

# **Selected Socio-Economic Data**

## **Zachary city, Louisiana**

### **African American and White, Not Hispanic**

**Data Set: 2008-2012 American Community Survey 5-Year Estimates**

[www.fairvote2020.org](http://www.fairvote2020.org)

[www.fairdata2000.com](http://www.fairdata2000.com)

[29-Dec-13](#)

**C02003.DETAILED RACE - Universe: TOTAL POPULATION**

Data Set: 2008-2012 American Community Survey 5-Year Estimates

	<b>Zachary city, Louisiana</b>		
	Population	Margin of Error (+/-)	% of Total
<b>Total:</b>	<b>14,954</b>	<b>32</b>	<b>100.0%</b>
Population of one race:	14,780	101	98.8%
White	8,477	677	56.7%
Black or African American	5,981	676	40.0%
American Indian and Alaska Native	9	15	0.1%
Asian alone	256	187	1.7%
Native Hawaiian and Other Pacific Islander	0	19	0.0%
Some other race	57	69	0.4%
Population of two or more races:	174	98	1.2%
Two races including Some other race	51	61	0.3%
Two races excluding Some other race, and three or more races	123	90	0.8%
Population of two races:	159	94	1.1%
White; Black or African American	85	76	0.6%
White; American Indian and Alaska Native	23	27	0.2%
White; Asian	0	19	0.0%
Black or African American; American Indian and Alaska Native	0	19	0.0%
All other two race combinations	51	61	0.3%
Population of three races	15	25	0.1%
Population of four or more races	0	19	0.0%

Note: Hispanics may be of any race. See Table B03002 and chart.

Source: U.S. Census Bureau, 2008-2012 American Community Survey

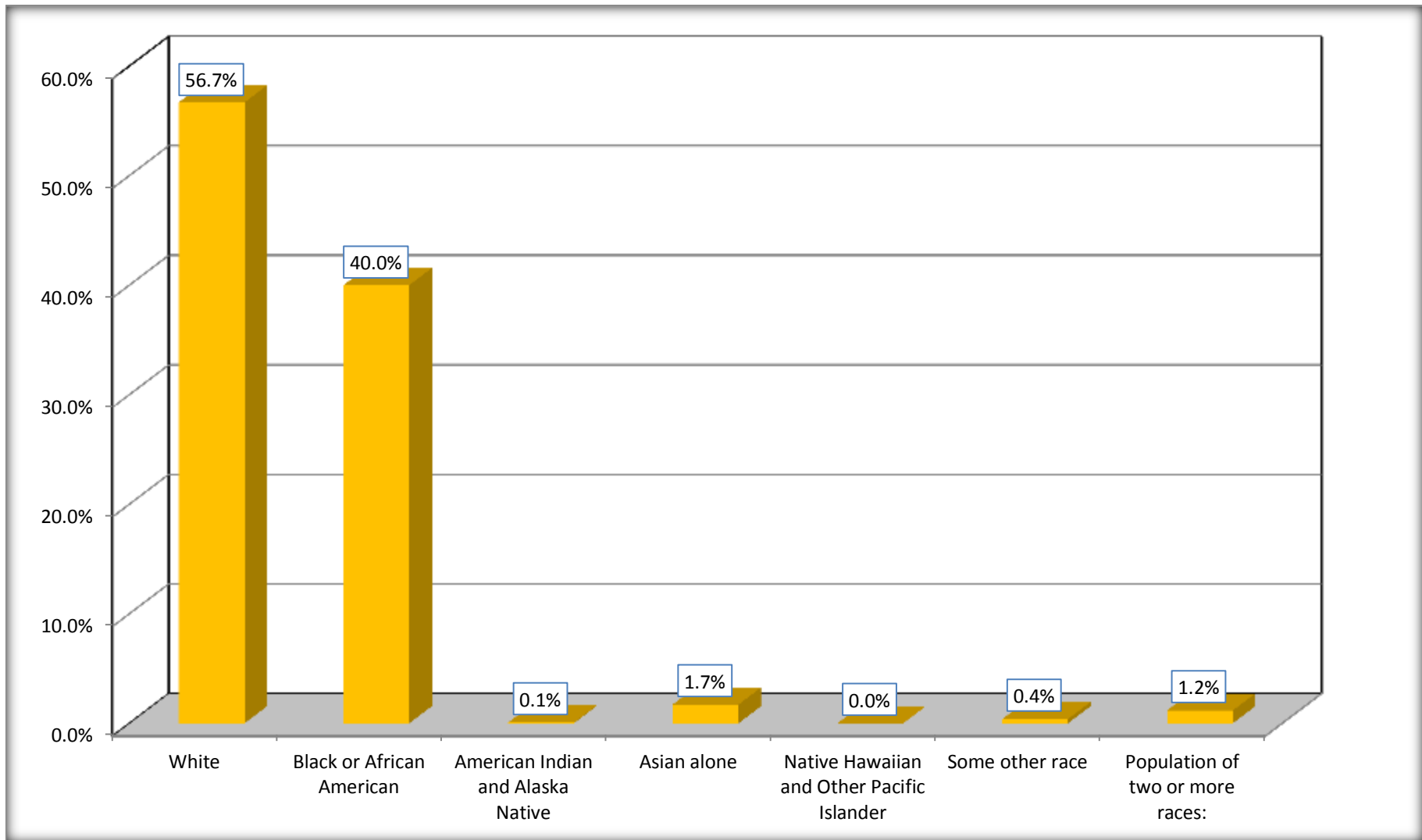
Although the American Community Survey (ACS) produces population, demographic and housing unit estimates, it is the Census Bureau's Population Estimates Program that produces and disseminates the official estimates of the population for the nation, states, counties, cities and towns and estimates of housing units for states and counties.

For information on confidentiality protection, sampling error, nonsampling error, and definitions, see Survey Methodology.

<http://www.census.gov/acs/www/UseData/index.htm>

# Population by Race

## Zachary city, Louisiana



Source: C02003.DETAILED RACE - Universe: TOTAL POPULATION  
Data Set: 2008-2012 American Community Survey 5-Year Estimates

**B03002. HISPANIC OR LATINO ORIGIN BY RACE - Universe: TOTAL POPULATION**

Data Set: 2008-2012 American Community Survey 5-Year Estimates

	Zachary city, Louisiana		
	Population	Margin of Error (+/-)	% of Total
<b>Total:</b>	14,954	32	<b>100.0%</b>
Not Hispanic or Latino:	14,821	121	99.1%
White alone	8,344	695	55.8%
Black or African American alone	5,981	676	40.0%
American Indian and Alaska Native alone	9	15	0.1%
Asian alone	256	187	1.7%
Native Hawaiian and Other Pacific Islander alone	0	19	0.0%
Some other race alone	57	69	0.4%
Two or more races:	174	98	1.2%
Two races including Some other race	51	61	0.3%
Two races excluding Some other race, and three or more races	123	90	0.8%
Hispanic or Latino	133	119	0.9%

Source: U.S. Census Bureau, 2008-2012 American Community Survey

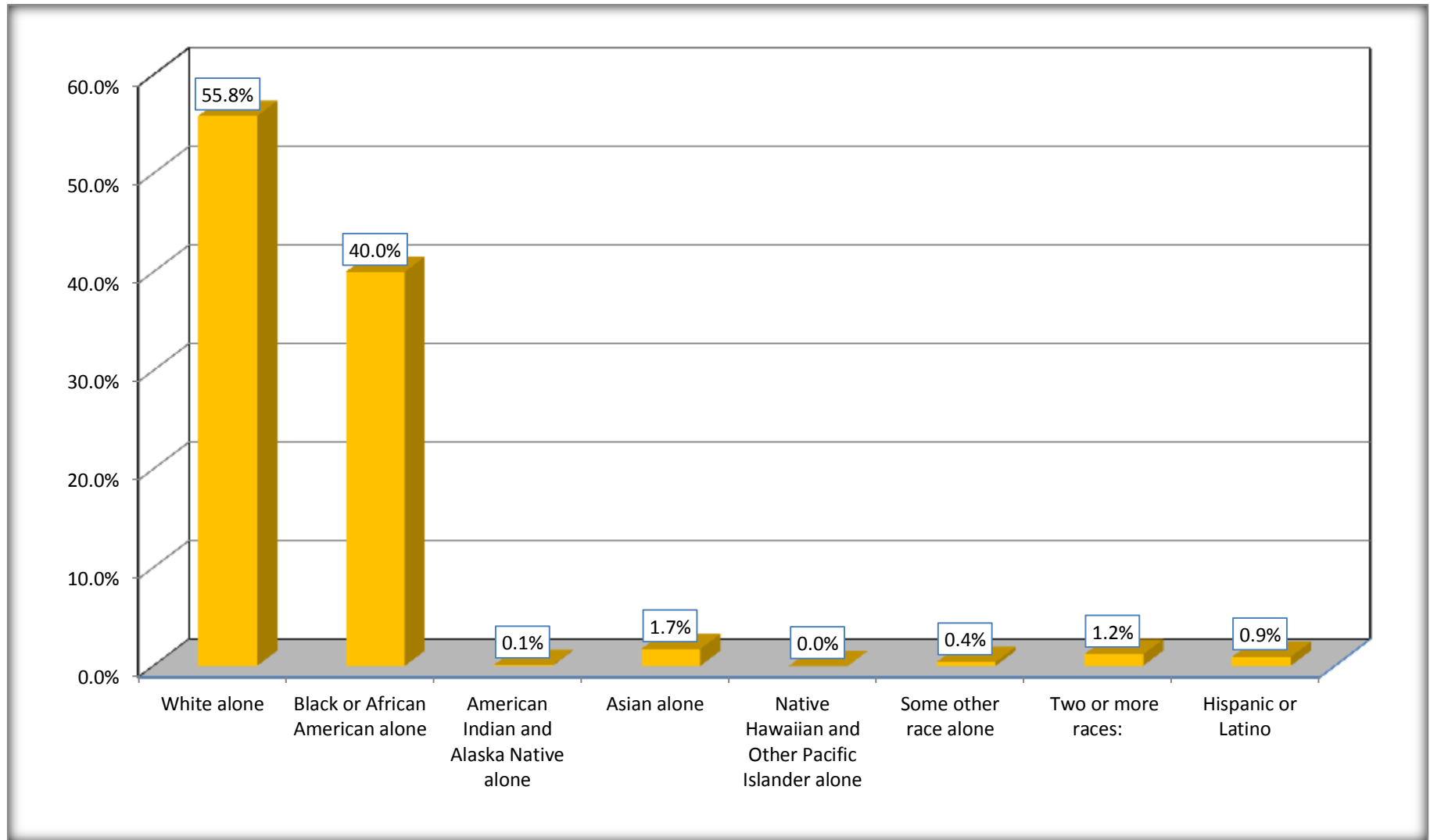
Although the American Community Survey (ACS) produces population, demographic and housing unit estimates, it is the Census Bureau's Population Estimates Program that produces and disseminates the official estimates of the population for the nation, states, counties, cities and towns and estimates of housing units for states and counties.

For information on confidentiality protection, sampling error, nonsampling error, and definitions, see Survey Methodology.

<http://www.census.gov/acs/www/UseData/index.htm>

# Non-Hispanic by Race and Hispanic Population

## Zachary city, Louisiana



Source: B03002. HISPANIC OR LATINO ORIGIN BY RACE - Universe: TOTAL POPULATION  
Data Set: 2008-2012 American Community Survey 5-Year Estimates

**B03002. HISPANIC OR LATINO ORIGIN BY RACE**

Data Set: 2008-2012 American Community Survey 5-Year Estimates

	Zachary city, Louisiana		
	Population	Margin of Error (+/-)	% of Total
Hispanic or Latino:	133	119	<b>100.0%</b>
White alone	133	119	100.0%
Black or African American alone	0	19	0.0%
American Indian and Alaska Native alone	0	19	0.0%
Asian alone	0	19	0.0%
Native Hawaiian and Other Pacific Islander alone	0	19	0.0%
Some other race alone	0	19	0.0%
Two or more races:	0	19	0.0%
Two races including Some other race	0	19	0.0%
Two races excluding Some other race, and three or more races	0	19	0.0%

Source: U.S. Census Bureau, 2008-2012 American Community Survey

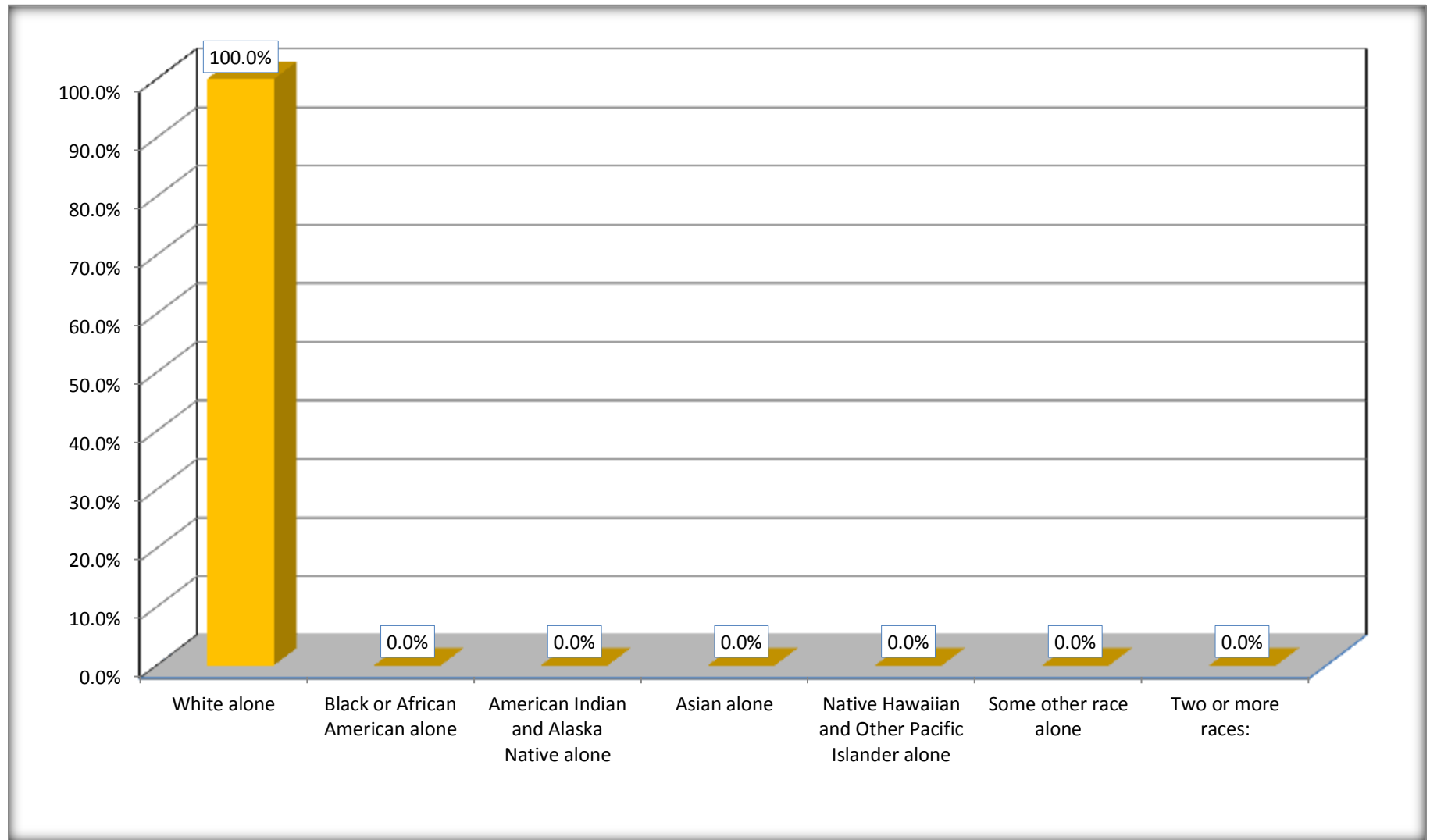
Although the American Community Survey (ACS) produces population, demographic and housing unit estimates, it is the Census Bureau's Population Estimates Program that produces and disseminates the official estimates of the population for the nation, states, counties, cities and towns and estimates of housing units for states and counties.

For information on confidentiality protection, sampling error, nonsampling error, and definitions, see Survey Methodology.

<http://www.census.gov/acs/www/UseData/index.htm>

# Hispanic or Latino Origin by Race

## Zachary city, Louisiana



Source: B03002. HISPANIC OR LATINO ORIGIN BY RACE  
Data Set: 2008-2012 American Community Survey 5-Year Estimates

**B01001. SEX BY AGE**

Data Set: 2008-2012 American Community Survey 5-Year Estimates

	Zachary city, Louisiana					
	African American	Margin of Error (+/-)	% of AA Total	White, Not Hispanic	Margin of Error (+/-)	% of NHW Total
<b>Total:</b>	<b>5,981</b>	<b>676</b>	<b>100.0%</b>	<b>8,344</b>	<b>695</b>	<b>100.0%</b>
Under 18 years	2,040	NC	34.1%	2,294	NC	27.5%
18 to 64 years	3,506	NC	58.6%	4,990	NC	59.8%
65 years and over	435	NC	7.3%	1,060	NC	12.7%
Male:	2,585	320	43.2%	4,079	389	48.9%
Under 18 years	765	NC	12.8%	1,229	NC	14.7%
18 to 64 years	1,695	NC	28.3%	2,450	NC	29.4%
65 years and over	125	NC	2.1%	400	NC	4.8%
Female:	3,396	519	56.8%	4,265	412	51.1%
Under 18 years	1,275	NC	21.3%	1,065	NC	12.8%
18 to 64 years	1,811	NC	30.3%	2,540	NC	30.4%
65 years and over	310	NC	5.2%	660	NC	7.9%

Source: U.S. Census Bureau, 2008-2012 American Community Survey

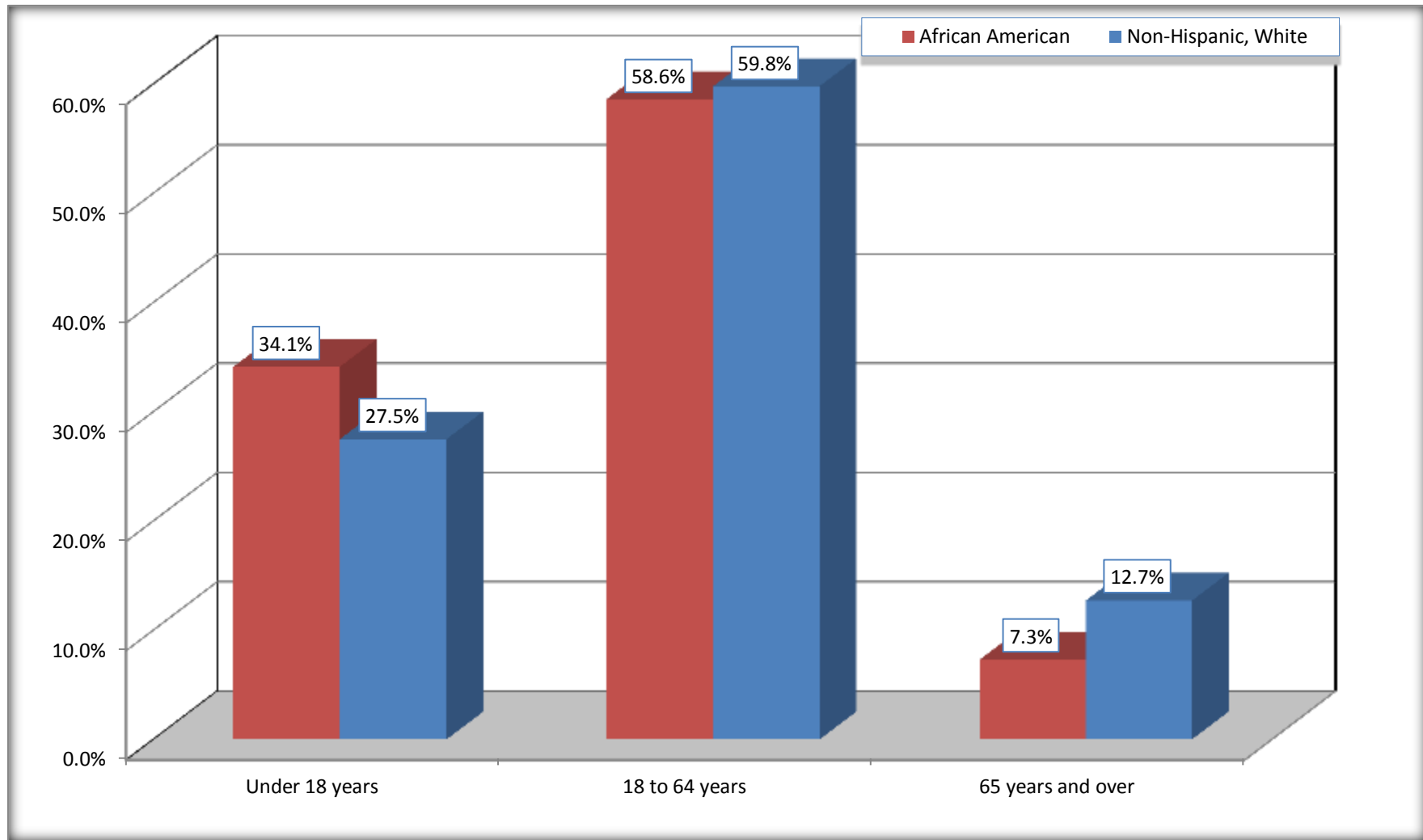
Although the American Community Survey (ACS) produces population, demographic and housing unit estimates, it is the Census Bureau's Population Estimates Program that produces and disseminates the official estimates of the population for the nation, states, counties, cities and towns and estimates of housing units for states and counties.

For information on confidentiality protection, sampling error, nonsampling error, and definitions, see Survey Methodology.  
<http://www.census.gov/acs/www/UseData/index.htm>



# Population by Age

## Zachary city, Louisiana



Source: B01001. SEX BY AGE  
Data Set: 2008-2012 American Community Survey 5-Year Estimates

**B05003. SEX BY AGE BY CITIZENSHIP STATUS**

Data Set: 2008-2012 American Community Survey 5-Year Estimates

	Zachary city, Louisiana					
	African American	Margin of Error (+/-)	% of AA Total by Age	White, Not Hispanic	Margin of Error (+/-)	% of NHW Total by Age
<b>Total:</b>	<b>5,981</b>	<b>676</b>	<b>100.0%</b>	<b>8,344</b>	<b>695</b>	<b>100.0%</b>
<b>Under 18 years:</b>	<b>2,040</b>	<b>NC</b>	<b>100.0%</b>	<b>2,294</b>	<b>NC</b>	<b>100.0%</b>
Native	2,040	NC	100.0%	2,294	NC	100.0%
Foreign born:	0	NC	0.0%	0	NC	0.0%
Naturalized U.S. citizen	0	NC	0.0%	0	NC	0.0%
Not a U.S. citizen	0	NC	0.0%	0	NC	0.0%
<b>18 years and over:</b>	<b>3,941</b>	<b>NC</b>	<b>100.0%</b>	<b>6,050</b>	<b>NC</b>	<b>100.0%</b>
Native	3,917	NC	99.4%	6,028	NC	99.6%
Foreign born:	24	NC	0.6%	22	NC	0.4%
Naturalized U.S. citizen	0	NC	0.0%	22	NC	0.4%
Not a U.S. citizen	24	NC	0.6%	0	NC	0.0%
<b>Male:</b>	<b>2,585</b>	<b>320</b>	<b>43.2%</b>	<b>4,079</b>	<b>401</b>	<b>48.9%</b>
<b>Under 18 years:</b>	<b>765</b>	<b>230</b>	<b>100.0%</b>	<b>1,229</b>	<b>252</b>	<b>100.0%</b>
Native	765	230	100.0%	1,229	252	100.0%
Foreign born:	0	19	0.0%	0	19	0.0%
Naturalized U.S. citizen	0	19	0.0%	0	19	0.0%
Not a U.S. citizen	0	19	0.0%	0	19	0.0%
<b>18 years and over:</b>	<b>1,820</b>	<b>214</b>	<b>100.0%</b>	<b>2,850</b>	<b>289</b>	<b>100.0%</b>
Native	1,809	216	99.4%	2,839	287	99.6%
Foreign born:	11	19	0.6%	11	19	0.4%
Naturalized U.S. citizen	0	19	0.0%	11	19	0.4%
Not a U.S. citizen	11	19	0.6%	0	19	0.0%

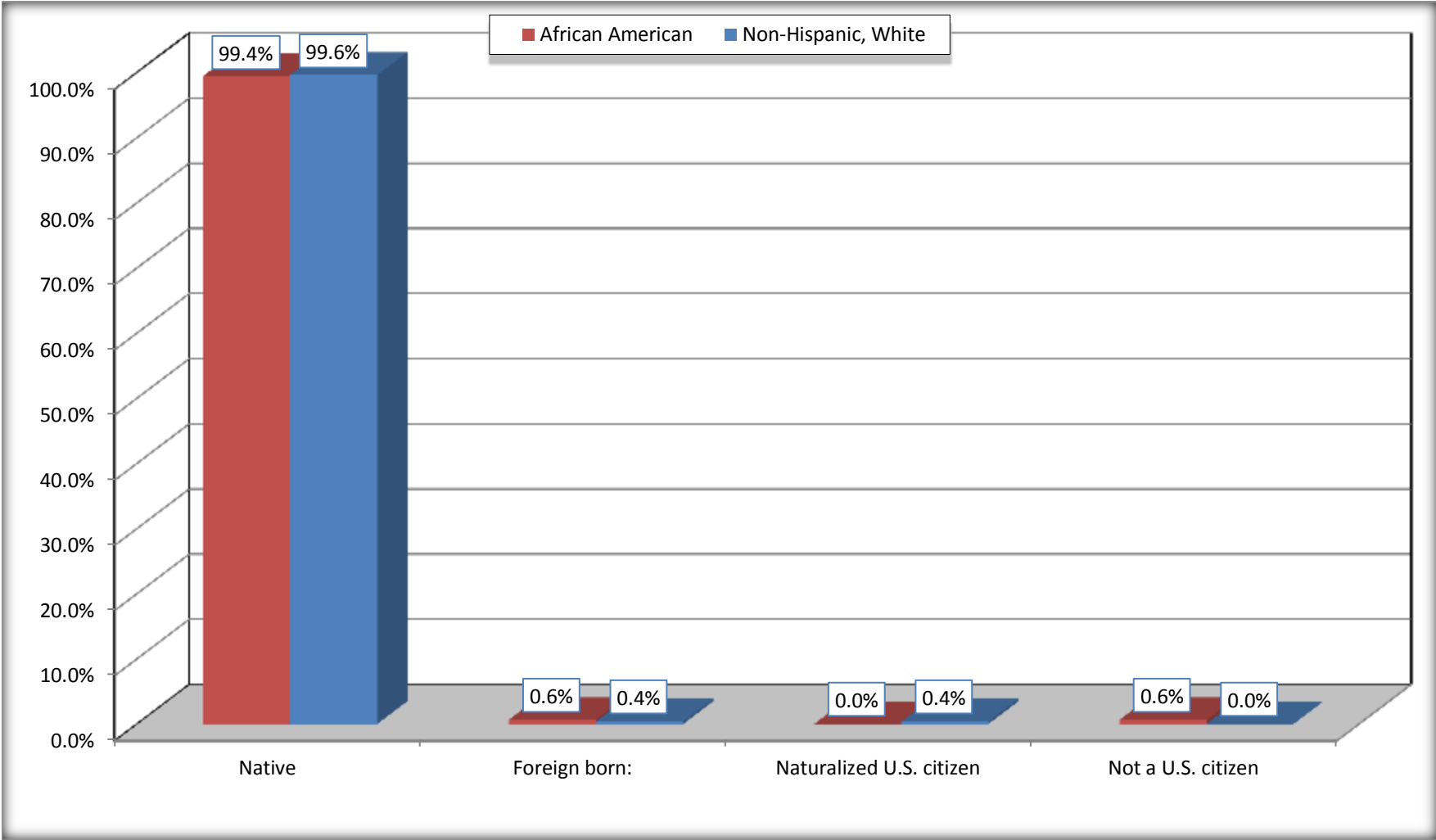
	Zachary city, Louisiana					
	African American	Margin of Error (+/-)	% of AA by Age	White, Not Hispanic	Margin of Error (+/-)	% of NHW by Age
<b>Female:</b>	3,396	519	56.8%	4,265	501	51.1%
<b>Under 18 years:</b>	<b>1,275</b>	<b>403</b>	<b>100.0%</b>	<b>1,065</b>	<b>342</b>	<b>100.0%</b>
Native	1,275	403	100.0%	1,065	342	100.0%
Foreign born:	0	19	0.0%	0	19	0.0%
Naturalized U.S. citizen	0	19	0.0%	0	19	0.0%
Not a U.S. citizen	0	19	0.0%	0	19	0.0%
<b>18 years and over:</b>	<b>2,121</b>	<b>290</b>	<b>100.0%</b>	<b>3,200</b>	<b>290</b>	<b>100.0%</b>
Native	2,108	290	99.4%	3,189	290	99.7%
Foreign born:	13	21	0.6%	11	17	0.3%
Naturalized U.S. citizen	0	19	0.0%	11	17	0.3%
Not a U.S. citizen	13	21	0.6%	0	19	0.0%

Source: U.S. Census Bureau, 2008-2012 American Community Survey

For information on confidentiality protection, sampling error, nonsampling error, and definitions, see Survey Methodology.  
<http://www.census.gov/acs/www/UseData/index.htm>

# Citizenship Status of Voting Age Population (18 and Over)

## Zachary city, Louisiana



Source: B05003. SEX BY AGE BY CITIZENSHIP STATUS  
Data Set: 2008-2012 American Community Survey 5-Year Estimates

**B07004. GEOGRAPHICAL MOBILITY IN THE PAST YEAR BY RACE FOR CURRENT RESIDENCE IN THE UNITED STATES - Universe:  
POPULATION 1 YEAR AND OVER**

Data Set: 2008-2012 American Community Survey 5-Year Estimates

	Zachary city, Louisiana					
	African American	Margin of Error (+/-)	% of AA Total	White, Not Hispanic	Margin of Error (+/-)	% of NHW Total
<b>Total:</b>	<b>5,878</b>	<b>665</b>	<b>100.0%</b>	<b>8,277</b>	<b>686</b>	<b>100.0%</b>
Same house 1 year ago	4,775	661	81.2%	7,334	685	88.6%
Moved within same county	910	499	15.5%	594	323	7.2%
Moved from different county within same state	162	239	2.8%	137	136	1.7%
Moved from different state	31	48	0.5%	212	187	2.6%
Moved from abroad	0	19	0.0%	0	19	0.0%

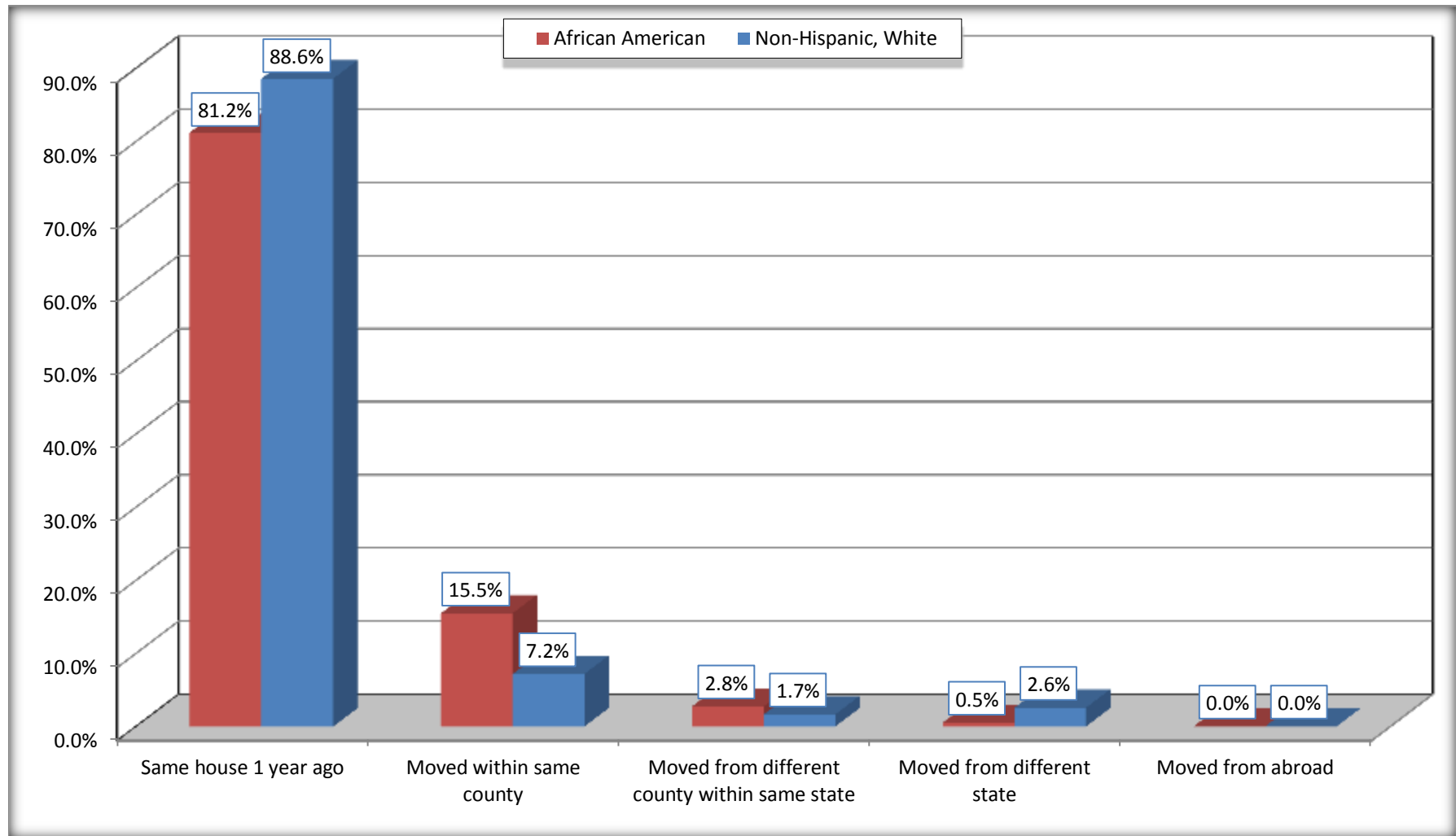
Source: U.S. Census Bureau, 2008-2012 American Community Survey

For information on confidentiality protection, sampling error, nonsampling error, and definitions, see Survey Methodology.

<http://www.census.gov/acs/www/UseData/index.htm>

# Geographical Mobility in the Past Year (Population 1 Year and Over)

## Zachary city, Louisiana



Source: B07004. GEOGRAPHICAL MOBILITY IN THE PAST YEAR BY RACE FOR CURRENT RESIDENCE IN THE UNITED STATES - Universe: POPULATION 1 YEAR AND OVER

Data Set: 2008-2012 American Community Survey 5-Year Estimates

**B08105. MEANS OF TRANSPORTATION TO WORK - Universe: WORKERS 16 YEARS AND OVER**

Data Set: 2008-2012 American Community Survey 5-Year Estimates

	Zachary city, Louisiana					
	African American	Margin of Error (+/-)	% of AA Total	White, Not Hispanic	Margin of Error (+/-)	% of NHW Total
<b>Total:</b>	2543	330	<b>100.0%</b>	4173	389	<b>100.0%</b>
Car, truck, or van - drove alone	2189	320	86.1%	3623	365	86.8%
Car, truck, or van - carpooled	222	129	8.7%	326	132	7.8%
Public transportation (excluding taxicab)	58	67	2.3%	0	19	0.0%
Walked	10	16	0.4%	0	19	0.0%
Taxicab, motorcycle, bicycle, or other means	23	36	0.9%	77	74	1.8%
Worked at home	41	61	1.6%	147	94	3.5%

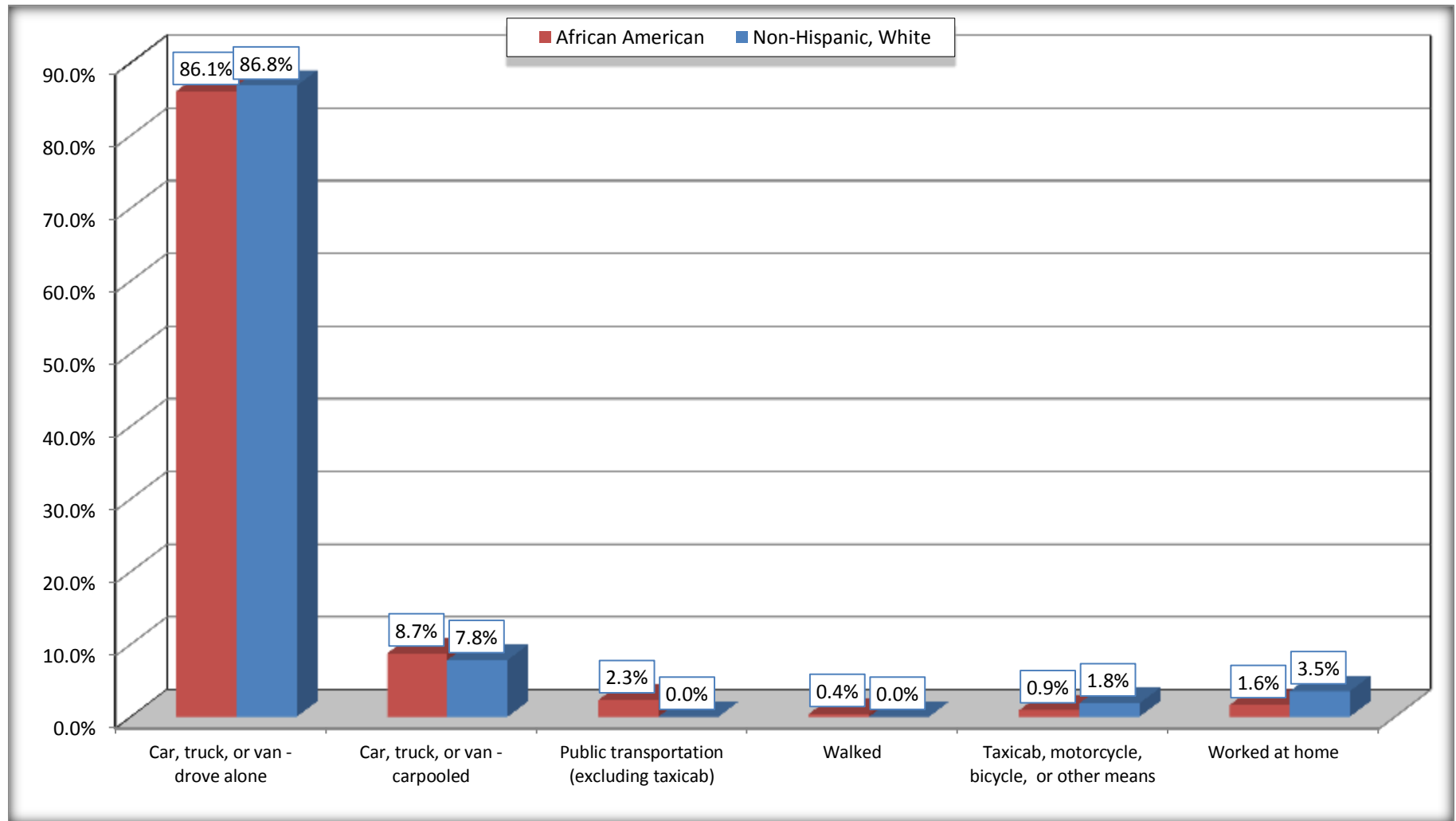
Source: U.S. Census Bureau, 2008-2012 American Community Survey

For information on confidentiality protection, sampling error, nonsampling error, and definitions, see Survey Methodology.

<http://www.census.gov/acs/www/UseData/index.htm>

# Means of Transportation to Work (Workers 16 Years and Over)

## Zachary city, Louisiana



Source: B08105. MEANS OF TRANSPORTATION TO WORK - Universe: WORKERS 16 YEARS AND OVER  
Data Set: 2008-2012 American Community Survey 5-Year Estimates



**B11002. HOUSEHOLD TYPE BY RELATIVES AND NONRELATIVES FOR POPULATION IN HOUSEHOLDS**

Data Set: 2008-2012 American Community Survey 5-Year Estimates

	Zachary city, Louisiana					
	African American	Margin of Error (+/-)	% of AA Total	White, Not Hispanic	Margin of Error (+/-)	% of NHW Total
<b>Total:</b>	5933	677	<b>100.0%</b>	8472	686	<b>100.0%</b>
In family households	5605	728	94.5%	7369	600	87.0%
In nonfamily households	328	131	5.5%	1103	335	13.0%

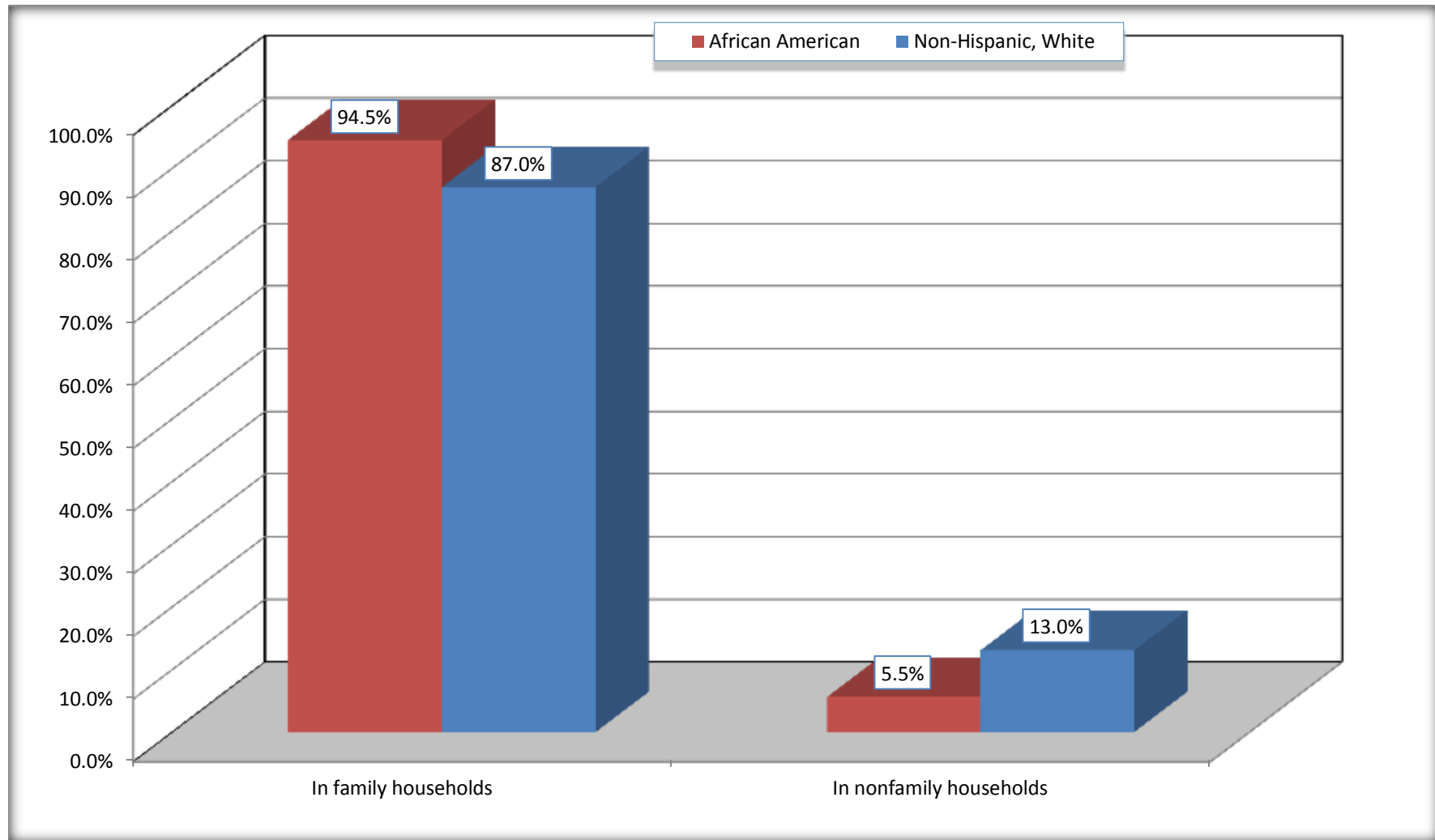
Source: U.S. Census Bureau, 2008-2012 American Community Survey

For information on confidentiality protection, sampling error, nonsampling error, and definitions, see Survey Methodology.

<http://www.census.gov/acs/www/UseData/index.htm>

# Household Type for Population in Households

## Zachary city, Louisiana



Source: B11002. HOUSEHOLD TYPE BY RELATIVES AND NONRELATIVES FOR POPULATION IN HOUSEHOLDS  
Data Set: 2008-2012 American Community Survey 5-Year Estimates

**B12002. MARITAL STATUS FOR THE POPULATION 15 YEARS AND OVER**

Data Set: 2008-2012 American Community Survey 5-Year Estimates

	Zachary city, Louisiana					
	African American	Margin of Error (+/-)	% of AA Total	White, Not Hispanic	Margin of Error (+/-)	% of NHW Total
<b>Total:</b>	<b>4,373</b>	<b>463</b>	<b>100.0%</b>	<b>6,559</b>	<b>473</b>	<b>100.0%</b>
Never married	1,721	NC	39.4%	1,275	NC	19.4%
Now married (except separated)	1,751	NC	40.0%	3,795	NC	57.9%
Separated	163	NC	3.7%	118	NC	1.8%
Widowed	342	NC	7.8%	394	NC	6.0%
Divorced	396	NC	9.1%	977	NC	14.9%
<b>Male:</b>	<b>2,020</b>	<b>239</b>	<b>46.2%</b>	<b>3,145</b>	<b>325</b>	<b>47.9%</b>
Never married	948	185	21.7%	753	198	11.5%
Now married (except separated)	870	196	19.9%	1,892	209	28.8%
Separated	38	44	0.9%	41	65	0.6%
Widowed	29	34	0.7%	79	62	1.2%
Divorced	135	69	3.1%	380	137	5.8%
<b>Female:</b>	<b>2,353</b>	<b>343</b>	<b>53.8%</b>	<b>3,414</b>	<b>313</b>	<b>52.1%</b>
Never married	773	265	17.7%	522	185	8.0%
Now married (except separated)	881	188	20.1%	1,903	206	29.0%
Separated	125	101	2.9%	77	71	1.2%
Widowed	313	103	7.2%	315	112	4.8%
Divorced	261	105	6.0%	597	189	9.1%

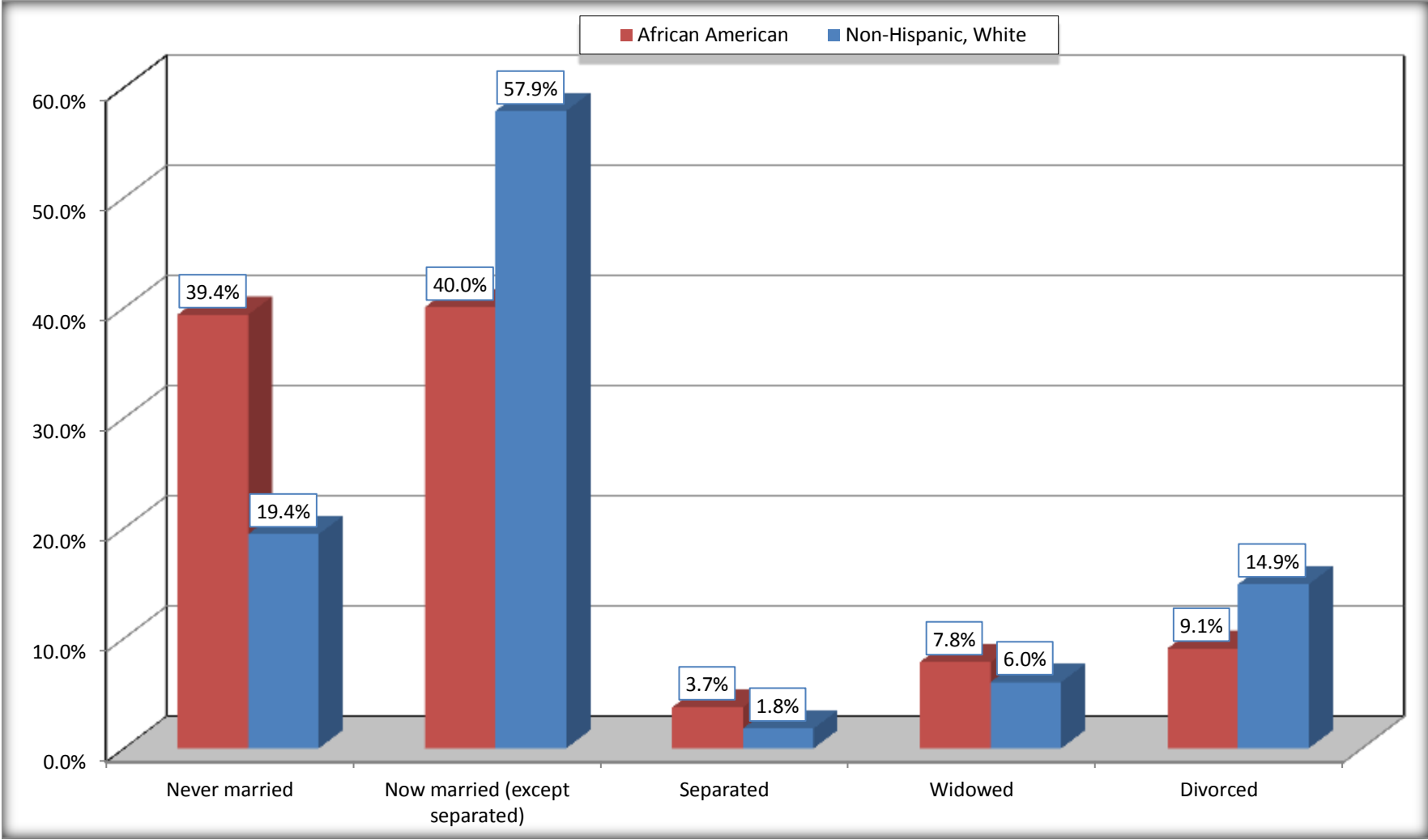
Source: U.S. Census Bureau, 2008-2012 American Community Survey

For information on confidentiality protection, sampling error, nonsampling error, and definitions, see Survey Methodology.

<http://www.census.gov/acs/www/UseData/index.htm>

# Marital Status for the Population 15 Years and Over

## Zachary city, Louisiana



Source: B12002. MARITAL STATUS FOR THE POPULATION 15 YEARS AND OVER  
Data Set: 2008-2012 American Community Survey 5-Year Estimates

**C15002. SEX BY EDUCATIONAL ATTAINMENT FOR THE POPULATION 25 YEARS AND OVER**

Data Set: 2008-2012 American Community Survey 5-Year Estimates

	Zachary city, Louisiana					
	African American	Margin of Error (+/-)	% of AA Total	White, Not Hispanic	Margin of Error (+/-)	% of NHW Total
<b>Total:</b>	<b>3,249</b>	<b>341</b>	<b>100.0%</b>	<b>5,617</b>	<b>476</b>	<b>100.0%</b>
Less than high school diploma	406	NC	12.5%	296	NC	5.3%
High school graduate, GED, or alternative	956	NC	29.4%	1,823	NC	32.5%
Some college or associate's degree	920	NC	28.3%	2,003	NC	35.7%
Bachelor's degree or higher	967	NC	29.8%	1,495	NC	26.6%
Male:	1,455	204	44.8%	2,592	273	46.1%
Less than high school diploma	204	113	6.3%	129	69	2.3%
High school graduate, GED, or alternative	520	163	16.0%	1,020	208	18.2%
Some college or associate's degree	358	140	11.0%	733	179	13.0%
Bachelor's degree or higher	373	143	11.5%	710	161	12.6%
Female:	1,794	227	55.2%	3,025	296	53.9%
Less than high school diploma	202	87	6.2%	167	85	3.0%
High school graduate, GED, or alternative	436	143	13.4%	803	170	14.3%
Some college or associate's degree	562	181	17.3%	1,270	225	22.6%
Bachelor's degree or higher	594	164	18.3%	785	182	14.0%

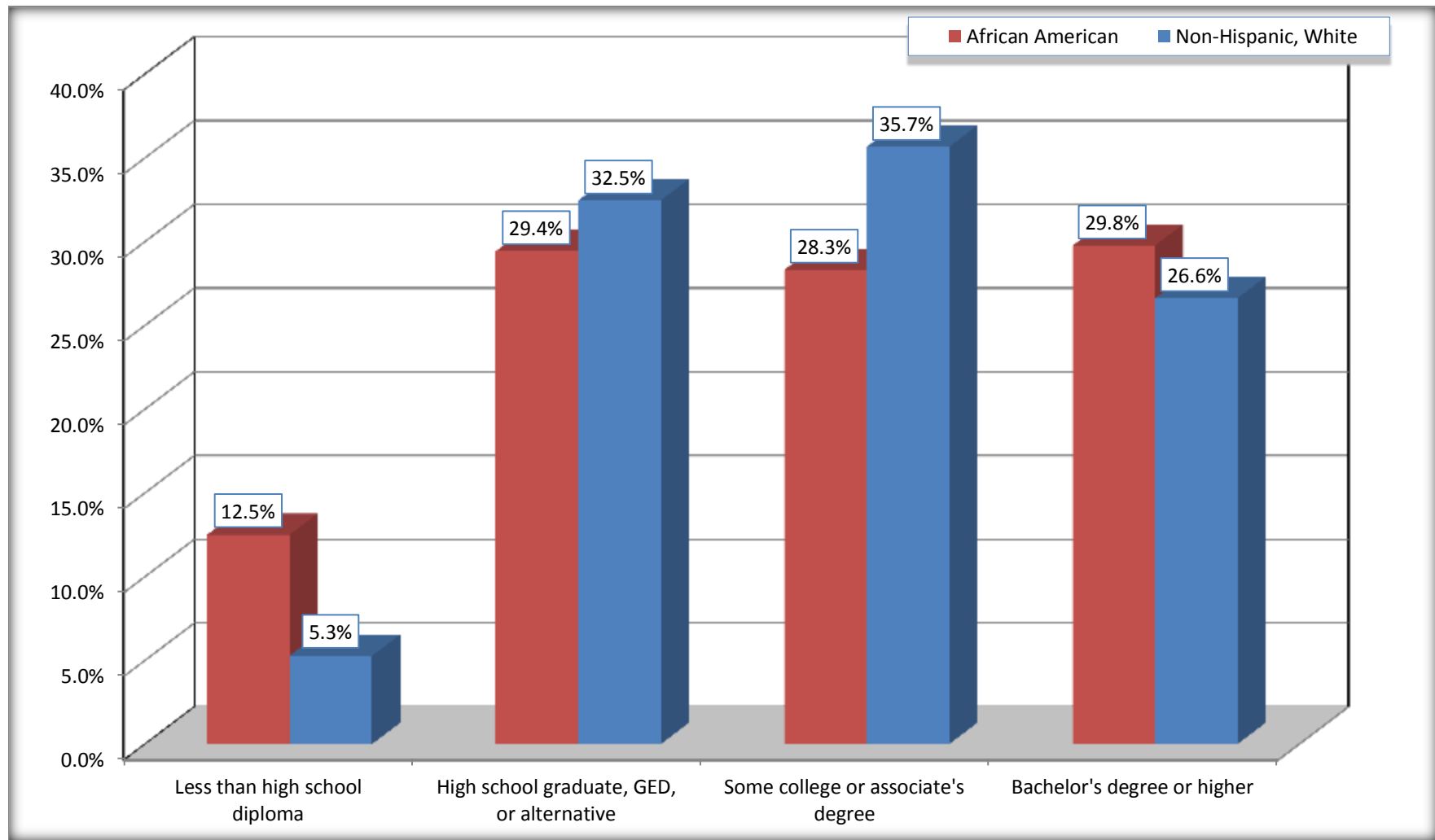
Source: U.S. Census Bureau, 2008-2012 American Community Survey

For information on confidentiality protection, sampling error, nonsampling error, and definitions, see Survey Methodology.

<http://www.census.gov/acs/www/UseData/index.htm>

# Educational Attainment for the Population 25 Years and Older

## Zachary city, Louisiana



Source: C15002. SEX BY EDUCATIONAL ATTAINMENT FOR THE POPULATION 25 YEARS AND OVER  
Data Set: 2008-2012 American Community Survey 5-Year Estimates

**B17010. POVERTY STATUS IN THE PAST 12 MONTHS OF FAMILIES BY FAMILY TYPE BY PRESENCE OF RELATED CHILDREN UNDER 18 YEARS**

Data Set: 2008-2012 American Community Survey 5-Year Estimates

	Zachary city, Louisiana					
	African American	Margin of Error (+/-)	% of AA Total	White, Not Hispanic	Margin of Error (+/-)	% of NHW Total
<b>Total:</b>	<b>1,498</b>	<b>206</b>	<b>100.0%</b>	<b>2,387</b>	<b>204</b>	<b>100.0%</b>
Income in the past 12 months below poverty level:	177	107	11.8%	136	100	5.7%
Married-couple family:	60	53	4.0%	39	36	1.6%
With related children under 18 years	53	51	3.5%	0	19	0.0%
Other family:	117	91	7.8%	97	93	4.1%
Male householder, no wife present	0	19	0.0%	0	19	0.0%
With related children under 18 years	0	19	0.0%	0	19	0.0%
Female householder, no husband present	117	91	7.8%	97	93	4.1%
With related children under 18 years	117	91	7.8%	97	93	4.1%
Income in the past 12 months at or above poverty level:	1,321	197	88.2%	2,251	204	94.3%
Married-couple family:	772	193	51.5%	1,803	197	75.5%
With related children under 18 years	520	162	34.7%	794	166	33.3%
Other family:	549	169	36.6%	448	164	18.8%
Male householder, no wife present	137	97	9.1%	144	83	6.0%
With related children under 18 years	137	97	9.1%	100	79	4.2%
Female householder, no husband present	412	141	27.5%	304	142	12.7%
With related children under 18 years	233	110	15.6%	254	136	10.6%

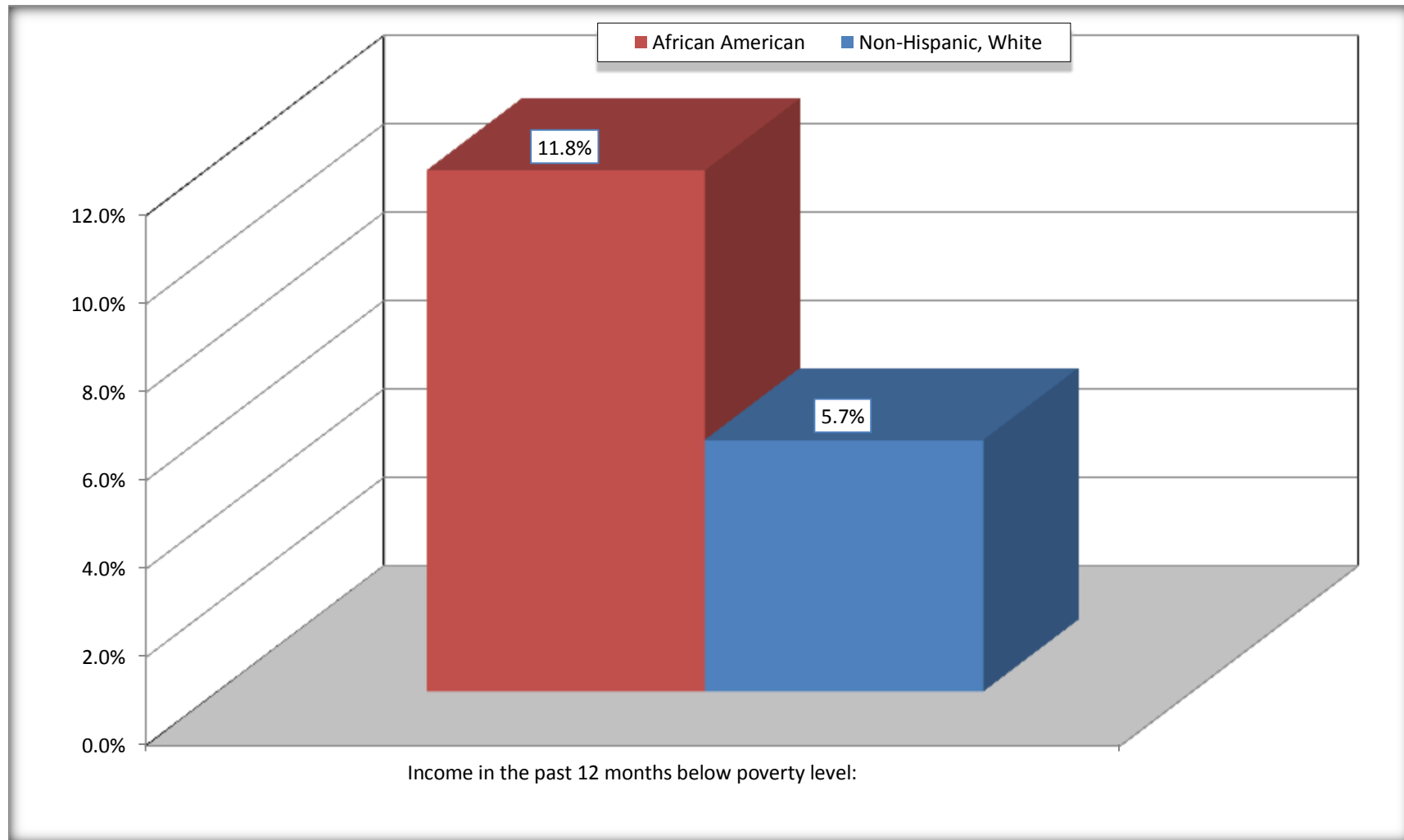
Source: U.S. Census Bureau, 2008-2012 American Community Survey

For information on confidentiality protection, sampling error, nonsampling error, and definitions, see Survey Methodology.

<http://www.census.gov/acs/www/UseData/index.htm>

# Family Households Below Poverty in the Past 12 Months

## Zachary city, Louisiana



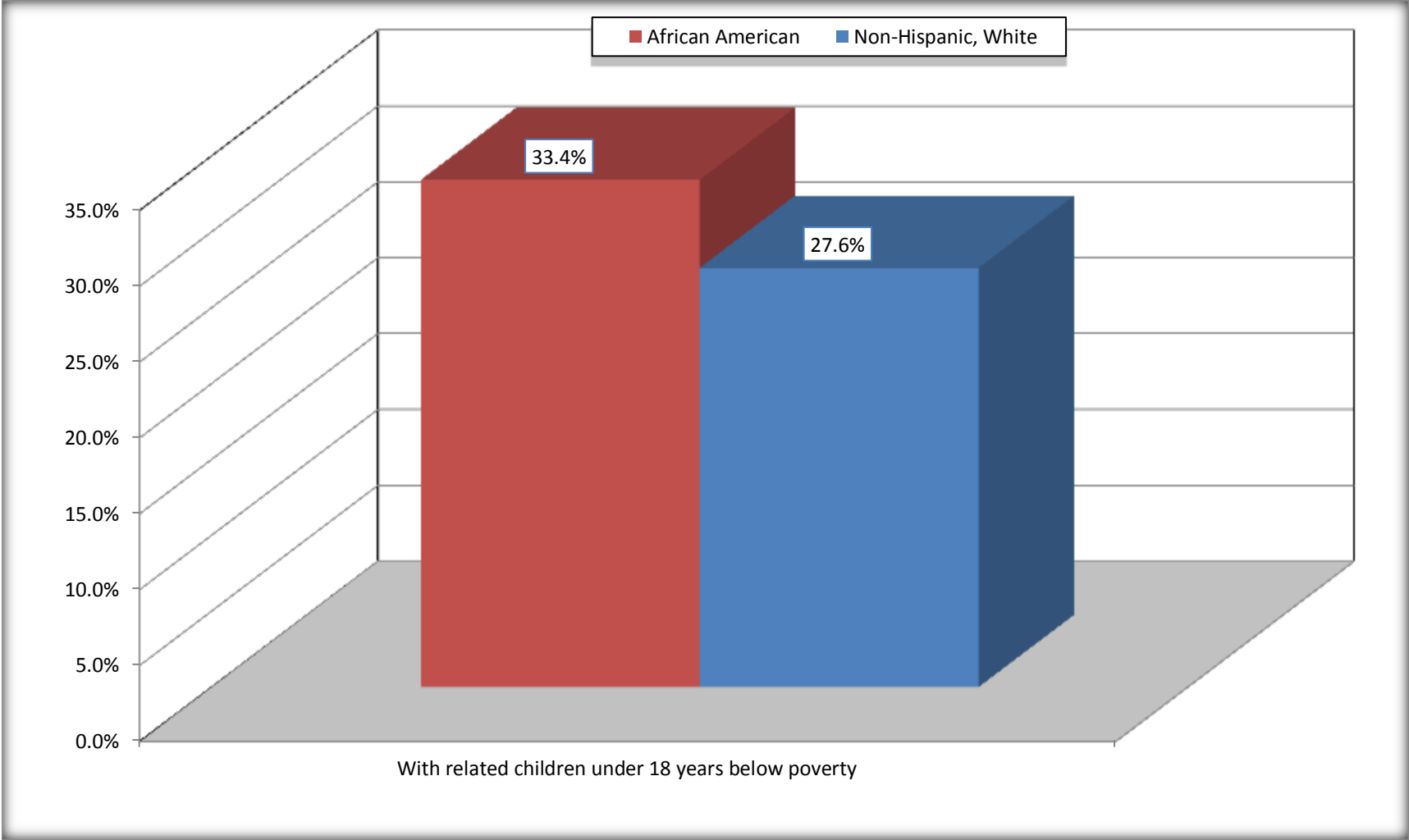
Source: B17010. POVERTY STATUS IN THE PAST 12 MONTHS OF FAMILIES BY FAMILY TYPE BY PRESENCE OF RELATED CHILDREN UNDER 18 YEARS

Data Set: 2008-2012 American Community Survey 5-Year Estimates



# Female-headed Households with Related Children Below Poverty in the Past 12 Months

## Zachary city, Louisiana



Source: B17010. POVERTY STATUS IN THE PAST 12 MONTHS OF FAMILIES BY FAMILY TYPE BY PRESENCE OF RELATED CHILDREN UNDER 18 YEARS

Data Set: 2008-2012 American Community Survey 5-Year Estimates

**B17020 POVERTY STATUS IN THE PAST 12 MONTHS BY AGE - Universe: POPULATION FOR WHOM POVERTY STATUS IS DETERMINED**

Data Set: 2008-2012 American Community Survey 5-Year Estimates

	Zachary city, Louisiana					
	African American	Margin of Error (+/-)	% of AA By Age	White, Not Hispanic	Margin of Error (+/-)	% of NHW By Age
<b>Total:</b>	<b>5,910</b>	<b>676</b>	<b>100.0%</b>	<b>8,151</b>	<b>659</b>	<b>100.0%</b>
Income in the past 12 months below poverty level:	765	398	12.9%	470	284	5.8%
<b>Under 18 years</b>	280	NC	13.7%	127	NC	5.8%
<b>18 to 64 years</b>	427	243	12.2%	343	189	6.9%
<b>65 years and over</b>	58	NC	15.4%	0	NC	0.0%
Income in the past 12 months at or above poverty level:	5,145	692	87.1%	7,681	669	94.2%
<b>Under 18 years</b>	1,760	NC	86.3%	2,063	NC	94.2%
<b>18 to 64 years</b>	3,067	369	87.8%	4,636	426	93.1%
<b>65 years and over</b>	318	NC	84.6%	982	NC	100.0%

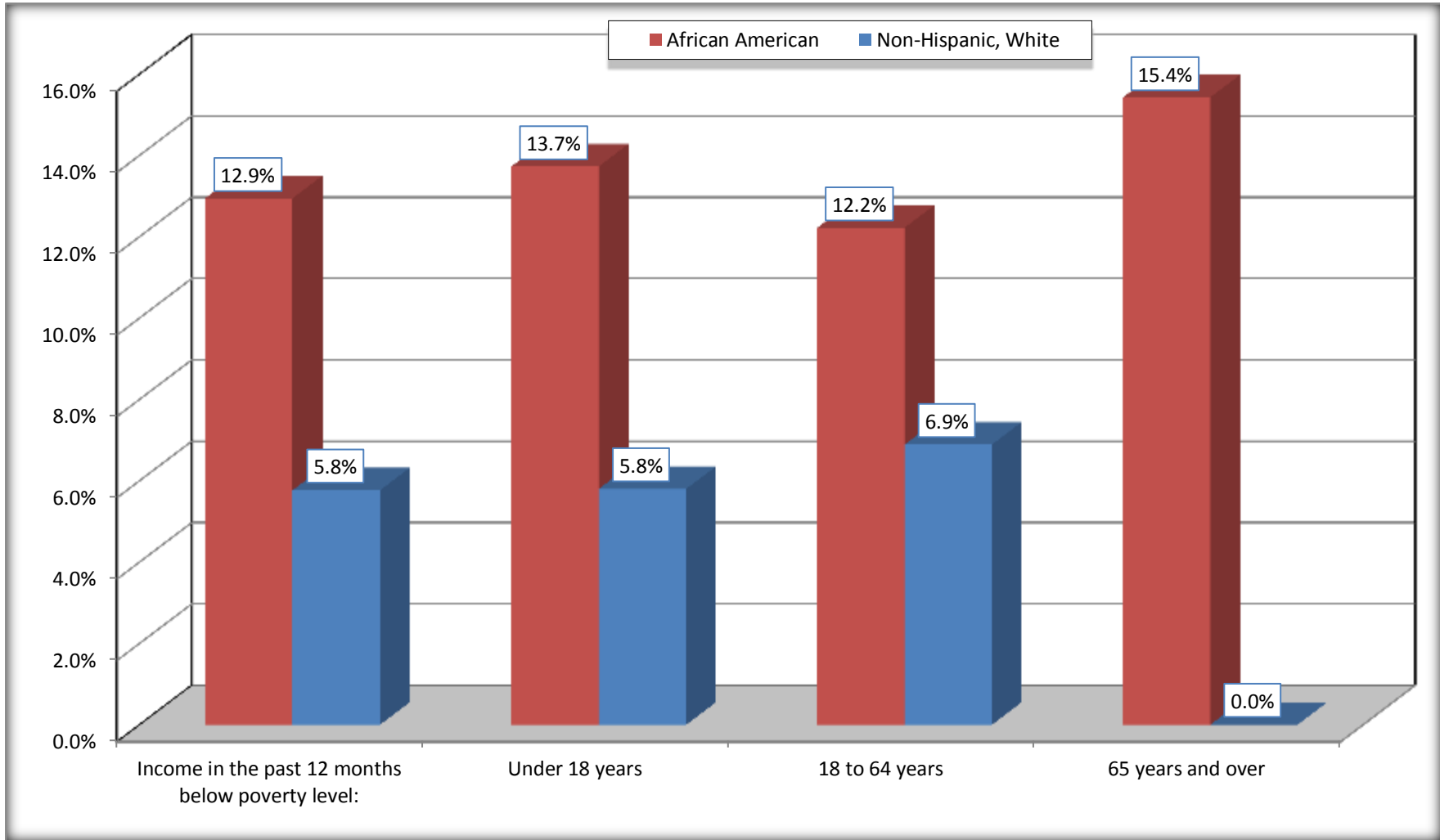
Source: U.S. Census Bureau, 2008-2012 American Community Survey

For information on confidentiality protection, sampling error, nonsampling error, and definitions, see Survey Methodology.

<http://www.census.gov/acs/www/UseData/index.htm>

# Population Below Poverty in the Past 12 Months

## Zachary city, Louisiana



Source: B17020 POVERTY STATUS IN THE PAST 12 MONTHS BY AGE - Universe: POPULATION FOR WHOM POVERTY STATUS IS DETERMINED  
Data Set: 2008-2012 American Community Survey 5-Year Estimates

**B19001. HOUSEHOLD INCOME IN THE PAST 12 MONTHS (IN 2010 INFLATION-ADJUSTED DOLLARS)**

Data Set: 2008-2012 American Community Survey 5-Year Estimates

	Zachary city, Louisiana					
	African American	Margin of Error (+/-)	% of AA Total	White, Not Hispanic	Margin of Error (+/-)	% of NHW Total
<b>Total:</b>	<b>1,826</b>	<b>203</b>	<b>100.0%</b>	<b>3,236</b>	<b>289</b>	<b>100.0%</b>
Less than \$ 10,000	142	87	7.8%	113	75	3.5%
\$ 10,000 to \$ 14,999	56	46	3.1%	66	81	2.0%
<b>\$ 15,000 to \$ 24,999</b>	260	NC	14.2%	201	NC	6.2%
<b>\$ 25,000 to \$ 34,999</b>	215	NC	11.8%	274	NC	8.5%
<b>\$ 35,000 to \$ 49,999</b>	198	NC	10.8%	455	NC	14.1%
<b>\$ 50,000 to \$ 74,999</b>	306	NC	16.8%	749	NC	23.1%
\$ 75,000 to \$ 99,999	351	146	19.2%	445	144	13.8%
<b>\$ 100,000 to \$ 149,999</b>	201	NC	11.0%	595	NC	18.4%
\$ 150,000 to \$ 199,999	66	62	3.6%	194	78	6.0%
\$ 200,000 or more	31	38	1.7%	144	82	4.4%

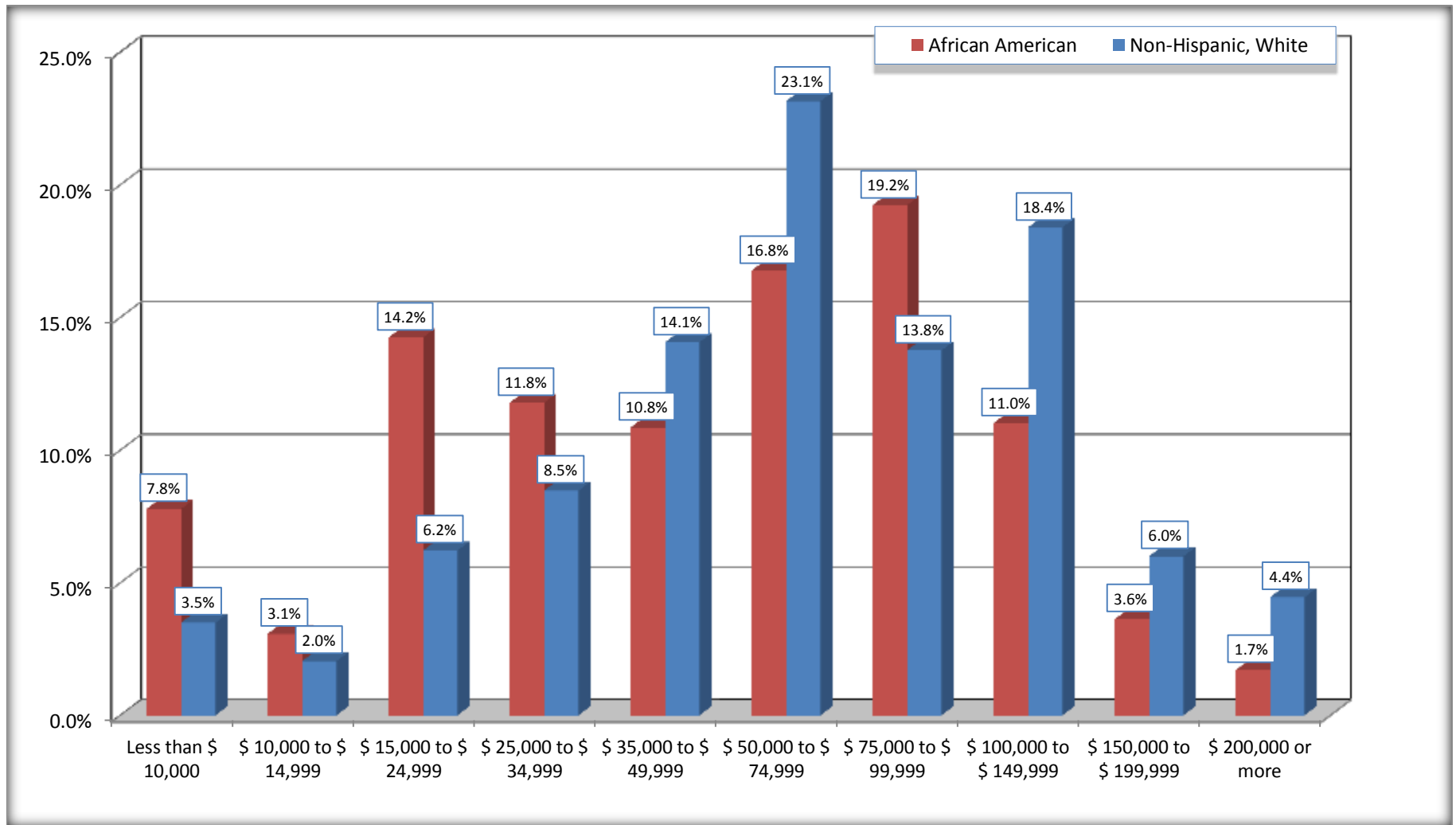
Source: U.S. Census Bureau, 2008-2012 American Community Survey

For information on confidentiality protection, sampling error, nonsampling error, and definitions, see Survey Methodology.

<http://www.census.gov/acs/www/UseData/index.htm>

# Household Income in the Past 12 Months

## Zachary city, Louisiana



Source: B19001. HOUSEHOLD INCOME IN THE PAST 12 MONTHS (IN 2010 INFLATION-ADJUSTED DOLLARS)  
Data Set: 2008-2012 American Community Survey 5-Year Estimates

**B19013. MEDIAN HOUSEHOLD INCOME IN THE PAST 12 MONTHS (IN 2010 INFLATION-ADJUSTED DOLLARS)**

Data Set: 2008-2012 American Community Survey 5-Year Estimates

	Zachary city, Louisiana			
	African American	Margin of Error (+/-)	White, Not Hispanic	Margin of Error (+/-)
Median household income in the past 12 months (in 2010 inflation-adjusted dollars)	\$ 56,855	\$ 16,426	\$ 71,024	\$ 5,066

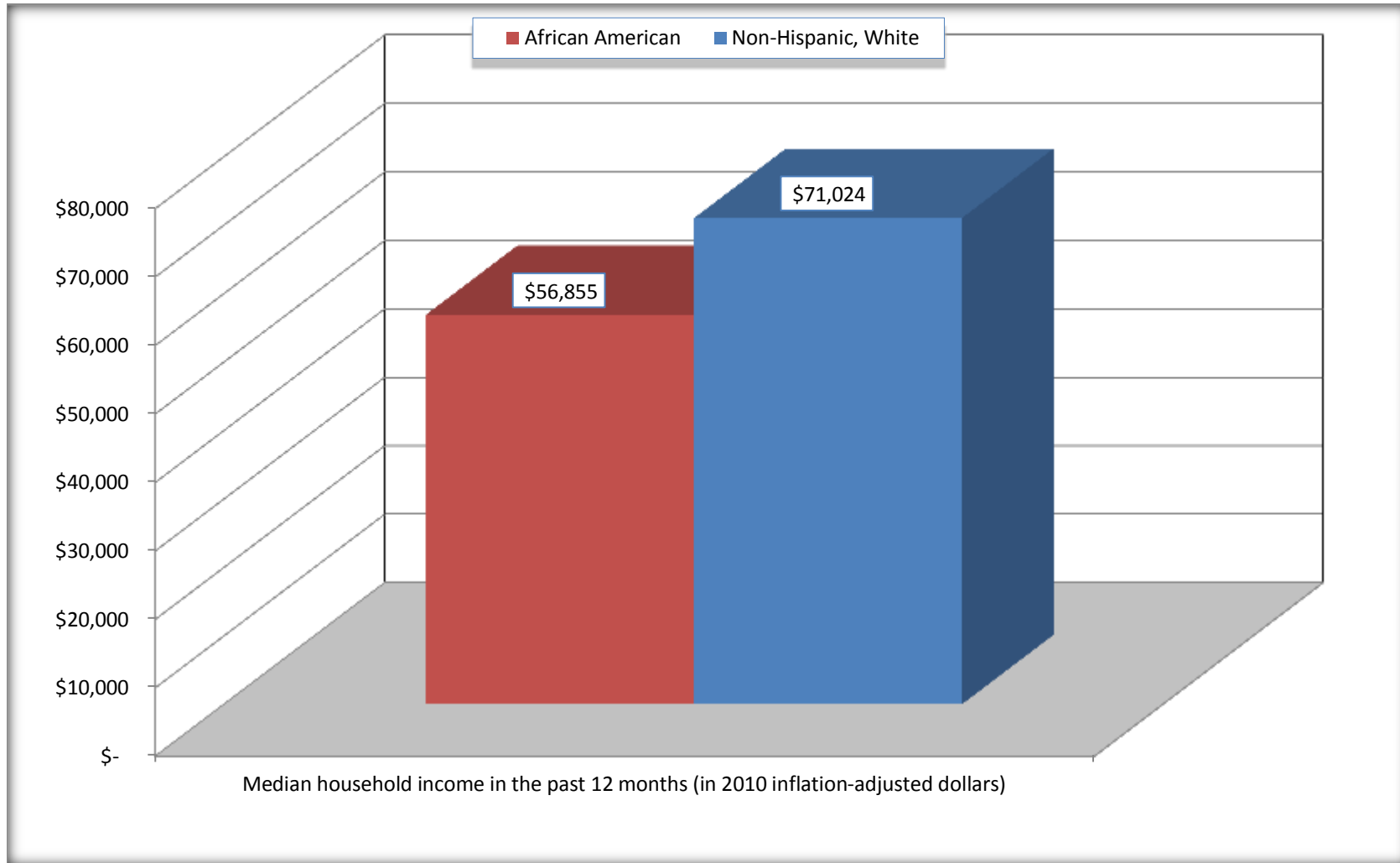
Source: U.S. Census Bureau, 2008-2012 American Community Survey

For information on confidentiality protection, sampling error, nonsampling error, and definitions, see Survey Methodology.

<http://www.census.gov/acs/www/UseData/index.htm>

# Median Household Income in the Past 12 Months

## Zachary city, Louisiana



Source: B19013. MEDIAN HOUSEHOLD INCOME IN THE PAST 12 MONTHS (IN 2010 INFLATION-ADJUSTED DOLLARS)  
Data Set: 2008-2012 American Community Survey 5-Year Estimates

**B19101. FAMILY INCOME IN THE PAST 12 MONTHS (IN 2010 INFLATION-ADJUSTED DOLLARS)**

Data Set: 2008-2012 American Community Survey 5-Year Estimates

	Zachary city, Louisiana					
	African American	Margin of Error (+/-)	% of AA Total	White, Not Hispanic	Margin of Error (+/-)	% of NHW Total
<b>Total:</b>	<b>1,498</b>	<b>206</b>	<b>100.0%</b>	<b>2,387</b>	<b>204</b>	<b>100.0%</b>
Less than \$ 10,000	69	73	4.6%	49	40	2.1%
\$ 10,000 to \$ 14,999	56	46	3.7%	53	79	2.2%
<b>\$ 15,000 to \$ 24,999</b>	<b>194</b>	<b>NC</b>	<b>13.0%</b>	<b>74</b>	<b>NC</b>	<b>3.1%</b>
<b>\$ 25,000 to \$ 34,999</b>	<b>177</b>	<b>NC</b>	<b>11.8%</b>	<b>150</b>	<b>NC</b>	<b>6.3%</b>
<b>\$ 35,000 to \$ 49,999</b>	<b>164</b>	<b>NC</b>	<b>10.9%</b>	<b>360</b>	<b>NC</b>	<b>15.1%</b>
<b>\$ 50,000 to \$ 74,999</b>	<b>238</b>	<b>NC</b>	<b>15.9%</b>	<b>505</b>	<b>NC</b>	<b>21.2%</b>
<b>\$ 100,000 to \$ 149,999</b>	<b>175</b>	<b>NC</b>	<b>11.7%</b>	<b>598</b>	<b>NC</b>	<b>25.1%</b>
\$ 150,000 to \$ 199,999	66	62	4.4%	111	59	4.7%
\$ 200,000 or more	31	38	2.1%	144	82	6.0%

Source: U.S. Census Bureau, 2008-2012 American Community Survey

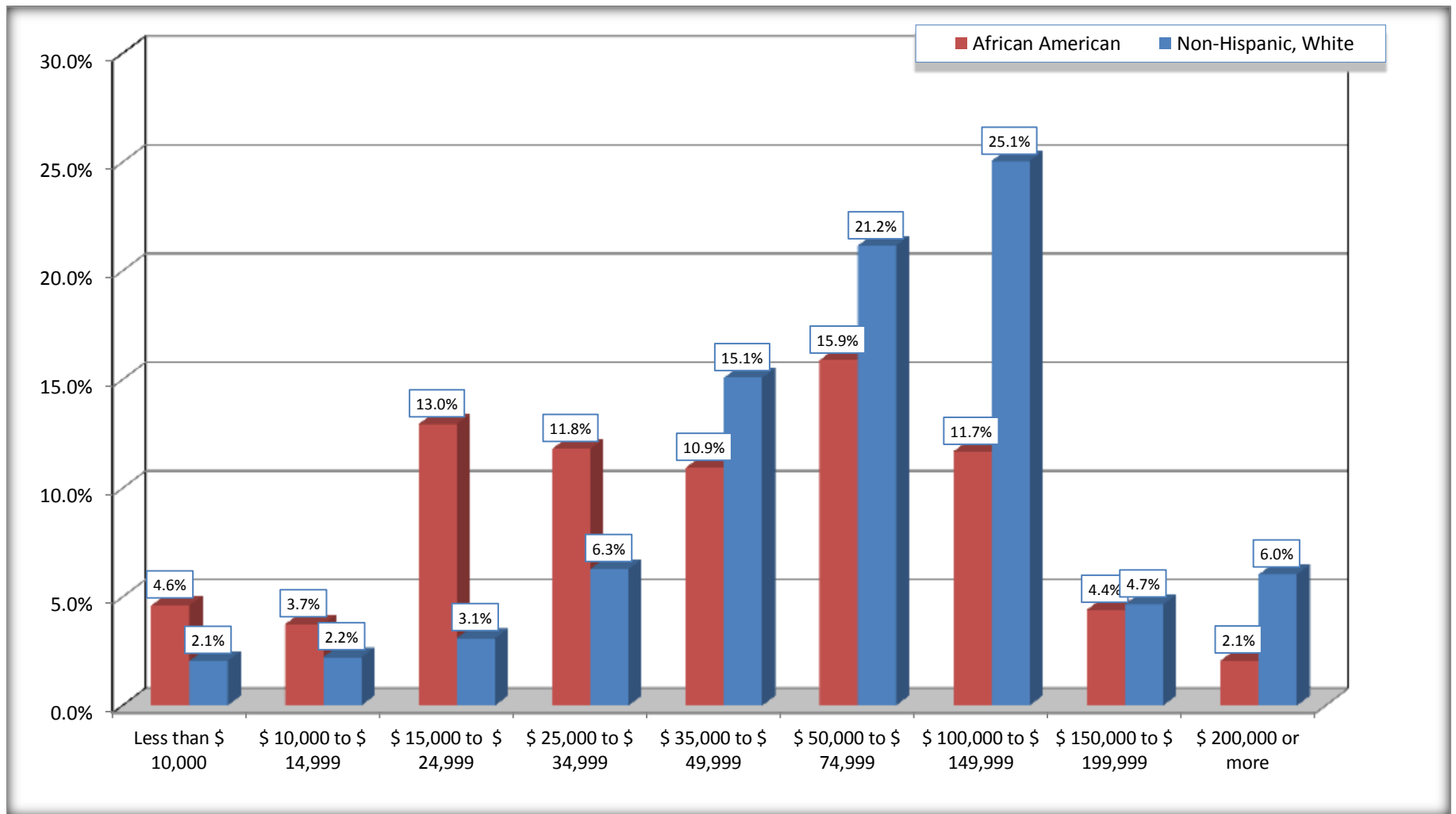
For information on confidentiality protection, sampling error, nonsampling error, and definitions, see Survey Methodology.

<http://www.census.gov/acs/www/UseData/index.htm>



# Family Income in the Past 12 Months

## Zachary city, Louisiana



Source: B19101. FAMILY INCOME IN THE PAST 12 MONTHS (IN 2010 INFLATION-ADJUSTED DOLLARS)  
Data Set: 2008-2012 American Community Survey 5-Year Estimates

**B19113. MEDIAN FAMILY INCOME IN THE PAST 12 MONTHS (IN 2010 INFLATION-ADJUSTED DOLLARS)**

Data Set: 2008-2012 American Community Survey 5-Year Estimates

	<b>Zachary city, Louisiana</b>			
	African American	Margin of Error (+/-)	White, Not Hispanic	Margin of Error (+/-)
Median family income in the past 12 months (in 2010 inflation-adjusted dollars)	\$ 61,116	\$ 15,756	\$ 75,240	\$ 8,032

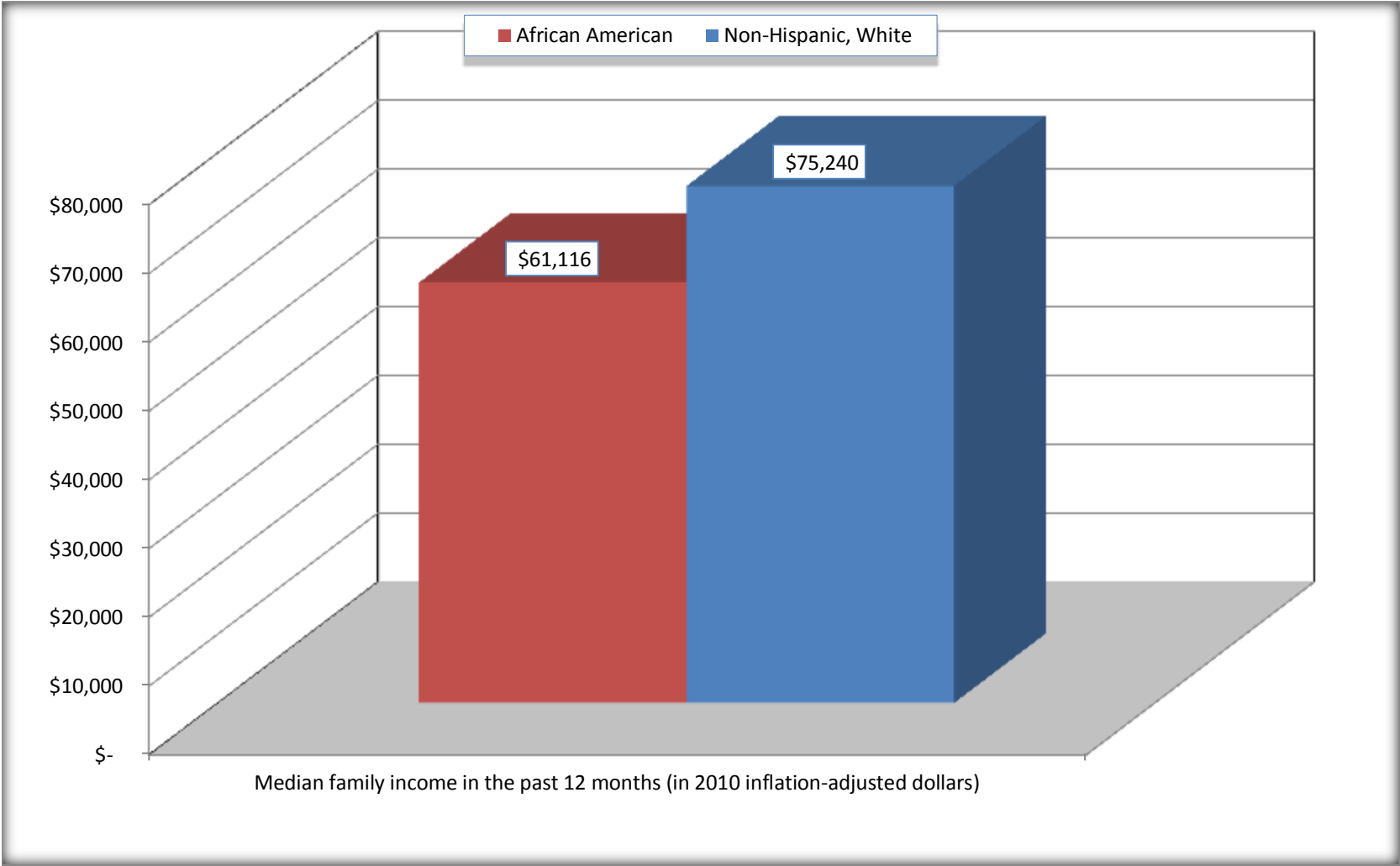
Source: U.S. Census Bureau, 2008-2012 American Community Survey

For information on confidentiality protection, sampling error, nonsampling error, and definitions, see Survey Methodology.

<http://www.census.gov/acs/www/UseData/index.htm>

# Median Family Income in the Past 12 Months

## Zachary city, Louisiana



Source: B19113. MEDIAN FAMILY INCOME IN THE PAST 12 MONTHS (IN 2010 INFLATION-ADJUSTED DOLLARS)  
Data Set: 2008-2012 American Community Survey 5-Year Estimates

**B19202. MEDIAN NONFAMILY HOUSEHOLD INCOME IN THE PAST 12 MONTHS (IN 2010 INFLATION-ADJUSTED DOLLARS)**

Data Set: 2008-2012 American Community Survey 5-Year Estimates

	<b>Zachary city, Louisiana</b>			
	African American	Margin of Error (+/-)	White, Not Hispanic	Margin of Error (+/-)
Median nonfamily household income in the past 12 months (in 2010 inflation-adjusted dollars)	\$ 26,563	\$ 14,787	\$ 50,087	\$ 18,854

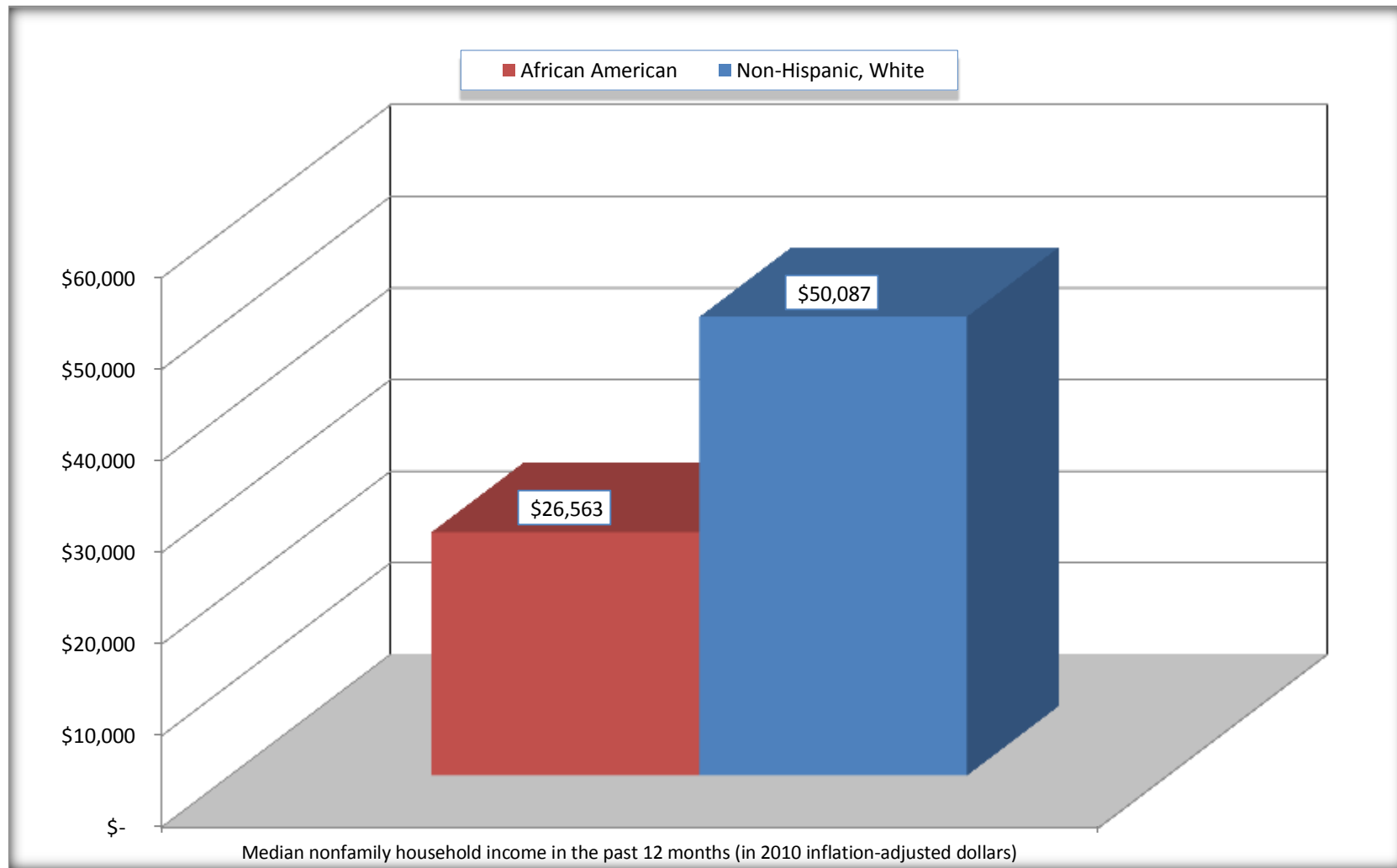
Source: U.S. Census Bureau, 2008-2012 American Community Survey

For information on confidentiality protection, sampling error, nonsampling error, and definitions, see Survey Methodology.

<http://www.census.gov/acs/www/UseData/index.htm>

# Median Non-Family Income in the Past 12 Months

## Zachary city, Louisiana



Source: B19202. MEDIAN NONFAMILY HOUSEHOLD INCOME IN THE PAST 12 MONTHS (IN 2010 INFLATION-ADJUSTED DOLLARS)  
Data Set: 2008-2012 American Community Survey 5-Year Estimates

**B19301. PER CAPITA INCOME IN THE PAST 12 MONTHS (IN 2010 INFLATION-ADJUSTED DOLLARS)**

Data Set: 2008-2012 American Community Survey 5-Year Estimates

	<b>Zachary city, Louisiana</b>			
	African American	Margin of Error (+/-)	White, Not Hispanic	Margin of Error (+/-)
Per capita income in the past 12 months (in 2010 inflation-adjusted dollars)	\$ 20,616	\$ 2,836	\$ 32,177	\$ 3,377

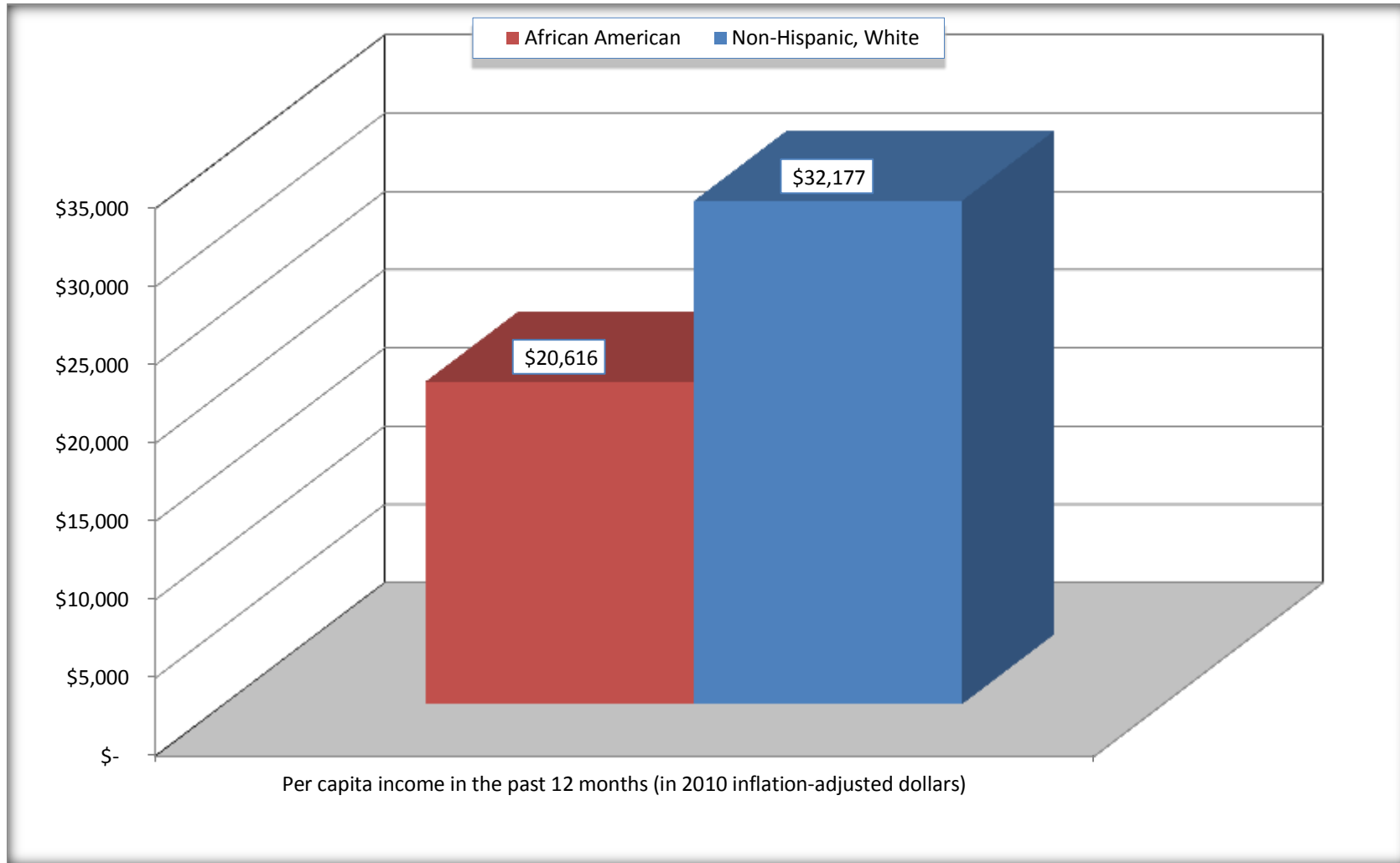
Source: U.S. Census Bureau, 2008-2012 American Community Survey

For information on confidentiality protection, sampling error, nonsampling error, and definitions, see Survey Methodology.

<http://www.census.gov/acs/www/UseData/index.htm>

## Per capita Income in the Past 12 Months

### Zachary city, Louisiana



Source: B19301. PER CAPITA INCOME IN THE PAST 12 MONTHS (IN 2010 INFLATION-ADJUSTED DOLLARS)  
Data Set: 2008-2012 American Community Survey 5-Year Estimates

**B20017. MEDIAN EARNINGS IN THE PAST 12 MONTHS (IN 2010 INFLATION-ADJUSTED DOLLARS) BY SEX BY WORK EXPERIENCE IN THE PAST 12 MONTHS FOR THE POPULATION 16 YEARS AND OVER WITH EARNINGS IN THE PAST 12 MONTHS**

Data Set: 2008-2012 American Community Survey 5-Year Estimates

	Zachary city, Louisiana			
	African American	Margin of Error (+/-)	White, Not Hispanic	Margin of Error (+/-)
Median earnings in the past 12 months (in 2010 inflation-adjusted dollars) --				
Total:	\$ 30,744	\$ 5,399	\$ 36,836	\$ 3,600
Male --				
Total	\$ 33,750	\$ 6,098	\$ 48,410	\$ 8,522
Worked full-time, year-round in the past 12 months	\$ 45,552	\$ 17,434	\$ 58,301	\$ 8,385
Other	\$ 6,265	\$ 3,534	\$ 10,816	\$ 4,164
Female --				
Total	\$ 27,276	\$ 5,426	\$ 30,663	\$ 2,698
Worked full-time, year-round in the past 12 months	\$ 42,342	\$ 7,996	\$ 35,770	\$ 4,960
Other	\$ 11,505	\$ 5,430	\$ 10,089	\$ 2,506

Source: U.S. Census Bureau, 2008-2012 American Community Survey

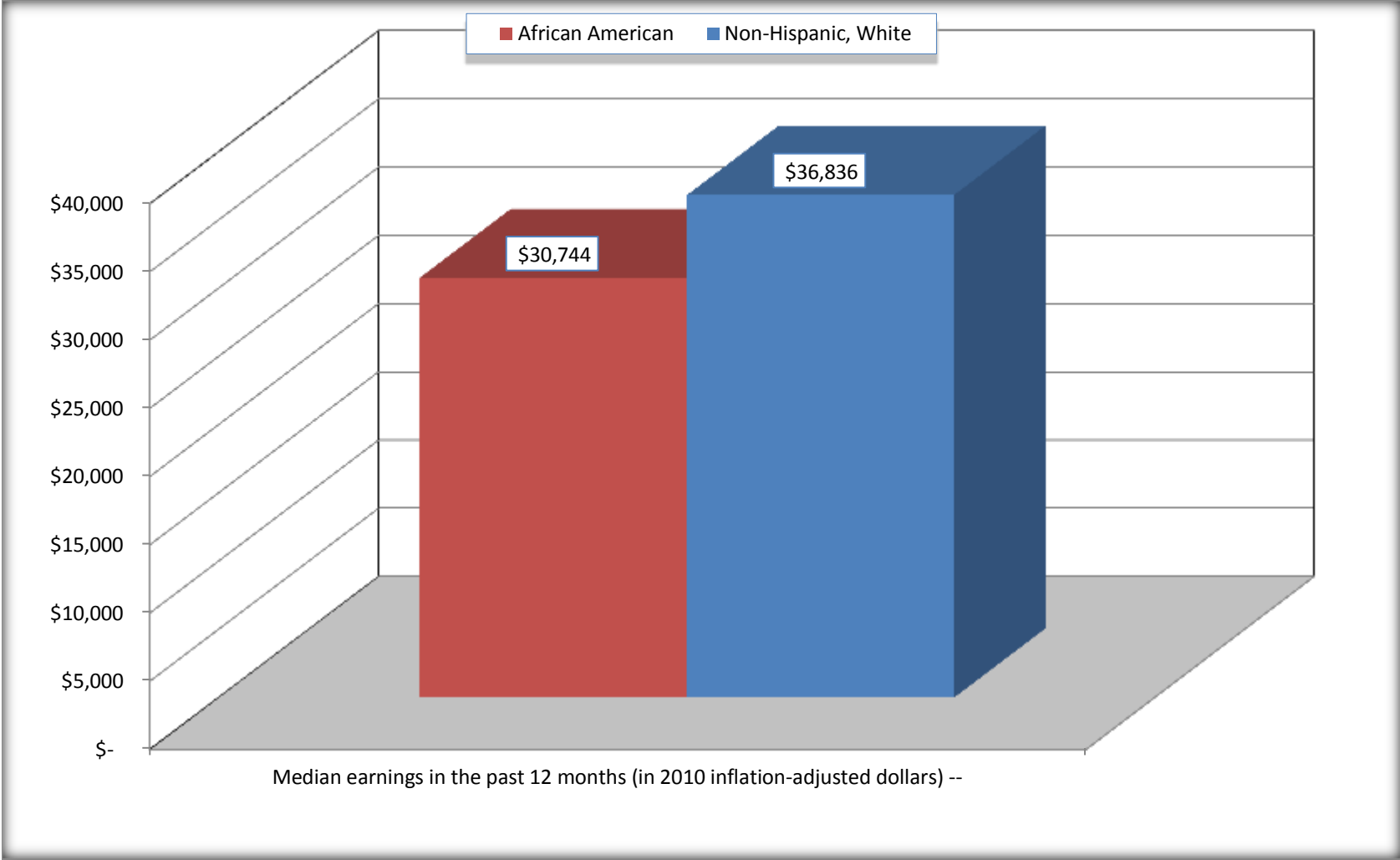
For information on confidentiality protection, sampling error, nonsampling error, and definitions, see Survey Methodology.

<http://www.census.gov/acs/www/UseData/index.htm>



# Median earnings in the Past 12 Months (16 Years and Over with Earnings)

## Zachary city, Louisiana



Source: B20017. MEDIAN EARNINGS IN THE PAST 12 MONTHS (IN 2010 INFLATION-ADJUSTED DOLLARS) BY SEX BY WORK EXPERIENCE IN THE PAST 12 MONTHS FOR THE POPULATION 16 YEARS AND OVER WITH EARNINGS IN THE PAST 12 MONTHS  
Data Set: 2008-2012 American Community Survey 5-Year Estimates

**B20005. SEX BY WORK EXPERIENCE IN THE PAST 12 MONTHS BY EARNINGS IN THE PAST 12 MONTHS (IN 2010 INFLATION-ADJUSTED DOLLARS) FOR THE POPULATION 16 YEARS AND OVER**

Data Set: 2008-2012 American Community Survey 5-Year Estimates

	Zachary city, Louisiana					
	African American	Margin of Error (+/-)	% of AA Total	White, Not Hispanic	Margin of Error (+/-)	% of NHW Total
<b>Total:</b>	<b>4,214</b>	<b>457</b>	<b>100.0%</b>	<b>6,383</b>	<b>483</b>	<b>100.0%</b>
Worked full-time, year-round in the past 12 months:	1,887	NC	44.8%	3,278	NC	51.4%
No earnings	0	NC	0.0%	0	NC	0.0%
With earnings:	1,887	NC	44.8%	3,278	NC	51.4%
\$ 1 to \$ 9,999 or loss	34	NC	0.8%	0	NC	0.0%
\$ 10,000 to \$ 19,999	217	NC	5.1%	120	NC	1.9%
\$ 20,000 to \$ 29,999	222	NC	5.3%	483	NC	7.6%
\$ 30,000 to \$ 49,999	668	NC	15.9%	1,082	NC	17.0%
\$ 50,000 to \$ 74,999	529	NC	12.6%	837	NC	13.1%
\$ 75,000 or more	217	NC	5.1%	756	NC	11.8%
Other:	2,327	NC	55.2%	3,105	NC	48.6%
No earnings	1,357	NC	32.2%	1,812	NC	28.4%
With earnings: less than full time, year-round	970	NC	23.0%	1,293	NC	20.3%
Male:	1,951	227	46.3%	3,107	327	48.7%
Worked full-time, year-round in the past 12 months:	915	191	21.7%	1,843	236	28.9%
No earnings	0	19	0.0%	0	19	0.0%
With earnings:	915	191	21.7%	1,843	236	28.9%
\$ 1 to \$ 9,999 or loss	34	NC	0.8%	0	NC	0.0%
\$ 10,000 to \$ 19,999	88	NC	2.1%	0	NC	0.0%
\$ 20,000 to \$ 29,999	78	NC	1.9%	150	NC	2.3%
\$ 30,000 to \$ 49,999	291	NC	6.9%	564	NC	8.8%
\$ 50,000 to \$ 74,999	232	NC	5.5%	534	NC	8.4%
\$ 75,000 or more	192	NC	4.6%	595	NC	9.3%

	Zachary city, Louisiana					
	African American	Margin of Error (+/-)	% of AA Total	White, Not Hispanic	Margin of Error (+/-)	% of NHW Total
Other:	1,036	192	24.6%	1,264	224	19.8%
No earnings	647	191	15.4%	716	165	11.2%
With earnings:	389	152	9.2%	548	179	8.6%
Female:	2,263	325	53.7%	3,276	294	51.3%
Worked full-time, year-round in the past 12 months:	972	198	23.1%	1,435	218	22.5%
No earnings	0	19	0.0%	0	19	0.0%
With earnings:	972	198	23.1%	1,435	218	22.5%
\$ 1 to \$ 9,999 or loss	0	NC	0.0%	0	NC	0.0%
\$ 10,000 to \$ 19,999	129	NC	3.1%	120	NC	1.9%
\$ 20,000 to \$ 29,999	144	NC	3.4%	333	NC	5.2%
\$ 30,000 to \$ 49,999	377	NC	8.9%	518	NC	8.1%
\$ 50,000 to \$ 74,999	297	NC	7.0%	303	NC	4.7%
\$ 75,000 or more	25	NC	0.6%	161	NC	2.5%
Other:	1,291	306	30.6%	1,841	234	28.8%
No earnings	710	217	16.8%	1,096	181	17.2%
With earnings:	581	181	13.8%	745	187	11.7%

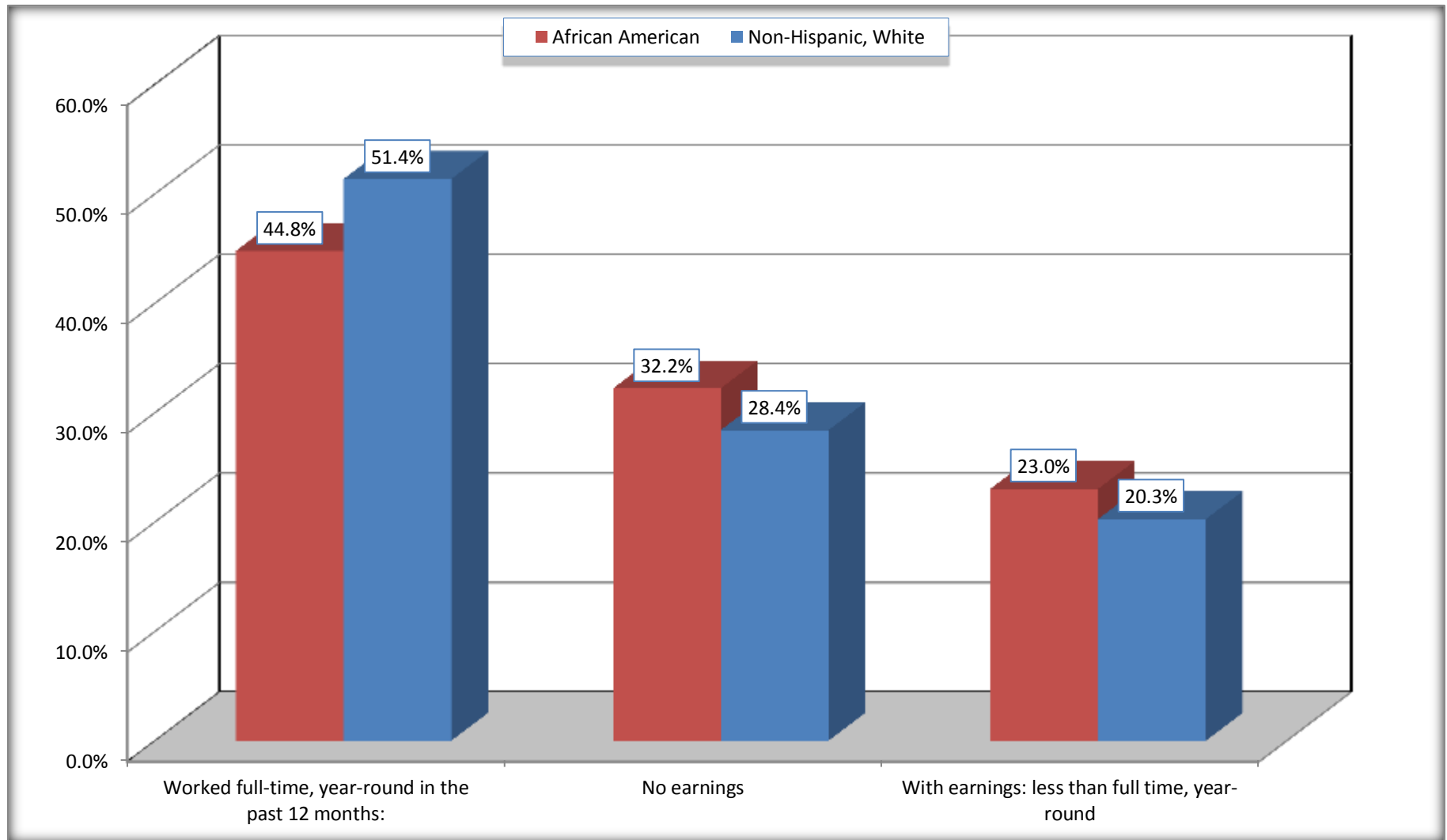
Source: U.S. Census Bureau, 2008-2012 American Community Survey

For information on confidentiality protection, sampling error, nonsampling error, and definitions, see Survey Methodology.

<http://www.census.gov/acs/www/UseData/index.htm>

# Employment and Earnings in in the Past 12 Months (16 Years and Over)

## Zachary city, Louisiana



Source: B20005. SEX BY WORK EXPERIENCE IN THE PAST 12 MONTHS BY EARNINGS IN THE PAST 12 MONTHS (IN 2010 INFLATION-ADJUSTED DOLLARS) FOR THE POPULATION 16 YEARS AND OVER

Data Set: 2008-2012 American Community Survey 5-Year Estimates

**C21001. SEX BY AGE BY VETERAN STATUS FOR THE CIVILIAN POPULATION 18 YEARS AND OVER**

Data Set: 2008-2012 American Community Survey 5-Year Estimates

	Zachary city, Louisiana					
	African American	Margin of Error (+/-)	% of AA Total	White, Not Hispanic	Margin of Error (+/-)	% of NHW Total
<b>Total:</b>	<b>3,941</b>	<b>400</b>	<b>100.0%</b>	<b>6,050</b>	<b>467</b>	<b>100.0%</b>
Veteran	241	NC	6.1%	693	NC	11.5%
Nonveteran	3,700	NC	93.9%	5,357	NC	88.5%
Male:	1,820	214	46.2%	2,850	289	47.1%
18 to 64 years:	1,695	207	43.0%	2,450	275	40.5%
Veteran	151	80	3.8%	368	152	6.1%
Nonveteran	1,544	203	39.2%	2,082	293	34.4%
65 years and over:	125	66	3.2%	400	94	6.6%
Veteran	46	44	1.2%	256	79	4.2%
Nonveteran	79	51	2.0%	144	64	2.4%
Female:	2,121	290	53.8%	3,200	290	52.9%
18 to 64 years:	1,811	277	46.0%	2,540	254	42.0%
Veteran	44	44	1.1%	65	68	1.1%
Nonveteran	1,767	276	44.8%	2,475	259	40.9%
65 years and over:	310	94	7.9%	660	119	10.9%
Veteran	0	19	0.0%	4	11	0.1%
Nonveteran	310	94	7.9%	656	116	10.8%

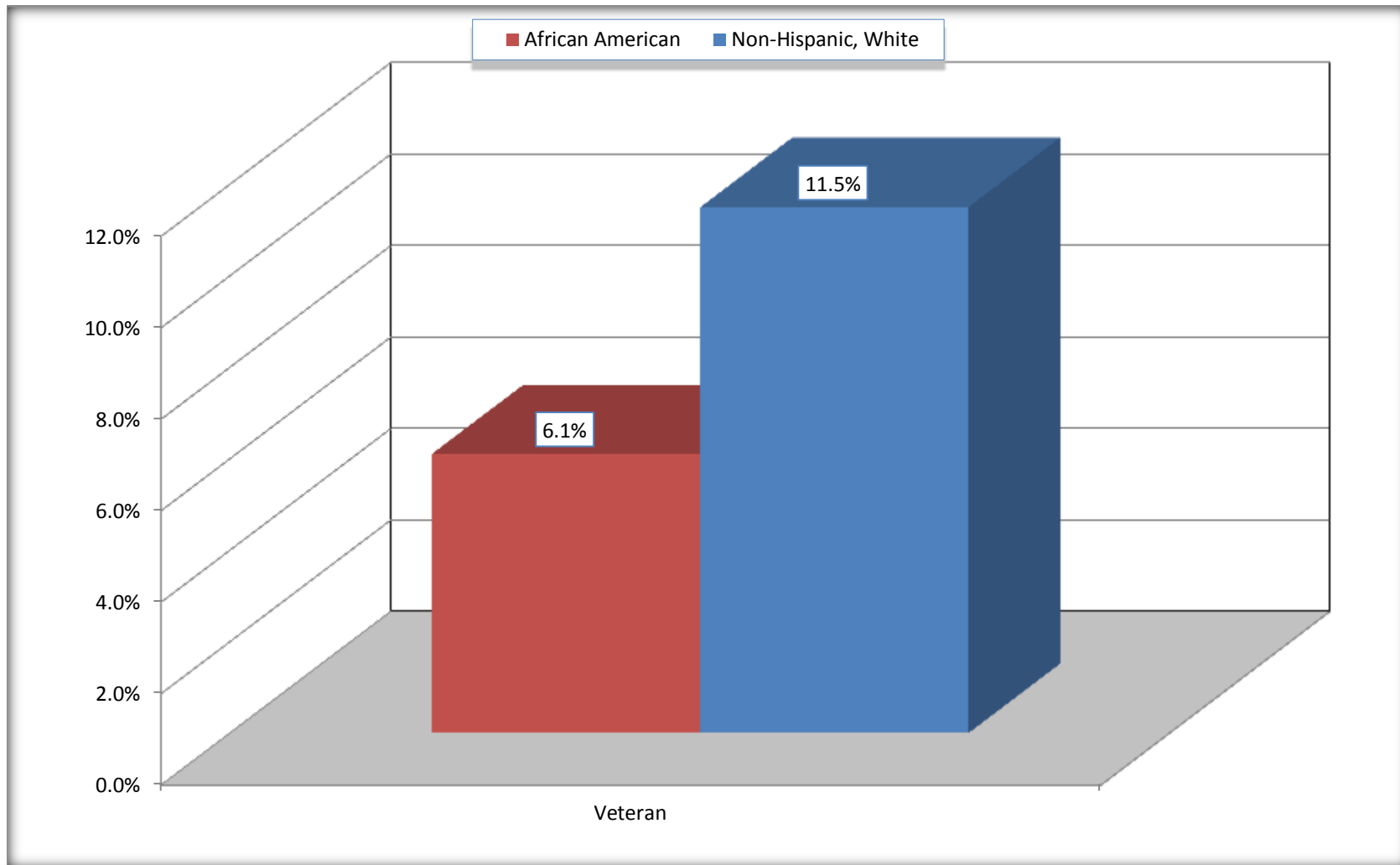
Source: U.S. Census Bureau, 2008-2012 American Community Survey

For information on confidentiality protection, sampling error, nonsampling error, and definitions, see Survey Methodology.

<http://www.census.gov/acs/www/UseData/index.htm>

# Veterans in the Civilian Population 18 Years and Over

## Zachary city, Louisiana



Source: C21001. SEX BY AGE BY VETERAN STATUS FOR THE CIVILIAN POPULATION 18 YEARS AND OVER  
Data Set: 2008-2012 American Community Survey 5-Year Estimates

**B22005. RECEIPT OF FOOD STAMPS/SNAP IN THE PAST 12 MONTHS BY RACE OF HOUSEHOLDER**

Data Set: 2008-2012 American Community Survey 5-Year Estimates

	<b>Zachary city, Louisiana</b>					
	African American	Margin of Error (+/-)	% of AA Total	White, Not Hispanic	Margin of Error (+/-)	% of NHW Total
<b>Total:</b>	<b>1,826</b>	<b>203</b>	<b>100.0%</b>	<b>3,236</b>	<b>289</b>	<b>100.0%</b>
HH received Food Stamps/SNAP in the past 12 months	352	135	19.3%	206	121	6.4%
HH did not receive Food Stamps/SNAP in the past 12 months	1,474	213	80.7%	3,030	286	93.6%

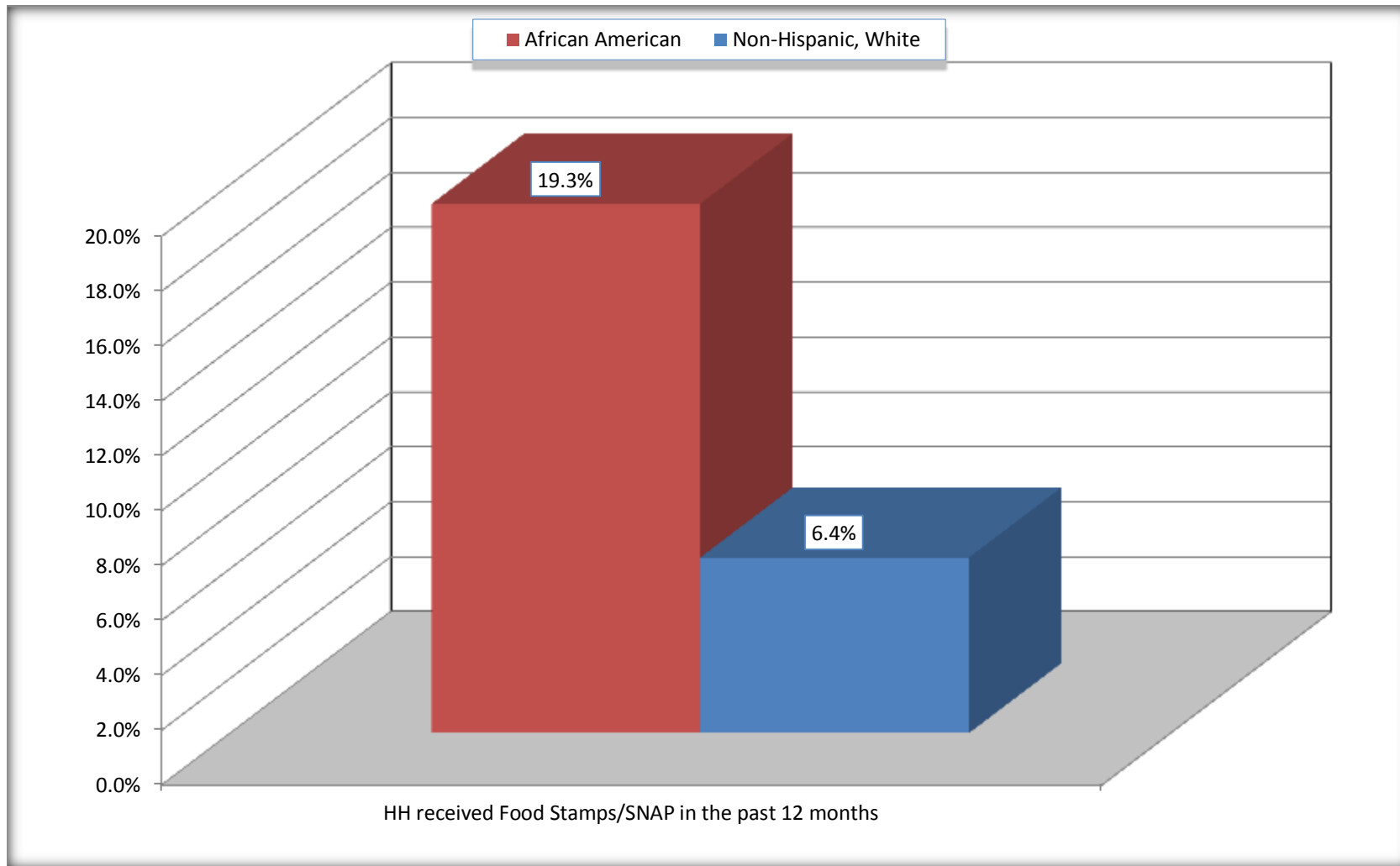
Source: U.S. Census Bureau, 2008-2012 American Community Survey

For information on confidentiality protection, sampling error, nonsampling error, and definitions, see Survey Methodology.

<http://www.census.gov/acs/www/UseData/index.htm>

# Receipt of Food Stamps/SNAP in the Past 12 Months by Household

## Zachary city, Louisiana



Source: B22005. RECEIPT OF FOOD STAMPS/SNAP IN THE PAST 12 MONTHS BY RACE OF HOUSEHOLDER  
Data Set: 2008-2012 American Community Survey 5-Year Estimates



**C23002. SEX BY AGE BY EMPLOYMENT STATUS FOR THE POPULATION 16 YEARS AND OVER**

Data Set: 2008-2012 American Community Survey 5-Year Estimates

	Zachary city, Louisiana					
	African American	Margin of Error (+/-)	% of AA Total	White, Not Hispanic	Margin of Error (+/-)	% of NHW Total
<b>Total:</b>	<b>4,214</b>	<b>457</b>	<b>100.0%</b>	<b>6,383</b>	<b>483</b>	<b>100.0%</b>
In labor force:	2,874	NC	68.2%	4,320	NC	67.7%
In Armed Forces	0	NC	0.0%	0	NC	0.0%
Civilian:	2,803	NC	66.5%	4,138	NC	64.8%
Employed	2,559	NC	60.7%	4,255	NC	66.7%
Unemployed	315	NC	7.5%	65	NC	1.0%
Not in labor force	1,340	NC	31.8%	2,063	NC	32.3%
Male:	1,951	227	46.3%	3,107	327	48.7%
16 to 64 years:	1,826	224	43.3%	2,707	319	42.4%
In labor force:	1,321	263	31.3%	2,176	279	34.1%
In Armed Forces	0	19	0.0%	0	19	0.0%
Civilian:	1,321	263	31.3%	2,176	279	34.1%
Employed	1,141	246	27.1%	2,120	282	33.2%
Unemployed	180	124	4.3%	56	47	0.9%
Not in labor force	505	173	12.0%	531	145	8.3%
65 years and over:	125	66	3.0%	400	94	6.3%
In labor force:	13	20	0.3%	86	46	1.3%
Employed	13	20	0.3%	86	46	1.3%
Unemployed	0	19	0.0%	0	19	0.0%
Not in labor force	112	63	2.7%	314	83	4.9%

	Zachary city, Louisiana					
	African American	Margin of Error (+/-)	% of AA Total	White, Not Hispanic	Margin of Error (+/-)	% of NHW Total
Female:	2,263	325	53.7%	3,276	294	51.3%
16 to 64 years:	1,953	319	46.3%	2,616	262	41.0%
In labor force:	1,482	251	35.2%	1,962	238	30.7%
In Armed Forces	0	19	0.0%	0	19	0.0%
Civilian:	1,482	251	35.2%	1,962	238	30.7%
Employed	1,347	225	32.0%	1,953	238	30.6%
Unemployed	135	125	3.2%	9	15	0.1%
Not in labor force	471	182	11.2%	654	135	10.2%
65 years and over:	310	94	7.4%	660	119	10.3%
In labor force:	58	41	1.4%	96	56	1.5%
Employed	58	41	1.4%	96	56	1.5%
Unemployed	0	19	0.0%	0	19	0.0%
Not in labor force	252	90	6.0%	564	111	8.8%

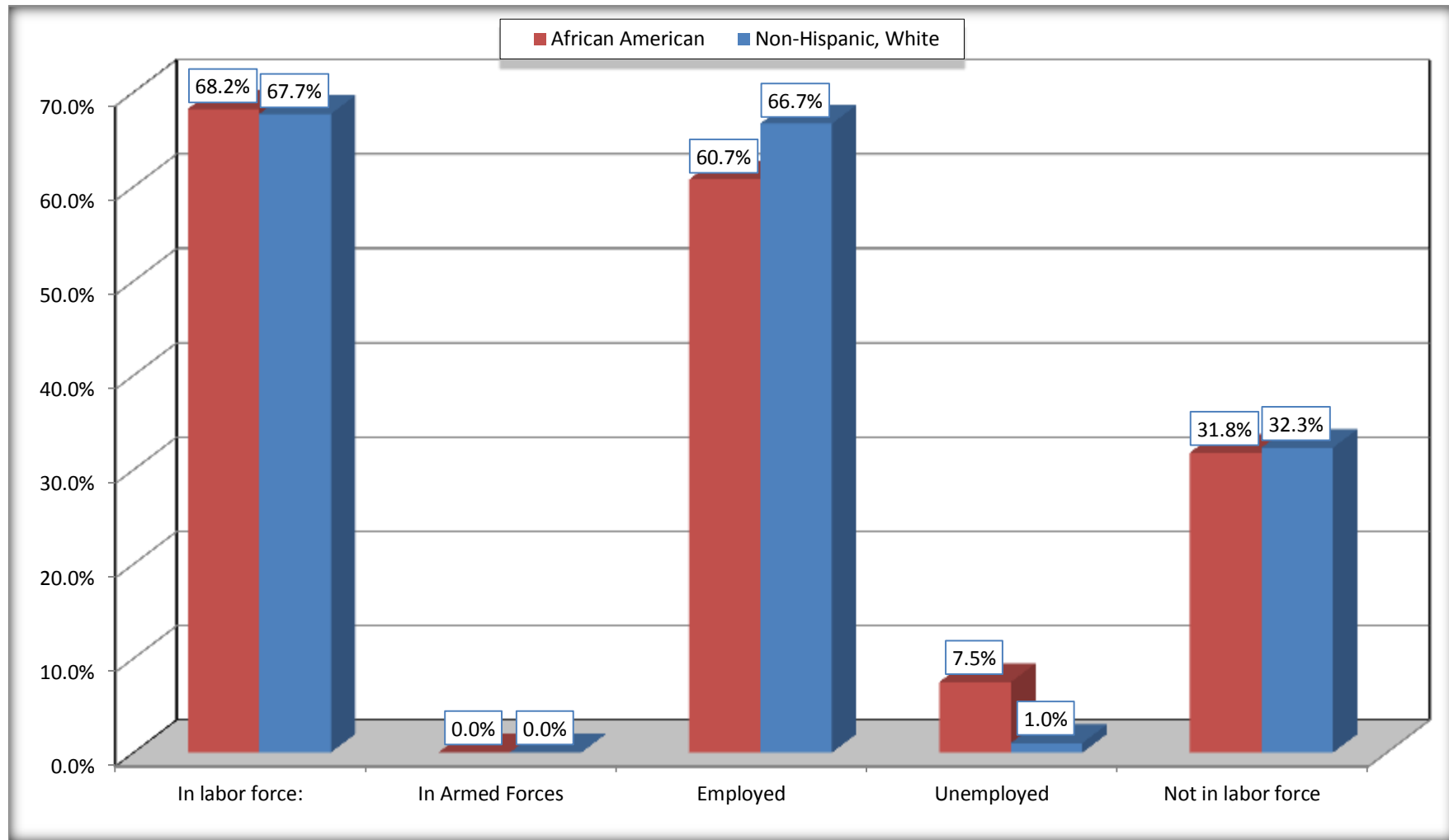
Source: U.S. Census Bureau, 2008-2012 American Community Survey

For information on confidentiality protection, sampling error, nonsampling error, and definitions, see Survey Methodology.

<http://www.census.gov/acs/www/UseData/index.htm>

# Employment Status for the Population 16 years and over

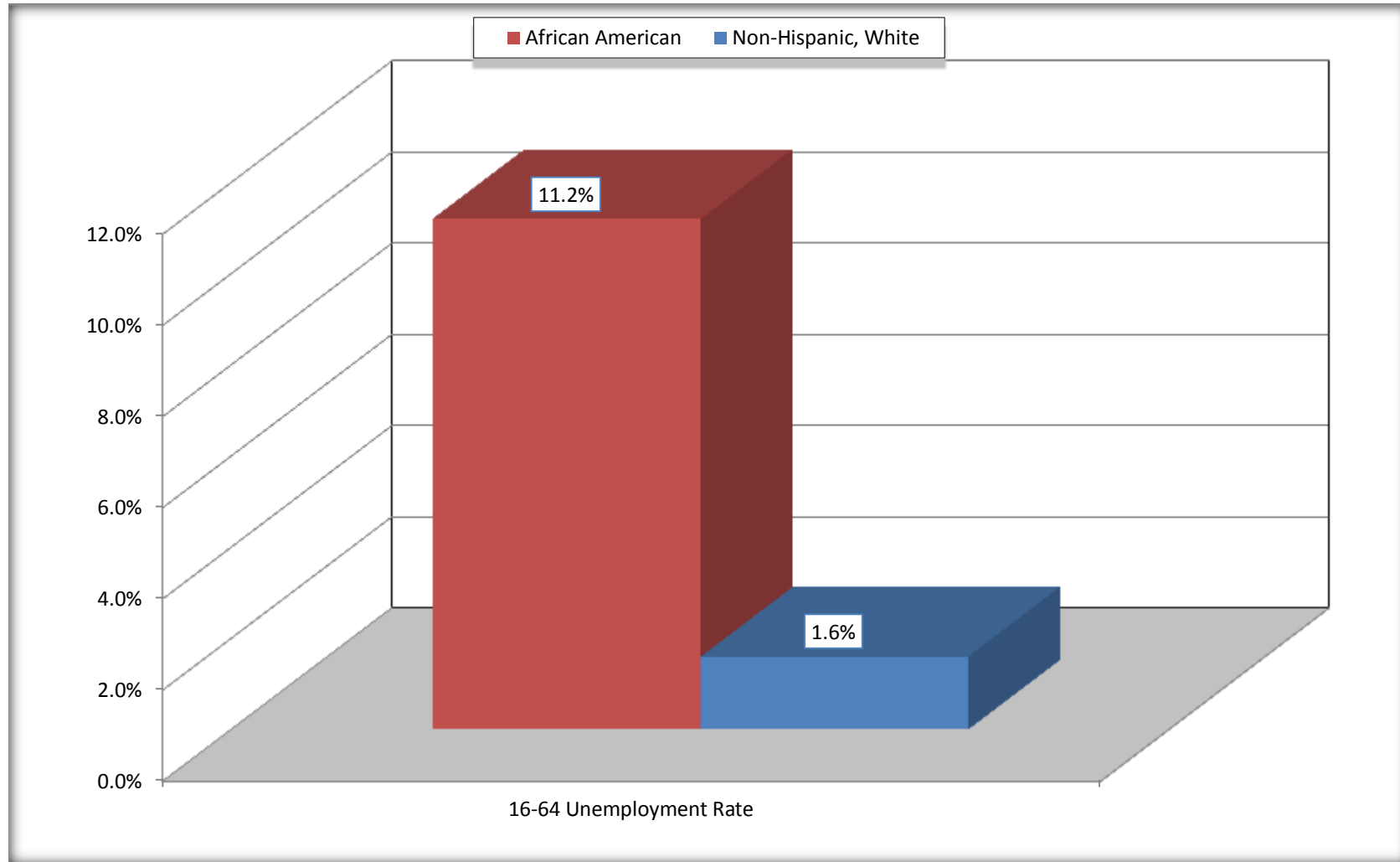
## Zachary city, Louisiana



Source: C23002. SEX BY AGE BY EMPLOYMENT STATUS FOR THE POPULATION 16 YEARS AND OVER  
Data Set: 2008-2012 American Community Survey 5-Year Estimates

# Unemployment of Working Age Population (Ages 16 to 64) (As a Percent of 16-64 Civilian Labor Force)

## Zachary city, Louisiana



Source: C23002. SEX BY AGE BY EMPLOYMENT STATUS FOR THE POPULATION 16 YEARS AND OVER  
Data Set: 2008-2012 American Community Survey 5-Year Estimates

**C24010. SEX BY OCCUPATION FOR THE CIVILIAN EMPLOYED POPULATION 16 YEARS AND OVER**

Data Set: 2008-2012 American Community Survey 5-Year Estimates

	Zachary city, Louisiana					
	African American	Margin of Error (+/-)	% of AA Total	White, Not Hispanic	Margin of Error (+/-)	% of NHW Total
<b>Total:</b>	<b>2,559</b>	<b>331</b>	<b>100.0%</b>	<b>4,255</b>	<b>403</b>	<b>100.0%</b>
Management, professional, and related occupations	853	NC	33.3%	1,700	NC	40.0%
Service occupations	671	NC	26.2%	564	NC	13.3%
Sales and office occupations	446	NC	17.4%	1,120	NC	26.3%
Natural resources, construction, and maintenance occupations:	302	NC	11.8%	551	NC	12.9%
Production, transportation, and material moving occupations	287	NC	11.2%	320	NC	7.5%
Male:	1,154	243	45.1%	2,206	287	51.8%
Management, business, science, and arts occupations:	224	108	8.8%	664	170	15.6%
Service occupations	247	123	9.7%	259	119	6.1%
Sales and office occupations	150	89	5.9%	423	150	9.9%
Natural resources, construction, and maintenance occupations:	302	196	11.8%	551	177	12.9%
Production, transportation, and material moving occupations	231	114	9.0%	309	119	7.3%
Female:	1,405	226	54.9%	2,049	254	48.2%
Management, professional, and related occupations	629	184	24.6%	1,036	184	24.3%
Service occupations	424	199	16.6%	305	168	7.2%
Sales and office occupations	296	120	11.6%	697	212	16.4%
Natural resources, construction, and maintenance occupations:	0	19	0.0%	0	19	0.0%
Production, transportation, and material moving occupations	56	57	2.2%	11	18	0.3%

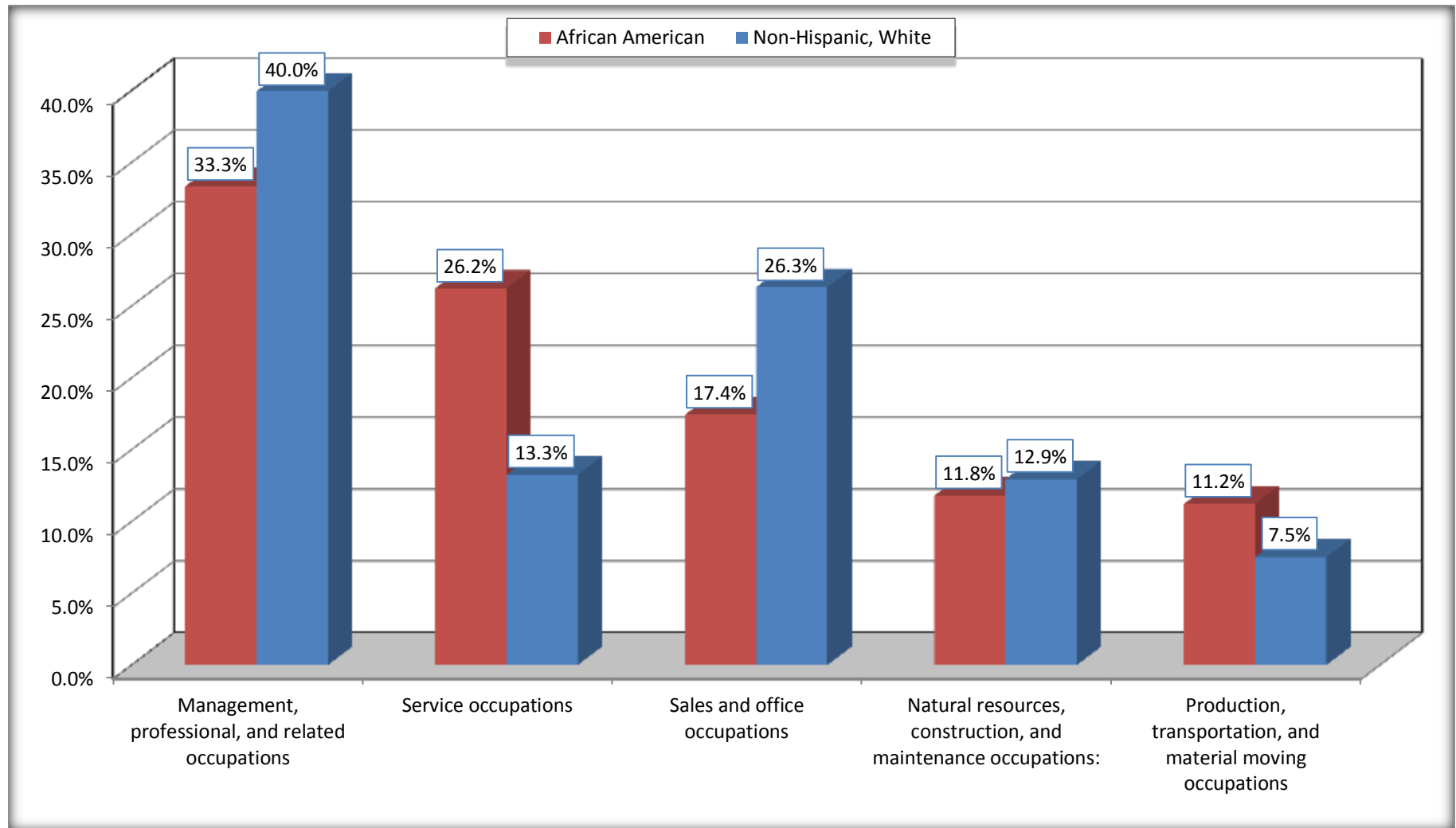
Source: U.S. Census Bureau, 2008-2012 American Community Survey

For information on confidentiality protection, sampling error, nonsampling error, and definitions, see Survey Methodology.

<http://www.census.gov/acs/www/UseData/index.htm>

# Occupation for the Civilian Employed 16 Years and Over Population

## Zachary city, Louisiana



Source: C24010. SEX BY OCCUPATION FOR THE CIVILIAN EMPLOYED POPULATION 16 YEARS AND OVER  
Data Set: 2008-2012 American Community Survey 5-Year Estimates

**B25003. TENURE - Universe: OCCUPIED HOUSING UNITS**

Data Set: 2008-2012 American Community Survey 5-Year Estimates

	Zachary city, Louisiana					
	African American	Margin of Error (+/-)	% of AA Total	White, Not Hispanic	Margin of Error (+/-)	% of NHW Total
<b>Total:</b>	<b>1,826</b>	<b>203</b>	<b>100.0%</b>	<b>3,236</b>	<b>289</b>	<b>100.0%</b>
Owner occupied	1,405	199	76.9%	2,552	262	78.9%
Renter occupied	421	158	23.1%	684	214	21.1%

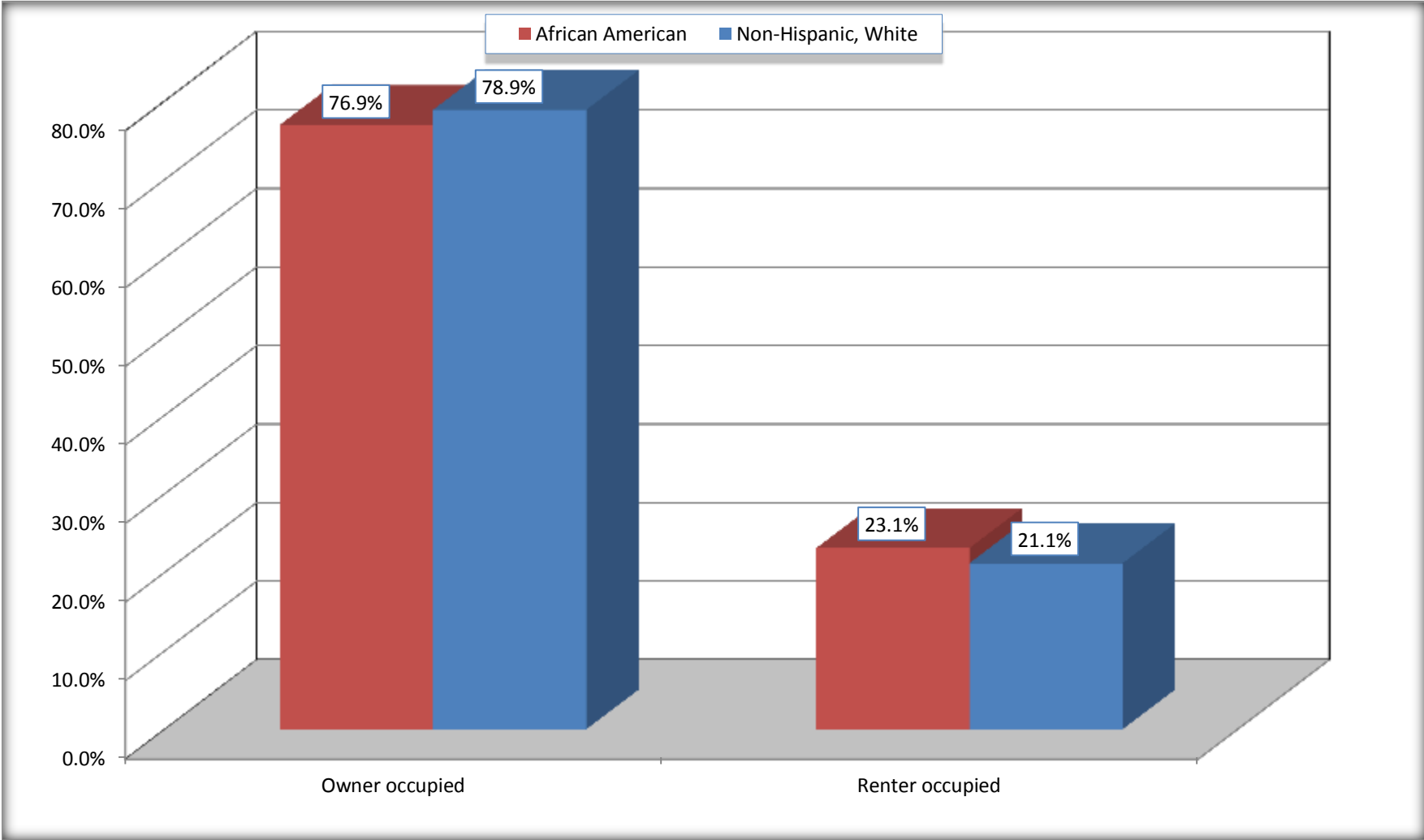
Source: U.S. Census Bureau, 2008-2012 American Community Survey

For information on confidentiality protection, sampling error, nonsampling error, and definitions, see Survey Methodology.

<http://www.census.gov/acs/www/UseData/index.h>

# Home Owners and Renters by Household

## Zachary city, Louisiana



Source: B25003. TENURE - Universe: OCCUPIED HOUSING UNITS  
Data Set: 2008-2012 American Community Survey 5-Year Estimates



**B25014. OCCUPANTS PER ROOM - Universe: OCCUPIED HOUSING UNITS**

Data Set: 2008-2012 American Community Survey 5-Year Estimates

	Zachary city, Louisiana					
	African American	Margin of Error (+/-)	% of AA Total	White, Not Hispanic	Margin of Error (+/-)	% of NHW Total
<b>Total:</b>	<b>1,826</b>	<b>203</b>	<b>100.0%</b>	<b>3,236</b>	<b>289</b>	<b>100.0%</b>
1.00 or less occupants per room	1,811	210	99.2%	3,179	302	98.2%
1.01 or more occupants per room	15	27	0.8%	57	61	1.8%

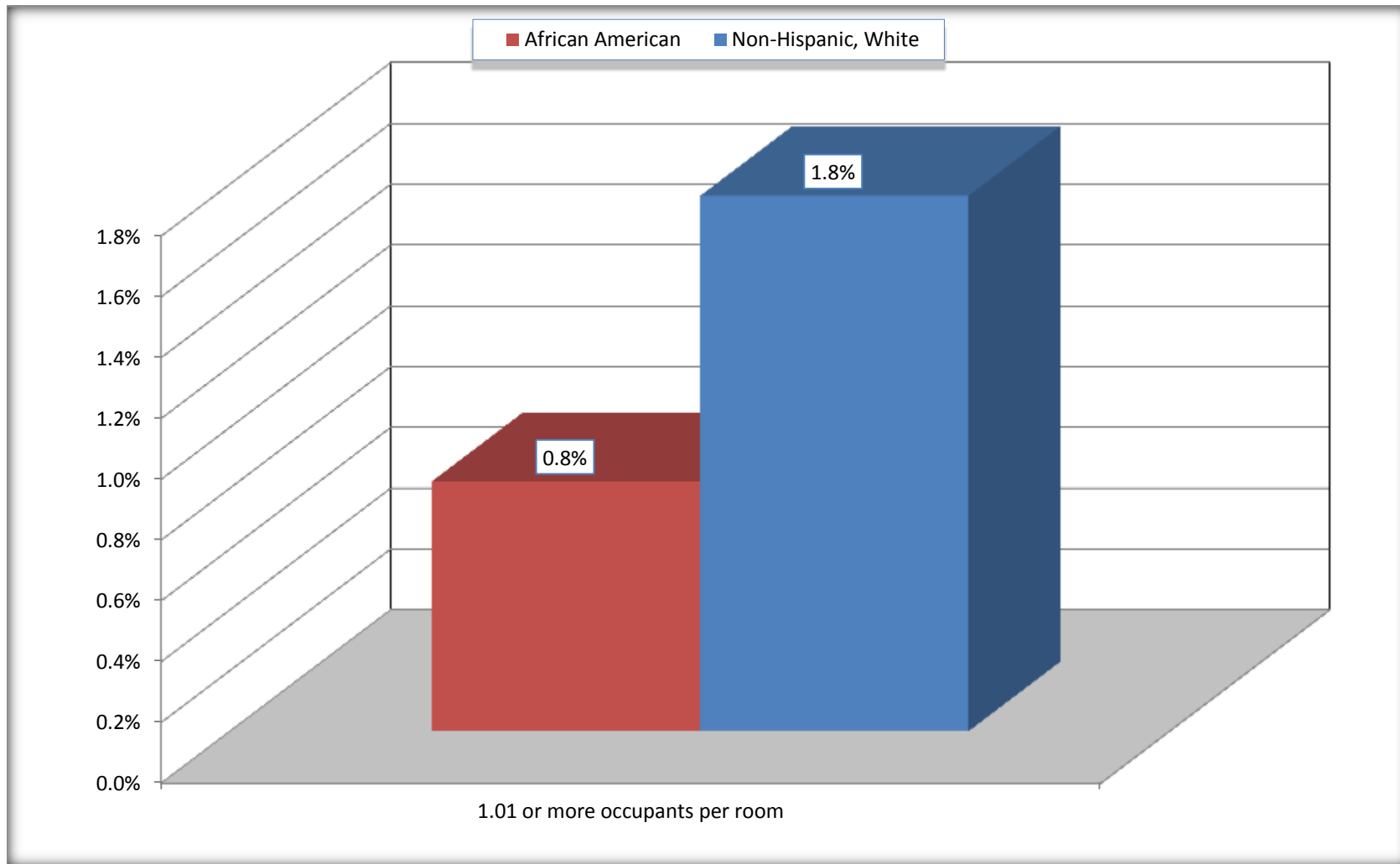
Source: U.S. Census Bureau, 2008-2012 American Community Survey

For information on confidentiality protection, sampling error, nonsampling error, and definitions, see Survey Methodology.

<http://www.census.gov/acs/www/UseData/index.ht>

# More than One Person per Room (Crowding) by Household

## Zachary city, Louisiana



Source: B25014. OCCUPANTS PER ROOM - Universe: OCCUPIED HOUSING UNITS  
Data Set: 2008-2012 American Community Survey 5-Year Estimates

**B18101. AGE BY DISABILITY STATUS**

Data Set: 2008-2012 American Community Survey 5-Year Estimates

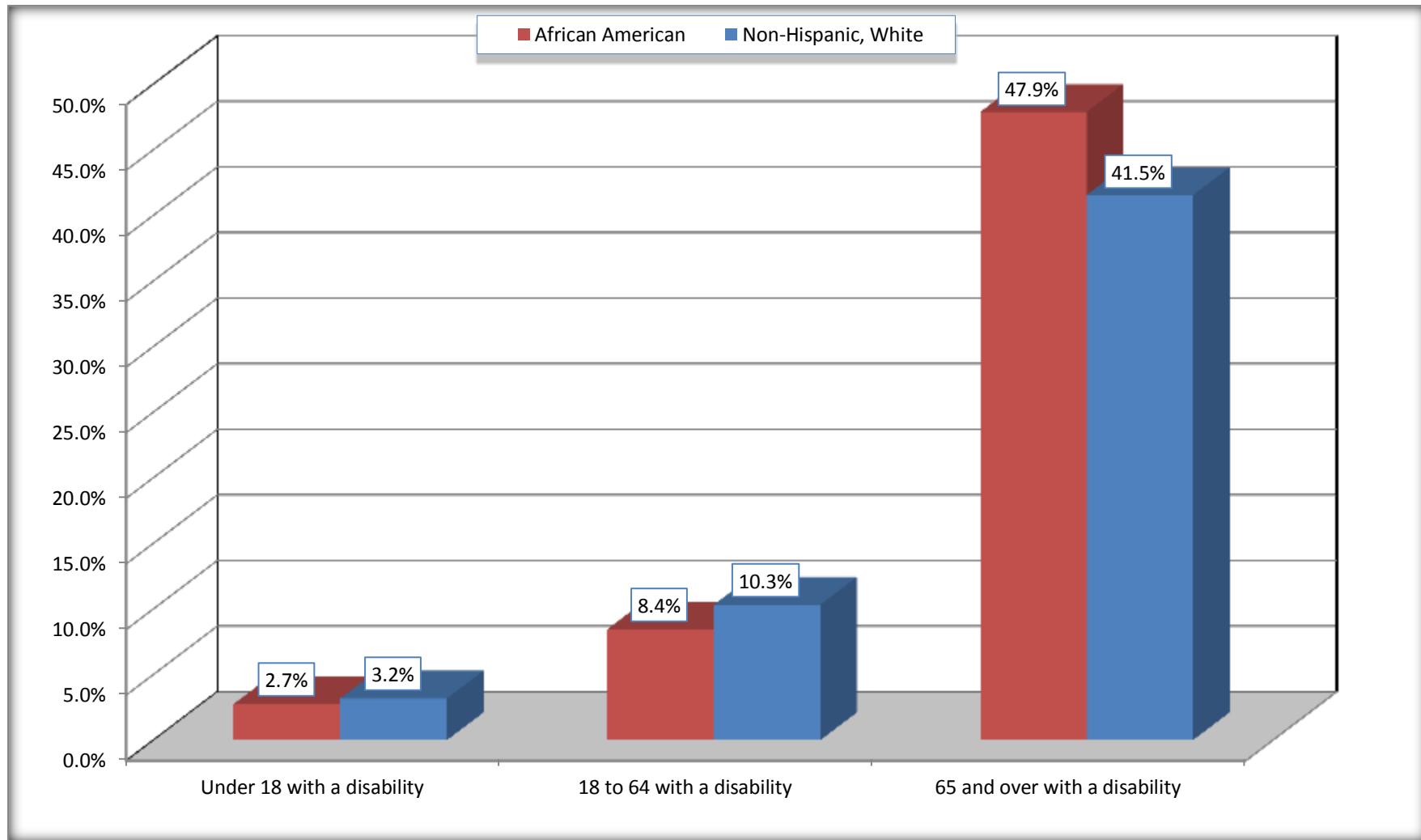
	Zachary city, Louisiana					
	African American	Margin of Error (+/-)	% of AA Total	White, Not Hispanic	Margin of Error (+/-)	% of NHW Total
<b>Total:</b>	<b>5,910</b>	<b>676</b>	<b>100.0%</b>	<b>8,255</b>	<b>685</b>	<b>100.0%</b>
Under 18 years:	2,040	436	34.5%	2,294	86	27.8%
With a disability	56	56	0.9%	73	58	0.9%
No disability	1,984	439	33.6%	2,221	406	26.9%
18 to 64 years:	3,494	386	59.1%	4,979	419	60.3%
With a disability	295	108	5.0%	514	163	6.2%
No disability	3,199	404	54.1%	4,465	405	54.1%
65 years and over:	376	100	6.4%	982	161	11.9%
With a disability	180	80	3.0%	408	103	4.9%
No disability	196	73	3.3%	574	142	7.0%

Source: U.S. Census Bureau, 2008-2012 American Community Survey

For information on confidentiality protection, sampling error, nonsampling error, and definitions, see Survey Methodology.

<http://www.census.gov/acs/www/UseData/index.htm>

## Disability by Age Zachary city, Louisiana



Source: B18101. AGE BY DISABILITY STATUS  
Data Set: 2008-2012 American Community Survey 5-Year Estimates

**C27001B. HEALTH INSURANCE COVERAGE STATUS BY AGE**

Data Set: 2008-2012 American Community Survey 5-Year Estimates

	<b>Zachary city, Louisiana</b>					
	African American	Margin of Error (+/-)	% of AA Total	White, Not Hispanic	Margin of Error (+/-)	% of NHW Total
<b>Total:</b>	<b>5,910</b>	<b>676</b>	<b>100.0%</b>	<b>8,255</b>	<b>685</b>	<b>100.0%</b>
Under 18 years:	2,040	436	34.5%	2,294	408	27.8%
With health insurance coverage	2,017	437	34.1%	2,192	430	26.6%
No health insurance coverage	23	37	0.4%	102	99	1.2%
18 to 64 years:	3,494	386	59.1%	4,979	419	60.3%
With health insurance coverage	2,695	357	45.6%	4,561	426	55.3%
No health insurance coverage	799	346	13.5%	418	154	5.1%
65 years and over:	376	100	6.4%	982	161	11.9%
With health insurance coverage	376	100	6.4%	982	161	11.9%
No health insurance coverage	0	19	0.0%	0	19	0.0%

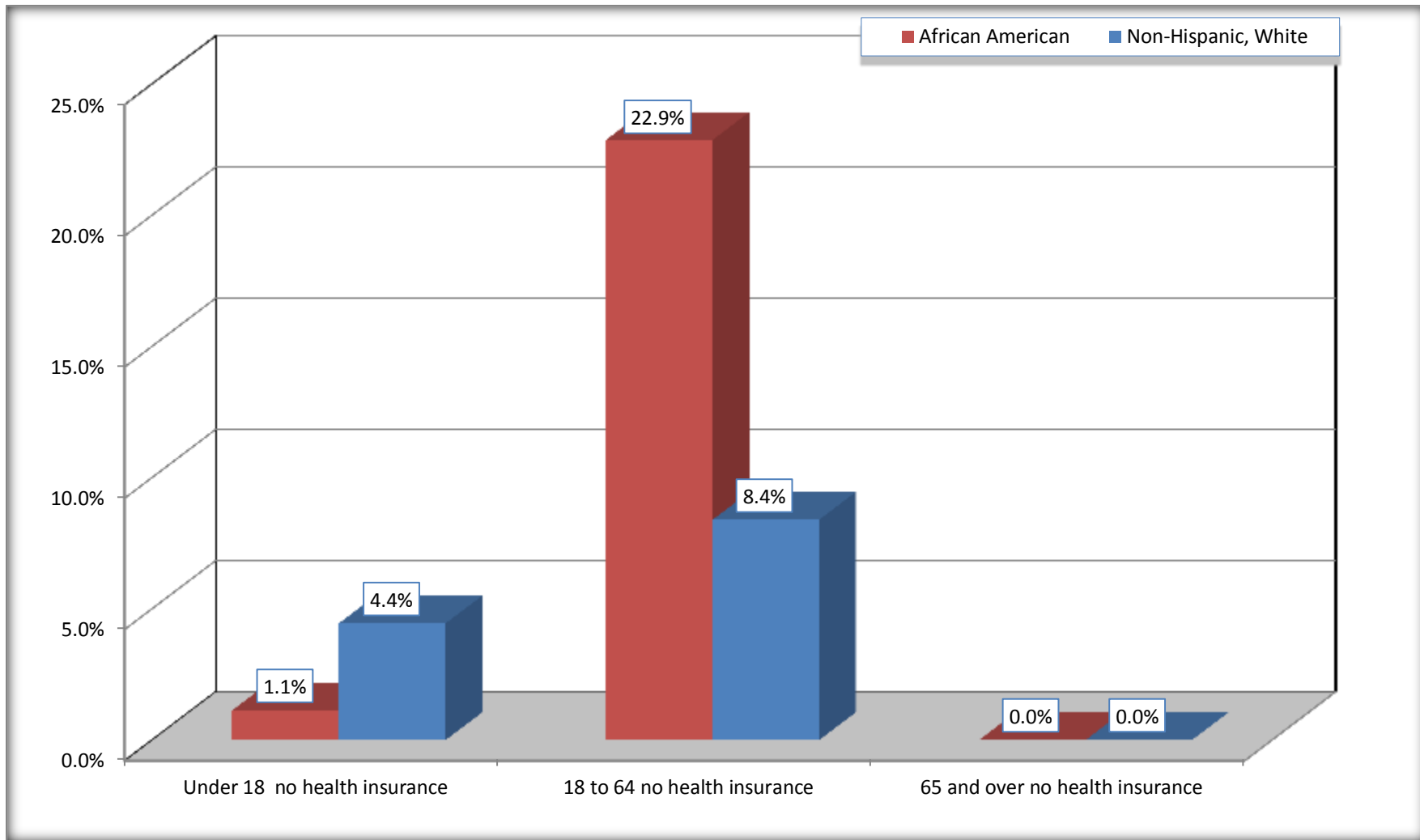
Source: U.S. Census Bureau, 2008-2012 American Community Survey

For information on confidentiality protection, sampling error, nonsampling error, and definitions, see Survey Methodology.

<http://www.census.gov/acs/www/UseData/index.htm>

# Lack of Health Insurance Coverage by Age

## Zachary city, Louisiana



Source: C27001B. HEALTH INSURANCE COVERAGE STATUS BY AGE  
Data Set: 2008-2012 American Community Survey 5-Year Estimates