

Selected Socio-Economic Data

Waggaman CDP, Louisiana

African American and White, Not Hispanic

Data Set: 2008-2012 American Community Survey 5-Year Estimates

www.fairvote2020.org

www.fairdata2000.com

[29-Dec-13](#)

C02003.DETAILED RACE - Universe: TOTAL POPULATION
 Data Set: 2008-2012 American Community Survey 5-Year Estimates

	Waggaman CDP, Louisiana		
	Population	Margin of Error (+/-)	% of Total
Total:	9,773	719	100.0%
Population of one race:	9,698	714	99.2%
White	3,482	645	35.6%
Black or African American	6,190	712	63.3%
American Indian and Alaska Native	0	17	0.0%
Asian alone	26	34	0.3%
Native Hawaiian and Other Pacific Islander	0	17	0.0%
Some other race	0	17	0.0%
Population of two or more races:	75	81	0.8%
Two races including Some other race	0	17	0.0%
Two races excluding Some other race, and three or more races	75	81	0.8%
Population of two races:	45	49	0.5%
White; Black or African American	28	38	0.3%
White; American Indian and Alaska Native	0	17	0.0%
White; Asian	17	27	0.2%
Black or African American; American Indian and Alaska Native	0	17	0.0%
All other two race combinations	0	17	0.0%
Population of three races	30	43	0.3%
Population of four or more races	0	17	0.0%

Note: Hispanics may be of any race. See Table B03002 and chart.

Source: U.S. Census Bureau, 2008-2012 American Community Survey

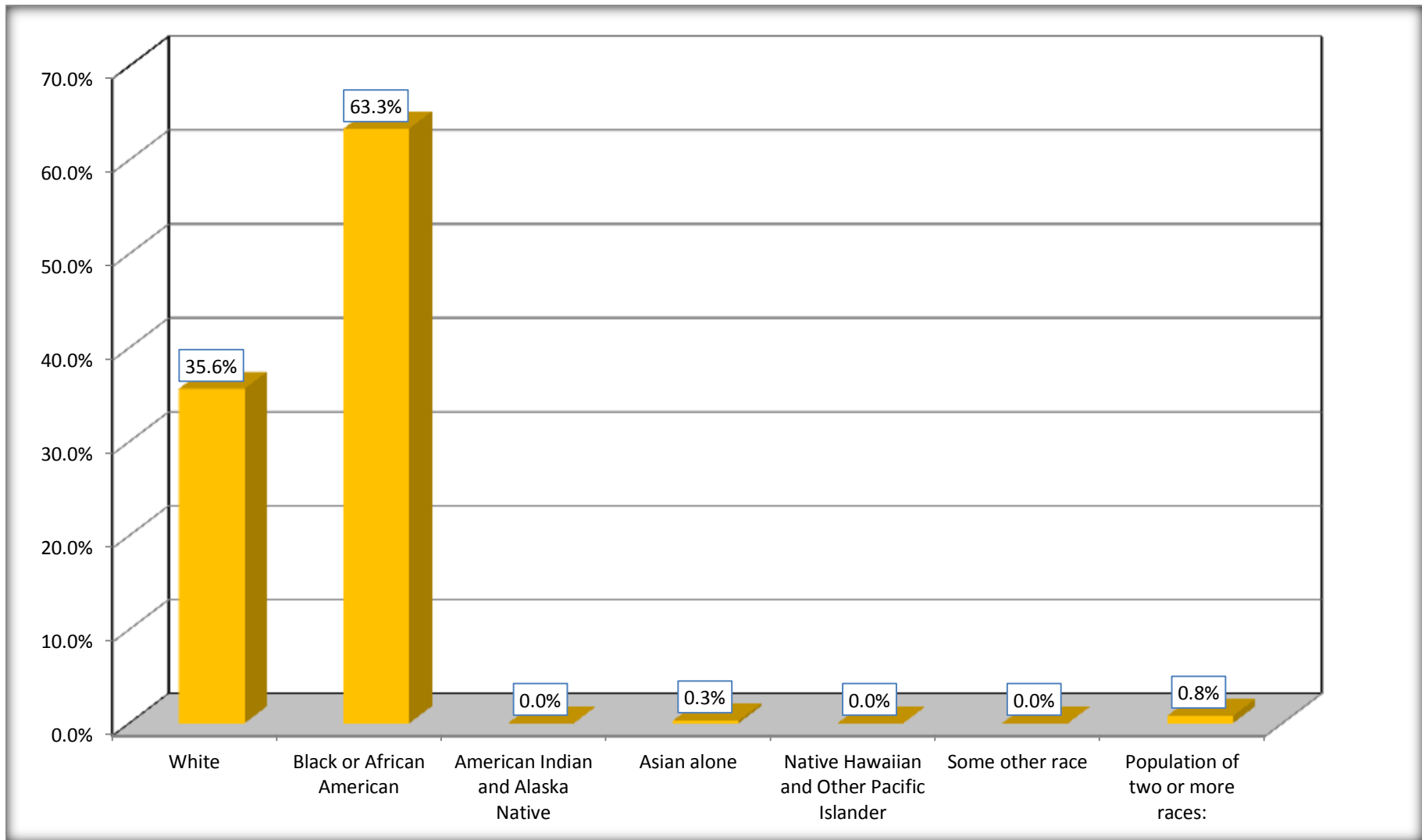
Although the American Community Survey (ACS) produces population, demographic and housing unit estimates, it is the Census Bureau's Population Estimates Program that produces and disseminates the official estimates of the population for the nation, states, counties, cities and towns and estimates of housing units for states and counties.

For information on confidentiality protection, sampling error, nonsampling error, and definitions, see Survey Methodology.

<http://www.census.gov/acs/www/UseData/index.htm>

Population by Race

Waggaman CDP, Louisiana



Source: C02003.DETAILED RACE - Universe: TOTAL POPULATION
Data Set: 2008-2012 American Community Survey 5-Year Estimates

B03002. HISPANIC OR LATINO ORIGIN BY RACE - Universe: TOTAL POPULATION

Data Set: 2008-2012 American Community Survey 5-Year Estimates

	Waggaman CDP, Louisiana		
	Population	Margin of Error (+/-)	% of Total
Total:	9,773	719	100.0%
Not Hispanic or Latino:	9,454	791	96.7%
White alone	3,169	884	32.4%
Black or African American alone	6,184	715	63.3%
American Indian and Alaska Native alone	0	17	0.0%
Asian alone	26	34	0.3%
Native Hawaiian and Other Pacific Islander alone	0	17	0.0%
Some other race alone	0	17	0.0%
Two or more races:	75	81	0.8%
Two races including Some other race	0	17	0.0%
Two races excluding Some other race, and three or more races	75	81	0.8%
Hispanic or Latino	319	271	3.3%

Source: U.S. Census Bureau, 2008-2012 American Community Survey

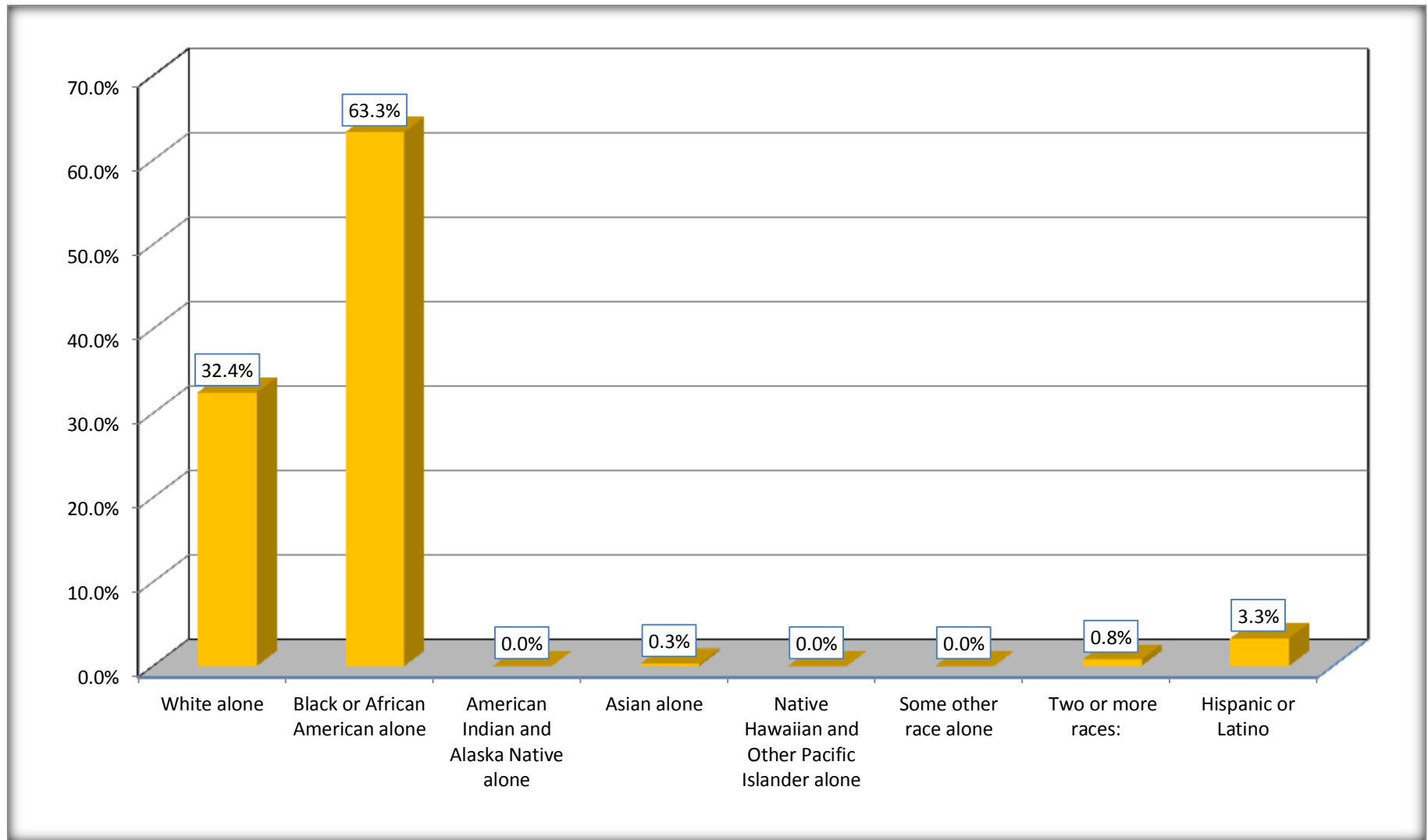
Although the American Community Survey (ACS) produces population, demographic and housing unit estimates, it is the Census Bureau's Population Estimates Program that produces and disseminates the official estimates of the population for the nation, states, counties, cities and towns and estimates of housing units for states and counties.

For information on confidentiality protection, sampling error, nonsampling error, and definitions, see Survey Methodology.

<http://www.census.gov/acs/www/UseData/index.htm>

Non-Hispanic by Race and Hispanic Population

Waggaman CDP, Louisiana



Source: B03002. HISPANIC OR LATINO ORIGIN BY RACE - Universe: TOTAL POPULATION
Data Set: 2008-2012 American Community Survey 5-Year Estimates

B03002. HISPANIC OR LATINO ORIGIN BY RACE

Data Set: 2008-2012 American Community Survey 5-Year Estimates

	Waggaman CDP, Louisiana		
	Population	Margin of Error (+/-)	% of Total
Hispanic or Latino:	319	271	100.0%
White alone	313	275	98.1%
Black or African American alone	6	13	1.9%
American Indian and Alaska Native alone	0	17	0.0%
Asian alone	0	17	0.0%
Native Hawaiian and Other Pacific Islander alone	0	17	0.0%
Some other race alone	0	17	0.0%
Two or more races:	0	17	0.0%
Two races including Some other race	0	17	0.0%
Two races excluding Some other race, and three or more races	0	17	0.0%

Source: U.S. Census Bureau, 2008-2012 American Community Survey

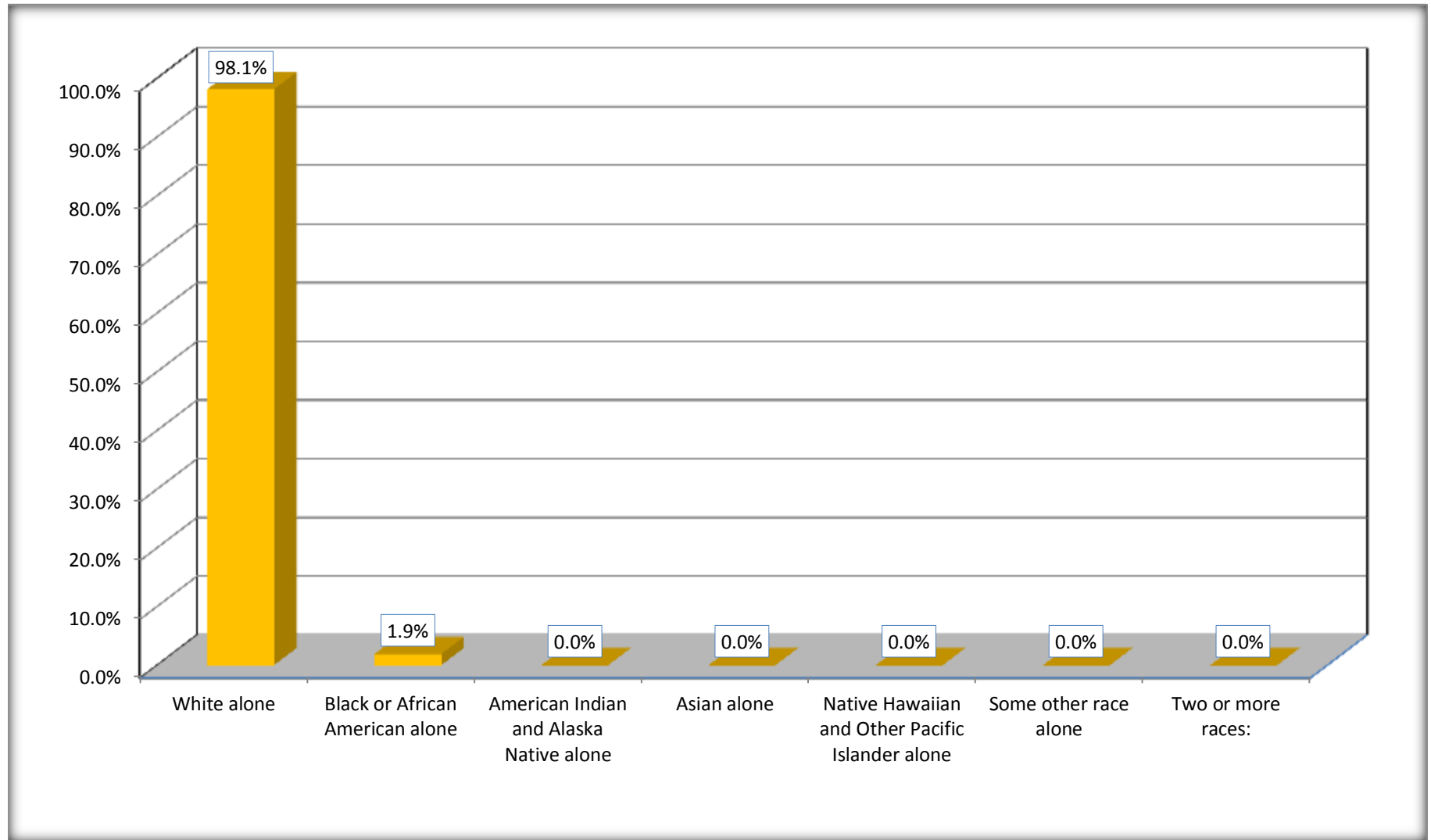
Although the American Community Survey (ACS) produces population, demographic and housing unit estimates, it is the Census Bureau's Population Estimates Program that produces and disseminates the official estimates of the population for the nation, states, counties, cities and towns and estimates of housing units for states and counties.

For information on confidentiality protection, sampling error, nonsampling error, and definitions, see Survey Methodology.

<http://www.census.gov/acs/www/UseData/index.htm>

Hispanic or Latino Origin by Race

Waggaman CDP, Louisiana



Source: B03002. HISPANIC OR LATINO ORIGIN BY RACE
Data Set: 2008-2012 American Community Survey 5-Year Estimates

B01001. SEX BY AGE

Data Set: 2008-2012 American Community Survey 5-Year Estimates

	Waggaman CDP, Louisiana					
	African American	Margin of Error (+/-)	% of AA Total	White, Not Hispanic	Margin of Error (+/-)	% of NHW Total
Total:	6,190	712	100.0%	3,169	884	100.0%
Under 18 years	1,980	NC	32.0%	907	NC	28.6%
18 to 64 years	3,319	NC	53.6%	1,927	NC	60.8%
65 years and over	891	NC	14.4%	335	NC	10.6%
Male:	2,686	376	43.4%	1,558	389	49.2%
Under 18 years	849	NC	13.7%	350	NC	11.0%
18 to 64 years	1,456	NC	23.5%	1,099	NC	34.7%
65 years and over	381	NC	6.2%	109	NC	3.4%
Female:	3,504	465	56.6%	1,611	412	50.8%
Under 18 years	1,131	NC	18.3%	557	NC	17.6%
18 to 64 years	1,863	NC	30.1%	828	NC	26.1%
65 years and over	510	NC	8.2%	226	NC	7.1%

Source: U.S. Census Bureau, 2008-2012 American Community Survey

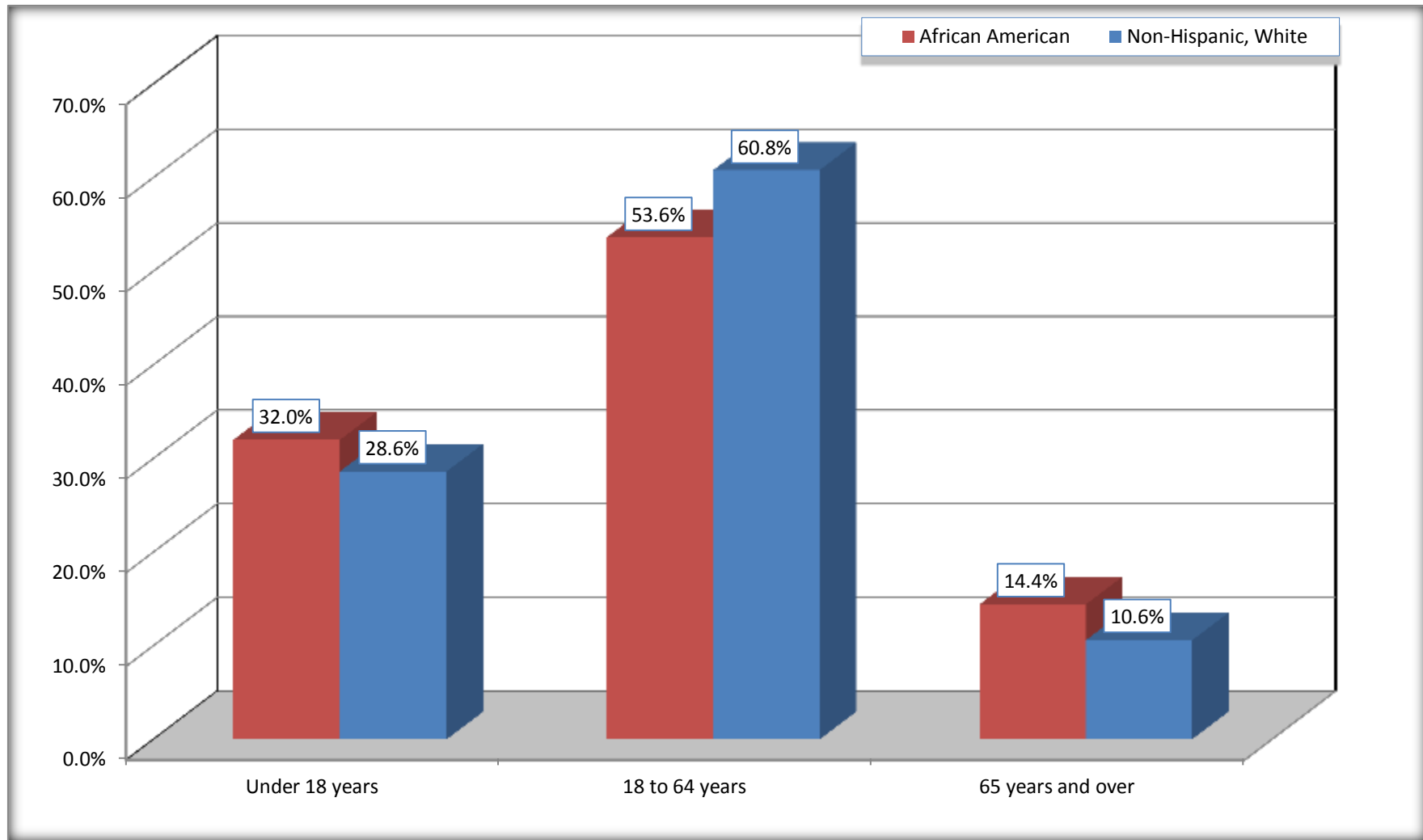
Although the American Community Survey (ACS) produces population, demographic and housing unit estimates, it is the Census Bureau's Population Estimates Program that produces and disseminates the official estimates of the population for the nation, states, counties, cities and towns and estimates of housing units for states and counties.

For information on confidentiality protection, sampling error, nonsampling error, and definitions, see Survey Methodology.

<http://www.census.gov/acs/www/UseData/index.htm>

Population by Age

Waggaman CDP, Louisiana



Source: B01001. SEX BY AGE
Data Set: 2008-2012 American Community Survey 5-Year Estimates

B05003. SEX BY AGE BY CITIZENSHIP STATUS

Data Set: 2008-2012 American Community Survey 5-Year Estimates

	Waggaman CDP, Louisiana					
	African American	Margin of Error (+/-)	% of AA Total by Age	White, Not Hispanic	Margin of Error (+/-)	% of NHW Total by Age
Total:	6,190	712	100.0%	3,169	884	100.0%
Under 18 years:	1,980	NC	100.0%	907	NC	100.0%
Native	1,980	NC	100.0%	907	NC	100.0%
Foreign born:	0	NC	0.0%	0	NC	0.0%
Naturalized U.S. citizen	0	NC	0.0%	0	NC	0.0%
Not a U.S. citizen	0	NC	0.0%	0	NC	0.0%
18 years and over:	4,210	NC	100.0%	2,262	NC	100.0%
Native	4,198	NC	99.7%	2,230	NC	98.6%
Foreign born:	12	NC	0.3%	32	NC	1.4%
Naturalized U.S. citizen	0	NC	0.0%	32	NC	1.4%
Not a U.S. citizen	12	NC	0.3%	0	NC	0.0%
Male:	2,686	376	43.4%	1,558	367	49.2%
Under 18 years:	849	317	100.0%	350	166	100.0%
Native	849	317	100.0%	350	166	100.0%
Foreign born:	0	17	0.0%	0	17	0.0%
Naturalized U.S. citizen	0	17	0.0%	0	17	0.0%
Not a U.S. citizen	0	17	0.0%	0	17	0.0%
18 years and over:	1,837	223	100.0%	1,208	235	100.0%
Native	1,825	219	99.3%	1,177	255	97.4%
Foreign born:	12	21	0.7%	31	40	2.6%
Naturalized U.S. citizen	0	17	0.0%	31	40	2.6%
Not a U.S. citizen	12	21	0.7%	0	17	0.0%

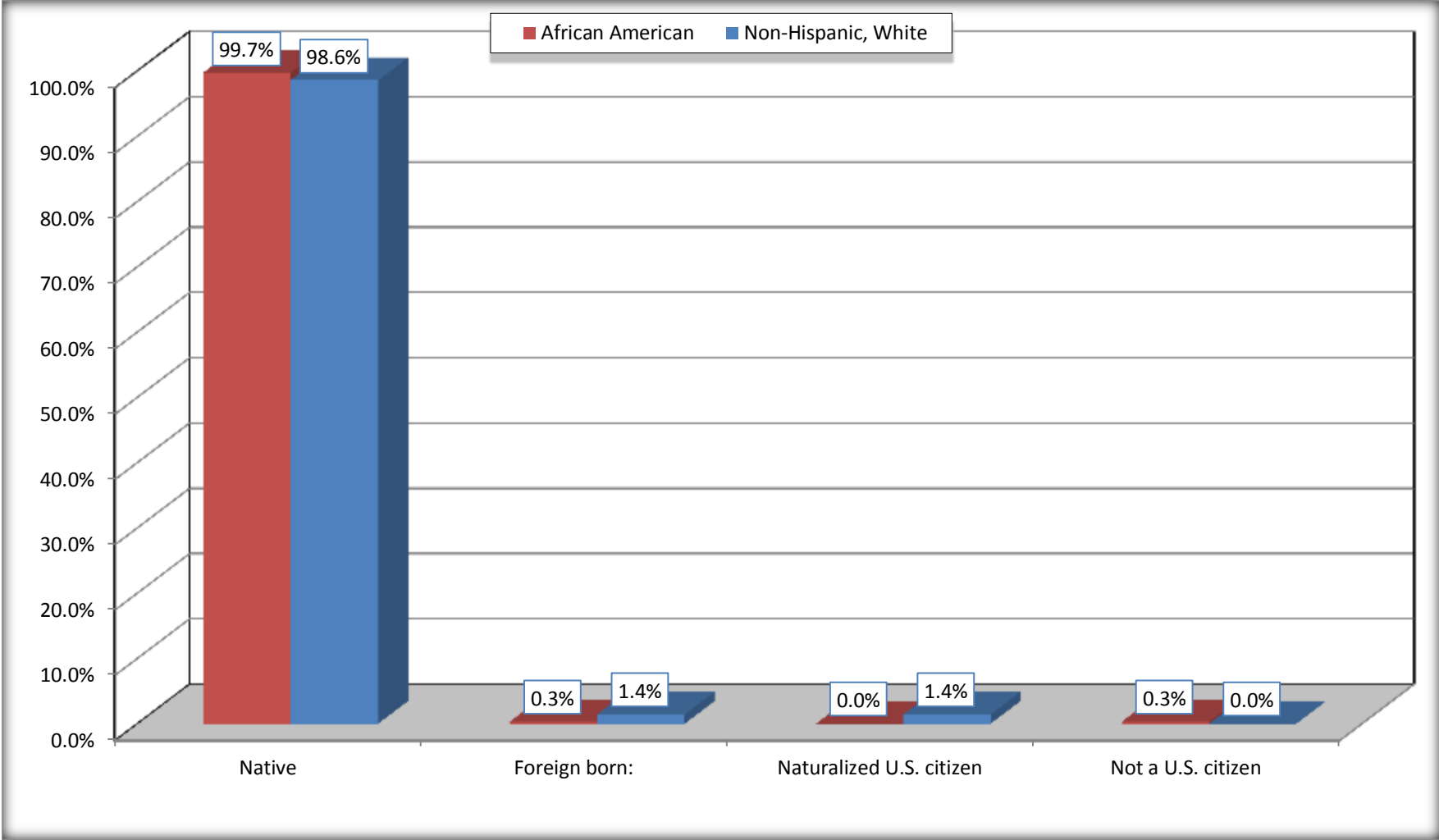
	Waggaman CDP, Louisiana					
	African American	Margin of Error (+/-)	% of AA by Age	White, Not Hispanic	Margin of Error (+/-)	% of NHW by Age
Female:	3,504	465	56.6%	1,611	550	50.8%
Under 18 years:	1,131	360	100.0%	557	373	100.0%
Native	1,131	360	100.0%	557	373	100.0%
Foreign born:	0	17	0.0%	0	17	0.0%
Naturalized U.S. citizen	0	17	0.0%	0	17	0.0%
Not a U.S. citizen	0	17	0.0%	0	17	0.0%
18 years and over:	2,373	259	100.0%	1,054	223	100.0%
Native	2,373	259	100.0%	1,053	223	99.9%
Foreign born:	0	17	0.0%	1	3	0.1%
Naturalized U.S. citizen	0	17	0.0%	1	3	0.1%
Not a U.S. citizen	0	17	0.0%	0	17	0.0%

Source: U.S. Census Bureau, 2008-2012 American Community Survey

For information on confidentiality protection, sampling error, nonsampling error, and definitions, see Survey Methodology.
<http://www.census.gov/acs/www/UseData/index.htm>

Citizenship Status of Voting Age Population (18 and Over)

Waggaman CDP, Louisiana



Source: B05003. SEX BY AGE BY CITIZENSHIP STATUS
Data Set: 2008-2012 American Community Survey 5-Year Estimates

**B07004. GEOGRAPHICAL MOBILITY IN THE PAST YEAR BY RACE FOR CURRENT RESIDENCE IN THE UNITED STATES - Universe:
POPULATION 1 YEAR AND OVER**

Data Set: 2008-2012 American Community Survey 5-Year Estimates

	Waggaman CDP, Louisiana					
	African American	Margin of Error (+/-)	% of AA Total	White, Not Hispanic	Margin of Error (+/-)	% of NHW Total
Total:	6,111	712	100.0%	3,148	892	100.0%
Same house 1 year ago	5,530	715	90.5%	3,060	940	97.2%
Moved within same county	474	238	7.8%	0	17	0.0%
Moved from different county within same state	73	78	1.2%	45	52	1.4%
Moved from different state	34	44	0.6%	31	59	1.0%
Moved from abroad	0	17	0.0%	12	22	0.4%

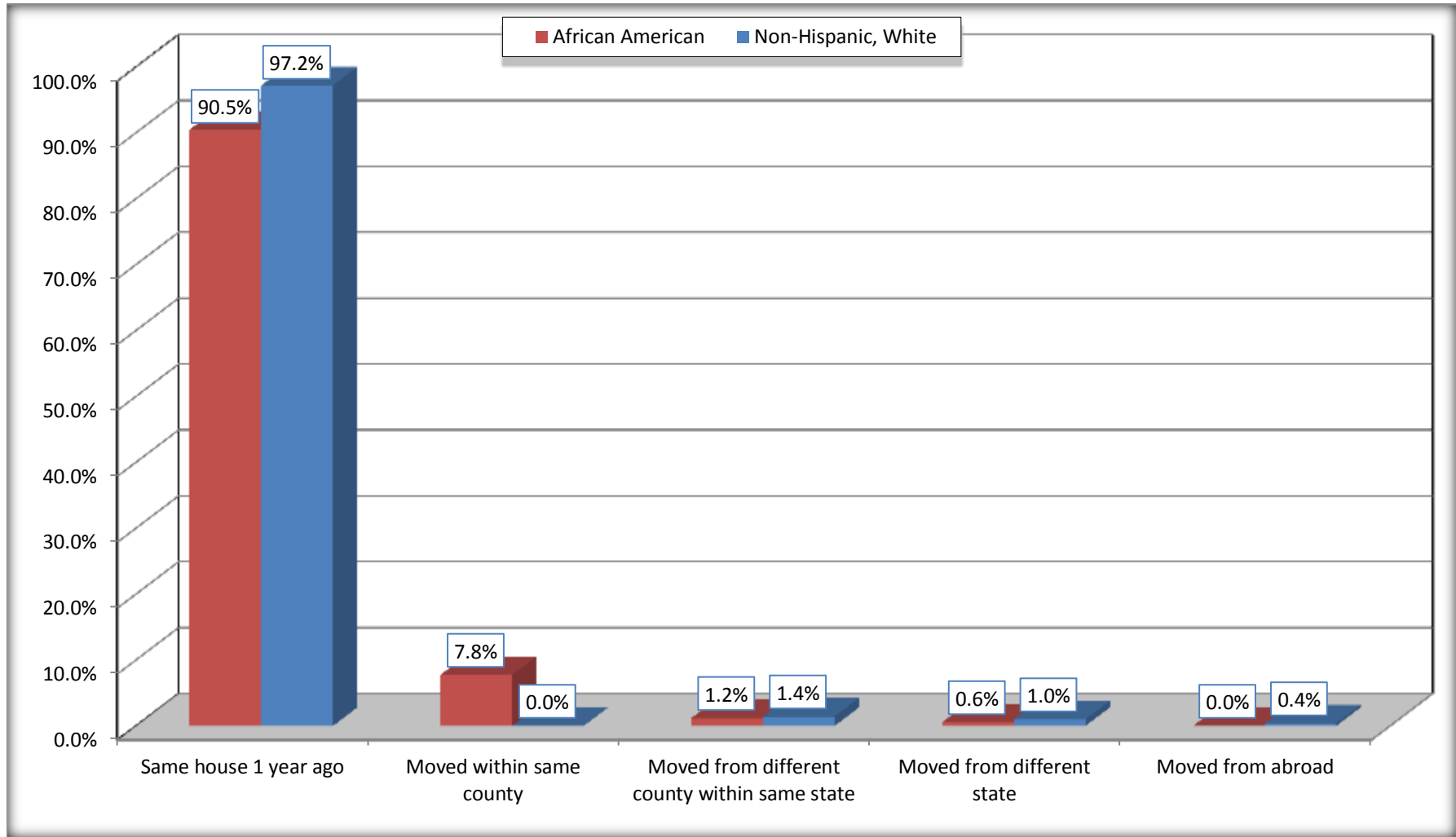
Source: U.S. Census Bureau, 2008-2012 American Community Survey

For information on confidentiality protection, sampling error, nonsampling error, and definitions, see Survey Methodology.

<http://www.census.gov/acs/www/UseData/index.htm>

Geographical Mobility in the Past Year (Population 1 Year and Over)

Waggaman CDP, Louisiana



Source: B07004. GEOGRAPHICAL MOBILITY IN THE PAST YEAR BY RACE FOR CURRENT RESIDENCE IN THE UNITED STATES - Universe: POPULATION 1 YEAR AND OVER

Data Set: 2008-2012 American Community Survey 5-Year Estimates

B08105. MEANS OF TRANSPORTATION TO WORK - Universe: WORKERS 16 YEARS AND OVER

Data Set: 2008-2012 American Community Survey 5-Year Estimates

	Waggaman CDP, Louisiana					
	African American	Margin of Error (+/-)	% of AA Total	White, Not Hispanic	Margin of Error (+/-)	% of NHW Total
Total:	2295	314	100.0%	1501	427	100.0%
Car, truck, or van - drove alone	1860	266	81.0%	1430	477	95.3%
Car, truck, or van - carpoled	326	209	14.2%	71	85	4.7%
Public transportation (excluding taxicab)	55	46	2.4%	0	17	0.0%
Walked	7	13	0.3%	0	17	0.0%
Taxicab, motorcycle, bicycle, or other means	28	32	1.2%	0	17	0.0%
Worked at home	19	23	0.8%	0	17	0.0%

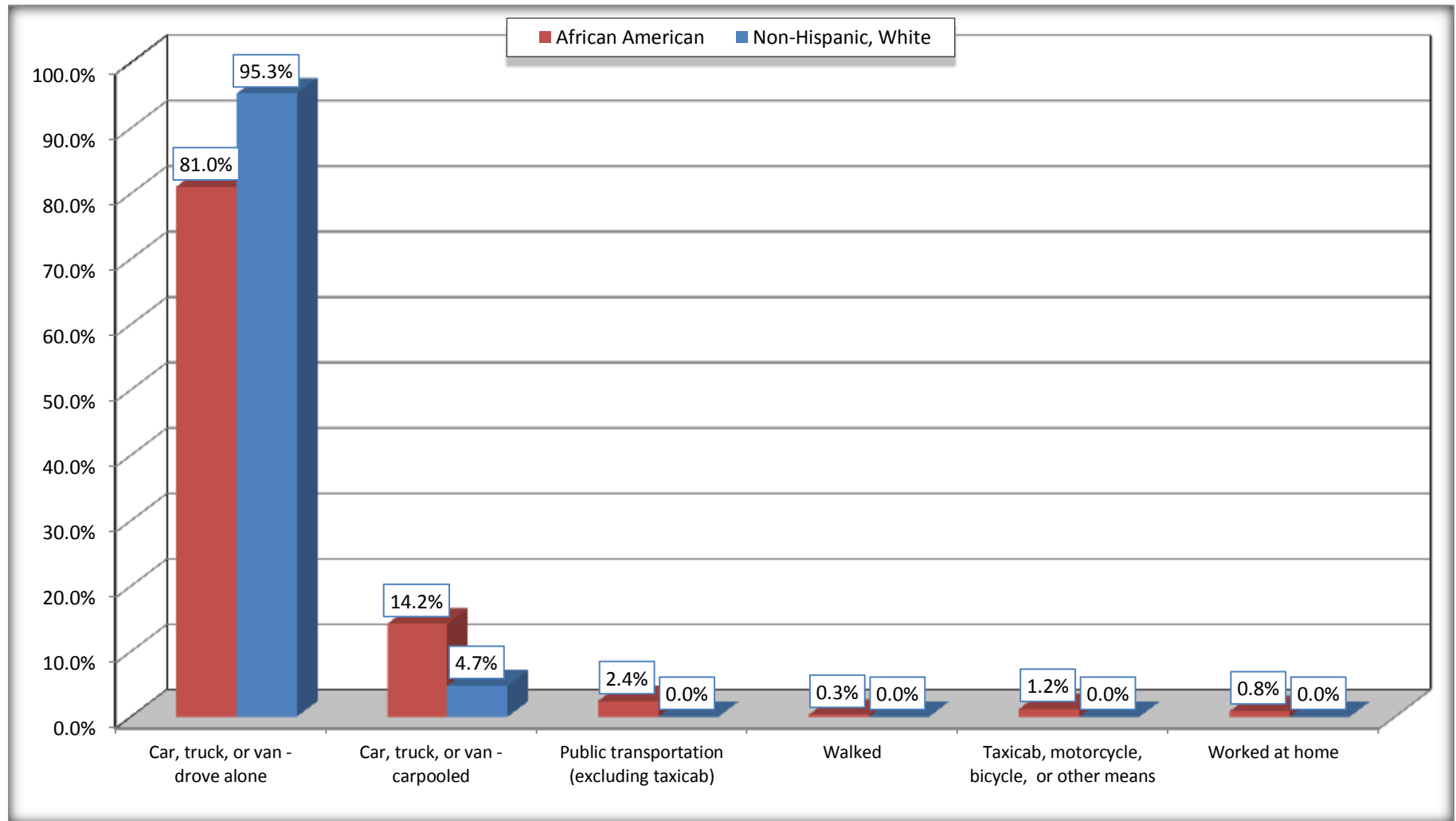
Source: U.S. Census Bureau, 2008-2012 American Community Survey

For information on confidentiality protection, sampling error, nonsampling error, and definitions, see Survey Methodology.

<http://www.census.gov/acs/www/UseData/index.htm>

Means of Transportation to Work (Workers 16 Years and Over)

Waggaman CDP, Louisiana



Source: B08105. MEANS OF TRANSPORTATION TO WORK - Universe: WORKERS 16 YEARS AND OVER
Data Set: 2008-2012 American Community Survey 5-Year Estimates

B11002. HOUSEHOLD TYPE BY RELATIVES AND NONRELATIVES FOR POPULATION IN HOUSEHOLDS

Data Set: 2008-2012 American Community Survey 5-Year Estimates

	Waggaman CDP, Louisiana					
	African American	Margin of Error (+/-)	% of AA Total	White, Not Hispanic	Margin of Error (+/-)	% of NHW Total
Total:	6205	712	100.0%	3092	869	100.0%
In family households	5611	820	90.4%	2818	796	91.1%
In nonfamily households	594	177	9.6%	274	136	8.9%

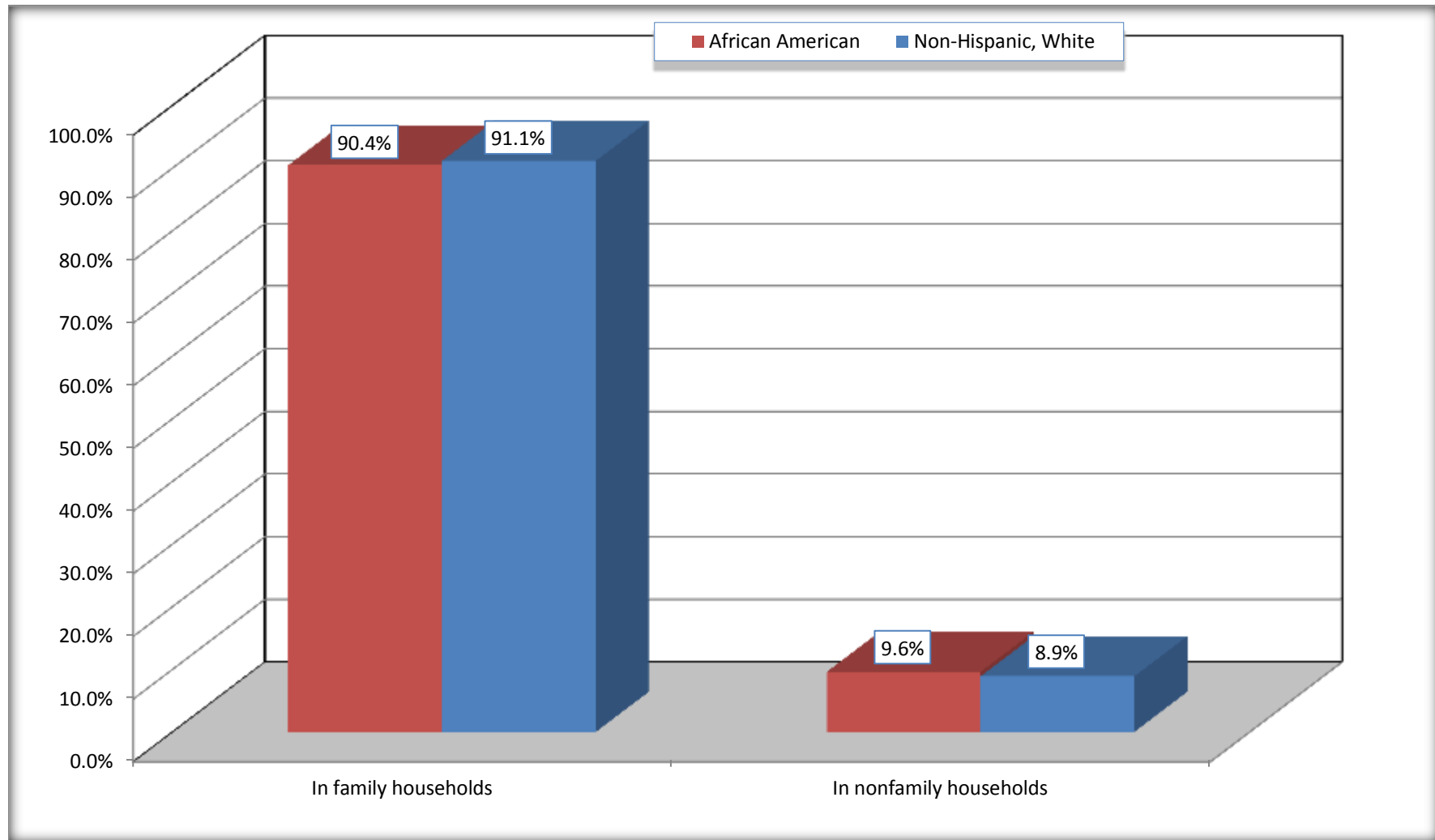
Source: U.S. Census Bureau, 2008-2012 American Community Survey

For information on confidentiality protection, sampling error, nonsampling error, and definitions, see Survey Methodology.

<http://www.census.gov/acs/www/UseData/index.htm>

Household Type for Population in Households

Waggaman CDP, Louisiana



Source: B11002. HOUSEHOLD TYPE BY RELATIVES AND NONRELATIVES FOR POPULATION IN HOUSEHOLDS
Data Set: 2008-2012 American Community Survey 5-Year Estimates

B12002. MARITAL STATUS FOR THE POPULATION 15 YEARS AND OVER

Data Set: 2008-2012 American Community Survey 5-Year Estimates

	Waggaman CDP, Louisiana					
	African American	Margin of Error (+/-)	% of AA Total	White, Not Hispanic	Margin of Error (+/-)	% of NHW Total
Total:	4,578	434	100.0%	2,322	383	100.0%
Never married	1,884	NC	41.2%	489	NC	21.1%
Now married (except separated)	1,581	NC	34.5%	1,464	NC	63.0%
Separated	173	NC	3.8%	35	NC	1.5%
Widowed	353	NC	7.7%	91	NC	3.9%
Divorced	587	NC	12.8%	243	NC	10.5%
Male:	1,996	242	43.6%	1,248	215	53.7%
Never married	921	210	20.1%	288	110	12.4%
Now married (except separated)	821	164	17.9%	777	200	33.5%
Separated	46	45	1.0%	23	37	1.0%
Widowed	36	49	0.8%	0	17	0.0%
Divorced	172	79	3.8%	160	104	6.9%
Female:	2,582	312	56.4%	1,074	208	46.3%
Never married	963	294	21.0%	201	139	8.7%
Now married (except separated)	760	163	16.6%	687	207	29.6%
Separated	127	97	2.8%	12	27	0.5%
Widowed	317	95	6.9%	91	55	3.9%
Divorced	415	170	9.1%	83	53	3.6%

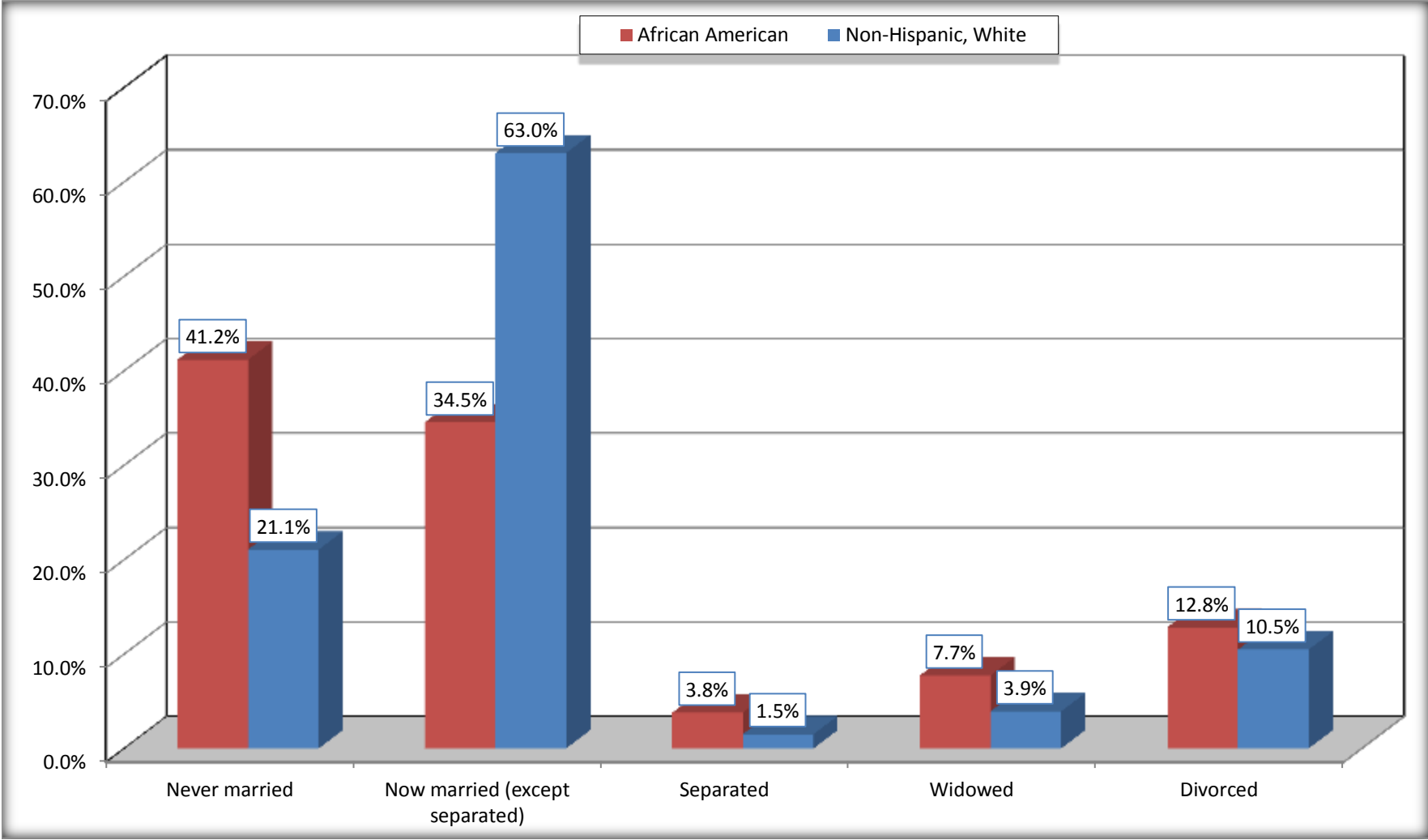
Source: U.S. Census Bureau, 2008-2012 American Community Survey

For information on confidentiality protection, sampling error, nonsampling error, and definitions, see Survey Methodology.

<http://www.census.gov/acs/www/UseData/index.htm>

Marital Status for the Population 15 Years and Over

Waggaman CDP, Louisiana



Source: B12002. MARITAL STATUS FOR THE POPULATION 15 YEARS AND OVER
Data Set: 2008-2012 American Community Survey 5-Year Estimates

C15002. SEX BY EDUCATIONAL ATTAINMENT FOR THE POPULATION 25 YEARS AND OVER

Data Set: 2008-2012 American Community Survey 5-Year Estimates

	Waggaman CDP, Louisiana					
	African American	Margin of Error (+/-)	% of AA Total	White, Not Hispanic	Margin of Error (+/-)	% of NHW Total
Total:	3,711	317	100.0%	1,976	451	100.0%
Less than high school diploma	691	NC	18.6%	534	NC	27.0%
High school graduate, GED, or alternative	1,633	NC	44.0%	878	NC	44.4%
Some college or associate's degree	1,131	NC	30.5%	413	NC	20.9%
Bachelor's degree or higher	256	NC	6.9%	151	NC	7.6%
Male:	1,560	195	42.0%	1,077	265	54.5%
Less than high school diploma	247	85	6.7%	307	291	15.5%
High school graduate, GED, or alternative	874	192	23.6%	479	149	24.2%
Some college or associate's degree	341	156	9.2%	219	107	11.1%
Bachelor's degree or higher	98	58	2.6%	72	55	3.6%
Female:	2,151	243	58.0%	899	221	45.5%
Less than high school diploma	444	160	12.0%	227	259	11.5%
High school graduate, GED, or alternative	759	217	20.5%	399	101	20.2%
Some college or associate's degree	790	207	21.3%	194	84	9.8%
Bachelor's degree or higher	158	69	4.3%	79	64	4.0%

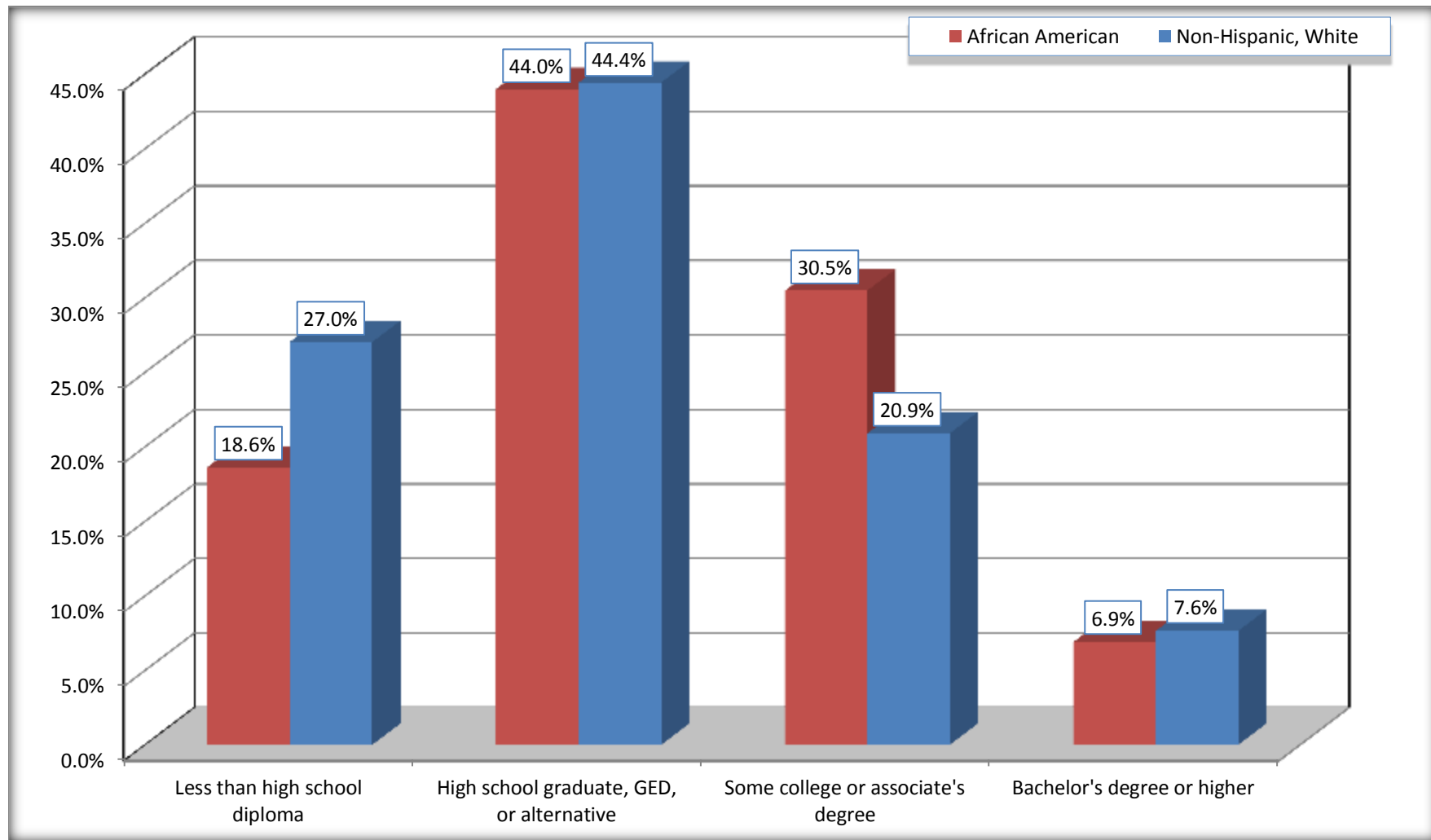
Source: U.S. Census Bureau, 2008-2012 American Community Survey

For information on confidentiality protection, sampling error, nonsampling error, and definitions, see Survey Methodology.

<http://www.census.gov/acs/www/UseData/index.htm>

Educational Attainment for the Population 25 Years and Older

Waggaman CDP, Louisiana



Source: C15002. SEX BY EDUCATIONAL ATTAINMENT FOR THE POPULATION 25 YEARS AND OVER
Data Set: 2008-2012 American Community Survey 5-Year Estimates

B17010. POVERTY STATUS IN THE PAST 12 MONTHS OF FAMILIES BY FAMILY TYPE BY PRESENCE OF RELATED CHILDREN UNDER 18 YEARS

Data Set: 2008-2012 American Community Survey 5-Year Estimates

	Waggaman CDP, Louisiana					
	African American	Margin of Error (+/-)	% of AA Total	White, Not Hispanic	Margin of Error (+/-)	% of NHW Total
Total:	1,467	186	100.0%	804	175	100.0%
Income in the past 12 months below poverty level:	234	119	16.0%	31	44	3.9%
Married-couple family:	40	46	2.7%	22	38	2.7%
With related children under 18 years	40	46	2.7%	22	38	2.7%
Other family:	194	103	13.2%	9	16	1.1%
Male householder, no wife present	8	14	0.5%	0	17	0.0%
With related children under 18 years	8	14	0.5%	0	17	0.0%
Female householder, no husband present	186	102	12.7%	9	16	1.1%
With related children under 18 years	176	101	12.0%	9	16	1.1%
Income in the past 12 months at or above poverty level:	1,233	170	84.0%	773	197	96.1%
Married-couple family:	693	150	47.2%	687	214	85.4%
With related children under 18 years	334	134	22.8%	288	165	35.8%
Other family:	540	142	36.8%	86	59	10.7%
Male householder, no wife present	176	106	12.0%	34	39	4.2%
With related children under 18 years	109	98	7.4%	14	25	1.7%
Female householder, no husband present	364	115	24.8%	52	40	6.5%
With related children under 18 years	216	105	14.7%	33	36	4.1%

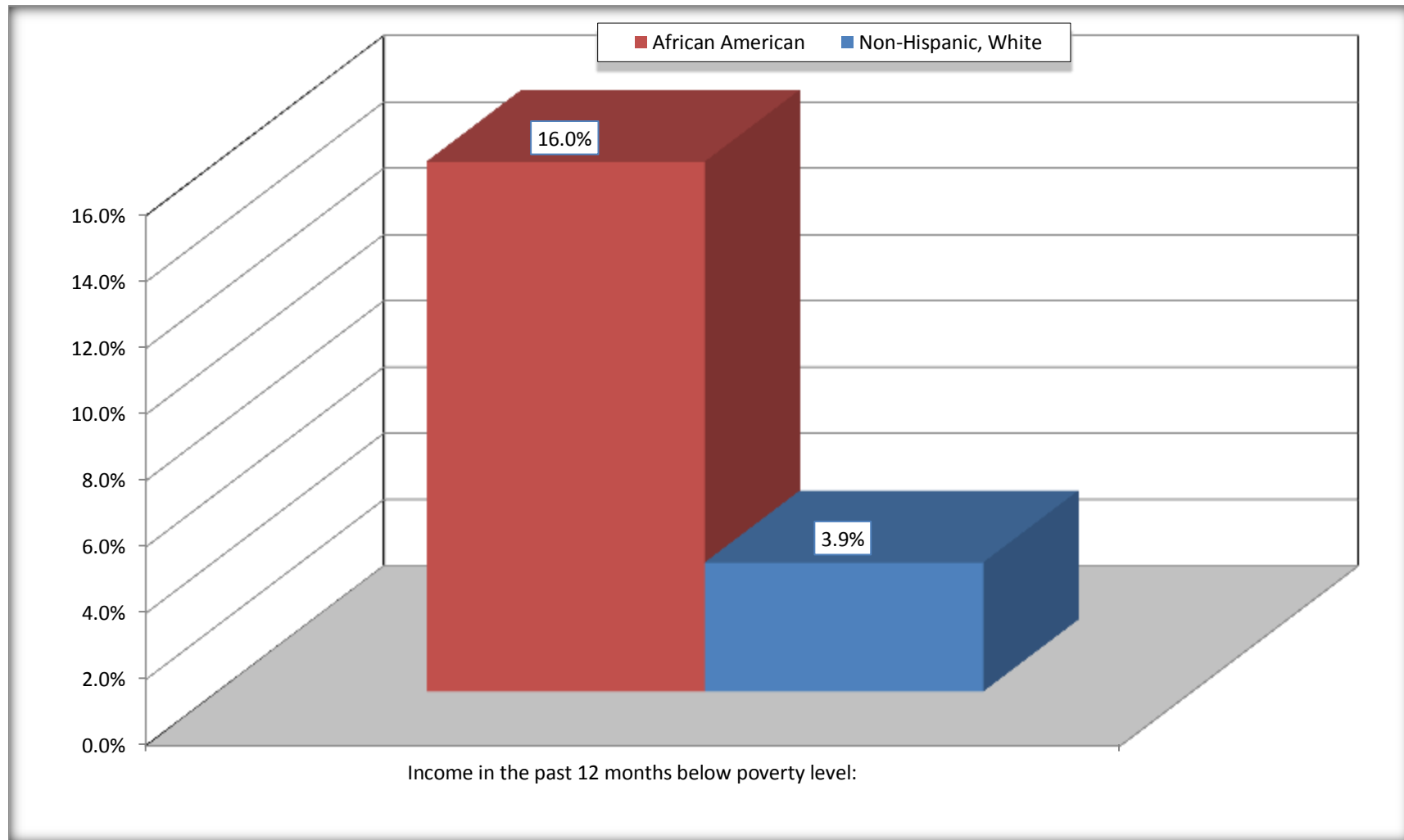
Source: U.S. Census Bureau, 2008-2012 American Community Survey

For information on confidentiality protection, sampling error, nonsampling error, and definitions, see Survey Methodology.

<http://www.census.gov/acs/www/UseData/index.htm>

Family Households Below Poverty in the Past 12 Months

Waggaman CDP, Louisiana

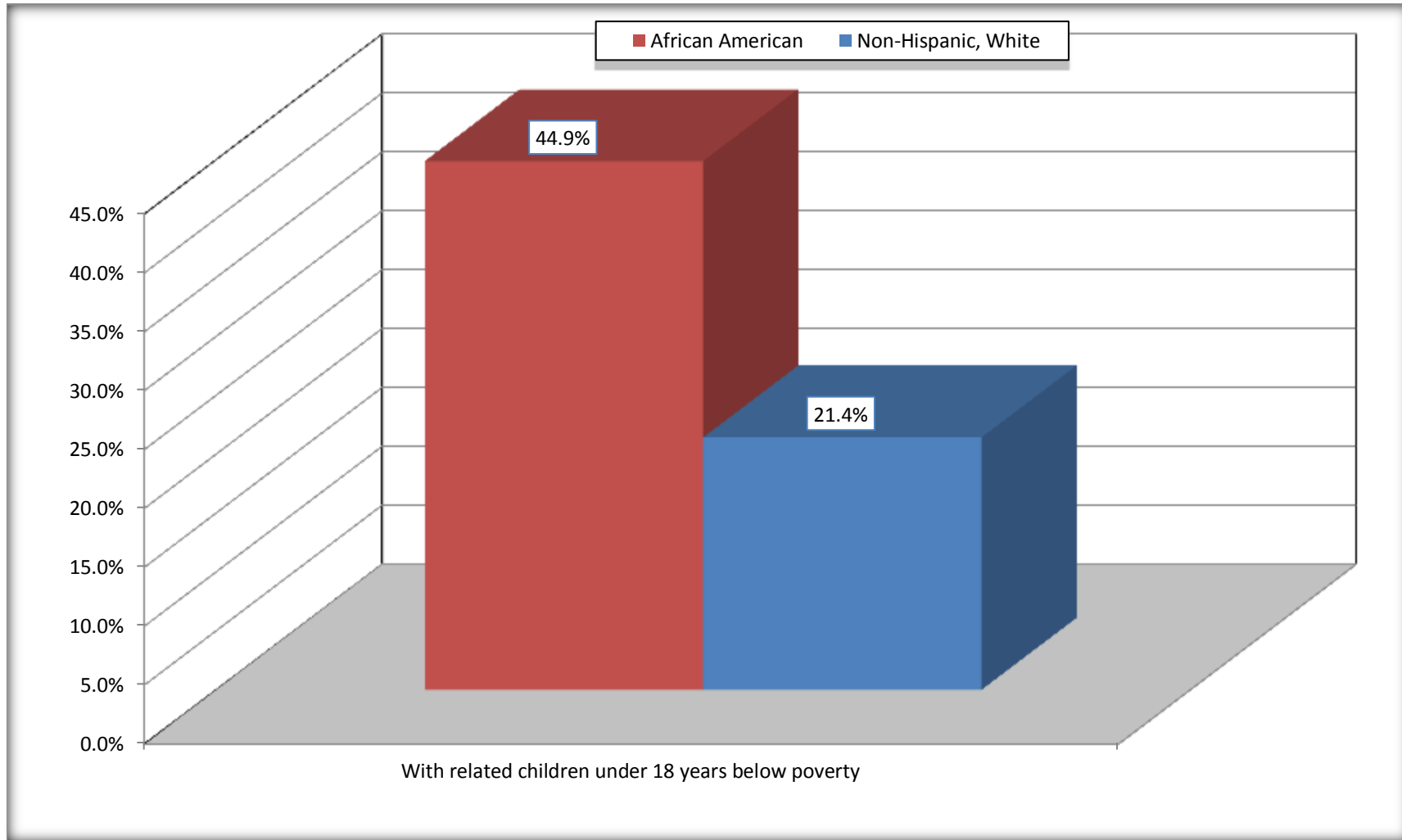


Source: B17010. POVERTY STATUS IN THE PAST 12 MONTHS OF FAMILIES BY FAMILY TYPE BY PRESENCE OF RELATED CHILDREN UNDER 18 YEARS

Data Set: 2008-2012 American Community Survey 5-Year Estimates

Female-headed Households with Related Children Below Poverty in the Past 12 Months

Waggaman CDP, Louisiana



Source: B17010. POVERTY STATUS IN THE PAST 12 MONTHS OF FAMILIES BY FAMILY TYPE BY PRESENCE OF RELATED CHILDREN UNDER 18 YEARS

Data Set: 2008-2012 American Community Survey 5-Year Estimates

B17020 POVERTY STATUS IN THE PAST 12 MONTHS BY AGE - Universe: POPULATION FOR WHOM POVERTY STATUS IS DETERMINED

Data Set: 2008-2012 American Community Survey 5-Year Estimates

	Waggaman CDP, Louisiana					
	African American	Margin of Error (+/-)	% of AA By Age	White, Not Hispanic	Margin of Error (+/-)	% of NHW By Age
Total:	6,190	712	100.0%	3,169	884	100.0%
Income in the past 12 months below poverty level:	1,273	613	20.6%	249	274	7.9%
Under 18 years	659	NC	33.3%	94	NC	10.4%
18 to 64 years	515	279	15.5%	145	125	7.5%
65 years and over	99	NC	11.1%	10	NC	3.0%
Income in the past 12 months at or above poverty level:	4,917	593	79.4%	2,920	1,009	92.1%
Under 18 years	1,321	NC	66.7%	813	NC	89.6%
18 to 64 years	2,804	339	84.5%	1,782	452	92.5%
65 years and over	792	NC	88.9%	325	NC	97.0%

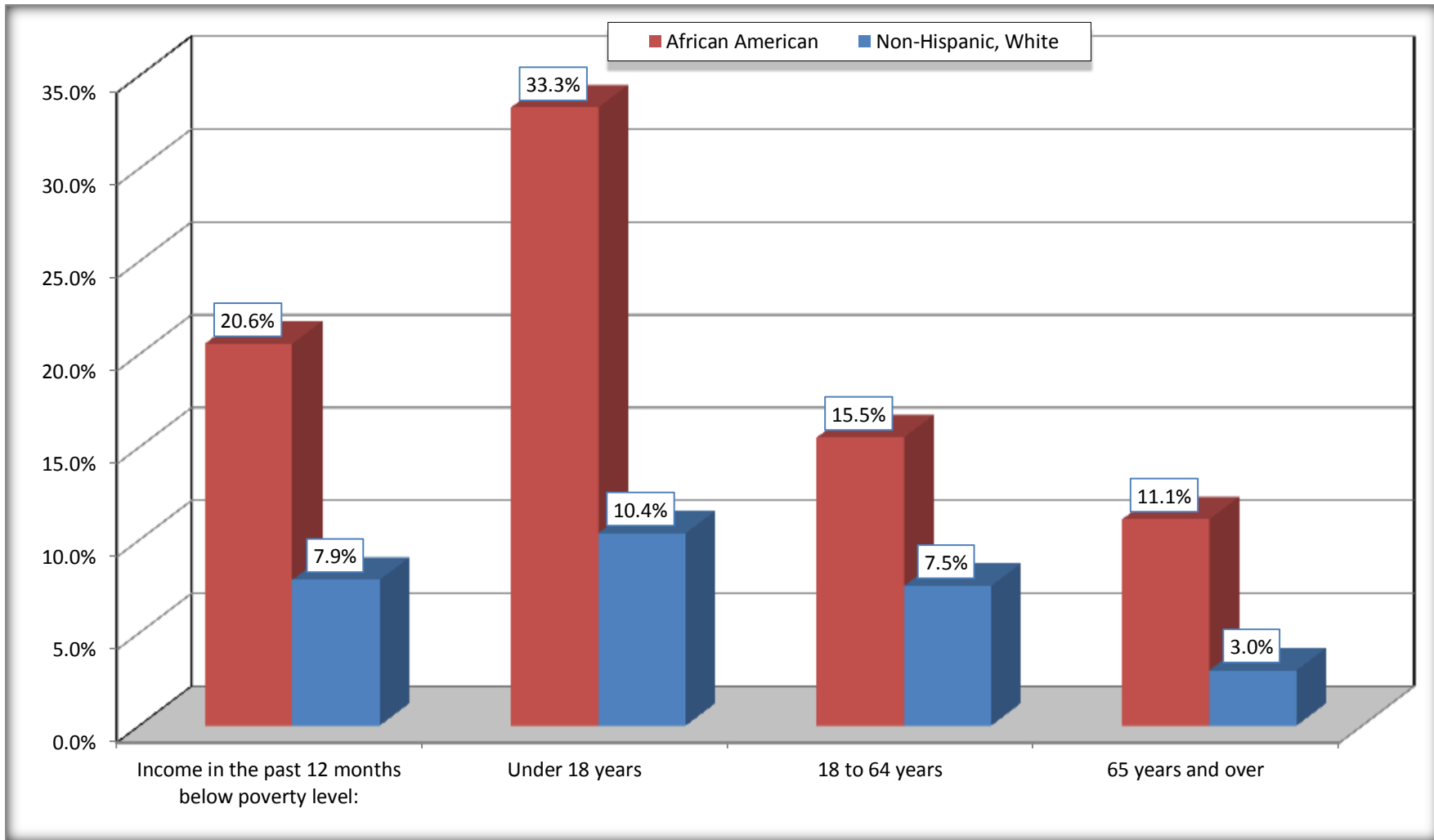
Source: U.S. Census Bureau, 2008-2012 American Community Survey

For information on confidentiality protection, sampling error, nonsampling error, and definitions, see Survey Methodology.

<http://www.census.gov/acs/www/UseData/index.htm>

Population Below Poverty in the Past 12 Months

Waggaman CDP, Louisiana



Source: B17020 POVERTY STATUS IN THE PAST 12 MONTHS BY AGE - Universe: POPULATION FOR WHOM POVERTY STATUS IS DETERMINED
Data Set: 2008-2012 American Community Survey 5-Year Estimates

B19001. HOUSEHOLD INCOME IN THE PAST 12 MONTHS (IN 2010 INFLATION-ADJUSTED DOLLARS)

Data Set: 2008-2012 American Community Survey 5-Year Estimates

	Waggaman CDP, Louisiana					
	African American	Margin of Error (+/-)	% of AA Total	White, Not Hispanic	Margin of Error (+/-)	% of NHW Total
Total:	2,061	146	100.0%	1,036	249	100.0%
Less than \$ 10,000	136	84	6.6%	12	20	1.2%
\$ 10,000 to \$ 14,999	124	65	6.0%	23	39	2.2%
\$ 15,000 to \$ 24,999	384	NC	18.6%	86	NC	8.3%
\$ 25,000 to \$ 34,999	354	NC	17.2%	137	NC	13.2%
\$ 35,000 to \$ 49,999	391	NC	19.0%	273	NC	26.4%
\$ 50,000 to \$ 74,999	454	NC	22.0%	200	NC	19.3%
\$ 75,000 to \$ 99,999	72	73	3.5%	136	69	13.1%
\$ 100,000 to \$ 149,999	135	NC	6.6%	125	NC	12.1%
\$ 150,000 to \$ 199,999	11	17	0.5%	0	17	0.0%
\$ 200,000 or more	0	17	0.0%	44	52	4.2%

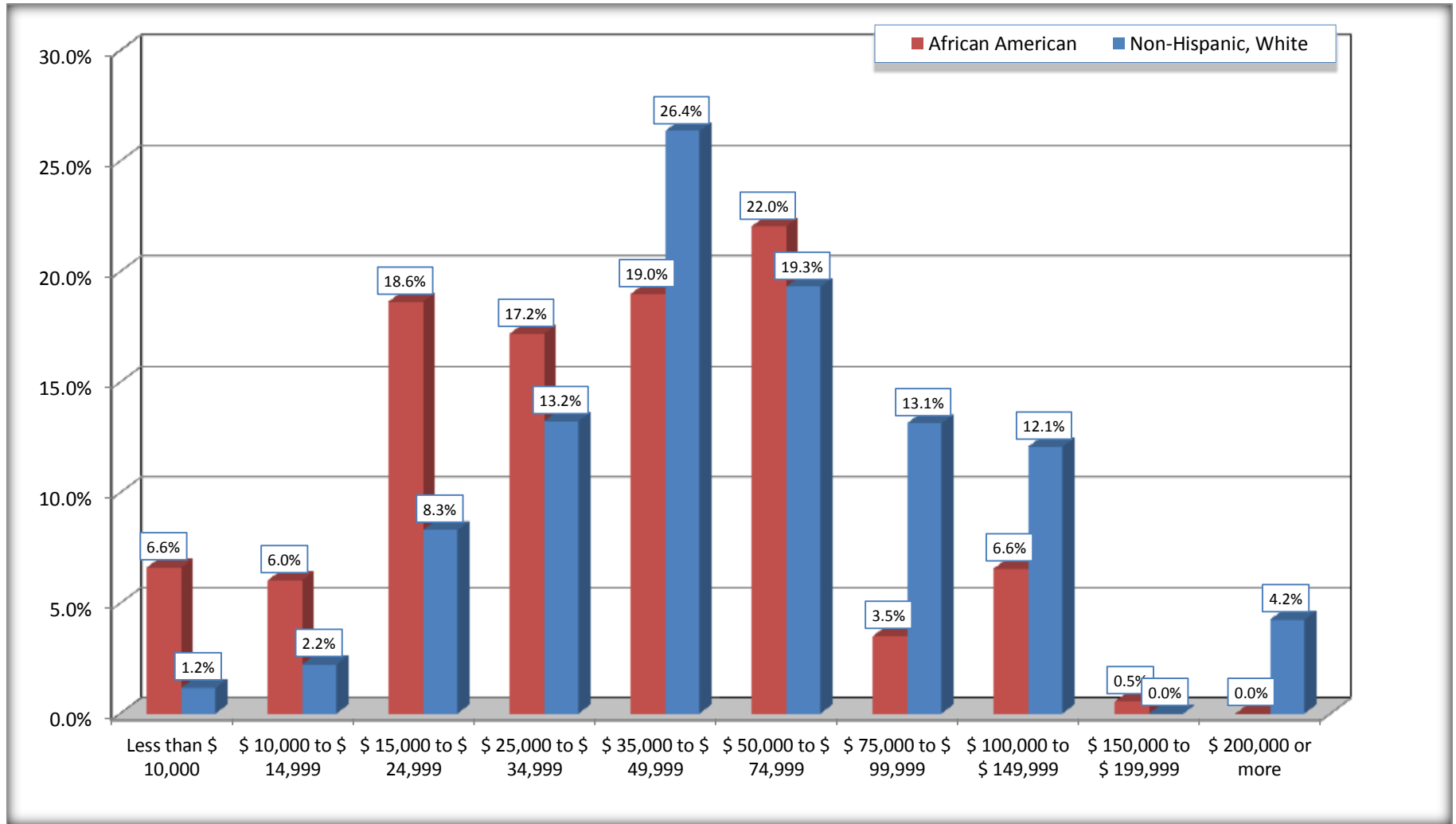
Source: U.S. Census Bureau, 2008-2012 American Community Survey

For information on confidentiality protection, sampling error, nonsampling error, and definitions, see Survey Methodology.

<http://www.census.gov/acs/www/UseData/index.htm>

Household Income in the Past 12 Months

Waggaman CDP, Louisiana



Source: B19001. HOUSEHOLD INCOME IN THE PAST 12 MONTHS (IN 2010 INFLATION-ADJUSTED DOLLARS)
Data Set: 2008-2012 American Community Survey 5-Year Estimates

B19013. MEDIAN HOUSEHOLD INCOME IN THE PAST 12 MONTHS (IN 2010 INFLATION-ADJUSTED DOLLARS)

Data Set: 2008-2012 American Community Survey 5-Year Estimates

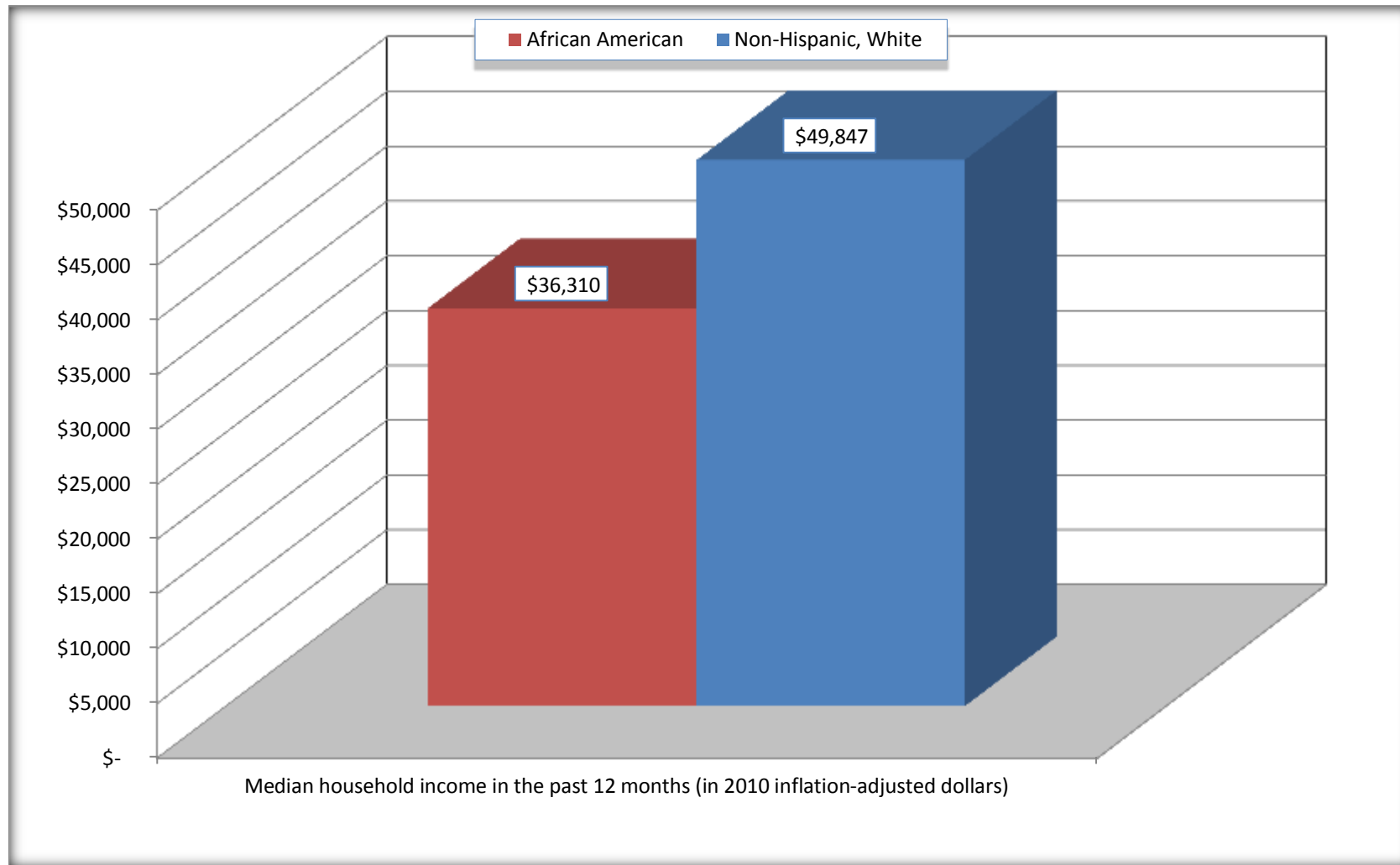
	Waggaman CDP, Louisiana			
	African American	Margin of Error (+/-)	White, Not Hispanic	Margin of Error (+/-)
Median household income in the past 12 months (in 2010 inflation-adjusted dollars)	\$ 36,310	\$ 5,288	\$ 49,847	\$ 10,761

Source: U.S. Census Bureau, 2008-2012 American Community Survey

For information on confidentiality protection, sampling error, nonsampling error, and definitions, see Survey Methodology.
<http://www.census.gov/acs/www/UseData/index.htm>

Median Household Income in the Past 12 Months

Waggaman CDP, Louisiana



Source: B19013. MEDIAN HOUSEHOLD INCOME IN THE PAST 12 MONTHS (IN 2010 INFLATION-ADJUSTED DOLLARS)
Data Set: 2008-2012 American Community Survey 5-Year Estimates

B19101. FAMILY INCOME IN THE PAST 12 MONTHS (IN 2010 INFLATION-ADJUSTED DOLLARS)

Data Set: 2008-2012 American Community Survey 5-Year Estimates

	Waggaman CDP, Louisiana					
	African American	Margin of Error (+/-)	% of AA Total	White, Not Hispanic	Margin of Error (+/-)	% of NHW Total
Total:	1,467	186	100.0%	804	175	100.0%
Less than \$ 10,000	70	67	4.8%	0	17	0.0%
\$ 10,000 to \$ 14,999	49	51	3.3%	0	17	0.0%
\$ 15,000 to \$ 24,999	218	NC	14.9%	36	NC	4.5%
\$ 25,000 to \$ 34,999	246	NC	16.8%	121	NC	15.0%
\$ 35,000 to \$ 49,999	322	NC	21.9%	259	NC	32.2%
\$ 50,000 to \$ 74,999	354	NC	24.1%	138	NC	17.2%
\$ 100,000 to \$ 149,999	127	NC	8.7%	95	NC	11.8%
\$ 150,000 to \$ 199,999	11	17	0.7%	0	17	0.0%
\$ 200,000 or more	0	17	0.0%	44	52	5.5%

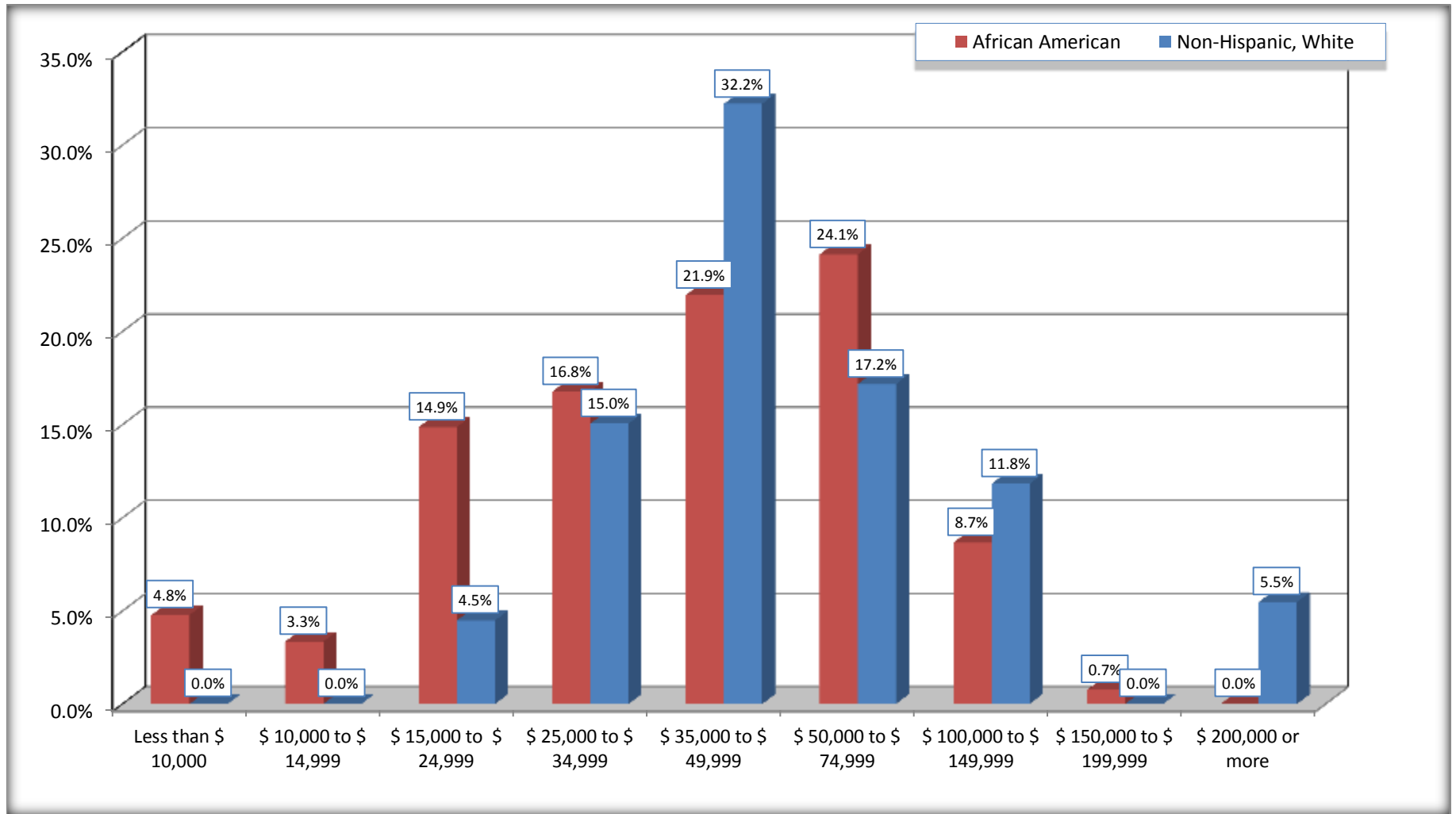
Source: U.S. Census Bureau, 2008-2012 American Community Survey

For information on confidentiality protection, sampling error, nonsampling error, and definitions, see Survey Methodology.

<http://www.census.gov/acs/www/UseData/index.htm>

Family Income in the Past 12 Months

Waggaman CDP, Louisiana



Source: B19101. FAMILY INCOME IN THE PAST 12 MONTHS (IN 2010 INFLATION-ADJUSTED DOLLARS)
Data Set: 2008-2012 American Community Survey 5-Year Estimates

B19113. MEDIAN FAMILY INCOME IN THE PAST 12 MONTHS (IN 2010 INFLATION-ADJUSTED DOLLARS)

Data Set: 2008-2012 American Community Survey 5-Year Estimates

	Waggaman CDP, Louisiana			
	African American	Margin of Error (+/-)	White, Not Hispanic	Margin of Error (+/-)
Median family income in the past 12 months (in 2010 inflation-adjusted dollars)	\$ 39,379	\$ 3,197	\$ 49,835	\$ 24,183

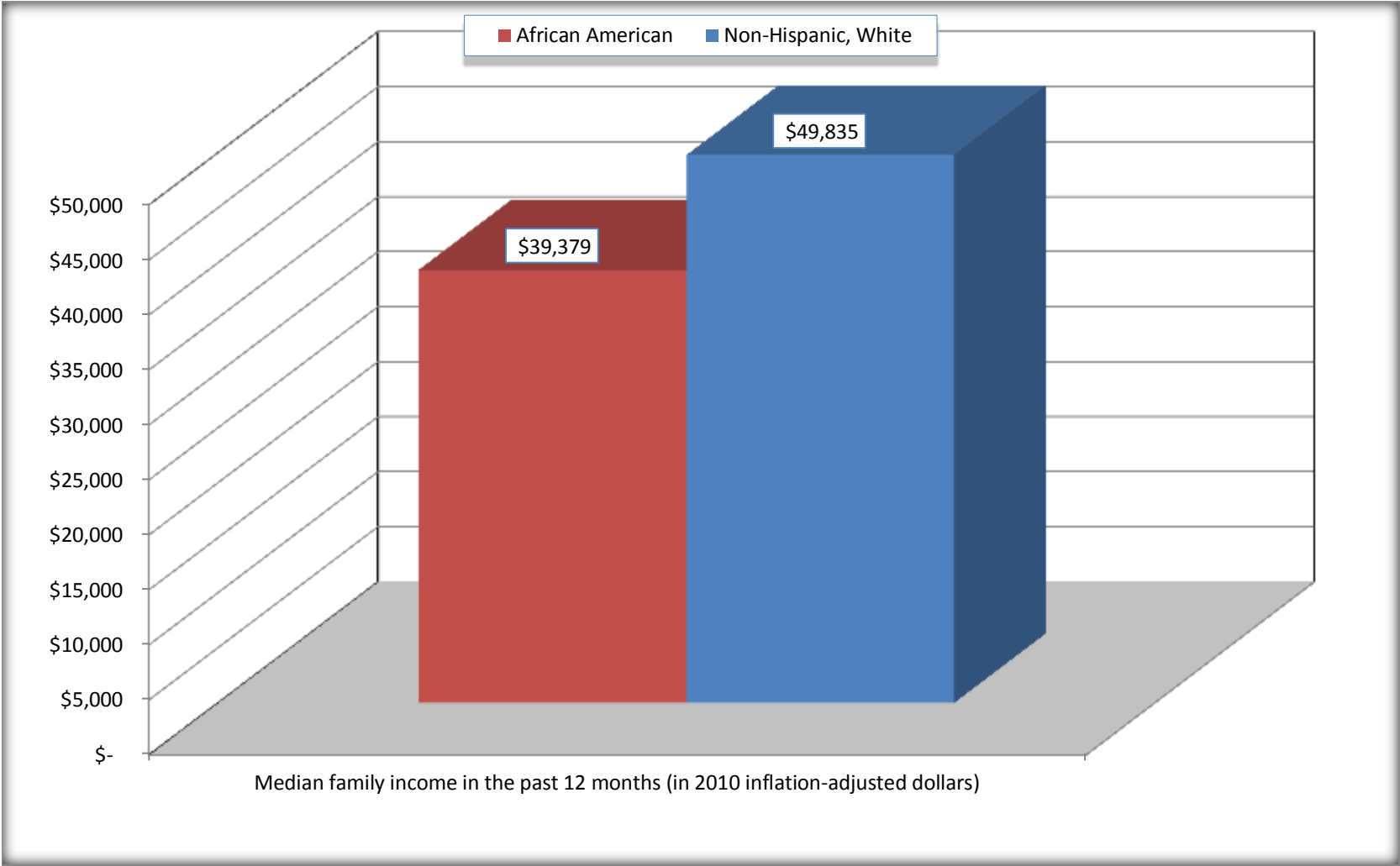
Source: U.S. Census Bureau, 2008-2012 American Community Survey

For information on confidentiality protection, sampling error, nonsampling error, and definitions, see Survey Methodology.

<http://www.census.gov/acs/www/UseData/index.htm>

Median Family Income in the Past 12 Months

Waggaman CDP, Louisiana



Source: B19113. MEDIAN FAMILY INCOME IN THE PAST 12 MONTHS (IN 2010 INFLATION-ADJUSTED DOLLARS)
Data Set: 2008-2012 American Community Survey 5-Year Estimates

B19202. MEDIAN NONFAMILY HOUSEHOLD INCOME IN THE PAST 12 MONTHS (IN 2010 INFLATION-ADJUSTED DOLLARS)

Data Set: 2008-2012 American Community Survey 5-Year Estimates

	Waggaman CDP, Louisiana			
	African American	Margin of Error (+/-)	White, Not Hispanic	Margin of Error (+/-)
Median nonfamily household income in the past 12 months (in 2010 inflation-adjusted dollars)	\$ 21,838	\$ 9,376	\$ 50,074	\$ 46,400

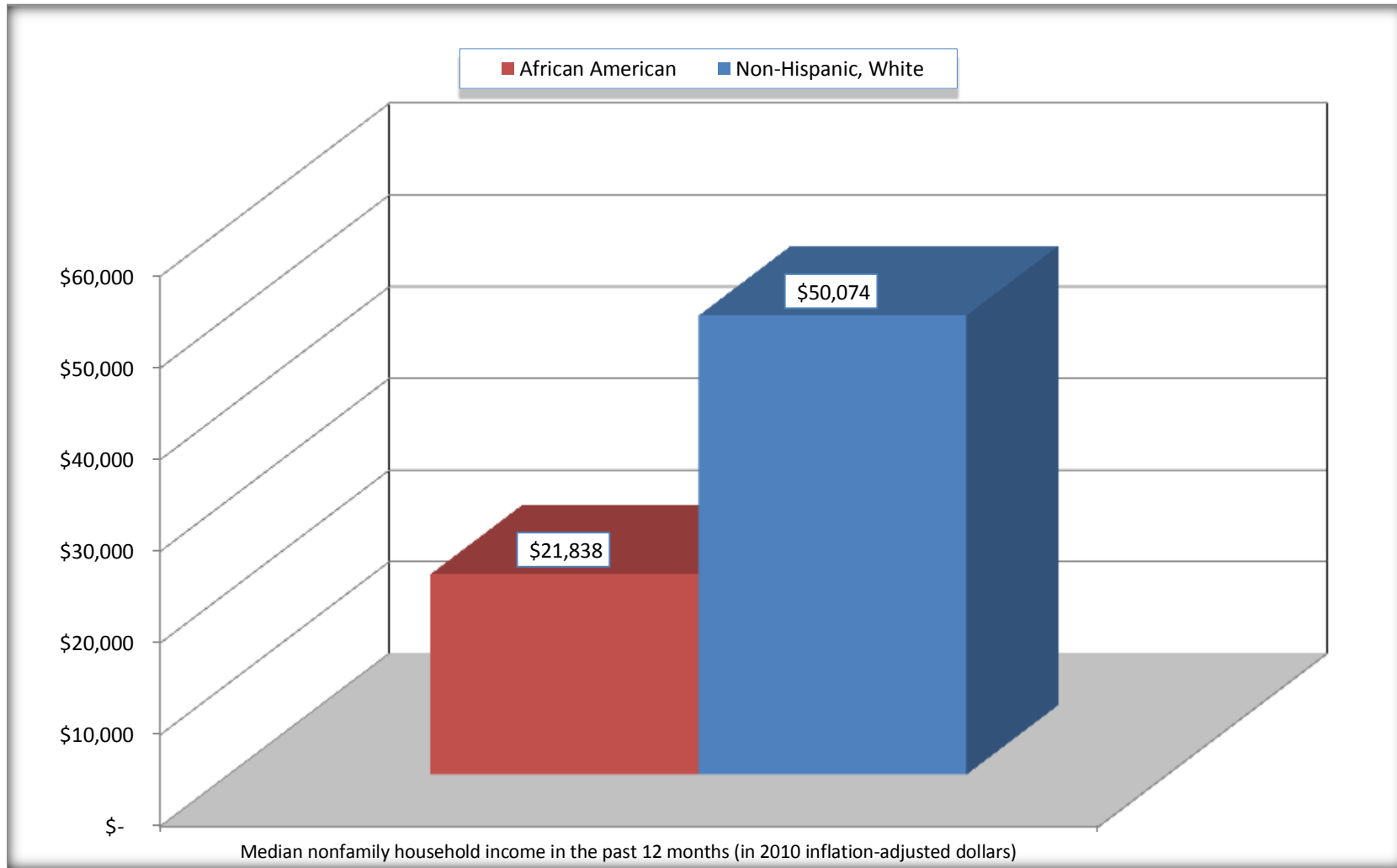
Source: U.S. Census Bureau, 2008-2012 American Community Survey

For information on confidentiality protection, sampling error, nonsampling error, and definitions, see Survey Methodology.

<http://www.census.gov/acs/www/UseData/index.htm>

Median Non-Family Income in the Past 12 Months

Waggaman CDP, Louisiana



Source: B19202. MEDIAN NONFAMILY HOUSEHOLD INCOME IN THE PAST 12 MONTHS (IN 2010 INFLATION-ADJUSTED DOLLARS)
Data Set: 2008-2012 American Community Survey 5-Year Estimates

B19301. PER CAPITA INCOME IN THE PAST 12 MONTHS (IN 2010 INFLATION-ADJUSTED DOLLARS)

Data Set: 2008-2012 American Community Survey 5-Year Estimates

	Waggaman CDP, Louisiana			
	African American	Margin of Error (+/-)	White, Not Hispanic	Margin of Error (+/-)
Per capita income in the past 12 months (in 2010 inflation-adjusted dollars)	\$ 14,965	\$ 1,751	\$ 22,612	\$ 4,824

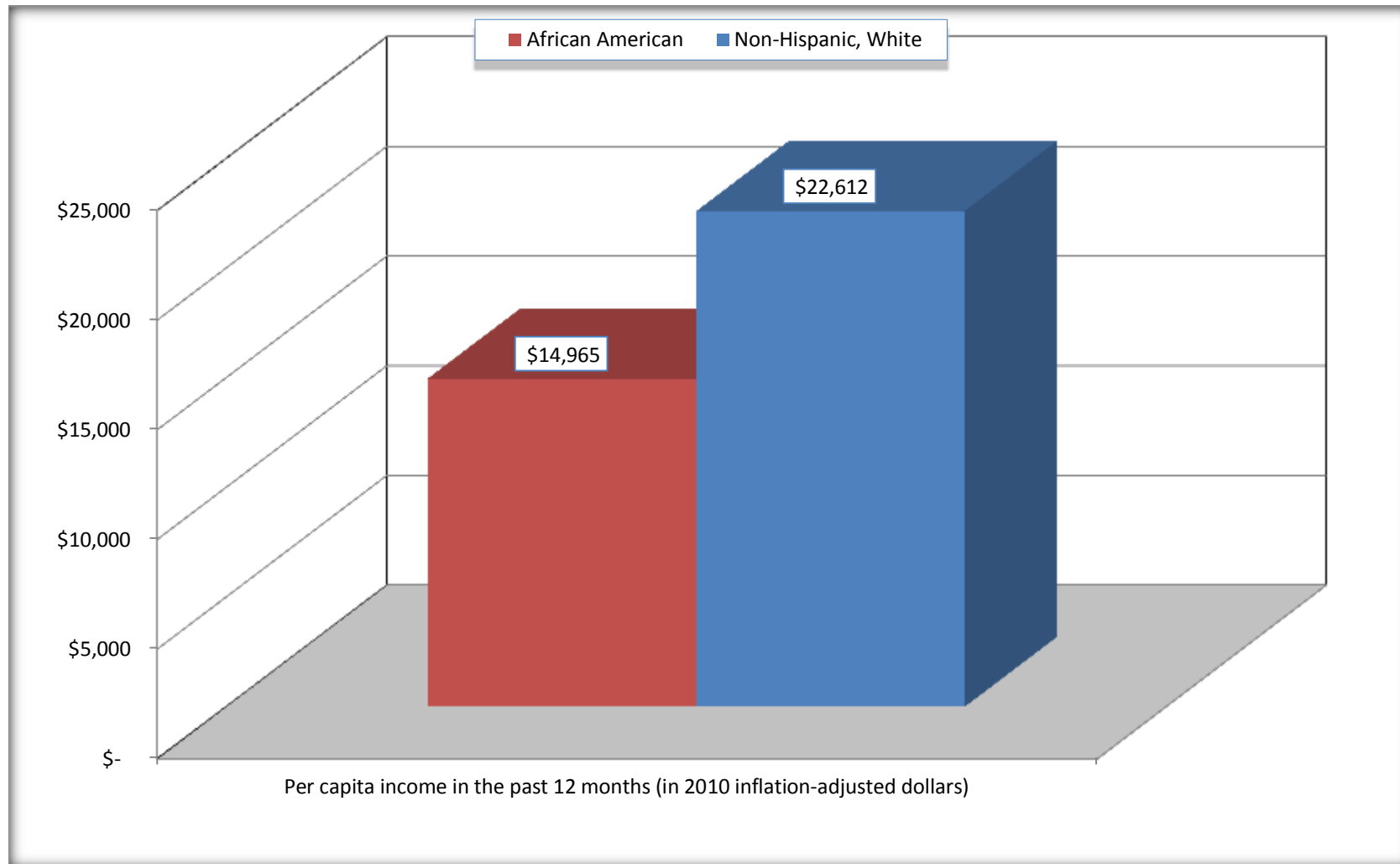
Source: U.S. Census Bureau, 2008-2012 American Community Survey

For information on confidentiality protection, sampling error, nonsampling error, and definitions, see Survey Methodology.

<http://www.census.gov/acs/www/UseData/index.htm>

Per capita Income in the Past 12 Months

Waggaman CDP, Louisiana



Source: B19301. PER CAPITA INCOME IN THE PAST 12 MONTHS (IN 2010 INFLATION-ADJUSTED DOLLARS)
Data Set: 2008-2012 American Community Survey 5-Year Estimates

B20017. MEDIAN EARNINGS IN THE PAST 12 MONTHS (IN 2010 INFLATION-ADJUSTED DOLLARS) BY SEX BY WORK EXPERIENCE IN THE PAST 12 MONTHS FOR THE POPULATION 16 YEARS AND OVER WITH EARNINGS IN THE PAST 12 MONTHS

Data Set: 2008-2012 American Community Survey 5-Year Estimates

	Waggaman CDP, Louisiana			
	African American	Margin of Error (+/-)	White, Not Hispanic	Margin of Error (+/-)
Median earnings in the past 12 months (in 2010 inflation-adjusted dollars) --				
Total:	\$ 26,414	\$ 2,711	\$ 26,570	\$ 4,872
Male --				
Total	\$ 26,441	\$ 4,063	\$ 26,735	\$ 17,652
Worked full-time, year-round in the past 12 months	\$ 35,461	\$ 14,736	\$ 50,958	\$ 14,055
Other	\$ 6,806	\$ 11,444	\$ 20,779	\$ 9,080
Female --				
Total	\$ 26,368	\$ 6,570	\$ 26,522	\$ 1,470
Worked full-time, year-round in the past 12 months	\$ 31,002	\$ 922	\$ 26,826	\$ 6,868
Other	\$ 11,731	\$ 4,674	\$ 14,883	\$ 16,422

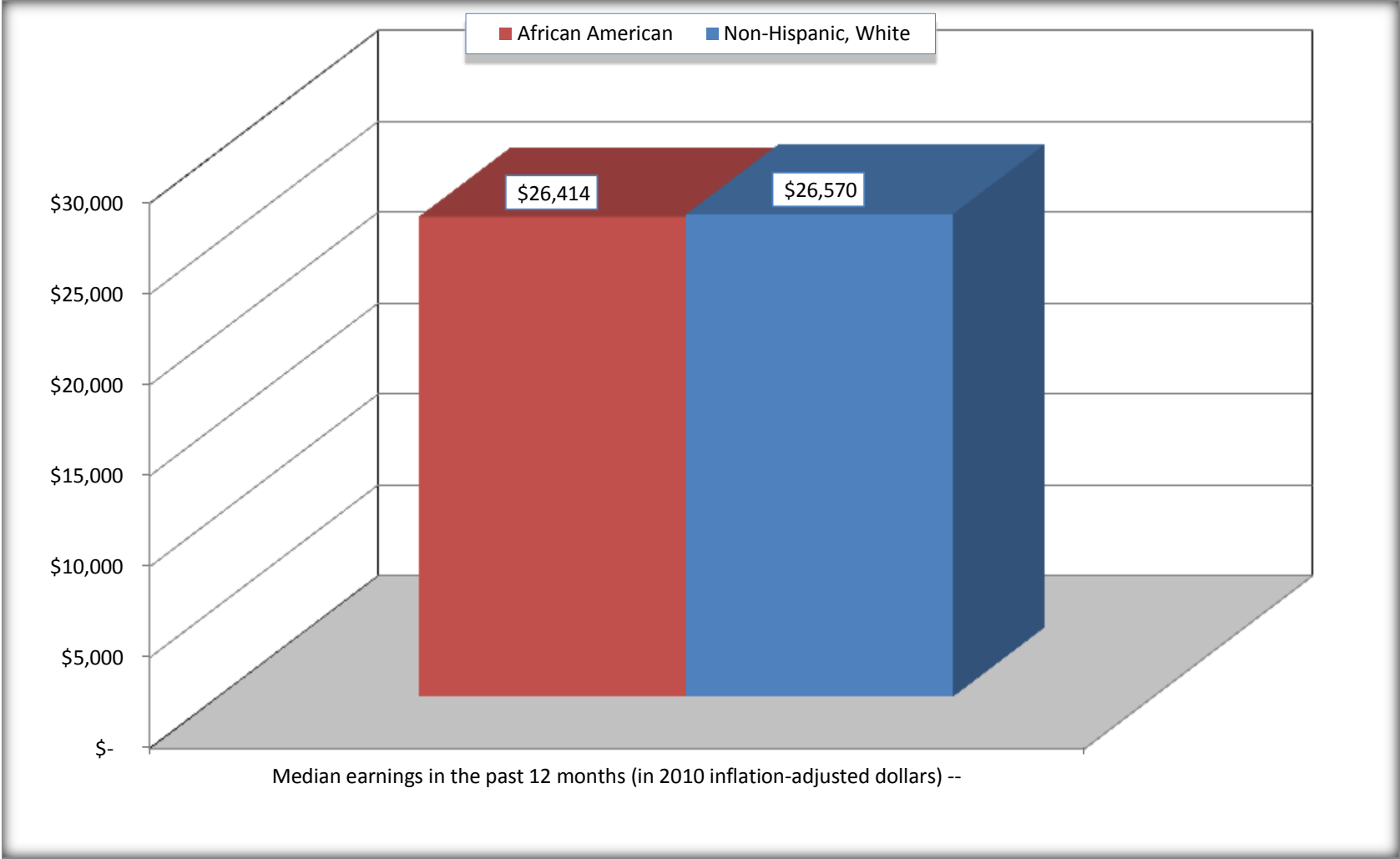
Source: U.S. Census Bureau, 2008-2012 American Community Survey

For information on confidentiality protection, sampling error, nonsampling error, and definitions, see Survey Methodology.

<http://www.census.gov/acs/www/UseData/index.htm>

Median earnings in the Past 12 Months (16 Years and Over with Earnings)

Waggaman CDP, Louisiana



Source: B20017. MEDIAN EARNINGS IN THE PAST 12 MONTHS (IN 2010 INFLATION-ADJUSTED DOLLARS) BY SEX BY WORK EXPERIENCE IN THE PAST 12 MONTHS FOR THE POPULATION 16 YEARS AND OVER WITH EARNINGS IN THE PAST 12 MONTHS
Data Set: 2008-2012 American Community Survey 5-Year Estimates

B20005. SEX BY WORK EXPERIENCE IN THE PAST 12 MONTHS BY EARNINGS IN THE PAST 12 MONTHS (IN 2010 INFLATION-ADJUSTED DOLLARS) FOR THE POPULATION 16 YEARS AND OVER

Data Set: 2008-2012 American Community Survey 5-Year Estimates

	Waggaman CDP, Louisiana					
	African American	Margin of Error (+/-)	% of AA Total	White, Not Hispanic	Margin of Error (+/-)	% of NHW Total
Total:	4,503	413	100.0%	2,302	385	100.0%
Worked full-time, year-round in the past 12 months:	1,826	NC	40.6%	1,037	NC	45.0%
No earnings	0	NC	0.0%	0	NC	0.0%
With earnings:	1,826	NC	40.6%	1,037	NC	45.0%
\$ 1 to \$ 9,999 or loss	37	NC	0.8%	39	NC	1.7%
\$ 10,000 to \$ 19,999	281	NC	6.2%	69	NC	3.0%
\$ 20,000 to \$ 29,999	451	NC	10.0%	326	NC	14.2%
\$ 30,000 to \$ 49,999	771	NC	17.1%	208	NC	9.0%
\$ 50,000 to \$ 74,999	213	NC	4.7%	208	NC	9.0%
\$ 75,000 or more	73	NC	1.6%	187	NC	8.1%
Other:	2,677	NC	59.4%	1,265	NC	55.0%
No earnings	1,918	NC	42.6%	612	NC	26.6%
With earnings: less than full time, year-round	759	NC	16.9%	653	NC	28.4%
Male:	1,969	243	43.7%	1,233	221	53.6%
Worked full-time, year-round in the past 12 months:	806	185	17.9%	565	164	24.5%
No earnings	0	17	0.0%	0	17	0.0%
With earnings:	806	185	17.9%	565	164	24.5%
\$ 1 to \$ 9,999 or loss	6	NC	0.1%	0	NC	0.0%
\$ 10,000 to \$ 19,999	80	NC	1.8%	54	NC	2.3%
\$ 20,000 to \$ 29,999	306	NC	6.8%	73	NC	3.2%
\$ 30,000 to \$ 49,999	189	NC	4.2%	144	NC	6.3%
\$ 50,000 to \$ 74,999	180	NC	4.0%	166	NC	7.2%
\$ 75,000 or more	45	NC	1.0%	128	NC	5.6%

	Waggaman CDP, Louisiana					
	African American	Margin of Error (+/-)	% of AA Total	White, Not Hispanic	Margin of Error (+/-)	% of NHW Total
Other:	1,163	186	25.8%	668	267	29.0%
No earnings	840	178	18.7%	242	98	10.5%
With earnings:	323	117	7.2%	426	273	18.5%
Female:	2,534	293	56.3%	1,069	205	46.4%
Worked full-time, year-round in the past 12 months:	1,020	209	22.7%	472	271	20.5%
No earnings	0	17	0.0%	0	17	0.0%
With earnings:	1,020	209	22.7%	472	271	20.5%
\$ 1 to \$ 9,999 or loss	31	NC	0.7%	39	NC	1.7%
\$ 10,000 to \$ 19,999	201	NC	4.5%	15	NC	0.7%
\$ 20,000 to \$ 29,999	145	NC	3.2%	253	NC	11.0%
\$ 30,000 to \$ 49,999	582	NC	12.9%	64	NC	2.8%
\$ 50,000 to \$ 74,999	33	NC	0.7%	42	NC	1.8%
\$ 75,000 or more	28	NC	0.6%	59	NC	2.6%
Other:	1,514	263	33.6%	597	203	25.9%
No earnings	1,078	223	23.9%	370	158	16.1%
With earnings:	436	141	9.7%	227	106	9.9%

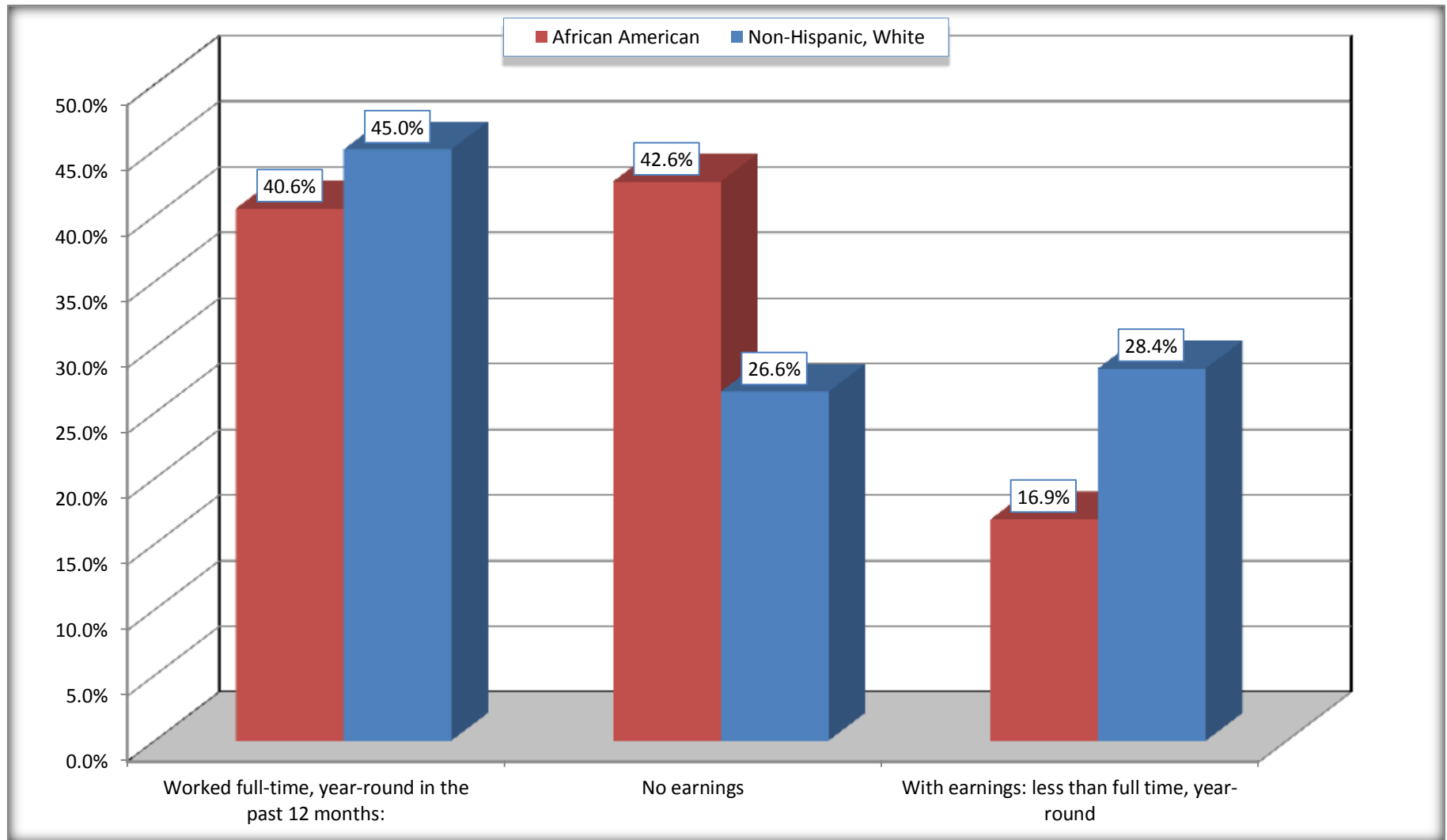
Source: U.S. Census Bureau, 2008-2012 American Community Survey

For information on confidentiality protection, sampling error, nonsampling error, and definitions, see Survey Methodology.

<http://www.census.gov/acs/www/UseData/index.htm>

Employment and Earnings in in the Past 12 Months (16 Years and Over)

Waggaman CDP, Louisiana



Source: B20005. SEX BY WORK EXPERIENCE IN THE PAST 12 MONTHS BY EARNINGS IN THE PAST 12 MONTHS (IN 2010 INFLATION-ADJUSTED DOLLARS) FOR THE POPULATION 16 YEARS AND OVER

Data Set: 2008-2012 American Community Survey 5-Year Estimates

C21001. SEX BY AGE BY VETERAN STATUS FOR THE CIVILIAN POPULATION 18 YEARS AND OVER

Data Set: 2008-2012 American Community Survey 5-Year Estimates

	Waggaman CDP, Louisiana					
	African American	Margin of Error (+/-)	% of AA Total	White, Not Hispanic	Margin of Error (+/-)	% of NHW Total
Total:	4,210	362	100.0%	2,262	421	100.0%
Veteran	330	NC	7.8%	142	NC	6.3%
Nonveteran	3,880	NC	92.2%	2,120	NC	93.7%
Male:	1,837	223	43.6%	1,208	235	53.4%
18 to 64 years:	1,456	229	34.6%	1,099	229	48.6%
Veteran	213	114	5.1%	121	64	5.3%
Nonveteran	1,243	206	29.5%	978	221	43.2%
65 years and over:	381	122	9.0%	109	60	4.8%
Veteran	77	46	1.8%	21	24	0.9%
Nonveteran	304	120	7.2%	88	59	3.9%
Female:	2,373	259	56.4%	1,054	223	46.6%
18 to 64 years:	1,863	271	44.3%	828	213	36.6%
Veteran	40	63	1.0%	0	17	0.0%
Nonveteran	1,823	253	43.3%	828	213	36.6%
65 years and over:	510	111	12.1%	226	88	10.0%
Veteran	0	17	0.0%	0	17	0.0%
Nonveteran	510	111	12.1%	226	88	10.0%

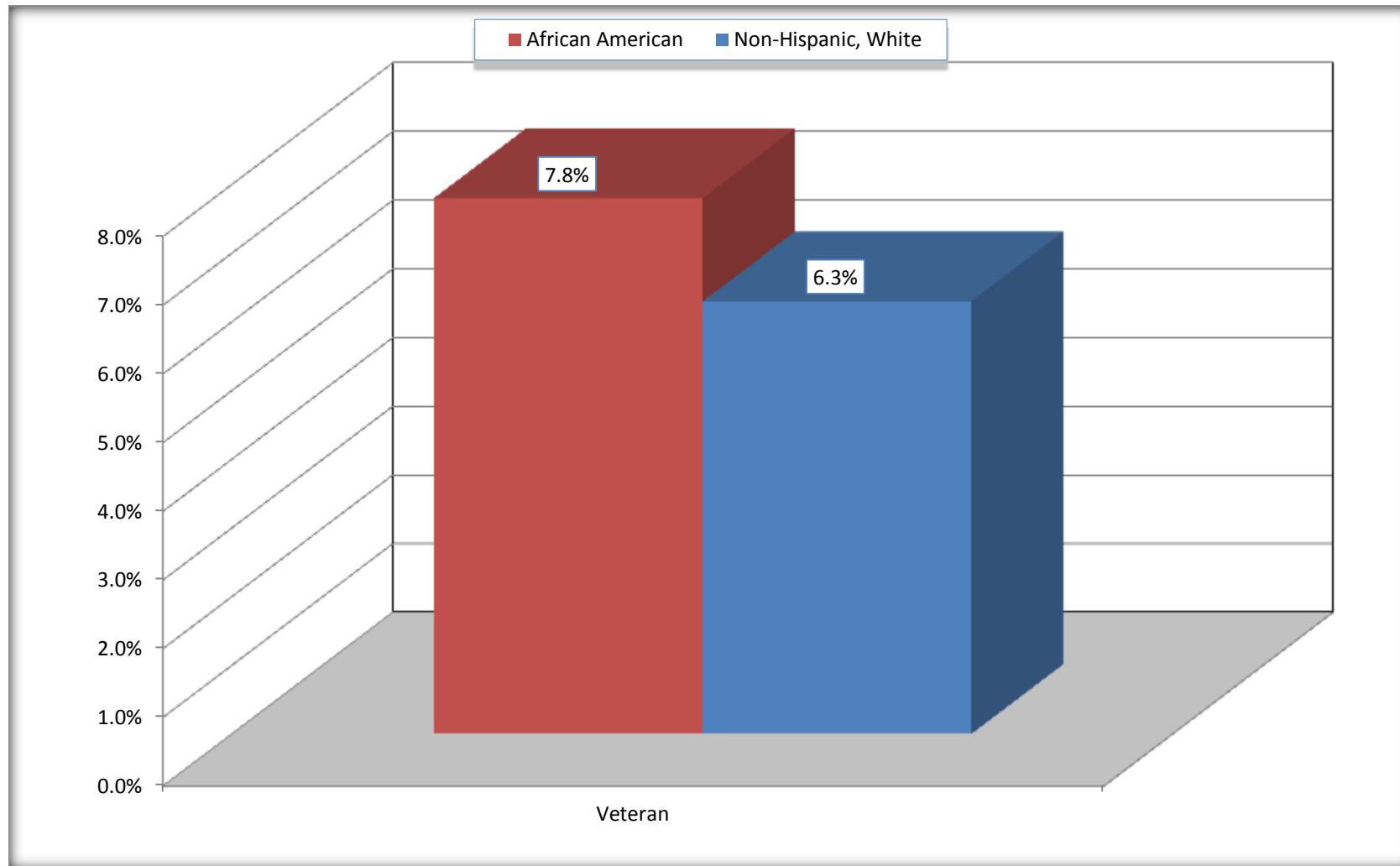
Source: U.S. Census Bureau, 2008-2012 American Community Survey

For information on confidentiality protection, sampling error, nonsampling error, and definitions, see Survey Methodology.

<http://www.census.gov/acs/www/UseData/index.htm>

Veterans in the Civilian Population 18 Years and Over

Waggaman CDP, Louisiana



Source: C21001. SEX BY AGE BY VETERAN STATUS FOR THE CIVILIAN POPULATION 18 YEARS AND OVER
Data Set: 2008-2012 American Community Survey 5-Year Estimates

B22005. RECEIPT OF FOOD STAMPS/SNAP IN THE PAST 12 MONTHS BY RACE OF HOUSEHOLDER

Data Set: 2008-2012 American Community Survey 5-Year Estimates

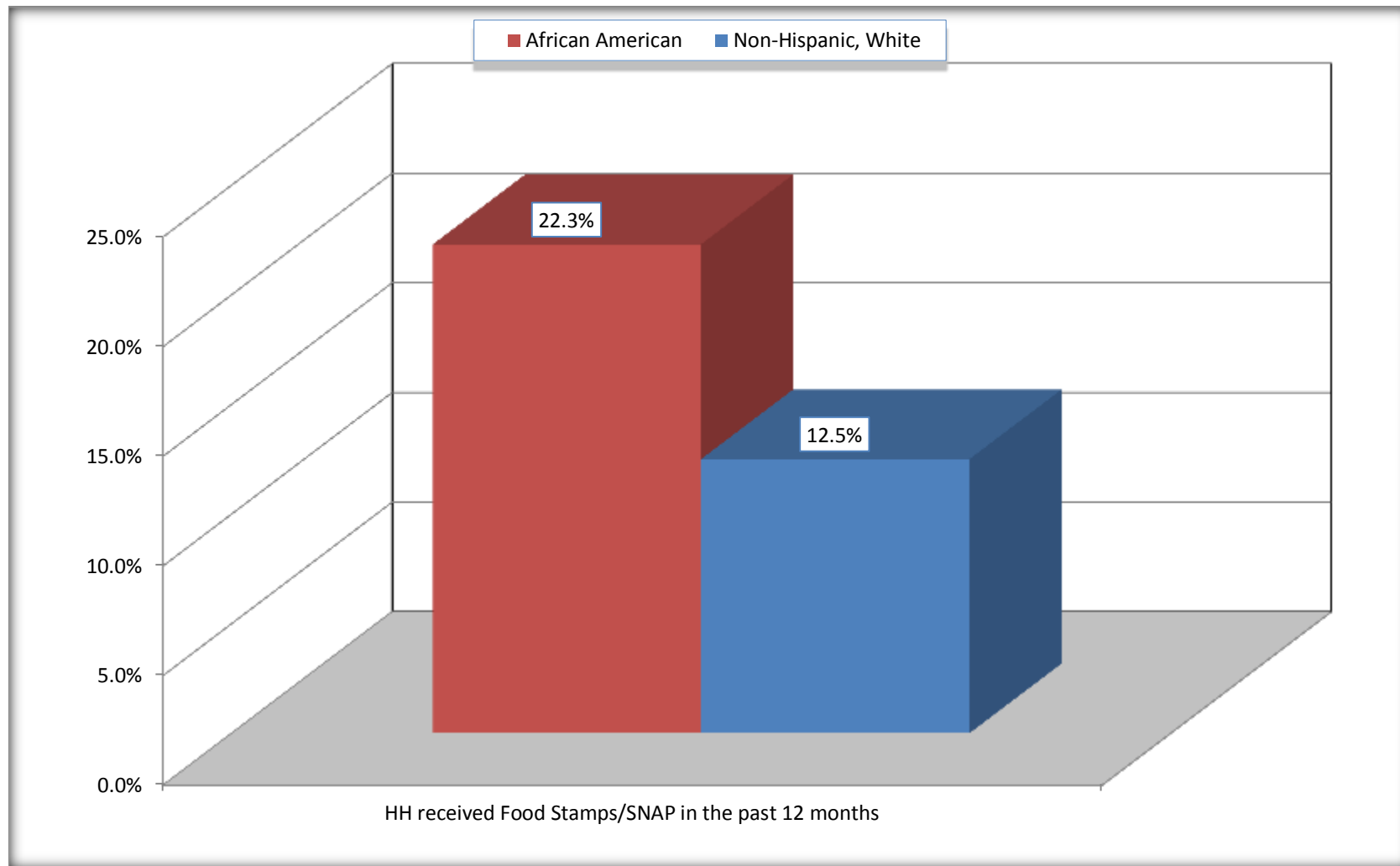
	Waggaman CDP, Louisiana					
	African American	Margin of Error (+/-)	% of AA Total	White, Not Hispanic	Margin of Error (+/-)	% of NHW Total
Total:	2,061	146	100.0%	1,036	249	100.0%
HH received Food Stamps/SNAP in the past 12 months	459	157	22.3%	130	77	12.5%
HH did not receive Food Stamps/SNAP in the past 12 months	1,602	196	77.7%	906	275	87.5%

Source: U.S. Census Bureau, 2008-2012 American Community Survey

For information on confidentiality protection, sampling error, nonsampling error, and definitions, see Survey Methodology.

<http://www.census.gov/acs/www/UseData/index.htm>

Receipt of Food Stamps/SNAP in the Past 12 Months by Household Waggaman CDP, Louisiana



Source: B22005. RECEIPT OF FOOD STAMPS/SNAP IN THE PAST 12 MONTHS BY RACE OF HOUSEHOLDER
Data Set: 2008-2012 American Community Survey 5-Year Estimates

C23002. SEX BY AGE BY EMPLOYMENT STATUS FOR THE POPULATION 16 YEARS AND OVER

Data Set: 2008-2012 American Community Survey 5-Year Estimates

	Waggaman CDP, Louisiana					
	African American	Margin of Error (+/-)	% of AA Total	White, Not Hispanic	Margin of Error (+/-)	% of NHW Total
Total:	4,503	413	100.0%	2,302	385	100.0%
In labor force:	2,709	NC	60.2%	1,606	NC	69.8%
In Armed Forces	0	NC	0.0%	0	NC	0.0%
Civilian:	2,593	NC	57.6%	1,554	NC	67.5%
Employed	2,387	NC	53.0%	1,543	NC	67.0%
Unemployed	322	NC	7.2%	63	NC	2.7%
Not in labor force	1,794	NC	39.8%	696	NC	30.2%
Male:	1,969	243	43.7%	1,233	221	53.6%
16 to 64 years:	1,588	264	35.3%	1,124	216	48.8%
In labor force:	1,130	214	25.1%	961	210	41.7%
In Armed Forces	0	17	0.0%	0	17	0.0%
Civilian:	1,130	214	25.1%	961	210	41.7%
Employed	980	210	21.8%	917	227	39.8%
Unemployed	150	92	3.3%	44	43	1.9%
Not in labor force	458	160	10.2%	163	84	7.1%
65 years and over:	381	122	8.5%	109	60	4.7%
In labor force:	42	45	0.9%	13	20	0.6%
Employed	33	42	0.7%	13	20	0.6%
Unemployed	9	12	0.2%	0	17	0.0%
Not in labor force	339	112	7.5%	96	60	4.2%

	Waggaman CDP, Louisiana					
	African American	Margin of Error (+/-)	% of AA Total	White, Not Hispanic	Margin of Error (+/-)	% of NHW Total
Female:	2,534	293	56.3%	1,069	205	46.4%
16 to 64 years:	2,024	310	44.9%	843	194	36.6%
In labor force:	1,463	223	32.5%	593	243	25.8%
In Armed Forces	0	17	0.0%	0	17	0.0%
Civilian:	1,463	223	32.5%	593	243	25.8%
Employed	1,300	200	28.9%	574	236	24.9%
Unemployed	163	120	3.6%	19	29	0.8%
Not in labor force	561	192	12.5%	250	168	10.9%
65 years and over:	510	111	11.3%	226	88	9.8%
In labor force:	74	44	1.6%	39	47	1.7%
Employed	74	44	1.6%	39	47	1.7%
Unemployed	0	17	0.0%	0	17	0.0%
Not in labor force	436	116	9.7%	187	77	8.1%

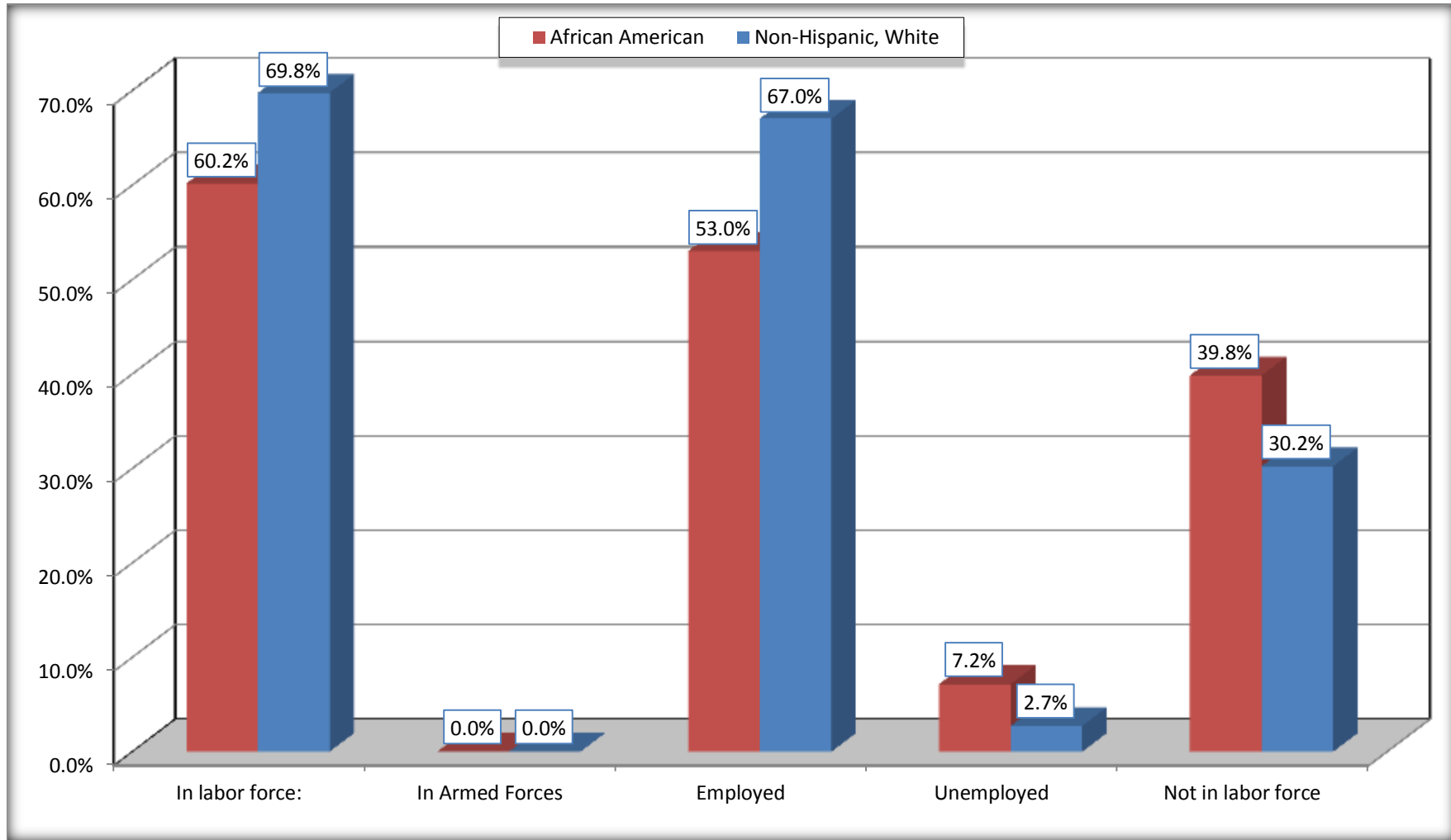
Source: U.S. Census Bureau, 2008-2012 American Community Survey

For information on confidentiality protection, sampling error, nonsampling error, and definitions, see Survey Methodology.

<http://www.census.gov/acs/www/UseData/index.htm>

Employment Status for the Population 16 years and over

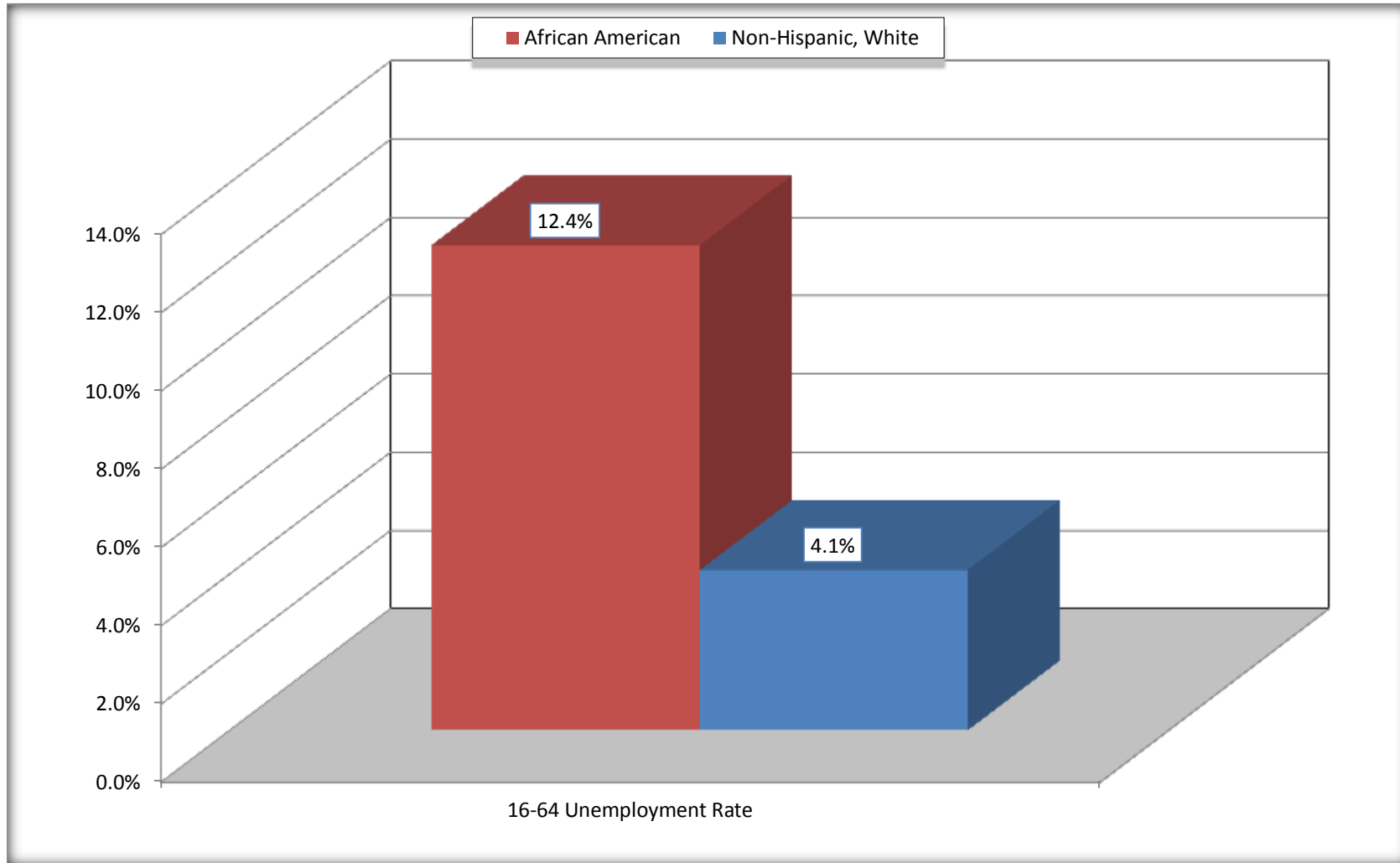
Waggaman CDP, Louisiana



Source: C23002. SEX BY AGE BY EMPLOYMENT STATUS FOR THE POPULATION 16 YEARS AND OVER
Data Set: 2008-2012 American Community Survey 5-Year Estimates

Unemployment of Working Age Population (Ages 16 to 64) (As a Percent of 16-64 Civilian Labor Force)

Waggaman CDP, Louisiana



Source: C23002. SEX BY AGE BY EMPLOYMENT STATUS FOR THE POPULATION 16 YEARS AND OVER
Data Set: 2008-2012 American Community Survey 5-Year Estimates

C24010. SEX BY OCCUPATION FOR THE CIVILIAN EMPLOYED POPULATION 16 YEARS AND OVER

Data Set: 2008-2012 American Community Survey 5-Year Estimates

	Waggaman CDP, Louisiana					
	African American	Margin of Error (+/-)	% of AA Total	White, Not Hispanic	Margin of Error (+/-)	% of NHW Total
Total:	2,387	313	100.0%	1,543	442	100.0%
Management, professional, and related occupations	596	NC	25.0%	368	NC	23.8%
Service occupations	643	NC	26.9%	295	NC	19.1%
Sales and office occupations	463	NC	19.4%	334	NC	21.6%
Natural resources, construction, and maintenance occupations:	256	NC	10.7%	344	NC	22.3%
Production, transportation, and material moving occupations	429	NC	18.0%	202	NC	13.1%
Male:	1,013	207	42.4%	930	230	60.3%
Management, business, science, and arts occupations:	181	92	7.6%	231	122	15.0%
Service occupations	113	78	4.7%	78	63	5.1%
Sales and office occupations	93	58	3.9%	75	63	4.9%
Natural resources, construction, and maintenance occupations:	244	114	10.2%	344	260	22.3%
Production, transportation, and material moving occupations	382	154	16.0%	202	89	13.1%
Female:	1,374	202	57.6%	613	245	39.7%
Management, professional, and related occupations	415	173	17.4%	137	78	8.9%
Service occupations	530	171	22.2%	217	254	14.1%
Sales and office occupations	370	128	15.5%	259	82	16.8%
Natural resources, construction, and maintenance occupations:	12	21	0.5%	0	17	0.0%
Production, transportation, and material moving occupations	47	44	2.0%	0	17	0.0%

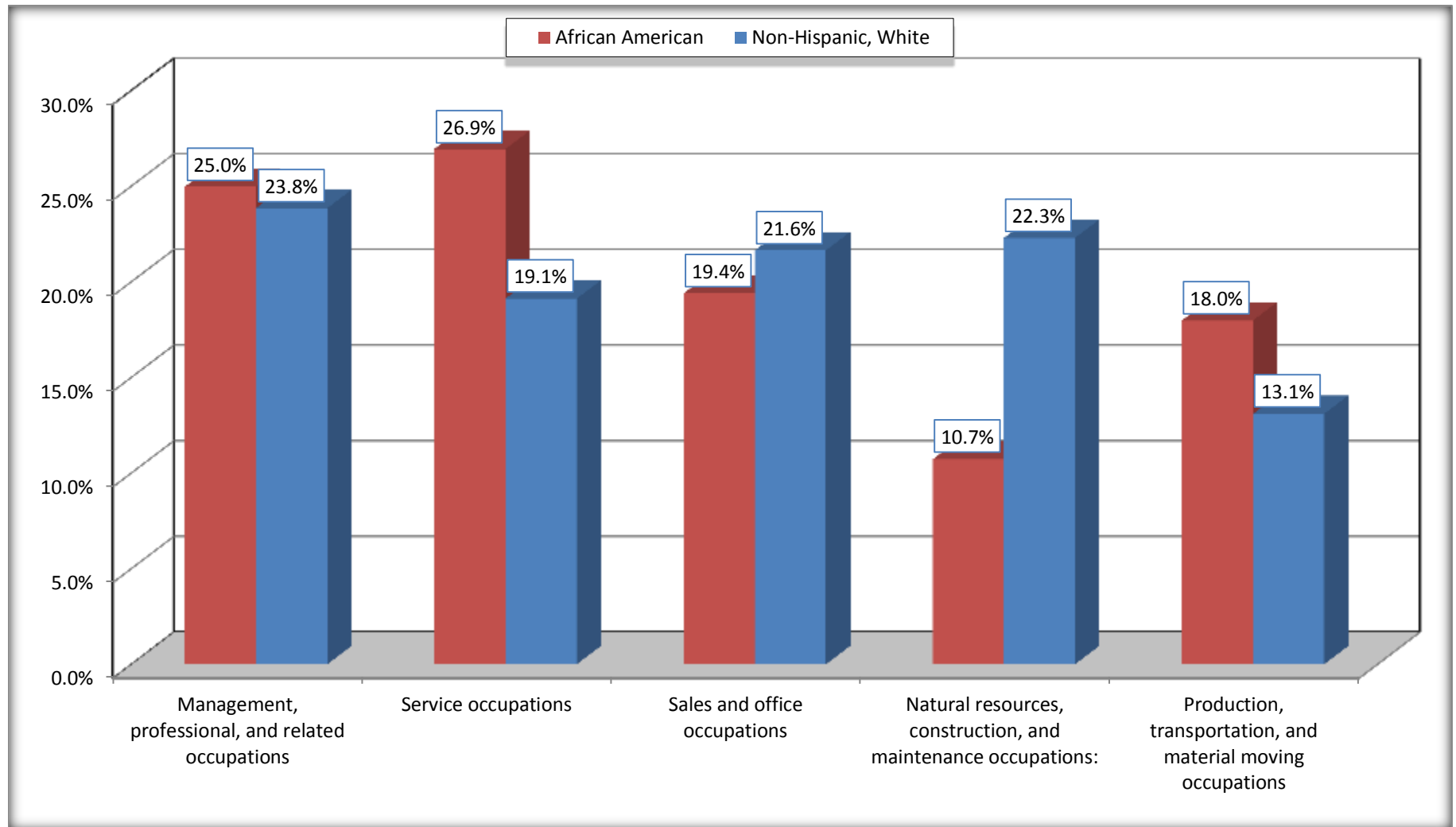
Source: U.S. Census Bureau, 2008-2012 American Community Survey

For information on confidentiality protection, sampling error, nonsampling error, and definitions, see Survey Methodology.

<http://www.census.gov/acs/www/UseData/index.htm>

Occupation for the Civilian Employed 16 Years and Over Population

Waggaman CDP, Louisiana



Source: C24010. SEX BY OCCUPATION FOR THE CIVILIAN EMPLOYED POPULATION 16 YEARS AND OVER
Data Set: 2008-2012 American Community Survey 5-Year Estimates

B25003. TENURE - Universe: OCCUPIED HOUSING UNITS

Data Set: 2008-2012 American Community Survey 5-Year Estimates

	Waggaman CDP, Louisiana					
	African American	Margin of Error (+/-)	% of AA Total	White, Not Hispanic	Margin of Error (+/-)	% of NHW Total
Total:	2,061	146	100.0%	1,036	249	100.0%
Owner occupied	1,567	195	76.0%	787	106	76.0%
Renter occupied	494	182	24.0%	249	256	24.0%

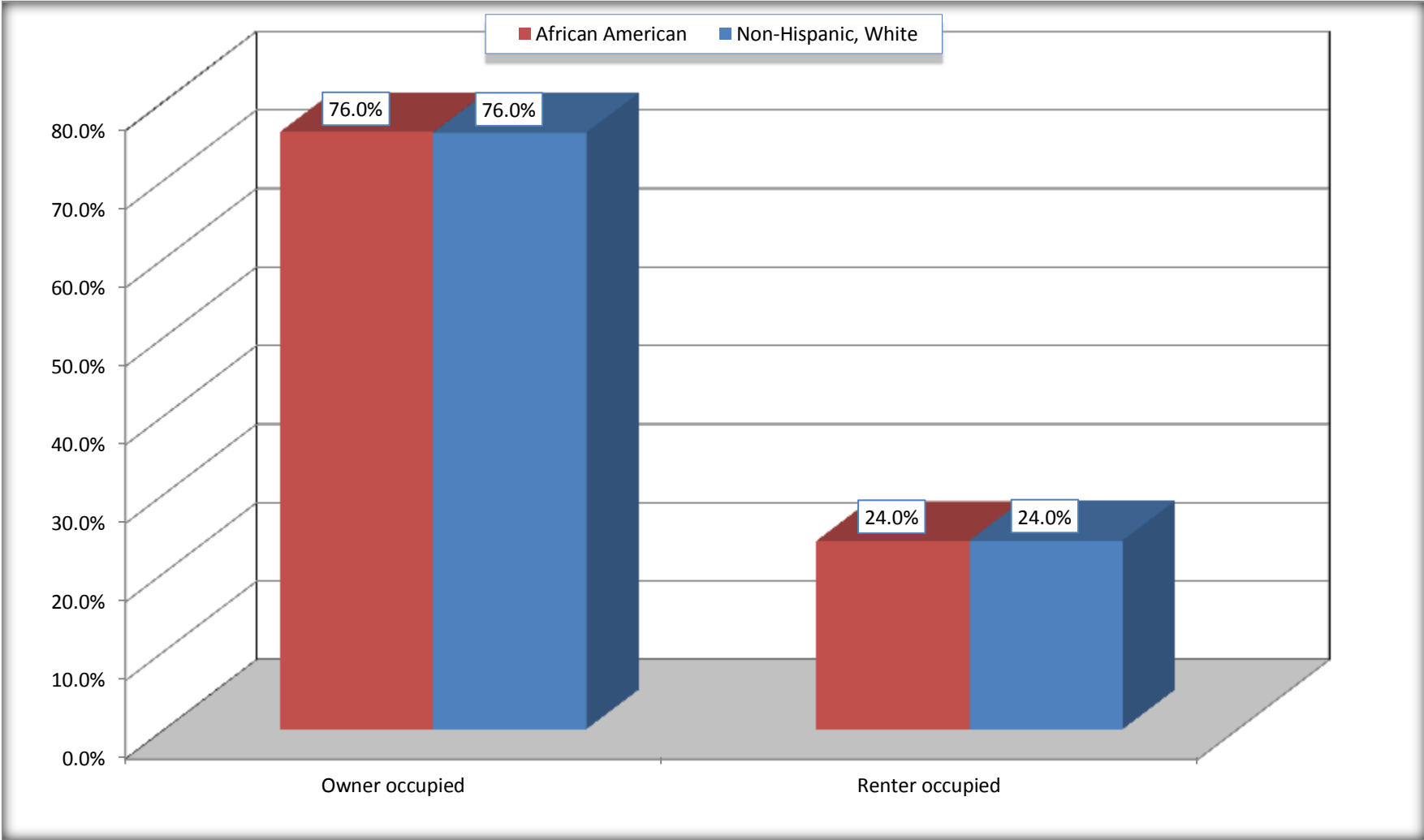
Source: U.S. Census Bureau, 2008-2012 American Community Survey

For information on confidentiality protection, sampling error, nonsampling error, and definitions, see Survey Methodology.

<http://www.census.gov/acs/www/UseData/index.h>

Home Owners and Renters by Household

Waggaman CDP, Louisiana



Source: B25003. TENURE - Universe: OCCUPIED HOUSING UNITS
Data Set: 2008-2012 American Community Survey 5-Year Estimates

B25014. OCCUPANTS PER ROOM - Universe: OCCUPIED HOUSING UNITS

Data Set: 2008-2012 American Community Survey 5-Year Estimates

	Waggaman CDP, Louisiana					
	African American	Margin of Error (+/-)	% of AA Total	White, Not Hispanic	Margin of Error (+/-)	% of NHW Total
Total:	2,061	146	100.0%	1,036	249	100.0%
1.00 or less occupants per room	1,958	161	95.0%	1,024	249	98.8%
1.01 or more occupants per room	103	74	5.0%	12	18	1.2%

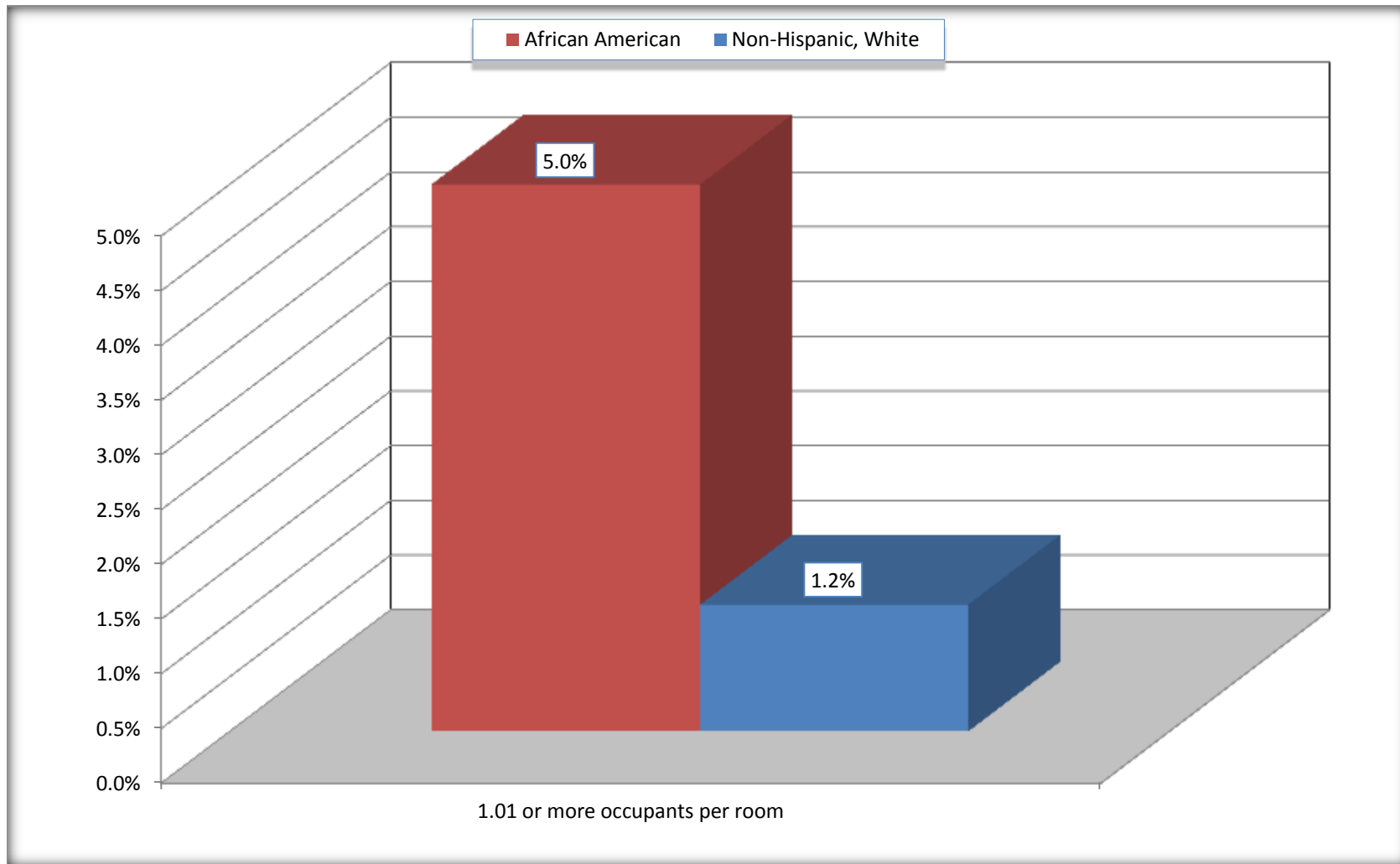
Source: U.S. Census Bureau, 2008-2012 American Community Survey

For information on confidentiality protection, sampling error, nonsampling error, and definitions, see Survey Methodology.

<http://www.census.gov/acs/www/UseData/index.ht>

More than One Person per Room (Crowding) by Household

Waggaman CDP, Louisiana



Source: B25014. OCCUPANTS PER ROOM - Universe: OCCUPIED HOUSING UNITS
Data Set: 2008-2012 American Community Survey 5-Year Estimates

B18101. AGE BY DISABILITY STATUS

Data Set: 2008-2012 American Community Survey 5-Year Estimates

	Waggaman CDP, Louisiana					
	African American	Margin of Error (+/-)	% of AA Total	White, Not Hispanic	Margin of Error (+/-)	% of NHW Total
Total:	6,190	712	100.0%	3,169	884	100.0%
Under 18 years:	1,980	540	32.0%	907	30	28.6%
With a disability	216	149	3.5%	33	51	1.0%
No disability	1,764	481	28.5%	874	542	27.6%
18 to 64 years:	3,319	385	53.6%	1,927	411	60.8%
With a disability	501	149	8.1%	243	107	7.7%
No disability	2,818	344	45.5%	1,684	409	53.1%
65 years and over:	891	182	14.4%	335	125	10.6%
With a disability	353	134	5.7%	183	87	5.8%
No disability	538	152	8.7%	152	79	4.8%

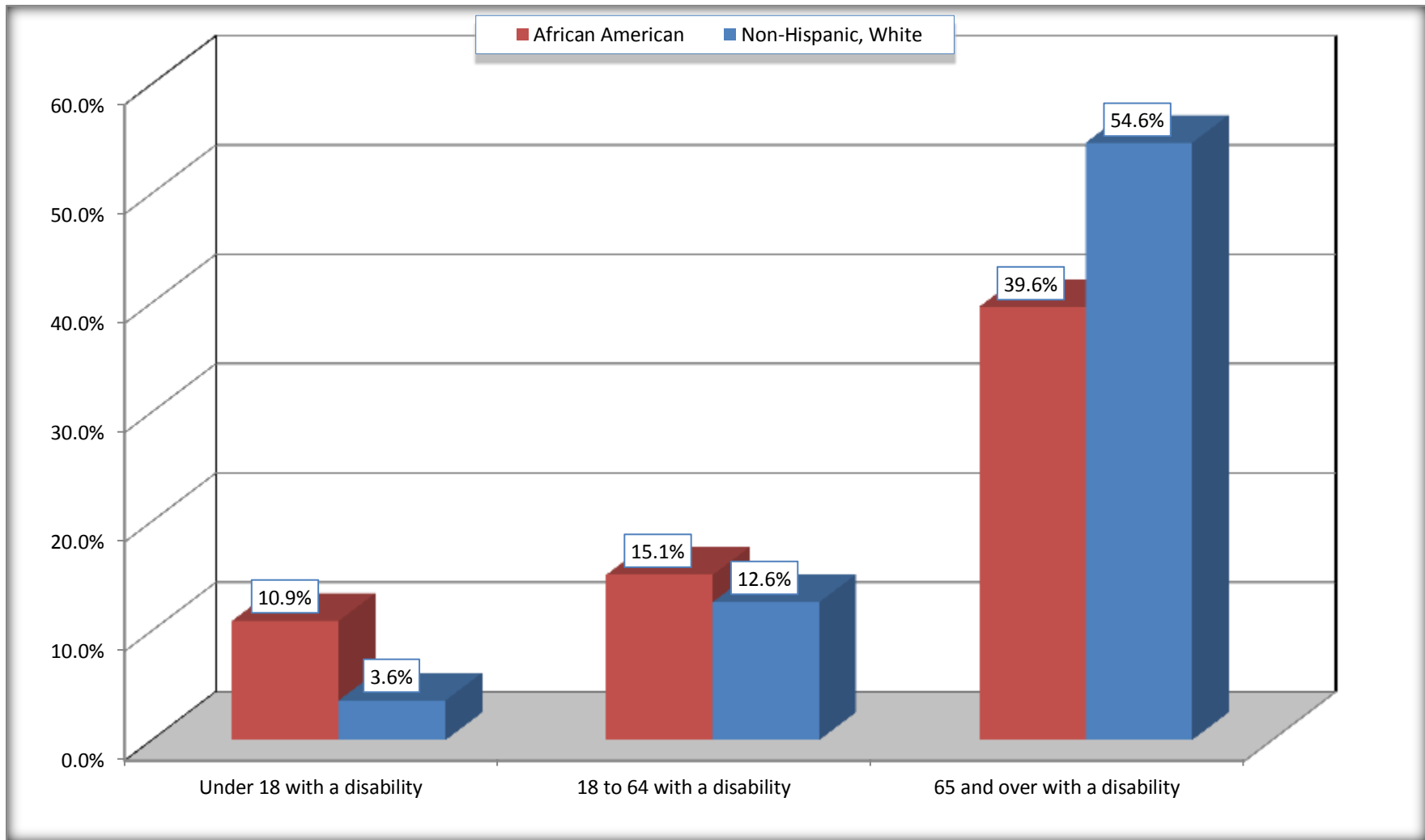
Source: U.S. Census Bureau, 2008-2012 American Community Survey

For information on confidentiality protection, sampling error, nonsampling error, and definitions, see Survey Methodology.

<http://www.census.gov/acs/www/UseData/index.htm>

Disability by Age

Waggaman CDP, Louisiana



Source: B18101. AGE BY DISABILITY STATUS
Data Set: 2008-2012 American Community Survey 5-Year Estimates

C27001B. HEALTH INSURANCE COVERAGE STATUS BY AGE

Data Set: 2008-2012 American Community Survey 5-Year Estimates

	Waggaman CDP, Louisiana					
	African American	Margin of Error (+/-)	% of AA Total	White, Not Hispanic	Margin of Error (+/-)	% of NHW Total
Total:	6,190	712	100.0%	3,169	884	100.0%
Under 18 years:	1,980	540	32.0%	907	516	28.6%
With health insurance coverage	1,794	486	29.0%	321	404	10.1%
No health insurance coverage	186	156	3.0%	586	853	18.5%
18 to 64 years:	3,319	385	53.6%	1,927	411	60.8%
With health insurance coverage	2,732	395	44.1%	1,315	252	41.5%
No health insurance coverage	587	170	9.5%	612	483	19.3%
65 years and over:	891	182	14.4%	335	125	10.6%
With health insurance coverage	891	182	14.4%	335	125	10.6%
No health insurance coverage	0	17	0.0%	0	17	0.0%

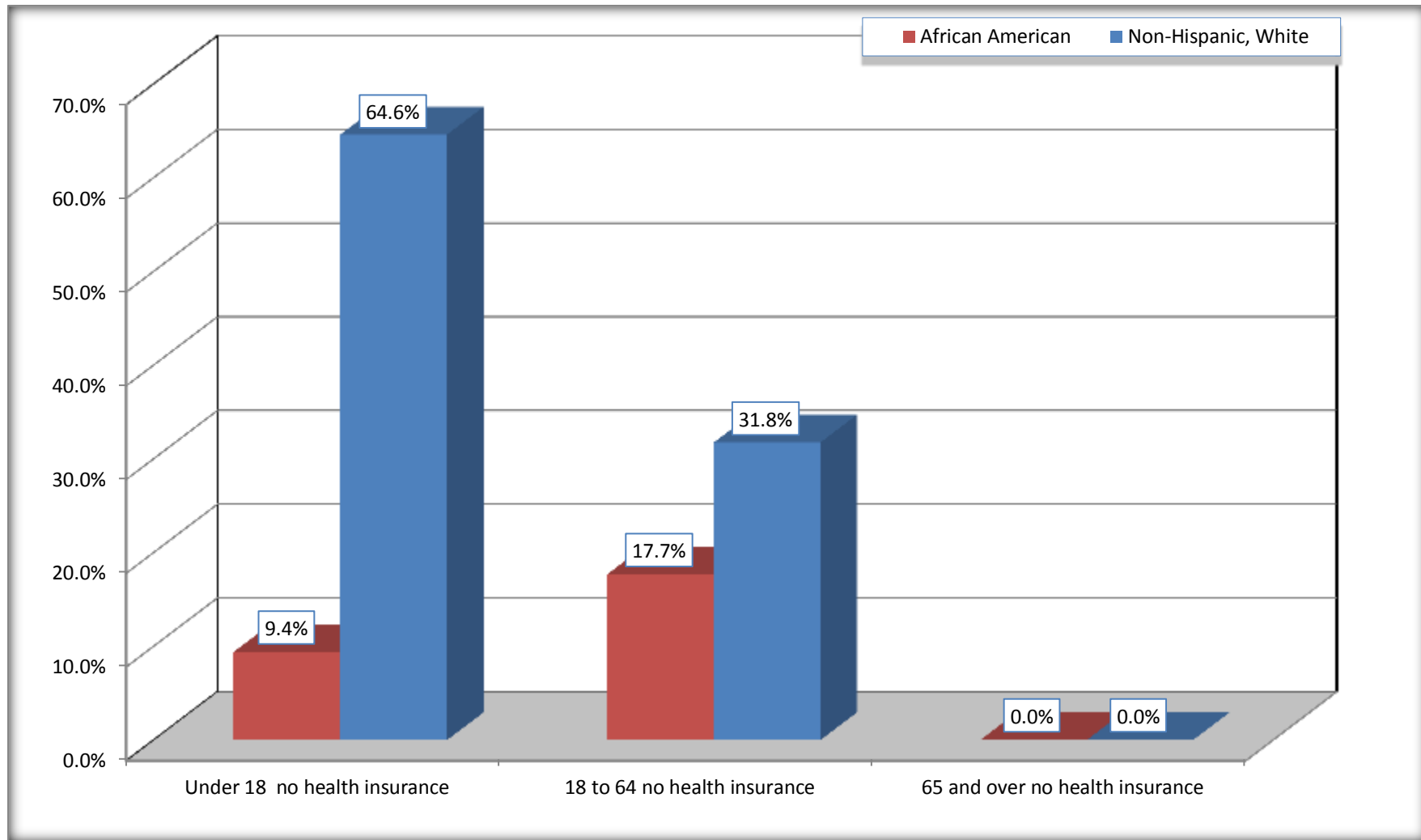
Source: U.S. Census Bureau, 2008-2012 American Community Survey

For information on confidentiality protection, sampling error, nonsampling error, and definitions, see Survey Methodology.

<http://www.census.gov/acs/www/UseData/index.htm>

Lack of Health Insurance Coverage by Age

Waggaman CDP, Louisiana



Source: C27001B. HEALTH INSURANCE COVERAGE STATUS BY AGE
Data Set: 2008-2012 American Community Survey 5-Year Estimates