

Selected Socio-Economic Data

Ville Platte city, Louisiana

African American and White, Not Hispanic

Data Set: 2008-2012 American Community Survey 5-Year Estimates

www.fairvote2020.org

www.fairdata2000.com

[29-Dec-13](#)

C02003.DETAILED RACE - Universe: TOTAL POPULATION

Data Set: 2008-2012 American Community Survey 5-Year Estimates

	Ville Platte city, Louisiana		
	Population	Margin of Error (+/-)	% of Total
Total:	7,464	22	100.0%
Population of one race:	7,456	24	99.9%
White	3,151	500	42.2%
Black or African American	4,289	500	57.5%
American Indian and Alaska Native	0	17	0.0%
Asian alone	4	6	0.1%
Native Hawaiian and Other Pacific Islander	0	17	0.0%
Some other race	12	17	0.2%
Population of two or more races:	8	13	0.1%
Two races including Some other race	0	17	0.0%
Two races excluding Some other race, and three or more races	8	13	0.1%
Population of two races:	8	13	0.1%
White; Black or African American	8	13	0.1%
White; American Indian and Alaska Native	0	17	0.0%
White; Asian	0	17	0.0%
Black or African American; American Indian and Alaska Native	0	17	0.0%
All other two race combinations	0	17	0.0%
Population of three races	0	17	0.0%
Population of four or more races	0	17	0.0%

Note: Hispanics may be of any race. See Table B03002 and chart.

Source: U.S. Census Bureau, 2008-2012 American Community Survey

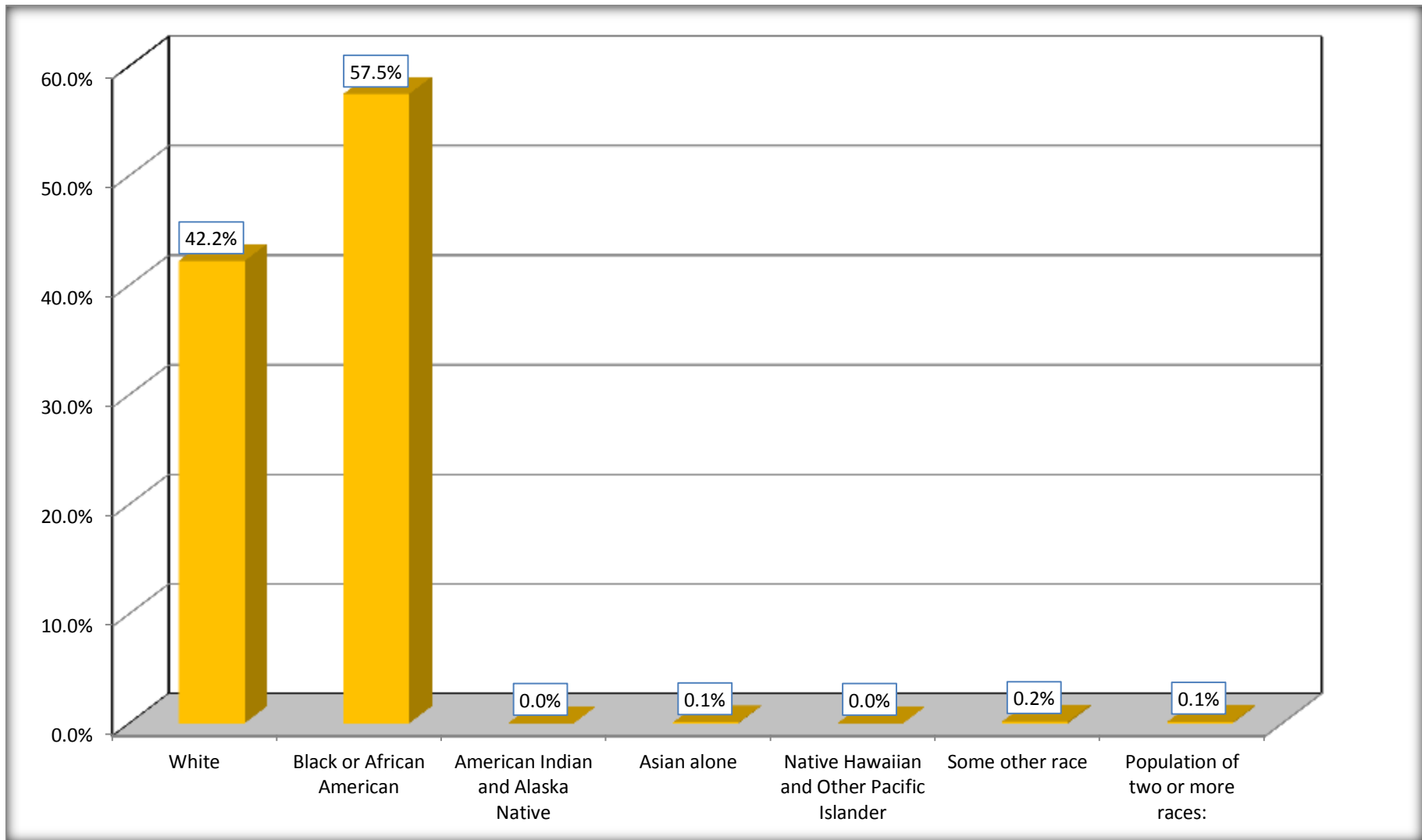
Although the American Community Survey (ACS) produces population, demographic and housing unit estimates, it is the Census Bureau's Population Estimates Program that produces and disseminates the official estimates of the population for the nation, states, counties, cities and towns and estimates of housing units for states and counties.

For information on confidentiality protection, sampling error, nonsampling error, and definitions, see Survey Methodology.

<http://www.census.gov/acs/www/UseData/index.htm>

Population by Race

Ville Platte city, Louisiana



Source: C02003.DETAILED RACE - Universe: TOTAL POPULATION
Data Set: 2008-2012 American Community Survey 5-Year Estimates

B03002. HISPANIC OR LATINO ORIGIN BY RACE - Universe: TOTAL POPULATION

Data Set: 2008-2012 American Community Survey 5-Year Estimates

	Ville Platte city, Louisiana		
	Population	Margin of Error (+/-)	% of Total
Total:	7,464	22	100.0%
Not Hispanic or Latino:	7,409	68	99.3%
White alone	3,111	500	41.7%
Black or African American alone	4,286	501	57.4%
American Indian and Alaska Native alone	0	17	0.0%
Asian alone	4	6	0.1%
Native Hawaiian and Other Pacific Islander alone	0	17	0.0%
Some other race alone	0	17	0.0%
Two or more races:	8	13	0.1%
Two races including Some other race	0	17	0.0%
Two races excluding Some other race, and three or more races	8	13	0.1%
Hispanic or Latino	55	68	0.7%

Source: U.S. Census Bureau, 2008-2012 American Community Survey

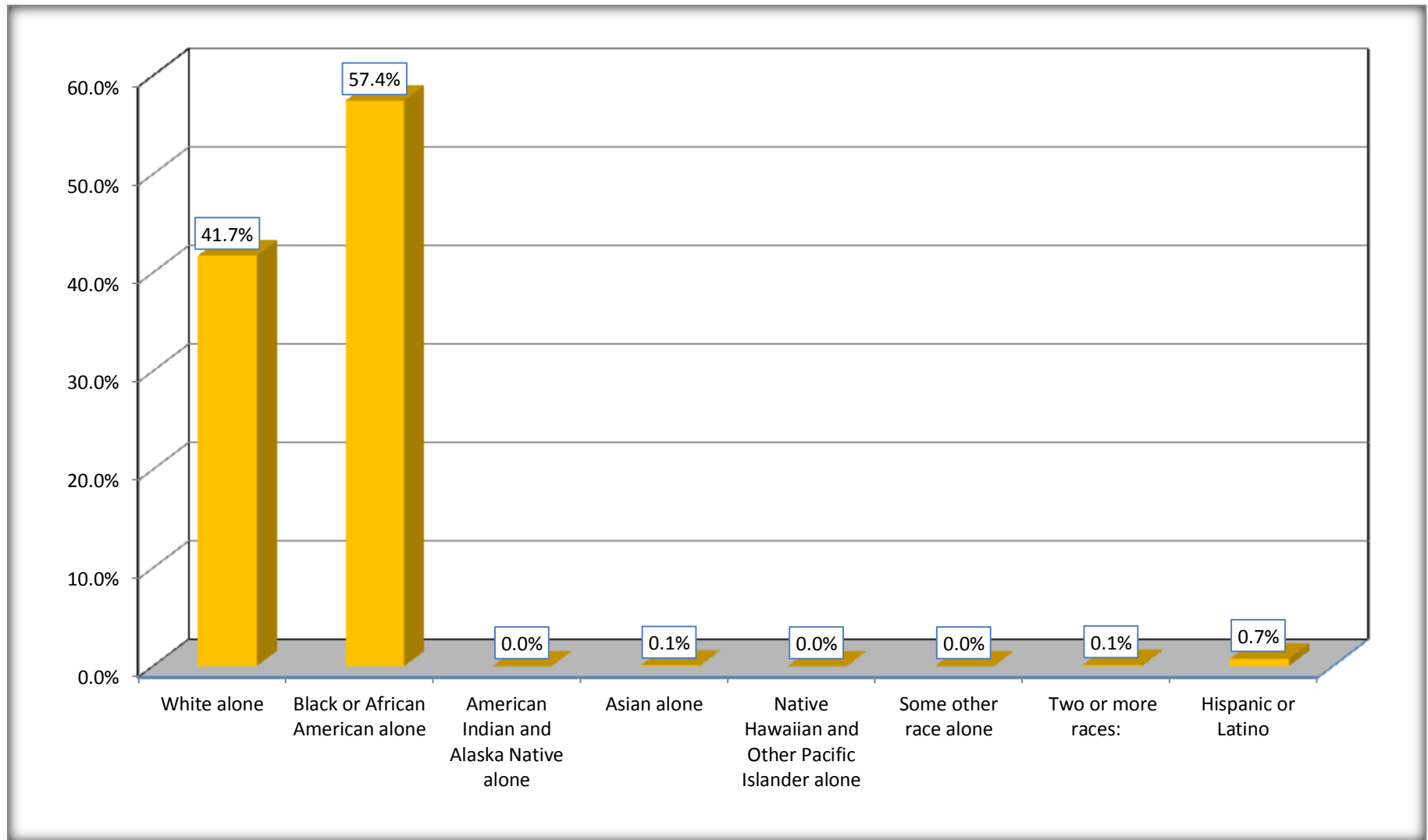
Although the American Community Survey (ACS) produces population, demographic and housing unit estimates, it is the Census Bureau's Population Estimates Program that produces and disseminates the official estimates of the population for the nation, states, counties, cities and towns and estimates of housing units for states and counties.

For information on confidentiality protection, sampling error, nonsampling error, and definitions, see Survey Methodology.

<http://www.census.gov/acs/www/UseData/index.htm>

Non-Hispanic by Race and Hispanic Population

Ville Platte city, Louisiana



Source: B03002. HISPANIC OR LATINO ORIGIN BY RACE - Universe: TOTAL POPULATION
Data Set: 2008-2012 American Community Survey 5-Year Estimates

B03002. HISPANIC OR LATINO ORIGIN BY RACE

Data Set: 2008-2012 American Community Survey 5-Year Estimates

	Ville Platte city, Louisiana		
	Population	Margin of Error (+/-)	% of Total
Hispanic or Latino:	55	68	100.0%
White alone	40	65	72.7%
Black or African American alone	3	7	5.5%
American Indian and Alaska Native alone	0	17	0.0%
Asian alone	0	17	0.0%
Native Hawaiian and Other Pacific Islander alone	0	17	0.0%
Some other race alone	12	17	21.8%
Two or more races:	0	17	0.0%
Two races including Some other race	0	17	0.0%
Two races excluding Some other race, and three or more races	0	17	0.0%

Source: U.S. Census Bureau, 2008-2012 American Community Survey

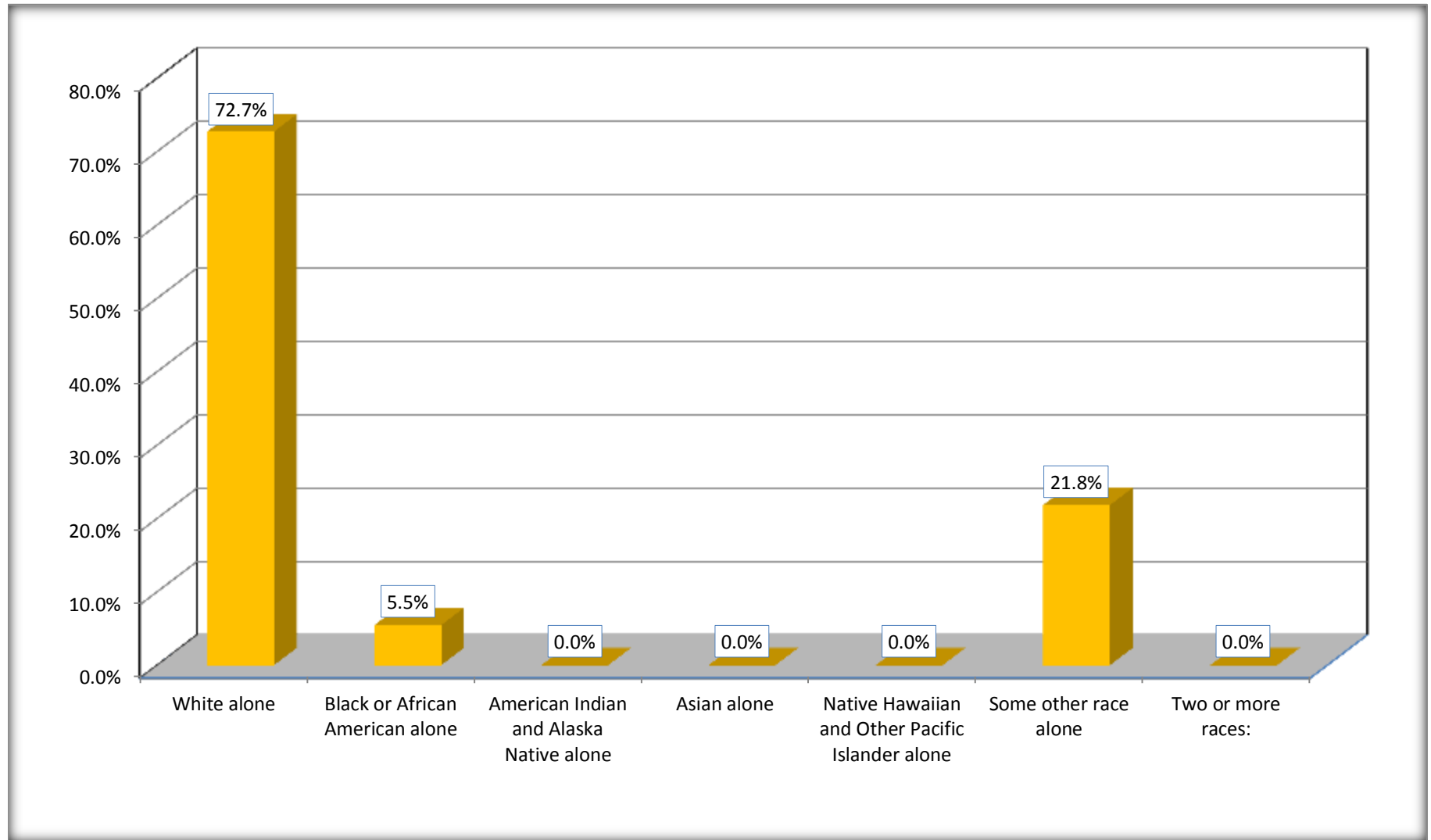
Although the American Community Survey (ACS) produces population, demographic and housing unit estimates, it is the Census Bureau's Population Estimates Program that produces and disseminates the official estimates of the population for the nation, states, counties, cities and towns and estimates of housing units for states and counties.

For information on confidentiality protection, sampling error, nonsampling error, and definitions, see Survey Methodology.

<http://www.census.gov/acs/www/UseData/index.htm>

Hispanic or Latino Origin by Race

Ville Platte city, Louisiana



Source: B03002. HISPANIC OR LATINO ORIGIN BY RACE
Data Set: 2008-2012 American Community Survey 5-Year Estimates

B01001. SEX BY AGE

Data Set: 2008-2012 American Community Survey 5-Year Estimates

	Ville Platte city, Louisiana					
	African American	Margin of Error (+/-)	% of AA Total	White, Not Hispanic	Margin of Error (+/-)	% of NHW Total
Total:	4,289	500	100.0%	3,111	500	100.0%
Under 18 years	1,680	NC	39.2%	549	NC	17.6%
18 to 64 years	2,210	NC	51.5%	1,644	NC	52.8%
65 years and over	399	NC	9.3%	918	NC	29.5%
Male:	1,887	524	44.0%	1,554	389	50.0%
Under 18 years	910	NC	21.2%	320	NC	10.3%
18 to 64 years	811	NC	18.9%	855	NC	27.5%
65 years and over	166	NC	3.9%	379	NC	12.2%
Female:	2,402	263	56.0%	1,557	412	50.0%
Under 18 years	770	NC	18.0%	229	NC	7.4%
18 to 64 years	1,399	NC	32.6%	789	NC	25.4%
65 years and over	233	NC	5.4%	539	NC	17.3%

Source: U.S. Census Bureau, 2008-2012 American Community Survey

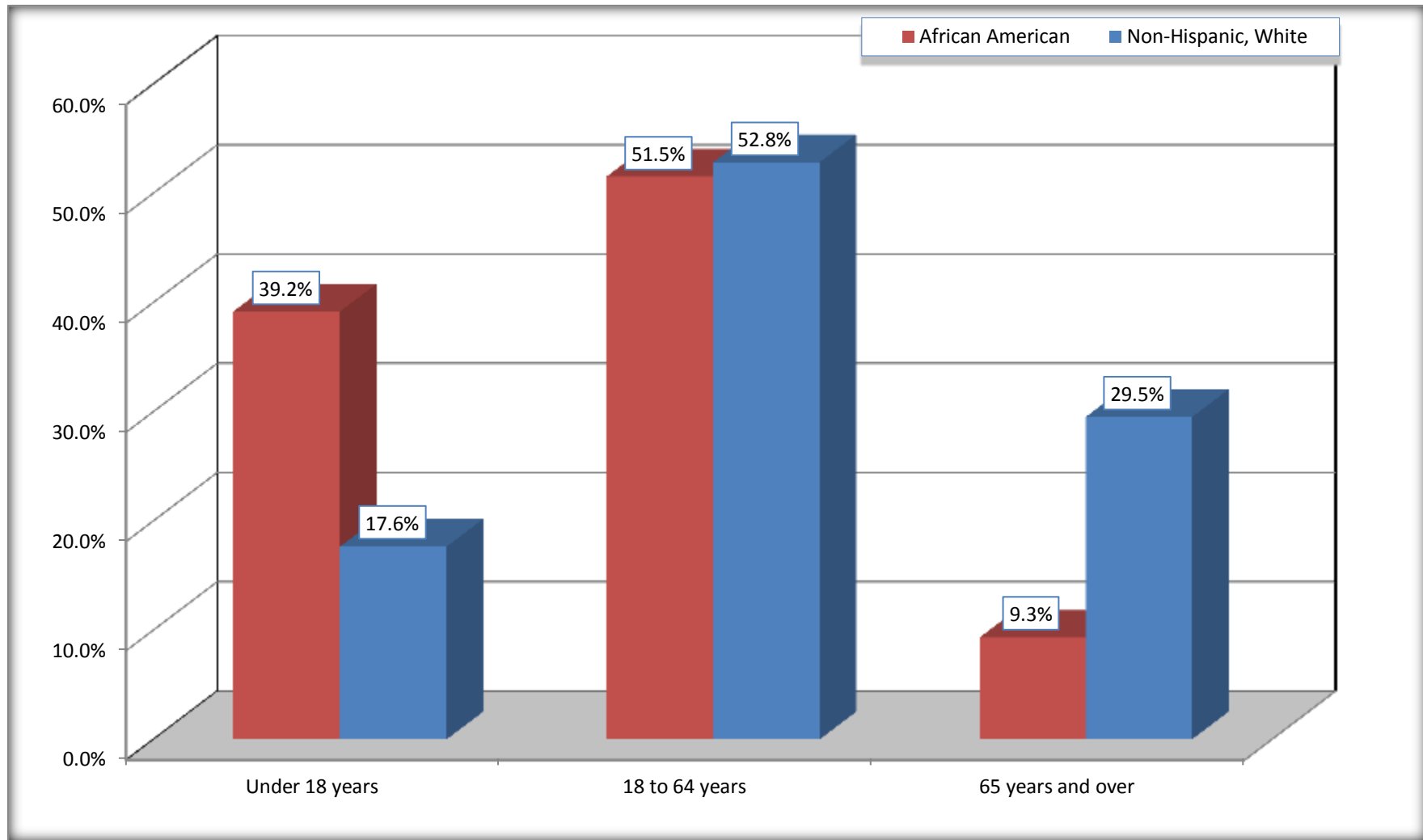
Although the American Community Survey (ACS) produces population, demographic and housing unit estimates, it is the Census Bureau's Population Estimates Program that produces and disseminates the official estimates of the population for the nation, states, counties, cities and towns and estimates of housing units for states and counties.

For information on confidentiality protection, sampling error, nonsampling error, and definitions, see Survey Methodology.

<http://www.census.gov/acs/www/UseData/index.htm>

Population by Age

Ville Platte city, Louisiana



Source: B01001. SEX BY AGE
Data Set: 2008-2012 American Community Survey 5-Year Estimates

B05003. SEX BY AGE BY CITIZENSHIP STATUS

Data Set: 2008-2012 American Community Survey 5-Year Estimates

	Ville Platte city, Louisiana					
	African American	Margin of Error (+/-)	% of AA Total by Age	White, Not Hispanic	Margin of Error (+/-)	% of NHW Total by Age
Total:	4,289	500	100.0%	3,111	500	100.0%
Under 18 years:	1,680	NC	100.0%	549	NC	100.0%
Native	1,680	NC	100.0%	549	NC	100.0%
Foreign born:	0	NC	0.0%	0	NC	0.0%
Naturalized U.S. citizen	0	NC	0.0%	0	NC	0.0%
Not a U.S. citizen	0	NC	0.0%	0	NC	0.0%
18 years and over:	2,609	NC	100.0%	2,562	NC	100.0%
Native	2,609	NC	100.0%	2,562	NC	100.0%
Foreign born:	0	NC	0.0%	0	NC	0.0%
Naturalized U.S. citizen	0	NC	0.0%	0	NC	0.0%
Not a U.S. citizen	0	NC	0.0%	0	NC	0.0%
Male:	1,887	524	44.0%	1,554	321	50.0%
Under 18 years:	910	151	100.0%	320	204	100.0%
Native	910	151	100.0%	320	204	100.0%
Foreign born:	0	17	0.0%	0	17	0.0%
Naturalized U.S. citizen	0	17	0.0%	0	17	0.0%
Not a U.S. citizen	0	17	0.0%	0	17	0.0%
18 years and over:	977	545	100.0%	1,234	233	100.0%
Native	977	545	100.0%	1,234	233	100.0%
Foreign born:	0	17	0.0%	0	17	0.0%
Naturalized U.S. citizen	0	17	0.0%	0	17	0.0%
Not a U.S. citizen	0	17	0.0%	0	17	0.0%

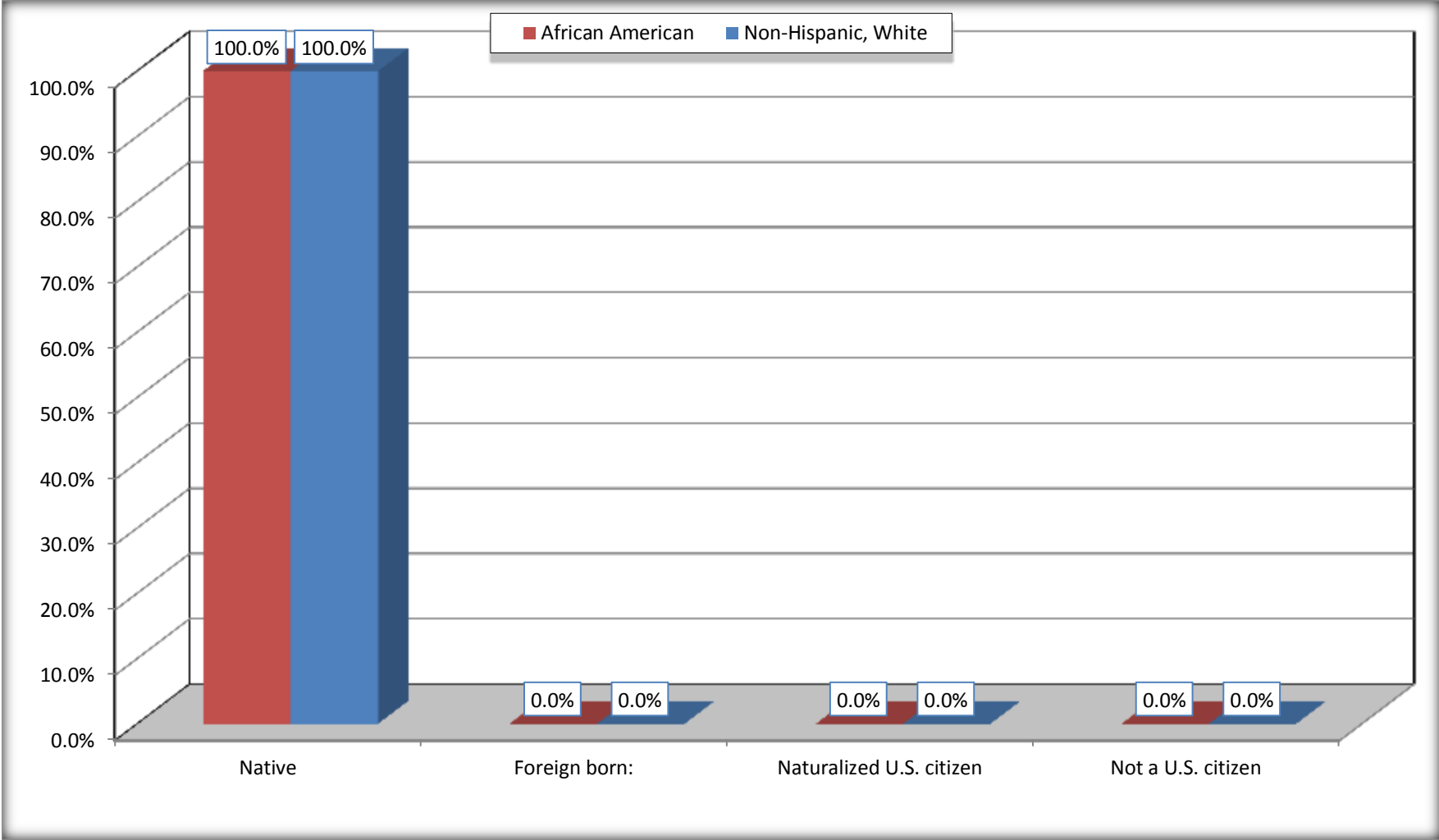
	Ville Platte city, Louisiana					
	African American	Margin of Error (+/-)	% of AA by Age	White, Not Hispanic	Margin of Error (+/-)	% of NHW by Age
Female:	2,402	263	56.0%	1,557	255	50.0%
Under 18 years:	770	168	100.0%	229	113	100.0%
Native	770	168	100.0%	229	113	100.0%
Foreign born:	0	17	0.0%	0	17	0.0%
Naturalized U.S. citizen	0	17	0.0%	0	17	0.0%
Not a U.S. citizen	0	17	0.0%	0	17	0.0%
18 years and over:	1,632	175	100.0%	1,328	198	100.0%
Native	1,632	175	100.0%	1,328	198	100.0%
Foreign born:	0	17	0.0%	0	17	0.0%
Naturalized U.S. citizen	0	17	0.0%	0	17	0.0%
Not a U.S. citizen	0	17	0.0%	0	17	0.0%

Source: U.S. Census Bureau, 2008-2012 American Community Survey

For information on confidentiality protection, sampling error, nonsampling error, and definitions, see Survey Methodology.
<http://www.census.gov/acs/www/UseData/index.htm>

Citizenship Status of Voting Age Population (18 and Over)

Ville Platte city, Louisiana



Source: B05003. SEX BY AGE BY CITIZENSHIP STATUS
Data Set: 2008-2012 American Community Survey 5-Year Estimates

**B07004. GEOGRAPHICAL MOBILITY IN THE PAST YEAR BY RACE FOR CURRENT RESIDENCE IN THE UNITED STATES - Universe:
POPULATION 1 YEAR AND OVER**

Data Set: 2008-2012 American Community Survey 5-Year Estimates

	Ville Platte city, Louisiana					
	African American	Margin of Error (+/-)	% of AA Total	White, Not Hispanic	Margin of Error (+/-)	% of NHW Total
Total:	4,151	487	100.0%	3,083	494	100.0%
Same house 1 year ago	3,331	508	80.2%	2,598	472	84.3%
Moved within same county	767	288	18.5%	162	90	5.3%
Moved from different county within same state	4	5	0.1%	323	245	10.5%
Moved from different state	49	56	1.2%	0	17	0.0%
Moved from abroad	0	17	0.0%	0	17	0.0%

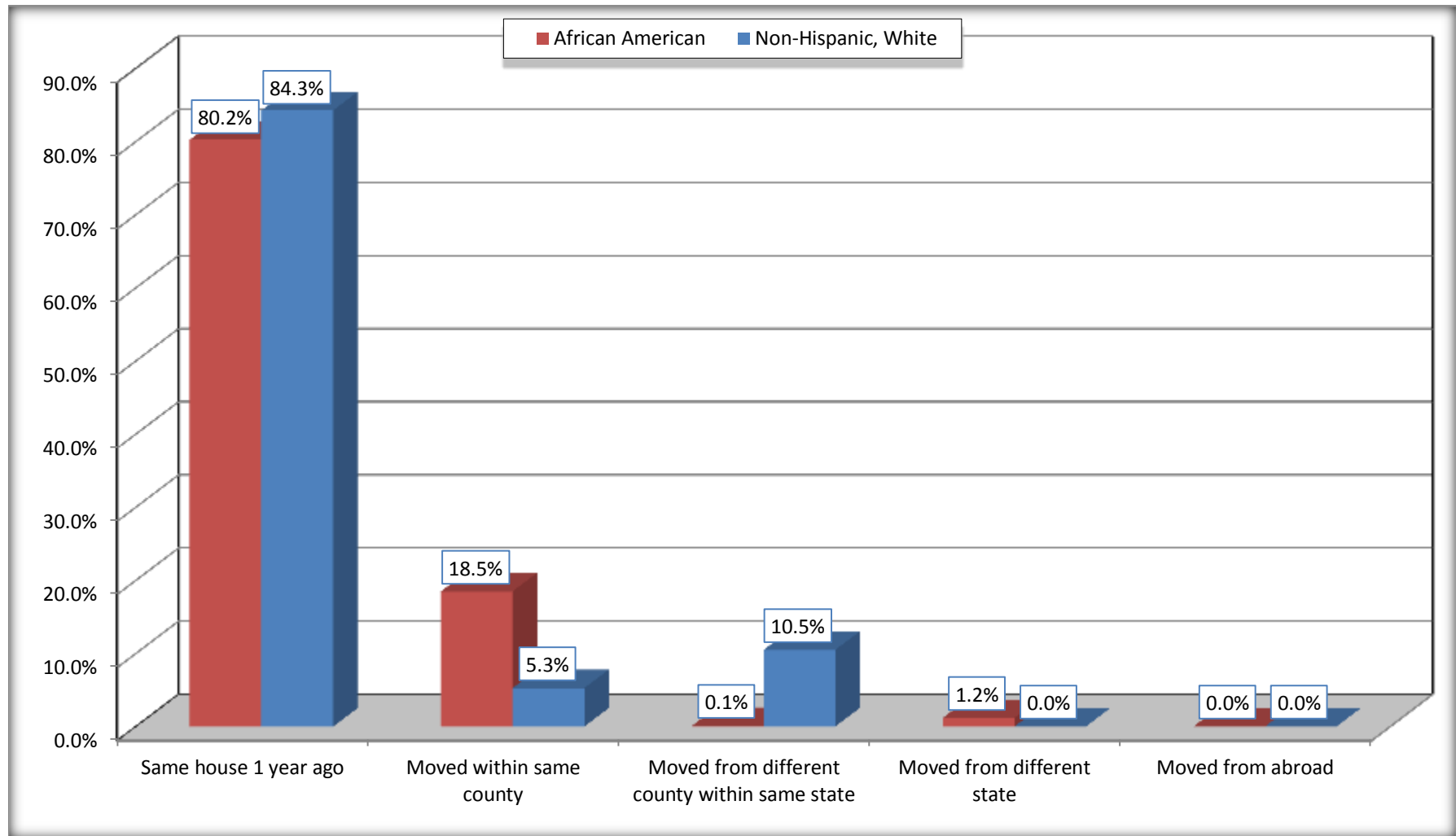
Source: U.S. Census Bureau, 2008-2012 American Community Survey

For information on confidentiality protection, sampling error, nonsampling error, and definitions, see Survey Methodology.

<http://www.census.gov/acs/www/UseData/index.htm>

Geographical Mobility in the Past Year (Population 1 Year and Over)

Ville Platte city, Louisiana



Source: B07004. GEOGRAPHICAL MOBILITY IN THE PAST YEAR BY RACE FOR CURRENT RESIDENCE IN THE UNITED STATES - Universe: POPULATION 1 YEAR AND OVER

Data Set: 2008-2012 American Community Survey 5-Year Estimates

B08105. MEANS OF TRANSPORTATION TO WORK - Universe: WORKERS 16 YEARS AND OVER

Data Set: 2008-2012 American Community Survey 5-Year Estimates

	Ville Platte city, Louisiana					
	African American	Margin of Error (+/-)	% of AA Total	White, Not Hispanic	Margin of Error (+/-)	% of NHW Total
Total:	816	285	100.0%	865	210	100.0%
Car, truck, or van - drove alone	588	217	72.1%	777	196	89.8%
Car, truck, or van - carpooled	87	62	10.7%	6	10	0.7%
Public transportation (excluding taxicab)	0	17	0.0%	0	17	0.0%
Walked	77	72	9.4%	13	20	1.5%
Taxicab, motorcycle, bicycle, or other means	25	41	3.1%	14	21	1.6%
Worked at home	39	55	4.8%	55	41	6.4%

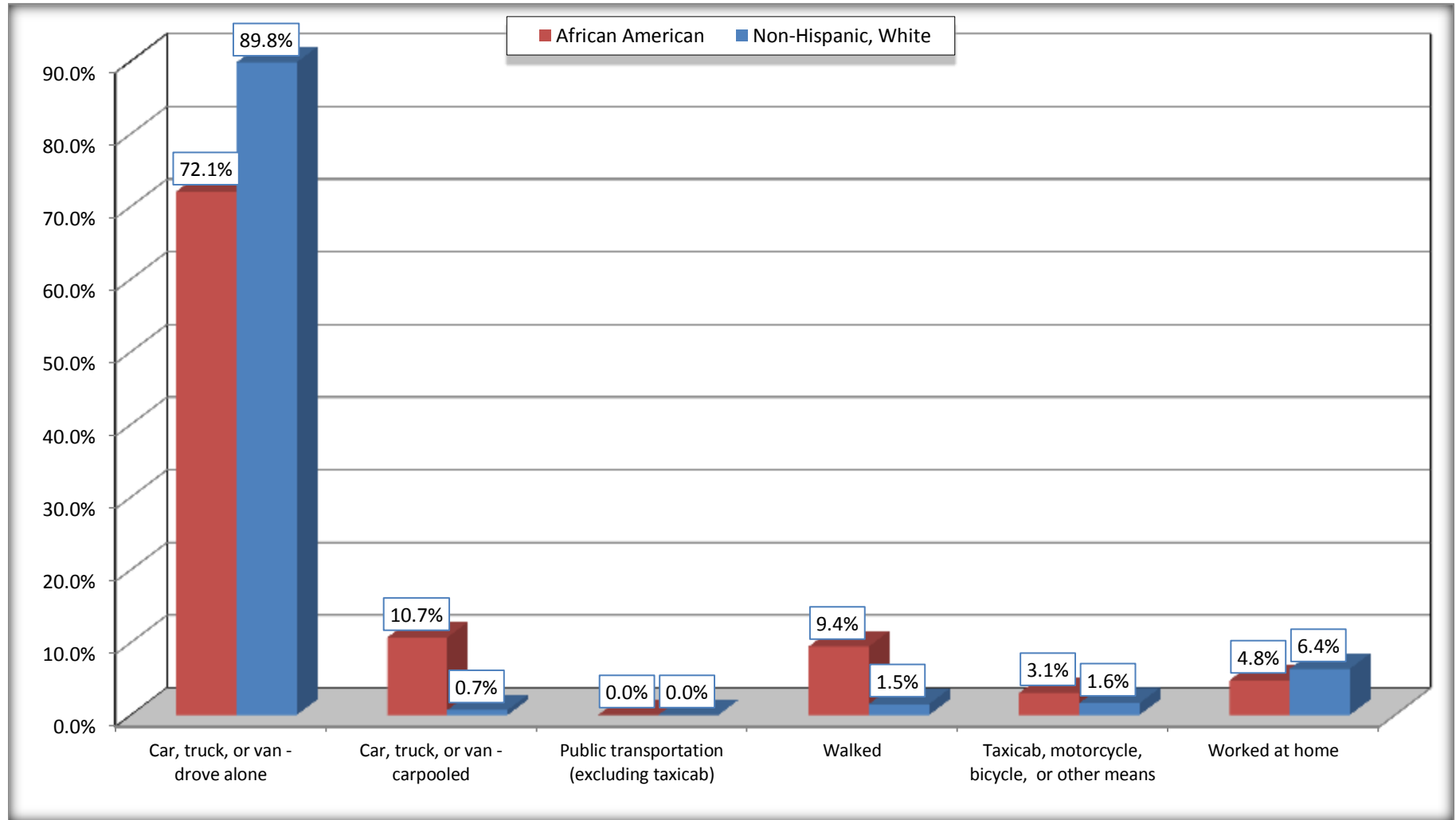
Source: U.S. Census Bureau, 2008-2012 American Community Survey

For information on confidentiality protection, sampling error, nonsampling error, and definitions, see Survey Methodology.

<http://www.census.gov/acs/www/UseData/index.htm>

Means of Transportation to Work (Workers 16 Years and Over)

Ville Platte city, Louisiana



Source: B08105. MEANS OF TRANSPORTATION TO WORK - Universe: WORKERS 16 YEARS AND OVER
Data Set: 2008-2012 American Community Survey 5-Year Estimates

B11002. HOUSEHOLD TYPE BY RELATIVES AND NONRELATIVES FOR POPULATION IN HOUSEHOLDS

Data Set: 2008-2012 American Community Survey 5-Year Estimates

	Ville Platte city, Louisiana					
	African American	Margin of Error (+/-)	% of AA Total	White, Not Hispanic	Margin of Error (+/-)	% of NHW Total
Total:	4177	503	100.0%	3085	499	100.0%
In family households	3655	420	87.5%	2610	466	84.6%
In nonfamily households	522	212	12.5%	475	142	15.4%

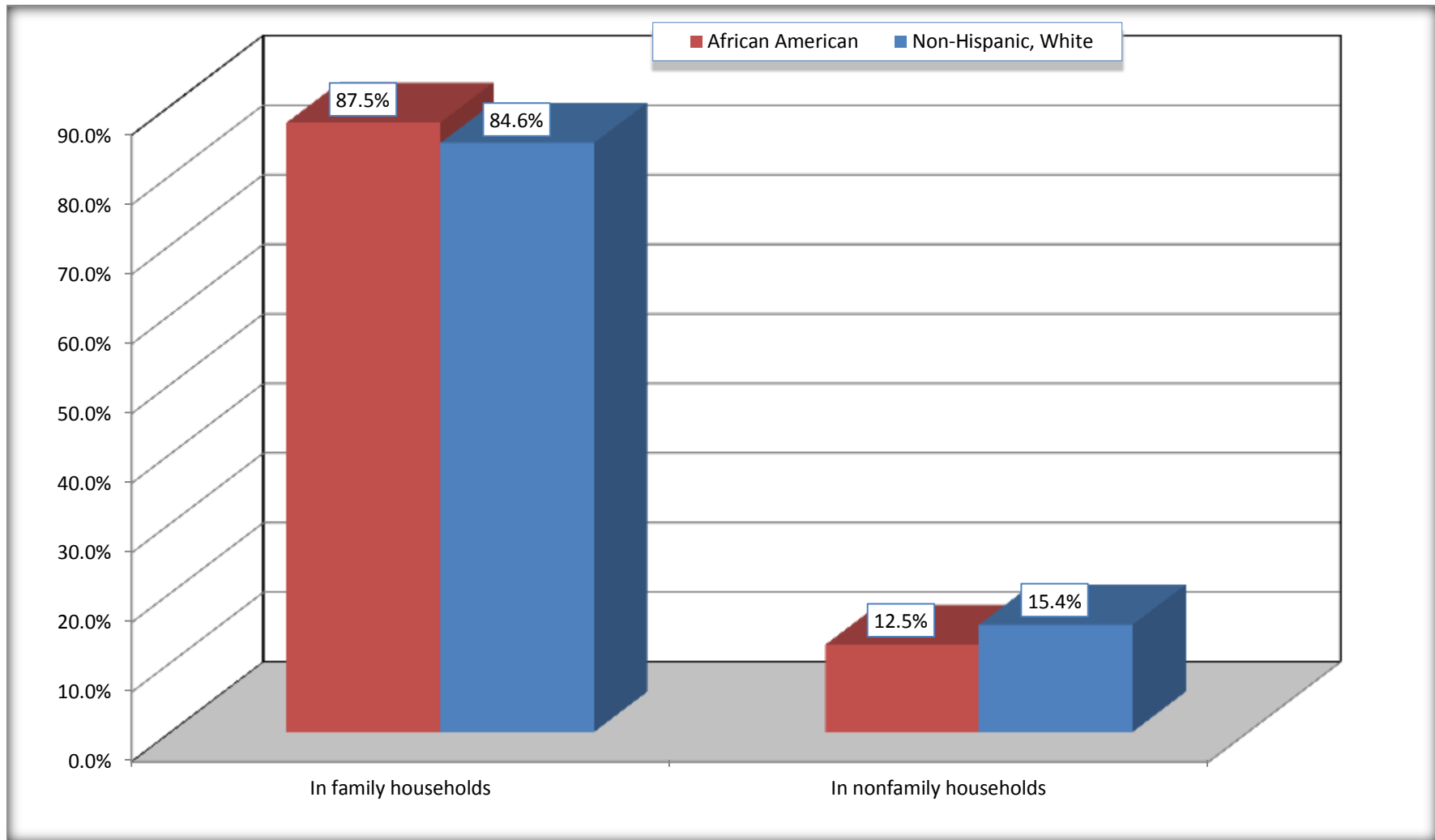
Source: U.S. Census Bureau, 2008-2012 American Community Survey

For information on confidentiality protection, sampling error, nonsampling error, and definitions, see Survey Methodology.

<http://www.census.gov/acs/www/UseData/index.htm>

Household Type for Population in Households

Ville Platte city, Louisiana



Source: B11002. HOUSEHOLD TYPE BY RELATIVES AND NONRELATIVES FOR POPULATION IN HOUSEHOLDS
Data Set: 2008-2012 American Community Survey 5-Year Estimates

B12002. MARITAL STATUS FOR THE POPULATION 15 YEARS AND OVER

Data Set: 2008-2012 American Community Survey 5-Year Estimates

	Ville Platte city, Louisiana					
	African American	Margin of Error (+/-)	% of AA Total	White, Not Hispanic	Margin of Error (+/-)	% of NHW Total
Total:	2,966	491	100.0%	2,621	408	100.0%
Never married	1,510	NC	50.9%	480	NC	18.3%
Now married (except separated)	731	NC	24.6%	1,450	NC	55.3%
Separated	261	NC	8.8%	50	NC	1.9%
Widowed	139	NC	4.7%	364	NC	13.9%
Divorced	325	NC	11.0%	277	NC	10.6%
Male:	1,139	535	38.4%	1,244	239	47.5%
Never married	678	280	22.9%	339	120	12.9%
Now married (except separated)	299	213	10.1%	766	159	29.2%
Separated	74	72	2.5%	25	29	1.0%
Widowed	62	61	2.1%	51	46	1.9%
Divorced	26	61	0.9%	63	48	2.4%
Female:	1,827	174	61.6%	1,377	207	52.5%
Never married	832	146	28.1%	141	73	5.4%
Now married (except separated)	432	132	14.6%	684	135	26.1%
Separated	187	91	6.3%	25	29	1.0%
Widowed	77	44	2.6%	313	92	11.9%
Divorced	299	121	10.1%	214	91	8.2%

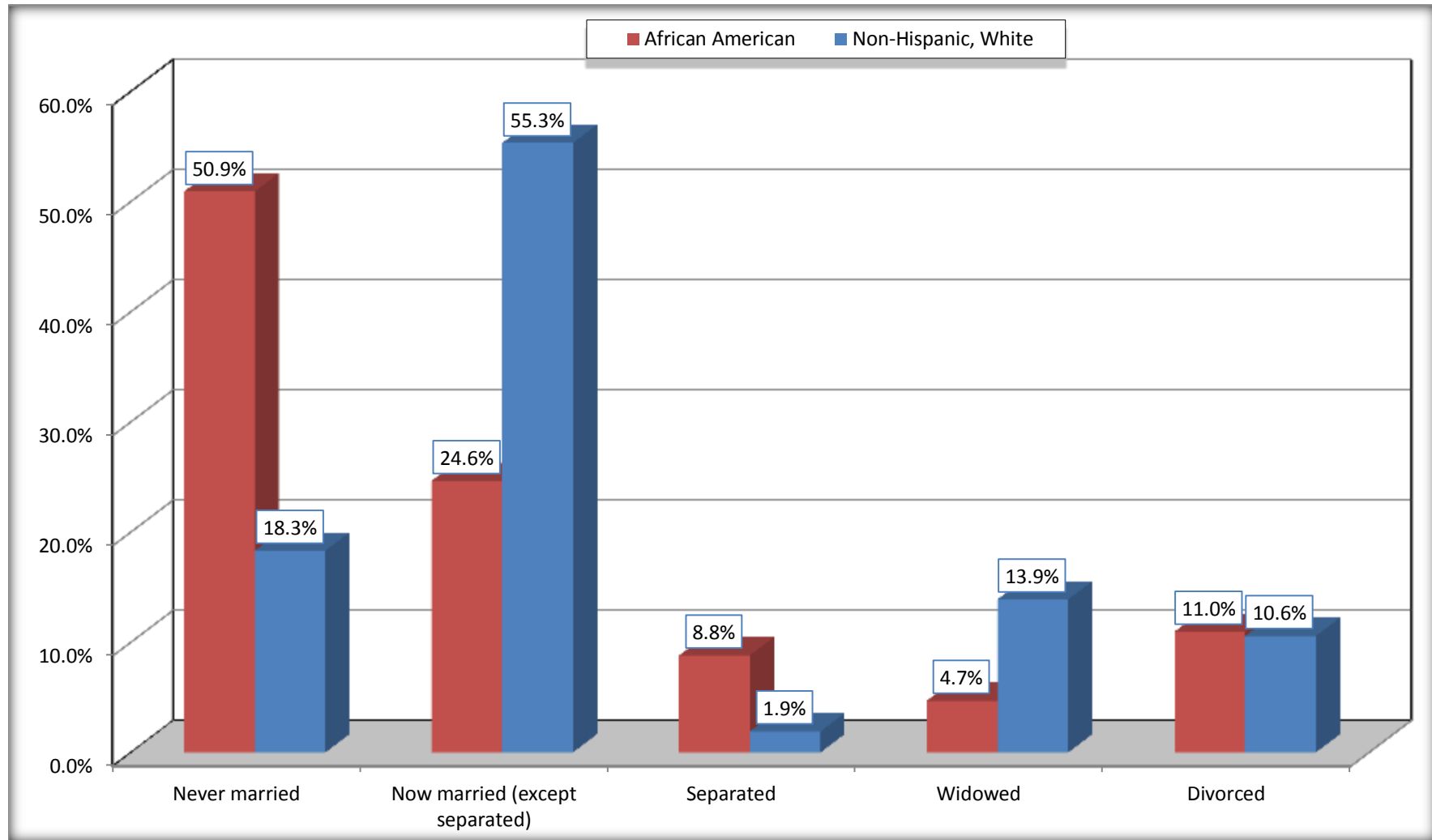
Source: U.S. Census Bureau, 2008-2012 American Community Survey

For information on confidentiality protection, sampling error, nonsampling error, and definitions, see Survey Methodology.

<http://www.census.gov/acs/www/UseData/index.htm>

Marital Status for the Population 15 Years and Over

Ville Platte city, Louisiana



Source: B12002. MARITAL STATUS FOR THE POPULATION 15 YEARS AND OVER
Data Set: 2008-2012 American Community Survey 5-Year Estimates

C15002. SEX BY EDUCATIONAL ATTAINMENT FOR THE POPULATION 25 YEARS AND OVER

Data Set: 2008-2012 American Community Survey 5-Year Estimates

	Ville Platte city, Louisiana					
	African American	Margin of Error (+/-)	% of AA Total	White, Not Hispanic	Margin of Error (+/-)	% of NHW Total
Total:	2,054	502	100.0%	2,298	364	100.0%
Less than high school diploma	1,270	NC	61.8%	545	NC	23.7%
High school graduate, GED, or alternative	440	NC	21.4%	946	NC	41.2%
Some college or associate's degree	265	NC	12.9%	432	NC	18.8%
Bachelor's degree or higher	79	NC	3.8%	375	NC	16.3%
Male:	660	543	32.1%	1,042	199	45.3%
Less than high school diploma	439	287	21.4%	274	100	11.9%
High school graduate, GED, or alternative	151	205	7.4%	351	135	15.3%
Some college or associate's degree	55	66	2.7%	195	71	8.5%
Bachelor's degree or higher	15	35	0.7%	222	89	9.7%
Female:	1,394	162	67.9%	1,256	197	54.7%
Less than high school diploma	831	172	40.5%	271	85	11.8%
High school graduate, GED, or alternative	289	114	14.1%	595	144	25.9%
Some college or associate's degree	210	83	10.2%	237	77	10.3%
Bachelor's degree or higher	64	49	3.1%	153	81	6.7%

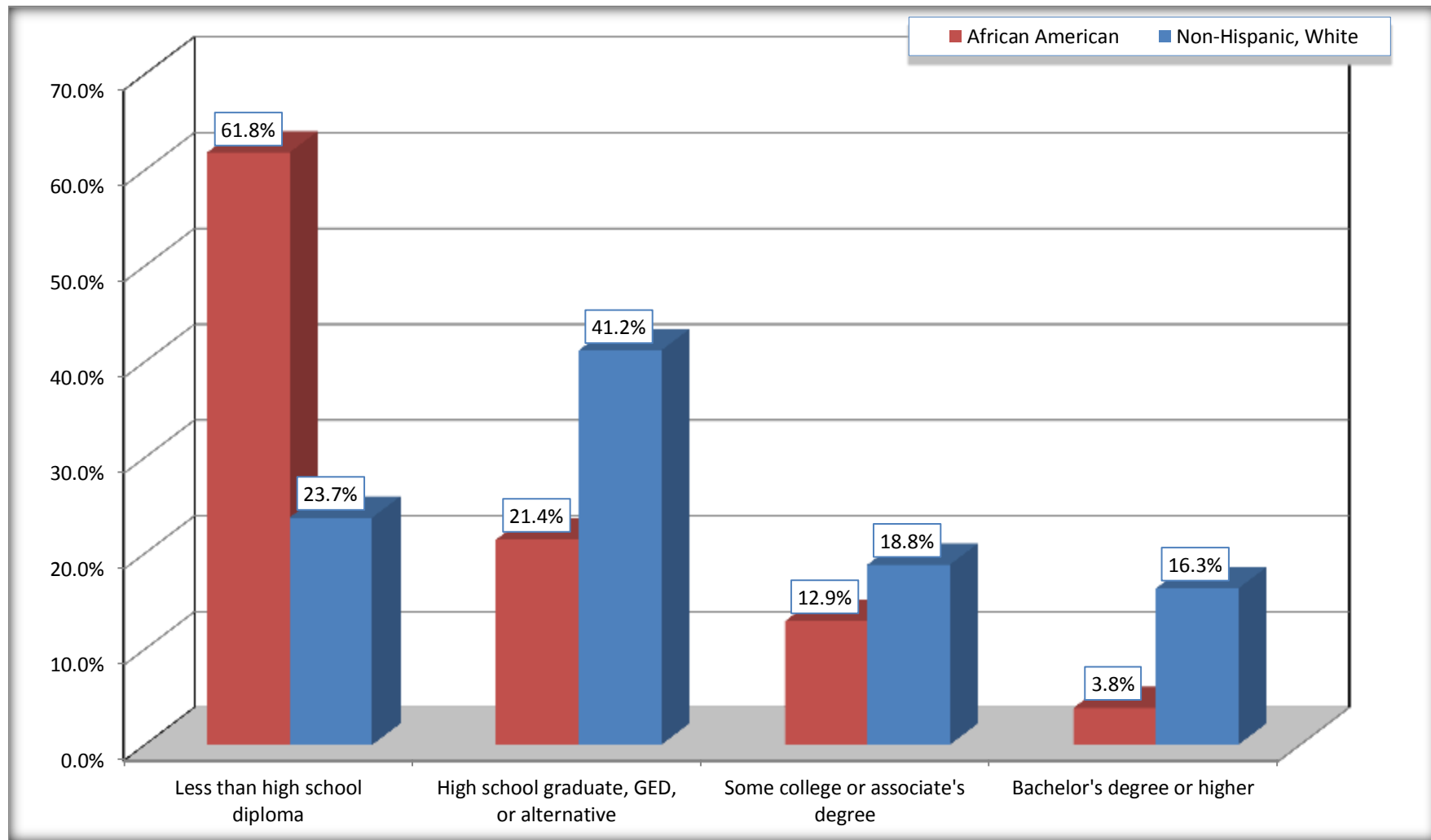
Source: U.S. Census Bureau, 2008-2012 American Community Survey

For information on confidentiality protection, sampling error, nonsampling error, and definitions, see Survey Methodology.

<http://www.census.gov/acs/www/UseData/index.htm>

Educational Attainment for the Population 25 Years and Older

Ville Platte city, Louisiana



Source: C15002. SEX BY EDUCATIONAL ATTAINMENT FOR THE POPULATION 25 YEARS AND OVER
Data Set: 2008-2012 American Community Survey 5-Year Estimates

B17010. POVERTY STATUS IN THE PAST 12 MONTHS OF FAMILIES BY FAMILY TYPE BY PRESENCE OF RELATED CHILDREN UNDER 18 YEARS

Data Set: 2008-2012 American Community Survey 5-Year Estimates

	Ville Platte city, Louisiana					
	African American	Margin of Error (+/-)	% of AA Total	White, Not Hispanic	Margin of Error (+/-)	% of NHW Total
Total:	968	185	100.0%	903	163	100.0%
Income in the past 12 months below poverty level:	485	148	50.1%	129	66	14.3%
Married-couple family:	136	83	14.0%	37	33	4.1%
With related children under 18 years	76	65	7.9%	17	27	1.9%
Other family:	349	121	36.1%	92	59	10.2%
Male householder, no wife present	27	60	2.8%	13	21	1.4%
With related children under 18 years	12	45	1.2%	0	17	0.0%
Female householder, no husband present	322	121	33.3%	79	54	8.7%
With related children under 18 years	251	109	25.9%	71	53	7.9%
Income in the past 12 months at or above poverty level:	483	150	49.9%	774	150	85.7%
Married-couple family:	227	120	23.5%	648	143	71.8%
With related children under 18 years	121	96	12.5%	155	89	17.2%
Other family:	256	105	26.4%	126	79	14.0%
Male householder, no wife present	97	79	10.0%	76	68	8.4%
With related children under 18 years	83	73	8.6%	31	46	3.4%
Female householder, no husband present	159	64	16.4%	50	39	5.5%
With related children under 18 years	131	62	13.5%	24	28	2.7%

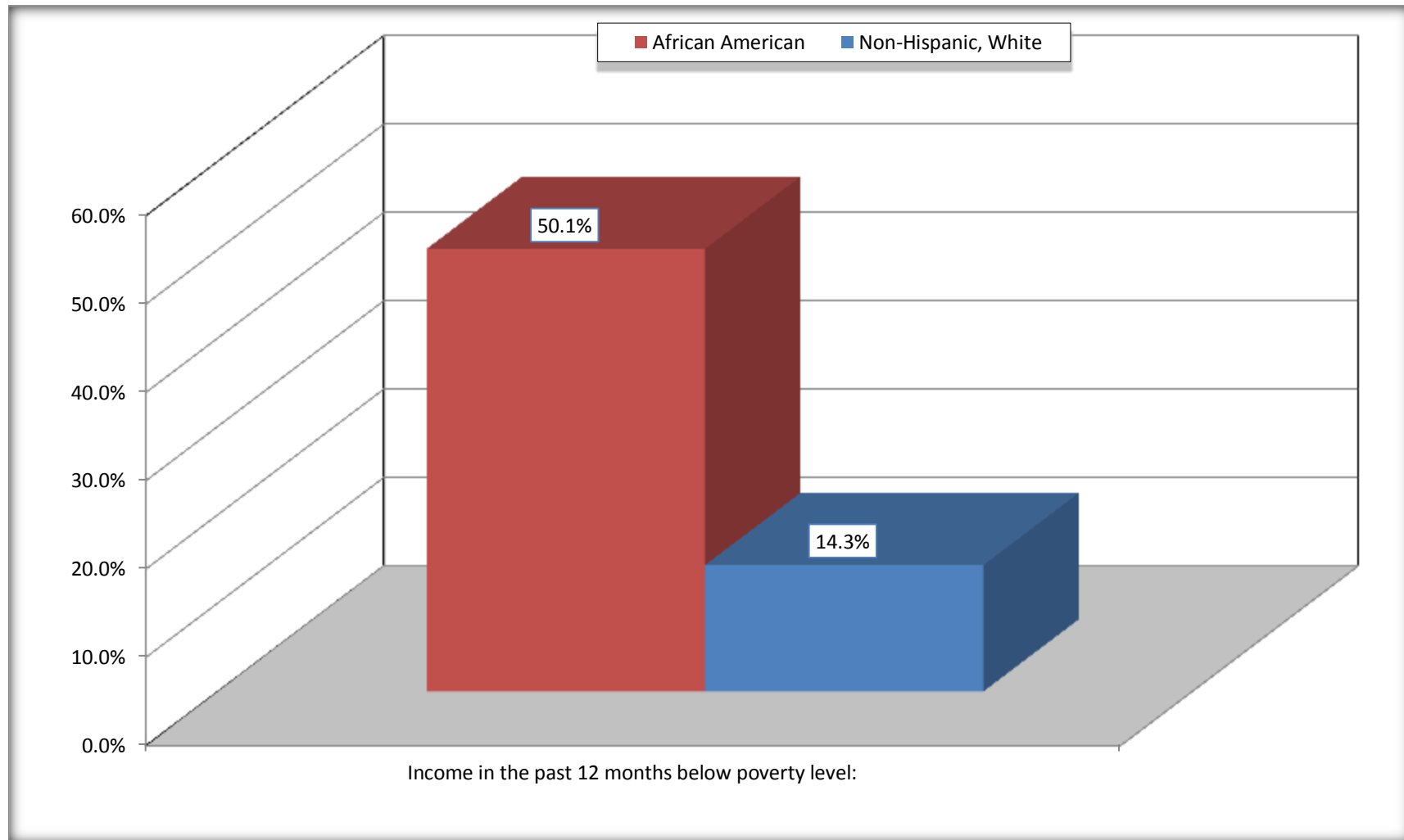
Source: U.S. Census Bureau, 2008-2012 American Community Survey

For information on confidentiality protection, sampling error, nonsampling error, and definitions, see Survey Methodology.

<http://www.census.gov/acs/www/UseData/index.htm>

Family Households Below Poverty in the Past 12 Months

Ville Platte city, Louisiana

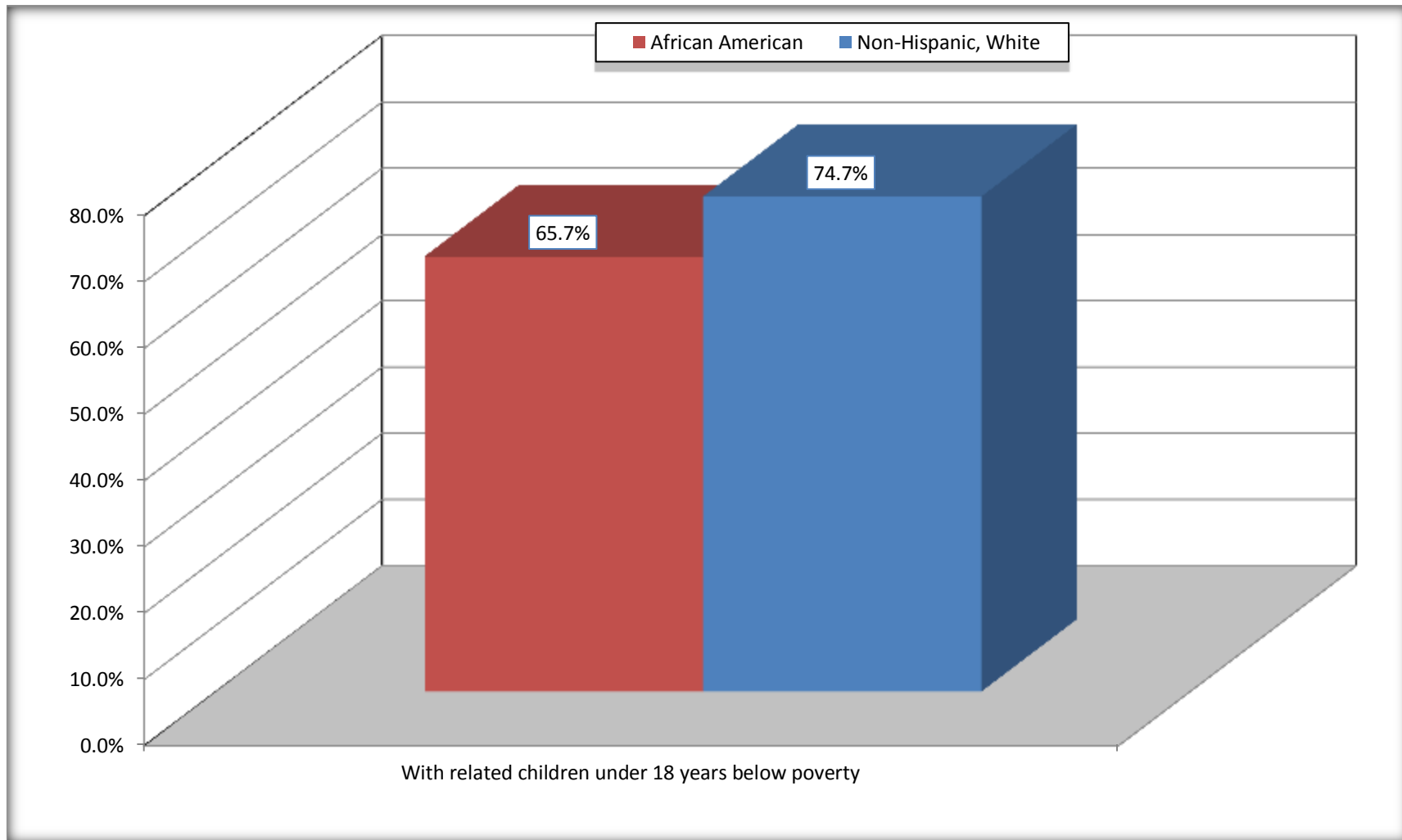


Source: B17010. POVERTY STATUS IN THE PAST 12 MONTHS OF FAMILIES BY FAMILY TYPE BY PRESENCE OF RELATED CHILDREN UNDER 18 YEARS

Data Set: 2008-2012 American Community Survey 5-Year Estimates

Female-headed Households with Related Children Below Poverty in the Past 12 Months

Ville Platte city, Louisiana



Source: B17010. POVERTY STATUS IN THE PAST 12 MONTHS OF FAMILIES BY FAMILY TYPE BY PRESENCE OF RELATED CHILDREN UNDER 18 YEARS

Data Set: 2008-2012 American Community Survey 5-Year Estimates

B17020 POVERTY STATUS IN THE PAST 12 MONTHS BY AGE - Universe: POPULATION FOR WHOM POVERTY STATUS IS DETERMINED

Data Set: 2008-2012 American Community Survey 5-Year Estimates

	Ville Platte city, Louisiana					
	African American	Margin of Error (+/-)	% of AA By Age	White, Not Hispanic	Margin of Error (+/-)	% of NHW By Age
Total:	4,226	500	100.0%	2,988	498	100.0%
Income in the past 12 months below poverty level:	2,368	451	56.0%	517	268	17.3%
Under 18 years	1,000	NC	60.0%	139	NC	25.3%
18 to 64 years	1,201	318	55.6%	263	142	16.1%
65 years and over	167	NC	41.9%	115	NC	14.2%
Income in the past 12 months at or above poverty level:	1,858	484	44.0%	2,471	441	82.7%
Under 18 years	667	NC	40.0%	410	NC	74.7%
18 to 64 years	959	363	44.4%	1,366	274	83.9%
65 years and over	232	NC	58.1%	695	NC	85.8%

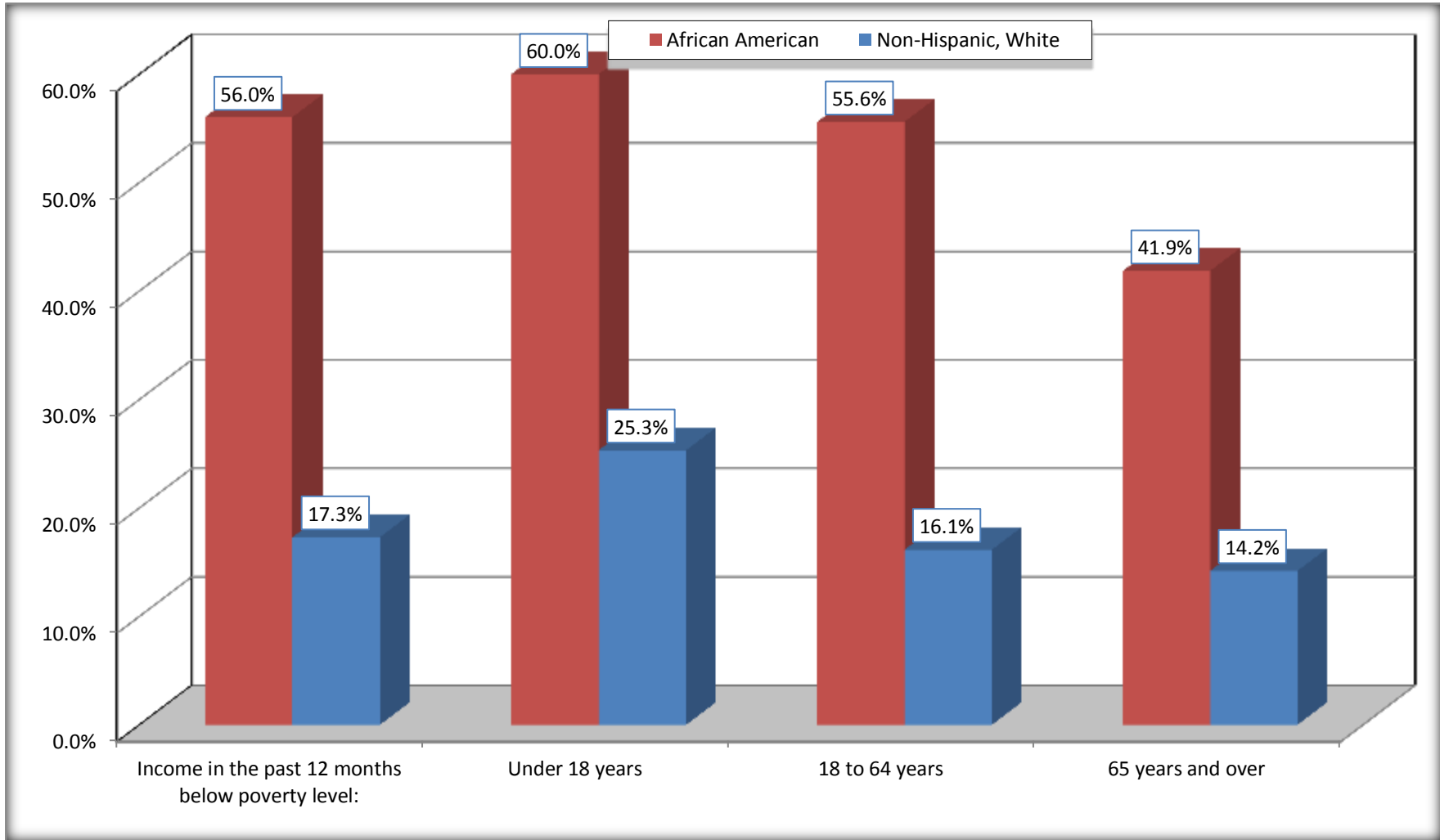
Source: U.S. Census Bureau, 2008-2012 American Community Survey

For information on confidentiality protection, sampling error, nonsampling error, and definitions, see Survey Methodology.

<http://www.census.gov/acs/www/UseData/index.htm>

Population Below Poverty in the Past 12 Months

Ville Platte city, Louisiana



Source: B17020 POVERTY STATUS IN THE PAST 12 MONTHS BY AGE - Universe: POPULATION FOR WHOM POVERTY STATUS IS DETERMINED
Data Set: 2008-2012 American Community Survey 5-Year Estimates

B19001. HOUSEHOLD INCOME IN THE PAST 12 MONTHS (IN 2010 INFLATION-ADJUSTED DOLLARS)

Data Set: 2008-2012 American Community Survey 5-Year Estimates

	Ville Platte city, Louisiana					
	African American	Margin of Error (+/-)	% of AA Total	White, Not Hispanic	Margin of Error (+/-)	% of NHW Total
Total:	1,484	306	100.0%	1,355	243	100.0%
Less than \$ 10,000	542	167	36.5%	154	74	11.4%
\$ 10,000 to \$ 14,999	181	100	12.2%	166	71	12.3%
\$ 15,000 to \$ 24,999	348	NC	23.5%	292	NC	21.5%
\$ 25,000 to \$ 34,999	118	NC	8.0%	149	NC	11.0%
\$ 35,000 to \$ 49,999	117	NC	7.9%	188	NC	13.9%
\$ 50,000 to \$ 74,999	86	NC	5.8%	161	NC	11.9%
\$ 75,000 to \$ 99,999	92	69	6.2%	57	38	4.2%
\$ 100,000 to \$ 149,999	0	NC	0.0%	142	NC	10.5%
\$ 150,000 to \$ 199,999	0	17	0.0%	26	25	1.9%
\$ 200,000 or more	0	17	0.0%	20	21	1.5%

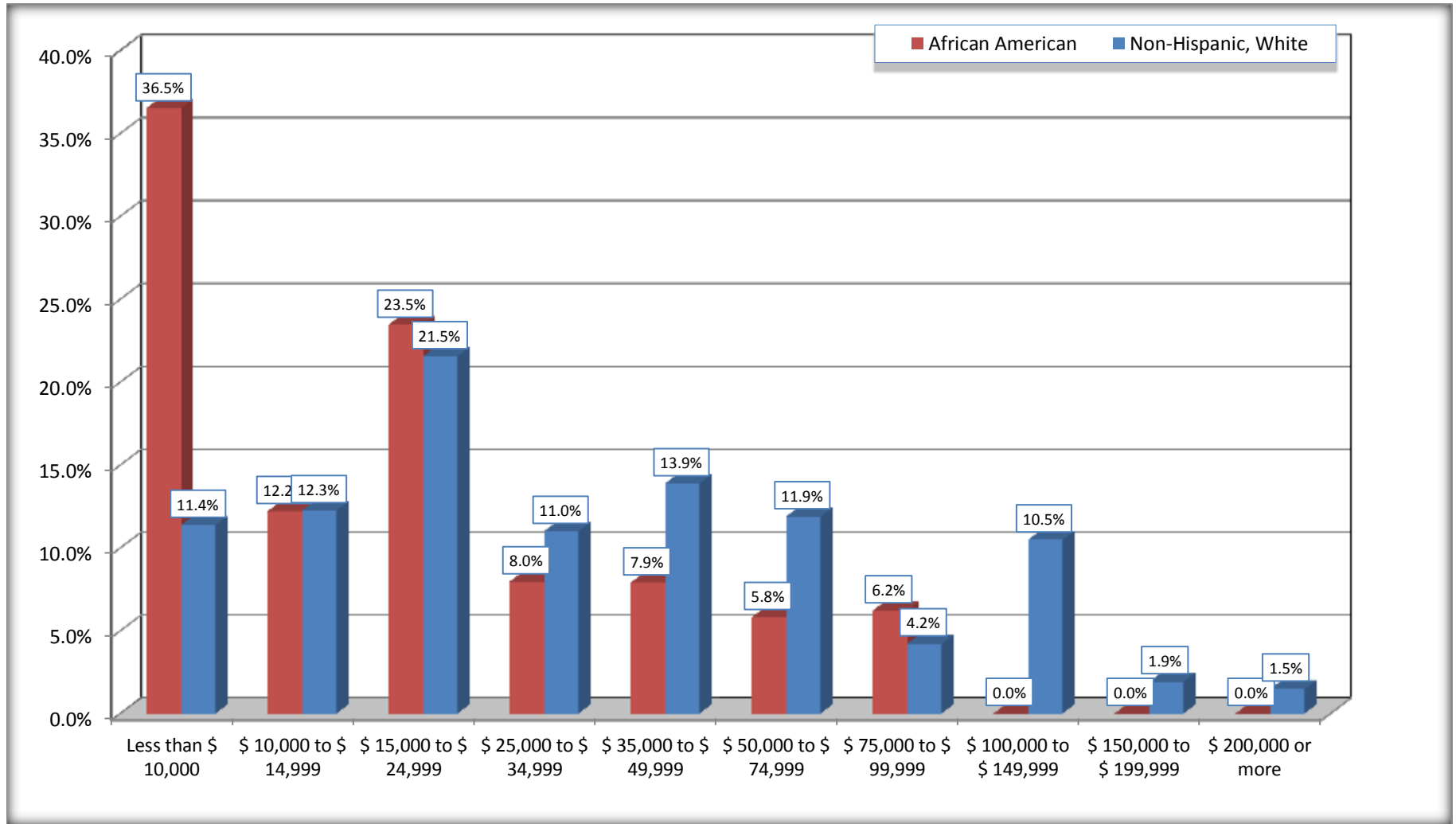
Source: U.S. Census Bureau, 2008-2012 American Community Survey

For information on confidentiality protection, sampling error, nonsampling error, and definitions, see Survey Methodology.

<http://www.census.gov/acs/www/UseData/index.htm>

Household Income in the Past 12 Months

Ville Platte city, Louisiana



Source: B19001. HOUSEHOLD INCOME IN THE PAST 12 MONTHS (IN 2010 INFLATION-ADJUSTED DOLLARS)
Data Set: 2008-2012 American Community Survey 5-Year Estimates

B19013. MEDIAN HOUSEHOLD INCOME IN THE PAST 12 MONTHS (IN 2010 INFLATION-ADJUSTED DOLLARS)

Data Set: 2008-2012 American Community Survey 5-Year Estimates

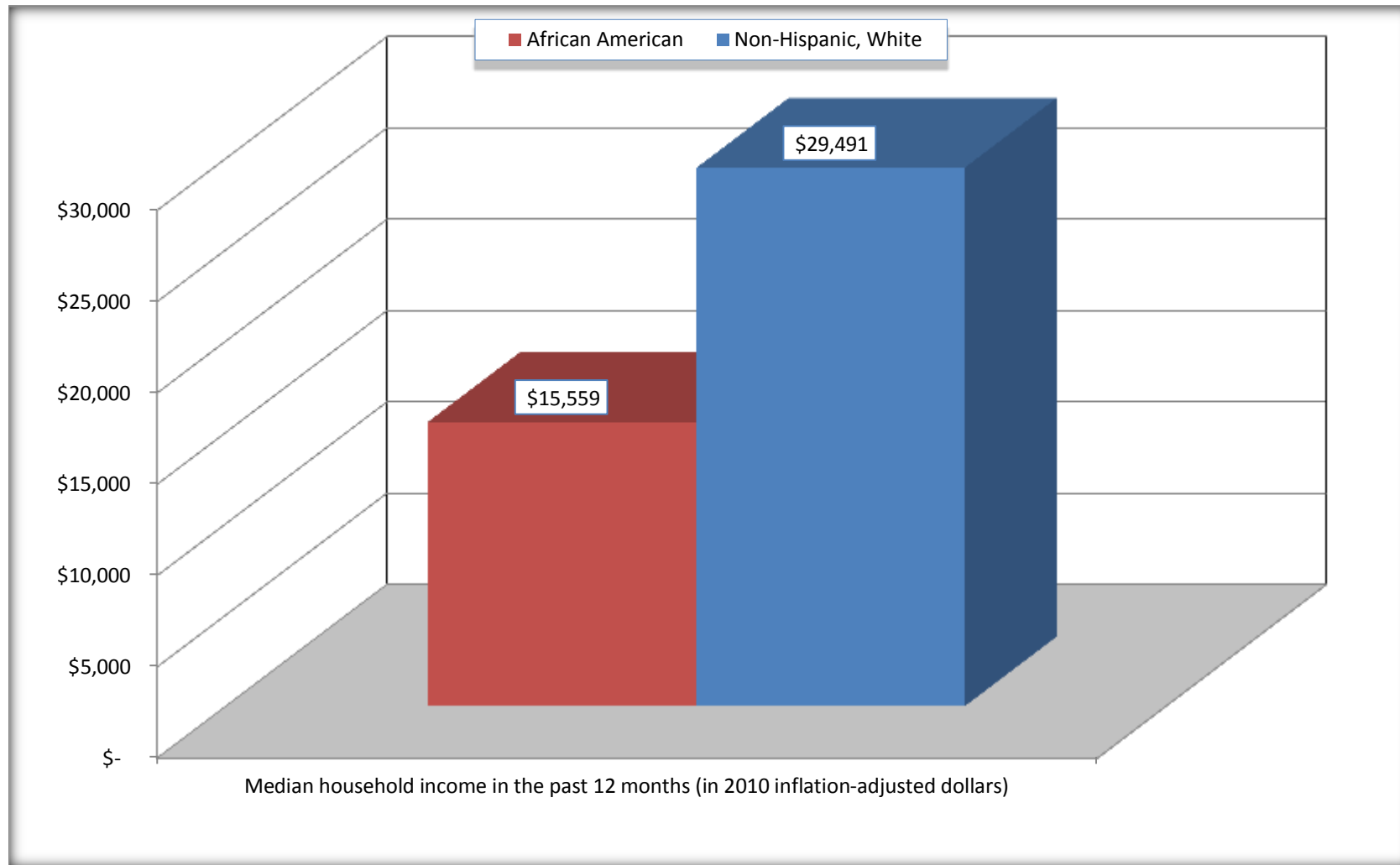
	Ville Platte city, Louisiana			
	African American	Margin of Error (+/-)	White, Not Hispanic	Margin of Error (+/-)
Median household income in the past 12 months (in 2010 inflation-adjusted dollars)	\$ 15,559	\$ 4,505	\$ 29,491	\$ 7,138

Source: U.S. Census Bureau, 2008-2012 American Community Survey

For information on confidentiality protection, sampling error, nonsampling error, and definitions, see Survey Methodology.
<http://www.census.gov/acs/www/UseData/index.htm>

Median Household Income in the Past 12 Months

Ville Platte city, Louisiana



Source: B19013. MEDIAN HOUSEHOLD INCOME IN THE PAST 12 MONTHS (IN 2010 INFLATION-ADJUSTED DOLLARS)
Data Set: 2008-2012 American Community Survey 5-Year Estimates

B19101. FAMILY INCOME IN THE PAST 12 MONTHS (IN 2010 INFLATION-ADJUSTED DOLLARS)

Data Set: 2008-2012 American Community Survey 5-Year Estimates

	Ville Platte city, Louisiana					
	African American	Margin of Error (+/-)	% of AA Total	White, Not Hispanic	Margin of Error (+/-)	% of NHW Total
Total:	968	185	100.0%	903	163	100.0%
Less than \$ 10,000	217	103	22.4%	75	51	8.3%
\$ 10,000 to \$ 14,999	137	81	14.2%	67	51	7.4%
\$ 15,000 to \$ 24,999	256	NC	26.4%	168	NC	18.6%
\$ 25,000 to \$ 34,999	99	NC	10.2%	105	NC	11.6%
\$ 35,000 to \$ 49,999	150	NC	15.5%	149	NC	16.5%
\$ 50,000 to \$ 74,999	32	NC	3.3%	131	NC	14.5%
\$ 100,000 to \$ 149,999	-	NC	0.0%	112	NC	12.4%
\$ 150,000 to \$ 199,999	0	17	0.0%	26	25	2.9%
\$ 200,000 or more	0	17	0.0%	13	17	1.4%

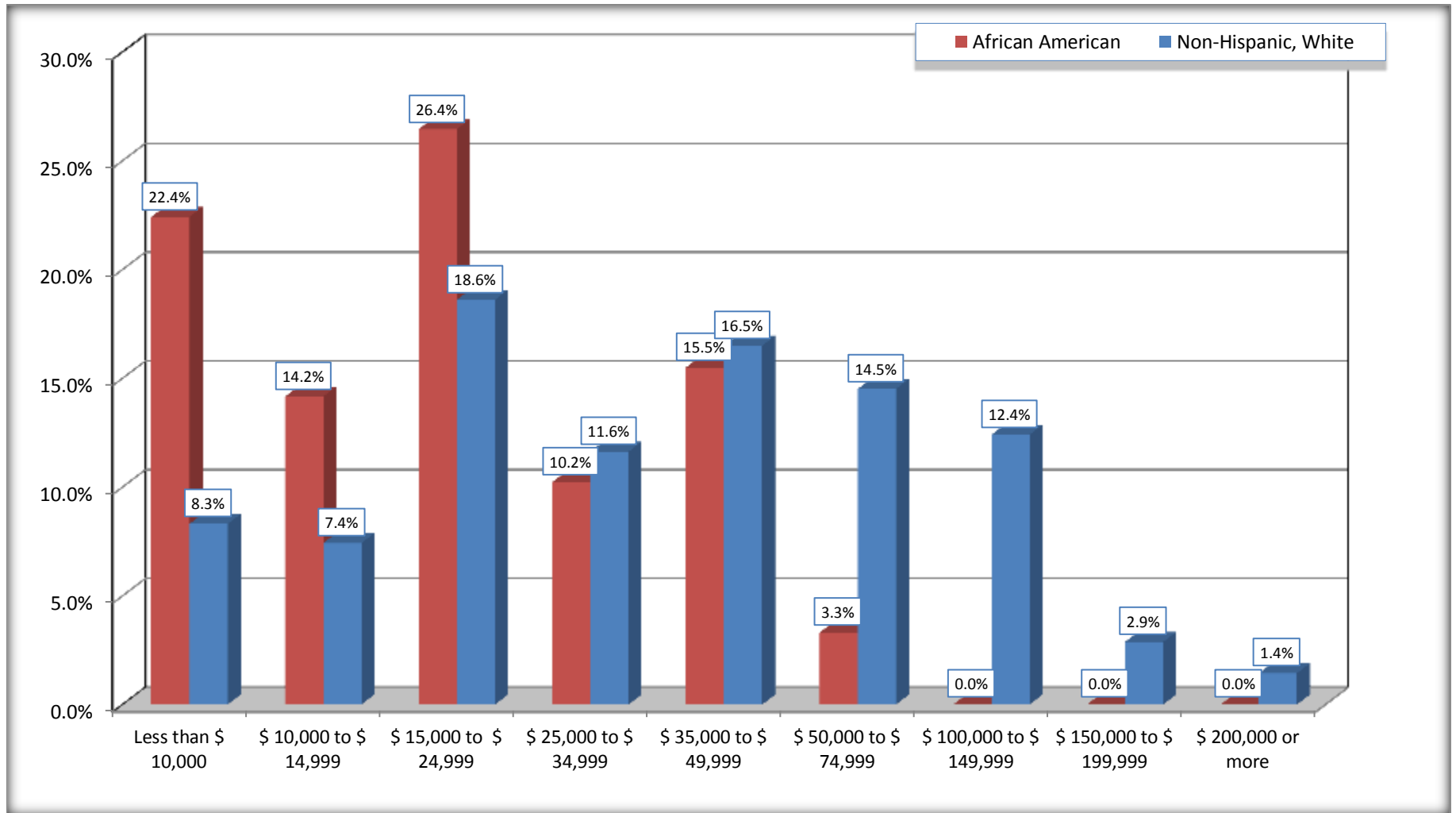
Source: U.S. Census Bureau, 2008-2012 American Community Survey

For information on confidentiality protection, sampling error, nonsampling error, and definitions, see Survey Methodology.

<http://www.census.gov/acs/www/UseData/index.htm>

Family Income in the Past 12 Months

Ville Platte city, Louisiana



Source: B19101. FAMILY INCOME IN THE PAST 12 MONTHS (IN 2010 INFLATION-ADJUSTED DOLLARS)
Data Set: 2008-2012 American Community Survey 5-Year Estimates

B19113. MEDIAN FAMILY INCOME IN THE PAST 12 MONTHS (IN 2010 INFLATION-ADJUSTED DOLLARS)

Data Set: 2008-2012 American Community Survey 5-Year Estimates

	Ville Platte city, Louisiana			
	African American	Margin of Error (+/-)	White, Not Hispanic	Margin of Error (+/-)
Median family income in the past 12 months (in 2010 inflation-adjusted dollars)	\$ 20,577	\$ 4,242	\$ 36,233	\$ 4,983

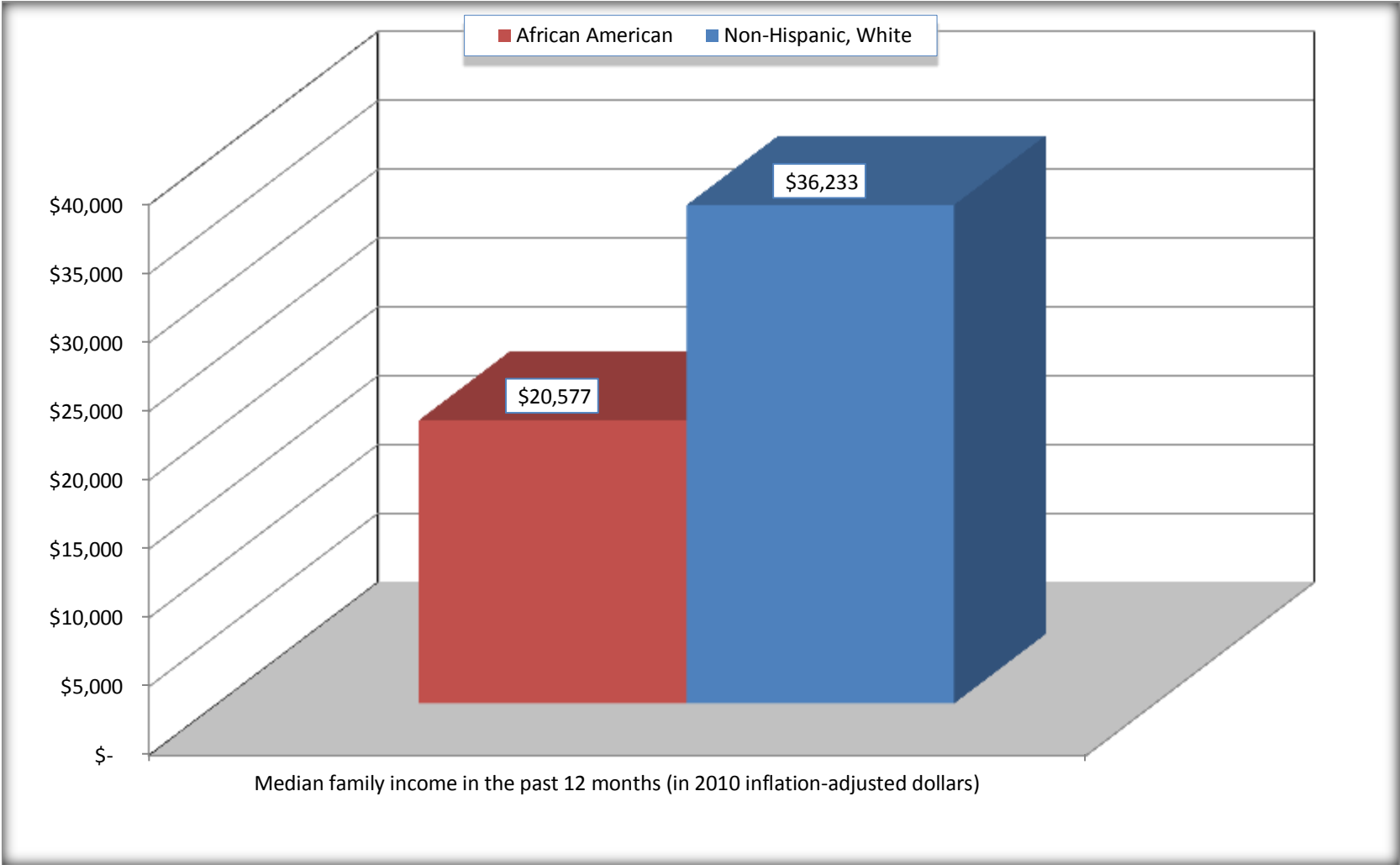
Source: U.S. Census Bureau, 2008-2012 American Community Survey

For information on confidentiality protection, sampling error, nonsampling error, and definitions, see Survey Methodology.

<http://www.census.gov/acs/www/UseData/index.htm>

Median Family Income in the Past 12 Months

Ville Platte city, Louisiana



Source: B19113. MEDIAN FAMILY INCOME IN THE PAST 12 MONTHS (IN 2010 INFLATION-ADJUSTED DOLLARS)
Data Set: 2008-2012 American Community Survey 5-Year Estimates

B19202. MEDIAN NONFAMILY HOUSEHOLD INCOME IN THE PAST 12 MONTHS (IN 2010 INFLATION-ADJUSTED DOLLARS)

Data Set: 2008-2012 American Community Survey 5-Year Estimates

	Ville Platte city, Louisiana			
	African American	Margin of Error (+/-)	White, Not Hispanic	Margin of Error (+/-)
Median nonfamily household income in the past 12 months (in 2010 inflation-adjusted dollars)	\$ 9,123	\$ 918	\$ 17,031	\$ 3,009

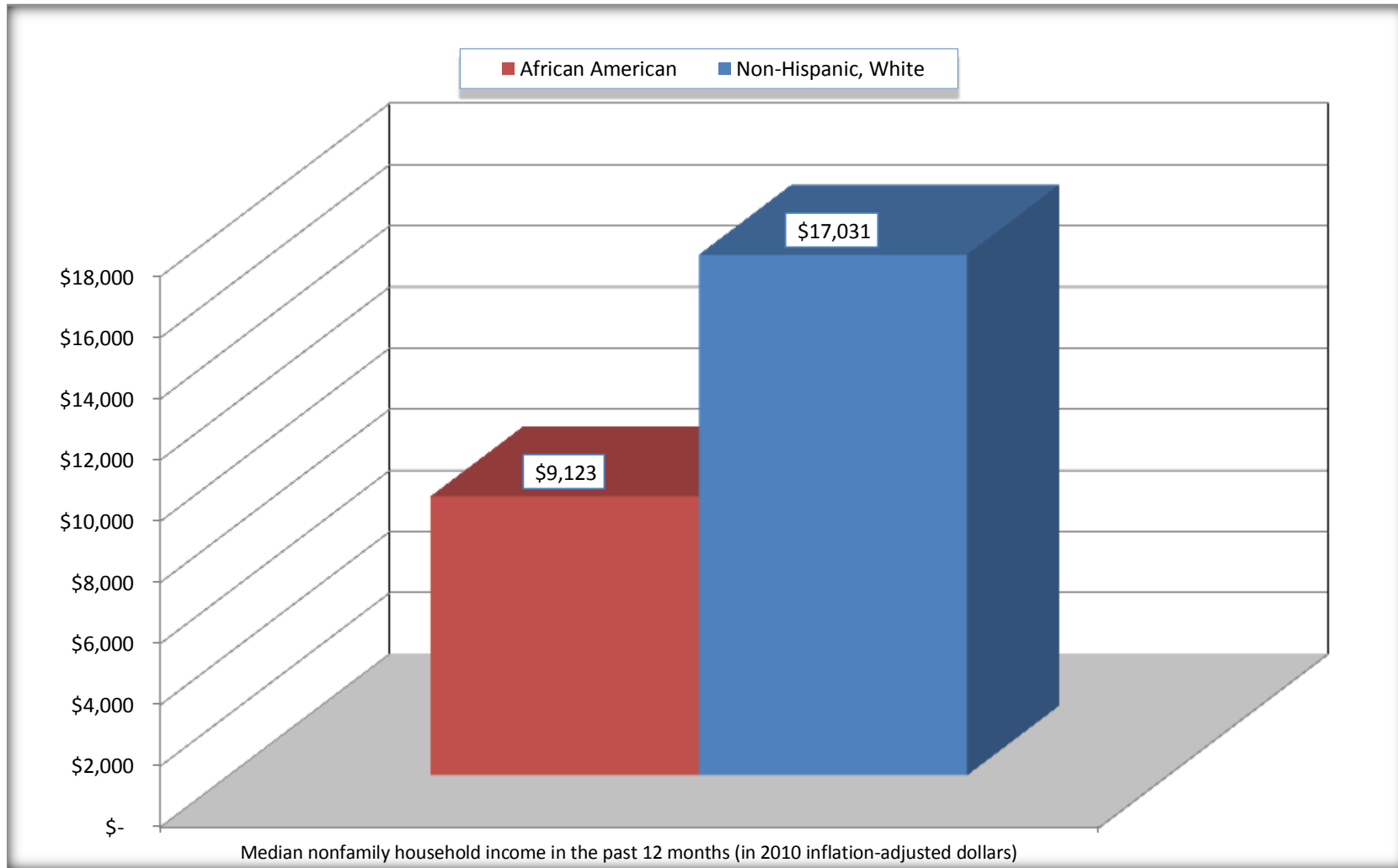
Source: U.S. Census Bureau, 2008-2012 American Community Survey

For information on confidentiality protection, sampling error, nonsampling error, and definitions, see Survey Methodology.

<http://www.census.gov/acs/www/UseData/index.htm>

Median Non-Family Income in the Past 12 Months

Ville Platte city, Louisiana



Source: B19202. MEDIAN NONFAMILY HOUSEHOLD INCOME IN THE PAST 12 MONTHS (IN 2010 INFLATION-ADJUSTED DOLLARS)
Data Set: 2008-2012 American Community Survey 5-Year Estimates

B19301. PER CAPITA INCOME IN THE PAST 12 MONTHS (IN 2010 INFLATION-ADJUSTED DOLLARS)

Data Set: 2008-2012 American Community Survey 5-Year Estimates

	Ville Platte city, Louisiana			
	African American	Margin of Error (+/-)	White, Not Hispanic	Margin of Error (+/-)
Per capita income in the past 12 months (in 2010 inflation-adjusted dollars)	\$ 7,400	\$ 2,211	\$ 24,688	\$ 6,909

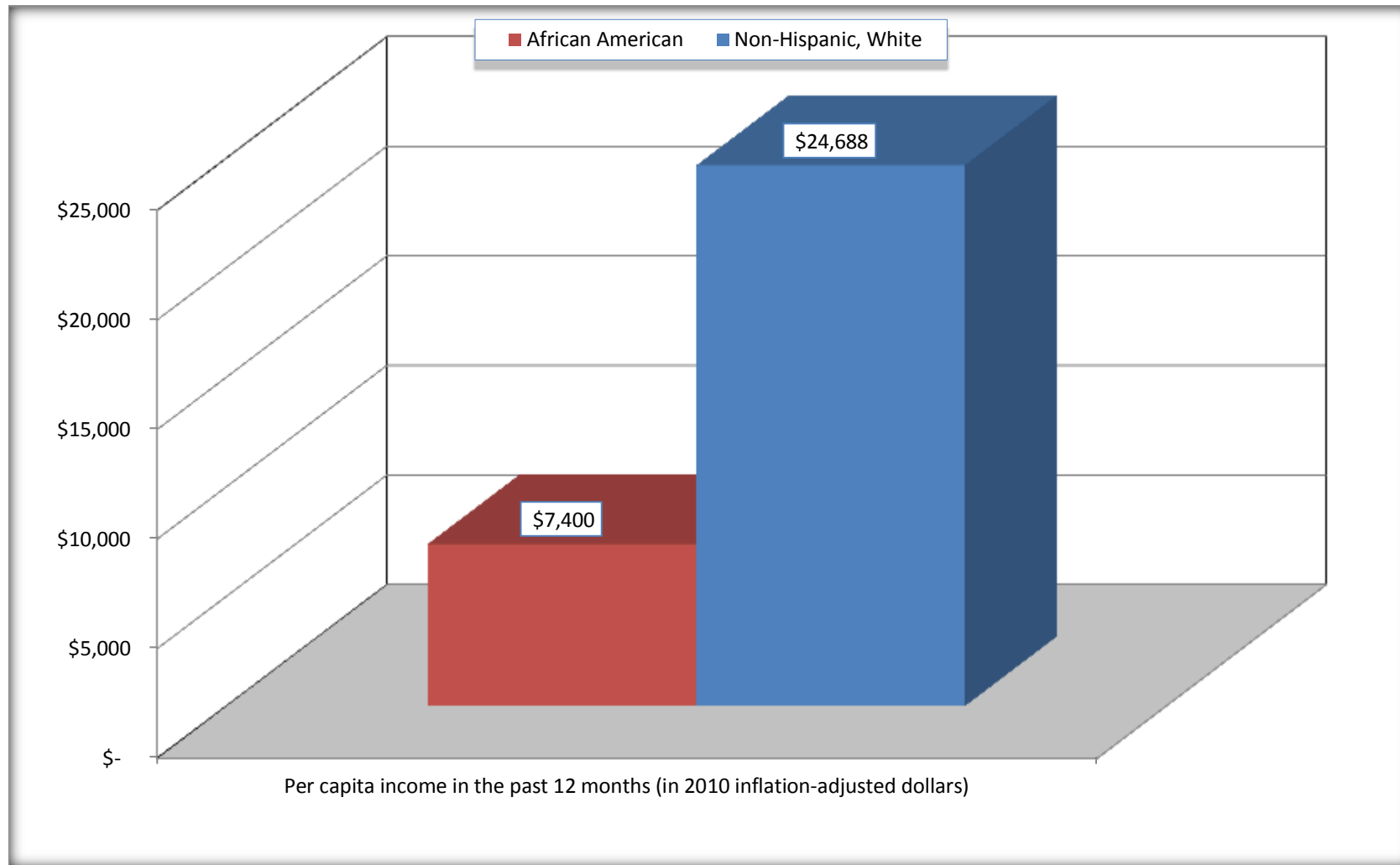
Source: U.S. Census Bureau, 2008-2012 American Community Survey

For information on confidentiality protection, sampling error, nonsampling error, and definitions, see Survey Methodology.

<http://www.census.gov/acs/www/UseData/index.htm>

Per capita Income in the Past 12 Months

Ville Platte city, Louisiana



Source: B19301. PER CAPITA INCOME IN THE PAST 12 MONTHS (IN 2010 INFLATION-ADJUSTED DOLLARS)
Data Set: 2008-2012 American Community Survey 5-Year Estimates

B20017. MEDIAN EARNINGS IN THE PAST 12 MONTHS (IN 2010 INFLATION-ADJUSTED DOLLARS) BY SEX BY WORK EXPERIENCE IN THE PAST 12 MONTHS FOR THE POPULATION 16 YEARS AND OVER WITH EARNINGS IN THE PAST 12 MONTHS

Data Set: 2008-2012 American Community Survey 5-Year Estimates

	Ville Platte city, Louisiana			
	African American	Margin of Error (+/-)	White, Not Hispanic	Margin of Error (+/-)
Median earnings in the past 12 months (in 2010 inflation-adjusted dollars) --				
Total:	\$ 18,060	\$ 7,912	\$ 35,750	\$ 12,924
Male --				
Total	\$ 27,500	\$ 11,424	\$ 49,737	\$ 24,928
Worked full-time, year-round in the past 12 months	\$ 28,833	\$ 13,241	\$ 66,042	\$ 8,163
Other	\$ 11,250	\$ 25,880	\$ 13,125	\$ 19,905
Female --				
Total	\$ 12,202	\$ 3,908	\$ 17,026	\$ 7,748
Worked full-time, year-round in the past 12 months	\$ 20,162	\$ 2,770	\$ 24,545	\$ 14,152
Other	\$ 6,190	\$ 1,703	\$ 6,279	\$ 1,762

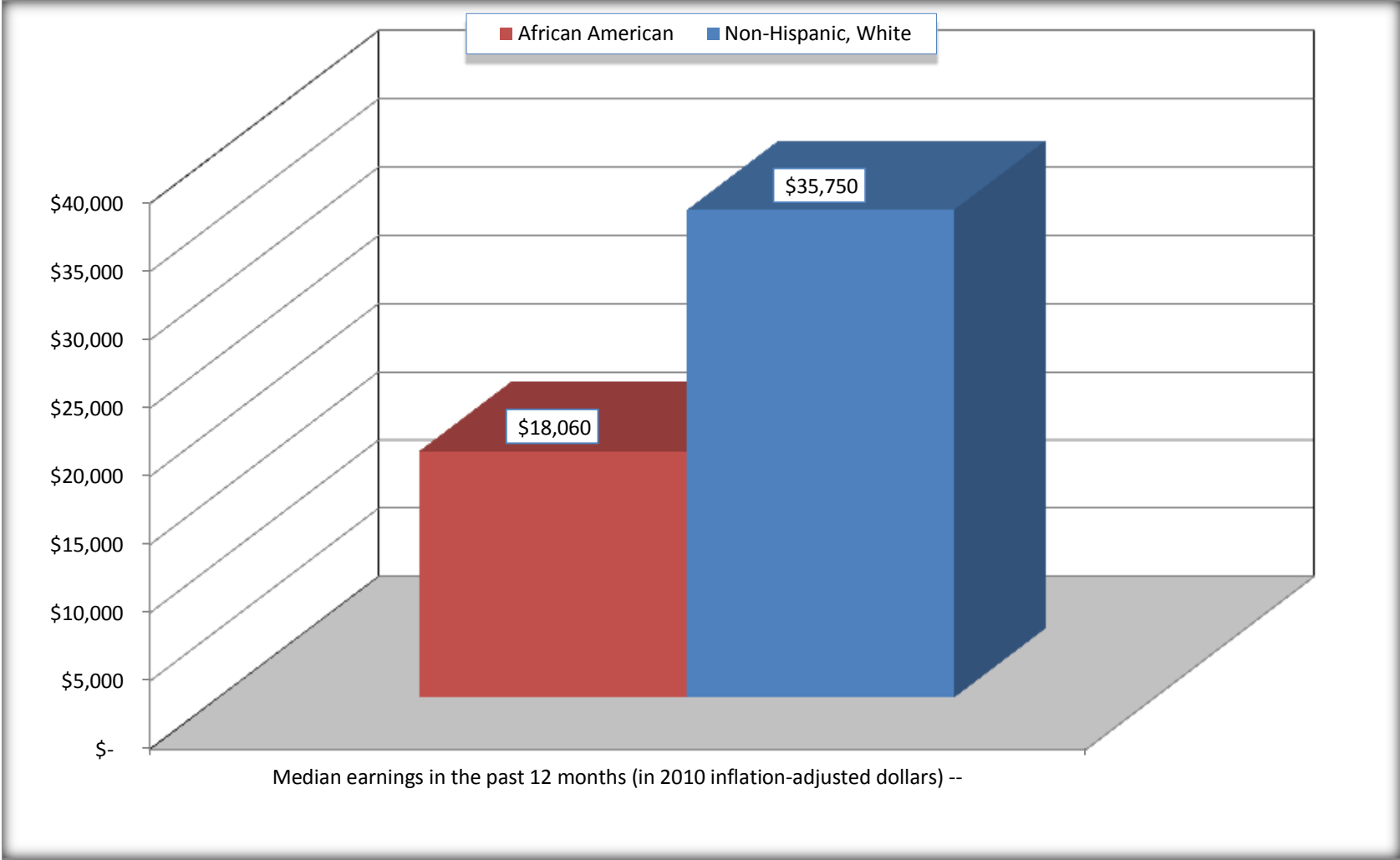
Source: U.S. Census Bureau, 2008-2012 American Community Survey

For information on confidentiality protection, sampling error, nonsampling error, and definitions, see Survey Methodology.

<http://www.census.gov/acs/www/UseData/index.htm>

Median earnings in the Past 12 Months (16 Years and Over with Earnings)

Ville Platte city, Louisiana



Source: B20017. MEDIAN EARNINGS IN THE PAST 12 MONTHS (IN 2010 INFLATION-ADJUSTED DOLLARS) BY SEX BY WORK EXPERIENCE IN THE PAST 12 MONTHS FOR THE POPULATION 16 YEARS AND OVER WITH EARNINGS IN THE PAST 12 MONTHS
Data Set: 2008-2012 American Community Survey 5-Year Estimates

B20005. SEX BY WORK EXPERIENCE IN THE PAST 12 MONTHS BY EARNINGS IN THE PAST 12 MONTHS (IN 2010 INFLATION-ADJUSTED DOLLARS) FOR THE POPULATION 16 YEARS AND OVER

Data Set: 2008-2012 American Community Survey 5-Year Estimates

	Ville Platte city, Louisiana					
	African American	Margin of Error (+/-)	% of AA Total	White, Not Hispanic	Margin of Error (+/-)	% of NHW Total
Total:	2,819	496	100.0%	2,586	401	100.0%
Worked full-time, year-round in the past 12 months:	603	NC	21.4%	733	NC	28.3%
No earnings	0	NC	0.0%	0	NC	0.0%
With earnings:	603	NC	21.4%	733	NC	28.3%
\$ 1 to \$ 9,999 or loss	45	NC	1.6%	69	NC	2.7%
\$ 10,000 to \$ 19,999	149	NC	5.3%	77	NC	3.0%
\$ 20,000 to \$ 29,999	198	NC	7.0%	88	NC	3.4%
\$ 30,000 to \$ 49,999	175	NC	6.2%	155	NC	6.0%
\$ 50,000 to \$ 74,999	15	NC	0.5%	134	NC	5.2%
\$ 75,000 or more	21	NC	0.7%	210	NC	8.1%
Other:	2,216	NC	78.6%	1,853	NC	71.7%
No earnings	1,789	NC	63.5%	1,552	NC	60.0%
With earnings: less than full time, year-round	427	NC	15.1%	301	NC	11.6%
Male:	1,039	540	36.9%	1,234	233	47.7%
Worked full-time, year-round in the past 12 months:	264	207	9.4%	509	153	19.7%
No earnings	0	17	0.0%	0	17	0.0%
With earnings:	264	207	9.4%	509	153	19.7%
\$ 1 to \$ 9,999 or loss	1	NC	0.0%	46	NC	1.8%
\$ 10,000 to \$ 19,999	27	NC	1.0%	25	NC	1.0%
\$ 20,000 to \$ 29,999	125	NC	4.4%	38	NC	1.5%
\$ 30,000 to \$ 49,999	98	NC	3.5%	81	NC	3.1%
\$ 50,000 to \$ 74,999	7	NC	0.2%	109	NC	4.2%
\$ 75,000 or more	6	NC	0.2%	210	NC	8.1%

	Ville Platte city, Louisiana					
	African American	Margin of Error (+/-)	% of AA Total	White, Not Hispanic	Margin of Error (+/-)	% of NHW Total
Other:	775	382	27.5%	725	179	28.0%
No earnings	681	251	24.2%	568	162	22.0%
With earnings:	94	152	3.3%	157	76	6.1%
Female:	1,780	179	63.1%	1,352	202	52.3%
Worked full-time, year-round in the past 12 months:	339	123	12.0%	224	93	8.7%
No earnings	0	17	0.0%	0	17	0.0%
With earnings:	339	123	12.0%	224	93	8.7%
\$ 1 to \$ 9,999 or loss	44	NC	1.6%	23	NC	0.9%
\$ 10,000 to \$ 19,999	122	NC	4.3%	52	NC	2.0%
\$ 20,000 to \$ 29,999	73	NC	2.6%	50	NC	1.9%
\$ 30,000 to \$ 49,999	77	NC	2.7%	74	NC	2.9%
\$ 50,000 to \$ 74,999	8	NC	0.3%	25	NC	1.0%
\$ 75,000 or more	15	NC	0.5%	0	NC	0.0%
Other:	1,441	190	51.1%	1,128	181	43.6%
No earnings	1,108	186	39.3%	984	186	38.1%
With earnings:	333	118	11.8%	144	59	5.6%

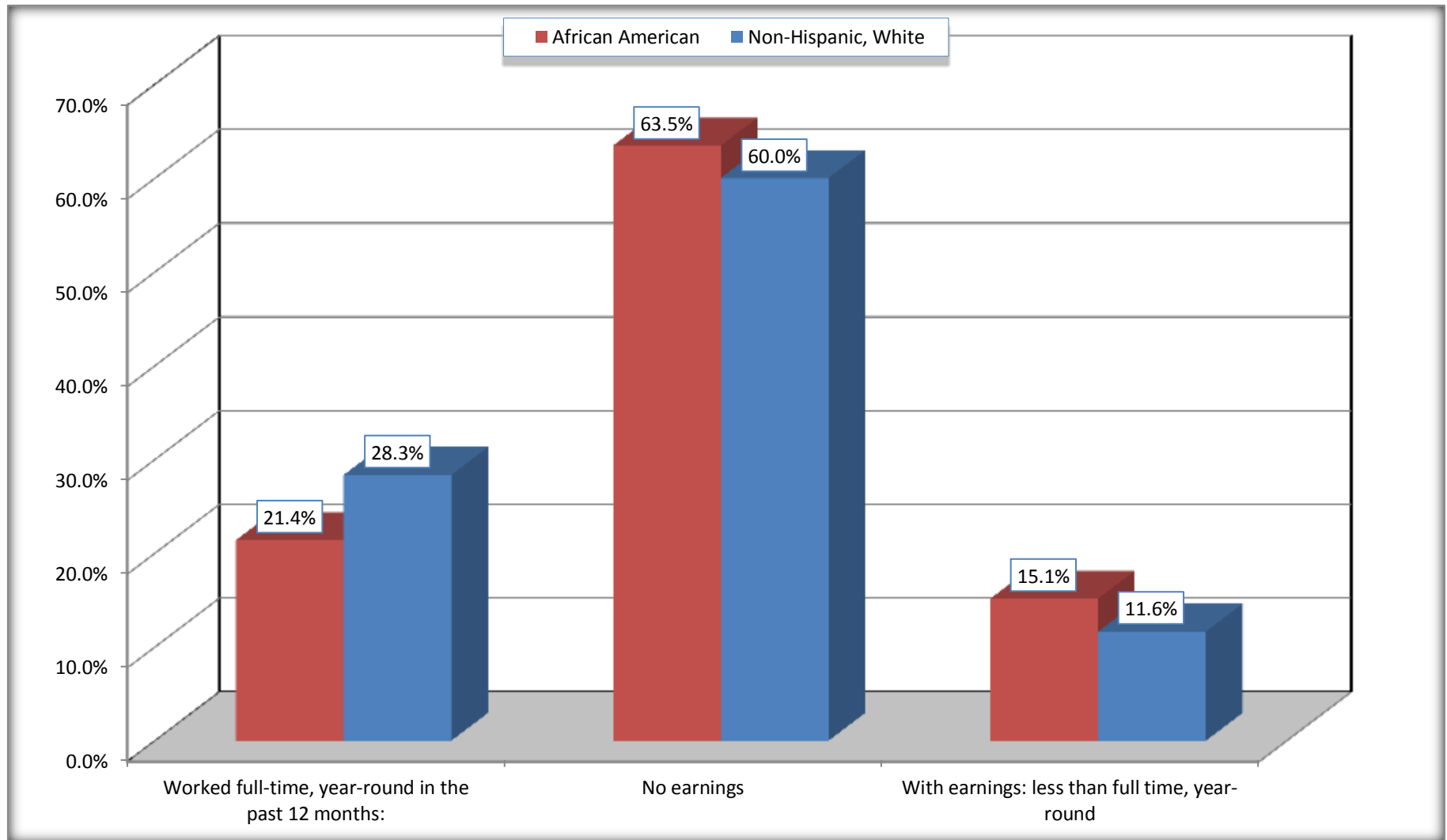
Source: U.S. Census Bureau, 2008-2012 American Community Survey

For information on confidentiality protection, sampling error, nonsampling error, and definitions, see Survey Methodology.

<http://www.census.gov/acs/www/UseData/index.htm>

Employment and Earnings in in the Past 12 Months (16 Years and Over)

Ville Platte city, Louisiana



Source: B20005. SEX BY WORK EXPERIENCE IN THE PAST 12 MONTHS BY EARNINGS IN THE PAST 12 MONTHS (IN 2010 INFLATION-ADJUSTED DOLLARS) FOR THE POPULATION 16 YEARS AND OVER

Data Set: 2008-2012 American Community Survey 5-Year Estimates

C21001. SEX BY AGE BY VETERAN STATUS FOR THE CIVILIAN POPULATION 18 YEARS AND OVER

Data Set: 2008-2012 American Community Survey 5-Year Estimates

	Ville Platte city, Louisiana					
	African American	Margin of Error (+/-)	% of AA Total	White, Not Hispanic	Margin of Error (+/-)	% of NHW Total
Total:	2,609	492	100.0%	2,562	397	100.0%
Veteran	114	NC	4.4%	425	NC	16.6%
Nonveteran	2,495	NC	95.6%	2,137	NC	83.4%
Male:	977	545	37.4%	1,234	233	48.2%
18 to 64 years:	811	542	31.1%	855	187	33.4%
Veteran	89	72	3.4%	188	95	7.3%
Nonveteran	722	510	27.7%	667	174	26.0%
65 years and over:	166	74	6.4%	379	109	14.8%
Veteran	25	20	1.0%	229	83	8.9%
Nonveteran	141	70	5.4%	150	69	5.9%
Female:	1,632	175	62.6%	1,328	198	51.8%
18 to 64 years:	1,399	174	53.6%	789	155	30.8%
Veteran	0	17	0.0%	8	14	0.3%
Nonveteran	1,399	174	53.6%	781	156	30.5%
65 years and over:	233	59	8.9%	539	106	21.0%
Veteran	0	17	0.0%	0	17	0.0%
Nonveteran	233	59	8.9%	539	106	21.0%

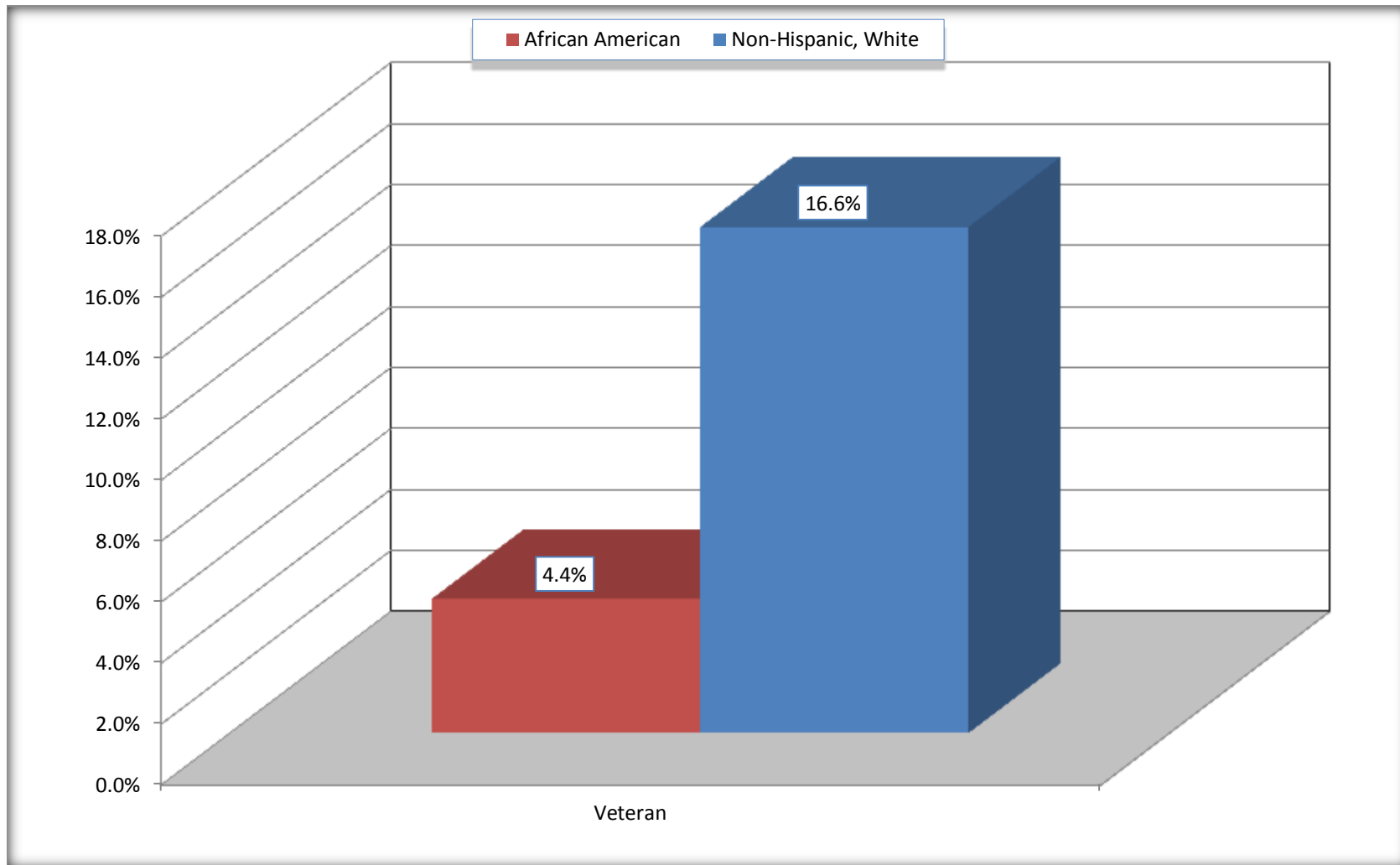
Source: U.S. Census Bureau, 2008-2012 American Community Survey

For information on confidentiality protection, sampling error, nonsampling error, and definitions, see Survey Methodology.

<http://www.census.gov/acs/www/UseData/index.htm>

Veterans in the Civilian Population 18 Years and Over

Ville Platte city, Louisiana



Source: C21001. SEX BY AGE BY VETERAN STATUS FOR THE CIVILIAN POPULATION 18 YEARS AND OVER
Data Set: 2008-2012 American Community Survey 5-Year Estimates

B22005. RECEIPT OF FOOD STAMPS/SNAP IN THE PAST 12 MONTHS BY RACE OF HOUSEHOLDER

Data Set: 2008-2012 American Community Survey 5-Year Estimates

	Ville Platte city, Louisiana					
	African American	Margin of Error (+/-)	% of AA Total	White, Not Hispanic	Margin of Error (+/-)	% of NHW Total
Total:	1,484	306	100.0%	1,355	243	100.0%
HH received Food Stamps/SNAP in the past 12 months	852	196	57.4%	281	94	20.7%
HH did not receive Food Stamps/SNAP in the past 12 months	632	208	42.6%	1,074	199	79.3%

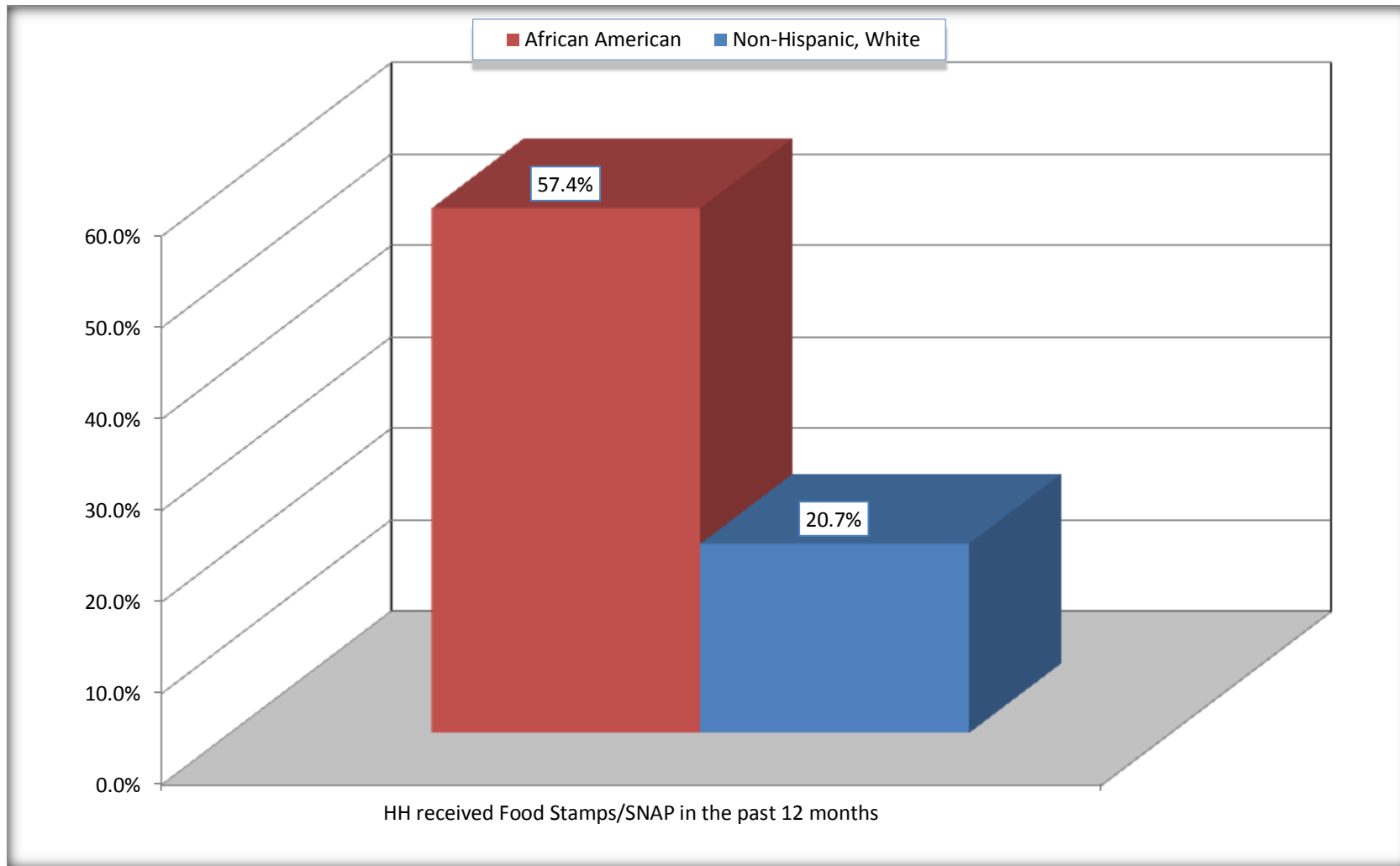
Source: U.S. Census Bureau, 2008-2012 American Community Survey

For information on confidentiality protection, sampling error, nonsampling error, and definitions, see Survey Methodology.

<http://www.census.gov/acs/www/UseData/index.htm>

Receipt of Food Stamps/SNAP in the Past 12 Months by Household

Ville Platte city, Louisiana



Source: B22005. RECEIPT OF FOOD STAMPS/SNAP IN THE PAST 12 MONTHS BY RACE OF HOUSEHOLDER
Data Set: 2008-2012 American Community Survey 5-Year Estimates

C23002. SEX BY AGE BY EMPLOYMENT STATUS FOR THE POPULATION 16 YEARS AND OVER

Data Set: 2008-2012 American Community Survey 5-Year Estimates

	Ville Platte city, Louisiana					
	African American	Margin of Error (+/-)	% of AA Total	White, Not Hispanic	Margin of Error (+/-)	% of NHW Total
Total:	2,819	496	100.0%	2,586	401	100.0%
In labor force:	956	NC	33.9%	990	NC	38.3%
In Armed Forces	0	NC	0.0%	0	NC	0.0%
Civilian:	922	NC	32.7%	922	NC	35.7%
Employed	834	NC	29.6%	921	NC	35.6%
Unemployed	122	NC	4.3%	69	NC	2.7%
Not in labor force	1,863	NC	66.1%	1,596	NC	61.7%
Male:	1,039	540	36.9%	1,234	233	47.7%
16 to 64 years:	873	538	31.0%	855	187	33.1%
In labor force:	359	338	12.7%	600	168	23.2%
In Armed Forces	0	17	0.0%	0	17	0.0%
Civilian:	359	338	12.7%	600	168	23.2%
Employed	288	260	10.2%	566	153	21.9%
Unemployed	71	111	2.5%	34	34	1.3%
Not in labor force	514	234	18.2%	255	104	9.9%
65 years and over:	166	74	5.9%	379	109	14.7%
In labor force:	19	30	0.7%	35	28	1.4%
Employed	19	30	0.7%	35	28	1.4%
Unemployed	0	17	0.0%	0	17	0.0%
Not in labor force	147	70	5.2%	344	103	13.3%

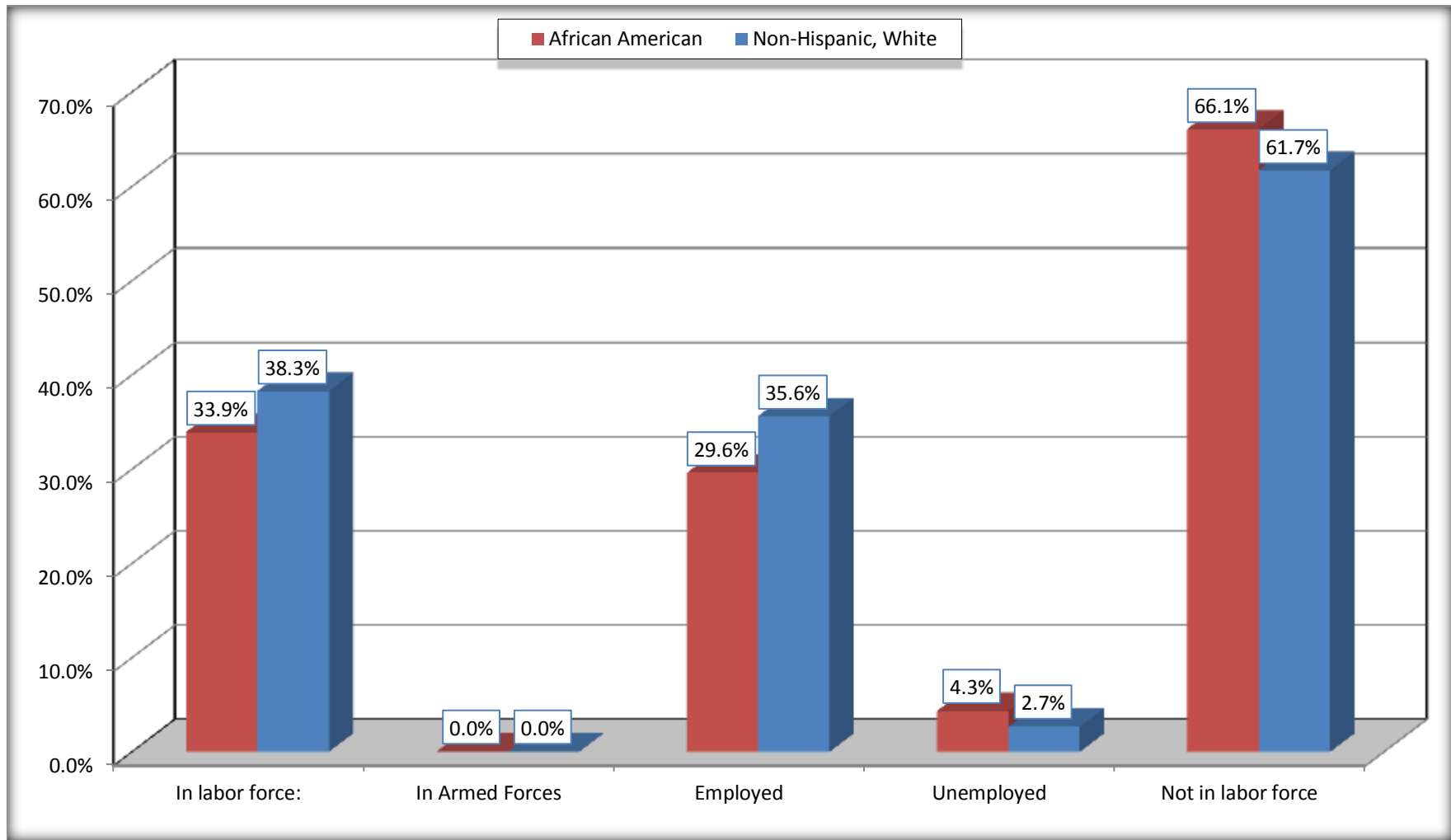
	Ville Platte city, Louisiana					
	African American	Margin of Error (+/-)	% of AA Total	White, Not Hispanic	Margin of Error (+/-)	% of NHW Total
Female:	1,780	179	63.1%	1,352	202	52.3%
16 to 64 years:	1,547	180	54.9%	813	166	31.4%
In labor force:	563	142	20.0%	322	115	12.5%
In Armed Forces	0	17	0.0%	0	17	0.0%
Civilian:	563	142	20.0%	322	115	12.5%
Employed	512	152	18.2%	296	110	11.4%
Unemployed	51	43	1.8%	26	37	1.0%
Not in labor force	984	179	34.9%	491	135	19.0%
65 years and over:	233	59	8.3%	539	106	20.8%
In labor force:	15	16	0.5%	33	30	1.3%
Employed	15	16	0.5%	24	25	0.9%
Unemployed	0	17	0.0%	9	14	0.3%
Not in labor force	218	58	7.7%	506	99	19.6%

Source: U.S. Census Bureau, 2008-2012 American Community Survey

For information on confidentiality protection, sampling error, nonsampling error, and definitions, see Survey Methodology.
<http://www.census.gov/acs/www/UseData/index.htm>

Employment Status for the Population 16 years and over

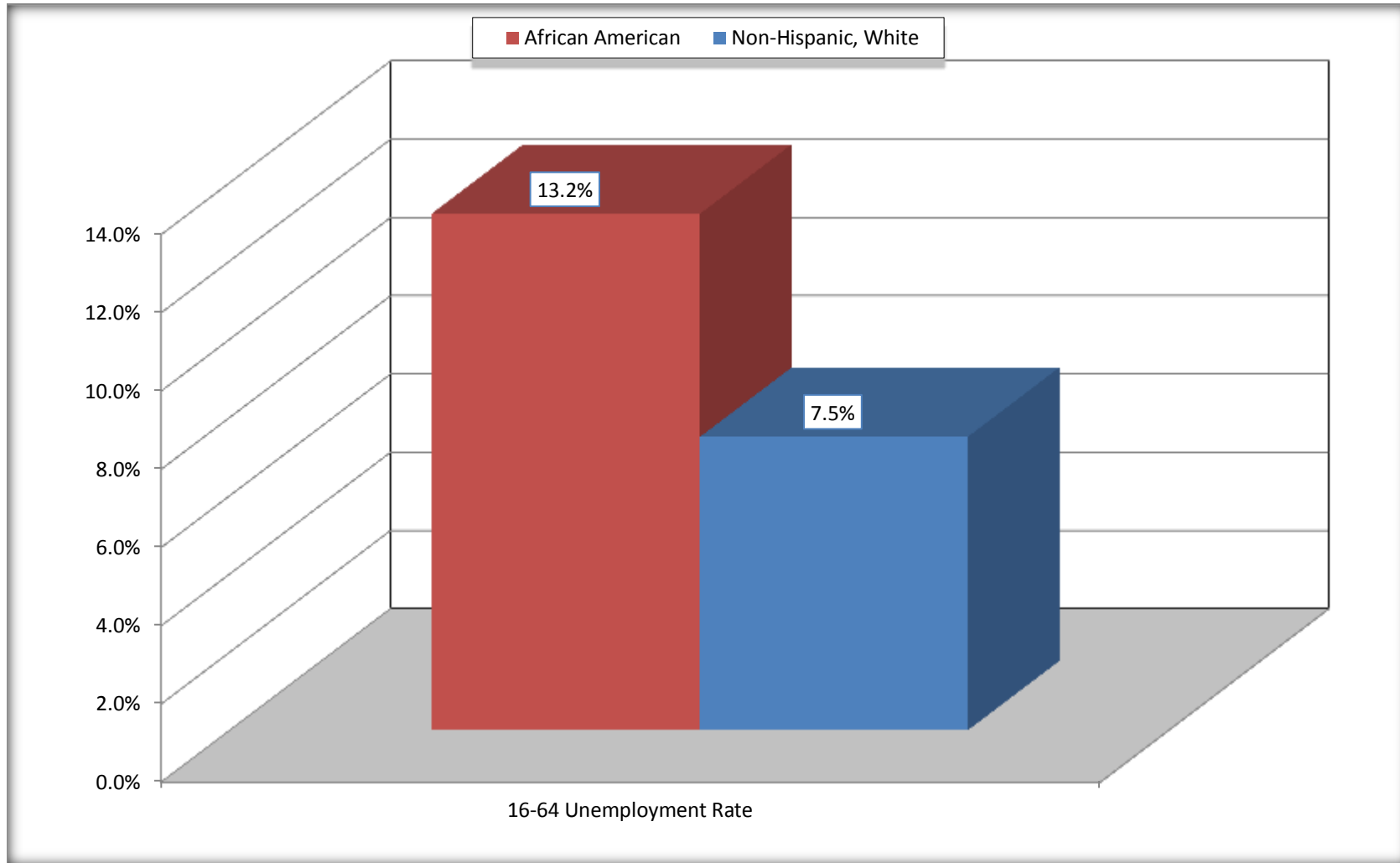
Ville Platte city, Louisiana



Source: C23002. SEX BY AGE BY EMPLOYMENT STATUS FOR THE POPULATION 16 YEARS AND OVER
Data Set: 2008-2012 American Community Survey 5-Year Estimates

Unemployment of Working Age Population (Ages 16 to 64) (As a Percent of 16-64 Civilian Labor Force)

Ville Platte city, Louisiana



Source: C23002. SEX BY AGE BY EMPLOYMENT STATUS FOR THE POPULATION 16 YEARS AND OVER
Data Set: 2008-2012 American Community Survey 5-Year Estimates

C24010. SEX BY OCCUPATION FOR THE CIVILIAN EMPLOYED POPULATION 16 YEARS AND OVER

Data Set: 2008-2012 American Community Survey 5-Year Estimates

	Ville Platte city, Louisiana					
	African American	Margin of Error (+/-)	% of AA Total	White, Not Hispanic	Margin of Error (+/-)	% of NHW Total
Total:	834	288	100.0%	921	225	100.0%
Management, professional, and related occupations	117	NC	14.0%	259	NC	28.1%
Service occupations	325	NC	39.0%	72	NC	7.8%
Sales and office occupations	145	NC	17.4%	237	NC	25.7%
Natural resources, construction, and maintenance occupations:	177	NC	21.2%	230	NC	25.0%
Production, transportation, and material moving occupations	70	NC	8.4%	123	NC	13.4%
Male:	307	262	36.8%	601	158	65.3%
Management, business, science, and arts occupations:	9	34	1.1%	109	50	11.8%
Service occupations	68	101	8.2%	38	33	4.1%
Sales and office occupations	6	15	0.7%	120	65	13.0%
Natural resources, construction, and maintenance occupations:	177	145	21.2%	230	109	25.0%
Production, transportation, and material moving occupations	47	46	5.6%	104	79	11.3%
Female:	527	152	63.2%	320	116	34.7%
Management, professional, and related occupations	108	67	12.9%	150	71	16.3%
Service occupations	257	96	30.8%	34	28	3.7%
Sales and office occupations	139	84	16.7%	117	63	12.7%
Natural resources, construction, and maintenance occupations:	0	17	0.0%	0	17	0.0%
Production, transportation, and material moving occupations	23	29	2.8%	19	25	2.1%

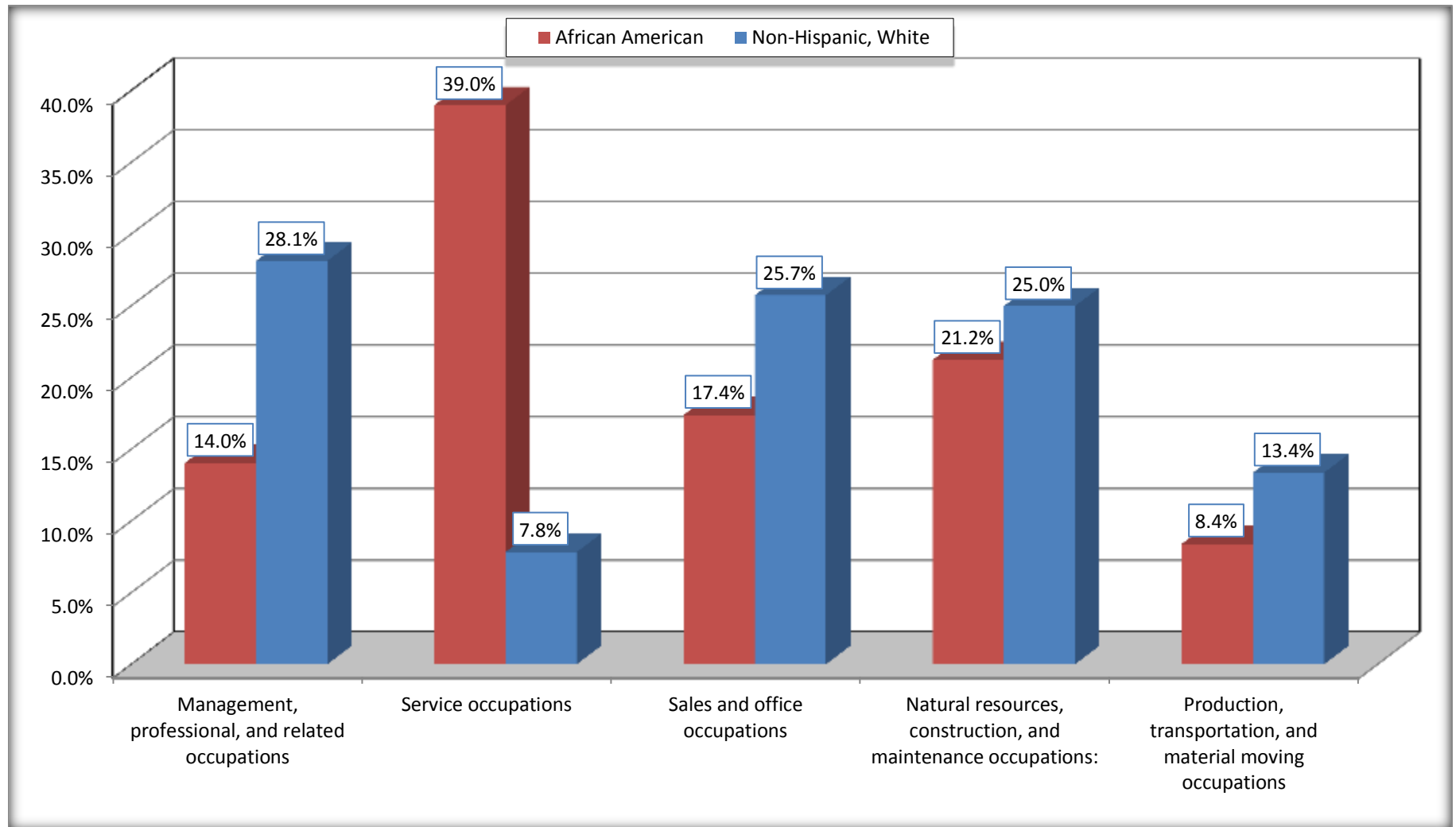
Source: U.S. Census Bureau, 2008-2012 American Community Survey

For information on confidentiality protection, sampling error, nonsampling error, and definitions, see Survey Methodology.

<http://www.census.gov/acs/www/UseData/index.htm>

Occupation for the Civilian Employed 16 Years and Over Population

Ville Platte city, Louisiana



Source: C24010. SEX BY OCCUPATION FOR THE CIVILIAN EMPLOYED POPULATION 16 YEARS AND OVER
Data Set: 2008-2012 American Community Survey 5-Year Estimates

B25003. TENURE - Universe: OCCUPIED HOUSING UNITS

Data Set: 2008-2012 American Community Survey 5-Year Estimates

	Ville Platte city, Louisiana					
	African American	Margin of Error (+/-)	% of AA Total	White, Not Hispanic	Margin of Error (+/-)	% of NHW Total
Total:	1,484	306	100.0%	1,355	243	100.0%
Owner occupied	460	156	31.0%	891	178	65.8%
Renter occupied	1,024	249	69.0%	464	148	34.2%

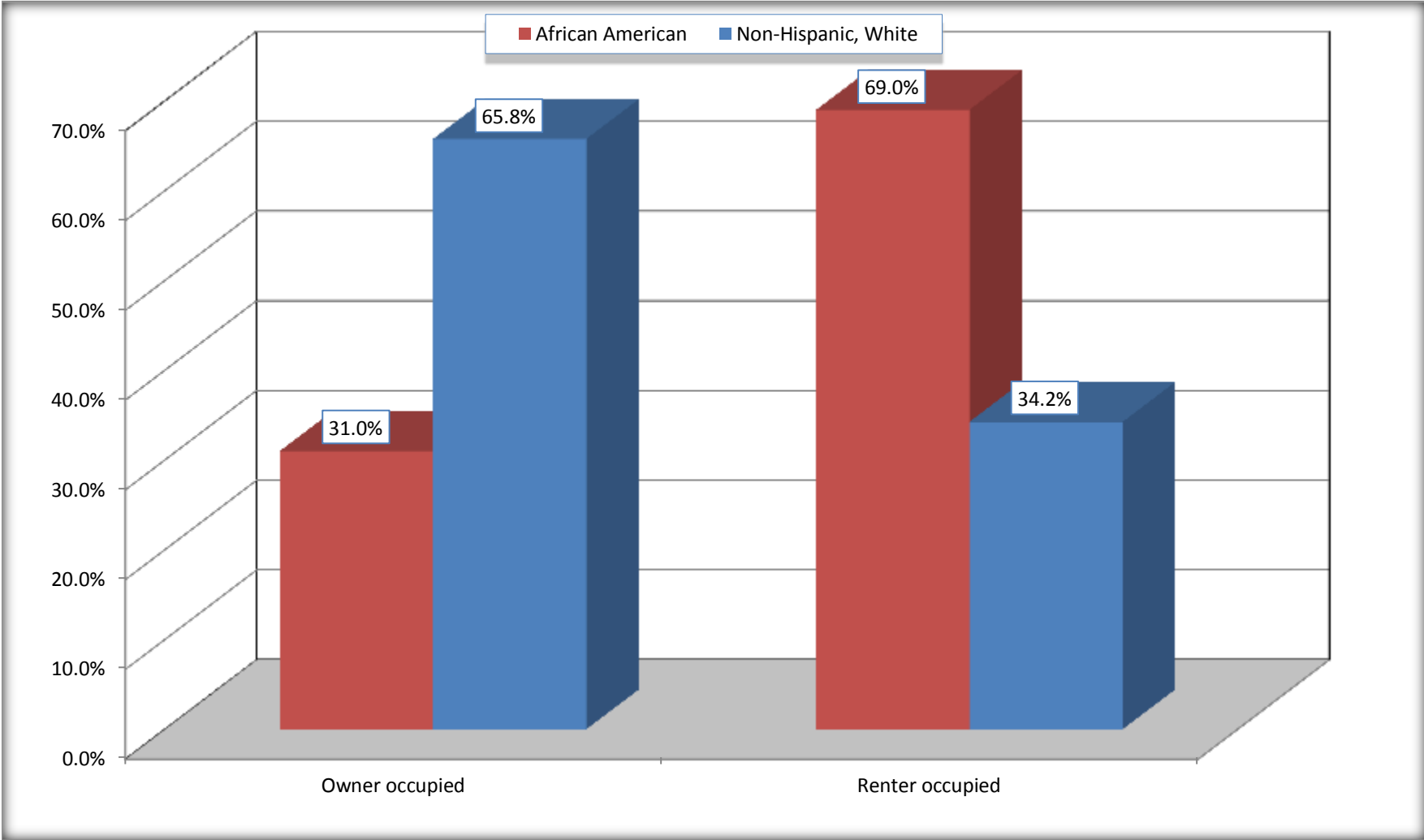
Source: U.S. Census Bureau, 2008-2012 American Community Survey

For information on confidentiality protection, sampling error, nonsampling error, and definitions, see Survey Methodology.

<http://www.census.gov/acs/www/UseData/index.h>

Home Owners and Renters by Household

Ville Platte city, Louisiana



Source: B25003. TENURE - Universe: OCCUPIED HOUSING UNITS
Data Set: 2008-2012 American Community Survey 5-Year Estimates

B25014. OCCUPANTS PER ROOM - Universe: OCCUPIED HOUSING UNITS

Data Set: 2008-2012 American Community Survey 5-Year Estimates

	Ville Platte city, Louisiana					
	African American	Margin of Error (+/-)	% of AA Total	White, Not Hispanic	Margin of Error (+/-)	% of NHW Total
Total:	1,484	306	100.0%	1,355	243	100.0%
1.00 or less occupants per room	1,388	284	93.5%	1,338	245	98.7%
1.01 or more occupants per room	96	80	6.5%	17	27	1.3%

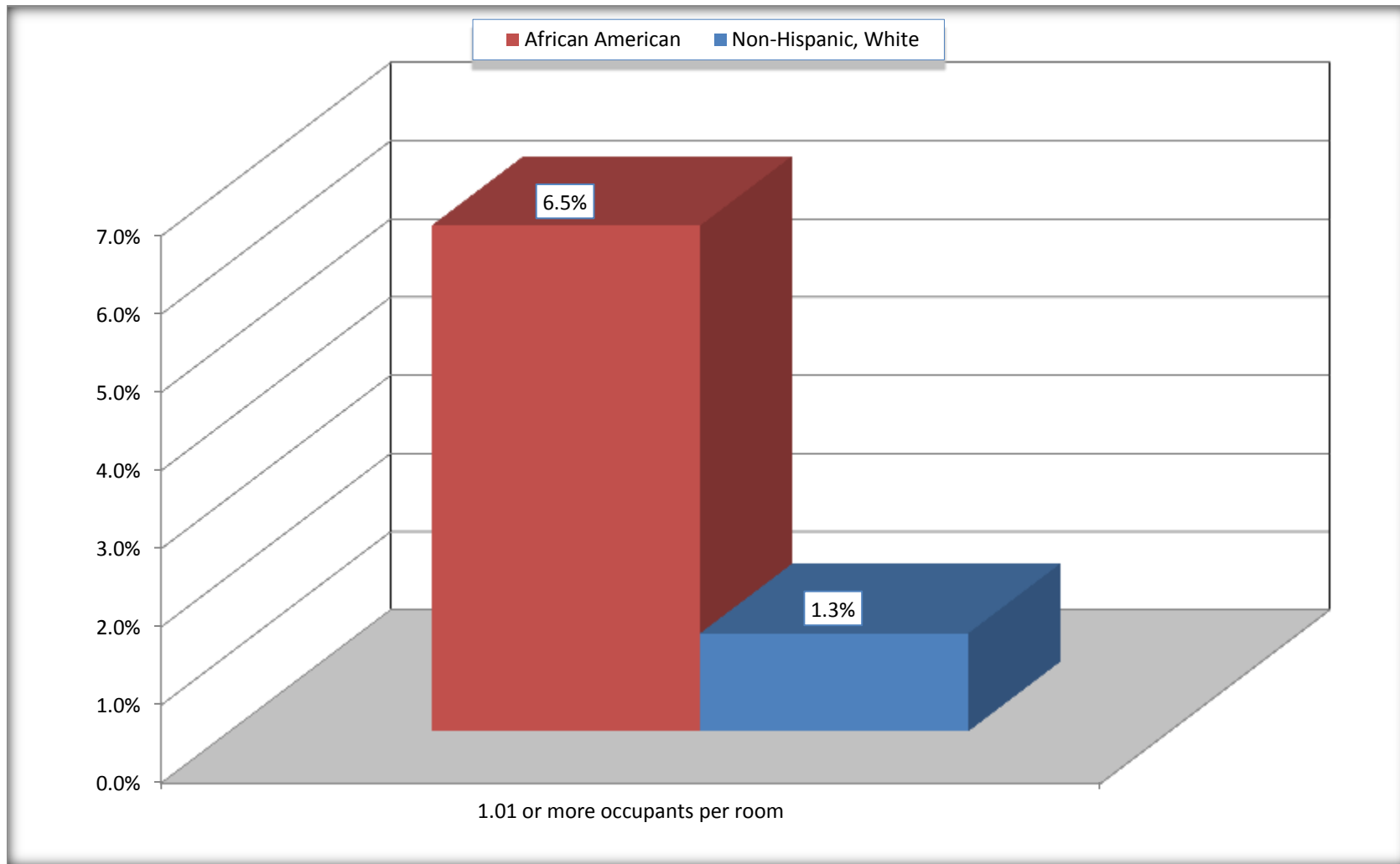
Source: U.S. Census Bureau, 2008-2012 American Community Survey

For information on confidentiality protection, sampling error, nonsampling error, and definitions, see Survey Methodology.

<http://www.census.gov/acs/www/UseData/index.ht>

More than One Person per Room (Crowding) by Household

Ville Platte city, Louisiana



Source: B25014. OCCUPANTS PER ROOM - Universe: OCCUPIED HOUSING UNITS
Data Set: 2008-2012 American Community Survey 5-Year Estimates

B18101. AGE BY DISABILITY STATUS

Data Set: 2008-2012 American Community Survey 5-Year Estimates

	Ville Platte city, Louisiana					
	African American	Margin of Error (+/-)	% of AA Total	White, Not Hispanic	Margin of Error (+/-)	% of NHW Total
Total:	4,239	499	100.0%	2,988	498	100.0%
Under 18 years:	1,680	250	39.6%	549	20	18.4%
With a disability	109	77	2.6%	42	38	1.4%
No disability	1,571	258	37.1%	507	236	17.0%
18 to 64 years:	2,160	498	51.0%	1,629	303	54.5%
With a disability	481	192	11.3%	349	115	11.7%
No disability	1,679	389	39.6%	1,280	268	42.8%
65 years and over:	399	116	9.4%	810	186	27.1%
With a disability	138	61	3.3%	364	109	12.2%
No disability	261	95	6.2%	446	138	14.9%

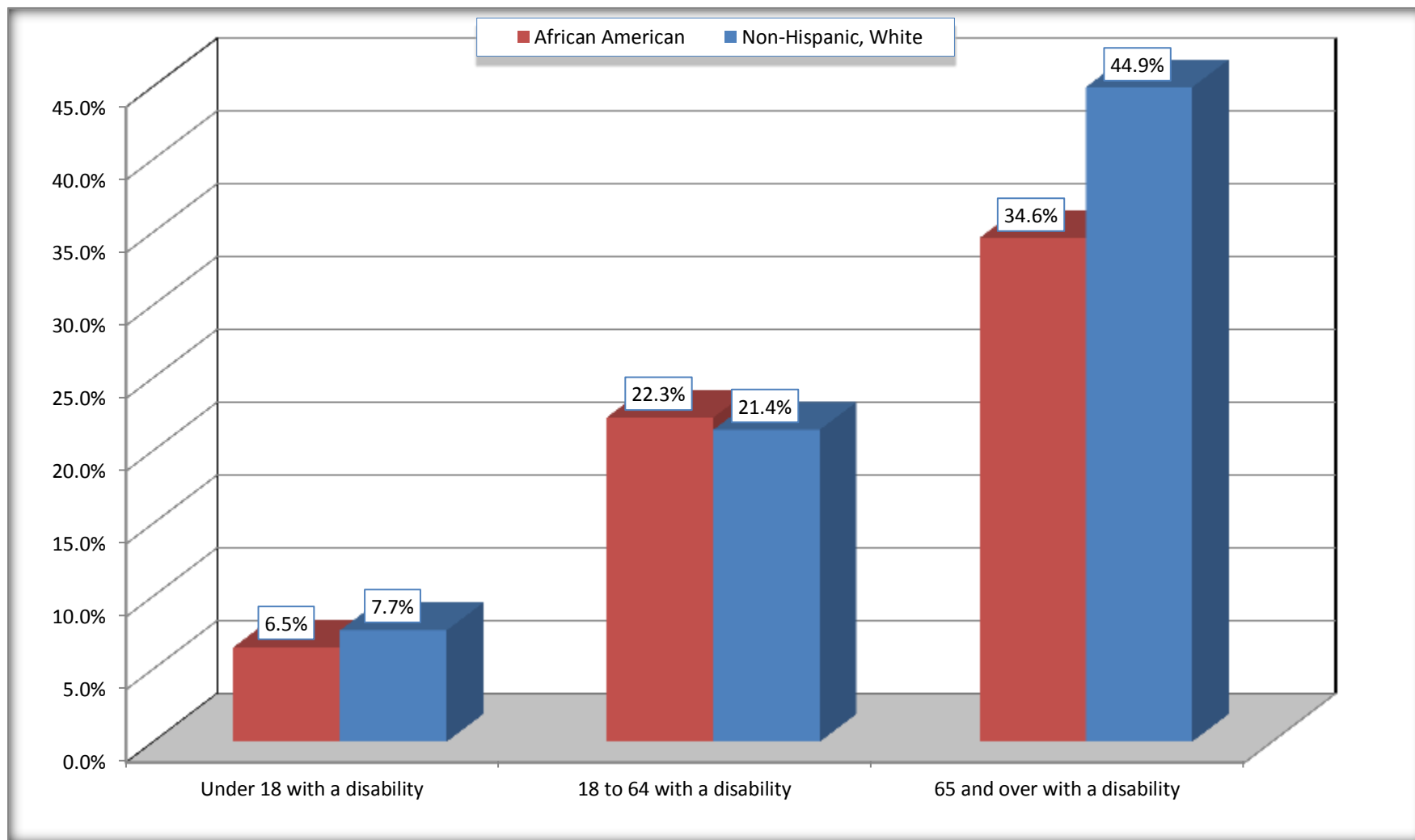
Source: U.S. Census Bureau, 2008-2012 American Community Survey

For information on confidentiality protection, sampling error, nonsampling error, and definitions, see Survey Methodology.

<http://www.census.gov/acs/www/UseData/index.htm>

Disability by Age

Ville Platte city, Louisiana



Source: B18101. AGE BY DISABILITY STATUS
Data Set: 2008-2012 American Community Survey 5-Year Estimates

C27001B. HEALTH INSURANCE COVERAGE STATUS BY AGE

Data Set: 2008-2012 American Community Survey 5-Year Estimates

	Ville Platte city, Louisiana					
	African American	Margin of Error (+/-)	% of AA Total	White, Not Hispanic	Margin of Error (+/-)	% of NHW Total
Total:	4,239	499	100.0%	2,988	498	100.0%
Under 18 years:	1,680	250	39.6%	549	252	18.4%
With health insurance coverage	1,670	252	39.4%	549	252	18.4%
No health insurance coverage	10	21	0.2%	0	17	0.0%
18 to 64 years:	2,160	498	51.0%	1,629	303	54.5%
With health insurance coverage	1,274	355	30.1%	1,222	232	40.9%
No health insurance coverage	886	271	20.9%	407	175	13.6%
65 years and over:	399	116	9.4%	810	186	27.1%
With health insurance coverage	394	115	9.3%	810	186	27.1%
No health insurance coverage	5	8	0.1%	0	17	0.0%

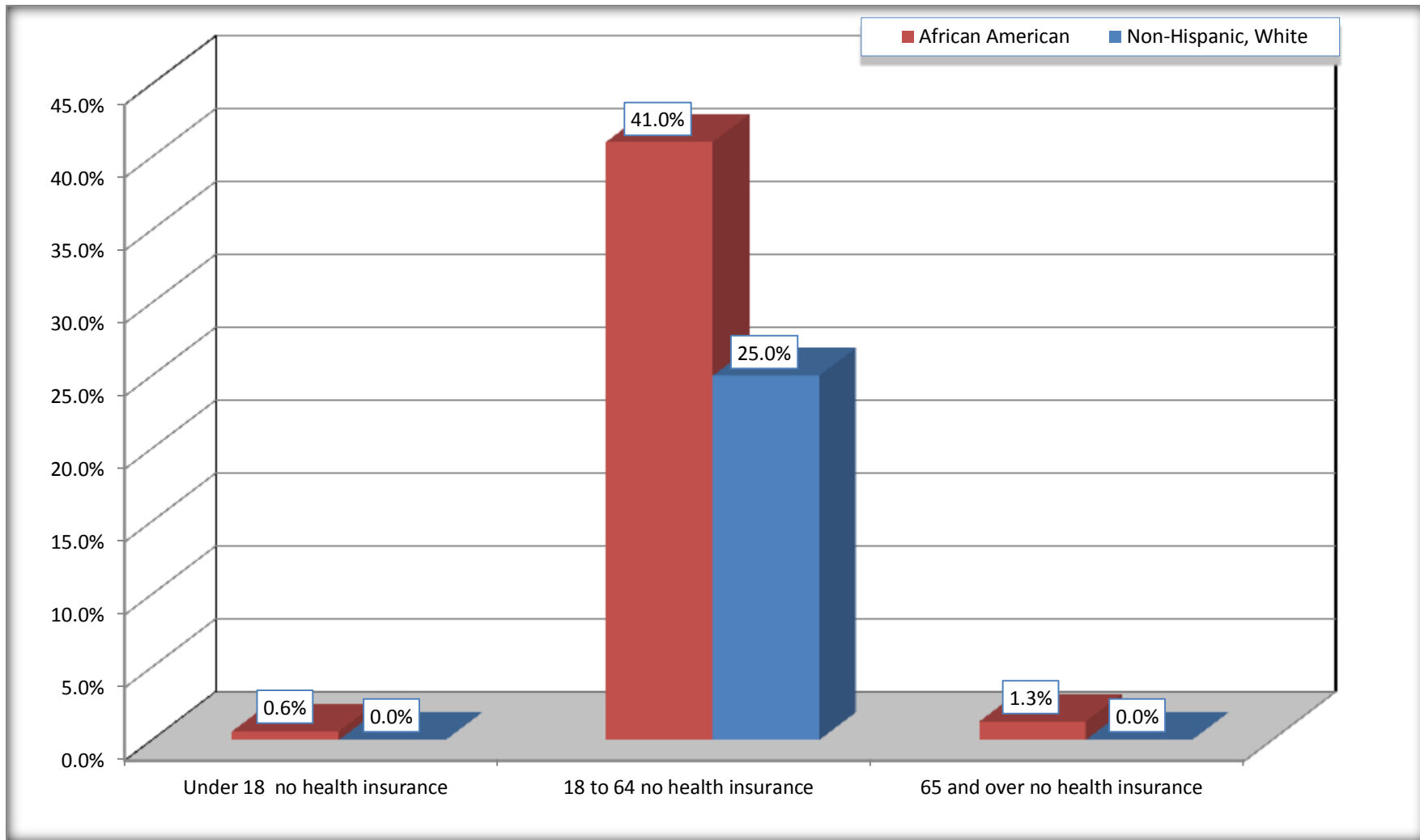
Source: U.S. Census Bureau, 2008-2012 American Community Survey

For information on confidentiality protection, sampling error, nonsampling error, and definitions, see Survey Methodology.

<http://www.census.gov/acs/www/UseData/index.htm>

Lack of Health Insurance Coverage by Age

Ville Platte city, Louisiana



Source: C27001B. HEALTH INSURANCE COVERAGE STATUS BY AGE
Data Set: 2008-2012 American Community Survey 5-Year Estimates