

Selected Socio-Economic Data

Timberlane CDP, Louisiana

African American and White, Not Hispanic

Data Set: 2008-2012 American Community Survey 5-Year Estimates

www.fairvote2020.org

www.fairdata2000.com

[29-Dec-13](#)

C02003.DETAILED RACE - Universe: TOTAL POPULATION

Data Set: 2008-2012 American Community Survey 5-Year Estimates

	Timberlane CDP, Louisiana		
	Population	Margin of Error (+/-)	% of Total
Total:	10,212	788	100.0%
Population of one race:	9,979	787	97.7%
White	5,394	711	52.8%
Black or African American	3,325	534	32.6%
American Indian and Alaska Native	20	33	0.2%
Asian alone	690	303	6.8%
Native Hawaiian and Other Pacific Islander	0	19	0.0%
Some other race	550	289	5.4%
Population of two or more races:	233	209	2.3%
Two races including Some other race	21	24	0.2%
Two races excluding Some other race, and three or more races	212	208	2.1%
Population of two races:	233	209	2.3%
White; Black or African American	151	162	1.5%
White; American Indian and Alaska Native	61	92	0.6%
White; Asian	0	19	0.0%
Black or African American; American Indian and Alaska Native	0	19	0.0%
All other two race combinations	21	24	0.2%
Population of three races	0	19	0.0%
Population of four or more races	0	19	0.0%

Note: Hispanics may be of any race. See Table B03002 and chart.

Source: U.S. Census Bureau, 2008-2012 American Community Survey

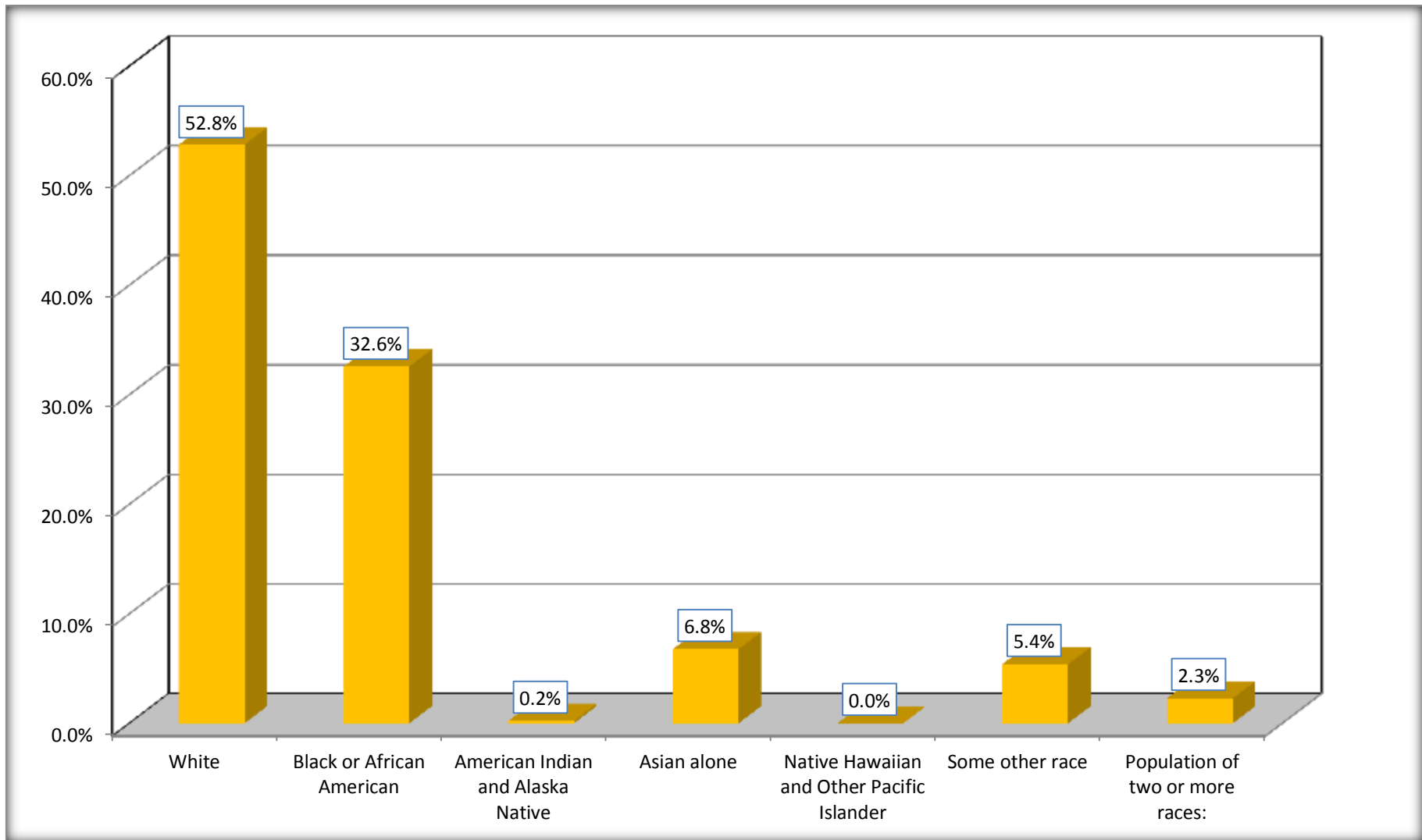
Although the American Community Survey (ACS) produces population, demographic and housing unit estimates, it is the Census Bureau's Population Estimates Program that produces and disseminates the official estimates of the population for the nation, states, counties, cities and towns and estimates of housing units for states and counties.

For information on confidentiality protection, sampling error, nonsampling error, and definitions, see Survey Methodology.

<http://www.census.gov/acs/www/UseData/index.htm>

Population by Race

Timberlane CDP, Louisiana



Source: C02003.DETAILED RACE - Universe: TOTAL POPULATION
Data Set: 2008-2012 American Community Survey 5-Year Estimates

B03002. HISPANIC OR LATINO ORIGIN BY RACE - Universe: TOTAL POPULATION

Data Set: 2008-2012 American Community Survey 5-Year Estimates

	Timberlane CDP, Louisiana		
	Population	Margin of Error (+/-)	% of Total
Total:	10,212	788	100.0%
Not Hispanic or Latino:	9,007	752	88.2%
White alone	4,882	652	47.8%
Black or African American alone	3,264	532	32.0%
American Indian and Alaska Native alone	4	6	0.0%
Asian alone	690	303	6.8%
Native Hawaiian and Other Pacific Islander alone	0	19	0.0%
Some other race alone	0	19	0.0%
Two or more races:	167	194	1.6%
Two races including Some other race	0	19	0.0%
Two races excluding Some other race, and three or more races	167	194	1.6%
Hispanic or Latino	1,205	324	11.8%

Source: U.S. Census Bureau, 2008-2012 American Community Survey

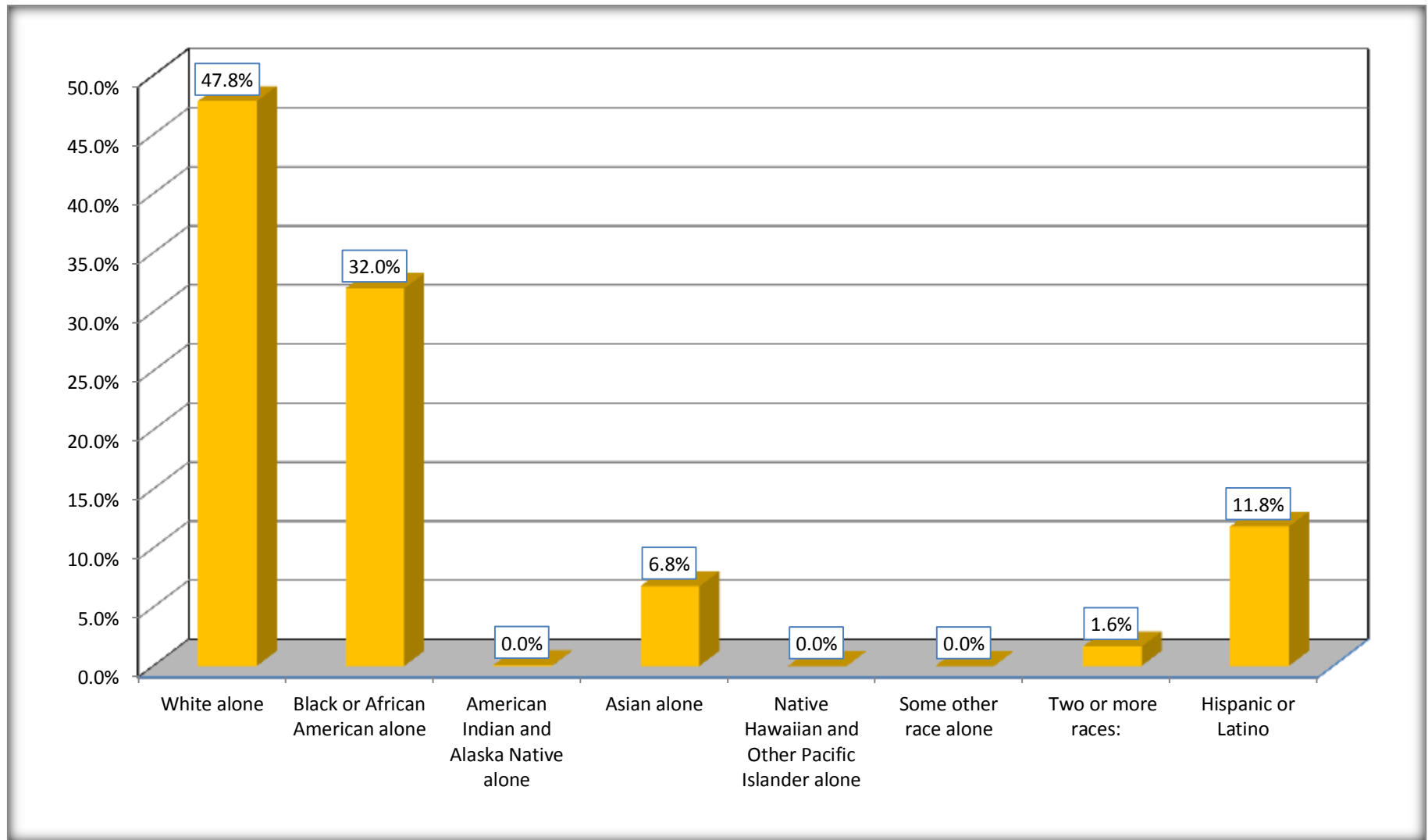
Although the American Community Survey (ACS) produces population, demographic and housing unit estimates, it is the Census Bureau's Population Estimates Program that produces and disseminates the official estimates of the population for the nation, states, counties, cities and towns and estimates of housing units for states and counties.

For information on confidentiality protection, sampling error, nonsampling error, and definitions, see Survey Methodology.

<http://www.census.gov/acs/www/UseData/index.htm>

Non-Hispanic by Race and Hispanic Population

Timberlane CDP, Louisiana



Source: B03002. HISPANIC OR LATINO ORIGIN BY RACE - Universe: TOTAL POPULATION
Data Set: 2008-2012 American Community Survey 5-Year Estimates

B03002. HISPANIC OR LATINO ORIGIN BY RACE

Data Set: 2008-2012 American Community Survey 5-Year Estimates

	Timberlane CDP, Louisiana		
	Population	Margin of Error (+/-)	% of Total
Hispanic or Latino:	1,205	324	100.0%
White alone	512	238	42.5%
Black or African American alone	61	95	5.1%
American Indian and Alaska Native alone	16	28	1.3%
Asian alone	0	19	0.0%
Native Hawaiian and Other Pacific Islander alone	0	19	0.0%
Some other race alone	550	289	45.6%
Two or more races:	66	74	5.5%
Two races including Some other race	21	24	1.7%
Two races excluding Some other race, and three or more races	45	71	3.7%

Source: U.S. Census Bureau, 2008-2012 American Community Survey

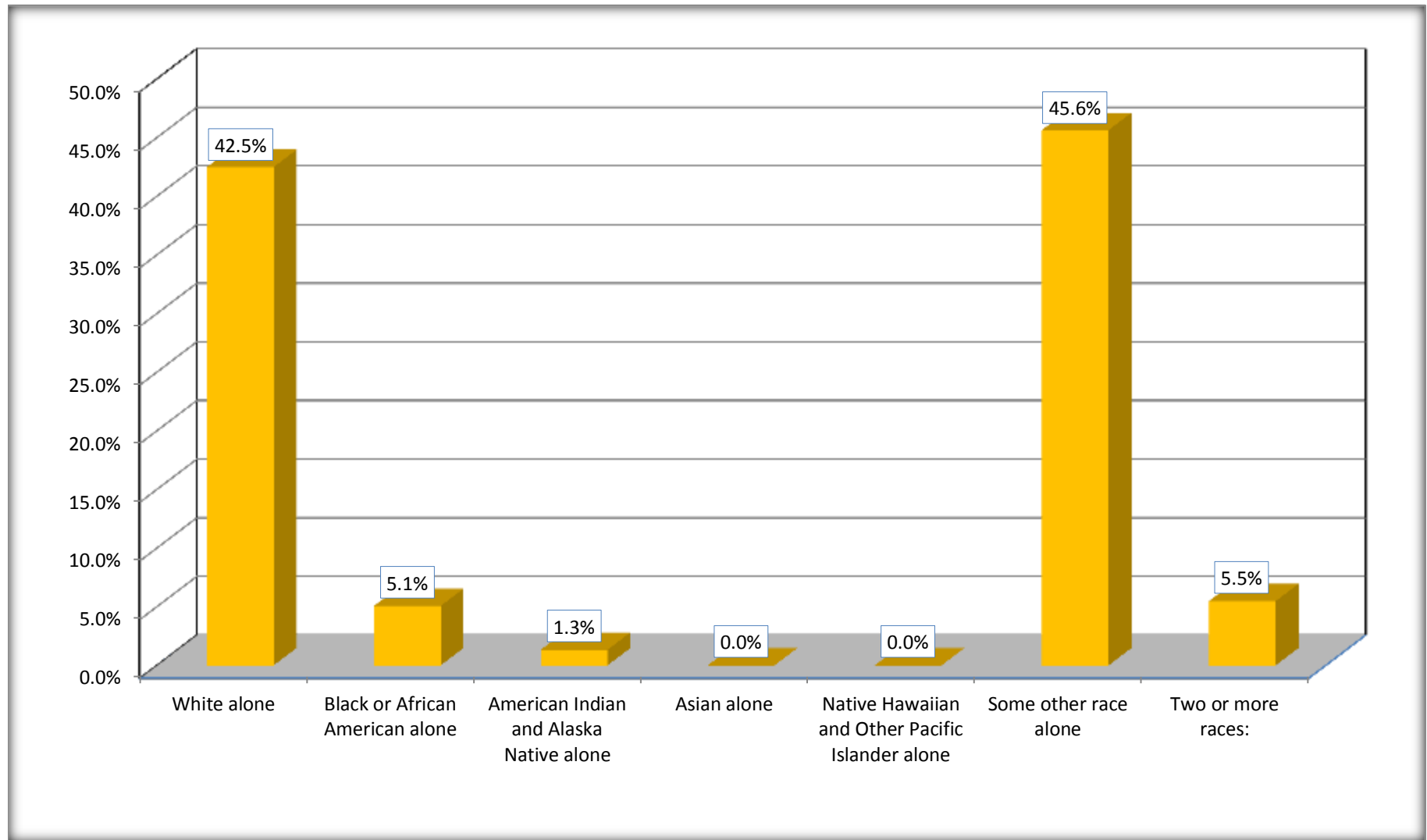
Although the American Community Survey (ACS) produces population, demographic and housing unit estimates, it is the Census Bureau's Population Estimates Program that produces and disseminates the official estimates of the population for the nation, states, counties, cities and towns and estimates of housing units for states and counties.

For information on confidentiality protection, sampling error, nonsampling error, and definitions, see Survey Methodology.

<http://www.census.gov/acs/www/UseData/index.htm>

Hispanic or Latino Origin by Race

Timberlane CDP, Louisiana



Source: B03002. HISPANIC OR LATINO ORIGIN BY RACE
Data Set: 2008-2012 American Community Survey 5-Year Estimates

B01001. SEX BY AGE

Data Set: 2008-2012 American Community Survey 5-Year Estimates

	Timberlane CDP, Louisiana					
	African American	Margin of Error (+/-)	% of AA Total	White, Not Hispanic	Margin of Error (+/-)	% of NHW Total
Total:	3,325	534	100.0%	4,882	652	100.0%
Under 18 years	866	NC	26.0%	1,113	NC	22.8%
18 to 64 years	2,180	NC	65.6%	3,100	NC	63.5%
65 years and over	279	NC	8.4%	669	NC	13.7%
Male:	1,356	330	40.8%	2,604	389	53.3%
Under 18 years	474	NC	14.3%	795	NC	16.3%
18 to 64 years	807	NC	24.3%	1,528	NC	31.3%
65 years and over	75	NC	2.3%	281	NC	5.8%
Female:	1,969	301	59.2%	2,278	412	46.7%
Under 18 years	392	NC	11.8%	318	NC	6.5%
18 to 64 years	1,373	NC	41.3%	1,572	NC	32.2%
65 years and over	204	NC	6.1%	388	NC	7.9%

Source: U.S. Census Bureau, 2008-2012 American Community Survey

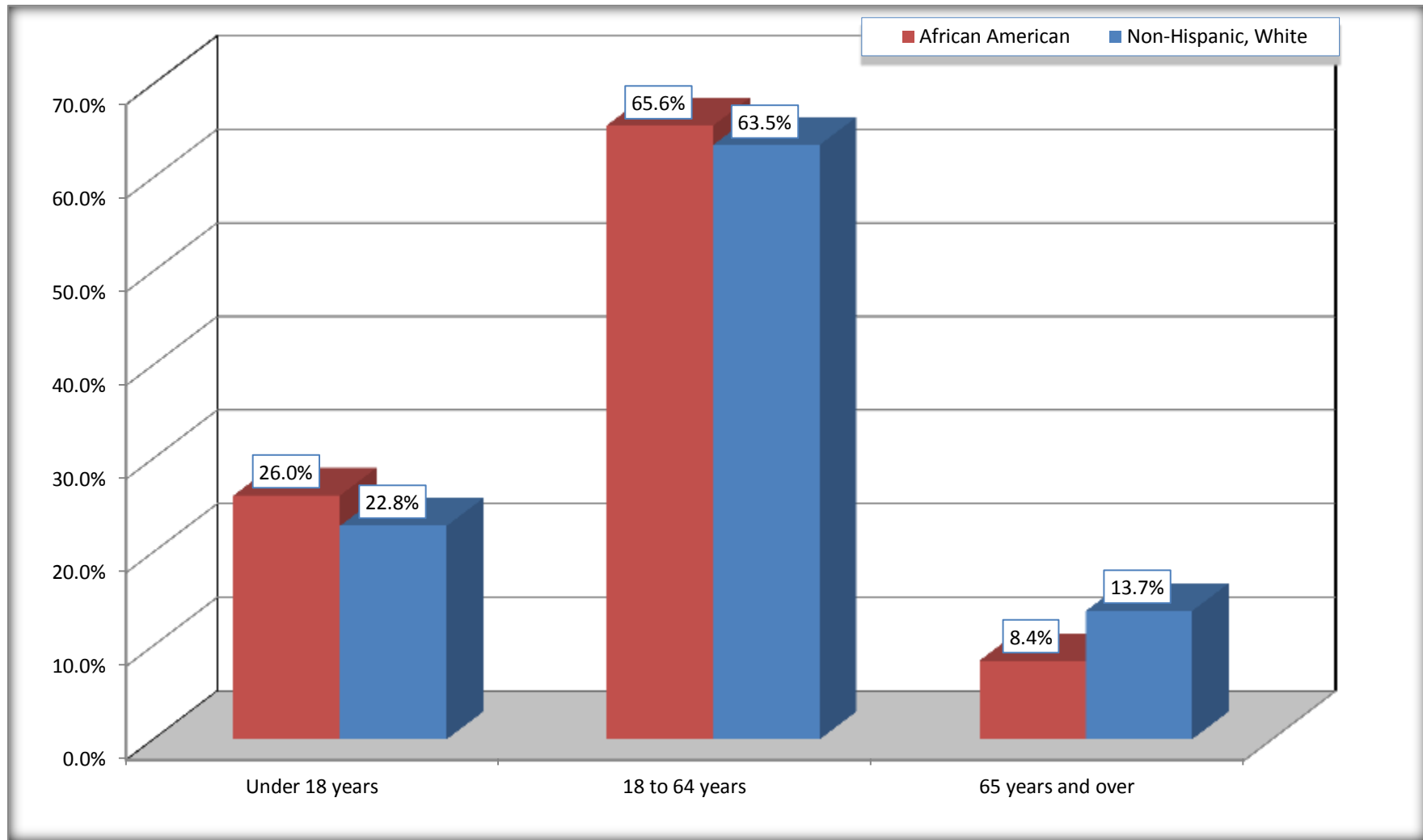
Although the American Community Survey (ACS) produces population, demographic and housing unit estimates, it is the Census Bureau's Population Estimates Program that produces and disseminates the official estimates of the population for the nation, states, counties, cities and towns and estimates of housing units for states and counties.

For information on confidentiality protection, sampling error, nonsampling error, and definitions, see Survey Methodology.

<http://www.census.gov/acs/www/UseData/index.htm>

Population by Age

Timberlane CDP, Louisiana



Source: B01001. SEX BY AGE
Data Set: 2008-2012 American Community Survey 5-Year Estimates

B05003. SEX BY AGE BY CITIZENSHIP STATUS

Data Set: 2008-2012 American Community Survey 5-Year Estimates

	Timberlane CDP, Louisiana					
	African American	Margin of Error (+/-)	% of AA Total by Age	White, Not Hispanic	Margin of Error (+/-)	% of NHW Total by Age
Total:	3,325	534	100.0%	4,882	652	100.0%
Under 18 years:	866	NC	100.0%	1,113	NC	100.0%
Native	866	NC	100.0%	1,086	NC	97.6%
Foreign born:	0	NC	0.0%	27	NC	2.4%
Naturalized U.S. citizen	0	NC	0.0%	0	NC	0.0%
Not a U.S. citizen	0	NC	0.0%	27	NC	2.4%
18 years and over:	2,459	NC	100.0%	3,769	NC	100.0%
Native	2,435	NC	99.0%	3,656	NC	97.0%
Foreign born:	24	NC	1.0%	113	NC	3.0%
Naturalized U.S. citizen	14	NC	0.6%	76	NC	2.0%
Not a U.S. citizen	10	NC	0.4%	37	NC	1.0%
Male:	1,356	330	40.8%	2,604	411	53.3%
Under 18 years:	474	216	100.0%	795	253	100.0%
Native	474	216	100.0%	768	252	96.6%
Foreign born:	0	19	0.0%	27	42	3.4%
Naturalized U.S. citizen	0	19	0.0%	0	19	0.0%
Not a U.S. citizen	0	19	0.0%	27	42	3.4%
18 years and over:	882	191	100.0%	1,809	254	100.0%
Native	858	193	97.3%	1,768	255	97.7%
Foreign born:	24	44	2.7%	41	31	2.3%
Naturalized U.S. citizen	14	26	1.6%	35	29	1.9%
Not a U.S. citizen	10	18	1.1%	6	11	0.3%

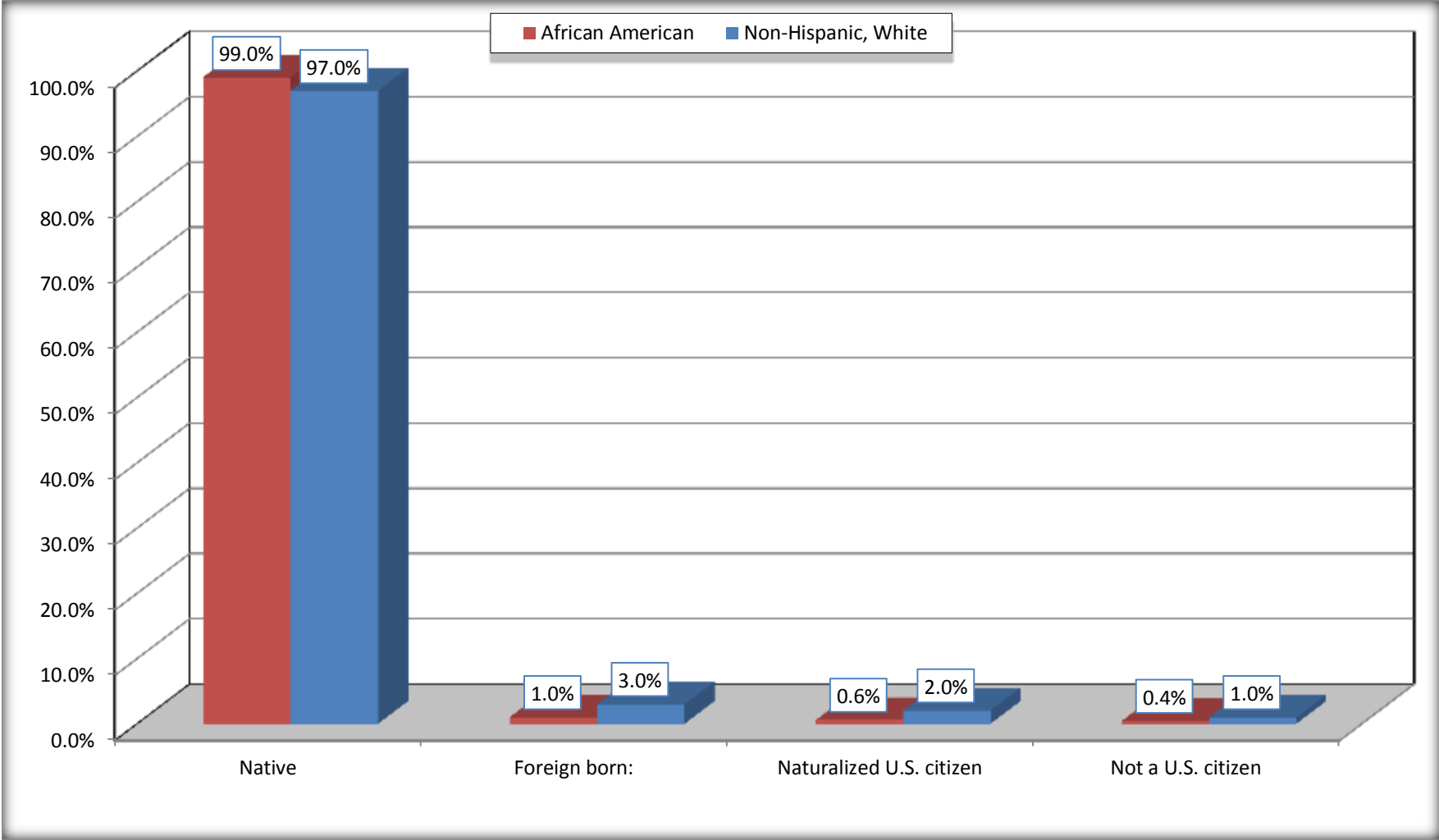
	Timberlane CDP, Louisiana					
	African American	Margin of Error (+/-)	% of AA by Age	White, Not Hispanic	Margin of Error (+/-)	% of NHW by Age
Female:	1,969	301	59.2%	2,278	293	46.7%
Under 18 years:	392	191	100.0%	318	141	100.0%
Native	392	191	100.0%	318	141	100.0%
Foreign born:	0	19	0.0%	0	19	0.0%
Naturalized U.S. citizen	0	19	0.0%	0	19	0.0%
Not a U.S. citizen	0	19	0.0%	0	19	0.0%
18 years and over:	1,577	231	100.0%	1,960	251	100.0%
Native	1,577	231	100.0%	1,888	265	96.3%
Foreign born:	0	19	0.0%	72	63	3.7%
Naturalized U.S. citizen	0	19	0.0%	41	55	2.1%
Not a U.S. citizen	0	19	0.0%	31	32	1.6%

Source: U.S. Census Bureau, 2008-2012 American Community Survey

For information on confidentiality protection, sampling error, nonsampling error, and definitions, see Survey Methodology.
<http://www.census.gov/acs/www/UseData/index.htm>

Citizenship Status of Voting Age Population (18 and Over)

Timberlane CDP, Louisiana



Source: B05003. SEX BY AGE BY CITIZENSHIP STATUS
Data Set: 2008-2012 American Community Survey 5-Year Estimates

**B07004. GEOGRAPHICAL MOBILITY IN THE PAST YEAR BY RACE FOR CURRENT RESIDENCE IN THE UNITED STATES - Universe:
POPULATION 1 YEAR AND OVER**

Data Set: 2008-2012 American Community Survey 5-Year Estimates

	Timberlane CDP, Louisiana					
	African American	Margin of Error (+/-)	% of AA Total	White, Not Hispanic	Margin of Error (+/-)	% of NHW Total
Total:	3,324	535	100.0%	4,839	643	100.0%
Same house 1 year ago	2,741	485	82.5%	4,557	579	94.2%
Moved within same county	265	240	8.0%	105	100	2.2%
Moved from different county within same state	267	190	8.0%	146	102	3.0%
Moved from different state	51	59	1.5%	31	36	0.6%
Moved from abroad	0	19	0.0%	0	19	0.0%

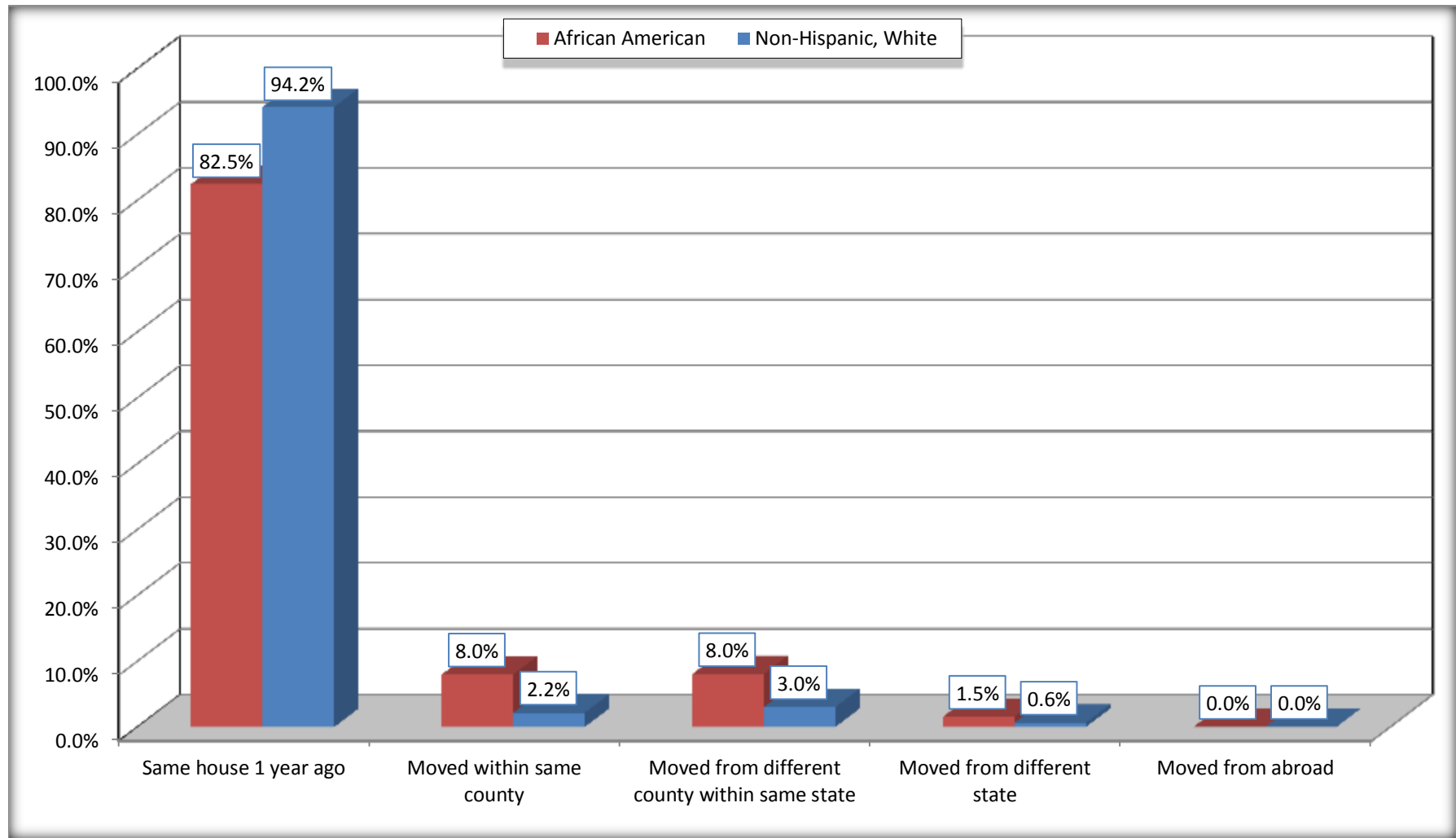
Source: U.S. Census Bureau, 2008-2012 American Community Survey

For information on confidentiality protection, sampling error, nonsampling error, and definitions, see Survey Methodology.

<http://www.census.gov/acs/www/UseData/index.htm>

Geographical Mobility in the Past Year (Population 1 Year and Over)

Timberlane CDP, Louisiana



Source: B07004. GEOGRAPHICAL MOBILITY IN THE PAST YEAR BY RACE FOR CURRENT RESIDENCE IN THE UNITED STATES - Universe: POPULATION 1 YEAR AND OVER

Data Set: 2008-2012 American Community Survey 5-Year Estimates

B08105. MEANS OF TRANSPORTATION TO WORK - Universe: WORKERS 16 YEARS AND OVER

Data Set: 2008-2012 American Community Survey 5-Year Estimates

	Timberlane CDP, Louisiana					
	African American	Margin of Error (+/-)	% of AA Total	White, Not Hispanic	Margin of Error (+/-)	% of NHW Total
Total:	1536	320	100.0%	2158	344	100.0%
Car, truck, or van - drove alone	1189	258	77.4%	1903	324	88.2%
Car, truck, or van - carpooled	281	153	18.3%	192	107	8.9%
Public transportation (excluding taxicab)	0	19	0.0%	0	19	0.0%
Walked	0	19	0.0%	0	19	0.0%
Taxicab, motorcycle, bicycle, or other means	49	62	3.2%	14	18	0.6%
Worked at home	17	21	1.1%	49	37	2.3%

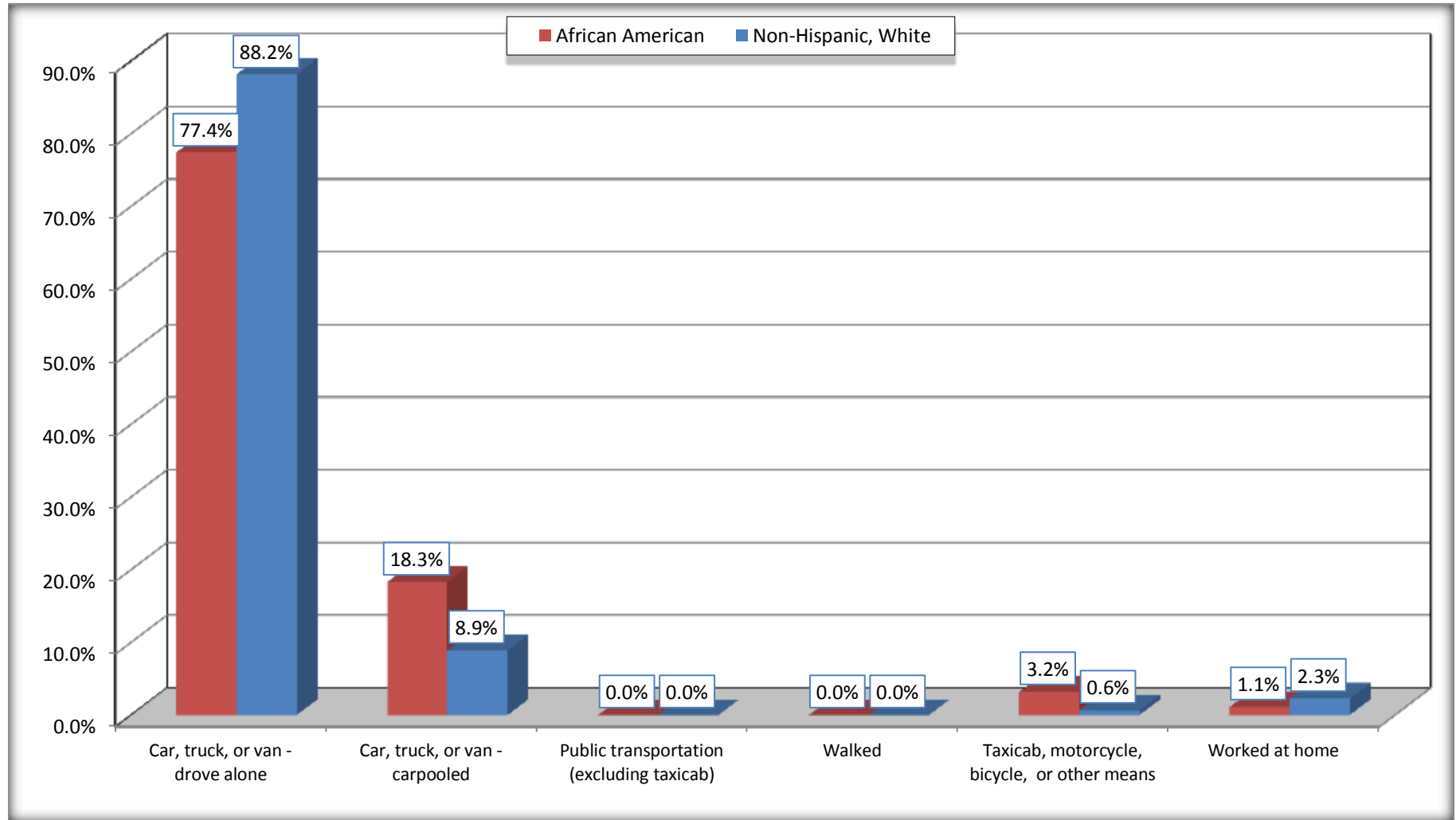
Source: U.S. Census Bureau, 2008-2012 American Community Survey

For information on confidentiality protection, sampling error, nonsampling error, and definitions, see Survey Methodology.

<http://www.census.gov/acs/www/UseData/index.htm>

Means of Transportation to Work (Workers 16 Years and Over)

Timberlane CDP, Louisiana



Source: B08105. MEANS OF TRANSPORTATION TO WORK - Universe: WORKERS 16 YEARS AND OVER
Data Set: 2008-2012 American Community Survey 5-Year Estimates

B11002. HOUSEHOLD TYPE BY RELATIVES AND NONRELATIVES FOR POPULATION IN HOUSEHOLDS

Data Set: 2008-2012 American Community Survey 5-Year Estimates

	Timberlane CDP, Louisiana					
	African American	Margin of Error (+/-)	% of AA Total	White, Not Hispanic	Margin of Error (+/-)	% of NHW Total
Total:	3334	557	100.0%	4949	714	100.0%
In family households	2805	596	84.1%	4450	719	89.9%
In nonfamily households	529	199	15.9%	499	129	10.1%

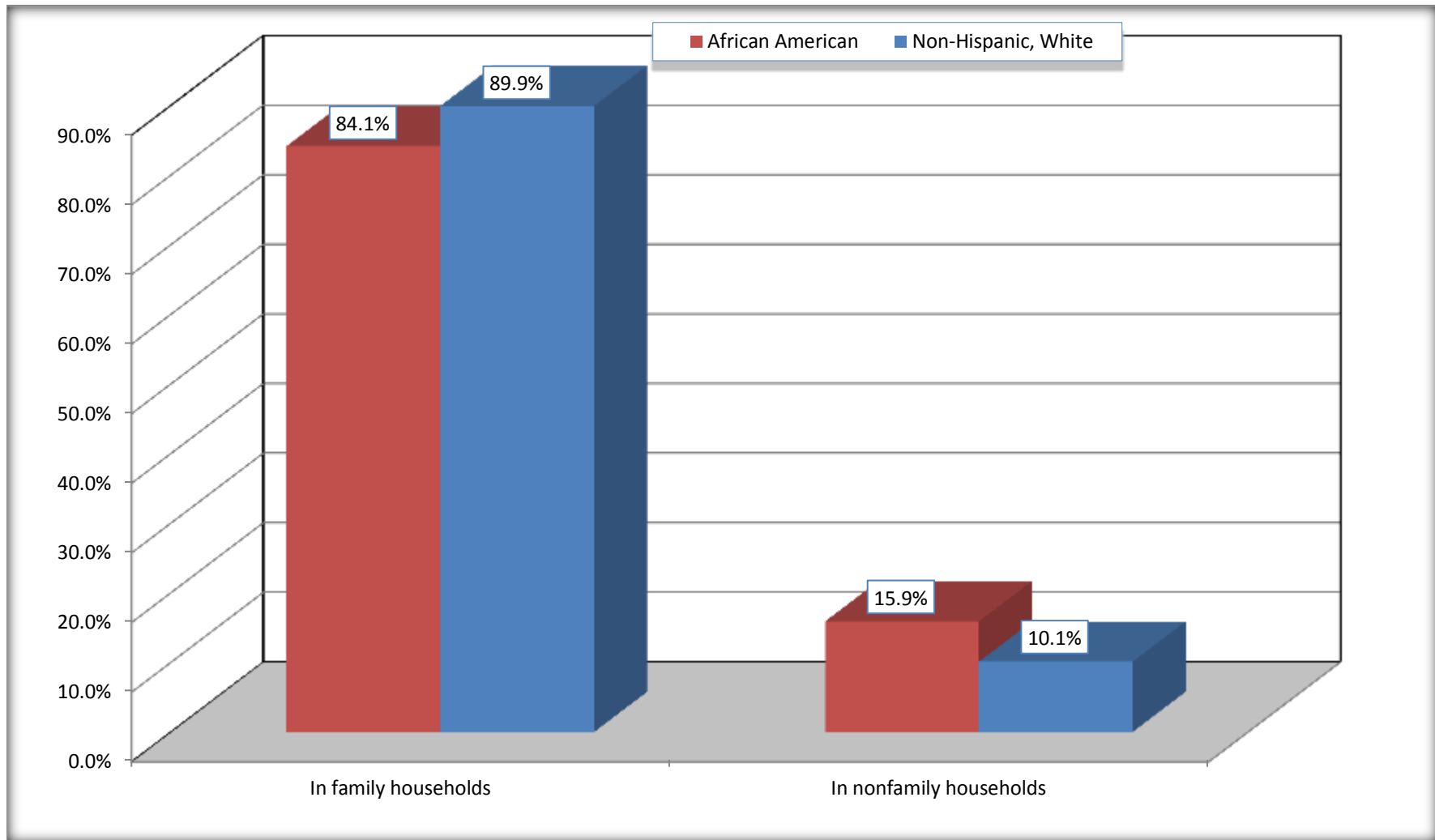
Source: U.S. Census Bureau, 2008-2012 American Community Survey

For information on confidentiality protection, sampling error, nonsampling error, and definitions, see Survey Methodology.

<http://www.census.gov/acs/www/UseData/index.htm>

Household Type for Population in Households

Timberlane CDP, Louisiana



Source: B11002. HOUSEHOLD TYPE BY RELATIVES AND NONRELATIVES FOR POPULATION IN HOUSEHOLDS
Data Set: 2008-2012 American Community Survey 5-Year Estimates

B12002. MARITAL STATUS FOR THE POPULATION 15 YEARS AND OVER

Data Set: 2008-2012 American Community Survey 5-Year Estimates

	Timberlane CDP, Louisiana					
	African American	Margin of Error (+/-)	% of AA Total	White, Not Hispanic	Margin of Error (+/-)	% of NHW Total
Total:	2,619	365	100.0%	3,908	476	100.0%
Never married	1,234	NC	47.1%	982	NC	25.1%
Now married (except separated)	672	NC	25.7%	2,031	NC	52.0%
Separated	110	NC	4.2%	103	NC	2.6%
Widowed	152	NC	5.8%	320	NC	8.2%
Divorced	451	NC	17.2%	472	NC	12.1%
Male:	963	209	36.8%	1,929	275	49.4%
Never married	501	174	19.1%	576	158	14.7%
Now married (except separated)	364	114	13.9%	996	156	25.5%
Separated	6	10	0.2%	23	28	0.6%
Widowed	34	32	1.3%	58	60	1.5%
Divorced	58	57	2.2%	276	105	7.1%
Female:	1,656	241	63.2%	1,979	251	50.6%
Never married	733	197	28.0%	406	129	10.4%
Now married (except separated)	308	82	11.8%	1,035	148	26.5%
Separated	104	115	4.0%	80	79	2.0%
Widowed	118	78	4.5%	262	117	6.7%
Divorced	393	133	15.0%	196	68	5.0%

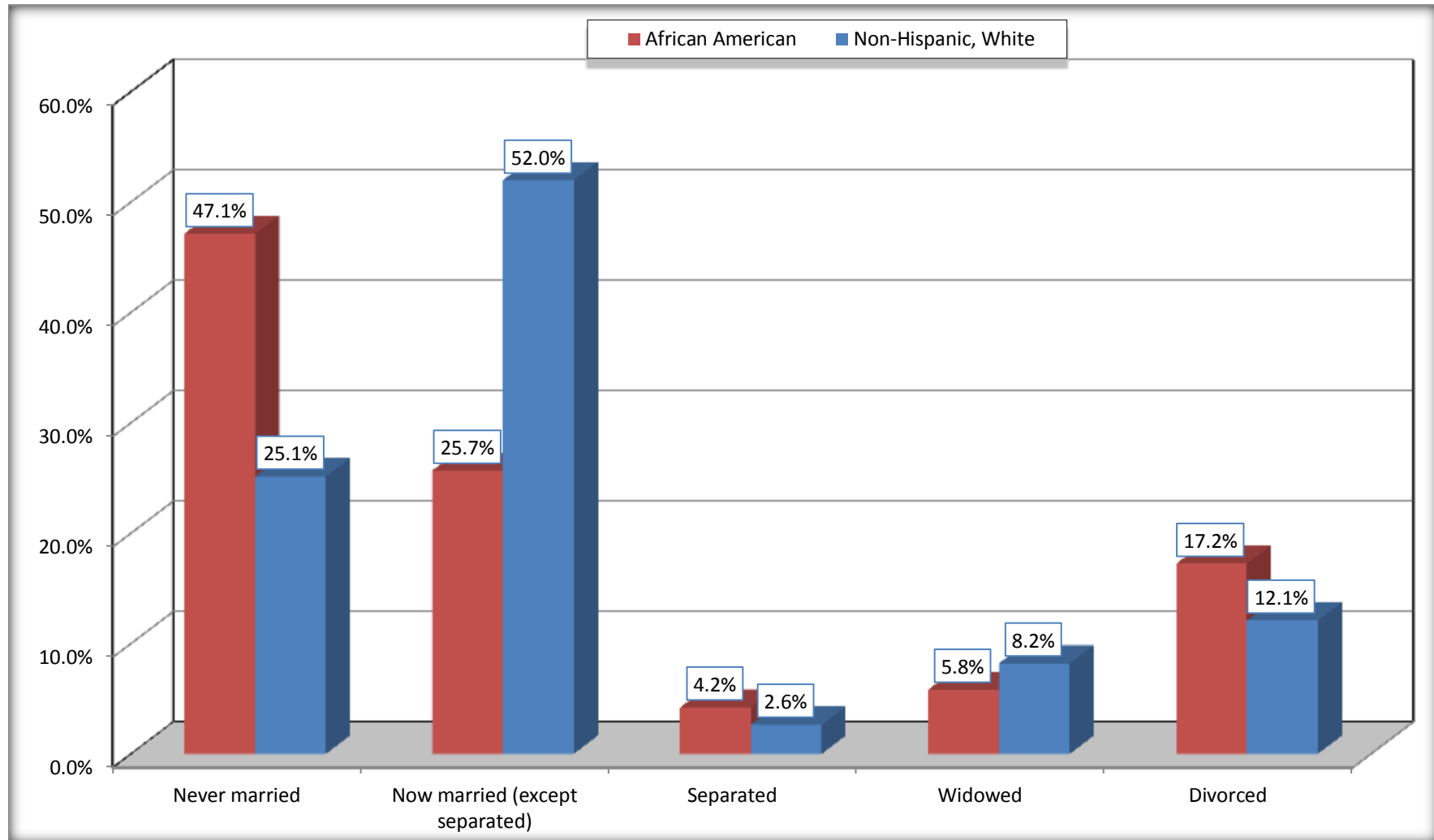
Source: U.S. Census Bureau, 2008-2012 American Community Survey

For information on confidentiality protection, sampling error, nonsampling error, and definitions, see Survey Methodology.

<http://www.census.gov/acs/www/UseData/index.htm>

Marital Status for the Population 15 Years and Over

Timberlane CDP, Louisiana



Source: B12002. MARITAL STATUS FOR THE POPULATION 15 YEARS AND OVER
Data Set: 2008-2012 American Community Survey 5-Year Estimates

C15002. SEX BY EDUCATIONAL ATTAINMENT FOR THE POPULATION 25 YEARS AND OVER

Data Set: 2008-2012 American Community Survey 5-Year Estimates

	Timberlane CDP, Louisiana					
	African American	Margin of Error (+/-)	% of AA Total	White, Not Hispanic	Margin of Error (+/-)	% of NHW Total
Total:	2,013	284	100.0%	3,521	413	100.0%
Less than high school diploma	271	NC	13.5%	383	NC	10.9%
High school graduate, GED, or alternative	627	NC	31.1%	1,238	NC	35.2%
Some college or associate's degree	667	NC	33.1%	1,229	NC	34.9%
Bachelor's degree or higher	448	NC	22.3%	671	NC	19.1%
Male:	742	160	36.9%	1,632	229	46.4%
Less than high school diploma	83	67	4.1%	221	91	6.3%
High school graduate, GED, or alternative	294	98	14.6%	526	142	14.9%
Some college or associate's degree	298	104	14.8%	578	155	16.4%
Bachelor's degree or higher	67	55	3.3%	307	105	8.7%
Female:	1,271	198	63.1%	1,889	235	53.6%
Less than high school diploma	188	98	9.3%	162	80	4.6%
High school graduate, GED, or alternative	333	160	16.5%	712	150	20.2%
Some college or associate's degree	369	111	18.3%	651	181	18.5%
Bachelor's degree or higher	381	172	18.9%	364	104	10.3%

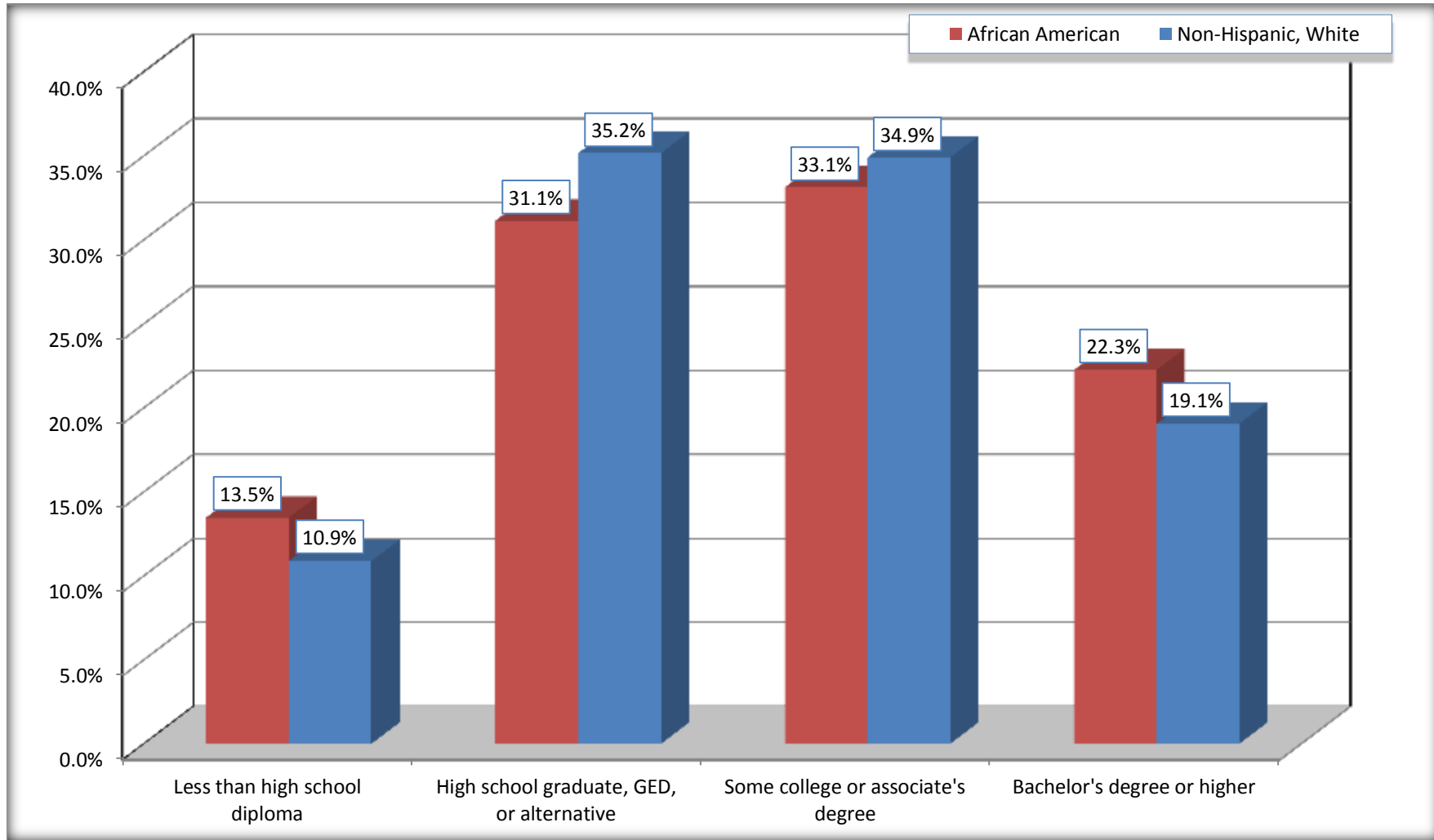
Source: U.S. Census Bureau, 2008-2012 American Community Survey

For information on confidentiality protection, sampling error, nonsampling error, and definitions, see Survey Methodology.

<http://www.census.gov/acs/www/UseData/index.htm>

Educational Attainment for the Population 25 Years and Older

Timberlane CDP, Louisiana



Source: C15002. SEX BY EDUCATIONAL ATTAINMENT FOR THE POPULATION 25 YEARS AND OVER
Data Set: 2008-2012 American Community Survey 5-Year Estimates

B17010. POVERTY STATUS IN THE PAST 12 MONTHS OF FAMILIES BY FAMILY TYPE BY PRESENCE OF RELATED CHILDREN UNDER 18 YEARS

Data Set: 2008-2012 American Community Survey 5-Year Estimates

	Timberlane CDP, Louisiana					
	African American	Margin of Error (+/-)	% of AA Total	White, Not Hispanic	Margin of Error (+/-)	% of NHW Total
Total:	759	148	100.0%	1,270	168	100.0%
Income in the past 12 months below poverty level:	107	69	14.1%	162	105	12.8%
Married-couple family:	0	19	0.0%	71	50	5.6%
With related children under 18 years	0	19	0.0%	32	31	2.5%
Other family:	107	69	14.1%	91	77	7.2%
Male householder, no wife present	13	20	1.7%	25	40	2.0%
With related children under 18 years	13	20	1.7%	25	40	2.0%
Female householder, no husband present	94	66	12.4%	66	63	5.2%
With related children under 18 years	72	56	9.5%	66	63	5.2%
Income in the past 12 months at or above poverty level:	652	152	85.9%	1,108	138	87.2%
Married-couple family:	295	83	38.9%	919	145	72.4%
With related children under 18 years	92	53	12.1%	370	97	29.1%
Other family:	357	126	47.0%	189	80	14.9%
Male householder, no wife present	76	68	10.0%	75	62	5.9%
With related children under 18 years	33	50	4.3%	75	62	5.9%
Female householder, no husband present	281	116	37.0%	114	63	9.0%
With related children under 18 years	206	110	27.1%	38	35	3.0%

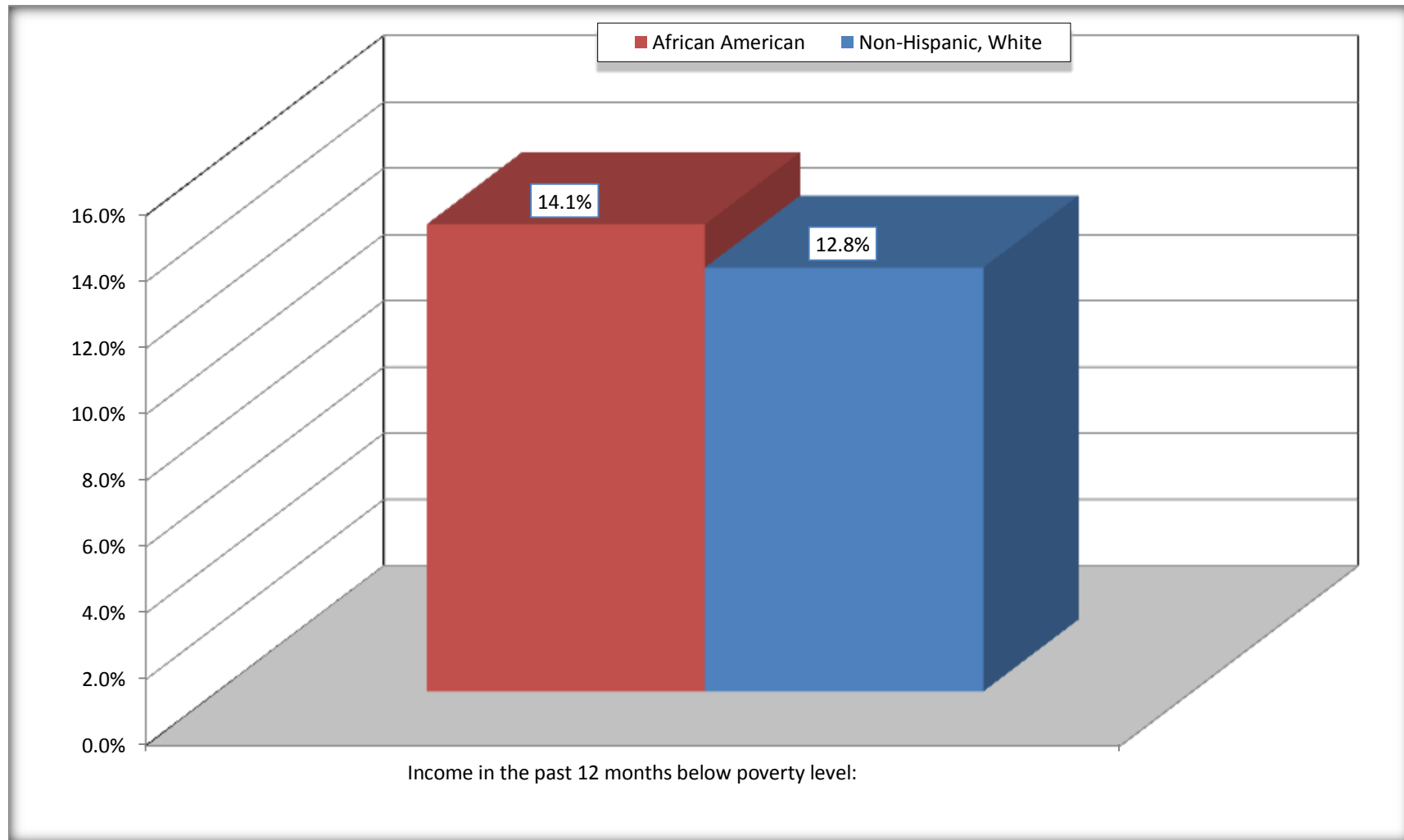
Source: U.S. Census Bureau, 2008-2012 American Community Survey

For information on confidentiality protection, sampling error, nonsampling error, and definitions, see Survey Methodology.

<http://www.census.gov/acs/www/UseData/index.htm>

Family Households Below Poverty in the Past 12 Months

Timberlane CDP, Louisiana

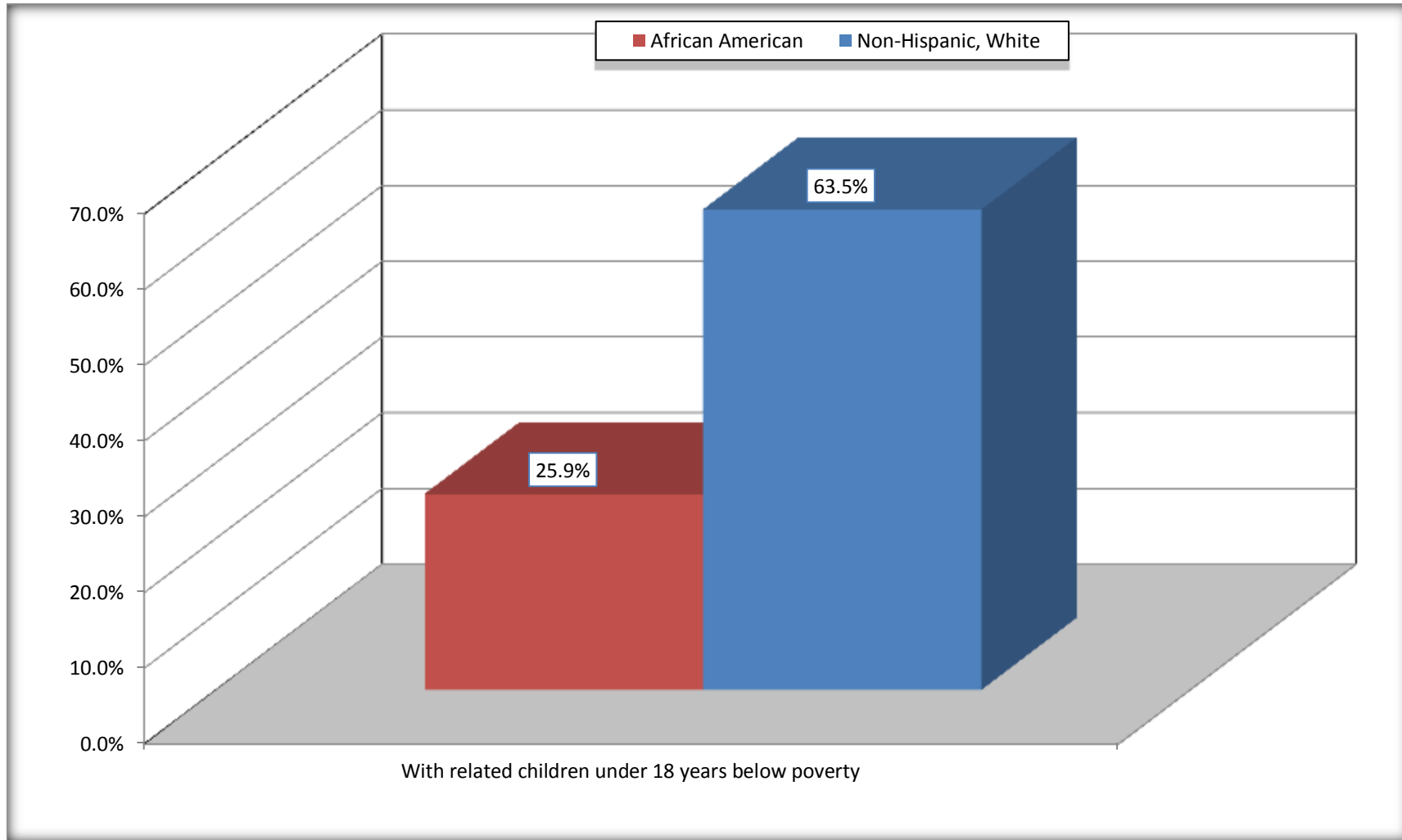


Source: B17010. POVERTY STATUS IN THE PAST 12 MONTHS OF FAMILIES BY FAMILY TYPE BY PRESENCE OF RELATED CHILDREN UNDER 18 YEARS

Data Set: 2008-2012 American Community Survey 5-Year Estimates

Female-headed Households with Related Children Below Poverty in the Past 12 Months

Timberlane CDP, Louisiana



Source: B17010. POVERTY STATUS IN THE PAST 12 MONTHS OF FAMILIES BY FAMILY TYPE BY PRESENCE OF RELATED CHILDREN UNDER 18 YEARS

Data Set: 2008-2012 American Community Survey 5-Year Estimates

B17020 POVERTY STATUS IN THE PAST 12 MONTHS BY AGE - Universe: POPULATION FOR WHOM POVERTY STATUS IS DETERMINED

Data Set: 2008-2012 American Community Survey 5-Year Estimates

	Timberlane CDP, Louisiana					
	African American	Margin of Error (+/-)	% of AA By Age	White, Not Hispanic	Margin of Error (+/-)	% of NHW By Age
Total:	3,300	534	100.0%	4,841	645	100.0%
Income in the past 12 months below poverty level:	577	343	17.5%	693	365	14.3%
Under 18 years	250	NC	29.0%	248	NC	22.3%
18 to 64 years	262	177	12.1%	377	187	12.2%
65 years and over	65	NC	24.0%	68	NC	10.7%
Income in the past 12 months at or above poverty level:	2,723	545	82.5%	4,148	526	85.7%
Under 18 years	611	NC	71.0%	865	NC	77.7%
18 to 64 years	1,906	375	87.9%	2,715	360	87.8%
65 years and over	206	NC	76.0%	568	NC	89.3%

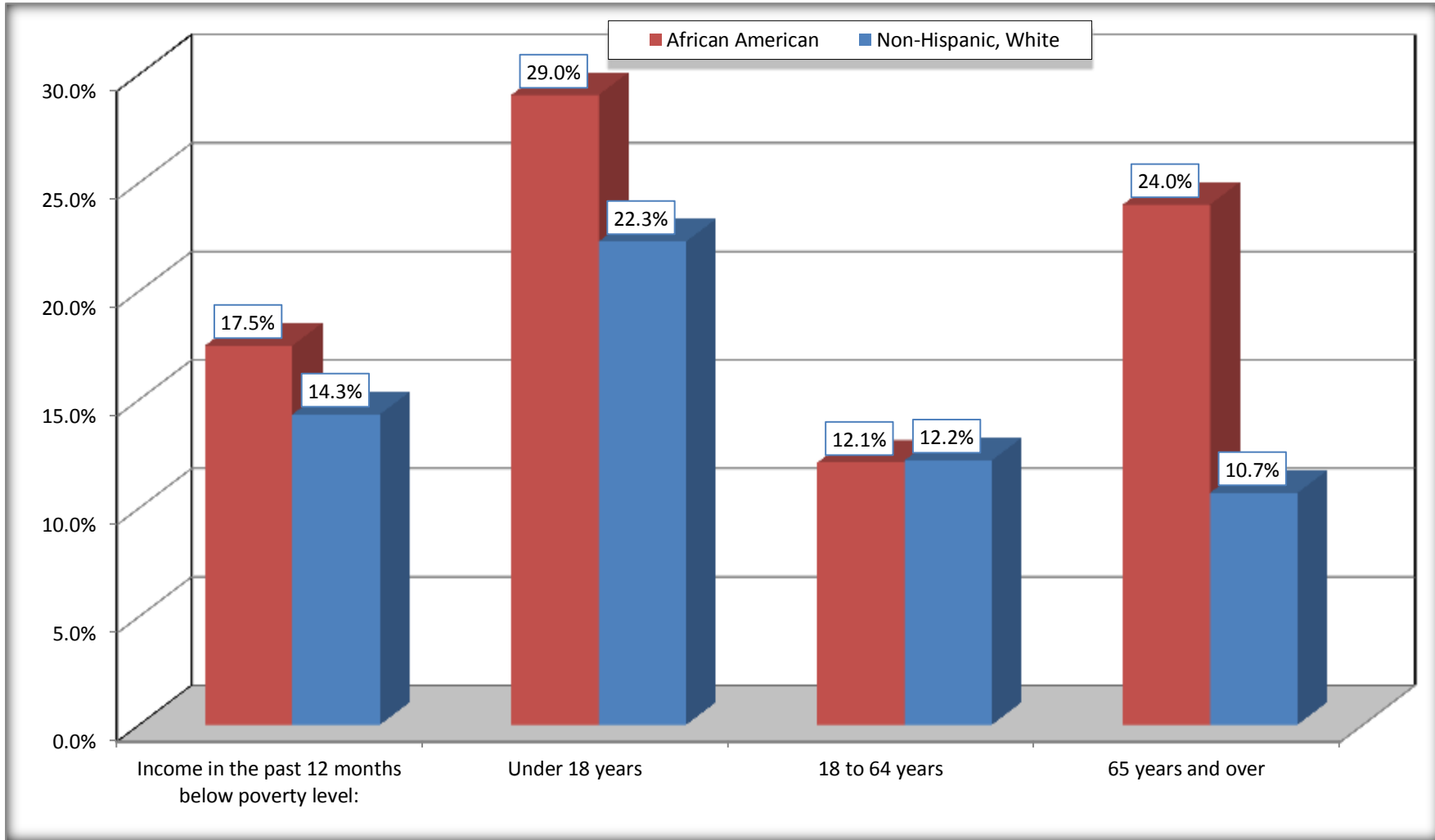
Source: U.S. Census Bureau, 2008-2012 American Community Survey

For information on confidentiality protection, sampling error, nonsampling error, and definitions, see Survey Methodology.

<http://www.census.gov/acs/www/UseData/index.htm>

Population Below Poverty in the Past 12 Months

Timberlane CDP, Louisiana



Source: B17020 POVERTY STATUS IN THE PAST 12 MONTHS BY AGE - Universe: POPULATION FOR WHOM POVERTY STATUS IS DETERMINED
Data Set: 2008-2012 American Community Survey 5-Year Estimates

B19001. HOUSEHOLD INCOME IN THE PAST 12 MONTHS (IN 2010 INFLATION-ADJUSTED DOLLARS)

Data Set: 2008-2012 American Community Survey 5-Year Estimates

	Timberlane CDP, Louisiana					
	African American	Margin of Error (+/-)	% of AA Total	White, Not Hispanic	Margin of Error (+/-)	% of NHW Total
Total:	1,181	132	100.0%	1,687	170	100.0%
Less than \$ 10,000	93	54	7.9%	156	79	9.2%
\$ 10,000 to \$ 14,999	103	66	8.7%	30	29	1.8%
\$ 15,000 to \$ 24,999	121	NC	10.2%	158	NC	9.4%
\$ 25,000 to \$ 34,999	164	NC	13.9%	120	NC	7.1%
\$ 35,000 to \$ 49,999	189	NC	16.0%	161	NC	9.5%
\$ 50,000 to \$ 74,999	242	NC	20.5%	323	NC	19.1%
\$ 75,000 to \$ 99,999	116	62	9.8%	346	118	20.5%
\$ 100,000 to \$ 149,999	140	NC	11.9%	295	NC	17.5%
\$ 150,000 to \$ 199,999	13	22	1.1%	83	45	4.9%
\$ 200,000 or more	0	19	0.0%	15	20	0.9%

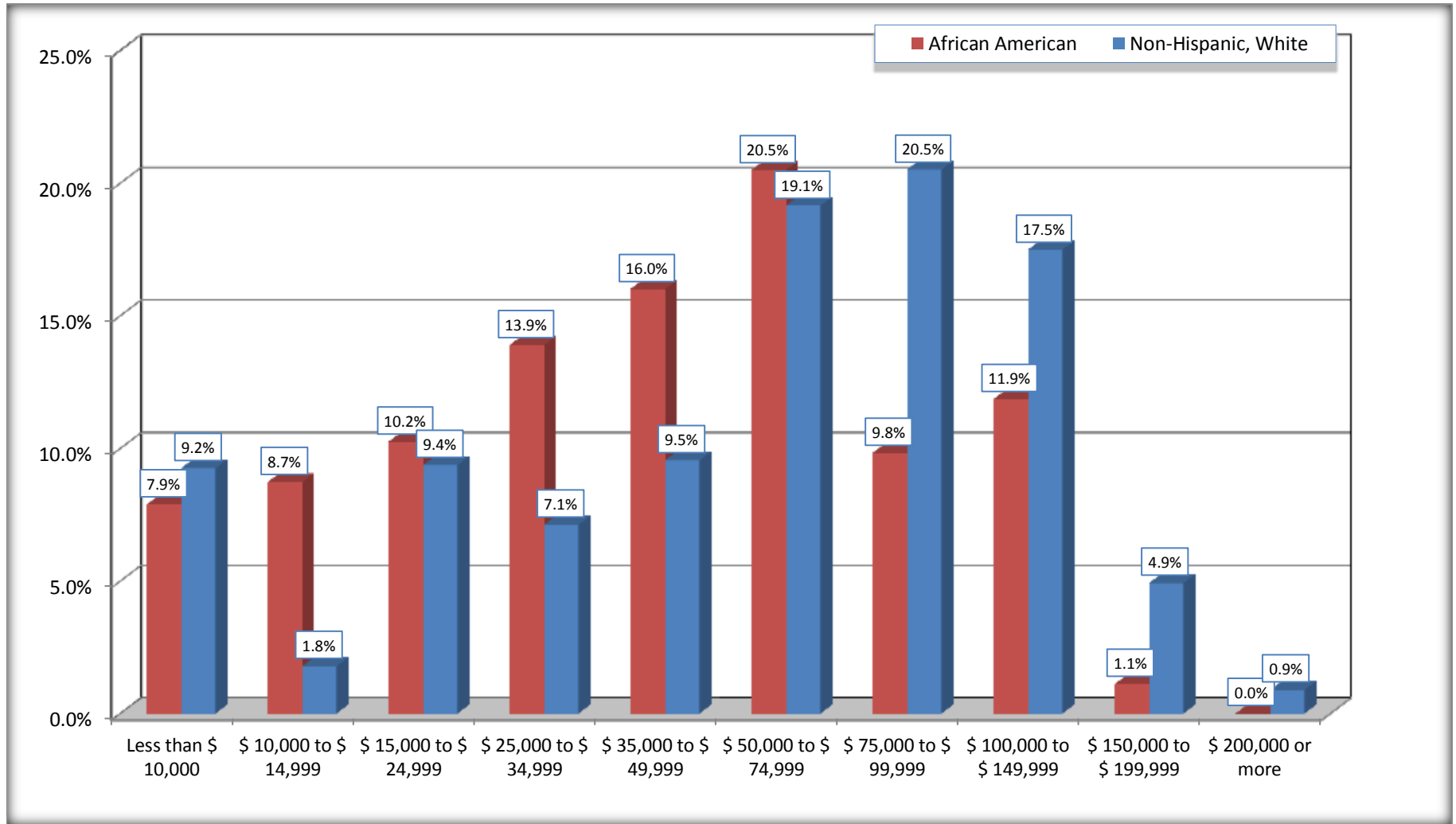
Source: U.S. Census Bureau, 2008-2012 American Community Survey

For information on confidentiality protection, sampling error, nonsampling error, and definitions, see Survey Methodology.

<http://www.census.gov/acs/www/UseData/index.htm>

Household Income in the Past 12 Months

Timberlane CDP, Louisiana



Source: B19001. HOUSEHOLD INCOME IN THE PAST 12 MONTHS (IN 2010 INFLATION-ADJUSTED DOLLARS)
Data Set: 2008-2012 American Community Survey 5-Year Estimates

B19013. MEDIAN HOUSEHOLD INCOME IN THE PAST 12 MONTHS (IN 2010 INFLATION-ADJUSTED DOLLARS)

Data Set: 2008-2012 American Community Survey 5-Year Estimates

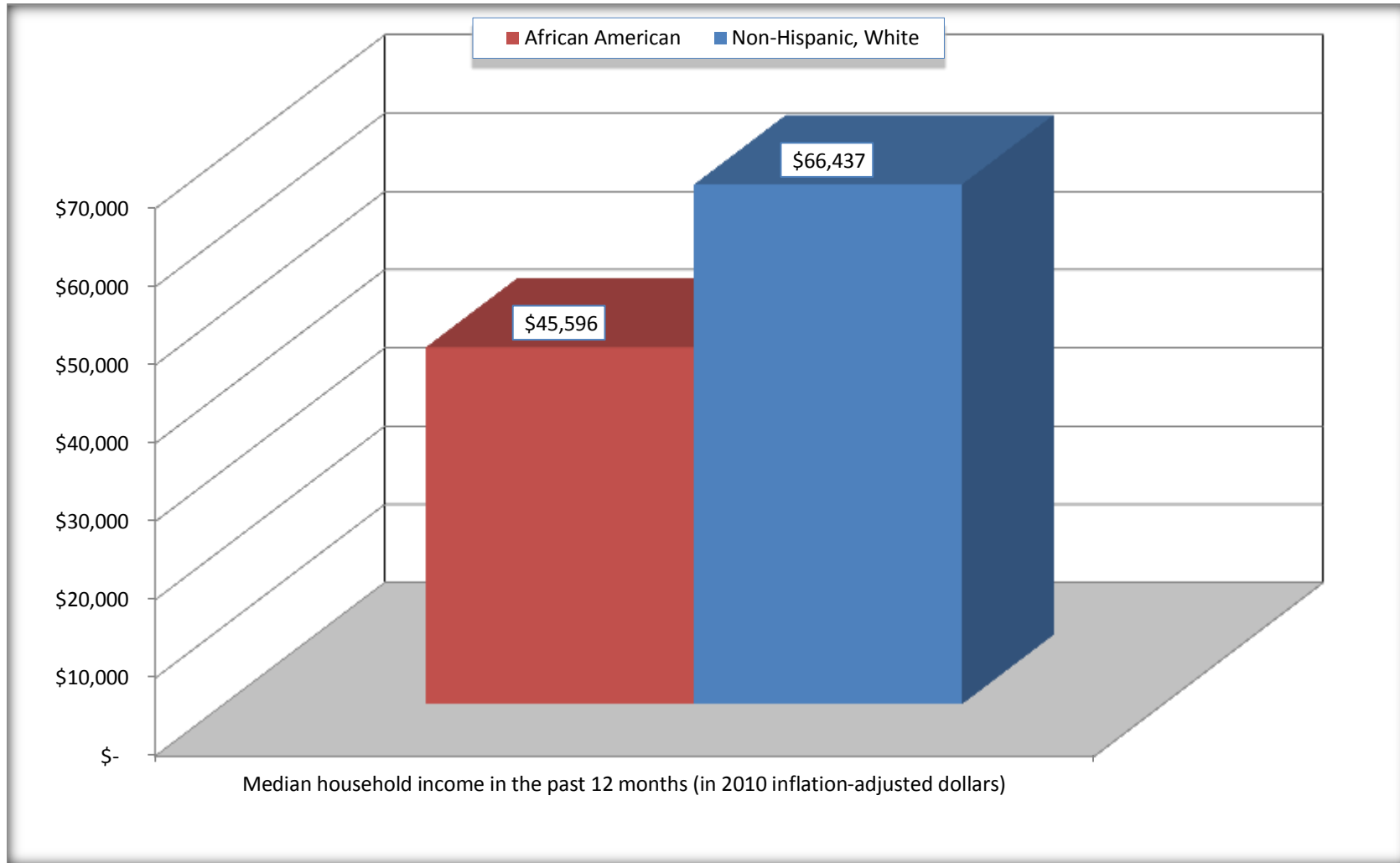
	Timberlane CDP, Louisiana			
	African American	Margin of Error (+/-)	White, Not Hispanic	Margin of Error (+/-)
Median household income in the past 12 months (in 2010 inflation-adjusted dollars)	\$ 45,596	\$ 6,450	\$ 66,437	\$ 6,982

Source: U.S. Census Bureau, 2008-2012 American Community Survey

For information on confidentiality protection, sampling error, nonsampling error, and definitions, see Survey Methodology.
<http://www.census.gov/acs/www/UseData/index.htm>

Median Household Income in the Past 12 Months

Timberlane CDP, Louisiana



Source: B19013. MEDIAN HOUSEHOLD INCOME IN THE PAST 12 MONTHS (IN 2010 INFLATION-ADJUSTED DOLLARS)
Data Set: 2008-2012 American Community Survey 5-Year Estimates

B19101. FAMILY INCOME IN THE PAST 12 MONTHS (IN 2010 INFLATION-ADJUSTED DOLLARS)

Data Set: 2008-2012 American Community Survey 5-Year Estimates

	Timberlane CDP, Louisiana					
	African American	Margin of Error (+/-)	% of AA Total	White, Not Hispanic	Margin of Error (+/-)	% of NHW Total
Total:	759	148	100.0%	1,270	168	100.0%
Less than \$ 10,000	51	50	6.7%	112	79	8.8%
\$ 10,000 to \$ 14,999	44	47	5.8%	12	20	0.9%
\$ 15,000 to \$ 24,999	51	NC	6.7%	86	NC	6.8%
\$ 25,000 to \$ 34,999	132	NC	17.4%	77	NC	6.1%
\$ 35,000 to \$ 49,999	85	NC	11.2%	96	NC	7.6%
\$ 50,000 to \$ 74,999	149	NC	19.6%	288	NC	22.7%
\$ 100,000 to \$ 149,999	132	NC	17.4%	295	NC	23.2%
\$ 150,000 to \$ 199,999	13	22	1.7%	48	32	3.8%
\$ 200,000 or more	0	19	0.0%	15	20	1.2%

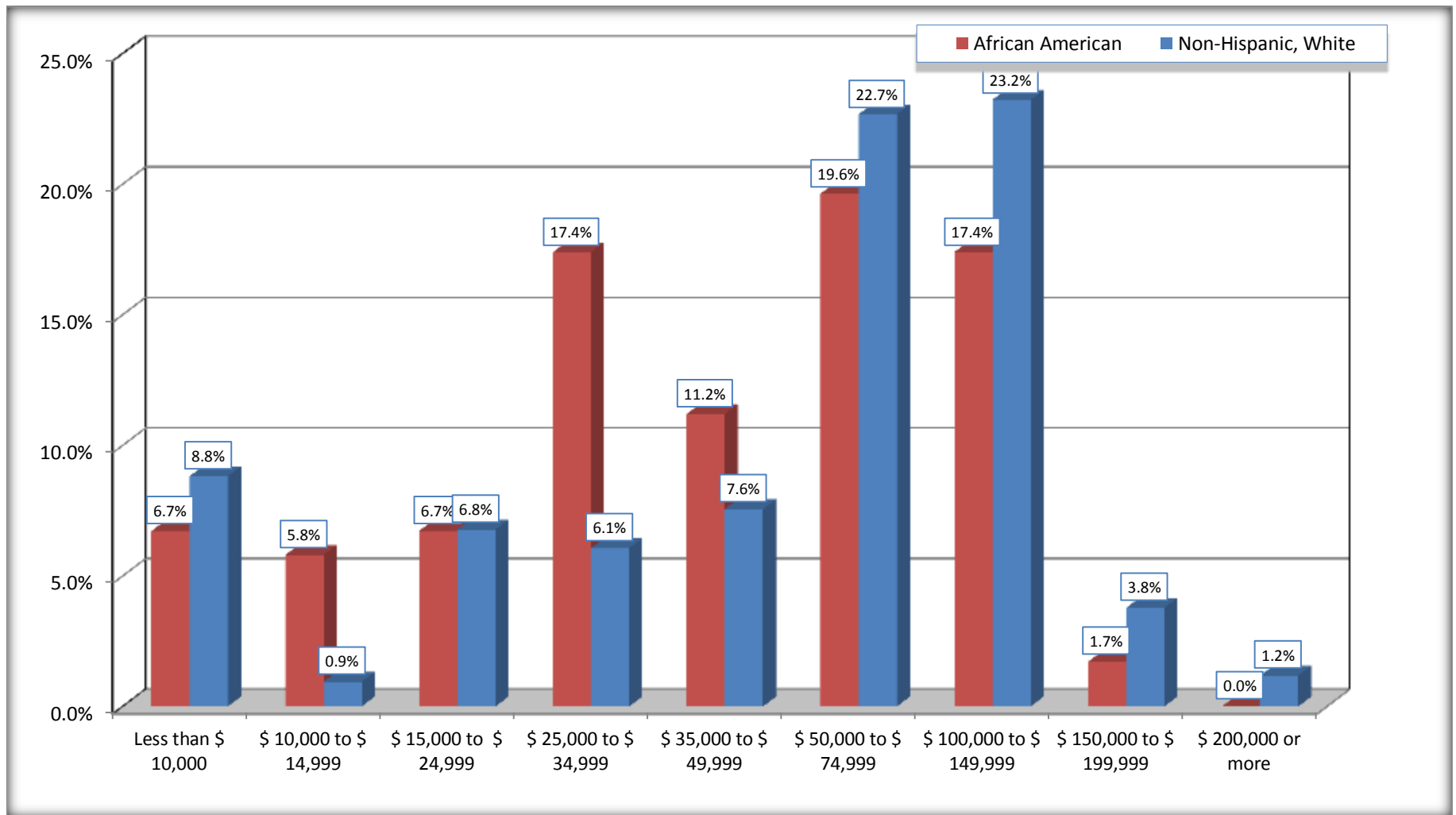
Source: U.S. Census Bureau, 2008-2012 American Community Survey

For information on confidentiality protection, sampling error, nonsampling error, and definitions, see Survey Methodology.

<http://www.census.gov/acs/www/UseData/index.htm>

Family Income in the Past 12 Months

Timberlane CDP, Louisiana



Source: B19101. FAMILY INCOME IN THE PAST 12 MONTHS (IN 2010 INFLATION-ADJUSTED DOLLARS)
Data Set: 2008-2012 American Community Survey 5-Year Estimates

B19113. MEDIAN FAMILY INCOME IN THE PAST 12 MONTHS (IN 2010 INFLATION-ADJUSTED DOLLARS)

Data Set: 2008-2012 American Community Survey 5-Year Estimates

	Timberlane CDP, Louisiana			
	African American	Margin of Error (+/-)	White, Not Hispanic	Margin of Error (+/-)
Median family income in the past 12 months (in 2010 inflation-adjusted dollars)	\$ 54,219	\$ 24,196	\$ 69,674	\$ 12,258

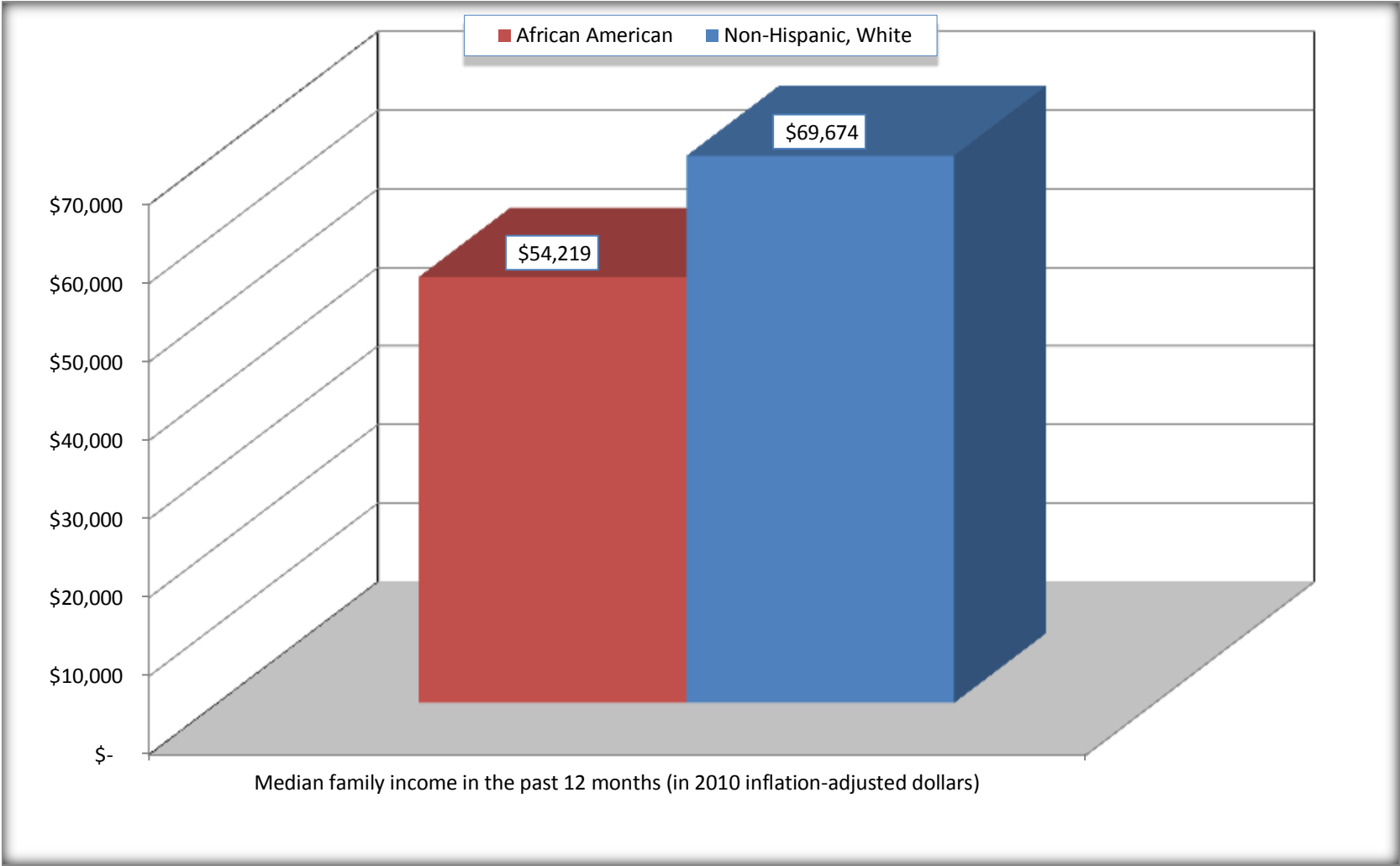
Source: U.S. Census Bureau, 2008-2012 American Community Survey

For information on confidentiality protection, sampling error, nonsampling error, and definitions, see Survey Methodology.

<http://www.census.gov/acs/www/UseData/index.htm>

Median Family Income in the Past 12 Months

Timberlane CDP, Louisiana



Source: B19113. MEDIAN FAMILY INCOME IN THE PAST 12 MONTHS (IN 2010 INFLATION-ADJUSTED DOLLARS)
Data Set: 2008-2012 American Community Survey 5-Year Estimates

B19202. MEDIAN NONFAMILY HOUSEHOLD INCOME IN THE PAST 12 MONTHS (IN 2010 INFLATION-ADJUSTED DOLLARS)

Data Set: 2008-2012 American Community Survey 5-Year Estimates

	Timberlane CDP, Louisiana			
	African American	Margin of Error (+/-)	White, Not Hispanic	Margin of Error (+/-)
Median nonfamily household income in the past 12 months (in 2010 inflation-adjusted dollars)	\$ 40,250	\$ 20,373	\$ 38,683	\$ 10,968

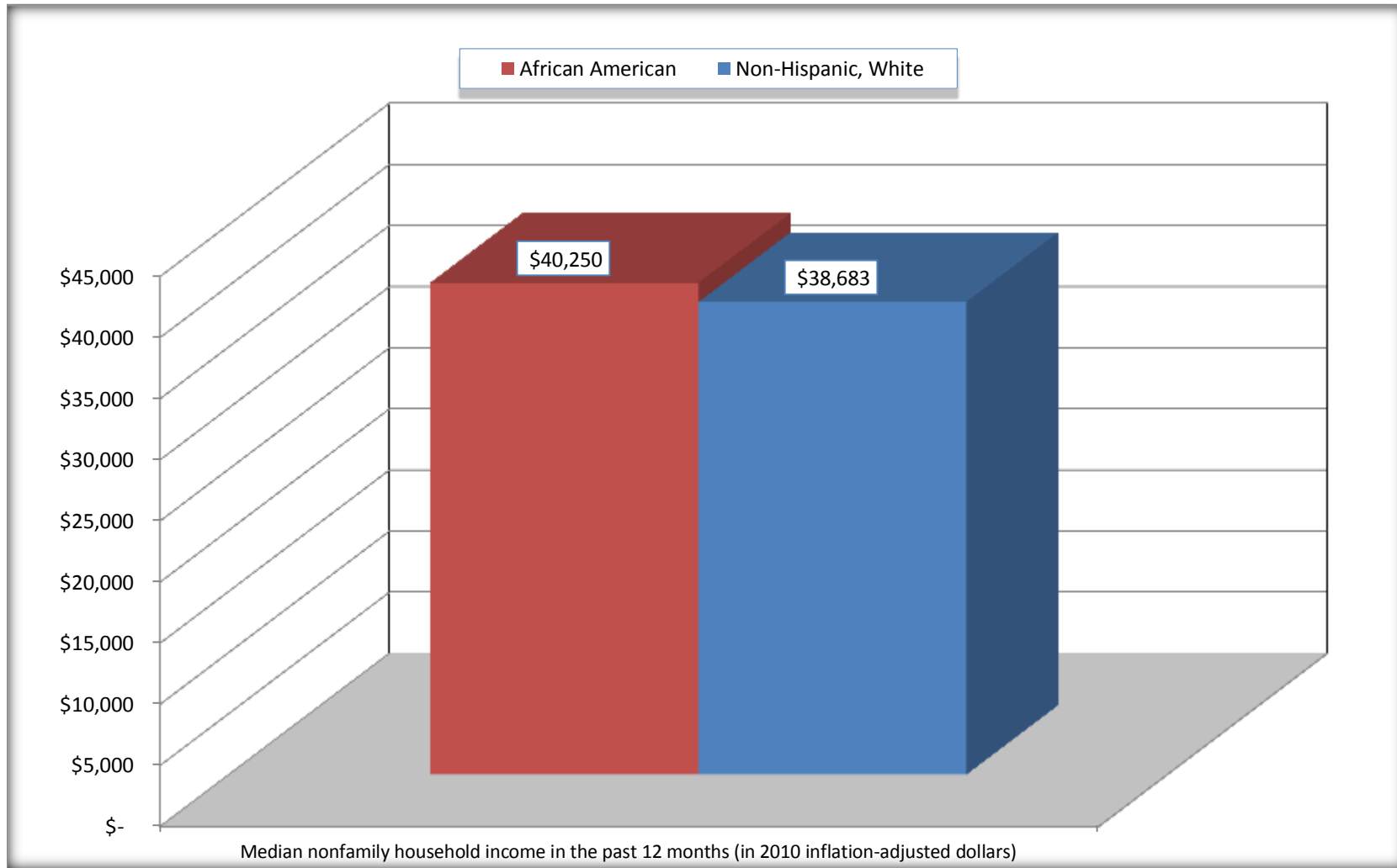
Source: U.S. Census Bureau, 2008-2012 American Community Survey

For information on confidentiality protection, sampling error, nonsampling error, and definitions, see Survey Methodology.

<http://www.census.gov/acs/www/UseData/index.htm>

Median Non-Family Income in the Past 12 Months

Timberlane CDP, Louisiana



Source: B19202. MEDIAN NONFAMILY HOUSEHOLD INCOME IN THE PAST 12 MONTHS (IN 2010 INFLATION-ADJUSTED DOLLARS)
Data Set: 2008-2012 American Community Survey 5-Year Estimates

B19301. PER CAPITA INCOME IN THE PAST 12 MONTHS (IN 2010 INFLATION-ADJUSTED DOLLARS)

Data Set: 2008-2012 American Community Survey 5-Year Estimates

	Timberlane CDP, Louisiana			
	African American	Margin of Error (+/-)	White, Not Hispanic	Margin of Error (+/-)
Per capita income in the past 12 months (in 2010 inflation-adjusted dollars)	\$ 19,928	\$ 3,263	\$ 25,709	\$ 3,039

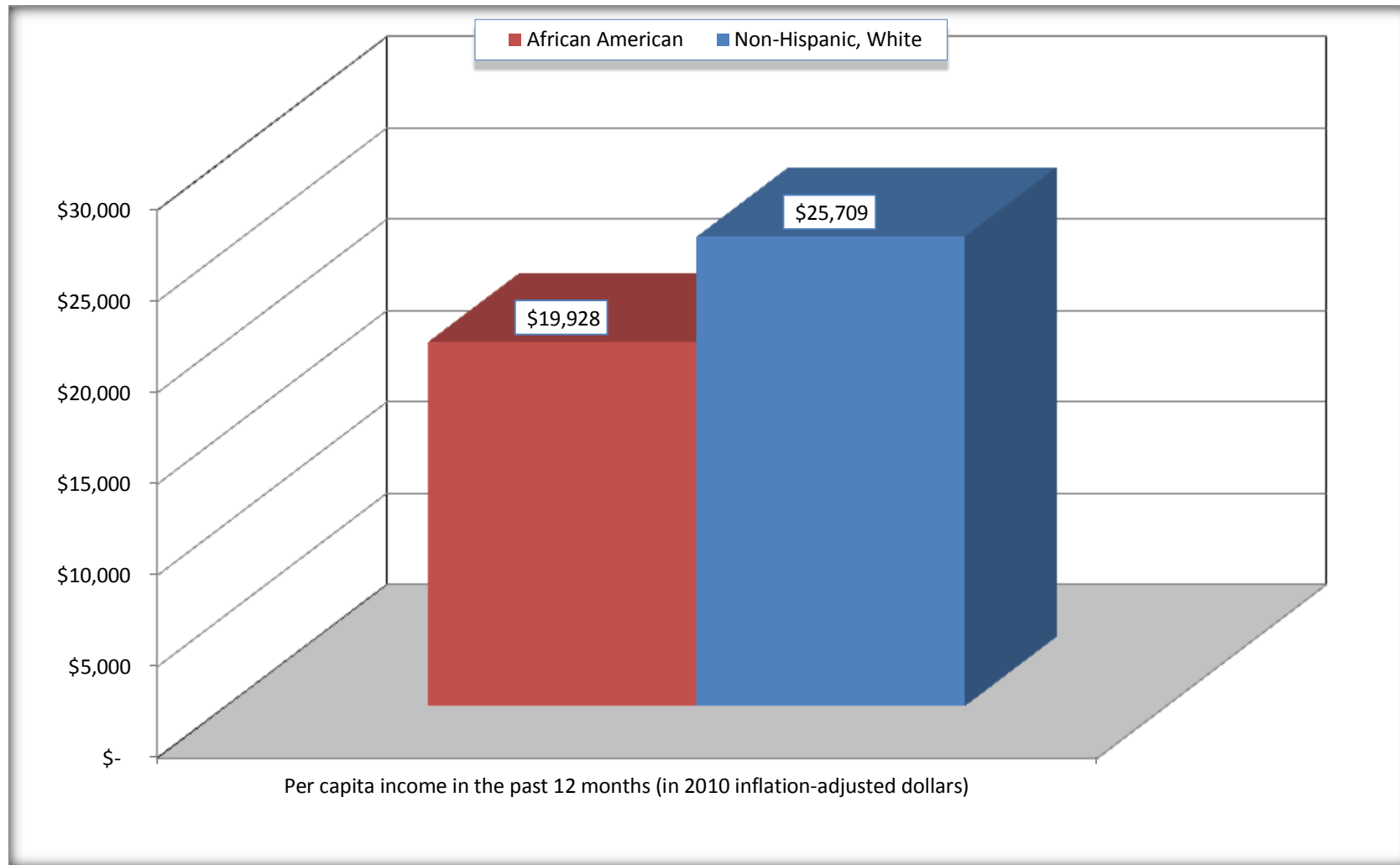
Source: U.S. Census Bureau, 2008-2012 American Community Survey

For information on confidentiality protection, sampling error, nonsampling error, and definitions, see Survey Methodology.

<http://www.census.gov/acs/www/UseData/index.htm>

Per capita Income in the Past 12 Months

Timberlane CDP, Louisiana



Source: B19301. PER CAPITA INCOME IN THE PAST 12 MONTHS (IN 2010 INFLATION-ADJUSTED DOLLARS)
Data Set: 2008-2012 American Community Survey 5-Year Estimates

B20017. MEDIAN EARNINGS IN THE PAST 12 MONTHS (IN 2010 INFLATION-ADJUSTED DOLLARS) BY SEX BY WORK EXPERIENCE IN THE PAST 12 MONTHS FOR THE POPULATION 16 YEARS AND OVER WITH EARNINGS IN THE PAST 12 MONTHS

Data Set: 2008-2012 American Community Survey 5-Year Estimates

	Timberlane CDP, Louisiana			
	African American	Margin of Error (+/-)	White, Not Hispanic	Margin of Error (+/-)
Median earnings in the past 12 months (in 2010 inflation-adjusted dollars) --				
Total:	\$ 24,704	\$ 4,606	\$ 37,843	\$ 6,609
Male --				
Total	\$ 37,134	\$ 10,475	\$ 49,323	\$ 7,322
Worked full-time, year-round in the past 12 months	\$ 44,414	\$ 9,044	\$ 53,838	\$ 8,427
Other	\$ 22,264	\$ 20,313	\$ 10,208	\$ 10,675
Female --				
Total	\$ 20,809	\$ 4,251	\$ 25,598	\$ 3,555
Worked full-time, year-round in the past 12 months	\$ 29,097	\$ 4,074	\$ 31,304	\$ 6,507
Other	\$ 10,000	\$ 3,167	\$ 8,139	\$ 3,533

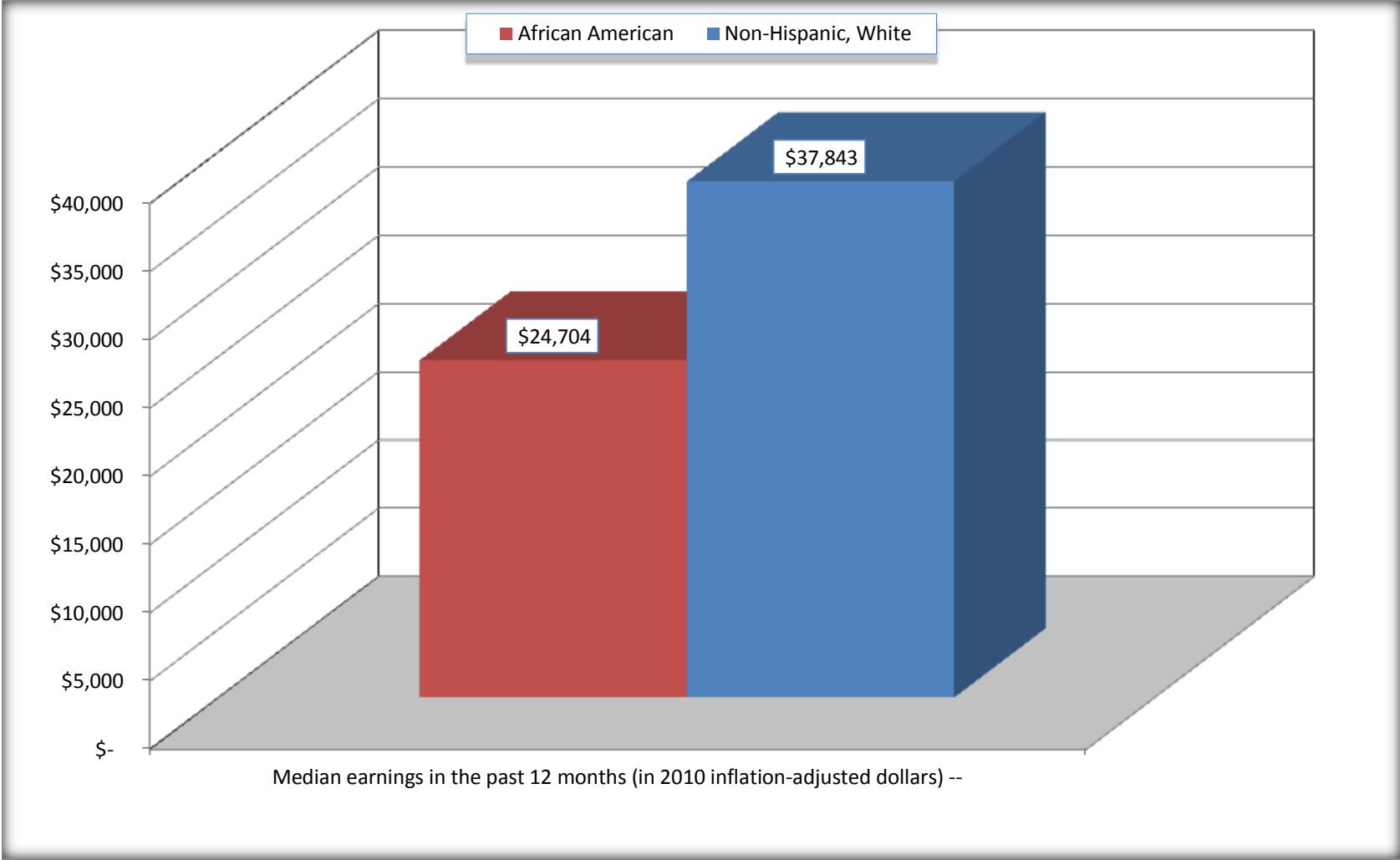
Source: U.S. Census Bureau, 2008-2012 American Community Survey

For information on confidentiality protection, sampling error, nonsampling error, and definitions, see Survey Methodology.

<http://www.census.gov/acs/www/UseData/index.htm>

Median earnings in the Past 12 Months (16 Years and Over with Earnings)

Timberlane CDP, Louisiana



Source: B20017. MEDIAN EARNINGS IN THE PAST 12 MONTHS (IN 2010 INFLATION-ADJUSTED DOLLARS) BY SEX BY WORK EXPERIENCE IN THE PAST 12 MONTHS FOR THE POPULATION 16 YEARS AND OVER WITH EARNINGS IN THE PAST 12 MONTHS
Data Set: 2008-2012 American Community Survey 5-Year Estimates

B20005. SEX BY WORK EXPERIENCE IN THE PAST 12 MONTHS BY EARNINGS IN THE PAST 12 MONTHS (IN 2010 INFLATION-ADJUSTED DOLLARS) FOR THE POPULATION 16 YEARS AND OVER

Data Set: 2008-2012 American Community Survey 5-Year Estimates

	Timberlane CDP, Louisiana					
	African American	Margin of Error (+/-)	% of AA Total	White, Not Hispanic	Margin of Error (+/-)	% of NHW Total
Total:	2,524	355	100.0%	3,859	473	100.0%
Worked full-time, year-round in the past 12 months:	1,119	NC	44.3%	1,760	NC	45.6%
No earnings	0	NC	0.0%	0	NC	0.0%
With earnings:	1,119	NC	44.3%	1,760	NC	45.6%
\$ 1 to \$ 9,999 or loss	0	NC	0.0%	11	NC	0.3%
\$ 10,000 to \$ 19,999	225	NC	8.9%	241	NC	6.2%
\$ 20,000 to \$ 29,999	285	NC	11.3%	272	NC	7.0%
\$ 30,000 to \$ 49,999	341	NC	13.5%	512	NC	13.3%
\$ 50,000 to \$ 74,999	157	NC	6.2%	440	NC	11.4%
\$ 75,000 or more	111	NC	4.4%	284	NC	7.4%
Other:	1,405	NC	55.7%	2,099	NC	54.4%
No earnings	720	NC	28.5%	1,511	NC	39.2%
With earnings: less than full time, year-round	685	NC	27.1%	588	NC	15.2%
Male:	882	191	34.9%	1,887	270	48.9%
Worked full-time, year-round in the past 12 months:	447	138	17.7%	1,030	200	26.7%
No earnings	0	19	0.0%	0	19	0.0%
With earnings:	447	138	17.7%	1,030	200	26.7%
\$ 1 to \$ 9,999 or loss	0	NC	0.0%	0	NC	0.0%
\$ 10,000 to \$ 19,999	67	NC	2.7%	98	NC	2.5%
\$ 20,000 to \$ 29,999	64	NC	2.5%	85	NC	2.2%
\$ 30,000 to \$ 49,999	157	NC	6.2%	264	NC	6.8%
\$ 50,000 to \$ 74,999	67	NC	2.7%	354	NC	9.2%
\$ 75,000 or more	92	NC	3.6%	229	NC	5.9%

	Timberlane CDP, Louisiana					
	African American	Margin of Error (+/-)	% of AA Total	White, Not Hispanic	Margin of Error (+/-)	% of NHW Total
Other:	435	140	17.2%	857	196	22.2%
No earnings	262	121	10.4%	598	157	15.5%
With earnings:	173	100	6.9%	259	110	6.7%
Female:	1,642	240	65.1%	1,972	253	51.1%
Worked full-time, year-round in the past 12 months:	672	178	26.6%	730	147	18.9%
No earnings	0	19	0.0%	0	19	0.0%
With earnings:	672	178	26.6%	730	147	18.9%
\$ 1 to \$ 9,999 or loss	0	NC	0.0%	11	NC	0.3%
\$ 10,000 to \$ 19,999	158	NC	6.3%	143	NC	3.7%
\$ 20,000 to \$ 29,999	221	NC	8.8%	187	NC	4.8%
\$ 30,000 to \$ 49,999	184	NC	7.3%	248	NC	6.4%
\$ 50,000 to \$ 74,999	90	NC	3.6%	86	NC	2.2%
\$ 75,000 or more	19	NC	0.8%	55	NC	1.4%
Other:	970	222	38.4%	1,242	193	32.2%
No earnings	458	169	18.1%	913	195	23.7%
With earnings:	512	210	20.3%	329	104	8.5%

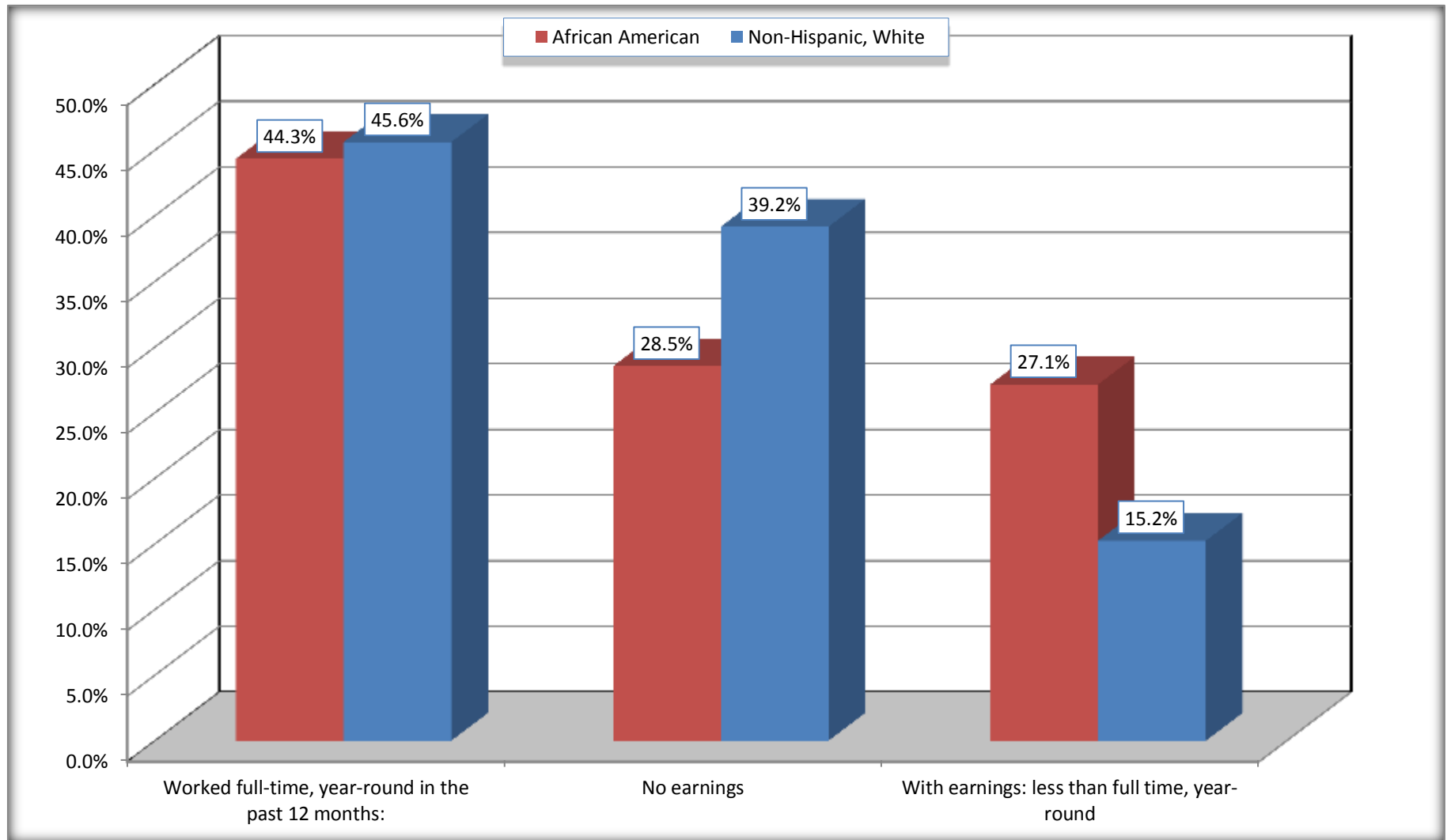
Source: U.S. Census Bureau, 2008-2012 American Community Survey

For information on confidentiality protection, sampling error, nonsampling error, and definitions, see Survey Methodology.

<http://www.census.gov/acs/www/UseData/index.htm>

Employment and Earnings in in the Past 12 Months (16 Years and Over)

Timberlane CDP, Louisiana



Source: B20005. SEX BY WORK EXPERIENCE IN THE PAST 12 MONTHS BY EARNINGS IN THE PAST 12 MONTHS (IN 2010 INFLATION-ADJUSTED DOLLARS) FOR THE POPULATION 16 YEARS AND OVER

Data Set: 2008-2012 American Community Survey 5-Year Estimates

C21001. SEX BY AGE BY VETERAN STATUS FOR THE CIVILIAN POPULATION 18 YEARS AND OVER

Data Set: 2008-2012 American Community Survey 5-Year Estimates

	Timberlane CDP, Louisiana					
	African American	Margin of Error (+/-)	% of AA Total	White, Not Hispanic	Margin of Error (+/-)	% of NHW Total
Total:	2,452	348	100.0%	3,737	437	100.0%
Veteran	298	NC	12.2%	350	NC	9.4%
Nonveteran	2,154	NC	87.8%	3,387	NC	90.6%
Male:	882	191	36.0%	1,777	245	47.6%
18 to 64 years:	807	181	32.9%	1,496	221	40.0%
Veteran	211	106	8.6%	159	62	4.3%
Nonveteran	596	153	24.3%	1,337	220	35.8%
65 years and over:	75	52	3.1%	281	82	7.5%
Veteran	45	40	1.8%	174	82	4.7%
Nonveteran	30	35	1.2%	107	52	2.9%
Female:	1,570	229	64.0%	1,960	251	52.4%
18 to 64 years:	1,366	235	55.7%	1,572	219	42.1%
Veteran	42	38	1.7%	9	14	0.2%
Nonveteran	1,324	237	54.0%	1,563	223	41.8%
65 years and over:	204	85	8.3%	388	102	10.4%
Veteran	0	19	0.0%	8	12	0.2%
Nonveteran	204	85	8.3%	380	102	10.2%

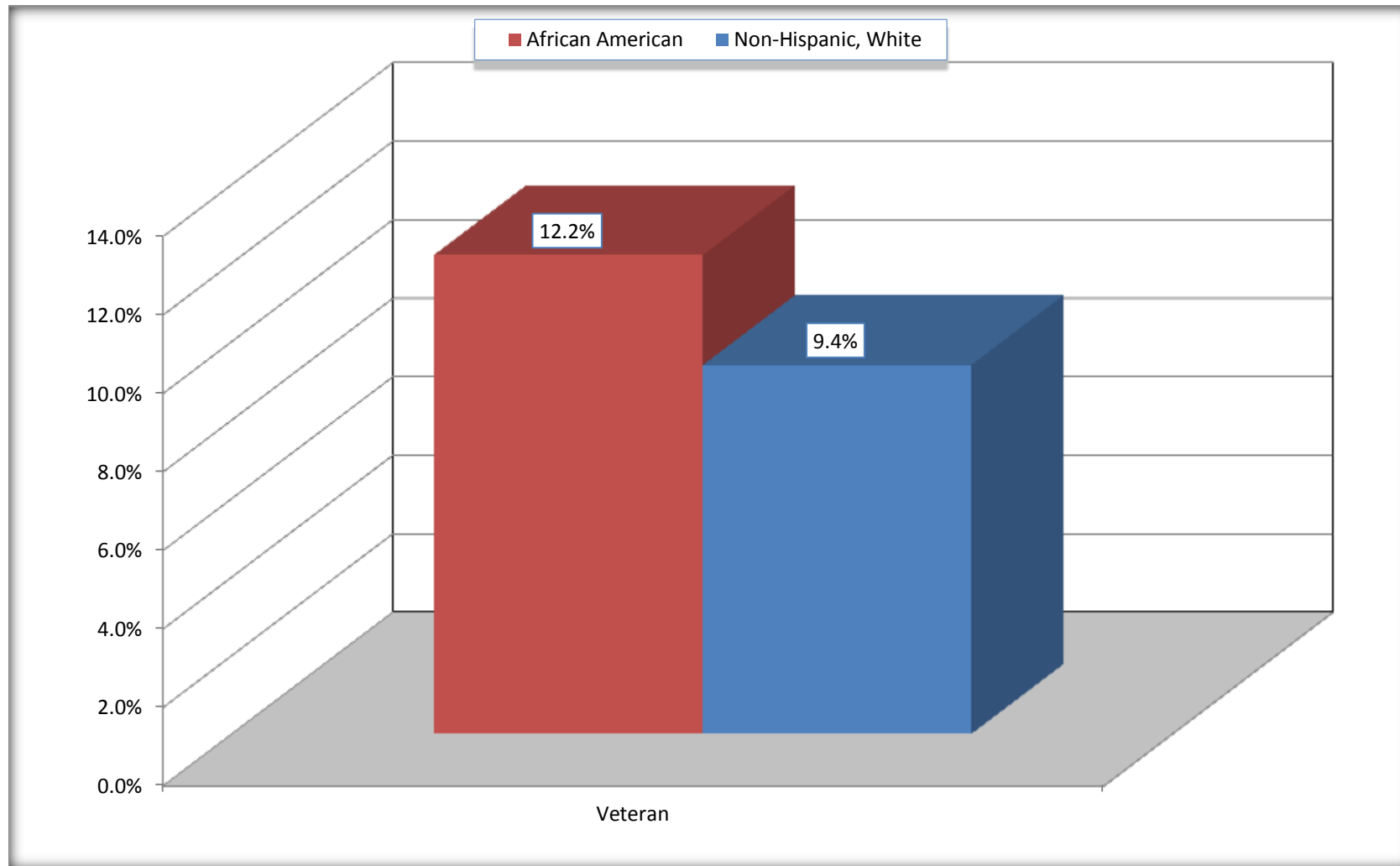
Source: U.S. Census Bureau, 2008-2012 American Community Survey

For information on confidentiality protection, sampling error, nonsampling error, and definitions, see Survey Methodology.

<http://www.census.gov/acs/www/UseData/index.htm>

Veterans in the Civilian Population 18 Years and Over

Timberlane CDP, Louisiana



Source: C21001. SEX BY AGE BY VETERAN STATUS FOR THE CIVILIAN POPULATION 18 YEARS AND OVER
Data Set: 2008-2012 American Community Survey 5-Year Estimates

B22005. RECEIPT OF FOOD STAMPS/SNAP IN THE PAST 12 MONTHS BY RACE OF HOUSEHOLDER

Data Set: 2008-2012 American Community Survey 5-Year Estimates

	Timberlane CDP, Louisiana					
	African American	Margin of Error (+/-)	% of AA Total	White, Not Hispanic	Margin of Error (+/-)	% of NHW Total
Total:	1,181	132	100.0%	1,687	170	100.0%
HH received Food Stamps/SNAP in the past 12 months	298	112	25.2%	104	44	6.2%
HH did not receive Food Stamps/SNAP in the past 12 months	883	150	74.8%	1,583	166	93.8%

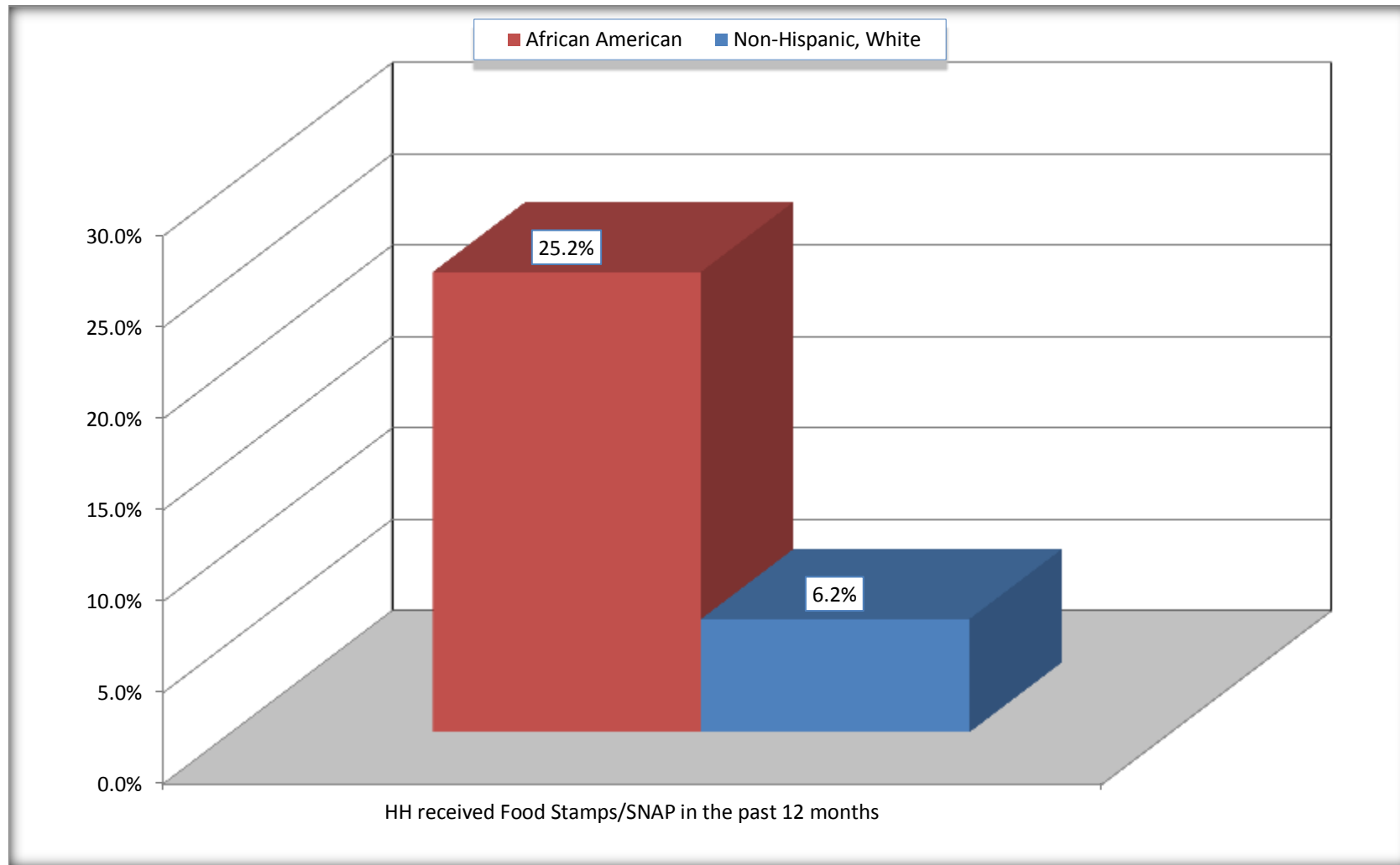
Source: U.S. Census Bureau, 2008-2012 American Community Survey

For information on confidentiality protection, sampling error, nonsampling error, and definitions, see Survey Methodology.

<http://www.census.gov/acs/www/UseData/index.htm>

Receipt of Food Stamps/SNAP in the Past 12 Months by Household

Timberlane CDP, Louisiana



Source: B22005. RECEIPT OF FOOD STAMPS/SNAP IN THE PAST 12 MONTHS BY RACE OF HOUSEHOLDER
Data Set: 2008-2012 American Community Survey 5-Year Estimates

C23002. SEX BY AGE BY EMPLOYMENT STATUS FOR THE POPULATION 16 YEARS AND OVER

Data Set: 2008-2012 American Community Survey 5-Year Estimates

	Timberlane CDP, Louisiana					
	African American	Margin of Error (+/-)	% of AA Total	White, Not Hispanic	Margin of Error (+/-)	% of NHW Total
Total:	2,524	355	100.0%	3,859	473	100.0%
In labor force:	1,716	NC	68.0%	2,323	NC	60.2%
In Armed Forces	7	NC	0.3%	32	NC	0.8%
Civilian:	1,639	NC	64.9%	2,176	NC	56.4%
Employed	1,542	NC	61.1%	2,195	NC	56.9%
Unemployed	167	NC	6.6%	96	NC	2.5%
Not in labor force	808	NC	32.0%	1,536	NC	39.8%
Male:	882	191	34.9%	1,887	270	48.9%
16 to 64 years:	807	181	32.0%	1,606	243	41.6%
In labor force:	550	167	21.8%	1,232	241	31.9%
In Armed Forces	0	19	0.0%	32	42	0.8%
Civilian:	550	167	21.8%	1,200	233	31.1%
Employed	531	160	21.0%	1,139	223	29.5%
Unemployed	19	29	0.8%	61	46	1.6%
Not in labor force	257	121	10.2%	374	146	9.7%
65 years and over:	75	52	3.0%	281	82	7.3%
In labor force:	28	33	1.1%	53	38	1.4%
Employed	11	22	0.4%	53	38	1.4%
Unemployed	17	26	0.7%	0	19	0.0%
Not in labor force	47	41	1.9%	228	74	5.9%

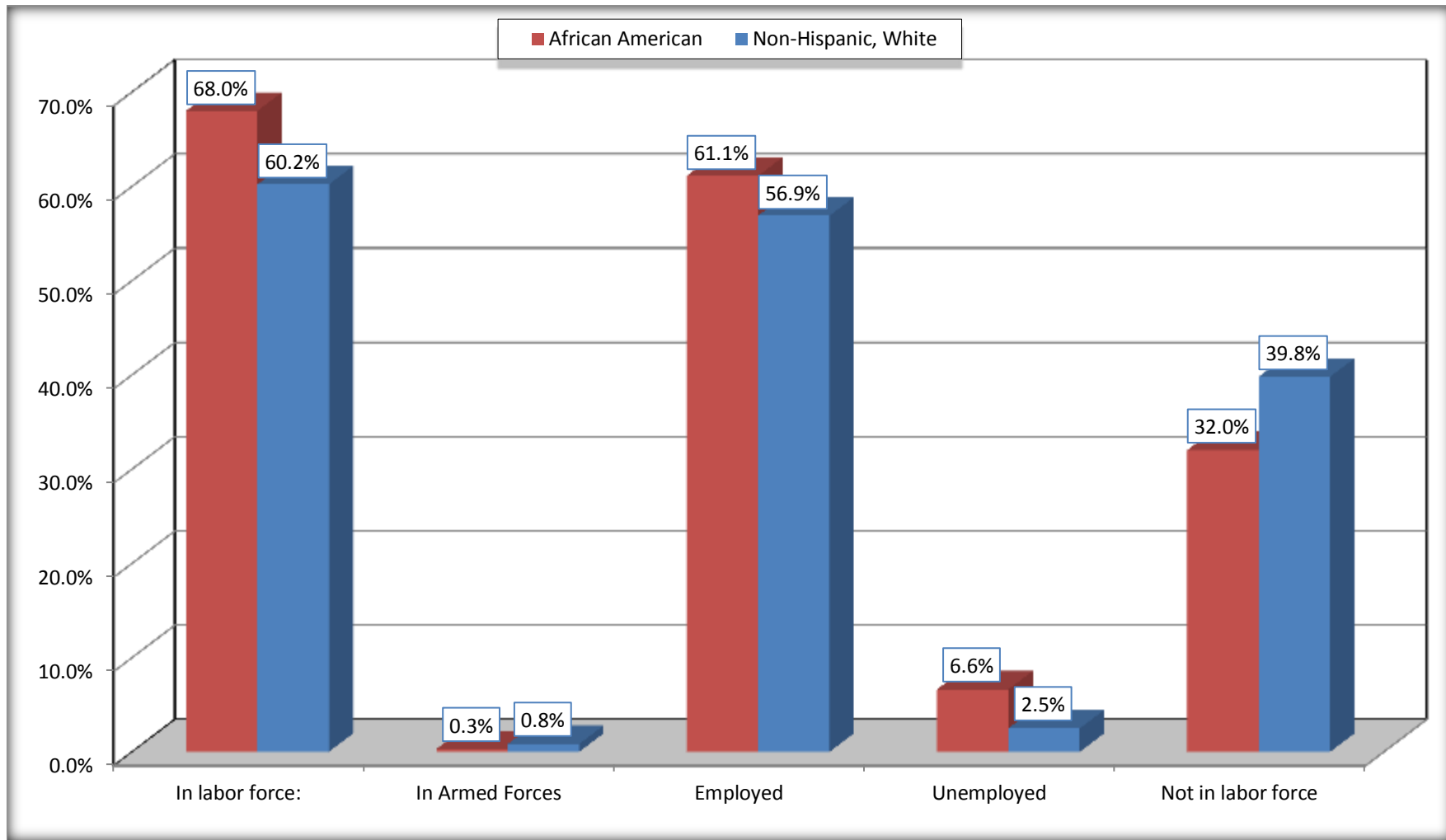
	Timberlane CDP, Louisiana					
	African American	Margin of Error (+/-)	% of AA Total	White, Not Hispanic	Margin of Error (+/-)	% of NHW Total
Female:	1,642	240	65.1%	1,972	253	51.1%
16 to 64 years:	1,438	245	57.0%	1,584	222	41.0%
In labor force:	1,096	259	43.4%	976	174	25.3%
In Armed Forces	7	12	0.3%	0	19	0.0%
Civilian:	1,089	259	43.1%	976	174	25.3%
Employed	958	243	38.0%	941	173	24.4%
Unemployed	131	90	5.2%	35	32	0.9%
Not in labor force	342	146	13.5%	608	150	15.8%
65 years and over:	204	85	8.1%	388	102	10.1%
In labor force:	42	55	1.7%	62	46	1.6%
Employed	42	55	1.7%	62	46	1.6%
Unemployed	0	19	0.0%	0	19	0.0%
Not in labor force	162	64	6.4%	326	110	8.4%

Source: U.S. Census Bureau, 2008-2012 American Community Survey

For information on confidentiality protection, sampling error, nonsampling error, and definitions, see Survey Methodology.
<http://www.census.gov/acs/www/UseData/index.htm>

Employment Status for the Population 16 years and over

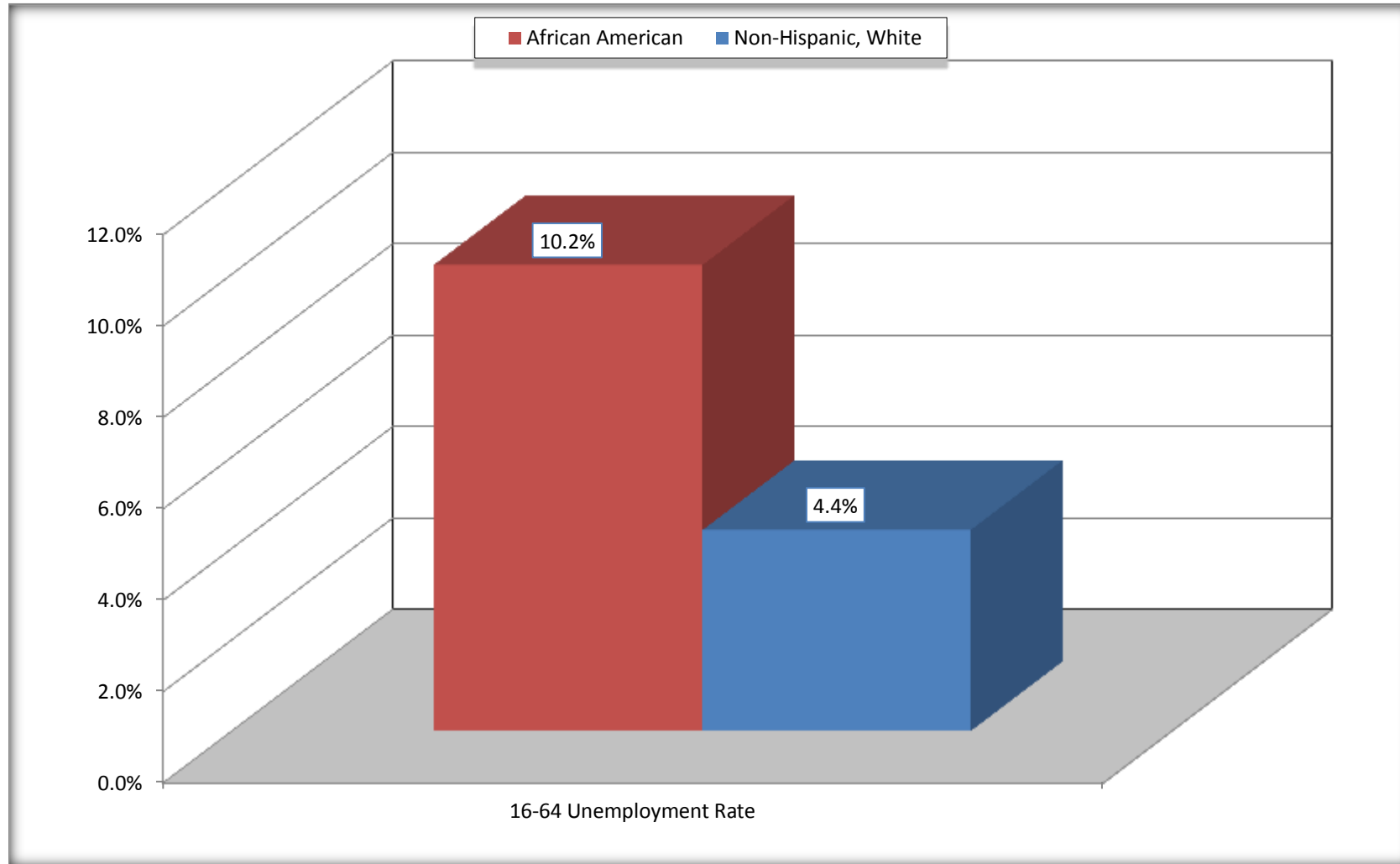
Timberlane CDP, Louisiana



Source: C23002. SEX BY AGE BY EMPLOYMENT STATUS FOR THE POPULATION 16 YEARS AND OVER
Data Set: 2008-2012 American Community Survey 5-Year Estimates

Unemployment of Working Age Population (Ages 16 to 64) (As a Percent of 16-64 Civilian Labor Force)

Timberlane CDP, Louisiana



Source: C23002. SEX BY AGE BY EMPLOYMENT STATUS FOR THE POPULATION 16 YEARS AND OVER
Data Set: 2008-2012 American Community Survey 5-Year Estimates

C24010. SEX BY OCCUPATION FOR THE CIVILIAN EMPLOYED POPULATION 16 YEARS AND OVER

Data Set: 2008-2012 American Community Survey 5-Year Estimates

	Timberlane CDP, Louisiana					
	African American	Margin of Error (+/-)	% of AA Total	White, Not Hispanic	Margin of Error (+/-)	% of NHW Total
Total:	1,542	321	100.0%	2,195	344	100.0%
Management, professional, and related occupations	405	NC	26.3%	685	NC	31.2%
Service occupations	378	NC	24.5%	248	NC	11.3%
Sales and office occupations	478	NC	31.0%	842	NC	38.4%
Natural resources, construction, and maintenance occupations:	108	NC	7.0%	125	NC	5.7%
Production, transportation, and material moving occupations	173	NC	11.2%	295	NC	13.4%
Male:	542	158	35.1%	1,192	226	54.3%
Management, business, science, and arts occupations:	80	66	5.2%	365	130	16.6%
Service occupations	67	64	4.3%	135	72	6.2%
Sales and office occupations	115	65	7.5%	334	129	15.2%
Natural resources, construction, and maintenance occupations:	108	74	7.0%	125	61	5.7%
Production, transportation, and material moving occupations	172	104	11.2%	233	122	10.6%
Female:	1,000	247	64.9%	1,003	179	45.7%
Management, professional, and related occupations	325	136	21.1%	320	104	14.6%
Service occupations	311	159	20.2%	113	72	5.1%
Sales and office occupations	363	145	23.5%	508	152	23.1%
Natural resources, construction, and maintenance occupations:	0	19	0.0%	0	19	0.0%
Production, transportation, and material moving occupations	1	10	0.1%	62	67	2.8%

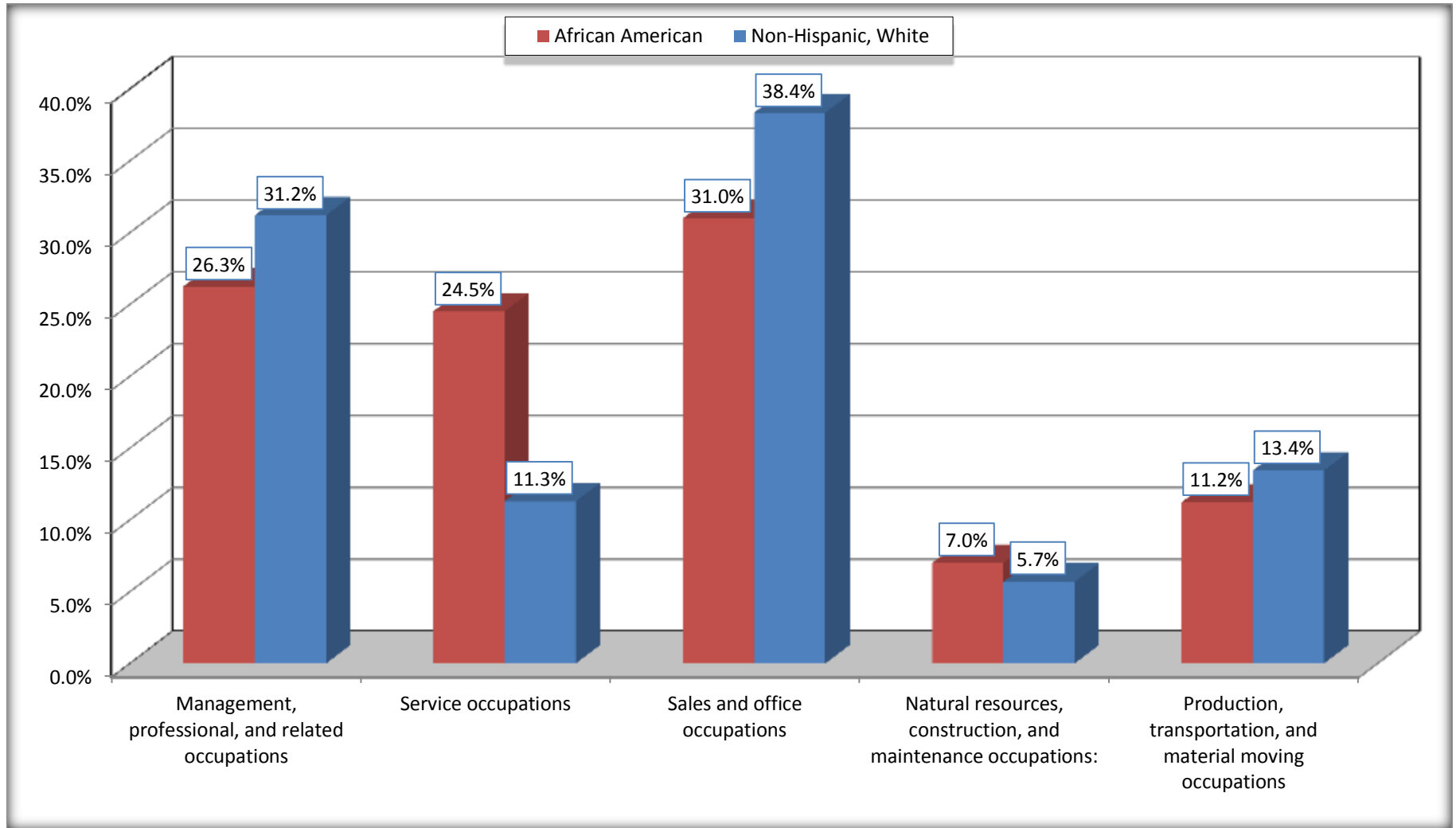
Source: U.S. Census Bureau, 2008-2012 American Community Survey

For information on confidentiality protection, sampling error, nonsampling error, and definitions, see Survey Methodology.

<http://www.census.gov/acs/www/UseData/index.htm>

Occupation for the Civilian Employed 16 Years and Over Population

Timberlane CDP, Louisiana



Source: C24010. SEX BY OCCUPATION FOR THE CIVILIAN EMPLOYED POPULATION 16 YEARS AND OVER
Data Set: 2008-2012 American Community Survey 5-Year Estimates

B25003. TENURE - Universe: OCCUPIED HOUSING UNITS

Data Set: 2008-2012 American Community Survey 5-Year Estimates

	Timberlane CDP, Louisiana					
	African American	Margin of Error (+/-)	% of AA Total	White, Not Hispanic	Margin of Error (+/-)	% of NHW Total
Total:	1,181	132	100.0%	1,687	170	100.0%
Owner occupied	645	114	54.6%	1,415	144	83.9%
Renter occupied	536	145	45.4%	272	106	16.1%

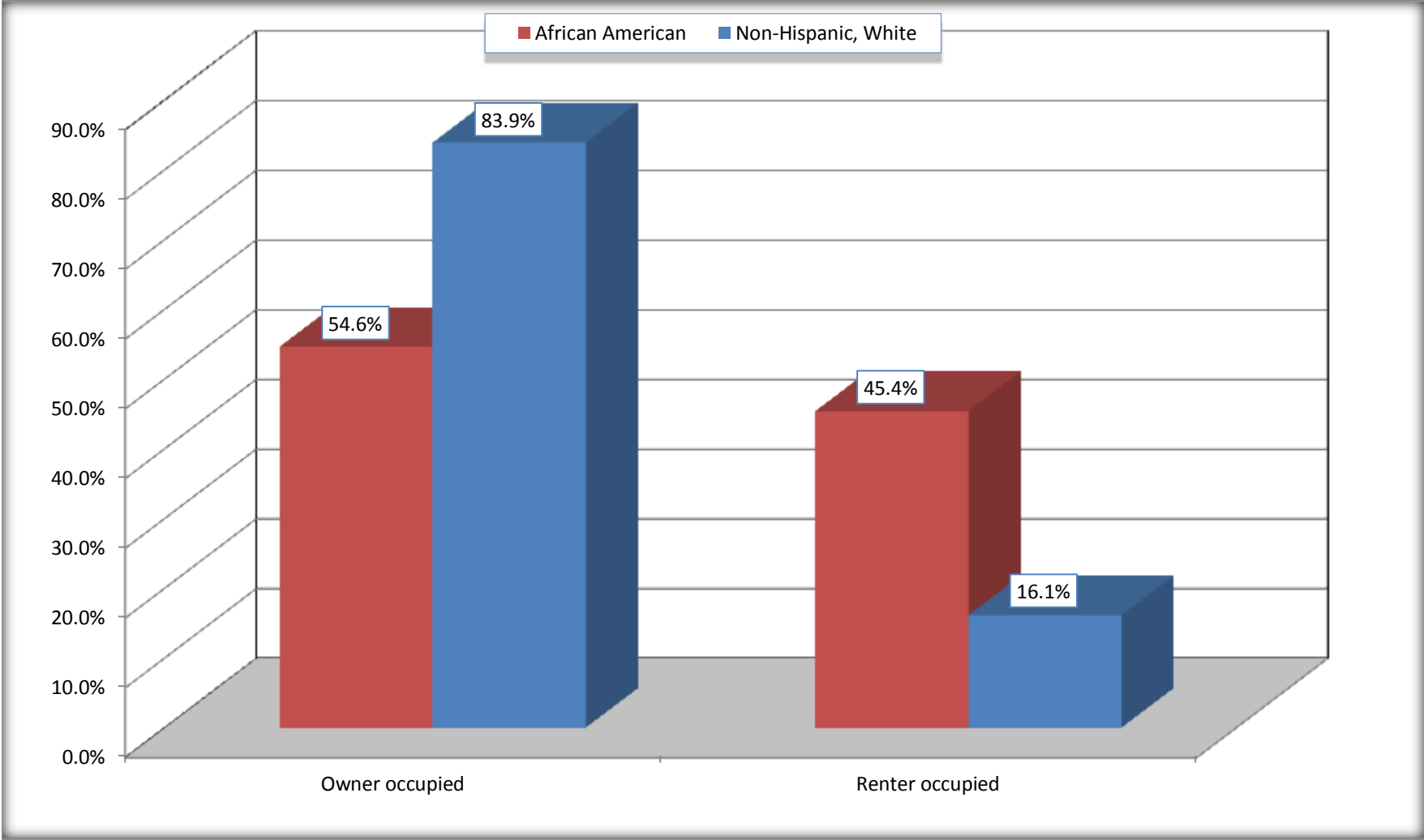
Source: U.S. Census Bureau, 2008-2012 American Community Survey

For information on confidentiality protection, sampling error, nonsampling error, and definitions, see Survey Methodology.

<http://www.census.gov/acs/www/UseData/index.h>

Home Owners and Renters by Household

Timberlane CDP, Louisiana



Source: B25003. TENURE - Universe: OCCUPIED HOUSING UNITS
Data Set: 2008-2012 American Community Survey 5-Year Estimates

B25014. OCCUPANTS PER ROOM - Universe: OCCUPIED HOUSING UNITS

Data Set: 2008-2012 American Community Survey 5-Year Estimates

	Timberlane CDP, Louisiana					
	African American	Margin of Error (+/-)	% of AA Total	White, Not Hispanic	Margin of Error (+/-)	% of NHW Total
Total:	1,181	132	100.0%	1,687	170	100.0%
1.00 or less occupants per room	1,123	130	95.1%	1,662	168	98.5%
1.01 or more occupants per room	58	64	4.9%	25	33	1.5%

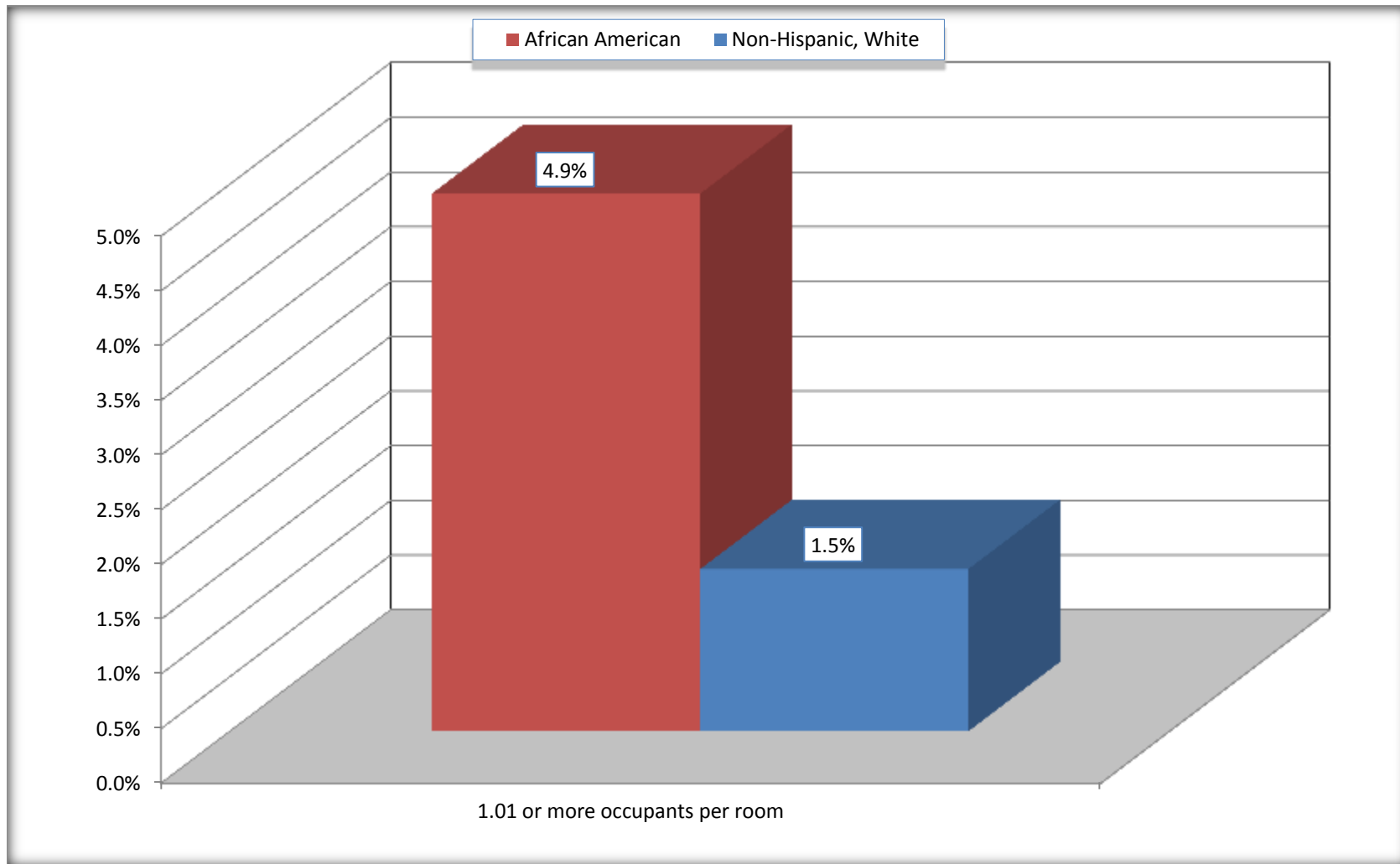
Source: U.S. Census Bureau, 2008-2012 American Community Survey

For information on confidentiality protection, sampling error, nonsampling error, and definitions, see Survey Methodology.

<http://www.census.gov/acs/www/UseData/index.ht>

More than One Person per Room (Crowding) by Household

Timberlane CDP, Louisiana



Source: B25014. OCCUPANTS PER ROOM - Universe: OCCUPIED HOUSING UNITS
Data Set: 2008-2012 American Community Survey 5-Year Estimates

B18101. AGE BY DISABILITY STATUS

Data Set: 2008-2012 American Community Survey 5-Year Estimates

	Timberlane CDP, Louisiana					
	African American	Margin of Error (+/-)	% of AA Total	White, Not Hispanic	Margin of Error (+/-)	% of NHW Total
Total:	3,298	533	100.0%	4,809	627	100.0%
Under 18 years:	866	307	26.3%	1,113	71	23.1%
With a disability	88	68	2.7%	65	64	1.4%
No disability	778	305	23.6%	1,048	279	21.8%
18 to 64 years:	2,161	338	65.5%	3,060	376	63.6%
With a disability	111	72	3.4%	492	149	10.2%
No disability	2,050	329	62.2%	2,568	358	53.4%
65 years and over:	271	105	8.2%	636	129	13.2%
With a disability	157	100	4.8%	270	87	5.6%
No disability	114	60	3.5%	366	131	7.6%

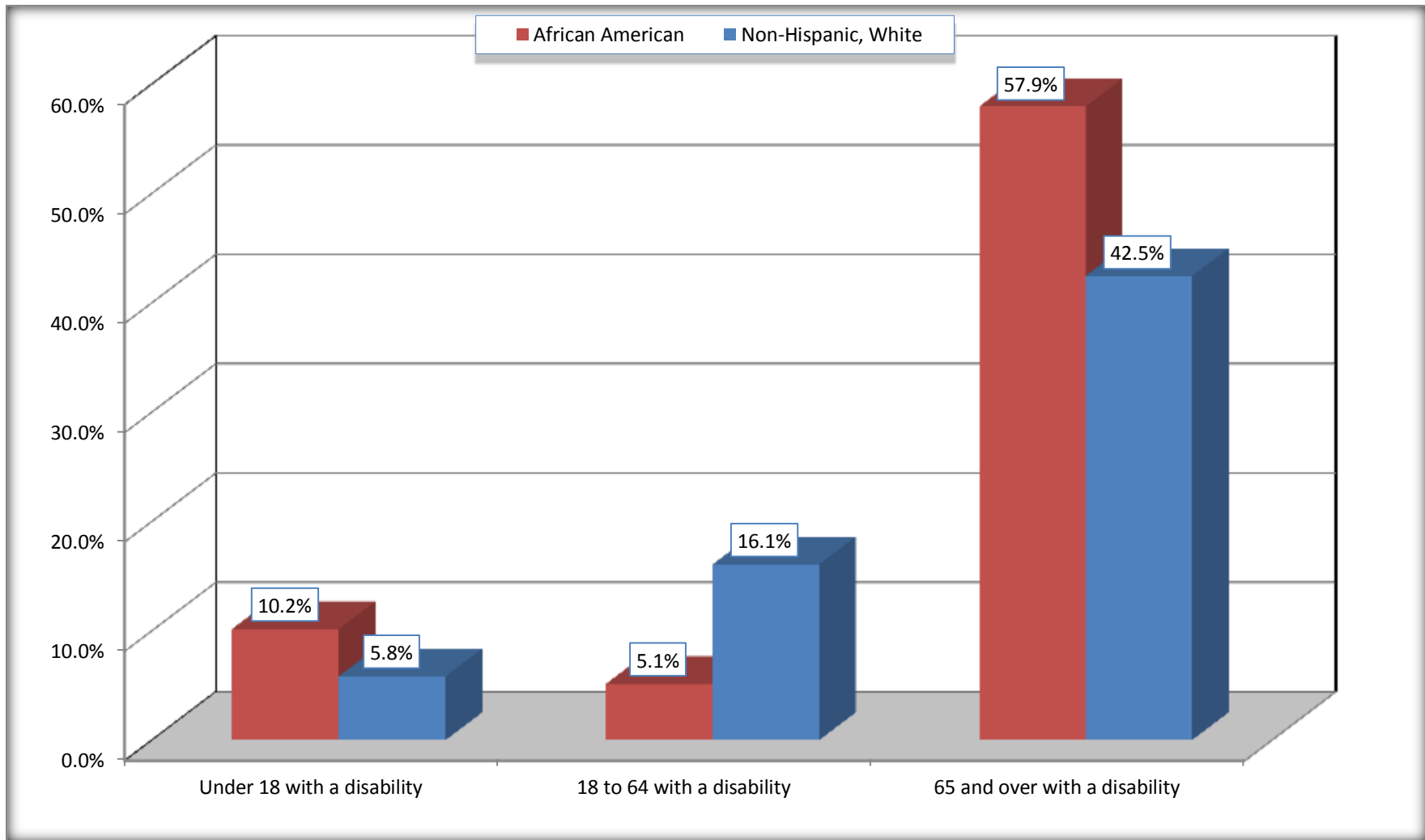
Source: U.S. Census Bureau, 2008-2012 American Community Survey

For information on confidentiality protection, sampling error, nonsampling error, and definitions, see Survey Methodology.

<http://www.census.gov/acs/www/UseData/index.htm>

Disability by Age

Timberlane CDP, Louisiana



Source: B18101. AGE BY DISABILITY STATUS
Data Set: 2008-2012 American Community Survey 5-Year Estimates

C27001B. HEALTH INSURANCE COVERAGE STATUS BY AGE

Data Set: 2008-2012 American Community Survey 5-Year Estimates

	Timberlane CDP, Louisiana					
	African American	Margin of Error (+/-)	% of AA Total	White, Not Hispanic	Margin of Error (+/-)	% of NHW Total
Total:	3,298	533	100.0%	4,809	627	100.0%
Under 18 years:	866	307	26.3%	1,113	292	23.1%
With health insurance coverage	814	283	24.7%	1,034	292	21.5%
No health insurance coverage	52	67	1.6%	79	86	1.6%
18 to 64 years:	2,161	338	65.5%	3,060	376	63.6%
With health insurance coverage	1,549	350	47.0%	2,465	300	51.3%
No health insurance coverage	612	185	18.6%	595	221	12.4%
65 years and over:	271	105	8.2%	636	129	13.2%
With health insurance coverage	271	105	8.2%	636	129	13.2%
No health insurance coverage	0	19	0.0%	0	19	0.0%

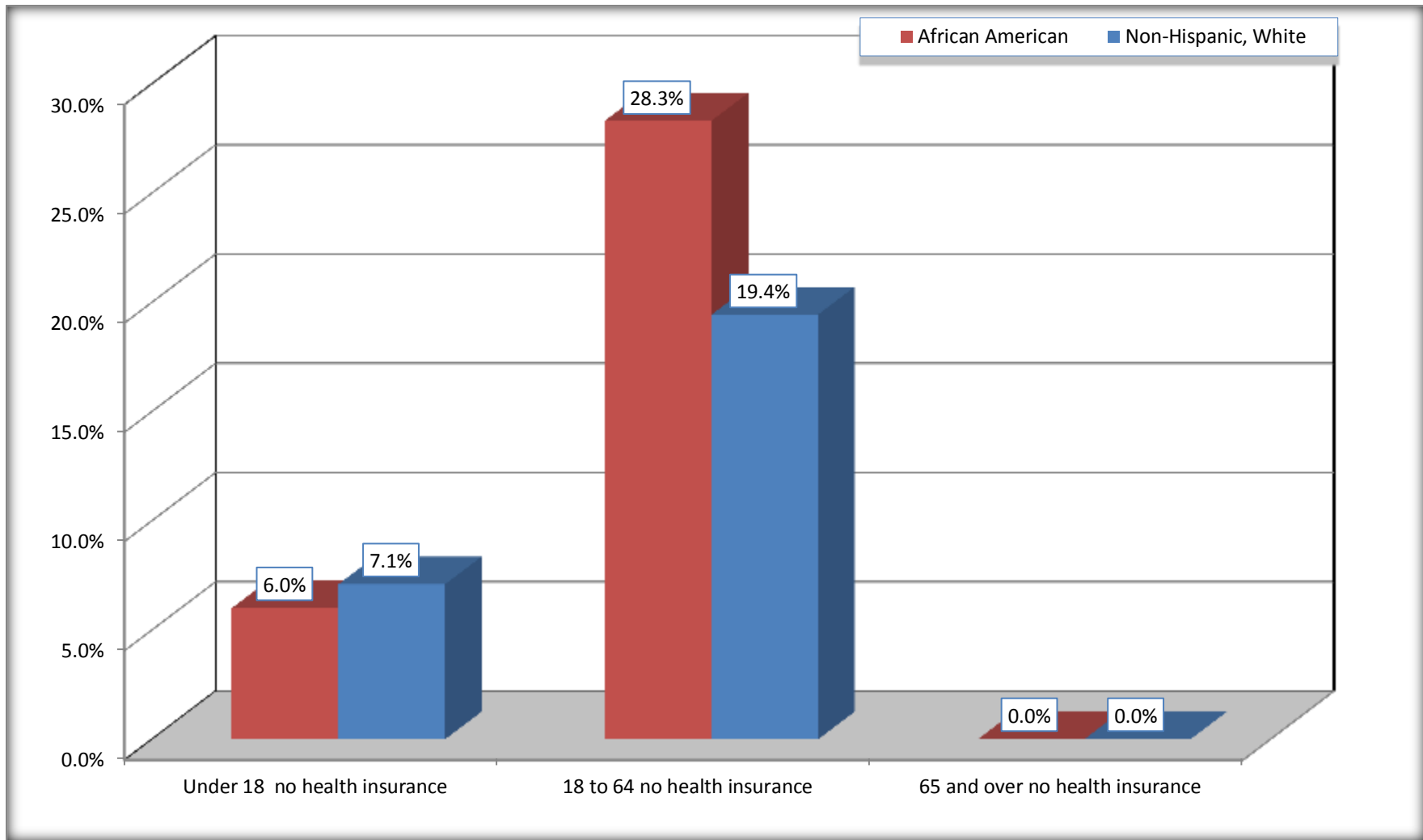
Source: U.S. Census Bureau, 2008-2012 American Community Survey

For information on confidentiality protection, sampling error, nonsampling error, and definitions, see Survey Methodology.

<http://www.census.gov/acs/www/UseData/index.htm>

Lack of Health Insurance Coverage by Age

Timberlane CDP, Louisiana



Source: C27001B. HEALTH INSURANCE COVERAGE STATUS BY AGE
Data Set: 2008-2012 American Community Survey 5-Year Estimates