

Selected Socio-Economic Data

St. Rose CDP, Louisiana

African American and White, Not Hispanic

Data Set: 2008-2012 American Community Survey 5-Year Estimates

www.fairvote2020.org

www.fairdata2000.com

[29-Dec-13](#)

C02003.DETAILED RACE - Universe: TOTAL POPULATION

Data Set: 2008-2012 American Community Survey 5-Year Estimates

	St. Rose CDP, Louisiana		
	Population	Margin of Error (+/-)	% of Total
Total:	8,861	682	100.0%
Population of one race:	8,642	672	97.5%
White	4,200	506	47.4%
Black or African American	4,360	689	49.2%
American Indian and Alaska Native	38	54	0.4%
Asian alone	33	39	0.4%
Native Hawaiian and Other Pacific Islander	0	17	0.0%
Some other race	11	31	0.1%
Population of two or more races:	219	187	2.5%
Two races including Some other race	115	148	1.3%
Two races excluding Some other race, and three or more races	104	137	1.2%
Population of two races:	219	187	2.5%
White; Black or African American	0	17	0.0%
White; American Indian and Alaska Native	0	17	0.0%
White; Asian	0	17	0.0%
Black or African American; American Indian and Alaska Native	104	137	1.2%
All other two race combinations	115	148	1.3%
Population of three races	0	17	0.0%
Population of four or more races	0	17	0.0%

Note: Hispanics may be of any race. See Table B03002 and chart.

Source: U.S. Census Bureau, 2008-2012 American Community Survey

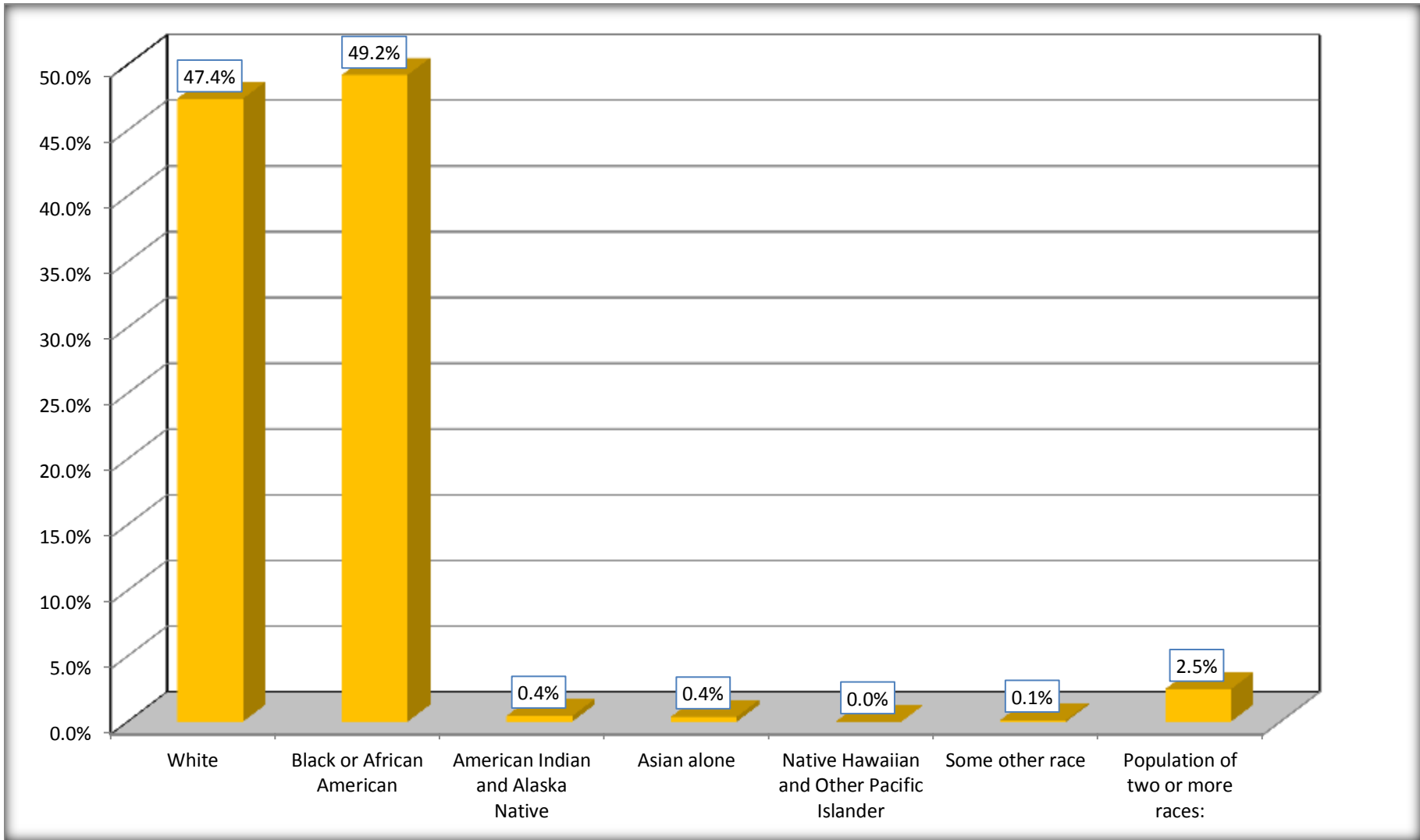
Although the American Community Survey (ACS) produces population, demographic and housing unit estimates, it is the Census Bureau's Population Estimates Program that produces and disseminates the official estimates of the population for the nation, states, counties, cities and towns and estimates of housing units for states and counties.

For information on confidentiality protection, sampling error, nonsampling error, and definitions, see Survey Methodology.

<http://www.census.gov/acs/www/UseData/index.htm>

Population by Race

St. Rose CDP, Louisiana



Source: C02003.DETAILED RACE - Universe: TOTAL POPULATION
Data Set: 2008-2012 American Community Survey 5-Year Estimates

B03002. HISPANIC OR LATINO ORIGIN BY RACE - Universe: TOTAL POPULATION

Data Set: 2008-2012 American Community Survey 5-Year Estimates

	St. Rose CDP, Louisiana		
	Population	Margin of Error (+/-)	% of Total
Total:	8,861	682	100.0%
Not Hispanic or Latino:	8,430	683	95.1%
White alone	3,925	491	44.3%
Black or African American alone	4,360	689	49.2%
American Indian and Alaska Native alone	38	54	0.4%
Asian alone	11	17	0.1%
Native Hawaiian and Other Pacific Islander alone	0	17	0.0%
Some other race alone	0	17	0.0%
Two or more races:	96	146	1.1%
Two races including Some other race	96	146	1.1%
Two races excluding Some other race, and three or more races	0	17	0.0%
Hispanic or Latino	431	149	4.9%

Source: U.S. Census Bureau, 2008-2012 American Community Survey

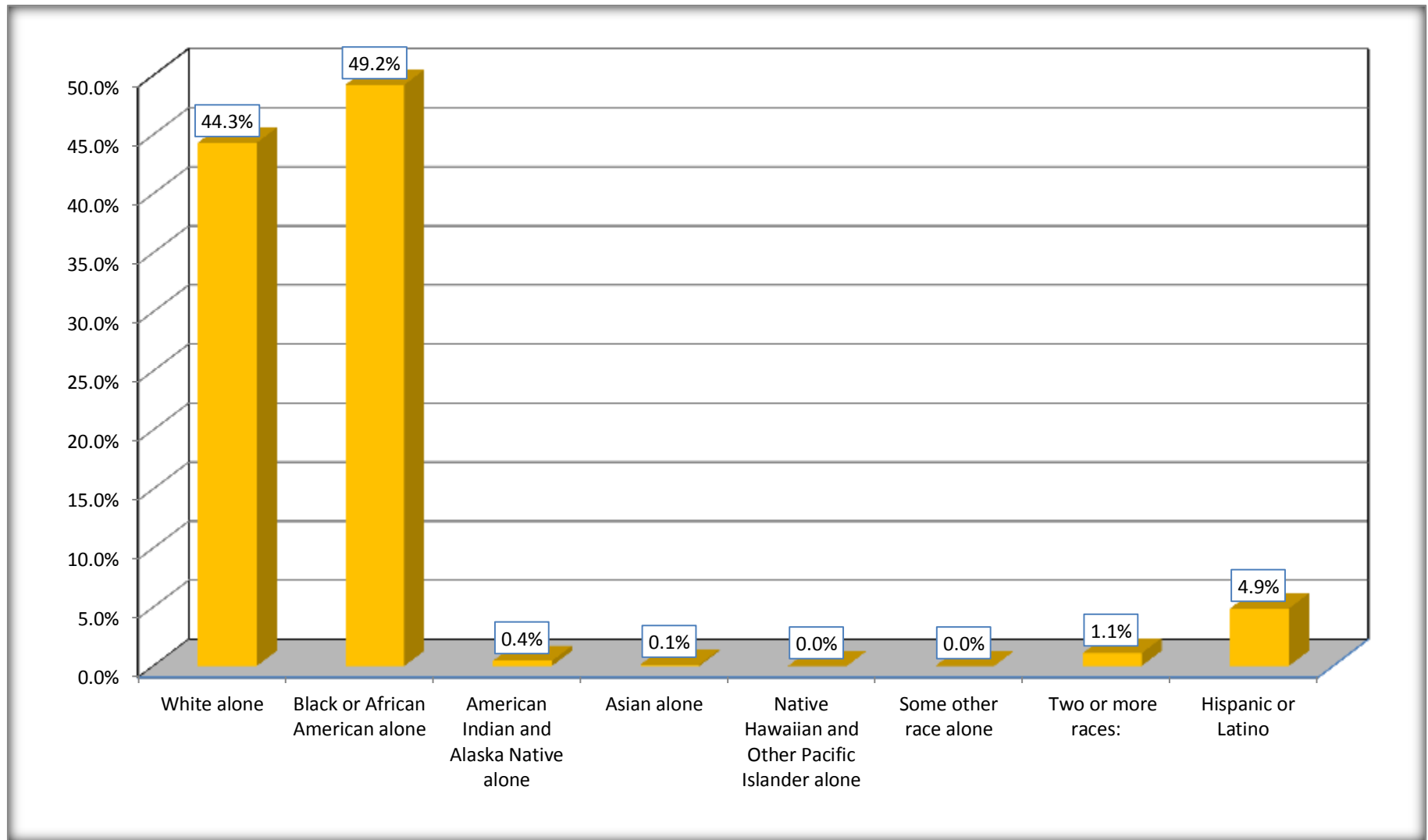
Although the American Community Survey (ACS) produces population, demographic and housing unit estimates, it is the Census Bureau's Population Estimates Program that produces and disseminates the official estimates of the population for the nation, states, counties, cities and towns and estimates of housing units for states and counties.

For information on confidentiality protection, sampling error, nonsampling error, and definitions, see Survey Methodology.

<http://www.census.gov/acs/www/UseData/index.htm>

Non-Hispanic by Race and Hispanic Population

St. Rose CDP, Louisiana



Source: B03002. HISPANIC OR LATINO ORIGIN BY RACE - Universe: TOTAL POPULATION
Data Set: 2008-2012 American Community Survey 5-Year Estimates

B03002. HISPANIC OR LATINO ORIGIN BY RACE

Data Set: 2008-2012 American Community Survey 5-Year Estimates

	St. Rose CDP, Louisiana		
	Population	Margin of Error (+/-)	% of Total
Hispanic or Latino:	431	149	100.0%
White alone	275	127	63.8%
Black or African American alone	0	17	0.0%
American Indian and Alaska Native alone	0	17	0.0%
Asian alone	22	34	5.1%
Native Hawaiian and Other Pacific Islander alone	0	17	0.0%
Some other race alone	11	31	2.6%
Two or more races:	123	140	28.5%
Two races including Some other race	19	31	4.4%
Two races excluding Some other race, and three or more races	104	137	24.1%

Source: U.S. Census Bureau, 2008-2012 American Community Survey

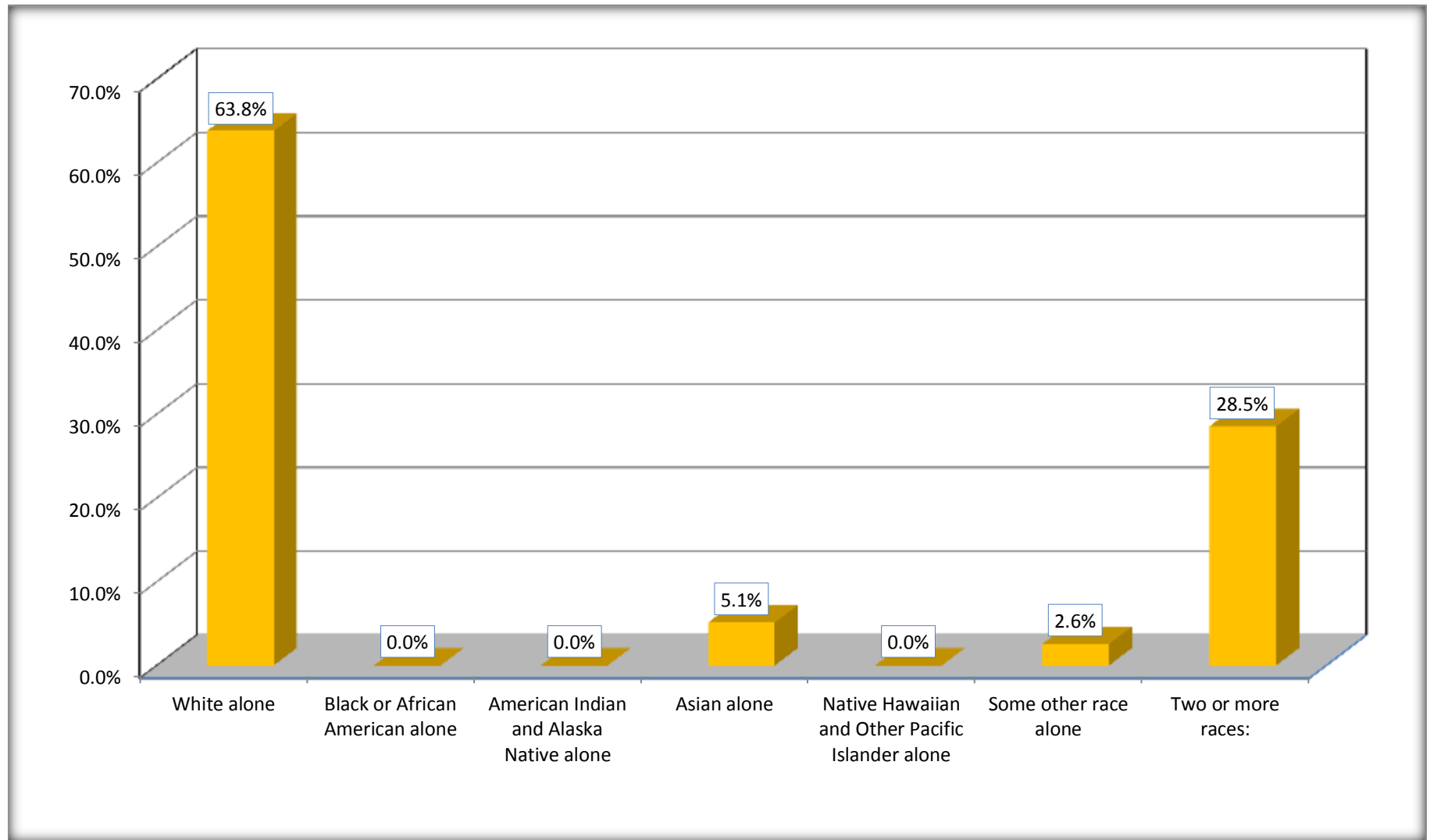
Although the American Community Survey (ACS) produces population, demographic and housing unit estimates, it is the Census Bureau's Population Estimates Program that produces and disseminates the official estimates of the population for the nation, states, counties, cities and towns and estimates of housing units for states and counties.

For information on confidentiality protection, sampling error, nonsampling error, and definitions, see Survey Methodology.

<http://www.census.gov/acs/www/UseData/index.htm>

Hispanic or Latino Origin by Race

St. Rose CDP, Louisiana



Source: B03002. HISPANIC OR LATINO ORIGIN BY RACE
Data Set: 2008-2012 American Community Survey 5-Year Estimates

B01001. SEX BY AGE

Data Set: 2008-2012 American Community Survey 5-Year Estimates

	St. Rose CDP, Louisiana					
	African American	Margin of Error (+/-)	% of AA Total	White, Not Hispanic	Margin of Error (+/-)	% of NHW Total
Total:	4,360	689	100.0%	3,925	491	100.0%
Under 18 years	1,723	NC	39.5%	999	NC	25.5%
18 to 64 years	2,216	NC	50.8%	2,520	NC	64.2%
65 years and over	421	NC	9.7%	406	NC	10.3%
Male:	1,851	326	42.5%	1,984	389	50.5%
Under 18 years	761	NC	17.5%	620	NC	15.8%
18 to 64 years	965	NC	22.1%	1,170	NC	29.8%
65 years and over	125	NC	2.9%	194	NC	4.9%
Female:	2,509	445	57.5%	1,941	412	49.5%
Under 18 years	962	NC	22.1%	379	NC	9.7%
18 to 64 years	1,251	NC	28.7%	1,350	NC	34.4%
65 years and over	296	NC	6.8%	212	NC	5.4%

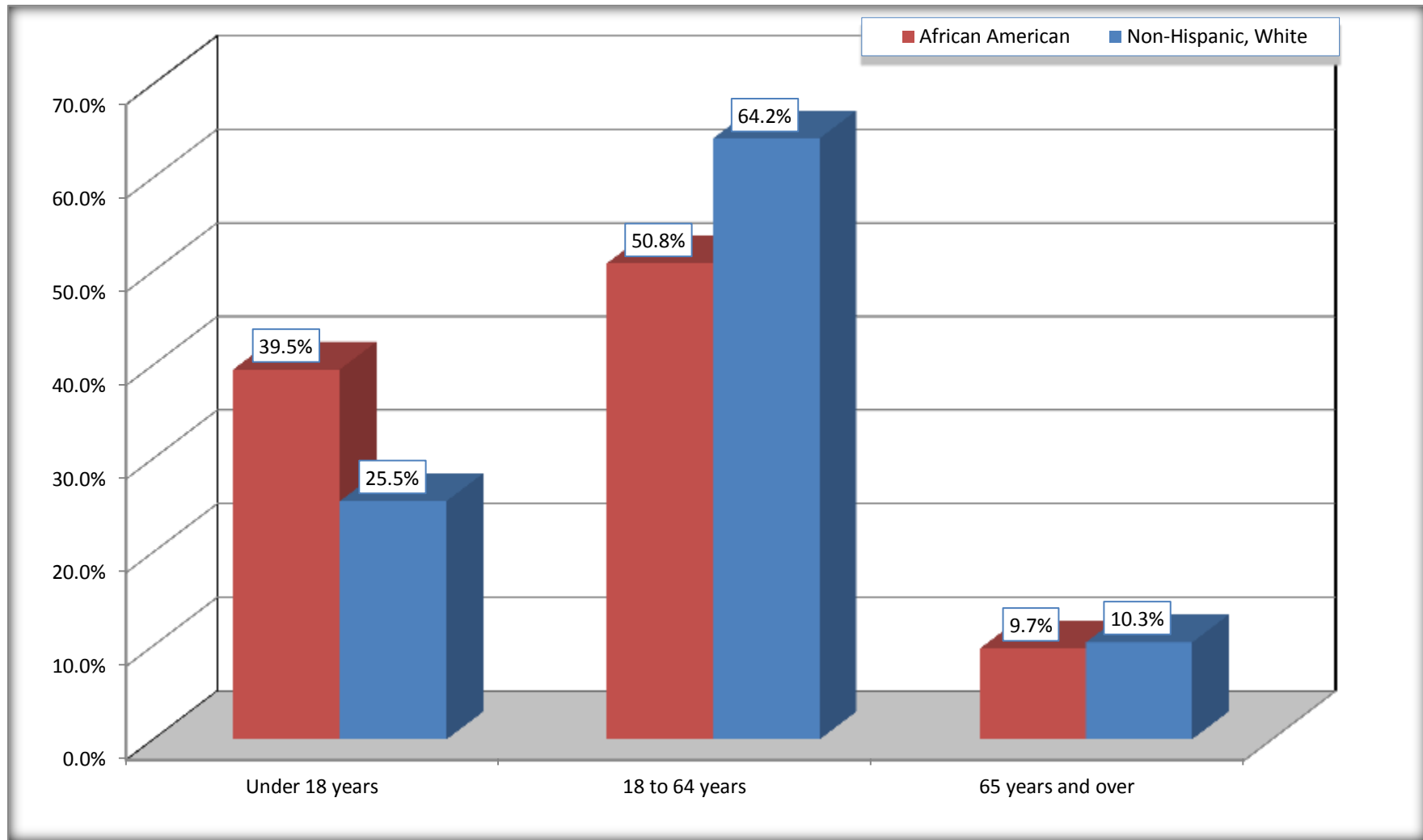
Source: U.S. Census Bureau, 2008-2012 American Community Survey

Although the American Community Survey (ACS) produces population, demographic and housing unit estimates, it is the Census Bureau's Population Estimates Program that produces and disseminates the official estimates of the population for the nation, states, counties, cities and towns and estimates of housing units for states and counties.

For information on confidentiality protection, sampling error, nonsampling error, and definitions, see Survey Methodology.
<http://www.census.gov/acs/www/UseData/index.htm>

Population by Age

St. Rose CDP, Louisiana



Source: B01001. SEX BY AGE
Data Set: 2008-2012 American Community Survey 5-Year Estimates

B05003. SEX BY AGE BY CITIZENSHIP STATUS

Data Set: 2008-2012 American Community Survey 5-Year Estimates

	St. Rose CDP, Louisiana					
	African American	Margin of Error (+/-)	% of AA Total by Age	White, Not Hispanic	Margin of Error (+/-)	% of NHW Total by Age
Total:	4,360	689	100.0%	3,925	491	100.0%
Under 18 years:	1,723	NC	100.0%	999	NC	100.0%
Native	1,723	NC	100.0%	949	NC	95.0%
Foreign born:	0	NC	0.0%	50	NC	5.0%
Naturalized U.S. citizen	0	NC	0.0%	0	NC	0.0%
Not a U.S. citizen	0	NC	0.0%	50	NC	5.0%
18 years and over:	2,637	NC	100.0%	2,926	NC	100.0%
Native	2,637	NC	100.0%	2,841	NC	97.1%
Foreign born:	0	NC	0.0%	85	NC	2.9%
Naturalized U.S. citizen	0	NC	0.0%	23	NC	0.8%
Not a U.S. citizen	0	NC	0.0%	62	NC	2.1%
Male:	1,851	326	42.5%	1,984	332	50.5%
Under 18 years:	761	205	100.0%	620	203	100.0%
Native	761	205	100.0%	570	161	91.9%
Foreign born:	0	17	0.0%	50	67	8.1%
Naturalized U.S. citizen	0	17	0.0%	0	17	0.0%
Not a U.S. citizen	0	17	0.0%	50	67	8.1%
18 years and over:	1,090	206	100.0%	1,364	198	100.0%
Native	1,090	206	100.0%	1,287	196	94.4%
Foreign born:	0	17	0.0%	77	74	5.6%
Naturalized U.S. citizen	0	17	0.0%	15	25	1.1%
Not a U.S. citizen	0	17	0.0%	62	70	4.5%

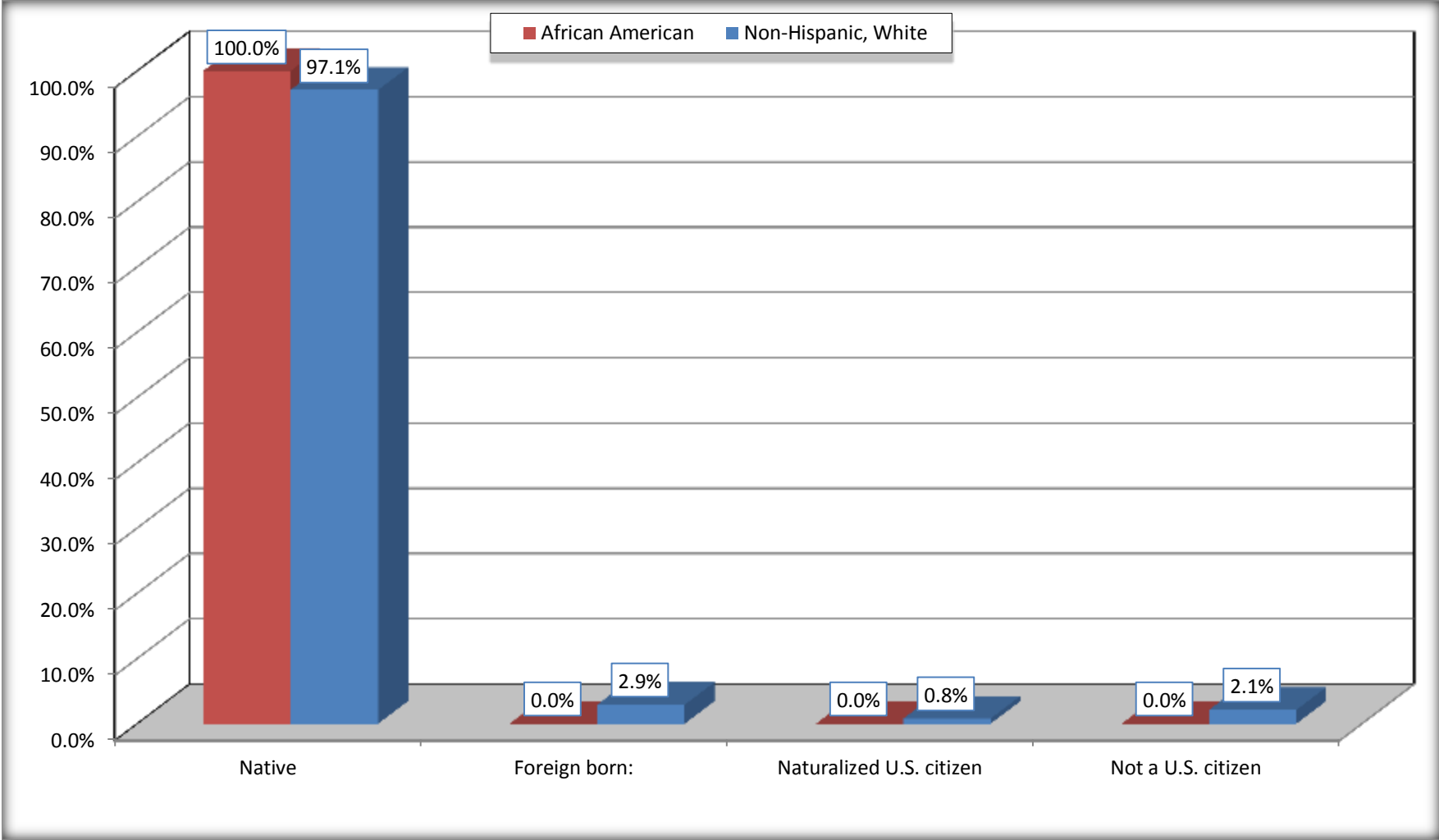
	St. Rose CDP, Louisiana					
	African American	Margin of Error (+/-)	% of AA by Age	White, Not Hispanic	Margin of Error (+/-)	% of NHW by Age
Female:	2,509	445	57.5%	1,941	226	49.5%
Under 18 years:	962	278	100.0%	379	150	100.0%
Native	962	278	100.0%	379	150	100.0%
Foreign born:	0	17	0.0%	0	17	0.0%
Naturalized U.S. citizen	0	17	0.0%	0	17	0.0%
Not a U.S. citizen	0	17	0.0%	0	17	0.0%
18 years and over:	1,547	288	100.0%	1,562	165	100.0%
Native	1,547	288	100.0%	1,554	166	99.5%
Foreign born:	0	17	0.0%	8	13	0.5%
Naturalized U.S. citizen	0	17	0.0%	8	13	0.5%
Not a U.S. citizen	0	17	0.0%	0	17	0.0%

Source: U.S. Census Bureau, 2008-2012 American Community Survey

For information on confidentiality protection, sampling error, nonsampling error, and definitions, see Survey Methodology.
<http://www.census.gov/acs/www/UseData/index.htm>

Citizenship Status of Voting Age Population (18 and Over)

St. Rose CDP, Louisiana



Source: B05003. SEX BY AGE BY CITIZENSHIP STATUS
Data Set: 2008-2012 American Community Survey 5-Year Estimates

**B07004. GEOGRAPHICAL MOBILITY IN THE PAST YEAR BY RACE FOR CURRENT RESIDENCE IN THE UNITED STATES - Universe:
POPULATION 1 YEAR AND OVER**

Data Set: 2008-2012 American Community Survey 5-Year Estimates

	St. Rose CDP, Louisiana					
	African American	Margin of Error (+/-)	% of AA Total	White, Not Hispanic	Margin of Error (+/-)	% of NHW Total
Total:	4,337	688	100.0%	3,809	462	100.0%
Same house 1 year ago	3,819	728	88.1%	3,729	468	97.9%
Moved within same county	218	192	5.0%	11	18	0.3%
Moved from different county within same state	263	251	6.1%	69	123	1.8%
Moved from different state	37	45	0.9%	0	17	0.0%
Moved from abroad	0	17	0.0%	0	17	0.0%

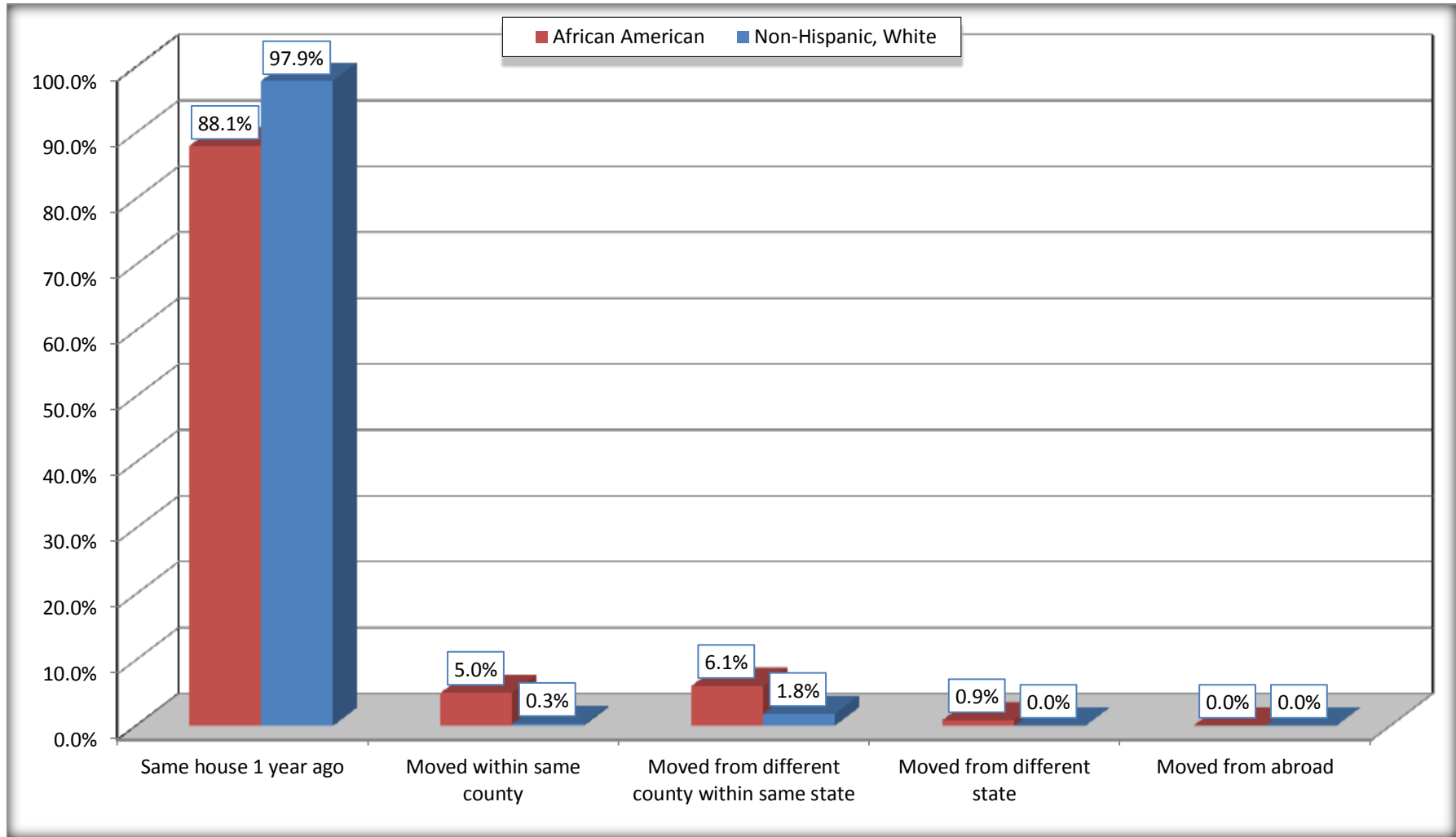
Source: U.S. Census Bureau, 2008-2012 American Community Survey

For information on confidentiality protection, sampling error, nonsampling error, and definitions, see Survey Methodology.

<http://www.census.gov/acs/www/UseData/index.htm>

Geographical Mobility in the Past Year (Population 1 Year and Over)

St. Rose CDP, Louisiana



Source: B07004. GEOGRAPHICAL MOBILITY IN THE PAST YEAR BY RACE FOR CURRENT RESIDENCE IN THE UNITED STATES - Universe: POPULATION 1 YEAR AND OVER

Data Set: 2008-2012 American Community Survey 5-Year Estimates

B08105. MEANS OF TRANSPORTATION TO WORK - Universe: WORKERS 16 YEARS AND OVER

Data Set: 2008-2012 American Community Survey 5-Year Estimates

	St. Rose CDP, Louisiana					
	African American	Margin of Error (+/-)	% of AA Total	White, Not Hispanic	Margin of Error (+/-)	% of NHW Total
Total:	1631	339	100.0%	1824	243	100.0%
Car, truck, or van - drove alone	1457	333	89.3%	1570	228	86.1%
Car, truck, or van - carpooled	64	45	3.9%	218	95	12.0%
Public transportation (excluding taxicab)	0	17	0.0%	0	17	0.0%
Walked	34	50	2.1%	0	17	0.0%
Taxicab, motorcycle, bicycle, or other means	76	75	4.7%	0	17	0.0%
Worked at home	0	17	0.0%	36	35	2.0%

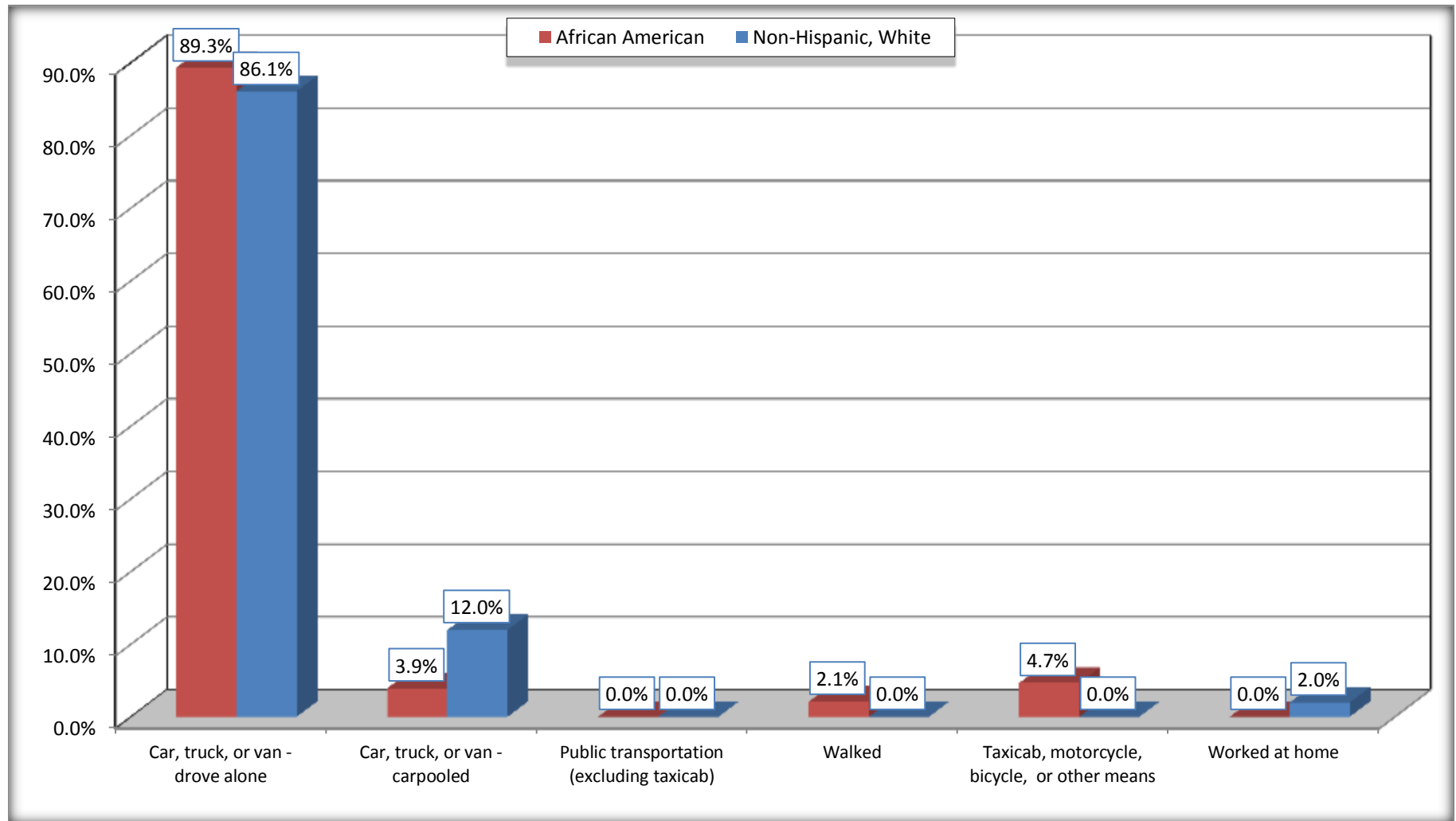
Source: U.S. Census Bureau, 2008-2012 American Community Survey

For information on confidentiality protection, sampling error, nonsampling error, and definitions, see Survey Methodology.

<http://www.census.gov/acs/www/UseData/index.htm>

Means of Transportation to Work (Workers 16 Years and Over)

St. Rose CDP, Louisiana



Source: B08105. MEANS OF TRANSPORTATION TO WORK - Universe: WORKERS 16 YEARS AND OVER
Data Set: 2008-2012 American Community Survey 5-Year Estimates

B11002. HOUSEHOLD TYPE BY RELATIVES AND NONRELATIVES FOR POPULATION IN HOUSEHOLDS

Data Set: 2008-2012 American Community Survey 5-Year Estimates

	St. Rose CDP, Louisiana					
	African American	Margin of Error (+/-)	% of AA Total	White, Not Hispanic	Margin of Error (+/-)	% of NHW Total
Total:	4360	689	100.0%	3894	478	100.0%
In family households	4118	710	94.4%	3413	542	87.6%
In nonfamily households	242	123	5.6%	481	206	12.4%

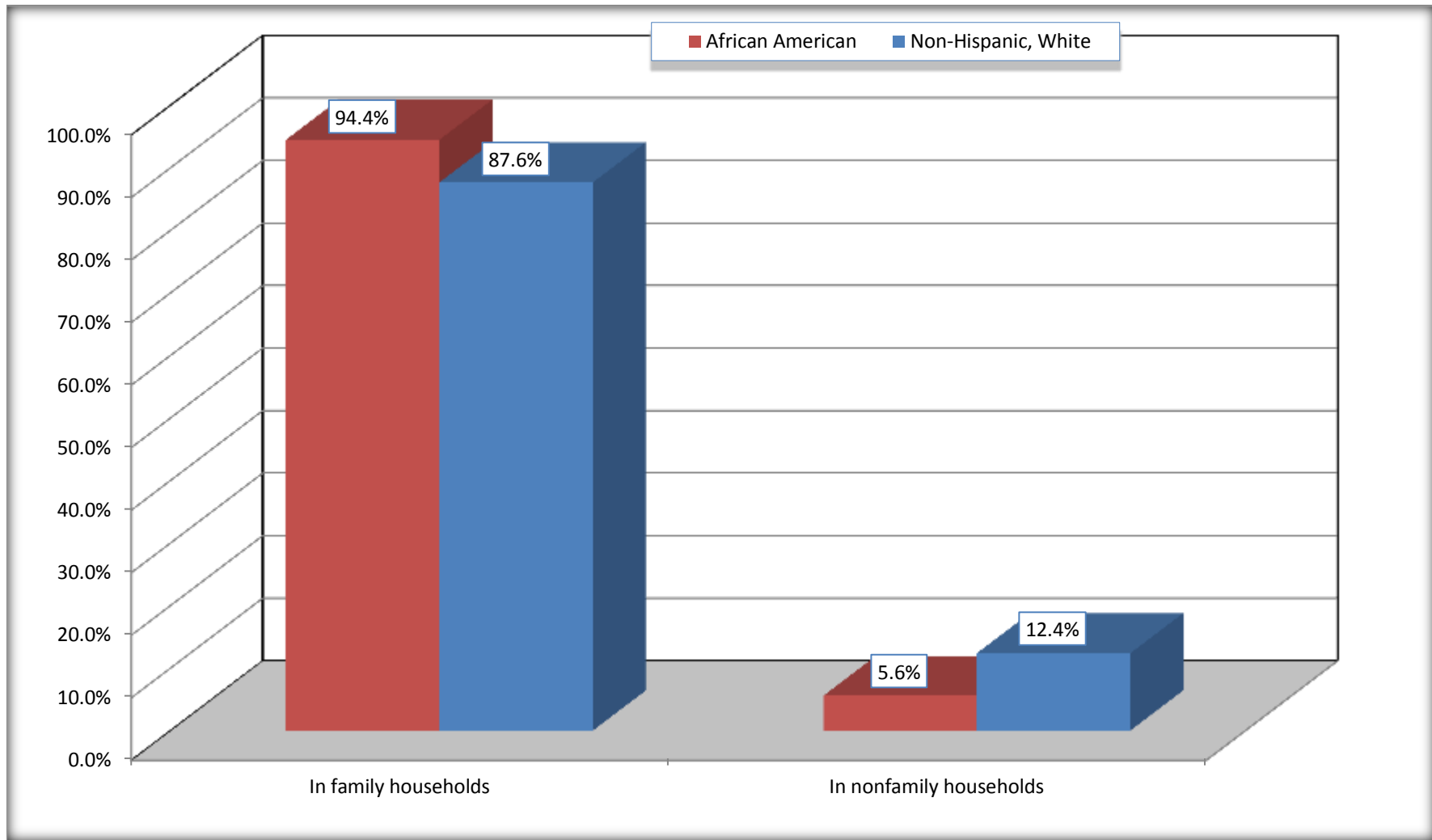
Source: U.S. Census Bureau, 2008-2012 American Community Survey

For information on confidentiality protection, sampling error, nonsampling error, and definitions, see Survey Methodology.

<http://www.census.gov/acs/www/UseData/index.htm>

Household Type for Population in Households

St. Rose CDP, Louisiana



Source: B11002. HOUSEHOLD TYPE BY RELATIVES AND NONRELATIVES FOR POPULATION IN HOUSEHOLDS
Data Set: 2008-2012 American Community Survey 5-Year Estimates

B12002. MARITAL STATUS FOR THE POPULATION 15 YEARS AND OVER

Data Set: 2008-2012 American Community Survey 5-Year Estimates

	St. Rose CDP, Louisiana					
	African American	Margin of Error (+/-)	% of AA Total	White, Not Hispanic	Margin of Error (+/-)	% of NHW Total
Total:	2,996	482	100.0%	3,057	306	100.0%
Never married	1,057	NC	35.3%	689	NC	22.5%
Now married (except separated)	1,275	NC	42.6%	1,616	NC	52.9%
Separated	120	NC	4.0%	43	NC	1.4%
Widowed	247	NC	8.2%	175	NC	5.7%
Divorced	297	NC	9.9%	534	NC	17.5%
Male:	1,249	247	41.7%	1,418	202	46.4%
Never married	414	157	13.8%	371	122	12.1%
Now married (except separated)	695	191	23.2%	833	163	27.2%
Separated	31	36	1.0%	43	40	1.4%
Widowed	39	34	1.3%	47	49	1.5%
Divorced	70	46	2.3%	124	70	4.1%
Female:	1,747	322	58.3%	1,639	171	53.6%
Never married	643	203	21.5%	318	105	10.4%
Now married (except separated)	580	152	19.4%	783	152	25.6%
Separated	89	85	3.0%	0	17	0.0%
Widowed	208	100	6.9%	128	64	4.2%
Divorced	227	98	7.6%	410	147	13.4%

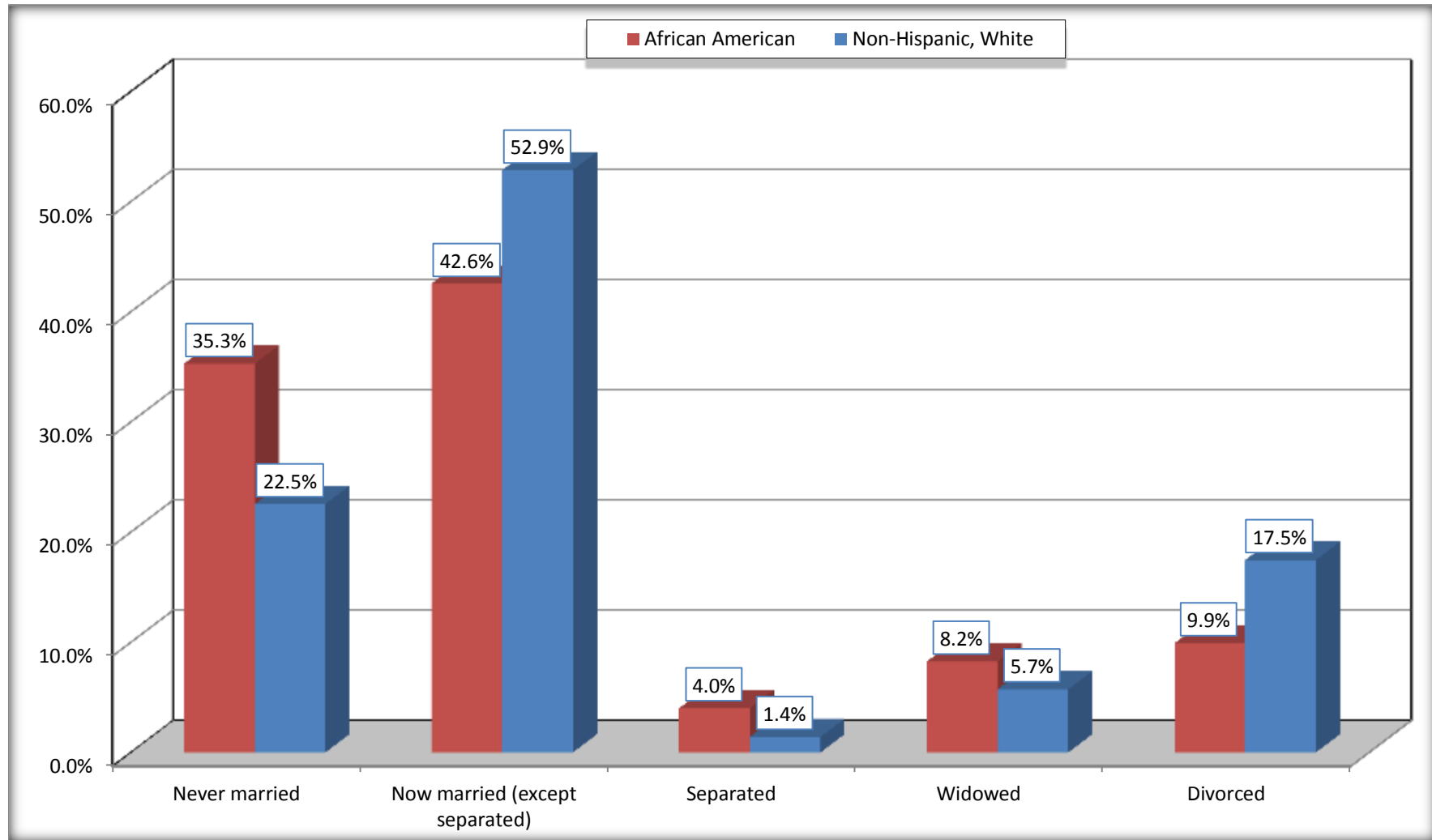
Source: U.S. Census Bureau, 2008-2012 American Community Survey

For information on confidentiality protection, sampling error, nonsampling error, and definitions, see Survey Methodology.

<http://www.census.gov/acs/www/UseData/index.htm>

Marital Status for the Population 15 Years and Over

St. Rose CDP, Louisiana



Source: B12002. MARITAL STATUS FOR THE POPULATION 15 YEARS AND OVER
Data Set: 2008-2012 American Community Survey 5-Year Estimates

C15002. SEX BY EDUCATIONAL ATTAINMENT FOR THE POPULATION 25 YEARS AND OVER

Data Set: 2008-2012 American Community Survey 5-Year Estimates

	St. Rose CDP, Louisiana					
	African American	Margin of Error (+/-)	% of AA Total	White, Not Hispanic	Margin of Error (+/-)	% of NHW Total
Total:	2,467	338	100.0%	2,626	267	100.0%
Less than high school diploma	682	NC	27.6%	260	NC	9.9%
High school graduate, GED, or alternative	695	NC	28.2%	1,156	NC	44.0%
Some college or associate's degree	722	NC	29.3%	845	NC	32.2%
Bachelor's degree or higher	368	NC	14.9%	365	NC	13.9%
Male:	1,012	187	41.0%	1,210	178	46.1%
Less than high school diploma	303	149	12.3%	165	95	6.3%
High school graduate, GED, or alternative	320	176	13.0%	523	141	19.9%
Some college or associate's degree	290	130	11.8%	372	101	14.2%
Bachelor's degree or higher	99	65	4.0%	150	67	5.7%
Female:	1,455	229	59.0%	1,416	158	53.9%
Less than high school diploma	379	149	15.4%	95	62	3.6%
High school graduate, GED, or alternative	375	123	15.2%	633	144	24.1%
Some college or associate's degree	432	175	17.5%	473	144	18.0%
Bachelor's degree or higher	269	127	10.9%	215	94	8.2%

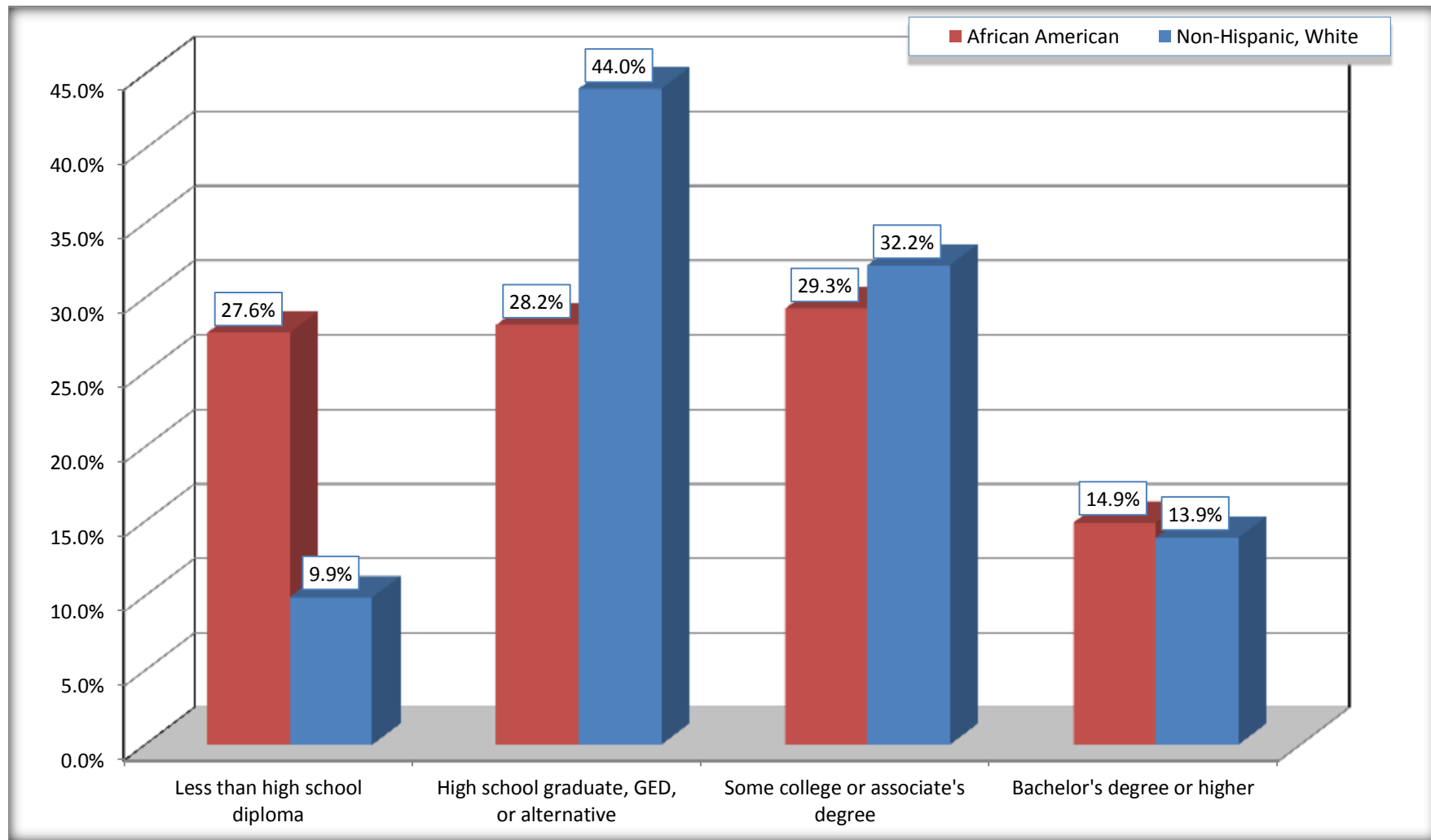
Source: U.S. Census Bureau, 2008-2012 American Community Survey

For information on confidentiality protection, sampling error, nonsampling error, and definitions, see Survey Methodology.

<http://www.census.gov/acs/www/UseData/index.htm>

Educational Attainment for the Population 25 Years and Older

St. Rose CDP, Louisiana



Source: C15002. SEX BY EDUCATIONAL ATTAINMENT FOR THE POPULATION 25 YEARS AND OVER
Data Set: 2008-2012 American Community Survey 5-Year Estimates

B17010. POVERTY STATUS IN THE PAST 12 MONTHS OF FAMILIES BY FAMILY TYPE BY PRESENCE OF RELATED CHILDREN UNDER 18 YEARS

Data Set: 2008-2012 American Community Survey 5-Year Estimates

	St. Rose CDP, Louisiana					
	African American	Margin of Error (+/-)	% of AA Total	White, Not Hispanic	Margin of Error (+/-)	% of NHW Total
Total:	1,062	154	100.0%	1,099	148	100.0%
Income in the past 12 months below poverty level:	261	125	24.6%	123	101	11.2%
Married-couple family:	37	55	3.5%	42	55	3.8%
With related children under 18 years	0	17	0.0%	0	17	0.0%
Other family:	224	112	21.1%	81	69	7.4%
Male householder, no wife present	17	27	1.6%	0	17	0.0%
With related children under 18 years	0	17	0.0%	0	17	0.0%
Female householder, no husband present	207	117	19.5%	81	69	7.4%
With related children under 18 years	168	109	15.8%	50	57	4.5%
Income in the past 12 months at or above poverty level:	801	154	75.4%	976	158	88.8%
Married-couple family:	428	143	40.3%	727	146	66.2%
With related children under 18 years	290	114	27.3%	322	117	29.3%
Other family:	373	135	35.1%	249	90	22.7%
Male householder, no wife present	88	54	8.3%	84	74	7.6%
With related children under 18 years	74	51	7.0%	84	74	7.6%
Female householder, no husband present	285	120	26.8%	165	78	15.0%
With related children under 18 years	248	118	23.4%	75	64	6.8%

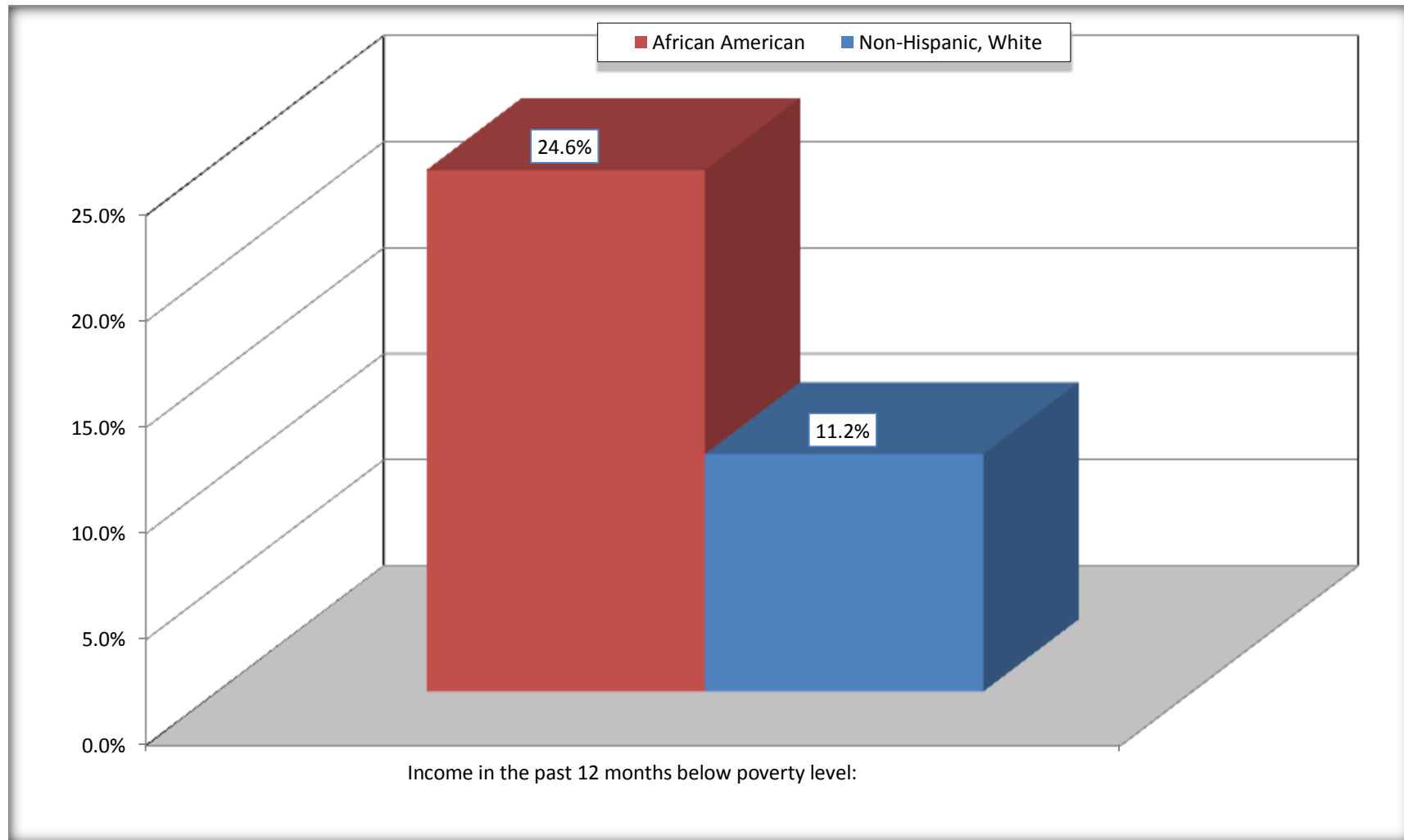
Source: U.S. Census Bureau, 2008-2012 American Community Survey

For information on confidentiality protection, sampling error, nonsampling error, and definitions, see Survey Methodology.

<http://www.census.gov/acs/www/UseData/index.htm>

Family Households Below Poverty in the Past 12 Months

St. Rose CDP, Louisiana

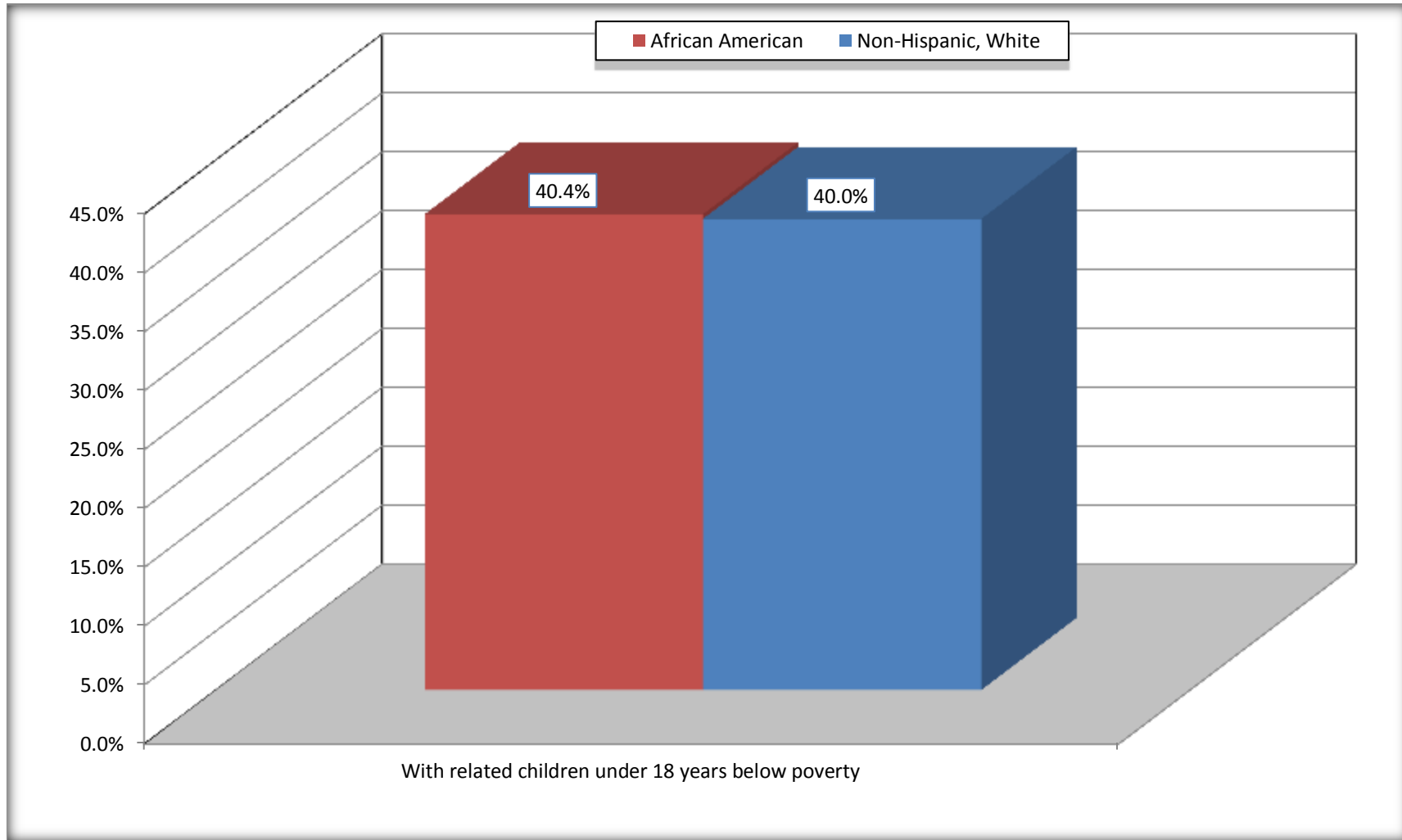


Source: B17010. POVERTY STATUS IN THE PAST 12 MONTHS OF FAMILIES BY FAMILY TYPE BY PRESENCE OF RELATED CHILDREN UNDER 18 YEARS

Data Set: 2008-2012 American Community Survey 5-Year Estimates

Female-headed Households with Related Children Below Poverty in the Past 12 Months

St. Rose CDP, Louisiana



Source: B17010. POVERTY STATUS IN THE PAST 12 MONTHS OF FAMILIES BY FAMILY TYPE BY PRESENCE OF RELATED CHILDREN UNDER 18 YEARS

Data Set: 2008-2012 American Community Survey 5-Year Estimates

B17020 POVERTY STATUS IN THE PAST 12 MONTHS BY AGE - Universe: POPULATION FOR WHOM POVERTY STATUS IS DETERMINED

Data Set: 2008-2012 American Community Survey 5-Year Estimates

	St. Rose CDP, Louisiana					
	African American	Margin of Error (+/-)	% of AA By Age	White, Not Hispanic	Margin of Error (+/-)	% of NHW By Age
Total:	4,360	689	100.0%	3,925	491	100.0%
Income in the past 12 months below poverty level:	988	480	22.7%	459	304	11.7%
Under 18 years	484	NC	28.1%	63	NC	6.3%
18 to 64 years	388	204	17.5%	385	266	15.3%
65 years and over	116	NC	27.6%	11	NC	2.7%
Income in the past 12 months at or above poverty level:	3,372	552	77.3%	3,466	573	88.3%
Under 18 years	1,239	NC	71.9%	936	NC	93.7%
18 to 64 years	1,828	344	82.5%	2,135	322	84.7%
65 years and over	305	NC	72.4%	395	NC	97.3%

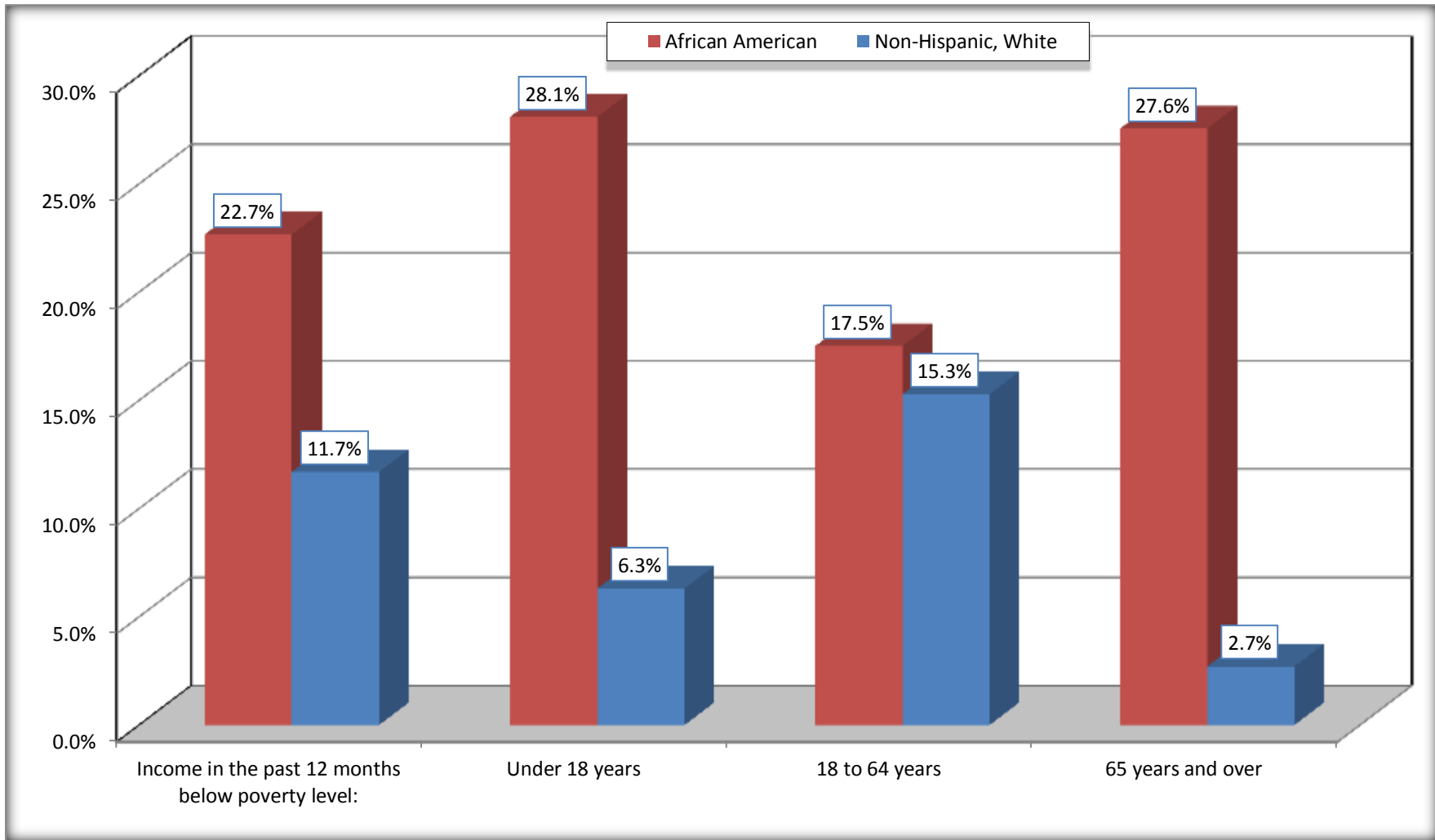
Source: U.S. Census Bureau, 2008-2012 American Community Survey

For information on confidentiality protection, sampling error, nonsampling error, and definitions, see Survey Methodology.

<http://www.census.gov/acs/www/UseData/index.htm>

Population Below Poverty in the Past 12 Months

St. Rose CDP, Louisiana



Source: B17020 POVERTY STATUS IN THE PAST 12 MONTHS BY AGE - Universe: POPULATION FOR WHOM POVERTY STATUS IS DETERMINED
Data Set: 2008-2012 American Community Survey 5-Year Estimates

B19001. HOUSEHOLD INCOME IN THE PAST 12 MONTHS (IN 2010 INFLATION-ADJUSTED DOLLARS)

Data Set: 2008-2012 American Community Survey 5-Year Estimates

	St. Rose CDP, Louisiana					
	African American	Margin of Error (+/-)	% of AA Total	White, Not Hispanic	Margin of Error (+/-)	% of NHW Total
Total:	1,285	157	100.0%	1,437	128	100.0%
Less than \$ 10,000	83	76	6.5%	53	59	3.7%
\$ 10,000 to \$ 14,999	209	138	16.3%	59	51	4.1%
\$ 15,000 to \$ 24,999	193	NC	15.0%	93	NC	6.5%
\$ 25,000 to \$ 34,999	172	NC	13.4%	137	NC	9.5%
\$ 35,000 to \$ 49,999	143	NC	11.1%	208	NC	14.5%
\$ 50,000 to \$ 74,999	179	NC	13.9%	245	NC	17.0%
\$ 75,000 to \$ 99,999	76	52	5.9%	278	113	19.3%
\$ 100,000 to \$ 149,999	230	NC	17.9%	318	NC	22.1%
\$ 150,000 to \$ 199,999	0	17	0.0%	46	33	3.2%
\$ 200,000 or more	0	17	0.0%	0	17	0.0%

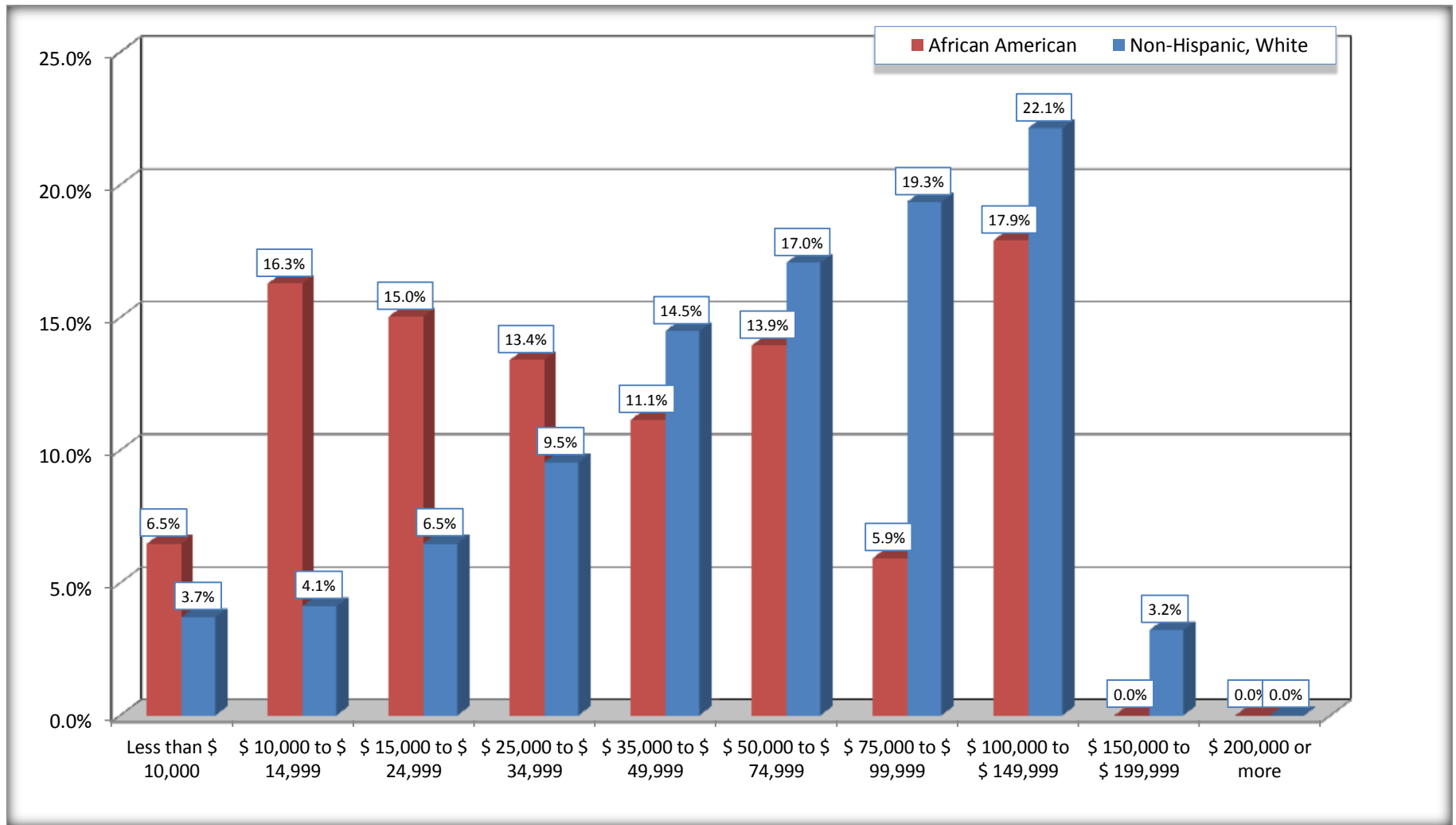
Source: U.S. Census Bureau, 2008-2012 American Community Survey

For information on confidentiality protection, sampling error, nonsampling error, and definitions, see Survey Methodology.

<http://www.census.gov/acs/www/UseData/index.htm>

Household Income in the Past 12 Months

St. Rose CDP, Louisiana



Source: B19001. HOUSEHOLD INCOME IN THE PAST 12 MONTHS (IN 2010 INFLATION-ADJUSTED DOLLARS)

Data Set: 2008-2012 American Community Survey 5-Year Estimates

B19013. MEDIAN HOUSEHOLD INCOME IN THE PAST 12 MONTHS (IN 2010 INFLATION-ADJUSTED DOLLARS)

Data Set: 2008-2012 American Community Survey 5-Year Estimates

	St. Rose CDP, Louisiana			
	African American	Margin of Error (+/-)	White, Not Hispanic	Margin of Error (+/-)
Median household income in the past 12 months (in 2010 inflation-adjusted dollars)	\$ 34,212	\$ 7,274	\$ 65,809	\$ 13,776

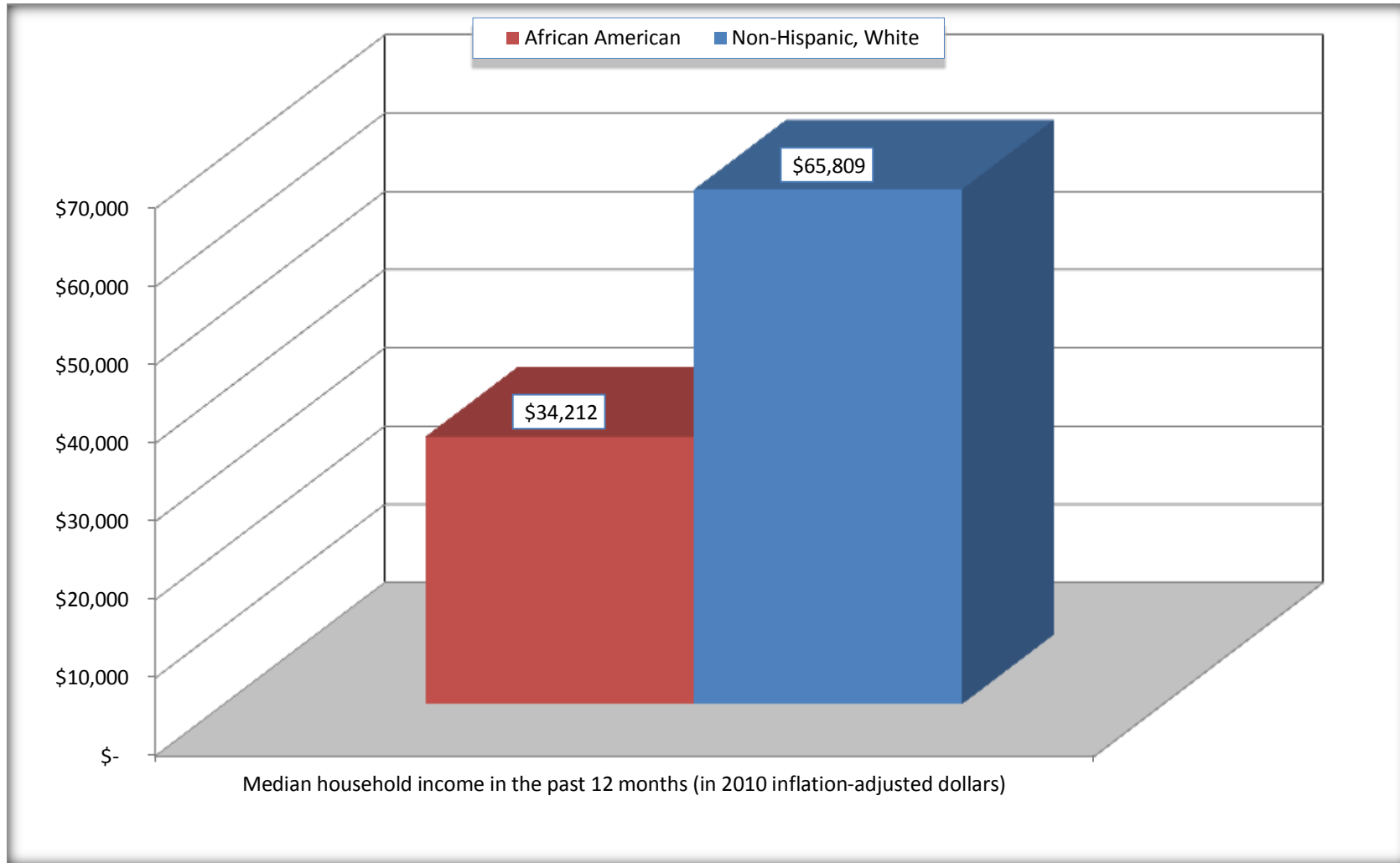
Source: U.S. Census Bureau, 2008-2012 American Community Survey

For information on confidentiality protection, sampling error, nonsampling error, and definitions, see Survey Methodology.

<http://www.census.gov/acs/www/UseData/index.htm>

Median Household Income in the Past 12 Months

St. Rose CDP, Louisiana



Source: B19013. MEDIAN HOUSEHOLD INCOME IN THE PAST 12 MONTHS (IN 2010 INFLATION-ADJUSTED DOLLARS)
Data Set: 2008-2012 American Community Survey 5-Year Estimates

B19101. FAMILY INCOME IN THE PAST 12 MONTHS (IN 2010 INFLATION-ADJUSTED DOLLARS)

Data Set: 2008-2012 American Community Survey 5-Year Estimates

	St. Rose CDP, Louisiana					
	African American	Margin of Error (+/-)	% of AA Total	White, Not Hispanic	Margin of Error (+/-)	% of NHW Total
Total:	1,062	154	100.0%	1,099	148	100.0%
Less than \$ 10,000	57	73	5.4%	39	57	3.5%
\$ 10,000 to \$ 14,999	111	83	10.5%	31	44	2.8%
\$ 15,000 to \$ 24,999	176	NC	16.6%	53	NC	4.8%
\$ 25,000 to \$ 34,999	154	NC	14.5%	121	NC	11.0%
\$ 35,000 to \$ 49,999	141	NC	13.3%	107	NC	9.7%
\$ 50,000 to \$ 74,999	131	NC	12.3%	199	NC	18.1%
\$ 100,000 to \$ 149,999	230	NC	21.7%	288	NC	26.2%
\$ 150,000 to \$ 199,999	0	17	0.0%	46	33	4.2%
\$ 200,000 or more	0	17	0.0%	0	17	0.0%

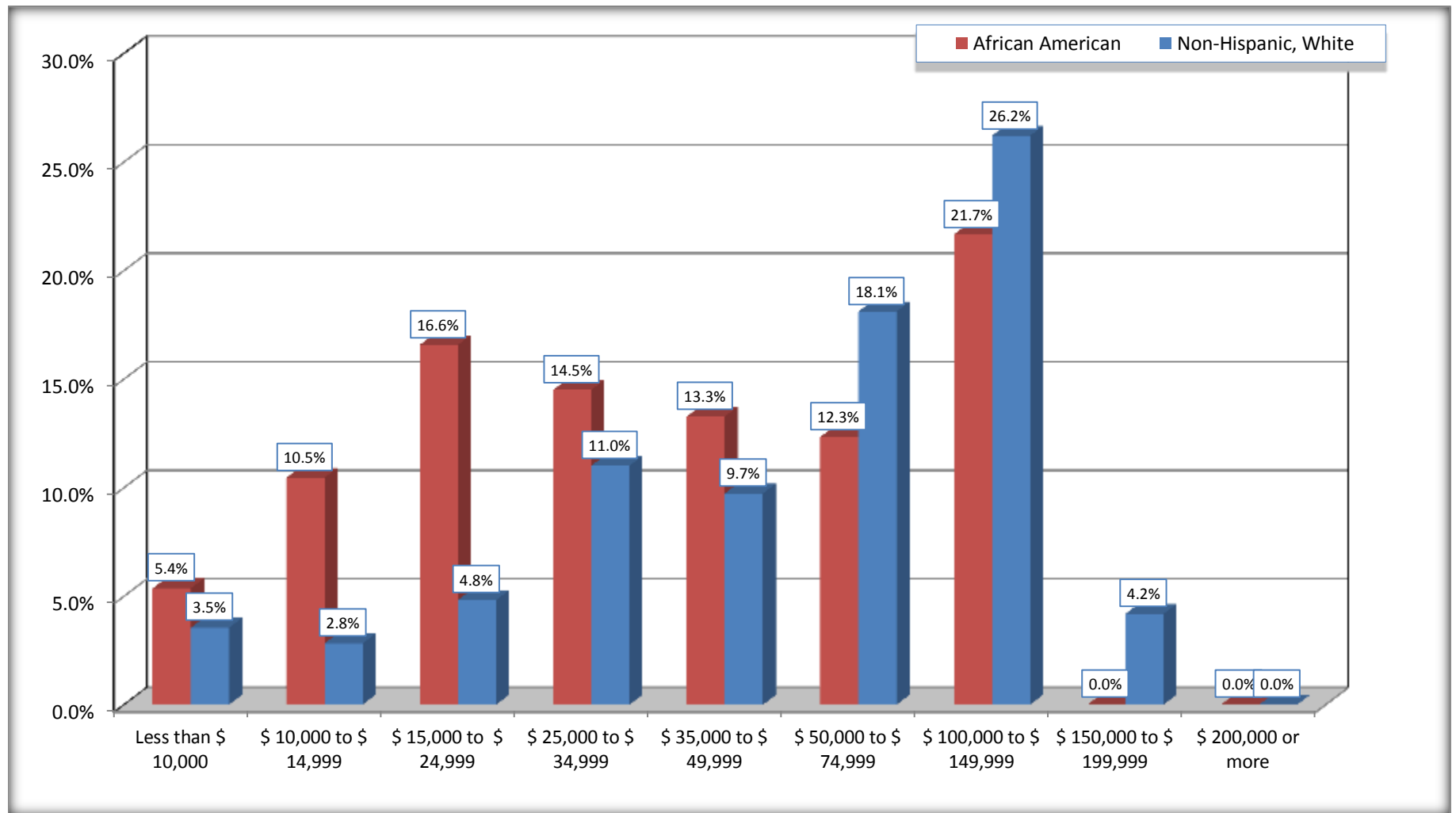
Source: U.S. Census Bureau, 2008-2012 American Community Survey

For information on confidentiality protection, sampling error, nonsampling error, and definitions, see Survey Methodology.

<http://www.census.gov/acs/www/UseData/index.htm>

Family Income in the Past 12 Months

St. Rose CDP, Louisiana



Source: B19101. FAMILY INCOME IN THE PAST 12 MONTHS (IN 2010 INFLATION-ADJUSTED DOLLARS)
Data Set: 2008-2012 American Community Survey 5-Year Estimates

B19113. MEDIAN FAMILY INCOME IN THE PAST 12 MONTHS (IN 2010 INFLATION-ADJUSTED DOLLARS)

Data Set: 2008-2012 American Community Survey 5-Year Estimates

	St. Rose CDP, Louisiana			
	African American	Margin of Error (+/-)	White, Not Hispanic	Margin of Error (+/-)
Median family income in the past 12 months (in 2010 inflation-adjusted dollars)	\$ 37,357	\$ 6,488	\$ 74,844	\$ 22,497

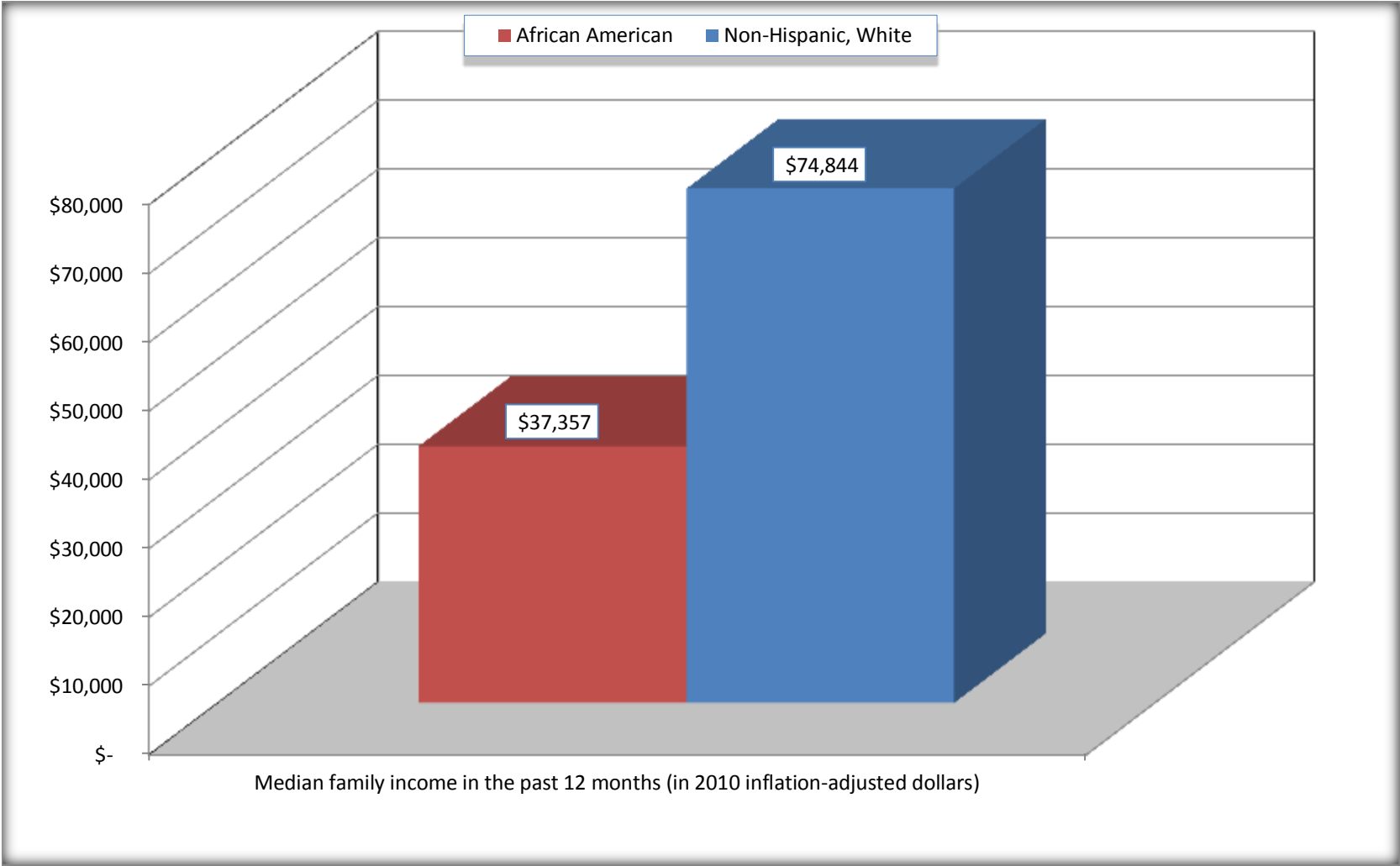
Source: U.S. Census Bureau, 2008-2012 American Community Survey

For information on confidentiality protection, sampling error, nonsampling error, and definitions, see Survey Methodology.

<http://www.census.gov/acs/www/UseData/index.htm>

Median Family Income in the Past 12 Months

St. Rose CDP, Louisiana



Source: B19113. MEDIAN FAMILY INCOME IN THE PAST 12 MONTHS (IN 2010 INFLATION-ADJUSTED DOLLARS)
Data Set: 2008-2012 American Community Survey 5-Year Estimates

B19202. MEDIAN NONFAMILY HOUSEHOLD INCOME IN THE PAST 12 MONTHS (IN 2010 INFLATION-ADJUSTED DOLLARS)

Data Set: 2008-2012 American Community Survey 5-Year Estimates

	St. Rose CDP, Louisiana			
	African American	Margin of Error (+/-)	White, Not Hispanic	Margin of Error (+/-)
Median nonfamily household income in the past 12 months (in 2010 inflation-adjusted dollars)	\$ 14,668	\$ 7,923	\$ 42,609	\$ 15,793

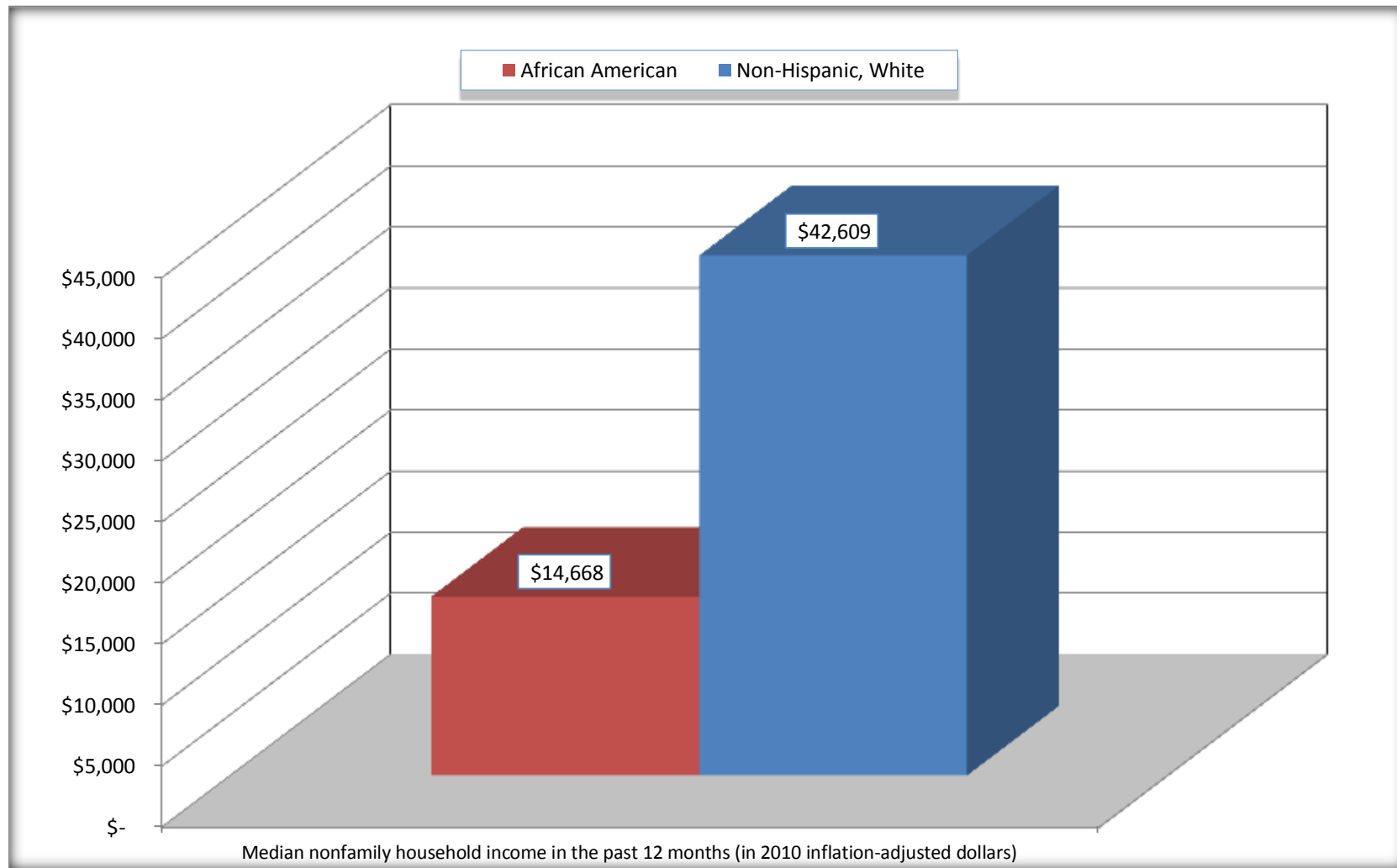
Source: U.S. Census Bureau, 2008-2012 American Community Survey

For information on confidentiality protection, sampling error, nonsampling error, and definitions, see Survey Methodology.

<http://www.census.gov/acs/www/UseData/index.htm>

Median Non-Family Income in the Past 12 Months

St. Rose CDP, Louisiana



Source: B19202. MEDIAN NONFAMILY HOUSEHOLD INCOME IN THE PAST 12 MONTHS (IN 2010 INFLATION-ADJUSTED DOLLARS)
Data Set: 2008-2012 American Community Survey 5-Year Estimates

B19301. PER CAPITA INCOME IN THE PAST 12 MONTHS (IN 2010 INFLATION-ADJUSTED DOLLARS)

Data Set: 2008-2012 American Community Survey 5-Year Estimates

	St. Rose CDP, Louisiana			
	African American	Margin of Error (+/-)	White, Not Hispanic	Margin of Error (+/-)
Per capita income in the past 12 months (in 2010 inflation-adjusted dollars)	\$ 17,211	\$ 2,516	\$ 26,682	\$ 2,999

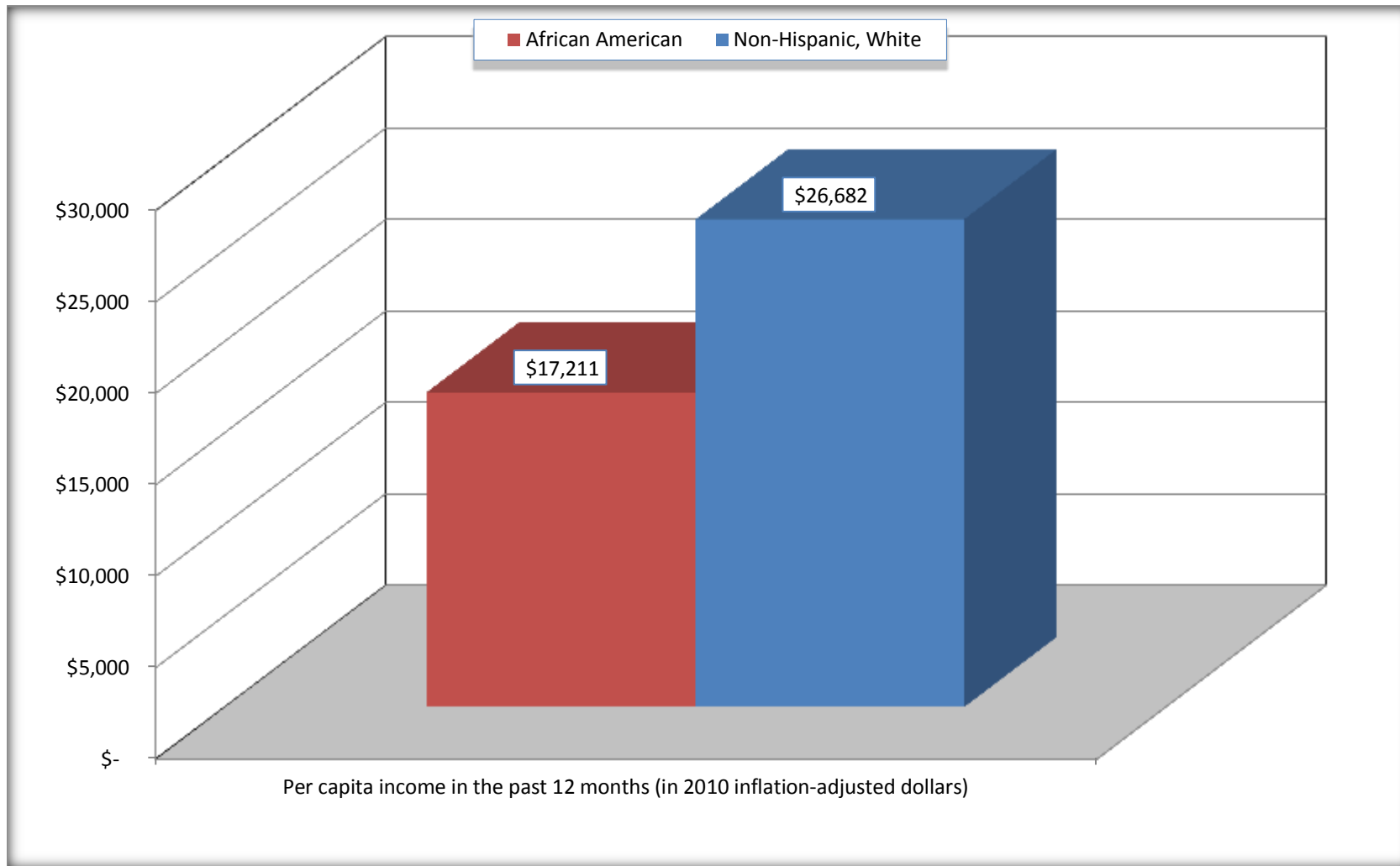
Source: U.S. Census Bureau, 2008-2012 American Community Survey

For information on confidentiality protection, sampling error, nonsampling error, and definitions, see Survey Methodology.

<http://www.census.gov/acs/www/UseData/index.htm>

Per capita Income in the Past 12 Months

St. Rose CDP, Louisiana



Source: B19301. PER CAPITA INCOME IN THE PAST 12 MONTHS (IN 2010 INFLATION-ADJUSTED DOLLARS)
Data Set: 2008-2012 American Community Survey 5-Year Estimates

B20017. MEDIAN EARNINGS IN THE PAST 12 MONTHS (IN 2010 INFLATION-ADJUSTED DOLLARS) BY SEX BY WORK EXPERIENCE IN THE PAST 12 MONTHS FOR THE POPULATION 16 YEARS AND OVER WITH EARNINGS IN THE PAST 12 MONTHS

Data Set: 2008-2012 American Community Survey 5-Year Estimates

	St. Rose CDP, Louisiana			
	African American	Margin of Error (+/-)	White, Not Hispanic	Margin of Error (+/-)
Median earnings in the past 12 months (in 2010 inflation-adjusted dollars) --				
Total:	\$ 27,478	\$ 4,626	\$ 42,726	\$ 7,814
Male --				
Total	\$ 39,000	\$ 10,575	\$ 51,546	\$ 7,509
Worked full-time, year-round in the past 12 months	\$ 58,750	\$ 34,200	\$ 54,345	\$ 3,663
Other	\$ -	\$ -	\$ 6,875	\$ 9,718
Female --				
Total	\$ 14,630	\$ 3,276	\$ 29,557	\$ 6,526
Worked full-time, year-round in the past 12 months	\$ 26,500	\$ 6,362	\$ 49,491	\$ 9,895
Other	\$ 9,375	\$ 6,315	\$ 9,196	\$ 5,499

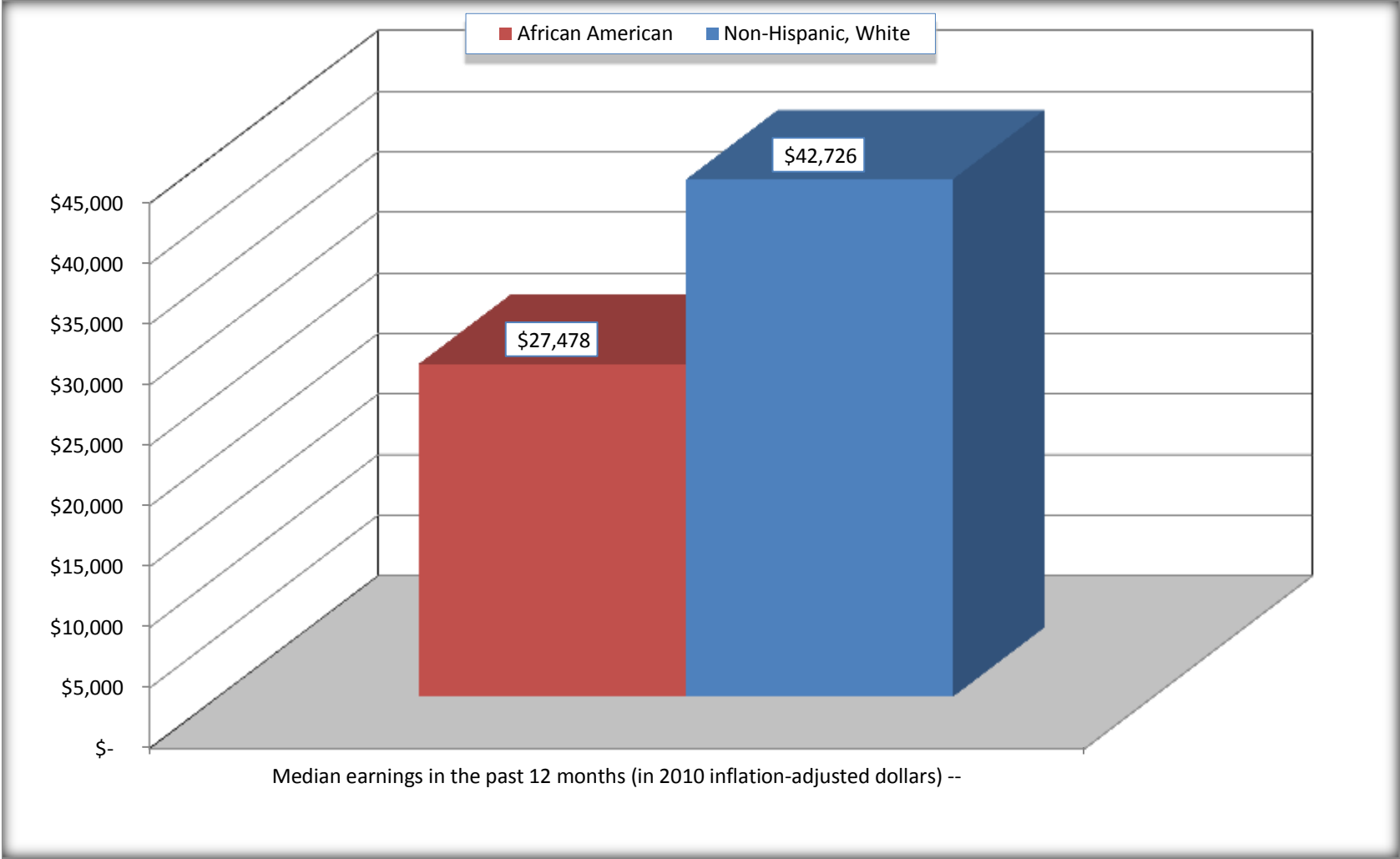
Source: U.S. Census Bureau, 2008-2012 American Community Survey

For information on confidentiality protection, sampling error, nonsampling error, and definitions, see Survey Methodology.

<http://www.census.gov/acs/www/UseData/index.htm>

Median earnings in the Past 12 Months (16 Years and Over with Earnings)

St. Rose CDP, Louisiana



Source: B20017. MEDIAN EARNINGS IN THE PAST 12 MONTHS (IN 2010 INFLATION-ADJUSTED DOLLARS) BY SEX BY WORK EXPERIENCE IN THE PAST 12 MONTHS FOR THE POPULATION 16 YEARS AND OVER WITH EARNINGS IN THE PAST 12 MONTHS
Data Set: 2008-2012 American Community Survey 5-Year Estimates

B20005. SEX BY WORK EXPERIENCE IN THE PAST 12 MONTHS BY EARNINGS IN THE PAST 12 MONTHS (IN 2010 INFLATION-ADJUSTED DOLLARS) FOR THE POPULATION 16 YEARS AND OVER

Data Set: 2008-2012 American Community Survey 5-Year Estimates

	St. Rose CDP, Louisiana					
	African American	Margin of Error (+/-)	% of AA Total	White, Not Hispanic	Margin of Error (+/-)	% of NHW Total
Total:	2,942	476	100.0%	3,005	302	100.0%
Worked full-time, year-round in the past 12 months:	1,261	NC	42.9%	1,396	NC	46.5%
No earnings	0	NC	0.0%	0	NC	0.0%
With earnings:	1,261	NC	42.9%	1,396	NC	46.5%
\$ 1 to \$ 9,999 or loss	40	NC	1.4%	9	NC	0.3%
\$ 10,000 to \$ 19,999	197	NC	6.7%	7	NC	0.2%
\$ 20,000 to \$ 29,999	217	NC	7.4%	190	NC	6.3%
\$ 30,000 to \$ 49,999	325	NC	11.0%	361	NC	12.0%
\$ 50,000 to \$ 74,999	234	NC	8.0%	668	NC	22.2%
\$ 75,000 or more	248	NC	8.4%	161	NC	5.4%
Other:	1,681	NC	57.1%	1,609	NC	53.5%
No earnings	1,064	NC	36.2%	934	NC	31.1%
With earnings: less than full time, year-round	617	NC	21.0%	675	NC	22.5%
Male:	1,210	238	41.1%	1,400	202	46.6%
Worked full-time, year-round in the past 12 months:	701	165	23.8%	843	166	28.1%
No earnings	0	17	0.0%	0	17	0.0%
With earnings:	701	165	23.8%	843	166	28.1%
\$ 1 to \$ 9,999 or loss	13	NC	0.4%	9	NC	0.3%
\$ 10,000 to \$ 19,999	17	NC	0.6%	0	NC	0.0%
\$ 20,000 to \$ 29,999	91	NC	3.1%	78	NC	2.6%
\$ 30,000 to \$ 49,999	212	NC	7.2%	198	NC	6.6%
\$ 50,000 to \$ 74,999	181	NC	6.2%	450	NC	15.0%
\$ 75,000 or more	187	NC	6.4%	108	NC	3.6%

	St. Rose CDP, Louisiana					
	African American	Margin of Error (+/-)	% of AA Total	White, Not Hispanic	Margin of Error (+/-)	% of NHW Total
Other:	509	163	17.3%	557	167	18.5%
No earnings	326	132	11.1%	318	113	10.6%
With earnings:	183	102	6.2%	239	122	8.0%
Female:	1,732	324	58.9%	1,605	169	53.4%
Worked full-time, year-round in the past 12 months:	560	161	19.0%	553	127	18.4%
No earnings	0	17	0.0%	0	17	0.0%
With earnings:	560	161	19.0%	553	127	18.4%
\$ 1 to \$ 9,999 or less	27	NC	0.9%	0	NC	0.0%
\$ 10,000 to \$ 19,999	180	NC	6.1%	7	NC	0.2%
\$ 20,000 to \$ 29,999	126	NC	4.3%	112	NC	3.7%
\$ 30,000 to \$ 49,999	113	NC	3.8%	163	NC	5.4%
\$ 50,000 to \$ 74,999	53	NC	1.8%	218	NC	7.3%
\$ 75,000 or more	61	NC	2.1%	53	NC	1.8%
Other:	1,172	294	39.8%	1,052	180	35.0%
No earnings	738	215	25.1%	616	157	20.5%
With earnings:	434	189	14.8%	436	142	14.5%

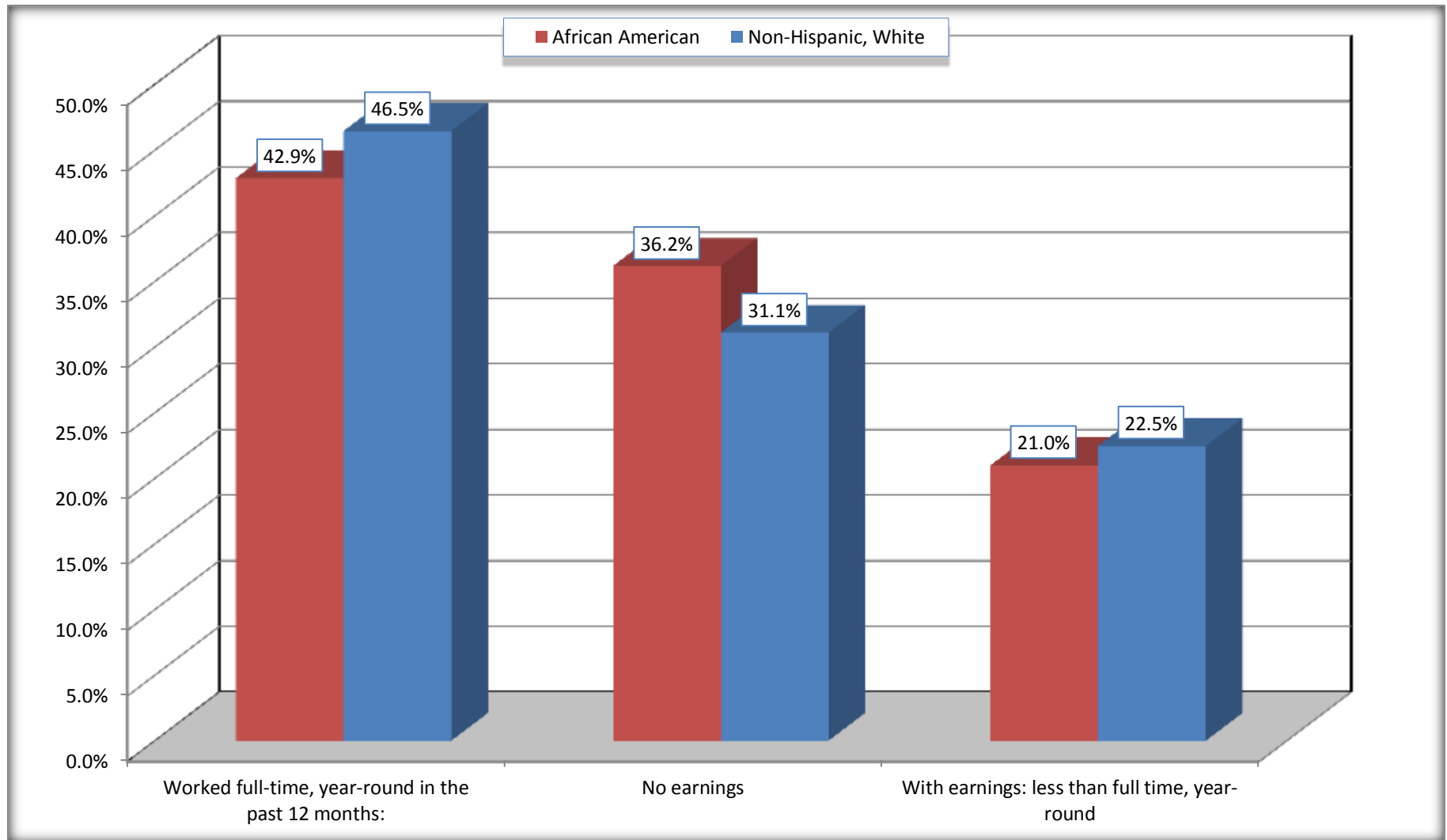
Source: U.S. Census Bureau, 2008-2012 American Community Survey

For information on confidentiality protection, sampling error, nonsampling error, and definitions, see Survey Methodology.

<http://www.census.gov/acs/www/UseData/index.htm>

Employment and Earnings in in the Past 12 Months (16 Years and Over)

St. Rose CDP, Louisiana



Source: B20005. SEX BY WORK EXPERIENCE IN THE PAST 12 MONTHS BY EARNINGS IN THE PAST 12 MONTHS (IN 2010 INFLATION-ADJUSTED DOLLARS) FOR THE POPULATION 16 YEARS AND OVER

Data Set: 2008-2012 American Community Survey 5-Year Estimates

C21001. SEX BY AGE BY VETERAN STATUS FOR THE CIVILIAN POPULATION 18 YEARS AND OVER

Data Set: 2008-2012 American Community Survey 5-Year Estimates

	St. Rose CDP, Louisiana					
	African American	Margin of Error (+/-)	% of AA Total	White, Not Hispanic	Margin of Error (+/-)	% of NHW Total
Total:	2,637	408	100.0%	2,926	297	100.0%
Veteran	75	NC	2.8%	259	NC	8.9%
Nonveteran	2,562	NC	97.2%	2,667	NC	91.1%
Male:	1,090	206	41.3%	1,364	198	46.6%
18 to 64 years:	965	207	36.6%	1,170	196	40.0%
Veteran	14	15	0.5%	138	72	4.7%
Nonveteran	951	206	36.1%	1,032	184	35.3%
65 years and over:	125	52	4.7%	194	82	6.6%
Veteran	37	35	1.4%	121	82	4.1%
Nonveteran	88	46	3.3%	73	44	2.5%
Female:	1,547	288	58.7%	1,562	165	53.4%
18 to 64 years:	1,251	267	47.4%	1,350	168	46.1%
Veteran	24	28	0.9%	0	17	0.0%
Nonveteran	1,227	268	46.5%	1,350	168	46.1%
65 years and over:	296	83	11.2%	212	63	7.2%
Veteran	0	17	0.0%	0	17	0.0%
Nonveteran	296	83	11.2%	212	63	7.2%

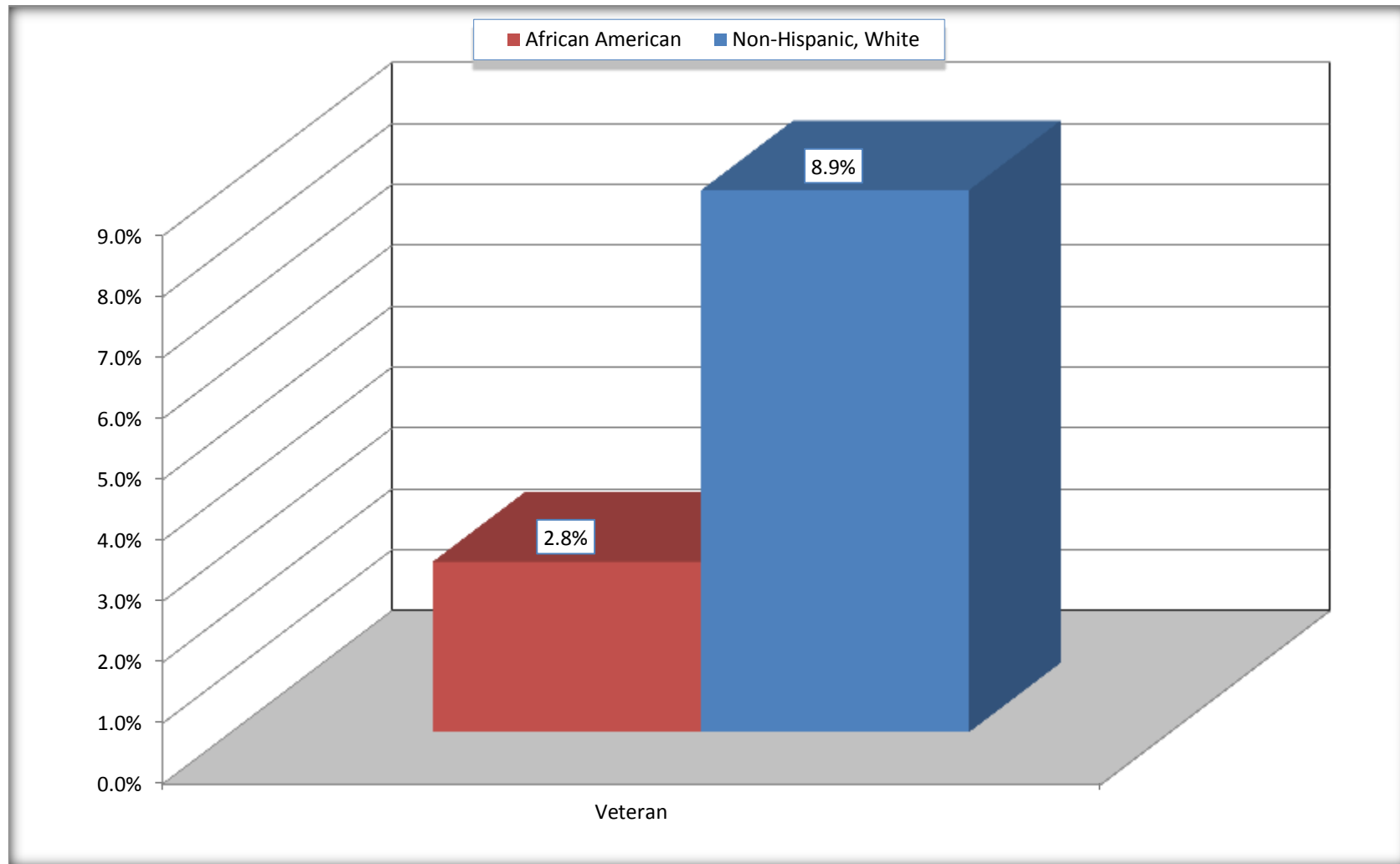
Source: U.S. Census Bureau, 2008-2012 American Community Survey

For information on confidentiality protection, sampling error, nonsampling error, and definitions, see Survey Methodology.

<http://www.census.gov/acs/www/UseData/index.htm>

Veterans in the Civilian Population 18 Years and Over

St. Rose CDP, Louisiana



Source: C21001. SEX BY AGE BY VETERAN STATUS FOR THE CIVILIAN POPULATION 18 YEARS AND OVER
Data Set: 2008-2012 American Community Survey 5-Year Estimates

B22005. RECEIPT OF FOOD STAMPS/SNAP IN THE PAST 12 MONTHS BY RACE OF HOUSEHOLDER

Data Set: 2008-2012 American Community Survey 5-Year Estimates

	St. Rose CDP, Louisiana					
	African American	Margin of Error (+/-)	% of AA Total	White, Not Hispanic	Margin of Error (+/-)	% of NHW Total
Total:	1,285	157	100.0%	1,437	128	100.0%
HH received Food Stamps/SNAP in the past 12 months	426	157	33.2%	137	92	9.5%
HH did not receive Food Stamps/SNAP in the past 12 months	859	172	66.8%	1,300	151	90.5%

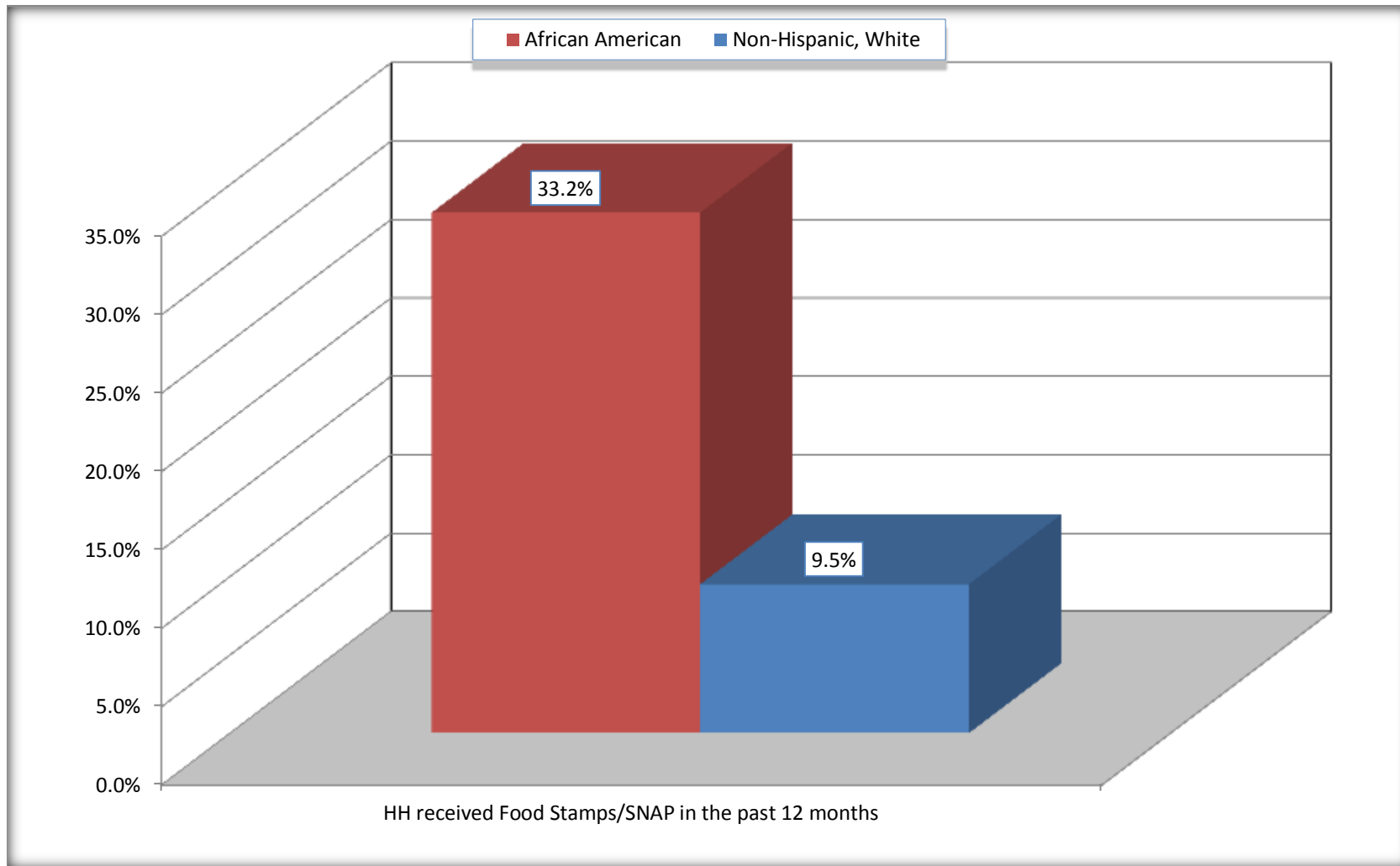
Source: U.S. Census Bureau, 2008-2012 American Community Survey

For information on confidentiality protection, sampling error, nonsampling error, and definitions, see Survey Methodology.

<http://www.census.gov/acs/www/UseData/index.htm>

Receipt of Food Stamps/SNAP in the Past 12 Months by Household

St. Rose CDP, Louisiana



Source: B22005. RECEIPT OF FOOD STAMPS/SNAP IN THE PAST 12 MONTHS BY RACE OF HOUSEHOLDER
Data Set: 2008-2012 American Community Survey 5-Year Estimates

C23002. SEX BY AGE BY EMPLOYMENT STATUS FOR THE POPULATION 16 YEARS AND OVER

Data Set: 2008-2012 American Community Survey 5-Year Estimates

	St. Rose CDP, Louisiana					
	African American	Margin of Error (+/-)	% of AA Total	White, Not Hispanic	Margin of Error (+/-)	% of NHW Total
Total:	2,942	476	100.0%	3,005	302	100.0%
In labor force:	1,808	NC	61.5%	1,983	NC	66.0%
In Armed Forces	0	NC	0.0%	0	NC	0.0%
Civilian:	1,764	NC	60.0%	1,936	NC	64.4%
Employed	1,636	NC	55.6%	1,848	NC	61.5%
Unemployed	172	NC	5.8%	135	NC	4.5%
Not in labor force	1,134	NC	38.5%	1,022	NC	34.0%
Male:	1,210	238	41.1%	1,400	202	46.6%
16 to 64 years:	1,085	236	36.9%	1,206	196	40.1%
In labor force:	867	190	29.5%	1,061	172	35.3%
In Armed Forces	0	17	0.0%	0	17	0.0%
Civilian:	867	190	29.5%	1,061	172	35.3%
Employed	768	193	26.1%	1012	168	33.7%
Unemployed	99	85	3.4%	49	43	1.6%
Not in labor force	218	120	7.4%	145	72	4.8%
65 years and over:	125	52	4.2%	194	82	6.5%
In labor force:	20	23	0.7%	37	29	1.2%
Employed	20	23	0.7%	14	15	0.5%
Unemployed	0	17	0.0%	23	29	0.8%
Not in labor force	105	50	3.6%	157	71	5.2%

	St. Rose CDP, Louisiana					
	African American	Margin of Error (+/-)	% of AA Total	White, Not Hispanic	Margin of Error (+/-)	% of NHW Total
Female:	1,732	324	58.9%	1,605	169	53.4%
16 to 64 years:	1,436	304	48.8%	1,393	170	46.4%
In labor force:	897	237	30.5%	875	168	29.1%
In Armed Forces	0	17	0.0%	0	17	0.0%
Civilian:	897	237	30.5%	875	168	29.1%
Employed	824	222	28.0%	812	151	27.0%
Unemployed	73	78	2.5%	63	65	2.1%
Not in labor force	539	175	18.3%	518	150	17.2%
65 years and over:	296	83	10.1%	212	63	7.1%
In labor force:	24	34	0.8%	10	16	0.3%
Employed	24	34	0.8%	10	16	0.3%
Unemployed	0	17	0.0%	0	17	0.0%
Not in labor force	272	80	9.2%	202	62	6.7%

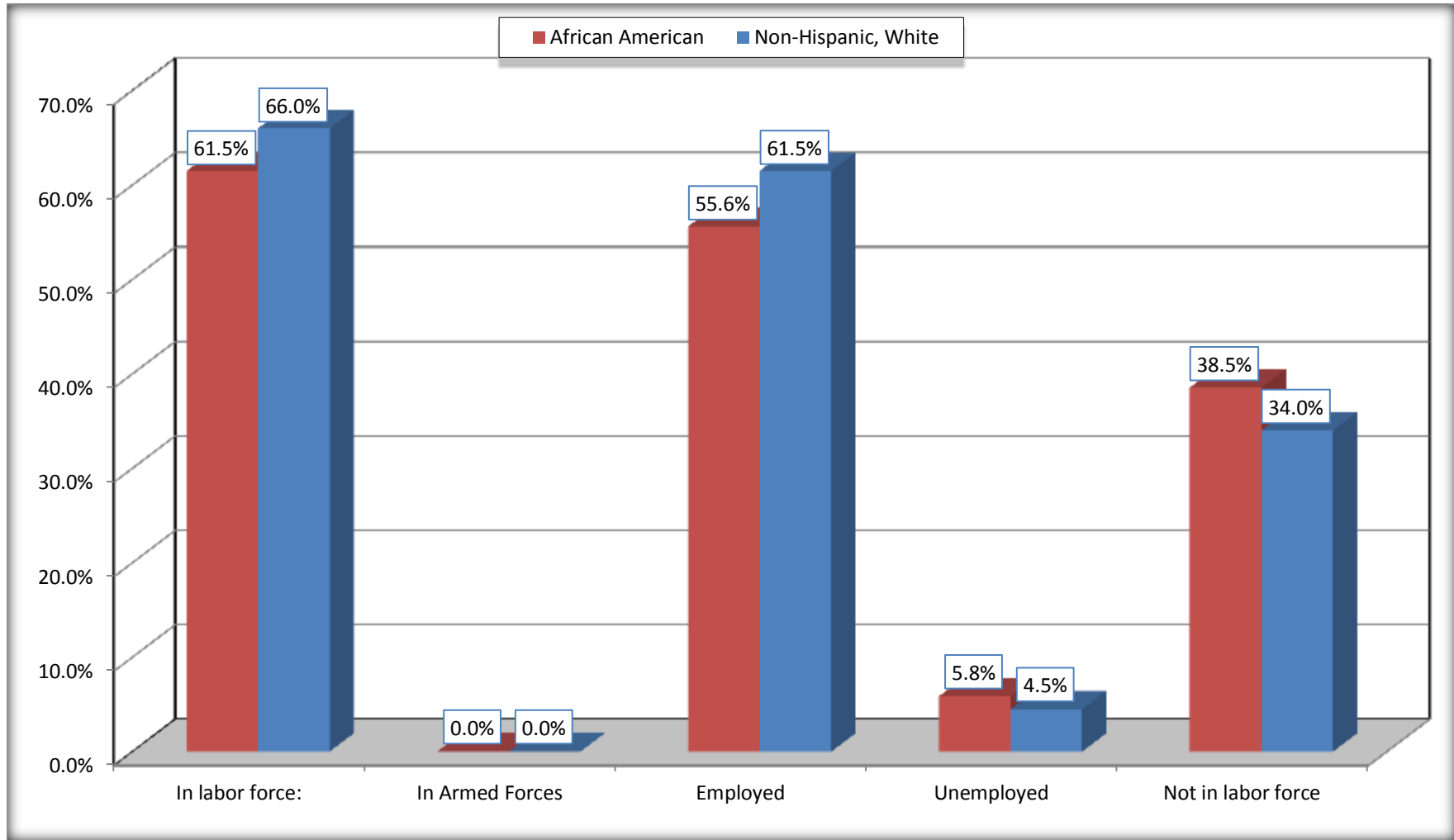
Source: U.S. Census Bureau, 2008-2012 American Community Survey

For information on confidentiality protection, sampling error, nonsampling error, and definitions, see Survey Methodology.

<http://www.census.gov/acs/www/UseData/index.htm>

Employment Status for the Population 16 years and over

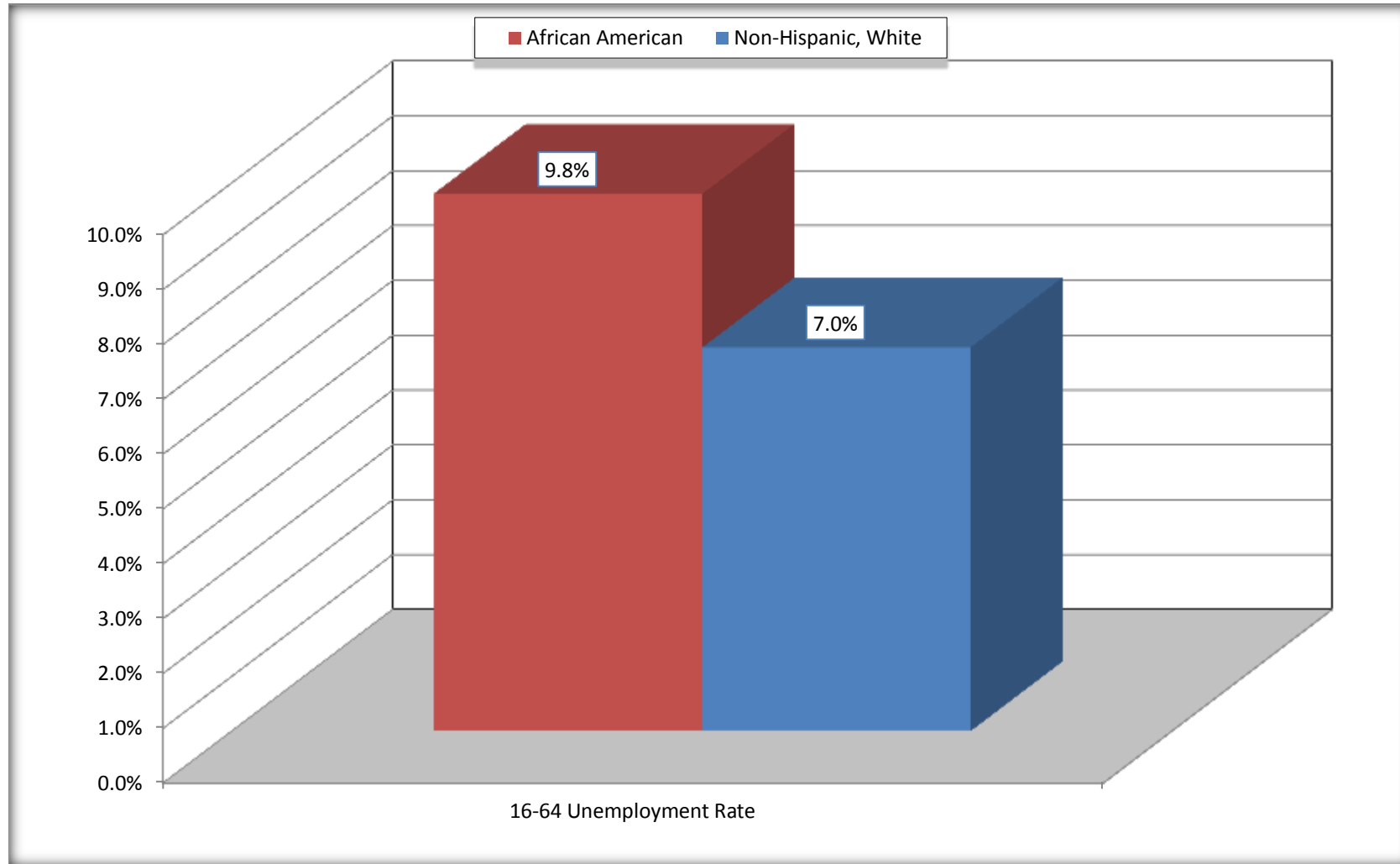
St. Rose CDP, Louisiana



Source: C23002. SEX BY AGE BY EMPLOYMENT STATUS FOR THE POPULATION 16 YEARS AND OVER
Data Set: 2008-2012 American Community Survey 5-Year Estimates

Unemployment of Working Age Population (Ages 16 to 64) (As a Percent of 16-64 Civilian Labor Force)

St. Rose CDP, Louisiana



Source: C23002. SEX BY AGE BY EMPLOYMENT STATUS FOR THE POPULATION 16 YEARS AND OVER
Data Set: 2008-2012 American Community Survey 5-Year Estimates

C24010. SEX BY OCCUPATION FOR THE CIVILIAN EMPLOYED POPULATION 16 YEARS AND OVER

Data Set: 2008-2012 American Community Survey 5-Year Estimates

	St. Rose CDP, Louisiana					
	African American	Margin of Error (+/-)	% of AA Total	White, Not Hispanic	Margin of Error (+/-)	% of NHW Total
Total:	1,636	339	100.0%	1,848	244	100.0%
Management, professional, and related occupations	586	NC	35.8%	633	NC	34.3%
Service occupations	157	NC	9.6%	265	NC	14.3%
Sales and office occupations	423	NC	25.9%	423	NC	22.9%
Natural resources, construction, and maintenance occupations:	279	NC	17.1%	408	NC	22.1%
Production, transportation, and material moving occupations	191	NC	11.7%	119	NC	6.4%
Male:	788	190	48.2%	1,026	169	55.5%
Management, business, science, and arts occupations:	127	65	7.8%	227	112	12.3%
Service occupations	71	67	4.3%	137	83	7.4%
Sales and office occupations	205	112	12.5%	149	65	8.1%
Natural resources, construction, and maintenance occupations:	242	153	14.8%	408	138	22.1%
Production, transportation, and material moving occupations	143	80	8.7%	105	64	5.7%
Female:	848	222	51.8%	822	153	44.5%
Management, professional, and related occupations	459	230	28.1%	406	106	22.0%
Service occupations	86	52	5.3%	128	81	6.9%
Sales and office occupations	218	104	13.3%	274	99	14.8%
Natural resources, construction, and maintenance occupations:	37	58	2.3%	0	17	0.0%
Production, transportation, and material moving occupations	48	43	2.9%	14	15	0.8%

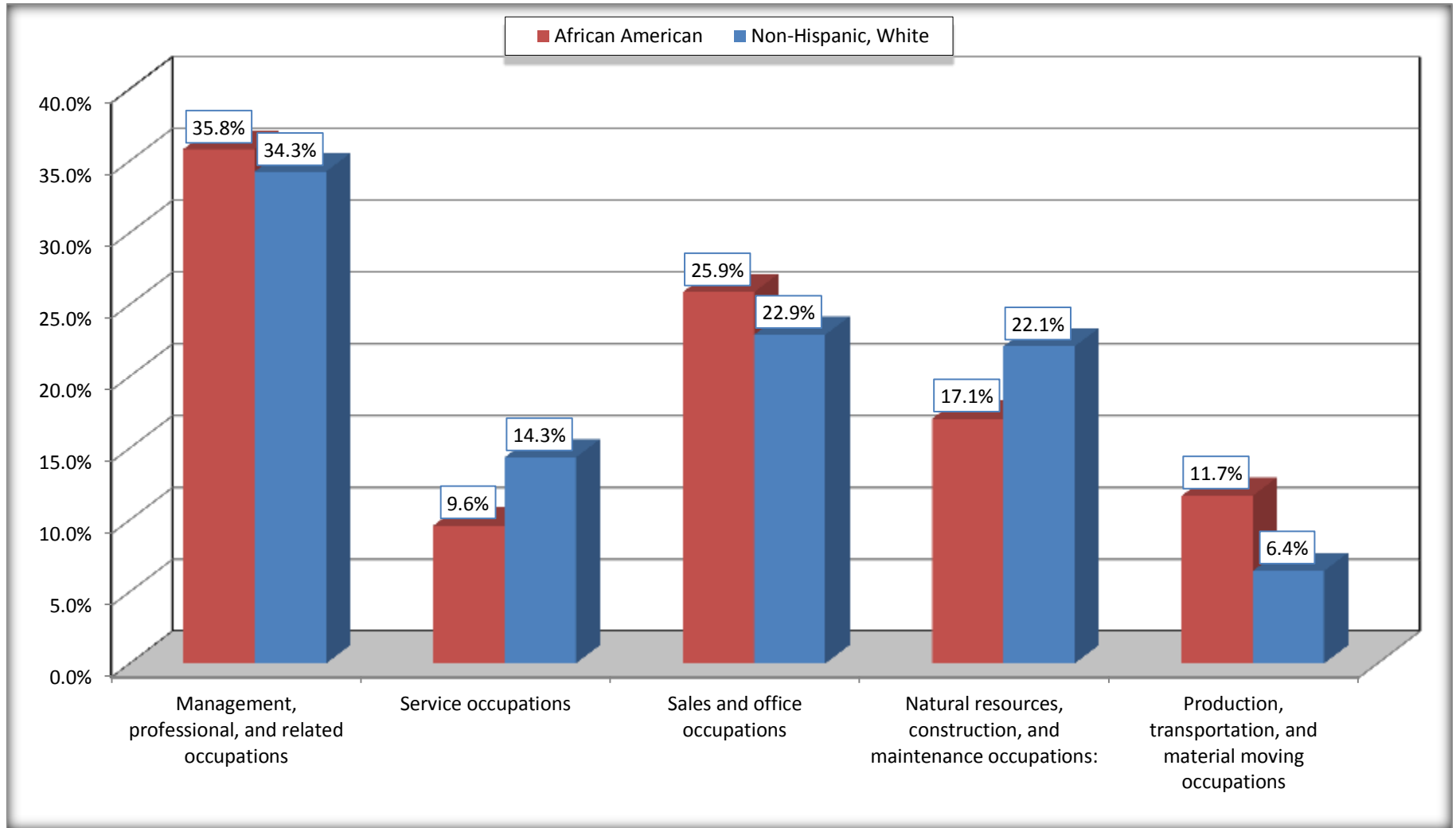
Source: U.S. Census Bureau, 2008-2012 American Community Survey

For information on confidentiality protection, sampling error, nonsampling error, and definitions, see Survey Methodology.

<http://www.census.gov/acs/www/UseData/index.htm>

Occupation for the Civilian Employed 16 Years and Over Population

St. Rose CDP, Louisiana



Source: C24010. SEX BY OCCUPATION FOR THE CIVILIAN EMPLOYED POPULATION 16 YEARS AND OVER
Data Set: 2008-2012 American Community Survey 5-Year Estimates

B25003. TENURE - Universe: OCCUPIED HOUSING UNITS

Data Set: 2008-2012 American Community Survey 5-Year Estimates

	St. Rose CDP, Louisiana					
	African American	Margin of Error (+/-)	% of AA Total	White, Not Hispanic	Margin of Error (+/-)	% of NHW Total
Total:	1,285	157	100.0%	1,437	128	100.0%
Owner occupied	816	131	63.5%	1,315	137	91.5%
Renter occupied	469	135	36.5%	122	63	8.5%

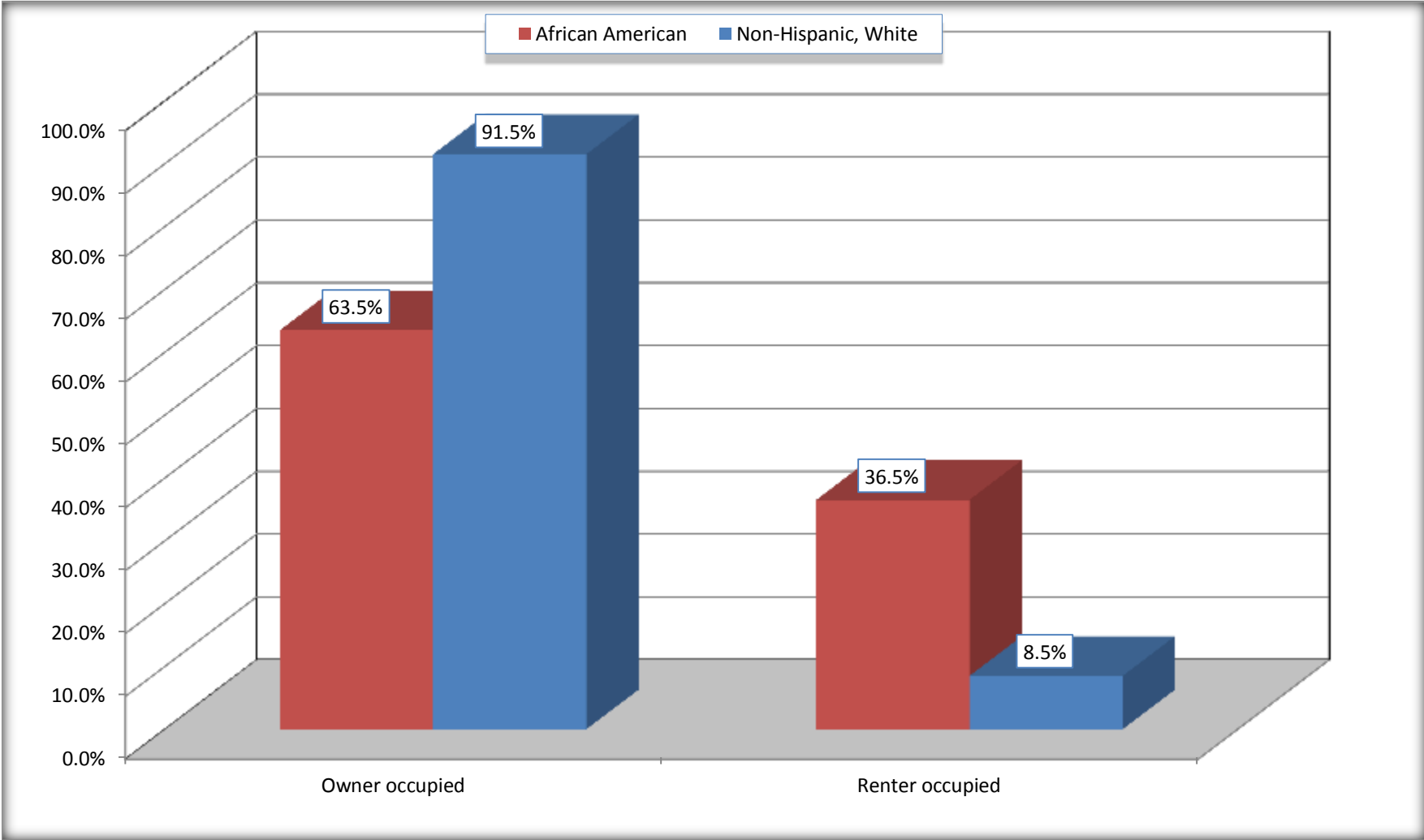
Source: U.S. Census Bureau, 2008-2012 American Community Survey

For information on confidentiality protection, sampling error, nonsampling error, and definitions, see Survey Methodology.

<http://www.census.gov/acs/www/UseData/index.h>

Home Owners and Renters by Household

St. Rose CDP, Louisiana



Source: B25003. TENURE - Universe: OCCUPIED HOUSING UNITS
Data Set: 2008-2012 American Community Survey 5-Year Estimates

B25014. OCCUPANTS PER ROOM - Universe: OCCUPIED HOUSING UNITS

Data Set: 2008-2012 American Community Survey 5-Year Estimates

	St. Rose CDP, Louisiana					
	African American	Margin of Error (+/-)	% of AA Total	White, Not Hispanic	Margin of Error (+/-)	% of NHW Total
Total:	1,285	157	100.0%	1,437	128	100.0%
1.00 or less occupants per room	1,192	169	92.8%	1,426	130	99.2%
1.01 or more occupants per room	93	95	7.2%	11	19	0.8%

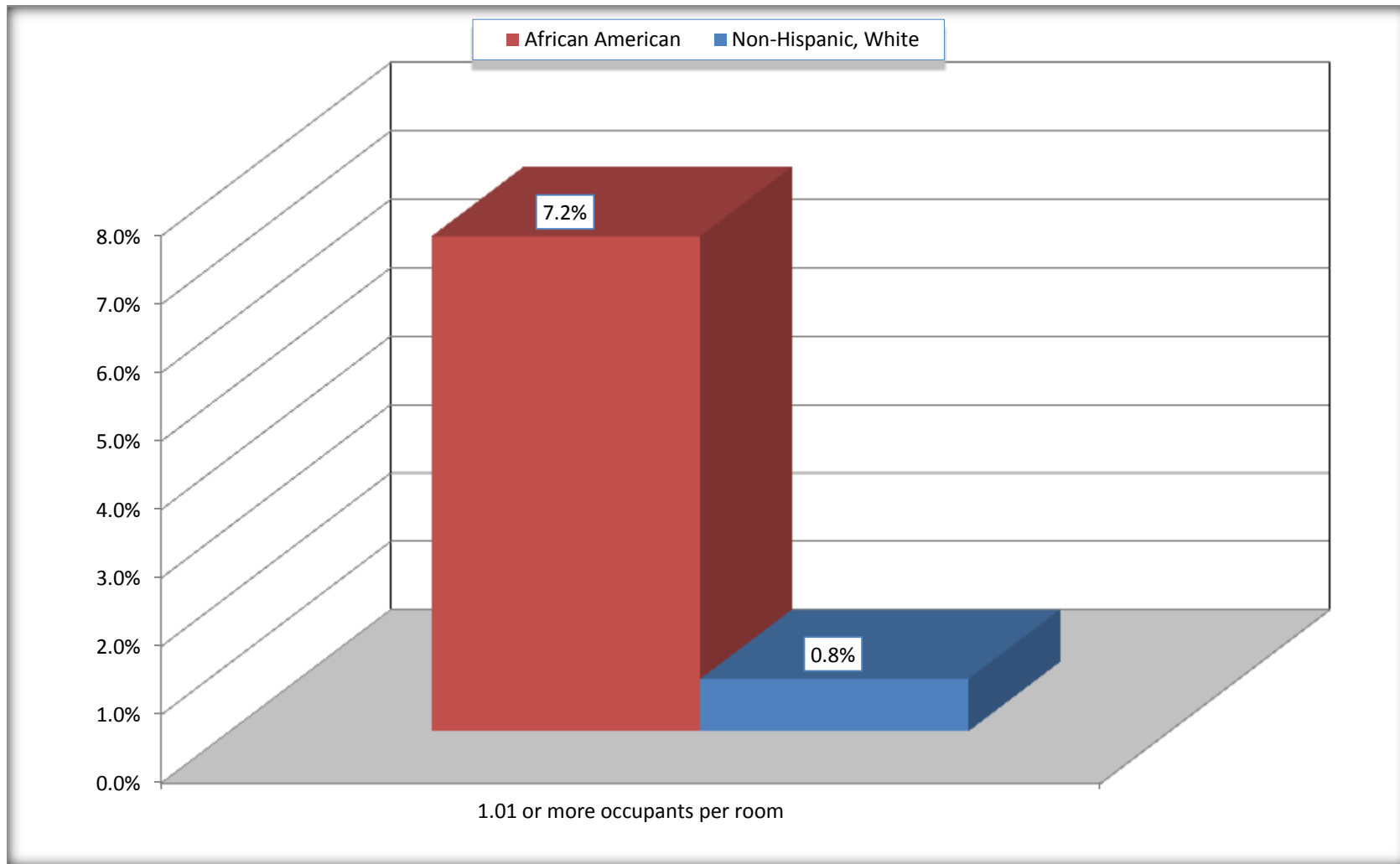
Source: U.S. Census Bureau, 2008-2012 American Community Survey

For information on confidentiality protection, sampling error, nonsampling error, and definitions, see Survey Methodology.

<http://www.census.gov/acs/www/UseData/index.ht>

More than One Person per Room (Crowding) by Household

St. Rose CDP, Louisiana



Source: B25014. OCCUPANTS PER ROOM - Universe: OCCUPIED HOUSING UNITS
Data Set: 2008-2012 American Community Survey 5-Year Estimates

B18101. AGE BY DISABILITY STATUS

Data Set: 2008-2012 American Community Survey 5-Year Estimates

	St. Rose CDP, Louisiana					
	African American	Margin of Error (+/-)	% of AA Total	White, Not Hispanic	Margin of Error (+/-)	% of NHW Total
Total:	4,360	689	100.0%	3,925	491	100.0%
Under 18 years:	1,723	413	39.5%	999	69	25.5%
With a disability	188	174	4.3%	45	48	1.1%
No disability	1,535	341	35.2%	954	281	24.3%
18 to 64 years:	2,216	392	50.8%	2,520	289	64.2%
With a disability	299	208	6.9%	312	121	7.9%
No disability	1,917	295	44.0%	2,208	273	56.3%
65 years and over:	421	112	9.7%	406	108	10.3%
With a disability	143	92	3.3%	178	79	4.5%
No disability	278	115	6.4%	228	91	5.8%

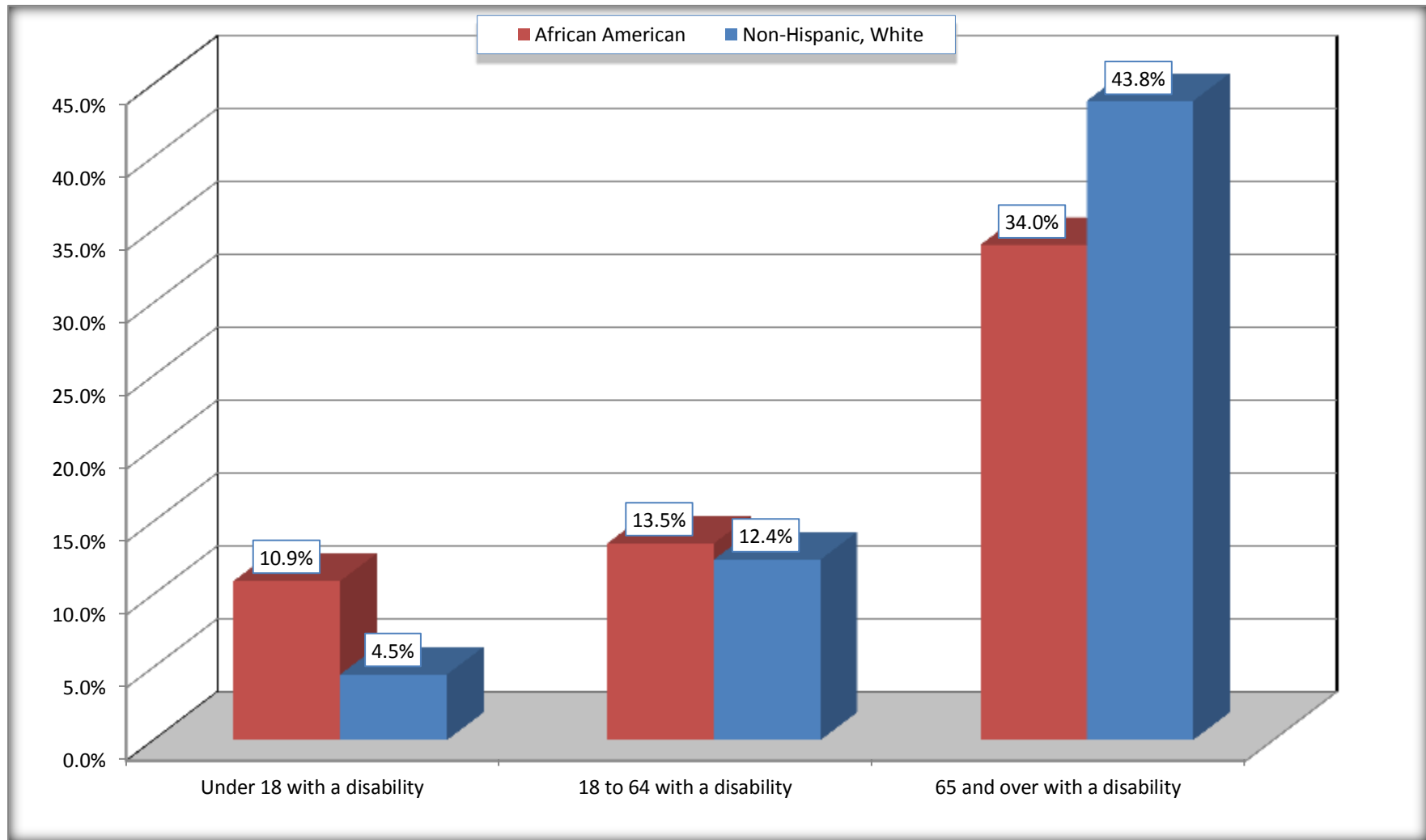
Source: U.S. Census Bureau, 2008-2012 American Community Survey

For information on confidentiality protection, sampling error, nonsampling error, and definitions, see Survey Methodology.

<http://www.census.gov/acs/www/UseData/index.htm>

Disability by Age

St. Rose CDP, Louisiana



Source: B18101. AGE BY DISABILITY STATUS
Data Set: 2008-2012 American Community Survey 5-Year Estimates

C27001B. HEALTH INSURANCE COVERAGE STATUS BY AGE

Data Set: 2008-2012 American Community Survey 5-Year Estimates

	St. Rose CDP, Louisiana					
	African American	Margin of Error (+/-)	% of AA Total	White, Not Hispanic	Margin of Error (+/-)	% of NHW Total
Total:	4,360	689	100.0%	3,925	491	100.0%
Under 18 years:	1,723	413	39.5%	999	296	25.5%
With health insurance coverage	1,708	413	39.2%	889	268	22.6%
No health insurance coverage	15	28	0.3%	110	82	2.8%
18 to 64 years:	2,216	392	50.8%	2,520	289	64.2%
With health insurance coverage	1,655	377	38.0%	1,686	245	43.0%
No health insurance coverage	561	208	12.9%	834	270	21.2%
65 years and over:	421	112	9.7%	406	108	10.3%
With health insurance coverage	421	112	9.7%	406	108	10.3%
No health insurance coverage	0	17	0.0%	0	17	0.0%

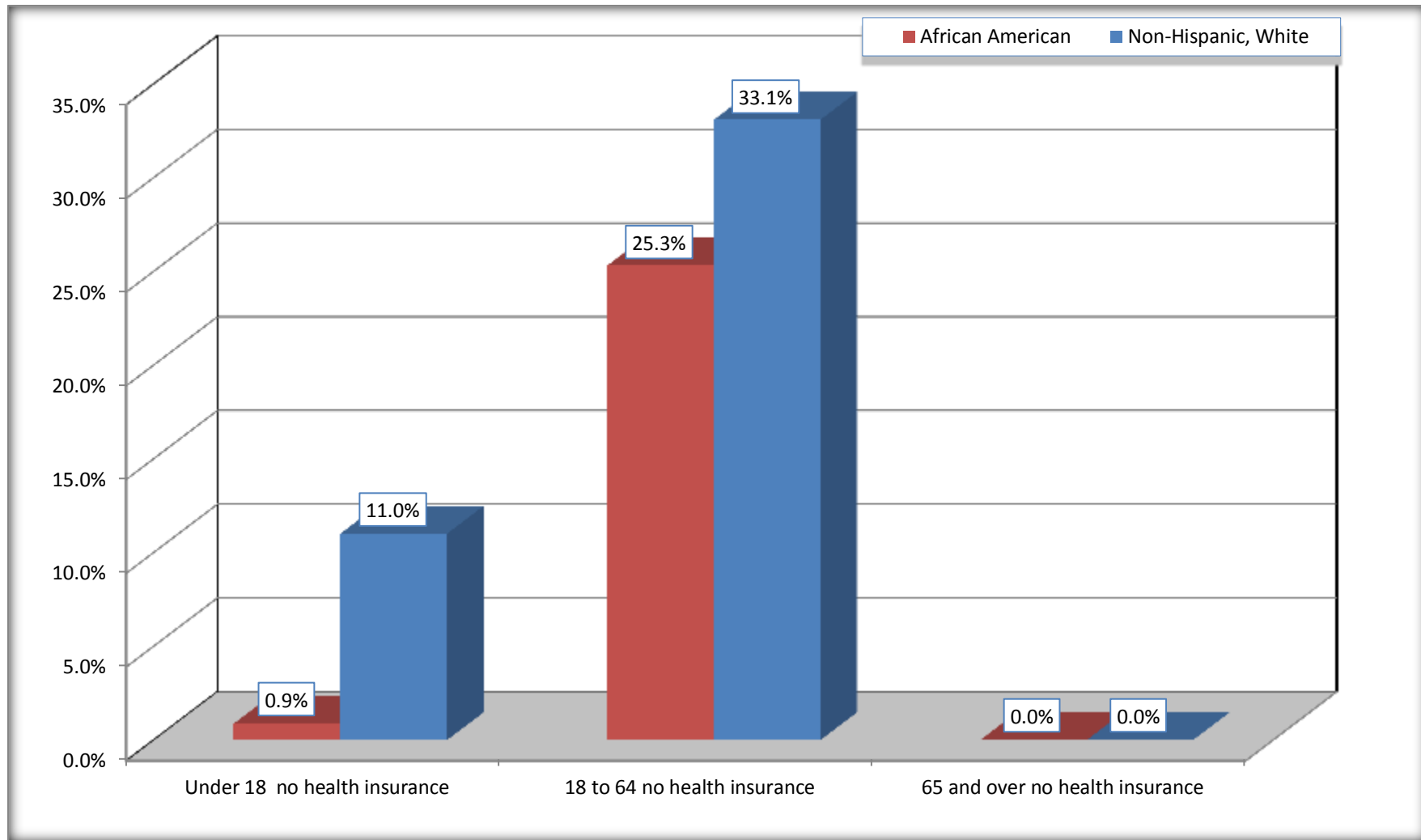
Source: U.S. Census Bureau, 2008-2012 American Community Survey

For information on confidentiality protection, sampling error, nonsampling error, and definitions, see Survey Methodology.

<http://www.census.gov/acs/www/UseData/index.htm>

Lack of Health Insurance Coverage by Age

St. Rose CDP, Louisiana



Source: C27001B. HEALTH INSURANCE COVERAGE STATUS BY AGE
Data Set: 2008-2012 American Community Survey 5-Year Estimates