

Selected Socio-Economic Data

Scott city, Louisiana

African American and White, Not Hispanic

Data Set: 2008-2012 American Community Survey 5-Year Estimates

www.fairvote2020.org

www.fairdata2000.com

[29-Dec-13](#)

C02003.DETAILED RACE - Universe: TOTAL POPULATION

Data Set: 2008-2012 American Community Survey 5-Year Estimates

	Scott city, Louisiana		
	Population	Margin of Error (+/-)	% of Total
Total:	8,607	34	100.0%
Population of one race:	8,543	49	99.3%
White	6,340	576	73.7%
Black or African American	2,094	580	24.3%
American Indian and Alaska Native	0	17	0.0%
Asian alone	32	53	0.4%
Native Hawaiian and Other Pacific Islander	77	118	0.9%
Some other race	0	17	0.0%
Population of two or more races:	64	43	0.7%
Two races including Some other race	0	17	0.0%
Two races excluding Some other race, and three or more races	64	43	0.7%
Population of two races:	64	43	0.7%
White; Black or African American	13	21	0.2%
White; American Indian and Alaska Native	38	45	0.4%
White; Asian	0	17	0.0%
Black or African American; American Indian and Alaska Native	0	17	0.0%
All other two race combinations	13	25	0.2%
Population of three races	0	17	0.0%
Population of four or more races	0	17	0.0%

Note: Hispanics may be of any race. See Table B03002 and chart.

Source: U.S. Census Bureau, 2008-2012 American Community Survey

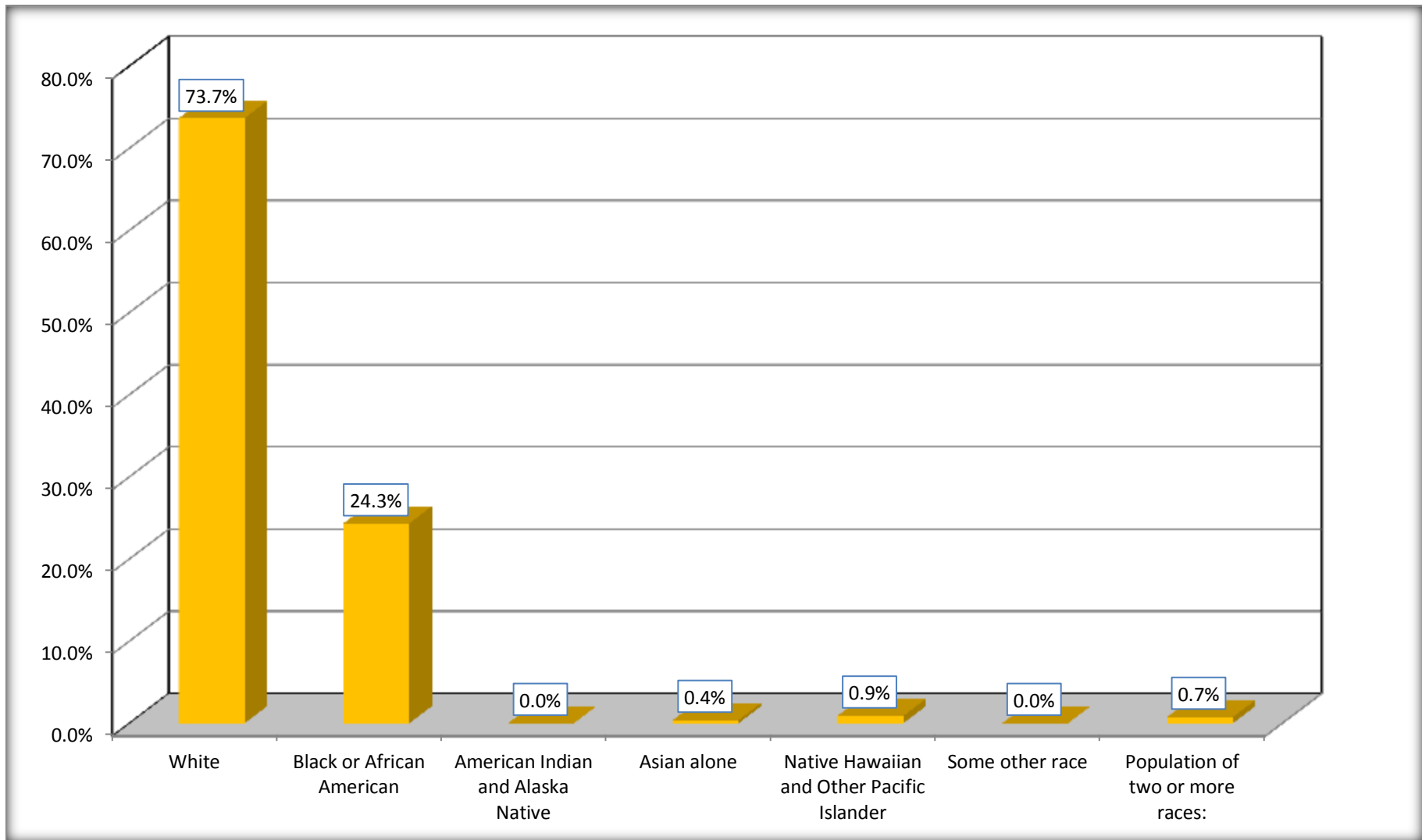
Although the American Community Survey (ACS) produces population, demographic and housing unit estimates, it is the Census Bureau's Population Estimates Program that produces and disseminates the official estimates of the population for the nation, states, counties, cities and towns and estimates of housing units for states and counties.

For information on confidentiality protection, sampling error, nonsampling error, and definitions, see Survey Methodology.

<http://www.census.gov/acs/www/UseData/index.htm>

Population by Race

Scott city, Louisiana



Source: C02003.DETAILED RACE - Universe: TOTAL POPULATION
Data Set: 2008-2012 American Community Survey 5-Year Estimates

B03002. HISPANIC OR LATINO ORIGIN BY RACE - Universe: TOTAL POPULATION

Data Set: 2008-2012 American Community Survey 5-Year Estimates

	Scott city, Louisiana		
	Population	Margin of Error (+/-)	% of Total
Total:	8,607	34	100.0%
Not Hispanic or Latino:	8,446	150	98.1%
White alone	6,179	573	71.8%
Black or African American alone	2,094	580	24.3%
American Indian and Alaska Native alone	0	17	0.0%
Asian alone	32	53	0.4%
Native Hawaiian and Other Pacific Islander alone	77	118	0.9%
Some other race alone	0	17	0.0%
Two or more races:	64	43	0.7%
Two races including Some other race	0	17	0.0%
Two races excluding Some other race, and three or more races	64	43	0.7%
Hispanic or Latino	161	143	1.9%

Source: U.S. Census Bureau, 2008-2012 American Community Survey

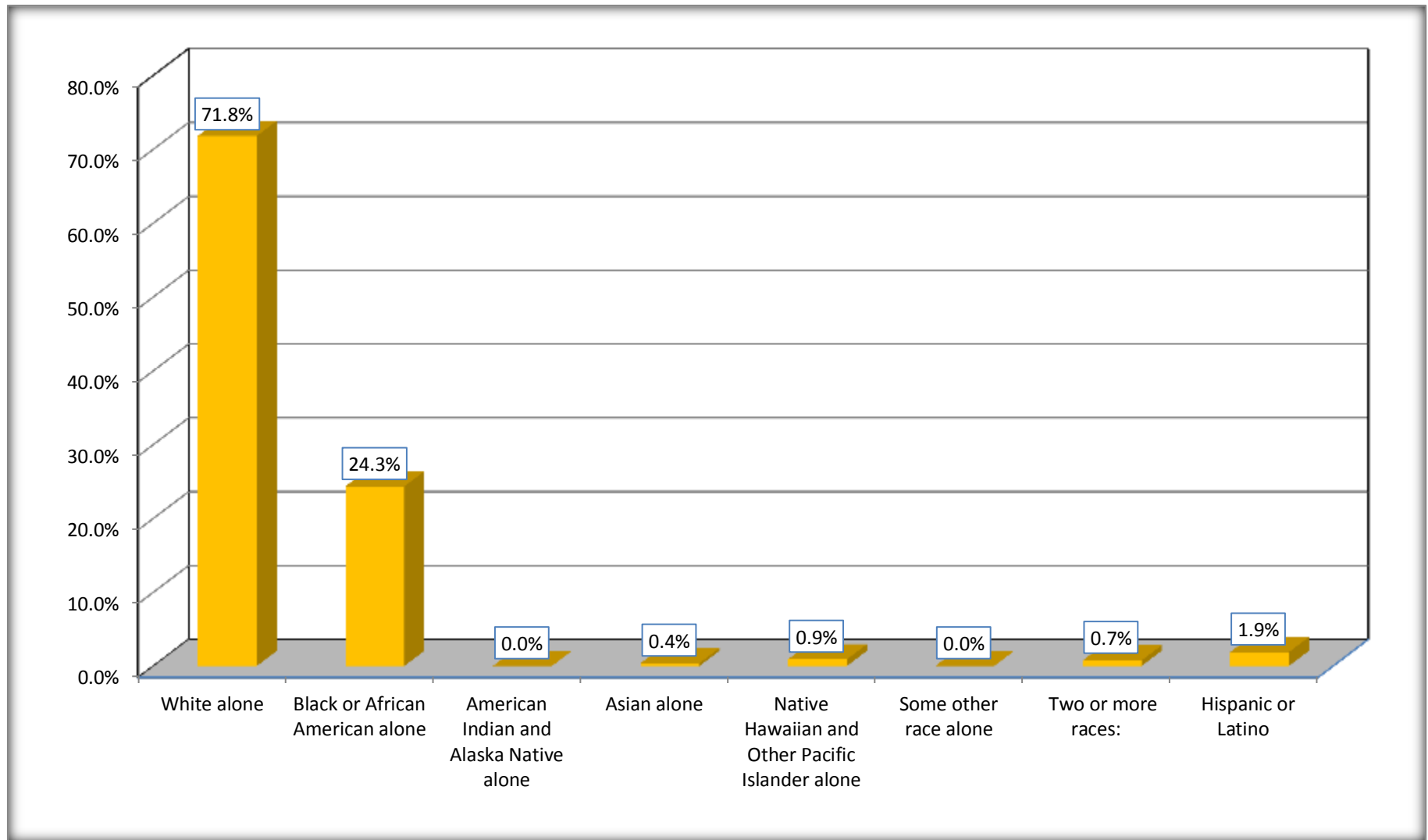
Although the American Community Survey (ACS) produces population, demographic and housing unit estimates, it is the Census Bureau's Population Estimates Program that produces and disseminates the official estimates of the population for the nation, states, counties, cities and towns and estimates of housing units for states and counties.

For information on confidentiality protection, sampling error, nonsampling error, and definitions, see Survey Methodology.

<http://www.census.gov/acs/www/UseData/index.htm>

Non-Hispanic by Race and Hispanic Population

Scott city, Louisiana



Source: B03002. HISPANIC OR LATINO ORIGIN BY RACE - Universe: TOTAL POPULATION
Data Set: 2008-2012 American Community Survey 5-Year Estimates

B03002. HISPANIC OR LATINO ORIGIN BY RACE

Data Set: 2008-2012 American Community Survey 5-Year Estimates

	Scott city, Louisiana		
	Population	Margin of Error (+/-)	% of Total
Hispanic or Latino:	161	143	100.0%
White alone	161	143	100.0%
Black or African American alone	0	17	0.0%
American Indian and Alaska Native alone	0	17	0.0%
Asian alone	0	17	0.0%
Native Hawaiian and Other Pacific Islander alone	0	17	0.0%
Some other race alone	0	17	0.0%
Two or more races:	0	17	0.0%
Two races including Some other race	0	17	0.0%
Two races excluding Some other race, and three or more races	0	17	0.0%

Source: U.S. Census Bureau, 2008-2012 American Community Survey

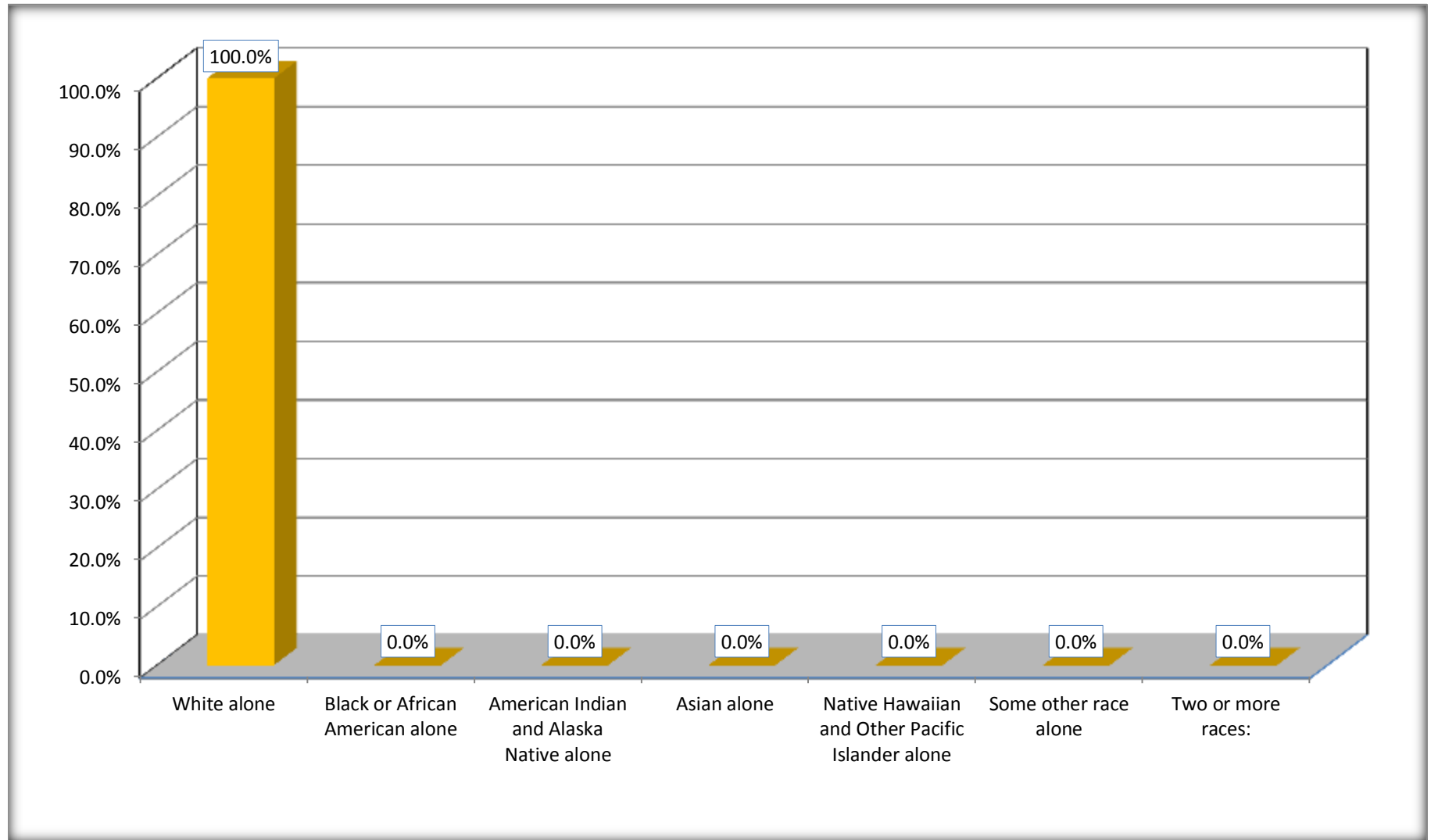
Although the American Community Survey (ACS) produces population, demographic and housing unit estimates, it is the Census Bureau's Population Estimates Program that produces and disseminates the official estimates of the population for the nation, states, counties, cities and towns and estimates of housing units for states and counties.

For information on confidentiality protection, sampling error, nonsampling error, and definitions, see Survey Methodology.

<http://www.census.gov/acs/www/UseData/index.htm>

Hispanic or Latino Origin by Race

Scott city, Louisiana



Source: B03002. HISPANIC OR LATINO ORIGIN BY RACE
Data Set: 2008-2012 American Community Survey 5-Year Estimates

B01001. SEX BY AGE

Data Set: 2008-2012 American Community Survey 5-Year Estimates

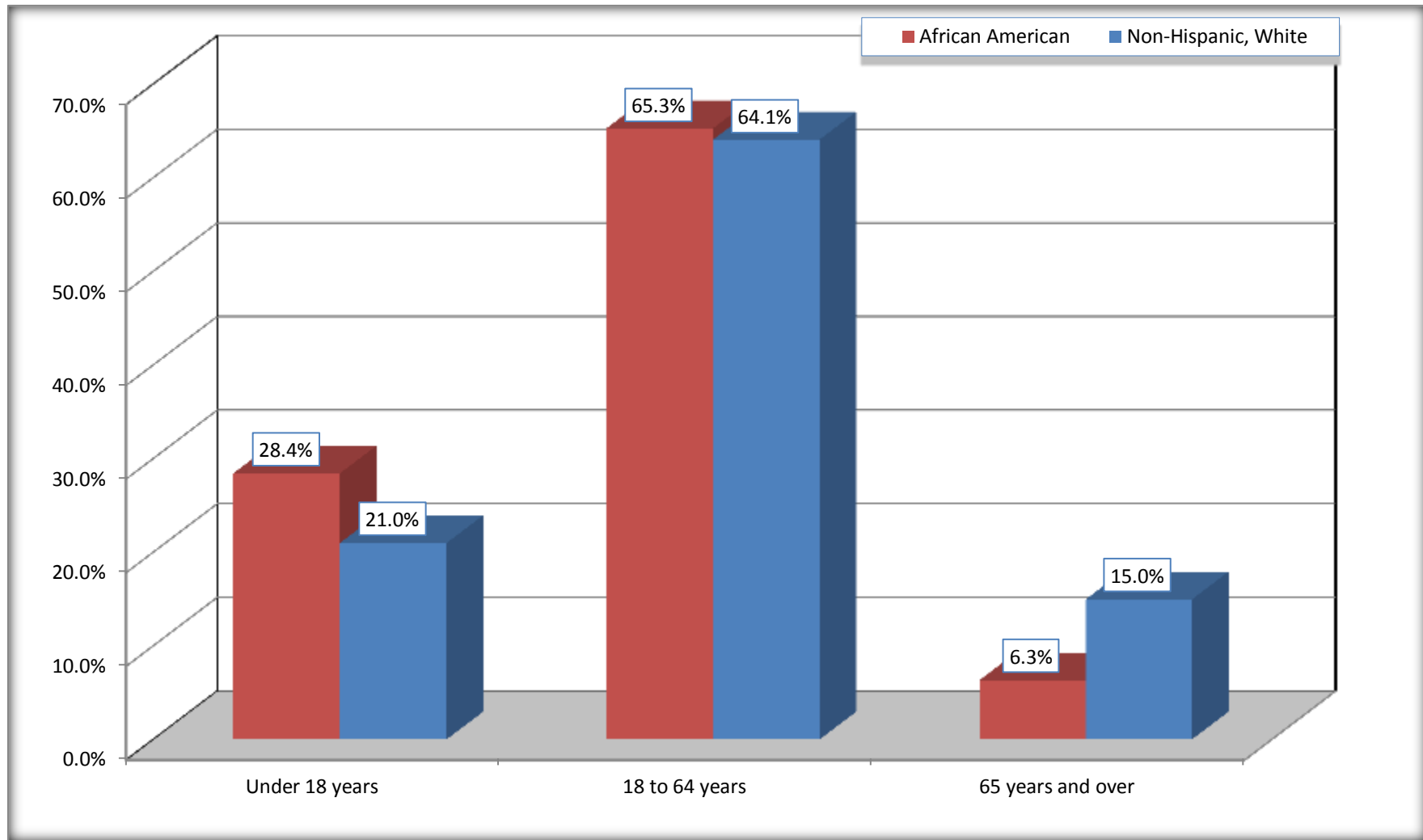
	Scott city, Louisiana					
	African American	Margin of Error (+/-)	% of AA Total	White, Not Hispanic	Margin of Error (+/-)	% of NHW Total
Total:	2,094	580	100.0%	6,179	573	100.0%
Under 18 years	595	NC	28.4%	1,296	NC	21.0%
18 to 64 years	1,367	NC	65.3%	3,959	NC	64.1%
65 years and over	132	NC	6.3%	924	NC	15.0%
Male:	987	318	47.1%	2,967	389	48.0%
Under 18 years	190	NC	9.1%	772	NC	12.5%
18 to 64 years	746	NC	35.6%	1,851	NC	30.0%
65 years and over	51	NC	2.4%	344	NC	5.6%
Female:	1,107	389	52.9%	3,212	412	52.0%
Under 18 years	405	NC	19.3%	524	NC	8.5%
18 to 64 years	621	NC	29.7%	2,108	NC	34.1%
65 years and over	81	NC	3.9%	580	NC	9.4%

Source: U.S. Census Bureau, 2008-2012 American Community Survey

Although the American Community Survey (ACS) produces population, demographic and housing unit estimates, it is the Census Bureau's Population Estimates Program that produces and disseminates the official estimates of the population for the nation, states, counties, cities and towns and estimates of housing units for states and counties.

For information on confidentiality protection, sampling error, nonsampling error, and definitions, see Survey Methodology.
<http://www.census.gov/acs/www/UseData/index.htm>

Population by Age Scott city, Louisiana



Source: B01001. SEX BY AGE

Data Set: 2008-2012 American Community Survey 5-Year Estimates

B05003. SEX BY AGE BY CITIZENSHIP STATUS

Data Set: 2008-2012 American Community Survey 5-Year Estimates

	Scott city, Louisiana					
	African American	Margin of Error (+/-)	% of AA Total by Age	White, Not Hispanic	Margin of Error (+/-)	% of NHW Total by Age
Total:	2,094	580	100.0%	6,179	573	100.0%
Under 18 years:	595	NC	100.0%	1,296	NC	100.0%
Native	595	NC	100.0%	1,296	NC	100.0%
Foreign born:	0	NC	0.0%	0	NC	0.0%
Naturalized U.S. citizen	0	NC	0.0%	0	NC	0.0%
Not a U.S. citizen	0	NC	0.0%	0	NC	0.0%
18 years and over:	1,499	NC	100.0%	4,883	NC	100.0%
Native	1,499	NC	100.0%	4,883	NC	100.0%
Foreign born:	0	NC	0.0%	0	NC	0.0%
Naturalized U.S. citizen	0	NC	0.0%	0	NC	0.0%
Not a U.S. citizen	0	NC	0.0%	0	NC	0.0%
Male:	987	318	47.1%	2,967	334	48.0%
Under 18 years:	190	156	100.0%	772	222	100.0%
Native	190	156	100.0%	772	222	100.0%
Foreign born:	0	17	0.0%	0	17	0.0%
Naturalized U.S. citizen	0	17	0.0%	0	17	0.0%
Not a U.S. citizen	0	17	0.0%	0	17	0.0%
18 years and over:	797	233	100.0%	2,195	266	100.0%
Native	797	233	100.0%	2,195	266	100.0%
Foreign born:	0	17	0.0%	0	17	0.0%
Naturalized U.S. citizen	0	17	0.0%	0	17	0.0%
Not a U.S. citizen	0	17	0.0%	0	17	0.0%

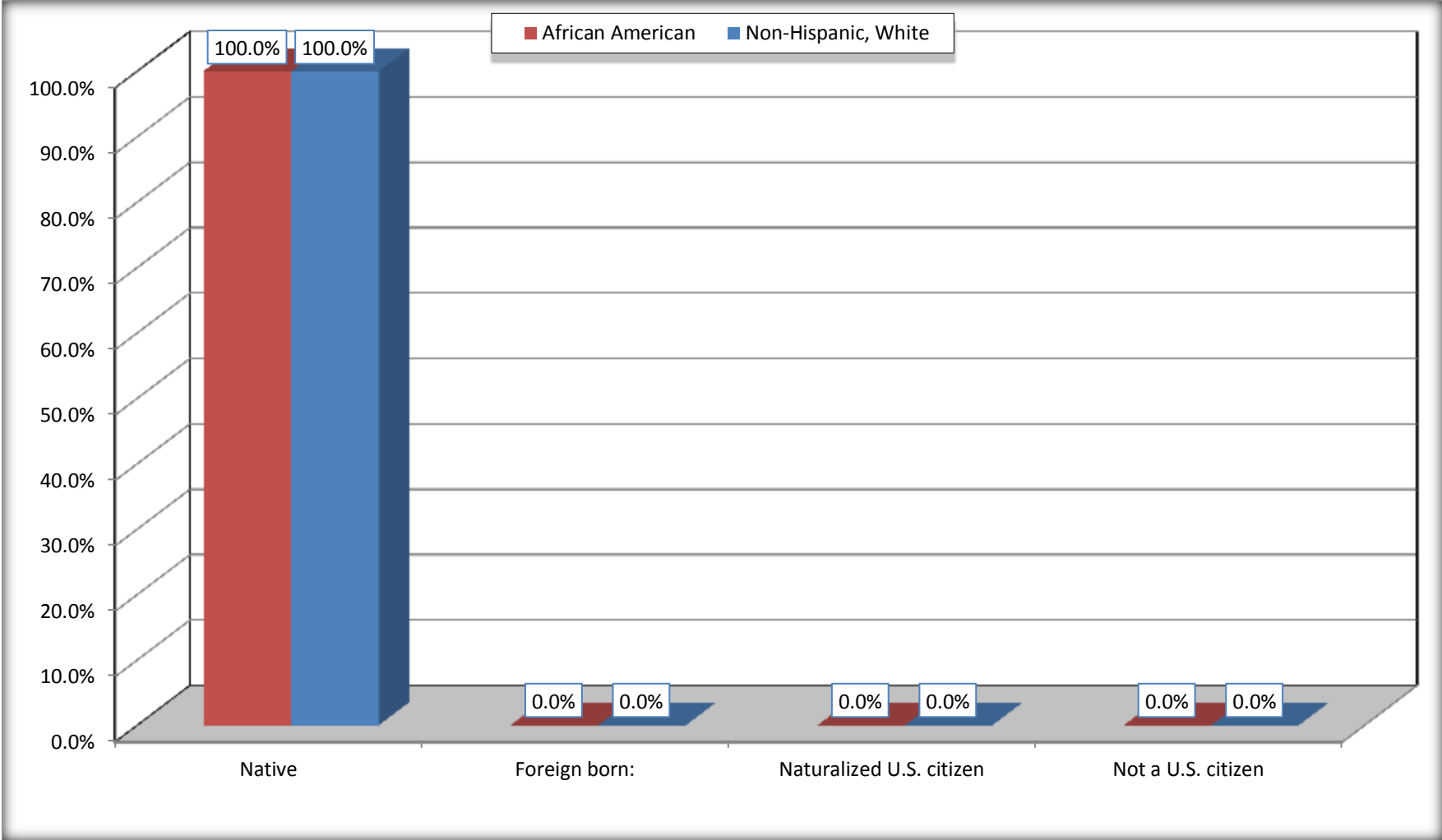
	Scott city, Louisiana					
	African American	Margin of Error (+/-)	% of AA by Age	White, Not Hispanic	Margin of Error (+/-)	% of NHW by Age
Female:	1,107	389	52.9%	3,212	349	52.0%
Under 18 years:	405	250	100.0%	524	161	100.0%
Native	405	250	100.0%	524	161	100.0%
Foreign born:	0	17	0.0%	0	17	0.0%
Naturalized U.S. citizen	0	17	0.0%	0	17	0.0%
Not a U.S. citizen	0	17	0.0%	0	17	0.0%
18 years and over:	702	220	100.0%	2,688	321	100.0%
Native	702	220	100.0%	2,688	321	100.0%
Foreign born:	0	17	0.0%	0	17	0.0%
Naturalized U.S. citizen	0	17	0.0%	0	17	0.0%
Not a U.S. citizen	0	17	0.0%	0	17	0.0%

Source: U.S. Census Bureau, 2008-2012 American Community Survey

For information on confidentiality protection, sampling error, nonsampling error, and definitions, see Survey Methodology.
<http://www.census.gov/acs/www/UseData/index.htm>

Citizenship Status of Voting Age Population (18 and Over)

Scott city, Louisiana



Source: B05003. SEX BY AGE BY CITIZENSHIP STATUS
Data Set: 2008-2012 American Community Survey 5-Year Estimates

**B07004. GEOGRAPHICAL MOBILITY IN THE PAST YEAR BY RACE FOR CURRENT RESIDENCE IN THE UNITED STATES - Universe:
POPULATION 1 YEAR AND OVER**

Data Set: 2008-2012 American Community Survey 5-Year Estimates

	Scott city, Louisiana					
	African American	Margin of Error (+/-)	% of AA Total	White, Not Hispanic	Margin of Error (+/-)	% of NHW Total
Total:	2,094	580	100.0%	6,133	570	100.0%
Same house 1 year ago	1,775	563	84.8%	5,448	565	88.8%
Moved within same county	319	374	15.2%	491	229	8.0%
Moved from different county within same state	0	17	0.0%	151	98	2.5%
Moved from different state	0	17	0.0%	28	42	0.5%
Moved from abroad	0	17	0.0%	15	23	0.2%

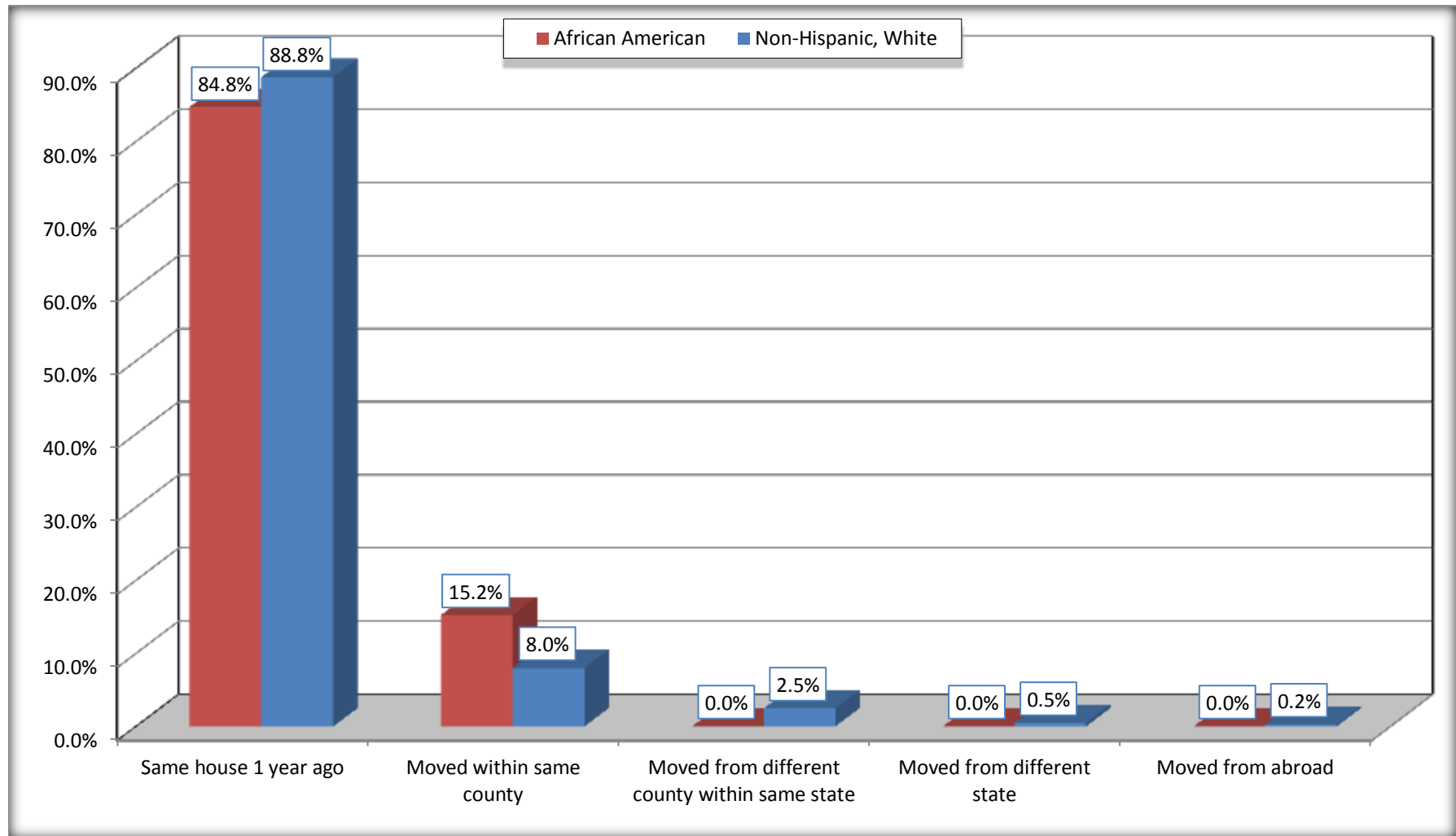
Source: U.S. Census Bureau, 2008-2012 American Community Survey

For information on confidentiality protection, sampling error, nonsampling error, and definitions, see Survey Methodology.

<http://www.census.gov/acs/www/UseData/index.htm>

Geographical Mobility in the Past Year (Population 1 Year and Over)

Scott city, Louisiana



Source: B07004. GEOGRAPHICAL MOBILITY IN THE PAST YEAR BY RACE FOR CURRENT RESIDENCE IN THE UNITED STATES - Universe: POPULATION 1 YEAR AND OVER

Data Set: 2008-2012 American Community Survey 5-Year Estimates

B08105. MEANS OF TRANSPORTATION TO WORK - Universe: WORKERS 16 YEARS AND OVER

Data Set: 2008-2012 American Community Survey 5-Year Estimates

	Scott city, Louisiana					
	African American	Margin of Error (+/-)	% of AA Total	White, Not Hispanic	Margin of Error (+/-)	% of NHW Total
Total:	945	343	100.0%	3012	437	100.0%
Car, truck, or van - drove alone	810	305	85.7%	2675	415	88.8%
Car, truck, or van - carpooled	114	112	12.1%	117	88	3.9%
Public transportation (excluding taxicab)	0	17	0.0%	0	17	0.0%
Walked	1	2	0.1%	26	42	0.9%
Taxicab, motorcycle, bicycle, or other means	20	32	2.1%	107	93	3.6%
Worked at home	0	17	0.0%	87	56	2.9%

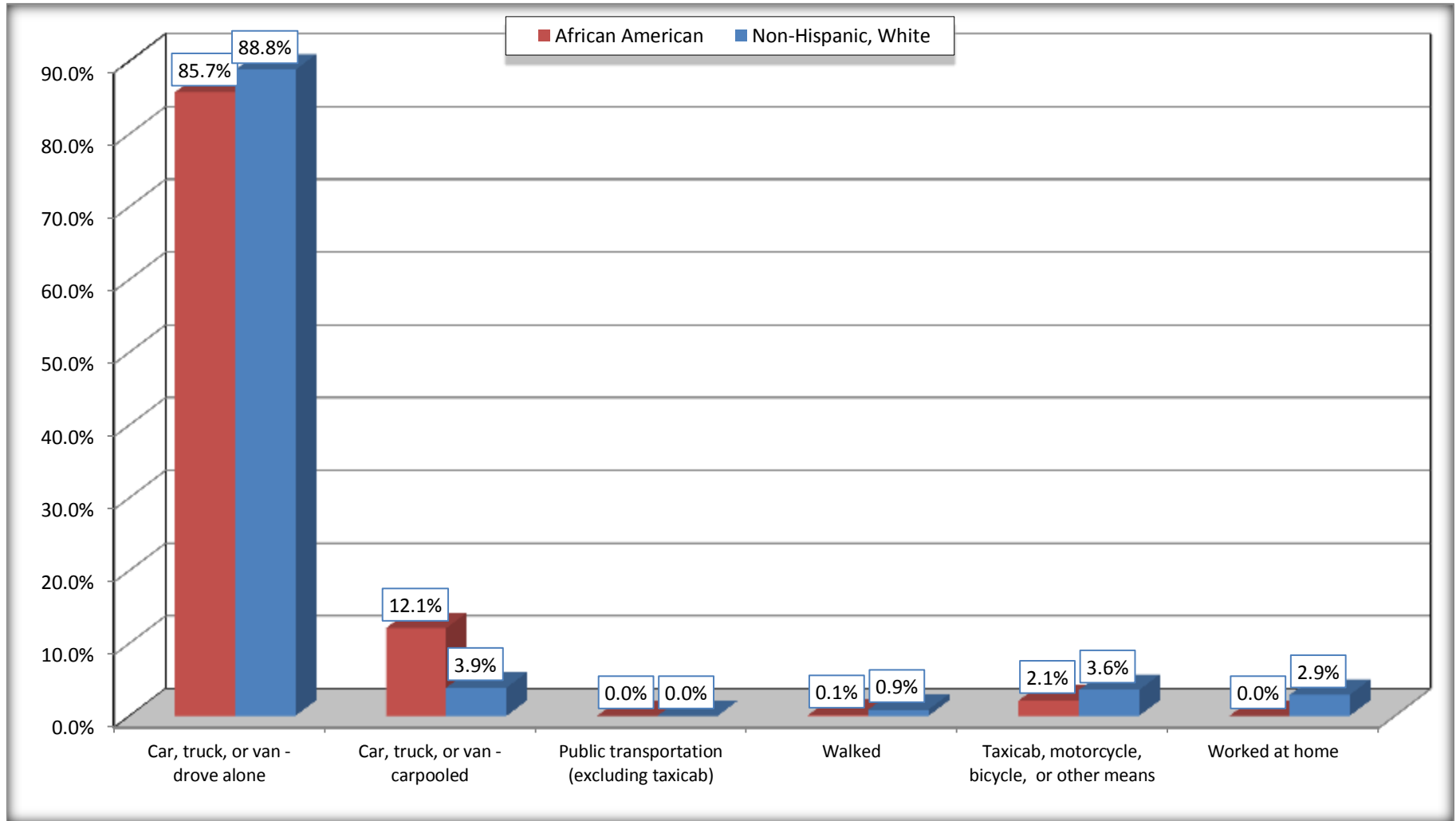
Source: U.S. Census Bureau, 2008-2012 American Community Survey

For information on confidentiality protection, sampling error, nonsampling error, and definitions, see Survey Methodology.

<http://www.census.gov/acs/www/UseData/index.htm>

Means of Transportation to Work (Workers 16 Years and Over)

Scott city, Louisiana



Source: B08105. MEANS OF TRANSPORTATION TO WORK - Universe: WORKERS 16 YEARS AND OVER
Data Set: 2008-2012 American Community Survey 5-Year Estimates

B11002. HOUSEHOLD TYPE BY RELATIVES AND NONRELATIVES FOR POPULATION IN HOUSEHOLDS

Data Set: 2008-2012 American Community Survey 5-Year Estimates

	Scott city, Louisiana					
	African American	Margin of Error (+/-)	% of AA Total	White, Not Hispanic	Margin of Error (+/-)	% of NHW Total
Total:	2093	580	100.0%	6223	565	100.0%
In family households	1848	580	88.3%	5261	615	84.5%
In nonfamily households	245	170	11.7%	962	237	15.5%

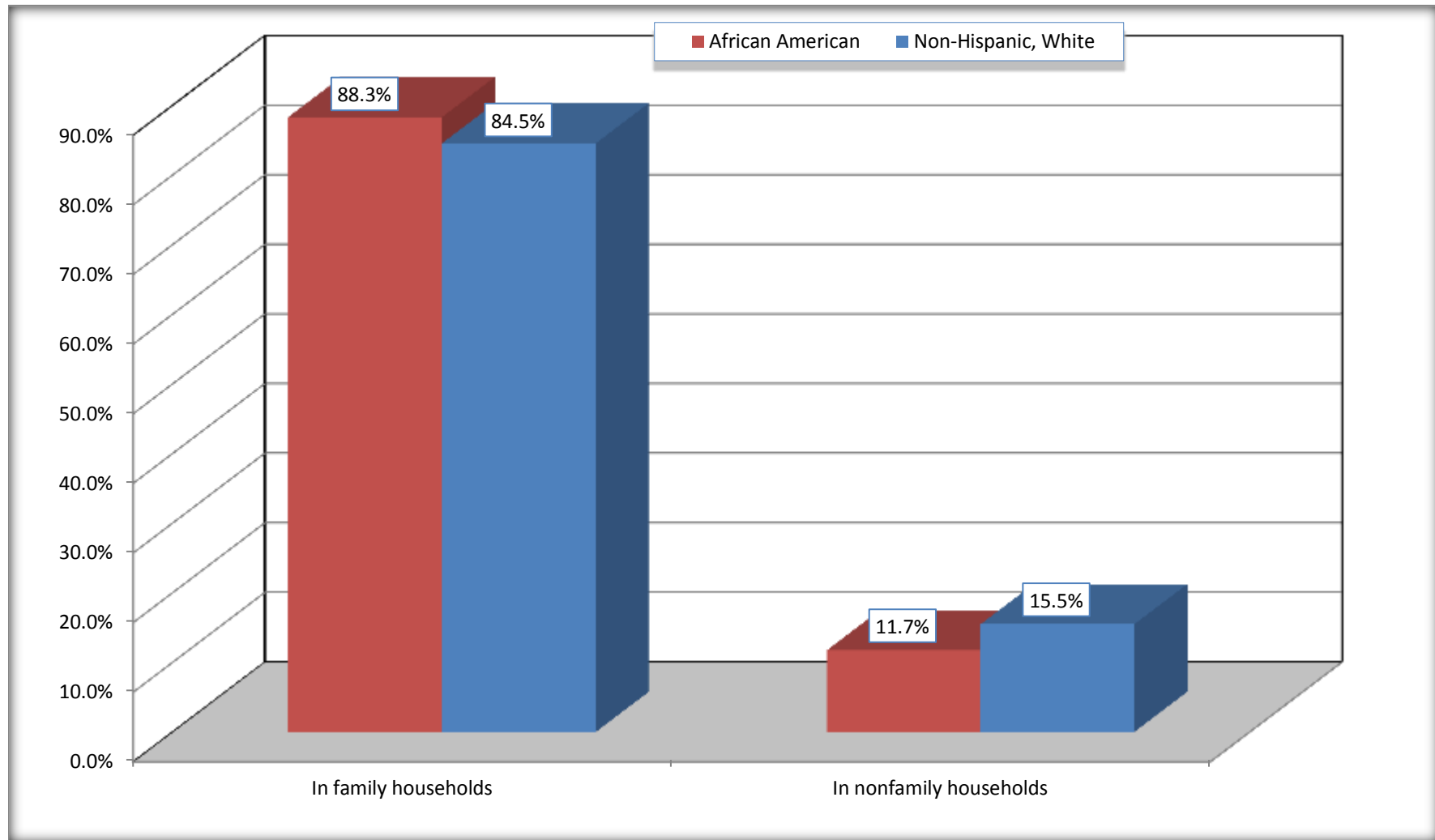
Source: U.S. Census Bureau, 2008-2012 American Community Survey

For information on confidentiality protection, sampling error, nonsampling error, and definitions, see Survey Methodology.

<http://www.census.gov/acs/www/UseData/index.htm>

Household Type for Population in Households

Scott city, Louisiana



Source: B11002. HOUSEHOLD TYPE BY RELATIVES AND NONRELATIVES FOR POPULATION IN HOUSEHOLDS
Data Set: 2008-2012 American Community Survey 5-Year Estimates

B12002. MARITAL STATUS FOR THE POPULATION 15 YEARS AND OVER

Data Set: 2008-2012 American Community Survey 5-Year Estimates

	Scott city, Louisiana					
	African American	Margin of Error (+/-)	% of AA Total	White, Not Hispanic	Margin of Error (+/-)	% of NHW Total
Total:	1,625	454	100.0%	5,098	470	100.0%
Never married	650	NC	40.0%	1,172	NC	23.0%
Now married (except separated)	697	NC	42.9%	2,863	NC	56.2%
Separated	0	NC	0.0%	130	NC	2.6%
Widowed	79	NC	4.9%	284	NC	5.6%
Divorced	199	NC	12.2%	649	NC	12.7%
Male:	802	235	49.4%	2,318	271	45.5%
Never married	326	175	20.1%	555	181	10.9%
Now married (except separated)	386	173	23.8%	1,464	210	28.7%
Separated	0	17	0.0%	60	67	1.2%
Widowed	0	17	0.0%	22	27	0.4%
Divorced	90	90	5.5%	217	150	4.3%
Female:	823	299	50.6%	2,780	313	54.5%
Never married	324	229	19.9%	617	211	12.1%
Now married (except separated)	311	138	19.1%	1,399	220	27.4%
Separated	0	17	0.0%	70	59	1.4%
Widowed	79	88	4.9%	262	137	5.1%
Divorced	109	91	6.7%	432	180	8.5%

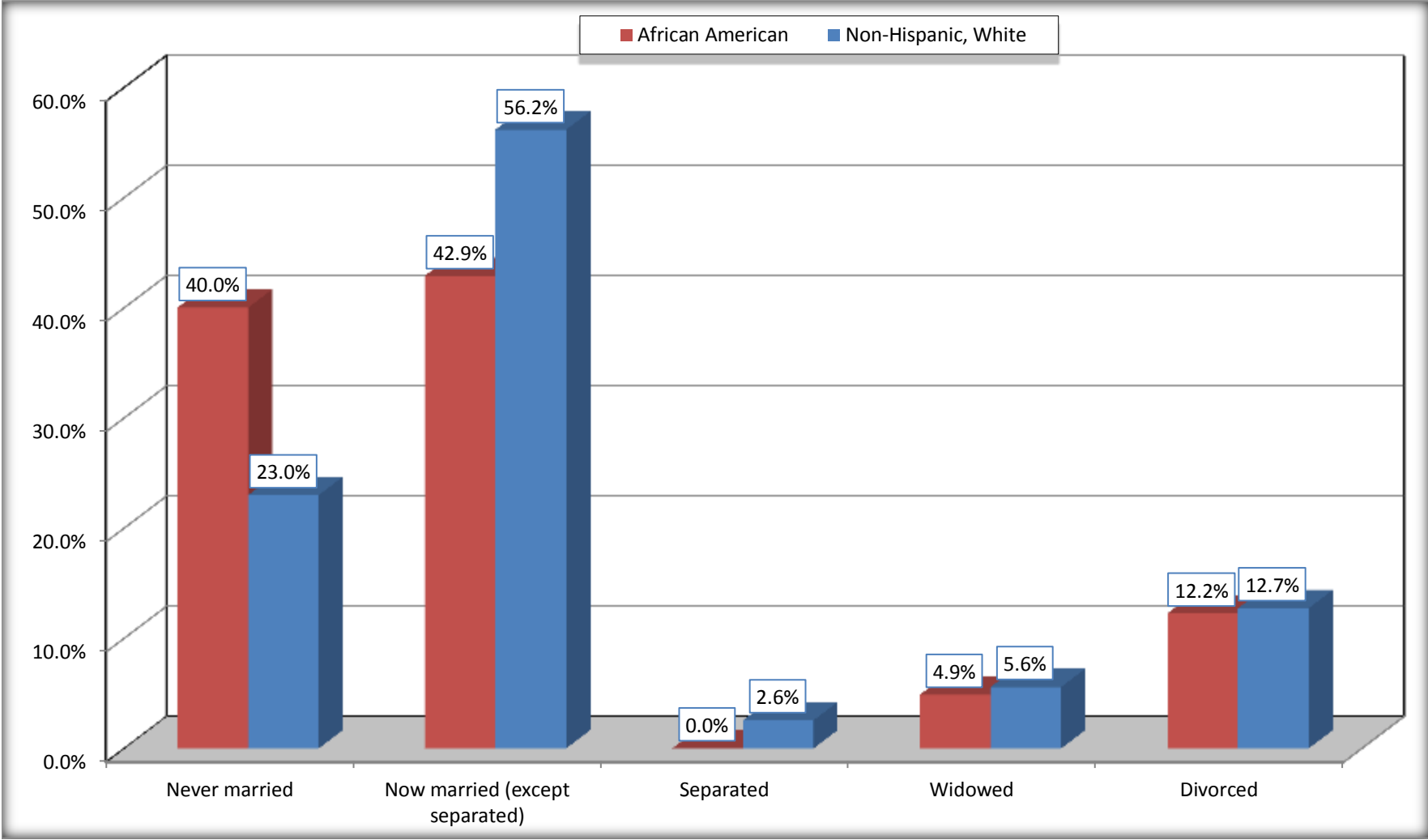
Source: U.S. Census Bureau, 2008-2012 American Community Survey

For information on confidentiality protection, sampling error, nonsampling error, and definitions, see Survey Methodology.

<http://www.census.gov/acs/www/UseData/index.htm>

Marital Status for the Population 15 Years and Over

Scott city, Louisiana



Source: B12002. MARITAL STATUS FOR THE POPULATION 15 YEARS AND OVER
Data Set: 2008-2012 American Community Survey 5-Year Estimates

C15002. SEX BY EDUCATIONAL ATTAINMENT FOR THE POPULATION 25 YEARS AND OVER

Data Set: 2008-2012 American Community Survey 5-Year Estimates

	Scott city, Louisiana					
	African American	Margin of Error (+/-)	% of AA Total	White, Not Hispanic	Margin of Error (+/-)	% of NHW Total
Total:	1,066	307	100.0%	4,406	463	100.0%
Less than high school diploma	248	NC	23.3%	672	NC	15.3%
High school graduate, GED, or alternative	267	NC	25.0%	1,648	NC	37.4%
Some college or associate's degree	465	NC	43.6%	1,456	NC	33.0%
Bachelor's degree or higher	86	NC	8.1%	630	NC	14.3%
Male:	570	207	53.5%	2,015	247	45.7%
Less than high school diploma	90	87	8.4%	297	130	6.7%
High school graduate, GED, or alternative	209	169	19.6%	734	233	16.7%
Some college or associate's degree	270	186	25.3%	698	189	15.8%
Bachelor's degree or higher	1	2	0.1%	286	89	6.5%
Female:	496	160	46.5%	2,391	297	54.3%
Less than high school diploma	158	119	14.8%	375	146	8.5%
High school graduate, GED, or alternative	58	78	5.4%	914	218	20.7%
Some college or associate's degree	195	126	18.3%	758	172	17.2%
Bachelor's degree or higher	85	80	8.0%	344	127	7.8%

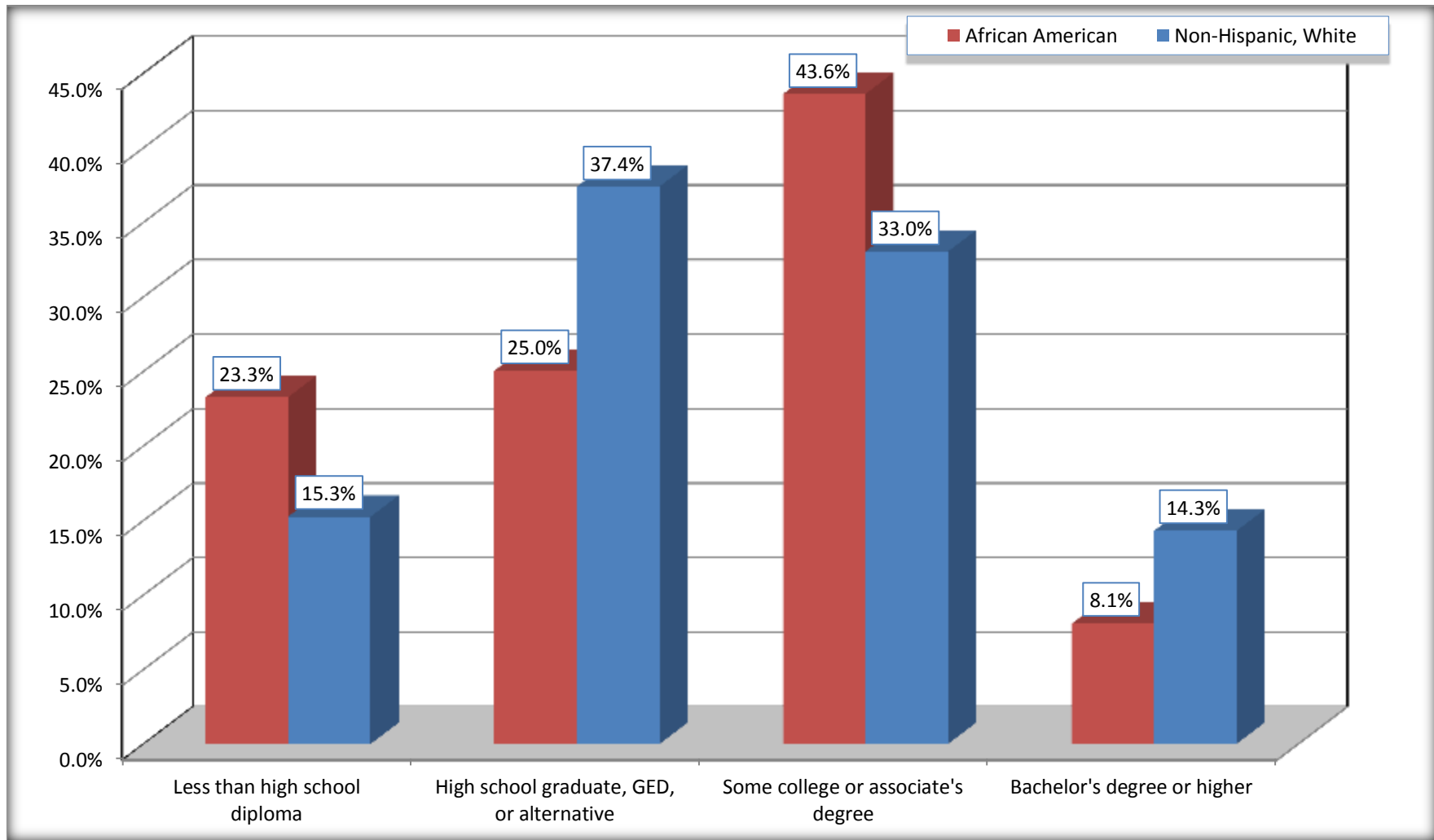
Source: U.S. Census Bureau, 2008-2012 American Community Survey

For information on confidentiality protection, sampling error, nonsampling error, and definitions, see Survey Methodology.

<http://www.census.gov/acs/www/UseData/index.htm>

Educational Attainment for the Population 25 Years and Older

Scott city, Louisiana



Source: C15002. SEX BY EDUCATIONAL ATTAINMENT FOR THE POPULATION 25 YEARS AND OVER
Data Set: 2008-2012 American Community Survey 5-Year Estimates

B17010. POVERTY STATUS IN THE PAST 12 MONTHS OF FAMILIES BY FAMILY TYPE BY PRESENCE OF RELATED CHILDREN UNDER 18 YEARS

Data Set: 2008-2012 American Community Survey 5-Year Estimates

	Scott city, Louisiana					
	African American	Margin of Error (+/-)	% of AA Total	White, Not Hispanic	Margin of Error (+/-)	% of NHW Total
Total:	528	168	100.0%	1,768	224	100.0%
Income in the past 12 months below poverty level:	0	17	0.0%	213	168	12.0%
Married-couple family:	0	17	0.0%	159	117	9.0%
With related children under 18 years	0	17	0.0%	18	28	1.0%
Other family:	0	17	0.0%	54	75	3.1%
Male householder, no wife present	0	17	0.0%	0	17	0.0%
With related children under 18 years	0	17	0.0%	0	17	0.0%
Female householder, no husband present	0	17	0.0%	54	75	3.1%
With related children under 18 years	0	17	0.0%	54	75	3.1%
Income in the past 12 months at or above poverty level:	528	168	100.0%	1,555	217	88.0%
Married-couple family:	369	173	69.9%	1,218	204	68.9%
With related children under 18 years	261	152	49.4%	478	124	27.0%
Other family:	159	122	30.1%	337	124	19.1%
Male householder, no wife present	25	39	4.7%	113	78	6.4%
With related children under 18 years	0	17	0.0%	40	45	2.3%
Female householder, no husband present	134	115	25.4%	224	101	12.7%
With related children under 18 years	134	115	25.4%	113	68	6.4%

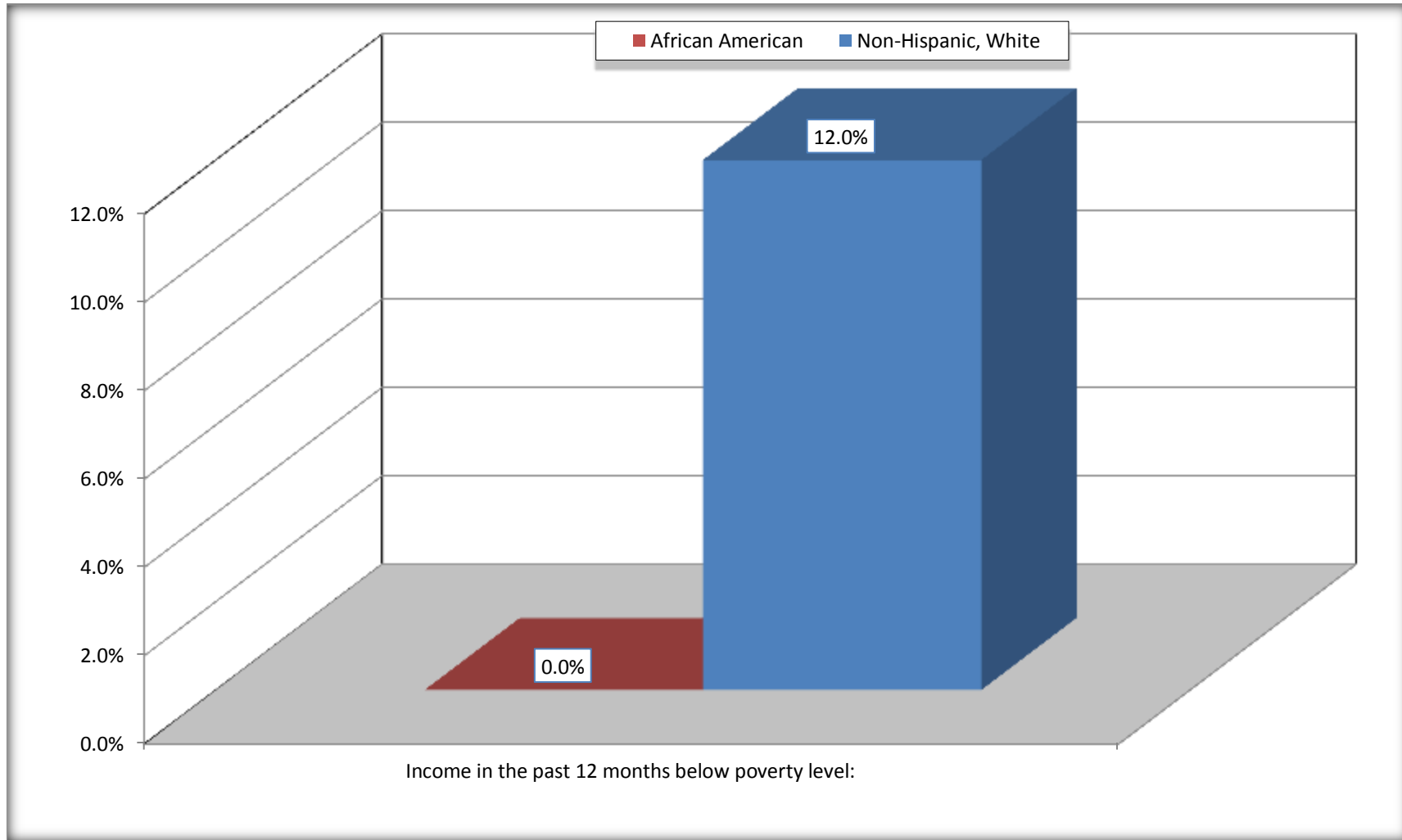
Source: U.S. Census Bureau, 2008-2012 American Community Survey

For information on confidentiality protection, sampling error, nonsampling error, and definitions, see Survey Methodology.

<http://www.census.gov/acs/www/UseData/index.htm>

Family Households Below Poverty in the Past 12 Months

Scott city, Louisiana

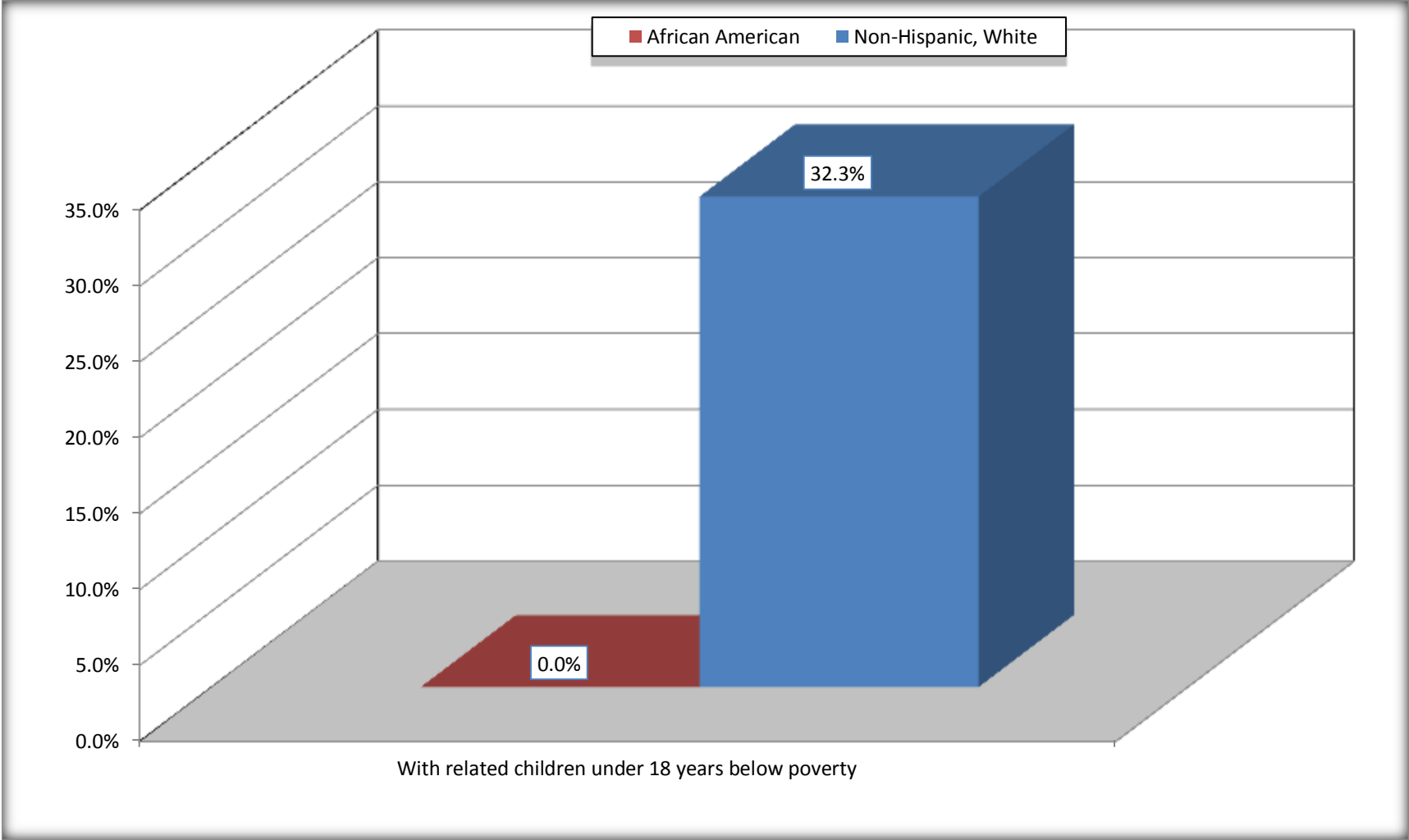


Source: B17010. POVERTY STATUS IN THE PAST 12 MONTHS OF FAMILIES BY FAMILY TYPE BY PRESENCE OF RELATED CHILDREN UNDER 18 YEARS

Data Set: 2008-2012 American Community Survey 5-Year Estimates

Female-headed Households with Related Children Below Poverty in the Past 12 Months

Scott city, Louisiana



Source: B17010. POVERTY STATUS IN THE PAST 12 MONTHS OF FAMILIES BY FAMILY TYPE BY PRESENCE OF RELATED CHILDREN UNDER 18 YEARS

Data Set: 2008-2012 American Community Survey 5-Year Estimates

B17020 POVERTY STATUS IN THE PAST 12 MONTHS BY AGE - Universe: POPULATION FOR WHOM POVERTY STATUS IS DETERMINED

Data Set: 2008-2012 American Community Survey 5-Year Estimates

	Scott city, Louisiana					
	African American	Margin of Error (+/-)	% of AA By Age	White, Not Hispanic	Margin of Error (+/-)	% of NHW By Age
Total:	2,094	580	100.0%	6,163	571	100.0%
Income in the past 12 months below poverty level:	0	17	0.0%	788	381	12.8%
Under 18 years	0	NC	0.0%	94	NC	7.3%
18 to 64 years	0	17	0.0%	532	302	13.4%
65 years and over	0	NC	0.0%	162	NC	17.5%
Income in the past 12 months at or above poverty level:	2,094	580	100.0%	5,375	644	87.2%
Under 18 years	595	NC	100.0%	1,186	NC	92.7%
18 to 64 years	1,367	410	100.0%	3,427	454	86.6%
65 years and over	132	NC	100.0%	762	NC	82.5%

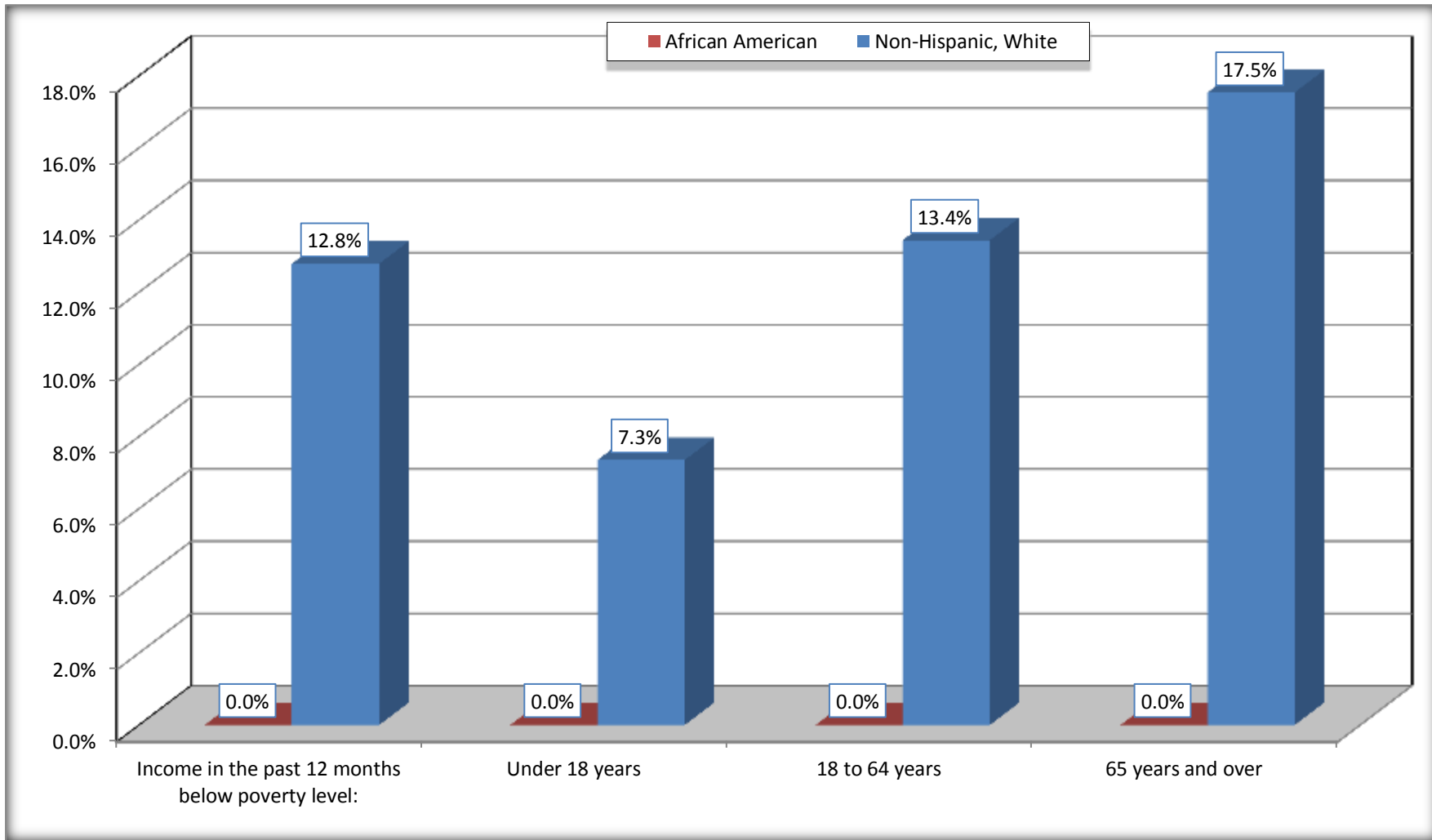
Source: U.S. Census Bureau, 2008-2012 American Community Survey

For information on confidentiality protection, sampling error, nonsampling error, and definitions, see Survey Methodology.

<http://www.census.gov/acs/www/UseData/index.htm>

Population Below Poverty in the Past 12 Months

Scott city, Louisiana



Source: B17020 POVERTY STATUS IN THE PAST 12 MONTHS BY AGE - Universe: POPULATION FOR WHOM POVERTY STATUS IS DETERMINED
Data Set: 2008-2012 American Community Survey 5-Year Estimates

B19001. HOUSEHOLD INCOME IN THE PAST 12 MONTHS (IN 2010 INFLATION-ADJUSTED DOLLARS)

Data Set: 2008-2012 American Community Survey 5-Year Estimates

	Scott city, Louisiana					
	African American	Margin of Error (+/-)	% of AA Total	White, Not Hispanic	Margin of Error (+/-)	% of NHW Total
Total:	753	208	100.0%	2,689	252	100.0%
Less than \$ 10,000	0	17	0.0%	297	137	11.0%
\$ 10,000 to \$ 14,999	41	62	5.4%	232	166	8.6%
\$ 15,000 to \$ 24,999	71	NC	9.4%	249	NC	9.3%
\$ 25,000 to \$ 34,999	65	NC	8.6%	329	NC	12.2%
\$ 35,000 to \$ 49,999	138	NC	18.3%	316	NC	11.8%
\$ 50,000 to \$ 74,999	233	NC	30.9%	417	NC	15.5%
\$ 75,000 to \$ 99,999	126	137	16.7%	339	113	12.6%
\$ 100,000 to \$ 149,999	0	NC	0.0%	330	NC	12.3%
\$ 150,000 to \$ 199,999	19	30	2.5%	158	101	5.9%
\$ 200,000 or more	60	96	8.0%	22	26	0.8%

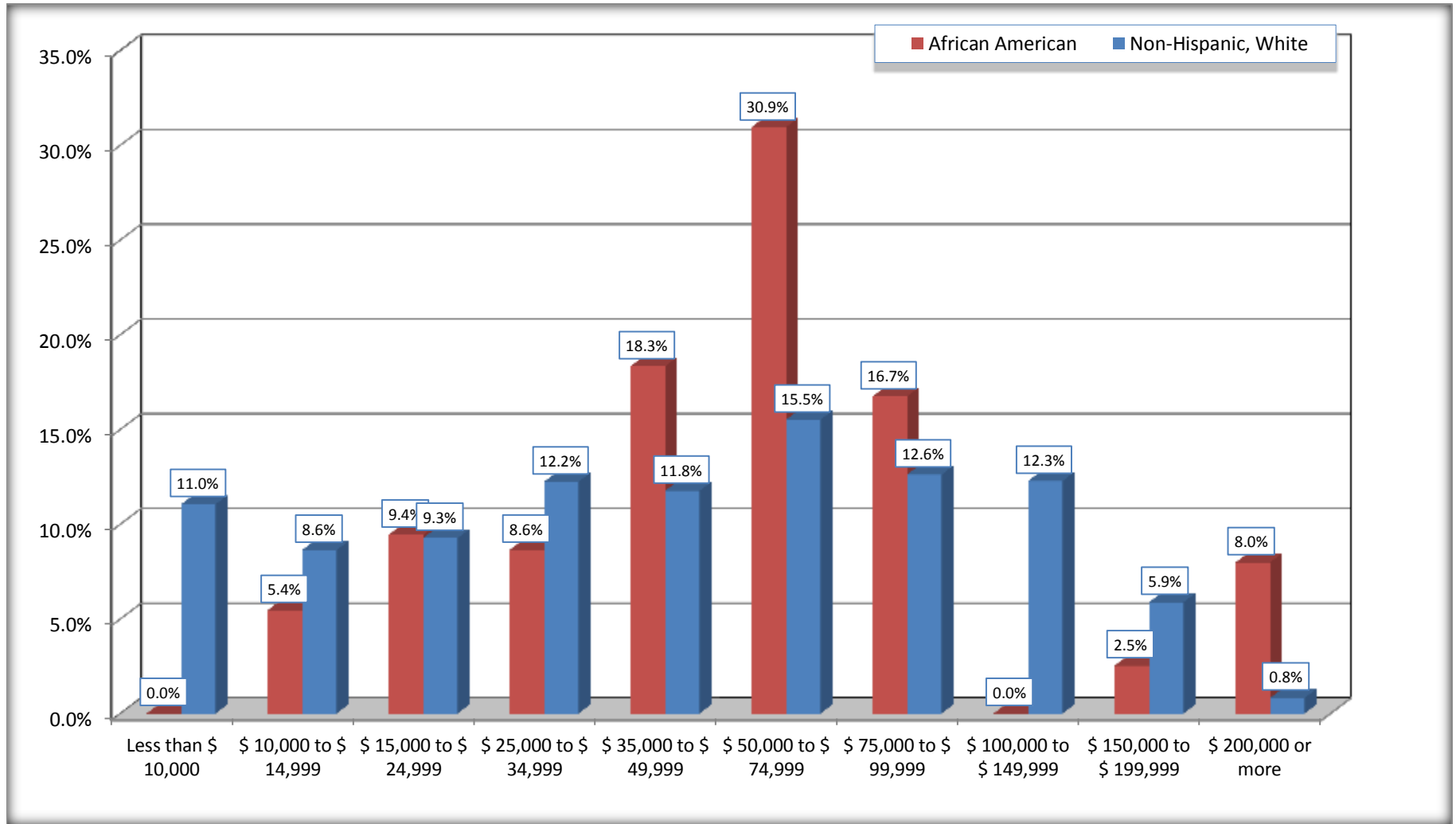
Source: U.S. Census Bureau, 2008-2012 American Community Survey

For information on confidentiality protection, sampling error, nonsampling error, and definitions, see Survey Methodology.

<http://www.census.gov/acs/www/UseData/index.htm>

Household Income in the Past 12 Months

Scott city, Louisiana



Source: B19001. HOUSEHOLD INCOME IN THE PAST 12 MONTHS (IN 2010 INFLATION-ADJUSTED DOLLARS)
Data Set: 2008-2012 American Community Survey 5-Year Estimates

B19013. MEDIAN HOUSEHOLD INCOME IN THE PAST 12 MONTHS (IN 2010 INFLATION-ADJUSTED DOLLARS)

Data Set: 2008-2012 American Community Survey 5-Year Estimates

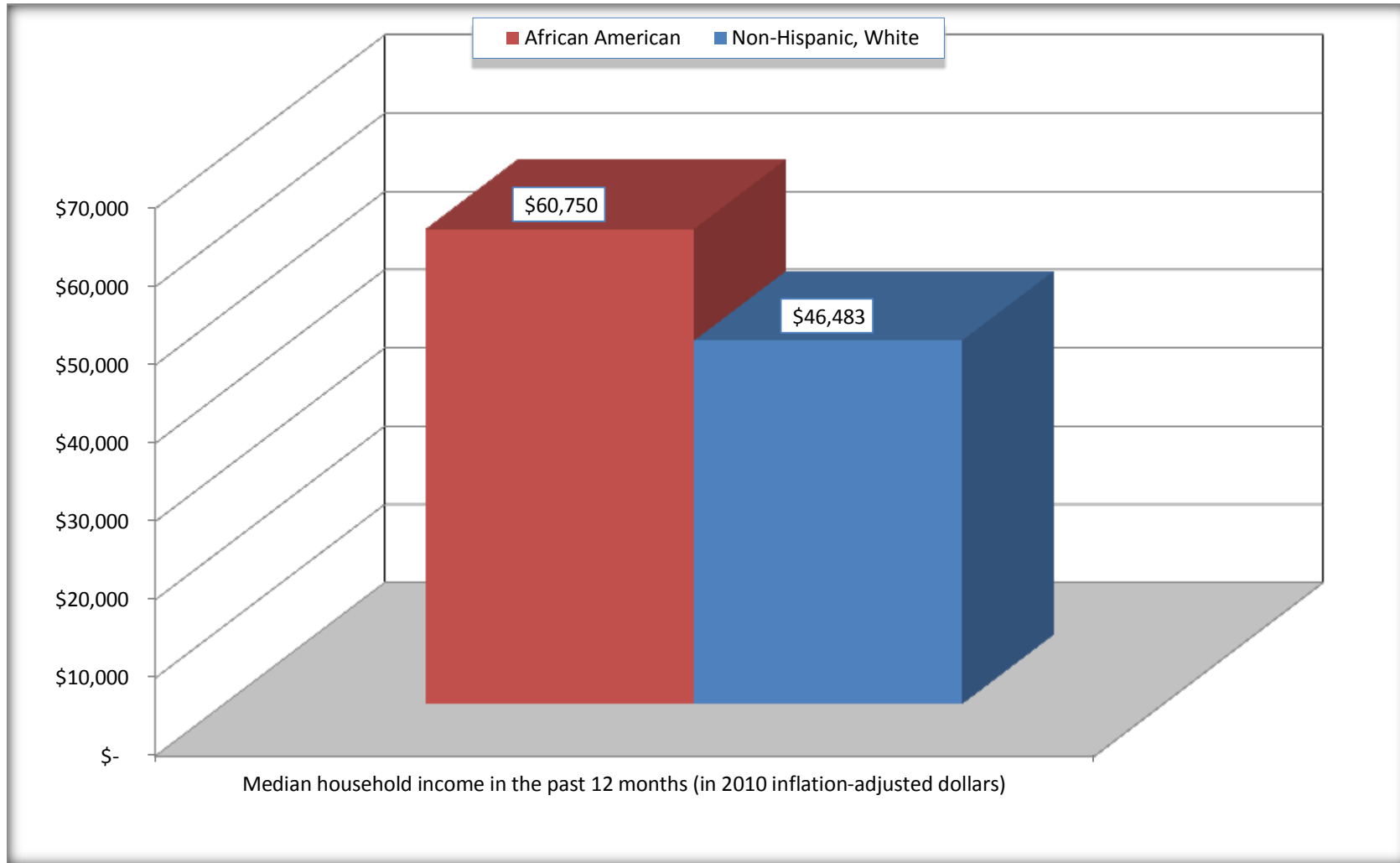
	Scott city, Louisiana			
	African American	Margin of Error (+/-)	White, Not Hispanic	Margin of Error (+/-)
Median household income in the past 12 months (in 2010 inflation-adjusted dollars)	\$ 60,750	\$ 20,441	\$ 46,483	\$ 9,339

Source: U.S. Census Bureau, 2008-2012 American Community Survey

For information on confidentiality protection, sampling error, nonsampling error, and definitions, see Survey Methodology.
<http://www.census.gov/acs/www/UseData/index.htm>

Median Household Income in the Past 12 Months

Scott city, Louisiana



Source: B19013. MEDIAN HOUSEHOLD INCOME IN THE PAST 12 MONTHS (IN 2010 INFLATION-ADJUSTED DOLLARS)
Data Set: 2008-2012 American Community Survey 5-Year Estimates

B19101. FAMILY INCOME IN THE PAST 12 MONTHS (IN 2010 INFLATION-ADJUSTED DOLLARS)

Data Set: 2008-2012 American Community Survey 5-Year Estimates

	Scott city, Louisiana					
	African American	Margin of Error (+/-)	% of AA Total	White, Not Hispanic	Margin of Error (+/-)	% of NHW Total
Total:	528	168	100.0%	1,768	224	100.0%
Less than \$ 10,000	0	17	0.0%	18	28	1.0%
\$ 10,000 to \$ 14,999	0	17	0.0%	177	164	10.0%
\$ 15,000 to \$ 24,999	71	NC	13.4%	103	NC	5.8%
\$ 25,000 to \$ 34,999	65	NC	12.3%	197	NC	11.1%
\$ 35,000 to \$ 49,999	51	NC	9.7%	179	NC	10.1%
\$ 50,000 to \$ 74,999	151	NC	28.6%	358	NC	20.2%
\$ 100,000 to \$ 149,999	-	NC	0.0%	272	NC	15.4%
\$ 150,000 to \$ 199,999	19	30	3.6%	142	97	8.0%
\$ 200,000 or more	60	96	11.4%	22	26	1.2%

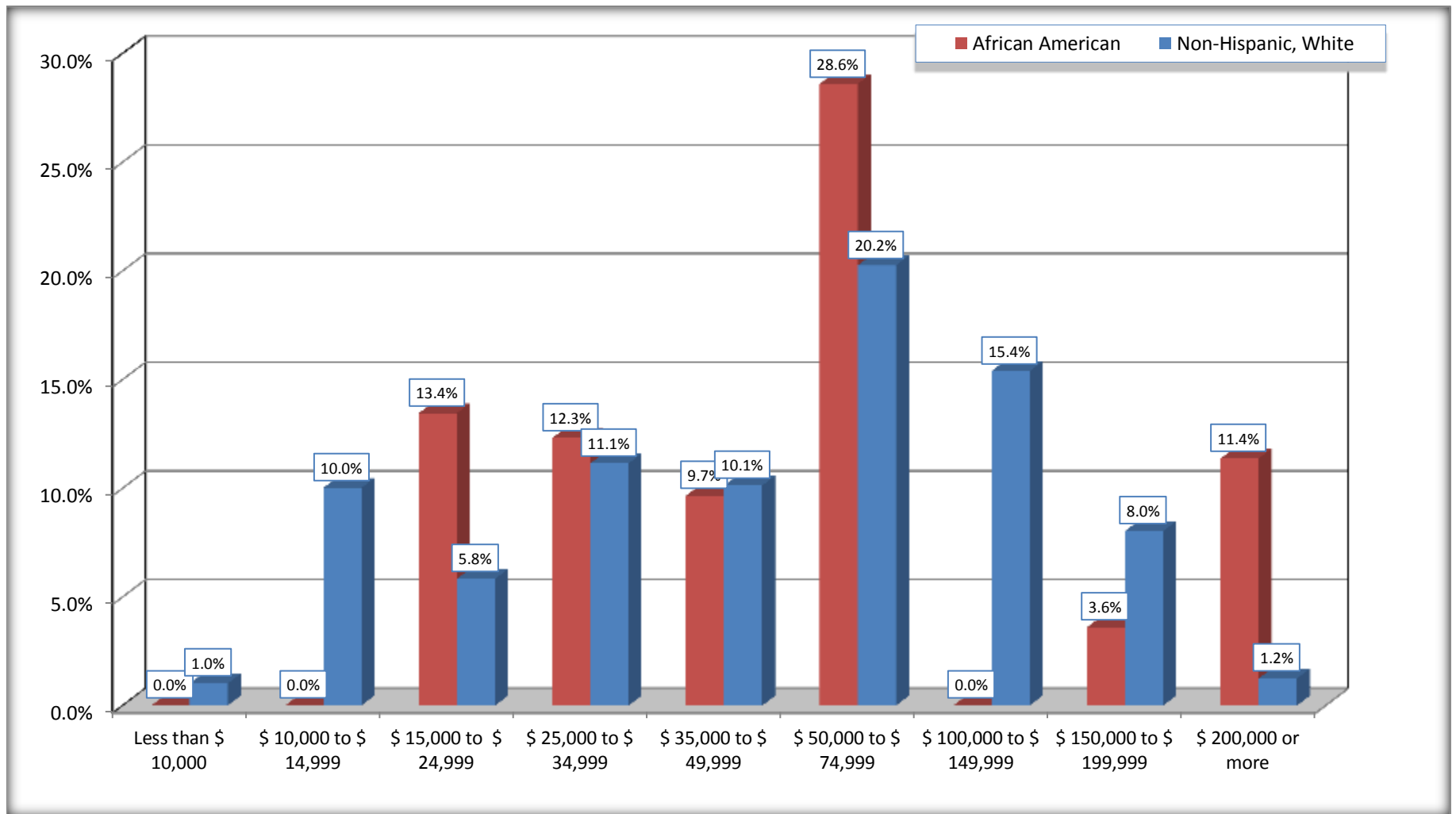
Source: U.S. Census Bureau, 2008-2012 American Community Survey

For information on confidentiality protection, sampling error, nonsampling error, and definitions, see Survey Methodology.

<http://www.census.gov/acs/www/UseData/index.htm>

Family Income in the Past 12 Months

Scott city, Louisiana



Source: B19101. FAMILY INCOME IN THE PAST 12 MONTHS (IN 2010 INFLATION-ADJUSTED DOLLARS)
Data Set: 2008-2012 American Community Survey 5-Year Estimates

B19113. MEDIAN FAMILY INCOME IN THE PAST 12 MONTHS (IN 2010 INFLATION-ADJUSTED DOLLARS)

Data Set: 2008-2012 American Community Survey 5-Year Estimates

	Scott city, Louisiana			
	African American	Margin of Error (+/-)	White, Not Hispanic	Margin of Error (+/-)
Median family income in the past 12 months (in 2010 inflation-adjusted dollars)	\$ 68,333	\$ 28,915	\$ 63,140	\$ 11,250

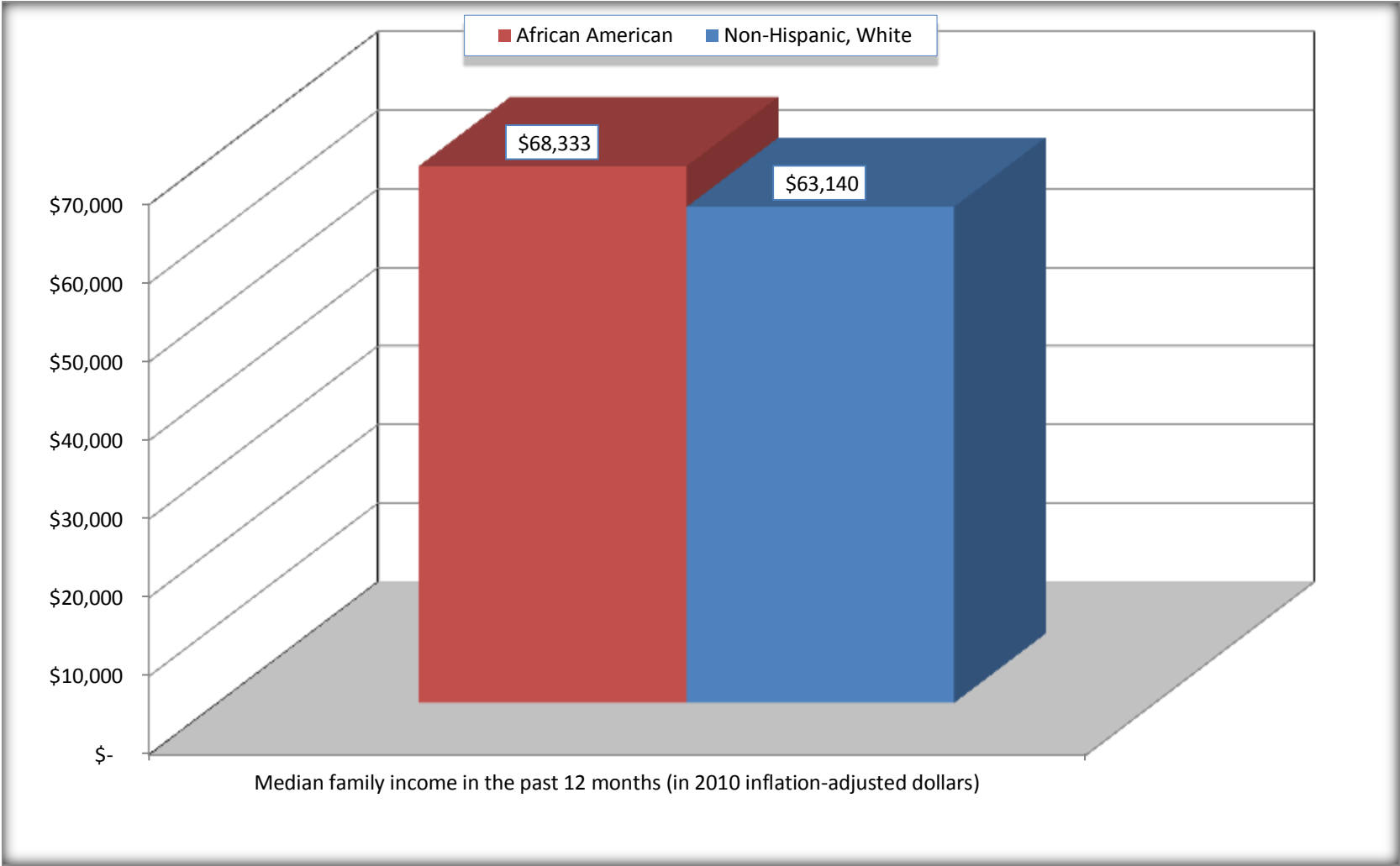
Source: U.S. Census Bureau, 2008-2012 American Community Survey

For information on confidentiality protection, sampling error, nonsampling error, and definitions, see Survey Methodology.

<http://www.census.gov/acs/www/UseData/index.htm>

Median Family Income in the Past 12 Months

Scott city, Louisiana



Source: B19113. MEDIAN FAMILY INCOME IN THE PAST 12 MONTHS (IN 2010 INFLATION-ADJUSTED DOLLARS)
Data Set: 2008-2012 American Community Survey 5-Year Estimates

B19202. MEDIAN NONFAMILY HOUSEHOLD INCOME IN THE PAST 12 MONTHS (IN 2010 INFLATION-ADJUSTED DOLLARS)

Data Set: 2008-2012 American Community Survey 5-Year Estimates

	Scott city, Louisiana			
	African American	Margin of Error (+/-)	White, Not Hispanic	Margin of Error (+/-)
Median nonfamily household income in the past 12 months (in 2010 inflation-adjusted dollars)	\$ 46,164	\$ 24,362	\$ 23,682	\$ 9,875

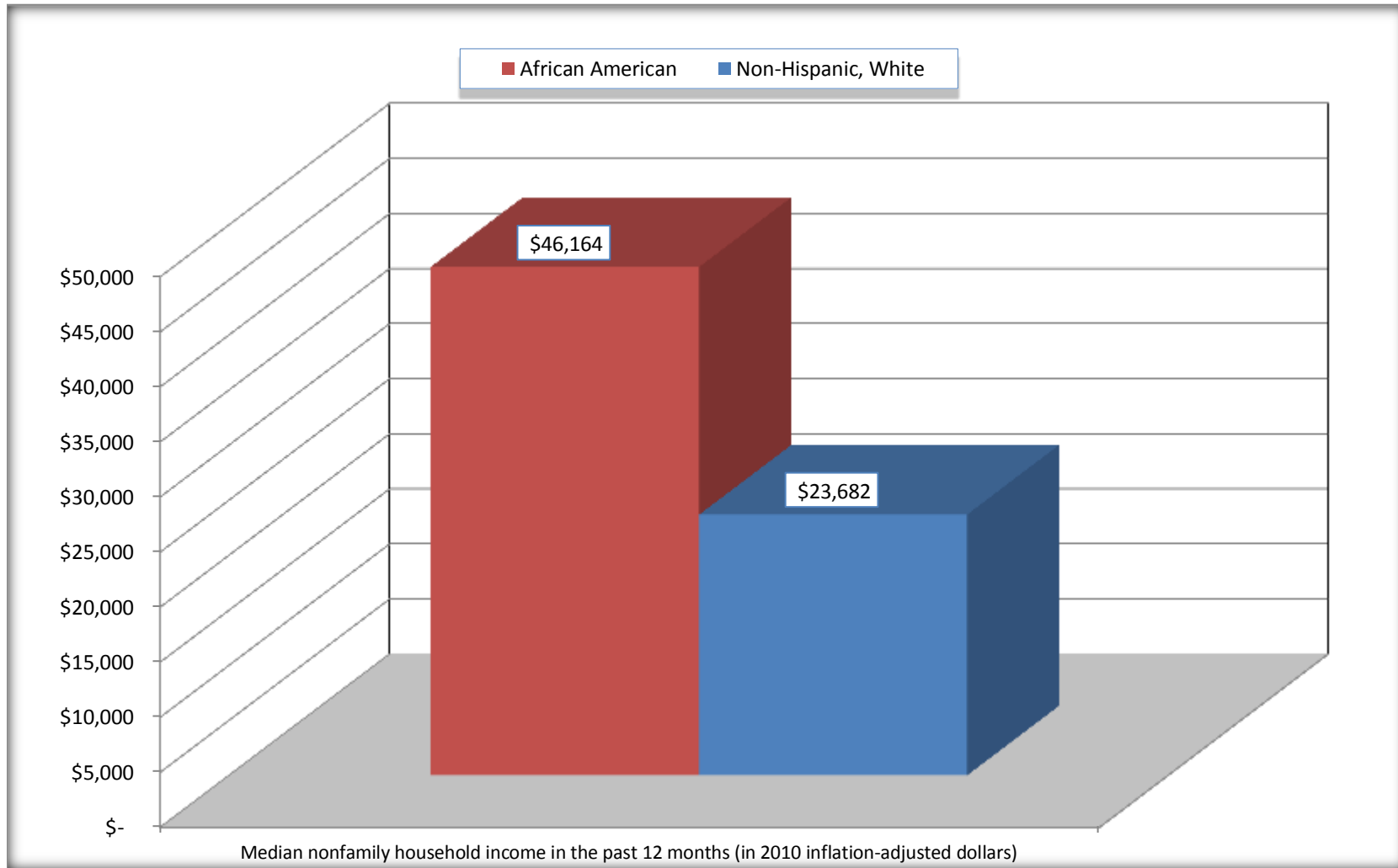
Source: U.S. Census Bureau, 2008-2012 American Community Survey

For information on confidentiality protection, sampling error, nonsampling error, and definitions, see Survey Methodology.

<http://www.census.gov/acs/www/UseData/index.htm>

Median Non-Family Income in the Past 12 Months

Scott city, Louisiana



Source: B19202. MEDIAN NONFAMILY HOUSEHOLD INCOME IN THE PAST 12 MONTHS (IN 2010 INFLATION-ADJUSTED DOLLARS)
Data Set: 2008-2012 American Community Survey 5-Year Estimates

B19301. PER CAPITA INCOME IN THE PAST 12 MONTHS (IN 2010 INFLATION-ADJUSTED DOLLARS)

Data Set: 2008-2012 American Community Survey 5-Year Estimates

	Scott city, Louisiana			
	African American	Margin of Error (+/-)	White, Not Hispanic	Margin of Error (+/-)
Per capita income in the past 12 months (in 2010 inflation-adjusted dollars)	\$ 28,782	\$ 12,627	\$ 27,506	\$ 3,504

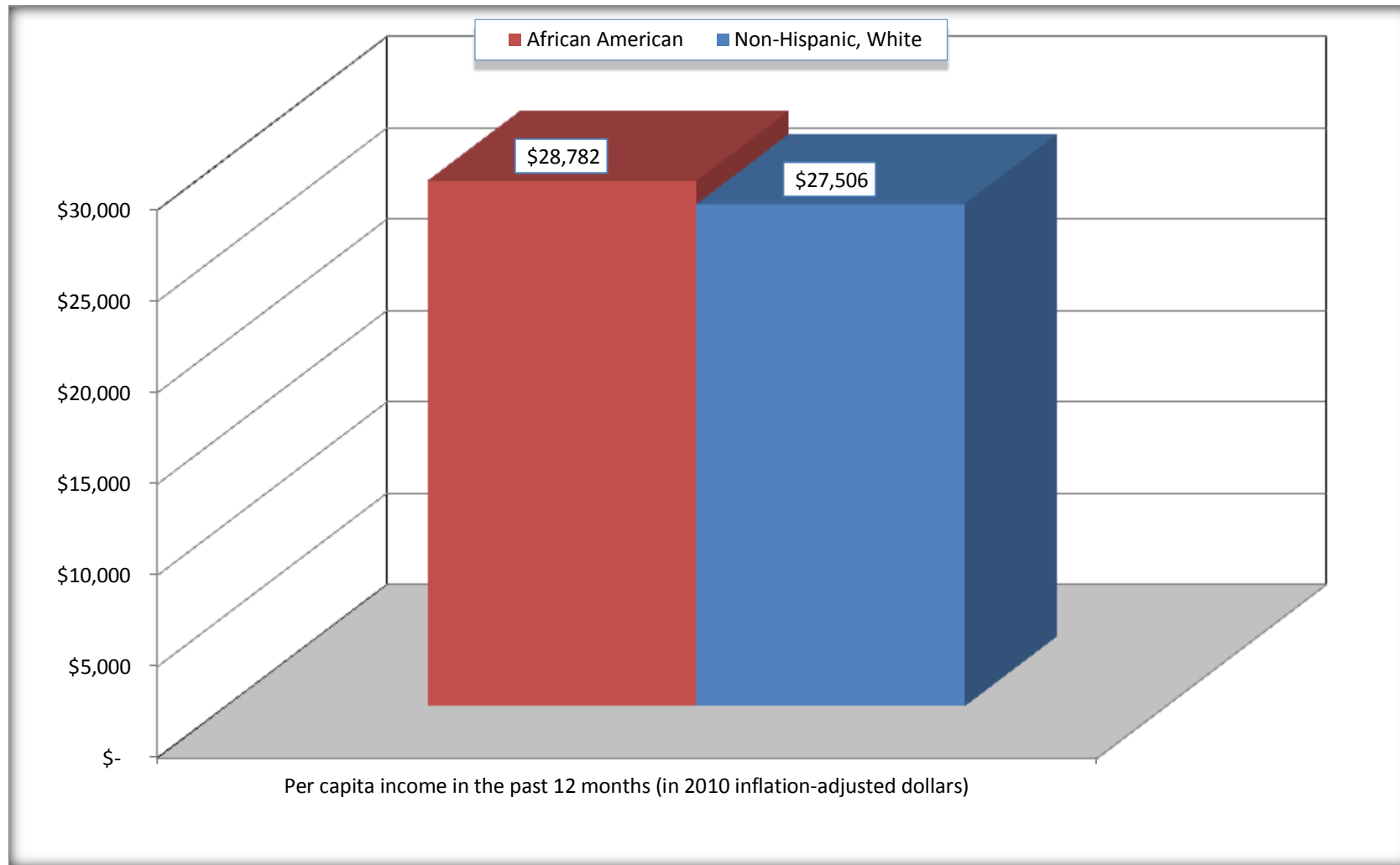
Source: U.S. Census Bureau, 2008-2012 American Community Survey

For information on confidentiality protection, sampling error, nonsampling error, and definitions, see Survey Methodology.

<http://www.census.gov/acs/www/UseData/index.htm>

Per capita Income in the Past 12 Months

Scott city, Louisiana



Source: B19301. PER CAPITA INCOME IN THE PAST 12 MONTHS (IN 2010 INFLATION-ADJUSTED DOLLARS)
Data Set: 2008-2012 American Community Survey 5-Year Estimates

B20017. MEDIAN EARNINGS IN THE PAST 12 MONTHS (IN 2010 INFLATION-ADJUSTED DOLLARS) BY SEX BY WORK EXPERIENCE IN THE PAST 12 MONTHS FOR THE POPULATION 16 YEARS AND OVER WITH EARNINGS IN THE PAST 12 MONTHS

Data Set: 2008-2012 American Community Survey 5-Year Estimates

	Scott city, Louisiana			
	African American	Margin of Error (+/-)	White, Not Hispanic	Margin of Error (+/-)
Median earnings in the past 12 months (in 2010 inflation-adjusted dollars) --				
Total:	\$ 29,000	\$ 17,576	\$ 33,554	\$ 6,076
Male --				
Total	\$ 47,769	\$ 28,709	\$ 44,290	\$ 8,301
Worked full-time, year-round in the past 12 months	\$ 39,271	\$ 63,842	\$ 52,792	\$ 4,930
Other	\$ 48,173	\$ 93,273	\$ 11,990	\$ 2,253
Female --				
Total	\$ 15,063	\$ 7,633	\$ 22,090	\$ 4,983
Worked full-time, year-round in the past 12 months	\$ 45,256	\$ 48,278	\$ 35,588	\$ 7,947
Other	\$ 10,239	\$ 19,749	\$ 12,920	\$ 3,356

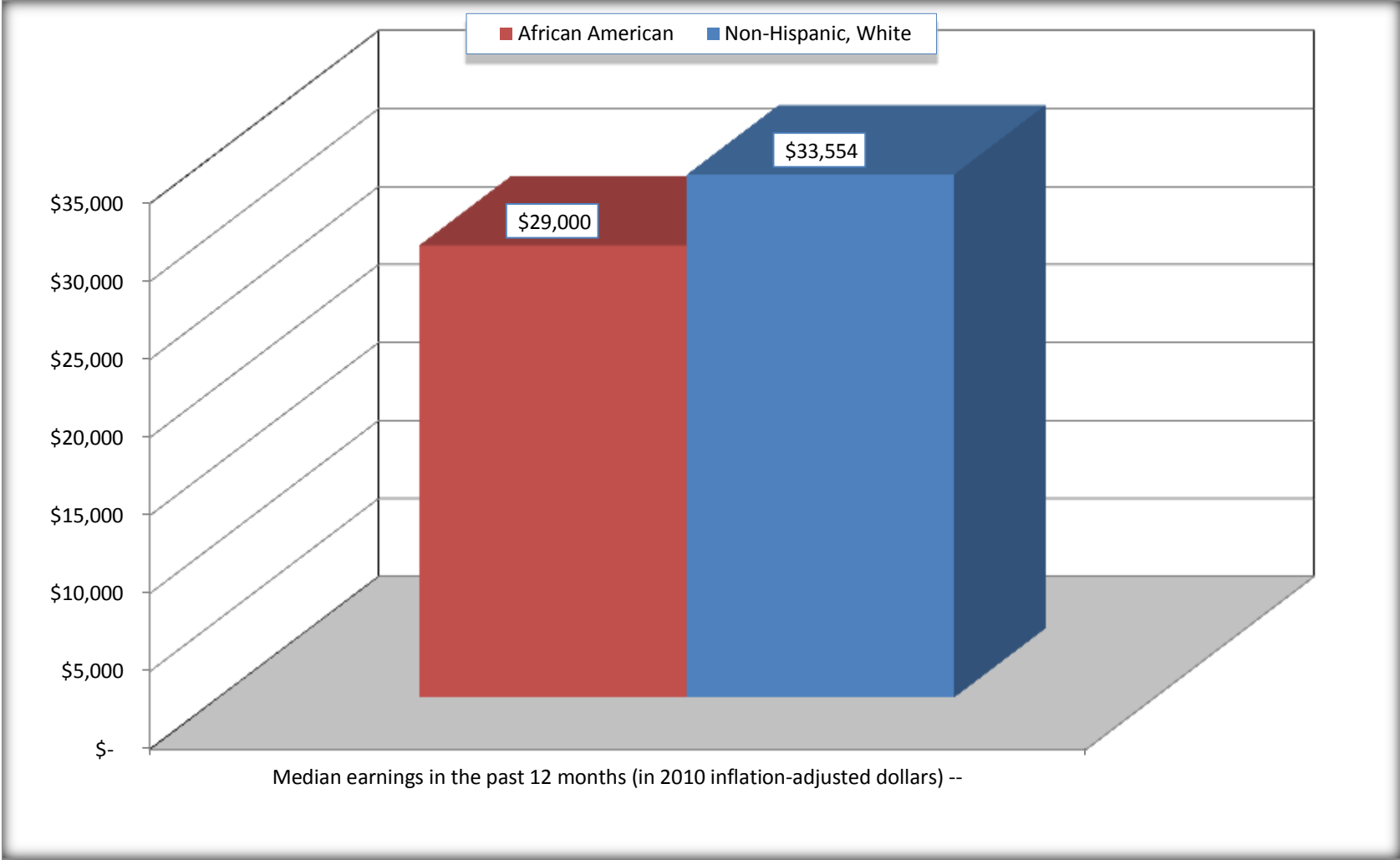
Source: U.S. Census Bureau, 2008-2012 American Community Survey

For information on confidentiality protection, sampling error, nonsampling error, and definitions, see Survey Methodology.

<http://www.census.gov/acs/www/UseData/index.htm>

Median earnings in the Past 12 Months (16 Years and Over with Earnings)

Scott city, Louisiana



Source: B20017. MEDIAN EARNINGS IN THE PAST 12 MONTHS (IN 2010 INFLATION-ADJUSTED DOLLARS) BY SEX BY WORK EXPERIENCE IN THE PAST 12 MONTHS FOR THE POPULATION 16 YEARS AND OVER WITH EARNINGS IN THE PAST 12 MONTHS
Data Set: 2008-2012 American Community Survey 5-Year Estimates

B20005. SEX BY WORK EXPERIENCE IN THE PAST 12 MONTHS BY EARNINGS IN THE PAST 12 MONTHS (IN 2010 INFLATION-ADJUSTED DOLLARS) FOR THE POPULATION 16 YEARS AND OVER

Data Set: 2008-2012 American Community Survey 5-Year Estimates

	Scott city, Louisiana					
	African American	Margin of Error (+/-)	% of AA Total	White, Not Hispanic	Margin of Error (+/-)	% of NHW Total
Total:	1,582	452	100.0%	5,028	453	100.0%
Worked full-time, year-round in the past 12 months:	658	NC	41.6%	2,195	NC	43.7%
No earnings	0	NC	0.0%	0	NC	0.0%
With earnings:	658	NC	41.6%	2,195	NC	43.7%
\$ 1 to \$ 9,999 or loss	0	NC	0.0%	0	NC	0.0%
\$ 10,000 to \$ 19,999	156	NC	9.9%	218	NC	4.3%
\$ 20,000 to \$ 29,999	85	NC	5.4%	277	NC	5.5%
\$ 30,000 to \$ 49,999	175	NC	11.1%	807	NC	16.1%
\$ 50,000 to \$ 74,999	63	NC	4.0%	513	NC	10.2%
\$ 75,000 or more	179	NC	11.3%	380	NC	7.6%
Other:	924	NC	58.4%	2,833	NC	56.3%
No earnings	478	NC	30.2%	1,673	NC	33.3%
With earnings: less than full time, year-round	446	NC	28.2%	1,160	NC	23.1%
Male:	802	235	50.7%	2,261	264	45.0%
Worked full-time, year-round in the past 12 months:	311	161	19.7%	1,343	237	26.7%
No earnings	0	17	0.0%	0	17	0.0%
With earnings:	311	161	19.7%	1,343	237	26.7%
\$ 1 to \$ 9,999 or loss	0	NC	0.0%	0	NC	0.0%
\$ 10,000 to \$ 19,999	26	NC	1.6%	32	NC	0.6%
\$ 20,000 to \$ 29,999	46	NC	2.9%	131	NC	2.6%
\$ 30,000 to \$ 49,999	94	NC	5.9%	437	NC	8.7%
\$ 50,000 to \$ 74,999	15	NC	0.9%	449	NC	8.9%
\$ 75,000 or more	130	NC	8.2%	294	NC	5.8%

	Scott city, Louisiana					
	African American	Margin of Error (+/-)	% of AA Total	White, Not Hispanic	Margin of Error (+/-)	% of NHW Total
Other:	491	229	31.0%	918	192	18.3%
No earnings	276	173	17.4%	498	154	9.9%
With earnings:	215	135	13.6%	420	165	8.4%
Female:	780	284	49.3%	2,767	313	55.0%
Worked full-time, year-round in the past 12 months:	347	184	21.9%	852	215	16.9%
No earnings	0	17	0.0%	0	17	0.0%
With earnings:	347	184	21.9%	852	215	16.9%
\$ 1 to \$ 9,999 or loss	0	NC	0.0%	0	NC	0.0%
\$ 10,000 to \$ 19,999	130	NC	8.2%	186	NC	3.7%
\$ 20,000 to \$ 29,999	39	NC	2.5%	146	NC	2.9%
\$ 30,000 to \$ 49,999	81	NC	5.1%	370	NC	7.4%
\$ 50,000 to \$ 74,999	48	NC	3.0%	64	NC	1.3%
\$ 75,000 or more	49	NC	3.1%	86	NC	1.7%
Other:	433	232	27.4%	1,915	272	38.1%
No earnings	202	120	12.8%	1,175	241	23.4%
With earnings:	231	190	14.6%	740	191	14.7%

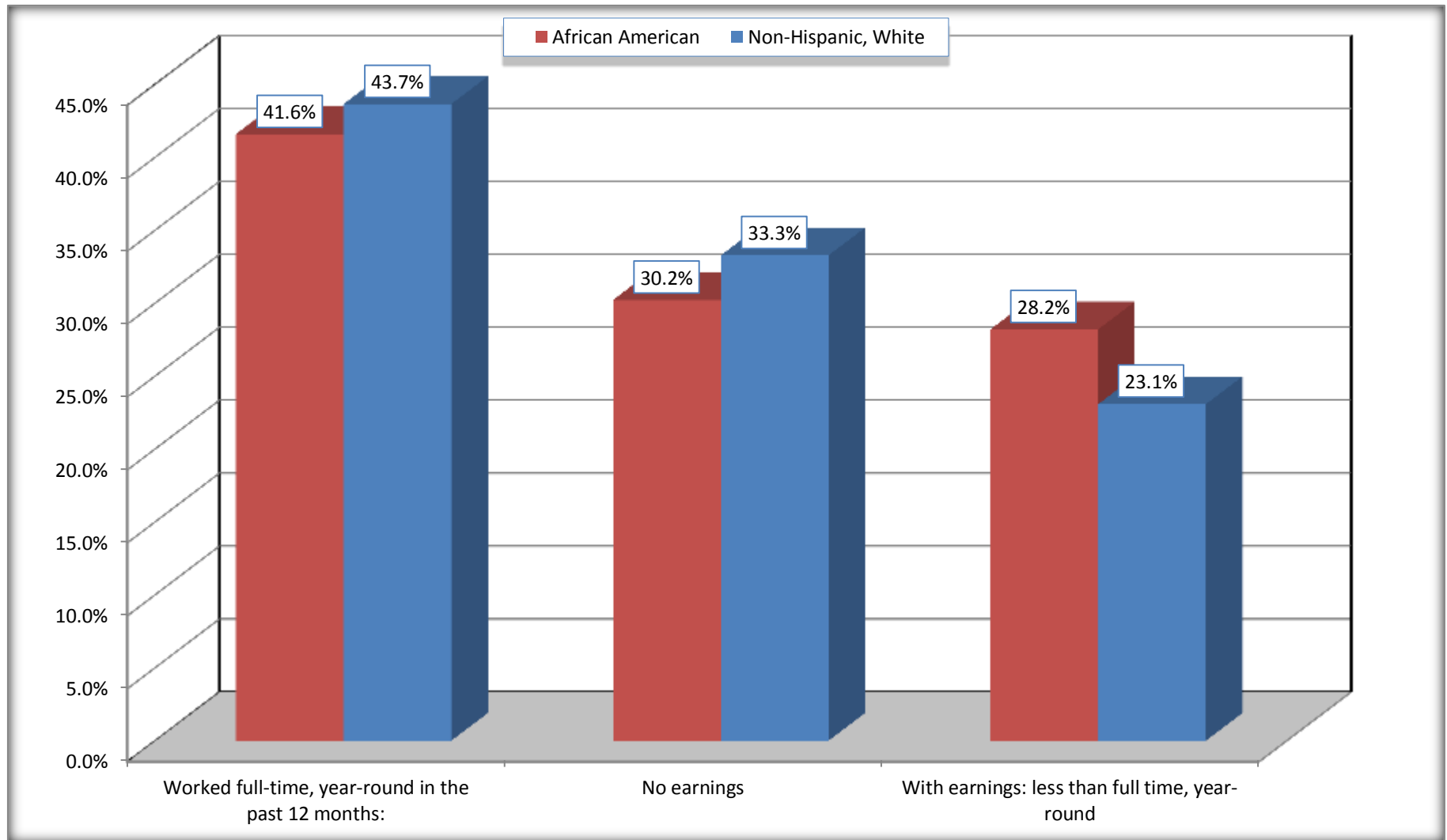
Source: U.S. Census Bureau, 2008-2012 American Community Survey

For information on confidentiality protection, sampling error, nonsampling error, and definitions, see Survey Methodology.

<http://www.census.gov/acs/www/UseData/index.htm>

Employment and Earnings in in the Past 12 Months (16 Years and Over)

Scott city, Louisiana



Source: B20005. SEX BY WORK EXPERIENCE IN THE PAST 12 MONTHS BY EARNINGS IN THE PAST 12 MONTHS (IN 2010 INFLATION-ADJUSTED DOLLARS) FOR THE POPULATION 16 YEARS AND OVER

Data Set: 2008-2012 American Community Survey 5-Year Estimates

C21001. SEX BY AGE BY VETERAN STATUS FOR THE CIVILIAN POPULATION 18 YEARS AND OVER

Data Set: 2008-2012 American Community Survey 5-Year Estimates

	Scott city, Louisiana					
	African American	Margin of Error (+/-)	% of AA Total	White, Not Hispanic	Margin of Error (+/-)	% of NHW Total
Total:	1,499	402	100.0%	4,883	458	100.0%
Veteran	114	NC	7.6%	597	NC	12.2%
Nonveteran	1,385	NC	92.4%	4,286	NC	87.8%
Male:	797	233	53.2%	2,195	266	45.0%
18 to 64 years:	746	237	49.8%	1,851	268	37.9%
Veteran	114	97	7.6%	383	156	7.8%
Nonveteran	632	220	42.2%	1,468	272	30.1%
65 years and over:	51	67	3.4%	344	135	7.0%
Veteran	0	17	0.0%	214	125	4.4%
Nonveteran	51	67	3.4%	130	85	2.7%
Female:	702	220	46.8%	2,688	321	55.0%
18 to 64 years:	621	218	41.4%	2,108	316	43.2%
Veteran	0	17	0.0%	0	17	0.0%
Nonveteran	621	218	41.4%	2,108	316	43.2%
65 years and over:	81	77	5.4%	580	205	11.9%
Veteran	0	17	0.0%	0	17	0.0%
Nonveteran	81	77	5.4%	580	205	11.9%

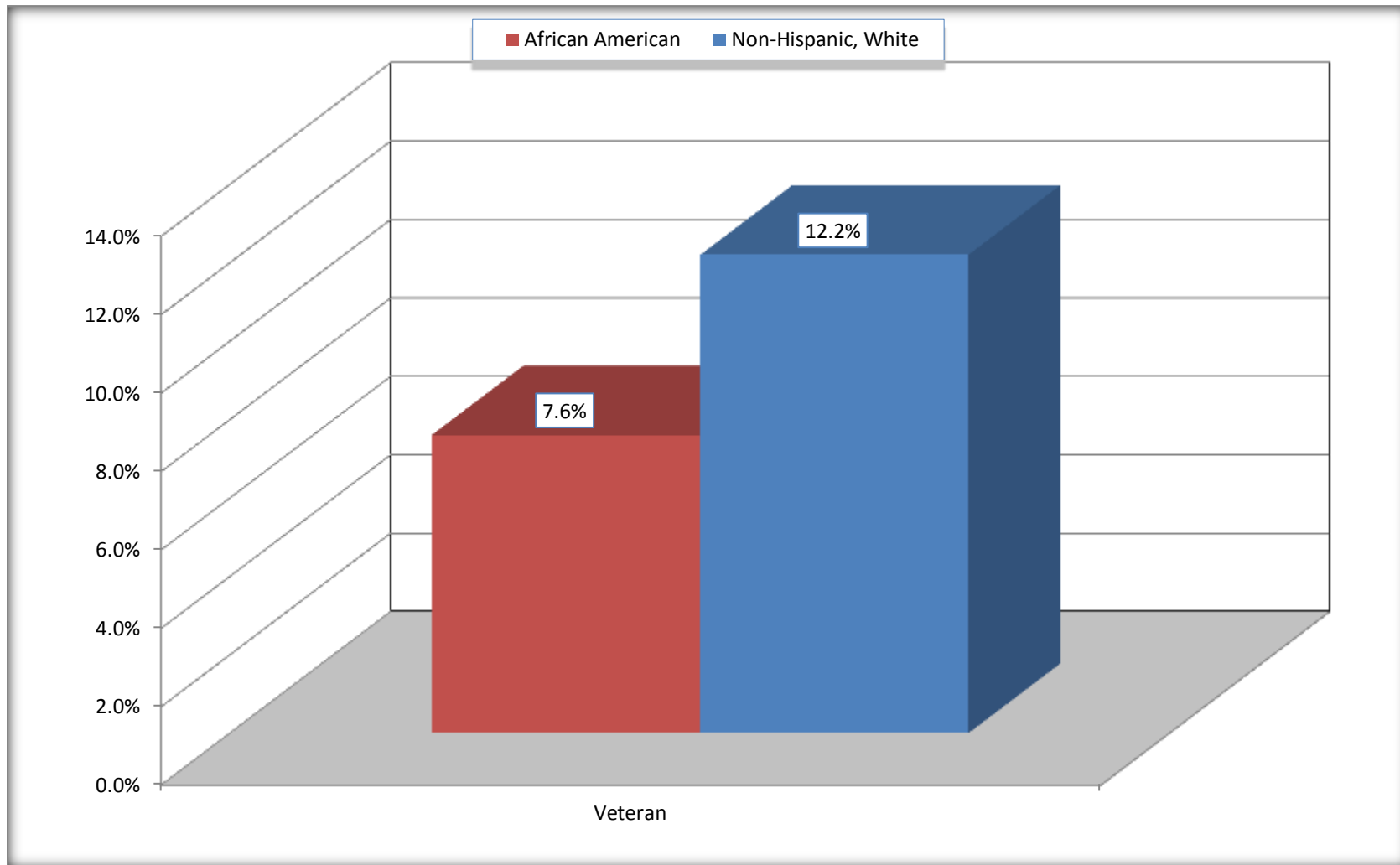
Source: U.S. Census Bureau, 2008-2012 American Community Survey

For information on confidentiality protection, sampling error, nonsampling error, and definitions, see Survey Methodology.

<http://www.census.gov/acs/www/UseData/index.htm>

Veterans in the Civilian Population 18 Years and Over

Scott city, Louisiana



Source: C21001. SEX BY AGE BY VETERAN STATUS FOR THE CIVILIAN POPULATION 18 YEARS AND OVER
Data Set: 2008-2012 American Community Survey 5-Year Estimates

B22005. RECEIPT OF FOOD STAMPS/SNAP IN THE PAST 12 MONTHS BY RACE OF HOUSEHOLDER

Data Set: 2008-2012 American Community Survey 5-Year Estimates

	Scott city, Louisiana					
	African American	Margin of Error (+/-)	% of AA Total	White, Not Hispanic	Margin of Error (+/-)	% of NHW Total
Total:	753	208	100.0%	2,689	252	100.0%
HH received Food Stamps/SNAP in the past 12 months	38	61	5.0%	151	83	5.6%
HH did not receive Food Stamps/SNAP in the past 12 months	715	208	95.0%	2,538	251	94.4%

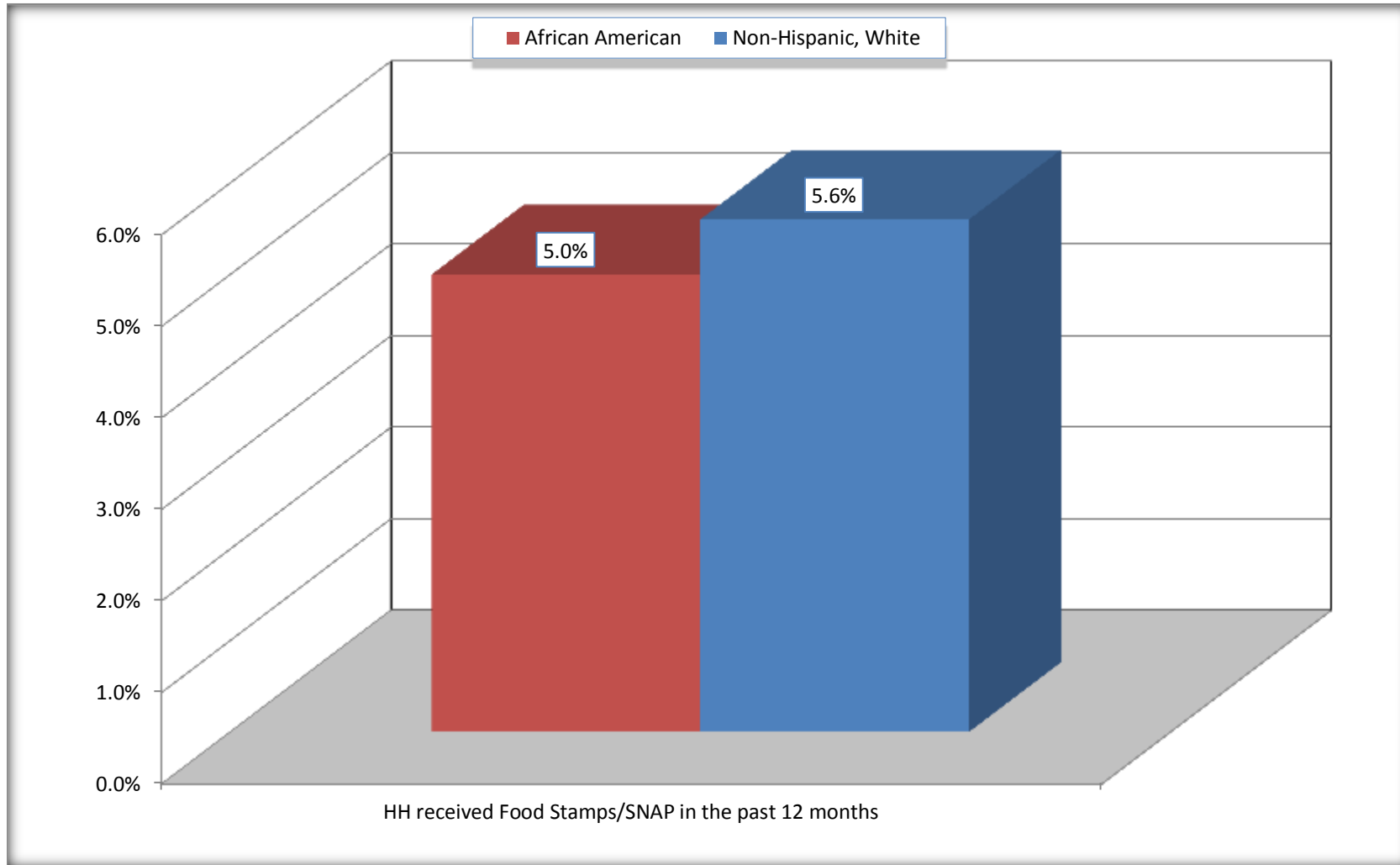
Source: U.S. Census Bureau, 2008-2012 American Community Survey

For information on confidentiality protection, sampling error, nonsampling error, and definitions, see Survey Methodology.

<http://www.census.gov/acs/www/UseData/index.htm>

Receipt of Food Stamps/SNAP in the Past 12 Months by Household

Scott city, Louisiana



Source: B22005. RECEIPT OF FOOD STAMPS/SNAP IN THE PAST 12 MONTHS BY RACE OF HOUSEHOLDER
Data Set: 2008-2012 American Community Survey 5-Year Estimates

C23002. SEX BY AGE BY EMPLOYMENT STATUS FOR THE POPULATION 16 YEARS AND OVER

Data Set: 2008-2012 American Community Survey 5-Year Estimates

	Scott city, Louisiana					
	African American	Margin of Error (+/-)	% of AA Total	White, Not Hispanic	Margin of Error (+/-)	% of NHW Total
Total:	1,582	452	100.0%	5,028	453	100.0%
In labor force:	1,087	NC	68.7%	3,250	NC	64.6%
In Armed Forces	0	NC	0.0%	0	NC	0.0%
Civilian:	1,046	NC	66.1%	3,080	NC	61.3%
Employed	1,005	NC	63.5%	3,060	NC	60.9%
Unemployed	82	NC	5.2%	190	NC	3.8%
Not in labor force	495	NC	31.3%	1,778	NC	35.4%
Male:	802	235	50.7%	2,261	264	45.0%
16 to 64 years:	751	240	47.5%	1,917	263	38.1%
In labor force:	498	196	31.5%	1,641	271	32.6%
In Armed Forces	0	17	0.0%	0	17	0.0%
Civilian:	498	196	31.5%	1,641	271	32.6%
Employed	474	210	30.0%	1,548	266	30.8%
Unemployed	24	82	1.5%	93	94	1.8%
Not in labor force	253	168	16.0%	276	128	5.5%
65 years and over:	51	67	3.2%	344	135	6.8%
In labor force:	1	2	0.1%	95	95	1.9%
Employed	1	2	0.1%	95	95	1.9%
Unemployed	0	17	0.0%	0	17	0.0%
Not in labor force	50	67	3.2%	249	108	5.0%

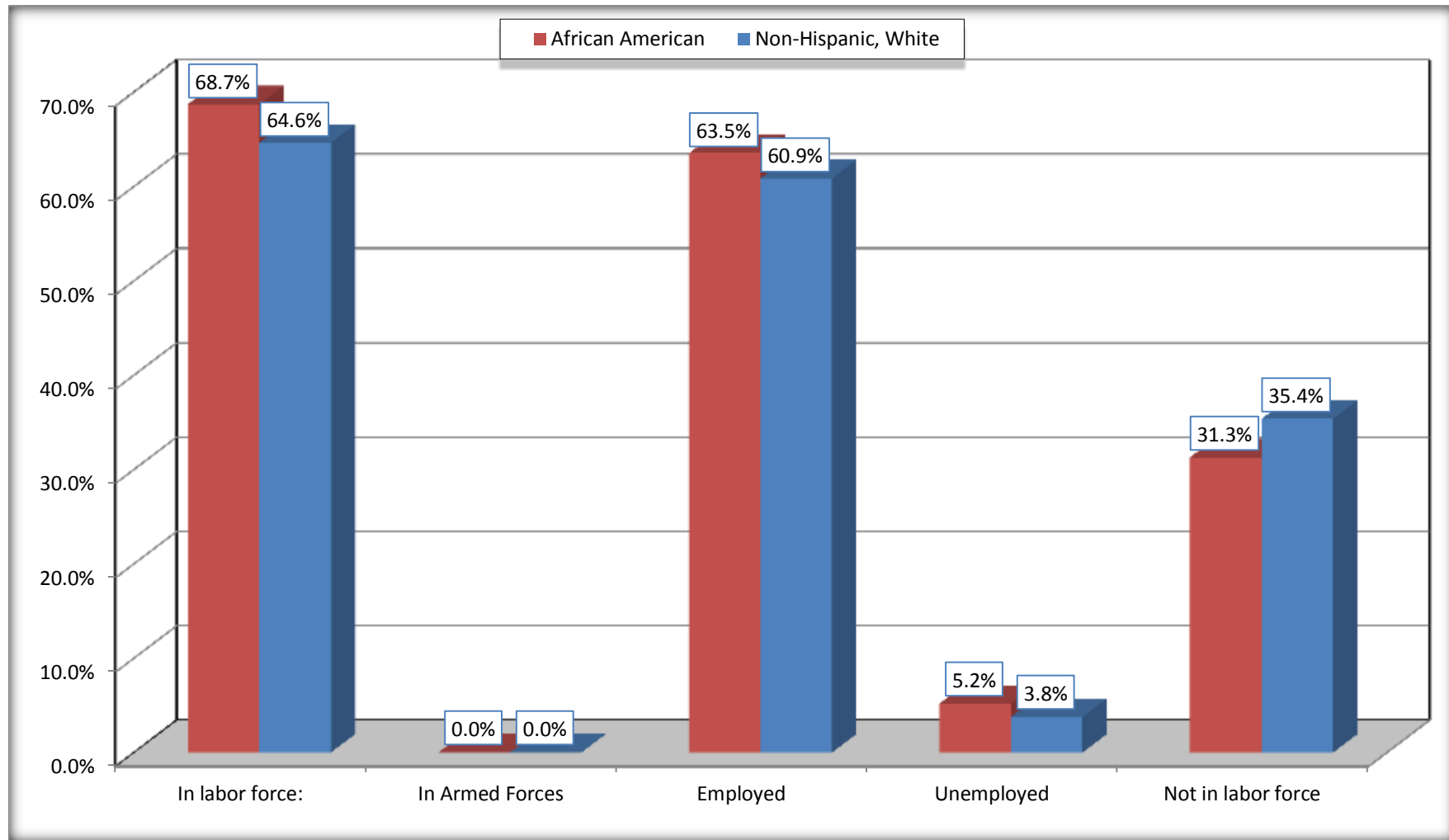
	Scott city, Louisiana					
	African American	Margin of Error (+/-)	% of AA Total	White, Not Hispanic	Margin of Error (+/-)	% of NHW Total
Female:	780	284	49.3%	2,767	313	55.0%
16 to 64 years:	699	283	44.2%	2,187	309	43.5%
In labor force:	548	283	34.6%	1,439	315	28.6%
In Armed Forces	0	17	0.0%	0	17	0.0%
Civilian:	548	283	34.6%	1,439	315	28.6%
Employed	490	233	31.0%	1,342	290	26.7%
Unemployed	58	76	3.7%	97	75	1.9%
Not in labor force	151	102	9.5%	748	230	14.9%
65 years and over:	81	77	5.1%	580	205	11.5%
In labor force:	40	54	2.5%	75	86	1.5%
Employed	40	54	2.5%	75	86	1.5%
Unemployed	0	17	0.0%	0	17	0.0%
Not in labor force	41	62	2.6%	505	184	10.0%

Source: U.S. Census Bureau, 2008-2012 American Community Survey

For information on confidentiality protection, sampling error, nonsampling error, and definitions, see Survey Methodology.
<http://www.census.gov/acs/www/UseData/index.htm>

Employment Status for the Population 16 years and over

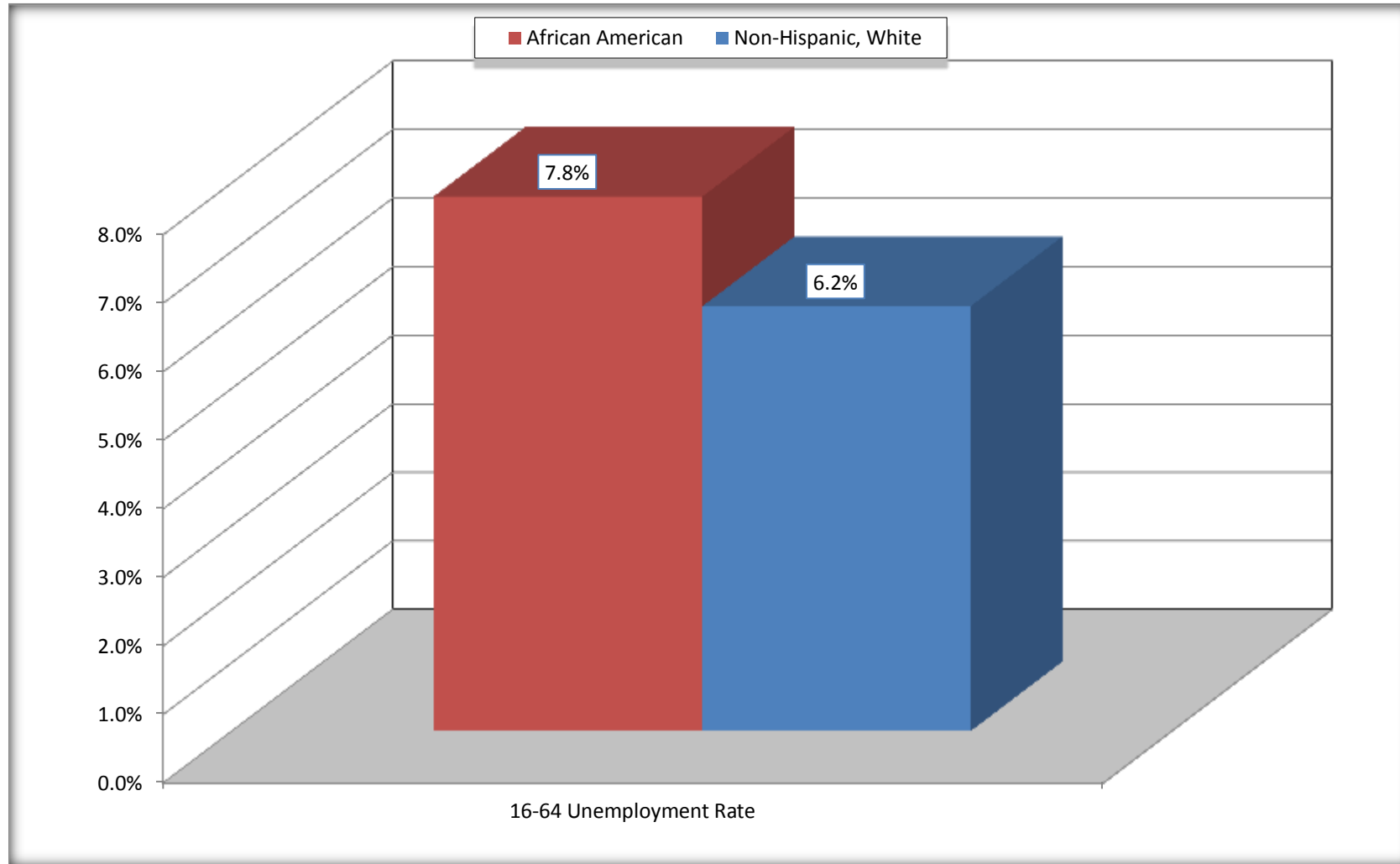
Scott city, Louisiana



Source: C23002. SEX BY AGE BY EMPLOYMENT STATUS FOR THE POPULATION 16 YEARS AND OVER
Data Set: 2008-2012 American Community Survey 5-Year Estimates

Unemployment of Working Age Population (Ages 16 to 64) (As a Percent of 16-64 Civilian Labor Force)

Scott city, Louisiana



Source: C23002. SEX BY AGE BY EMPLOYMENT STATUS FOR THE POPULATION 16 YEARS AND OVER
Data Set: 2008-2012 American Community Survey 5-Year Estimates

C24010. SEX BY OCCUPATION FOR THE CIVILIAN EMPLOYED POPULATION 16 YEARS AND OVER

Data Set: 2008-2012 American Community Survey 5-Year Estimates

	Scott city, Louisiana					
	African American	Margin of Error (+/-)	% of AA Total	White, Not Hispanic	Margin of Error (+/-)	% of NHW Total
Total:	1,005	390	100.0%	3,060	437	100.0%
Management, professional, and related occupations	311	NC	30.9%	904	NC	29.5%
Service occupations	52	NC	5.2%	454	NC	14.8%
Sales and office occupations	376	NC	37.4%	932	NC	30.5%
Natural resources, construction, and maintenance occupations:	135	NC	13.4%	470	NC	15.4%
Production, transportation, and material moving occupations	131	NC	13.0%	300	NC	9.8%
Male:	475	210	47.3%	1,643	273	53.7%
Management, business, science, and arts occupations:	112	137	11.1%	382	143	12.5%
Service occupations	20	32	2.0%	138	74	4.5%
Sales and office occupations	110	128	10.9%	408	133	13.3%
Natural resources, construction, and maintenance occupations:	135	123	13.4%	470	185	15.4%
Production, transportation, and material moving occupations	98	100	9.8%	245	123	8.0%
Female:	530	226	52.7%	1,417	297	46.3%
Management, professional, and related occupations	199	130	19.8%	522	162	17.1%
Service occupations	32	37	3.2%	316	165	10.3%
Sales and office occupations	266	155	26.5%	524	182	17.1%
Natural resources, construction, and maintenance occupations:	0	17	0.0%	0	17	0.0%
Production, transportation, and material moving occupations	33	47	3.3%	55	48	1.8%

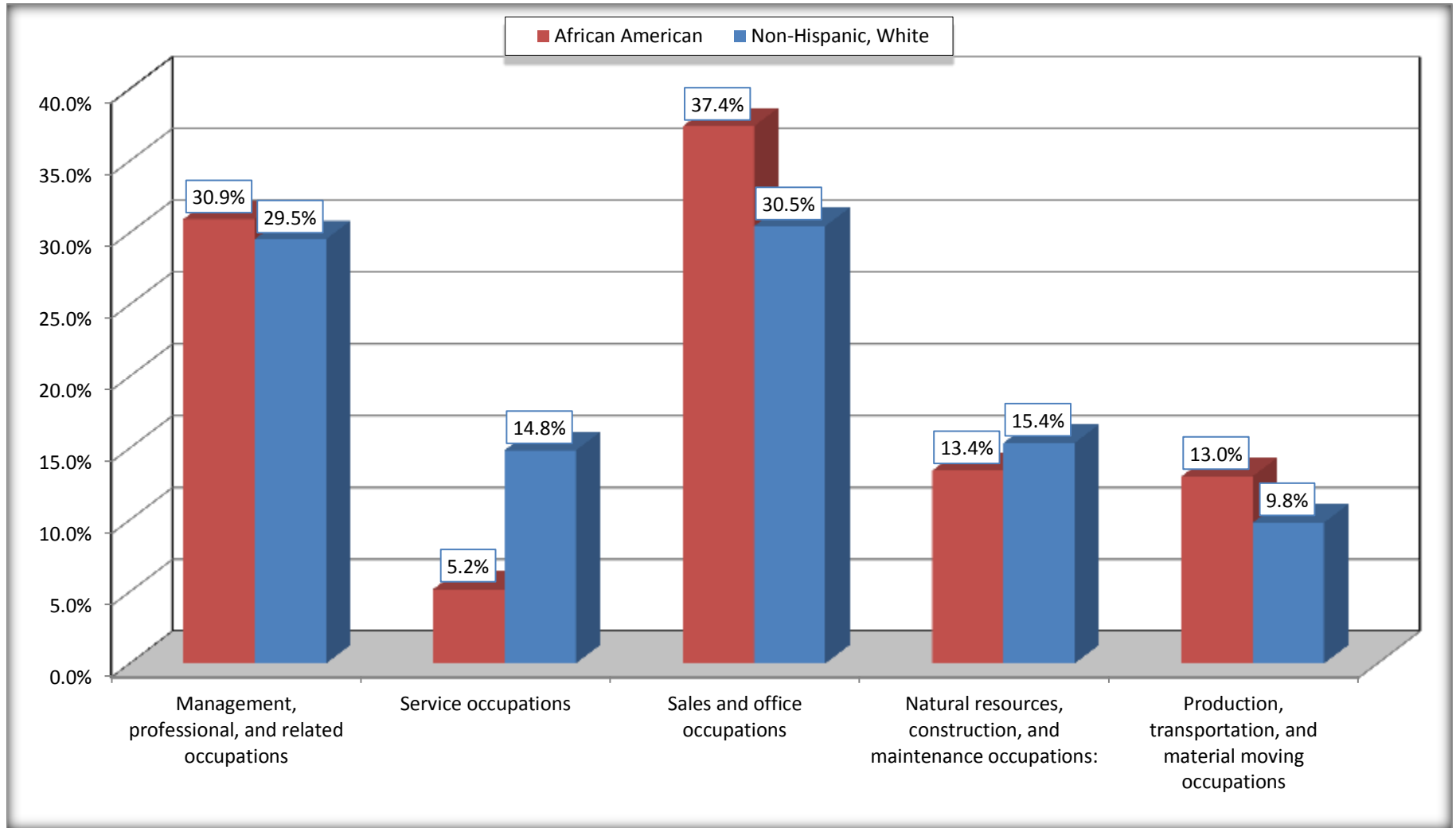
Source: U.S. Census Bureau, 2008-2012 American Community Survey

For information on confidentiality protection, sampling error, nonsampling error, and definitions, see Survey Methodology.

<http://www.census.gov/acs/www/UseData/index.htm>

Occupation for the Civilian Employed 16 Years and Over Population

Scott city, Louisiana



Source: C24010. SEX BY OCCUPATION FOR THE CIVILIAN EMPLOYED POPULATION 16 YEARS AND OVER
Data Set: 2008-2012 American Community Survey 5-Year Estimates

B25003. TENURE - Universe: OCCUPIED HOUSING UNITS

Data Set: 2008-2012 American Community Survey 5-Year Estimates

	Scott city, Louisiana					
	African American	Margin of Error (+/-)	% of AA Total	White, Not Hispanic	Margin of Error (+/-)	% of NHW Total
Total:	753	208	100.0%	2,689	252	100.0%
Owner occupied	511	199	67.9%	2,166	279	80.6%
Renter occupied	242	147	32.1%	523	199	19.4%

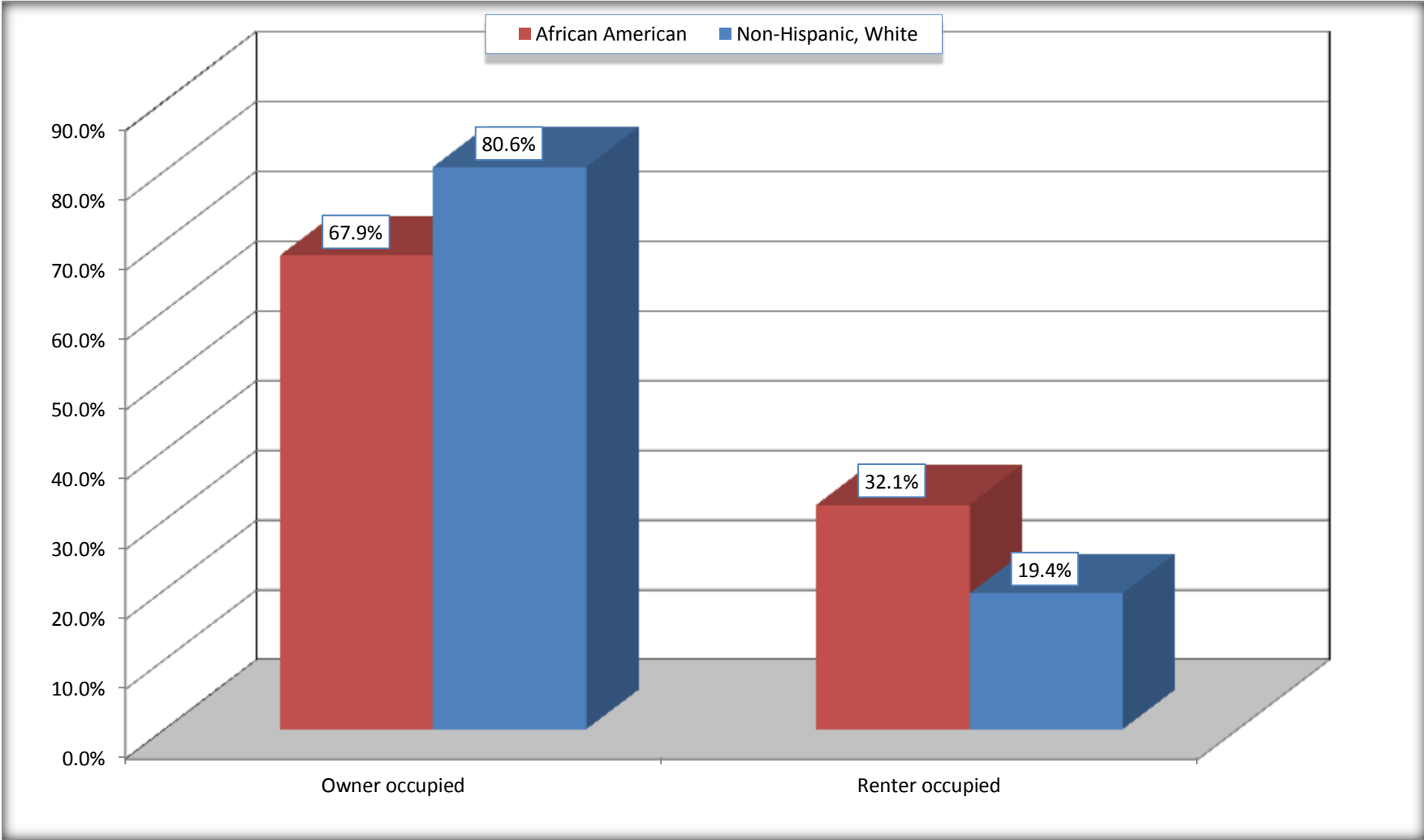
Source: U.S. Census Bureau, 2008-2012 American Community Survey

For information on confidentiality protection, sampling error, nonsampling error, and definitions, see Survey Methodology.

<http://www.census.gov/acs/www/UseData/index.h>

Home Owners and Renters by Household

Scott city, Louisiana



Source: B25003. TENURE - Universe: OCCUPIED HOUSING UNITS
Data Set: 2008-2012 American Community Survey 5-Year Estimates

B25014. OCCUPANTS PER ROOM - Universe: OCCUPIED HOUSING UNITS

Data Set: 2008-2012 American Community Survey 5-Year Estimates

	Scott city, Louisiana					
	African American	Margin of Error (+/-)	% of AA Total	White, Not Hispanic	Margin of Error (+/-)	% of NHW Total
Total:	753	208	100.0%	2,689	252	100.0%
1.00 or less occupants per room	753	208	100.0%	2,663	251	99.0%
1.01 or more occupants per room	0	17	0.0%	26	39	1.0%

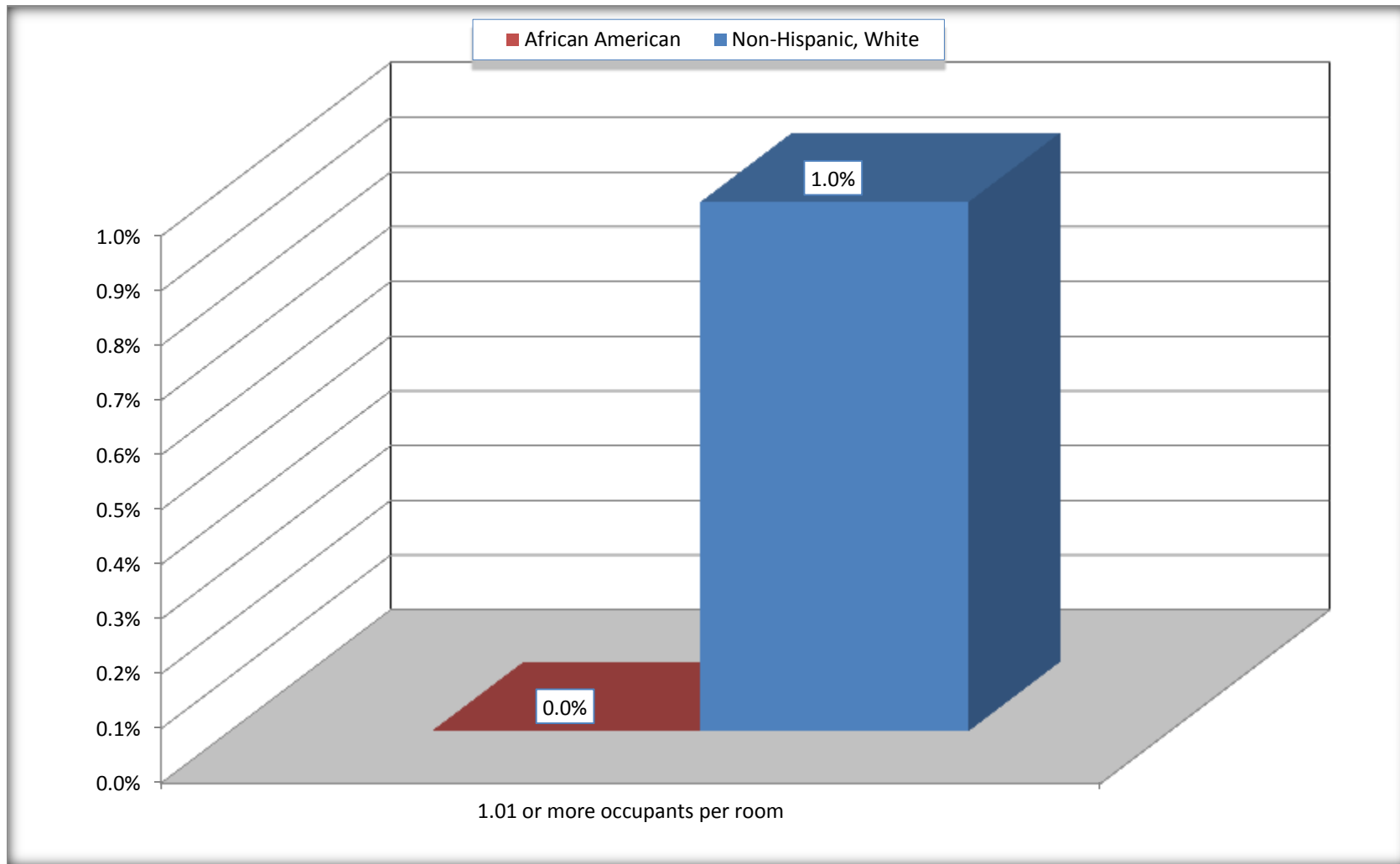
Source: U.S. Census Bureau, 2008-2012 American Community Survey

For information on confidentiality protection, sampling error, nonsampling error, and definitions, see Survey Methodology.

<http://www.census.gov/acs/www/UseData/index.ht>

More than One Person per Room (Crowding) by Household

Scott city, Louisiana



Source: B25014. OCCUPANTS PER ROOM - Universe: OCCUPIED HOUSING UNITS
Data Set: 2008-2012 American Community Survey 5-Year Estimates

B18101. AGE BY DISABILITY STATUS

Data Set: 2008-2012 American Community Survey 5-Year Estimates

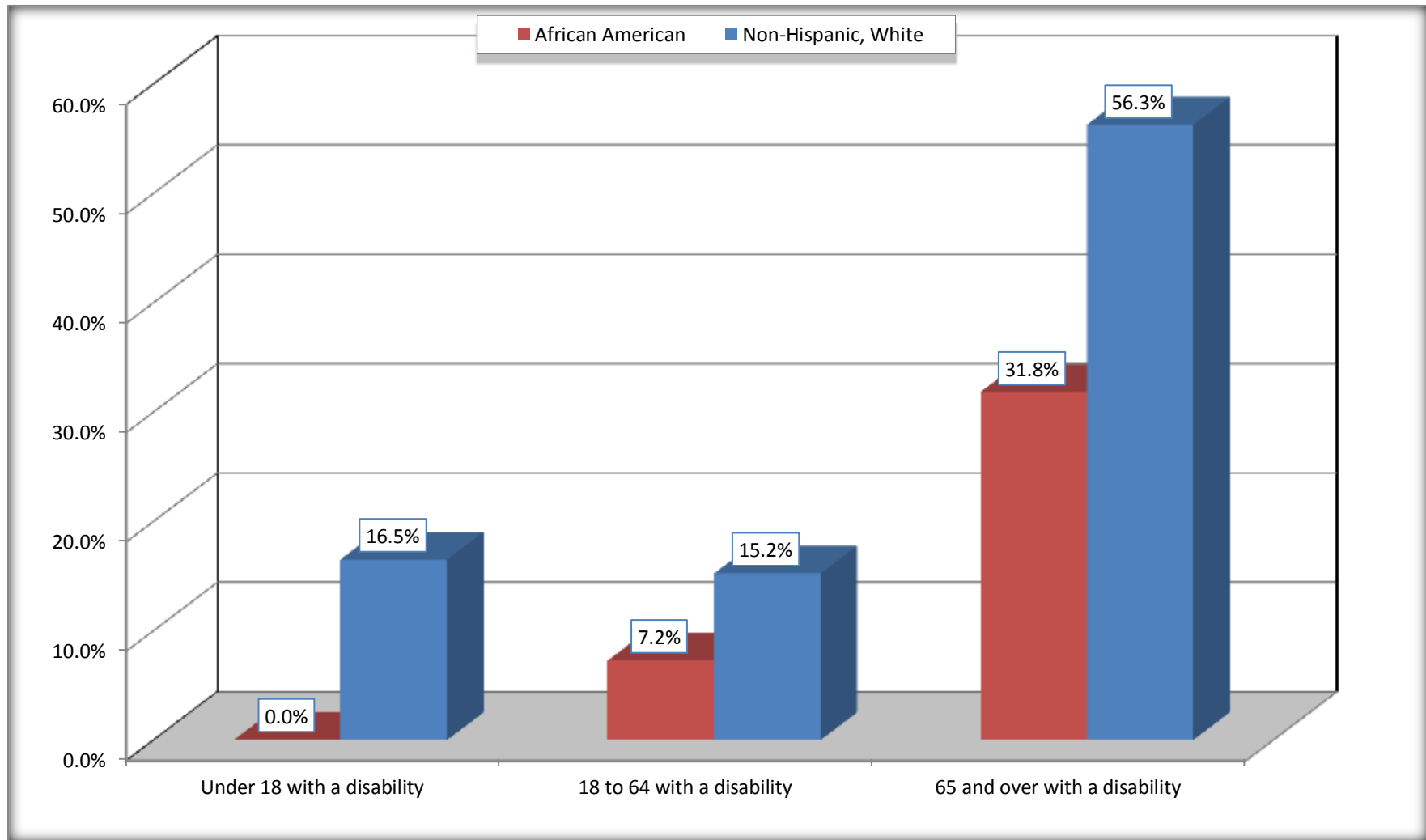
	Scott city, Louisiana					
	African American	Margin of Error (+/-)	% of AA Total	White, Not Hispanic	Margin of Error (+/-)	% of NHW Total
Total:	2,094	580	100.0%	6,179	573	100.0%
Under 18 years:	595	246	28.4%	1,296	90	21.0%
With a disability	0	17	0.0%	214	209	3.5%
No disability	595	246	28.4%	1,082	238	17.5%
18 to 64 years:	1,367	410	65.3%	3,959	462	64.1%
With a disability	99	101	4.7%	603	185	9.8%
No disability	1,268	390	60.6%	3,356	460	54.3%
65 years and over:	132	127	6.3%	924	299	15.0%
With a disability	42	62	2.0%	520	236	8.4%
No disability	90	119	4.3%	404	162	6.5%

Source: U.S. Census Bureau, 2008-2012 American Community Survey

For information on confidentiality protection, sampling error, nonsampling error, and definitions, see Survey Methodology.

<http://www.census.gov/acs/www/UseData/index.htm>

Disability by Age Scott city, Louisiana



Source: B18101. AGE BY DISABILITY STATUS
Data Set: 2008-2012 American Community Survey 5-Year Estimates

C27001B. HEALTH INSURANCE COVERAGE STATUS BY AGE

Data Set: 2008-2012 American Community Survey 5-Year Estimates

	Scott city, Louisiana					
	African American	Margin of Error (+/-)	% of AA Total	White, Not Hispanic	Margin of Error (+/-)	% of NHW Total
Total:	2,094	580	100.0%	6,179	573	100.0%
Under 18 years:	595	246	28.4%	1,296	320	21.0%
With health insurance coverage	595	246	28.4%	1,113	265	18.0%
No health insurance coverage	0	17	0.0%	183	216	3.0%
18 to 64 years:	1,367	410	65.3%	3,959	462	64.1%
With health insurance coverage	918	360	43.8%	3,336	421	54.0%
No health insurance coverage	449	271	21.4%	623	185	10.1%
65 years and over:	132	127	6.3%	924	299	15.0%
With health insurance coverage	92	84	4.4%	924	299	15.0%
No health insurance coverage	40	54	1.9%	0	17	0.0%

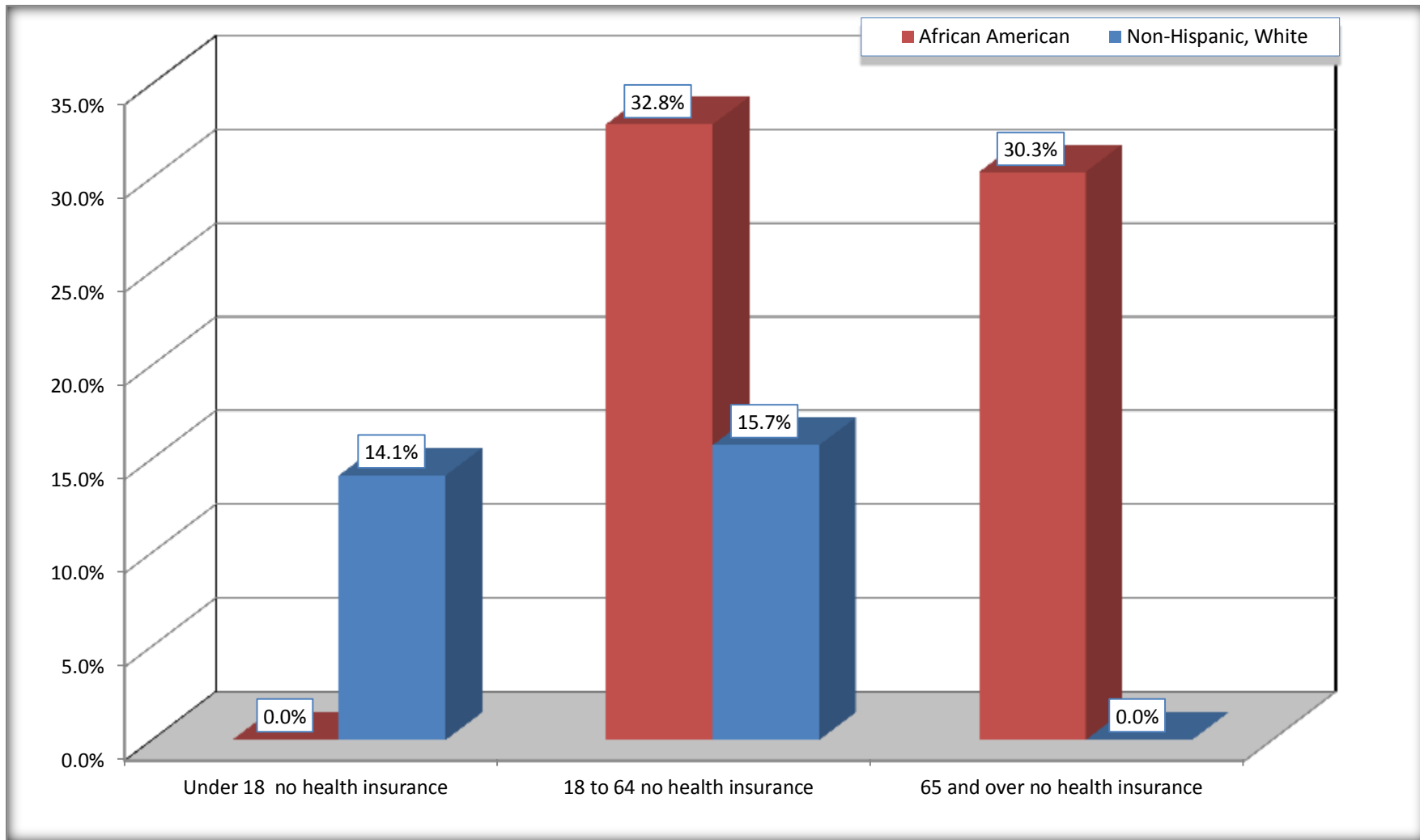
Source: U.S. Census Bureau, 2008-2012 American Community Survey

For information on confidentiality protection, sampling error, nonsampling error, and definitions, see Survey Methodology.

<http://www.census.gov/acs/www/UseData/index.htm>

Lack of Health Insurance Coverage by Age

Scott city, Louisiana



Source: C27001B. HEALTH INSURANCE COVERAGE STATUS BY AGE
Data Set: 2008-2012 American Community Survey 5-Year Estimates