

Selected Socio-Economic Data

Red River Parish, Louisiana

African American and White, Not Hispanic

Data Set: 2008-2012 American Community Survey 5-Year Estimates

www.fairvote2020.org

www.fairdata2000.com

[29-Dec-13](#)

C02003.DETAILED RACE - Universe: TOTAL POPULATION
 Data Set: 2008-2012 American Community Survey 5-Year Estimates

	Red River Parish, Louisiana		
	Population	Margin of Error (+/-)	% of Total
Total:	9,068	*****	100.0%
Population of one race:	8,980	65	99.0%
White	5,369	17	59.2%
Black or African American	3,575	71	39.4%
American Indian and Alaska Native	16	14	0.2%
Asian alone	20	25	0.2%
Native Hawaiian and Other Pacific Islander	0	17	0.0%
Some other race	0	17	0.0%
Population of two or more races:	88	65	1.0%
Two races including Some other race	0	17	0.0%
Two races excluding Some other race, and three or more races	88	65	1.0%
Population of two races:	54	44	0.6%
White; Black or African American	35	34	0.4%
White; American Indian and Alaska Native	19	26	0.2%
White; Asian	0	17	0.0%
Black or African American; American Indian and Alaska Native	0	17	0.0%
All other two race combinations	0	17	0.0%
Population of three races	34	45	0.4%
Population of four or more races	0	17	0.0%

Note: Hispanics may be of any race. See Table B03002 and chart.

Source: U.S. Census Bureau, 2008-2012 American Community Survey

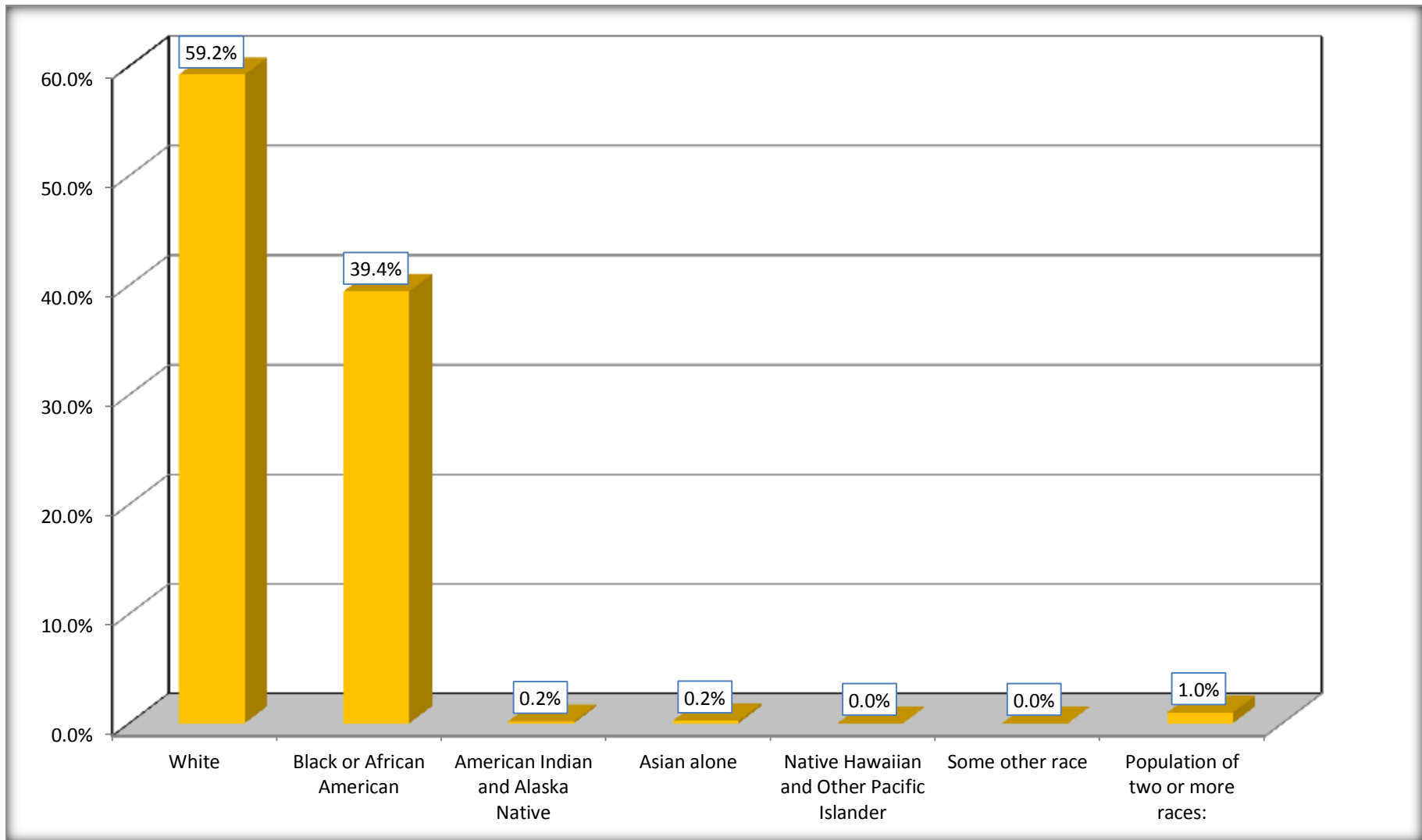
Although the American Community Survey (ACS) produces population, demographic and housing unit estimates, it is the Census Bureau's Population Estimates Program that produces and disseminates the official estimates of the population for the nation, states, counties, cities and towns and estimates of housing units for states and counties.

For information on confidentiality protection, sampling error, nonsampling error, and definitions, see Survey Methodology.

<http://www.census.gov/acs/www/UseData/index.htm>

Population by Race

Red River Parish, Louisiana



Source: C02003.DETAILED RACE - Universe: TOTAL POPULATION
Data Set: 2008-2012 American Community Survey 5-Year Estimates

B03002. HISPANIC OR LATINO ORIGIN BY RACE - Universe: TOTAL POPULATION

Data Set: 2008-2012 American Community Survey 5-Year Estimates

	Red River Parish, Louisiana		
	Population	Margin of Error (+/-)	% of Total
Total:	9,068	*****	100.0%
Not Hispanic or Latino:	8,963	*****	98.8%
White alone	5,264	17	58.1%
Black or African American alone	3,575	71	39.4%
American Indian and Alaska Native alone	16	14	0.2%
Asian alone	20	25	0.2%
Native Hawaiian and Other Pacific Islander alone	0	17	0.0%
Some other race alone	0	17	0.0%
Two or more races:	88	65	1.0%
Two races including Some other race	0	17	0.0%
Two races excluding Some other race, and three or more races	88	65	1.0%
Hispanic or Latino	105	*****	1.2%

Source: U.S. Census Bureau, 2008-2012 American Community Survey

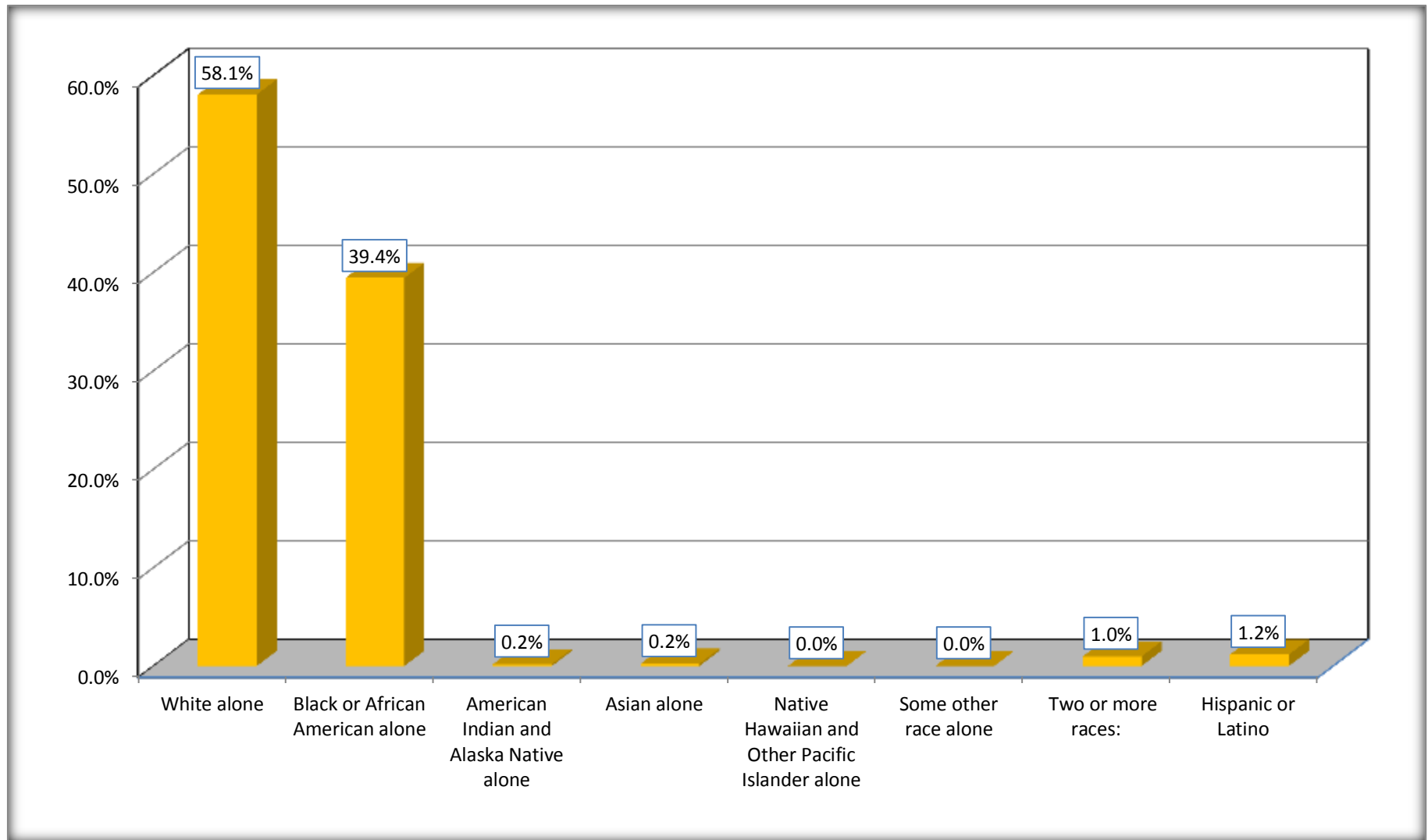
Although the American Community Survey (ACS) produces population, demographic and housing unit estimates, it is the Census Bureau's Population Estimates Program that produces and disseminates the official estimates of the population for the nation, states, counties, cities and towns and estimates of housing units for states and counties.

For information on confidentiality protection, sampling error, nonsampling error, and definitions, see Survey Methodology.

<http://www.census.gov/acs/www/UseData/index.htm>

Non-Hispanic by Race and Hispanic Population

Red River Parish, Louisiana



Source: B03002. HISPANIC OR LATINO ORIGIN BY RACE - Universe: TOTAL POPULATION
Data Set: 2008-2012 American Community Survey 5-Year Estimates

B03002. HISPANIC OR LATINO ORIGIN BY RACE

Data Set: 2008-2012 American Community Survey 5-Year Estimates

	Red River Parish, Louisiana		
	Population	Margin of Error (+/-)	% of Total
Hispanic or Latino:	105	*****	100.0%
White alone	105	17	100.0%
Black or African American alone	0	17	0.0%
American Indian and Alaska Native alone	0	17	0.0%
Asian alone	0	17	0.0%
Native Hawaiian and Other Pacific Islander alone	0	17	0.0%
Some other race alone	0	17	0.0%
Two or more races:	0	17	0.0%
Two races including Some other race	0	17	0.0%
Two races excluding Some other race, and three or more races	0	17	0.0%

Source: U.S. Census Bureau, 2008-2012 American Community Survey

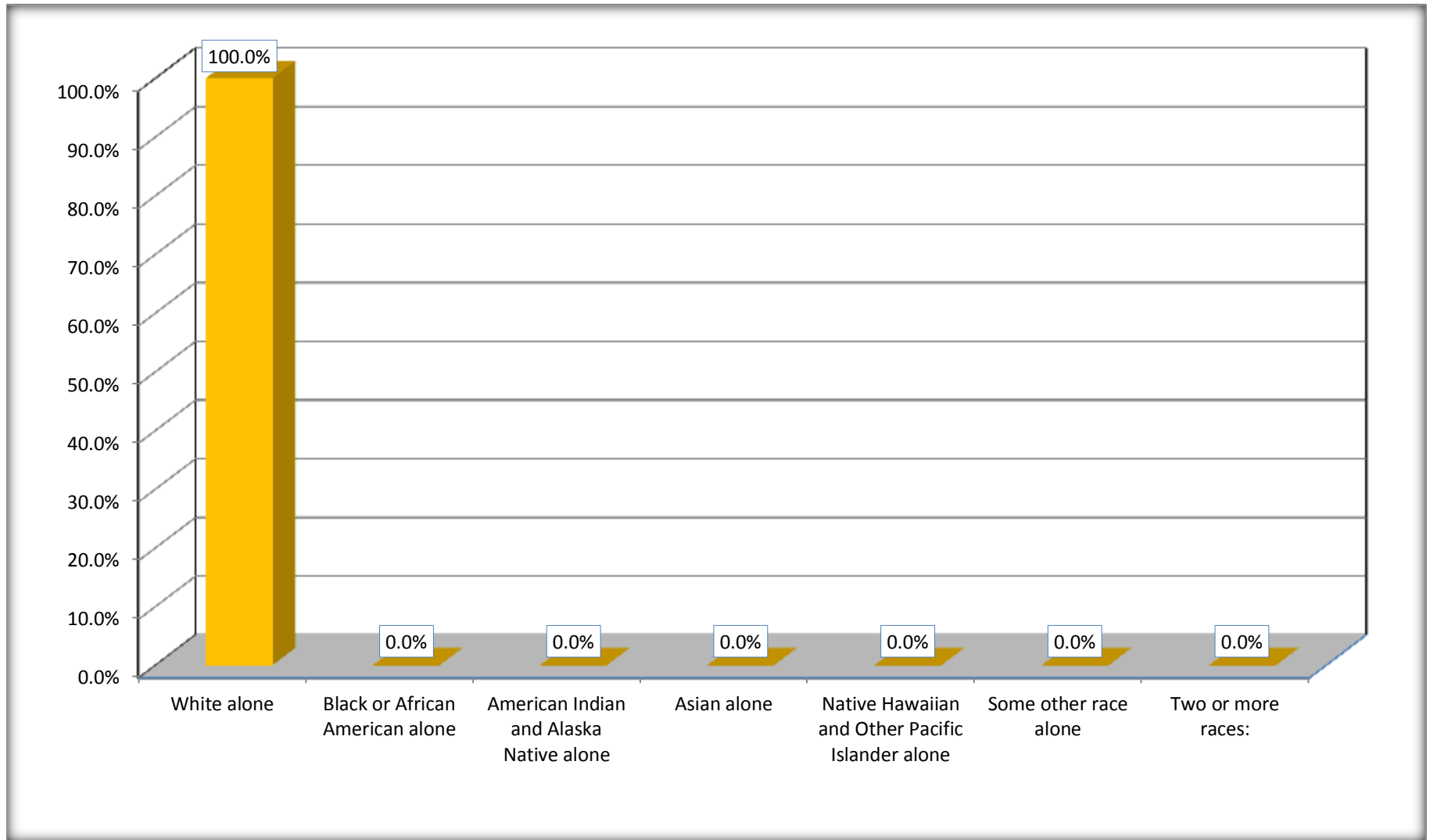
Although the American Community Survey (ACS) produces population, demographic and housing unit estimates, it is the Census Bureau's Population Estimates Program that produces and disseminates the official estimates of the population for the nation, states, counties, cities and towns and estimates of housing units for states and counties.

For information on confidentiality protection, sampling error, nonsampling error, and definitions, see Survey Methodology.

<http://www.census.gov/acs/www/UseData/index.htm>

Hispanic or Latino Origin by Race

Red River Parish, Louisiana



Source: B03002. HISPANIC OR LATINO ORIGIN BY RACE
Data Set: 2008-2012 American Community Survey 5-Year Estimates

B01001. SEX BY AGE

Data Set: 2008-2012 American Community Survey 5-Year Estimates

	Red River Parish, Louisiana					
	African American	Margin of Error (+/-)	% of AA Total	White, Not Hispanic	Margin of Error (+/-)	% of NHW Total
Total:	3,575	71	100.0%	5,264	17	100.0%
Under 18 years	1,141	NC	31.9%	1,081	NC	20.5%
18 to 64 years	2,053	NC	57.4%	3,182	NC	60.4%
65 years and over	381	NC	10.7%	1,001	NC	19.0%
Male:	1,659	38	46.4%	2,554	389	48.5%
Under 18 years	581	NC	16.3%	530	NC	10.1%
18 to 64 years	946	NC	26.5%	1,585	NC	30.1%
65 years and over	132	NC	3.7%	439	NC	8.3%
Female:	1,916	55	53.6%	2,710	412	51.5%
Under 18 years	560	NC	15.7%	551	NC	10.5%
18 to 64 years	1,107	NC	31.0%	1,597	NC	30.3%
65 years and over	249	NC	7.0%	562	NC	10.7%

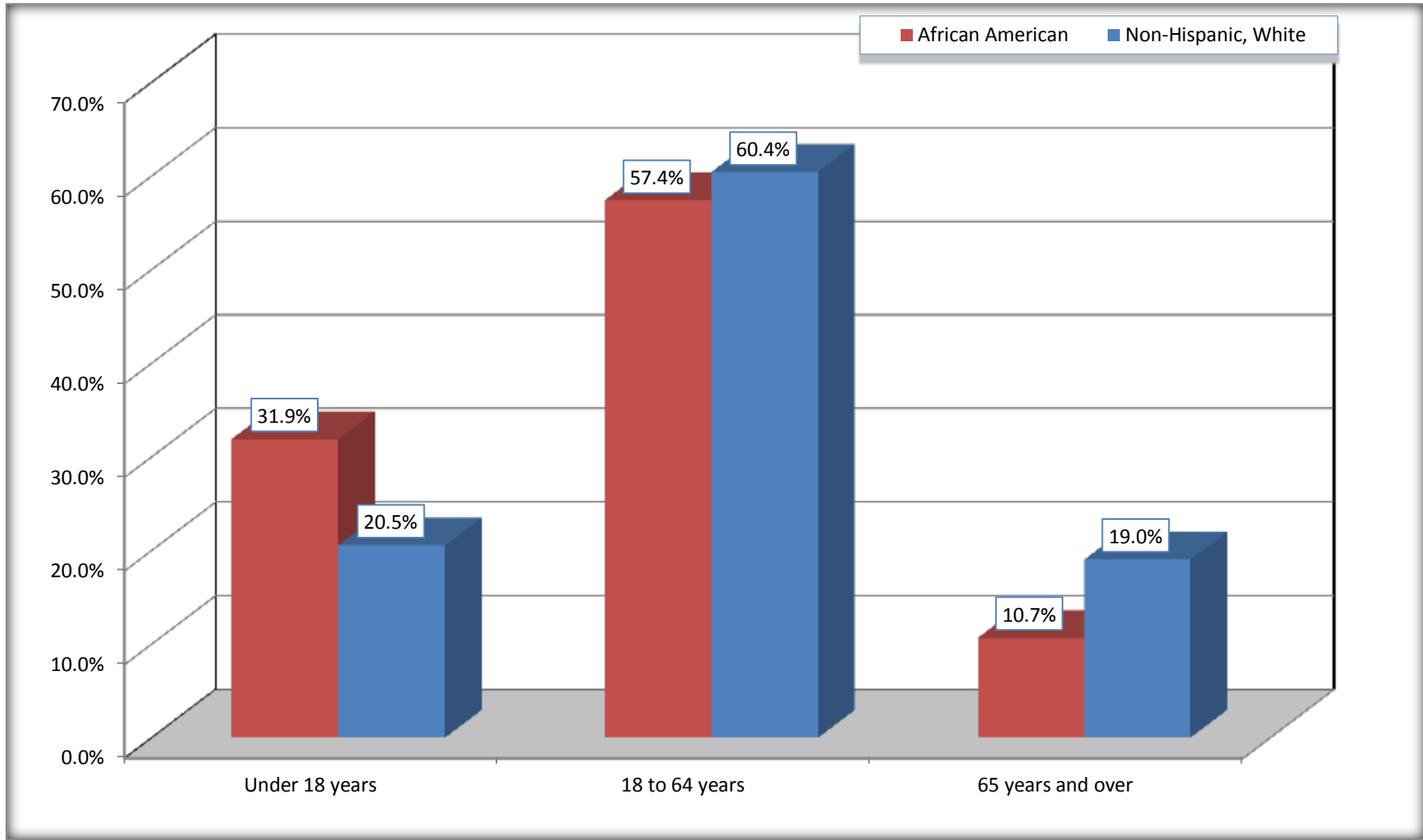
Source: U.S. Census Bureau, 2008-2012 American Community Survey

Although the American Community Survey (ACS) produces population, demographic and housing unit estimates, it is the Census Bureau's Population Estimates Program that produces and disseminates the official estimates of the population for the nation, states, counties, cities and towns and estimates of housing units for states and counties.

For information on confidentiality protection, sampling error, nonsampling error, and definitions, see Survey Methodology.
<http://www.census.gov/acs/www/UseData/index.htm>

Population by Age

Red River Parish, Louisiana



Source: B01001. SEX BY AGE
Data Set: 2008-2012 American Community Survey 5-Year Estimates

B05003. SEX BY AGE BY CITIZENSHIP STATUS

Data Set: 2008-2012 American Community Survey 5-Year Estimates

	Red River Parish, Louisiana					
	African American	Margin of Error (+/-)	% of AA Total by Age	White, Not Hispanic	Margin of Error (+/-)	% of NHW Total by Age
Total:	3,575	71	100.0%	5,264	17	100.0%
Under 18 years:	1,141	NC	100.0%	1,081	NC	100.0%
Native	1,141	NC	100.0%	1,081	NC	100.0%
Foreign born:	0	NC	0.0%	0	NC	0.0%
Naturalized U.S. citizen	0	NC	0.0%	0	NC	0.0%
Not a U.S. citizen	0	NC	0.0%	0	NC	0.0%
18 years and over:	2,434	NC	100.0%	4,183	NC	100.0%
Native	2,434	NC	100.0%	4,180	NC	99.9%
Foreign born:	0	NC	0.0%	3	NC	0.1%
Naturalized U.S. citizen	0	NC	0.0%	3	NC	0.1%
Not a U.S. citizen	0	NC	0.0%	0	NC	0.0%
Male:	1,659	38	46.4%	2,554	37	48.5%
Under 18 years:	581	21	100.0%	530	37	100.0%
Native	581	21	100.0%	530	37	100.0%
Foreign born:	0	17	0.0%	0	17	0.0%
Naturalized U.S. citizen	0	17	0.0%	0	17	0.0%
Not a U.S. citizen	0	17	0.0%	0	17	0.0%
18 years and over:	1,078	31	100.0%	2,024	17	100.0%
Native	1,078	31	100.0%	2,024	17	100.0%
Foreign born:	0	17	0.0%	0	17	0.0%
Naturalized U.S. citizen	0	17	0.0%	0	17	0.0%
Not a U.S. citizen	0	17	0.0%	0	17	0.0%

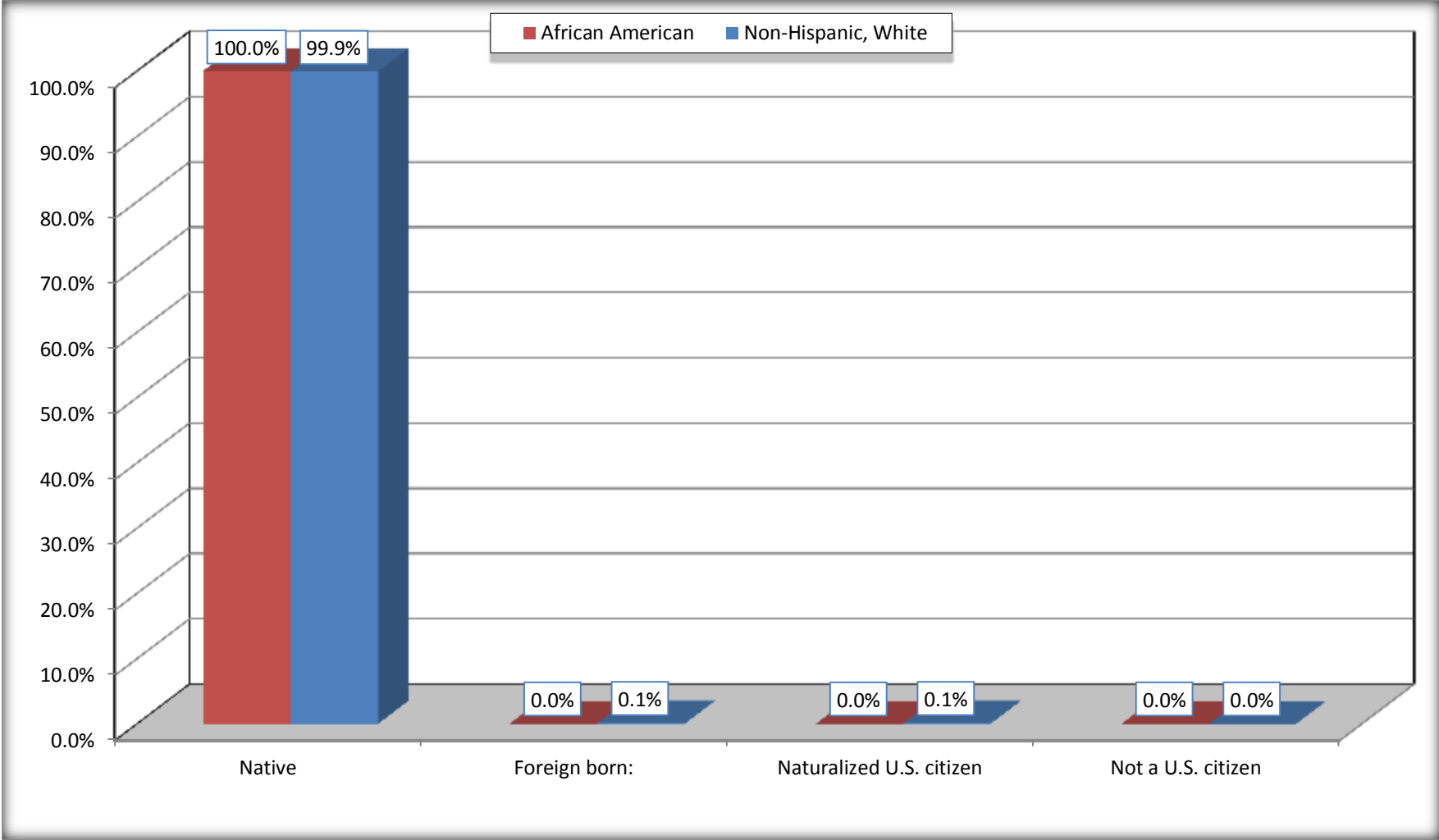
	Red River Parish, Louisiana					
	African American	Margin of Error (+/-)	% of AA by Age	White, Not Hispanic	Margin of Error (+/-)	% of NHW by Age
Female:	1,916	55	53.6%	2,710	37	51.5%
Under 18 years:	560	36	100.0%	551	37	100.0%
Native	560	36	100.0%	551	37	100.0%
Foreign born:	0	17	0.0%	0	17	0.0%
Naturalized U.S. citizen	0	17	0.0%	0	17	0.0%
Not a U.S. citizen	0	17	0.0%	0	17	0.0%
18 years and over:	1,356	27	100.0%	2,159	17	100.0%
Native	1,356	27	100.0%	2,156	5	99.9%
Foreign born:	0	17	0.0%	3	5	0.1%
Naturalized U.S. citizen	0	17	0.0%	3	5	0.1%
Not a U.S. citizen	0	17	0.0%	0	17	0.0%

Source: U.S. Census Bureau, 2008-2012 American Community Survey

For information on confidentiality protection, sampling error, nonsampling error, and definitions, see Survey Methodology.
<http://www.census.gov/acs/www/UseData/index.htm>

Citizenship Status of Voting Age Population (18 and Over)

Red River Parish, Louisiana



Source: B05003. SEX BY AGE BY CITIZENSHIP STATUS
Data Set: 2008-2012 American Community Survey 5-Year Estimates

**B07004. GEOGRAPHICAL MOBILITY IN THE PAST YEAR BY RACE FOR CURRENT RESIDENCE IN THE UNITED STATES - Universe:
POPULATION 1 YEAR AND OVER**

Data Set: 2008-2012 American Community Survey 5-Year Estimates

	Red River Parish, Louisiana					
	African American	Margin of Error (+/-)	% of AA Total	White, Not Hispanic	Margin of Error (+/-)	% of NHW Total
Total:	3,463	86	100.0%	5,171	55	100.0%
Same house 1 year ago	3,180	142	91.8%	4,763	144	92.1%
Moved within same county	113	62	3.3%	284	123	5.5%
Moved from different county within same state	166	79	4.8%	96	56	1.9%
Moved from different state	4	9	0.1%	28	20	0.5%
Moved from abroad	0	17	0.0%	0	17	0.0%

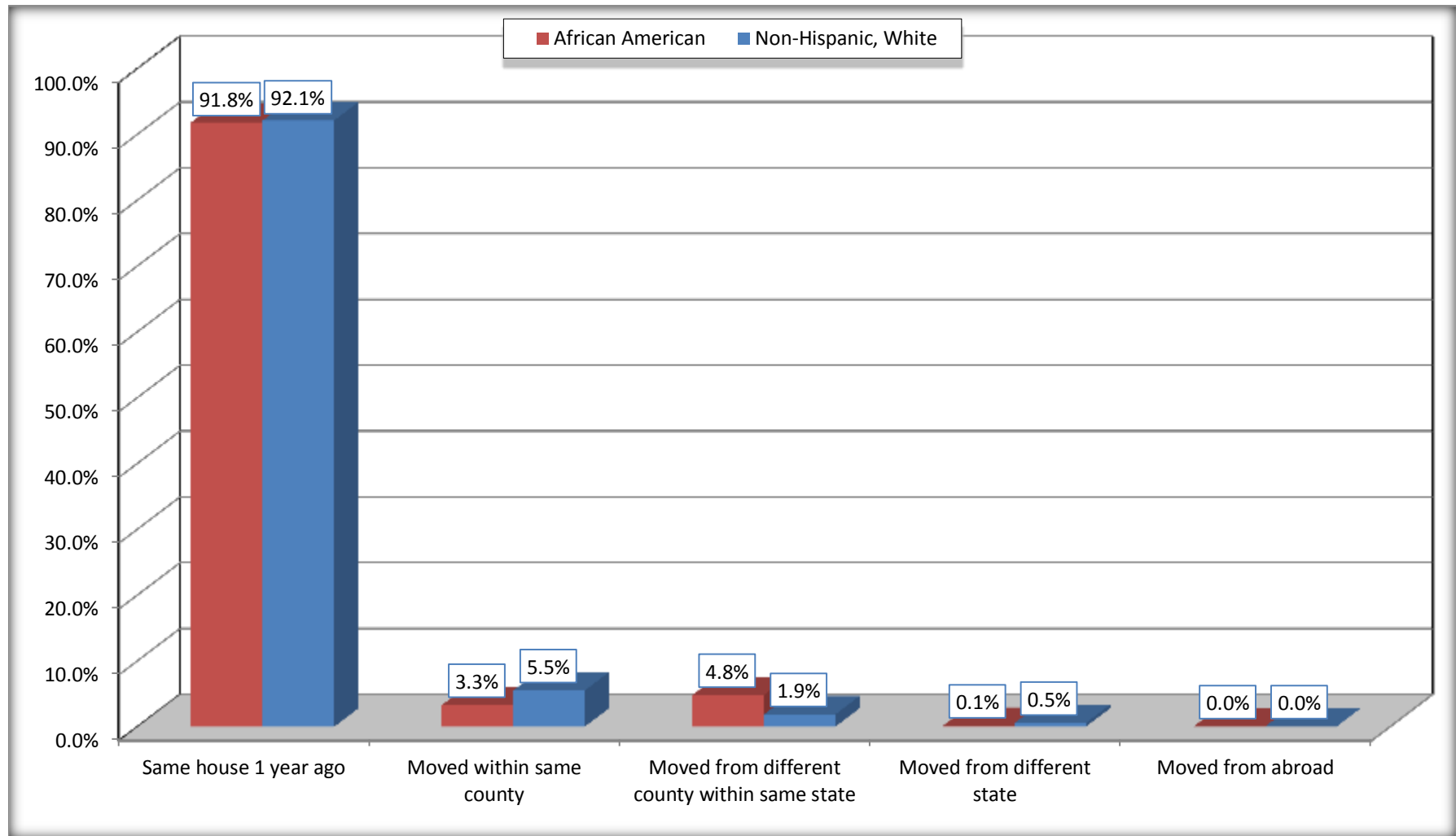
Source: U.S. Census Bureau, 2008-2012 American Community Survey

For information on confidentiality protection, sampling error, nonsampling error, and definitions, see Survey Methodology.

<http://www.census.gov/acs/www/UseData/index.htm>

Geographical Mobility in the Past Year (Population 1 Year and Over)

Red River Parish, Louisiana



Source: B07004. GEOGRAPHICAL MOBILITY IN THE PAST YEAR BY RACE FOR CURRENT RESIDENCE IN THE UNITED STATES - Universe: POPULATION 1 YEAR AND OVER

Data Set: 2008-2012 American Community Survey 5-Year Estimates

B08105. MEANS OF TRANSPORTATION TO WORK - Universe: WORKERS 16 YEARS AND OVER

Data Set: 2008-2012 American Community Survey 5-Year Estimates

	Red River Parish, Louisiana					
	African American	Margin of Error (+/-)	% of AA Total	White, Not Hispanic	Margin of Error (+/-)	% of NHW Total
Total:	945	148	100.0%	2123	195	100.0%
Car, truck, or van - drove alone	744	139	78.7%	1837	213	86.5%
Car, truck, or van - carpooled	117	67	12.4%	129	79	6.1%
Public transportation (excluding taxicab)	14	14	1.5%	28	33	1.3%
Walked	33	25	3.5%	6	9	0.3%
Taxicab, motorcycle, bicycle, or other means	34	37	3.6%	92	65	4.3%
Worked at home	3	6	0.3%	31	30	1.5%

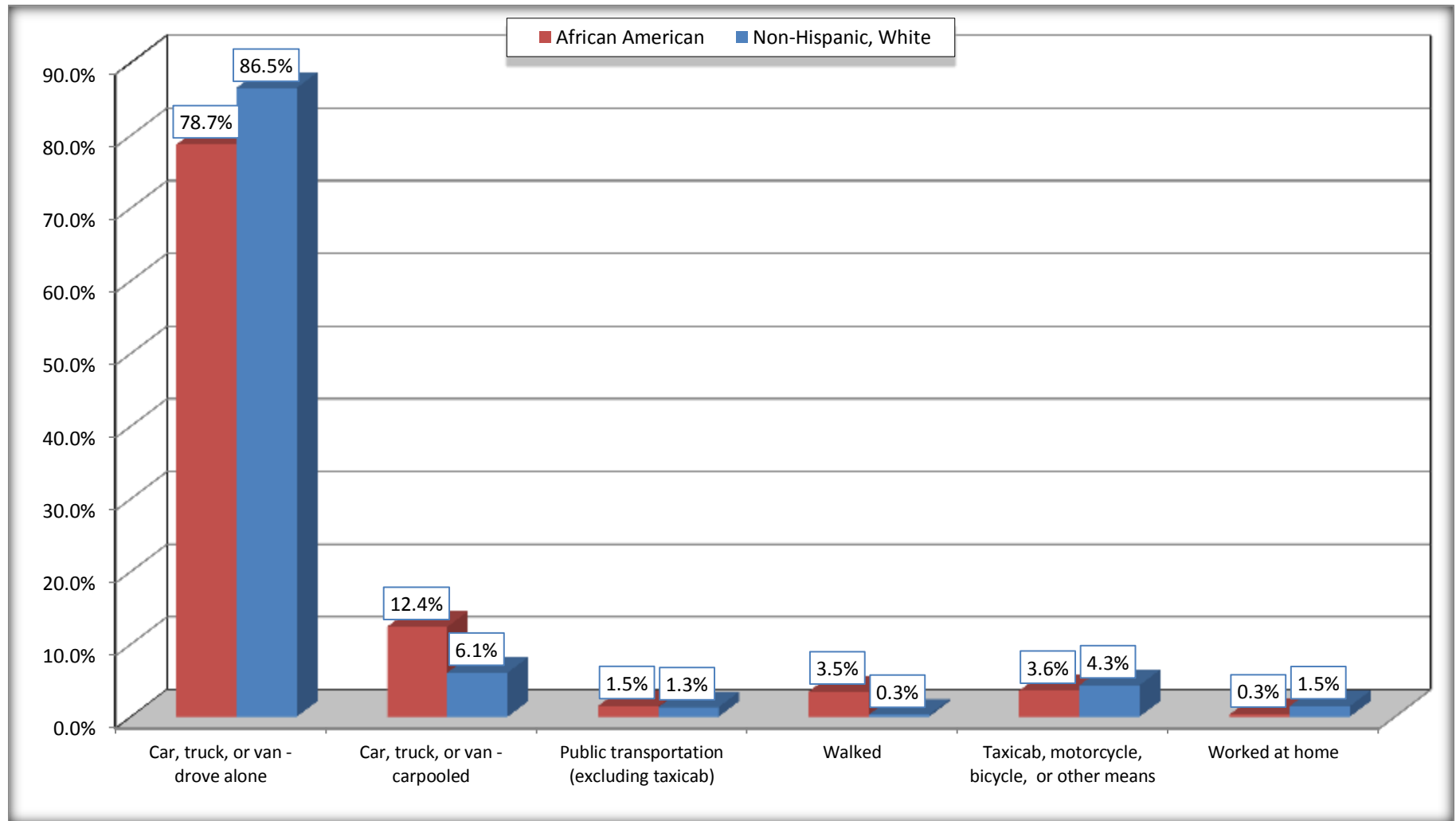
Source: U.S. Census Bureau, 2008-2012 American Community Survey

For information on confidentiality protection, sampling error, nonsampling error, and definitions, see Survey Methodology.

<http://www.census.gov/acs/www/UseData/index.htm>

Means of Transportation to Work (Workers 16 Years and Over)

Red River Parish, Louisiana



Source: B08105. MEANS OF TRANSPORTATION TO WORK - Universe: WORKERS 16 YEARS AND OVER
Data Set: 2008-2012 American Community Survey 5-Year Estimates

B11002. HOUSEHOLD TYPE BY RELATIVES AND NONRELATIVES FOR POPULATION IN HOUSEHOLDS

Data Set: 2008-2012 American Community Survey 5-Year Estimates

	Red River Parish, Louisiana					
	African American	Margin of Error (+/-)	% of AA Total	White, Not Hispanic	Margin of Error (+/-)	% of NHW Total
Total:	3447	86	100.0%	5307	93	100.0%
In family households	3196	108	92.7%	4544	169	85.6%
In nonfamily households	251	77	7.3%	763	150	14.4%

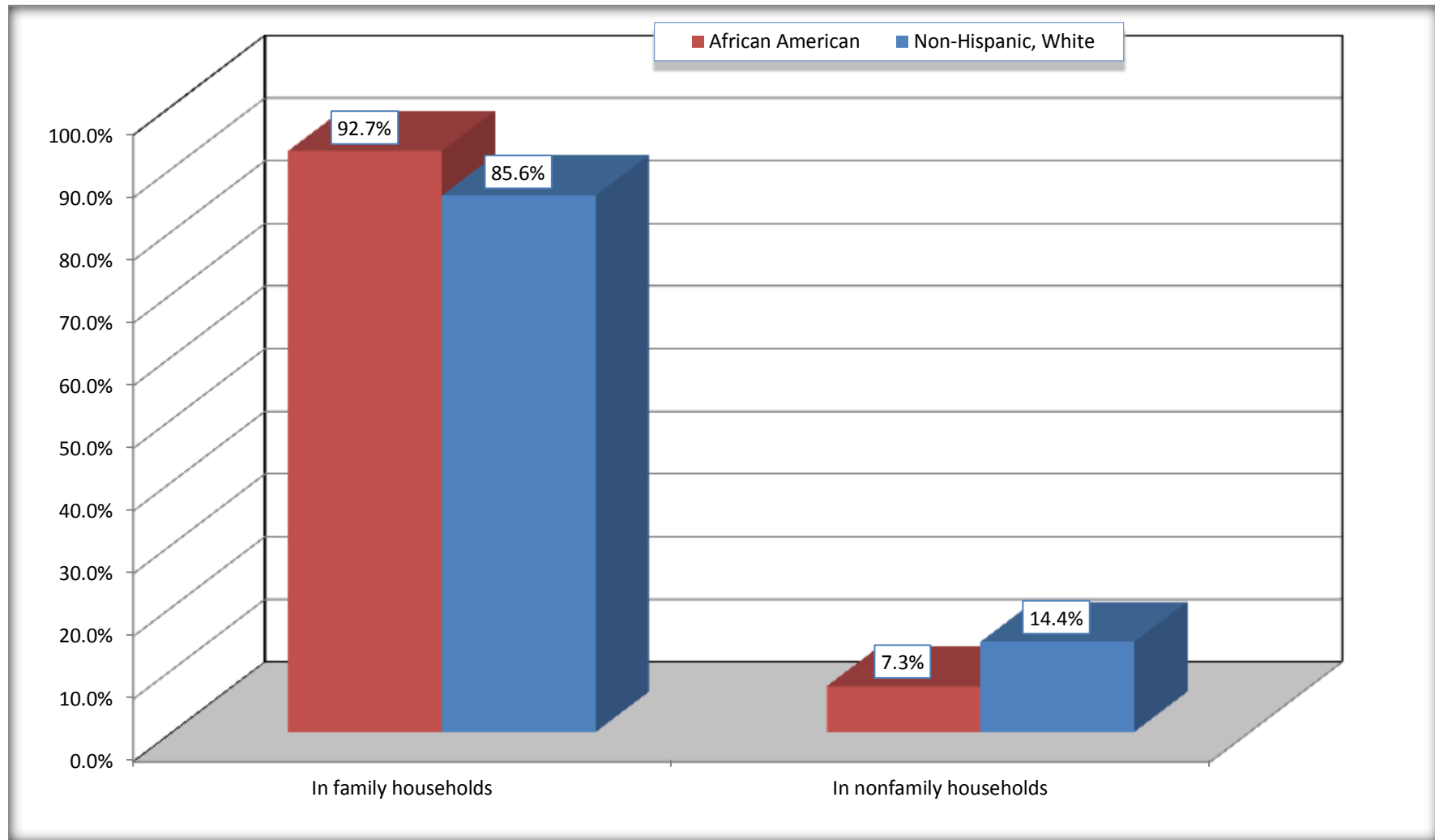
Source: U.S. Census Bureau, 2008-2012 American Community Survey

For information on confidentiality protection, sampling error, nonsampling error, and definitions, see Survey Methodology.

<http://www.census.gov/acs/www/UseData/index.htm>

Household Type for Population in Households

Red River Parish, Louisiana



Source: B11002. HOUSEHOLD TYPE BY RELATIVES AND NONRELATIVES FOR POPULATION IN HOUSEHOLDS
Data Set: 2008-2012 American Community Survey 5-Year Estimates

B12002. MARITAL STATUS FOR THE POPULATION 15 YEARS AND OVER

Data Set: 2008-2012 American Community Survey 5-Year Estimates

	Red River Parish, Louisiana					
	African American	Margin of Error (+/-)	% of AA Total	White, Not Hispanic	Margin of Error (+/-)	% of NHW Total
Total:	2,638	45	100.0%	4,369	17	100.0%
Never married	1,181	NC	44.8%	920	NC	21.1%
Now married (except separated)	634	NC	24.0%	2,487	NC	56.9%
Separated	241	NC	9.1%	98	NC	2.2%
Widowed	228	NC	8.6%	419	NC	9.6%
Divorced	354	NC	13.4%	445	NC	10.2%
Male:	1,180	31	44.7%	2,095	37	48.0%
Never married	563	76	21.3%	512	118	11.7%
Now married (except separated)	293	77	11.1%	1,192	127	27.3%
Separated	96	74	3.6%	71	49	1.6%
Widowed	41	36	1.6%	122	69	2.8%
Divorced	187	72	7.1%	198	76	4.5%
Female:	1,458	27	55.3%	2,274	37	52.0%
Never married	618	108	23.4%	408	130	9.3%
Now married (except separated)	341	96	12.9%	1,295	149	29.6%
Separated	145	75	5.5%	27	27	0.6%
Widowed	187	50	7.1%	297	71	6.8%
Divorced	167	76	6.3%	247	80	5.7%

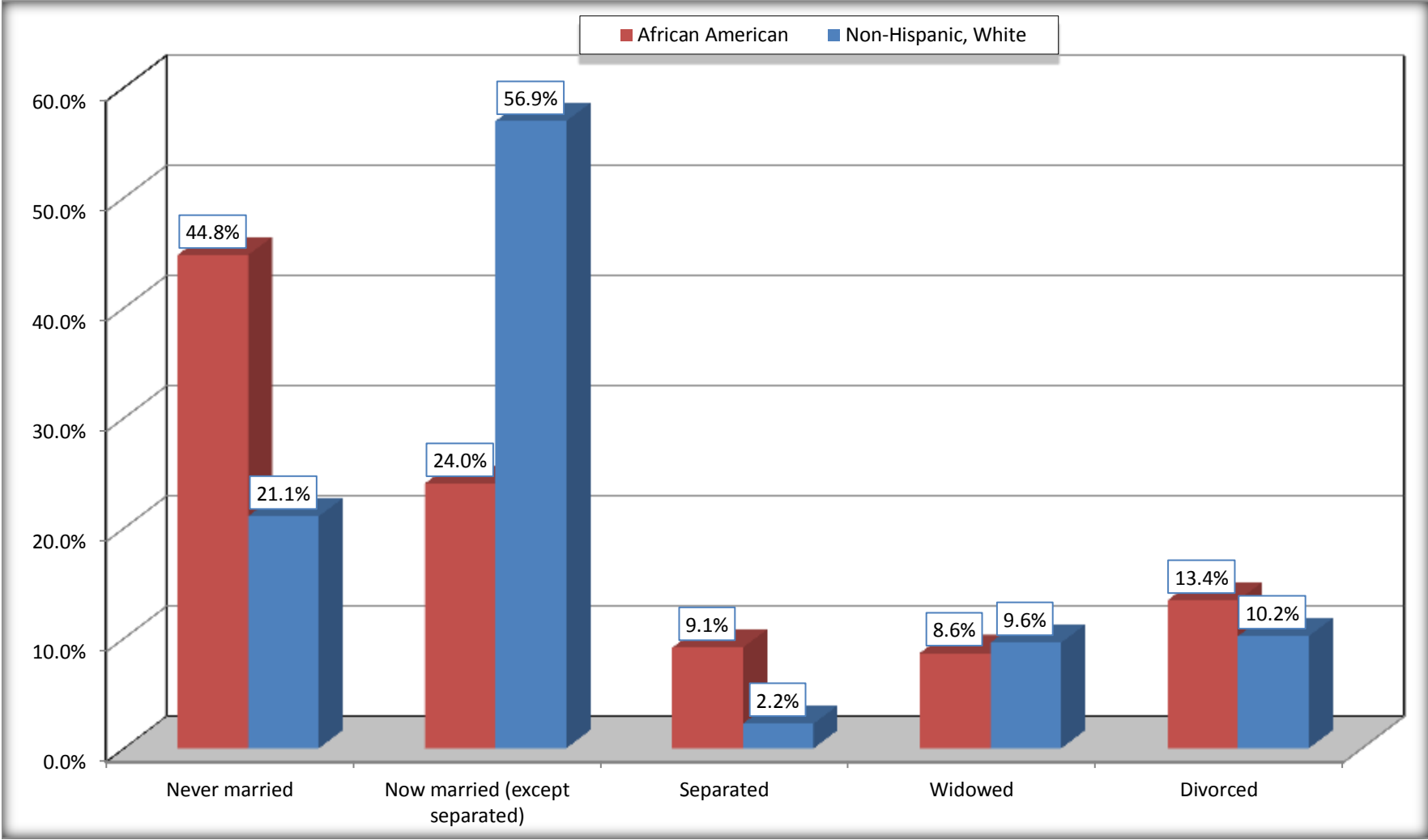
Source: U.S. Census Bureau, 2008-2012 American Community Survey

For information on confidentiality protection, sampling error, nonsampling error, and definitions, see Survey Methodology.

<http://www.census.gov/acs/www/UseData/index.htm>

Marital Status for the Population 15 Years and Over

Red River Parish, Louisiana



Source: B12002. MARITAL STATUS FOR THE POPULATION 15 YEARS AND OVER
Data Set: 2008-2012 American Community Survey 5-Year Estimates

C15002. SEX BY EDUCATIONAL ATTAINMENT FOR THE POPULATION 25 YEARS AND OVER

Data Set: 2008-2012 American Community Survey 5-Year Estimates

	Red River Parish, Louisiana					
	African American	Margin of Error (+/-)	% of AA Total	White, Not Hispanic	Margin of Error (+/-)	% of NHW Total
Total:	2,012	57	100.0%	3,779	17	100.0%
Less than high school diploma	893	NC	44.4%	576	NC	15.2%
High school graduate, GED, or alternative	698	NC	34.7%	1,815	NC	48.0%
Some college or associate's degree	365	NC	18.1%	812	NC	21.5%
Bachelor's degree or higher	56	NC	2.8%	576	NC	15.2%
Male:	840	48	41.7%	1,819	17	48.1%
Less than high school diploma	359	81	17.8%	263	72	7.0%
High school graduate, GED, or alternative	377	79	18.7%	993	123	26.3%
Some college or associate's degree	81	53	4.0%	320	93	8.5%
Bachelor's degree or higher	23	26	1.1%	243	79	6.4%
Female:	1,172	27	58.3%	1,960	17	51.9%
Less than high school diploma	534	76	26.5%	313	96	8.3%
High school graduate, GED, or alternative	321	78	16.0%	822	135	21.8%
Some college or associate's degree	284	96	14.1%	492	115	13.0%
Bachelor's degree or higher	33	31	1.6%	333	102	8.8%

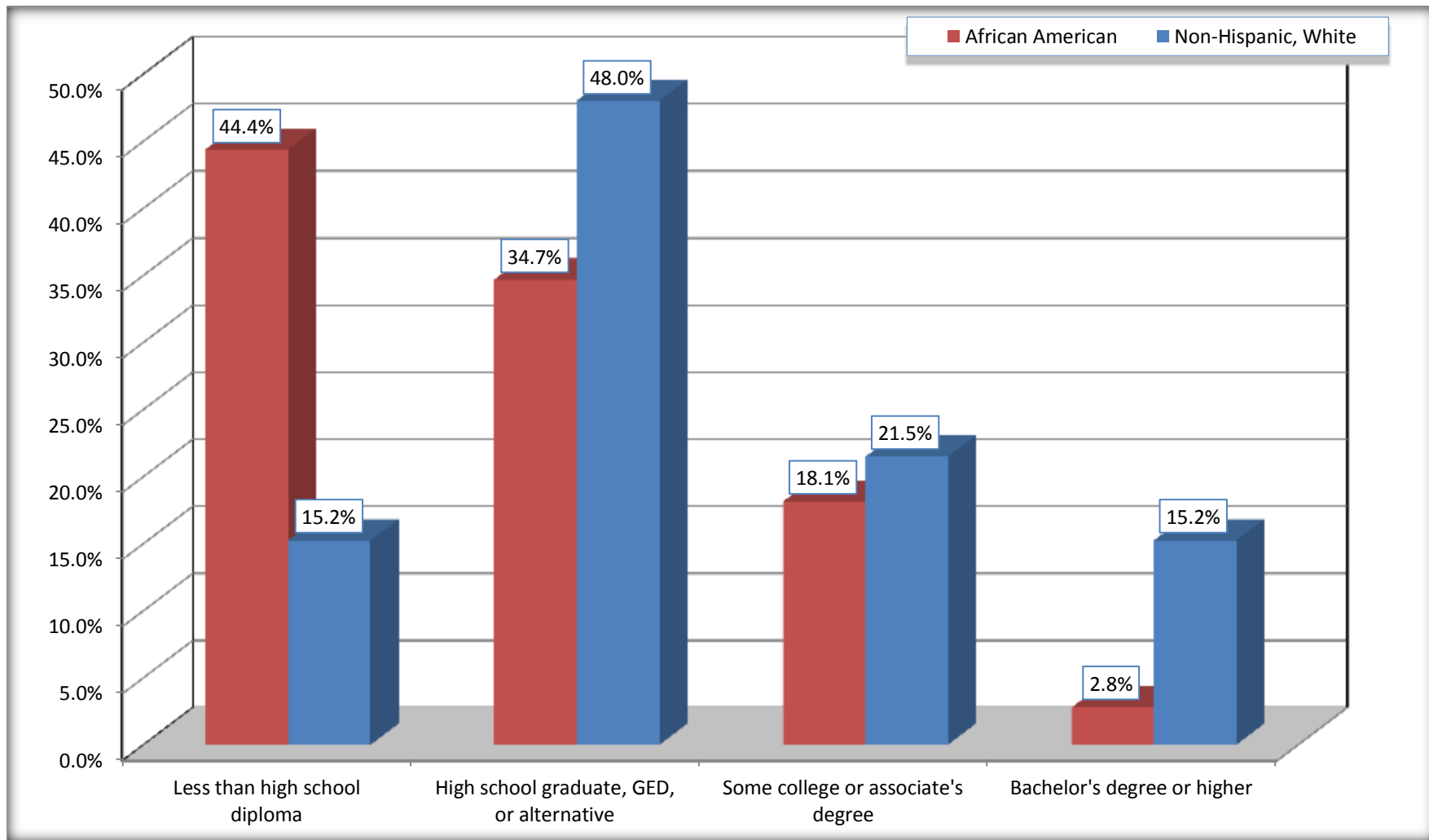
Source: U.S. Census Bureau, 2008-2012 American Community Survey

For information on confidentiality protection, sampling error, nonsampling error, and definitions, see Survey Methodology.

<http://www.census.gov/acs/www/UseData/index.htm>

Educational Attainment for the Population 25 Years and Older

Red River Parish, Louisiana



Source: C15002. SEX BY EDUCATIONAL ATTAINMENT FOR THE POPULATION 25 YEARS AND OVER
Data Set: 2008-2012 American Community Survey 5-Year Estimates

B17010. POVERTY STATUS IN THE PAST 12 MONTHS OF FAMILIES BY FAMILY TYPE BY PRESENCE OF RELATED CHILDREN UNDER 18 YEARS

Data Set: 2008-2012 American Community Survey 5-Year Estimates

	Red River Parish, Louisiana					
	African American	Margin of Error (+/-)	% of AA Total	White, Not Hispanic	Margin of Error (+/-)	% of NHW Total
Total:	819	114	100.0%	1,516	127	100.0%
Income in the past 12 months below poverty level:	303	94	37.0%	130	70	8.6%
Married-couple family:	20	20	2.4%	62	36	4.1%
With related children under 18 years	16	19	2.0%	8	12	0.5%
Other family:	283	92	34.6%	68	58	4.5%
Male householder, no wife present	117	81	14.3%	0	17	0.0%
With related children under 18 years	55	53	6.7%	0	17	0.0%
Female householder, no husband present	166	63	20.3%	68	58	4.5%
With related children under 18 years	140	57	17.1%	68	58	4.5%
Income in the past 12 months at or above poverty level:	516	88	63.0%	1,386	139	91.4%
Married-couple family:	278	78	33.9%	1,146	134	75.6%
With related children under 18 years	164	55	20.0%	383	84	25.3%
Other family:	238	76	29.1%	240	83	15.8%
Male householder, no wife present	64	47	7.8%	126	62	8.3%
With related children under 18 years	38	43	4.6%	74	64	4.9%
Female householder, no husband present	174	57	21.2%	114	57	7.5%
With related children under 18 years	104	50	12.7%	66	49	4.4%

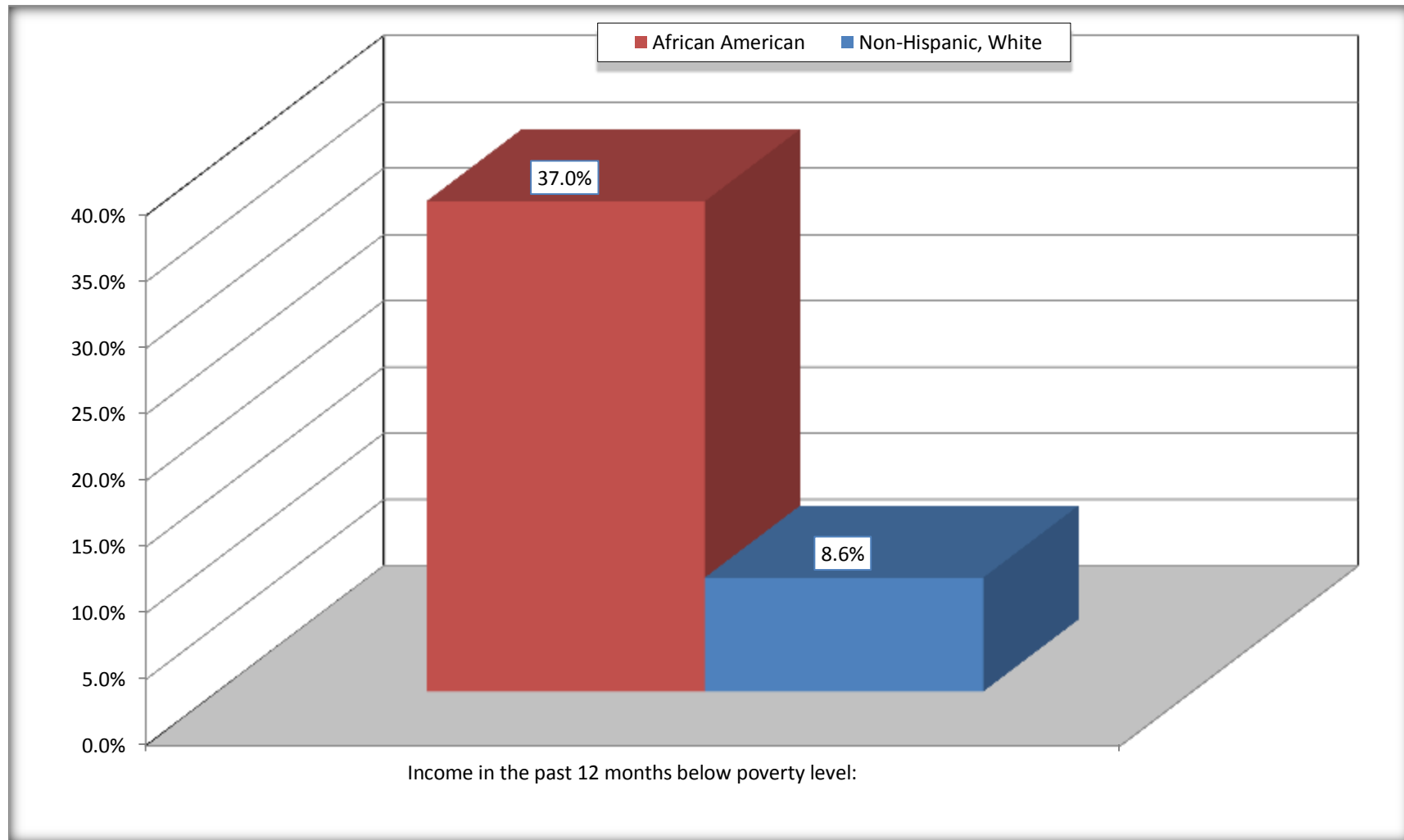
Source: U.S. Census Bureau, 2008-2012 American Community Survey

For information on confidentiality protection, sampling error, nonsampling error, and definitions, see Survey Methodology.

<http://www.census.gov/acs/www/UseData/index.htm>

Family Households Below Poverty in the Past 12 Months

Red River Parish, Louisiana

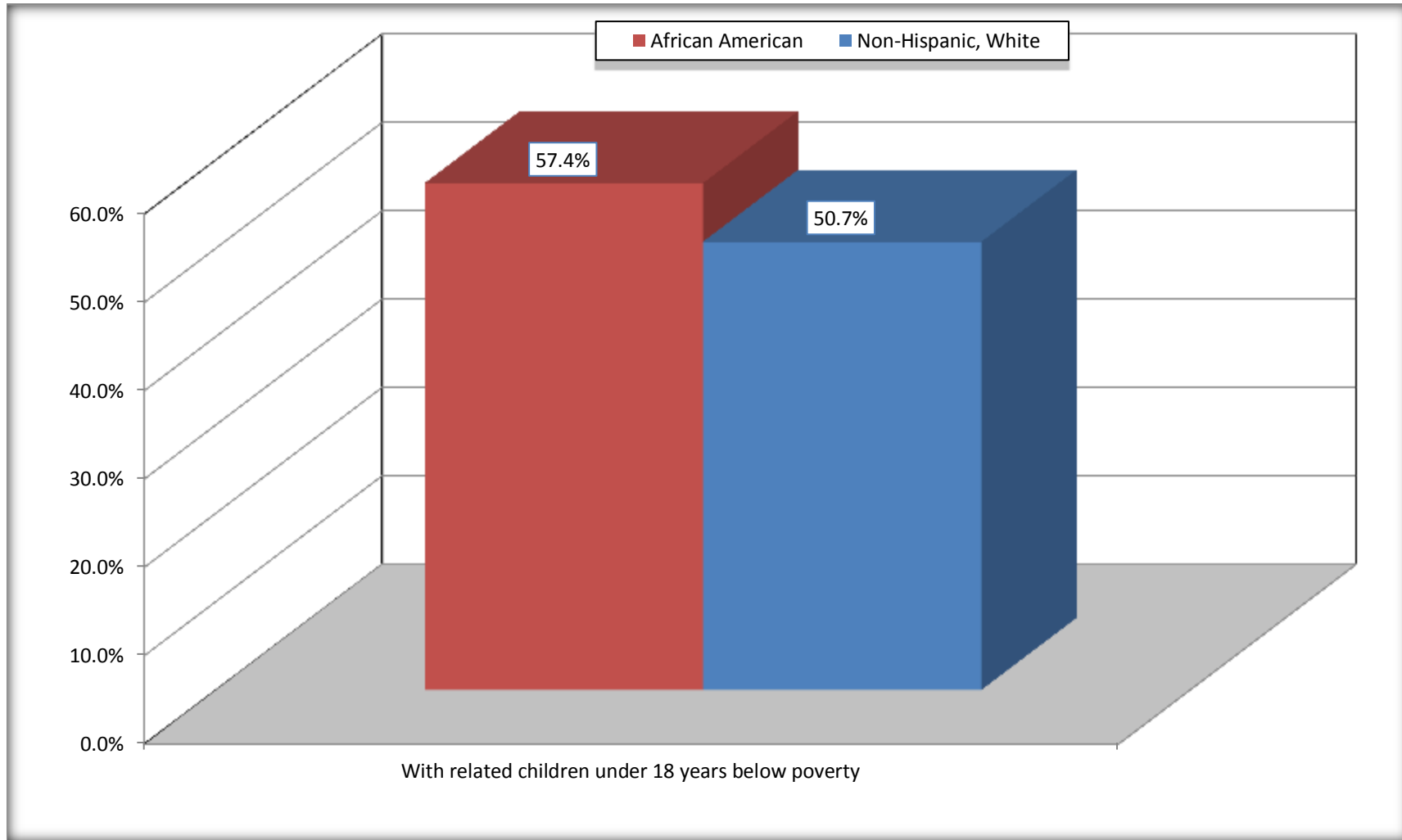


Source: B17010. POVERTY STATUS IN THE PAST 12 MONTHS OF FAMILIES BY FAMILY TYPE BY PRESENCE OF RELATED CHILDREN UNDER 18 YEARS

Data Set: 2008-2012 American Community Survey 5-Year Estimates

Female-headed Households with Related Children Below Poverty in the Past 12 Months

Red River Parish, Louisiana



Source: B17010. POVERTY STATUS IN THE PAST 12 MONTHS OF FAMILIES BY FAMILY TYPE BY PRESENCE OF RELATED CHILDREN UNDER 18 YEARS

Data Set: 2008-2012 American Community Survey 5-Year Estimates

B17020 POVERTY STATUS IN THE PAST 12 MONTHS BY AGE - Universe: POPULATION FOR WHOM POVERTY STATUS IS DETERMINED

Data Set: 2008-2012 American Community Survey 5-Year Estimates

	Red River Parish, Louisiana					
	African American	Margin of Error (+/-)	% of AA By Age	White, Not Hispanic	Margin of Error (+/-)	% of NHW By Age
Total:	3,400	90	100.0%	5,191	48	100.0%
Income in the past 12 months below poverty level:	1,237	289	36.4%	589	222	11.3%
Under 18 years	474	NC	43.7%	135	NC	12.6%
18 to 64 years	685	183	34.5%	323	135	10.2%
65 years and over	78	NC	23.6%	131	NC	13.6%
Income in the past 12 months at or above poverty level:	2,163	285	63.6%	4,602	218	88.7%
Under 18 years	610	NC	56.3%	935	NC	87.4%
18 to 64 years	1,301	181	65.5%	2,834	134	89.8%
65 years and over	252	NC	76.4%	833	NC	86.4%

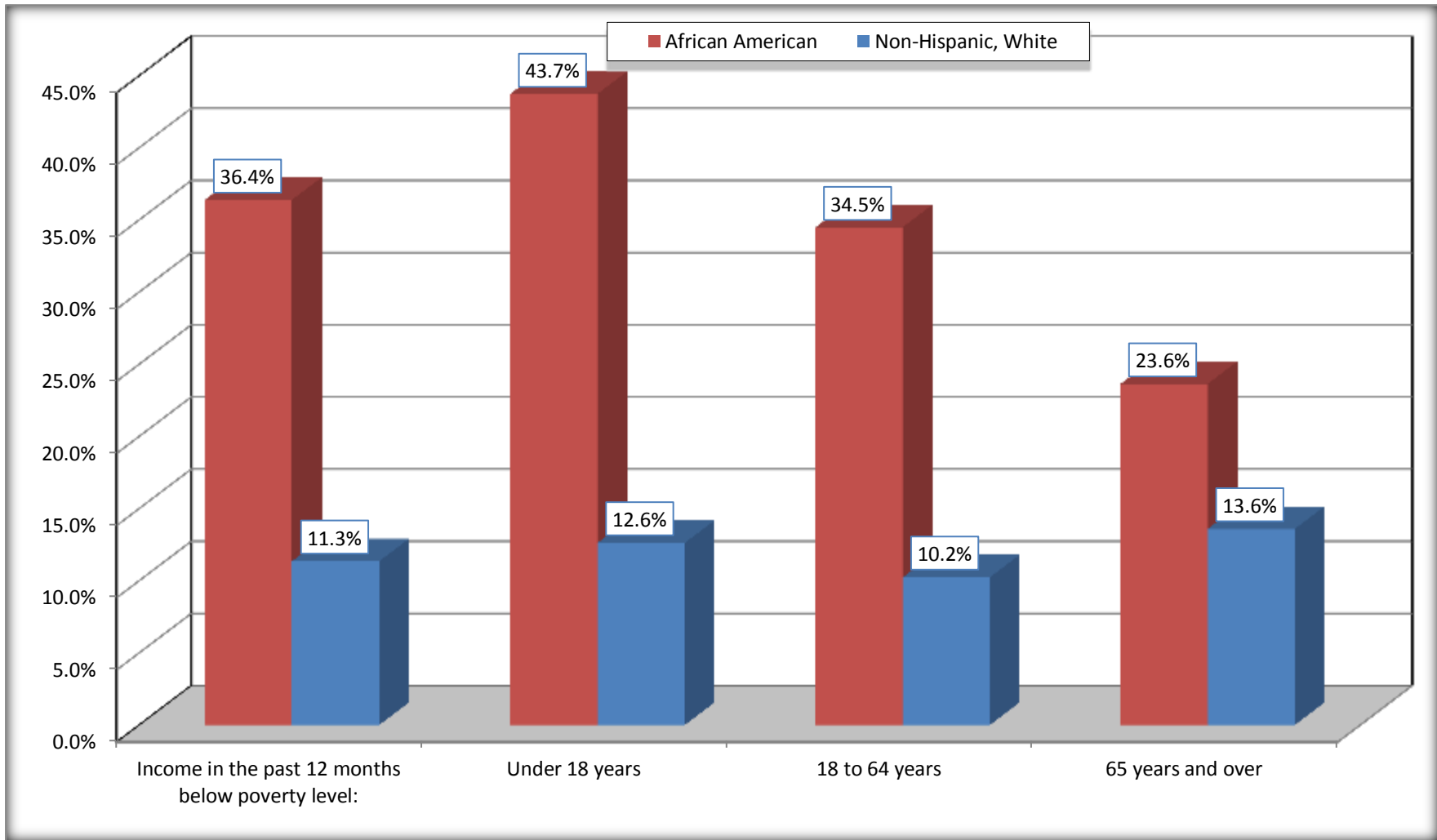
Source: U.S. Census Bureau, 2008-2012 American Community Survey

For information on confidentiality protection, sampling error, nonsampling error, and definitions, see Survey Methodology.

<http://www.census.gov/acs/www/UseData/index.htm>

Population Below Poverty in the Past 12 Months

Red River Parish, Louisiana



Source: B17020 POVERTY STATUS IN THE PAST 12 MONTHS BY AGE - Universe: POPULATION FOR WHOM POVERTY STATUS IS DETERMINED
Data Set: 2008-2012 American Community Survey 5-Year Estimates

B19001. HOUSEHOLD INCOME IN THE PAST 12 MONTHS (IN 2010 INFLATION-ADJUSTED DOLLARS)

Data Set: 2008-2012 American Community Survey 5-Year Estimates

	Red River Parish, Louisiana					
	African American	Margin of Error (+/-)	% of AA Total	White, Not Hispanic	Margin of Error (+/-)	% of NHW Total
Total:	1,058	115	100.0%	2,142	141	100.0%
Less than \$ 10,000	314	104	29.7%	160	59	7.5%
\$ 10,000 to \$ 14,999	87	49	8.2%	137	64	6.4%
\$ 15,000 to \$ 24,999	137	NC	12.9%	275	NC	12.8%
\$ 25,000 to \$ 34,999	164	NC	15.5%	192	NC	9.0%
\$ 35,000 to \$ 49,999	182	NC	17.2%	410	NC	19.1%
\$ 50,000 to \$ 74,999	94	NC	8.9%	390	NC	18.2%
\$ 75,000 to \$ 99,999	27	24	2.6%	280	85	13.1%
\$ 100,000 to \$ 149,999	47	NC	4.4%	155	NC	7.2%
\$ 150,000 to \$ 199,999	0	17	0.0%	85	58	4.0%
\$ 200,000 or more	6	10	0.6%	58	38	2.7%

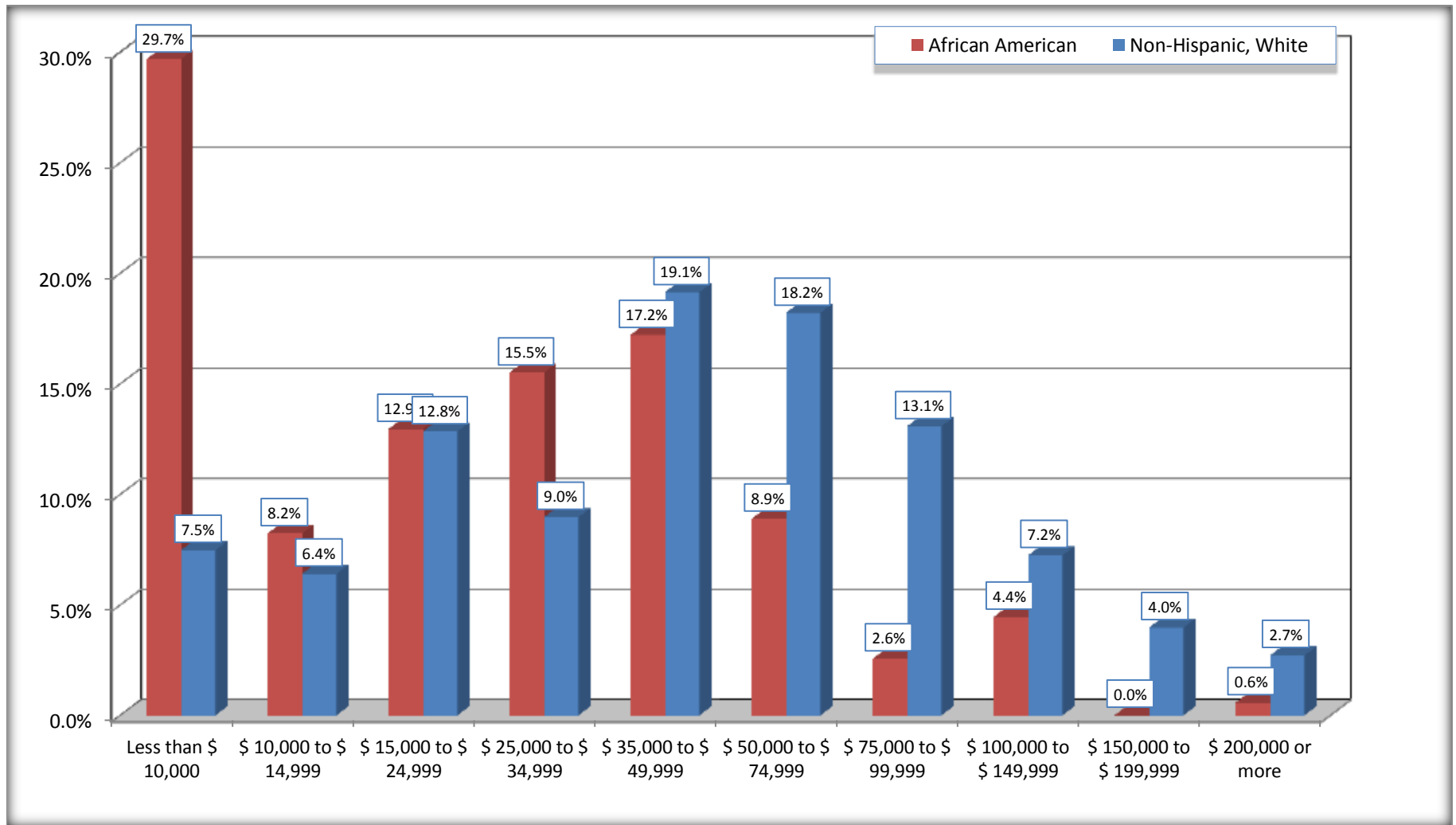
Source: U.S. Census Bureau, 2008-2012 American Community Survey

For information on confidentiality protection, sampling error, nonsampling error, and definitions, see Survey Methodology.

<http://www.census.gov/acs/www/UseData/index.htm>

Household Income in the Past 12 Months

Red River Parish, Louisiana



Source: B19001. HOUSEHOLD INCOME IN THE PAST 12 MONTHS (IN 2010 INFLATION-ADJUSTED DOLLARS)
Data Set: 2008-2012 American Community Survey 5-Year Estimates

B19013. MEDIAN HOUSEHOLD INCOME IN THE PAST 12 MONTHS (IN 2010 INFLATION-ADJUSTED DOLLARS)

Data Set: 2008-2012 American Community Survey 5-Year Estimates

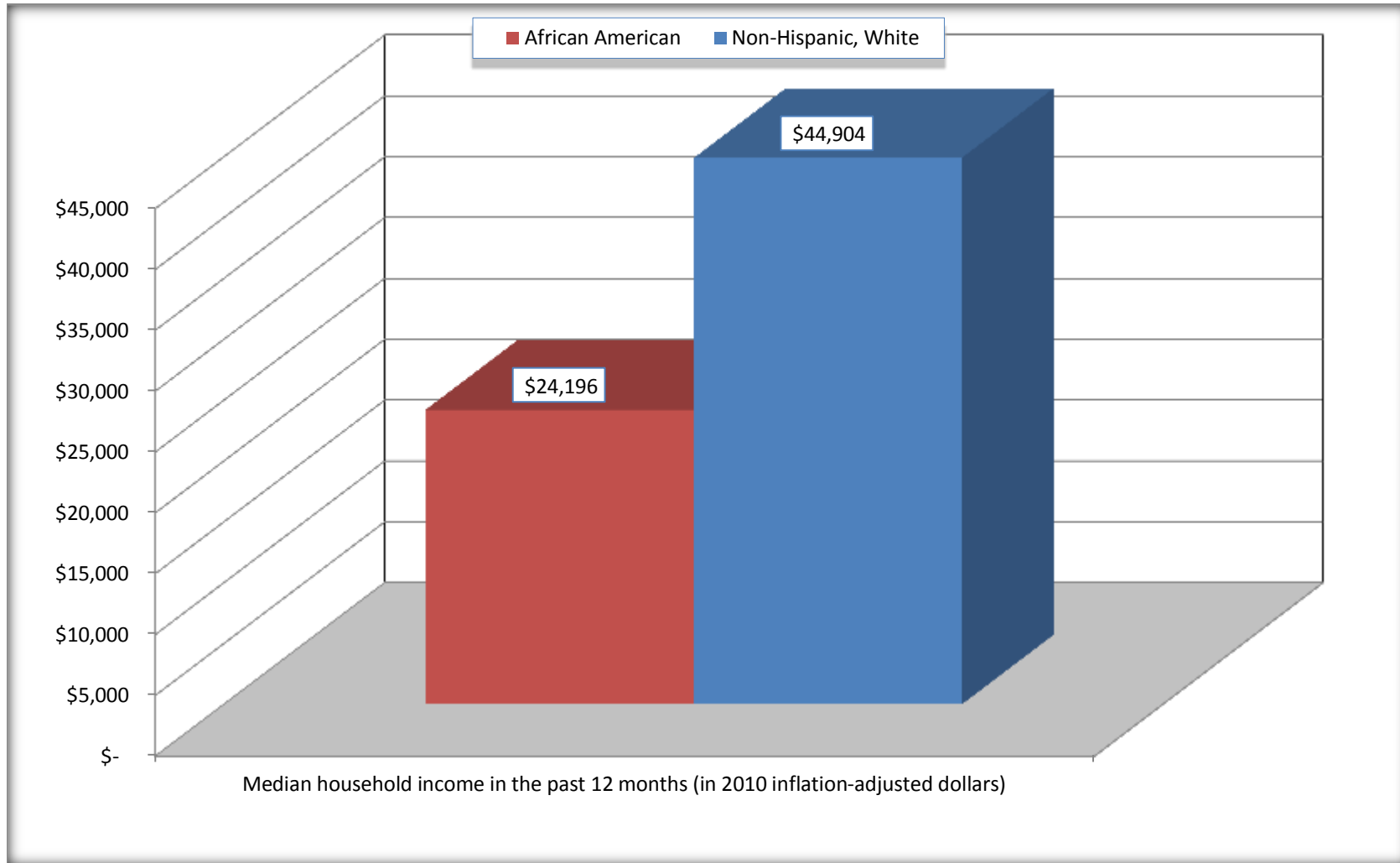
	Red River Parish, Louisiana			
	African American	Margin of Error (+/-)	White, Not Hispanic	Margin of Error (+/-)
Median household income in the past 12 months (in 2010 inflation-adjusted dollars)	\$ 24,196	\$ 7,159	\$ 44,904	\$ 5,547

Source: U.S. Census Bureau, 2008-2012 American Community Survey

For information on confidentiality protection, sampling error, nonsampling error, and definitions, see Survey Methodology.
<http://www.census.gov/acs/www/UseData/index.htm>

Median Household Income in the Past 12 Months

Red River Parish, Louisiana



Source: B19013. MEDIAN HOUSEHOLD INCOME IN THE PAST 12 MONTHS (IN 2010 INFLATION-ADJUSTED DOLLARS)
Data Set: 2008-2012 American Community Survey 5-Year Estimates

B19101. FAMILY INCOME IN THE PAST 12 MONTHS (IN 2010 INFLATION-ADJUSTED DOLLARS)

Data Set: 2008-2012 American Community Survey 5-Year Estimates

	Red River Parish, Louisiana					
	African American	Margin of Error (+/-)	% of AA Total	White, Not Hispanic	Margin of Error (+/-)	% of NHW Total
Total:	819	114	100.0%	1,516	127	100.0%
Less than \$ 10,000	211	84	25.8%	88	63	5.8%
\$ 10,000 to \$ 14,999	52	39	6.3%	26	21	1.7%
\$ 15,000 to \$ 24,999	98	NC	12.0%	148	NC	9.8%
\$ 25,000 to \$ 34,999	146	NC	17.8%	89	NC	5.9%
\$ 35,000 to \$ 49,999	173	NC	21.1%	299	NC	19.7%
\$ 50,000 to \$ 74,999	77	NC	9.4%	341	NC	22.5%
\$ 100,000 to \$ 149,999	47	NC	5.7%	144	NC	9.5%
\$ 150,000 to \$ 199,999	0	17	0.0%	78	57	5.1%
\$ 200,000 or more	6	10	0.7%	38	27	2.5%

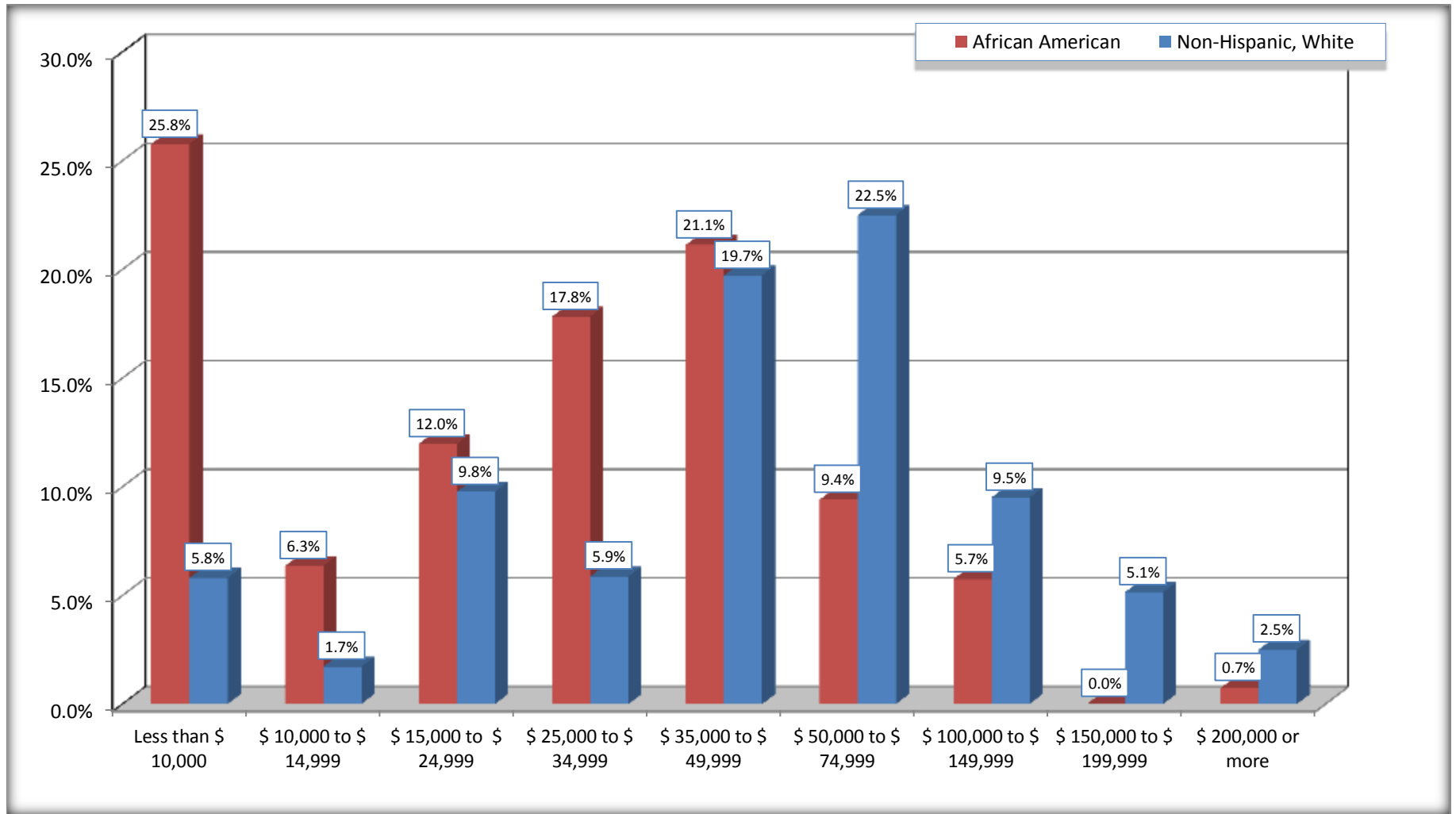
Source: U.S. Census Bureau, 2008-2012 American Community Survey

For information on confidentiality protection, sampling error, nonsampling error, and definitions, see Survey Methodology.

<http://www.census.gov/acs/www/UseData/index.htm>

Family Income in the Past 12 Months

Red River Parish, Louisiana



Source: B19101. FAMILY INCOME IN THE PAST 12 MONTHS (IN 2010 INFLATION-ADJUSTED DOLLARS)
Data Set: 2008-2012 American Community Survey 5-Year Estimates

B19113. MEDIAN FAMILY INCOME IN THE PAST 12 MONTHS (IN 2010 INFLATION-ADJUSTED DOLLARS)

Data Set: 2008-2012 American Community Survey 5-Year Estimates

	Red River Parish, Louisiana			
	African American	Margin of Error (+/-)	White, Not Hispanic	Margin of Error (+/-)
Median family income in the past 12 months (in 2010 inflation-adjusted dollars)	\$ 27,865	\$ 5,958	\$ 56,778	\$ 9,386

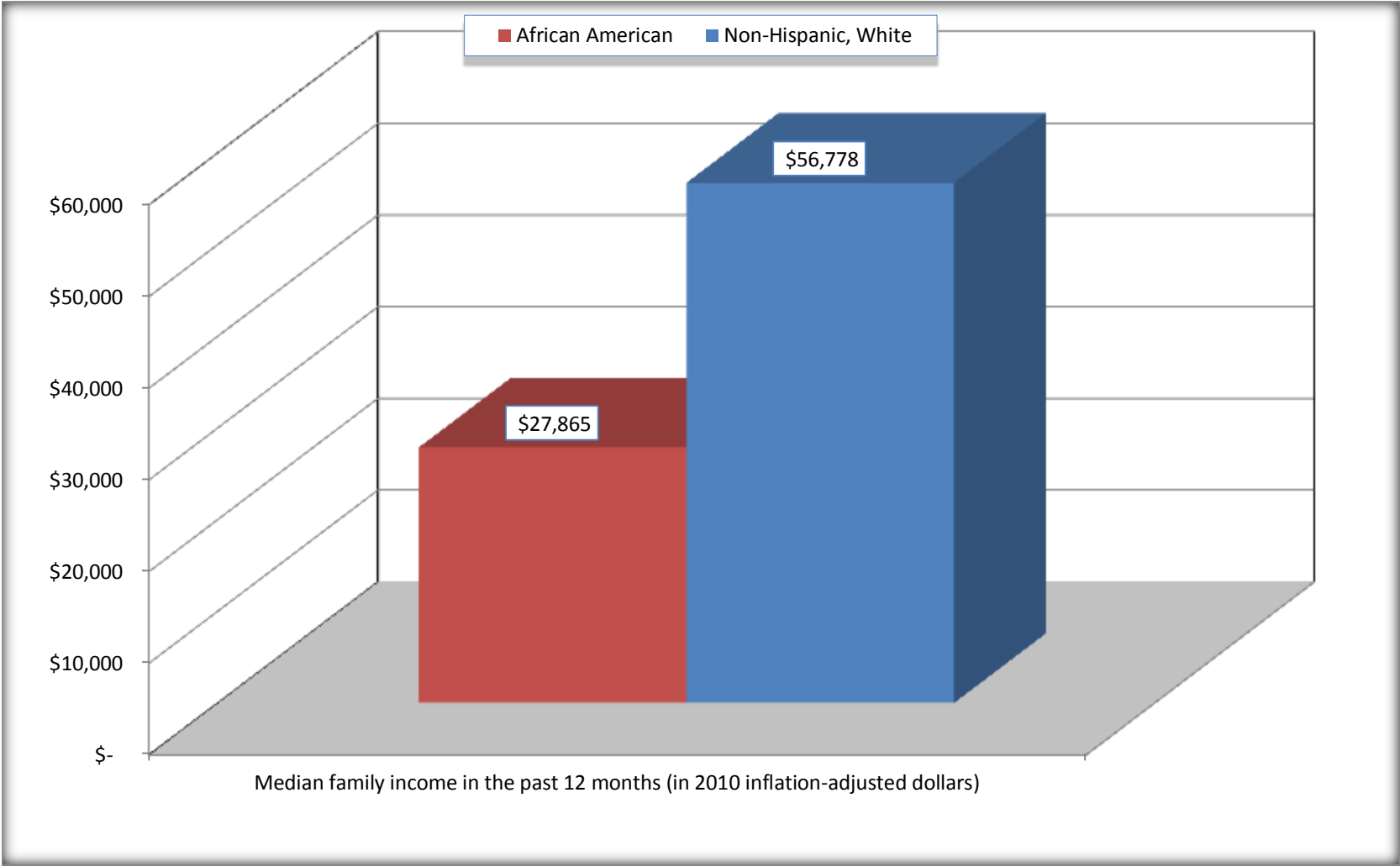
Source: U.S. Census Bureau, 2008-2012 American Community Survey

For information on confidentiality protection, sampling error, nonsampling error, and definitions, see Survey Methodology.

<http://www.census.gov/acs/www/UseData/index.htm>

Median Family Income in the Past 12 Months

Red River Parish, Louisiana



Source: B19113. MEDIAN FAMILY INCOME IN THE PAST 12 MONTHS (IN 2010 INFLATION-ADJUSTED DOLLARS)
Data Set: 2008-2012 American Community Survey 5-Year Estimates

B19202. MEDIAN NONFAMILY HOUSEHOLD INCOME IN THE PAST 12 MONTHS (IN 2010 INFLATION-ADJUSTED DOLLARS)

Data Set: 2008-2012 American Community Survey 5-Year Estimates

	Red River Parish, Louisiana			
	African American	Margin of Error (+/-)	White, Not Hispanic	Margin of Error (+/-)
Median nonfamily household income in the past 12 months (in 2010 inflation-adjusted dollars)	\$ 9,505	\$ 1,785	\$ 21,630	\$ 5,566

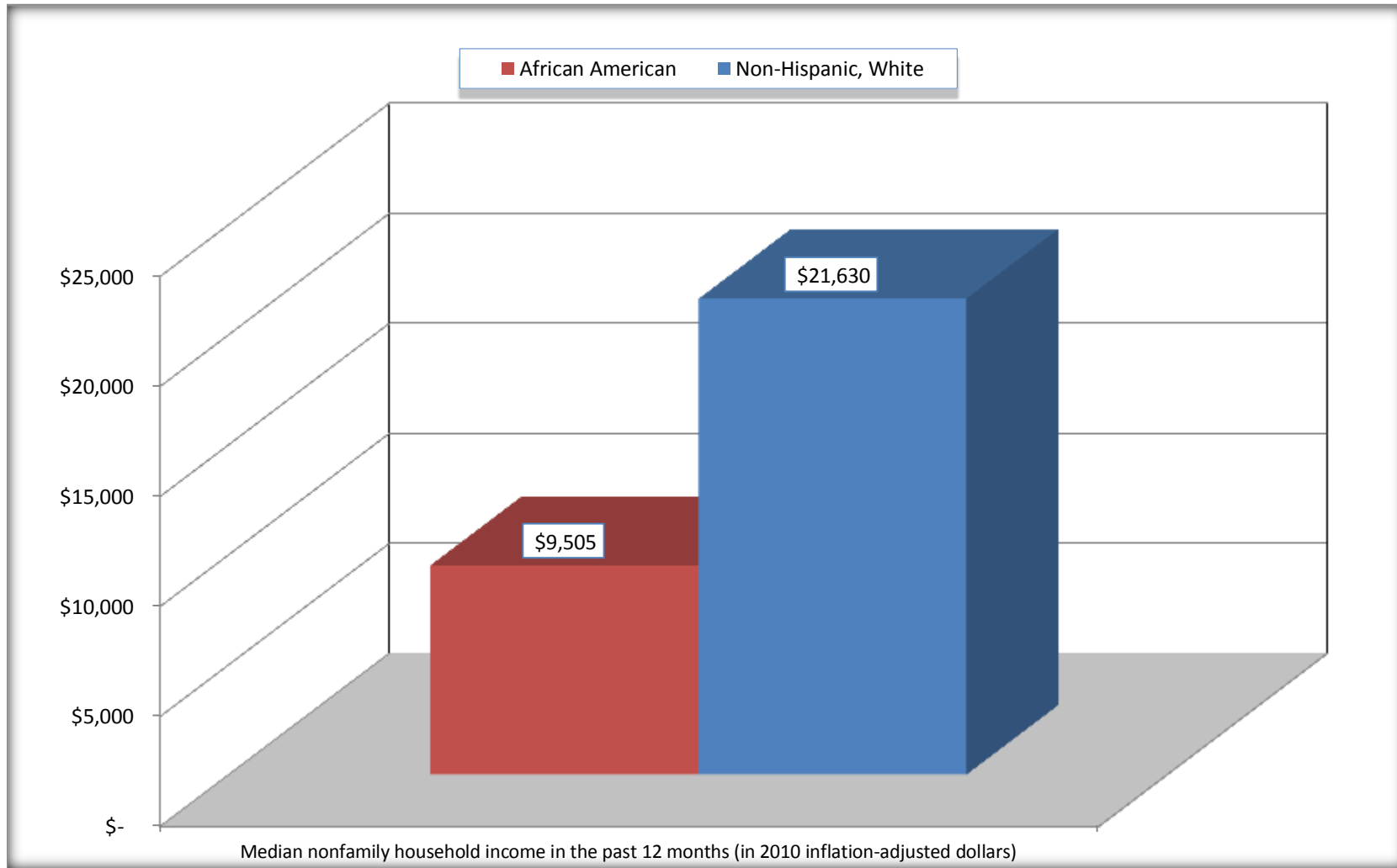
Source: U.S. Census Bureau, 2008-2012 American Community Survey

For information on confidentiality protection, sampling error, nonsampling error, and definitions, see Survey Methodology.

<http://www.census.gov/acs/www/UseData/index.htm>

Median Non-Family Income in the Past 12 Months

Red River Parish, Louisiana



Source: B19202. MEDIAN NONFAMILY HOUSEHOLD INCOME IN THE PAST 12 MONTHS (IN 2010 INFLATION-ADJUSTED DOLLARS)
Data Set: 2008-2012 American Community Survey 5-Year Estimates

B19301. PER CAPITA INCOME IN THE PAST 12 MONTHS (IN 2010 INFLATION-ADJUSTED DOLLARS)

Data Set: 2008-2012 American Community Survey 5-Year Estimates

	Red River Parish, Louisiana			
	African American	Margin of Error (+/-)	White, Not Hispanic	Margin of Error (+/-)
Per capita income in the past 12 months (in 2010 inflation-adjusted dollars)	\$ 11,164	\$ 2,187	\$ 25,695	\$ 3,220

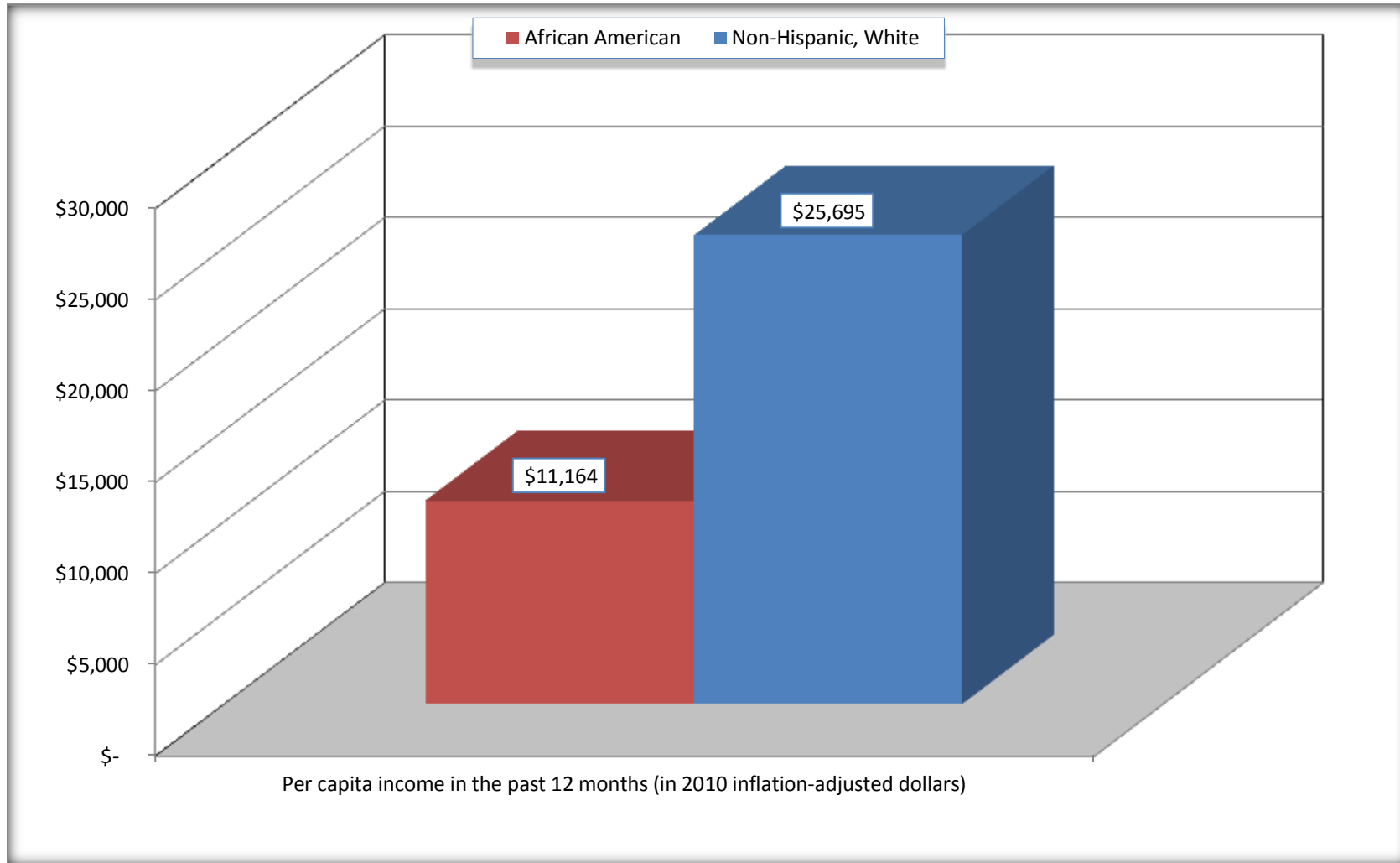
Source: U.S. Census Bureau, 2008-2012 American Community Survey

For information on confidentiality protection, sampling error, nonsampling error, and definitions, see Survey Methodology.

<http://www.census.gov/acs/www/UseData/index.htm>

Per capita Income in the Past 12 Months

Red River Parish, Louisiana



Source: B19301. PER CAPITA INCOME IN THE PAST 12 MONTHS (IN 2010 INFLATION-ADJUSTED DOLLARS)
Data Set: 2008-2012 American Community Survey 5-Year Estimates

B20017. MEDIAN EARNINGS IN THE PAST 12 MONTHS (IN 2010 INFLATION-ADJUSTED DOLLARS) BY SEX BY WORK EXPERIENCE IN THE PAST 12 MONTHS FOR THE POPULATION 16 YEARS AND OVER WITH EARNINGS IN THE PAST 12 MONTHS

Data Set: 2008-2012 American Community Survey 5-Year Estimates

	Red River Parish, Louisiana			
	African American	Margin of Error (+/-)	White, Not Hispanic	Margin of Error (+/-)
Median earnings in the past 12 months (in 2010 inflation-adjusted dollars) --				
Total:	\$ 17,289	\$ 1,559	\$ 31,646	\$ 2,947
Male --				
Total	\$ 22,738	\$ 6,382	\$ 36,841	\$ 8,568
Worked full-time, year-round in the past 12 months	\$ 32,879	\$ 5,626	\$ 45,139	\$ 8,026
Other	\$ 7,969	\$ 3,569	\$ 8,281	\$ 7,223
Female --				
Total	\$ 15,912	\$ 1,222	\$ 24,308	\$ 3,219
Worked full-time, year-round in the past 12 months	\$ 17,625	\$ 2,195	\$ 33,291	\$ 8,013
Other	\$ 6,921	\$ 2,548	\$ 12,705	\$ 5,027

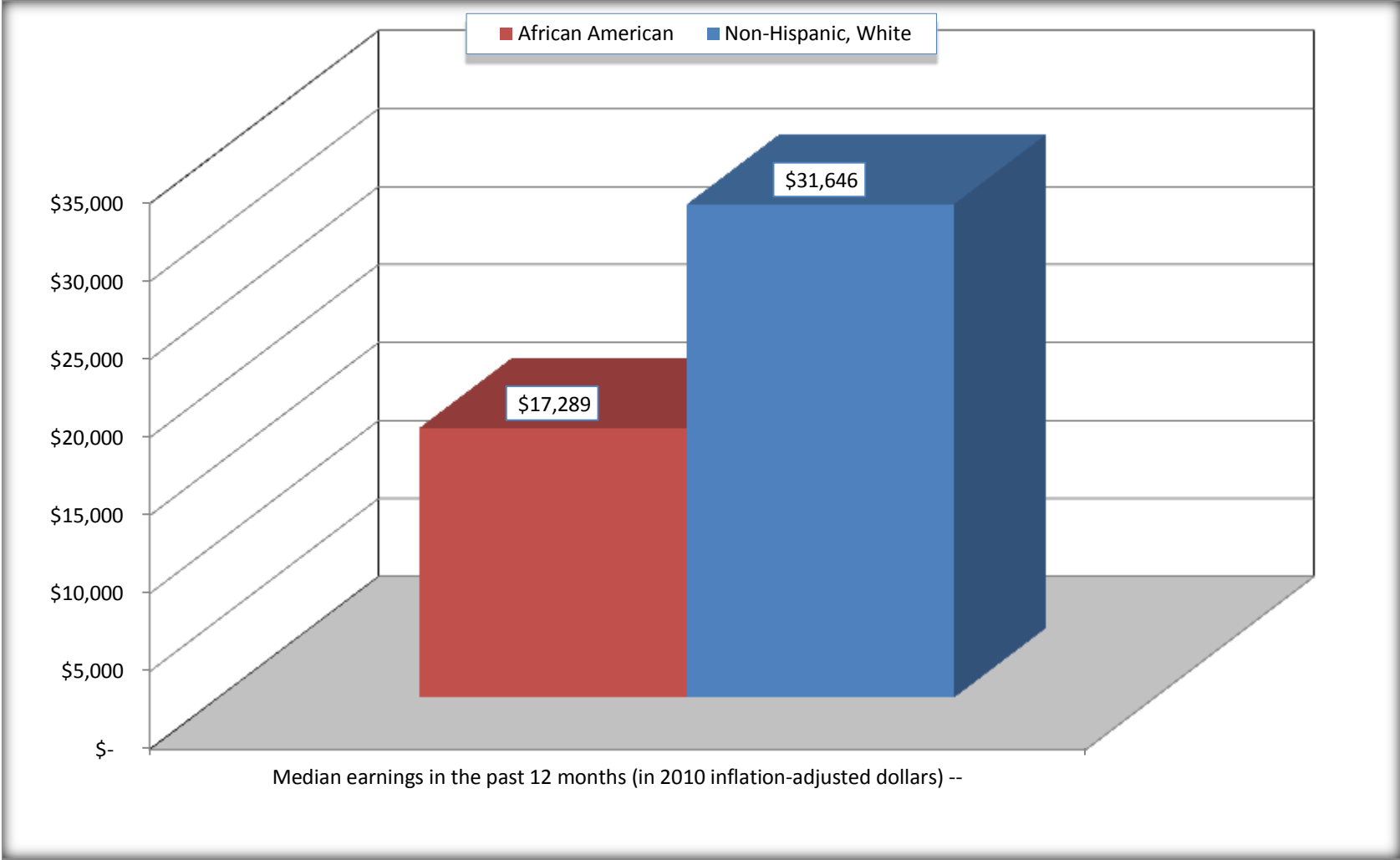
Source: U.S. Census Bureau, 2008-2012 American Community Survey

For information on confidentiality protection, sampling error, nonsampling error, and definitions, see Survey Methodology.

<http://www.census.gov/acs/www/UseData/index.htm>

Median earnings in the Past 12 Months (16 Years and Over with Earnings)

Red River Parish, Louisiana



Source: B20017. MEDIAN EARNINGS IN THE PAST 12 MONTHS (IN 2010 INFLATION-ADJUSTED DOLLARS) BY SEX BY WORK EXPERIENCE IN THE PAST 12 MONTHS FOR THE POPULATION 16 YEARS AND OVER WITH EARNINGS IN THE PAST 12 MONTHS
Data Set: 2008-2012 American Community Survey 5-Year Estimates

B20005. SEX BY WORK EXPERIENCE IN THE PAST 12 MONTHS BY EARNINGS IN THE PAST 12 MONTHS (IN 2010 INFLATION-ADJUSTED DOLLARS) FOR THE POPULATION 16 YEARS AND OVER

Data Set: 2008-2012 American Community Survey 5-Year Estimates

	Red River Parish, Louisiana					
	African American	Margin of Error (+/-)	% of AA Total	White, Not Hispanic	Margin of Error (+/-)	% of NHW Total
Total:	2,582	53	100.0%	4,329	24	100.0%
Worked full-time, year-round in the past 12 months:	686	NC	26.6%	1,701	NC	39.3%
No earnings	0	NC	0.0%	0	NC	0.0%
With earnings:	686	NC	26.6%	1,701	NC	39.3%
\$ 1 to \$ 9,999 or loss	25	NC	1.0%	31	NC	0.7%
\$ 10,000 to \$ 19,999	282	NC	10.9%	204	NC	4.7%
\$ 20,000 to \$ 29,999	123	NC	4.8%	294	NC	6.8%
\$ 30,000 to \$ 49,999	159	NC	6.2%	539	NC	12.5%
\$ 50,000 to \$ 74,999	47	NC	1.8%	404	NC	9.3%
\$ 75,000 or more	50	NC	1.9%	229	NC	5.3%
Other:	1,896	NC	73.4%	2,628	NC	60.7%
No earnings	1,483	NC	57.4%	1,816	NC	41.9%
With earnings: less than full time, year-round	413	NC	16.0%	812	NC	18.8%
Male:	1,138	42	44.1%	2,081	37	48.1%
Worked full-time, year-round in the past 12 months:	370	82	14.3%	1,114	139	25.7%
No earnings	0	17	0.0%	0	17	0.0%
With earnings:	370	82	14.3%	1,114	139	25.7%
\$ 1 to \$ 9,999 or loss	10	NC	0.4%	18	NC	0.4%
\$ 10,000 to \$ 19,999	82	NC	3.2%	112	NC	2.6%
\$ 20,000 to \$ 29,999	70	NC	2.7%	131	NC	3.0%
\$ 30,000 to \$ 49,999	140	NC	5.4%	350	NC	8.1%
\$ 50,000 to \$ 74,999	18	NC	0.7%	298	NC	6.9%
\$ 75,000 or more	50	NC	1.9%	205	NC	4.7%

	Red River Parish, Louisiana					
	African American	Margin of Error (+/-)	% of AA Total	White, Not Hispanic	Margin of Error (+/-)	% of NHW Total
Other:	768	89	29.7%	967	144	22.3%
No earnings	564	118	21.8%	606	113	14.0%
With earnings:	204	72	7.9%	361	93	8.3%
Female:	1,444	29	55.9%	2,248	37	51.9%
Worked full-time, year-round in the past 12 months:	316	101	12.2%	587	120	13.6%
No earnings	0	17	0.0%	0	17	0.0%
With earnings:	316	101	12.2%	587	120	13.6%
\$ 1 to \$ 9,999 or loss	15	NC	0.6%	13	NC	0.3%
\$ 10,000 to \$ 19,999	200	NC	7.7%	92	NC	2.1%
\$ 20,000 to \$ 29,999	53	NC	2.1%	163	NC	3.8%
\$ 30,000 to \$ 49,999	19	NC	0.7%	189	NC	4.4%
\$ 50,000 to \$ 74,999	29	NC	1.1%	106	NC	2.4%
\$ 75,000 or more	0	NC	0.0%	24	NC	0.6%
Other:	1,128	94	43.7%	1,661	128	38.4%
No earnings	919	109	35.6%	1,210	141	28.0%
With earnings:	209	74	8.1%	451	101	10.4%

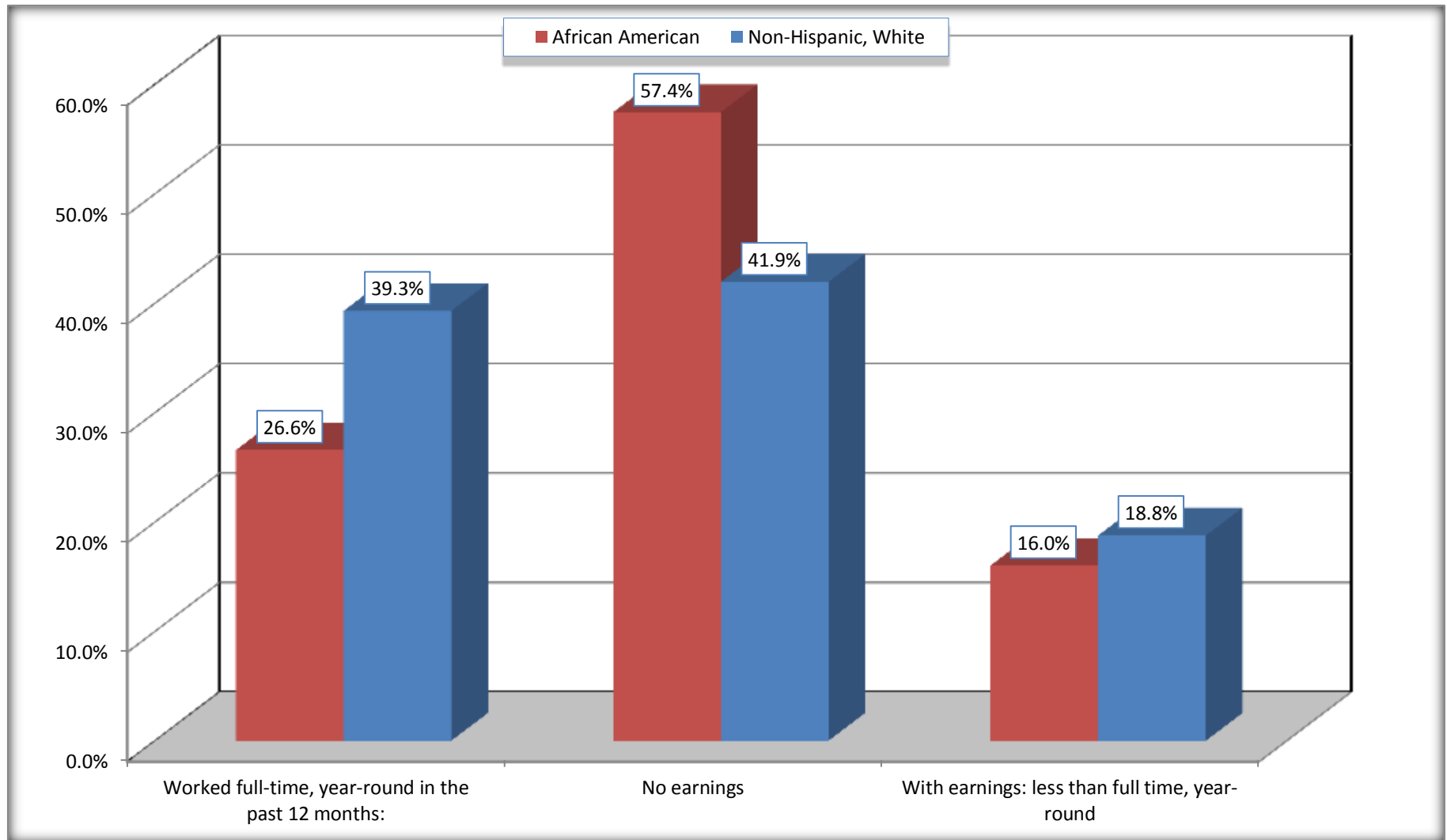
Source: U.S. Census Bureau, 2008-2012 American Community Survey

For information on confidentiality protection, sampling error, nonsampling error, and definitions, see Survey Methodology.

<http://www.census.gov/acs/www/UseData/index.htm>

Employment and Earnings in in the Past 12 Months (16 Years and Over)

Red River Parish, Louisiana



Source: B20005. SEX BY WORK EXPERIENCE IN THE PAST 12 MONTHS BY EARNINGS IN THE PAST 12 MONTHS (IN 2010 INFLATION-ADJUSTED DOLLARS) FOR THE POPULATION 16 YEARS AND OVER

Data Set: 2008-2012 American Community Survey 5-Year Estimates

C21001. SEX BY AGE BY VETERAN STATUS FOR THE CIVILIAN POPULATION 18 YEARS AND OVER

Data Set: 2008-2012 American Community Survey 5-Year Estimates

	Red River Parish, Louisiana					
	African American	Margin of Error (+/-)	% of AA Total	White, Not Hispanic	Margin of Error (+/-)	% of NHW Total
Total:	2,434	45	100.0%	4,182	2	100.0%
Veteran	91	NC	3.7%	475	NC	11.4%
Nonveteran	2,343	NC	96.3%	3,707	NC	88.6%
Male:	1,078	31	44.3%	2,023	2	48.4%
18 to 64 years:	946	31	38.9%	1,584	2	37.9%
Veteran	62	38	2.5%	223	88	5.3%
Nonveteran	884	50	36.3%	1,361	88	32.5%
65 years and over:	132	3	5.4%	439	17	10.5%
Veteran	20	18	0.8%	225	60	5.4%
Nonveteran	112	18	4.6%	214	60	5.1%
Female:	1,356	27	55.7%	2,159	17	51.6%
18 to 64 years:	1,107	27	45.5%	1,597	17	38.2%
Veteran	9	17	0.4%	13	17	0.3%
Nonveteran	1,098	32	45.1%	1,584	17	37.9%
65 years and over:	249	17	10.2%	562	17	13.4%
Veteran	0	17	0.0%	14	16	0.3%
Nonveteran	249	17	10.2%	548	16	13.1%

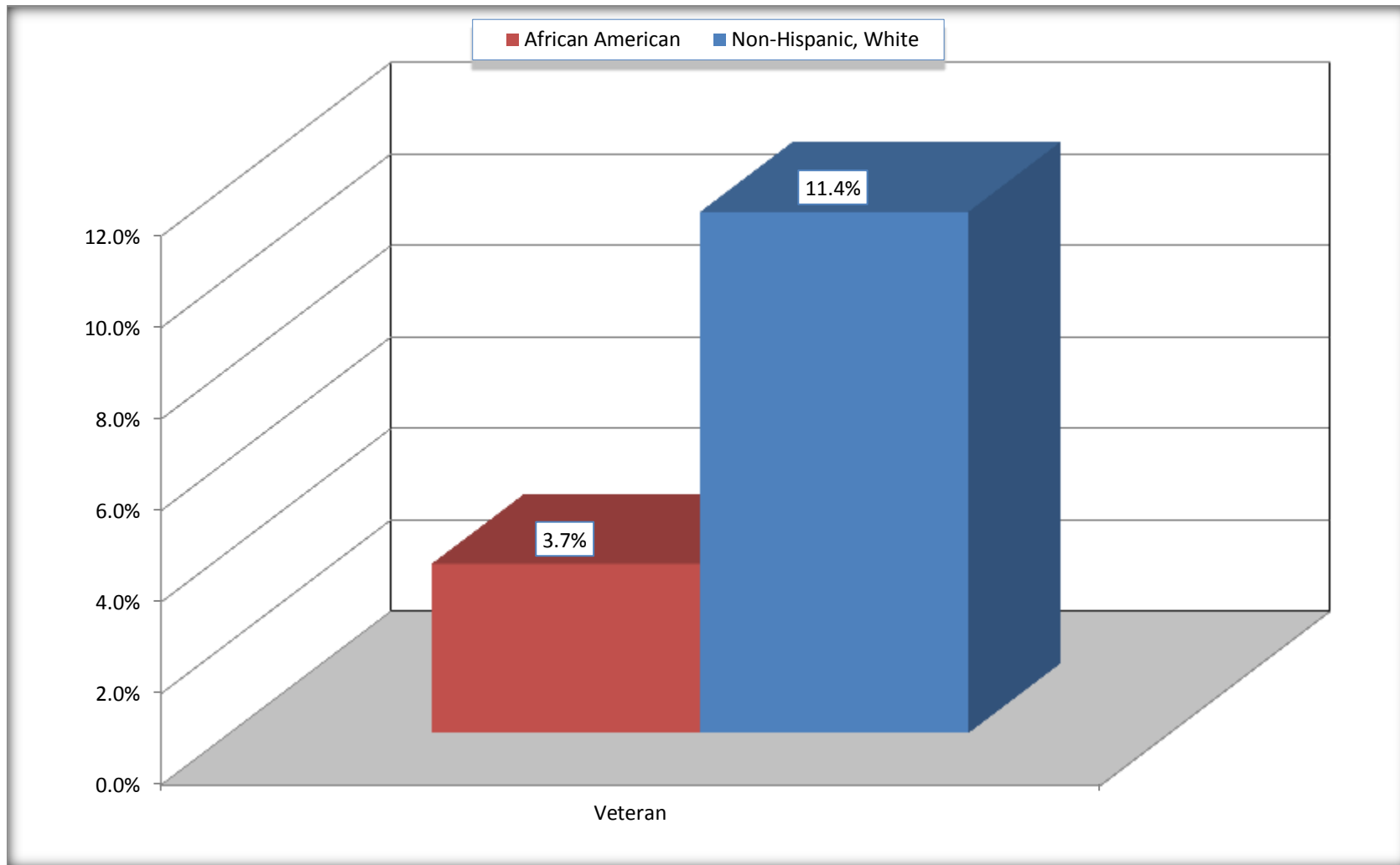
Source: U.S. Census Bureau, 2008-2012 American Community Survey

For information on confidentiality protection, sampling error, nonsampling error, and definitions, see Survey Methodology.

<http://www.census.gov/acs/www/UseData/index.htm>

Veterans in the Civilian Population 18 Years and Over

Red River Parish, Louisiana



Source: C21001. SEX BY AGE BY VETERAN STATUS FOR THE CIVILIAN POPULATION 18 YEARS AND OVER
Data Set: 2008-2012 American Community Survey 5-Year Estimates

B22005. RECEIPT OF FOOD STAMPS/SNAP IN THE PAST 12 MONTHS BY RACE OF HOUSEHOLDER

Data Set: 2008-2012 American Community Survey 5-Year Estimates

	Red River Parish, Louisiana					
	African American	Margin of Error (+/-)	% of AA Total	White, Not Hispanic	Margin of Error (+/-)	% of NHW Total
Total:	1,058	115	100.0%	2,142	141	100.0%
HH received Food Stamps/SNAP in the past 12 months	515	122	48.7%	136	59	6.3%
HH did not receive Food Stamps/SNAP in the past 12 months	543	98	51.3%	2,006	147	93.7%

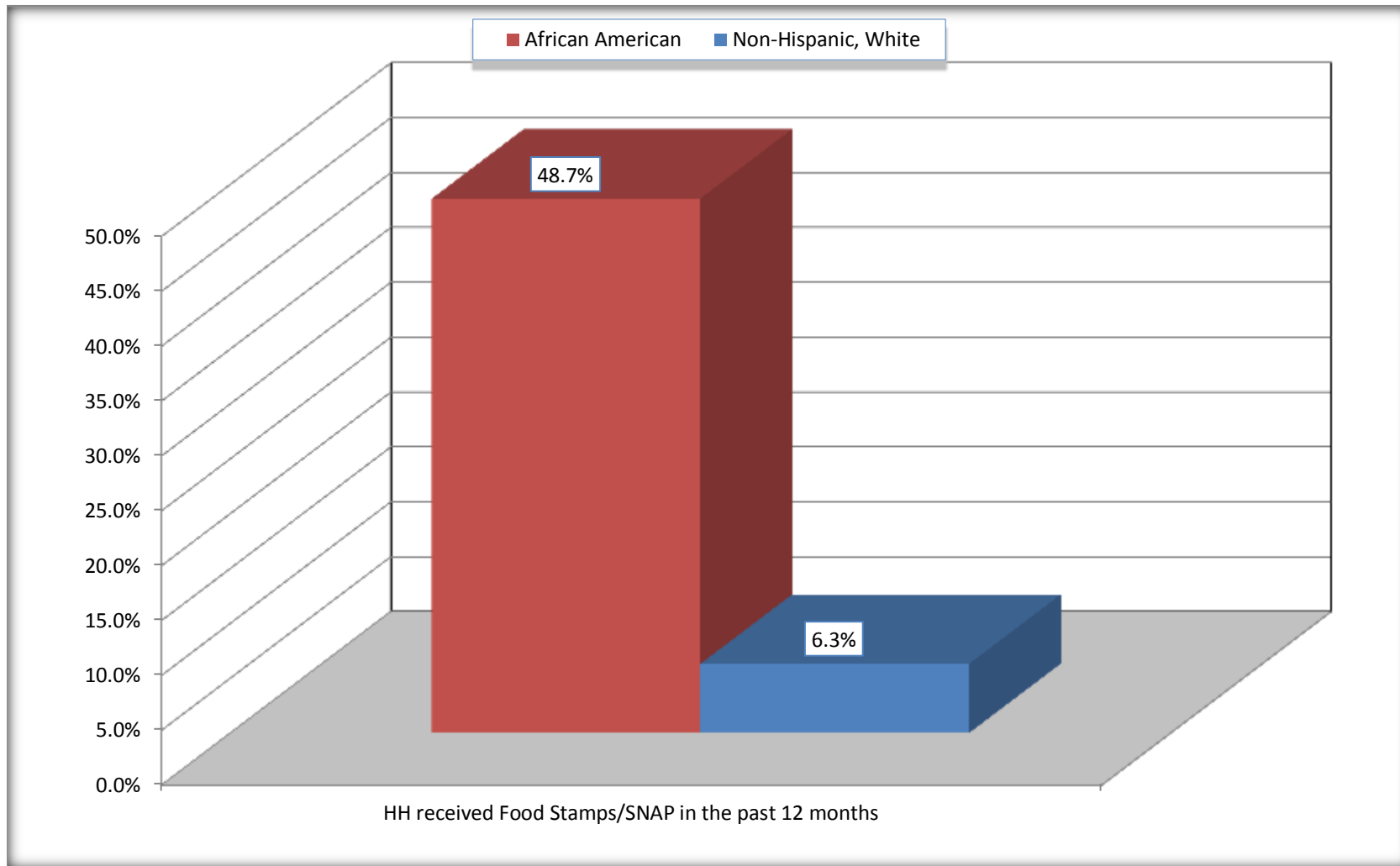
Source: U.S. Census Bureau, 2008-2012 American Community Survey

For information on confidentiality protection, sampling error, nonsampling error, and definitions, see Survey Methodology.

<http://www.census.gov/acs/www/UseData/index.htm>

Receipt of Food Stamps/SNAP in the Past 12 Months by Household

Red River Parish, Louisiana



Source: B22005. RECEIPT OF FOOD STAMPS/SNAP IN THE PAST 12 MONTHS BY RACE OF HOUSEHOLDER
Data Set: 2008-2012 American Community Survey 5-Year Estimates

C23002. SEX BY AGE BY EMPLOYMENT STATUS FOR THE POPULATION 16 YEARS AND OVER

Data Set: 2008-2012 American Community Survey 5-Year Estimates

	Red River Parish, Louisiana					
	African American	Margin of Error (+/-)	% of AA Total	White, Not Hispanic	Margin of Error (+/-)	% of NHW Total
Total:	2,582	53	100.0%	4,329	24	100.0%
In labor force:	1,212	NC	46.9%	2,342	NC	54.1%
In Armed Forces	0	NC	0.0%	1	NC	0.0%
Civilian:	1,162	NC	45.0%	2,200	NC	50.8%
Employed	958	NC	37.1%	2,159	NC	49.9%
Unemployed	254	NC	9.8%	182	NC	4.2%
Not in labor force	1,370	NC	53.1%	1,987	NC	45.9%
Male:	1,138	42	44.1%	2,081	37	48.1%
16 to 64 years:	1,006	41	39.0%	1,642	37	37.9%
In labor force:	634	73	24.6%	1,325	95	30.6%
In Armed Forces	0	17	0.0%	1	2	0.0%
Civilian:	634	73	24.6%	1,324	95	30.6%
Employed	506	99	19.6%	1216	100	28.1%
Unemployed	128	66	5.0%	108	59	2.5%
Not in labor force	372	81	14.4%	317	109	7.3%
65 years and over:	132	3	5.1%	439	17	10.1%
In labor force:	21	23	0.8%	119	56	2.7%
Employed	21	23	0.8%	90	52	2.1%
Unemployed	0	17	0.0%	29	32	0.7%
Not in labor force	111	23	4.3%	320	56	7.4%

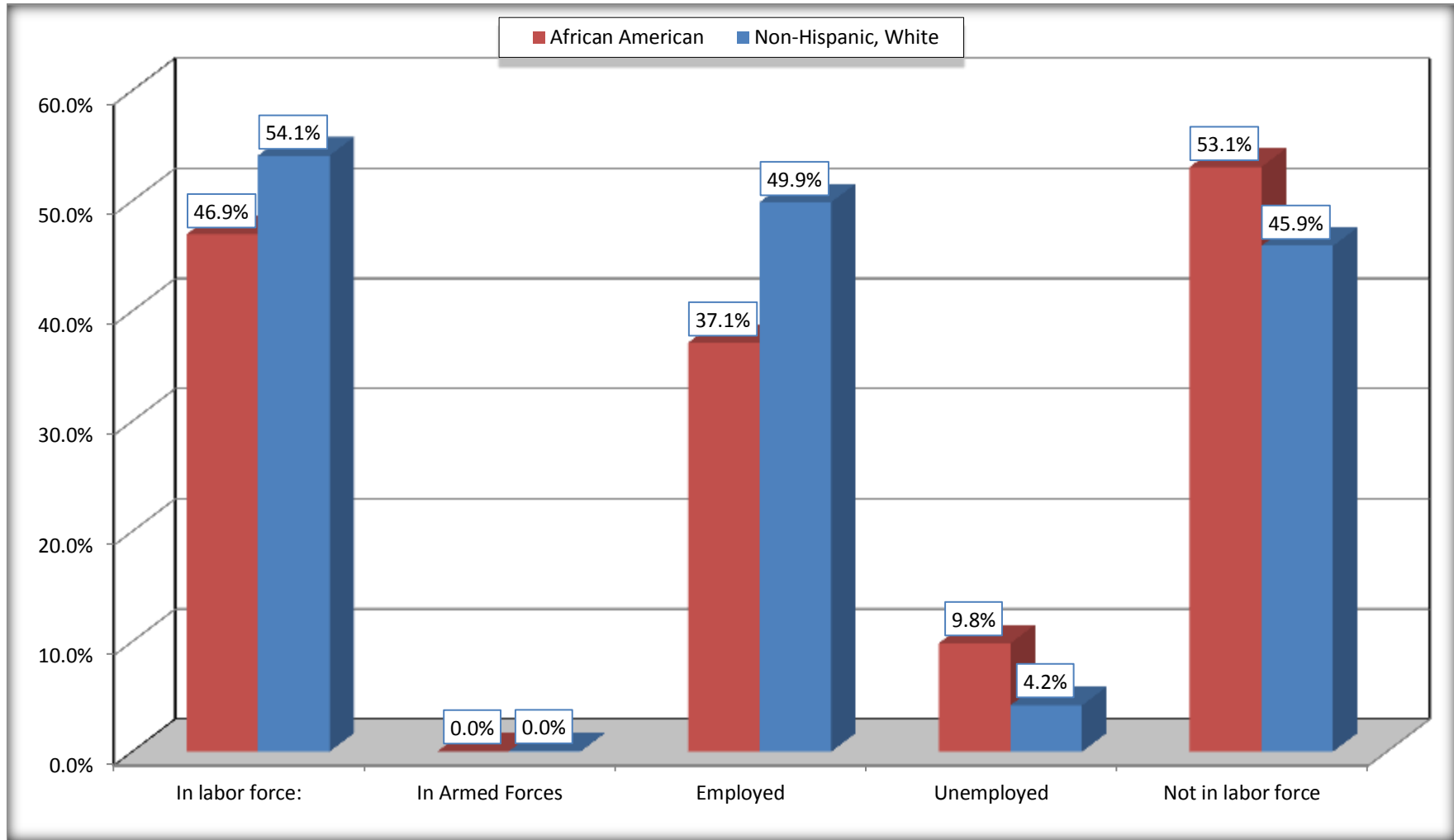
	Red River Parish, Louisiana					
	African American	Margin of Error (+/-)	% of AA Total	White, Not Hispanic	Margin of Error (+/-)	% of NHW Total
Female:	1,444	29	55.9%	2,248	37	51.9%
16 to 64 years:	1,195	29	46.3%	1,686	37	38.9%
In labor force:	528	96	20.4%	876	133	20.2%
In Armed Forces	0	17	0.0%	0	17	0.0%
Civilian:	528	96	20.4%	876	133	20.2%
Employed	402	92	15.6%	831	130	19.2%
Unemployed	126	67	4.9%	45	31	1.0%
Not in labor force	667	90	25.8%	810	142	18.7%
65 years and over:	249	17	9.6%	562	17	13.0%
In labor force:	29	30	1.1%	22	24	0.5%
Employed	29	30	1.1%	22	24	0.5%
Unemployed	0	17	0.0%	0	17	0.0%
Not in labor force	220	30	8.5%	540	24	12.5%

Source: U.S. Census Bureau, 2008-2012 American Community Survey

For information on confidentiality protection, sampling error, nonsampling error, and definitions, see Survey Methodology.
<http://www.census.gov/acs/www/UseData/index.htm>

Employment Status for the Population 16 years and over

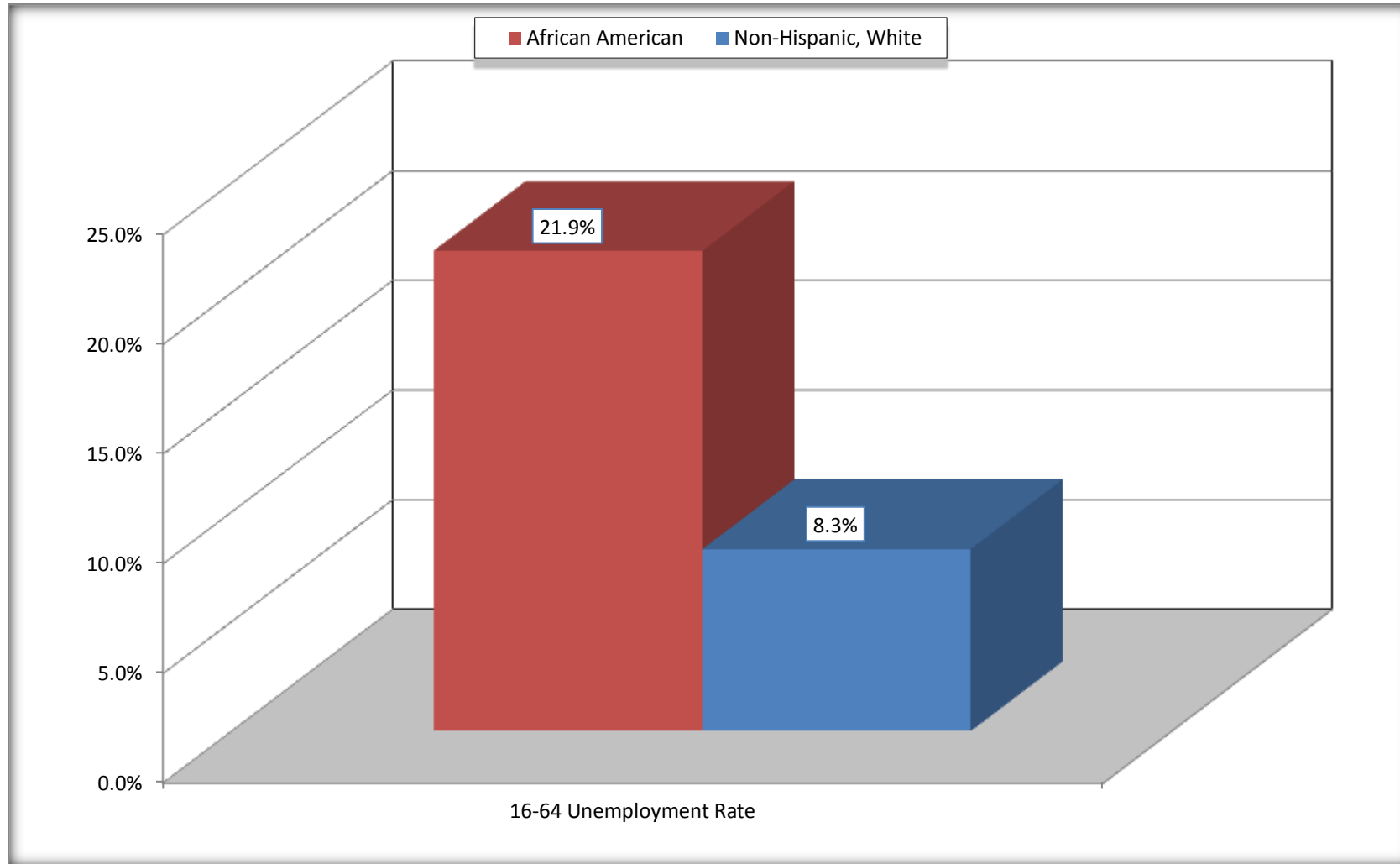
Red River Parish, Louisiana



Source: C23002. SEX BY AGE BY EMPLOYMENT STATUS FOR THE POPULATION 16 YEARS AND OVER
Data Set: 2008-2012 American Community Survey 5-Year Estimates

Unemployment of Working Age Population (Ages 16 to 64) (As a Percent of 16-64 Civilian Labor Force)

Red River Parish, Louisiana



Source: C23002. SEX BY AGE BY EMPLOYMENT STATUS FOR THE POPULATION 16 YEARS AND OVER
Data Set: 2008-2012 American Community Survey 5-Year Estimates

C24010. SEX BY OCCUPATION FOR THE CIVILIAN EMPLOYED POPULATION 16 YEARS AND OVER

Data Set: 2008-2012 American Community Survey 5-Year Estimates

	Red River Parish, Louisiana					
	African American	Margin of Error (+/-)	% of AA Total	White, Not Hispanic	Margin of Error (+/-)	% of NHW Total
Total:	958	148	100.0%	2,159	191	100.0%
Management, professional, and related occupations	180	NC	18.8%	565	NC	26.2%
Service occupations	385	NC	40.2%	248	NC	11.5%
Sales and office occupations	80	NC	8.4%	620	NC	28.7%
Natural resources, construction, and maintenance occupations:	119	NC	12.4%	493	NC	22.8%
Production, transportation, and material moving occupations	194	NC	20.3%	233	NC	10.8%
Male:	527	102	55.0%	1,306	127	60.5%
Management, business, science, and arts occupations:	69	42	7.2%	295	106	13.7%
Service occupations	132	54	13.8%	104	61	4.8%
Sales and office occupations	41	40	4.3%	205	62	9.5%
Natural resources, construction, and maintenance occupations:	119	60	12.4%	493	107	22.8%
Production, transportation, and material moving occupations	166	66	17.3%	209	66	9.7%
Female:	431	108	45.0%	853	131	39.5%
Management, professional, and related occupations	111	52	11.6%	270	95	12.5%
Service occupations	253	90	26.4%	144	90	6.7%
Sales and office occupations	39	32	4.1%	415	121	19.2%
Natural resources, construction, and maintenance occupations:	0	17	0.0%	0	17	0.0%
Production, transportation, and material moving occupations	28	26	2.9%	24	20	1.1%

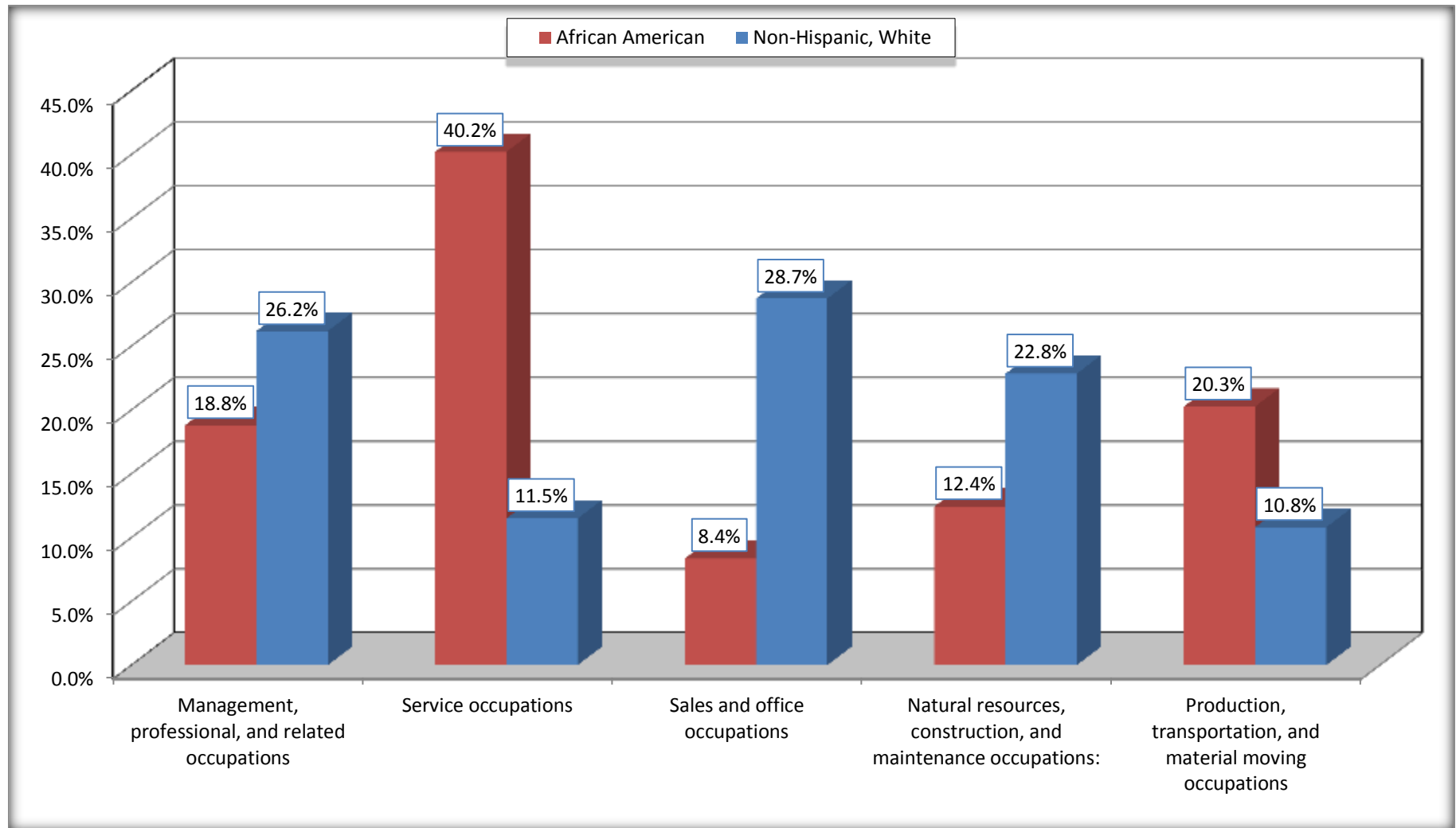
Source: U.S. Census Bureau, 2008-2012 American Community Survey

For information on confidentiality protection, sampling error, nonsampling error, and definitions, see Survey Methodology.

<http://www.census.gov/acs/www/UseData/index.htm>

Occupation for the Civilian Employed 16 Years and Over Population

Red River Parish, Louisiana



Source: C24010. SEX BY OCCUPATION FOR THE CIVILIAN EMPLOYED POPULATION 16 YEARS AND OVER
Data Set: 2008-2012 American Community Survey 5-Year Estimates

B25003. TENURE - Universe: OCCUPIED HOUSING UNITS

Data Set: 2008-2012 American Community Survey 5-Year Estimates

	Red River Parish, Louisiana					
	African American	Margin of Error (+/-)	% of AA Total	White, Not Hispanic	Margin of Error (+/-)	% of NHW Total
Total:	1,058	115	100.0%	2,142	141	100.0%
Owner occupied	614	101	58.0%	1,848	164	86.3%
Renter occupied	444	98	42.0%	294	105	13.7%

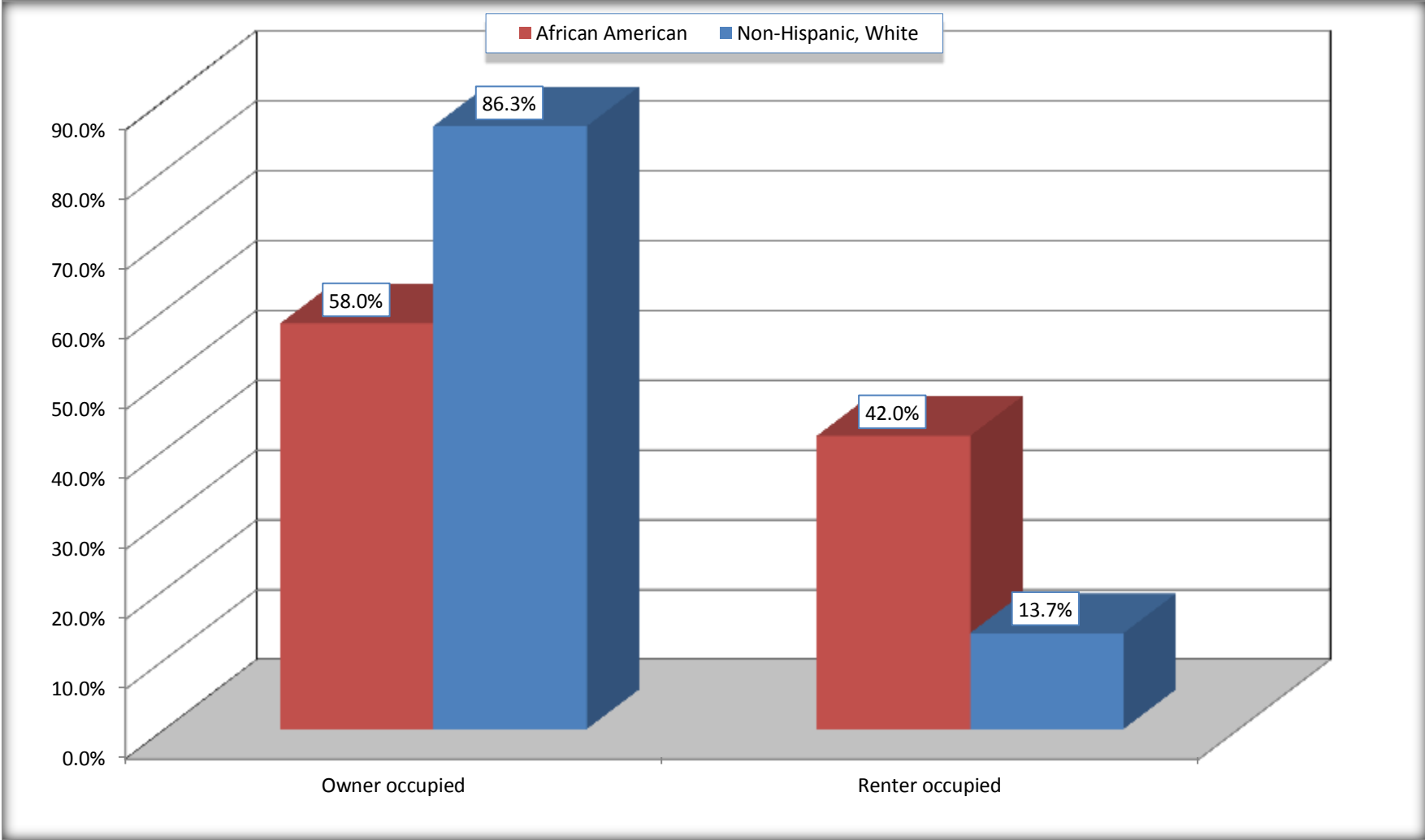
Source: U.S. Census Bureau, 2008-2012 American Community Survey

For information on confidentiality protection, sampling error, nonsampling error, and definitions, see Survey Methodology.

<http://www.census.gov/acs/www/UseData/index.h>

Home Owners and Renters by Household

Red River Parish, Louisiana



Source: B25003. TENURE - Universe: OCCUPIED HOUSING UNITS
Data Set: 2008-2012 American Community Survey 5-Year Estimates

B25014. OCCUPANTS PER ROOM - Universe: OCCUPIED HOUSING UNITS

Data Set: 2008-2012 American Community Survey 5-Year Estimates

	Red River Parish, Louisiana					
	African American	Margin of Error (+/-)	% of AA Total	White, Not Hispanic	Margin of Error (+/-)	% of NHW Total
Total:	1,058	115	100.0%	2,142	141	100.0%
1.00 or less occupants per room	1,012	116	95.7%	2,115	138	98.7%
1.01 or more occupants per room	46	27	4.3%	27	22	1.3%

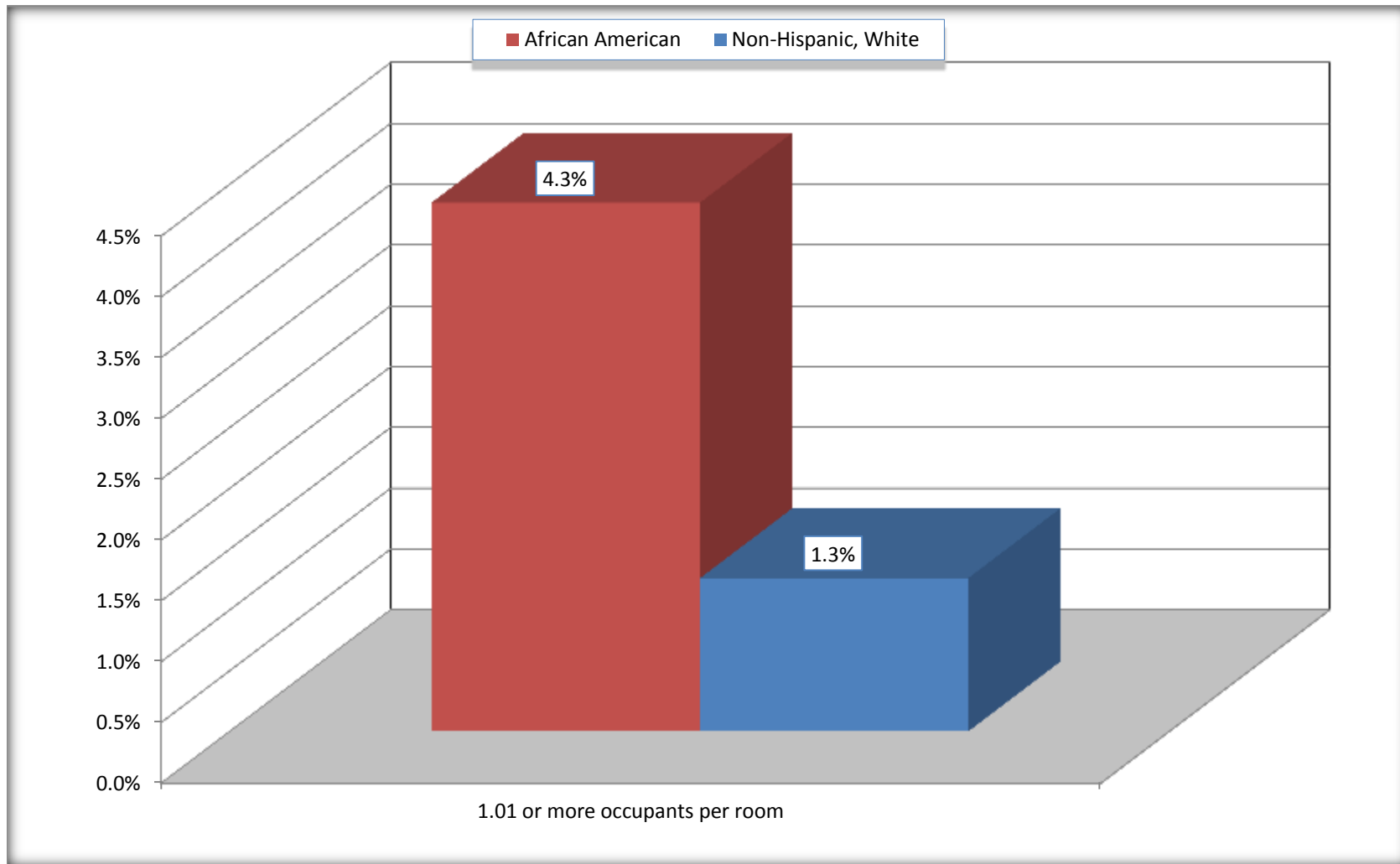
Source: U.S. Census Bureau, 2008-2012 American Community Survey

For information on confidentiality protection, sampling error, nonsampling error, and definitions, see Survey Methodology.

<http://www.census.gov/acs/www/UseData/index.ht>

More than One Person per Room (Crowding) by Household

Red River Parish, Louisiana



Source: B25014. OCCUPANTS PER ROOM - Universe: OCCUPIED HOUSING UNITS
Data Set: 2008-2012 American Community Survey 5-Year Estimates

B18101. AGE BY DISABILITY STATUS

Data Set: 2008-2012 American Community Survey 5-Year Estimates

	Red River Parish, Louisiana					
	African American	Margin of Error (+/-)	% of AA Total	White, Not Hispanic	Margin of Error (+/-)	% of NHW Total
Total:	3,428	88	100.0%	5,190	48	100.0%
Under 18 years:	1,112	45	32.4%	1,070	33	20.6%
With a disability	41	31	1.2%	36	34	0.7%
No disability	1,071	55	31.2%	1,034	36	19.9%
18 to 64 years:	1,986	61	57.9%	3,156	16	60.8%
With a disability	330	95	9.6%	473	104	9.1%
No disability	1,656	102	48.3%	2,683	103	51.7%
65 years and over:	330	37	9.6%	964	47	18.6%
With a disability	155	60	4.5%	386	94	7.4%
No disability	175	56	5.1%	578	99	11.1%

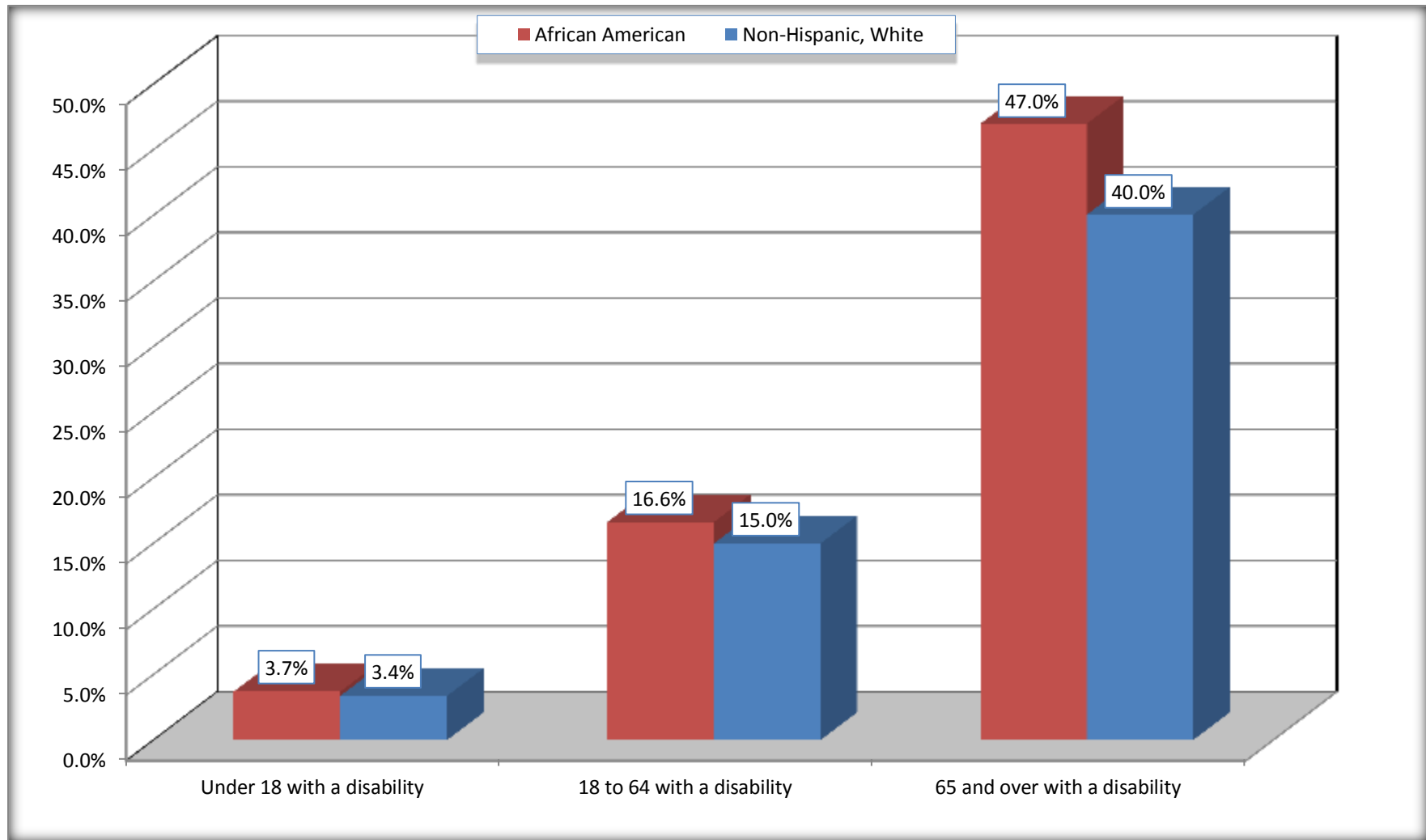
Source: U.S. Census Bureau, 2008-2012 American Community Survey

For information on confidentiality protection, sampling error, nonsampling error, and definitions, see Survey Methodology.

<http://www.census.gov/acs/www/UseData/index.htm>

Disability by Age

Red River Parish, Louisiana



Source: B18101. AGE BY DISABILITY STATUS
Data Set: 2008-2012 American Community Survey 5-Year Estimates

C27001B. HEALTH INSURANCE COVERAGE STATUS BY AGE

Data Set: 2008-2012 American Community Survey 5-Year Estimates

	Red River Parish, Louisiana					
	African American	Margin of Error (+/-)	% of AA Total	White, Not Hispanic	Margin of Error (+/-)	% of NHW Total
Total:	3,428	88	100.0%	5,190	48	100.0%
Under 18 years:	1,112	45	32.4%	1,070	13	20.6%
With health insurance coverage	1,019	69	29.7%	997	77	19.2%
No health insurance coverage	93	55	2.7%	73	72	1.4%
18 to 64 years:	1,986	61	57.9%	3,156	16	60.8%
With health insurance coverage	1,094	127	31.9%	2,428	189	46.8%
No health insurance coverage	892	126	26.0%	728	190	14.0%
65 years and over:	330	37	9.6%	964	47	18.6%
With health insurance coverage	319	37	9.3%	964	47	18.6%
No health insurance coverage	11	13	0.3%	0	17	0.0%

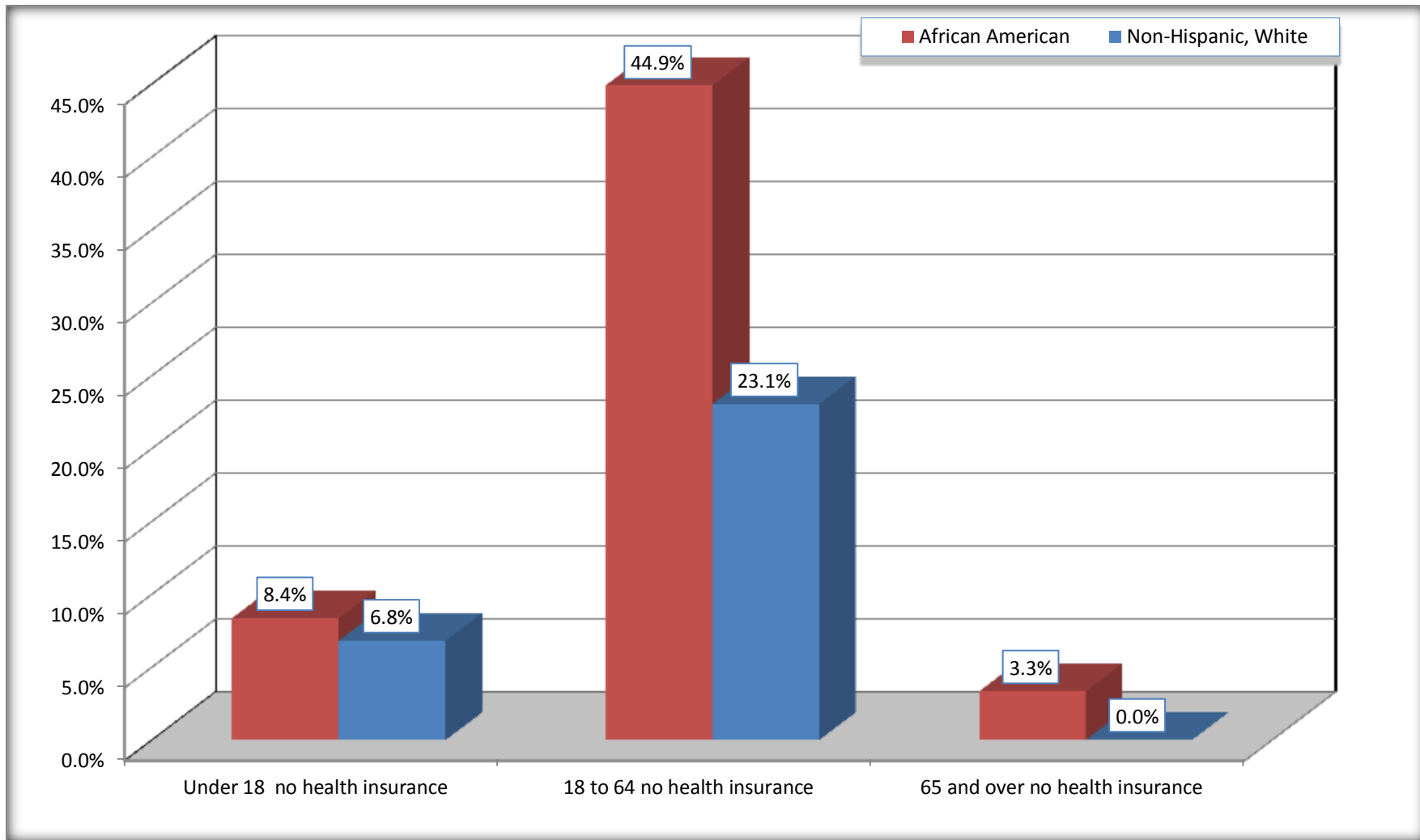
Source: U.S. Census Bureau, 2008-2012 American Community Survey

For information on confidentiality protection, sampling error, nonsampling error, and definitions, see Survey Methodology.

<http://www.census.gov/acs/www/UseData/index.htm>

Lack of Health Insurance Coverage by Age

Red River Parish, Louisiana



Source: C27001B. HEALTH INSURANCE COVERAGE STATUS BY AGE
Data Set: 2008-2012 American Community Survey 5-Year Estimates