

Selected Socio-Economic Data

Raceland CDP, Louisiana

African American and White, Not Hispanic

Data Set: 2008-2012 American Community Survey 5-Year Estimates

www.fairvote2020.org

www.fairdata2000.com

[29-Dec-13](#)

C02003.DETAILED RACE - Universe: TOTAL POPULATION

Data Set: 2008-2012 American Community Survey 5-Year Estimates

	Raceland CDP, Louisiana		
	Population	Margin of Error (+/-)	% of Total
Total:	10,200	814	100.0%
Population of one race:	10,076	817	98.8%
White	6,696	700	65.6%
Black or African American	3,334	403	32.7%
American Indian and Alaska Native	26	39	0.3%
Asian alone	6	10	0.1%
Native Hawaiian and Other Pacific Islander	0	19	0.0%
Some other race	14	23	0.1%
Population of two or more races:	124	86	1.2%
Two races including Some other race	56	61	0.5%
Two races excluding Some other race, and three or more races	68	59	0.7%
Population of two races:	124	86	1.2%
White; Black or African American	12	18	0.1%
White; American Indian and Alaska Native	56	54	0.5%
White; Asian	0	19	0.0%
Black or African American; American Indian and Alaska Native	0	19	0.0%
All other two race combinations	56	61	0.5%
Population of three races	0	19	0.0%
Population of four or more races	0	19	0.0%

Note: Hispanics may be of any race. See Table B03002 and chart.

Source: U.S. Census Bureau, 2008-2012 American Community Survey

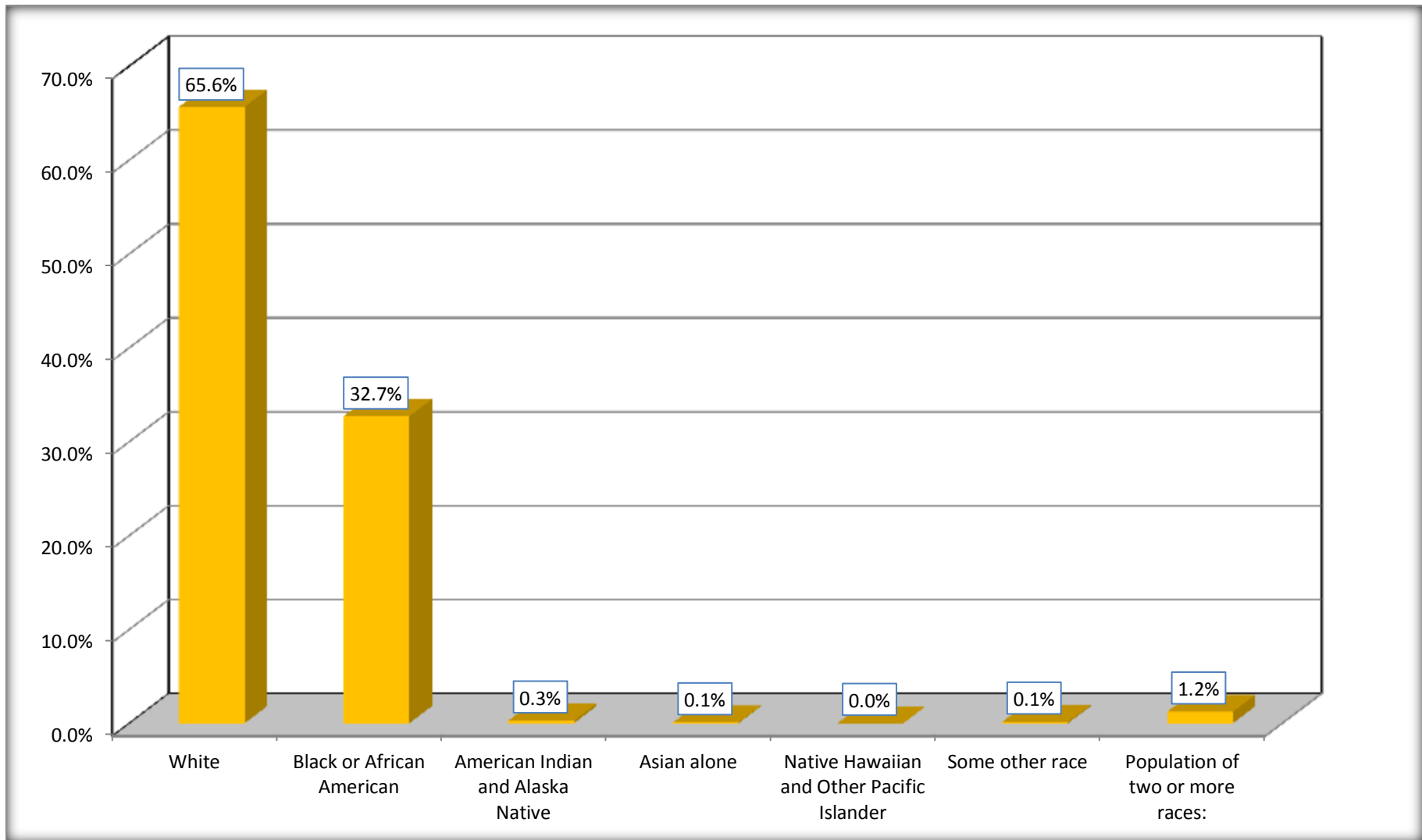
Although the American Community Survey (ACS) produces population, demographic and housing unit estimates, it is the Census Bureau's Population Estimates Program that produces and disseminates the official estimates of the population for the nation, states, counties, cities and towns and estimates of housing units for states and counties.

For information on confidentiality protection, sampling error, nonsampling error, and definitions, see Survey Methodology.

<http://www.census.gov/acs/www/UseData/index.htm>

Population by Race

Raceland CDP, Louisiana



Source: C02003.DETAILED RACE - Universe: TOTAL POPULATION
Data Set: 2008-2012 American Community Survey 5-Year Estimates

B03002. HISPANIC OR LATINO ORIGIN BY RACE - Universe: TOTAL POPULATION

Data Set: 2008-2012 American Community Survey 5-Year Estimates

	Raceland CDP, Louisiana		
	Population	Margin of Error (+/-)	% of Total
Total:	10,200	814	100.0%
Not Hispanic or Latino:	10,036	826	98.4%
White alone	6,623	704	64.9%
Black or African American alone	3,312	400	32.5%
American Indian and Alaska Native alone	0	19	0.0%
Asian alone	6	10	0.1%
Native Hawaiian and Other Pacific Islander alone	0	19	0.0%
Some other race alone	0	19	0.0%
Two or more races:	95	70	0.9%
Two races including Some other race	27	42	0.3%
Two races excluding Some other race, and three or more races	68	59	0.7%
Hispanic or Latino	164	105	1.6%

Source: U.S. Census Bureau, 2008-2012 American Community Survey

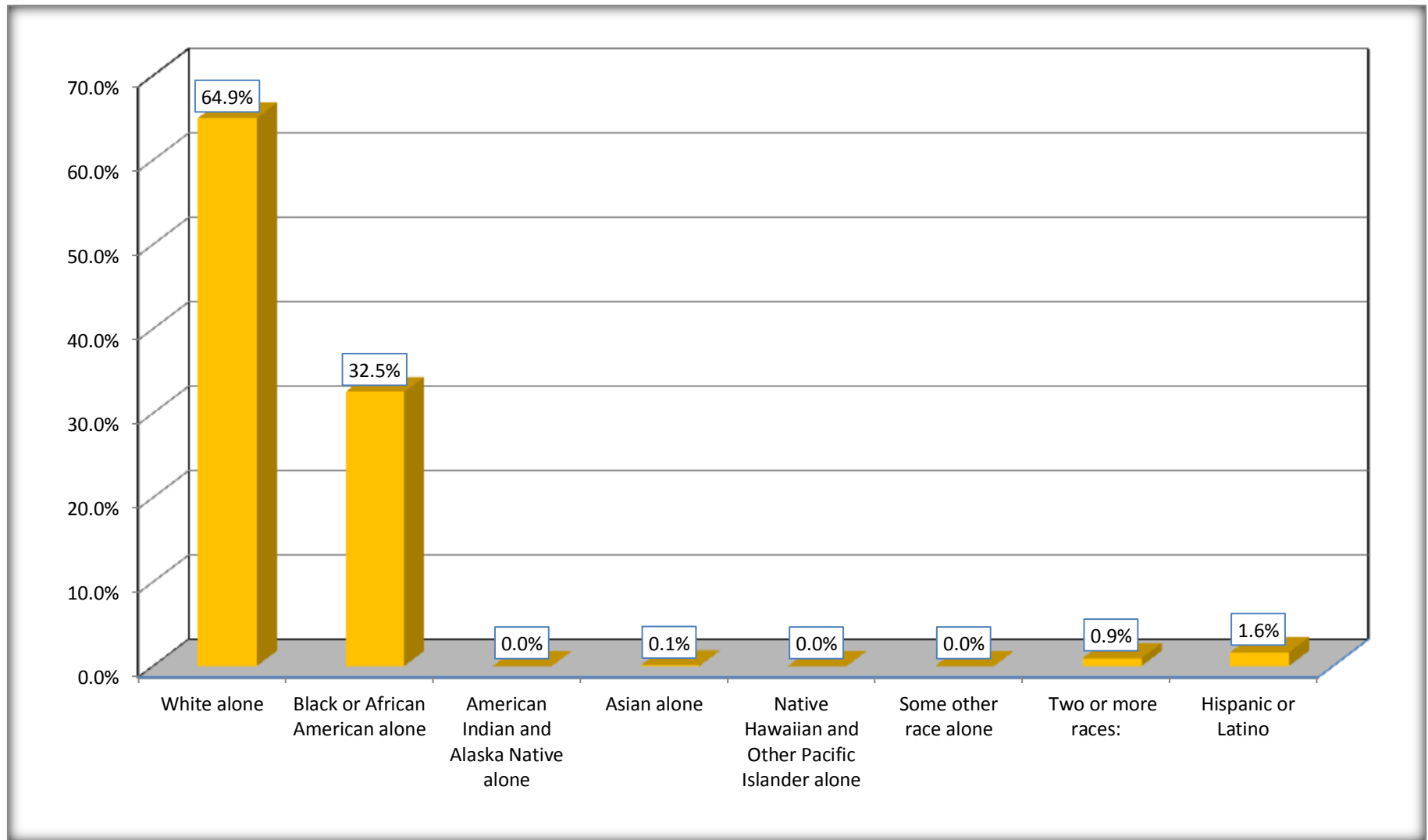
Although the American Community Survey (ACS) produces population, demographic and housing unit estimates, it is the Census Bureau's Population Estimates Program that produces and disseminates the official estimates of the population for the nation, states, counties, cities and towns and estimates of housing units for states and counties.

For information on confidentiality protection, sampling error, nonsampling error, and definitions, see Survey Methodology.

<http://www.census.gov/acs/www/UseData/index.htm>

Non-Hispanic by Race and Hispanic Population

Raceland CDP, Louisiana



Source: B03002. HISPANIC OR LATINO ORIGIN BY RACE - Universe: TOTAL POPULATION
Data Set: 2008-2012 American Community Survey 5-Year Estimates

B03002. HISPANIC OR LATINO ORIGIN BY RACE

Data Set: 2008-2012 American Community Survey 5-Year Estimates

	Raceland CDP, Louisiana		
	Population	Margin of Error (+/-)	% of Total
Hispanic or Latino:	164	105	100.0%
White alone	73	86	44.5%
Black or African American alone	22	34	13.4%
American Indian and Alaska Native alone	26	39	15.9%
Asian alone	0	19	0.0%
Native Hawaiian and Other Pacific Islander alone	0	19	0.0%
Some other race alone	14	23	8.5%
Two or more races:	29	44	17.7%
Two races including Some other race	29	44	17.7%
Two races excluding Some other race, and three or more races	0	19	0.0%

Source: U.S. Census Bureau, 2008-2012 American Community Survey

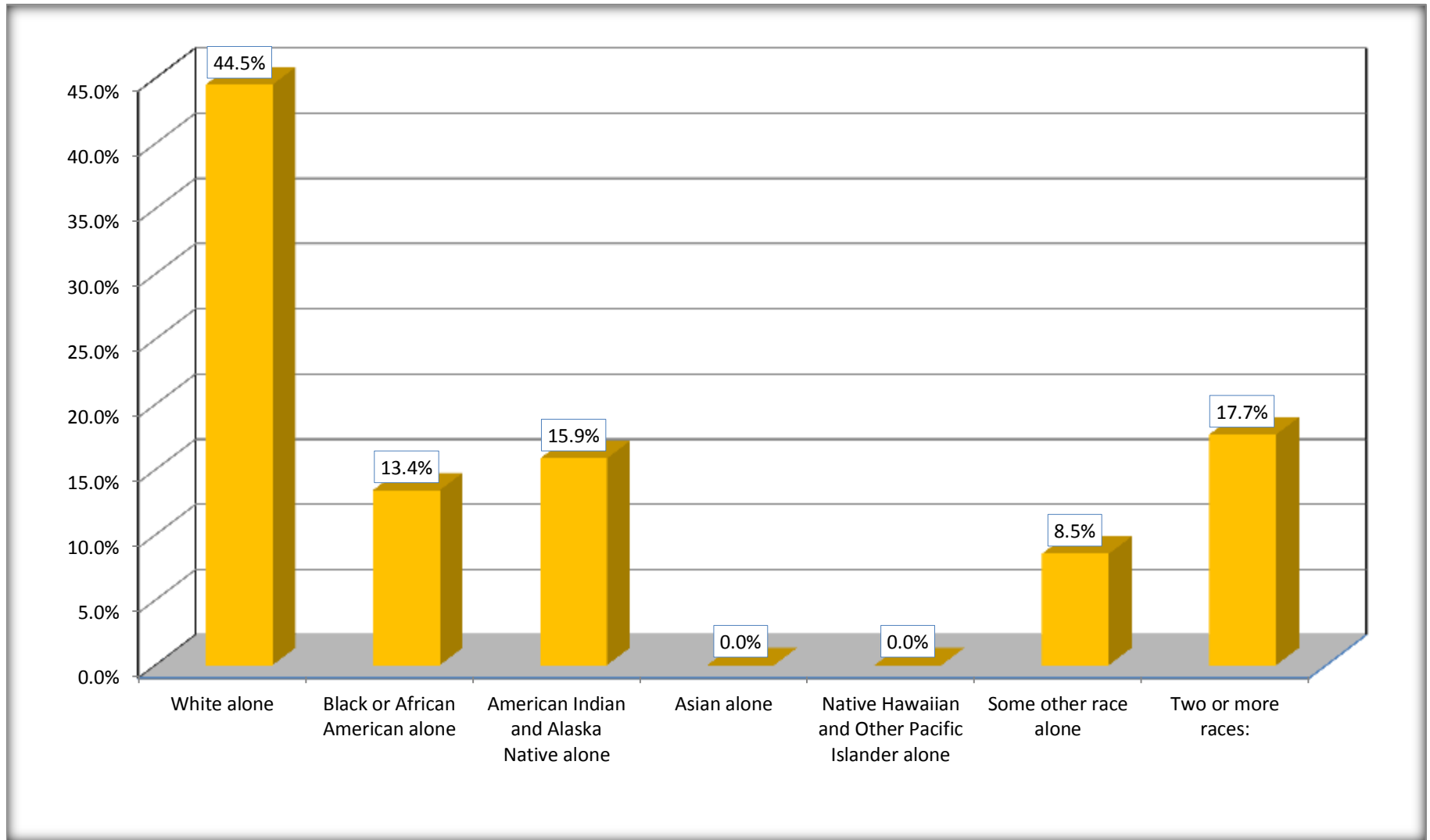
Although the American Community Survey (ACS) produces population, demographic and housing unit estimates, it is the Census Bureau's Population Estimates Program that produces and disseminates the official estimates of the population for the nation, states, counties, cities and towns and estimates of housing units for states and counties.

For information on confidentiality protection, sampling error, nonsampling error, and definitions, see Survey Methodology.

<http://www.census.gov/acs/www/UseData/index.htm>

Hispanic or Latino Origin by Race

Raceland CDP, Louisiana



Source: B03002. HISPANIC OR LATINO ORIGIN BY RACE
Data Set: 2008-2012 American Community Survey 5-Year Estimates

B01001. SEX BY AGE

Data Set: 2008-2012 American Community Survey 5-Year Estimates

	Raceland CDP, Louisiana					
	African American	Margin of Error (+/-)	% of AA Total	White, Not Hispanic	Margin of Error (+/-)	% of NHW Total
Total:	3,334	403	100.0%	6,623	704	100.0%
Under 18 years	1,013	NC	30.4%	1,341	NC	20.2%
18 to 64 years	2,060	NC	61.8%	4,115	NC	62.1%
65 years and over	261	NC	7.8%	1,167	NC	17.6%
Male:	1,495	232	44.8%	3,269	389	49.4%
Under 18 years	555	NC	16.6%	692	NC	10.4%
18 to 64 years	781	NC	23.4%	2,001	NC	30.2%
65 years and over	159	NC	4.8%	576	NC	8.7%
Female:	1,839	290	55.2%	3,354	412	50.6%
Under 18 years	458	NC	13.7%	649	NC	9.8%
18 to 64 years	1,279	NC	38.4%	2,114	NC	31.9%
65 years and over	102	NC	3.1%	591	NC	8.9%

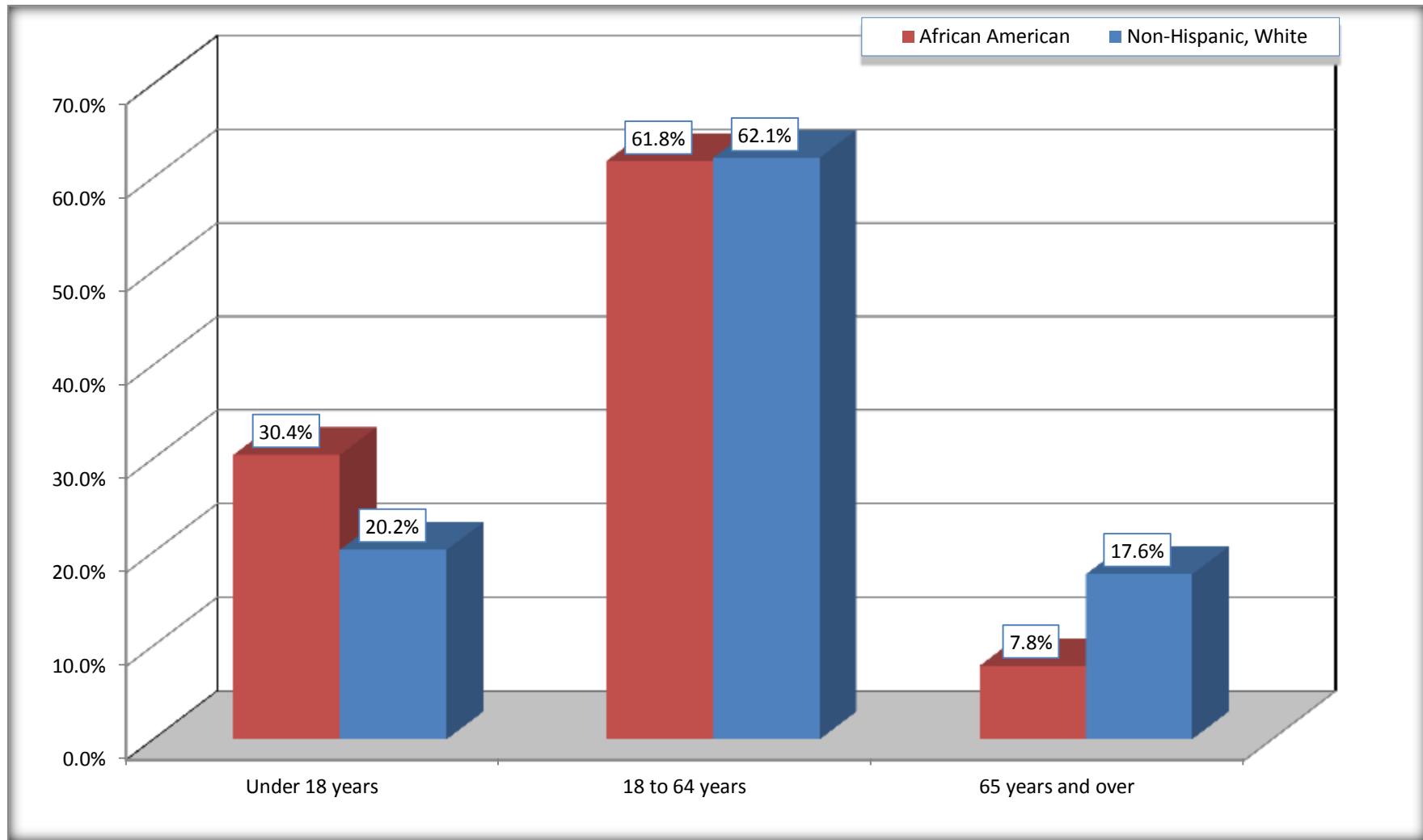
Source: U.S. Census Bureau, 2008-2012 American Community Survey

Although the American Community Survey (ACS) produces population, demographic and housing unit estimates, it is the Census Bureau's Population Estimates Program that produces and disseminates the official estimates of the population for the nation, states, counties, cities and towns and estimates of housing units for states and counties.

For information on confidentiality protection, sampling error, nonsampling error, and definitions, see Survey Methodology.
<http://www.census.gov/acs/www/UseData/index.htm>

Population by Age

Raceland CDP, Louisiana



Source: B01001. SEX BY AGE
Data Set: 2008-2012 American Community Survey 5-Year Estimates

B05003. SEX BY AGE BY CITIZENSHIP STATUS

Data Set: 2008-2012 American Community Survey 5-Year Estimates

	Raceland CDP, Louisiana					
	African American	Margin of Error (+/-)	% of AA Total by Age	White, Not Hispanic	Margin of Error (+/-)	% of NHW Total by Age
Total:	3,334	403	100.0%	6,623	704	100.0%
Under 18 years:	1,013	NC	100.0%	1,341	NC	100.0%
Native	1,013	NC	100.0%	1,341	NC	100.0%
Foreign born:	0	NC	0.0%	0	NC	0.0%
Naturalized U.S. citizen	0	NC	0.0%	0	NC	0.0%
Not a U.S. citizen	0	NC	0.0%	0	NC	0.0%
18 years and over:	2,321	NC	100.0%	5,282	NC	100.0%
Native	2,321	NC	100.0%	5,262	NC	99.6%
Foreign born:	0	NC	0.0%	20	NC	0.4%
Naturalized U.S. citizen	0	NC	0.0%	0	NC	0.0%
Not a U.S. citizen	0	NC	0.0%	20	NC	0.4%
Male:	1,495	232	44.8%	3,269	407	49.4%
Under 18 years:	555	165	100.0%	692	195	100.0%
Native	555	165	100.0%	692	195	100.0%
Foreign born:	0	19	0.0%	0	19	0.0%
Naturalized U.S. citizen	0	19	0.0%	0	19	0.0%
Not a U.S. citizen	0	19	0.0%	0	19	0.0%
18 years and over:	940	220	100.0%	2,577	314	100.0%
Native	940	220	100.0%	2,576	314	100.0%
Foreign born:	0	19	0.0%	1	2	0.0%
Naturalized U.S. citizen	0	19	0.0%	0	19	0.0%
Not a U.S. citizen	0	19	0.0%	1	2	0.0%

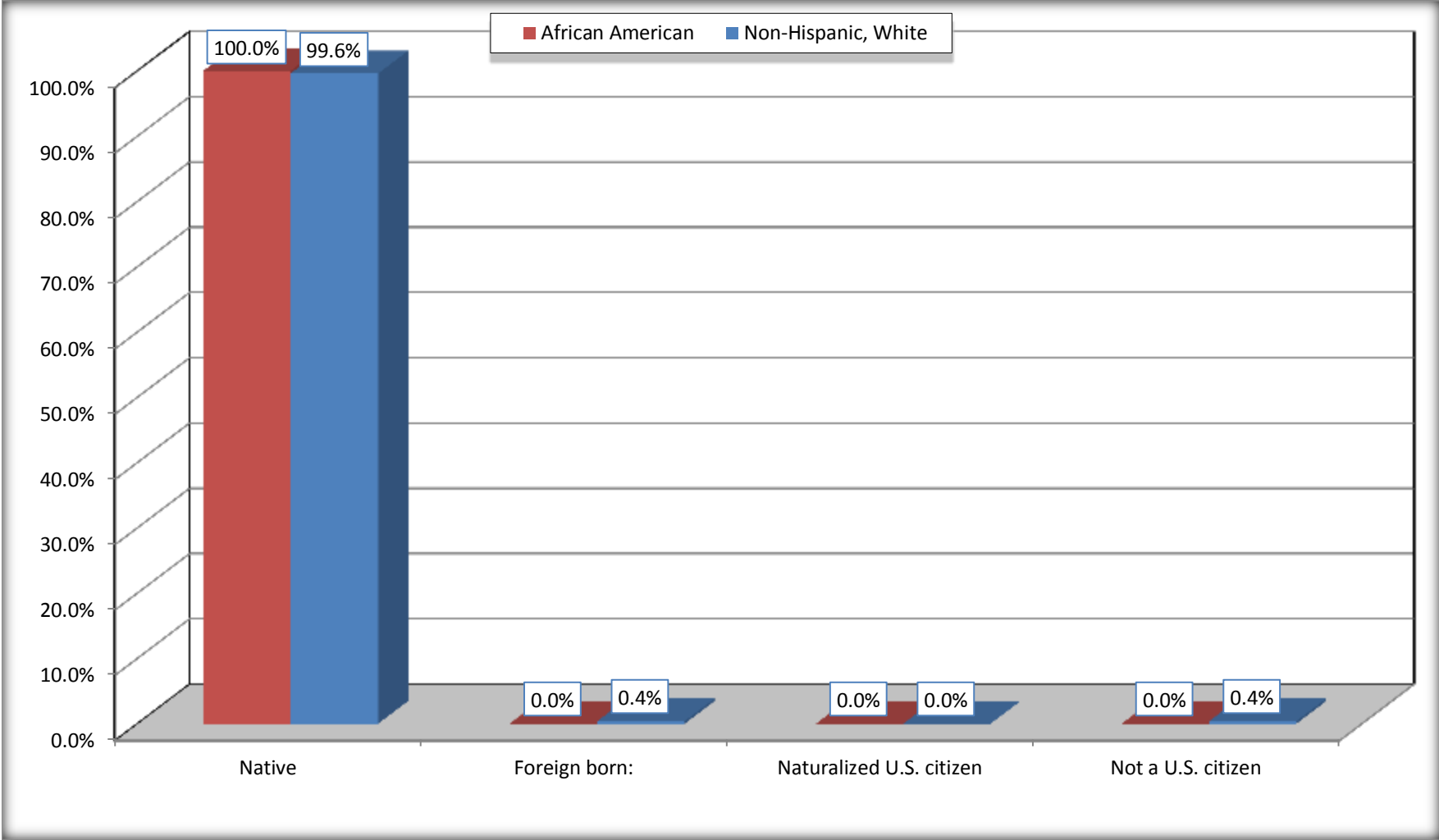
	Raceland CDP, Louisiana					
	African American	Margin of Error (+/-)	% of AA by Age	White, Not Hispanic	Margin of Error (+/-)	% of NHW by Age
Female:	1,839	290	55.2%	3,354	392	50.6%
Under 18 years:	458	171	100.0%	649	196	100.0%
Native	458	171	100.0%	649	196	100.0%
Foreign born:	0	19	0.0%	0	19	0.0%
Naturalized U.S. citizen	0	19	0.0%	0	19	0.0%
Not a U.S. citizen	0	19	0.0%	0	19	0.0%
18 years and over:	1,381	228	100.0%	2,705	281	100.0%
Native	1,381	228	100.0%	2,686	281	99.3%
Foreign born:	0	19	0.0%	19	32	0.7%
Naturalized U.S. citizen	0	19	0.0%	0	19	0.0%
Not a U.S. citizen	0	19	0.0%	19	32	0.7%

Source: U.S. Census Bureau, 2008-2012 American Community Survey

For information on confidentiality protection, sampling error, nonsampling error, and definitions, see Survey Methodology.
<http://www.census.gov/acs/www/UseData/index.htm>

Citizenship Status of Voting Age Population (18 and Over)

Raceland CDP, Louisiana



Source: B05003. SEX BY AGE BY CITIZENSHIP STATUS
Data Set: 2008-2012 American Community Survey 5-Year Estimates

**B07004. GEOGRAPHICAL MOBILITY IN THE PAST YEAR BY RACE FOR CURRENT RESIDENCE IN THE UNITED STATES - Universe:
POPULATION 1 YEAR AND OVER**

Data Set: 2008-2012 American Community Survey 5-Year Estimates

	Raceland CDP, Louisiana					
	African American	Margin of Error (+/-)	% of AA Total	White, Not Hispanic	Margin of Error (+/-)	% of NHW Total
Total:	3,267	405	100.0%	6,587	702	100.0%
Same house 1 year ago	3,020	423	92.4%	6,093	674	92.5%
Moved within same county	216	287	6.6%	159	96	2.4%
Moved from different county within same state	31	37	0.9%	311	289	4.7%
Moved from different state	0	19	0.0%	24	38	0.4%
Moved from abroad	0	19	0.0%	0	19	0.0%

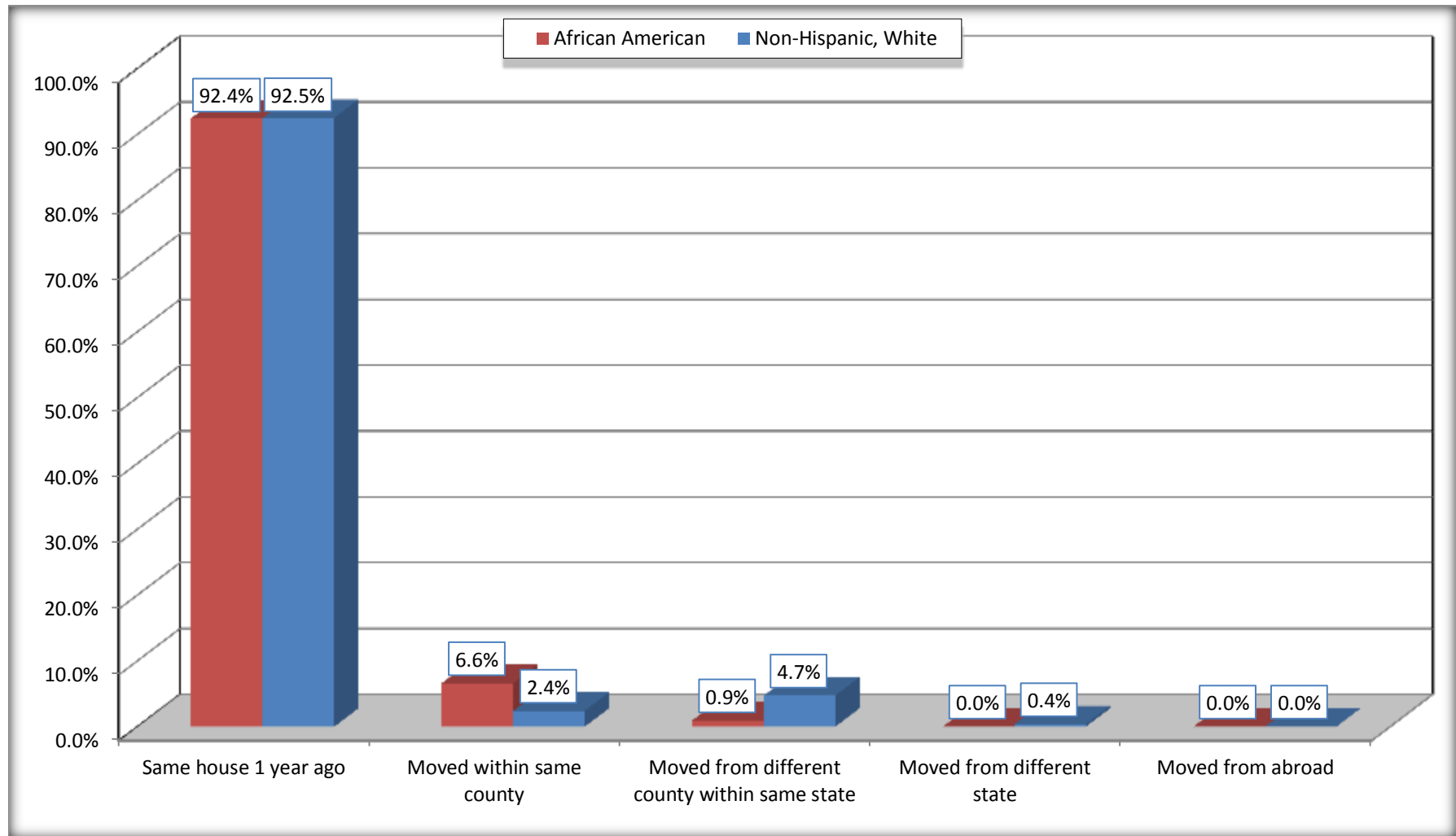
Source: U.S. Census Bureau, 2008-2012 American Community Survey

For information on confidentiality protection, sampling error, nonsampling error, and definitions, see Survey Methodology.

<http://www.census.gov/acs/www/UseData/index.htm>

Geographical Mobility in the Past Year (Population 1 Year and Over)

Raceland CDP, Louisiana



Source: B07004. GEOGRAPHICAL MOBILITY IN THE PAST YEAR BY RACE FOR CURRENT RESIDENCE IN THE UNITED STATES - Universe: POPULATION 1 YEAR AND OVER

Data Set: 2008-2012 American Community Survey 5-Year Estimates

B08105. MEANS OF TRANSPORTATION TO WORK - Universe: WORKERS 16 YEARS AND OVER

Data Set: 2008-2012 American Community Survey 5-Year Estimates

	Raceland CDP, Louisiana					
	African American	Margin of Error (+/-)	% of AA Total	White, Not Hispanic	Margin of Error (+/-)	% of NHW Total
Total:	1153	248	100.0%	2977	384	100.0%
Car, truck, or van - drove alone	898	214	77.9%	2460	398	82.6%
Car, truck, or van - carpooled	146	92	12.7%	401	134	13.5%
Public transportation (excluding taxicab)	11	21	1.0%	30	37	1.0%
Walked	22	35	1.9%	37	46	1.2%
Taxicab, motorcycle, bicycle, or other means	45	36	3.9%	8	14	0.3%
Worked at home	31	36	2.7%	41	38	1.4%

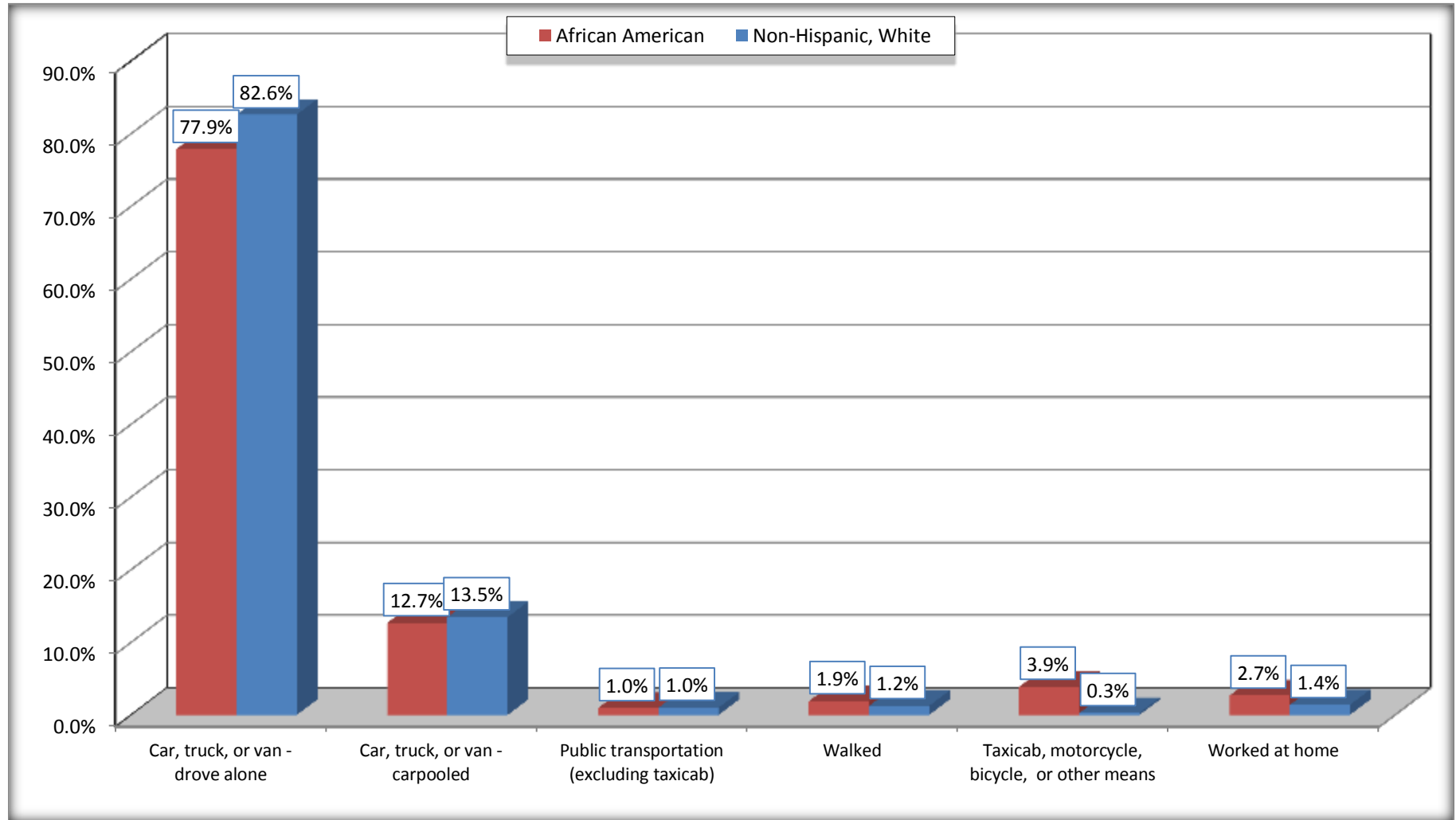
Source: U.S. Census Bureau, 2008-2012 American Community Survey

For information on confidentiality protection, sampling error, nonsampling error, and definitions, see Survey Methodology.

<http://www.census.gov/acs/www/UseData/index.htm>

Means of Transportation to Work (Workers 16 Years and Over)

Raceland CDP, Louisiana



Source: B08105. MEANS OF TRANSPORTATION TO WORK - Universe: WORKERS 16 YEARS AND OVER
Data Set: 2008-2012 American Community Survey 5-Year Estimates

B11002. HOUSEHOLD TYPE BY RELATIVES AND NONRELATIVES FOR POPULATION IN HOUSEHOLDS

Data Set: 2008-2012 American Community Survey 5-Year Estimates

	Raceland CDP, Louisiana					
	African American	Margin of Error (+/-)	% of AA Total	White, Not Hispanic	Margin of Error (+/-)	% of NHW Total
Total:	3370	410	100.0%	6637	675	100.0%
In family households	3129	417	92.8%	5898	668	88.9%
In nonfamily households	241	108	7.2%	739	211	11.1%

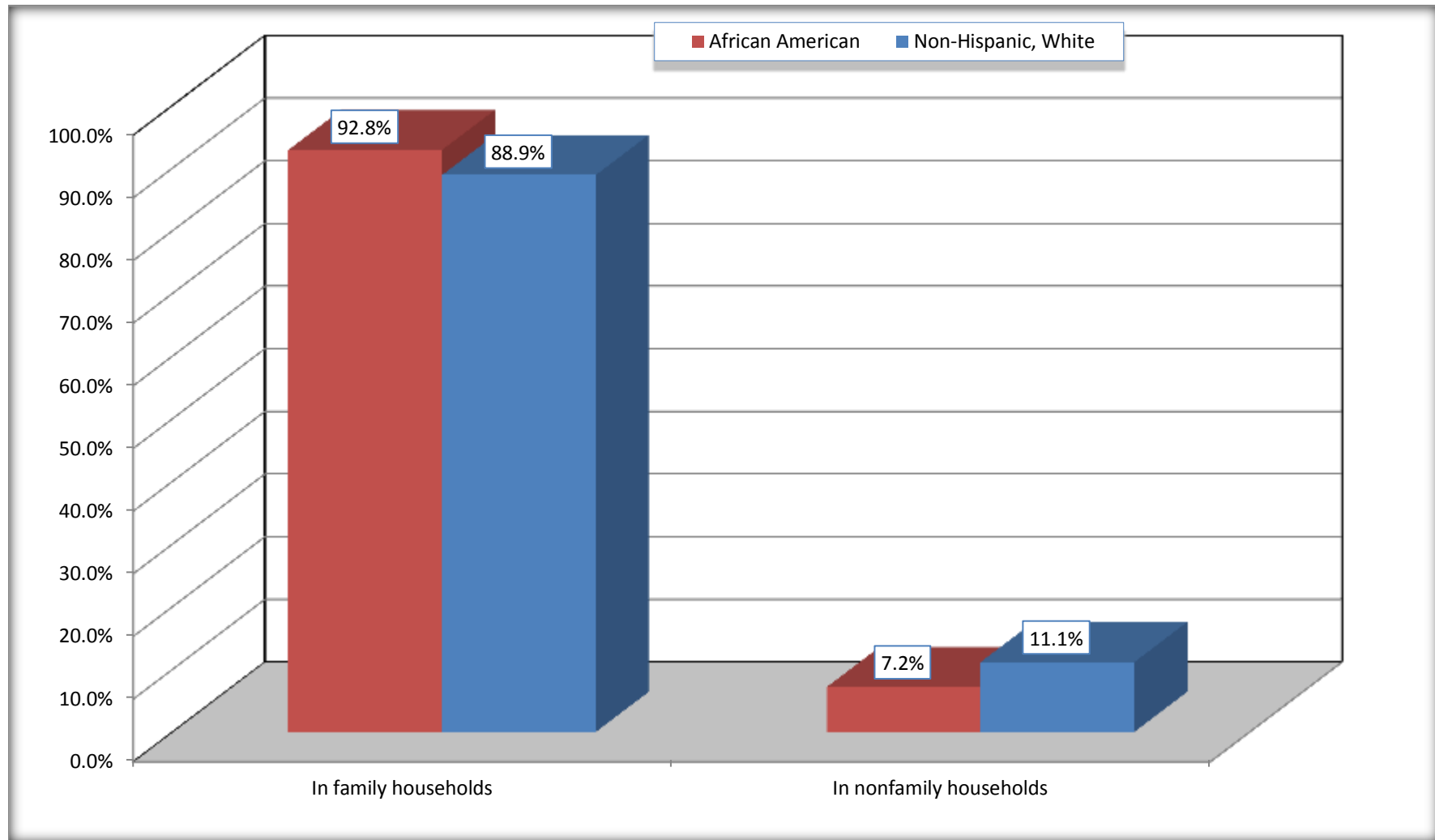
Source: U.S. Census Bureau, 2008-2012 American Community Survey

For information on confidentiality protection, sampling error, nonsampling error, and definitions, see Survey Methodology.

<http://www.census.gov/acs/www/UseData/index.htm>

Household Type for Population in Households

Raceland CDP, Louisiana



Source: B11002. HOUSEHOLD TYPE BY RELATIVES AND NONRELATIVES FOR POPULATION IN HOUSEHOLDS
Data Set: 2008-2012 American Community Survey 5-Year Estimates

B12002. MARITAL STATUS FOR THE POPULATION 15 YEARS AND OVER

Data Set: 2008-2012 American Community Survey 5-Year Estimates

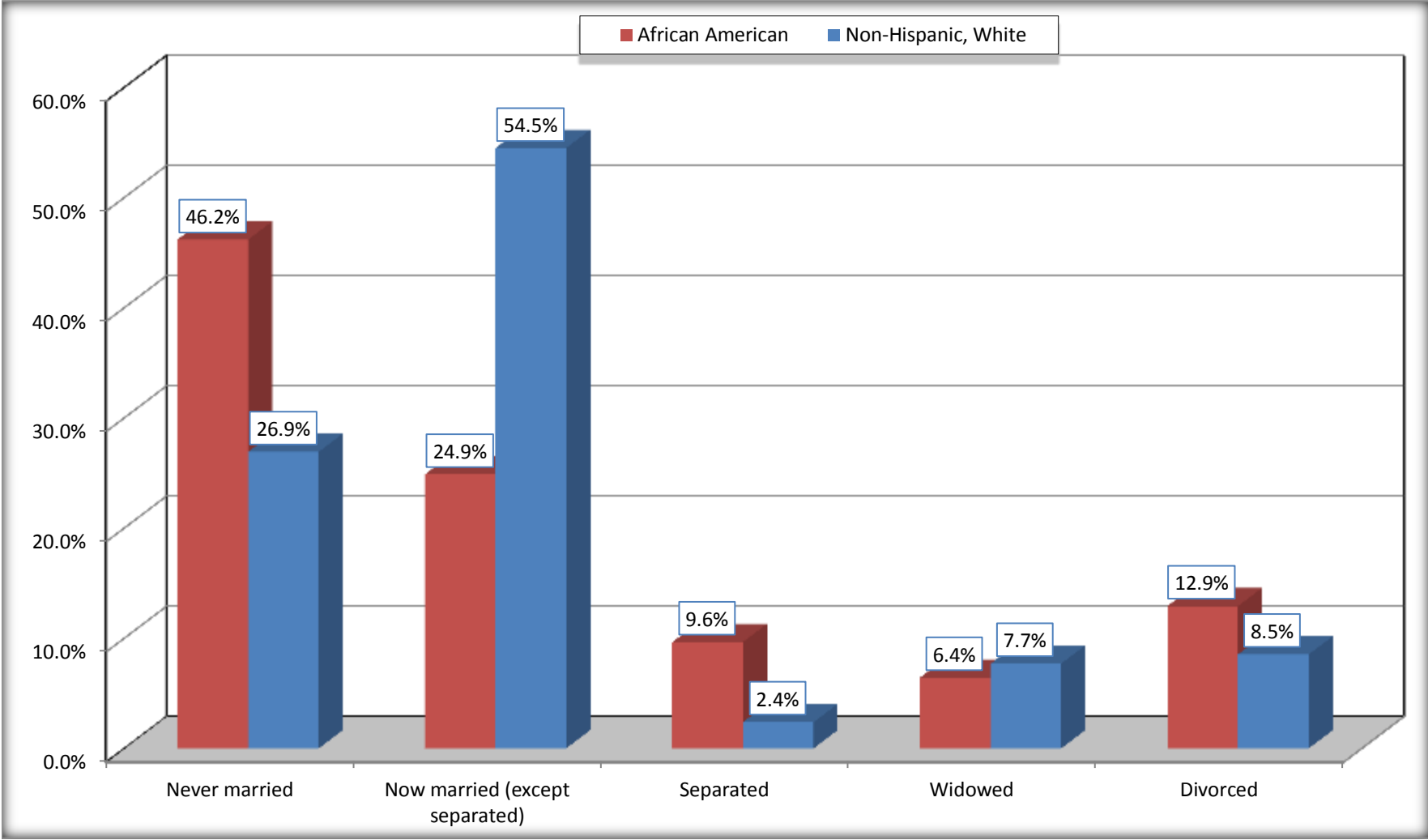
	Raceland CDP, Louisiana					
	African American	Margin of Error (+/-)	% of AA Total	White, Not Hispanic	Margin of Error (+/-)	% of NHW Total
Total:	2,417	356	100.0%	5,592	590	100.0%
Never married	1,116	NC	46.2%	1,505	NC	26.9%
Now married (except separated)	601	NC	24.9%	3,047	NC	54.5%
Separated	233	NC	9.6%	133	NC	2.4%
Widowed	155	NC	6.4%	430	NC	7.7%
Divorced	312	NC	12.9%	477	NC	8.5%
Male:	1,005	249	41.6%	2,742	326	49.0%
Never married	479	183	19.8%	809	194	14.5%
Now married (except separated)	315	110	13.0%	1,527	185	27.3%
Separated	27	29	1.1%	67	61	1.2%
Widowed	60	46	2.5%	107	94	1.9%
Divorced	124	99	5.1%	232	109	4.1%
Female:	1,412	233	58.4%	2,850	327	51.0%
Never married	637	194	26.4%	696	187	12.4%
Now married (except separated)	286	89	11.8%	1,520	182	27.2%
Separated	206	116	8.5%	66	46	1.2%
Widowed	95	67	3.9%	323	133	5.8%
Divorced	188	105	7.8%	245	117	4.4%

Source: U.S. Census Bureau, 2008-2012 American Community Survey

For information on confidentiality protection, sampling error, nonsampling error, and definitions, see Survey Methodology.

<http://www.census.gov/acs/www/UseData/index.htm>

Marital Status for the Population 15 Years and Over
Raceland CDP, Louisiana



Source: B12002. MARITAL STATUS FOR THE POPULATION 15 YEARS AND OVER
Data Set: 2008-2012 American Community Survey 5-Year Estimates

C15002. SEX BY EDUCATIONAL ATTAINMENT FOR THE POPULATION 25 YEARS AND OVER

Data Set: 2008-2012 American Community Survey 5-Year Estimates

	Raceland CDP, Louisiana					
	African American	Margin of Error (+/-)	% of AA Total	White, Not Hispanic	Margin of Error (+/-)	% of NHW Total
Total:	1,975	312	100.0%	4,742	491	100.0%
Less than high school diploma	845	NC	42.8%	867	NC	18.3%
High school graduate, GED, or alternative	622	NC	31.5%	2,024	NC	42.7%
Some college or associate's degree	370	NC	18.7%	1,187	NC	25.0%
Bachelor's degree or higher	138	NC	7.0%	664	NC	14.0%
Male:	725	193	36.7%	2,321	299	48.9%
Less than high school diploma	355	115	18.0%	498	168	10.5%
High school graduate, GED, or alternative	286	125	14.5%	1,033	191	21.8%
Some college or associate's degree	64	60	3.2%	475	118	10.0%
Bachelor's degree or higher	20	25	1.0%	315	130	6.6%
Female:	1,250	200	63.3%	2,421	251	51.1%
Less than high school diploma	490	147	24.8%	369	110	7.8%
High school graduate, GED, or alternative	336	149	17.0%	991	192	20.9%
Some college or associate's degree	306	136	15.5%	712	170	15.0%
Bachelor's degree or higher	118	95	6.0%	349	94	7.4%

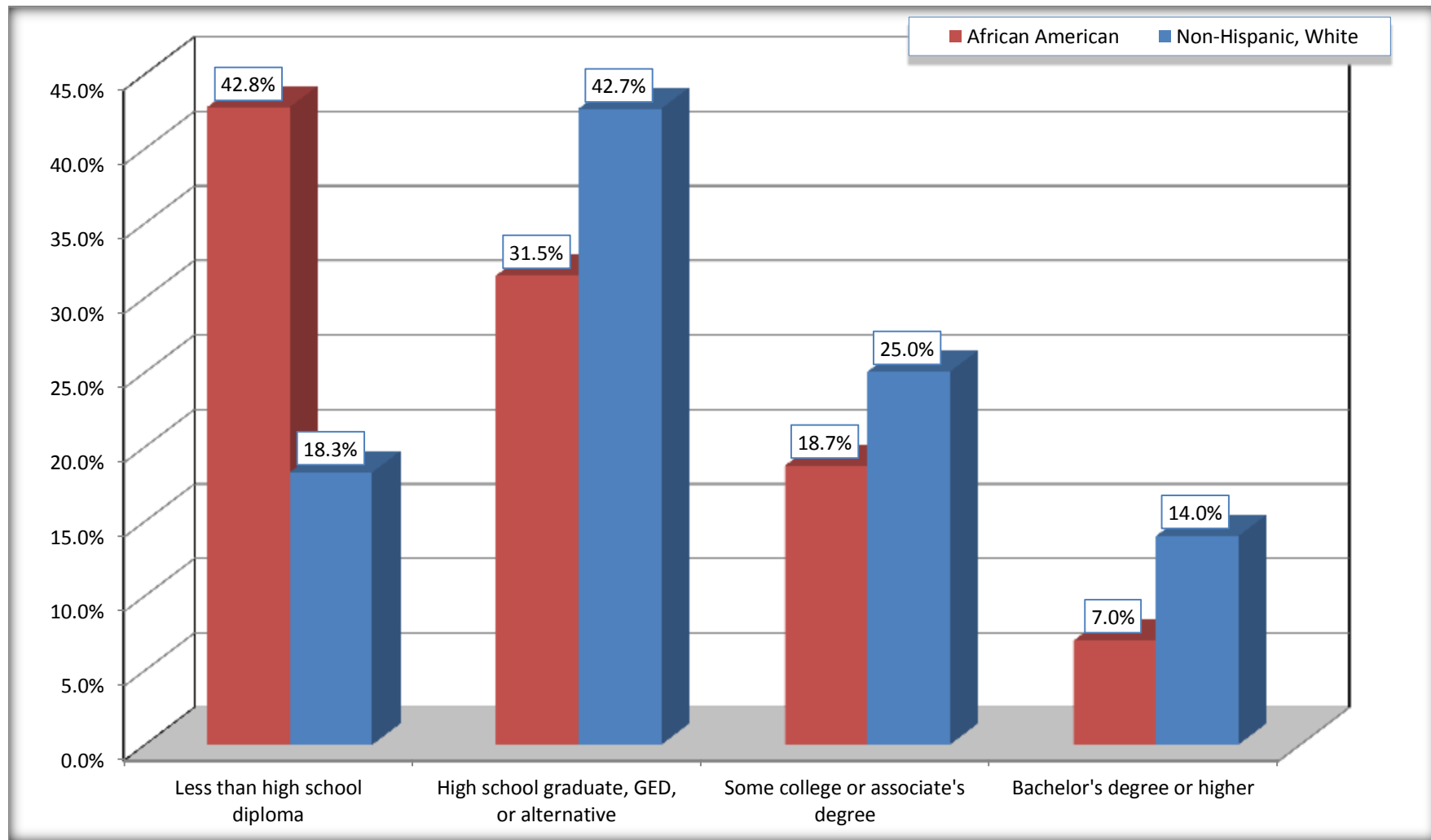
Source: U.S. Census Bureau, 2008-2012 American Community Survey

For information on confidentiality protection, sampling error, nonsampling error, and definitions, see Survey Methodology.

<http://www.census.gov/acs/www/UseData/index.htm>

Educational Attainment for the Population 25 Years and Older

Raceland CDP, Louisiana



Source: C15002. SEX BY EDUCATIONAL ATTAINMENT FOR THE POPULATION 25 YEARS AND OVER
Data Set: 2008-2012 American Community Survey 5-Year Estimates

B17010. POVERTY STATUS IN THE PAST 12 MONTHS OF FAMILIES BY FAMILY TYPE BY PRESENCE OF RELATED CHILDREN UNDER 18 YEARS

Data Set: 2008-2012 American Community Survey 5-Year Estimates

	Raceland CDP, Louisiana					
	African American	Margin of Error (+/-)	% of AA Total	White, Not Hispanic	Margin of Error (+/-)	% of NHW Total
Total:	926	164	100.0%	1,918	215	100.0%
Income in the past 12 months below poverty level:	351	142	37.9%	118	57	6.2%
Married-couple family:	33	40	3.6%	15	15	0.8%
With related children under 18 years	33	40	3.6%	5	9	0.3%
Other family:	318	141	34.3%	103	56	5.4%
Male householder, no wife present	33	41	3.6%	0	19	0.0%
With related children under 18 years	33	41	3.6%	0	19	0.0%
Female householder, no husband present	285	146	30.8%	103	56	5.4%
With related children under 18 years	185	108	20.0%	67	42	3.5%
Income in the past 12 months at or above poverty level:	575	151	62.1%	1,800	216	93.8%
Married-couple family:	265	93	28.6%	1,469	176	76.6%
With related children under 18 years	105	57	11.3%	490	126	25.5%
Other family:	310	126	33.5%	331	133	17.3%
Male householder, no wife present	49	37	5.3%	86	58	4.5%
With related children under 18 years	22	29	2.4%	48	41	2.5%
Female householder, no husband present	261	116	28.2%	245	120	12.8%
With related children under 18 years	190	101	20.5%	177	105	9.2%

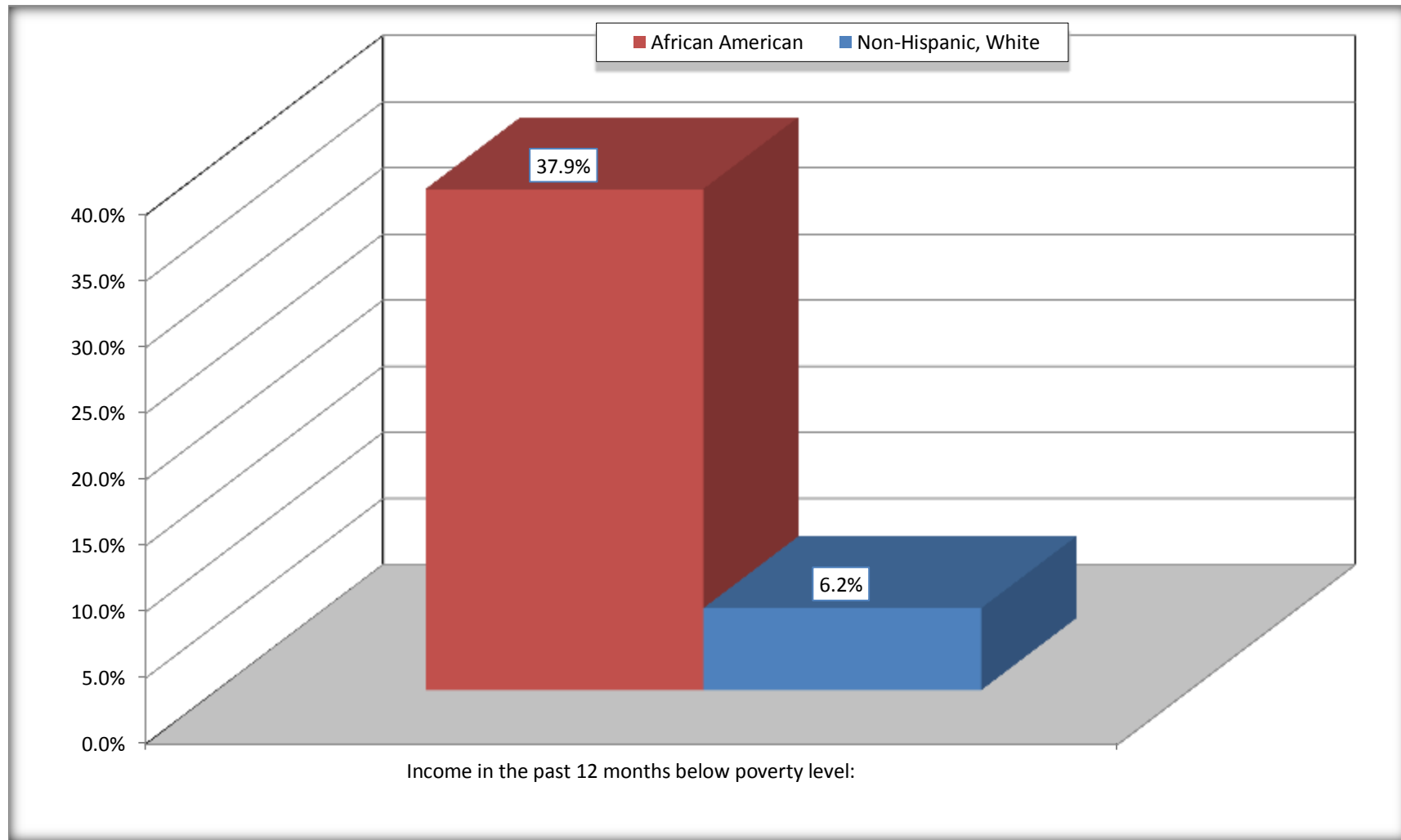
Source: U.S. Census Bureau, 2008-2012 American Community Survey

For information on confidentiality protection, sampling error, nonsampling error, and definitions, see Survey Methodology.

<http://www.census.gov/acs/www/UseData/index.htm>

Family Households Below Poverty in the Past 12 Months

Raceland CDP, Louisiana

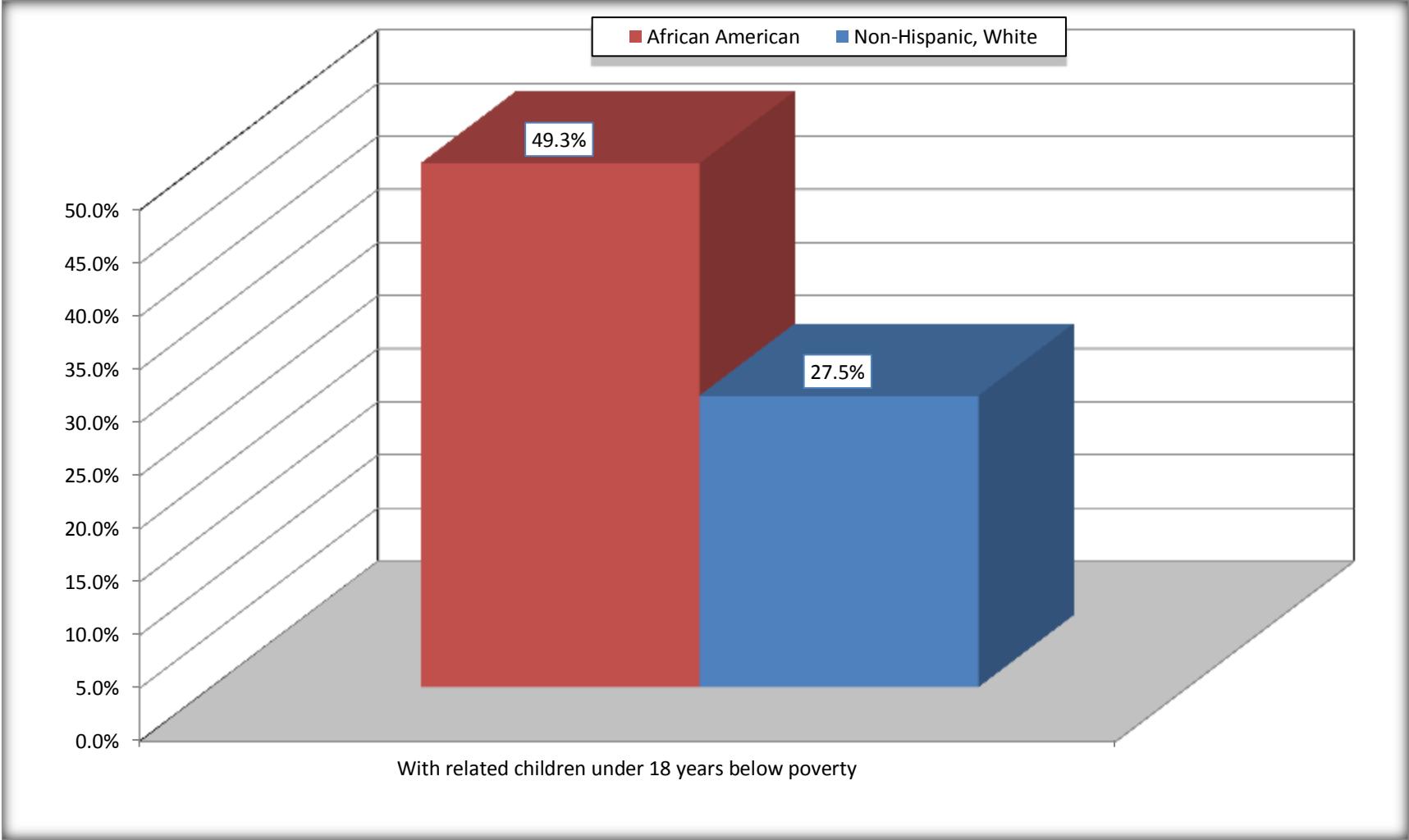


Source: B17010. POVERTY STATUS IN THE PAST 12 MONTHS OF FAMILIES BY FAMILY TYPE BY PRESENCE OF RELATED CHILDREN UNDER 18 YEARS

Data Set: 2008-2012 American Community Survey 5-Year Estimates

Female-headed Households with Related Children Below Poverty in the Past 12 Months

Raceland CDP, Louisiana



Source: B17010. POVERTY STATUS IN THE PAST 12 MONTHS OF FAMILIES BY FAMILY TYPE BY PRESENCE OF RELATED CHILDREN UNDER 18 YEARS

Data Set: 2008-2012 American Community Survey 5-Year Estimates

B17020 POVERTY STATUS IN THE PAST 12 MONTHS BY AGE - Universe: POPULATION FOR WHOM POVERTY STATUS IS DETERMINED

Data Set: 2008-2012 American Community Survey 5-Year Estimates

	Raceland CDP, Louisiana					
	African American	Margin of Error (+/-)	% of AA By Age	White, Not Hispanic	Margin of Error (+/-)	% of NHW By Age
Total:	3,326	402	100.0%	6,566	682	100.0%
Income in the past 12 months below poverty level:	1,244	396	37.4%	461	192	7.0%
Under 18 years	434	NC	42.8%	139	NC	10.4%
18 to 64 years	774	276	37.6%	264	132	6.4%
65 years and over	36	NC	14.0%	58	NC	5.2%
Income in the past 12 months at or above poverty level:	2,082	414	62.6%	6,105	684	93.0%
Under 18 years	579	NC	57.2%	1,202	NC	89.6%
18 to 64 years	1,282	330	62.4%	3,838	431	93.6%
65 years and over	221	NC	86.0%	1,065	NC	94.8%

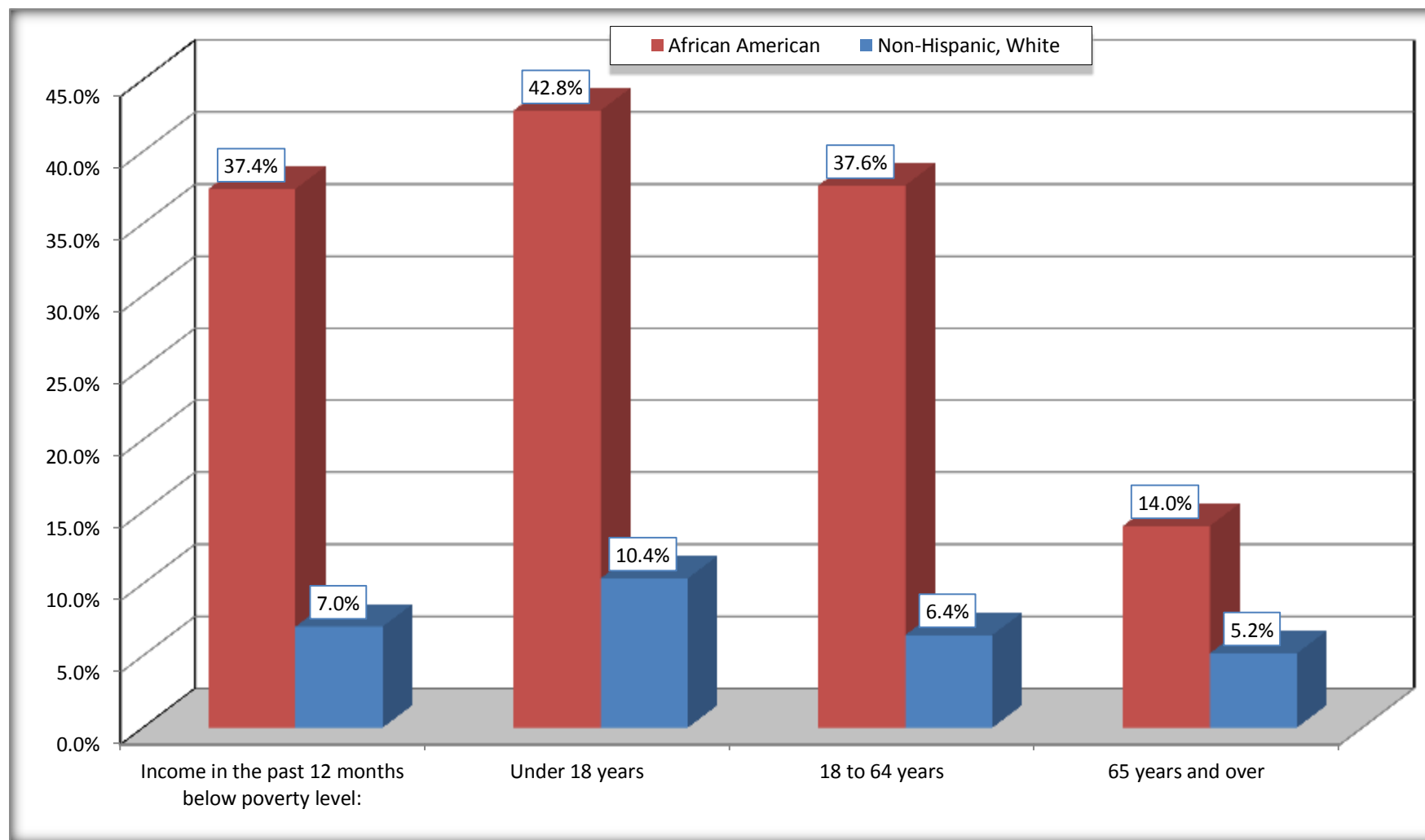
Source: U.S. Census Bureau, 2008-2012 American Community Survey

For information on confidentiality protection, sampling error, nonsampling error, and definitions, see Survey Methodology.

<http://www.census.gov/acs/www/UseData/index.htm>

Population Below Poverty in the Past 12 Months

Raceland CDP, Louisiana



Source: B17020 POVERTY STATUS IN THE PAST 12 MONTHS BY AGE - Universe: POPULATION FOR WHOM POVERTY STATUS IS DETERMINED
Data Set: 2008-2012 American Community Survey 5-Year Estimates

B19001. HOUSEHOLD INCOME IN THE PAST 12 MONTHS (IN 2010 INFLATION-ADJUSTED DOLLARS)

Data Set: 2008-2012 American Community Survey 5-Year Estimates

	Raceland CDP, Louisiana					
	African American	Margin of Error (+/-)	% of AA Total	White, Not Hispanic	Margin of Error (+/-)	% of NHW Total
Total:	1,150	173	100.0%	2,574	233	100.0%
Less than \$ 10,000	307	168	26.7%	116	64	4.5%
\$ 10,000 to \$ 14,999	98	79	8.5%	103	60	4.0%
\$ 15,000 to \$ 24,999	204	NC	17.7%	329	NC	12.8%
\$ 25,000 to \$ 34,999	145	NC	12.6%	279	NC	10.8%
\$ 35,000 to \$ 49,999	115	NC	10.0%	344	NC	13.4%
\$ 50,000 to \$ 74,999	172	NC	15.0%	494	NC	19.2%
\$ 75,000 to \$ 99,999	82	67	7.1%	286	112	11.1%
\$ 100,000 to \$ 149,999	27	NC	2.3%	488	NC	19.0%
\$ 150,000 to \$ 199,999	0	19	0.0%	109	74	4.2%
\$ 200,000 or more	0	19	0.0%	26	25	1.0%

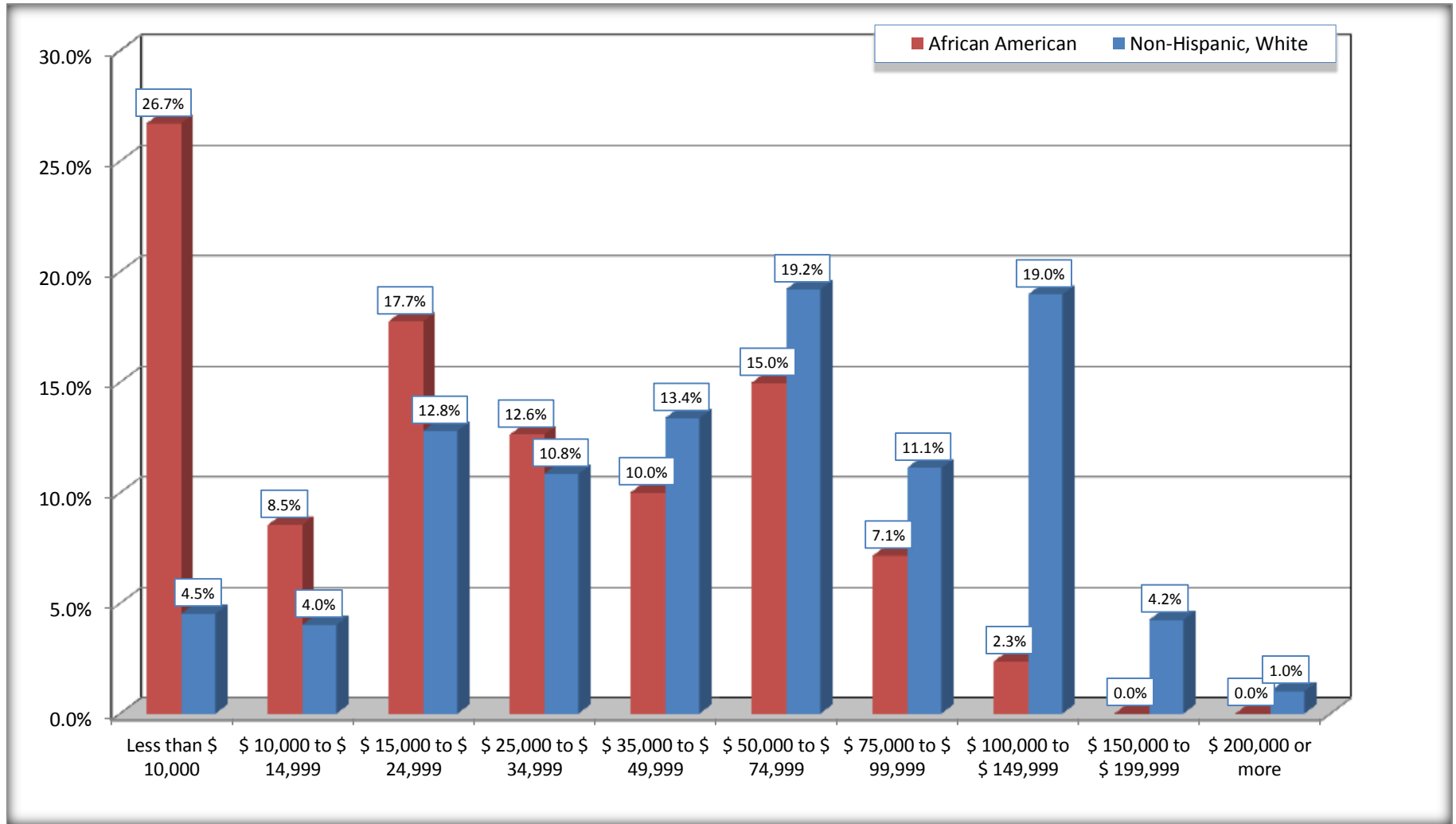
Source: U.S. Census Bureau, 2008-2012 American Community Survey

For information on confidentiality protection, sampling error, nonsampling error, and definitions, see Survey Methodology.

<http://www.census.gov/acs/www/UseData/index.htm>

Household Income in the Past 12 Months

Raceland CDP, Louisiana



Source: B19001. HOUSEHOLD INCOME IN THE PAST 12 MONTHS (IN 2010 INFLATION-ADJUSTED DOLLARS)
Data Set: 2008-2012 American Community Survey 5-Year Estimates

B19013. MEDIAN HOUSEHOLD INCOME IN THE PAST 12 MONTHS (IN 2010 INFLATION-ADJUSTED DOLLARS)

Data Set: 2008-2012 American Community Survey 5-Year Estimates

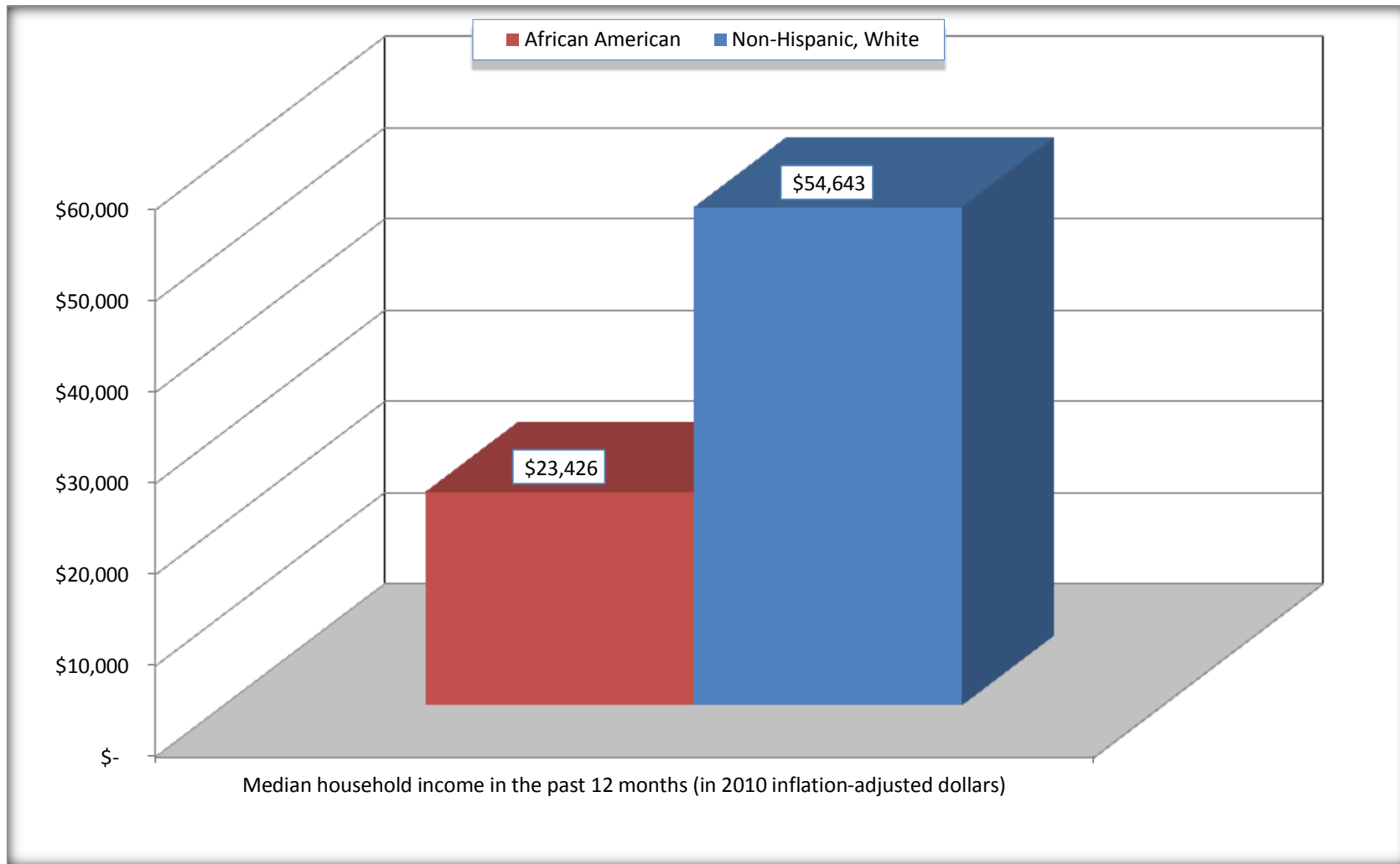
	Raceland CDP, Louisiana			
	African American	Margin of Error (+/-)	White, Not Hispanic	Margin of Error (+/-)
Median household income in the past 12 months (in 2010 inflation-adjusted dollars)	\$ 23,426	\$ 5,502	\$ 54,643	\$ 5,870

Source: U.S. Census Bureau, 2008-2012 American Community Survey

For information on confidentiality protection, sampling error, nonsampling error, and definitions, see Survey Methodology.
<http://www.census.gov/acs/www/UseData/index.htm>

Median Household Income in the Past 12 Months

Raceland CDP, Louisiana



Source: B19013. MEDIAN HOUSEHOLD INCOME IN THE PAST 12 MONTHS (IN 2010 INFLATION-ADJUSTED DOLLARS)
Data Set: 2008-2012 American Community Survey 5-Year Estimates

B19101. FAMILY INCOME IN THE PAST 12 MONTHS (IN 2010 INFLATION-ADJUSTED DOLLARS)

Data Set: 2008-2012 American Community Survey 5-Year Estimates

	Raceland CDP, Louisiana					
	African American	Margin of Error (+/-)	% of AA Total	White, Not Hispanic	Margin of Error (+/-)	% of NHW Total
Total:	926	164	100.0%	1,918	215	100.0%
Less than \$ 10,000	149	118	16.1%	50	39	2.6%
\$ 10,000 to \$ 14,999	92	79	9.9%	63	54	3.3%
\$ 15,000 to \$ 24,999	171	NC	18.5%	167	NC	8.7%
\$ 25,000 to \$ 34,999	124	NC	13.4%	223	NC	11.6%
\$ 35,000 to \$ 49,999	152	NC	16.4%	260	NC	13.6%
\$ 50,000 to \$ 74,999	147	NC	15.9%	368	NC	19.2%
\$ 100,000 to \$ 149,999	27	NC	2.9%	403	NC	21.0%
\$ 150,000 to \$ 199,999	0	19	0.0%	109	74	5.7%
\$ 200,000 or more	0	19	0.0%	26	25	1.4%

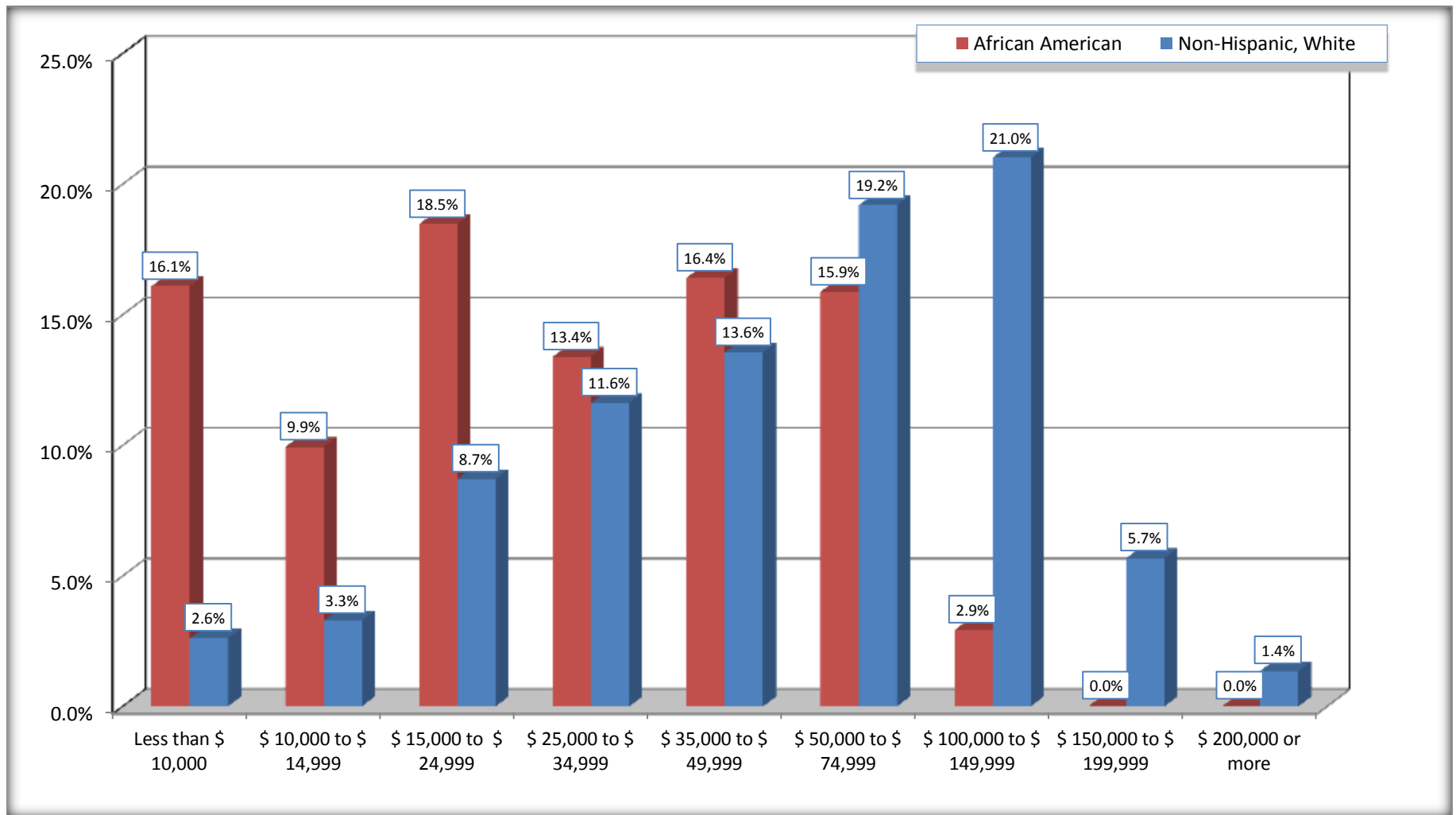
Source: U.S. Census Bureau, 2008-2012 American Community Survey

For information on confidentiality protection, sampling error, nonsampling error, and definitions, see Survey Methodology.

<http://www.census.gov/acs/www/UseData/index.htm>

Family Income in the Past 12 Months

Raceland CDP, Louisiana



Source: B19101. FAMILY INCOME IN THE PAST 12 MONTHS (IN 2010 INFLATION-ADJUSTED DOLLARS)
Data Set: 2008-2012 American Community Survey 5-Year Estimates

B19113. MEDIAN FAMILY INCOME IN THE PAST 12 MONTHS (IN 2010 INFLATION-ADJUSTED DOLLARS)

Data Set: 2008-2012 American Community Survey 5-Year Estimates

	Raceland CDP, Louisiana			
	African American	Margin of Error (+/-)	White, Not Hispanic	Margin of Error (+/-)
Median family income in the past 12 months (in 2010 inflation-adjusted dollars)	\$ 26,678	\$ 10,258	\$ 62,778	\$ 11,279

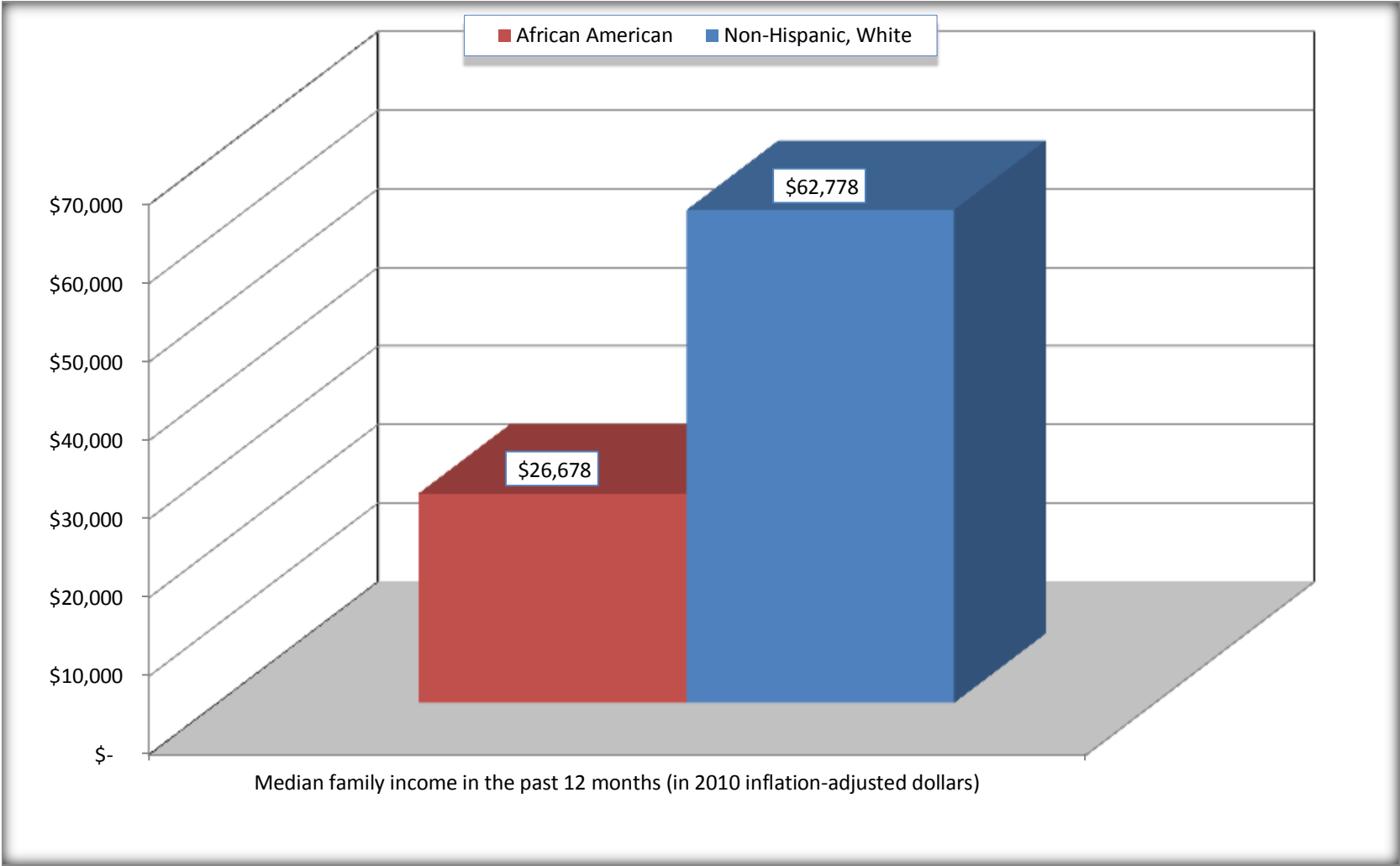
Source: U.S. Census Bureau, 2008-2012 American Community Survey

For information on confidentiality protection, sampling error, nonsampling error, and definitions, see Survey Methodology.

<http://www.census.gov/acs/www/UseData/index.htm>

Median Family Income in the Past 12 Months

Raceland CDP, Louisiana



Source: B19113. MEDIAN FAMILY INCOME IN THE PAST 12 MONTHS (IN 2010 INFLATION-ADJUSTED DOLLARS)
Data Set: 2008-2012 American Community Survey 5-Year Estimates

B19202. MEDIAN NONFAMILY HOUSEHOLD INCOME IN THE PAST 12 MONTHS (IN 2010 INFLATION-ADJUSTED DOLLARS)

Data Set: 2008-2012 American Community Survey 5-Year Estimates

	Raceland CDP, Louisiana			
	African American	Margin of Error (+/-)	White, Not Hispanic	Margin of Error (+/-)
Median nonfamily household income in the past 12 months (in 2010 inflation-adjusted dollars)	\$ 8,915	\$ 5,929	\$ 30,551	\$ 7,934

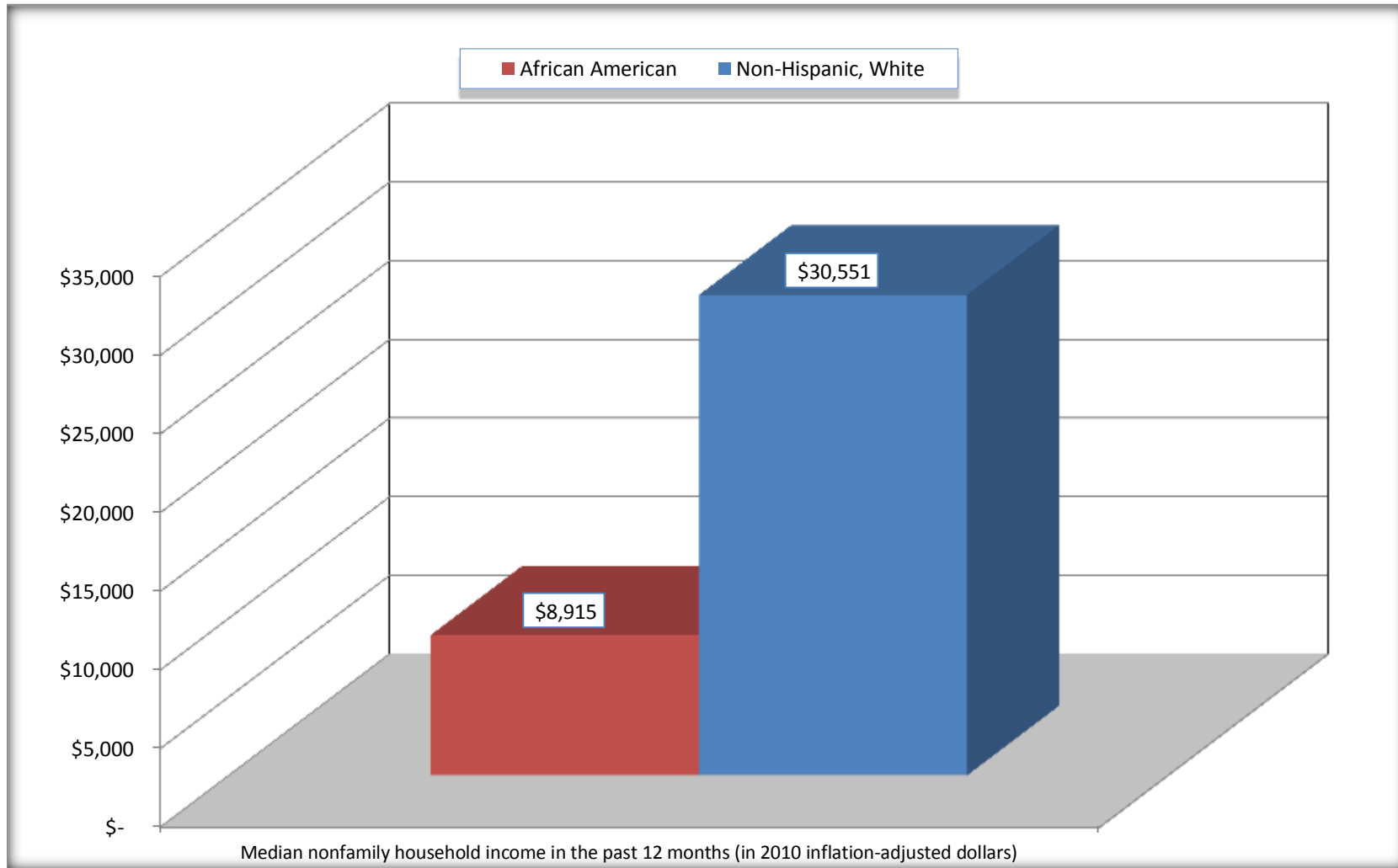
Source: U.S. Census Bureau, 2008-2012 American Community Survey

For information on confidentiality protection, sampling error, nonsampling error, and definitions, see Survey Methodology.

<http://www.census.gov/acs/www/UseData/index.htm>

Median Non-Family Income in the Past 12 Months

Raceland CDP, Louisiana



Source: B19202. MEDIAN NONFAMILY HOUSEHOLD INCOME IN THE PAST 12 MONTHS (IN 2010 INFLATION-ADJUSTED DOLLARS)
Data Set: 2008-2012 American Community Survey 5-Year Estimates

B19301. PER CAPITA INCOME IN THE PAST 12 MONTHS (IN 2010 INFLATION-ADJUSTED DOLLARS)

Data Set: 2008-2012 American Community Survey 5-Year Estimates

	Raceland CDP, Louisiana			
	African American	Margin of Error (+/-)	White, Not Hispanic	Margin of Error (+/-)
Per capita income in the past 12 months (in 2010 inflation-adjusted dollars)	\$ 11,314	\$ 2,185	\$ 26,048	\$ 2,164

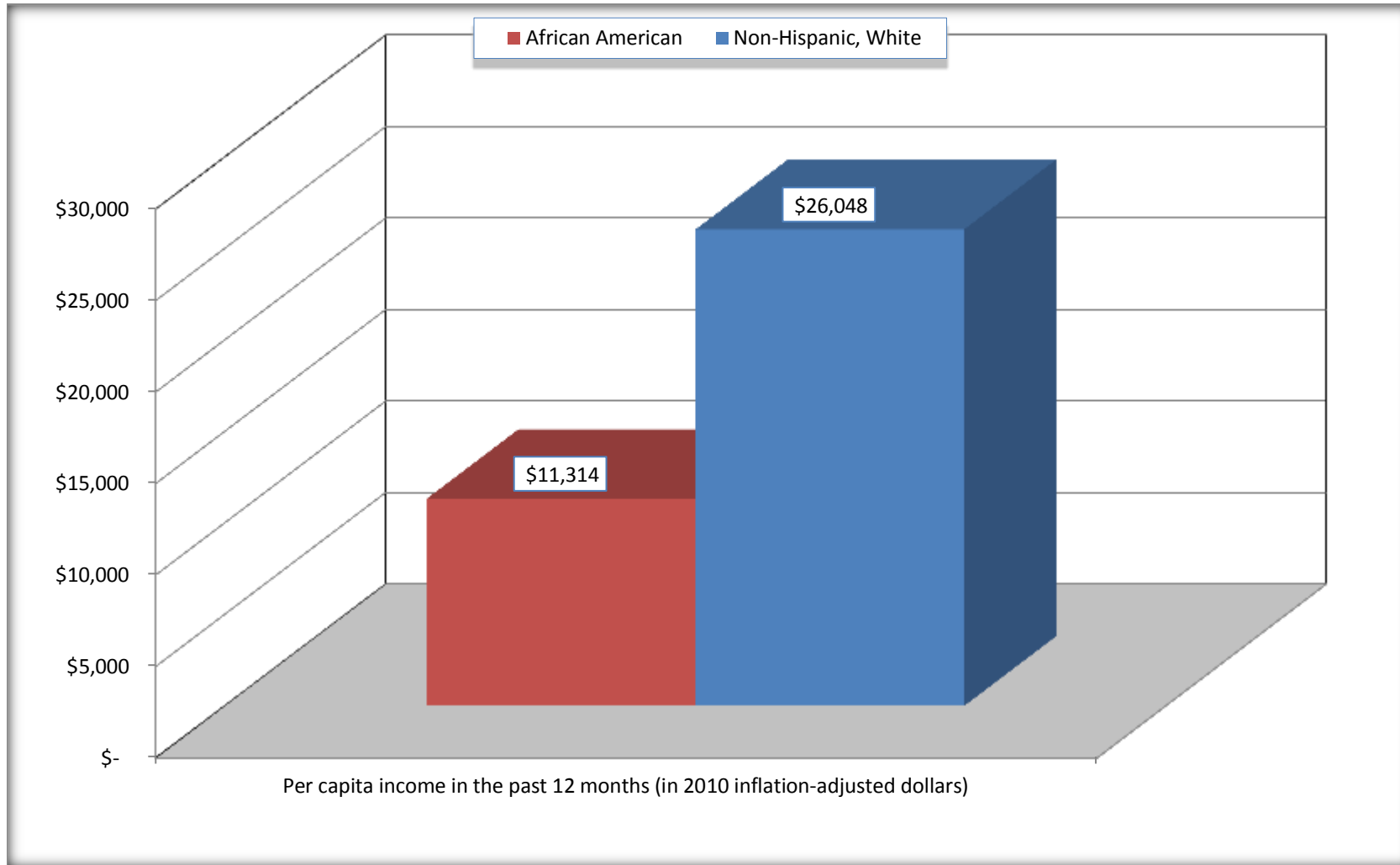
Source: U.S. Census Bureau, 2008-2012 American Community Survey

For information on confidentiality protection, sampling error, nonsampling error, and definitions, see Survey Methodology.

<http://www.census.gov/acs/www/UseData/index.htm>

Per capita Income in the Past 12 Months

Raceland CDP, Louisiana



Source: B19301. PER CAPITA INCOME IN THE PAST 12 MONTHS (IN 2010 INFLATION-ADJUSTED DOLLARS)
Data Set: 2008-2012 American Community Survey 5-Year Estimates

B20017. MEDIAN EARNINGS IN THE PAST 12 MONTHS (IN 2010 INFLATION-ADJUSTED DOLLARS) BY SEX BY WORK EXPERIENCE IN THE PAST 12 MONTHS FOR THE POPULATION 16 YEARS AND OVER WITH EARNINGS IN THE PAST 12 MONTHS

Data Set: 2008-2012 American Community Survey 5-Year Estimates

	Raceland CDP, Louisiana			
	African American	Margin of Error (+/-)	White, Not Hispanic	Margin of Error (+/-)
Median earnings in the past 12 months (in 2010 inflation-adjusted dollars) --				
Total:	\$ 15,796	\$ 2,342	\$ 34,760	\$ 4,228
Male --				
Total	\$ 21,439	\$ 4,772	\$ 51,829	\$ 10,955
Worked full-time, year-round in the past 12 months	\$ 39,250	\$ 18,408	\$ 57,790	\$ 6,242
Other	\$ 10,739	\$ 8,730	\$ 10,840	\$ 2,872
Female --				
Total	\$ 14,628	\$ 1,850	\$ 26,017	\$ 5,568
Worked full-time, year-round in the past 12 months	\$ 23,036	\$ 8,852	\$ 33,594	\$ 3,535
Other	\$ 6,452	\$ 2,290	\$ 7,388	\$ 1,669

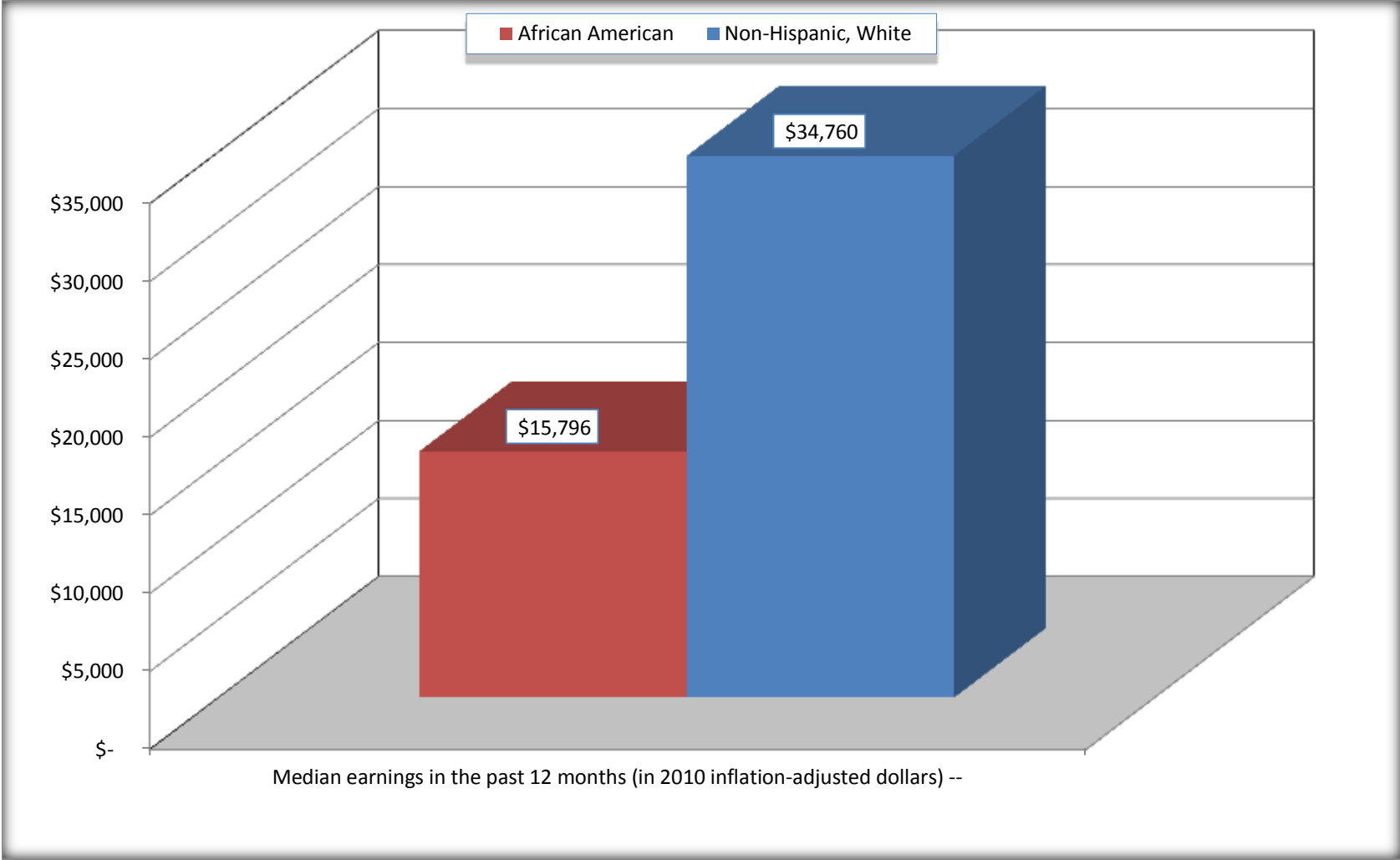
Source: U.S. Census Bureau, 2008-2012 American Community Survey

For information on confidentiality protection, sampling error, nonsampling error, and definitions, see Survey Methodology.

<http://www.census.gov/acs/www/UseData/index.htm>

Median earnings in the Past 12 Months (16 Years and Over with Earnings)

Raceland CDP, Louisiana



Source: B20017. MEDIAN EARNINGS IN THE PAST 12 MONTHS (IN 2010 INFLATION-ADJUSTED DOLLARS) BY SEX BY WORK EXPERIENCE IN THE PAST 12 MONTHS FOR THE POPULATION 16 YEARS AND OVER WITH EARNINGS IN THE PAST 12 MONTHS
Data Set: 2008-2012 American Community Survey 5-Year Estimates

B20005. SEX BY WORK EXPERIENCE IN THE PAST 12 MONTHS BY EARNINGS IN THE PAST 12 MONTHS (IN 2010 INFLATION-ADJUSTED DOLLARS) FOR THE POPULATION 16 YEARS AND OVER

Data Set: 2008-2012 American Community Survey 5-Year Estimates

	Raceland CDP, Louisiana					
	African American	Margin of Error (+/-)	% of AA Total	White, Not Hispanic	Margin of Error (+/-)	% of NHW Total
Total:	2,362	351	100.0%	5,488	580	100.0%
Worked full-time, year-round in the past 12 months:	724	NC	30.7%	2,363	NC	43.1%
No earnings	0	NC	0.0%	0	NC	0.0%
With earnings:	724	NC	30.7%	2,363	NC	43.1%
\$ 1 to \$ 9,999 or loss	23	NC	1.0%	23	NC	0.4%
\$ 10,000 to \$ 19,999	230	NC	9.7%	262	NC	4.8%
\$ 20,000 to \$ 29,999	157	NC	6.6%	339	NC	6.2%
\$ 30,000 to \$ 49,999	258	NC	10.9%	647	NC	11.8%
\$ 50,000 to \$ 74,999	29	NC	1.2%	695	NC	12.7%
\$ 75,000 or more	27	NC	1.1%	397	NC	7.2%
Other:	1,638	NC	69.3%	3,125	NC	56.9%
No earnings	950	NC	40.2%	2,168	NC	39.5%
With earnings: less than full time, year-round	688	NC	29.1%	957	NC	17.4%
Male:	981	233	41.5%	2,679	329	48.8%
Worked full-time, year-round in the past 12 months:	253	88	10.7%	1,415	202	25.8%
No earnings	0	19	0.0%	0	19	0.0%
With earnings:	253	88	10.7%	1,415	202	25.8%
\$ 1 to \$ 9,999 or loss	23	NC	1.0%	1	NC	0.0%
\$ 10,000 to \$ 19,999	15	NC	0.6%	133	NC	2.4%
\$ 20,000 to \$ 29,999	72	NC	3.0%	119	NC	2.2%
\$ 30,000 to \$ 49,999	119	NC	5.0%	273	NC	5.0%
\$ 50,000 to \$ 74,999	24	NC	1.0%	531	NC	9.7%
\$ 75,000 or more	0	NC	0.0%	358	NC	6.5%

	Raceland CDP, Louisiana					
	African American	Margin of Error (+/-)	% of AA Total	White, Not Hispanic	Margin of Error (+/-)	% of NHW Total
Other:	728	214	30.8%	1,264	214	23.0%
No earnings	497	179	21.0%	903	192	16.5%
With earnings:	231	117	9.8%	361	135	6.6%
Female:	1,381	228	58.5%	2,809	313	51.2%
Worked full-time, year-round in the past 12 months:	471	140	19.9%	948	207	17.3%
No earnings	0	19	0.0%	0	19	0.0%
With earnings:	471	140	19.9%	948	207	17.3%
\$ 1 to \$ 9,999 or loss	0	NC	0.0%	22	NC	0.4%
\$ 10,000 to \$ 19,999	215	NC	9.1%	129	NC	2.4%
\$ 20,000 to \$ 29,999	85	NC	3.6%	220	NC	4.0%
\$ 30,000 to \$ 49,999	139	NC	5.9%	374	NC	6.8%
\$ 50,000 to \$ 74,999	5	NC	0.2%	164	NC	3.0%
\$ 75,000 or more	27	NC	1.1%	39	NC	0.7%
Other:	910	191	38.5%	1,861	241	33.9%
No earnings	453	162	19.2%	1,265	206	23.1%
With earnings:	457	190	19.3%	596	169	10.9%

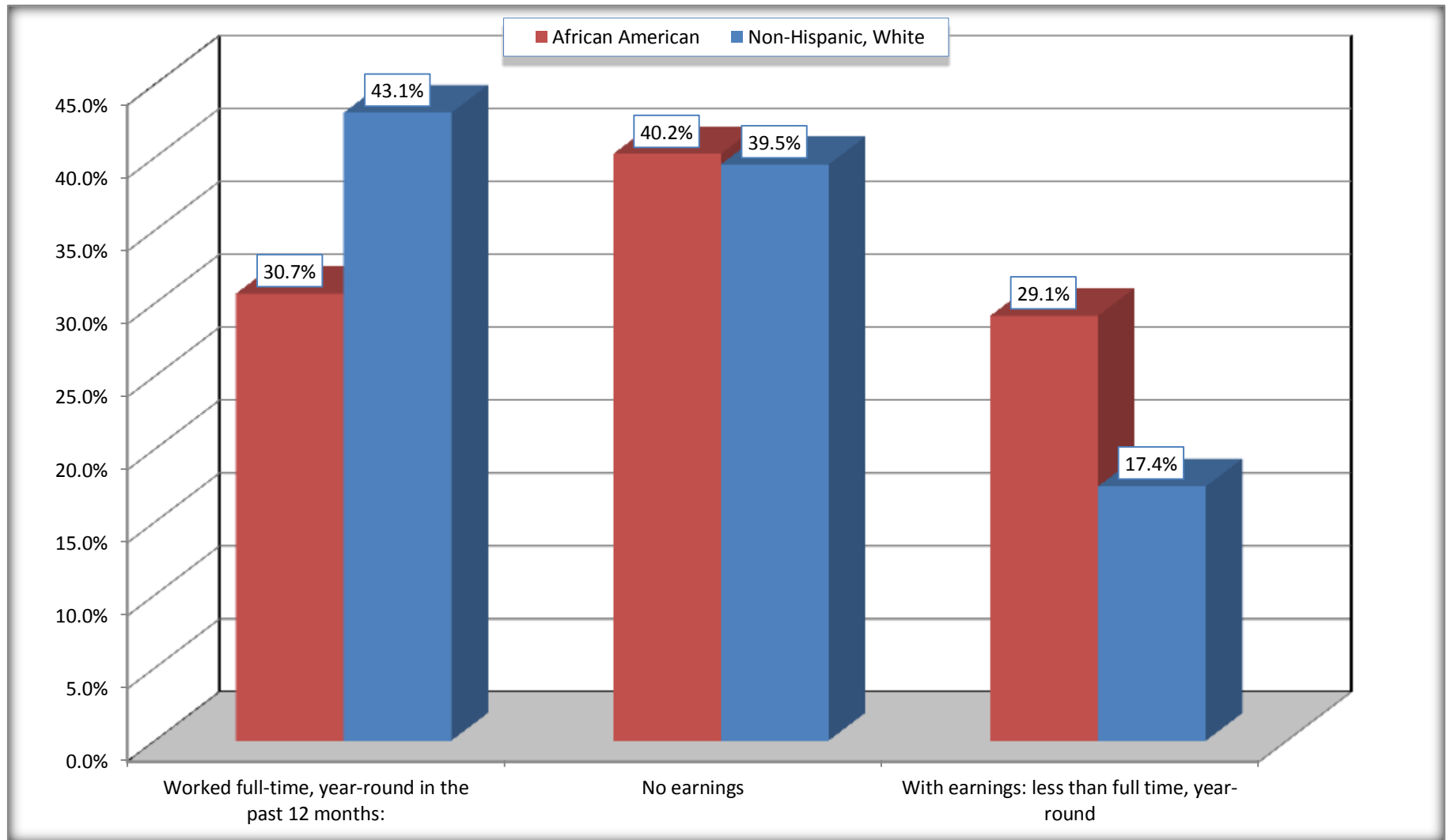
Source: U.S. Census Bureau, 2008-2012 American Community Survey

For information on confidentiality protection, sampling error, nonsampling error, and definitions, see Survey Methodology.

<http://www.census.gov/acs/www/UseData/index.htm>

Employment and Earnings in in the Past 12 Months (16 Years and Over)

Raceland CDP, Louisiana



Source: B20005. SEX BY WORK EXPERIENCE IN THE PAST 12 MONTHS BY EARNINGS IN THE PAST 12 MONTHS (IN 2010 INFLATION-ADJUSTED DOLLARS) FOR THE POPULATION 16 YEARS AND OVER

Data Set: 2008-2012 American Community Survey 5-Year Estimates

C21001. SEX BY AGE BY VETERAN STATUS FOR THE CIVILIAN POPULATION 18 YEARS AND OVER

Data Set: 2008-2012 American Community Survey 5-Year Estimates

	Raceland CDP, Louisiana					
	African American	Margin of Error (+/-)	% of AA Total	White, Not Hispanic	Margin of Error (+/-)	% of NHW Total
Total:	2,321	344	100.0%	5,282	531	100.0%
Veteran	150	NC	6.5%	674	NC	12.8%
Nonveteran	2,171	NC	93.5%	4,608	NC	87.2%
Male:	940	220	40.5%	2,577	314	48.8%
18 to 64 years:	781	203	33.6%	2,001	259	37.9%
Veteran	79	85	3.4%	310	131	5.9%
Nonveteran	702	184	30.2%	1,691	263	32.0%
65 years and over:	159	68	6.9%	576	124	10.9%
Veteran	30	28	1.3%	279	84	5.3%
Nonveteran	129	63	5.6%	297	94	5.6%
Female:	1,381	228	59.5%	2,705	281	51.2%
18 to 64 years:	1,279	229	55.1%	2,114	264	40.0%
Veteran	39	51	1.7%	73	62	1.4%
Nonveteran	1,240	236	53.4%	2,041	256	38.6%
65 years and over:	102	50	4.4%	591	118	11.2%
Veteran	2	5	0.1%	12	18	0.2%
Nonveteran	100	51	4.3%	579	118	11.0%

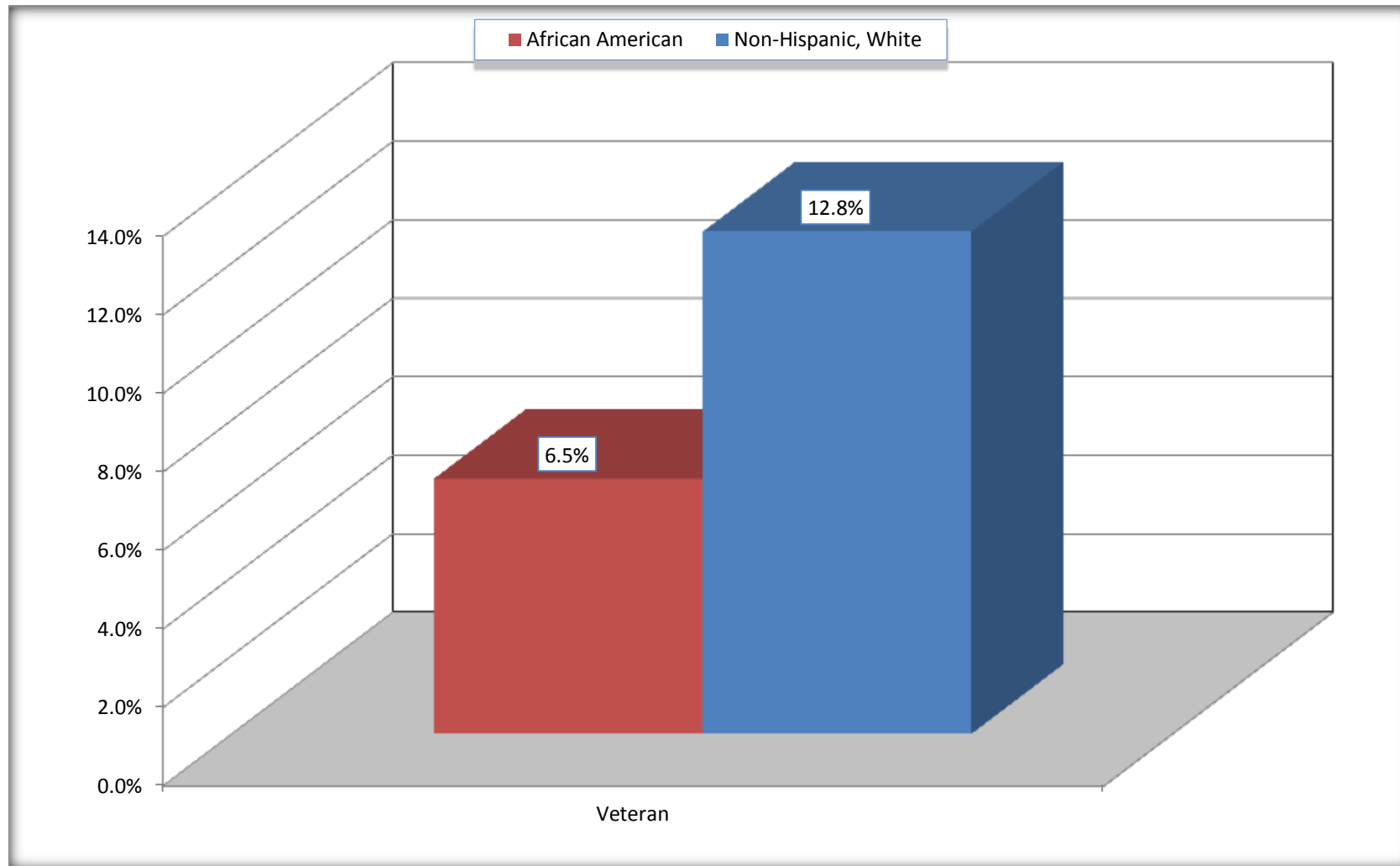
Source: U.S. Census Bureau, 2008-2012 American Community Survey

For information on confidentiality protection, sampling error, nonsampling error, and definitions, see Survey Methodology.

<http://www.census.gov/acs/www/UseData/index.htm>

Veterans in the Civilian Population 18 Years and Over

Raceland CDP, Louisiana



Source: C21001. SEX BY AGE BY VETERAN STATUS FOR THE CIVILIAN POPULATION 18 YEARS AND OVER
Data Set: 2008-2012 American Community Survey 5-Year Estimates

B22005. RECEIPT OF FOOD STAMPS/SNAP IN THE PAST 12 MONTHS BY RACE OF HOUSEHOLDER

Data Set: 2008-2012 American Community Survey 5-Year Estimates

	Raceland CDP, Louisiana					
	African American	Margin of Error (+/-)	% of AA Total	White, Not Hispanic	Margin of Error (+/-)	% of NHW Total
Total:	1,150	173	100.0%	2,574	233	100.0%
HH received Food Stamps/SNAP in the past 12 months	588	149	51.1%	193	80	7.5%
HH did not receive Food Stamps/SNAP in the past 12 months	562	167	48.9%	2,381	218	92.5%

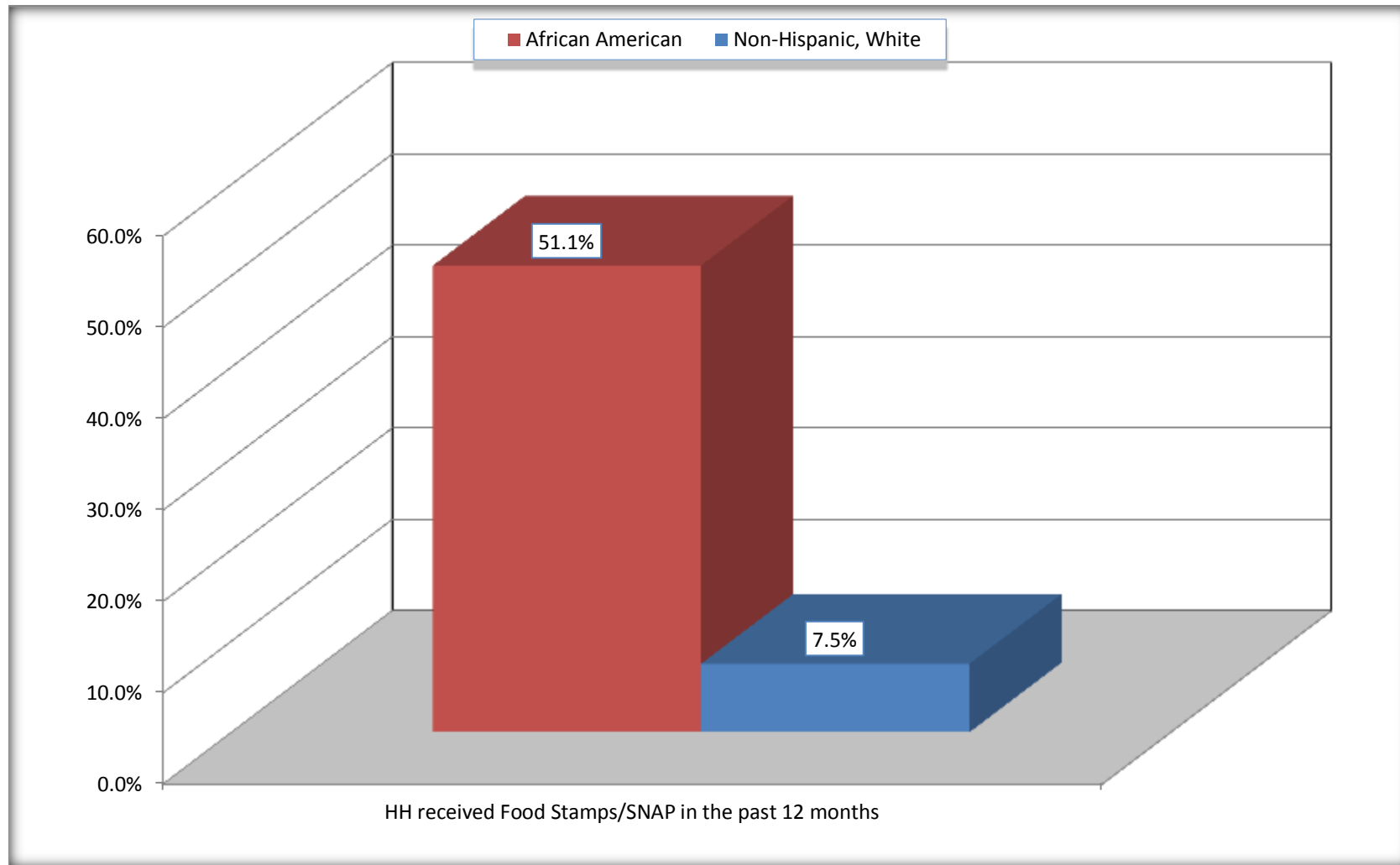
Source: U.S. Census Bureau, 2008-2012 American Community Survey

For information on confidentiality protection, sampling error, nonsampling error, and definitions, see Survey Methodology.

<http://www.census.gov/acs/www/UseData/index.htm>

Receipt of Food Stamps/SNAP in the Past 12 Months by Household

Raceland CDP, Louisiana



Source: B22005. RECEIPT OF FOOD STAMPS/SNAP IN THE PAST 12 MONTHS BY RACE OF HOUSEHOLDER
Data Set: 2008-2012 American Community Survey 5-Year Estimates

C23002. SEX BY AGE BY EMPLOYMENT STATUS FOR THE POPULATION 16 YEARS AND OVER

Data Set: 2008-2012 American Community Survey 5-Year Estimates

	Raceland CDP, Louisiana					
	African American	Margin of Error (+/-)	% of AA Total	White, Not Hispanic	Margin of Error (+/-)	% of NHW Total
Total:	2,362	351	100.0%	5,488	580	100.0%
In labor force:	1,265	NC	53.6%	3,253	NC	59.3%
In Armed Forces	0	NC	0.0%	0	NC	0.0%
Civilian:	1,196	NC	50.6%	3,071	NC	56.0%
Employed	1,161	NC	49.2%	3,017	NC	55.0%
Unemployed	104	NC	4.4%	236	NC	4.3%
Not in labor force	1,097	NC	46.4%	2,235	NC	40.7%
Male:	981	233	41.5%	2,679	329	48.8%
16 to 64 years:	822	218	34.8%	2,103	275	38.3%
In labor force:	419	154	17.7%	1,620	219	29.5%
In Armed Forces	0	19	0.0%	0	19	0.0%
Civilian:	419	154	17.7%	1,620	219	29.5%
Employed	359	141	15.2%	1,494	198	27.2%
Unemployed	60	56	2.5%	126	77	2.3%
Not in labor force	403	165	17.1%	483	140	8.8%
65 years and over:	159	68	6.7%	576	124	10.5%
In labor force:	57	39	2.4%	107	55	1.9%
Employed	57	39	2.4%	107	55	1.9%
Unemployed	0	19	0.0%	0	19	0.0%
Not in labor force	102	55	4.3%	469	121	8.5%

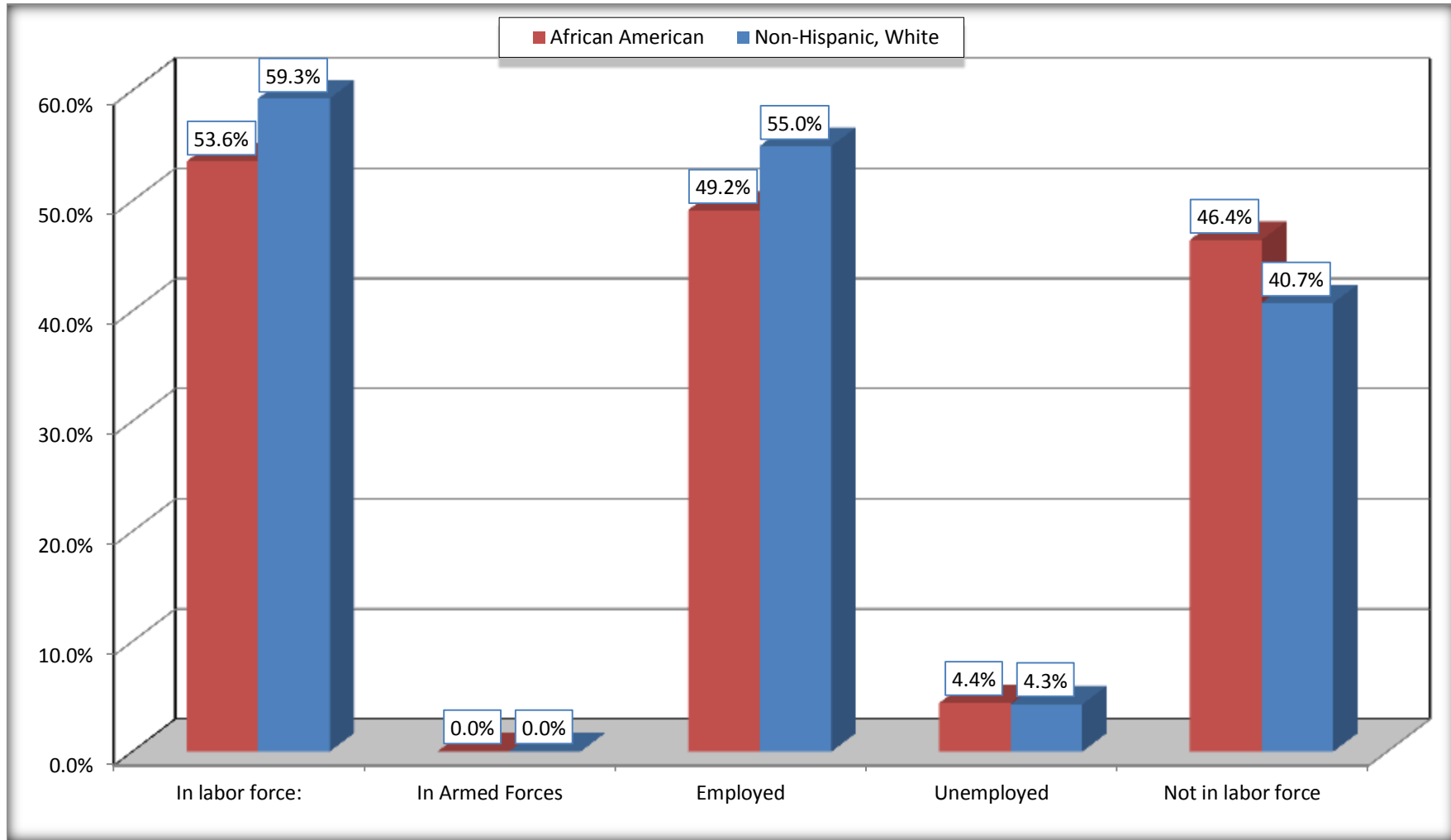
	Raceland CDP, Louisiana					
	African American	Margin of Error (+/-)	% of AA Total	White, Not Hispanic	Margin of Error (+/-)	% of NHW Total
Female:	1,381	228	58.5%	2,809	313	51.2%
16 to 64 years:	1,279	229	54.1%	2,218	294	40.4%
In labor force:	777	205	32.9%	1,451	266	26.4%
In Armed Forces	0	19	0.0%	0	19	0.0%
Civilian:	777	205	32.9%	1,451	266	26.4%
Employed	733	203	31.0%	1,341	260	24.4%
Unemployed	44	39	1.9%	110	74	2.0%
Not in labor force	502	167	21.3%	767	178	14.0%
65 years and over:	102	50	4.3%	591	118	10.8%
In labor force:	12	20	0.5%	75	53	1.4%
Employed	12	20	0.5%	75	53	1.4%
Unemployed	0	19	0.0%	0	19	0.0%
Not in labor force	90	47	3.8%	516	112	9.4%

Source: U.S. Census Bureau, 2008-2012 American Community Survey

For information on confidentiality protection, sampling error, nonsampling error, and definitions, see Survey Methodology.
<http://www.census.gov/acs/www/UseData/index.htm>

Employment Status for the Population 16 years and over

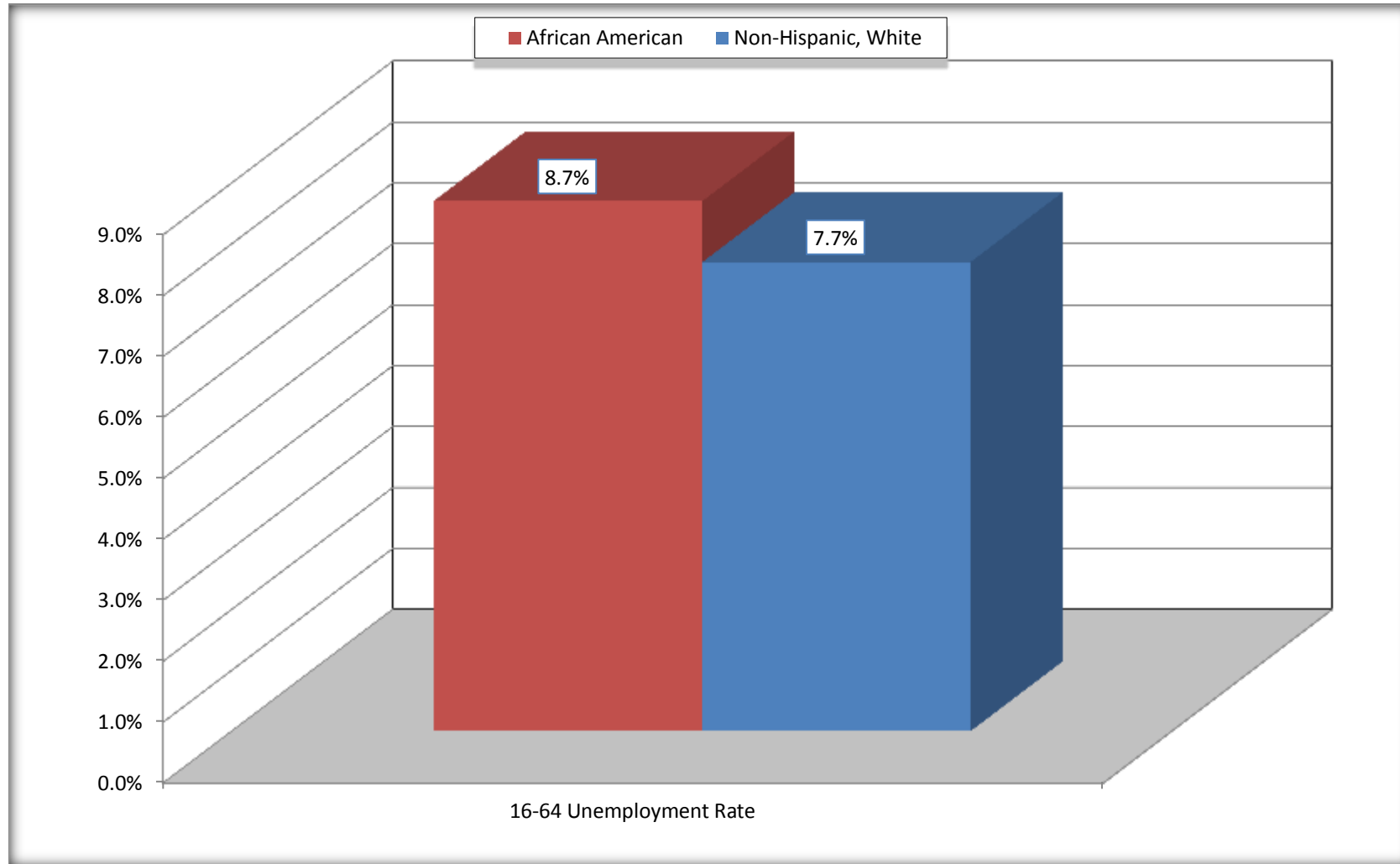
Raceland CDP, Louisiana



Source: C23002. SEX BY AGE BY EMPLOYMENT STATUS FOR THE POPULATION 16 YEARS AND OVER
Data Set: 2008-2012 American Community Survey 5-Year Estimates

Unemployment of Working Age Population (Ages 16 to 64) (As a Percent of 16-64 Civilian Labor Force)

Raceland CDP, Louisiana



Source: C23002. SEX BY AGE BY EMPLOYMENT STATUS FOR THE POPULATION 16 YEARS AND OVER
Data Set: 2008-2012 American Community Survey 5-Year Estimates

C24010. SEX BY OCCUPATION FOR THE CIVILIAN EMPLOYED POPULATION 16 YEARS AND OVER

Data Set: 2008-2012 American Community Survey 5-Year Estimates

	Raceland CDP, Louisiana					
	African American	Margin of Error (+/-)	% of AA Total	White, Not Hispanic	Margin of Error (+/-)	% of NHW Total
Total:	1,161	248	100.0%	3,017	386	100.0%
Management, professional, and related occupations	209	NC	18.0%	910	NC	30.2%
Service occupations	468	NC	40.3%	713	NC	23.6%
Sales and office occupations	182	NC	15.7%	695	NC	23.0%
Natural resources, construction, and maintenance occupations:	96	NC	8.3%	389	NC	12.9%
Production, transportation, and material moving occupations	206	NC	17.7%	310	NC	10.3%
Male:	416	146	35.8%	1,601	209	53.1%
Management, business, science, and arts occupations:	38	34	3.3%	472	134	15.6%
Service occupations	133	96	11.5%	242	137	8.0%
Sales and office occupations	23	27	2.0%	208	92	6.9%
Natural resources, construction, and maintenance occupations:	96	71	8.3%	389	138	12.9%
Production, transportation, and material moving occupations	126	77	10.9%	290	99	9.6%
Female:	745	203	64.2%	1,416	266	46.9%
Management, professional, and related occupations	171	109	14.7%	438	125	14.5%
Service occupations	335	159	28.9%	471	176	15.6%
Sales and office occupations	159	97	13.7%	487	188	16.1%
Natural resources, construction, and maintenance occupations:	0	19	0.0%	0	19	0.0%
Production, transportation, and material moving occupations	80	51	6.9%	20	25	0.7%

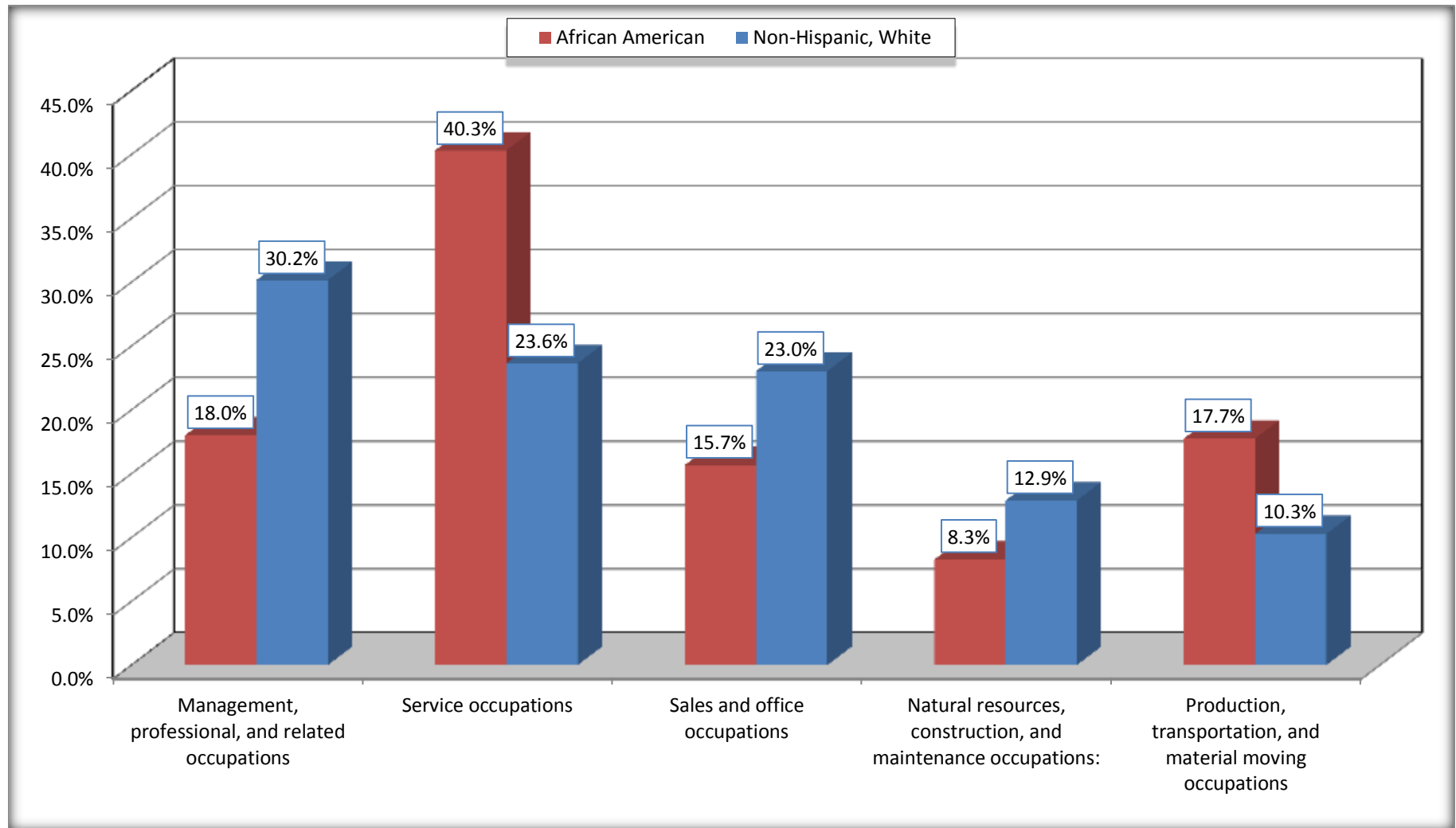
Source: U.S. Census Bureau, 2008-2012 American Community Survey

For information on confidentiality protection, sampling error, nonsampling error, and definitions, see Survey Methodology.

<http://www.census.gov/acs/www/UseData/index.htm>

Occupation for the Civilian Employed 16 Years and Over Population

Raceland CDP, Louisiana



Source: C24010. SEX BY OCCUPATION FOR THE CIVILIAN EMPLOYED POPULATION 16 YEARS AND OVER
Data Set: 2008-2012 American Community Survey 5-Year Estimates

B25003. TENURE - Universe: OCCUPIED HOUSING UNITS

Data Set: 2008-2012 American Community Survey 5-Year Estimates

	Raceland CDP, Louisiana					
	African American	Margin of Error (+/-)	% of AA Total	White, Not Hispanic	Margin of Error (+/-)	% of NHW Total
Total:	1,150	173	100.0%	2,574	233	100.0%
Owner occupied	880	156	76.5%	2,219	239	86.2%
Renter occupied	270	128	23.5%	355	145	13.8%

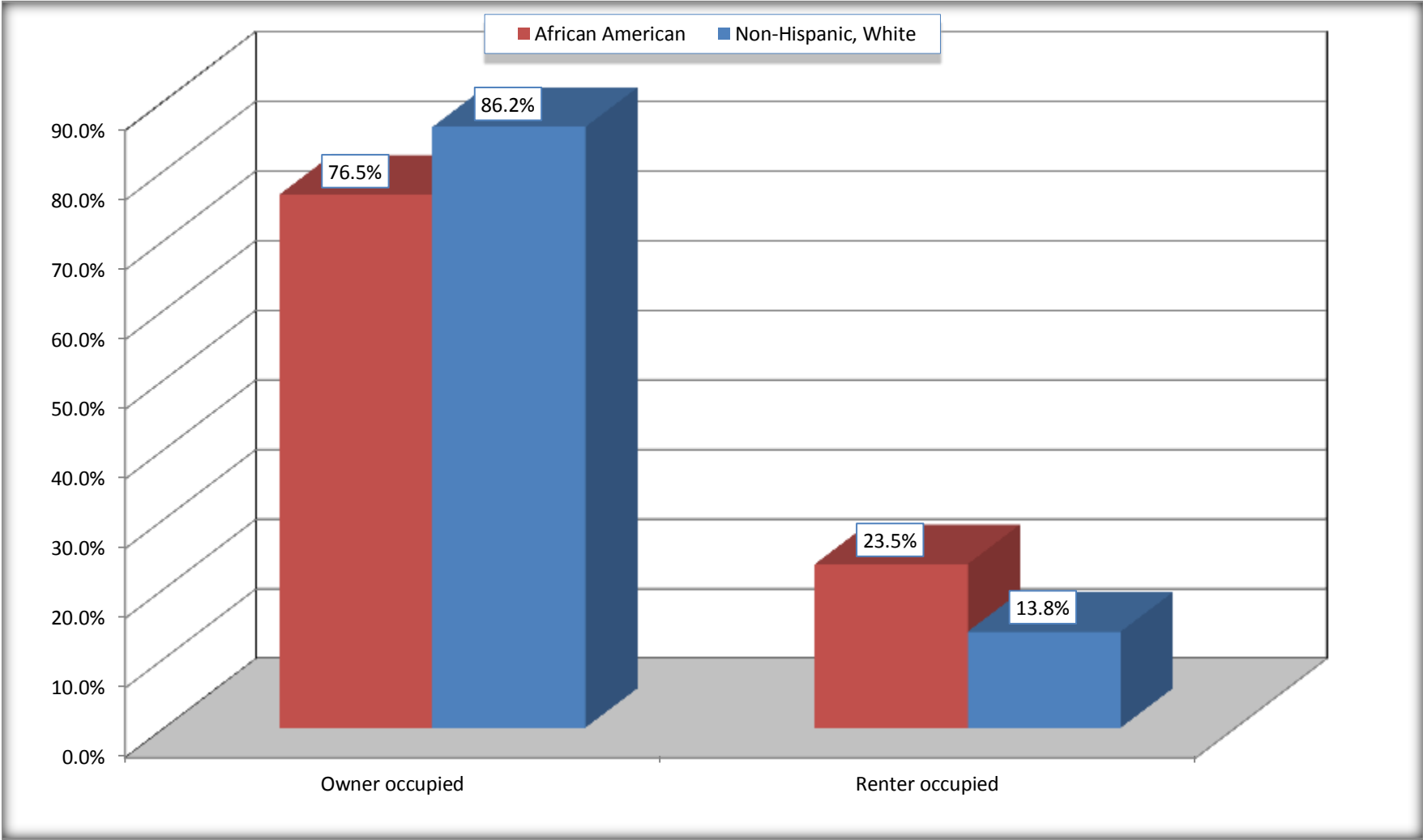
Source: U.S. Census Bureau, 2008-2012 American Community Survey

For information on confidentiality protection, sampling error, nonsampling error, and definitions, see Survey Methodology.

<http://www.census.gov/acs/www/UseData/index.h>

Home Owners and Renters by Household

Raceland CDP, Louisiana



Source: B25003. TENURE - Universe: OCCUPIED HOUSING UNITS
Data Set: 2008-2012 American Community Survey 5-Year Estimates

B25014. OCCUPANTS PER ROOM - Universe: OCCUPIED HOUSING UNITS

Data Set: 2008-2012 American Community Survey 5-Year Estimates

	Raceland CDP, Louisiana					
	African American	Margin of Error (+/-)	% of AA Total	White, Not Hispanic	Margin of Error (+/-)	% of NHW Total
Total:	1,150	173	100.0%	2,574	233	100.0%
1.00 or less occupants per room	1,098	184	95.5%	2,532	233	98.4%
1.01 or more occupants per room	52	60	4.5%	42	29	1.6%

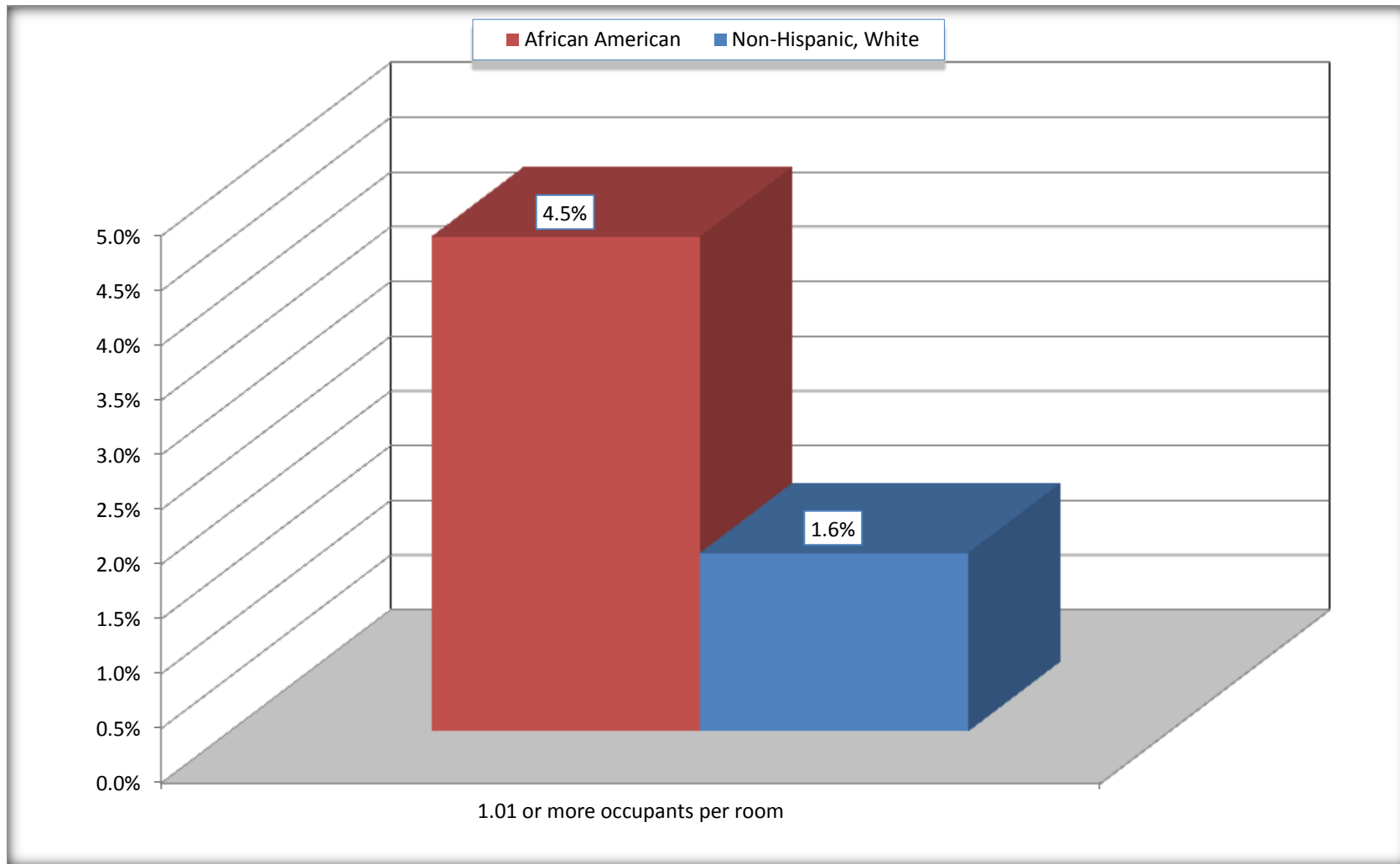
Source: U.S. Census Bureau, 2008-2012 American Community Survey

For information on confidentiality protection, sampling error, nonsampling error, and definitions, see Survey Methodology.

<http://www.census.gov/acs/www/UseData/index.ht>

More than One Person per Room (Crowding) by Household

Raceland CDP, Louisiana



Source: B25014. OCCUPANTS PER ROOM - Universe: OCCUPIED HOUSING UNITS
Data Set: 2008-2012 American Community Survey 5-Year Estimates

B18101. AGE BY DISABILITY STATUS

Data Set: 2008-2012 American Community Survey 5-Year Estimates

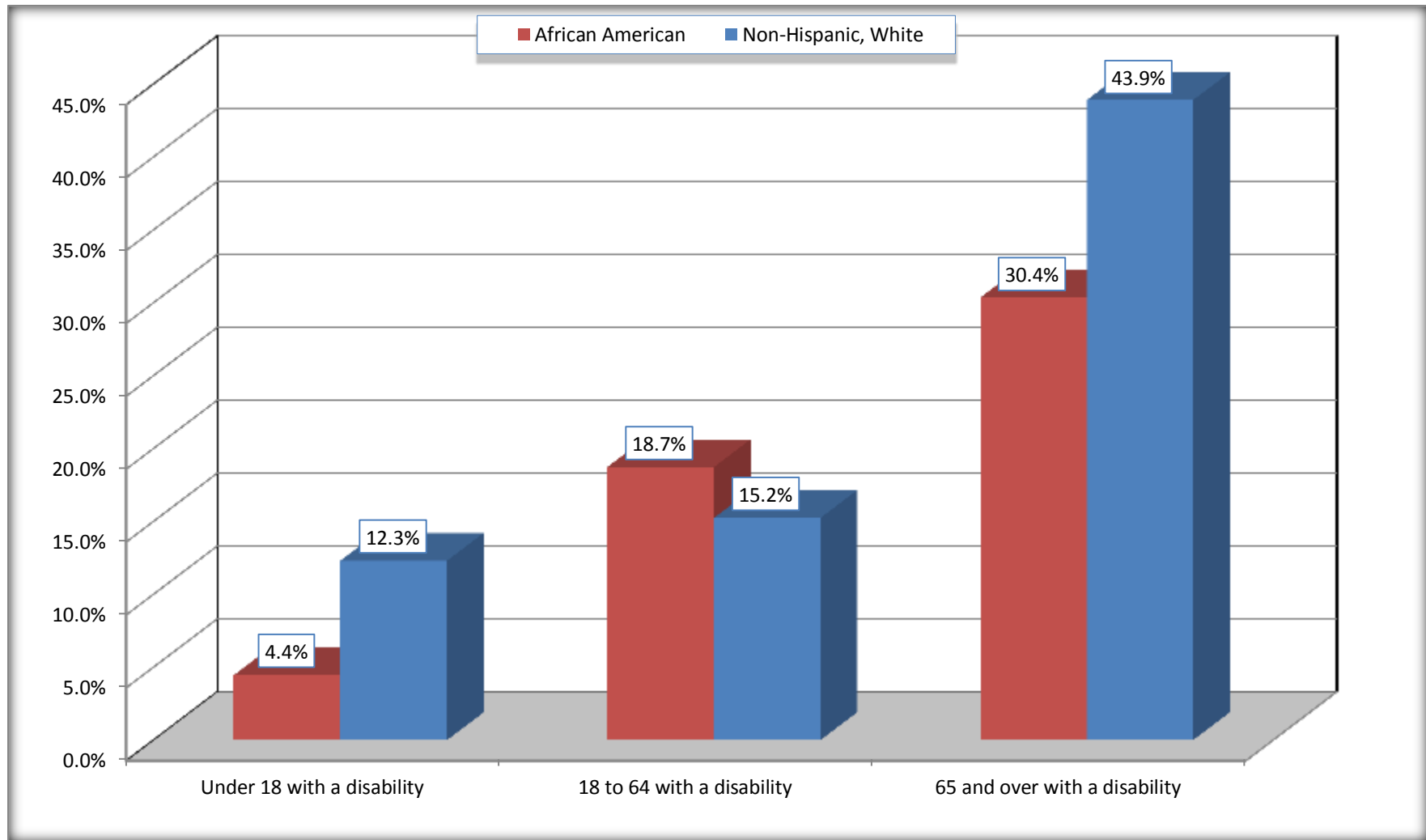
	Raceland CDP, Louisiana					
	African American	Margin of Error (+/-)	% of AA Total	White, Not Hispanic	Margin of Error (+/-)	% of NHW Total
Total:	3,326	402	100.0%	6,566	682	100.0%
Under 18 years:	1,013	273	30.5%	1,341	73	20.4%
With a disability	45	48	1.4%	165	149	2.5%
No disability	968	273	29.1%	1,176	250	17.9%
18 to 64 years:	2,056	330	61.8%	4,102	457	62.5%
With a disability	385	161	11.6%	625	167	9.5%
No disability	1,671	300	50.2%	3,477	406	53.0%
65 years and over:	257	105	7.7%	1,123	167	17.1%
With a disability	78	48	2.3%	493	147	7.5%
No disability	179	94	5.4%	630	134	9.6%

Source: U.S. Census Bureau, 2008-2012 American Community Survey

For information on confidentiality protection, sampling error, nonsampling error, and definitions, see Survey Methodology.

<http://www.census.gov/acs/www/UseData/index.htm>

Disability by Age Raceland CDP, Louisiana



Source: B18101. AGE BY DISABILITY STATUS
Data Set: 2008-2012 American Community Survey 5-Year Estimates

C27001B. HEALTH INSURANCE COVERAGE STATUS BY AGE

Data Set: 2008-2012 American Community Survey 5-Year Estimates

	Raceland CDP, Louisiana					
	African American	Margin of Error (+/-)	% of AA Total	White, Not Hispanic	Margin of Error (+/-)	% of NHW Total
Total:	3,326	402	100.0%	6,566	682	100.0%
Under 18 years:	1,013	273	30.5%	1,341	281	20.4%
With health insurance coverage	1,010	273	30.4%	1,296	271	19.7%
No health insurance coverage	3	7	0.1%	45	53	0.7%
18 to 64 years:	2,056	330	61.8%	4,102	457	62.5%
With health insurance coverage	1,080	222	32.5%	3,351	404	51.0%
No health insurance coverage	976	292	29.3%	751	271	11.4%
65 years and over:	257	105	7.7%	1,123	167	17.1%
With health insurance coverage	257	105	7.7%	1,123	167	17.1%
No health insurance coverage	0	19	0.0%	0	19	0.0%

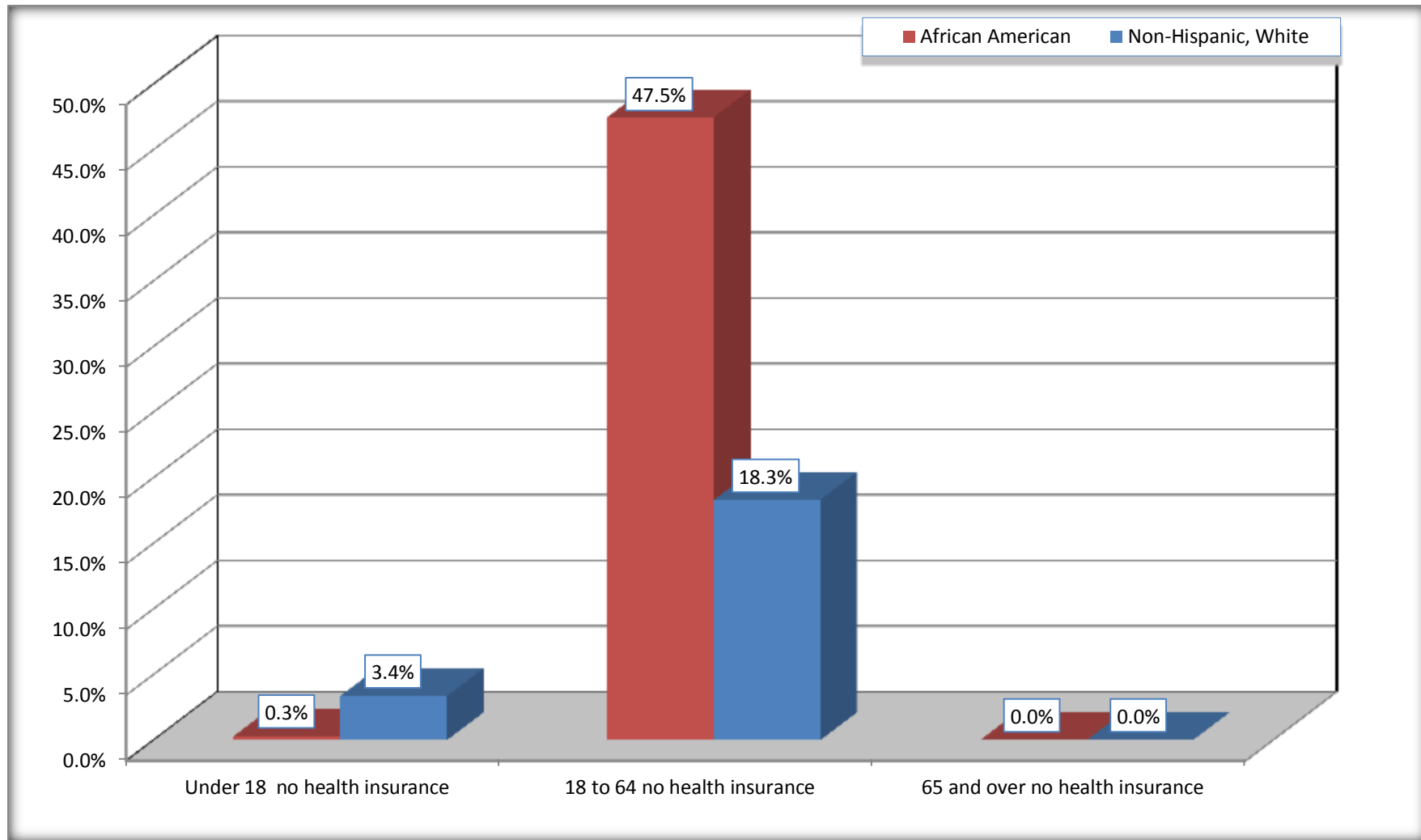
Source: U.S. Census Bureau, 2008-2012 American Community Survey

For information on confidentiality protection, sampling error, nonsampling error, and definitions, see Survey Methodology.

<http://www.census.gov/acs/www/UseData/index.htm>

Lack of Health Insurance Coverage by Age

Raceland CDP, Louisiana



Source: C27001B. HEALTH INSURANCE COVERAGE STATUS BY AGE
Data Set: 2008-2012 American Community Survey 5-Year Estimates