

# **Selected Socio-Economic Data**

## **Ponchatoula city, Louisiana**

### **African American and White, Not Hispanic**

**Data Set: 2008-2012 American Community Survey 5-Year Estimates**

[www.fairvote2020.org](http://www.fairvote2020.org)

[www.fairdata2000.com](http://www.fairdata2000.com)

[29-Dec-13](#)

**C02003.DETAILED RACE - Universe: TOTAL POPULATION**

Data Set: 2008-2012 American Community Survey 5-Year Estimates

	Ponchatoula city, Louisiana		
	Population	Margin of Error (+/-)	% of Total
<b>Total:</b>	<b>6,577</b>	<b>23</b>	<b>100.0%</b>
Population of one race:	6,506	93	98.9%
White	3,969	521	60.3%
Black or African American	2,269	546	34.5%
American Indian and Alaska Native	18	30	0.3%
Asian alone	233	249	3.5%
Native Hawaiian and Other Pacific Islander	7	13	0.1%
Some other race	10	16	0.2%
Population of two or more races:	71	89	1.1%
Two races including Some other race	0	17	0.0%
Two races excluding Some other race, and three or more races	71	89	1.1%
Population of two races:	71	89	1.1%
White; Black or African American	0	17	0.0%
White; American Indian and Alaska Native	59	87	0.9%
White; Asian	12	19	0.2%
Black or African American; American Indian and Alaska Native	0	17	0.0%
All other two race combinations	0	17	0.0%
Population of three races	0	17	0.0%
Population of four or more races	0	17	0.0%

Note: Hispanics may be of any race. See Table B03002 and chart.

Source: U.S. Census Bureau, 2008-2012 American Community Survey

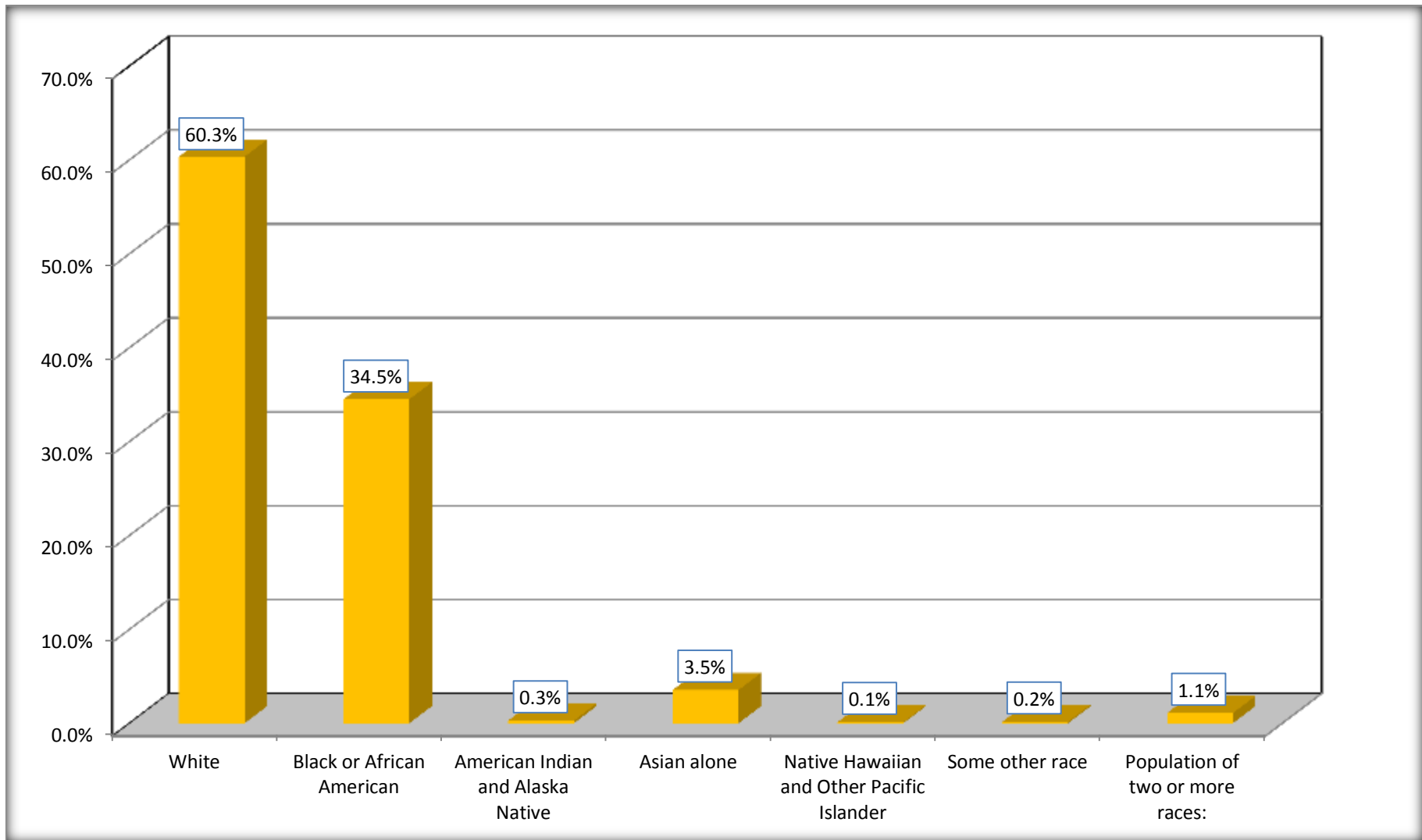
Although the American Community Survey (ACS) produces population, demographic and housing unit estimates, it is the Census Bureau's Population Estimates Program that produces and disseminates the official estimates of the population for the nation, states, counties, cities and towns and estimates of housing units for states and counties.

For information on confidentiality protection, sampling error, nonsampling error, and definitions, see Survey Methodology.

<http://www.census.gov/acs/www/UseData/index.htm>

# Population by Race

## Ponchatoula city, Louisiana



Source: C02003.DETAILED RACE - Universe: TOTAL POPULATION  
Data Set: 2008-2012 American Community Survey 5-Year Estimates

**B03002. HISPANIC OR LATINO ORIGIN BY RACE - Universe: TOTAL POPULATION**

Data Set: 2008-2012 American Community Survey 5-Year Estimates

	Ponchatoula city, Louisiana		
	Population	Margin of Error (+/-)	% of Total
<b>Total:</b>	6,577	23	<b>100.0%</b>
Not Hispanic or Latino:	6,485	97	98.6%
White alone	3,889	523	59.1%
Black or African American alone	2,257	544	34.3%
American Indian and Alaska Native alone	18	30	0.3%
Asian alone	233	249	3.5%
Native Hawaiian and Other Pacific Islander alone	7	13	0.1%
Some other race alone	10	16	0.2%
Two or more races:	71	89	1.1%
Two races including Some other race	0	17	0.0%
Two races excluding Some other race, and three or more races	71	89	1.1%
Hispanic or Latino	92	100	1.4%

Source: U.S. Census Bureau, 2008-2012 American Community Survey

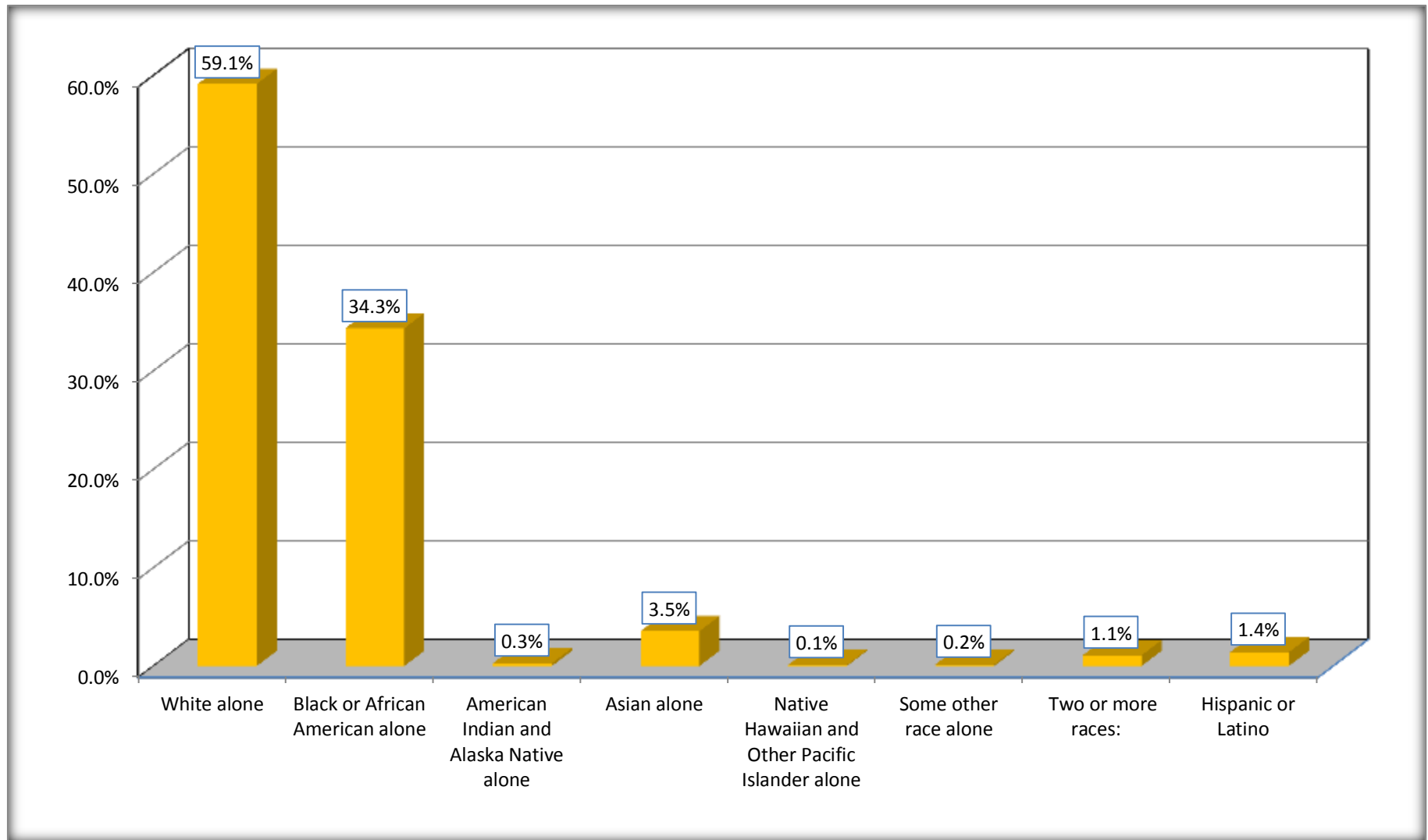
Although the American Community Survey (ACS) produces population, demographic and housing unit estimates, it is the Census Bureau's Population Estimates Program that produces and disseminates the official estimates of the population for the nation, states, counties, cities and towns and estimates of housing units for states and counties.

For information on confidentiality protection, sampling error, nonsampling error, and definitions, see Survey Methodology.

<http://www.census.gov/acs/www/UseData/index.htm>

# Non-Hispanic by Race and Hispanic Population

## Ponchatoula city, Louisiana



Source: B03002. HISPANIC OR LATINO ORIGIN BY RACE - Universe: TOTAL POPULATION  
Data Set: 2008-2012 American Community Survey 5-Year Estimates

**B03002. HISPANIC OR LATINO ORIGIN BY RACE**

Data Set: 2008-2012 American Community Survey 5-Year Estimates

	Ponchatoula city, Louisiana		
	Population	Margin of Error (+/-)	% of Total
Hispanic or Latino:	92	100	<b>100.0%</b>
White alone	80	96	87.0%
Black or African American alone	12	20	13.0%
American Indian and Alaska Native alone	0	17	0.0%
Asian alone	0	17	0.0%
Native Hawaiian and Other Pacific Islander alone	0	17	0.0%
Some other race alone	0	17	0.0%
Two or more races:	0	17	0.0%
Two races including Some other race	0	17	0.0%
Two races excluding Some other race, and three or more races	0	17	0.0%

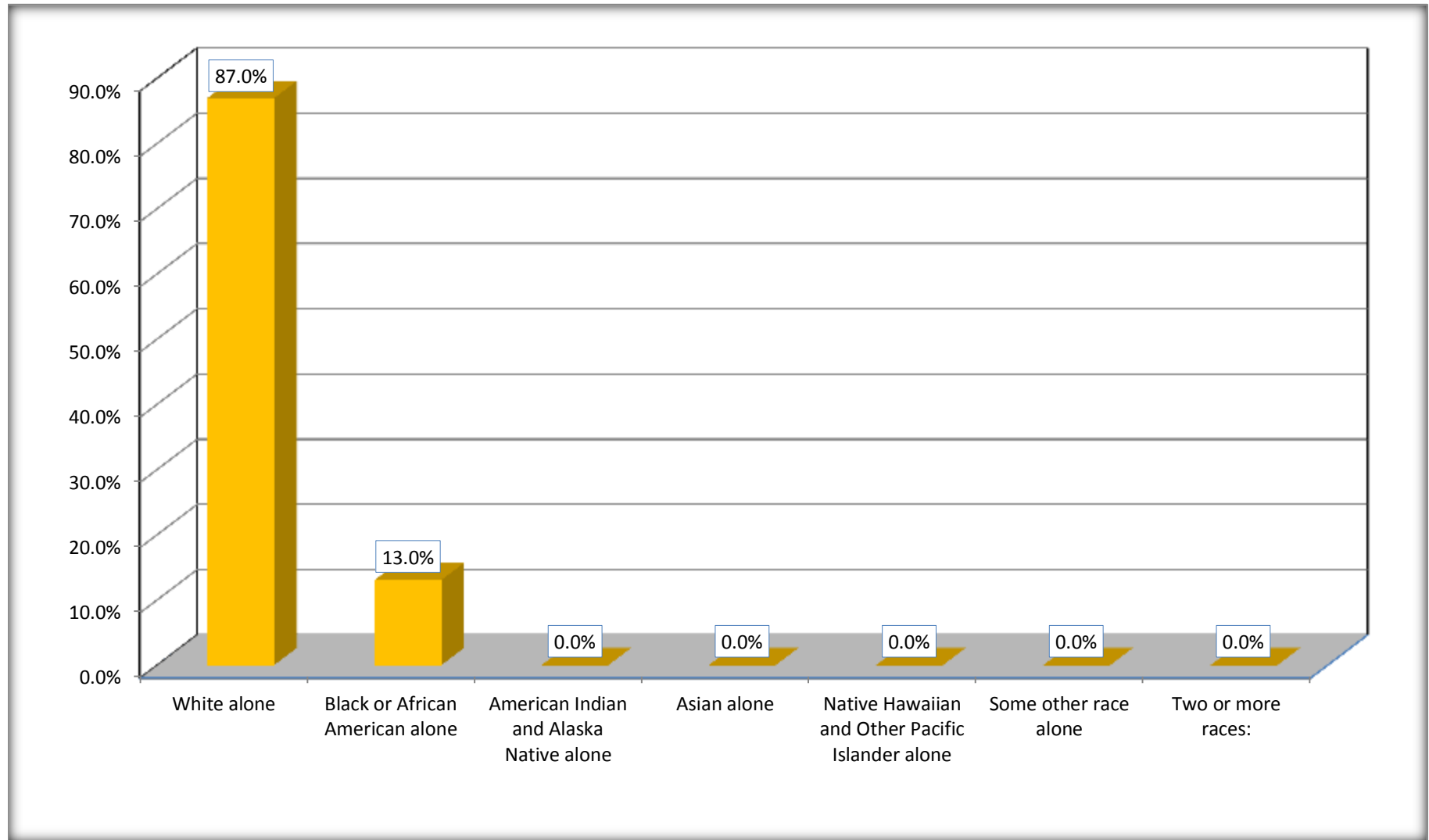
Source: U.S. Census Bureau, 2008-2012 American Community Survey

Although the American Community Survey (ACS) produces population, demographic and housing unit estimates, it is the Census Bureau's Population Estimates Program that produces and disseminates the official estimates of the population for the nation, states, counties, cities and towns and estimates of housing units for states and counties.

For information on confidentiality protection, sampling error, nonsampling error, and definitions, see Survey Methodology.

<http://www.census.gov/acs/www/UseData/index.htm>

## Hispanic or Latino Origin by Race Ponchatoula city, Louisiana



Source: B03002. HISPANIC OR LATINO ORIGIN BY RACE  
Data Set: 2008-2012 American Community Survey 5-Year Estimates

**B01001. SEX BY AGE**

Data Set: 2008-2012 American Community Survey 5-Year Estimates

	Ponchatoula city, Louisiana					
	African American	Margin of Error (+/-)	% of AA Total	White, Not Hispanic	Margin of Error (+/-)	% of NHW Total
<b>Total:</b>	<b>2,269</b>	<b>546</b>	<b>100.0%</b>	<b>3,889</b>	<b>523</b>	<b>100.0%</b>
Under 18 years	662	NC	29.2%	881	NC	22.7%
18 to 64 years	1,418	NC	62.5%	2,199	NC	56.5%
65 years and over	189	NC	8.3%	809	NC	20.8%
Male:	766	247	33.8%	1,829	389	47.0%
Under 18 years	185	NC	8.2%	487	NC	12.5%
18 to 64 years	498	NC	21.9%	1,068	NC	27.5%
65 years and over	83	NC	3.7%	274	NC	7.0%
Female:	1,503	424	66.2%	2,060	412	53.0%
Under 18 years	477	NC	21.0%	394	NC	10.1%
18 to 64 years	920	NC	40.5%	1,131	NC	29.1%
65 years and over	106	NC	4.7%	535	NC	13.8%

Source: U.S. Census Bureau, 2008-2012 American Community Survey

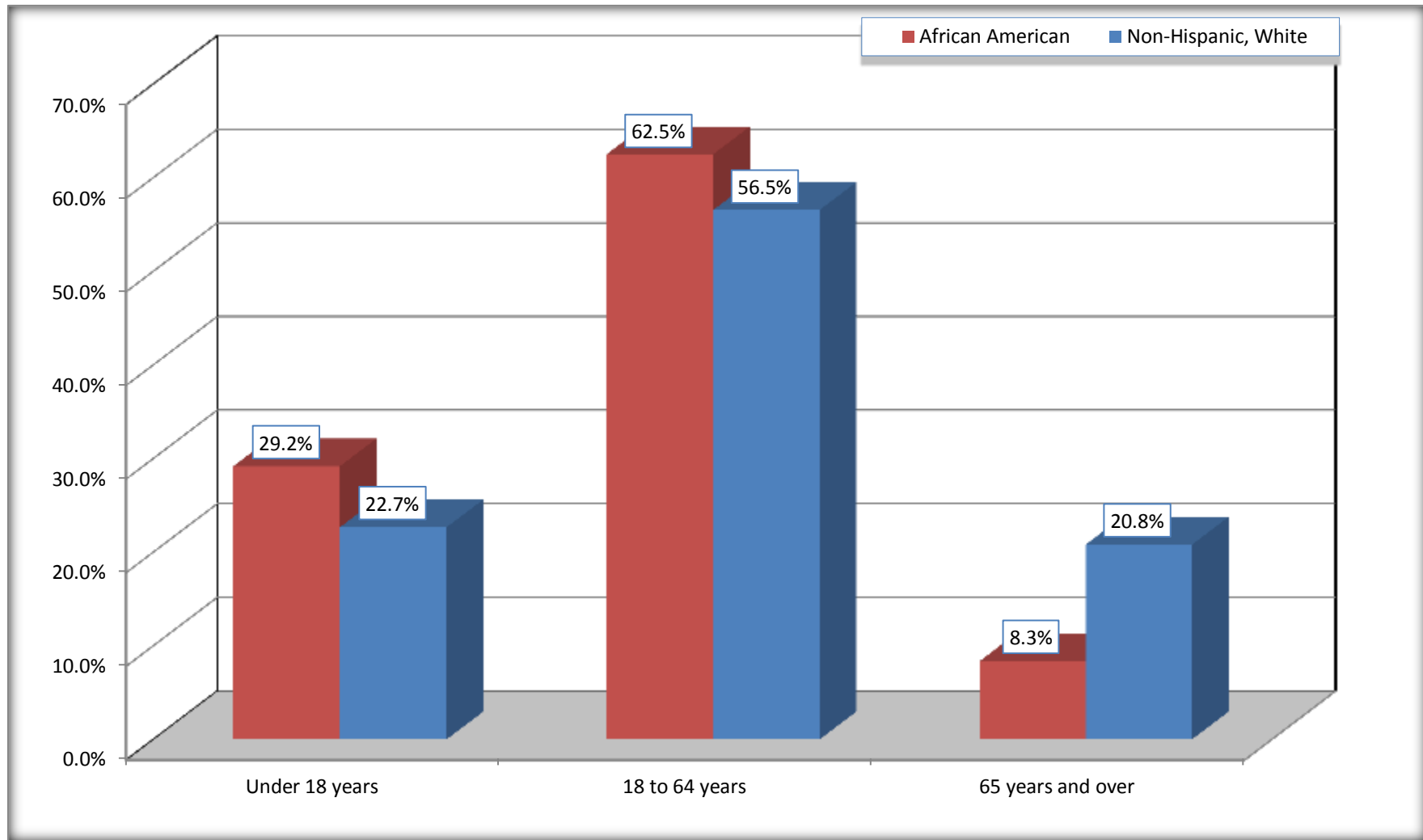
Although the American Community Survey (ACS) produces population, demographic and housing unit estimates, it is the Census Bureau's Population Estimates Program that produces and disseminates the official estimates of the population for the nation, states, counties, cities and towns and estimates of housing units for states and counties.

For information on confidentiality protection, sampling error, nonsampling error, and definitions, see Survey Methodology.  
<http://www.census.gov/acs/www/UseData/index.htm>



# Population by Age

## Ponchatoula city, Louisiana



Source: B01001. SEX BY AGE  
Data Set: 2008-2012 American Community Survey 5-Year Estimates

**B05003. SEX BY AGE BY CITIZENSHIP STATUS**

Data Set: 2008-2012 American Community Survey 5-Year Estimates

	Ponchatoula city, Louisiana					
	African American	Margin of Error (+/-)	% of AA Total by Age	White, Not Hispanic	Margin of Error (+/-)	% of NHW Total by Age
<b>Total:</b>	<b>2,269</b>	<b>546</b>	<b>100.0%</b>	<b>3,889</b>	<b>523</b>	<b>100.0%</b>
<b>Under 18 years:</b>	<b>662</b>	<b>NC</b>	<b>100.0%</b>	<b>881</b>	<b>NC</b>	<b>100.0%</b>
Native	662	NC	100.0%	881	NC	100.0%
Foreign born:	0	NC	0.0%	0	NC	0.0%
Naturalized U.S. citizen	0	NC	0.0%	0	NC	0.0%
Not a U.S. citizen	0	NC	0.0%	0	NC	0.0%
<b>18 years and over:</b>	<b>1,607</b>	<b>NC</b>	<b>100.0%</b>	<b>3,008</b>	<b>NC</b>	<b>100.0%</b>
Native	1,607	NC	100.0%	2,989	NC	99.4%
Foreign born:	0	NC	0.0%	19	NC	0.6%
Naturalized U.S. citizen	0	NC	0.0%	0	NC	0.0%
Not a U.S. citizen	0	NC	0.0%	19	NC	0.6%
<b>Male:</b>	<b>766</b>	<b>247</b>	<b>33.8%</b>	<b>1,829</b>	<b>307</b>	<b>47.0%</b>
<b>Under 18 years:</b>	<b>185</b>	<b>94</b>	<b>100.0%</b>	<b>487</b>	<b>158</b>	<b>100.0%</b>
Native	185	94	100.0%	487	158	100.0%
Foreign born:	0	17	0.0%	0	17	0.0%
Naturalized U.S. citizen	0	17	0.0%	0	17	0.0%
Not a U.S. citizen	0	17	0.0%	0	17	0.0%
<b>18 years and over:</b>	<b>581</b>	<b>207</b>	<b>100.0%</b>	<b>1,342</b>	<b>215</b>	<b>100.0%</b>
Native	581	207	100.0%	1,332	214	99.3%
Foreign born:	0	17	0.0%	10	15	0.7%
Naturalized U.S. citizen	0	17	0.0%	0	17	0.0%
Not a U.S. citizen	0	17	0.0%	10	15	0.7%

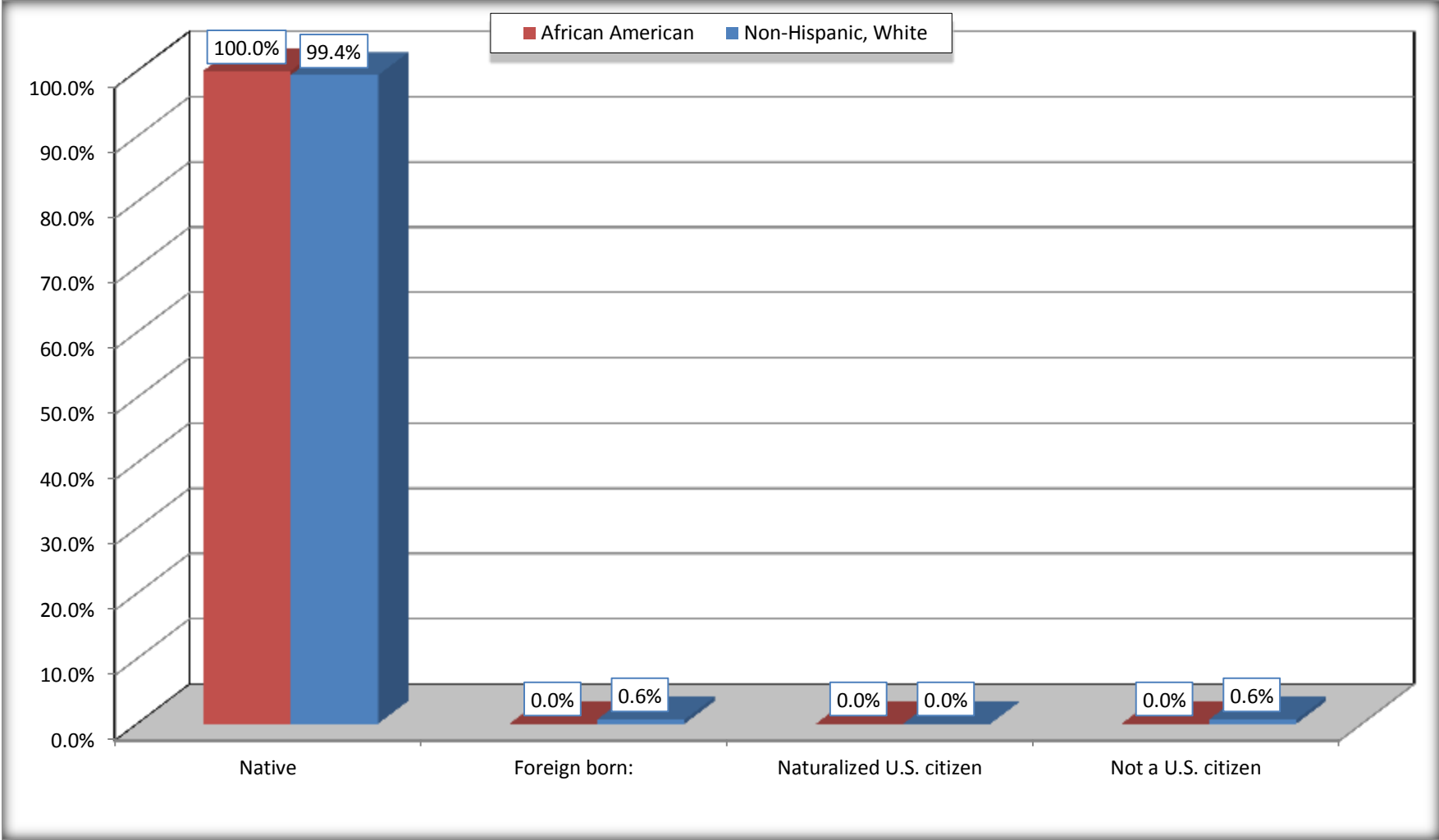
	Ponchatoula city, Louisiana					
	African American	Margin of Error (+/-)	% of AA by Age	White, Not Hispanic	Margin of Error (+/-)	% of NHW by Age
<b>Female:</b>	1,503	424	66.2%	2,060	314	53.0%
<b>Under 18 years:</b>	<b>477</b>	<b>223</b>	<b>100.0%</b>	<b>394</b>	<b>177</b>	<b>100.0%</b>
Native	477	223	100.0%	394	177	100.0%
Foreign born:	0	17	0.0%	0	17	0.0%
Naturalized U.S. citizen	0	17	0.0%	0	17	0.0%
Not a U.S. citizen	0	17	0.0%	0	17	0.0%
<b>18 years and over:</b>	<b>1,026</b>	<b>328</b>	<b>100.0%</b>	<b>1,666</b>	<b>256</b>	<b>100.0%</b>
Native	1,026	328	100.0%	1,657	254	99.5%
Foreign born:	0	17	0.0%	9	14	0.5%
Naturalized U.S. citizen	0	17	0.0%	0	17	0.0%
Not a U.S. citizen	0	17	0.0%	9	14	0.5%

Source: U.S. Census Bureau, 2008-2012 American Community Survey

For information on confidentiality protection, sampling error, nonsampling error, and definitions, see Survey Methodology.  
<http://www.census.gov/acs/www/UseData/index.htm>

# Citizenship Status of Voting Age Population (18 and Over)

## Ponchatoula city, Louisiana



Source: B05003. SEX BY AGE BY CITIZENSHIP STATUS  
Data Set: 2008-2012 American Community Survey 5-Year Estimates

**B07004. GEOGRAPHICAL MOBILITY IN THE PAST YEAR BY RACE FOR CURRENT RESIDENCE IN THE UNITED STATES - Universe:  
POPULATION 1 YEAR AND OVER**

Data Set: 2008-2012 American Community Survey 5-Year Estimates

	Ponchatoula city, Louisiana					
	African American	Margin of Error (+/-)	% of AA Total	White, Not Hispanic	Margin of Error (+/-)	% of NHW Total
<b>Total:</b>	<b>2,224</b>	<b>534</b>	<b>100.0%</b>	<b>3,834</b>	<b>515</b>	<b>100.0%</b>
Same house 1 year ago	2,044	512	91.9%	3,439	515	89.7%
Moved within same county	174	181	7.8%	297	206	7.7%
Moved from different county within same state	3	7	0.1%	59	62	1.5%
Moved from different state	3	5	0.1%	39	38	1.0%
Moved from abroad	0	17	0.0%	0	17	0.0%

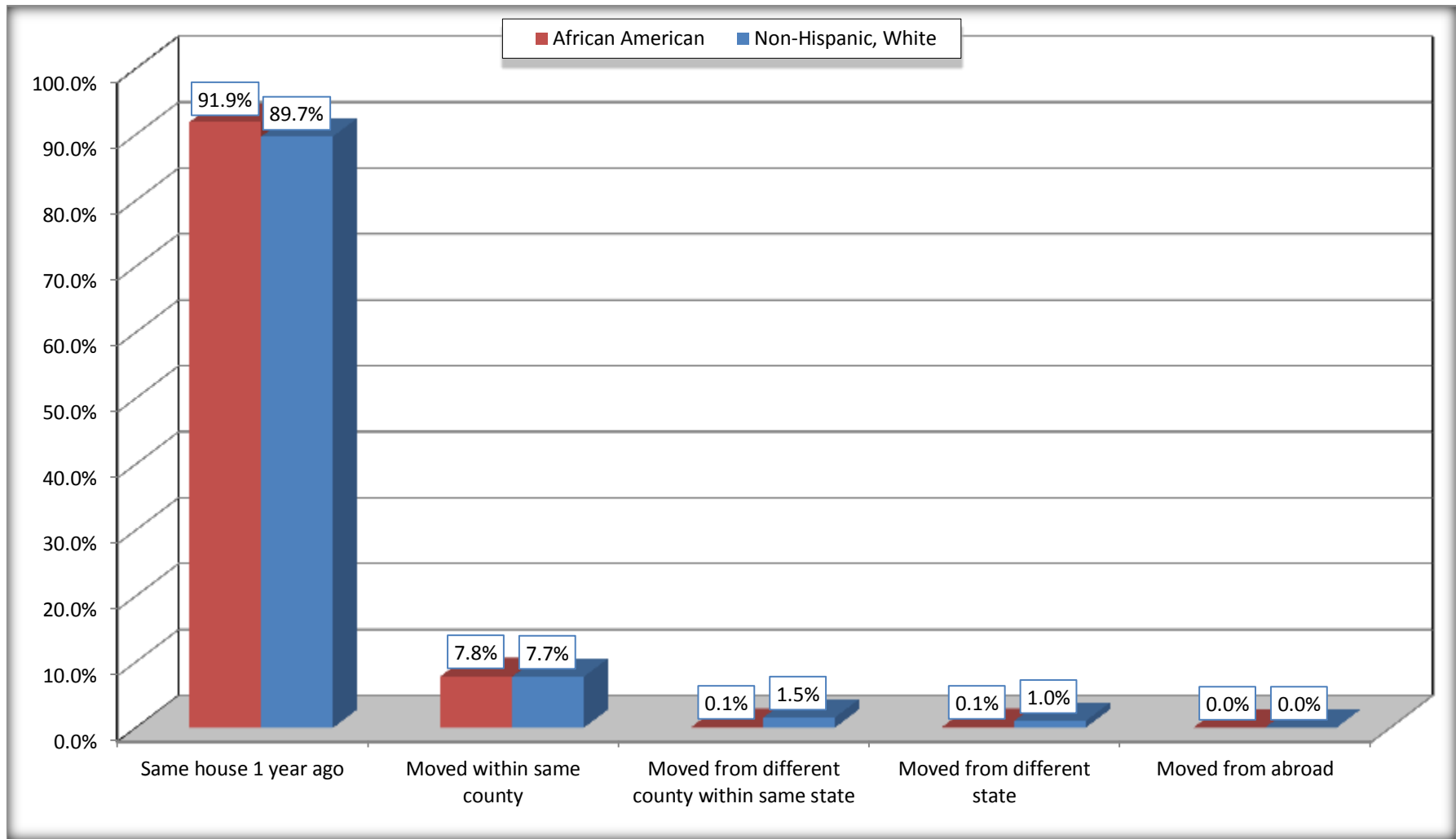
Source: U.S. Census Bureau, 2008-2012 American Community Survey

For information on confidentiality protection, sampling error, nonsampling error, and definitions, see Survey Methodology.

<http://www.census.gov/acs/www/UseData/index.htm>

# Geographical Mobility in the Past Year (Population 1 Year and Over)

## Ponchatoula city, Louisiana



Source: B07004. GEOGRAPHICAL MOBILITY IN THE PAST YEAR BY RACE FOR CURRENT RESIDENCE IN THE UNITED STATES - Universe: POPULATION 1 YEAR AND OVER

Data Set: 2008-2012 American Community Survey 5-Year Estimates

**B08105. MEANS OF TRANSPORTATION TO WORK - Universe: WORKERS 16 YEARS AND OVER**

Data Set: 2008-2012 American Community Survey 5-Year Estimates

	Ponchatoula city, Louisiana					
	African American	Margin of Error (+/-)	% of AA Total	White, Not Hispanic	Margin of Error (+/-)	% of NHW Total
<b>Total:</b>	1012	355	<b>100.0%</b>	1591	312	<b>100.0%</b>
Car, truck, or van - drove alone	763	311	75.4%	1160	256	72.9%
Car, truck, or van - carpooled	152	121	15.0%	400	148	25.1%
Public transportation (excluding taxicab)	0	17	0.0%	0	17	0.0%
Walked	0	17	0.0%	0	17	0.0%
Taxicab, motorcycle, bicycle, or other means	79	82	7.8%	9	16	0.6%
Worked at home	18	31	1.8%	22	26	1.4%

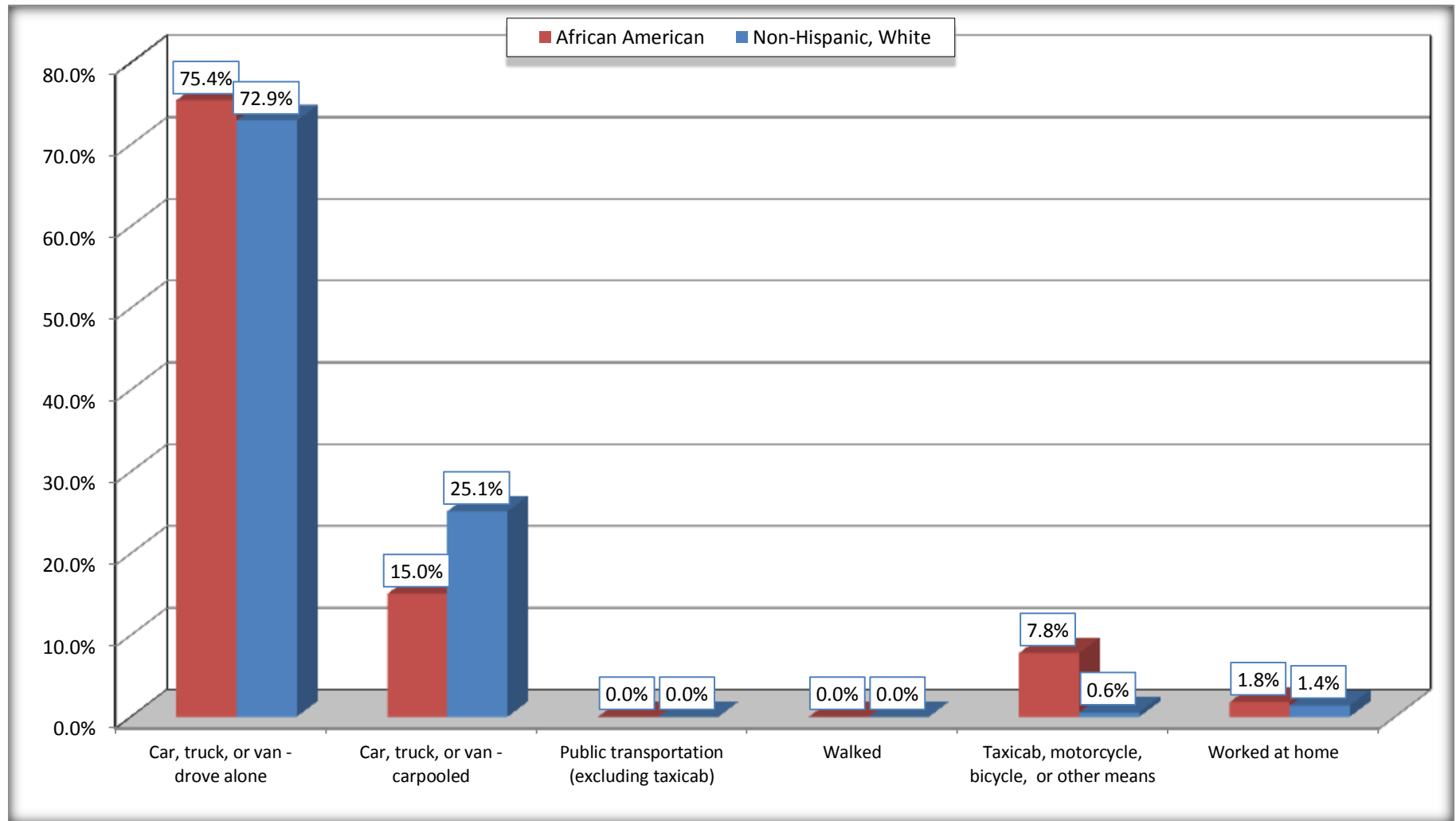
Source: U.S. Census Bureau, 2008-2012 American Community Survey

For information on confidentiality protection, sampling error, nonsampling error, and definitions, see Survey Methodology.

<http://www.census.gov/acs/www/UseData/index.htm>

# Means of Transportation to Work (Workers 16 Years and Over)

## Ponchatoula city, Louisiana



Source: B08105. MEANS OF TRANSPORTATION TO WORK - Universe: WORKERS 16 YEARS AND OVER  
Data Set: 2008-2012 American Community Survey 5-Year Estimates



**B11002. HOUSEHOLD TYPE BY RELATIVES AND NONRELATIVES FOR POPULATION IN HOUSEHOLDS**

Data Set: 2008-2012 American Community Survey 5-Year Estimates

	Ponchatoula city, Louisiana					
	African American	Margin of Error (+/-)	% of AA Total	White, Not Hispanic	Margin of Error (+/-)	% of NHW Total
<b>Total:</b>	2257	545	<b>100.0%</b>	3848	522	<b>100.0%</b>
In family households	1945	558	86.2%	3112	511	80.9%
In nonfamily households	312	166	13.8%	736	202	19.1%

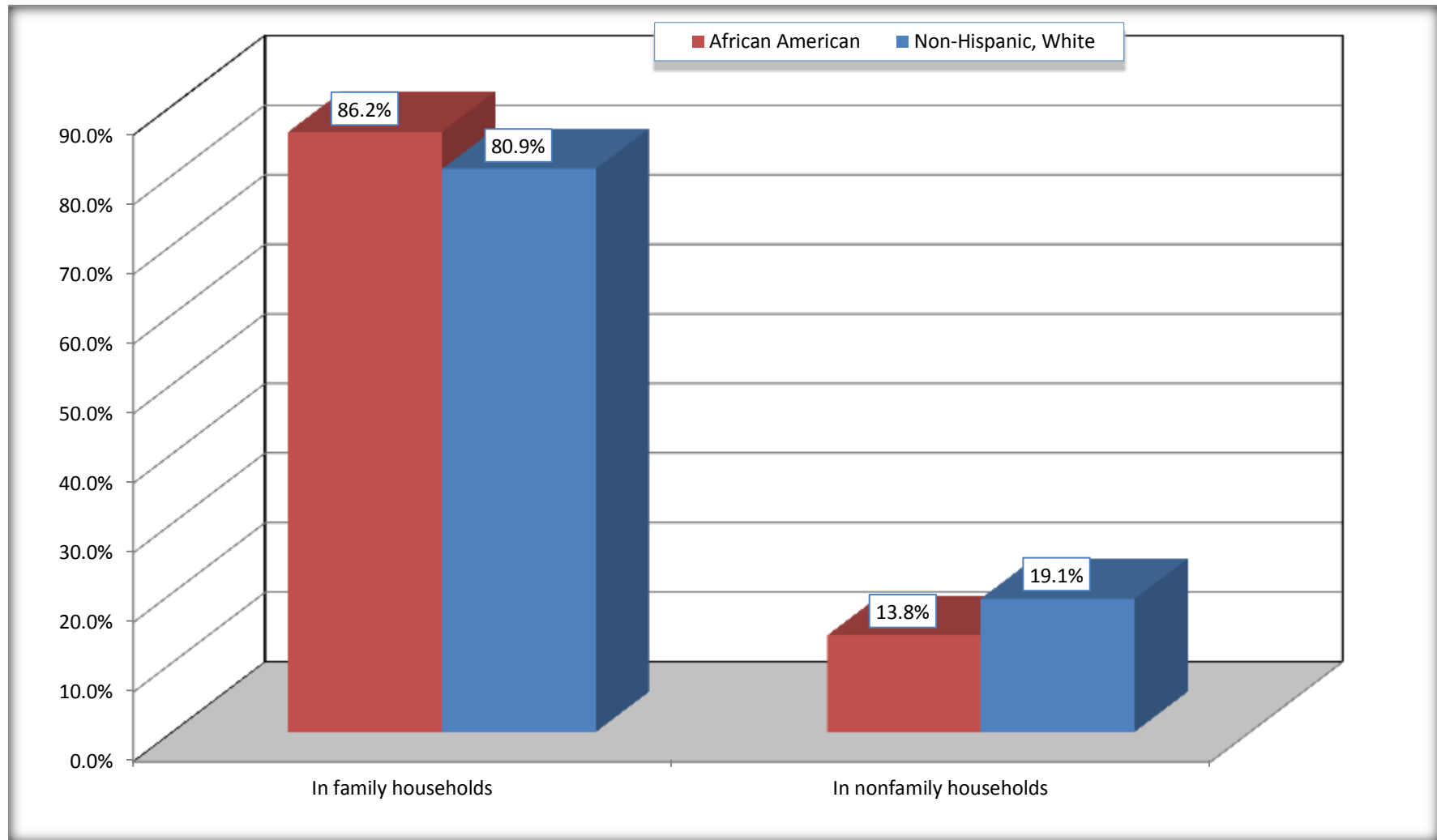
Source: U.S. Census Bureau, 2008-2012 American Community Survey

For information on confidentiality protection, sampling error, nonsampling error, and definitions, see Survey Methodology.

<http://www.census.gov/acs/www/UseData/index.htm>

# Household Type for Population in Households

## Ponchatoula city, Louisiana



Source: B11002. HOUSEHOLD TYPE BY RELATIVES AND NONRELATIVES FOR POPULATION IN HOUSEHOLDS  
Data Set: 2008-2012 American Community Survey 5-Year Estimates

**B12002. MARITAL STATUS FOR THE POPULATION 15 YEARS AND OVER**

Data Set: 2008-2012 American Community Survey 5-Year Estimates

	Ponchatoula city, Louisiana					
	African American	Margin of Error (+/-)	% of AA Total	White, Not Hispanic	Margin of Error (+/-)	% of NHW Total
<b>Total:</b>	<b>1,708</b>	<b>415</b>	<b>100.0%</b>	<b>3,145</b>	<b>419</b>	<b>100.0%</b>
Never married	733	NC	42.9%	665	NC	21.1%
Now married (except separated)	536	NC	31.4%	1,761	NC	56.0%
Separated	148	NC	8.7%	105	NC	3.3%
Widowed	68	NC	4.0%	299	NC	9.5%
Divorced	223	NC	13.1%	315	NC	10.0%
<b>Male:</b>	594	210	34.8%	1,447	237	46.0%
Never married	212	153	12.4%	327	115	10.4%
Now married (except separated)	276	134	16.2%	901	147	28.6%
Separated	60	87	3.5%	52	57	1.7%
Widowed	22	34	1.3%	35	40	1.1%
Divorced	24	33	1.4%	132	81	4.2%
<b>Female:</b>	1,114	332	65.2%	1,698	253	54.0%
Never married	521	266	30.5%	338	108	10.7%
Now married (except separated)	260	130	15.2%	860	138	27.3%
Separated	88	75	5.2%	53	56	1.7%
Widowed	46	65	2.7%	264	106	8.4%
Divorced	199	110	11.7%	183	94	5.8%

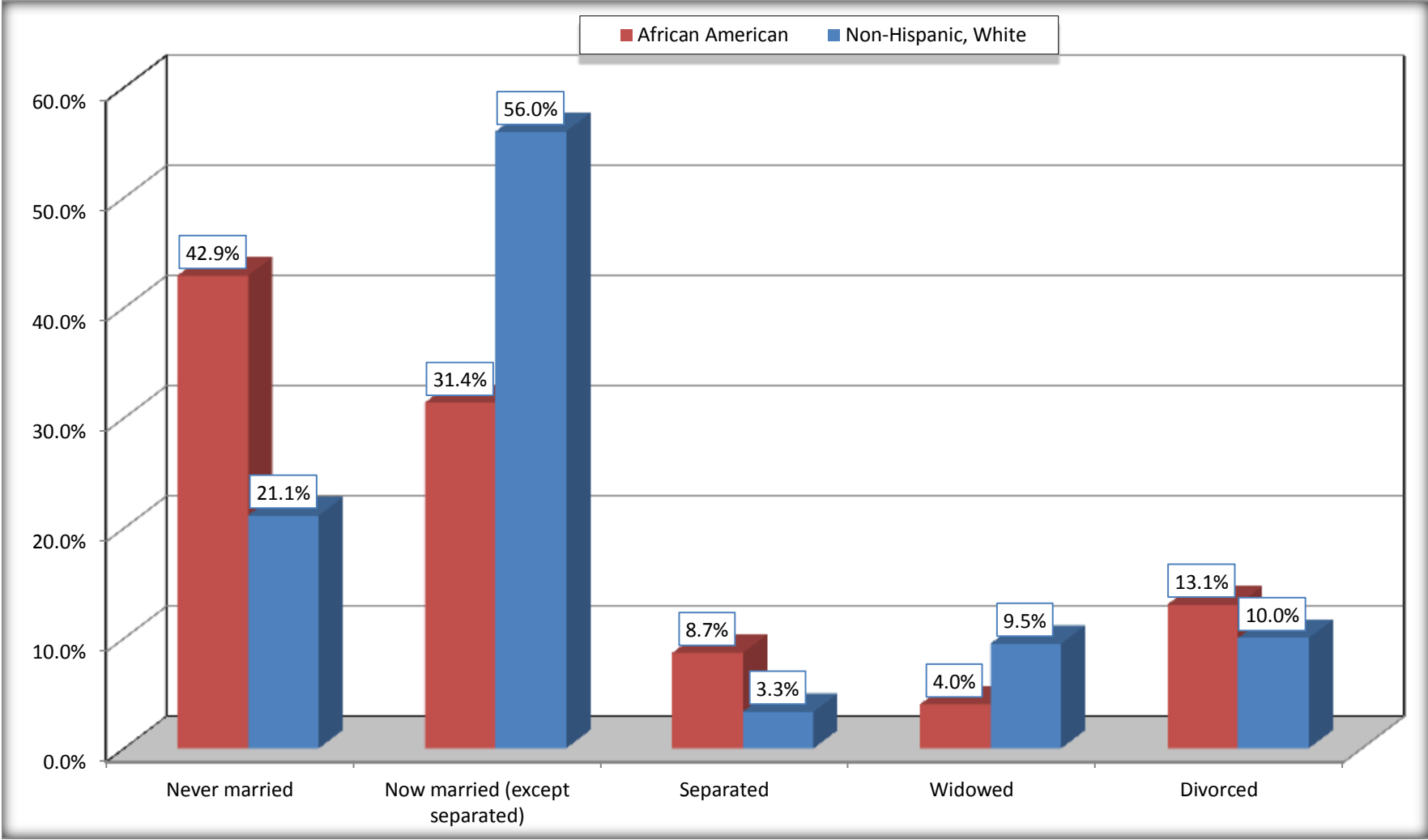
Source: U.S. Census Bureau, 2008-2012 American Community Survey

For information on confidentiality protection, sampling error, nonsampling error, and definitions, see Survey Methodology.

<http://www.census.gov/acs/www/UseData/index.htm>

# Marital Status for the Population 15 Years and Over

## Ponchatoula city, Louisiana



Source: B12002. MARITAL STATUS FOR THE POPULATION 15 YEARS AND OVER  
Data Set: 2008-2012 American Community Survey 5-Year Estimates

**C15002. SEX BY EDUCATIONAL ATTAINMENT FOR THE POPULATION 25 YEARS AND OVER**

Data Set: 2008-2012 American Community Survey 5-Year Estimates

	Ponchatoula city, Louisiana					
	African American	Margin of Error (+/-)	% of AA Total	White, Not Hispanic	Margin of Error (+/-)	% of NHW Total
<b>Total:</b>	<b>1,248</b>	<b>276</b>	<b>100.0%</b>	<b>2,713</b>	<b>383</b>	<b>100.0%</b>
Less than high school diploma	381	NC	30.5%	444	NC	16.4%
High school graduate, GED, or alternative	339	NC	27.2%	820	NC	30.2%
Some college or associate's degree	404	NC	32.4%	749	NC	27.6%
Bachelor's degree or higher	124	NC	9.9%	700	NC	25.8%
Male:	443	188	35.5%	1,192	216	43.9%
Less than high school diploma	128	86	10.3%	169	94	6.2%
High school graduate, GED, or alternative	143	132	11.5%	402	154	14.8%
Some college or associate's degree	114	120	9.1%	297	118	10.9%
Bachelor's degree or higher	58	78	4.6%	324	108	11.9%
Female:	805	193	64.5%	1,521	246	56.1%
Less than high school diploma	253	139	20.3%	275	121	10.1%
High school graduate, GED, or alternative	196	112	15.7%	418	125	15.4%
Some college or associate's degree	290	139	23.2%	452	148	16.7%
Bachelor's degree or higher	66	60	5.3%	376	133	13.9%

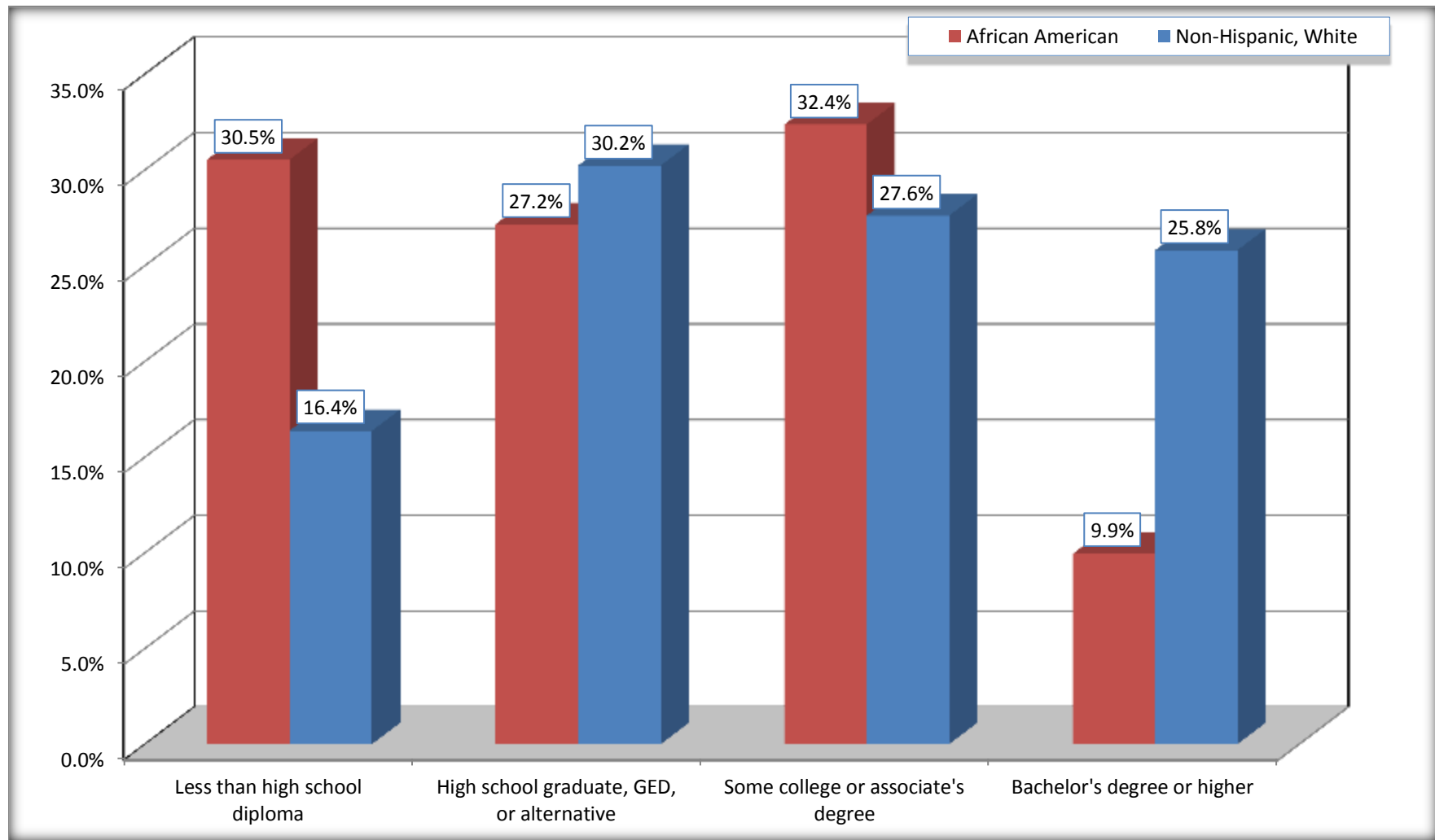
Source: U.S. Census Bureau, 2008-2012 American Community Survey

For information on confidentiality protection, sampling error, nonsampling error, and definitions, see Survey Methodology.

<http://www.census.gov/acs/www/UseData/index.htm>

# Educational Attainment for the Population 25 Years and Older

## Ponchatoula city, Louisiana



Source: C15002. SEX BY EDUCATIONAL ATTAINMENT FOR THE POPULATION 25 YEARS AND OVER  
Data Set: 2008-2012 American Community Survey 5-Year Estimates

**B17010. POVERTY STATUS IN THE PAST 12 MONTHS OF FAMILIES BY FAMILY TYPE BY PRESENCE OF RELATED CHILDREN UNDER 18 YEARS**

Data Set: 2008-2012 American Community Survey 5-Year Estimates

	Ponchatoula city, Louisiana					
	African American	Margin of Error (+/-)	% of AA Total	White, Not Hispanic	Margin of Error (+/-)	% of NHW Total
<b>Total:</b>	<b>516</b>	<b>153</b>	<b>100.0%</b>	<b>1,082</b>	<b>173</b>	<b>100.0%</b>
Income in the past 12 months below poverty level:	133	79	25.8%	147	105	13.6%
Married-couple family:	42	49	8.1%	69	83	6.4%
With related children under 18 years	23	38	4.5%	15	24	1.4%
Other family:	91	62	17.6%	78	65	7.2%
Male householder, no wife present	0	17	0.0%	10	16	0.9%
With related children under 18 years	0	17	0.0%	0	17	0.0%
Female householder, no husband present	91	62	17.6%	68	62	6.3%
With related children under 18 years	71	52	13.8%	43	49	4.0%
Income in the past 12 months at or above poverty level:	383	154	74.2%	935	168	86.4%
Married-couple family:	224	141	43.4%	804	142	74.3%
With related children under 18 years	176	146	34.1%	365	119	33.7%
Other family:	159	82	30.8%	131	89	12.1%
Male householder, no wife present	0	17	0.0%	26	43	2.4%
With related children under 18 years	0	17	0.0%	26	43	2.4%
Female householder, no husband present	159	82	30.8%	105	78	9.7%
With related children under 18 years	84	69	16.3%	90	74	8.3%

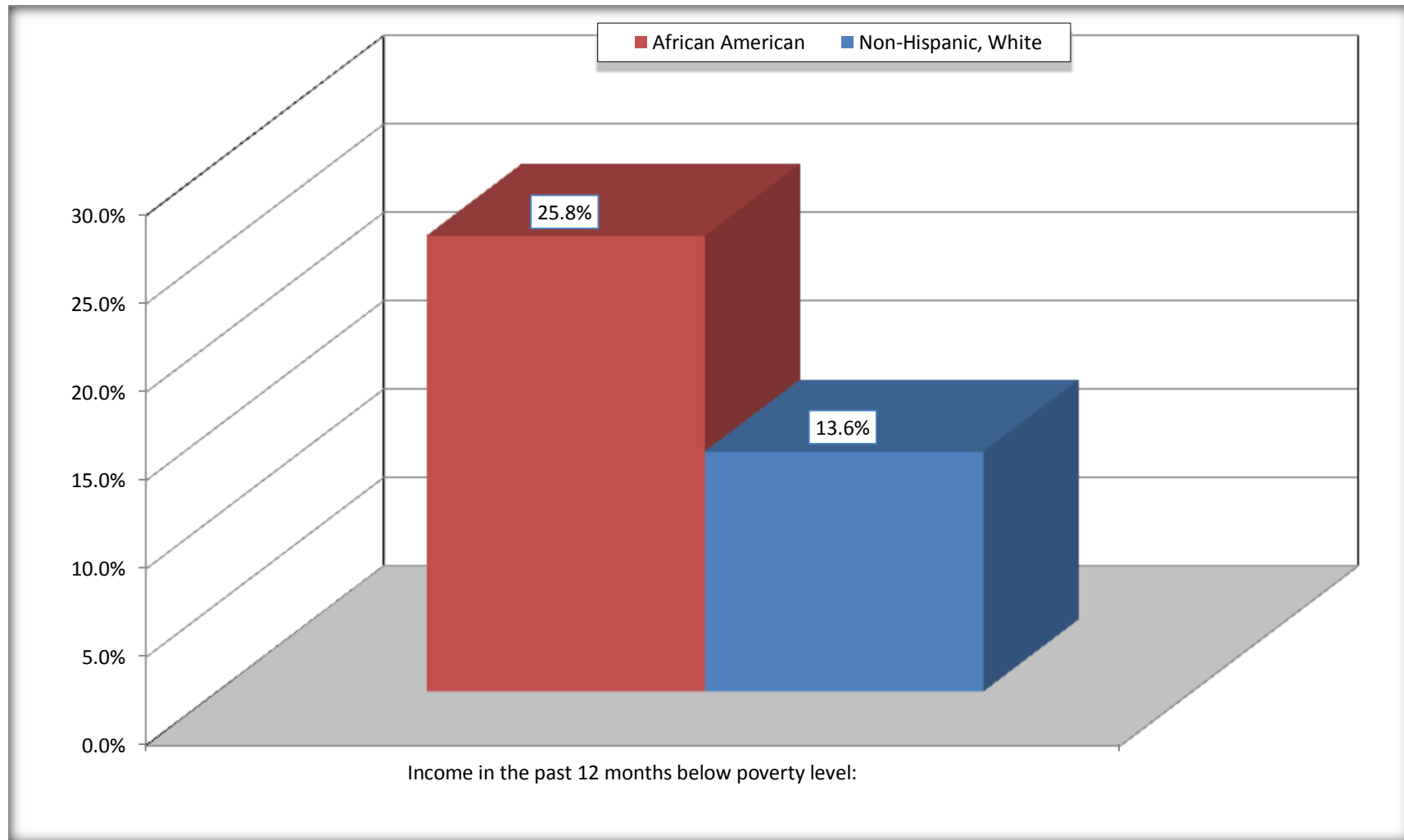
Source: U.S. Census Bureau, 2008-2012 American Community Survey

For information on confidentiality protection, sampling error, nonsampling error, and definitions, see Survey Methodology.

<http://www.census.gov/acs/www/UseData/index.htm>

# Family Households Below Poverty in the Past 12 Months

## Ponchatoula city, Louisiana



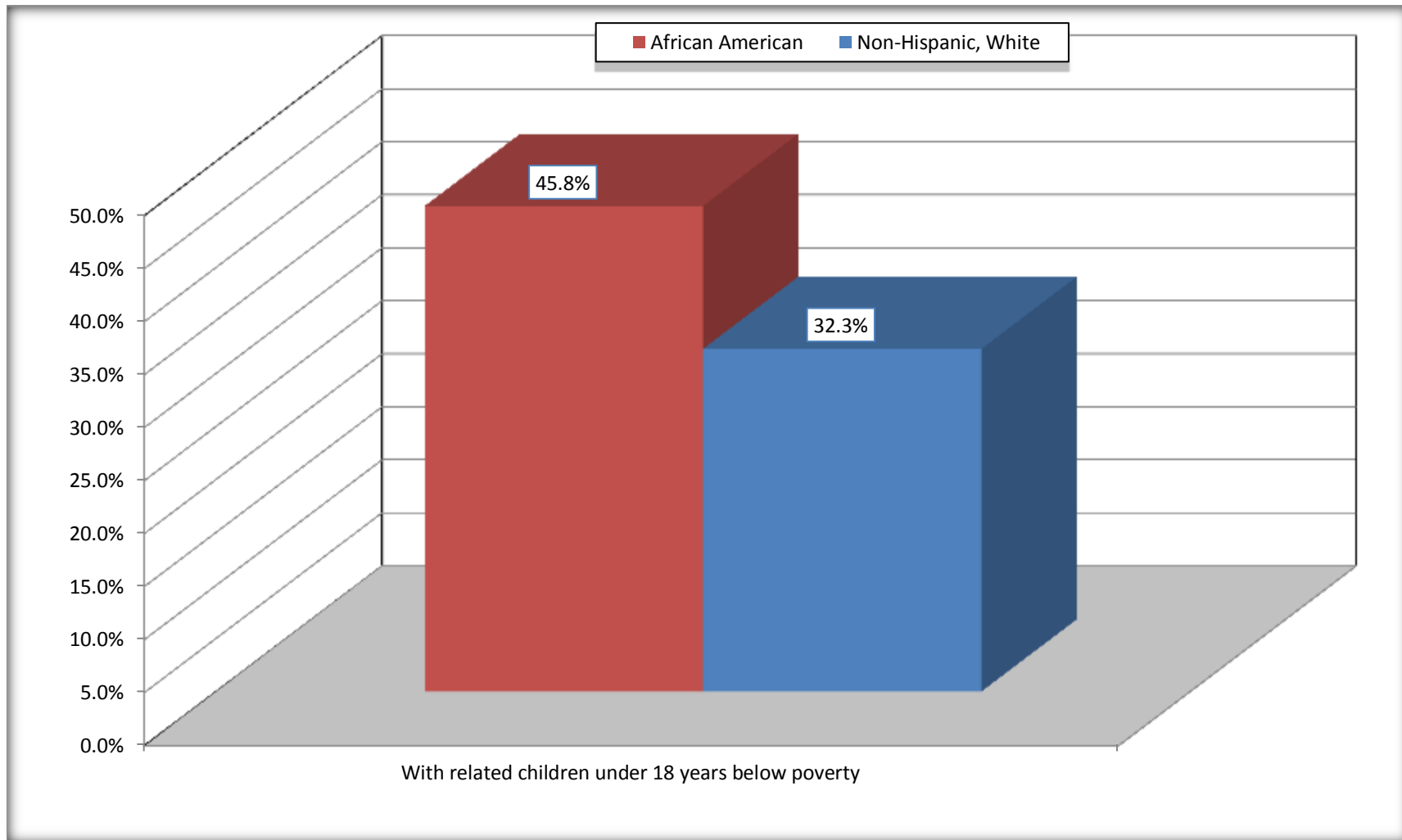
Source: B17010. POVERTY STATUS IN THE PAST 12 MONTHS OF FAMILIES BY FAMILY TYPE BY PRESENCE OF RELATED CHILDREN UNDER 18 YEARS

Data Set: 2008-2012 American Community Survey 5-Year Estimates



# Female-headed Households with Related Children Below Poverty in the Past 12 Months

## Ponchatoula city, Louisiana



Source: B17010. POVERTY STATUS IN THE PAST 12 MONTHS OF FAMILIES BY FAMILY TYPE BY PRESENCE OF RELATED CHILDREN UNDER 18 YEARS

Data Set: 2008-2012 American Community Survey 5-Year Estimates

**B17020 POVERTY STATUS IN THE PAST 12 MONTHS BY AGE - Universe: POPULATION FOR WHOM POVERTY STATUS IS DETERMINED**

Data Set: 2008-2012 American Community Survey 5-Year Estimates

	Ponchatoula city, Louisiana					
	African American	Margin of Error (+/-)	% of AA By Age	White, Not Hispanic	Margin of Error (+/-)	% of NHW By Age
<b>Total:</b>	<b>2,265</b>	<b>547</b>	<b>100.0%</b>	<b>3,887</b>	<b>523</b>	<b>100.0%</b>
Income in the past 12 months below poverty level:	595	359	26.3%	555	251	14.3%
<b>Under 18 years</b>	236	NC	35.9%	87	NC	9.9%
<b>18 to 64 years</b>	266	173	18.8%	382	190	17.4%
<b>65 years and over</b>	93	NC	49.2%	86	NC	10.6%
Income in the past 12 months at or above poverty level:	1,670	564	73.7%	3,332	520	85.7%
<b>Under 18 years</b>	422	NC	64.1%	792	NC	90.1%
<b>18 to 64 years</b>	1,152	408	81.2%	1,817	331	82.6%
<b>65 years and over</b>	96	NC	50.8%	723	NC	89.4%

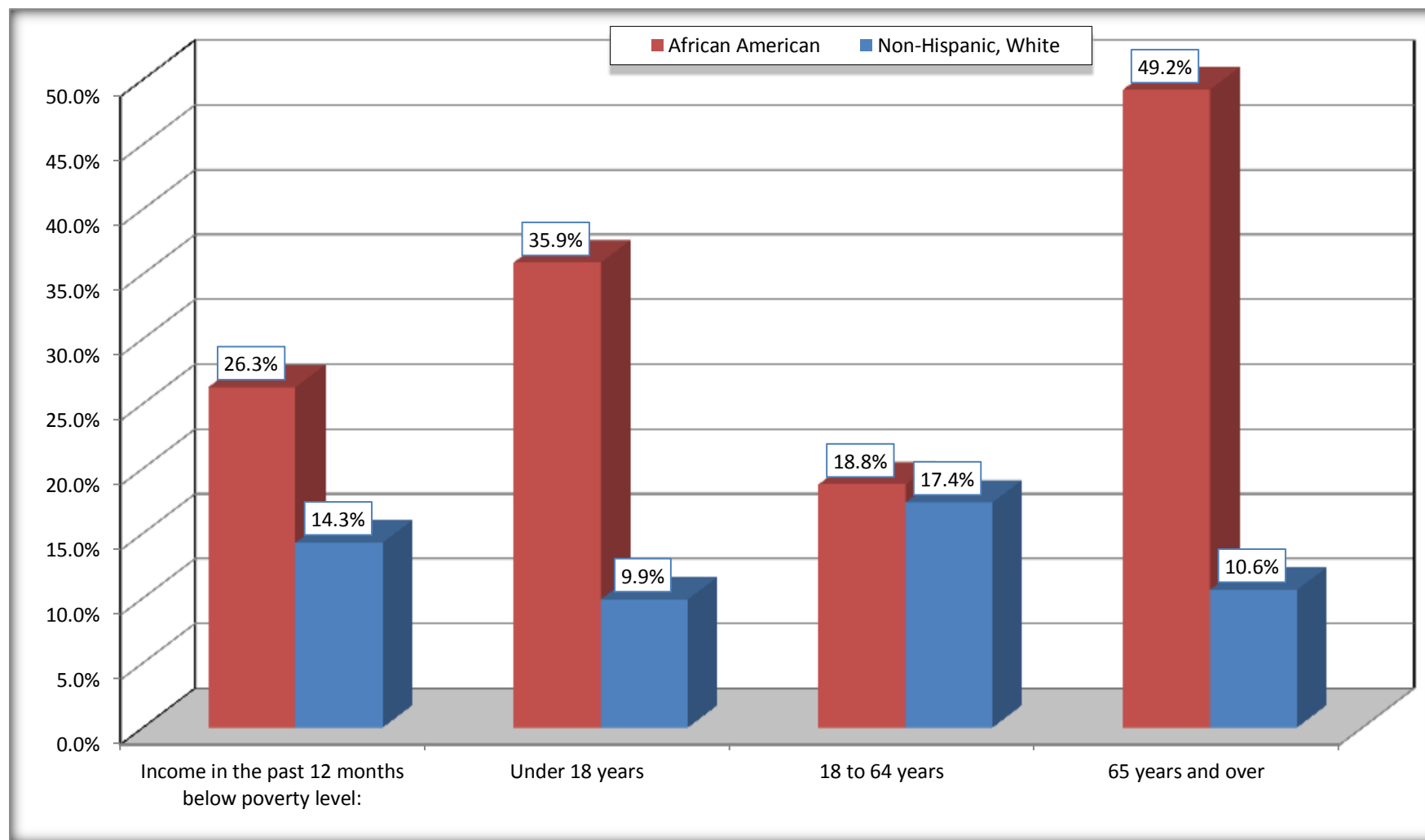
Source: U.S. Census Bureau, 2008-2012 American Community Survey

For information on confidentiality protection, sampling error, nonsampling error, and definitions, see Survey Methodology.

<http://www.census.gov/acs/www/UseData/index.htm>

# Population Below Poverty in the Past 12 Months

## Ponchatoula city, Louisiana



Source: B17020 POVERTY STATUS IN THE PAST 12 MONTHS BY AGE - Universe: POPULATION FOR WHOM POVERTY STATUS IS DETERMINED  
Data Set: 2008-2012 American Community Survey 5-Year Estimates

**B19001. HOUSEHOLD INCOME IN THE PAST 12 MONTHS (IN 2010 INFLATION-ADJUSTED DOLLARS)**

Data Set: 2008-2012 American Community Survey 5-Year Estimates

	Ponchatoula city, Louisiana					
	African American	Margin of Error (+/-)	% of AA Total	White, Not Hispanic	Margin of Error (+/-)	% of NHW Total
<b>Total:</b>	<b>794</b>	<b>183</b>	<b>100.0%</b>	<b>1,747</b>	<b>254</b>	<b>100.0%</b>
Less than \$ 10,000	48	45	6.0%	234	127	13.4%
\$ 10,000 to \$ 14,999	198	123	24.9%	79	51	4.5%
<b>\$ 15,000 to \$ 24,999</b>	159	NC	20.0%	283	NC	16.2%
<b>\$ 25,000 to \$ 34,999</b>	76	NC	9.6%	275	NC	15.7%
<b>\$ 35,000 to \$ 49,999</b>	123	NC	15.5%	140	NC	8.0%
<b>\$ 50,000 to \$ 74,999</b>	179	NC	22.5%	361	NC	20.7%
\$ 75,000 to \$ 99,999	11	18	1.4%	195	86	11.2%
<b>\$ 100,000 to \$ 149,999</b>	0	NC	0.0%	67	NC	3.8%
\$ 150,000 to \$ 199,999	0	17	0.0%	78	61	4.5%
\$ 200,000 or more	0	17	0.0%	35	33	2.0%

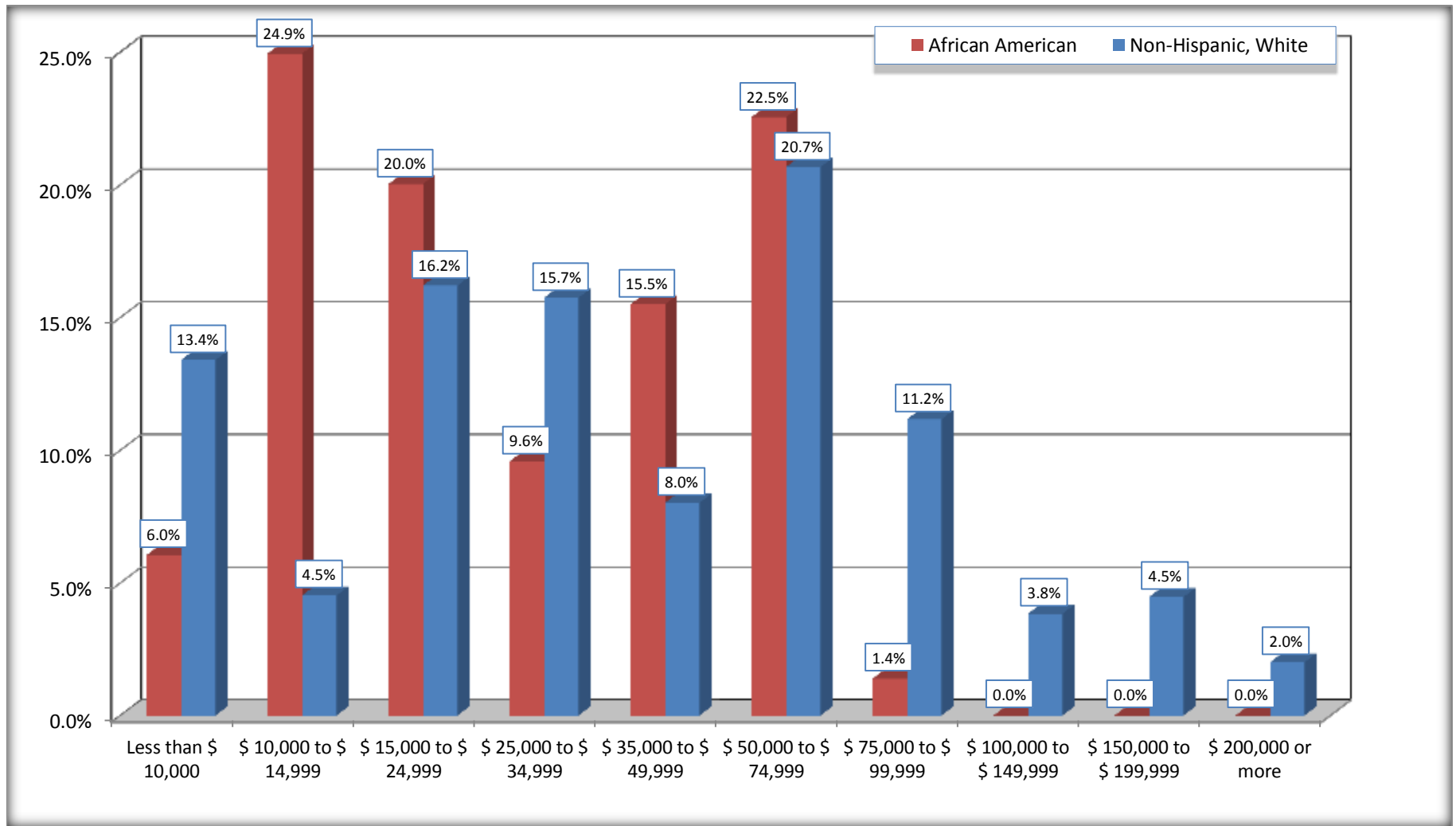
Source: U.S. Census Bureau, 2008-2012 American Community Survey

For information on confidentiality protection, sampling error, nonsampling error, and definitions, see Survey Methodology.

<http://www.census.gov/acs/www/UseData/index.htm>

# Household Income in the Past 12 Months

## Ponchatoula city, Louisiana



Source: B19001. HOUSEHOLD INCOME IN THE PAST 12 MONTHS (IN 2010 INFLATION-ADJUSTED DOLLARS)  
Data Set: 2008-2012 American Community Survey 5-Year Estimates

**B19013. MEDIAN HOUSEHOLD INCOME IN THE PAST 12 MONTHS (IN 2010 INFLATION-ADJUSTED DOLLARS)**

Data Set: 2008-2012 American Community Survey 5-Year Estimates

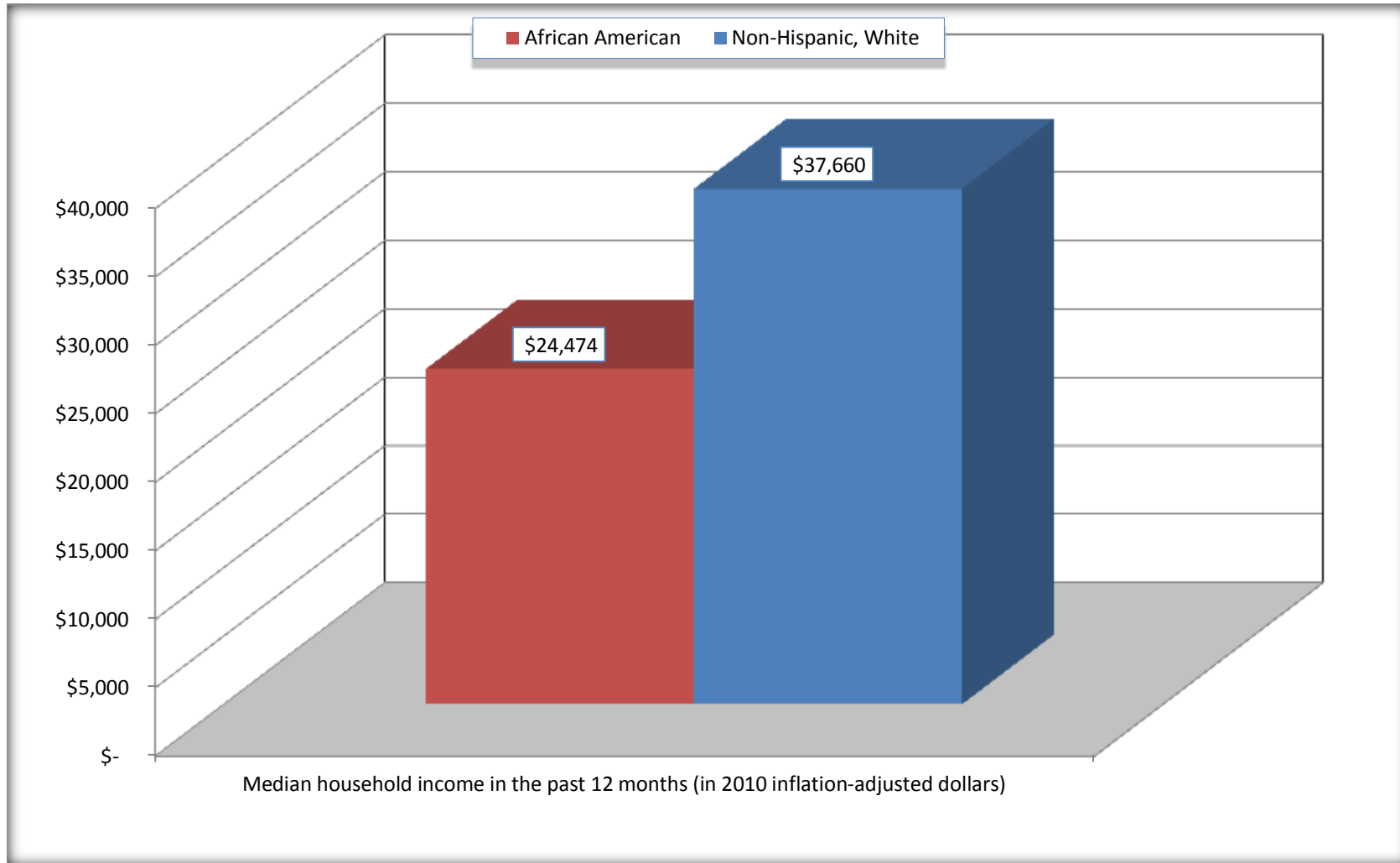
	<b>Ponchatoula city, Louisiana</b>			
	African American	Margin of Error (+/-)	White, Not Hispanic	Margin of Error (+/-)
Median household income in the past 12 months (in 2010 inflation-adjusted dollars)	\$ 24,474	\$ 20,655	\$ 37,660	\$ 12,116

Source: U.S. Census Bureau, 2008-2012 American Community Survey

For information on confidentiality protection, sampling error, nonsampling error, and definitions, see Survey Methodology.  
<http://www.census.gov/acs/www/UseData/index.htm>

# Median Household Income in the Past 12 Months

## Ponchatoula city, Louisiana



Source: B19013. MEDIAN HOUSEHOLD INCOME IN THE PAST 12 MONTHS (IN 2010 INFLATION-ADJUSTED DOLLARS)  
Data Set: 2008-2012 American Community Survey 5-Year Estimates

**B19101. FAMILY INCOME IN THE PAST 12 MONTHS (IN 2010 INFLATION-ADJUSTED DOLLARS)**

Data Set: 2008-2012 American Community Survey 5-Year Estimates

	Ponchatoula city, Louisiana					
	African American	Margin of Error (+/-)	% of AA Total	White, Not Hispanic	Margin of Error (+/-)	% of NHW Total
<b>Total:</b>	<b>516</b>	<b>153</b>	<b>100.0%</b>	<b>1,082</b>	<b>173</b>	<b>100.0%</b>
Less than \$ 10,000	27	29	5.2%	107	97	9.9%
\$ 10,000 to \$ 14,999	83	63	16.1%	25	28	2.3%
<b>\$ 15,000 to \$ 24,999</b>	<b>31</b>	<b>NC</b>	<b>6.0%</b>	<b>54</b>	<b>NC</b>	<b>5.0%</b>
<b>\$ 25,000 to \$ 34,999</b>	<b>103</b>	<b>NC</b>	<b>20.0%</b>	<b>159</b>	<b>NC</b>	<b>14.7%</b>
<b>\$ 35,000 to \$ 49,999</b>	<b>109</b>	<b>NC</b>	<b>21.1%</b>	<b>114</b>	<b>NC</b>	<b>10.5%</b>
<b>\$ 50,000 to \$ 74,999</b>	<b>152</b>	<b>NC</b>	<b>29.5%</b>	<b>303</b>	<b>NC</b>	<b>28.0%</b>
<b>\$ 100,000 to \$ 149,999</b>	-	<b>NC</b>	<b>0.0%</b>	<b>56</b>	<b>NC</b>	5.2%
\$ 150,000 to \$ 199,999	0	17	0.0%	78	61	7.2%
\$ 200,000 or more	0	17	0.0%	35	33	3.2%

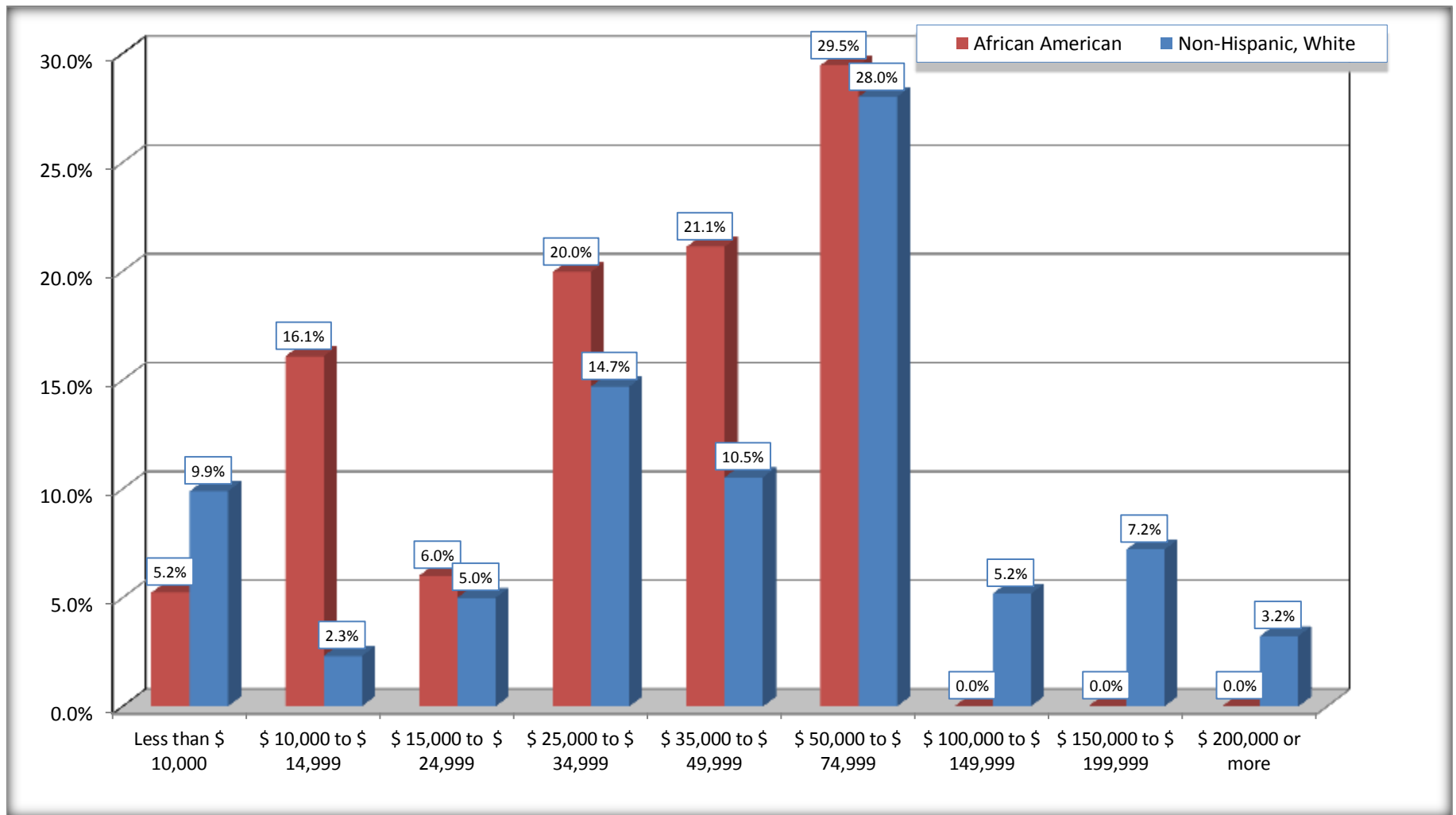
Source: U.S. Census Bureau, 2008-2012 American Community Survey

For information on confidentiality protection, sampling error, nonsampling error, and definitions, see Survey Methodology.

<http://www.census.gov/acs/www/UseData/index.htm>



## Family Income in the Past 12 Months Ponchatoula city, Louisiana



Source: B19101. FAMILY INCOME IN THE PAST 12 MONTHS (IN 2010 INFLATION-ADJUSTED DOLLARS)  
Data Set: 2008-2012 American Community Survey 5-Year Estimates

**B19113. MEDIAN FAMILY INCOME IN THE PAST 12 MONTHS (IN 2010 INFLATION-ADJUSTED DOLLARS)**

Data Set: 2008-2012 American Community Survey 5-Year Estimates

	<b>Ponchatoula city, Louisiana</b>			
	African American	Margin of Error (+/-)	White, Not Hispanic	Margin of Error (+/-)
Median family income in the past 12 months (in 2010 inflation-adjusted dollars)	\$ 37,609	\$ 14,753	\$ 57,853	\$ 5,120

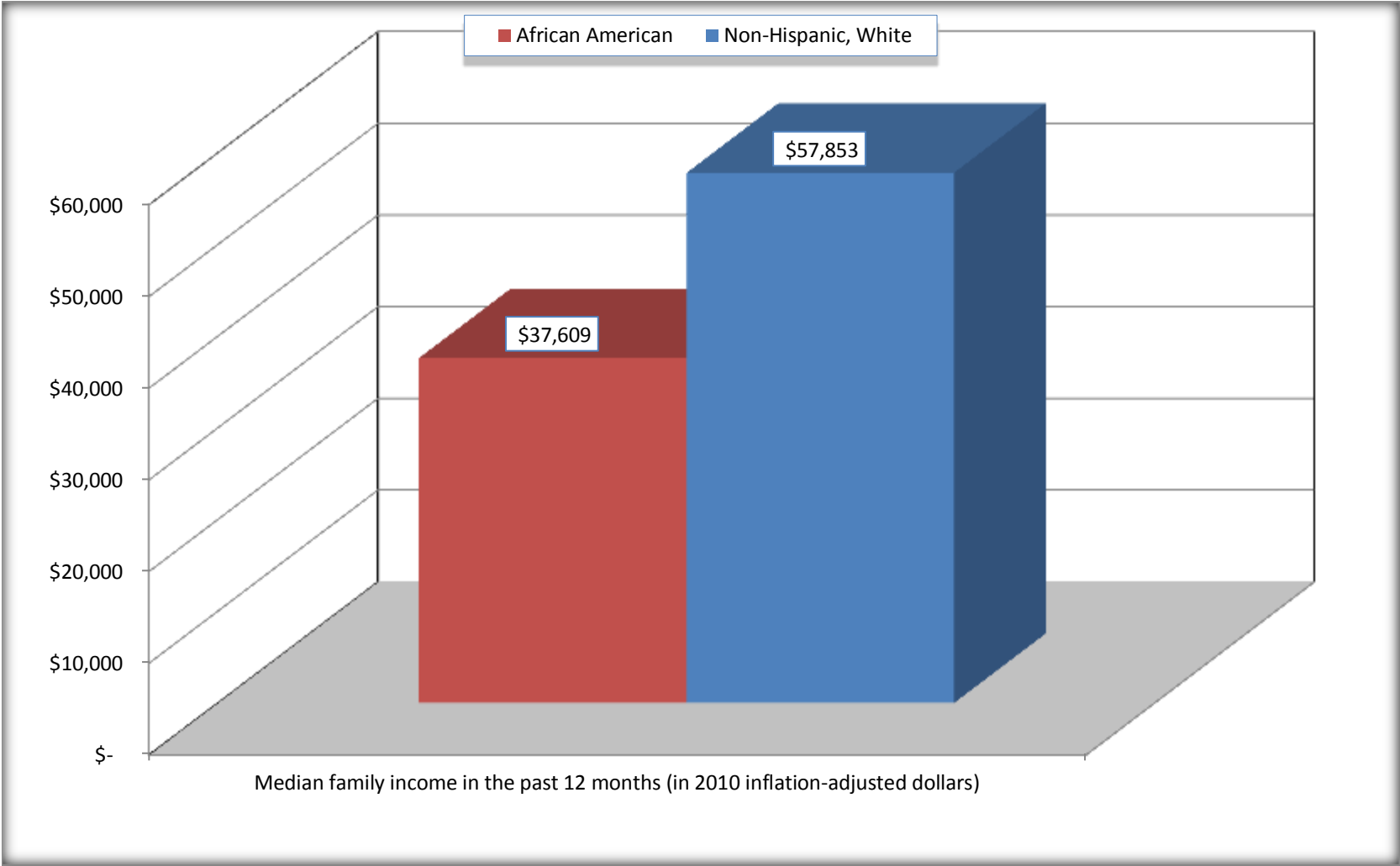
Source: U.S. Census Bureau, 2008-2012 American Community Survey

For information on confidentiality protection, sampling error, nonsampling error, and definitions, see Survey Methodology.

<http://www.census.gov/acs/www/UseData/index.htm>

# Median Family Income in the Past 12 Months

## Ponchatoula city, Louisiana



Source: B19113. MEDIAN FAMILY INCOME IN THE PAST 12 MONTHS (IN 2010 INFLATION-ADJUSTED DOLLARS)  
Data Set: 2008-2012 American Community Survey 5-Year Estimates

**B19202. MEDIAN NONFAMILY HOUSEHOLD INCOME IN THE PAST 12 MONTHS (IN 2010 INFLATION-ADJUSTED DOLLARS)**

Data Set: 2008-2012 American Community Survey 5-Year Estimates

	Ponchatoula city, Louisiana			
	African American	Margin of Error (+/-)	White, Not Hispanic	Margin of Error (+/-)
Median nonfamily household income in the past 12 months (in 2010 inflation-adjusted dollars)	\$ 15,160	\$ 3,347	\$ 20,966	\$ 3,152

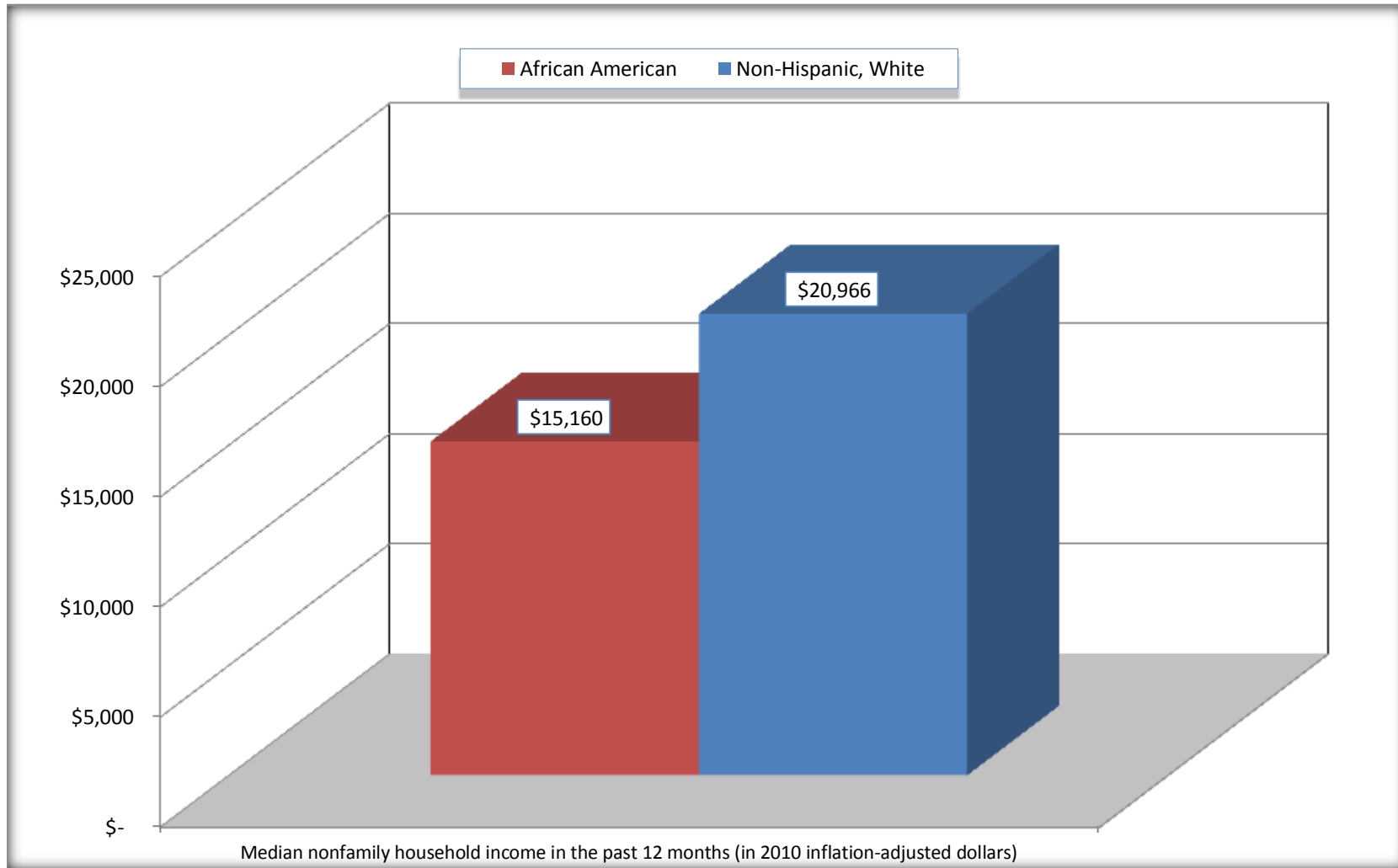
Source: U.S. Census Bureau, 2008-2012 American Community Survey

For information on confidentiality protection, sampling error, nonsampling error, and definitions, see Survey Methodology.

<http://www.census.gov/acs/www/UseData/index.htm>

# Median Non-Family Income in the Past 12 Months

## Ponchatoula city, Louisiana



Source: B19202. MEDIAN NONFAMILY HOUSEHOLD INCOME IN THE PAST 12 MONTHS (IN 2010 INFLATION-ADJUSTED DOLLARS)  
Data Set: 2008-2012 American Community Survey 5-Year Estimates

**B19301. PER CAPITA INCOME IN THE PAST 12 MONTHS (IN 2010 INFLATION-ADJUSTED DOLLARS)**

Data Set: 2008-2012 American Community Survey 5-Year Estimates

	<b>Ponchatoula city, Louisiana</b>			
	African American	Margin of Error (+/-)	White, Not Hispanic	Margin of Error (+/-)
Per capita income in the past 12 months (in 2010 inflation-adjusted dollars)	\$ 12,333	\$ 2,334	\$ 25,334	\$ 5,083

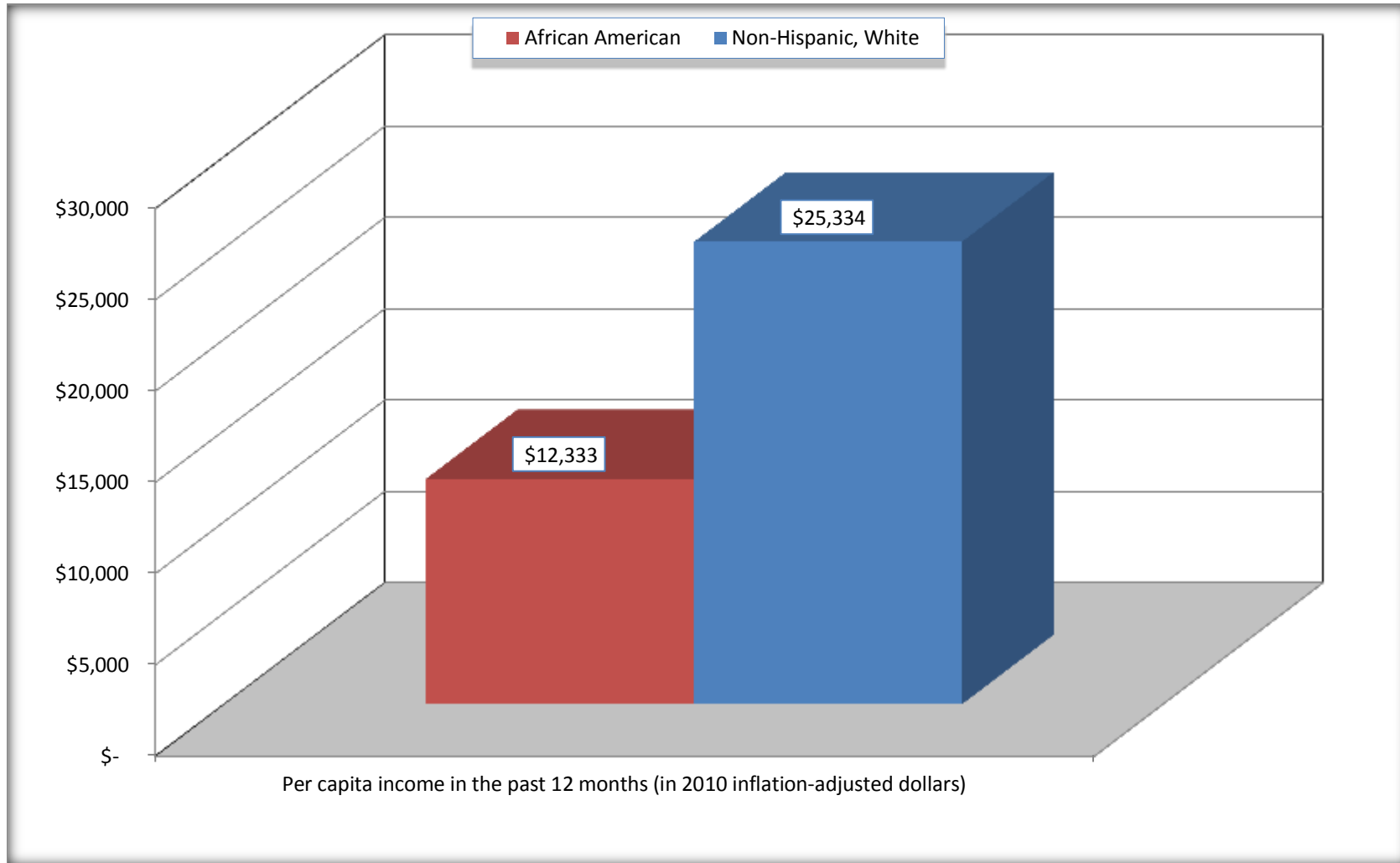
Source: U.S. Census Bureau, 2008-2012 American Community Survey

For information on confidentiality protection, sampling error, nonsampling error, and definitions, see Survey Methodology.

<http://www.census.gov/acs/www/UseData/index.htm>

## Per capita Income in the Past 12 Months

### Ponchatoula city, Louisiana



Source: B19301. PER CAPITA INCOME IN THE PAST 12 MONTHS (IN 2010 INFLATION-ADJUSTED DOLLARS)  
Data Set: 2008-2012 American Community Survey 5-Year Estimates

**B20017. MEDIAN EARNINGS IN THE PAST 12 MONTHS (IN 2010 INFLATION-ADJUSTED DOLLARS) BY SEX BY WORK EXPERIENCE IN THE PAST 12 MONTHS FOR THE POPULATION 16 YEARS AND OVER WITH EARNINGS IN THE PAST 12 MONTHS**

Data Set: 2008-2012 American Community Survey 5-Year Estimates

	Ponchatoula city, Louisiana			
	African American	Margin of Error (+/-)	White, Not Hispanic	Margin of Error (+/-)
Median earnings in the past 12 months (in 2010 inflation-adjusted dollars) --				
Total:	\$ 21,722	\$ 5,611	\$ 28,478	\$ 4,229
Male --				
Total	\$ 23,750	\$ 13,779	\$ 35,188	\$ 8,661
Worked full-time, year-round in the past 12 months	\$ 32,543	\$ 4,301	\$ 44,087	\$ 11,591
Other	\$ 17,601	\$ 9,515	\$ 3,750	\$ 10,192
Female --				
Total	\$ 16,467	\$ 9,796	\$ 23,726	\$ 4,617
Worked full-time, year-round in the past 12 months	\$ 23,901	\$ 4,955	\$ 32,571	\$ 5,473
Other	\$ 6,850	\$ 9,348	\$ 13,813	\$ 9,725

Source: U.S. Census Bureau, 2008-2012 American Community Survey

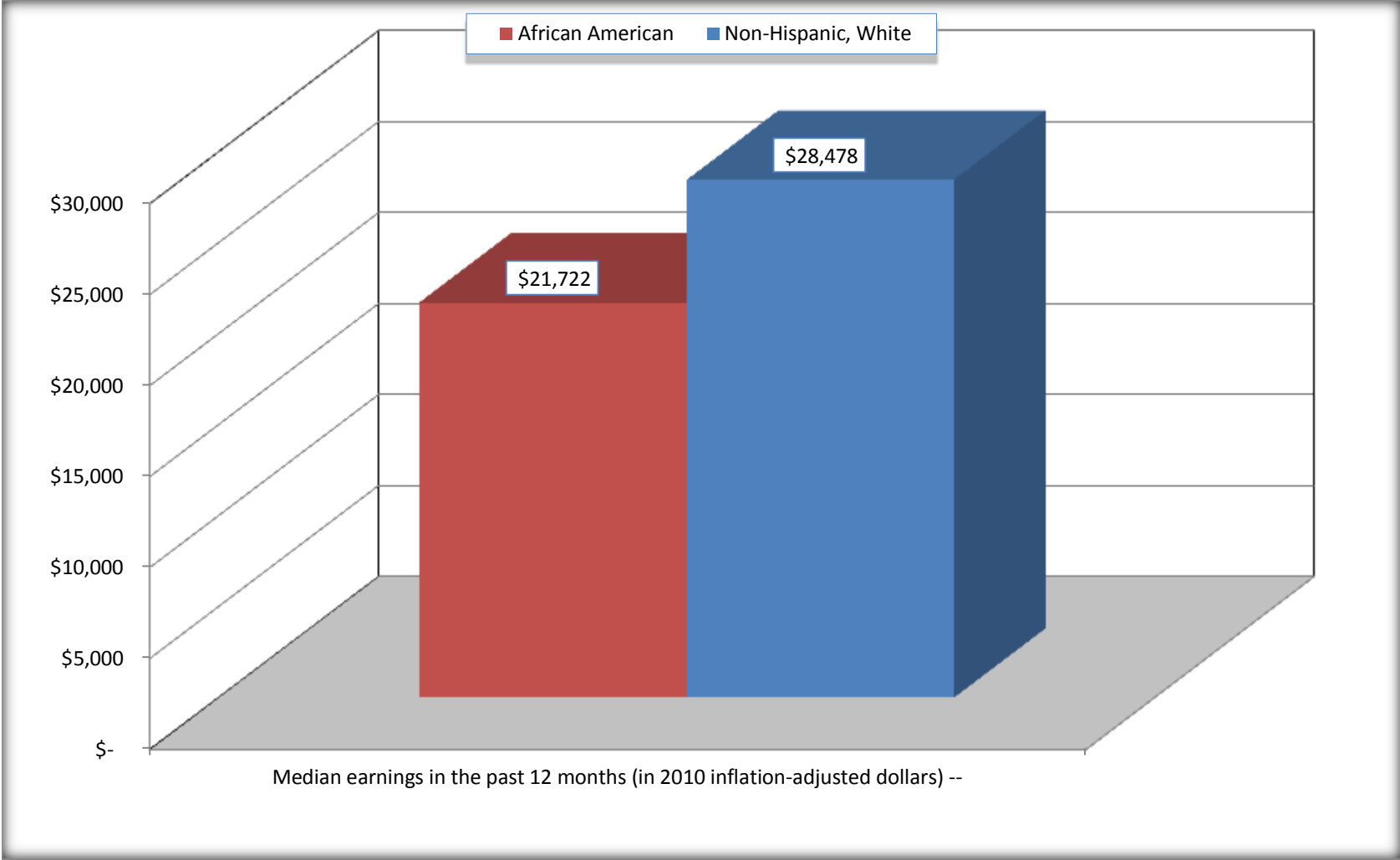
For information on confidentiality protection, sampling error, nonsampling error, and definitions, see Survey Methodology.

<http://www.census.gov/acs/www/UseData/index.htm>



# Median earnings in the Past 12 Months (16 Years and Over with Earnings)

## Ponchatoula city, Louisiana



Source: B20017. MEDIAN EARNINGS IN THE PAST 12 MONTHS (IN 2010 INFLATION-ADJUSTED DOLLARS) BY SEX BY WORK EXPERIENCE IN THE PAST 12 MONTHS FOR THE POPULATION 16 YEARS AND OVER WITH EARNINGS IN THE PAST 12 MONTHS  
Data Set: 2008-2012 American Community Survey 5-Year Estimates

**B20005. SEX BY WORK EXPERIENCE IN THE PAST 12 MONTHS BY EARNINGS IN THE PAST 12 MONTHS (IN 2010 INFLATION-ADJUSTED DOLLARS) FOR THE POPULATION 16 YEARS AND OVER**

Data Set: 2008-2012 American Community Survey 5-Year Estimates

	Ponchatoula city, Louisiana					
	African American	Margin of Error (+/-)	% of AA Total	White, Not Hispanic	Margin of Error (+/-)	% of NHW Total
<b>Total:</b>	<b>1,654</b>	<b>416</b>	<b>100.0%</b>	<b>3,132</b>	<b>415</b>	<b>100.0%</b>
Worked full-time, year-round in the past 12 months:	681	NC	41.2%	1,165	NC	37.2%
No earnings	0	NC	0.0%	0	NC	0.0%
With earnings:	681	NC	41.2%	1,165	NC	37.2%
\$ 1 to \$ 9,999 or loss	0	NC	0.0%	0	NC	0.0%
\$ 10,000 to \$ 19,999	158	NC	9.6%	130	NC	4.2%
\$ 20,000 to \$ 29,999	250	NC	15.1%	295	NC	9.4%
\$ 30,000 to \$ 49,999	262	NC	15.8%	379	NC	12.1%
\$ 50,000 to \$ 74,999	0	NC	0.0%	202	NC	6.4%
\$ 75,000 or more	11	NC	0.7%	159	NC	5.1%
Other:	973	NC	58.8%	1,967	NC	62.8%
No earnings	561	NC	33.9%	1,331	NC	42.5%
With earnings: less than full time, year-round	412	NC	24.9%	636	NC	20.3%
Male:	581	207	35.1%	1,442	234	46.0%
Worked full-time, year-round in the past 12 months:	272	155	16.4%	679	171	21.7%
No earnings	0	17	0.0%	0	17	0.0%
With earnings:	272	155	16.4%	679	171	21.7%
\$ 1 to \$ 9,999 or loss	0	NC	0.0%	0	NC	0.0%
\$ 10,000 to \$ 19,999	0	NC	0.0%	27	NC	0.9%
\$ 20,000 to \$ 29,999	77	NC	4.7%	188	NC	6.0%
\$ 30,000 to \$ 49,999	195	NC	11.8%	208	NC	6.6%
\$ 50,000 to \$ 74,999	0	NC	0.0%	114	NC	3.6%
\$ 75,000 or more	0	NC	0.0%	142	NC	4.5%

	Ponchatoula city, Louisiana					
	African American	Margin of Error (+/-)	% of AA Total	White, Not Hispanic	Margin of Error (+/-)	% of NHW Total
Other:	309	152	18.7%	763	197	24.4%
No earnings	167	88	10.1%	442	137	14.1%
With earnings:	142	134	8.6%	321	140	10.2%
Female:	1,073	330	64.9%	1,690	254	54.0%
Worked full-time, year-round in the past 12 months:	409	153	24.7%	486	132	15.5%
No earnings	0	17	0.0%	0	17	0.0%
With earnings:	409	153	24.7%	486	132	15.5%
\$ 1 to \$ 9,999 or loss	0	NC	0.0%	0	NC	0.0%
\$ 10,000 to \$ 19,999	158	NC	9.6%	103	NC	3.3%
\$ 20,000 to \$ 29,999	173	NC	10.5%	107	NC	3.4%
\$ 30,000 to \$ 49,999	67	NC	4.1%	171	NC	5.5%
\$ 50,000 to \$ 74,999	0	NC	0.0%	88	NC	2.8%
\$ 75,000 or more	11	NC	0.7%	17	NC	0.5%
Other:	664	281	40.1%	1,204	223	38.4%
No earnings	394	213	23.8%	889	203	28.4%
With earnings:	270	131	16.3%	315	133	10.1%

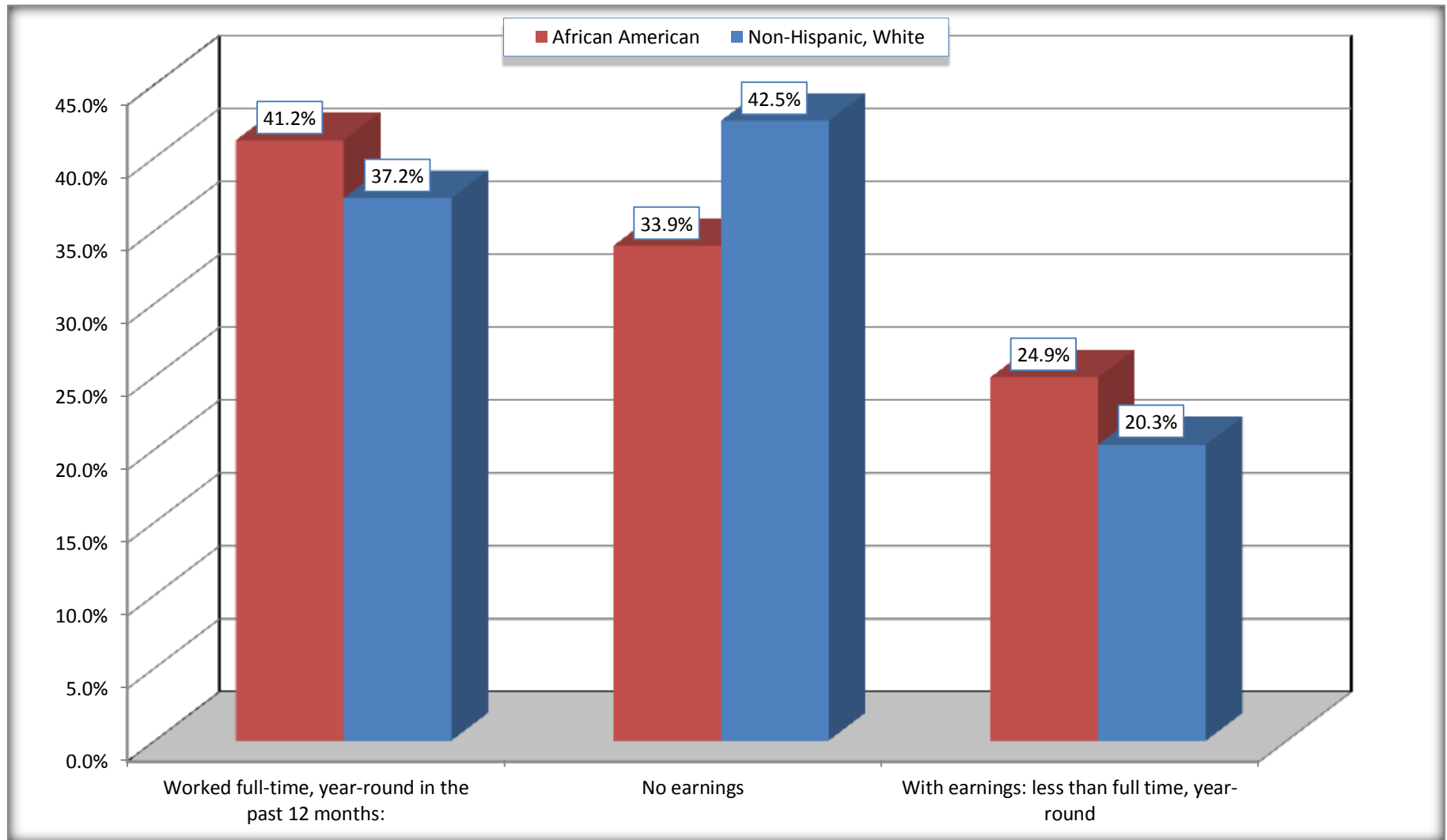
Source: U.S. Census Bureau, 2008-2012 American Community Survey

For information on confidentiality protection, sampling error, nonsampling error, and definitions, see Survey Methodology.

<http://www.census.gov/acs/www/UseData/index.htm>

# Employment and Earnings in in the Past 12 Months (16 Years and Over)

## Ponchatoula city, Louisiana



Source: B20005. SEX BY WORK EXPERIENCE IN THE PAST 12 MONTHS BY EARNINGS IN THE PAST 12 MONTHS (IN 2010 INFLATION-ADJUSTED DOLLARS) FOR THE POPULATION 16 YEARS AND OVER

Data Set: 2008-2012 American Community Survey 5-Year Estimates

**C21001. SEX BY AGE BY VETERAN STATUS FOR THE CIVILIAN POPULATION 18 YEARS AND OVER**

Data Set: 2008-2012 American Community Survey 5-Year Estimates

	Ponchatoula city, Louisiana					
	African American	Margin of Error (+/-)	% of AA Total	White, Not Hispanic	Margin of Error (+/-)	% of NHW Total
<b>Total:</b>	<b>1,607</b>	<b>402</b>	<b>100.0%</b>	<b>3,008</b>	<b>403</b>	<b>100.0%</b>
Veteran	79	NC	4.9%	289	NC	9.6%
Nonveteran	1,528	NC	95.1%	2,719	NC	90.4%
Male:	581	207	36.2%	1,342	215	44.6%
18 to 64 years:	498	208	31.0%	1,068	201	35.5%
Veteran	58	87	3.6%	135	79	4.5%
Nonveteran	440	187	27.4%	933	183	31.0%
65 years and over:	83	58	5.2%	274	80	9.1%
Veteran	21	33	1.3%	140	69	4.7%
Nonveteran	62	55	3.9%	134	65	4.5%
Female:	1,026	328	63.8%	1,666	256	55.4%
18 to 64 years:	920	320	57.2%	1,131	201	37.6%
Veteran	0	17	0.0%	14	23	0.5%
Nonveteran	920	320	57.2%	1,117	201	37.1%
65 years and over:	106	104	6.6%	535	143	17.8%
Veteran	0	17	0.0%	0	17	0.0%
Nonveteran	106	104	6.6%	535	143	17.8%

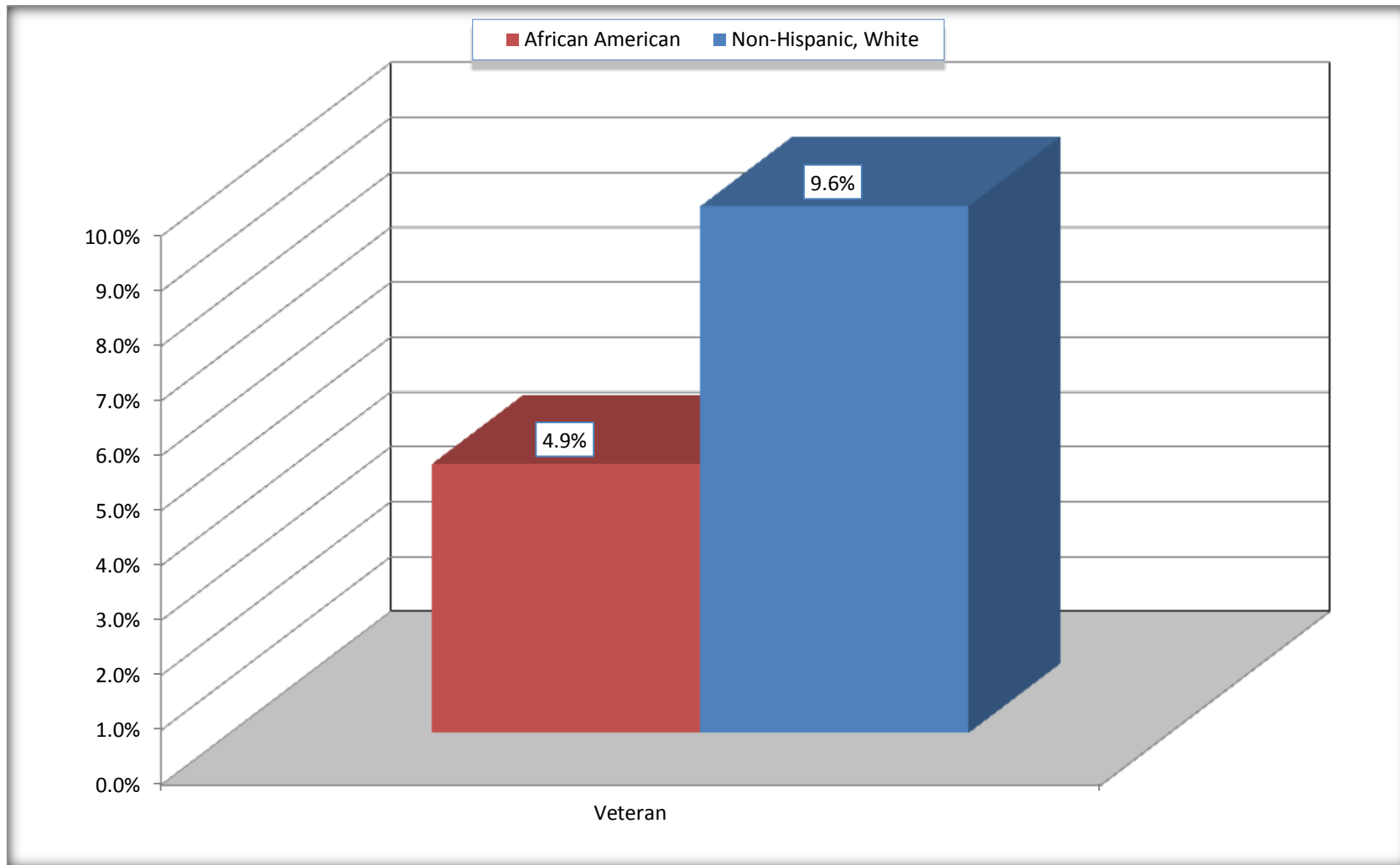
Source: U.S. Census Bureau, 2008-2012 American Community Survey

For information on confidentiality protection, sampling error, nonsampling error, and definitions, see Survey Methodology.

<http://www.census.gov/acs/www/UseData/index.htm>

# Veterans in the Civilian Population 18 Years and Over

## Ponchatoula city, Louisiana



Source: C21001. SEX BY AGE BY VETERAN STATUS FOR THE CIVILIAN POPULATION 18 YEARS AND OVER  
Data Set: 2008-2012 American Community Survey 5-Year Estimates

**B22005. RECEIPT OF FOOD STAMPS/SNAP IN THE PAST 12 MONTHS BY RACE OF HOUSEHOLDER**

Data Set: 2008-2012 American Community Survey 5-Year Estimates

	Ponchatoula city, Louisiana					
	African American	Margin of Error (+/-)	% of AA Total	White, Not Hispanic	Margin of Error (+/-)	% of NHW Total
<b>Total:</b>	<b>794</b>	<b>183</b>	<b>100.0%</b>	<b>1,747</b>	<b>254</b>	<b>100.0%</b>
HH received Food Stamps/SNAP in the past 12 months	279	127	35.1%	152	73	8.7%
HH did not receive Food Stamps/SNAP in the past 12 months	515	182	64.9%	1,595	240	91.3%

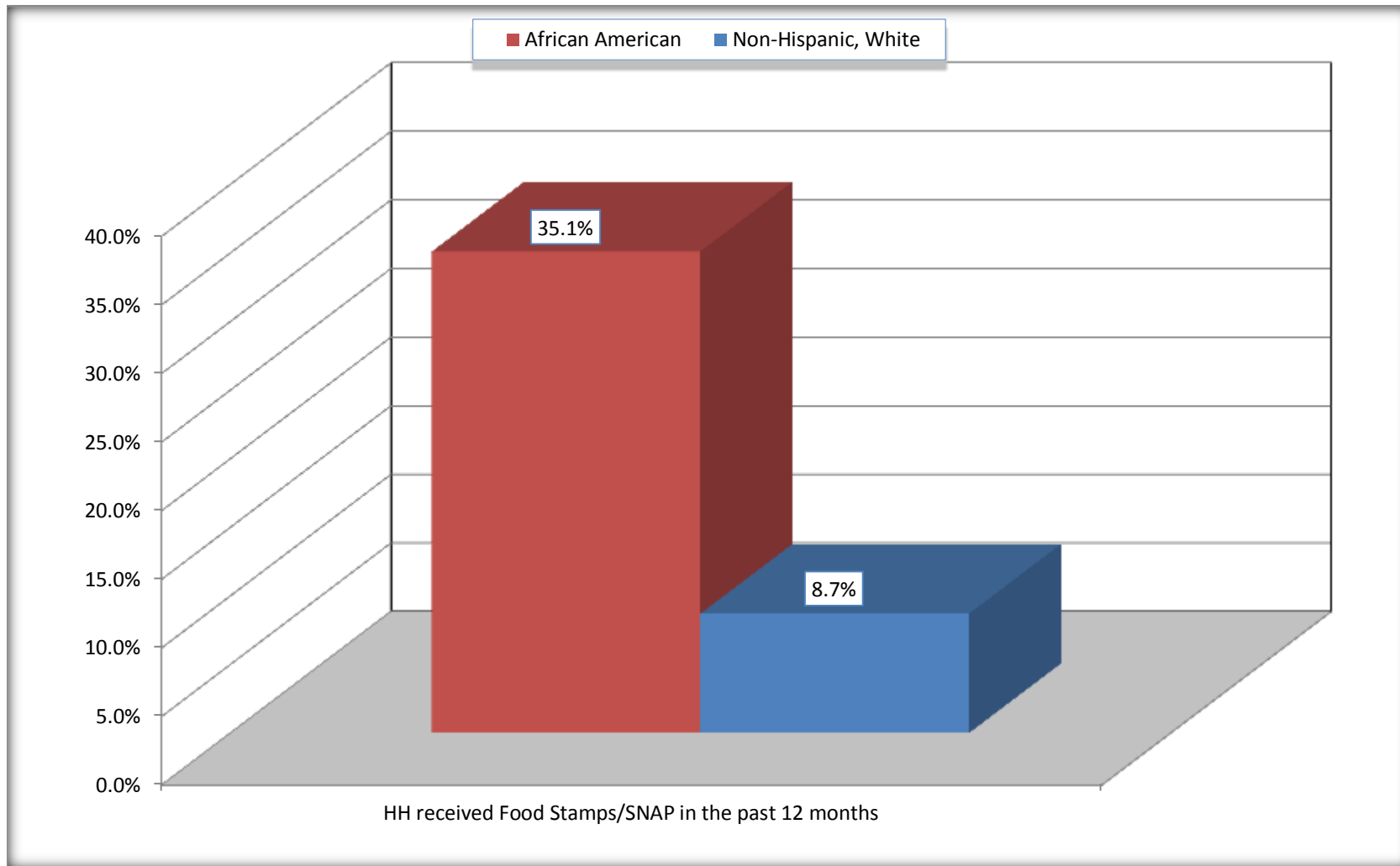
Source: U.S. Census Bureau, 2008-2012 American Community Survey

For information on confidentiality protection, sampling error, nonsampling error, and definitions, see Survey Methodology.

<http://www.census.gov/acs/www/UseData/index.htm>

# Receipt of Food Stamps/SNAP in the Past 12 Months by Household

## Ponchatoula city, Louisiana



Source: B22005. RECEIPT OF FOOD STAMPS/SNAP IN THE PAST 12 MONTHS BY RACE OF HOUSEHOLDER  
Data Set: 2008-2012 American Community Survey 5-Year Estimates



**C23002. SEX BY AGE BY EMPLOYMENT STATUS FOR THE POPULATION 16 YEARS AND OVER**

Data Set: 2008-2012 American Community Survey 5-Year Estimates

	Ponchatoula city, Louisiana					
	African American	Margin of Error (+/-)	% of AA Total	White, Not Hispanic	Margin of Error (+/-)	% of NHW Total
<b>Total:</b>	<b>1,654</b>	<b>416</b>	<b>100.0%</b>	<b>3,132</b>	<b>415</b>	<b>100.0%</b>
In labor force:	1,141	NC	69.0%	1,719	NC	54.9%
In Armed Forces	0	NC	0.0%	0	NC	0.0%
Civilian:	1,129	NC	68.3%	1,629	NC	52.0%
Employed	1,053	NC	63.7%	1,630	NC	52.0%
Unemployed	88	NC	5.3%	89	NC	2.8%
Not in labor force	513	NC	31.0%	1,413	NC	45.1%
Male:	581	207	35.1%	1,442	234	46.0%
16 to 64 years:	498	208	30.1%	1,168	217	37.3%
In labor force:	409	216	24.7%	898	181	28.7%
In Armed Forces	0	17	0.0%	0	17	0.0%
Civilian:	409	216	24.7%	898	181	28.7%
Employed	395	210	23.9%	840	181	26.8%
Unemployed	14	24	0.8%	58	50	1.9%
Not in labor force	89	73	5.4%	270	113	8.6%
65 years and over:	83	58	5.0%	274	80	8.7%
In labor force:	12	22	0.7%	73	44	2.3%
Employed	12	22	0.7%	73	44	2.3%
Unemployed	0	17	0.0%	0	17	0.0%
Not in labor force	71	60	4.3%	201	76	6.4%

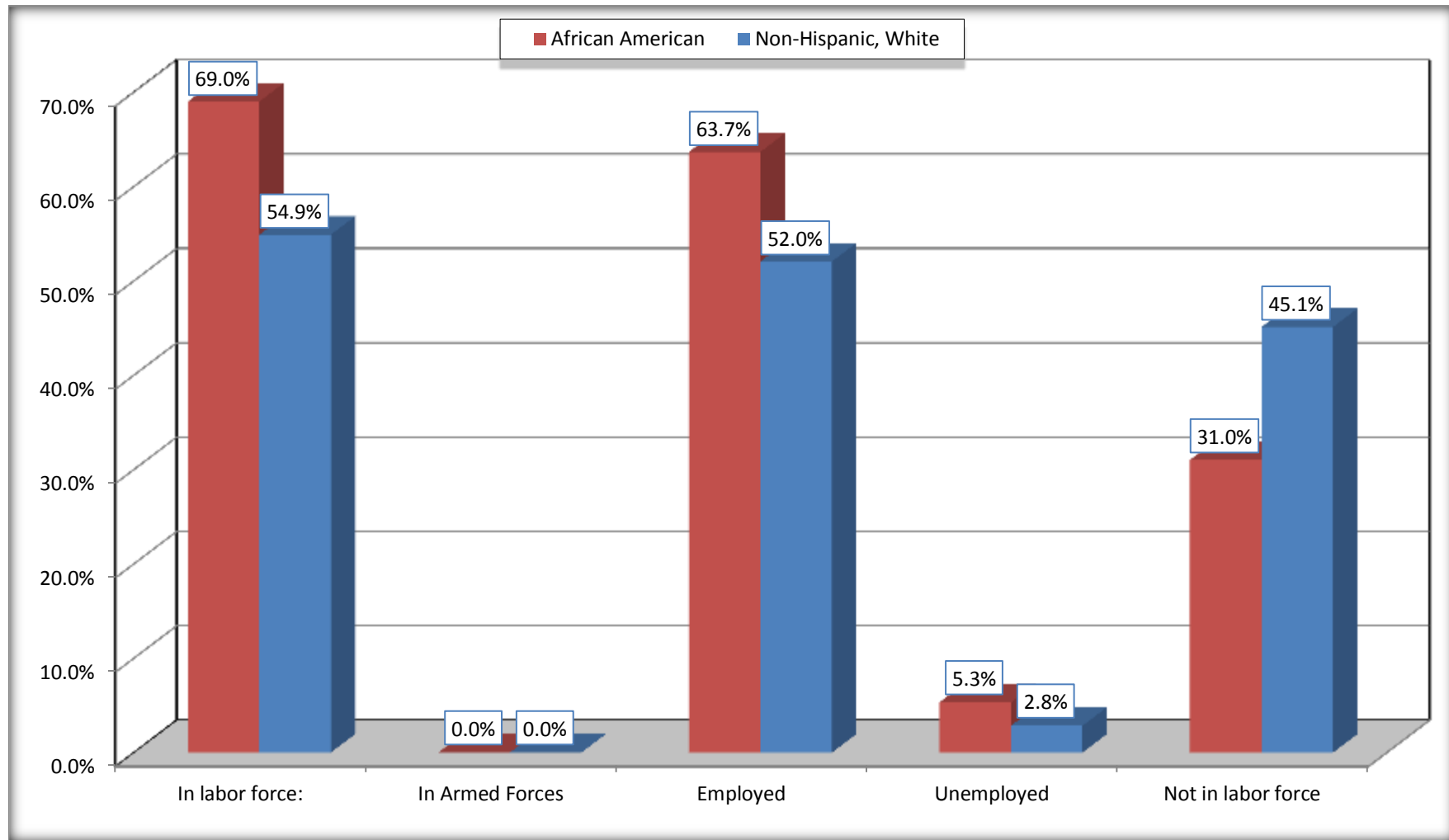
	Ponchatoula city, Louisiana					
	African American	Margin of Error (+/-)	% of AA Total	White, Not Hispanic	Margin of Error (+/-)	% of NHW Total
Female:	1,073	330	64.9%	1,690	254	54.0%
16 to 64 years:	967	324	58.5%	1,155	200	36.9%
In labor force:	720	264	43.5%	731	181	23.3%
In Armed Forces	0	17	0.0%	0	17	0.0%
Civilian:	720	264	43.5%	731	181	23.3%
Employed	646	209	39.1%	700	171	22.3%
Unemployed	74	89	4.5%	31	31	1.0%
Not in labor force	247	125	14.9%	424	134	13.5%
65 years and over:	106	104	6.4%	535	143	17.1%
In labor force:	0	17	0.0%	17	20	0.5%
Employed	0	17	0.0%	17	20	0.5%
Unemployed	0	17	0.0%	0	17	0.0%
Not in labor force	106	104	6.4%	518	141	16.5%

Source: U.S. Census Bureau, 2008-2012 American Community Survey

For information on confidentiality protection, sampling error, nonsampling error, and definitions, see Survey Methodology.  
<http://www.census.gov/acs/www/UseData/index.htm>

# Employment Status for the Population 16 years and over

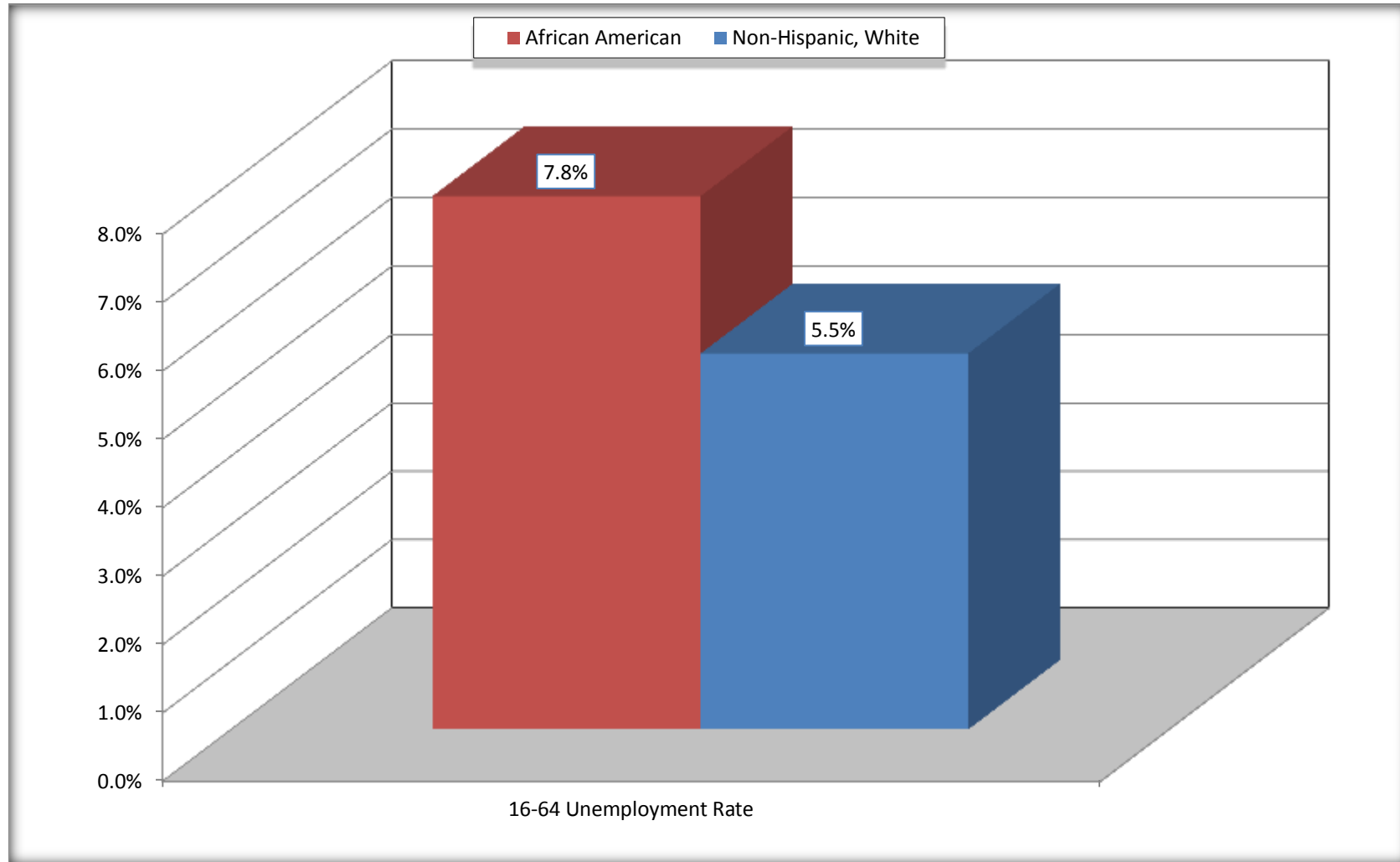
## Ponchatoula city, Louisiana



Source: C23002. SEX BY AGE BY EMPLOYMENT STATUS FOR THE POPULATION 16 YEARS AND OVER  
Data Set: 2008-2012 American Community Survey 5-Year Estimates

# Unemployment of Working Age Population (Ages 16 to 64) (As a Percent of 16-64 Civilian Labor Force)

## Ponchatoula city, Louisiana



Source: C23002. SEX BY AGE BY EMPLOYMENT STATUS FOR THE POPULATION 16 YEARS AND OVER  
Data Set: 2008-2012 American Community Survey 5-Year Estimates

**C24010. SEX BY OCCUPATION FOR THE CIVILIAN EMPLOYED POPULATION 16 YEARS AND OVER**

Data Set: 2008-2012 American Community Survey 5-Year Estimates

	Ponchatoula city, Louisiana					
	African American	Margin of Error (+/-)	% of AA Total	White, Not Hispanic	Margin of Error (+/-)	% of NHW Total
<b>Total:</b>	<b>1,053</b>	<b>352</b>	<b>100.0%</b>	<b>1,630</b>	<b>311</b>	<b>100.0%</b>
Management, professional, and related occupations	267	NC	25.4%	785	NC	48.2%
Service occupations	319	NC	30.3%	312	NC	19.1%
Sales and office occupations	242	NC	23.0%	195	NC	12.0%
Natural resources, construction, and maintenance occupations:	0	NC	0.0%	169	NC	10.4%
Production, transportation, and material moving occupations	225	NC	21.4%	169	NC	10.4%
Male:	407	213	38.7%	913	182	56.0%
Management, business, science, and arts occupations:	53	78	5.0%	388	130	23.8%
Service occupations	132	105	12.5%	100	55	6.1%
Sales and office occupations	41	50	3.9%	117	71	7.2%
Natural resources, construction, and maintenance occupations:	0	17	0.0%	169	100	10.4%
Production, transportation, and material moving occupations	181	170	17.2%	139	93	8.5%
Female:	646	209	61.3%	717	175	44.0%
Management, professional, and related occupations	214	99	20.3%	397	123	24.4%
Service occupations	187	91	17.8%	212	119	13.0%
Sales and office occupations	201	152	19.1%	78	43	4.8%
Natural resources, construction, and maintenance occupations:	0	17	0.0%	0	17	0.0%
Production, transportation, and material moving occupations	44	43	4.2%	30	33	1.8%

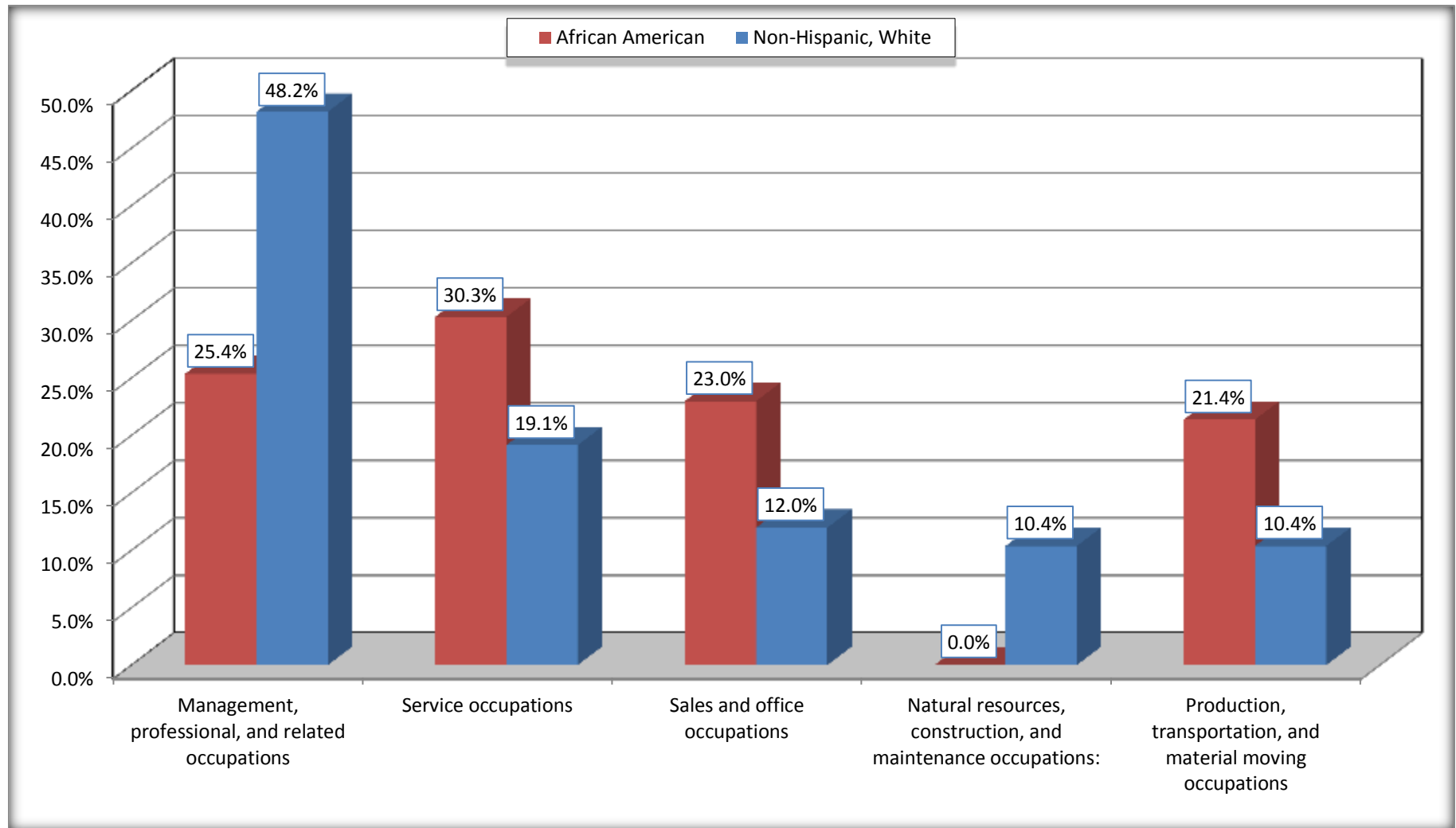
Source: U.S. Census Bureau, 2008-2012 American Community Survey

For information on confidentiality protection, sampling error, nonsampling error, and definitions, see Survey Methodology.

<http://www.census.gov/acs/www/UseData/index.htm>

# Occupation for the Civilian Employed 16 Years and Over Population

## Ponchatoula city, Louisiana



Source: C24010. SEX BY OCCUPATION FOR THE CIVILIAN EMPLOYED POPULATION 16 YEARS AND OVER  
Data Set: 2008-2012 American Community Survey 5-Year Estimates

**B25003. TENURE - Universe: OCCUPIED HOUSING UNITS**

Data Set: 2008-2012 American Community Survey 5-Year Estimates

	Ponchatoula city, Louisiana					
	African American	Margin of Error (+/-)	% of AA Total	White, Not Hispanic	Margin of Error (+/-)	% of NHW Total
<b>Total:</b>	<b>794</b>	<b>183</b>	<b>100.0%</b>	<b>1,747</b>	<b>254</b>	<b>100.0%</b>
Owner occupied	340	117	42.8%	1,366	224	78.2%
Renter occupied	454	182	57.2%	381	141	21.8%

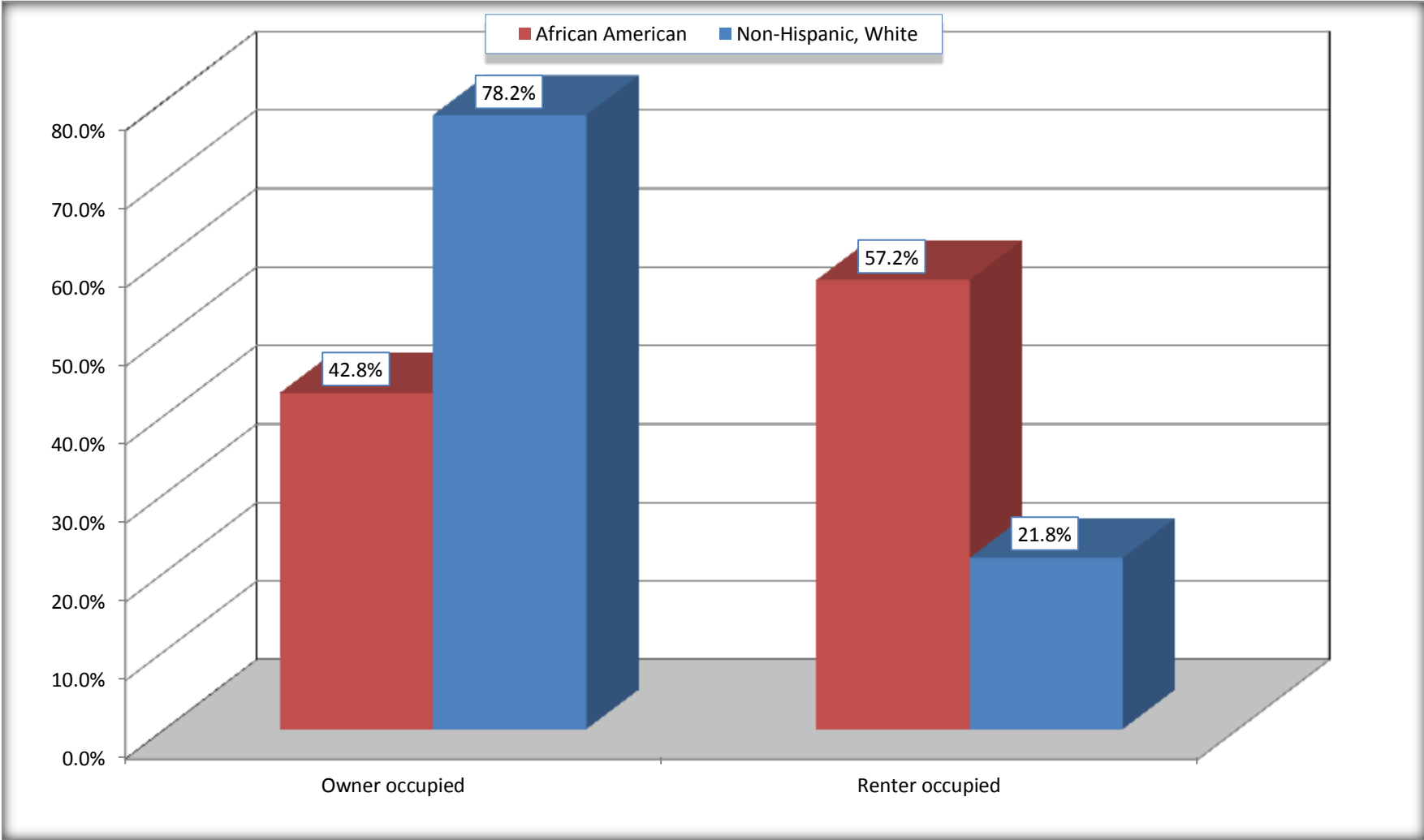
Source: U.S. Census Bureau, 2008-2012 American Community Survey

For information on confidentiality protection, sampling error, nonsampling error, and definitions, see Survey Methodology.

<http://www.census.gov/acs/www/UseData/index.h>

# Home Owners and Renters by Household

## Ponchatoula city, Louisiana



Source: B25003. TENURE - Universe: OCCUPIED HOUSING UNITS  
Data Set: 2008-2012 American Community Survey 5-Year Estimates



**B25014. OCCUPANTS PER ROOM - Universe: OCCUPIED HOUSING UNITS**

Data Set: 2008-2012 American Community Survey 5-Year Estimates

	Ponchatoula city, Louisiana					
	African American	Margin of Error (+/-)	% of AA Total	White, Not Hispanic	Margin of Error (+/-)	% of NHW Total
<b>Total:</b>	<b>794</b>	<b>183</b>	<b>100.0%</b>	<b>1,747</b>	<b>254</b>	<b>100.0%</b>
1.00 or less occupants per room	771	189	97.1%	1,740	255	99.6%
1.01 or more occupants per room	23	38	2.9%	7	12	0.4%

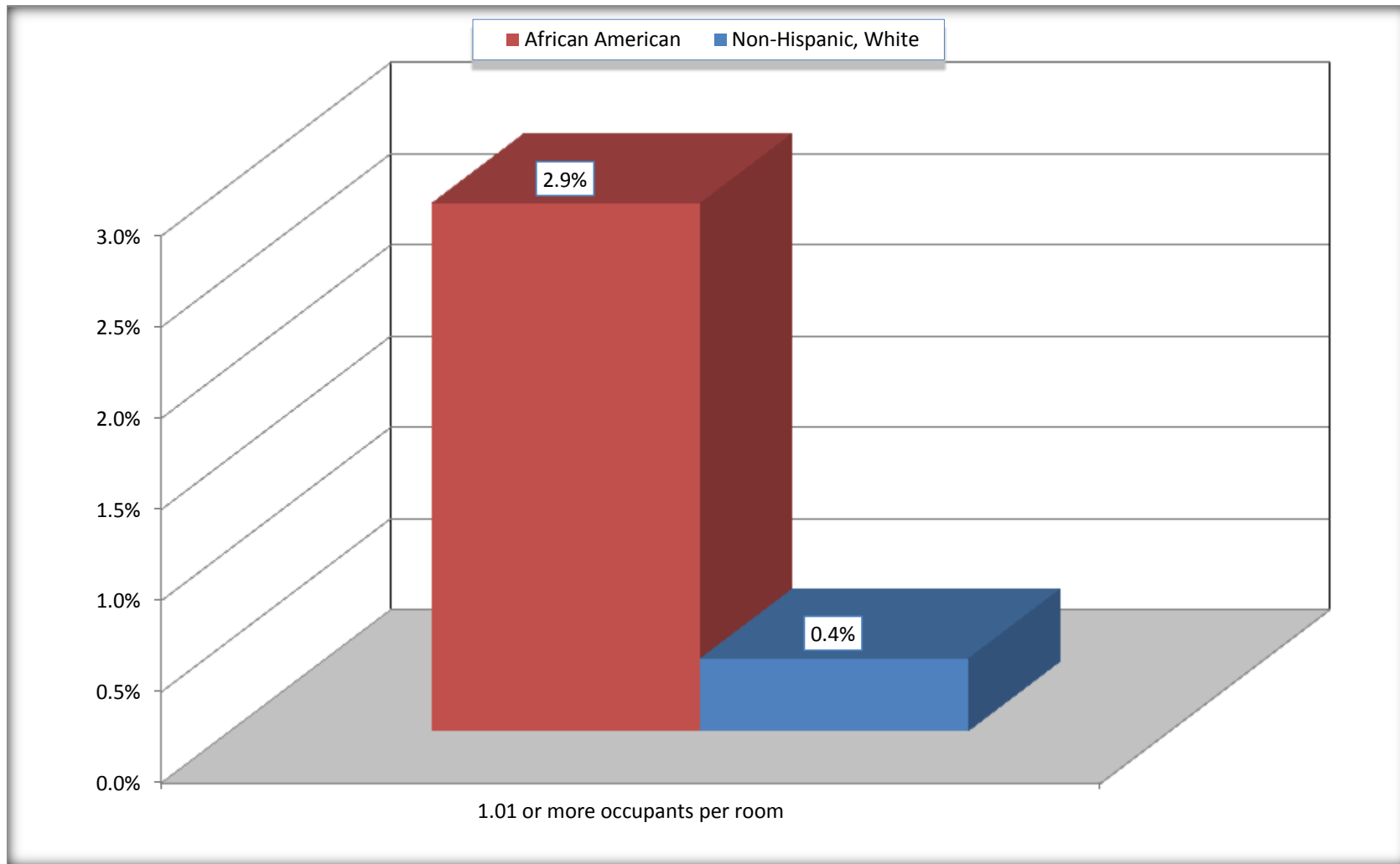
Source: U.S. Census Bureau, 2008-2012 American Community Survey

For information on confidentiality protection, sampling error, nonsampling error, and definitions, see Survey Methodology.

<http://www.census.gov/acs/www/UseData/index.ht>

## More than One Person per Room (Crowding) by Household

### Ponchatoula city, Louisiana



Source: B25014. OCCUPANTS PER ROOM - Universe: OCCUPIED HOUSING UNITS  
Data Set: 2008-2012 American Community Survey 5-Year Estimates

**B18101. AGE BY DISABILITY STATUS**

Data Set: 2008-2012 American Community Survey 5-Year Estimates

	Ponchatoula city, Louisiana					
	African American	Margin of Error (+/-)	% of AA Total	White, Not Hispanic	Margin of Error (+/-)	% of NHW Total
<b>Total:</b>	<b>2,265</b>	<b>547</b>	<b>100.0%</b>	<b>3,887</b>	<b>523</b>	<b>100.0%</b>
Under 18 years:	658	275	29.1%	879	17	22.6%
With a disability	141	155	6.2%	91	69	2.3%
No disability	517	251	22.8%	788	221	20.3%
18 to 64 years:	1,418	399	62.6%	2,199	359	56.6%
With a disability	228	136	10.1%	279	114	7.2%
No disability	1,190	410	52.5%	1,920	330	49.4%
65 years and over:	189	112	8.3%	809	183	20.8%
With a disability	106	104	4.7%	334	110	8.6%
No disability	83	58	3.7%	475	125	12.2%

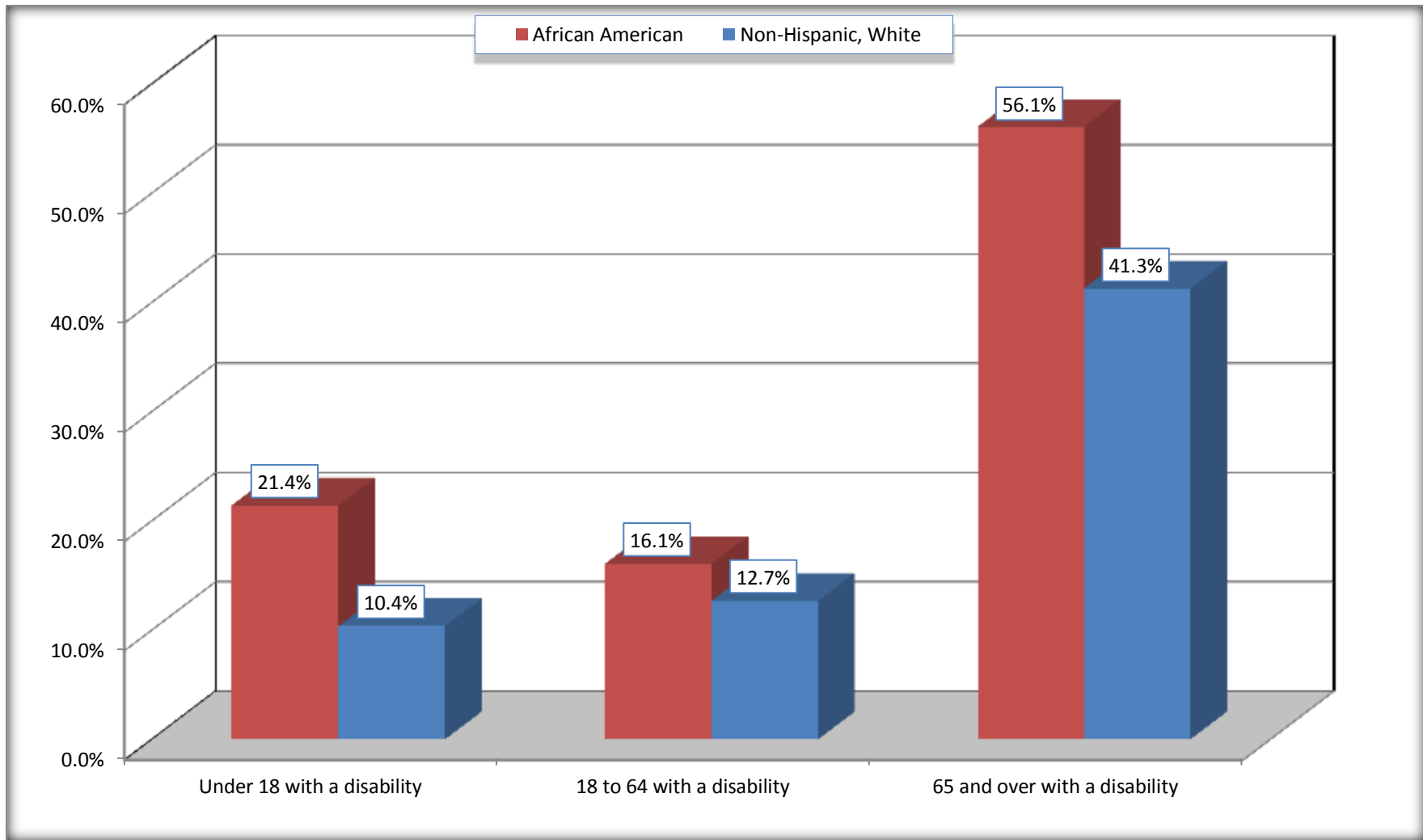
Source: U.S. Census Bureau, 2008-2012 American Community Survey

For information on confidentiality protection, sampling error, nonsampling error, and definitions, see Survey Methodology.

<http://www.census.gov/acs/www/UseData/index.htm>

## Disability by Age

### Ponchatoula city, Louisiana



Source: B18101. AGE BY DISABILITY STATUS  
Data Set: 2008-2012 American Community Survey 5-Year Estimates

**C27001B. HEALTH INSURANCE COVERAGE STATUS BY AGE**

Data Set: 2008-2012 American Community Survey 5-Year Estimates

	<b>Ponchatoula city, Louisiana</b>					
	African American	Margin of Error (+/-)	% of AA Total	White, Not Hispanic	Margin of Error (+/-)	% of NHW Total
<b>Total:</b>	<b>2,265</b>	<b>547</b>	<b>100.0%</b>	<b>3,887</b>	<b>523</b>	<b>100.0%</b>
Under 18 years:	658	275	29.1%	879	241	22.6%
With health insurance coverage	647	275	28.6%	879	241	22.6%
No health insurance coverage	11	18	0.5%	0	17	0.0%
18 to 64 years:	1,418	399	62.6%	2,199	359	56.6%
With health insurance coverage	1,036	311	45.7%	1,740	320	44.8%
No health insurance coverage	382	202	16.9%	459	191	11.8%
65 years and over:	189	112	8.3%	809	183	20.8%
With health insurance coverage	189	112	8.3%	809	183	20.8%
No health insurance coverage	0	17	0.0%	0	17	0.0%

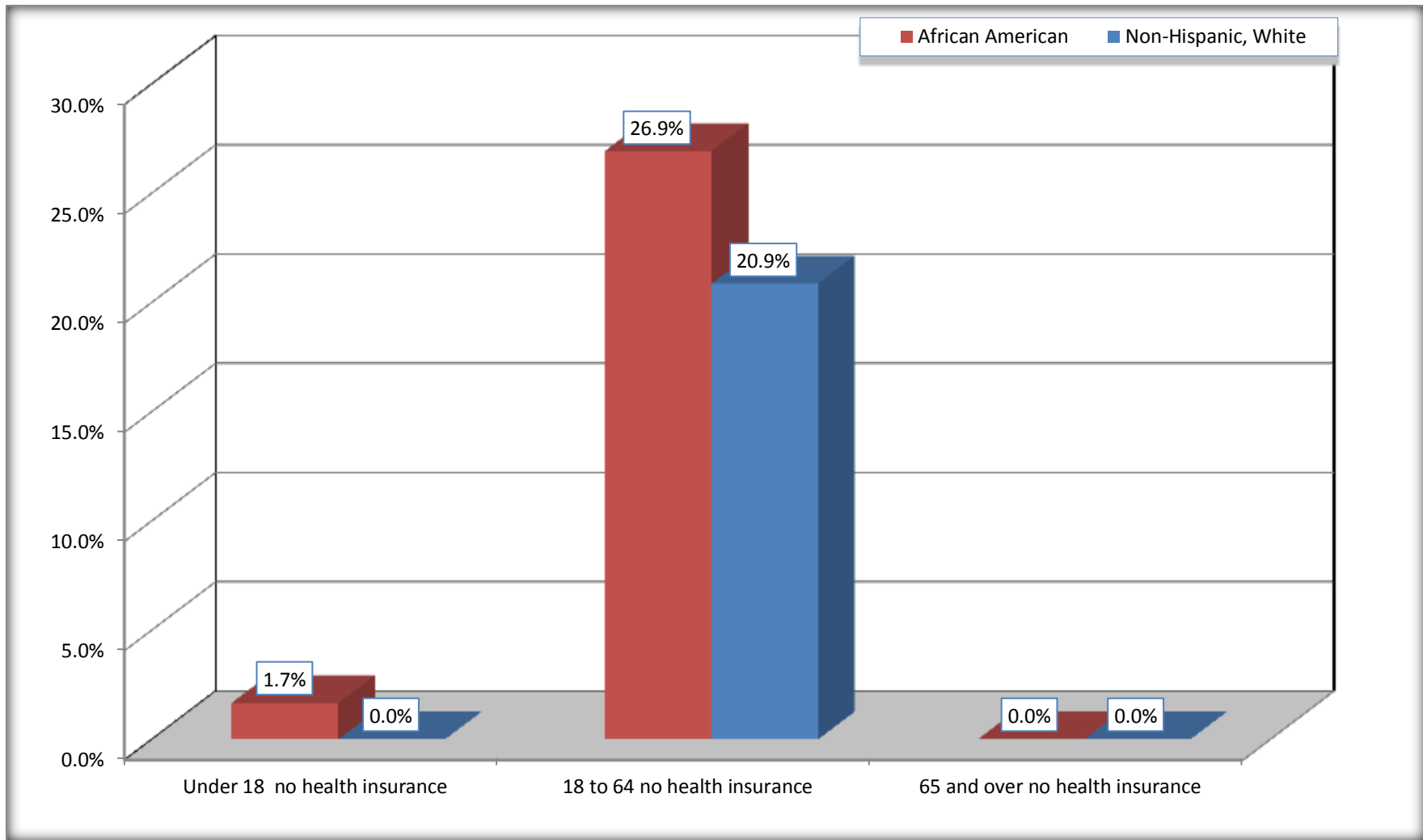
Source: U.S. Census Bureau, 2008-2012 American Community Survey

For information on confidentiality protection, sampling error, nonsampling error, and definitions, see Survey Methodology.

<http://www.census.gov/acs/www/UseData/index.htm>

# Lack of Health Insurance Coverage by Age

## Ponchatoula city, Louisiana



Source: C27001B. HEALTH INSURANCE COVERAGE STATUS BY AGE  
Data Set: 2008-2012 American Community Survey 5-Year Estimates