

Selected Socio-Economic Data

Pointe Coupee Parish, Louisiana

African American and White, Not Hispanic

Data Set: 2008-2012 American Community Survey 5-Year Estimates

www.fairvote2020.org

www.fairdata2000.com

[29-Dec-13](#)

C02003.DETAILED RACE - Universe: TOTAL POPULATION

Data Set: 2008-2012 American Community Survey 5-Year Estimates

	Pointe Coupee Parish, Louisiana		
	Population	Margin of Error (+/-)	% of Total
Total:	22,821	*****	100.0%
Population of one race:	22,685	93	99.4%
White	14,120	70	61.9%
Black or African American	8,343	91	36.6%
American Indian and Alaska Native	76	54	0.3%
Asian alone	82	23	0.4%
Native Hawaiian and Other Pacific Islander	0	23	0.0%
Some other race	64	64	0.3%
Population of two or more races:	136	93	0.6%
Two races including Some other race	11	17	0.0%
Two races excluding Some other race, and three or more races	125	92	0.5%
Population of two races:	136	93	0.6%
White; Black or African American	59	54	0.3%
White; American Indian and Alaska Native	18	17	0.1%
White; Asian	0	23	0.0%
Black or African American; American Indian and Alaska Native	48	72	0.2%
All other two race combinations	11	17	0.0%
Population of three races	0	23	0.0%
Population of four or more races	0	23	0.0%

Note: Hispanics may be of any race. See Table B03002 and chart.

Source: U.S. Census Bureau, 2008-2012 American Community Survey

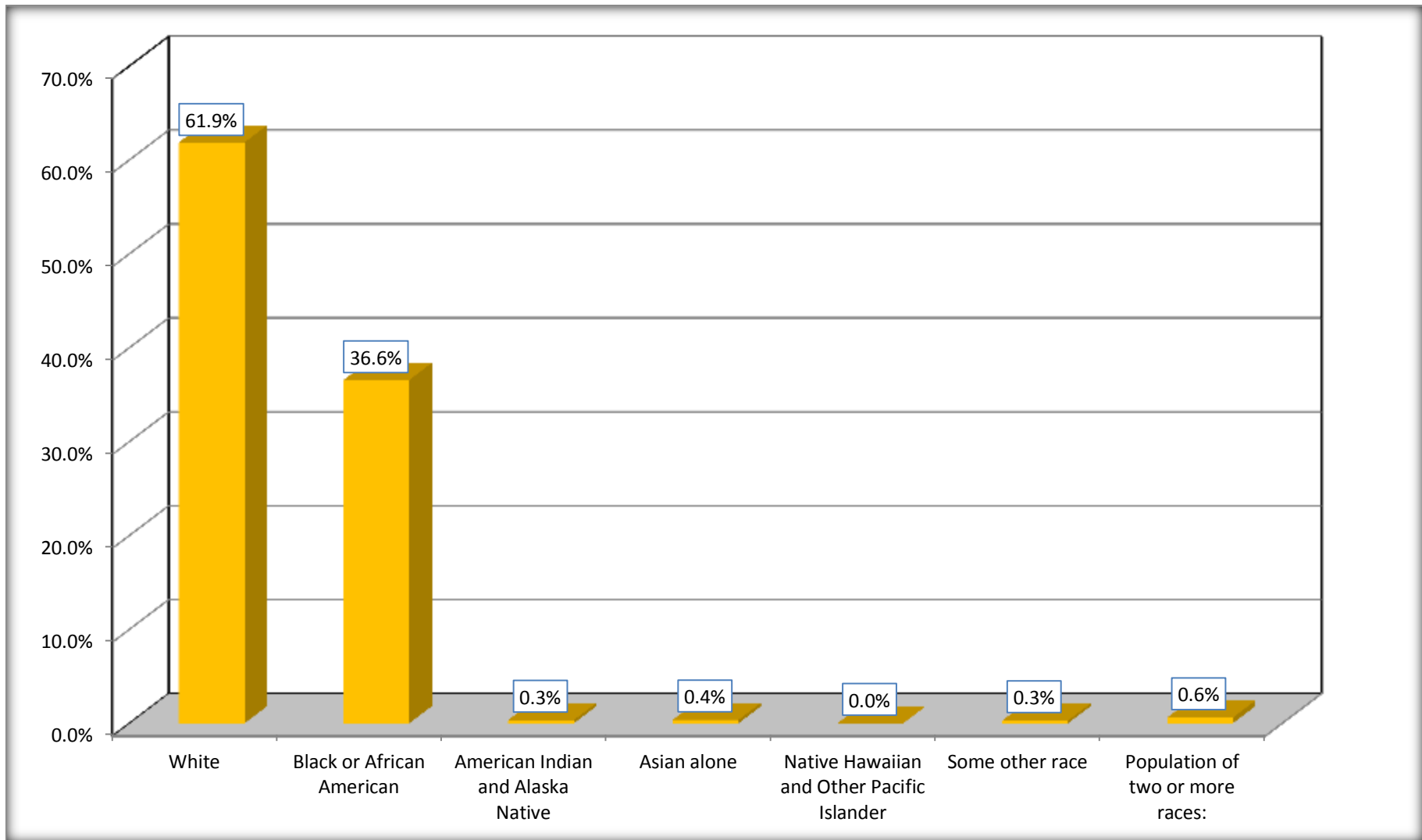
Although the American Community Survey (ACS) produces population, demographic and housing unit estimates, it is the Census Bureau's Population Estimates Program that produces and disseminates the official estimates of the population for the nation, states, counties, cities and towns and estimates of housing units for states and counties.

For information on confidentiality protection, sampling error, nonsampling error, and definitions, see Survey Methodology.

<http://www.census.gov/acs/www/UseData/index.htm>

Population by Race

Pointe Coupee Parish, Louisiana



Source: C02003.DETAILED RACE - Universe: TOTAL POPULATION
Data Set: 2008-2012 American Community Survey 5-Year Estimates

B03002. HISPANIC OR LATINO ORIGIN BY RACE - Universe: TOTAL POPULATION

Data Set: 2008-2012 American Community Survey 5-Year Estimates

	Pointe Coupee Parish, Louisiana		
	Population	Margin of Error (+/-)	% of Total
Total:	22,821	*****	100.0%
Not Hispanic or Latino:	22,339	*****	97.9%
White alone	13,722	29	60.1%
Black or African American alone	8,343	91	36.6%
American Indian and Alaska Native alone	45	17	0.2%
Asian alone	82	23	0.4%
Native Hawaiian and Other Pacific Islander alone	0	23	0.0%
Some other race alone	11	22	0.0%
Two or more races:	136	93	0.6%
Two races including Some other race	11	17	0.0%
Two races excluding Some other race, and three or more races	125	92	0.5%
Hispanic or Latino	482	*****	2.1%

Source: U.S. Census Bureau, 2008-2012 American Community Survey

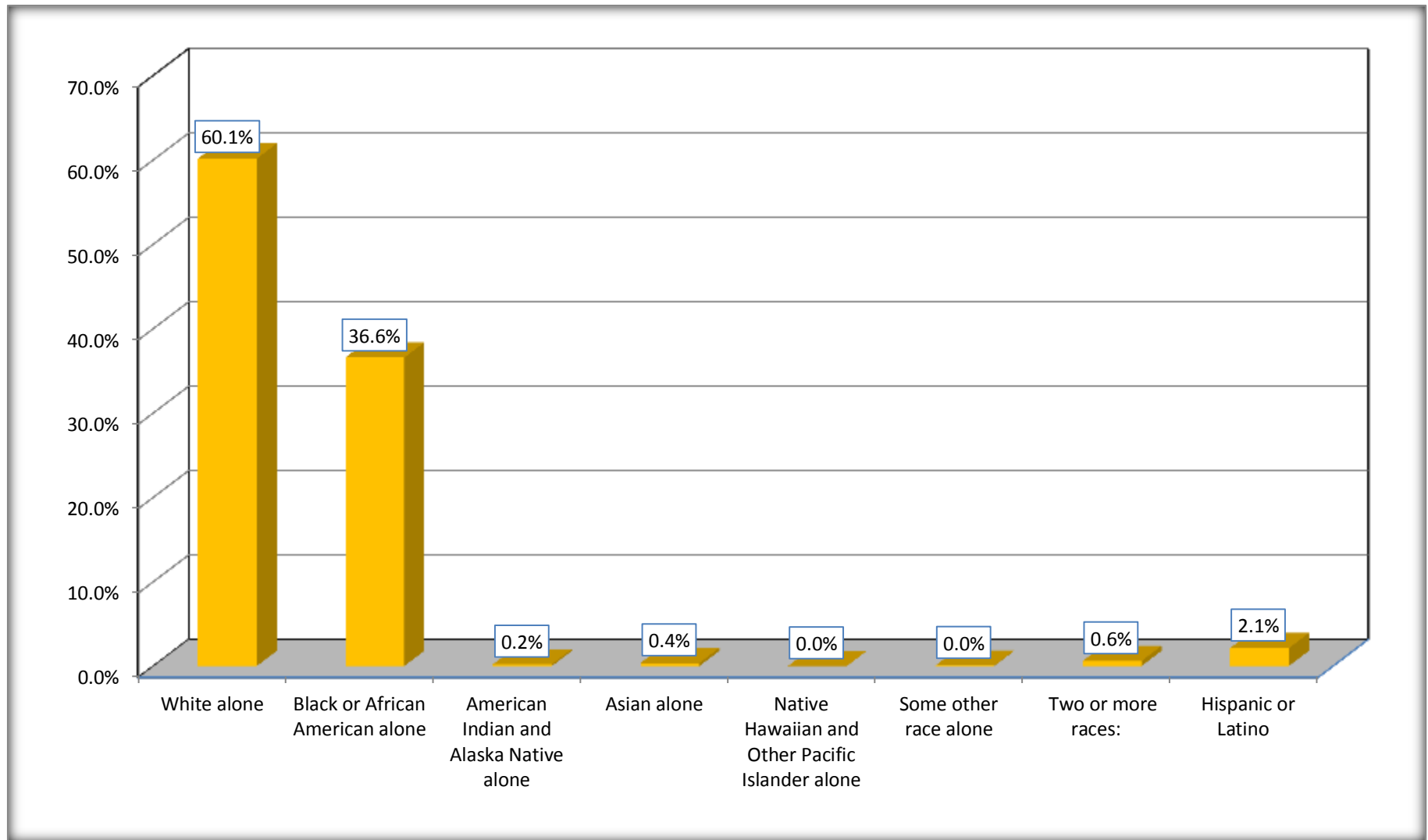
Although the American Community Survey (ACS) produces population, demographic and housing unit estimates, it is the Census Bureau's Population Estimates Program that produces and disseminates the official estimates of the population for the nation, states, counties, cities and towns and estimates of housing units for states and counties.

For information on confidentiality protection, sampling error, nonsampling error, and definitions, see Survey Methodology.

<http://www.census.gov/acs/www/UseData/index.htm>

Non-Hispanic by Race and Hispanic Population

Pointe Coupee Parish, Louisiana



Source: B03002. HISPANIC OR LATINO ORIGIN BY RACE - Universe: TOTAL POPULATION
Data Set: 2008-2012 American Community Survey 5-Year Estimates

B03002. HISPANIC OR LATINO ORIGIN BY RACE

Data Set: 2008-2012 American Community Survey 5-Year Estimates

	Pointe Coupee Parish, Louisiana		
	Population	Margin of Error (+/-)	% of Total
Hispanic or Latino:	482	*****	100.0%
White alone	398	65	82.6%
Black or African American alone	0	23	0.0%
American Indian and Alaska Native alone	31	53	6.4%
Asian alone	0	23	0.0%
Native Hawaiian and Other Pacific Islander alone	0	23	0.0%
Some other race alone	53	61	11.0%
Two or more races:	0	23	0.0%
Two races including Some other race	0	23	0.0%
Two races excluding Some other race, and three or more races	0	23	0.0%

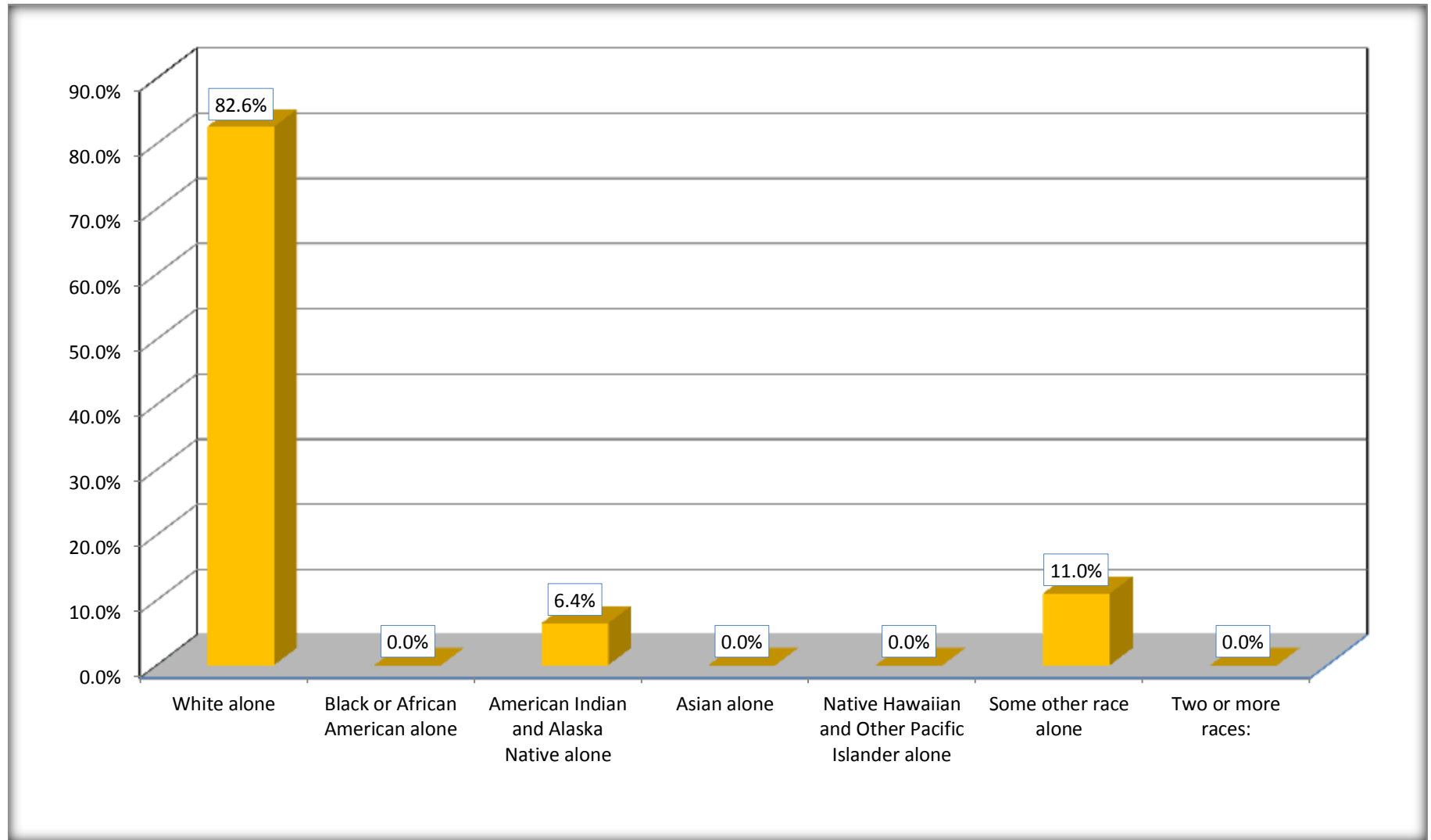
Source: U.S. Census Bureau, 2008-2012 American Community Survey

Although the American Community Survey (ACS) produces population, demographic and housing unit estimates, it is the Census Bureau's Population Estimates Program that produces and disseminates the official estimates of the population for the nation, states, counties, cities and towns and estimates of housing units for states and counties.

For information on confidentiality protection, sampling error, nonsampling error, and definitions, see Survey Methodology.

<http://www.census.gov/acs/www/UseData/index.htm>

Hispanic or Latino Origin by Race Pointe Coupee Parish, Louisiana



Source: B03002. HISPANIC OR LATINO ORIGIN BY RACE
Data Set: 2008-2012 American Community Survey 5-Year Estimates

B01001. SEX BY AGE

Data Set: 2008-2012 American Community Survey 5-Year Estimates

	Pointe Coupee Parish, Louisiana					
	African American	Margin of Error (+/-)	% of AA Total	White, Not Hispanic	Margin of Error (+/-)	% of NHW Total
Total:	8,343	91	100.0%	13,722	29	100.0%
Under 18 years	2,371	NC	28.4%	2,837	NC	20.7%
18 to 64 years	4,829	NC	57.9%	8,423	NC	61.4%
65 years and over	1,143	NC	13.7%	2,462	NC	17.9%
Male:	3,852	47	46.2%	6,779	389	49.4%
Under 18 years	1214	NC	14.6%	1,442	NC	10.5%
18 to 64 years	2,192	NC	26.3%	4,190	NC	30.5%
65 years and over	446	NC	5.3%	1,147	NC	8.4%
Female:	4,491	47	53.8%	6,943	412	50.6%
Under 18 years	1,157	NC	13.9%	1,395	NC	10.2%
18 to 64 years	2,637	NC	31.6%	4,233	NC	30.8%
65 years and over	697	NC	8.4%	1,315	NC	9.6%

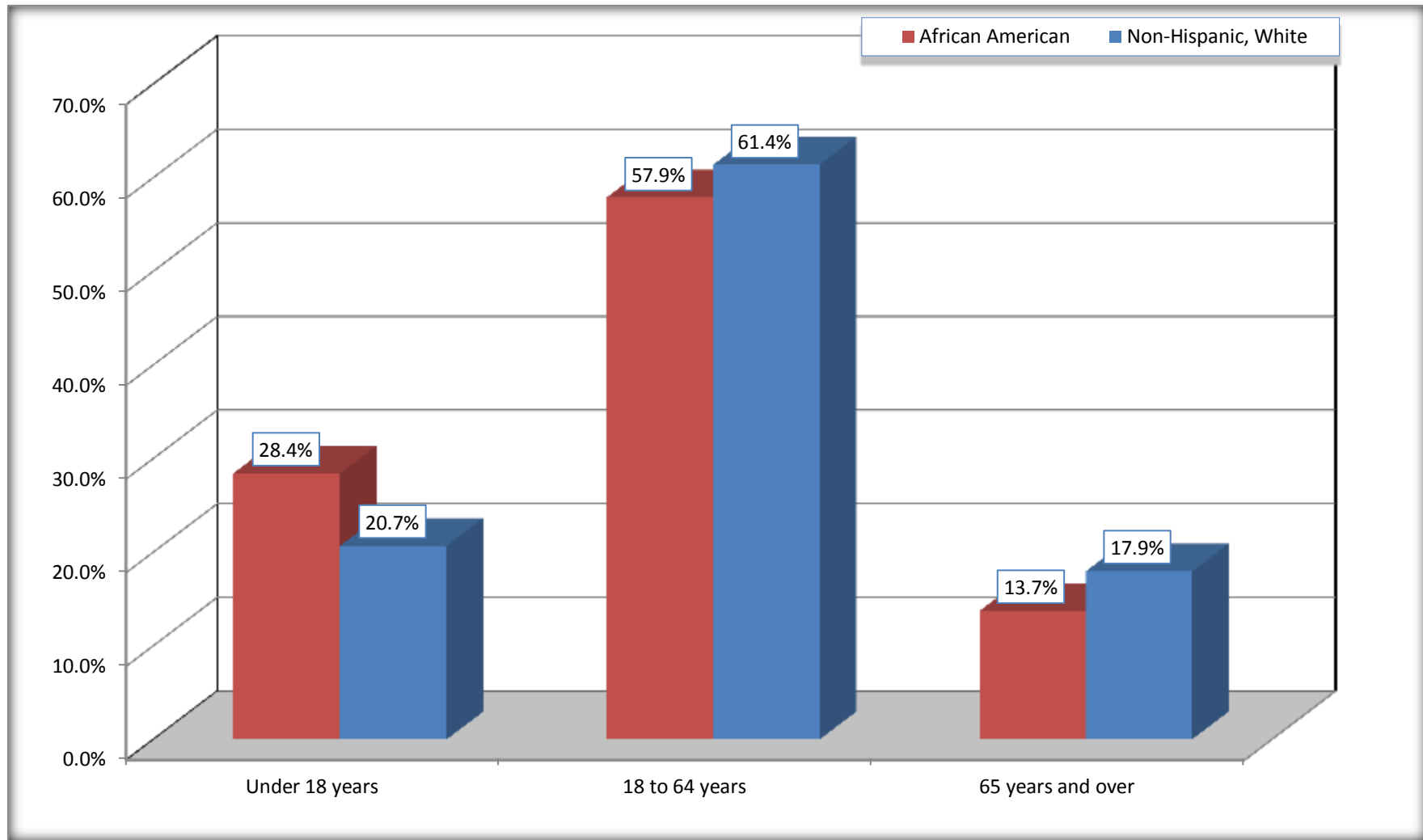
Source: U.S. Census Bureau, 2008-2012 American Community Survey

Although the American Community Survey (ACS) produces population, demographic and housing unit estimates, it is the Census Bureau's Population Estimates Program that produces and disseminates the official estimates of the population for the nation, states, counties, cities and towns and estimates of housing units for states and counties.

For information on confidentiality protection, sampling error, nonsampling error, and definitions, see Survey Methodology.
<http://www.census.gov/acs/www/UseData/index.htm>

Population by Age

Pointe Coupee Parish, Louisiana



Source: B01001. SEX BY AGE
Data Set: 2008-2012 American Community Survey 5-Year Estimates

B05003. SEX BY AGE BY CITIZENSHIP STATUS

Data Set: 2008-2012 American Community Survey 5-Year Estimates

	Pointe Coupee Parish, Louisiana					
	African American	Margin of Error (+/-)	% of AA Total by Age	White, Not Hispanic	Margin of Error (+/-)	% of NHW Total by Age
Total:	8,343	91	100.0%	13,722	29	100.0%
Under 18 years:	2,371	NC	100.0%	2,837	NC	100.0%
Native	2,371	NC	100.0%	2,824	NC	99.5%
Foreign born:	0	NC	0.0%	13	NC	0.5%
Naturalized U.S. citizen	0	NC	0.0%	4	NC	0.1%
Not a U.S. citizen	0	NC	0.0%	9	NC	0.3%
18 years and over:	5,972	NC	100.0%	10,885	NC	100.0%
Native	5,913	NC	99.0%	10,800	NC	99.2%
Foreign born:	59	NC	1.0%	85	NC	0.8%
Naturalized U.S. citizen	0	NC	0.0%	31	NC	0.3%
Not a U.S. citizen	59	NC	1.0%	54	NC	0.5%
Male:	3,852	47	46.2%	6,779	29	49.4%
Under 18 years:	1,214	26	100.0%	1,442	23	100.0%
Native	1,214	26	100.0%	1,429	16	99.1%
Foreign born:	0	23	0.0%	13	16	0.9%
Naturalized U.S. citizen	0	23	0.0%	4	7	0.3%
Not a U.S. citizen	0	23	0.0%	9	15	0.6%
18 years and over:	2,638	38	100.0%	5,337	29	100.0%
Native	2,608	60	98.9%	5,279	63	98.9%
Foreign born:	30	46	1.1%	58	50	1.1%
Naturalized U.S. citizen	0	23	0.0%	16	27	0.3%
Not a U.S. citizen	30	46	1.1%	42	42	0.8%

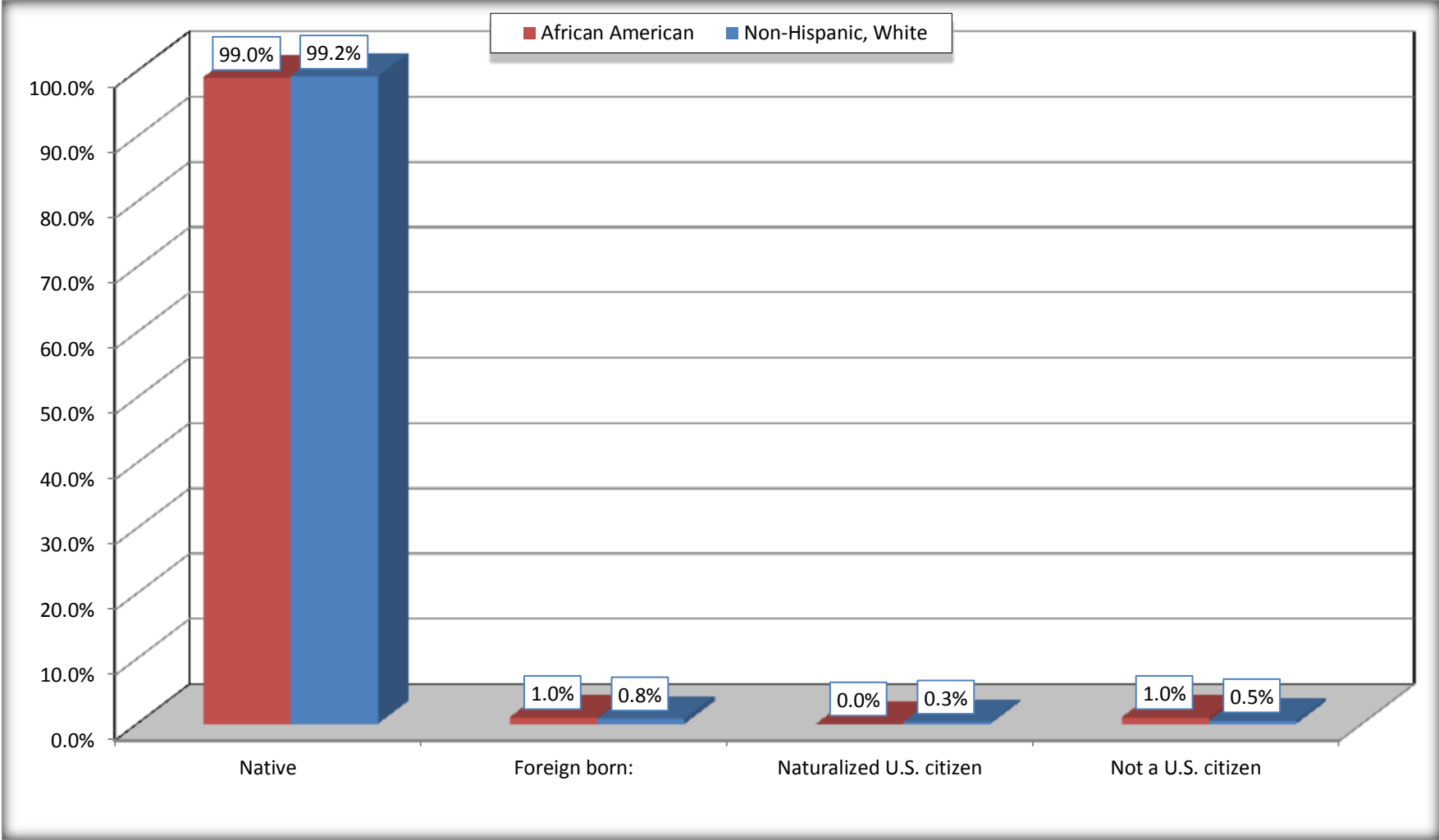
	Pointe Coupee Parish, Louisiana					
	African American	Margin of Error (+/-)	% of AA by Age	White, Not Hispanic	Margin of Error (+/-)	% of NHW by Age
Female:	4,491	47	53.8%	6,943	23	50.6%
Under 18 years:	1,157	27	100.0%	1,395	23	100.0%
Native	1,157	27	100.0%	1,395	23	100.0%
Foreign born:	0	23	0.0%	0	23	0.0%
Naturalized U.S. citizen	0	23	0.0%	0	23	0.0%
Not a U.S. citizen	0	23	0.0%	0	23	0.0%
18 years and over:	3,334	38	100.0%	5,548	23	100.0%
Native	3,305	55	99.1%	5,521	30	99.5%
Foreign born:	29	42	0.9%	27	30	0.5%
Naturalized U.S. citizen	0	23	0.0%	15	23	0.3%
Not a U.S. citizen	29	42	0.9%	12	18	0.2%

Source: U.S. Census Bureau, 2008-2012 American Community Survey

For information on confidentiality protection, sampling error, nonsampling error, and definitions, see Survey Methodology.
<http://www.census.gov/acs/www/UseData/index.htm>

Citizenship Status of Voting Age Population (18 and Over)

Pointe Coupee Parish, Louisiana



Source: B05003. SEX BY AGE BY CITIZENSHIP STATUS
Data Set: 2008-2012 American Community Survey 5-Year Estimates

**B07004. GEOGRAPHICAL MOBILITY IN THE PAST YEAR BY RACE FOR CURRENT RESIDENCE IN THE UNITED STATES - Universe:
POPULATION 1 YEAR AND OVER**

Data Set: 2008-2012 American Community Survey 5-Year Estimates

	Pointe Coupee Parish, Louisiana					
	African American	Margin of Error (+/-)	% of AA Total	White, Not Hispanic	Margin of Error (+/-)	% of NHW Total
Total:	8,241	105	100.0%	13,404	98	100.0%
Same house 1 year ago	7,638	295	92.7%	12,438	321	92.8%
Moved within same county	430	263	5.2%	762	282	5.7%
Moved from different county within same state	94	89	1.1%	144	88	1.1%
Moved from different state	60	65	0.7%	43	40	0.3%
Moved from abroad	19	32	0.2%	17	21	0.1%

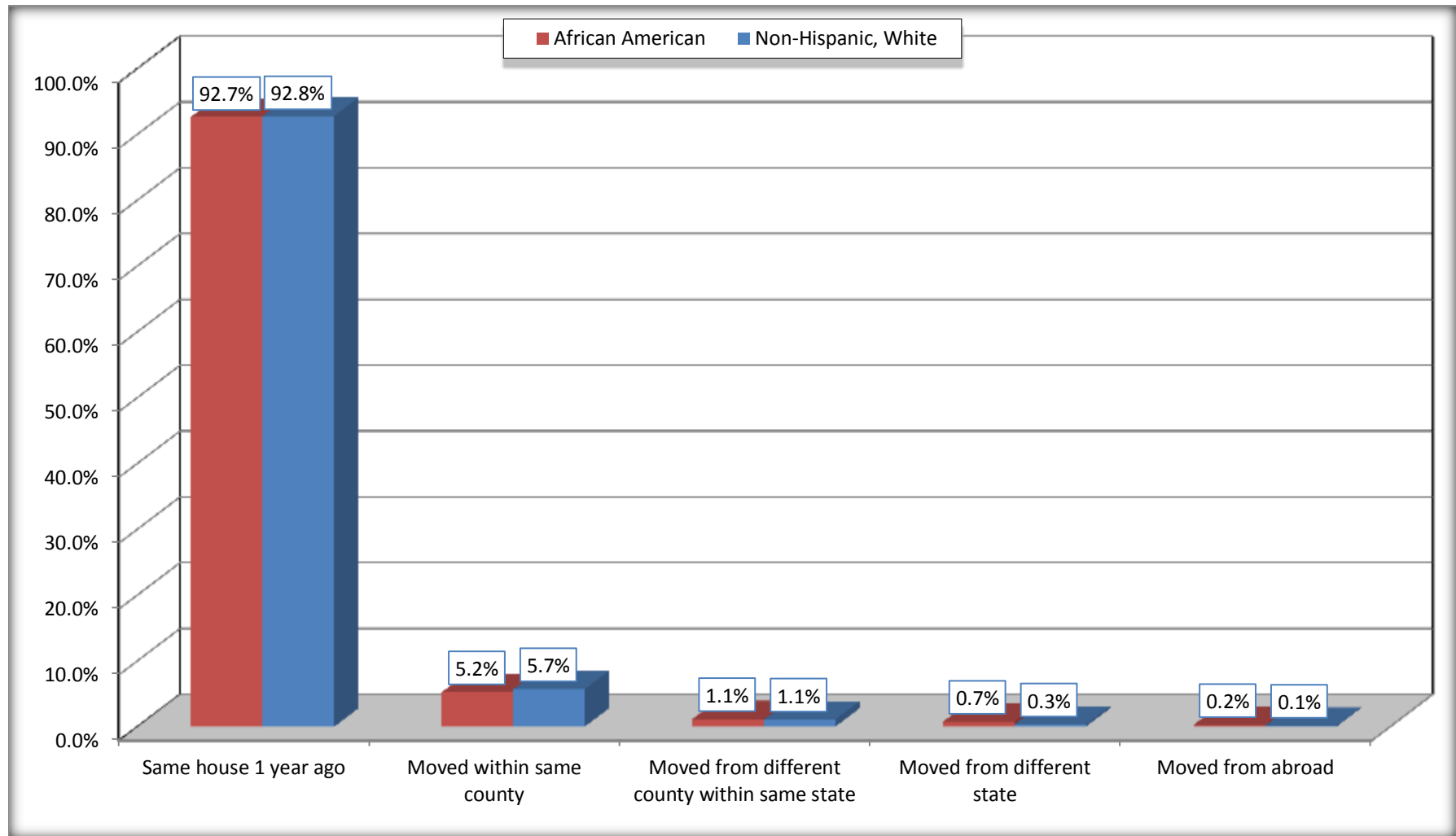
Source: U.S. Census Bureau, 2008-2012 American Community Survey

For information on confidentiality protection, sampling error, nonsampling error, and definitions, see Survey Methodology.

<http://www.census.gov/acs/www/UseData/index.htm>

Geographical Mobility in the Past Year (Population 1 Year and Over)

Pointe Coupee Parish, Louisiana



Source: B07004. GEOGRAPHICAL MOBILITY IN THE PAST YEAR BY RACE FOR CURRENT RESIDENCE IN THE UNITED STATES - Universe: POPULATION 1 YEAR AND OVER

Data Set: 2008-2012 American Community Survey 5-Year Estimates

B08105. MEANS OF TRANSPORTATION TO WORK - Universe: WORKERS 16 YEARS AND OVER

Data Set: 2008-2012 American Community Survey 5-Year Estimates

	Pointe Coupee Parish, Louisiana					
	African American	Margin of Error (+/-)	% of AA Total	White, Not Hispanic	Margin of Error (+/-)	% of NHW Total
Total:	2714	295	100.0%	6319	286	100.0%
Car, truck, or van - drove alone	2173	298	80.1%	5307	321	84.0%
Car, truck, or van - carpooled	332	143	12.2%	581	157	9.2%
Public transportation (excluding taxicab)	0	23	0.0%	40	37	0.6%
Walked	27	30	1.0%	52	36	0.8%
Taxicab, motorcycle, bicycle, or other means	129	100	4.8%	46	34	0.7%
Worked at home	53	51	2.0%	293	111	4.6%

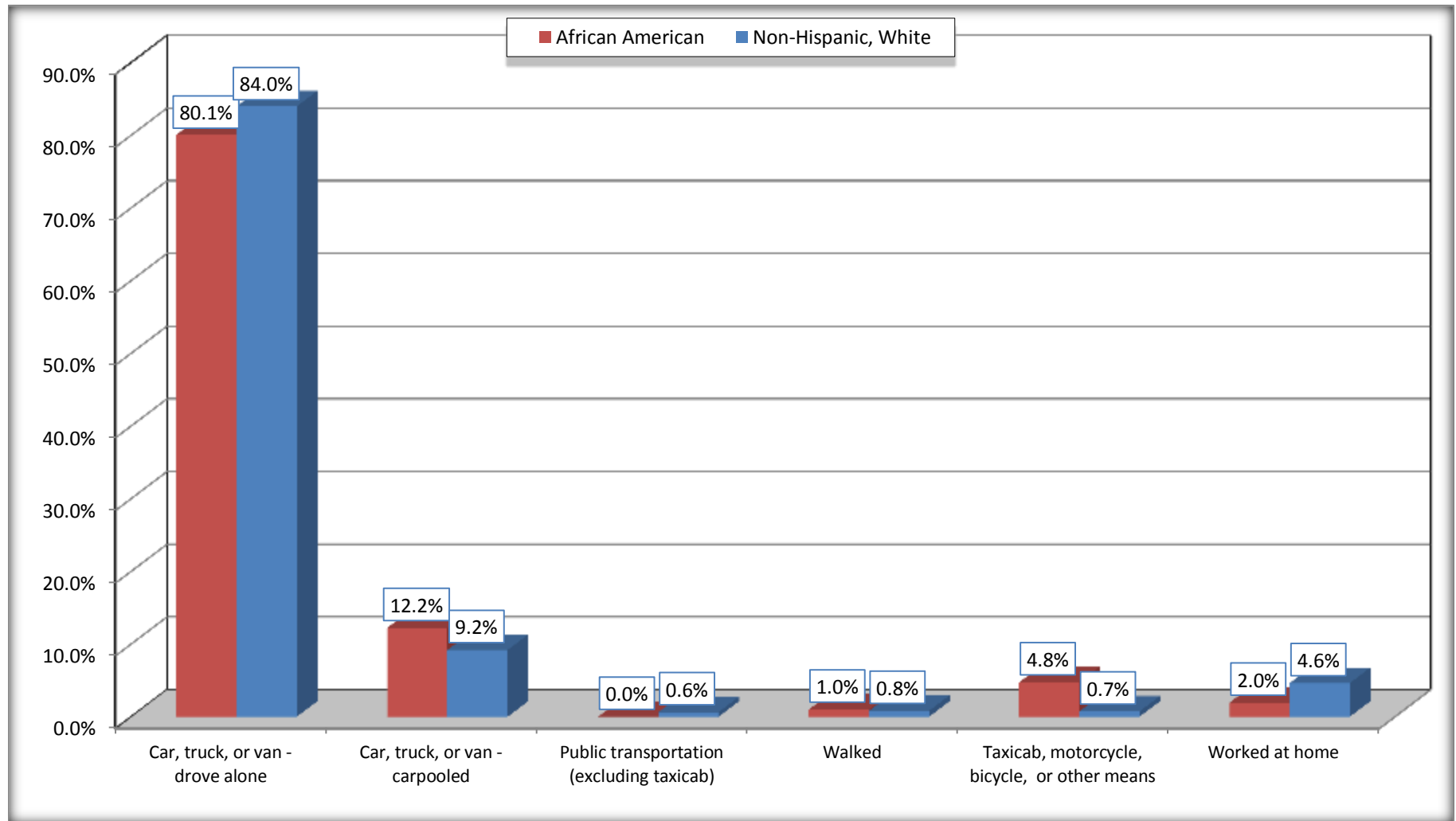
Source: U.S. Census Bureau, 2008-2012 American Community Survey

For information on confidentiality protection, sampling error, nonsampling error, and definitions, see Survey Methodology.

<http://www.census.gov/acs/www/UseData/index.htm>

Means of Transportation to Work (Workers 16 Years and Over)

Pointe Coupee Parish, Louisiana



Source: B08105. MEANS OF TRANSPORTATION TO WORK - Universe: WORKERS 16 YEARS AND OVER
Data Set: 2008-2012 American Community Survey 5-Year Estimates

B11002. HOUSEHOLD TYPE BY RELATIVES AND NONRELATIVES FOR POPULATION IN HOUSEHOLDS

Data Set: 2008-2012 American Community Survey 5-Year Estimates

	Pointe Coupee Parish, Louisiana					
	African American	Margin of Error (+/-)	% of AA Total	White, Not Hispanic	Margin of Error (+/-)	% of NHW Total
Total:	8203	137	100.0%	13637	188	100.0%
In family households	6887	269	84.0%	11550	381	84.7%
In nonfamily households	1316	264	16.0%	2087	325	15.3%

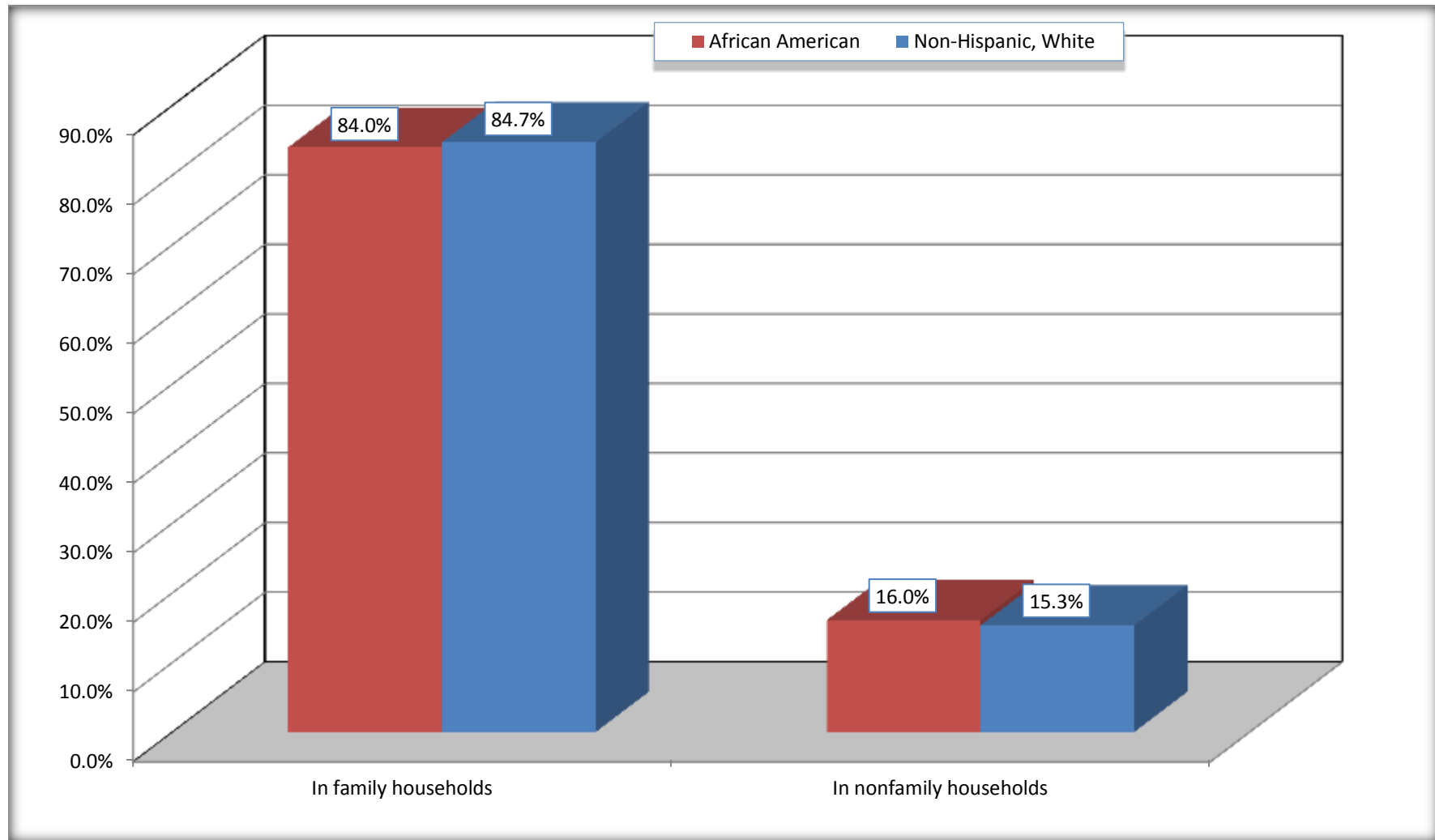
Source: U.S. Census Bureau, 2008-2012 American Community Survey

For information on confidentiality protection, sampling error, nonsampling error, and definitions, see Survey Methodology.

<http://www.census.gov/acs/www/UseData/index.htm>

Household Type for Population in Households

Pointe Coupee Parish, Louisiana



Source: B11002. HOUSEHOLD TYPE BY RELATIVES AND NONRELATIVES FOR POPULATION IN HOUSEHOLDS
Data Set: 2008-2012 American Community Survey 5-Year Estimates

B12002. MARITAL STATUS FOR THE POPULATION 15 YEARS AND OVER

Data Set: 2008-2012 American Community Survey 5-Year Estimates

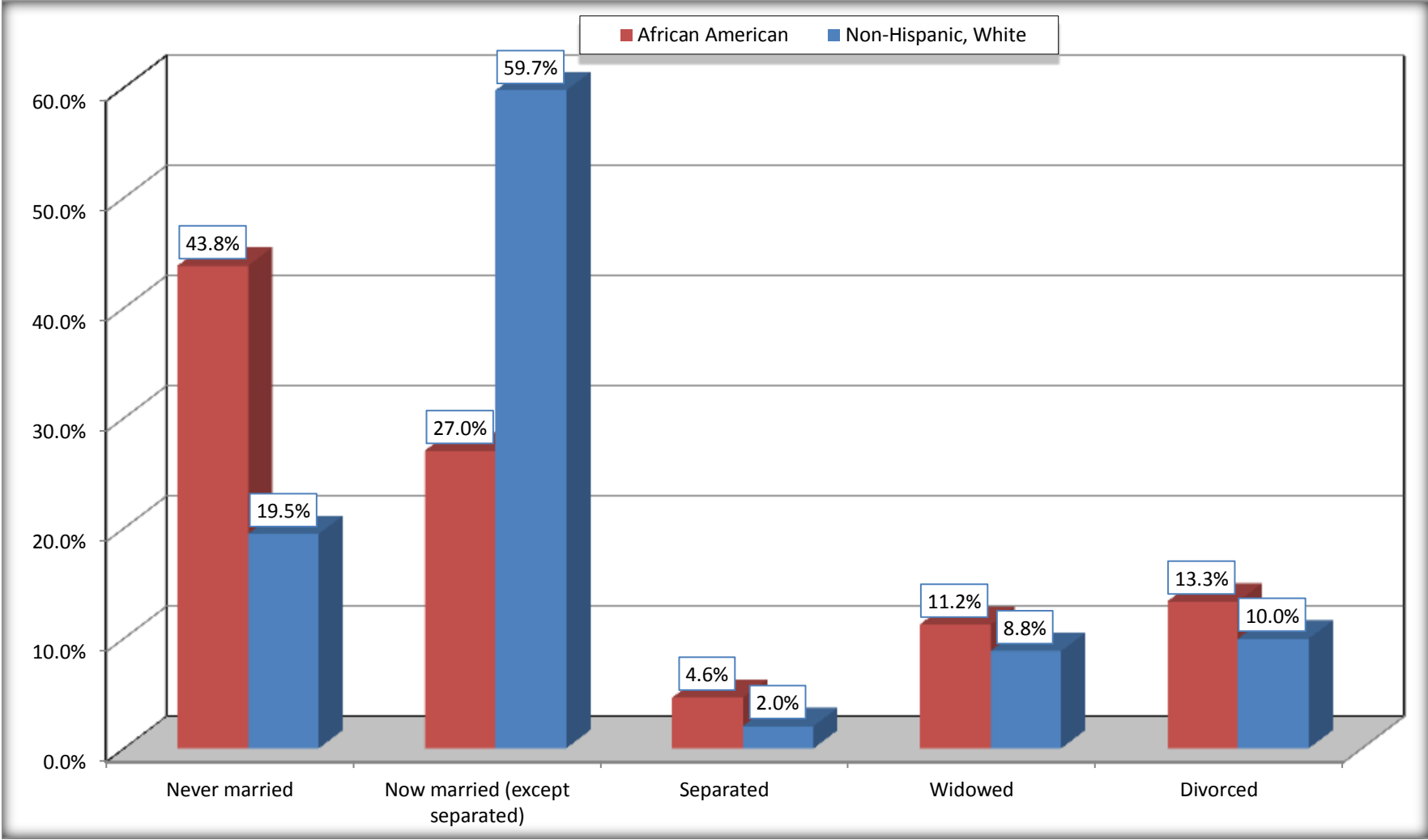
	Pointe Coupee Parish, Louisiana					
	African American	Margin of Error (+/-)	% of AA Total	White, Not Hispanic	Margin of Error (+/-)	% of NHW Total
Total:	6,381	76	100.0%	11,395	29	100.0%
Never married	2,795	NC	43.8%	2,218	NC	19.5%
Now married (except separated)	1,724	NC	27.0%	6,805	NC	59.7%
Separated	294	NC	4.6%	231	NC	2.0%
Widowed	717	NC	11.2%	1,006	NC	8.8%
Divorced	851	NC	13.3%	1,135	NC	10.0%
Male:	2,821	42	44.2%	5,611	29	49.2%
Never married	1,239	151	19.4%	1,228	156	10.8%
Now married (except separated)	981	209	15.4%	3,492	239	30.6%
Separated	116	87	1.8%	139	83	1.2%
Widowed	197	68	3.1%	278	102	2.4%
Divorced	288	126	4.5%	474	108	4.2%
Female:	3,560	38	55.8%	5,784	23	50.8%
Never married	1,556	184	24.4%	990	122	8.7%
Now married (except separated)	743	150	11.6%	3,313	257	29.1%
Separated	178	91	2.8%	92	55	0.8%
Widowed	520	90	8.1%	728	124	6.4%
Divorced	563	158	8.8%	661	176	5.8%

Source: U.S. Census Bureau, 2008-2012 American Community Survey

For information on confidentiality protection, sampling error, nonsampling error, and definitions, see Survey Methodology.

<http://www.census.gov/acs/www/UseData/index.htm>

Marital Status for the Population 15 Years and Over
Pointe Coupee Parish, Louisiana



Source: B12002. MARITAL STATUS FOR THE POPULATION 15 YEARS AND OVER
Data Set: 2008-2012 American Community Survey 5-Year Estimates

C15002. SEX BY EDUCATIONAL ATTAINMENT FOR THE POPULATION 25 YEARS AND OVER

Data Set: 2008-2012 American Community Survey 5-Year Estimates

	Pointe Coupee Parish, Louisiana					
	African American	Margin of Error (+/-)	% of AA Total	White, Not Hispanic	Margin of Error (+/-)	% of NHW Total
Total:	5,154	74	100.0%	9,956	29	100.0%
Less than high school diploma	1,364	NC	26.5%	1,440	NC	14.5%
High school graduate, GED, or alternative	2,012	NC	39.0%	4,445	NC	44.6%
Some college or associate's degree	1,106	NC	21.5%	2,524	NC	25.4%
Bachelor's degree or higher	672	NC	13.0%	1,547	NC	15.5%
Male:	2,234	38	43.3%	4,857	29	48.8%
Less than high school diploma	783	214	15.2%	791	137	7.9%
High school graduate, GED, or alternative	951	187	18.5%	2,465	189	24.8%
Some college or associate's degree	327	121	6.3%	900	135	9.0%
Bachelor's degree or higher	173	102	3.4%	701	125	7.0%
Female:	2,920	38	56.7%	5,099	23	51.2%
Less than high school diploma	581	169	11.3%	649	119	6.5%
High school graduate, GED, or alternative	1,061	199	20.6%	1,980	183	19.9%
Some college or associate's degree	779	169	15.1%	1,624	238	16.3%
Bachelor's degree or higher	499	166	9.7%	846	180	8.5%

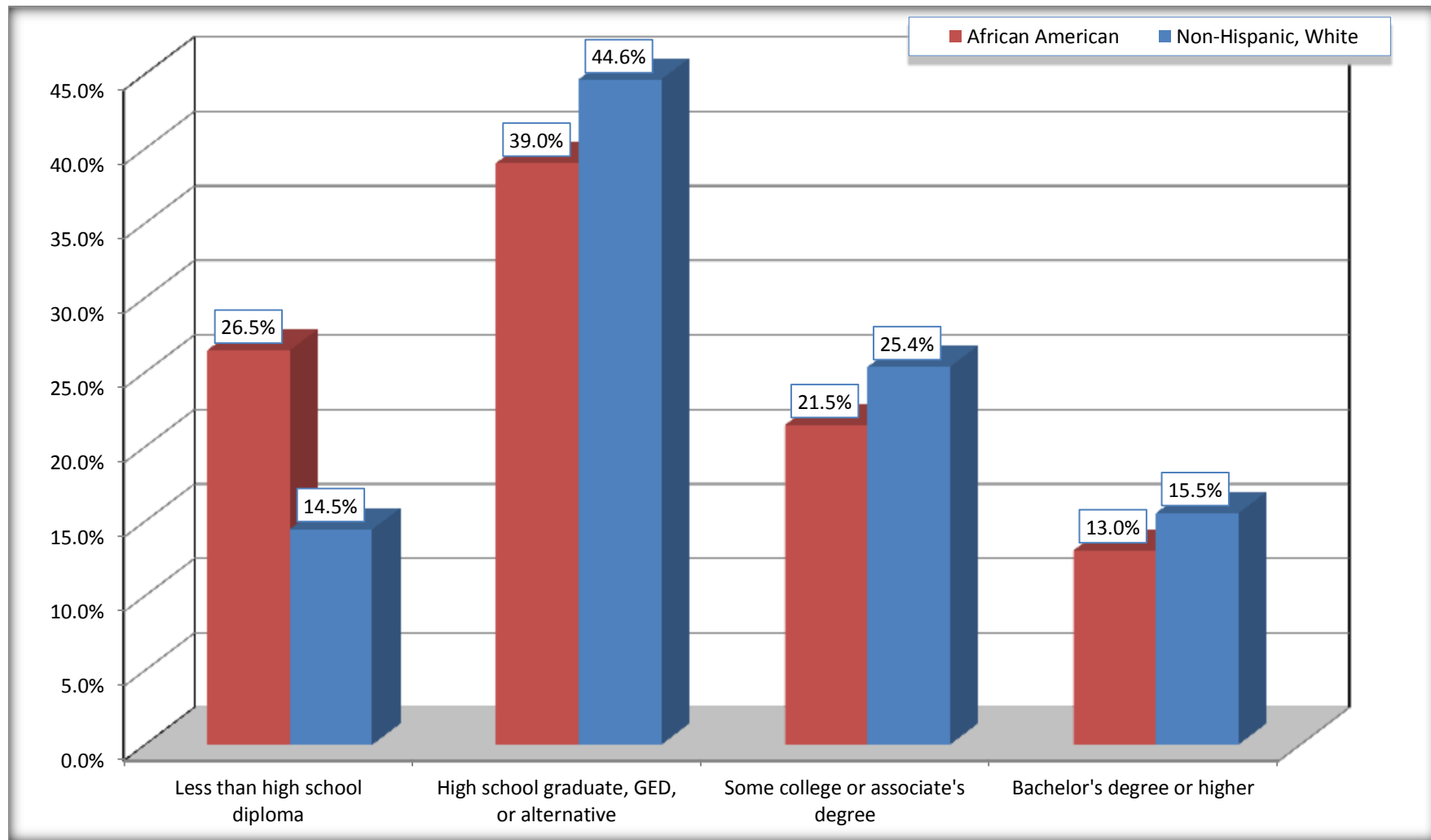
Source: U.S. Census Bureau, 2008-2012 American Community Survey

For information on confidentiality protection, sampling error, nonsampling error, and definitions, see Survey Methodology.

<http://www.census.gov/acs/www/UseData/index.htm>

Educational Attainment for the Population 25 Years and Older

Pointe Coupee Parish, Louisiana



Source: C15002. SEX BY EDUCATIONAL ATTAINMENT FOR THE POPULATION 25 YEARS AND OVER
Data Set: 2008-2012 American Community Survey 5-Year Estimates

B17010. POVERTY STATUS IN THE PAST 12 MONTHS OF FAMILIES BY FAMILY TYPE BY PRESENCE OF RELATED CHILDREN UNDER 18 YEARS

Data Set: 2008-2012 American Community Survey 5-Year Estimates

	Pointe Coupee Parish, Louisiana					
	African American	Margin of Error (+/-)	% of AA Total	White, Not Hispanic	Margin of Error (+/-)	% of NHW Total
Total:	1,722	210	100.0%	3,965	189	100.0%
Income in the past 12 months below poverty level:	411	134	23.9%	276	101	7.0%
Married-couple family:	84	57	4.9%	147	77	3.7%
With related children under 18 years	62	51	3.6%	69	54	1.7%
Other family:	327	129	19.0%	129	57	3.3%
Male householder, no wife present	121	92	7.0%	31	28	0.8%
With related children under 18 years	121	92	7.0%	9	14	0.2%
Female householder, no husband present	206	82	12.0%	98	47	2.5%
With related children under 18 years	137	60	8.0%	81	44	2.0%
Income in the past 12 months at or above poverty level:	1,311	229	76.1%	3,689	201	93.0%
Married-couple family:	680	162	39.5%	3,233	242	81.5%
With related children under 18 years	304	101	17.7%	1,319	191	33.3%
Other family:	631	162	36.6%	456	137	11.5%
Male householder, no wife present	160	92	9.3%	159	77	4.0%
With related children under 18 years	29	49	1.7%	72	51	1.8%
Female householder, no husband present	471	136	27.4%	297	102	7.5%
With related children under 18 years	322	112	18.7%	113	64	2.8%

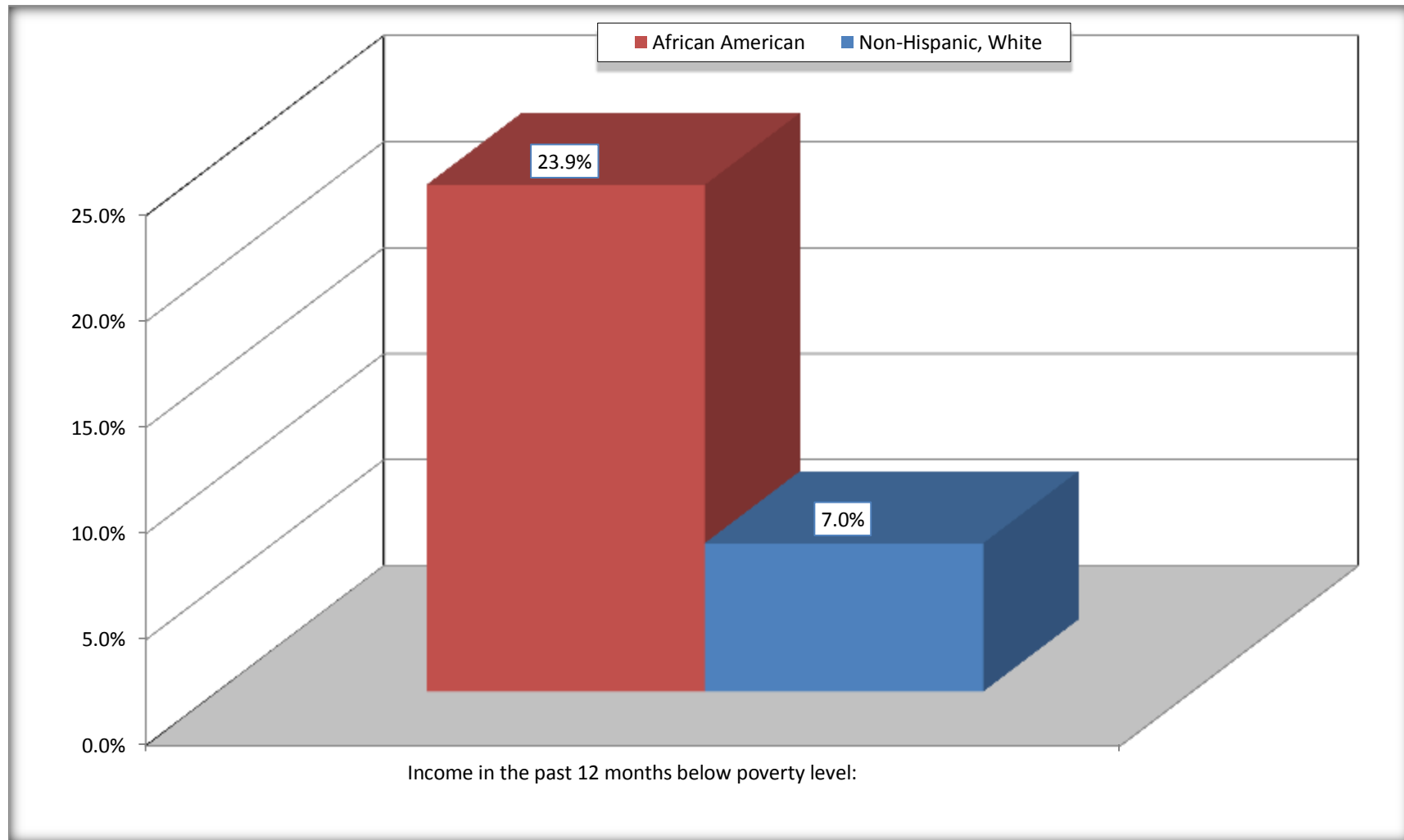
Source: U.S. Census Bureau, 2008-2012 American Community Survey

For information on confidentiality protection, sampling error, nonsampling error, and definitions, see Survey Methodology.

<http://www.census.gov/acs/www/UseData/index.htm>

Family Households Below Poverty in the Past 12 Months

Pointe Coupee Parish, Louisiana

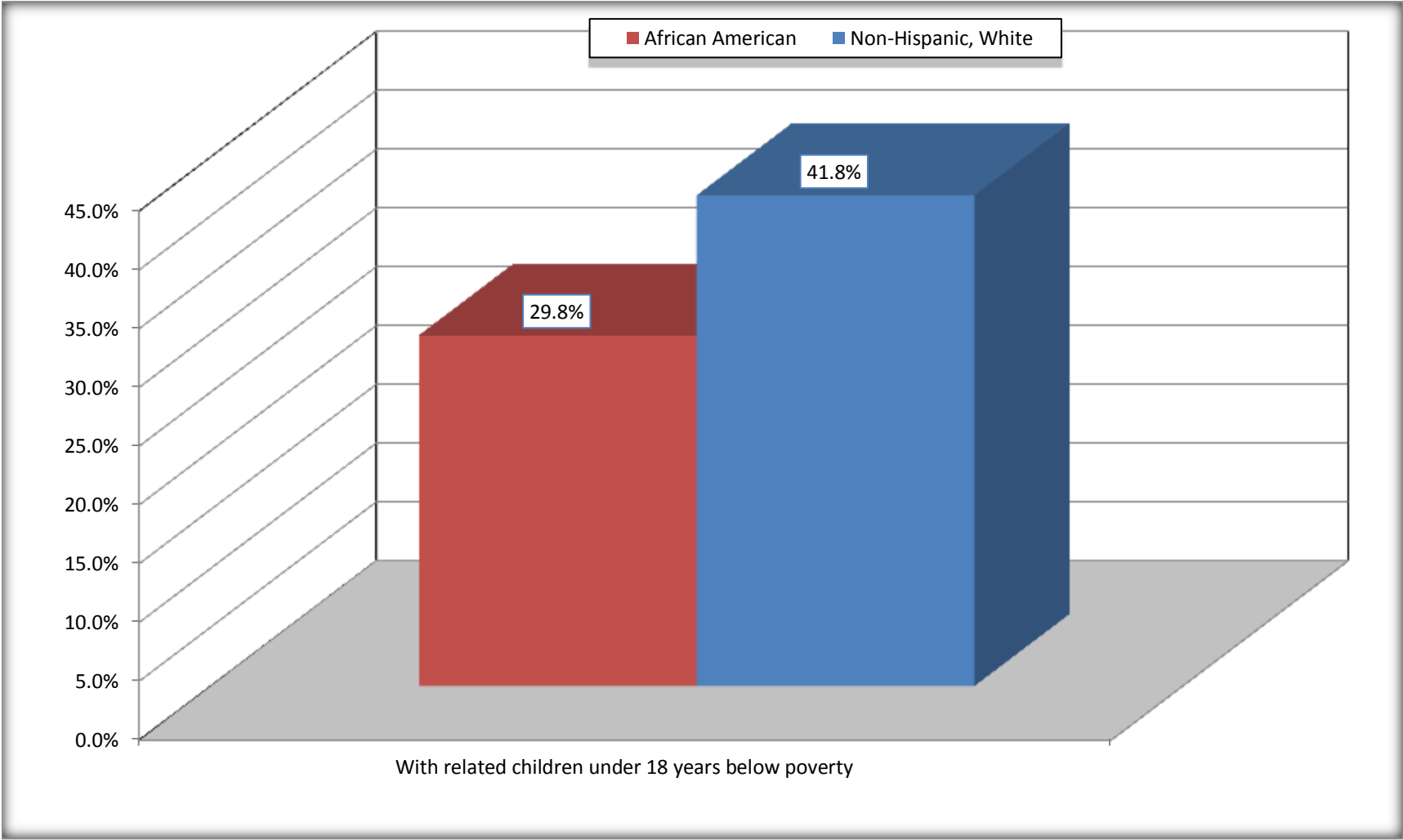


Source: B17010. POVERTY STATUS IN THE PAST 12 MONTHS OF FAMILIES BY FAMILY TYPE BY PRESENCE OF RELATED CHILDREN UNDER 18 YEARS

Data Set: 2008-2012 American Community Survey 5-Year Estimates

Female-headed Households with Related Children Below Poverty in the Past 12 Months

Pointe Coupee Parish, Louisiana



Source: B17010. POVERTY STATUS IN THE PAST 12 MONTHS OF FAMILIES BY FAMILY TYPE BY PRESENCE OF RELATED CHILDREN UNDER 18 YEARS

Data Set: 2008-2012 American Community Survey 5-Year Estimates

B17020 POVERTY STATUS IN THE PAST 12 MONTHS BY AGE - Universe: POPULATION FOR WHOM POVERTY STATUS IS DETERMINED

Data Set: 2008-2012 American Community Survey 5-Year Estimates

	Pointe Coupee Parish, Louisiana					
	African American	Margin of Error (+/-)	% of AA By Age	White, Not Hispanic	Margin of Error (+/-)	% of NHW By Age
Total:	8,211	114	100.0%	13,572	76	100.0%
Income in the past 12 months below poverty level:	2,853	679	34.7%	1,229	362	9.1%
Under 18 years	1,145	NC	48.4%	340	NC	12.0%
18 to 64 years	1,451	345	30.5%	693	246	8.3%
65 years and over	257	NC	23.8%	196	NC	8.3%
Income in the past 12 months at or above poverty level:	5,358	687	65.3%	12,343	362	90.9%
Under 18 years	1,219	NC	51.6%	2,496	NC	88.0%
18 to 64 years	3,314	353	69.5%	7,682	252	91.7%
65 years and over	825	NC	76.2%	2,165	NC	91.7%

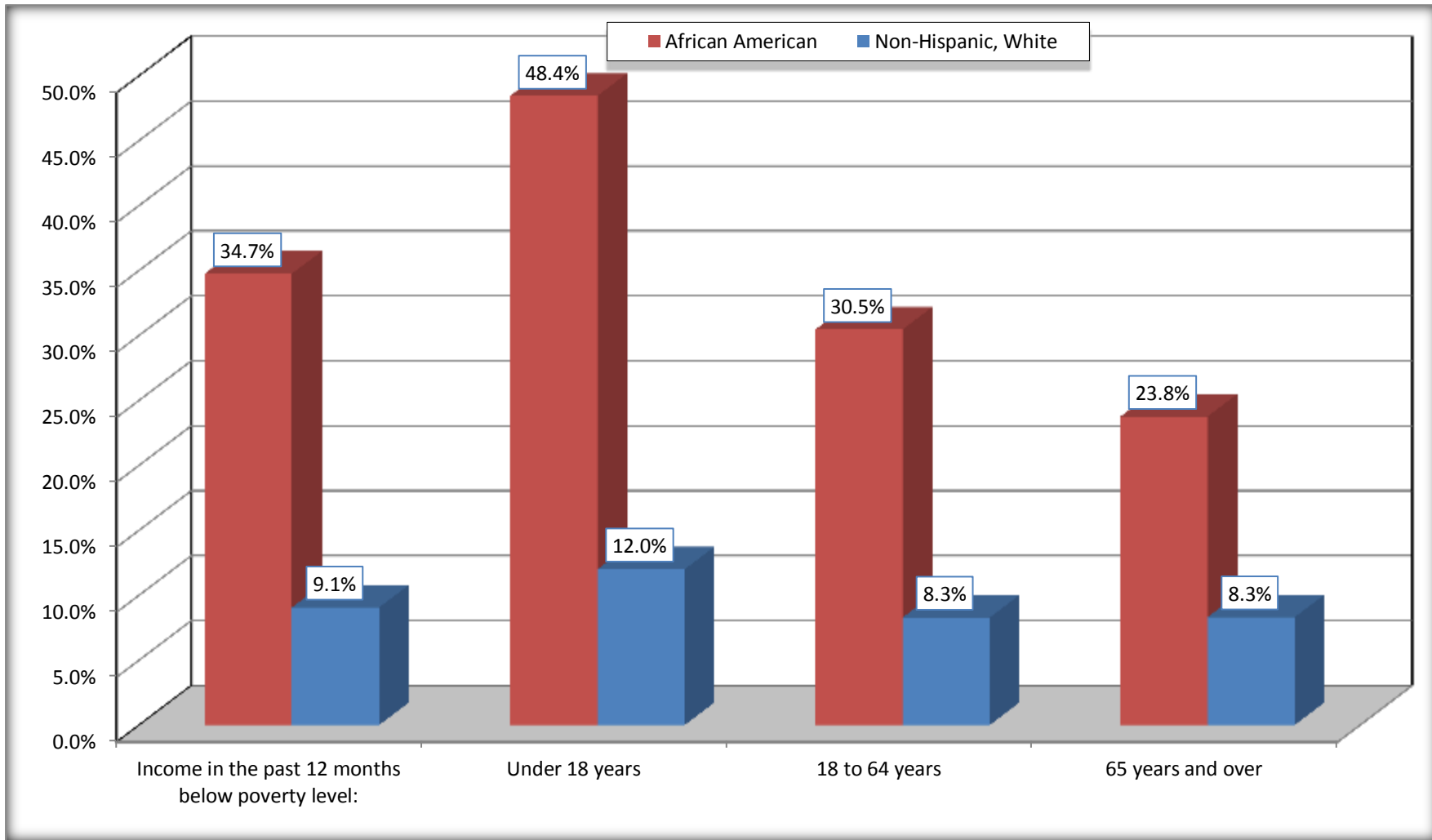
Source: U.S. Census Bureau, 2008-2012 American Community Survey

For information on confidentiality protection, sampling error, nonsampling error, and definitions, see Survey Methodology.

<http://www.census.gov/acs/www/UseData/index.htm>

Population Below Poverty in the Past 12 Months

Pointe Coupee Parish, Louisiana



Source: B17020 POVERTY STATUS IN THE PAST 12 MONTHS BY AGE - Universe: POPULATION FOR WHOM POVERTY STATUS IS DETERMINED
Data Set: 2008-2012 American Community Survey 5-Year Estimates

B19001. HOUSEHOLD INCOME IN THE PAST 12 MONTHS (IN 2010 INFLATION-ADJUSTED DOLLARS)

Data Set: 2008-2012 American Community Survey 5-Year Estimates

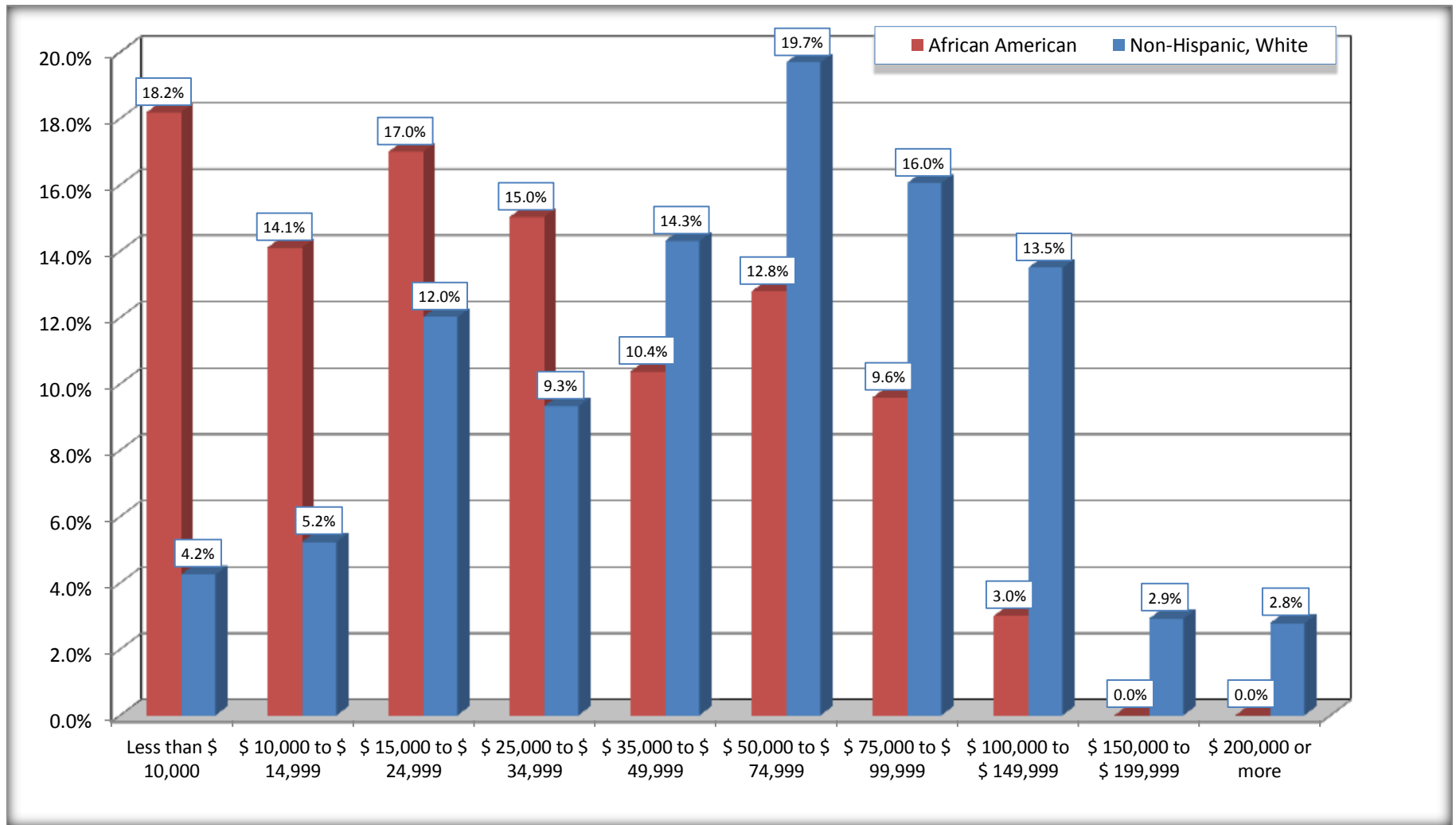
	Pointe Coupee Parish, Louisiana					
	African American	Margin of Error (+/-)	% of AA Total	White, Not Hispanic	Margin of Error (+/-)	% of NHW Total
Total:	2,943	217	100.0%	5,797	179	100.0%
Less than \$ 10,000	535	184	18.2%	246	85	4.2%
\$ 10,000 to \$ 14,999	415	153	14.1%	303	91	5.2%
\$ 15,000 to \$ 24,999	500	NC	17.0%	696	NC	12.0%
\$ 25,000 to \$ 34,999	442	NC	15.0%	540	NC	9.3%
\$ 35,000 to \$ 49,999	305	NC	10.4%	829	NC	14.3%
\$ 50,000 to \$ 74,999	376	NC	12.8%	1,141	NC	19.7%
\$ 75,000 to \$ 99,999	282	154	9.6%	930	149	16.0%
\$ 100,000 to \$ 149,999	88	NC	3.0%	782	NC	13.5%
\$ 150,000 to \$ 199,999	0	23	0.0%	169	79	2.9%
\$ 200,000 or more	0	23	0.0%	161	69	2.8%

Source: U.S. Census Bureau, 2008-2012 American Community Survey

For information on confidentiality protection, sampling error, nonsampling error, and definitions, see Survey Methodology.

<http://www.census.gov/acs/www/UseData/index.htm>

Household Income in the Past 12 Months Pointe Coupee Parish, Louisiana



Source: B19001. HOUSEHOLD INCOME IN THE PAST 12 MONTHS (IN 2010 INFLATION-ADJUSTED DOLLARS)
Data Set: 2008-2012 American Community Survey 5-Year Estimates

B19013. MEDIAN HOUSEHOLD INCOME IN THE PAST 12 MONTHS (IN 2010 INFLATION-ADJUSTED DOLLARS)

Data Set: 2008-2012 American Community Survey 5-Year Estimates

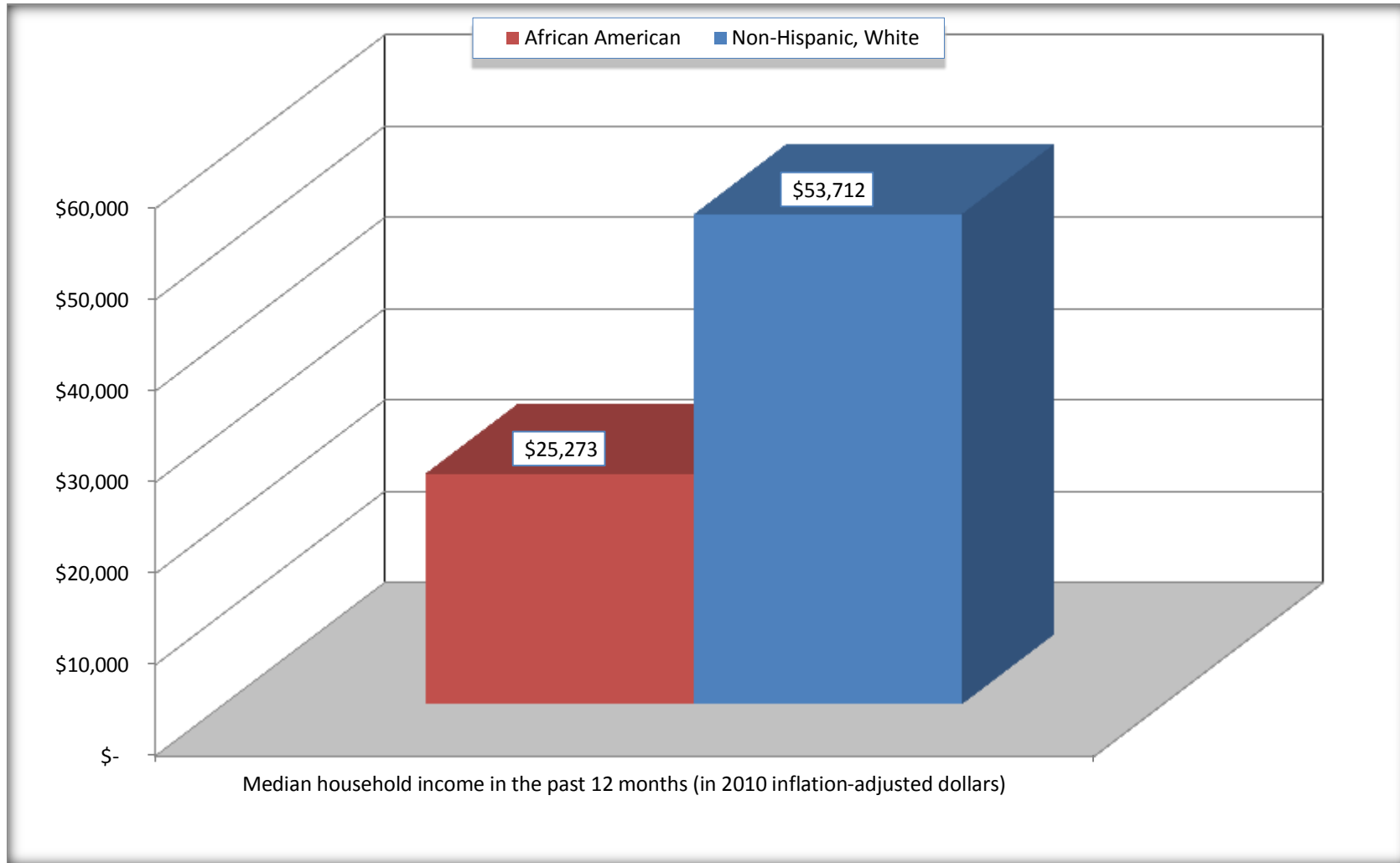
	Pointe Coupee Parish, Louisiana			
	African American	Margin of Error (+/-)	White, Not Hispanic	Margin of Error (+/-)
Median household income in the past 12 months (in 2010 inflation-adjusted dollars)	\$ 25,273	\$ 3,512	\$ 53,712	\$ 3,659

Source: U.S. Census Bureau, 2008-2012 American Community Survey

For information on confidentiality protection, sampling error, nonsampling error, and definitions, see Survey Methodology.
<http://www.census.gov/acs/www/UseData/index.htm>

Median Household Income in the Past 12 Months

Pointe Coupee Parish, Louisiana



Source: B19013. MEDIAN HOUSEHOLD INCOME IN THE PAST 12 MONTHS (IN 2010 INFLATION-ADJUSTED DOLLARS)
Data Set: 2008-2012 American Community Survey 5-Year Estimates

B19101. FAMILY INCOME IN THE PAST 12 MONTHS (IN 2010 INFLATION-ADJUSTED DOLLARS)

Data Set: 2008-2012 American Community Survey 5-Year Estimates

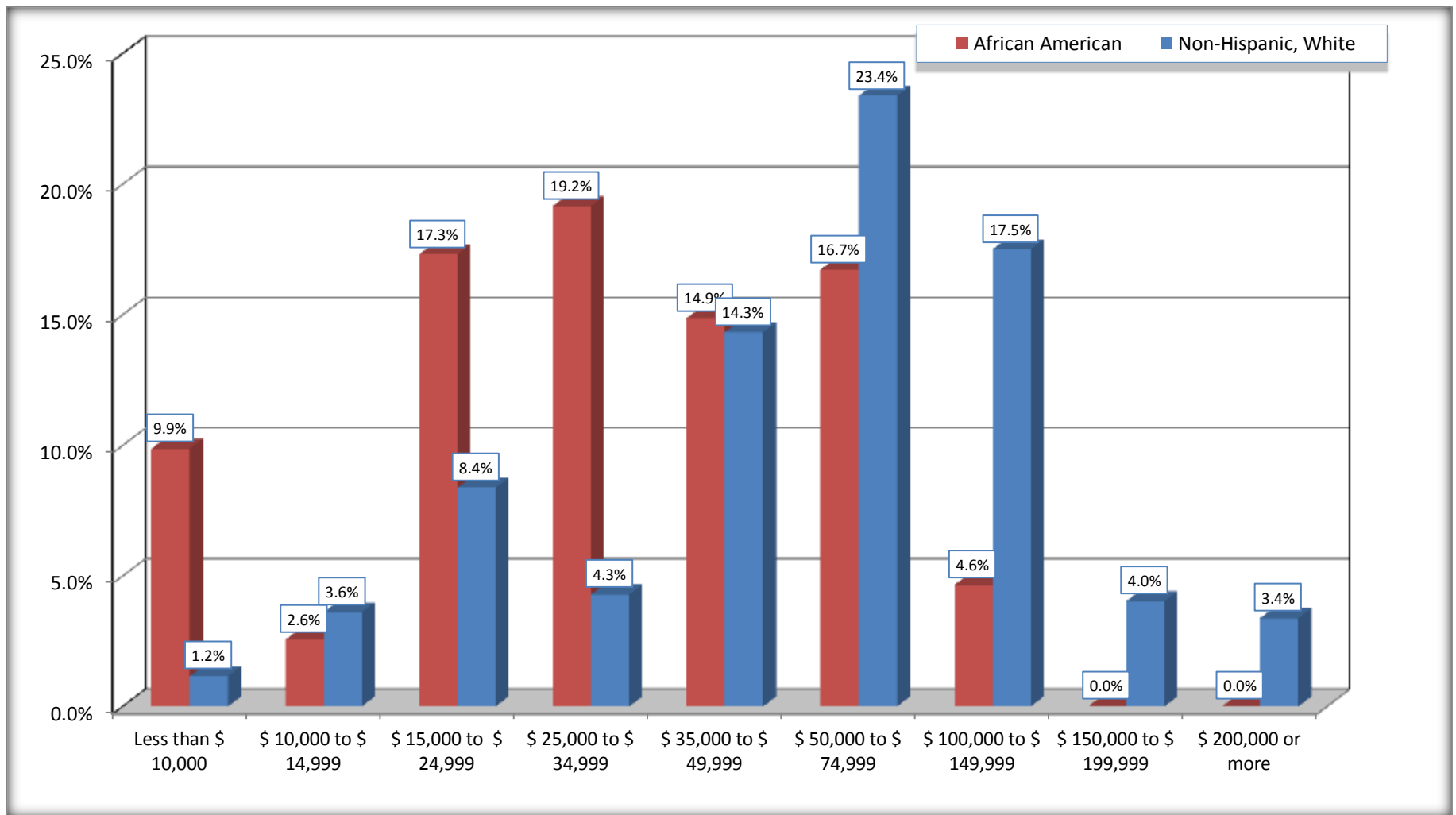
	Pointe Coupee Parish, Louisiana					
	African American	Margin of Error (+/-)	% of AA Total	White, Not Hispanic	Margin of Error (+/-)	% of NHW Total
Total:	1,722	210	100.0%	3,965	189	100.0%
Less than \$ 10,000	170	103	9.9%	46	29	1.2%
\$ 10,000 to \$ 14,999	44	34	2.6%	143	67	3.6%
\$ 15,000 to \$ 24,999	298	NC	17.3%	332	NC	8.4%
\$ 25,000 to \$ 34,999	330	NC	19.2%	170	NC	4.3%
\$ 35,000 to \$ 49,999	256	NC	14.9%	568	NC	14.3%
\$ 50,000 to \$ 74,999	288	NC	16.7%	927	NC	23.4%
\$ 100,000 to \$ 149,999	80	NC	4.6%	694	NC	17.5%
\$ 150,000 to \$ 199,999	0	23	0.0%	160	79	4.0%
\$ 200,000 or more	0	23	0.0%	134	59	3.4%

Source: U.S. Census Bureau, 2008-2012 American Community Survey

For information on confidentiality protection, sampling error, nonsampling error, and definitions, see Survey Methodology.

<http://www.census.gov/acs/www/UseData/index.htm>

Family Income in the Past 12 Months Pointe Coupee Parish, Louisiana



Source: B19101. FAMILY INCOME IN THE PAST 12 MONTHS (IN 2010 INFLATION-ADJUSTED DOLLARS)
Data Set: 2008-2012 American Community Survey 5-Year Estimates

B19113. MEDIAN FAMILY INCOME IN THE PAST 12 MONTHS (IN 2010 INFLATION-ADJUSTED DOLLARS)

Data Set: 2008-2012 American Community Survey 5-Year Estimates

	Pointe Coupee Parish, Louisiana			
	African American	Margin of Error (+/-)	White, Not Hispanic	Margin of Error (+/-)
Median family income in the past 12 months (in 2010 inflation-adjusted dollars)	\$ 35,990	\$ 9,789	\$ 69,574	\$ 6,575

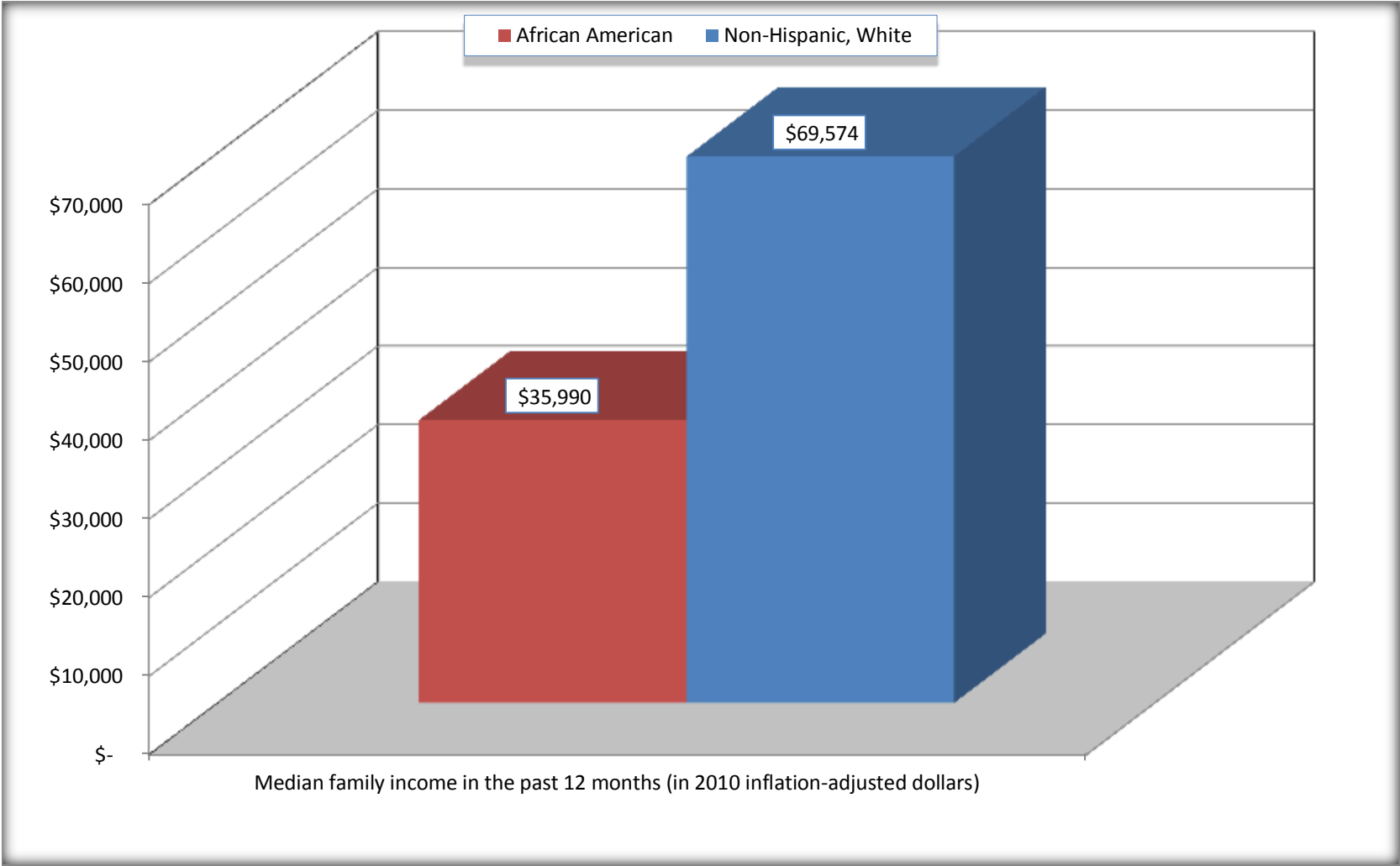
Source: U.S. Census Bureau, 2008-2012 American Community Survey

For information on confidentiality protection, sampling error, nonsampling error, and definitions, see Survey Methodology.

<http://www.census.gov/acs/www/UseData/index.htm>

Median Family Income in the Past 12 Months

Pointe Coupee Parish, Louisiana



Source: B19113. MEDIAN FAMILY INCOME IN THE PAST 12 MONTHS (IN 2010 INFLATION-ADJUSTED DOLLARS)
Data Set: 2008-2012 American Community Survey 5-Year Estimates

B19202. MEDIAN NONFAMILY HOUSEHOLD INCOME IN THE PAST 12 MONTHS (IN 2010 INFLATION-ADJUSTED DOLLARS)

Data Set: 2008-2012 American Community Survey 5-Year Estimates

	Pointe Coupee Parish, Louisiana			
	African American	Margin of Error (+/-)	White, Not Hispanic	Margin of Error (+/-)
Median nonfamily household income in the past 12 months (in 2010 inflation-adjusted dollars)	\$ 13,841	\$ 1,129	\$ 27,124	\$ 2,706

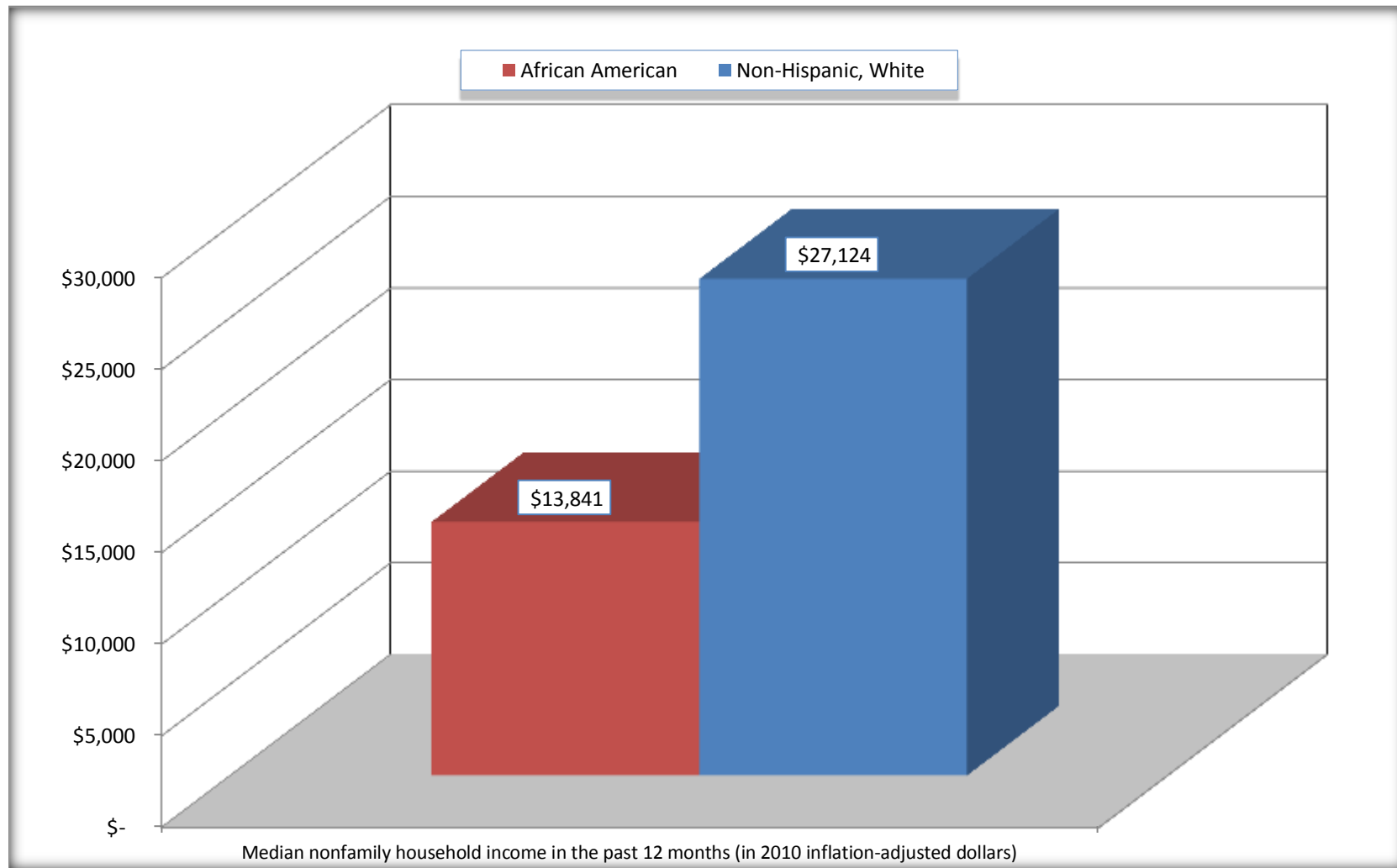
Source: U.S. Census Bureau, 2008-2012 American Community Survey

For information on confidentiality protection, sampling error, nonsampling error, and definitions, see Survey Methodology.

<http://www.census.gov/acs/www/UseData/index.htm>

Median Non-Family Income in the Past 12 Months

Pointe Coupee Parish, Louisiana



Source: B19202. MEDIAN NONFAMILY HOUSEHOLD INCOME IN THE PAST 12 MONTHS (IN 2010 INFLATION-ADJUSTED DOLLARS)
Data Set: 2008-2012 American Community Survey 5-Year Estimates

B19301. PER CAPITA INCOME IN THE PAST 12 MONTHS (IN 2010 INFLATION-ADJUSTED DOLLARS)

Data Set: 2008-2012 American Community Survey 5-Year Estimates

	Pointe Coupee Parish, Louisiana			
	African American	Margin of Error (+/-)	White, Not Hispanic	Margin of Error (+/-)
Per capita income in the past 12 months (in 2010 inflation-adjusted dollars)	\$ 13,173	\$ 1,344	\$ 28,812	\$ 1,893

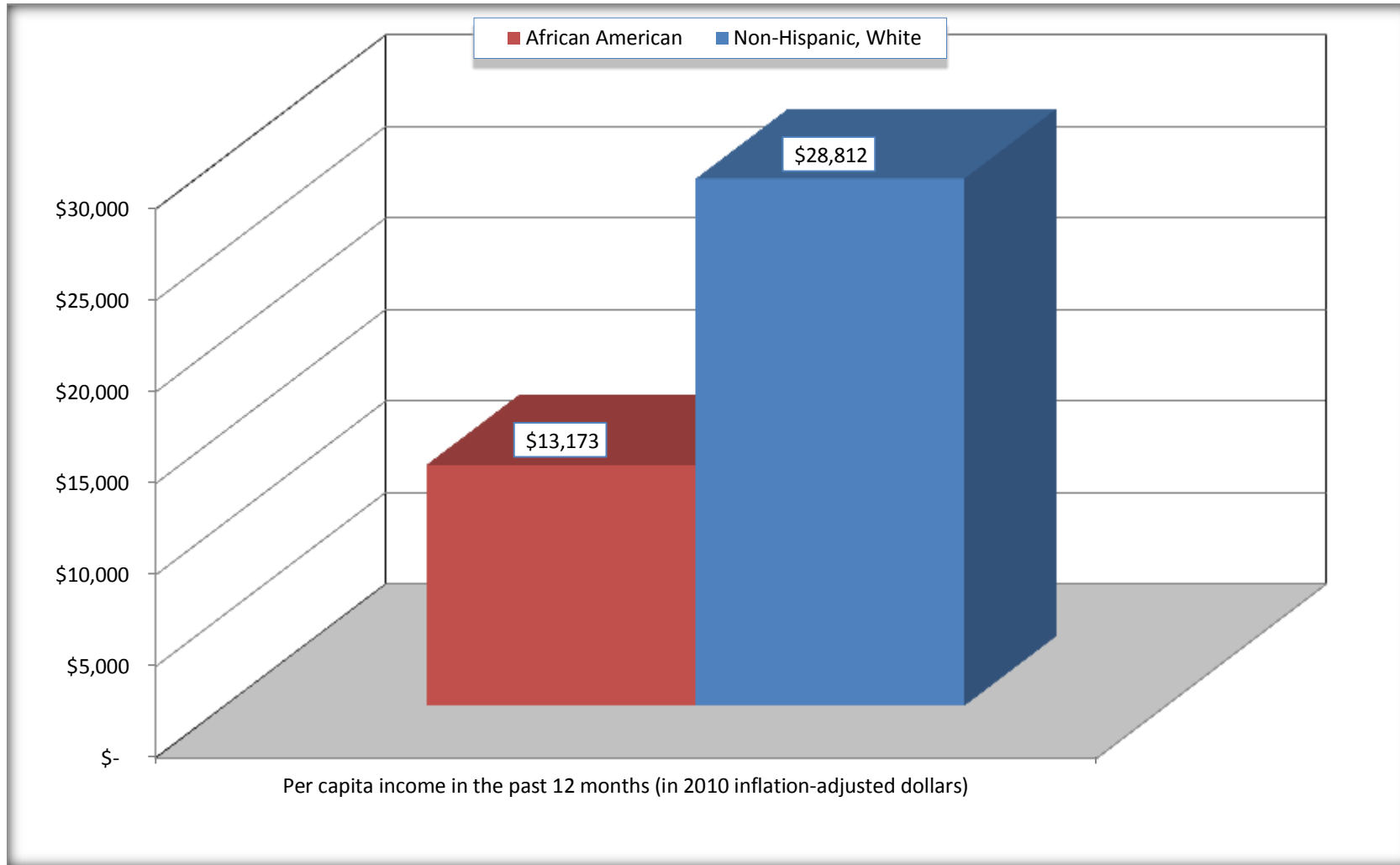
Source: U.S. Census Bureau, 2008-2012 American Community Survey

For information on confidentiality protection, sampling error, nonsampling error, and definitions, see Survey Methodology.

<http://www.census.gov/acs/www/UseData/index.htm>

Per capita Income in the Past 12 Months

Pointe Coupee Parish, Louisiana



Source: B19301. PER CAPITA INCOME IN THE PAST 12 MONTHS (IN 2010 INFLATION-ADJUSTED DOLLARS)
Data Set: 2008-2012 American Community Survey 5-Year Estimates

B20017. MEDIAN EARNINGS IN THE PAST 12 MONTHS (IN 2010 INFLATION-ADJUSTED DOLLARS) BY SEX BY WORK EXPERIENCE IN THE PAST 12 MONTHS FOR THE POPULATION 16 YEARS AND OVER WITH EARNINGS IN THE PAST 12 MONTHS

Data Set: 2008-2012 American Community Survey 5-Year Estimates

	Pointe Coupee Parish, Louisiana			
	African American	Margin of Error (+/-)	White, Not Hispanic	Margin of Error (+/-)
Median earnings in the past 12 months (in 2010 inflation-adjusted dollars) --				
Total:	\$ 22,426	\$ 2,965	\$ 35,438	\$ 2,471
Male --				
Total	\$ 28,013	\$ 5,805	\$ 44,607	\$ 4,912
Worked full-time, year-round in the past 12 months	\$ 31,646	\$ 5,592	\$ 51,163	\$ 2,650
Other	\$ 18,793	\$ 16,450	\$ 19,591	\$ 3,489
Female --				
Total	\$ 18,675	\$ 5,456	\$ 27,474	\$ 3,613
Worked full-time, year-round in the past 12 months	\$ 28,935	\$ 3,172	\$ 35,564	\$ 2,386
Other	\$ 7,768	\$ 2,320	\$ 9,802	\$ 2,650

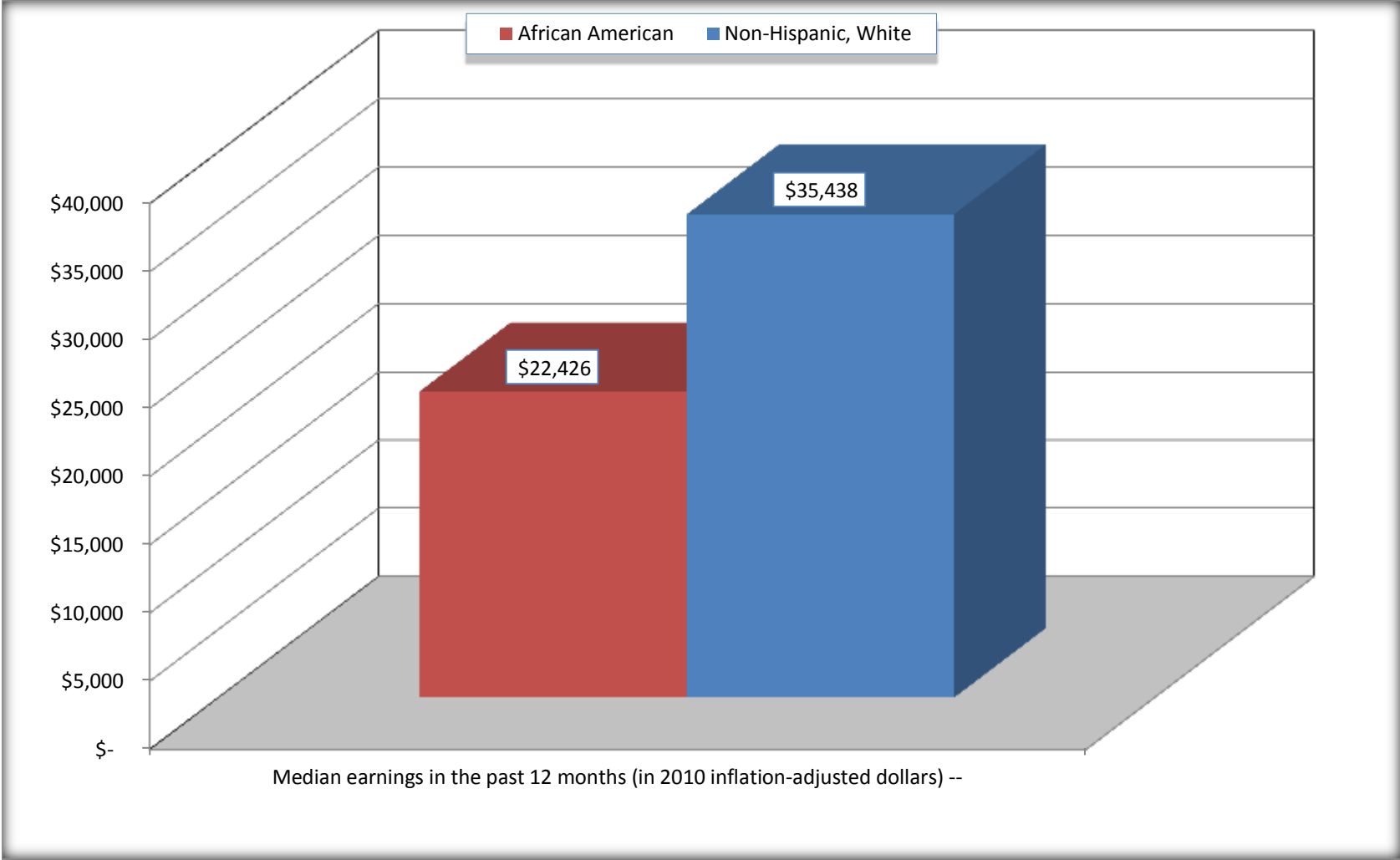
Source: U.S. Census Bureau, 2008-2012 American Community Survey

For information on confidentiality protection, sampling error, nonsampling error, and definitions, see Survey Methodology.

<http://www.census.gov/acs/www/UseData/index.htm>

Median earnings in the Past 12 Months (16 Years and Over with Earnings)

Pointe Coupee Parish, Louisiana



Source: B20017. MEDIAN EARNINGS IN THE PAST 12 MONTHS (IN 2010 INFLATION-ADJUSTED DOLLARS) BY SEX BY WORK EXPERIENCE IN THE PAST 12 MONTHS FOR THE POPULATION 16 YEARS AND OVER WITH EARNINGS IN THE PAST 12 MONTHS
Data Set: 2008-2012 American Community Survey 5-Year Estimates

B20005. SEX BY WORK EXPERIENCE IN THE PAST 12 MONTHS BY EARNINGS IN THE PAST 12 MONTHS (IN 2010 INFLATION-ADJUSTED DOLLARS) FOR THE POPULATION 16 YEARS AND OVER

Data Set: 2008-2012 American Community Survey 5-Year Estimates

	Pointe Coupee Parish, Louisiana					
	African American	Margin of Error (+/-)	% of AA Total	White, Not Hispanic	Margin of Error (+/-)	% of NHW Total
Total:	6,192	106	100.0%	11,218	67	100.0%
Worked full-time, year-round in the past 12 months:	1,792	NC	28.9%	4,989	NC	44.5%
No earnings	0	NC	0.0%	8	NC	0.1%
With earnings:	1,792	NC	28.9%	4,981	NC	44.4%
\$ 1 to \$ 9,999 or loss	109	NC	1.8%	75	NC	0.7%
\$ 10,000 to \$ 19,999	272	NC	4.4%	593	NC	5.3%
\$ 20,000 to \$ 29,999	513	NC	8.3%	658	NC	5.9%
\$ 30,000 to \$ 49,999	616	NC	9.9%	1,664	NC	14.8%
\$ 50,000 to \$ 74,999	248	NC	4.0%	1,139	NC	10.2%
\$ 75,000 or more	34	NC	0.5%	852	NC	7.6%
Other:	4,400	NC	71.1%	6,229	NC	55.5%
No earnings	2,888	NC	46.6%	4,095	NC	36.5%
With earnings: less than full time, year-round	1,512	NC	24.4%	2,134	NC	19.0%
Male:	2,717	64	43.9%	5,520	54	49.2%
Worked full-time, year-round in the past 12 months:	909	179	14.7%	2,808	207	25.0%
No earnings	0	23	0.0%	0	23	0.0%
With earnings:	909	179	14.7%	2,808	207	25.0%
\$ 1 to \$ 9,999 or loss	26	NC	0.4%	48	NC	0.4%
\$ 10,000 to \$ 19,999	168	NC	2.7%	139	NC	1.2%
\$ 20,000 to \$ 29,999	221	NC	3.6%	329	NC	2.9%
\$ 30,000 to \$ 49,999	273	NC	4.4%	808	NC	7.2%
\$ 50,000 to \$ 74,999	187	NC	3.0%	789	NC	7.0%
\$ 75,000 or more	34	NC	0.5%	695	NC	6.2%

	Pointe Coupee Parish, Louisiana					
	African American	Margin of Error (+/-)	% of AA Total	White, Not Hispanic	Margin of Error (+/-)	% of NHW Total
Other:	1,808	184	29.2%	2,712	216	24.2%
No earnings	1,160	203	18.7%	1,710	184	15.2%
With earnings:	648	161	10.5%	1,002	178	8.9%
Female:	3,475	62	56.1%	5,698	44	50.8%
Worked full-time, year-round in the past 12 months:	883	191	14.3%	2,181	215	19.4%
No earnings	0	23	0.0%	8	10	0.1%
With earnings:	883	191	14.3%	2,173	215	19.4%
\$ 1 to \$ 9,999 or loss	83	NC	1.3%	27	NC	0.2%
\$ 10,000 to \$ 19,999	104	NC	1.7%	454	NC	4.0%
\$ 20,000 to \$ 29,999	292	NC	4.7%	329	NC	2.9%
\$ 30,000 to \$ 49,999	343	NC	5.5%	856	NC	7.6%
\$ 50,000 to \$ 74,999	61	NC	1.0%	350	NC	3.1%
\$ 75,000 or more	0	NC	0.0%	157	NC	1.4%
Other:	2,592	209	41.9%	3,517	215	31.4%
No earnings	1,728	247	27.9%	2,385	227	21.3%
With earnings:	864	171	14.0%	1,132	194	10.1%

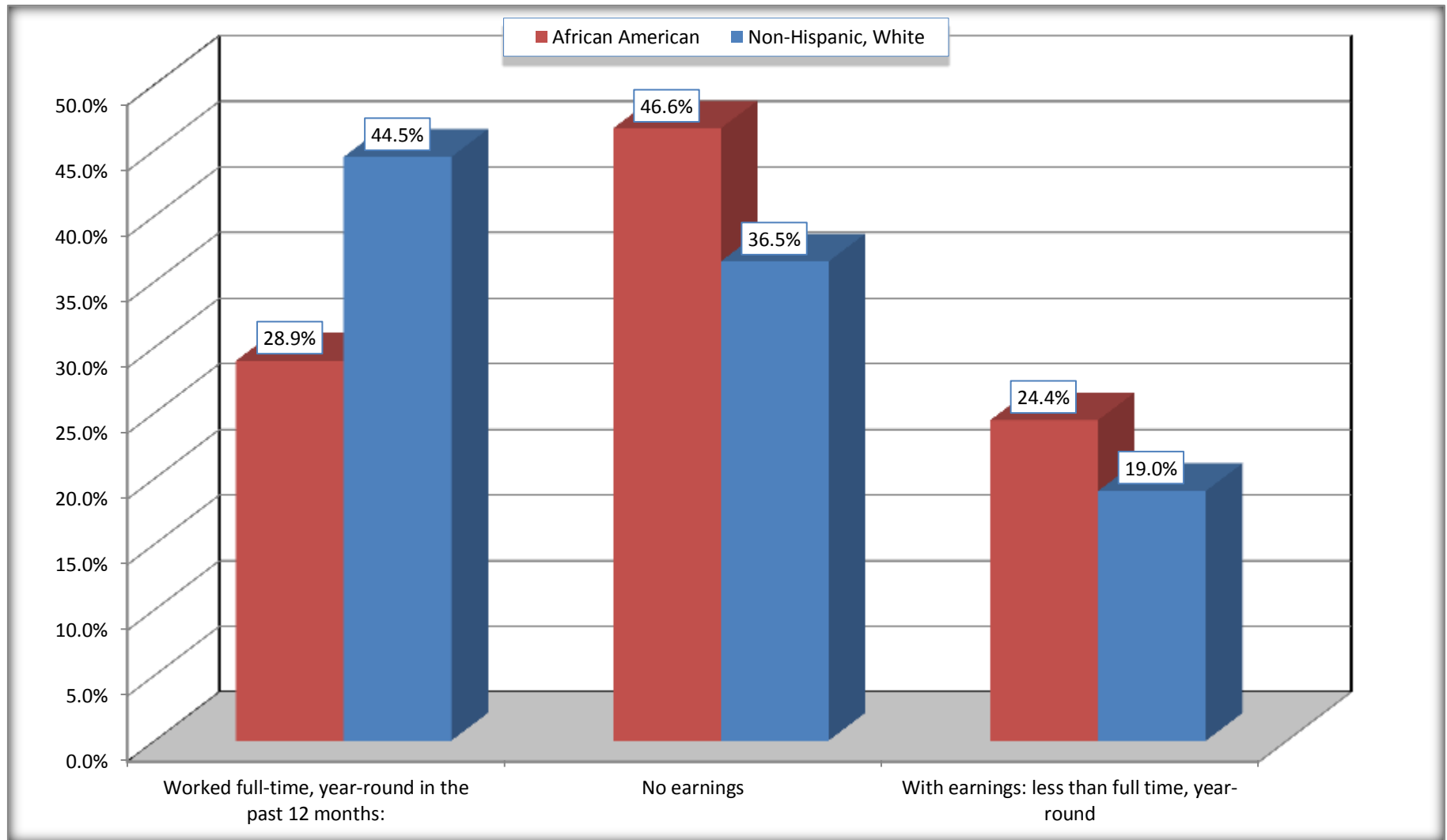
Source: U.S. Census Bureau, 2008-2012 American Community Survey

For information on confidentiality protection, sampling error, nonsampling error, and definitions, see Survey Methodology.

<http://www.census.gov/acs/www/UseData/index.htm>

Employment and Earnings in in the Past 12 Months (16 Years and Over)

Pointe Coupee Parish, Louisiana



Source: B20005. SEX BY WORK EXPERIENCE IN THE PAST 12 MONTHS BY EARNINGS IN THE PAST 12 MONTHS (IN 2010 INFLATION-ADJUSTED DOLLARS) FOR THE POPULATION 16 YEARS AND OVER

Data Set: 2008-2012 American Community Survey 5-Year Estimates

C21001. SEX BY AGE BY VETERAN STATUS FOR THE CIVILIAN POPULATION 18 YEARS AND OVER

Data Set: 2008-2012 American Community Survey 5-Year Estimates

	Pointe Coupee Parish, Louisiana					
	African American	Margin of Error (+/-)	% of AA Total	White, Not Hispanic	Margin of Error (+/-)	% of NHW Total
Total:	5,972	74	100.0%	10,871	39	100.0%
Veteran	348	NC	5.8%	1,151	NC	10.6%
Nonveteran	5,624	NC	94.2%	9,720	NC	89.4%
Male:	2,638	38	44.2%	5,323	39	49.0%
18 to 64 years:	2,192	38	36.7%	4,176	34	38.4%
Veteran	190	80	3.2%	495	127	4.6%
Nonveteran	2,002	85	33.5%	3,681	133	33.9%
65 years and over:	446	23	7.5%	1,147	17	10.6%
Veteran	145	67	2.4%	617	89	5.7%
Nonveteran	301	67	5.0%	530	91	4.9%
Female:	3,334	38	55.8%	5,548	23	51.0%
18 to 64 years:	2,637	38	44.2%	4,233	23	38.9%
Veteran	13	22	0.2%	39	51	0.4%
Nonveteran	2,624	44	43.9%	4,194	51	38.6%
65 years and over:	697	23	11.7%	1,315	23	12.1%
Veteran	0	23	0.0%	0	23	0.0%
Nonveteran	697	23	11.7%	1,315	23	12.1%

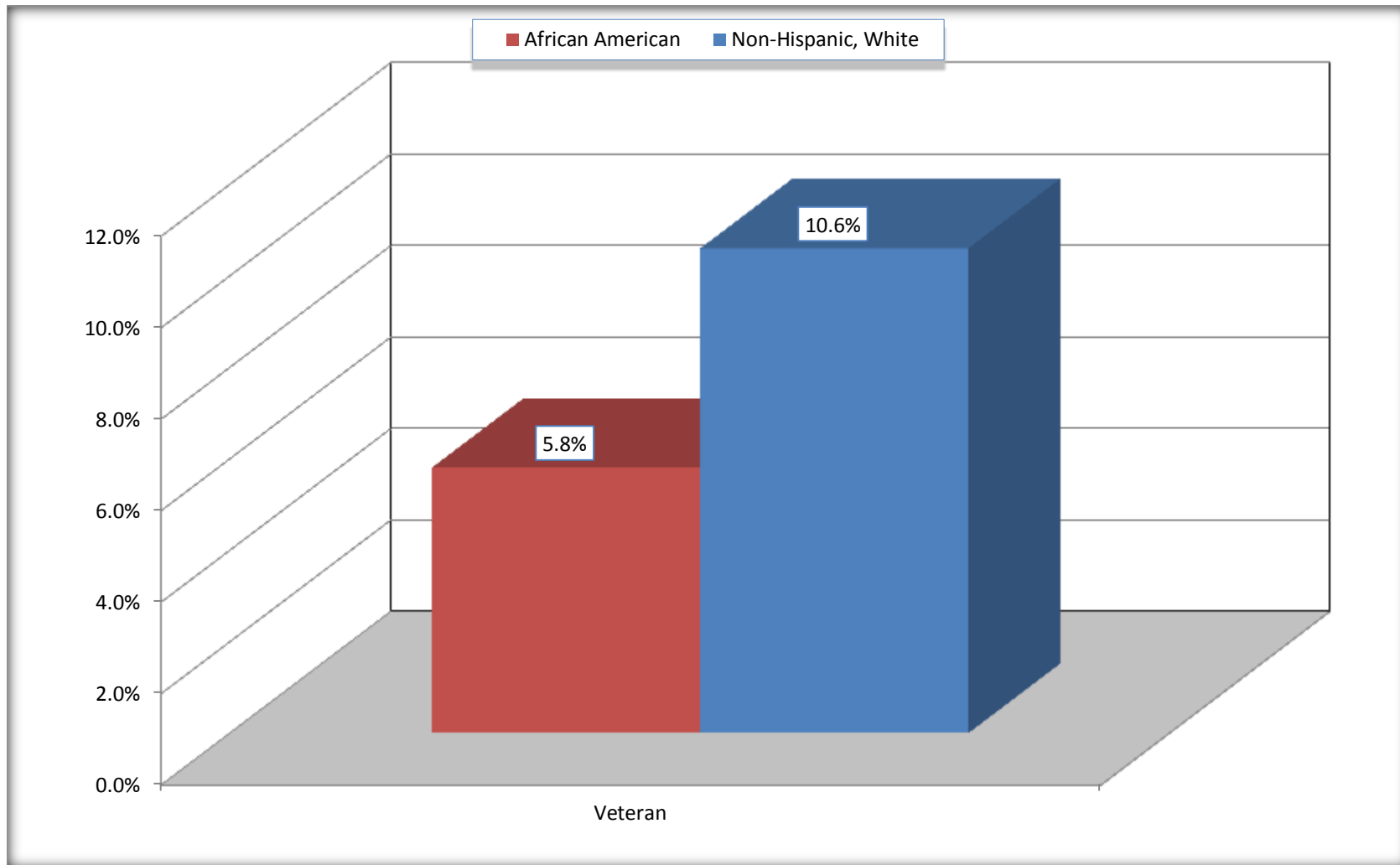
Source: U.S. Census Bureau, 2008-2012 American Community Survey

For information on confidentiality protection, sampling error, nonsampling error, and definitions, see Survey Methodology.

<http://www.census.gov/acs/www/UseData/index.htm>

Veterans in the Civilian Population 18 Years and Over

Pointe Coupee Parish, Louisiana



Source: C21001. SEX BY AGE BY VETERAN STATUS FOR THE CIVILIAN POPULATION 18 YEARS AND OVER
Data Set: 2008-2012 American Community Survey 5-Year Estimates

B22005. RECEIPT OF FOOD STAMPS/SNAP IN THE PAST 12 MONTHS BY RACE OF HOUSEHOLDER

Data Set: 2008-2012 American Community Survey 5-Year Estimates

	Pointe Coupee Parish, Louisiana					
	African American	Margin of Error (+/-)	% of AA Total	White, Not Hispanic	Margin of Error (+/-)	% of NHW Total
Total:	2,943	217	100.0%	5,797	179	100.0%
HH received Food Stamps/SNAP in the past 12 months	1,076	210	36.6%	584	140	10.1%
HH did not receive Food Stamps/SNAP in the past 12 months	1,867	237	63.4%	5,213	229	89.9%

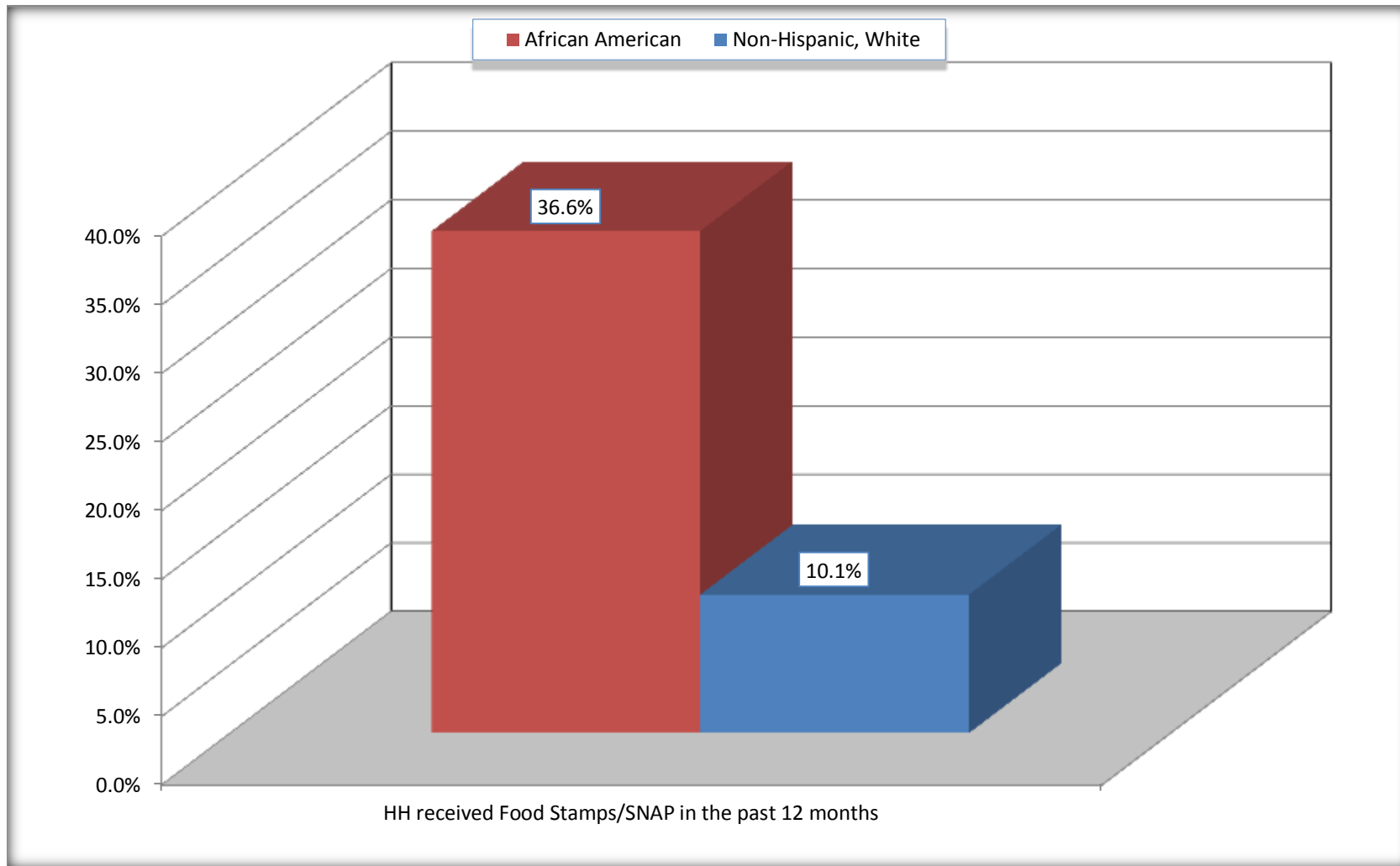
Source: U.S. Census Bureau, 2008-2012 American Community Survey

For information on confidentiality protection, sampling error, nonsampling error, and definitions, see Survey Methodology.

<http://www.census.gov/acs/www/UseData/index.htm>

Receipt of Food Stamps/SNAP in the Past 12 Months by Household

Pointe Coupee Parish, Louisiana



Source: B22005. RECEIPT OF FOOD STAMPS/SNAP IN THE PAST 12 MONTHS BY RACE OF HOUSEHOLDER
Data Set: 2008-2012 American Community Survey 5-Year Estimates

C23002. SEX BY AGE BY EMPLOYMENT STATUS FOR THE POPULATION 16 YEARS AND OVER

Data Set: 2008-2012 American Community Survey 5-Year Estimates

	Pointe Coupee Parish, Louisiana					
	African American	Margin of Error (+/-)	% of AA Total	White, Not Hispanic	Margin of Error (+/-)	% of NHW Total
Total:	6,192	106	100.0%	11,218	67	100.0%
In labor force:	3,294	NC	53.2%	6,680	NC	59.5%
In Armed Forces	0	NC	0.0%	14	NC	0.1%
Civilian:	3,106	NC	50.2%	6,205	NC	55.3%
Employed	2,842	NC	45.9%	6,414	NC	57.2%
Unemployed	452	NC	7.3%	252	NC	2.2%
Not in labor force	2,898	NC	46.8%	4,538	NC	40.5%
Male:	2,717	64	43.9%	5,520	54	49.2%
16 to 64 years:	2,271	64	36.7%	4,373	50	39.0%
In labor force:	1,540	185	24.9%	3,472	155	31.0%
In Armed Forces	0	23	0.0%	14	23	0.1%
Civilian:	1,540	185	24.9%	3,458	156	30.8%
Employed	1330	165	21.5%	3292	163	29.3%
Unemployed	210	99	3.4%	166	88	1.5%
Not in labor force	731	178	11.8%	901	160	8.0%
65 years and over:	446	23	7.2%	1,147	17	10.2%
In labor force:	52	42	0.8%	206	66	1.8%
Employed	52	42	0.8%	202	66	1.8%
Unemployed	0	23	0.0%	4	7	0.0%
Not in labor force	394	42	6.4%	941	67	8.4%

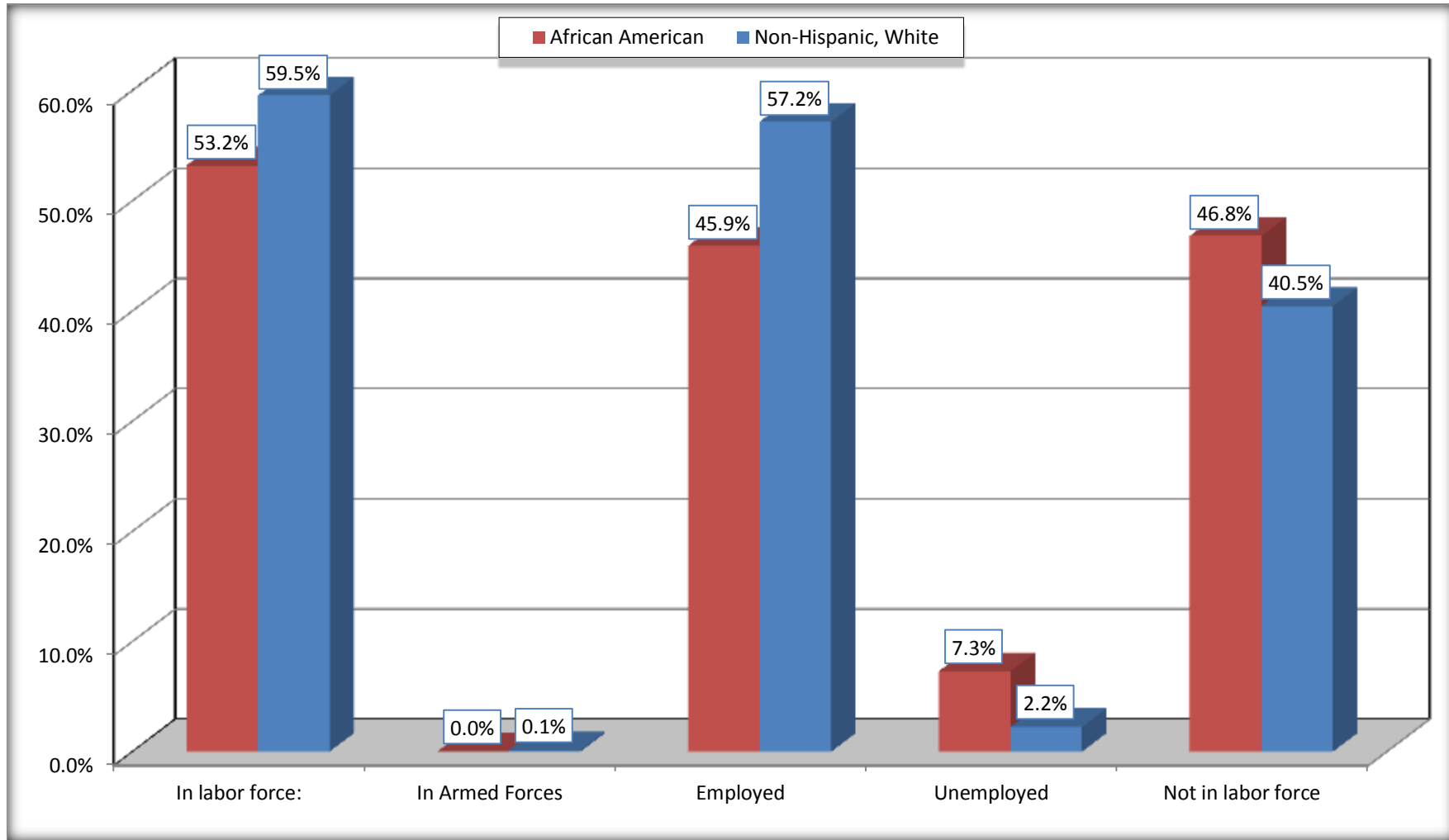
	Pointe Coupee Parish, Louisiana					
	African American	Margin of Error (+/-)	% of AA Total	White, Not Hispanic	Margin of Error (+/-)	% of NHW Total
Female:	3,475	62	56.1%	5,698	44	50.8%
16 to 64 years:	2,778	62	44.9%	4,383	44	39.1%
In labor force:	1,566	199	25.3%	2,747	195	24.5%
In Armed Forces	0	23	0.0%	0	23	0.0%
Civilian:	1,566	199	25.3%	2,747	195	24.5%
Employed	1,337	205	21.6%	2,681	193	23.9%
Unemployed	229	133	3.7%	66	34	0.6%
Not in labor force	1,212	216	19.6%	1,636	193	14.6%
65 years and over:	697	23	11.3%	1,315	23	11.7%
In labor force:	136	84	2.2%	255	83	2.3%
Employed	123	84	2.0%	239	88	2.1%
Unemployed	13	22	0.2%	16	19	0.1%
Not in labor force	561	84	9.1%	1,060	83	9.4%

Source: U.S. Census Bureau, 2008-2012 American Community Survey

For information on confidentiality protection, sampling error, nonsampling error, and definitions, see Survey Methodology.
<http://www.census.gov/acs/www/UseData/index.htm>

Employment Status for the Population 16 years and over

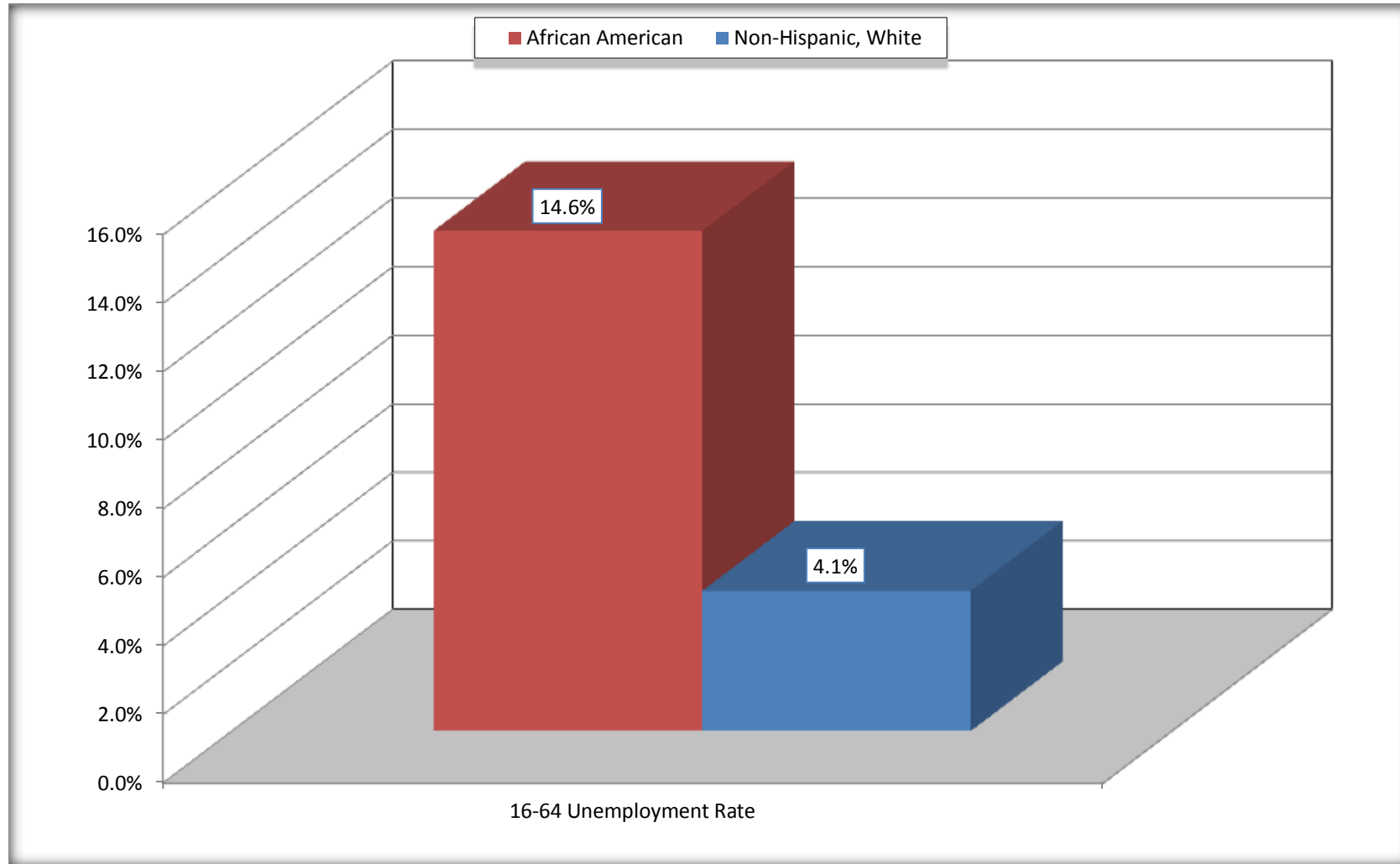
Pointe Coupee Parish, Louisiana



Source: C23002. SEX BY AGE BY EMPLOYMENT STATUS FOR THE POPULATION 16 YEARS AND OVER
Data Set: 2008-2012 American Community Survey 5-Year Estimates

Unemployment of Working Age Population (Ages 16 to 64) (As a Percent of 16-64 Civilian Labor Force)

Pointe Coupee Parish, Louisiana



Source: C23002. SEX BY AGE BY EMPLOYMENT STATUS FOR THE POPULATION 16 YEARS AND OVER
Data Set: 2008-2012 American Community Survey 5-Year Estimates

C24010. SEX BY OCCUPATION FOR THE CIVILIAN EMPLOYED POPULATION 16 YEARS AND OVER

Data Set: 2008-2012 American Community Survey 5-Year Estimates

	Pointe Coupee Parish, Louisiana					
	African American	Margin of Error (+/-)	% of AA Total	White, Not Hispanic	Margin of Error (+/-)	% of NHW Total
Total:	2,842	293	100.0%	6,414	288	100.0%
Management, professional, and related occupations	467	NC	16.4%	2,145	NC	33.4%
Service occupations	636	NC	22.4%	823	NC	12.8%
Sales and office occupations	721	NC	25.4%	1,387	NC	21.6%
Natural resources, construction, and maintenance occupations:	487	NC	17.1%	1,182	NC	18.4%
Production, transportation, and material moving occupations	531	NC	18.7%	877	NC	13.7%
Male:	1,382	179	48.6%	3,494	190	54.5%
Management, business, science, and arts occupations:	70	55	2.5%	857	162	13.4%
Service occupations	205	113	7.2%	294	103	4.6%
Sales and office occupations	202	123	7.1%	349	116	5.4%
Natural resources, construction, and maintenance occupations:	473	165	16.6%	1,170	204	18.2%
Production, transportation, and material moving occupations	432	147	15.2%	824	178	12.8%
Female:	1,460	234	51.4%	2,920	203	45.5%
Management, professional, and related occupations	397	154	14.0%	1,288	203	20.1%
Service occupations	431	173	15.2%	529	162	8.2%
Sales and office occupations	519	129	18.3%	1,038	168	16.2%
Natural resources, construction, and maintenance occupations:	14	26	0.5%	12	14	0.2%
Production, transportation, and material moving occupations	99	78	3.5%	53	45	0.8%

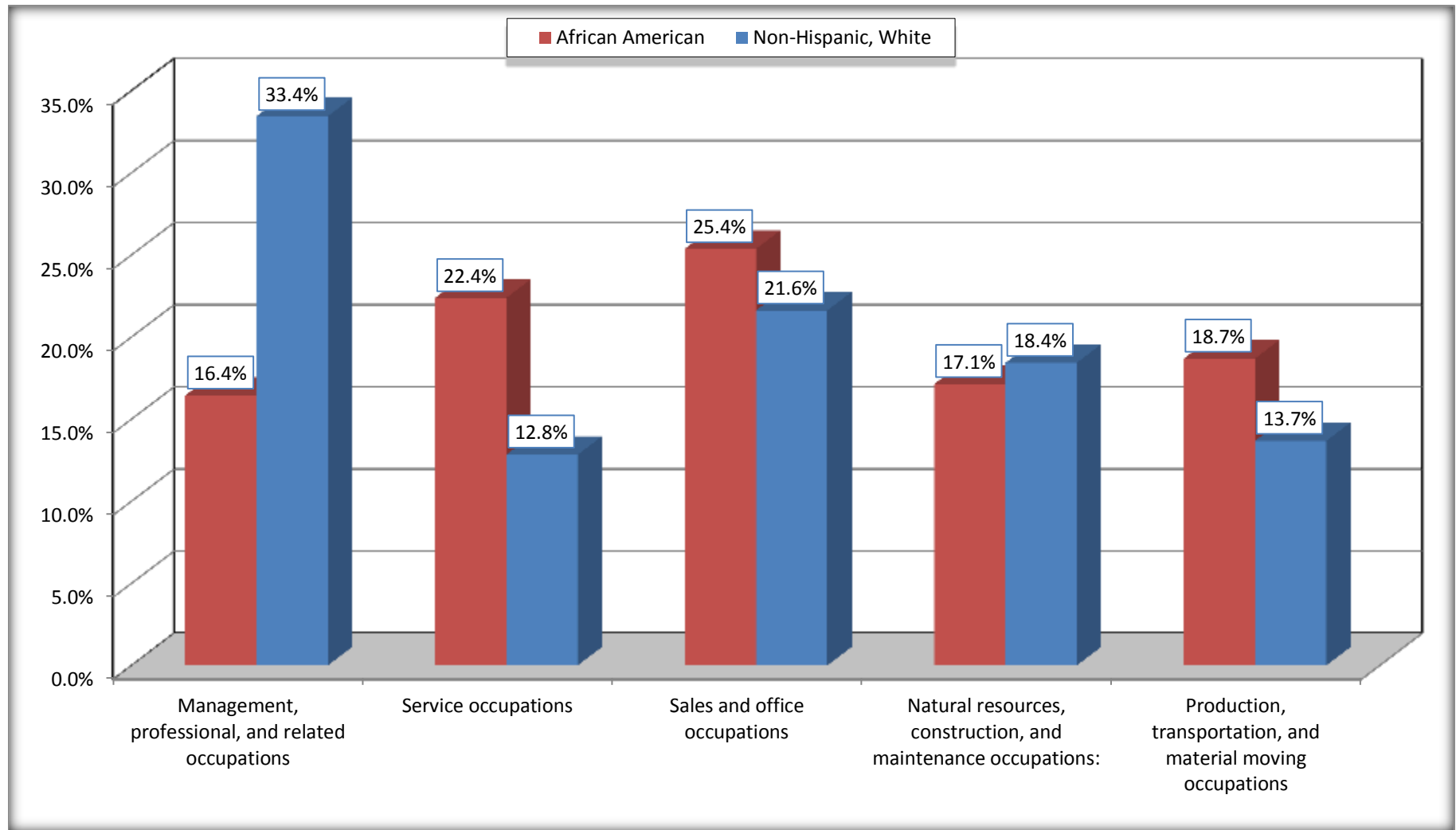
Source: U.S. Census Bureau, 2008-2012 American Community Survey

For information on confidentiality protection, sampling error, nonsampling error, and definitions, see Survey Methodology.

<http://www.census.gov/acs/www/UseData/index.htm>

Occupation for the Civilian Employed 16 Years and Over Population

Pointe Coupee Parish, Louisiana



Source: C24010. SEX BY OCCUPATION FOR THE CIVILIAN EMPLOYED POPULATION 16 YEARS AND OVER
Data Set: 2008-2012 American Community Survey 5-Year Estimates

B25003. TENURE - Universe: OCCUPIED HOUSING UNITS

Data Set: 2008-2012 American Community Survey 5-Year Estimates

	Pointe Coupee Parish, Louisiana					
	African American	Margin of Error (+/-)	% of AA Total	White, Not Hispanic	Margin of Error (+/-)	% of NHW Total
Total:	2,943	217	100.0%	5,797	179	100.0%
Owner occupied	1,980	169	67.3%	4,885	212	84.3%
Renter occupied	963	190	32.7%	912	201	15.7%

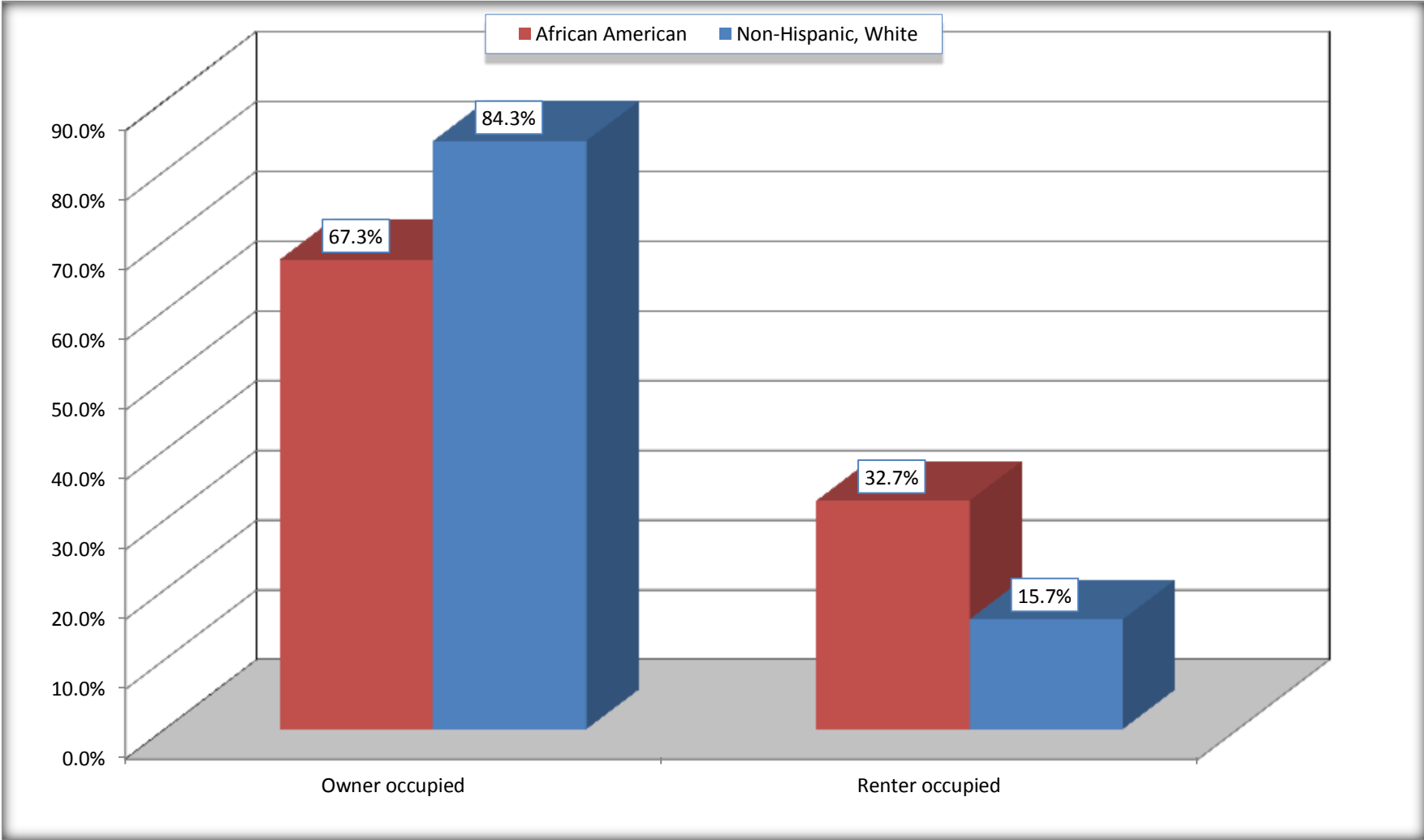
Source: U.S. Census Bureau, 2008-2012 American Community Survey

For information on confidentiality protection, sampling error, nonsampling error, and definitions, see Survey Methodology.

<http://www.census.gov/acs/www/UseData/index.h>

Home Owners and Renters by Household

Pointe Coupee Parish, Louisiana



Source: B25003. TENURE - Universe: OCCUPIED HOUSING UNITS
Data Set: 2008-2012 American Community Survey 5-Year Estimates

B25014. OCCUPANTS PER ROOM - Universe: OCCUPIED HOUSING UNITS

Data Set: 2008-2012 American Community Survey 5-Year Estimates

	Pointe Coupee Parish, Louisiana					
	African American	Margin of Error (+/-)	% of AA Total	White, Not Hispanic	Margin of Error (+/-)	% of NHW Total
Total:	2,943	217	100.0%	5,797	179	100.0%
1.00 or less occupants per room	2,760	202	93.8%	5,718	181	98.6%
1.01 or more occupants per room	183	92	6.2%	79	51	1.4%

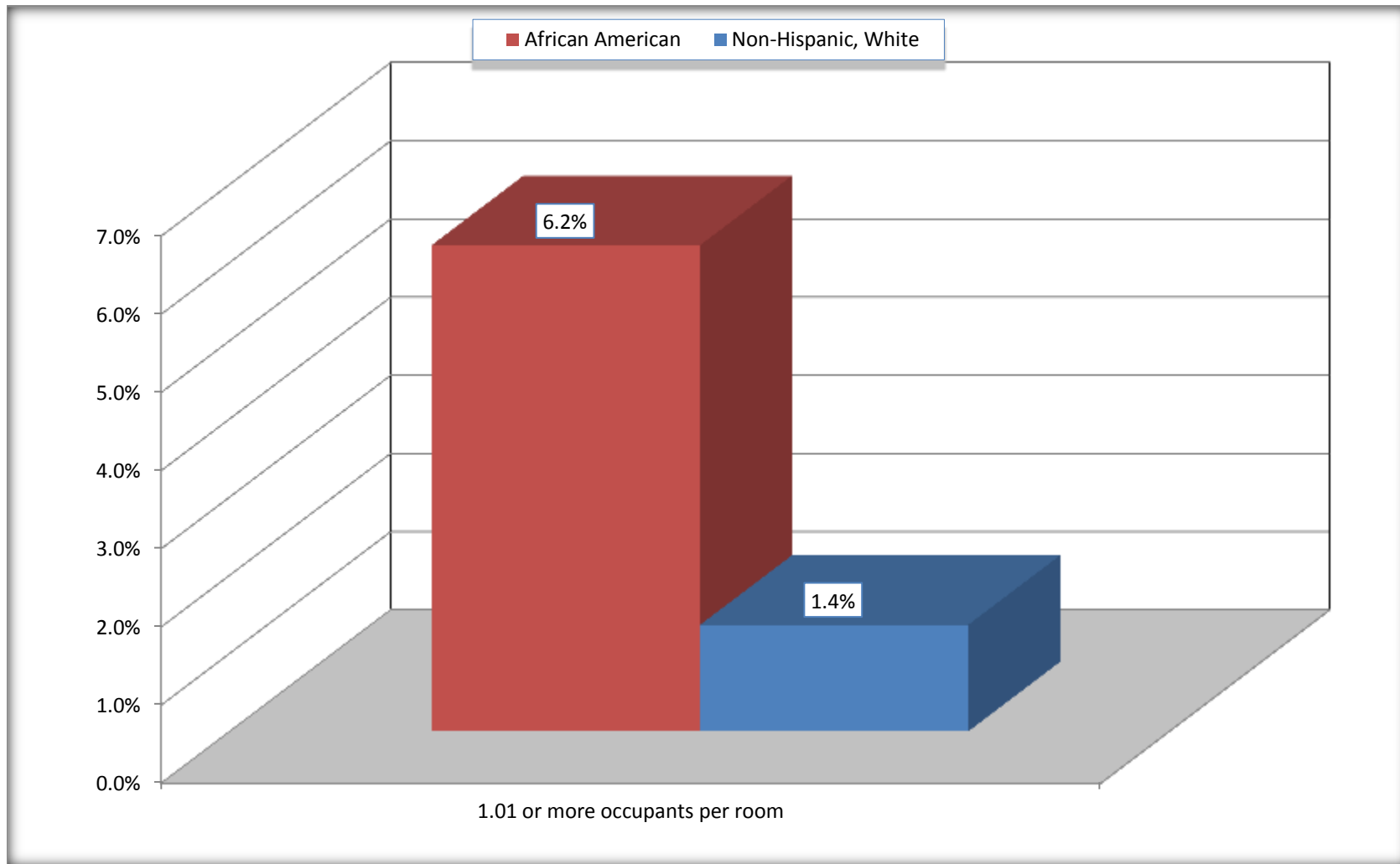
Source: U.S. Census Bureau, 2008-2012 American Community Survey

For information on confidentiality protection, sampling error, nonsampling error, and definitions, see Survey Methodology.

<http://www.census.gov/acs/www/UseData/index.ht>

More than One Person per Room (Crowding) by Household

Pointe Coupee Parish, Louisiana



Source: B25014. OCCUPANTS PER ROOM - Universe: OCCUPIED HOUSING UNITS
Data Set: 2008-2012 American Community Survey 5-Year Estimates

B18101. AGE BY DISABILITY STATUS

Data Set: 2008-2012 American Community Survey 5-Year Estimates

	Pointe Coupee Parish, Louisiana					
	African American	Margin of Error (+/-)	% of AA Total	White, Not Hispanic	Margin of Error (+/-)	% of NHW Total
Total:	8,211	114	100.0%	13,559	75	100.0%
Under 18 years:	2,364	53	28.8%	2,837	114	20.9%
With a disability	176	110	2.1%	100	58	0.7%
No disability	2,188	119	26.6%	2,737	58	20.2%
18 to 64 years:	4,765	97	58.0%	8,361	37	61.7%
With a disability	792	206	9.6%	1,043	208	7.7%
No disability	3,973	220	48.4%	7,318	208	54.0%
65 years and over:	1,082	35	13.2%	2,361	71	17.4%
With a disability	653	137	8.0%	1,040	138	7.7%
No disability	429	134	5.2%	1,321	147	9.7%

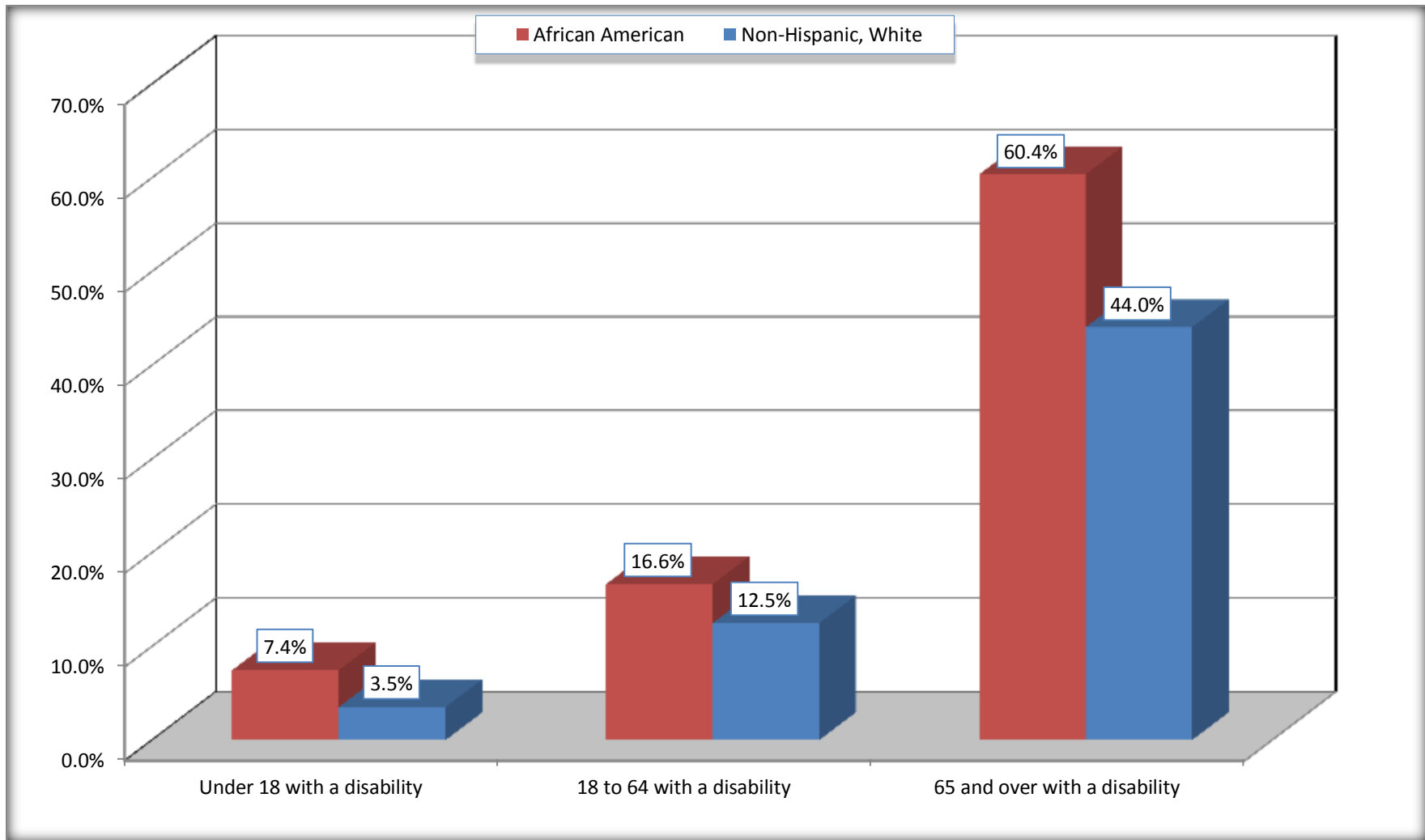
Source: U.S. Census Bureau, 2008-2012 American Community Survey

For information on confidentiality protection, sampling error, nonsampling error, and definitions, see Survey Methodology.

<http://www.census.gov/acs/www/UseData/index.htm>

Disability by Age

Pointe Coupee Parish, Louisiana



Source: B18101. AGE BY DISABILITY STATUS
Data Set: 2008-2012 American Community Survey 5-Year Estimates

C27001B. HEALTH INSURANCE COVERAGE STATUS BY AGE

Data Set: 2008-2012 American Community Survey 5-Year Estimates

	Pointe Coupee Parish, Louisiana					
	African American	Margin of Error (+/-)	% of AA Total	White, Not Hispanic	Margin of Error (+/-)	% of NHW Total
Total:	8,211	114	100.0%	13,559	75	100.0%
Under 18 years:	2,364	53	28.8%	2,837	23	20.9%
With health insurance coverage	2,276	86	27.7%	2,794	50	20.6%
No health insurance coverage	88	71	1.1%	43	50	0.3%
18 to 64 years:	4,765	97	58.0%	8,361	37	61.7%
With health insurance coverage	2,815	318	34.3%	6,890	269	50.8%
No health insurance coverage	1,950	311	23.7%	1,471	267	10.8%
65 years and over:	1,082	35	13.2%	2,361	71	17.4%
With health insurance coverage	1,075	38	13.1%	2,361	71	17.4%
No health insurance coverage	7	13	0.1%	0	23	0.0%

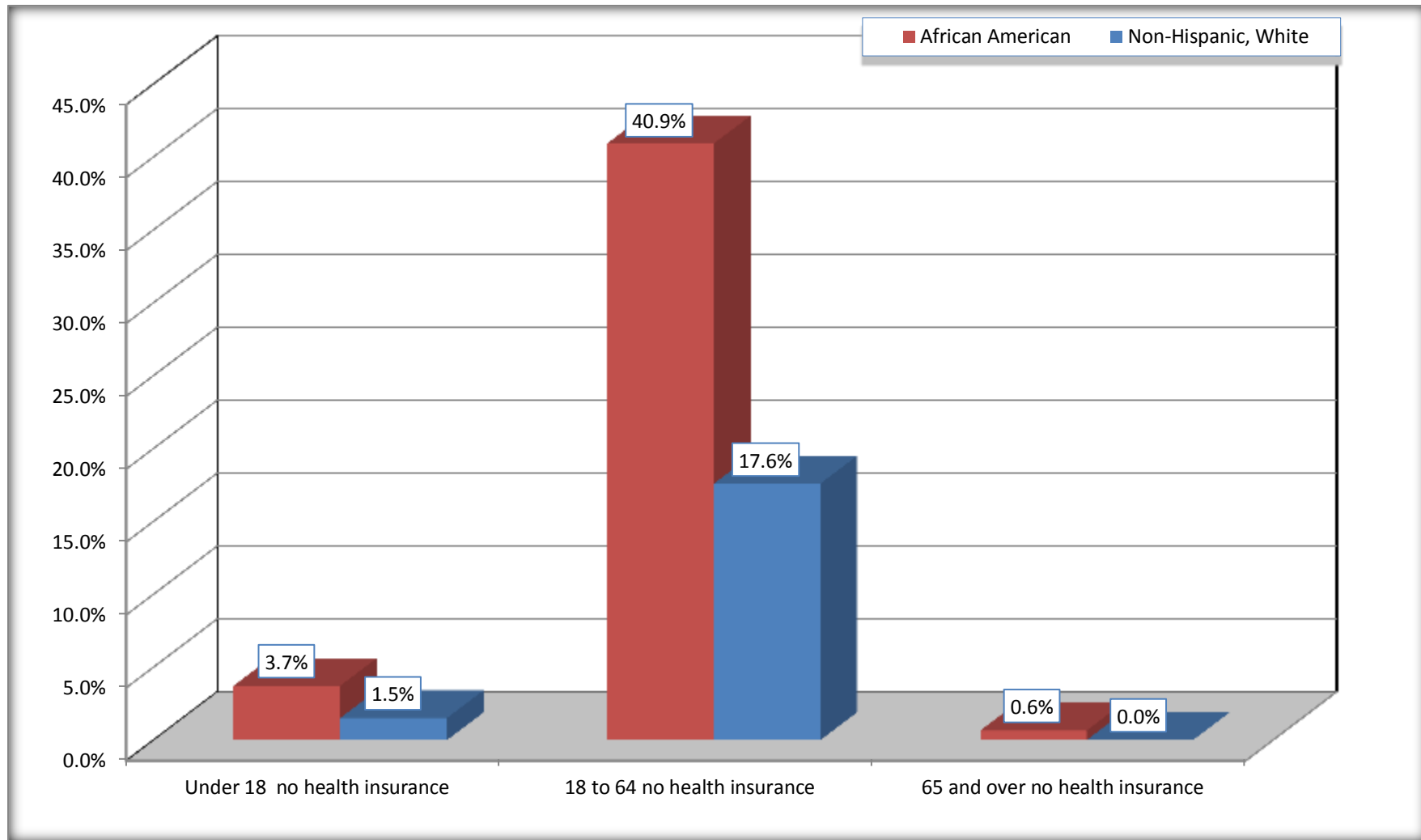
Source: U.S. Census Bureau, 2008-2012 American Community Survey

For information on confidentiality protection, sampling error, nonsampling error, and definitions, see Survey Methodology.

<http://www.census.gov/acs/www/UseData/index.htm>

Lack of Health Insurance Coverage by Age

Pointe Coupee Parish, Louisiana



Source: C27001B. HEALTH INSURANCE COVERAGE STATUS BY AGE
Data Set: 2008-2012 American Community Survey 5-Year Estimates