

# **Selected Socio-Economic Data**

## **Morgan City city, Louisiana**

### **African American and White, Not Hispanic**

**Data Set: 2008-2012 American Community Survey 5-Year Estimates**

[www.fairvote2020.org](http://www.fairvote2020.org)

[www.fairdata2000.com](http://www.fairdata2000.com)

[29-Dec-13](#)

**C02003.DETAILED RACE - Universe: TOTAL POPULATION**

Data Set: 2008-2012 American Community Survey 5-Year Estimates

	<b>Morgan City city, Louisiana</b>		
	Population	Margin of Error (+/-)	% of Total
<b>Total:</b>	<b>12,326</b>	<b>30</b>	<b>100.0%</b>
Population of one race:	12,019	141	97.5%
White	7,831	471	63.5%
Black or African American	3,472	405	28.2%
American Indian and Alaska Native	294	130	2.4%
Asian alone	124	120	1.0%
Native Hawaiian and Other Pacific Islander	18	29	0.1%
Some other race	280	191	2.3%
Population of two or more races:	307	144	2.5%
Two races including Some other race	38	57	0.3%
Two races excluding Some other race, and three or more races	269	139	2.2%
Population of two races:	298	144	2.4%
White; Black or African American	126	111	1.0%
White; American Indian and Alaska Native	66	57	0.5%
White; Asian	0	19	0.0%
Black or African American; American Indian and Alaska Native	0	19	0.0%
All other two race combinations	106	97	0.9%
Population of three races	9	16	0.1%
Population of four or more races	0	19	0.0%

Note: Hispanics may be of any race. See Table B03002 and chart.

Source: U.S. Census Bureau, 2008-2012 American Community Survey

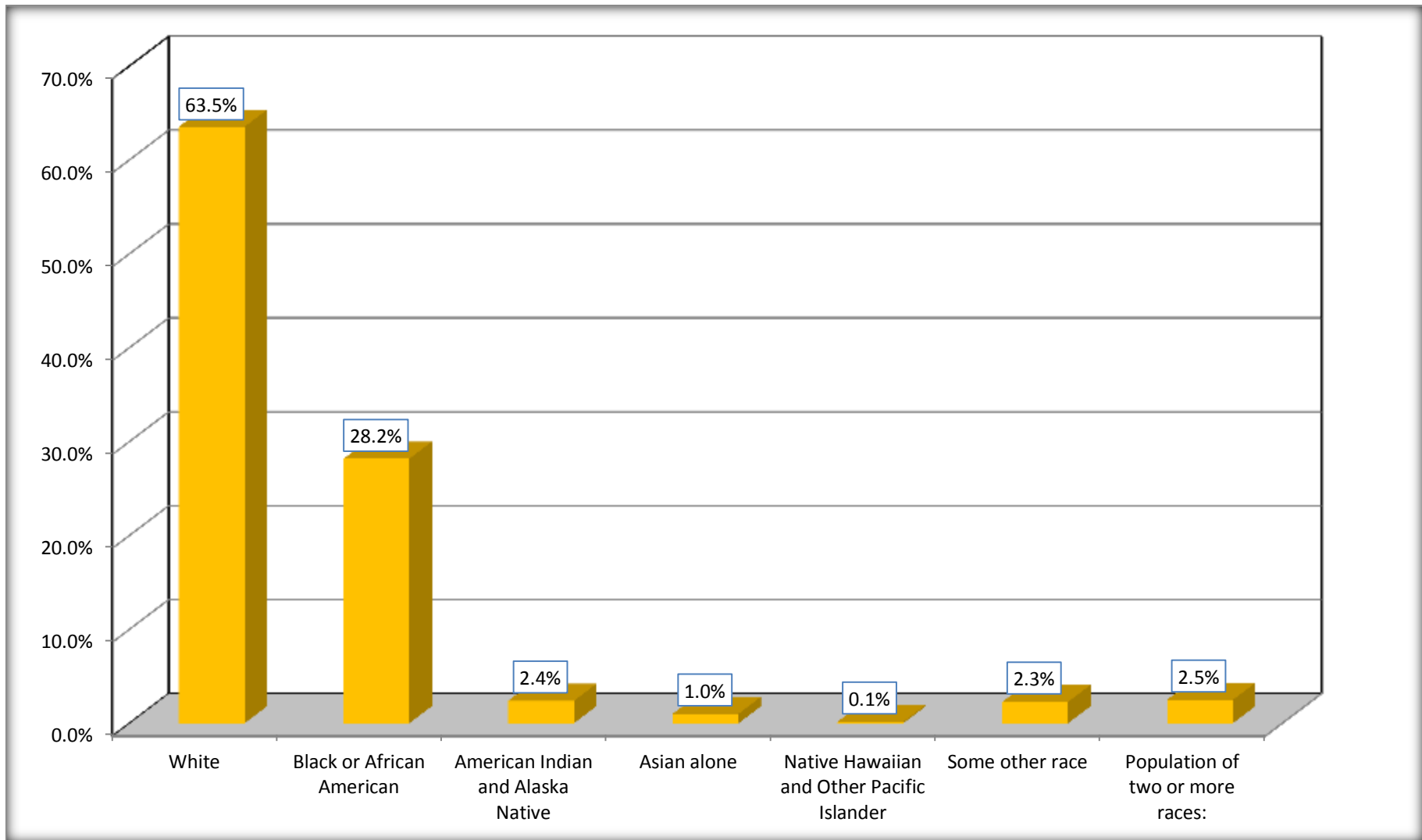
Although the American Community Survey (ACS) produces population, demographic and housing unit estimates, it is the Census Bureau's Population Estimates Program that produces and disseminates the official estimates of the population for the nation, states, counties, cities and towns and estimates of housing units for states and counties.

For information on confidentiality protection, sampling error, nonsampling error, and definitions, see Survey Methodology.

<http://www.census.gov/acs/www/UseData/index.htm>

# Population by Race

## Morgan City city, Louisiana



Source: C02003.DETAILED RACE - Universe: TOTAL POPULATION  
Data Set: 2008-2012 American Community Survey 5-Year Estimates

**B03002. HISPANIC OR LATINO ORIGIN BY RACE - Universe: TOTAL POPULATION**

Data Set: 2008-2012 American Community Survey 5-Year Estimates

	Morgan City city, Louisiana		
	Population	Margin of Error (+/-)	% of Total
<b>Total:</b>	12,326	30	<b>100.0%</b>
Not Hispanic or Latino:	11,295	342	91.6%
White alone	7,260	493	58.9%
Black or African American alone	3,354	405	27.2%
American Indian and Alaska Native alone	227	115	1.8%
Asian alone	124	120	1.0%
Native Hawaiian and Other Pacific Islander alone	18	29	0.1%
Some other race alone	16	20	0.1%
Two or more races:	296	146	2.4%
Two races including Some other race	38	57	0.3%
Two races excluding Some other race, and three or more races	258	138	2.1%
Hispanic or Latino	1,031	339	8.4%

Source: U.S. Census Bureau, 2008-2012 American Community Survey

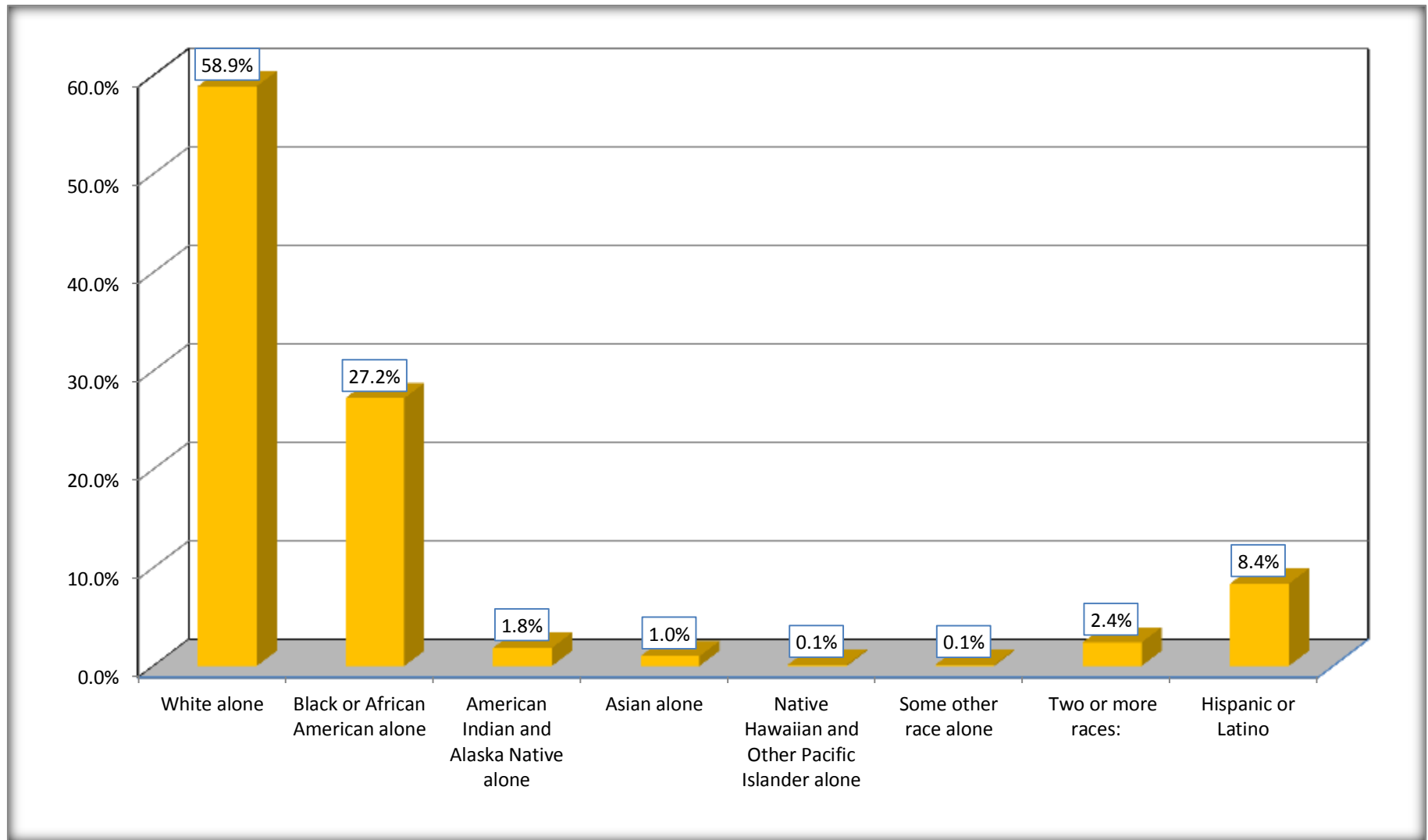
Although the American Community Survey (ACS) produces population, demographic and housing unit estimates, it is the Census Bureau's Population Estimates Program that produces and disseminates the official estimates of the population for the nation, states, counties, cities and towns and estimates of housing units for states and counties.

For information on confidentiality protection, sampling error, nonsampling error, and definitions, see Survey Methodology.

<http://www.census.gov/acs/www/UseData/index.htm>

# Non-Hispanic by Race and Hispanic Population

## Morgan City city, Louisiana



Source: B03002. HISPANIC OR LATINO ORIGIN BY RACE - Universe: TOTAL POPULATION  
Data Set: 2008-2012 American Community Survey 5-Year Estimates

**B03002. HISPANIC OR LATINO ORIGIN BY RACE**

Data Set: 2008-2012 American Community Survey 5-Year Estimates

	Morgan City city, Louisiana		
	Population	Margin of Error (+/-)	% of Total
Hispanic or Latino:	1,031	339	<b>100.0%</b>
White alone	571	257	55.4%
Black or African American alone	118	159	11.4%
American Indian and Alaska Native alone	67	75	6.5%
Asian alone	0	19	0.0%
Native Hawaiian and Other Pacific Islander alone	0	19	0.0%
Some other race alone	264	189	25.6%
Two or more races:	11	19	1.1%
Two races including Some other race	0	19	0.0%
Two races excluding Some other race, and three or more races	11	19	1.1%

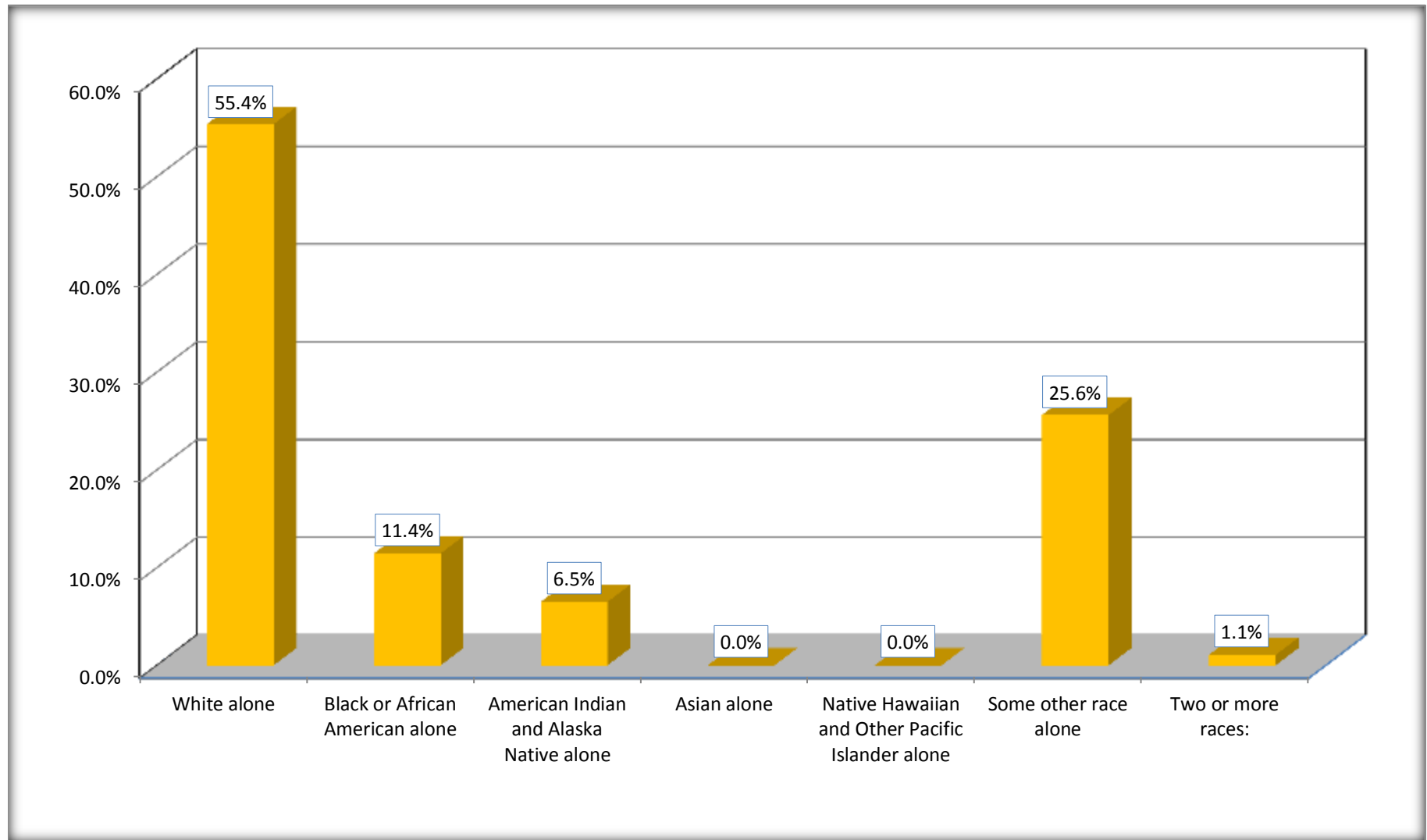
Source: U.S. Census Bureau, 2008-2012 American Community Survey

Although the American Community Survey (ACS) produces population, demographic and housing unit estimates, it is the Census Bureau's Population Estimates Program that produces and disseminates the official estimates of the population for the nation, states, counties, cities and towns and estimates of housing units for states and counties.

For information on confidentiality protection, sampling error, nonsampling error, and definitions, see Survey Methodology.

<http://www.census.gov/acs/www/UseData/index.htm>

## Hispanic or Latino Origin by Race Morgan City city, Louisiana



Source: B03002. HISPANIC OR LATINO ORIGIN BY RACE  
Data Set: 2008-2012 American Community Survey 5-Year Estimates

**B01001. SEX BY AGE**

Data Set: 2008-2012 American Community Survey 5-Year Estimates

	Morgan City city, Louisiana					
	African American	Margin of Error (+/-)	% of AA Total	White, Not Hispanic	Margin of Error (+/-)	% of NHW Total
<b>Total:</b>	<b>3,472</b>	<b>405</b>	<b>100.0%</b>	<b>7,260</b>	<b>493</b>	<b>100.0%</b>
Under 18 years	977	NC	28.1%	1,109	NC	15.3%
18 to 64 years	2,228	NC	64.2%	4,836	NC	66.6%
65 years and over	267	NC	7.7%	1,315	NC	18.1%
Male:	1,474	225	42.5%	3,682	389	50.7%
Under 18 years	421	NC	12.1%	478	NC	6.6%
18 to 64 years	933	NC	26.9%	2,567	NC	35.4%
65 years and over	120	NC	3.5%	637	NC	8.8%
Female:	1,998	275	57.5%	3,578	412	49.3%
Under 18 years	556	NC	16.0%	631	NC	8.7%
18 to 64 years	1,295	NC	37.3%	2,269	NC	31.3%
65 years and over	147	NC	4.2%	678	NC	9.3%

Source: U.S. Census Bureau, 2008-2012 American Community Survey

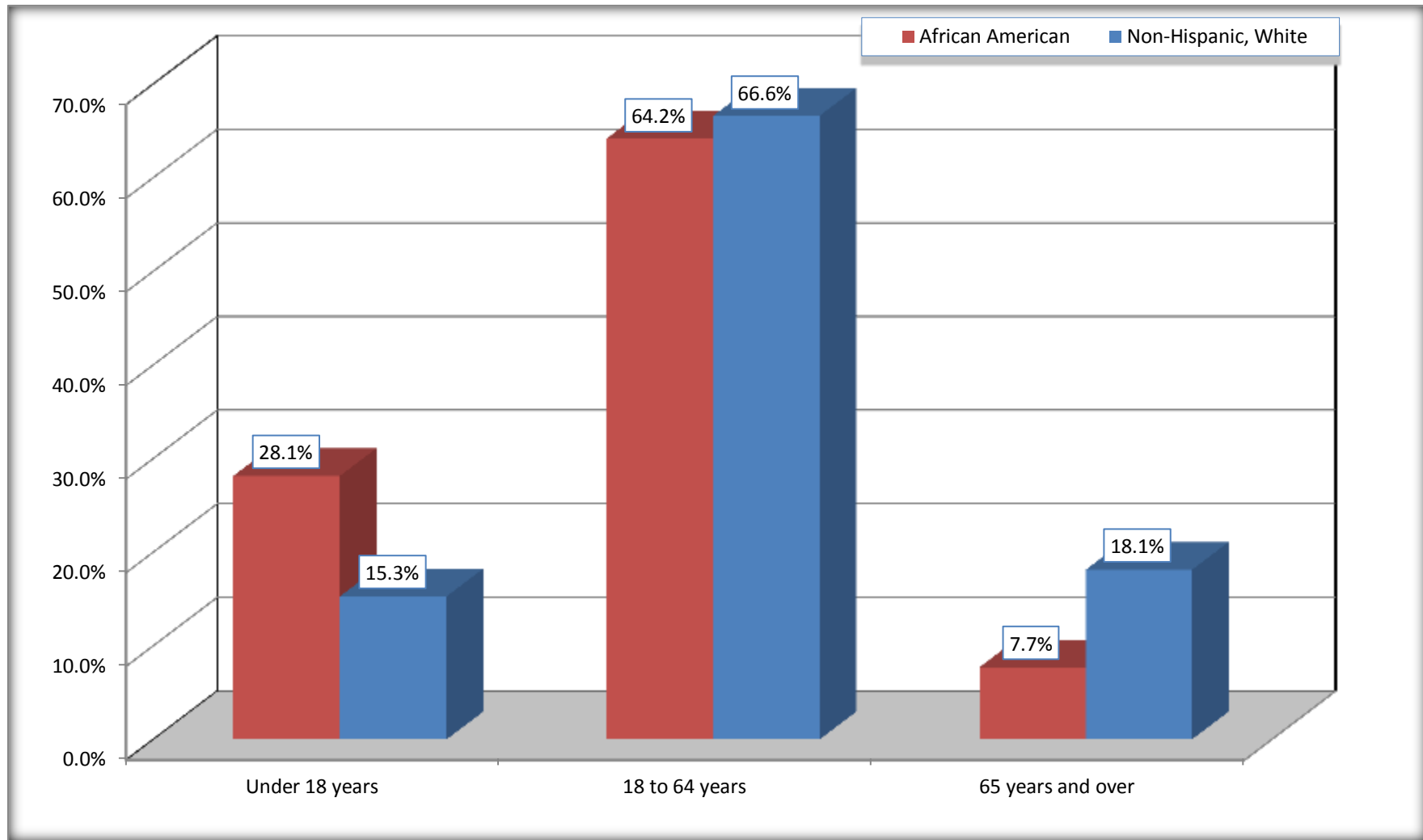
Although the American Community Survey (ACS) produces population, demographic and housing unit estimates, it is the Census Bureau's Population Estimates Program that produces and disseminates the official estimates of the population for the nation, states, counties, cities and towns and estimates of housing units for states and counties.

For information on confidentiality protection, sampling error, nonsampling error, and definitions, see Survey Methodology.  
<http://www.census.gov/acs/www/UseData/index.htm>



# Population by Age

## Morgan City city, Louisiana



Source: B01001. SEX BY AGE  
Data Set: 2008-2012 American Community Survey 5-Year Estimates

**B05003. SEX BY AGE BY CITIZENSHIP STATUS**

Data Set: 2008-2012 American Community Survey 5-Year Estimates

	Morgan City city, Louisiana					
	African American	Margin of Error (+/-)	% of AA Total by Age	White, Not Hispanic	Margin of Error (+/-)	% of NHW Total by Age
<b>Total:</b>	<b>3,472</b>	<b>405</b>	<b>100.0%</b>	<b>7,260</b>	<b>493</b>	<b>100.0%</b>
<b>Under 18 years:</b>	<b>977</b>	<b>NC</b>	<b>100.0%</b>	<b>1,109</b>	<b>NC</b>	<b>100.0%</b>
Native	977	NC	100.0%	1,109	NC	100.0%
Foreign born:	0	NC	0.0%	0	NC	0.0%
Naturalized U.S. citizen	0	NC	0.0%	0	NC	0.0%
Not a U.S. citizen	0	NC	0.0%	0	NC	0.0%
<b>18 years and over:</b>	<b>2,495</b>	<b>NC</b>	<b>100.0%</b>	<b>6,151</b>	<b>NC</b>	<b>100.0%</b>
Native	2,495	NC	100.0%	6,117	NC	99.4%
Foreign born:	0	NC	0.0%	34	NC	0.6%
Naturalized U.S. citizen	0	NC	0.0%	34	NC	0.6%
Not a U.S. citizen	0	NC	0.0%	0	NC	0.0%
<b>Male:</b>	<b>1,474</b>	<b>225</b>	<b>42.5%</b>	<b>3,682</b>	<b>304</b>	<b>50.7%</b>
<b>Under 18 years:</b>	<b>421</b>	<b>147</b>	<b>100.0%</b>	<b>478</b>	<b>120</b>	<b>100.0%</b>
Native	421	147	100.0%	478	120	100.0%
Foreign born:	0	19	0.0%	0	19	0.0%
Naturalized U.S. citizen	0	19	0.0%	0	19	0.0%
Not a U.S. citizen	0	19	0.0%	0	19	0.0%
<b>18 years and over:</b>	<b>1,053</b>	<b>175</b>	<b>100.0%</b>	<b>3,204</b>	<b>275</b>	<b>100.0%</b>
Native	1,053	175	100.0%	3,196	275	99.8%
Foreign born:	0	19	0.0%	8	13	0.2%
Naturalized U.S. citizen	0	19	0.0%	8	13	0.2%
Not a U.S. citizen	0	19	0.0%	0	19	0.0%

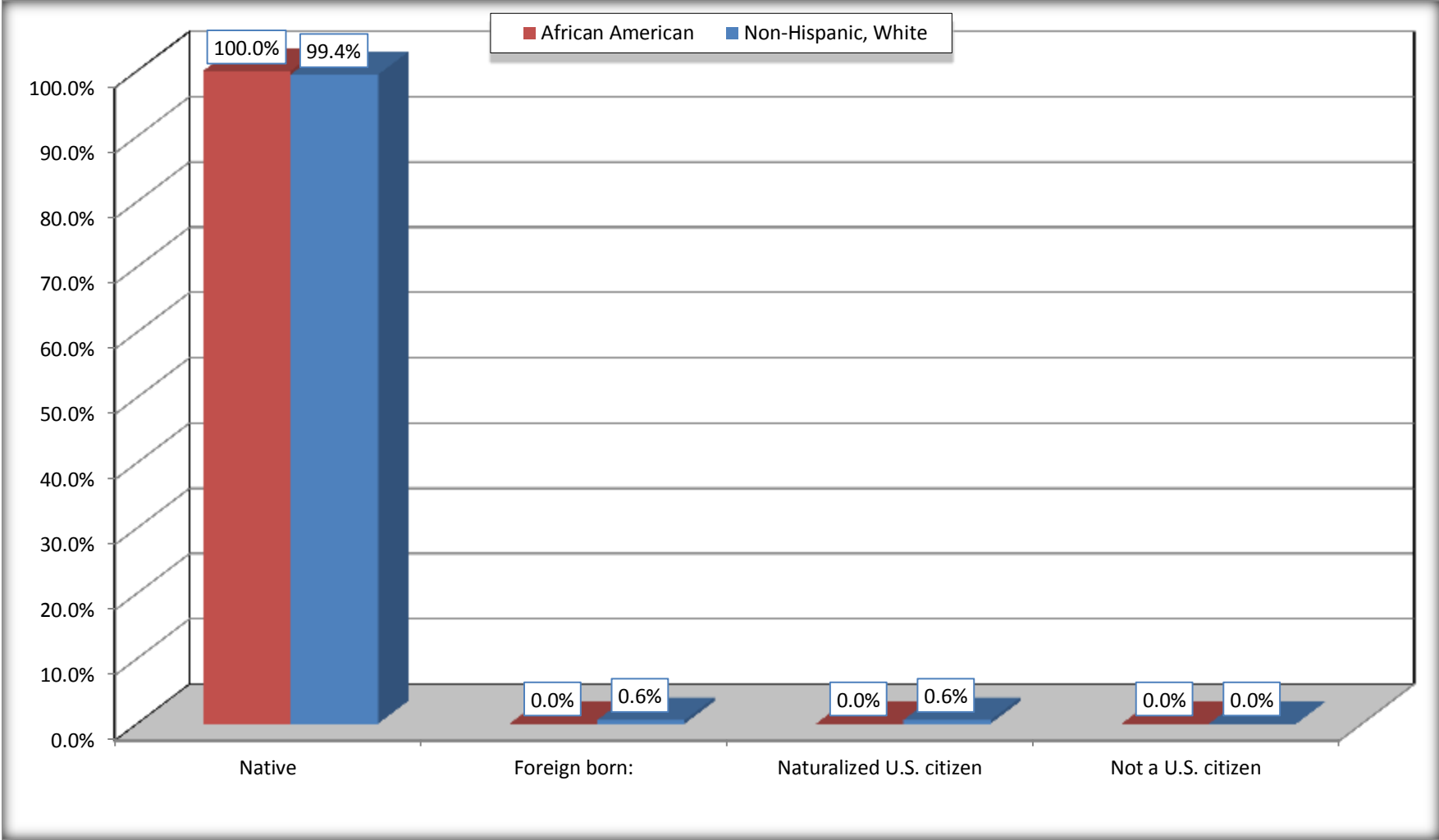
	Morgan City city, Louisiana					
	African American	Margin of Error (+/-)	% of AA by Age	White, Not Hispanic	Margin of Error (+/-)	% of NHW by Age
<b>Female:</b>	1,998	275	57.5%	3,578	291	49.3%
<b>Under 18 years:</b>	<b>556</b>	<b>132</b>	<b>100.0%</b>	<b>631</b>	<b>172</b>	<b>100.0%</b>
Native	556	132	100.0%	631	172	100.0%
Foreign born:	0	19	0.0%	0	19	0.0%
Naturalized U.S. citizen	0	19	0.0%	0	19	0.0%
Not a U.S. citizen	0	19	0.0%	0	19	0.0%
<b>18 years and over:</b>	<b>1,442</b>	<b>186</b>	<b>100.0%</b>	<b>2,947</b>	<b>216</b>	<b>100.0%</b>
Native	1,442	186	100.0%	2,921	217	99.1%
Foreign born:	0	19	0.0%	26	23	0.9%
Naturalized U.S. citizen	0	19	0.0%	26	23	0.9%
Not a U.S. citizen	0	19	0.0%	0	19	0.0%

Source: U.S. Census Bureau, 2008-2012 American Community Survey

For information on confidentiality protection, sampling error, nonsampling error, and definitions, see Survey Methodology.  
<http://www.census.gov/acs/www/UseData/index.htm>

# Citizenship Status of Voting Age Population (18 and Over)

## Morgan City city, Louisiana



Source: B05003. SEX BY AGE BY CITIZENSHIP STATUS  
Data Set: 2008-2012 American Community Survey 5-Year Estimates

**B07004. GEOGRAPHICAL MOBILITY IN THE PAST YEAR BY RACE FOR CURRENT RESIDENCE IN THE UNITED STATES - Universe:  
POPULATION 1 YEAR AND OVER**

Data Set: 2008-2012 American Community Survey 5-Year Estimates

	Morgan City city, Louisiana					
	African American	Margin of Error (+/-)	% of AA Total	White, Not Hispanic	Margin of Error (+/-)	% of NHW Total
Total:	<b>3,412</b>	<b>397</b>	<b>100.0%</b>	<b>7,175</b>	<b>491</b>	<b>100.0%</b>
Same house 1 year ago	2,700	408	79.1%	6,050	559	84.3%
Moved within same county	568	344	16.6%	694	231	9.7%
Moved from different county within same state	126	84	3.7%	198	116	2.8%
Moved from different state	18	29	0.5%	233	154	3.2%
Moved from abroad	0	19	0.0%	0	19	0.0%

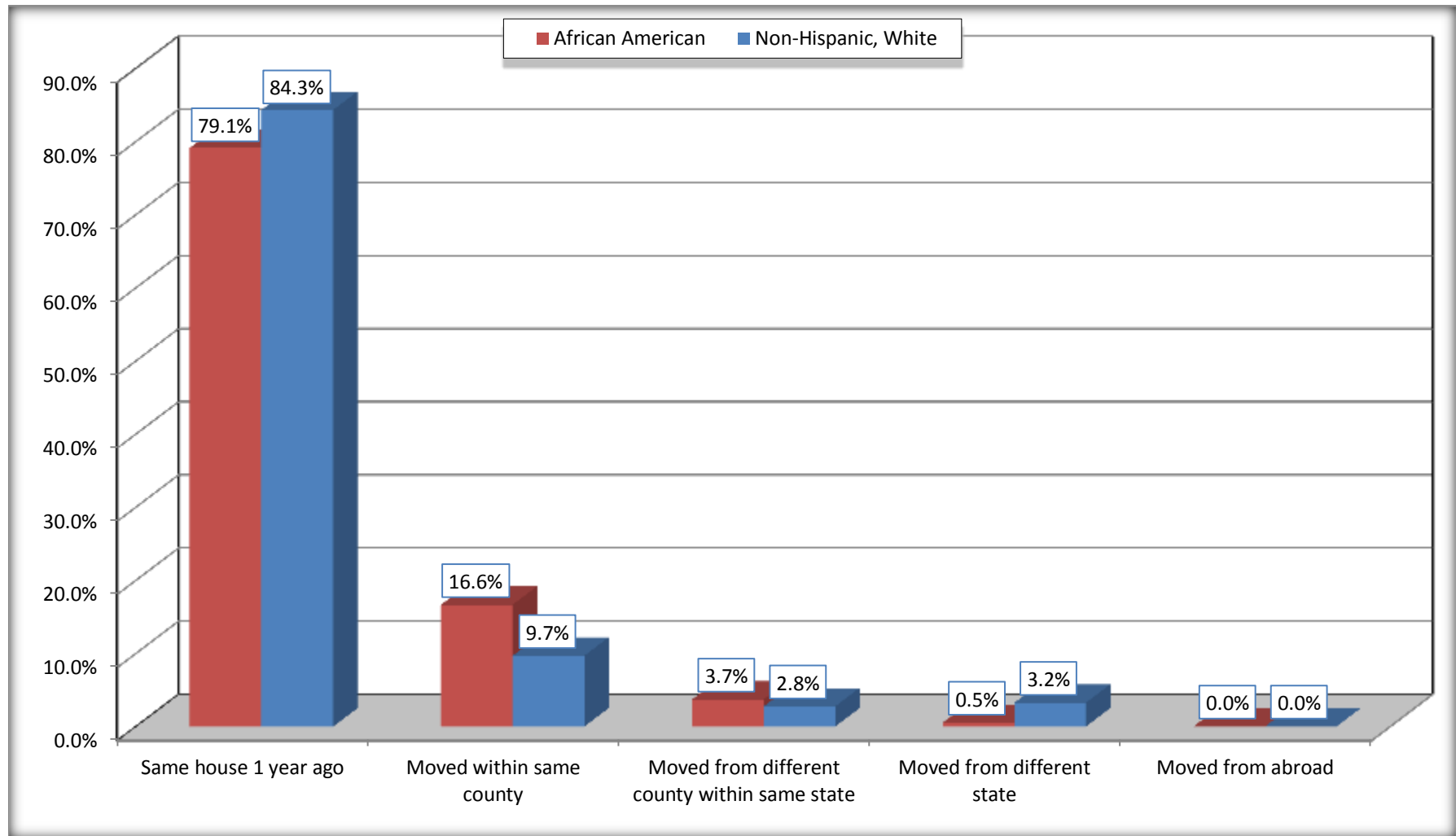
Source: U.S. Census Bureau, 2008-2012 American Community Survey

For information on confidentiality protection, sampling error, nonsampling error, and definitions, see Survey Methodology.

<http://www.census.gov/acs/www/UseData/index.htm>

# Geographical Mobility in the Past Year (Population 1 Year and Over)

## Morgan City city, Louisiana



Source: B07004. GEOGRAPHICAL MOBILITY IN THE PAST YEAR BY RACE FOR CURRENT RESIDENCE IN THE UNITED STATES - Universe: POPULATION 1 YEAR AND OVER

Data Set: 2008-2012 American Community Survey 5-Year Estimates

**B08105. MEANS OF TRANSPORTATION TO WORK - Universe: WORKERS 16 YEARS AND OVER**

Data Set: 2008-2012 American Community Survey 5-Year Estimates

	Morgan City city, Louisiana					
	African American	Margin of Error (+/-)	% of AA Total	White, Not Hispanic	Margin of Error (+/-)	% of NHW Total
<b>Total:</b>	1257	211	<b>100.0%</b>	3533	328	<b>100.0%</b>
Car, truck, or van - drove alone	835	181	66.4%	2869	339	81.2%
Car, truck, or van - carpooled	206	80	16.4%	454	132	12.9%
Public transportation (excluding taxicab)	0	19	0.0%	19	28	0.5%
Walked	150	102	11.9%	51	40	1.4%
Taxicab, motorcycle, bicycle, or other means	66	65	5.3%	50	34	1.4%
Worked at home	0	19	0.0%	90	51	2.5%

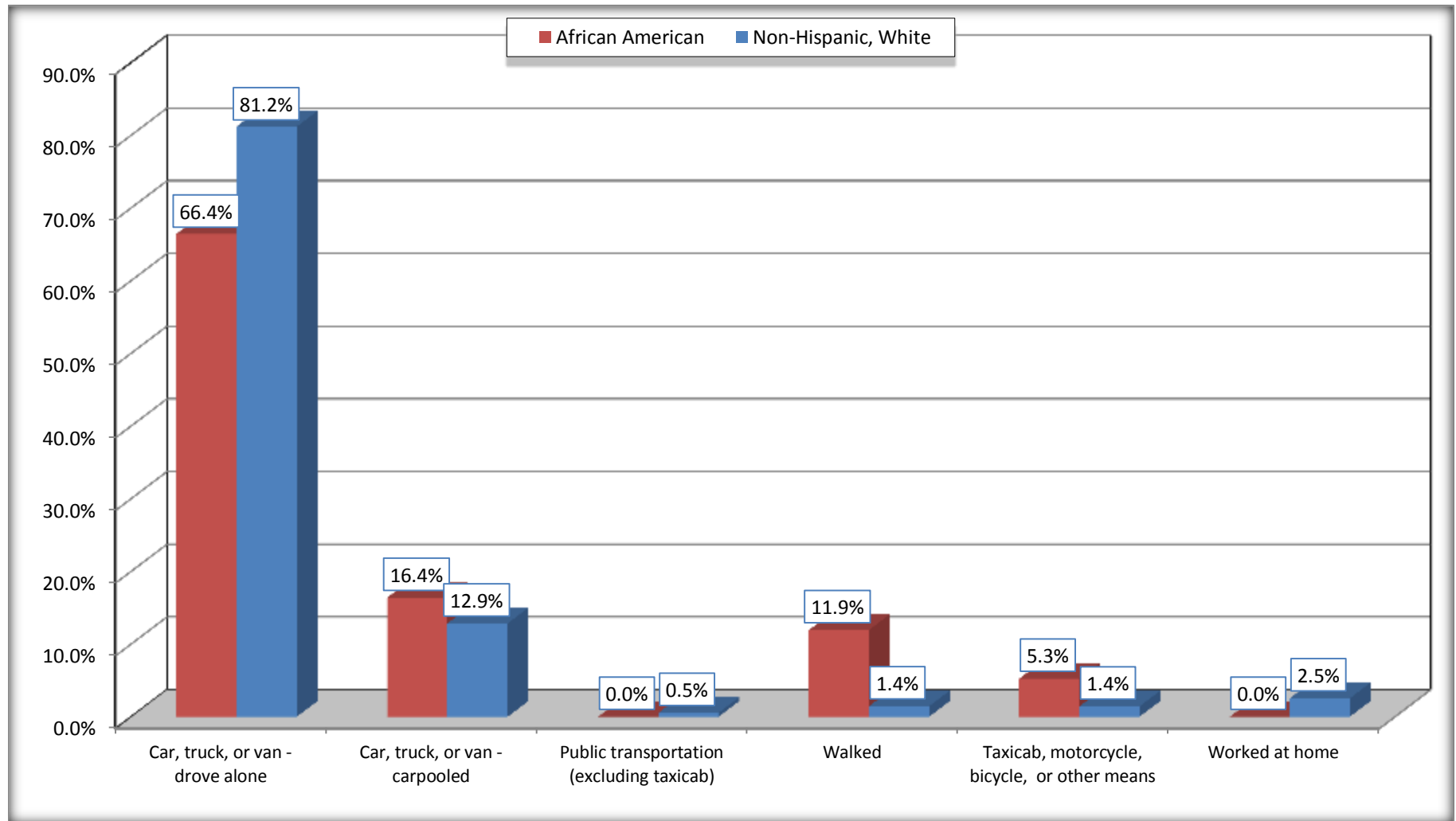
Source: U.S. Census Bureau, 2008-2012 American Community Survey

For information on confidentiality protection, sampling error, nonsampling error, and definitions, see Survey Methodology.

<http://www.census.gov/acs/www/UseData/index.htm>

## Means of Transportation to Work (Workers 16 Years and Over)

### Morgan City city, Louisiana



Source: B08105. MEANS OF TRANSPORTATION TO WORK - Universe: WORKERS 16 YEARS AND OVER  
Data Set: 2008-2012 American Community Survey 5-Year Estimates



**B11002. HOUSEHOLD TYPE BY RELATIVES AND NONRELATIVES FOR POPULATION IN HOUSEHOLDS**

Data Set: 2008-2012 American Community Survey 5-Year Estimates

	Morgan City city, Louisiana					
	African American	Margin of Error (+/-)	% of AA Total	White, Not Hispanic	Margin of Error (+/-)	% of NHW Total
<b>Total:</b>	3451	441	<b>100.0%</b>	7290	526	<b>100.0%</b>
In family households	2901	499	84.1%	5499	590	75.4%
In nonfamily households	550	203	15.9%	1791	324	24.6%

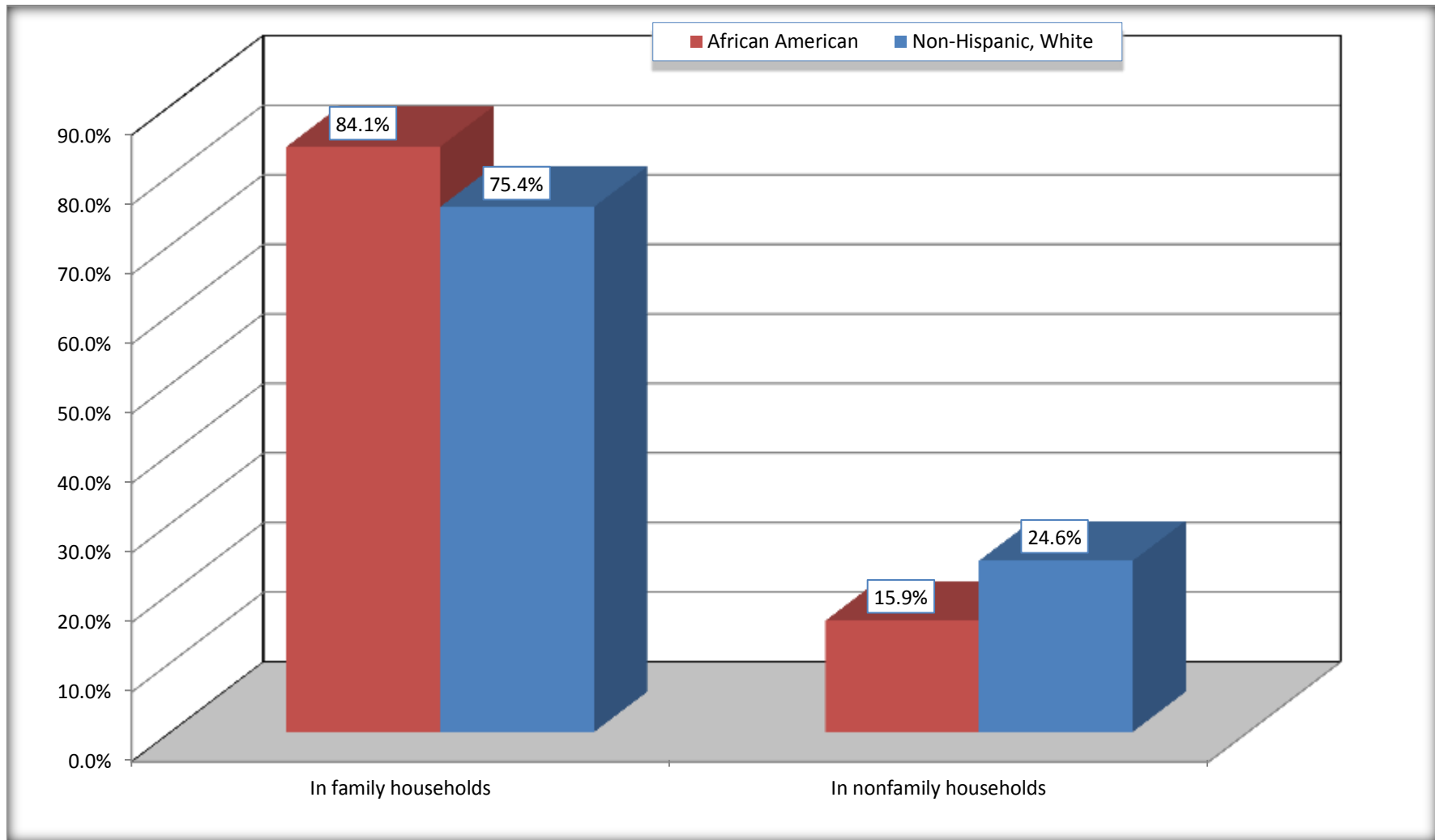
Source: U.S. Census Bureau, 2008-2012 American Community Survey

For information on confidentiality protection, sampling error, nonsampling error, and definitions, see Survey Methodology.

<http://www.census.gov/acs/www/UseData/index.htm>

# Household Type for Population in Households

## Morgan City city, Louisiana



Source: B11002. HOUSEHOLD TYPE BY RELATIVES AND NONRELATIVES FOR POPULATION IN HOUSEHOLDS  
Data Set: 2008-2012 American Community Survey 5-Year Estimates

**B12002. MARITAL STATUS FOR THE POPULATION 15 YEARS AND OVER**

Data Set: 2008-2012 American Community Survey 5-Year Estimates

	Morgan City city, Louisiana					
	African American	Margin of Error (+/-)	% of AA Total	White, Not Hispanic	Margin of Error (+/-)	% of NHW Total
<b>Total:</b>	<b>2,749</b>	<b>279</b>	<b>100.0%</b>	<b>6,405</b>	<b>412</b>	<b>100.0%</b>
Never married	1,420	NC	51.7%	1,934	NC	30.2%
Now married (except separated)	708	NC	25.8%	3,011	NC	47.0%
Separated	145	NC	5.3%	205	NC	3.2%
Widowed	150	NC	5.5%	482	NC	7.5%
Divorced	326	NC	11.9%	773	NC	12.1%
<b>Male:</b>	<b>1,133</b>	<b>181</b>	<b>41.2%</b>	<b>3,317</b>	<b>278</b>	<b>51.8%</b>
Never married	546	126	19.9%	1,234	209	19.3%
Now married (except separated)	345	114	12.6%	1,527	192	23.8%
Separated	37	34	1.3%	100	74	1.6%
Widowed	72	52	2.6%	116	59	1.8%
Divorced	133	85	4.8%	340	118	5.3%
<b>Female:</b>	<b>1,616</b>	<b>200</b>	<b>58.8%</b>	<b>3,088</b>	<b>245</b>	<b>48.2%</b>
Never married	874	164	31.8%	700	162	10.9%
Now married (except separated)	363	109	13.2%	1,484	177	23.2%
Separated	108	61	3.9%	105	78	1.6%
Widowed	78	50	2.8%	366	101	5.7%
Divorced	193	112	7.0%	433	135	6.8%

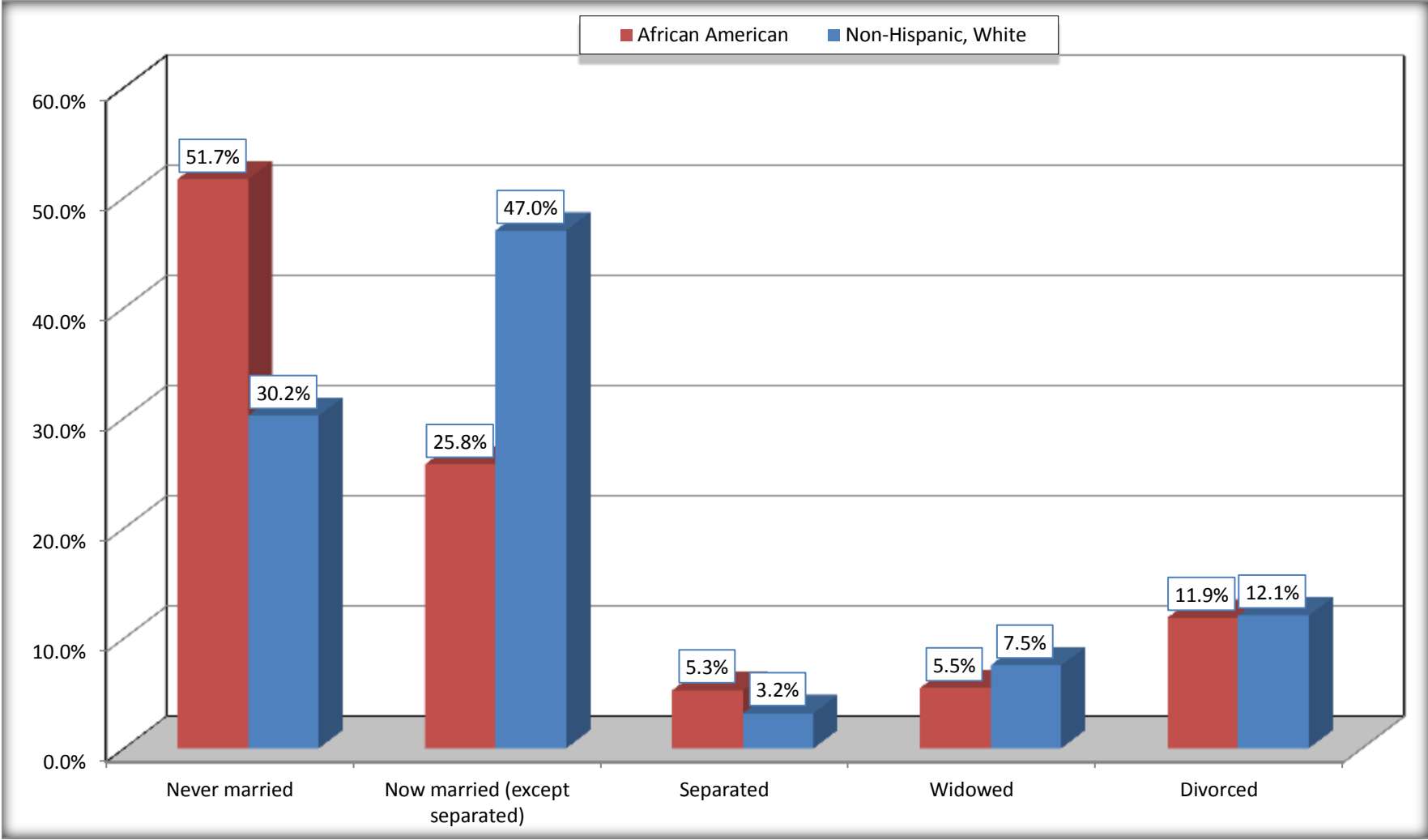
Source: U.S. Census Bureau, 2008-2012 American Community Survey

For information on confidentiality protection, sampling error, nonsampling error, and definitions, see Survey Methodology.

<http://www.census.gov/acs/www/UseData/index.htm>

# Marital Status for the Population 15 Years and Over

## Morgan City city, Louisiana



Source: B12002. MARITAL STATUS FOR THE POPULATION 15 YEARS AND OVER  
Data Set: 2008-2012 American Community Survey 5-Year Estimates

**C15002. SEX BY EDUCATIONAL ATTAINMENT FOR THE POPULATION 25 YEARS AND OVER**

Data Set: 2008-2012 American Community Survey 5-Year Estimates

	Morgan City city, Louisiana					
	African American	Margin of Error (+/-)	% of AA Total	White, Not Hispanic	Margin of Error (+/-)	% of NHW Total
<b>Total:</b>	<b>1,986</b>	<b>222</b>	<b>100.0%</b>	<b>5,378</b>	<b>360</b>	<b>100.0%</b>
Less than high school diploma	527	NC	26.5%	1,450	NC	27.0%
High school graduate, GED, or alternative	972	NC	48.9%	1,723	NC	32.0%
Some college or associate's degree	384	NC	19.3%	1,310	NC	24.4%
Bachelor's degree or higher	103	NC	5.2%	895	NC	16.6%
Male:	812	156	40.9%	2,758	244	51.3%
Less than high school diploma	289	94	14.6%	770	185	14.3%
High school graduate, GED, or alternative	388	109	19.5%	884	181	16.4%
Some college or associate's degree	119	69	6.0%	690	154	12.8%
Bachelor's degree or higher	16	22	0.8%	414	103	7.7%
Female:	1,174	144	59.1%	2,620	205	48.7%
Less than high school diploma	238	88	12.0%	680	157	12.6%
High school graduate, GED, or alternative	584	151	29.4%	839	159	15.6%
Some college or associate's degree	265	104	13.3%	620	155	11.5%
Bachelor's degree or higher	87	62	4.4%	481	125	8.9%

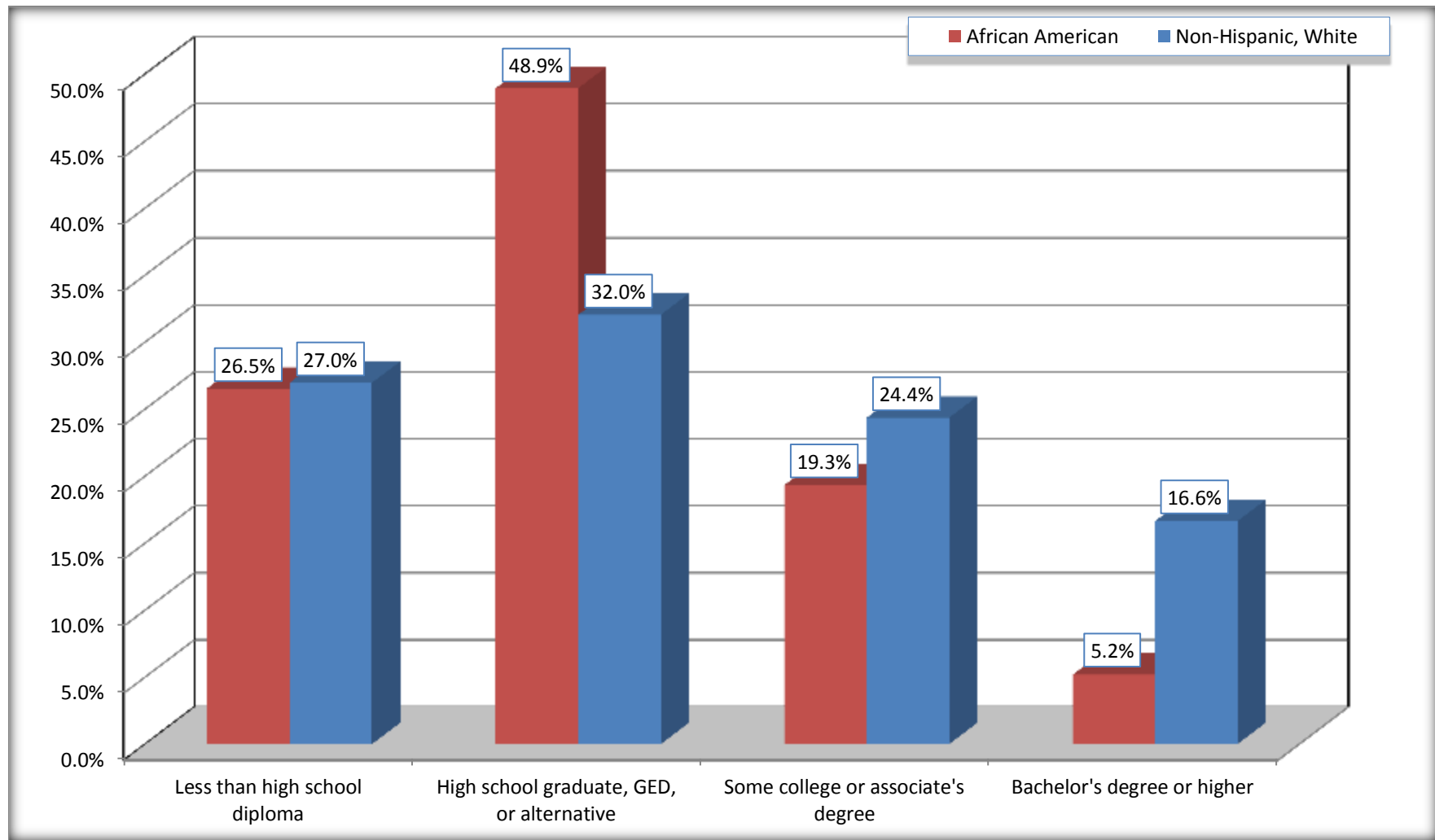
Source: U.S. Census Bureau, 2008-2012 American Community Survey

For information on confidentiality protection, sampling error, nonsampling error, and definitions, see Survey Methodology.

<http://www.census.gov/acs/www/UseData/index.htm>

# Educational Attainment for the Population 25 Years and Older

## Morgan City city, Louisiana



Source: C15002. SEX BY EDUCATIONAL ATTAINMENT FOR THE POPULATION 25 YEARS AND OVER  
Data Set: 2008-2012 American Community Survey 5-Year Estimates

**B17010. POVERTY STATUS IN THE PAST 12 MONTHS OF FAMILIES BY FAMILY TYPE BY PRESENCE OF RELATED CHILDREN UNDER 18 YEARS**

Data Set: 2008-2012 American Community Survey 5-Year Estimates

	Morgan City city, Louisiana					
	African American	Margin of Error (+/-)	% of AA Total	White, Not Hispanic	Margin of Error (+/-)	% of NHW Total
<b>Total:</b>	<b>783</b>	<b>141</b>	<b>100.0%</b>	<b>1,889</b>	<b>216</b>	<b>100.0%</b>
Income in the past 12 months below poverty level:	226	96	28.9%	201	77	10.6%
Married-couple family:	77	54	9.8%	74	39	3.9%
With related children under 18 years	61	54	7.8%	18	22	1.0%
Other family:	149	87	19.0%	127	71	6.7%
Male householder, no wife present	0	19	0.0%	29	46	1.5%
With related children under 18 years	0	19	0.0%	29	46	1.5%
Female householder, no husband present	149	87	19.0%	98	55	5.2%
With related children under 18 years	149	87	19.0%	88	52	4.7%
Income in the past 12 months at or above poverty level:	557	135	71.1%	1,688	215	89.4%
Married-couple family:	250	89	31.9%	1,364	186	72.2%
With related children under 18 years	172	74	22.0%	388	99	20.5%
Other family:	307	116	39.2%	324	108	17.2%
Male householder, no wife present	81	59	10.3%	133	68	7.0%
With related children under 18 years	55	50	7.0%	31	30	1.6%
Female householder, no husband present	226	95	28.9%	191	92	10.1%
With related children under 18 years	188	84	24.0%	118	73	6.2%

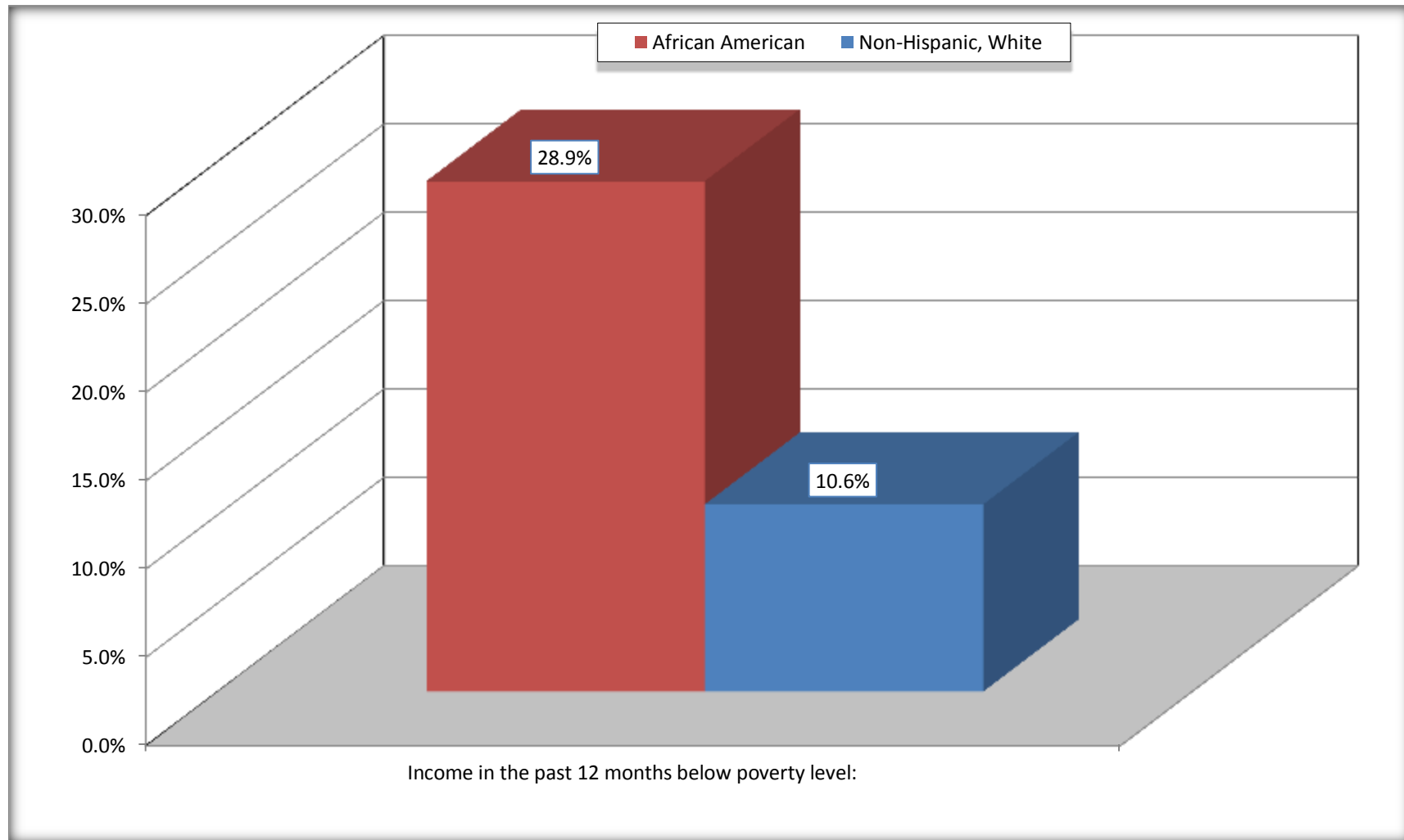
Source: U.S. Census Bureau, 2008-2012 American Community Survey

For information on confidentiality protection, sampling error, nonsampling error, and definitions, see Survey Methodology.

<http://www.census.gov/acs/www/UseData/index.htm>

# Family Households Below Poverty in the Past 12 Months

## Morgan City city, Louisiana



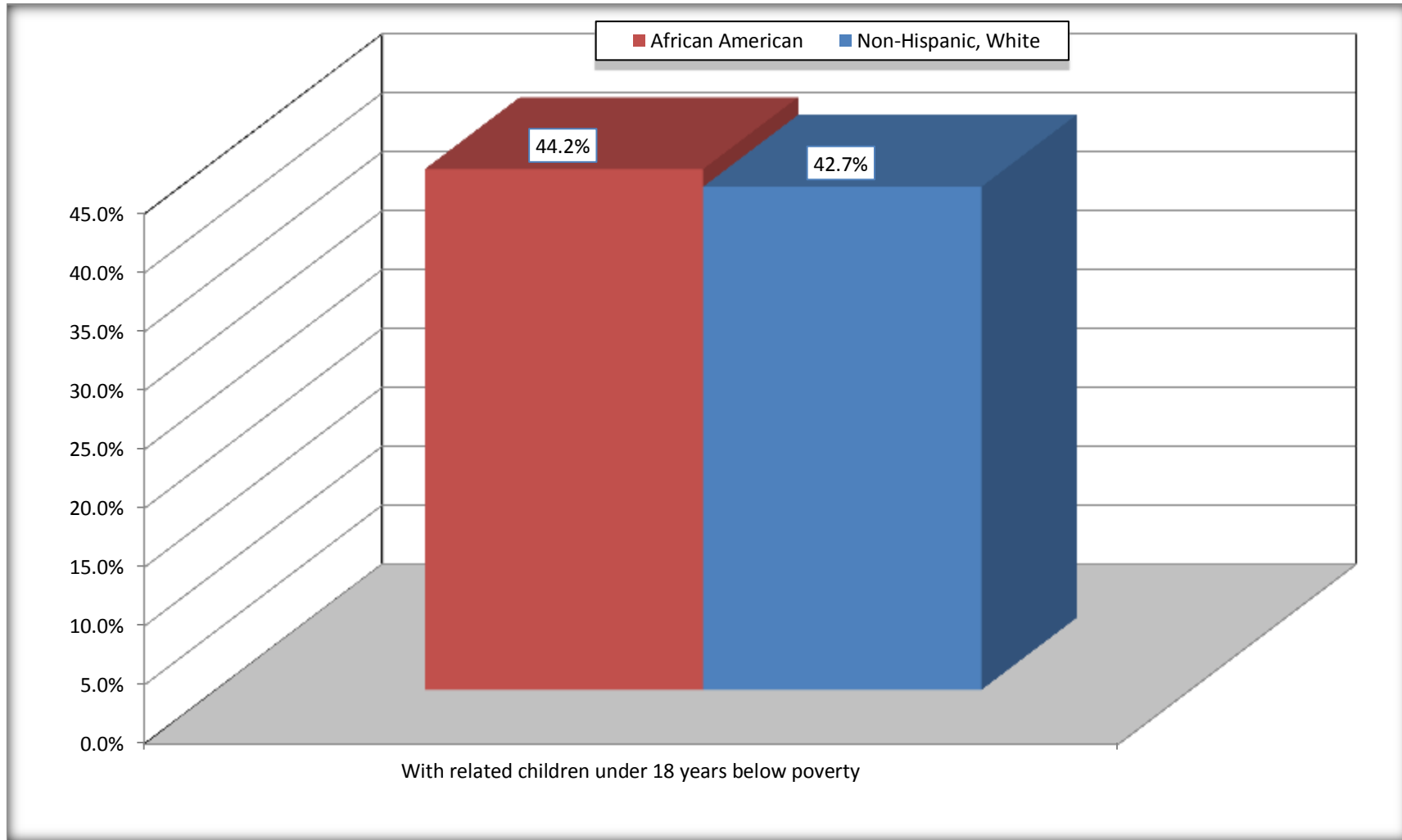
Source: B17010. POVERTY STATUS IN THE PAST 12 MONTHS OF FAMILIES BY FAMILY TYPE BY PRESENCE OF RELATED CHILDREN UNDER 18 YEARS

Data Set: 2008-2012 American Community Survey 5-Year Estimates



# Female-headed Households with Related Children Below Poverty in the Past 12 Months

## Morgan City city, Louisiana



Source: B17010. POVERTY STATUS IN THE PAST 12 MONTHS OF FAMILIES BY FAMILY TYPE BY PRESENCE OF RELATED CHILDREN UNDER 18 YEARS

Data Set: 2008-2012 American Community Survey 5-Year Estimates

**B17020 POVERTY STATUS IN THE PAST 12 MONTHS BY AGE - Universe: POPULATION FOR WHOM POVERTY STATUS IS DETERMINED**

Data Set: 2008-2012 American Community Survey 5-Year Estimates

	Morgan City city, Louisiana					
	African American	Margin of Error (+/-)	% of AA By Age	White, Not Hispanic	Margin of Error (+/-)	% of NHW By Age
<b>Total:</b>	<b>3,405</b>	<b>411</b>	<b>100.0%</b>	<b>7,173</b>	<b>490</b>	<b>100.0%</b>
Income in the past 12 months below poverty level:	935	336	27.5%	1,014	320	14.1%
<b>Under 18 years</b>	330	NC	33.8%	278	NC	25.4%
<b>18 to 64 years</b>	556	186	25.5%	582	171	12.1%
<b>65 years and over</b>	49	NC	20.0%	154	NC	12.0%
Income in the past 12 months at or above poverty level:	2,470	461	72.5%	6,159	566	85.9%
<b>Under 18 years</b>	647	NC	66.2%	816	NC	74.6%
<b>18 to 64 years</b>	1,627	288	74.5%	4,214	413	87.9%
<b>65 years and over</b>	196	NC	80.0%	1,129	NC	88.0%

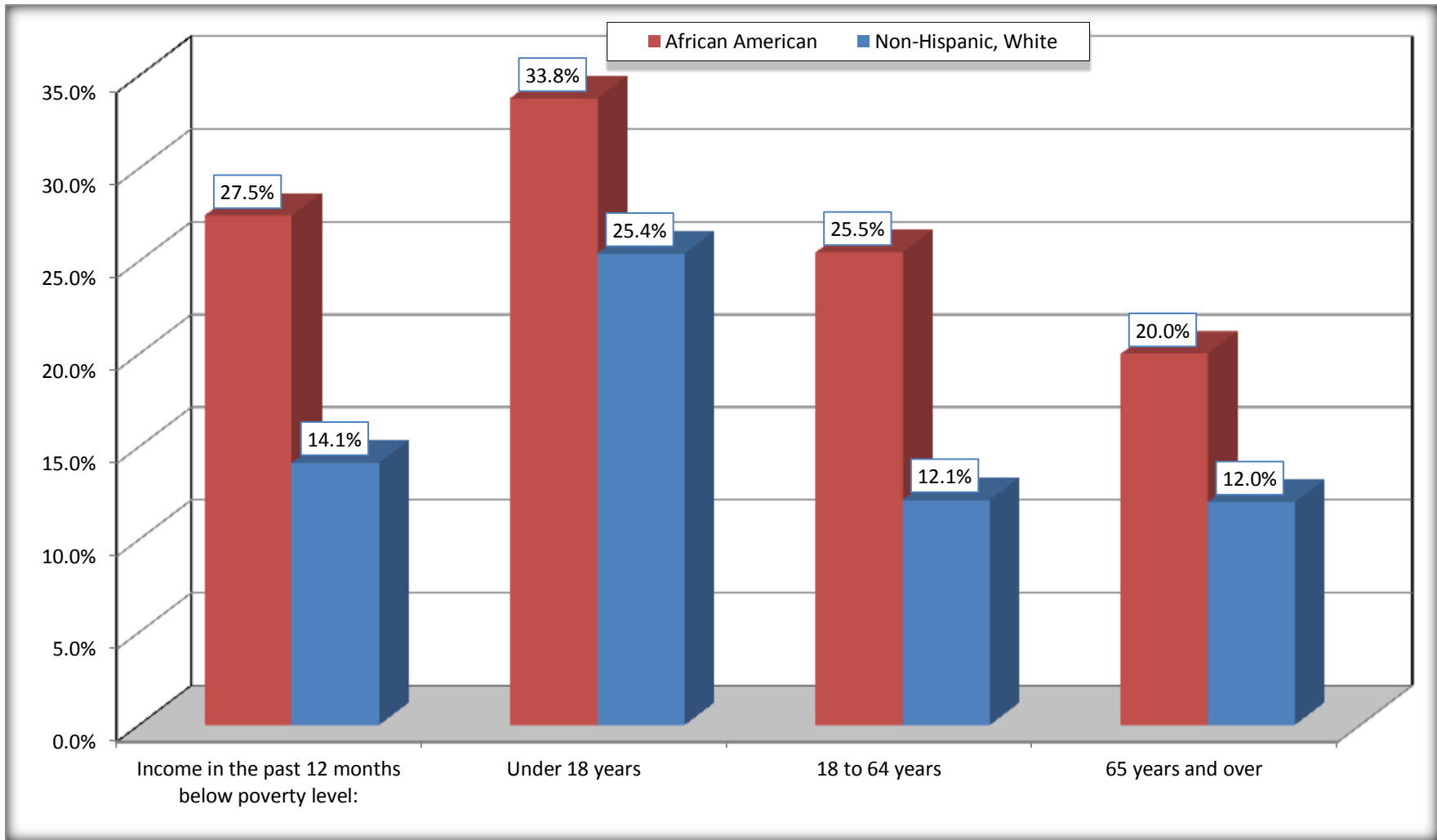
Source: U.S. Census Bureau, 2008-2012 American Community Survey

For information on confidentiality protection, sampling error, nonsampling error, and definitions, see Survey Methodology.

<http://www.census.gov/acs/www/UseData/index.htm>

# Population Below Poverty in the Past 12 Months

## Morgan City city, Louisiana



Source: B17020 POVERTY STATUS IN THE PAST 12 MONTHS BY AGE - Universe: POPULATION FOR WHOM POVERTY STATUS IS DETERMINED  
Data Set: 2008-2012 American Community Survey 5-Year Estimates

**B19001. HOUSEHOLD INCOME IN THE PAST 12 MONTHS (IN 2010 INFLATION-ADJUSTED DOLLARS)**

Data Set: 2008-2012 American Community Survey 5-Year Estimates

	Morgan City city, Louisiana					
	African American	Margin of Error (+/-)	% of AA Total	White, Not Hispanic	Margin of Error (+/-)	% of NHW Total
<b>Total:</b>	<b>1,216</b>	<b>161</b>	<b>100.0%</b>	<b>3,264</b>	<b>246</b>	<b>100.0%</b>
Less than \$ 10,000	244	103	20.1%	352	140	10.8%
\$ 10,000 to \$ 14,999	125	92	10.3%	116	66	3.6%
<b>\$ 15,000 to \$ 24,999</b>	213	NC	17.5%	384	NC	11.8%
<b>\$ 25,000 to \$ 34,999</b>	270	NC	22.2%	300	NC	9.2%
<b>\$ 35,000 to \$ 49,999</b>	126	NC	10.4%	542	NC	16.6%
<b>\$ 50,000 to \$ 74,999</b>	189	NC	15.5%	595	NC	18.2%
\$ 75,000 to \$ 99,999	12	16	1.0%	447	111	13.7%
<b>\$ 100,000 to \$ 149,999</b>	23	NC	1.9%	287	NC	8.8%
\$ 150,000 to \$ 199,999	0	19	0.0%	139	63	4.3%
\$ 200,000 or more	14	24	1.2%	102	44	3.1%

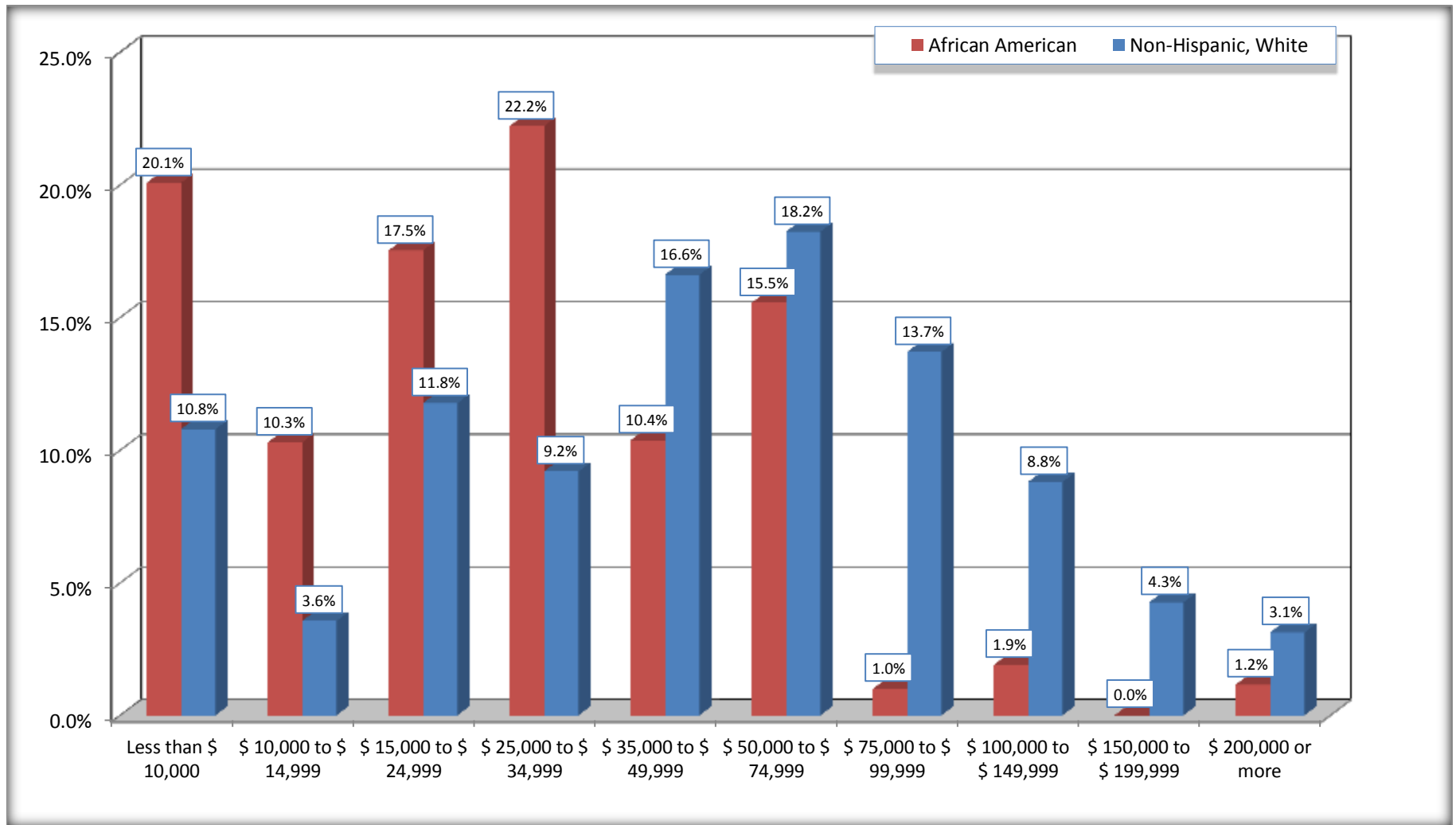
Source: U.S. Census Bureau, 2008-2012 American Community Survey

For information on confidentiality protection, sampling error, nonsampling error, and definitions, see Survey Methodology.

<http://www.census.gov/acs/www/UseData/index.htm>

# Household Income in the Past 12 Months

## Morgan City city, Louisiana



Source: B19001. HOUSEHOLD INCOME IN THE PAST 12 MONTHS (IN 2010 INFLATION-ADJUSTED DOLLARS)  
Data Set: 2008-2012 American Community Survey 5-Year Estimates

**B19013. MEDIAN HOUSEHOLD INCOME IN THE PAST 12 MONTHS (IN 2010 INFLATION-ADJUSTED DOLLARS)**

Data Set: 2008-2012 American Community Survey 5-Year Estimates

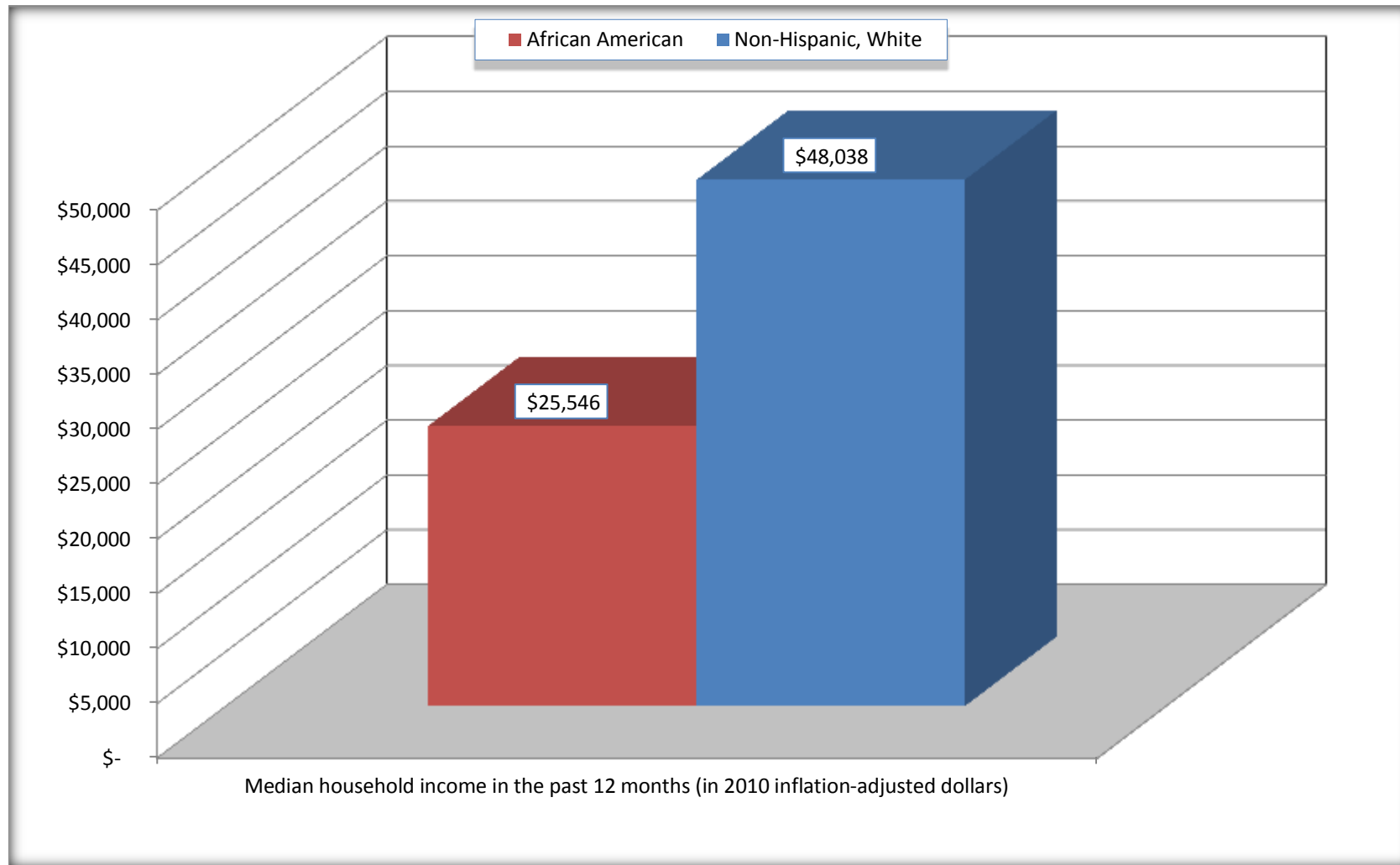
	<b>Morgan City city, Louisiana</b>			
	African American	Margin of Error (+/-)	White, Not Hispanic	Margin of Error (+/-)
Median household income in the past 12 months (in 2010 inflation-adjusted dollars)	\$ 25,546	\$ 8,385	\$ 48,038	\$ 5,847

Source: U.S. Census Bureau, 2008-2012 American Community Survey

For information on confidentiality protection, sampling error, nonsampling error, and definitions, see Survey Methodology.  
<http://www.census.gov/acs/www/UseData/index.htm>

## Median Household Income in the Past 12 Months

### Morgan City city, Louisiana



Source: B19013. MEDIAN HOUSEHOLD INCOME IN THE PAST 12 MONTHS (IN 2010 INFLATION-ADJUSTED DOLLARS)  
Data Set: 2008-2012 American Community Survey 5-Year Estimates

**B19101. FAMILY INCOME IN THE PAST 12 MONTHS (IN 2010 INFLATION-ADJUSTED DOLLARS)**

Data Set: 2008-2012 American Community Survey 5-Year Estimates

	Morgan City city, Louisiana					
	African American	Margin of Error (+/-)	% of AA Total	White, Not Hispanic	Margin of Error (+/-)	% of NHW Total
<b>Total:</b>	<b>783</b>	<b>141</b>	<b>100.0%</b>	<b>1,889</b>	<b>216</b>	<b>100.0%</b>
Less than \$ 10,000	114	75	14.6%	86	64	4.6%
\$ 10,000 to \$ 14,999	42	48	5.4%	66	51	3.5%
<b>\$ 15,000 to \$ 24,999</b>	<b>112</b>	<b>NC</b>	<b>14.3%</b>	<b>205</b>	<b>NC</b>	<b>10.9%</b>
<b>\$ 25,000 to \$ 34,999</b>	<b>240</b>	<b>NC</b>	<b>30.7%</b>	<b>188</b>	<b>NC</b>	<b>10.0%</b>
<b>\$ 35,000 to \$ 49,999</b>	<b>98</b>	<b>NC</b>	<b>12.5%</b>	<b>251</b>	<b>NC</b>	<b>13.3%</b>
<b>\$ 50,000 to \$ 74,999</b>	<b>128</b>	<b>NC</b>	<b>16.3%</b>	<b>365</b>	<b>NC</b>	<b>19.3%</b>
<b>\$ 100,000 to \$ 149,999</b>	<b>23</b>	<b>NC</b>	<b>2.9%</b>	<b>241</b>	<b>NC</b>	<b>12.8%</b>
\$ 150,000 to \$ 199,999	0	19	0.0%	127	58	6.7%
\$ 200,000 or more	14	24	1.8%	76	46	4.0%

Source: U.S. Census Bureau, 2008-2012 American Community Survey

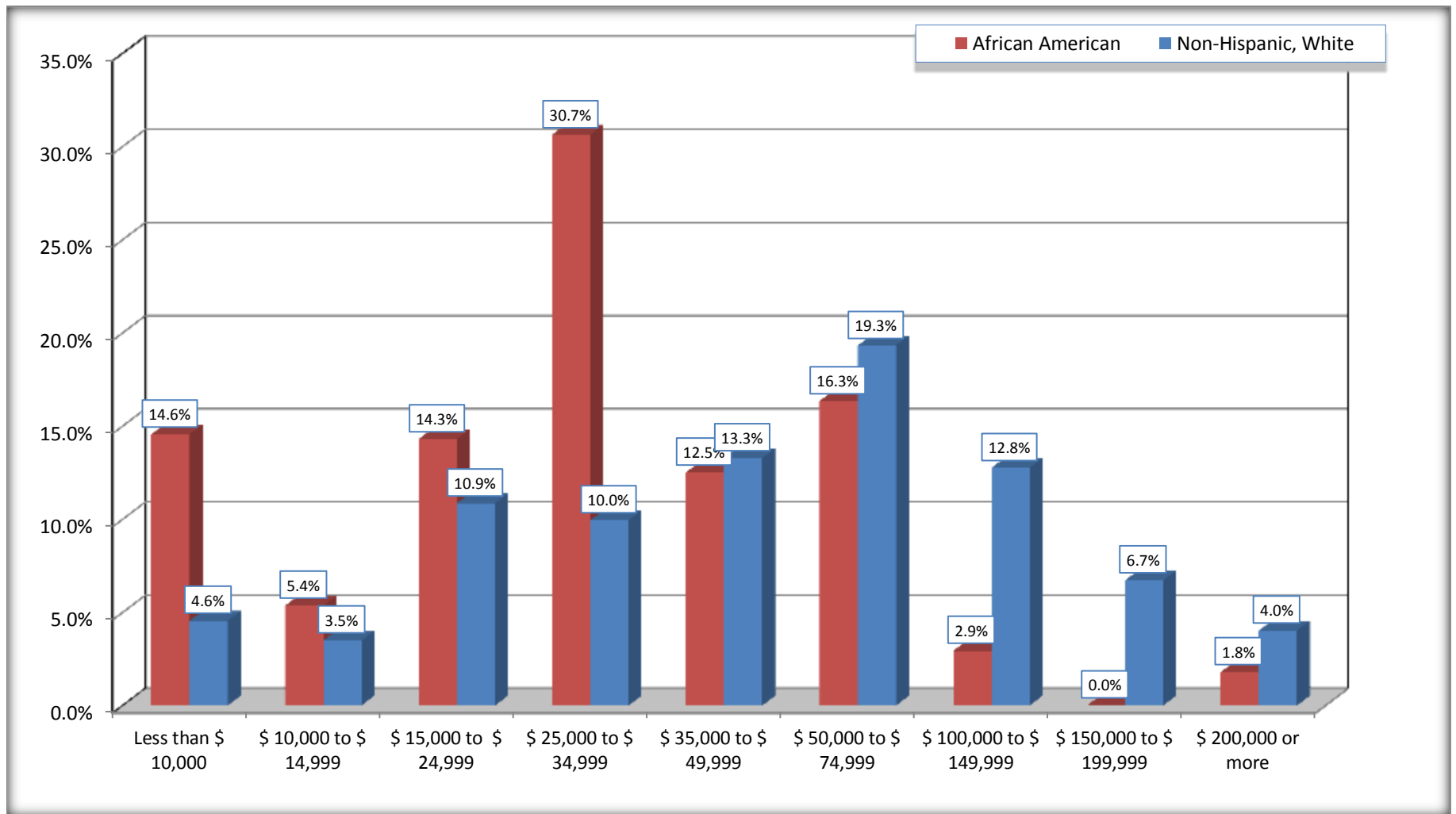
For information on confidentiality protection, sampling error, nonsampling error, and definitions, see Survey Methodology.

<http://www.census.gov/acs/www/UseData/index.htm>



# Family Income in the Past 12 Months

## Morgan City city, Louisiana



Source: B19101. FAMILY INCOME IN THE PAST 12 MONTHS (IN 2010 INFLATION-ADJUSTED DOLLARS)  
Data Set: 2008-2012 American Community Survey 5-Year Estimates

**B19113. MEDIAN FAMILY INCOME IN THE PAST 12 MONTHS (IN 2010 INFLATION-ADJUSTED DOLLARS)**

Data Set: 2008-2012 American Community Survey 5-Year Estimates

	<b>Morgan City city, Louisiana</b>			
	African American	Margin of Error (+/-)	White, Not Hispanic	Margin of Error (+/-)
Median family income in the past 12 months (in 2010 inflation-adjusted dollars)	\$ 28,438	\$ 2,134	\$ 56,959	\$ 8,288

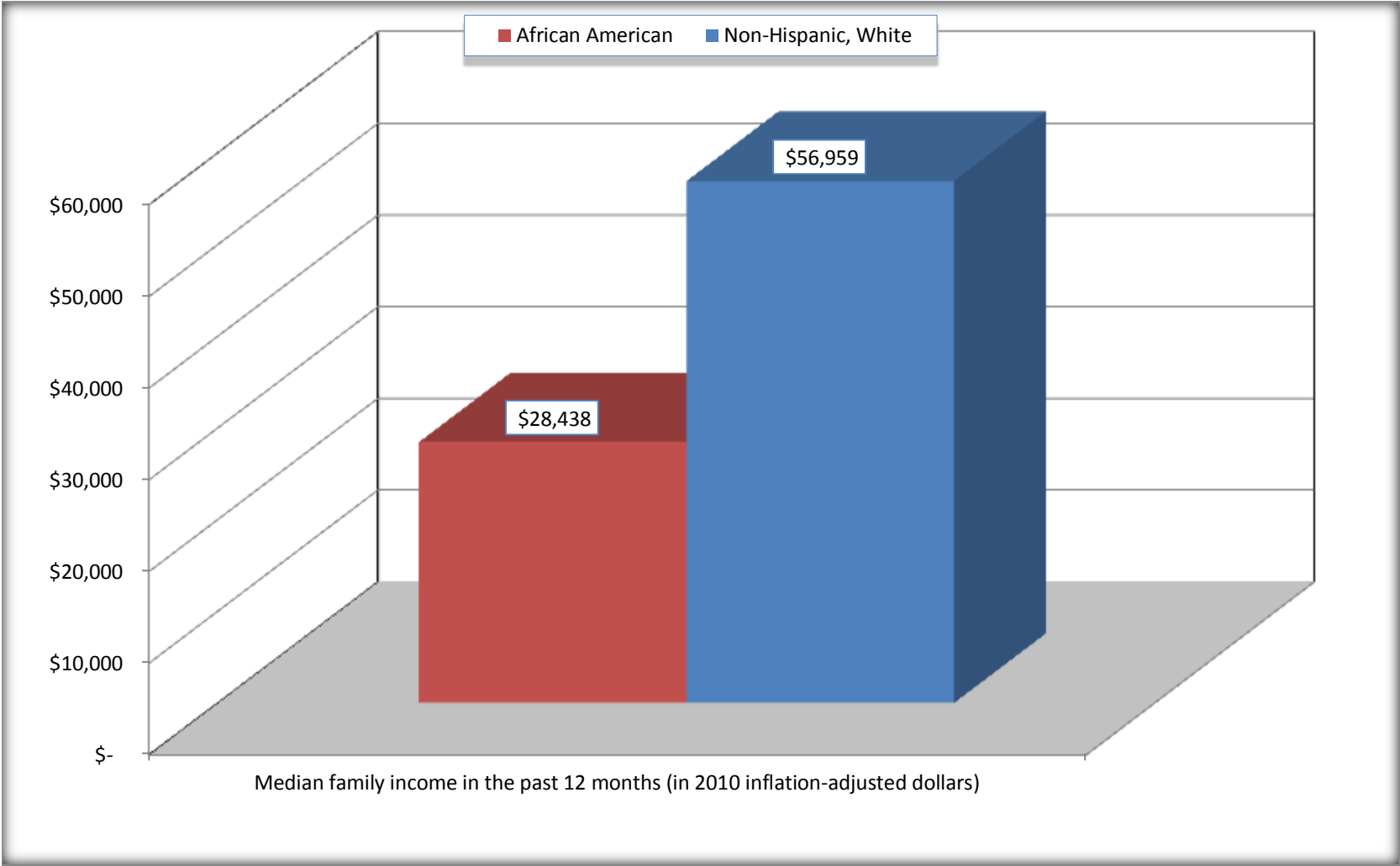
Source: U.S. Census Bureau, 2008-2012 American Community Survey

For information on confidentiality protection, sampling error, nonsampling error, and definitions, see Survey Methodology.

<http://www.census.gov/acs/www/UseData/index.htm>

# Median Family Income in the Past 12 Months

## Morgan City city, Louisiana



Source: B19113. MEDIAN FAMILY INCOME IN THE PAST 12 MONTHS (IN 2010 INFLATION-ADJUSTED DOLLARS)  
Data Set: 2008-2012 American Community Survey 5-Year Estimates

**B19202. MEDIAN NONFAMILY HOUSEHOLD INCOME IN THE PAST 12 MONTHS (IN 2010 INFLATION-ADJUSTED DOLLARS)**

Data Set: 2008-2012 American Community Survey 5-Year Estimates

	<b>Morgan City city, Louisiana</b>			
	African American	Margin of Error (+/-)	White, Not Hispanic	Margin of Error (+/-)
Median nonfamily household income in the past 12 months (in 2010 inflation-adjusted dollars)	\$ 15,099	\$ 5,615	\$ 36,875	\$ 3,592

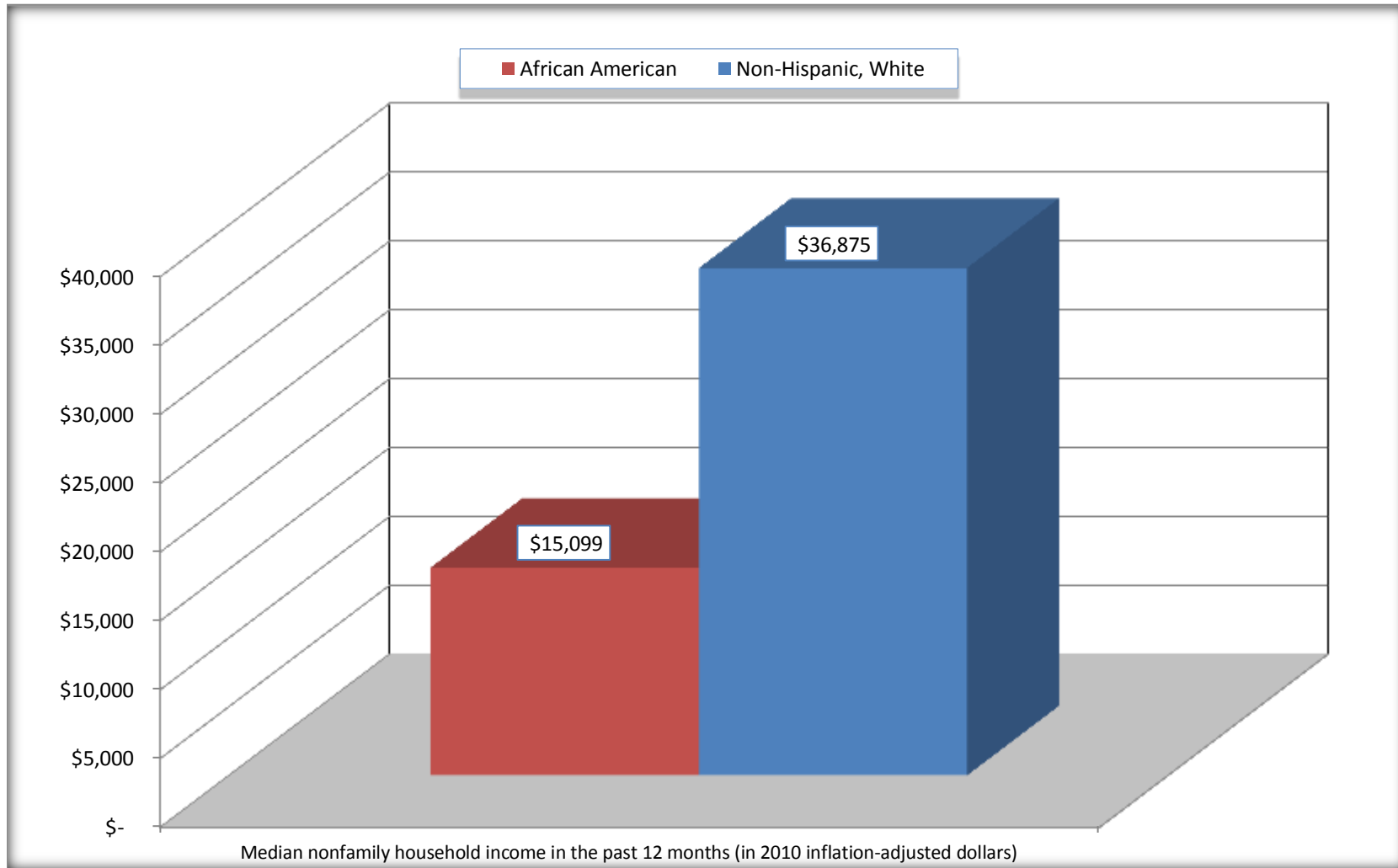
Source: U.S. Census Bureau, 2008-2012 American Community Survey

For information on confidentiality protection, sampling error, nonsampling error, and definitions, see Survey Methodology.

<http://www.census.gov/acs/www/UseData/index.htm>

# Median Non-Family Income in the Past 12 Months

## Morgan City city, Louisiana



Source: B19202. MEDIAN NONFAMILY HOUSEHOLD INCOME IN THE PAST 12 MONTHS (IN 2010 INFLATION-ADJUSTED DOLLARS)  
Data Set: 2008-2012 American Community Survey 5-Year Estimates

**B19301. PER CAPITA INCOME IN THE PAST 12 MONTHS (IN 2010 INFLATION-ADJUSTED DOLLARS)**

Data Set: 2008-2012 American Community Survey 5-Year Estimates

	<b>Morgan City city, Louisiana</b>			
	African American	Margin of Error (+/-)	White, Not Hispanic	Margin of Error (+/-)
Per capita income in the past 12 months (in 2010 inflation-adjusted dollars)	\$ 11,580	\$ 1,815	\$ 28,417	\$ 2,211

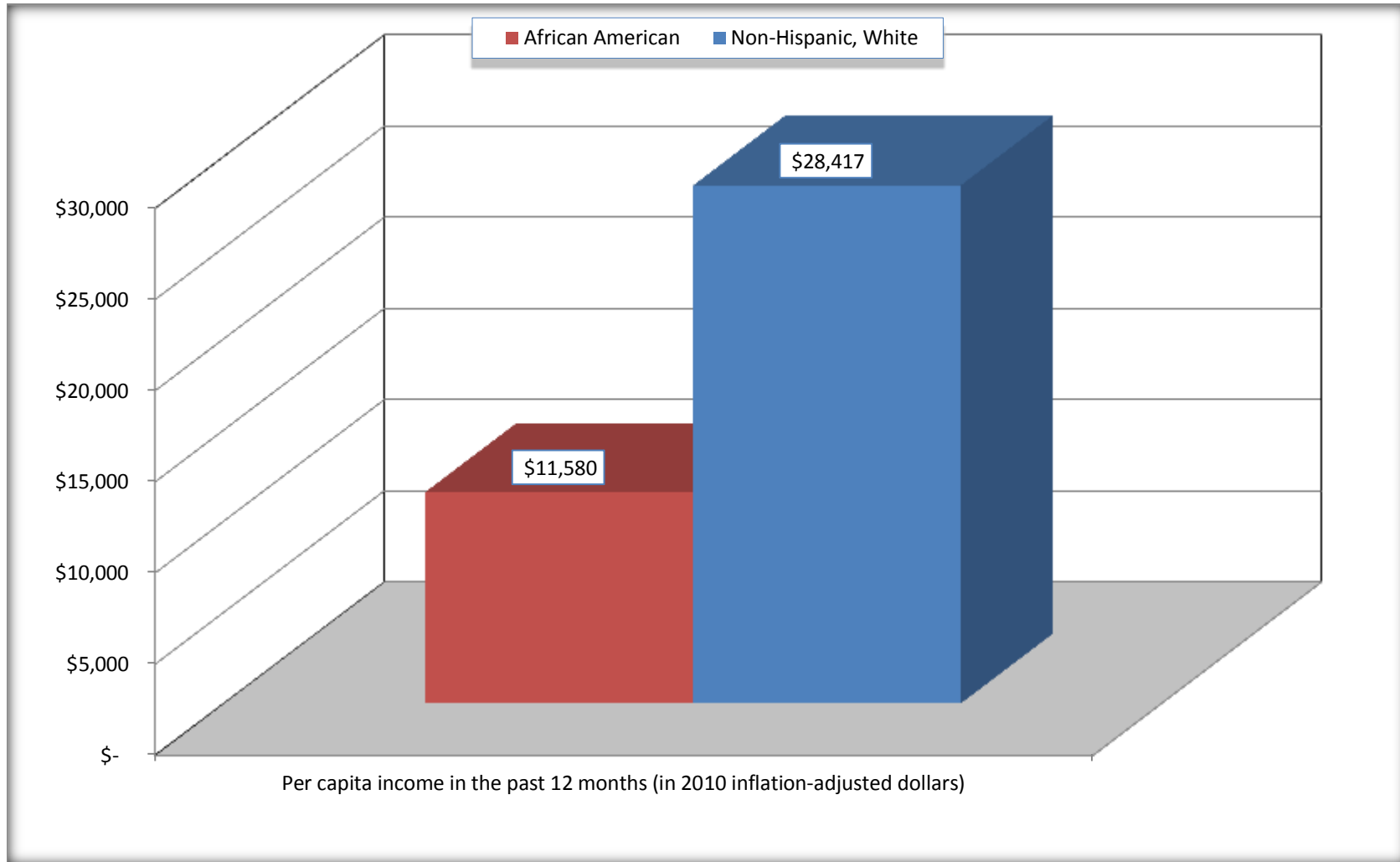
Source: U.S. Census Bureau, 2008-2012 American Community Survey

For information on confidentiality protection, sampling error, nonsampling error, and definitions, see Survey Methodology.

<http://www.census.gov/acs/www/UseData/index.htm>

## Per capita Income in the Past 12 Months

### Morgan City city, Louisiana



Source: B19301. PER CAPITA INCOME IN THE PAST 12 MONTHS (IN 2010 INFLATION-ADJUSTED DOLLARS)  
Data Set: 2008-2012 American Community Survey 5-Year Estimates

**B20017. MEDIAN EARNINGS IN THE PAST 12 MONTHS (IN 2010 INFLATION-ADJUSTED DOLLARS) BY SEX BY WORK EXPERIENCE IN THE PAST 12 MONTHS FOR THE POPULATION 16 YEARS AND OVER WITH EARNINGS IN THE PAST 12 MONTHS**

Data Set: 2008-2012 American Community Survey 5-Year Estimates

	Morgan City city, Louisiana			
	African American	Margin of Error (+/-)	White, Not Hispanic	Margin of Error (+/-)
Median earnings in the past 12 months (in 2010 inflation-adjusted dollars) --				
Total:	\$ 15,837	\$ 1,791	\$ 35,238	\$ 5,453
Male --				
Total	\$ 17,462	\$ 5,250	\$ 43,532	\$ 4,005
Worked full-time, year-round in the past 12 months	\$ 27,596	\$ 6,532	\$ 53,520	\$ 7,608
Other	\$ 5,280	\$ 2,193	\$ 12,500	\$ 16,689
Female --				
Total	\$ 15,147	\$ 3,606	\$ 22,050	\$ 4,456
Worked full-time, year-round in the past 12 months	\$ 16,678	\$ 2,108	\$ 33,448	\$ 4,959
Other	\$ 7,563	\$ 10,104	\$ 9,514	\$ 2,363

Source: U.S. Census Bureau, 2008-2012 American Community Survey

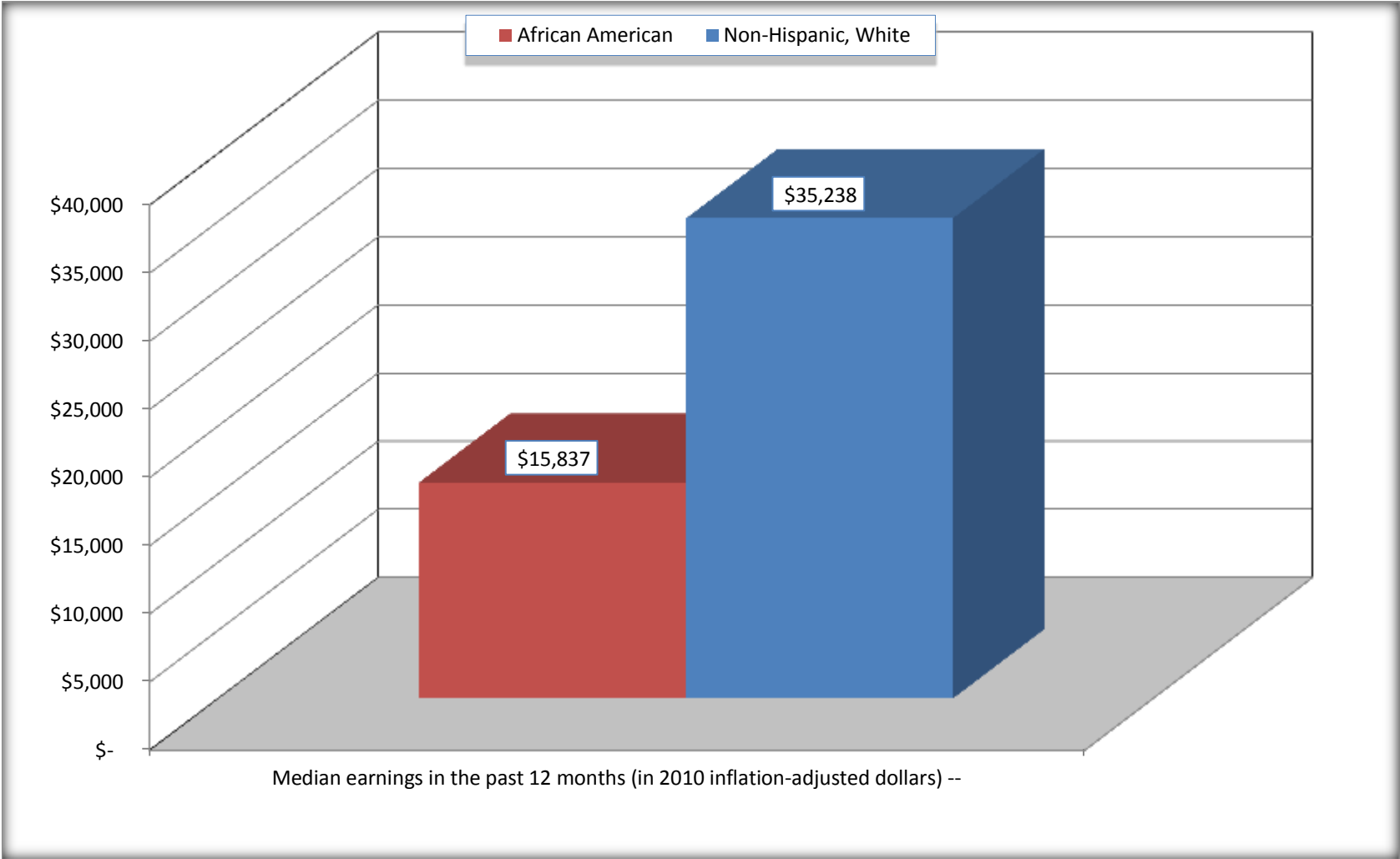
For information on confidentiality protection, sampling error, nonsampling error, and definitions, see Survey Methodology.

<http://www.census.gov/acs/www/UseData/index.htm>



# Median earnings in the Past 12 Months (16 Years and Over with Earnings)

## Morgan City city, Louisiana



Source: B20017. MEDIAN EARNINGS IN THE PAST 12 MONTHS (IN 2010 INFLATION-ADJUSTED DOLLARS) BY SEX BY WORK EXPERIENCE IN THE PAST 12 MONTHS FOR THE POPULATION 16 YEARS AND OVER WITH EARNINGS IN THE PAST 12 MONTHS  
Data Set: 2008-2012 American Community Survey 5-Year Estimates

**B20005. SEX BY WORK EXPERIENCE IN THE PAST 12 MONTHS BY EARNINGS IN THE PAST 12 MONTHS (IN 2010 INFLATION-ADJUSTED DOLLARS) FOR THE POPULATION 16 YEARS AND OVER**

Data Set: 2008-2012 American Community Survey 5-Year Estimates

	Morgan City city, Louisiana					
	African American	Margin of Error (+/-)	% of AA Total	White, Not Hispanic	Margin of Error (+/-)	% of NHW Total
<b>Total:</b>	<b>2,689</b>	<b>291</b>	<b>100.0%</b>	<b>6,333</b>	<b>399</b>	<b>100.0%</b>
Worked full-time, year-round in the past 12 months:	864	NC	32.1%	2,613	NC	41.3%
No earnings	0	NC	0.0%	0	NC	0.0%
With earnings:	864	NC	32.1%	2,613	NC	41.3%
\$ 1 to \$ 9,999 or loss	35	NC	1.3%	68	NC	1.1%
\$ 10,000 to \$ 19,999	349	NC	13.0%	296	NC	4.7%
\$ 20,000 to \$ 29,999	200	NC	7.4%	351	NC	5.5%
\$ 30,000 to \$ 49,999	172	NC	6.4%	823	NC	13.0%
\$ 50,000 to \$ 74,999	71	NC	2.6%	618	NC	9.8%
\$ 75,000 or more	37	NC	1.4%	457	NC	7.2%
Other:	1,825	NC	67.9%	3,720	NC	58.7%
No earnings	1,101	NC	40.9%	2,275	NC	35.9%
With earnings: less than full time, year-round	724	NC	26.9%	1,445	NC	22.8%
Male:	1,105	179	41.1%	3,284	279	51.9%
Worked full-time, year-round in the past 12 months:	383	118	14.2%	1,643	193	25.9%
No earnings	0	19	0.0%	0	19	0.0%
With earnings:	383	118	14.2%	1,643	193	25.9%
\$ 1 to \$ 9,999 or loss	0	NC	0.0%	63	NC	1.0%
\$ 10,000 to \$ 19,999	73	NC	2.7%	92	NC	1.5%
\$ 20,000 to \$ 29,999	131	NC	4.9%	162	NC	2.6%
\$ 30,000 to \$ 49,999	95	NC	3.5%	427	NC	6.7%
\$ 50,000 to \$ 74,999	71	NC	2.6%	499	NC	7.9%
\$ 75,000 or more	13	NC	0.5%	400	NC	6.3%

	Morgan City city, Louisiana					
	African American	Margin of Error (+/-)	% of AA Total	White, Not Hispanic	Margin of Error (+/-)	% of NHW Total
Other:	722	152	26.9%	1,641	222	25.9%
No earnings	425	133	15.8%	901	168	14.2%
With earnings:	297	119	11.0%	740	178	11.7%
Female:	1,584	201	58.9%	3,049	234	48.1%
Worked full-time, year-round in the past 12 months:	481	144	17.9%	970	168	15.3%
No earnings	0	19	0.0%	0	19	0.0%
With earnings:	481	144	17.9%	970	168	15.3%
\$ 1 to \$ 9,999 or loss	35	NC	1.3%	5	NC	0.1%
\$ 10,000 to \$ 19,999	276	NC	10.3%	204	NC	3.2%
\$ 20,000 to \$ 29,999	69	NC	2.6%	189	NC	3.0%
\$ 30,000 to \$ 49,999	77	NC	2.9%	396	NC	6.3%
\$ 50,000 to \$ 74,999	0	NC	0.0%	119	NC	1.9%
\$ 75,000 or more	24	NC	0.9%	57	NC	0.9%
Other:	1,103	202	41.0%	2,079	264	32.8%
No earnings	676	164	25.1%	1,374	212	21.7%
With earnings:	427	153	15.9%	705	180	11.1%

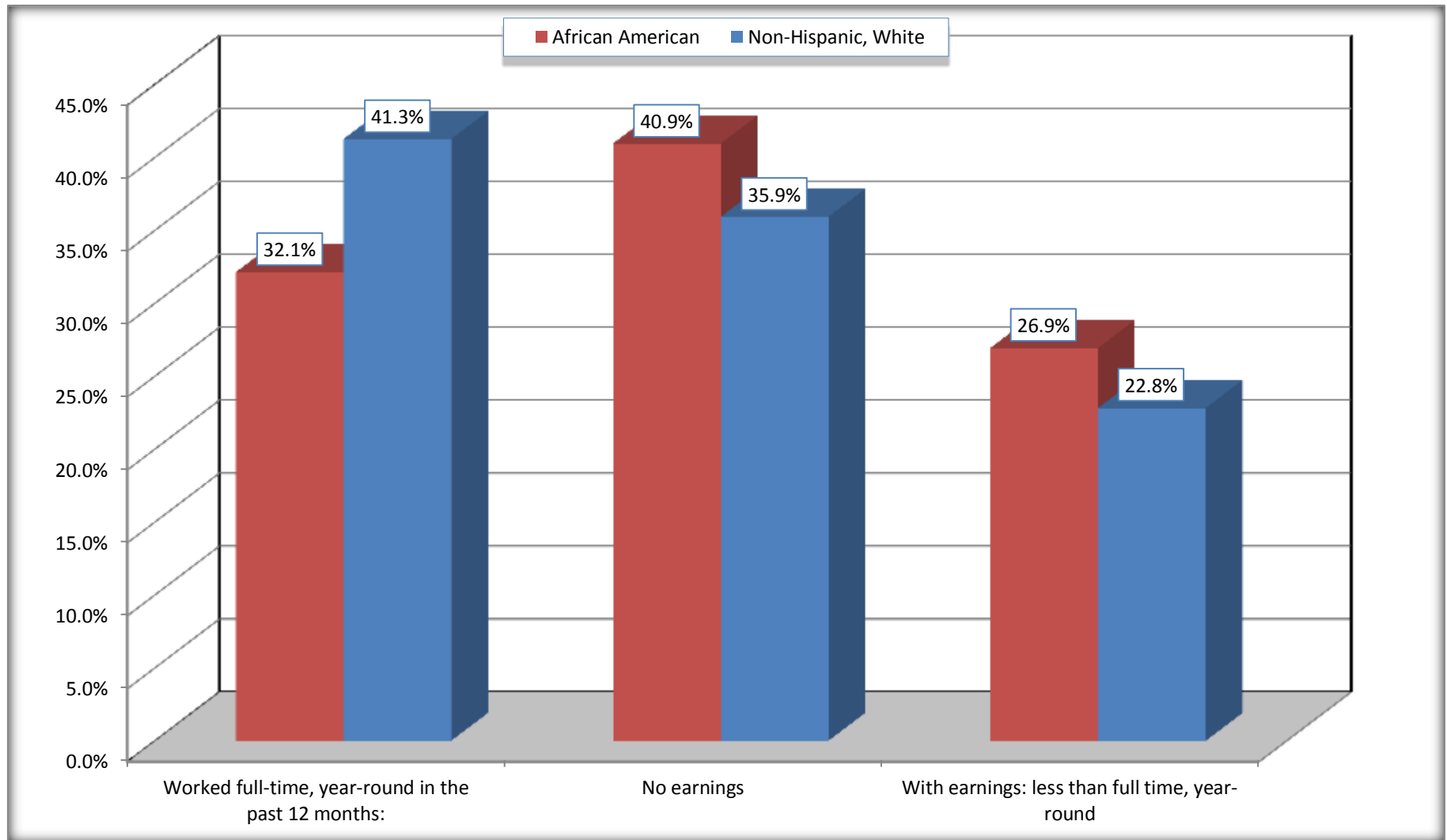
Source: U.S. Census Bureau, 2008-2012 American Community Survey

For information on confidentiality protection, sampling error, nonsampling error, and definitions, see Survey Methodology.

<http://www.census.gov/acs/www/UseData/index.htm>

# Employment and Earnings in in the Past 12 Months (16 Years and Over)

## Morgan City city, Louisiana



Source: B20005. SEX BY WORK EXPERIENCE IN THE PAST 12 MONTHS BY EARNINGS IN THE PAST 12 MONTHS (IN 2010 INFLATION-ADJUSTED DOLLARS) FOR THE POPULATION 16 YEARS AND OVER

Data Set: 2008-2012 American Community Survey 5-Year Estimates

**C21001. SEX BY AGE BY VETERAN STATUS FOR THE CIVILIAN POPULATION 18 YEARS AND OVER**

Data Set: 2008-2012 American Community Survey 5-Year Estimates

	Morgan City city, Louisiana					
	African American	Margin of Error (+/-)	% of AA Total	White, Not Hispanic	Margin of Error (+/-)	% of NHW Total
<b>Total:</b>	<b>2,495</b>	<b>274</b>	<b>100.0%</b>	<b>6,140</b>	<b>392</b>	<b>100.0%</b>
Veteran	86	NC	3.4%	777	NC	12.7%
Nonveteran	2,409	NC	96.6%	5,363	NC	87.3%
Male:	1,053	175	42.2%	3,193	275	52.0%
18 to 64 years:	933	171	37.4%	2,556	258	41.6%
Veteran	75	43	3.0%	393	139	6.4%
Nonveteran	858	166	34.4%	2,163	254	35.2%
65 years and over:	120	65	4.8%	637	98	10.4%
Veteran	0	19	0.0%	333	83	5.4%
Nonveteran	120	65	4.8%	304	78	5.0%
Female:	1,442	186	57.8%	2,947	216	48.0%
18 to 64 years:	1,295	170	51.9%	2,269	206	37.0%
Veteran	11	18	0.4%	51	52	0.8%
Nonveteran	1,284	170	51.5%	2,218	201	36.1%
65 years and over:	147	65	5.9%	678	104	11.0%
Veteran	0	19	0.0%	0	19	0.0%
Nonveteran	147	65	5.9%	678	104	11.0%

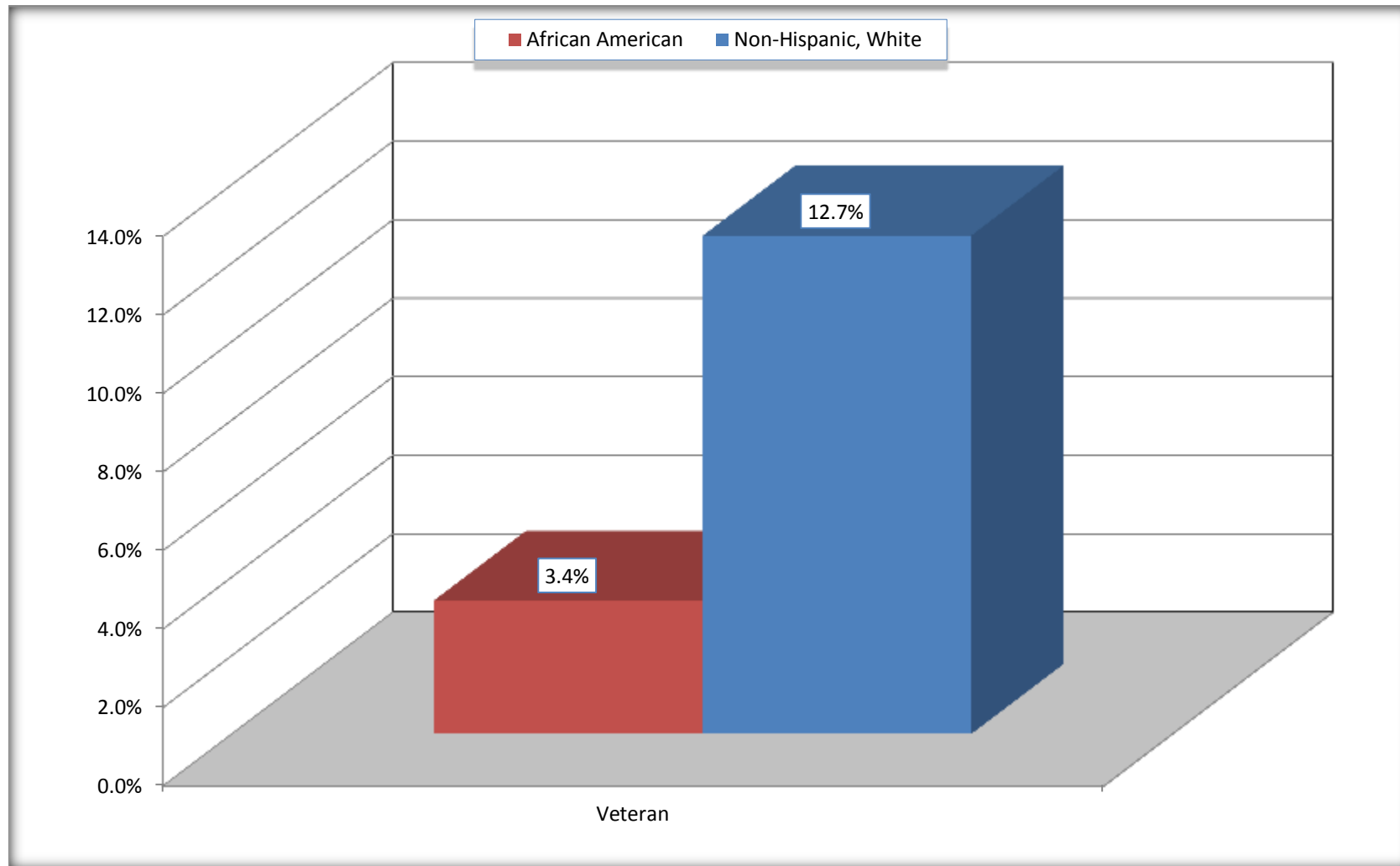
Source: U.S. Census Bureau, 2008-2012 American Community Survey

For information on confidentiality protection, sampling error, nonsampling error, and definitions, see Survey Methodology.

<http://www.census.gov/acs/www/UseData/index.htm>

# Veterans in the Civilian Population 18 Years and Over

## Morgan City city, Louisiana



Source: C21001. SEX BY AGE BY VETERAN STATUS FOR THE CIVILIAN POPULATION 18 YEARS AND OVER  
Data Set: 2008-2012 American Community Survey 5-Year Estimates

**B22005. RECEIPT OF FOOD STAMPS/SNAP IN THE PAST 12 MONTHS BY RACE OF HOUSEHOLDER**

Data Set: 2008-2012 American Community Survey 5-Year Estimates

	Morgan City city, Louisiana					
	African American	Margin of Error (+/-)	% of AA Total	White, Not Hispanic	Margin of Error (+/-)	% of NHW Total
<b>Total:</b>	<b>1,216</b>	<b>161</b>	<b>100.0%</b>	<b>3,264</b>	<b>246</b>	<b>100.0%</b>
HH received Food Stamps/SNAP in the past 12 months	564	141	46.4%	428	121	13.1%
HH did not receive Food Stamps/SNAP in the past 12 months	652	147	53.6%	2,836	238	86.9%

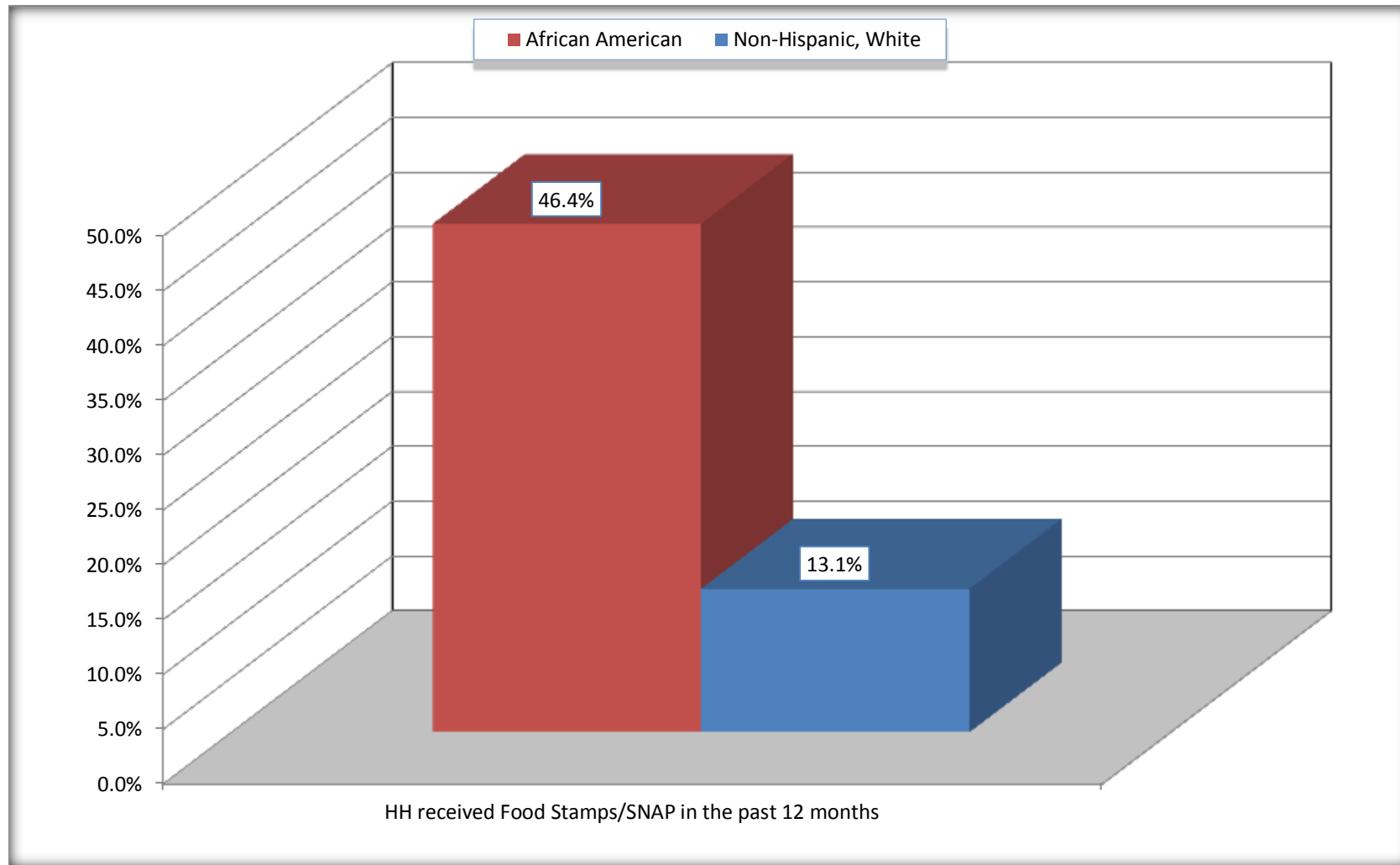
Source: U.S. Census Bureau, 2008-2012 American Community Survey

For information on confidentiality protection, sampling error, nonsampling error, and definitions, see Survey Methodology.

<http://www.census.gov/acs/www/UseData/index.htm>

# Receipt of Food Stamps/SNAP in the Past 12 Months by Household

## Morgan City city, Louisiana



Source: B22005. RECEIPT OF FOOD STAMPS/SNAP IN THE PAST 12 MONTHS BY RACE OF HOUSEHOLDER  
Data Set: 2008-2012 American Community Survey 5-Year Estimates



**C23002. SEX BY AGE BY EMPLOYMENT STATUS FOR THE POPULATION 16 YEARS AND OVER**

Data Set: 2008-2012 American Community Survey 5-Year Estimates

	Morgan City city, Louisiana					
	African American	Margin of Error (+/-)	% of AA Total	White, Not Hispanic	Margin of Error (+/-)	% of NHW Total
<b>Total:</b>	<b>2,689</b>	<b>291</b>	<b>100.0%</b>	<b>6,333</b>	<b>399</b>	<b>100.0%</b>
In labor force:	1,509	NC	56.1%	3,884	NC	61.3%
In Armed Forces	0	NC	0.0%	11	NC	0.2%
Civilian:	1,509	NC	56.1%	3,647	NC	57.6%
Employed	1,290	NC	48.0%	3,638	NC	57.4%
Unemployed	219	NC	8.1%	235	NC	3.7%
Not in labor force	1,180	NC	43.9%	2,449	NC	38.7%
Male:	1,105	179	41.1%	3,284	279	51.9%
16 to 64 years:	985	174	36.6%	2,647	261	41.8%
In labor force:	592	171	22.0%	2,215	238	35.0%
In Armed Forces	0	19	0.0%	11	17	0.2%
Civilian:	592	171	22.0%	2,204	237	34.8%
Employed	553	169	20.6%	2,010	228	31.7%
Unemployed	39	37	1.5%	194	90	3.1%
Not in labor force	393	128	14.6%	432	131	6.8%
65 years and over:	120	65	4.5%	637	98	10.1%
In labor force:	0	19	0.0%	129	54	2.0%
Employed	0	19	0.0%	129	54	2.0%
Unemployed	0	19	0.0%	0	19	0.0%
Not in labor force	120	65	4.5%	508	96	8.0%

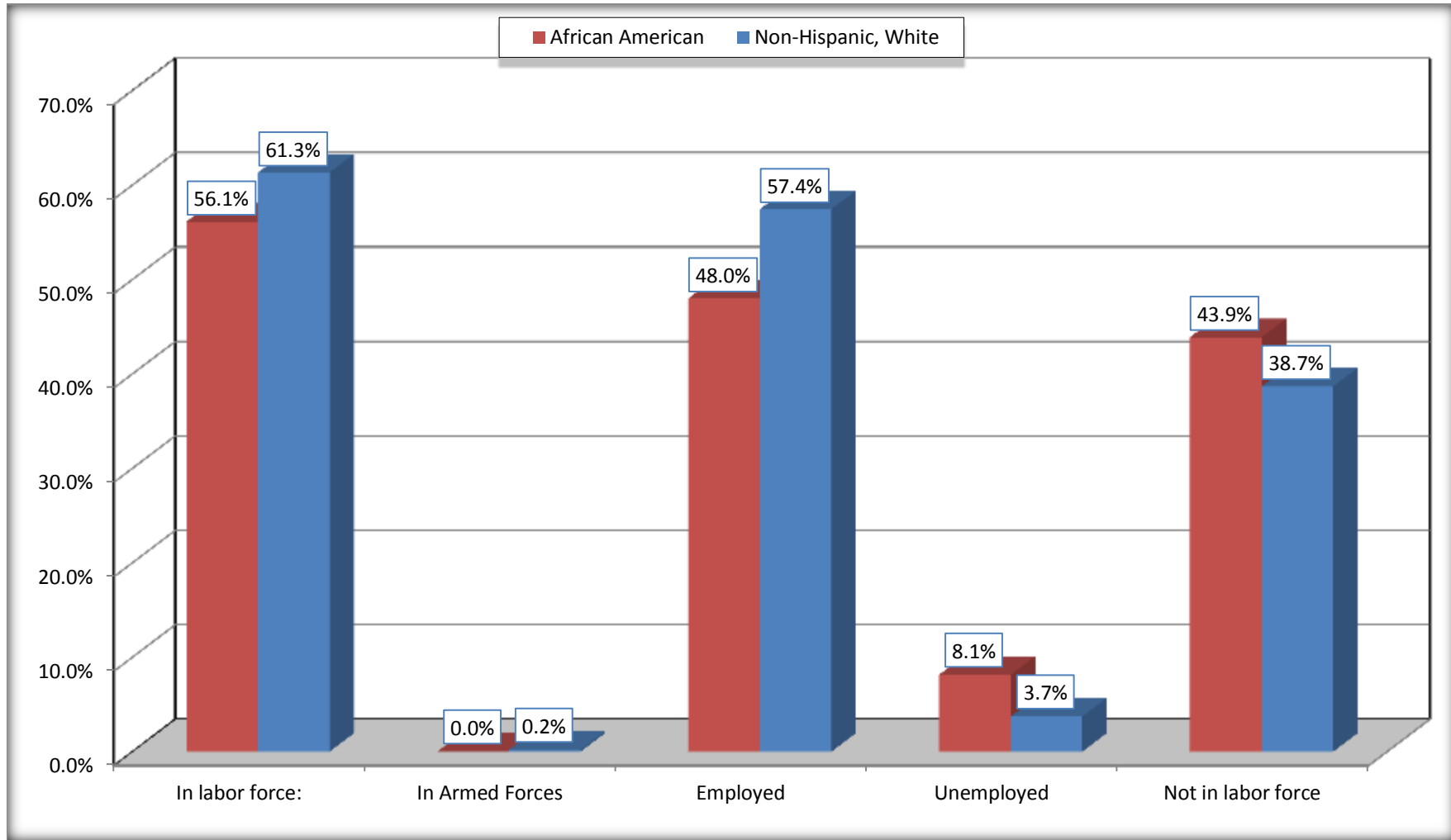
	Morgan City city, Louisiana					
	African American	Margin of Error (+/-)	% of AA Total	White, Not Hispanic	Margin of Error (+/-)	% of NHW Total
Female:	1,584	201	58.9%	3,049	234	48.1%
16 to 64 years:	1,437	190	53.4%	2,371	226	37.4%
In labor force:	917	158	34.1%	1,443	192	22.8%
In Armed Forces	0	19	0.0%	0	19	0.0%
Civilian:	917	158	34.1%	1,443	192	22.8%
Employed	737	139	27.4%	1,402	182	22.1%
Unemployed	180	100	6.7%	41	51	0.6%
Not in labor force	520	127	19.3%	928	200	14.7%
65 years and over:	147	65	5.5%	678	104	10.7%
In labor force:	0	19	0.0%	97	43	1.5%
Employed	0	19	0.0%	97	43	1.5%
Unemployed	0	19	0.0%	0	19	0.0%
Not in labor force	147	65	5.5%	581	100	9.2%

Source: U.S. Census Bureau, 2008-2012 American Community Survey

For information on confidentiality protection, sampling error, nonsampling error, and definitions, see Survey Methodology.  
<http://www.census.gov/acs/www/UseData/index.htm>

# Employment Status for the Population 16 years and over

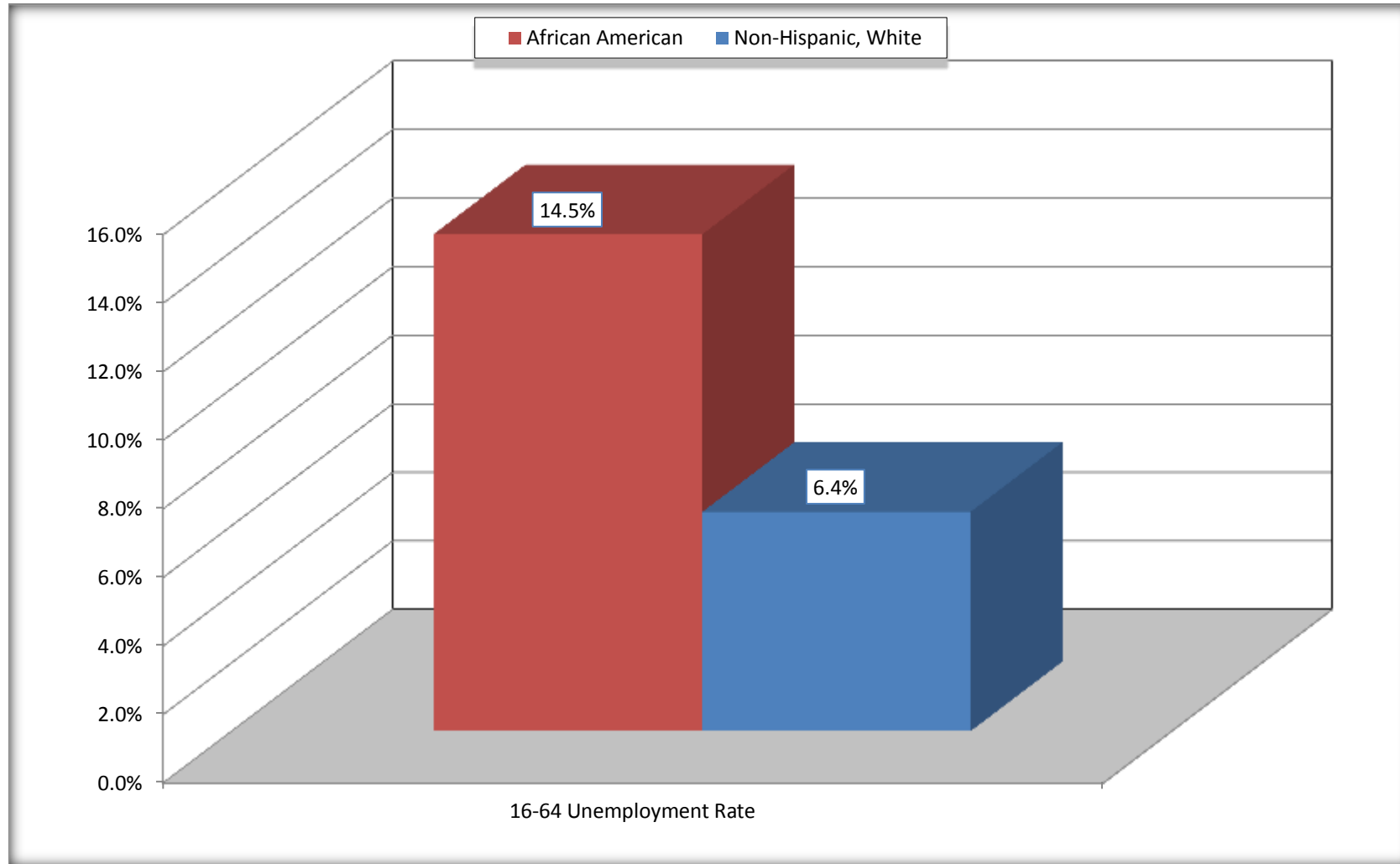
## Morgan City city, Louisiana



Source: C23002. SEX BY AGE BY EMPLOYMENT STATUS FOR THE POPULATION 16 YEARS AND OVER  
Data Set: 2008-2012 American Community Survey 5-Year Estimates

# Unemployment of Working Age Population (Ages 16 to 64) (As a Percent of 16-64 Civilian Labor Force)

## Morgan City city, Louisiana



Source: C23002. SEX BY AGE BY EMPLOYMENT STATUS FOR THE POPULATION 16 YEARS AND OVER  
Data Set: 2008-2012 American Community Survey 5-Year Estimates

**C24010. SEX BY OCCUPATION FOR THE CIVILIAN EMPLOYED POPULATION 16 YEARS AND OVER**

Data Set: 2008-2012 American Community Survey 5-Year Estimates

	Morgan City city, Louisiana					
	African American	Margin of Error (+/-)	% of AA Total	White, Not Hispanic	Margin of Error (+/-)	% of NHW Total
<b>Total:</b>	<b>1,290</b>	<b>208</b>	<b>100.0%</b>	<b>3,638</b>	<b>342</b>	<b>100.0%</b>
Management, professional, and related occupations	186	NC	14.4%	1,097	NC	30.2%
Service occupations	351	NC	27.2%	589	NC	16.2%
Sales and office occupations	386	NC	29.9%	982	NC	27.0%
Natural resources, construction, and maintenance occupations:	103	NC	8.0%	473	NC	13.0%
Production, transportation, and material moving occupations	264	NC	20.5%	497	NC	13.7%
Male:	553	169	42.9%	2,139	232	58.8%
Management, business, science, and arts occupations:	82	71	6.4%	615	154	16.9%
Service occupations	62	51	4.8%	236	98	6.5%
Sales and office occupations	103	89	8.0%	384	132	10.6%
Natural resources, construction, and maintenance occupations:	69	43	5.3%	452	149	12.4%
Production, transportation, and material moving occupations	237	103	18.4%	452	113	12.4%
Female:	737	139	57.1%	1,499	189	41.2%
Management, professional, and related occupations	104	65	8.1%	482	119	13.2%
Service occupations	289	94	22.4%	353	137	9.7%
Sales and office occupations	283	104	21.9%	598	128	16.4%
Natural resources, construction, and maintenance occupations:	34	40	2.6%	21	30	0.6%
Production, transportation, and material moving occupations	27	34	2.1%	45	53	1.2%

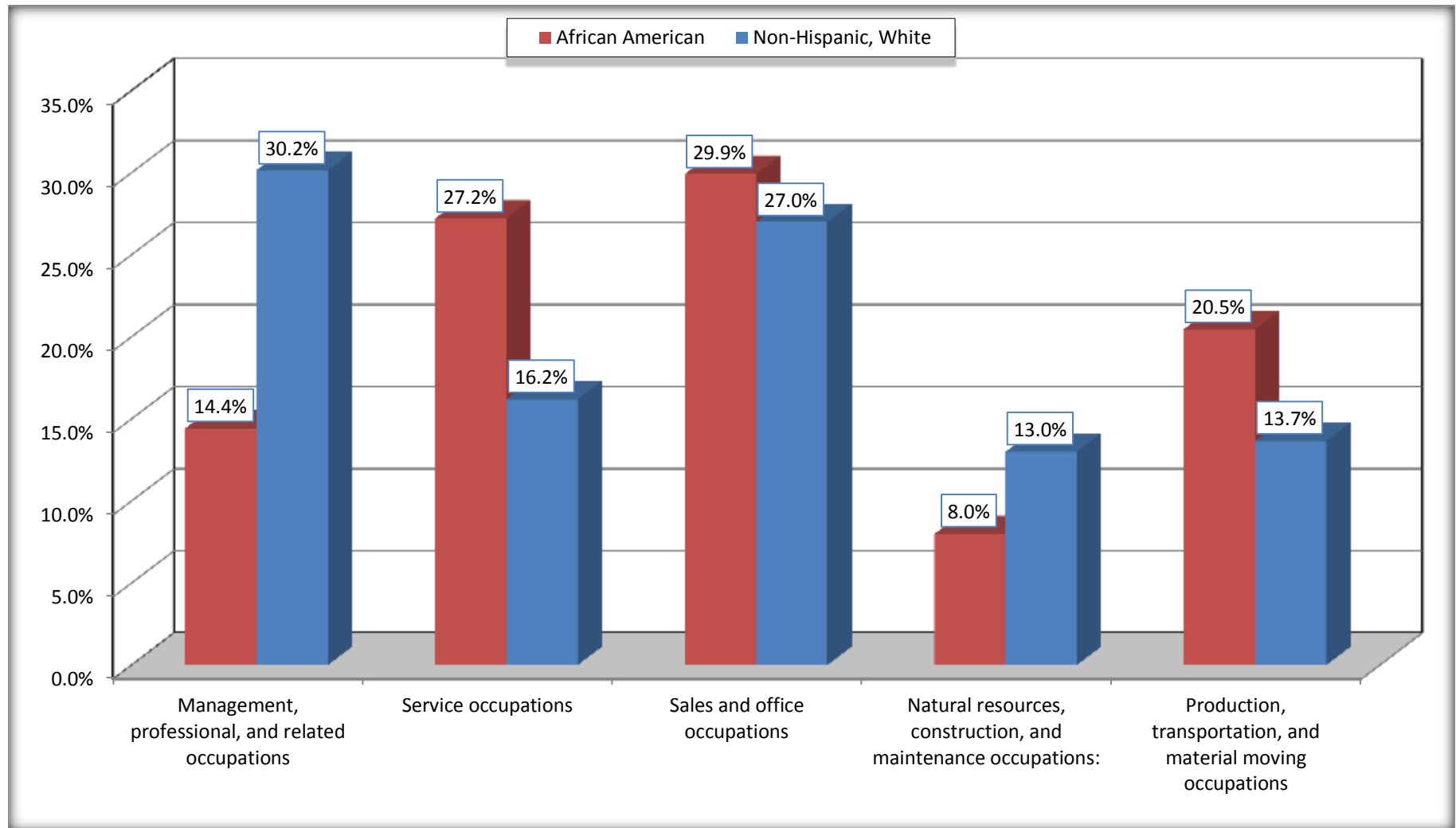
Source: U.S. Census Bureau, 2008-2012 American Community Survey

For information on confidentiality protection, sampling error, nonsampling error, and definitions, see Survey Methodology.

<http://www.census.gov/acs/www/UseData/index.htm>

# Occupation for the Civilian Employed 16 Years and Over Population

## Morgan City city, Louisiana



Source: C24010. SEX BY OCCUPATION FOR THE CIVILIAN EMPLOYED POPULATION 16 YEARS AND OVER  
Data Set: 2008-2012 American Community Survey 5-Year Estimates

**B25003. TENURE - Universe: OCCUPIED HOUSING UNITS**

Data Set: 2008-2012 American Community Survey 5-Year Estimates

	<b>Morgan City city, Louisiana</b>					
	African American	Margin of Error (+/-)	% of AA Total	White, Not Hispanic	Margin of Error (+/-)	% of NHW Total
<b>Total:</b>	<b>1,216</b>	<b>161</b>	<b>100.0%</b>	<b>3,264</b>	<b>246</b>	<b>100.0%</b>
Owner occupied	403	123	33.1%	2,288	219	70.1%
Renter occupied	813	175	66.9%	976	169	29.9%

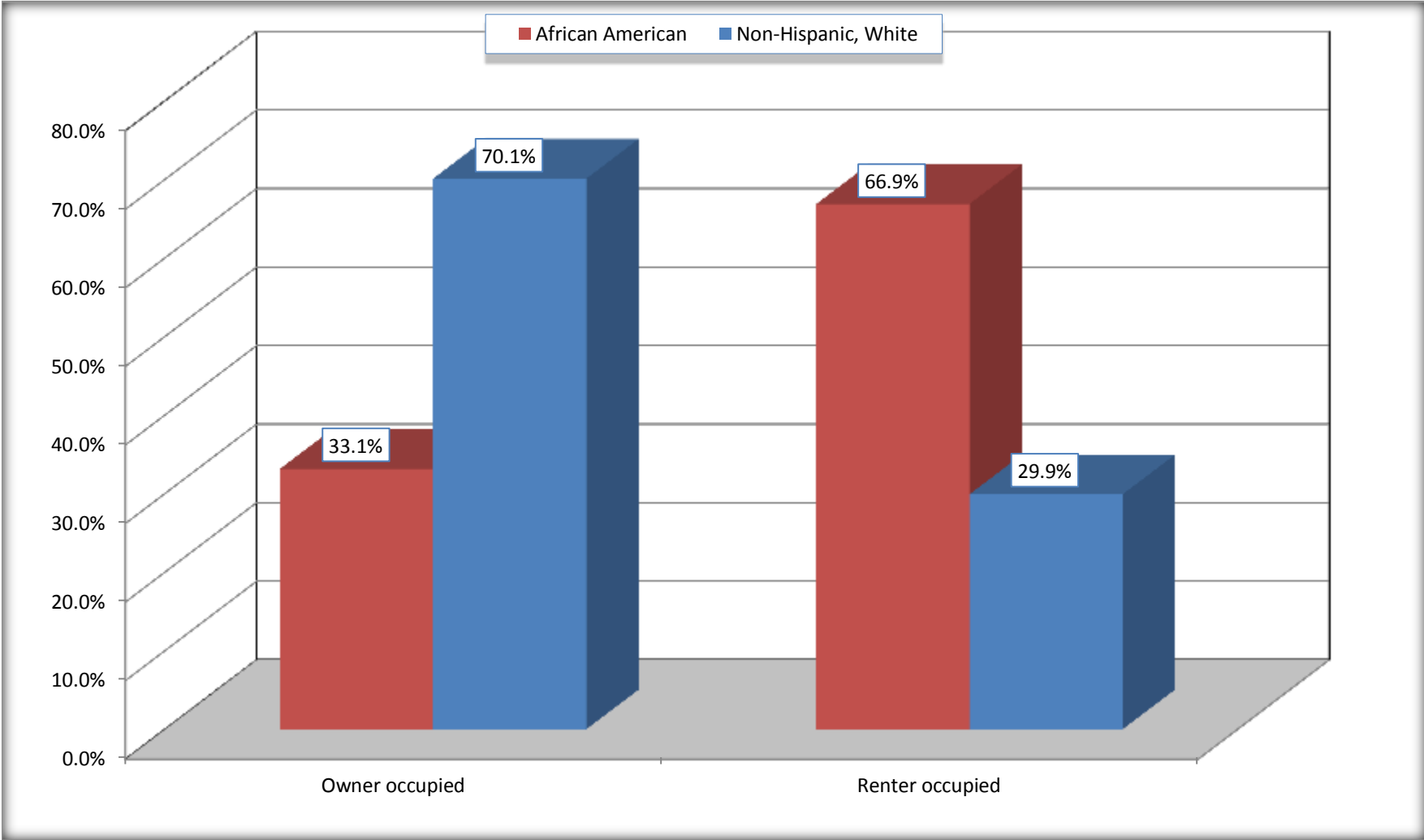
Source: U.S. Census Bureau, 2008-2012 American Community Survey

For information on confidentiality protection, sampling error, nonsampling error, and definitions, see Survey Methodology.

<http://www.census.gov/acs/www/UseData/index.h>

# Home Owners and Renters by Household

## Morgan City city, Louisiana



Source: B25003. TENURE - Universe: OCCUPIED HOUSING UNITS  
Data Set: 2008-2012 American Community Survey 5-Year Estimates



**B25014. OCCUPANTS PER ROOM - Universe: OCCUPIED HOUSING UNITS**

Data Set: 2008-2012 American Community Survey 5-Year Estimates

	Morgan City city, Louisiana					
	African American	Margin of Error (+/-)	% of AA Total	White, Not Hispanic	Margin of Error (+/-)	% of NHW Total
<b>Total:</b>	<b>1,216</b>	<b>161</b>	<b>100.0%</b>	<b>3,264</b>	<b>246</b>	<b>100.0%</b>
1.00 or less occupants per room	1,133	169	93.2%	3,210	257	98.3%
1.01 or more occupants per room	83	61	6.8%	54	50	1.7%

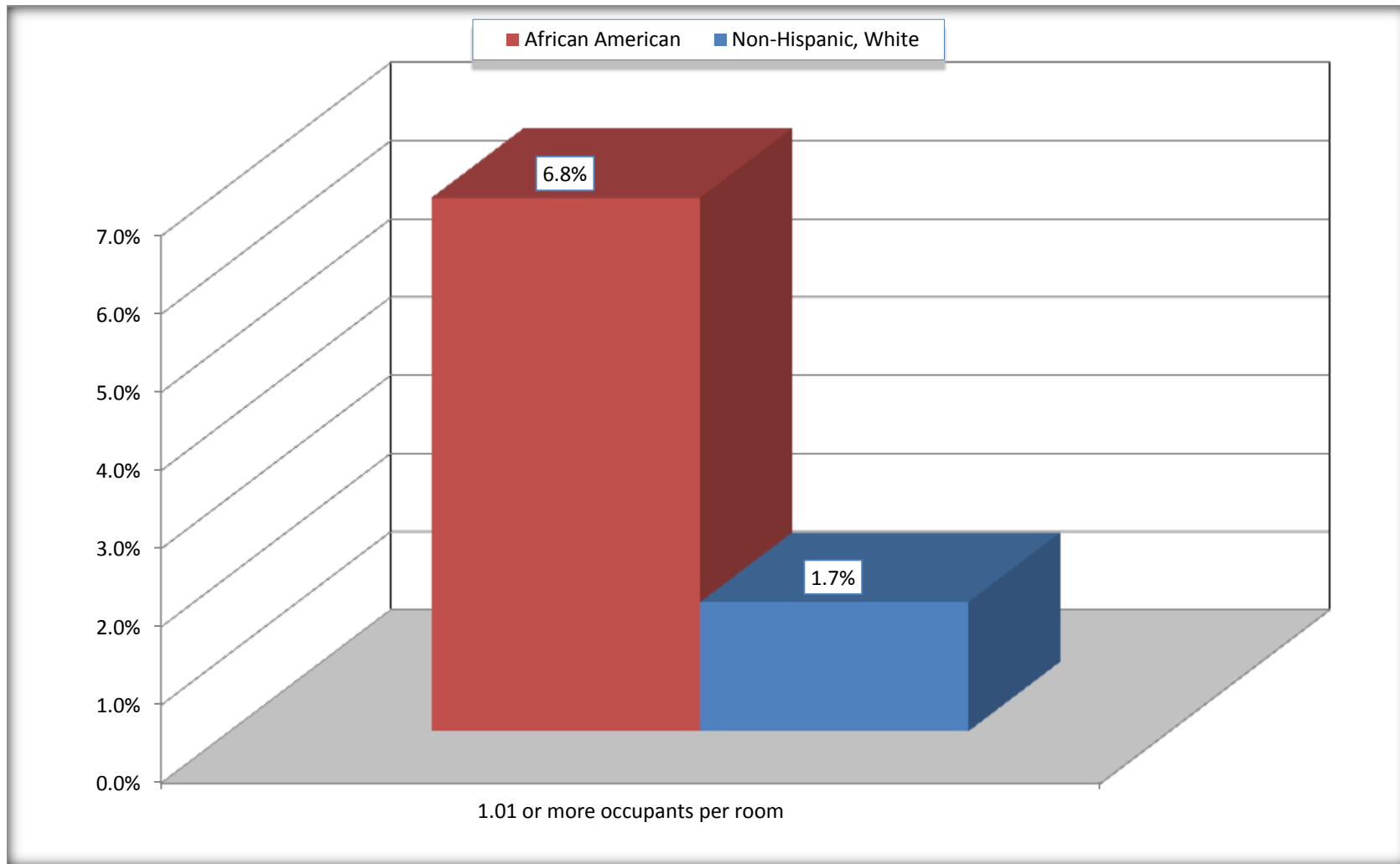
Source: U.S. Census Bureau, 2008-2012 American Community Survey

For information on confidentiality protection, sampling error, nonsampling error, and definitions, see Survey Methodology.

<http://www.census.gov/acs/www/UseData/index.ht>

# More than One Person per Room (Crowding) by Household

## Morgan City city, Louisiana



Source: B25014. OCCUPANTS PER ROOM - Universe: OCCUPIED HOUSING UNITS  
Data Set: 2008-2012 American Community Survey 5-Year Estimates

**B18101. AGE BY DISABILITY STATUS**

Data Set: 2008-2012 American Community Survey 5-Year Estimates

	Morgan City city, Louisiana					
	African American	Margin of Error (+/-)	% of AA Total	White, Not Hispanic	Margin of Error (+/-)	% of NHW Total
<b>Total:</b>	<b>3,405</b>	<b>411</b>	<b>100.0%</b>	<b>7,177</b>	<b>488</b>	<b>100.0%</b>
Under 18 years:	977	231	28.7%	1,109	65	15.5%
With a disability	41	44	1.2%	101	64	1.4%
No disability	936	239	27.5%	1,008	220	14.0%
18 to 64 years:	2,183	258	64.1%	4,785	367	66.7%
With a disability	486	149	14.3%	940	203	13.1%
No disability	1,697	231	49.8%	3,845	348	53.6%
65 years and over:	245	103	7.2%	1,283	154	17.9%
With a disability	149	75	4.4%	657	144	9.2%
No disability	96	66	2.8%	626	136	8.7%

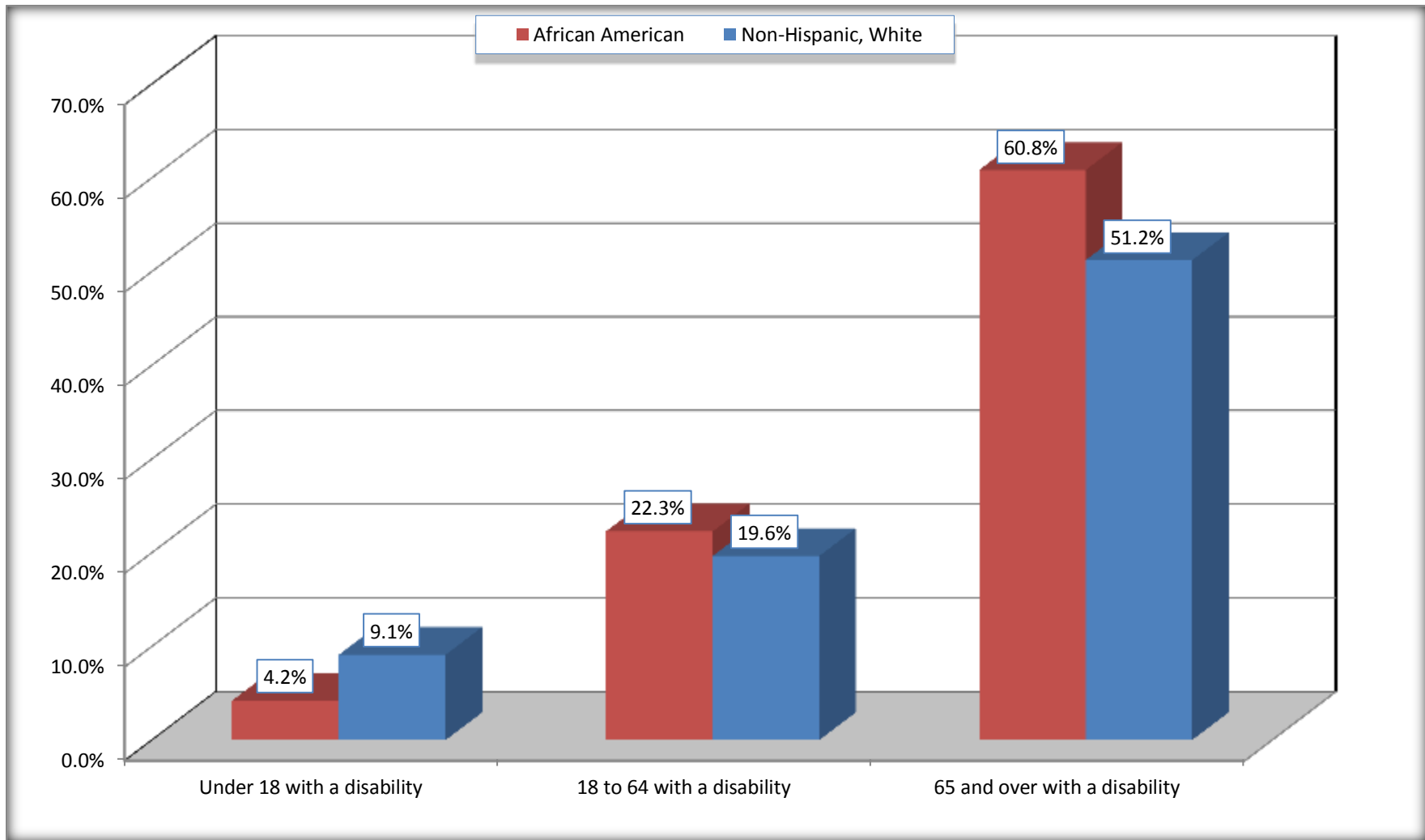
Source: U.S. Census Bureau, 2008-2012 American Community Survey

For information on confidentiality protection, sampling error, nonsampling error, and definitions, see Survey Methodology.

<http://www.census.gov/acs/www/UseData/index.htm>

## Disability by Age

### Morgan City city, Louisiana



Source: B18101. AGE BY DISABILITY STATUS  
Data Set: 2008-2012 American Community Survey 5-Year Estimates

**C27001B. HEALTH INSURANCE COVERAGE STATUS BY AGE**

Data Set: 2008-2012 American Community Survey 5-Year Estimates

	<b>Morgan City city, Louisiana</b>					
	African American	Margin of Error (+/-)	% of AA Total	White, Not Hispanic	Margin of Error (+/-)	% of NHW Total
<b>Total:</b>	<b>3,405</b>	<b>411</b>	<b>100.0%</b>	<b>7,177</b>	<b>488</b>	<b>100.0%</b>
Under 18 years:	977	231	28.7%	1,109	242	15.5%
With health insurance coverage	955	229	28.0%	1,109	242	15.5%
No health insurance coverage	22	25	0.6%	0	19	0.0%
18 to 64 years:	2,183	258	64.1%	4,785	367	66.7%
With health insurance coverage	1,117	252	32.8%	3,708	367	51.7%
No health insurance coverage	1,066	233	31.3%	1,077	276	15.0%
65 years and over:	245	103	7.2%	1,283	154	17.9%
With health insurance coverage	245	103	7.2%	1,283	154	17.9%
No health insurance coverage	0	19	0.0%	0	19	0.0%

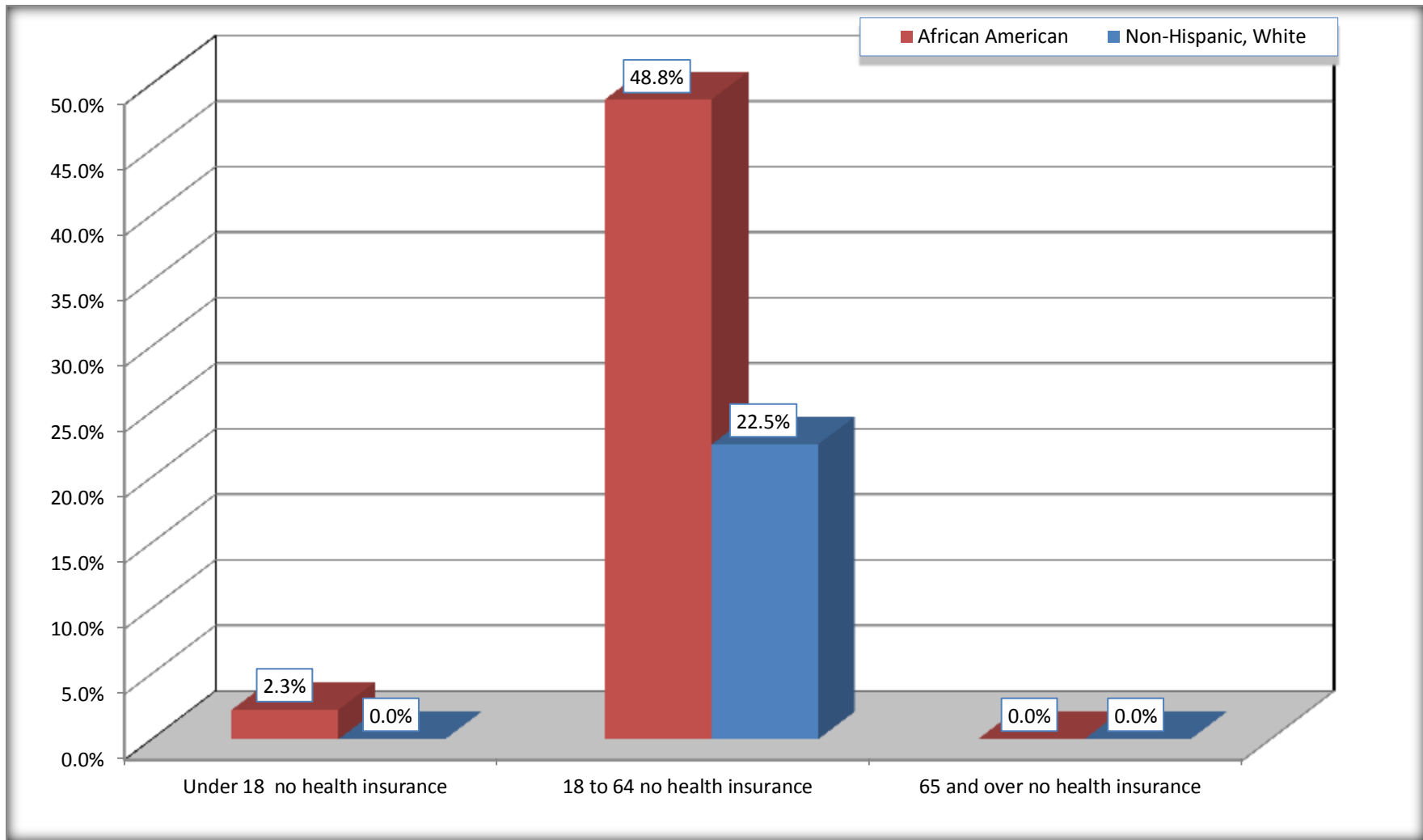
Source: U.S. Census Bureau, 2008-2012 American Community Survey

For information on confidentiality protection, sampling error, nonsampling error, and definitions, see Survey Methodology.

<http://www.census.gov/acs/www/UseData/index.htm>

# Lack of Health Insurance Coverage by Age

## Morgan City city, Louisiana



Source: C27001B. HEALTH INSURANCE COVERAGE STATUS BY AGE  
Data Set: 2008-2012 American Community Survey 5-Year Estimates