

Selected Socio-Economic Data

Monticello CDP, Louisiana

African American and White, Not Hispanic

Data Set: 2008-2012 American Community Survey 5-Year Estimates

www.fairvote2020.org

www.fairdata2000.com

[29-Dec-13](#)

C02003.DETAILED RACE - Universe: TOTAL POPULATION

Data Set: 2008-2012 American Community Survey 5-Year Estimates

	Monticello CDP, Louisiana		
	Population	Margin of Error (+/-)	% of Total
Total:	5,472	462	100.0%
Population of one race:	5,131	400	93.8%
White	1,029	230	18.8%
Black or African American	3,900	368	71.3%
American Indian and Alaska Native	0	17	0.0%
Asian alone	177	249	3.2%
Native Hawaiian and Other Pacific Islander	0	17	0.0%
Some other race	25	39	0.5%
Population of two or more races:	341	305	6.2%
Two races including Some other race	0	17	0.0%
Two races excluding Some other race, and three or more races	341	305	6.2%
Population of two races:	334	306	6.1%
White; Black or African American	175	259	3.2%
White; American Indian and Alaska Native	144	187	2.6%
White; Asian	15	24	0.3%
Black or African American; American Indian and Alaska Native	0	17	0.0%
All other two race combinations	0	17	0.0%
Population of three races	0	17	0.0%
Population of four or more races	7	11	0.1%

Note: Hispanics may be of any race. See Table B03002 and chart.

Source: U.S. Census Bureau, 2008-2012 American Community Survey

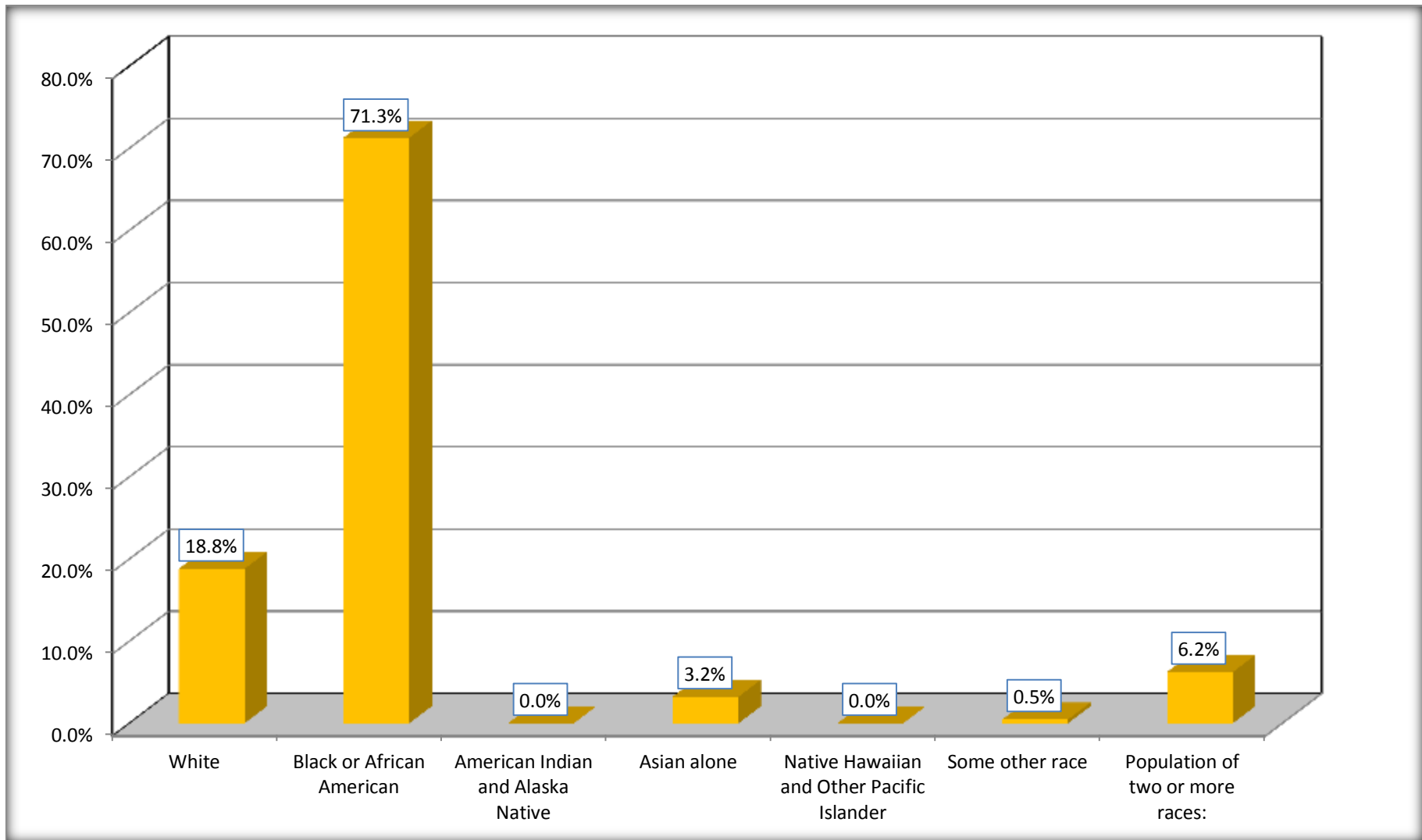
Although the American Community Survey (ACS) produces population, demographic and housing unit estimates, it is the Census Bureau's Population Estimates Program that produces and disseminates the official estimates of the population for the nation, states, counties, cities and towns and estimates of housing units for states and counties.

For information on confidentiality protection, sampling error, nonsampling error, and definitions, see Survey Methodology.

<http://www.census.gov/acs/www/UseData/index.htm>

Population by Race

Monticello CDP, Louisiana



Source: C02003.DETAILED RACE - Universe: TOTAL POPULATION
Data Set: 2008-2012 American Community Survey 5-Year Estimates

B03002. HISPANIC OR LATINO ORIGIN BY RACE - Universe: TOTAL POPULATION

Data Set: 2008-2012 American Community Survey 5-Year Estimates

	Monticello CDP, Louisiana		
	Population	Margin of Error (+/-)	% of Total
Total:	5,472	462	100.0%
Not Hispanic or Latino:	5,455	465	99.7%
White alone	1,012	234	18.5%
Black or African American alone	3,900	368	71.3%
American Indian and Alaska Native alone	0	17	0.0%
Asian alone	177	249	3.2%
Native Hawaiian and Other Pacific Islander alone	0	17	0.0%
Some other race alone	25	39	0.5%
Two or more races:	341	305	6.2%
Two races including Some other race	0	17	0.0%
Two races excluding Some other race, and three or more races	341	305	6.2%
Hispanic or Latino	17	29	0.3%

Source: U.S. Census Bureau, 2008-2012 American Community Survey

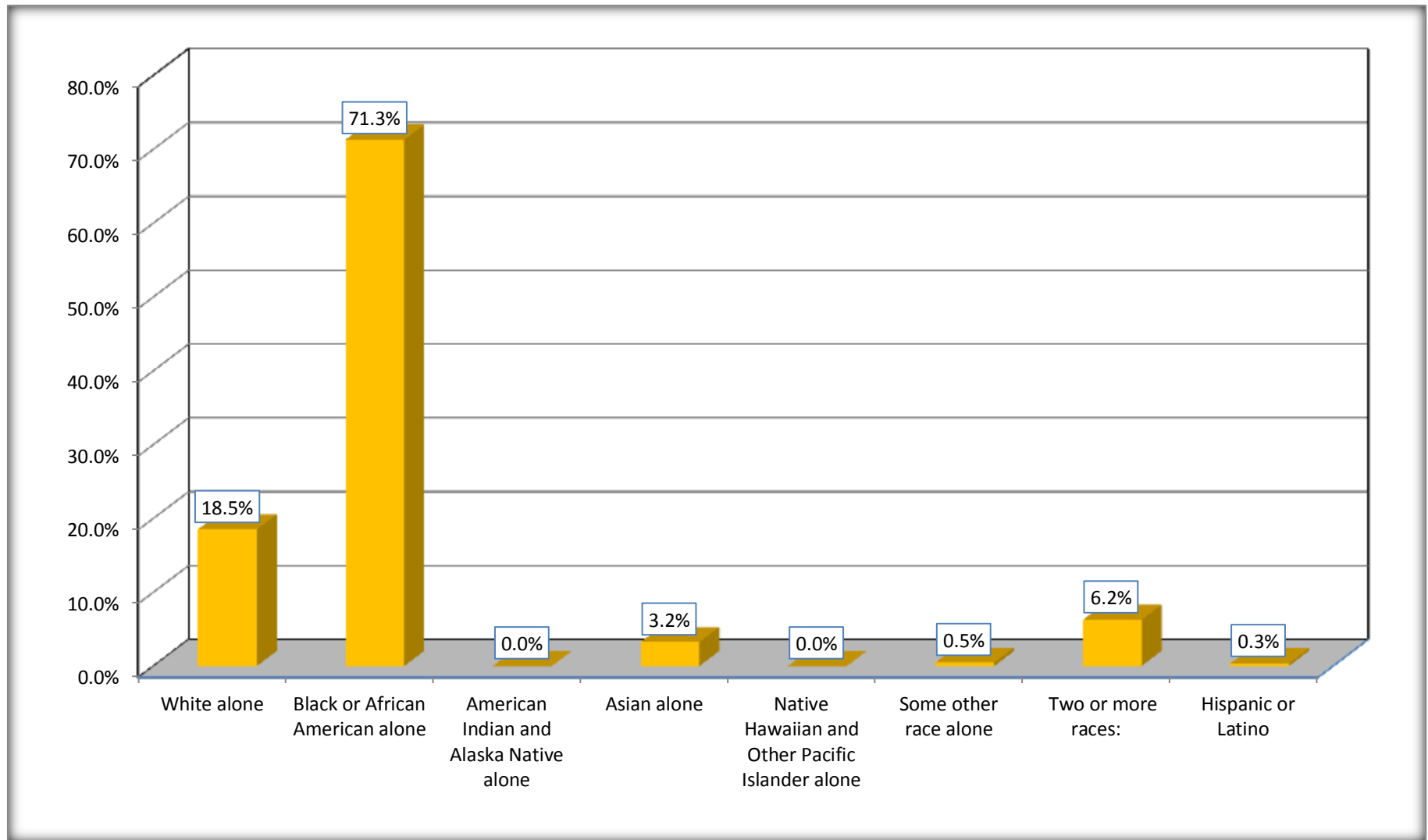
Although the American Community Survey (ACS) produces population, demographic and housing unit estimates, it is the Census Bureau's Population Estimates Program that produces and disseminates the official estimates of the population for the nation, states, counties, cities and towns and estimates of housing units for states and counties.

For information on confidentiality protection, sampling error, nonsampling error, and definitions, see Survey Methodology.

<http://www.census.gov/acs/www/UseData/index.htm>

Non-Hispanic by Race and Hispanic Population

Monticello CDP, Louisiana



Source: B03002. HISPANIC OR LATINO ORIGIN BY RACE - Universe: TOTAL POPULATION
Data Set: 2008-2012 American Community Survey 5-Year Estimates

B03002. HISPANIC OR LATINO ORIGIN BY RACE

Data Set: 2008-2012 American Community Survey 5-Year Estimates

	Monticello CDP, Louisiana		
	Population	Margin of Error (+/-)	% of Total
Hispanic or Latino:	17	29	100.0%
White alone	17	29	100.0%
Black or African American alone	0	17	0.0%
American Indian and Alaska Native alone	0	17	0.0%
Asian alone	0	17	0.0%
Native Hawaiian and Other Pacific Islander alone	0	17	0.0%
Some other race alone	0	17	0.0%
Two or more races:	0	17	0.0%
Two races including Some other race	0	17	0.0%
Two races excluding Some other race, and three or more races	0	17	0.0%

Source: U.S. Census Bureau, 2008-2012 American Community Survey

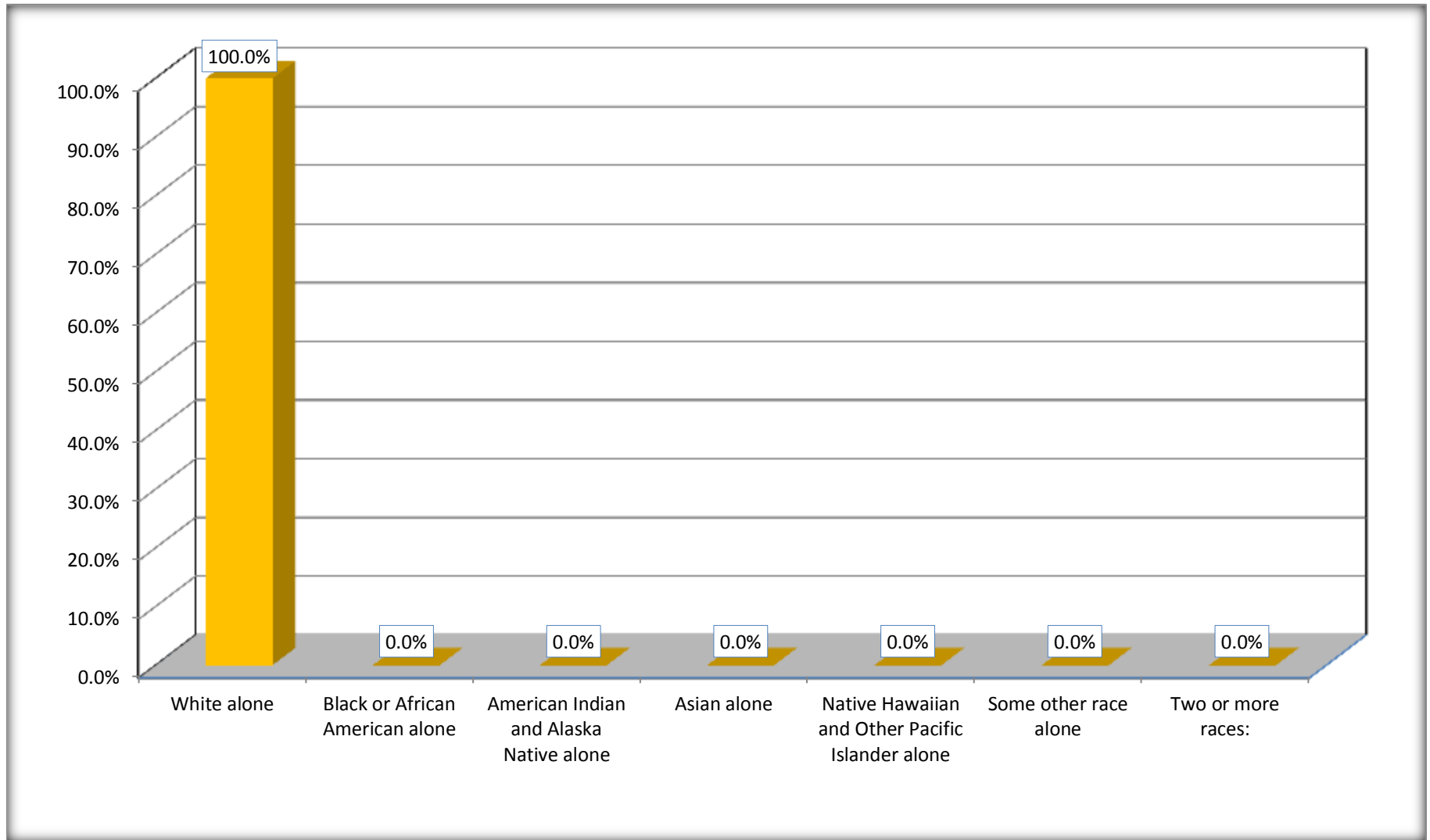
Although the American Community Survey (ACS) produces population, demographic and housing unit estimates, it is the Census Bureau's Population Estimates Program that produces and disseminates the official estimates of the population for the nation, states, counties, cities and towns and estimates of housing units for states and counties.

For information on confidentiality protection, sampling error, nonsampling error, and definitions, see Survey Methodology.

<http://www.census.gov/acs/www/UseData/index.htm>

Hispanic or Latino Origin by Race

Monticello CDP, Louisiana



Source: B03002. HISPANIC OR LATINO ORIGIN BY RACE
Data Set: 2008-2012 American Community Survey 5-Year Estimates

B01001. SEX BY AGE

Data Set: 2008-2012 American Community Survey 5-Year Estimates

	Monticello CDP, Louisiana					
	African American	Margin of Error (+/-)	% of AA Total	White, Not Hispanic	Margin of Error (+/-)	% of NHW Total
Total:	3,900	368	100.0%	1,012	234	100.0%
Under 18 years	1,041	NC	26.7%	121	NC	12.0%
18 to 64 years	2,669	NC	68.4%	584	NC	57.7%
65 years and over	190	NC	4.9%	307	NC	30.3%
Male:	1,881	213	48.2%	392	389	38.7%
Under 18 years	486	NC	12.5%	38	NC	3.8%
18 to 64 years	1,275	NC	32.7%	191	NC	18.9%
65 years and over	120	NC	3.1%	163	NC	16.1%
Female:	2,019	303	51.8%	620	412	61.3%
Under 18 years	555	NC	14.2%	83	NC	8.2%
18 to 64 years	1,394	NC	35.7%	393	NC	38.8%
65 years and over	70	NC	1.8%	144	NC	14.2%

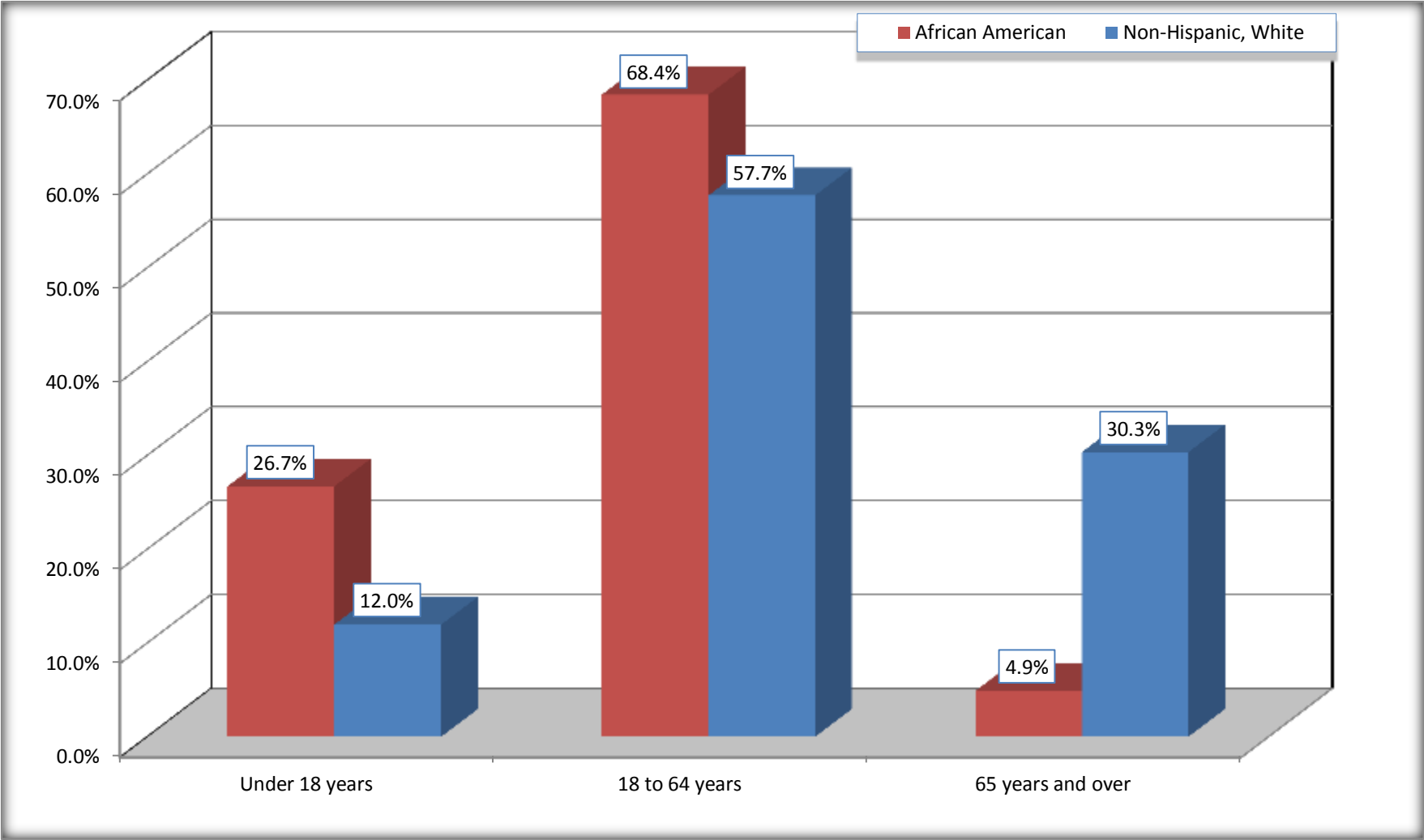
Source: U.S. Census Bureau, 2008-2012 American Community Survey

Although the American Community Survey (ACS) produces population, demographic and housing unit estimates, it is the Census Bureau's Population Estimates Program that produces and disseminates the official estimates of the population for the nation, states, counties, cities and towns and estimates of housing units for states and counties.

For information on confidentiality protection, sampling error, nonsampling error, and definitions, see Survey Methodology.
<http://www.census.gov/acs/www/UseData/index.htm>

Population by Age

Monticello CDP, Louisiana



Source: B01001. SEX BY AGE
Data Set: 2008-2012 American Community Survey 5-Year Estimates

B05003. SEX BY AGE BY CITIZENSHIP STATUS

Data Set: 2008-2012 American Community Survey 5-Year Estimates

	Monticello CDP, Louisiana					
	African American	Margin of Error (+/-)	% of AA Total by Age	White, Not Hispanic	Margin of Error (+/-)	% of NHW Total by Age
Total:	3,900	368	100.0%	1,012	234	100.0%
Under 18 years:	1,041	NC	100.0%	121	NC	100.0%
Native	1,041	NC	100.0%	121	NC	100.0%
Foreign born:	0	NC	0.0%	0	NC	0.0%
Naturalized U.S. citizen	0	NC	0.0%	0	NC	0.0%
Not a U.S. citizen	0	NC	0.0%	0	NC	0.0%
18 years and over:	2,859	NC	100.0%	891	NC	100.0%
Native	2,850	NC	99.7%	891	NC	100.0%
Foreign born:	9	NC	0.3%	0	NC	0.0%
Naturalized U.S. citizen	0	NC	0.0%	0	NC	0.0%
Not a U.S. citizen	9	NC	0.3%	0	NC	0.0%
Male:	1,881	213	48.2%	392	130	38.7%
Under 18 years:	486	156	100.0%	38	44	100.0%
Native	486	156	100.0%	38	44	100.0%
Foreign born:	0	17	0.0%	0	17	0.0%
Naturalized U.S. citizen	0	17	0.0%	0	17	0.0%
Not a U.S. citizen	0	17	0.0%	0	17	0.0%
18 years and over:	1,395	154	100.0%	354	110	100.0%
Native	1,395	154	100.0%	354	110	100.0%
Foreign born:	0	17	0.0%	0	17	0.0%
Naturalized U.S. citizen	0	17	0.0%	0	17	0.0%
Not a U.S. citizen	0	17	0.0%	0	17	0.0%

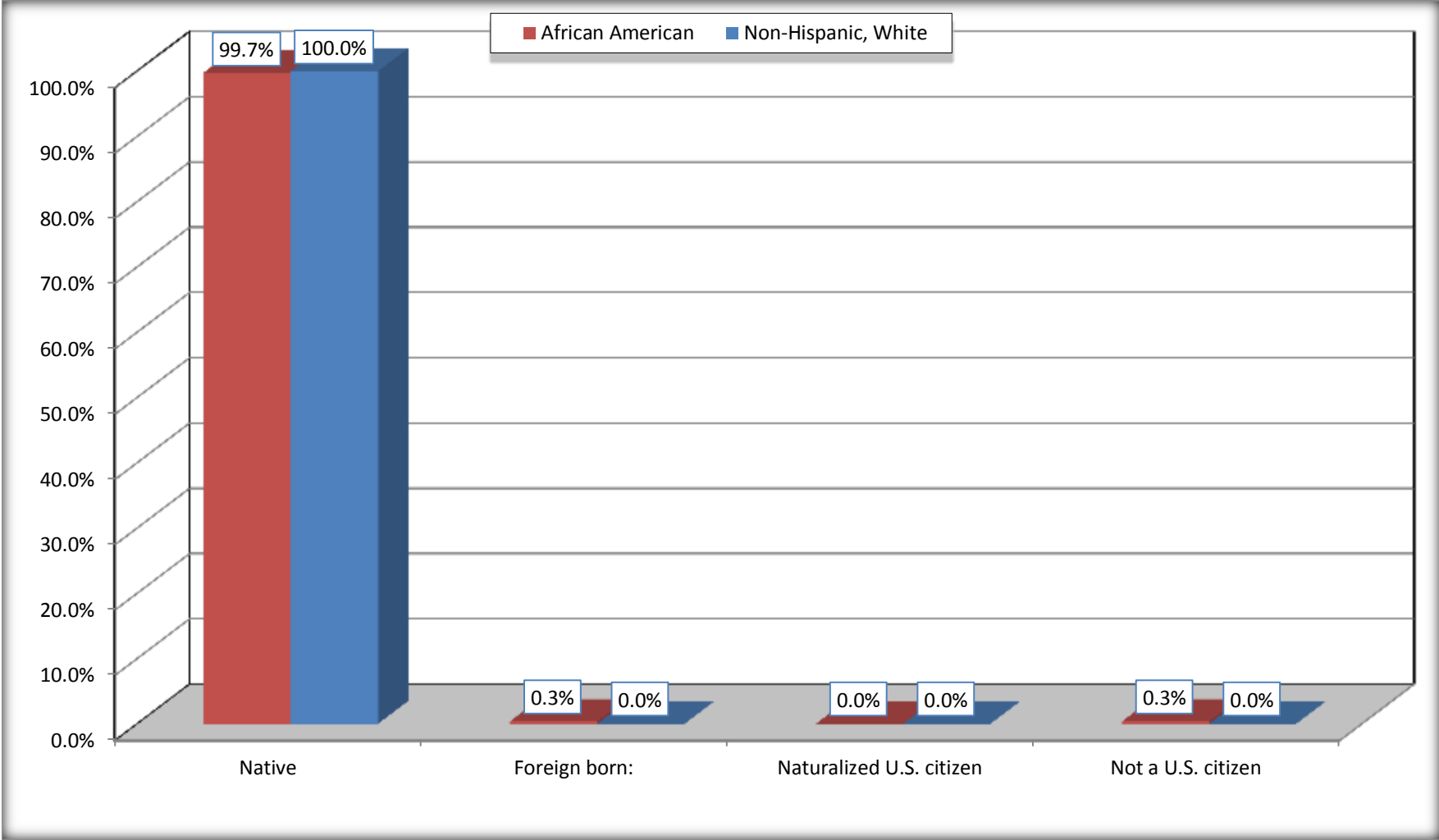
	Monticello CDP, Louisiana					
	African American	Margin of Error (+/-)	% of AA by Age	White, Not Hispanic	Margin of Error (+/-)	% of NHW by Age
Female:	2,019	303	51.8%	620	178	61.3%
Under 18 years:	555	198	100.0%	83	62	100.0%
Native	555	198	100.0%	83	62	100.0%
Foreign born:	0	17	0.0%	0	17	0.0%
Naturalized U.S. citizen	0	17	0.0%	0	17	0.0%
Not a U.S. citizen	0	17	0.0%	0	17	0.0%
18 years and over:	1,464	190	100.0%	537	148	100.0%
Native	1,455	194	99.4%	537	148	100.0%
Foreign born:	9	14	0.6%	0	17	0.0%
Naturalized U.S. citizen	0	17	0.0%	0	17	0.0%
Not a U.S. citizen	9	14	0.6%	0	17	0.0%

Source: U.S. Census Bureau, 2008-2012 American Community Survey

For information on confidentiality protection, sampling error, nonsampling error, and definitions, see Survey Methodology.
<http://www.census.gov/acs/www/UseData/index.htm>

Citizenship Status of Voting Age Population (18 and Over)

Monticello CDP, Louisiana



Source: B05003. SEX BY AGE BY CITIZENSHIP STATUS
Data Set: 2008-2012 American Community Survey 5-Year Estimates

**B07004. GEOGRAPHICAL MOBILITY IN THE PAST YEAR BY RACE FOR CURRENT RESIDENCE IN THE UNITED STATES - Universe:
POPULATION 1 YEAR AND OVER**

Data Set: 2008-2012 American Community Survey 5-Year Estimates

	Monticello CDP, Louisiana					
	African American	Margin of Error (+/-)	% of AA Total	White, Not Hispanic	Margin of Error (+/-)	% of NHW Total
Total:	3,892	368	100.0%	1,012	234	100.0%
Same house 1 year ago	3,679	376	94.5%	908	228	89.7%
Moved within same county	196	165	5.0%	41	61	4.1%
Moved from different county within same state	0	17	0.0%	63	75	6.2%
Moved from different state	17	26	0.4%	0	17	0.0%
Moved from abroad	0	17	0.0%	0	17	0.0%

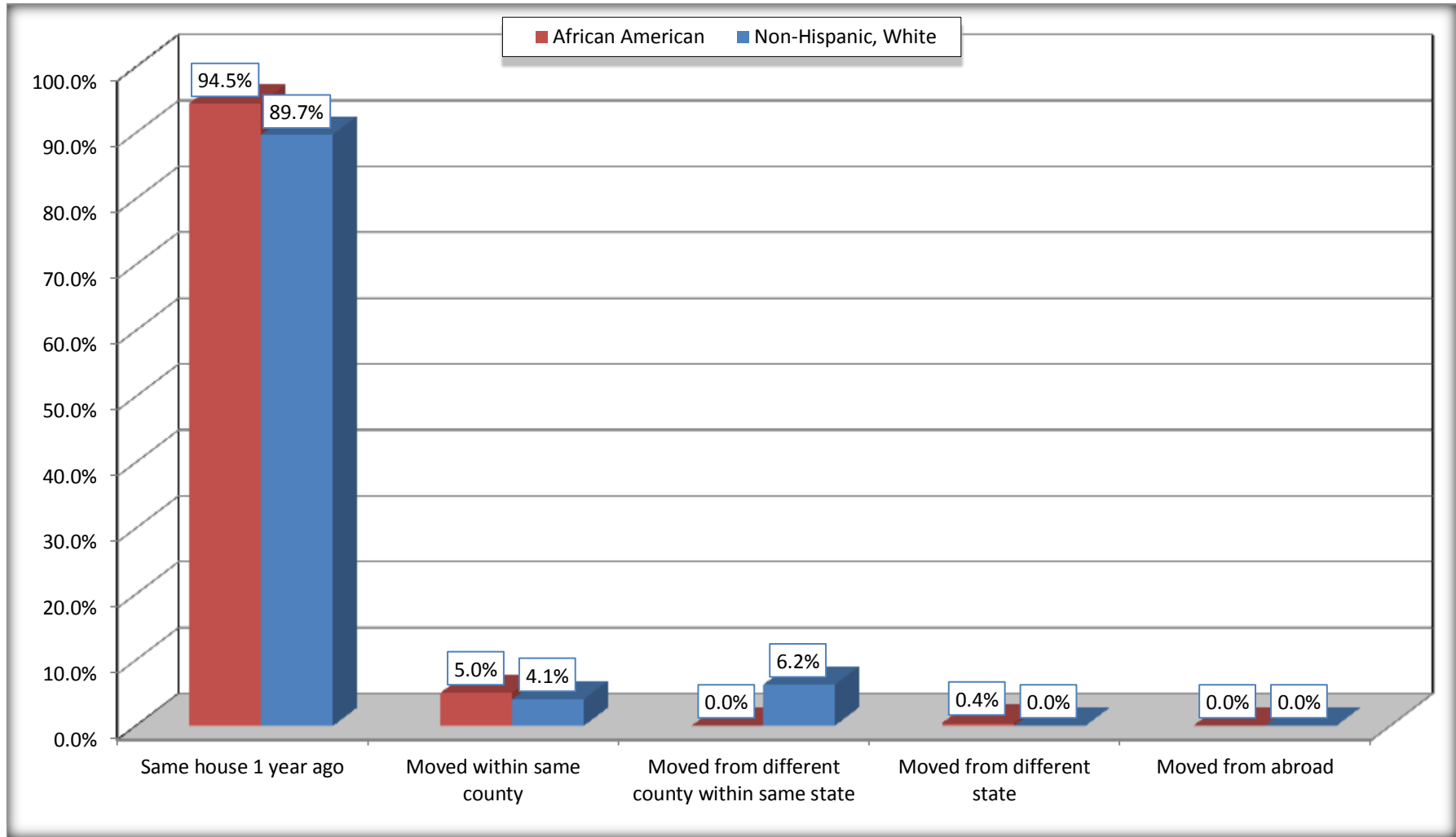
Source: U.S. Census Bureau, 2008-2012 American Community Survey

For information on confidentiality protection, sampling error, nonsampling error, and definitions, see Survey Methodology.

<http://www.census.gov/acs/www/UseData/index.htm>

Geographical Mobility in the Past Year (Population 1 Year and Over)

Monticello CDP, Louisiana



Source: B07004. GEOGRAPHICAL MOBILITY IN THE PAST YEAR BY RACE FOR CURRENT RESIDENCE IN THE UNITED STATES - Universe: POPULATION 1 YEAR AND OVER

Data Set: 2008-2012 American Community Survey 5-Year Estimates

B08105. MEANS OF TRANSPORTATION TO WORK - Universe: WORKERS 16 YEARS AND OVER

Data Set: 2008-2012 American Community Survey 5-Year Estimates

	Monticello CDP, Louisiana					
	African American	Margin of Error (+/-)	% of AA Total	White, Not Hispanic	Margin of Error (+/-)	% of NHW Total
Total:	2122	281	100.0%	435	139	100.0%
Car, truck, or van - drove alone	1869	276	88.1%	328	122	75.4%
Car, truck, or van - carpooled	182	106	8.6%	60	65	13.8%
Public transportation (excluding taxicab)	8	13	0.4%	0	17	0.0%
Walked	0	17	0.0%	0	17	0.0%
Taxicab, motorcycle, bicycle, or other means	28	42	1.3%	20	24	4.6%
Worked at home	35	54	1.6%	27	31	6.2%

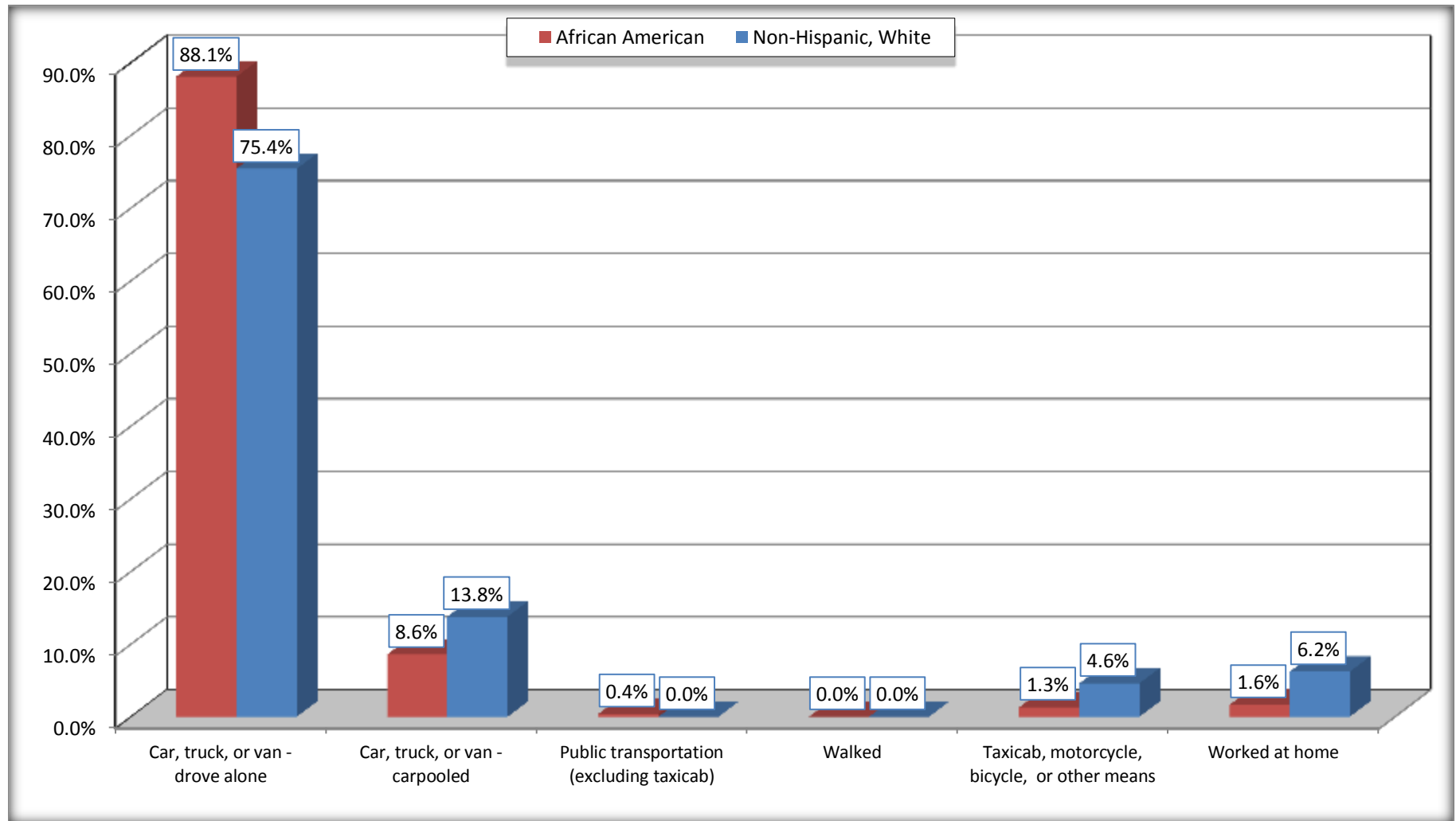
Source: U.S. Census Bureau, 2008-2012 American Community Survey

For information on confidentiality protection, sampling error, nonsampling error, and definitions, see Survey Methodology.

<http://www.census.gov/acs/www/UseData/index.htm>

Means of Transportation to Work (Workers 16 Years and Over)

Monticello CDP, Louisiana



Source: B08105. MEANS OF TRANSPORTATION TO WORK - Universe: WORKERS 16 YEARS AND OVER
Data Set: 2008-2012 American Community Survey 5-Year Estimates

B11002. HOUSEHOLD TYPE BY RELATIVES AND NONRELATIVES FOR POPULATION IN HOUSEHOLDS

Data Set: 2008-2012 American Community Survey 5-Year Estimates

	Monticello CDP, Louisiana					
	African American	Margin of Error (+/-)	% of AA Total	White, Not Hispanic	Margin of Error (+/-)	% of NHW Total
Total:	3853	378	100.0%	1244	423	100.0%
In family households	3646	427	94.6%	1027	436	82.6%
In nonfamily households	207	106	5.4%	217	89	17.4%

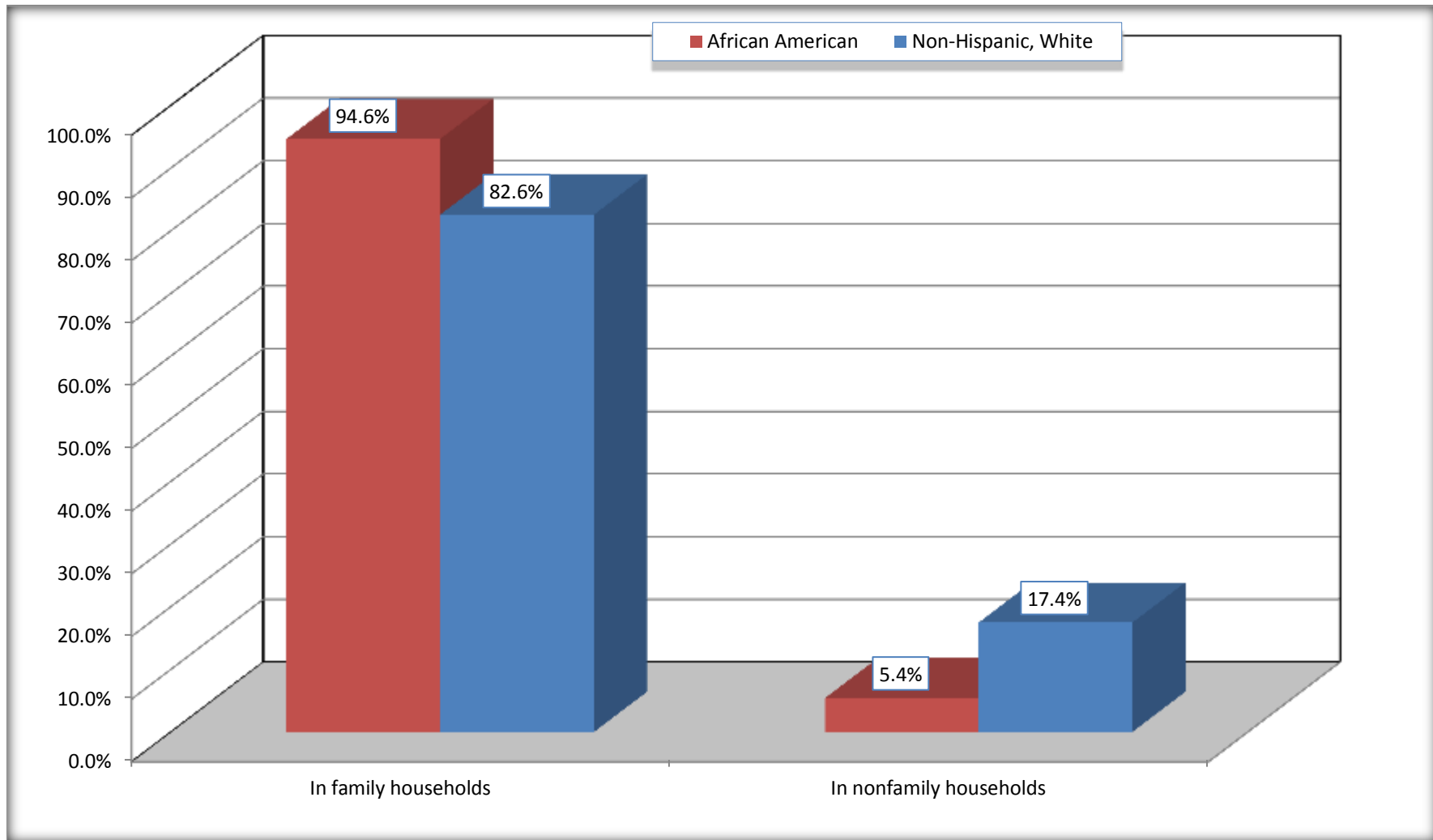
Source: U.S. Census Bureau, 2008-2012 American Community Survey

For information on confidentiality protection, sampling error, nonsampling error, and definitions, see Survey Methodology.

<http://www.census.gov/acs/www/UseData/index.htm>

Household Type for Population in Households

Monticello CDP, Louisiana



Source: B11002. HOUSEHOLD TYPE BY RELATIVES AND NONRELATIVES FOR POPULATION IN HOUSEHOLDS
Data Set: 2008-2012 American Community Survey 5-Year Estimates

B12002. MARITAL STATUS FOR THE POPULATION 15 YEARS AND OVER

Data Set: 2008-2012 American Community Survey 5-Year Estimates

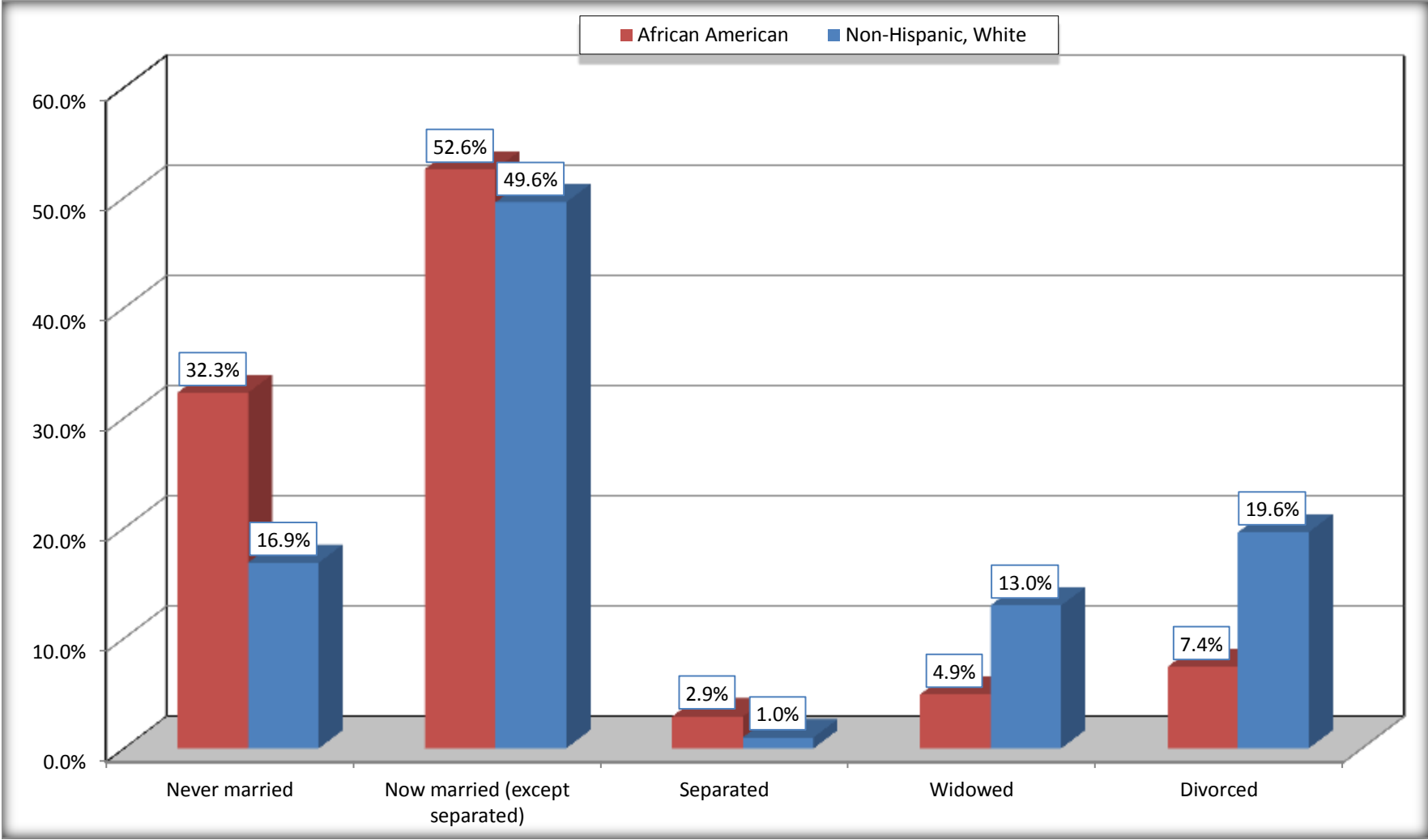
	Monticello CDP, Louisiana					
	African American	Margin of Error (+/-)	% of AA Total	White, Not Hispanic	Margin of Error (+/-)	% of NHW Total
Total:	3,101	288	100.0%	902	170	100.0%
Never married	1,001	NC	32.3%	152	NC	16.9%
Now married (except separated)	1,630	NC	52.6%	447	NC	49.6%
Separated	90	NC	2.9%	9	NC	1.0%
Widowed	151	NC	4.9%	117	NC	13.0%
Divorced	229	NC	7.4%	177	NC	19.6%
Male:	1,478	160	47.7%	354	110	39.2%
Never married	419	123	13.5%	46	36	5.1%
Now married (except separated)	848	135	27.3%	200	75	22.2%
Separated	64	62	2.1%	9	14	1.0%
Widowed	43	54	1.4%	69	62	7.6%
Divorced	104	75	3.4%	30	23	3.3%
Female:	1,623	220	52.3%	548	150	60.8%
Never married	582	164	18.8%	106	70	11.8%
Now married (except separated)	782	121	25.2%	247	88	27.4%
Separated	26	28	0.8%	0	17	0.0%
Widowed	108	52	3.5%	48	33	5.3%
Divorced	125	59	4.0%	147	105	16.3%

Source: U.S. Census Bureau, 2008-2012 American Community Survey

For information on confidentiality protection, sampling error, nonsampling error, and definitions, see Survey Methodology.

<http://www.census.gov/acs/www/UseData/index.htm>

Marital Status for the Population 15 Years and Over
Monticello CDP, Louisiana



Source: B12002. MARITAL STATUS FOR THE POPULATION 15 YEARS AND OVER
Data Set: 2008-2012 American Community Survey 5-Year Estimates

C15002. SEX BY EDUCATIONAL ATTAINMENT FOR THE POPULATION 25 YEARS AND OVER

Data Set: 2008-2012 American Community Survey 5-Year Estimates

	Monticello CDP, Louisiana					
	African American	Margin of Error (+/-)	% of AA Total	White, Not Hispanic	Margin of Error (+/-)	% of NHW Total
Total:	2,410	210	100.0%	837	158	100.0%
Less than high school diploma	139	NC	5.8%	139	NC	16.6%
High school graduate, GED, or alternative	617	NC	25.6%	362	NC	43.2%
Some college or associate's degree	954	NC	39.6%	161	NC	19.2%
Bachelor's degree or higher	700	NC	29.0%	175	NC	20.9%
Male:	1,150	132	47.7%	329	99	39.3%
Less than high school diploma	78	72	3.2%	18	21	2.2%
High school graduate, GED, or alternative	376	103	15.6%	153	73	18.3%
Some college or associate's degree	482	136	20.0%	72	52	8.6%
Bachelor's degree or higher	214	87	8.9%	86	58	10.3%
Female:	1,260	146	52.3%	508	146	60.7%
Less than high school diploma	61	37	2.5%	121	80	14.5%
High school graduate, GED, or alternative	241	104	10.0%	209	81	25.0%
Some college or associate's degree	472	124	19.6%	89	70	10.6%
Bachelor's degree or higher	486	126	20.2%	89	72	10.6%

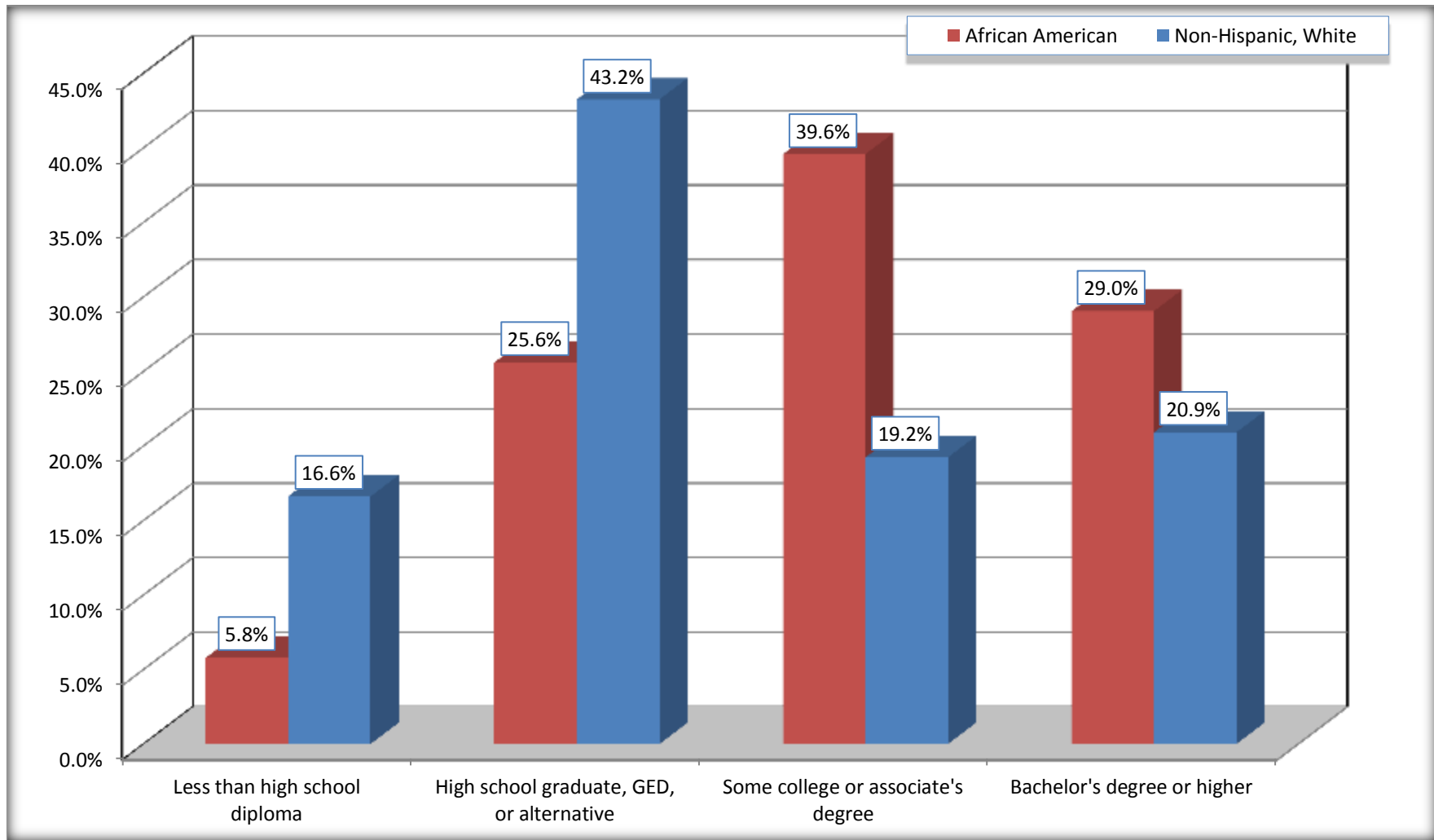
Source: U.S. Census Bureau, 2008-2012 American Community Survey

For information on confidentiality protection, sampling error, nonsampling error, and definitions, see Survey Methodology.

<http://www.census.gov/acs/www/UseData/index.htm>

Educational Attainment for the Population 25 Years and Older

Monticello CDP, Louisiana



Source: C15002. SEX BY EDUCATIONAL ATTAINMENT FOR THE POPULATION 25 YEARS AND OVER
Data Set: 2008-2012 American Community Survey 5-Year Estimates

B17010. POVERTY STATUS IN THE PAST 12 MONTHS OF FAMILIES BY FAMILY TYPE BY PRESENCE OF RELATED CHILDREN UNDER 18 YEARS

Data Set: 2008-2012 American Community Survey 5-Year Estimates

	Monticello CDP, Louisiana					
	African American	Margin of Error (+/-)	% of AA Total	White, Not Hispanic	Margin of Error (+/-)	% of NHW Total
Total:	1,105	125	100.0%	323	94	100.0%
Income in the past 12 months below poverty level:	79	51	7.1%	91	79	28.2%
Married-couple family:	25	27	2.3%	41	61	12.7%
With related children under 18 years	4	10	0.4%	41	61	12.7%
Other family:	54	43	4.9%	50	55	15.5%
Male householder, no wife present	0	17	0.0%	0	17	0.0%
With related children under 18 years	0	17	0.0%	0	17	0.0%
Female householder, no husband present	54	43	4.9%	50	55	15.5%
With related children under 18 years	54	43	4.9%	9	14	2.8%
Income in the past 12 months at or above poverty level:	1,026	130	92.9%	232	82	71.8%
Married-couple family:	755	125	68.3%	172	69	53.3%
With related children under 18 years	441	98	39.9%	23	26	7.1%
Other family:	271	114	24.5%	60	49	18.6%
Male householder, no wife present	66	61	6.0%	40	47	12.4%
With related children under 18 years	32	29	2.9%	27	42	8.4%
Female householder, no husband present	205	91	18.6%	20	22	6.2%
With related children under 18 years	99	62	9.0%	11	16	3.4%

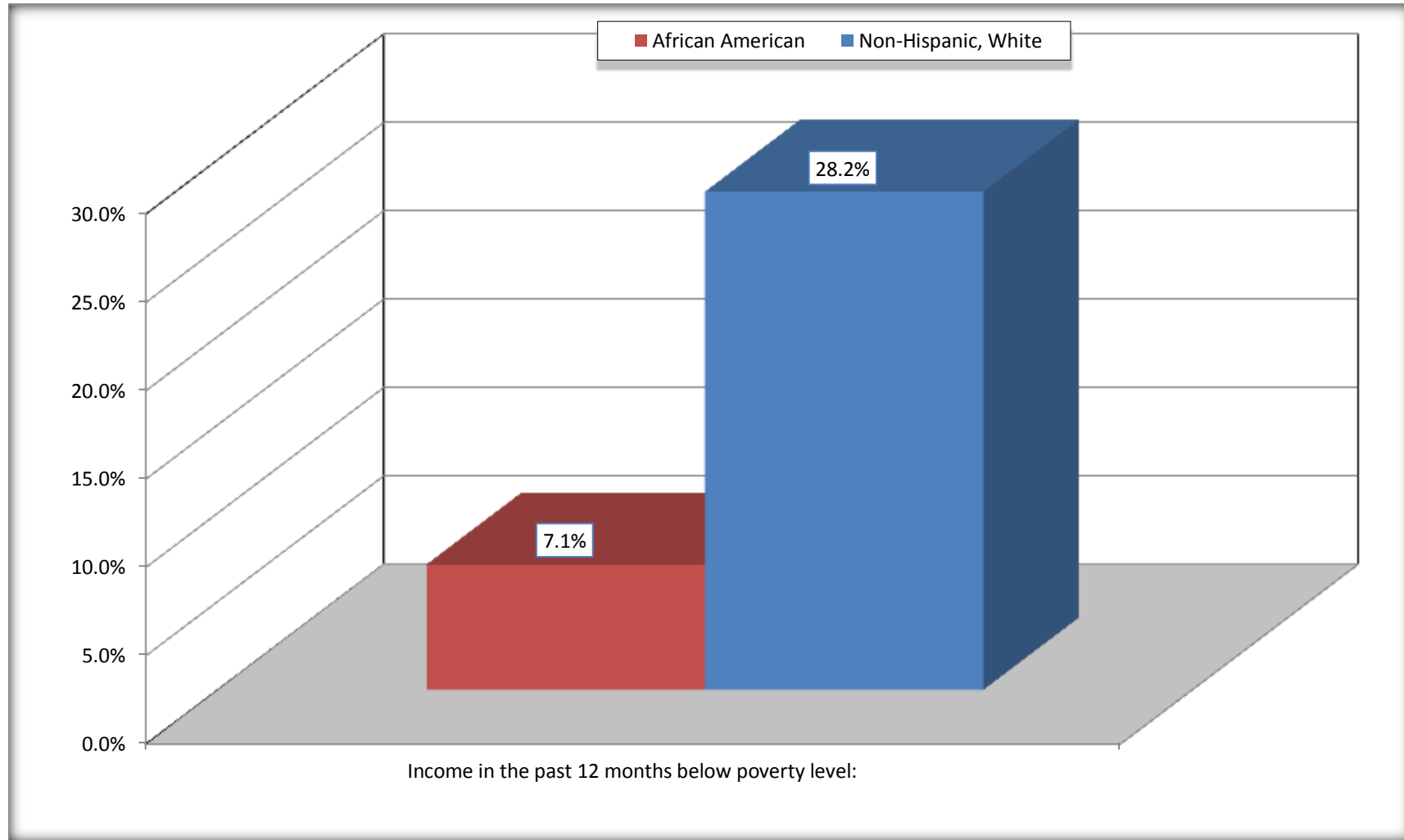
Source: U.S. Census Bureau, 2008-2012 American Community Survey

For information on confidentiality protection, sampling error, nonsampling error, and definitions, see Survey Methodology.

<http://www.census.gov/acs/www/UseData/index.htm>

Family Households Below Poverty in the Past 12 Months

Monticello CDP, Louisiana

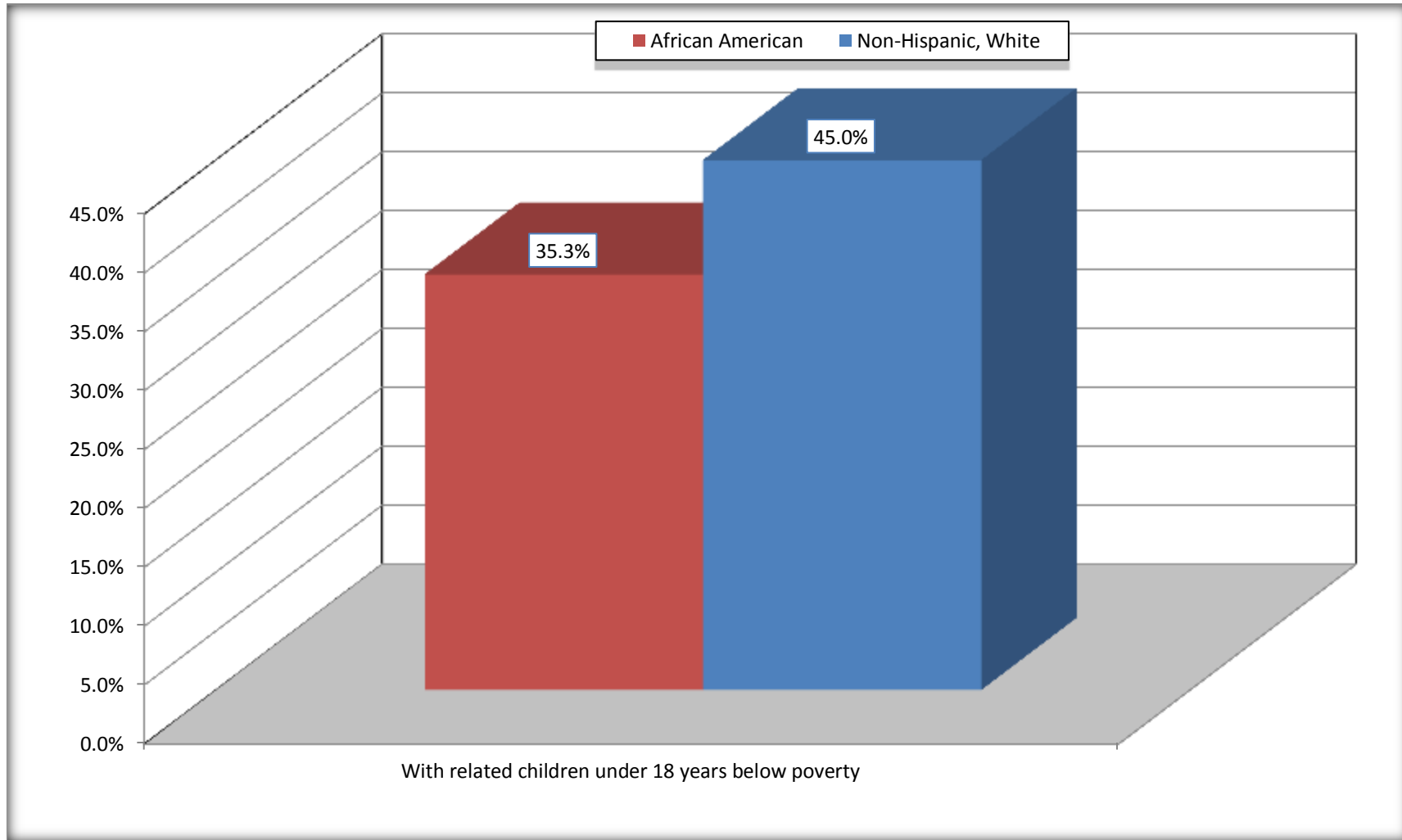


Source: B17010. POVERTY STATUS IN THE PAST 12 MONTHS OF FAMILIES BY FAMILY TYPE BY PRESENCE OF RELATED CHILDREN UNDER 18 YEARS

Data Set: 2008-2012 American Community Survey 5-Year Estimates

Female-headed Households with Related Children Below Poverty in the Past 12 Months

Monticello CDP, Louisiana



Source: B17010. POVERTY STATUS IN THE PAST 12 MONTHS OF FAMILIES BY FAMILY TYPE BY PRESENCE OF RELATED CHILDREN UNDER 18 YEARS

Data Set: 2008-2012 American Community Survey 5-Year Estimates

B17020 POVERTY STATUS IN THE PAST 12 MONTHS BY AGE - Universe: POPULATION FOR WHOM POVERTY STATUS IS DETERMINED

Data Set: 2008-2012 American Community Survey 5-Year Estimates

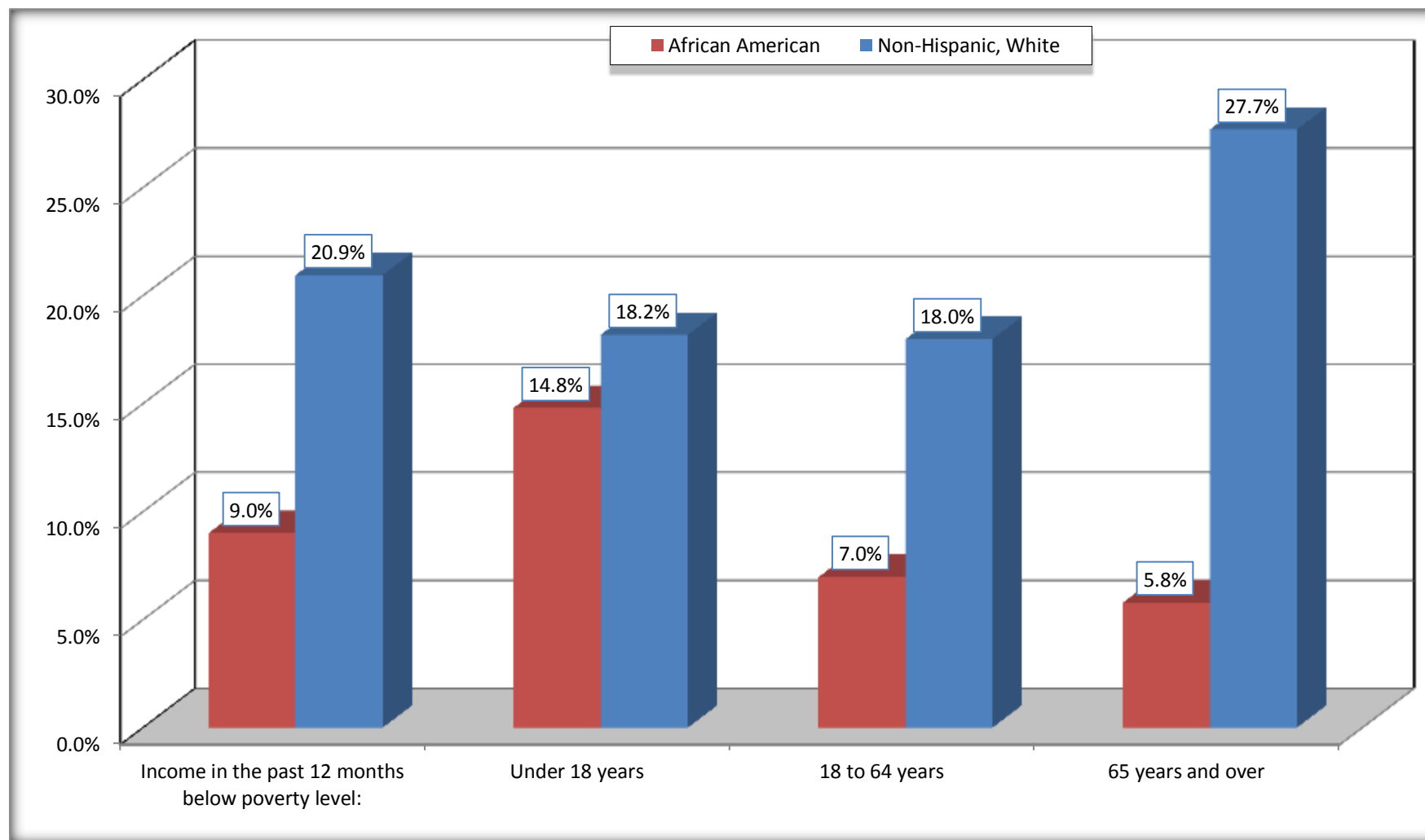
	Monticello CDP, Louisiana					
	African American	Margin of Error (+/-)	% of AA By Age	White, Not Hispanic	Margin of Error (+/-)	% of NHW By Age
Total:	3,900	368	100.0%	1,012	234	100.0%
Income in the past 12 months below poverty level:	351	202	9.0%	212	145	20.9%
Under 18 years	154	NC	14.8%	22	NC	18.2%
18 to 64 years	186	86	7.0%	105	79	18.0%
65 years and over	11	NC	5.8%	85	NC	27.7%
Income in the past 12 months at or above poverty level:	3,549	393	91.0%	800	253	79.1%
Under 18 years	887	NC	85.2%	99	NC	81.8%
18 to 64 years	2,483	281	93.0%	479	152	82.0%
65 years and over	179	NC	94.2%	222	NC	72.3%

Source: U.S. Census Bureau, 2008-2012 American Community Survey

For information on confidentiality protection, sampling error, nonsampling error, and definitions, see Survey Methodology.

<http://www.census.gov/acs/www/UseData/index.htm>

Population Below Poverty in the Past 12 Months Monticello CDP, Louisiana



Source: B17020 POVERTY STATUS IN THE PAST 12 MONTHS BY AGE - Universe: POPULATION FOR WHOM POVERTY STATUS IS DETERMINED
Data Set: 2008-2012 American Community Survey 5-Year Estimates

B19001. HOUSEHOLD INCOME IN THE PAST 12 MONTHS (IN 2010 INFLATION-ADJUSTED DOLLARS)

Data Set: 2008-2012 American Community Survey 5-Year Estimates

	Monticello CDP, Louisiana					
	African American	Margin of Error (+/-)	% of AA Total	White, Not Hispanic	Margin of Error (+/-)	% of NHW Total
Total:	1,300	102	100.0%	521	100	100.0%
Less than \$ 10,000	61	47	4.7%	19	23	3.6%
\$ 10,000 to \$ 14,999	7	11	0.5%	64	56	12.3%
\$ 15,000 to \$ 24,999	90	NC	6.9%	57	NC	10.9%
\$ 25,000 to \$ 34,999	85	NC	6.5%	74	NC	14.2%
\$ 35,000 to \$ 49,999	162	NC	12.5%	117	NC	22.5%
\$ 50,000 to \$ 74,999	304	NC	23.4%	35	NC	6.7%
\$ 75,000 to \$ 99,999	320	119	24.6%	54	50	10.4%
\$ 100,000 to \$ 149,999	256	NC	19.7%	101	NC	19.4%
\$ 150,000 to \$ 199,999	15	18	1.2%	0	17	0.0%
\$ 200,000 or more	0	17	0.0%	0	17	0.0%

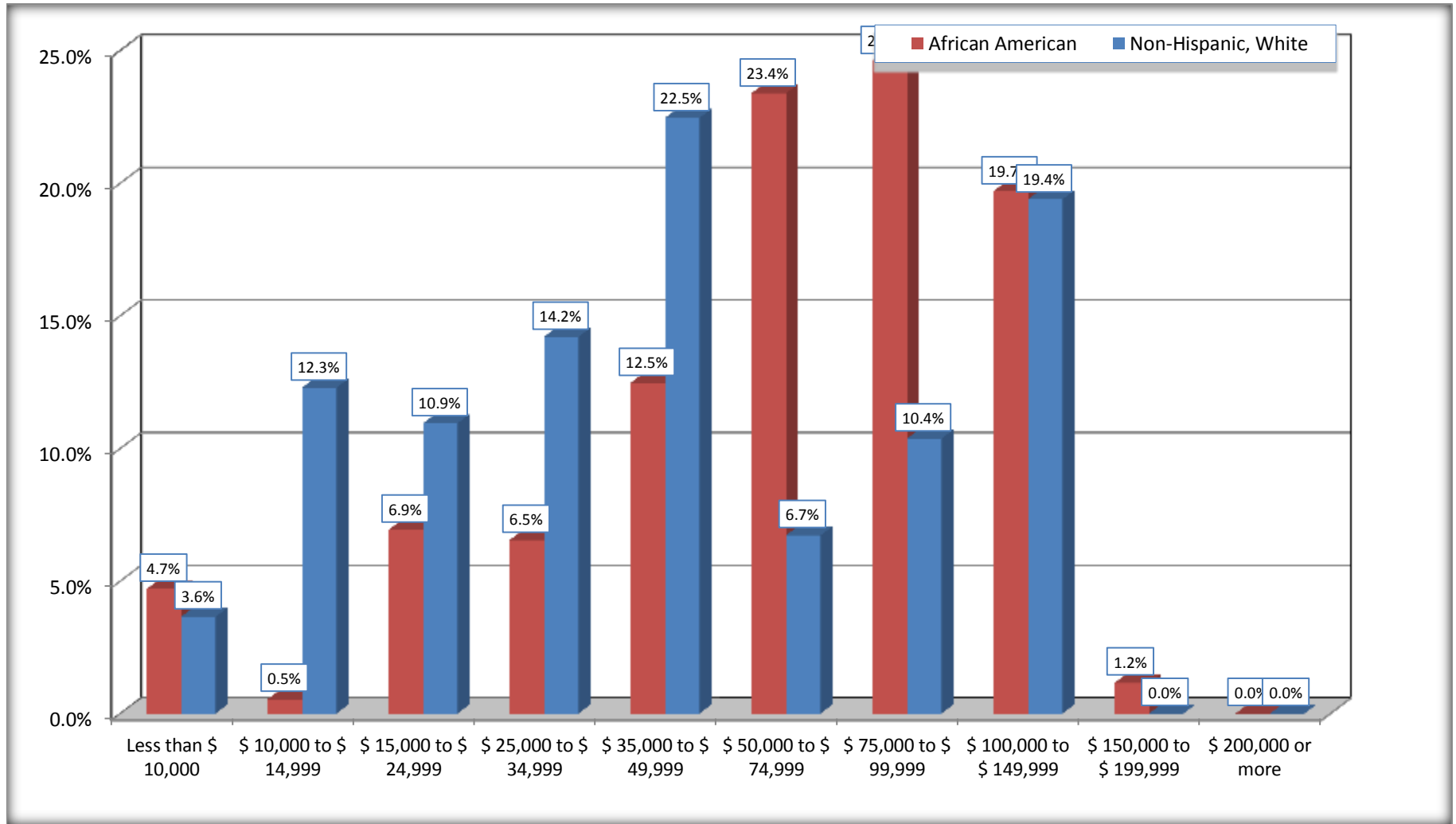
Source: U.S. Census Bureau, 2008-2012 American Community Survey

For information on confidentiality protection, sampling error, nonsampling error, and definitions, see Survey Methodology.

<http://www.census.gov/acs/www/UseData/index.htm>

Household Income in the Past 12 Months

Monticello CDP, Louisiana



Source: B19001. HOUSEHOLD INCOME IN THE PAST 12 MONTHS (IN 2010 INFLATION-ADJUSTED DOLLARS)
Data Set: 2008-2012 American Community Survey 5-Year Estimates

B19013. MEDIAN HOUSEHOLD INCOME IN THE PAST 12 MONTHS (IN 2010 INFLATION-ADJUSTED DOLLARS)

Data Set: 2008-2012 American Community Survey 5-Year Estimates

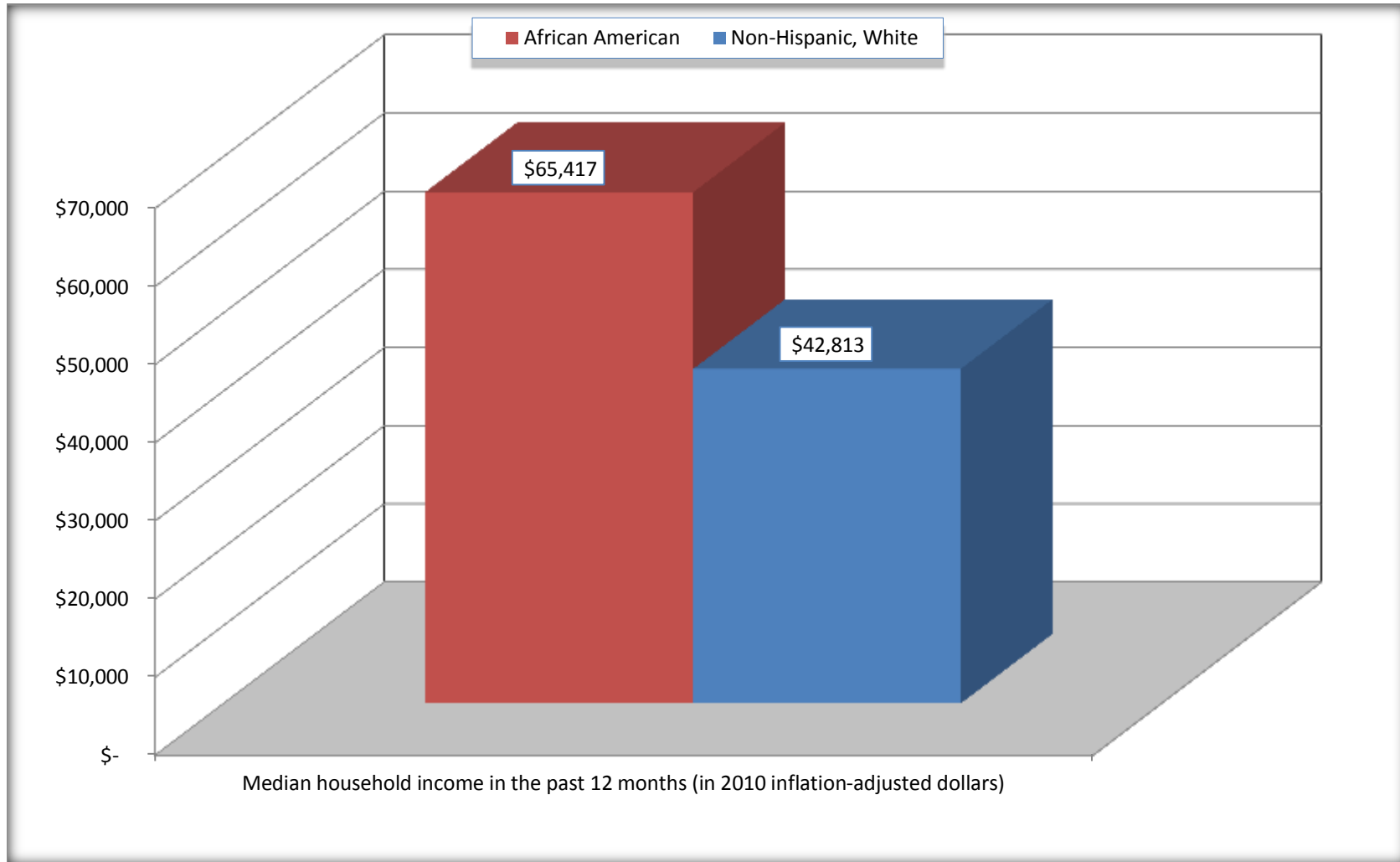
	Monticello CDP, Louisiana			
	African American	Margin of Error (+/-)	White, Not Hispanic	Margin of Error (+/-)
Median household income in the past 12 months (in 2010 inflation-adjusted dollars)	\$ 65,417	\$ 20,042	\$ 42,813	\$ 11,449

Source: U.S. Census Bureau, 2008-2012 American Community Survey

For information on confidentiality protection, sampling error, nonsampling error, and definitions, see Survey Methodology.
<http://www.census.gov/acs/www/UseData/index.htm>

Median Household Income in the Past 12 Months

Monticello CDP, Louisiana



Source: B19013. MEDIAN HOUSEHOLD INCOME IN THE PAST 12 MONTHS (IN 2010 INFLATION-ADJUSTED DOLLARS)
Data Set: 2008-2012 American Community Survey 5-Year Estimates

B19101. FAMILY INCOME IN THE PAST 12 MONTHS (IN 2010 INFLATION-ADJUSTED DOLLARS)

Data Set: 2008-2012 American Community Survey 5-Year Estimates

	Monticello CDP, Louisiana					
	African American	Margin of Error (+/-)	% of AA Total	White, Not Hispanic	Margin of Error (+/-)	% of NHW Total
Total:	1,105	125	100.0%	323	94	100.0%
Less than \$ 10,000	50	43	4.5%	9	14	2.8%
\$ 10,000 to \$ 14,999	7	11	0.6%	41	52	12.7%
\$ 15,000 to \$ 24,999	46	NC	4.2%	11	NC	3.4%
\$ 25,000 to \$ 34,999	65	NC	5.9%	50	NC	15.5%
\$ 35,000 to \$ 49,999	127	NC	11.5%	64	NC	19.8%
\$ 50,000 to \$ 74,999	266	NC	24.1%	27	NC	8.4%
\$ 100,000 to \$ 149,999	214	NC	19.4%	67	NC	20.7%
\$ 150,000 to \$ 199,999	15	18	1.4%	0	17	0.0%
\$ 200,000 or more	0	17	0.0%	0	17	0.0%

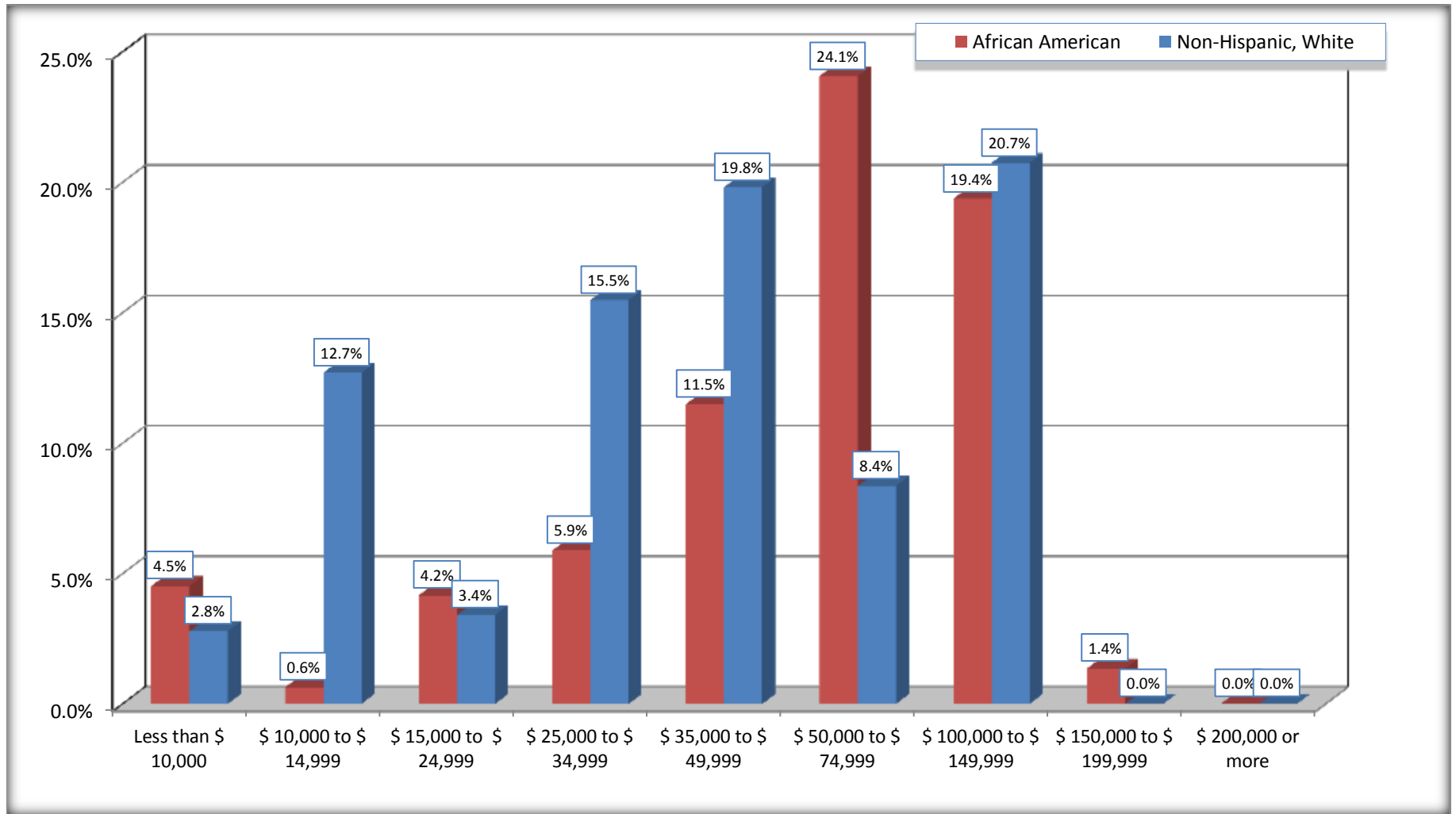
Source: U.S. Census Bureau, 2008-2012 American Community Survey

For information on confidentiality protection, sampling error, nonsampling error, and definitions, see Survey Methodology.

<http://www.census.gov/acs/www/UseData/index.htm>

Family Income in the Past 12 Months

Monticello CDP, Louisiana



Source: B19101. FAMILY INCOME IN THE PAST 12 MONTHS (IN 2010 INFLATION-ADJUSTED DOLLARS)
Data Set: 2008-2012 American Community Survey 5-Year Estimates

B19113. MEDIAN FAMILY INCOME IN THE PAST 12 MONTHS (IN 2010 INFLATION-ADJUSTED DOLLARS)

Data Set: 2008-2012 American Community Survey 5-Year Estimates

	Monticello CDP, Louisiana			
	African American	Margin of Error (+/-)	White, Not Hispanic	Margin of Error (+/-)
Median family income in the past 12 months (in 2010 inflation-adjusted dollars)	\$ 74,213	\$ 17,996	\$ 48,313	\$ 27,776

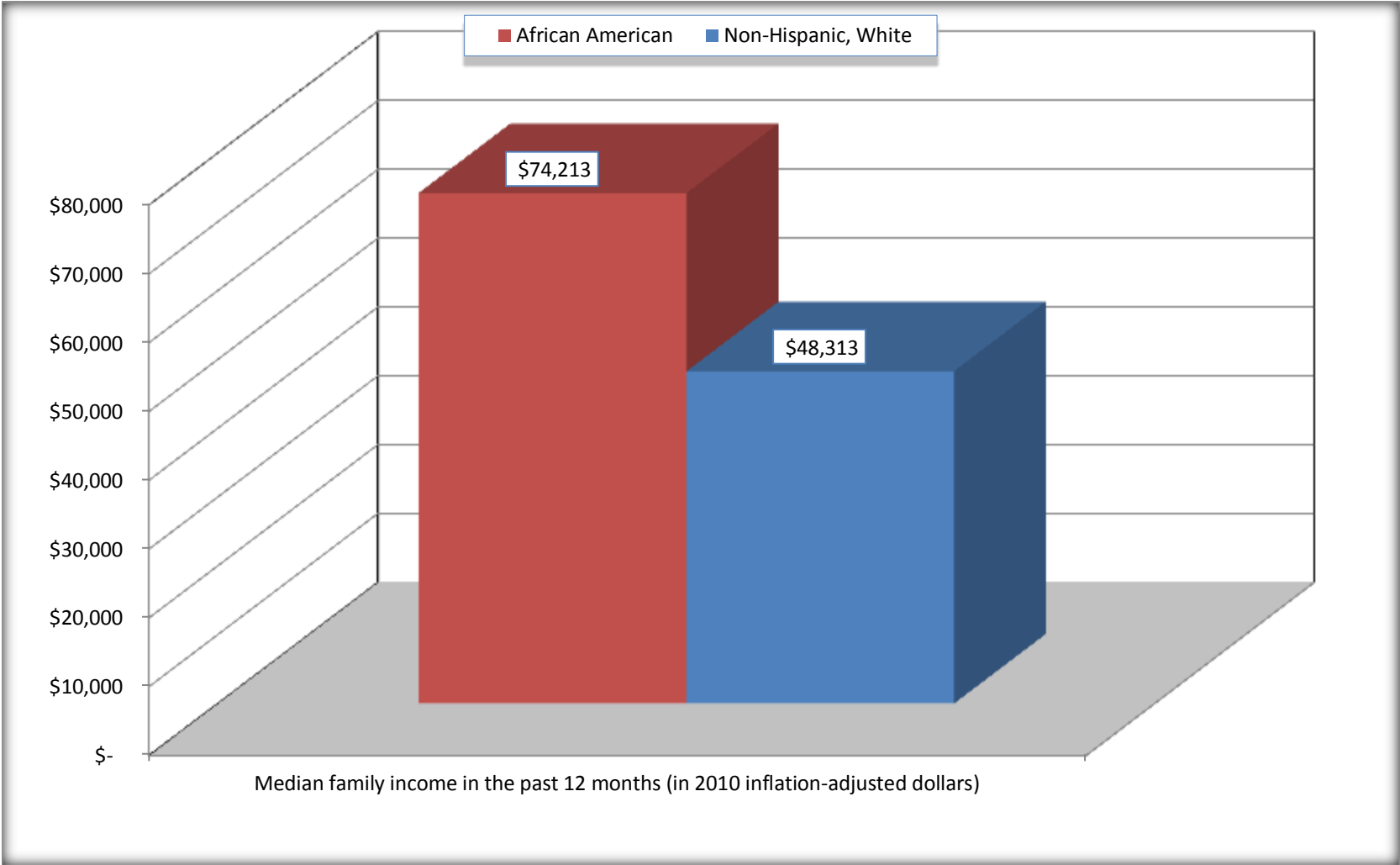
Source: U.S. Census Bureau, 2008-2012 American Community Survey

For information on confidentiality protection, sampling error, nonsampling error, and definitions, see Survey Methodology.

<http://www.census.gov/acs/www/UseData/index.htm>

Median Family Income in the Past 12 Months

Monticello CDP, Louisiana



Source: B19113. MEDIAN FAMILY INCOME IN THE PAST 12 MONTHS (IN 2010 INFLATION-ADJUSTED DOLLARS)
Data Set: 2008-2012 American Community Survey 5-Year Estimates

B19202. MEDIAN NONFAMILY HOUSEHOLD INCOME IN THE PAST 12 MONTHS (IN 2010 INFLATION-ADJUSTED DOLLARS)

Data Set: 2008-2012 American Community Survey 5-Year Estimates

	Monticello CDP, Louisiana			
	African American	Margin of Error (+/-)	White, Not Hispanic	Margin of Error (+/-)
Median nonfamily household income in the past 12 months (in 2010 inflation-adjusted dollars)	\$ 44,844	\$ 21,719	\$ 34,412	\$ 14,510

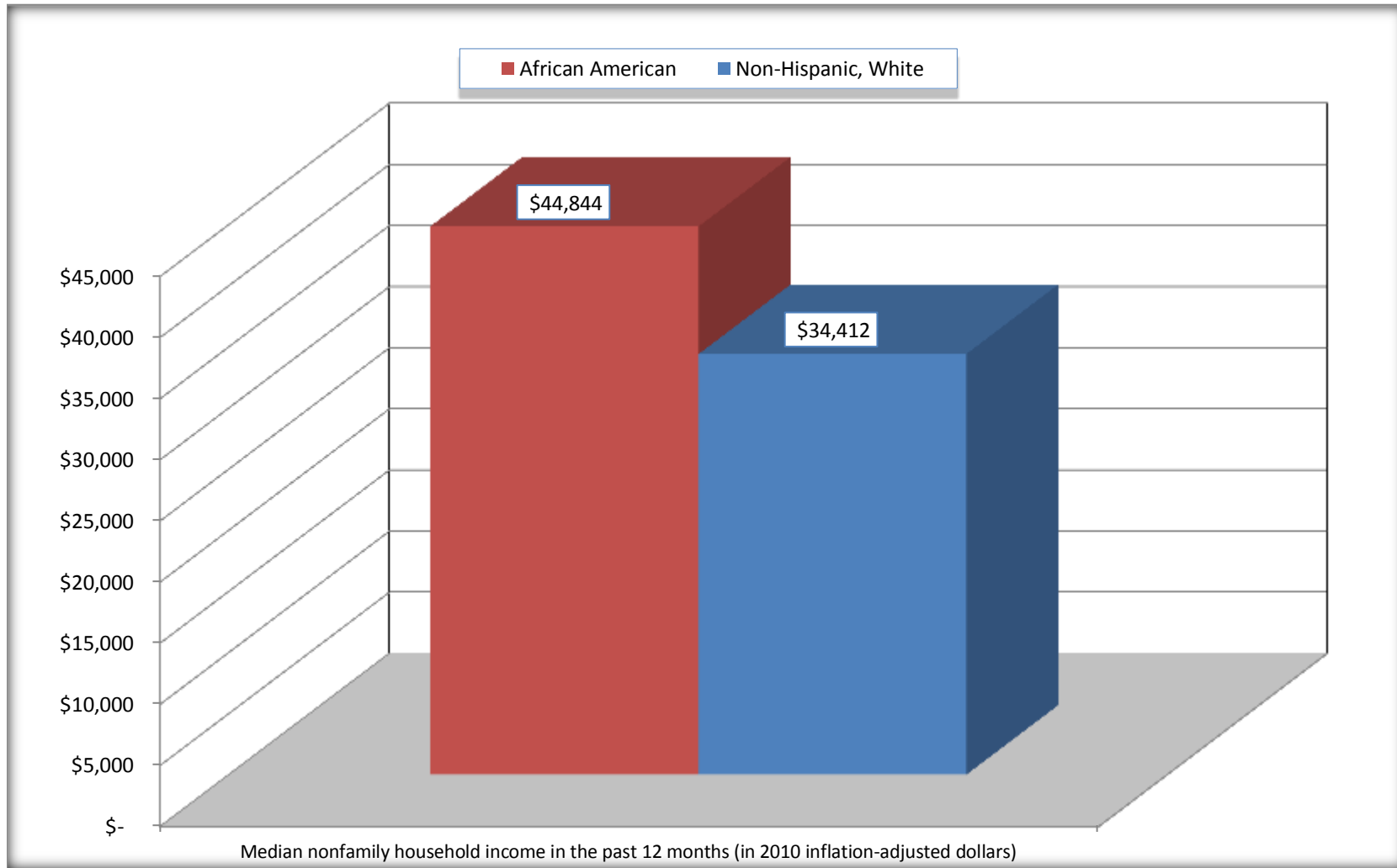
Source: U.S. Census Bureau, 2008-2012 American Community Survey

For information on confidentiality protection, sampling error, nonsampling error, and definitions, see Survey Methodology.

<http://www.census.gov/acs/www/UseData/index.htm>

Median Non-Family Income in the Past 12 Months

Monticello CDP, Louisiana



Source: B19202. MEDIAN NONFAMILY HOUSEHOLD INCOME IN THE PAST 12 MONTHS (IN 2010 INFLATION-ADJUSTED DOLLARS)
Data Set: 2008-2012 American Community Survey 5-Year Estimates

B19301. PER CAPITA INCOME IN THE PAST 12 MONTHS (IN 2010 INFLATION-ADJUSTED DOLLARS)

Data Set: 2008-2012 American Community Survey 5-Year Estimates

	Monticello CDP, Louisiana			
	African American	Margin of Error (+/-)	White, Not Hispanic	Margin of Error (+/-)
Per capita income in the past 12 months (in 2010 inflation-adjusted dollars)	\$ 24,515	\$ 2,849	\$ 29,304	\$ 7,208

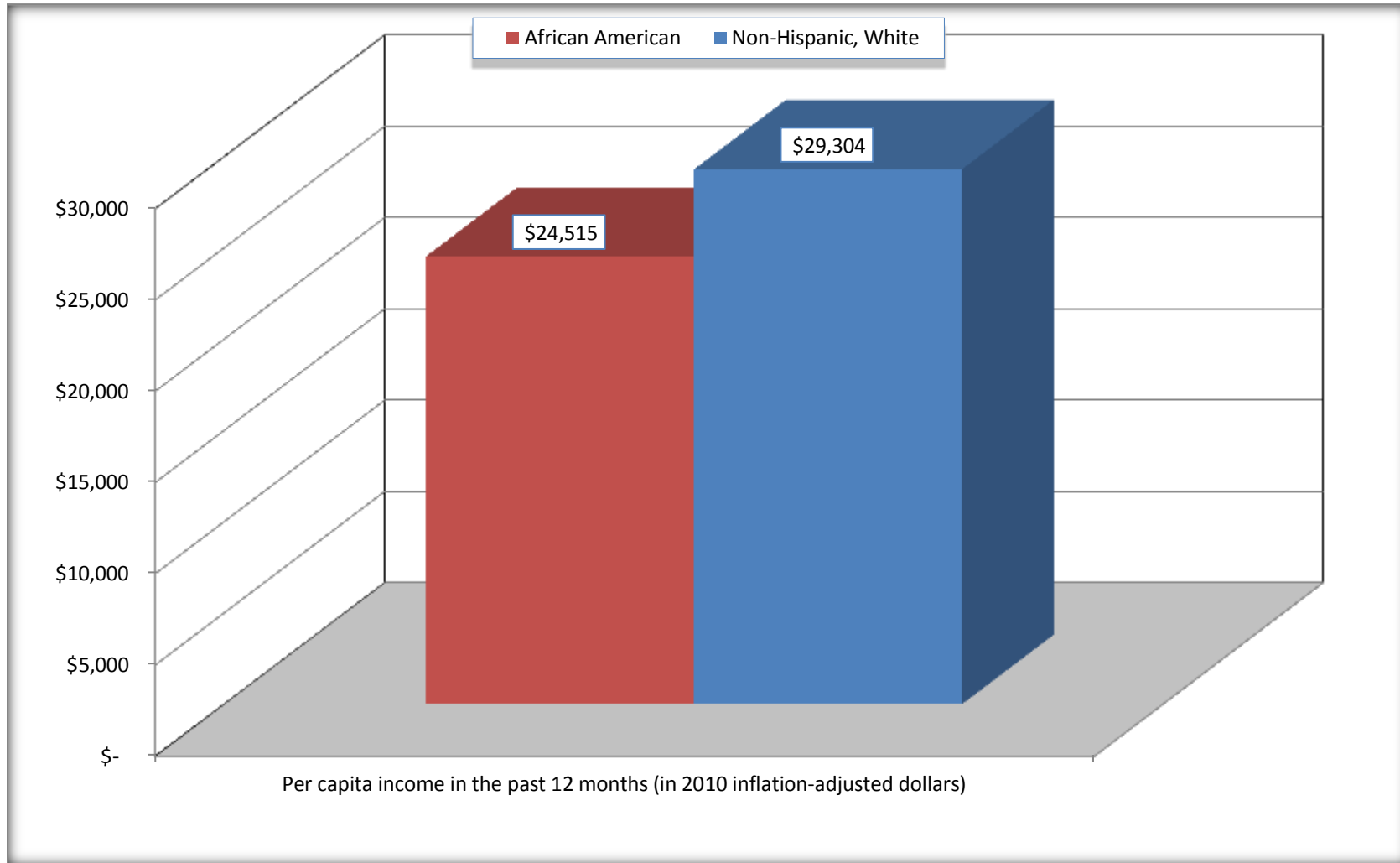
Source: U.S. Census Bureau, 2008-2012 American Community Survey

For information on confidentiality protection, sampling error, nonsampling error, and definitions, see Survey Methodology.

<http://www.census.gov/acs/www/UseData/index.htm>

Per capita Income in the Past 12 Months

Monticello CDP, Louisiana



Source: B19301. PER CAPITA INCOME IN THE PAST 12 MONTHS (IN 2010 INFLATION-ADJUSTED DOLLARS)
Data Set: 2008-2012 American Community Survey 5-Year Estimates

B20017. MEDIAN EARNINGS IN THE PAST 12 MONTHS (IN 2010 INFLATION-ADJUSTED DOLLARS) BY SEX BY WORK EXPERIENCE IN THE PAST 12 MONTHS FOR THE POPULATION 16 YEARS AND OVER WITH EARNINGS IN THE PAST 12 MONTHS

Data Set: 2008-2012 American Community Survey 5-Year Estimates

	Monticello CDP, Louisiana			
	African American	Margin of Error (+/-)	White, Not Hispanic	Margin of Error (+/-)
Median earnings in the past 12 months (in 2010 inflation-adjusted dollars) --				
Total:	\$ 31,657	\$ 3,460	\$ 31,327	\$ 6,881
Male --				
Total	\$ 40,000	\$ 12,845	\$ 37,550	\$ 14,214
Worked full-time, year-round in the past 12 months	\$ 44,531	\$ 8,880	\$ 43,409	\$ 18,408
Other	\$ 9,743	\$ 19,621	\$ 7,404	\$ 51,020
Female --				
Total	\$ 30,255	\$ 4,563	\$ 30,469	\$ 13,032
Worked full-time, year-round in the past 12 months	\$ 35,547	\$ 6,660	\$ 35,048	\$ 10,880
Other	\$ 11,146	\$ 5,602	\$ 11,400	\$ 1,138

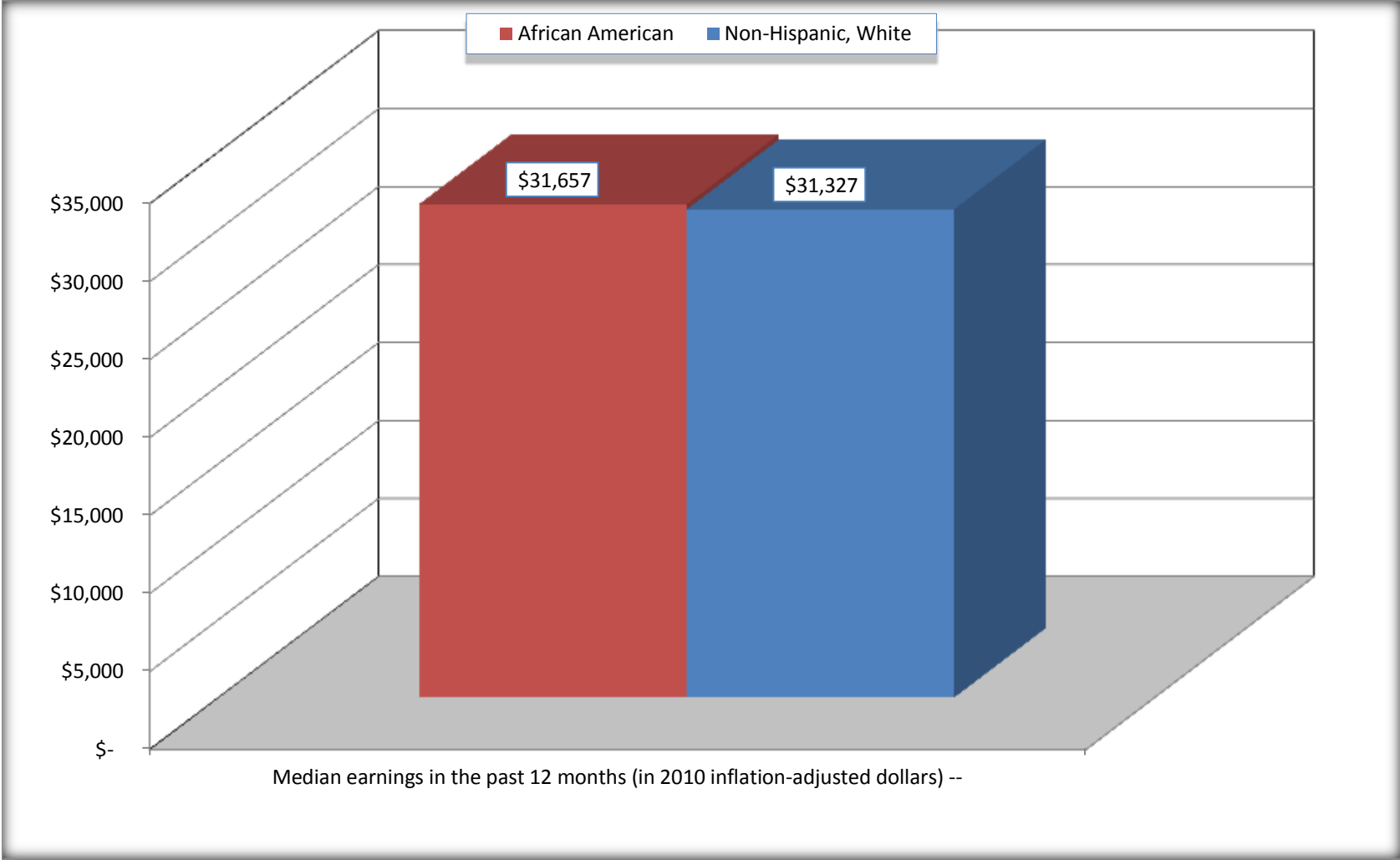
Source: U.S. Census Bureau, 2008-2012 American Community Survey

For information on confidentiality protection, sampling error, nonsampling error, and definitions, see Survey Methodology.

<http://www.census.gov/acs/www/UseData/index.htm>

Median earnings in the Past 12 Months (16 Years and Over with Earnings)

Monticello CDP, Louisiana



Source: B20017. MEDIAN EARNINGS IN THE PAST 12 MONTHS (IN 2010 INFLATION-ADJUSTED DOLLARS) BY SEX BY WORK EXPERIENCE IN THE PAST 12 MONTHS FOR THE POPULATION 16 YEARS AND OVER WITH EARNINGS IN THE PAST 12 MONTHS
Data Set: 2008-2012 American Community Survey 5-Year Estimates

B20005. SEX BY WORK EXPERIENCE IN THE PAST 12 MONTHS BY EARNINGS IN THE PAST 12 MONTHS (IN 2010 INFLATION-ADJUSTED DOLLARS) FOR THE POPULATION 16 YEARS AND OVER

Data Set: 2008-2012 American Community Survey 5-Year Estimates

	Monticello CDP, Louisiana					
	African American	Margin of Error (+/-)	% of AA Total	White, Not Hispanic	Margin of Error (+/-)	% of NHW Total
Total:	3,051	295	100.0%	891	165	100.0%
Worked full-time, year-round in the past 12 months:	1,655	NC	54.2%	315	NC	35.4%
No earnings	0	NC	0.0%	0	NC	0.0%
With earnings:	1,655	NC	54.2%	315	NC	35.4%
\$ 1 to \$ 9,999 or loss	44	NC	1.4%	0	NC	0.0%
\$ 10,000 to \$ 19,999	194	NC	6.4%	23	NC	2.6%
\$ 20,000 to \$ 29,999	264	NC	8.7%	75	NC	8.4%
\$ 30,000 to \$ 49,999	557	NC	18.3%	116	NC	13.0%
\$ 50,000 to \$ 74,999	478	NC	15.7%	26	NC	2.9%
\$ 75,000 or more	118	NC	3.9%	75	NC	8.4%
Other:	1,396	NC	45.8%	576	NC	64.6%
No earnings	642	NC	21.0%	435	NC	48.8%
With earnings: less than full time, year-round	754	NC	24.7%	141	NC	15.8%
Male:	1,468	158	48.1%	354	110	39.7%
Worked full-time, year-round in the past 12 months:	851	172	27.9%	130	60	14.6%
No earnings	0	17	0.0%	0	17	0.0%
With earnings:	851	172	27.9%	130	60	14.6%
\$ 1 to \$ 9,999 or loss	28	NC	0.9%	0	NC	0.0%
\$ 10,000 to \$ 19,999	121	NC	4.0%	10	NC	1.1%
\$ 20,000 to \$ 29,999	80	NC	2.6%	36	NC	4.0%
\$ 30,000 to \$ 49,999	256	NC	8.4%	26	NC	2.9%
\$ 50,000 to \$ 74,999	258	NC	8.5%	26	NC	2.9%
\$ 75,000 or more	108	NC	3.5%	32	NC	3.6%

	Monticello CDP, Louisiana					
	African American	Margin of Error (+/-)	% of AA Total	White, Not Hispanic	Margin of Error (+/-)	% of NHW Total
Other:	617	153	20.2%	224	95	25.1%
No earnings	200	91	6.6%	167	75	18.7%
With earnings:	417	140	13.7%	57	41	6.4%
Female:	1,583	228	51.9%	537	148	60.3%
Worked full-time, year-round in the past 12 months:	804	145	26.4%	185	93	20.8%
No earnings	0	17	0.0%	0	17	0.0%
With earnings:	804	145	26.4%	185	93	20.8%
\$ 1 to \$ 9,999 or less	16	NC	0.5%	0	NC	0.0%
\$ 10,000 to \$ 19,999	73	NC	2.4%	13	NC	1.5%
\$ 20,000 to \$ 29,999	184	NC	6.0%	39	NC	4.4%
\$ 30,000 to \$ 49,999	301	NC	9.9%	90	NC	10.1%
\$ 50,000 to \$ 74,999	220	NC	7.2%	0	NC	0.0%
\$ 75,000 or more	10	NC	0.3%	43	NC	4.8%
Other:	779	158	25.5%	352	126	39.5%
No earnings	442	128	14.5%	268	122	30.1%
With earnings:	337	103	11.0%	84	71	9.4%

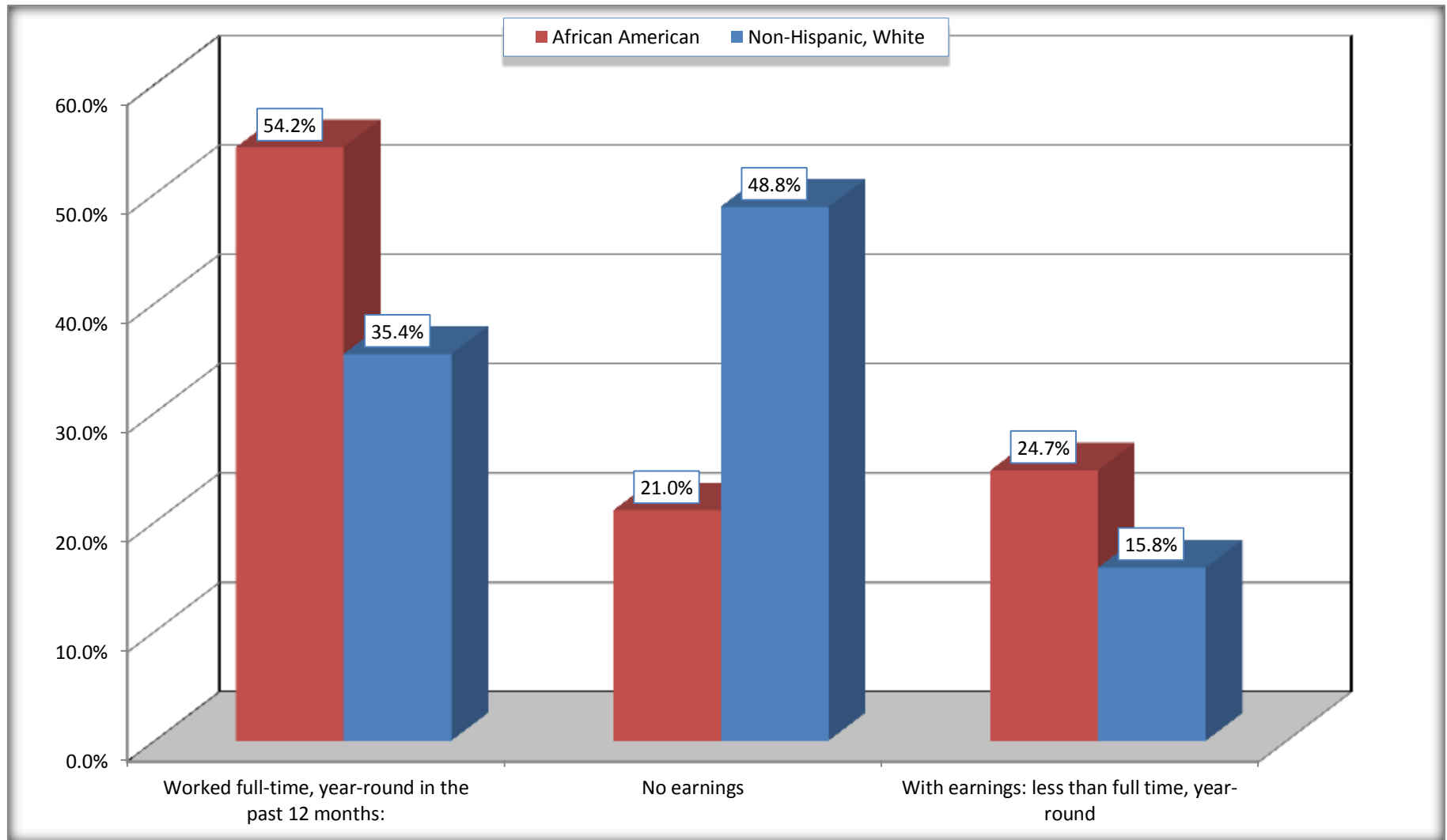
Source: U.S. Census Bureau, 2008-2012 American Community Survey

For information on confidentiality protection, sampling error, nonsampling error, and definitions, see Survey Methodology.

<http://www.census.gov/acs/www/UseData/index.htm>

Employment and Earnings in in the Past 12 Months (16 Years and Over)

Monticello CDP, Louisiana



Source: B20005. SEX BY WORK EXPERIENCE IN THE PAST 12 MONTHS BY EARNINGS IN THE PAST 12 MONTHS (IN 2010 INFLATION-ADJUSTED DOLLARS) FOR THE POPULATION 16 YEARS AND OVER

Data Set: 2008-2012 American Community Survey 5-Year Estimates

C21001. SEX BY AGE BY VETERAN STATUS FOR THE CIVILIAN POPULATION 18 YEARS AND OVER

Data Set: 2008-2012 American Community Survey 5-Year Estimates

	Monticello CDP, Louisiana					
	African American	Margin of Error (+/-)	% of AA Total	White, Not Hispanic	Margin of Error (+/-)	% of NHW Total
Total:	2,859	264	100.0%	891	165	100.0%
Veteran	267	NC	9.3%	125	NC	14.0%
Nonveteran	2,592	NC	90.7%	766	NC	86.0%
Male:	1,395	154	48.8%	354	110	39.7%
18 to 64 years:	1,275	167	44.6%	191	77	21.4%
Veteran	200	109	7.0%	75	50	8.4%
Nonveteran	1,075	184	37.6%	116	61	13.0%
65 years and over:	120	49	4.2%	163	72	18.3%
Veteran	36	26	1.3%	50	49	5.6%
Nonveteran	84	42	2.9%	113	57	12.7%
Female:	1,464	190	51.2%	537	148	60.3%
18 to 64 years:	1,394	184	48.8%	393	119	44.1%
Veteran	31	50	1.1%	0	17	0.0%
Nonveteran	1,363	174	47.7%	393	119	44.1%
65 years and over:	70	35	2.4%	144	76	16.2%
Veteran	0	17	0.0%	0	17	0.0%
Nonveteran	70	35	2.4%	144	76	16.2%

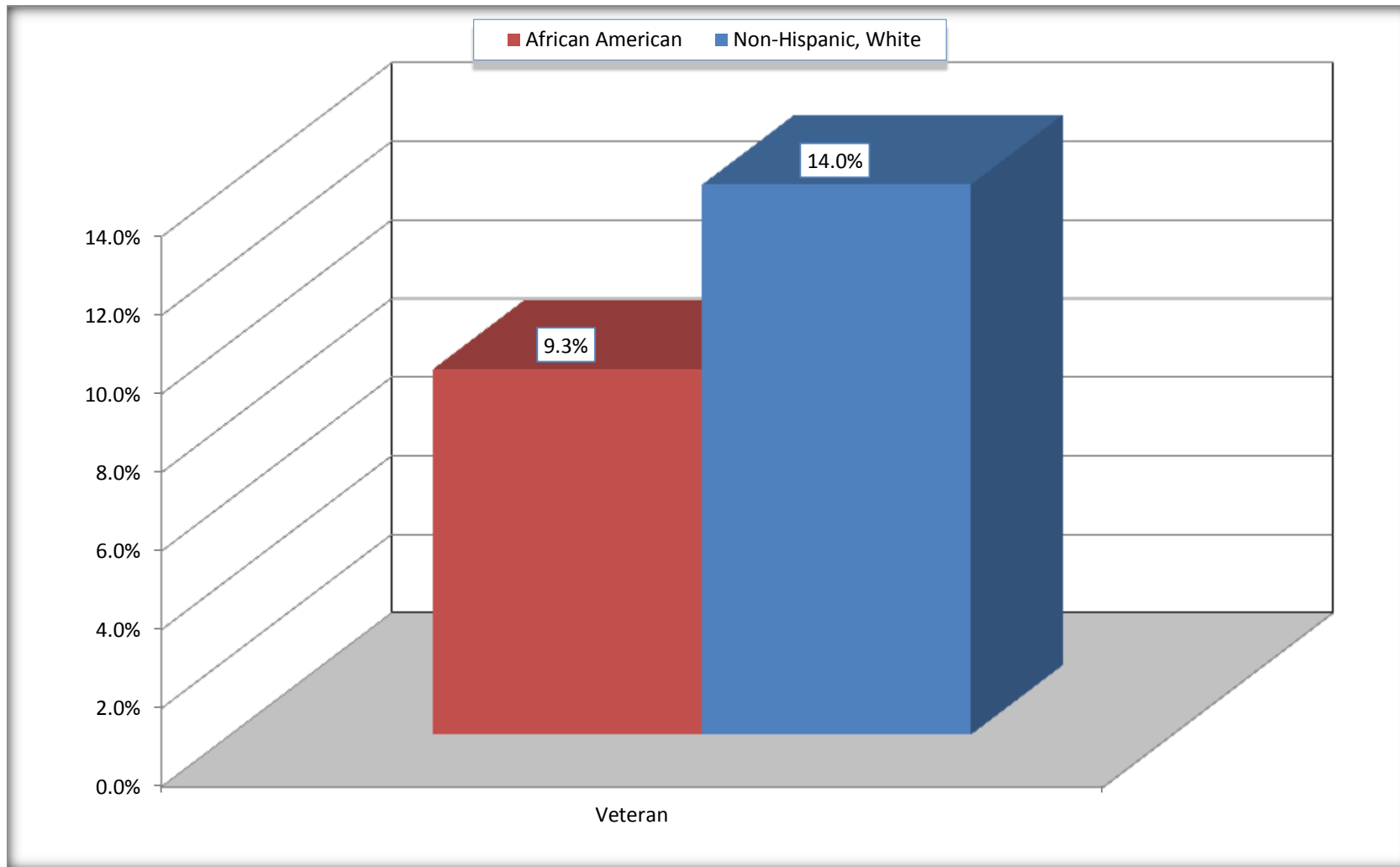
Source: U.S. Census Bureau, 2008-2012 American Community Survey

For information on confidentiality protection, sampling error, nonsampling error, and definitions, see Survey Methodology.

<http://www.census.gov/acs/www/UseData/index.htm>

Veterans in the Civilian Population 18 Years and Over

Monticello CDP, Louisiana



Source: C21001. SEX BY AGE BY VETERAN STATUS FOR THE CIVILIAN POPULATION 18 YEARS AND OVER
Data Set: 2008-2012 American Community Survey 5-Year Estimates

B22005. RECEIPT OF FOOD STAMPS/SNAP IN THE PAST 12 MONTHS BY RACE OF HOUSEHOLDER

Data Set: 2008-2012 American Community Survey 5-Year Estimates

	Monticello CDP, Louisiana					
	African American	Margin of Error (+/-)	% of AA Total	White, Not Hispanic	Margin of Error (+/-)	% of NHW Total
Total:	1,300	102	100.0%	521	100	100.0%
HH received Food Stamps/SNAP in the past 12 months	105	75	8.1%	21	24	4.0%
HH did not receive Food Stamps/SNAP in the past 12 months	1,195	117	91.9%	500	100	96.0%

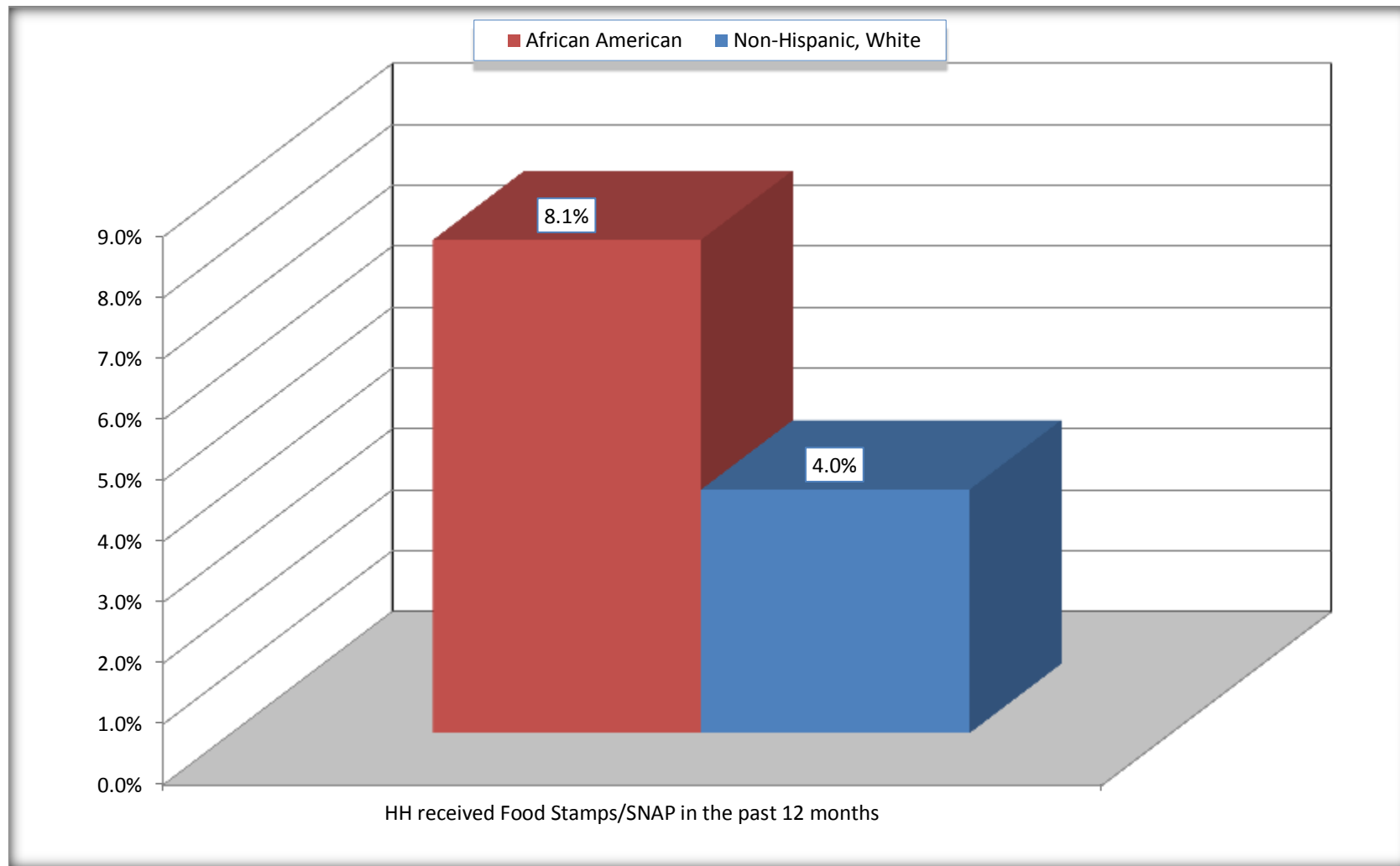
Source: U.S. Census Bureau, 2008-2012 American Community Survey

For information on confidentiality protection, sampling error, nonsampling error, and definitions, see Survey Methodology.

<http://www.census.gov/acs/www/UseData/index.htm>

Receipt of Food Stamps/SNAP in the Past 12 Months by Household

Monticello CDP, Louisiana



Source: B22005. RECEIPT OF FOOD STAMPS/SNAP IN THE PAST 12 MONTHS BY RACE OF HOUSEHOLDER
Data Set: 2008-2012 American Community Survey 5-Year Estimates

C23002. SEX BY AGE BY EMPLOYMENT STATUS FOR THE POPULATION 16 YEARS AND OVER

Data Set: 2008-2012 American Community Survey 5-Year Estimates

	Monticello CDP, Louisiana					
	African American	Margin of Error (+/-)	% of AA Total	White, Not Hispanic	Margin of Error (+/-)	% of NHW Total
Total:	3,051	295	100.0%	891	165	100.0%
In labor force:	2,414	NC	79.1%	435	NC	48.8%
In Armed Forces	0	NC	0.0%	0	NC	0.0%
Civilian:	2,348	NC	77.0%	408	NC	45.8%
Employed	2,210	NC	72.4%	435	NC	48.8%
Unemployed	204	NC	6.7%	0	NC	0.0%
Not in labor force	637	NC	20.9%	456	NC	51.2%
Male:	1,468	158	48.1%	354	110	39.7%
16 to 64 years:	1,348	171	44.2%	191	77	21.4%
In labor force:	1,145	164	37.5%	160	64	18.0%
In Armed Forces	0	17	0.0%	0	17	0.0%
Civilian:	1,145	164	37.5%	160	64	18.0%
Employed	1,051	183	34.4%	160	64	18.0%
Unemployed	94	69	3.1%	0	17	0.0%
Not in labor force	203	105	6.7%	31	30	3.5%
65 years and over:	120	49	3.9%	163	72	18.3%
In labor force:	59	29	1.9%	18	21	2.0%
Employed	59	29	1.9%	18	21	2.0%
Unemployed	0	17	0.0%	0	17	0.0%
Not in labor force	61	41	2.0%	145	68	16.3%

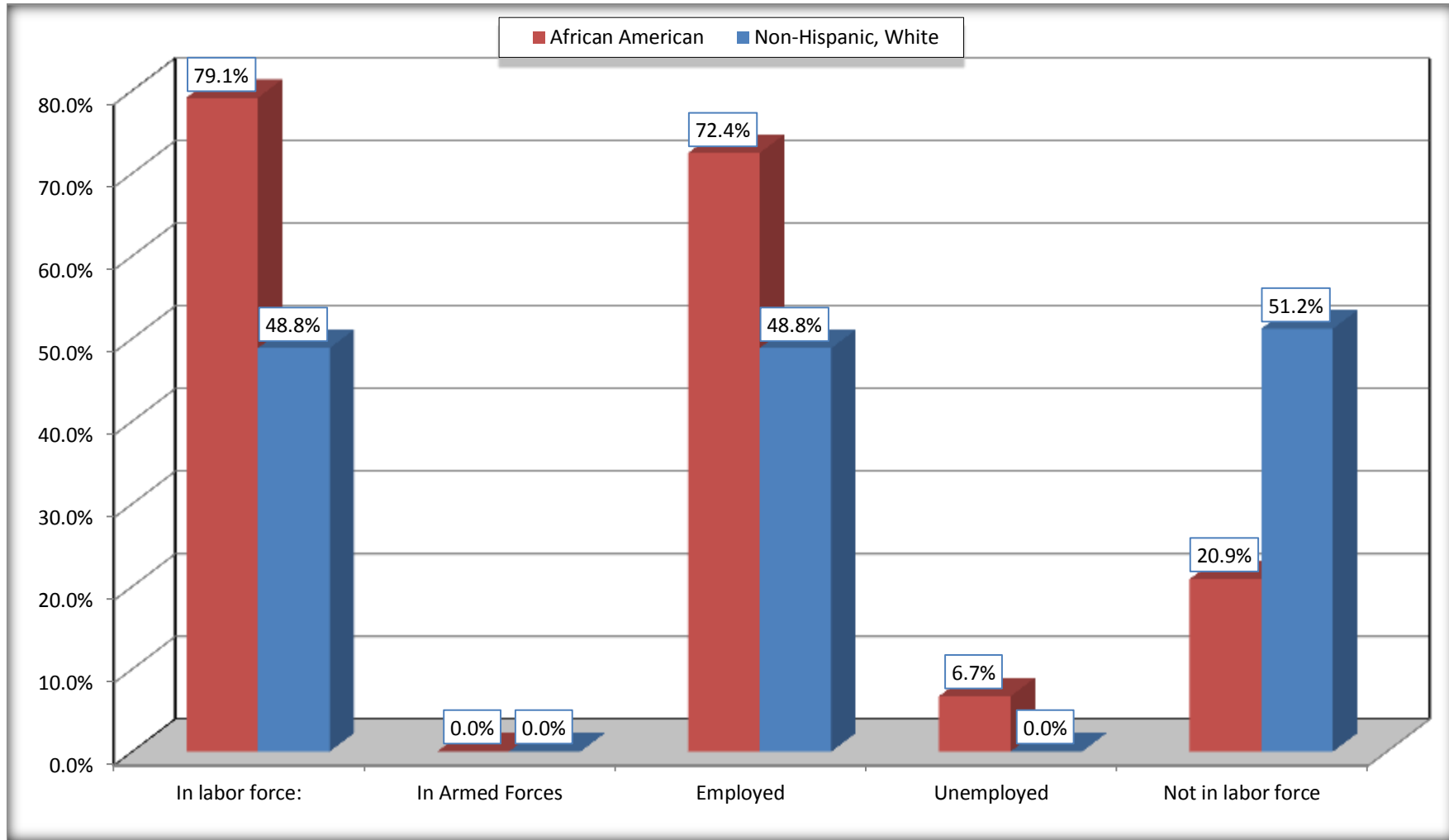
	Monticello CDP, Louisiana					
	African American	Margin of Error (+/-)	% of AA Total	White, Not Hispanic	Margin of Error (+/-)	% of NHW Total
Female:	1,583	228	51.9%	537	148	60.3%
16 to 64 years:	1,513	222	49.6%	393	119	44.1%
In labor force:	1,203	176	39.4%	248	112	27.8%
In Armed Forces	0	17	0.0%	0	17	0.0%
Civilian:	1,203	176	39.4%	248	112	27.8%
Employed	1,093	168	35.8%	248	112	27.8%
Unemployed	110	70	3.6%	0	17	0.0%
Not in labor force	310	134	10.2%	145	69	16.3%
65 years and over:	70	35	2.3%	144	76	16.2%
In labor force:	7	12	0.2%	9	14	1.0%
Employed	7	12	0.2%	9	14	1.0%
Unemployed	0	17	0.0%	0	17	0.0%
Not in labor force	63	32	2.1%	135	77	15.2%

Source: U.S. Census Bureau, 2008-2012 American Community Survey

For information on confidentiality protection, sampling error, nonsampling error, and definitions, see Survey Methodology.
<http://www.census.gov/acs/www/UseData/index.htm>

Employment Status for the Population 16 years and over

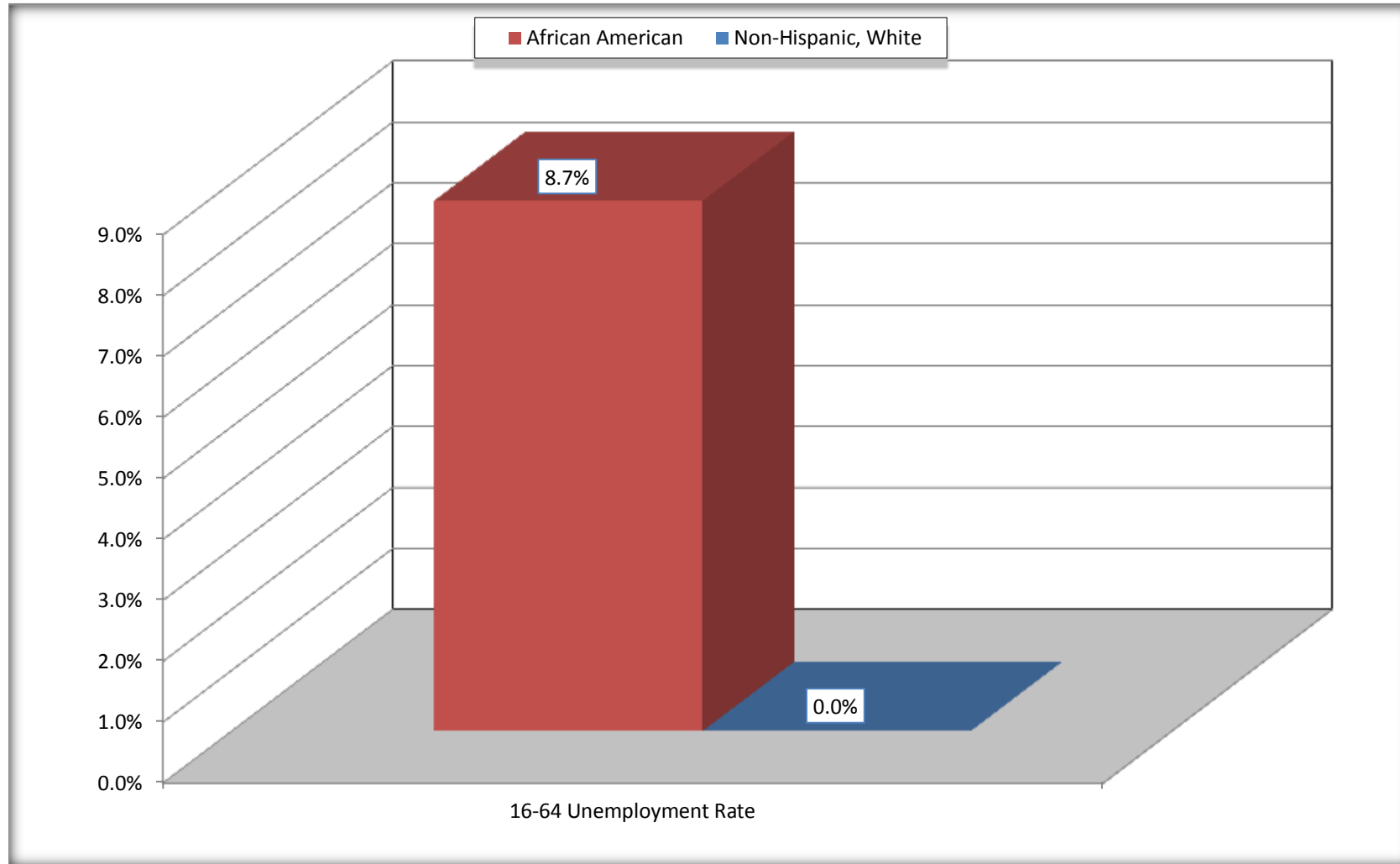
Monticello CDP, Louisiana



Source: C23002. SEX BY AGE BY EMPLOYMENT STATUS FOR THE POPULATION 16 YEARS AND OVER
Data Set: 2008-2012 American Community Survey 5-Year Estimates

Unemployment of Working Age Population (Ages 16 to 64) (As a Percent of 16-64 Civilian Labor Force)

Monticello CDP, Louisiana



Source: C23002. SEX BY AGE BY EMPLOYMENT STATUS FOR THE POPULATION 16 YEARS AND OVER
Data Set: 2008-2012 American Community Survey 5-Year Estimates

C24010. SEX BY OCCUPATION FOR THE CIVILIAN EMPLOYED POPULATION 16 YEARS AND OVER

Data Set: 2008-2012 American Community Survey 5-Year Estimates

	Monticello CDP, Louisiana					
	African American	Margin of Error (+/-)	% of AA Total	White, Not Hispanic	Margin of Error (+/-)	% of NHW Total
Total:	2,210	285	100.0%	435	139	100.0%
Management, professional, and related occupations	601	NC	27.2%	163	NC	37.5%
Service occupations	376	NC	17.0%	17	NC	3.9%
Sales and office occupations	658	NC	29.8%	183	NC	42.1%
Natural resources, construction, and maintenance occupations:	143	NC	6.5%	30	NC	6.9%
Production, transportation, and material moving occupations	432	NC	19.5%	42	NC	9.7%
Male:	1,110	184	50.2%	178	69	40.9%
Management, business, science, and arts occupations:	191	108	8.6%	58	51	13.3%
Service occupations	203	108	9.2%	7	11	1.6%
Sales and office occupations	243	87	11.0%	54	39	12.4%
Natural resources, construction, and maintenance occupations:	132	83	6.0%	30	28	6.9%
Production, transportation, and material moving occupations	341	101	15.4%	29	32	6.7%
Female:	1,100	168	49.8%	257	111	59.1%
Management, professional, and related occupations	410	115	18.6%	105	81	24.1%
Service occupations	173	103	7.8%	10	13	2.3%
Sales and office occupations	415	117	18.8%	129	83	29.7%
Natural resources, construction, and maintenance occupations:	11	18	0.5%	0	17	0.0%
Production, transportation, and material moving occupations	91	82	4.1%	13	20	3.0%

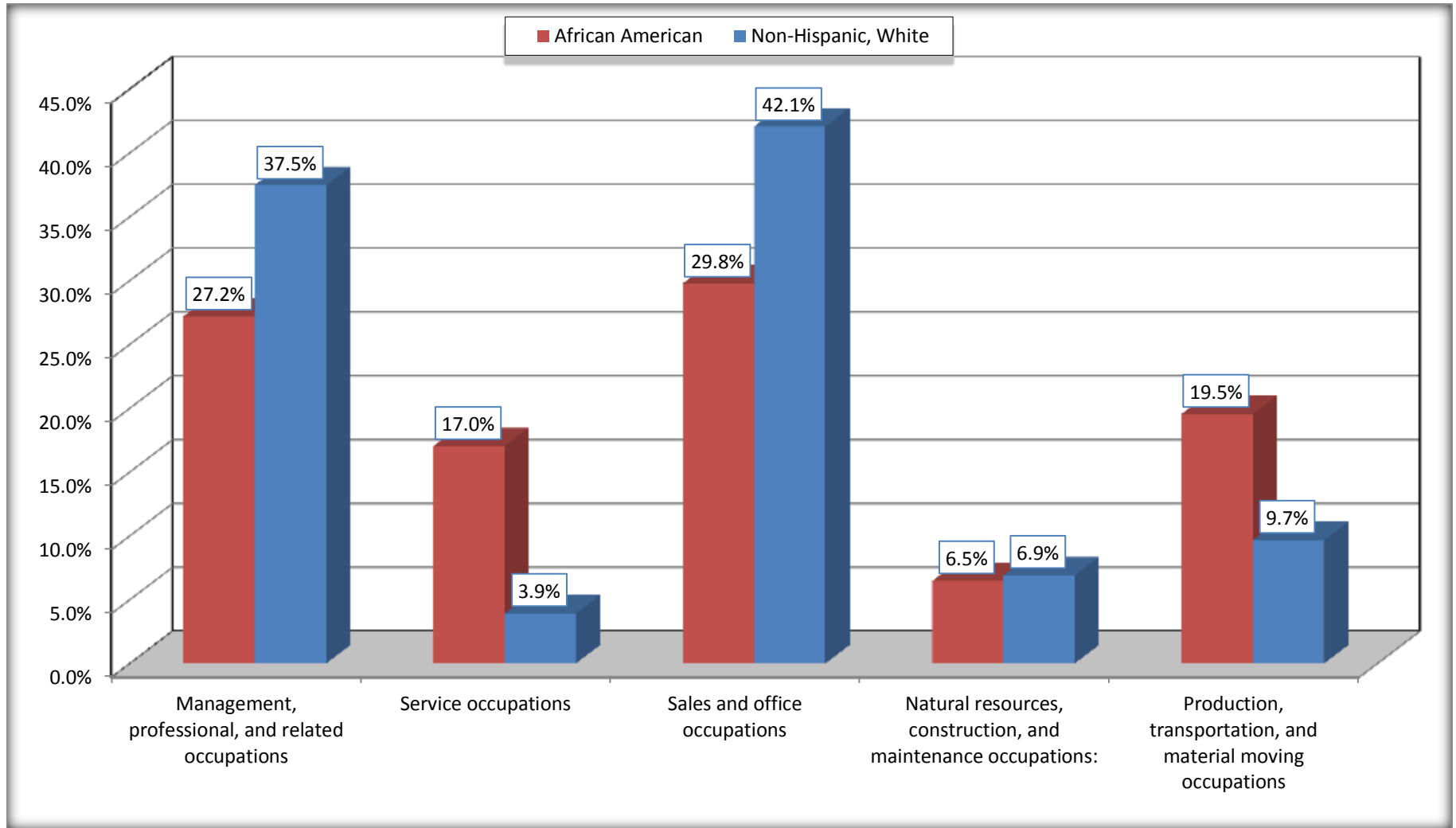
Source: U.S. Census Bureau, 2008-2012 American Community Survey

For information on confidentiality protection, sampling error, nonsampling error, and definitions, see Survey Methodology.

<http://www.census.gov/acs/www/UseData/index.htm>

Occupation for the Civilian Employed 16 Years and Over Population

Monticello CDP, Louisiana



Source: C24010. SEX BY OCCUPATION FOR THE CIVILIAN EMPLOYED POPULATION 16 YEARS AND OVER
Data Set: 2008-2012 American Community Survey 5-Year Estimates

B25003. TENURE - Universe: OCCUPIED HOUSING UNITS

Data Set: 2008-2012 American Community Survey 5-Year Estimates

	Monticello CDP, Louisiana					
	African American	Margin of Error (+/-)	% of AA Total	White, Not Hispanic	Margin of Error (+/-)	% of NHW Total
Total:	1,300	102	100.0%	521	100	100.0%
Owner occupied	1,223	105	94.1%	474	102	91.0%
Renter occupied	77	61	5.9%	47	50	9.0%

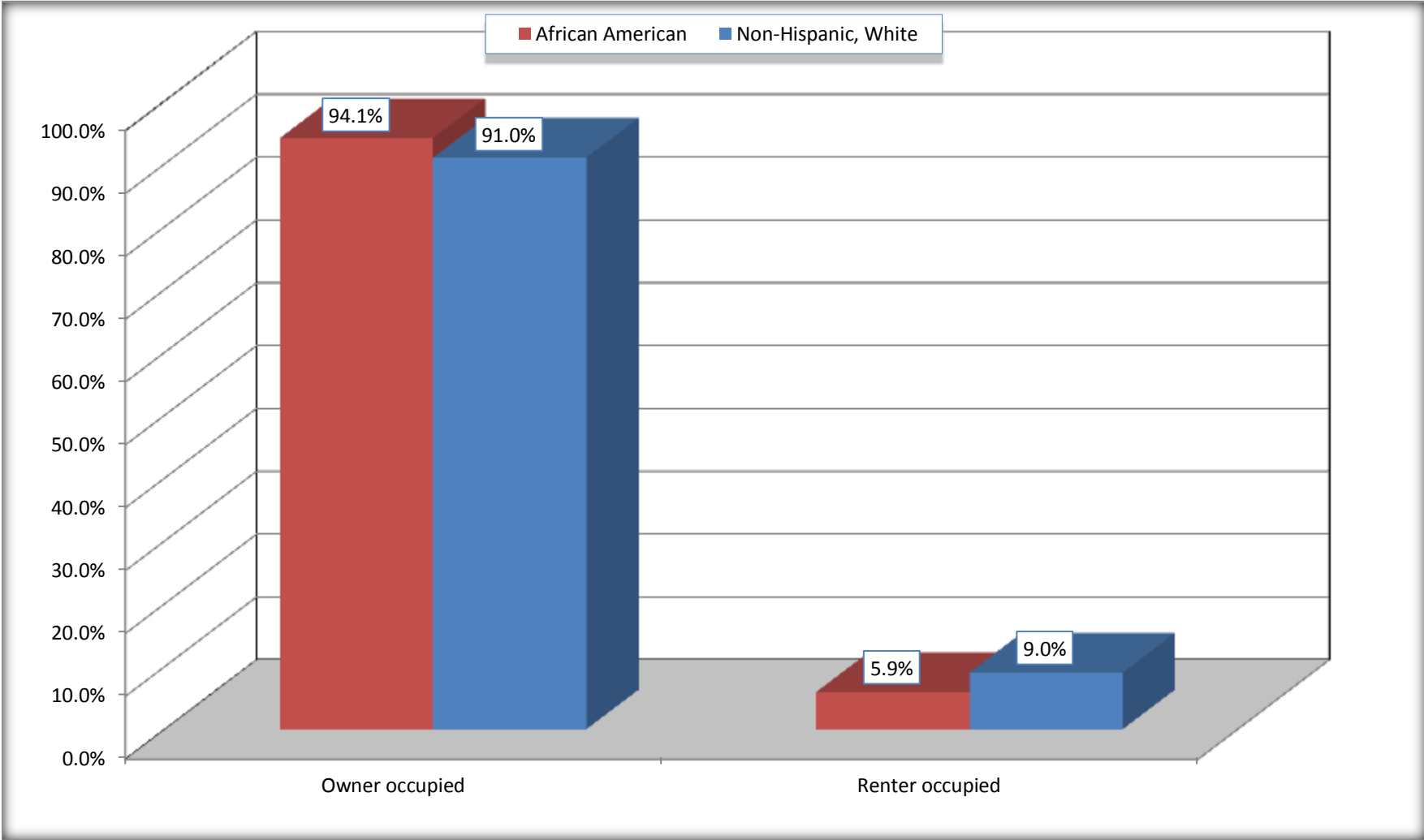
Source: U.S. Census Bureau, 2008-2012 American Community Survey

For information on confidentiality protection, sampling error, nonsampling error, and definitions, see Survey Methodology.

<http://www.census.gov/acs/www/UseData/index.h>

Home Owners and Renters by Household

Monticello CDP, Louisiana



Source: B25003. TENURE - Universe: OCCUPIED HOUSING UNITS
Data Set: 2008-2012 American Community Survey 5-Year Estimates

B25014. OCCUPANTS PER ROOM - Universe: OCCUPIED HOUSING UNITS

Data Set: 2008-2012 American Community Survey 5-Year Estimates

	Monticello CDP, Louisiana					
	African American	Margin of Error (+/-)	% of AA Total	White, Not Hispanic	Margin of Error (+/-)	% of NHW Total
Total:	1,300	102	100.0%	521	100	100.0%
1.00 or less occupants per room	1,284	106	98.8%	521	100	100.0%
1.01 or more occupants per room	16	19	1.2%	0	17	0.0%

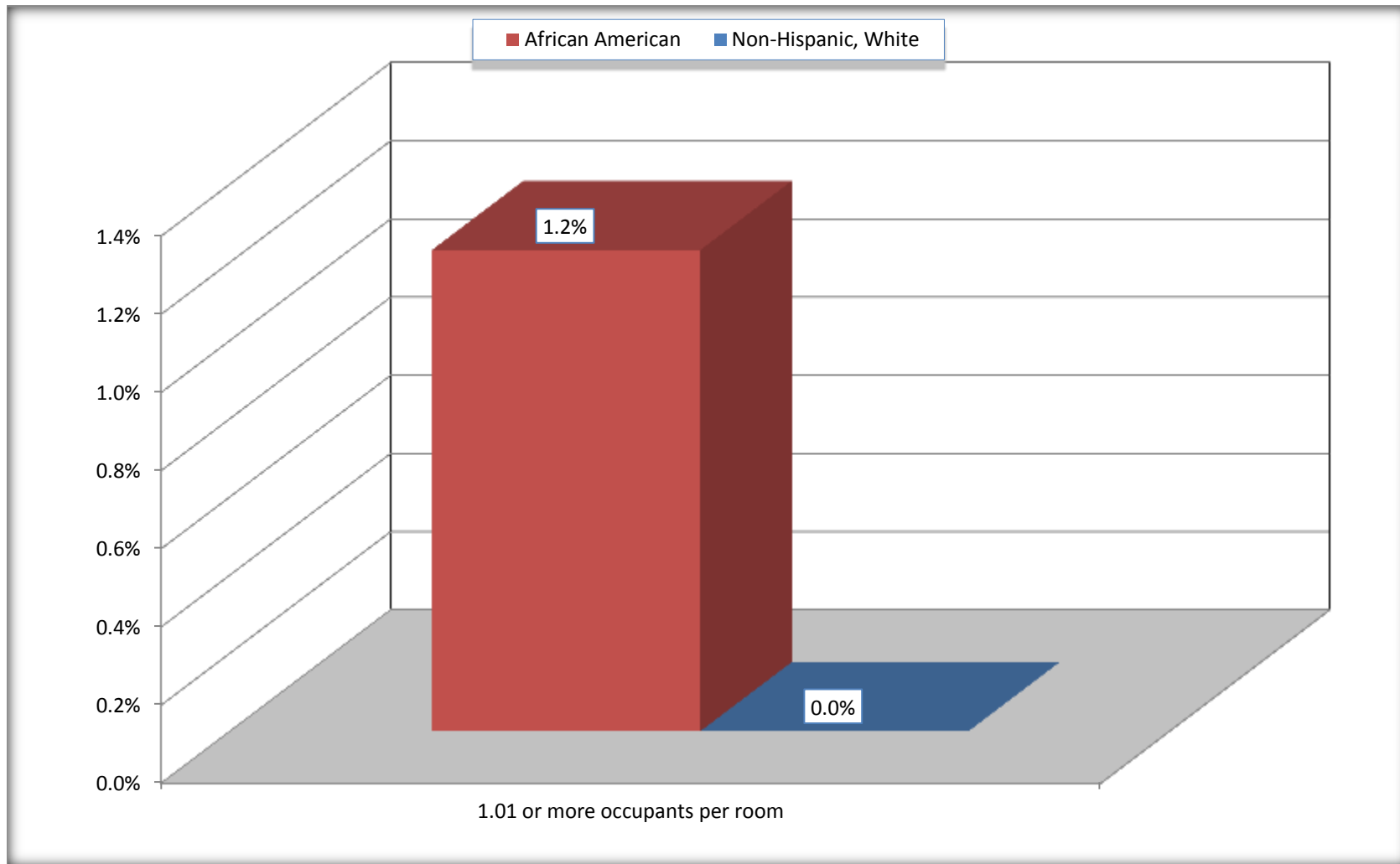
Source: U.S. Census Bureau, 2008-2012 American Community Survey

For information on confidentiality protection, sampling error, nonsampling error, and definitions, see Survey Methodology.

<http://www.census.gov/acs/www/UseData/index.ht>

More than One Person per Room (Crowding) by Household

Monticello CDP, Louisiana



Source: B25014. OCCUPANTS PER ROOM - Universe: OCCUPIED HOUSING UNITS
Data Set: 2008-2012 American Community Survey 5-Year Estimates

B18101. AGE BY DISABILITY STATUS

Data Set: 2008-2012 American Community Survey 5-Year Estimates

	Monticello CDP, Louisiana					
	African American	Margin of Error (+/-)	% of AA Total	White, Not Hispanic	Margin of Error (+/-)	% of NHW Total
Total:	3,900	368	100.0%	1,012	234	100.0%
Under 18 years:	1,041	251	26.7%	121	41	12.0%
With a disability	41	37	1.1%	11	19	1.1%
No disability	1,000	241	25.6%	110	96	10.9%
18 to 64 years:	2,669	257	68.4%	584	146	57.7%
With a disability	293	95	7.5%	122	64	12.1%
No disability	2,376	242	60.9%	462	144	45.7%
65 years and over:	190	57	4.9%	307	72	30.3%
With a disability	66	36	1.7%	170	92	16.8%
No disability	124	49	3.2%	137	60	13.5%

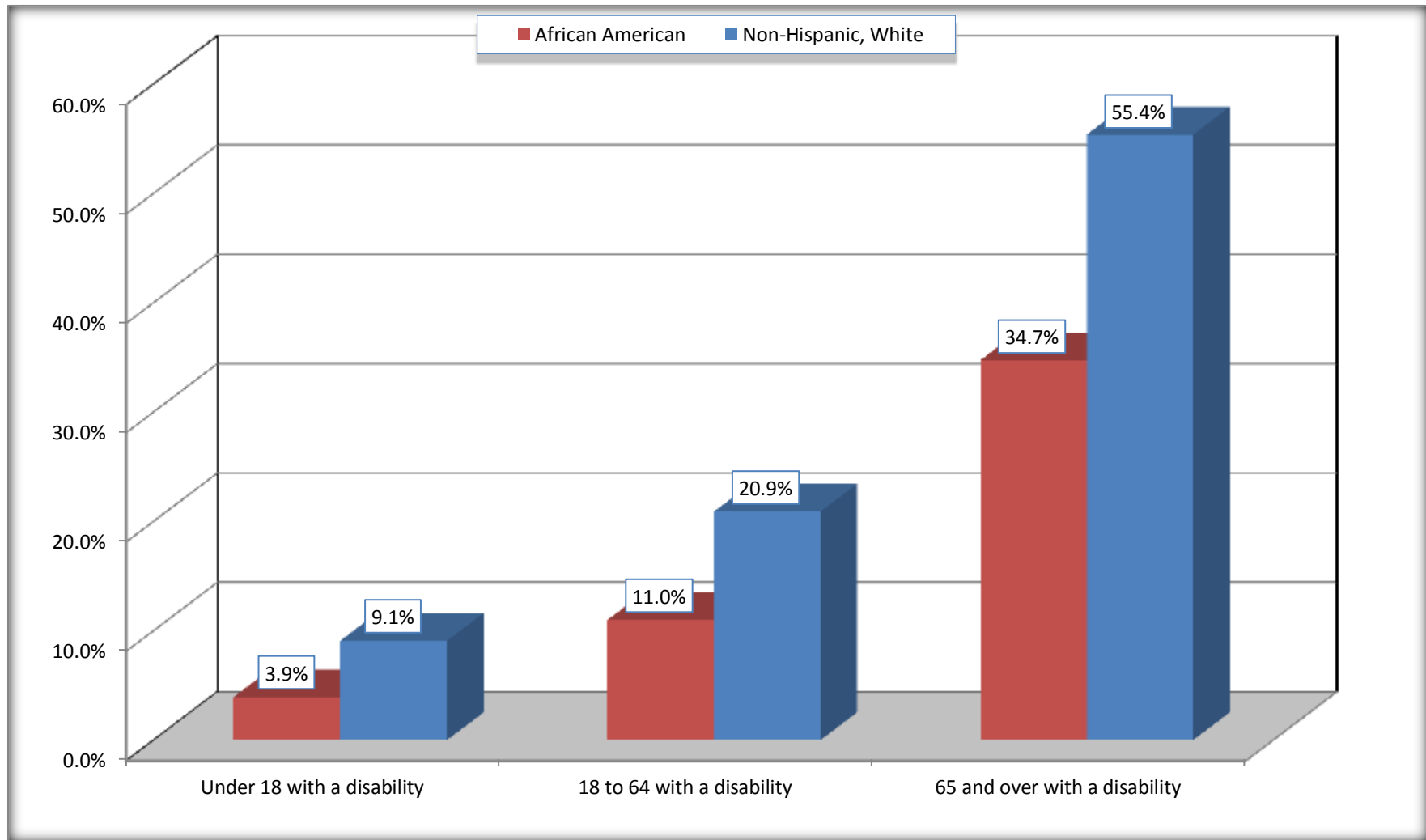
Source: U.S. Census Bureau, 2008-2012 American Community Survey

For information on confidentiality protection, sampling error, nonsampling error, and definitions, see Survey Methodology.

<http://www.census.gov/acs/www/UseData/index.htm>

Disability by Age

Monticello CDP, Louisiana



Source: B18101. AGE BY DISABILITY STATUS
Data Set: 2008-2012 American Community Survey 5-Year Estimates

C27001B. HEALTH INSURANCE COVERAGE STATUS BY AGE

Data Set: 2008-2012 American Community Survey 5-Year Estimates

	Monticello CDP, Louisiana					
	African American	Margin of Error (+/-)	% of AA Total	White, Not Hispanic	Margin of Error (+/-)	% of NHW Total
Total:	3,900	368	100.0%	1,012	234	100.0%
Under 18 years:	1,041	251	26.7%	121	97	12.0%
With health insurance coverage	1,004	252	25.7%	111	96	11.0%
No health insurance coverage	37	41	0.9%	10	17	1.0%
18 to 64 years:	2,669	257	68.4%	584	146	57.7%
With health insurance coverage	2,349	292	60.2%	458	134	45.3%
No health insurance coverage	320	148	8.2%	126	79	12.5%
65 years and over:	190	57	4.9%	307	72	30.3%
With health insurance coverage	190	57	4.9%	300	70	29.6%
No health insurance coverage	0	17	0.0%	7	12	0.7%

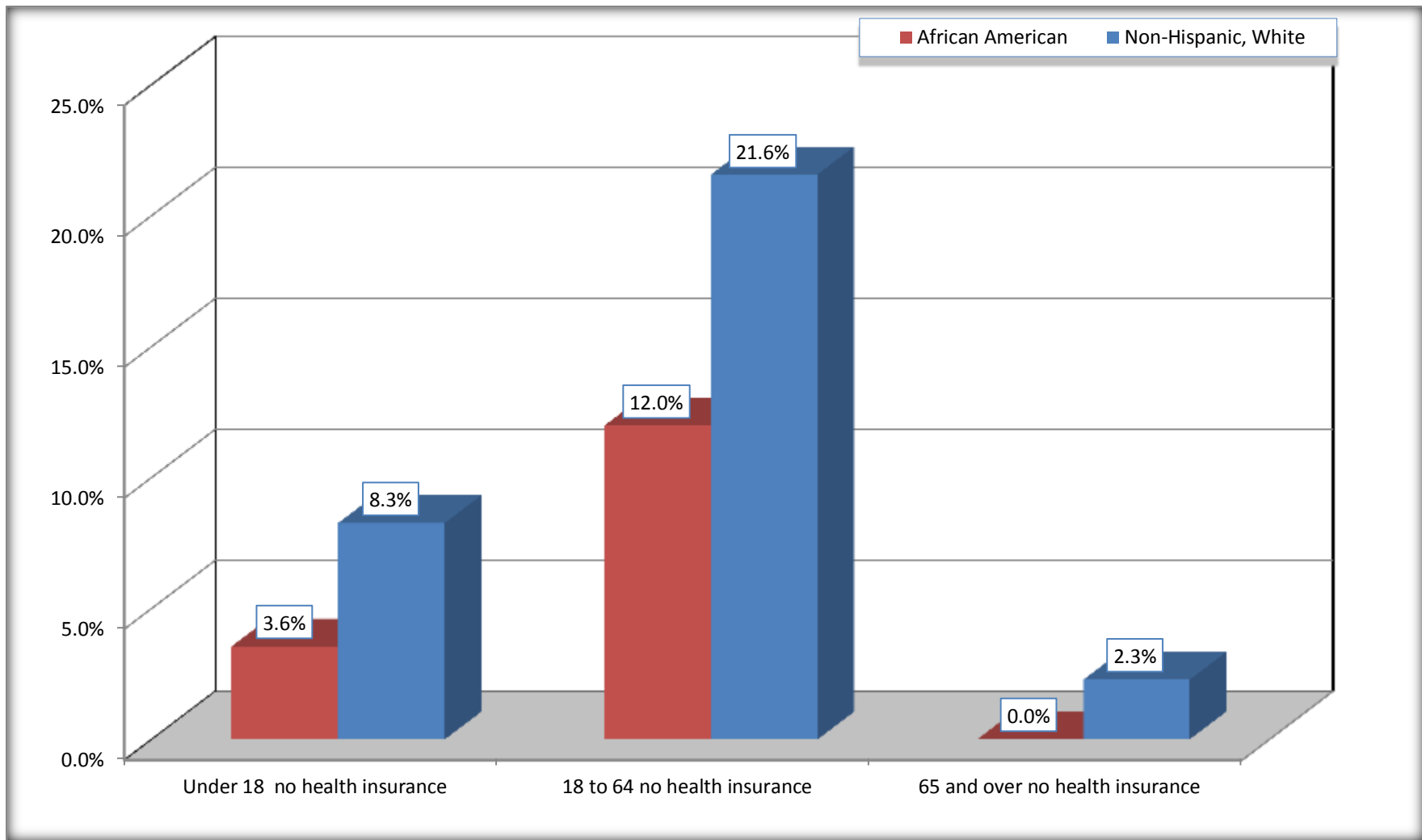
Source: U.S. Census Bureau, 2008-2012 American Community Survey

For information on confidentiality protection, sampling error, nonsampling error, and definitions, see Survey Methodology.

<http://www.census.gov/acs/www/UseData/index.htm>

Lack of Health Insurance Coverage by Age

Monticello CDP, Louisiana



Source: C27001B. HEALTH INSURANCE COVERAGE STATUS BY AGE
Data Set: 2008-2012 American Community Survey 5-Year Estimates