

# **Selected Socio-Economic Data**

## **Minden city, Louisiana**

### **African American and White, Not Hispanic**

**Data Set: 2008-2012 American Community Survey 5-Year Estimates**

[www.fairvote2020.org](http://www.fairvote2020.org)

[www.fairdata2000.com](http://www.fairdata2000.com)

[29-Dec-13](#)

**C02003.DETAILED RACE - Universe: TOTAL POPULATION**

Data Set: 2008-2012 American Community Survey 5-Year Estimates

	Minden city, Louisiana		
	Population	Margin of Error (+/-)	% of Total
<b>Total:</b>	<b>13,062</b>	<b>25</b>	<b>100.0%</b>
Population of one race:	13,000	55	99.5%
White	5,575	378	42.7%
Black or African American	7,234	364	55.4%
American Indian and Alaska Native	42	52	0.3%
Asian alone	120	43	0.9%
Native Hawaiian and Other Pacific Islander	0	19	0.0%
Some other race	29	32	0.2%
Population of two or more races:	62	52	0.5%
Two races including Some other race	14	24	0.1%
Two races excluding Some other race, and three or more races	48	46	0.4%
Population of two races:	62	52	0.5%
White; Black or African American	0	19	0.0%
White; American Indian and Alaska Native	48	46	0.4%
White; Asian	0	19	0.0%
Black or African American; American Indian and Alaska Native	0	19	0.0%
All other two race combinations	14	24	0.1%
Population of three races	0	19	0.0%
Population of four or more races	0	19	0.0%

Note: Hispanics may be of any race. See Table B03002 and chart.

Source: U.S. Census Bureau, 2008-2012 American Community Survey

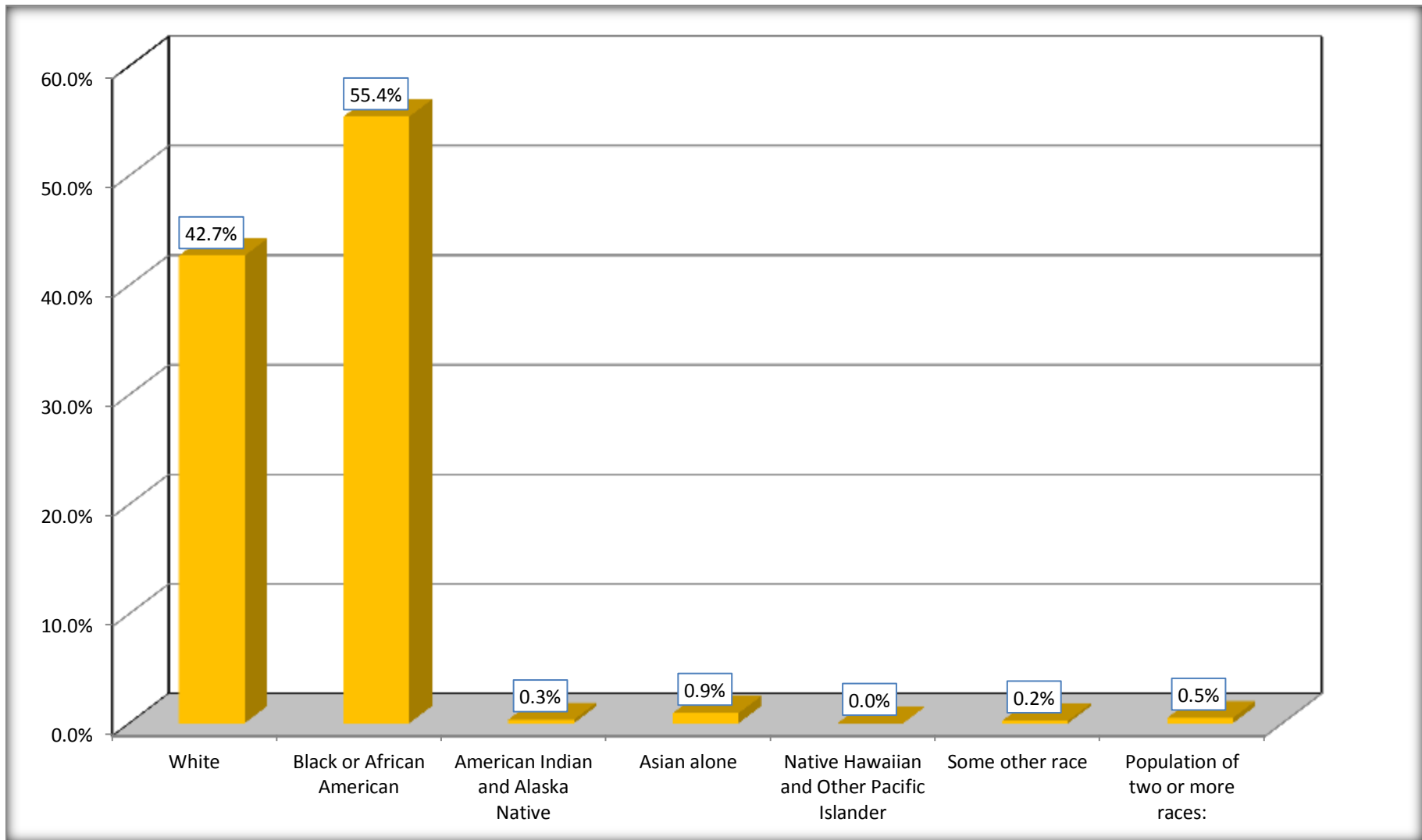
Although the American Community Survey (ACS) produces population, demographic and housing unit estimates, it is the Census Bureau's Population Estimates Program that produces and disseminates the official estimates of the population for the nation, states, counties, cities and towns and estimates of housing units for states and counties.

For information on confidentiality protection, sampling error, nonsampling error, and definitions, see Survey Methodology.

<http://www.census.gov/acs/www/UseData/index.htm>

# Population by Race

## Minden city, Louisiana



Source: C02003.DETAILED RACE - Universe: TOTAL POPULATION  
Data Set: 2008-2012 American Community Survey 5-Year Estimates

**B03002. HISPANIC OR LATINO ORIGIN BY RACE - Universe: TOTAL POPULATION**

Data Set: 2008-2012 American Community Survey 5-Year Estimates

	Minden city, Louisiana		
	Population	Margin of Error (+/-)	% of Total
<b>Total:</b>	13,062	25	<b>100.0%</b>
Not Hispanic or Latino:	12,845	123	98.3%
White alone	5,403	372	41.4%
Black or African American alone	7,232	365	55.4%
American Indian and Alaska Native alone	42	52	0.3%
Asian alone	120	43	0.9%
Native Hawaiian and Other Pacific Islander alone	0	19	0.0%
Some other race alone	0	19	0.0%
Two or more races:	48	46	0.4%
Two races including Some other race	0	19	0.0%
Two races excluding Some other race, and three or more races	48	46	0.4%
Hispanic or Latino	217	115	1.7%

Source: U.S. Census Bureau, 2008-2012 American Community Survey

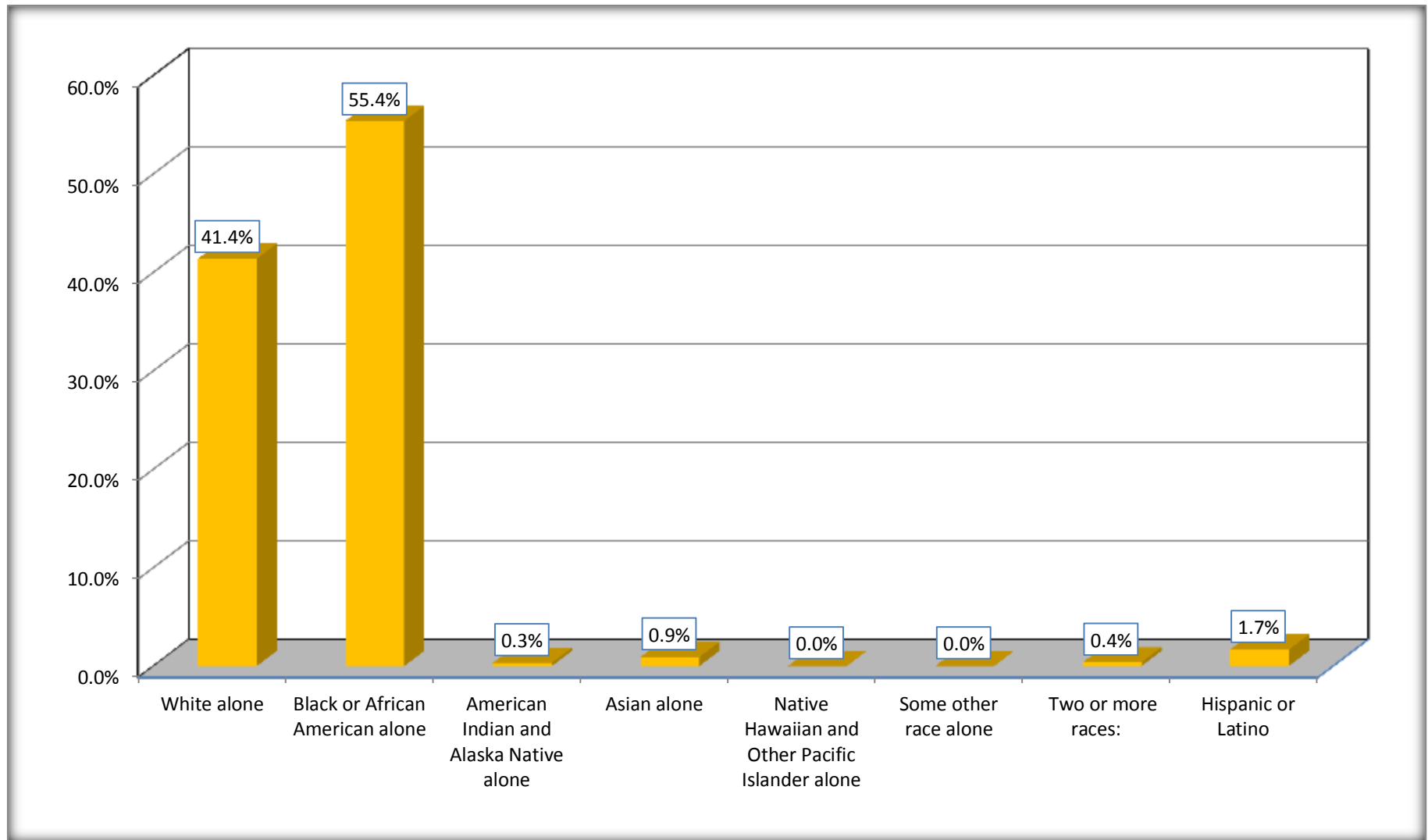
Although the American Community Survey (ACS) produces population, demographic and housing unit estimates, it is the Census Bureau's Population Estimates Program that produces and disseminates the official estimates of the population for the nation, states, counties, cities and towns and estimates of housing units for states and counties.

For information on confidentiality protection, sampling error, nonsampling error, and definitions, see Survey Methodology.

<http://www.census.gov/acs/www/UseData/index.htm>

# Non-Hispanic by Race and Hispanic Population

## Minden city, Louisiana



Source: B03002. HISPANIC OR LATINO ORIGIN BY RACE - Universe: TOTAL POPULATION  
Data Set: 2008-2012 American Community Survey 5-Year Estimates

**B03002. HISPANIC OR LATINO ORIGIN BY RACE**

Data Set: 2008-2012 American Community Survey 5-Year Estimates

	Minden city, Louisiana		
	Population	Margin of Error (+/-)	% of Total
Hispanic or Latino:	217	115	<b>100.0%</b>
White alone	172	106	79.3%
Black or African American alone	2	6	0.9%
American Indian and Alaska Native alone	0	19	0.0%
Asian alone	0	19	0.0%
Native Hawaiian and Other Pacific Islander alone	0	19	0.0%
Some other race alone	29	32	13.4%
Two or more races:	14	24	6.5%
Two races including Some other race	14	24	6.5%
Two races excluding Some other race, and three or more races	0	19	0.0%

Source: U.S. Census Bureau, 2008-2012 American Community Survey

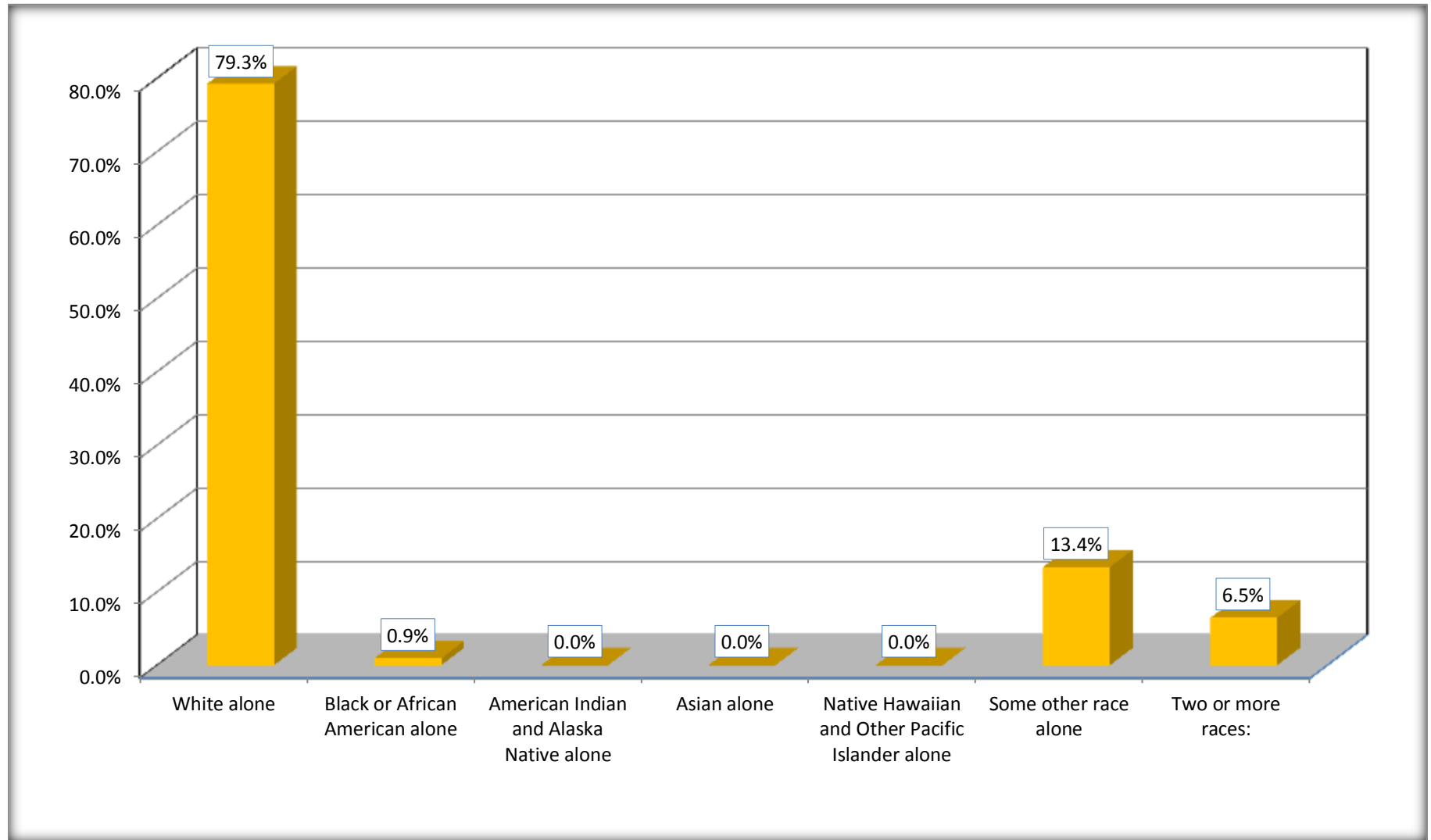
Although the American Community Survey (ACS) produces population, demographic and housing unit estimates, it is the Census Bureau's Population Estimates Program that produces and disseminates the official estimates of the population for the nation, states, counties, cities and towns and estimates of housing units for states and counties.

For information on confidentiality protection, sampling error, nonsampling error, and definitions, see Survey Methodology.

<http://www.census.gov/acs/www/UseData/index.htm>

# Hispanic or Latino Origin by Race

## Minden city, Louisiana



Source: B03002. HISPANIC OR LATINO ORIGIN BY RACE  
Data Set: 2008-2012 American Community Survey 5-Year Estimates

**B01001. SEX BY AGE**

Data Set: 2008-2012 American Community Survey 5-Year Estimates

	Minden city, Louisiana					
	African American	Margin of Error (+/-)	% of AA Total	White, Not Hispanic	Margin of Error (+/-)	% of NHW Total
<b>Total:</b>	<b>7,234</b>	<b>364</b>	<b>100.0%</b>	<b>5,403</b>	<b>372</b>	<b>100.0%</b>
Under 18 years	2,176	NC	30.1%	1,009	NC	18.7%
18 to 64 years	4,164	NC	57.6%	3,123	NC	57.8%
65 years and over	894	NC	12.4%	1,271	NC	23.5%
Male:	3,264	266	45.1%	2,529	389	46.8%
Under 18 years	1,180	NC	16.3%	456	NC	8.4%
18 to 64 years	1,811	NC	25.0%	1,560	NC	28.9%
65 years and over	273	NC	3.8%	513	NC	9.5%
Female:	3,970	243	54.9%	2,874	412	53.2%
Under 18 years	996	NC	13.8%	553	NC	10.2%
18 to 64 years	2,353	NC	32.5%	1,563	NC	28.9%
65 years and over	621	NC	8.6%	758	NC	14.0%

Source: U.S. Census Bureau, 2008-2012 American Community Survey

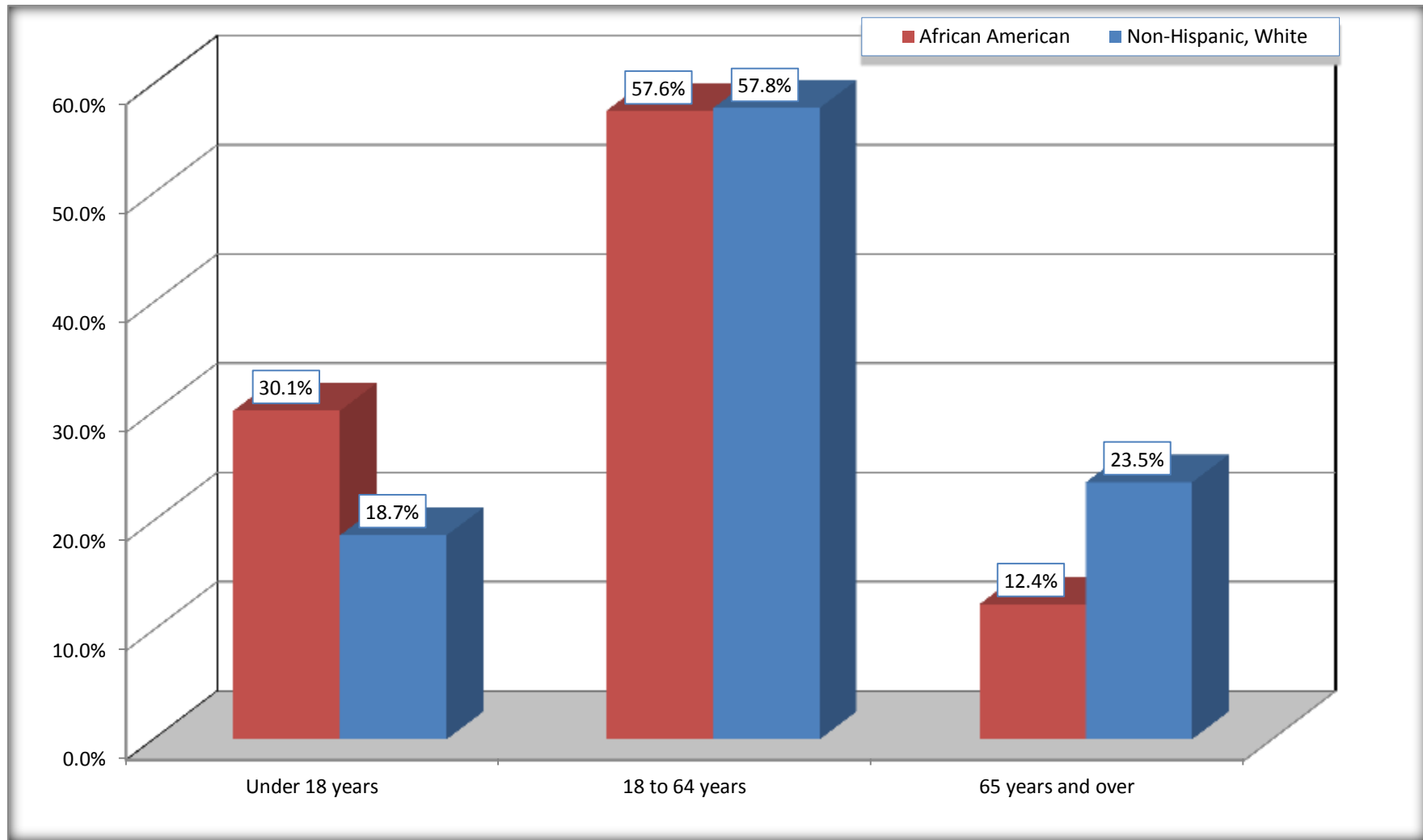
Although the American Community Survey (ACS) produces population, demographic and housing unit estimates, it is the Census Bureau's Population Estimates Program that produces and disseminates the official estimates of the population for the nation, states, counties, cities and towns and estimates of housing units for states and counties.

For information on confidentiality protection, sampling error, nonsampling error, and definitions, see Survey Methodology.  
<http://www.census.gov/acs/www/UseData/index.htm>



# Population by Age

## Minden city, Louisiana



Source: B01001. SEX BY AGE  
Data Set: 2008-2012 American Community Survey 5-Year Estimates

**B05003. SEX BY AGE BY CITIZENSHIP STATUS**

Data Set: 2008-2012 American Community Survey 5-Year Estimates

	Minden city, Louisiana					
	African American	Margin of Error (+/-)	% of AA Total by Age	White, Not Hispanic	Margin of Error (+/-)	% of NHW Total by Age
<b>Total:</b>	<b>7,234</b>	<b>364</b>	<b>100.0%</b>	<b>5,403</b>	<b>372</b>	<b>100.0%</b>
<b>Under 18 years:</b>	<b>2,176</b>	<b>NC</b>	<b>100.0%</b>	<b>1,009</b>	<b>NC</b>	<b>100.0%</b>
Native	2,176	NC	100.0%	1,009	NC	100.0%
Foreign born:	0	NC	0.0%	0	NC	0.0%
Naturalized U.S. citizen	0	NC	0.0%	0	NC	0.0%
Not a U.S. citizen	0	NC	0.0%	0	NC	0.0%
<b>18 years and over:</b>	<b>5,058</b>	<b>NC</b>	<b>100.0%</b>	<b>4,394</b>	<b>NC</b>	<b>100.0%</b>
Native	5,058	NC	100.0%	4,394	NC	100.0%
Foreign born:	0	NC	0.0%	0	NC	0.0%
Naturalized U.S. citizen	0	NC	0.0%	0	NC	0.0%
Not a U.S. citizen	0	NC	0.0%	0	NC	0.0%
<b>Male:</b>	<b>3,264</b>	<b>266</b>	<b>45.1%</b>	<b>2,529</b>	<b>232</b>	<b>46.8%</b>
<b>Under 18 years:</b>	<b>1180</b>	<b>183</b>	<b>100.0%</b>	<b>456</b>	<b>137</b>	<b>100.0%</b>
Native	1,180	183	100.0%	456	137	100.0%
Foreign born:	0	19	0.0%	0	19	0.0%
Naturalized U.S. citizen	0	19	0.0%	0	19	0.0%
Not a U.S. citizen	0	19	0.0%	0	19	0.0%
<b>18 years and over:</b>	<b>2,084</b>	<b>224</b>	<b>100.0%</b>	<b>2,073</b>	<b>175</b>	<b>100.0%</b>
Native	2,084	224	100.0%	2,073	175	100.0%
Foreign born:	0	19	0.0%	0	19	0.0%
Naturalized U.S. citizen	0	19	0.0%	0	19	0.0%
Not a U.S. citizen	0	19	0.0%	0	19	0.0%

	<b>Minden city, Louisiana</b>					
	African American	Margin of Error (+/-)	% of AA by Age	White, Not Hispanic	Margin of Error (+/-)	% of NHW by Age
<b>Female:</b>	3,970	243	54.9%	2,874	259	53.2%
<b>Under 18 years:</b>	<b>996</b>	<b>144</b>	<b>100.0%</b>	<b>553</b>	<b>115</b>	<b>100.0%</b>
Native	996	144	100.0%	553	115	100.0%
Foreign born:	0	19	0.0%	0	19	0.0%
Naturalized U.S. citizen	0	19	0.0%	0	19	0.0%
Not a U.S. citizen	0	19	0.0%	0	19	0.0%
<b>18 years and over:</b>	<b>2,974</b>	<b>182</b>	<b>100.0%</b>	<b>2,321</b>	<b>197</b>	<b>100.0%</b>
Native	2,974	182	100.0%	2,321	197	100.0%
Foreign born:	0	19	0.0%	0	19	0.0%
Naturalized U.S. citizen	0	19	0.0%	0	19	0.0%
Not a U.S. citizen	0	19	0.0%	0	19	0.0%

Source: U.S. Census Bureau, 2008-2012 American Community Survey

For information on confidentiality protection, sampling error, nonsampling error, and definitions, see Survey Methodology.  
<http://www.census.gov/acs/www/UseData/index.htm>

# Citizenship Status of Voting Age Population (18 and Over)

## Minden city, Louisiana



Source: B05003. SEX BY AGE BY CITIZENSHIP STATUS  
Data Set: 2008-2012 American Community Survey 5-Year Estimates

**B07004. GEOGRAPHICAL MOBILITY IN THE PAST YEAR BY RACE FOR CURRENT RESIDENCE IN THE UNITED STATES - Universe:  
POPULATION 1 YEAR AND OVER**

Data Set: 2008-2012 American Community Survey 5-Year Estimates

	Minden city, Louisiana					
	African American	Margin of Error (+/-)	% of AA Total	White, Not Hispanic	Margin of Error (+/-)	% of NHW Total
Total:	<b>7,124</b>	<b>366</b>	<b>100.0%</b>	<b>5,366</b>	<b>370</b>	<b>100.0%</b>
Same house 1 year ago	5,659	501	79.4%	4,516	393	84.2%
Moved within same county	1,133	365	15.9%	482	203	9.0%
Moved from different county within same state	225	147	3.2%	313	146	5.8%
Moved from different state	96	75	1.3%	46	61	0.9%
Moved from abroad	11	18	0.2%	9	14	0.2%

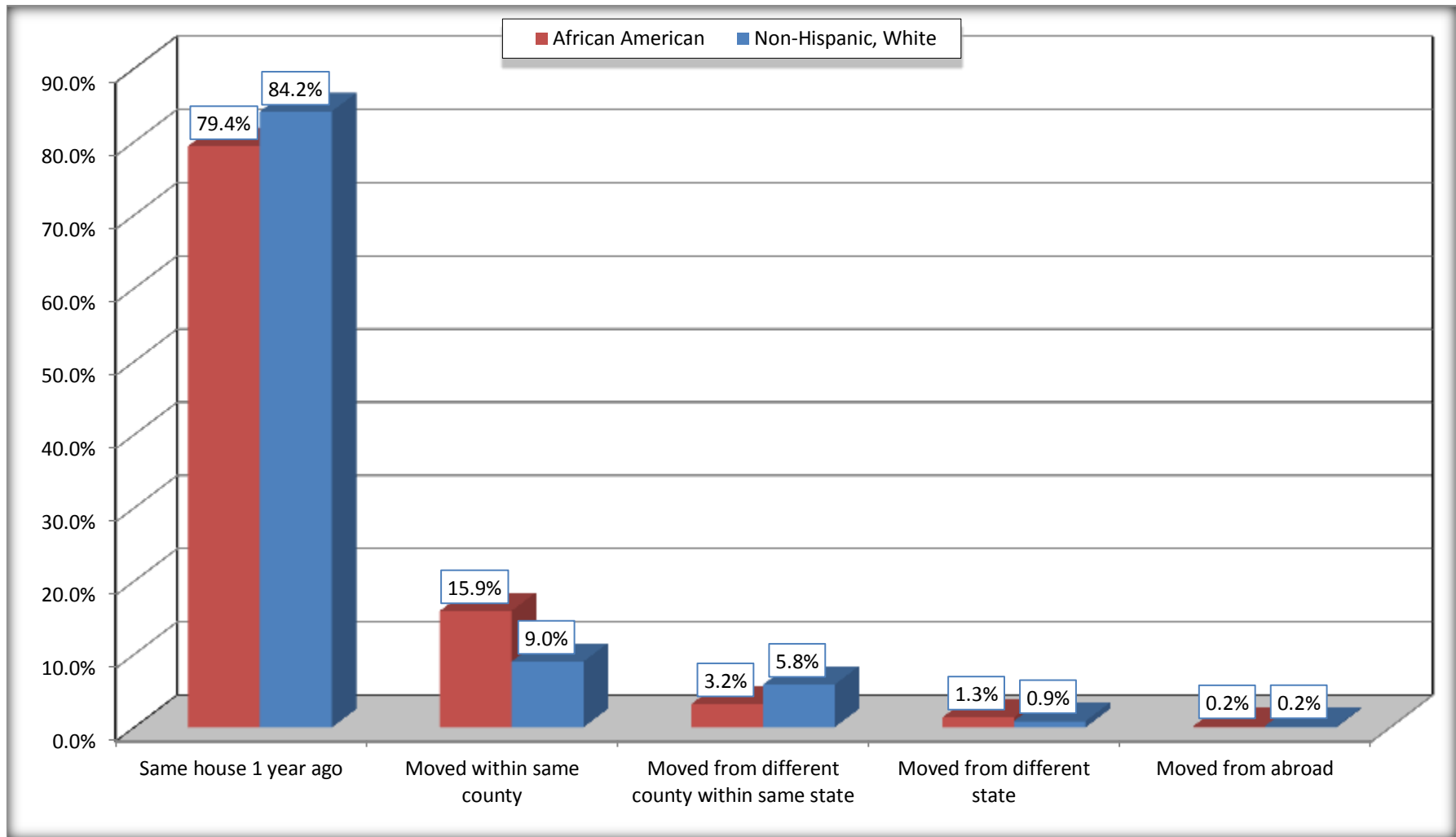
Source: U.S. Census Bureau, 2008-2012 American Community Survey

For information on confidentiality protection, sampling error, nonsampling error, and definitions, see Survey Methodology.

<http://www.census.gov/acs/www/UseData/index.htm>

# Geographical Mobility in the Past Year (Population 1 Year and Over)

## Minden city, Louisiana



Source: B07004. GEOGRAPHICAL MOBILITY IN THE PAST YEAR BY RACE FOR CURRENT RESIDENCE IN THE UNITED STATES - Universe: POPULATION 1 YEAR AND OVER

Data Set: 2008-2012 American Community Survey 5-Year Estimates

**B08105. MEANS OF TRANSPORTATION TO WORK - Universe: WORKERS 16 YEARS AND OVER**

Data Set: 2008-2012 American Community Survey 5-Year Estimates

	Minden city, Louisiana					
	African American	Margin of Error (+/-)	% of AA Total	White, Not Hispanic	Margin of Error (+/-)	% of NHW Total
<b>Total:</b>	2590	343	<b>100.0%</b>	2246	241	<b>100.0%</b>
Car, truck, or van - drove alone	2005	359	77.4%	2013	221	89.6%
Car, truck, or van - carpooled	218	95	8.4%	104	57	4.6%
Public transportation (excluding taxicab)	21	30	0.8%	0	19	0.0%
Walked	84	53	3.2%	7	12	0.3%
Taxicab, motorcycle, bicycle, or other means	253	129	9.8%	86	95	3.8%
Worked at home	9	14	0.3%	36	34	1.6%

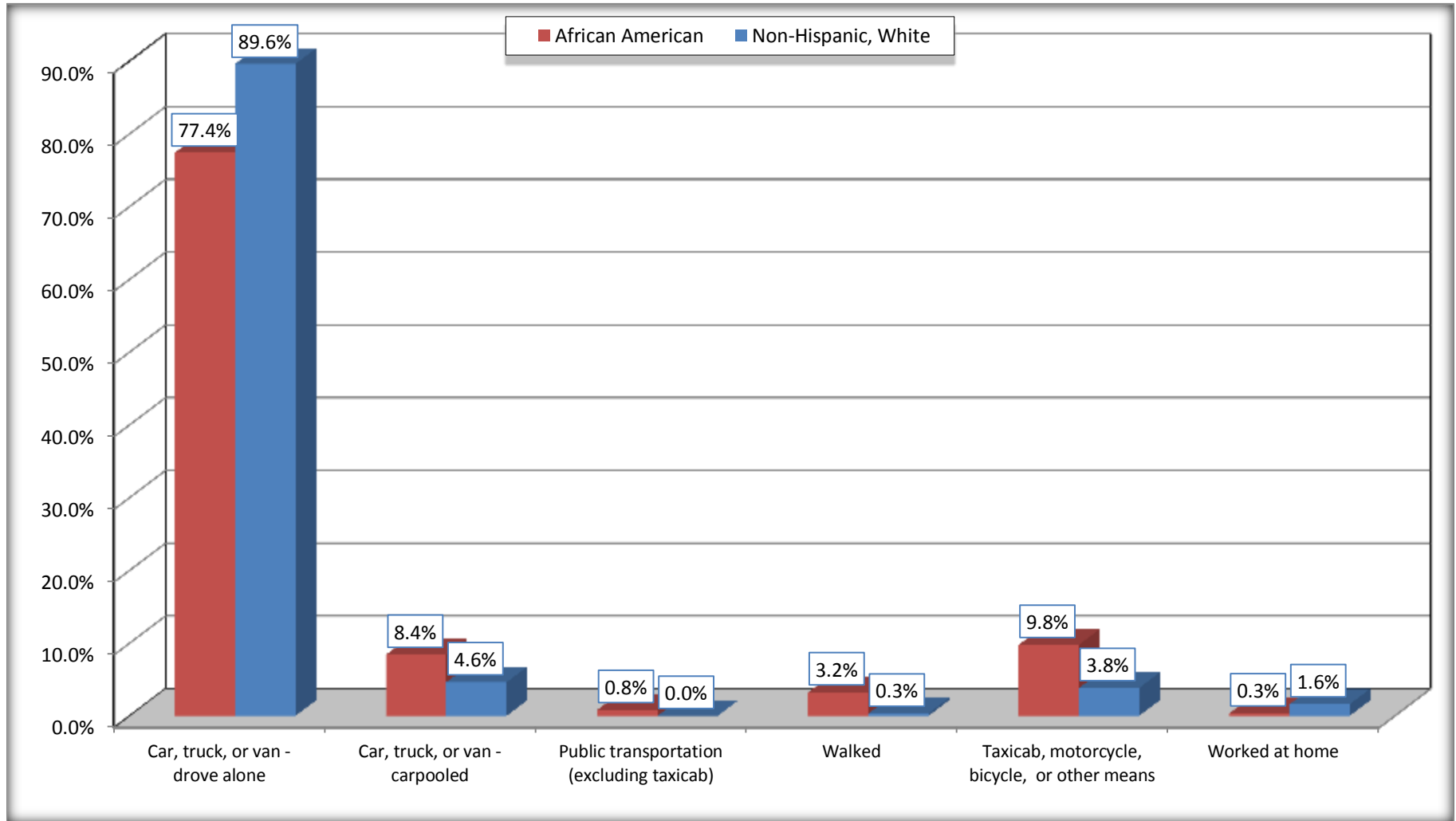
Source: U.S. Census Bureau, 2008-2012 American Community Survey

For information on confidentiality protection, sampling error, nonsampling error, and definitions, see Survey Methodology.

<http://www.census.gov/acs/www/UseData/index.htm>

# Means of Transportation to Work (Workers 16 Years and Over)

## Minden city, Louisiana



Source: B08105. MEANS OF TRANSPORTATION TO WORK - Universe: WORKERS 16 YEARS AND OVER  
Data Set: 2008-2012 American Community Survey 5-Year Estimates



**B11002. HOUSEHOLD TYPE BY RELATIVES AND NONRELATIVES FOR POPULATION IN HOUSEHOLDS**

Data Set: 2008-2012 American Community Survey 5-Year Estimates

	Minden city, Louisiana					
	African American	Margin of Error (+/-)	% of AA Total	White, Not Hispanic	Margin of Error (+/-)	% of NHW Total
<b>Total:</b>	7062	377	<b>100.0%</b>	5385	409	<b>100.0%</b>
In family households	5853	469	82.9%	4585	433	85.1%
In nonfamily households	1209	289	17.1%	800	174	14.9%

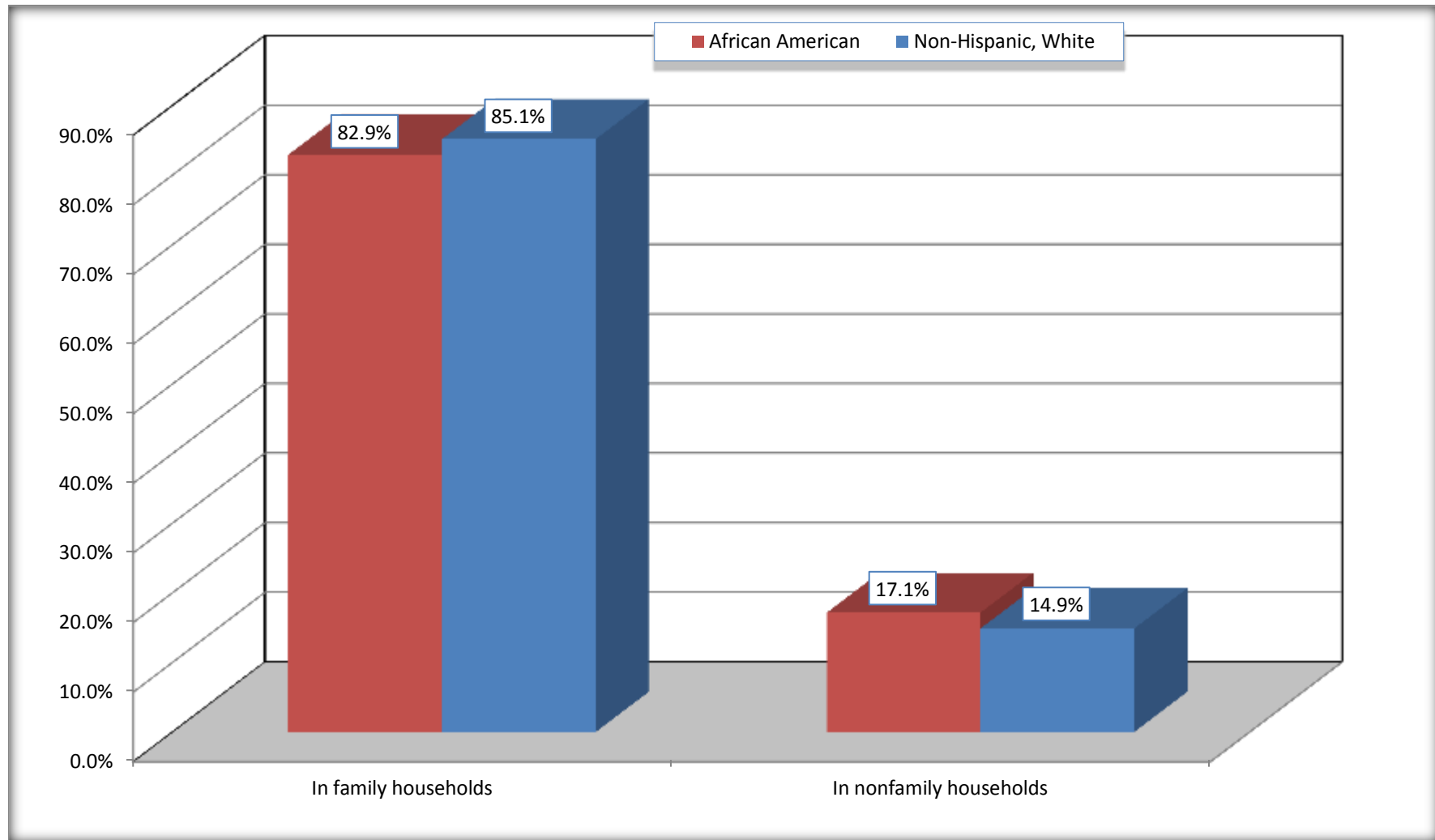
Source: U.S. Census Bureau, 2008-2012 American Community Survey

For information on confidentiality protection, sampling error, nonsampling error, and definitions, see Survey Methodology.

<http://www.census.gov/acs/www/UseData/index.htm>

# Household Type for Population in Households

## Minden city, Louisiana



Source: B11002. HOUSEHOLD TYPE BY RELATIVES AND NONRELATIVES FOR POPULATION IN HOUSEHOLDS  
Data Set: 2008-2012 American Community Survey 5-Year Estimates

**B12002. MARITAL STATUS FOR THE POPULATION 15 YEARS AND OVER**

Data Set: 2008-2012 American Community Survey 5-Year Estimates

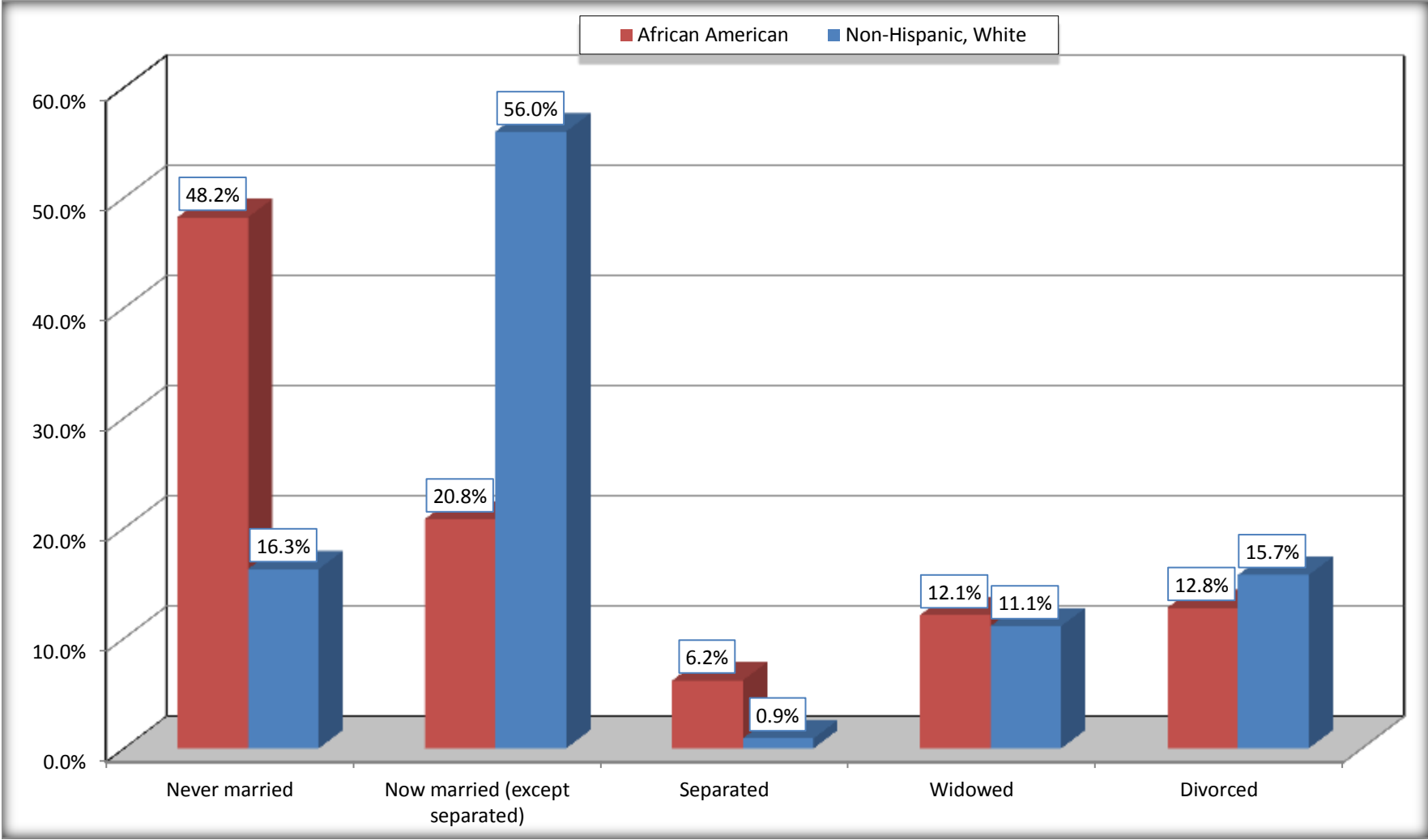
	Minden city, Louisiana					
	African American	Margin of Error (+/-)	% of AA Total	White, Not Hispanic	Margin of Error (+/-)	% of NHW Total
<b>Total:</b>	<b>5,456</b>	<b>326</b>	<b>100.0%</b>	<b>4,517</b>	<b>292</b>	<b>100.0%</b>
Never married	2,630	NC	48.2%	735	NC	16.3%
Now married (except separated)	1,135	NC	20.8%	2,529	NC	56.0%
Separated	336	NC	6.2%	41	NC	0.9%
Widowed	659	NC	12.1%	501	NC	11.1%
Divorced	696	NC	12.8%	711	NC	15.7%
<b>Male:</b>	<b>2,284</b>	<b>248</b>	<b>41.9%</b>	<b>2,143</b>	<b>184</b>	<b>47.4%</b>
Never married	1,124	213	20.6%	458	113	10.1%
Now married (except separated)	582	131	10.7%	1,287	155	28.5%
Separated	133	80	2.4%	30	27	0.7%
Widowed	149	70	2.7%	87	55	1.9%
Divorced	296	137	5.4%	281	113	6.2%
<b>Female:</b>	<b>3,172</b>	<b>204</b>	<b>58.1%</b>	<b>2,374</b>	<b>209</b>	<b>52.6%</b>
Never married	1,506	190	27.6%	277	129	6.1%
Now married (except separated)	553	108	10.1%	1,242	149	27.5%
Separated	203	99	3.7%	11	18	0.2%
Widowed	510	117	9.3%	414	96	9.2%
Divorced	400	131	7.3%	430	112	9.5%

Source: U.S. Census Bureau, 2008-2012 American Community Survey

For information on confidentiality protection, sampling error, nonsampling error, and definitions, see Survey Methodology.

<http://www.census.gov/acs/www/UseData/index.htm>

**Marital Status for the Population 15 Years and Over**  
**Minden city, Louisiana**



Source: B12002. MARITAL STATUS FOR THE POPULATION 15 YEARS AND OVER  
Data Set: 2008-2012 American Community Survey 5-Year Estimates

**C15002. SEX BY EDUCATIONAL ATTAINMENT FOR THE POPULATION 25 YEARS AND OVER**

Data Set: 2008-2012 American Community Survey 5-Year Estimates

	Minden city, Louisiana					
	African American	Margin of Error (+/-)	% of AA Total	White, Not Hispanic	Margin of Error (+/-)	% of NHW Total
<b>Total:</b>	<b>4,266</b>	<b>263</b>	<b>100.0%</b>	<b>4,047</b>	<b>287</b>	<b>100.0%</b>
Less than high school diploma	1,135	NC	26.6%	522	NC	12.9%
High school graduate, GED, or alternative	1,756	NC	41.2%	1,583	NC	39.1%
Some college or associate's degree	921	NC	21.6%	1,121	NC	27.7%
Bachelor's degree or higher	454	NC	10.6%	821	NC	20.3%
Male:	1,772	186	41.5%	1,885	174	46.6%
Less than high school diploma	399	114	9.4%	325	102	8.0%
High school graduate, GED, or alternative	964	161	22.6%	693	154	17.1%
Some college or associate's degree	210	89	4.9%	506	116	12.5%
Bachelor's degree or higher	199	99	4.7%	361	98	8.9%
Female:	2,494	171	58.5%	2,162	169	53.4%
Less than high school diploma	736	148	17.3%	197	96	4.9%
High school graduate, GED, or alternative	792	172	18.6%	890	145	22.0%
Some college or associate's degree	711	138	16.7%	615	126	15.2%
Bachelor's degree or higher	255	94	6.0%	460	87	11.4%

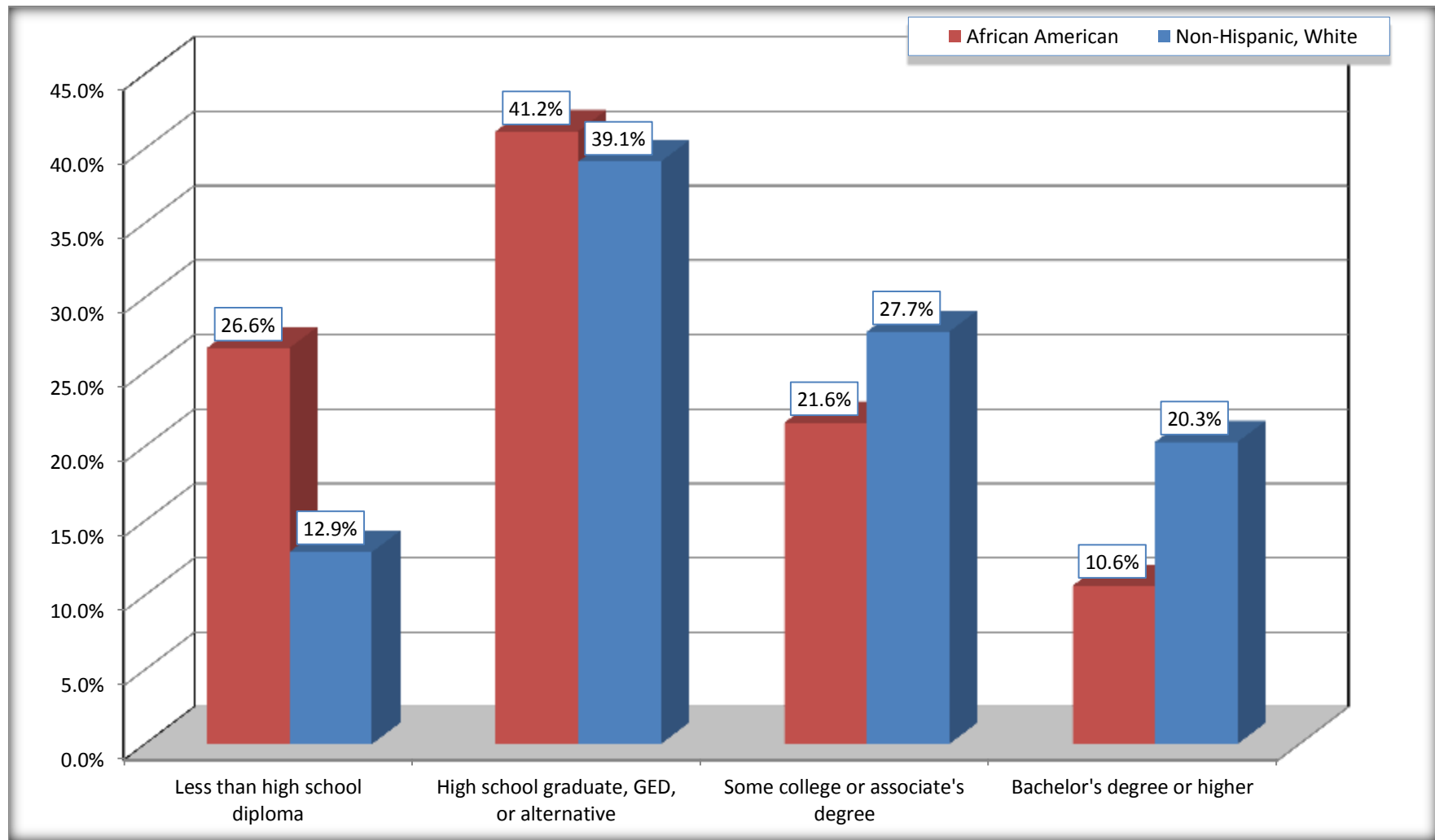
Source: U.S. Census Bureau, 2008-2012 American Community Survey

For information on confidentiality protection, sampling error, nonsampling error, and definitions, see Survey Methodology.

<http://www.census.gov/acs/www/UseData/index.htm>

# Educational Attainment for the Population 25 Years and Older

## Minden city, Louisiana



Source: C15002. SEX BY EDUCATIONAL ATTAINMENT FOR THE POPULATION 25 YEARS AND OVER  
Data Set: 2008-2012 American Community Survey 5-Year Estimates

**B17010. POVERTY STATUS IN THE PAST 12 MONTHS OF FAMILIES BY FAMILY TYPE BY PRESENCE OF RELATED CHILDREN UNDER 18 YEARS**

Data Set: 2008-2012 American Community Survey 5-Year Estimates

	Minden city, Louisiana					
	African American	Margin of Error (+/-)	% of AA Total	White, Not Hispanic	Margin of Error (+/-)	% of NHW Total
<b>Total:</b>	<b>1,827</b>	<b>192</b>	<b>100.0%</b>	<b>1,599</b>	<b>161</b>	<b>100.0%</b>
Income in the past 12 months below poverty level:	620	154	33.9%	131	68	8.2%
Married-couple family:	39	38	2.1%	26	30	1.6%
With related children under 18 years	18	26	1.0%	0	19	0.0%
Other family:	581	151	31.8%	105	61	6.6%
Male householder, no wife present	19	24	1.0%	9	15	0.6%
With related children under 18 years	13	21	0.7%	9	15	0.6%
Female householder, no husband present	562	151	30.8%	96	58	6.0%
With related children under 18 years	530	149	29.0%	83	59	5.2%
Income in the past 12 months at or above poverty level:	1,207	192	66.1%	1,468	156	91.8%
Married-couple family:	477	114	26.1%	1,215	147	76.0%
With related children under 18 years	193	69	10.6%	411	91	25.7%
Other family:	730	166	40.0%	253	95	15.8%
Male householder, no wife present	158	90	8.6%	48	47	3.0%
With related children under 18 years	73	70	4.0%	44	46	2.8%
Female householder, no husband present	572	155	31.3%	205	71	12.8%
With related children under 18 years	341	121	18.7%	104	47	6.5%

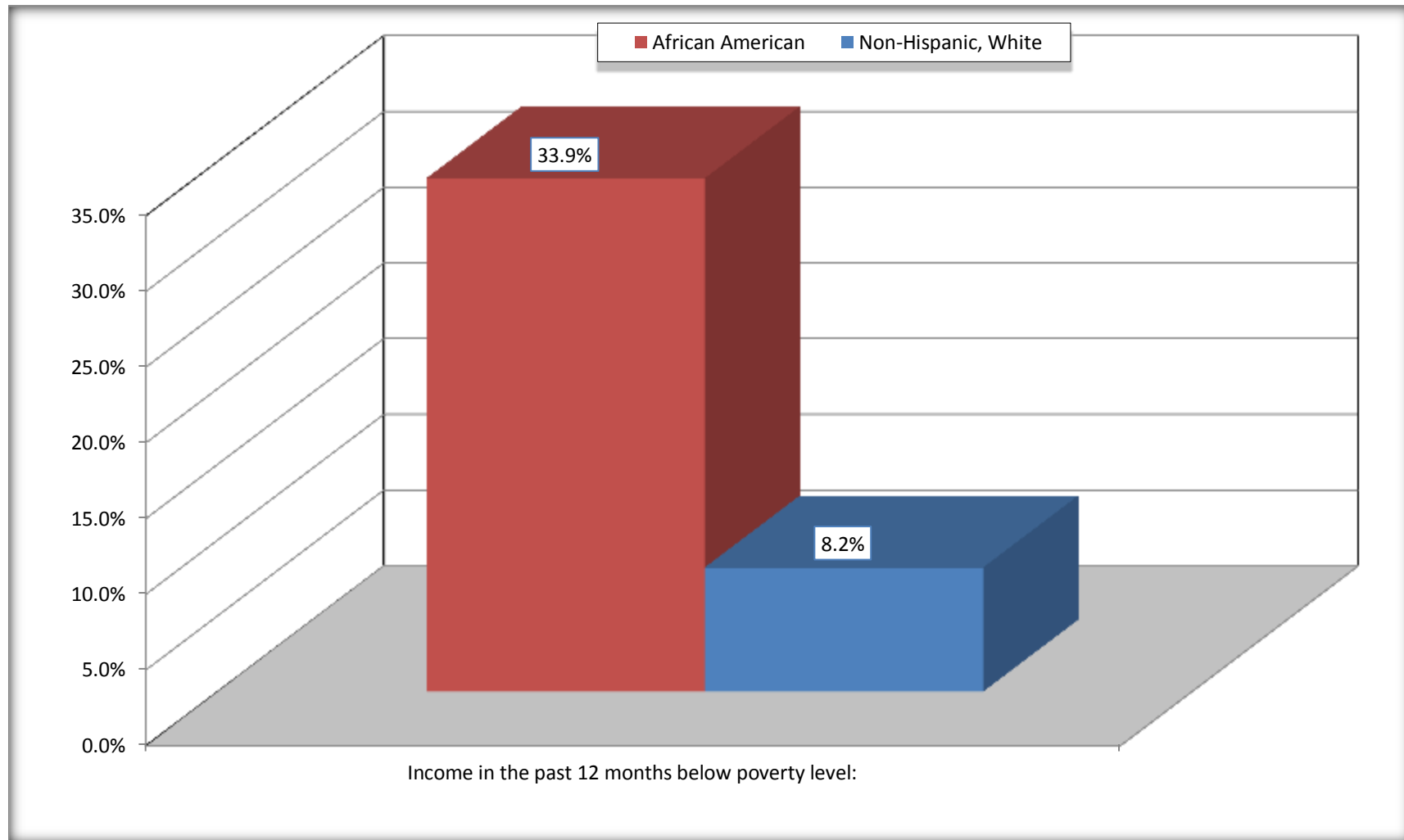
Source: U.S. Census Bureau, 2008-2012 American Community Survey

For information on confidentiality protection, sampling error, nonsampling error, and definitions, see Survey Methodology.

<http://www.census.gov/acs/www/UseData/index.htm>

# Family Households Below Poverty in the Past 12 Months

## Minden city, Louisiana



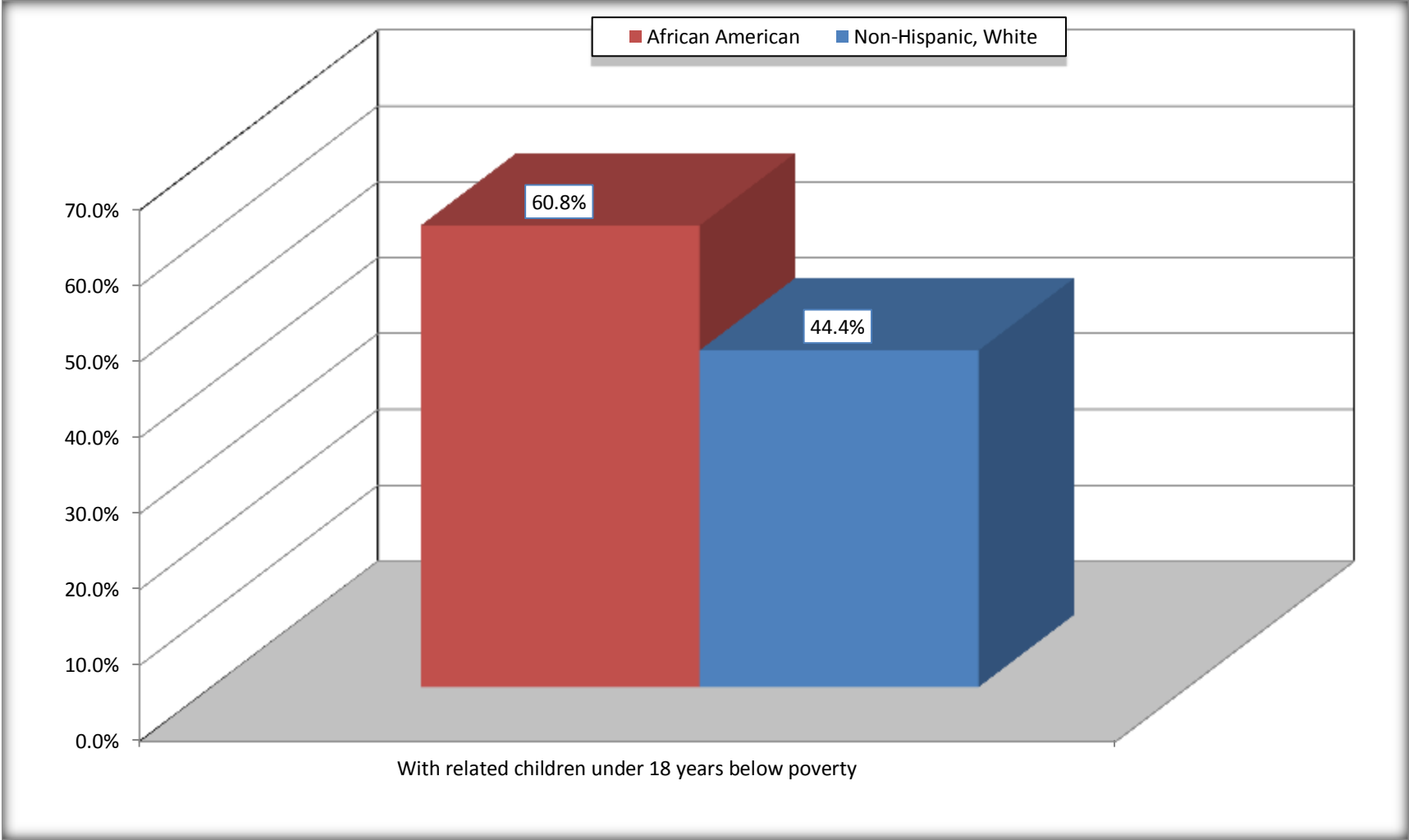
Source: B17010. POVERTY STATUS IN THE PAST 12 MONTHS OF FAMILIES BY FAMILY TYPE BY PRESENCE OF RELATED CHILDREN UNDER 18 YEARS

Data Set: 2008-2012 American Community Survey 5-Year Estimates



# Female-headed Households with Related Children Below Poverty in the Past 12 Months

## Minden city, Louisiana



Source: B17010. POVERTY STATUS IN THE PAST 12 MONTHS OF FAMILIES BY FAMILY TYPE BY PRESENCE OF RELATED CHILDREN UNDER 18 YEARS

Data Set: 2008-2012 American Community Survey 5-Year Estimates

**B17020 POVERTY STATUS IN THE PAST 12 MONTHS BY AGE - Universe: POPULATION FOR WHOM POVERTY STATUS IS DETERMINED**

Data Set: 2008-2012 American Community Survey 5-Year Estimates

	Minden city, Louisiana					
	African American	Margin of Error (+/-)	% of AA By Age	White, Not Hispanic	Margin of Error (+/-)	% of NHW By Age
<b>Total:</b>	<b>6,933</b>	<b>352</b>	<b>100.0%</b>	<b>5,238</b>	<b>385</b>	<b>100.0%</b>
Income in the past 12 months below poverty level:	2,564	450	37.0%	589	234	11.2%
<b>Under 18 years</b>	1,147	NC	55.5%	174	NC	17.2%
<b>18 to 64 years</b>	1,243	238	30.4%	346	143	11.4%
<b>65 years and over</b>	174	NC	22.3%	69	NC	5.8%
Income in the past 12 months at or above poverty level:	4,369	547	63.0%	4,649	390	88.8%
<b>Under 18 years</b>	919	NC	44.5%	835	NC	82.8%
<b>18 to 64 years</b>	2,845	357	69.6%	2,685	243	88.6%
<b>65 years and over</b>	605	NC	77.7%	1,129	NC	94.2%

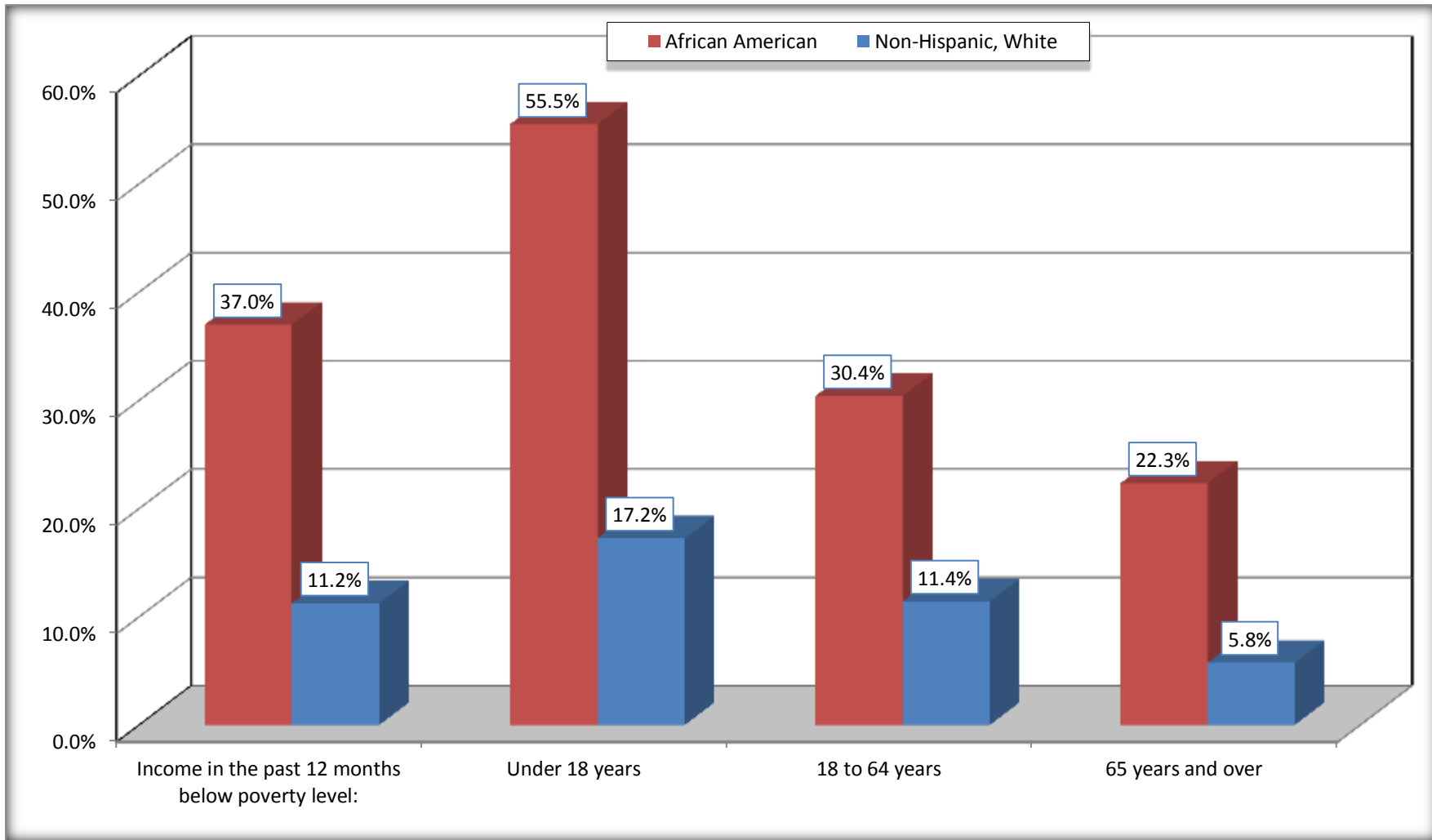
Source: U.S. Census Bureau, 2008-2012 American Community Survey

For information on confidentiality protection, sampling error, nonsampling error, and definitions, see Survey Methodology.

<http://www.census.gov/acs/www/UseData/index.htm>

# Population Below Poverty in the Past 12 Months

## Minden city, Louisiana



Source: B17020 POVERTY STATUS IN THE PAST 12 MONTHS BY AGE - Universe: POPULATION FOR WHOM POVERTY STATUS IS DETERMINED  
Data Set: 2008-2012 American Community Survey 5-Year Estimates

**B19001. HOUSEHOLD INCOME IN THE PAST 12 MONTHS (IN 2010 INFLATION-ADJUSTED DOLLARS)**

Data Set: 2008-2012 American Community Survey 5-Year Estimates

	Minden city, Louisiana					
	African American	Margin of Error (+/-)	% of AA Total	White, Not Hispanic	Margin of Error (+/-)	% of NHW Total
<b>Total:</b>	<b>2,823</b>	<b>196</b>	<b>100.0%</b>	<b>2,279</b>	<b>163</b>	<b>100.0%</b>
Less than \$ 10,000	670	170	23.7%	136	60	6.0%
\$ 10,000 to \$ 14,999	366	126	13.0%	76	44	3.3%
<b>\$ 15,000 to \$ 24,999</b>	597	NC	21.1%	330	NC	14.5%
<b>\$ 25,000 to \$ 34,999</b>	344	NC	12.2%	264	NC	11.6%
<b>\$ 35,000 to \$ 49,999</b>	336	NC	11.9%	312	NC	13.7%
<b>\$ 50,000 to \$ 74,999</b>	269	NC	9.5%	487	NC	21.4%
\$ 75,000 to \$ 99,999	213	91	7.5%	238	75	10.4%
<b>\$ 100,000 to \$ 149,999</b>	28	NC	1.0%	276	NC	12.1%
\$ 150,000 to \$ 199,999	0	19	0.0%	102	52	4.5%
\$ 200,000 or more	0	19	0.0%	58	30	2.5%

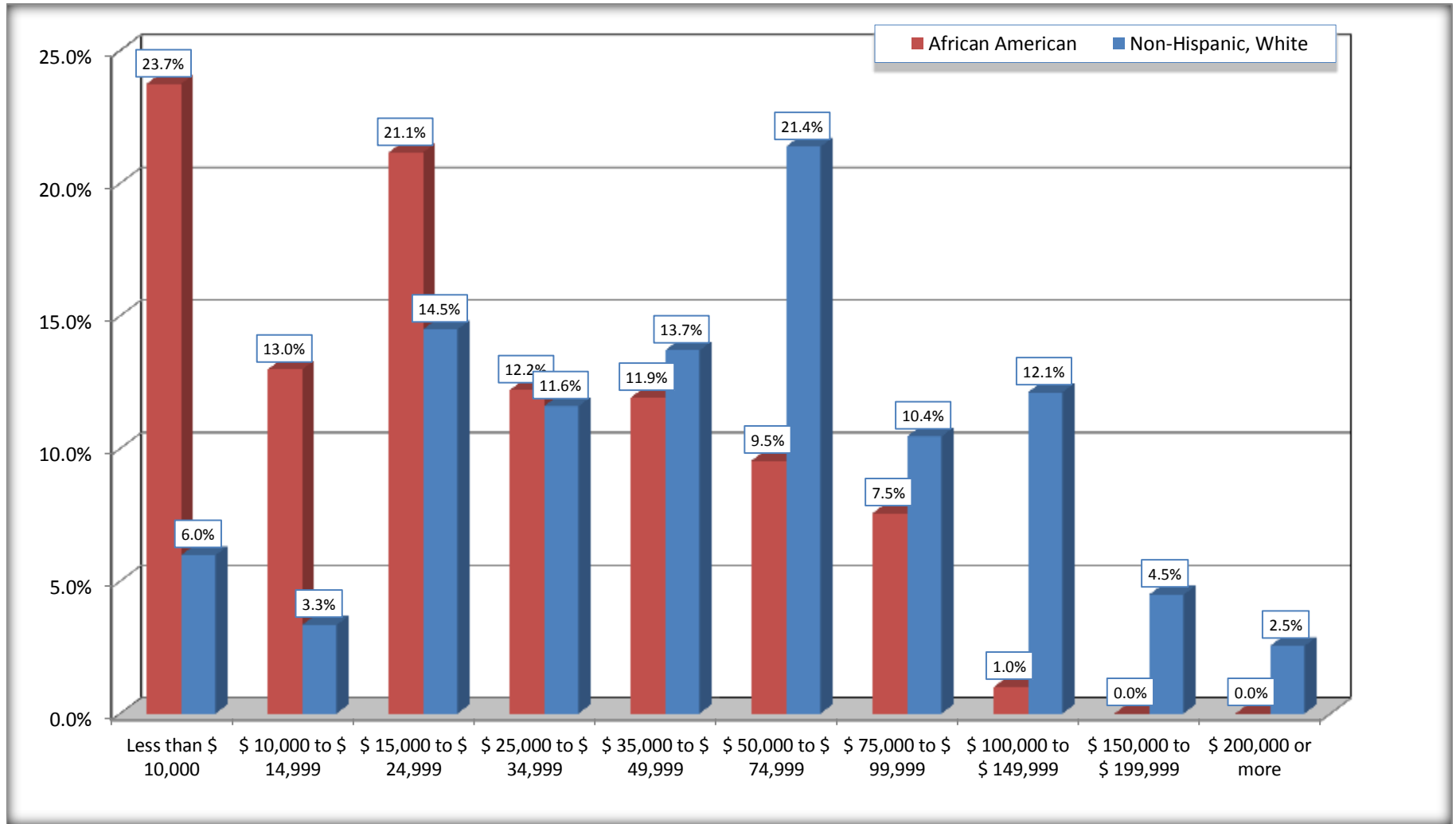
Source: U.S. Census Bureau, 2008-2012 American Community Survey

For information on confidentiality protection, sampling error, nonsampling error, and definitions, see Survey Methodology.

<http://www.census.gov/acs/www/UseData/index.htm>

# Household Income in the Past 12 Months

## Minden city, Louisiana



Source: B19001. HOUSEHOLD INCOME IN THE PAST 12 MONTHS (IN 2010 INFLATION-ADJUSTED DOLLARS)  
Data Set: 2008-2012 American Community Survey 5-Year Estimates

**B19013. MEDIAN HOUSEHOLD INCOME IN THE PAST 12 MONTHS (IN 2010 INFLATION-ADJUSTED DOLLARS)**

Data Set: 2008-2012 American Community Survey 5-Year Estimates

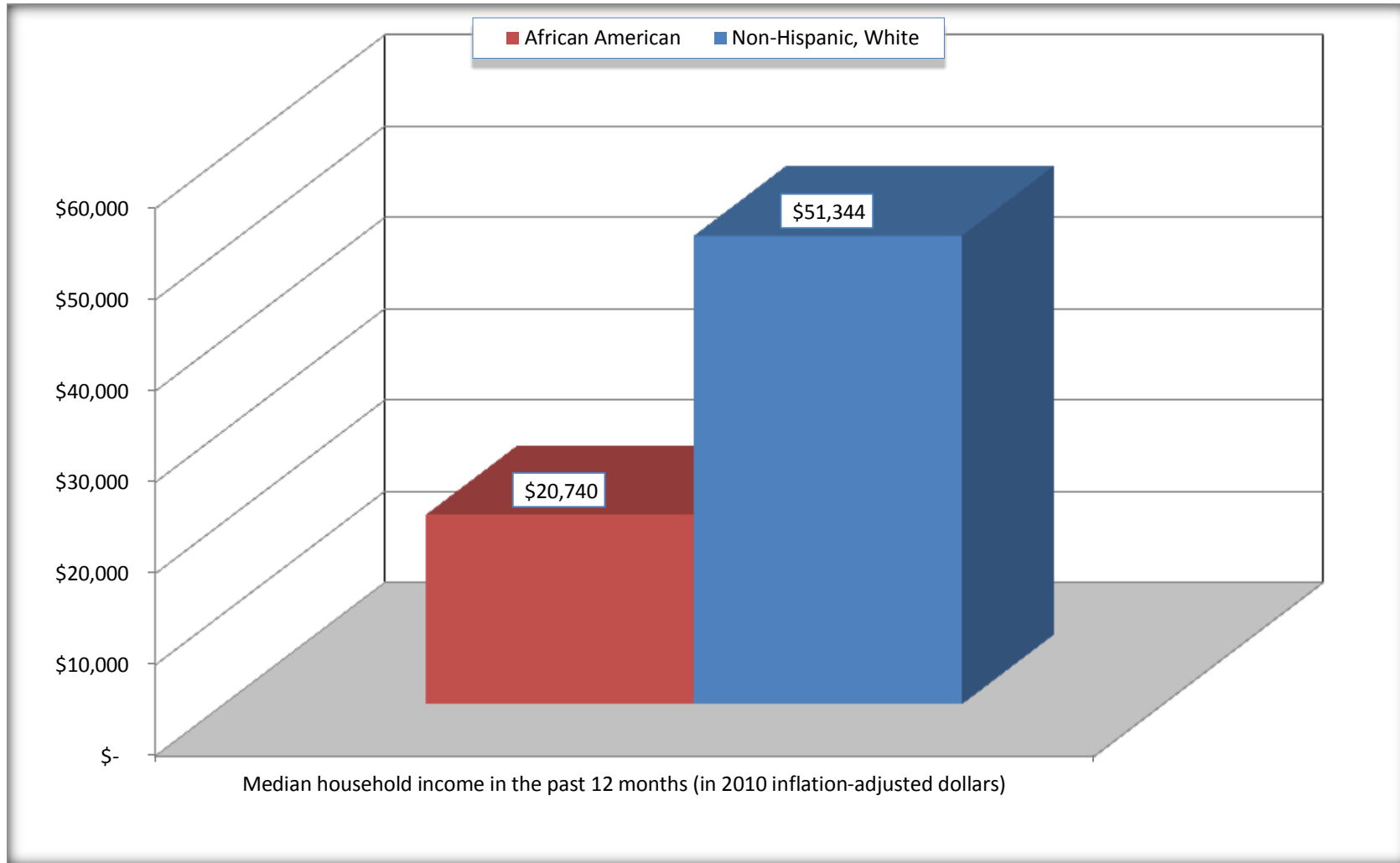
	<b>Minden city, Louisiana</b>			
	African American	Margin of Error (+/-)	White, Not Hispanic	Margin of Error (+/-)
Median household income in the past 12 months (in 2010 inflation-adjusted dollars)	\$ 20,740	\$ 2,908	\$ 51,344	\$ 6,927

Source: U.S. Census Bureau, 2008-2012 American Community Survey

For information on confidentiality protection, sampling error, nonsampling error, and definitions, see Survey Methodology.  
<http://www.census.gov/acs/www/UseData/index.htm>

# Median Household Income in the Past 12 Months

## Minden city, Louisiana



Source: B19013. MEDIAN HOUSEHOLD INCOME IN THE PAST 12 MONTHS (IN 2010 INFLATION-ADJUSTED DOLLARS)  
Data Set: 2008-2012 American Community Survey 5-Year Estimates

**B19101. FAMILY INCOME IN THE PAST 12 MONTHS (IN 2010 INFLATION-ADJUSTED DOLLARS)**

Data Set: 2008-2012 American Community Survey 5-Year Estimates

	Minden city, Louisiana					
	African American	Margin of Error (+/-)	% of AA Total	White, Not Hispanic	Margin of Error (+/-)	% of NHW Total
<b>Total:</b>	<b>1,827</b>	<b>192</b>	<b>100.0%</b>	<b>1,599</b>	<b>161</b>	<b>100.0%</b>
Less than \$ 10,000	360	121	19.7%	92	57	5.8%
\$ 10,000 to \$ 14,999	119	78	6.5%	24	29	1.5%
<b>\$ 15,000 to \$ 24,999</b>	<b>441</b>	<b>NC</b>	<b>24.1%</b>	<b>177</b>	<b>NC</b>	<b>11.1%</b>
<b>\$ 25,000 to \$ 34,999</b>	<b>248</b>	<b>NC</b>	<b>13.6%</b>	<b>130</b>	<b>NC</b>	<b>8.1%</b>
<b>\$ 35,000 to \$ 49,999</b>	<b>300</b>	<b>NC</b>	<b>16.4%</b>	<b>211</b>	<b>NC</b>	<b>13.2%</b>
<b>\$ 50,000 to \$ 74,999</b>	<b>157</b>	<b>NC</b>	<b>8.6%</b>	<b>355</b>	<b>NC</b>	<b>22.2%</b>
<b>\$ 100,000 to \$ 149,999</b>	<b>28</b>	<b>NC</b>	<b>1.5%</b>	<b>276</b>	<b>NC</b>	<b>17.3%</b>
\$ 150,000 to \$ 199,999	0	19	0.0%	89	47	5.6%
\$ 200,000 or more	0	19	0.0%	58	30	3.6%

Source: U.S. Census Bureau, 2008-2012 American Community Survey

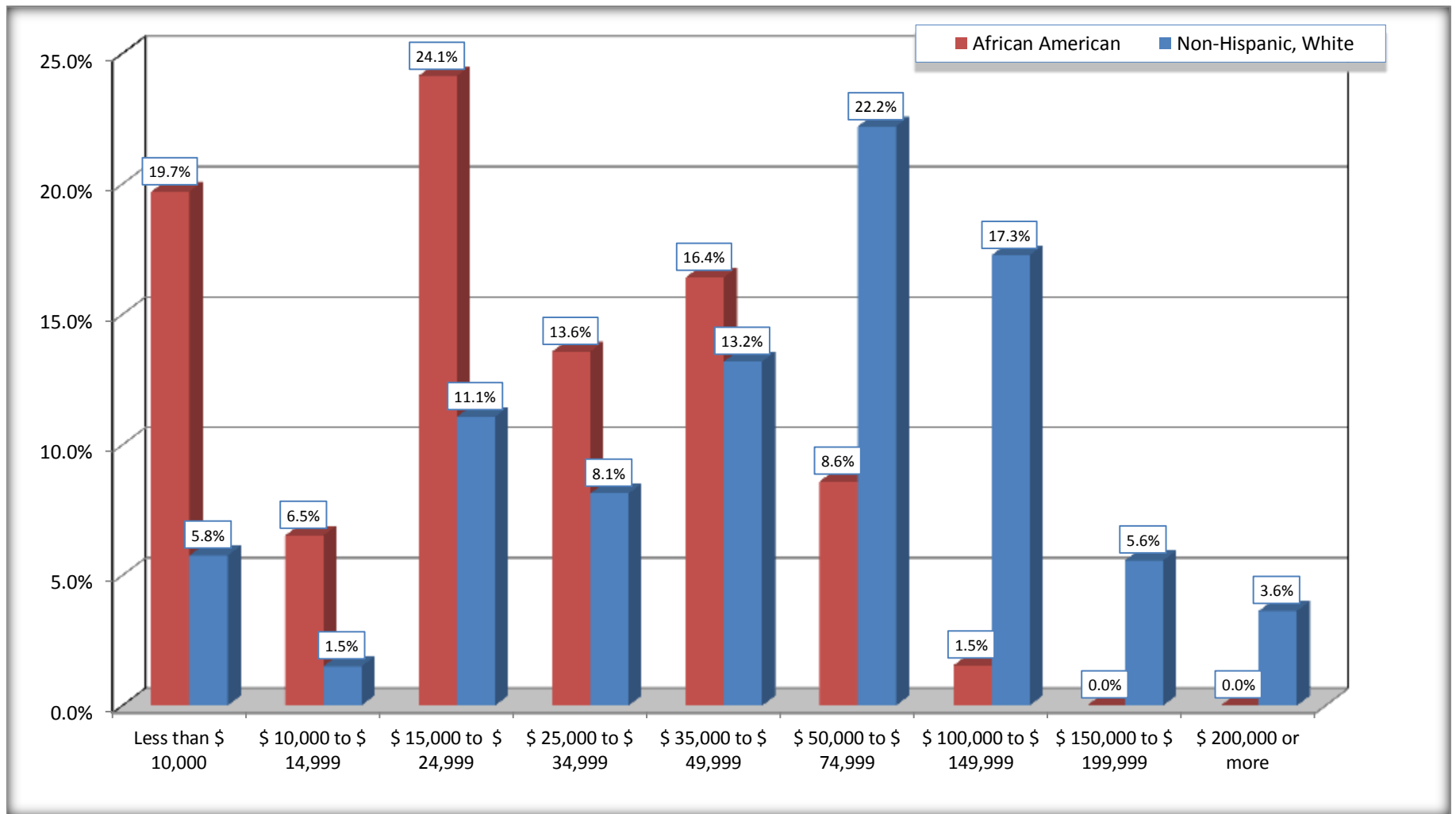
For information on confidentiality protection, sampling error, nonsampling error, and definitions, see Survey Methodology.

<http://www.census.gov/acs/www/UseData/index.htm>



# Family Income in the Past 12 Months

## Minden city, Louisiana



Source: B19101. FAMILY INCOME IN THE PAST 12 MONTHS (IN 2010 INFLATION-ADJUSTED DOLLARS)  
Data Set: 2008-2012 American Community Survey 5-Year Estimates

**B19113. MEDIAN FAMILY INCOME IN THE PAST 12 MONTHS (IN 2010 INFLATION-ADJUSTED DOLLARS)**

Data Set: 2008-2012 American Community Survey 5-Year Estimates

	<b>Minden city, Louisiana</b>			
	African American	Margin of Error (+/-)	White, Not Hispanic	Margin of Error (+/-)
Median family income in the past 12 months (in 2010 inflation-adjusted dollars)	\$ 24,813	\$ 3,262	\$ 58,733	\$ 4,568

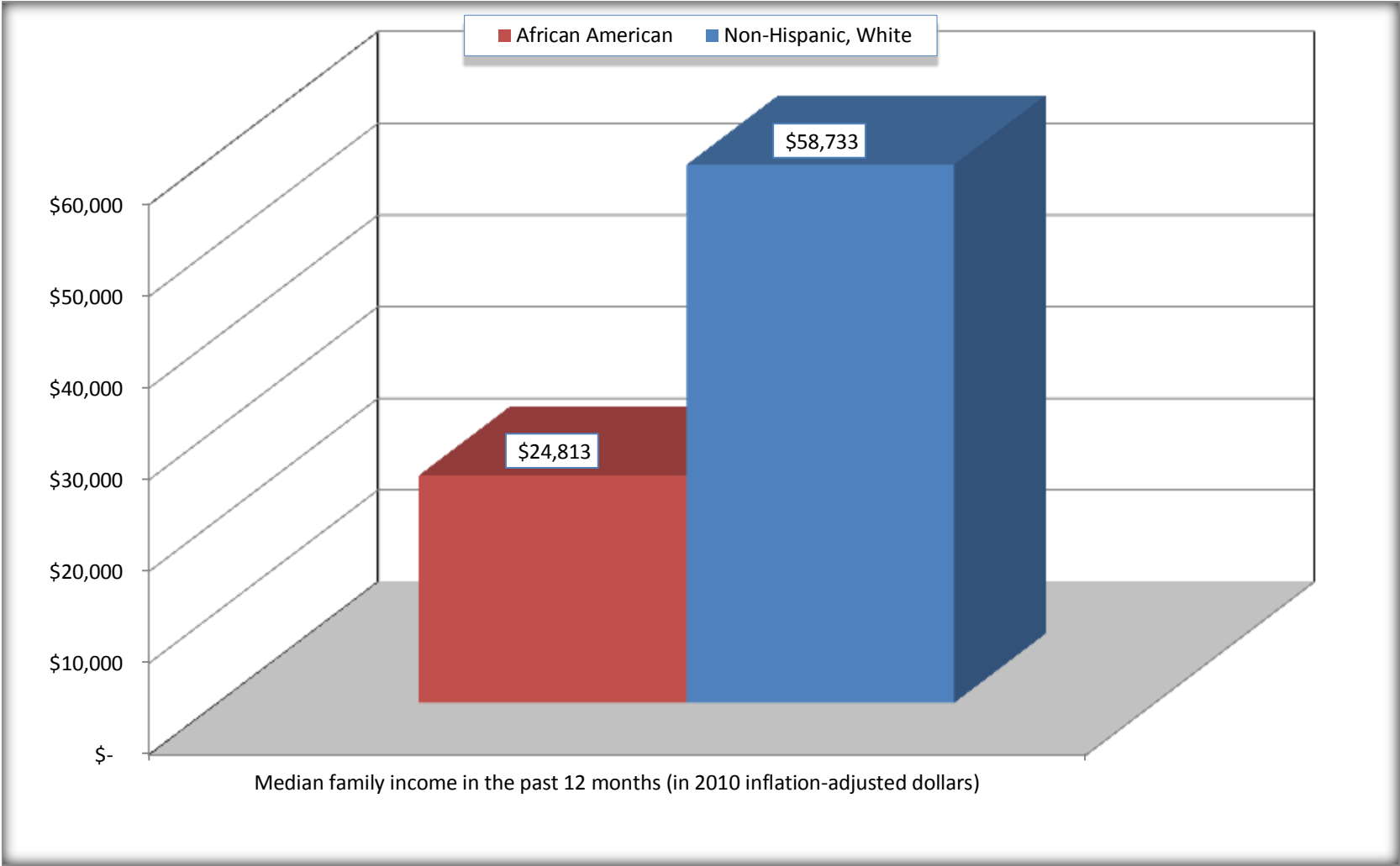
Source: U.S. Census Bureau, 2008-2012 American Community Survey

For information on confidentiality protection, sampling error, nonsampling error, and definitions, see Survey Methodology.

<http://www.census.gov/acs/www/UseData/index.htm>

# Median Family Income in the Past 12 Months

## Minden city, Louisiana



Source: B19113. MEDIAN FAMILY INCOME IN THE PAST 12 MONTHS (IN 2010 INFLATION-ADJUSTED DOLLARS)  
Data Set: 2008-2012 American Community Survey 5-Year Estimates

**B19202. MEDIAN NONFAMILY HOUSEHOLD INCOME IN THE PAST 12 MONTHS (IN 2010 INFLATION-ADJUSTED DOLLARS)**

Data Set: 2008-2012 American Community Survey 5-Year Estimates

	<b>Minden city, Louisiana</b>			
	African American	Margin of Error (+/-)	White, Not Hispanic	Margin of Error (+/-)
Median nonfamily household income in the past 12 months (in 2010 inflation-adjusted dollars)	\$ 13,472	\$ 2,110	\$ 27,385	\$ 4,725

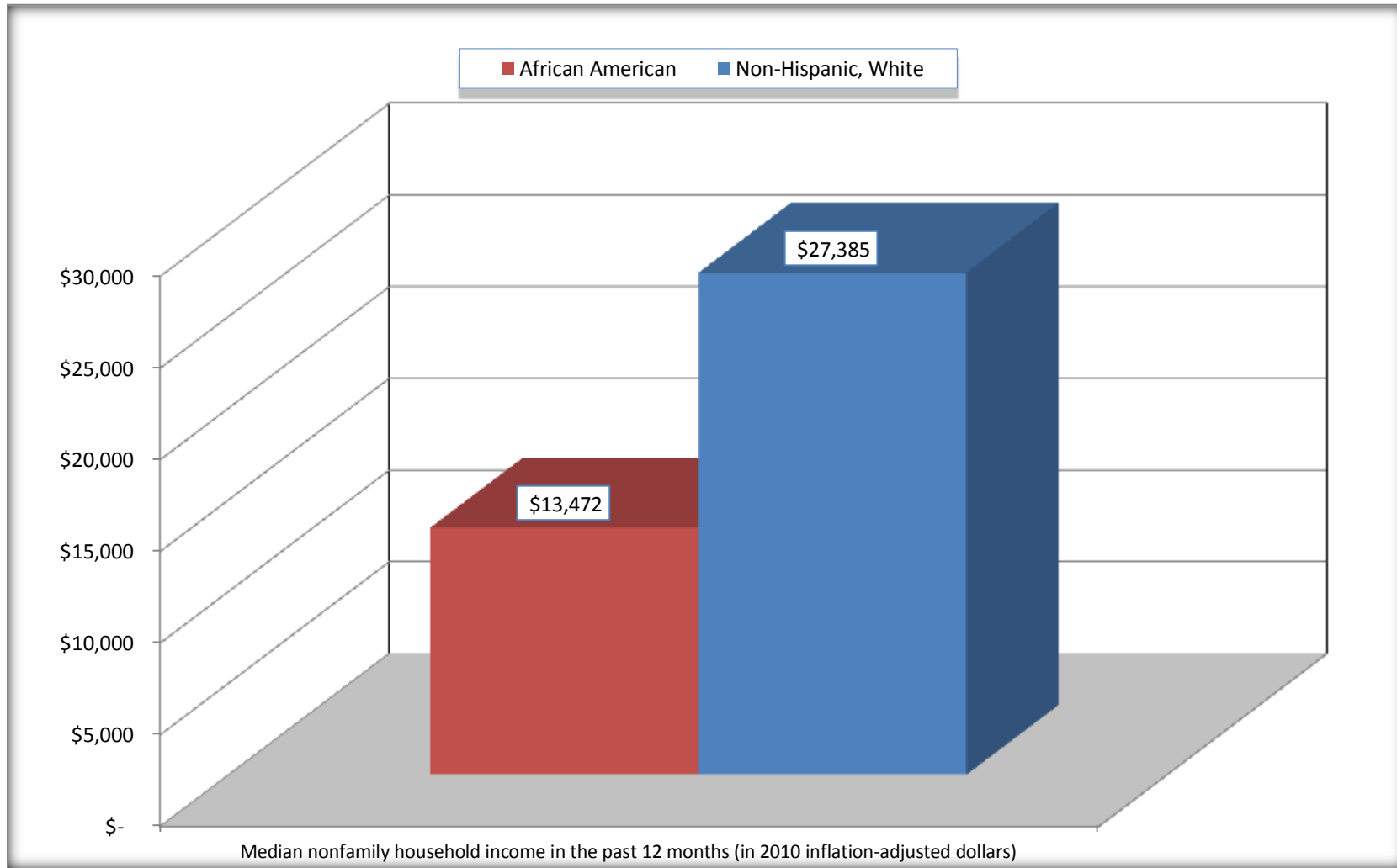
Source: U.S. Census Bureau, 2008-2012 American Community Survey

For information on confidentiality protection, sampling error, nonsampling error, and definitions, see Survey Methodology.

<http://www.census.gov/acs/www/UseData/index.htm>

# Median Non-Family Income in the Past 12 Months

## Minden city, Louisiana



Source: B19202. MEDIAN NONFAMILY HOUSEHOLD INCOME IN THE PAST 12 MONTHS (IN 2010 INFLATION-ADJUSTED DOLLARS)  
Data Set: 2008-2012 American Community Survey 5-Year Estimates

**B19301. PER CAPITA INCOME IN THE PAST 12 MONTHS (IN 2010 INFLATION-ADJUSTED DOLLARS)**

Data Set: 2008-2012 American Community Survey 5-Year Estimates

	<b>Minden city, Louisiana</b>			
	African American	Margin of Error (+/-)	White, Not Hispanic	Margin of Error (+/-)
Per capita income in the past 12 months (in 2010 inflation-adjusted dollars)	\$ 12,113	\$ 1,343	\$ 27,464	\$ 2,779

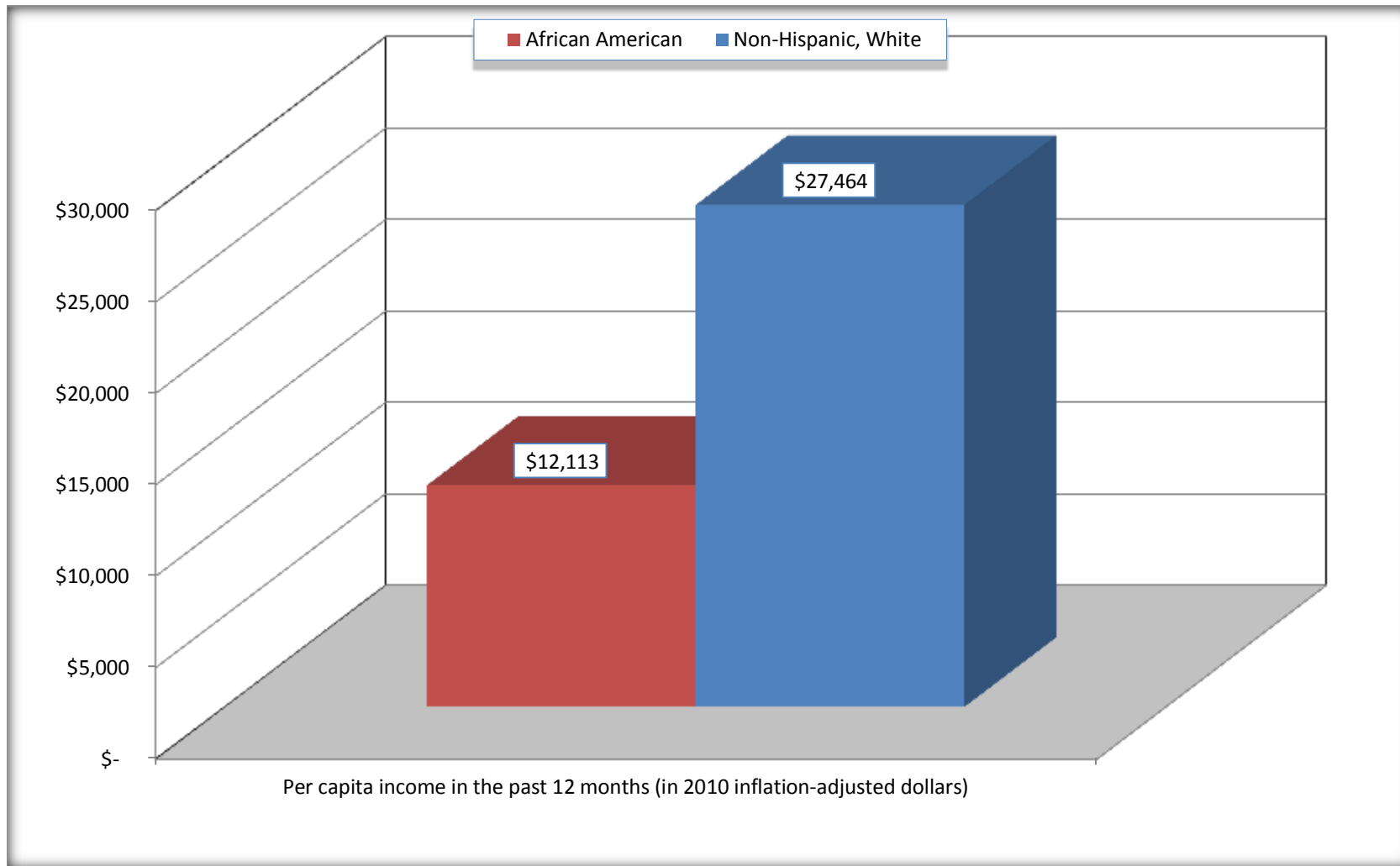
Source: U.S. Census Bureau, 2008-2012 American Community Survey

For information on confidentiality protection, sampling error, nonsampling error, and definitions, see Survey Methodology.

<http://www.census.gov/acs/www/UseData/index.htm>

## Per capita Income in the Past 12 Months

### Minden city, Louisiana



Source: B19301. PER CAPITA INCOME IN THE PAST 12 MONTHS (IN 2010 INFLATION-ADJUSTED DOLLARS)  
Data Set: 2008-2012 American Community Survey 5-Year Estimates

**B20017. MEDIAN EARNINGS IN THE PAST 12 MONTHS (IN 2010 INFLATION-ADJUSTED DOLLARS) BY SEX BY WORK EXPERIENCE IN THE PAST 12 MONTHS FOR THE POPULATION 16 YEARS AND OVER WITH EARNINGS IN THE PAST 12 MONTHS**

Data Set: 2008-2012 American Community Survey 5-Year Estimates

	Minden city, Louisiana			
	African American	Margin of Error (+/-)	White, Not Hispanic	Margin of Error (+/-)
Median earnings in the past 12 months (in 2010 inflation-adjusted dollars) --				
Total:	\$ 14,961	\$ 1,953	\$ 32,471	\$ 6,622
Male --				
Total	\$ 16,917	\$ 3,452	\$ 41,625	\$ 5,538
Worked full-time, year-round in the past 12 months	\$ 25,585	\$ 9,838	\$ 54,545	\$ 5,953
Other	\$ 9,559	\$ 6,425	\$ 11,188	\$ 1,809
Female --				
Total	\$ 12,928	\$ 2,296	\$ 27,614	\$ 3,315
Worked full-time, year-round in the past 12 months	\$ 22,026	\$ 3,151	\$ 34,632	\$ 5,869
Other	\$ 7,634	\$ 2,507	\$ 8,244	\$ 2,811

Source: U.S. Census Bureau, 2008-2012 American Community Survey

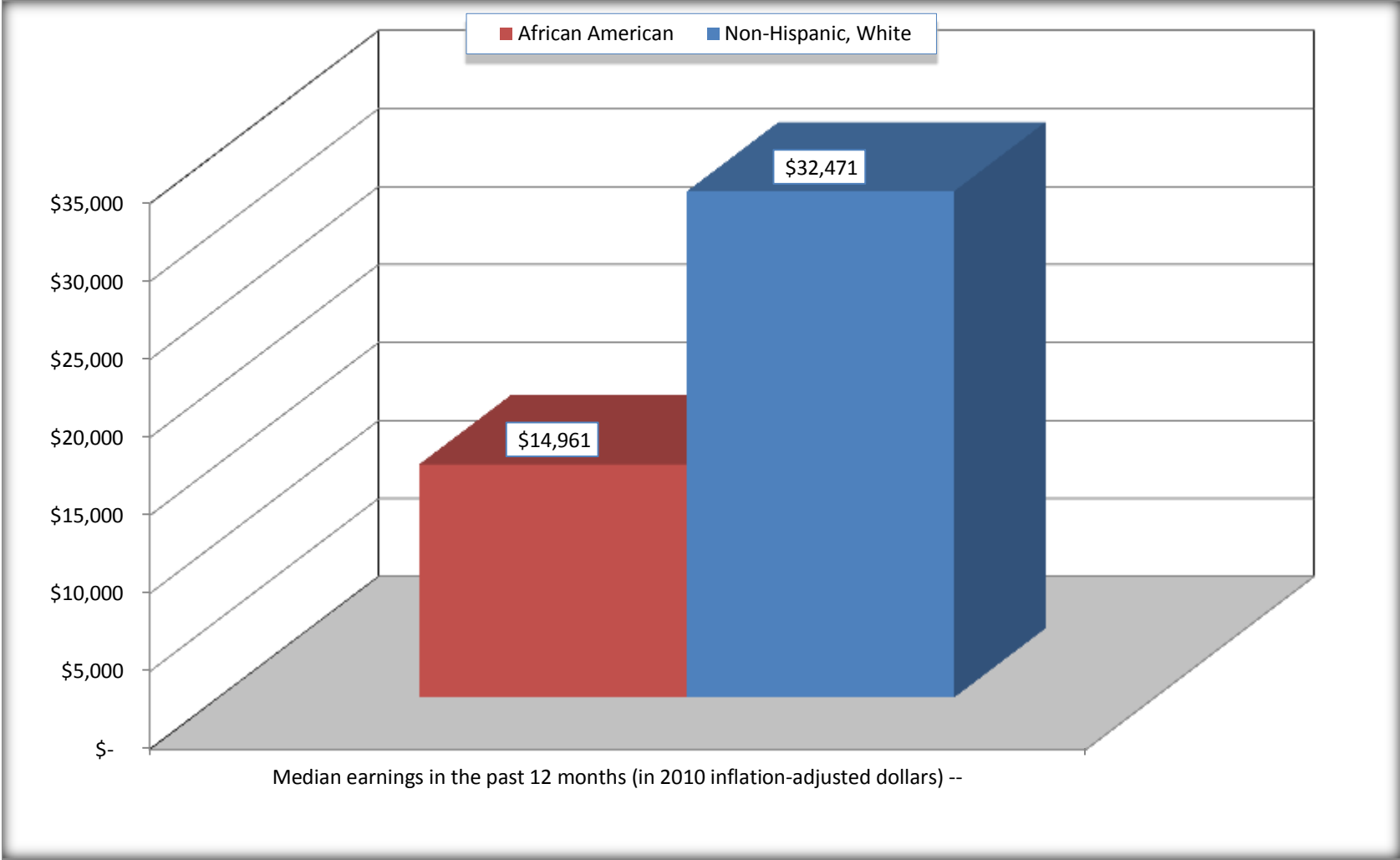
For information on confidentiality protection, sampling error, nonsampling error, and definitions, see Survey Methodology.

<http://www.census.gov/acs/www/UseData/index.htm>



# Median earnings in the Past 12 Months (16 Years and Over with Earnings)

## Minden city, Louisiana



Source: B20017. MEDIAN EARNINGS IN THE PAST 12 MONTHS (IN 2010 INFLATION-ADJUSTED DOLLARS) BY SEX BY WORK EXPERIENCE IN THE PAST 12 MONTHS FOR THE POPULATION 16 YEARS AND OVER WITH EARNINGS IN THE PAST 12 MONTHS  
Data Set: 2008-2012 American Community Survey 5-Year Estimates

**B20005. SEX BY WORK EXPERIENCE IN THE PAST 12 MONTHS BY EARNINGS IN THE PAST 12 MONTHS (IN 2010 INFLATION-ADJUSTED DOLLARS) FOR THE POPULATION 16 YEARS AND OVER**

Data Set: 2008-2012 American Community Survey 5-Year Estimates

	Minden city, Louisiana					
	African American	Margin of Error (+/-)	% of AA Total	White, Not Hispanic	Margin of Error (+/-)	% of NHW Total
<b>Total:</b>	<b>5,324</b>	<b>316</b>	<b>100.0%</b>	<b>4,447</b>	<b>287</b>	<b>100.0%</b>
Worked full-time, year-round in the past 12 months:	1,371	NC	25.8%	1,713	NC	38.5%
No earnings	0	NC	0.0%	0	NC	0.0%
With earnings:	1,371	NC	25.8%	1,713	NC	38.5%
\$ 1 to \$ 9,999 or loss	61	NC	1.1%	40	NC	0.9%
\$ 10,000 to \$ 19,999	410	NC	7.7%	98	NC	2.2%
\$ 20,000 to \$ 29,999	371	NC	7.0%	300	NC	6.7%
\$ 30,000 to \$ 49,999	344	NC	6.5%	565	NC	12.7%
\$ 50,000 to \$ 74,999	113	NC	2.1%	371	NC	8.3%
\$ 75,000 or more	72	NC	1.4%	339	NC	7.6%
Other:	3,953	NC	74.2%	2,734	NC	61.5%
No earnings	2,087	NC	39.2%	1,848	NC	41.6%
With earnings: less than full time, year-round	1,866	NC	35.0%	886	NC	19.9%
Male:	2,210	240	41.5%	2,095	178	47.1%
Worked full-time, year-round in the past 12 months:	628	163	11.8%	1,052	124	23.7%
No earnings	0	19	0.0%	0	19	0.0%
With earnings:	628	163	11.8%	1,052	124	23.7%
\$ 1 to \$ 9,999 or loss	44	NC	0.8%	13	NC	0.3%
\$ 10,000 to \$ 19,999	156	NC	2.9%	48	NC	1.1%
\$ 20,000 to \$ 29,999	150	NC	2.8%	139	NC	3.1%
\$ 30,000 to \$ 49,999	133	NC	2.5%	272	NC	6.1%
\$ 50,000 to \$ 74,999	89	NC	1.7%	265	NC	6.0%
\$ 75,000 or more	56	NC	1.1%	315	NC	7.1%

	Minden city, Louisiana					
	African American	Margin of Error (+/-)	% of AA Total	White, Not Hispanic	Margin of Error (+/-)	% of NHW Total
Other:	1,582	205	29.7%	1,043	144	23.5%
No earnings	870	193	16.3%	578	129	13.0%
With earnings:	712	162	13.4%	465	110	10.5%
Female:	3,114	198	58.5%	2,352	195	52.9%
Worked full-time, year-round in the past 12 months:	743	183	14.0%	661	108	14.9%
No earnings	0	19	0.0%	0	19	0.0%
With earnings:	743	183	14.0%	661	108	14.9%
\$ 1 to \$ 9,999 or loss	17	NC	0.3%	27	NC	0.6%
\$ 10,000 to \$ 19,999	254	NC	4.8%	50	NC	1.1%
\$ 20,000 to \$ 29,999	221	NC	4.2%	161	NC	3.6%
\$ 30,000 to \$ 49,999	211	NC	4.0%	293	NC	6.6%
\$ 50,000 to \$ 74,999	24	NC	0.5%	106	NC	2.4%
\$ 75,000 or more	16	NC	0.3%	24	NC	0.5%
Other:	2,371	246	44.5%	1,691	194	38.0%
No earnings	1,217	225	22.9%	1,270	170	28.6%
With earnings:	1,154	188	21.7%	421	127	9.5%

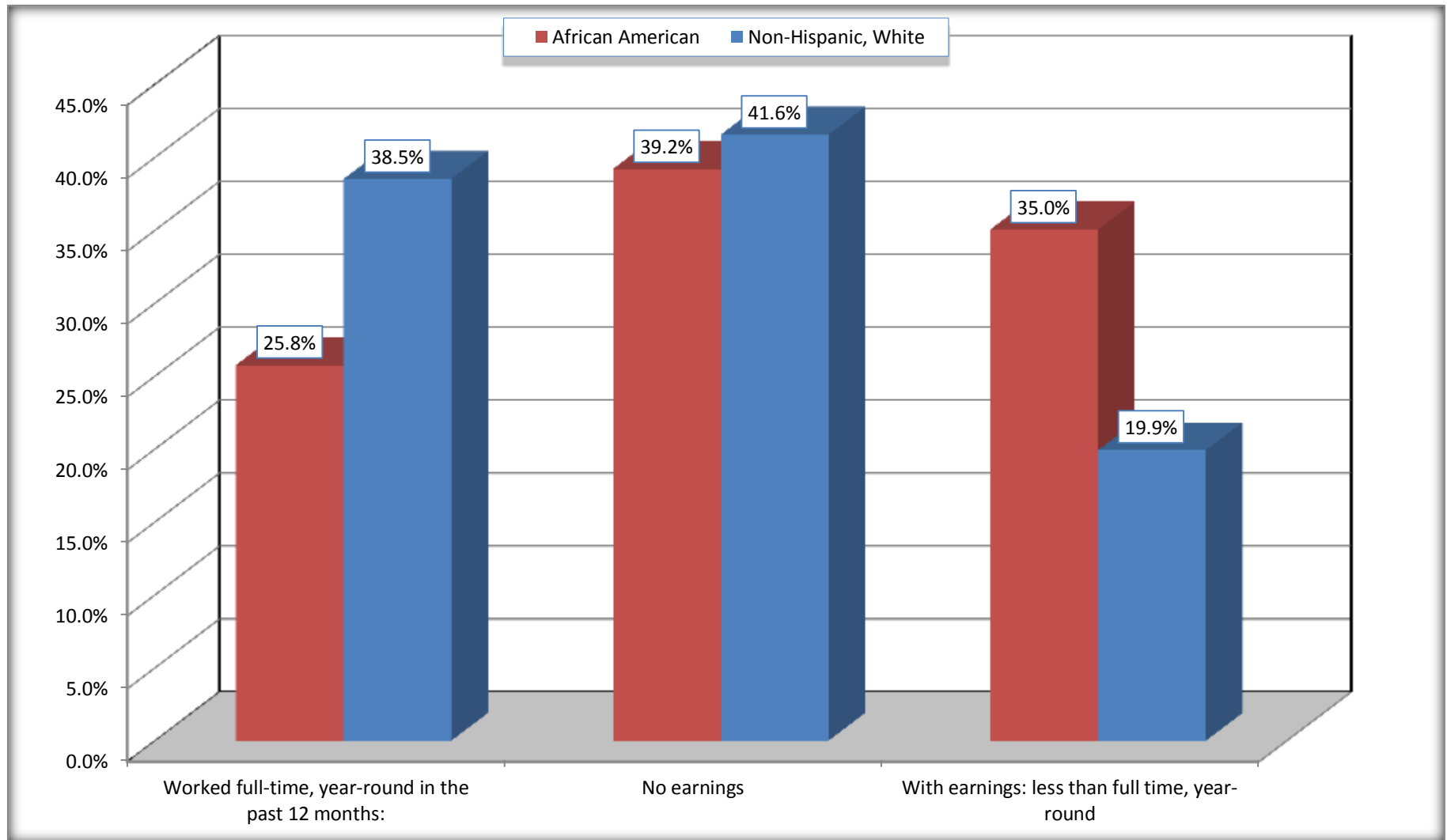
Source: U.S. Census Bureau, 2008-2012 American Community Survey

For information on confidentiality protection, sampling error, nonsampling error, and definitions, see Survey Methodology.

<http://www.census.gov/acs/www/UseData/index.htm>

# Employment and Earnings in in the Past 12 Months (16 Years and Over)

## Minden city, Louisiana



Source: B20005. SEX BY WORK EXPERIENCE IN THE PAST 12 MONTHS BY EARNINGS IN THE PAST 12 MONTHS (IN 2010 INFLATION-ADJUSTED DOLLARS) FOR THE POPULATION 16 YEARS AND OVER

Data Set: 2008-2012 American Community Survey 5-Year Estimates

**C21001. SEX BY AGE BY VETERAN STATUS FOR THE CIVILIAN POPULATION 18 YEARS AND OVER**

Data Set: 2008-2012 American Community Survey 5-Year Estimates

	Minden city, Louisiana					
	African American	Margin of Error (+/-)	% of AA Total	White, Not Hispanic	Margin of Error (+/-)	% of NHW Total
<b>Total:</b>	<b>5,058</b>	<b>284</b>	<b>100.0%</b>	<b>4,394</b>	<b>289</b>	<b>100.0%</b>
Veteran	471	NC	9.3%	488	NC	11.1%
Nonveteran	4,587	NC	90.7%	3,906	NC	88.9%
Male:	2,084	224	41.2%	2,073	175	47.2%
18 to 64 years:	1,811	210	35.8%	1,560	155	35.5%
Veteran	286	115	5.7%	190	80	4.3%
Nonveteran	1,525	239	30.2%	1,370	143	31.2%
65 years and over:	273	68	5.4%	513	89	11.7%
Veteran	123	56	2.4%	272	77	6.2%
Nonveteran	150	59	3.0%	241	75	5.5%
Female:	2,974	182	58.8%	2,321	197	52.8%
18 to 64 years:	2,353	176	46.5%	1,563	185	35.6%
Veteran	62	44	1.2%	26	23	0.6%
Nonveteran	2,291	175	45.3%	1,537	187	35.0%
65 years and over:	621	103	12.3%	758	98	17.3%
Veteran	0	19	0.0%	0	19	0.0%
Nonveteran	621	103	12.3%	758	98	17.3%

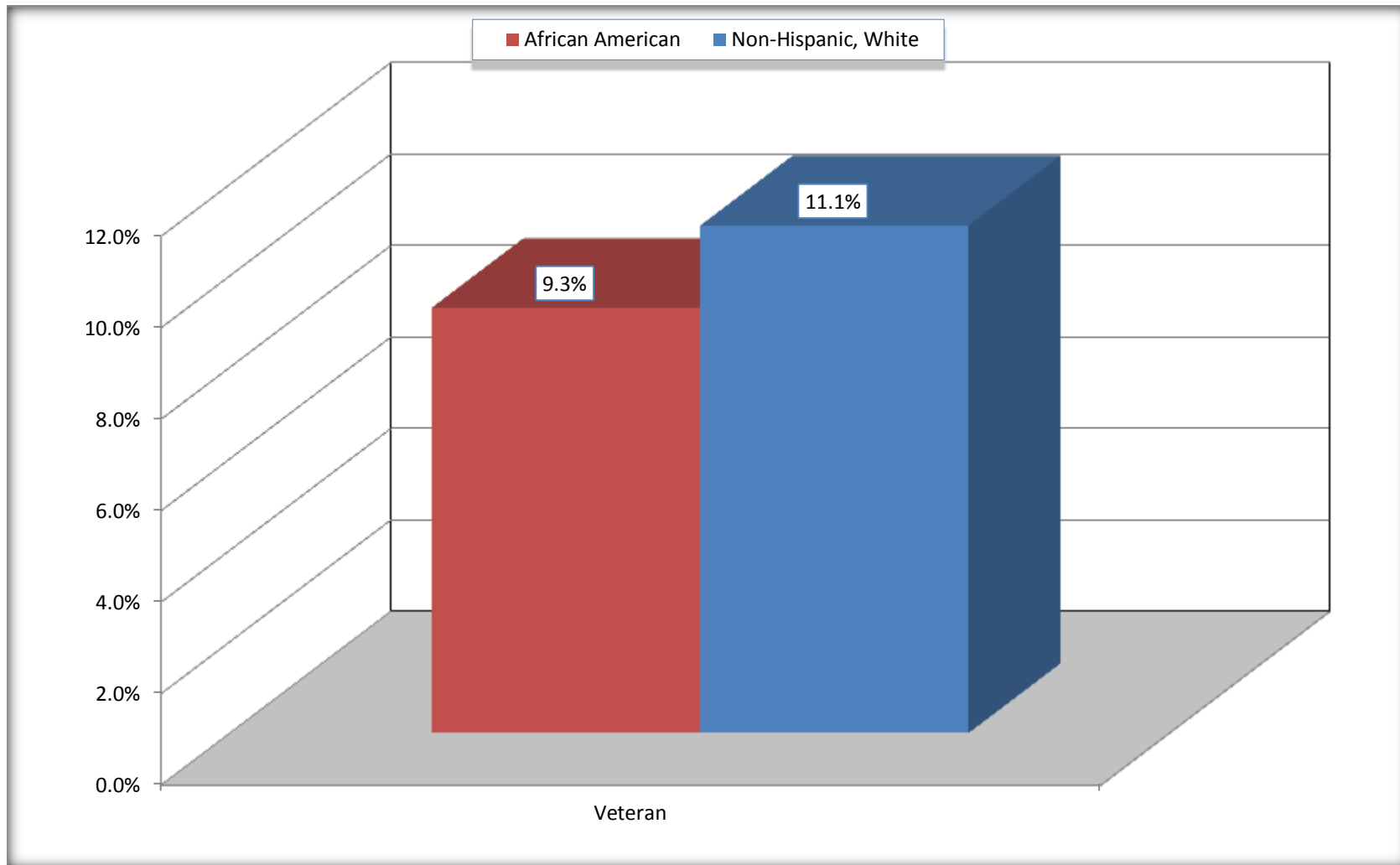
Source: U.S. Census Bureau, 2008-2012 American Community Survey

For information on confidentiality protection, sampling error, nonsampling error, and definitions, see Survey Methodology.

<http://www.census.gov/acs/www/UseData/index.htm>

# Veterans in the Civilian Population 18 Years and Over

## Minden city, Louisiana



Source: C21001. SEX BY AGE BY VETERAN STATUS FOR THE CIVILIAN POPULATION 18 YEARS AND OVER  
Data Set: 2008-2012 American Community Survey 5-Year Estimates

**B22005. RECEIPT OF FOOD STAMPS/SNAP IN THE PAST 12 MONTHS BY RACE OF HOUSEHOLDER**

Data Set: 2008-2012 American Community Survey 5-Year Estimates

	Minden city, Louisiana					
	African American	Margin of Error (+/-)	% of AA Total	White, Not Hispanic	Margin of Error (+/-)	% of NHW Total
<b>Total:</b>	<b>2,823</b>	<b>196</b>	<b>100.0%</b>	<b>2,279</b>	<b>163</b>	<b>100.0%</b>
HH received Food Stamps/SNAP in the past 12 months	1,193	192	42.3%	174	69	7.6%
HH did not receive Food Stamps/SNAP in the past 12 months	1,630	189	57.7%	2,105	169	92.4%

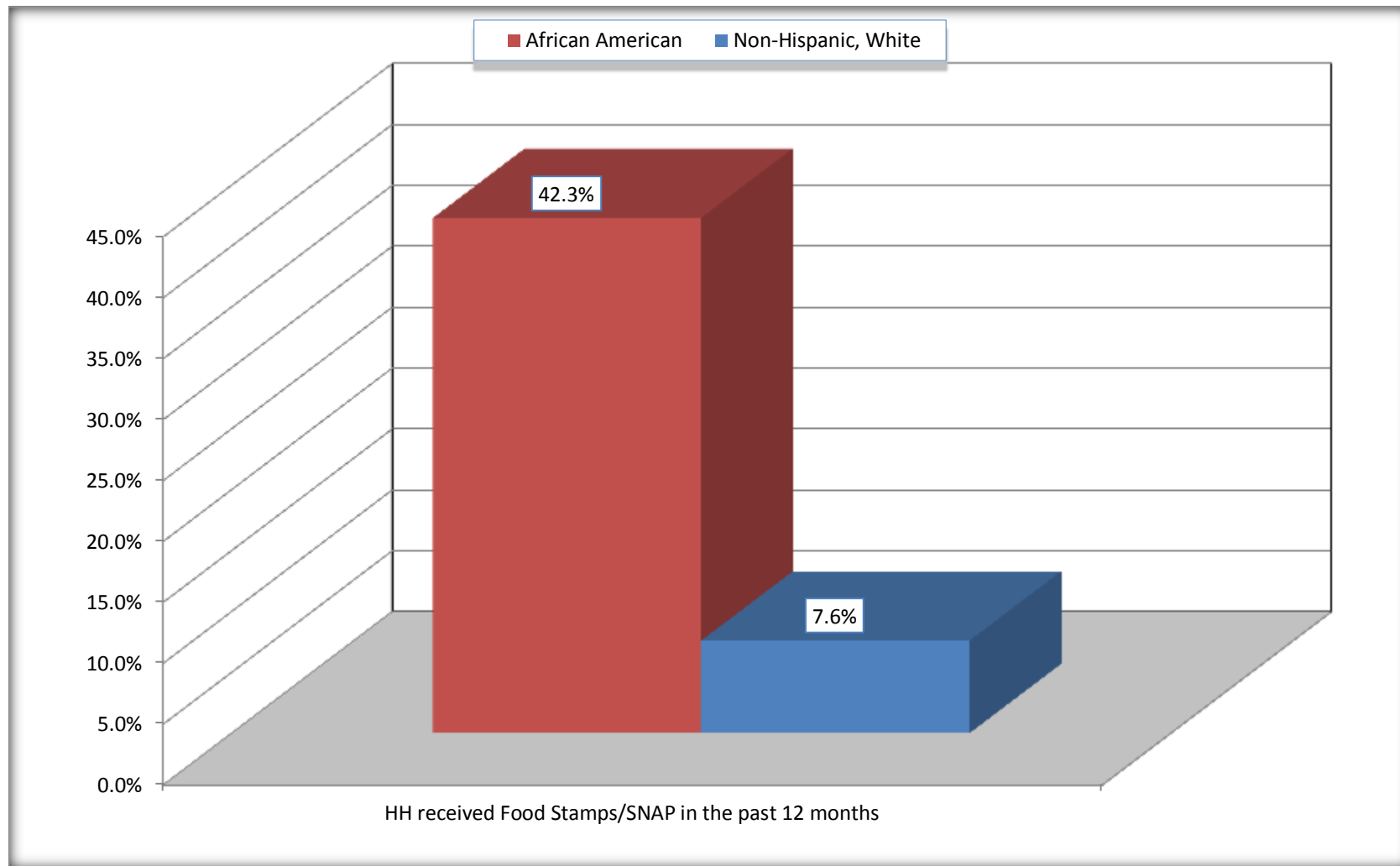
Source: U.S. Census Bureau, 2008-2012 American Community Survey

For information on confidentiality protection, sampling error, nonsampling error, and definitions, see Survey Methodology.

<http://www.census.gov/acs/www/UseData/index.htm>

# Receipt of Food Stamps/SNAP in the Past 12 Months by Household

## Minden city, Louisiana



Source: B22005. RECEIPT OF FOOD STAMPS/SNAP IN THE PAST 12 MONTHS BY RACE OF HOUSEHOLDER  
Data Set: 2008-2012 American Community Survey 5-Year Estimates



**C23002. SEX BY AGE BY EMPLOYMENT STATUS FOR THE POPULATION 16 YEARS AND OVER**

Data Set: 2008-2012 American Community Survey 5-Year Estimates

	Minden city, Louisiana					
	African American	Margin of Error (+/-)	% of AA Total	White, Not Hispanic	Margin of Error (+/-)	% of NHW Total
<b>Total:</b>	<b>5,324</b>	<b>316</b>	<b>100.0%</b>	<b>4,447</b>	<b>287</b>	<b>100.0%</b>
In labor force:	3,202	NC	60.1%	2,442	NC	54.9%
In Armed Forces	0	NC	0.0%	0	NC	0.0%
Civilian:	3,069	NC	57.6%	2,249	NC	50.6%
Employed	2,603	NC	48.9%	2,316	NC	52.1%
Unemployed	599	NC	11.3%	126	NC	2.8%
Not in labor force	2,122	NC	39.9%	2,005	NC	45.1%
Male:	2,210	240	41.5%	2,095	178	47.1%
16 to 64 years:	1,937	229	36.4%	1,582	160	35.6%
In labor force:	1,279	225	24.0%	1,299	149	29.2%
In Armed Forces	0	19	0.0%	0	19	0.0%
Civilian:	1,279	225	24.0%	1,299	149	29.2%
Employed	1,041	226	19.6%	1,173	147	26.4%
Unemployed	238	114	4.5%	126	56	2.8%
Not in labor force	658	163	12.4%	283	103	6.4%
65 years and over:	273	68	5.1%	513	89	11.5%
In labor force:	21	22	0.4%	133	47	3.0%
Employed	21	22	0.4%	133	47	3.0%
Unemployed	0	19	0.0%	0	19	0.0%
Not in labor force	252	67	4.7%	380	89	8.5%

	Minden city, Louisiana					
	African American	Margin of Error (+/-)	% of AA Total	White, Not Hispanic	Margin of Error (+/-)	% of NHW Total
Female:	3,114	198	58.5%	2,352	195	52.9%
16 to 64 years:	2,493	191	46.8%	1,594	186	35.8%
In labor force:	1,790	172	33.6%	950	162	21.4%
In Armed Forces	0	19	0.0%	0	19	0.0%
Civilian:	1,790	172	33.6%	950	162	21.4%
Employed	1,429	181	26.8%	950	162	21.4%
Unemployed	361	116	6.8%	0	19	0.0%
Not in labor force	703	177	13.2%	644	140	14.5%
65 years and over:	621	103	11.7%	758	98	17.0%
In labor force:	112	61	2.1%	60	35	1.3%
Employed	112	61	2.1%	60	35	1.3%
Unemployed	0	19	0.0%	0	19	0.0%
Not in labor force	509	108	9.6%	698	101	15.7%

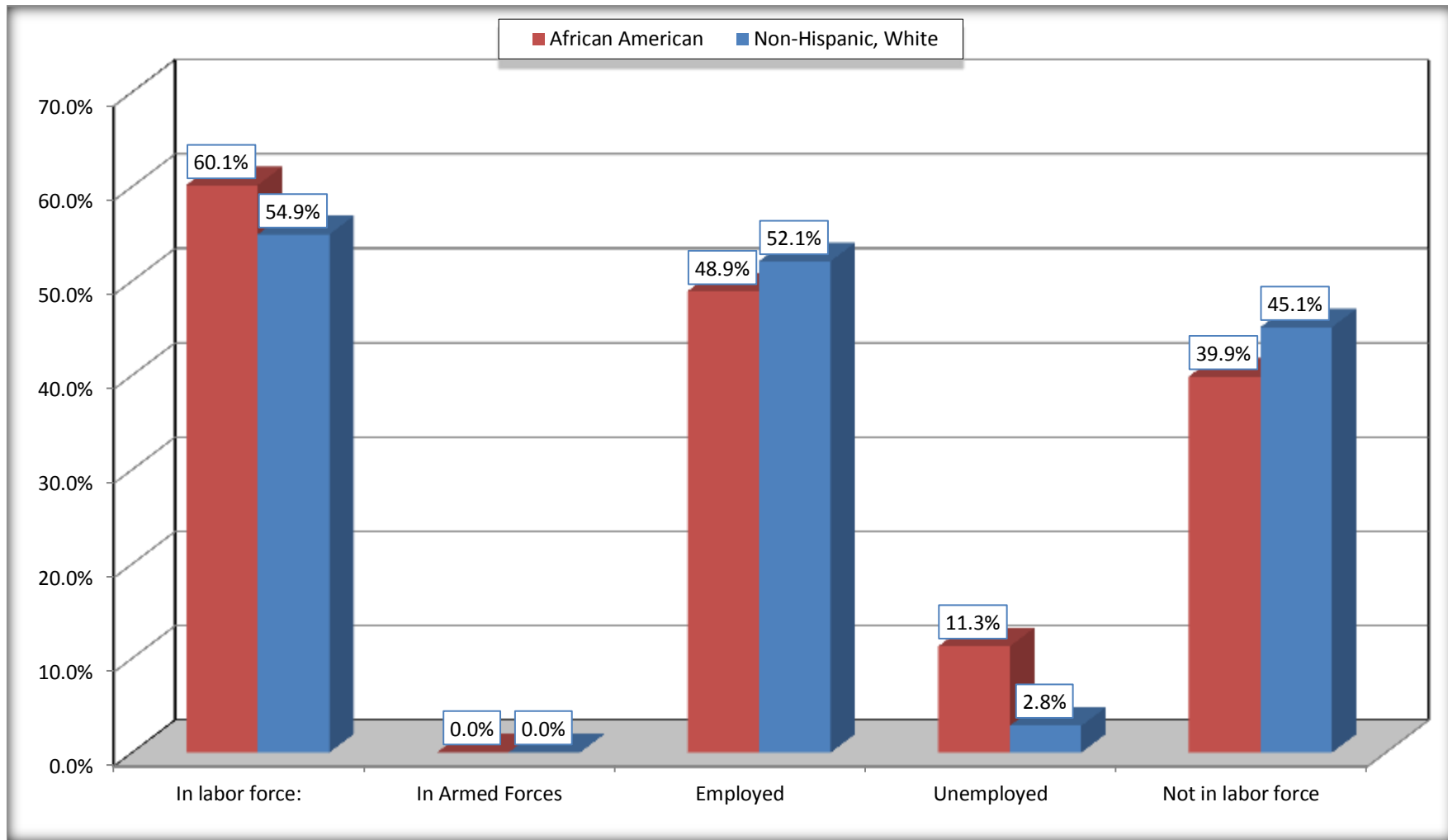
Source: U.S. Census Bureau, 2008-2012 American Community Survey

For information on confidentiality protection, sampling error, nonsampling error, and definitions, see Survey Methodology.

<http://www.census.gov/acs/www/UseData/index.htm>

# Employment Status for the Population 16 years and over

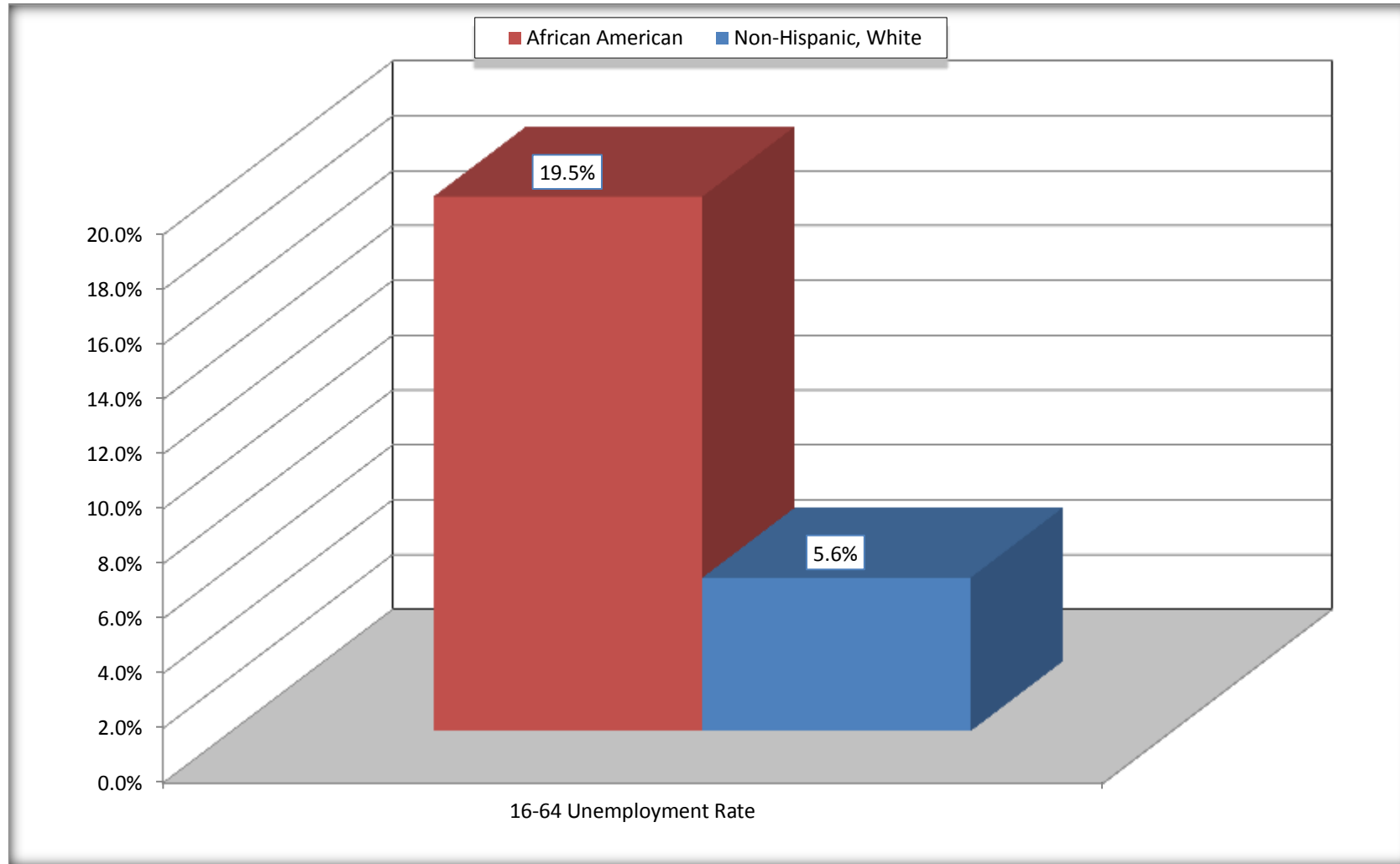
## Minden city, Louisiana



Source: C23002. SEX BY AGE BY EMPLOYMENT STATUS FOR THE POPULATION 16 YEARS AND OVER  
Data Set: 2008-2012 American Community Survey 5-Year Estimates

# Unemployment of Working Age Population (Ages 16 to 64) (As a Percent of 16-64 Civilian Labor Force)

## Minden city, Louisiana



Source: C23002. SEX BY AGE BY EMPLOYMENT STATUS FOR THE POPULATION 16 YEARS AND OVER  
Data Set: 2008-2012 American Community Survey 5-Year Estimates

**C24010. SEX BY OCCUPATION FOR THE CIVILIAN EMPLOYED POPULATION 16 YEARS AND OVER**

Data Set: 2008-2012 American Community Survey 5-Year Estimates

	Minden city, Louisiana					
	African American	Margin of Error (+/-)	% of AA Total	White, Not Hispanic	Margin of Error (+/-)	% of NHW Total
<b>Total:</b>	<b>2,603</b>	<b>341</b>	<b>100.0%</b>	<b>2,316</b>	<b>247</b>	<b>100.0%</b>
Management, professional, and related occupations	471	NC	18.1%	904	NC	39.0%
Service occupations	716	NC	27.5%	299	NC	12.9%
Sales and office occupations	704	NC	27.0%	524	NC	22.6%
Natural resources, construction, and maintenance occupations:	140	NC	5.4%	256	NC	11.1%
Production, transportation, and material moving occupations	572	NC	22.0%	333	NC	14.4%
Male:	1,062	227	40.8%	1,306	156	56.4%
Management, business, science, and arts occupations:	116	53	4.5%	440	106	19.0%
Service occupations	233	100	9.0%	140	63	6.0%
Sales and office occupations	96	71	3.7%	164	63	7.1%
Natural resources, construction, and maintenance occupations:	140	83	5.4%	256	87	11.1%
Production, transportation, and material moving occupations	477	170	18.3%	306	131	13.2%
Female:	1,541	187	59.2%	1,010	173	43.6%
Management, professional, and related occupations	355	116	13.6%	464	103	20.0%
Service occupations	483	133	18.6%	159	75	6.9%
Sales and office occupations	608	138	23.4%	360	99	15.5%
Natural resources, construction, and maintenance occupations:	0	19	0.0%	0	19	0.0%
Production, transportation, and material moving occupations	95	64	3.6%	27	36	1.2%

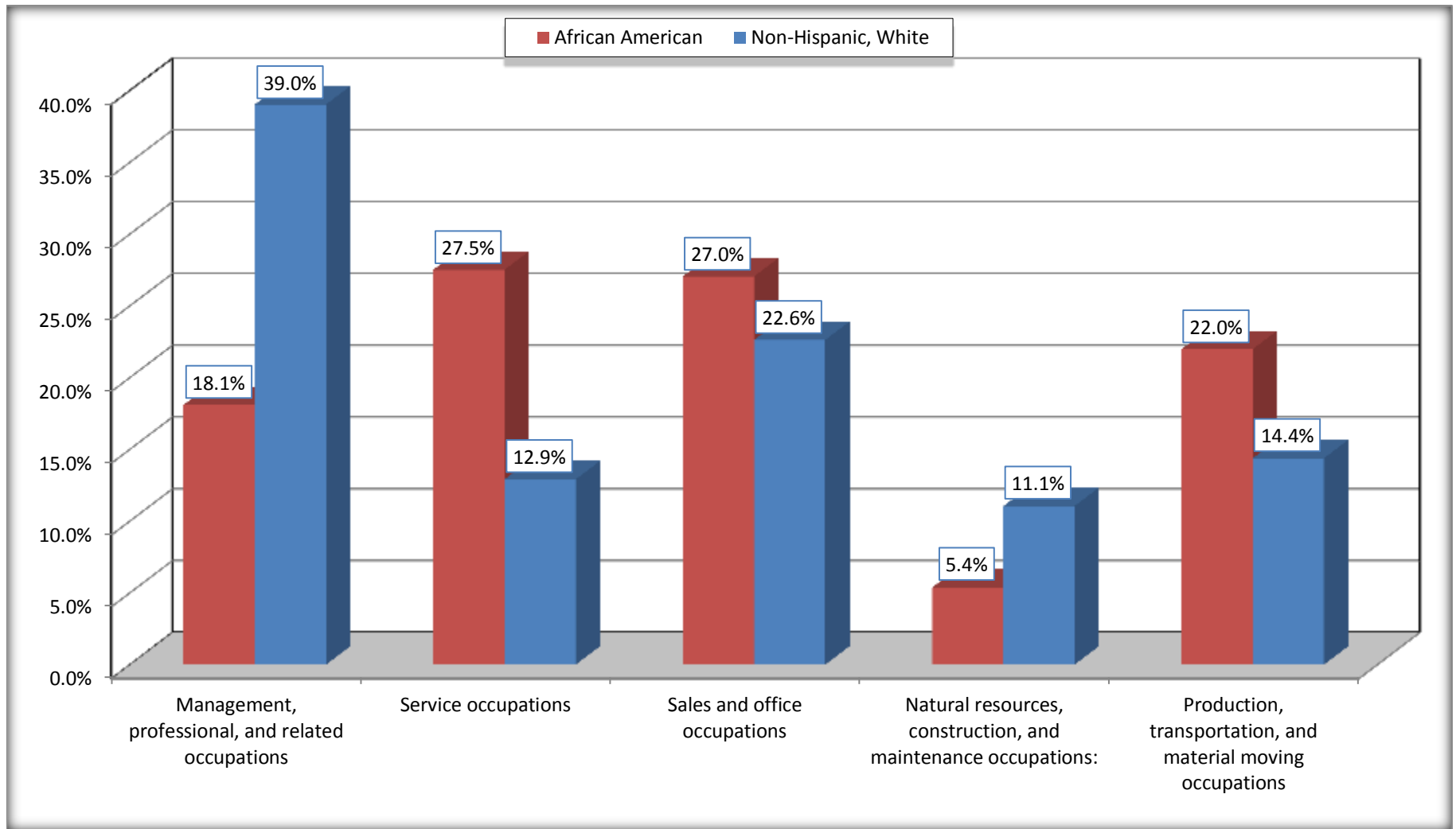
Source: U.S. Census Bureau, 2008-2012 American Community Survey

For information on confidentiality protection, sampling error, nonsampling error, and definitions, see Survey Methodology.

<http://www.census.gov/acs/www/UseData/index.htm>

## Occupation for the Civilian Employed 16 Years and Over Population

### Minden city, Louisiana



Source: C24010. SEX BY OCCUPATION FOR THE CIVILIAN EMPLOYED POPULATION 16 YEARS AND OVER  
 Data Set: 2008-2012 American Community Survey 5-Year Estimates

**B25003. TENURE - Universe: OCCUPIED HOUSING UNITS**

Data Set: 2008-2012 American Community Survey 5-Year Estimates

	Minden city, Louisiana					
	African American	Margin of Error (+/-)	% of AA Total	White, Not Hispanic	Margin of Error (+/-)	% of NHW Total
<b>Total:</b>	<b>2,823</b>	<b>196</b>	<b>100.0%</b>	<b>2,279</b>	<b>163</b>	<b>100.0%</b>
Owner occupied	1,292	161	45.8%	1,775	168	77.9%
Renter occupied	1,531	214	54.2%	504	105	22.1%

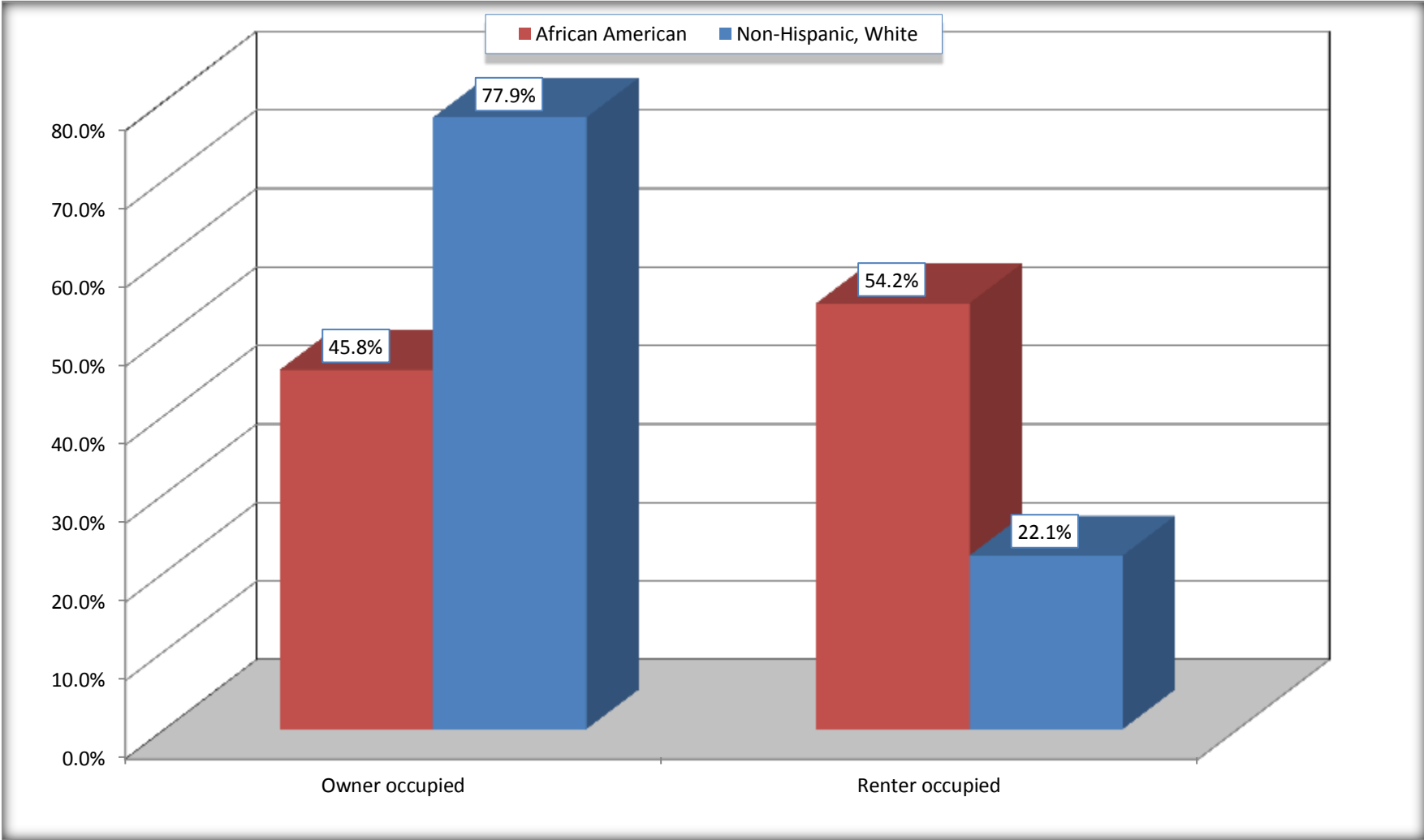
Source: U.S. Census Bureau, 2008-2012 American Community Survey

For information on confidentiality protection, sampling error, nonsampling error, and definitions, see Survey Methodology.

<http://www.census.gov/acs/www/UseData/index.h>

# Home Owners and Renters by Household

## Minden city, Louisiana



Source: B25003. TENURE - Universe: OCCUPIED HOUSING UNITS  
Data Set: 2008-2012 American Community Survey 5-Year Estimates



**B25014. OCCUPANTS PER ROOM - Universe: OCCUPIED HOUSING UNITS**

Data Set: 2008-2012 American Community Survey 5-Year Estimates

	Minden city, Louisiana					
	African American	Margin of Error (+/-)	% of AA Total	White, Not Hispanic	Margin of Error (+/-)	% of NHW Total
<b>Total:</b>	<b>2,823</b>	<b>196</b>	<b>100.0%</b>	<b>2,279</b>	<b>163</b>	<b>100.0%</b>
1.00 or less occupants per room	2,666	215	94.4%	2,271	164	99.6%
1.01 or more occupants per room	157	98	5.6%	8	14	0.4%

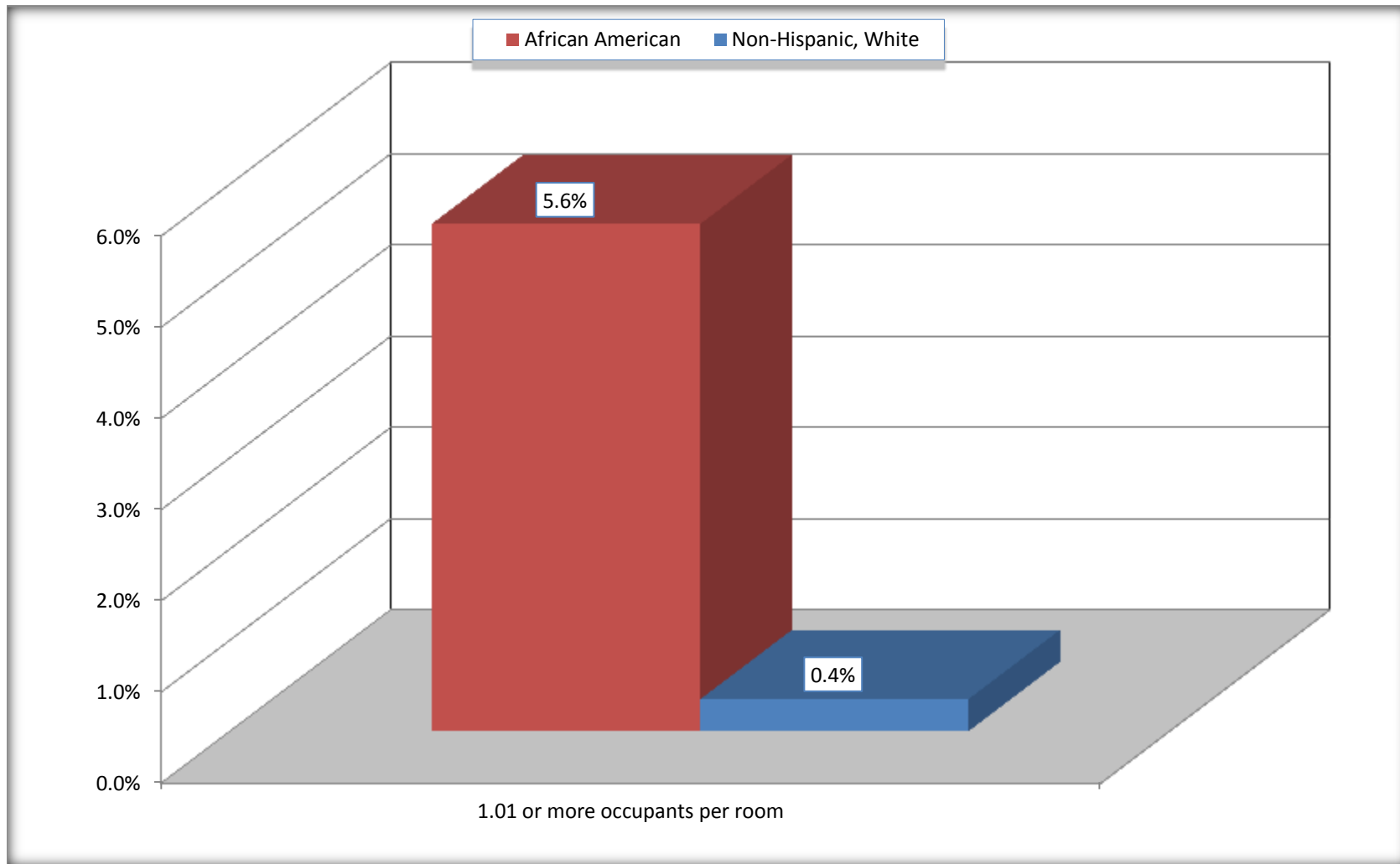
Source: U.S. Census Bureau, 2008-2012 American Community Survey

For information on confidentiality protection, sampling error, nonsampling error, and definitions, see Survey Methodology.

<http://www.census.gov/acs/www/UseData/index.ht>

# More than One Person per Room (Crowding) by Household

## Minden city, Louisiana



Source: B25014. OCCUPANTS PER ROOM - Universe: OCCUPIED HOUSING UNITS  
Data Set: 2008-2012 American Community Survey 5-Year Estimates

**B18101. AGE BY DISABILITY STATUS**

Data Set: 2008-2012 American Community Survey 5-Year Estimates

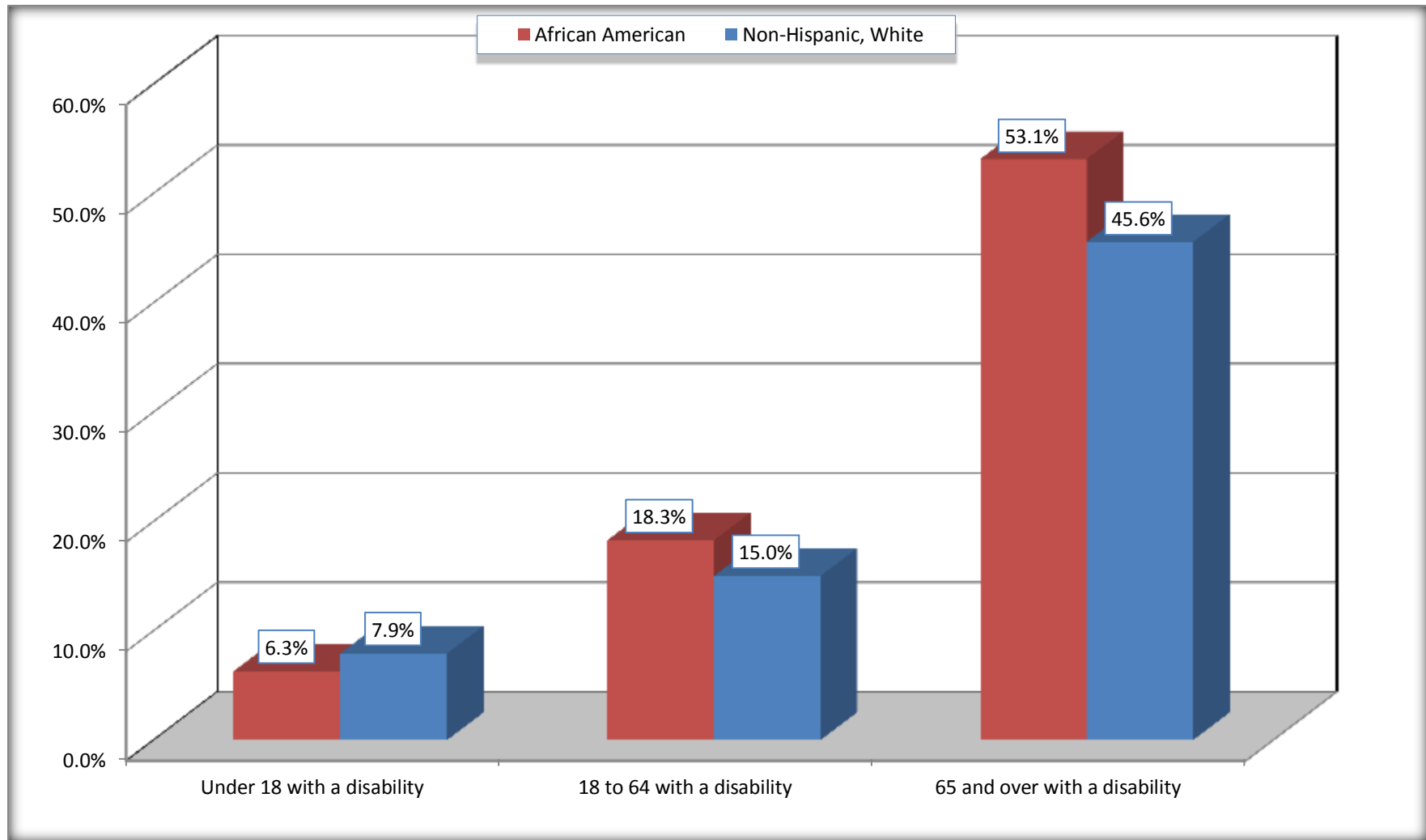
	Minden city, Louisiana					
	African American	Margin of Error (+/-)	% of AA Total	White, Not Hispanic	Margin of Error (+/-)	% of NHW Total
<b>Total:</b>	<b>7,043</b>	<b>357</b>	<b>100.0%</b>	<b>5,238</b>	<b>385</b>	<b>100.0%</b>
Under 18 years:	2,176	253	30.9%	1,009	41	19.3%
With a disability	137	109	1.9%	80	63	1.5%
No disability	2,039	251	29.0%	929	196	17.7%
18 to 64 years:	4,088	259	58.0%	3,031	256	57.9%
With a disability	747	177	10.6%	455	150	8.7%
No disability	3,341	272	47.4%	2,576	241	49.2%
65 years and over:	779	128	11.1%	1,198	141	22.9%
With a disability	414	122	5.9%	546	110	10.4%
No disability	365	92	5.2%	652	135	12.4%

Source: U.S. Census Bureau, 2008-2012 American Community Survey

For information on confidentiality protection, sampling error, nonsampling error, and definitions, see Survey Methodology.

<http://www.census.gov/acs/www/UseData/index.htm>

## Disability by Age Minden city, Louisiana



Source: B18101. AGE BY DISABILITY STATUS  
Data Set: 2008-2012 American Community Survey 5-Year Estimates

**C27001B. HEALTH INSURANCE COVERAGE STATUS BY AGE**

Data Set: 2008-2012 American Community Survey 5-Year Estimates

	<b>Minden city, Louisiana</b>					
	African American	Margin of Error (+/-)	% of AA Total	White, Not Hispanic	Margin of Error (+/-)	% of NHW Total
<b>Total:</b>	<b>7,043</b>	<b>357</b>	<b>100.0%</b>	<b>5,238</b>	<b>385</b>	<b>100.0%</b>
Under 18 years:	2,176	253	30.9%	1,009	189	19.3%
With health insurance coverage	2,048	278	29.1%	968	182	18.5%
No health insurance coverage	128	80	1.8%	41	44	0.8%
18 to 64 years:	4,088	259	58.0%	3,031	256	57.9%
With health insurance coverage	2,364	322	33.6%	2,381	203	45.5%
No health insurance coverage	1,724	253	24.5%	650	182	12.4%
65 years and over:	779	128	11.1%	1,198	141	22.9%
With health insurance coverage	779	128	11.1%	1,198	141	22.9%
No health insurance coverage	0	19	0.0%	0	19	0.0%

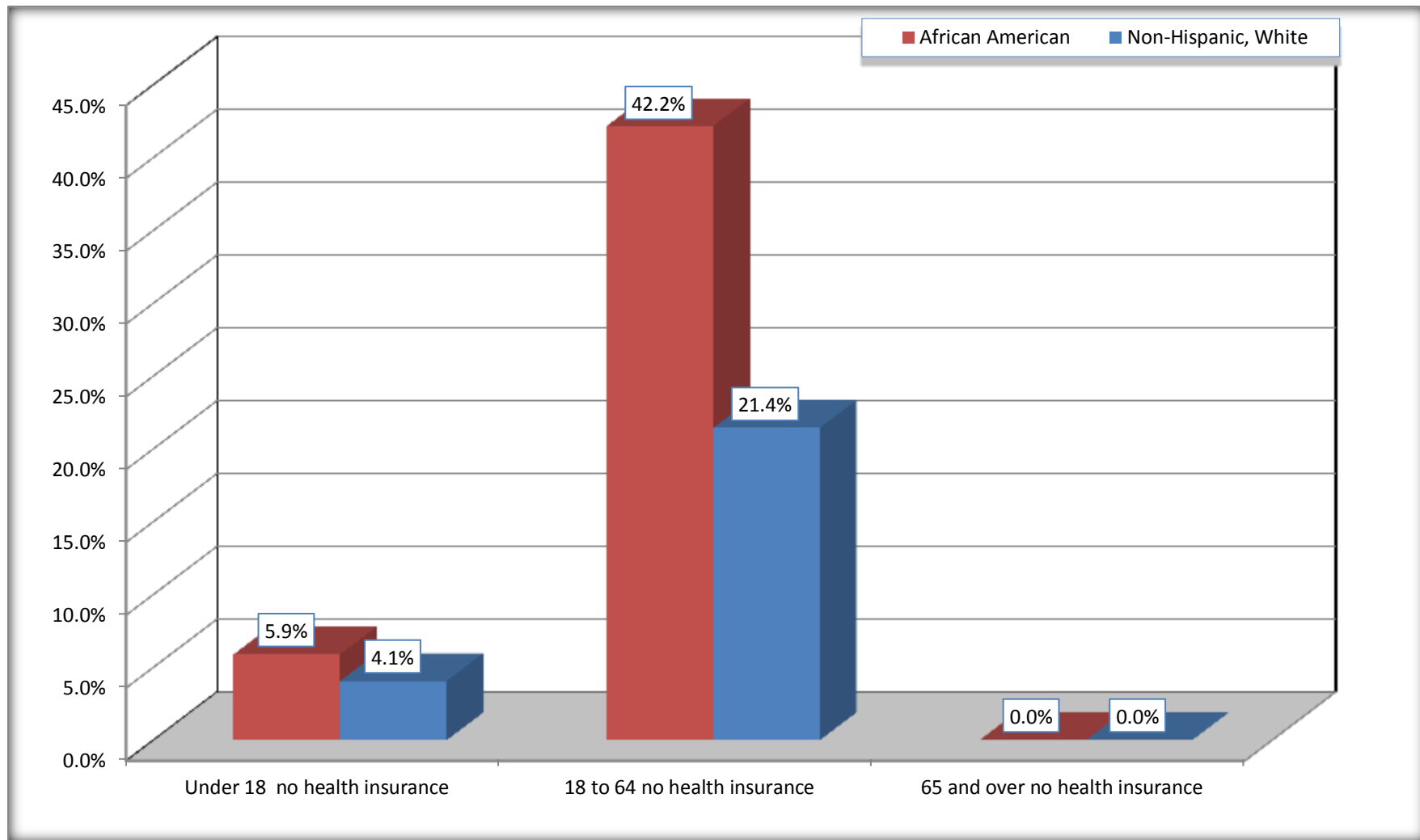
Source: U.S. Census Bureau, 2008-2012 American Community Survey

For information on confidentiality protection, sampling error, nonsampling error, and definitions, see Survey Methodology.

<http://www.census.gov/acs/www/UseData/index.htm>

# Lack of Health Insurance Coverage by Age

## Minden city, Louisiana



Source: C27001B. HEALTH INSURANCE COVERAGE STATUS BY AGE  
Data Set: 2008-2012 American Community Survey 5-Year Estimates