

Selected Socio-Economic Data

Marksville city, Louisiana

African American and White, Not Hispanic

Data Set: 2008-2012 American Community Survey 5-Year Estimates

www.fairvote2020.org

www.fairdata2000.com

[29-Dec-13](#)

C02003.DETAILED RACE - Universe: TOTAL POPULATION

Data Set: 2008-2012 American Community Survey 5-Year Estimates

	Marksville city, Louisiana		
	Population	Margin of Error (+/-)	% of Total
Total:	5,679	17	100.0%
Population of one race:	5,516	190	97.1%
White	2,679	327	47.2%
Black or African American	2,646	380	46.6%
American Indian and Alaska Native	84	45	1.5%
Asian alone	89	72	1.6%
Native Hawaiian and Other Pacific Islander	0	17	0.0%
Some other race	18	30	0.3%
Population of two or more races:	163	189	2.9%
Two races including Some other race	0	17	0.0%
Two races excluding Some other race, and three or more races	163	189	2.9%
Population of two races:	163	189	2.9%
White; Black or African American	138	194	2.4%
White; American Indian and Alaska Native	16	22	0.3%
White; Asian	9	14	0.2%
Black or African American; American Indian and Alaska Native	0	17	0.0%
All other two race combinations	0	17	0.0%
Population of three races	0	17	0.0%
Population of four or more races	0	17	0.0%

Note: Hispanics may be of any race. See Table B03002 and chart.

Source: U.S. Census Bureau, 2008-2012 American Community Survey

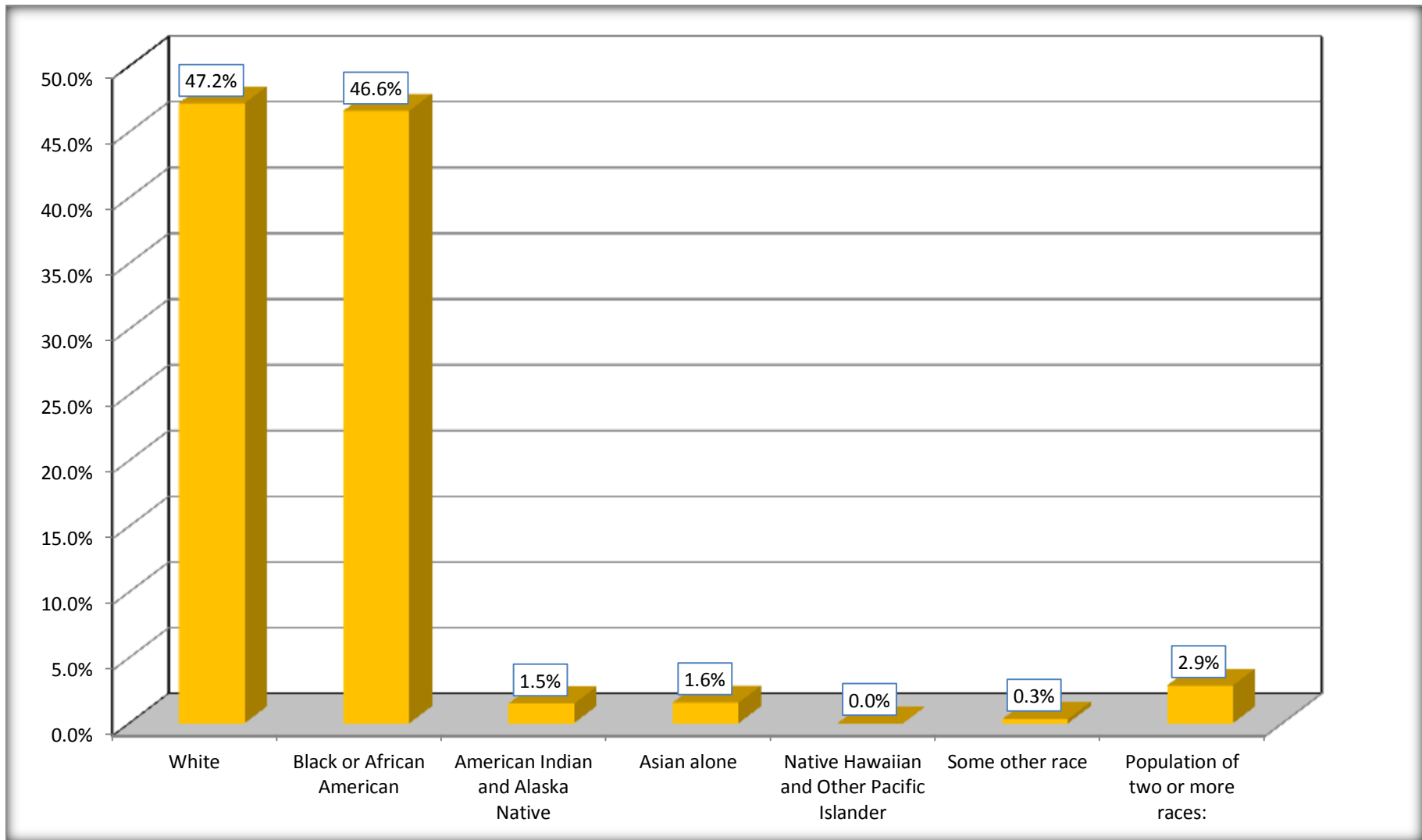
Although the American Community Survey (ACS) produces population, demographic and housing unit estimates, it is the Census Bureau's Population Estimates Program that produces and disseminates the official estimates of the population for the nation, states, counties, cities and towns and estimates of housing units for states and counties.

For information on confidentiality protection, sampling error, nonsampling error, and definitions, see Survey Methodology.

<http://www.census.gov/acs/www/UseData/index.htm>

Population by Race

Marksville city, Louisiana



Source: C02003.DETAILED RACE - Universe: TOTAL POPULATION
Data Set: 2008-2012 American Community Survey 5-Year Estimates

B03002. HISPANIC OR LATINO ORIGIN BY RACE - Universe: TOTAL POPULATION

Data Set: 2008-2012 American Community Survey 5-Year Estimates

	Marksville city, Louisiana		
	Population	Margin of Error (+/-)	% of Total
Total:	5,679	17	100.0%
Not Hispanic or Latino:	5,660	32	99.7%
White alone	2,678	327	47.2%
Black or African American alone	2,646	380	46.6%
American Indian and Alaska Native alone	84	45	1.5%
Asian alone	89	72	1.6%
Native Hawaiian and Other Pacific Islander alone	0	17	0.0%
Some other race alone	0	17	0.0%
Two or more races:	163	189	2.9%
Two races including Some other race	0	17	0.0%
Two races excluding Some other race, and three or more races	163	189	2.9%
Hispanic or Latino	19	30	0.3%

Source: U.S. Census Bureau, 2008-2012 American Community Survey

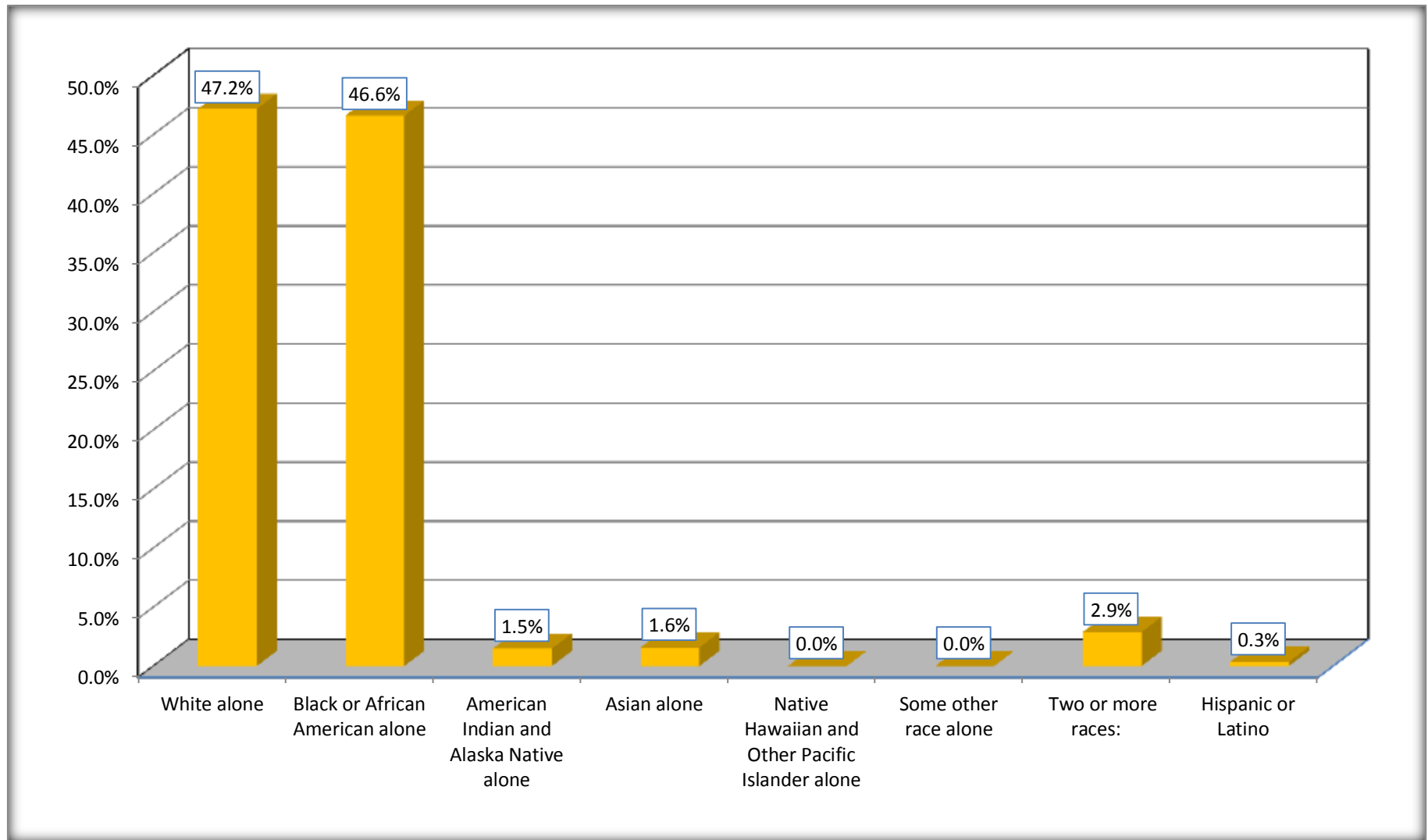
Although the American Community Survey (ACS) produces population, demographic and housing unit estimates, it is the Census Bureau's Population Estimates Program that produces and disseminates the official estimates of the population for the nation, states, counties, cities and towns and estimates of housing units for states and counties.

For information on confidentiality protection, sampling error, nonsampling error, and definitions, see Survey Methodology.

<http://www.census.gov/acs/www/UseData/index.htm>

Non-Hispanic by Race and Hispanic Population

Marksville city, Louisiana



Source: B03002. HISPANIC OR LATINO ORIGIN BY RACE - Universe: TOTAL POPULATION
Data Set: 2008-2012 American Community Survey 5-Year Estimates

B03002. HISPANIC OR LATINO ORIGIN BY RACE

Data Set: 2008-2012 American Community Survey 5-Year Estimates

	Marksville city, Louisiana		
	Population	Margin of Error (+/-)	% of Total
Hispanic or Latino:	19	30	100.0%
White alone	1	3	5.3%
Black or African American alone	0	17	0.0%
American Indian and Alaska Native alone	0	17	0.0%
Asian alone	0	17	0.0%
Native Hawaiian and Other Pacific Islander alone	0	17	0.0%
Some other race alone	18	30	94.7%
Two or more races:	0	17	0.0%
Two races including Some other race	0	17	0.0%
Two races excluding Some other race, and three or more races	0	17	0.0%

Source: U.S. Census Bureau, 2008-2012 American Community Survey

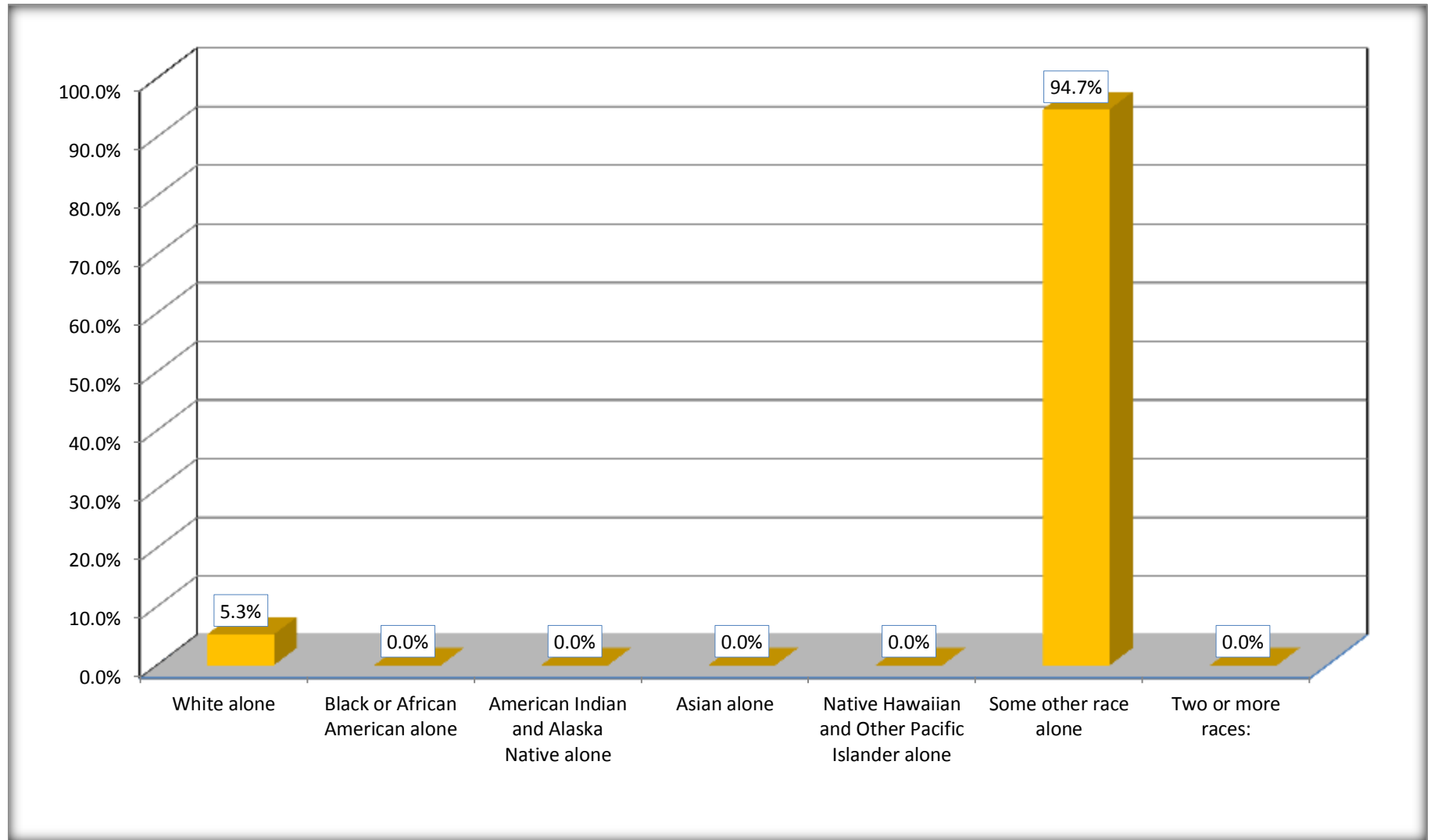
Although the American Community Survey (ACS) produces population, demographic and housing unit estimates, it is the Census Bureau's Population Estimates Program that produces and disseminates the official estimates of the population for the nation, states, counties, cities and towns and estimates of housing units for states and counties.

For information on confidentiality protection, sampling error, nonsampling error, and definitions, see Survey Methodology.

<http://www.census.gov/acs/www/UseData/index.htm>

Hispanic or Latino Origin by Race

Marksville city, Louisiana



Source: B03002. HISPANIC OR LATINO ORIGIN BY RACE
Data Set: 2008-2012 American Community Survey 5-Year Estimates

B01001. SEX BY AGE

Data Set: 2008-2012 American Community Survey 5-Year Estimates

	Marksville city, Louisiana					
	African American	Margin of Error (+/-)	% of AA Total	White, Not Hispanic	Margin of Error (+/-)	% of NHW Total
Total:	2,646	380	100.0%	2,678	327	100.0%
Under 18 years	862	NC	32.6%	339	NC	12.7%
18 to 64 years	1,569	NC	59.3%	1,645	NC	61.4%
65 years and over	215	NC	8.1%	694	NC	25.9%
Male:	1,259	252	47.6%	1,183	389	44.2%
Under 18 years	400	NC	15.1%	182	NC	6.8%
18 to 64 years	819	NC	31.0%	705	NC	26.3%
65 years and over	40	NC	1.5%	296	NC	11.1%
Female:	1,387	239	52.4%	1,495	412	55.8%
Under 18 years	462	NC	17.5%	157	NC	5.9%
18 to 64 years	750	NC	28.3%	940	NC	35.1%
65 years and over	175	NC	6.6%	398	NC	14.9%

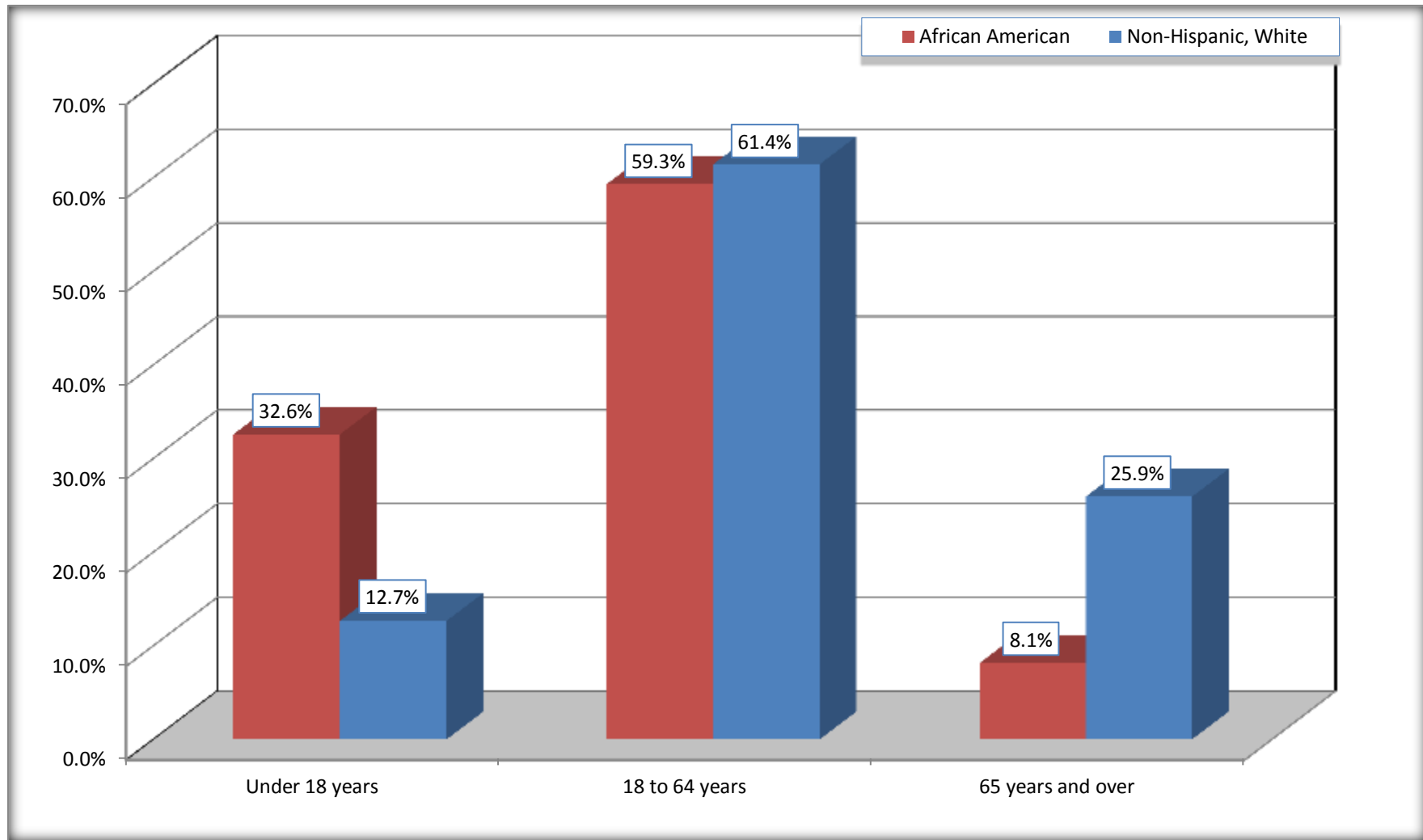
Source: U.S. Census Bureau, 2008-2012 American Community Survey

Although the American Community Survey (ACS) produces population, demographic and housing unit estimates, it is the Census Bureau's Population Estimates Program that produces and disseminates the official estimates of the population for the nation, states, counties, cities and towns and estimates of housing units for states and counties.

For information on confidentiality protection, sampling error, nonsampling error, and definitions, see Survey Methodology.
<http://www.census.gov/acs/www/UseData/index.htm>

Population by Age

Marksville city, Louisiana



Source: B01001. SEX BY AGE
Data Set: 2008-2012 American Community Survey 5-Year Estimates

B05003. SEX BY AGE BY CITIZENSHIP STATUS

Data Set: 2008-2012 American Community Survey 5-Year Estimates

	Marksville city, Louisiana					
	African American	Margin of Error (+/-)	% of AA Total by Age	White, Not Hispanic	Margin of Error (+/-)	% of NHW Total by Age
Total:	2,646	380	100.0%	2,678	327	100.0%
Under 18 years:	862	NC	100.0%	339	NC	100.0%
Native	862	NC	100.0%	339	NC	100.0%
Foreign born:	0	NC	0.0%	0	NC	0.0%
Naturalized U.S. citizen	0	NC	0.0%	0	NC	0.0%
Not a U.S. citizen	0	NC	0.0%	0	NC	0.0%
18 years and over:	1,784	NC	100.0%	2,339	NC	100.0%
Native	1,784	NC	100.0%	2,338	NC	100.0%
Foreign born:	0	NC	0.0%	1	NC	0.0%
Naturalized U.S. citizen	0	NC	0.0%	1	NC	0.0%
Not a U.S. citizen	0	NC	0.0%	0	NC	0.0%
Male:	1,259	252	47.6%	1,183	197	44.2%
Under 18 years:	400	143	100.0%	182	94	100.0%
Native	400	143	100.0%	182	94	100.0%
Foreign born:	0	17	0.0%	0	17	0.0%
Naturalized U.S. citizen	0	17	0.0%	0	17	0.0%
Not a U.S. citizen	0	17	0.0%	0	17	0.0%
18 years and over:	859	232	100.0%	1,001	159	100.0%
Native	859	232	100.0%	1,000	158	99.9%
Foreign born:	0	17	0.0%	1	5	0.1%
Naturalized U.S. citizen	0	17	0.0%	1	5	0.1%
Not a U.S. citizen	0	17	0.0%	0	17	0.0%

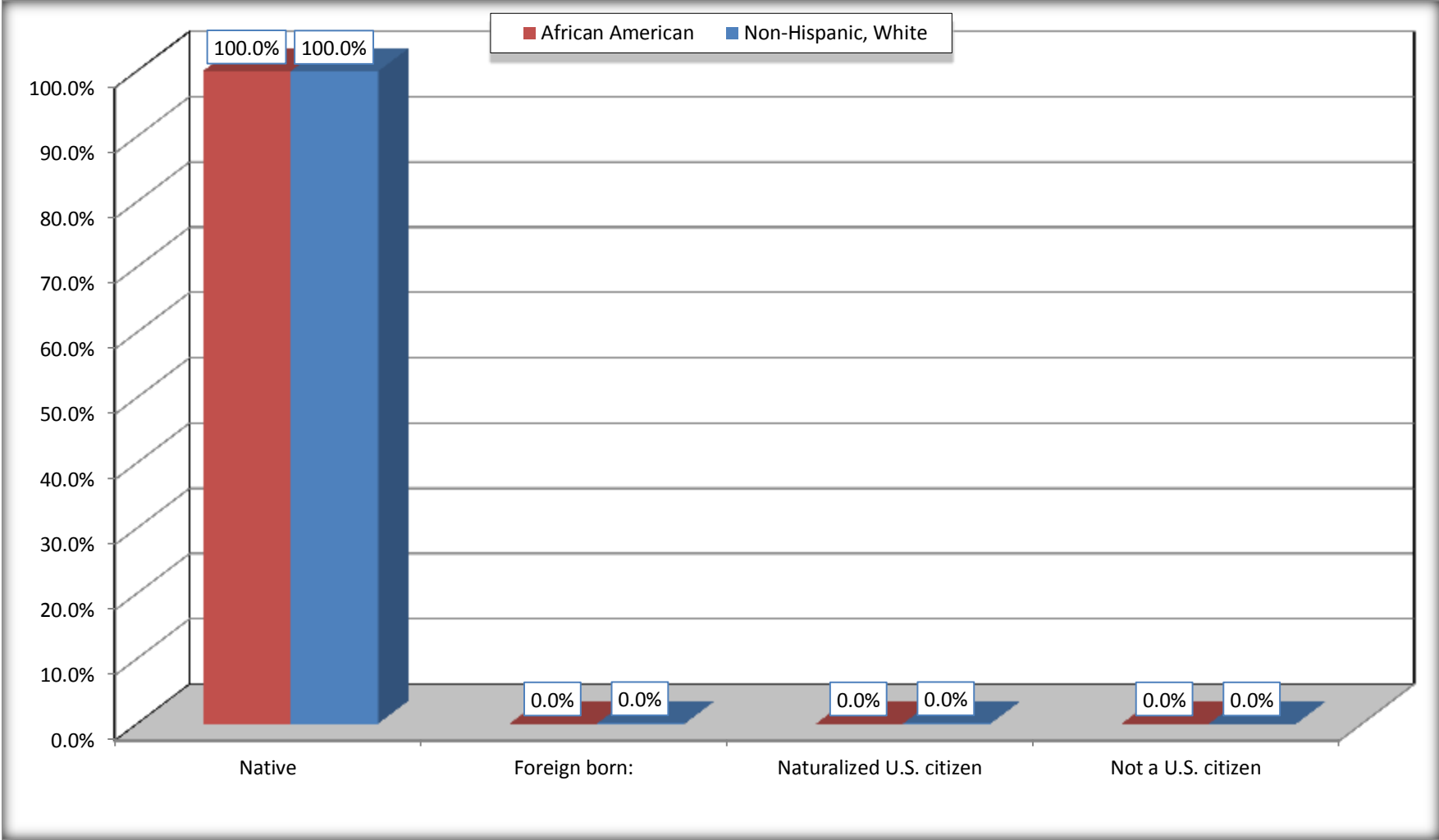
	Marksville city, Louisiana					
	African American	Margin of Error (+/-)	% of AA by Age	White, Not Hispanic	Margin of Error (+/-)	% of NHW by Age
Female:	1,387	239	52.4%	1,495	227	55.8%
Under 18 years:	462	183	100.0%	157	92	100.0%
Native	462	183	100.0%	157	92	100.0%
Foreign born:	0	17	0.0%	0	17	0.0%
Naturalized U.S. citizen	0	17	0.0%	0	17	0.0%
Not a U.S. citizen	0	17	0.0%	0	17	0.0%
18 years and over:	925	179	100.0%	1,338	188	100.0%
Native	925	179	100.0%	1,338	188	100.0%
Foreign born:	0	17	0.0%	0	17	0.0%
Naturalized U.S. citizen	0	17	0.0%	0	17	0.0%
Not a U.S. citizen	0	17	0.0%	0	17	0.0%

Source: U.S. Census Bureau, 2008-2012 American Community Survey

For information on confidentiality protection, sampling error, nonsampling error, and definitions, see Survey Methodology.
<http://www.census.gov/acs/www/UseData/index.htm>

Citizenship Status of Voting Age Population (18 and Over)

Marksville city, Louisiana



Source: B05003. SEX BY AGE BY CITIZENSHIP STATUS
Data Set: 2008-2012 American Community Survey 5-Year Estimates

**B07004. GEOGRAPHICAL MOBILITY IN THE PAST YEAR BY RACE FOR CURRENT RESIDENCE IN THE UNITED STATES - Universe:
POPULATION 1 YEAR AND OVER**

Data Set: 2008-2012 American Community Survey 5-Year Estimates

	Marksville city, Louisiana					
	African American	Margin of Error (+/-)	% of AA Total	White, Not Hispanic	Margin of Error (+/-)	% of NHW Total
Total:	2,646	380	100.0%	2,641	324	100.0%
Same house 1 year ago	2,215	420	83.7%	2,176	336	82.4%
Moved within same county	340	316	12.8%	351	217	13.3%
Moved from different county within same state	60	51	2.3%	87	75	3.3%
Moved from different state	31	52	1.2%	27	31	1.0%
Moved from abroad	0	17	0.0%	0	17	0.0%

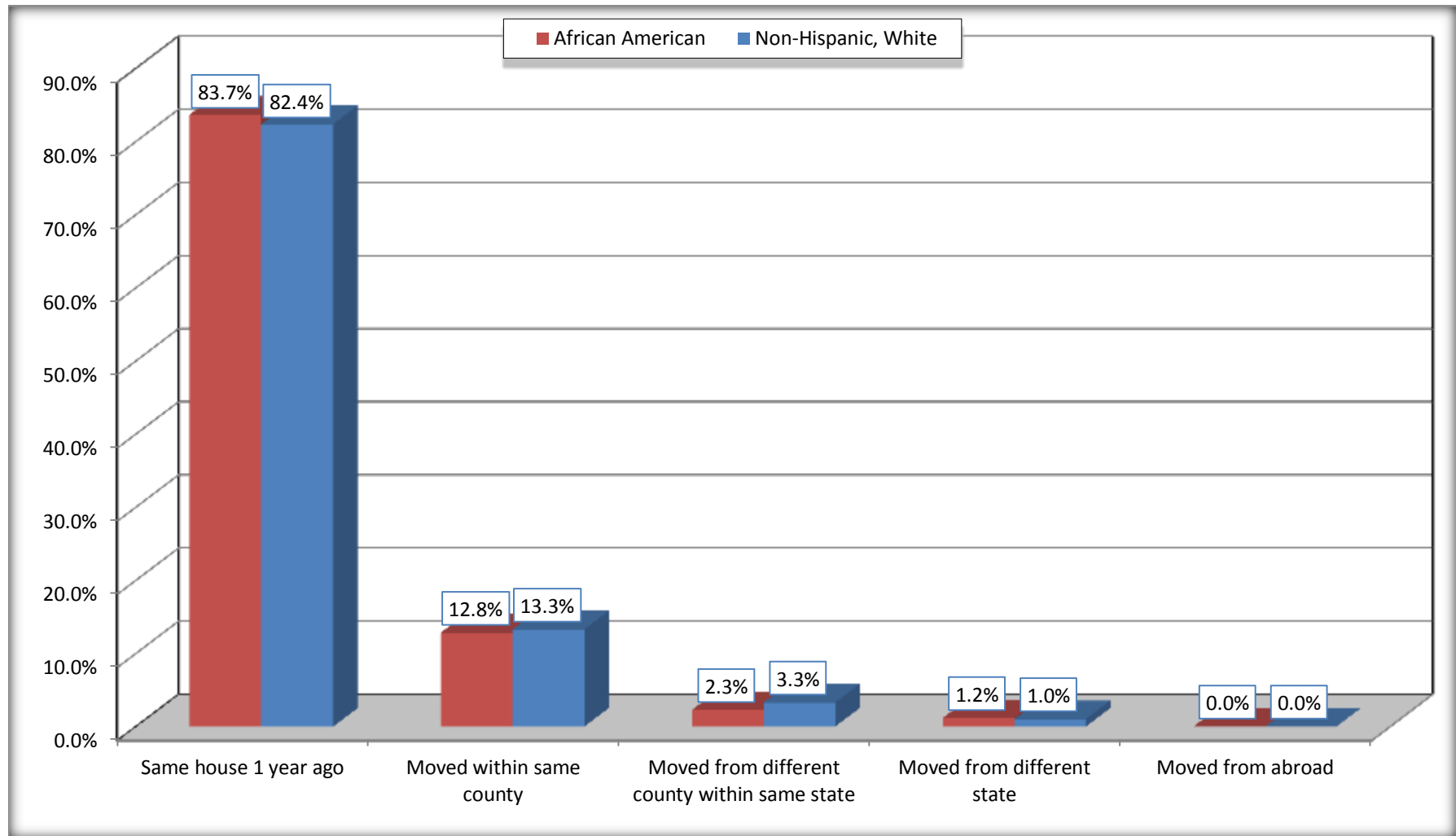
Source: U.S. Census Bureau, 2008-2012 American Community Survey

For information on confidentiality protection, sampling error, nonsampling error, and definitions, see Survey Methodology.

<http://www.census.gov/acs/www/UseData/index.htm>

Geographical Mobility in the Past Year (Population 1 Year and Over)

Marksville city, Louisiana



Source: B07004. GEOGRAPHICAL MOBILITY IN THE PAST YEAR BY RACE FOR CURRENT RESIDENCE IN THE UNITED STATES - Universe: POPULATION 1 YEAR AND OVER

Data Set: 2008-2012 American Community Survey 5-Year Estimates

B08105. MEANS OF TRANSPORTATION TO WORK - Universe: WORKERS 16 YEARS AND OVER

Data Set: 2008-2012 American Community Survey 5-Year Estimates

	Marksville city, Louisiana					
	African American	Margin of Error (+/-)	% of AA Total	White, Not Hispanic	Margin of Error (+/-)	% of NHW Total
Total:	1050	236	100.0%	1142	264	100.0%
Car, truck, or van - drove alone	834	256	79.4%	991	267	86.8%
Car, truck, or van - carpooled	203	159	19.3%	100	84	8.8%
Public transportation (excluding taxicab)	0	17	0.0%	0	17	0.0%
Walked	0	17	0.0%	21	34	1.8%
Taxicab, motorcycle, bicycle, or other means	13	27	1.2%	0	17	0.0%
Worked at home	0	17	0.0%	30	41	2.6%

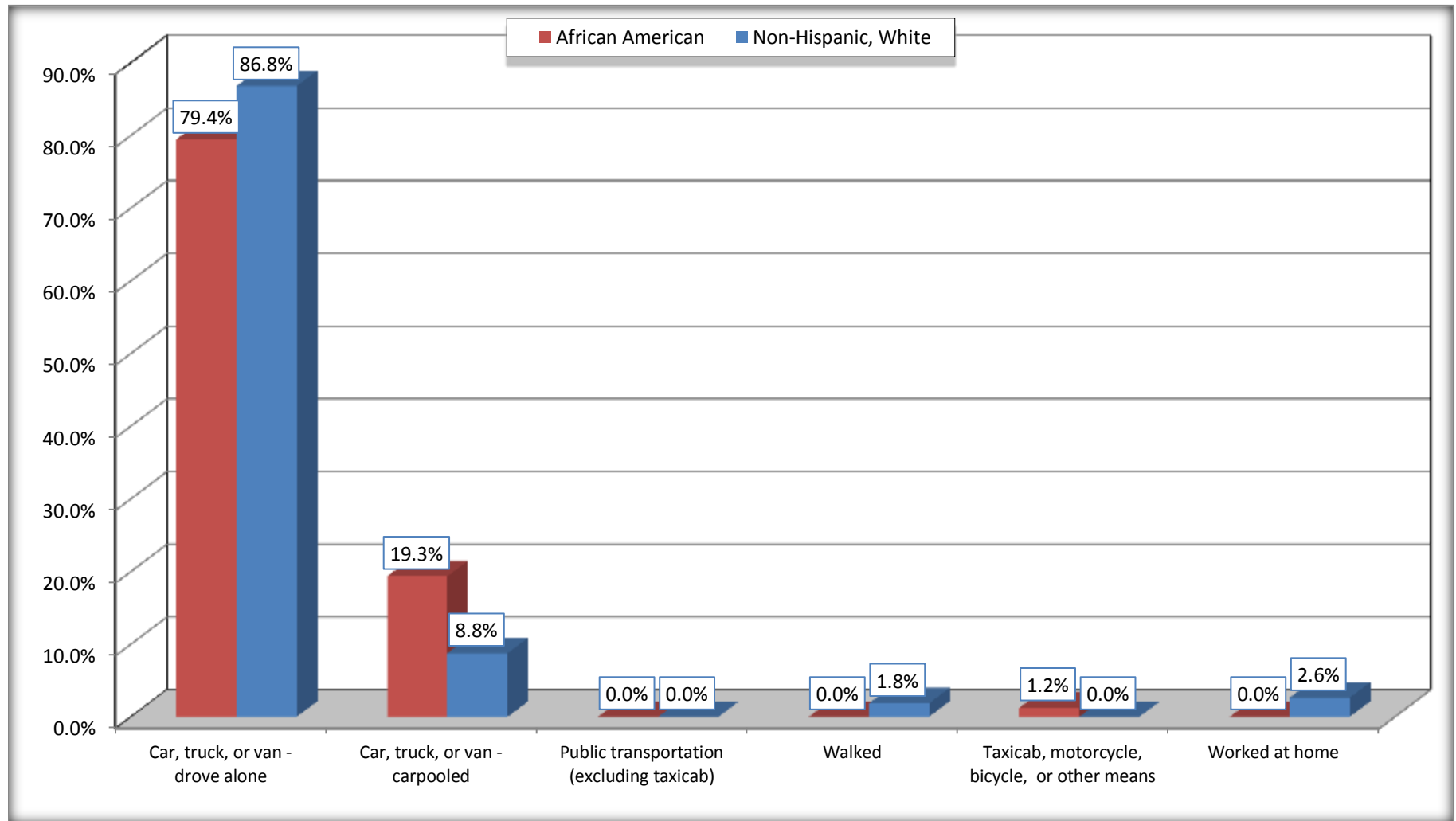
Source: U.S. Census Bureau, 2008-2012 American Community Survey

For information on confidentiality protection, sampling error, nonsampling error, and definitions, see Survey Methodology.

<http://www.census.gov/acs/www/UseData/index.htm>

Means of Transportation to Work (Workers 16 Years and Over)

Marksville city, Louisiana



Source: B08105. MEANS OF TRANSPORTATION TO WORK - Universe: WORKERS 16 YEARS AND OVER
Data Set: 2008-2012 American Community Survey 5-Year Estimates

B11002. HOUSEHOLD TYPE BY RELATIVES AND NONRELATIVES FOR POPULATION IN HOUSEHOLDS

Data Set: 2008-2012 American Community Survey 5-Year Estimates

	Marksville city, Louisiana					
	African American	Margin of Error (+/-)	% of AA Total	White, Not Hispanic	Margin of Error (+/-)	% of NHW Total
Total:	2521	393	100.0%	2472	402	100.0%
In family households	2304	384	91.4%	1917	440	77.5%
In nonfamily households	217	136	8.6%	555	210	22.5%

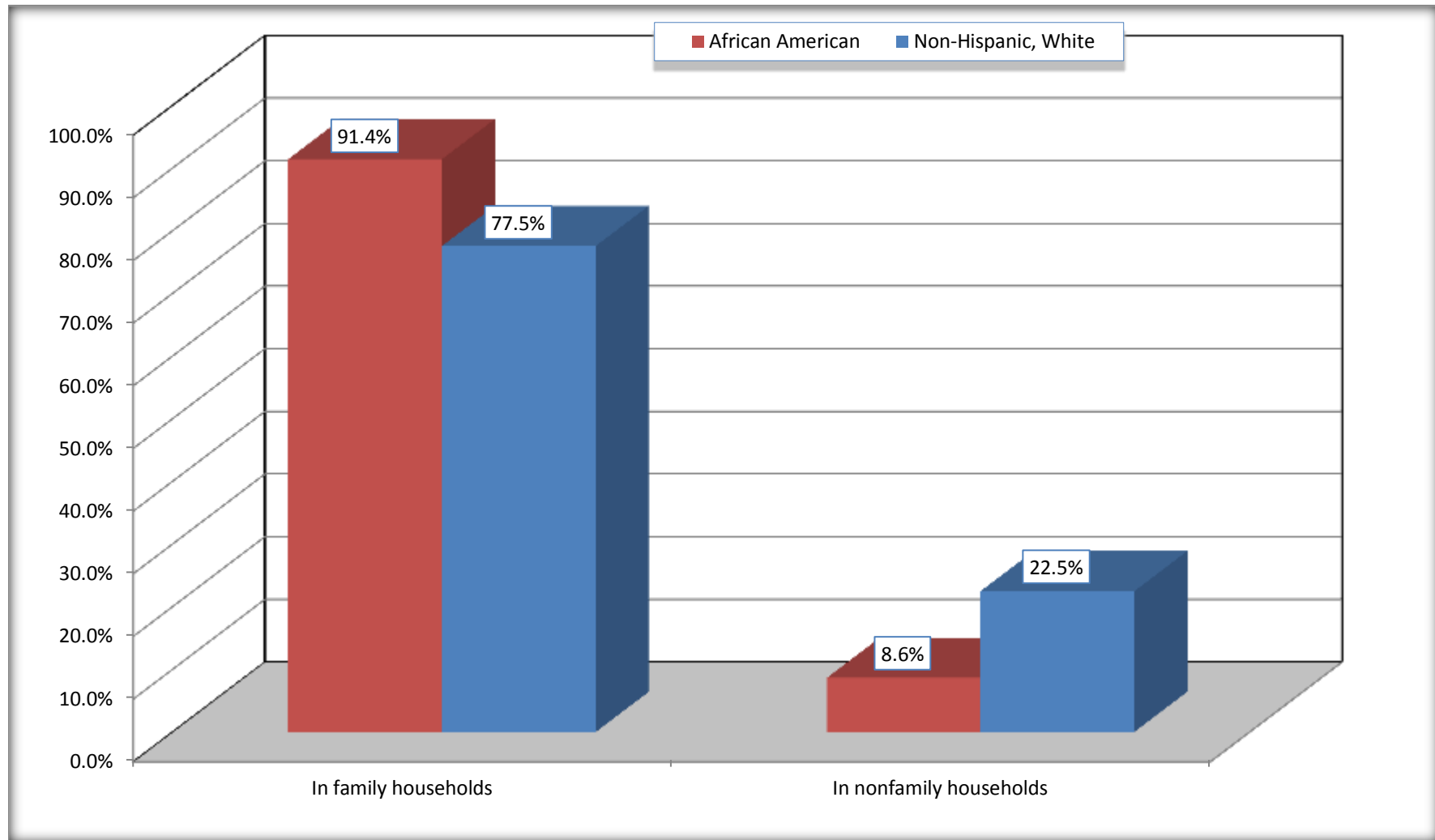
Source: U.S. Census Bureau, 2008-2012 American Community Survey

For information on confidentiality protection, sampling error, nonsampling error, and definitions, see Survey Methodology.

<http://www.census.gov/acs/www/UseData/index.htm>

Household Type for Population in Households

Marksville city, Louisiana



Source: B11002. HOUSEHOLD TYPE BY RELATIVES AND NONRELATIVES FOR POPULATION IN HOUSEHOLDS
Data Set: 2008-2012 American Community Survey 5-Year Estimates

B12002. MARITAL STATUS FOR THE POPULATION 15 YEARS AND OVER

Data Set: 2008-2012 American Community Survey 5-Year Estimates

	Marksville city, Louisiana					
	African American	Margin of Error (+/-)	% of AA Total	White, Not Hispanic	Margin of Error (+/-)	% of NHW Total
Total:	1,870	300	100.0%	2,447	298	100.0%
Never married	846	NC	45.2%	373	NC	15.2%
Now married (except separated)	452	NC	24.2%	1,228	NC	50.2%
Separated	183	NC	9.8%	165	NC	6.7%
Widowed	181	NC	9.7%	283	NC	11.6%
Divorced	208	NC	11.1%	398	NC	16.3%
Male:	873	228	46.7%	1,071	178	43.8%
Never married	485	169	25.9%	225	85	9.2%
Now married (except separated)	238	137	12.7%	634	141	25.9%
Separated	74	93	4.0%	51	48	2.1%
Widowed	19	31	1.0%	29	34	1.2%
Divorced	57	44	3.0%	132	91	5.4%
Female:	997	179	53.3%	1,376	207	56.2%
Never married	361	139	19.3%	148	99	6.0%
Now married (except separated)	214	116	11.4%	594	141	24.3%
Separated	109	94	5.8%	114	117	4.7%
Widowed	162	94	8.7%	254	102	10.4%
Divorced	151	92	8.1%	266	115	10.9%

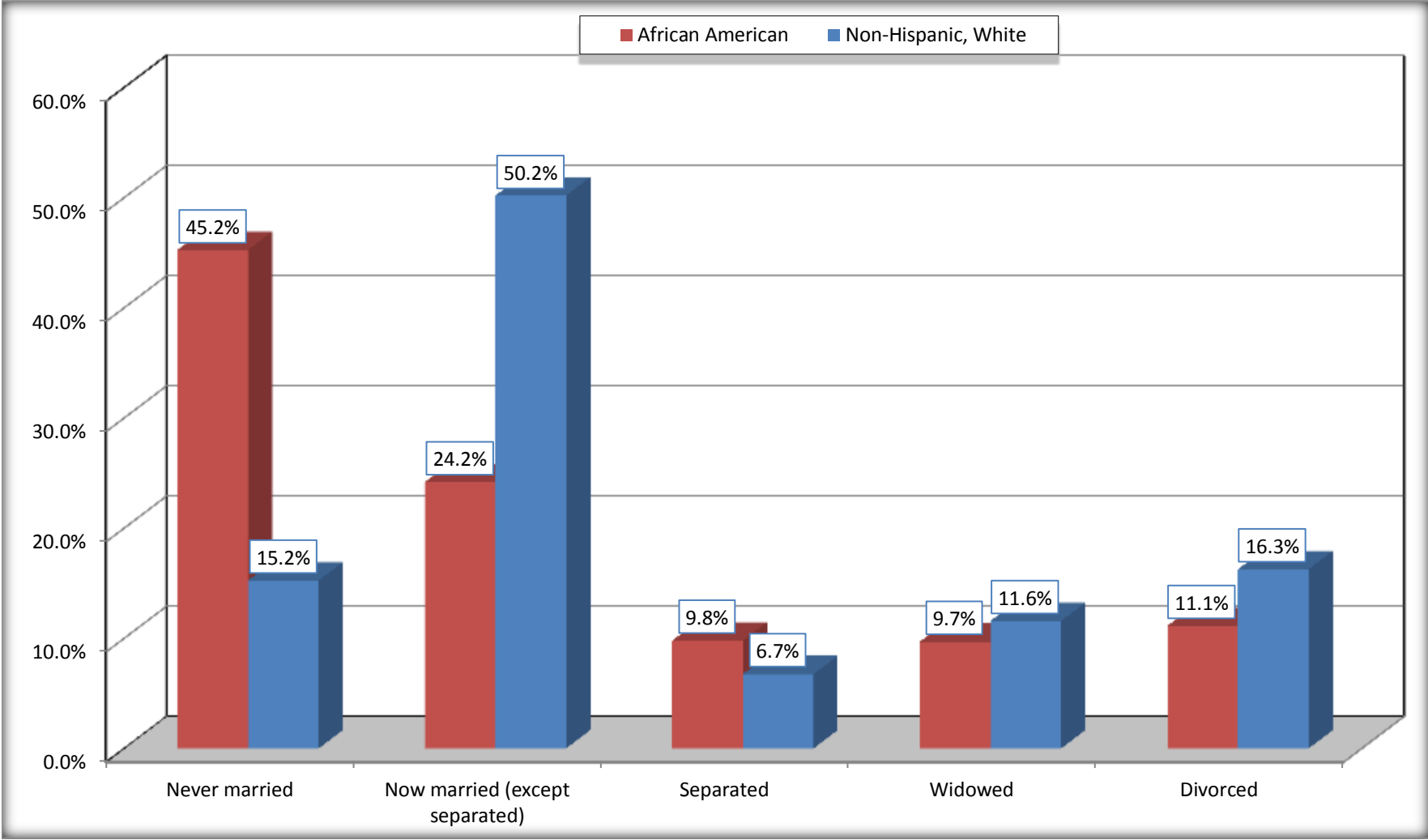
Source: U.S. Census Bureau, 2008-2012 American Community Survey

For information on confidentiality protection, sampling error, nonsampling error, and definitions, see Survey Methodology.

<http://www.census.gov/acs/www/UseData/index.htm>

Marital Status for the Population 15 Years and Over

Marksville city, Louisiana



Source: B12002. MARITAL STATUS FOR THE POPULATION 15 YEARS AND OVER
Data Set: 2008-2012 American Community Survey 5-Year Estimates

C15002. SEX BY EDUCATIONAL ATTAINMENT FOR THE POPULATION 25 YEARS AND OVER

Data Set: 2008-2012 American Community Survey 5-Year Estimates

	Marksville city, Louisiana					
	African American	Margin of Error (+/-)	% of AA Total	White, Not Hispanic	Margin of Error (+/-)	% of NHW Total
Total:	1,505	222	100.0%	2,254	277	100.0%
Less than high school diploma	710	NC	47.2%	630	NC	28.0%
High school graduate, GED, or alternative	386	NC	25.6%	645	NC	28.6%
Some college or associate's degree	354	NC	23.5%	479	NC	21.3%
Bachelor's degree or higher	55	NC	3.7%	500	NC	22.2%
Male:	628	162	41.7%	946	153	42.0%
Less than high school diploma	307	127	20.4%	257	137	11.4%
High school graduate, GED, or alternative	107	68	7.1%	208	90	9.2%
Some college or associate's degree	183	114	12.2%	163	109	7.2%
Bachelor's degree or higher	31	42	2.1%	318	130	14.1%
Female:	877	164	58.3%	1,308	186	58.0%
Less than high school diploma	403	185	26.8%	373	154	16.5%
High school graduate, GED, or alternative	279	93	18.5%	437	149	19.4%
Some college or associate's degree	171	112	11.4%	316	130	14.0%
Bachelor's degree or higher	24	41	1.6%	182	108	8.1%

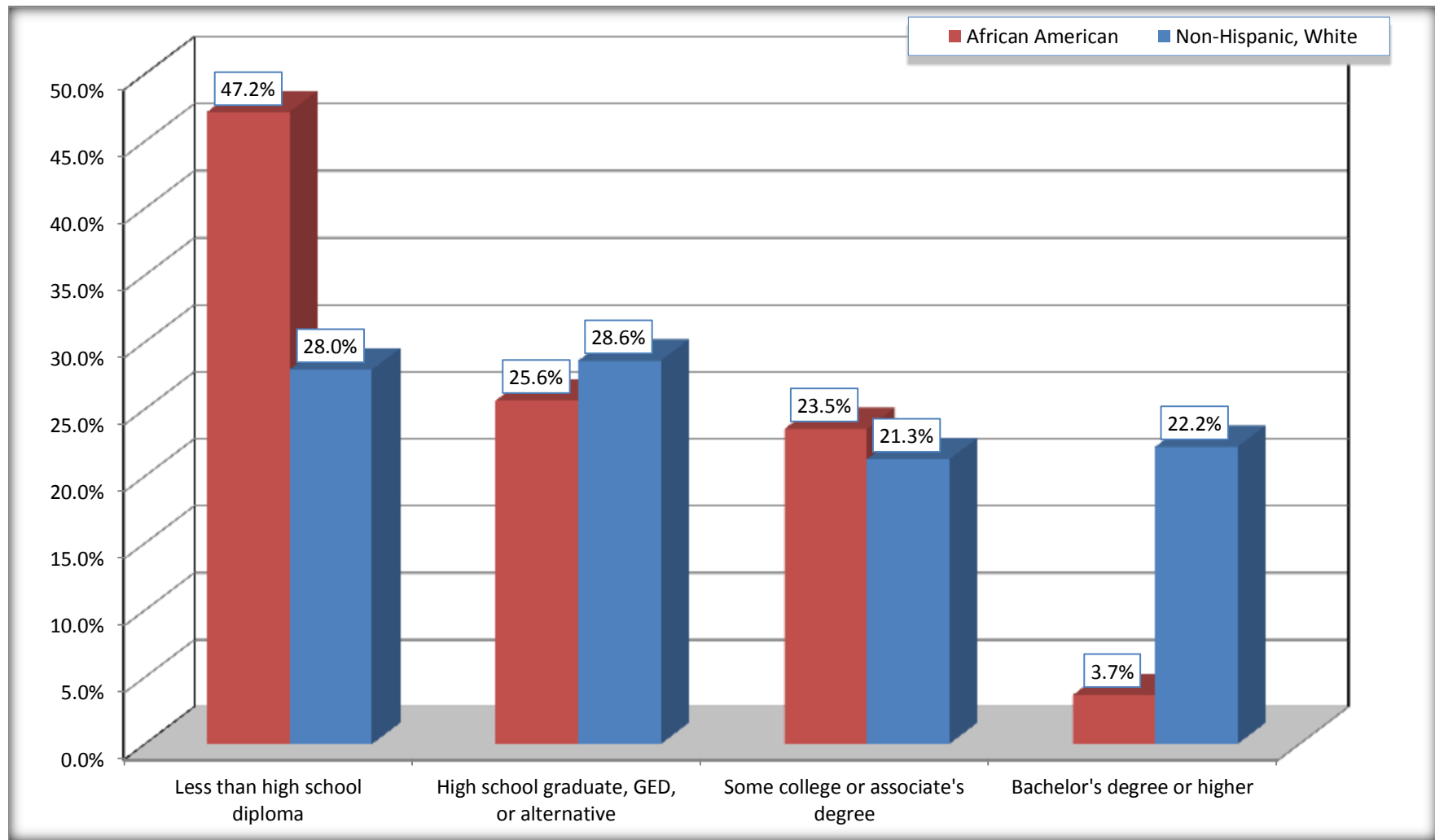
Source: U.S. Census Bureau, 2008-2012 American Community Survey

For information on confidentiality protection, sampling error, nonsampling error, and definitions, see Survey Methodology.

<http://www.census.gov/acs/www/UseData/index.htm>

Educational Attainment for the Population 25 Years and Older

Marksville city, Louisiana



Source: C15002. SEX BY EDUCATIONAL ATTAINMENT FOR THE POPULATION 25 YEARS AND OVER
Data Set: 2008-2012 American Community Survey 5-Year Estimates

B17010. POVERTY STATUS IN THE PAST 12 MONTHS OF FAMILIES BY FAMILY TYPE BY PRESENCE OF RELATED CHILDREN UNDER 18 YEARS

Data Set: 2008-2012 American Community Survey 5-Year Estimates

	Marksville city, Louisiana					
	African American	Margin of Error (+/-)	% of AA Total	White, Not Hispanic	Margin of Error (+/-)	% of NHW Total
Total:	648	125	100.0%	779	161	100.0%
Income in the past 12 months below poverty level:	221	114	34.1%	125	98	16.0%
Married-couple family:	110	100	17.0%	34	39	4.4%
With related children under 18 years	110	100	17.0%	0	17	0.0%
Other family:	111	79	17.1%	91	89	11.7%
Male householder, no wife present	42	53	6.5%	30	49	3.9%
With related children under 18 years	22	40	3.4%	30	49	3.9%
Female householder, no husband present	69	55	10.6%	61	77	7.8%
With related children under 18 years	37	44	5.7%	61	77	7.8%
Income in the past 12 months at or above poverty level:	427	151	65.9%	654	161	84.0%
Married-couple family:	130	91	20.1%	556	150	71.4%
With related children under 18 years	17	29	2.6%	172	95	22.1%
Other family:	297	160	45.8%	98	67	12.6%
Male householder, no wife present	49	70	7.6%	29	35	3.7%
With related children under 18 years	49	70	7.6%	29	35	3.7%
Female householder, no husband present	248	139	38.3%	69	63	8.9%
With related children under 18 years	104	111	16.0%	0	17	0.0%

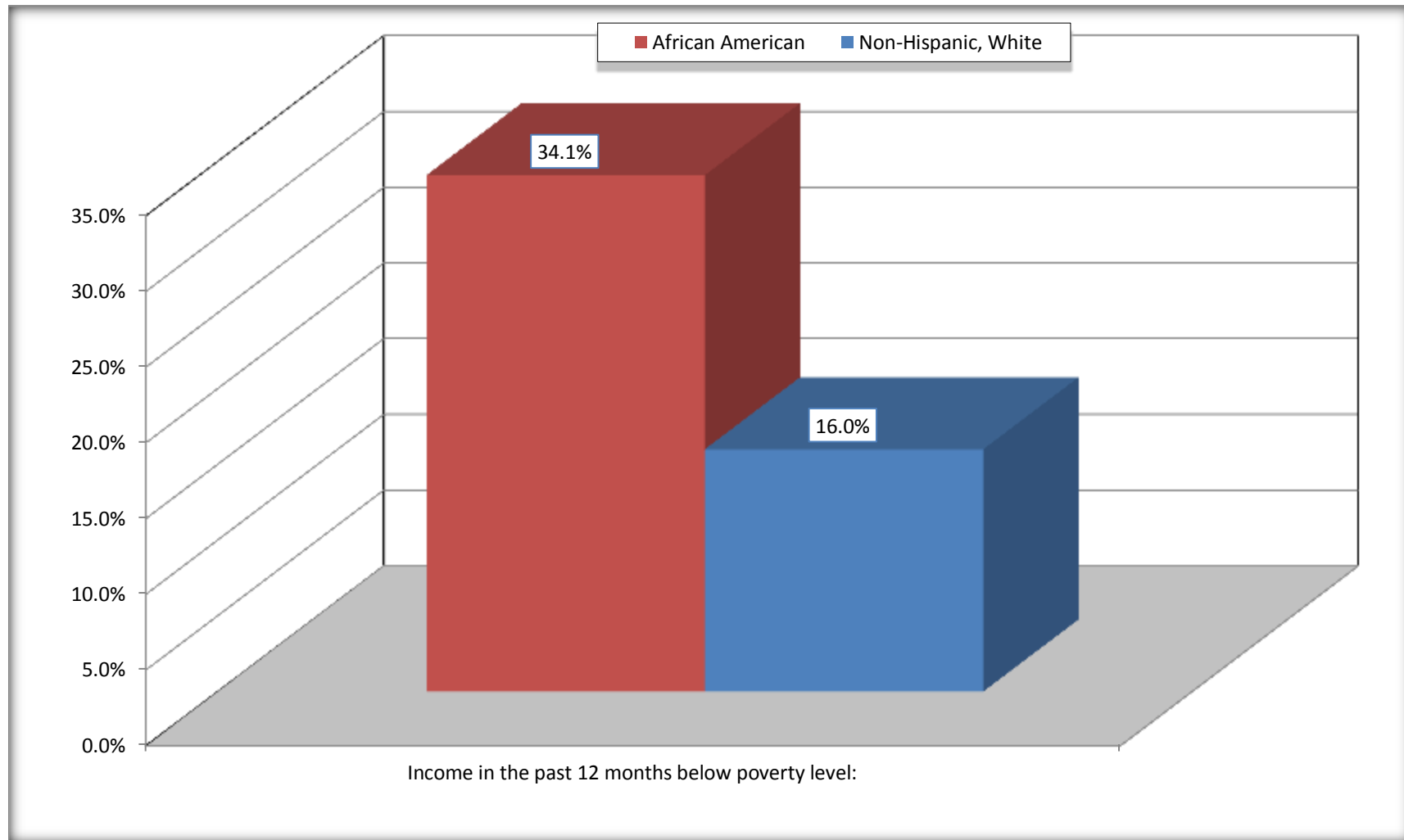
Source: U.S. Census Bureau, 2008-2012 American Community Survey

For information on confidentiality protection, sampling error, nonsampling error, and definitions, see Survey Methodology.

<http://www.census.gov/acs/www/UseData/index.htm>

Family Households Below Poverty in the Past 12 Months

Marksville city, Louisiana

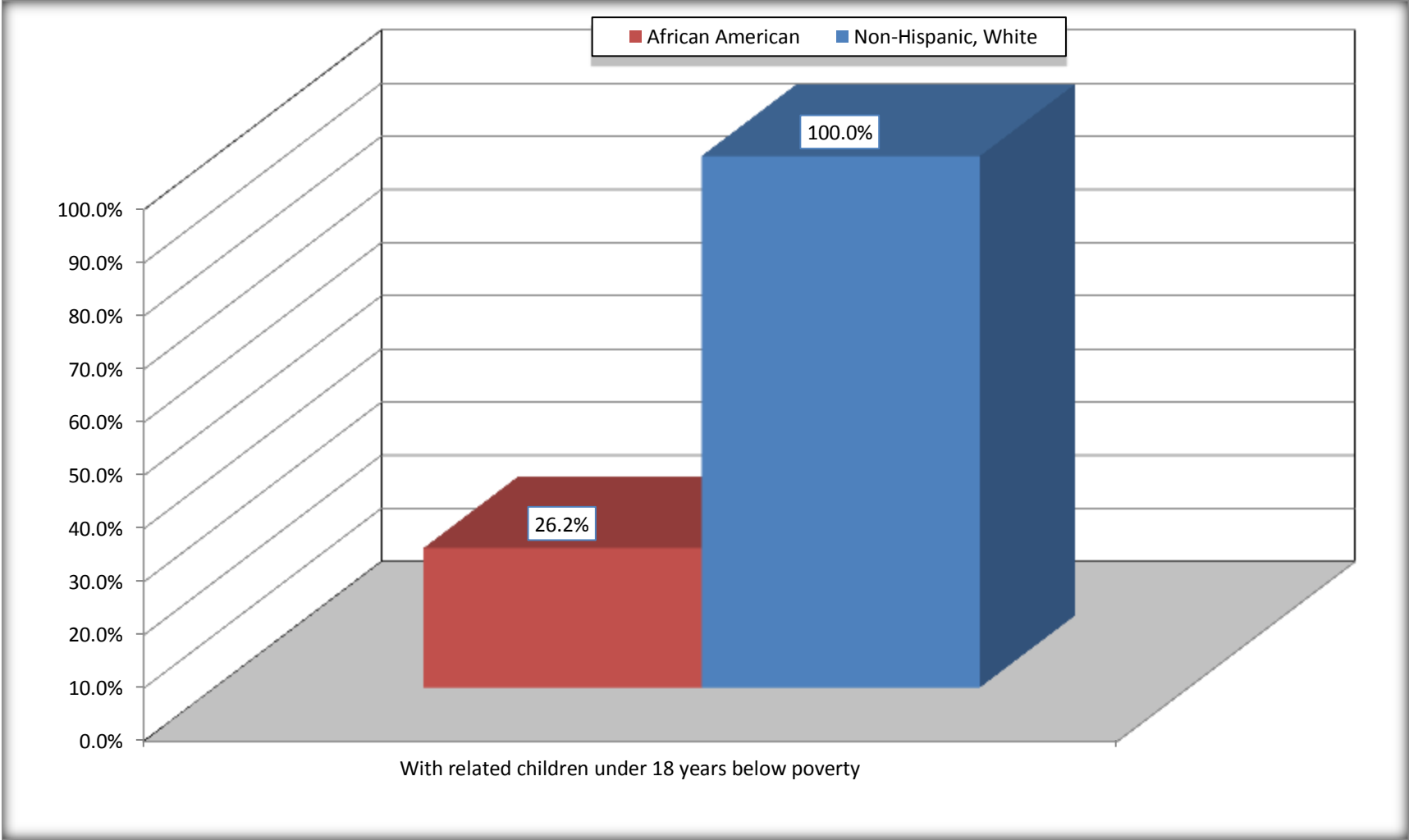


Source: B17010. POVERTY STATUS IN THE PAST 12 MONTHS OF FAMILIES BY FAMILY TYPE BY PRESENCE OF RELATED CHILDREN UNDER 18 YEARS

Data Set: 2008-2012 American Community Survey 5-Year Estimates

Female-headed Households with Related Children Below Poverty in the Past 12 Months

Marksville city, Louisiana



Source: B17010. POVERTY STATUS IN THE PAST 12 MONTHS OF FAMILIES BY FAMILY TYPE BY PRESENCE OF RELATED CHILDREN UNDER 18 YEARS

Data Set: 2008-2012 American Community Survey 5-Year Estimates

B17020 POVERTY STATUS IN THE PAST 12 MONTHS BY AGE - Universe: POPULATION FOR WHOM POVERTY STATUS IS DETERMINED

Data Set: 2008-2012 American Community Survey 5-Year Estimates

	Marksville city, Louisiana					
	African American	Margin of Error (+/-)	% of AA By Age	White, Not Hispanic	Margin of Error (+/-)	% of NHW By Age
Total:	2,478	378	100.0%	2,501	344	100.0%
Income in the past 12 months below poverty level:	947	561	38.2%	456	230	18.2%
Under 18 years	521	NC	60.4%	127	NC	37.5%
18 to 64 years	388	190	27.4%	231	140	15.2%
65 years and over	38	NC	19.1%	98	NC	15.3%
Income in the past 12 months at or above poverty level:	1,531	545	61.8%	2,045	355	81.8%
Under 18 years	341	NC	39.6%	212	NC	62.5%
18 to 64 years	1,029	336	72.6%	1,289	273	84.8%
65 years and over	161	NC	80.9%	544	NC	84.7%

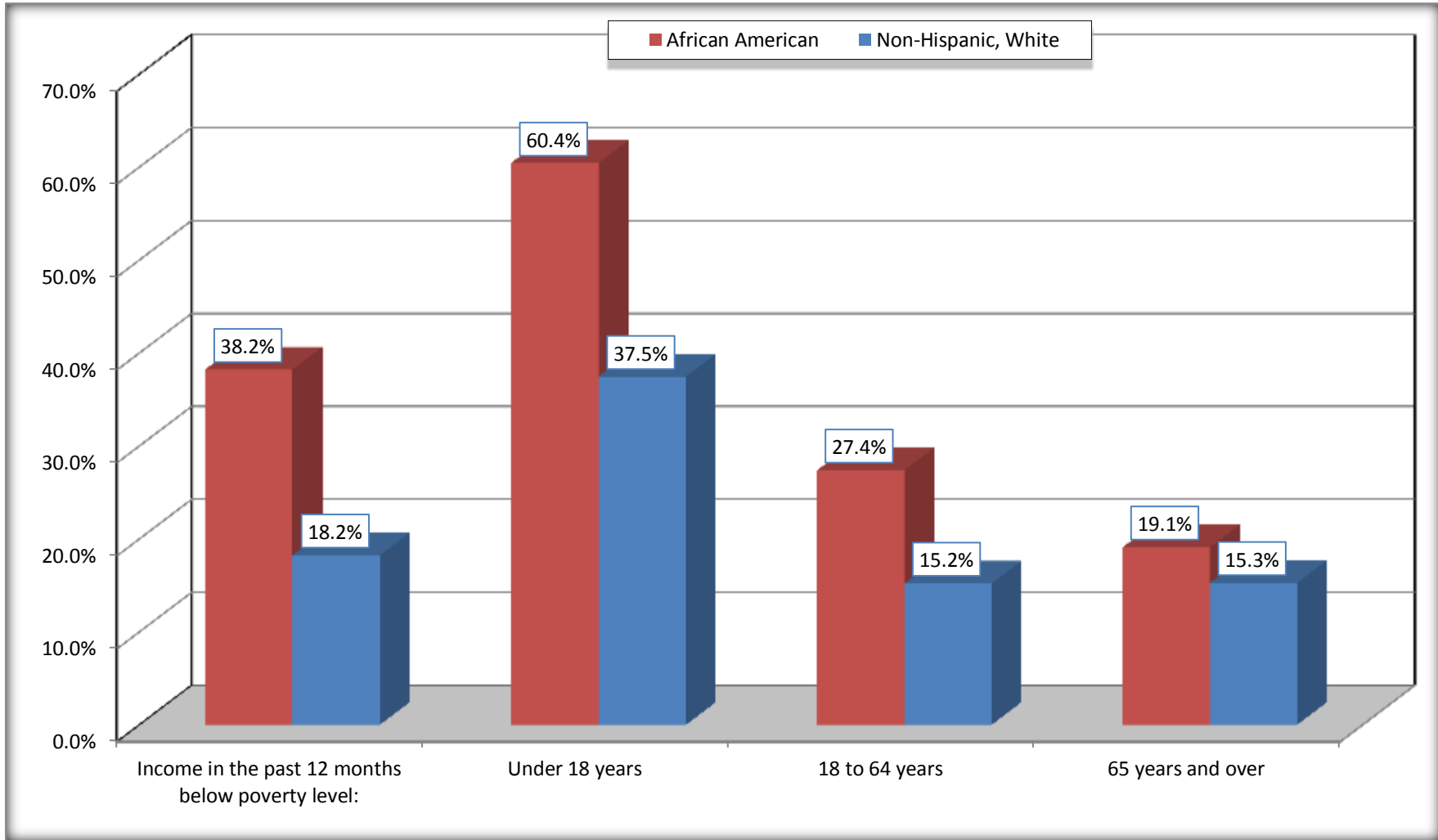
Source: U.S. Census Bureau, 2008-2012 American Community Survey

For information on confidentiality protection, sampling error, nonsampling error, and definitions, see Survey Methodology.

<http://www.census.gov/acs/www/UseData/index.htm>

Population Below Poverty in the Past 12 Months

Marksville city, Louisiana



Source: B17020 POVERTY STATUS IN THE PAST 12 MONTHS BY AGE - Universe: POPULATION FOR WHOM POVERTY STATUS IS DETERMINED
Data Set: 2008-2012 American Community Survey 5-Year Estimates

B19001. HOUSEHOLD INCOME IN THE PAST 12 MONTHS (IN 2010 INFLATION-ADJUSTED DOLLARS)

Data Set: 2008-2012 American Community Survey 5-Year Estimates

	Marksville city, Louisiana					
	African American	Margin of Error (+/-)	% of AA Total	White, Not Hispanic	Margin of Error (+/-)	% of NHW Total
Total:	842	152	100.0%	1,307	209	100.0%
Less than \$ 10,000	75	52	8.9%	155	104	11.9%
\$ 10,000 to \$ 14,999	17	27	2.0%	154	107	11.8%
\$ 15,000 to \$ 24,999	145	NC	17.2%	232	NC	17.8%
\$ 25,000 to \$ 34,999	108	NC	12.8%	206	NC	15.8%
\$ 35,000 to \$ 49,999	382	NC	45.4%	144	NC	11.0%
\$ 50,000 to \$ 74,999	93	NC	11.0%	135	NC	10.3%
\$ 75,000 to \$ 99,999	22	34	2.6%	160	113	12.2%
\$ 100,000 to \$ 149,999	0	NC	0.0%	74	NC	5.7%
\$ 150,000 to \$ 199,999	0	17	0.0%	30	39	2.3%
\$ 200,000 or more	0	17	0.0%	17	26	1.3%

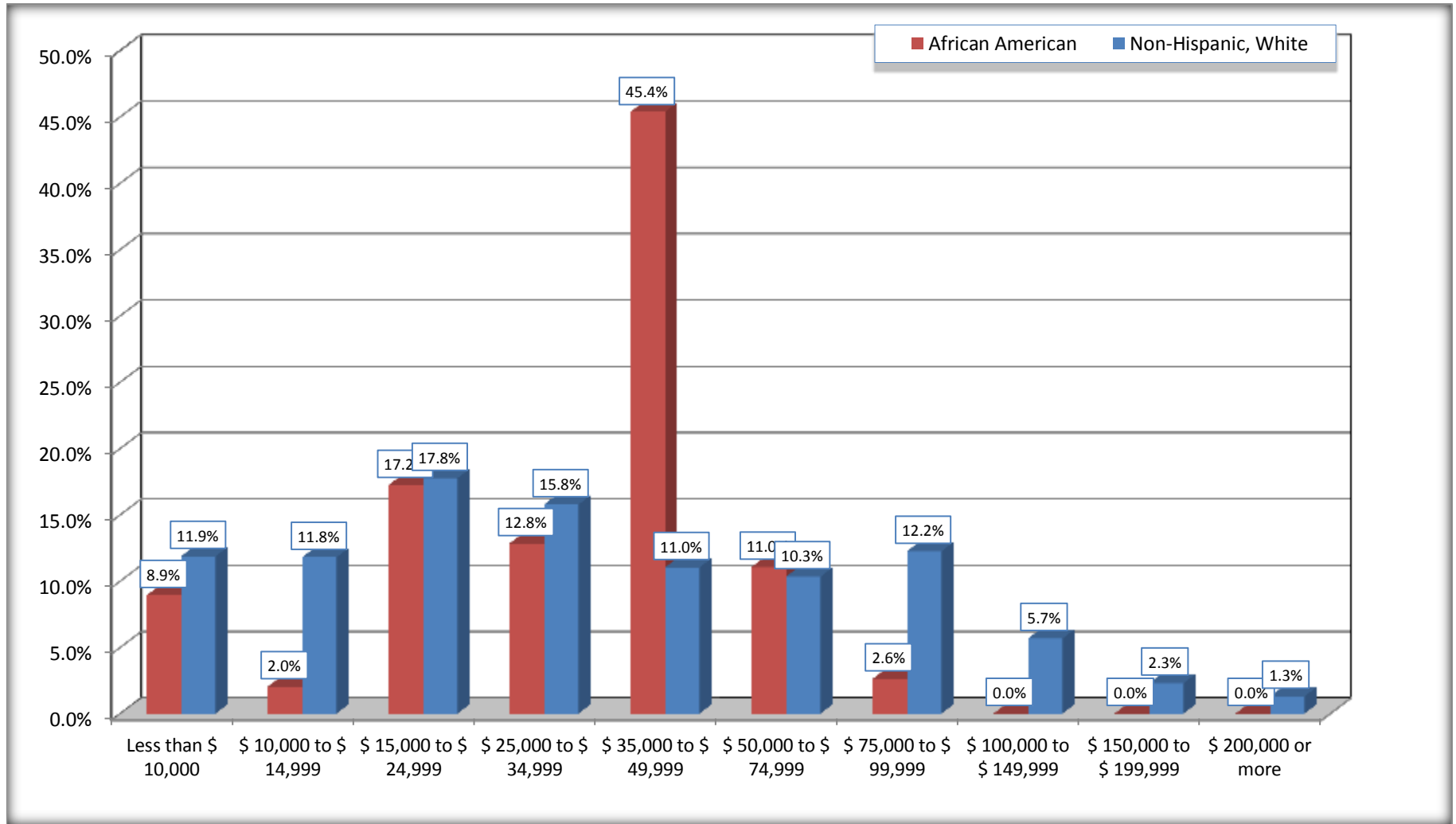
Source: U.S. Census Bureau, 2008-2012 American Community Survey

For information on confidentiality protection, sampling error, nonsampling error, and definitions, see Survey Methodology.

<http://www.census.gov/acs/www/UseData/index.htm>

Household Income in the Past 12 Months

Marksville city, Louisiana



Source: B19001. HOUSEHOLD INCOME IN THE PAST 12 MONTHS (IN 2010 INFLATION-ADJUSTED DOLLARS)
Data Set: 2008-2012 American Community Survey 5-Year Estimates

B19013. MEDIAN HOUSEHOLD INCOME IN THE PAST 12 MONTHS (IN 2010 INFLATION-ADJUSTED DOLLARS)

Data Set: 2008-2012 American Community Survey 5-Year Estimates

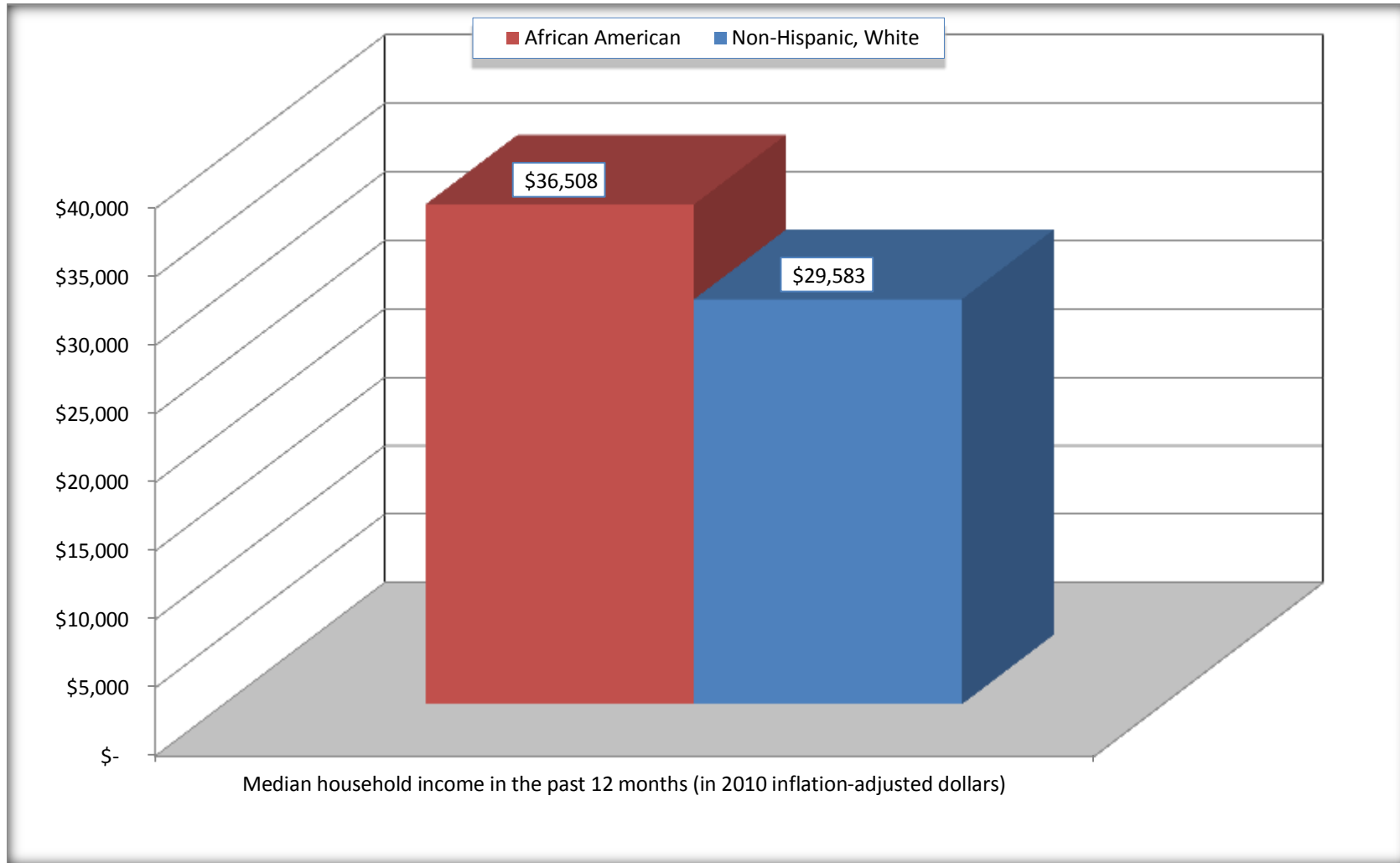
	Marksville city, Louisiana			
	African American	Margin of Error (+/-)	White, Not Hispanic	Margin of Error (+/-)
Median household income in the past 12 months (in 2010 inflation-adjusted dollars)	\$ 36,508	\$ 2,609	\$ 29,583	\$ 5,268

Source: U.S. Census Bureau, 2008-2012 American Community Survey

For information on confidentiality protection, sampling error, nonsampling error, and definitions, see Survey Methodology.
<http://www.census.gov/acs/www/UseData/index.htm>

Median Household Income in the Past 12 Months

Marksville city, Louisiana



Source: B19013. MEDIAN HOUSEHOLD INCOME IN THE PAST 12 MONTHS (IN 2010 INFLATION-ADJUSTED DOLLARS)
Data Set: 2008-2012 American Community Survey 5-Year Estimates

B19101. FAMILY INCOME IN THE PAST 12 MONTHS (IN 2010 INFLATION-ADJUSTED DOLLARS)

Data Set: 2008-2012 American Community Survey 5-Year Estimates

	Marksville city, Louisiana					
	African American	Margin of Error (+/-)	% of AA Total	White, Not Hispanic	Margin of Error (+/-)	% of NHW Total
Total:	648	125	100.0%	779	161	100.0%
Less than \$ 10,000	64	47	9.9%	66	67	8.5%
\$ 10,000 to \$ 14,999	22	40	3.4%	59	78	7.6%
\$ 15,000 to \$ 24,999	37	NC	5.7%	63	NC	8.1%
\$ 25,000 to \$ 34,999	105	NC	16.2%	115	NC	14.8%
\$ 35,000 to \$ 49,999	305	NC	47.1%	83	NC	10.7%
\$ 50,000 to \$ 74,999	93	NC	14.4%	112	NC	14.4%
\$ 100,000 to \$ 149,999	-	NC	0.0%	74	NC	9.5%
\$ 150,000 to \$ 199,999	0	17	0.0%	30	39	3.9%
\$ 200,000 or more	0	17	0.0%	17	26	2.2%

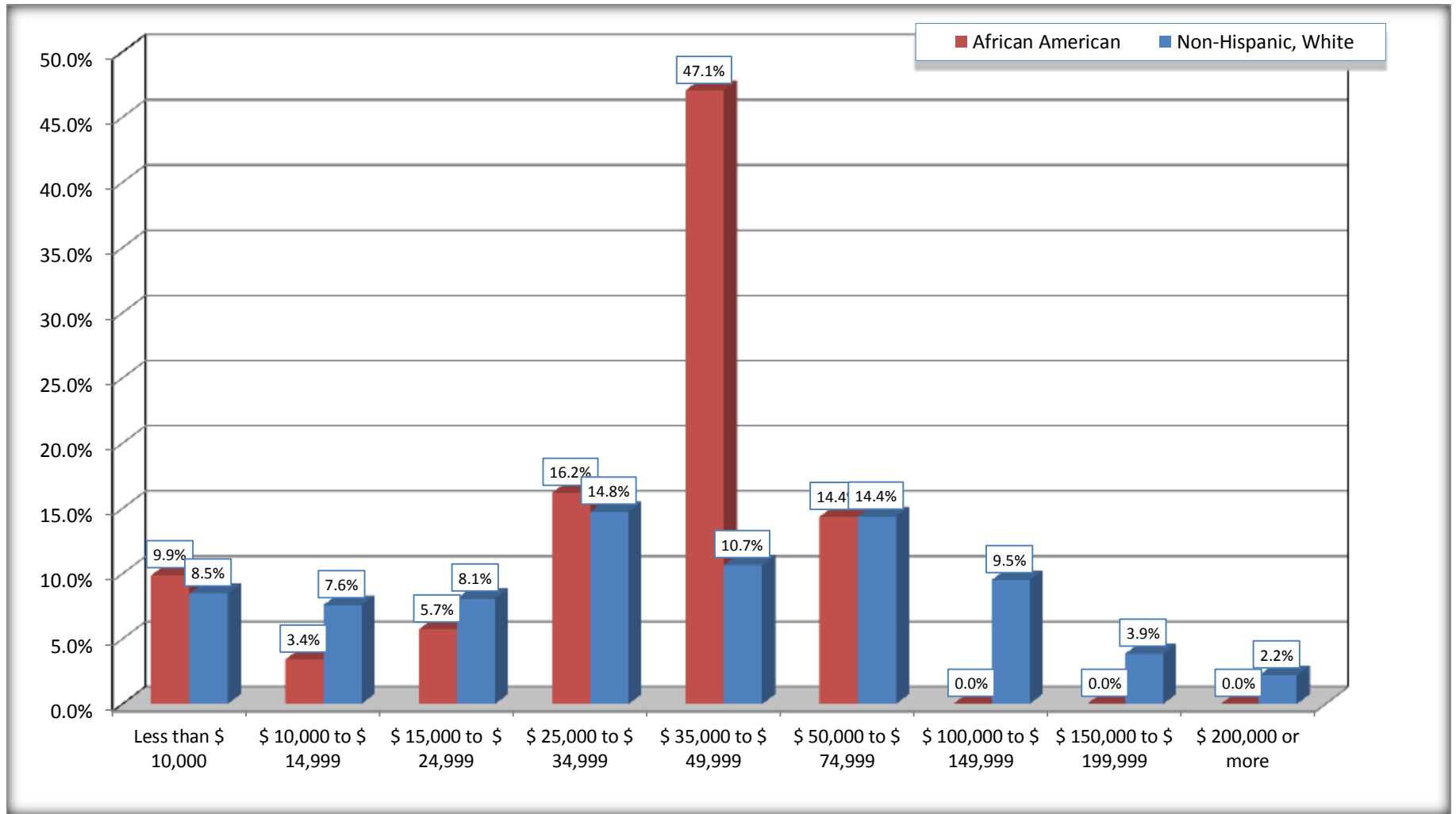
Source: U.S. Census Bureau, 2008-2012 American Community Survey

For information on confidentiality protection, sampling error, nonsampling error, and definitions, see Survey Methodology.

<http://www.census.gov/acs/www/UseData/index.htm>

Family Income in the Past 12 Months

Marksville city, Louisiana



Source: B19101. FAMILY INCOME IN THE PAST 12 MONTHS (IN 2010 INFLATION-ADJUSTED DOLLARS)
Data Set: 2008-2012 American Community Survey 5-Year Estimates

B19113. MEDIAN FAMILY INCOME IN THE PAST 12 MONTHS (IN 2010 INFLATION-ADJUSTED DOLLARS)

Data Set: 2008-2012 American Community Survey 5-Year Estimates

	Marksville city, Louisiana			
	African American	Margin of Error (+/-)	White, Not Hispanic	Margin of Error (+/-)
Median family income in the past 12 months (in 2010 inflation-adjusted dollars)	\$ 37,449	\$ 3,351	\$ 60,131	\$ 32,711

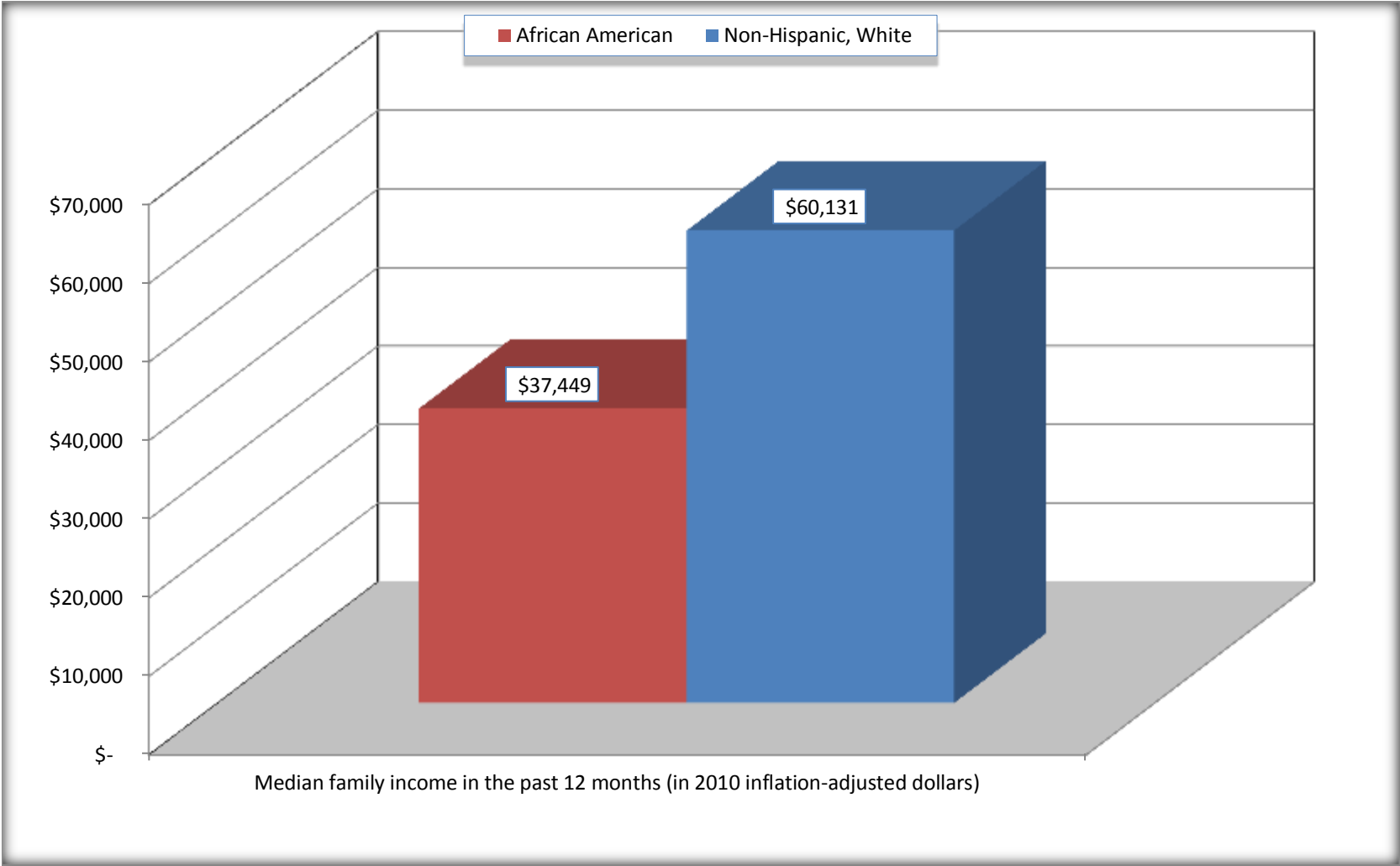
Source: U.S. Census Bureau, 2008-2012 American Community Survey

For information on confidentiality protection, sampling error, nonsampling error, and definitions, see Survey Methodology.

<http://www.census.gov/acs/www/UseData/index.htm>

Median Family Income in the Past 12 Months

Marksville city, Louisiana



Source: B19113. MEDIAN FAMILY INCOME IN THE PAST 12 MONTHS (IN 2010 INFLATION-ADJUSTED DOLLARS)
Data Set: 2008-2012 American Community Survey 5-Year Estimates

B19202. MEDIAN NONFAMILY HOUSEHOLD INCOME IN THE PAST 12 MONTHS (IN 2010 INFLATION-ADJUSTED DOLLARS)

Data Set: 2008-2012 American Community Survey 5-Year Estimates

	Marksville city, Louisiana			
	African American	Margin of Error (+/-)	White, Not Hispanic	Margin of Error (+/-)
Median nonfamily household income in the past 12 months (in 2010 inflation-adjusted dollars)	\$ 18,851	\$ 6,529	\$ 17,469	\$ 4,283

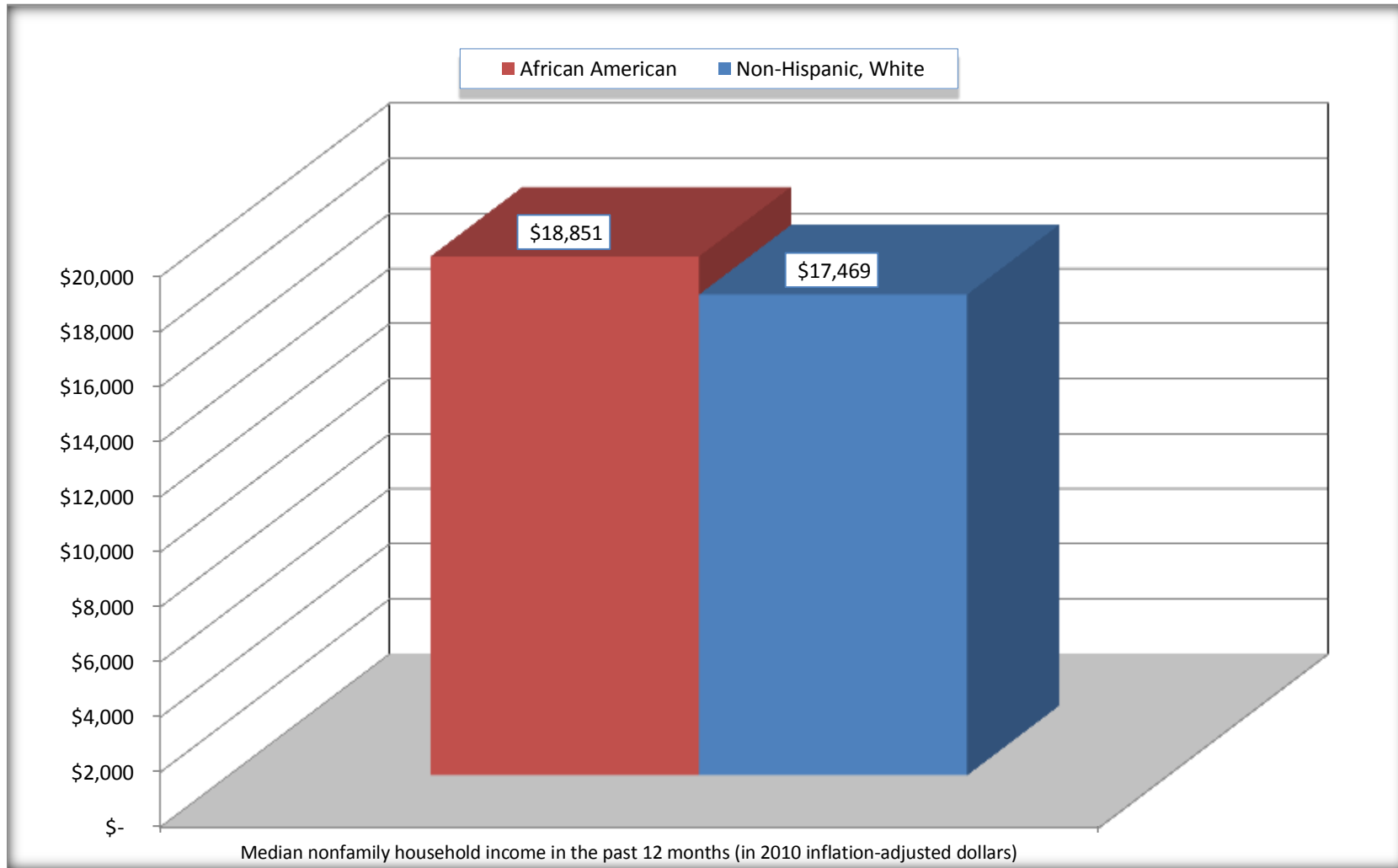
Source: U.S. Census Bureau, 2008-2012 American Community Survey

For information on confidentiality protection, sampling error, nonsampling error, and definitions, see Survey Methodology.

<http://www.census.gov/acs/www/UseData/index.htm>

Median Non-Family Income in the Past 12 Months

Marksville city, Louisiana



Source: B19202. MEDIAN NONFAMILY HOUSEHOLD INCOME IN THE PAST 12 MONTHS (IN 2010 INFLATION-ADJUSTED DOLLARS)
Data Set: 2008-2012 American Community Survey 5-Year Estimates

B19301. PER CAPITA INCOME IN THE PAST 12 MONTHS (IN 2010 INFLATION-ADJUSTED DOLLARS)

Data Set: 2008-2012 American Community Survey 5-Year Estimates

	Marksville city, Louisiana			
	African American	Margin of Error (+/-)	White, Not Hispanic	Margin of Error (+/-)
Per capita income in the past 12 months (in 2010 inflation-adjusted dollars)	\$ 10,753	\$ 1,812	\$ 25,284	\$ 6,299

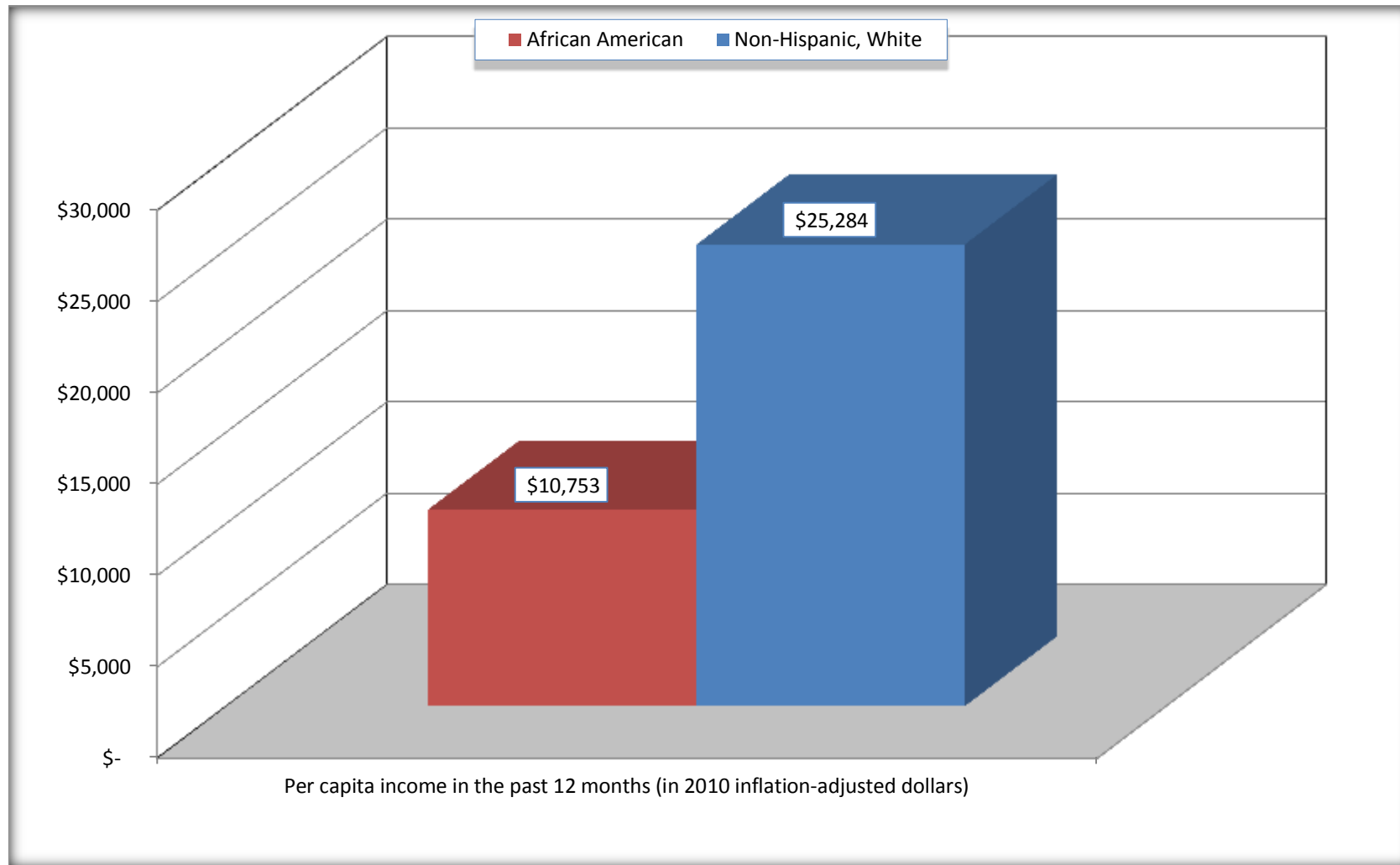
Source: U.S. Census Bureau, 2008-2012 American Community Survey

For information on confidentiality protection, sampling error, nonsampling error, and definitions, see Survey Methodology.

<http://www.census.gov/acs/www/UseData/index.htm>

Per capita Income in the Past 12 Months

Marksville city, Louisiana



Source: B19301. PER CAPITA INCOME IN THE PAST 12 MONTHS (IN 2010 INFLATION-ADJUSTED DOLLARS)
Data Set: 2008-2012 American Community Survey 5-Year Estimates

B20017. MEDIAN EARNINGS IN THE PAST 12 MONTHS (IN 2010 INFLATION-ADJUSTED DOLLARS) BY SEX BY WORK EXPERIENCE IN THE PAST 12 MONTHS FOR THE POPULATION 16 YEARS AND OVER WITH EARNINGS IN THE PAST 12 MONTHS

Data Set: 2008-2012 American Community Survey 5-Year Estimates

	Marksville city, Louisiana			
	African American	Margin of Error (+/-)	White, Not Hispanic	Margin of Error (+/-)
Median earnings in the past 12 months (in 2010 inflation-adjusted dollars) --				
Total:	\$ 17,118	\$ 1,526	\$ 27,935	\$ 17,016
Male --				
Total	\$ 16,917	\$ 2,497	\$ 36,569	\$ 8,376
Worked full-time, year-round in the past 12 months	\$ 17,602	\$ 2,889	\$ 39,125	\$ 11,674
Other	\$ 9,598	\$ 13,559	\$ 9,667	\$ 10,677
Female --				
Total	\$ 17,338	\$ 3,520	\$ 15,095	\$ 3,447
Worked full-time, year-round in the past 12 months	\$ 20,472	\$ 3,827	\$ 30,690	\$ 9,770
Other	\$ 7,384	\$ 3,831	\$ 6,715	\$ 7,125

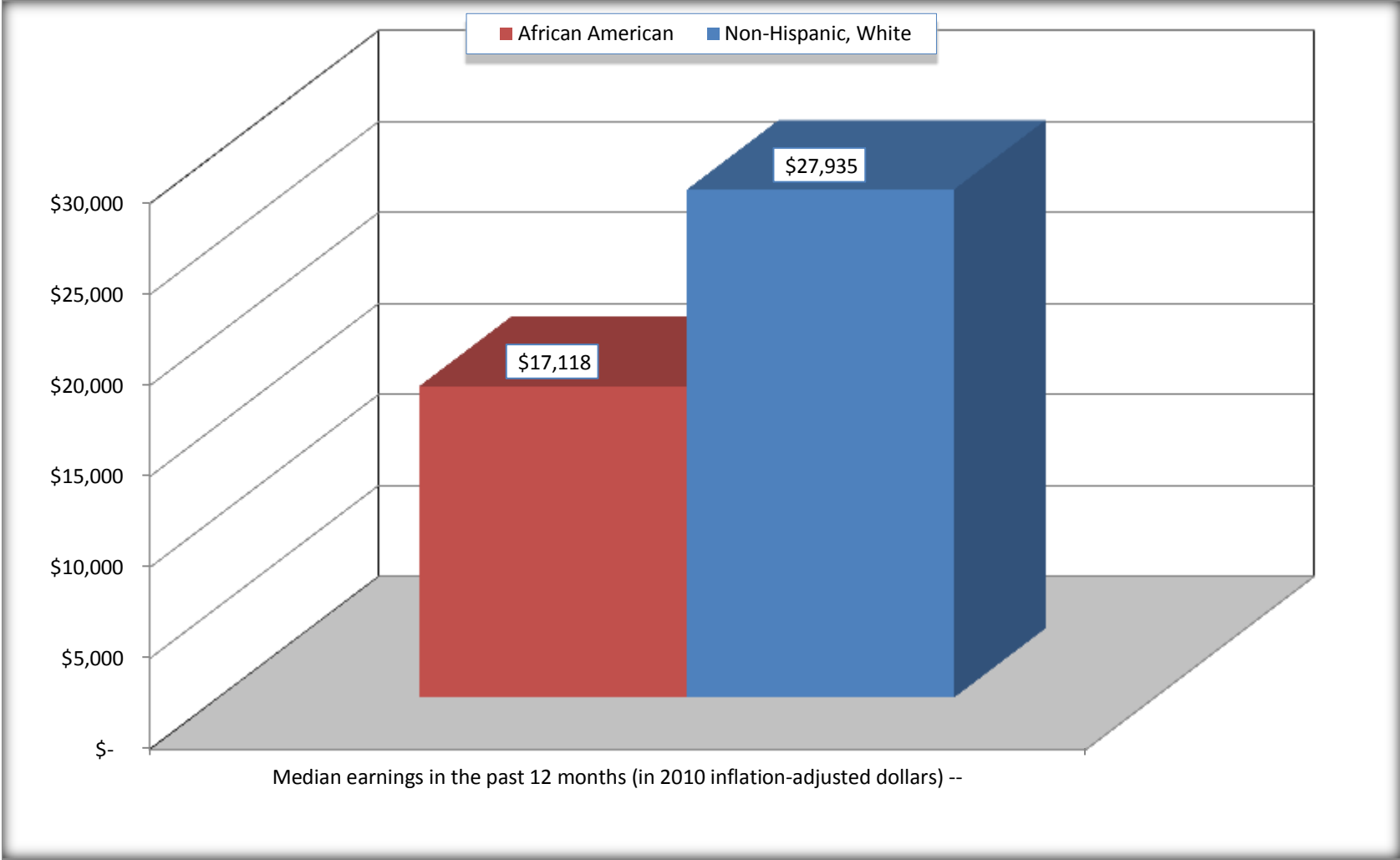
Source: U.S. Census Bureau, 2008-2012 American Community Survey

For information on confidentiality protection, sampling error, nonsampling error, and definitions, see Survey Methodology.

<http://www.census.gov/acs/www/UseData/index.htm>

Median earnings in the Past 12 Months (16 Years and Over with Earnings)

Marksville city, Louisiana



Source: B20017. MEDIAN EARNINGS IN THE PAST 12 MONTHS (IN 2010 INFLATION-ADJUSTED DOLLARS) BY SEX BY WORK EXPERIENCE IN THE PAST 12 MONTHS FOR THE POPULATION 16 YEARS AND OVER WITH EARNINGS IN THE PAST 12 MONTHS
Data Set: 2008-2012 American Community Survey 5-Year Estimates

B20005. SEX BY WORK EXPERIENCE IN THE PAST 12 MONTHS BY EARNINGS IN THE PAST 12 MONTHS (IN 2010 INFLATION-ADJUSTED DOLLARS) FOR THE POPULATION 16 YEARS AND OVER

Data Set: 2008-2012 American Community Survey 5-Year Estimates

	Marksville city, Louisiana					
	African American	Margin of Error (+/-)	% of AA Total	White, Not Hispanic	Margin of Error (+/-)	% of NHW Total
Total:	1,813	300	100.0%	2,447	298	100.0%
Worked full-time, year-round in the past 12 months:	842	NC	46.4%	803	NC	32.8%
No earnings	0	NC	0.0%	0	NC	0.0%
With earnings:	842	NC	46.4%	803	NC	32.8%
\$ 1 to \$ 9,999 or loss	39	NC	2.2%	19	NC	0.8%
\$ 10,000 to \$ 19,999	412	NC	22.7%	179	NC	7.3%
\$ 20,000 to \$ 29,999	252	NC	13.9%	34	NC	1.4%
\$ 30,000 to \$ 49,999	122	NC	6.7%	359	NC	14.7%
\$ 50,000 to \$ 74,999	17	NC	0.9%	80	NC	3.3%
\$ 75,000 or more	0	NC	0.0%	132	NC	5.4%
Other:	971	NC	53.6%	1,644	NC	67.2%
No earnings	662	NC	36.5%	1,227	NC	50.1%
With earnings: less than full time, year-round	309	NC	17.0%	417	NC	17.0%
Male:	873	228	48.2%	1,071	178	43.8%
Worked full-time, year-round in the past 12 months:	362	154	20.0%	451	155	18.4%
No earnings	0	17	0.0%	0	17	0.0%
With earnings:	362	154	20.0%	451	155	18.4%
\$ 1 to \$ 9,999 or loss	39	NC	2.2%	19	NC	0.8%
\$ 10,000 to \$ 19,999	189	NC	10.4%	42	NC	1.7%
\$ 20,000 to \$ 29,999	134	NC	7.4%	11	NC	0.4%
\$ 30,000 to \$ 49,999	0	NC	0.0%	219	NC	8.9%
\$ 50,000 to \$ 74,999	0	NC	0.0%	56	NC	2.3%
\$ 75,000 or more	0	NC	0.0%	104	NC	4.3%

	Marksville city, Louisiana					
	African American	Margin of Error (+/-)	% of AA Total	White, Not Hispanic	Margin of Error (+/-)	% of NHW Total
Other:	511	220	28.2%	620	142	25.3%
No earnings	338	146	18.6%	454	129	18.6%
With earnings:	173	113	9.5%	166	80	6.8%
Female:	940	181	51.8%	1,376	207	56.2%
Worked full-time, year-round in the past 12 months:	480	139	26.5%	352	151	14.4%
No earnings	0	17	0.0%	0	17	0.0%
With earnings:	480	139	26.5%	352	151	14.4%
\$ 1 to \$ 9,999 or loss	0	NC	0.0%	0	NC	0.0%
\$ 10,000 to \$ 19,999	223	NC	12.3%	137	NC	5.6%
\$ 20,000 to \$ 29,999	118	NC	6.5%	23	NC	0.9%
\$ 30,000 to \$ 49,999	122	NC	6.7%	140	NC	5.7%
\$ 50,000 to \$ 74,999	17	NC	0.9%	24	NC	1.0%
\$ 75,000 or more	0	NC	0.0%	28	NC	1.1%
Other:	460	177	25.4%	1,024	228	41.8%
No earnings	324	164	17.9%	773	188	31.6%
With earnings:	136	88	7.5%	251	135	10.3%

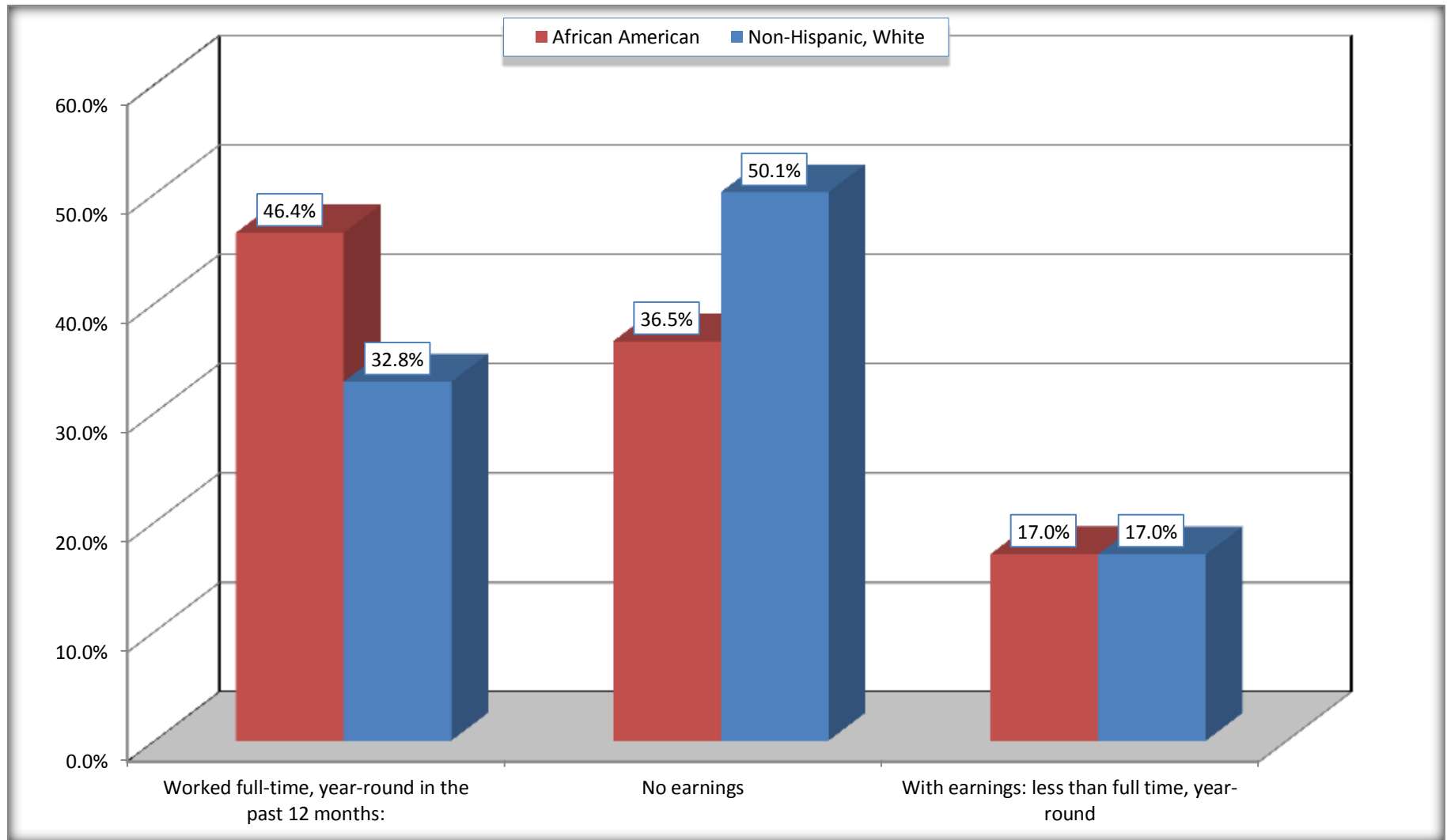
Source: U.S. Census Bureau, 2008-2012 American Community Survey

For information on confidentiality protection, sampling error, nonsampling error, and definitions, see Survey Methodology.

<http://www.census.gov/acs/www/UseData/index.htm>

Employment and Earnings in in the Past 12 Months (16 Years and Over)

Marksville city, Louisiana



Source: B20005. SEX BY WORK EXPERIENCE IN THE PAST 12 MONTHS BY EARNINGS IN THE PAST 12 MONTHS (IN 2010 INFLATION-ADJUSTED DOLLARS) FOR THE POPULATION 16 YEARS AND OVER

Data Set: 2008-2012 American Community Survey 5-Year Estimates

C21001. SEX BY AGE BY VETERAN STATUS FOR THE CIVILIAN POPULATION 18 YEARS AND OVER

Data Set: 2008-2012 American Community Survey 5-Year Estimates

	Marksville city, Louisiana					
	African American	Margin of Error (+/-)	% of AA Total	White, Not Hispanic	Margin of Error (+/-)	% of NHW Total
Total:	1,784	296	100.0%	2,321	276	100.0%
Veteran	154	NC	8.6%	310	NC	13.4%
Nonveteran	1,630	NC	91.4%	2,011	NC	86.6%
Male:	859	232	48.2%	983	161	42.4%
18 to 64 years:	819	235	45.9%	687	148	29.6%
Veteran	54	70	3.0%	188	126	8.1%
Nonveteran	765	190	42.9%	499	127	21.5%
65 years and over:	40	45	2.2%	296	105	12.8%
Veteran	0	17	0.0%	109	71	4.7%
Nonveteran	40	45	2.2%	187	105	8.1%
Female:	925	179	51.8%	1,338	188	57.6%
18 to 64 years:	750	147	42.0%	940	185	40.5%
Veteran	100	75	5.6%	0	17	0.0%
Nonveteran	650	156	36.4%	940	185	40.5%
65 years and over:	175	91	9.8%	398	101	17.1%
Veteran	0	17	0.0%	13	21	0.6%
Nonveteran	175	91	9.8%	385	102	16.6%

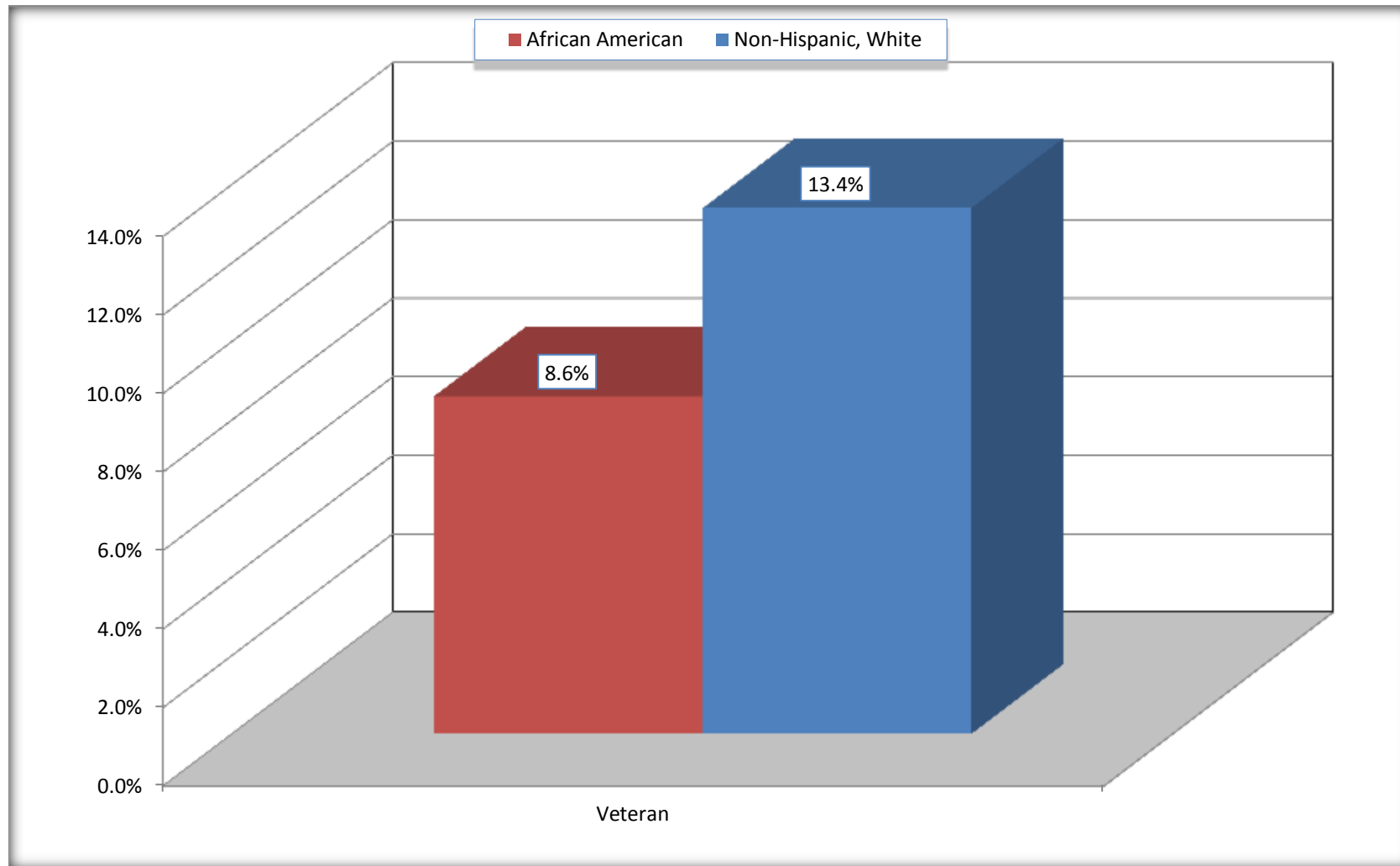
Source: U.S. Census Bureau, 2008-2012 American Community Survey

For information on confidentiality protection, sampling error, nonsampling error, and definitions, see Survey Methodology.

<http://www.census.gov/acs/www/UseData/index.htm>

Veterans in the Civilian Population 18 Years and Over

Marksville city, Louisiana



Source: C21001. SEX BY AGE BY VETERAN STATUS FOR THE CIVILIAN POPULATION 18 YEARS AND OVER
Data Set: 2008-2012 American Community Survey 5-Year Estimates

B22005. RECEIPT OF FOOD STAMPS/SNAP IN THE PAST 12 MONTHS BY RACE OF HOUSEHOLDER

Data Set: 2008-2012 American Community Survey 5-Year Estimates

	Marksville city, Louisiana					
	African American	Margin of Error (+/-)	% of AA Total	White, Not Hispanic	Margin of Error (+/-)	% of NHW Total
Total:	842	152	100.0%	1,307	209	100.0%
HH received Food Stamps/SNAP in the past 12 months	512	152	60.8%	231	134	17.7%
HH did not receive Food Stamps/SNAP in the past 12 months	330	155	39.2%	1,076	238	82.3%

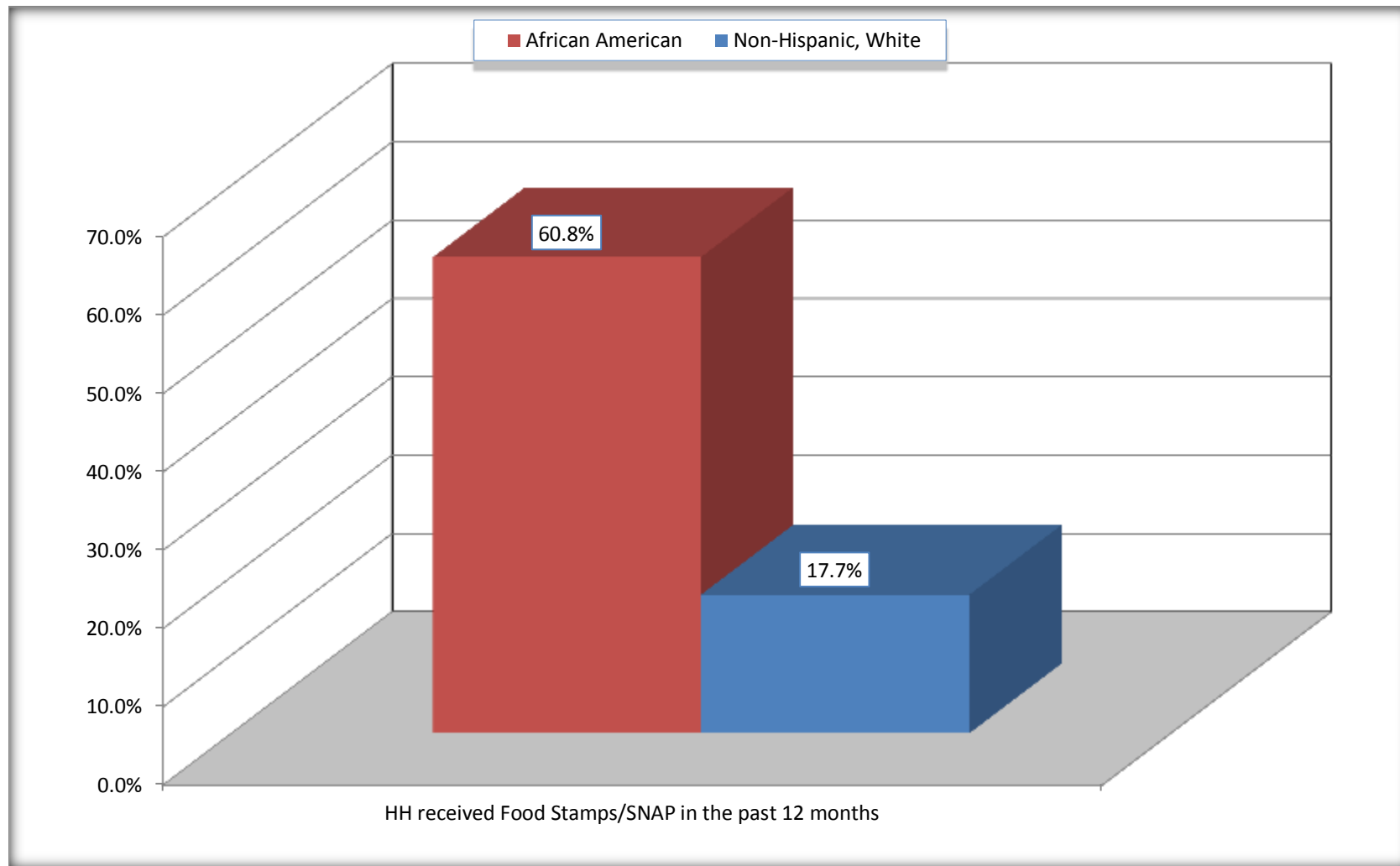
Source: U.S. Census Bureau, 2008-2012 American Community Survey

For information on confidentiality protection, sampling error, nonsampling error, and definitions, see Survey Methodology.

<http://www.census.gov/acs/www/UseData/index.htm>

Receipt of Food Stamps/SNAP in the Past 12 Months by Household

Marksville city, Louisiana



Source: B22005. RECEIPT OF FOOD STAMPS/SNAP IN THE PAST 12 MONTHS BY RACE OF HOUSEHOLDER
Data Set: 2008-2012 American Community Survey 5-Year Estimates

C23002. SEX BY AGE BY EMPLOYMENT STATUS FOR THE POPULATION 16 YEARS AND OVER

Data Set: 2008-2012 American Community Survey 5-Year Estimates

	Marksville city, Louisiana					
	African American	Margin of Error (+/-)	% of AA Total	White, Not Hispanic	Margin of Error (+/-)	% of NHW Total
Total:	1,813	300	100.0%	2,447	298	100.0%
In labor force:	1,214	NC	67.0%	1,149	NC	47.0%
In Armed Forces	0	NC	0.0%	18	NC	0.7%
Civilian:	1,162	NC	64.1%	1,008	NC	41.2%
Employed	1,050	NC	57.9%	1,124	NC	45.9%
Unemployed	164	NC	9.0%	7	NC	0.3%
Not in labor force	599	NC	33.0%	1,298	NC	53.0%
Male:	873	228	48.2%	1,071	178	43.8%
16 to 64 years:	833	232	45.9%	775	170	31.7%
In labor force:	491	180	27.1%	461	149	18.8%
In Armed Forces	0	17	0.0%	18	31	0.7%
Civilian:	491	180	27.1%	443	145	18.1%
Employed	417	145	23.0%	436	143	17.8%
Unemployed	74	75	4.1%	7	12	0.3%
Not in labor force	342	152	18.9%	314	116	12.8%
65 years and over:	40	45	2.2%	296	105	12.1%
In labor force:	36	43	2.0%	105	103	4.3%
Employed	36	43	2.0%	105	103	4.3%
Unemployed	0	17	0.0%	0	17	0.0%
Not in labor force	4	9	0.2%	191	86	7.8%

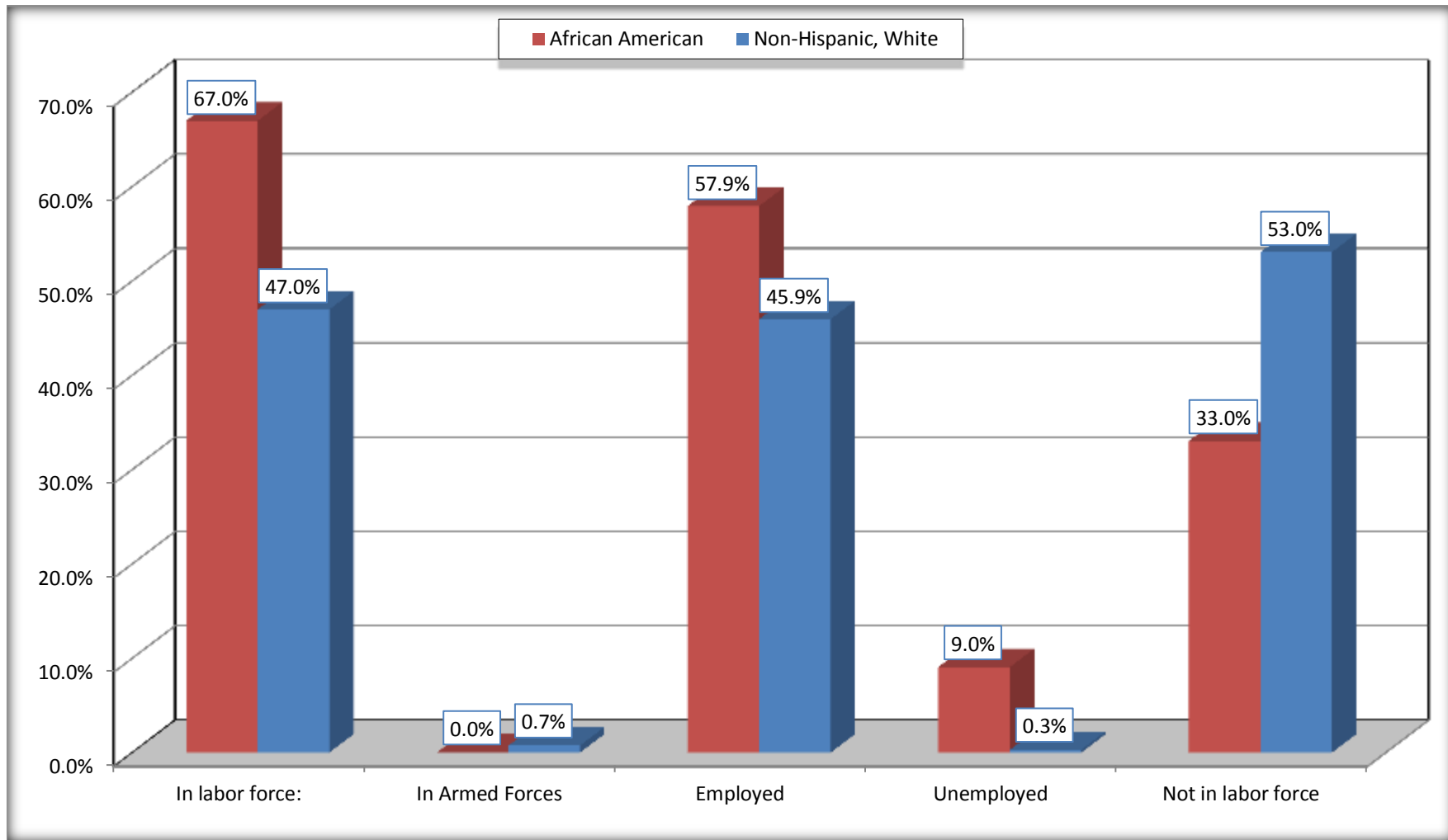
	Marksville city, Louisiana					
	African American	Margin of Error (+/-)	% of AA Total	White, Not Hispanic	Margin of Error (+/-)	% of NHW Total
Female:	940	181	51.8%	1,376	207	56.2%
16 to 64 years:	765	148	42.2%	978	211	40.0%
In labor force:	671	144	37.0%	565	156	23.1%
In Armed Forces	0	17	0.0%	0	17	0.0%
Civilian:	671	144	37.0%	565	156	23.1%
Employed	581	148	32.0%	565	156	23.1%
Unemployed	90	77	5.0%	0	17	0.0%
Not in labor force	94	84	5.2%	413	189	16.9%
65 years and over:	175	91	9.7%	398	101	16.3%
In labor force:	16	28	0.9%	18	29	0.7%
Employed	16	28	0.9%	18	29	0.7%
Unemployed	0	17	0.0%	0	17	0.0%
Not in labor force	159	89	8.8%	380	96	15.5%

Source: U.S. Census Bureau, 2008-2012 American Community Survey

For information on confidentiality protection, sampling error, nonsampling error, and definitions, see Survey Methodology.
<http://www.census.gov/acs/www/UseData/index.htm>

Employment Status for the Population 16 years and over

Marksville city, Louisiana

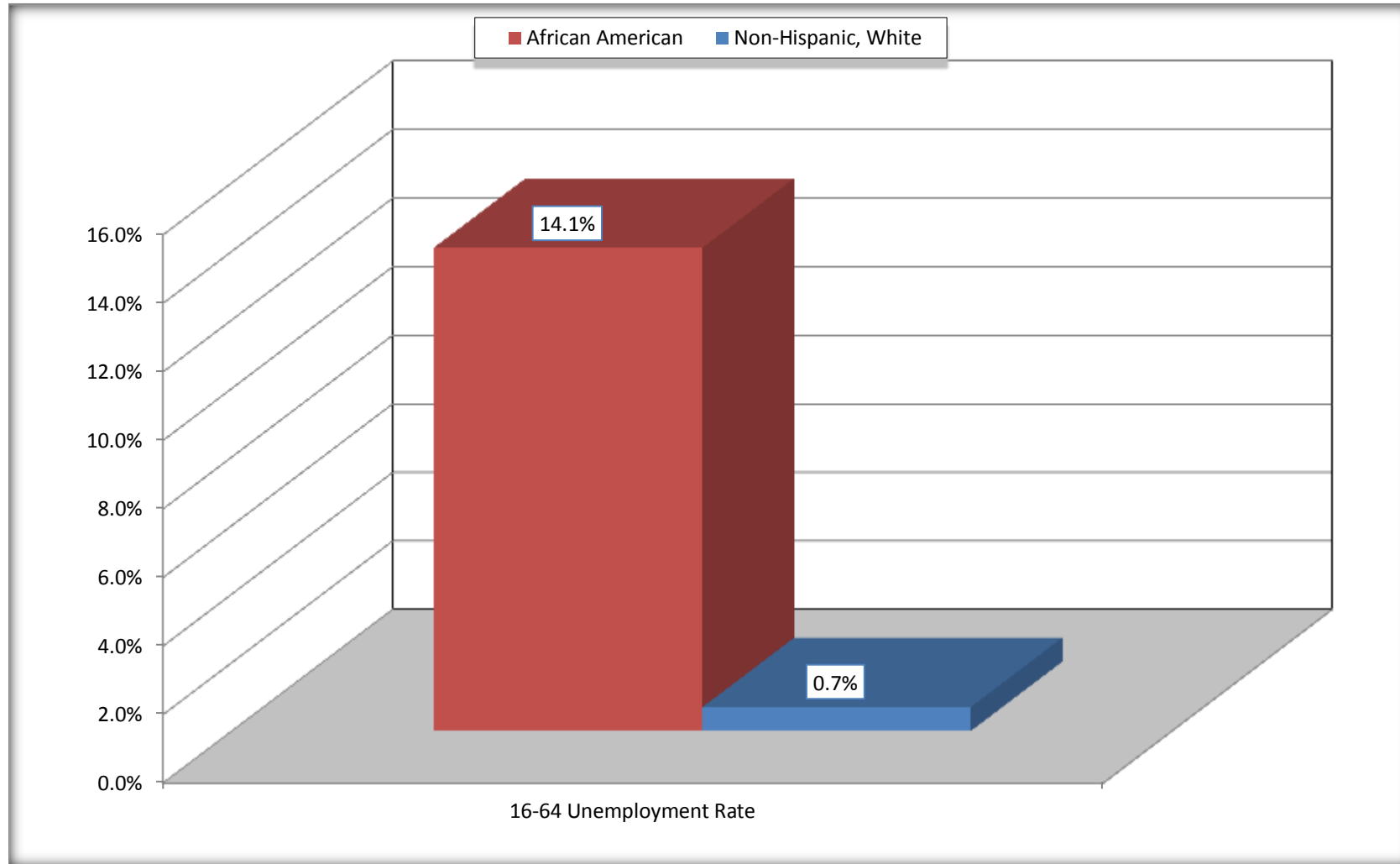


Source: C23002. SEX BY AGE BY EMPLOYMENT STATUS FOR THE POPULATION 16 YEARS AND OVER

Data Set: 2008-2012 American Community Survey 5-Year Estimates

Unemployment of Working Age Population (Ages 16 to 64) (As a Percent of 16-64 Civilian Labor Force)

Marksville city, Louisiana



Source: C23002. SEX BY AGE BY EMPLOYMENT STATUS FOR THE POPULATION 16 YEARS AND OVER
Data Set: 2008-2012 American Community Survey 5-Year Estimates

C24010. SEX BY OCCUPATION FOR THE CIVILIAN EMPLOYED POPULATION 16 YEARS AND OVER

Data Set: 2008-2012 American Community Survey 5-Year Estimates

	Marksville city, Louisiana					
	African American	Margin of Error (+/-)	% of AA Total	White, Not Hispanic	Margin of Error (+/-)	% of NHW Total
Total:	1,050	236	100.0%	1,124	261	100.0%
Management, professional, and related occupations	86	NC	8.2%	292	NC	26.0%
Service occupations	499	NC	47.5%	404	NC	35.9%
Sales and office occupations	300	NC	28.6%	199	NC	17.7%
Natural resources, construction, and maintenance occupations:	49	NC	4.7%	138	NC	12.3%
Production, transportation, and material moving occupations	116	NC	11.0%	91	NC	8.1%
Male:	453	141	43.1%	541	151	48.1%
Management, business, science, and arts occupations:	19	29	1.8%	142	68	12.6%
Service occupations	146	107	13.9%	118	82	10.5%
Sales and office occupations	137	101	13.0%	90	104	8.0%
Natural resources, construction, and maintenance occupations:	49	69	4.7%	138	111	12.3%
Production, transportation, and material moving occupations	102	69	9.7%	53	59	4.7%
Female:	597	146	56.9%	583	160	51.9%
Management, professional, and related occupations	67	69	6.4%	150	85	13.3%
Service occupations	353	175	33.6%	286	151	25.4%
Sales and office occupations	163	104	15.5%	109	71	9.7%
Natural resources, construction, and maintenance occupations:	0	17	0.0%	0	17	0.0%
Production, transportation, and material moving occupations	14	26	1.3%	38	51	3.4%

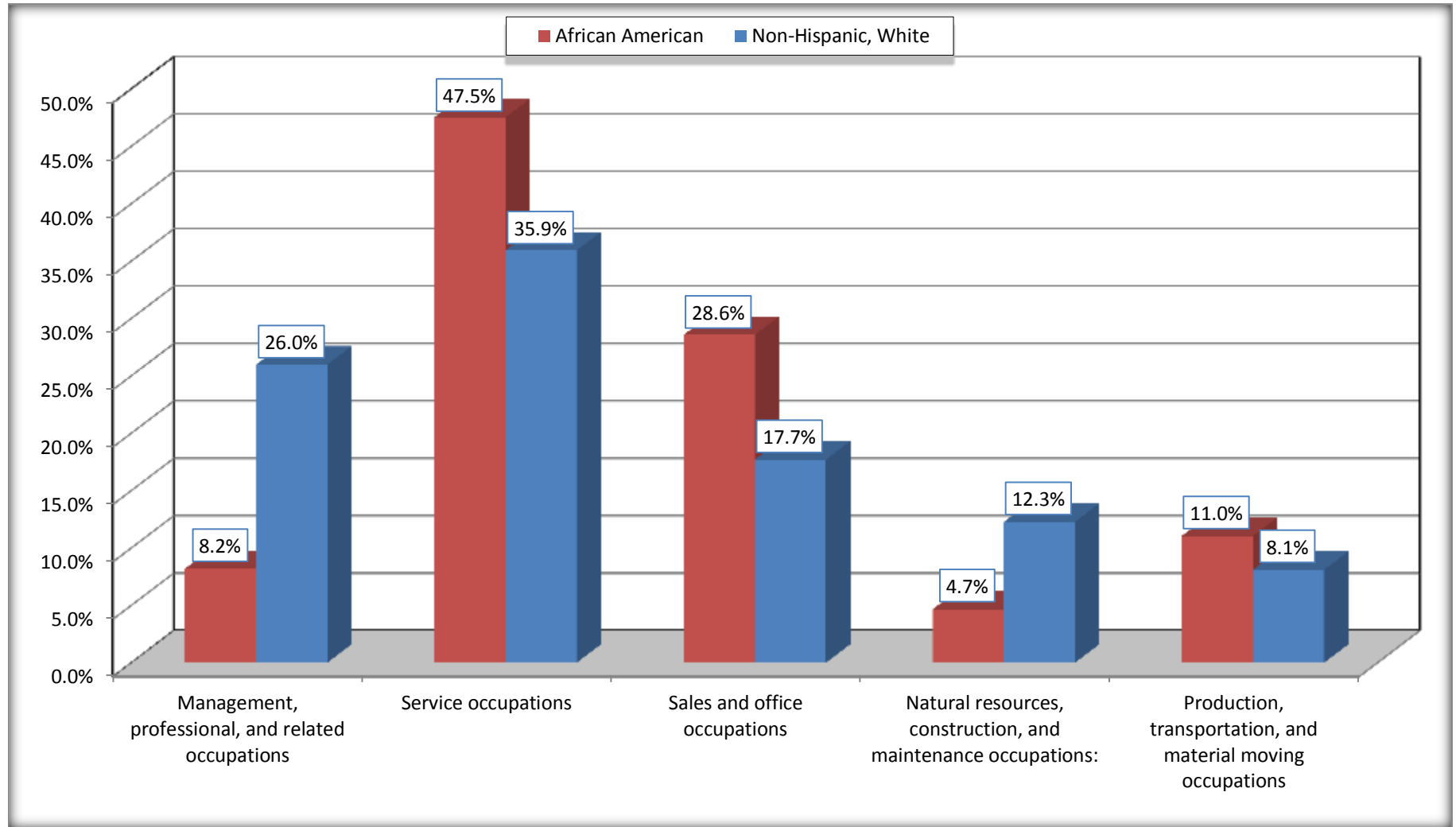
Source: U.S. Census Bureau, 2008-2012 American Community Survey

For information on confidentiality protection, sampling error, nonsampling error, and definitions, see Survey Methodology.

<http://www.census.gov/acs/www/UseData/index.htm>

Occupation for the Civilian Employed 16 Years and Over Population

Marksville city, Louisiana



Source: C24010. SEX BY OCCUPATION FOR THE CIVILIAN EMPLOYED POPULATION 16 YEARS AND OVER
Data Set: 2008-2012 American Community Survey 5-Year Estimates

B25003. TENURE - Universe: OCCUPIED HOUSING UNITS

Data Set: 2008-2012 American Community Survey 5-Year Estimates

	Marksville city, Louisiana					
	African American	Margin of Error (+/-)	% of AA Total	White, Not Hispanic	Margin of Error (+/-)	% of NHW Total
Total:	842	152	100.0%	1,307	209	100.0%
Owner occupied	374	152	44.4%	913	175	69.9%
Renter occupied	468	155	55.6%	394	162	30.1%

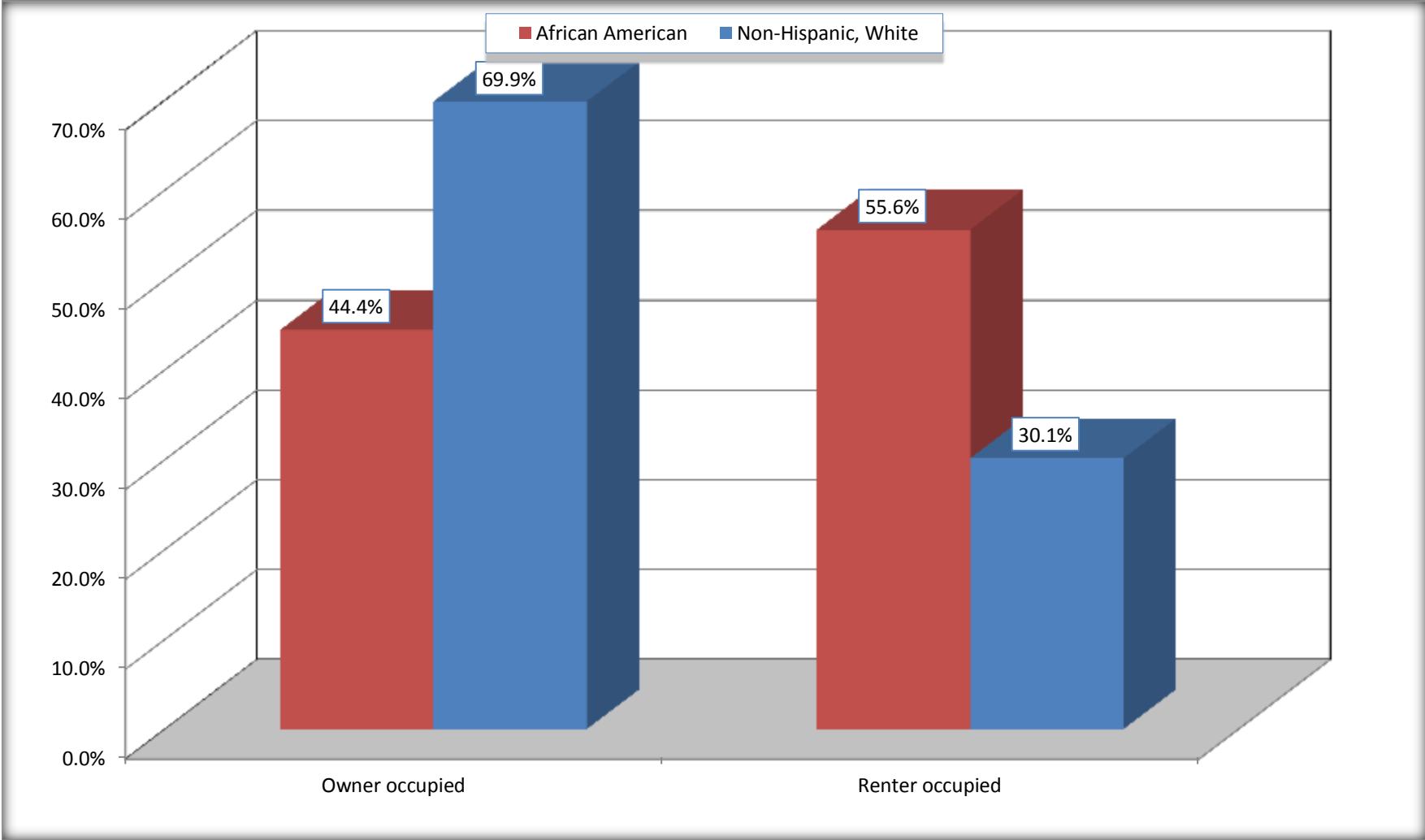
Source: U.S. Census Bureau, 2008-2012 American Community Survey

For information on confidentiality protection, sampling error, nonsampling error, and definitions, see Survey Methodology.

<http://www.census.gov/acs/www/UseData/index.h>

Home Owners and Renters by Household

Marksville city, Louisiana



Source: B25003. TENURE - Universe: OCCUPIED HOUSING UNITS
Data Set: 2008-2012 American Community Survey 5-Year Estimates

B25014. OCCUPANTS PER ROOM - Universe: OCCUPIED HOUSING UNITS

Data Set: 2008-2012 American Community Survey 5-Year Estimates

	Marksville city, Louisiana					
	African American	Margin of Error (+/-)	% of AA Total	White, Not Hispanic	Margin of Error (+/-)	% of NHW Total
Total:	842	152	100.0%	1,307	209	100.0%
1.00 or less occupants per room	695	176	82.5%	1,307	209	100.0%
1.01 or more occupants per room	147	97	17.5%	0	17	0.0%

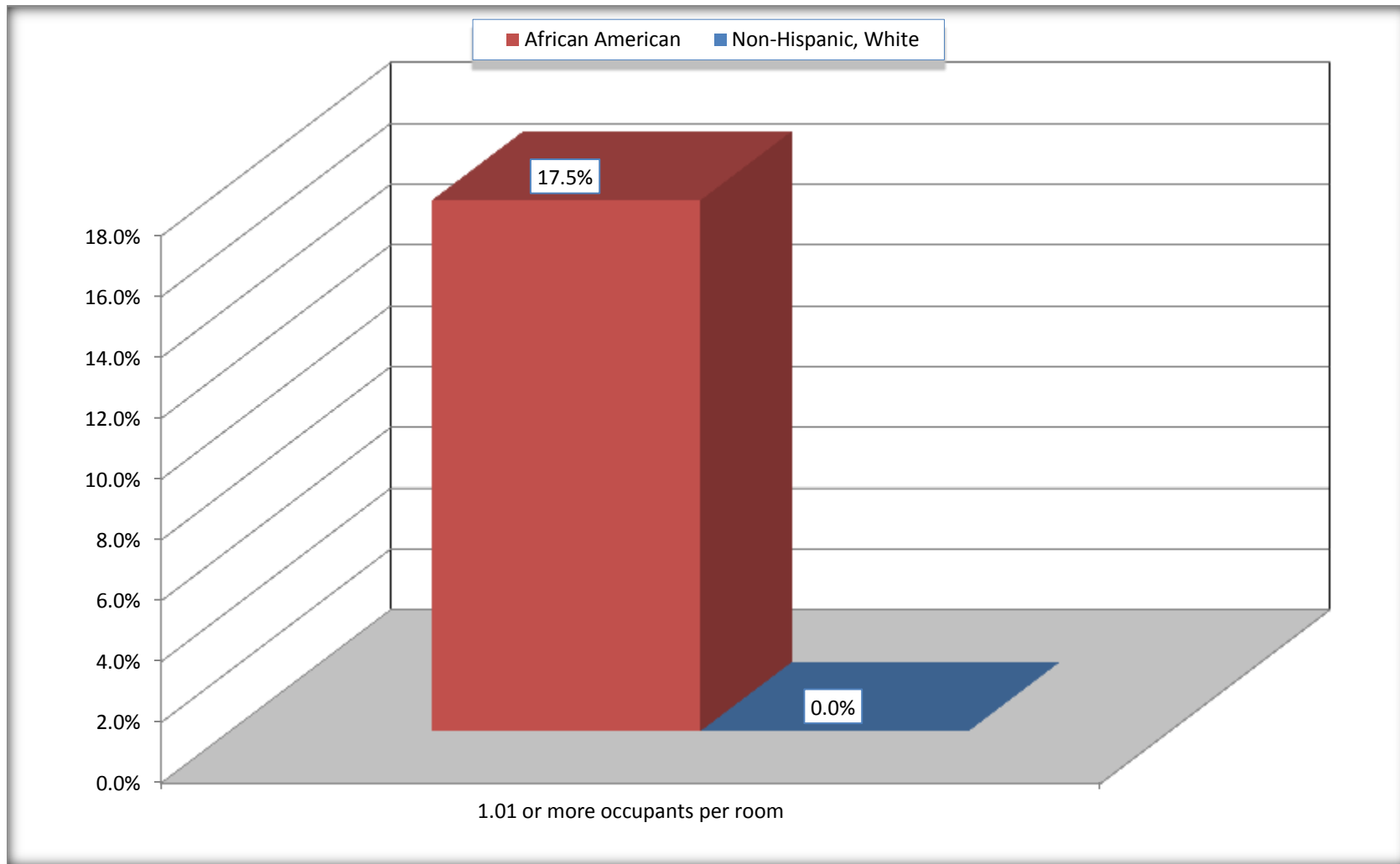
Source: U.S. Census Bureau, 2008-2012 American Community Survey

For information on confidentiality protection, sampling error, nonsampling error, and definitions, see Survey Methodology.

<http://www.census.gov/acs/www/UseData/index.ht>

More than One Person per Room (Crowding) by Household

Marksville city, Louisiana



Source: B25014. OCCUPANTS PER ROOM - Universe: OCCUPIED HOUSING UNITS
Data Set: 2008-2012 American Community Survey 5-Year Estimates

B18101. AGE BY DISABILITY STATUS

Data Set: 2008-2012 American Community Survey 5-Year Estimates

	Marksville city, Louisiana					
	African American	Margin of Error (+/-)	% of AA Total	White, Not Hispanic	Margin of Error (+/-)	% of NHW Total
Total:	2,478	378	100.0%	2,483	348	100.0%
Under 18 years:	862	277	34.8%	339	17	13.7%
With a disability	14	27	0.6%	34	40	1.4%
No disability	848	273	34.2%	305	133	12.3%
18 to 64 years:	1,417	292	57.2%	1,502	266	60.5%
With a disability	118	99	4.8%	291	153	11.7%
No disability	1,299	267	52.4%	1,211	254	48.8%
65 years and over:	199	103	8.0%	642	157	25.9%
With a disability	85	68	3.4%	318	127	12.8%
No disability	114	85	4.6%	324	145	13.0%

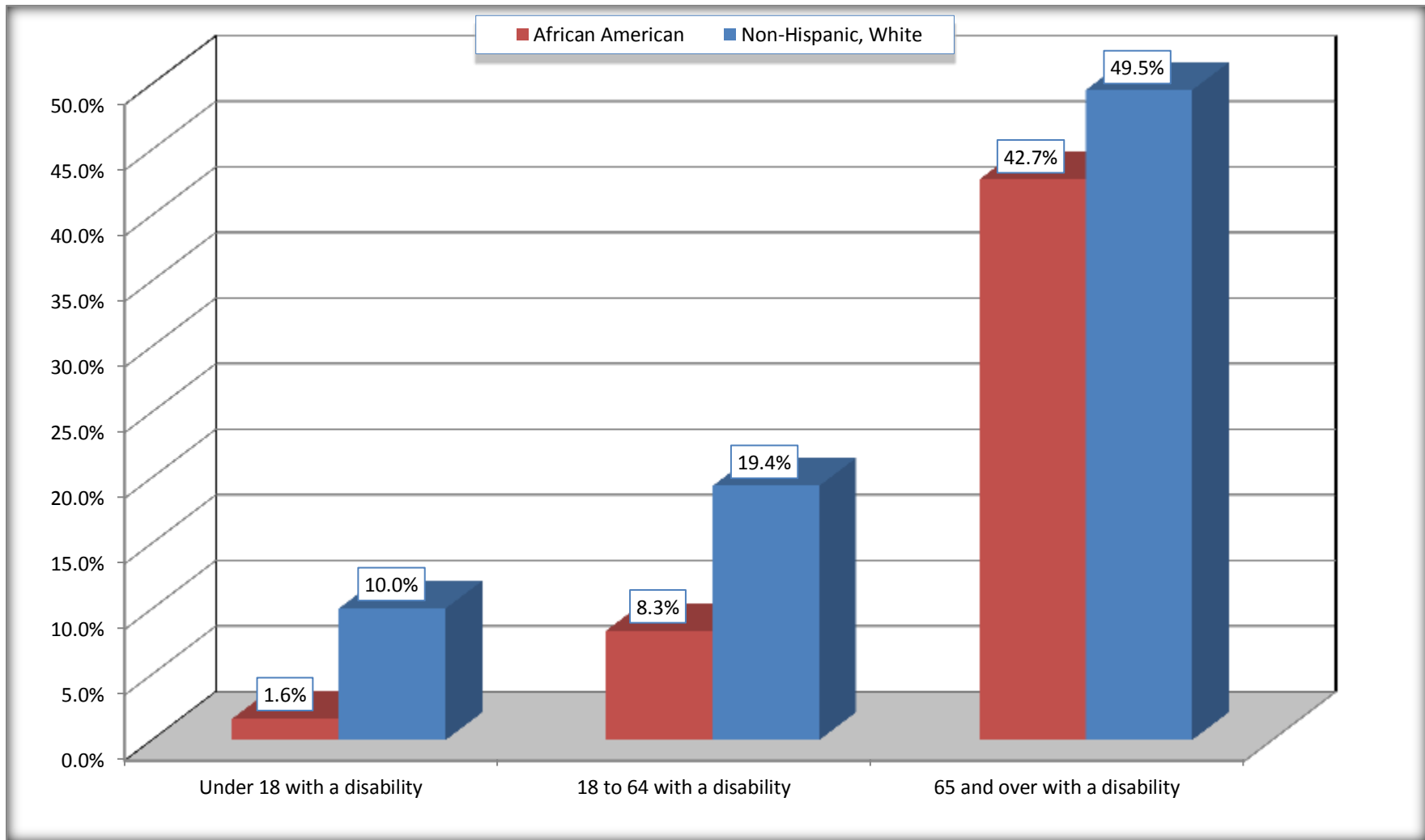
Source: U.S. Census Bureau, 2008-2012 American Community Survey

For information on confidentiality protection, sampling error, nonsampling error, and definitions, see Survey Methodology.

<http://www.census.gov/acs/www/UseData/index.htm>

Disability by Age

Marksville city, Louisiana



Source: B18101. AGE BY DISABILITY STATUS
Data Set: 2008-2012 American Community Survey 5-Year Estimates

C27001B. HEALTH INSURANCE COVERAGE STATUS BY AGE

Data Set: 2008-2012 American Community Survey 5-Year Estimates

	Marksville city, Louisiana					
	African American	Margin of Error (+/-)	% of AA Total	White, Not Hispanic	Margin of Error (+/-)	% of NHW Total
Total:	2,478	378	100.0%	2,483	348	100.0%
Under 18 years:	862	277	34.8%	339	140	13.7%
With health insurance coverage	862	277	34.8%	339	140	13.7%
No health insurance coverage	0	17	0.0%	0	17	0.0%
18 to 64 years:	1,417	292	57.2%	1,502	266	60.5%
With health insurance coverage	770	306	31.1%	1,051	252	42.3%
No health insurance coverage	647	363	26.1%	451	183	18.2%
65 years and over:	199	103	8.0%	642	157	25.9%
With health insurance coverage	199	103	8.0%	642	157	25.9%
No health insurance coverage	0	17	0.0%	0	17	0.0%

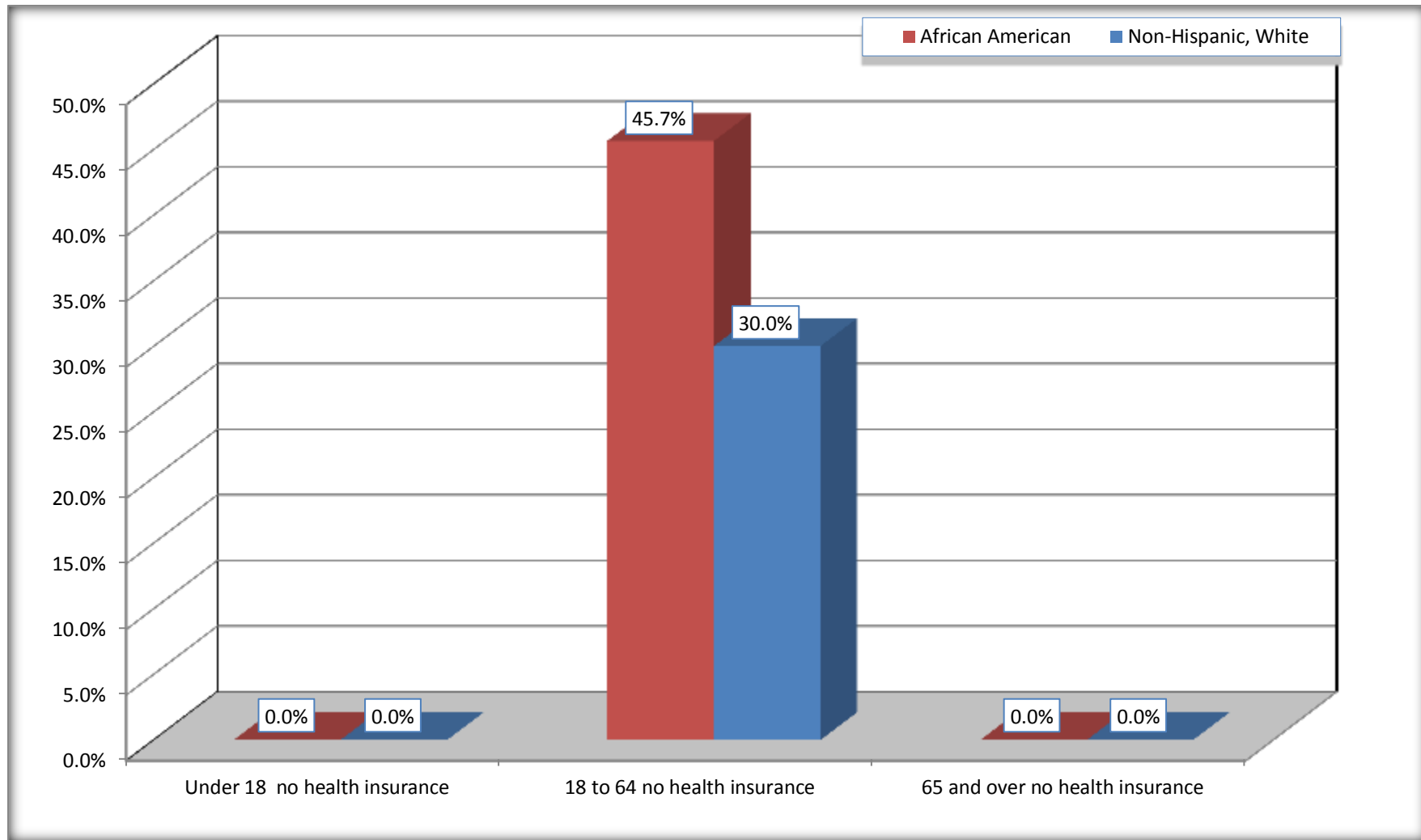
Source: U.S. Census Bureau, 2008-2012 American Community Survey

For information on confidentiality protection, sampling error, nonsampling error, and definitions, see Survey Methodology.

<http://www.census.gov/acs/www/UseData/index.htm>

Lack of Health Insurance Coverage by Age

Marksville city, Louisiana



Source: C27001B. HEALTH INSURANCE COVERAGE STATUS BY AGE
Data Set: 2008-2012 American Community Survey 5-Year Estimates