

Selected Socio-Economic Data

Madison Parish, Louisiana

African American and White, Not Hispanic

Data Set: 2008-2012 American Community Survey 5-Year Estimates

www.fairvote2020.org

www.fairdata2000.com

[29-Dec-13](#)

C02003.DETAILED RACE - Universe: TOTAL POPULATION

Data Set: 2008-2012 American Community Survey 5-Year Estimates

	Madison Parish, Louisiana		
	Population	Margin of Error (+/-)	% of Total
Total:	12,113	*****	100.0%
Population of one race:	12,021	96	99.2%
White	4,506	70	37.2%
Black or African American	7,387	96	61.0%
American Indian and Alaska Native	49	2	0.4%
Asian alone	10	18	0.1%
Native Hawaiian and Other Pacific Islander	0	19	0.0%
Some other race	69	70	0.6%
Population of two or more races:	92	96	0.8%
Two races including Some other race	0	19	0.0%
Two races excluding Some other race, and three or more races	92	96	0.8%
Population of two races:	92	96	0.8%
White; Black or African American	56	83	0.5%
White; American Indian and Alaska Native	1	2	0.0%
White; Asian	0	19	0.0%
Black or African American; American Indian and Alaska Native	35	53	0.3%
All other two race combinations	0	19	0.0%
Population of three races	0	19	0.0%
Population of four or more races	0	19	0.0%

Note: Hispanics may be of any race. See Table B03002 and chart.

Source: U.S. Census Bureau, 2008-2012 American Community Survey

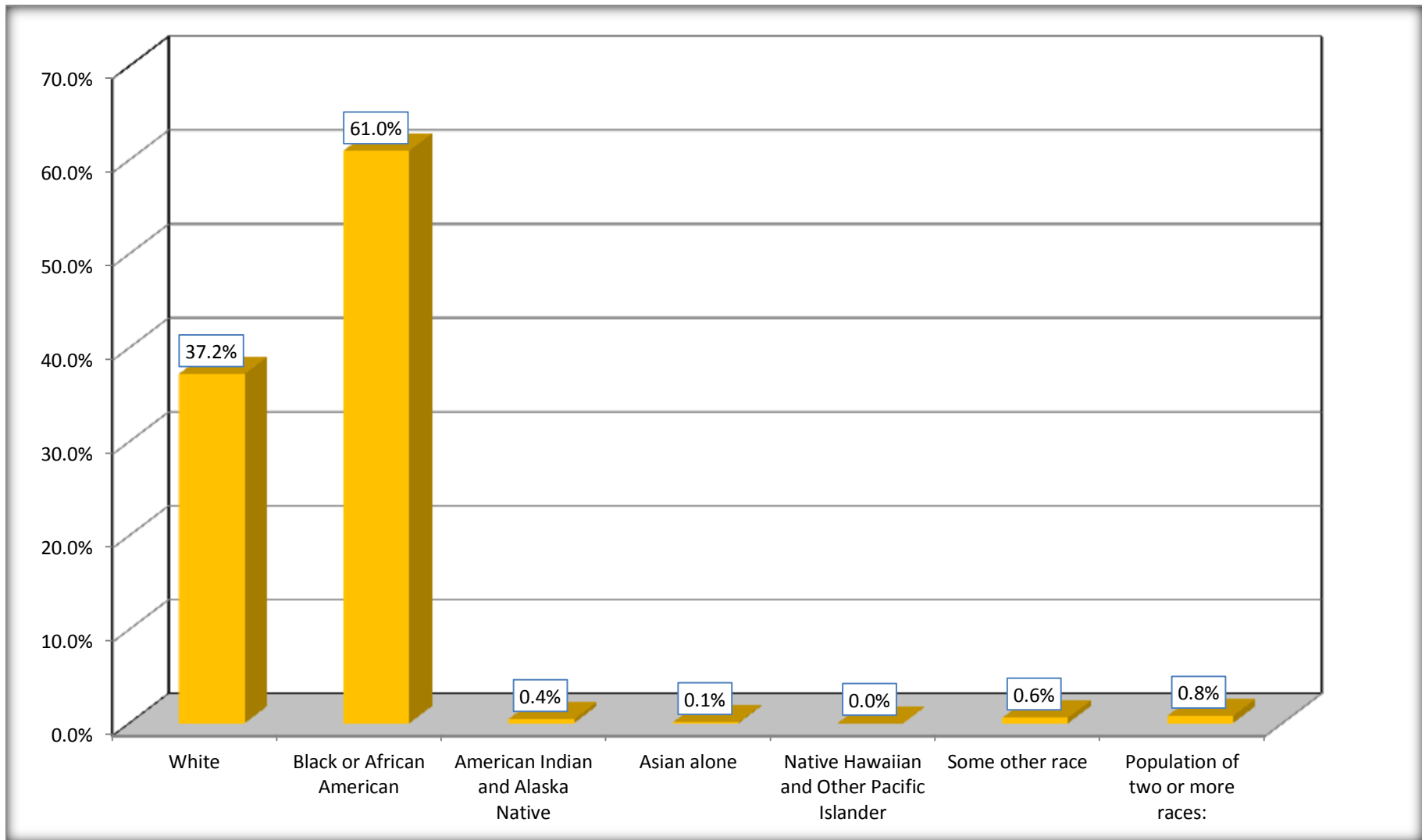
Although the American Community Survey (ACS) produces population, demographic and housing unit estimates, it is the Census Bureau's Population Estimates Program that produces and disseminates the official estimates of the population for the nation, states, counties, cities and towns and estimates of housing units for states and counties.

For information on confidentiality protection, sampling error, nonsampling error, and definitions, see Survey Methodology.

<http://www.census.gov/acs/www/UseData/index.htm>

Population by Race

Madison Parish, Louisiana



Source: C02003.DETAILED RACE - Universe: TOTAL POPULATION
Data Set: 2008-2012 American Community Survey 5-Year Estimates

B03002. HISPANIC OR LATINO ORIGIN BY RACE - Universe: TOTAL POPULATION

Data Set: 2008-2012 American Community Survey 5-Year Estimates

	Madison Parish, Louisiana		
	Population	Margin of Error (+/-)	% of Total
Total:	12,113	*****	100.0%
Not Hispanic or Latino:	11,925	*****	98.4%
White alone	4,387	19	36.2%
Black or African American alone	7,387	96	61.0%
American Indian and Alaska Native alone	49	2	0.4%
Asian alone	10	18	0.1%
Native Hawaiian and Other Pacific Islander alone	0	19	0.0%
Some other race alone	0	19	0.0%
Two or more races:	92	96	0.8%
Two races including Some other race	0	19	0.0%
Two races excluding Some other race, and three or more races	92	96	0.8%
Hispanic or Latino	188	*****	1.6%

Source: U.S. Census Bureau, 2008-2012 American Community Survey

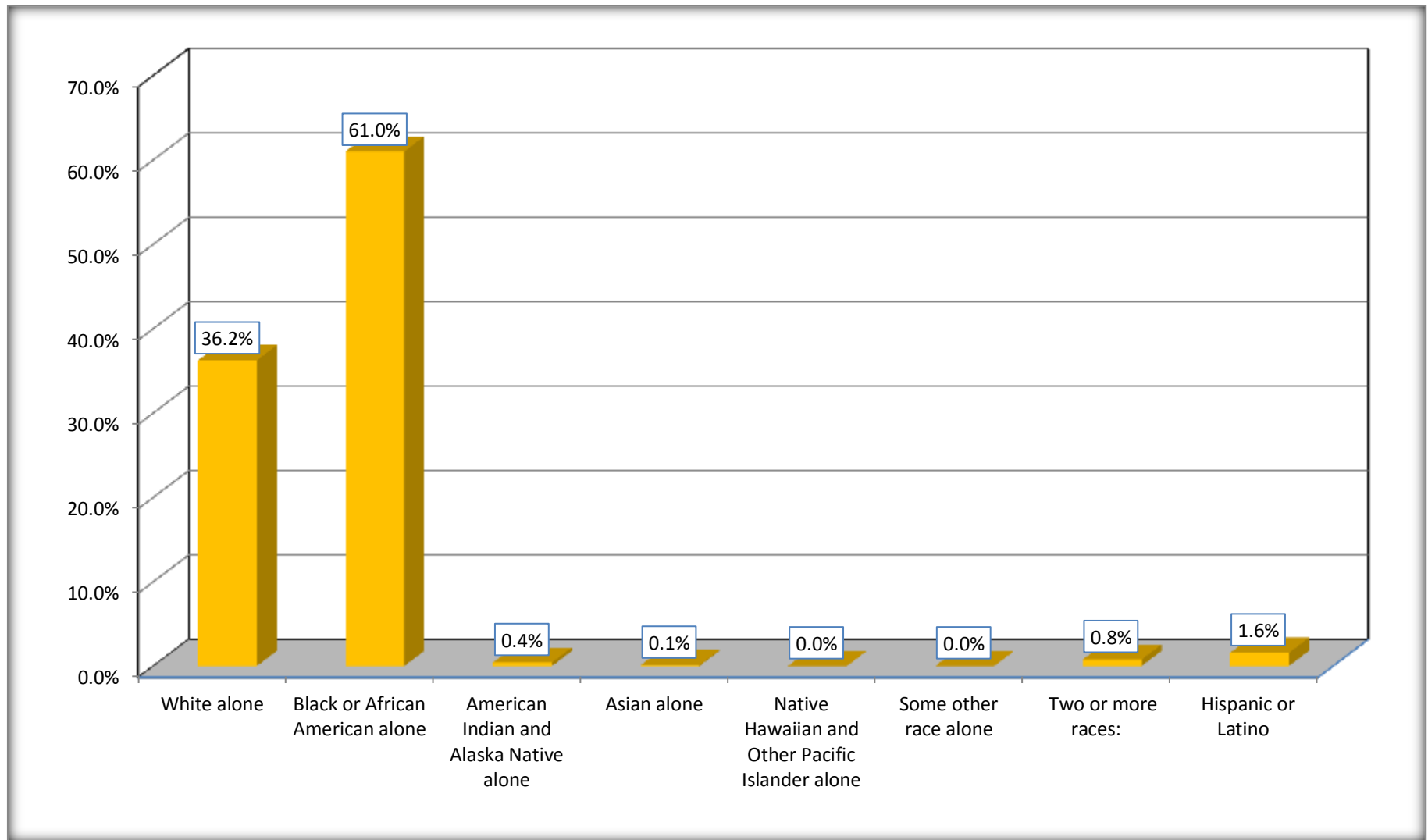
Although the American Community Survey (ACS) produces population, demographic and housing unit estimates, it is the Census Bureau's Population Estimates Program that produces and disseminates the official estimates of the population for the nation, states, counties, cities and towns and estimates of housing units for states and counties.

For information on confidentiality protection, sampling error, nonsampling error, and definitions, see Survey Methodology.

<http://www.census.gov/acs/www/UseData/index.htm>

Non-Hispanic by Race and Hispanic Population

Madison Parish, Louisiana



Source: B03002. HISPANIC OR LATINO ORIGIN BY RACE - Universe: TOTAL POPULATION
Data Set: 2008-2012 American Community Survey 5-Year Estimates

B03002. HISPANIC OR LATINO ORIGIN BY RACE

Data Set: 2008-2012 American Community Survey 5-Year Estimates

	Madison Parish, Louisiana		
	Population	Margin of Error (+/-)	% of Total
Hispanic or Latino:	188	*****	100.0%
White alone	119	70	63.3%
Black or African American alone	0	19	0.0%
American Indian and Alaska Native alone	0	19	0.0%
Asian alone	0	19	0.0%
Native Hawaiian and Other Pacific Islander alone	0	19	0.0%
Some other race alone	69	70	36.7%
Two or more races:	0	19	0.0%
Two races including Some other race	0	19	0.0%
Two races excluding Some other race, and three or more races	0	19	0.0%

Source: U.S. Census Bureau, 2008-2012 American Community Survey

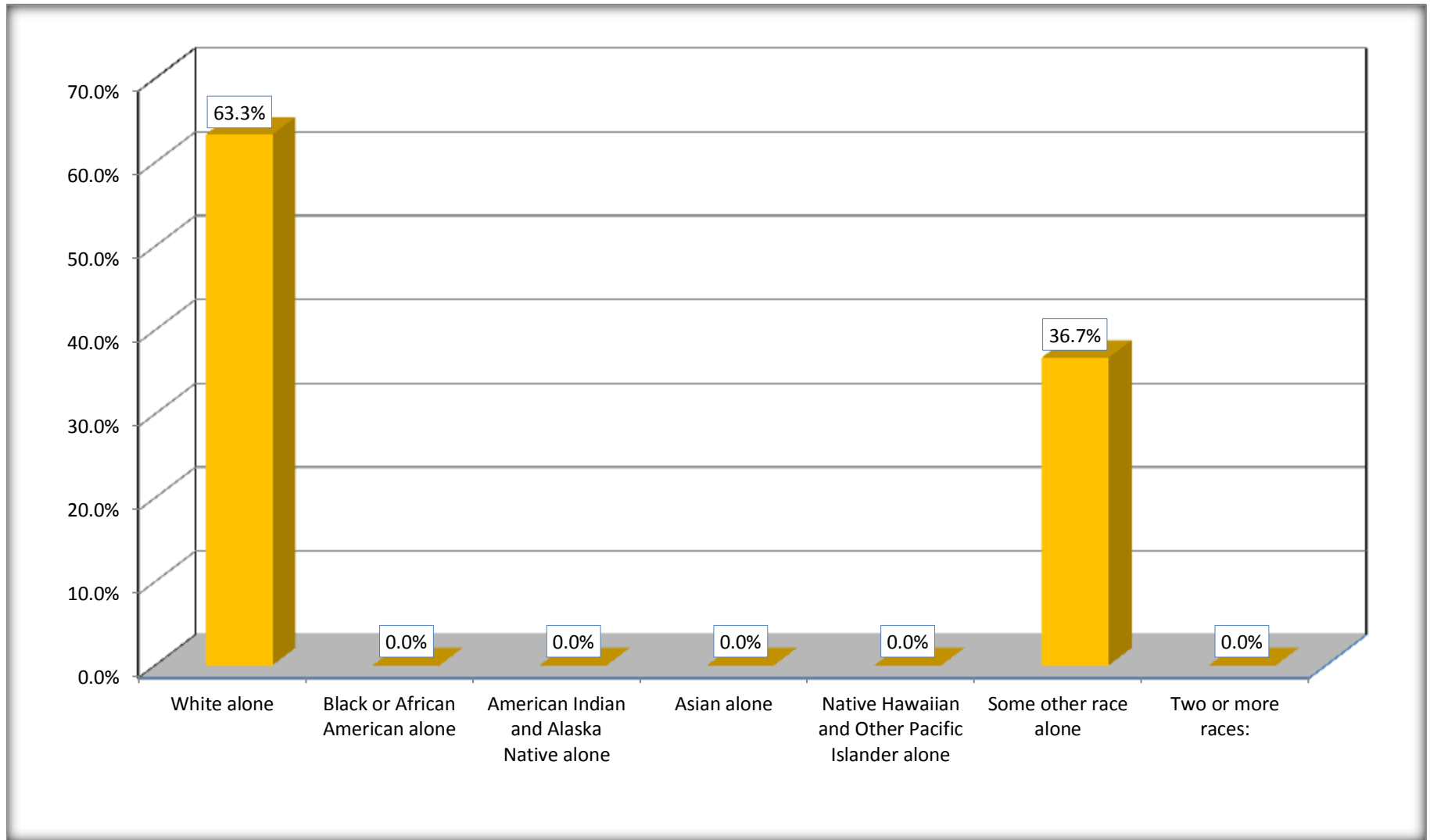
Although the American Community Survey (ACS) produces population, demographic and housing unit estimates, it is the Census Bureau's Population Estimates Program that produces and disseminates the official estimates of the population for the nation, states, counties, cities and towns and estimates of housing units for states and counties.

For information on confidentiality protection, sampling error, nonsampling error, and definitions, see Survey Methodology.

<http://www.census.gov/acs/www/UseData/index.htm>

Hispanic or Latino Origin by Race

Madison Parish, Louisiana



Source: B03002. HISPANIC OR LATINO ORIGIN BY RACE
Data Set: 2008-2012 American Community Survey 5-Year Estimates

B01001. SEX BY AGE

Data Set: 2008-2012 American Community Survey 5-Year Estimates

	Madison Parish, Louisiana					
	African American	Margin of Error (+/-)	% of AA Total	White, Not Hispanic	Margin of Error (+/-)	% of NHW Total
Total:	7,387	96	100.0%	4,387	19	100.0%
Under 18 years	2,117	NC	28.7%	819	NC	18.7%
18 to 64 years	4,633	NC	62.7%	2,790	NC	63.6%
65 years and over	637	NC	8.6%	778	NC	17.7%
Male:	3,715	118	50.3%	2,198	389	50.1%
Under 18 years	1,127	NC	15.3%	459	NC	10.5%
18 to 64 years	2,324	NC	31.5%	1,388	NC	31.6%
65 years and over	264	NC	3.6%	351	NC	8.0%
Female:	3,672	63	49.7%	2,189	412	49.9%
Under 18 years	990	NC	13.4%	360	NC	8.2%
18 to 64 years	2,309	NC	31.3%	1,402	NC	32.0%
65 years and over	373	NC	5.0%	427	NC	9.7%

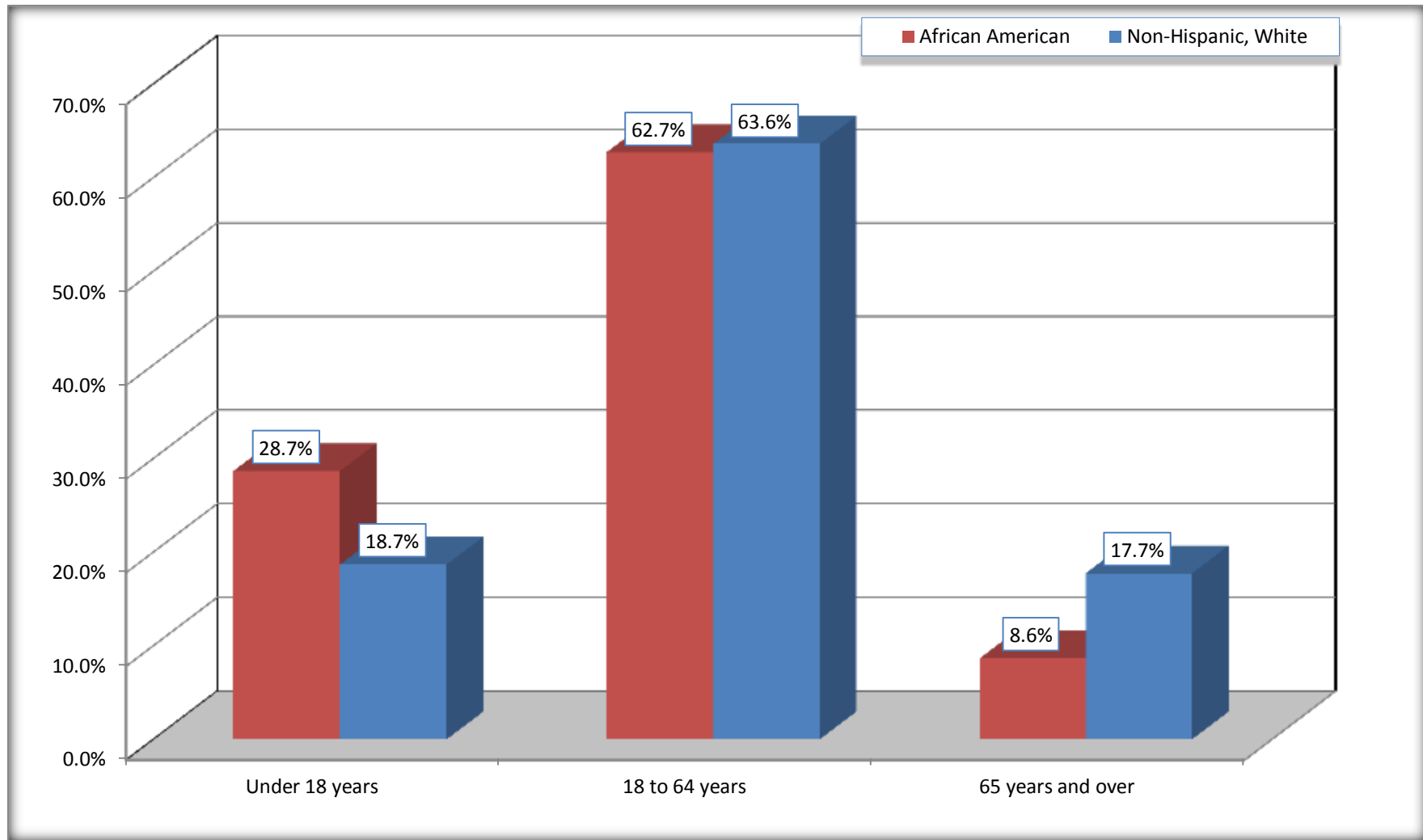
Source: U.S. Census Bureau, 2008-2012 American Community Survey

Although the American Community Survey (ACS) produces population, demographic and housing unit estimates, it is the Census Bureau's Population Estimates Program that produces and disseminates the official estimates of the population for the nation, states, counties, cities and towns and estimates of housing units for states and counties.

For information on confidentiality protection, sampling error, nonsampling error, and definitions, see Survey Methodology.
<http://www.census.gov/acs/www/UseData/index.htm>

Population by Age

Madison Parish, Louisiana



Source: B01001. SEX BY AGE
Data Set: 2008-2012 American Community Survey 5-Year Estimates

B05003. SEX BY AGE BY CITIZENSHIP STATUS

Data Set: 2008-2012 American Community Survey 5-Year Estimates

	Madison Parish, Louisiana					
	African American	Margin of Error (+/-)	% of AA Total by Age	White, Not Hispanic	Margin of Error (+/-)	% of NHW Total by Age
Total:	7,387	96	100.0%	4,387	19	100.0%
Under 18 years:	2,117	NC	100.0%	819	NC	100.0%
Native	2,117	NC	100.0%	819	NC	100.0%
Foreign born:	0	NC	0.0%	0	NC	0.0%
Naturalized U.S. citizen	0	NC	0.0%	0	NC	0.0%
Not a U.S. citizen	0	NC	0.0%	0	NC	0.0%
18 years and over:	5,270	NC	100.0%	3,568	NC	100.0%
Native	5,270	NC	100.0%	3,568	NC	100.0%
Foreign born:	0	NC	0.0%	0	NC	0.0%
Naturalized U.S. citizen	0	NC	0.0%	0	NC	0.0%
Not a U.S. citizen	0	NC	0.0%	0	NC	0.0%
Male:	3,715	118	50.3%	2,198	43	50.1%
Under 18 years:	1,127	84	100.0%	459	43	100.0%
Native	1,127	84	100.0%	459	43	100.0%
Foreign born:	0	19	0.0%	0	19	0.0%
Naturalized U.S. citizen	0	19	0.0%	0	19	0.0%
Not a U.S. citizen	0	19	0.0%	0	19	0.0%
18 years and over:	2,588	80	100.0%	1,739	19	100.0%
Native	2,588	80	100.0%	1,739	19	100.0%
Foreign born:	0	19	0.0%	0	19	0.0%
Naturalized U.S. citizen	0	19	0.0%	0	19	0.0%
Not a U.S. citizen	0	19	0.0%	0	19	0.0%

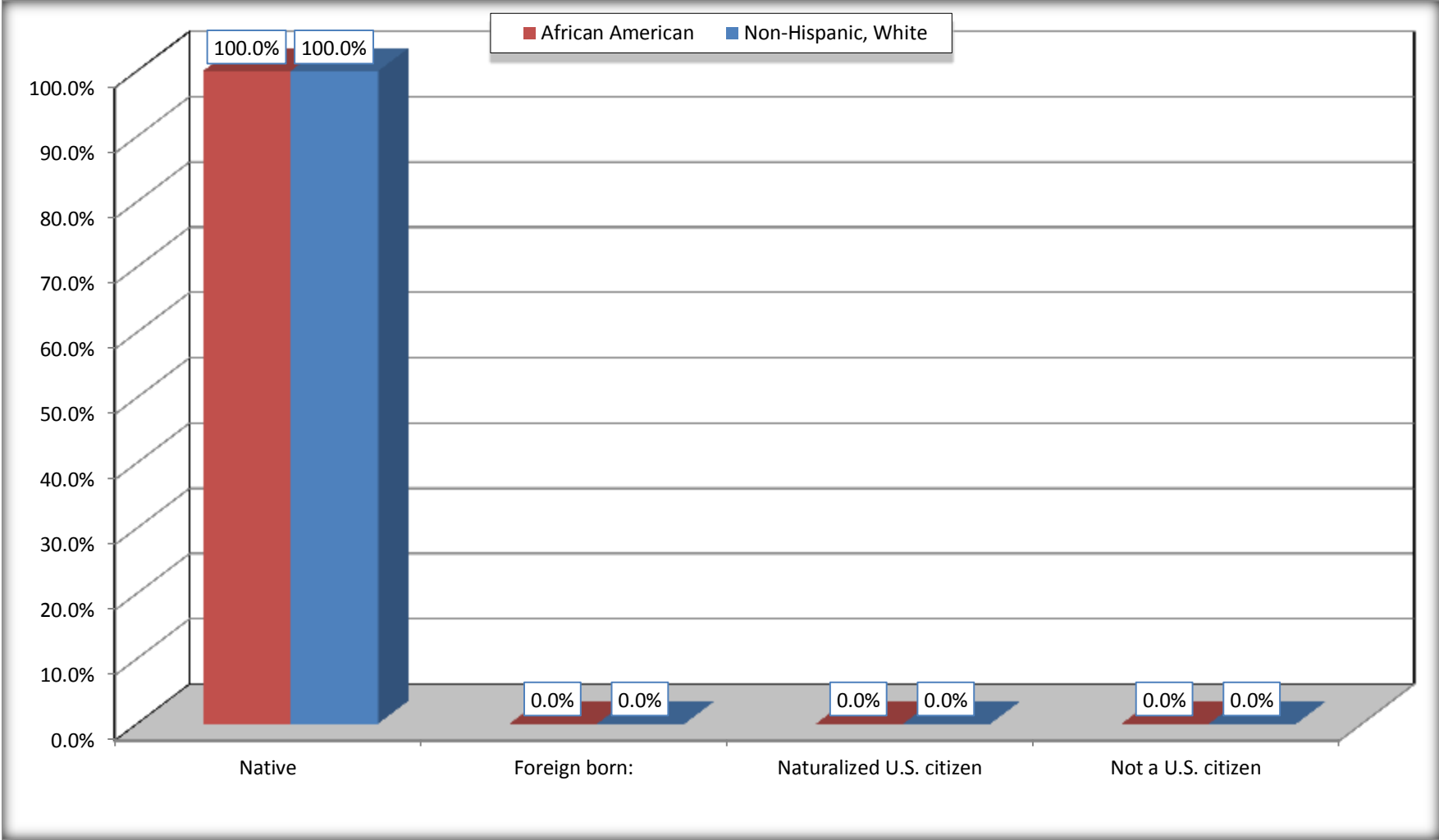
	Madison Parish, Louisiana					
	African American	Margin of Error (+/-)	% of AA by Age	White, Not Hispanic	Margin of Error (+/-)	% of NHW by Age
Female:	3,672	63	49.7%	2,189	43	49.9%
Under 18 years:	990	63	100.0%	360	43	100.0%
Native	990	63	100.0%	360	43	100.0%
Foreign born:	0	19	0.0%	0	19	0.0%
Naturalized U.S. citizen	0	19	0.0%	0	19	0.0%
Not a U.S. citizen	0	19	0.0%	0	19	0.0%
18 years and over:	2,682	7	100.0%	1,829	19	100.0%
Native	2,682	7	100.0%	1,829	19	100.0%
Foreign born:	0	19	0.0%	0	19	0.0%
Naturalized U.S. citizen	0	19	0.0%	0	19	0.0%
Not a U.S. citizen	0	19	0.0%	0	19	0.0%

Source: U.S. Census Bureau, 2008-2012 American Community Survey

For information on confidentiality protection, sampling error, nonsampling error, and definitions, see Survey Methodology.
<http://www.census.gov/acs/www/UseData/index.htm>

Citizenship Status of Voting Age Population (18 and Over)

Madison Parish, Louisiana



Source: B05003. SEX BY AGE BY CITIZENSHIP STATUS
Data Set: 2008-2012 American Community Survey 5-Year Estimates

**B07004. GEOGRAPHICAL MOBILITY IN THE PAST YEAR BY RACE FOR CURRENT RESIDENCE IN THE UNITED STATES - Universe:
POPULATION 1 YEAR AND OVER**

Data Set: 2008-2012 American Community Survey 5-Year Estimates

	Madison Parish, Louisiana					
	African American	Margin of Error (+/-)	% of AA Total	White, Not Hispanic	Margin of Error (+/-)	% of NHW Total
Total:	7,321	108	100.0%	4,361	25	100.0%
Same house 1 year ago	5,979	331	81.7%	3,847	178	88.2%
Moved within same county	801	296	10.9%	136	75	3.1%
Moved from different county within same state	435	139	5.9%	294	168	6.7%
Moved from different state	106	65	1.4%	73	46	1.7%
Moved from abroad	0	19	0.0%	11	24	0.3%

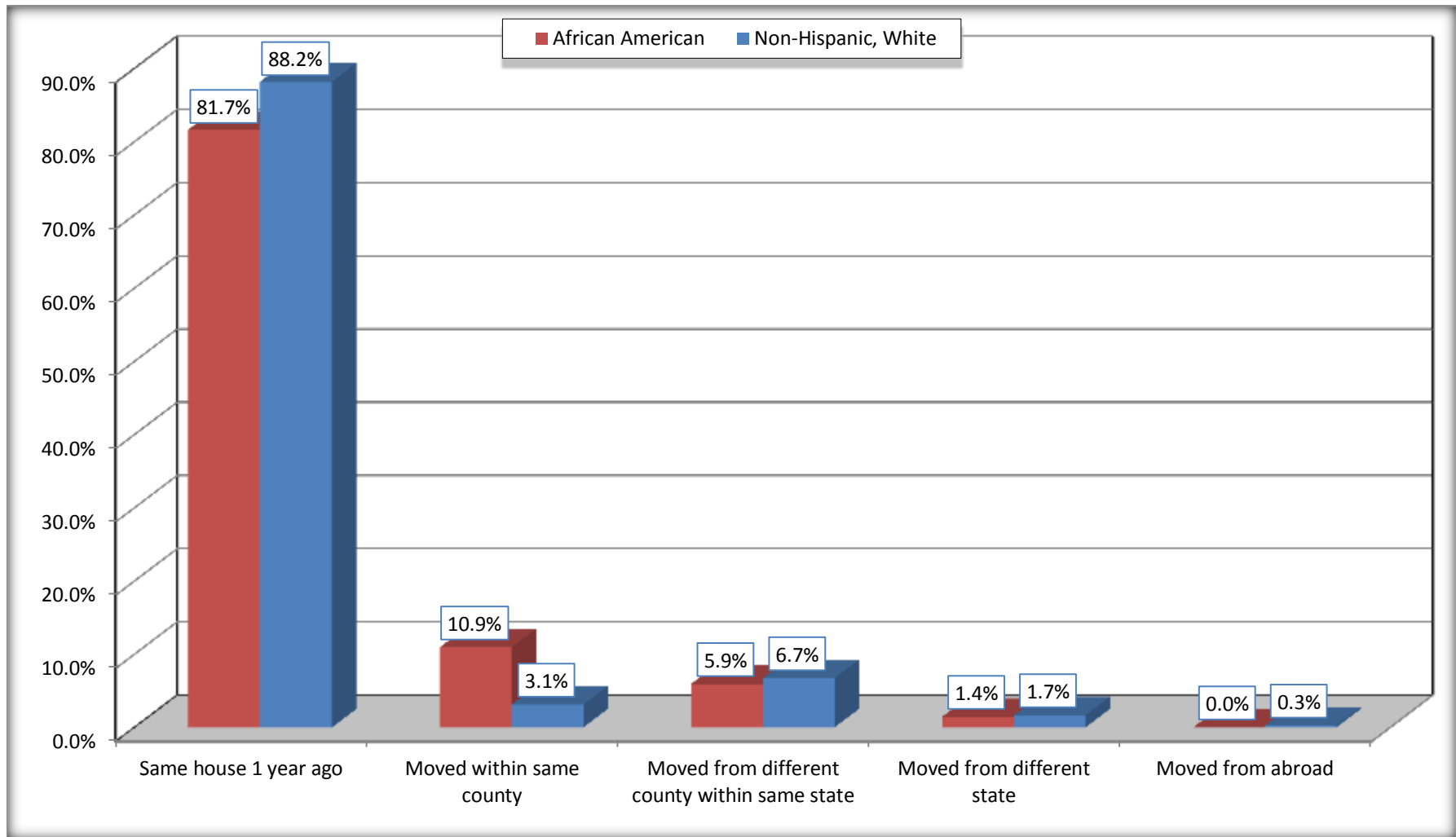
Source: U.S. Census Bureau, 2008-2012 American Community Survey

For information on confidentiality protection, sampling error, nonsampling error, and definitions, see Survey Methodology.

<http://www.census.gov/acs/www/UseData/index.htm>

Geographical Mobility in the Past Year (Population 1 Year and Over)

Madison Parish, Louisiana



Source: B07004. GEOGRAPHICAL MOBILITY IN THE PAST YEAR BY RACE FOR CURRENT RESIDENCE IN THE UNITED STATES - Universe: POPULATION 1 YEAR AND OVER

Data Set: 2008-2012 American Community Survey 5-Year Estimates

B08105. MEANS OF TRANSPORTATION TO WORK - Universe: WORKERS 16 YEARS AND OVER

Data Set: 2008-2012 American Community Survey 5-Year Estimates

	Madison Parish, Louisiana					
	African American	Margin of Error (+/-)	% of AA Total	White, Not Hispanic	Margin of Error (+/-)	% of NHW Total
Total:	2226	242	100.0%	1681	173	100.0%
Car, truck, or van - drove alone	1848	265	83.0%	1453	161	86.4%
Car, truck, or van - carpooled	163	96	7.3%	159	74	9.5%
Public transportation (excluding taxicab)	21	29	0.9%	11	25	0.7%
Walked	137	94	6.2%	10	15	0.6%
Taxicab, motorcycle, bicycle, or other means	42	41	1.9%	9	18	0.5%
Worked at home	15	25	0.7%	39	38	2.3%

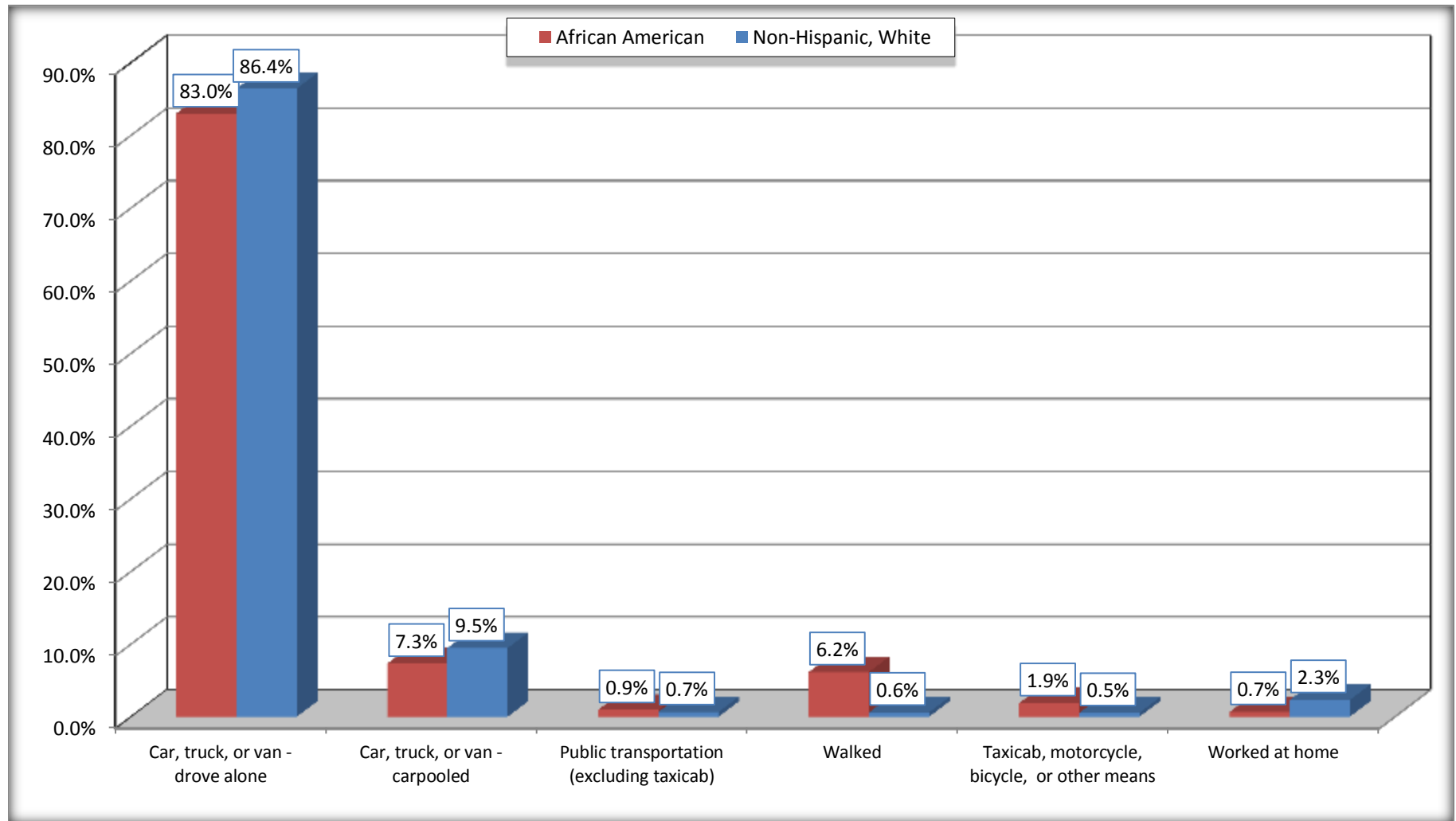
Source: U.S. Census Bureau, 2008-2012 American Community Survey

For information on confidentiality protection, sampling error, nonsampling error, and definitions, see Survey Methodology.

<http://www.census.gov/acs/www/UseData/index.htm>

Means of Transportation to Work (Workers 16 Years and Over)

Madison Parish, Louisiana



Source: B08105. MEANS OF TRANSPORTATION TO WORK - Universe: WORKERS 16 YEARS AND OVER
Data Set: 2008-2012 American Community Survey 5-Year Estimates

B11002. HOUSEHOLD TYPE BY RELATIVES AND NONRELATIVES FOR POPULATION IN HOUSEHOLDS

Data Set: 2008-2012 American Community Survey 5-Year Estimates

	Madison Parish, Louisiana					
	African American	Margin of Error (+/-)	% of AA Total	White, Not Hispanic	Margin of Error (+/-)	% of NHW Total
Total:	6497	243	100.0%	3935	257	100.0%
In family households	5539	292	85.3%	3318	280	84.3%
In nonfamily households	958	165	14.7%	617	131	15.7%

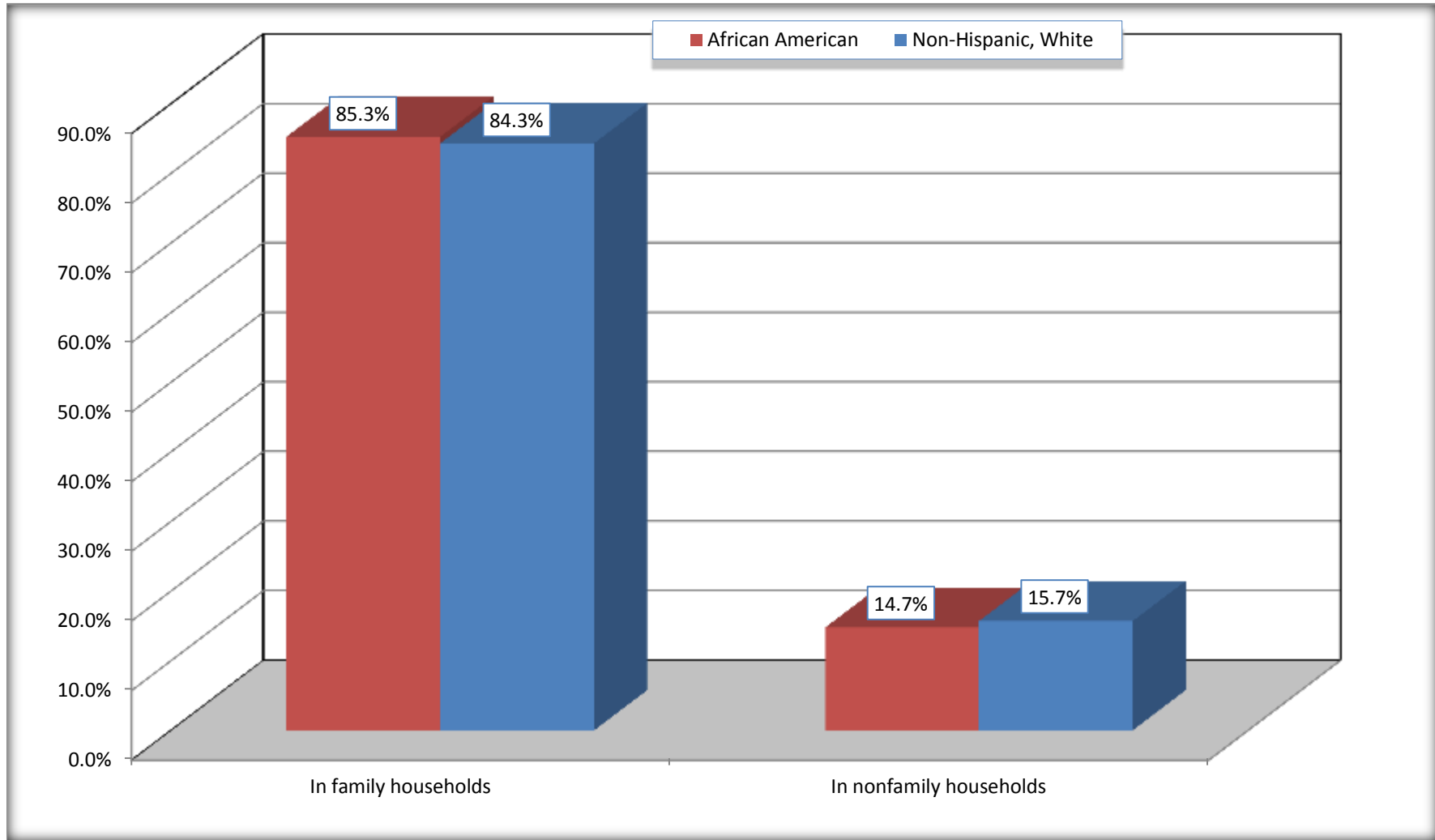
Source: U.S. Census Bureau, 2008-2012 American Community Survey

For information on confidentiality protection, sampling error, nonsampling error, and definitions, see Survey Methodology.

<http://www.census.gov/acs/www/UseData/index.htm>

Household Type for Population in Households

Madison Parish, Louisiana



Source: B11002. HOUSEHOLD TYPE BY RELATIVES AND NONRELATIVES FOR POPULATION IN HOUSEHOLDS
Data Set: 2008-2012 American Community Survey 5-Year Estimates

B12002. MARITAL STATUS FOR THE POPULATION 15 YEARS AND OVER

Data Set: 2008-2012 American Community Survey 5-Year Estimates

	Madison Parish, Louisiana					
	African American	Margin of Error (+/-)	% of AA Total	White, Not Hispanic	Margin of Error (+/-)	% of NHW Total
Total:	5,649	85	100.0%	3,733	19	100.0%
Never married	2,924	NC	51.8%	951	NC	25.5%
Now married (except separated)	1,393	NC	24.7%	1,828	NC	49.0%
Separated	294	NC	5.2%	93	NC	2.5%
Widowed	412	NC	7.3%	389	NC	10.4%
Divorced	626	NC	11.1%	472	NC	12.6%
Male:	2,862	108	50.7%	1,853	43	49.6%
Never married	1,653	177	29.3%	575	100	15.4%
Now married (except separated)	695	171	12.3%	974	104	26.1%
Separated	147	96	2.6%	6	11	0.2%
Widowed	105	72	1.9%	113	49	3.0%
Divorced	262	106	4.6%	185	61	5.0%
Female:	2,787	63	49.3%	1,880	43	50.4%
Never married	1,271	139	22.5%	376	121	10.1%
Now married (except separated)	698	161	12.4%	854	152	22.9%
Separated	147	75	2.6%	87	56	2.3%
Widowed	307	73	5.4%	276	69	7.4%
Divorced	364	95	6.4%	287	80	7.7%

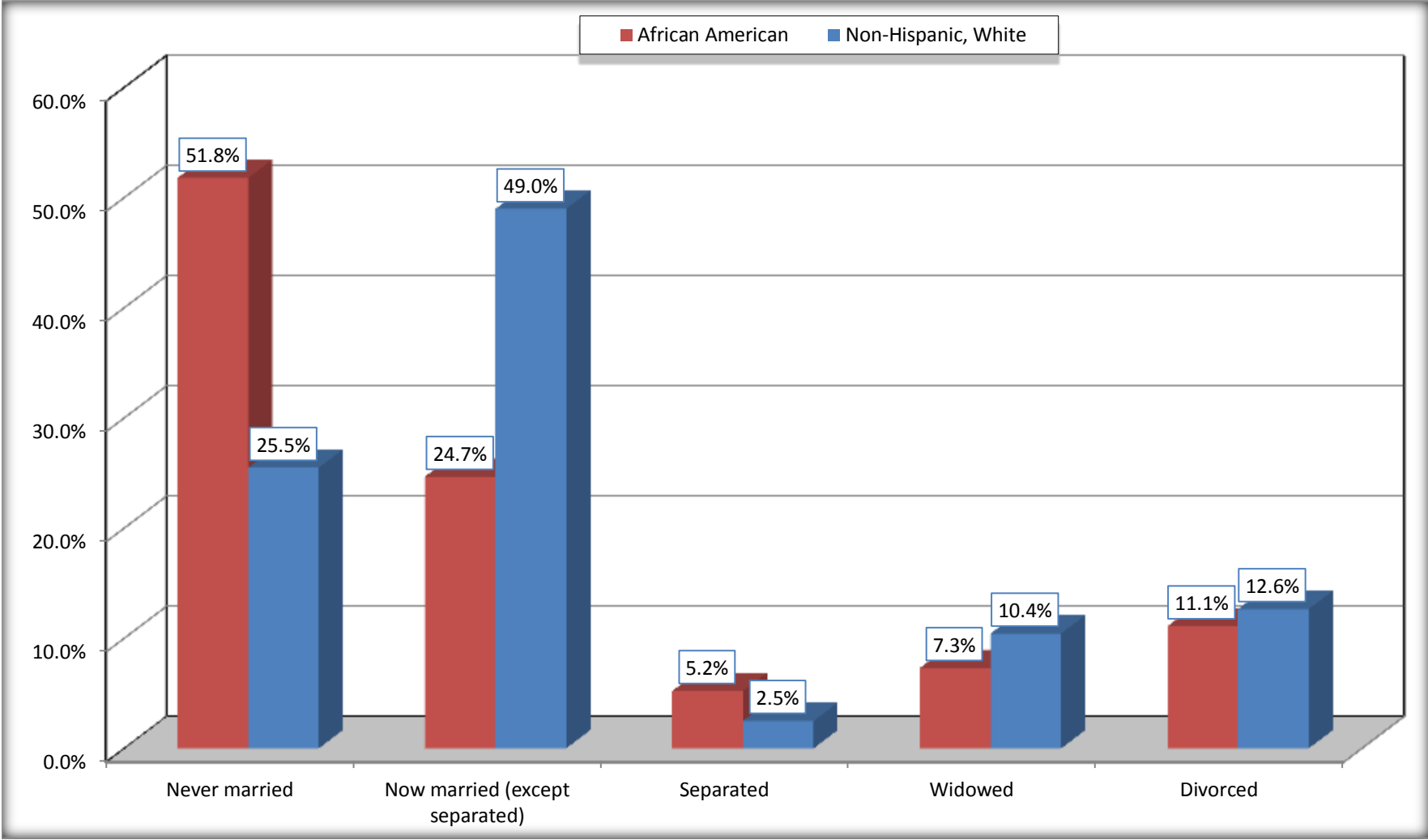
Source: U.S. Census Bureau, 2008-2012 American Community Survey

For information on confidentiality protection, sampling error, nonsampling error, and definitions, see Survey Methodology.

<http://www.census.gov/acs/www/UseData/index.htm>

Marital Status for the Population 15 Years and Over

Madison Parish, Louisiana



Source: B12002. MARITAL STATUS FOR THE POPULATION 15 YEARS AND OVER
Data Set: 2008-2012 American Community Survey 5-Year Estimates

C15002. SEX BY EDUCATIONAL ATTAINMENT FOR THE POPULATION 25 YEARS AND OVER

Data Set: 2008-2012 American Community Survey 5-Year Estimates

	Madison Parish, Louisiana					
	African American	Margin of Error (+/-)	% of AA Total	White, Not Hispanic	Margin of Error (+/-)	% of NHW Total
Total:	4,445	85	100.0%	3,242	19	100.0%
Less than high school diploma	1,259	NC	28.3%	680	NC	21.0%
High school graduate, GED, or alternative	1,886	NC	42.4%	1,208	NC	37.3%
Some college or associate's degree	790	NC	17.8%	957	NC	29.5%
Bachelor's degree or higher	510	NC	11.5%	397	NC	12.2%
Male:	2,143	80	48.2%	1,568	19	48.4%
Less than high school diploma	624	159	14.0%	303	95	9.3%
High school graduate, GED, or alternative	977	143	22.0%	653	122	20.1%
Some college or associate's degree	351	109	7.9%	410	101	12.6%
Bachelor's degree or higher	191	100	4.3%	202	82	6.2%
Female:	2,302	7	51.8%	1,674	19	51.6%
Less than high school diploma	635	121	14.3%	377	103	11.6%
High school graduate, GED, or alternative	909	126	20.4%	555	106	17.1%
Some college or associate's degree	439	109	9.9%	547	127	16.9%
Bachelor's degree or higher	319	118	7.2%	195	66	6.0%

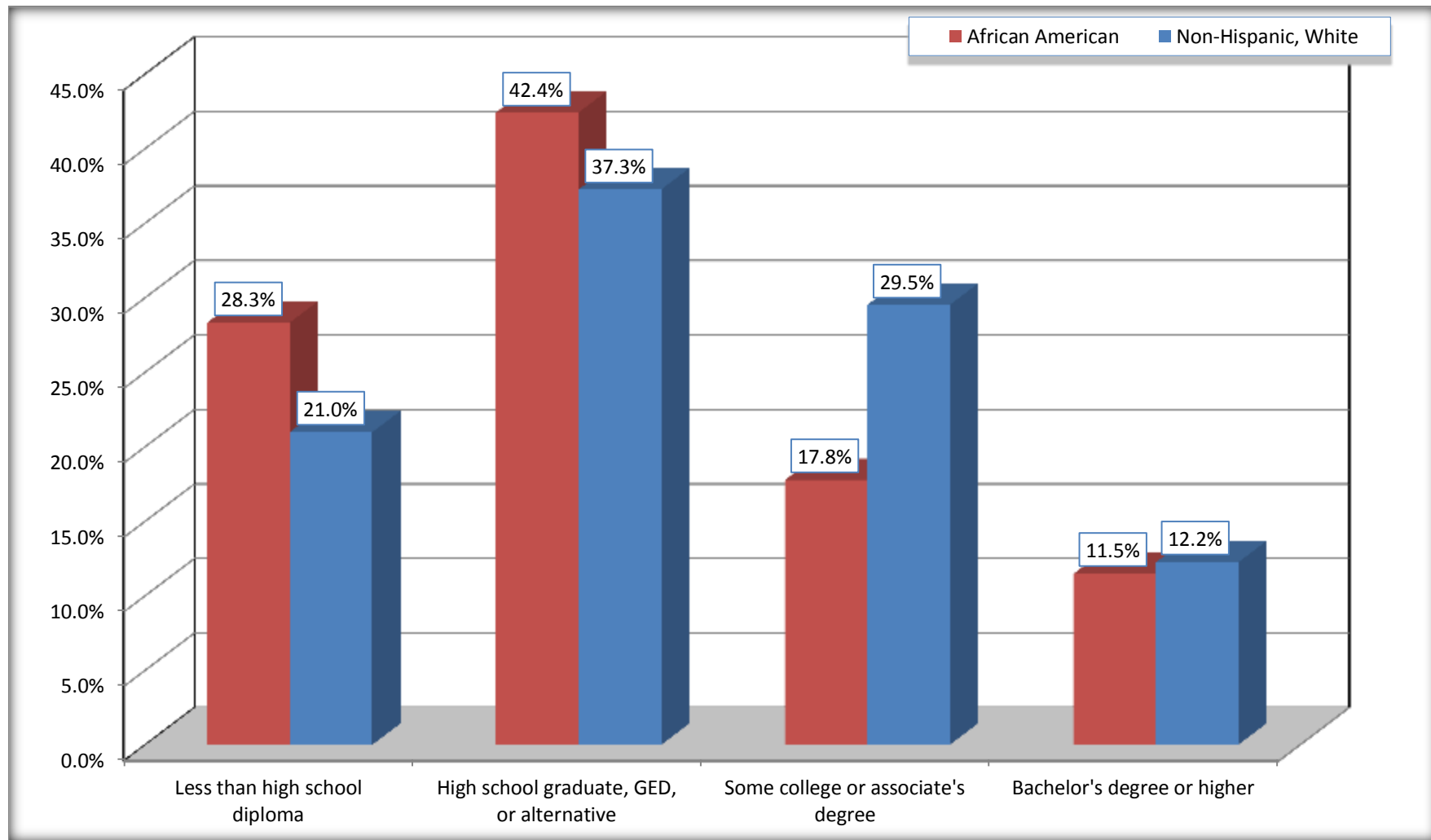
Source: U.S. Census Bureau, 2008-2012 American Community Survey

For information on confidentiality protection, sampling error, nonsampling error, and definitions, see Survey Methodology.

<http://www.census.gov/acs/www/UseData/index.htm>

Educational Attainment for the Population 25 Years and Older

Madison Parish, Louisiana



Source: C15002. SEX BY EDUCATIONAL ATTAINMENT FOR THE POPULATION 25 YEARS AND OVER
Data Set: 2008-2012 American Community Survey 5-Year Estimates

B17010. POVERTY STATUS IN THE PAST 12 MONTHS OF FAMILIES BY FAMILY TYPE BY PRESENCE OF RELATED CHILDREN UNDER 18 YEARS

Data Set: 2008-2012 American Community Survey 5-Year Estimates

	Madison Parish, Louisiana					
	African American	Margin of Error (+/-)	% of AA Total	White, Not Hispanic	Margin of Error (+/-)	% of NHW Total
Total:	1,406	163	100.0%	1,094	122	100.0%
Income in the past 12 months below poverty level:	493	135	35.1%	211	80	19.3%
Married-couple family:	88	63	6.3%	130	66	11.9%
With related children under 18 years	41	43	2.9%	71	45	6.5%
Other family:	405	123	28.8%	81	52	7.4%
Male householder, no wife present	54	51	3.8%	0	19	0.0%
With related children under 18 years	26	33	1.8%	0	19	0.0%
Female householder, no husband present	351	112	25.0%	81	52	7.4%
With related children under 18 years	340	109	24.2%	67	51	6.1%
Income in the past 12 months at or above poverty level:	913	153	64.9%	883	119	80.7%
Married-couple family:	460	133	32.7%	765	114	69.9%
With related children under 18 years	175	78	12.4%	259	89	23.7%
Other family:	453	112	32.2%	118	57	10.8%
Male householder, no wife present	93	64	6.6%	71	42	6.5%
With related children under 18 years	74	60	5.3%	43	32	3.9%
Female householder, no husband present	360	85	25.6%	47	37	4.3%
With related children under 18 years	194	71	13.8%	12	11	1.1%

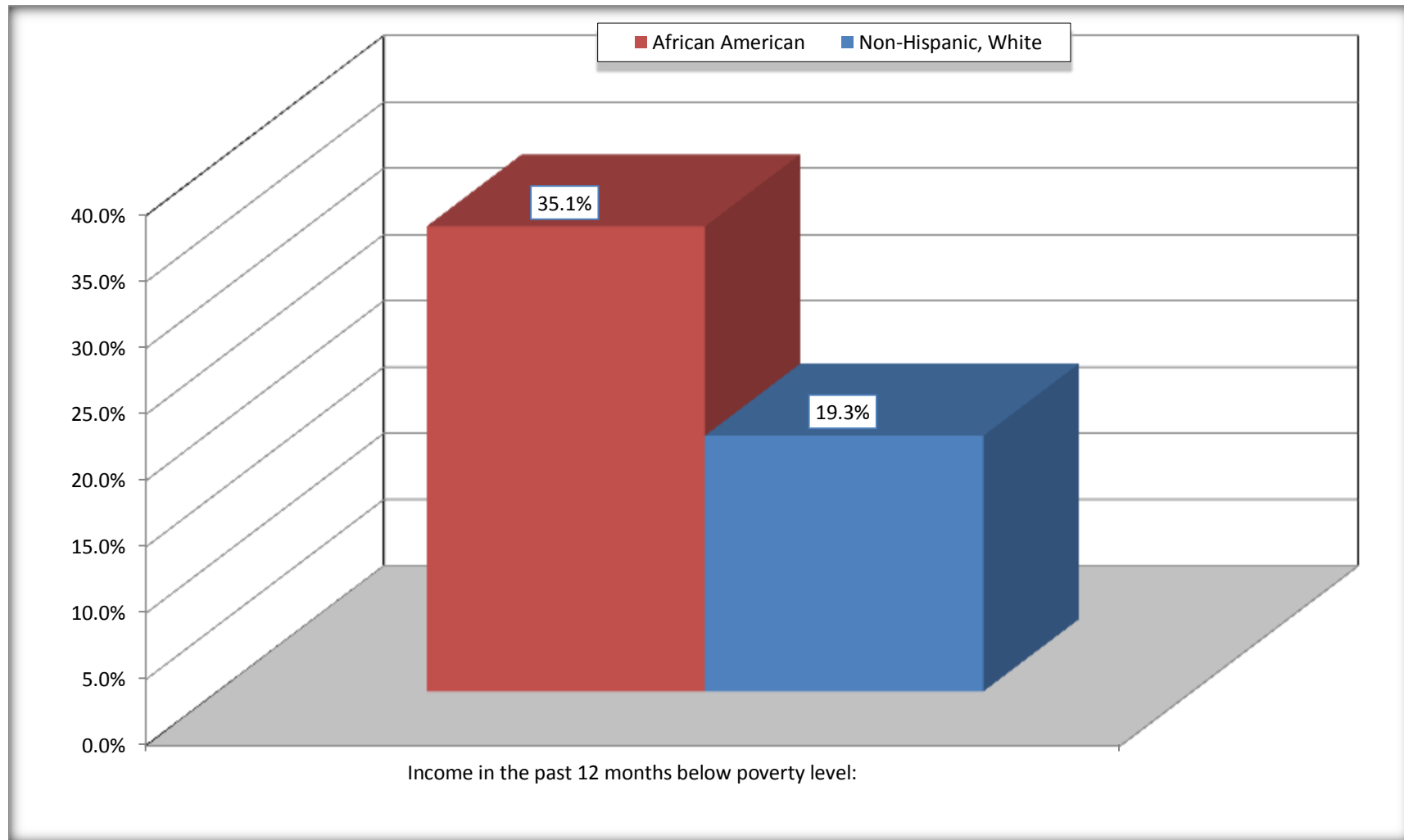
Source: U.S. Census Bureau, 2008-2012 American Community Survey

For information on confidentiality protection, sampling error, nonsampling error, and definitions, see Survey Methodology.

<http://www.census.gov/acs/www/UseData/index.htm>

Family Households Below Poverty in the Past 12 Months

Madison Parish, Louisiana

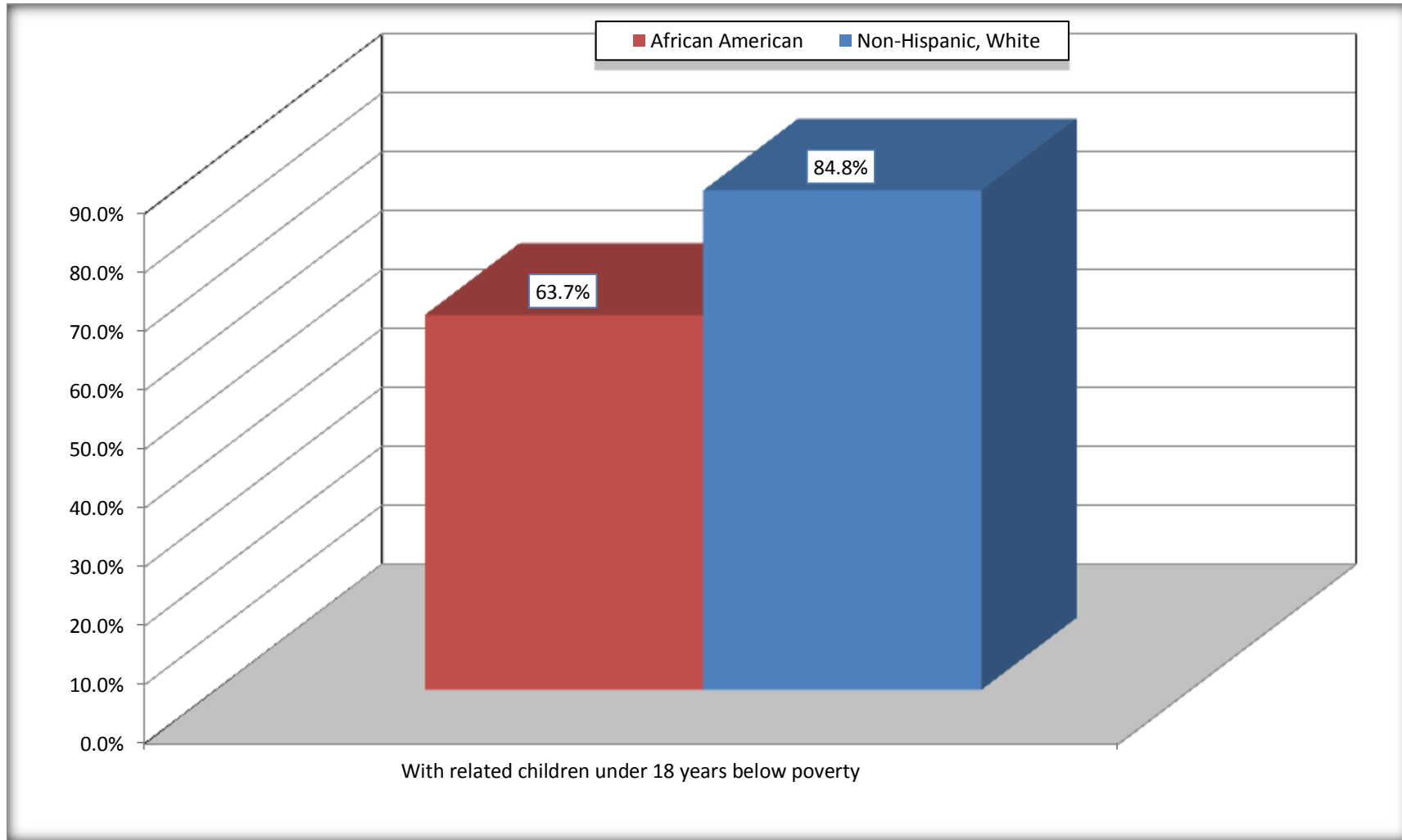


Source: B17010. POVERTY STATUS IN THE PAST 12 MONTHS OF FAMILIES BY FAMILY TYPE BY PRESENCE OF RELATED CHILDREN UNDER 18 YEARS

Data Set: 2008-2012 American Community Survey 5-Year Estimates

Female-headed Households with Related Children Below Poverty in the Past 12 Months

Madison Parish, Louisiana



Source: B17010. POVERTY STATUS IN THE PAST 12 MONTHS OF FAMILIES BY FAMILY TYPE BY PRESENCE OF RELATED CHILDREN UNDER 18 YEARS

Data Set: 2008-2012 American Community Survey 5-Year Estimates

B17020 POVERTY STATUS IN THE PAST 12 MONTHS BY AGE - Universe: POPULATION FOR WHOM POVERTY STATUS IS DETERMINED

Data Set: 2008-2012 American Community Survey 5-Year Estimates

	Madison Parish, Louisiana					
	African American	Margin of Error (+/-)	% of AA By Age	White, Not Hispanic	Margin of Error (+/-)	% of NHW By Age
Total:	6,639	205	100.0%	3,908	216	100.0%
Income in the past 12 months below poverty level:	2,901	408	43.7%	925	247	23.7%
Under 18 years	1,206	NC	61.5%	272	NC	33.5%
18 to 64 years	1,478	280	36.0%	530	163	22.3%
65 years and over	217	NC	37.5%	123	NC	17.1%
Income in the past 12 months at or above poverty level:	3,738	419	56.3%	2,983	294	76.3%
Under 18 years	754	NC	38.5%	540	NC	66.5%
18 to 64 years	2,623	299	64.0%	1,847	214	77.7%
65 years and over	361	NC	62.5%	596	NC	82.9%

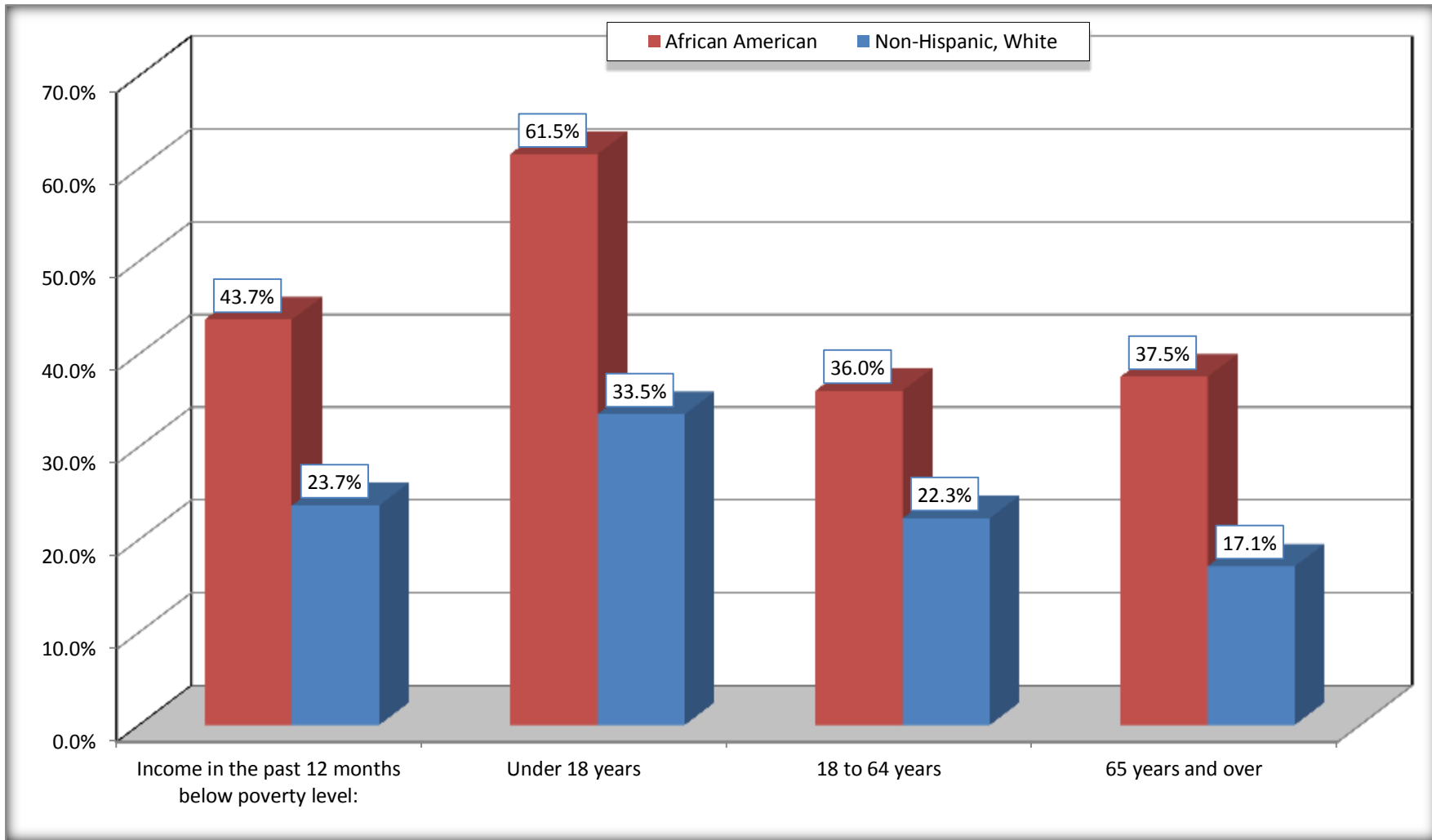
Source: U.S. Census Bureau, 2008-2012 American Community Survey

For information on confidentiality protection, sampling error, nonsampling error, and definitions, see Survey Methodology.

<http://www.census.gov/acs/www/UseData/index.htm>

Population Below Poverty in the Past 12 Months

Madison Parish, Louisiana



Source: B17020 POVERTY STATUS IN THE PAST 12 MONTHS BY AGE - Universe: POPULATION FOR WHOM POVERTY STATUS IS DETERMINED
Data Set: 2008-2012 American Community Survey 5-Year Estimates

B19001. HOUSEHOLD INCOME IN THE PAST 12 MONTHS (IN 2010 INFLATION-ADJUSTED DOLLARS)

Data Set: 2008-2012 American Community Survey 5-Year Estimates

	Madison Parish, Louisiana					
	African American	Margin of Error (+/-)	% of AA Total	White, Not Hispanic	Margin of Error (+/-)	% of NHW Total
Total:	2,358	161	100.0%	1,652	132	100.0%
Less than \$ 10,000	699	151	29.6%	195	73	11.8%
\$ 10,000 to \$ 14,999	231	77	9.8%	126	45	7.6%
\$ 15,000 to \$ 24,999	454	NC	19.3%	319	NC	19.3%
\$ 25,000 to \$ 34,999	353	NC	15.0%	193	NC	11.7%
\$ 35,000 to \$ 49,999	337	NC	14.3%	179	NC	10.8%
\$ 50,000 to \$ 74,999	170	NC	7.2%	272	NC	16.5%
\$ 75,000 to \$ 99,999	13	14	0.6%	186	63	11.3%
\$ 100,000 to \$ 149,999	79	NC	3.4%	121	NC	7.3%
\$ 150,000 to \$ 199,999	3	6	0.1%	42	35	2.5%
\$ 200,000 or more	19	18	0.8%	19	20	1.2%

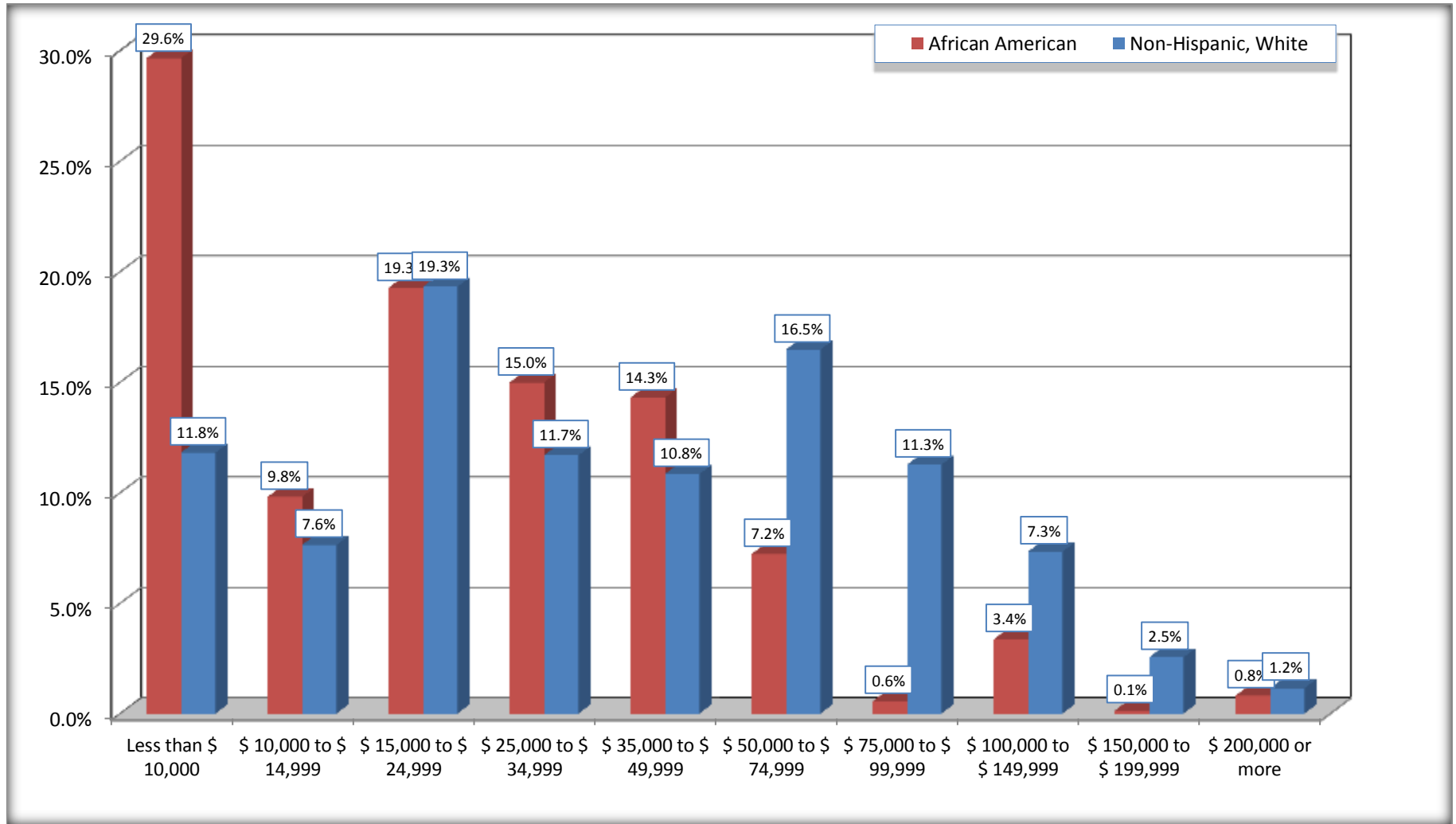
Source: U.S. Census Bureau, 2008-2012 American Community Survey

For information on confidentiality protection, sampling error, nonsampling error, and definitions, see Survey Methodology.

<http://www.census.gov/acs/www/UseData/index.htm>

Household Income in the Past 12 Months

Madison Parish, Louisiana



Source: B19001. HOUSEHOLD INCOME IN THE PAST 12 MONTHS (IN 2010 INFLATION-ADJUSTED DOLLARS)
Data Set: 2008-2012 American Community Survey 5-Year Estimates

B19013. MEDIAN HOUSEHOLD INCOME IN THE PAST 12 MONTHS (IN 2010 INFLATION-ADJUSTED DOLLARS)

Data Set: 2008-2012 American Community Survey 5-Year Estimates

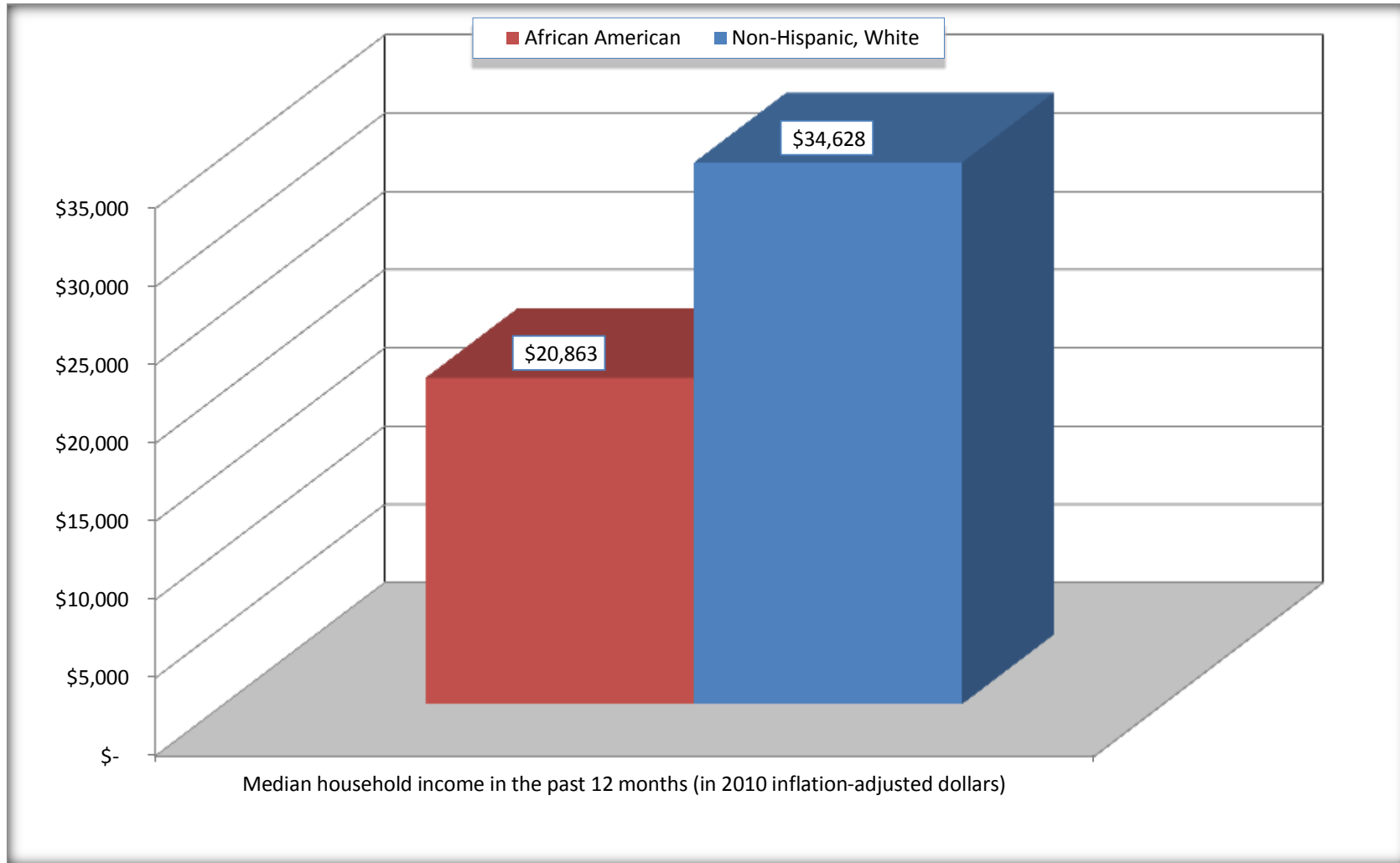
	Madison Parish, Louisiana			
	African American	Margin of Error (+/-)	White, Not Hispanic	Margin of Error (+/-)
Median household income in the past 12 months (in 2010 inflation-adjusted dollars)	\$ 20,863	\$ 2,531	\$ 34,628	\$ 6,333

Source: U.S. Census Bureau, 2008-2012 American Community Survey

For information on confidentiality protection, sampling error, nonsampling error, and definitions, see Survey Methodology.
<http://www.census.gov/acs/www/UseData/index.htm>

Median Household Income in the Past 12 Months

Madison Parish, Louisiana



Source: B19013. MEDIAN HOUSEHOLD INCOME IN THE PAST 12 MONTHS (IN 2010 INFLATION-ADJUSTED DOLLARS)
Data Set: 2008-2012 American Community Survey 5-Year Estimates

B19101. FAMILY INCOME IN THE PAST 12 MONTHS (IN 2010 INFLATION-ADJUSTED DOLLARS)

Data Set: 2008-2012 American Community Survey 5-Year Estimates

	Madison Parish, Louisiana					
	African American	Margin of Error (+/-)	% of AA Total	White, Not Hispanic	Margin of Error (+/-)	% of NHW Total
Total:	1,406	163	100.0%	1,094	122	100.0%
Less than \$ 10,000	254	96	18.1%	123	62	11.2%
\$ 10,000 to \$ 14,999	101	51	7.2%	42	38	3.8%
\$ 15,000 to \$ 24,999	238	NC	16.9%	157	NC	14.4%
\$ 25,000 to \$ 34,999	289	NC	20.6%	123	NC	11.2%
\$ 35,000 to \$ 49,999	303	NC	21.6%	135	NC	12.3%
\$ 50,000 to \$ 74,999	115	NC	8.2%	224	NC	20.5%
\$ 100,000 to \$ 149,999	76	NC	5.4%	109	NC	10.0%
\$ 150,000 to \$ 199,999	3	6	0.2%	42	35	3.8%
\$ 200,000 or more	19	18	1.4%	19	20	1.7%

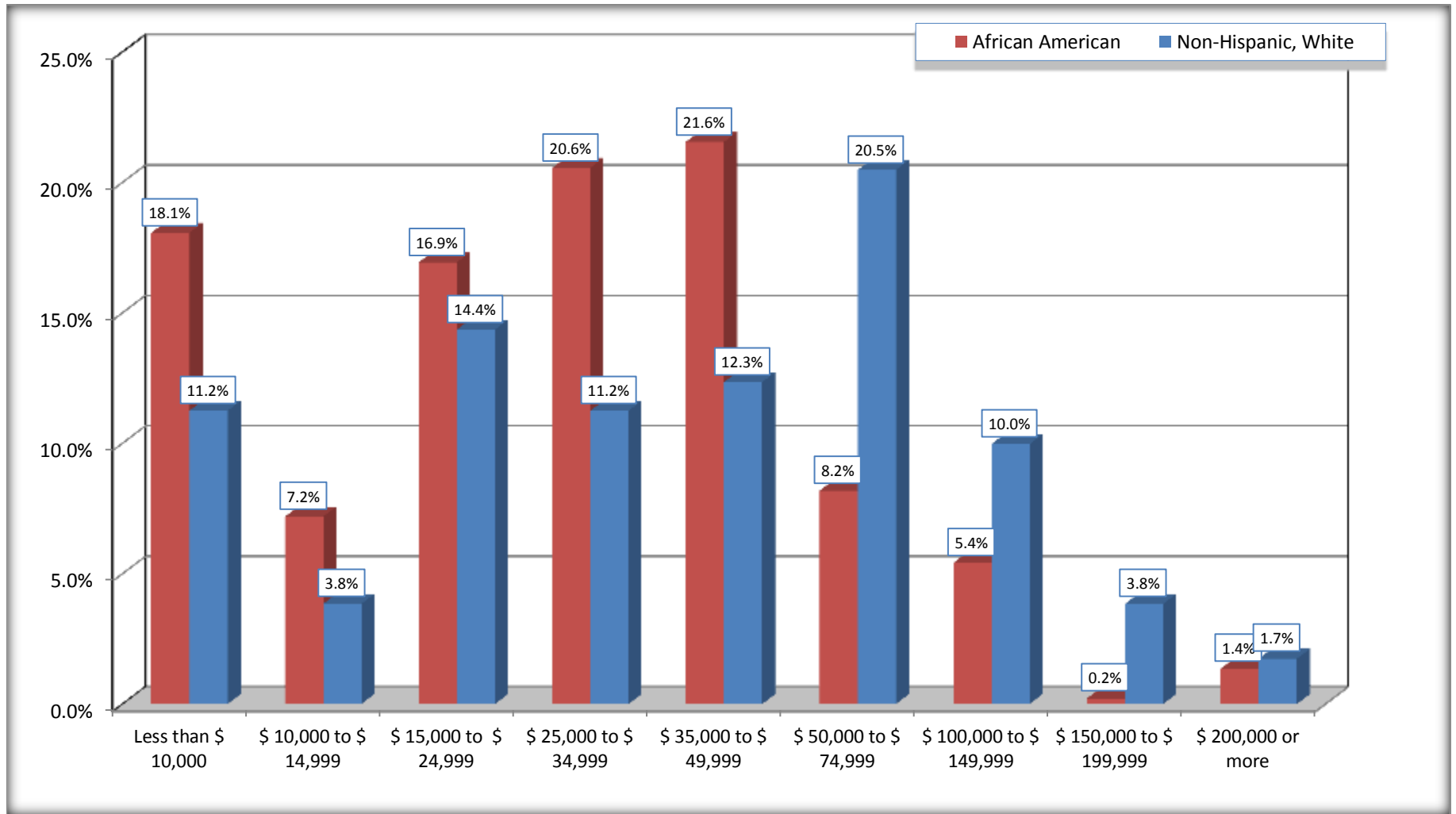
Source: U.S. Census Bureau, 2008-2012 American Community Survey

For information on confidentiality protection, sampling error, nonsampling error, and definitions, see Survey Methodology.

<http://www.census.gov/acs/www/UseData/index.htm>

Family Income in the Past 12 Months

Madison Parish, Louisiana



Source: B19101. FAMILY INCOME IN THE PAST 12 MONTHS (IN 2010 INFLATION-ADJUSTED DOLLARS)
Data Set: 2008-2012 American Community Survey 5-Year Estimates

B19113. MEDIAN FAMILY INCOME IN THE PAST 12 MONTHS (IN 2010 INFLATION-ADJUSTED DOLLARS)

Data Set: 2008-2012 American Community Survey 5-Year Estimates

	Madison Parish, Louisiana			
	African American	Margin of Error (+/-)	White, Not Hispanic	Margin of Error (+/-)
Median family income in the past 12 months (in 2010 inflation-adjusted dollars)	\$ 26,923	\$ 3,266	\$ 45,313	\$ 8,274

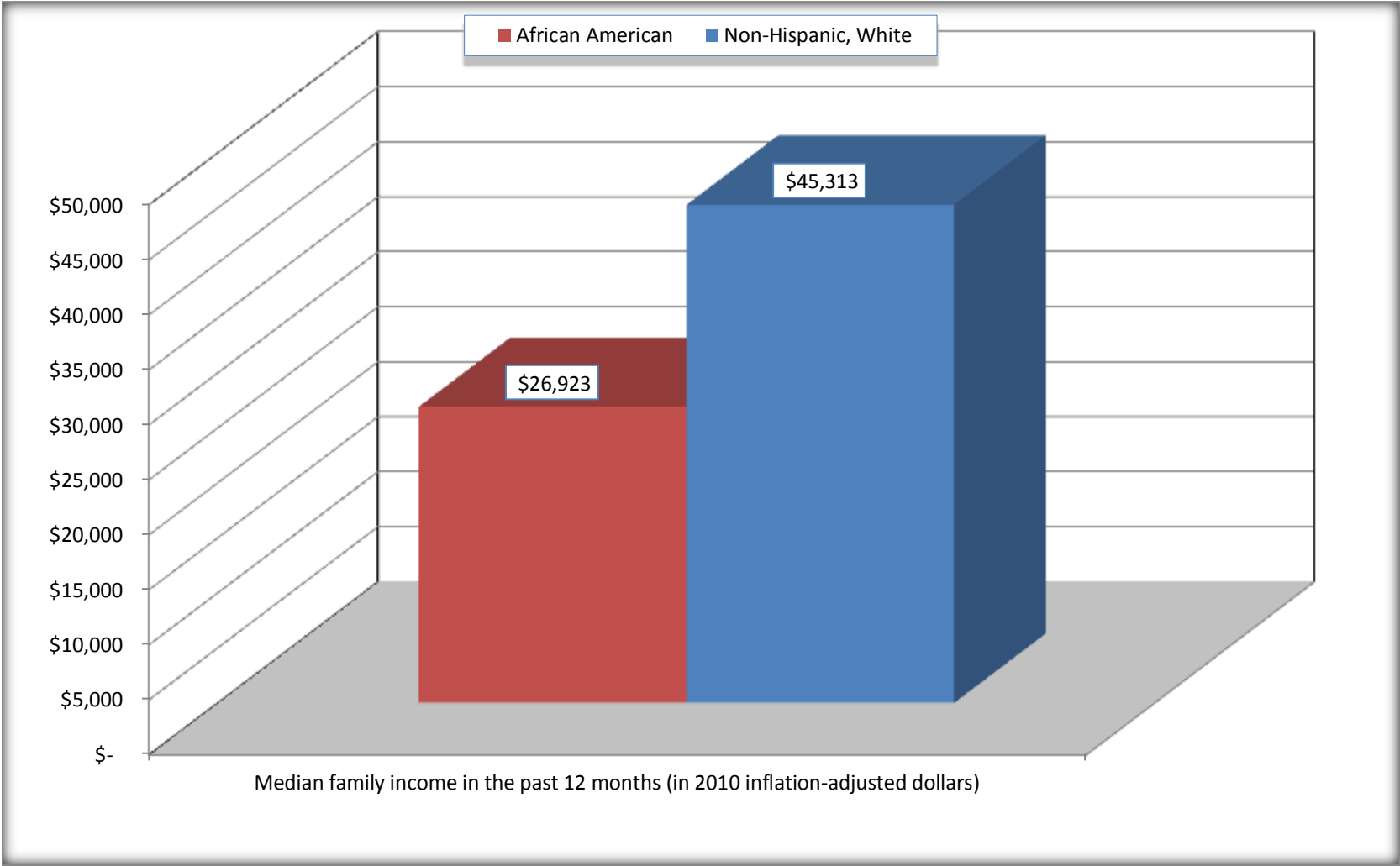
Source: U.S. Census Bureau, 2008-2012 American Community Survey

For information on confidentiality protection, sampling error, nonsampling error, and definitions, see Survey Methodology.

<http://www.census.gov/acs/www/UseData/index.htm>

Median Family Income in the Past 12 Months

Madison Parish, Louisiana



Source: B19113. MEDIAN FAMILY INCOME IN THE PAST 12 MONTHS (IN 2010 INFLATION-ADJUSTED DOLLARS)
Data Set: 2008-2012 American Community Survey 5-Year Estimates

B19202. MEDIAN NONFAMILY HOUSEHOLD INCOME IN THE PAST 12 MONTHS (IN 2010 INFLATION-ADJUSTED DOLLARS)

Data Set: 2008-2012 American Community Survey 5-Year Estimates

	Madison Parish, Louisiana			
	African American	Margin of Error (+/-)	White, Not Hispanic	Margin of Error (+/-)
Median nonfamily household income in the past 12 months (in 2010 inflation-adjusted dollars)	\$ 11,140	\$ 3,308	\$ 19,702	\$ 5,649

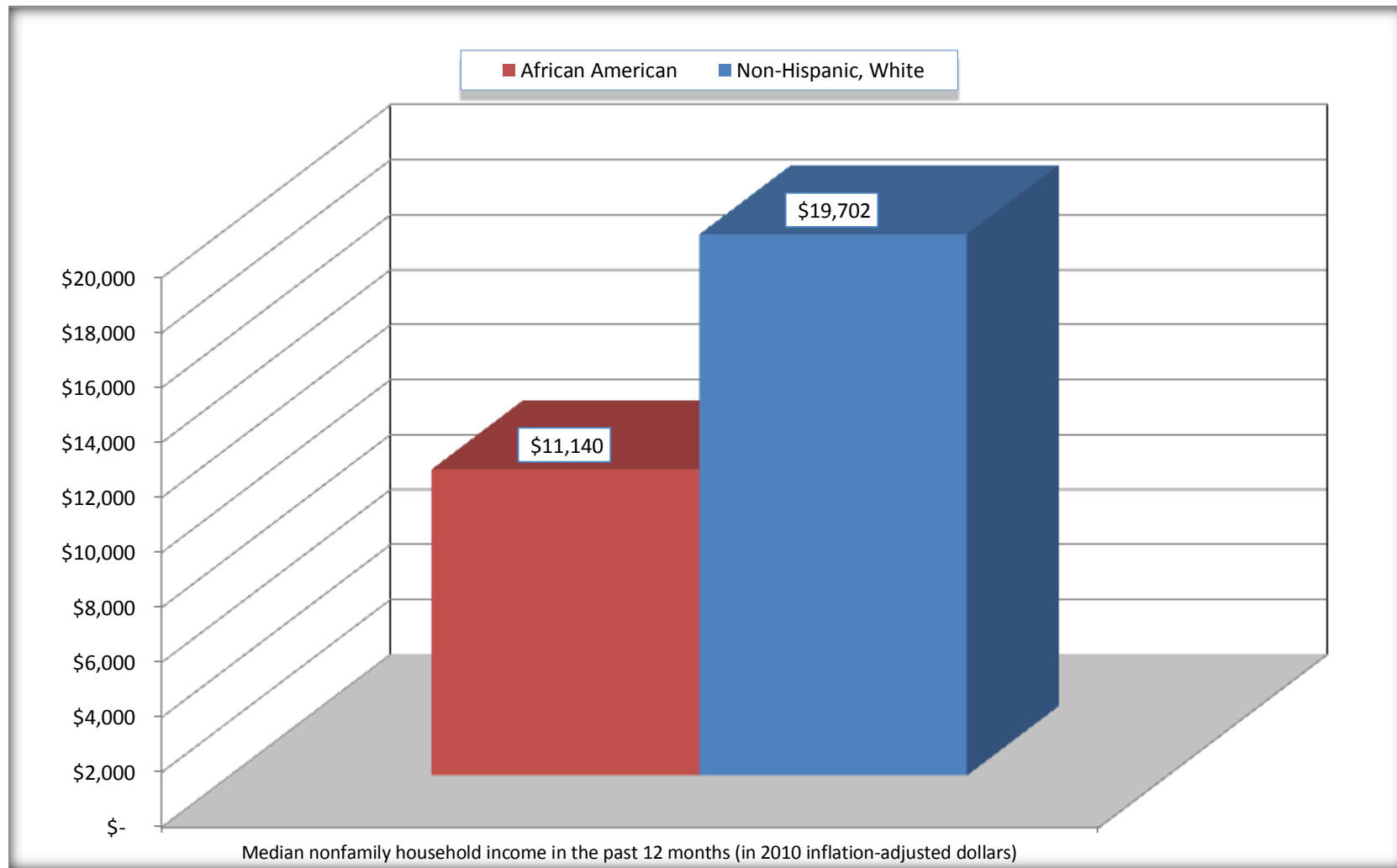
Source: U.S. Census Bureau, 2008-2012 American Community Survey

For information on confidentiality protection, sampling error, nonsampling error, and definitions, see Survey Methodology.

<http://www.census.gov/acs/www/UseData/index.htm>

Median Non-Family Income in the Past 12 Months

Madison Parish, Louisiana



Source: B19202. MEDIAN NONFAMILY HOUSEHOLD INCOME IN THE PAST 12 MONTHS (IN 2010 INFLATION-ADJUSTED DOLLARS)
Data Set: 2008-2012 American Community Survey 5-Year Estimates

B19301. PER CAPITA INCOME IN THE PAST 12 MONTHS (IN 2010 INFLATION-ADJUSTED DOLLARS)

Data Set: 2008-2012 American Community Survey 5-Year Estimates

	Madison Parish, Louisiana			
	African American	Margin of Error (+/-)	White, Not Hispanic	Margin of Error (+/-)
Per capita income in the past 12 months (in 2010 inflation-adjusted dollars)	\$ 10,561	\$ 1,375	\$ 20,131	\$ 2,131

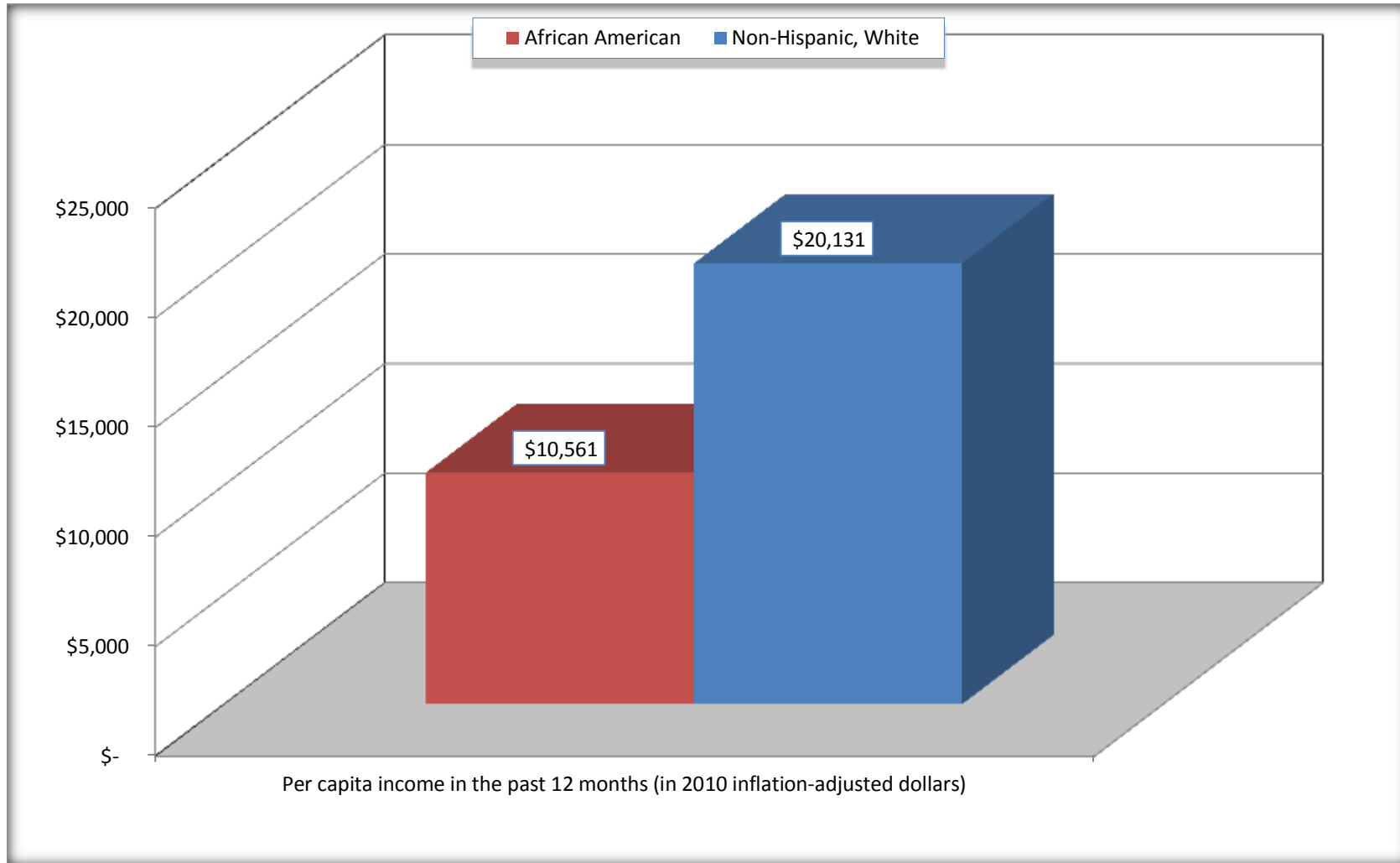
Source: U.S. Census Bureau, 2008-2012 American Community Survey

For information on confidentiality protection, sampling error, nonsampling error, and definitions, see Survey Methodology.

<http://www.census.gov/acs/www/UseData/index.htm>

Per capita Income in the Past 12 Months

Madison Parish, Louisiana



Source: B19301. PER CAPITA INCOME IN THE PAST 12 MONTHS (IN 2010 INFLATION-ADJUSTED DOLLARS)
Data Set: 2008-2012 American Community Survey 5-Year Estimates

B20017. MEDIAN EARNINGS IN THE PAST 12 MONTHS (IN 2010 INFLATION-ADJUSTED DOLLARS) BY SEX BY WORK EXPERIENCE IN THE PAST 12 MONTHS FOR THE POPULATION 16 YEARS AND OVER WITH EARNINGS IN THE PAST 12 MONTHS

Data Set: 2008-2012 American Community Survey 5-Year Estimates

	Madison Parish, Louisiana			
	African American	Margin of Error (+/-)	White, Not Hispanic	Margin of Error (+/-)
Median earnings in the past 12 months (in 2010 inflation-adjusted dollars) --				
Total:	\$ 17,362	\$ 2,362	\$ 25,534	\$ 3,357
Male --				
Total	\$ 18,569	\$ 6,898	\$ 30,046	\$ 6,302
Worked full-time, year-round in the past 12 months	\$ 27,486	\$ 10,016	\$ 35,474	\$ 8,664
Other	\$ 8,356	\$ 989	\$ 15,728	\$ 1,268
Female --				
Total	\$ 16,803	\$ 2,258	\$ 20,552	\$ 7,682
Worked full-time, year-round in the past 12 months	\$ 20,683	\$ 3,156	\$ 33,966	\$ 4,022
Other	\$ 6,532	\$ 1,872	\$ 5,603	\$ 1,130

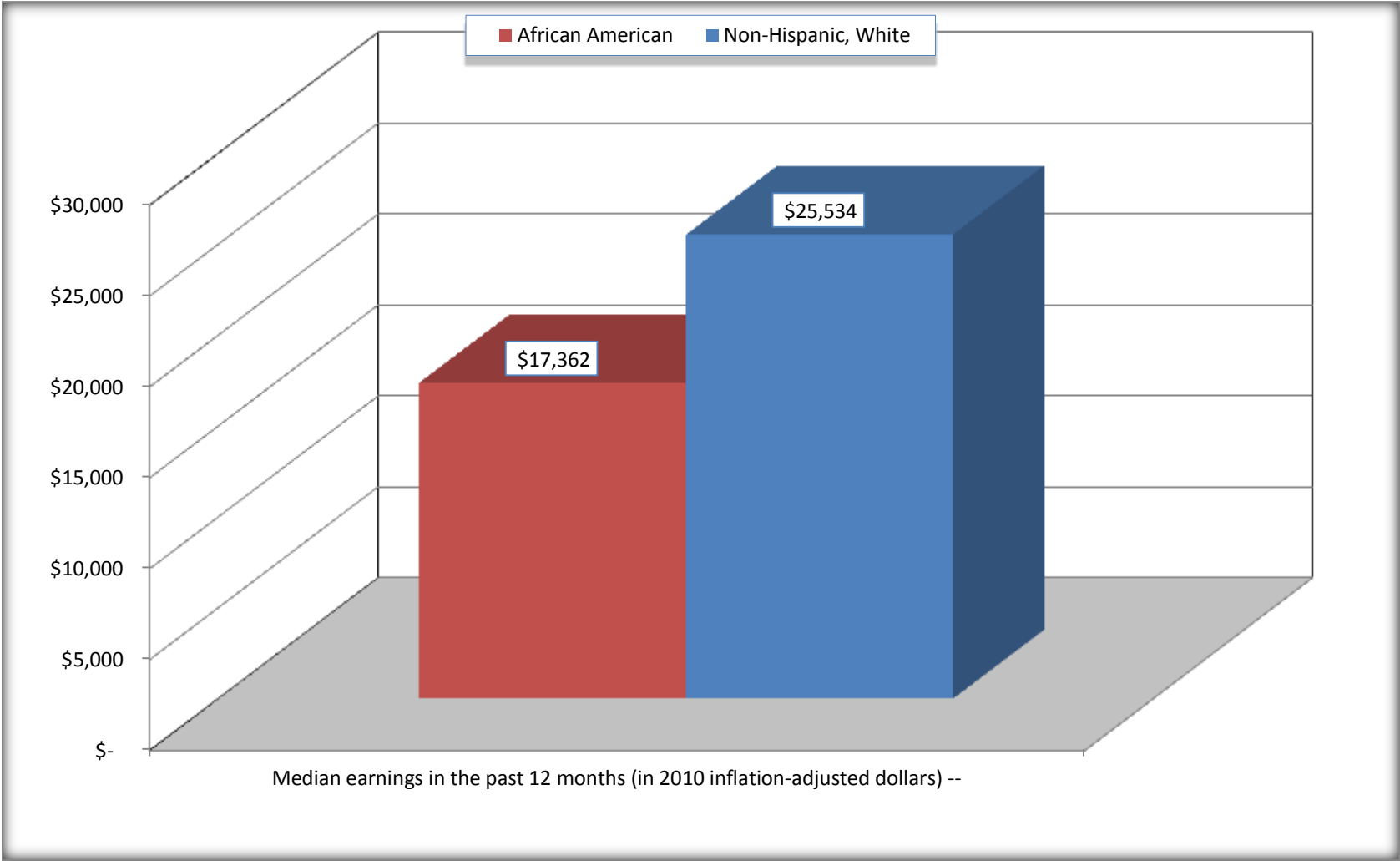
Source: U.S. Census Bureau, 2008-2012 American Community Survey

For information on confidentiality protection, sampling error, nonsampling error, and definitions, see Survey Methodology.

<http://www.census.gov/acs/www/UseData/index.htm>

Median earnings in the Past 12 Months (16 Years and Over with Earnings)

Madison Parish, Louisiana



Source: B20017. MEDIAN EARNINGS IN THE PAST 12 MONTHS (IN 2010 INFLATION-ADJUSTED DOLLARS) BY SEX BY WORK EXPERIENCE IN THE PAST 12 MONTHS FOR THE POPULATION 16 YEARS AND OVER WITH EARNINGS IN THE PAST 12 MONTHS
Data Set: 2008-2012 American Community Survey 5-Year Estimates

B20005. SEX BY WORK EXPERIENCE IN THE PAST 12 MONTHS BY EARNINGS IN THE PAST 12 MONTHS (IN 2010 INFLATION-ADJUSTED DOLLARS) FOR THE POPULATION 16 YEARS AND OVER

Data Set: 2008-2012 American Community Survey 5-Year Estimates

	Madison Parish, Louisiana					
	African American	Margin of Error (+/-)	% of AA Total	White, Not Hispanic	Margin of Error (+/-)	% of NHW Total
Total:	5,542	87	100.0%	3,658	39	100.0%
Worked full-time, year-round in the past 12 months:	1,653	NC	29.8%	1,286	NC	35.2%
No earnings	0	NC	0.0%	0	NC	0.0%
With earnings:	1,653	NC	29.8%	1,286	NC	35.2%
\$ 1 to \$ 9,999 or loss	29	NC	0.5%	46	NC	1.3%
\$ 10,000 to \$ 19,999	594	NC	10.7%	203	NC	5.5%
\$ 20,000 to \$ 29,999	469	NC	8.5%	198	NC	5.4%
\$ 30,000 to \$ 49,999	398	NC	7.2%	441	NC	12.1%
\$ 50,000 to \$ 74,999	115	NC	2.1%	244	NC	6.7%
\$ 75,000 or more	48	NC	0.9%	154	NC	4.2%
Other:	3,889	NC	70.2%	2,372	NC	64.8%
No earnings	2,850	NC	51.4%	1,647	NC	45.0%
With earnings: less than full time, year-round	1,039	NC	18.7%	725	NC	19.8%
Male:	2,792	96	50.4%	1,790	37	48.9%
Worked full-time, year-round in the past 12 months:	748	159	13.5%	857	104	23.4%
No earnings	0	19	0.0%	0	19	0.0%
With earnings:	748	159	13.5%	857	104	23.4%
\$ 1 to \$ 9,999 or loss	0	NC	0.0%	38	NC	1.0%
\$ 10,000 to \$ 19,999	191	NC	3.4%	132	NC	3.6%
\$ 20,000 to \$ 29,999	184	NC	3.3%	93	NC	2.5%
\$ 30,000 to \$ 49,999	238	NC	4.3%	319	NC	8.7%
\$ 50,000 to \$ 74,999	92	NC	1.7%	162	NC	4.4%
\$ 75,000 or more	43	NC	0.8%	113	NC	3.1%

	Madison Parish, Louisiana					
	African American	Margin of Error (+/-)	% of AA Total	White, Not Hispanic	Margin of Error (+/-)	% of NHW Total
Other:	2,044	161	36.9%	933	102	25.5%
No earnings	1,465	160	26.4%	548	91	15.0%
With earnings:	579	141	10.4%	385	97	10.5%
Female:	2,750	49	49.6%	1,868	39	51.1%
Worked full-time, year-round in the past 12 months:	905	167	16.3%	429	102	11.7%
No earnings	0	19	0.0%	0	19	0.0%
With earnings:	905	167	16.3%	429	102	11.7%
\$ 1 to \$ 9,999 or loss	29	NC	0.5%	8	NC	0.2%
\$ 10,000 to \$ 19,999	403	NC	7.3%	71	NC	1.9%
\$ 20,000 to \$ 29,999	285	NC	5.1%	105	NC	2.9%
\$ 30,000 to \$ 49,999	160	NC	2.9%	122	NC	3.3%
\$ 50,000 to \$ 74,999	23	NC	0.4%	82	NC	2.2%
\$ 75,000 or more	5	NC	0.1%	41	NC	1.1%
Other:	1,845	183	33.3%	1,439	104	39.3%
No earnings	1,385	214	25.0%	1,099	132	30.0%
With earnings:	460	133	8.3%	340	81	9.3%

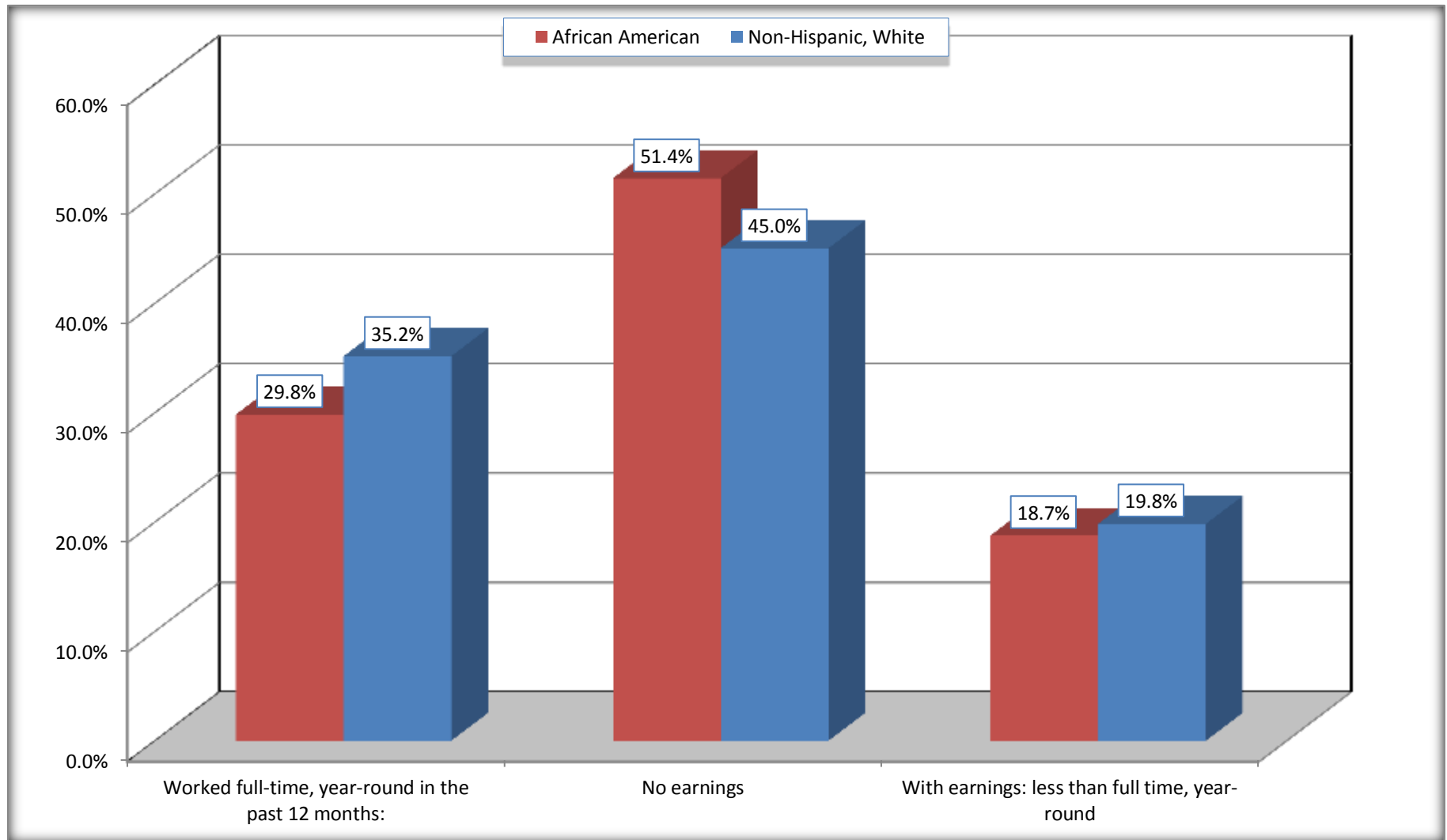
Source: U.S. Census Bureau, 2008-2012 American Community Survey

For information on confidentiality protection, sampling error, nonsampling error, and definitions, see Survey Methodology.

<http://www.census.gov/acs/www/UseData/index.htm>

Employment and Earnings in in the Past 12 Months (16 Years and Over)

Madison Parish, Louisiana



Source: B20005. SEX BY WORK EXPERIENCE IN THE PAST 12 MONTHS BY EARNINGS IN THE PAST 12 MONTHS (IN 2010 INFLATION-ADJUSTED DOLLARS) FOR THE POPULATION 16 YEARS AND OVER

Data Set: 2008-2012 American Community Survey 5-Year Estimates

C21001. SEX BY AGE BY VETERAN STATUS FOR THE CIVILIAN POPULATION 18 YEARS AND OVER

Data Set: 2008-2012 American Community Survey 5-Year Estimates

	Madison Parish, Louisiana					
	African American	Margin of Error (+/-)	% of AA Total	White, Not Hispanic	Margin of Error (+/-)	% of NHW Total
Total:	5,270	85	100.0%	3,568	19	100.0%
Veteran	379	NC	7.2%	440	NC	12.3%
Nonveteran	4,891	NC	92.8%	3,128	NC	87.7%
Male:	2,588	80	49.1%	1,739	19	48.7%
18 to 64 years:	2,324	80	44.1%	1,388	19	38.9%
Veteran	318	127	6.0%	226	92	6.3%
Nonveteran	2,006	140	38.1%	1,162	92	32.6%
65 years and over:	264	19	5.0%	351	19	9.8%
Veteran	53	38	1.0%	203	41	5.7%
Nonveteran	211	38	4.0%	148	41	4.1%
Female:	2,682	7	50.9%	1,829	19	51.3%
18 to 64 years:	2,309	7	43.8%	1,402	19	39.3%
Veteran	8	13	0.2%	9	15	0.3%
Nonveteran	2,301	14	43.7%	1,393	15	39.0%
65 years and over:	373	19	7.1%	427	19	12.0%
Veteran	0	19	0.0%	2	3	0.1%
Nonveteran	373	19	7.1%	425	3	11.9%

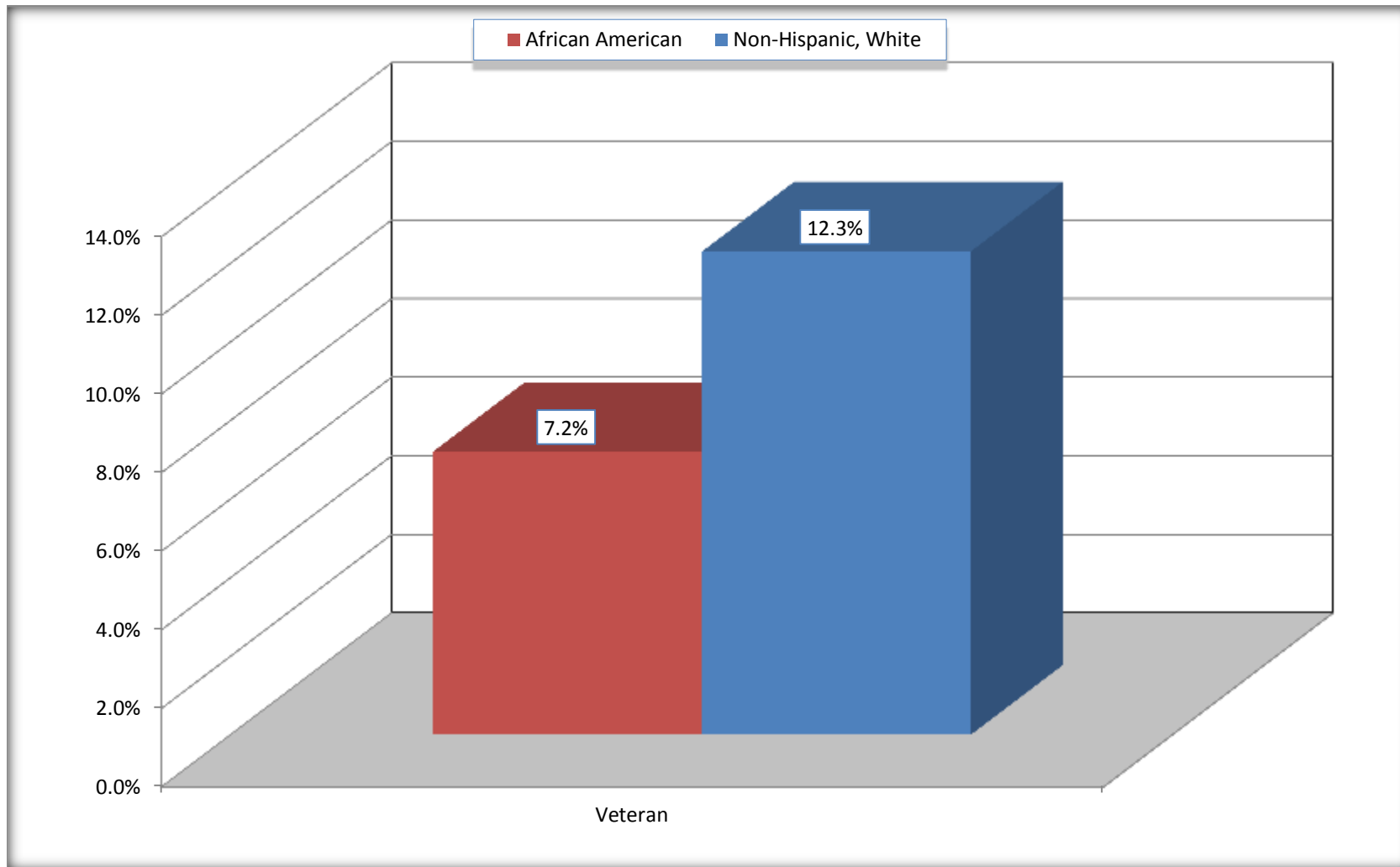
Source: U.S. Census Bureau, 2008-2012 American Community Survey

For information on confidentiality protection, sampling error, nonsampling error, and definitions, see Survey Methodology.

<http://www.census.gov/acs/www/UseData/index.htm>

Veterans in the Civilian Population 18 Years and Over

Madison Parish, Louisiana



Source: C21001. SEX BY AGE BY VETERAN STATUS FOR THE CIVILIAN POPULATION 18 YEARS AND OVER
Data Set: 2008-2012 American Community Survey 5-Year Estimates

B22005. RECEIPT OF FOOD STAMPS/SNAP IN THE PAST 12 MONTHS BY RACE OF HOUSEHOLDER

Data Set: 2008-2012 American Community Survey 5-Year Estimates

	Madison Parish, Louisiana					
	African American	Margin of Error (+/-)	% of AA Total	White, Not Hispanic	Margin of Error (+/-)	% of NHW Total
Total:	2,358	161	100.0%	1,652	132	100.0%
HH received Food Stamps/SNAP in the past 12 months	712	147	30.2%	190	73	11.5%
HH did not receive Food Stamps/SNAP in the past 12 months	1,646	197	69.8%	1,462	145	88.5%

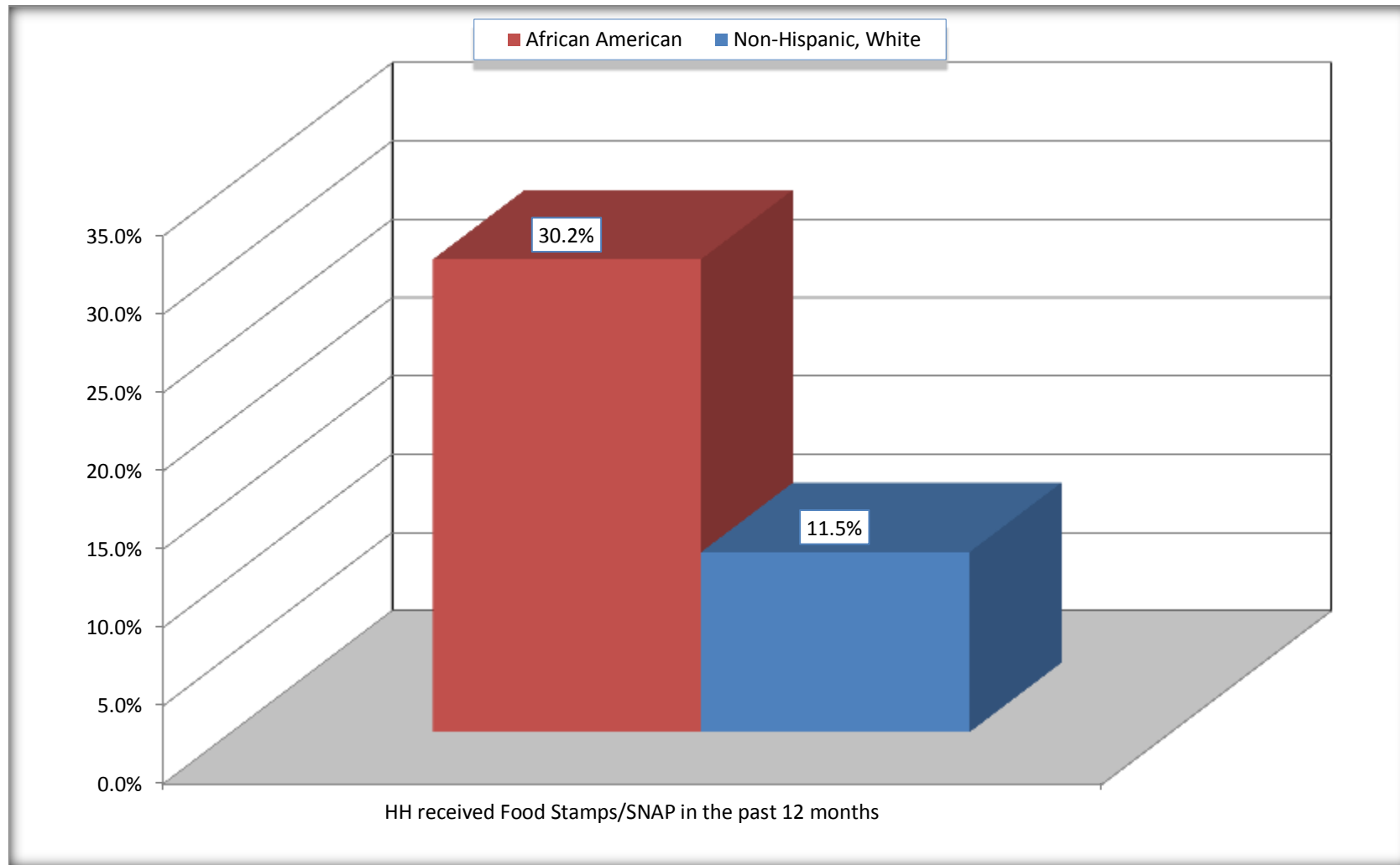
Source: U.S. Census Bureau, 2008-2012 American Community Survey

For information on confidentiality protection, sampling error, nonsampling error, and definitions, see Survey Methodology.

<http://www.census.gov/acs/www/UseData/index.htm>

Receipt of Food Stamps/SNAP in the Past 12 Months by Household

Madison Parish, Louisiana



Source: B22005. RECEIPT OF FOOD STAMPS/SNAP IN THE PAST 12 MONTHS BY RACE OF HOUSEHOLDER
Data Set: 2008-2012 American Community Survey 5-Year Estimates

C23002. SEX BY AGE BY EMPLOYMENT STATUS FOR THE POPULATION 16 YEARS AND OVER

Data Set: 2008-2012 American Community Survey 5-Year Estimates

	Madison Parish, Louisiana					
	African American	Margin of Error (+/-)	% of AA Total	White, Not Hispanic	Margin of Error (+/-)	% of NHW Total
Total:	5,542	87	100.0%	3,658	39	100.0%
In labor force:	3,012	NC	54.3%	1,870	NC	51.1%
In Armed Forces	0	NC	0.0%	0	NC	0.0%
Civilian:	2,924	NC	52.8%	1,700	NC	46.5%
Employed	2,245	NC	40.5%	1,694	NC	46.3%
Unemployed	767	NC	13.8%	176	NC	4.8%
Not in labor force	2,530	NC	45.7%	1,788	NC	48.9%
Male:	2,792	96	50.4%	1,790	37	48.9%
16 to 64 years:	2,528	96	45.6%	1,439	37	39.3%
In labor force:	1,524	183	27.5%	1,078	79	29.5%
In Armed Forces	0	19	0.0%	0	19	0.0%
Civilian:	1,524	183	27.5%	1,078	79	29.5%
Employed	973	159	17.6%	997	95	27.3%
Unemployed	551	161	9.9%	81	52	2.2%
Not in labor force	1,004	160	18.1%	361	74	9.9%
65 years and over:	264	19	4.8%	351	19	9.6%
In labor force:	65	38	1.2%	94	41	2.6%
Employed	62	38	1.1%	87	40	2.4%
Unemployed	3	5	0.1%	7	11	0.2%
Not in labor force	199	38	3.6%	257	41	7.0%

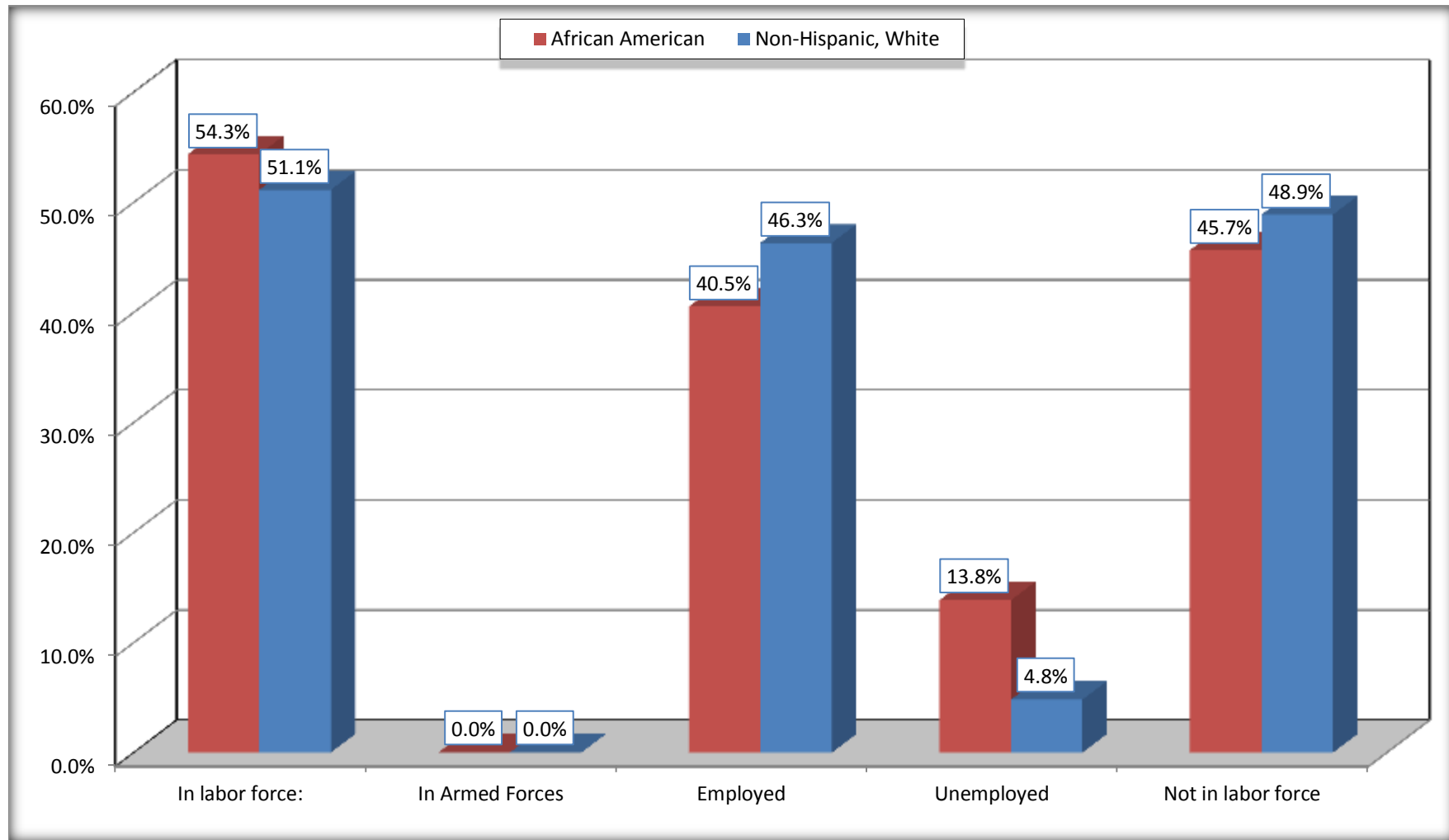
	Madison Parish, Louisiana					
	African American	Margin of Error (+/-)	% of AA Total	White, Not Hispanic	Margin of Error (+/-)	% of NHW Total
Female:	2,750	49	49.6%	1,868	39	51.1%
16 to 64 years:	2,377	49	42.9%	1,441	39	39.4%
In labor force:	1,400	198	25.3%	622	144	17.0%
In Armed Forces	0	19	0.0%	0	19	0.0%
Civilian:	1,400	198	25.3%	622	144	17.0%
Employed	1,187	172	21.4%	534	146	14.6%
Unemployed	213	91	3.8%	88	49	2.4%
Not in labor force	977	203	17.6%	819	133	22.4%
65 years and over:	373	19	6.7%	427	19	11.7%
In labor force:	23	23	0.4%	76	37	2.1%
Employed	23	23	0.4%	76	37	2.1%
Unemployed	0	19	0.0%	0	19	0.0%
Not in labor force	350	23	6.3%	351	37	9.6%

Source: U.S. Census Bureau, 2008-2012 American Community Survey

For information on confidentiality protection, sampling error, nonsampling error, and definitions, see Survey Methodology.
<http://www.census.gov/acs/www/UseData/index.htm>

Employment Status for the Population 16 years and over

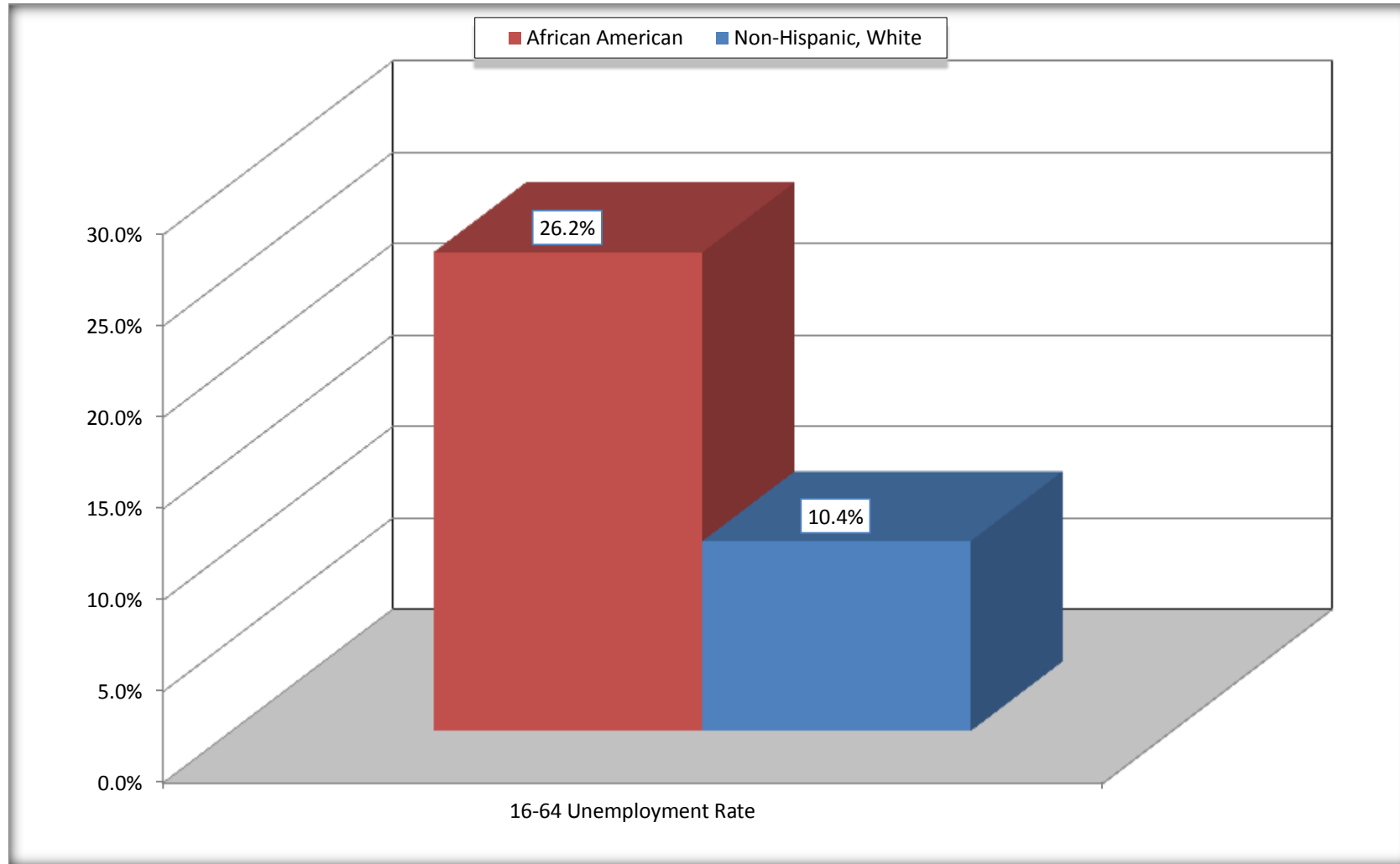
Madison Parish, Louisiana



Source: C23002. SEX BY AGE BY EMPLOYMENT STATUS FOR THE POPULATION 16 YEARS AND OVER
Data Set: 2008-2012 American Community Survey 5-Year Estimates

Unemployment of Working Age Population (Ages 16 to 64) (As a Percent of 16-64 Civilian Labor Force)

Madison Parish, Louisiana



Source: C23002. SEX BY AGE BY EMPLOYMENT STATUS FOR THE POPULATION 16 YEARS AND OVER
Data Set: 2008-2012 American Community Survey 5-Year Estimates

C24010. SEX BY OCCUPATION FOR THE CIVILIAN EMPLOYED POPULATION 16 YEARS AND OVER

Data Set: 2008-2012 American Community Survey 5-Year Estimates

	Madison Parish, Louisiana					
	African American	Margin of Error (+/-)	% of AA Total	White, Not Hispanic	Margin of Error (+/-)	% of NHW Total
Total:	2,245	241	100.0%	1,694	175	100.0%
Management, professional, and related occupations	557	NC	24.8%	582	NC	34.4%
Service occupations	745	NC	33.2%	221	NC	13.0%
Sales and office occupations	405	NC	18.0%	271	NC	16.0%
Natural resources, construction, and maintenance occupations:	256	NC	11.4%	417	NC	24.6%
Production, transportation, and material moving occupations	282	NC	12.6%	203	NC	12.0%
Male:	1,035	166	46.1%	1,084	102	64.0%
Management, business, science, and arts occupations:	145	84	6.5%	317	100	18.7%
Service occupations	253	112	11.3%	95	53	5.6%
Sales and office occupations	145	88	6.5%	63	29	3.7%
Natural resources, construction, and maintenance occupations:	256	84	11.4%	417	111	24.6%
Production, transportation, and material moving occupations	236	92	10.5%	192	76	11.3%
Female:	1,210	175	53.9%	610	147	36.0%
Management, professional, and related occupations	412	121	18.4%	265	86	15.6%
Service occupations	492	122	21.9%	126	62	7.4%
Sales and office occupations	260	98	11.6%	208	81	12.3%
Natural resources, construction, and maintenance occupations:	0	19	0.0%	0	19	0.0%
Production, transportation, and material moving occupations	46	39	2.0%	11	25	0.6%

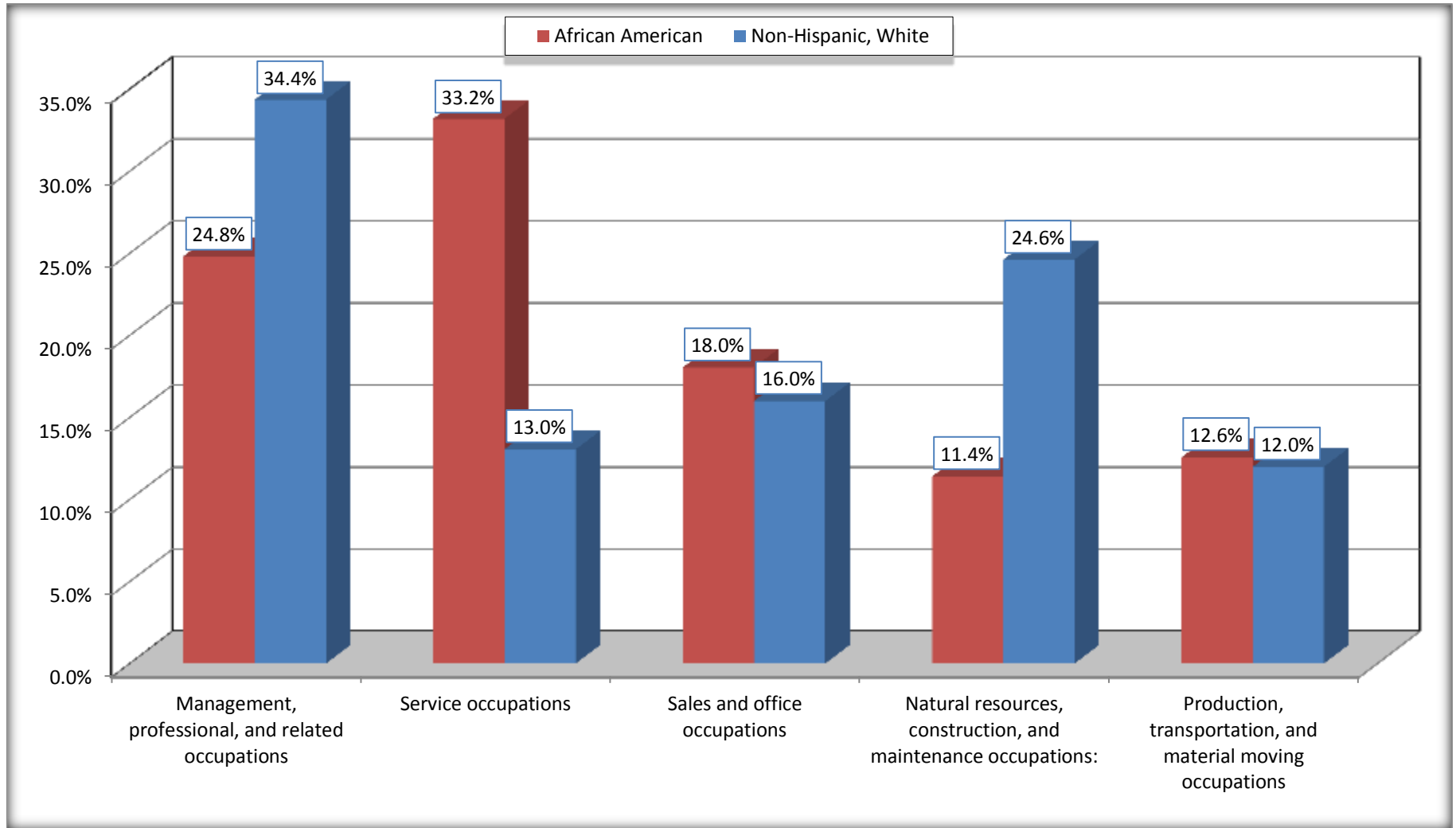
Source: U.S. Census Bureau, 2008-2012 American Community Survey

For information on confidentiality protection, sampling error, nonsampling error, and definitions, see Survey Methodology.

<http://www.census.gov/acs/www/UseData/index.htm>

Occupation for the Civilian Employed 16 Years and Over Population

Madison Parish, Louisiana



Source: C24010. SEX BY OCCUPATION FOR THE CIVILIAN EMPLOYED POPULATION 16 YEARS AND OVER
Data Set: 2008-2012 American Community Survey 5-Year Estimates

B25003. TENURE - Universe: OCCUPIED HOUSING UNITS

Data Set: 2008-2012 American Community Survey 5-Year Estimates

	Madison Parish, Louisiana					
	African American	Margin of Error (+/-)	% of AA Total	White, Not Hispanic	Margin of Error (+/-)	% of NHW Total
Total:	2,358	161	100.0%	1,652	132	100.0%
Owner occupied	1,017	141	43.1%	1,257	139	76.1%
Renter occupied	1,341	169	56.9%	395	103	23.9%

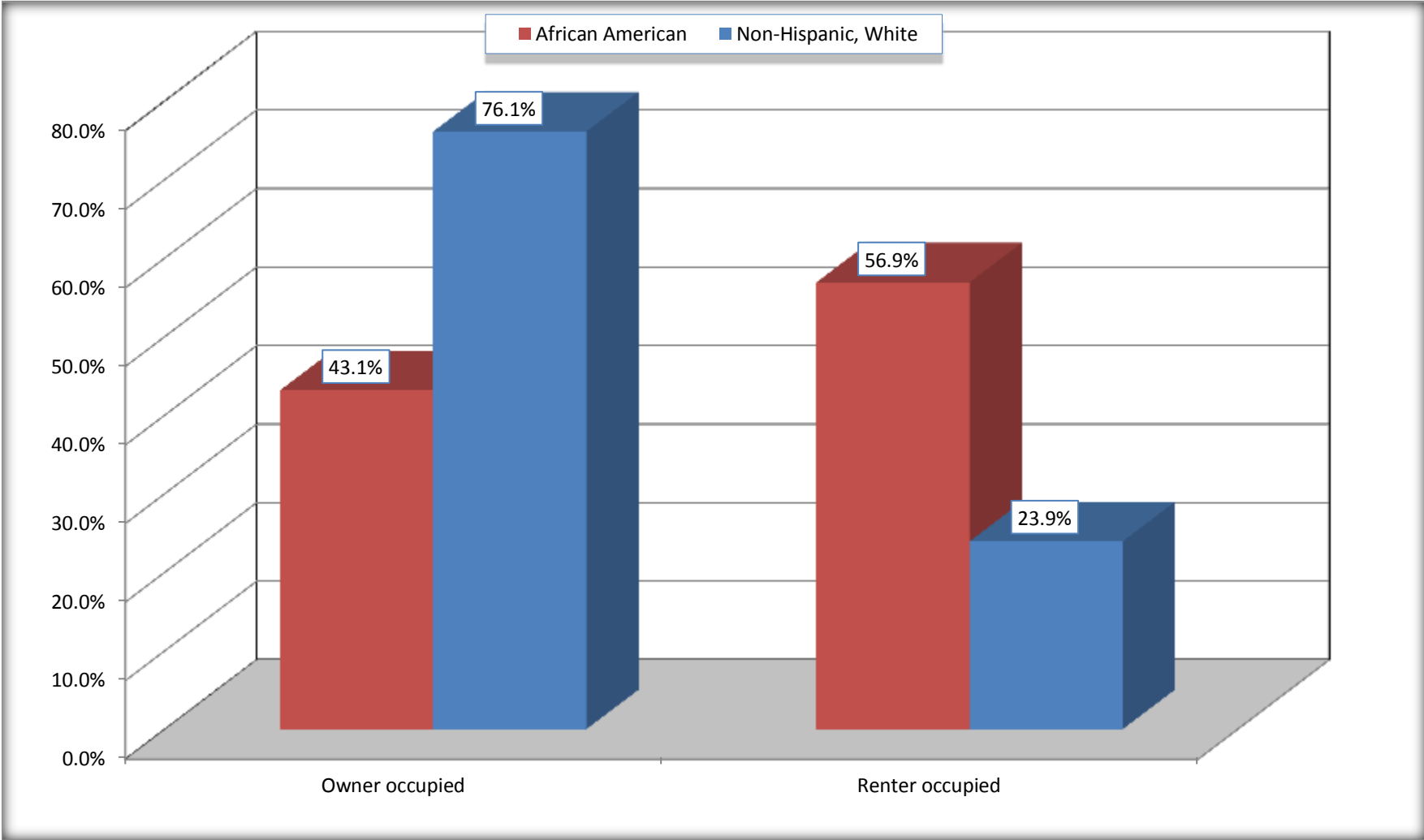
Source: U.S. Census Bureau, 2008-2012 American Community Survey

For information on confidentiality protection, sampling error, nonsampling error, and definitions, see Survey Methodology.

<http://www.census.gov/acs/www/UseData/index.h>

Home Owners and Renters by Household

Madison Parish, Louisiana



Source: B25003. TENURE - Universe: OCCUPIED HOUSING UNITS
Data Set: 2008-2012 American Community Survey 5-Year Estimates

B25014. OCCUPANTS PER ROOM - Universe: OCCUPIED HOUSING UNITS

Data Set: 2008-2012 American Community Survey 5-Year Estimates

	Madison Parish, Louisiana					
	African American	Margin of Error (+/-)	% of AA Total	White, Not Hispanic	Margin of Error (+/-)	% of NHW Total
Total:	2,358	161	100.0%	1,652	132	100.0%
1.00 or less occupants per room	2,279	179	96.6%	1,612	140	97.6%
1.01 or more occupants per room	79	62	3.4%	40	42	2.4%

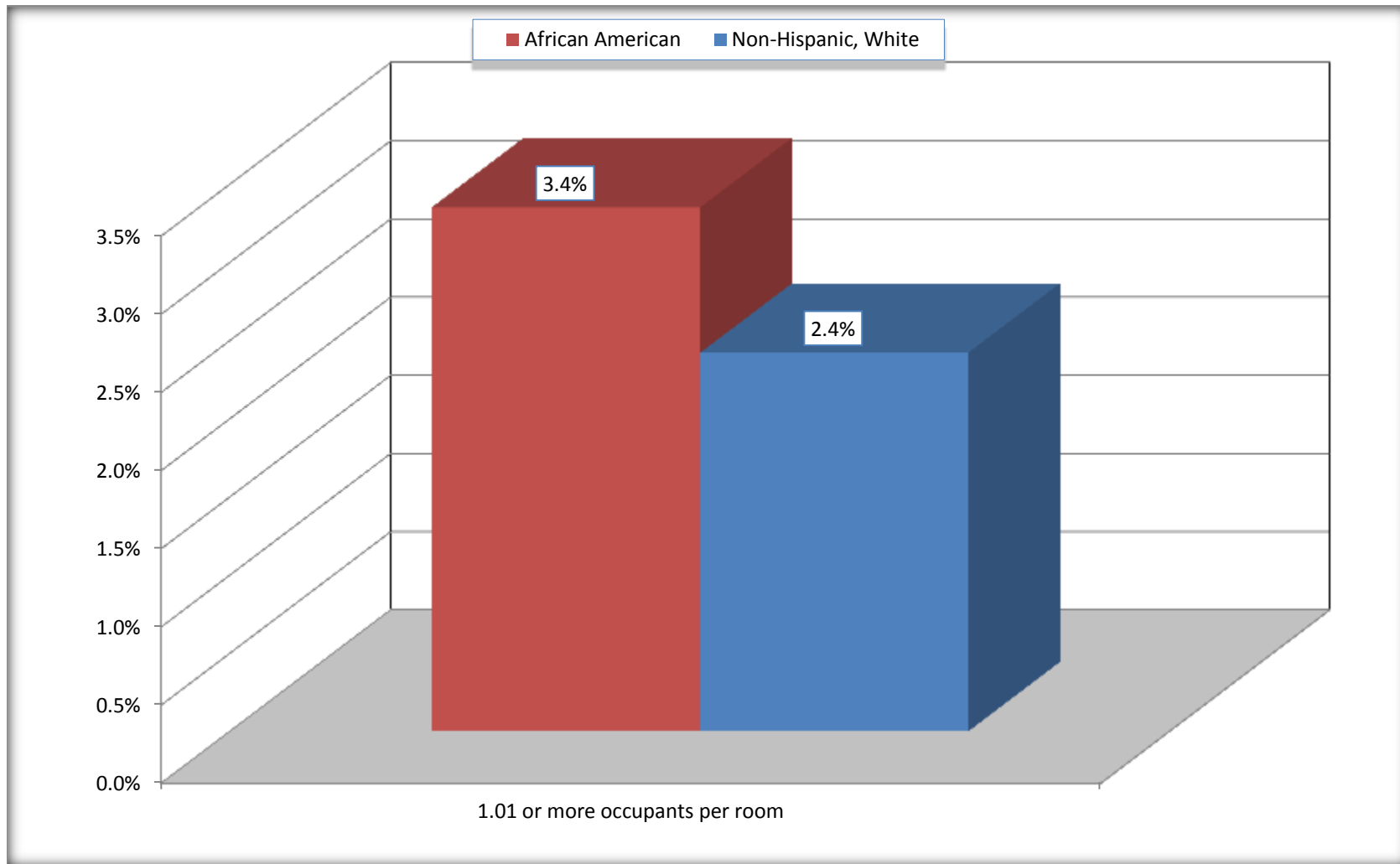
Source: U.S. Census Bureau, 2008-2012 American Community Survey

For information on confidentiality protection, sampling error, nonsampling error, and definitions, see Survey Methodology.

<http://www.census.gov/acs/www/UseData/index.ht>

More than One Person per Room (Crowding) by Household

Madison Parish, Louisiana



Source: B25014. OCCUPANTS PER ROOM - Universe: OCCUPIED HOUSING UNITS
Data Set: 2008-2012 American Community Survey 5-Year Estimates

B18101. AGE BY DISABILITY STATUS

Data Set: 2008-2012 American Community Survey 5-Year Estimates

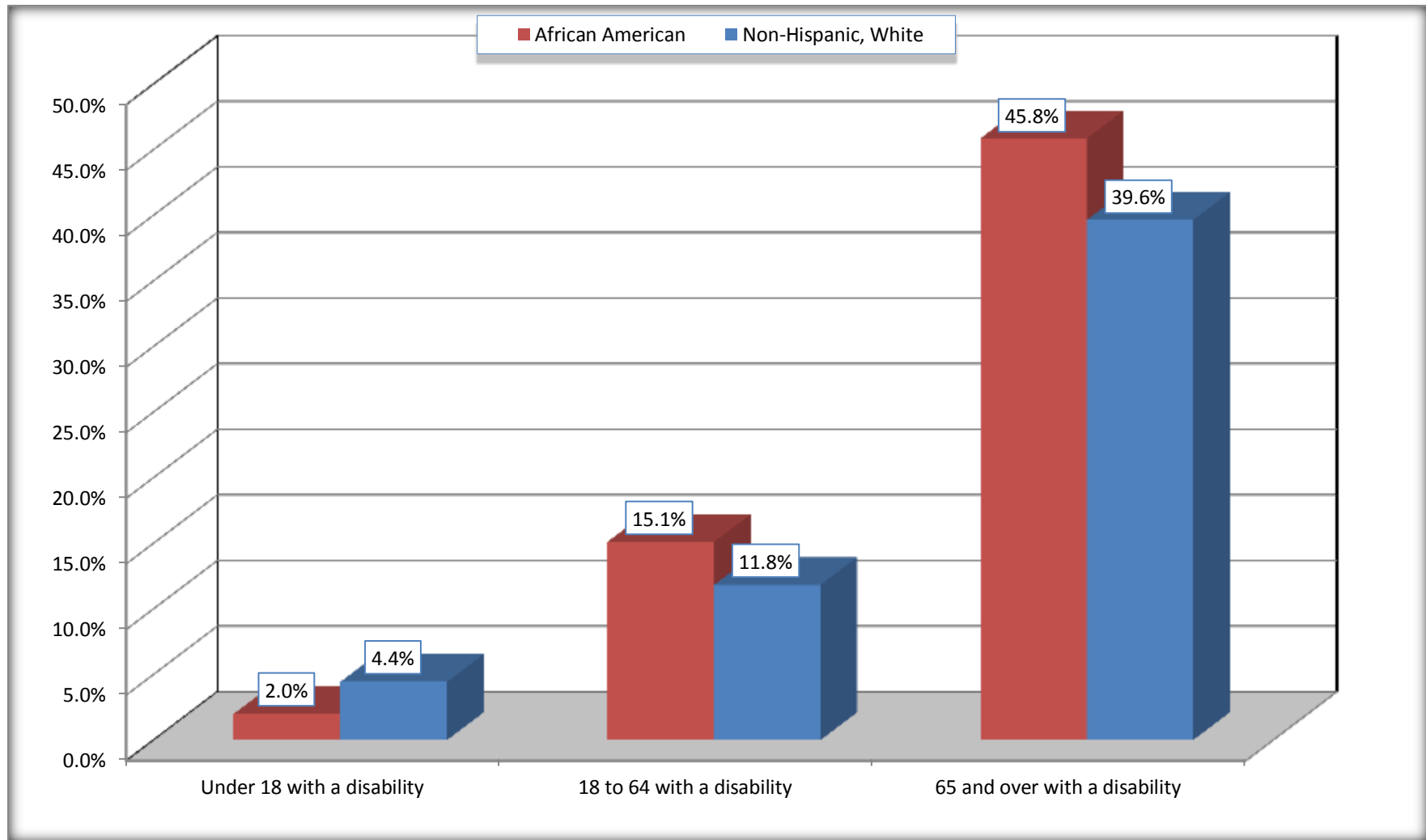
	Madison Parish, Louisiana					
	African American	Margin of Error (+/-)	% of AA Total	White, Not Hispanic	Margin of Error (+/-)	% of NHW Total
Total:	6,642	205	100.0%	3,908	216	100.0%
Under 18 years:	1,963	66	29.6%	812	31	20.8%
With a disability	39	35	0.6%	36	41	0.9%
No disability	1,924	74	29.0%	776	38	19.9%
18 to 64 years:	4,101	195	61.7%	2,377	208	60.8%
With a disability	619	172	9.3%	281	112	7.2%
No disability	3,482	238	52.4%	2,096	225	53.6%
65 years and over:	578	47	8.7%	719	45	18.4%
With a disability	265	70	4.0%	285	64	7.3%
No disability	313	70	4.7%	434	57	11.1%

Source: U.S. Census Bureau, 2008-2012 American Community Survey

For information on confidentiality protection, sampling error, nonsampling error, and definitions, see Survey Methodology.

<http://www.census.gov/acs/www/UseData/index.htm>

Disability by Age Madison Parish, Louisiana



Source: B18101. AGE BY DISABILITY STATUS
Data Set: 2008-2012 American Community Survey 5-Year Estimates

C27001B. HEALTH INSURANCE COVERAGE STATUS BY AGE

Data Set: 2008-2012 American Community Survey 5-Year Estimates

	Madison Parish, Louisiana					
	African American	Margin of Error (+/-)	% of AA Total	White, Not Hispanic	Margin of Error (+/-)	% of NHW Total
Total:	6,642	205	100.0%	3,908	216	100.0%
Under 18 years:	1,963	66	29.6%	812	19	20.8%
With health insurance coverage	1,123	284	16.9%	520	114	13.3%
No health insurance coverage	840	276	12.6%	292	114	7.5%
18 to 64 years:	4,101	195	61.7%	2,377	208	60.8%
With health insurance coverage	2,122	288	31.9%	1,488	210	38.1%
No health insurance coverage	1,979	282	29.8%	889	182	22.7%
65 years and over:	578	47	8.7%	719	45	18.4%
With health insurance coverage	552	58	8.3%	717	45	18.3%
No health insurance coverage	26	32	0.4%	2	4	0.1%

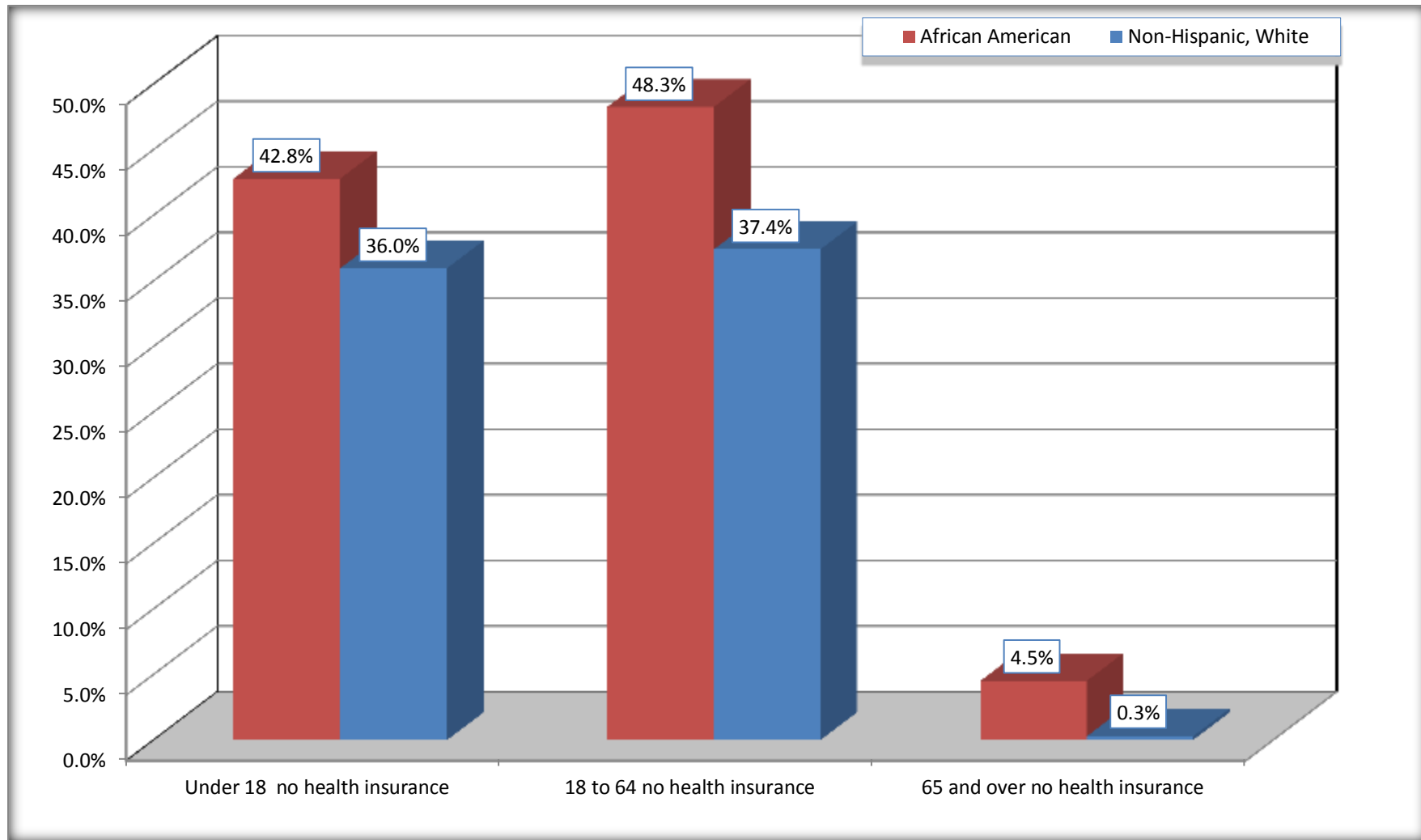
Source: U.S. Census Bureau, 2008-2012 American Community Survey

For information on confidentiality protection, sampling error, nonsampling error, and definitions, see Survey Methodology.

<http://www.census.gov/acs/www/UseData/index.htm>

Lack of Health Insurance Coverage by Age

Madison Parish, Louisiana



Source: C27001B. HEALTH INSURANCE COVERAGE STATUS BY AGE
Data Set: 2008-2012 American Community Survey 5-Year Estimates