

Selected Socio-Economic Data

Gonzales city, Louisiana

African American and White, Not Hispanic

Data Set: 2008-2012 American Community Survey 5-Year Estimates

www.fairvote2020.org

www.fairdata2000.com

[29-Dec-13](#)

C02003.DETAILED RACE - Universe: TOTAL POPULATION

Data Set: 2008-2012 American Community Survey 5-Year Estimates

	Gonzales city, Louisiana		
	Population	Margin of Error (+/-)	% of Total
Total:	9,837	49	100.0%
Population of one race:	9,674	115	98.3%
White	4,941	442	50.2%
Black or African American	4,588	456	46.6%
American Indian and Alaska Native	48	70	0.5%
Asian alone	62	66	0.6%
Native Hawaiian and Other Pacific Islander	0	19	0.0%
Some other race	35	55	0.4%
Population of two or more races:	163	105	1.7%
Two races including Some other race	7	14	0.1%
Two races excluding Some other race, and three or more races	156	104	1.6%
Population of two races:	163	105	1.7%
White; Black or African American	87	77	0.9%
White; American Indian and Alaska Native	69	63	0.7%
White; Asian	0	19	0.0%
Black or African American; American Indian and Alaska Native	0	19	0.0%
All other two race combinations	7	14	0.1%
Population of three races	0	19	0.0%
Population of four or more races	0	19	0.0%

Note: Hispanics may be of any race. See Table B03002 and chart.

Source: U.S. Census Bureau, 2008-2012 American Community Survey

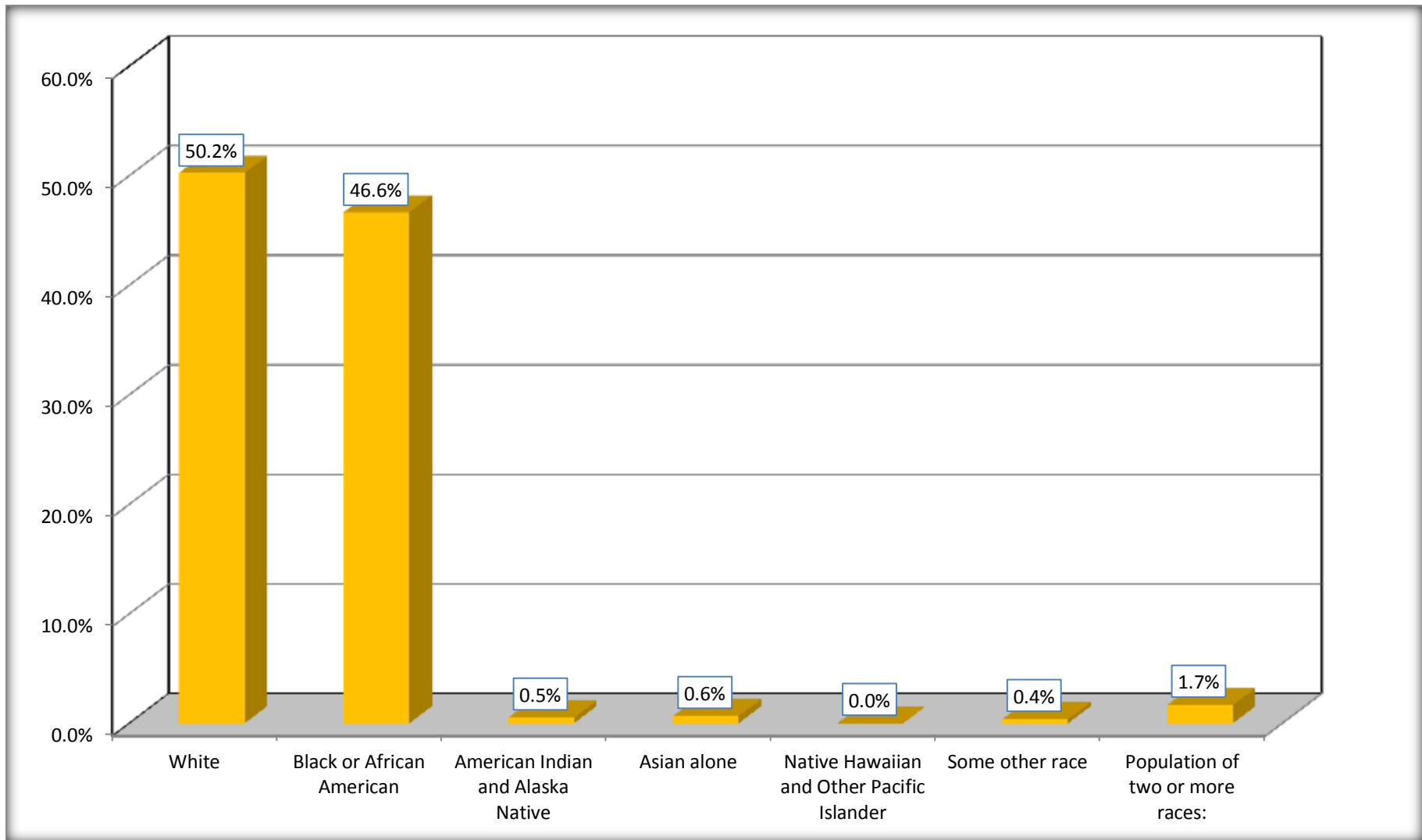
Although the American Community Survey (ACS) produces population, demographic and housing unit estimates, it is the Census Bureau's Population Estimates Program that produces and disseminates the official estimates of the population for the nation, states, counties, cities and towns and estimates of housing units for states and counties.

For information on confidentiality protection, sampling error, nonsampling error, and definitions, see Survey Methodology.

<http://www.census.gov/acs/www/UseData/index.htm>

Population by Race

Gonzales city, Louisiana



Source: C02003.DETAILED RACE - Universe: TOTAL POPULATION
Data Set: 2008-2012 American Community Survey 5-Year Estimates

B03002. HISPANIC OR LATINO ORIGIN BY RACE - Universe: TOTAL POPULATION

Data Set: 2008-2012 American Community Survey 5-Year Estimates

	Gonzales city, Louisiana		
	Population	Margin of Error (+/-)	% of Total
Total:	9,837	49	100.0%
Not Hispanic or Latino:	9,325	211	94.8%
White alone	4,495	457	45.7%
Black or African American alone	4,588	456	46.6%
American Indian and Alaska Native alone	48	70	0.5%
Asian alone	62	66	0.6%
Native Hawaiian and Other Pacific Islander alone	0	19	0.0%
Some other race alone	0	19	0.0%
Two or more races:	132	92	1.3%
Two races including Some other race	0	19	0.0%
Two races excluding Some other race, and three or more races	132	92	1.3%
Hispanic or Latino	512	204	5.2%

Source: U.S. Census Bureau, 2008-2012 American Community Survey

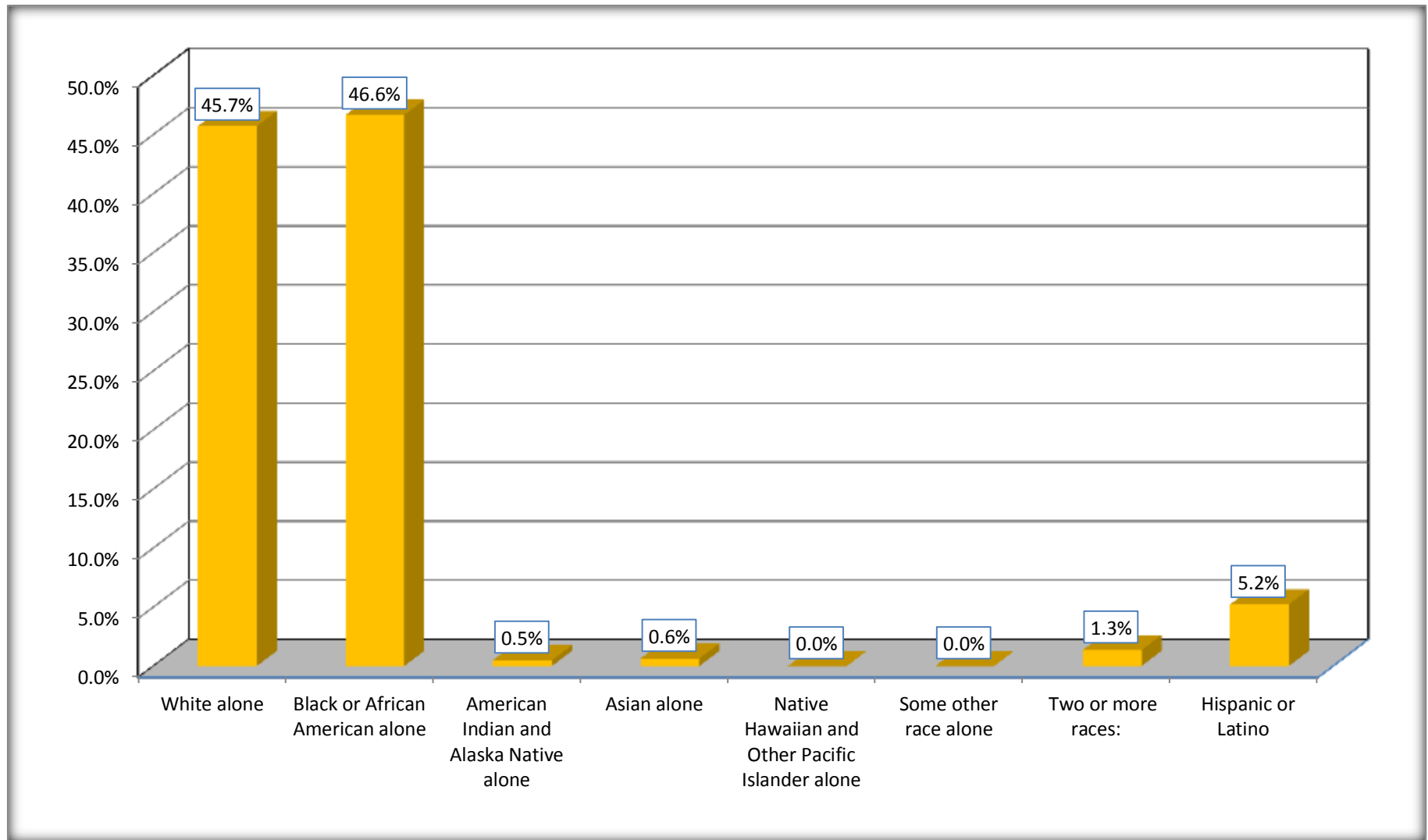
Although the American Community Survey (ACS) produces population, demographic and housing unit estimates, it is the Census Bureau's Population Estimates Program that produces and disseminates the official estimates of the population for the nation, states, counties, cities and towns and estimates of housing units for states and counties.

For information on confidentiality protection, sampling error, nonsampling error, and definitions, see Survey Methodology.

<http://www.census.gov/acs/www/UseData/index.htm>

Non-Hispanic by Race and Hispanic Population

Gonzales city, Louisiana



Source: B03002. HISPANIC OR LATINO ORIGIN BY RACE - Universe: TOTAL POPULATION
Data Set: 2008-2012 American Community Survey 5-Year Estimates

B03002. HISPANIC OR LATINO ORIGIN BY RACE

Data Set: 2008-2012 American Community Survey 5-Year Estimates

	Gonzales city, Louisiana		
	Population	Margin of Error (+/-)	% of Total
Hispanic or Latino:	512	204	100.0%
White alone	446	195	87.1%
Black or African American alone	0	19	0.0%
American Indian and Alaska Native alone	0	19	0.0%
Asian alone	0	19	0.0%
Native Hawaiian and Other Pacific Islander alone	0	19	0.0%
Some other race alone	35	55	6.8%
Two or more races:	31	40	6.1%
Two races including Some other race	7	14	1.4%
Two races excluding Some other race, and three or more races	24	39	4.7%

Source: U.S. Census Bureau, 2008-2012 American Community Survey

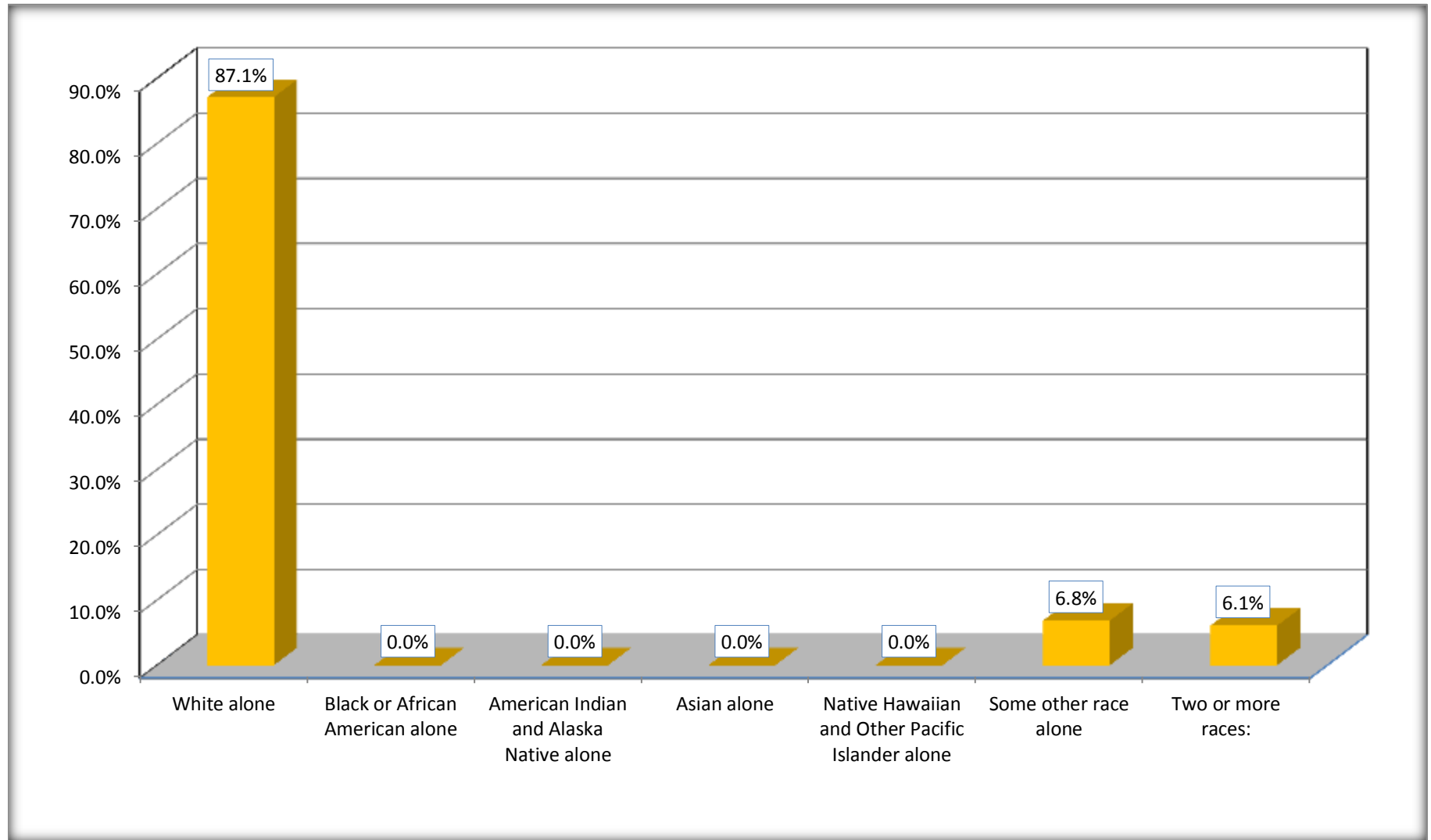
Although the American Community Survey (ACS) produces population, demographic and housing unit estimates, it is the Census Bureau's Population Estimates Program that produces and disseminates the official estimates of the population for the nation, states, counties, cities and towns and estimates of housing units for states and counties.

For information on confidentiality protection, sampling error, nonsampling error, and definitions, see Survey Methodology.

<http://www.census.gov/acs/www/UseData/index.htm>

Hispanic or Latino Origin by Race

Gonzales city, Louisiana



Source: B03002. HISPANIC OR LATINO ORIGIN BY RACE
Data Set: 2008-2012 American Community Survey 5-Year Estimates

B01001. SEX BY AGE

Data Set: 2008-2012 American Community Survey 5-Year Estimates

	Gonzales city, Louisiana					
	African American	Margin of Error (+/-)	% of AA Total	White, Not Hispanic	Margin of Error (+/-)	% of NHW Total
Total:	4,588	456	100.0%	4,495	457	100.0%
Under 18 years	1,419	NC	30.9%	789	NC	17.6%
18 to 64 years	2,808	NC	61.2%	2,890	NC	64.3%
65 years and over	361	NC	7.9%	816	NC	18.2%
Male:	2,085	352	45.4%	2,152	389	47.9%
Under 18 years	745	NC	16.2%	384	NC	8.5%
18 to 64 years	1,194	NC	26.0%	1,467	NC	32.6%
65 years and over	146	NC	3.2%	301	NC	6.7%
Female:	2,503	331	54.6%	2,343	412	52.1%
Under 18 years	674	NC	14.7%	405	NC	9.0%
18 to 64 years	1,614	NC	35.2%	1,423	NC	31.7%
65 years and over	215	NC	4.7%	515	NC	11.5%

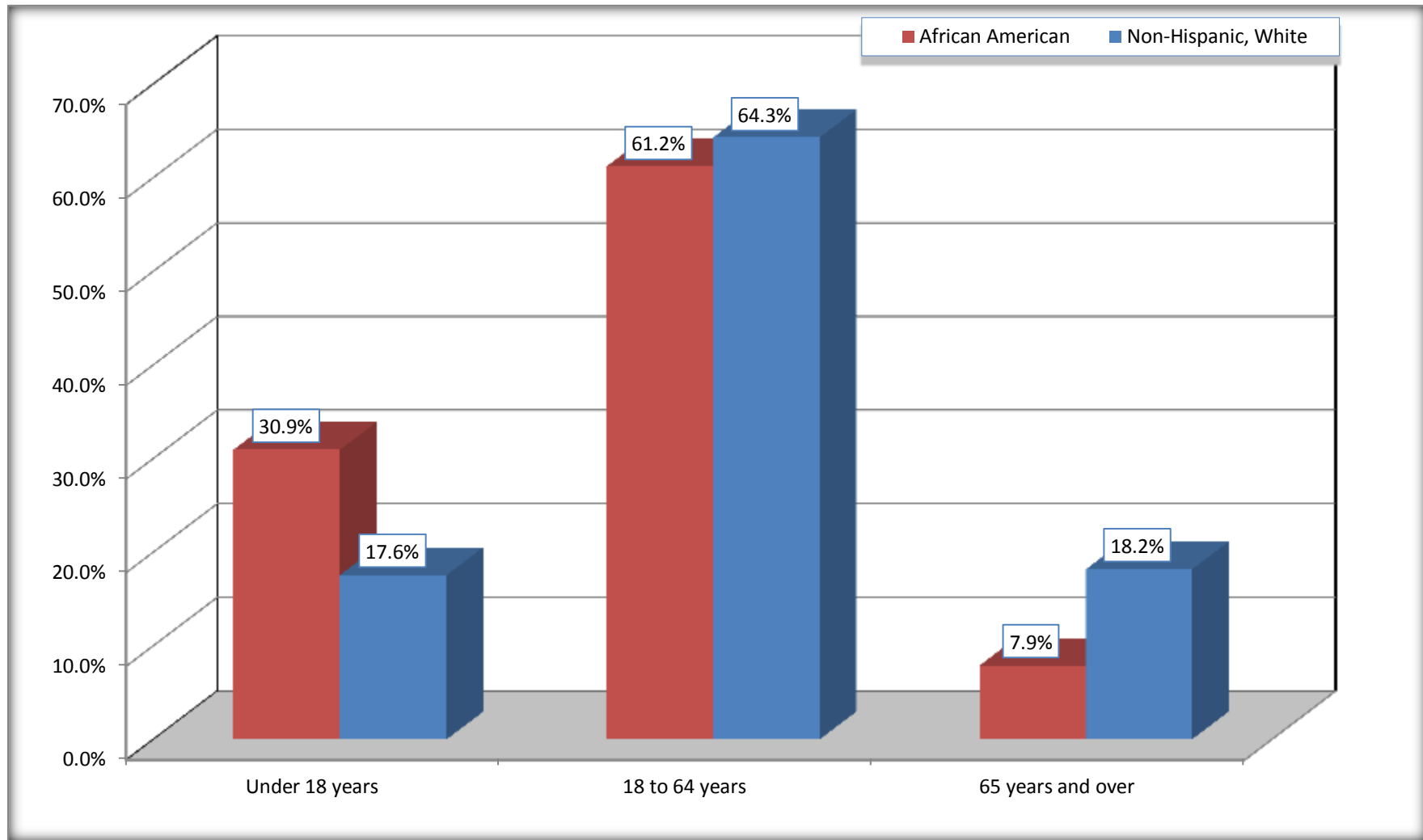
Source: U.S. Census Bureau, 2008-2012 American Community Survey

Although the American Community Survey (ACS) produces population, demographic and housing unit estimates, it is the Census Bureau's Population Estimates Program that produces and disseminates the official estimates of the population for the nation, states, counties, cities and towns and estimates of housing units for states and counties.

For information on confidentiality protection, sampling error, nonsampling error, and definitions, see Survey Methodology.
<http://www.census.gov/acs/www/UseData/index.htm>

Population by Age

Gonzales city, Louisiana



Source: B01001. SEX BY AGE
Data Set: 2008-2012 American Community Survey 5-Year Estimates

B05003. SEX BY AGE BY CITIZENSHIP STATUS

Data Set: 2008-2012 American Community Survey 5-Year Estimates

	Gonzales city, Louisiana					
	African American	Margin of Error (+/-)	% of AA Total by Age	White, Not Hispanic	Margin of Error (+/-)	% of NHW Total by Age
Total:	4,588	456	100.0%	4,495	457	100.0%
Under 18 years:	1,419	NC	100.0%	789	NC	100.0%
Native	1,419	NC	100.0%	789	NC	100.0%
Foreign born:	0	NC	0.0%	0	NC	0.0%
Naturalized U.S. citizen	0	NC	0.0%	0	NC	0.0%
Not a U.S. citizen	0	NC	0.0%	0	NC	0.0%
18 years and over:	3,169	NC	100.0%	3,706	NC	100.0%
Native	3,169	NC	100.0%	3,692	NC	99.6%
Foreign born:	0	NC	0.0%	14	NC	0.4%
Naturalized U.S. citizen	0	NC	0.0%	14	NC	0.4%
Not a U.S. citizen	0	NC	0.0%	0	NC	0.0%
Male:	2,085	352	45.4%	2,152	306	47.9%
Under 18 years:	745	273	100.0%	384	184	100.0%
Native	745	273	100.0%	384	184	100.0%
Foreign born:	0	19	0.0%	0	19	0.0%
Naturalized U.S. citizen	0	19	0.0%	0	19	0.0%
Not a U.S. citizen	0	19	0.0%	0	19	0.0%
18 years and over:	1,340	273	100.0%	1,768	255	100.0%
Native	1,340	273	100.0%	1,760	255	99.5%
Foreign born:	0	19	0.0%	8	13	0.5%
Naturalized U.S. citizen	0	19	0.0%	8	13	0.5%
Not a U.S. citizen	0	19	0.0%	0	19	0.0%

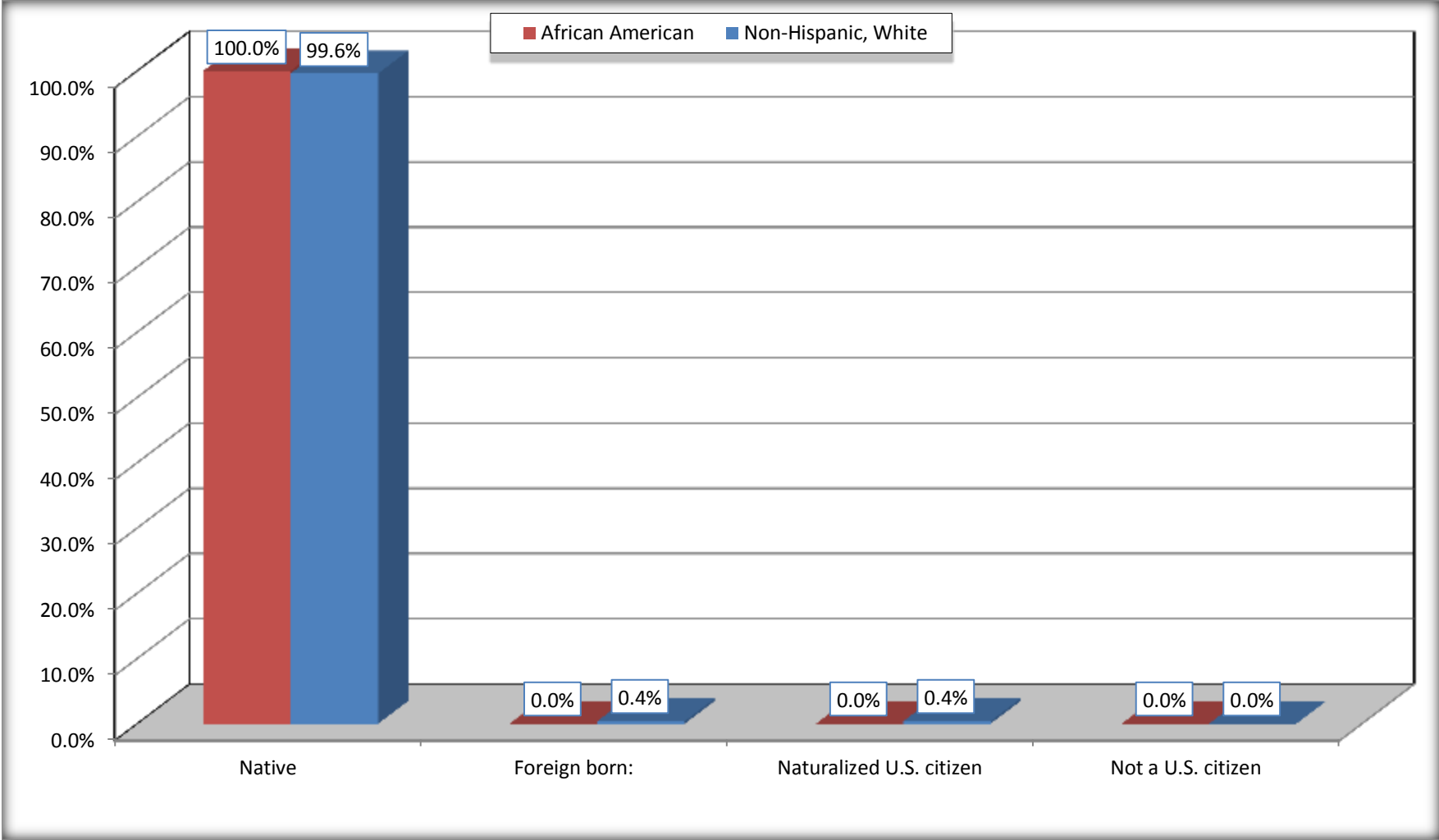
	Gonzales city, Louisiana					
	African American	Margin of Error (+/-)	% of AA by Age	White, Not Hispanic	Margin of Error (+/-)	% of NHW by Age
Female:	2,503	331	54.6%	2,343	287	52.1%
Under 18 years:	674	248	100.0%	405	143	100.0%
Native	674	248	100.0%	405	143	100.0%
Foreign born:	0	19	0.0%	0	19	0.0%
Naturalized U.S. citizen	0	19	0.0%	0	19	0.0%
Not a U.S. citizen	0	19	0.0%	0	19	0.0%
18 years and over:	1,829	228	100.0%	1,938	247	100.0%
Native	1,829	228	100.0%	1,932	249	99.7%
Foreign born:	0	19	0.0%	6	11	0.3%
Naturalized U.S. citizen	0	19	0.0%	6	11	0.3%
Not a U.S. citizen	0	19	0.0%	0	19	0.0%

Source: U.S. Census Bureau, 2008-2012 American Community Survey

For information on confidentiality protection, sampling error, nonsampling error, and definitions, see Survey Methodology.
<http://www.census.gov/acs/www/UseData/index.htm>

Citizenship Status of Voting Age Population (18 and Over)

Gonzales city, Louisiana



Source: B05003. SEX BY AGE BY CITIZENSHIP STATUS
Data Set: 2008-2012 American Community Survey 5-Year Estimates

**B07004. GEOGRAPHICAL MOBILITY IN THE PAST YEAR BY RACE FOR CURRENT RESIDENCE IN THE UNITED STATES - Universe:
POPULATION 1 YEAR AND OVER**

Data Set: 2008-2012 American Community Survey 5-Year Estimates

	Gonzales city, Louisiana					
	African American	Margin of Error (+/-)	% of AA Total	White, Not Hispanic	Margin of Error (+/-)	% of NHW Total
Total:	4,537	449	100.0%	4,437	463	100.0%
Same house 1 year ago	3,962	428	87.3%	3,728	452	84.0%
Moved within same county	495	345	10.9%	279	193	6.3%
Moved from different county within same state	11	19	0.2%	269	240	6.1%
Moved from different state	69	68	1.5%	161	114	3.6%
Moved from abroad	0	19	0.0%	0	19	0.0%

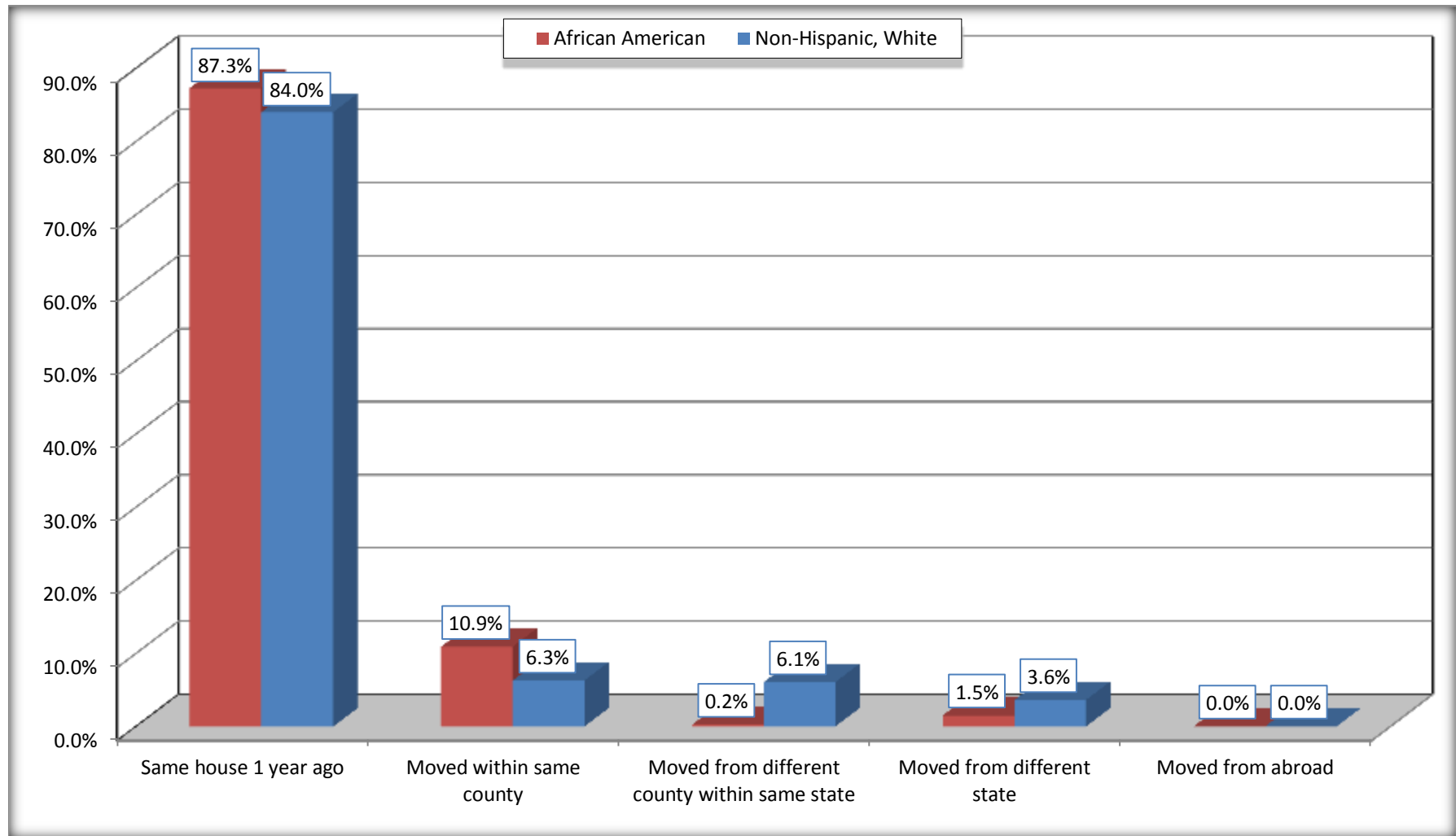
Source: U.S. Census Bureau, 2008-2012 American Community Survey

For information on confidentiality protection, sampling error, nonsampling error, and definitions, see Survey Methodology.

<http://www.census.gov/acs/www/UseData/index.htm>

Geographical Mobility in the Past Year (Population 1 Year and Over)

Gonzales city, Louisiana



Source: B07004. GEOGRAPHICAL MOBILITY IN THE PAST YEAR BY RACE FOR CURRENT RESIDENCE IN THE UNITED STATES - Universe: POPULATION 1 YEAR AND OVER

Data Set: 2008-2012 American Community Survey 5-Year Estimates

B08105. MEANS OF TRANSPORTATION TO WORK - Universe: WORKERS 16 YEARS AND OVER

Data Set: 2008-2012 American Community Survey 5-Year Estimates

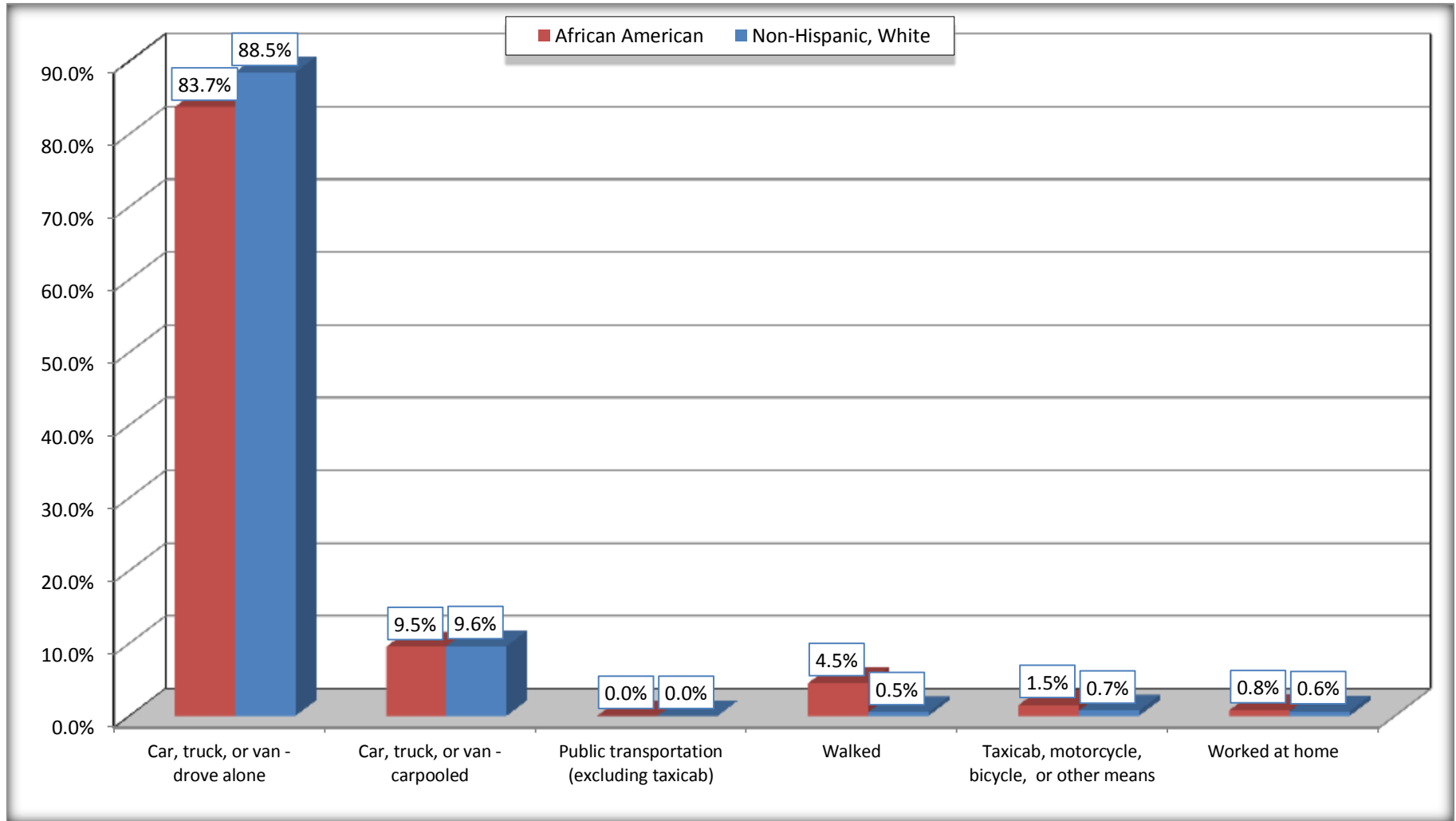
	Gonzales city, Louisiana					
	African American	Margin of Error (+/-)	% of AA Total	White, Not Hispanic	Margin of Error (+/-)	% of NHW Total
Total:	1794	255	100.0%	2321	333	100.0%
Car, truck, or van - drove alone	1502	201	83.7%	2054	327	88.5%
Car, truck, or van - carpooled	170	98	9.5%	223	133	9.6%
Public transportation (excluding taxicab)	0	19	0.0%	0	19	0.0%
Walked	81	78	4.5%	12	20	0.5%
Taxicab, motorcycle, bicycle, or other means	27	33	1.5%	17	18	0.7%
Worked at home	14	24	0.8%	15	19	0.6%

Source: U.S. Census Bureau, 2008-2012 American Community Survey

For information on confidentiality protection, sampling error, nonsampling error, and definitions, see Survey Methodology.
<http://www.census.gov/acs/www/UseData/index.htm>

Means of Transportation to Work (Workers 16 Years and Over)

Gonzales city, Louisiana



Source: B08105. MEANS OF TRANSPORTATION TO WORK - Universe: WORKERS 16 YEARS AND OVER
Data Set: 2008-2012 American Community Survey 5-Year Estimates

B11002. HOUSEHOLD TYPE BY RELATIVES AND NONRELATIVES FOR POPULATION IN HOUSEHOLDS

Data Set: 2008-2012 American Community Survey 5-Year Estimates

	Gonzales city, Louisiana					
	African American	Margin of Error (+/-)	% of AA Total	White, Not Hispanic	Margin of Error (+/-)	% of NHW Total
Total:	4509	450	100.0%	4405	472	100.0%
In family households	3875	566	85.9%	3411	502	77.4%
In nonfamily households	634	288	14.1%	994	249	22.6%

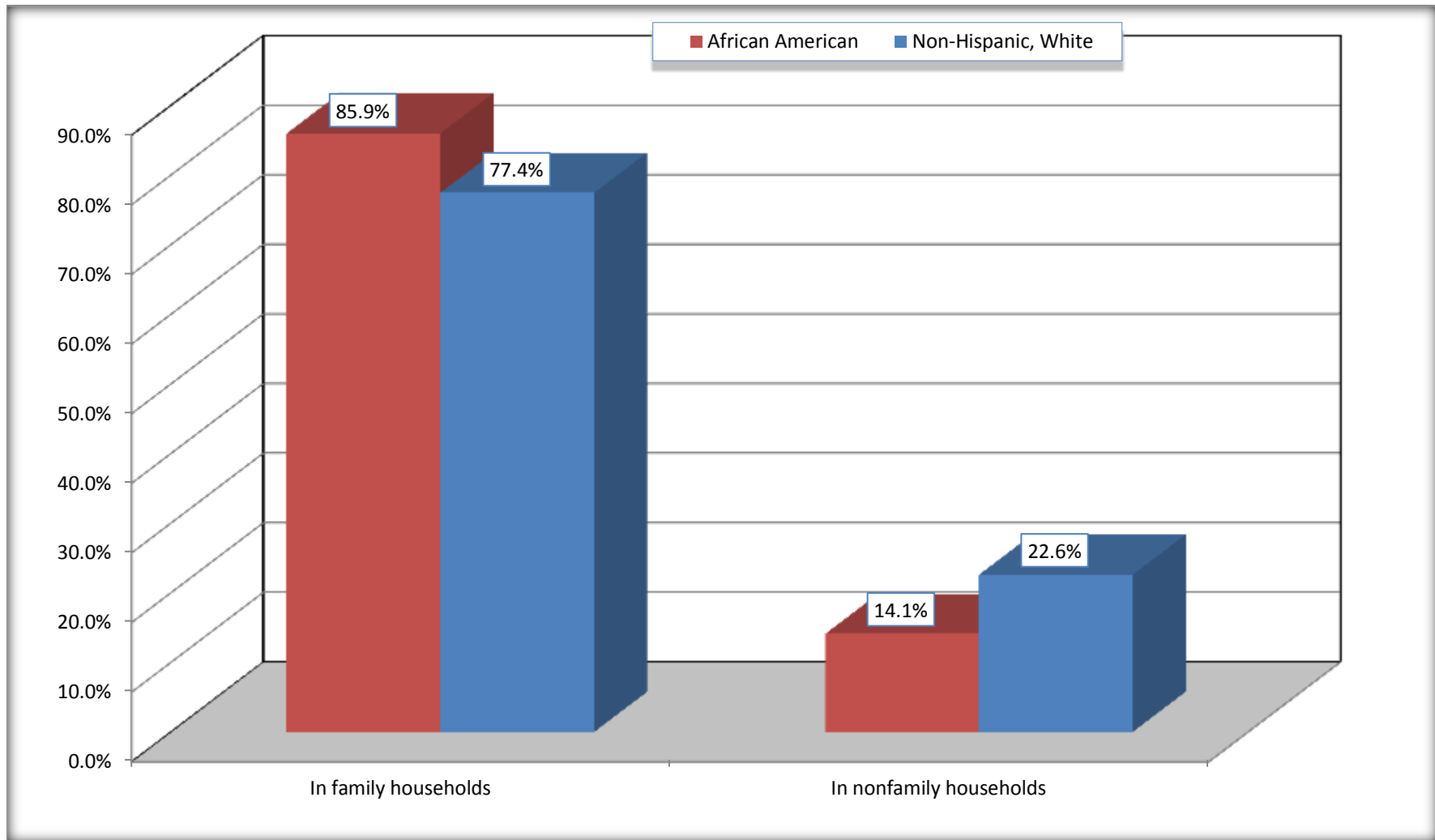
Source: U.S. Census Bureau, 2008-2012 American Community Survey

For information on confidentiality protection, sampling error, nonsampling error, and definitions, see Survey Methodology.

<http://www.census.gov/acs/www/UseData/index.htm>

Household Type for Population in Households

Gonzales city, Louisiana



Source: B11002. HOUSEHOLD TYPE BY RELATIVES AND NONRELATIVES FOR POPULATION IN HOUSEHOLDS
Data Set: 2008-2012 American Community Survey 5-Year Estimates

B12002. MARITAL STATUS FOR THE POPULATION 15 YEARS AND OVER

Data Set: 2008-2012 American Community Survey 5-Year Estimates

	Gonzales city, Louisiana					
	African American	Margin of Error (+/-)	% of AA Total	White, Not Hispanic	Margin of Error (+/-)	% of NHW Total
Total:	3,681	387	100.0%	3,830	385	100.0%
Never married	1,726	NC	46.9%	824	NC	21.5%
Now married (except separated)	1,166	NC	31.7%	1,930	NC	50.4%
Separated	197	NC	5.4%	74	NC	1.9%
Widowed	114	NC	3.1%	277	NC	7.2%
Divorced	478	NC	13.0%	725	NC	18.9%
Male:	1,638	283	44.5%	1,818	258	47.5%
Never married	819	200	22.2%	485	148	12.7%
Now married (except separated)	581	170	15.8%	952	156	24.9%
Separated	4	9	0.1%	34	54	0.9%
Widowed	69	87	1.9%	33	26	0.9%
Divorced	165	115	4.5%	314	117	8.2%
Female:	2,043	251	55.5%	2,012	244	52.5%
Never married	907	240	24.6%	339	133	8.9%
Now married (except separated)	585	160	15.9%	978	158	25.5%
Separated	193	128	5.2%	40	35	1.0%
Widowed	45	32	1.2%	244	97	6.4%
Divorced	313	135	8.5%	411	128	10.7%

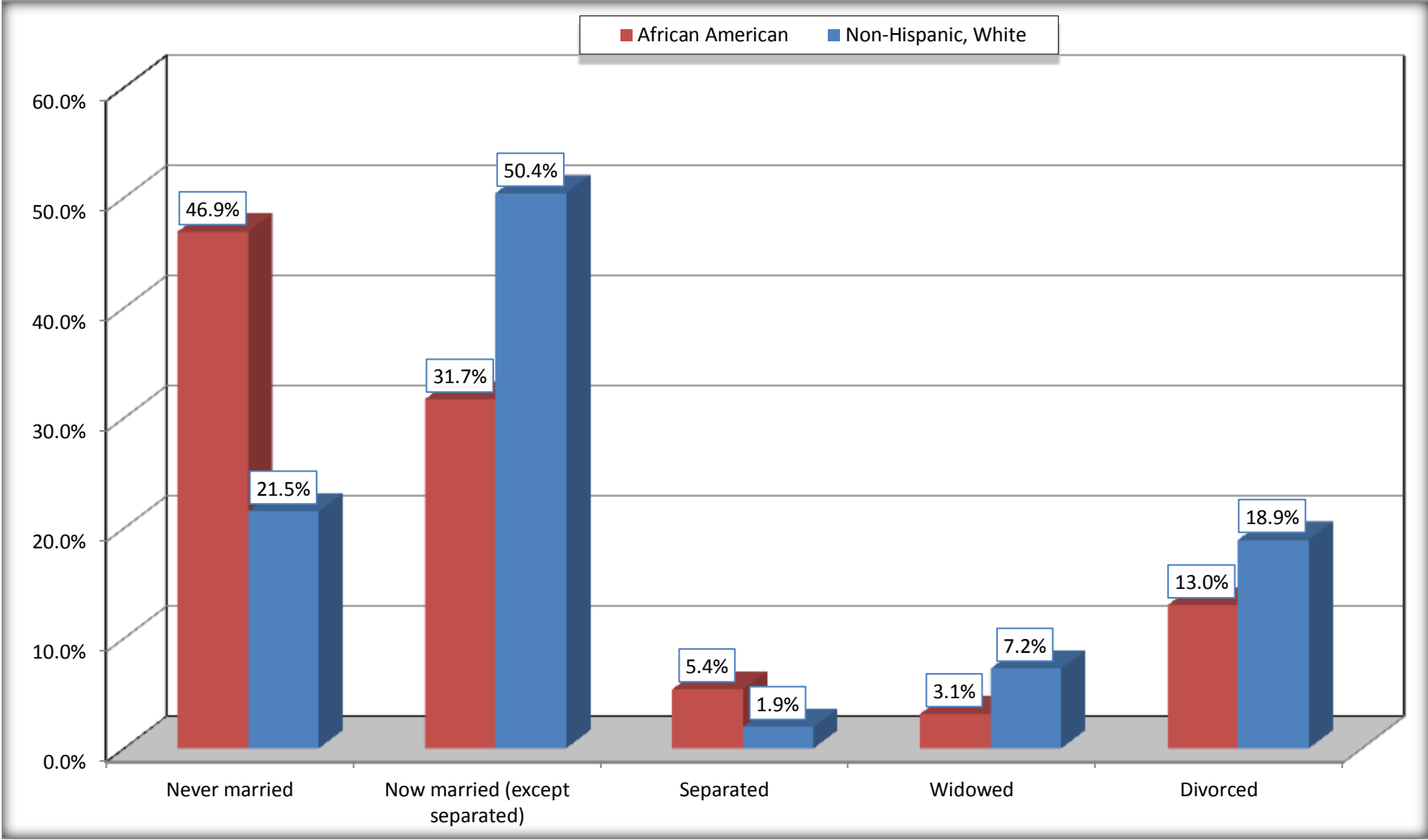
Source: U.S. Census Bureau, 2008-2012 American Community Survey

For information on confidentiality protection, sampling error, nonsampling error, and definitions, see Survey Methodology.

<http://www.census.gov/acs/www/UseData/index.htm>

Marital Status for the Population 15 Years and Over

Gonzales city, Louisiana



Source: B12002. MARITAL STATUS FOR THE POPULATION 15 YEARS AND OVER
Data Set: 2008-2012 American Community Survey 5-Year Estimates

C15002. SEX BY EDUCATIONAL ATTAINMENT FOR THE POPULATION 25 YEARS AND OVER

Data Set: 2008-2012 American Community Survey 5-Year Estimates

	Gonzales city, Louisiana					
	African American	Margin of Error (+/-)	% of AA Total	White, Not Hispanic	Margin of Error (+/-)	% of NHW Total
Total:	2,639	331	100.0%	3,381	350	100.0%
Less than high school diploma	435	NC	16.5%	212	NC	6.3%
High school graduate, GED, or alternative	924	NC	35.0%	1,516	NC	44.8%
Some college or associate's degree	865	NC	32.8%	962	NC	28.5%
Bachelor's degree or higher	415	NC	15.7%	691	NC	20.4%
Male:	1,056	209	40.0%	1,518	210	44.9%
Less than high school diploma	234	146	8.9%	47	44	1.4%
High school graduate, GED, or alternative	440	146	16.7%	786	192	23.2%
Some college or associate's degree	252	136	9.5%	411	125	12.2%
Bachelor's degree or higher	130	74	4.9%	274	100	8.1%
Female:	1,583	206	60.0%	1,863	240	55.1%
Less than high school diploma	201	126	7.6%	165	96	4.9%
High school graduate, GED, or alternative	484	150	18.3%	730	160	21.6%
Some college or associate's degree	613	189	23.2%	551	164	16.3%
Bachelor's degree or higher	285	139	10.8%	417	143	12.3%

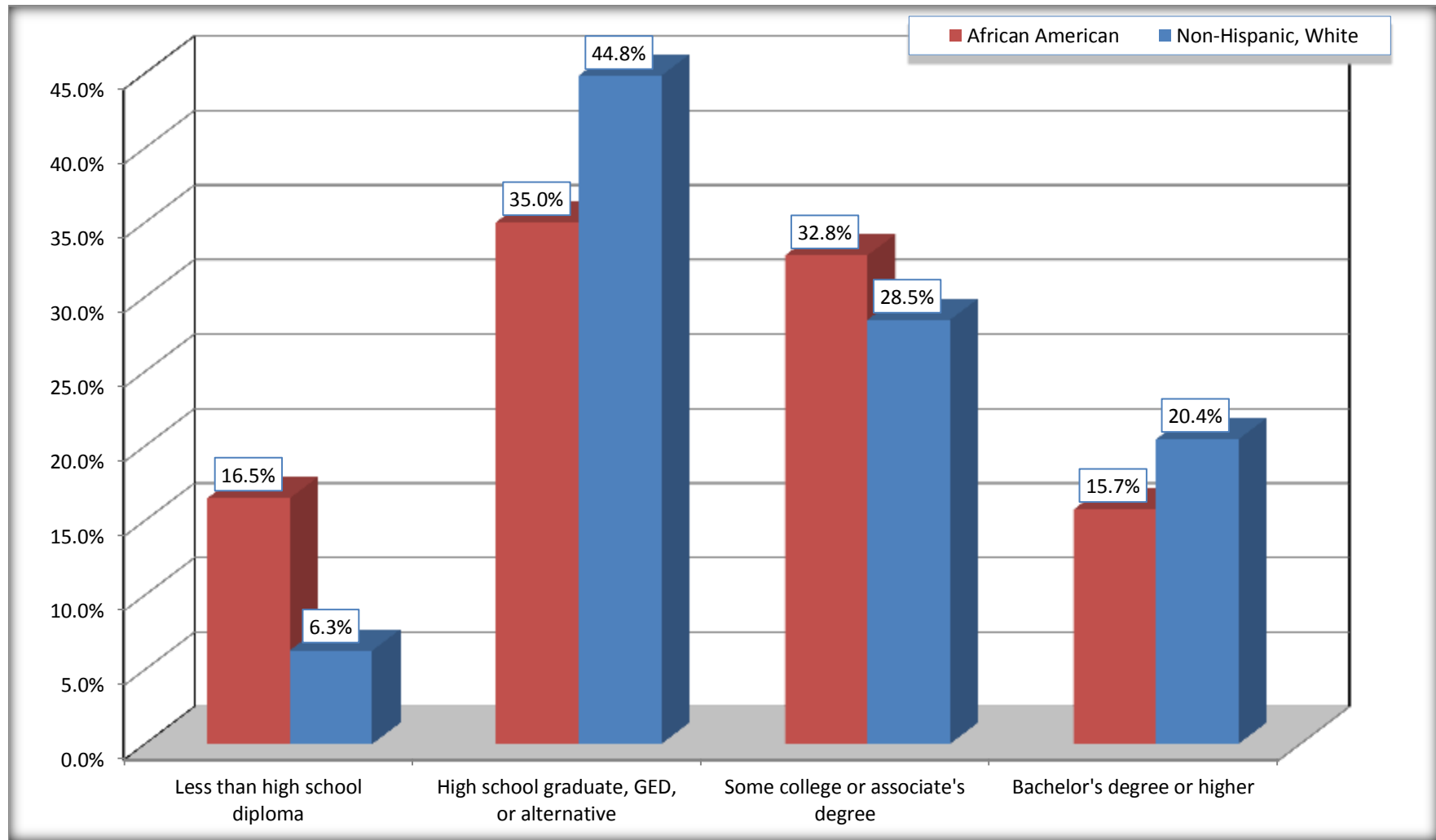
Source: U.S. Census Bureau, 2008-2012 American Community Survey

For information on confidentiality protection, sampling error, nonsampling error, and definitions, see Survey Methodology.

<http://www.census.gov/acs/www/UseData/index.htm>

Educational Attainment for the Population 25 Years and Older

Gonzales city, Louisiana



Source: C15002. SEX BY EDUCATIONAL ATTAINMENT FOR THE POPULATION 25 YEARS AND OVER
Data Set: 2008-2012 American Community Survey 5-Year Estimates

B17010. POVERTY STATUS IN THE PAST 12 MONTHS OF FAMILIES BY FAMILY TYPE BY PRESENCE OF RELATED CHILDREN UNDER 18 YEARS

Data Set: 2008-2012 American Community Survey 5-Year Estimates

	Gonzales city, Louisiana					
	African American	Margin of Error (+/-)	% of AA Total	White, Not Hispanic	Margin of Error (+/-)	% of NHW Total
Total:	1,099	216	100.0%	1,119	161	100.0%
Income in the past 12 months below poverty level:	263	122	23.9%	60	44	5.4%
Married-couple family:	62	60	5.6%	12	19	1.1%
With related children under 18 years	48	55	4.4%	12	19	1.1%
Other family:	201	129	18.3%	48	36	4.3%
Male householder, no wife present	29	46	2.6%	0	19	0.0%
With related children under 18 years	29	46	2.6%	0	19	0.0%
Female householder, no husband present	172	120	15.7%	48	36	4.3%
With related children under 18 years	172	120	15.7%	48	36	4.3%
Income in the past 12 months at or above poverty level:	836	221	76.1%	1,059	160	94.6%
Married-couple family:	473	146	43.0%	874	154	78.1%
With related children under 18 years	238	123	21.7%	257	100	23.0%
Other family:	363	190	33.0%	185	72	16.5%
Male householder, no wife present	16	26	1.5%	74	58	6.6%
With related children under 18 years	0	19	0.0%	28	38	2.5%
Female householder, no husband present	347	182	31.6%	111	50	9.9%
With related children under 18 years	263	175	23.9%	66	43	5.9%

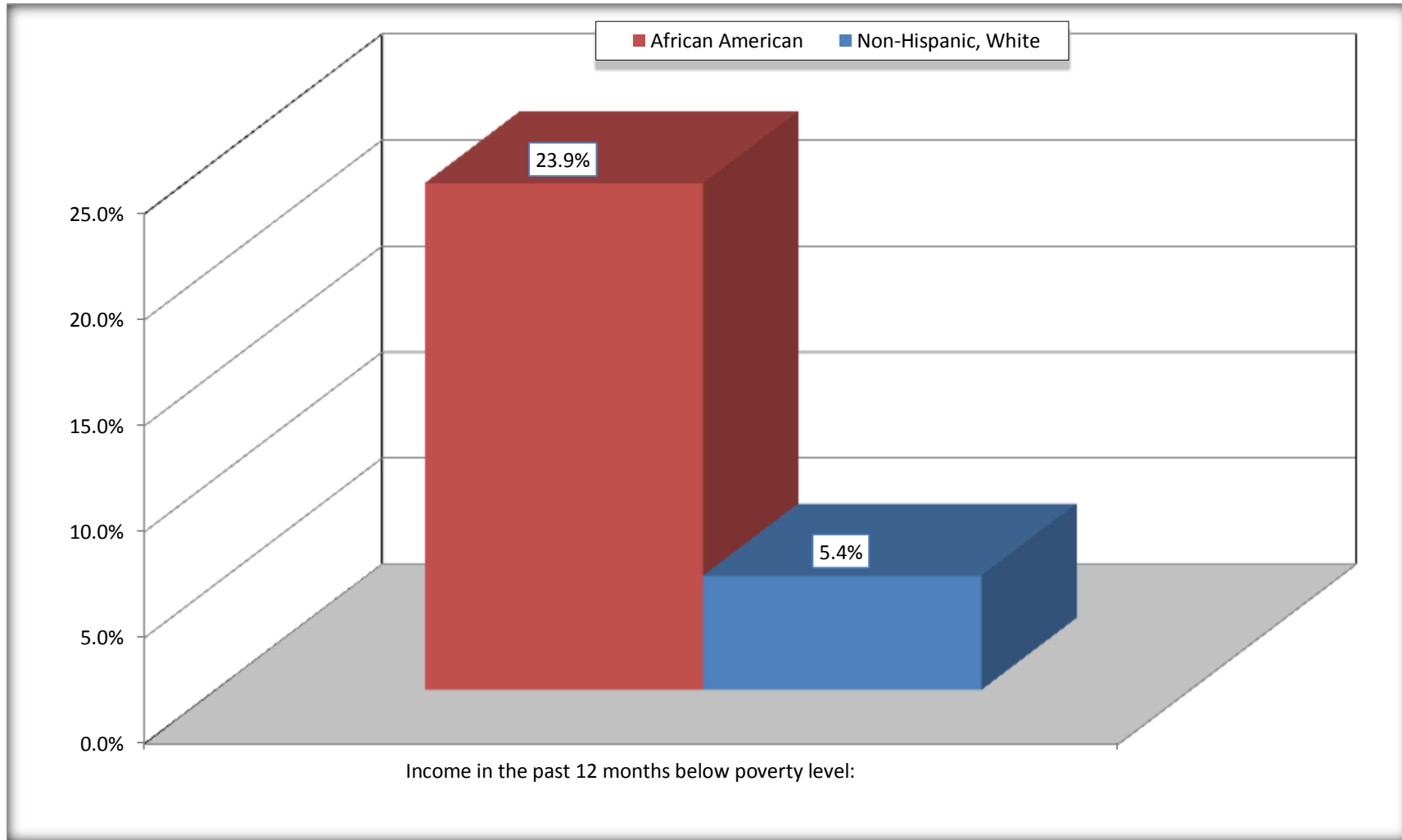
Source: U.S. Census Bureau, 2008-2012 American Community Survey

For information on confidentiality protection, sampling error, nonsampling error, and definitions, see Survey Methodology.

<http://www.census.gov/acs/www/UseData/index.htm>

Family Households Below Poverty in the Past 12 Months

Gonzales city, Louisiana

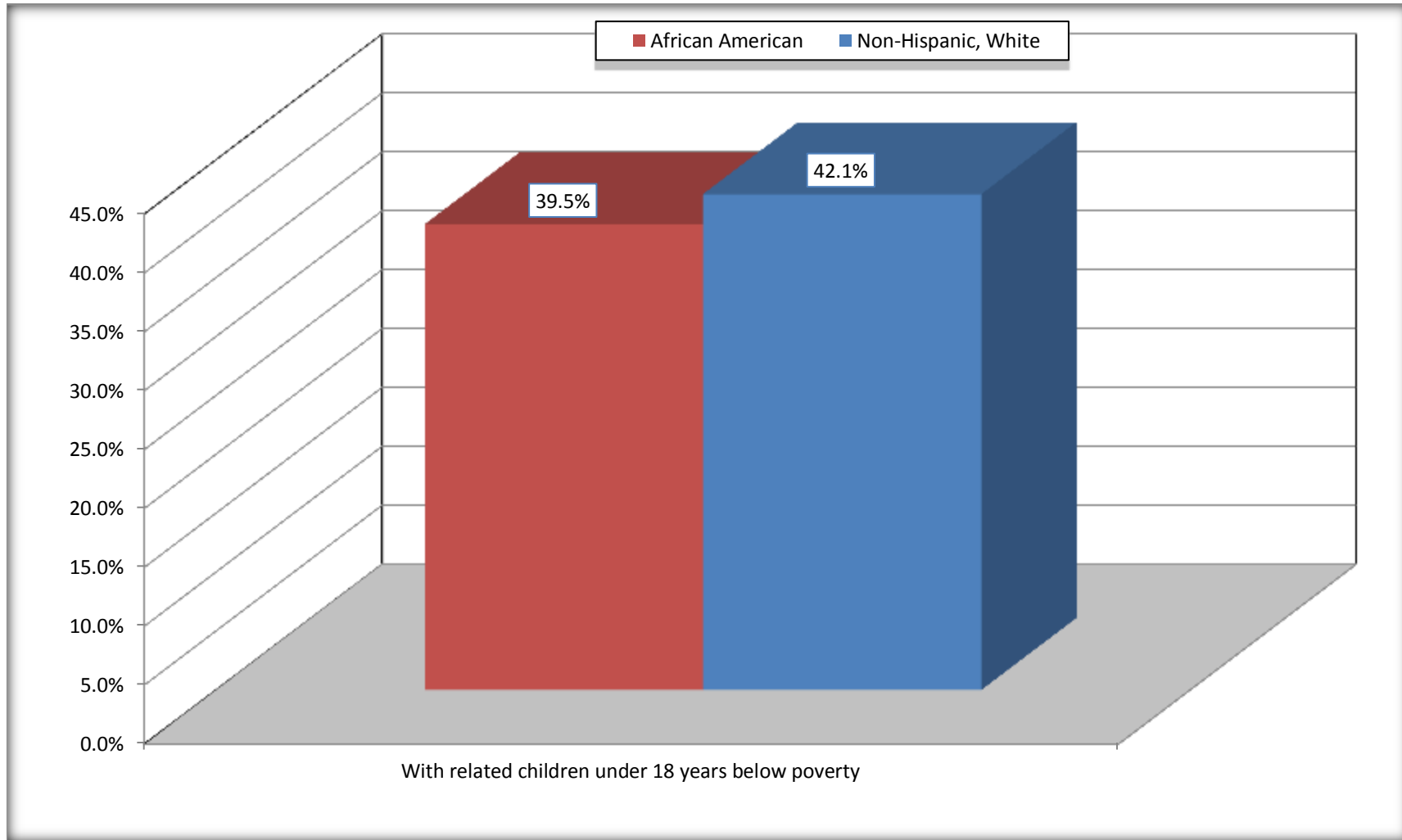


Source: B17010. POVERTY STATUS IN THE PAST 12 MONTHS OF FAMILIES BY FAMILY TYPE BY PRESENCE OF RELATED CHILDREN UNDER 18 YEARS

Data Set: 2008-2012 American Community Survey 5-Year Estimates

Female-headed Households with Related Children Below Poverty in the Past 12 Months

Gonzales city, Louisiana



Source: B17010. POVERTY STATUS IN THE PAST 12 MONTHS OF FAMILIES BY FAMILY TYPE BY PRESENCE OF RELATED CHILDREN UNDER 18 YEARS

Data Set: 2008-2012 American Community Survey 5-Year Estimates

B17020 POVERTY STATUS IN THE PAST 12 MONTHS BY AGE - Universe: POPULATION FOR WHOM POVERTY STATUS IS DETERMINED

Data Set: 2008-2012 American Community Survey 5-Year Estimates

	Gonzales city, Louisiana					
	African American	Margin of Error (+/-)	% of AA By Age	White, Not Hispanic	Margin of Error (+/-)	% of NHW By Age
Total:	4,555	453	100.0%	4,389	462	100.0%
Income in the past 12 months below poverty level:	1,616	467	35.5%	397	173	9.0%
Under 18 years	607	NC	42.8%	100	NC	12.8%
18 to 64 years	923	298	33.1%	219	102	7.6%
65 years and over	86	NC	24.8%	78	NC	10.8%
Income in the past 12 months at or above poverty level:	2,939	568	64.5%	3,992	492	91.0%
Under 18 years	812	NC	57.2%	679	NC	87.2%
18 to 64 years	1,866	435	66.9%	2,666	359	92.4%
65 years and over	261	NC	75.2%	647	NC	89.2%

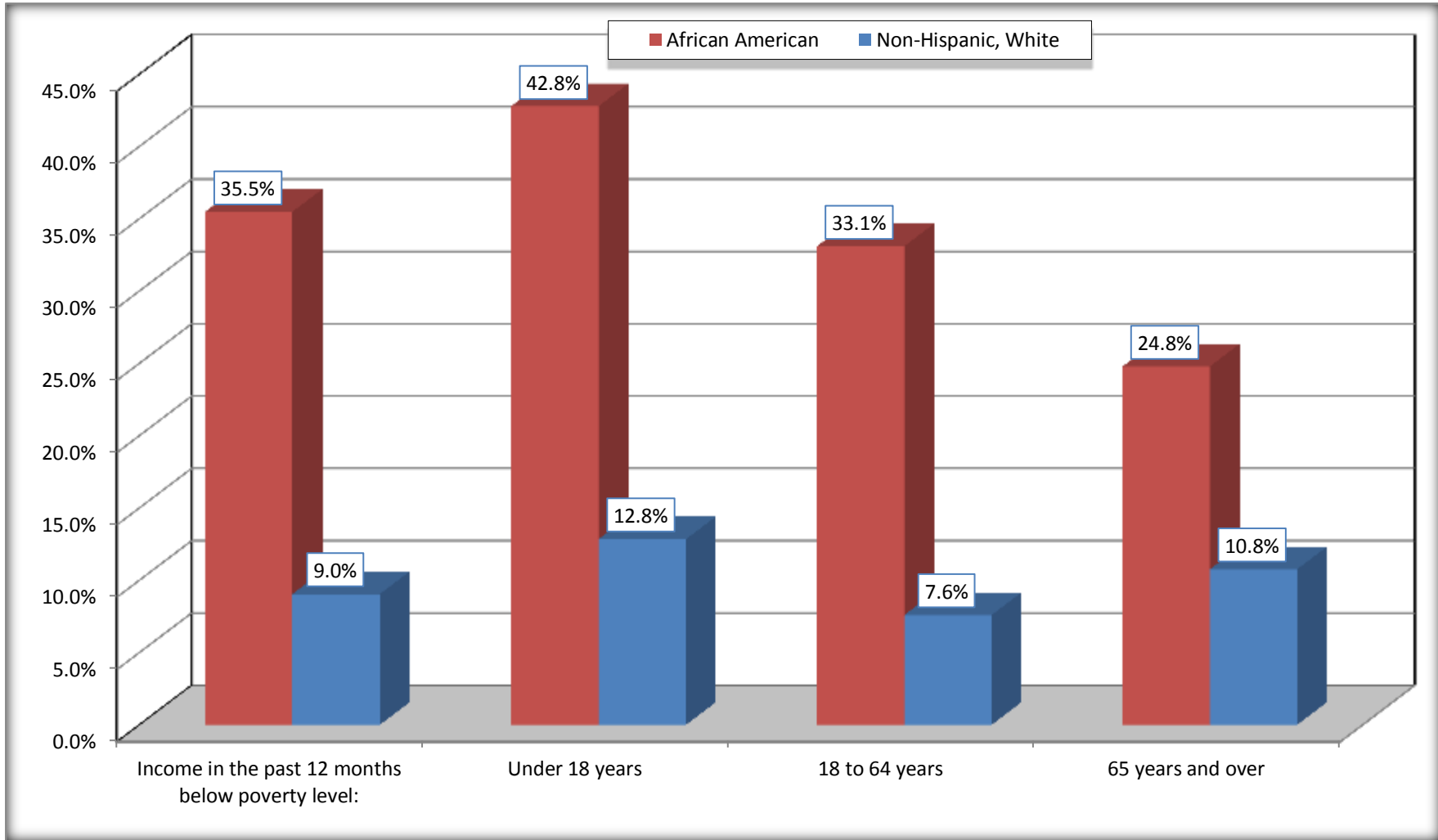
Source: U.S. Census Bureau, 2008-2012 American Community Survey

For information on confidentiality protection, sampling error, nonsampling error, and definitions, see Survey Methodology.

<http://www.census.gov/acs/www/UseData/index.htm>

Population Below Poverty in the Past 12 Months

Gonzales city, Louisiana



Source: B17020 POVERTY STATUS IN THE PAST 12 MONTHS BY AGE - Universe: POPULATION FOR WHOM POVERTY STATUS IS DETERMINED
Data Set: 2008-2012 American Community Survey 5-Year Estimates

B19001. HOUSEHOLD INCOME IN THE PAST 12 MONTHS (IN 2010 INFLATION-ADJUSTED DOLLARS)

Data Set: 2008-2012 American Community Survey 5-Year Estimates

	Gonzales city, Louisiana					
	African American	Margin of Error (+/-)	% of AA Total	White, Not Hispanic	Margin of Error (+/-)	% of NHW Total
Total:	1,599	187	100.0%	1,896	195	100.0%
Less than \$ 10,000	208	111	13.0%	28	43	1.5%
\$ 10,000 to \$ 14,999	150	92	9.4%	168	92	8.9%
\$ 15,000 to \$ 24,999	238	NC	14.9%	188	NC	9.9%
\$ 25,000 to \$ 34,999	116	NC	7.3%	192	NC	10.1%
\$ 35,000 to \$ 49,999	287	NC	17.9%	320	NC	16.9%
\$ 50,000 to \$ 74,999	187	NC	11.7%	330	NC	17.4%
\$ 75,000 to \$ 99,999	204	136	12.8%	274	112	14.5%
\$ 100,000 to \$ 149,999	199	NC	12.4%	220	NC	11.6%
\$ 150,000 to \$ 199,999	0	19	0.0%	56	43	3.0%
\$ 200,000 or more	10	17	0.6%	120	86	6.3%

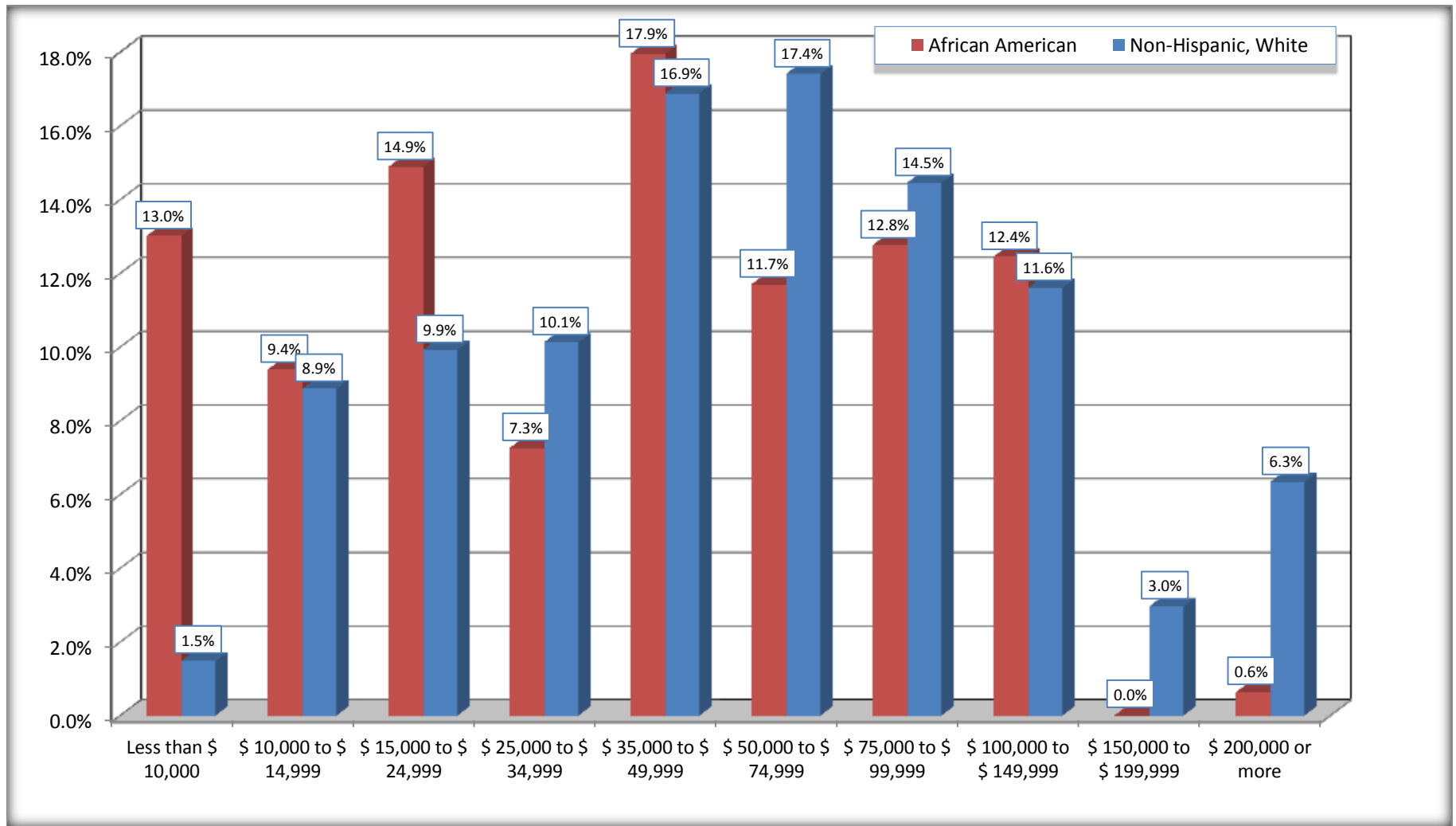
Source: U.S. Census Bureau, 2008-2012 American Community Survey

For information on confidentiality protection, sampling error, nonsampling error, and definitions, see Survey Methodology.

<http://www.census.gov/acs/www/UseData/index.htm>

Household Income in the Past 12 Months

Gonzales city, Louisiana



Source: B19001. HOUSEHOLD INCOME IN THE PAST 12 MONTHS (IN 2010 INFLATION-ADJUSTED DOLLARS)
Data Set: 2008-2012 American Community Survey 5-Year Estimates

B19013. MEDIAN HOUSEHOLD INCOME IN THE PAST 12 MONTHS (IN 2010 INFLATION-ADJUSTED DOLLARS)

Data Set: 2008-2012 American Community Survey 5-Year Estimates

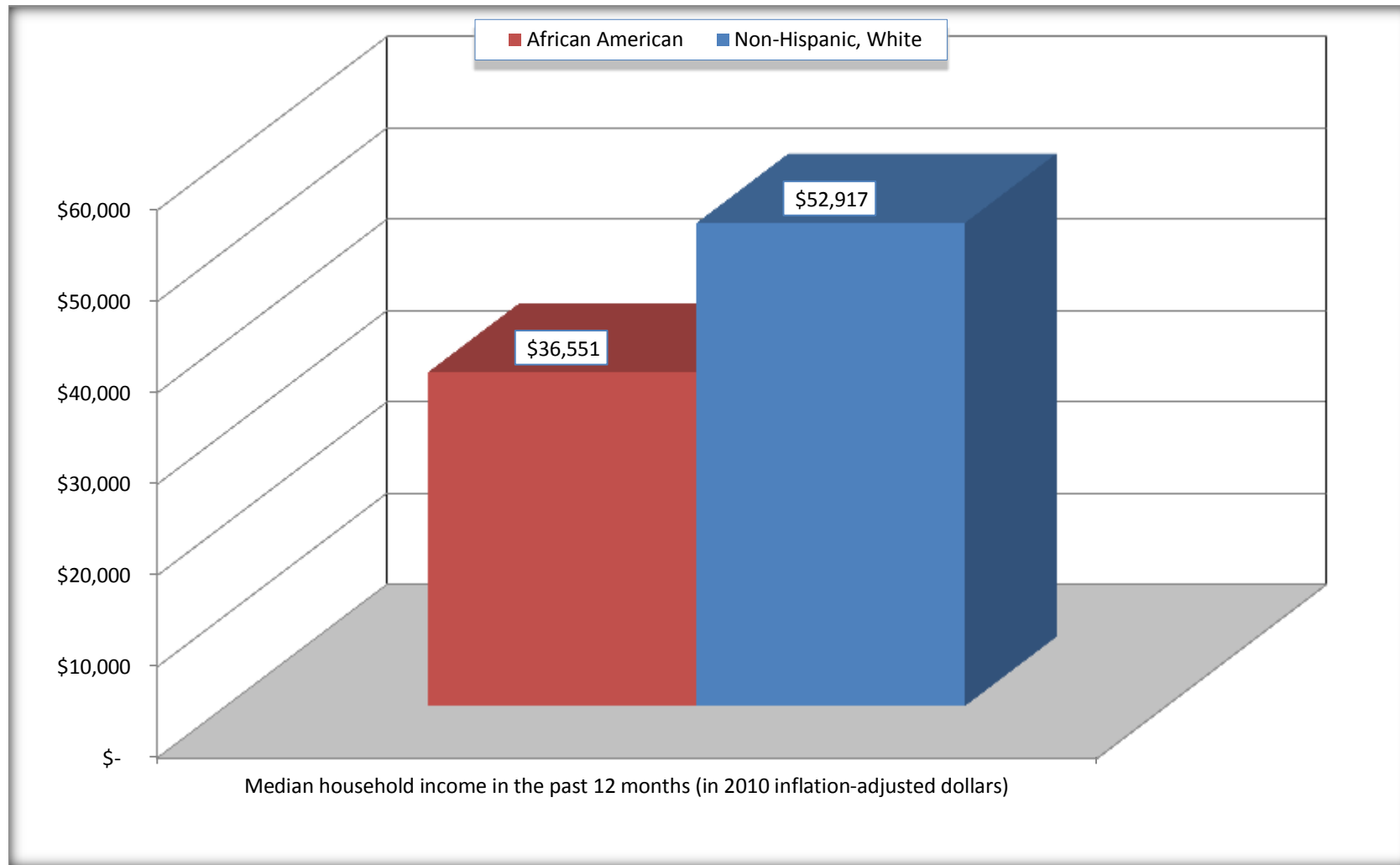
	Gonzales city, Louisiana			
	African American	Margin of Error (+/-)	White, Not Hispanic	Margin of Error (+/-)
Median household income in the past 12 months (in 2010 inflation-adjusted dollars)	\$ 36,551	\$ 6,657	\$ 52,917	\$ 10,372

Source: U.S. Census Bureau, 2008-2012 American Community Survey

For information on confidentiality protection, sampling error, nonsampling error, and definitions, see Survey Methodology.
<http://www.census.gov/acs/www/UseData/index.htm>

Median Household Income in the Past 12 Months

Gonzales city, Louisiana



Source: B19013. MEDIAN HOUSEHOLD INCOME IN THE PAST 12 MONTHS (IN 2010 INFLATION-ADJUSTED DOLLARS)
Data Set: 2008-2012 American Community Survey 5-Year Estimates

B19101. FAMILY INCOME IN THE PAST 12 MONTHS (IN 2010 INFLATION-ADJUSTED DOLLARS)

Data Set: 2008-2012 American Community Survey 5-Year Estimates

	Gonzales city, Louisiana					
	African American	Margin of Error (+/-)	% of AA Total	White, Not Hispanic	Margin of Error (+/-)	% of NHW Total
Total:	1,099	216	100.0%	1,119	161	100.0%
Less than \$ 10,000	69	55	6.3%	0	19	0.0%
\$ 10,000 to \$ 14,999	56	54	5.1%	41	34	3.7%
\$ 15,000 to \$ 24,999	201	NC	18.3%	46	NC	4.1%
\$ 25,000 to \$ 34,999	78	NC	7.1%	43	NC	3.8%
\$ 35,000 to \$ 49,999	208	NC	18.9%	244	NC	21.8%
\$ 50,000 to \$ 74,999	187	NC	17.0%	232	NC	20.7%
\$ 100,000 to \$ 149,999	199	NC	18.1%	167	NC	14.9%
\$ 150,000 to \$ 199,999	0	19	0.0%	56	43	5.0%
\$ 200,000 or more	10	17	0.9%	120	86	10.7%

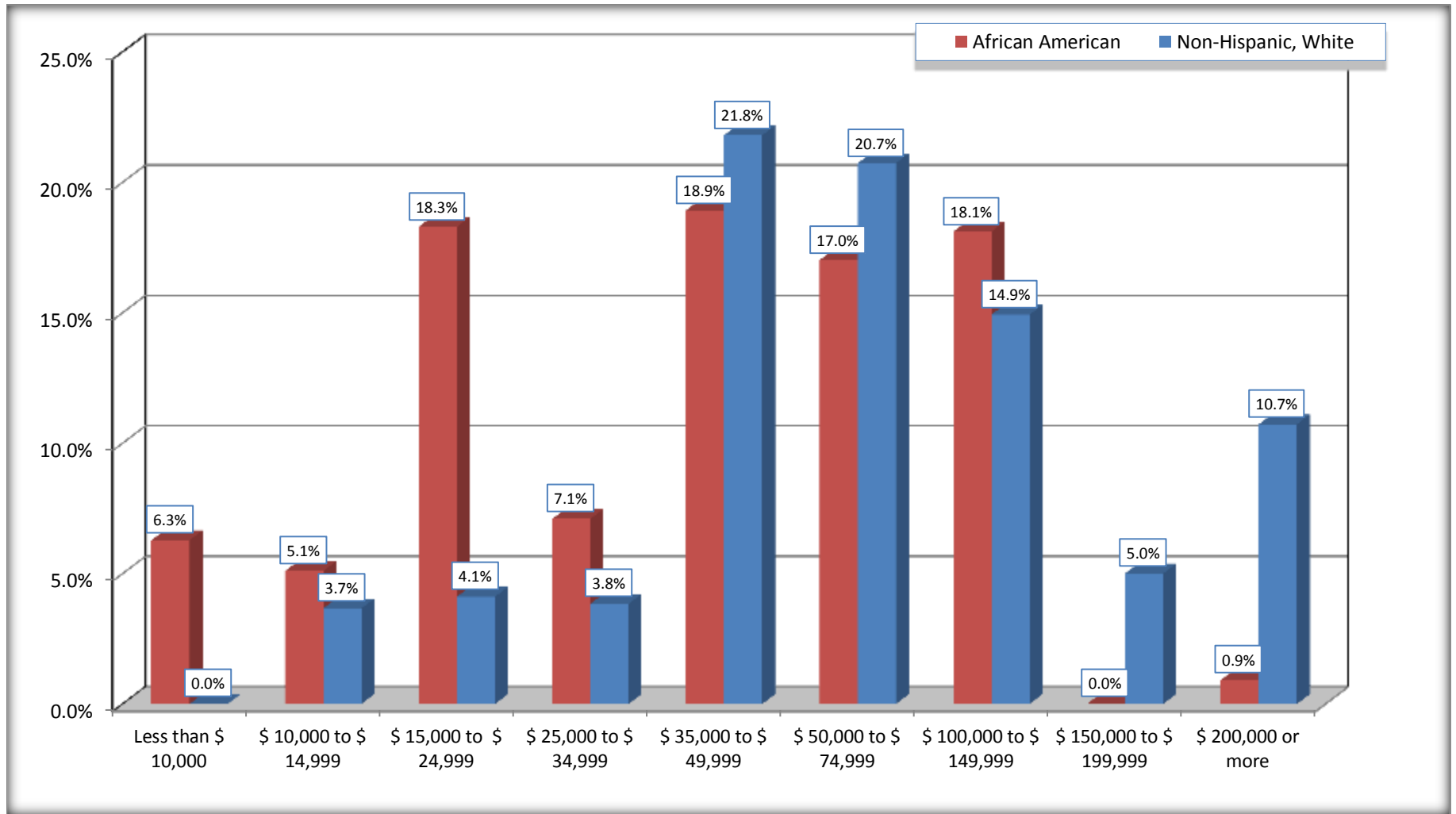
Source: U.S. Census Bureau, 2008-2012 American Community Survey

For information on confidentiality protection, sampling error, nonsampling error, and definitions, see Survey Methodology.

<http://www.census.gov/acs/www/UseData/index.htm>

Family Income in the Past 12 Months

Gonzales city, Louisiana



Source: B19101. FAMILY INCOME IN THE PAST 12 MONTHS (IN 2010 INFLATION-ADJUSTED DOLLARS)
Data Set: 2008-2012 American Community Survey 5-Year Estimates

B19113. MEDIAN FAMILY INCOME IN THE PAST 12 MONTHS (IN 2010 INFLATION-ADJUSTED DOLLARS)

Data Set: 2008-2012 American Community Survey 5-Year Estimates

	Gonzales city, Louisiana			
	African American	Margin of Error (+/-)	White, Not Hispanic	Margin of Error (+/-)
Median family income in the past 12 months (in 2010 inflation-adjusted dollars)	\$ 45,917	\$ 17,577	\$ 68,487	\$ 13,550

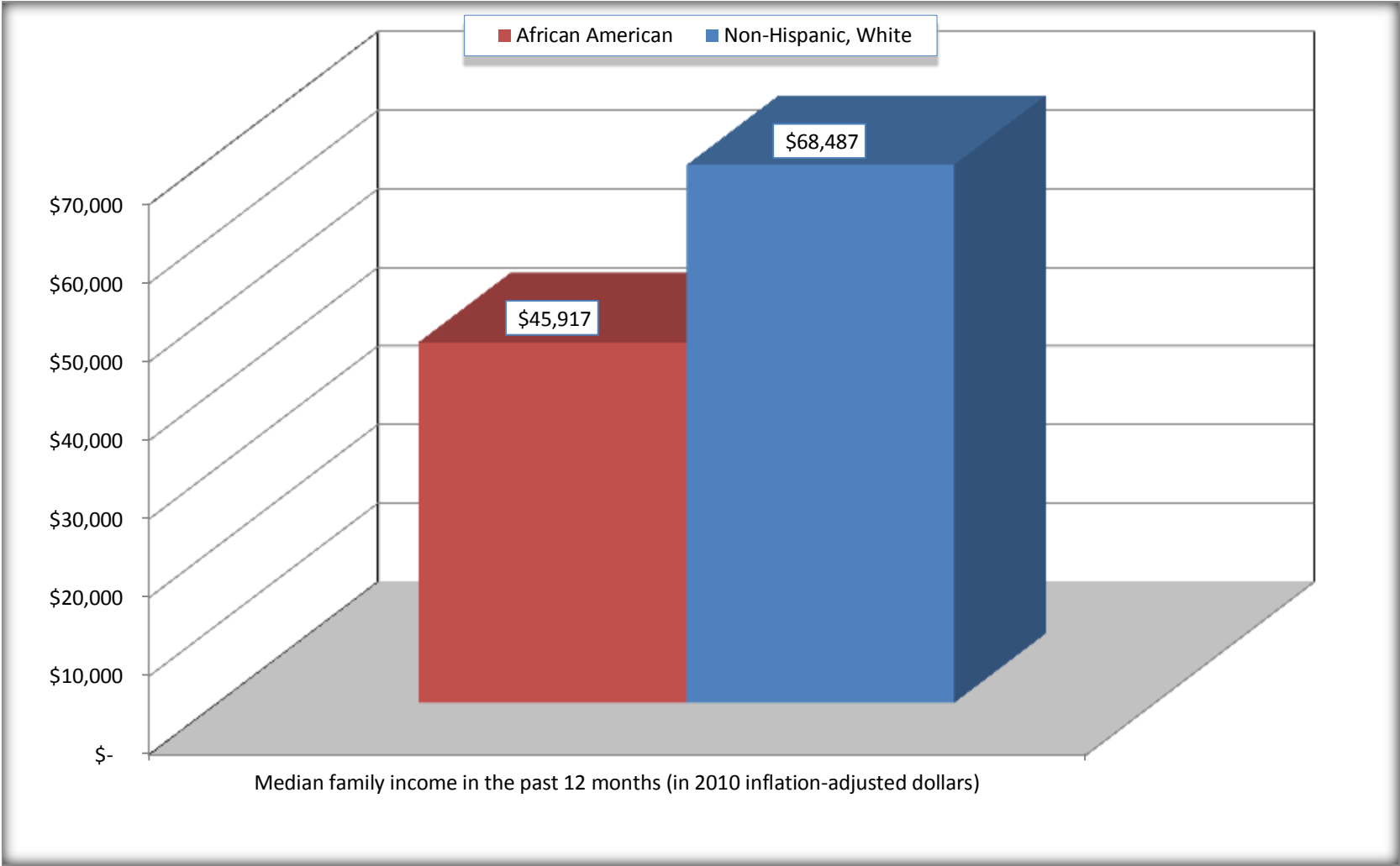
Source: U.S. Census Bureau, 2008-2012 American Community Survey

For information on confidentiality protection, sampling error, nonsampling error, and definitions, see Survey Methodology.

<http://www.census.gov/acs/www/UseData/index.htm>

Median Family Income in the Past 12 Months

Gonzales city, Louisiana



Source: B19113. MEDIAN FAMILY INCOME IN THE PAST 12 MONTHS (IN 2010 INFLATION-ADJUSTED DOLLARS)
Data Set: 2008-2012 American Community Survey 5-Year Estimates

B19202. MEDIAN NONFAMILY HOUSEHOLD INCOME IN THE PAST 12 MONTHS (IN 2010 INFLATION-ADJUSTED DOLLARS)

Data Set: 2008-2012 American Community Survey 5-Year Estimates

	Gonzales city, Louisiana			
	African American	Margin of Error (+/-)	White, Not Hispanic	Margin of Error (+/-)
Median nonfamily household income in the past 12 months (in 2010 inflation-adjusted dollars)	\$ 15,644	\$ 17,581	\$ 30,504	\$ 6,512

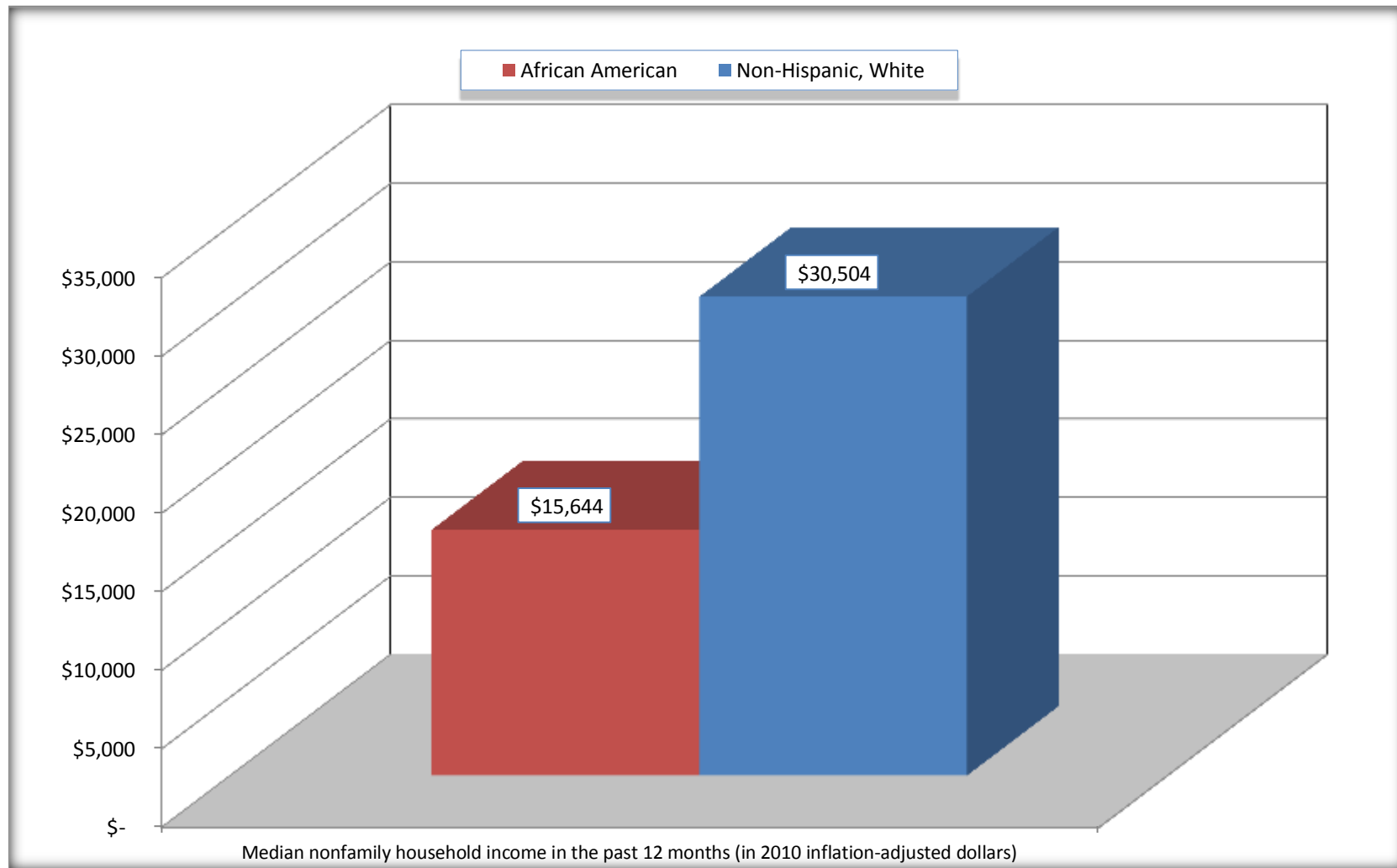
Source: U.S. Census Bureau, 2008-2012 American Community Survey

For information on confidentiality protection, sampling error, nonsampling error, and definitions, see Survey Methodology.

<http://www.census.gov/acs/www/UseData/index.htm>

Median Non-Family Income in the Past 12 Months

Gonzales city, Louisiana



Source: B19202. MEDIAN NONFAMILY HOUSEHOLD INCOME IN THE PAST 12 MONTHS (IN 2010 INFLATION-ADJUSTED DOLLARS)
Data Set: 2008-2012 American Community Survey 5-Year Estimates

B19301. PER CAPITA INCOME IN THE PAST 12 MONTHS (IN 2010 INFLATION-ADJUSTED DOLLARS)

Data Set: 2008-2012 American Community Survey 5-Year Estimates

	Gonzales city, Louisiana			
	African American	Margin of Error (+/-)	White, Not Hispanic	Margin of Error (+/-)
Per capita income in the past 12 months (in 2010 inflation-adjusted dollars)	\$ 18,832	\$ 3,942	\$ 31,561	\$ 3,016

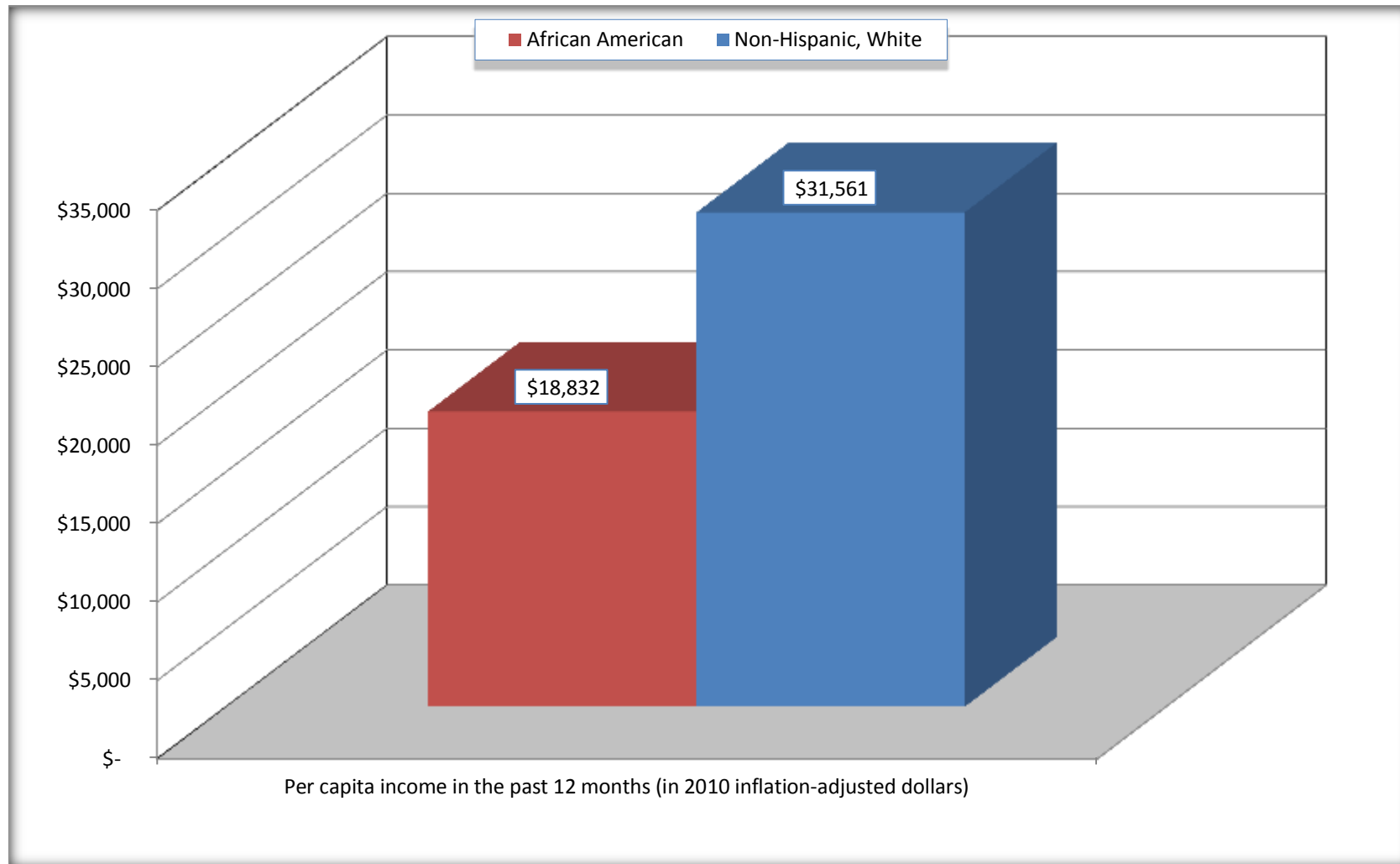
Source: U.S. Census Bureau, 2008-2012 American Community Survey

For information on confidentiality protection, sampling error, nonsampling error, and definitions, see Survey Methodology.

<http://www.census.gov/acs/www/UseData/index.htm>

Per capita Income in the Past 12 Months

Gonzales city, Louisiana



Source: B19301. PER CAPITA INCOME IN THE PAST 12 MONTHS (IN 2010 INFLATION-ADJUSTED DOLLARS)
Data Set: 2008-2012 American Community Survey 5-Year Estimates

B20017. MEDIAN EARNINGS IN THE PAST 12 MONTHS (IN 2010 INFLATION-ADJUSTED DOLLARS) BY SEX BY WORK EXPERIENCE IN THE PAST 12 MONTHS FOR THE POPULATION 16 YEARS AND OVER WITH EARNINGS IN THE PAST 12 MONTHS

Data Set: 2008-2012 American Community Survey 5-Year Estimates

	Gonzales city, Louisiana			
	African American	Margin of Error (+/-)	White, Not Hispanic	Margin of Error (+/-)
Median earnings in the past 12 months (in 2010 inflation-adjusted dollars) --				
Total:	\$ 16,081	\$ 5,065	\$ 33,500	\$ 4,429
Male --				
Total	\$ 10,203	\$ 5,001	\$ 41,920	\$ 4,187
Worked full-time, year-round in the past 12 months	\$ 67,875	\$ 48,076	\$ 52,500	\$ 8,045
Other	\$ 4,654	\$ 2,704	\$ 12,014	\$ 7,012
Female --				
Total	\$ 18,750	\$ 12,408	\$ 28,590	\$ 5,267
Worked full-time, year-round in the past 12 months	\$ 31,931	\$ 1,982	\$ 40,000	\$ 11,543
Other	\$ 6,768	\$ 5,724	\$ 9,188	\$ 7,503

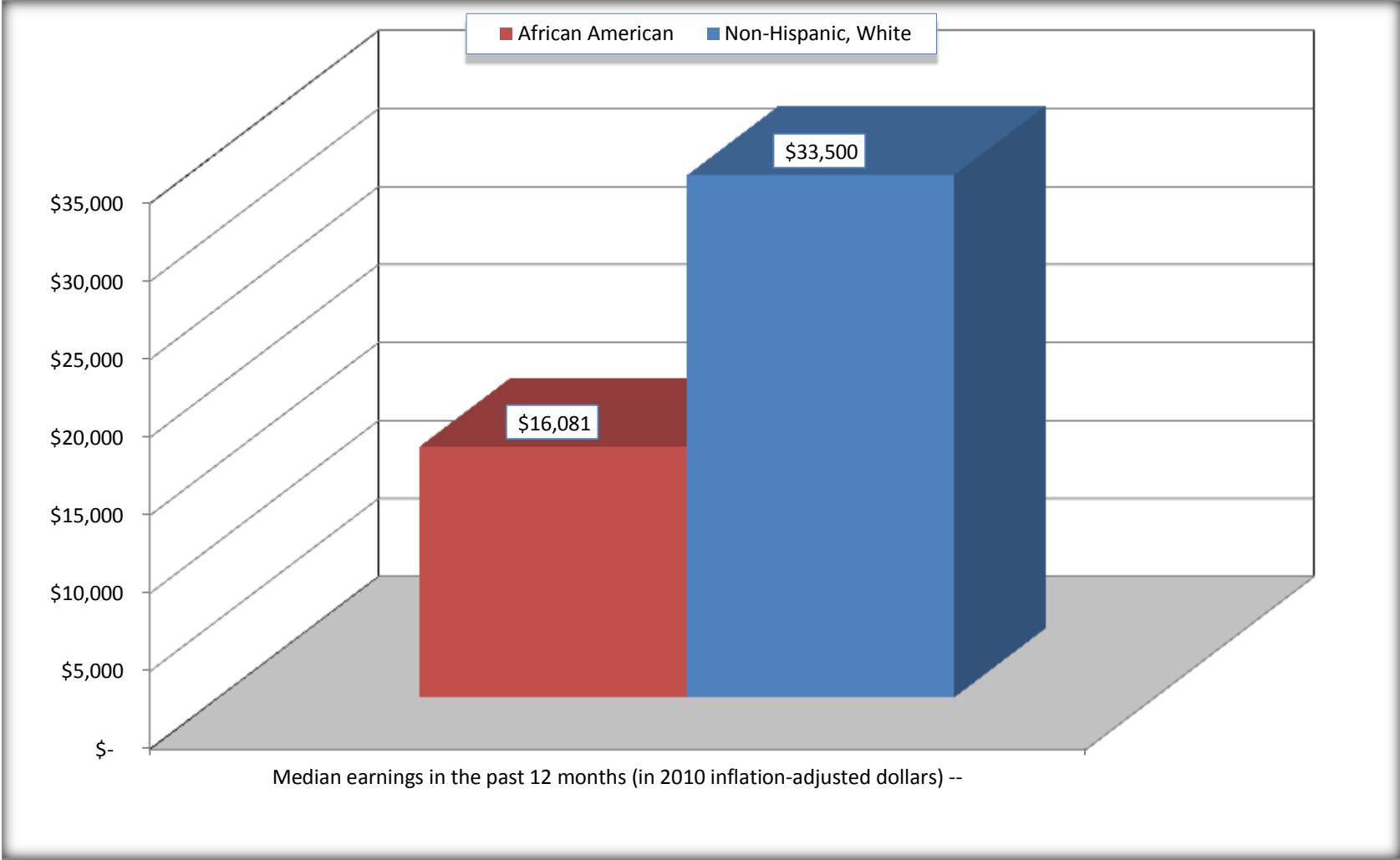
Source: U.S. Census Bureau, 2008-2012 American Community Survey

For information on confidentiality protection, sampling error, nonsampling error, and definitions, see Survey Methodology.

<http://www.census.gov/acs/www/UseData/index.htm>

Median earnings in the Past 12 Months (16 Years and Over with Earnings)

Gonzales city, Louisiana



Source: B20017. MEDIAN EARNINGS IN THE PAST 12 MONTHS (IN 2010 INFLATION-ADJUSTED DOLLARS) BY SEX BY WORK EXPERIENCE IN THE PAST 12 MONTHS FOR THE POPULATION 16 YEARS AND OVER WITH EARNINGS IN THE PAST 12 MONTHS
Data Set: 2008-2012 American Community Survey 5-Year Estimates

B20005. SEX BY WORK EXPERIENCE IN THE PAST 12 MONTHS BY EARNINGS IN THE PAST 12 MONTHS (IN 2010 INFLATION-ADJUSTED DOLLARS) FOR THE POPULATION 16 YEARS AND OVER

Data Set: 2008-2012 American Community Survey 5-Year Estimates

	Gonzales city, Louisiana					
	African American	Margin of Error (+/-)	% of AA Total	White, Not Hispanic	Margin of Error (+/-)	% of NHW Total
Total:	3,597	396	100.0%	3,808	386	100.0%
Worked full-time, year-round in the past 12 months:	1,088	NC	30.2%	1,662	NC	43.6%
No earnings	0	NC	0.0%	0	NC	0.0%
With earnings:	1,088	NC	30.2%	1,662	NC	43.6%
\$ 1 to \$ 9,999 or loss	6	NC	0.2%	30	NC	0.8%
\$ 10,000 to \$ 19,999	239	NC	6.6%	81	NC	2.1%
\$ 20,000 to \$ 29,999	134	NC	3.7%	168	NC	4.4%
\$ 30,000 to \$ 49,999	354	NC	9.8%	587	NC	15.4%
\$ 50,000 to \$ 74,999	130	NC	3.6%	394	NC	10.3%
\$ 75,000 or more	225	NC	6.3%	402	NC	10.6%
Other:	2,509	NC	69.8%	2,146	NC	56.4%
No earnings	1,449	NC	40.3%	1,242	NC	32.6%
With earnings: less than full time, year-round	1,060	NC	29.5%	904	NC	23.7%
Male:	1,596	294	44.4%	1,796	257	47.2%
Worked full-time, year-round in the past 12 months:	318	124	8.8%	906	185	23.8%
No earnings	0	19	0.0%	0	19	0.0%
With earnings:	318	124	8.8%	906	185	23.8%
\$ 1 to \$ 9,999 or loss	0	NC	0.0%	0	NC	0.0%
\$ 10,000 to \$ 19,999	50	NC	1.4%	60	NC	1.6%
\$ 20,000 to \$ 29,999	39	NC	1.1%	24	NC	0.6%
\$ 30,000 to \$ 49,999	64	NC	1.8%	348	NC	9.1%
\$ 50,000 to \$ 74,999	40	NC	1.1%	206	NC	5.4%
\$ 75,000 or more	125	NC	3.5%	268	NC	7.0%

	Gonzales city, Louisiana					
	African American	Margin of Error (+/-)	% of AA Total	White, Not Hispanic	Margin of Error (+/-)	% of NHW Total
Other:	1,278	270	35.5%	890	200	23.4%
No earnings	716	268	19.9%	447	141	11.7%
With earnings:	562	183	15.6%	443	143	11.6%
Female:	2,001	244	55.6%	2,012	244	52.8%
Worked full-time, year-round in the past 12 months:	770	205	21.4%	756	160	19.9%
No earnings	0	19	0.0%	0	19	0.0%
With earnings:	770	205	21.4%	756	160	19.9%
\$ 1 to \$ 9,999 or loss	6	NC	0.2%	30	NC	0.8%
\$ 10,000 to \$ 19,999	189	NC	5.3%	21	NC	0.6%
\$ 20,000 to \$ 29,999	95	NC	2.6%	144	NC	3.8%
\$ 30,000 to \$ 49,999	290	NC	8.1%	239	NC	6.3%
\$ 50,000 to \$ 74,999	90	NC	2.5%	188	NC	4.9%
\$ 75,000 or more	100	NC	2.8%	134	NC	3.5%
Other:	1,231	269	34.2%	1,256	236	33.0%
No earnings	733	186	20.4%	795	191	20.9%
With earnings:	498	203	13.8%	461	149	12.1%

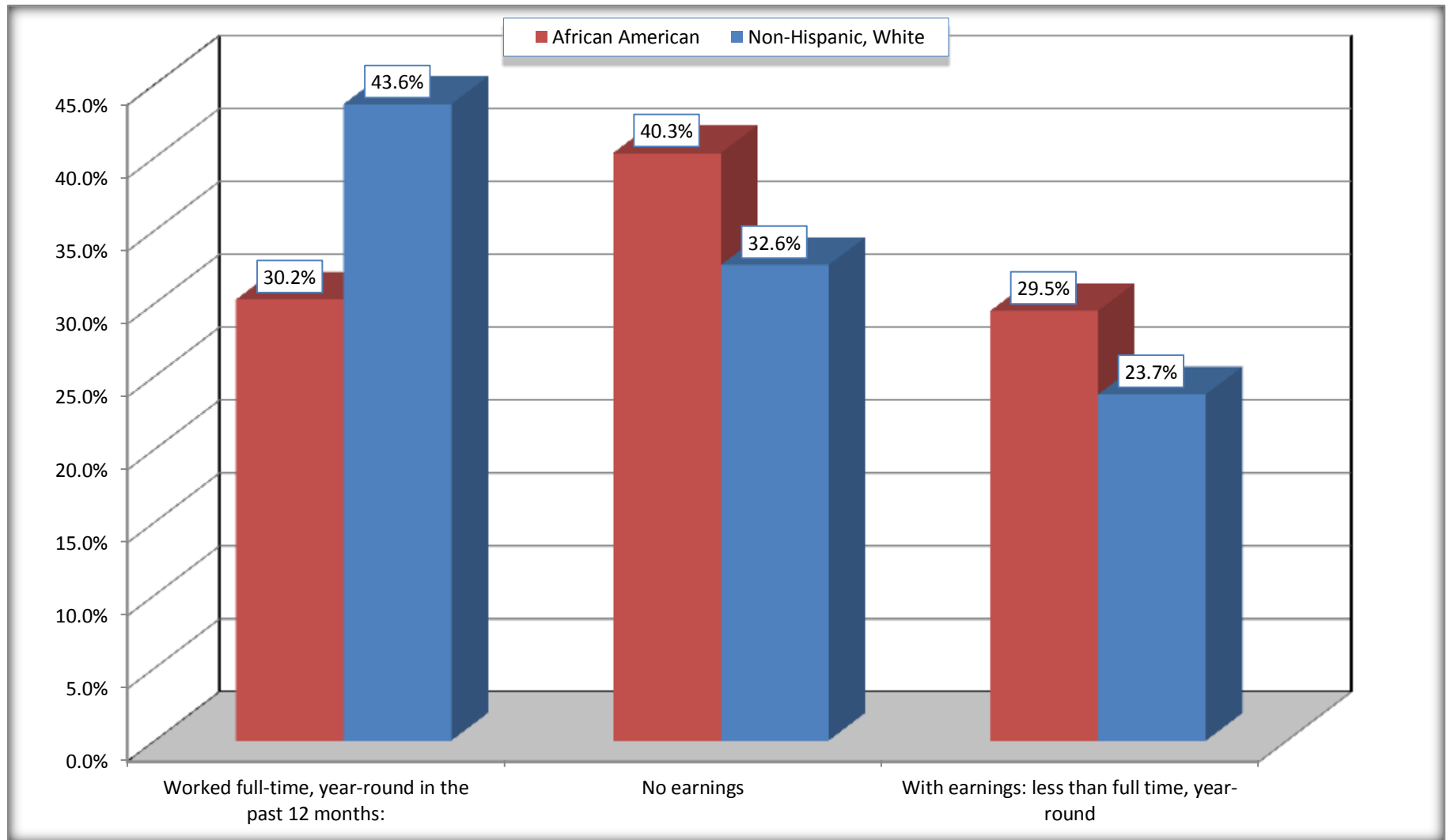
Source: U.S. Census Bureau, 2008-2012 American Community Survey

For information on confidentiality protection, sampling error, nonsampling error, and definitions, see Survey Methodology.

<http://www.census.gov/acs/www/UseData/index.htm>

Employment and Earnings in in the Past 12 Months (16 Years and Over)

Gonzales city, Louisiana



Source: B20005. SEX BY WORK EXPERIENCE IN THE PAST 12 MONTHS BY EARNINGS IN THE PAST 12 MONTHS (IN 2010 INFLATION-ADJUSTED DOLLARS) FOR THE POPULATION 16 YEARS AND OVER

Data Set: 2008-2012 American Community Survey 5-Year Estimates

C21001. SEX BY AGE BY VETERAN STATUS FOR THE CIVILIAN POPULATION 18 YEARS AND OVER

Data Set: 2008-2012 American Community Survey 5-Year Estimates

	Gonzales city, Louisiana					
	African American	Margin of Error (+/-)	% of AA Total	White, Not Hispanic	Margin of Error (+/-)	% of NHW Total
Total:	3,169	368	100.0%	3,679	379	100.0%
Veteran	219	NC	6.9%	455	NC	12.4%
Nonveteran	2,950	NC	93.1%	3,224	NC	87.6%
Male:	1,340	273	42.3%	1,741	257	47.3%
18 to 64 years:	1,194	268	37.7%	1,440	256	39.1%
Veteran	122	83	3.8%	259	130	7.0%
Nonveteran	1,072	239	33.8%	1,181	256	32.1%
65 years and over:	146	68	4.6%	301	98	8.2%
Veteran	97	57	3.1%	162	68	4.4%
Nonveteran	49	41	1.5%	139	79	3.8%
Female:	1,829	228	57.7%	1,938	247	52.7%
18 to 64 years:	1,614	216	50.9%	1,423	221	38.7%
Veteran	0	19	0.0%	34	44	0.9%
Nonveteran	1,614	216	50.9%	1,389	228	37.8%
65 years and over:	215	94	6.8%	515	140	14.0%
Veteran	0	19	0.0%	0	19	0.0%
Nonveteran	215	94	6.8%	515	140	14.0%

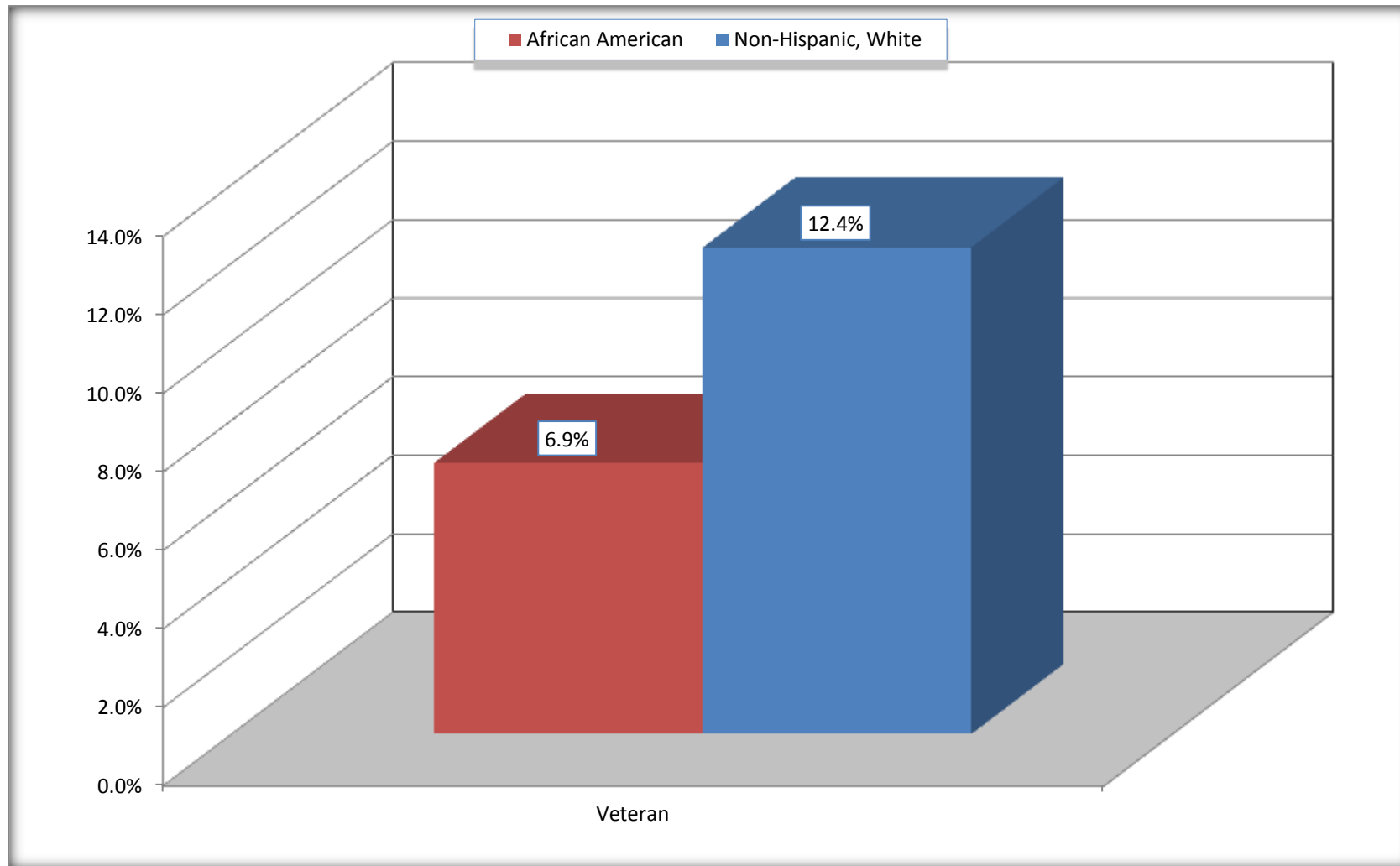
Source: U.S. Census Bureau, 2008-2012 American Community Survey

For information on confidentiality protection, sampling error, nonsampling error, and definitions, see Survey Methodology.

<http://www.census.gov/acs/www/UseData/index.htm>

Veterans in the Civilian Population 18 Years and Over

Gonzales city, Louisiana



Source: C21001. SEX BY AGE BY VETERAN STATUS FOR THE CIVILIAN POPULATION 18 YEARS AND OVER
Data Set: 2008-2012 American Community Survey 5-Year Estimates

B22005. RECEIPT OF FOOD STAMPS/SNAP IN THE PAST 12 MONTHS BY RACE OF HOUSEHOLDER

Data Set: 2008-2012 American Community Survey 5-Year Estimates

	Gonzales city, Louisiana					
	African American	Margin of Error (+/-)	% of AA Total	White, Not Hispanic	Margin of Error (+/-)	% of NHW Total
Total:	1,599	187	100.0%	1,896	195	100.0%
HH received Food Stamps/SNAP in the past 12 months	465	164	29.1%	122	60	6.4%
HH did not receive Food Stamps/SNAP in the past 12 months	1,134	227	70.9%	1,774	194	93.6%

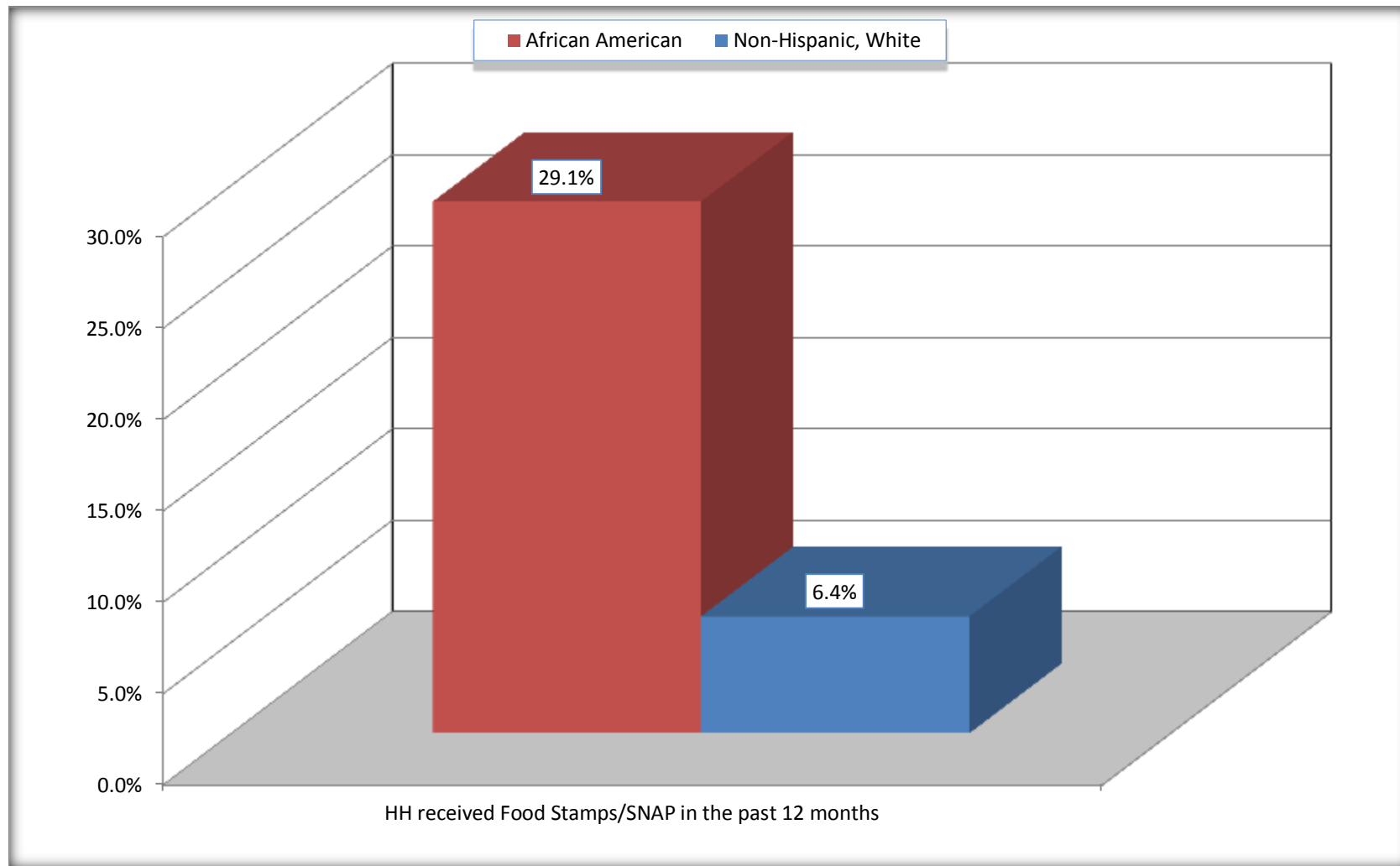
Source: U.S. Census Bureau, 2008-2012 American Community Survey

For information on confidentiality protection, sampling error, nonsampling error, and definitions, see Survey Methodology.

<http://www.census.gov/acs/www/UseData/index.htm>

Receipt of Food Stamps/SNAP in the Past 12 Months by Household

Gonzales city, Louisiana



Source: B22005. RECEIPT OF FOOD STAMPS/SNAP IN THE PAST 12 MONTHS BY RACE OF HOUSEHOLDER
Data Set: 2008-2012 American Community Survey 5-Year Estimates

C23002. SEX BY AGE BY EMPLOYMENT STATUS FOR THE POPULATION 16 YEARS AND OVER

Data Set: 2008-2012 American Community Survey 5-Year Estimates

	Gonzales city, Louisiana					
	African American	Margin of Error (+/-)	% of AA Total	White, Not Hispanic	Margin of Error (+/-)	% of NHW Total
Total:	3,597	396	100.0%	3,808	386	100.0%
In labor force:	2,092	NC	58.2%	2,529	NC	66.4%
In Armed Forces	0	NC	0.0%	27	NC	0.7%
Civilian:	2,034	NC	56.5%	2,411	NC	63.3%
Employed	1,855	NC	51.6%	2,351	NC	61.7%
Unemployed	237	NC	6.6%	151	NC	4.0%
Not in labor force	1,505	NC	41.8%	1,279	NC	33.6%
Male:	1,596	294	44.4%	1,796	257	47.2%
16 to 64 years:	1,450	288	40.3%	1,495	257	39.3%
In labor force:	790	211	22.0%	1,273	217	33.4%
In Armed Forces	0	19	0.0%	27	39	0.7%
Civilian:	790	211	22.0%	1,246	219	32.7%
Employed	604	196	16.8%	1,173	217	30.8%
Unemployed	186	139	5.2%	73	71	1.9%
Not in labor force	660	259	18.3%	222	102	5.8%
65 years and over:	146	68	4.1%	301	98	7.9%
In labor force:	24	29	0.7%	63	50	1.7%
Employed	24	29	0.7%	63	50	1.7%
Unemployed	0	19	0.0%	0	19	0.0%
Not in labor force	122	68	3.4%	238	93	6.3%

	Gonzales city, Louisiana					
	African American	Margin of Error (+/-)	% of AA Total	White, Not Hispanic	Margin of Error (+/-)	% of NHW Total
Female:	2,001	244	55.6%	2,012	244	52.8%
16 to 64 years:	1,786	244	49.7%	1,497	227	39.3%
In labor force:	1,244	214	34.6%	1,165	195	30.6%
In Armed Forces	0	19	0.0%	0	19	0.0%
Civilian:	1,244	214	34.6%	1,165	195	30.6%
Employed	1,193	215	33.2%	1,087	191	28.5%
Unemployed	51	51	1.4%	78	69	2.0%
Not in labor force	542	195	15.1%	332	124	8.7%
65 years and over:	215	94	6.0%	515	140	13.5%
In labor force:	34	37	0.9%	28	34	0.7%
Employed	34	37	0.9%	28	34	0.7%
Unemployed	0	19	0.0%	0	19	0.0%
Not in labor force	181	91	5.0%	487	139	12.8%

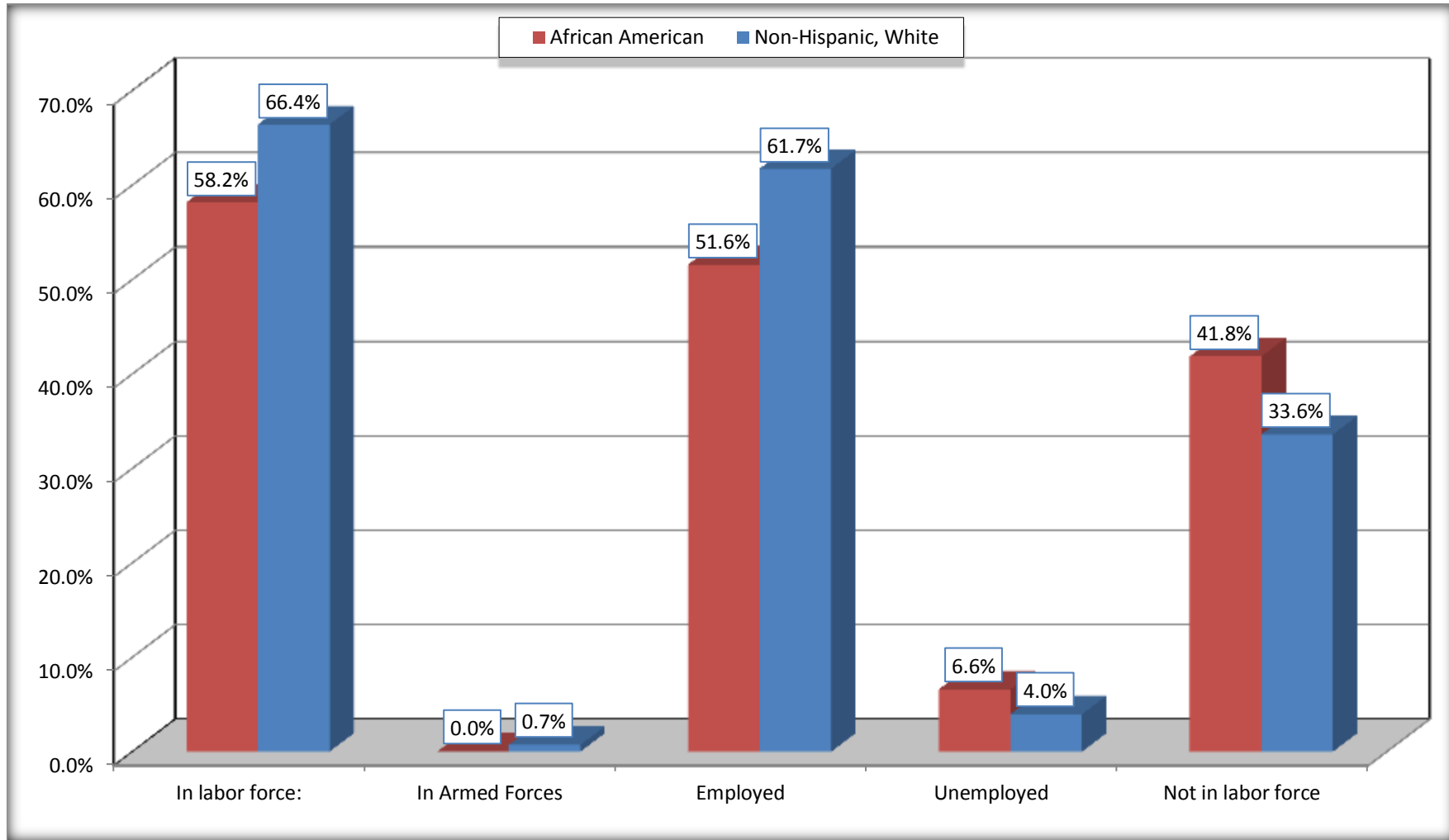
Source: U.S. Census Bureau, 2008-2012 American Community Survey

For information on confidentiality protection, sampling error, nonsampling error, and definitions, see Survey Methodology.

<http://www.census.gov/acs/www/UseData/index.htm>

Employment Status for the Population 16 years and over

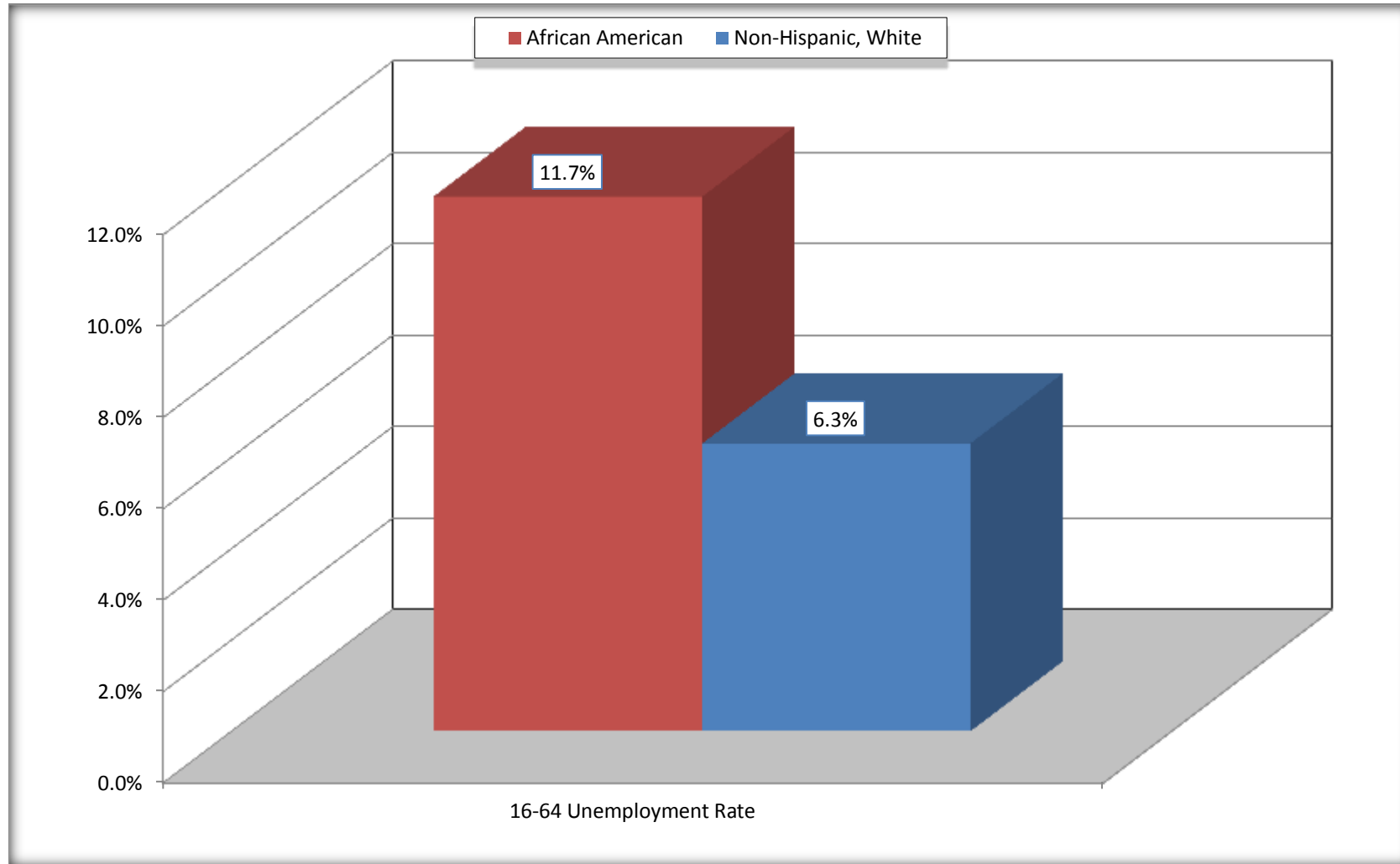
Gonzales city, Louisiana



Source: C23002. SEX BY AGE BY EMPLOYMENT STATUS FOR THE POPULATION 16 YEARS AND OVER
Data Set: 2008-2012 American Community Survey 5-Year Estimates

Unemployment of Working Age Population (Ages 16 to 64) (As a Percent of 16-64 Civilian Labor Force)

Gonzales city, Louisiana



Source: C23002. SEX BY AGE BY EMPLOYMENT STATUS FOR THE POPULATION 16 YEARS AND OVER
Data Set: 2008-2012 American Community Survey 5-Year Estimates

C24010. SEX BY OCCUPATION FOR THE CIVILIAN EMPLOYED POPULATION 16 YEARS AND OVER

Data Set: 2008-2012 American Community Survey 5-Year Estimates

	Gonzales city, Louisiana					
	African American	Margin of Error (+/-)	% of AA Total	White, Not Hispanic	Margin of Error (+/-)	% of NHW Total
Total:	1,855	266	100.0%	2,351	338	100.0%
Management, professional, and related occupations	529	NC	28.5%	797	NC	33.9%
Service occupations	553	NC	29.8%	244	NC	10.4%
Sales and office occupations	537	NC	28.9%	775	NC	33.0%
Natural resources, construction, and maintenance occupations:	137	NC	7.4%	245	NC	10.4%
Production, transportation, and material moving occupations	99	NC	5.3%	290	NC	12.3%
Male:	628	197	33.9%	1,236	215	52.6%
Management, business, science, and arts occupations:	132	96	7.1%	348	130	14.8%
Service occupations	180	110	9.7%	104	58	4.4%
Sales and office occupations	99	73	5.3%	293	136	12.5%
Natural resources, construction, and maintenance occupations:	137	108	7.4%	245	125	10.4%
Production, transportation, and material moving occupations	80	70	4.3%	246	142	10.5%
Female:	1,227	211	66.1%	1,115	193	47.4%
Management, professional, and related occupations	397	169	21.4%	449	149	19.1%
Service occupations	373	204	20.1%	140	85	6.0%
Sales and office occupations	438	121	23.6%	482	128	20.5%
Natural resources, construction, and maintenance occupations:	0	19	0.0%	0	19	0.0%
Production, transportation, and material moving occupations	19	32	1.0%	44	42	1.9%

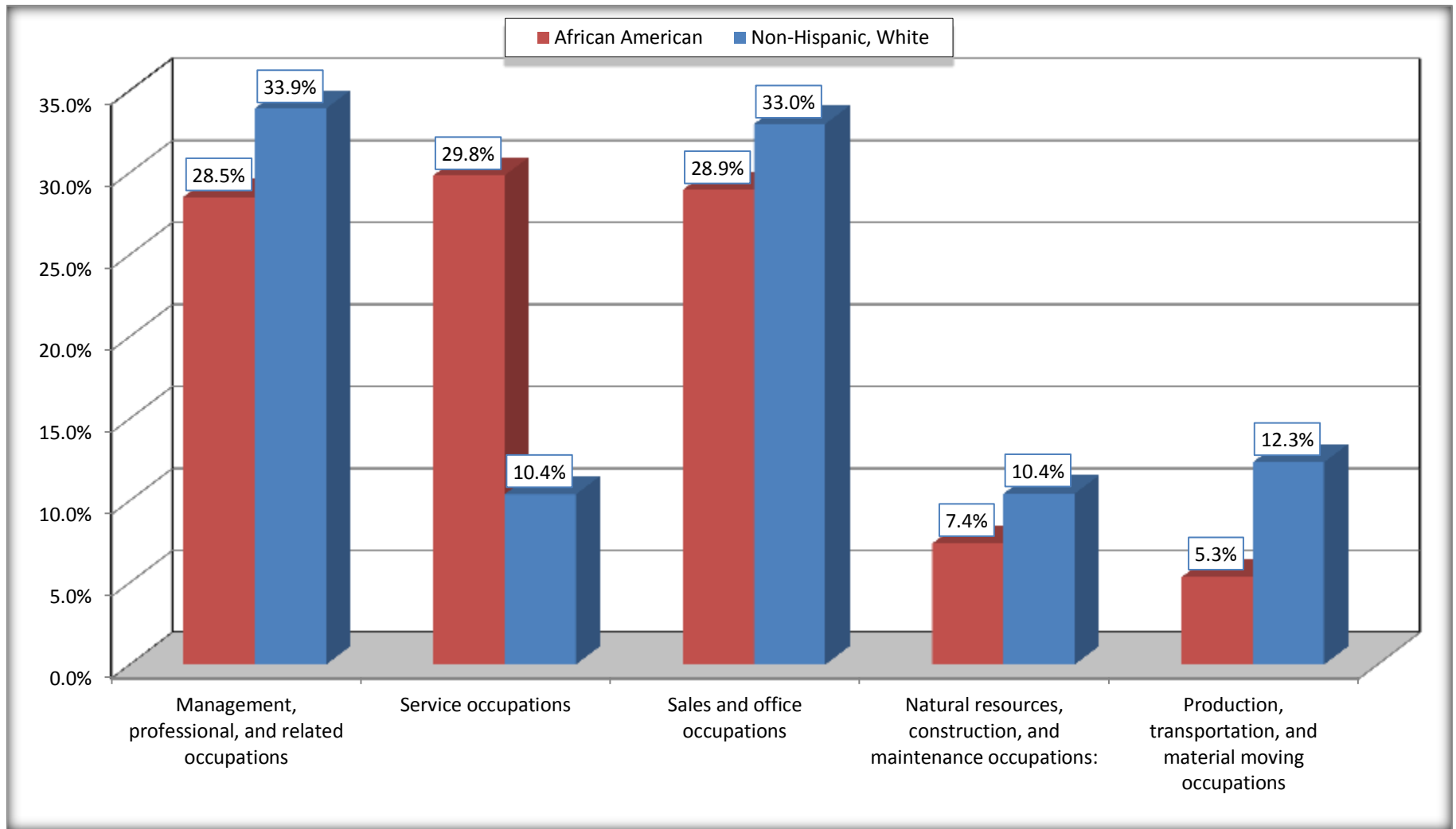
Source: U.S. Census Bureau, 2008-2012 American Community Survey

For information on confidentiality protection, sampling error, nonsampling error, and definitions, see Survey Methodology.

<http://www.census.gov/acs/www/UseData/index.htm>

Occupation for the Civilian Employed 16 Years and Over Population

Gonzales city, Louisiana



Source: C24010. SEX BY OCCUPATION FOR THE CIVILIAN EMPLOYED POPULATION 16 YEARS AND OVER
Data Set: 2008-2012 American Community Survey 5-Year Estimates

B25003. TENURE - Universe: OCCUPIED HOUSING UNITS

Data Set: 2008-2012 American Community Survey 5-Year Estimates

	Gonzales city, Louisiana					
	African American	Margin of Error (+/-)	% of AA Total	White, Not Hispanic	Margin of Error (+/-)	% of NHW Total
Total:	1,599	187	100.0%	1,896	195	100.0%
Owner occupied	1,010	219	63.2%	1,437	203	75.8%
Renter occupied	589	193	36.8%	459	128	24.2%

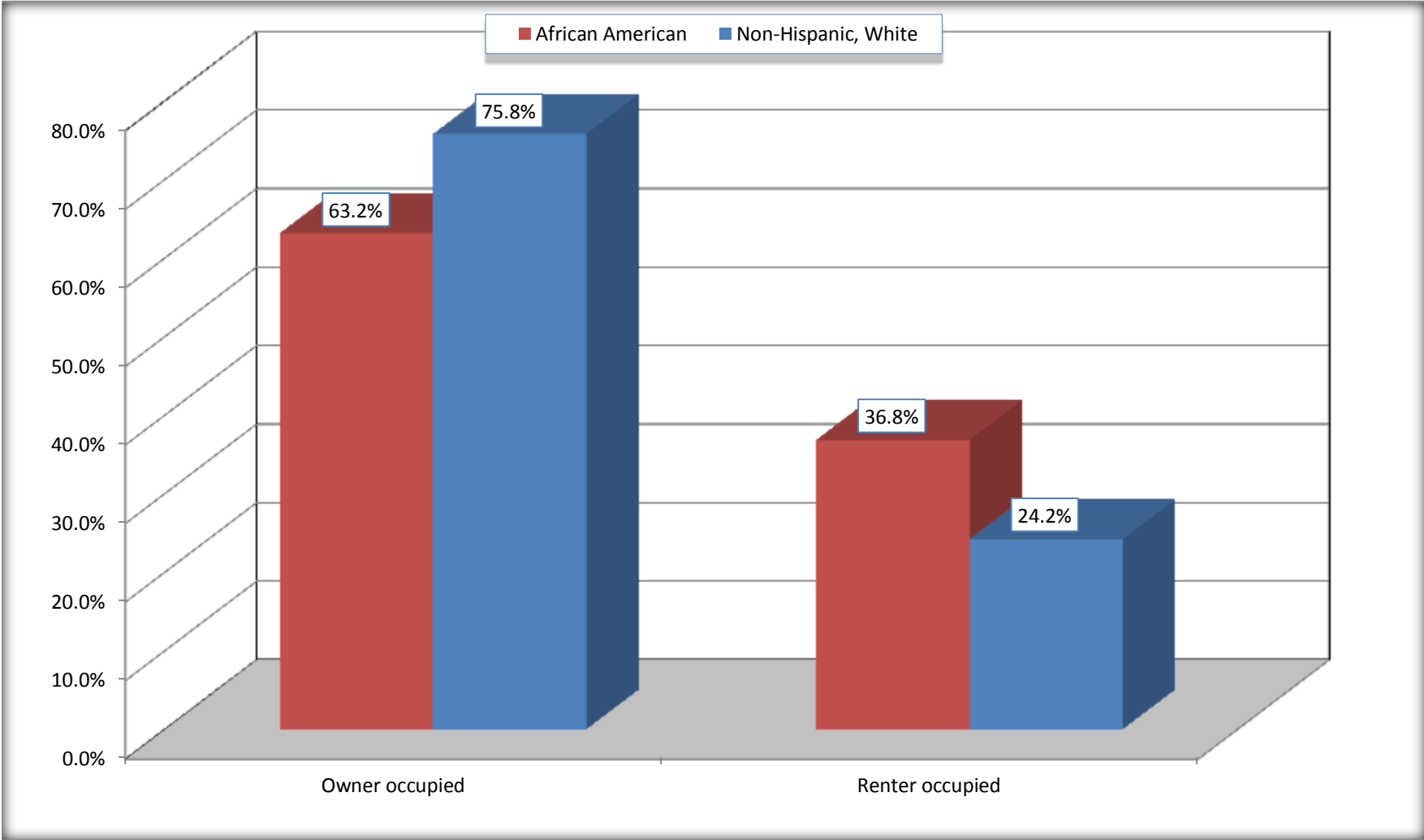
Source: U.S. Census Bureau, 2008-2012 American Community Survey

For information on confidentiality protection, sampling error, nonsampling error, and definitions, see Survey Methodology.

<http://www.census.gov/acs/www/UseData/index.h>

Home Owners and Renters by Household

Gonzales city, Louisiana



Source: B25003. TENURE - Universe: OCCUPIED HOUSING UNITS
Data Set: 2008-2012 American Community Survey 5-Year Estimates

B25014. OCCUPANTS PER ROOM - Universe: OCCUPIED HOUSING UNITS

Data Set: 2008-2012 American Community Survey 5-Year Estimates

	Gonzales city, Louisiana					
	African American	Margin of Error (+/-)	% of AA Total	White, Not Hispanic	Margin of Error (+/-)	% of NHW Total
Total:	1,599	187	100.0%	1,896	195	100.0%
1.00 or less occupants per room	1,535	214	96.0%	1,873	205	98.8%
1.01 or more occupants per room	64	71	4.0%	23	37	1.2%

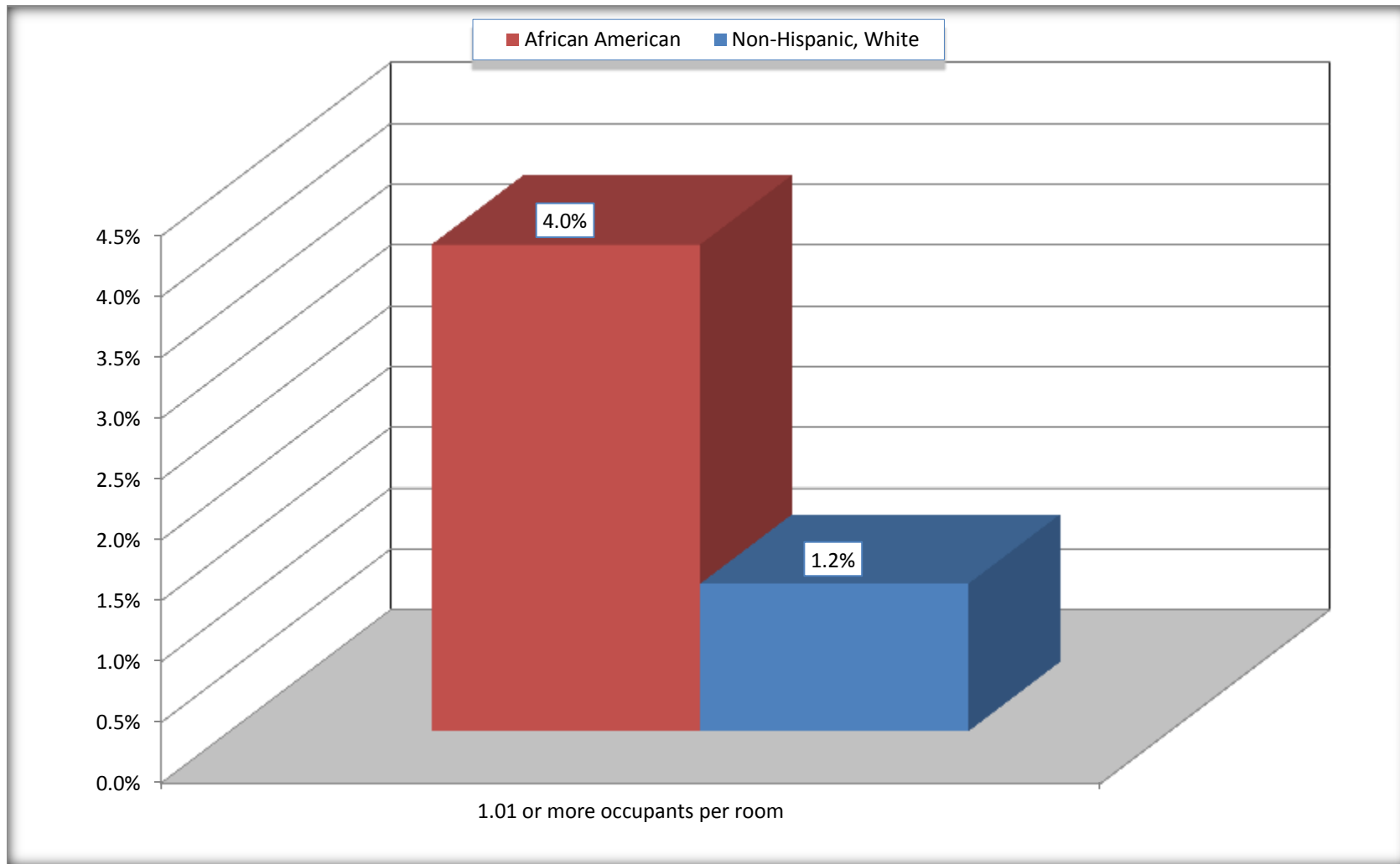
Source: U.S. Census Bureau, 2008-2012 American Community Survey

For information on confidentiality protection, sampling error, nonsampling error, and definitions, see Survey Methodology.

<http://www.census.gov/acs/www/UseData/index.ht>

More than One Person per Room (Crowding) by Household

Gonzales city, Louisiana



Source: B25014. OCCUPANTS PER ROOM - Universe: OCCUPIED HOUSING UNITS
Data Set: 2008-2012 American Community Survey 5-Year Estimates

B18101. AGE BY DISABILITY STATUS

Data Set: 2008-2012 American Community Survey 5-Year Estimates

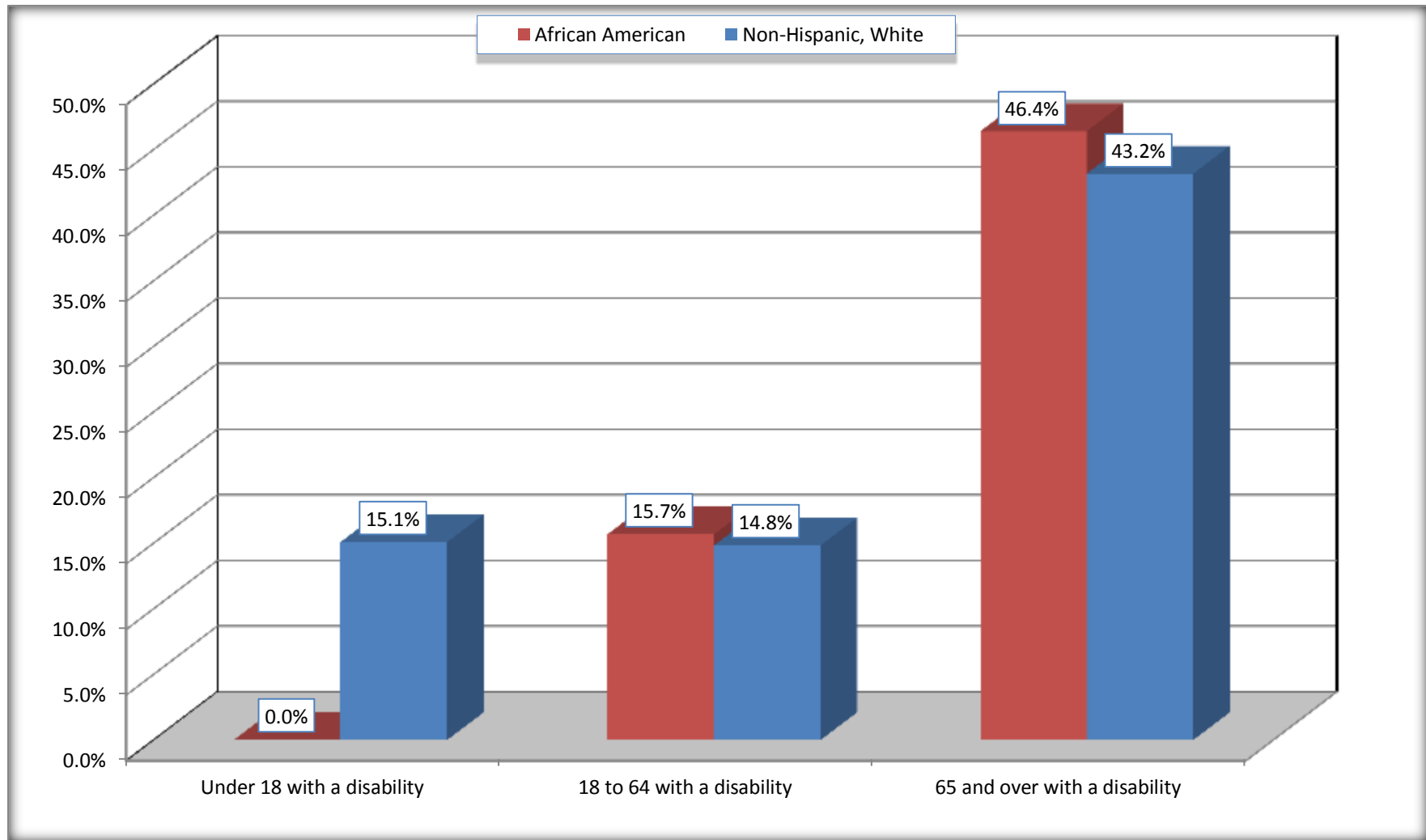
	Gonzales city, Louisiana					
	African American	Margin of Error (+/-)	% of AA Total	White, Not Hispanic	Margin of Error (+/-)	% of NHW Total
Total:	4,555	453	100.0%	4,372	467	100.0%
Under 18 years:	1,419	373	31.2%	789	100	18.0%
With a disability	0	19	0.0%	119	132	2.7%
No disability	1,419	373	31.2%	670	195	15.3%
18 to 64 years:	2,789	362	61.2%	2,858	375	65.4%
With a disability	437	179	9.6%	424	175	9.7%
No disability	2,352	318	51.6%	2,434	399	55.7%
65 years and over:	347	146	7.6%	725	183	16.6%
With a disability	161	90	3.5%	313	128	7.2%
No disability	186	89	4.1%	412	127	9.4%

Source: U.S. Census Bureau, 2008-2012 American Community Survey

For information on confidentiality protection, sampling error, nonsampling error, and definitions, see Survey Methodology.

<http://www.census.gov/acs/www/UseData/index.htm>

Disability by Age Gonzales city, Louisiana



Source: B18101. AGE BY DISABILITY STATUS
Data Set: 2008-2012 American Community Survey 5-Year Estimates

C27001B. HEALTH INSURANCE COVERAGE STATUS BY AGE

Data Set: 2008-2012 American Community Survey 5-Year Estimates

	Gonzales city, Louisiana					
	African American	Margin of Error (+/-)	% of AA Total	White, Not Hispanic	Margin of Error (+/-)	% of NHW Total
Total:	4,555	453	100.0%	4,372	467	100.0%
Under 18 years:	1,419	373	31.2%	789	262	18.0%
With health insurance coverage	1,173	382	25.8%	701	267	16.0%
No health insurance coverage	246	232	5.4%	88	65	2.0%
18 to 64 years:	2,789	362	61.2%	2,858	375	65.4%
With health insurance coverage	1,669	341	36.6%	2,337	322	53.5%
No health insurance coverage	1,120	302	24.6%	521	182	11.9%
65 years and over:	347	146	7.6%	725	183	16.6%
With health insurance coverage	347	146	7.6%	725	183	16.6%
No health insurance coverage	0	19	0.0%	0	19	0.0%

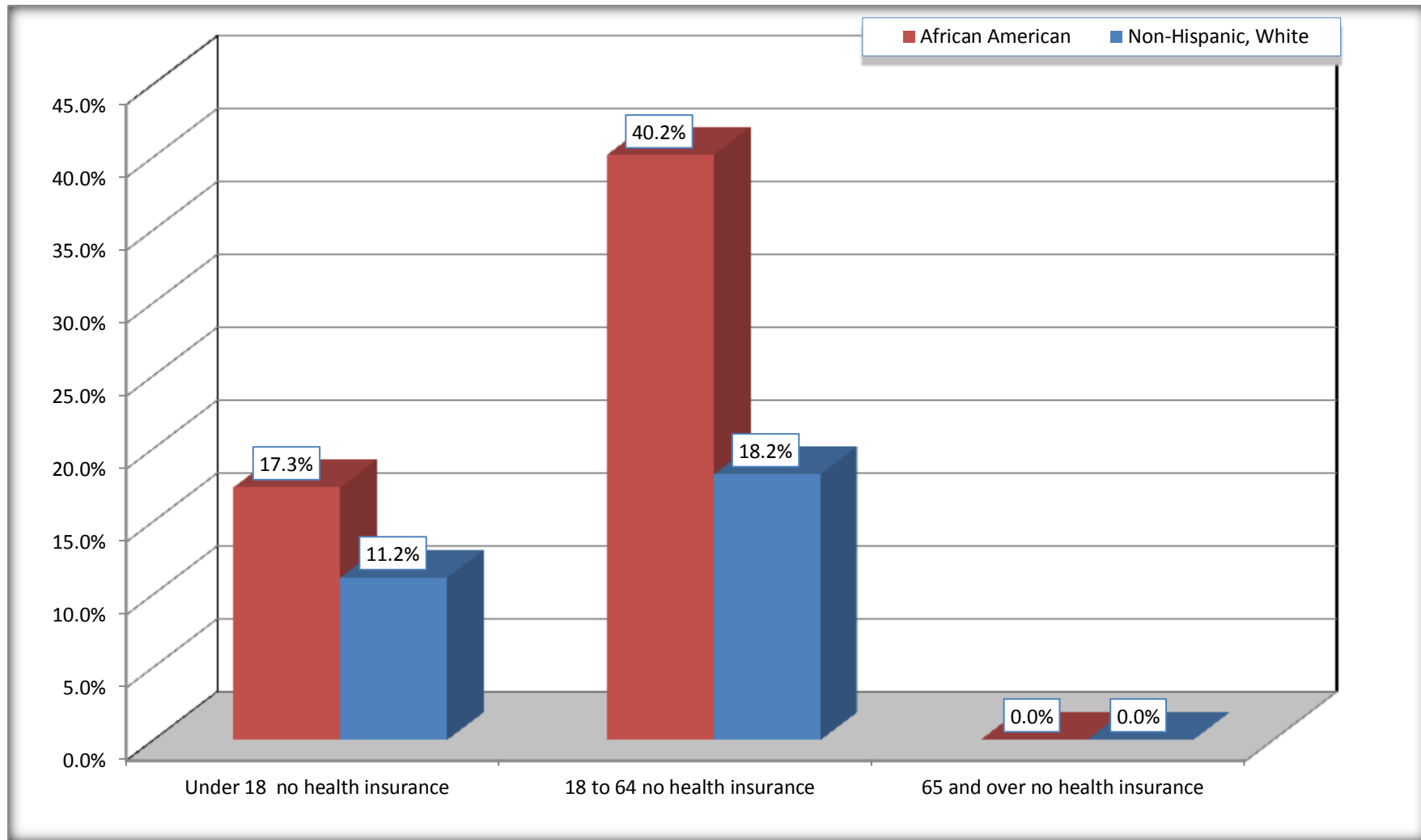
Source: U.S. Census Bureau, 2008-2012 American Community Survey

For information on confidentiality protection, sampling error, nonsampling error, and definitions, see Survey Methodology.

<http://www.census.gov/acs/www/UseData/index.htm>

Lack of Health Insurance Coverage by Age

Gonzales city, Louisiana



Source: C27001B. HEALTH INSURANCE COVERAGE STATUS BY AGE
Data Set: 2008-2012 American Community Survey 5-Year Estimates