

# **Selected Socio-Economic Data**

## **Crowley city, Louisiana**

### **African American and White, Not Hispanic**

**Data Set: 2008-2012 American Community Survey 5-Year Estimates**

[www.fairvote2020.org](http://www.fairvote2020.org)

[www.fairdata2000.com](http://www.fairdata2000.com)

[29-Dec-13](#)

**C02003.DETAILED RACE - Universe: TOTAL POPULATION**

Data Set: 2008-2012 American Community Survey 5-Year Estimates

	Crowley city, Louisiana		
	Population	Margin of Error (+/-)	% of Total
<b>Total:</b>	<b>13,280</b>	<b>29</b>	<b>100.0%</b>
Population of one race:	13,028	122	98.1%
White	8,350	572	62.9%
Black or African American	4,128	502	31.1%
American Indian and Alaska Native	103	93	0.8%
Asian alone	0	19	0.0%
Native Hawaiian and Other Pacific Islander	70	122	0.5%
Some other race	377	221	2.8%
Population of two or more races:	252	117	1.9%
Two races including Some other race	16	26	0.1%
Two races excluding Some other race, and three or more races	236	112	1.8%
Population of two races:	244	117	1.8%
White; Black or African American	96	96	0.7%
White; American Indian and Alaska Native	112	75	0.8%
White; Asian	0	19	0.0%
Black or African American; American Indian and Alaska Native	20	33	0.2%
All other two race combinations	16	26	0.1%
Population of three races	8	13	0.1%
Population of four or more races	0	19	0.0%

Note: Hispanics may be of any race. See Table B03002 and chart.

Source: U.S. Census Bureau, 2008-2012 American Community Survey

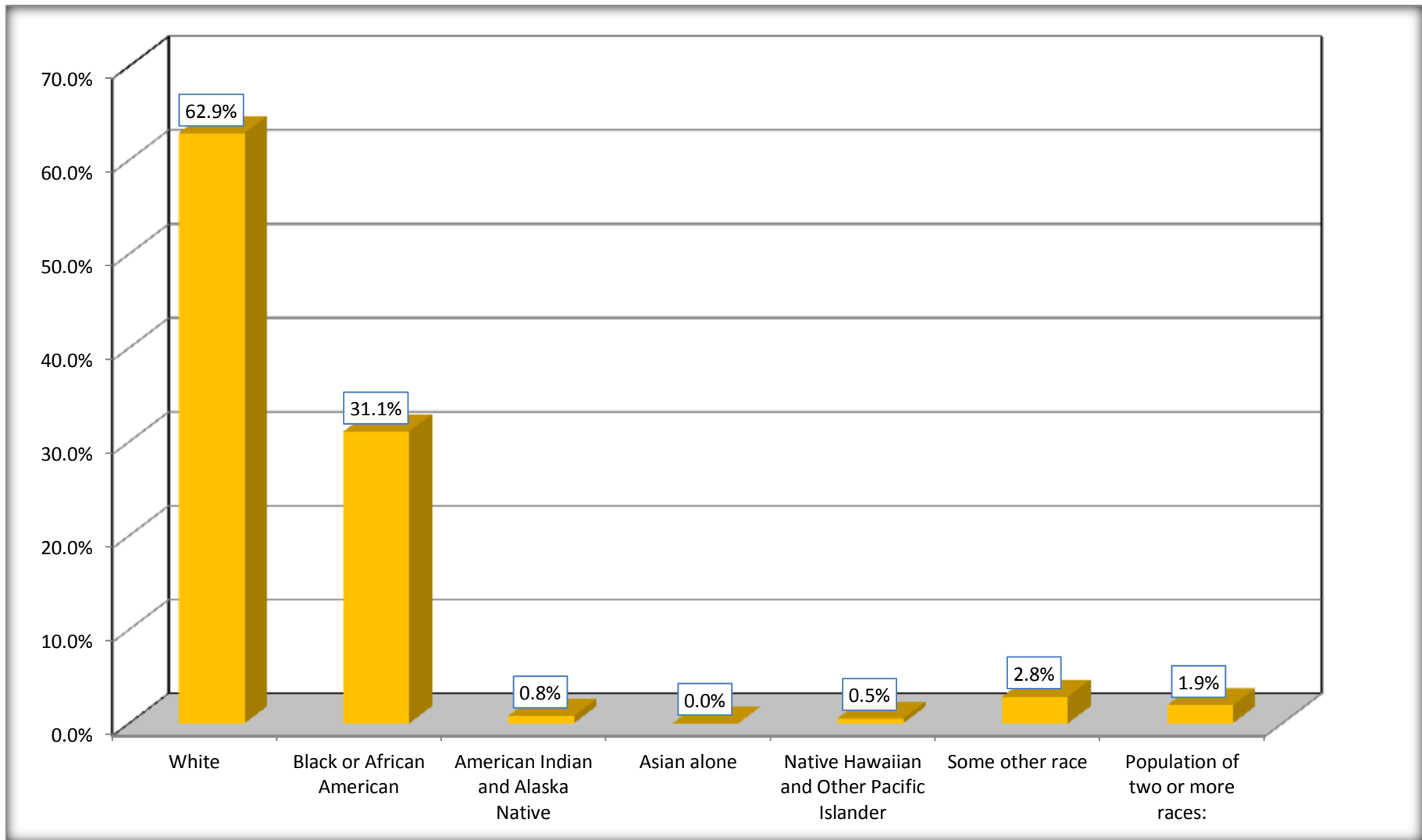
Although the American Community Survey (ACS) produces population, demographic and housing unit estimates, it is the Census Bureau's Population Estimates Program that produces and disseminates the official estimates of the population for the nation, states, counties, cities and towns and estimates of housing units for states and counties.

For information on confidentiality protection, sampling error, nonsampling error, and definitions, see Survey Methodology.

<http://www.census.gov/acs/www/UseData/index.htm>

# Population by Race

## Crowley city, Louisiana



Source: C02003.DETAILED RACE - Universe: TOTAL POPULATION  
Data Set: 2008-2012 American Community Survey 5-Year Estimates

**B03002. HISPANIC OR LATINO ORIGIN BY RACE - Universe: TOTAL POPULATION**

Data Set: 2008-2012 American Community Survey 5-Year Estimates

	Crowley city, Louisiana		
	Population	Margin of Error (+/-)	% of Total
<b>Total:</b>	13,280	29	<b>100.0%</b>
Not Hispanic or Latino:	12,765	198	96.1%
White alone	8,158	549	61.4%
Black or African American alone	4,035	493	30.4%
American Indian and Alaska Native alone	85	85	0.6%
Asian alone	0	19	0.0%
Native Hawaiian and Other Pacific Islander alone	70	122	0.5%
Some other race alone	165	178	1.2%
Two or more races:	252	117	1.9%
Two races including Some other race	16	26	0.1%
Two races excluding Some other race, and three or more races	236	112	1.8%
Hispanic or Latino	515	194	3.9%

Source: U.S. Census Bureau, 2008-2012 American Community Survey

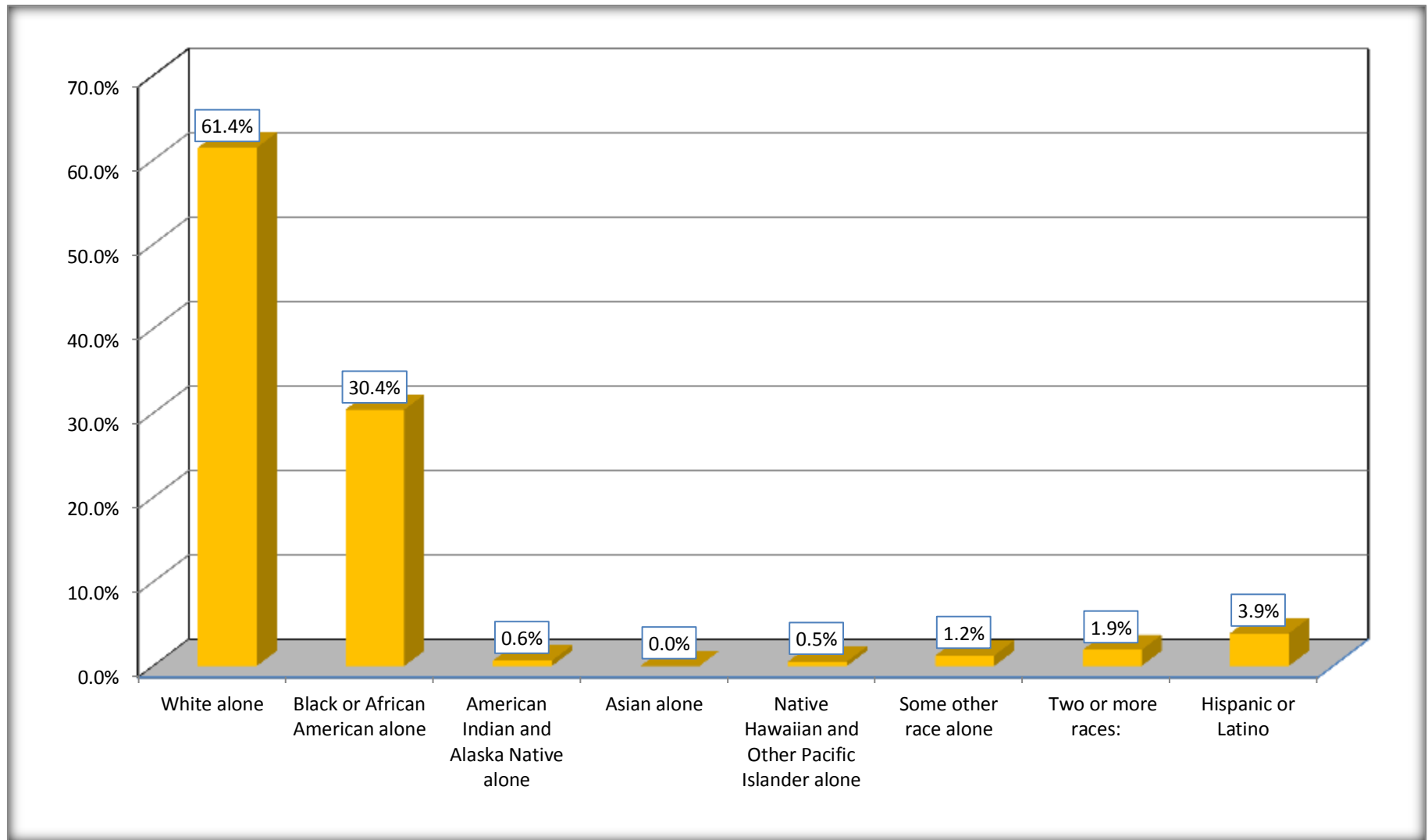
Although the American Community Survey (ACS) produces population, demographic and housing unit estimates, it is the Census Bureau's Population Estimates Program that produces and disseminates the official estimates of the population for the nation, states, counties, cities and towns and estimates of housing units for states and counties.

For information on confidentiality protection, sampling error, nonsampling error, and definitions, see Survey Methodology.

<http://www.census.gov/acs/www/UseData/index.htm>

# Non-Hispanic by Race and Hispanic Population

## Crowley city, Louisiana



Source: B03002. HISPANIC OR LATINO ORIGIN BY RACE - Universe: TOTAL POPULATION  
Data Set: 2008-2012 American Community Survey 5-Year Estimates

**B03002. HISPANIC OR LATINO ORIGIN BY RACE**

Data Set: 2008-2012 American Community Survey 5-Year Estimates

	Crowley city, Louisiana		
	Population	Margin of Error (+/-)	% of Total
Hispanic or Latino:	515	194	<b>100.0%</b>
White alone	192	176	37.3%
Black or African American alone	93	133	18.1%
American Indian and Alaska Native alone	18	32	3.5%
Asian alone	0	19	0.0%
Native Hawaiian and Other Pacific Islander alone	0	19	0.0%
Some other race alone	212	147	41.2%
Two or more races:	0	19	0.0%
Two races including Some other race	0	19	0.0%
Two races excluding Some other race, and three or more races	0	19	0.0%

Source: U.S. Census Bureau, 2008-2012 American Community Survey

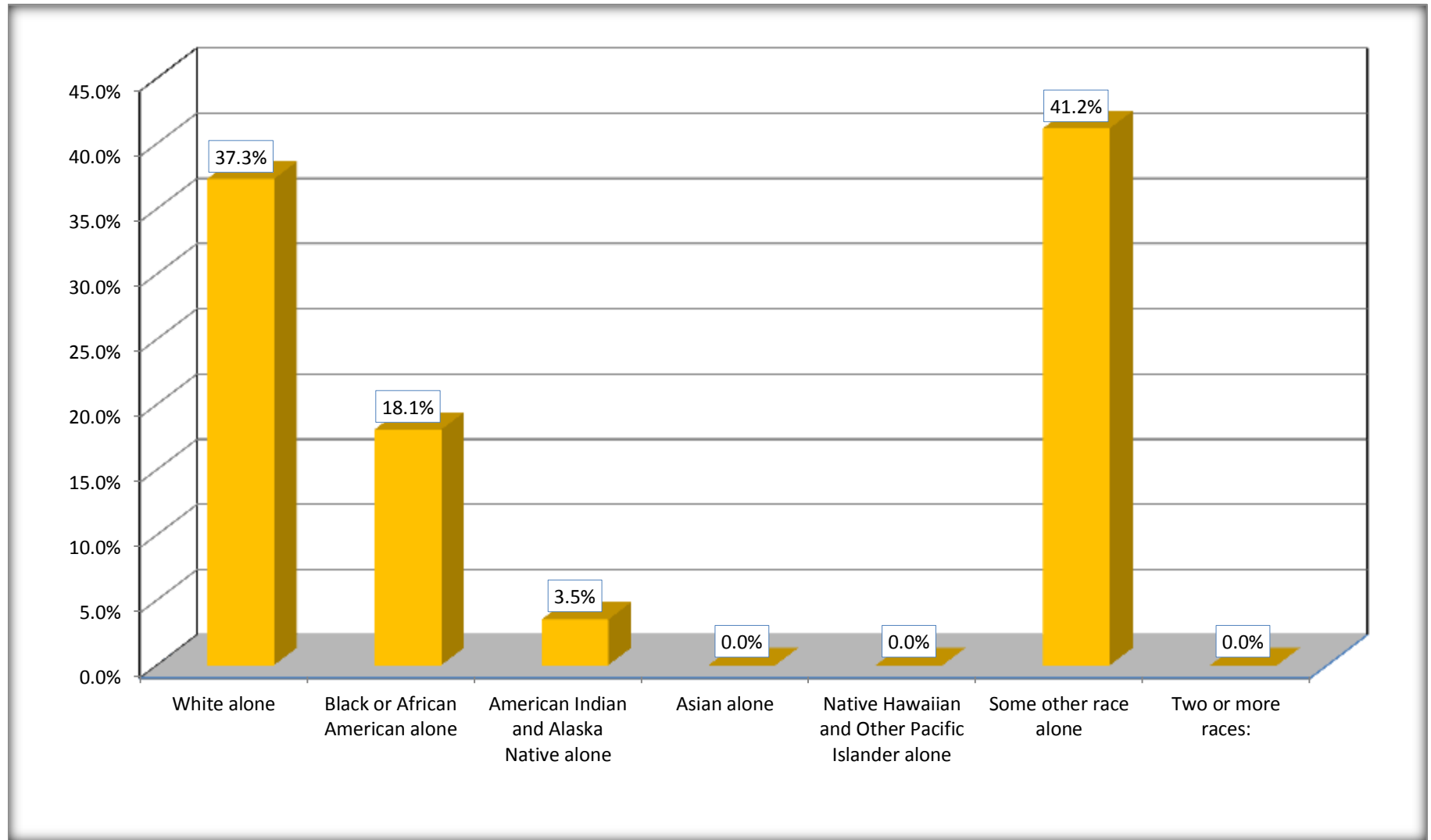
Although the American Community Survey (ACS) produces population, demographic and housing unit estimates, it is the Census Bureau's Population Estimates Program that produces and disseminates the official estimates of the population for the nation, states, counties, cities and towns and estimates of housing units for states and counties.

For information on confidentiality protection, sampling error, nonsampling error, and definitions, see Survey Methodology.

<http://www.census.gov/acs/www/UseData/index.htm>

# Hispanic or Latino Origin by Race

## Crowley city, Louisiana



Source: B03002. HISPANIC OR LATINO ORIGIN BY RACE  
Data Set: 2008-2012 American Community Survey 5-Year Estimates

**B01001. SEX BY AGE**

Data Set: 2008-2012 American Community Survey 5-Year Estimates

	Crowley city, Louisiana					
	African American	Margin of Error (+/-)	% of AA Total	White, Not Hispanic	Margin of Error (+/-)	% of NHW Total
<b>Total:</b>	<b>4,128</b>	<b>502</b>	<b>100.0%</b>	<b>8,158</b>	<b>549</b>	<b>100.0%</b>
Under 18 years	1,423	NC	34.5%	2,172	NC	26.6%
18 to 64 years	2,286	NC	55.4%	4,771	NC	58.5%
65 years and over	419	NC	10.2%	1,215	NC	14.9%
Male:	2,019	326	48.9%	3,825	389	46.9%
Under 18 years	802	NC	19.4%	1,066	NC	13.1%
18 to 64 years	1,018	NC	24.7%	2,336	NC	28.6%
65 years and over	199	NC	4.8%	423	NC	5.2%
Female:	2,109	276	51.1%	4,333	412	53.1%
Under 18 years	621	NC	15.0%	1,106	NC	13.6%
18 to 64 years	1,268	NC	30.7%	2,435	NC	29.8%
65 years and over	220	NC	5.3%	792	NC	9.7%

Source: U.S. Census Bureau, 2008-2012 American Community Survey

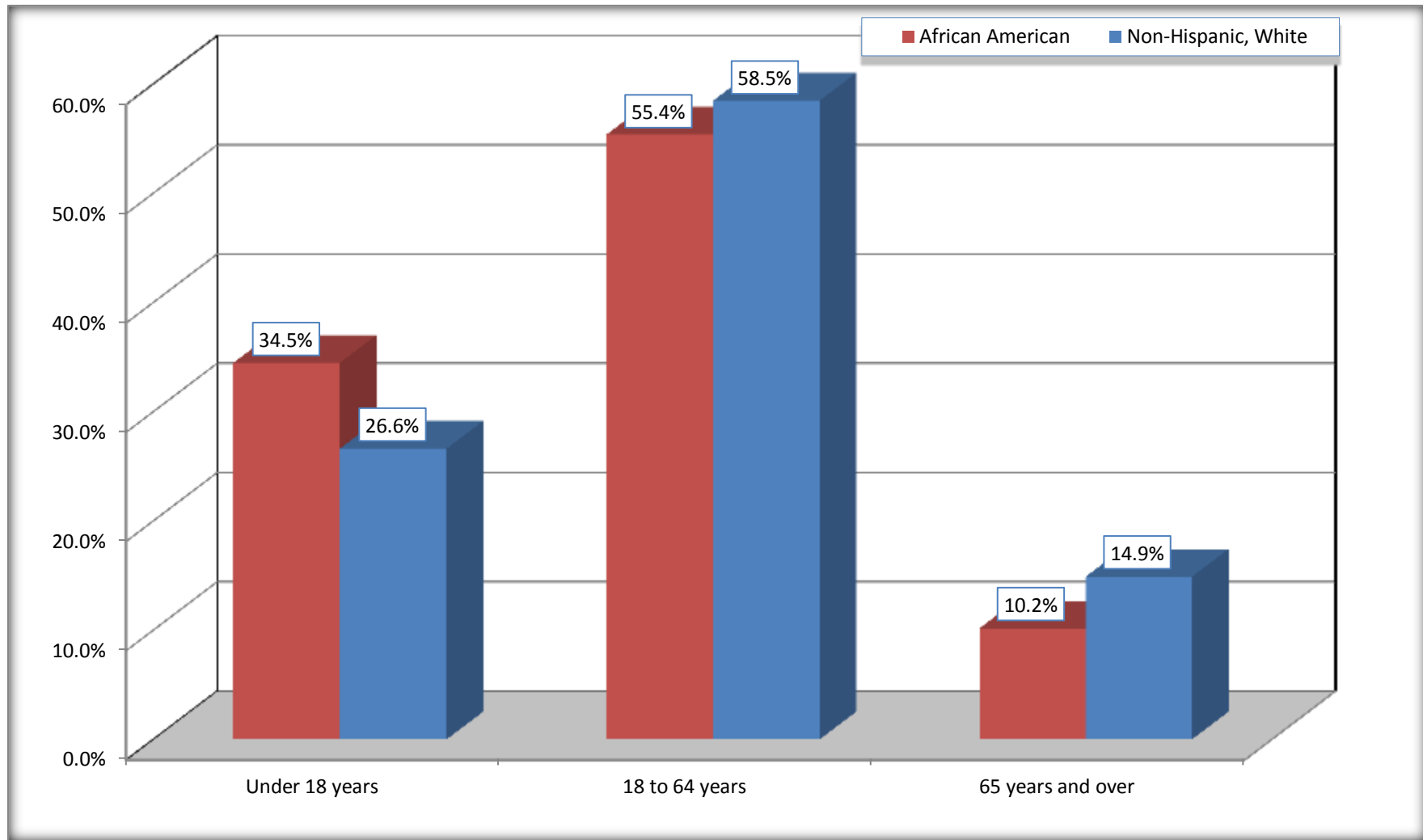
Although the American Community Survey (ACS) produces population, demographic and housing unit estimates, it is the Census Bureau's Population Estimates Program that produces and disseminates the official estimates of the population for the nation, states, counties, cities and towns and estimates of housing units for states and counties.

For information on confidentiality protection, sampling error, nonsampling error, and definitions, see Survey Methodology.  
<http://www.census.gov/acs/www/UseData/index.htm>



# Population by Age

## Crowley city, Louisiana



Source: B01001. SEX BY AGE  
Data Set: 2008-2012 American Community Survey 5-Year Estimates

**B05003. SEX BY AGE BY CITIZENSHIP STATUS**

Data Set: 2008-2012 American Community Survey 5-Year Estimates

	Crowley city, Louisiana					
	African American	Margin of Error (+/-)	% of AA Total by Age	White, Not Hispanic	Margin of Error (+/-)	% of NHW Total by Age
<b>Total:</b>	<b>4,128</b>	<b>502</b>	<b>100.0%</b>	<b>8,158</b>	<b>549</b>	<b>100.0%</b>
<b>Under 18 years:</b>	<b>1,423</b>	<b>NC</b>	<b>100.0%</b>	<b>2,172</b>	<b>NC</b>	<b>100.0%</b>
Native	1,423	NC	100.0%	2,172	NC	100.0%
Foreign born:	0	NC	0.0%	0	NC	0.0%
Naturalized U.S. citizen	0	NC	0.0%	0	NC	0.0%
Not a U.S. citizen	0	NC	0.0%	0	NC	0.0%
<b>18 years and over:</b>	<b>2,705</b>	<b>NC</b>	<b>100.0%</b>	<b>5,986</b>	<b>NC</b>	<b>100.0%</b>
Native	2,705	NC	100.0%	5,985	NC	100.0%
Foreign born:	0	NC	0.0%	1	NC	0.0%
Naturalized U.S. citizen	0	NC	0.0%	0	NC	0.0%
Not a U.S. citizen	0	NC	0.0%	1	NC	0.0%
<b>Male:</b>	<b>2,019</b>	<b>326</b>	<b>48.9%</b>	<b>3,825</b>	<b>341</b>	<b>46.9%</b>
<b>Under 18 years:</b>	<b>802</b>	<b>221</b>	<b>100.0%</b>	<b>1,066</b>	<b>223</b>	<b>100.0%</b>
Native	802	221	100.0%	1,066	223	100.0%
Foreign born:	0	19	0.0%	0	19	0.0%
Naturalized U.S. citizen	0	19	0.0%	0	19	0.0%
Not a U.S. citizen	0	19	0.0%	0	19	0.0%
<b>18 years and over:</b>	<b>1,217</b>	<b>198</b>	<b>100.0%</b>	<b>2,759</b>	<b>316</b>	<b>100.0%</b>
Native	1,217	198	100.0%	2,759	316	100.0%
Foreign born:	0	19	0.0%	0	19	0.0%
Naturalized U.S. citizen	0	19	0.0%	0	19	0.0%
Not a U.S. citizen	0	19	0.0%	0	19	0.0%

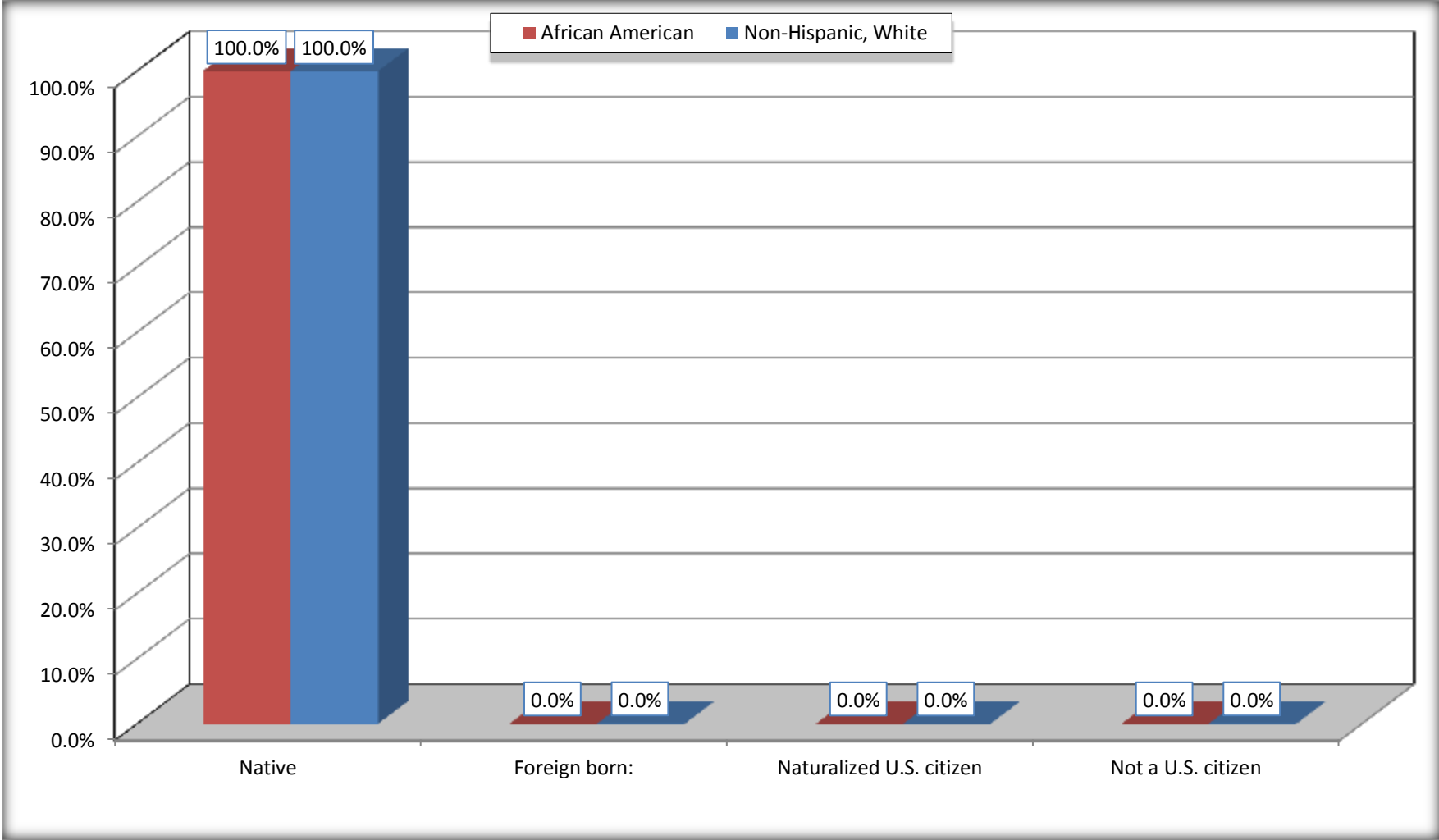
	Crowley city, Louisiana					
	African American	Margin of Error (+/-)	% of AA by Age	White, Not Hispanic	Margin of Error (+/-)	% of NHW by Age
<b>Female:</b>	2,109	276	51.1%	4,333	413	53.1%
<b>Under 18 years:</b>	<b>621</b>	<b>163</b>	<b>100.0%</b>	<b>1,106</b>	<b>289</b>	<b>100.0%</b>
Native	621	163	100.0%	1,106	289	100.0%
Foreign born:	0	19	0.0%	0	19	0.0%
Naturalized U.S. citizen	0	19	0.0%	0	19	0.0%
Not a U.S. citizen	0	19	0.0%	0	19	0.0%
<b>18 years and over:</b>	<b>1,488</b>	<b>182</b>	<b>100.0%</b>	<b>3,227</b>	<b>307</b>	<b>100.0%</b>
Native	1,488	182	100.0%	3,226	306	100.0%
Foreign born:	0	19	0.0%	1	14	0.0%
Naturalized U.S. citizen	0	19	0.0%	0	19	0.0%
Not a U.S. citizen	0	19	0.0%	1	14	0.0%

Source: U.S. Census Bureau, 2008-2012 American Community Survey

For information on confidentiality protection, sampling error, nonsampling error, and definitions, see Survey Methodology.  
<http://www.census.gov/acs/www/UseData/index.htm>

# Citizenship Status of Voting Age Population (18 and Over)

## Crowley city, Louisiana



Source: B05003. SEX BY AGE BY CITIZENSHIP STATUS  
Data Set: 2008-2012 American Community Survey 5-Year Estimates

**B07004. GEOGRAPHICAL MOBILITY IN THE PAST YEAR BY RACE FOR CURRENT RESIDENCE IN THE UNITED STATES - Universe:  
POPULATION 1 YEAR AND OVER**

Data Set: 2008-2012 American Community Survey 5-Year Estimates

	Crowley city, Louisiana					
	African American	Margin of Error (+/-)	% of AA Total	White, Not Hispanic	Margin of Error (+/-)	% of NHW Total
<b>Total:</b>	<b>4,054</b>	<b>495</b>	<b>100.0%</b>	<b>8,036</b>	<b>544</b>	<b>100.0%</b>
Same house 1 year ago	3,325	490	82.0%	6,420	702	79.9%
Moved within same county	611	379	15.1%	1,252	445	15.6%
Moved from different county within same state	63	62	1.6%	252	151	3.1%
Moved from different state	55	62	1.4%	112	123	1.4%
Moved from abroad	0	19	0.0%	0	19	0.0%

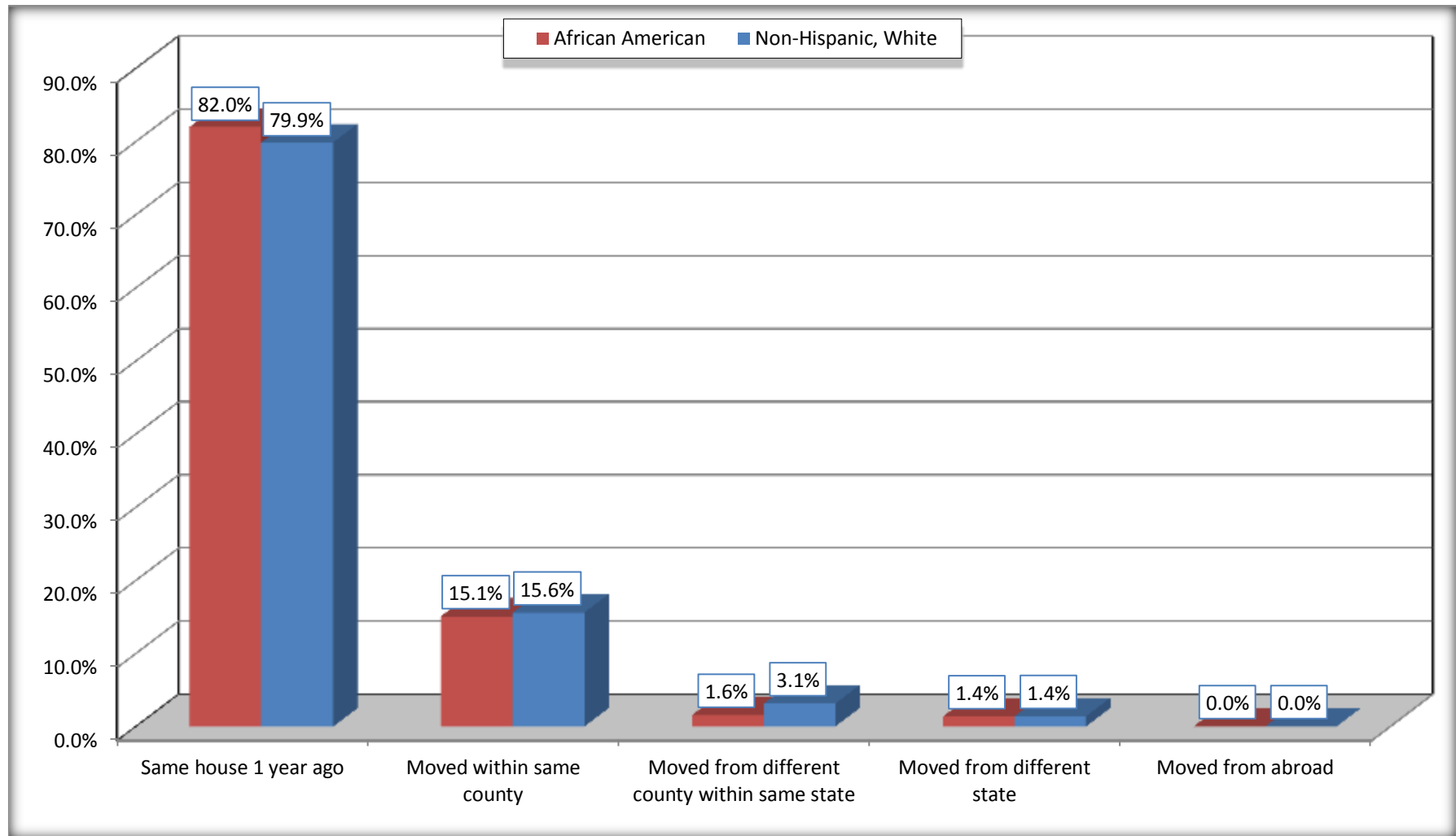
Source: U.S. Census Bureau, 2008-2012 American Community Survey

For information on confidentiality protection, sampling error, nonsampling error, and definitions, see Survey Methodology.

<http://www.census.gov/acs/www/UseData/index.htm>

# Geographical Mobility in the Past Year (Population 1 Year and Over)

## Crowley city, Louisiana



Source: B07004. GEOGRAPHICAL MOBILITY IN THE PAST YEAR BY RACE FOR CURRENT RESIDENCE IN THE UNITED STATES - Universe: POPULATION 1 YEAR AND OVER

Data Set: 2008-2012 American Community Survey 5-Year Estimates

**B08105. MEANS OF TRANSPORTATION TO WORK - Universe: WORKERS 16 YEARS AND OVER**

Data Set: 2008-2012 American Community Survey 5-Year Estimates

	Crowley city, Louisiana					
	African American	Margin of Error (+/-)	% of AA Total	White, Not Hispanic	Margin of Error (+/-)	% of NHW Total
<b>Total:</b>	1189	241	<b>100.0%</b>	2914	474	<b>100.0%</b>
Car, truck, or van - drove alone	941	222	79.1%	2292	458	78.7%
Car, truck, or van - carpooled	127	74	10.7%	513	161	17.6%
Public transportation (excluding taxicab)	11	18	0.9%	0	19	0.0%
Walked	56	55	4.7%	56	55	1.9%
Taxicab, motorcycle, bicycle, or other means	31	43	2.6%	21	22	0.7%
Worked at home	23	28	1.9%	32	29	1.1%

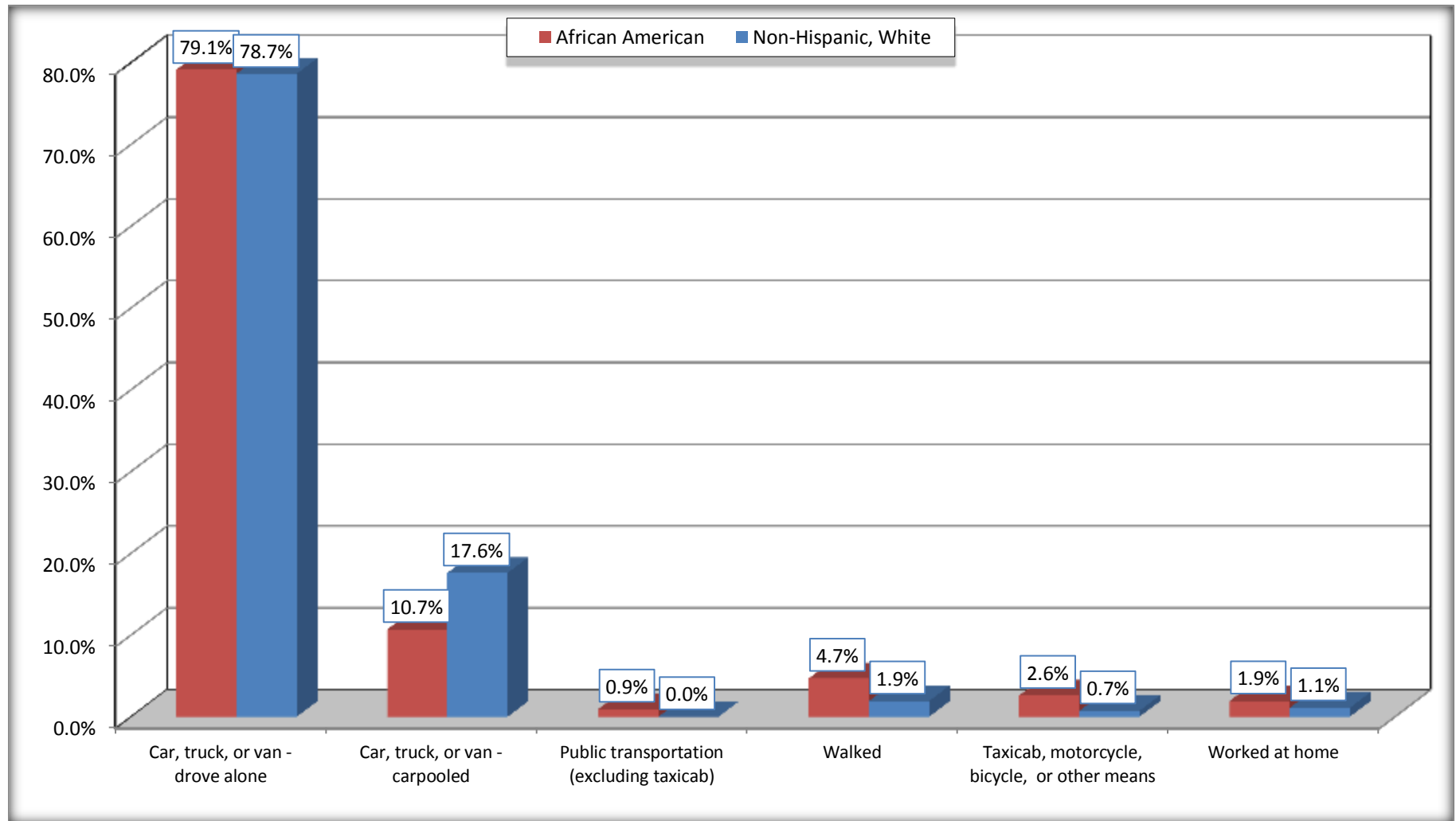
Source: U.S. Census Bureau, 2008-2012 American Community Survey

For information on confidentiality protection, sampling error, nonsampling error, and definitions, see Survey Methodology.

<http://www.census.gov/acs/www/UseData/index.htm>

## Means of Transportation to Work (Workers 16 Years and Over)

### Crowley city, Louisiana



Source: B08105. MEANS OF TRANSPORTATION TO WORK - Universe: WORKERS 16 YEARS AND OVER  
Data Set: 2008-2012 American Community Survey 5-Year Estimates



**B11002. HOUSEHOLD TYPE BY RELATIVES AND NONRELATIVES FOR POPULATION IN HOUSEHOLDS**

Data Set: 2008-2012 American Community Survey 5-Year Estimates

	Crowley city, Louisiana					
	African American	Margin of Error (+/-)	% of AA Total	White, Not Hispanic	Margin of Error (+/-)	% of NHW Total
<b>Total:</b>	3905	493	<b>100.0%</b>	8230	538	<b>100.0%</b>
In family households	3508	501	89.8%	6846	657	83.2%
In nonfamily households	397	115	10.2%	1384	390	16.8%

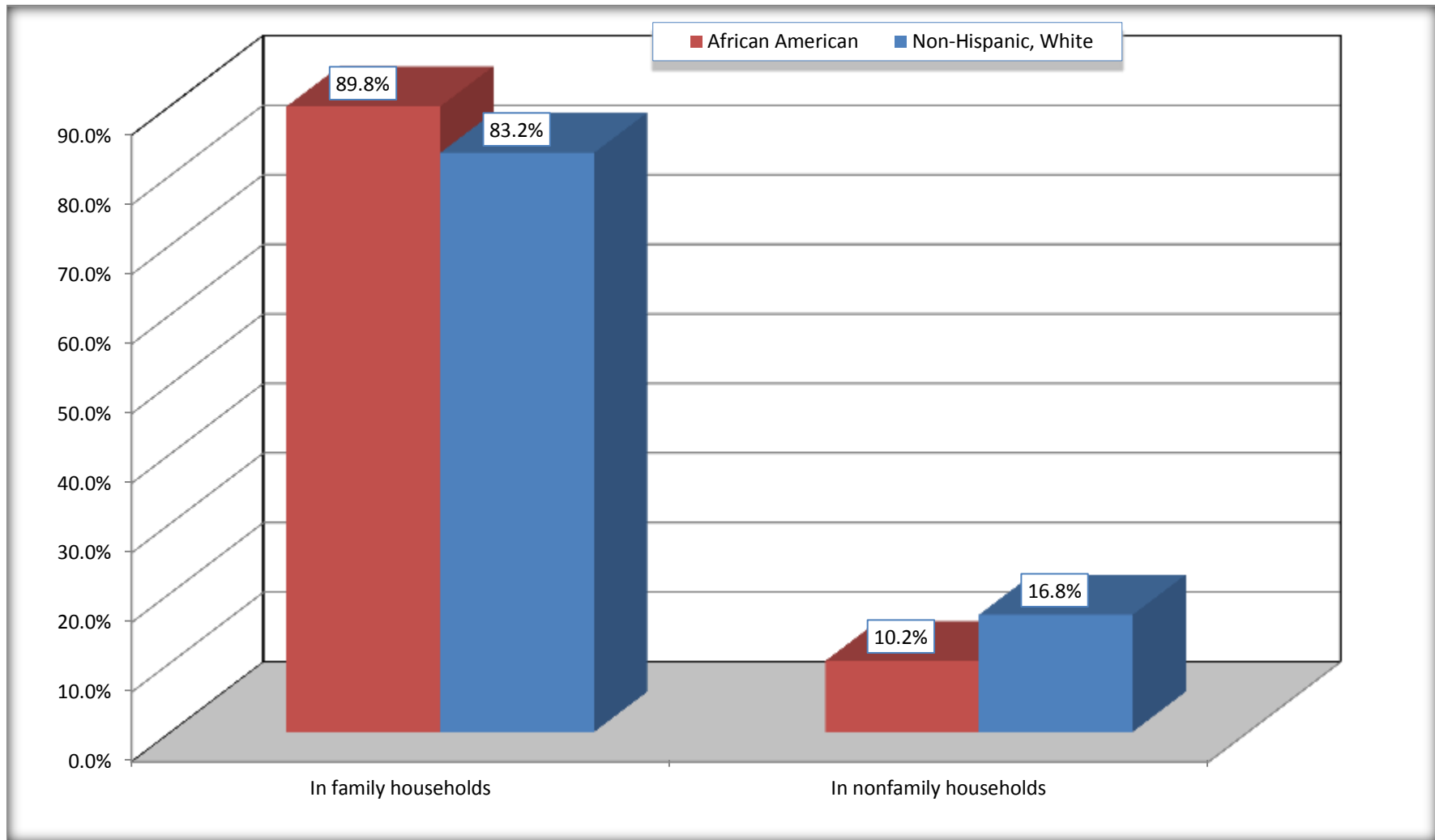
Source: U.S. Census Bureau, 2008-2012 American Community Survey

For information on confidentiality protection, sampling error, nonsampling error, and definitions, see Survey Methodology.

<http://www.census.gov/acs/www/UseData/index.htm>

# Household Type for Population in Households

## Crowley city, Louisiana



Source: B11002. HOUSEHOLD TYPE BY RELATIVES AND NONRELATIVES FOR POPULATION IN HOUSEHOLDS  
Data Set: 2008-2012 American Community Survey 5-Year Estimates

**B12002. MARITAL STATUS FOR THE POPULATION 15 YEARS AND OVER**

Data Set: 2008-2012 American Community Survey 5-Year Estimates

	Crowley city, Louisiana					
	African American	Margin of Error (+/-)	% of AA Total	White, Not Hispanic	Margin of Error (+/-)	% of NHW Total
<b>Total:</b>	<b>2,879</b>	<b>334</b>	<b>100.0%</b>	<b>6,254</b>	<b>523</b>	<b>100.0%</b>
Never married	1,135	NC	39.4%	1,881	NC	30.1%
Now married (except separated)	921	NC	32.0%	2,649	NC	42.4%
Separated	155	NC	5.4%	95	NC	1.5%
Widowed	169	NC	5.9%	565	NC	9.0%
Divorced	499	NC	17.3%	1,064	NC	17.0%
<b>Male:</b>	<b>1,343</b>	<b>218</b>	<b>46.6%</b>	<b>2,938</b>	<b>345</b>	<b>47.0%</b>
Never married	599	168	20.8%	1,054	269	16.9%
Now married (except separated)	461	157	16.0%	1,338	189	21.4%
Separated	8	20	0.3%	92	76	1.5%
Widowed	50	54	1.7%	74	53	1.2%
Divorced	225	86	7.8%	380	154	6.1%
<b>Female:</b>	<b>1,536</b>	<b>186</b>	<b>53.4%</b>	<b>3,316</b>	<b>328</b>	<b>53.0%</b>
Never married	536	155	18.6%	827	251	13.2%
Now married (except separated)	460	136	16.0%	1,311	163	21.0%
Separated	147	98	5.1%	3	8	0.0%
Widowed	119	57	4.1%	491	145	7.9%
Divorced	274	108	9.5%	684	201	10.9%

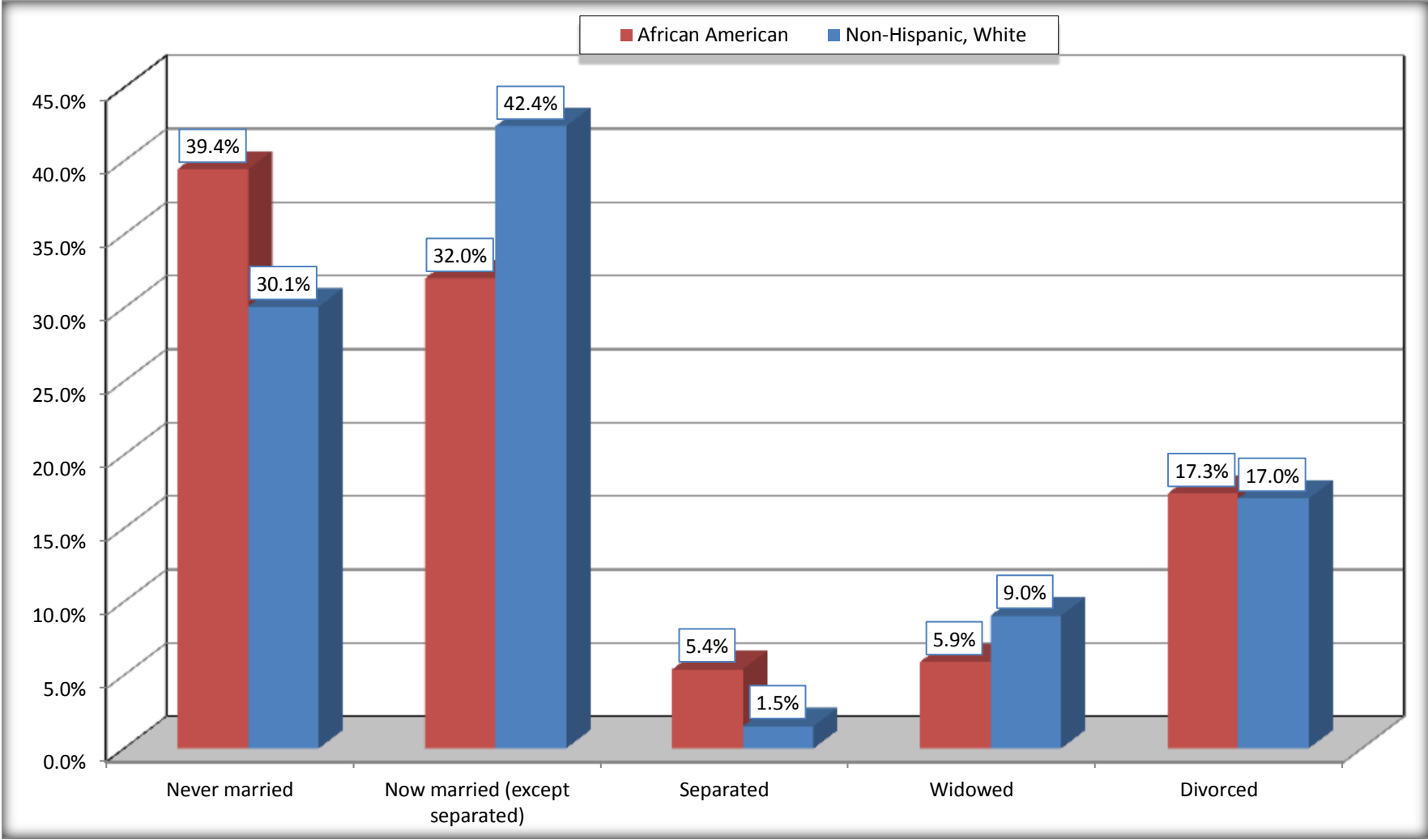
Source: U.S. Census Bureau, 2008-2012 American Community Survey

For information on confidentiality protection, sampling error, nonsampling error, and definitions, see Survey Methodology.

<http://www.census.gov/acs/www/UseData/index.htm>

# Marital Status for the Population 15 Years and Over

## Crowley city, Louisiana



Source: B12002. MARITAL STATUS FOR THE POPULATION 15 YEARS AND OVER  
Data Set: 2008-2012 American Community Survey 5-Year Estimates

**C15002. SEX BY EDUCATIONAL ATTAINMENT FOR THE POPULATION 25 YEARS AND OVER**

Data Set: 2008-2012 American Community Survey 5-Year Estimates

	Crowley city, Louisiana					
	African American	Margin of Error (+/-)	% of AA Total	White, Not Hispanic	Margin of Error (+/-)	% of NHW Total
<b>Total:</b>	<b>2,356</b>	<b>266</b>	<b>100.0%</b>	<b>5,215</b>	<b>421</b>	<b>100.0%</b>
Less than high school diploma	958	NC	40.7%	1,331	NC	25.5%
High school graduate, GED, or alternative	724	NC	30.7%	1,981	NC	38.0%
Some college or associate's degree	576	NC	24.4%	1,147	NC	22.0%
Bachelor's degree or higher	98	NC	4.2%	756	NC	14.5%
Male:	1,061	159	45.0%	2,295	259	44.0%
Less than high school diploma	392	134	16.6%	544	145	10.4%
High school graduate, GED, or alternative	409	132	17.4%	954	197	18.3%
Some college or associate's degree	222	94	9.4%	487	140	9.3%
Bachelor's degree or higher	38	31	1.6%	310	94	5.9%
Female:	1,295	167	55.0%	2,920	271	56.0%
Less than high school diploma	566	124	24.0%	787	202	15.1%
High school graduate, GED, or alternative	315	123	13.4%	1,027	212	19.7%
Some college or associate's degree	354	138	15.0%	660	158	12.7%
Bachelor's degree or higher	60	52	2.5%	446	118	8.6%

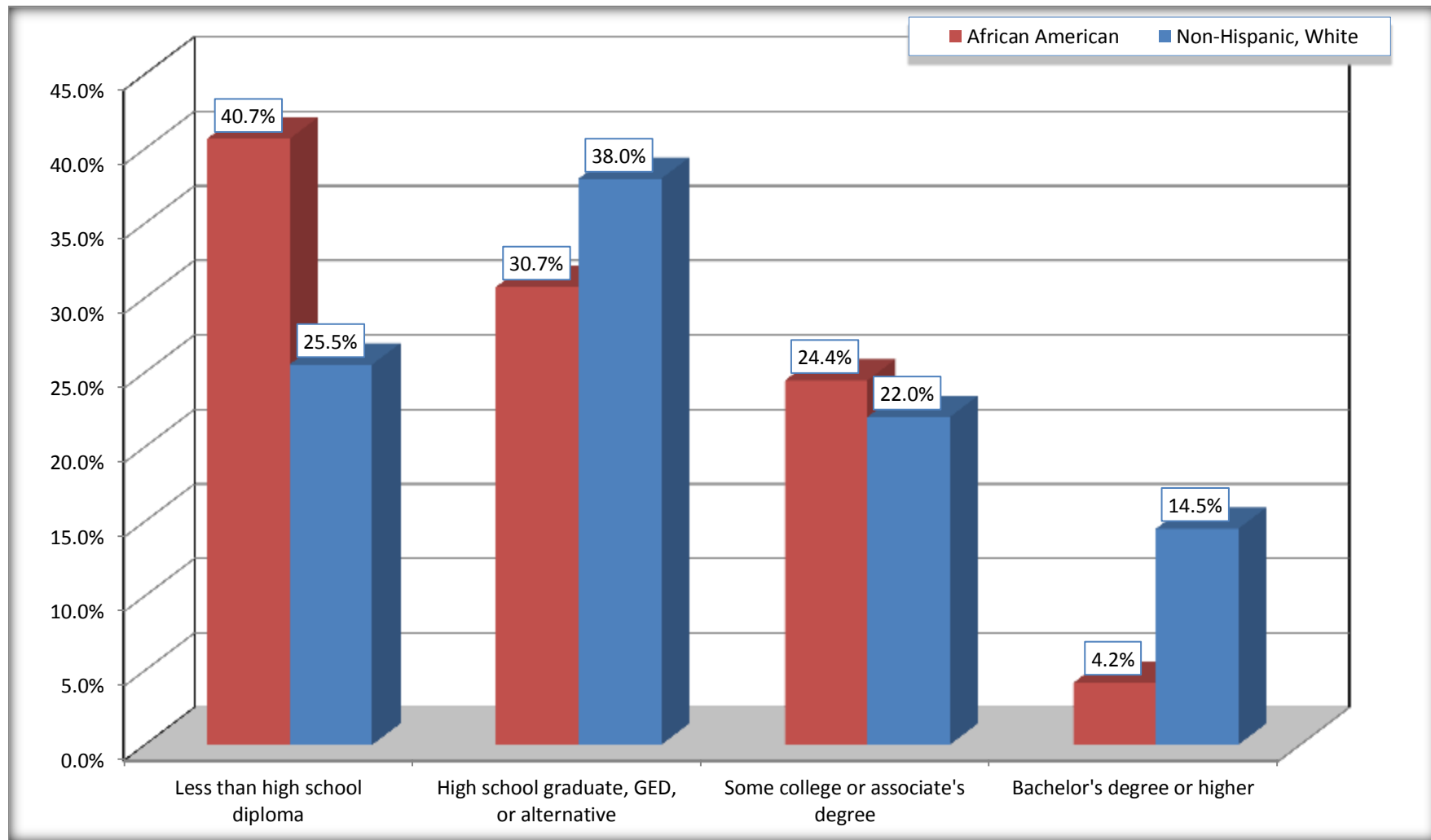
Source: U.S. Census Bureau, 2008-2012 American Community Survey

For information on confidentiality protection, sampling error, nonsampling error, and definitions, see Survey Methodology.

<http://www.census.gov/acs/www/UseData/index.htm>

# Educational Attainment for the Population 25 Years and Older

## Crowley city, Louisiana



Source: C15002. SEX BY EDUCATIONAL ATTAINMENT FOR THE POPULATION 25 YEARS AND OVER  
Data Set: 2008-2012 American Community Survey 5-Year Estimates

**B17010. POVERTY STATUS IN THE PAST 12 MONTHS OF FAMILIES BY FAMILY TYPE BY PRESENCE OF RELATED CHILDREN UNDER 18 YEARS**

Data Set: 2008-2012 American Community Survey 5-Year Estimates

	Crowley city, Louisiana					
	African American	Margin of Error (+/-)	% of AA Total	White, Not Hispanic	Margin of Error (+/-)	% of NHW Total
<b>Total:</b>	<b>1,058</b>	<b>153</b>	<b>100.0%</b>	<b>1,989</b>	<b>198</b>	<b>100.0%</b>
Income in the past 12 months below poverty level:	447	126	42.2%	440	159	22.1%
Married-couple family:	66	39	6.2%	136	86	6.8%
With related children under 18 years	12	19	1.1%	38	47	1.9%
Other family:	381	115	36.0%	304	142	15.3%
Male householder, no wife present	31	36	2.9%	39	57	2.0%
With related children under 18 years	31	36	2.9%	0	19	0.0%
Female householder, no husband present	350	110	33.1%	265	133	13.3%
With related children under 18 years	311	115	29.4%	249	129	12.5%
Income in the past 12 months at or above poverty level:	611	140	57.8%	1,549	226	77.9%
Married-couple family:	327	130	30.9%	1,153	151	58.0%
With related children under 18 years	160	108	15.1%	560	117	28.2%
Other family:	284	105	26.8%	396	145	19.9%
Male householder, no wife present	10	16	0.9%	133	106	6.7%
With related children under 18 years	0	19	0.0%	120	103	6.0%
Female householder, no husband present	274	102	25.9%	263	117	13.2%
With related children under 18 years	215	94	20.3%	160	103	8.0%

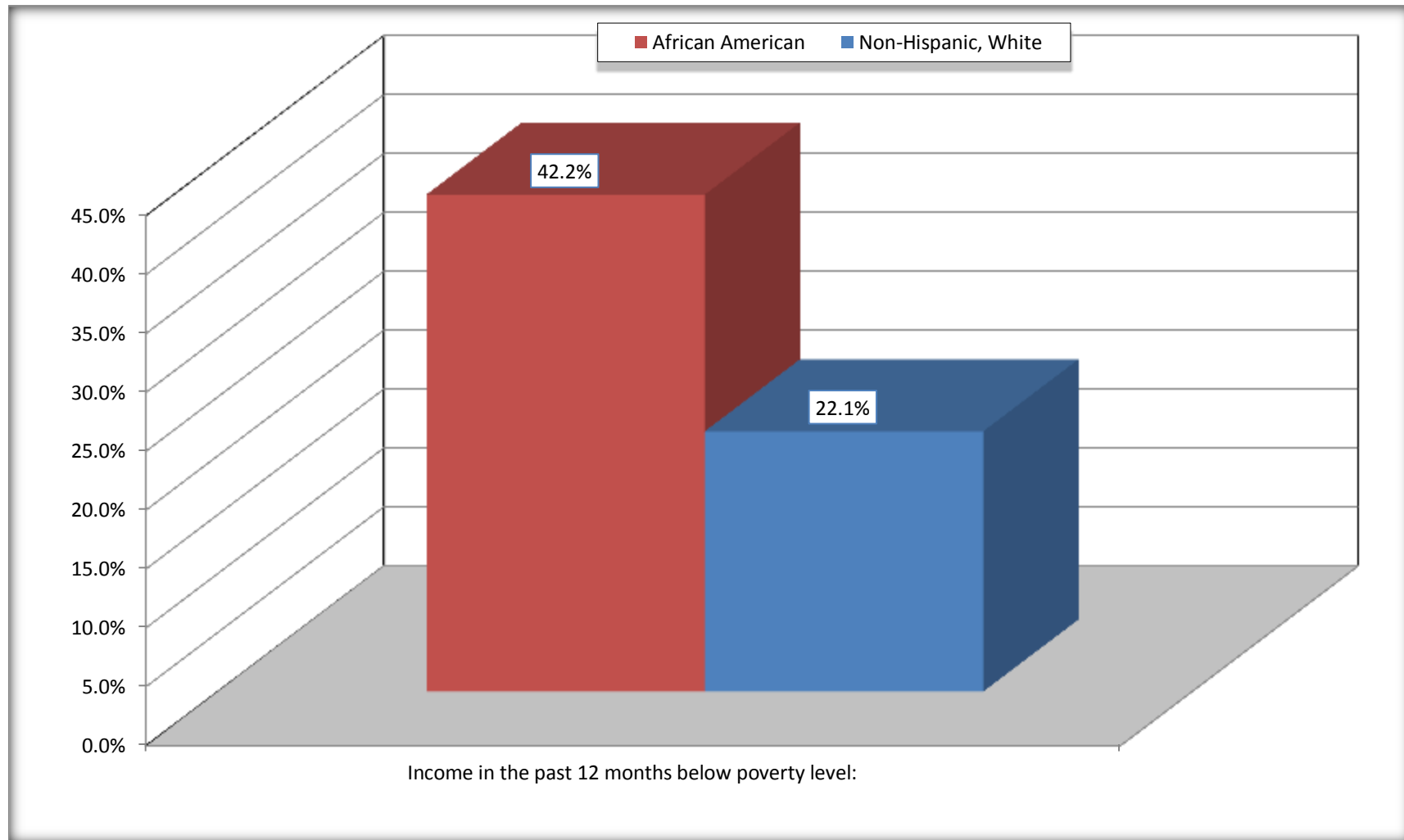
Source: U.S. Census Bureau, 2008-2012 American Community Survey

For information on confidentiality protection, sampling error, nonsampling error, and definitions, see Survey Methodology.

<http://www.census.gov/acs/www/UseData/index.htm>

# Family Households Below Poverty in the Past 12 Months

## Crowley city, Louisiana



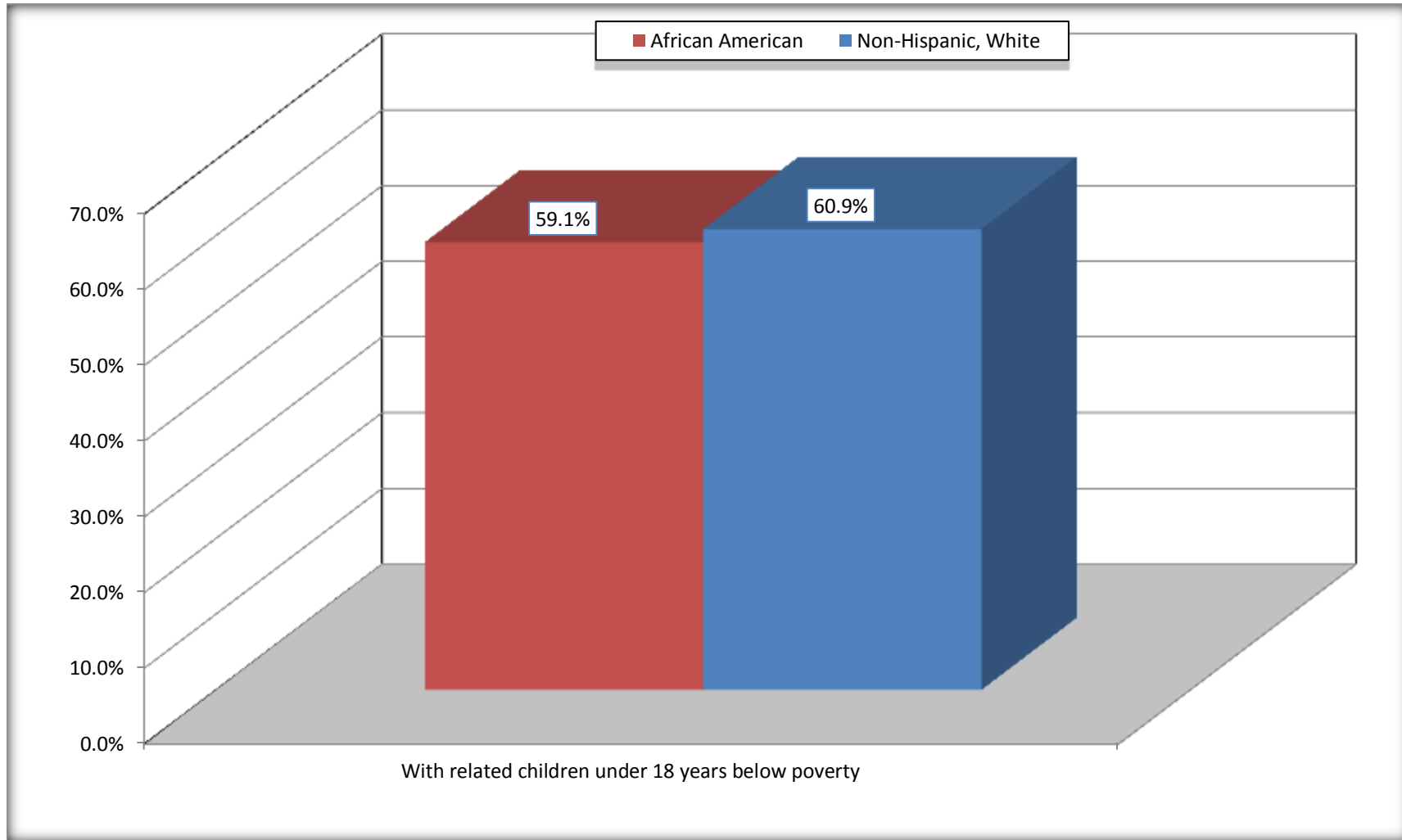
Source: B17010. POVERTY STATUS IN THE PAST 12 MONTHS OF FAMILIES BY FAMILY TYPE BY PRESENCE OF RELATED CHILDREN UNDER 18 YEARS

Data Set: 2008-2012 American Community Survey 5-Year Estimates



# Female-headed Households with Related Children Below Poverty in the Past 12 Months

## Crowley city, Louisiana



Source: B17010. POVERTY STATUS IN THE PAST 12 MONTHS OF FAMILIES BY FAMILY TYPE BY PRESENCE OF RELATED CHILDREN UNDER 18 YEARS

Data Set: 2008-2012 American Community Survey 5-Year Estimates

**B17020 POVERTY STATUS IN THE PAST 12 MONTHS BY AGE - Universe: POPULATION FOR WHOM POVERTY STATUS IS DETERMINED**

Data Set: 2008-2012 American Community Survey 5-Year Estimates

	Crowley city, Louisiana					
	African American	Margin of Error (+/-)	% of AA By Age	White, Not Hispanic	Margin of Error (+/-)	% of NHW By Age
<b>Total:</b>	<b>3,994</b>	<b>494</b>	<b>100.0%</b>	<b>7,848</b>	<b>545</b>	<b>100.0%</b>
Income in the past 12 months below poverty level:	1,812	417	45.4%	2,049	569	26.1%
<b>Under 18 years</b>	811	NC	57.0%	611	NC	29.1%
<b>18 to 64 years</b>	825	194	37.5%	1,234	355	26.7%
<b>65 years and over</b>	176	NC	47.6%	204	NC	18.1%
Income in the past 12 months at or above poverty level:	2,182	469	54.6%	5,799	682	73.9%
<b>Under 18 years</b>	612	NC	43.0%	1,489	NC	70.9%
<b>18 to 64 years</b>	1,376	299	62.5%	3,384	491	73.3%
<b>65 years and over</b>	194	NC	52.4%	926	NC	81.9%

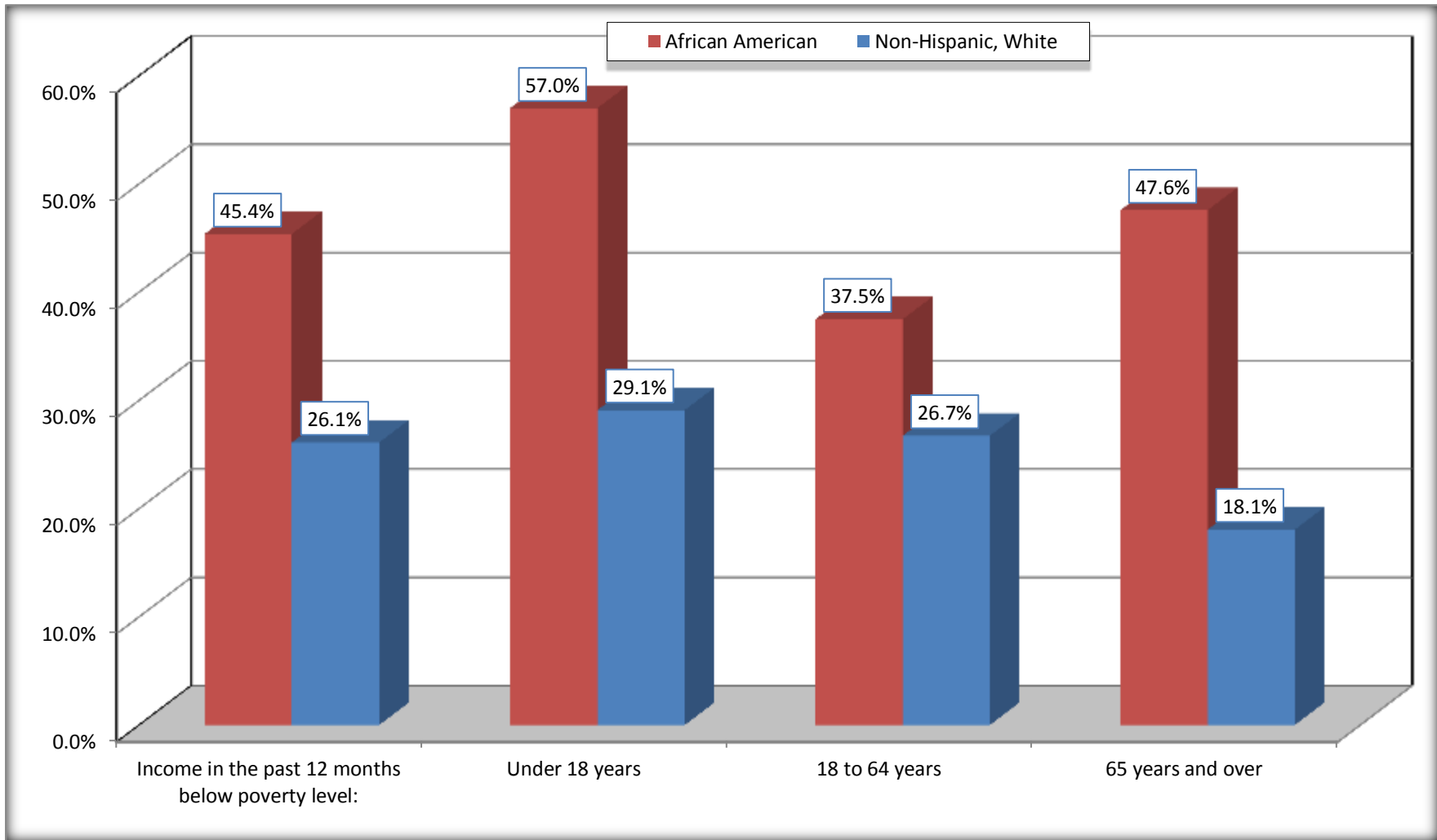
Source: U.S. Census Bureau, 2008-2012 American Community Survey

For information on confidentiality protection, sampling error, nonsampling error, and definitions, see Survey Methodology.

<http://www.census.gov/acs/www/UseData/index.htm>

# Population Below Poverty in the Past 12 Months

## Crowley city, Louisiana



Source: B17020 POVERTY STATUS IN THE PAST 12 MONTHS BY AGE - Universe: POPULATION FOR WHOM POVERTY STATUS IS DETERMINED  
Data Set: 2008-2012 American Community Survey 5-Year Estimates

**B19001. HOUSEHOLD INCOME IN THE PAST 12 MONTHS (IN 2010 INFLATION-ADJUSTED DOLLARS)**

Data Set: 2008-2012 American Community Survey 5-Year Estimates

	Crowley city, Louisiana					
	African American	Margin of Error (+/-)	% of AA Total	White, Not Hispanic	Margin of Error (+/-)	% of NHW Total
<b>Total:</b>	<b>1,437</b>	<b>180</b>	<b>100.0%</b>	<b>3,028</b>	<b>268</b>	<b>100.0%</b>
Less than \$ 10,000	388	124	27.0%	361	131	11.9%
\$ 10,000 to \$ 14,999	189	73	13.2%	256	108	8.5%
<b>\$ 15,000 to \$ 24,999</b>	249	NC	17.3%	427	NC	14.1%
<b>\$ 25,000 to \$ 34,999</b>	214	NC	14.9%	333	NC	11.0%
<b>\$ 35,000 to \$ 49,999</b>	233	NC	16.2%	408	NC	13.5%
<b>\$ 50,000 to \$ 74,999</b>	99	NC	6.9%	443	NC	14.6%
\$ 75,000 to \$ 99,999	22	33	1.5%	324	124	10.7%
<b>\$ 100,000 to \$ 149,999</b>	34	NC	2.4%	326	NC	10.8%
\$ 150,000 to \$ 199,999	9	16	0.6%	72	45	2.4%
\$ 200,000 or more	0	19	0.0%	78	51	2.6%

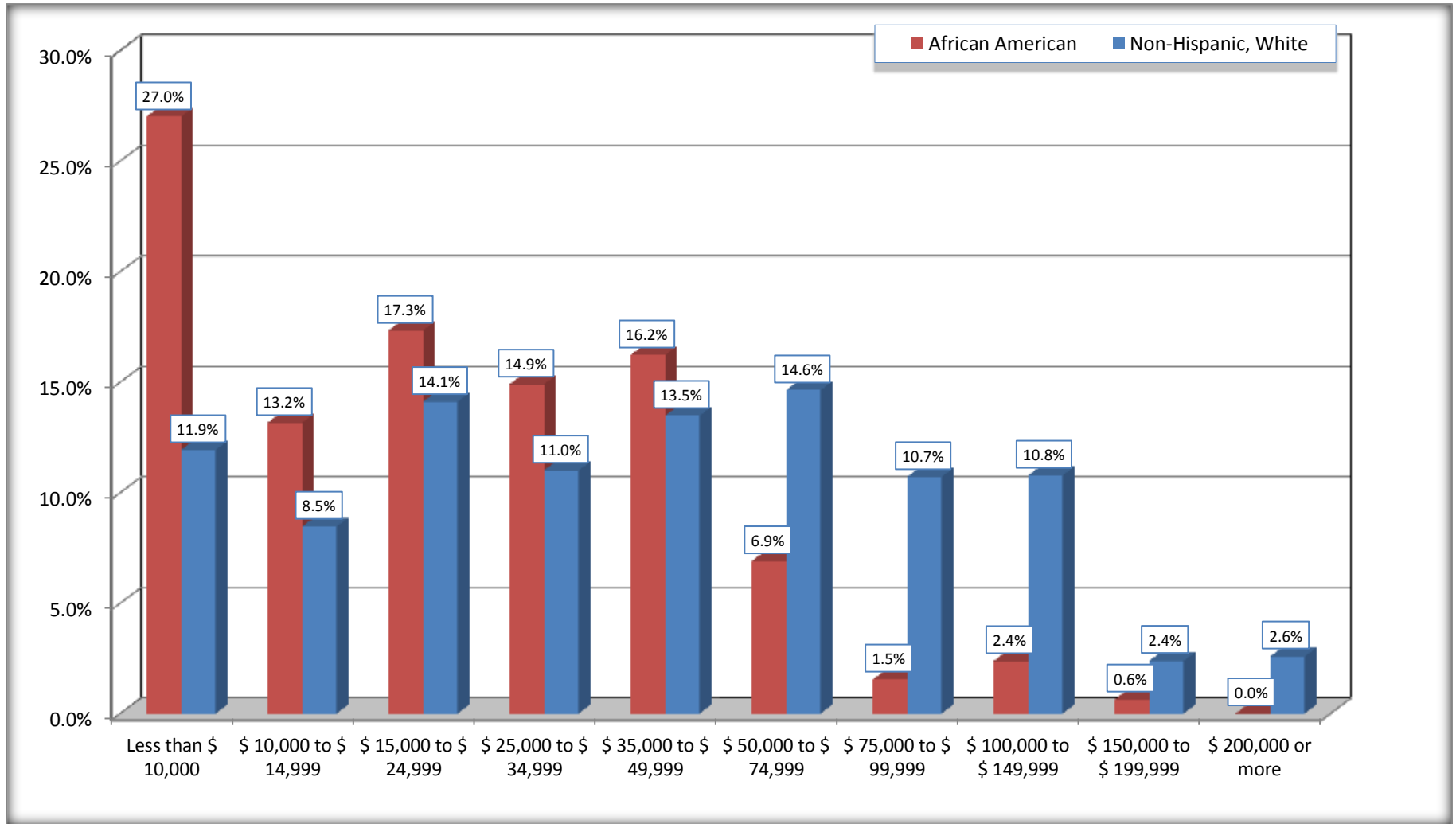
Source: U.S. Census Bureau, 2008-2012 American Community Survey

For information on confidentiality protection, sampling error, nonsampling error, and definitions, see Survey Methodology.

<http://www.census.gov/acs/www/UseData/index.htm>

# Household Income in the Past 12 Months

## Crowley city, Louisiana



Source: B19001. HOUSEHOLD INCOME IN THE PAST 12 MONTHS (IN 2010 INFLATION-ADJUSTED DOLLARS)  
Data Set: 2008-2012 American Community Survey 5-Year Estimates

**B19013. MEDIAN HOUSEHOLD INCOME IN THE PAST 12 MONTHS (IN 2010 INFLATION-ADJUSTED DOLLARS)**

Data Set: 2008-2012 American Community Survey 5-Year Estimates

	Crowley city, Louisiana			
	African American	Margin of Error (+/-)	White, Not Hispanic	Margin of Error (+/-)
Median household income in the past 12 months (in 2010 inflation-adjusted dollars)	\$ 19,493	\$ 4,076	\$ 40,482	\$ 6,684

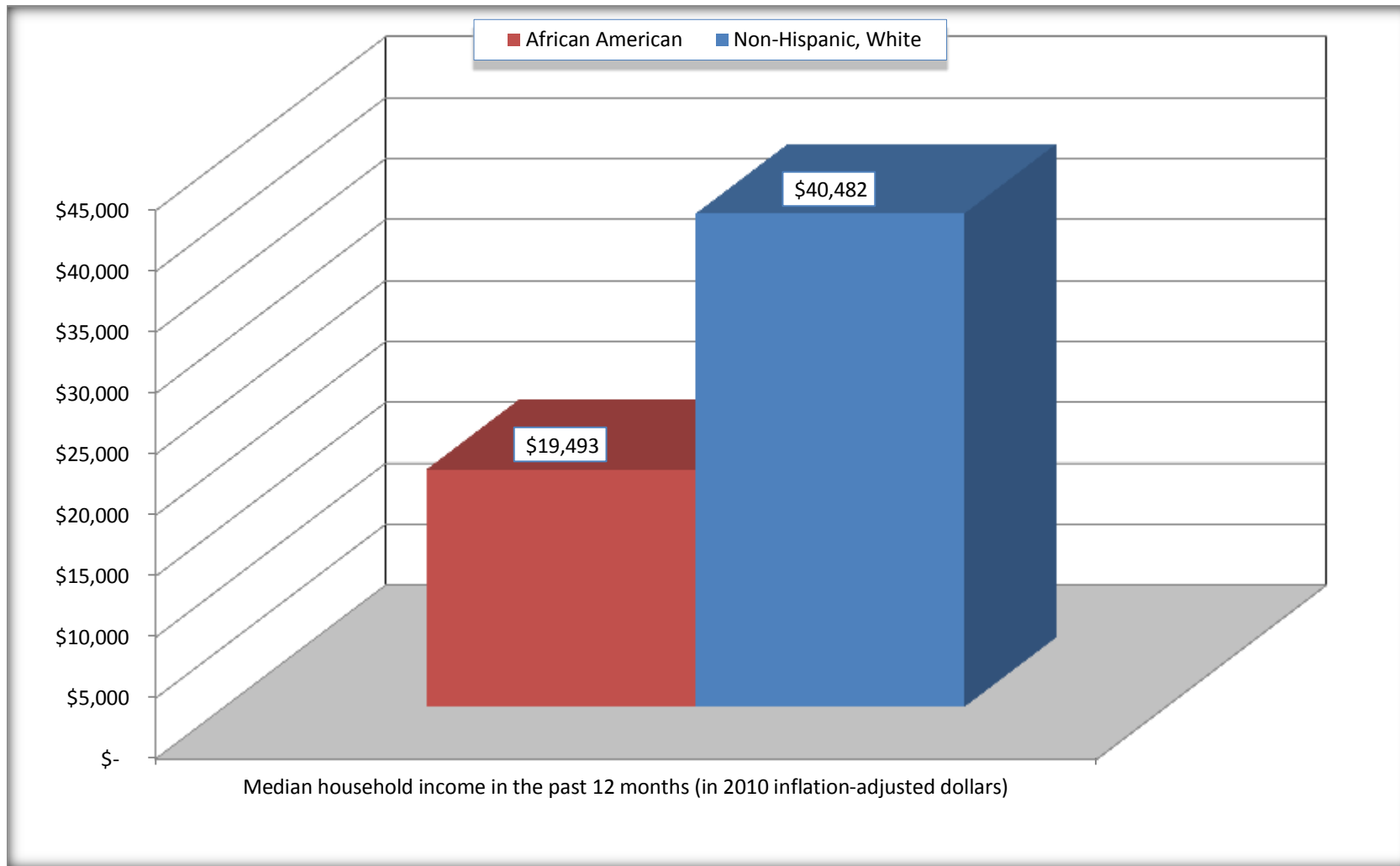
Source: U.S. Census Bureau, 2008-2012 American Community Survey

For information on confidentiality protection, sampling error, nonsampling error, and definitions, see Survey Methodology.

<http://www.census.gov/acs/www/UseData/index.htm>

# Median Household Income in the Past 12 Months

## Crowley city, Louisiana



Source: B19013. MEDIAN HOUSEHOLD INCOME IN THE PAST 12 MONTHS (IN 2010 INFLATION-ADJUSTED DOLLARS)  
Data Set: 2008-2012 American Community Survey 5-Year Estimates

**B19101. FAMILY INCOME IN THE PAST 12 MONTHS (IN 2010 INFLATION-ADJUSTED DOLLARS)**

Data Set: 2008-2012 American Community Survey 5-Year Estimates

	Crowley city, Louisiana					
	African American	Margin of Error (+/-)	% of AA Total	White, Not Hispanic	Margin of Error (+/-)	% of NHW Total
<b>Total:</b>	<b>1,058</b>	<b>153</b>	<b>100.0%</b>	<b>1,989</b>	<b>198</b>	<b>100.0%</b>
Less than \$ 10,000	255	113	24.1%	133	64	6.7%
\$ 10,000 to \$ 14,999	104	59	9.8%	152	106	7.6%
<b>\$ 15,000 to \$ 24,999</b>	<b>219</b>	<b>NC</b>	<b>20.7%</b>	<b>244</b>	<b>NC</b>	<b>12.3%</b>
<b>\$ 25,000 to \$ 34,999</b>	<b>133</b>	<b>NC</b>	<b>12.6%</b>	<b>263</b>	<b>NC</b>	<b>13.2%</b>
<b>\$ 35,000 to \$ 49,999</b>	<b>224</b>	<b>NC</b>	<b>21.2%</b>	<b>251</b>	<b>NC</b>	<b>12.6%</b>
<b>\$ 50,000 to \$ 74,999</b>	<b>67</b>	<b>NC</b>	<b>6.3%</b>	<b>280</b>	<b>NC</b>	<b>14.1%</b>
<b>\$ 100,000 to \$ 149,999</b>	<b>34</b>	<b>NC</b>	<b>3.2%</b>	<b>326</b>	<b>NC</b>	<b>16.4%</b>
\$ 150,000 to \$ 199,999	0	19	0.0%	72	45	3.6%
\$ 200,000 or more	0	19	0.0%	78	51	3.9%

Source: U.S. Census Bureau, 2008-2012 American Community Survey

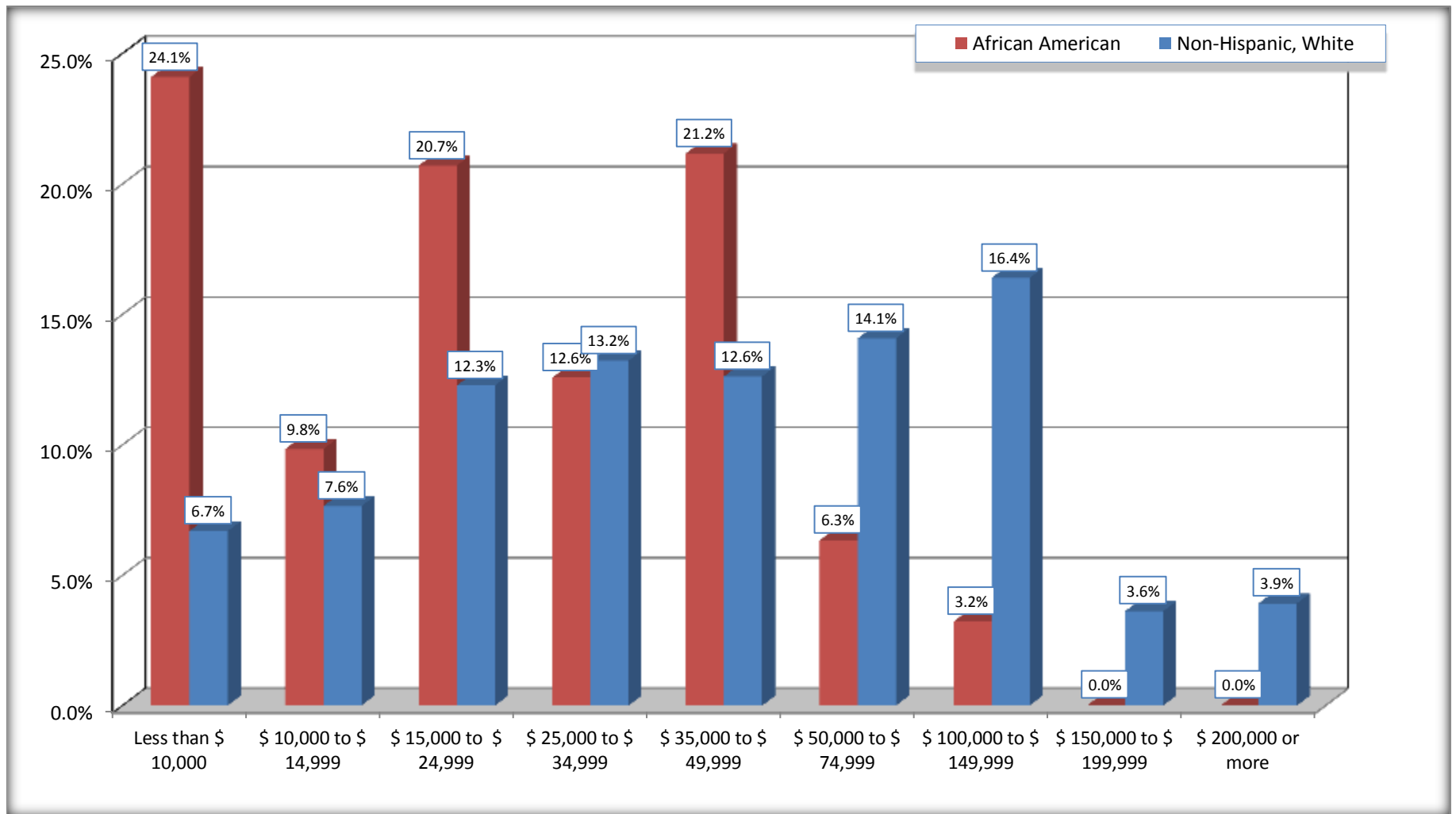
For information on confidentiality protection, sampling error, nonsampling error, and definitions, see Survey Methodology.

<http://www.census.gov/acs/www/UseData/index.htm>



# Family Income in the Past 12 Months

## Crowley city, Louisiana



Source: B19101. FAMILY INCOME IN THE PAST 12 MONTHS (IN 2010 INFLATION-ADJUSTED DOLLARS)  
Data Set: 2008-2012 American Community Survey 5-Year Estimates

**B19113. MEDIAN FAMILY INCOME IN THE PAST 12 MONTHS (IN 2010 INFLATION-ADJUSTED DOLLARS)**

Data Set: 2008-2012 American Community Survey 5-Year Estimates

	Crowley city, Louisiana			
	African American	Margin of Error (+/-)	White, Not Hispanic	Margin of Error (+/-)
Median family income in the past 12 months (in 2010 inflation-adjusted dollars)	\$ 22,731	\$ 5,907	\$ 46,344	\$ 9,516

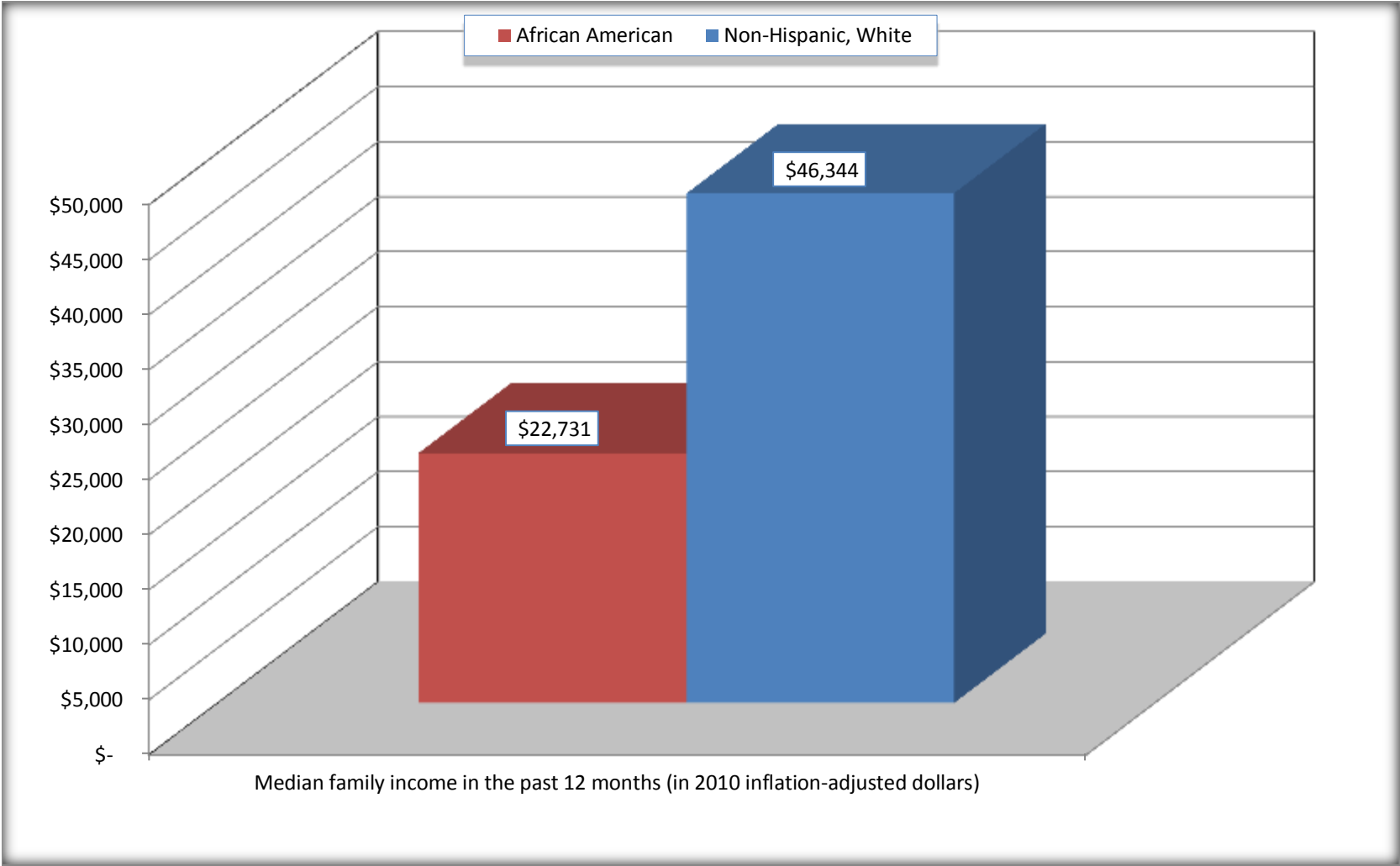
Source: U.S. Census Bureau, 2008-2012 American Community Survey

For information on confidentiality protection, sampling error, nonsampling error, and definitions, see Survey Methodology.

<http://www.census.gov/acs/www/UseData/index.htm>

# Median Family Income in the Past 12 Months

## Crowley city, Louisiana



Source: B19113. MEDIAN FAMILY INCOME IN THE PAST 12 MONTHS (IN 2010 INFLATION-ADJUSTED DOLLARS)  
Data Set: 2008-2012 American Community Survey 5-Year Estimates

**B19202. MEDIAN NONFAMILY HOUSEHOLD INCOME IN THE PAST 12 MONTHS (IN 2010 INFLATION-ADJUSTED DOLLARS)**

Data Set: 2008-2012 American Community Survey 5-Year Estimates

	Crowley city, Louisiana			
	African American	Margin of Error (+/-)	White, Not Hispanic	Margin of Error (+/-)
Median nonfamily household income in the past 12 months (in 2010 inflation-adjusted dollars)	\$ 12,940	\$ 3,490	\$ 20,575	\$ 6,717

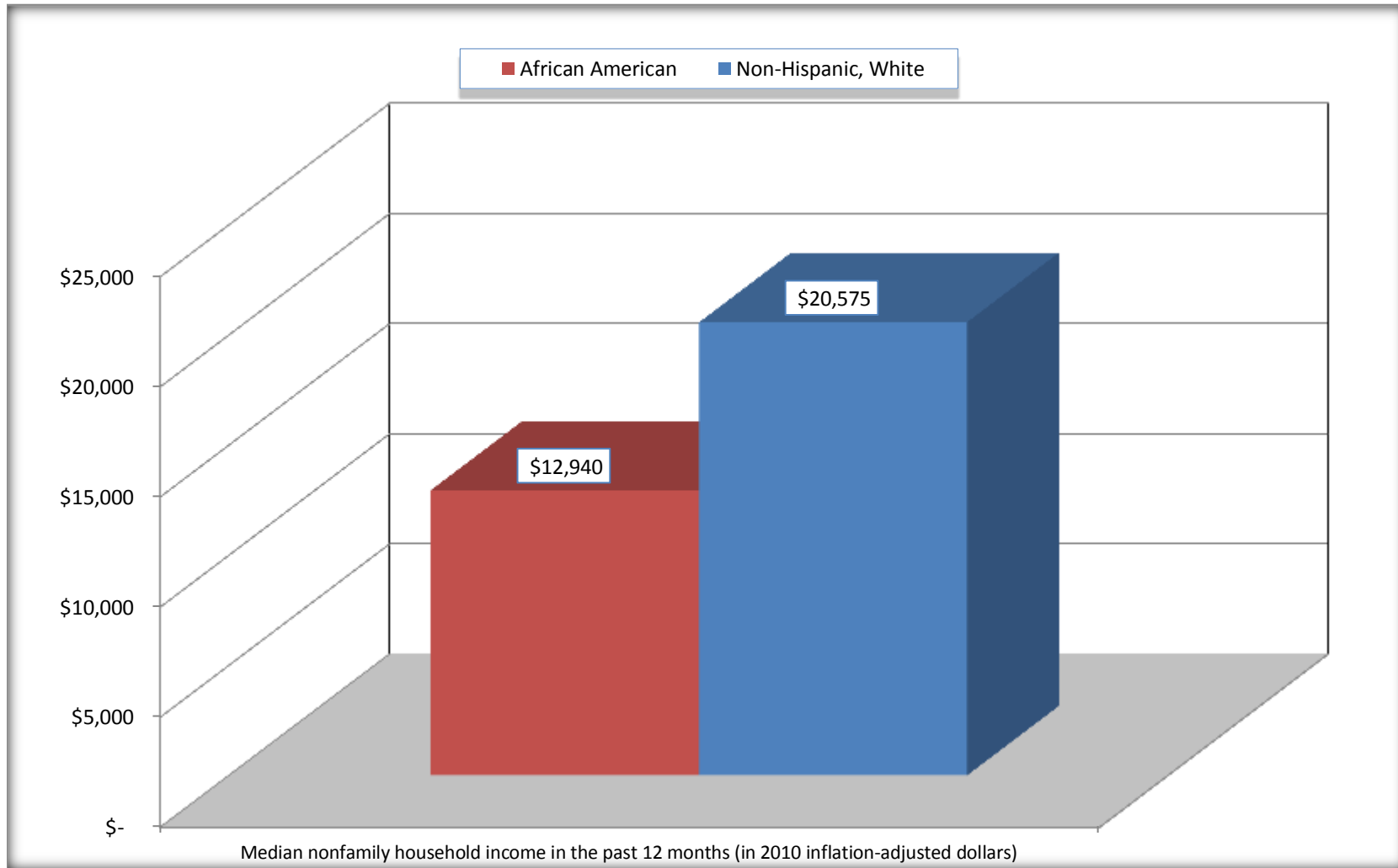
Source: U.S. Census Bureau, 2008-2012 American Community Survey

For information on confidentiality protection, sampling error, nonsampling error, and definitions, see Survey Methodology.

<http://www.census.gov/acs/www/UseData/index.htm>

# Median Non-Family Income in the Past 12 Months

## Crowley city, Louisiana



Source: B19202. MEDIAN NONFAMILY HOUSEHOLD INCOME IN THE PAST 12 MONTHS (IN 2010 INFLATION-ADJUSTED DOLLARS)  
Data Set: 2008-2012 American Community Survey 5-Year Estimates

**B19301. PER CAPITA INCOME IN THE PAST 12 MONTHS (IN 2010 INFLATION-ADJUSTED DOLLARS)**

Data Set: 2008-2012 American Community Survey 5-Year Estimates

	Crowley city, Louisiana			
	African American	Margin of Error (+/-)	White, Not Hispanic	Margin of Error (+/-)
Per capita income in the past 12 months (in 2010 inflation-adjusted dollars)	\$ 10,138	\$ 1,421	\$ 21,054	\$ 1,996

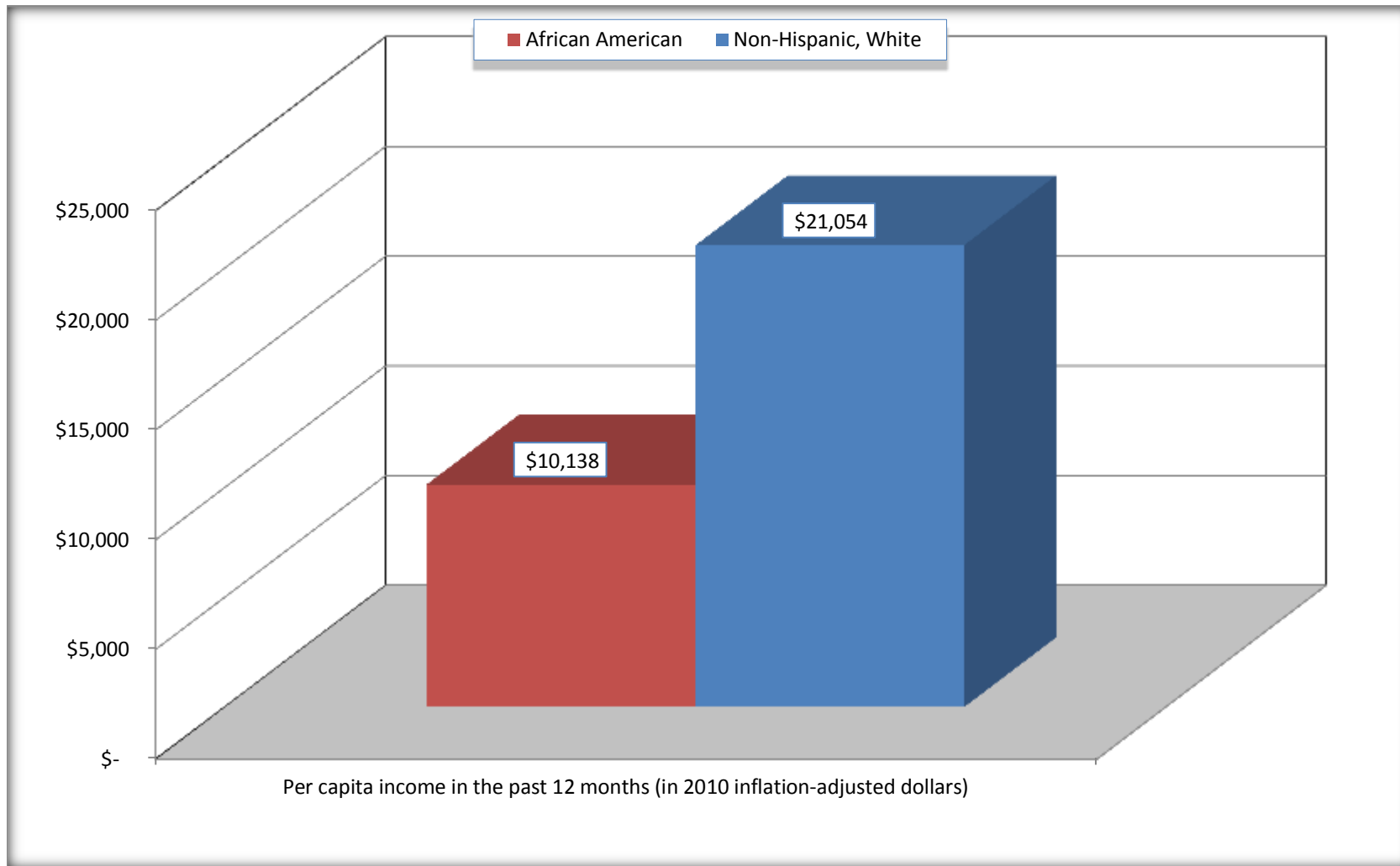
Source: U.S. Census Bureau, 2008-2012 American Community Survey

For information on confidentiality protection, sampling error, nonsampling error, and definitions, see Survey Methodology.

<http://www.census.gov/acs/www/UseData/index.htm>

## Per capita Income in the Past 12 Months

### Crowley city, Louisiana



Source: B19301. PER CAPITA INCOME IN THE PAST 12 MONTHS (IN 2010 INFLATION-ADJUSTED DOLLARS)  
Data Set: 2008-2012 American Community Survey 5-Year Estimates

**B20017. MEDIAN EARNINGS IN THE PAST 12 MONTHS (IN 2010 INFLATION-ADJUSTED DOLLARS) BY SEX BY WORK EXPERIENCE IN THE PAST 12 MONTHS FOR THE POPULATION 16 YEARS AND OVER WITH EARNINGS IN THE PAST 12 MONTHS**

Data Set: 2008-2012 American Community Survey 5-Year Estimates

	Crowley city, Louisiana			
	African American	Margin of Error (+/-)	White, Not Hispanic	Margin of Error (+/-)
Median earnings in the past 12 months (in 2010 inflation-adjusted dollars) --				
Total:	\$ 16,698	\$ 1,726	\$ 26,971	\$ 2,478
Male --				
Total	\$ 17,926	\$ 5,632	\$ 37,500	\$ 11,661
Worked full-time, year-round in the past 12 months	\$ 25,448	\$ 12,735	\$ 48,466	\$ 5,382
Other	\$ 12,768	\$ 6,869	\$ 11,017	\$ 3,470
Female --				
Total	\$ 16,095	\$ 2,137	\$ 19,215	\$ 5,185
Worked full-time, year-round in the past 12 months	\$ 19,566	\$ 5,945	\$ 28,260	\$ 3,815
Other	\$ 8,935	\$ 6,585	\$ 8,378	\$ 3,591

Source: U.S. Census Bureau, 2008-2012 American Community Survey

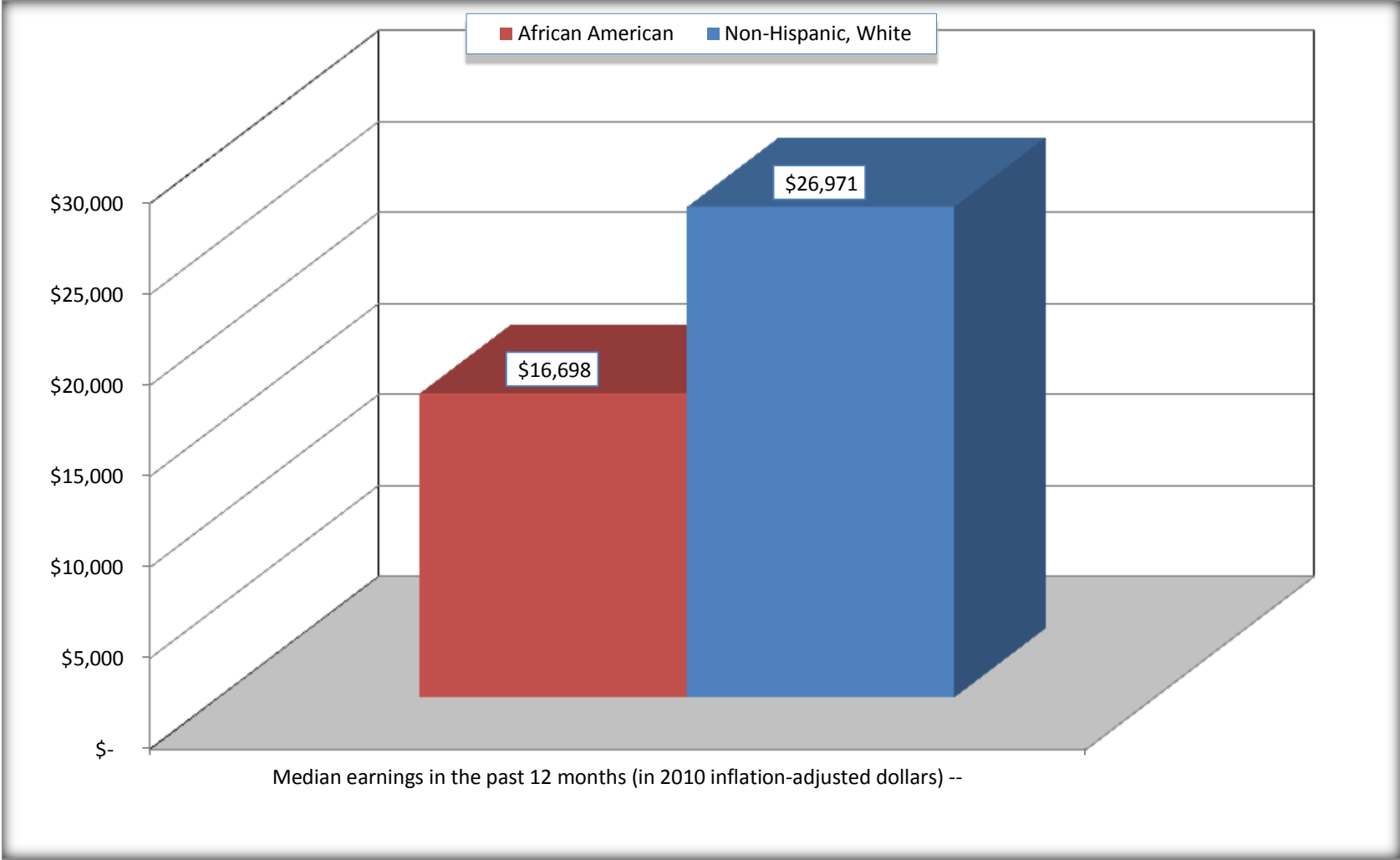
For information on confidentiality protection, sampling error, nonsampling error, and definitions, see Survey Methodology.

<http://www.census.gov/acs/www/UseData/index.htm>



# Median earnings in the Past 12 Months (16 Years and Over with Earnings)

## Crowley city, Louisiana



Source: B20017. MEDIAN EARNINGS IN THE PAST 12 MONTHS (IN 2010 INFLATION-ADJUSTED DOLLARS) BY SEX BY WORK EXPERIENCE IN THE PAST 12 MONTHS FOR THE POPULATION 16 YEARS AND OVER WITH EARNINGS IN THE PAST 12 MONTHS  
Data Set: 2008-2012 American Community Survey 5-Year Estimates

**B20005. SEX BY WORK EXPERIENCE IN THE PAST 12 MONTHS BY EARNINGS IN THE PAST 12 MONTHS (IN 2010 INFLATION-ADJUSTED DOLLARS) FOR THE POPULATION 16 YEARS AND OVER**

Data Set: 2008-2012 American Community Survey 5-Year Estimates

	Crowley city, Louisiana					
	African American	Margin of Error (+/-)	% of AA Total	White, Not Hispanic	Margin of Error (+/-)	% of NHW Total
<b>Total:</b>	<b>2,833</b>	<b>334</b>	<b>100.0%</b>	<b>6,207</b>	<b>515</b>	<b>100.0%</b>
Worked full-time, year-round in the past 12 months:	922	NC	32.5%	2,323	NC	37.4%
No earnings	0	NC	0.0%	0	NC	0.0%
With earnings:	922	NC	32.5%	2,323	NC	37.4%
\$ 1 to \$ 9,999 or loss	110	NC	3.9%	104	NC	1.7%
\$ 10,000 to \$ 19,999	356	NC	12.6%	255	NC	4.1%
\$ 20,000 to \$ 29,999	221	NC	7.8%	547	NC	8.8%
\$ 30,000 to \$ 49,999	157	NC	5.5%	688	NC	11.1%
\$ 50,000 to \$ 74,999	43	NC	1.5%	426	NC	6.9%
\$ 75,000 or more	35	NC	1.2%	303	NC	4.9%
Other:	1,911	NC	67.5%	3,884	NC	62.6%
No earnings	1,276	NC	45.0%	2,600	NC	41.9%
With earnings: less than full time, year-round	635	NC	22.4%	1,284	NC	20.7%
<b>Male:</b>	<b>1,323</b>	<b>216</b>	<b>46.7%</b>	<b>2,899</b>	<b>334</b>	<b>46.7%</b>
Worked full-time, year-round in the past 12 months:	394	130	13.9%	1,261	235	20.3%
No earnings	0	19	0.0%	0	19	0.0%
With earnings:	394	130	13.9%	1,261	235	20.3%
\$ 1 to \$ 9,999 or loss	50	NC	1.8%	80	NC	1.3%
\$ 10,000 to \$ 19,999	135	NC	4.8%	0	NC	0.0%
\$ 20,000 to \$ 29,999	105	NC	3.7%	224	NC	3.6%
\$ 30,000 to \$ 49,999	67	NC	2.4%	394	NC	6.3%
\$ 50,000 to \$ 74,999	16	NC	0.6%	282	NC	4.5%
\$ 75,000 or more	21	NC	0.7%	281	NC	4.5%

	Crowley city, Louisiana					
	African American	Margin of Error (+/-)	% of AA Total	White, Not Hispanic	Margin of Error (+/-)	% of NHW Total
Other:	929	178	32.8%	1,638	330	26.4%
No earnings	651	146	23.0%	1,091	277	17.6%
With earnings:	278	112	9.8%	547	164	8.8%
Female:	1,510	184	53.3%	3,308	328	53.3%
Worked full-time, year-round in the past 12 months:	528	137	18.6%	1,062	292	17.1%
No earnings	0	19	0.0%	0	19	0.0%
With earnings:	528	137	18.6%	1,062	292	17.1%
\$ 1 to \$ 9,999 or loss	60	NC	2.1%	24	NC	0.4%
\$ 10,000 to \$ 19,999	221	NC	7.8%	255	NC	4.1%
\$ 20,000 to \$ 29,999	116	NC	4.1%	323	NC	5.2%
\$ 30,000 to \$ 49,999	90	NC	3.2%	294	NC	4.7%
\$ 50,000 to \$ 74,999	27	NC	1.0%	144	NC	2.3%
\$ 75,000 or more	14	NC	0.5%	22	NC	0.4%
Other:	982	171	34.7%	2,246	248	36.2%
No earnings	625	130	22.1%	1,509	248	24.3%
With earnings:	357	155	12.6%	737	188	11.9%

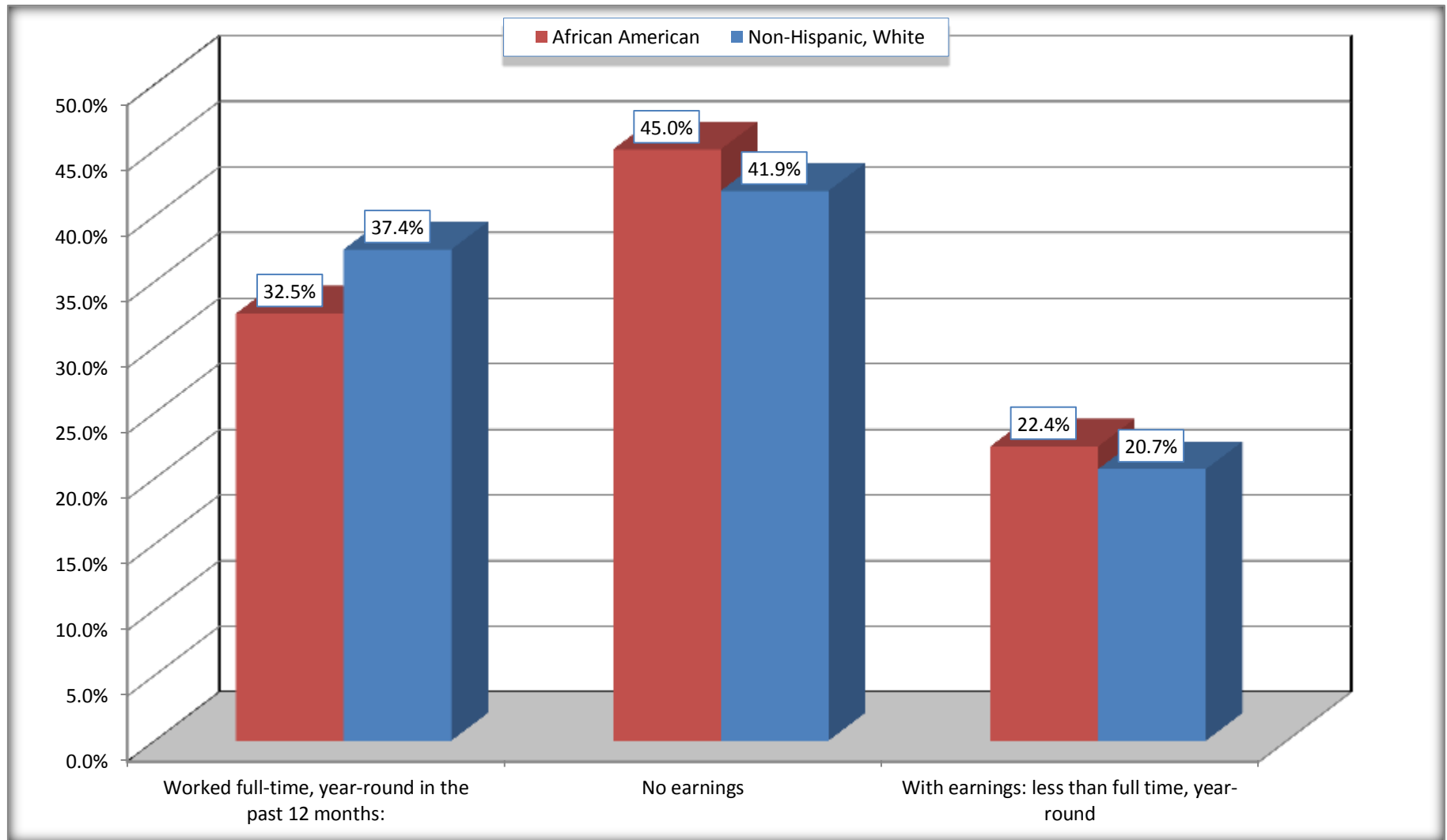
Source: U.S. Census Bureau, 2008-2012 American Community Survey

For information on confidentiality protection, sampling error, nonsampling error, and definitions, see Survey Methodology.

<http://www.census.gov/acs/www/UseData/index.htm>

# Employment and Earnings in in the Past 12 Months (16 Years and Over)

## Crowley city, Louisiana



Source: B20005. SEX BY WORK EXPERIENCE IN THE PAST 12 MONTHS BY EARNINGS IN THE PAST 12 MONTHS (IN 2010 INFLATION-ADJUSTED DOLLARS) FOR THE POPULATION 16 YEARS AND OVER

Data Set: 2008-2012 American Community Survey 5-Year Estimates

**C21001. SEX BY AGE BY VETERAN STATUS FOR THE CIVILIAN POPULATION 18 YEARS AND OVER**

Data Set: 2008-2012 American Community Survey 5-Year Estimates

	Crowley city, Louisiana					
	African American	Margin of Error (+/-)	% of AA Total	White, Not Hispanic	Margin of Error (+/-)	% of NHW Total
<b>Total:</b>	<b>2,705</b>	<b>317</b>	<b>100.0%</b>	<b>5,986</b>	<b>461</b>	<b>100.0%</b>
Veteran	224	NC	8.3%	587	NC	9.8%
Nonveteran	2,481	NC	91.7%	5,399	NC	90.2%
Male:	1,217	198	45.0%	2,759	316	46.1%
18 to 64 years:	1,018	190	37.6%	2,336	283	39.0%
Veteran	149	83	5.5%	310	113	5.2%
Nonveteran	869	173	32.1%	2,026	293	33.8%
65 years and over:	199	52	7.4%	423	106	7.1%
Veteran	62	41	2.3%	223	68	3.7%
Nonveteran	137	63	5.1%	200	83	3.3%
Female:	1,488	182	55.0%	3,227	307	53.9%
18 to 64 years:	1,268	170	46.9%	2,435	262	40.7%
Veteran	13	19	0.5%	30	26	0.5%
Nonveteran	1,255	169	46.4%	2,405	262	40.2%
65 years and over:	220	58	8.1%	792	161	13.2%
Veteran	0	19	0.0%	24	29	0.4%
Nonveteran	220	58	8.1%	768	160	12.8%

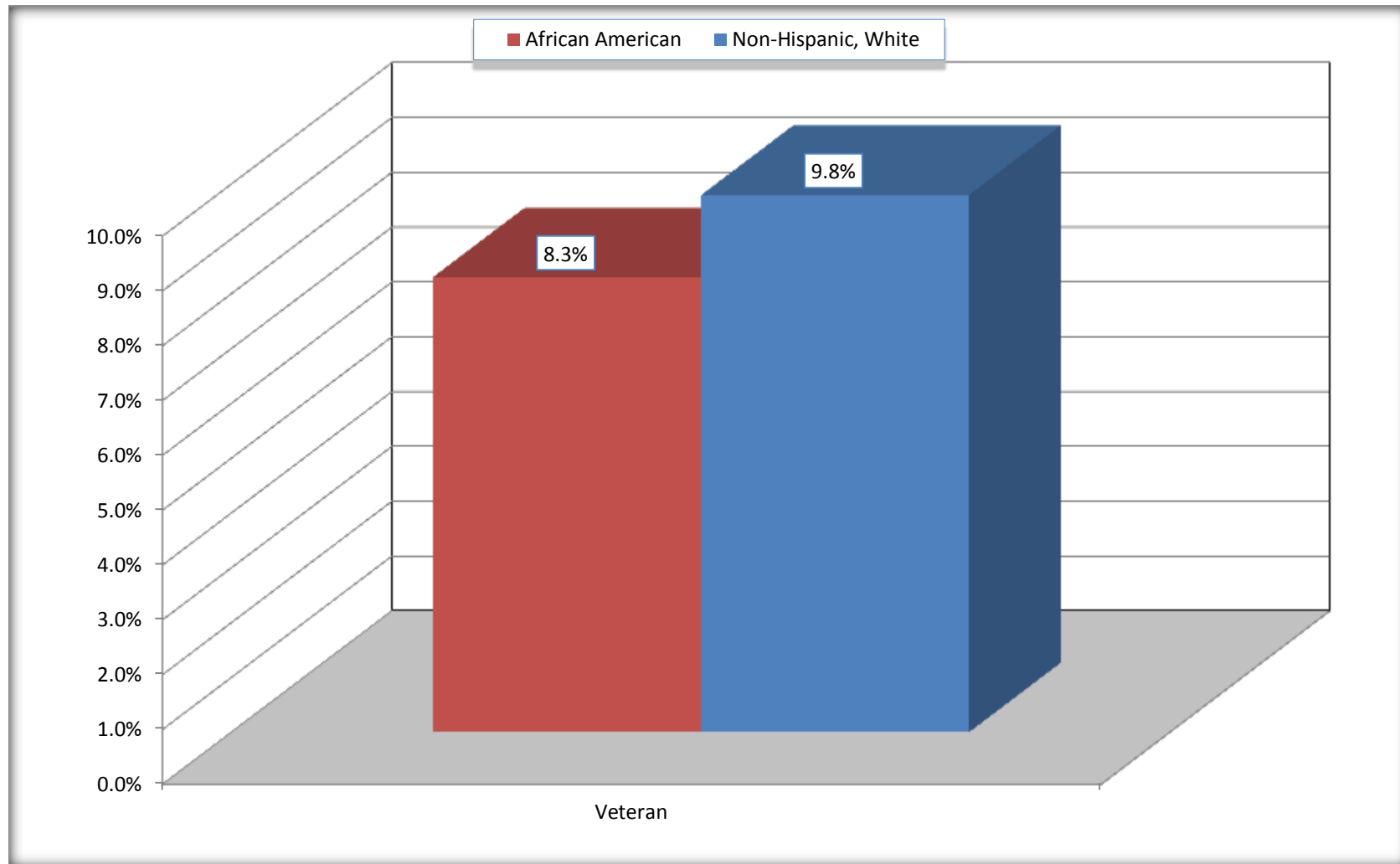
Source: U.S. Census Bureau, 2008-2012 American Community Survey

For information on confidentiality protection, sampling error, nonsampling error, and definitions, see Survey Methodology.

<http://www.census.gov/acs/www/UseData/index.htm>

# Veterans in the Civilian Population 18 Years and Over

## Crowley city, Louisiana



Source: C21001. SEX BY AGE BY VETERAN STATUS FOR THE CIVILIAN POPULATION 18 YEARS AND OVER  
Data Set: 2008-2012 American Community Survey 5-Year Estimates

**B22005. RECEIPT OF FOOD STAMPS/SNAP IN THE PAST 12 MONTHS BY RACE OF HOUSEHOLDER**

Data Set: 2008-2012 American Community Survey 5-Year Estimates

	Crowley city, Louisiana					
	African American	Margin of Error (+/-)	% of AA Total	White, Not Hispanic	Margin of Error (+/-)	% of NHW Total
<b>Total:</b>	<b>1,437</b>	<b>180</b>	<b>100.0%</b>	<b>3,028</b>	<b>268</b>	<b>100.0%</b>
HH received Food Stamps/SNAP in the past 12 months	728	154	50.7%	888	183	29.3%
HH did not receive Food Stamps/SNAP in the past 12 months	709	162	49.3%	2,140	315	70.7%

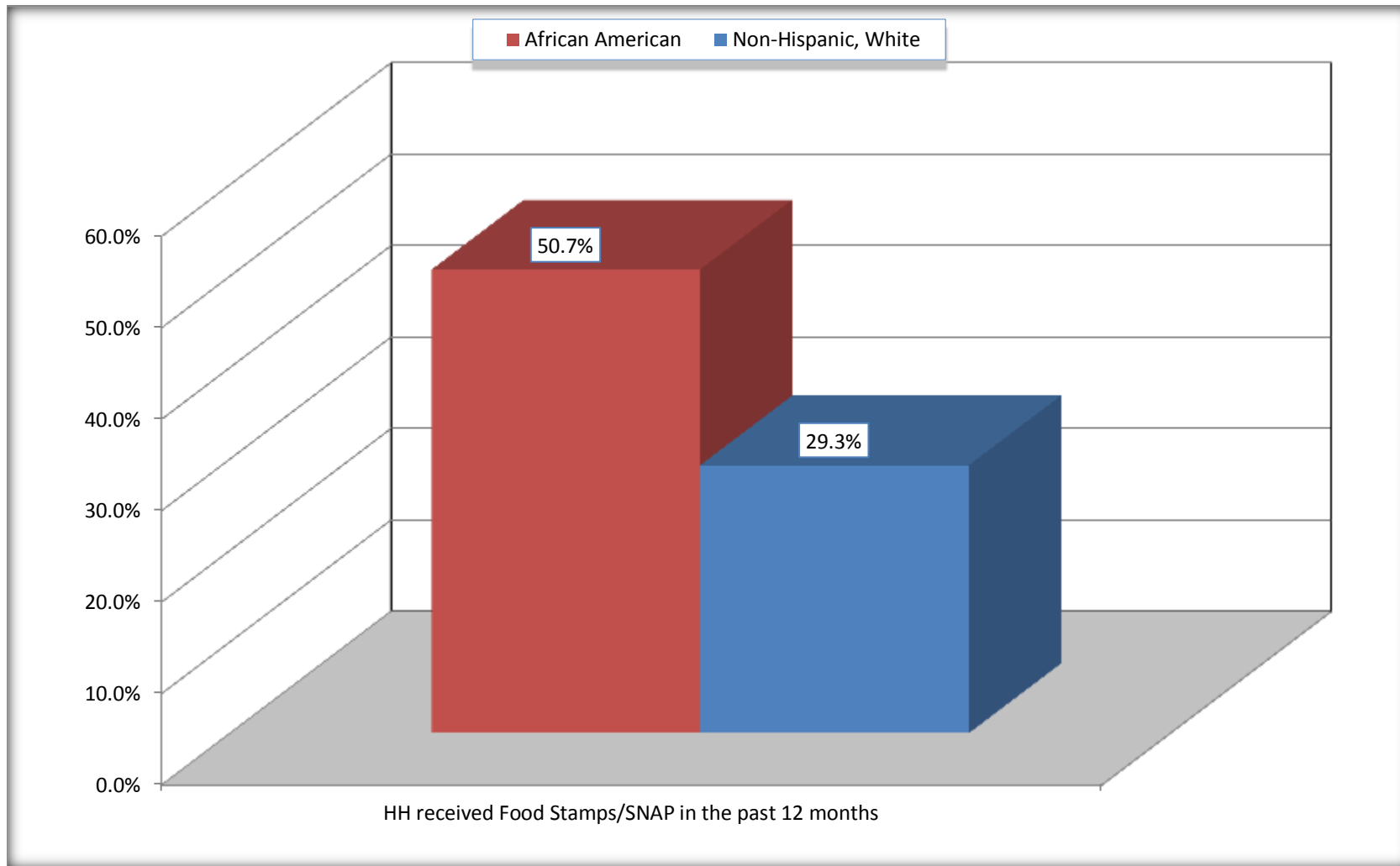
Source: U.S. Census Bureau, 2008-2012 American Community Survey

For information on confidentiality protection, sampling error, nonsampling error, and definitions, see Survey Methodology.

<http://www.census.gov/acs/www/UseData/index.htm>

# Receipt of Food Stamps/SNAP in the Past 12 Months by Household

## Crowley city, Louisiana



Source: B22005. RECEIPT OF FOOD STAMPS/SNAP IN THE PAST 12 MONTHS BY RACE OF HOUSEHOLDER  
Data Set: 2008-2012 American Community Survey 5-Year Estimates



**C23002. SEX BY AGE BY EMPLOYMENT STATUS FOR THE POPULATION 16 YEARS AND OVER**

Data Set: 2008-2012 American Community Survey 5-Year Estimates

	Crowley city, Louisiana					
	African American	Margin of Error (+/-)	% of AA Total	White, Not Hispanic	Margin of Error (+/-)	% of NHW Total
<b>Total:</b>	<b>2,833</b>	<b>334</b>	<b>100.0%</b>	<b>6,207</b>	<b>515</b>	<b>100.0%</b>
In labor force:	1,432	NC	50.5%	3,427	NC	55.2%
In Armed Forces	0	NC	0.0%	0	NC	0.0%
Civilian:	1,388	NC	49.0%	3,281	NC	52.9%
Employed	1,208	NC	42.6%	2,989	NC	48.2%
Unemployed	224	NC	7.9%	438	NC	7.1%
Not in labor force	1,401	NC	49.5%	2,780	NC	44.8%
Male:	1,323	216	46.7%	2,899	334	46.7%
16 to 64 years:	1,124	210	39.7%	2,476	306	39.9%
In labor force:	581	172	20.5%	1,645	273	26.5%
In Armed Forces	0	19	0.0%	0	19	0.0%
Civilian:	581	172	20.5%	1,645	273	26.5%
Employed	437	140	15.4%	1,411	254	22.7%
Unemployed	144	78	5.1%	234	207	3.8%
Not in labor force	543	143	19.2%	831	180	13.4%
65 years and over:	199	52	7.0%	423	106	6.8%
In labor force:	44	42	1.6%	88	44	1.4%
Employed	44	42	1.6%	88	44	1.4%
Unemployed	0	19	0.0%	0	19	0.0%
Not in labor force	155	65	5.5%	335	102	5.4%

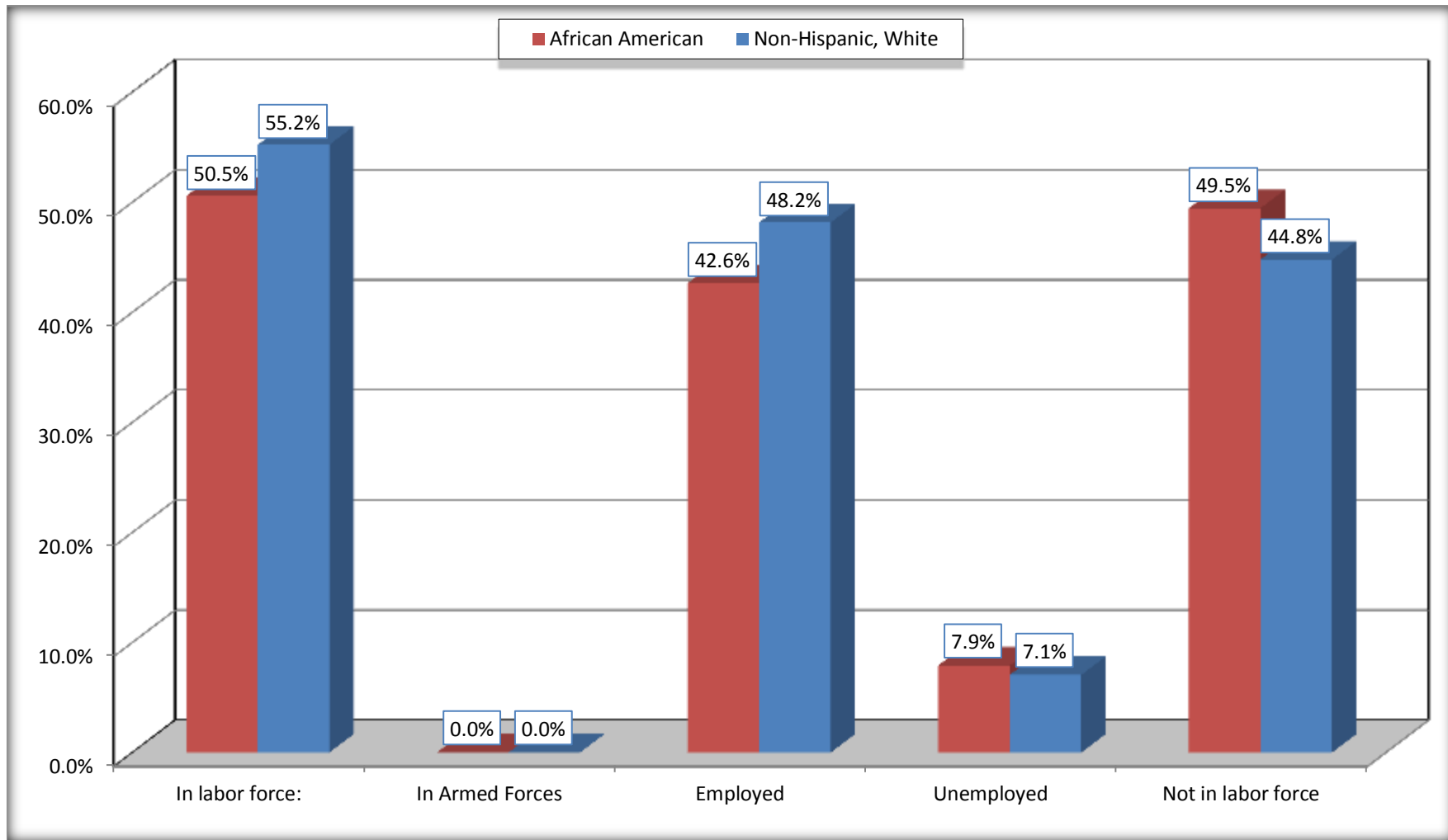
	Crowley city, Louisiana					
	African American	Margin of Error (+/-)	% of AA Total	White, Not Hispanic	Margin of Error (+/-)	% of NHW Total
Female:	1,510	184	53.3%	3,308	328	53.3%
16 to 64 years:	1,290	173	45.5%	2,516	287	40.5%
In labor force:	807	165	28.5%	1,636	295	26.4%
In Armed Forces	0	19	0.0%	0	19	0.0%
Civilian:	807	165	28.5%	1,636	295	26.4%
Employed	727	167	25.7%	1,455	309	23.4%
Unemployed	80	46	2.8%	181	113	2.9%
Not in labor force	483	118	17.0%	880	191	14.2%
65 years and over:	220	58	7.8%	792	161	12.8%
In labor force:	0	19	0.0%	58	47	0.9%
Employed	0	19	0.0%	35	32	0.6%
Unemployed	0	19	0.0%	23	35	0.4%
Not in labor force	220	58	7.8%	734	152	11.8%

Source: U.S. Census Bureau, 2008-2012 American Community Survey

For information on confidentiality protection, sampling error, nonsampling error, and definitions, see Survey Methodology.  
<http://www.census.gov/acs/www/UseData/index.htm>

# Employment Status for the Population 16 years and over

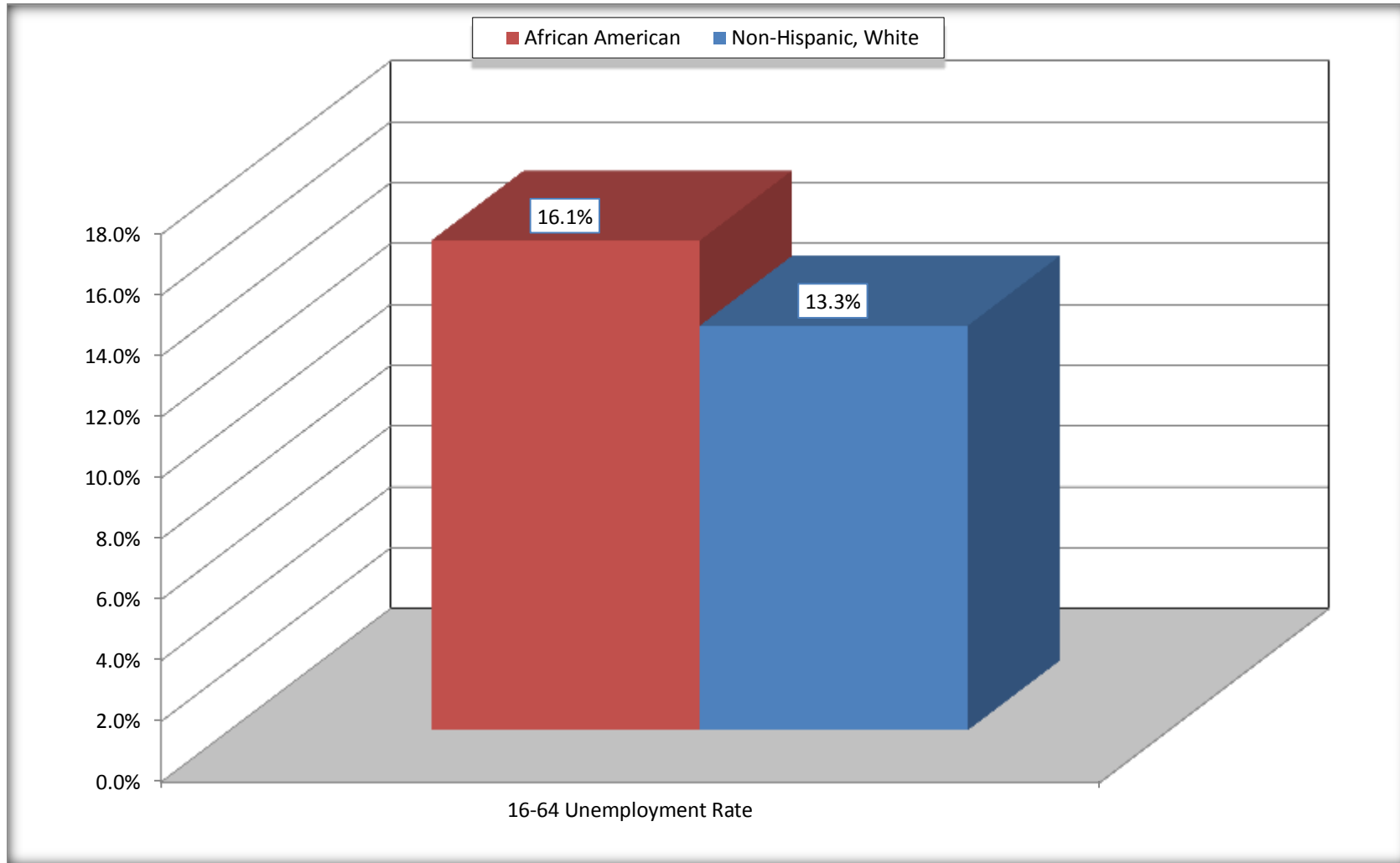
## Crowley city, Louisiana



Source: C23002. SEX BY AGE BY EMPLOYMENT STATUS FOR THE POPULATION 16 YEARS AND OVER  
Data Set: 2008-2012 American Community Survey 5-Year Estimates

# Unemployment of Working Age Population (Ages 16 to 64) (As a Percent of 16-64 Civilian Labor Force)

## Crowley city, Louisiana



Source: C23002. SEX BY AGE BY EMPLOYMENT STATUS FOR THE POPULATION 16 YEARS AND OVER  
Data Set: 2008-2012 American Community Survey 5-Year Estimates

**C24010. SEX BY OCCUPATION FOR THE CIVILIAN EMPLOYED POPULATION 16 YEARS AND OVER**

Data Set: 2008-2012 American Community Survey 5-Year Estimates

	Crowley city, Louisiana					
	African American	Margin of Error (+/-)	% of AA Total	White, Not Hispanic	Margin of Error (+/-)	% of NHW Total
<b>Total:</b>	<b>1,208</b>	<b>239</b>	<b>100.0%</b>	<b>2,989</b>	<b>488</b>	<b>100.0%</b>
Management, professional, and related occupations	123	NC	10.2%	937	NC	31.3%
Service occupations	542	NC	44.9%	500	NC	16.7%
Sales and office occupations	267	NC	22.1%	723	NC	24.2%
Natural resources, construction, and maintenance occupations:	32	NC	2.6%	446	NC	14.9%
Production, transportation, and material moving occupations	244	NC	20.2%	383	NC	12.8%
Male:	481	145	39.8%	1,499	256	50.2%
Management, business, science, and arts occupations:	29	27	2.4%	464	169	15.5%
Service occupations	196	101	16.2%	127	70	4.2%
Sales and office occupations	35	41	2.9%	169	87	5.7%
Natural resources, construction, and maintenance occupations:	32	29	2.6%	446	132	14.9%
Production, transportation, and material moving occupations	189	115	15.6%	293	112	9.8%
Female:	727	167	60.2%	1,490	308	49.8%
Management, professional, and related occupations	94	61	7.8%	473	148	15.8%
Service occupations	346	122	28.6%	373	136	12.5%
Sales and office occupations	232	116	19.2%	554	168	18.5%
Natural resources, construction, and maintenance occupations:	0	19	0.0%	0	19	0.0%
Production, transportation, and material moving occupations	55	49	4.6%	90	100	3.0%

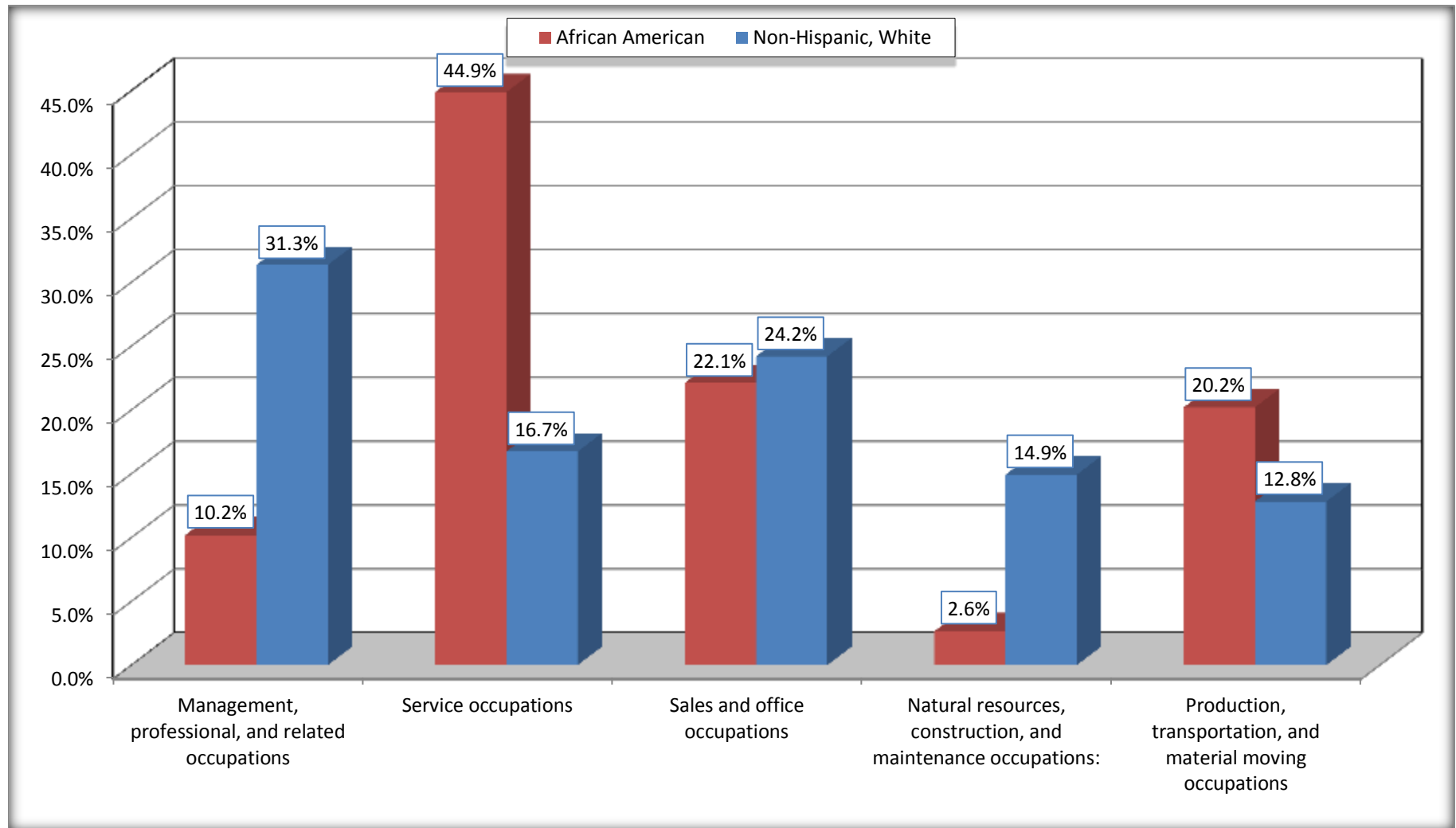
Source: U.S. Census Bureau, 2008-2012 American Community Survey

For information on confidentiality protection, sampling error, nonsampling error, and definitions, see Survey Methodology.

<http://www.census.gov/acs/www/UseData/index.htm>

# Occupation for the Civilian Employed 16 Years and Over Population

## Crowley city, Louisiana



Source: C24010. SEX BY OCCUPATION FOR THE CIVILIAN EMPLOYED POPULATION 16 YEARS AND OVER  
Data Set: 2008-2012 American Community Survey 5-Year Estimates

**B25003. TENURE - Universe: OCCUPIED HOUSING UNITS**

Data Set: 2008-2012 American Community Survey 5-Year Estimates

	Crowley city, Louisiana					
	African American	Margin of Error (+/-)	% of AA Total	White, Not Hispanic	Margin of Error (+/-)	% of NHW Total
<b>Total:</b>	<b>1,437</b>	<b>180</b>	<b>100.0%</b>	<b>3,028</b>	<b>268</b>	<b>100.0%</b>
Owner occupied	523	119	36.4%	1,777	231	58.7%
Renter occupied	914	182	63.6%	1,251	232	41.3%

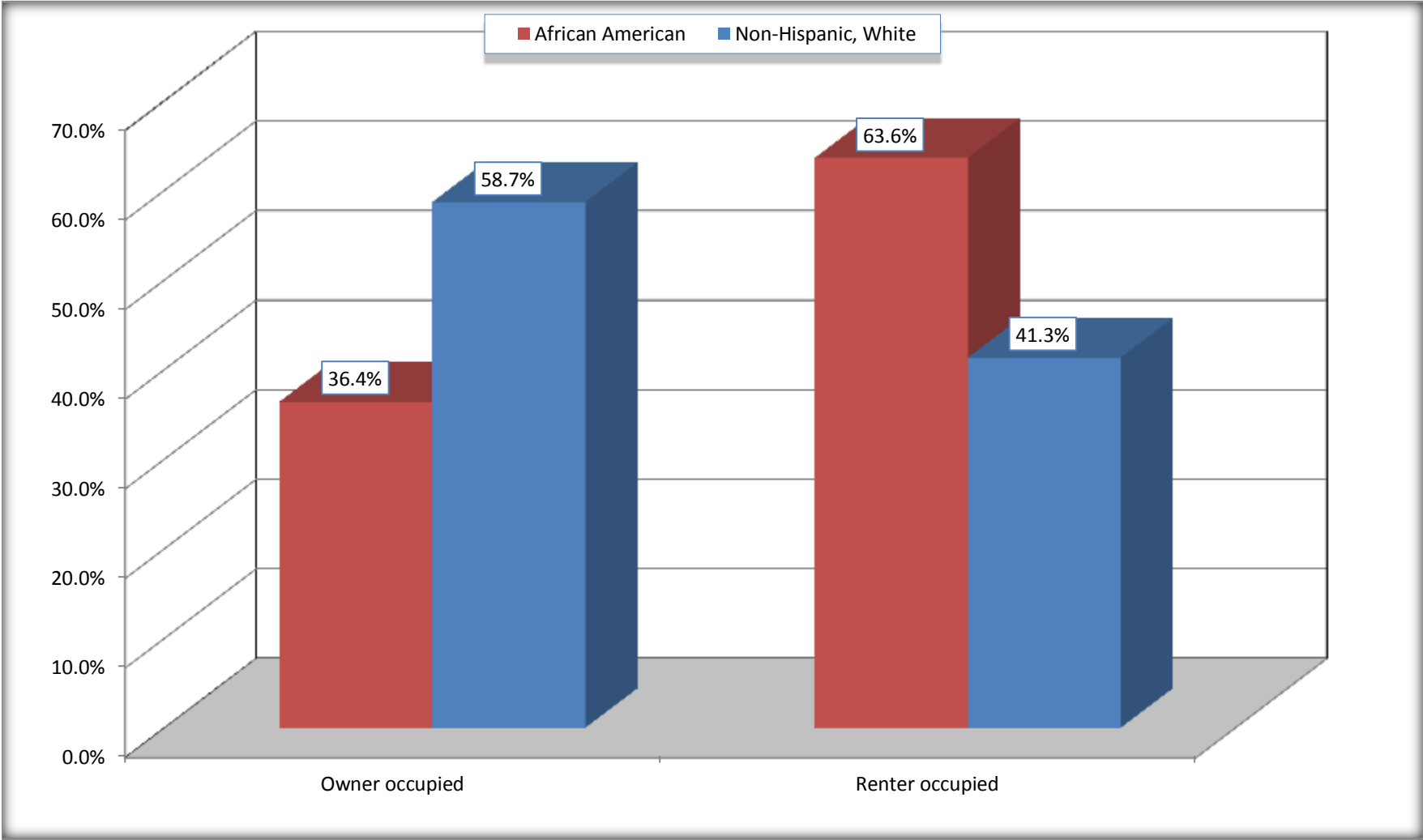
Source: U.S. Census Bureau, 2008-2012 American Community Survey

For information on confidentiality protection, sampling error, nonsampling error, and definitions, see Survey Methodology.

<http://www.census.gov/acs/www/UseData/index.h>

# Home Owners and Renters by Household

## Crowley city, Louisiana



Source: B25003. TENURE - Universe: OCCUPIED HOUSING UNITS  
Data Set: 2008-2012 American Community Survey 5-Year Estimates



**B25014. OCCUPANTS PER ROOM - Universe: OCCUPIED HOUSING UNITS**

Data Set: 2008-2012 American Community Survey 5-Year Estimates

	Crowley city, Louisiana					
	African American	Margin of Error (+/-)	% of AA Total	White, Not Hispanic	Margin of Error (+/-)	% of NHW Total
<b>Total:</b>	<b>1,437</b>	<b>180</b>	<b>100.0%</b>	<b>3,028</b>	<b>268</b>	<b>100.0%</b>
1.00 or less occupants per room	1,327	188	92.3%	2,926	286	96.6%
1.01 or more occupants per room	110	96	7.7%	102	71	3.4%

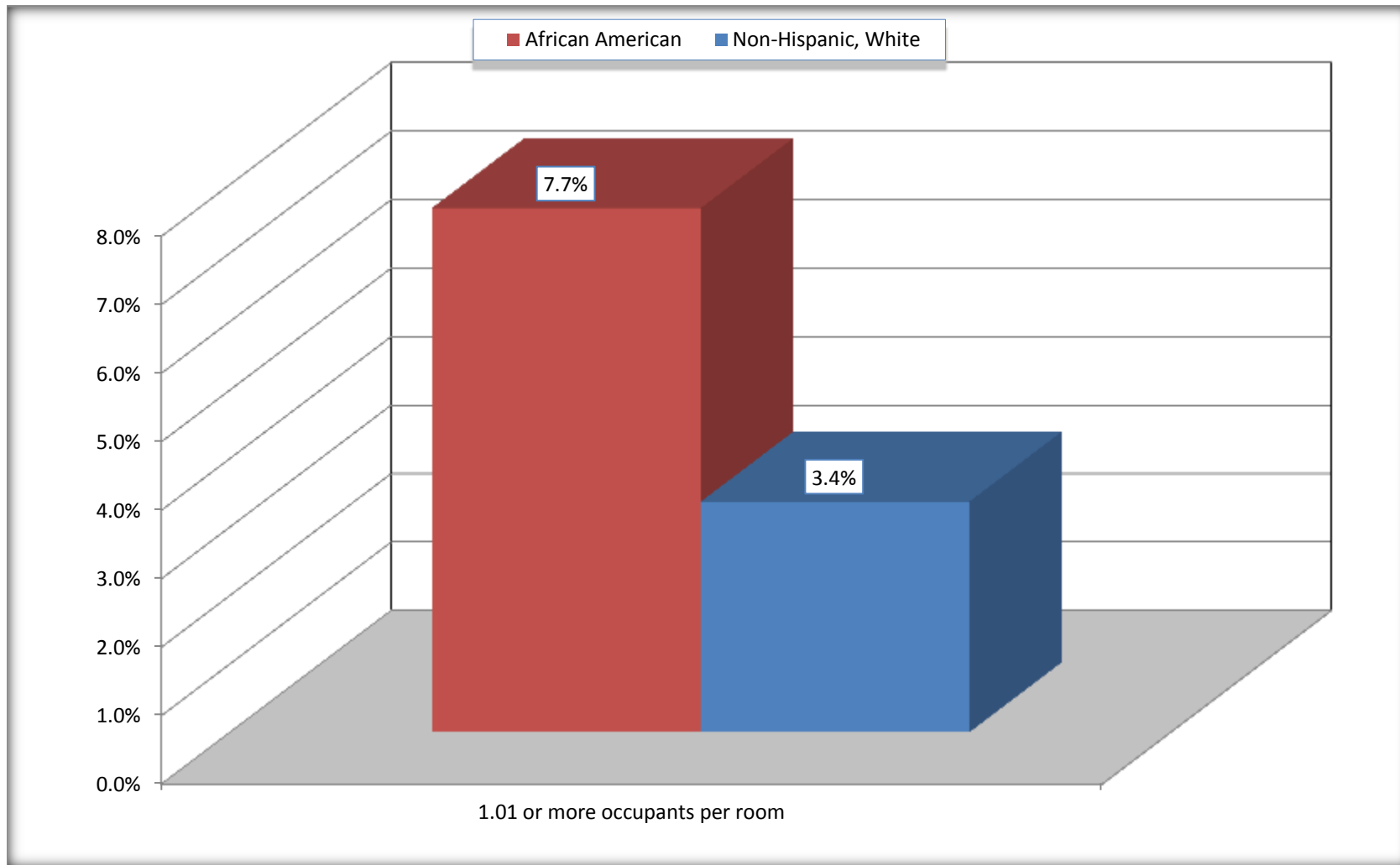
Source: U.S. Census Bureau, 2008-2012 American Community Survey

For information on confidentiality protection, sampling error, nonsampling error, and definitions, see Survey Methodology.

<http://www.census.gov/acs/www/UseData/index.ht>

# More than One Person per Room (Crowding) by Household

## Crowley city, Louisiana



Source: B25014. OCCUPANTS PER ROOM - Universe: OCCUPIED HOUSING UNITS  
Data Set: 2008-2012 American Community Survey 5-Year Estimates

**B18101. AGE BY DISABILITY STATUS**

Data Set: 2008-2012 American Community Survey 5-Year Estimates

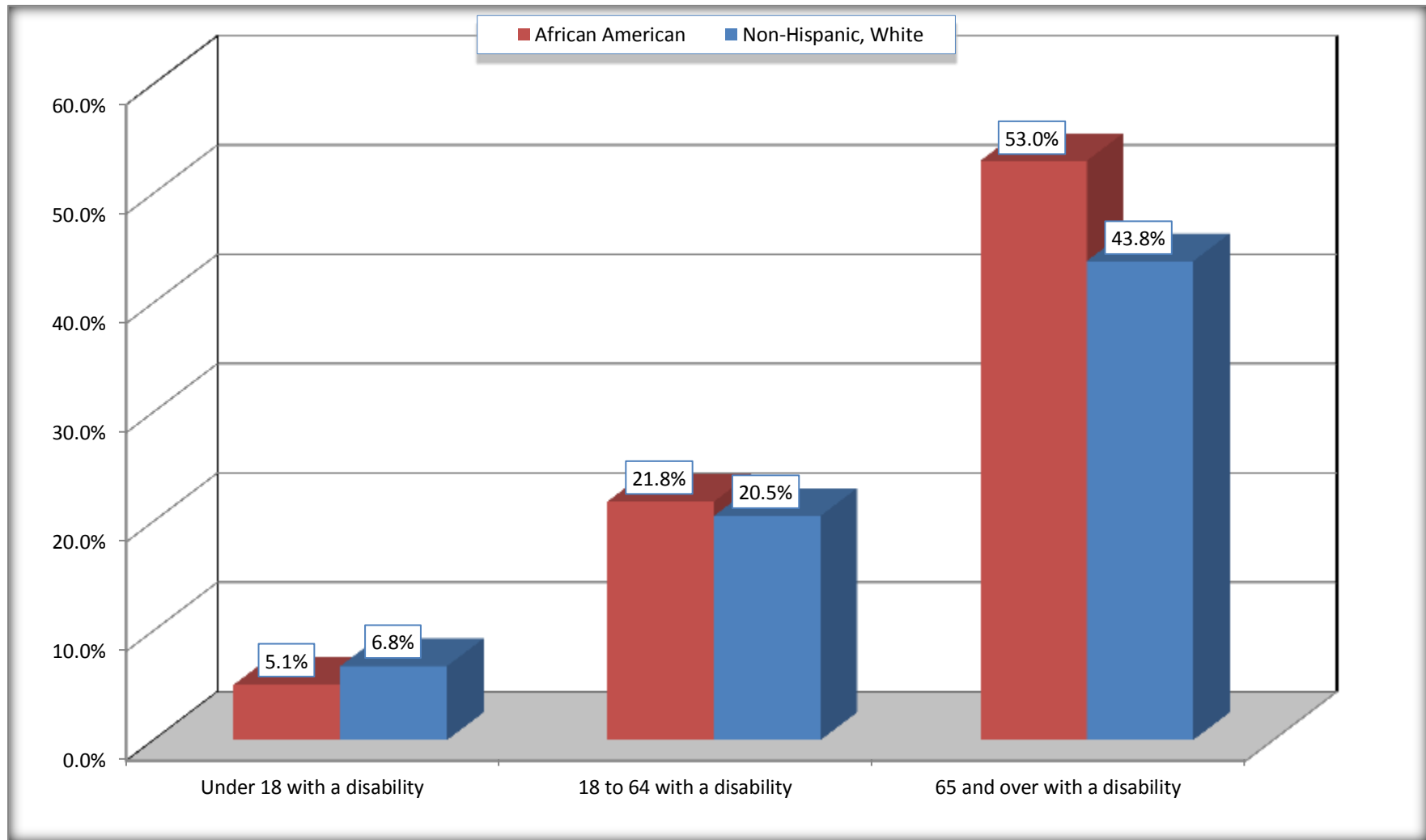
	Crowley city, Louisiana					
	African American	Margin of Error (+/-)	% of AA Total	White, Not Hispanic	Margin of Error (+/-)	% of NHW Total
<b>Total:</b>	<b>3,994</b>	<b>494</b>	<b>100.0%</b>	<b>7,920</b>	<b>549</b>	<b>100.0%</b>
Under 18 years:	1,423	314	35.6%	2,172	45	27.4%
With a disability	72	45	1.8%	147	90	1.9%
No disability	1,351	312	33.8%	2,025	417	25.6%
18 to 64 years:	2,201	300	55.1%	4,618	426	58.3%
With a disability	480	124	12.0%	947	204	12.0%
No disability	1,721	304	43.1%	3,671	406	46.4%
65 years and over:	370	86	9.3%	1,130	215	14.3%
With a disability	196	75	4.9%	495	143	6.3%
No disability	174	65	4.4%	635	155	8.0%

Source: U.S. Census Bureau, 2008-2012 American Community Survey

For information on confidentiality protection, sampling error, nonsampling error, and definitions, see Survey Methodology.

<http://www.census.gov/acs/www/UseData/index.htm>

## Disability by Age Crowley city, Louisiana



Source: B18101. AGE BY DISABILITY STATUS  
Data Set: 2008-2012 American Community Survey 5-Year Estimates

**C27001B. HEALTH INSURANCE COVERAGE STATUS BY AGE**

Data Set: 2008-2012 American Community Survey 5-Year Estimates

	Crowley city, Louisiana					
	African American	Margin of Error (+/-)	% of AA Total	White, Not Hispanic	Margin of Error (+/-)	% of NHW Total
<b>Total:</b>	<b>3,994</b>	<b>494</b>	<b>100.0%</b>	<b>7,920</b>	<b>549</b>	<b>100.0%</b>
Under 18 years:	1,423	314	35.6%	2,172	423	27.4%
With health insurance coverage	1,366	314	34.2%	2,131	422	26.9%
No health insurance coverage	57	57	1.4%	41	61	0.5%
18 to 64 years:	2,201	300	55.1%	4,618	426	58.3%
With health insurance coverage	1,544	276	38.7%	3,449	505	43.5%
No health insurance coverage	657	174	16.4%	1,169	400	14.8%
65 years and over:	370	86	9.3%	1,130	215	14.3%
With health insurance coverage	370	86	9.3%	1,130	215	14.3%
No health insurance coverage	0	19	0.0%	0	19	0.0%

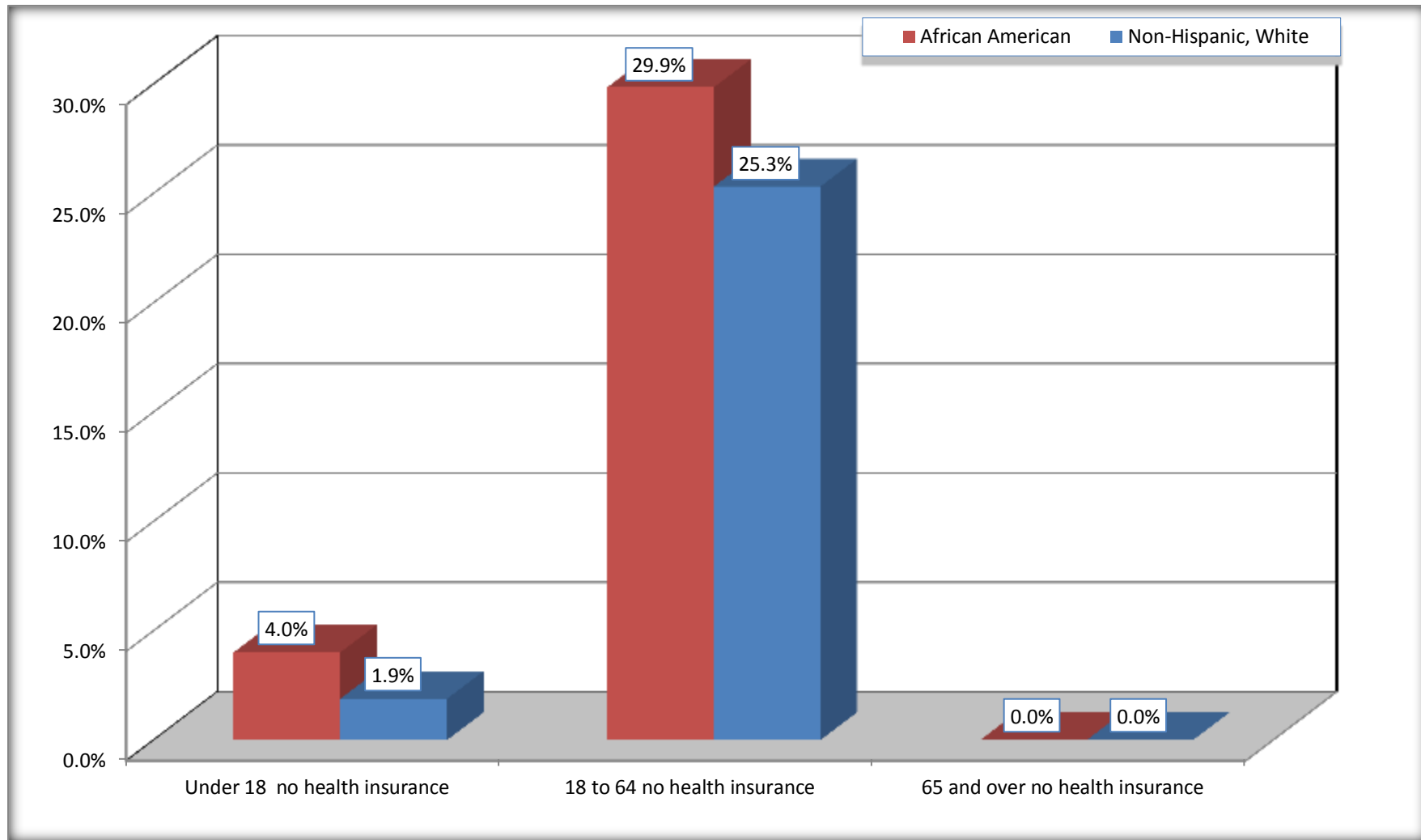
Source: U.S. Census Bureau, 2008-2012 American Community Survey

For information on confidentiality protection, sampling error, nonsampling error, and definitions, see Survey Methodology.

<http://www.census.gov/acs/www/UseData/index.htm>

# Lack of Health Insurance Coverage by Age

## Crowley city, Louisiana



Source: C27001B. HEALTH INSURANCE COVERAGE STATUS BY AGE  
Data Set: 2008-2012 American Community Survey 5-Year Estimates