

Selected Socio-Economic Data

Bastrop city, Louisiana

African American and White, Not Hispanic

Data Set: 2008-2012 American Community Survey 5-Year Estimates

www.fairvote2020.org

www.fairdata2000.com

[29-Dec-13](#)

C02003.DETAILED RACE - Universe: TOTAL POPULATION

Data Set: 2008-2012 American Community Survey 5-Year Estimates

	Bastrop city, Louisiana		
	Population	Margin of Error (+/-)	% of Total
Total:	11,348	41	100.0%
Population of one race:	11,269	93	99.3%
White	2,635	398	23.2%
Black or African American	8,615	387	75.9%
American Indian and Alaska Native	0	19	0.0%
Asian alone	19	30	0.2%
Native Hawaiian and Other Pacific Islander	0	19	0.0%
Some other race	0	19	0.0%
Population of two or more races:	79	83	0.7%
Two races including Some other race	0	19	0.0%
Two races excluding Some other race, and three or more races	79	83	0.7%
Population of two races:	72	81	0.6%
White; Black or African American	63	79	0.6%
White; American Indian and Alaska Native	0	19	0.0%
White; Asian	0	19	0.0%
Black or African American; American Indian and Alaska Native	9	16	0.1%
All other two race combinations	0	19	0.0%
Population of three races	7	12	0.1%
Population of four or more races	0	19	0.0%

Note: Hispanics may be of any race. See Table B03002 and chart.

Source: U.S. Census Bureau, 2008-2012 American Community Survey

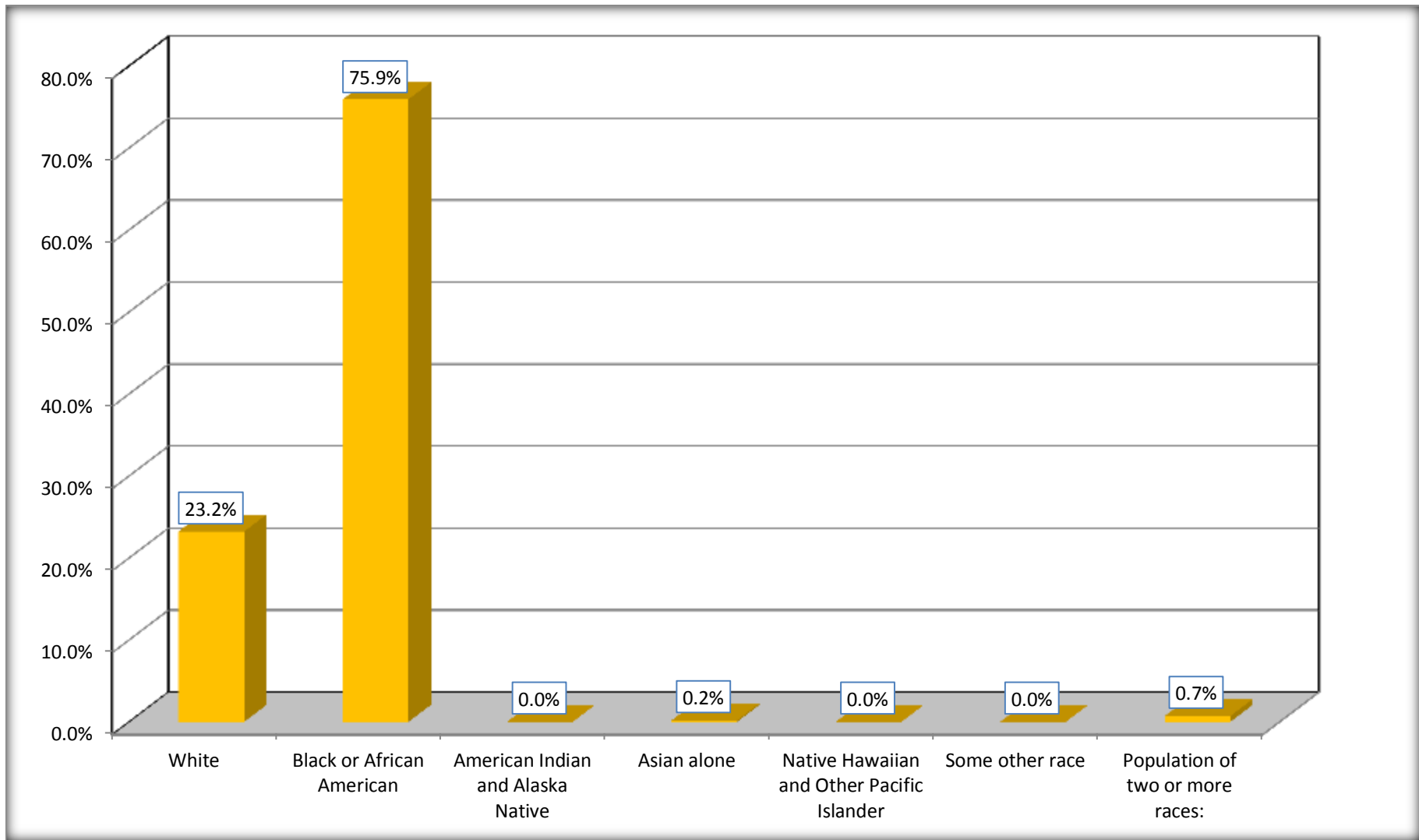
Although the American Community Survey (ACS) produces population, demographic and housing unit estimates, it is the Census Bureau's Population Estimates Program that produces and disseminates the official estimates of the population for the nation, states, counties, cities and towns and estimates of housing units for states and counties.

For information on confidentiality protection, sampling error, nonsampling error, and definitions, see Survey Methodology.

<http://www.census.gov/acs/www/UseData/index.htm>

Population by Race

Bastrop city, Louisiana



Source: C02003.DETAILED RACE - Universe: TOTAL POPULATION
Data Set: 2008-2012 American Community Survey 5-Year Estimates

B03002. HISPANIC OR LATINO ORIGIN BY RACE - Universe: TOTAL POPULATION

Data Set: 2008-2012 American Community Survey 5-Year Estimates

	Bastrop city, Louisiana		
	Population	Margin of Error (+/-)	% of Total
Total:	11,348	41	100.0%
Not Hispanic or Latino:	11,286	70	99.5%
White alone	2,630	397	23.2%
Black or African American alone	8,558	391	75.4%
American Indian and Alaska Native alone	0	19	0.0%
Asian alone	19	30	0.2%
Native Hawaiian and Other Pacific Islander alone	0	19	0.0%
Some other race alone	0	19	0.0%
Two or more races:	79	83	0.7%
Two races including Some other race	0	19	0.0%
Two races excluding Some other race, and three or more races	79	83	0.7%
Hispanic or Latino	62	61	0.5%

Source: U.S. Census Bureau, 2008-2012 American Community Survey

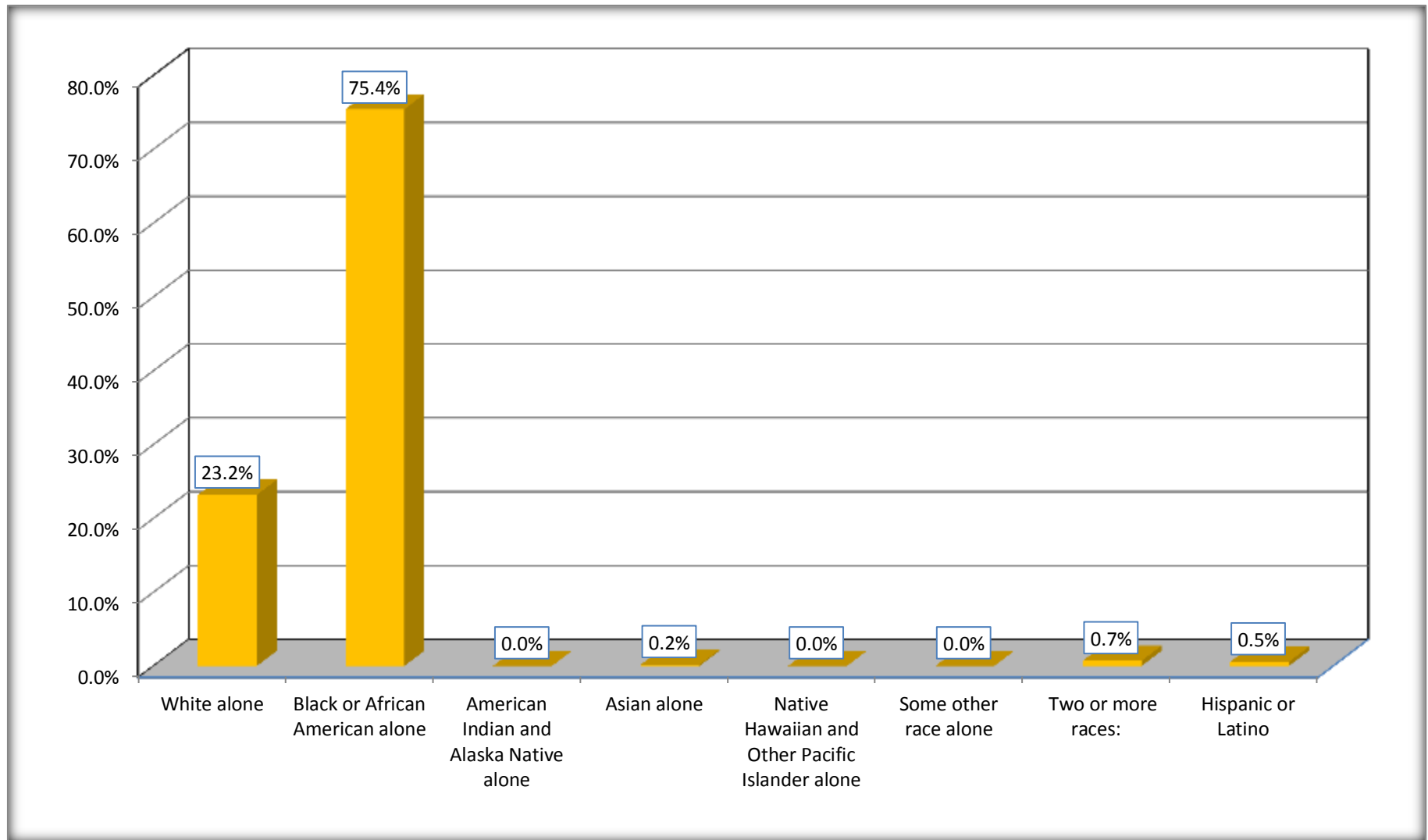
Although the American Community Survey (ACS) produces population, demographic and housing unit estimates, it is the Census Bureau's Population Estimates Program that produces and disseminates the official estimates of the population for the nation, states, counties, cities and towns and estimates of housing units for states and counties.

For information on confidentiality protection, sampling error, nonsampling error, and definitions, see Survey Methodology.

<http://www.census.gov/acs/www/UseData/index.htm>

Non-Hispanic by Race and Hispanic Population

Bastrop city, Louisiana



Source: B03002. HISPANIC OR LATINO ORIGIN BY RACE - Universe: TOTAL POPULATION
Data Set: 2008-2012 American Community Survey 5-Year Estimates

B03002. HISPANIC OR LATINO ORIGIN BY RACE

Data Set: 2008-2012 American Community Survey 5-Year Estimates

	Bastrop city, Louisiana		
	Population	Margin of Error (+/-)	% of Total
Hispanic or Latino:	62	61	100.0%
White alone	5	9	8.1%
Black or African American alone	57	62	91.9%
American Indian and Alaska Native alone	0	19	0.0%
Asian alone	0	19	0.0%
Native Hawaiian and Other Pacific Islander alone	0	19	0.0%
Some other race alone	0	19	0.0%
Two or more races:	0	19	0.0%
Two races including Some other race	0	19	0.0%
Two races excluding Some other race, and three or more races	0	19	0.0%

Source: U.S. Census Bureau, 2008-2012 American Community Survey

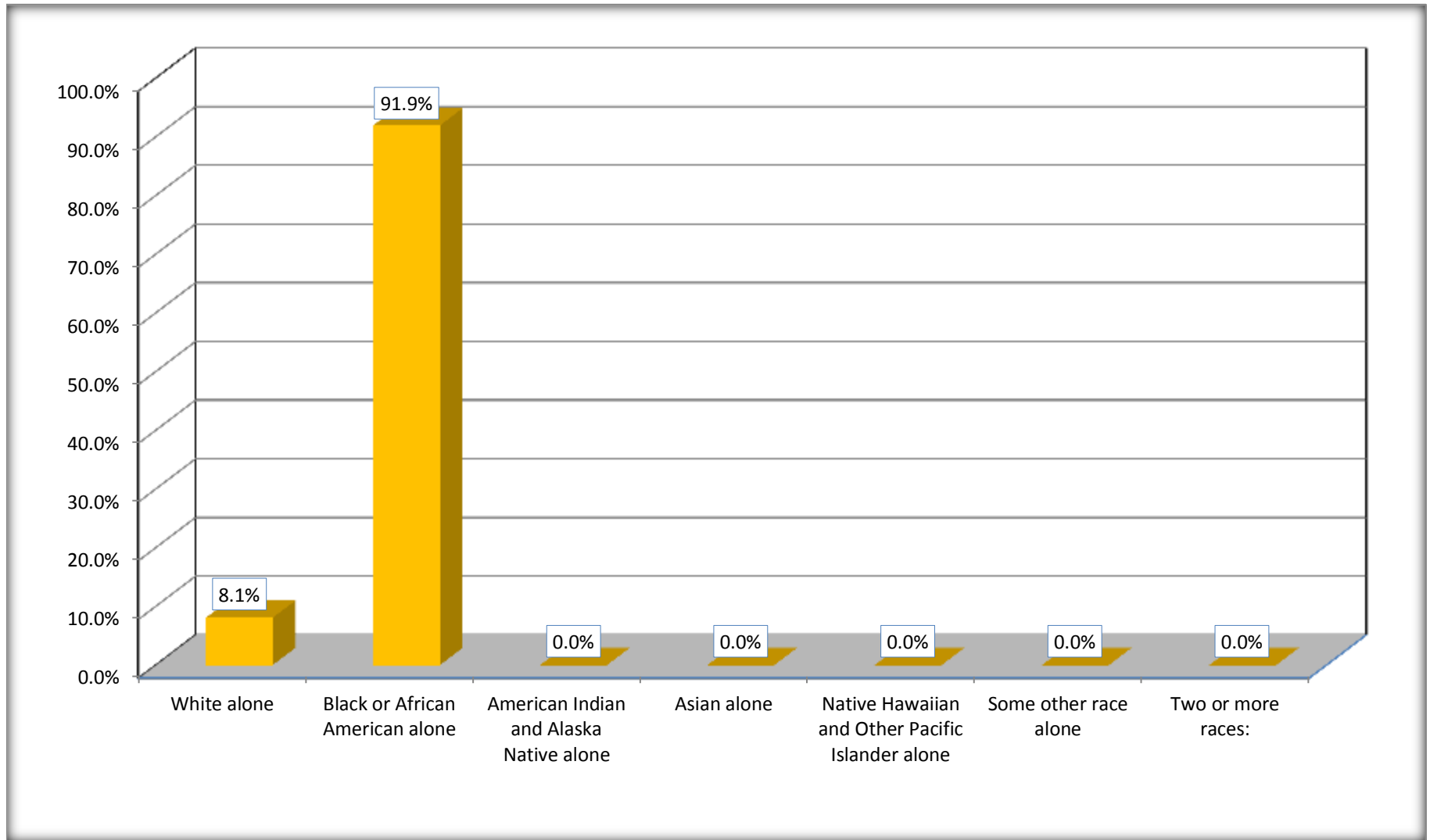
Although the American Community Survey (ACS) produces population, demographic and housing unit estimates, it is the Census Bureau's Population Estimates Program that produces and disseminates the official estimates of the population for the nation, states, counties, cities and towns and estimates of housing units for states and counties.

For information on confidentiality protection, sampling error, nonsampling error, and definitions, see Survey Methodology.

<http://www.census.gov/acs/www/UseData/index.htm>

Hispanic or Latino Origin by Race

Bastrop city, Louisiana



Source: B03002. HISPANIC OR LATINO ORIGIN BY RACE
Data Set: 2008-2012 American Community Survey 5-Year Estimates

B01001. SEX BY AGE

Data Set: 2008-2012 American Community Survey 5-Year Estimates

	Bastrop city, Louisiana					
	African American	Margin of Error (+/-)	% of AA Total	White, Not Hispanic	Margin of Error (+/-)	% of NHW Total
Total:	8,615	387	100.0%	2,630	397	100.0%
Under 18 years	2,760	NC	32.0%	384	NC	14.6%
18 to 64 years	5,153	NC	59.8%	1,378	NC	52.4%
65 years and over	702	NC	8.1%	868	NC	33.0%
Male:	3,739	313	43.4%	1,165	389	44.3%
Under 18 years	1,197	NC	13.9%	168	NC	6.4%
18 to 64 years	2,305	NC	26.8%	631	NC	24.0%
65 years and over	237	NC	2.8%	366	NC	13.9%
Female:	4,876	227	56.6%	1,465	412	55.7%
Under 18 years	1,563	NC	18.1%	216	NC	8.2%
18 to 64 years	2,848	NC	33.1%	747	NC	28.4%
65 years and over	465	NC	5.4%	502	NC	19.1%

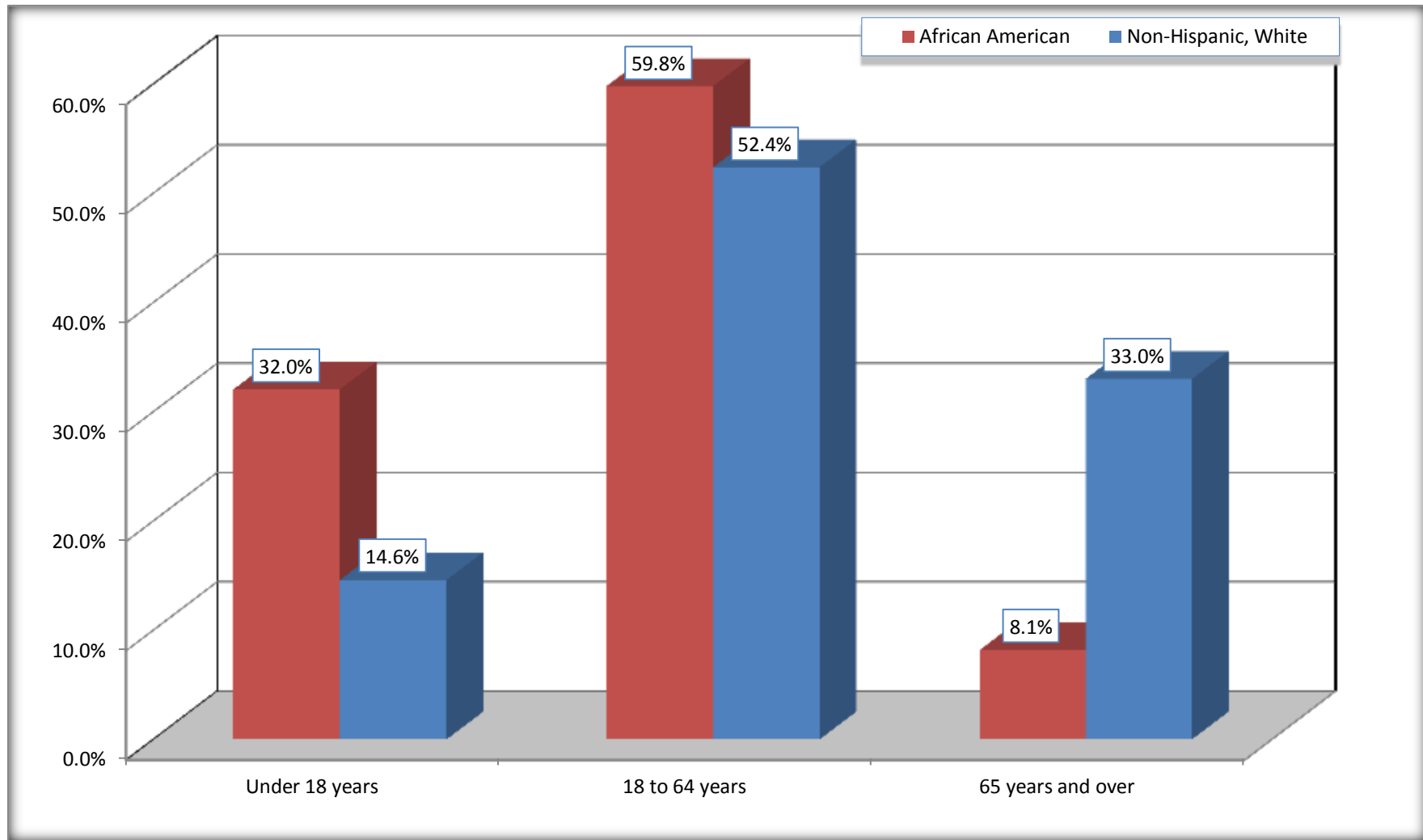
Source: U.S. Census Bureau, 2008-2012 American Community Survey

Although the American Community Survey (ACS) produces population, demographic and housing unit estimates, it is the Census Bureau's Population Estimates Program that produces and disseminates the official estimates of the population for the nation, states, counties, cities and towns and estimates of housing units for states and counties.

For information on confidentiality protection, sampling error, nonsampling error, and definitions, see Survey Methodology.
<http://www.census.gov/acs/www/UseData/index.htm>

Population by Age

Bastrop city, Louisiana



Source: B01001. SEX BY AGE
Data Set: 2008-2012 American Community Survey 5-Year Estimates

B05003. SEX BY AGE BY CITIZENSHIP STATUS

Data Set: 2008-2012 American Community Survey 5-Year Estimates

	Bastrop city, Louisiana					
	African American	Margin of Error (+/-)	% of AA Total by Age	White, Not Hispanic	Margin of Error (+/-)	% of NHW Total by Age
Total:	8,615	387	100.0%	2,630	397	100.0%
Under 18 years:	2,760	NC	100.0%	384	NC	100.0%
Native	2,760	NC	100.0%	384	NC	100.0%
Foreign born:	0	NC	0.0%	0	NC	0.0%
Naturalized U.S. citizen	0	NC	0.0%	0	NC	0.0%
Not a U.S. citizen	0	NC	0.0%	0	NC	0.0%
18 years and over:	5,855	NC	100.0%	2,246	NC	100.0%
Native	5,855	NC	100.0%	2,236	NC	99.6%
Foreign born:	0	NC	0.0%	10	NC	0.4%
Naturalized U.S. citizen	0	NC	0.0%	0	NC	0.0%
Not a U.S. citizen	0	NC	0.0%	10	NC	0.4%
Male:	3,739	313	43.4%	1,165	209	44.3%
Under 18 years:	1,197	205	100.0%	168	99	100.0%
Native	1,197	205	100.0%	168	99	100.0%
Foreign born:	0	19	0.0%	0	19	0.0%
Naturalized U.S. citizen	0	19	0.0%	0	19	0.0%
Not a U.S. citizen	0	19	0.0%	0	19	0.0%
18 years and over:	2,542	177	100.0%	997	160	100.0%
Native	2,542	177	100.0%	987	160	99.0%
Foreign born:	0	19	0.0%	10	15	1.0%
Naturalized U.S. citizen	0	19	0.0%	0	19	0.0%
Not a U.S. citizen	0	19	0.0%	10	15	1.0%

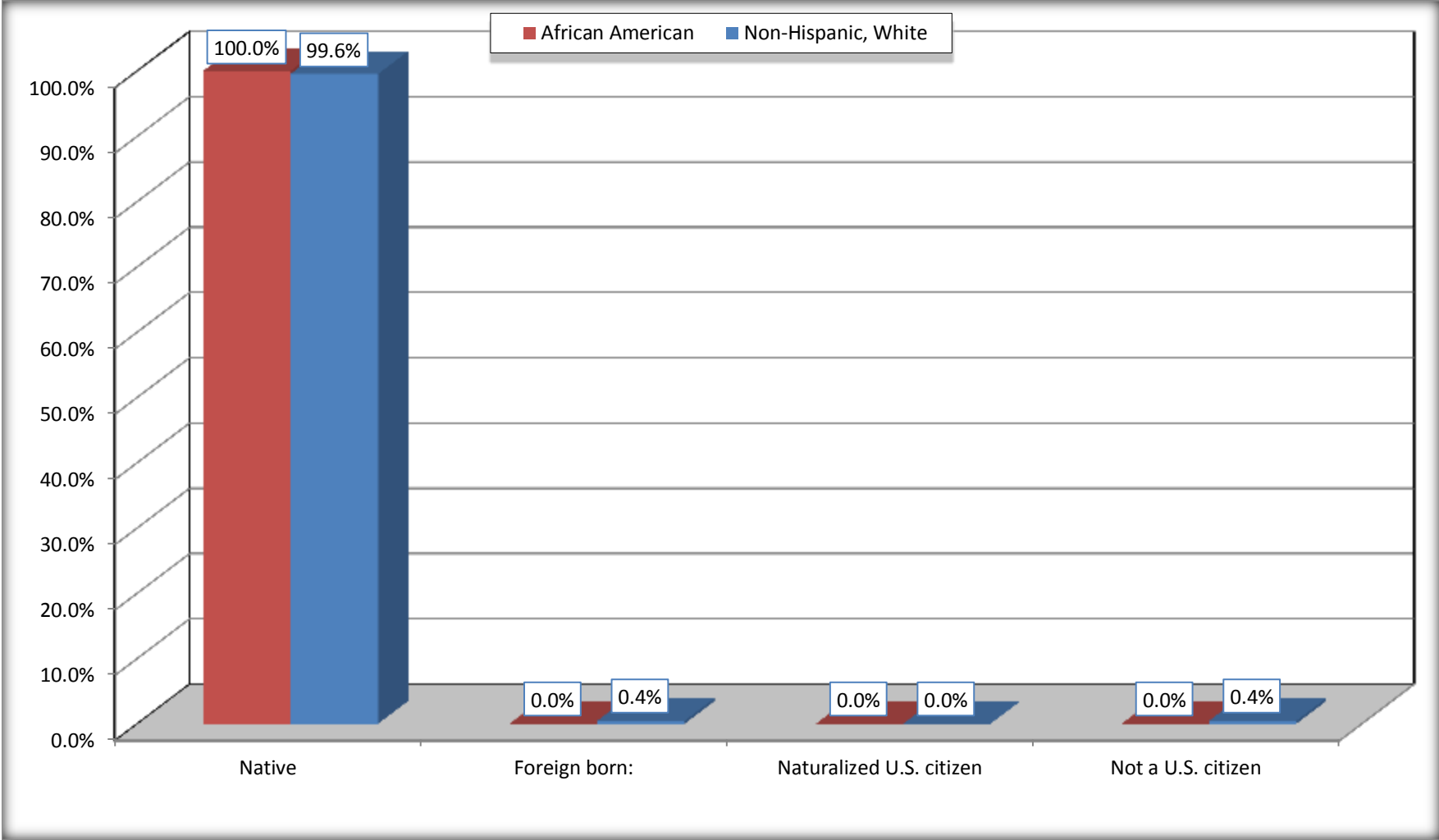
	Bastrop city, Louisiana					
	African American	Margin of Error (+/-)	% of AA by Age	White, Not Hispanic	Margin of Error (+/-)	% of NHW by Age
Female:	4,876	227	56.6%	1,465	232	55.7%
Under 18 years:	1,563	123	100.0%	216	83	100.0%
Native	1,563	123	100.0%	216	83	100.0%
Foreign born:	0	19	0.0%	0	19	0.0%
Naturalized U.S. citizen	0	19	0.0%	0	19	0.0%
Not a U.S. citizen	0	19	0.0%	0	19	0.0%
18 years and over:	3,313	194	100.0%	1,249	193	100.0%
Native	3,313	194	100.0%	1,249	193	100.0%
Foreign born:	0	19	0.0%	0	19	0.0%
Naturalized U.S. citizen	0	19	0.0%	0	19	0.0%
Not a U.S. citizen	0	19	0.0%	0	19	0.0%

Source: U.S. Census Bureau, 2008-2012 American Community Survey

For information on confidentiality protection, sampling error, nonsampling error, and definitions, see Survey Methodology.
<http://www.census.gov/acs/www/UseData/index.htm>

Citizenship Status of Voting Age Population (18 and Over)

Bastrop city, Louisiana



Source: B05003. SEX BY AGE BY CITIZENSHIP STATUS
Data Set: 2008-2012 American Community Survey 5-Year Estimates

**B07004. GEOGRAPHICAL MOBILITY IN THE PAST YEAR BY RACE FOR CURRENT RESIDENCE IN THE UNITED STATES - Universe:
POPULATION 1 YEAR AND OVER**

Data Set: 2008-2012 American Community Survey 5-Year Estimates

	Bastrop city, Louisiana					
	African American	Margin of Error (+/-)	% of AA Total	White, Not Hispanic	Margin of Error (+/-)	% of NHW Total
Total:	8,422	411	100.0%	2,617	398	100.0%
Same house 1 year ago	7,669	479	91.1%	2,432	394	92.9%
Moved within same county	501	253	5.9%	85	51	3.2%
Moved from different county within same state	125	169	1.5%	77	77	2.9%
Moved from different state	127	116	1.5%	23	27	0.9%
Moved from abroad	0	19	0.0%	0	19	0.0%

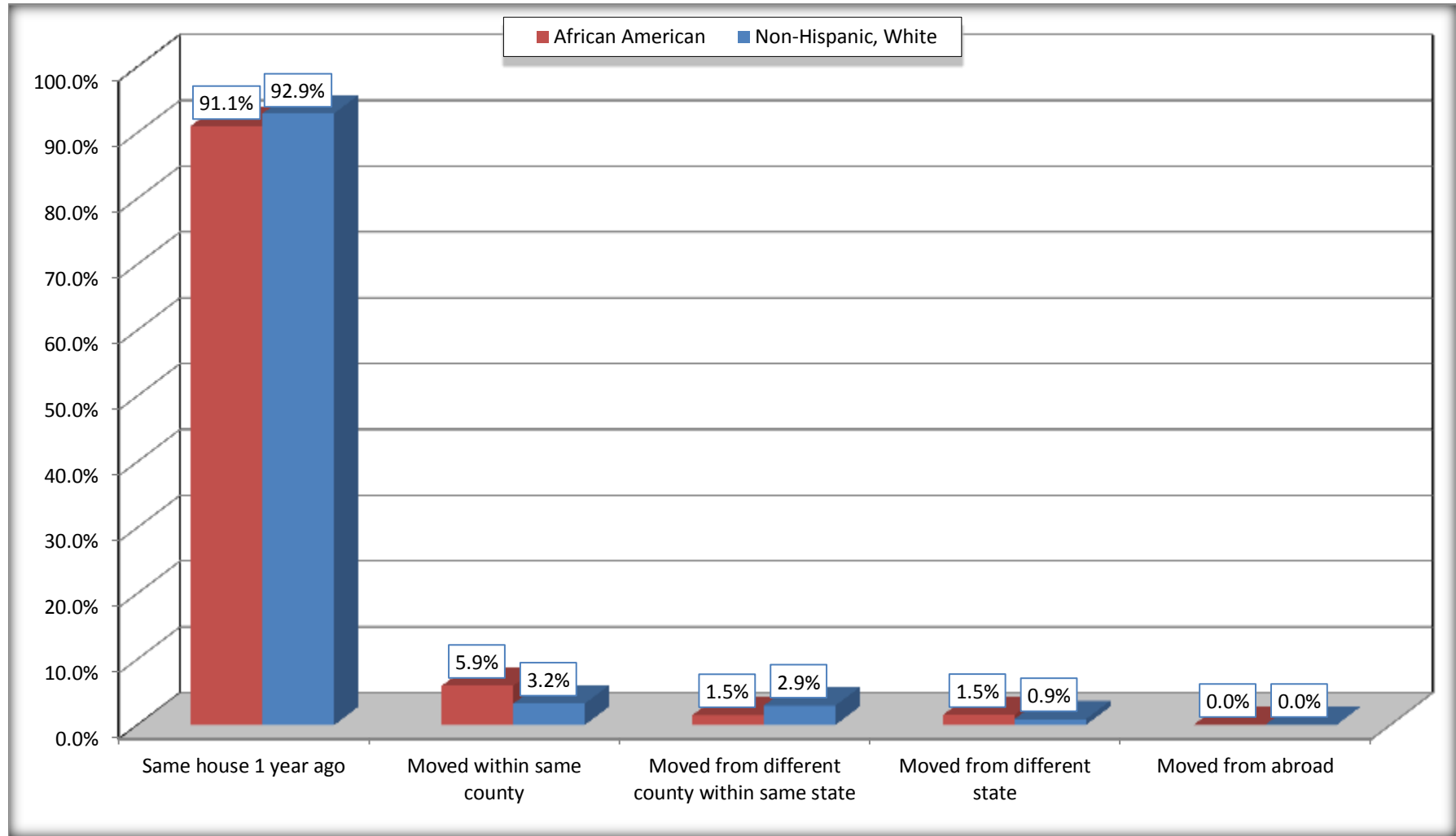
Source: U.S. Census Bureau, 2008-2012 American Community Survey

For information on confidentiality protection, sampling error, nonsampling error, and definitions, see Survey Methodology.

<http://www.census.gov/acs/www/UseData/index.htm>

Geographical Mobility in the Past Year (Population 1 Year and Over)

Bastrop city, Louisiana



Source: B07004. GEOGRAPHICAL MOBILITY IN THE PAST YEAR BY RACE FOR CURRENT RESIDENCE IN THE UNITED STATES - Universe: POPULATION 1 YEAR AND OVER

Data Set: 2008-2012 American Community Survey 5-Year Estimates

B08105. MEANS OF TRANSPORTATION TO WORK - Universe: WORKERS 16 YEARS AND OVER

Data Set: 2008-2012 American Community Survey 5-Year Estimates

	Bastrop city, Louisiana					
	African American	Margin of Error (+/-)	% of AA Total	White, Not Hispanic	Margin of Error (+/-)	% of NHW Total
Total:	2898	345	100.0%	735	186	100.0%
Car, truck, or van - drove alone	2345	328	80.9%	664	181	90.3%
Car, truck, or van - carpooled	377	155	13.0%	51	43	6.9%
Public transportation (excluding taxicab)	0	19	0.0%	0	19	0.0%
Walked	66	51	2.3%	0	19	0.0%
Taxicab, motorcycle, bicycle, or other means	82	65	2.8%	20	33	2.7%
Worked at home	28	27	1.0%	0	19	0.0%

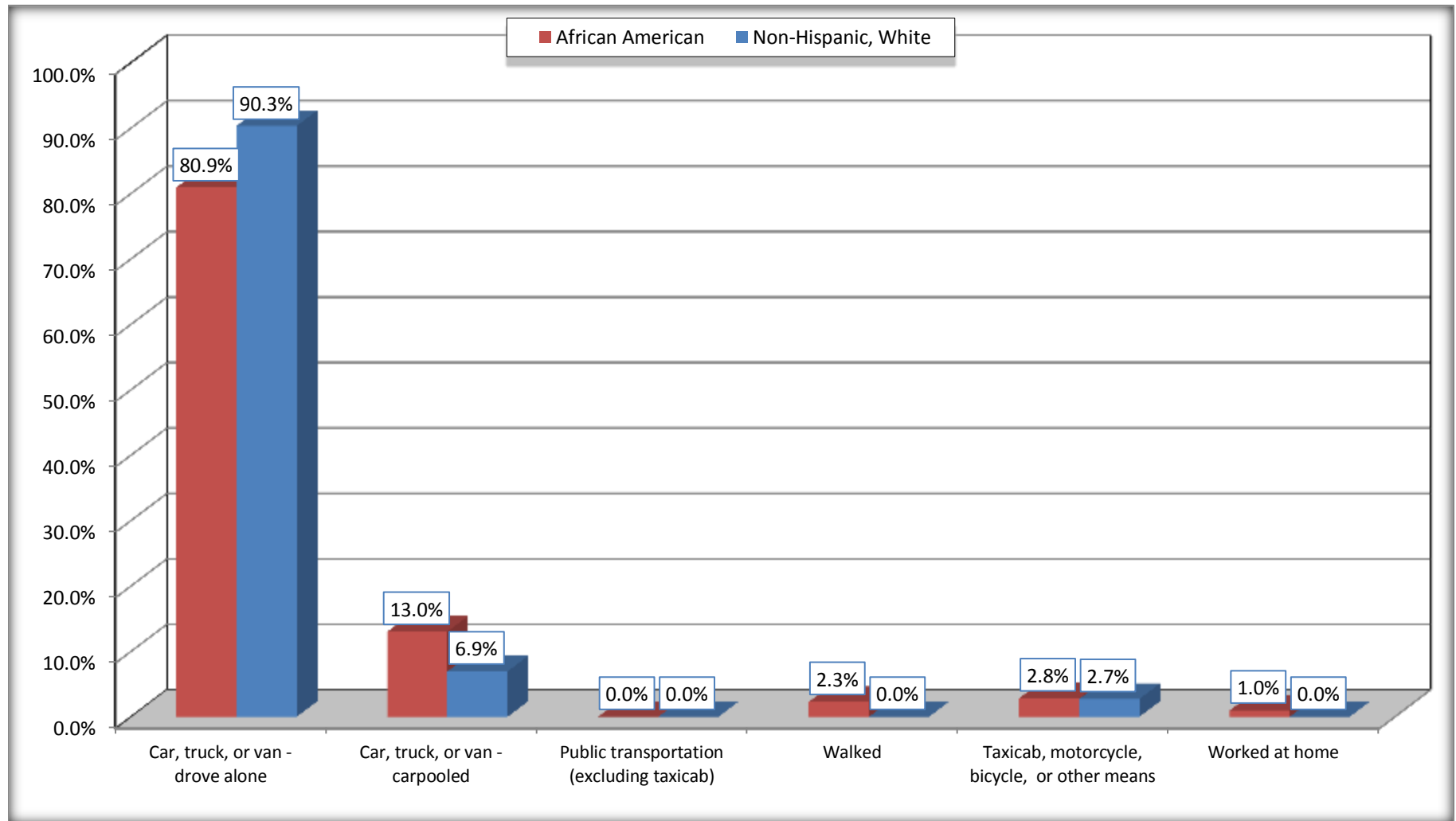
Source: U.S. Census Bureau, 2008-2012 American Community Survey

For information on confidentiality protection, sampling error, nonsampling error, and definitions, see Survey Methodology.

<http://www.census.gov/acs/www/UseData/index.htm>

Means of Transportation to Work (Workers 16 Years and Over)

Bastrop city, Louisiana



Source: B08105. MEANS OF TRANSPORTATION TO WORK - Universe: WORKERS 16 YEARS AND OVER
Data Set: 2008-2012 American Community Survey 5-Year Estimates

B11002. HOUSEHOLD TYPE BY RELATIVES AND NONRELATIVES FOR POPULATION IN HOUSEHOLDS

Data Set: 2008-2012 American Community Survey 5-Year Estimates

	Bastrop city, Louisiana					
	African American	Margin of Error (+/-)	% of AA Total	White, Not Hispanic	Margin of Error (+/-)	% of NHW Total
Total:	8424	381	100.0%	2481	391	100.0%
In family households	7326	437	87.0%	2130	399	85.9%
In nonfamily households	1098	185	13.0%	351	97	14.1%

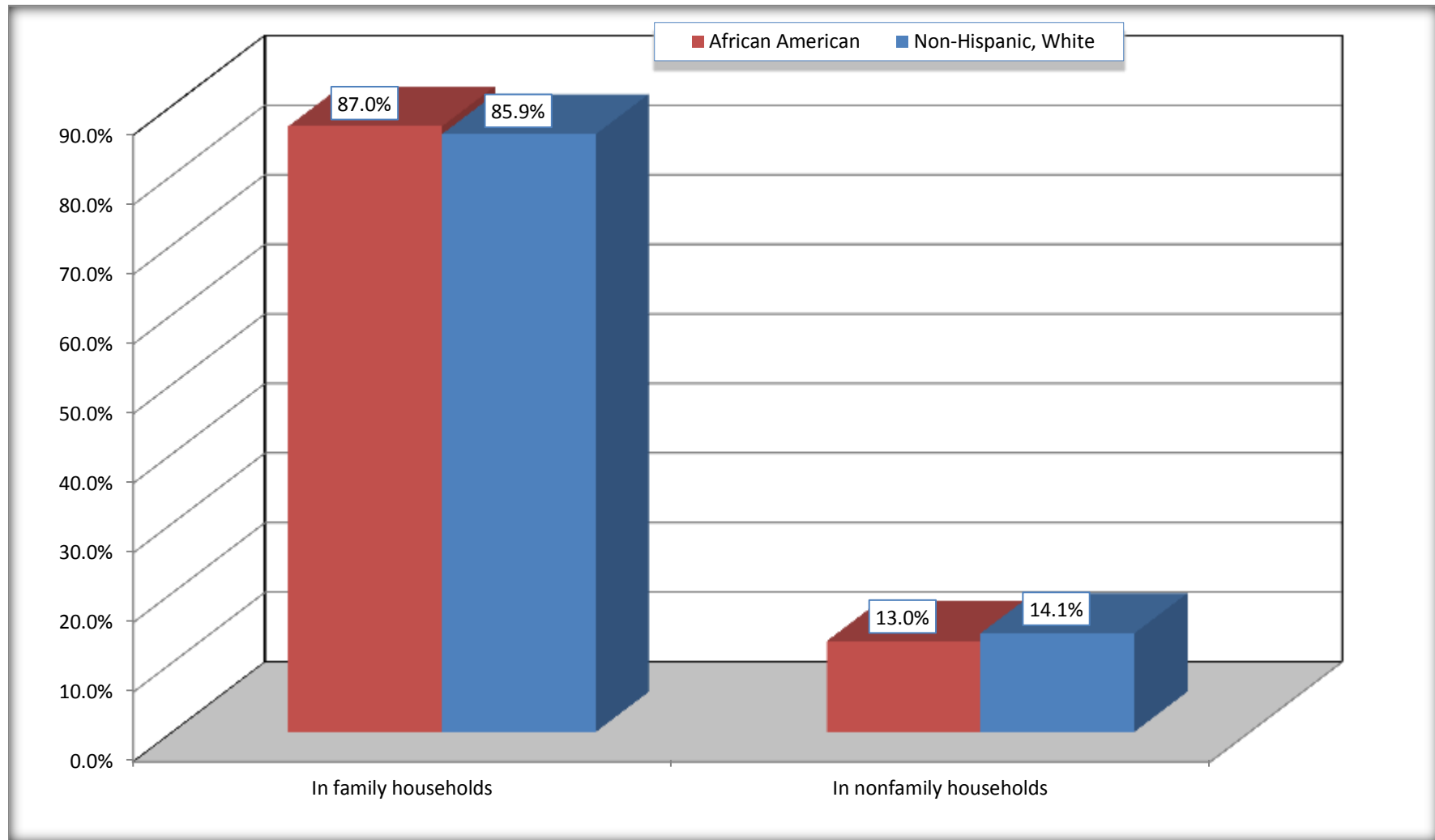
Source: U.S. Census Bureau, 2008-2012 American Community Survey

For information on confidentiality protection, sampling error, nonsampling error, and definitions, see Survey Methodology.

<http://www.census.gov/acs/www/UseData/index.htm>

Household Type for Population in Households

Bastrop city, Louisiana



Source: B11002. HOUSEHOLD TYPE BY RELATIVES AND NONRELATIVES FOR POPULATION IN HOUSEHOLDS
Data Set: 2008-2012 American Community Survey 5-Year Estimates

B12002. MARITAL STATUS FOR THE POPULATION 15 YEARS AND OVER

Data Set: 2008-2012 American Community Survey 5-Year Estimates

	Bastrop city, Louisiana					
	African American	Margin of Error (+/-)	% of AA Total	White, Not Hispanic	Margin of Error (+/-)	% of NHW Total
Total:	6,231	284	100.0%	2,337	322	100.0%
Never married	3,346	NC	53.7%	477	NC	20.4%
Now married (except separated)	1,448	NC	23.2%	1,188	NC	50.8%
Separated	297	NC	4.8%	120	NC	5.1%
Widowed	415	NC	6.7%	294	NC	12.6%
Divorced	725	NC	11.6%	258	NC	11.0%
Male:	2,689	178	43.2%	1,032	172	44.2%
Never married	1,541	180	24.7%	279	91	11.9%
Now married (except separated)	720	160	11.6%	595	131	25.5%
Separated	62	61	1.0%	27	27	1.2%
Widowed	112	80	1.8%	37	30	1.6%
Divorced	254	99	4.1%	94	48	4.0%
Female:	3,542	209	56.8%	1,305	195	55.8%
Never married	1,805	232	29.0%	198	122	8.5%
Now married (except separated)	728	187	11.7%	593	117	25.4%
Separated	235	112	3.8%	93	84	4.0%
Widowed	303	84	4.9%	257	87	11.0%
Divorced	471	139	7.6%	164	71	7.0%

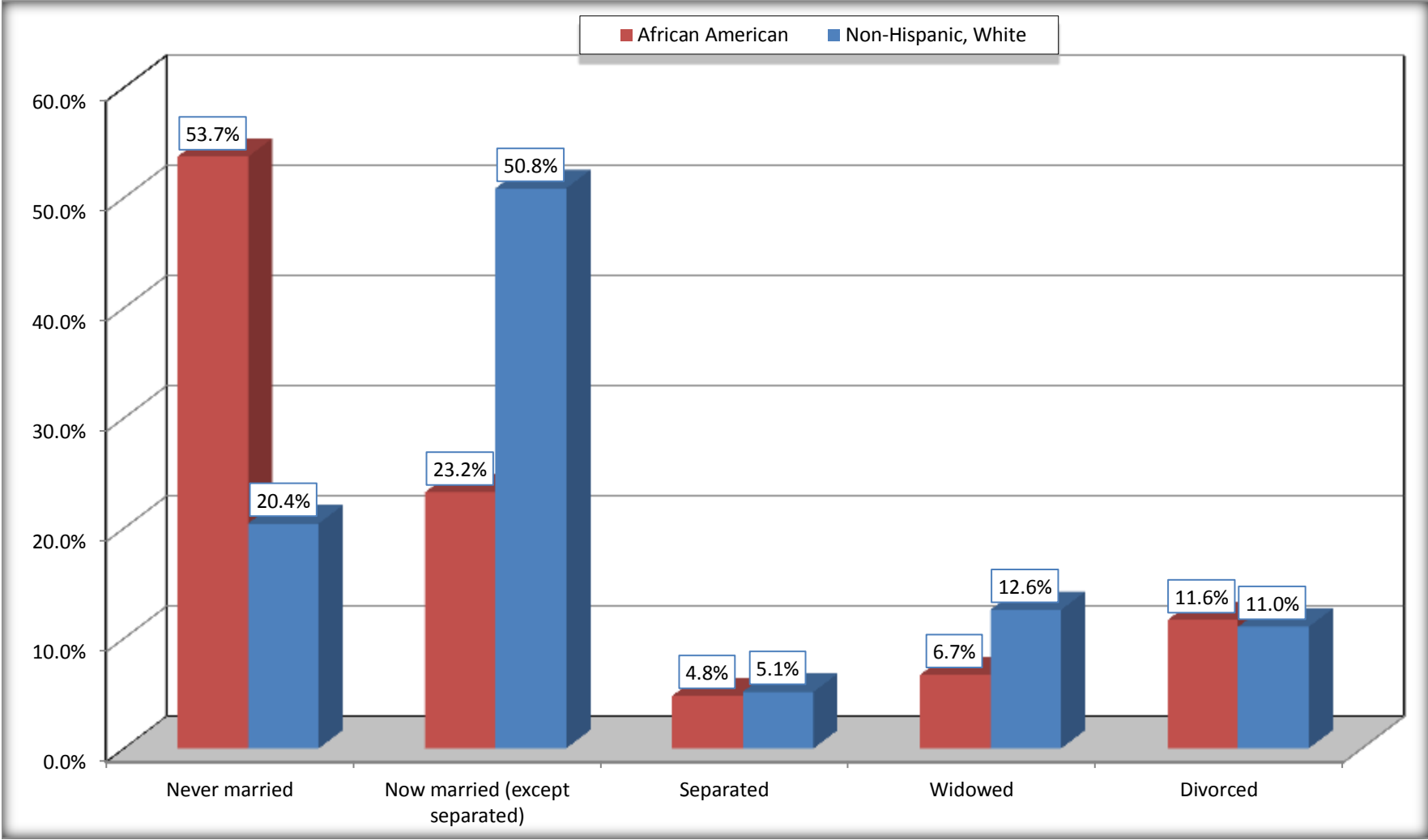
Source: U.S. Census Bureau, 2008-2012 American Community Survey

For information on confidentiality protection, sampling error, nonsampling error, and definitions, see Survey Methodology.

<http://www.census.gov/acs/www/UseData/index.htm>

Marital Status for the Population 15 Years and Over

Bastrop city, Louisiana



Source: B12002. MARITAL STATUS FOR THE POPULATION 15 YEARS AND OVER
Data Set: 2008-2012 American Community Survey 5-Year Estimates

C15002. SEX BY EDUCATIONAL ATTAINMENT FOR THE POPULATION 25 YEARS AND OVER

Data Set: 2008-2012 American Community Survey 5-Year Estimates

	Bastrop city, Louisiana					
	African American	Margin of Error (+/-)	% of AA Total	White, Not Hispanic	Margin of Error (+/-)	% of NHW Total
Total:	5,078	257	100.0%	2,096	286	100.0%
Less than high school diploma	1,796	NC	35.4%	455	NC	21.7%
High school graduate, GED, or alternative	1,938	NC	38.2%	813	NC	38.8%
Some college or associate's degree	980	NC	19.3%	463	NC	22.1%
Bachelor's degree or higher	364	NC	7.2%	365	NC	17.4%
Male:	2,233	167	44.0%	952	147	45.4%
Less than high school diploma	888	203	17.5%	270	85	12.9%
High school graduate, GED, or alternative	898	173	17.7%	268	98	12.8%
Some college or associate's degree	311	127	6.1%	187	69	8.9%
Bachelor's degree or higher	136	96	2.7%	227	83	10.8%
Female:	2,845	177	56.0%	1,144	175	54.6%
Less than high school diploma	908	174	17.9%	185	73	8.8%
High school graduate, GED, or alternative	1,040	185	20.5%	545	142	26.0%
Some college or associate's degree	669	152	13.2%	276	93	13.2%
Bachelor's degree or higher	228	96	4.5%	138	71	6.6%

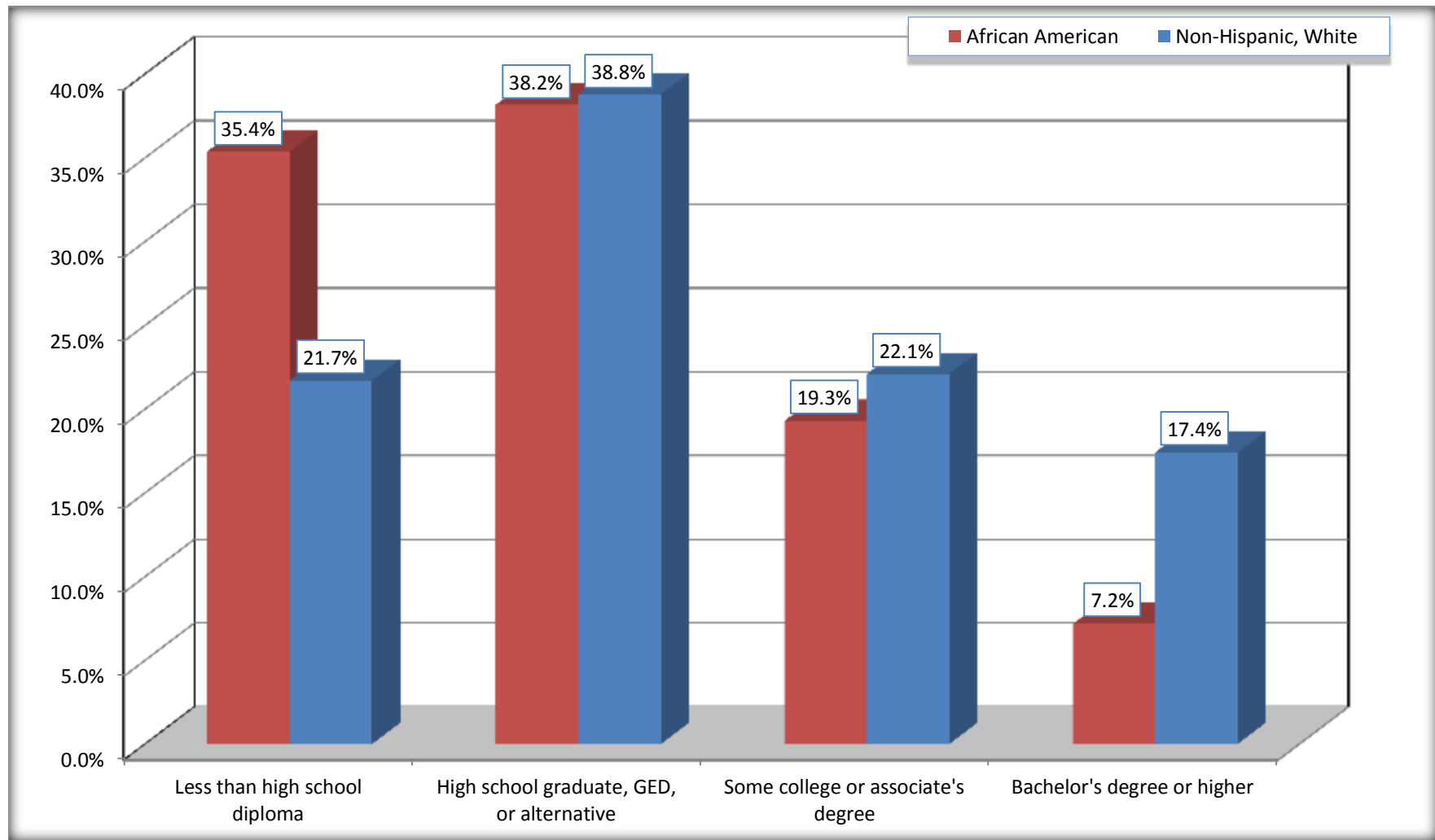
Source: U.S. Census Bureau, 2008-2012 American Community Survey

For information on confidentiality protection, sampling error, nonsampling error, and definitions, see Survey Methodology.

<http://www.census.gov/acs/www/UseData/index.htm>

Educational Attainment for the Population 25 Years and Older

Bastrop city, Louisiana



Source: C15002. SEX BY EDUCATIONAL ATTAINMENT FOR THE POPULATION 25 YEARS AND OVER
Data Set: 2008-2012 American Community Survey 5-Year Estimates

B17010. POVERTY STATUS IN THE PAST 12 MONTHS OF FAMILIES BY FAMILY TYPE BY PRESENCE OF RELATED CHILDREN UNDER 18 YEARS

Data Set: 2008-2012 American Community Survey 5-Year Estimates

	Bastrop city, Louisiana					
	African American	Margin of Error (+/-)	% of AA Total	White, Not Hispanic	Margin of Error (+/-)	% of NHW Total
Total:	1,853	180	100.0%	729	134	100.0%
Income in the past 12 months below poverty level:	734	164	39.6%	106	57	14.5%
Married-couple family:	131	57	7.1%	62	45	8.5%
With related children under 18 years	85	49	4.6%	32	33	4.4%
Other family:	603	153	32.5%	44	34	6.0%
Male householder, no wife present	46	44	2.5%	12	20	1.6%
With related children under 18 years	30	38	1.6%	12	20	1.6%
Female householder, no husband present	557	145	30.1%	32	26	4.4%
With related children under 18 years	435	141	23.5%	0	19	0.0%
Income in the past 12 months at or above poverty level:	1,119	185	60.4%	623	131	85.5%
Married-couple family:	506	149	27.3%	515	118	70.6%
With related children under 18 years	215	92	11.6%	156	82	21.4%
Other family:	613	148	33.1%	108	57	14.8%
Male householder, no wife present	93	54	5.0%	7	12	1.0%
With related children under 18 years	54	43	2.9%	0	19	0.0%
Female householder, no husband present	520	147	28.1%	101	55	13.9%
With related children under 18 years	330	128	17.8%	66	48	9.1%

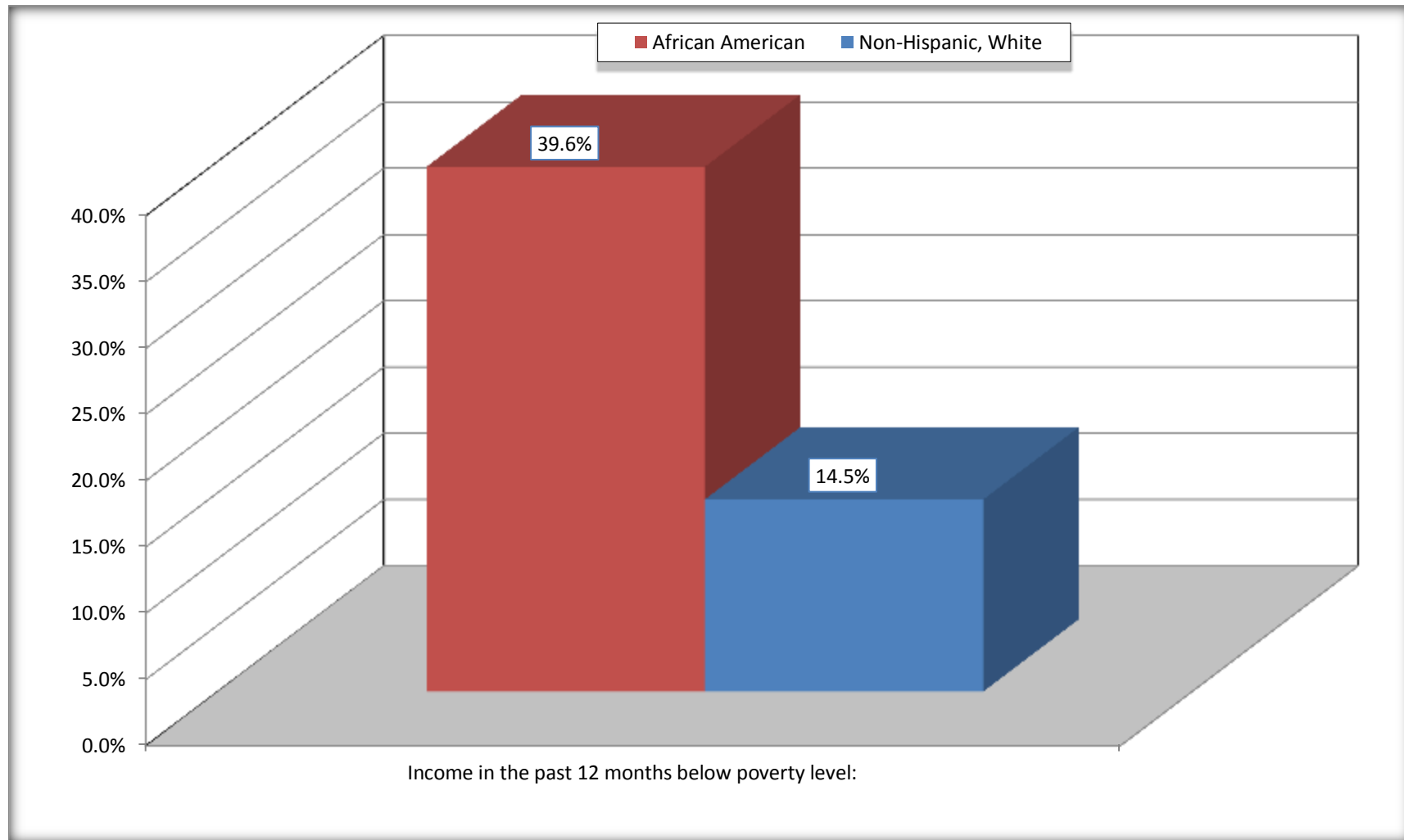
Source: U.S. Census Bureau, 2008-2012 American Community Survey

For information on confidentiality protection, sampling error, nonsampling error, and definitions, see Survey Methodology.

<http://www.census.gov/acs/www/UseData/index.htm>

Family Households Below Poverty in the Past 12 Months

Bastrop city, Louisiana

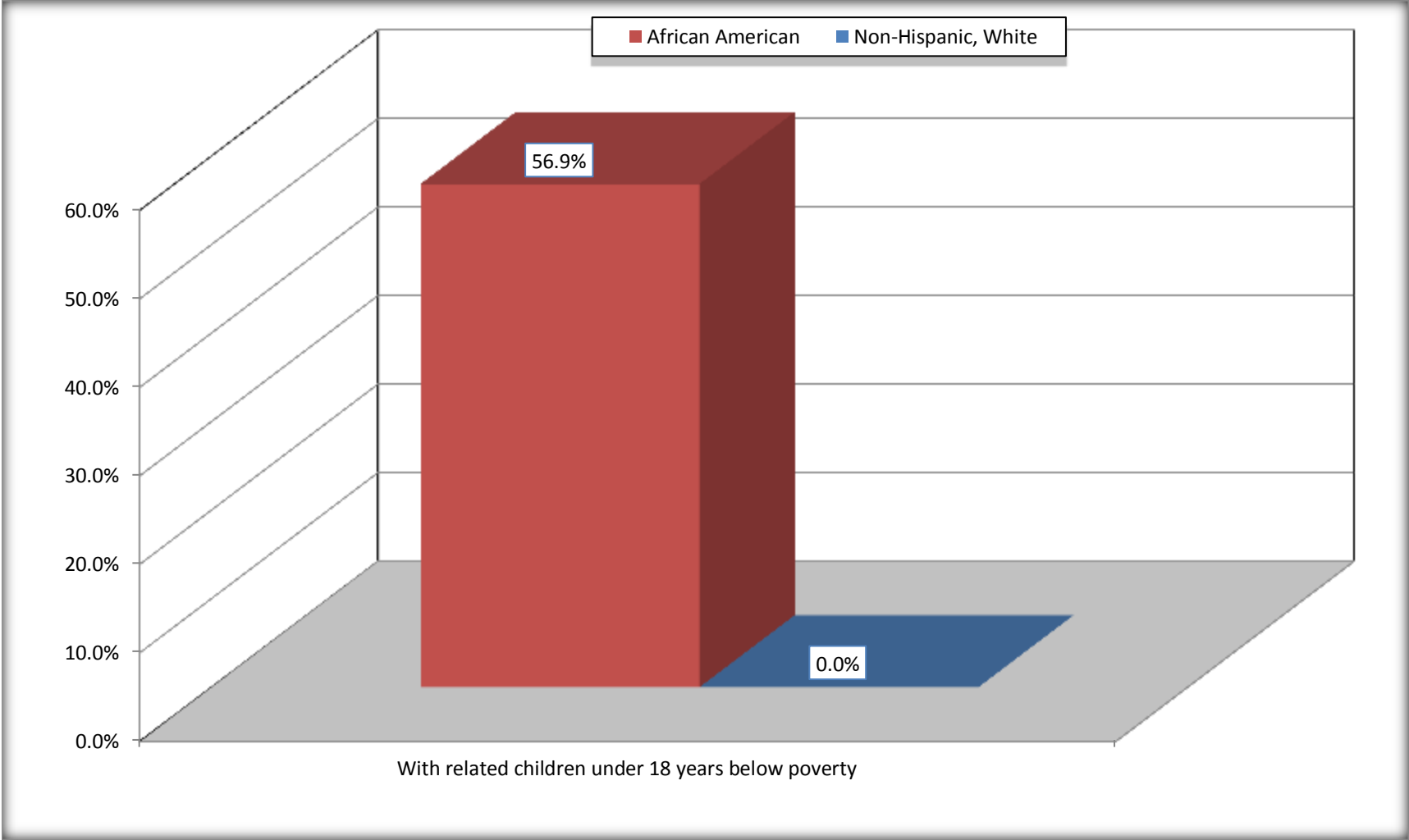


Source: B17010. POVERTY STATUS IN THE PAST 12 MONTHS OF FAMILIES BY FAMILY TYPE BY PRESENCE OF RELATED CHILDREN UNDER 18 YEARS

Data Set: 2008-2012 American Community Survey 5-Year Estimates

Female-headed Households with Related Children Below Poverty in the Past 12 Months

Bastrop city, Louisiana



Source: B17010. POVERTY STATUS IN THE PAST 12 MONTHS OF FAMILIES BY FAMILY TYPE BY PRESENCE OF RELATED CHILDREN UNDER 18 YEARS

Data Set: 2008-2012 American Community Survey 5-Year Estimates

B17020 POVERTY STATUS IN THE PAST 12 MONTHS BY AGE - Universe: POPULATION FOR WHOM POVERTY STATUS IS DETERMINED

Data Set: 2008-2012 American Community Survey 5-Year Estimates

	Bastrop city, Louisiana					
	African American	Margin of Error (+/-)	% of AA By Age	White, Not Hispanic	Margin of Error (+/-)	% of NHW By Age
Total:	8,438	382	100.0%	2,426	393	100.0%
Income in the past 12 months below poverty level:	3,635	563	43.1%	400	195	16.5%
Under 18 years	1,458	NC	52.8%	66	NC	17.2%
18 to 64 years	1,956	322	39.0%	229	145	18.2%
65 years and over	221	NC	33.4%	105	NC	13.4%
Income in the past 12 months at or above poverty level:	4,803	676	56.9%	2,026	409	83.5%
Under 18 years	1,302	NC	47.2%	318	NC	82.8%
18 to 64 years	3,061	379	61.0%	1,027	268	81.8%
65 years and over	440	NC	66.6%	681	NC	86.6%

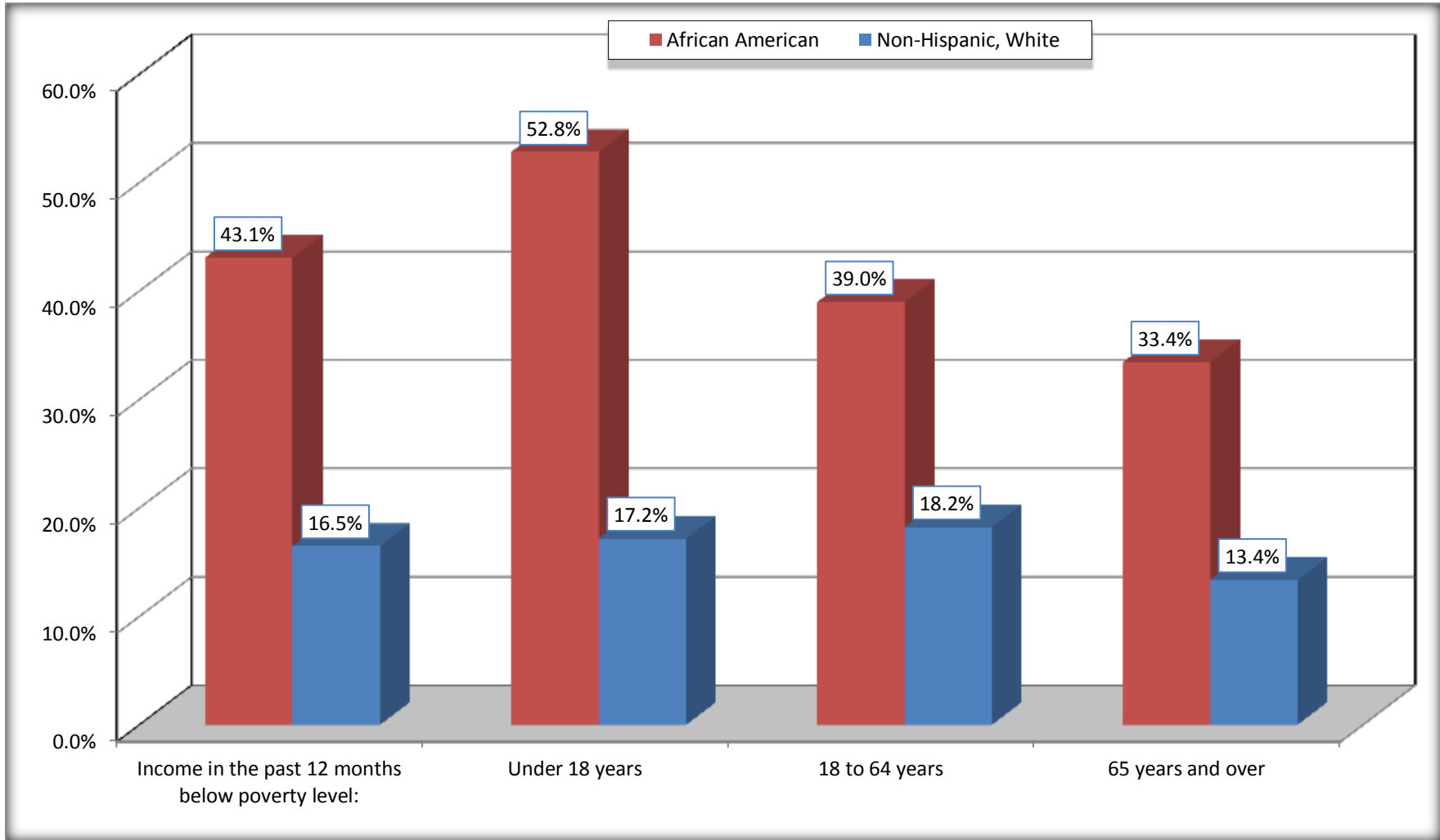
Source: U.S. Census Bureau, 2008-2012 American Community Survey

For information on confidentiality protection, sampling error, nonsampling error, and definitions, see Survey Methodology.

<http://www.census.gov/acs/www/UseData/index.htm>

Population Below Poverty in the Past 12 Months

Bastrop city, Louisiana



Source: B17020 POVERTY STATUS IN THE PAST 12 MONTHS BY AGE - Universe: POPULATION FOR WHOM POVERTY STATUS IS DETERMINED
Data Set: 2008-2012 American Community Survey 5-Year Estimates

B19001. HOUSEHOLD INCOME IN THE PAST 12 MONTHS (IN 2010 INFLATION-ADJUSTED DOLLARS)

Data Set: 2008-2012 American Community Survey 5-Year Estimates

	Bastrop city, Louisiana					
	African American	Margin of Error (+/-)	% of AA Total	White, Not Hispanic	Margin of Error (+/-)	% of NHW Total
Total:	2,848	217	100.0%	1,076	156	100.0%
Less than \$ 10,000	675	133	23.7%	88	52	8.2%
\$ 10,000 to \$ 14,999	365	121	12.8%	109	56	10.1%
\$ 15,000 to \$ 24,999	643	NC	22.6%	222	NC	20.6%
\$ 25,000 to \$ 34,999	278	NC	9.8%	137	NC	12.7%
\$ 35,000 to \$ 49,999	387	NC	13.6%	173	NC	16.1%
\$ 50,000 to \$ 74,999	267	NC	9.4%	194	NC	18.0%
\$ 75,000 to \$ 99,999	155	82	5.4%	80	55	7.4%
\$ 100,000 to \$ 149,999	54	NC	1.9%	51	NC	4.7%
\$ 150,000 to \$ 199,999	24	28	0.8%	22	22	2.0%
\$ 200,000 or more	0	19	0.0%	0	19	0.0%

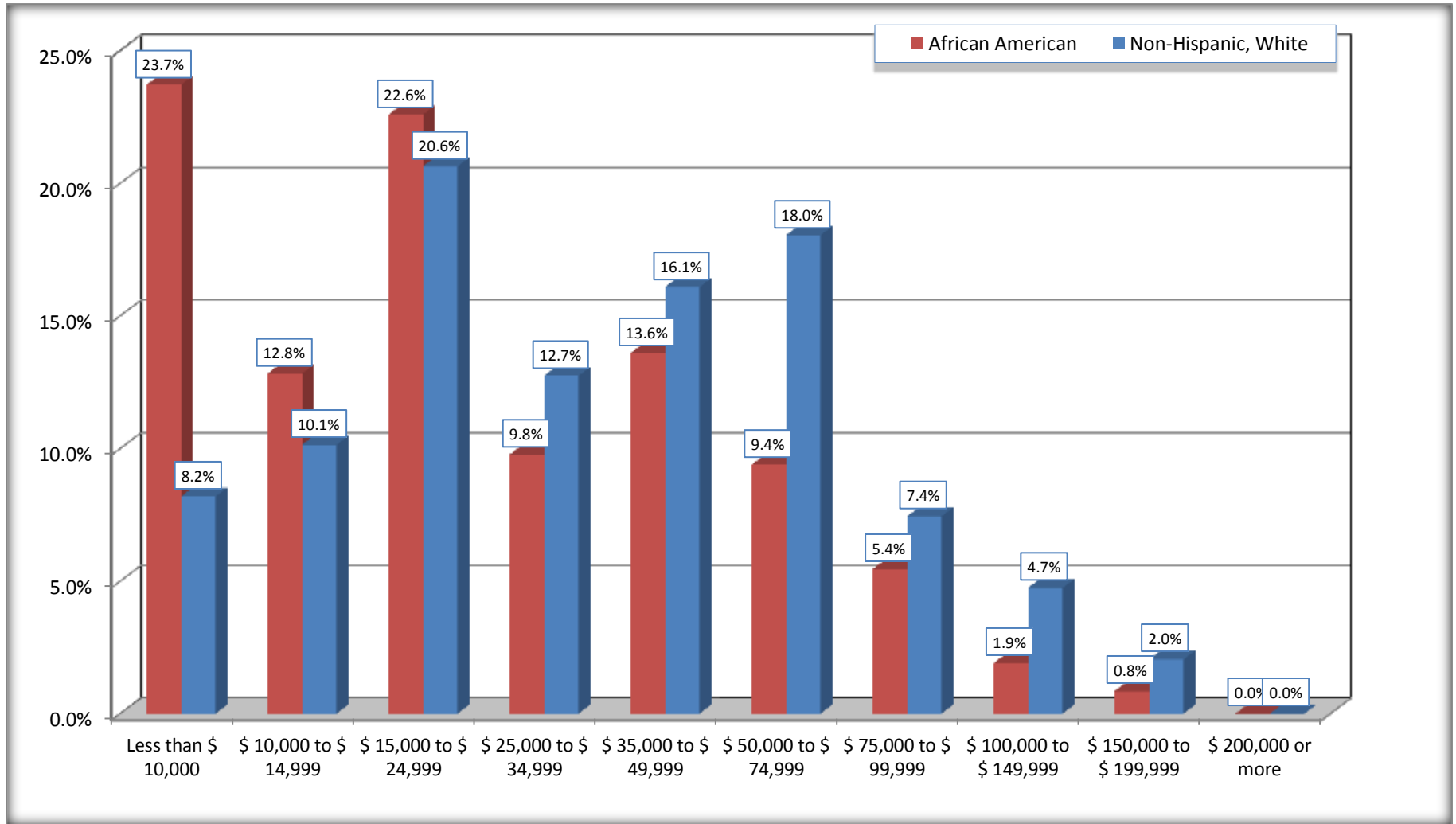
Source: U.S. Census Bureau, 2008-2012 American Community Survey

For information on confidentiality protection, sampling error, nonsampling error, and definitions, see Survey Methodology.

<http://www.census.gov/acs/www/UseData/index.htm>

Household Income in the Past 12 Months

Bastrop city, Louisiana



Source: B19001. HOUSEHOLD INCOME IN THE PAST 12 MONTHS (IN 2010 INFLATION-ADJUSTED DOLLARS)
Data Set: 2008-2012 American Community Survey 5-Year Estimates

B19013. MEDIAN HOUSEHOLD INCOME IN THE PAST 12 MONTHS (IN 2010 INFLATION-ADJUSTED DOLLARS)

Data Set: 2008-2012 American Community Survey 5-Year Estimates

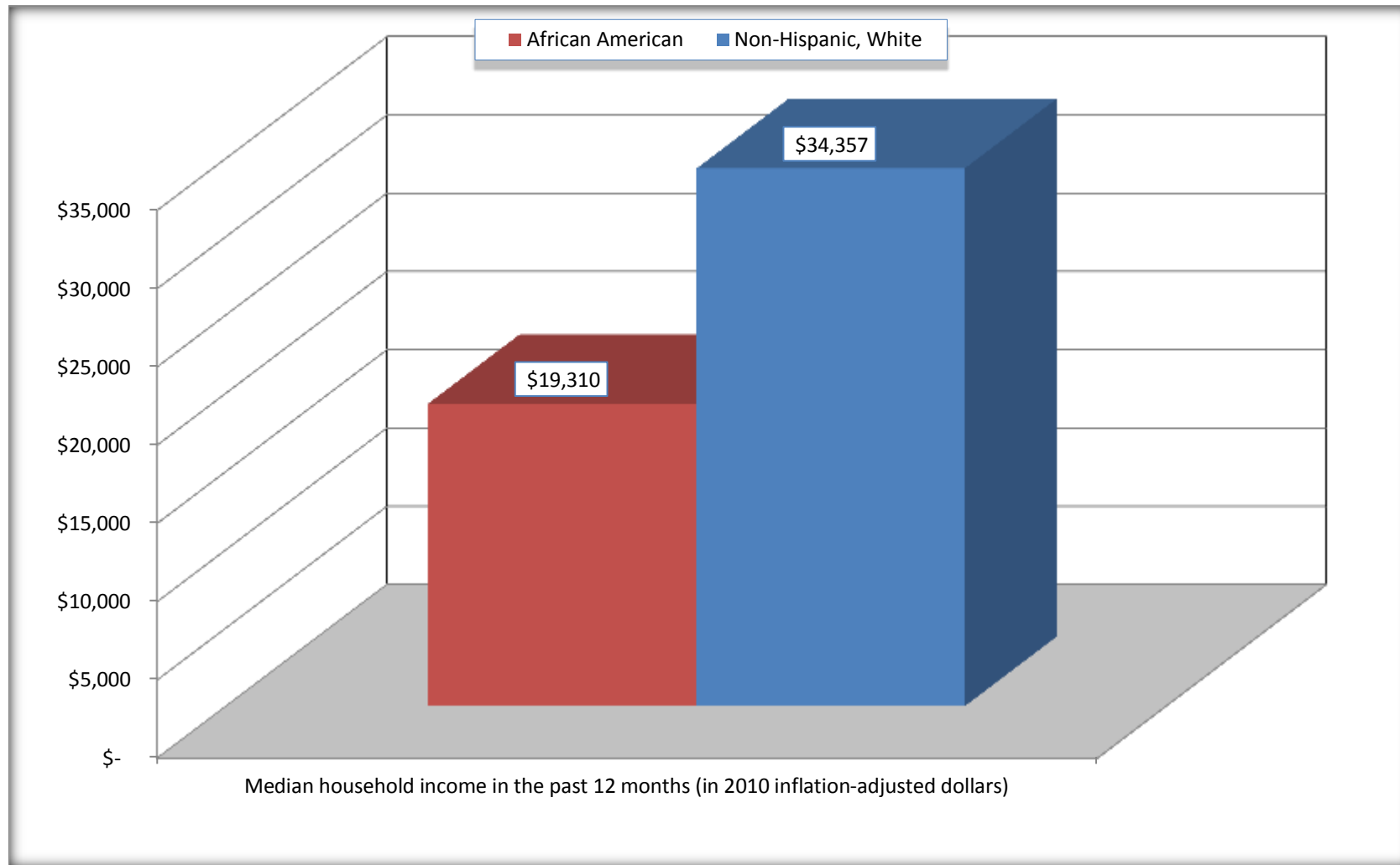
	Bastrop city, Louisiana			
	African American	Margin of Error (+/-)	White, Not Hispanic	Margin of Error (+/-)
Median household income in the past 12 months (in 2010 inflation-adjusted dollars)	\$ 19,310	\$ 2,392	\$ 34,357	\$ 4,904

Source: U.S. Census Bureau, 2008-2012 American Community Survey

For information on confidentiality protection, sampling error, nonsampling error, and definitions, see Survey Methodology.
<http://www.census.gov/acs/www/UseData/index.htm>

Median Household Income in the Past 12 Months

Bastrop city, Louisiana



Source: B19013. MEDIAN HOUSEHOLD INCOME IN THE PAST 12 MONTHS (IN 2010 INFLATION-ADJUSTED DOLLARS)
Data Set: 2008-2012 American Community Survey 5-Year Estimates

B19101. FAMILY INCOME IN THE PAST 12 MONTHS (IN 2010 INFLATION-ADJUSTED DOLLARS)

Data Set: 2008-2012 American Community Survey 5-Year Estimates

	Bastrop city, Louisiana					
	African American	Margin of Error (+/-)	% of AA Total	White, Not Hispanic	Margin of Error (+/-)	% of NHW Total
Total:	1,853	180	100.0%	729	134	100.0%
Less than \$ 10,000	290	108	15.7%	59	43	8.1%
\$ 10,000 to \$ 14,999	219	109	11.8%	36	31	4.9%
\$ 15,000 to \$ 24,999	492	NC	26.6%	80	NC	11.0%
\$ 25,000 to \$ 34,999	165	NC	8.9%	89	NC	12.2%
\$ 35,000 to \$ 49,999	276	NC	14.9%	153	NC	21.0%
\$ 50,000 to \$ 74,999	178	NC	9.6%	164	NC	22.5%
\$ 100,000 to \$ 149,999	54	NC	2.9%	51	NC	7.0%
\$ 150,000 to \$ 199,999	24	28	1.3%	22	22	3.0%
\$ 200,000 or more	0	19	0.0%	0	19	0.0%

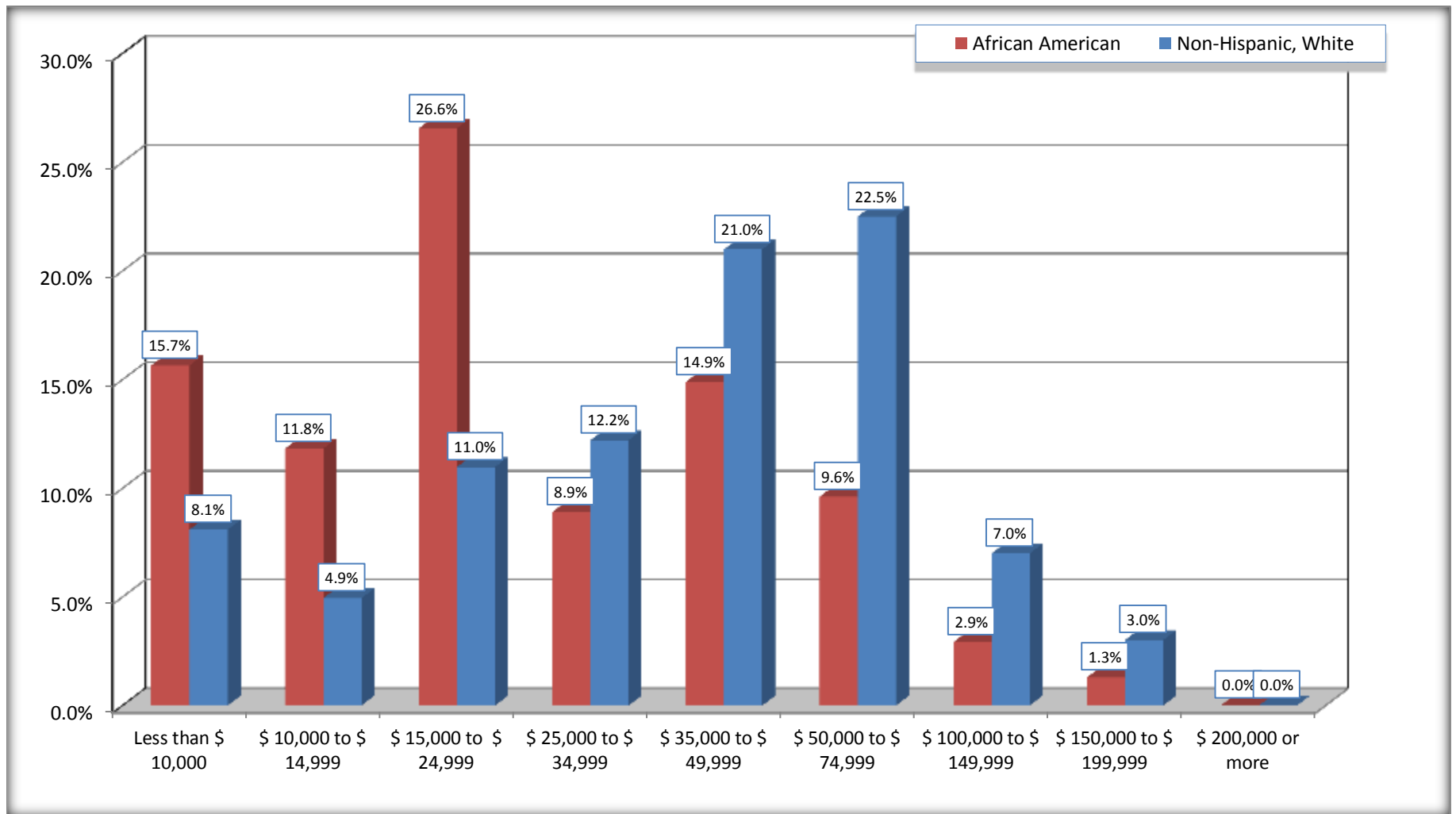
Source: U.S. Census Bureau, 2008-2012 American Community Survey

For information on confidentiality protection, sampling error, nonsampling error, and definitions, see Survey Methodology.

<http://www.census.gov/acs/www/UseData/index.htm>

Family Income in the Past 12 Months

Bastrop city, Louisiana



Source: B19101. FAMILY INCOME IN THE PAST 12 MONTHS (IN 2010 INFLATION-ADJUSTED DOLLARS)
Data Set: 2008-2012 American Community Survey 5-Year Estimates

B19113. MEDIAN FAMILY INCOME IN THE PAST 12 MONTHS (IN 2010 INFLATION-ADJUSTED DOLLARS)

Data Set: 2008-2012 American Community Survey 5-Year Estimates

	Bastrop city, Louisiana			
	African American	Margin of Error (+/-)	White, Not Hispanic	Margin of Error (+/-)
Median family income in the past 12 months (in 2010 inflation-adjusted dollars)	\$ 22,809	\$ 6,274	\$ 46,052	\$ 4,237

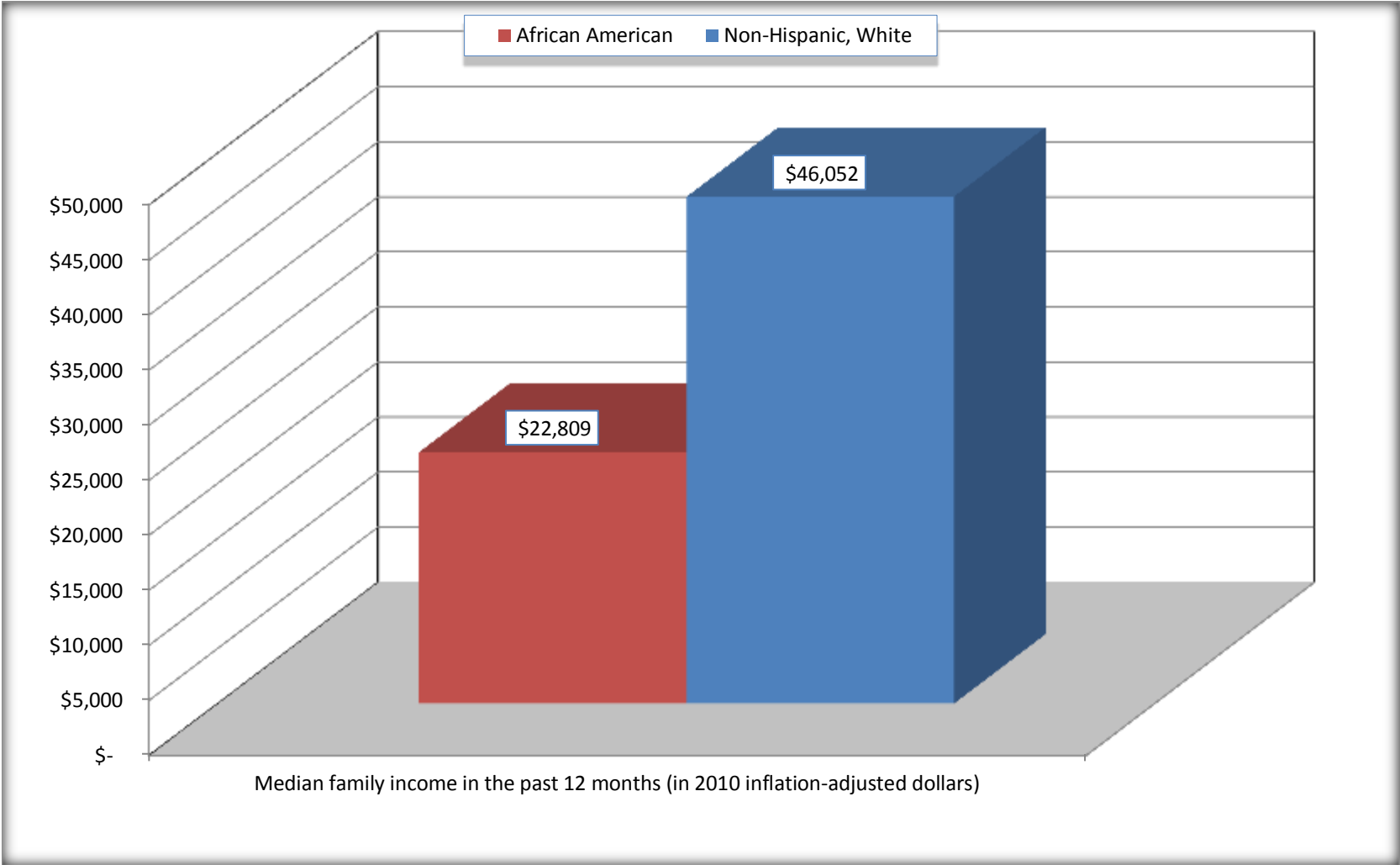
Source: U.S. Census Bureau, 2008-2012 American Community Survey

For information on confidentiality protection, sampling error, nonsampling error, and definitions, see Survey Methodology.

<http://www.census.gov/acs/www/UseData/index.htm>

Median Family Income in the Past 12 Months

Bastrop city, Louisiana



Source: B19113. MEDIAN FAMILY INCOME IN THE PAST 12 MONTHS (IN 2010 INFLATION-ADJUSTED DOLLARS)
Data Set: 2008-2012 American Community Survey 5-Year Estimates

B19202. MEDIAN NONFAMILY HOUSEHOLD INCOME IN THE PAST 12 MONTHS (IN 2010 INFLATION-ADJUSTED DOLLARS)

Data Set: 2008-2012 American Community Survey 5-Year Estimates

	Bastrop city, Louisiana			
	African American	Margin of Error (+/-)	White, Not Hispanic	Margin of Error (+/-)
Median nonfamily household income in the past 12 months (in 2010 inflation-adjusted dollars)	\$ 13,991	\$ 2,777	\$ 17,930	\$ 2,564

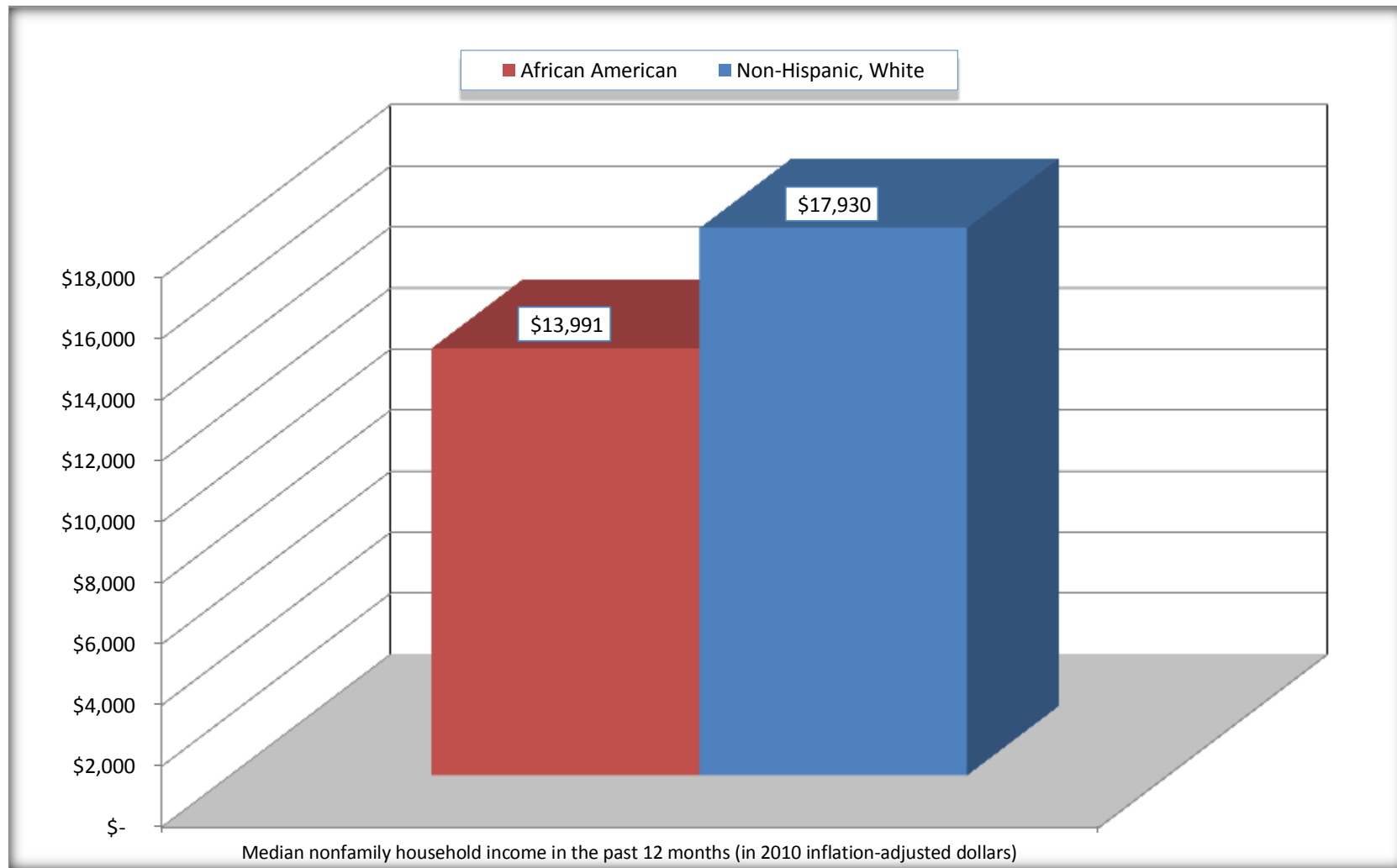
Source: U.S. Census Bureau, 2008-2012 American Community Survey

For information on confidentiality protection, sampling error, nonsampling error, and definitions, see Survey Methodology.

<http://www.census.gov/acs/www/UseData/index.htm>

Median Non-Family Income in the Past 12 Months

Bastrop city, Louisiana



Source: B19202. MEDIAN NONFAMILY HOUSEHOLD INCOME IN THE PAST 12 MONTHS (IN 2010 INFLATION-ADJUSTED DOLLARS)
Data Set: 2008-2012 American Community Survey 5-Year Estimates

B19301. PER CAPITA INCOME IN THE PAST 12 MONTHS (IN 2010 INFLATION-ADJUSTED DOLLARS)

Data Set: 2008-2012 American Community Survey 5-Year Estimates

	Bastrop city, Louisiana			
	African American	Margin of Error (+/-)	White, Not Hispanic	Margin of Error (+/-)
Per capita income in the past 12 months (in 2010 inflation-adjusted dollars)	\$ 11,437	\$ 1,062	\$ 17,660	\$ 2,881

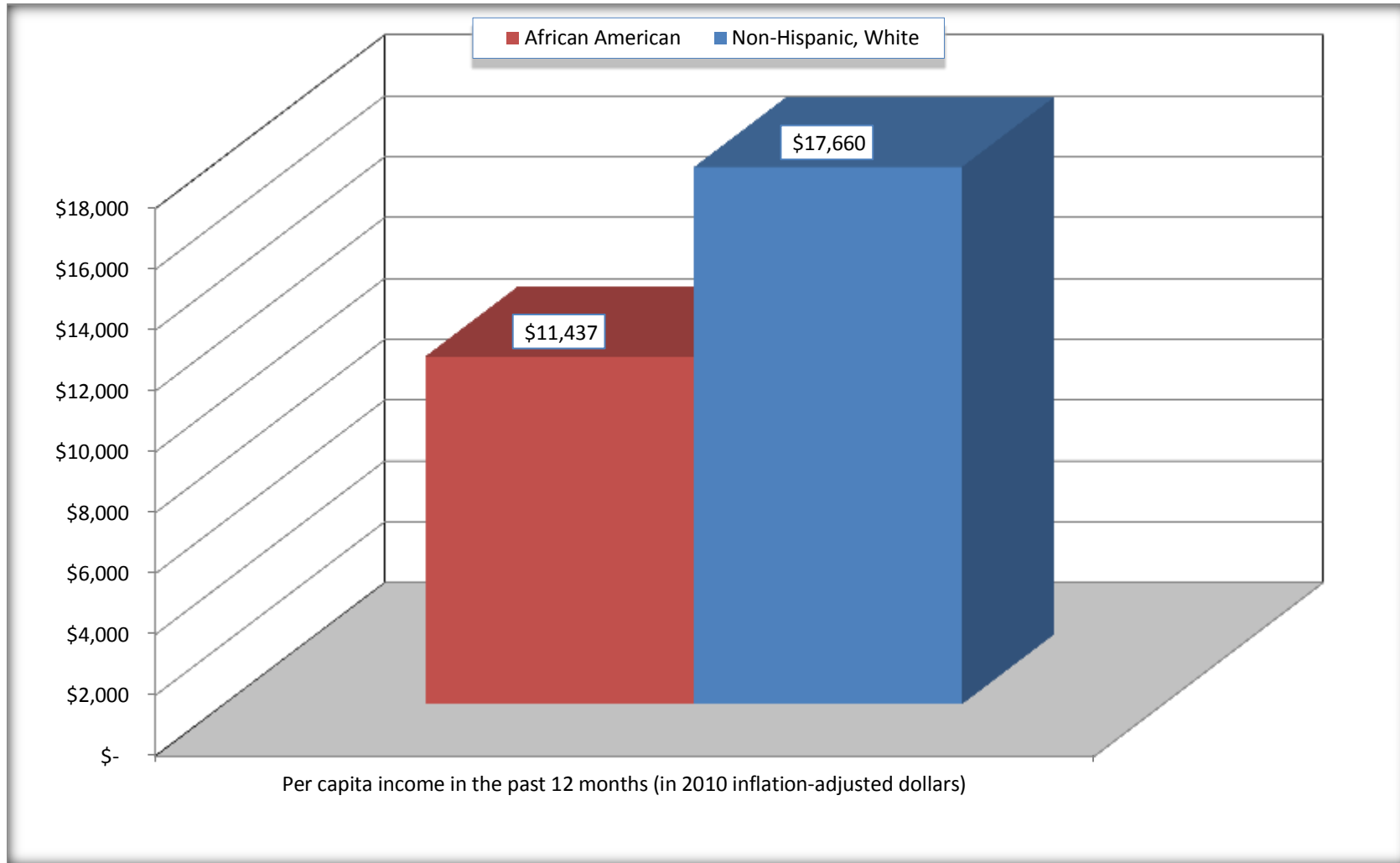
Source: U.S. Census Bureau, 2008-2012 American Community Survey

For information on confidentiality protection, sampling error, nonsampling error, and definitions, see Survey Methodology.

<http://www.census.gov/acs/www/UseData/index.htm>

Per capita Income in the Past 12 Months

Bastrop city, Louisiana



Source: B19301. PER CAPITA INCOME IN THE PAST 12 MONTHS (IN 2010 INFLATION-ADJUSTED DOLLARS)
Data Set: 2008-2012 American Community Survey 5-Year Estimates

B20017. MEDIAN EARNINGS IN THE PAST 12 MONTHS (IN 2010 INFLATION-ADJUSTED DOLLARS) BY SEX BY WORK EXPERIENCE IN THE PAST 12 MONTHS FOR THE POPULATION 16 YEARS AND OVER WITH EARNINGS IN THE PAST 12 MONTHS

Data Set: 2008-2012 American Community Survey 5-Year Estimates

	Bastrop city, Louisiana			
	African American	Margin of Error (+/-)	White, Not Hispanic	Margin of Error (+/-)
Median earnings in the past 12 months (in 2010 inflation-adjusted dollars) --				
Total:	\$ 18,552	\$ 1,977	\$ 25,161	\$ 6,109
Male --				
Total	\$ 22,727	\$ 5,183	\$ 34,468	\$ 10,722
Worked full-time, year-round in the past 12 months	\$ 26,491	\$ 4,459	\$ 40,296	\$ 11,719
Other	\$ 7,250	\$ 11,303	\$ 11,830	\$ 14,652
Female --				
Total	\$ 17,046	\$ 2,549	\$ 15,546	\$ 1,809
Worked full-time, year-round in the past 12 months	\$ 19,111	\$ 1,665	\$ 17,500	\$ 8,504
Other	\$ 8,810	\$ 4,431	\$ 10,671	\$ 3,084

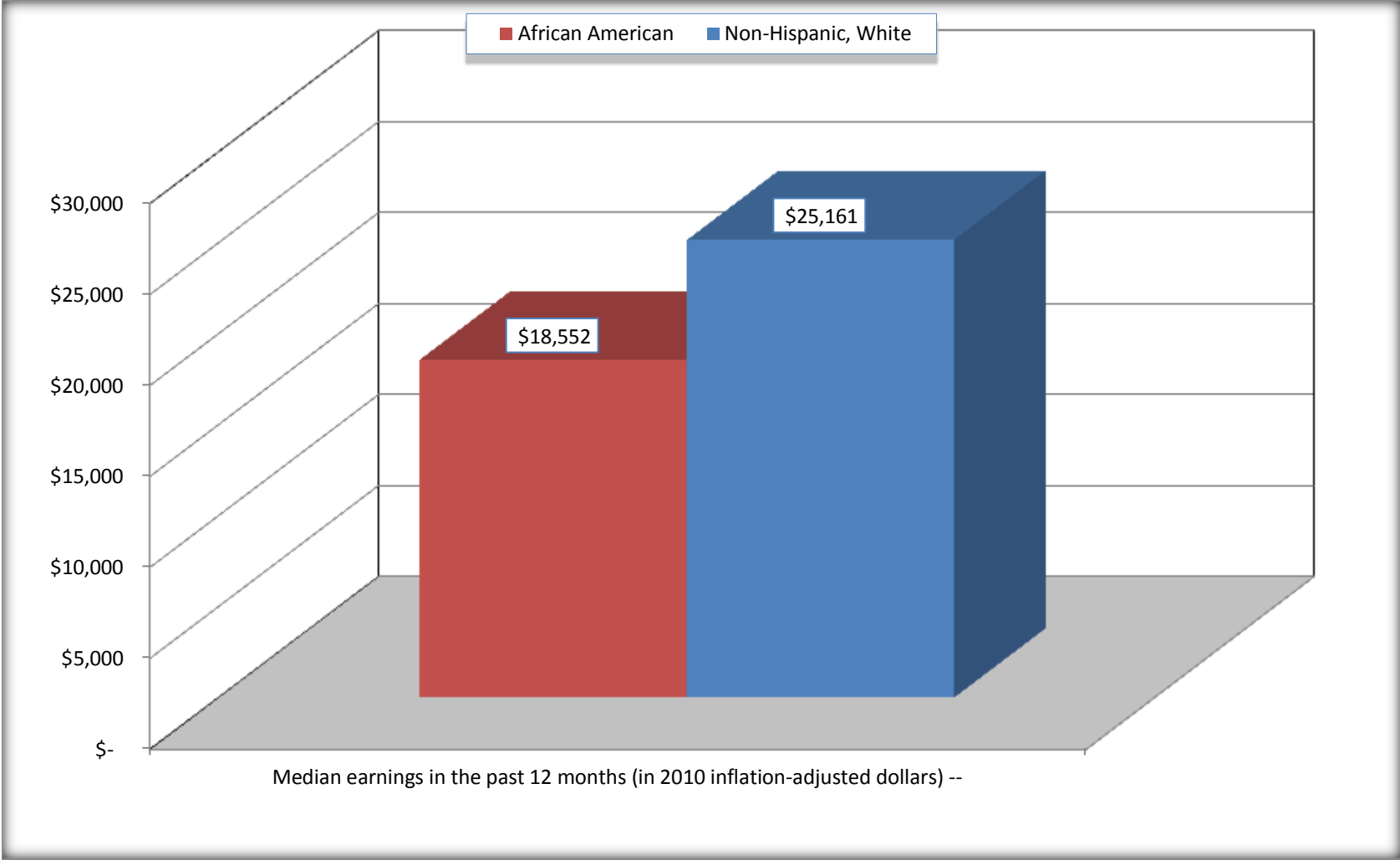
Source: U.S. Census Bureau, 2008-2012 American Community Survey

For information on confidentiality protection, sampling error, nonsampling error, and definitions, see Survey Methodology.

<http://www.census.gov/acs/www/UseData/index.htm>

Median earnings in the Past 12 Months (16 Years and Over with Earnings)

Bastrop city, Louisiana



Source: B20017. MEDIAN EARNINGS IN THE PAST 12 MONTHS (IN 2010 INFLATION-ADJUSTED DOLLARS) BY SEX BY WORK EXPERIENCE IN THE PAST 12 MONTHS FOR THE POPULATION 16 YEARS AND OVER WITH EARNINGS IN THE PAST 12 MONTHS
Data Set: 2008-2012 American Community Survey 5-Year Estimates

B20005. SEX BY WORK EXPERIENCE IN THE PAST 12 MONTHS BY EARNINGS IN THE PAST 12 MONTHS (IN 2010 INFLATION-ADJUSTED DOLLARS) FOR THE POPULATION 16 YEARS AND OVER

Data Set: 2008-2012 American Community Survey 5-Year Estimates

	Bastrop city, Louisiana					
	African American	Margin of Error (+/-)	% of AA Total	White, Not Hispanic	Margin of Error (+/-)	% of NHW Total
Total:	6,106	284	100.0%	2,307	315	100.0%
Worked full-time, year-round in the past 12 months:	2,359	NC	38.6%	619	NC	26.8%
No earnings	0	NC	0.0%	0	NC	0.0%
With earnings:	2,359	NC	38.6%	619	NC	26.8%
\$ 1 to \$ 9,999 or loss	156	NC	2.6%	32	NC	1.4%
\$ 10,000 to \$ 19,999	884	NC	14.5%	139	NC	6.0%
\$ 20,000 to \$ 29,999	553	NC	9.1%	95	NC	4.1%
\$ 30,000 to \$ 49,999	469	NC	7.7%	234	NC	10.1%
\$ 50,000 to \$ 74,999	282	NC	4.6%	86	NC	3.7%
\$ 75,000 or more	15	NC	0.2%	33	NC	1.4%
Other:	3,747	NC	61.4%	1,688	NC	73.2%
No earnings	2,747	NC	45.0%	1,485	NC	64.4%
With earnings: less than full time, year-round	1,000	NC	16.4%	203	NC	8.8%
Male:	2,640	182	43.2%	1,013	166	43.9%
Worked full-time, year-round in the past 12 months:	896	213	14.7%	361	119	15.6%
No earnings	0	19	0.0%	0	19	0.0%
With earnings:	896	213	14.7%	361	119	15.6%
\$ 1 to \$ 9,999 or loss	65	NC	1.1%	17	NC	0.7%
\$ 10,000 to \$ 19,999	156	NC	2.6%	17	NC	0.7%
\$ 20,000 to \$ 29,999	281	NC	4.6%	57	NC	2.5%
\$ 30,000 to \$ 49,999	174	NC	2.8%	187	NC	8.1%
\$ 50,000 to \$ 74,999	212	NC	3.5%	55	NC	2.4%
\$ 75,000 or more	8	NC	0.1%	28	NC	1.2%

	Bastrop city, Louisiana					
	African American	Margin of Error (+/-)	% of AA Total	White, Not Hispanic	Margin of Error (+/-)	% of NHW Total
Other:	1,744	231	28.6%	652	138	28.3%
No earnings	1,320	180	21.6%	599	125	26.0%
With earnings:	424	145	6.9%	53	38	2.3%
Female:	3,466	205	56.8%	1,294	194	56.1%
Worked full-time, year-round in the past 12 months:	1,463	221	24.0%	258	100	11.2%
No earnings	0	19	0.0%	0	19	0.0%
With earnings:	1,463	221	24.0%	258	100	11.2%
\$ 1 to \$ 9,999 or loss	91	NC	1.5%	15	NC	0.7%
\$ 10,000 to \$ 19,999	728	NC	11.9%	122	NC	5.3%
\$ 20,000 to \$ 29,999	272	NC	4.5%	38	NC	1.6%
\$ 30,000 to \$ 49,999	295	NC	4.8%	47	NC	2.0%
\$ 50,000 to \$ 74,999	70	NC	1.1%	31	NC	1.3%
\$ 75,000 or more	7	NC	0.1%	5	NC	0.2%
Other:	2,003	223	32.8%	1,036	174	44.9%
No earnings	1,427	225	23.4%	886	173	38.4%
With earnings:	576	171	9.4%	150	81	6.5%

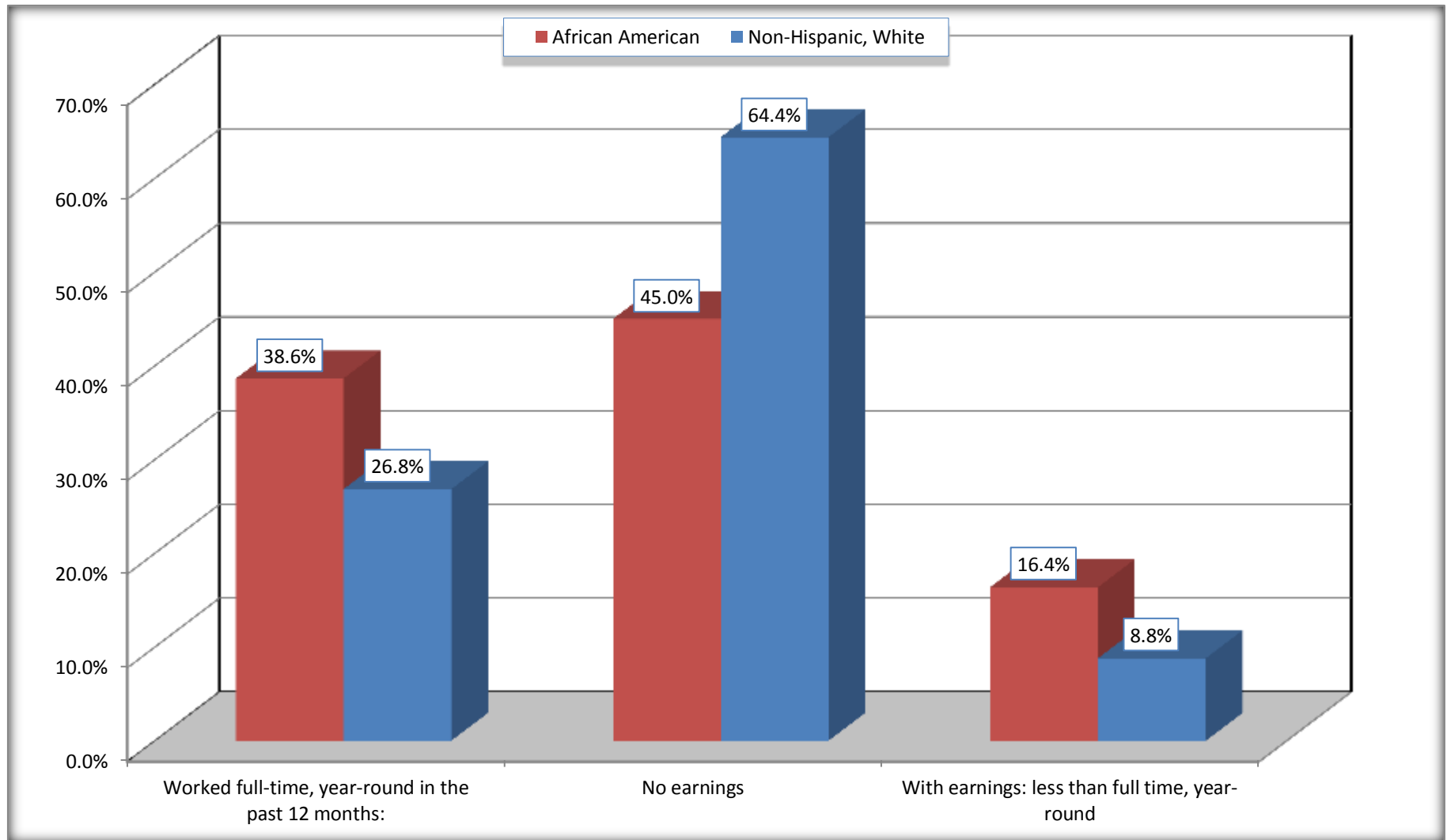
Source: U.S. Census Bureau, 2008-2012 American Community Survey

For information on confidentiality protection, sampling error, nonsampling error, and definitions, see Survey Methodology.

<http://www.census.gov/acs/www/UseData/index.htm>

Employment and Earnings in in the Past 12 Months (16 Years and Over)

Bastrop city, Louisiana



Source: B20005. SEX BY WORK EXPERIENCE IN THE PAST 12 MONTHS BY EARNINGS IN THE PAST 12 MONTHS (IN 2010 INFLATION-ADJUSTED DOLLARS) FOR THE POPULATION 16 YEARS AND OVER

Data Set: 2008-2012 American Community Survey 5-Year Estimates

C21001. SEX BY AGE BY VETERAN STATUS FOR THE CIVILIAN POPULATION 18 YEARS AND OVER

Data Set: 2008-2012 American Community Survey 5-Year Estimates

	Bastrop city, Louisiana					
	African American	Margin of Error (+/-)	% of AA Total	White, Not Hispanic	Margin of Error (+/-)	% of NHW Total
Total:	5,855	273	100.0%	2,246	309	100.0%
Veteran	334	NC	5.7%	317	NC	14.1%
Nonveteran	5,521	NC	94.3%	1,929	NC	85.9%
Male:	2,542	177	43.4%	997	160	44.4%
18 to 64 years:	2,305	183	39.4%	631	141	28.1%
Veteran	229	93	3.9%	136	81	6.1%
Nonveteran	2,076	193	35.5%	495	122	22.0%
65 years and over:	237	69	4.0%	366	92	16.3%
Veteran	88	49	1.5%	157	56	7.0%
Nonveteran	149	66	2.5%	209	83	9.3%
Female:	3,313	194	56.6%	1,249	193	55.6%
18 to 64 years:	2,848	189	48.6%	747	184	33.3%
Veteran	17	17	0.3%	24	26	1.1%
Nonveteran	2,831	190	48.4%	723	181	32.2%
65 years and over:	465	73	7.9%	502	102	22.4%
Veteran	0	19	0.0%	0	19	0.0%
Nonveteran	465	73	7.9%	502	102	22.4%

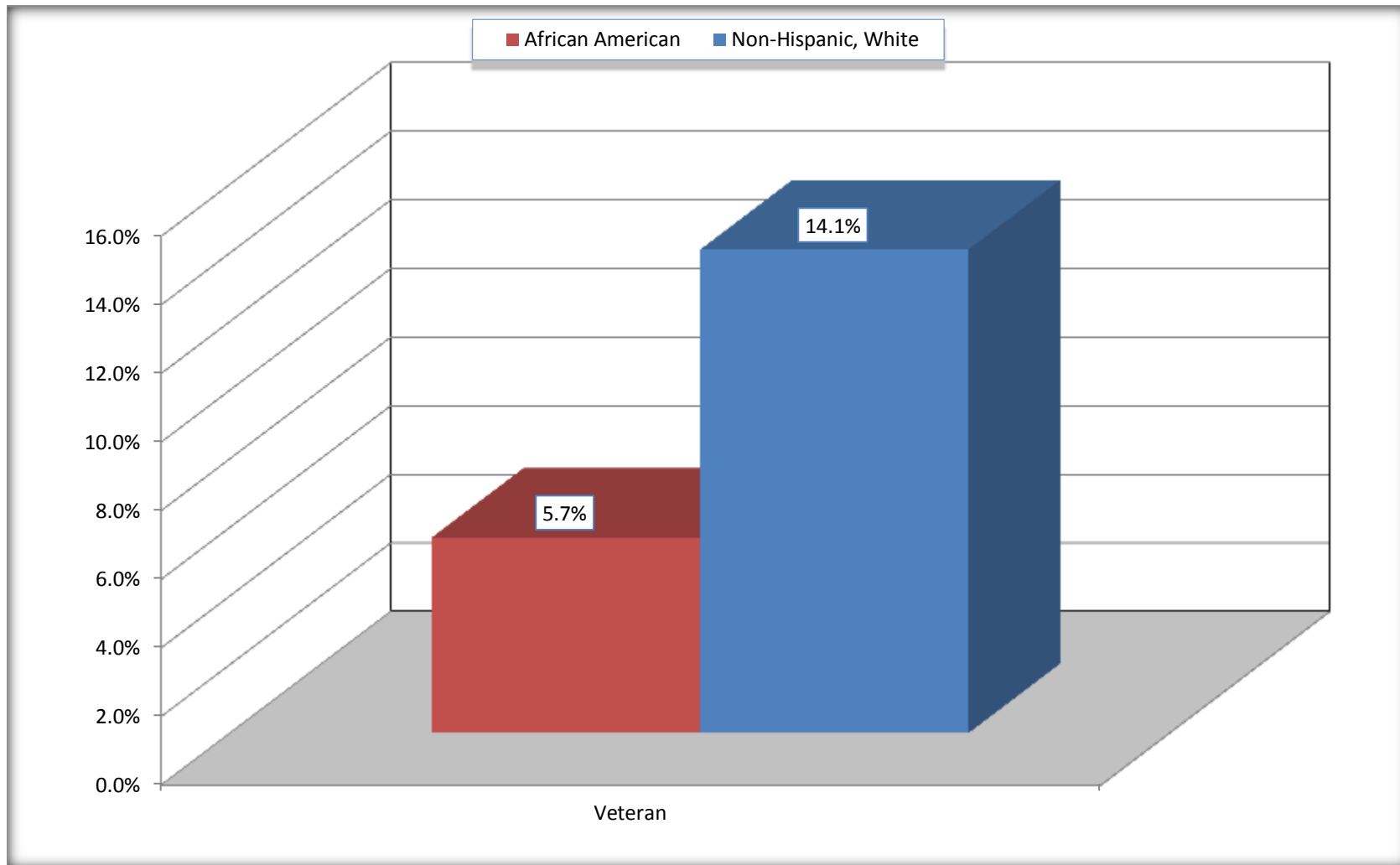
Source: U.S. Census Bureau, 2008-2012 American Community Survey

For information on confidentiality protection, sampling error, nonsampling error, and definitions, see Survey Methodology.

<http://www.census.gov/acs/www/UseData/index.htm>

Veterans in the Civilian Population 18 Years and Over

Bastrop city, Louisiana



Source: C21001. SEX BY AGE BY VETERAN STATUS FOR THE CIVILIAN POPULATION 18 YEARS AND OVER
Data Set: 2008-2012 American Community Survey 5-Year Estimates

B22005. RECEIPT OF FOOD STAMPS/SNAP IN THE PAST 12 MONTHS BY RACE OF HOUSEHOLDER

Data Set: 2008-2012 American Community Survey 5-Year Estimates

	Bastrop city, Louisiana					
	African American	Margin of Error (+/-)	% of AA Total	White, Not Hispanic	Margin of Error (+/-)	% of NHW Total
Total:	2,848	217	100.0%	1,076	156	100.0%
HH received Food Stamps/SNAP in the past 12 months	1,051	177	36.9%	161	65	15.0%
HH did not receive Food Stamps/SNAP in the past 12 months	1,797	246	63.1%	915	148	85.0%

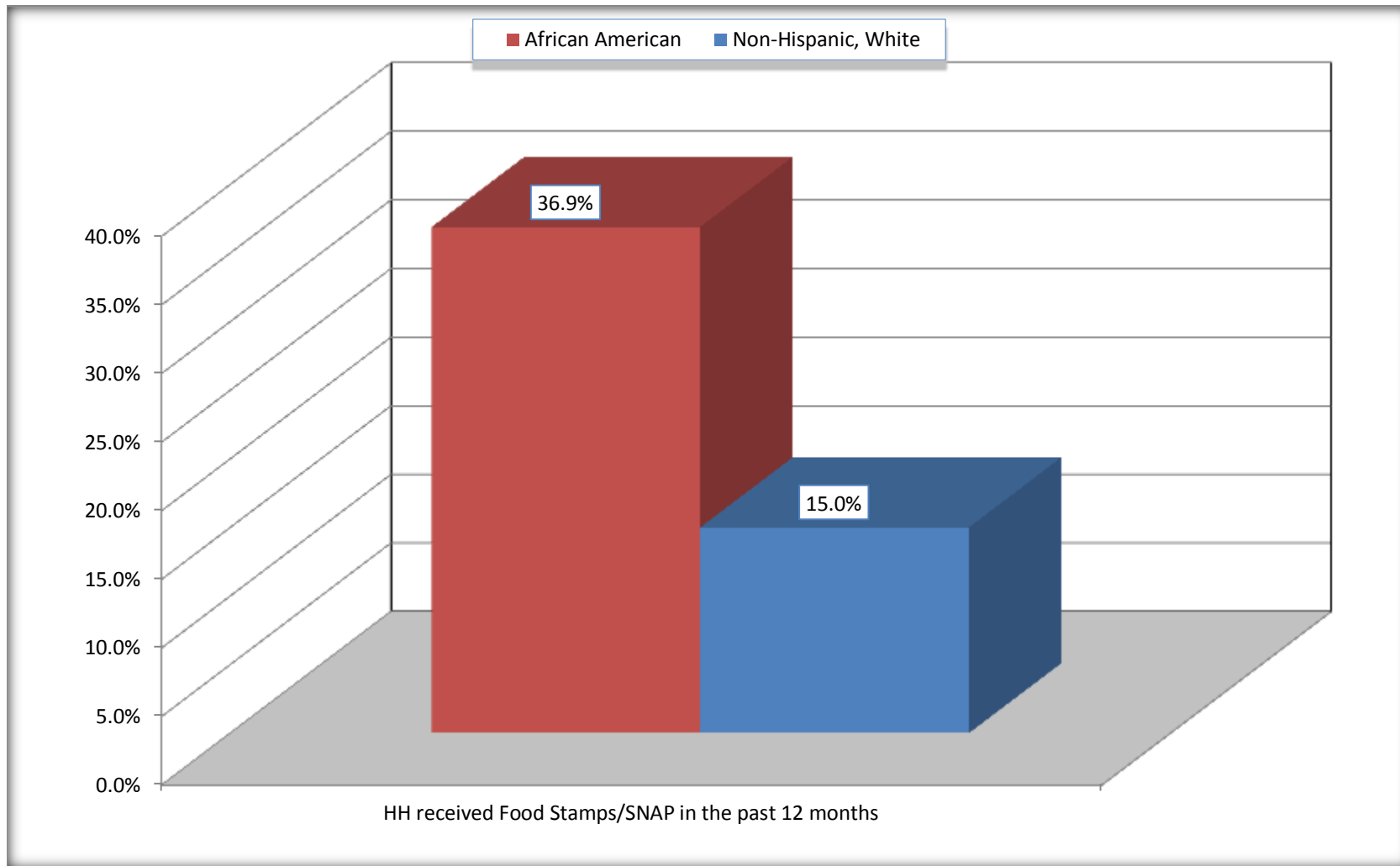
Source: U.S. Census Bureau, 2008-2012 American Community Survey

For information on confidentiality protection, sampling error, nonsampling error, and definitions, see Survey Methodology.

<http://www.census.gov/acs/www/UseData/index.htm>

Receipt of Food Stamps/SNAP in the Past 12 Months by Household

Bastrop city, Louisiana



Source: B22005. RECEIPT OF FOOD STAMPS/SNAP IN THE PAST 12 MONTHS BY RACE OF HOUSEHOLDER
Data Set: 2008-2012 American Community Survey 5-Year Estimates

C23002. SEX BY AGE BY EMPLOYMENT STATUS FOR THE POPULATION 16 YEARS AND OVER

Data Set: 2008-2012 American Community Survey 5-Year Estimates

	Bastrop city, Louisiana					
	African American	Margin of Error (+/-)	% of AA Total	White, Not Hispanic	Margin of Error (+/-)	% of NHW Total
Total:	6,106	284	100.0%	2,307	315	100.0%
In labor force:	3,551	NC	58.2%	838	NC	36.3%
In Armed Forces	0	NC	0.0%	0	NC	0.0%
Civilian:	3,479	NC	57.0%	781	NC	33.9%
Employed	2,940	NC	48.1%	744	NC	32.2%
Unemployed	611	NC	10.0%	94	NC	4.1%
Not in labor force	2,555	NC	41.8%	1,469	NC	63.7%
Male:	2,640	182	43.2%	1,013	166	43.9%
16 to 64 years:	2,403	191	39.4%	647	148	28.0%
In labor force:	1,486	209	24.3%	397	122	17.2%
In Armed Forces	0	19	0.0%	0	19	0.0%
Civilian:	1,486	209	24.3%	397	122	17.2%
Employed	1,028	200	16.8%	338	118	14.7%
Unemployed	458	152	7.5%	59	41	2.6%
Not in labor force	917	184	15.0%	250	84	10.8%
65 years and over:	237	69	3.9%	366	92	15.9%
In labor force:	0	19	0.0%	27	40	1.2%
Employed	0	19	0.0%	27	40	1.2%
Unemployed	0	19	0.0%	0	19	0.0%
Not in labor force	237	69	3.9%	339	81	14.7%

	Bastrop city, Louisiana					
	African American	Margin of Error (+/-)	% of AA Total	White, Not Hispanic	Margin of Error (+/-)	% of NHW Total
Female:	3,466	205	56.8%	1,294	194	56.1%
16 to 64 years:	3,001	202	49.1%	792	186	34.3%
In labor force:	1,993	280	32.6%	384	106	16.6%
In Armed Forces	0	19	0.0%	0	19	0.0%
Civilian:	1,993	280	32.6%	384	106	16.6%
Employed	1,840	276	30.1%	349	103	15.1%
Unemployed	153	83	2.5%	35	34	1.5%
Not in labor force	1,008	221	16.5%	408	157	17.7%
65 years and over:	465	73	7.6%	502	102	21.8%
In labor force:	72	45	1.2%	30	28	1.3%
Employed	72	45	1.2%	30	28	1.3%
Unemployed	0	19	0.0%	0	19	0.0%
Not in labor force	393	75	6.4%	472	101	20.5%

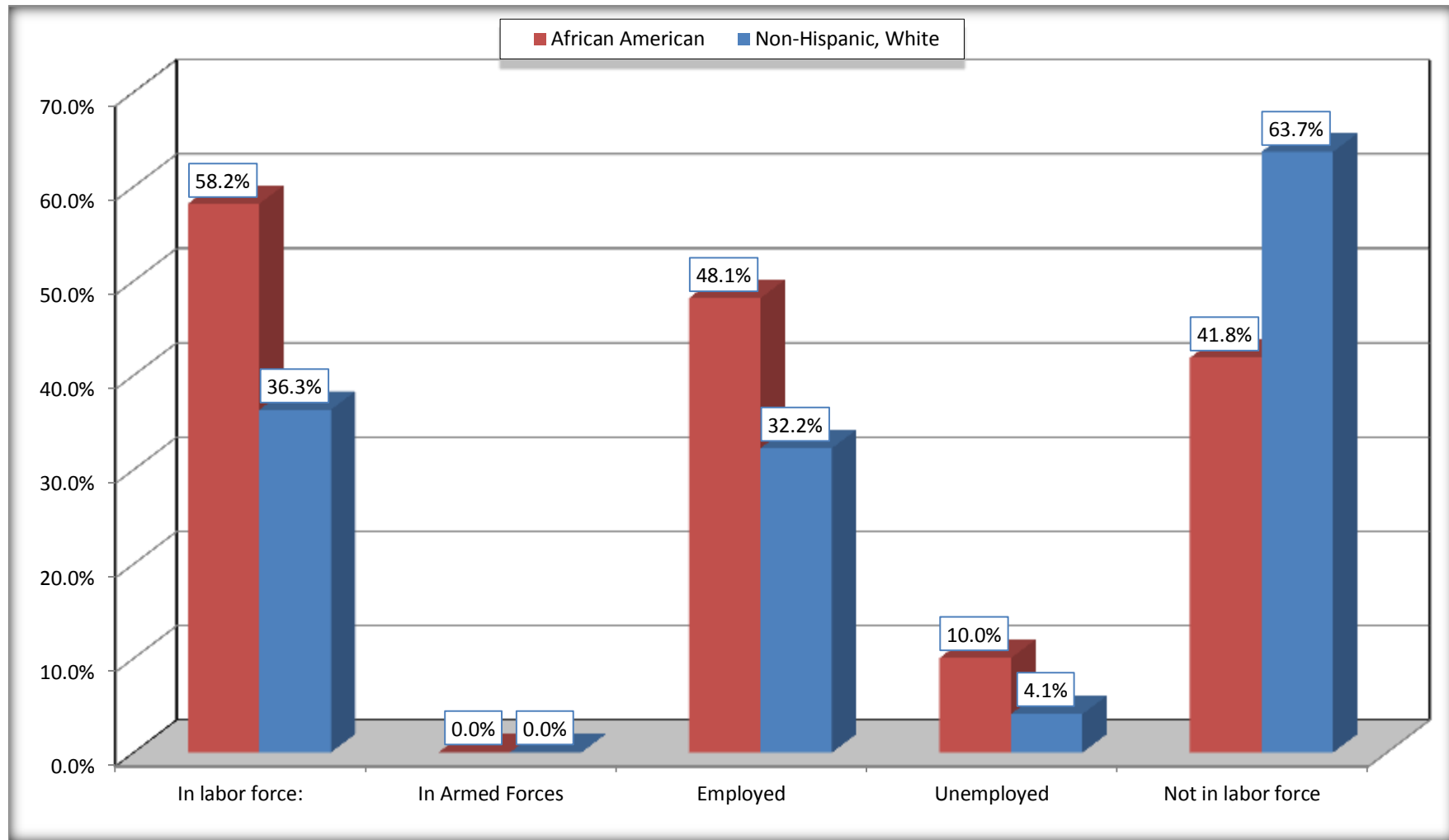
Source: U.S. Census Bureau, 2008-2012 American Community Survey

For information on confidentiality protection, sampling error, nonsampling error, and definitions, see Survey Methodology.

<http://www.census.gov/acs/www/UseData/index.htm>

Employment Status for the Population 16 years and over

Bastrop city, Louisiana

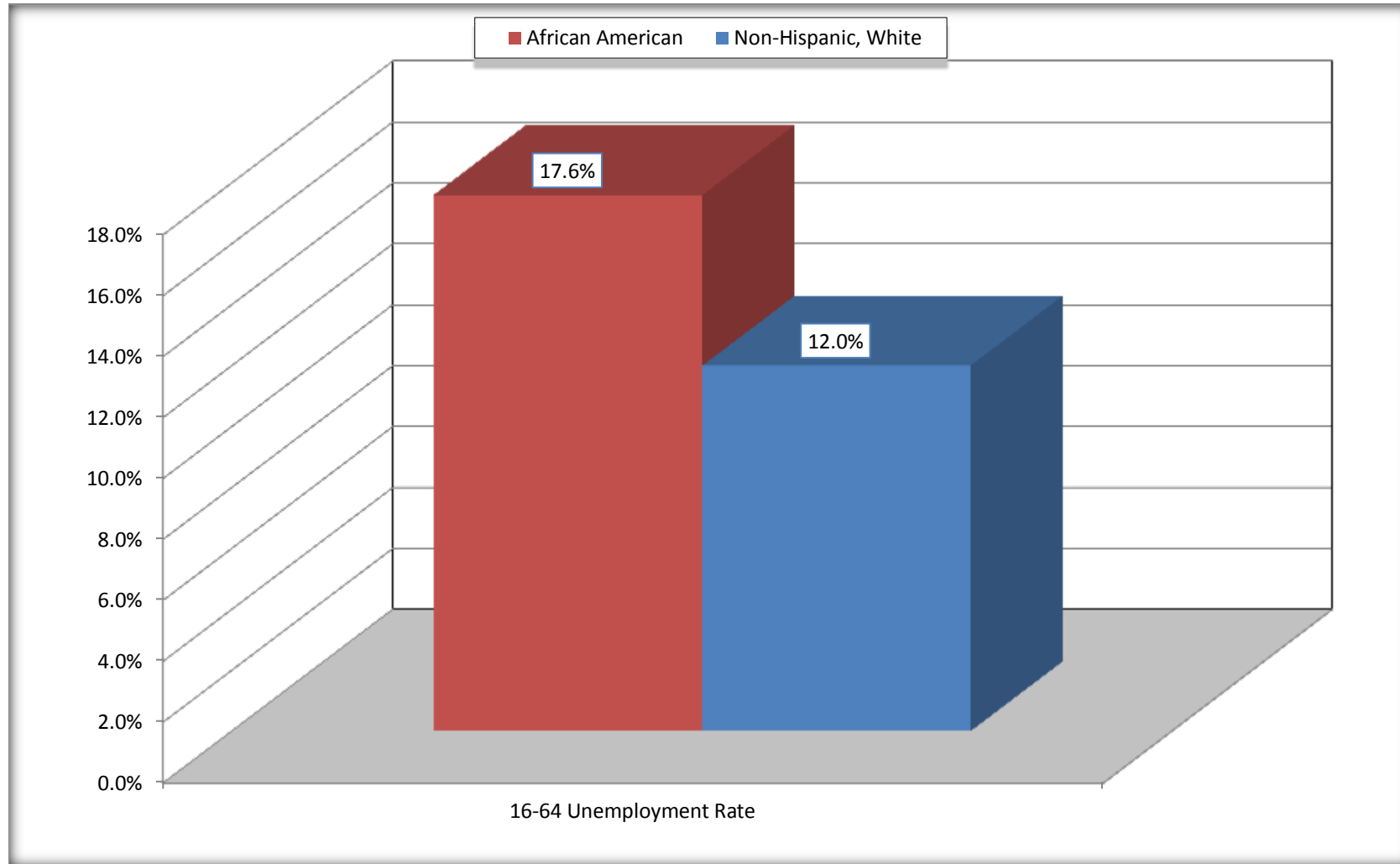


Source: C23002. SEX BY AGE BY EMPLOYMENT STATUS FOR THE POPULATION 16 YEARS AND OVER

Data Set: 2008-2012 American Community Survey 5-Year Estimates

Unemployment of Working Age Population (Ages 16 to 64) (As a Percent of 16-64 Civilian Labor Force)

Bastrop city, Louisiana



Source: C23002. SEX BY AGE BY EMPLOYMENT STATUS FOR THE POPULATION 16 YEARS AND OVER
Data Set: 2008-2012 American Community Survey 5-Year Estimates

C24010. SEX BY OCCUPATION FOR THE CIVILIAN EMPLOYED POPULATION 16 YEARS AND OVER

Data Set: 2008-2012 American Community Survey 5-Year Estimates

	Bastrop city, Louisiana					
	African American	Margin of Error (+/-)	% of AA Total	White, Not Hispanic	Margin of Error (+/-)	% of NHW Total
Total:	2,940	348	100.0%	744	187	100.0%
Management, professional, and related occupations	489	NC	16.6%	216	NC	29.0%
Service occupations	961	NC	32.7%	61	NC	8.2%
Sales and office occupations	579	NC	19.7%	281	NC	37.8%
Natural resources, construction, and maintenance occupations:	221	NC	7.5%	78	NC	10.5%
Production, transportation, and material moving occupations	690	NC	23.5%	108	NC	14.5%
Male:	1,028	200	35.0%	365	118	49.1%
Management, business, science, and arts occupations:	120	65	4.1%	81	50	10.9%
Service occupations	257	103	8.7%	2	5	0.3%
Sales and office occupations	91	90	3.1%	117	75	15.7%
Natural resources, construction, and maintenance occupations:	192	104	6.5%	78	62	10.5%
Production, transportation, and material moving occupations	368	150	12.5%	87	62	11.7%
Female:	1,912	281	65.0%	379	110	50.9%
Management, professional, and related occupations	369	119	12.6%	135	74	18.1%
Service occupations	704	211	23.9%	59	46	7.9%
Sales and office occupations	488	178	16.6%	164	93	22.0%
Natural resources, construction, and maintenance occupations:	29	47	1.0%	0	19	0.0%
Production, transportation, and material moving occupations	322	154	11.0%	21	21	2.8%

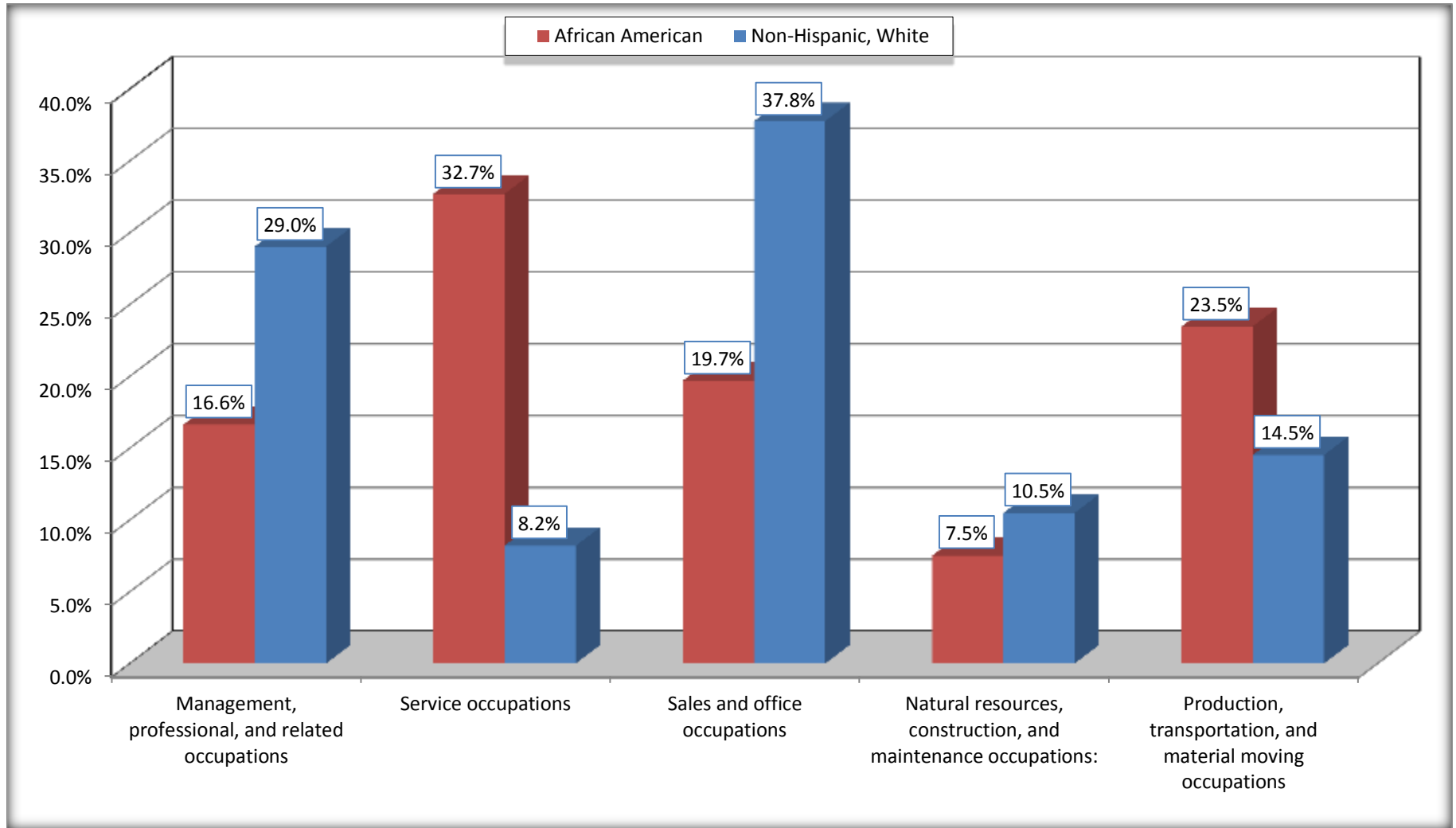
Source: U.S. Census Bureau, 2008-2012 American Community Survey

For information on confidentiality protection, sampling error, nonsampling error, and definitions, see Survey Methodology.

<http://www.census.gov/acs/www/UseData/index.htm>

Occupation for the Civilian Employed 16 Years and Over Population

Bastrop city, Louisiana



Source: C24010. SEX BY OCCUPATION FOR THE CIVILIAN EMPLOYED POPULATION 16 YEARS AND OVER
Data Set: 2008-2012 American Community Survey 5-Year Estimates

B25003. TENURE - Universe: OCCUPIED HOUSING UNITS

Data Set: 2008-2012 American Community Survey 5-Year Estimates

	Bastrop city, Louisiana					
	African American	Margin of Error (+/-)	% of AA Total	White, Not Hispanic	Margin of Error (+/-)	% of NHW Total
Total:	2,848	217	100.0%	1,076	156	100.0%
Owner occupied	1,399	175	49.1%	803	142	74.6%
Renter occupied	1,449	225	50.9%	273	92	25.4%

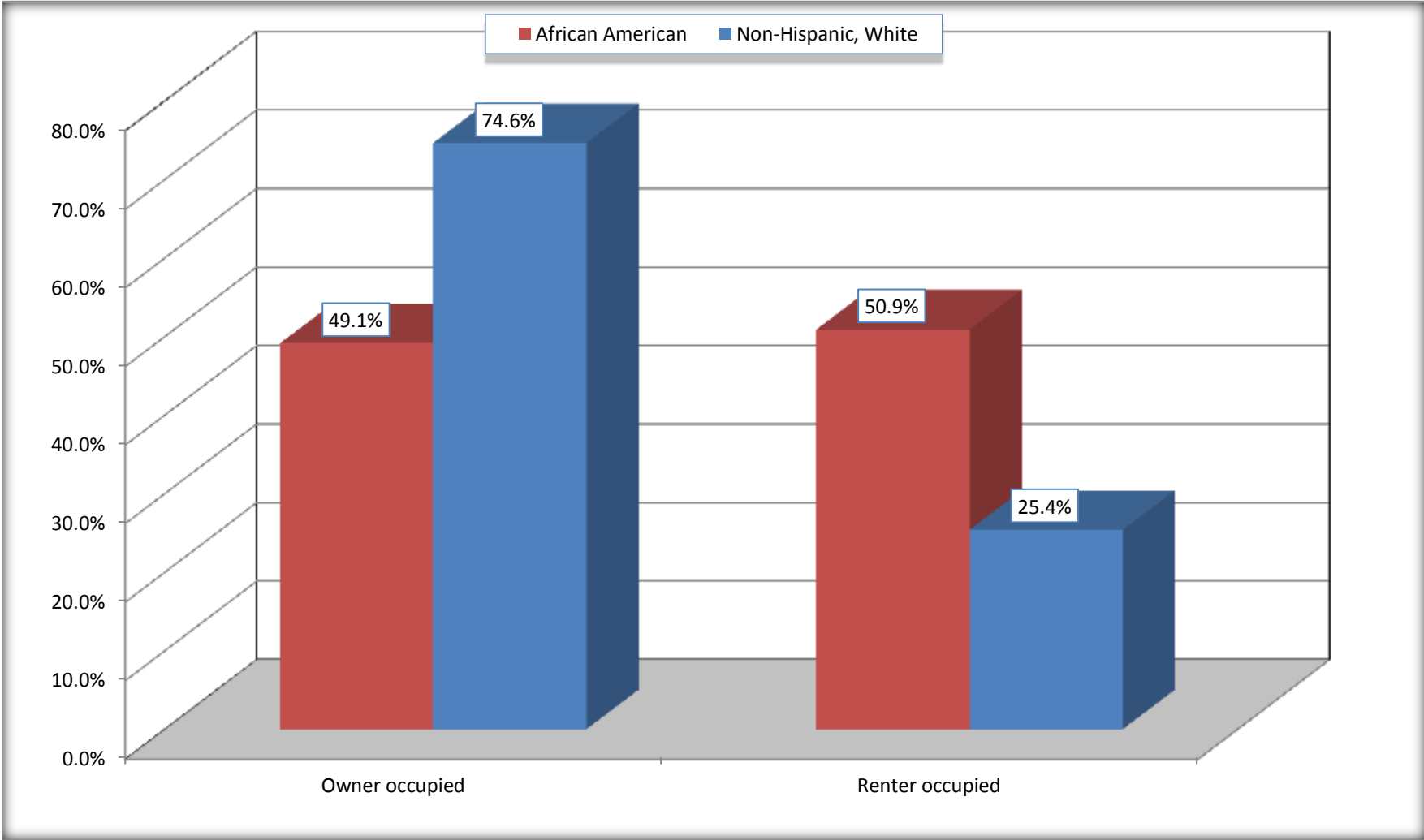
Source: U.S. Census Bureau, 2008-2012 American Community Survey

For information on confidentiality protection, sampling error, nonsampling error, and definitions, see Survey Methodology.

<http://www.census.gov/acs/www/UseData/index.h>

Home Owners and Renters by Household

Bastrop city, Louisiana



Source: B25003. TENURE - Universe: OCCUPIED HOUSING UNITS
Data Set: 2008-2012 American Community Survey 5-Year Estimates

B25014. OCCUPANTS PER ROOM - Universe: OCCUPIED HOUSING UNITS

Data Set: 2008-2012 American Community Survey 5-Year Estimates

	Bastrop city, Louisiana					
	African American	Margin of Error (+/-)	% of AA Total	White, Not Hispanic	Margin of Error (+/-)	% of NHW Total
Total:	2,848	217	100.0%	1,076	156	100.0%
1.00 or less occupants per room	2,693	239	94.6%	1,068	157	99.3%
1.01 or more occupants per room	155	90	5.4%	8	14	0.7%

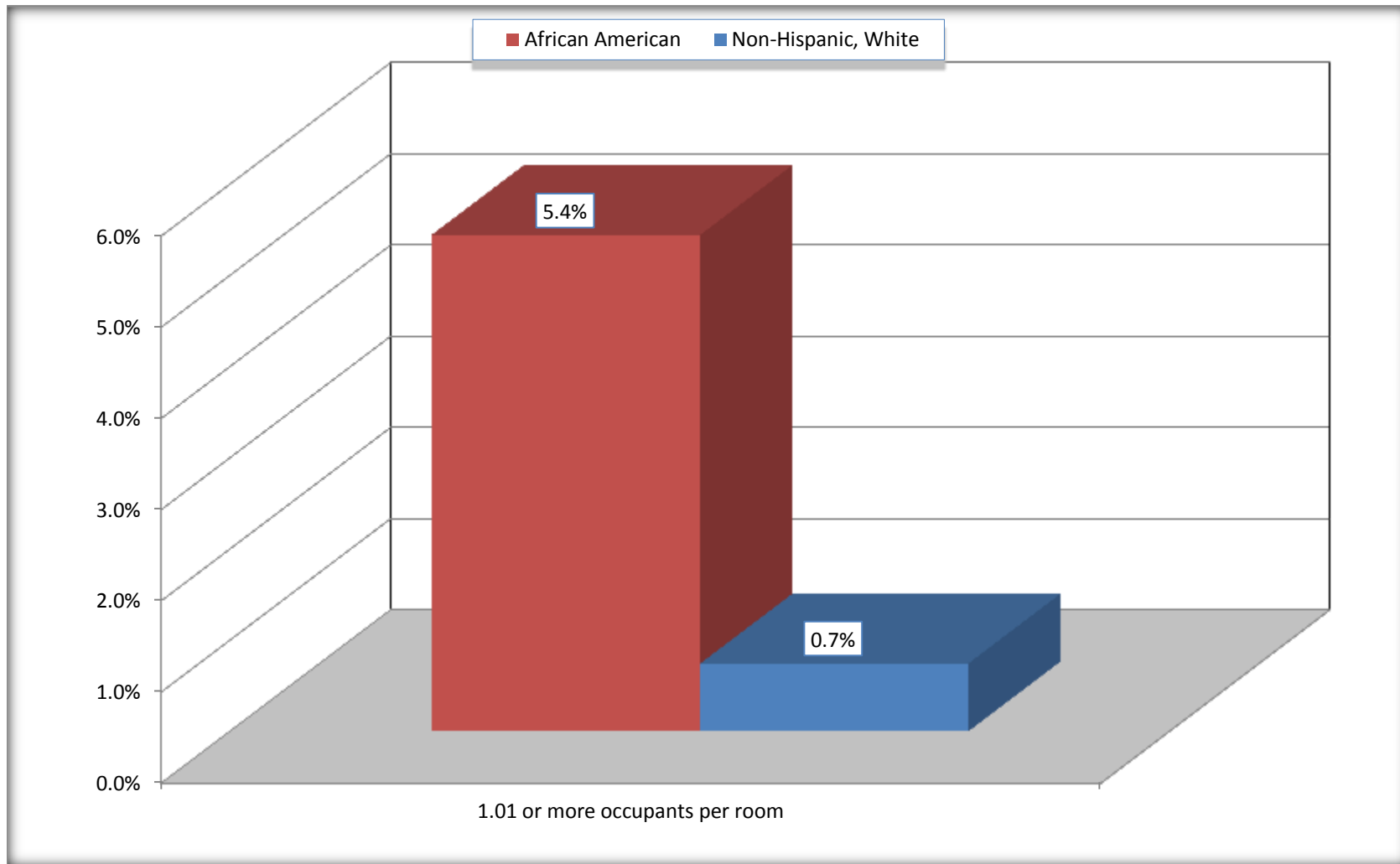
Source: U.S. Census Bureau, 2008-2012 American Community Survey

For information on confidentiality protection, sampling error, nonsampling error, and definitions, see Survey Methodology.

<http://www.census.gov/acs/www/UseData/index.ht>

More than One Person per Room (Crowding) by Household

Bastrop city, Louisiana



Source: B25014. OCCUPANTS PER ROOM - Universe: OCCUPIED HOUSING UNITS
Data Set: 2008-2012 American Community Survey 5-Year Estimates

B18101. AGE BY DISABILITY STATUS

Data Set: 2008-2012 American Community Survey 5-Year Estimates

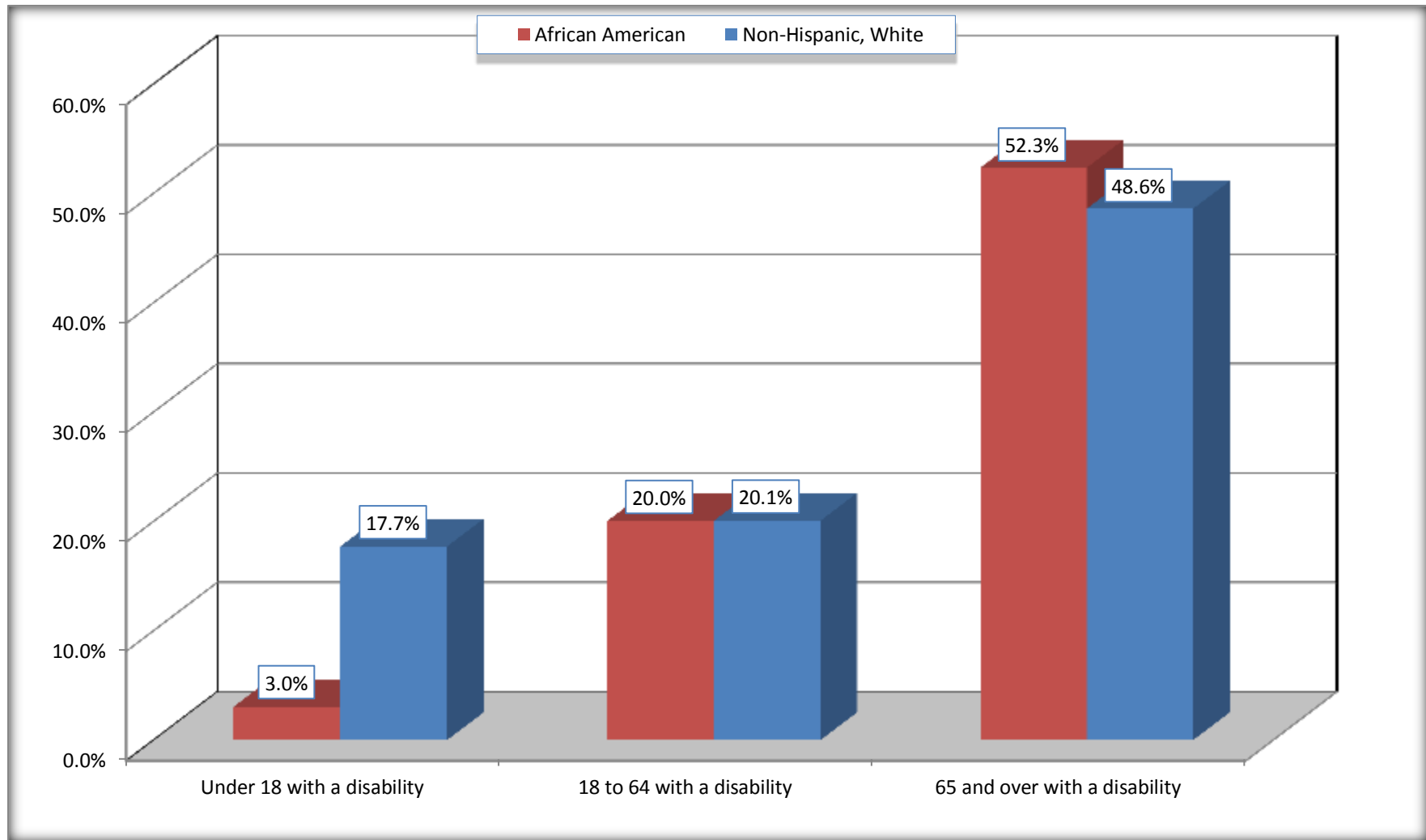
	Bastrop city, Louisiana					
	African American	Margin of Error (+/-)	% of AA Total	White, Not Hispanic	Margin of Error (+/-)	% of NHW Total
Total:	8,438	382	100.0%	2,426	393	100.0%
Under 18 years:	2,760	240	32.7%	384	19	15.8%
With a disability	84	56	1.0%	68	83	2.8%
No disability	2,676	237	31.7%	316	154	13.0%
18 to 64 years:	5,017	263	59.5%	1,256	273	51.8%
With a disability	1,005	210	11.9%	252	115	10.4%
No disability	4,012	303	47.5%	1,004	255	41.4%
65 years and over:	661	110	7.8%	786	157	32.4%
With a disability	346	94	4.1%	382	104	15.7%
No disability	315	107	3.7%	404	117	16.7%

Source: U.S. Census Bureau, 2008-2012 American Community Survey

For information on confidentiality protection, sampling error, nonsampling error, and definitions, see Survey Methodology.

<http://www.census.gov/acs/www/UseData/index.htm>

Disability by Age Bastrop city, Louisiana



Source: B18101. AGE BY DISABILITY STATUS
Data Set: 2008-2012 American Community Survey 5-Year Estimates

C27001B. HEALTH INSURANCE COVERAGE STATUS BY AGE

Data Set: 2008-2012 American Community Survey 5-Year Estimates

	Bastrop city, Louisiana					
	African American	Margin of Error (+/-)	% of AA Total	White, Not Hispanic	Margin of Error (+/-)	% of NHW Total
Total:	8,438	382	100.0%	2,426	393	100.0%
Under 18 years:	2,760	240	32.7%	384	165	15.8%
With health insurance coverage	2,305	267	27.3%	302	114	12.4%
No health insurance coverage	455	280	5.4%	82	113	3.4%
18 to 64 years:	5,017	263	59.5%	1,256	273	51.8%
With health insurance coverage	3,196	347	37.9%	683	188	28.2%
No health insurance coverage	1,821	309	21.6%	573	225	23.6%
65 years and over:	661	110	7.8%	786	157	32.4%
With health insurance coverage	661	110	7.8%	760	153	31.3%
No health insurance coverage	0	19	0.0%	26	39	1.1%

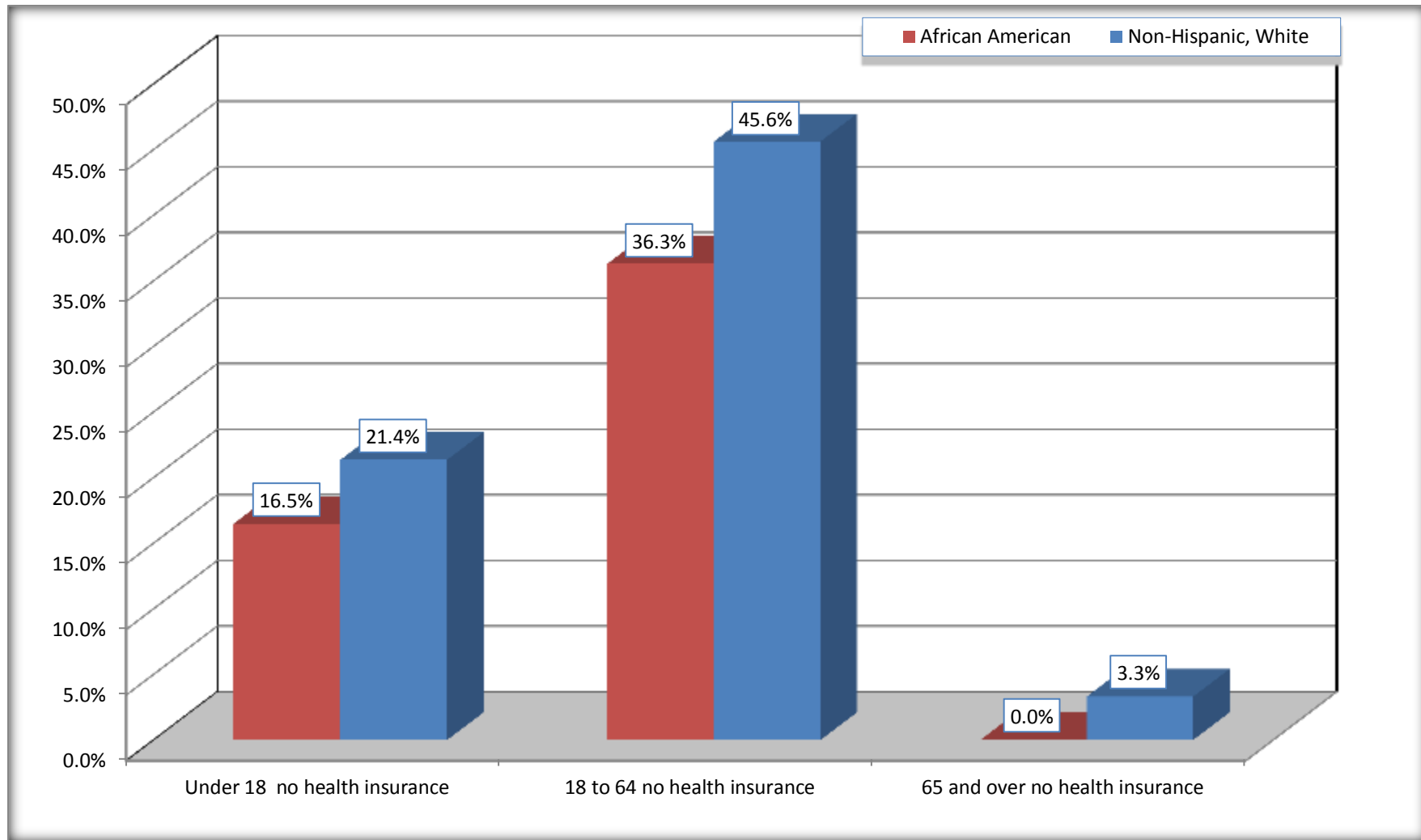
Source: U.S. Census Bureau, 2008-2012 American Community Survey

For information on confidentiality protection, sampling error, nonsampling error, and definitions, see Survey Methodology.

<http://www.census.gov/acs/www/UseData/index.htm>

Lack of Health Insurance Coverage by Age

Bastrop city, Louisiana



Source: C27001B. HEALTH INSURANCE COVERAGE STATUS BY AGE
Data Set: 2008-2012 American Community Survey 5-Year Estimates