

# **Selected Socio-Economic Data**

## **Shively city, Kentucky**

### **African American and White, Not Hispanic**

**Data Set: 2008-2012 American Community Survey 5-Year Estimates**

[www.fairvote2020.org](http://www.fairvote2020.org)

[www.fairdata2000.com](http://www.fairdata2000.com)

[29-Dec-13](#)

**C02003.DETAILED RACE - Universe: TOTAL POPULATION**

Data Set: 2008-2012 American Community Survey 5-Year Estimates

	Shively city, Kentucky		
	Population	Margin of Error (+/-)	% of Total
<b>Total:</b>	<b>15,282</b>	<b>58</b>	<b>100.0%</b>
Population of one race:	14,560	404	95.3%
White	7,192	539	47.1%
Black or African American	6,936	613	45.4%
American Indian and Alaska Native	10	14	0.1%
Asian alone	194	164	1.3%
Native Hawaiian and Other Pacific Islander	0	19	0.0%
Some other race	228	186	1.5%
Population of two or more races:	722	399	4.7%
Two races including Some other race	26	40	0.2%
Two races excluding Some other race, and three or more races	696	402	4.6%
Population of two races:	629	385	4.1%
White; Black or African American	453	381	3.0%
White; American Indian and Alaska Native	87	64	0.6%
White; Asian	31	41	0.2%
Black or African American; American Indian and Alaska Native	32	51	0.2%
All other two race combinations	26	40	0.2%
Population of three races	93	120	0.6%
Population of four or more races	0	19	0.0%

Note: Hispanics may be of any race. See Table B03002 and chart.

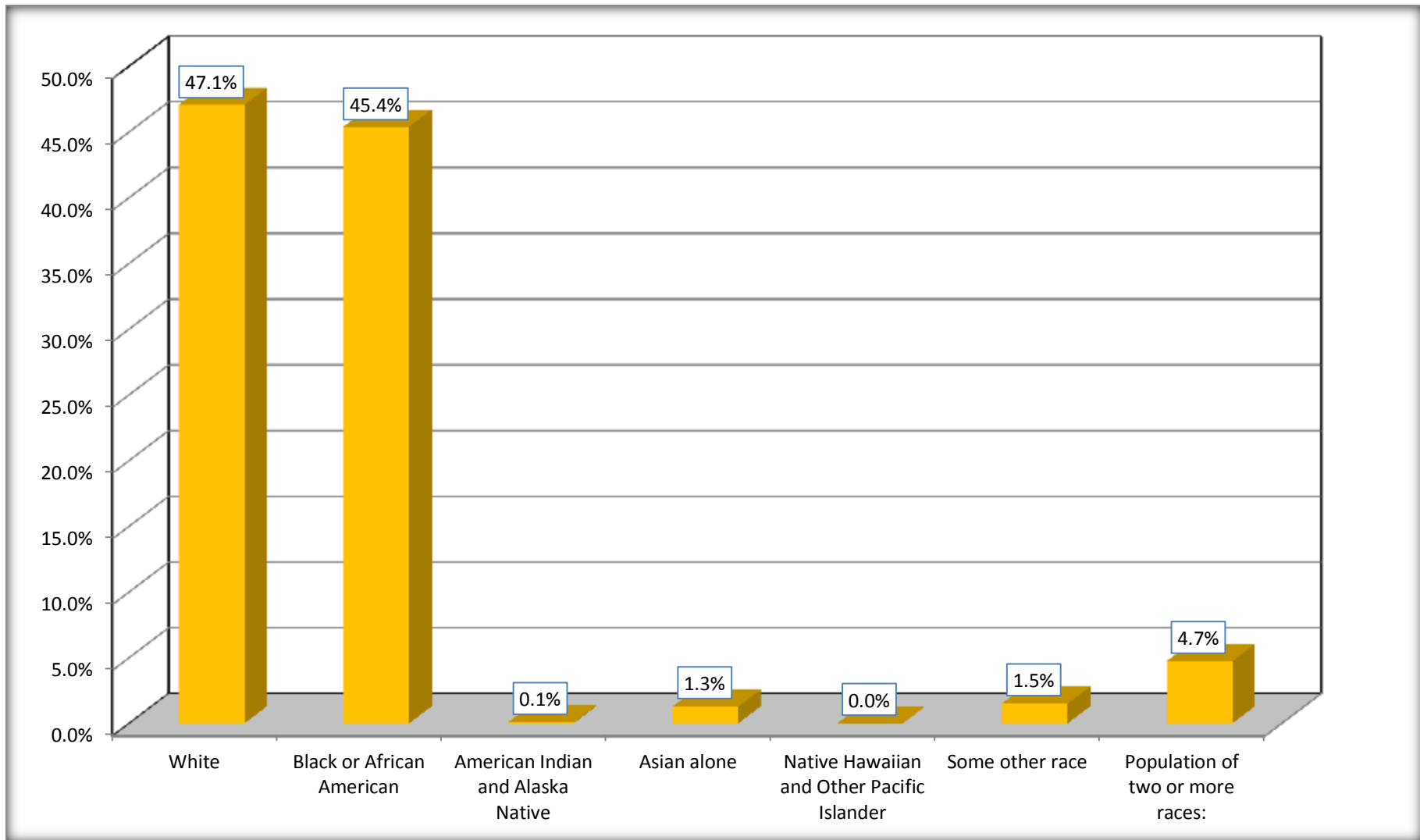
Source: U.S. Census Bureau, 2008-2012 American Community Survey

Although the American Community Survey (ACS) produces population, demographic and housing unit estimates, it is the Census Bureau's Population Estimates Program that produces and disseminates the official estimates of the population for the nation, states, counties, cities and towns and estimates of housing units for states and counties.

For information on confidentiality protection, sampling error, nonsampling error, and definitions, see Survey Methodology.

<http://www.census.gov/acs/www/UseData/index.htm>

## Population by Race Shively city, Kentucky



Source: C02003.DETAILED RACE - Universe: TOTAL POPULATION  
Data Set: 2008-2012 American Community Survey 5-Year Estimates

**B03002. HISPANIC OR LATINO ORIGIN BY RACE - Universe: TOTAL POPULATION**

Data Set: 2008-2012 American Community Survey 5-Year Estimates

	Shively city, Kentucky		
	Population	Margin of Error (+/-)	% of Total
<b>Total:</b>	15,282	58	<b>100.0%</b>
Not Hispanic or Latino:	14,848	195	97.2%
White alone	6,984	538	45.7%
Black or African American alone	6,936	613	45.4%
American Indian and Alaska Native alone	10	14	0.1%
Asian alone	194	164	1.3%
Native Hawaiian and Other Pacific Islander alone	0	19	0.0%
Some other race alone	9	17	0.1%
Two or more races:	715	399	4.7%
Two races including Some other race	26	40	0.2%
Two races excluding Some other race, and three or more races	689	401	4.5%
Hispanic or Latino	434	190	2.8%

Source: U.S. Census Bureau, 2008-2012 American Community Survey

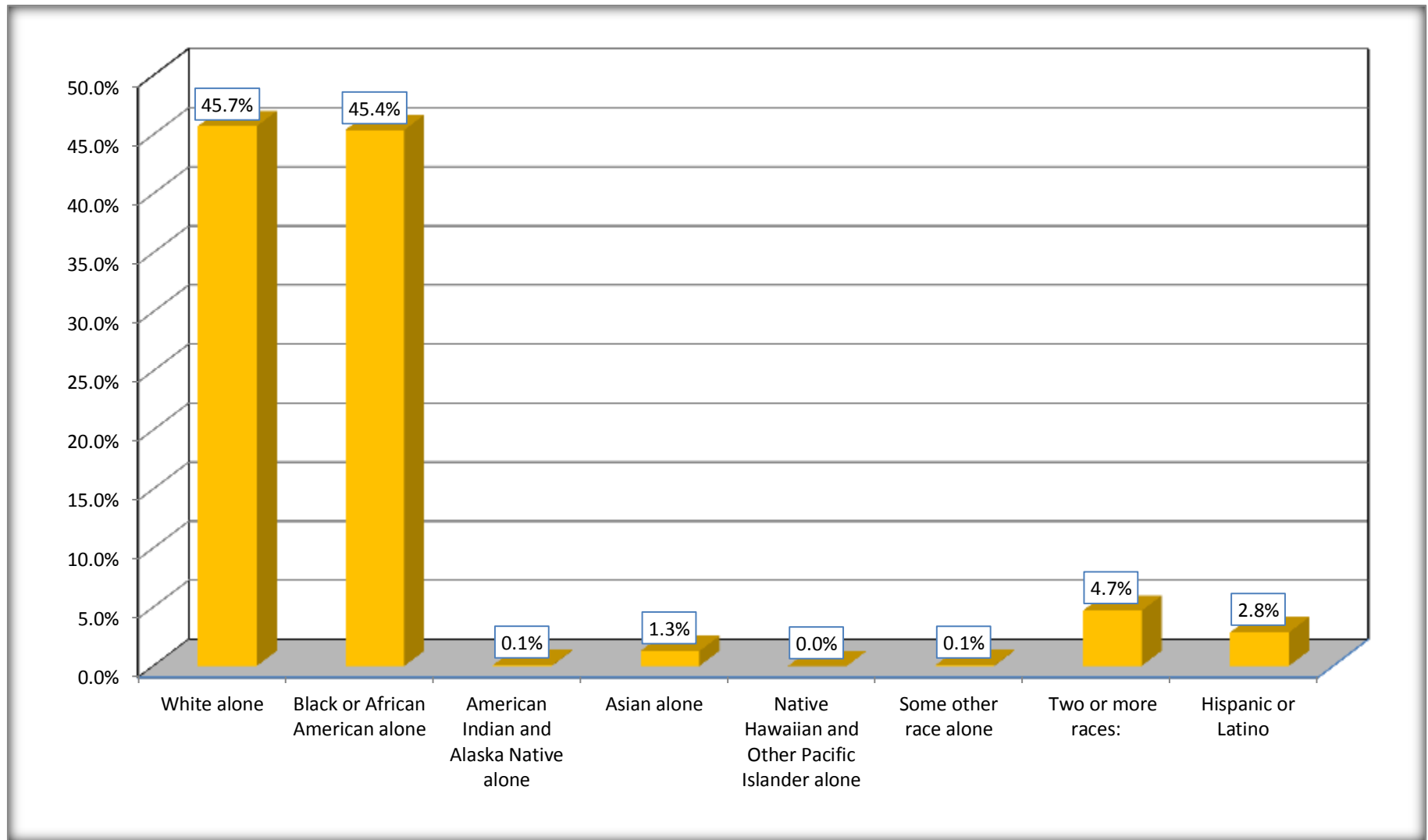
Although the American Community Survey (ACS) produces population, demographic and housing unit estimates, it is the Census Bureau's Population Estimates Program that produces and disseminates the official estimates of the population for the nation, states, counties, cities and towns and estimates of housing units for states and counties.

For information on confidentiality protection, sampling error, nonsampling error, and definitions, see Survey Methodology.

<http://www.census.gov/acs/www/UseData/index.htm>

# Non-Hispanic by Race and Hispanic Population

## Shively city, Kentucky



Source: B03002. HISPANIC OR LATINO ORIGIN BY RACE - Universe: TOTAL POPULATION  
Data Set: 2008-2012 American Community Survey 5-Year Estimates

**B03002. HISPANIC OR LATINO ORIGIN BY RACE**

Data Set: 2008-2012 American Community Survey 5-Year Estimates

	Shively city, Kentucky		
	Population	Margin of Error (+/-)	% of Total
Hispanic or Latino:	434	190	<b>100.0%</b>
White alone	208	269	47.9%
Black or African American alone	0	19	0.0%
American Indian and Alaska Native alone	0	19	0.0%
Asian alone	0	19	0.0%
Native Hawaiian and Other Pacific Islander alone	0	19	0.0%
Some other race alone	219	186	50.5%
Two or more races:	7	11	1.6%
Two races including Some other race	0	19	0.0%
Two races excluding Some other race, and three or more races	7	11	1.6%

Source: U.S. Census Bureau, 2008-2012 American Community Survey

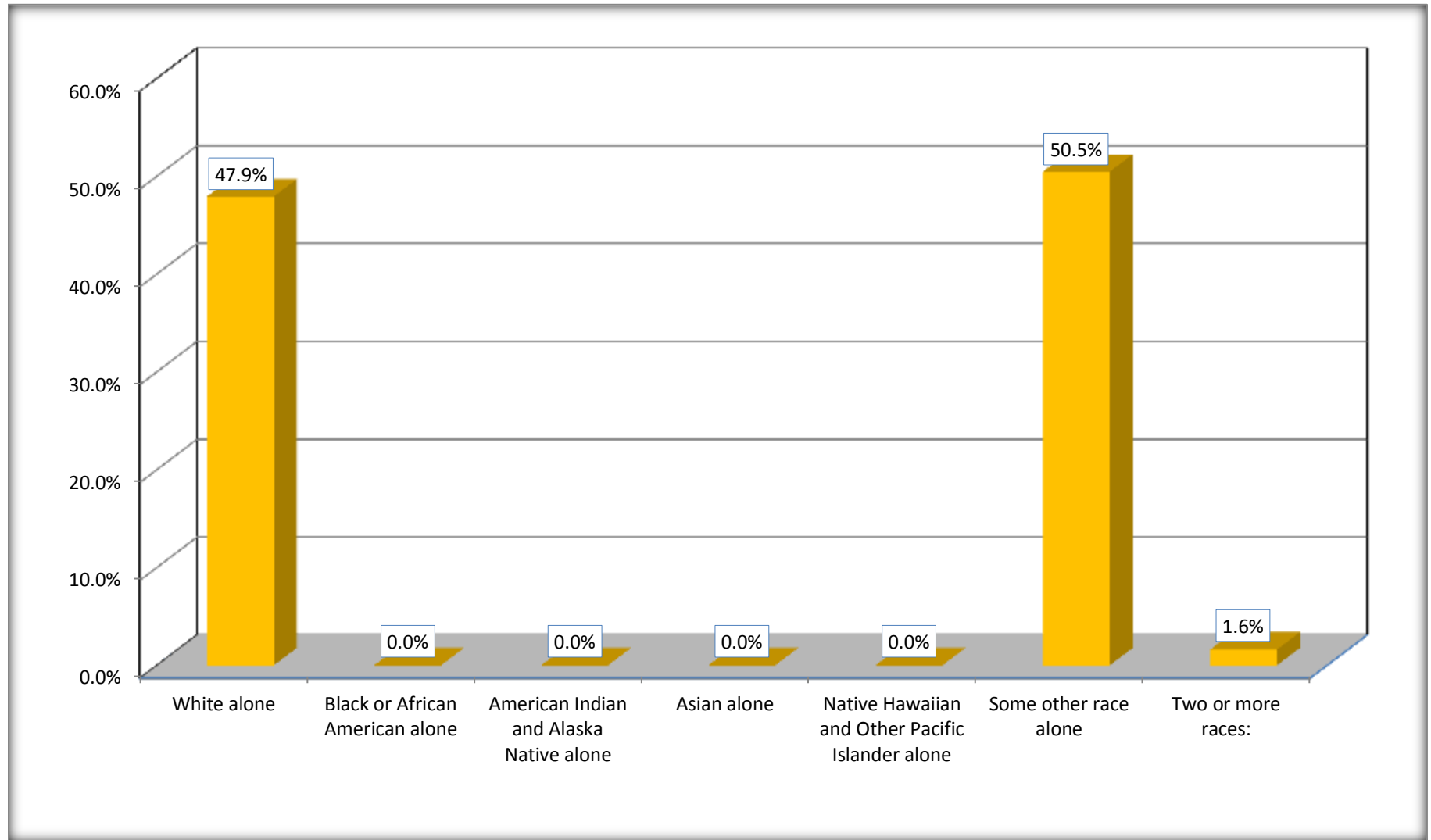
Although the American Community Survey (ACS) produces population, demographic and housing unit estimates, it is the Census Bureau's Population Estimates Program that produces and disseminates the official estimates of the population for the nation, states, counties, cities and towns and estimates of housing units for states and counties.

For information on confidentiality protection, sampling error, nonsampling error, and definitions, see Survey Methodology.

<http://www.census.gov/acs/www/UseData/index.htm>

## Hispanic or Latino Origin by Race

### Shively city, Kentucky



Source: B03002. HISPANIC OR LATINO ORIGIN BY RACE  
Data Set: 2008-2012 American Community Survey 5-Year Estimates

**B01001. SEX BY AGE**

Data Set: 2008-2012 American Community Survey 5-Year Estimates

	Shively city, Kentucky					
	African American	Margin of Error (+/-)	% of AA Total	White, Not Hispanic	Margin of Error (+/-)	% of NHW Total
<b>Total:</b>	<b>6,936</b>	<b>613</b>	<b>100.0%</b>	<b>6,984</b>	<b>538</b>	<b>100.0%</b>
Under 18 years	1,795	NC	25.9%	1,098	NC	15.7%
18 to 64 years	4,528	NC	65.3%	4,204	NC	60.2%
65 years and over	613	NC	8.8%	1,682	NC	24.1%
Male:	3,130	350	45.1%	3,152	389	45.1%
Under 18 years	883	NC	12.7%	551	NC	7.9%
18 to 64 years	1,938	NC	27.9%	2,124	NC	30.4%
65 years and over	309	NC	4.5%	477	NC	6.8%
Female:	3,806	437	54.9%	3,832	412	54.9%
Under 18 years	912	NC	13.1%	547	NC	7.8%
18 to 64 years	2,590	NC	37.3%	2,080	NC	29.8%
65 years and over	304	NC	4.4%	1,205	NC	17.3%

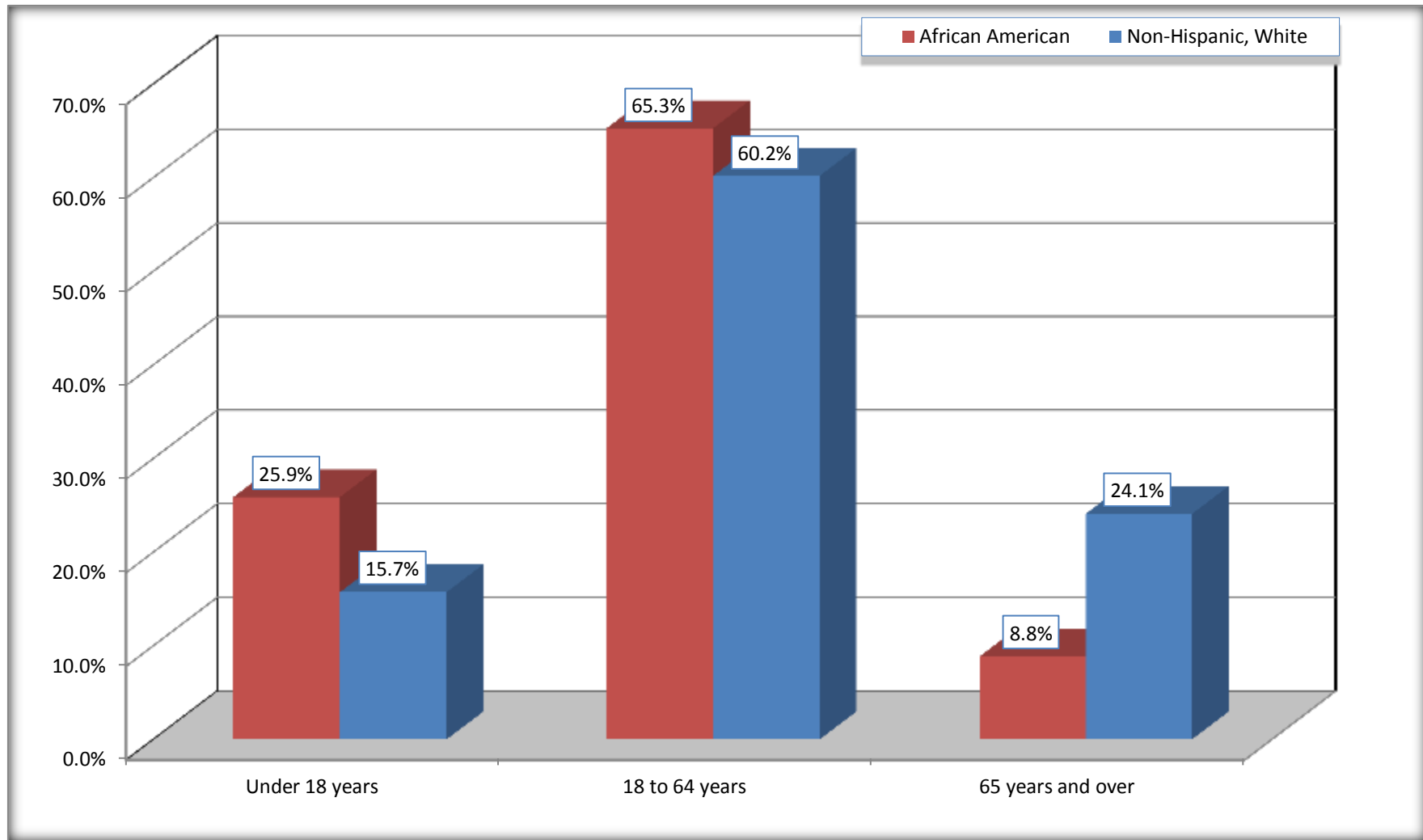
Source: U.S. Census Bureau, 2008-2012 American Community Survey

Although the American Community Survey (ACS) produces population, demographic and housing unit estimates, it is the Census Bureau's Population Estimates Program that produces and disseminates the official estimates of the population for the nation, states, counties, cities and towns and estimates of housing units for states and counties.

For information on confidentiality protection, sampling error, nonsampling error, and definitions, see Survey Methodology.  
<http://www.census.gov/acs/www/UseData/index.htm>



## Population by Age Shively city, Kentucky



Source: B01001. SEX BY AGE  
Data Set: 2008-2012 American Community Survey 5-Year Estimates

**B05003. SEX BY AGE BY CITIZENSHIP STATUS**

Data Set: 2008-2012 American Community Survey 5-Year Estimates

	Shively city, Kentucky					
	African American	Margin of Error (+/-)	% of AA Total by Age	White, Not Hispanic	Margin of Error (+/-)	% of NHW Total by Age
<b>Total:</b>	<b>6,936</b>	<b>613</b>	<b>100.0%</b>	<b>6,984</b>	<b>538</b>	<b>100.0%</b>
<b>Under 18 years:</b>	<b>1,795</b>	<b>NC</b>	<b>100.0%</b>	<b>1,098</b>	<b>NC</b>	<b>100.0%</b>
Native	1,795	NC	100.0%	1,085	NC	98.8%
Foreign born:	0	NC	0.0%	13	NC	1.2%
Naturalized U.S. citizen	0	NC	0.0%	13	NC	1.2%
Not a U.S. citizen	0	NC	0.0%	0	NC	0.0%
<b>18 years and over:</b>	<b>5,141</b>	<b>NC</b>	<b>100.0%</b>	<b>5,886</b>	<b>NC</b>	<b>100.0%</b>
Native	5,141	NC	100.0%	5,848	NC	99.4%
Foreign born:	0	NC	0.0%	38	NC	0.6%
Naturalized U.S. citizen	0	NC	0.0%	29	NC	0.5%
Not a U.S. citizen	0	NC	0.0%	9	NC	0.2%
<b>Male:</b>	<b>3,130</b>	<b>350</b>	<b>45.1%</b>	<b>3,152</b>	<b>340</b>	<b>45.1%</b>
<b>Under 18 years:</b>	<b>883</b>	<b>206</b>	<b>100.0%</b>	<b>551</b>	<b>164</b>	<b>100.0%</b>
Native	883	206	100.0%	538	157	97.6%
Foreign born:	0	19	0.0%	13	22	2.4%
Naturalized U.S. citizen	0	19	0.0%	13	22	2.4%
Not a U.S. citizen	0	19	0.0%	0	19	0.0%
<b>18 years and over:</b>	<b>2,247</b>	<b>325</b>	<b>100.0%</b>	<b>2,601</b>	<b>282</b>	<b>100.0%</b>
Native	2,247	325	100.0%	2,592	282	99.7%
Foreign born:	0	19	0.0%	9	17	0.3%
Naturalized U.S. citizen	0	19	0.0%	0	19	0.0%
Not a U.S. citizen	0	19	0.0%	9	17	0.3%

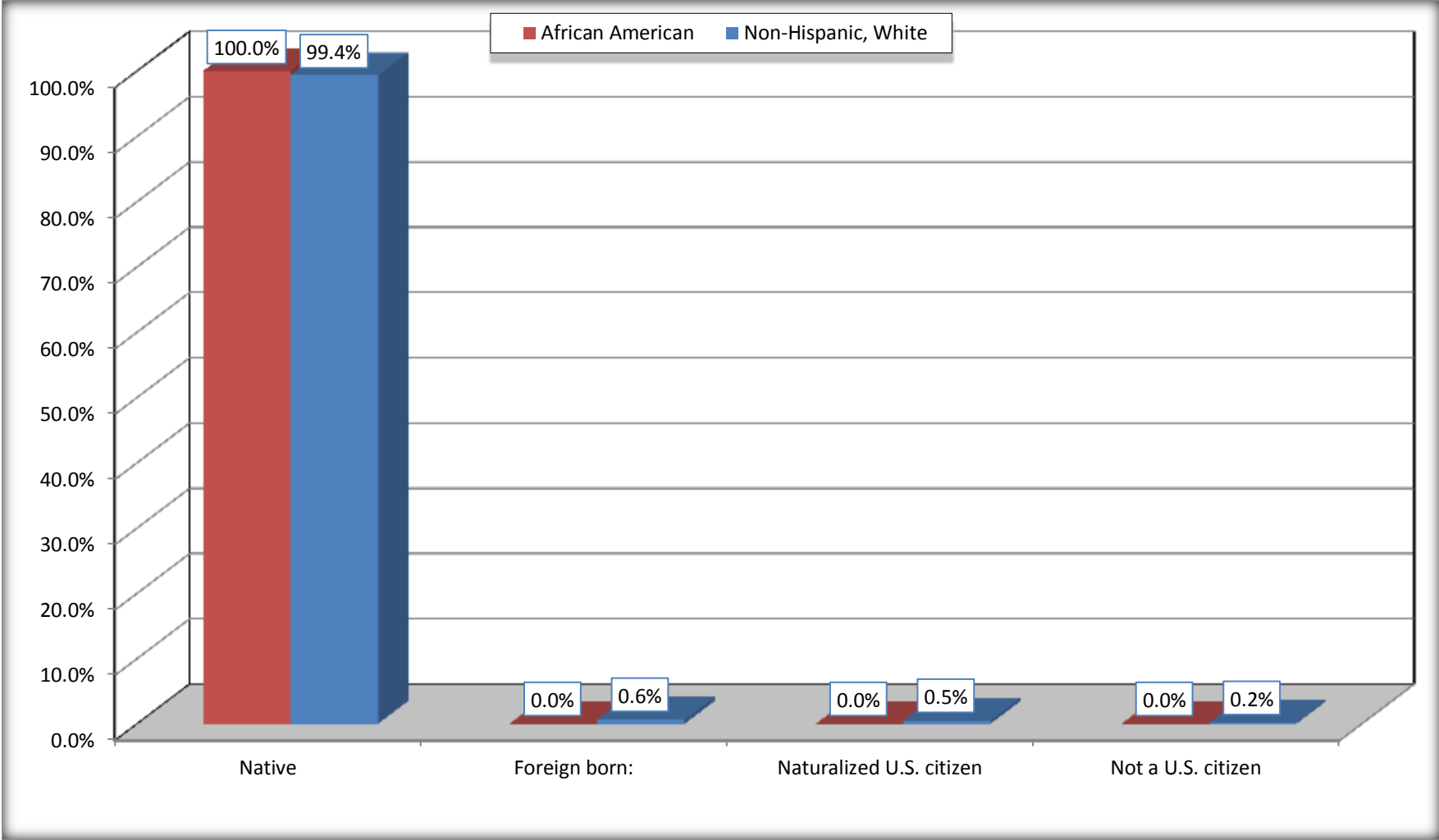
	Shively city, Kentucky					
	African American	Margin of Error (+/-)	% of AA by Age	White, Not Hispanic	Margin of Error (+/-)	% of NHW by Age
<b>Female:</b>	3,806	437	54.9%	3,832	369	54.9%
<b>Under 18 years:</b>	<b>912</b>	<b>233</b>	<b>100.0%</b>	<b>547</b>	<b>188</b>	<b>100.0%</b>
Native	912	233	100.0%	547	188	100.0%
Foreign born:	0	19	0.0%	0	19	0.0%
Naturalized U.S. citizen	0	19	0.0%	0	19	0.0%
Not a U.S. citizen	0	19	0.0%	0	19	0.0%
<b>18 years and over:</b>	<b>2,894</b>	<b>301</b>	<b>100.0%</b>	<b>3,285</b>	<b>292</b>	<b>100.0%</b>
Native	2,894	301	100.0%	3,256	289	99.1%
Foreign born:	0	19	0.0%	29	31	0.9%
Naturalized U.S. citizen	0	19	0.0%	29	31	0.9%
Not a U.S. citizen	0	19	0.0%	0	19	0.0%

Source: U.S. Census Bureau, 2008-2012 American Community Survey

For information on confidentiality protection, sampling error, nonsampling error, and definitions, see Survey Methodology.  
<http://www.census.gov/acs/www/UseData/index.htm>

# Citizenship Status of Voting Age Population (18 and Over)

## Shively city, Kentucky



Source: B05003. SEX BY AGE BY CITIZENSHIP STATUS  
Data Set: 2008-2012 American Community Survey 5-Year Estimates

**B07004. GEOGRAPHICAL MOBILITY IN THE PAST YEAR BY RACE FOR CURRENT RESIDENCE IN THE UNITED STATES - Universe:  
POPULATION 1 YEAR AND OVER**

Data Set: 2008-2012 American Community Survey 5-Year Estimates

	Shively city, Kentucky					
	African American	Margin of Error (+/-)	% of AA Total	White, Not Hispanic	Margin of Error (+/-)	% of NHW Total
<b>Total:</b>	<b>6,936</b>	<b>613</b>	<b>100.0%</b>	<b>6,933</b>	<b>546</b>	<b>100.0%</b>
Same house 1 year ago	5,825	632	84.0%	6,265	531	90.4%
Moved within same county	1,015	456	14.6%	570	358	8.2%
Moved from different county within same state	35	40	0.5%	81	98	1.2%
Moved from different state	41	37	0.6%	17	28	0.2%
Moved from abroad	20	32	0.3%	0	19	0.0%

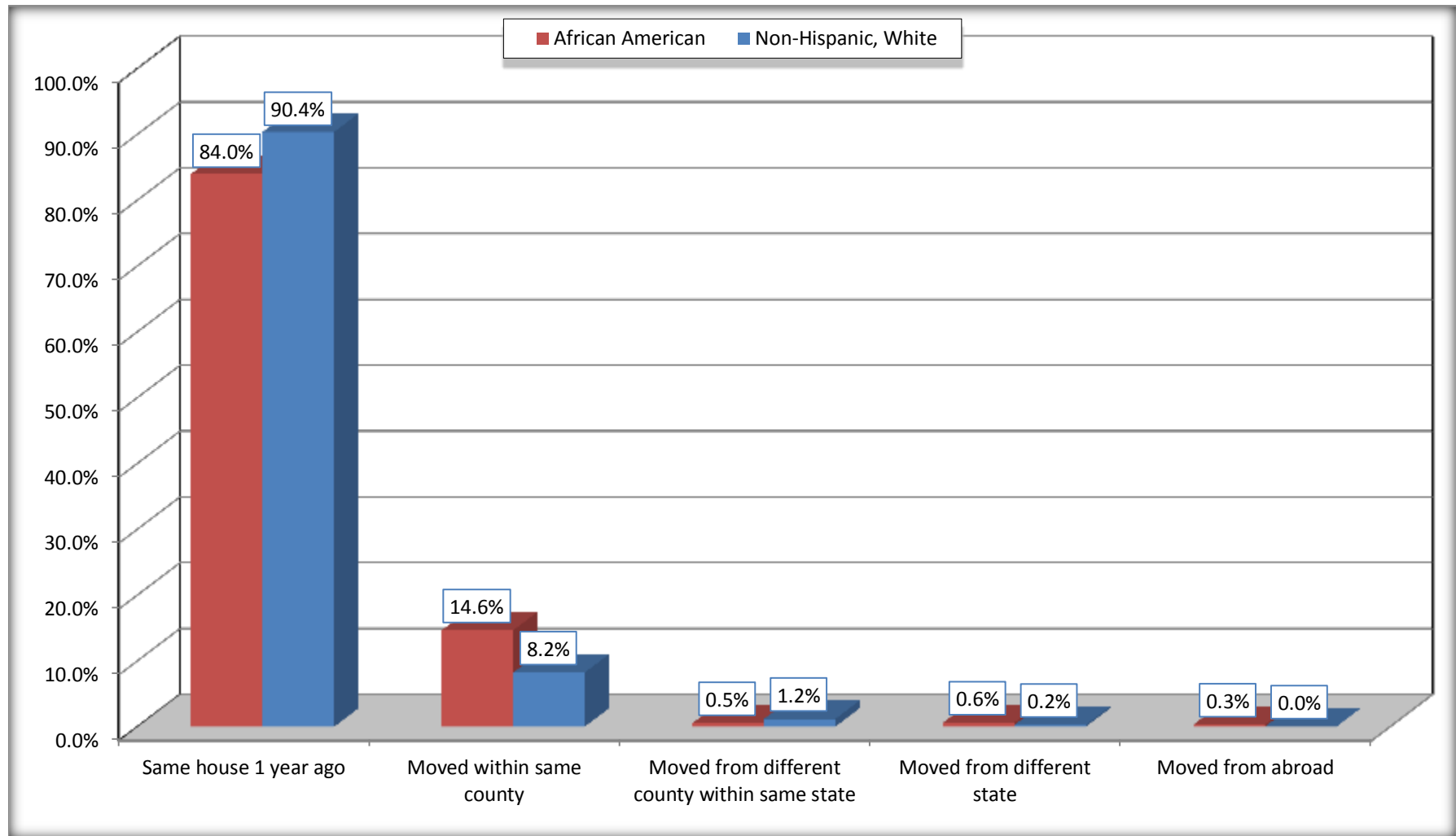
Source: U.S. Census Bureau, 2008-2012 American Community Survey

For information on confidentiality protection, sampling error, nonsampling error, and definitions, see Survey Methodology.

<http://www.census.gov/acs/www/UseData/index.htm>

# Geographical Mobility in the Past Year (Population 1 Year and Over)

## Shively city, Kentucky



Source: B07004. GEOGRAPHICAL MOBILITY IN THE PAST YEAR BY RACE FOR CURRENT RESIDENCE IN THE UNITED STATES - Universe: POPULATION 1 YEAR AND OVER

Data Set: 2008-2012 American Community Survey 5-Year Estimates

**B08105. MEANS OF TRANSPORTATION TO WORK - Universe: WORKERS 16 YEARS AND OVER**

Data Set: 2008-2012 American Community Survey 5-Year Estimates

	Shively city, Kentucky					
	African American	Margin of Error (+/-)	% of AA Total	White, Not Hispanic	Margin of Error (+/-)	% of NHW Total
<b>Total:</b>	3184	361	<b>100.0%</b>	2549	312	<b>100.0%</b>
Car, truck, or van - drove alone	2597	353	81.6%	2129	287	83.5%
Car, truck, or van - carpooled	282	136	8.9%	280	130	11.0%
Public transportation (excluding taxicab)	147	89	4.6%	89	79	3.5%
Walked	8	15	0.3%	0	19	0.0%
Taxicab, motorcycle, bicycle, or other means	0	19	0.0%	9	13	0.4%
Worked at home	150	130	4.7%	42	31	1.6%

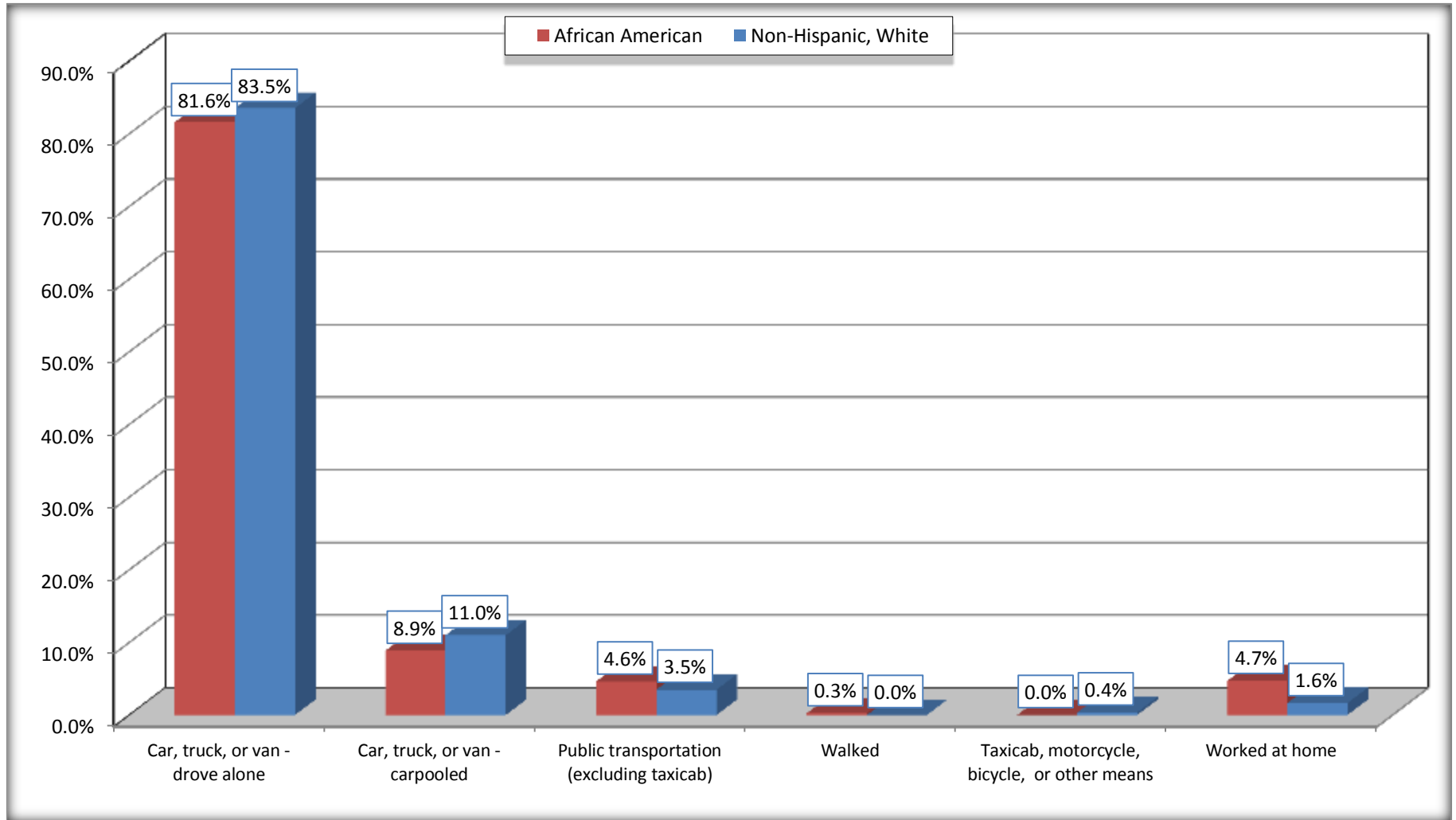
Source: U.S. Census Bureau, 2008-2012 American Community Survey

For information on confidentiality protection, sampling error, nonsampling error, and definitions, see Survey Methodology.

<http://www.census.gov/acs/www/UseData/index.htm>

# Means of Transportation to Work (Workers 16 Years and Over)

## Shively city, Kentucky



Source: B08105. MEANS OF TRANSPORTATION TO WORK - Universe: WORKERS 16 YEARS AND OVER  
Data Set: 2008-2012 American Community Survey 5-Year Estimates



**B11002. HOUSEHOLD TYPE BY RELATIVES AND NONRELATIVES FOR POPULATION IN HOUSEHOLDS**

Data Set: 2008-2012 American Community Survey 5-Year Estimates

	Shively city, Kentucky					
	African American	Margin of Error (+/-)	% of AA Total	White, Not Hispanic	Margin of Error (+/-)	% of NHW Total
<b>Total:</b>	6904	649	<b>100.0%</b>	7069	612	<b>100.0%</b>
In family households	5641	694	81.7%	5408	659	76.5%
In nonfamily households	1263	214	18.3%	1661	272	23.5%

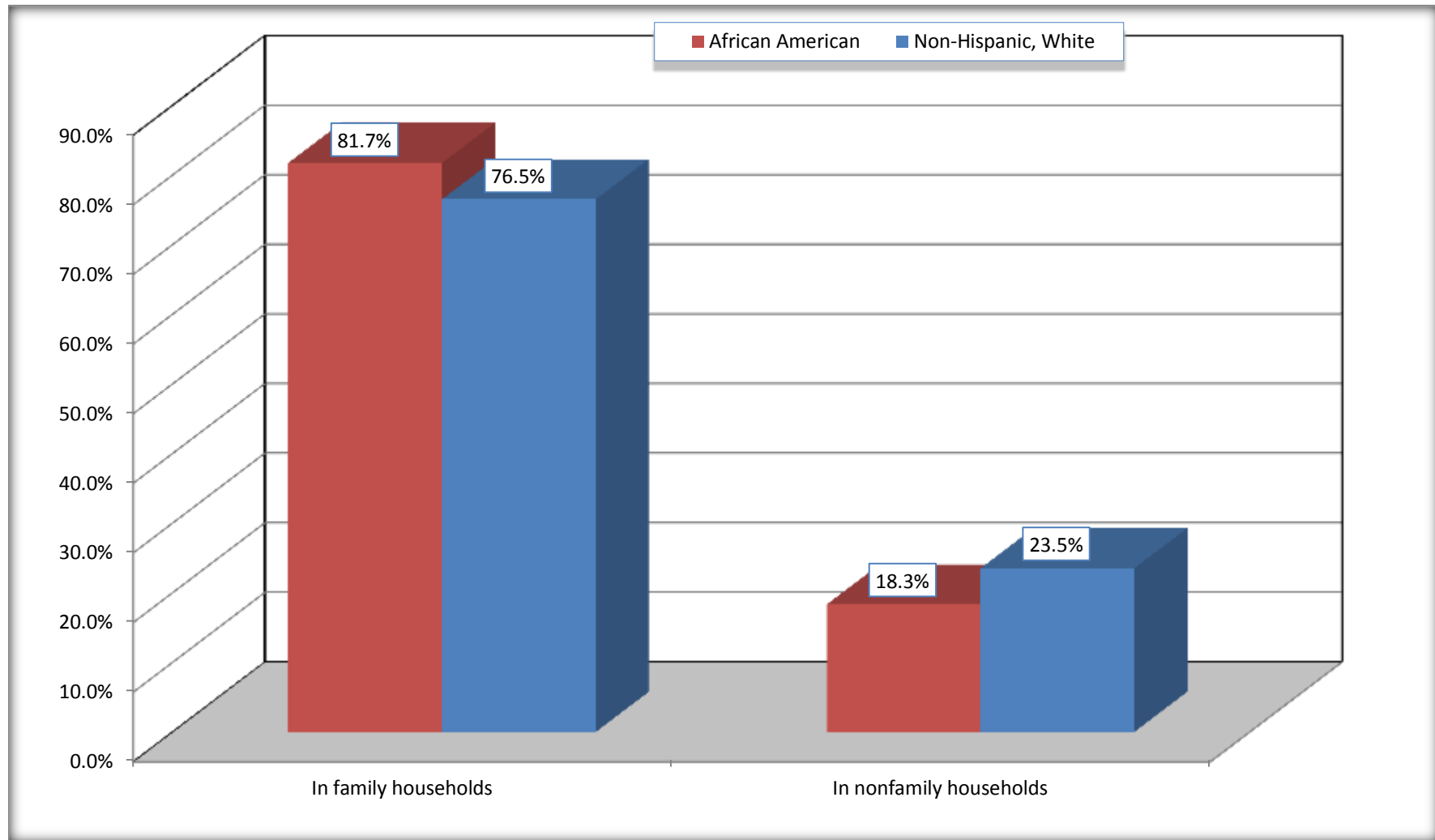
Source: U.S. Census Bureau, 2008-2012 American Community Survey

For information on confidentiality protection, sampling error, nonsampling error, and definitions, see Survey Methodology.

<http://www.census.gov/acs/www/UseData/index.htm>

# Household Type for Population in Households

## Shively city, Kentucky



Source: B11002. HOUSEHOLD TYPE BY RELATIVES AND NONRELATIVES FOR POPULATION IN HOUSEHOLDS  
Data Set: 2008-2012 American Community Survey 5-Year Estimates

**B12002. MARITAL STATUS FOR THE POPULATION 15 YEARS AND OVER**

Data Set: 2008-2012 American Community Survey 5-Year Estimates

	Shively city, Kentucky					
	African American	Margin of Error (+/-)	% of AA Total	White, Not Hispanic	Margin of Error (+/-)	% of NHW Total
<b>Total:</b>	<b>5,402</b>	<b>471</b>	<b>100.0%</b>	<b>6,044</b>	<b>448</b>	<b>100.0%</b>
Never married	2,521	NC	46.7%	1,524	NC	25.2%
Now married (except separated)	1,867	NC	34.6%	2,363	NC	39.1%
Separated	221	NC	4.1%	105	NC	1.7%
Widowed	218	NC	4.0%	900	NC	14.9%
Divorced	575	NC	10.6%	1,152	NC	19.1%
<b>Male:</b>	<b>2,349</b>	<b>330</b>	<b>43.5%</b>	<b>2,711</b>	<b>305</b>	<b>44.9%</b>
Never married	1,050	236	19.4%	844	236	14.0%
Now married (except separated)	924	192	17.1%	1,187	172	19.6%
Separated	88	83	1.6%	48	46	0.8%
Widowed	83	75	1.5%	87	50	1.4%
Divorced	204	87	3.8%	545	173	9.0%
<b>Female:</b>	<b>3,053</b>	<b>337</b>	<b>56.5%</b>	<b>3,333</b>	<b>300</b>	<b>55.1%</b>
Never married	1,471	289	27.2%	680	194	11.3%
Now married (except separated)	943	188	17.5%	1,176	175	19.5%
Separated	133	87	2.5%	57	44	0.9%
Widowed	135	63	2.5%	813	185	13.5%
Divorced	371	135	6.9%	607	155	10.0%

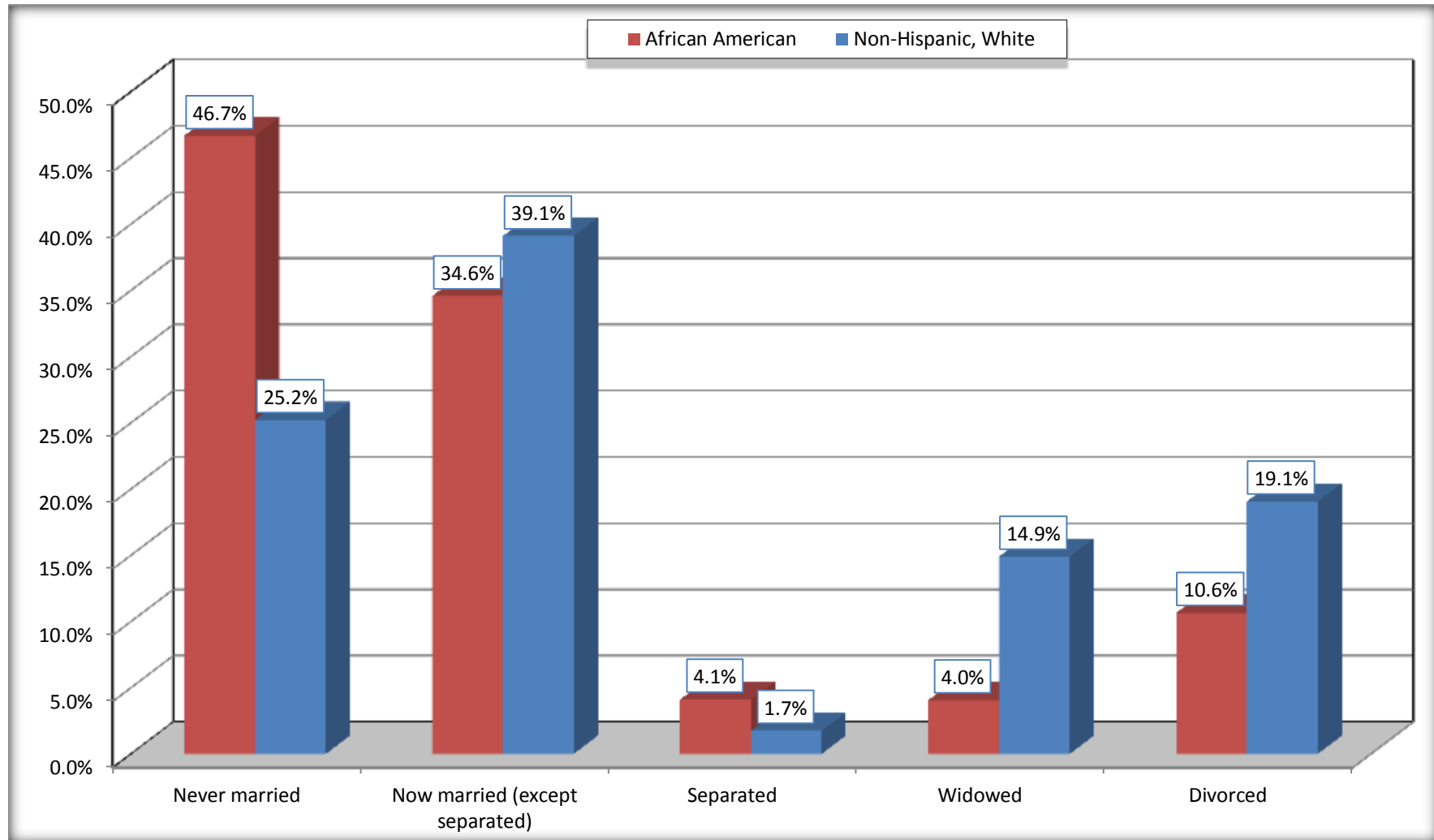
Source: U.S. Census Bureau, 2008-2012 American Community Survey

For information on confidentiality protection, sampling error, nonsampling error, and definitions, see Survey Methodology.

<http://www.census.gov/acs/www/UseData/index.htm>

# Marital Status for the Population 15 Years and Over

## Shively city, Kentucky



Source: B12002. MARITAL STATUS FOR THE POPULATION 15 YEARS AND OVER  
Data Set: 2008-2012 American Community Survey 5-Year Estimates

**C15002. SEX BY EDUCATIONAL ATTAINMENT FOR THE POPULATION 25 YEARS AND OVER**

Data Set: 2008-2012 American Community Survey 5-Year Estimates

	Shively city, Kentucky					
	African American	Margin of Error (+/-)	% of AA Total	White, Not Hispanic	Margin of Error (+/-)	% of NHW Total
<b>Total:</b>	<b>4,485</b>	<b>404</b>	<b>100.0%</b>	<b>5,452</b>	<b>379</b>	<b>100.0%</b>
Less than high school diploma	561	NC	12.5%	1,054	NC	19.3%
High school graduate, GED, or alternative	1,466	NC	32.7%	2,349	NC	43.1%
Some college or associate's degree	1,947	NC	43.4%	1,413	NC	25.9%
Bachelor's degree or higher	511	NC	11.4%	636	NC	11.7%
Male:	1,946	274	43.4%	2,337	251	42.9%
Less than high school diploma	217	88	4.8%	492	134	9.0%
High school graduate, GED, or alternative	722	195	16.1%	1,028	193	18.9%
Some college or associate's degree	790	195	17.6%	616	161	11.3%
Bachelor's degree or higher	217	128	4.8%	201	87	3.7%
Female:	2,539	292	56.6%	3,115	262	57.1%
Less than high school diploma	344	178	7.7%	562	121	10.3%
High school graduate, GED, or alternative	744	187	16.6%	1,321	241	24.2%
Some college or associate's degree	1,157	215	25.8%	797	187	14.6%
Bachelor's degree or higher	294	124	6.6%	435	146	8.0%

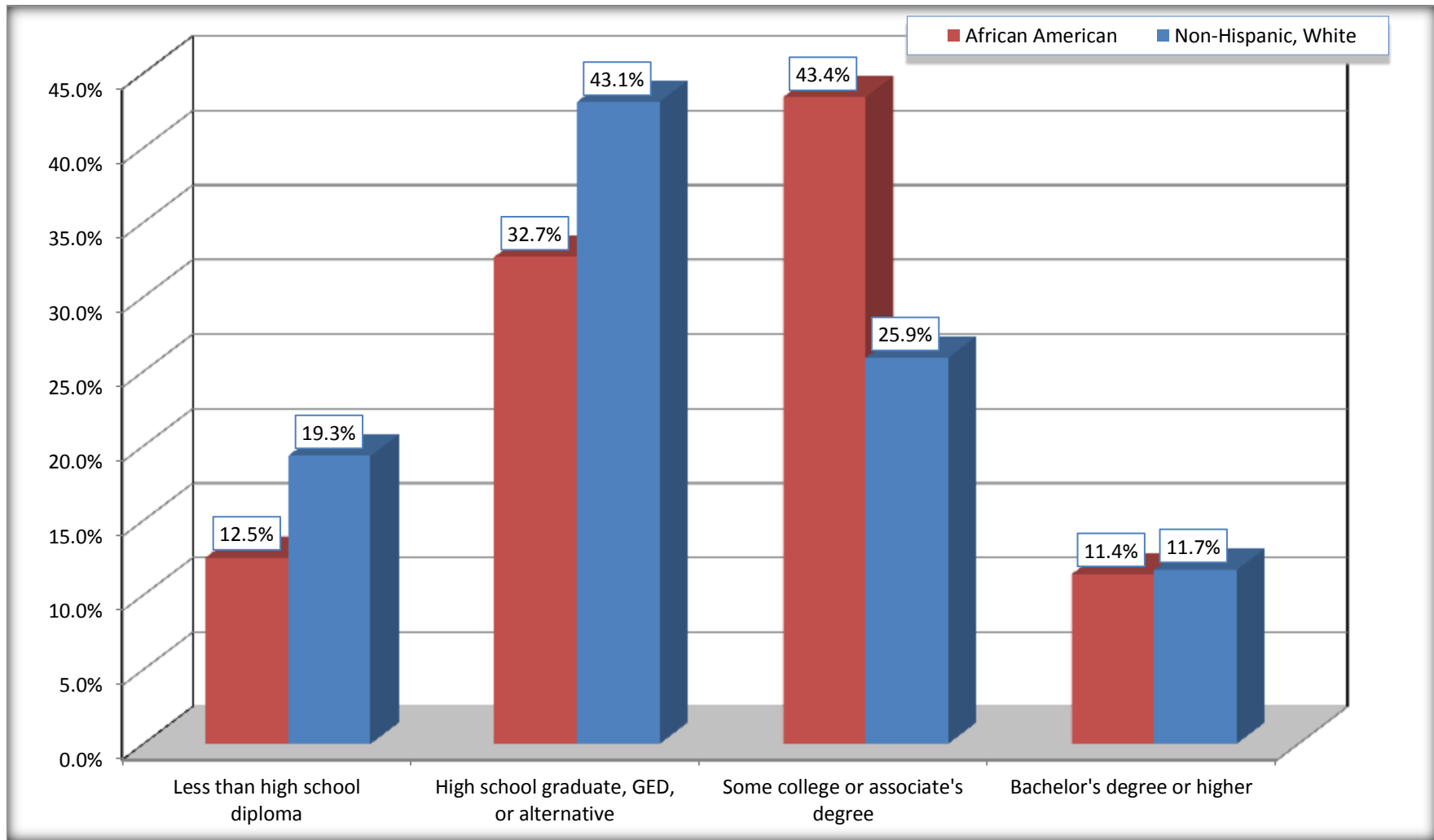
Source: U.S. Census Bureau, 2008-2012 American Community Survey

For information on confidentiality protection, sampling error, nonsampling error, and definitions, see Survey Methodology.

<http://www.census.gov/acs/www/UseData/index.htm>

# Educational Attainment for the Population 25 Years and Older

## Shively city, Kentucky



Source: C15002. SEX BY EDUCATIONAL ATTAINMENT FOR THE POPULATION 25 YEARS AND OVER  
Data Set: 2008-2012 American Community Survey 5-Year Estimates

**B17010. POVERTY STATUS IN THE PAST 12 MONTHS OF FAMILIES BY FAMILY TYPE BY PRESENCE OF RELATED CHILDREN UNDER 18 YEARS**

Data Set: 2008-2012 American Community Survey 5-Year Estimates

	Shively city, Kentucky					
	African American	Margin of Error (+/-)	% of AA Total	White, Not Hispanic	Margin of Error (+/-)	% of NHW Total
<b>Total:</b>	<b>1,705</b>	<b>200</b>	<b>100.0%</b>	<b>1,774</b>	<b>196</b>	<b>100.0%</b>
Income in the past 12 months below poverty level:	239	124	14.0%	255	122	14.4%
Married-couple family:	5	7	0.3%	85	59	4.8%
With related children under 18 years	0	19	0.0%	37	38	2.1%
Other family:	234	122	13.7%	170	101	9.6%
Male householder, no wife present	0	19	0.0%	20	22	1.1%
With related children under 18 years	0	19	0.0%	11	17	0.6%
Female householder, no husband present	234	122	13.7%	150	99	8.5%
With related children under 18 years	223	122	13.1%	138	98	7.8%
Income in the past 12 months at or above poverty level:	1,466	197	86.0%	1,519	180	85.6%
Married-couple family:	819	182	48.0%	1,044	168	58.9%
With related children under 18 years	364	133	21.3%	266	85	15.0%
Other family:	647	166	37.9%	475	138	26.8%
Male householder, no wife present	115	86	6.7%	52	38	2.9%
With related children under 18 years	41	38	2.4%	0	19	0.0%
Female householder, no husband present	532	156	31.2%	423	132	23.8%
With related children under 18 years	417	143	24.5%	225	107	12.7%

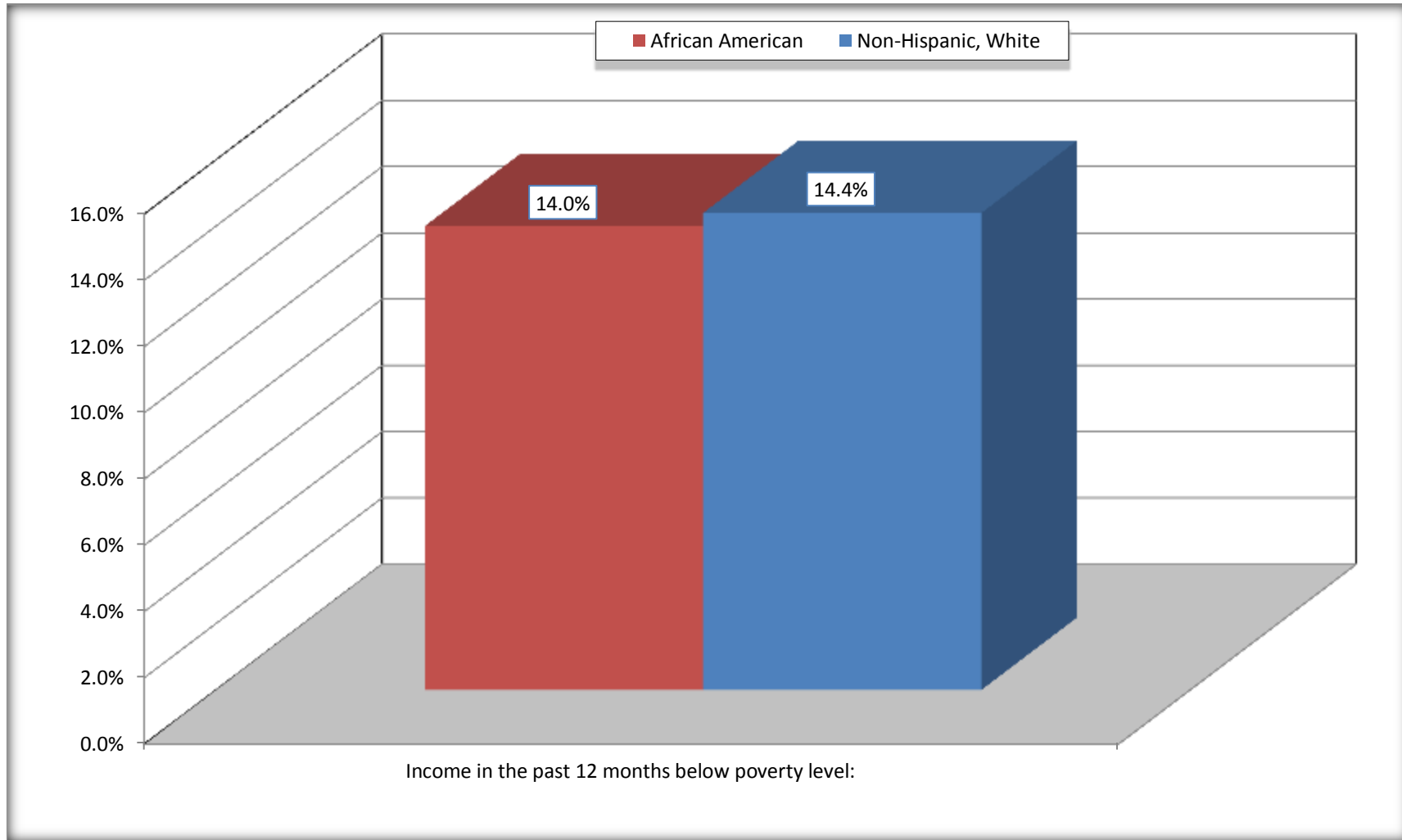
Source: U.S. Census Bureau, 2008-2012 American Community Survey

For information on confidentiality protection, sampling error, nonsampling error, and definitions, see Survey Methodology.

<http://www.census.gov/acs/www/UseData/index.htm>

# Family Households Below Poverty in the Past 12 Months

## Shively city, Kentucky



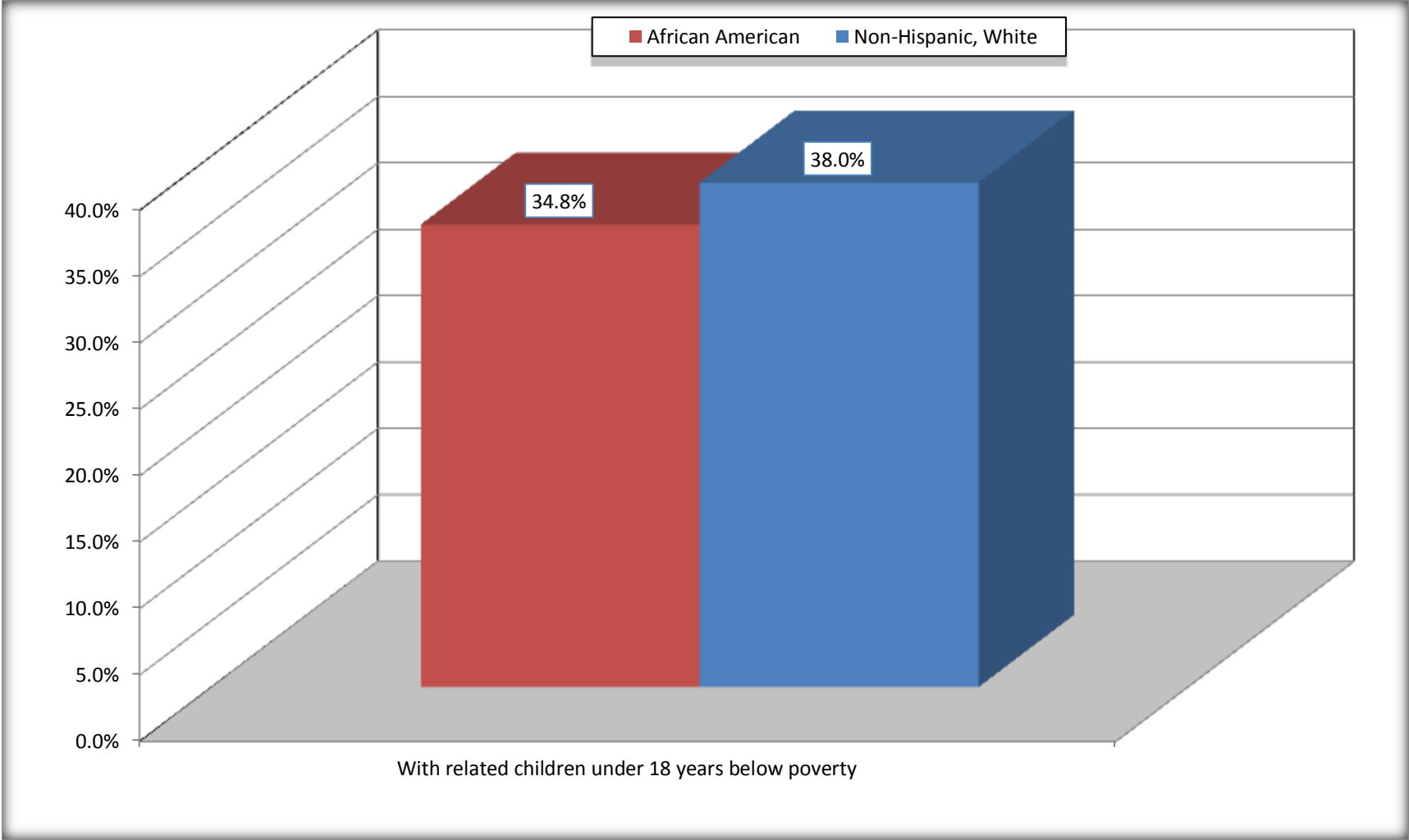
Source: B17010. POVERTY STATUS IN THE PAST 12 MONTHS OF FAMILIES BY FAMILY TYPE BY PRESENCE OF RELATED CHILDREN UNDER 18 YEARS

Data Set: 2008-2012 American Community Survey 5-Year Estimates



# Female-headed Households with Related Children Below Poverty in the Past 12 Months

## Shively city, Kentucky



Source: B17010. POVERTY STATUS IN THE PAST 12 MONTHS OF FAMILIES BY FAMILY TYPE BY PRESENCE OF RELATED CHILDREN UNDER 18 YEARS

Data Set: 2008-2012 American Community Survey 5-Year Estimates

**B17020 POVERTY STATUS IN THE PAST 12 MONTHS BY AGE - Universe: POPULATION FOR WHOM POVERTY STATUS IS DETERMINED**

Data Set: 2008-2012 American Community Survey 5-Year Estimates

	Shively city, Kentucky					
	African American	Margin of Error (+/-)	% of AA By Age	White, Not Hispanic	Margin of Error (+/-)	% of NHW By Age
<b>Total:</b>	<b>6,892</b>	<b>606</b>	<b>100.0%</b>	<b>6,730</b>	<b>521</b>	<b>100.0%</b>
Income in the past 12 months below poverty level:	1,138	374	16.5%	1,061	333	15.8%
<b>Under 18 years</b>	459	NC	25.7%	198	NC	18.5%
<b>18 to 64 years</b>	665	201	14.8%	634	198	15.2%
<b>65 years and over</b>	14	NC	2.3%	229	NC	15.4%
Income in the past 12 months at or above poverty level:	5,754	622	83.5%	5,669	530	84.2%
<b>Under 18 years</b>	1,324	NC	74.3%	874	NC	81.5%
<b>18 to 64 years</b>	3,843	457	85.2%	3,534	389	84.8%
<b>65 years and over</b>	587	NC	97.7%	1,261	NC	84.6%

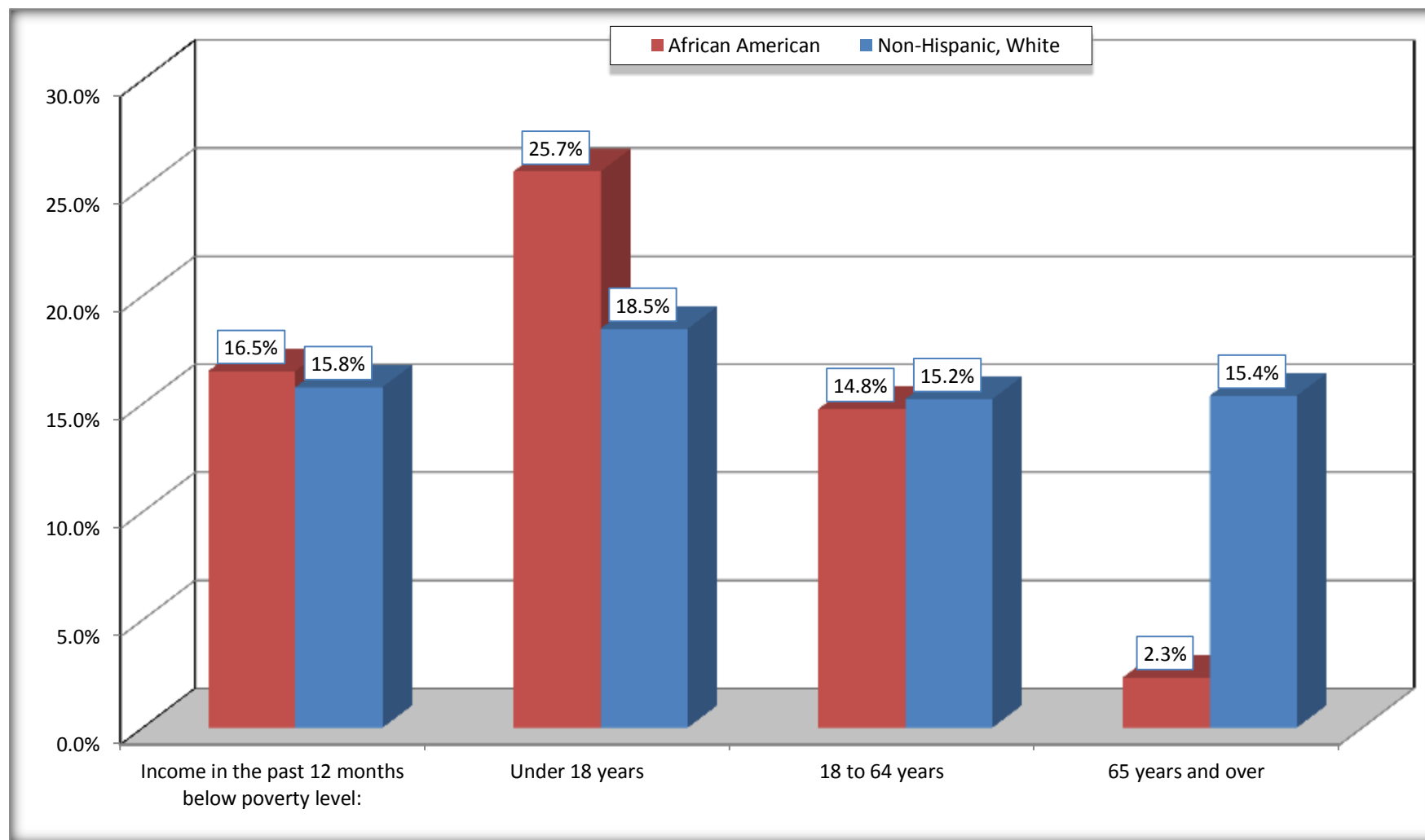
Source: U.S. Census Bureau, 2008-2012 American Community Survey

For information on confidentiality protection, sampling error, nonsampling error, and definitions, see Survey Methodology.

<http://www.census.gov/acs/www/UseData/index.htm>

## Population Below Poverty in the Past 12 Months

### Shively city, Kentucky



Source: B17020 POVERTY STATUS IN THE PAST 12 MONTHS BY AGE - Universe: POPULATION FOR WHOM POVERTY STATUS IS DETERMINED  
Data Set: 2008-2012 American Community Survey 5-Year Estimates

**B19001. HOUSEHOLD INCOME IN THE PAST 12 MONTHS (IN 2010 INFLATION-ADJUSTED DOLLARS)**

Data Set: 2008-2012 American Community Survey 5-Year Estimates

	Shively city, Kentucky					
	African American	Margin of Error (+/-)	% of AA Total	White, Not Hispanic	Margin of Error (+/-)	% of NHW Total
<b>Total:</b>	<b>2,885</b>	<b>248</b>	<b>100.0%</b>	<b>3,218</b>	<b>269</b>	<b>100.0%</b>
Less than \$ 10,000	231	114	8.0%	269	112	8.4%
\$ 10,000 to \$ 14,999	265	139	9.2%	371	138	11.5%
<b>\$ 15,000 to \$ 24,999</b>	426	NC	14.8%	615	NC	19.1%
<b>\$ 25,000 to \$ 34,999</b>	449	NC	15.6%	443	NC	13.8%
<b>\$ 35,000 to \$ 49,999</b>	266	NC	9.2%	426	NC	13.2%
<b>\$ 50,000 to \$ 74,999</b>	762	NC	26.4%	613	NC	19.0%
\$ 75,000 to \$ 99,999	303	125	10.5%	312	104	9.7%
<b>\$ 100,000 to \$ 149,999</b>	132	NC	4.6%	145	NC	4.5%
\$ 150,000 to \$ 199,999	51	35	1.8%	12	14	0.4%
\$ 200,000 or more	0	19	0.0%	12	20	0.4%

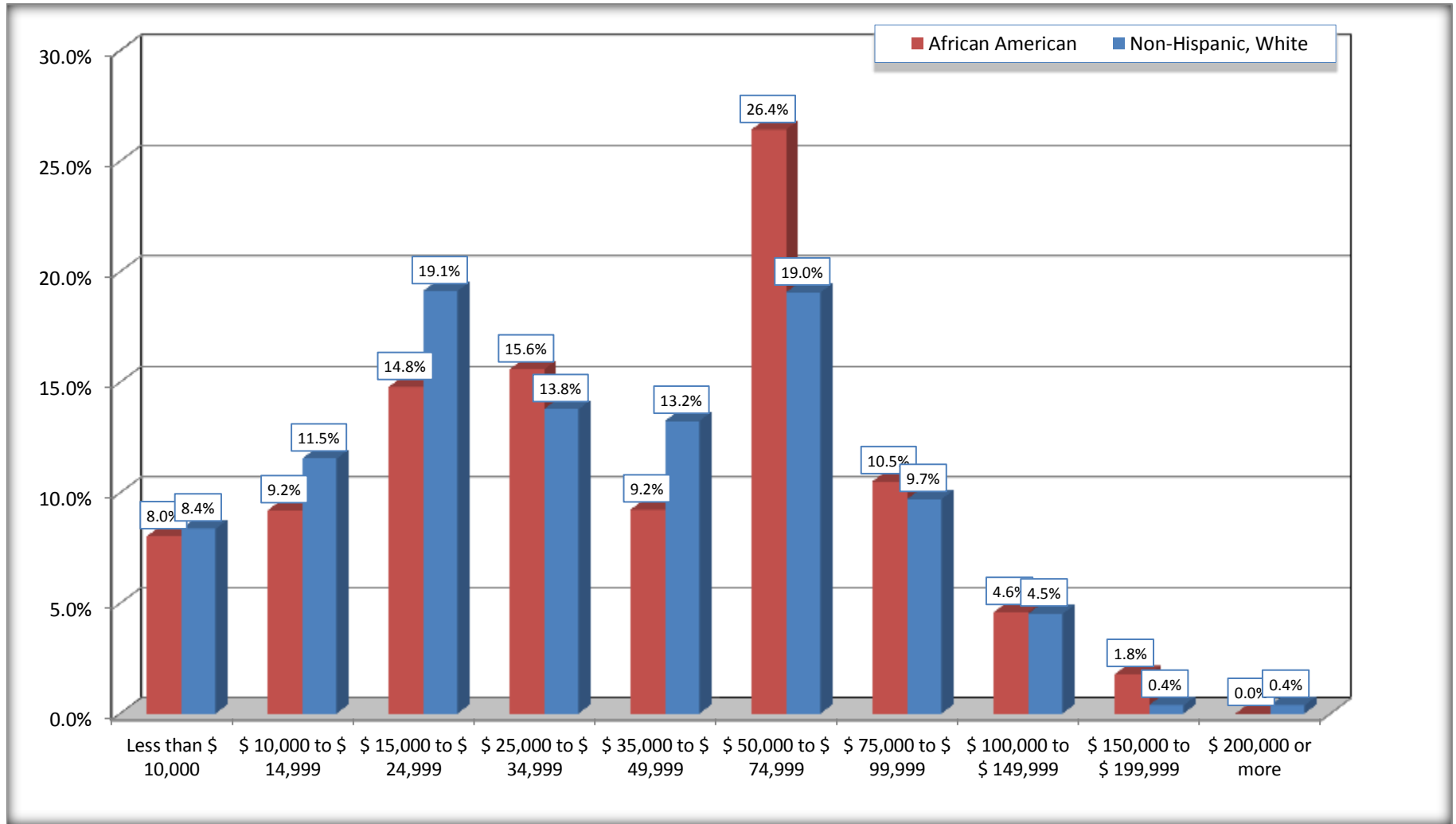
Source: U.S. Census Bureau, 2008-2012 American Community Survey

For information on confidentiality protection, sampling error, nonsampling error, and definitions, see Survey Methodology.

<http://www.census.gov/acs/www/UseData/index.htm>

# Household Income in the Past 12 Months

## Shively city, Kentucky



Source: B19001. HOUSEHOLD INCOME IN THE PAST 12 MONTHS (IN 2010 INFLATION-ADJUSTED DOLLARS)  
Data Set: 2008-2012 American Community Survey 5-Year Estimates

**B19013. MEDIAN HOUSEHOLD INCOME IN THE PAST 12 MONTHS (IN 2010 INFLATION-ADJUSTED DOLLARS)**

Data Set: 2008-2012 American Community Survey 5-Year Estimates

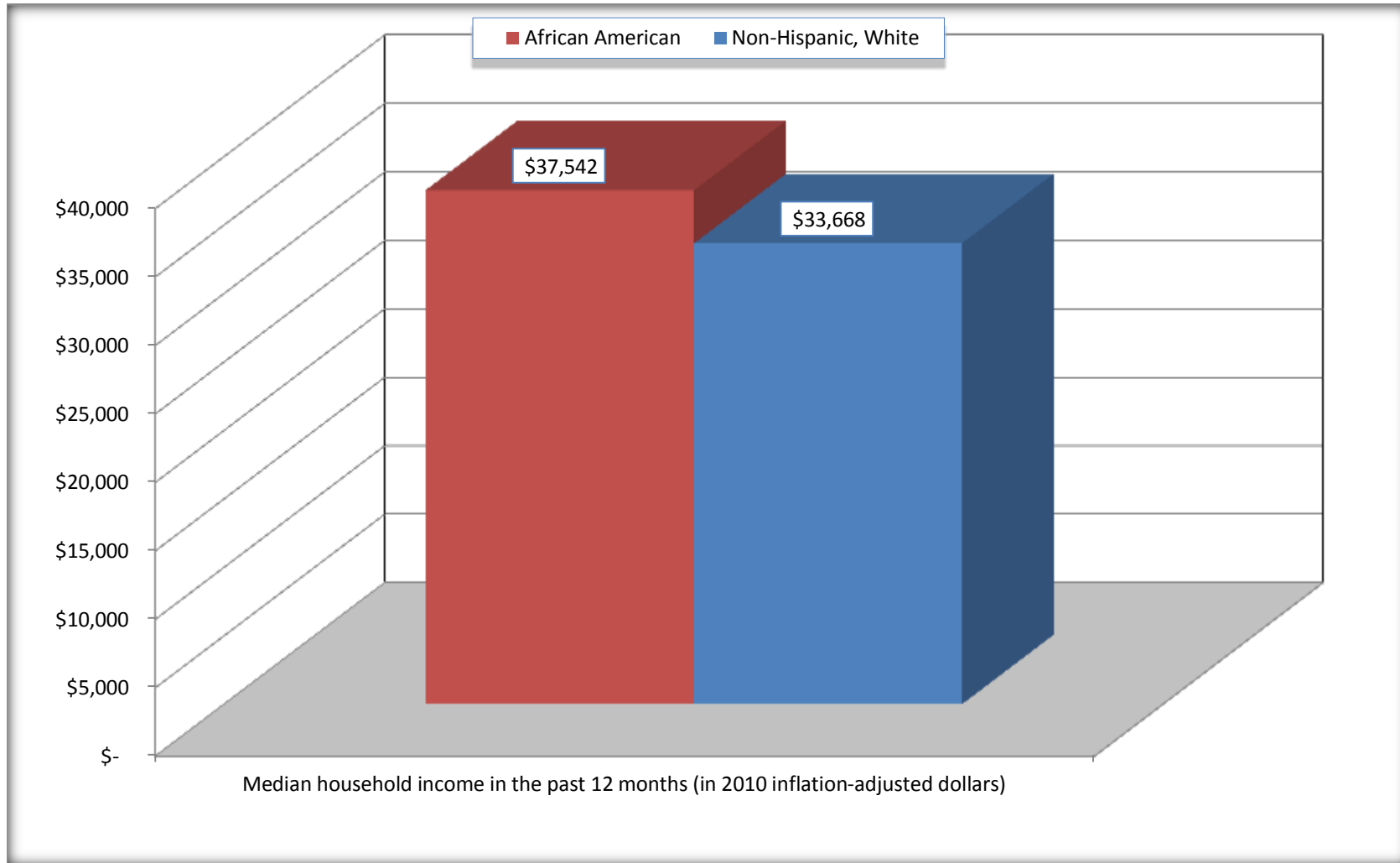
	Shively city, Kentucky			
	African American	Margin of Error (+/-)	White, Not Hispanic	Margin of Error (+/-)
Median household income in the past 12 months (in 2010 inflation-adjusted dollars)	\$ 37,542	\$ 7,251	\$ 33,668	\$ 2,556

Source: U.S. Census Bureau, 2008-2012 American Community Survey

For information on confidentiality protection, sampling error, nonsampling error, and definitions, see Survey Methodology.  
<http://www.census.gov/acs/www/UseData/index.htm>

# Median Household Income in the Past 12 Months

## Shively city, Kentucky



Source: B19013. MEDIAN HOUSEHOLD INCOME IN THE PAST 12 MONTHS (IN 2010 INFLATION-ADJUSTED DOLLARS)  
Data Set: 2008-2012 American Community Survey 5-Year Estimates

**B19101. FAMILY INCOME IN THE PAST 12 MONTHS (IN 2010 INFLATION-ADJUSTED DOLLARS)**

Data Set: 2008-2012 American Community Survey 5-Year Estimates

	Shively city, Kentucky					
	African American	Margin of Error (+/-)	% of AA Total	White, Not Hispanic	Margin of Error (+/-)	% of NHW Total
<b>Total:</b>	<b>1,705</b>	<b>200</b>	<b>100.0%</b>	<b>1,774</b>	<b>196</b>	<b>100.0%</b>
Less than \$ 10,000	92	65	5.4%	120	100	6.8%
\$ 10,000 to \$ 14,999	125	94	7.3%	41	37	2.3%
<b>\$ 15,000 to \$ 24,999</b>	<b>184</b>	<b>NC</b>	<b>10.8%</b>	<b>240</b>	<b>NC</b>	<b>13.5%</b>
<b>\$ 25,000 to \$ 34,999</b>	<b>272</b>	<b>NC</b>	<b>16.0%</b>	<b>198</b>	<b>NC</b>	<b>11.2%</b>
<b>\$ 35,000 to \$ 49,999</b>	<b>144</b>	<b>NC</b>	<b>8.4%</b>	<b>309</b>	<b>NC</b>	<b>17.4%</b>
<b>\$ 50,000 to \$ 74,999</b>	<b>451</b>	<b>NC</b>	<b>26.5%</b>	<b>461</b>	<b>NC</b>	<b>26.0%</b>
<b>\$ 100,000 to \$ 149,999</b>	<b>132</b>	<b>NC</b>	<b>7.7%</b>	<b>135</b>	<b>NC</b>	<b>7.6%</b>
\$ 150,000 to \$ 199,999	51	35	3.0%	12	14	0.7%
\$ 200,000 or more	0	19	0.0%	12	20	0.7%

Source: U.S. Census Bureau, 2008-2012 American Community Survey

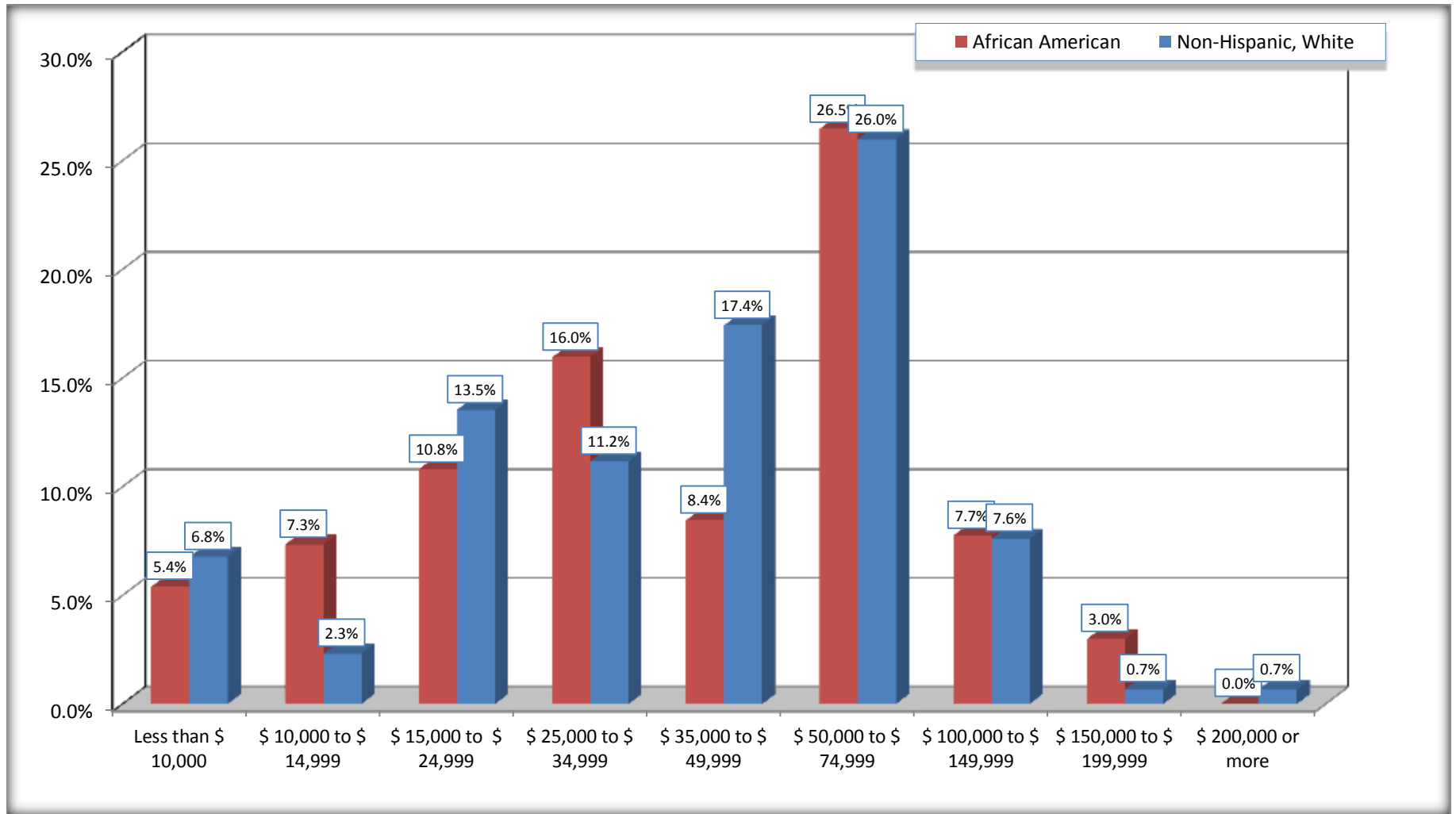
For information on confidentiality protection, sampling error, nonsampling error, and definitions, see Survey Methodology.

<http://www.census.gov/acs/www/UseData/index.htm>



# Family Income in the Past 12 Months

## Shively city, Kentucky



Source: B19101. FAMILY INCOME IN THE PAST 12 MONTHS (IN 2010 INFLATION-ADJUSTED DOLLARS)  
Data Set: 2008-2012 American Community Survey 5-Year Estimates

**B19113. MEDIAN FAMILY INCOME IN THE PAST 12 MONTHS (IN 2010 INFLATION-ADJUSTED DOLLARS)**

Data Set: 2008-2012 American Community Survey 5-Year Estimates

	Shively city, Kentucky			
	African American	Margin of Error (+/-)	White, Not Hispanic	Margin of Error (+/-)
Median family income in the past 12 months (in 2010 inflation-adjusted dollars)	\$ 50,648	\$ 7,750	\$ 47,813	\$ 9,072

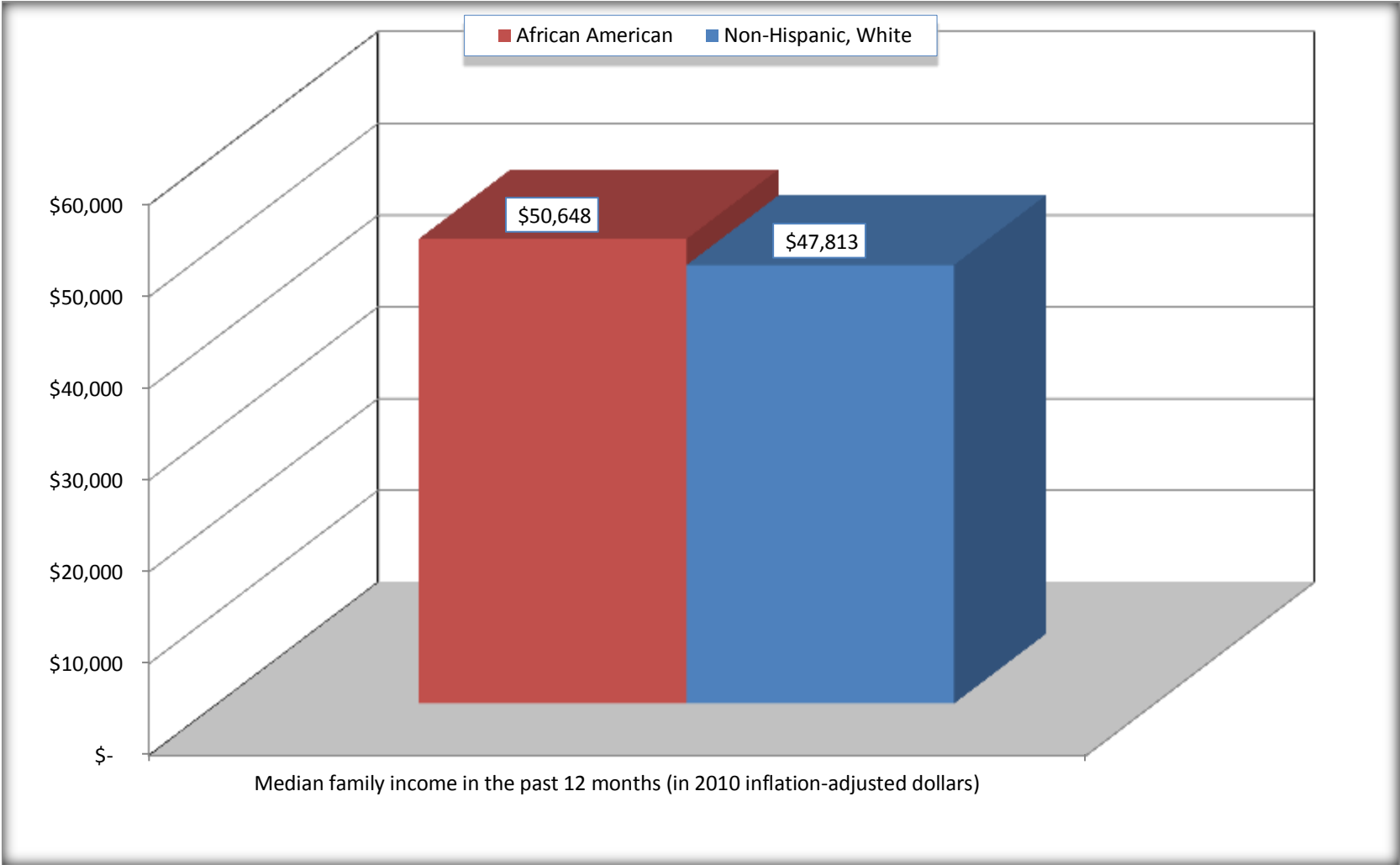
Source: U.S. Census Bureau, 2008-2012 American Community Survey

For information on confidentiality protection, sampling error, nonsampling error, and definitions, see Survey Methodology.

<http://www.census.gov/acs/www/UseData/index.htm>

# Median Family Income in the Past 12 Months

## Shively city, Kentucky



Source: B19113. MEDIAN FAMILY INCOME IN THE PAST 12 MONTHS (IN 2010 INFLATION-ADJUSTED DOLLARS)  
Data Set: 2008-2012 American Community Survey 5-Year Estimates

**B19202. MEDIAN NONFAMILY HOUSEHOLD INCOME IN THE PAST 12 MONTHS (IN 2010 INFLATION-ADJUSTED DOLLARS)**

Data Set: 2008-2012 American Community Survey 5-Year Estimates

	Shively city, Kentucky			
	African American	Margin of Error (+/-)	White, Not Hispanic	Margin of Error (+/-)
Median nonfamily household income in the past 12 months (in 2010 inflation-adjusted dollars)	\$ 26,296	\$ 5,064	\$ 19,322	\$ 3,068

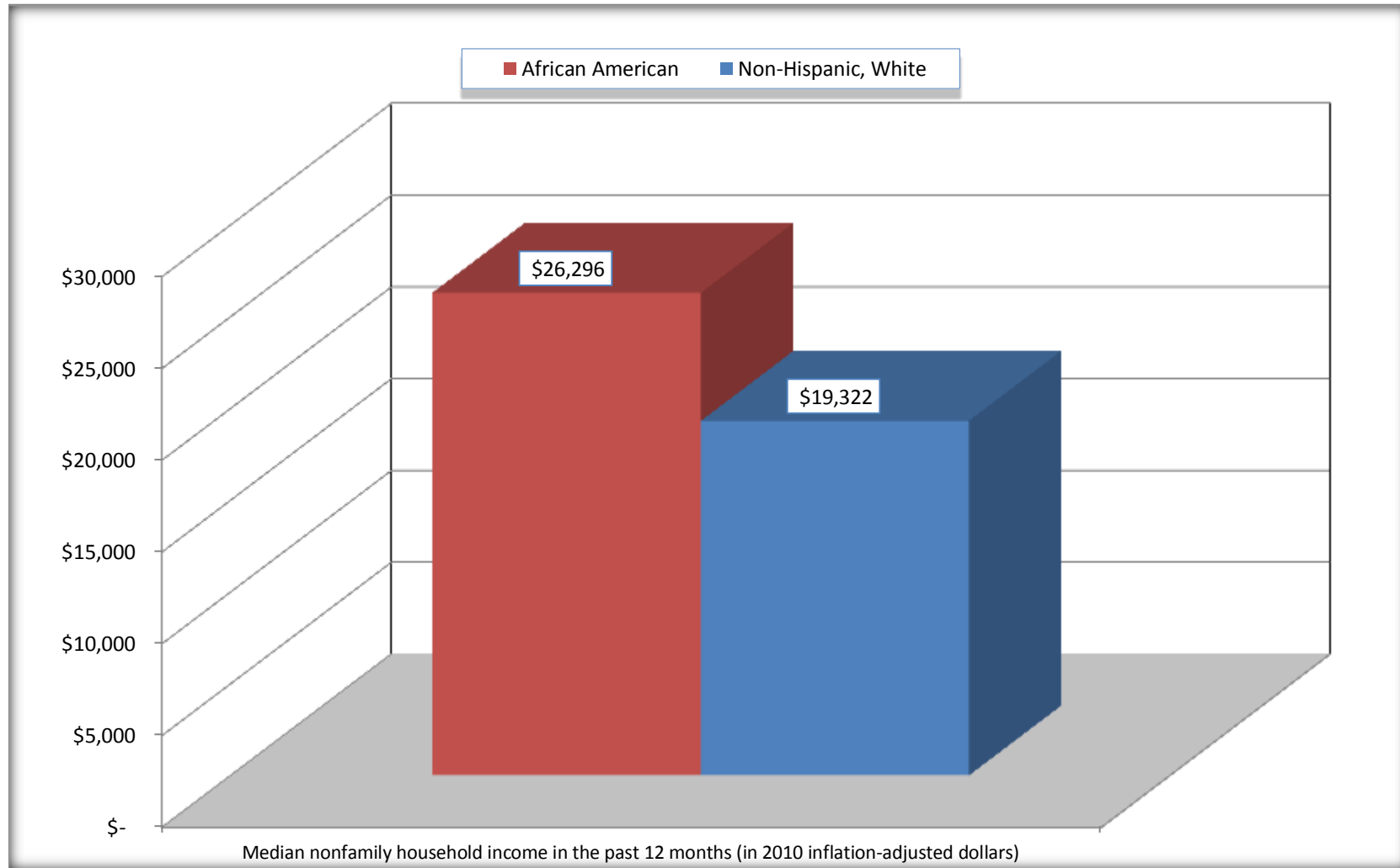
Source: U.S. Census Bureau, 2008-2012 American Community Survey

For information on confidentiality protection, sampling error, nonsampling error, and definitions, see Survey Methodology.

<http://www.census.gov/acs/www/UseData/index.htm>

# Median Non-Family Income in the Past 12 Months

## Shively city, Kentucky



Source: B19202. MEDIAN NONFAMILY HOUSEHOLD INCOME IN THE PAST 12 MONTHS (IN 2010 INFLATION-ADJUSTED DOLLARS)  
Data Set: 2008-2012 American Community Survey 5-Year Estimates

**B19301. PER CAPITA INCOME IN THE PAST 12 MONTHS (IN 2010 INFLATION-ADJUSTED DOLLARS)**

Data Set: 2008-2012 American Community Survey 5-Year Estimates

	Shively city, Kentucky			
	African American	Margin of Error (+/-)	White, Not Hispanic	Margin of Error (+/-)
Per capita income in the past 12 months (in 2010 inflation-adjusted dollars)	\$ 19,939	\$ 2,171	\$ 19,777	\$ 1,702

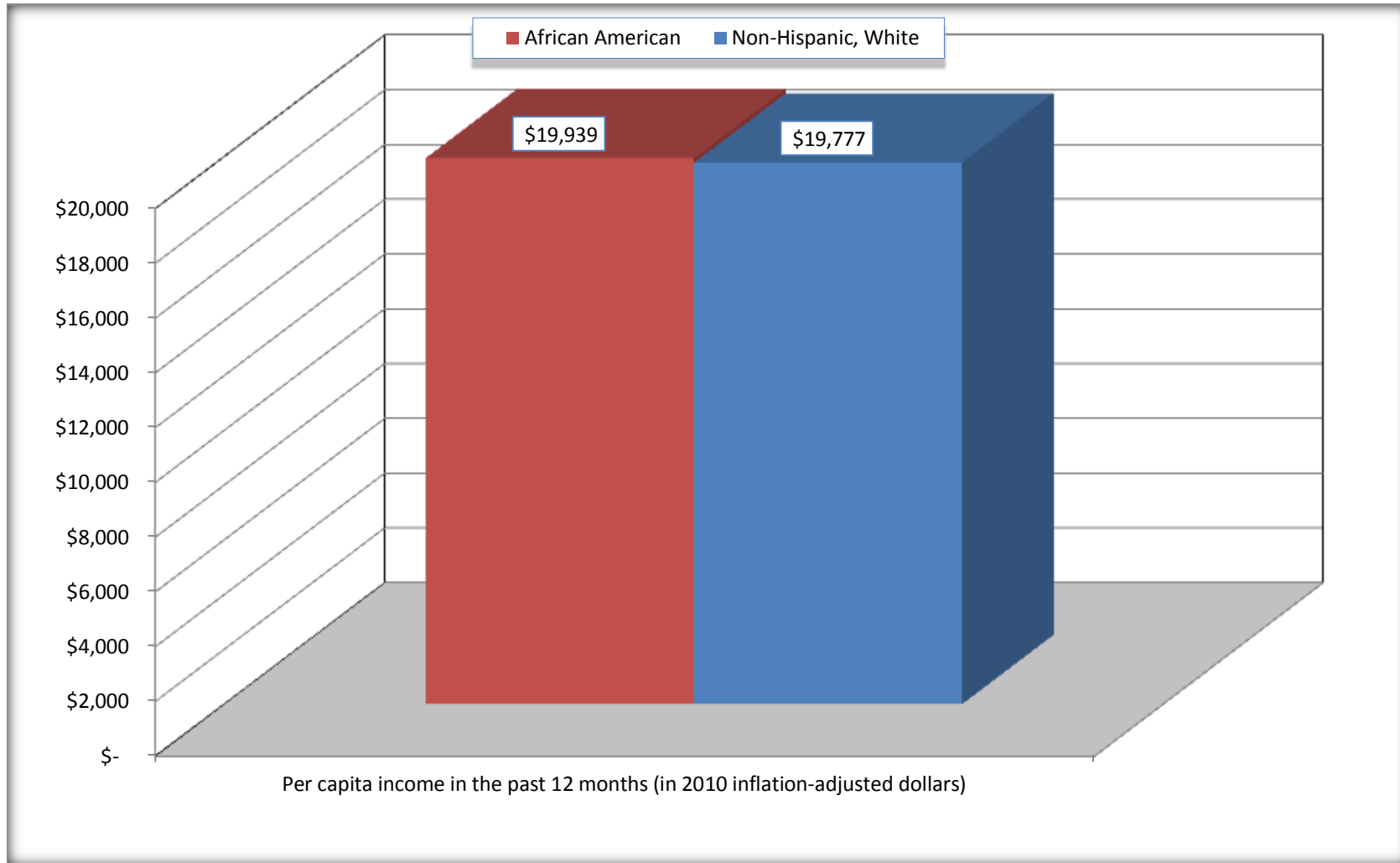
Source: U.S. Census Bureau, 2008-2012 American Community Survey

For information on confidentiality protection, sampling error, nonsampling error, and definitions, see Survey Methodology.

<http://www.census.gov/acs/www/UseData/index.htm>

# Per capita Income in the Past 12 Months

## Shively city, Kentucky



Source: B19301. PER CAPITA INCOME IN THE PAST 12 MONTHS (IN 2010 INFLATION-ADJUSTED DOLLARS)  
Data Set: 2008-2012 American Community Survey 5-Year Estimates

**B20017. MEDIAN EARNINGS IN THE PAST 12 MONTHS (IN 2010 INFLATION-ADJUSTED DOLLARS) BY SEX BY WORK EXPERIENCE IN THE PAST 12 MONTHS FOR THE POPULATION 16 YEARS AND OVER WITH EARNINGS IN THE PAST 12 MONTHS**

Data Set: 2008-2012 American Community Survey 5-Year Estimates

	Shively city, Kentucky			
	African American	Margin of Error (+/-)	White, Not Hispanic	Margin of Error (+/-)
Median earnings in the past 12 months (in 2010 inflation-adjusted dollars) --				
Total:	\$ 28,265	\$ 2,515	\$ 29,630	\$ 3,657
Male --				
Total	\$ 28,942	\$ 3,784	\$ 30,310	\$ 5,943
Worked full-time, year-round in the past 12 months	\$ 36,223	\$ 8,168	\$ 36,607	\$ 4,398
Other	\$ 6,995	\$ 2,555	\$ 10,512	\$ 3,531
Female --				
Total	\$ 27,890	\$ 2,956	\$ 29,033	\$ 3,839
Worked full-time, year-round in the past 12 months	\$ 32,377	\$ 2,422	\$ 35,595	\$ 3,607
Other	\$ 11,208	\$ 1,986	\$ 10,047	\$ 3,179

Source: U.S. Census Bureau, 2008-2012 American Community Survey

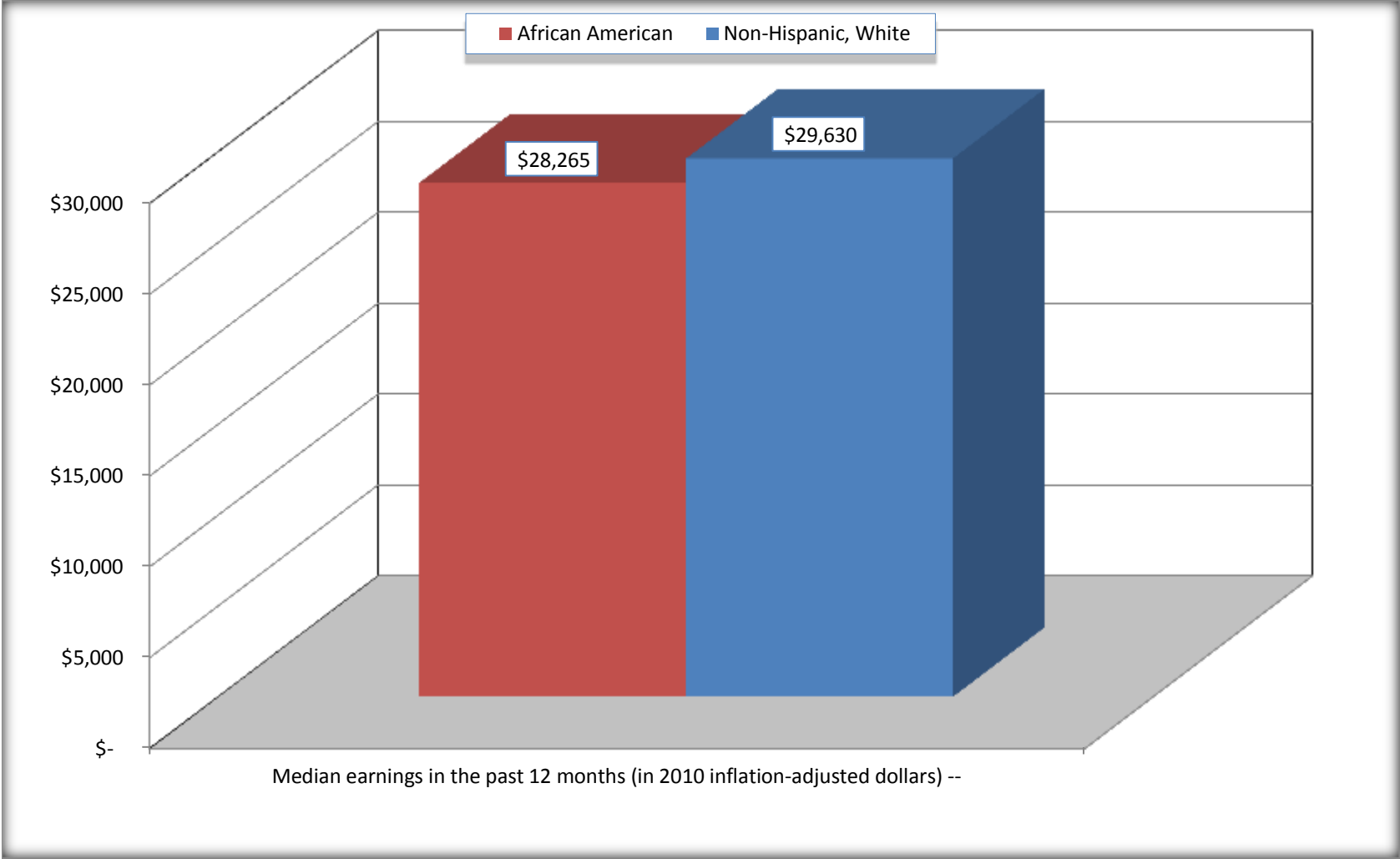
For information on confidentiality protection, sampling error, nonsampling error, and definitions, see Survey Methodology.

<http://www.census.gov/acs/www/UseData/index.htm>



# Median earnings in the Past 12 Months (16 Years and Over with Earnings)

## Shively city, Kentucky



Source: B20017. MEDIAN EARNINGS IN THE PAST 12 MONTHS (IN 2010 INFLATION-ADJUSTED DOLLARS) BY SEX BY WORK EXPERIENCE IN THE PAST 12 MONTHS FOR THE POPULATION 16 YEARS AND OVER WITH EARNINGS IN THE PAST 12 MONTHS  
Data Set: 2008-2012 American Community Survey 5-Year Estimates

**B20005. SEX BY WORK EXPERIENCE IN THE PAST 12 MONTHS BY EARNINGS IN THE PAST 12 MONTHS (IN 2010 INFLATION-ADJUSTED DOLLARS) FOR THE POPULATION 16 YEARS AND OVER**

Data Set: 2008-2012 American Community Survey 5-Year Estimates

	Shively city, Kentucky					
	African American	Margin of Error (+/-)	% of AA Total	White, Not Hispanic	Margin of Error (+/-)	% of NHW Total
<b>Total:</b>	<b>5,334</b>	<b>471</b>	<b>100.0%</b>	<b>5,937</b>	<b>416</b>	<b>100.0%</b>
Worked full-time, year-round in the past 12 months:	2,391	NC	44.8%	1,912	NC	32.2%
No earnings	0	NC	0.0%	0	NC	0.0%
With earnings:	2,391	NC	44.8%	1,912	NC	32.2%
\$ 1 to \$ 9,999 or loss	8	NC	0.1%	60	NC	1.0%
\$ 10,000 to \$ 19,999	102	NC	1.9%	160	NC	2.7%
\$ 20,000 to \$ 29,999	732	NC	13.7%	364	NC	6.1%
\$ 30,000 to \$ 49,999	938	NC	17.6%	819	NC	13.8%
\$ 50,000 to \$ 74,999	501	NC	9.4%	447	NC	7.5%
\$ 75,000 or more	110	NC	2.1%	62	NC	1.0%
Other:	2,943	NC	55.2%	4,025	NC	67.8%
No earnings	1,640	NC	30.7%	2,991	NC	50.4%
With earnings: less than full time, year-round	1,303	NC	24.4%	1,034	NC	17.4%
Male:	2,312	327	43.3%	2,629	279	44.3%
Worked full-time, year-round in the past 12 months:	982	227	18.4%	993	180	16.7%
No earnings	0	19	0.0%	0	19	0.0%
With earnings:	982	227	18.4%	993	180	16.7%
\$ 1 to \$ 9,999 or loss	0	NC	0.0%	47	NC	0.8%
\$ 10,000 to \$ 19,999	27	NC	0.5%	83	NC	1.4%
\$ 20,000 to \$ 29,999	256	NC	4.8%	154	NC	2.6%
\$ 30,000 to \$ 49,999	387	NC	7.3%	468	NC	7.9%
\$ 50,000 to \$ 74,999	230	NC	4.3%	206	NC	3.5%
\$ 75,000 or more	82	NC	1.5%	35	NC	0.6%

	Shively city, Kentucky					
	African American	Margin of Error (+/-)	% of AA Total	White, Not Hispanic	Margin of Error (+/-)	% of NHW Total
Other:	1,330	257	24.9%	1,636	213	27.6%
No earnings	742	187	13.9%	1,111	185	18.7%
With earnings:	588	181	11.0%	525	134	8.8%
Female:	3,022	338	56.7%	3,308	295	55.7%
Worked full-time, year-round in the past 12 months:	1,409	186	26.4%	919	168	15.5%
No earnings	0	19	0.0%	0	19	0.0%
With earnings:	1,409	186	26.4%	919	168	15.5%
\$ 1 to \$ 9,999 or loss	8	NC	0.1%	13	NC	0.2%
\$ 10,000 to \$ 19,999	75	NC	1.4%	77	NC	1.3%
\$ 20,000 to \$ 29,999	476	NC	8.9%	210	NC	3.5%
\$ 30,000 to \$ 49,999	551	NC	10.3%	351	NC	5.9%
\$ 50,000 to \$ 74,999	271	NC	5.1%	241	NC	4.1%
\$ 75,000 or more	28	NC	0.5%	27	NC	0.5%
Other:	1,613	271	30.2%	2,389	283	40.2%
No earnings	898	256	16.8%	1,880	268	31.7%
With earnings:	715	184	13.4%	509	131	8.6%

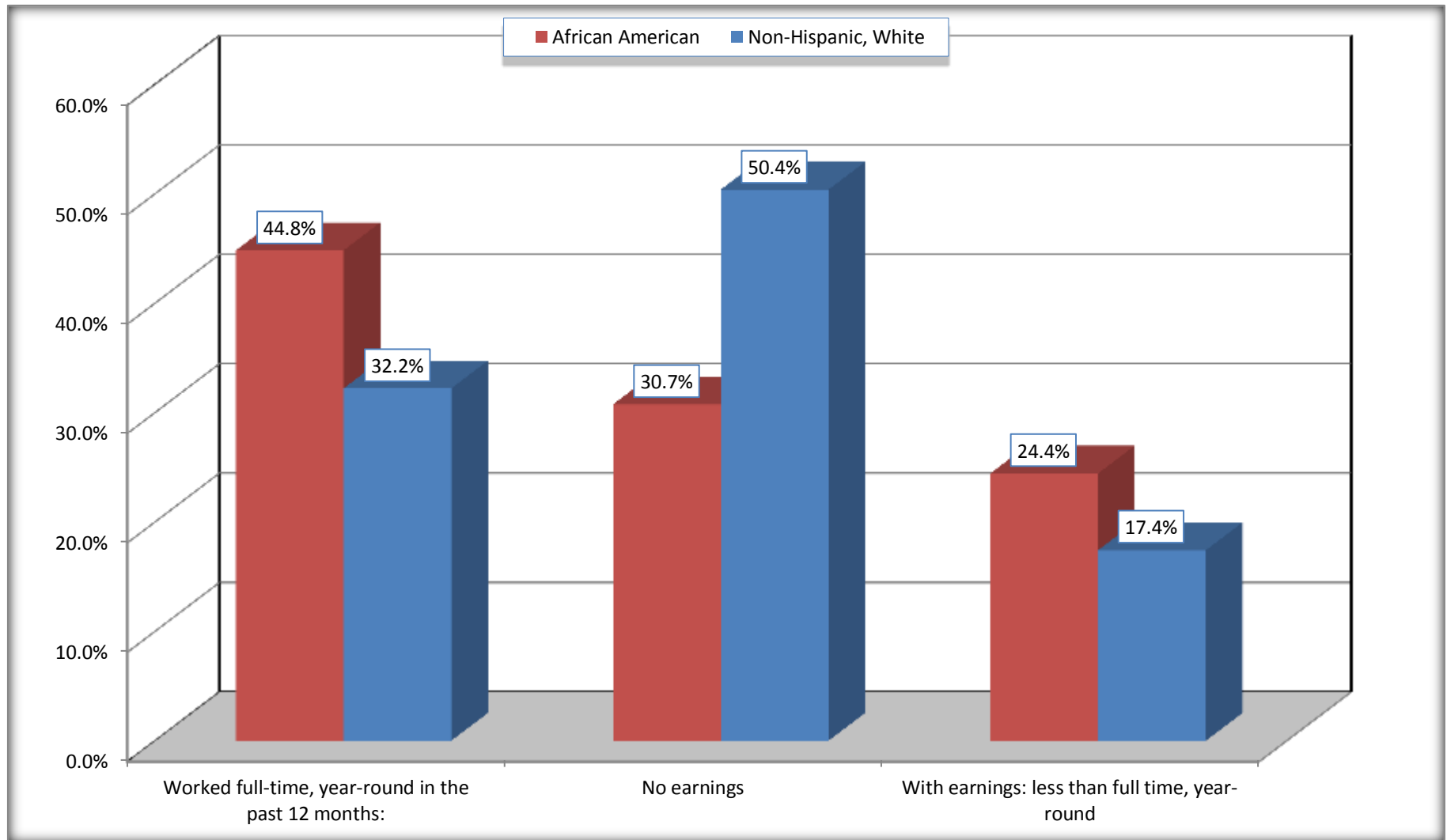
Source: U.S. Census Bureau, 2008-2012 American Community Survey

For information on confidentiality protection, sampling error, nonsampling error, and definitions, see Survey Methodology.

<http://www.census.gov/acs/www/UseData/index.htm>

# Employment and Earnings in in the Past 12 Months (16 Years and Over)

## Shively city, Kentucky



Source: B20005. SEX BY WORK EXPERIENCE IN THE PAST 12 MONTHS BY EARNINGS IN THE PAST 12 MONTHS (IN 2010 INFLATION-ADJUSTED DOLLARS) FOR THE POPULATION 16 YEARS AND OVER

Data Set: 2008-2012 American Community Survey 5-Year Estimates

**C21001. SEX BY AGE BY VETERAN STATUS FOR THE CIVILIAN POPULATION 18 YEARS AND OVER**

Data Set: 2008-2012 American Community Survey 5-Year Estimates

	Shively city, Kentucky					
	African American	Margin of Error (+/-)	% of AA Total	White, Not Hispanic	Margin of Error (+/-)	% of NHW Total
<b>Total:</b>	<b>5,141</b>	<b>458</b>	<b>100.0%</b>	<b>5,886</b>	<b>414</b>	<b>100.0%</b>
Veteran	573	NC	11.1%	554	NC	9.4%
Nonveteran	4,568	NC	88.9%	5,332	NC	90.6%
Male:	2,247	325	43.7%	2,601	282	44.2%
18 to 64 years:	1,938	308	37.7%	2,124	263	36.1%
Veteran	323	128	6.3%	310	91	5.3%
Nonveteran	1,615	282	31.4%	1,814	268	30.8%
65 years and over:	309	112	6.0%	477	110	8.1%
Veteran	165	87	3.2%	207	69	3.5%
Nonveteran	144	71	2.8%	270	95	4.6%
Female:	2,894	301	56.3%	3,285	292	55.8%
18 to 64 years:	2,590	261	50.4%	2,080	252	35.3%
Veteran	73	50	1.4%	23	36	0.4%
Nonveteran	2,517	264	49.0%	2,057	254	34.9%
65 years and over:	304	104	5.9%	1,205	179	20.5%
Veteran	12	17	0.2%	14	21	0.2%
Nonveteran	292	105	5.7%	1,191	176	20.2%

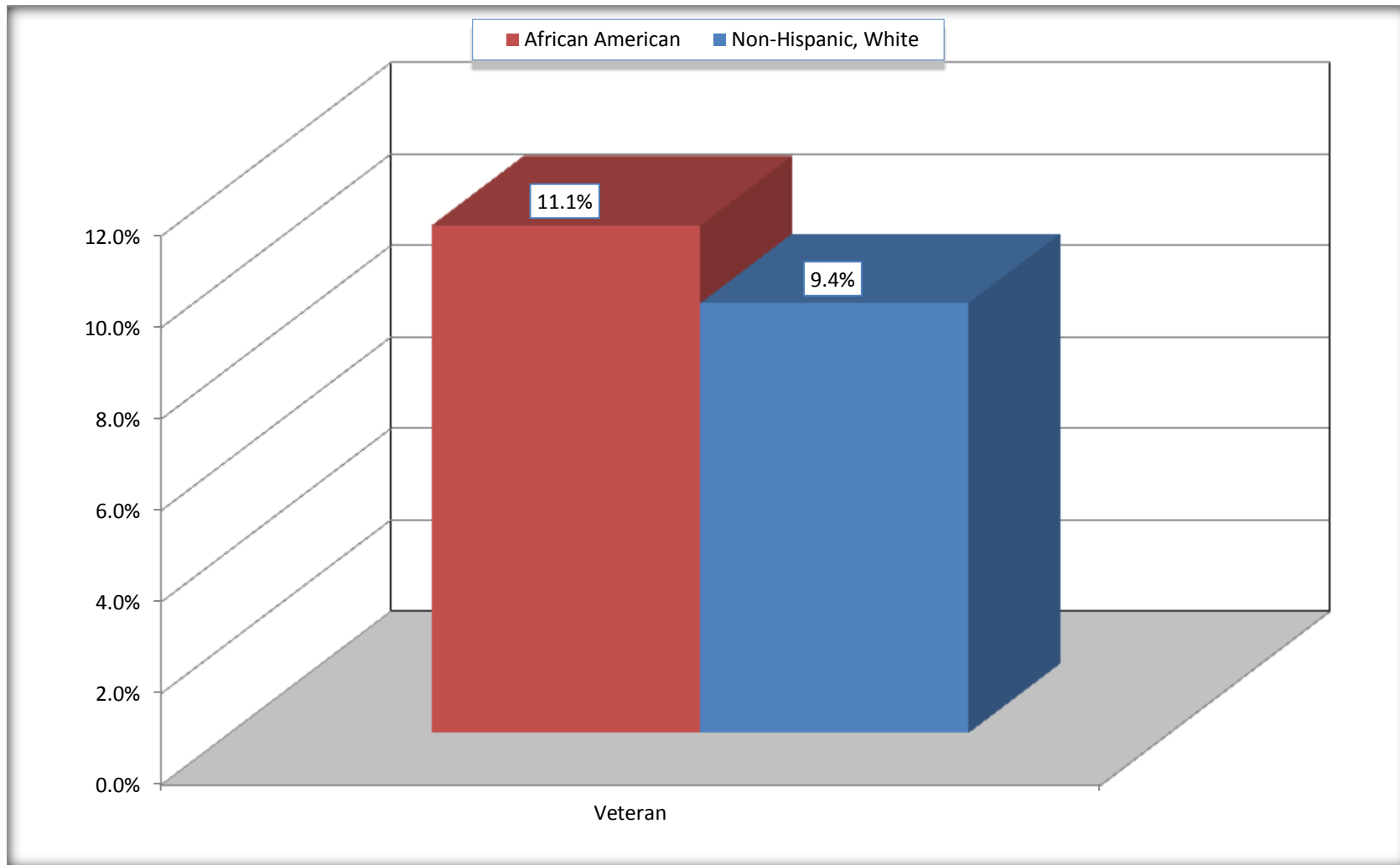
Source: U.S. Census Bureau, 2008-2012 American Community Survey

For information on confidentiality protection, sampling error, nonsampling error, and definitions, see Survey Methodology.

<http://www.census.gov/acs/www/UseData/index.htm>

# Veterans in the Civilian Population 18 Years and Over

## Shively city, Kentucky



Source: C21001. SEX BY AGE BY VETERAN STATUS FOR THE CIVILIAN POPULATION 18 YEARS AND OVER  
Data Set: 2008-2012 American Community Survey 5-Year Estimates

**B22005. RECEIPT OF FOOD STAMPS/SNAP IN THE PAST 12 MONTHS BY RACE OF HOUSEHOLDER**

Data Set: 2008-2012 American Community Survey 5-Year Estimates

	Shively city, Kentucky					
	African American	Margin of Error (+/-)	% of AA Total	White, Not Hispanic	Margin of Error (+/-)	% of NHW Total
<b>Total:</b>	<b>2,885</b>	<b>248</b>	<b>100.0%</b>	<b>3,218</b>	<b>269</b>	<b>100.0%</b>
HH received Food Stamps/SNAP in the past 12 months	489	156	16.9%	498	140	15.5%
HH did not receive Food Stamps/SNAP in the past 12 months	2,396	263	83.1%	2,720	258	84.5%

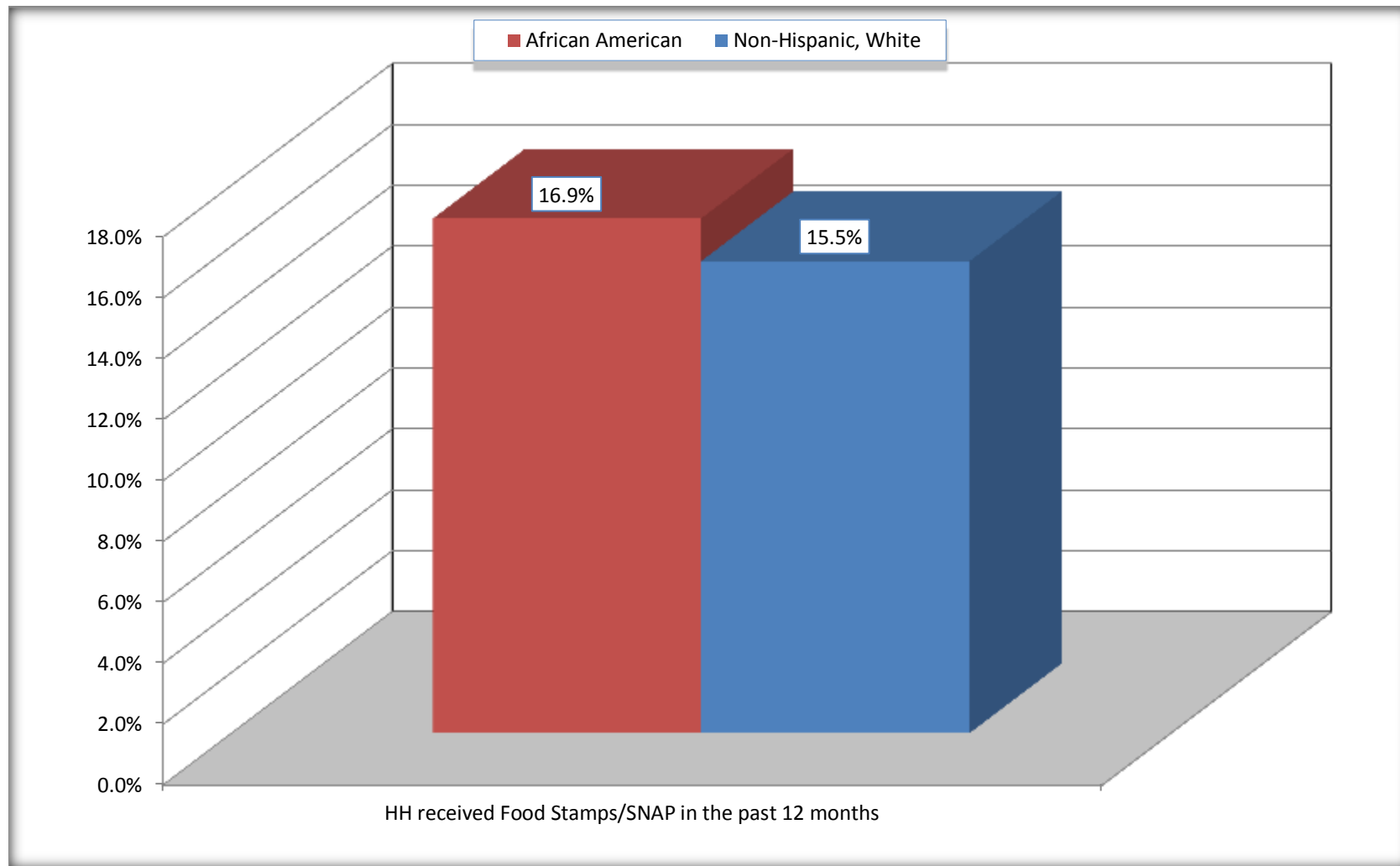
Source: U.S. Census Bureau, 2008-2012 American Community Survey

For information on confidentiality protection, sampling error, nonsampling error, and definitions, see Survey Methodology.

<http://www.census.gov/acs/www/UseData/index.htm>

# Receipt of Food Stamps/SNAP in the Past 12 Months by Household

## Shively city, Kentucky



Source: B22005. RECEIPT OF FOOD STAMPS/SNAP IN THE PAST 12 MONTHS BY RACE OF HOUSEHOLDER  
Data Set: 2008-2012 American Community Survey 5-Year Estimates



**C23002. SEX BY AGE BY EMPLOYMENT STATUS FOR THE POPULATION 16 YEARS AND OVER**

Data Set: 2008-2012 American Community Survey 5-Year Estimates

	Shively city, Kentucky					
	African American	Margin of Error (+/-)	% of AA Total	White, Not Hispanic	Margin of Error (+/-)	% of NHW Total
<b>Total:</b>	<b>5,334</b>	<b>471</b>	<b>100.0%</b>	<b>5,937</b>	<b>416</b>	<b>100.0%</b>
In labor force:	3,623	NC	67.9%	2,884	NC	48.6%
In Armed Forces	0	NC	0.0%	0	NC	0.0%
Civilian:	3,508	NC	65.8%	2,848	NC	48.0%
Employed	3,313	NC	62.1%	2,611	NC	44.0%
Unemployed	310	NC	5.8%	273	NC	4.6%
Not in labor force	1,711	NC	32.1%	3,053	NC	51.4%
Male:	2,312	327	43.3%	2,629	279	44.3%
16 to 64 years:	2,003	307	37.6%	2,152	261	36.2%
In labor force:	1,506	273	28.2%	1,503	251	25.3%
In Armed Forces	0	19	0.0%	0	19	0.0%
Civilian:	1,506	273	28.2%	1,503	251	25.3%
Employed	1,287	263	24.1%	1,332	218	22.4%
Unemployed	219	127	4.1%	171	87	2.9%
Not in labor force	497	160	9.3%	649	162	10.9%
65 years and over:	309	112	5.8%	477	110	8.0%
In labor force:	56	43	1.0%	6	10	0.1%
Employed	46	38	0.9%	6	10	0.1%
Unemployed	10	18	0.2%	0	19	0.0%
Not in labor force	253	102	4.7%	471	111	7.9%

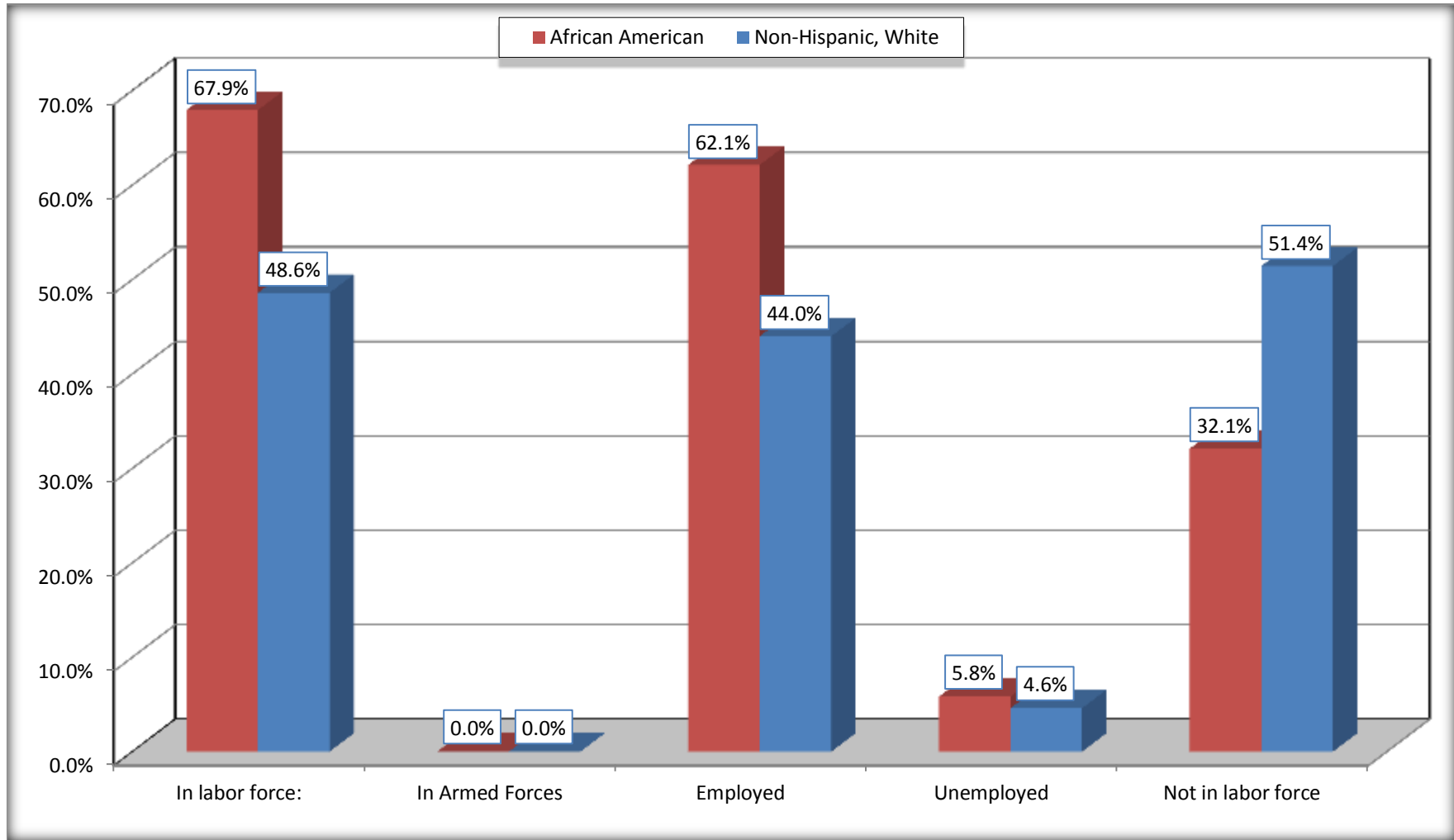
	Shively city, Kentucky					
	African American	Margin of Error (+/-)	% of AA Total	White, Not Hispanic	Margin of Error (+/-)	% of NHW Total
Female:	3,022	338	56.7%	3,308	295	55.7%
16 to 64 years:	2,718	294	51.0%	2,103	255	35.4%
In labor force:	2,002	255	37.5%	1,345	194	22.7%
In Armed Forces	0	19	0.0%	0	19	0.0%
Civilian:	2,002	255	37.5%	1,345	194	22.7%
Employed	1,921	242	36.0%	1,243	190	20.9%
Unemployed	81	62	1.5%	102	58	1.7%
Not in labor force	716	220	13.4%	758	238	12.8%
65 years and over:	304	104	5.7%	1,205	179	20.3%
In labor force:	59	40	1.1%	30	25	0.5%
Employed	59	40	1.1%	30	25	0.5%
Unemployed	0	19	0.0%	0	19	0.0%
Not in labor force	245	92	4.6%	1,175	180	19.8%

Source: U.S. Census Bureau, 2008-2012 American Community Survey

For information on confidentiality protection, sampling error, nonsampling error, and definitions, see Survey Methodology.  
<http://www.census.gov/acs/www/UseData/index.htm>

# Employment Status for the Population 16 years and over

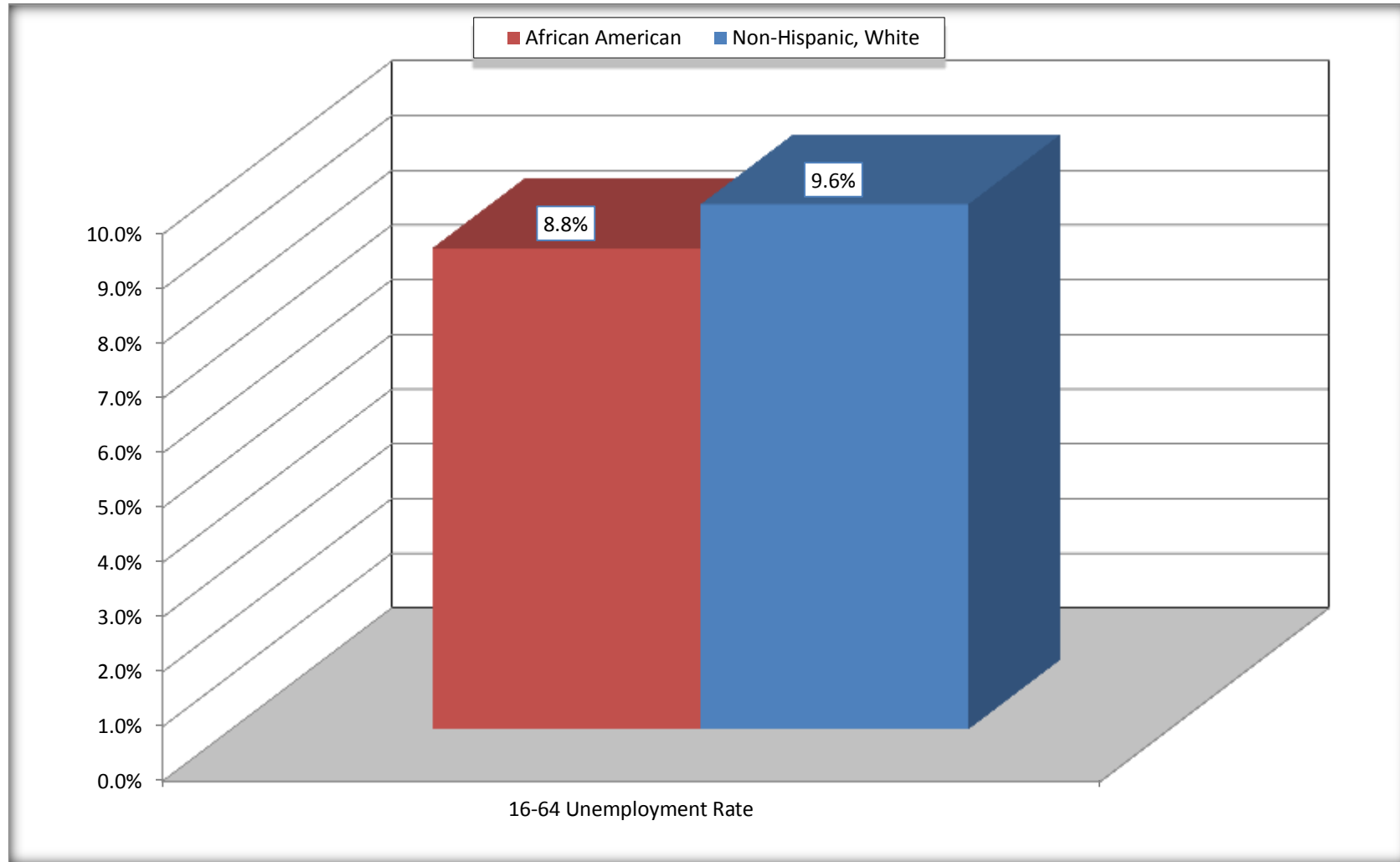
## Shively city, Kentucky



Source: C23002. SEX BY AGE BY EMPLOYMENT STATUS FOR THE POPULATION 16 YEARS AND OVER  
Data Set: 2008-2012 American Community Survey 5-Year Estimates

# Unemployment of Working Age Population (Ages 16 to 64) (As a Percent of 16-64 Civilian Labor Force)

## Shively city, Kentucky



Source: C23002. SEX BY AGE BY EMPLOYMENT STATUS FOR THE POPULATION 16 YEARS AND OVER  
Data Set: 2008-2012 American Community Survey 5-Year Estimates

**C24010. SEX BY OCCUPATION FOR THE CIVILIAN EMPLOYED POPULATION 16 YEARS AND OVER**

Data Set: 2008-2012 American Community Survey 5-Year Estimates

	Shively city, Kentucky					
	African American	Margin of Error (+/-)	% of AA Total	White, Not Hispanic	Margin of Error (+/-)	% of NHW Total
<b>Total:</b>	<b>3,313</b>	<b>386</b>	<b>100.0%</b>	<b>2,611</b>	<b>309</b>	<b>100.0%</b>
Management, professional, and related occupations	635	NC	19.2%	606	NC	23.2%
Service occupations	704	NC	21.2%	434	NC	16.6%
Sales and office occupations	1,095	NC	33.1%	867	NC	33.2%
Natural resources, construction, and maintenance occupations:	113	NC	3.4%	323	NC	12.4%
Production, transportation, and material moving occupations	766	NC	23.1%	381	NC	14.6%
Male:	1,333	258	40.2%	1,338	219	51.2%
Management, business, science, and arts occupations:	167	92	5.0%	121	65	4.6%
Service occupations	257	90	7.8%	303	102	11.6%
Sales and office occupations	322	140	9.7%	350	111	13.4%
Natural resources, construction, and maintenance occupations:	99	60	3.0%	323	134	12.4%
Production, transportation, and material moving occupations	488	187	14.7%	241	107	9.2%
Female:	1,980	248	59.8%	1,273	192	48.8%
Management, professional, and related occupations	468	141	14.1%	485	129	18.6%
Service occupations	447	144	13.5%	131	63	5.0%
Sales and office occupations	773	206	23.3%	517	144	19.8%
Natural resources, construction, and maintenance occupations:	14	21	0.4%	0	19	0.0%
Production, transportation, and material moving occupations	278	112	8.4%	140	69	5.4%

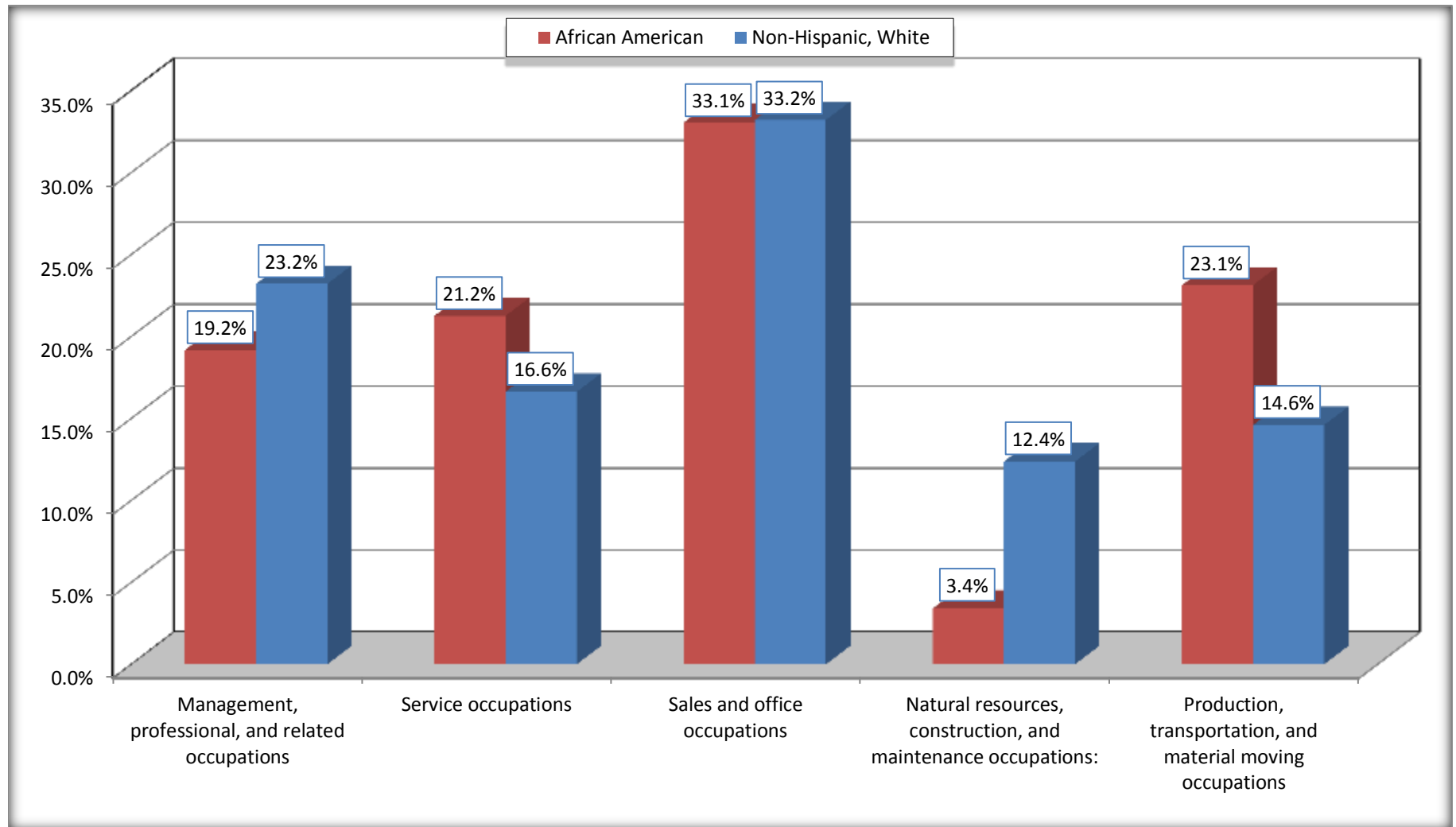
Source: U.S. Census Bureau, 2008-2012 American Community Survey

For information on confidentiality protection, sampling error, nonsampling error, and definitions, see Survey Methodology.

<http://www.census.gov/acs/www/UseData/index.htm>

# Occupation for the Civilian Employed 16 Years and Over Population

## Shively city, Kentucky



Source: C24010. SEX BY OCCUPATION FOR THE CIVILIAN EMPLOYED POPULATION 16 YEARS AND OVER  
Data Set: 2008-2012 American Community Survey 5-Year Estimates

**B25003. TENURE - Universe: OCCUPIED HOUSING UNITS**

Data Set: 2008-2012 American Community Survey 5-Year Estimates

	Shively city, Kentucky					
	African American	Margin of Error (+/-)	% of AA Total	White, Not Hispanic	Margin of Error (+/-)	% of NHW Total
<b>Total:</b>	<b>2,885</b>	<b>248</b>	<b>100.0%</b>	<b>3,218</b>	<b>269</b>	<b>100.0%</b>
Owner occupied	1,448	194	50.2%	2,256	210	70.1%
Renter occupied	1,437	219	49.8%	962	228	29.9%

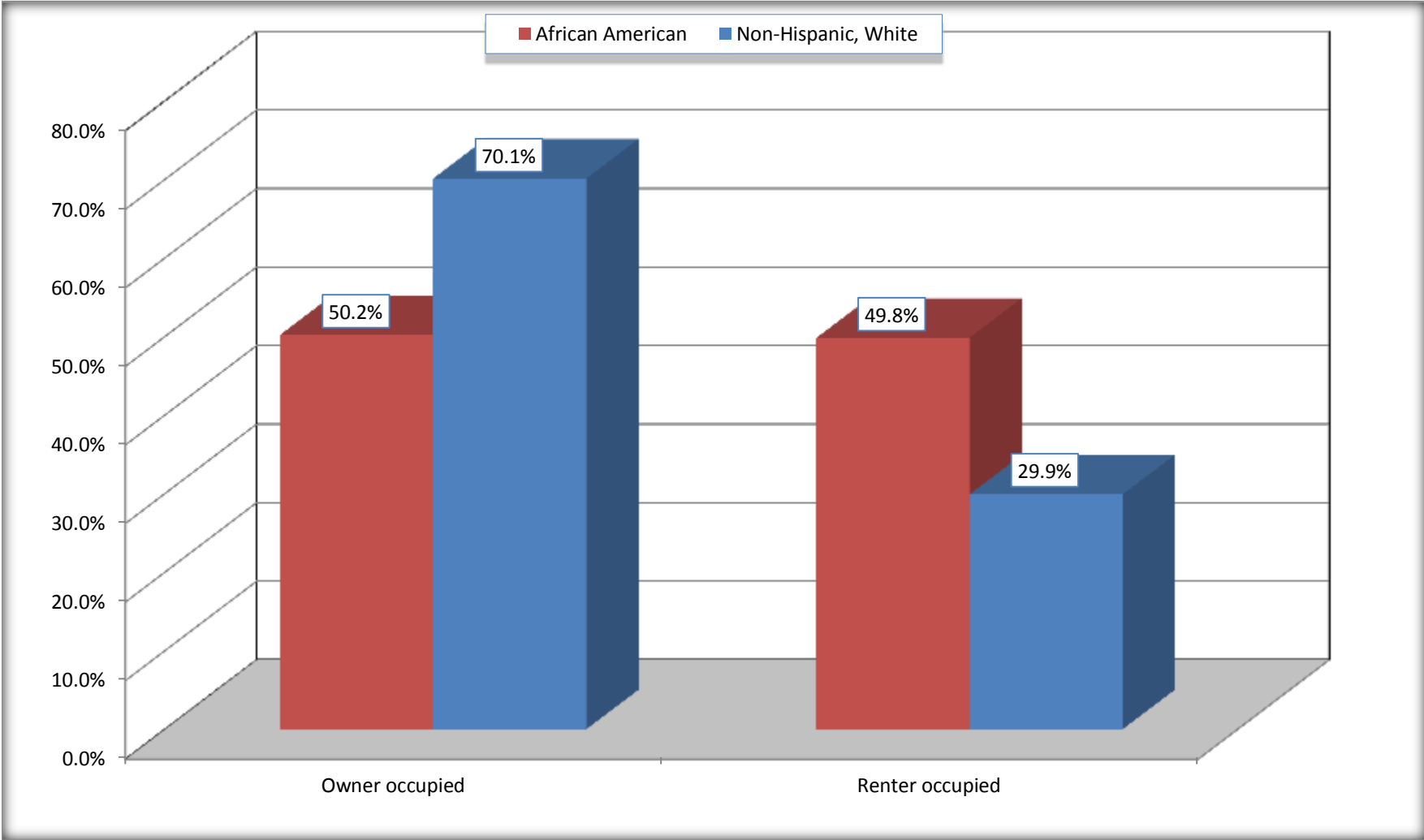
Source: U.S. Census Bureau, 2008-2012 American Community Survey

For information on confidentiality protection, sampling error, nonsampling error, and definitions, see Survey Methodology.

<http://www.census.gov/acs/www/UseData/index.h>

# Home Owners and Renters by Household

## Shively city, Kentucky



Source: B25003. TENURE - Universe: OCCUPIED HOUSING UNITS  
Data Set: 2008-2012 American Community Survey 5-Year Estimates



**B25014. OCCUPANTS PER ROOM - Universe: OCCUPIED HOUSING UNITS**

Data Set: 2008-2012 American Community Survey 5-Year Estimates

	Shively city, Kentucky					
	African American	Margin of Error (+/-)	% of AA Total	White, Not Hispanic	Margin of Error (+/-)	% of NHW Total
<b>Total:</b>	<b>2,885</b>	<b>248</b>	<b>100.0%</b>	<b>3,218</b>	<b>269</b>	<b>100.0%</b>
1.00 or less occupants per room	2,832	268	98.2%	3,205	273	99.6%
1.01 or more occupants per room	53	51	1.8%	13	21	0.4%

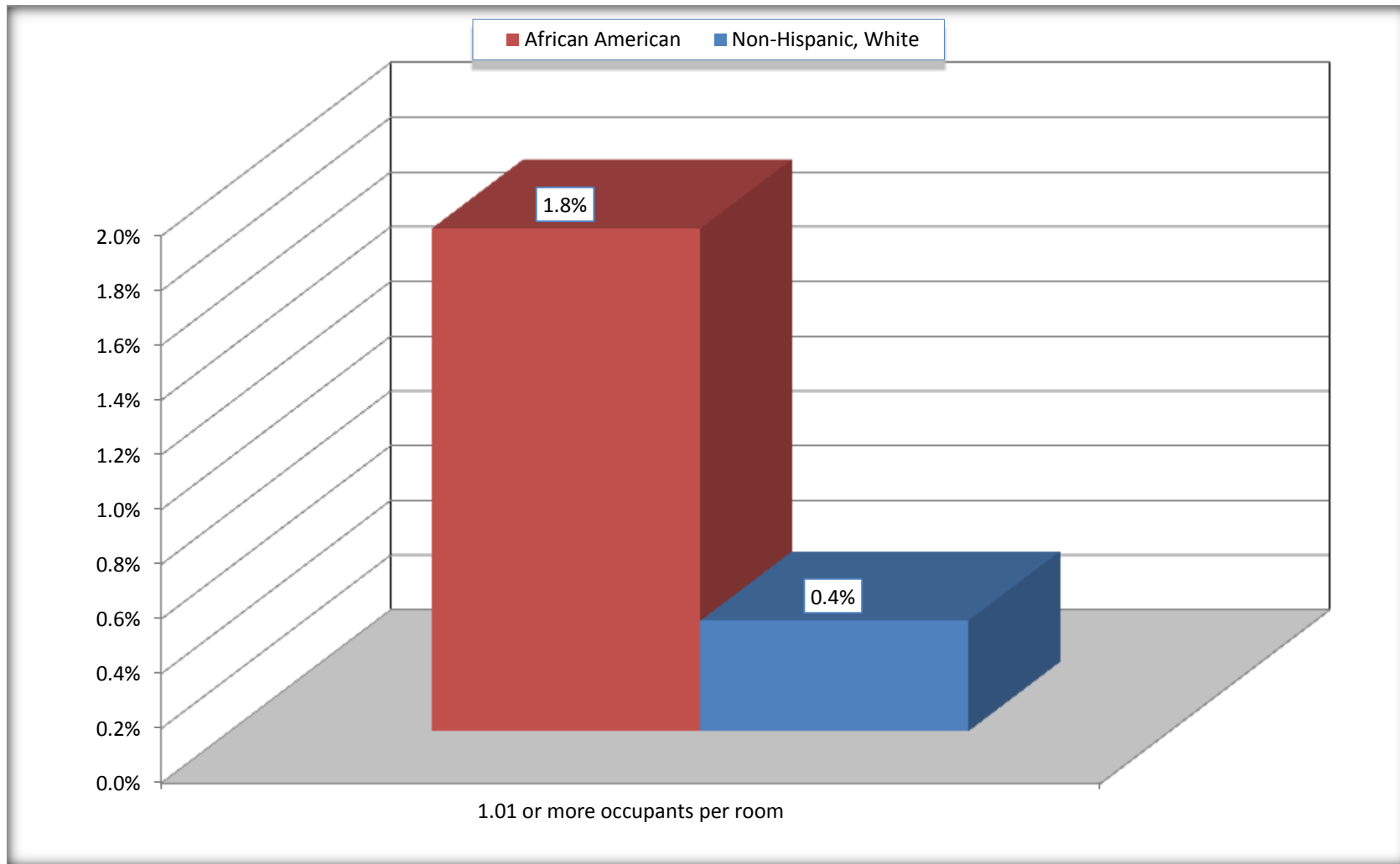
Source: U.S. Census Bureau, 2008-2012 American Community Survey

For information on confidentiality protection, sampling error, nonsampling error, and definitions, see Survey Methodology.

<http://www.census.gov/acs/www/UseData/index.ht>

# More than One Person per Room (Crowding) by Household

## Shively city, Kentucky



Source: B25014. OCCUPANTS PER ROOM - Universe: OCCUPIED HOUSING UNITS  
Data Set: 2008-2012 American Community Survey 5-Year Estimates

**B18101. AGE BY DISABILITY STATUS**

Data Set: 2008-2012 American Community Survey 5-Year Estimates

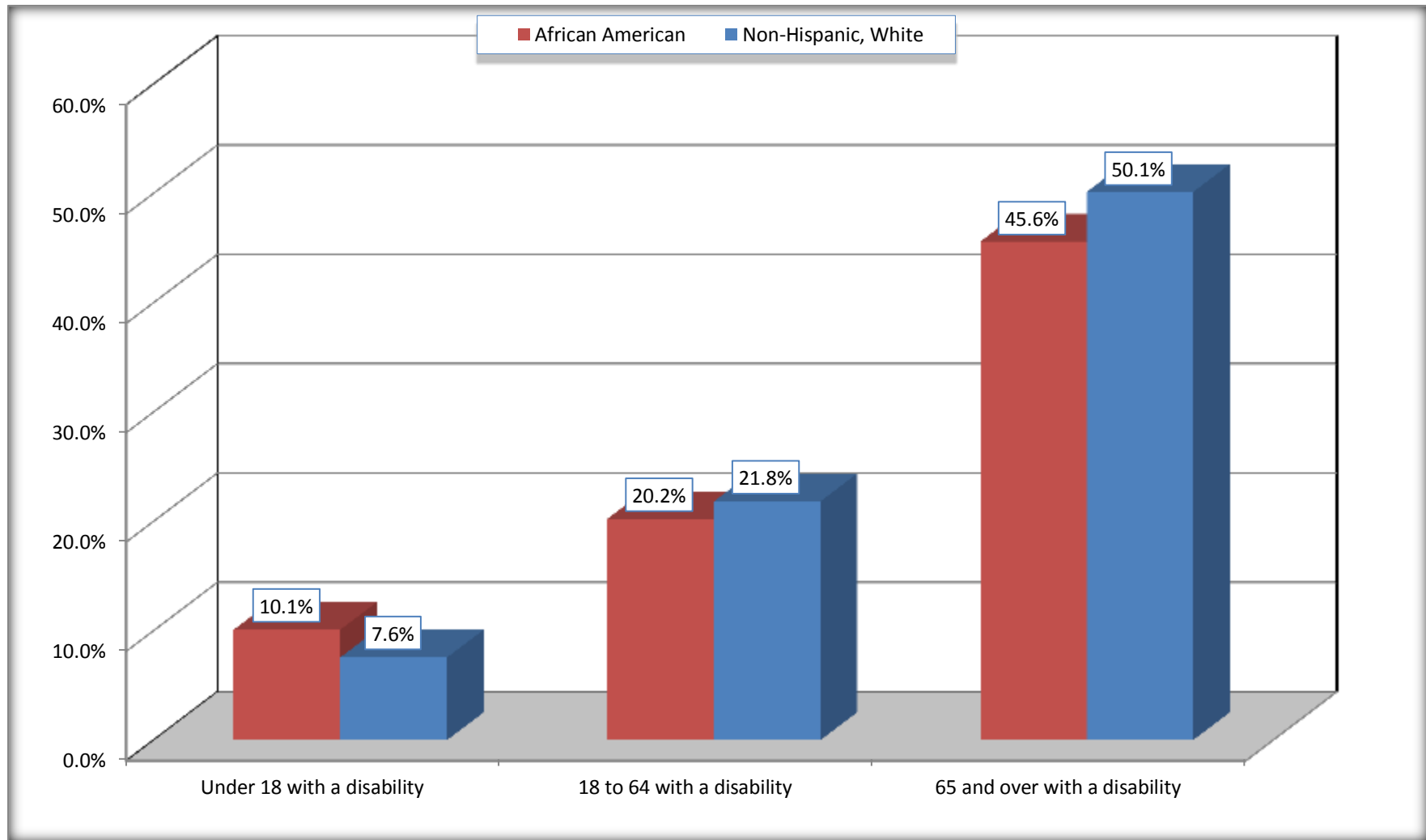
	Shively city, Kentucky					
	African American	Margin of Error (+/-)	% of AA Total	White, Not Hispanic	Margin of Error (+/-)	% of NHW Total
<b>Total:</b>	<b>6,904</b>	<b>607</b>	<b>100.0%</b>	<b>6,756</b>	<b>529</b>	<b>100.0%</b>
Under 18 years:	1,795	376	26.0%	1,098	53	16.3%
With a disability	181	128	2.6%	83	66	1.2%
No disability	1,614	365	23.4%	1,015	239	15.0%
18 to 64 years:	4,508	412	65.3%	4,168	392	61.7%
With a disability	912	263	13.2%	910	201	13.5%
No disability	3,596	366	52.1%	3,258	337	48.2%
65 years and over:	601	162	8.7%	1,490	211	22.1%
With a disability	274	112	4.0%	747	167	11.1%
No disability	327	110	4.7%	743	171	11.0%

Source: U.S. Census Bureau, 2008-2012 American Community Survey

For information on confidentiality protection, sampling error, nonsampling error, and definitions, see Survey Methodology.

<http://www.census.gov/acs/www/UseData/index.htm>

## Disability by Age Shively city, Kentucky



Source: B18101. AGE BY DISABILITY STATUS  
Data Set: 2008-2012 American Community Survey 5-Year Estimates

**C27001B. HEALTH INSURANCE COVERAGE STATUS BY AGE**

Data Set: 2008-2012 American Community Survey 5-Year Estimates

	<b>Shively city, Kentucky</b>					
	African American	Margin of Error (+/-)	% of AA Total	White, Not Hispanic	Margin of Error (+/-)	% of NHW Total
<b>Total:</b>	<b>6,904</b>	<b>607</b>	<b>100.0%</b>	<b>6,756</b>	<b>529</b>	<b>100.0%</b>
Under 18 years:	1,795	376	26.0%	1,098	264	16.3%
With health insurance coverage	1,587	371	23.0%	1,086	269	16.1%
No health insurance coverage	208	246	3.0%	12	21	0.2%
18 to 64 years:	4,508	412	65.3%	4,168	392	61.7%
With health insurance coverage	3,434	368	49.7%	3,372	333	49.9%
No health insurance coverage	1,074	290	15.6%	796	199	11.8%
65 years and over:	601	162	8.7%	1,490	211	22.1%
With health insurance coverage	601	162	8.7%	1,490	211	22.1%
No health insurance coverage	0	19	0.0%	0	19	0.0%

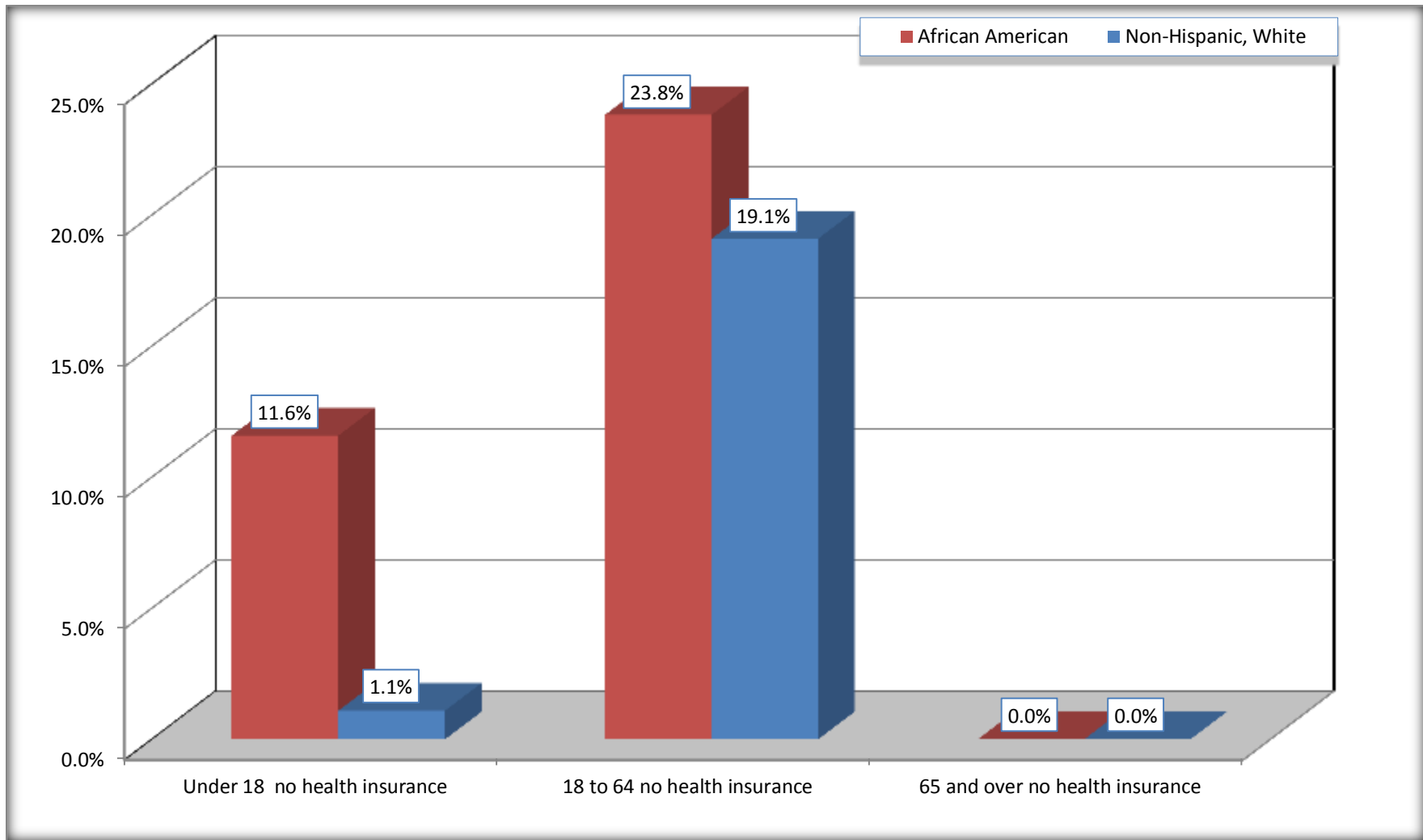
Source: U.S. Census Bureau, 2008-2012 American Community Survey

For information on confidentiality protection, sampling error, nonsampling error, and definitions, see Survey Methodology.

<http://www.census.gov/acs/www/UseData/index.htm>

# Lack of Health Insurance Coverage by Age

## Shively city, Kentucky



Source: C27001B. HEALTH INSURANCE COVERAGE STATUS BY AGE  
Data Set: 2008-2012 American Community Survey 5-Year Estimates