

Selected Socio-Economic Data

Lebanon city, Kentucky

African American and White, Not Hispanic

Data Set: 2008-2012 American Community Survey 5-Year Estimates

www.fairvote2020.org

www.fairdata2000.com

[29-Dec-13](#)

C02003.DETAILED RACE - Universe: TOTAL POPULATION

Data Set: 2008-2012 American Community Survey 5-Year Estimates

	Lebanon city, Kentucky		
	Population	Margin of Error (+/-)	% of Total
Total:	5,571	21	100.0%
Population of one race:	5,459	98	98.0%
White	4,275	182	76.7%
Black or African American	1,044	220	18.7%
American Indian and Alaska Native	0	17	0.0%
Asian alone	111	152	2.0%
Native Hawaiian and Other Pacific Islander	0	17	0.0%
Some other race	29	44	0.5%
Population of two or more races:	112	94	2.0%
Two races including Some other race	10	17	0.2%
Two races excluding Some other race, and three or more races	102	92	1.8%
Population of two races:	112	94	2.0%
White; Black or African American	95	92	1.7%
White; American Indian and Alaska Native	0	17	0.0%
White; Asian	0	17	0.0%
Black or African American; American Indian and Alaska Native	7	11	0.1%
All other two race combinations	10	17	0.2%
Population of three races	0	17	0.0%
Population of four or more races	0	17	0.0%

Note: Hispanics may be of any race. See Table B03002 and chart.

Source: U.S. Census Bureau, 2008-2012 American Community Survey

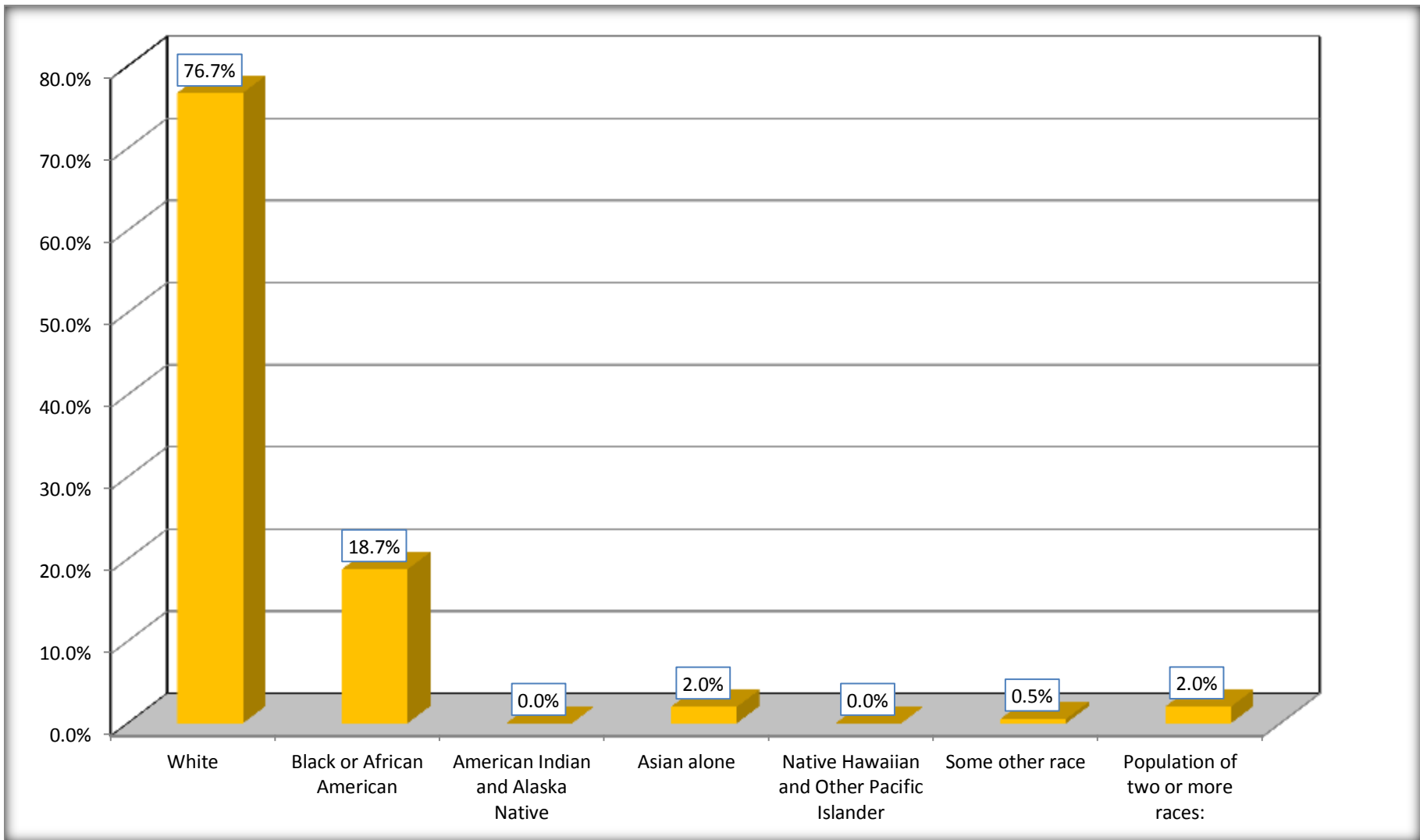
Although the American Community Survey (ACS) produces population, demographic and housing unit estimates, it is the Census Bureau's Population Estimates Program that produces and disseminates the official estimates of the population for the nation, states, counties, cities and towns and estimates of housing units for states and counties.

For information on confidentiality protection, sampling error, nonsampling error, and definitions, see Survey Methodology.

<http://www.census.gov/acs/www/UseData/index.htm>

Population by Race

Lebanon city, Kentucky



Source: C02003.DETAILED RACE - Universe: TOTAL POPULATION
Data Set: 2008-2012 American Community Survey 5-Year Estimates

B03002. HISPANIC OR LATINO ORIGIN BY RACE - Universe: TOTAL POPULATION

Data Set: 2008-2012 American Community Survey 5-Year Estimates

	Lebanon city, Kentucky		
	Population	Margin of Error (+/-)	% of Total
Total:	5,571	21	100.0%
Not Hispanic or Latino:	5,502	68	98.8%
White alone	4,254	178	76.4%
Black or African American alone	1,025	216	18.4%
American Indian and Alaska Native alone	0	17	0.0%
Asian alone	111	152	2.0%
Native Hawaiian and Other Pacific Islander alone	0	17	0.0%
Some other race alone	0	17	0.0%
Two or more races:	112	94	2.0%
Two races including Some other race	10	17	0.2%
Two races excluding Some other race, and three or more races	102	92	1.8%
Hispanic or Latino	69	70	1.2%

Source: U.S. Census Bureau, 2008-2012 American Community Survey

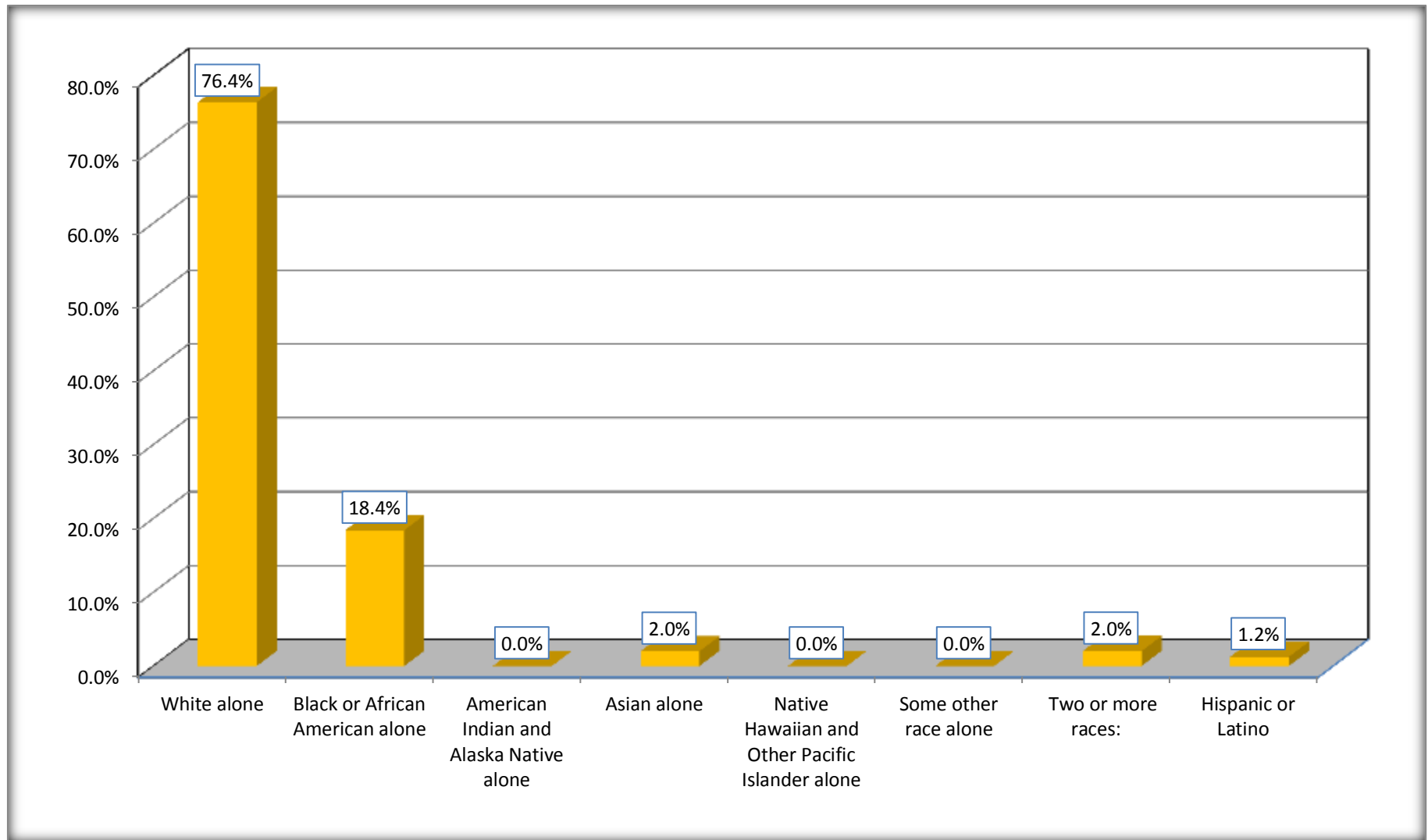
Although the American Community Survey (ACS) produces population, demographic and housing unit estimates, it is the Census Bureau's Population Estimates Program that produces and disseminates the official estimates of the population for the nation, states, counties, cities and towns and estimates of housing units for states and counties.

For information on confidentiality protection, sampling error, nonsampling error, and definitions, see Survey Methodology.

<http://www.census.gov/acs/www/UseData/index.htm>

Non-Hispanic by Race and Hispanic Population

Lebanon city, Kentucky



Source: B03002. HISPANIC OR LATINO ORIGIN BY RACE - Universe: TOTAL POPULATION
Data Set: 2008-2012 American Community Survey 5-Year Estimates

B03002. HISPANIC OR LATINO ORIGIN BY RACE

Data Set: 2008-2012 American Community Survey 5-Year Estimates

	Lebanon city, Kentucky		
	Population	Margin of Error (+/-)	% of Total
Hispanic or Latino:	69	70	100.0%
White alone	21	42	30.4%
Black or African American alone	19	33	27.5%
American Indian and Alaska Native alone	0	17	0.0%
Asian alone	0	17	0.0%
Native Hawaiian and Other Pacific Islander alone	0	17	0.0%
Some other race alone	29	44	42.0%
Two or more races:	0	17	0.0%
Two races including Some other race	0	17	0.0%
Two races excluding Some other race, and three or more races	0	17	0.0%

Source: U.S. Census Bureau, 2008-2012 American Community Survey

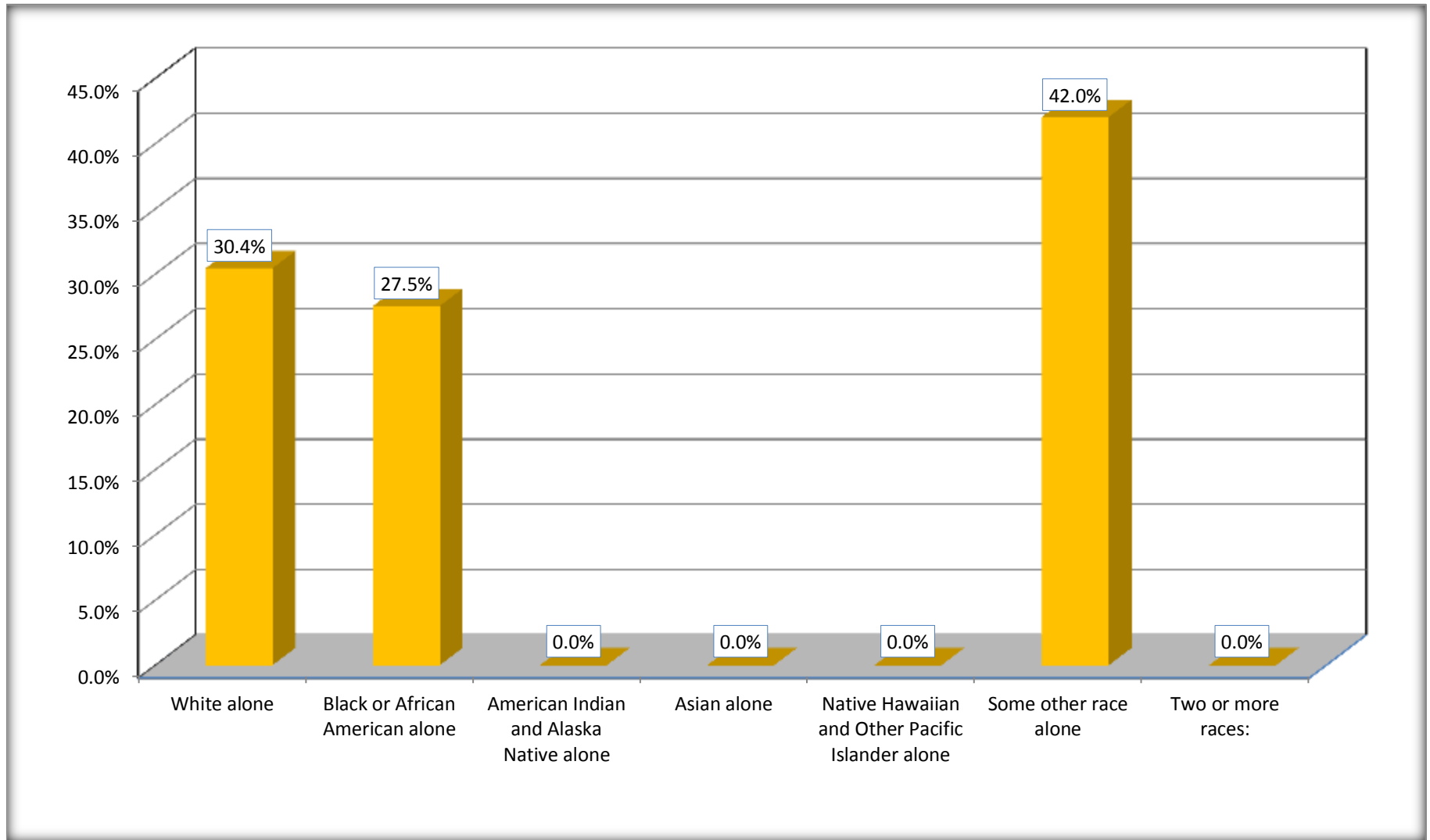
Although the American Community Survey (ACS) produces population, demographic and housing unit estimates, it is the Census Bureau's Population Estimates Program that produces and disseminates the official estimates of the population for the nation, states, counties, cities and towns and estimates of housing units for states and counties.

For information on confidentiality protection, sampling error, nonsampling error, and definitions, see Survey Methodology.

<http://www.census.gov/acs/www/UseData/index.htm>

Hispanic or Latino Origin by Race

Lebanon city, Kentucky



Source: B03002. HISPANIC OR LATINO ORIGIN BY RACE
Data Set: 2008-2012 American Community Survey 5-Year Estimates

B01001. SEX BY AGE

Data Set: 2008-2012 American Community Survey 5-Year Estimates

	Lebanon city, Kentucky					
	African American	Margin of Error (+/-)	% of AA Total	White, Not Hispanic	Margin of Error (+/-)	% of NHW Total
Total:	1,044	220	100.0%	4,254	178	100.0%
Under 18 years	345	NC	33.0%	1,027	NC	24.1%
18 to 64 years	595	NC	57.0%	2,305	NC	54.2%
65 years and over	104	NC	10.0%	922	NC	21.7%
Male:	479	159	45.9%	1,823	389	42.9%
Under 18 years	229	NC	21.9%	522	NC	12.3%
18 to 64 years	223	NC	21.4%	974	NC	22.9%
65 years and over	27	NC	2.6%	327	NC	7.7%
Female:	565	107	54.1%	2,431	412	57.1%
Under 18 years	116	NC	11.1%	505	NC	11.9%
18 to 64 years	372	NC	35.6%	1,331	NC	31.3%
65 years and over	77	NC	7.4%	595	NC	14.0%

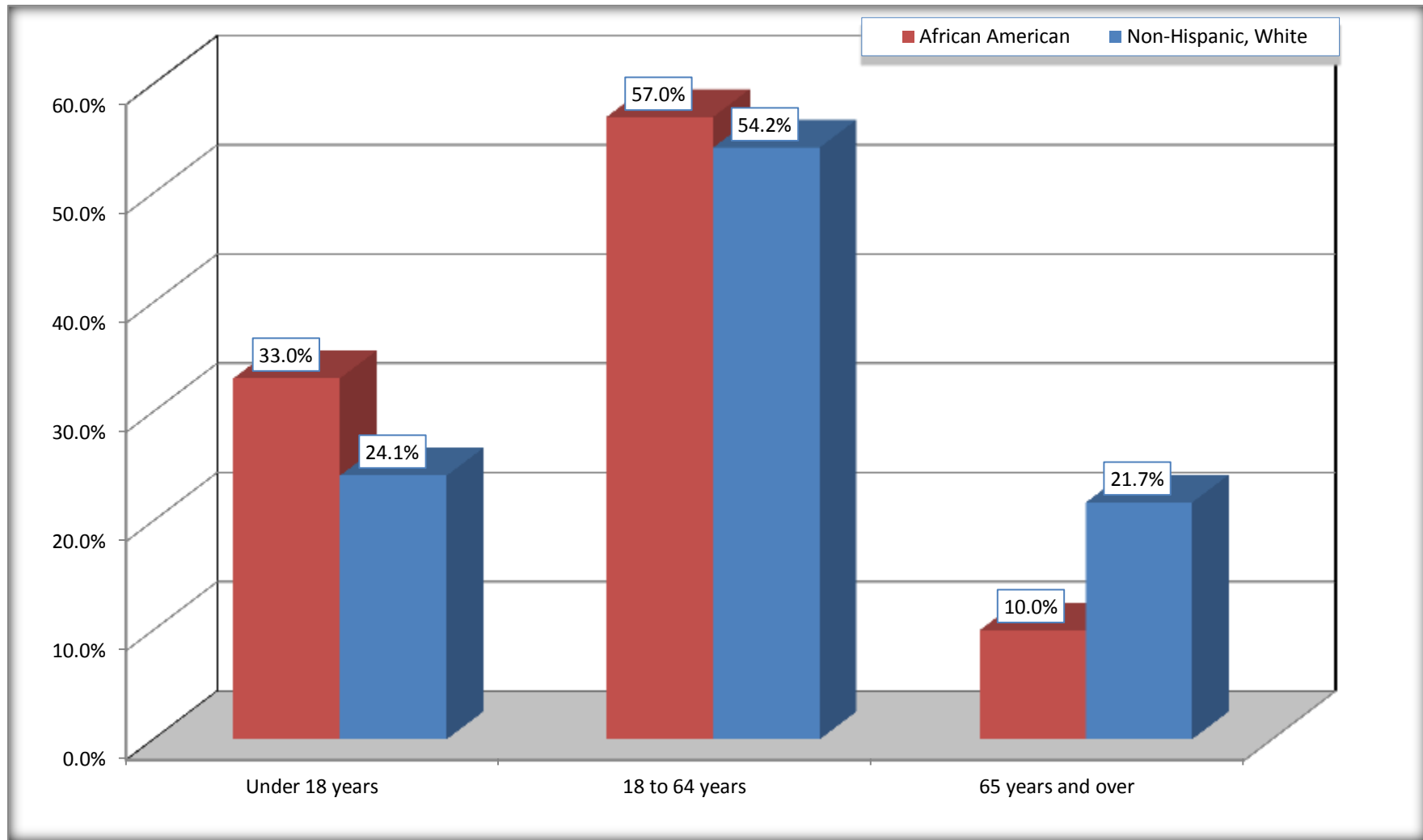
Source: U.S. Census Bureau, 2008-2012 American Community Survey

Although the American Community Survey (ACS) produces population, demographic and housing unit estimates, it is the Census Bureau's Population Estimates Program that produces and disseminates the official estimates of the population for the nation, states, counties, cities and towns and estimates of housing units for states and counties.

For information on confidentiality protection, sampling error, nonsampling error, and definitions, see Survey Methodology.
<http://www.census.gov/acs/www/UseData/index.htm>

Population by Age

Lebanon city, Kentucky



Source: B01001. SEX BY AGE
Data Set: 2008-2012 American Community Survey 5-Year Estimates

B05003. SEX BY AGE BY CITIZENSHIP STATUS

Data Set: 2008-2012 American Community Survey 5-Year Estimates

	Lebanon city, Kentucky					
	African American	Margin of Error (+/-)	% of AA Total by Age	White, Not Hispanic	Margin of Error (+/-)	% of NHW Total by Age
Total:	1,044	220	100.0%	4,254	178	100.0%
Under 18 years:	345	NC	100.0%	1,027	NC	100.0%
Native	311	NC	90.1%	1,027	NC	100.0%
Foreign born:	34	NC	9.9%	0	NC	0.0%
Naturalized U.S. citizen	0	NC	0.0%	0	NC	0.0%
Not a U.S. citizen	34	NC	9.9%	0	NC	0.0%
18 years and over:	699	NC	100.0%	3,227	NC	100.0%
Native	611	NC	87.4%	3,220	NC	99.8%
Foreign born:	88	NC	12.6%	7	NC	0.2%
Naturalized U.S. citizen	0	NC	0.0%	0	NC	0.0%
Not a U.S. citizen	88	NC	12.6%	7	NC	0.2%
Male:	479	159	45.9%	1,823	173	42.9%
Under 18 years:	229	107	100.0%	522	134	100.0%
Native	195	100	85.2%	522	134	100.0%
Foreign born:	34	48	14.8%	0	17	0.0%
Naturalized U.S. citizen	0	17	0.0%	0	17	0.0%
Not a U.S. citizen	34	48	14.8%	0	17	0.0%
18 years and over:	250	99	100.0%	1,301	148	100.0%
Native	208	90	83.2%	1,301	148	100.0%
Foreign born:	42	68	16.8%	0	17	0.0%
Naturalized U.S. citizen	0	17	0.0%	0	17	0.0%
Not a U.S. citizen	42	68	16.8%	0	17	0.0%

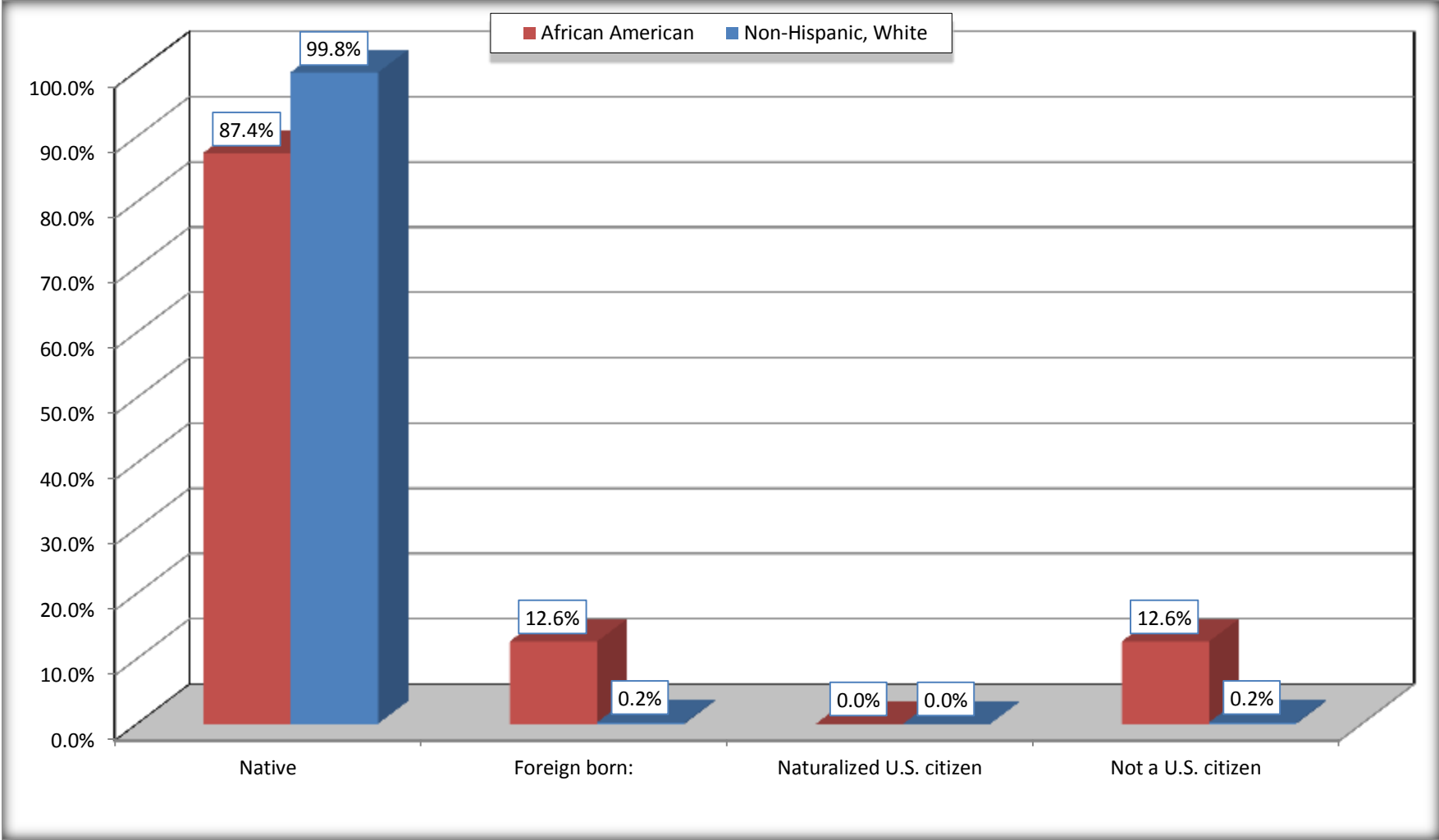
	Lebanon city, Kentucky					
	African American	Margin of Error (+/-)	% of AA by Age	White, Not Hispanic	Margin of Error (+/-)	% of NHW by Age
Female:	565	107	54.1%	2,431	168	57.1%
Under 18 years:	116	72	100.0%	505	114	100.0%
Native	116	72	100.0%	505	114	100.0%
Foreign born:	0	17	0.0%	0	17	0.0%
Naturalized U.S. citizen	0	17	0.0%	0	17	0.0%
Not a U.S. citizen	0	17	0.0%	0	17	0.0%
18 years and over:	449	77	100.0%	1,926	137	100.0%
Native	403	78	89.8%	1,919	138	99.6%
Foreign born:	46	64	10.2%	7	12	0.4%
Naturalized U.S. citizen	0	17	0.0%	0	17	0.0%
Not a U.S. citizen	46	64	10.2%	7	12	0.4%

Source: U.S. Census Bureau, 2008-2012 American Community Survey

For information on confidentiality protection, sampling error, nonsampling error, and definitions, see Survey Methodology.
<http://www.census.gov/acs/www/UseData/index.htm>

Citizenship Status of Voting Age Population (18 and Over)

Lebanon city, Kentucky



Source: B05003. SEX BY AGE BY CITIZENSHIP STATUS
Data Set: 2008-2012 American Community Survey 5-Year Estimates

**B07004. GEOGRAPHICAL MOBILITY IN THE PAST YEAR BY RACE FOR CURRENT RESIDENCE IN THE UNITED STATES - Universe:
POPULATION 1 YEAR AND OVER**

Data Set: 2008-2012 American Community Survey 5-Year Estimates

	Lebanon city, Kentucky					
	African American	Margin of Error (+/-)	% of AA Total	White, Not Hispanic	Margin of Error (+/-)	% of NHW Total
Total:	1,044	220	100.0%	4,230	179	100.0%
Same house 1 year ago	946	220	90.6%	3,718	271	87.9%
Moved within same county	45	50	4.3%	304	132	7.2%
Moved from different county within same state	53	60	5.1%	190	170	4.5%
Moved from different state	0	17	0.0%	11	15	0.3%
Moved from abroad	0	17	0.0%	7	12	0.2%

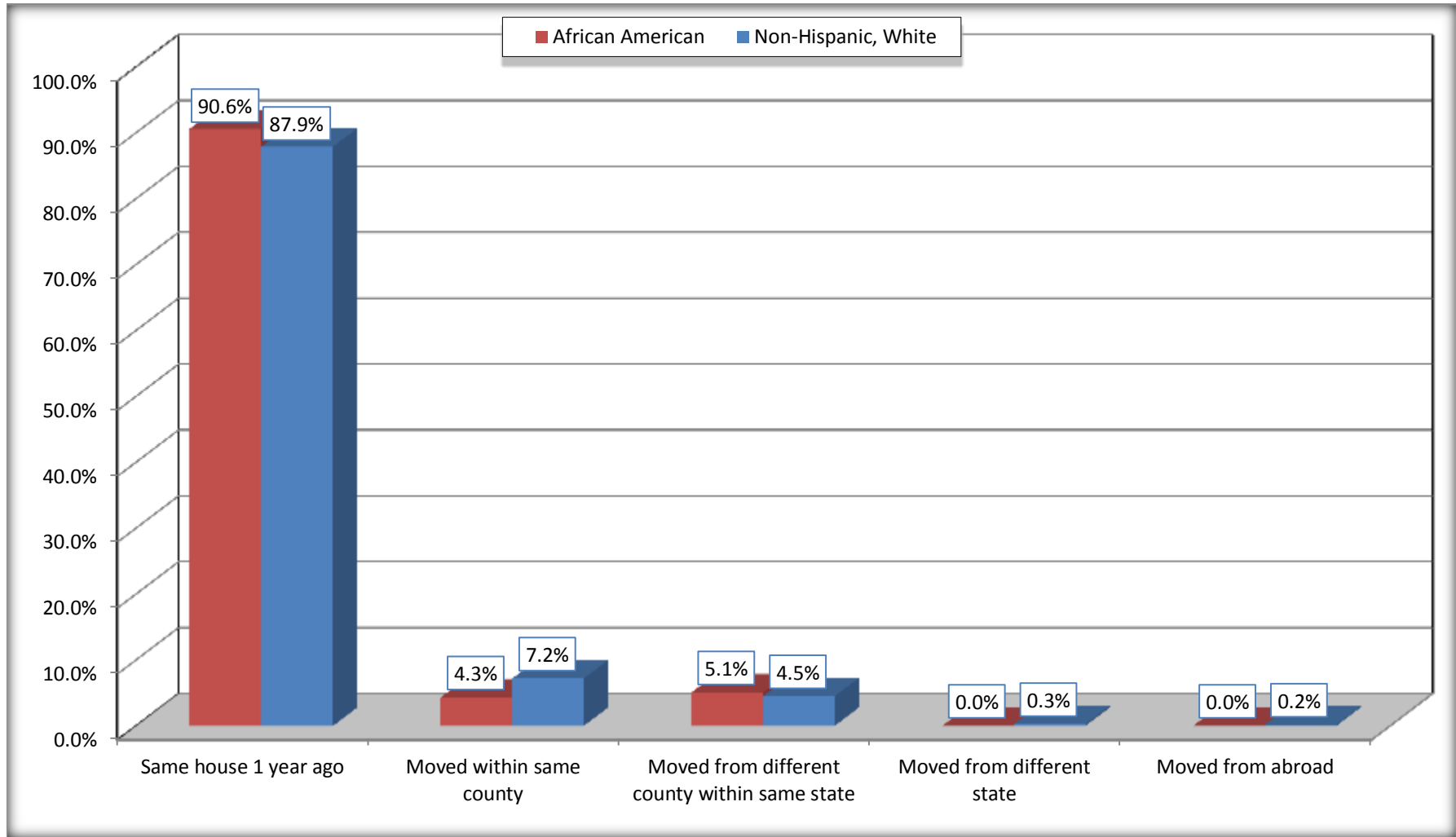
Source: U.S. Census Bureau, 2008-2012 American Community Survey

For information on confidentiality protection, sampling error, nonsampling error, and definitions, see Survey Methodology.

<http://www.census.gov/acs/www/UseData/index.htm>

Geographical Mobility in the Past Year (Population 1 Year and Over)

Lebanon city, Kentucky



Source: B07004. GEOGRAPHICAL MOBILITY IN THE PAST YEAR BY RACE FOR CURRENT RESIDENCE IN THE UNITED STATES - Universe: POPULATION 1 YEAR AND OVER

Data Set: 2008-2012 American Community Survey 5-Year Estimates

B08105. MEANS OF TRANSPORTATION TO WORK - Universe: WORKERS 16 YEARS AND OVER

Data Set: 2008-2012 American Community Survey 5-Year Estimates

	Lebanon city, Kentucky					
	African American	Margin of Error (+/-)	% of AA Total	White, Not Hispanic	Margin of Error (+/-)	% of NHW Total
Total:	410	159	100.0%	1612	176	100.0%
Car, truck, or van - drove alone	243	105	59.3%	1285	151	79.7%
Car, truck, or van - carpooled	130	134	31.7%	186	140	11.5%
Public transportation (excluding taxicab)	0	17	0.0%	0	17	0.0%
Walked	37	35	9.0%	46	48	2.9%
Taxicab, motorcycle, bicycle, or other means	0	17	0.0%	67	64	4.2%
Worked at home	0	17	0.0%	28	31	1.7%

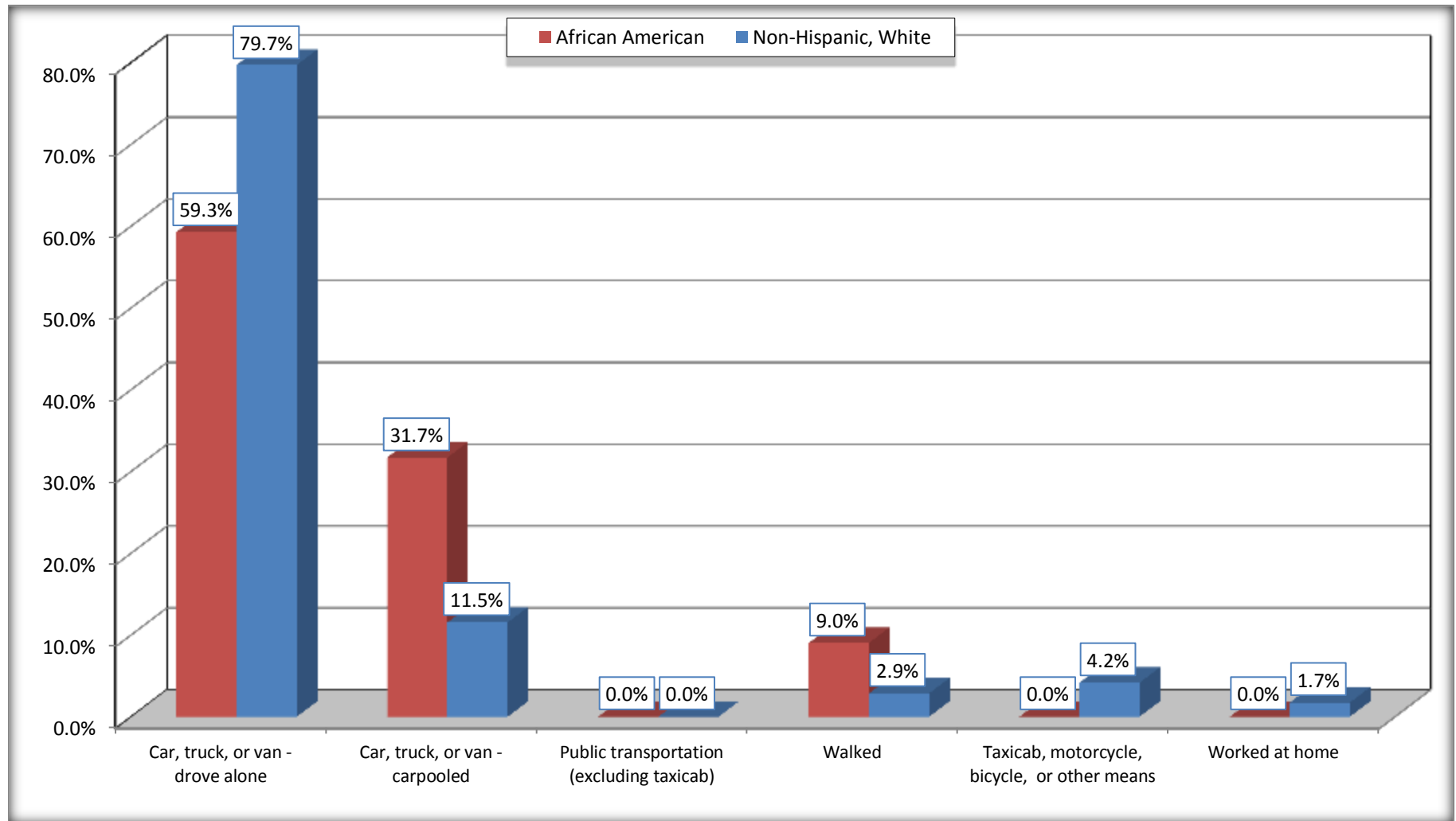
Source: U.S. Census Bureau, 2008-2012 American Community Survey

For information on confidentiality protection, sampling error, nonsampling error, and definitions, see Survey Methodology.

<http://www.census.gov/acs/www/UseData/index.htm>

Means of Transportation to Work (Workers 16 Years and Over)

Lebanon city, Kentucky



Source: B08105. MEANS OF TRANSPORTATION TO WORK - Universe: WORKERS 16 YEARS AND OVER
Data Set: 2008-2012 American Community Survey 5-Year Estimates

B11002. HOUSEHOLD TYPE BY RELATIVES AND NONRELATIVES FOR POPULATION IN HOUSEHOLDS

Data Set: 2008-2012 American Community Survey 5-Year Estimates

	Lebanon city, Kentucky					
	African American	Margin of Error (+/-)	% of AA Total	White, Not Hispanic	Margin of Error (+/-)	% of NHW Total
Total:	969	219	100.0%	4297	207	100.0%
In family households	900	227	92.9%	3175	296	73.9%
In nonfamily households	69	36	7.1%	1122	234	26.1%

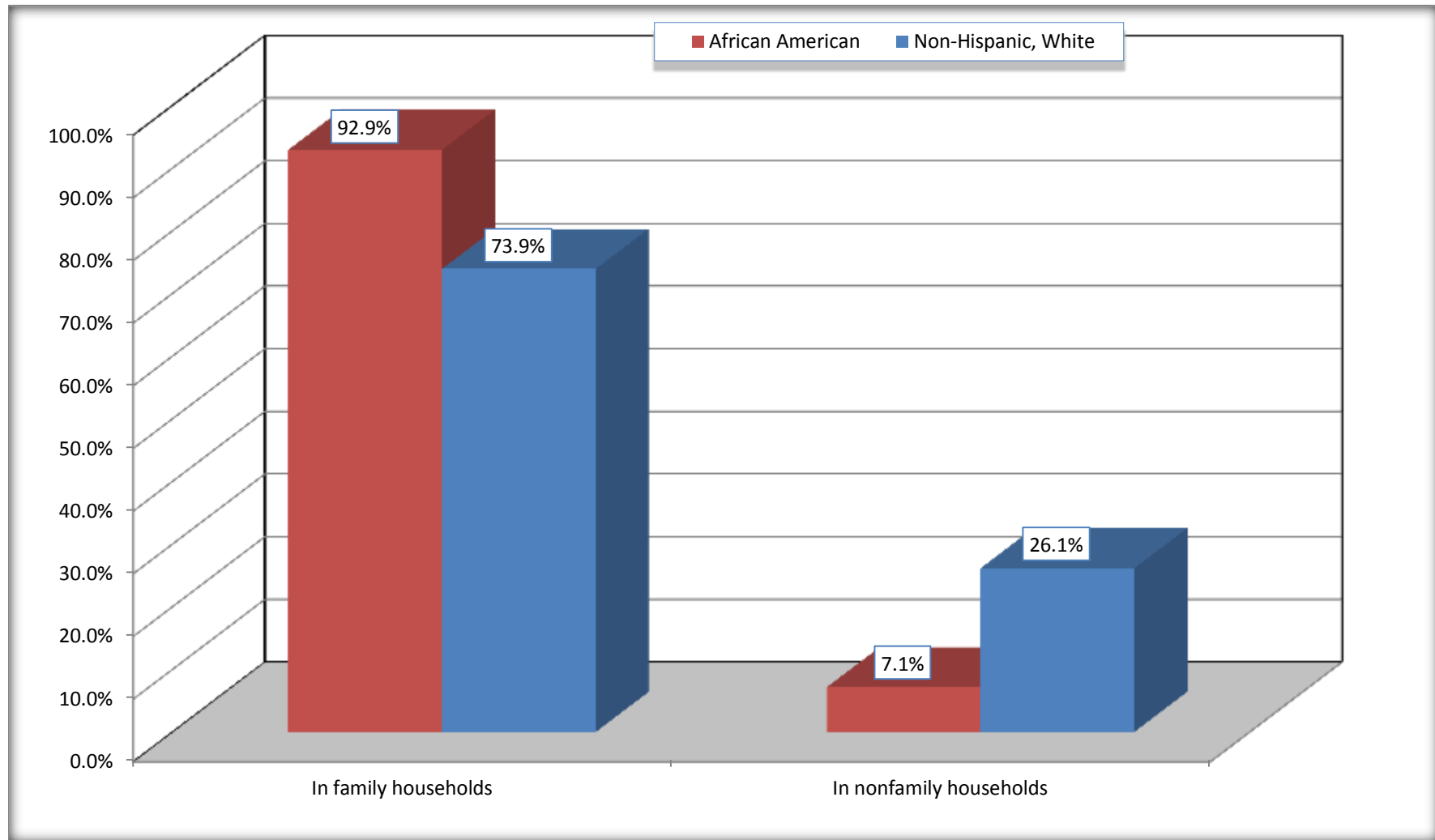
Source: U.S. Census Bureau, 2008-2012 American Community Survey

For information on confidentiality protection, sampling error, nonsampling error, and definitions, see Survey Methodology.

<http://www.census.gov/acs/www/UseData/index.htm>

Household Type for Population in Households

Lebanon city, Kentucky



Source: B11002. HOUSEHOLD TYPE BY RELATIVES AND NONRELATIVES FOR POPULATION IN HOUSEHOLDS
Data Set: 2008-2012 American Community Survey 5-Year Estimates

B12002. MARITAL STATUS FOR THE POPULATION 15 YEARS AND OVER

Data Set: 2008-2012 American Community Survey 5-Year Estimates

	Lebanon city, Kentucky					
	African American	Margin of Error (+/-)	% of AA Total	White, Not Hispanic	Margin of Error (+/-)	% of NHW Total
Total:	782	172	100.0%	3,347	178	100.0%
Never married	448	NC	57.3%	1,069	NC	31.9%
Now married (except separated)	240	NC	30.7%	1,224	NC	36.6%
Separated	35	NC	4.5%	81	NC	2.4%
Widowed	23	NC	2.9%	402	NC	12.0%
Divorced	36	NC	4.6%	571	NC	17.1%
Male:	314	120	40.2%	1,364	155	40.8%
Never married	170	110	21.7%	428	142	12.8%
Now married (except separated)	129	58	16.5%	618	101	18.5%
Separated	0	17	0.0%	0	17	0.0%
Widowed	0	17	0.0%	125	56	3.7%
Divorced	15	27	1.9%	193	86	5.8%
Female:	468	77	59.8%	1,983	140	59.2%
Never married	278	90	35.5%	641	140	19.2%
Now married (except separated)	111	51	14.2%	606	87	18.1%
Separated	35	46	4.5%	81	61	2.4%
Widowed	23	20	2.9%	277	94	8.3%
Divorced	21	23	2.7%	378	108	11.3%

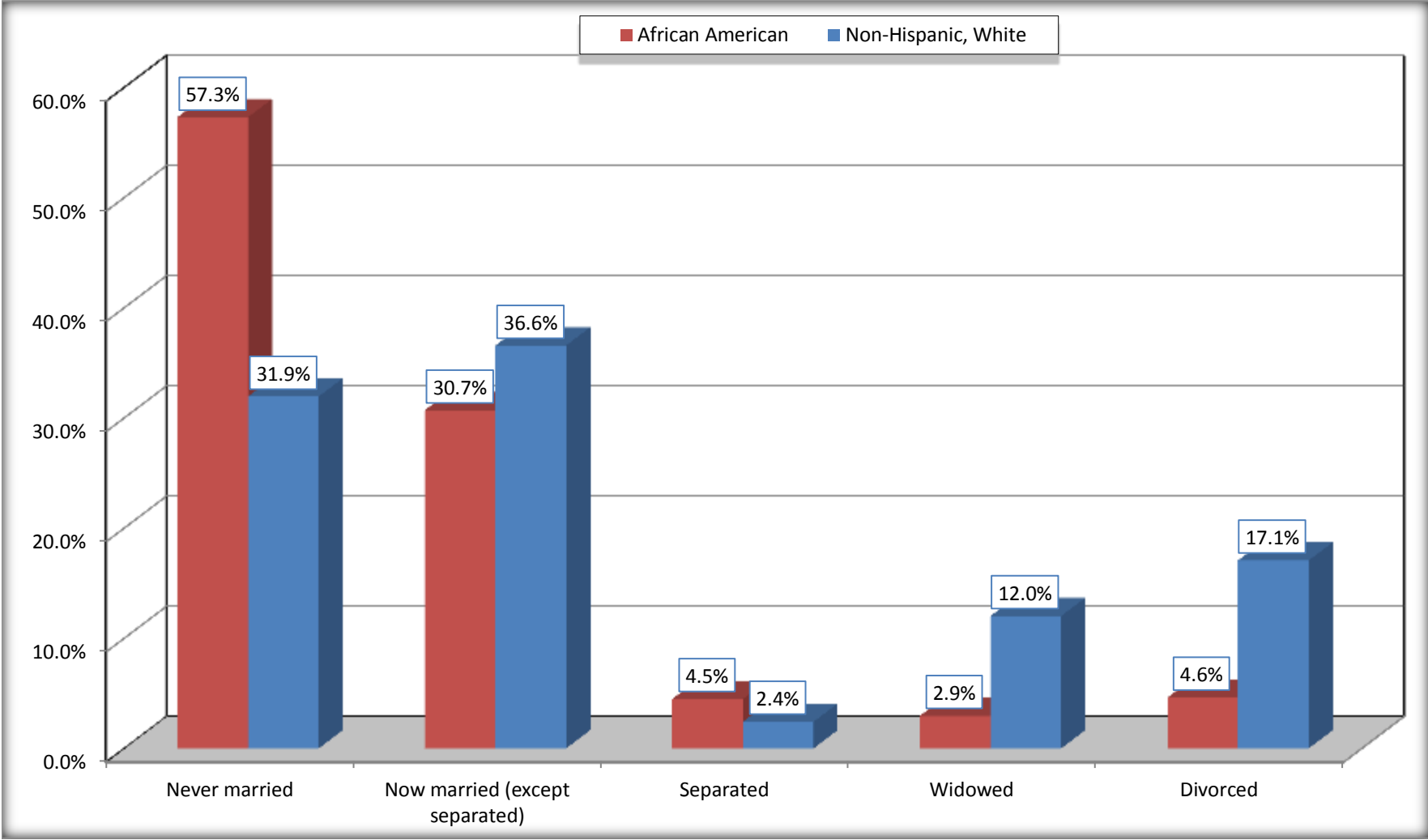
Source: U.S. Census Bureau, 2008-2012 American Community Survey

For information on confidentiality protection, sampling error, nonsampling error, and definitions, see Survey Methodology.

<http://www.census.gov/acs/www/UseData/index.htm>

Marital Status for the Population 15 Years and Over

Lebanon city, Kentucky



Source: B12002. MARITAL STATUS FOR THE POPULATION 15 YEARS AND OVER
Data Set: 2008-2012 American Community Survey 5-Year Estimates

C15002. SEX BY EDUCATIONAL ATTAINMENT FOR THE POPULATION 25 YEARS AND OVER

Data Set: 2008-2012 American Community Survey 5-Year Estimates

	Lebanon city, Kentucky					
	African American	Margin of Error (+/-)	% of AA Total	White, Not Hispanic	Margin of Error (+/-)	% of NHW Total
Total:	644	157	100.0%	2,921	191	100.0%
Less than high school diploma	190	NC	29.5%	571	NC	19.5%
High school graduate, GED, or alternative	222	NC	34.5%	1,141	NC	39.1%
Some college or associate's degree	219	NC	34.0%	787	NC	26.9%
Bachelor's degree or higher	13	NC	2.0%	422	NC	14.4%
Male:	225	96	34.9%	1,198	159	41.0%
Less than high school diploma	78	76	12.1%	196	67	6.7%
High school graduate, GED, or alternative	66	47	10.2%	559	137	19.1%
Some college or associate's degree	68	59	10.6%	309	136	10.6%
Bachelor's degree or higher	13	25	2.0%	134	59	4.6%
Female:	419	78	65.1%	1,723	134	59.0%
Less than high school diploma	112	77	17.4%	375	112	12.8%
High school graduate, GED, or alternative	156	79	24.2%	582	143	19.9%
Some college or associate's degree	151	69	23.4%	478	133	16.4%
Bachelor's degree or higher	0	17	0.0%	288	125	9.9%

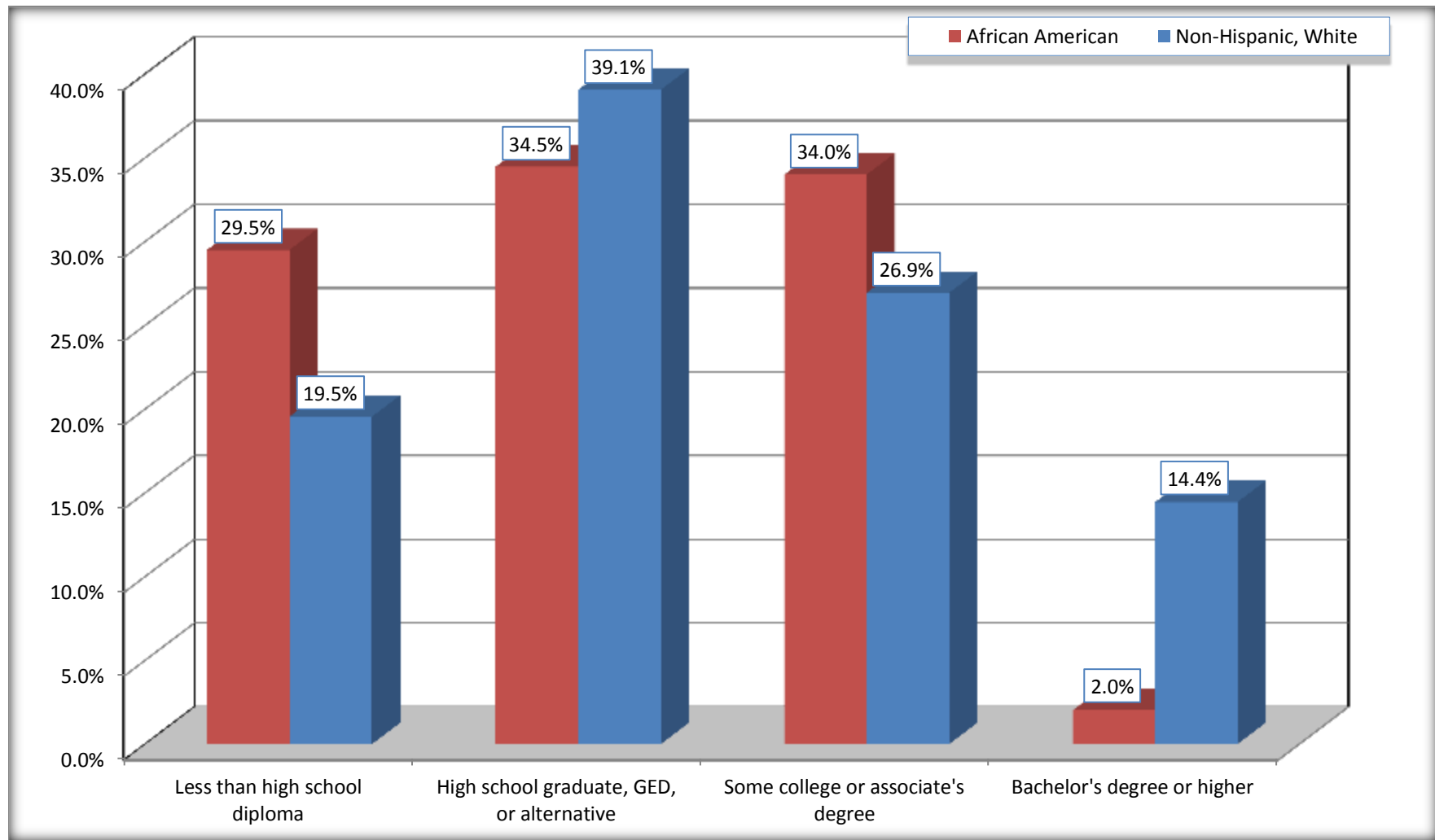
Source: U.S. Census Bureau, 2008-2012 American Community Survey

For information on confidentiality protection, sampling error, nonsampling error, and definitions, see Survey Methodology.

<http://www.census.gov/acs/www/UseData/index.htm>

Educational Attainment for the Population 25 Years and Older

Lebanon city, Kentucky



Source: C15002. SEX BY EDUCATIONAL ATTAINMENT FOR THE POPULATION 25 YEARS AND OVER
Data Set: 2008-2012 American Community Survey 5-Year Estimates

B17010. POVERTY STATUS IN THE PAST 12 MONTHS OF FAMILIES BY FAMILY TYPE BY PRESENCE OF RELATED CHILDREN UNDER 18 YEARS

Data Set: 2008-2012 American Community Survey 5-Year Estimates

	Lebanon city, Kentucky					
	African American	Margin of Error (+/-)	% of AA Total	White, Not Hispanic	Margin of Error (+/-)	% of NHW Total
Total:	331	98	100.0%	966	109	100.0%
Income in the past 12 months below poverty level:	158	76	47.7%	259	85	26.8%
Married-couple family:	24	27	7.3%	40	34	4.1%
With related children under 18 years	9	15	2.7%	24	29	2.5%
Other family:	134	71	40.5%	219	76	22.7%
Male householder, no wife present	0	17	0.0%	53	53	5.5%
With related children under 18 years	0	17	0.0%	53	53	5.5%
Female householder, no husband present	134	71	40.5%	166	73	17.2%
With related children under 18 years	126	73	38.1%	166	73	17.2%
Income in the past 12 months at or above poverty level:	173	75	52.3%	707	99	73.2%
Married-couple family:	100	58	30.2%	526	84	54.5%
With related children under 18 years	19	21	5.7%	249	68	25.8%
Other family:	73	49	22.1%	181	68	18.7%
Male householder, no wife present	22	29	6.6%	47	34	4.9%
With related children under 18 years	14	24	4.2%	33	29	3.4%
Female householder, no husband present	51	35	15.4%	134	62	13.9%
With related children under 18 years	51	35	15.4%	89	53	9.2%

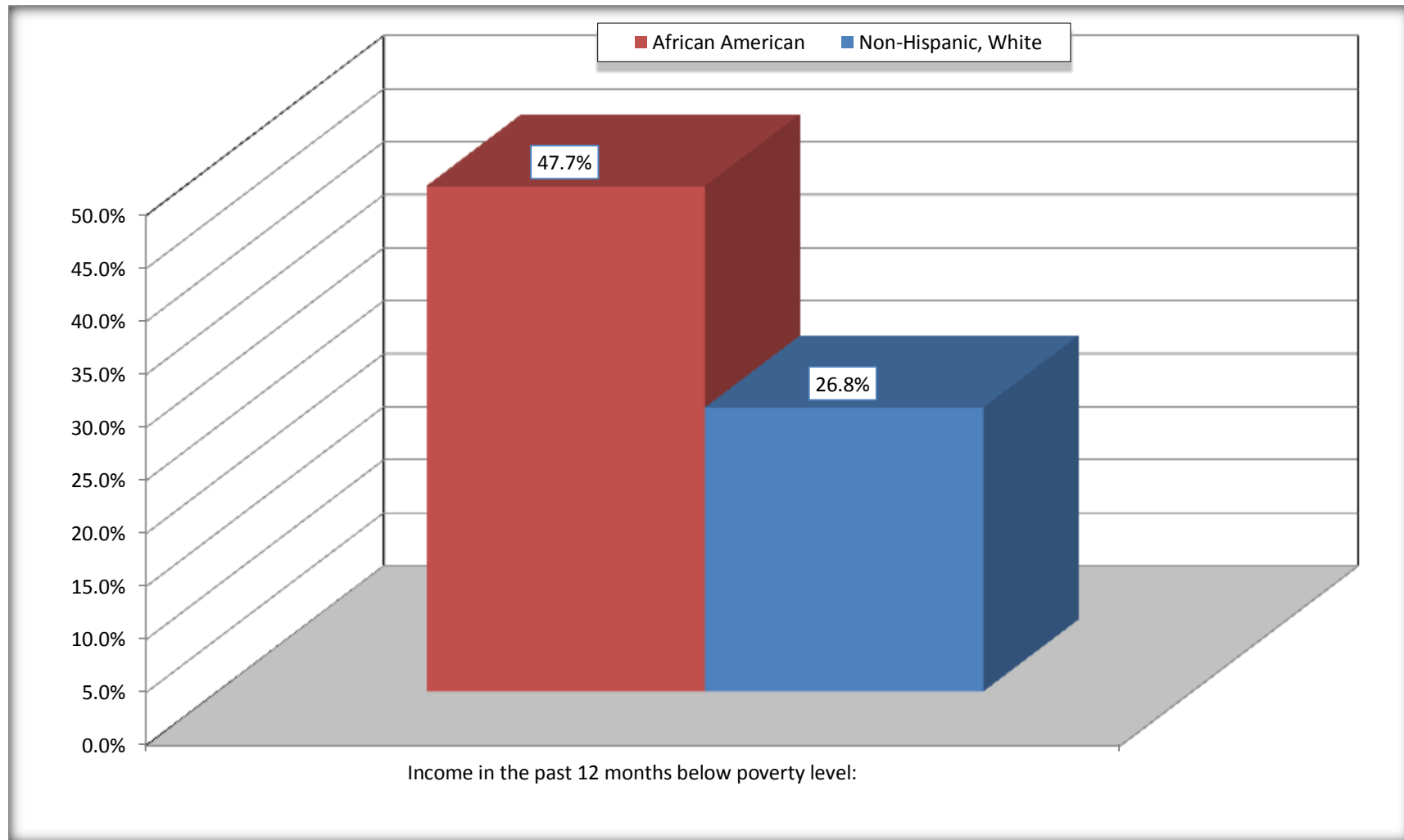
Source: U.S. Census Bureau, 2008-2012 American Community Survey

For information on confidentiality protection, sampling error, nonsampling error, and definitions, see Survey Methodology.

<http://www.census.gov/acs/www/UseData/index.htm>

Family Households Below Poverty in the Past 12 Months

Lebanon city, Kentucky

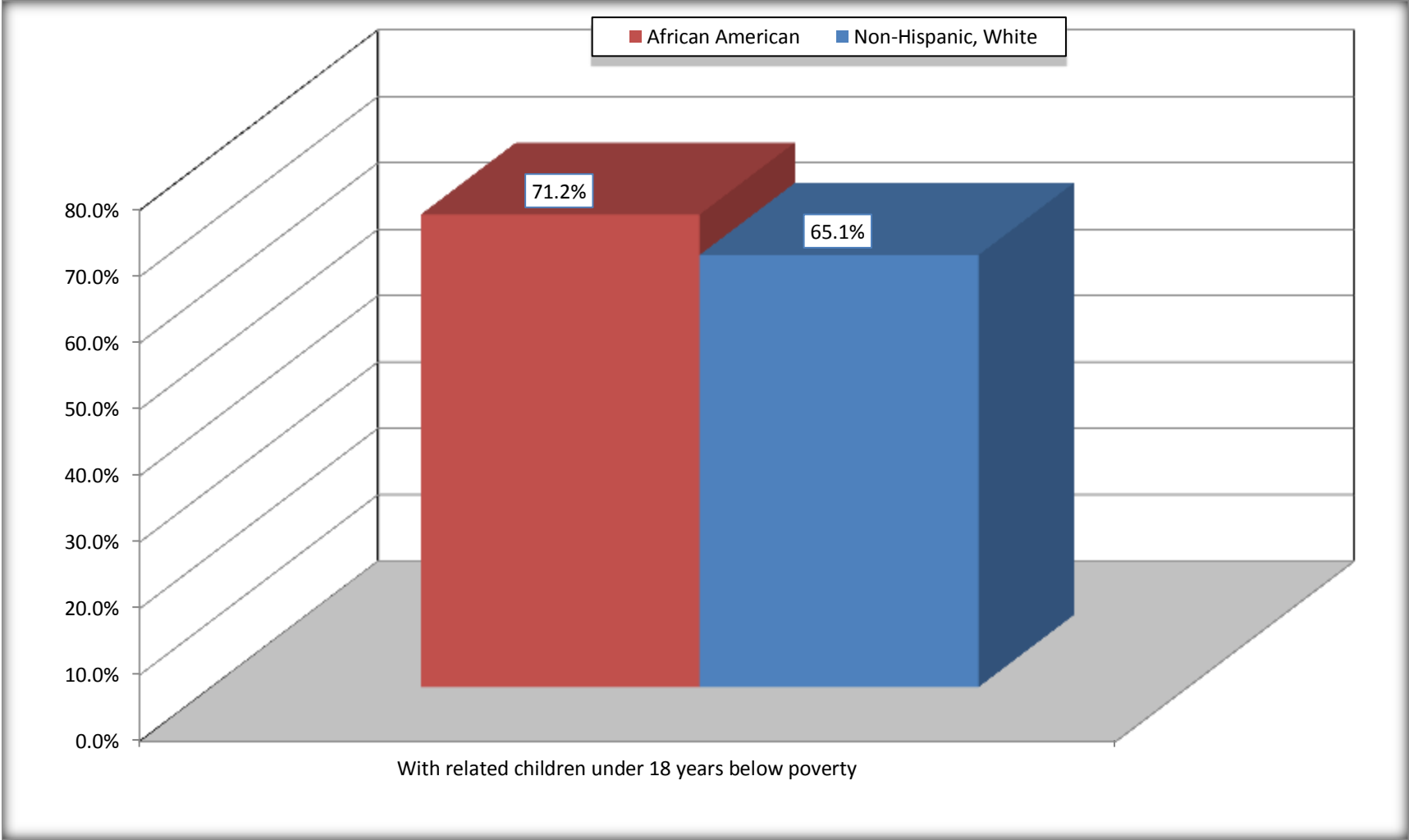


Source: B17010. POVERTY STATUS IN THE PAST 12 MONTHS OF FAMILIES BY FAMILY TYPE BY PRESENCE OF RELATED CHILDREN UNDER 18 YEARS

Data Set: 2008-2012 American Community Survey 5-Year Estimates

Female-headed Households with Related Children Below Poverty in the Past 12 Months

Lebanon city, Kentucky



Source: B17010. POVERTY STATUS IN THE PAST 12 MONTHS OF FAMILIES BY FAMILY TYPE BY PRESENCE OF RELATED CHILDREN UNDER 18 YEARS

Data Set: 2008-2012 American Community Survey 5-Year Estimates

B17020 POVERTY STATUS IN THE PAST 12 MONTHS BY AGE - Universe: POPULATION FOR WHOM POVERTY STATUS IS DETERMINED

Data Set: 2008-2012 American Community Survey 5-Year Estimates

	Lebanon city, Kentucky					
	African American	Margin of Error (+/-)	% of AA By Age	White, Not Hispanic	Margin of Error (+/-)	% of NHW By Age
Total:	1,028	223	100.0%	4,153	179	100.0%
Income in the past 12 months below poverty level:	510	218	49.6%	1,188	320	28.6%
Under 18 years	211	NC	61.2%	382	NC	37.2%
18 to 64 years	253	134	42.7%	598	168	26.4%
65 years and over	46	NC	50.5%	208	NC	24.3%
Income in the past 12 months at or above poverty level:	518	179	50.4%	2,965	335	71.4%
Under 18 years	134	NC	38.8%	645	NC	62.8%
18 to 64 years	339	126	57.3%	1,671	210	73.6%
65 years and over	45	NC	49.5%	649	NC	75.7%

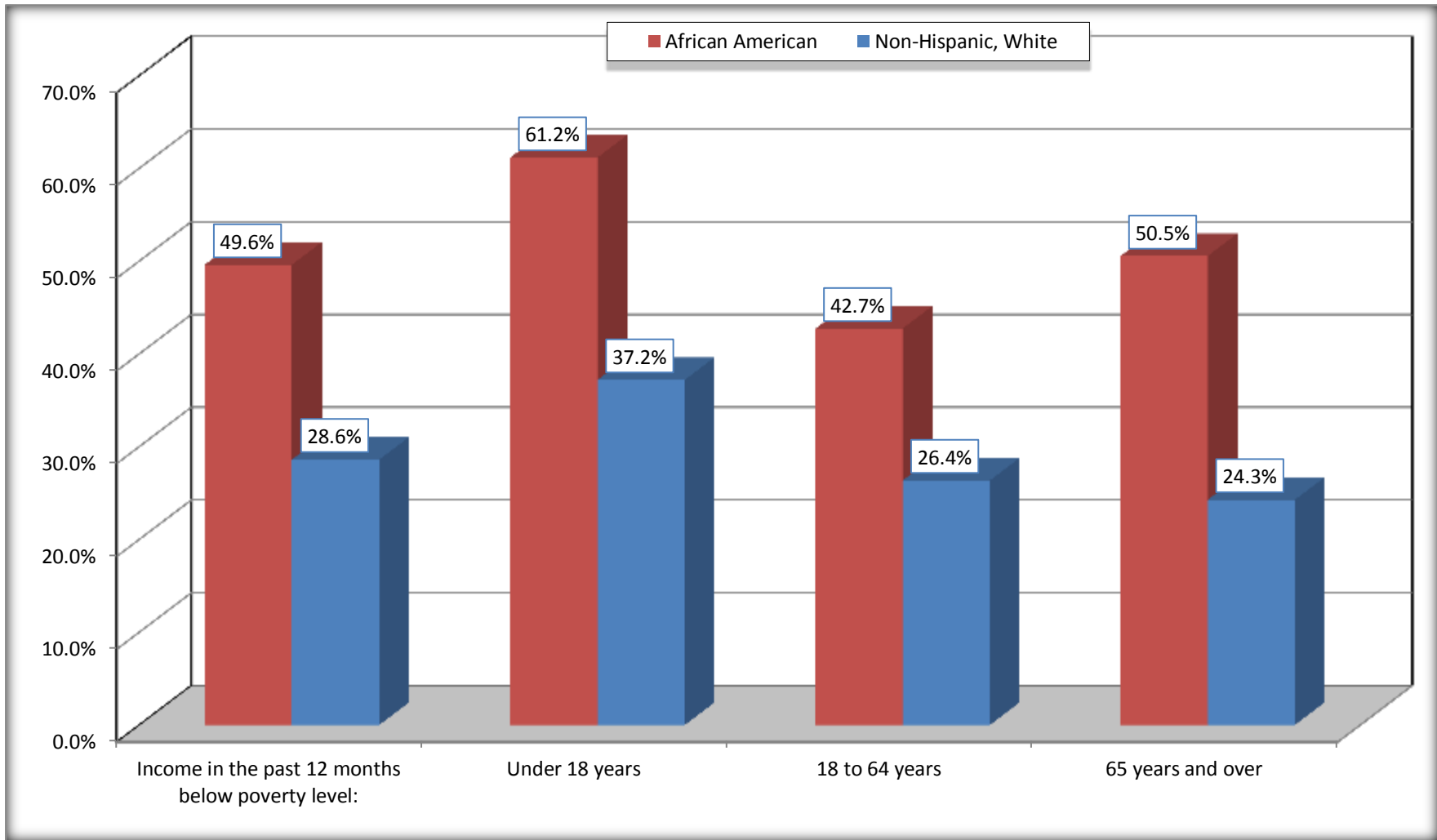
Source: U.S. Census Bureau, 2008-2012 American Community Survey

For information on confidentiality protection, sampling error, nonsampling error, and definitions, see Survey Methodology.

<http://www.census.gov/acs/www/UseData/index.htm>

Population Below Poverty in the Past 12 Months

Lebanon city, Kentucky



Source: B17020 POVERTY STATUS IN THE PAST 12 MONTHS BY AGE - Universe: POPULATION FOR WHOM POVERTY STATUS IS DETERMINED
Data Set: 2008-2012 American Community Survey 5-Year Estimates

B19001. HOUSEHOLD INCOME IN THE PAST 12 MONTHS (IN 2010 INFLATION-ADJUSTED DOLLARS)

Data Set: 2008-2012 American Community Survey 5-Year Estimates

	Lebanon city, Kentucky					
	African American	Margin of Error (+/-)	% of AA Total	White, Not Hispanic	Margin of Error (+/-)	% of NHW Total
Total:	400	96	100.0%	1,976	148	100.0%
Less than \$ 10,000	161	78	40.3%	387	98	19.6%
\$ 10,000 to \$ 14,999	46	50	11.5%	209	93	10.6%
\$ 15,000 to \$ 24,999	58	NC	14.5%	378	NC	19.1%
\$ 25,000 to \$ 34,999	55	NC	13.8%	170	NC	8.6%
\$ 35,000 to \$ 49,999	22	NC	5.5%	281	NC	14.2%
\$ 50,000 to \$ 74,999	50	NC	12.5%	266	NC	13.5%
\$ 75,000 to \$ 99,999	0	17	0.0%	157	56	7.9%
\$ 100,000 to \$ 149,999	8	NC	2.0%	98	NC	5.0%
\$ 150,000 to \$ 199,999	0	17	0.0%	19	21	1.0%
\$ 200,000 or more	0	17	0.0%	11	18	0.6%

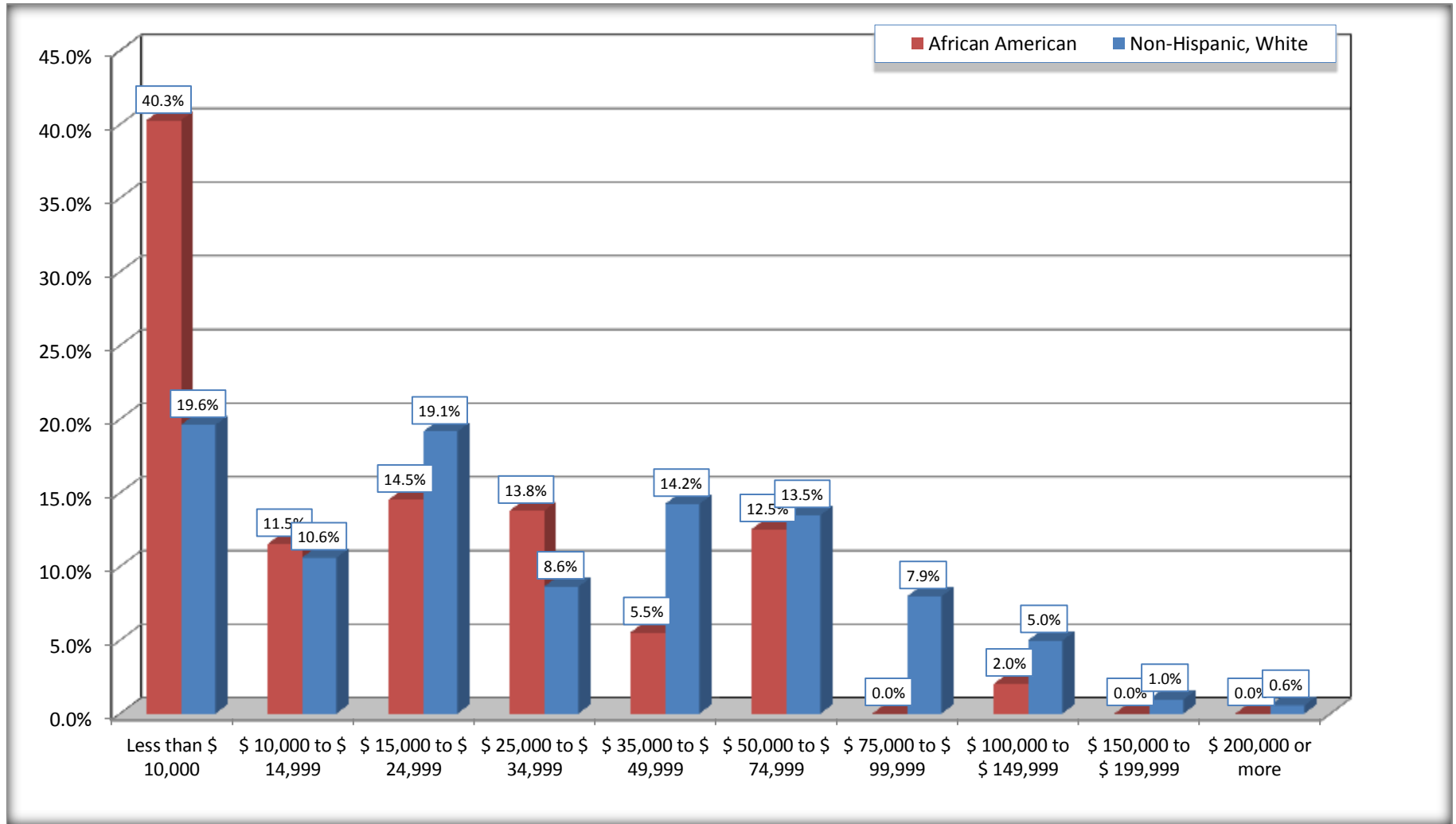
Source: U.S. Census Bureau, 2008-2012 American Community Survey

For information on confidentiality protection, sampling error, nonsampling error, and definitions, see Survey Methodology.

<http://www.census.gov/acs/www/UseData/index.htm>

Household Income in the Past 12 Months

Lebanon city, Kentucky



Source: B19001. HOUSEHOLD INCOME IN THE PAST 12 MONTHS (IN 2010 INFLATION-ADJUSTED DOLLARS)
Data Set: 2008-2012 American Community Survey 5-Year Estimates

B19013. MEDIAN HOUSEHOLD INCOME IN THE PAST 12 MONTHS (IN 2010 INFLATION-ADJUSTED DOLLARS)

Data Set: 2008-2012 American Community Survey 5-Year Estimates

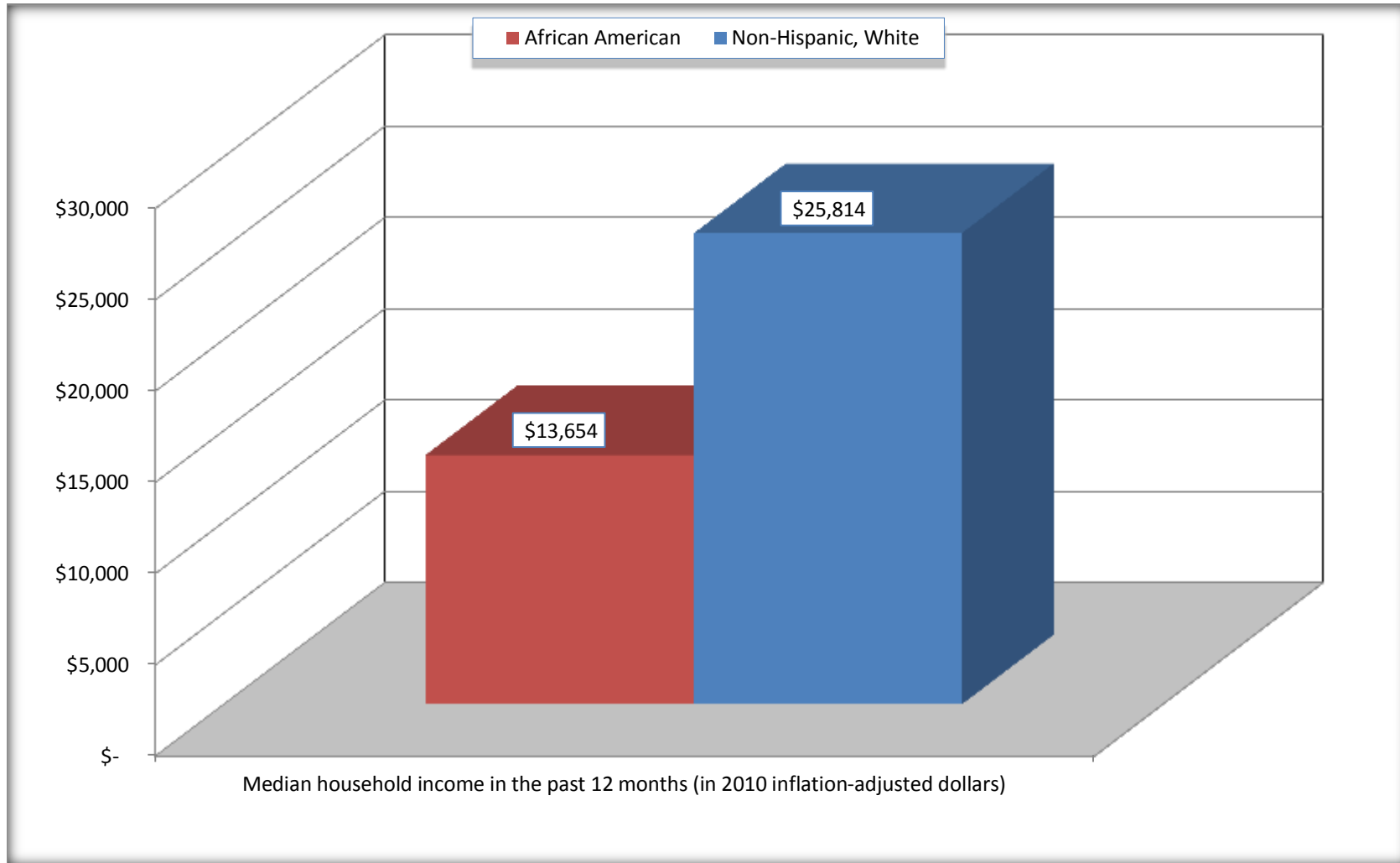
	Lebanon city, Kentucky			
	African American	Margin of Error (+/-)	White, Not Hispanic	Margin of Error (+/-)
Median household income in the past 12 months (in 2010 inflation-adjusted dollars)	\$ 13,654	\$ 7,210	\$ 25,814	\$ 5,766

Source: U.S. Census Bureau, 2008-2012 American Community Survey

For information on confidentiality protection, sampling error, nonsampling error, and definitions, see Survey Methodology.
<http://www.census.gov/acs/www/UseData/index.htm>

Median Household Income in the Past 12 Months

Lebanon city, Kentucky



Source: B19013. MEDIAN HOUSEHOLD INCOME IN THE PAST 12 MONTHS (IN 2010 INFLATION-ADJUSTED DOLLARS)
Data Set: 2008-2012 American Community Survey 5-Year Estimates

B19101. FAMILY INCOME IN THE PAST 12 MONTHS (IN 2010 INFLATION-ADJUSTED DOLLARS)

Data Set: 2008-2012 American Community Survey 5-Year Estimates

	Lebanon city, Kentucky					
	African American	Margin of Error (+/-)	% of AA Total	White, Not Hispanic	Margin of Error (+/-)	% of NHW Total
Total:	331	98	100.0%	966	109	100.0%
Less than \$ 10,000	120	73	36.3%	202	74	20.9%
\$ 10,000 to \$ 14,999	29	43	8.8%	23	28	2.4%
\$ 15,000 to \$ 24,999	58	NC	17.5%	111	NC	11.5%
\$ 25,000 to \$ 34,999	44	NC	13.3%	73	NC	7.6%
\$ 35,000 to \$ 49,999	22	NC	6.6%	165	NC	17.1%
\$ 50,000 to \$ 74,999	50	NC	15.1%	163	NC	16.9%
\$ 100,000 to \$ 149,999	8	NC	2.4%	76	NC	7.9%
\$ 150,000 to \$ 199,999	0	17	0.0%	19	21	2.0%
\$ 200,000 or more	0	17	0.0%	11	18	1.1%

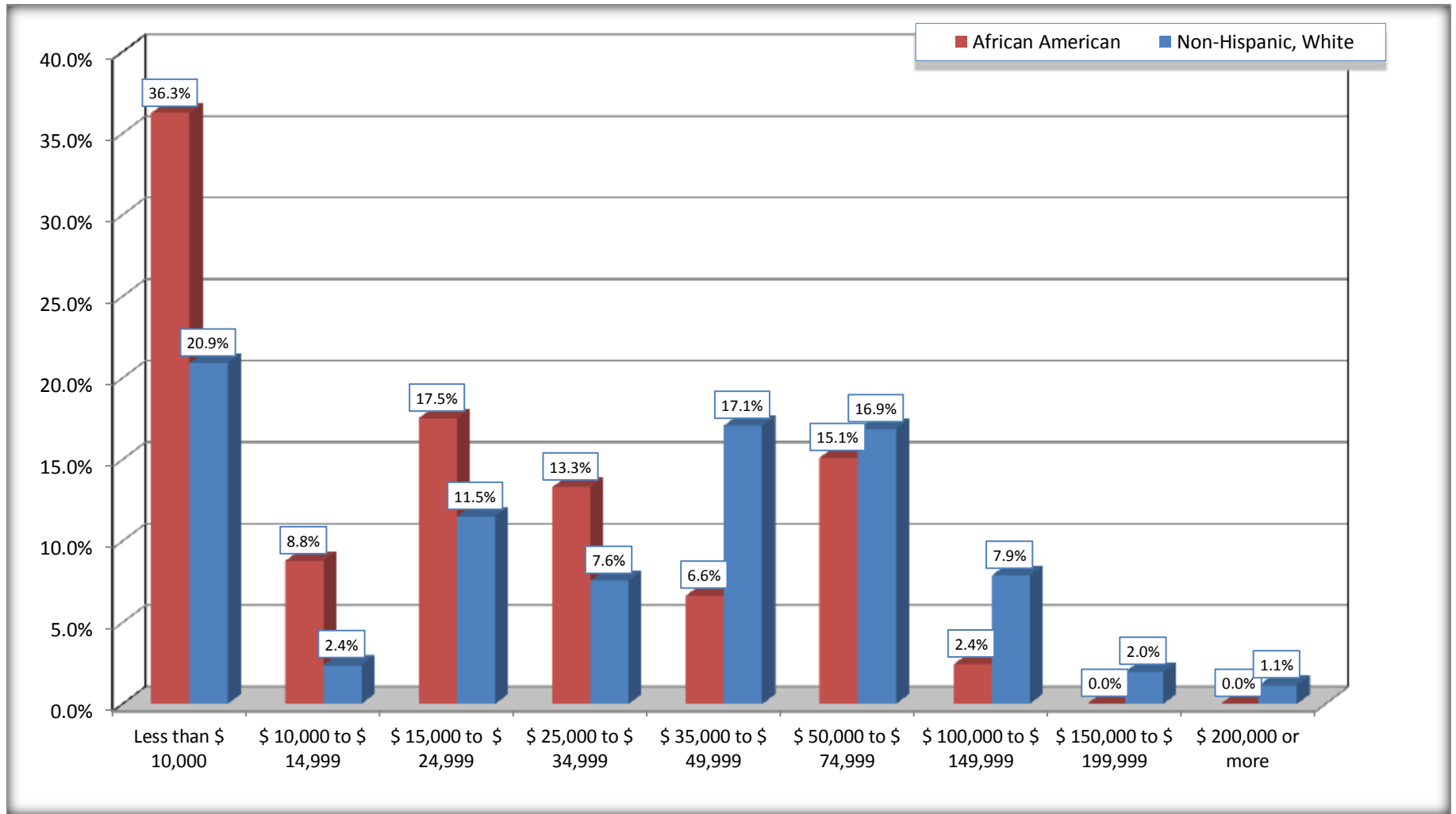
Source: U.S. Census Bureau, 2008-2012 American Community Survey

For information on confidentiality protection, sampling error, nonsampling error, and definitions, see Survey Methodology.

<http://www.census.gov/acs/www/UseData/index.htm>

Family Income in the Past 12 Months

Lebanon city, Kentucky



Source: B19101. FAMILY INCOME IN THE PAST 12 MONTHS (IN 2010 INFLATION-ADJUSTED DOLLARS)
Data Set: 2008-2012 American Community Survey 5-Year Estimates

B19113. MEDIAN FAMILY INCOME IN THE PAST 12 MONTHS (IN 2010 INFLATION-ADJUSTED DOLLARS)

Data Set: 2008-2012 American Community Survey 5-Year Estimates

	Lebanon city, Kentucky			
	African American	Margin of Error (+/-)	White, Not Hispanic	Margin of Error (+/-)
Median family income in the past 12 months (in 2010 inflation-adjusted dollars)	\$ 16,422	\$ 11,795	\$ 39,648	\$ 5,325

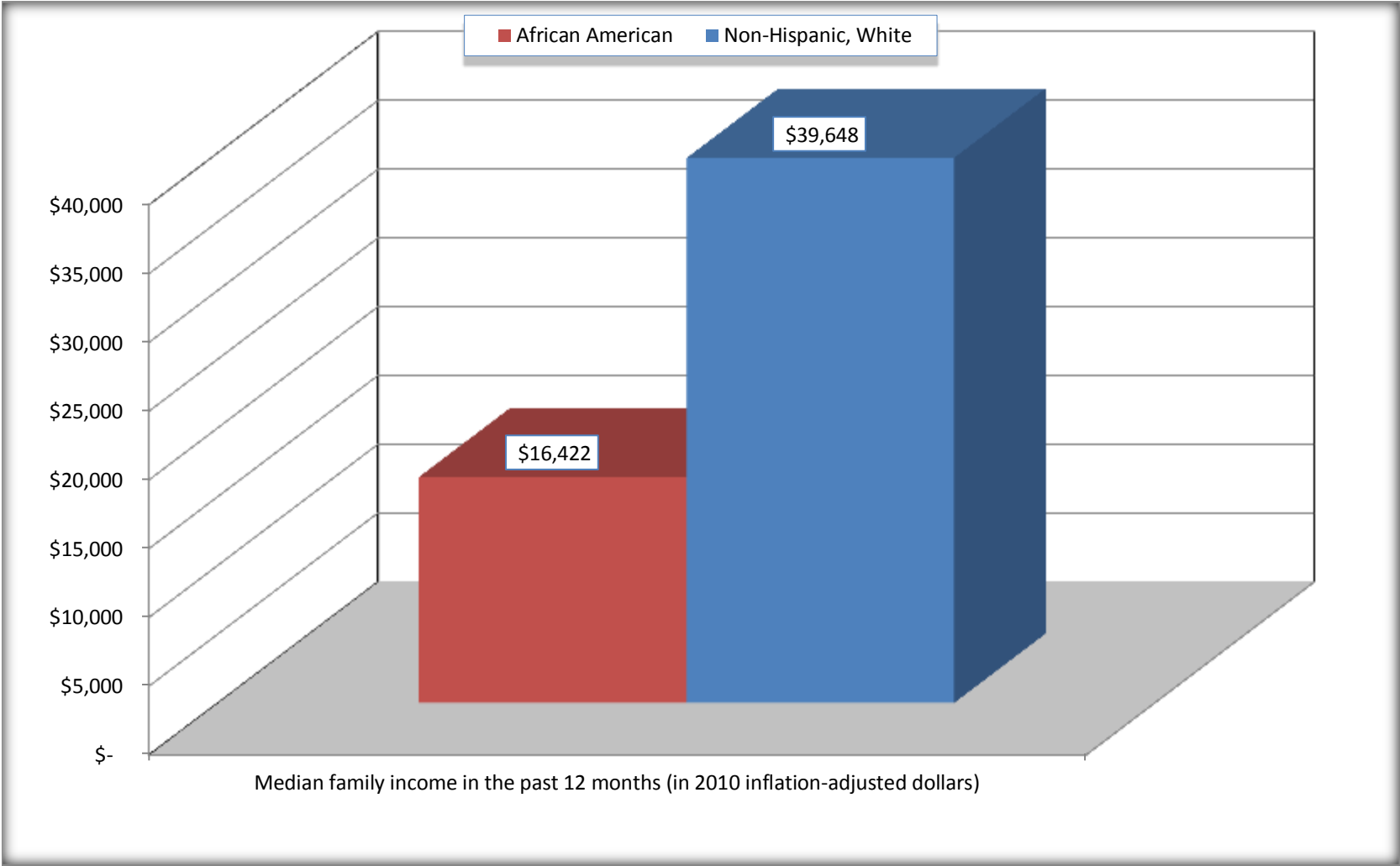
Source: U.S. Census Bureau, 2008-2012 American Community Survey

For information on confidentiality protection, sampling error, nonsampling error, and definitions, see Survey Methodology.

<http://www.census.gov/acs/www/UseData/index.htm>

Median Family Income in the Past 12 Months

Lebanon city, Kentucky



Source: B19113. MEDIAN FAMILY INCOME IN THE PAST 12 MONTHS (IN 2010 INFLATION-ADJUSTED DOLLARS)
Data Set: 2008-2012 American Community Survey 5-Year Estimates

B19202. MEDIAN NONFAMILY HOUSEHOLD INCOME IN THE PAST 12 MONTHS (IN 2010 INFLATION-ADJUSTED DOLLARS)

Data Set: 2008-2012 American Community Survey 5-Year Estimates

	Lebanon city, Kentucky			
	African American	Margin of Error (+/-)	White, Not Hispanic	Margin of Error (+/-)
Median nonfamily household income in the past 12 months (in 2010 inflation-adjusted dollars)	\$ 8,750	\$ 3,443	\$ 16,675	\$ 2,634

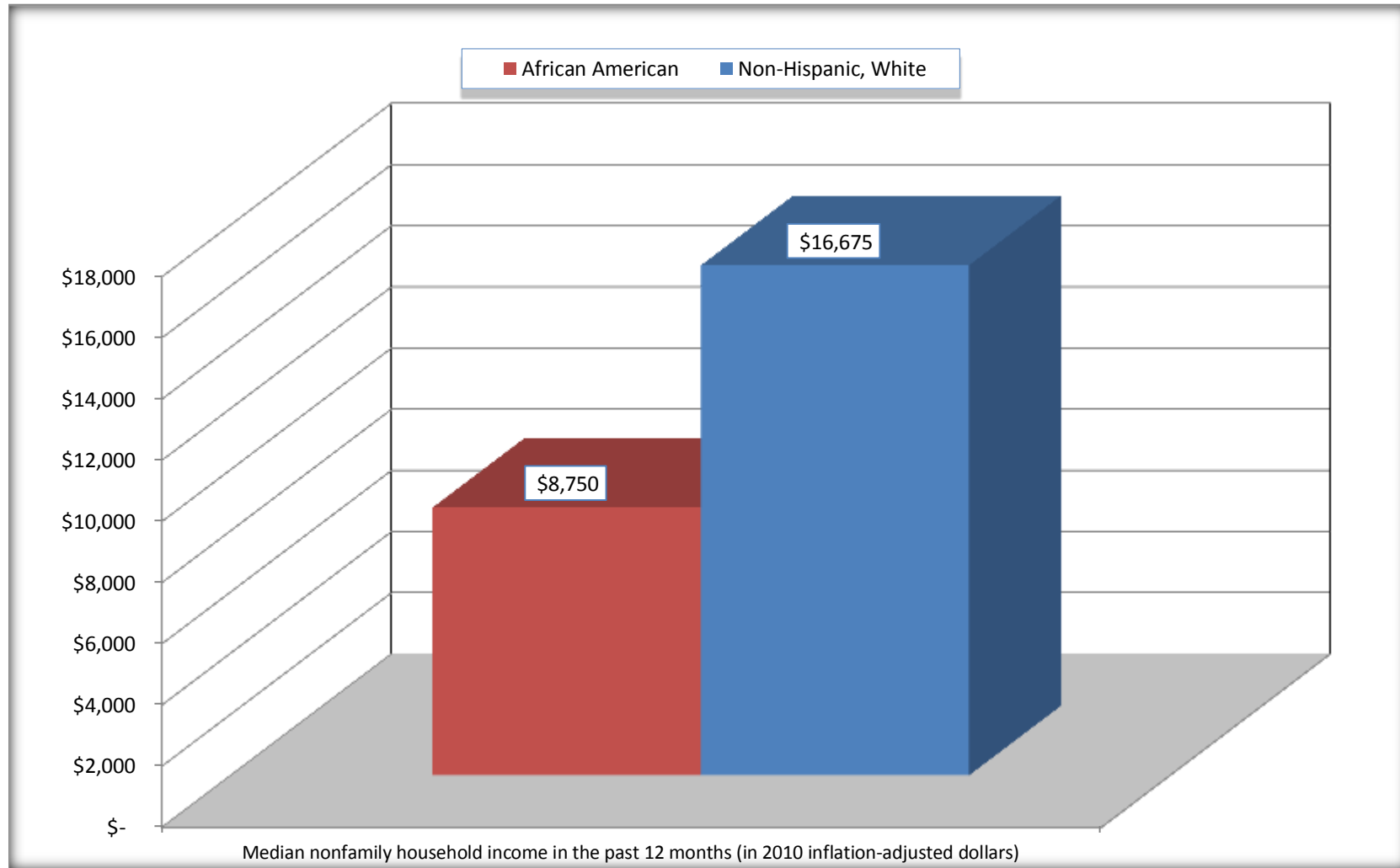
Source: U.S. Census Bureau, 2008-2012 American Community Survey

For information on confidentiality protection, sampling error, nonsampling error, and definitions, see Survey Methodology.

<http://www.census.gov/acs/www/UseData/index.htm>

Median Non-Family Income in the Past 12 Months

Lebanon city, Kentucky



Source: B19202. MEDIAN NONFAMILY HOUSEHOLD INCOME IN THE PAST 12 MONTHS (IN 2010 INFLATION-ADJUSTED DOLLARS)
Data Set: 2008-2012 American Community Survey 5-Year Estimates

B19301. PER CAPITA INCOME IN THE PAST 12 MONTHS (IN 2010 INFLATION-ADJUSTED DOLLARS)

Data Set: 2008-2012 American Community Survey 5-Year Estimates

	Lebanon city, Kentucky			
	African American	Margin of Error (+/-)	White, Not Hispanic	Margin of Error (+/-)
Per capita income in the past 12 months (in 2010 inflation-adjusted dollars)	\$ 9,201	\$ 2,814	\$ 18,056	\$ 1,997

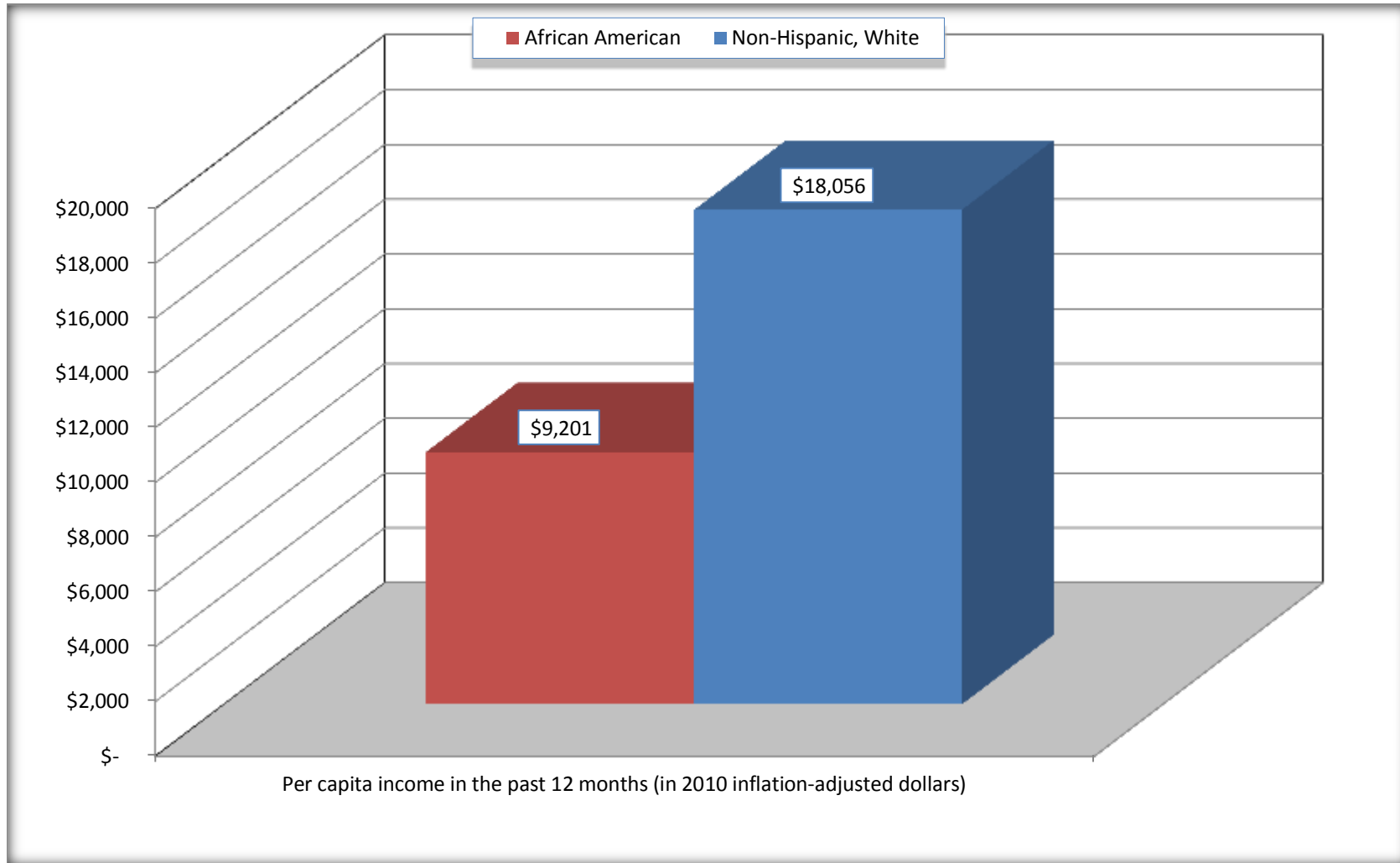
Source: U.S. Census Bureau, 2008-2012 American Community Survey

For information on confidentiality protection, sampling error, nonsampling error, and definitions, see Survey Methodology.

<http://www.census.gov/acs/www/UseData/index.htm>

Per capita Income in the Past 12 Months

Lebanon city, Kentucky



Source: B19301. PER CAPITA INCOME IN THE PAST 12 MONTHS (IN 2010 INFLATION-ADJUSTED DOLLARS)
Data Set: 2008-2012 American Community Survey 5-Year Estimates

B20017. MEDIAN EARNINGS IN THE PAST 12 MONTHS (IN 2010 INFLATION-ADJUSTED DOLLARS) BY SEX BY WORK EXPERIENCE IN THE PAST 12 MONTHS FOR THE POPULATION 16 YEARS AND OVER WITH EARNINGS IN THE PAST 12 MONTHS

Data Set: 2008-2012 American Community Survey 5-Year Estimates

	Lebanon city, Kentucky			
	African American	Margin of Error (+/-)	White, Not Hispanic	Margin of Error (+/-)
Median earnings in the past 12 months (in 2010 inflation-adjusted dollars) --				
Total:	\$ 9,821	\$ 5,658	\$ 22,366	\$ 5,645
Male --				
Total	\$ 15,833	\$ 10,454	\$ 29,167	\$ 1,763
Worked full-time, year-round in the past 12 months	\$ 22,857	\$ 28,427	\$ 31,786	\$ 8,749
Other	\$ -	\$ -	\$ 11,324	\$ 3,936
Female --				
Total	\$ 7,004	\$ 4,393	\$ 17,022	\$ 2,032
Worked full-time, year-round in the past 12 months	\$ 14,625	\$ 16,336	\$ 21,616	\$ 3,138
Other	\$ 5,216	\$ 6,039	\$ 8,241	\$ 2,760

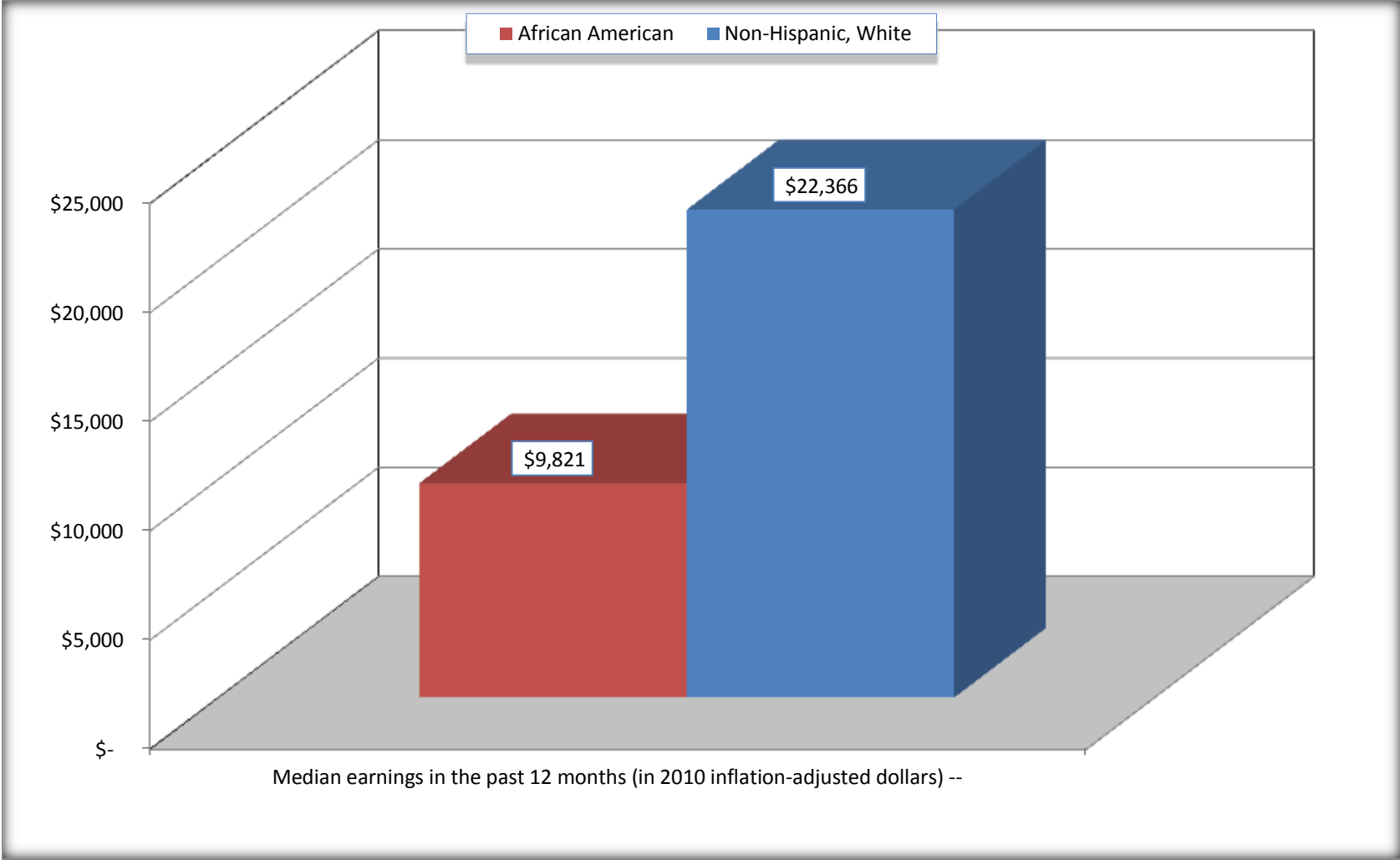
Source: U.S. Census Bureau, 2008-2012 American Community Survey

For information on confidentiality protection, sampling error, nonsampling error, and definitions, see Survey Methodology.

<http://www.census.gov/acs/www/UseData/index.htm>

Median earnings in the Past 12 Months (16 Years and Over with Earnings)

Lebanon city, Kentucky



Source: B20017. MEDIAN EARNINGS IN THE PAST 12 MONTHS (IN 2010 INFLATION-ADJUSTED DOLLARS) BY SEX BY WORK EXPERIENCE IN THE PAST 12 MONTHS FOR THE POPULATION 16 YEARS AND OVER WITH EARNINGS IN THE PAST 12 MONTHS
Data Set: 2008-2012 American Community Survey 5-Year Estimates

B20005. SEX BY WORK EXPERIENCE IN THE PAST 12 MONTHS BY EARNINGS IN THE PAST 12 MONTHS (IN 2010 INFLATION-ADJUSTED DOLLARS) FOR THE POPULATION 16 YEARS AND OVER

Data Set: 2008-2012 American Community Survey 5-Year Estimates

	Lebanon city, Kentucky					
	African American	Margin of Error (+/-)	% of AA Total	White, Not Hispanic	Margin of Error (+/-)	% of NHW Total
Total:	763	175	100.0%	3,317	175	100.0%
Worked full-time, year-round in the past 12 months:	181	NC	23.7%	1,123	NC	33.9%
No earnings	0	NC	0.0%	0	NC	0.0%
With earnings:	181	NC	23.7%	1,123	NC	33.9%
\$ 1 to \$ 9,999 or loss	21	NC	2.8%	12	NC	0.4%
\$ 10,000 to \$ 19,999	40	NC	5.2%	263	NC	7.9%
\$ 20,000 to \$ 29,999	77	NC	10.1%	318	NC	9.6%
\$ 30,000 to \$ 49,999	6	NC	0.8%	342	NC	10.3%
\$ 50,000 to \$ 74,999	37	NC	4.8%	111	NC	3.3%
\$ 75,000 or more	0	NC	0.0%	77	NC	2.3%
Other:	582	NC	76.3%	2,194	NC	66.1%
No earnings	282	NC	37.0%	1,506	NC	45.4%
With earnings: less than full time, year-round	300	NC	39.3%	688	NC	20.7%
Male:	314	120	41.2%	1,355	155	40.9%
Worked full-time, year-round in the past 12 months:	98	67	12.8%	638	142	19.2%
No earnings	0	17	0.0%	0	17	0.0%
With earnings:	98	67	12.8%	638	142	19.2%
\$ 1 to \$ 9,999 or loss	10	NC	1.3%	0	NC	0.0%
\$ 10,000 to \$ 19,999	8	NC	1.0%	70	NC	2.1%
\$ 20,000 to \$ 29,999	43	NC	5.6%	199	NC	6.0%
\$ 30,000 to \$ 49,999	0	NC	0.0%	226	NC	6.8%
\$ 50,000 to \$ 74,999	37	NC	4.8%	76	NC	2.3%
\$ 75,000 or more	0	NC	0.0%	67	NC	2.0%

	Lebanon city, Kentucky					
	African American	Margin of Error (+/-)	% of AA Total	White, Not Hispanic	Margin of Error (+/-)	% of NHW Total
Other:	216	119	28.3%	717	140	21.6%
No earnings	118	68	15.5%	473	117	14.3%
With earnings:	98	74	12.8%	244	89	7.4%
Female:	449	77	58.8%	1,962	137	59.1%
Worked full-time, year-round in the past 12 months:	83	39	10.9%	485	115	14.6%
No earnings	0	17	0.0%	0	17	0.0%
With earnings:	83	39	10.9%	485	115	14.6%
\$ 1 to \$ 9,999 or loss	11	NC	1.4%	12	NC	0.4%
\$ 10,000 to \$ 19,999	32	NC	4.2%	193	NC	5.8%
\$ 20,000 to \$ 29,999	34	NC	4.5%	119	NC	3.6%
\$ 30,000 to \$ 49,999	6	NC	0.8%	116	NC	3.5%
\$ 50,000 to \$ 74,999	0	NC	0.0%	35	NC	1.1%
\$ 75,000 or more	0	NC	0.0%	10	NC	0.3%
Other:	366	81	48.0%	1,477	160	44.5%
No earnings	164	58	21.5%	1,033	149	31.1%
With earnings:	202	77	26.5%	444	110	13.4%

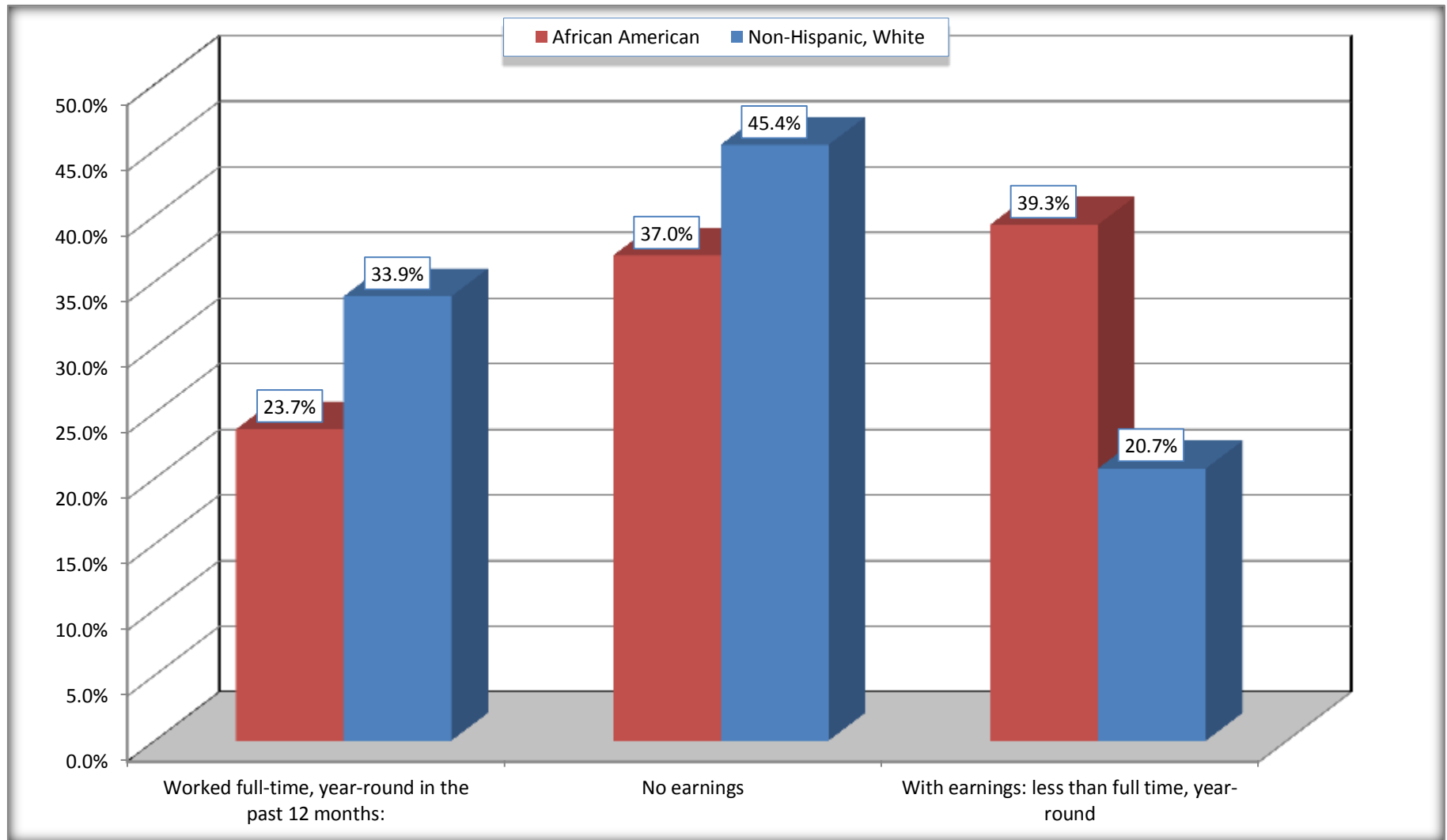
Source: U.S. Census Bureau, 2008-2012 American Community Survey

For information on confidentiality protection, sampling error, nonsampling error, and definitions, see Survey Methodology.

<http://www.census.gov/acs/www/UseData/index.htm>

Employment and Earnings in in the Past 12 Months (16 Years and Over)

Lebanon city, Kentucky



Source: B20005. SEX BY WORK EXPERIENCE IN THE PAST 12 MONTHS BY EARNINGS IN THE PAST 12 MONTHS (IN 2010 INFLATION-ADJUSTED DOLLARS) FOR THE POPULATION 16 YEARS AND OVER

Data Set: 2008-2012 American Community Survey 5-Year Estimates

C21001. SEX BY AGE BY VETERAN STATUS FOR THE CIVILIAN POPULATION 18 YEARS AND OVER

Data Set: 2008-2012 American Community Survey 5-Year Estimates

	Lebanon city, Kentucky					
	African American	Margin of Error (+/-)	% of AA Total	White, Not Hispanic	Margin of Error (+/-)	% of NHW Total
Total:	699	160	100.0%	3,227	169	100.0%
Veteran	77	NC	11.0%	229	NC	7.1%
Nonveteran	622	NC	89.0%	2,998	NC	92.9%
Male:	250	99	35.8%	1,301	148	40.3%
18 to 64 years:	223	95	31.9%	974	137	30.2%
Veteran	65	52	9.3%	51	38	1.6%
Nonveteran	158	82	22.6%	923	142	28.6%
65 years and over:	27	29	3.9%	327	83	10.1%
Veteran	0	17	0.0%	159	57	4.9%
Nonveteran	27	29	3.9%	168	65	5.2%
Female:	449	77	64.2%	1,926	137	59.7%
18 to 64 years:	372	80	53.2%	1,331	110	41.2%
Veteran	12	13	1.7%	19	20	0.6%
Nonveteran	360	80	51.5%	1,312	107	40.7%
65 years and over:	77	38	11.0%	595	118	18.4%
Veteran	0	17	0.0%	0	17	0.0%
Nonveteran	77	38	11.0%	595	118	18.4%

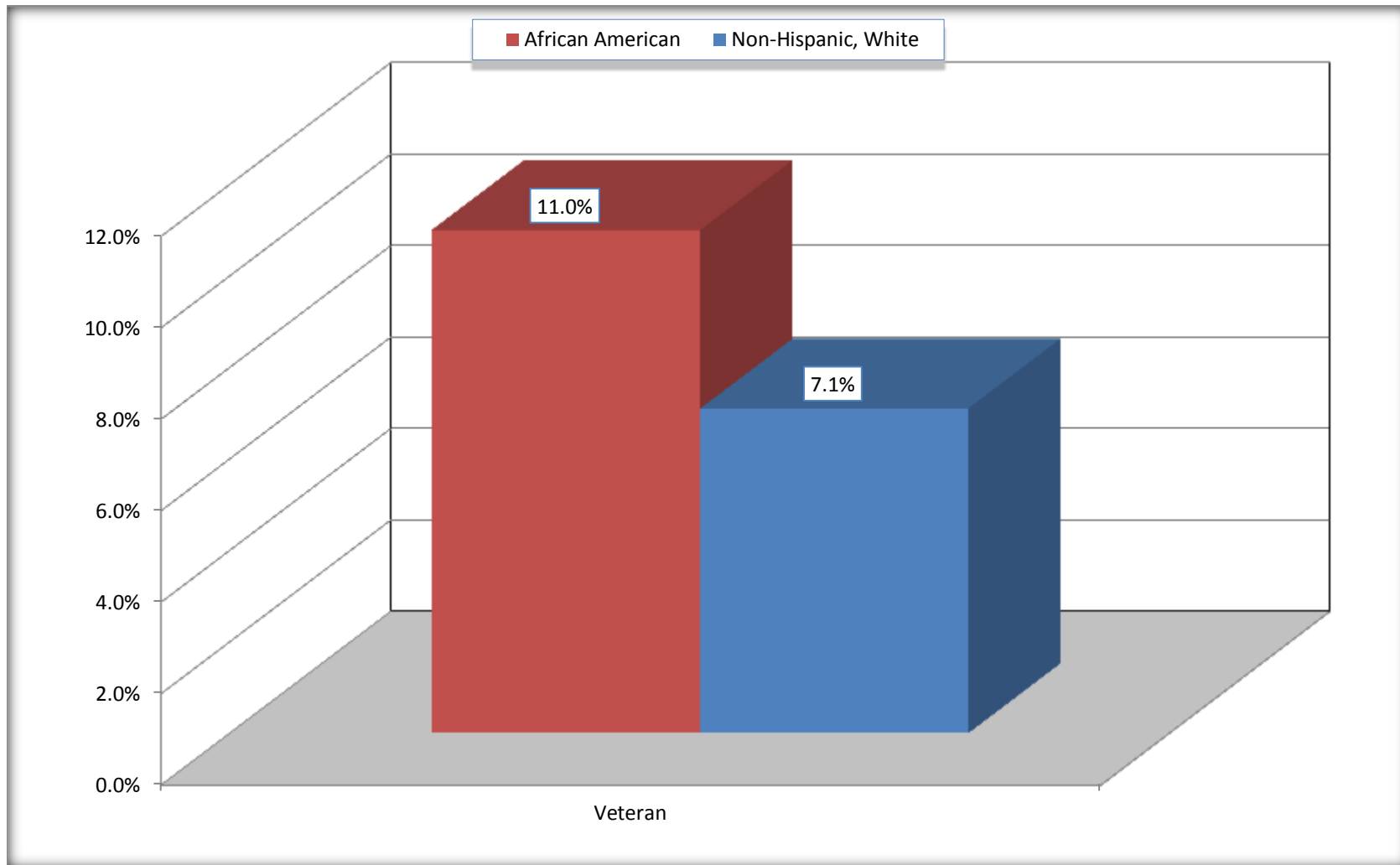
Source: U.S. Census Bureau, 2008-2012 American Community Survey

For information on confidentiality protection, sampling error, nonsampling error, and definitions, see Survey Methodology.

<http://www.census.gov/acs/www/UseData/index.htm>

Veterans in the Civilian Population 18 Years and Over

Lebanon city, Kentucky



Source: C21001. SEX BY AGE BY VETERAN STATUS FOR THE CIVILIAN POPULATION 18 YEARS AND OVER
Data Set: 2008-2012 American Community Survey 5-Year Estimates

B22005. RECEIPT OF FOOD STAMPS/SNAP IN THE PAST 12 MONTHS BY RACE OF HOUSEHOLDER

Data Set: 2008-2012 American Community Survey 5-Year Estimates

	Lebanon city, Kentucky					
	African American	Margin of Error (+/-)	% of AA Total	White, Not Hispanic	Margin of Error (+/-)	% of NHW Total
Total:	400	96	100.0%	1,976	148	100.0%
HH received Food Stamps/SNAP in the past 12 months	162	66	40.5%	503	123	25.5%
HH did not receive Food Stamps/SNAP in the past 12 months	238	89	59.5%	1,473	213	74.5%

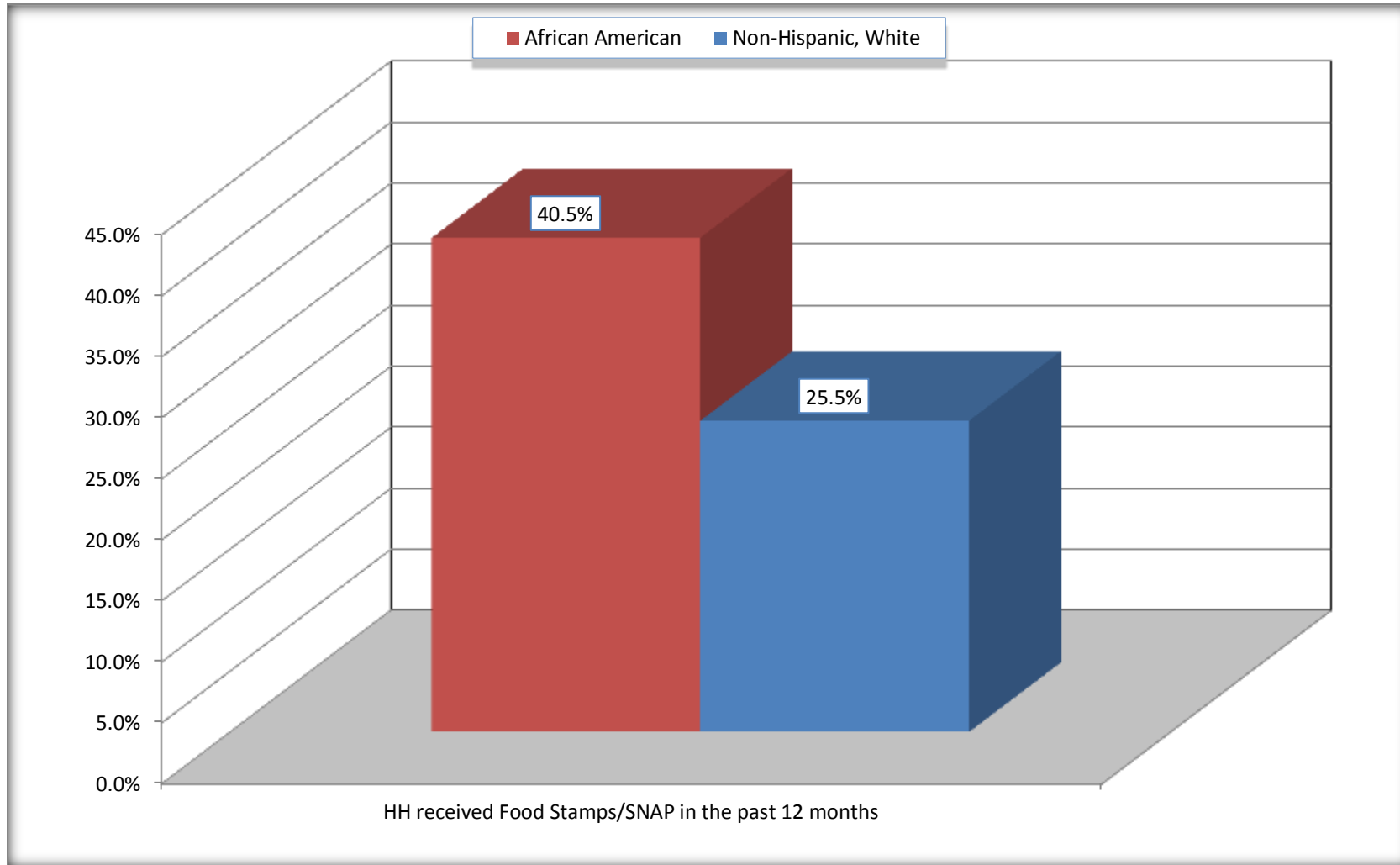
Source: U.S. Census Bureau, 2008-2012 American Community Survey

For information on confidentiality protection, sampling error, nonsampling error, and definitions, see Survey Methodology.

<http://www.census.gov/acs/www/UseData/index.htm>

Receipt of Food Stamps/SNAP in the Past 12 Months by Household

Lebanon city, Kentucky



Source: B22005. RECEIPT OF FOOD STAMPS/SNAP IN THE PAST 12 MONTHS BY RACE OF HOUSEHOLDER
Data Set: 2008-2012 American Community Survey 5-Year Estimates

C23002. SEX BY AGE BY EMPLOYMENT STATUS FOR THE POPULATION 16 YEARS AND OVER

Data Set: 2008-2012 American Community Survey 5-Year Estimates

	Lebanon city, Kentucky					
	African American	Margin of Error (+/-)	% of AA Total	White, Not Hispanic	Margin of Error (+/-)	% of NHW Total
Total:	763	175	100.0%	3,317	175	100.0%
In labor force:	420	NC	55.0%	1,760	NC	53.1%
In Armed Forces	0	NC	0.0%	0	NC	0.0%
Civilian:	420	NC	55.0%	1,653	NC	49.8%
Employed	420	NC	55.0%	1,619	NC	48.8%
Unemployed	0	NC	0.0%	141	NC	4.3%
Not in labor force	343	NC	45.0%	1,557	NC	46.9%
Male:	314	120	41.2%	1,355	155	40.9%
16 to 64 years:	287	117	37.6%	1,028	145	31.0%
In labor force:	181	98	23.7%	805	145	24.3%
In Armed Forces	0	17	0.0%	0	17	0.0%
Civilian:	181	98	23.7%	805	145	24.3%
Employed	181	98	23.7%	715	139	21.6%
Unemployed	0	17	0.0%	90	58	2.7%
Not in labor force	106	66	13.9%	223	107	6.7%
65 years and over:	27	29	3.5%	327	83	9.9%
In labor force:	0	17	0.0%	86	45	2.6%
Employed	0	17	0.0%	62	41	1.9%
Unemployed	0	17	0.0%	24	26	0.7%
Not in labor force	27	29	3.5%	241	82	7.3%

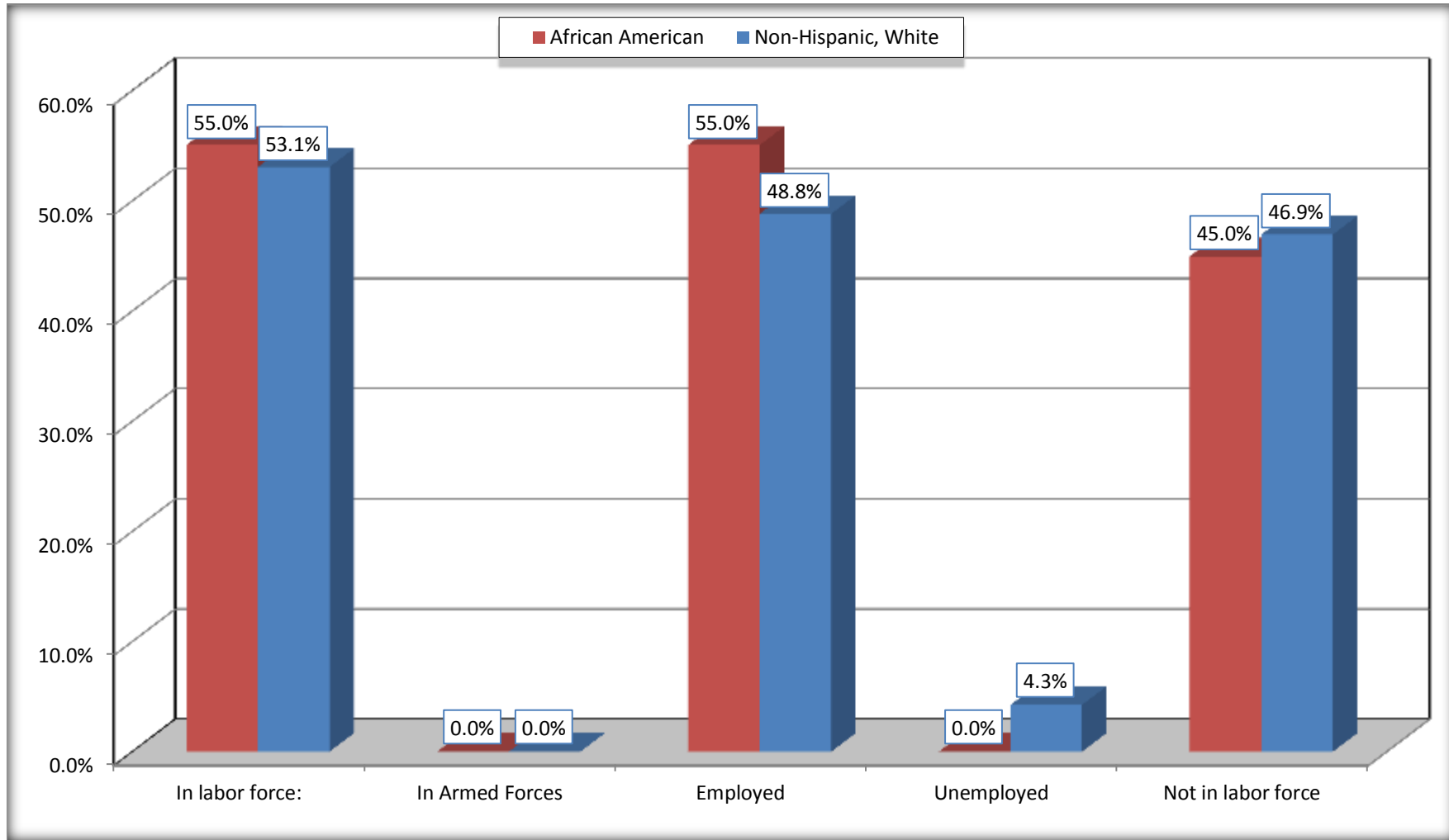
	Lebanon city, Kentucky					
	African American	Margin of Error (+/-)	% of AA Total	White, Not Hispanic	Margin of Error (+/-)	% of NHW Total
Female:	449	77	58.8%	1,962	137	59.1%
16 to 64 years:	372	80	48.8%	1,367	114	41.2%
In labor force:	239	85	31.3%	848	126	25.6%
In Armed Forces	0	17	0.0%	0	17	0.0%
Civilian:	239	85	31.3%	848	126	25.6%
Employed	239	85	31.3%	821	125	24.8%
Unemployed	0	17	0.0%	27	26	0.8%
Not in labor force	133	62	17.4%	519	140	15.6%
65 years and over:	77	38	10.1%	595	118	17.9%
In labor force:	0	17	0.0%	21	19	0.6%
Employed	0	17	0.0%	21	19	0.6%
Unemployed	0	17	0.0%	0	17	0.0%
Not in labor force	77	38	10.1%	574	119	17.3%

Source: U.S. Census Bureau, 2008-2012 American Community Survey

For information on confidentiality protection, sampling error, nonsampling error, and definitions, see Survey Methodology.
<http://www.census.gov/acs/www/UseData/index.htm>

Employment Status for the Population 16 years and over

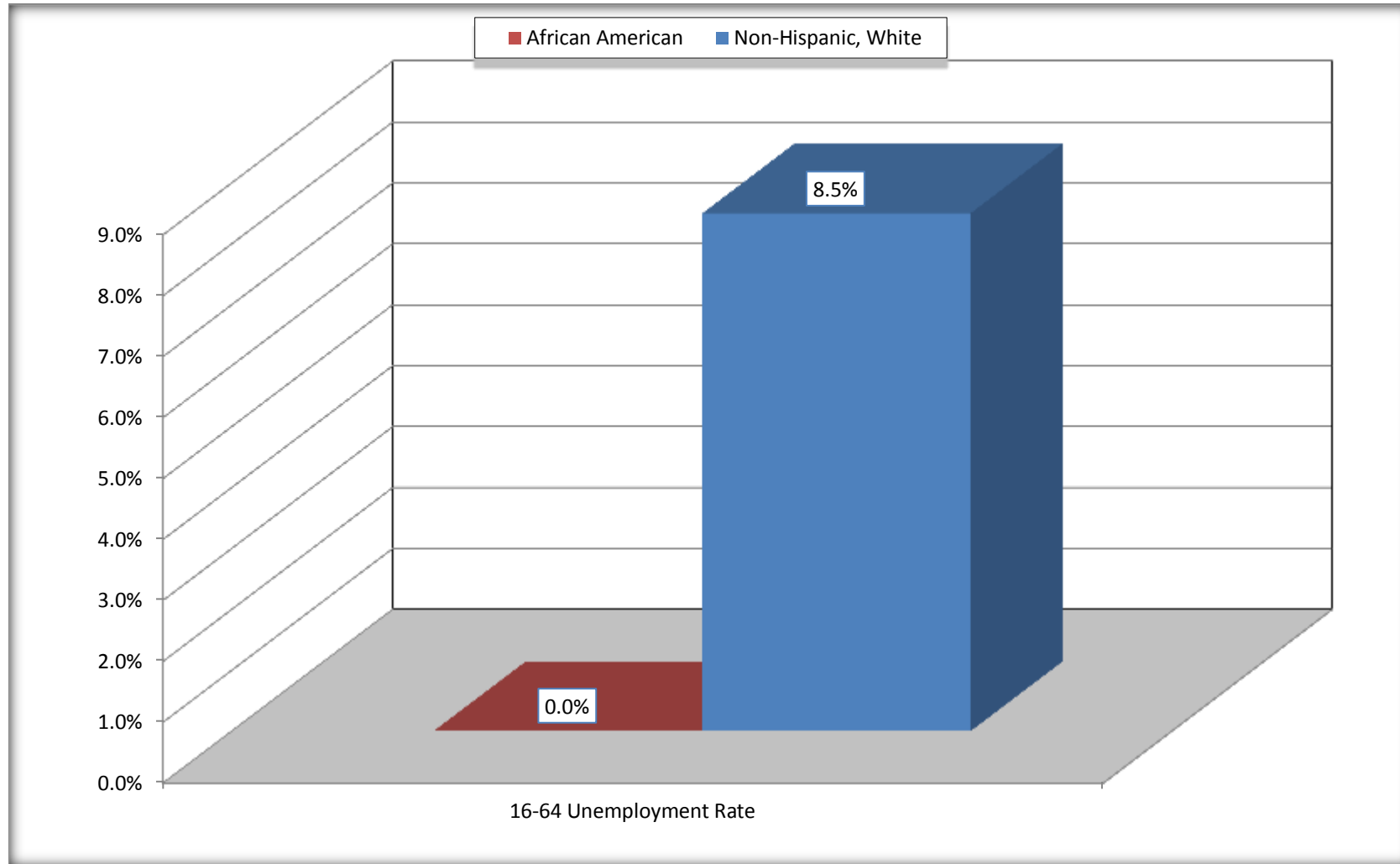
Lebanon city, Kentucky



Source: C23002. SEX BY AGE BY EMPLOYMENT STATUS FOR THE POPULATION 16 YEARS AND OVER
Data Set: 2008-2012 American Community Survey 5-Year Estimates

Unemployment of Working Age Population (Ages 16 to 64) (As a Percent of 16-64 Civilian Labor Force)

Lebanon city, Kentucky



Source: C23002. SEX BY AGE BY EMPLOYMENT STATUS FOR THE POPULATION 16 YEARS AND OVER
Data Set: 2008-2012 American Community Survey 5-Year Estimates

C24010. SEX BY OCCUPATION FOR THE CIVILIAN EMPLOYED POPULATION 16 YEARS AND OVER

Data Set: 2008-2012 American Community Survey 5-Year Estimates

	Lebanon city, Kentucky					
	African American	Margin of Error (+/-)	% of AA Total	White, Not Hispanic	Margin of Error (+/-)	% of NHW Total
Total:	420	162	100.0%	1,619	177	100.0%
Management, professional, and related occupations	104	NC	24.8%	458	NC	28.3%
Service occupations	105	NC	25.0%	266	NC	16.4%
Sales and office occupations	85	NC	20.2%	393	NC	24.3%
Natural resources, construction, and maintenance occupations:	100	NC	23.8%	110	NC	6.8%
Production, transportation, and material moving occupations	26	NC	6.2%	392	NC	24.2%
Male:	181	98	43.1%	777	143	48.0%
Management, business, science, and arts occupations:	66	53	15.7%	245	126	15.1%
Service occupations	18	22	4.3%	59	45	3.6%
Sales and office occupations	17	26	4.0%	115	56	7.1%
Natural resources, construction, and maintenance occupations:	54	71	12.9%	98	47	6.1%
Production, transportation, and material moving occupations	26	26	6.2%	260	79	16.1%
Female:	239	85	56.9%	842	126	52.0%
Management, professional, and related occupations	38	27	9.0%	213	71	13.2%
Service occupations	87	66	20.7%	207	86	12.8%
Sales and office occupations	68	41	16.2%	278	99	17.2%
Natural resources, construction, and maintenance occupations:	46	64	11.0%	12	17	0.7%
Production, transportation, and material moving occupations	0	17	0.0%	132	58	8.2%

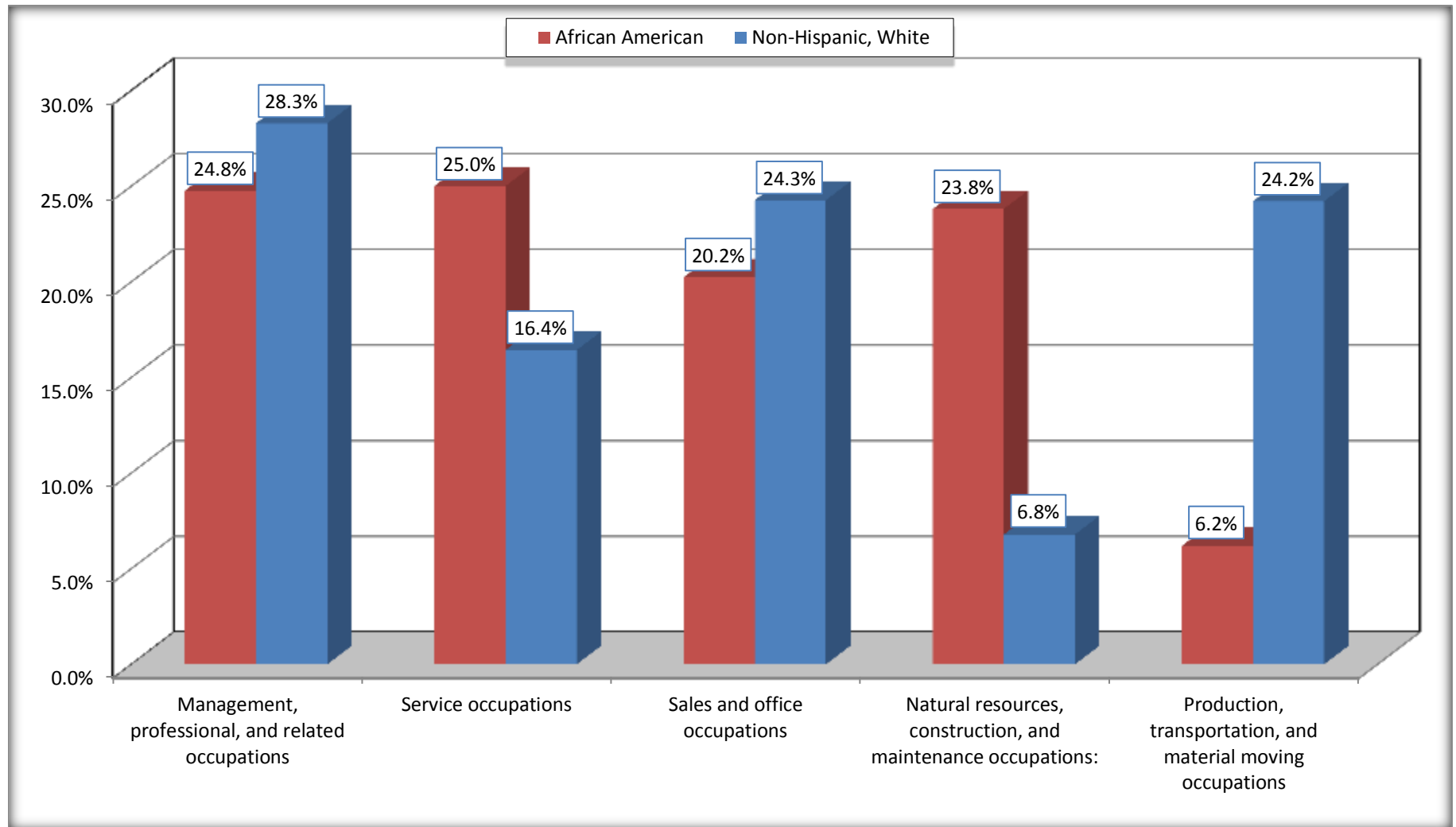
Source: U.S. Census Bureau, 2008-2012 American Community Survey

For information on confidentiality protection, sampling error, nonsampling error, and definitions, see Survey Methodology.

<http://www.census.gov/acs/www/UseData/index.htm>

Occupation for the Civilian Employed 16 Years and Over Population

Lebanon city, Kentucky



Source: C24010. SEX BY OCCUPATION FOR THE CIVILIAN EMPLOYED POPULATION 16 YEARS AND OVER
Data Set: 2008-2012 American Community Survey 5-Year Estimates

B25003. TENURE - Universe: OCCUPIED HOUSING UNITS

Data Set: 2008-2012 American Community Survey 5-Year Estimates

	Lebanon city, Kentucky					
	African American	Margin of Error (+/-)	% of AA Total	White, Not Hispanic	Margin of Error (+/-)	% of NHW Total
Total:	400	96	100.0%	1,976	148	100.0%
Owner occupied	210	80	52.5%	1,273	172	64.4%
Renter occupied	190	89	47.5%	703	120	35.6%

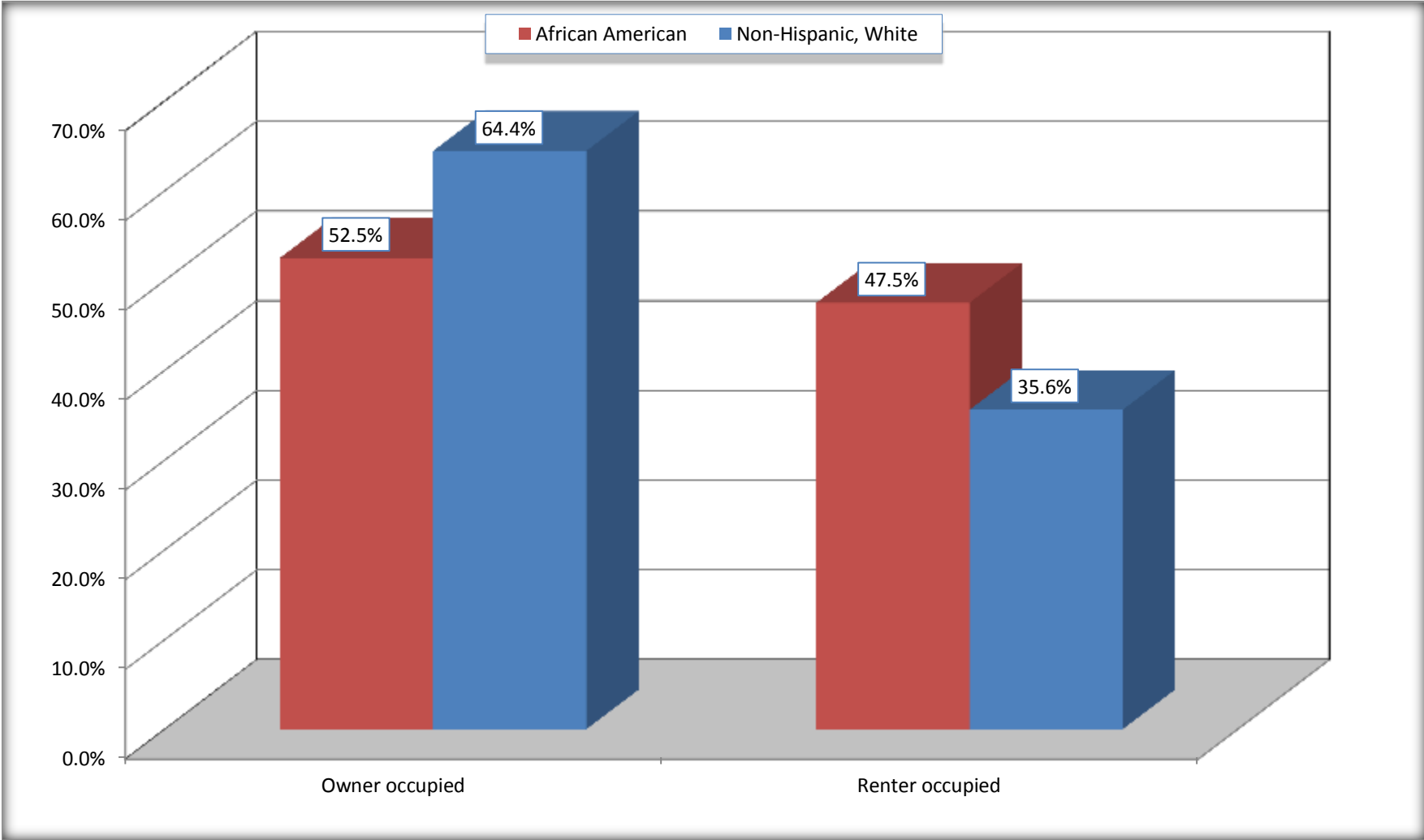
Source: U.S. Census Bureau, 2008-2012 American Community Survey

For information on confidentiality protection, sampling error, nonsampling error, and definitions, see Survey Methodology.

<http://www.census.gov/acs/www/UseData/index.h>

Home Owners and Renters by Household

Lebanon city, Kentucky



Source: B25003. TENURE - Universe: OCCUPIED HOUSING UNITS
Data Set: 2008-2012 American Community Survey 5-Year Estimates

B25014. OCCUPANTS PER ROOM - Universe: OCCUPIED HOUSING UNITS

Data Set: 2008-2012 American Community Survey 5-Year Estimates

	Lebanon city, Kentucky					
	African American	Margin of Error (+/-)	% of AA Total	White, Not Hispanic	Margin of Error (+/-)	% of NHW Total
Total:	400	96	100.0%	1,976	148	100.0%
1.00 or less occupants per room	400	96	100.0%	1,976	148	100.0%
1.01 or more occupants per room	0	17	0.0%	0	17	0.0%

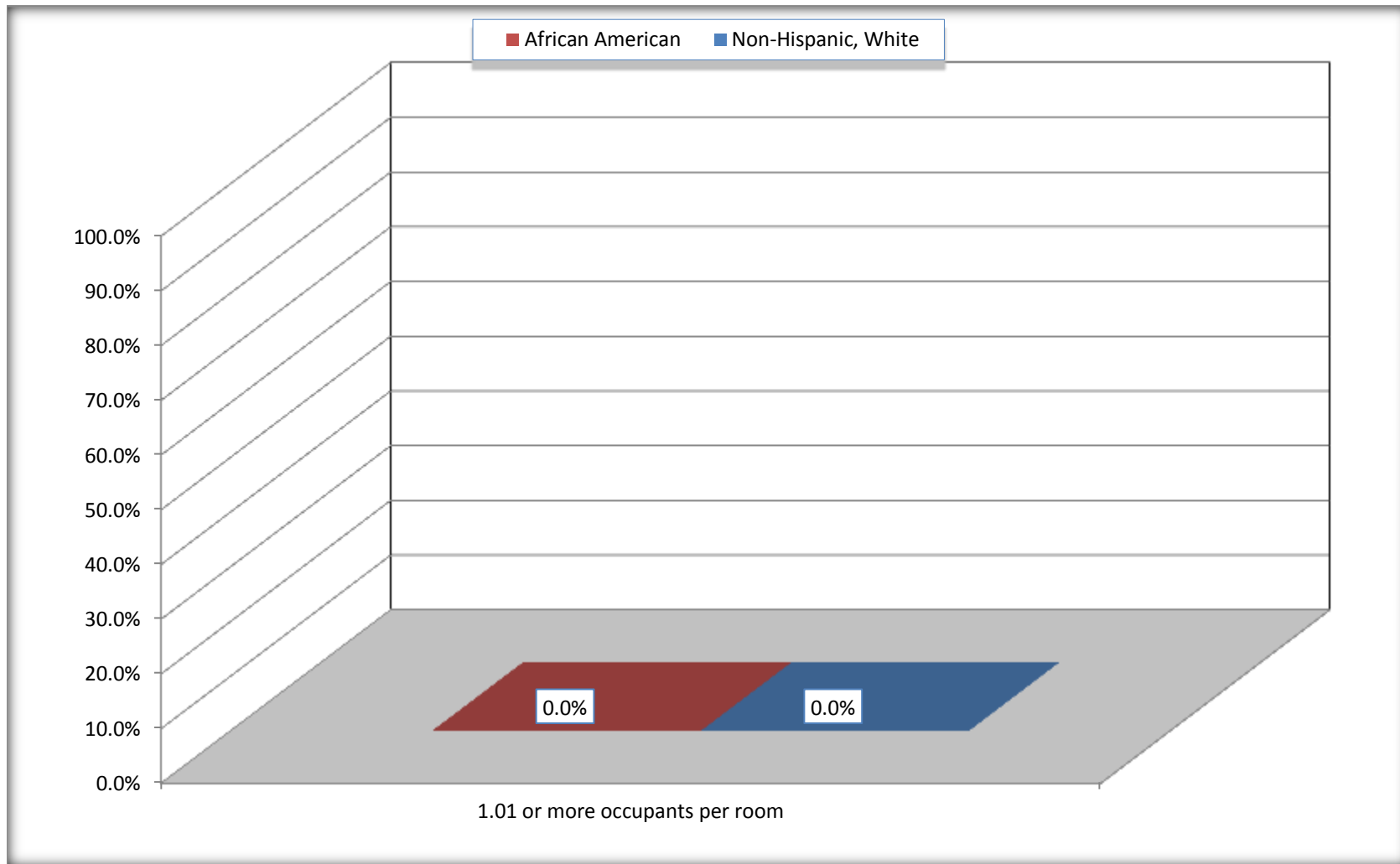
Source: U.S. Census Bureau, 2008-2012 American Community Survey

For information on confidentiality protection, sampling error, nonsampling error, and definitions, see Survey Methodology.

<http://www.census.gov/acs/www/UseData/index.ht>

More than One Person per Room (Crowding) by Household

Lebanon city, Kentucky



Source: B25014. OCCUPANTS PER ROOM - Universe: OCCUPIED HOUSING UNITS
Data Set: 2008-2012 American Community Survey 5-Year Estimates

B18101. AGE BY DISABILITY STATUS

Data Set: 2008-2012 American Community Survey 5-Year Estimates

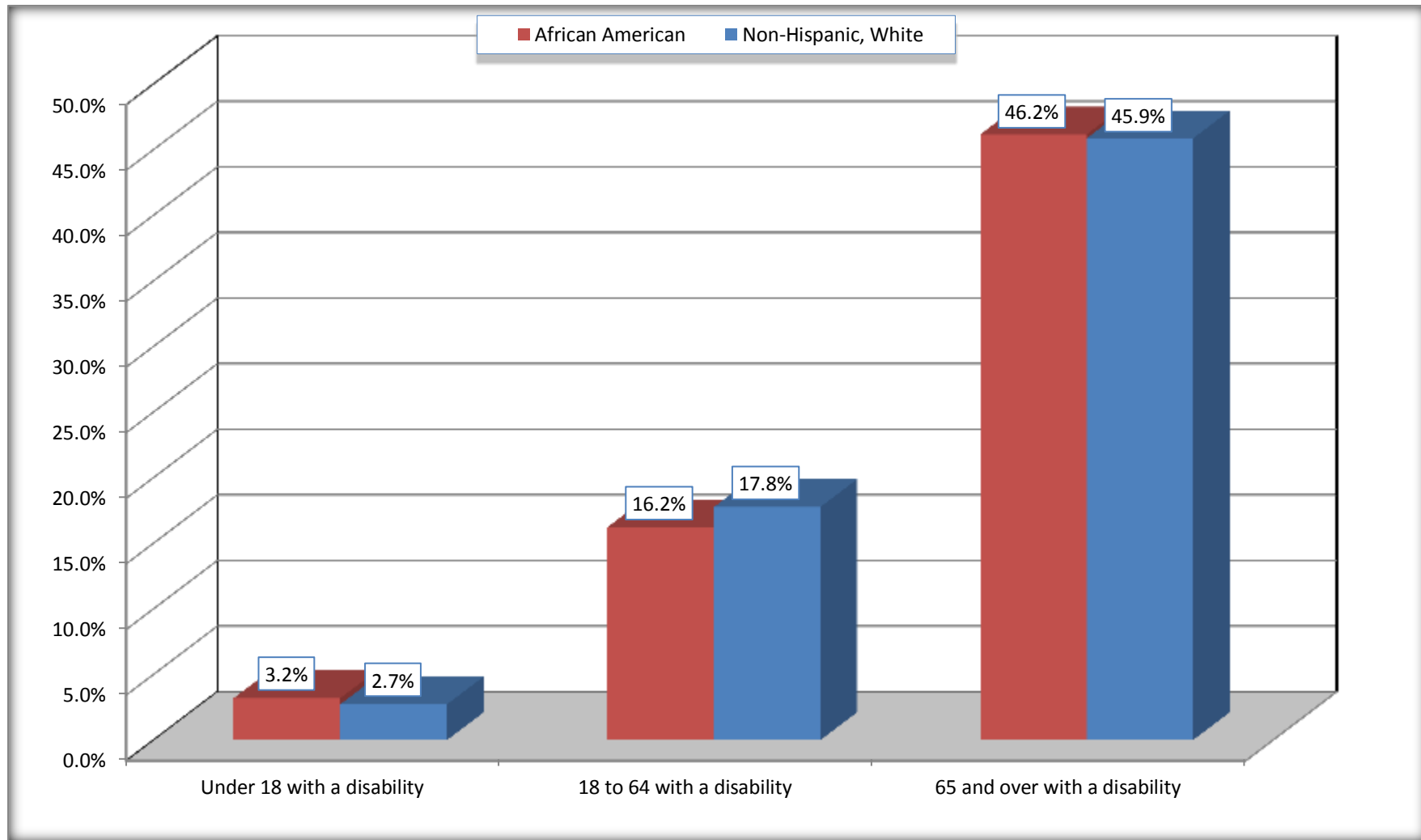
	Lebanon city, Kentucky					
	African American	Margin of Error (+/-)	% of AA Total	White, Not Hispanic	Margin of Error (+/-)	% of NHW Total
Total:	1,028	223	100.0%	4,153	179	100.0%
Under 18 years:	345	117	33.6%	1,027	33	24.7%
With a disability	11	19	1.1%	28	29	0.7%
No disability	334	115	32.5%	999	156	24.1%
18 to 64 years:	592	160	57.6%	2,269	160	54.6%
With a disability	96	63	9.3%	403	137	9.7%
No disability	496	160	48.2%	1,866	180	44.9%
65 years and over:	91	57	8.9%	857	152	20.6%
With a disability	42	33	4.1%	393	114	9.5%
No disability	49	35	4.8%	464	123	11.2%

Source: U.S. Census Bureau, 2008-2012 American Community Survey

For information on confidentiality protection, sampling error, nonsampling error, and definitions, see Survey Methodology.

<http://www.census.gov/acs/www/UseData/index.htm>

Disability by Age Lebanon city, Kentucky



Source: B18101. AGE BY DISABILITY STATUS
Data Set: 2008-2012 American Community Survey 5-Year Estimates

C27001B. HEALTH INSURANCE COVERAGE STATUS BY AGE

Data Set: 2008-2012 American Community Survey 5-Year Estimates

	Lebanon city, Kentucky					
	African American	Margin of Error (+/-)	% of AA Total	White, Not Hispanic	Margin of Error (+/-)	% of NHW Total
Total:	1,028	223	100.0%	4,153	179	100.0%
Under 18 years:	345	117	33.6%	1,027	157	24.7%
With health insurance coverage	311	123	30.3%	1,014	161	24.4%
No health insurance coverage	34	48	3.3%	13	21	0.3%
18 to 64 years:	592	160	57.6%	2,269	160	54.6%
With health insurance coverage	394	133	38.3%	1,880	182	45.3%
No health insurance coverage	198	137	19.3%	389	131	9.4%
65 years and over:	91	57	8.9%	857	152	20.6%
With health insurance coverage	91	57	8.9%	857	152	20.6%
No health insurance coverage	0	17	0.0%	0	17	0.0%

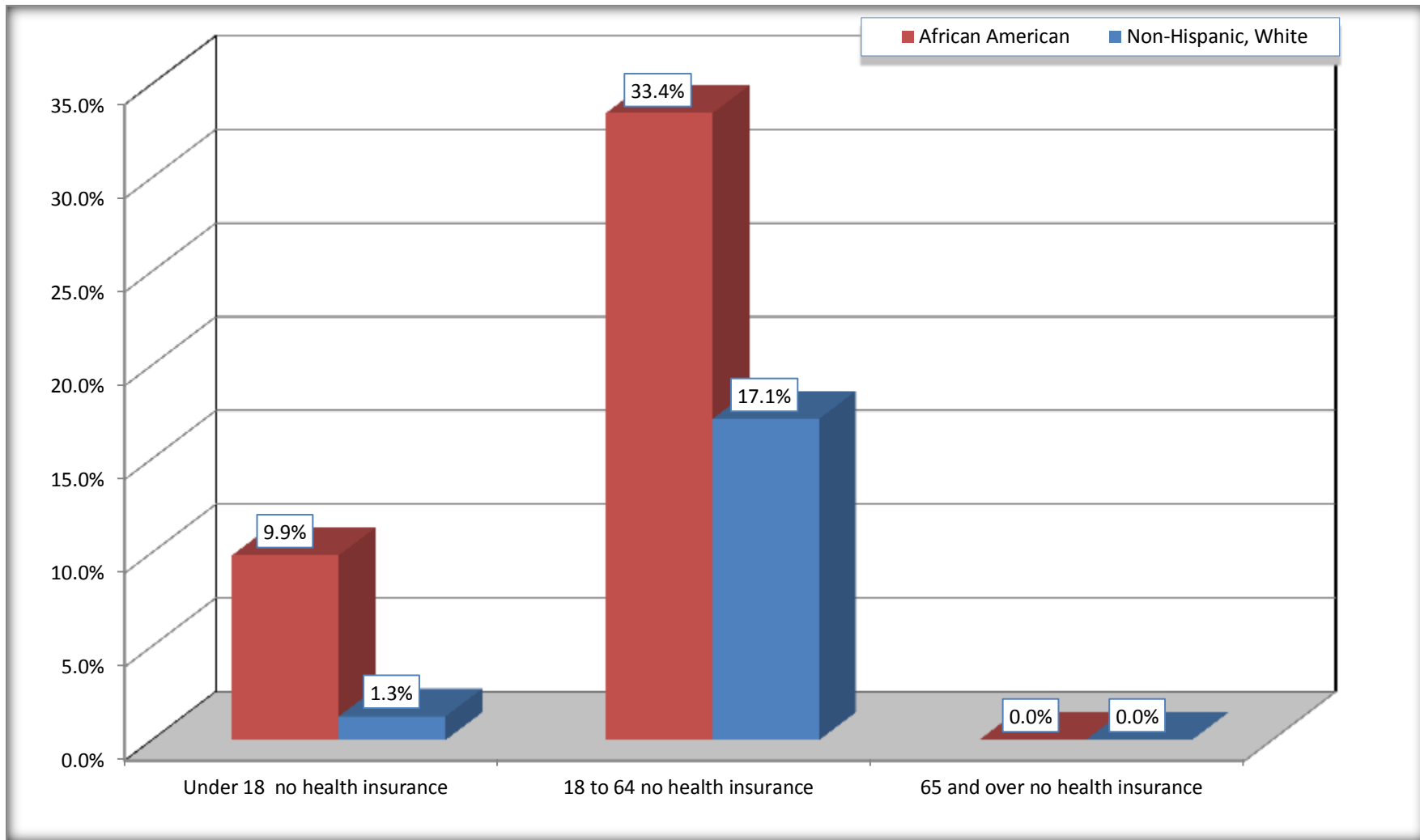
Source: U.S. Census Bureau, 2008-2012 American Community Survey

For information on confidentiality protection, sampling error, nonsampling error, and definitions, see Survey Methodology.

<http://www.census.gov/acs/www/UseData/index.htm>

Lack of Health Insurance Coverage by Age

Lebanon city, Kentucky



Source: C27001B. HEALTH INSURANCE COVERAGE STATUS BY AGE
Data Set: 2008-2012 American Community Survey 5-Year Estimates