

# **Selected Socio-Economic Data**

## **Pulaski County, Illinois**

### **African American and White, Not Hispanic**

**Data Set: 2008-2012 American Community Survey 5-Year Estimates**

[www.fairvote2020.org](http://www.fairvote2020.org)

[www.fairdata2000.com](http://www.fairdata2000.com)

[29-Dec-13](#)

**C02003.DETAILED RACE - Universe: TOTAL POPULATION**  
 Data Set: 2008-2012 American Community Survey 5-Year Estimates

	Pulaski County, Illinois		
	Population	Margin of Error (+/-)	% of Total
<b>Total:</b>	<b>6,107</b>	<b>*****</b>	<b>100.0%</b>
Population of one race:	5,994	46	98.1%
White	3,933	42	64.4%
Black or African American	2,038	32	33.4%
American Indian and Alaska Native	4	9	0.1%
Asian alone	8	10	0.1%
Native Hawaiian and Other Pacific Islander	0	16	0.0%
Some other race	11	18	0.2%
Population of two or more races:	113	46	1.9%
Two races including Some other race	36	38	0.6%
Two races excluding Some other race, and three or more races	77	30	1.3%
Population of two races:	113	46	1.9%
White; Black or African American	28	30	0.5%
White; American Indian and Alaska Native	46	9	0.8%
White; Asian	0	16	0.0%
Black or African American; American Indian and Alaska Native	3	5	0.0%
All other two race combinations	36	38	0.6%
Population of three races	0	16	0.0%
Population of four or more races	0	16	0.0%

Note: Hispanics may be of any race. See Table B03002 and chart.

Source: U.S. Census Bureau, 2008-2012 American Community Survey

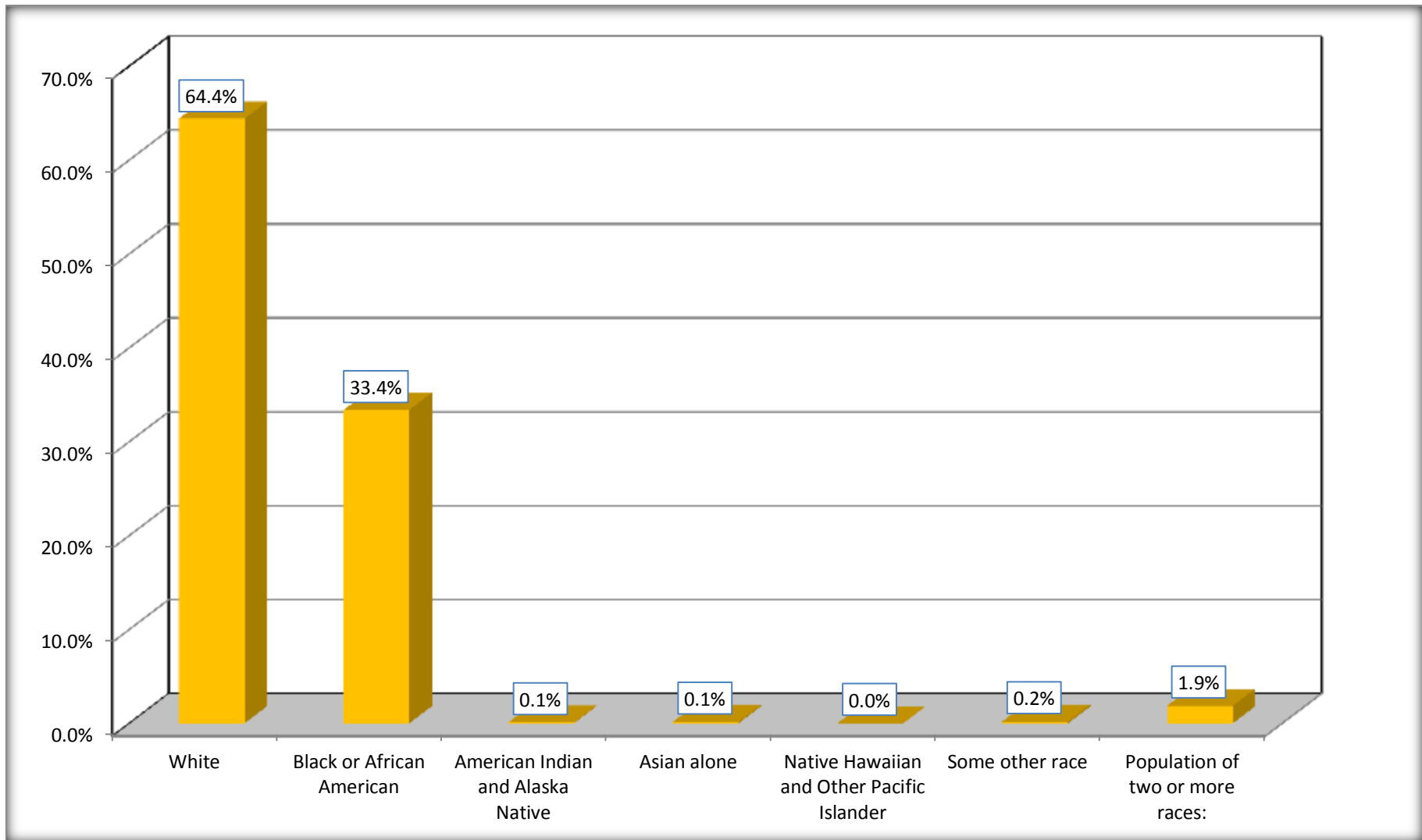
Although the American Community Survey (ACS) produces population, demographic and housing unit estimates, it is the Census Bureau's Population Estimates Program that produces and disseminates the official estimates of the population for the nation, states, counties, cities and towns and estimates of housing units for states and counties.

For information on confidentiality protection, sampling error, nonsampling error, and definitions, see Survey Methodology.

<http://www.census.gov/acs/www/UseData/index.htm>

# Population by Race

## Pulaski County, Illinois



Source: C02003.DETAILED RACE - Universe: TOTAL POPULATION  
Data Set: 2008-2012 American Community Survey 5-Year Estimates

**B03002. HISPANIC OR LATINO ORIGIN BY RACE - Universe: TOTAL POPULATION**

Data Set: 2008-2012 American Community Survey 5-Year Estimates

	Pulaski County, Illinois		
	Population	Margin of Error (+/-)	% of Total
<b>Total:</b>	6,107	*****	<b>100.0%</b>
Not Hispanic or Latino:	6,008	*****	98.4%
White alone	3,882	16	63.6%
Black or African American alone	2,037	32	33.4%
American Indian and Alaska Native alone	4	9	0.1%
Asian alone	8	10	0.1%
Native Hawaiian and Other Pacific Islander alone	0	16	0.0%
Some other race alone	0	16	0.0%
Two or more races:	77	30	1.3%
Two races including Some other race	0	16	0.0%
Two races excluding Some other race, and three or more races	77	30	1.3%
Hispanic or Latino	99	*****	1.6%

Source: U.S. Census Bureau, 2008-2012 American Community Survey

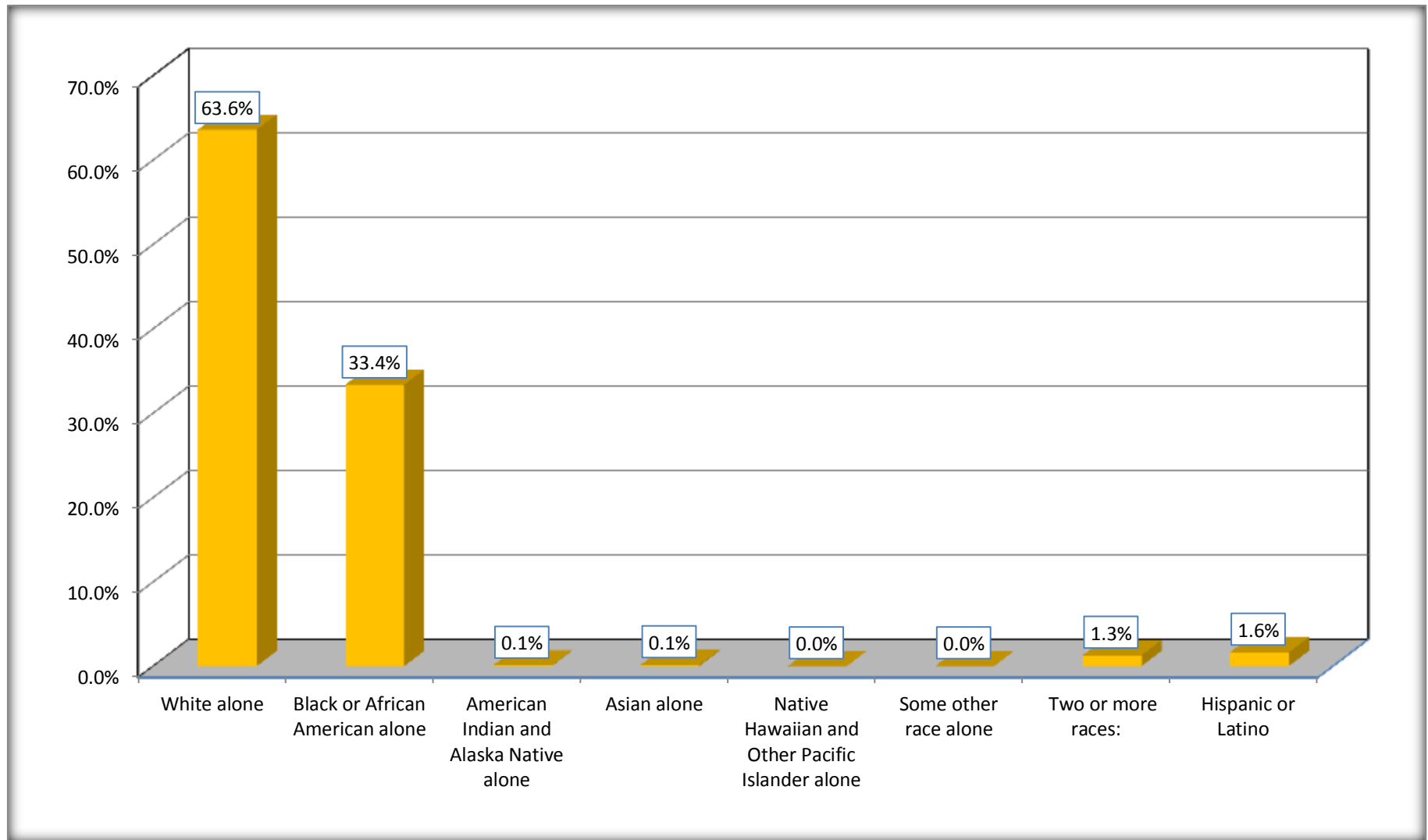
Although the American Community Survey (ACS) produces population, demographic and housing unit estimates, it is the Census Bureau's Population Estimates Program that produces and disseminates the official estimates of the population for the nation, states, counties, cities and towns and estimates of housing units for states and counties.

For information on confidentiality protection, sampling error, nonsampling error, and definitions, see Survey Methodology.

<http://www.census.gov/acs/www/UseData/index.htm>

# Non-Hispanic by Race and Hispanic Population

## Pulaski County, Illinois



Source: B03002. HISPANIC OR LATINO ORIGIN BY RACE - Universe: TOTAL POPULATION  
Data Set: 2008-2012 American Community Survey 5-Year Estimates

**B03002. HISPANIC OR LATINO ORIGIN BY RACE**

Data Set: 2008-2012 American Community Survey 5-Year Estimates

	Pulaski County, Illinois		
	Population	Margin of Error (+/-)	% of Total
Hispanic or Latino:	99	*****	<b>100.0%</b>
White alone	51	42	51.5%
Black or African American alone	1	3	1.0%
American Indian and Alaska Native alone	0	16	0.0%
Asian alone	0	16	0.0%
Native Hawaiian and Other Pacific Islander alone	0	16	0.0%
Some other race alone	11	18	11.1%
Two or more races:	36	38	36.4%
Two races including Some other race	36	38	36.4%
Two races excluding Some other race, and three or more races	0	16	0.0%

Source: U.S. Census Bureau, 2008-2012 American Community Survey

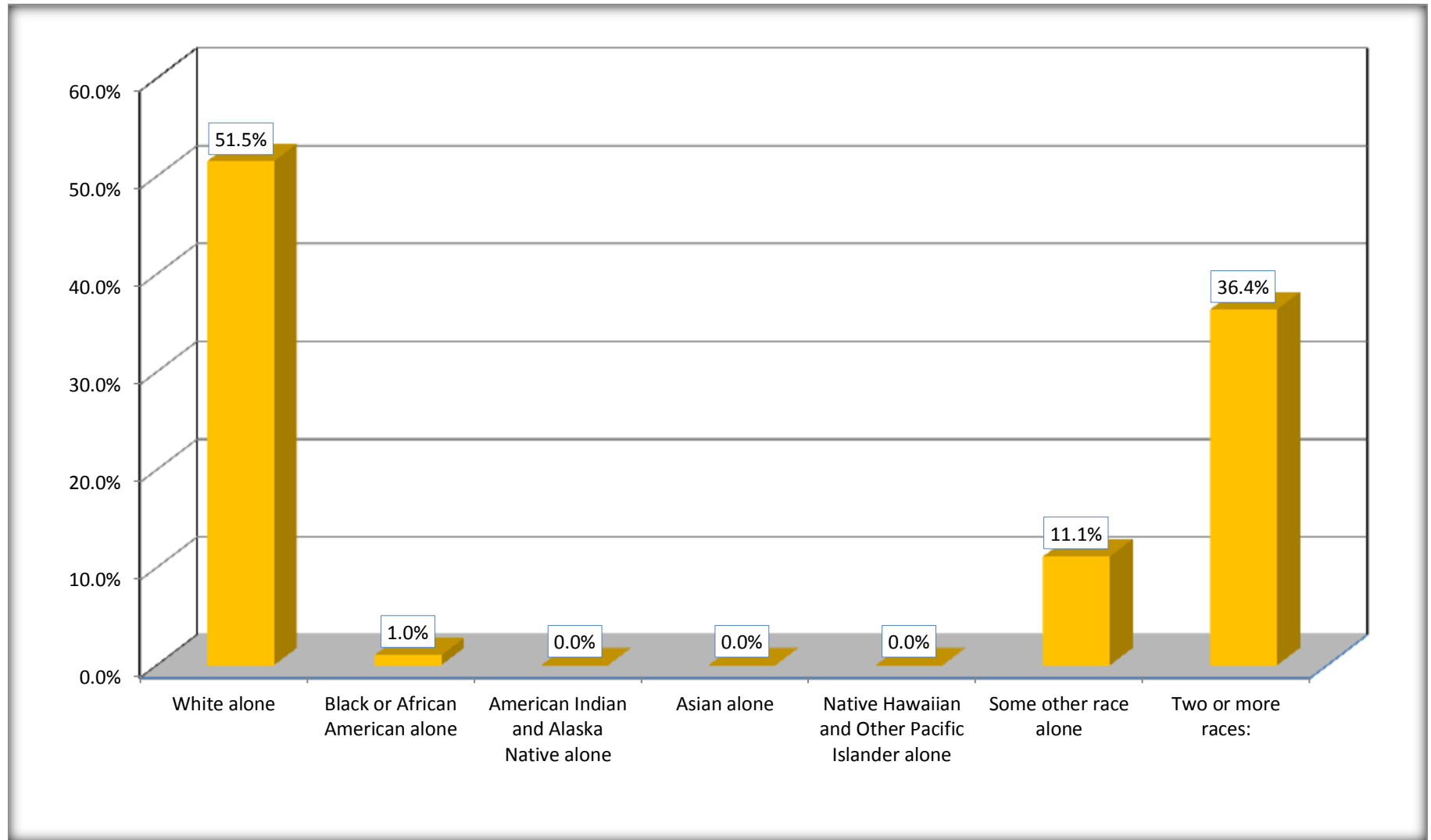
Although the American Community Survey (ACS) produces population, demographic and housing unit estimates, it is the Census Bureau's Population Estimates Program that produces and disseminates the official estimates of the population for the nation, states, counties, cities and towns and estimates of housing units for states and counties.

For information on confidentiality protection, sampling error, nonsampling error, and definitions, see Survey Methodology.

<http://www.census.gov/acs/www/UseData/index.htm>

## Hispanic or Latino Origin by Race

### Pulaski County, Illinois



Source: B03002. HISPANIC OR LATINO ORIGIN BY RACE  
Data Set: 2008-2012 American Community Survey 5-Year Estimates

**B01001. SEX BY AGE**

Data Set: 2008-2012 American Community Survey 5-Year Estimates

	Pulaski County, Illinois					
	African American	Margin of Error (+/-)	% of AA Total	White, Not Hispanic	Margin of Error (+/-)	% of NHW Total
<b>Total:</b>	<b>2,038</b>	<b>32</b>	<b>100.0%</b>	<b>3,882</b>	<b>16</b>	<b>100.0%</b>
Under 18 years	577	NC	28.3%	779	NC	20.1%
18 to 64 years	1,148	NC	56.3%	2,317	NC	59.7%
65 years and over	313	NC	15.4%	786	NC	20.2%
Male:	1,012	35	49.7%	1,891	389	48.7%
Under 18 years	344	NC	16.9%	408	NC	10.5%
18 to 64 years	536	NC	26.3%	1,136	NC	29.3%
65 years and over	132	NC	6.5%	347	NC	8.9%
Female:	1,026	37	50.3%	1,991	412	51.3%
Under 18 years	233	NC	11.4%	371	NC	9.6%
18 to 64 years	612	NC	30.0%	1,181	NC	30.4%
65 years and over	181	NC	8.9%	439	NC	11.3%

Source: U.S. Census Bureau, 2008-2012 American Community Survey

Although the American Community Survey (ACS) produces population, demographic and housing unit estimates, it is the Census Bureau's Population Estimates Program that produces and disseminates the official estimates of the population for the nation, states, counties, cities and towns and estimates of housing units for states and counties.

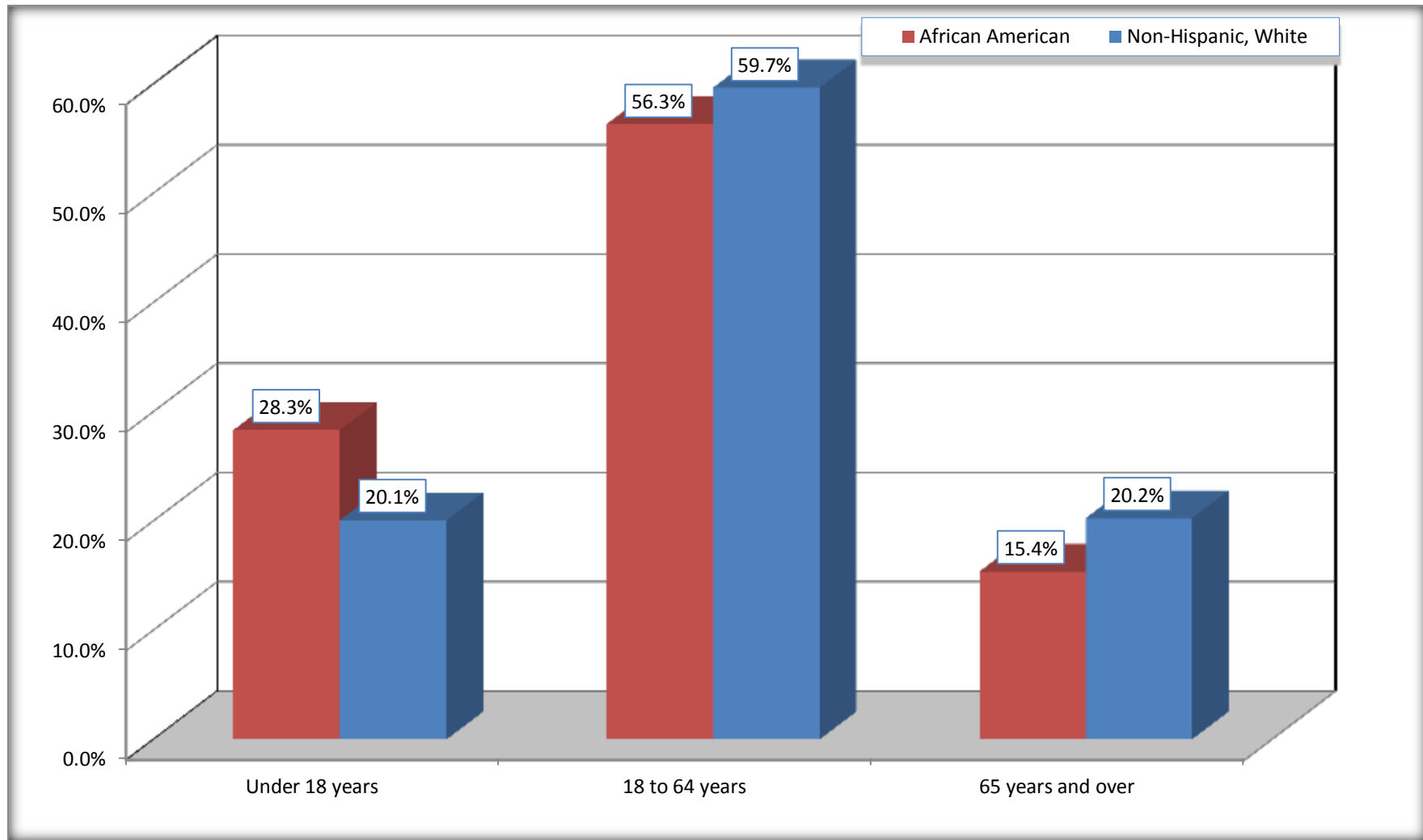
For information on confidentiality protection, sampling error, nonsampling error, and definitions, see Survey Methodology.

<http://www.census.gov/acs/www/UseData/index.htm>



# Population by Age

## Pulaski County, Illinois



Source: B01001. SEX BY AGE  
Data Set: 2008-2012 American Community Survey 5-Year Estimates

**B05003. SEX BY AGE BY CITIZENSHIP STATUS**

Data Set: 2008-2012 American Community Survey 5-Year Estimates

	Pulaski County, Illinois					
	African American	Margin of Error (+/-)	% of AA Total by Age	White, Not Hispanic	Margin of Error (+/-)	% of NHW Total by Age
<b>Total:</b>	<b>2,038</b>	<b>32</b>	<b>100.0%</b>	<b>3,882</b>	<b>16</b>	<b>100.0%</b>
<b>Under 18 years:</b>	<b>577</b>	<b>NC</b>	<b>100.0%</b>	<b>779</b>	<b>NC</b>	<b>100.0%</b>
Native	577	NC	100.0%	779	NC	100.0%
Foreign born:	0	NC	0.0%	0	NC	0.0%
Naturalized U.S. citizen	0	NC	0.0%	0	NC	0.0%
Not a U.S. citizen	0	NC	0.0%	0	NC	0.0%
<b>18 years and over:</b>	<b>1,461</b>	<b>NC</b>	<b>100.0%</b>	<b>3,103</b>	<b>NC</b>	<b>100.0%</b>
Native	1,439	NC	98.5%	3,034	NC	97.8%
Foreign born:	22	NC	1.5%	69	NC	2.2%
Naturalized U.S. citizen	11	NC	0.8%	11	NC	0.4%
Not a U.S. citizen	11	NC	0.8%	58	NC	1.9%
<b>Male:</b>	<b>1,012</b>	<b>35</b>	<b>49.7%</b>	<b>1,891</b>	<b>31</b>	<b>48.7%</b>
<b>Under 18 years:</b>	<b>344</b>	<b>30</b>	<b>100.0%</b>	<b>408</b>	<b>31</b>	<b>100.0%</b>
Native	344	30	100.0%	408	31	100.0%
Foreign born:	0	16	0.0%	0	16	0.0%
Naturalized U.S. citizen	0	16	0.0%	0	16	0.0%
Not a U.S. citizen	0	16	0.0%	0	16	0.0%
<b>18 years and over:</b>	<b>668</b>	<b>17</b>	<b>100.0%</b>	<b>1,483</b>	<b>16</b>	<b>100.0%</b>
Native	646	35	96.7%	1,453	32	98.0%
Foreign born:	22	25	3.3%	30	32	2.0%
Naturalized U.S. citizen	11	17	1.6%	0	16	0.0%
Not a U.S. citizen	11	14	1.6%	30	32	2.0%

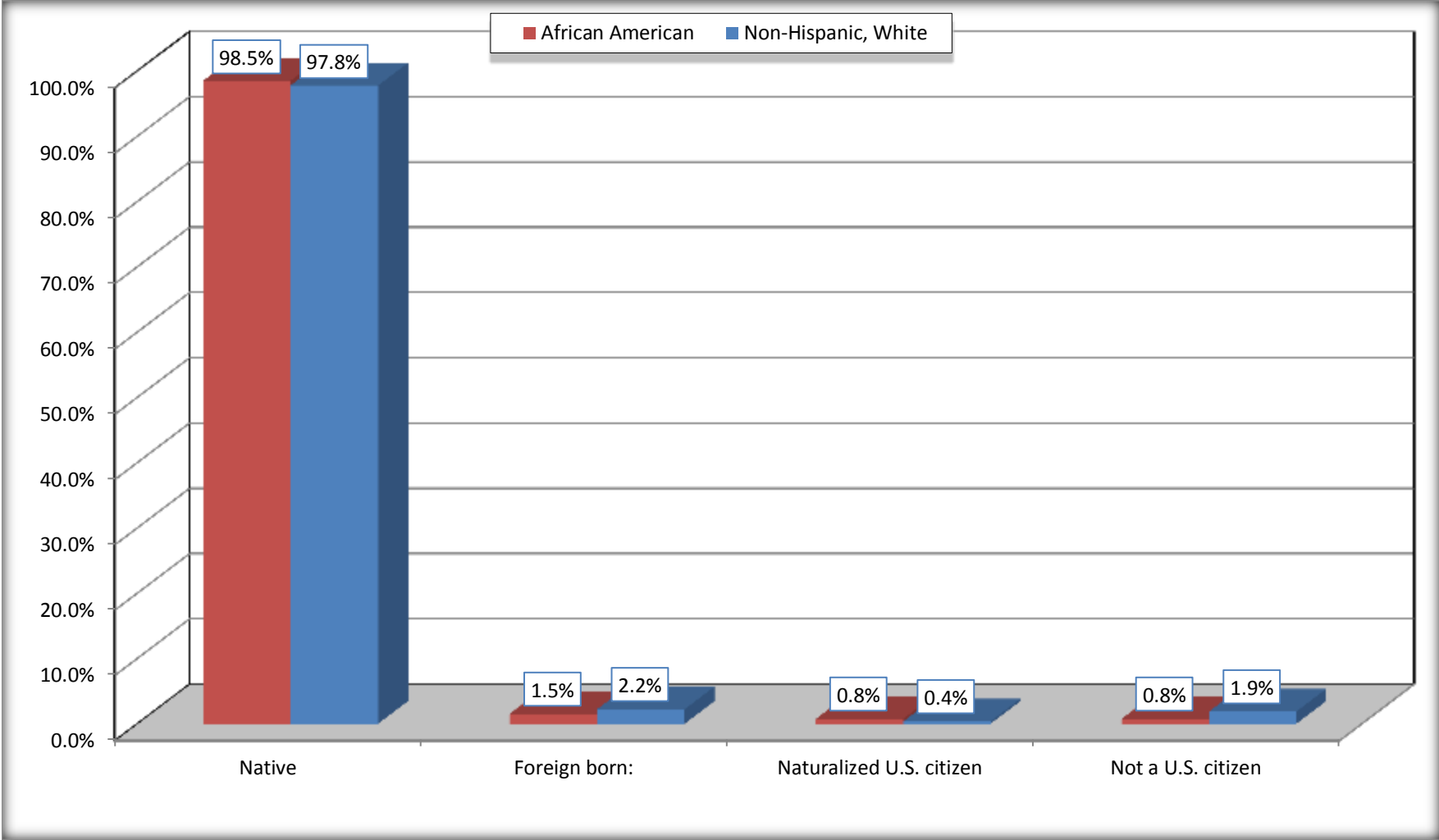
	Pulaski County, Illinois					
	African American	Margin of Error (+/-)	% of AA by Age	White, Not Hispanic	Margin of Error (+/-)	% of NHW by Age
<b>Female:</b>	1,026	37	50.3%	1,991	31	51.3%
<b>Under 18 years:</b>	<b>233</b>	<b>36</b>	<b>100.0%</b>	<b>371</b>	<b>31</b>	<b>100.0%</b>
Native	233	36	100.0%	371	31	100.0%
Foreign born:	0	16	0.0%	0	16	0.0%
Naturalized U.S. citizen	0	16	0.0%	0	16	0.0%
Not a U.S. citizen	0	16	0.0%	0	16	0.0%
<b>18 years and over:</b>	<b>793</b>	<b>11</b>	<b>100.0%</b>	<b>1,620</b>	<b>16</b>	<b>100.0%</b>
Native	793	11	100.0%	1,581	31	97.6%
Foreign born:	0	16	0.0%	39	31	2.4%
Naturalized U.S. citizen	0	16	0.0%	11	10	0.7%
Not a U.S. citizen	0	16	0.0%	28	29	1.7%

Source: U.S. Census Bureau, 2008-2012 American Community Survey

For information on confidentiality protection, sampling error, nonsampling error, and definitions, see Survey Methodology.  
<http://www.census.gov/acs/www/UseData/index.htm>

# Citizenship Status of Voting Age Population (18 and Over)

## Pulaski County, Illinois



Source: B05003. SEX BY AGE BY CITIZENSHIP STATUS  
Data Set: 2008-2012 American Community Survey 5-Year Estimates

**B07004. GEOGRAPHICAL MOBILITY IN THE PAST YEAR BY RACE FOR CURRENT RESIDENCE IN THE UNITED STATES - Universe:  
POPULATION 1 YEAR AND OVER**

Data Set: 2008-2012 American Community Survey 5-Year Estimates

	Pulaski County, Illinois					
	African American	Margin of Error (+/-)	% of AA Total	White, Not Hispanic	Margin of Error (+/-)	% of NHW Total
<b>Total:</b>	<b>2,026</b>	<b>37</b>	<b>100.0%</b>	<b>3,818</b>	<b>24</b>	<b>100.0%</b>
Same house 1 year ago	1,793	101	88.5%	3,571	93	93.5%
Moved within same county	192	97	9.5%	142	63	3.7%
Moved from different county within same state	20	24	1.0%	94	50	2.5%
Moved from different state	21	17	1.0%	11	12	0.3%
Moved from abroad	0	16	0.0%	0	16	0.0%

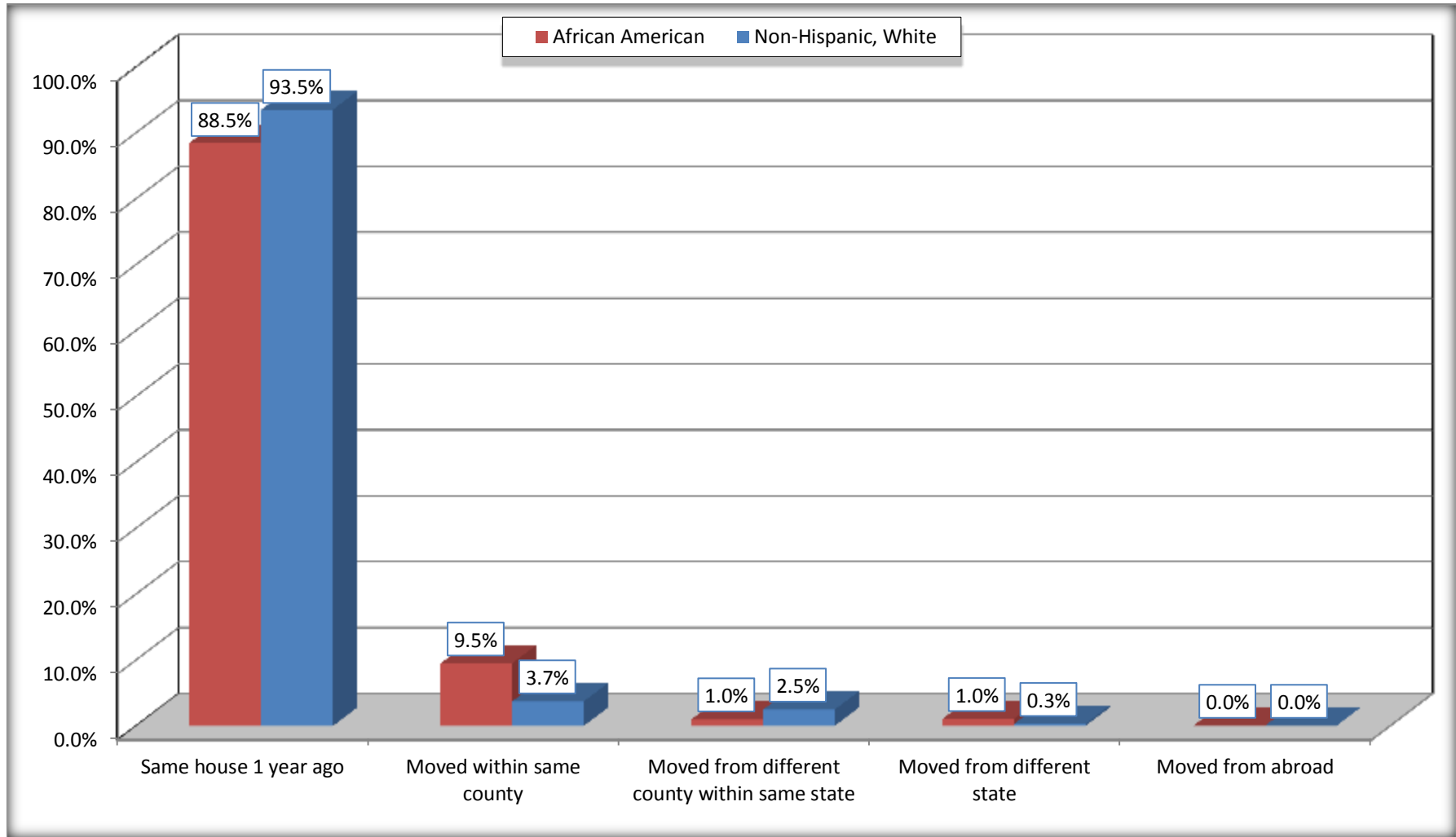
Source: U.S. Census Bureau, 2008-2012 American Community Survey

For information on confidentiality protection, sampling error, nonsampling error, and definitions, see Survey Methodology.

<http://www.census.gov/acs/www/UseData/index.htm>

# Geographical Mobility in the Past Year (Population 1 Year and Over)

## Pulaski County, Illinois



Source: B07004. GEOGRAPHICAL MOBILITY IN THE PAST YEAR BY RACE FOR CURRENT RESIDENCE IN THE UNITED STATES - Universe: POPULATION 1 YEAR AND OVER

Data Set: 2008-2012 American Community Survey 5-Year Estimates

**B08105. MEANS OF TRANSPORTATION TO WORK - Universe: WORKERS 16 YEARS AND OVER**

Data Set: 2008-2012 American Community Survey 5-Year Estimates

	Pulaski County, Illinois					
	African American	Margin of Error (+/-)	% of AA Total	White, Not Hispanic	Margin of Error (+/-)	% of NHW Total
<b>Total:</b>	624	93	<b>100.0%</b>	1426	121	<b>100.0%</b>
Car, truck, or van - drove alone	486	96	77.9%	1247	122	87.4%
Car, truck, or van - carpooled	74	39	11.9%	103	48	7.2%
Public transportation (excluding taxicab)	16	17	2.6%	17	13	1.2%
Walked	33	24	5.3%	14	14	1.0%
Taxicab, motorcycle, bicycle, or other means	0	16	0.0%	0	16	0.0%
Worked at home	15	13	2.4%	45	31	3.2%

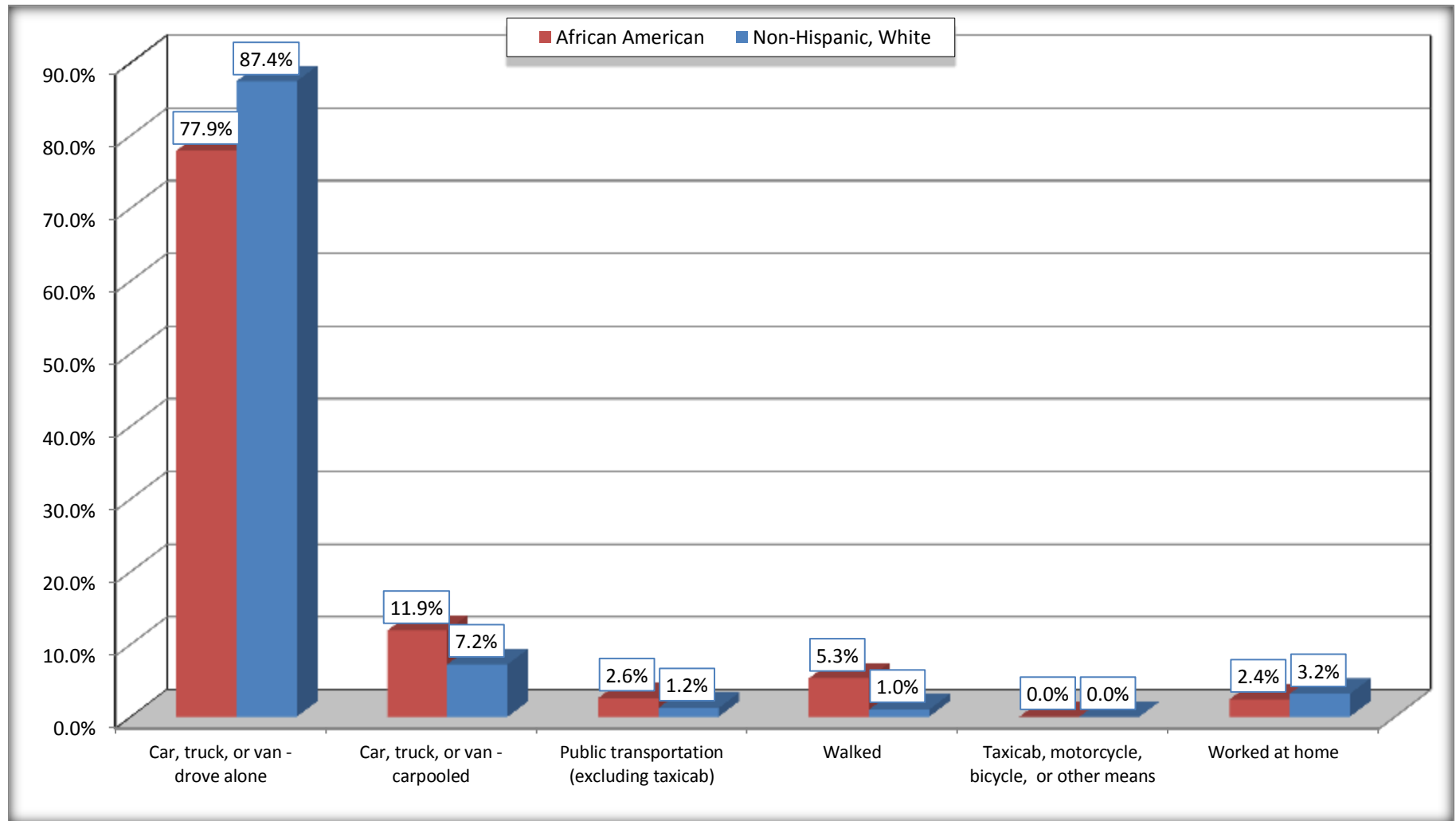
Source: U.S. Census Bureau, 2008-2012 American Community Survey

For information on confidentiality protection, sampling error, nonsampling error, and definitions, see Survey Methodology.

<http://www.census.gov/acs/www/UseData/index.htm>

# Means of Transportation to Work (Workers 16 Years and Over)

## Pulaski County, Illinois



Source: B08105. MEANS OF TRANSPORTATION TO WORK - Universe: WORKERS 16 YEARS AND OVER  
Data Set: 2008-2012 American Community Survey 5-Year Estimates



**B11002. HOUSEHOLD TYPE BY RELATIVES AND NONRELATIVES FOR POPULATION IN HOUSEHOLDS**

Data Set: 2008-2012 American Community Survey 5-Year Estimates

	Pulaski County, Illinois					
	African American	Margin of Error (+/-)	% of AA Total	White, Not Hispanic	Margin of Error (+/-)	% of NHW Total
<b>Total:</b>	1939	62	<b>100.0%</b>	3926	67	<b>100.0%</b>
In family households	1580	97	81.5%	3292	139	83.9%
In nonfamily households	359	74	18.5%	634	110	16.1%

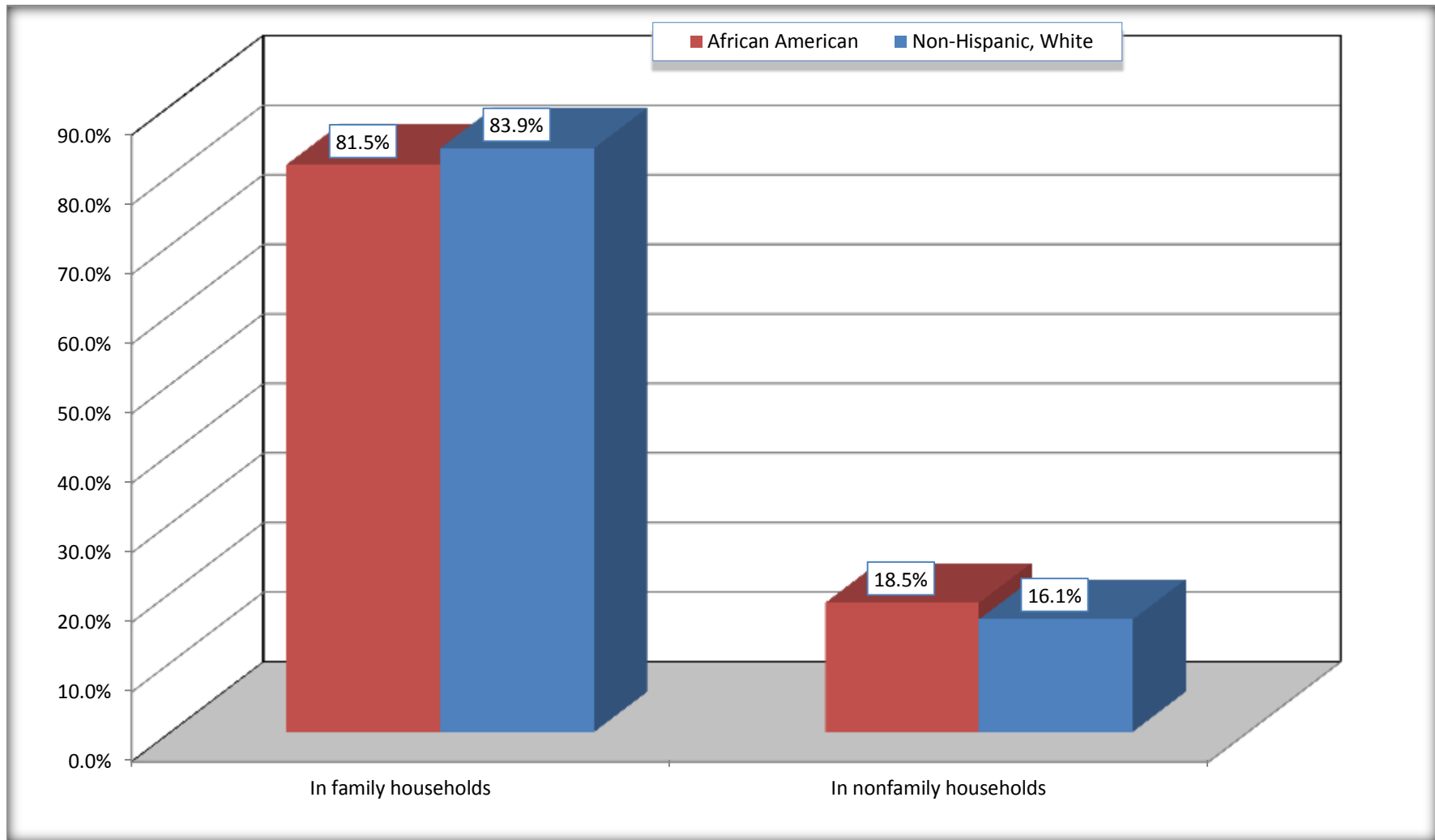
Source: U.S. Census Bureau, 2008-2012 American Community Survey

For information on confidentiality protection, sampling error, nonsampling error, and definitions, see Survey Methodology.

<http://www.census.gov/acs/www/UseData/index.htm>

# Household Type for Population in Households

## Pulaski County, Illinois



Source: B11002. HOUSEHOLD TYPE BY RELATIVES AND NONRELATIVES FOR POPULATION IN HOUSEHOLDS  
Data Set: 2008-2012 American Community Survey 5-Year Estimates

**B12002. MARITAL STATUS FOR THE POPULATION 15 YEARS AND OVER**

Data Set: 2008-2012 American Community Survey 5-Year Estimates

	Pulaski County, Illinois					
	African American	Margin of Error (+/-)	% of AA Total	White, Not Hispanic	Margin of Error (+/-)	% of NHW Total
<b>Total:</b>	<b>1,566</b>	<b>27</b>	<b>100.0%</b>	<b>3,237</b>	<b>16</b>	<b>100.0%</b>
Never married	632	NC	40.4%	662	NC	20.5%
Now married (except separated)	471	NC	30.1%	1,764	NC	54.5%
Separated	60	NC	3.8%	39	NC	1.2%
Widowed	176	NC	11.2%	357	NC	11.0%
Divorced	227	NC	14.5%	415	NC	12.8%
<b>Male:</b>	716	36	45.7%	1,554	31	48.0%
Never married	339	61	21.6%	346	53	10.7%
Now married (except separated)	240	57	15.3%	902	75	27.9%
Separated	7	8	0.4%	25	18	0.8%
Widowed	50	28	3.2%	60	27	1.9%
Divorced	80	34	5.1%	221	52	6.8%
<b>Female:</b>	850	32	54.3%	1,683	31	52.0%
Never married	293	60	18.7%	316	67	9.8%
Now married (except separated)	231	70	14.8%	862	88	26.6%
Separated	53	38	3.4%	14	16	0.4%
Widowed	126	34	8.0%	297	54	9.2%
Divorced	147	46	9.4%	194	61	6.0%

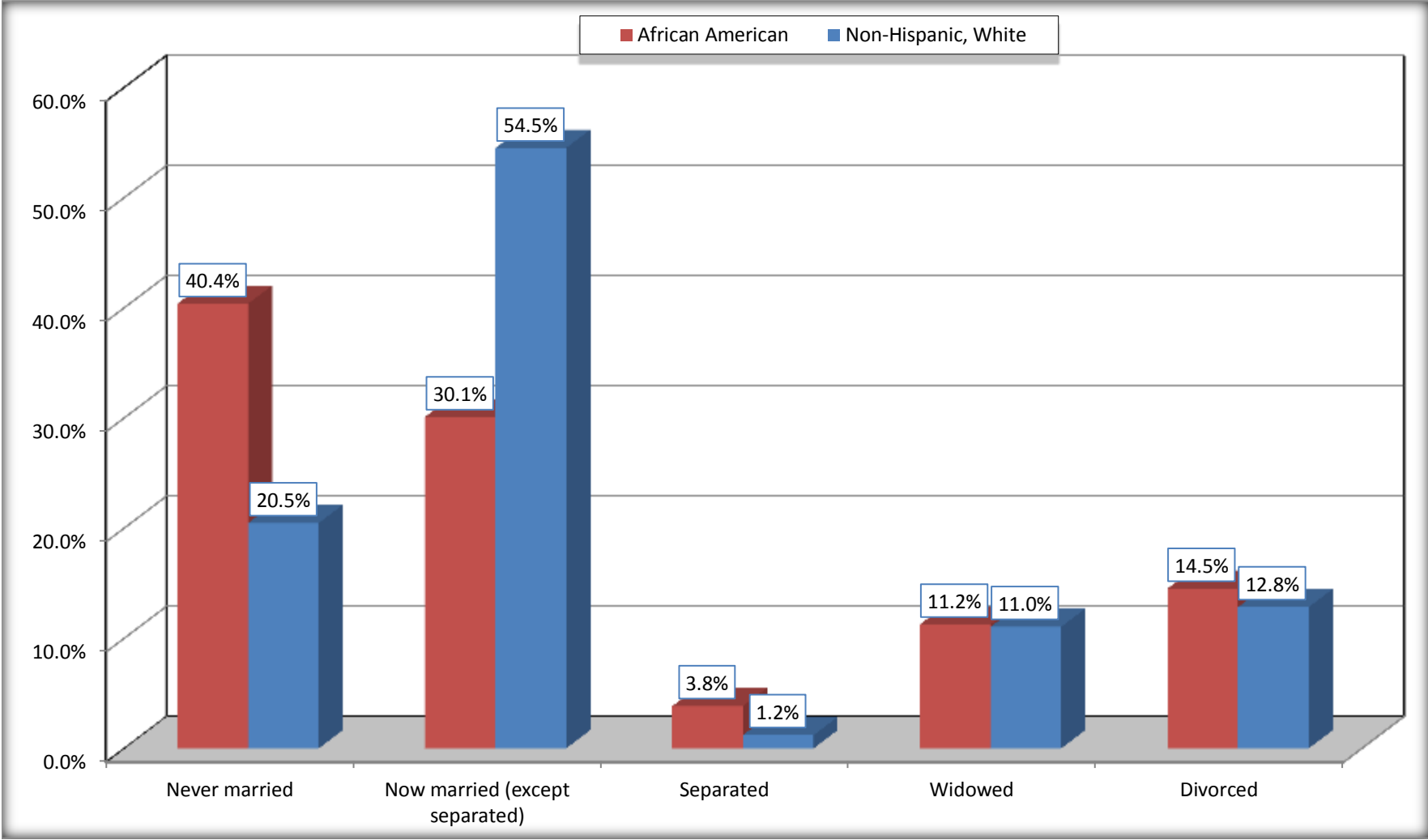
Source: U.S. Census Bureau, 2008-2012 American Community Survey

For information on confidentiality protection, sampling error, nonsampling error, and definitions, see Survey Methodology.

<http://www.census.gov/acs/www/UseData/index.htm>

# Marital Status for the Population 15 Years and Over

## Pulaski County, Illinois



Source: B12002. MARITAL STATUS FOR THE POPULATION 15 YEARS AND OVER  
Data Set: 2008-2012 American Community Survey 5-Year Estimates

**C15002. SEX BY EDUCATIONAL ATTAINMENT FOR THE POPULATION 25 YEARS AND OVER**

Data Set: 2008-2012 American Community Survey 5-Year Estimates

	Pulaski County, Illinois					
	African American	Margin of Error (+/-)	% of AA Total	White, Not Hispanic	Margin of Error (+/-)	% of NHW Total
<b>Total:</b>	<b>1,268</b>	<b>44</b>	<b>100.0%</b>	<b>2,792</b>	<b>16</b>	<b>100.0%</b>
Less than high school diploma	259	NC	20.4%	578	NC	20.7%
High school graduate, GED, or alternative	355	NC	28.0%	1,000	NC	35.8%
Some college or associate's degree	401	NC	31.6%	968	NC	34.7%
Bachelor's degree or higher	253	NC	20.0%	246	NC	8.8%
Male:	561	20	44.2%	1,334	16	47.8%
Less than high school diploma	158	37	12.5%	246	56	8.8%
High school graduate, GED, or alternative	167	51	13.2%	463	85	16.6%
Some college or associate's degree	156	42	12.3%	524	100	18.8%
Bachelor's degree or higher	80	41	6.3%	101	45	3.6%
Female:	707	34	55.8%	1,458	16	52.2%
Less than high school diploma	101	38	8.0%	332	68	11.9%
High school graduate, GED, or alternative	188	61	14.8%	537	72	19.2%
Some college or associate's degree	245	59	19.3%	444	80	15.9%
Bachelor's degree or higher	173	52	13.6%	145	47	5.2%

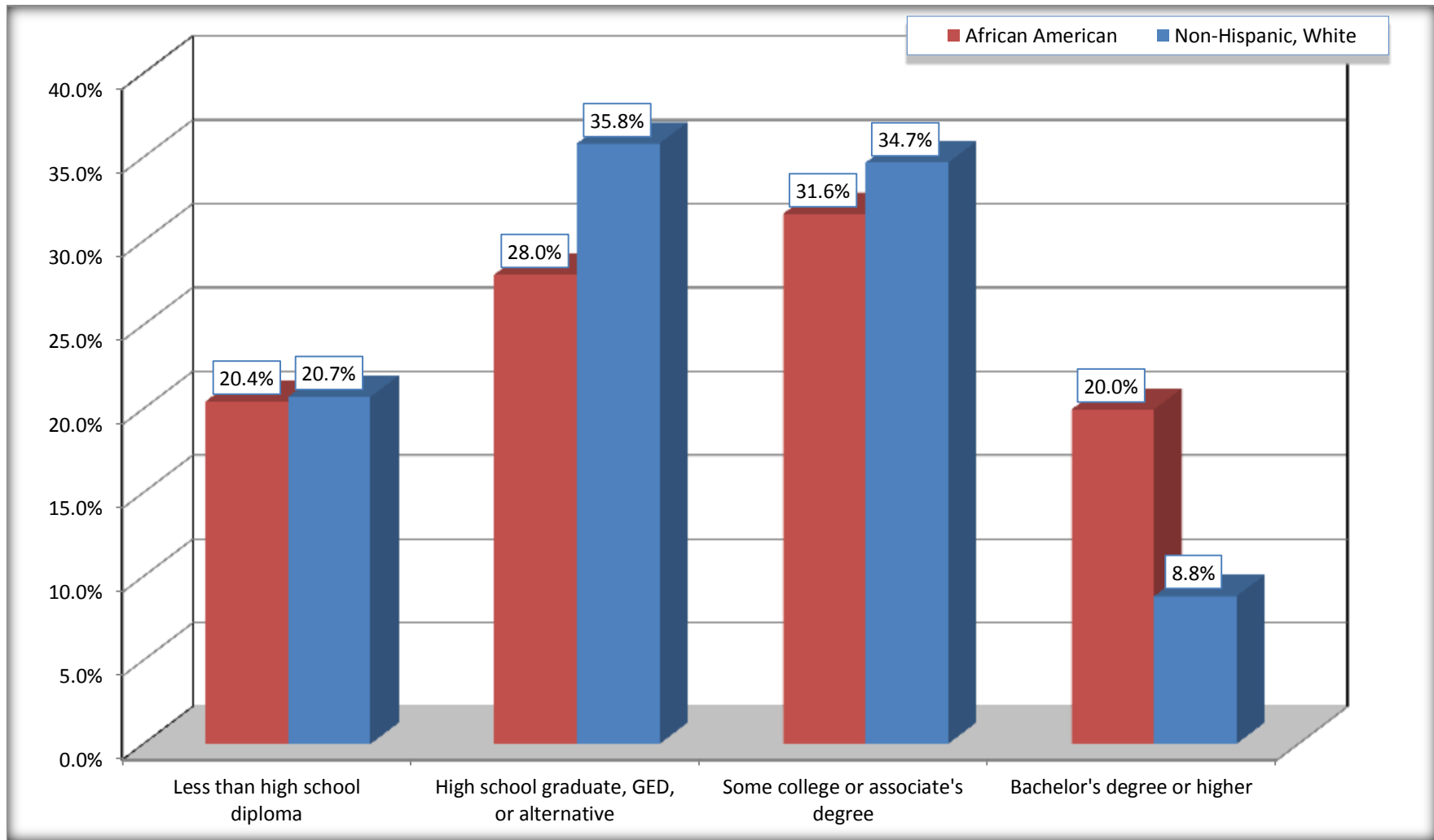
Source: U.S. Census Bureau, 2008-2012 American Community Survey

For information on confidentiality protection, sampling error, nonsampling error, and definitions, see Survey Methodology.

<http://www.census.gov/acs/www/UseData/index.htm>

# Educational Attainment for the Population 25 Years and Older

## Pulaski County, Illinois



Source: C15002. SEX BY EDUCATIONAL ATTAINMENT FOR THE POPULATION 25 YEARS AND OVER  
Data Set: 2008-2012 American Community Survey 5-Year Estimates

**B17010. POVERTY STATUS IN THE PAST 12 MONTHS OF FAMILIES BY FAMILY TYPE BY PRESENCE OF RELATED CHILDREN UNDER 18 YEARS**

Data Set: 2008-2012 American Community Survey 5-Year Estimates

	Pulaski County, Illinois					
	African American	Margin of Error (+/-)	% of AA Total	White, Not Hispanic	Margin of Error (+/-)	% of NHW Total
<b>Total:</b>	<b>442</b>	<b>71</b>	<b>100.0%</b>	<b>1,056</b>	<b>82</b>	<b>100.0%</b>
Income in the past 12 months below poverty level:	131	49	29.6%	129	46	12.2%
Married-couple family:	29	28	6.6%	64	34	6.1%
With related children under 18 years	12	15	2.7%	20	18	1.9%
Other family:	102	41	23.1%	65	31	6.2%
Male householder, no wife present	7	11	1.6%	12	14	1.1%
With related children under 18 years	7	11	1.6%	12	14	1.1%
Female householder, no husband present	95	42	21.5%	53	26	5.0%
With related children under 18 years	84	40	19.0%	36	20	3.4%
Income in the past 12 months at or above poverty level:	311	62	70.4%	927	78	87.8%
Married-couple family:	195	64	44.1%	794	81	75.2%
With related children under 18 years	75	35	17.0%	184	53	17.4%
Other family:	116	40	26.2%	133	37	12.6%
Male householder, no wife present	10	10	2.3%	66	32	6.3%
With related children under 18 years	0	16	0.0%	49	35	4.6%
Female householder, no husband present	106	38	24.0%	67	30	6.3%
With related children under 18 years	50	25	11.3%	49	30	4.6%

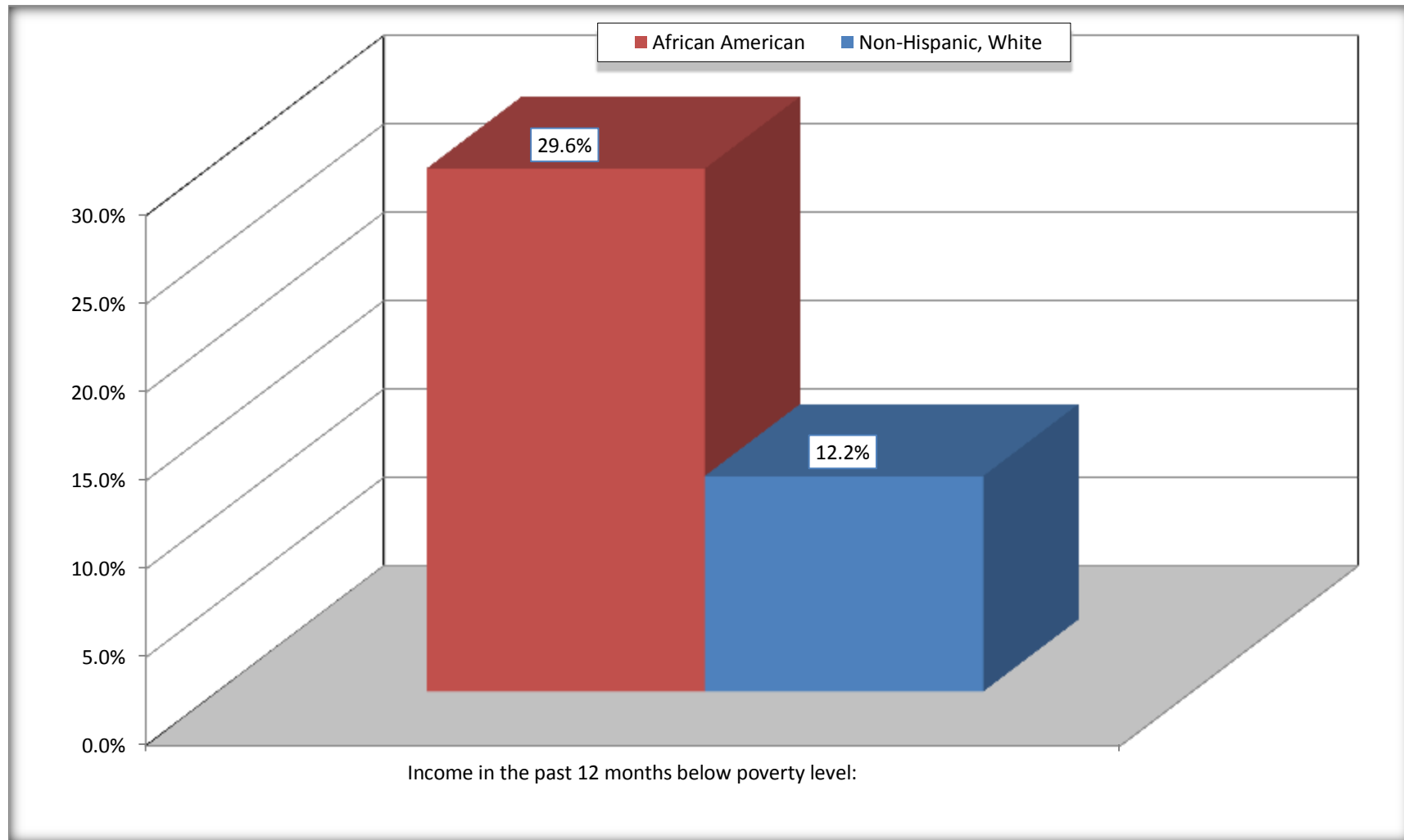
Source: U.S. Census Bureau, 2008-2012 American Community Survey

For information on confidentiality protection, sampling error, nonsampling error, and definitions, see Survey Methodology.

<http://www.census.gov/acs/www/UseData/index.htm>

# Family Households Below Poverty in the Past 12 Months

## Pulaski County, Illinois



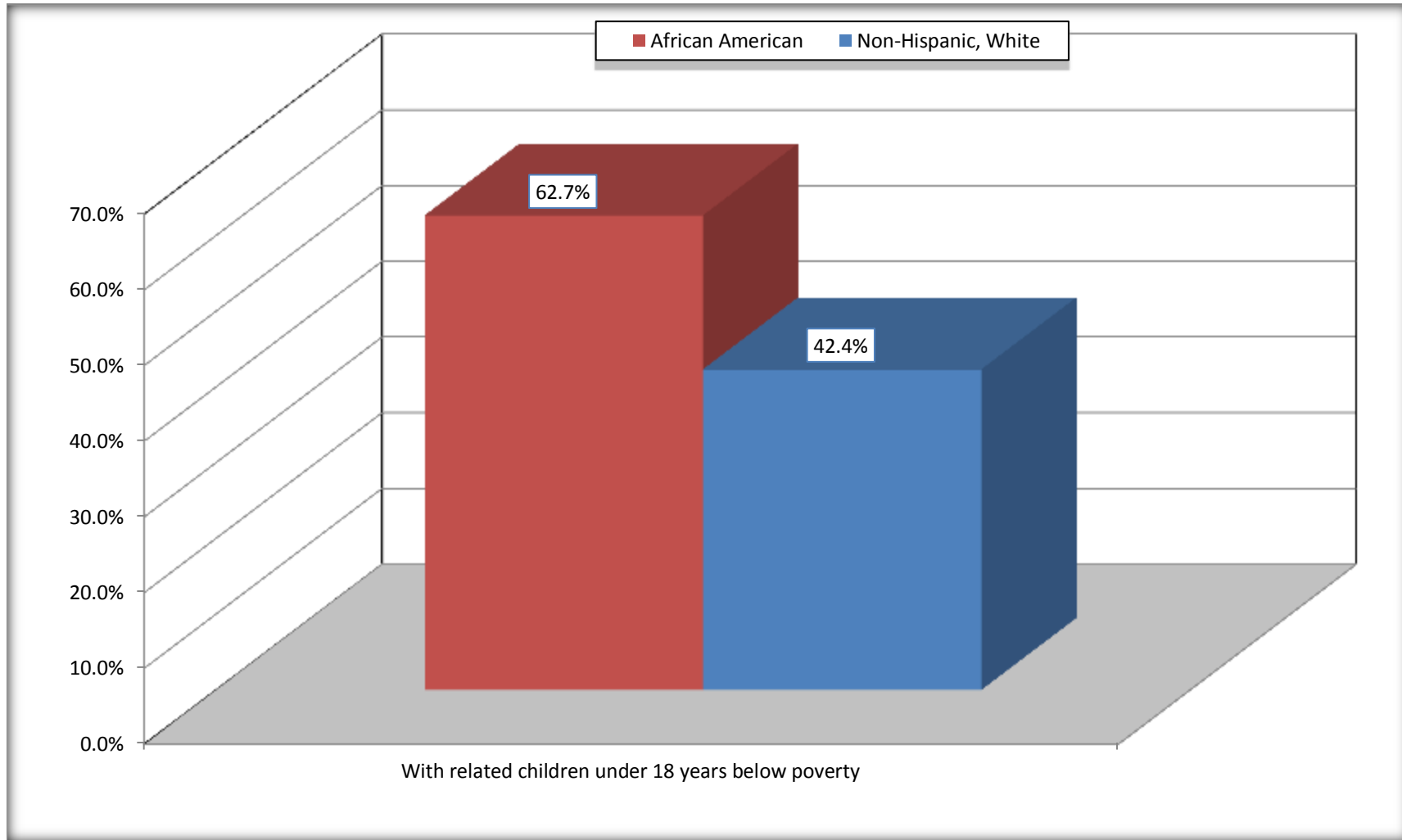
Source: B17010. POVERTY STATUS IN THE PAST 12 MONTHS OF FAMILIES BY FAMILY TYPE BY PRESENCE OF RELATED CHILDREN UNDER 18 YEARS

Data Set: 2008-2012 American Community Survey 5-Year Estimates



# Female-headed Households with Related Children Below Poverty in the Past 12 Months

## Pulaski County, Illinois



Source: B17010. POVERTY STATUS IN THE PAST 12 MONTHS OF FAMILIES BY FAMILY TYPE BY PRESENCE OF RELATED CHILDREN UNDER 18 YEARS

Data Set: 2008-2012 American Community Survey 5-Year Estimates

**B17020 POVERTY STATUS IN THE PAST 12 MONTHS BY AGE - Universe: POPULATION FOR WHOM POVERTY STATUS IS DETERMINED**

Data Set: 2008-2012 American Community Survey 5-Year Estimates

	Pulaski County, Illinois					
	African American	Margin of Error (+/-)	% of AA By Age	White, Not Hispanic	Margin of Error (+/-)	% of NHW By Age
<b>Total:</b>	<b>1,978</b>	<b>51</b>	<b>100.0%</b>	<b>3,824</b>	<b>38</b>	<b>100.0%</b>
Income in the past 12 months below poverty level:	671	143	33.9%	675	164	17.7%
<b>Under 18 years</b>	284	NC	49.5%	117	NC	15.3%
<b>18 to 64 years</b>	289	75	26.2%	456	125	20.0%
<b>65 years and over</b>	98	NC	32.3%	102	NC	13.1%
Income in the past 12 months at or above poverty level:	1,307	150	66.1%	3,149	175	82.3%
<b>Under 18 years</b>	290	NC	50.5%	646	NC	84.7%
<b>18 to 64 years</b>	812	91	73.8%	1,829	127	80.0%
<b>65 years and over</b>	205	NC	67.7%	674	NC	86.9%

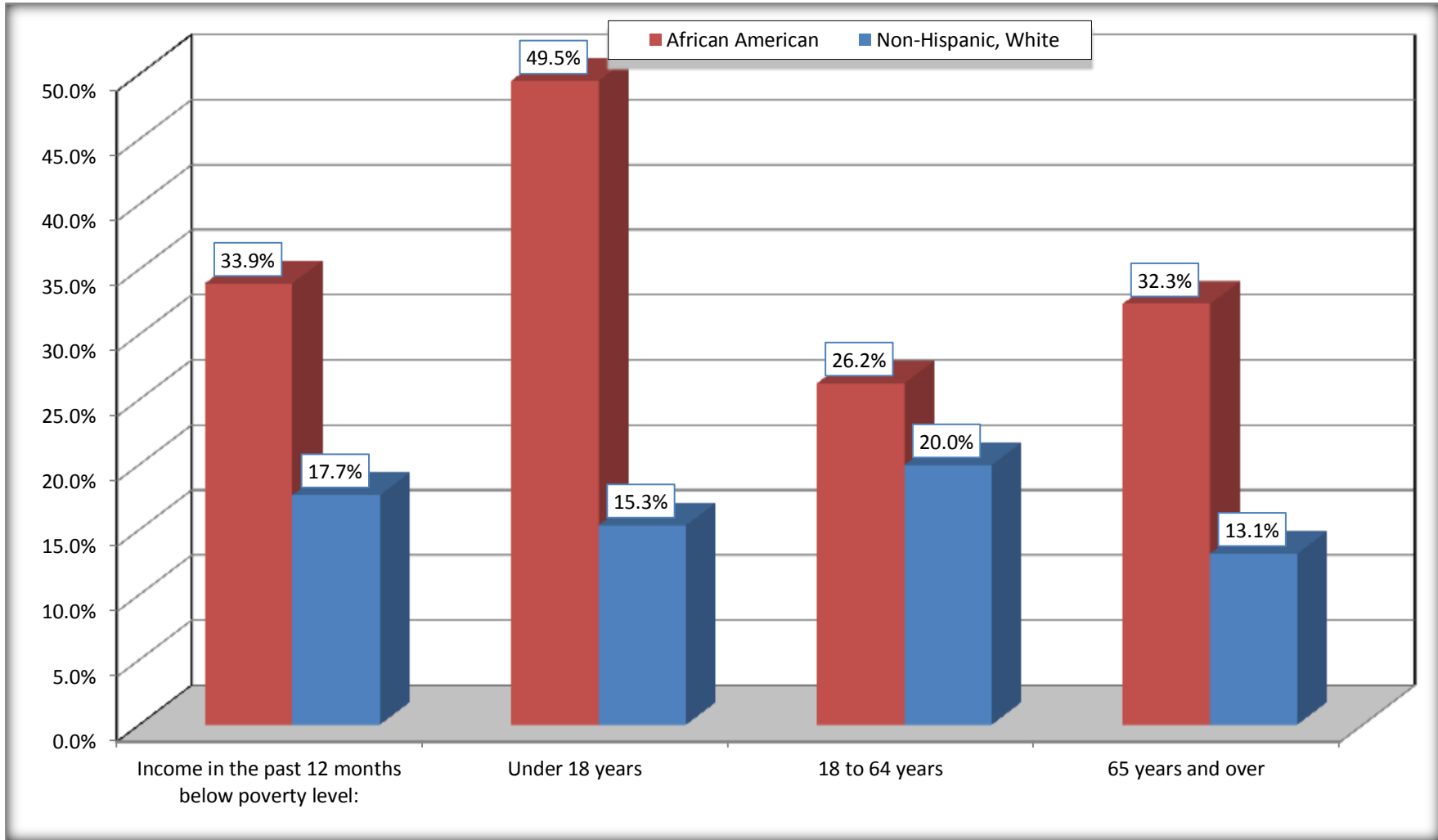
Source: U.S. Census Bureau, 2008-2012 American Community Survey

For information on confidentiality protection, sampling error, nonsampling error, and definitions, see Survey Methodology.

<http://www.census.gov/acs/www/UseData/index.htm>

# Population Below Poverty in the Past 12 Months

## Pulaski County, Illinois



Source: B17020 POVERTY STATUS IN THE PAST 12 MONTHS BY AGE - Universe: POPULATION FOR WHOM POVERTY STATUS IS DETERMINED  
Data Set: 2008-2012 American Community Survey 5-Year Estimates

**B19001. HOUSEHOLD INCOME IN THE PAST 12 MONTHS (IN 2010 INFLATION-ADJUSTED DOLLARS)**

Data Set: 2008-2012 American Community Survey 5-Year Estimates

	Pulaski County, Illinois					
	African American	Margin of Error (+/-)	% of AA Total	White, Not Hispanic	Margin of Error (+/-)	% of NHW Total
<b>Total:</b>	<b>789</b>	<b>74</b>	<b>100.0%</b>	<b>1,595</b>	<b>87</b>	<b>100.0%</b>
Less than \$ 10,000	191	60	24.2%	171	56	10.7%
\$ 10,000 to \$ 14,999	100	42	12.7%	106	39	6.6%
<b>\$ 15,000 to \$ 24,999</b>	116	NC	14.7%	238	NC	14.9%
<b>\$ 25,000 to \$ 34,999</b>	101	NC	12.8%	236	NC	14.8%
<b>\$ 35,000 to \$ 49,999</b>	104	NC	13.2%	233	NC	14.6%
<b>\$ 50,000 to \$ 74,999</b>	74	NC	9.4%	279	NC	17.5%
\$ 75,000 to \$ 99,999	34	17	4.3%	150	67	9.4%
<b>\$ 100,000 to \$ 149,999</b>	66	NC	8.4%	127	NC	8.0%
\$ 150,000 to \$ 199,999	3	4	0.4%	26	28	1.6%
\$ 200,000 or more	0	16	0.0%	29	26	1.8%

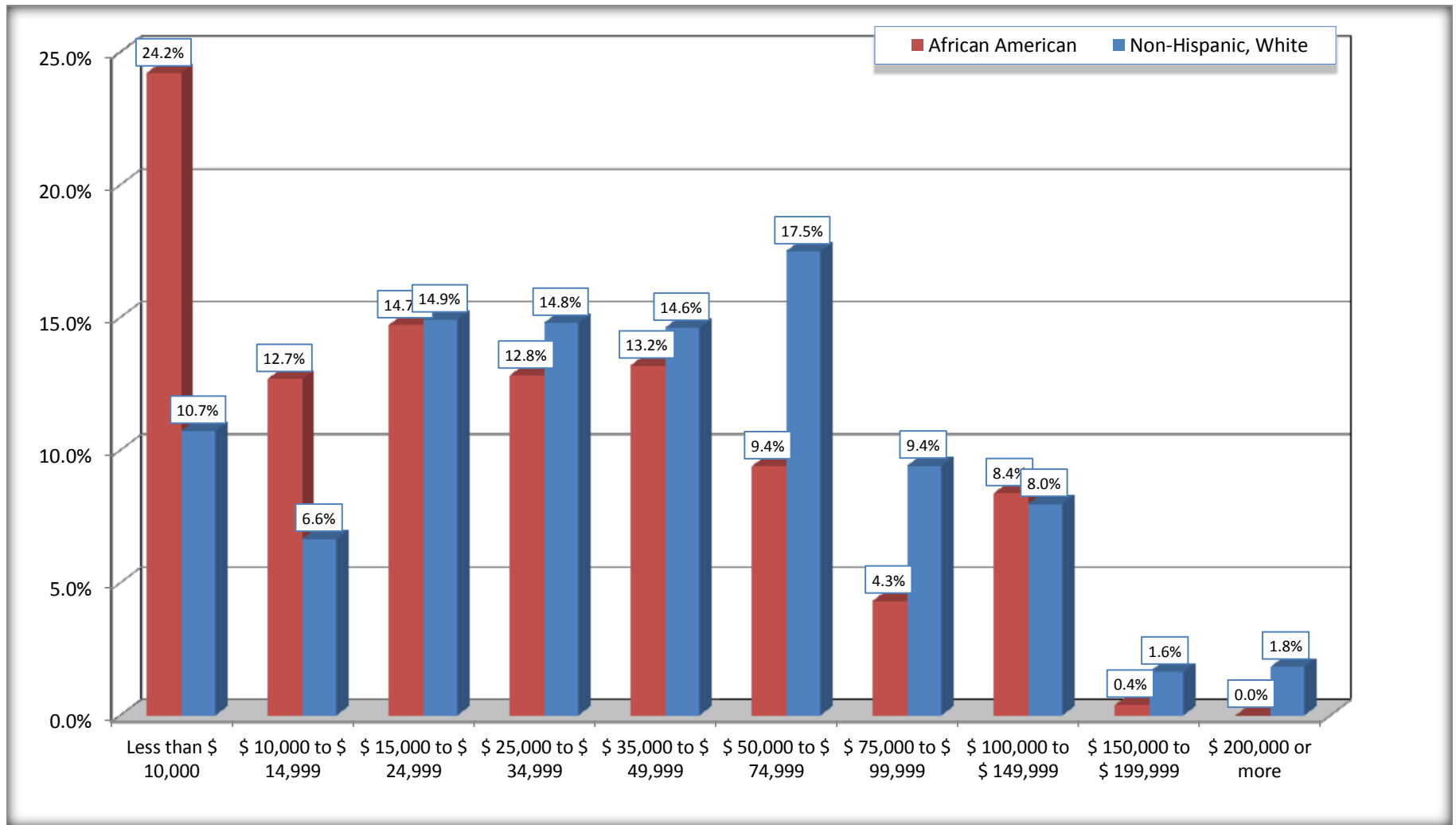
Source: U.S. Census Bureau, 2008-2012 American Community Survey

For information on confidentiality protection, sampling error, nonsampling error, and definitions, see Survey Methodology.

<http://www.census.gov/acs/www/UseData/index.htm>

# Household Income in the Past 12 Months

## Pulaski County, Illinois



Source: B19001. HOUSEHOLD INCOME IN THE PAST 12 MONTHS (IN 2010 INFLATION-ADJUSTED DOLLARS)  
Data Set: 2008-2012 American Community Survey 5-Year Estimates

**B19013. MEDIAN HOUSEHOLD INCOME IN THE PAST 12 MONTHS (IN 2010 INFLATION-ADJUSTED DOLLARS)**

Data Set: 2008-2012 American Community Survey 5-Year Estimates

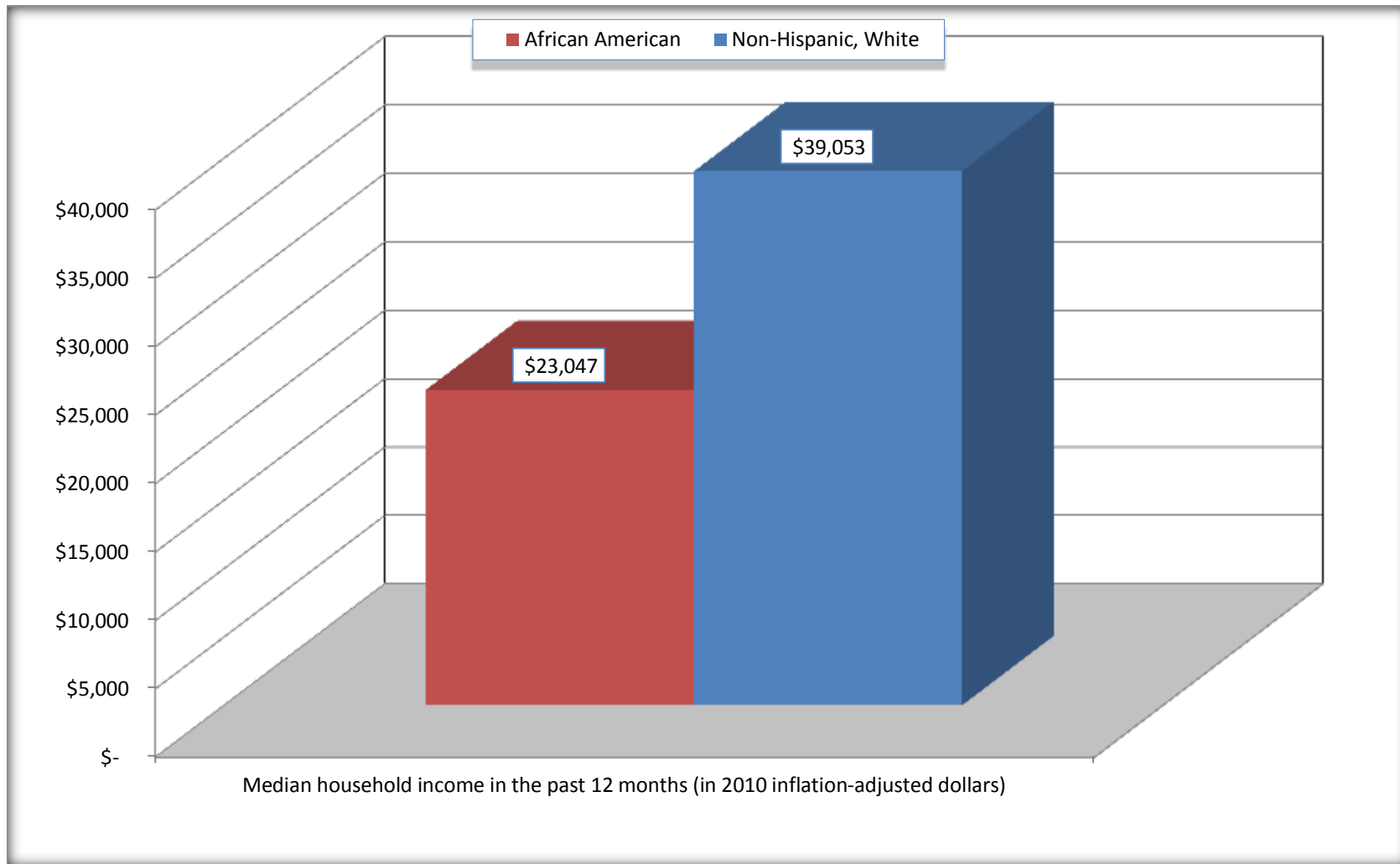
	Pulaski County, Illinois			
	African American	Margin of Error (+/-)	White, Not Hispanic	Margin of Error (+/-)
Median household income in the past 12 months (in 2010 inflation-adjusted dollars)	\$ 23,047	\$ 6,012	\$ 39,053	\$ 7,213

Source: U.S. Census Bureau, 2008-2012 American Community Survey

For information on confidentiality protection, sampling error, nonsampling error, and definitions, see Survey Methodology.  
<http://www.census.gov/acs/www/UseData/index.htm>

## Median Household Income in the Past 12 Months

### Pulaski County, Illinois



Source: B19013. MEDIAN HOUSEHOLD INCOME IN THE PAST 12 MONTHS (IN 2010 INFLATION-ADJUSTED DOLLARS)  
Data Set: 2008-2012 American Community Survey 5-Year Estimates

**B19101. FAMILY INCOME IN THE PAST 12 MONTHS (IN 2010 INFLATION-ADJUSTED DOLLARS)**

Data Set: 2008-2012 American Community Survey 5-Year Estimates

	Pulaski County, Illinois					
	African American	Margin of Error (+/-)	% of AA Total	White, Not Hispanic	Margin of Error (+/-)	% of NHW Total
<b>Total:</b>	<b>442</b>	<b>71</b>	<b>100.0%</b>	<b>1,056</b>	<b>82</b>	<b>100.0%</b>
Less than \$ 10,000	40	29	9.0%	63	34	6.0%
\$ 10,000 to \$ 14,999	49	34	11.1%	39	26	3.7%
<b>\$ 15,000 to \$ 24,999</b>	<b>68</b>	<b>NC</b>	<b>15.4%</b>	<b>88</b>	<b>NC</b>	<b>8.3%</b>
<b>\$ 25,000 to \$ 34,999</b>	<b>66</b>	<b>NC</b>	<b>14.9%</b>	<b>151</b>	<b>NC</b>	<b>14.3%</b>
<b>\$ 35,000 to \$ 49,999</b>	<b>80</b>	<b>NC</b>	<b>18.1%</b>	<b>218</b>	<b>NC</b>	<b>20.6%</b>
<b>\$ 50,000 to \$ 74,999</b>	<b>43</b>	<b>NC</b>	<b>9.7%</b>	<b>219</b>	<b>NC</b>	<b>20.7%</b>
<b>\$ 100,000 to \$ 149,999</b>	<b>59</b>	<b>NC</b>	<b>13.3%</b>	<b>89</b>	<b>NC</b>	<b>8.4%</b>
\$ 150,000 to \$ 199,999	3	4	0.7%	26	28	2.5%
\$ 200,000 or more	0	16	0.0%	29	26	2.7%

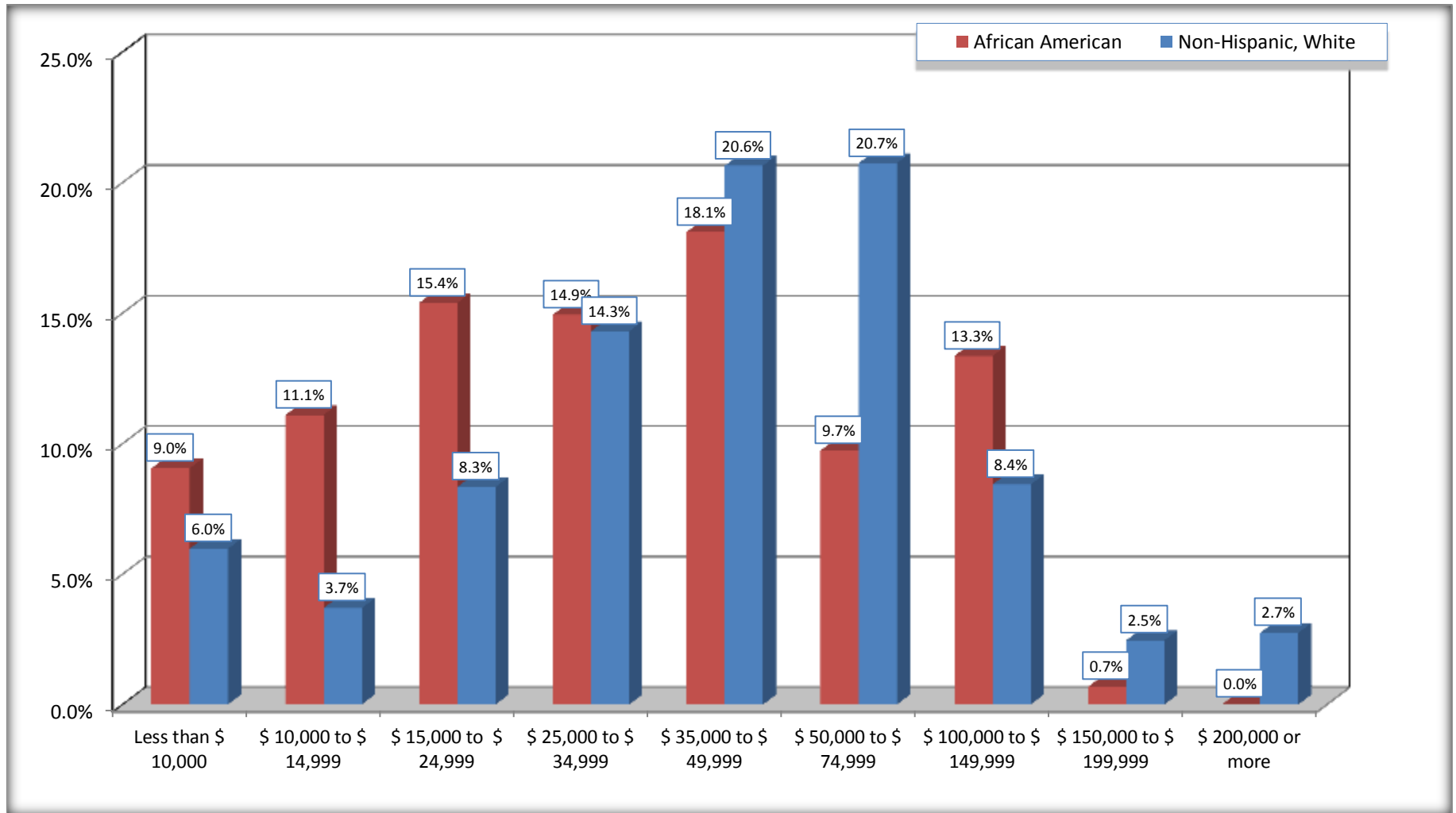
Source: U.S. Census Bureau, 2008-2012 American Community Survey

For information on confidentiality protection, sampling error, nonsampling error, and definitions, see Survey Methodology.

<http://www.census.gov/acs/www/UseData/index.htm>



## Family Income in the Past 12 Months Pulaski County, Illinois



Source: B19101. FAMILY INCOME IN THE PAST 12 MONTHS (IN 2010 INFLATION-ADJUSTED DOLLARS)  
Data Set: 2008-2012 American Community Survey 5-Year Estimates

**B19113. MEDIAN FAMILY INCOME IN THE PAST 12 MONTHS (IN 2010 INFLATION-ADJUSTED DOLLARS)**

Data Set: 2008-2012 American Community Survey 5-Year Estimates

	Pulaski County, Illinois			
	African American	Margin of Error (+/-)	White, Not Hispanic	Margin of Error (+/-)
Median family income in the past 12 months (in 2010 inflation-adjusted dollars)	\$ 34,375	\$ 8,061	\$ 48,315	\$ 4,324

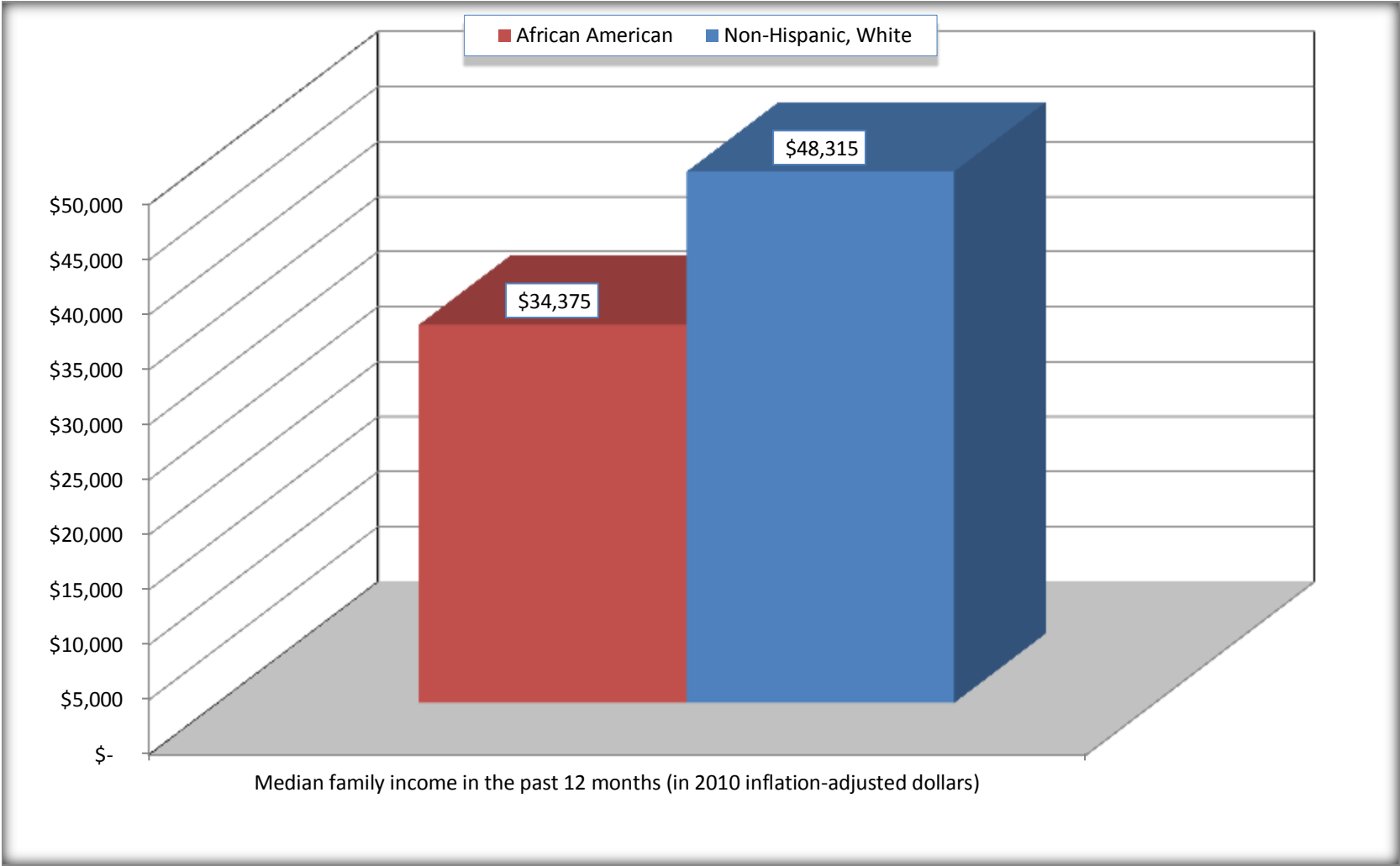
Source: U.S. Census Bureau, 2008-2012 American Community Survey

For information on confidentiality protection, sampling error, nonsampling error, and definitions, see Survey Methodology.

<http://www.census.gov/acs/www/UseData/index.htm>

# Median Family Income in the Past 12 Months

## Pulaski County, Illinois



Source: B19113. MEDIAN FAMILY INCOME IN THE PAST 12 MONTHS (IN 2010 INFLATION-ADJUSTED DOLLARS)  
Data Set: 2008-2012 American Community Survey 5-Year Estimates

**B19202. MEDIAN NONFAMILY HOUSEHOLD INCOME IN THE PAST 12 MONTHS (IN 2010 INFLATION-ADJUSTED DOLLARS)**

Data Set: 2008-2012 American Community Survey 5-Year Estimates

	Pulaski County, Illinois			
	African American	Margin of Error (+/-)	White, Not Hispanic	Margin of Error (+/-)
Median nonfamily household income in the past 12 months (in 2010 inflation-adjusted dollars)	\$ 11,480	\$ 2,257	\$ 19,668	\$ 2,337

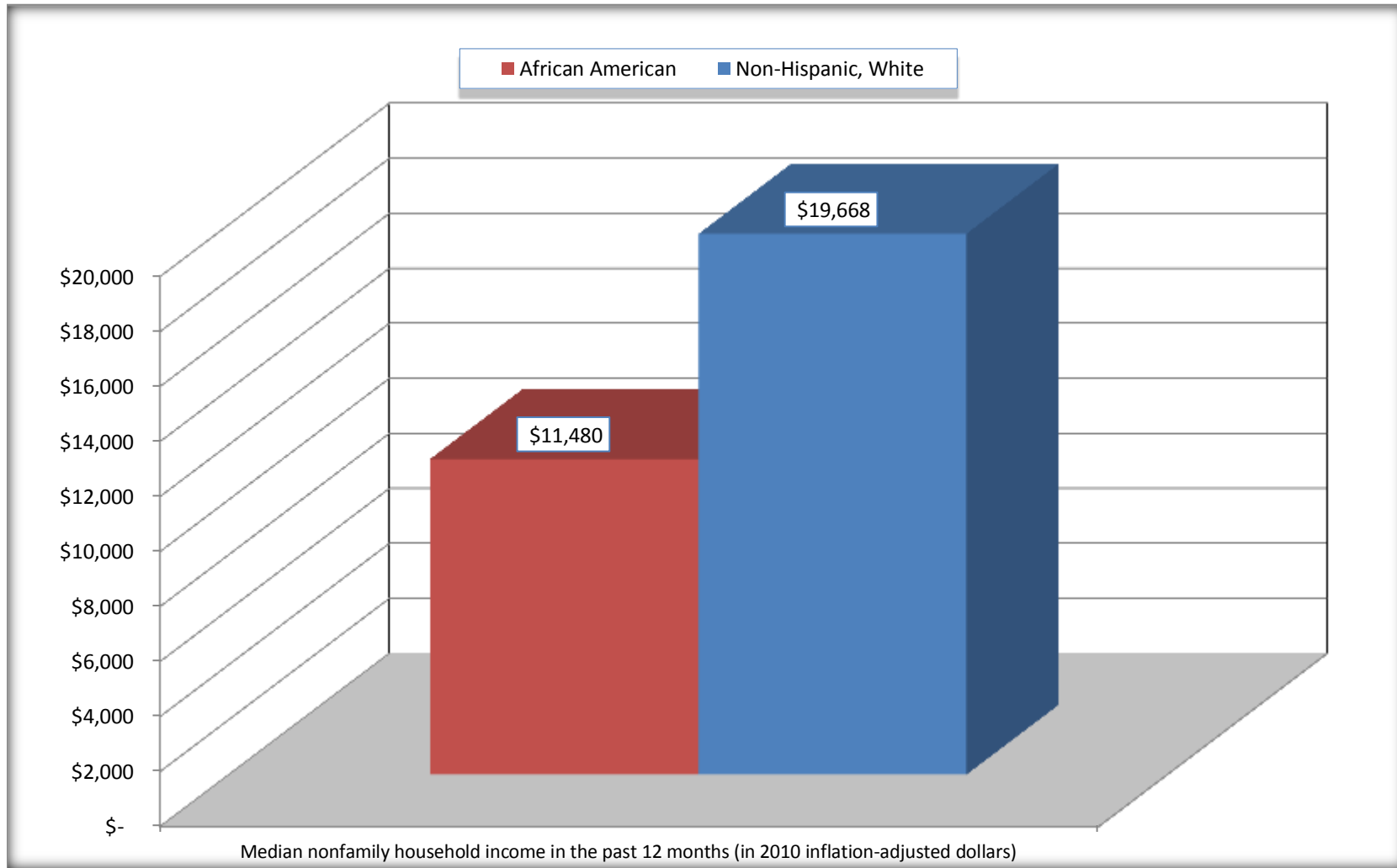
Source: U.S. Census Bureau, 2008-2012 American Community Survey

For information on confidentiality protection, sampling error, nonsampling error, and definitions, see Survey Methodology.

<http://www.census.gov/acs/www/UseData/index.htm>

# Median Non-Family Income in the Past 12 Months

## Pulaski County, Illinois



Source: B19202. MEDIAN NONFAMILY HOUSEHOLD INCOME IN THE PAST 12 MONTHS (IN 2010 INFLATION-ADJUSTED DOLLARS)  
Data Set: 2008-2012 American Community Survey 5-Year Estimates

**B19301. PER CAPITA INCOME IN THE PAST 12 MONTHS (IN 2010 INFLATION-ADJUSTED DOLLARS)**

Data Set: 2008-2012 American Community Survey 5-Year Estimates

	Pulaski County, Illinois			
	African American	Margin of Error (+/-)	White, Not Hispanic	Margin of Error (+/-)
Per capita income in the past 12 months (in 2010 inflation-adjusted dollars)	\$ 14,647	\$ 2,275	\$ 21,173	\$ 1,966

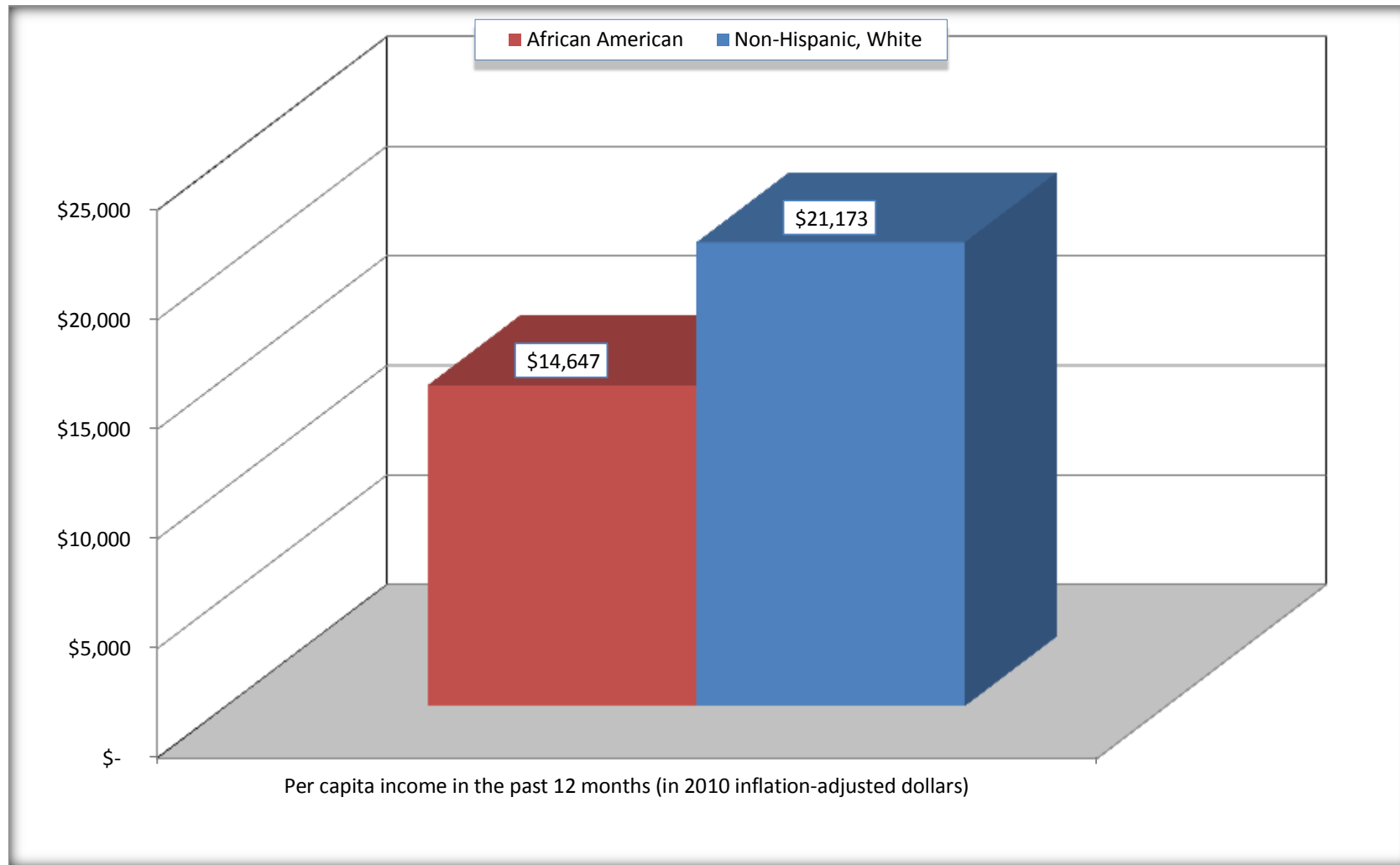
Source: U.S. Census Bureau, 2008-2012 American Community Survey

For information on confidentiality protection, sampling error, nonsampling error, and definitions, see Survey Methodology.

<http://www.census.gov/acs/www/UseData/index.htm>

## Per capita Income in the Past 12 Months

### Pulaski County, Illinois



Source: B19301. PER CAPITA INCOME IN THE PAST 12 MONTHS (IN 2010 INFLATION-ADJUSTED DOLLARS)  
Data Set: 2008-2012 American Community Survey 5-Year Estimates

**B20017. MEDIAN EARNINGS IN THE PAST 12 MONTHS (IN 2010 INFLATION-ADJUSTED DOLLARS) BY SEX BY WORK EXPERIENCE IN THE PAST 12 MONTHS FOR THE POPULATION 16 YEARS AND OVER WITH EARNINGS IN THE PAST 12 MONTHS**

Data Set: 2008-2012 American Community Survey 5-Year Estimates

	Pulaski County, Illinois			
	African American	Margin of Error (+/-)	White, Not Hispanic	Margin of Error (+/-)
Median earnings in the past 12 months (in 2010 inflation-adjusted dollars) --				
Total:	\$ 21,214	\$ 6,187	\$ 25,666	\$ 1,652
Male --				
Total	\$ 24,643	\$ 8,781	\$ 31,855	\$ 5,139
Worked full-time, year-round in the past 12 months	\$ 38,750	\$ 16,826	\$ 37,679	\$ 7,437
Other	\$ 8,125	\$ 8,278	\$ 14,191	\$ 3,577
Female --				
Total	\$ 19,931	\$ 6,080	\$ 20,481	\$ 4,388
Worked full-time, year-round in the past 12 months	\$ 32,118	\$ 12,629	\$ 29,833	\$ 4,569
Other	\$ 12,986	\$ 6,867	\$ 10,978	\$ 746

Source: U.S. Census Bureau, 2008-2012 American Community Survey

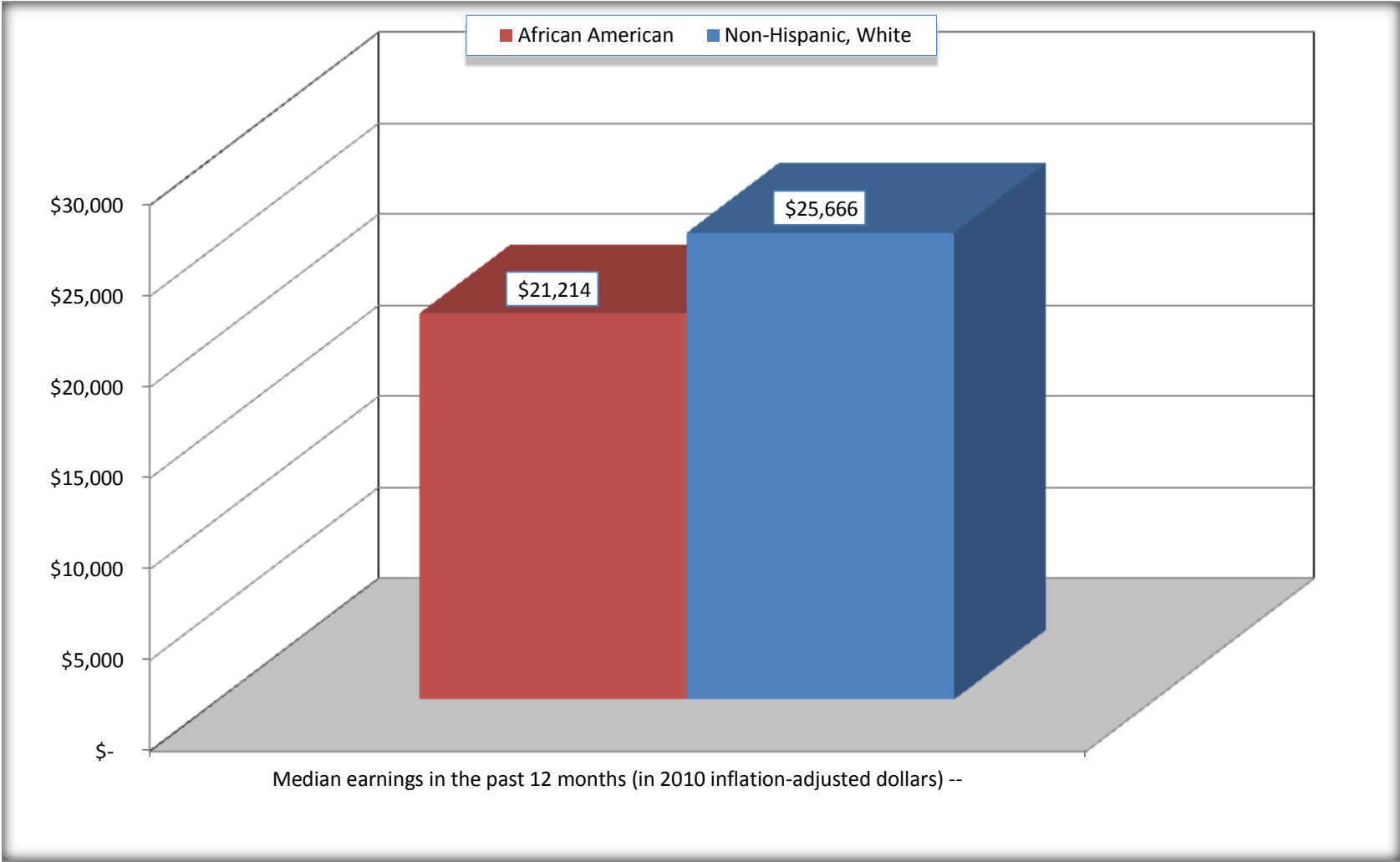
For information on confidentiality protection, sampling error, nonsampling error, and definitions, see Survey Methodology.

<http://www.census.gov/acs/www/UseData/index.htm>



# Median earnings in the Past 12 Months (16 Years and Over with Earnings)

## Pulaski County, Illinois



Source: B20017. MEDIAN EARNINGS IN THE PAST 12 MONTHS (IN 2010 INFLATION-ADJUSTED DOLLARS) BY SEX BY WORK EXPERIENCE IN THE PAST 12 MONTHS FOR THE POPULATION 16 YEARS AND OVER WITH EARNINGS IN THE PAST 12 MONTHS  
Data Set: 2008-2012 American Community Survey 5-Year Estimates

**B20005. SEX BY WORK EXPERIENCE IN THE PAST 12 MONTHS BY EARNINGS IN THE PAST 12 MONTHS (IN 2010 INFLATION-ADJUSTED DOLLARS) FOR THE POPULATION 16 YEARS AND OVER**

Data Set: 2008-2012 American Community Survey 5-Year Estimates

	Pulaski County, Illinois					
	African American	Margin of Error (+/-)	% of AA Total	White, Not Hispanic	Margin of Error (+/-)	% of NHW Total
<b>Total:</b>	<b>1,499</b>	<b>39</b>	<b>100.0%</b>	<b>3,157</b>	<b>28</b>	<b>100.0%</b>
Worked full-time, year-round in the past 12 months:	314	NC	20.9%	1,043	NC	33.0%
No earnings	0	NC	0.0%	0	NC	0.0%
With earnings:	314	NC	20.9%	1,043	NC	33.0%
\$ 1 to \$ 9,999 or loss	22	NC	1.5%	28	NC	0.9%
\$ 10,000 to \$ 19,999	39	NC	2.6%	166	NC	5.3%
\$ 20,000 to \$ 29,999	40	NC	2.7%	244	NC	7.7%
\$ 30,000 to \$ 49,999	137	NC	9.1%	303	NC	9.6%
\$ 50,000 to \$ 74,999	52	NC	3.5%	149	NC	4.7%
\$ 75,000 or more	24	NC	1.6%	153	NC	4.8%
Other:	1,185	NC	79.1%	2,114	NC	67.0%
No earnings	705	NC	47.0%	1,472	NC	46.6%
With earnings: less than full time, year-round	480	NC	32.0%	642	NC	20.3%
<b>Male:</b>	<b>687</b>	<b>27</b>	<b>45.8%</b>	<b>1,513</b>	<b>25</b>	<b>47.9%</b>
Worked full-time, year-round in the past 12 months:	119	50	7.9%	591	72	18.7%
No earnings	0	16	0.0%	0	16	0.0%
With earnings:	119	50	7.9%	591	72	18.7%
\$ 1 to \$ 9,999 or loss	3	NC	0.2%	4	NC	0.1%
\$ 10,000 to \$ 19,999	15	NC	1.0%	81	NC	2.6%
\$ 20,000 to \$ 29,999	16	NC	1.1%	126	NC	4.0%
\$ 30,000 to \$ 49,999	59	NC	3.9%	189	NC	6.0%
\$ 50,000 to \$ 74,999	15	NC	1.0%	91	NC	2.9%
\$ 75,000 or more	11	NC	0.7%	100	NC	3.2%

	Pulaski County, Illinois					
	African American	Margin of Error (+/-)	% of AA Total	White, Not Hispanic	Margin of Error (+/-)	% of NHW Total
Other:	568	54	37.9%	922	72	29.2%
No earnings	383	66	25.6%	659	80	20.9%
With earnings:	185	60	12.3%	263	60	8.3%
Female:	812	27	54.2%	1,644	21	52.1%
Worked full-time, year-round in the past 12 months:	195	49	13.0%	452	71	14.3%
No earnings	0	16	0.0%	0	16	0.0%
With earnings:	195	49	13.0%	452	71	14.3%
\$ 1 to \$ 9,999 or loss	19	NC	1.3%	24	NC	0.8%
\$ 10,000 to \$ 19,999	24	NC	1.6%	85	NC	2.7%
\$ 20,000 to \$ 29,999	24	NC	1.6%	118	NC	3.7%
\$ 30,000 to \$ 49,999	78	NC	5.2%	114	NC	3.6%
\$ 50,000 to \$ 74,999	37	NC	2.5%	58	NC	1.8%
\$ 75,000 or more	13	NC	0.9%	53	NC	1.7%
Other:	617	54	41.2%	1,192	76	37.8%
No earnings	322	53	21.5%	813	77	25.8%
With earnings:	295	53	19.7%	379	83	12.0%

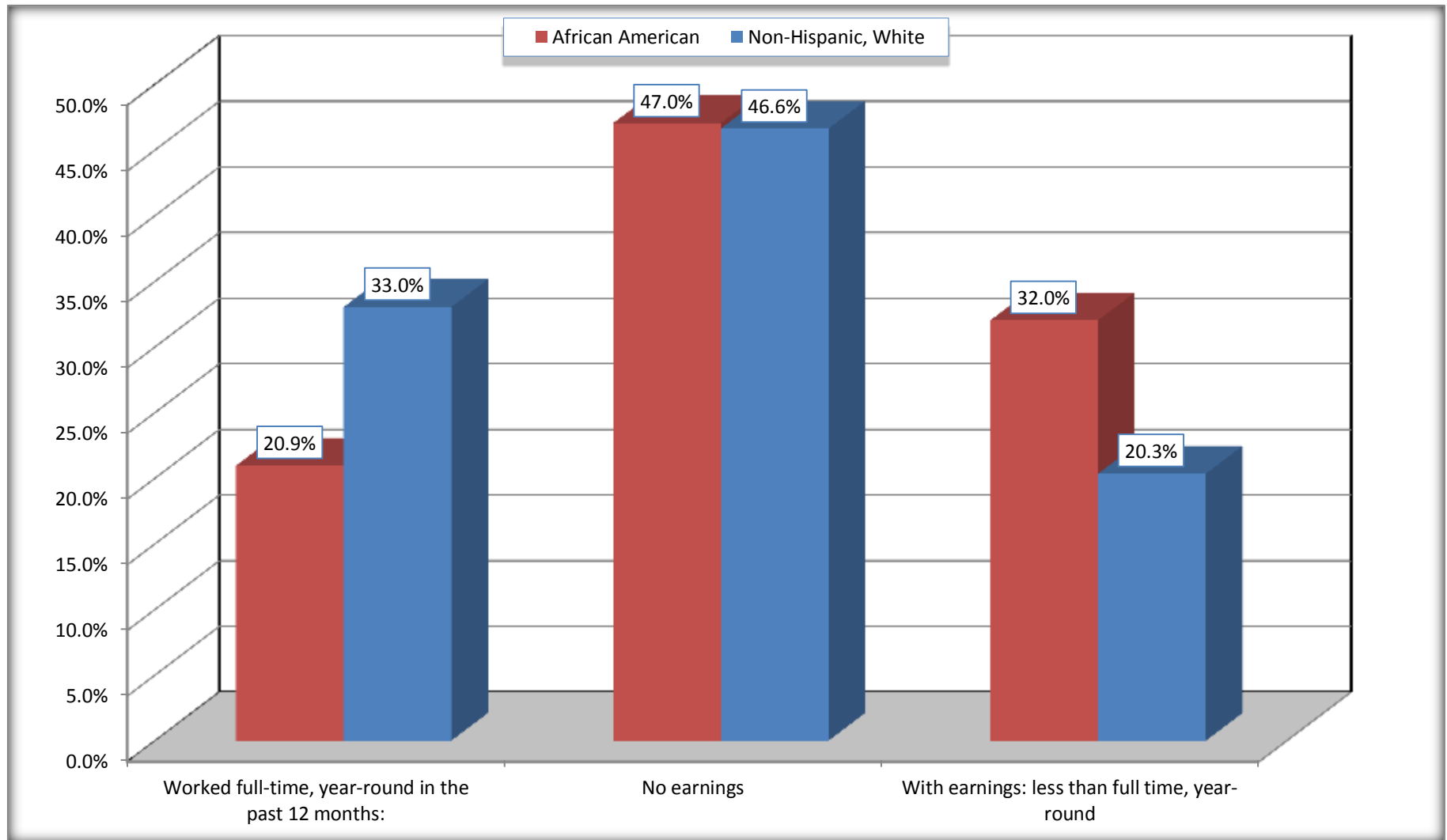
Source: U.S. Census Bureau, 2008-2012 American Community Survey

For information on confidentiality protection, sampling error, nonsampling error, and definitions, see Survey Methodology.

<http://www.census.gov/acs/www/UseData/index.htm>

# Employment and Earnings in in the Past 12 Months (16 Years and Over)

## Pulaski County, Illinois



Source: B20005. SEX BY WORK EXPERIENCE IN THE PAST 12 MONTHS BY EARNINGS IN THE PAST 12 MONTHS (IN 2010 INFLATION-ADJUSTED DOLLARS) FOR THE POPULATION 16 YEARS AND OVER

Data Set: 2008-2012 American Community Survey 5-Year Estimates

**C21001. SEX BY AGE BY VETERAN STATUS FOR THE CIVILIAN POPULATION 18 YEARS AND OVER**

Data Set: 2008-2012 American Community Survey 5-Year Estimates

	Pulaski County, Illinois					
	African American	Margin of Error (+/-)	% of AA Total	White, Not Hispanic	Margin of Error (+/-)	% of NHW Total
<b>Total:</b>	<b>1,461</b>	<b>25</b>	<b>100.0%</b>	<b>3,103</b>	<b>16</b>	<b>100.0%</b>
Veteran	174	NC	11.9%	392	NC	12.6%
Nonveteran	1,287	NC	88.1%	2,711	NC	87.4%
Male:	668	17	45.7%	1,483	16	47.8%
18 to 64 years:	536	17	36.7%	1,136	16	36.6%
Veteran	83	36	5.7%	204	63	6.6%
Nonveteran	453	38	31.0%	932	63	30.0%
65 years and over:	132	16	9.0%	347	16	11.2%
Veteran	60	29	4.1%	181	44	5.8%
Nonveteran	72	29	4.9%	166	44	5.3%
Female:	793	11	54.3%	1,620	16	52.2%
18 to 64 years:	612	11	41.9%	1,181	16	38.1%
Veteran	31	28	2.1%	7	7	0.2%
Nonveteran	581	29	39.8%	1,174	7	37.8%
65 years and over:	181	16	12.4%	439	16	14.1%
Veteran	0	16	0.0%	0	16	0.0%
Nonveteran	181	16	12.4%	439	16	14.1%

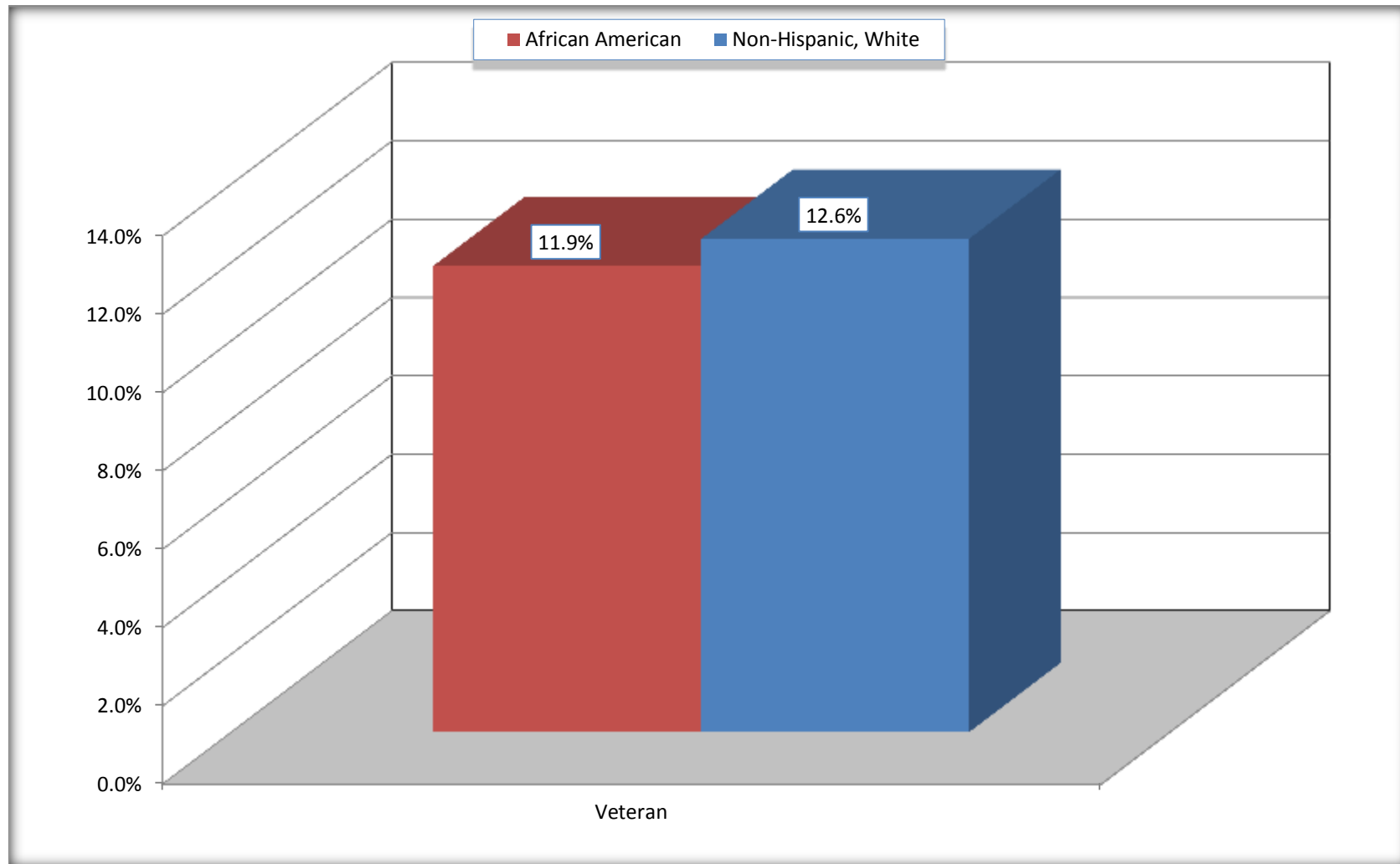
Source: U.S. Census Bureau, 2008-2012 American Community Survey

For information on confidentiality protection, sampling error, nonsampling error, and definitions, see Survey Methodology.

<http://www.census.gov/acs/www/UseData/index.htm>

# Veterans in the Civilian Population 18 Years and Over

## Pulaski County, Illinois



Source: C21001. SEX BY AGE BY VETERAN STATUS FOR THE CIVILIAN POPULATION 18 YEARS AND OVER  
Data Set: 2008-2012 American Community Survey 5-Year Estimates

**B22005. RECEIPT OF FOOD STAMPS/SNAP IN THE PAST 12 MONTHS BY RACE OF HOUSEHOLDER**

Data Set: 2008-2012 American Community Survey 5-Year Estimates

	Pulaski County, Illinois					
	African American	Margin of Error (+/-)	% of AA Total	White, Not Hispanic	Margin of Error (+/-)	% of NHW Total
<b>Total:</b>	<b>789</b>	<b>74</b>	<b>100.0%</b>	<b>1,595</b>	<b>87</b>	<b>100.0%</b>
HH received Food Stamps/SNAP in the past 12 months	290	70	36.8%	293	71	18.4%
HH did not receive Food Stamps/SNAP in the past 12 months	499	69	63.2%	1,302	79	81.6%

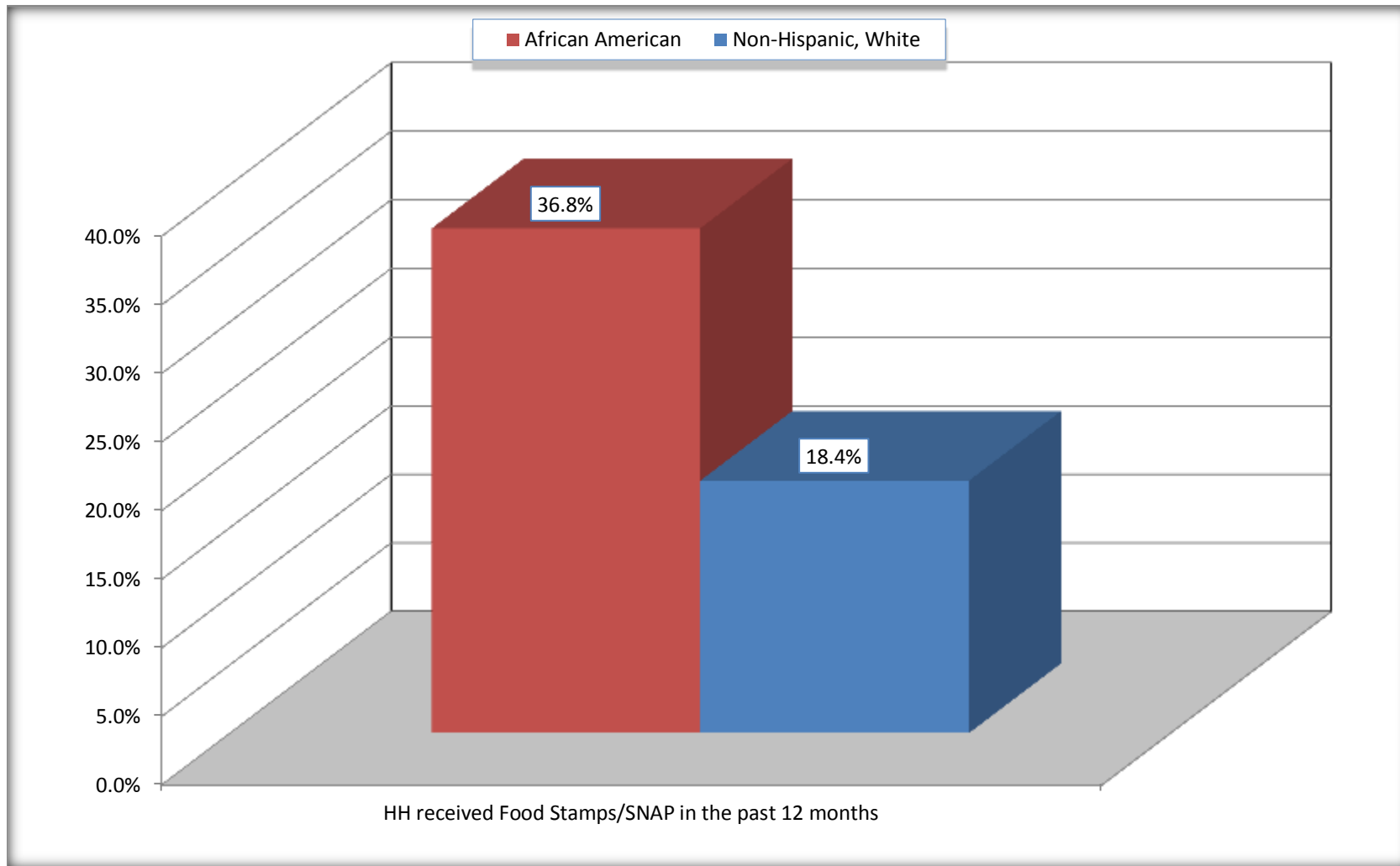
Source: U.S. Census Bureau, 2008-2012 American Community Survey

For information on confidentiality protection, sampling error, nonsampling error, and definitions, see Survey Methodology.

<http://www.census.gov/acs/www/UseData/index.htm>

# Receipt of Food Stamps/SNAP in the Past 12 Months by Household

## Pulaski County, Illinois



Source: B22005. RECEIPT OF FOOD STAMPS/SNAP IN THE PAST 12 MONTHS BY RACE OF HOUSEHOLDER  
Data Set: 2008-2012 American Community Survey 5-Year Estimates



**C23002. SEX BY AGE BY EMPLOYMENT STATUS FOR THE POPULATION 16 YEARS AND OVER**

Data Set: 2008-2012 American Community Survey 5-Year Estimates

	Pulaski County, Illinois					
	African American	Margin of Error (+/-)	% of AA Total	White, Not Hispanic	Margin of Error (+/-)	% of NHW Total
<b>Total:</b>	<b>1,499</b>	<b>39</b>	<b>100.0%</b>	<b>3,157</b>	<b>28</b>	<b>100.0%</b>
In labor force:	810	NC	54.0%	1,621	NC	51.3%
In Armed Forces	0	NC	0.0%	0	NC	0.0%
Civilian:	744	NC	49.6%	1,540	NC	48.8%
Employed	635	NC	42.4%	1,482	NC	46.9%
Unemployed	175	NC	11.7%	139	NC	4.4%
Not in labor force	689	NC	46.0%	1,536	NC	48.7%
Male:	687	27	45.8%	1,513	25	47.9%
16 to 64 years:	555	27	37.0%	1,166	25	36.9%
In labor force:	305	61	20.3%	768	75	24.3%
In Armed Forces	0	16	0.0%	0	16	0.0%
Civilian:	305	61	20.3%	768	75	24.3%
Employed	233	64	15.5%	692	79	21.9%
Unemployed	72	33	4.8%	76	31	2.4%
Not in labor force	250	57	16.7%	398	71	12.6%
65 years and over:	132	16	8.8%	347	16	11.0%
In labor force:	39	26	2.6%	42	27	1.3%
Employed	39	26	2.6%	39	27	1.2%
Unemployed	0	16	0.0%	3	5	0.1%
Not in labor force	93	26	6.2%	305	27	9.7%

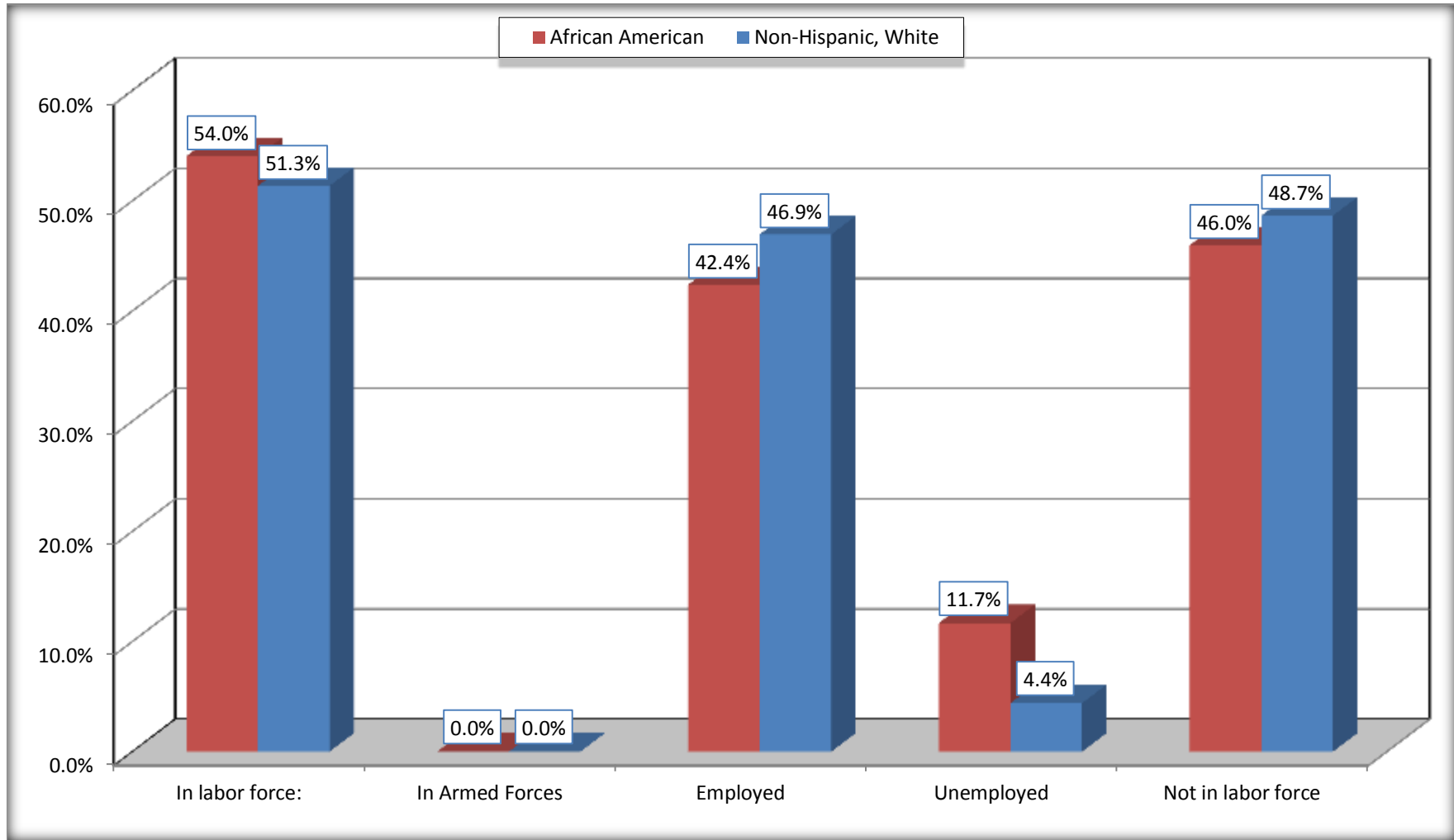
	Pulaski County, Illinois					
	African American	Margin of Error (+/-)	% of AA Total	White, Not Hispanic	Margin of Error (+/-)	% of NHW Total
Female:	812	27	54.2%	1,644	21	52.1%
16 to 64 years:	631	27	42.1%	1,205	21	38.2%
In labor force:	439	49	29.3%	772	71	24.5%
In Armed Forces	0	16	0.0%	0	16	0.0%
Civilian:	439	49	29.3%	772	71	24.5%
Employed	347	56	23.1%	712	71	22.6%
Unemployed	92	45	6.1%	60	33	1.9%
Not in labor force	192	54	12.8%	433	74	13.7%
65 years and over:	181	16	12.1%	439	16	13.9%
In labor force:	27	18	1.8%	39	21	1.2%
Employed	16	13	1.1%	39	21	1.2%
Unemployed	11	14	0.7%	0	16	0.0%
Not in labor force	154	18	10.3%	400	21	12.7%

Source: U.S. Census Bureau, 2008-2012 American Community Survey

For information on confidentiality protection, sampling error, nonsampling error, and definitions, see Survey Methodology.  
<http://www.census.gov/acs/www/UseData/index.htm>

# Employment Status for the Population 16 years and over

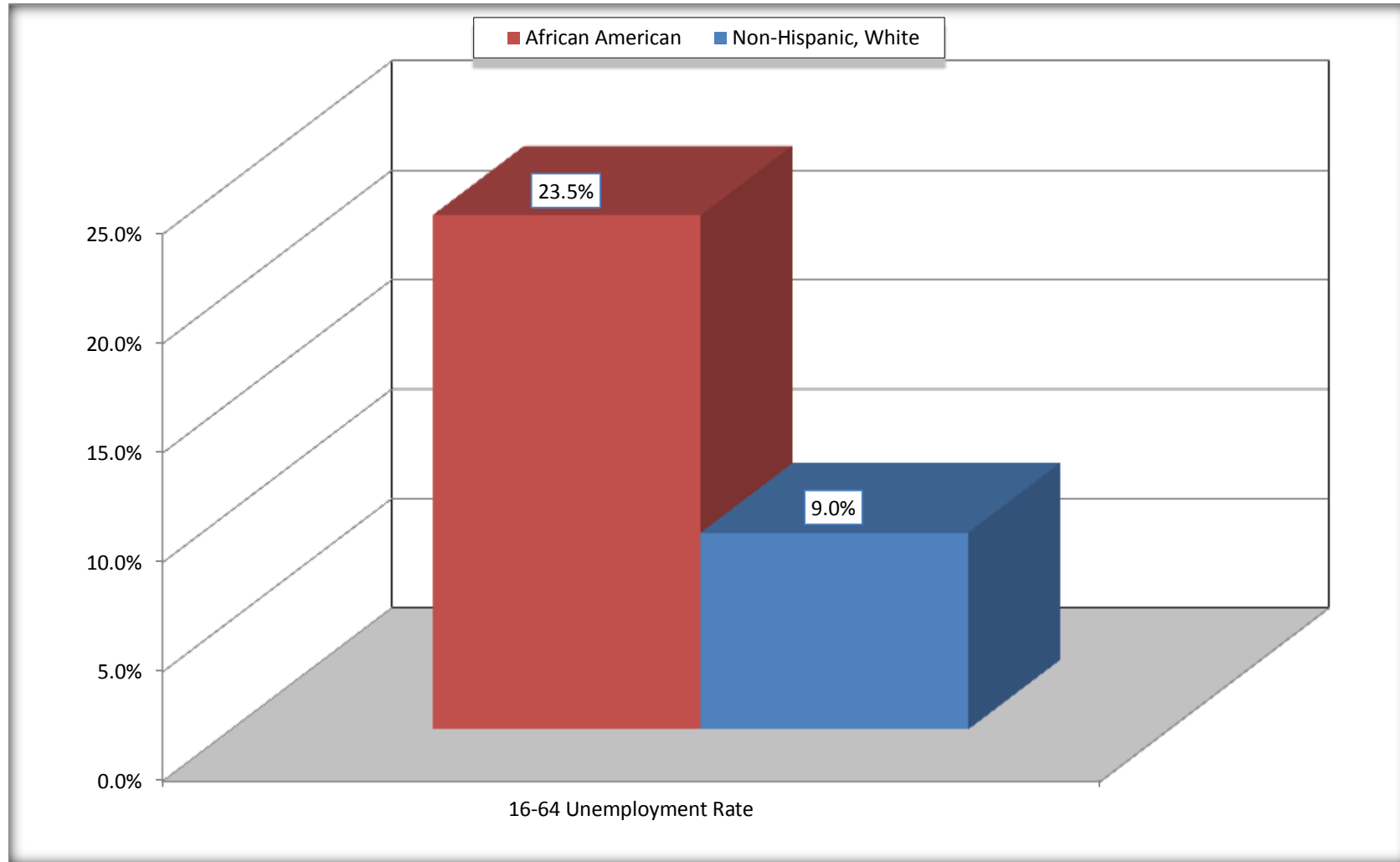
## Pulaski County, Illinois



Source: C23002. SEX BY AGE BY EMPLOYMENT STATUS FOR THE POPULATION 16 YEARS AND OVER  
Data Set: 2008-2012 American Community Survey 5-Year Estimates

# Unemployment of Working Age Population (Ages 16 to 64) (As a Percent of 16-64 Civilian Labor Force)

## Pulaski County, Illinois



Source: C23002. SEX BY AGE BY EMPLOYMENT STATUS FOR THE POPULATION 16 YEARS AND OVER  
Data Set: 2008-2012 American Community Survey 5-Year Estimates

**C24010. SEX BY OCCUPATION FOR THE CIVILIAN EMPLOYED POPULATION 16 YEARS AND OVER**

Data Set: 2008-2012 American Community Survey 5-Year Estimates

	Pulaski County, Illinois					
	African American	Margin of Error (+/-)	% of AA Total	White, Not Hispanic	Margin of Error (+/-)	% of NHW Total
<b>Total:</b>	<b>635</b>	<b>94</b>	<b>100.0%</b>	<b>1,482</b>	<b>126</b>	<b>100.0%</b>
Management, professional, and related occupations	185	NC	29.1%	352	NC	23.8%
Service occupations	203	NC	32.0%	320	NC	21.6%
Sales and office occupations	120	NC	18.9%	304	NC	20.5%
Natural resources, construction, and maintenance occupations:	42	NC	6.6%	165	NC	11.1%
Production, transportation, and material moving occupations	85	NC	13.4%	341	NC	23.0%
Male:	272	70	42.8%	731	91	49.3%
Management, business, science, and arts occupations:	70	48	11.0%	131	50	8.8%
Service occupations	63	40	9.9%	101	45	6.8%
Sales and office occupations	33	27	5.2%	43	23	2.9%
Natural resources, construction, and maintenance occupations:	42	32	6.6%	165	49	11.1%
Production, transportation, and material moving occupations	64	31	10.1%	291	57	19.6%
Female:	363	55	57.2%	751	75	50.7%
Management, professional, and related occupations	115	44	18.1%	221	52	14.9%
Service occupations	140	45	22.0%	219	55	14.8%
Sales and office occupations	87	44	13.7%	261	76	17.6%
Natural resources, construction, and maintenance occupations:	0	16	0.0%	0	16	0.0%
Production, transportation, and material moving occupations	21	21	3.3%	50	35	3.4%

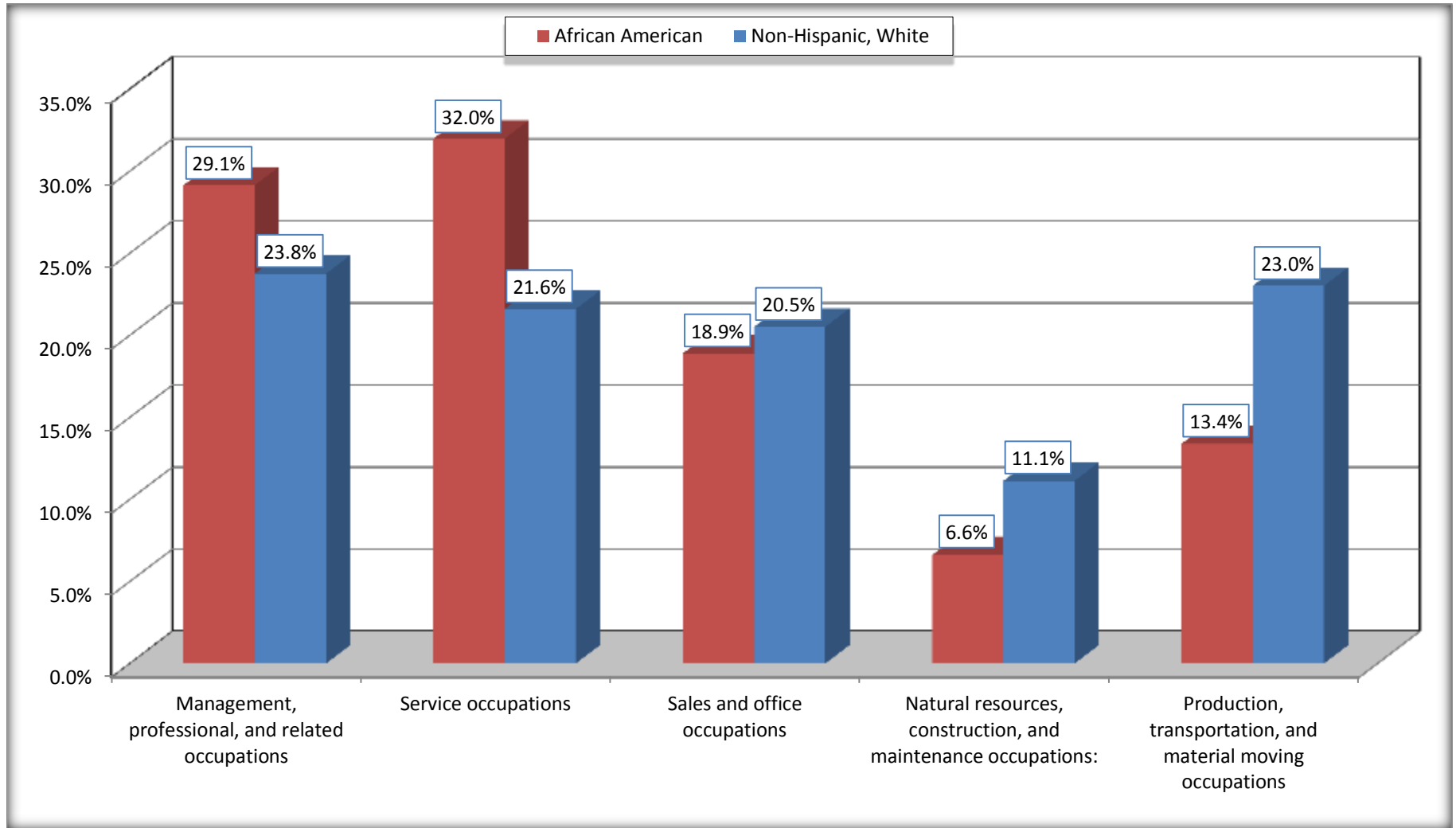
Source: U.S. Census Bureau, 2008-2012 American Community Survey

For information on confidentiality protection, sampling error, nonsampling error, and definitions, see Survey Methodology.

<http://www.census.gov/acs/www/UseData/index.htm>

# Occupation for the Civilian Employed 16 Years and Over Population

## Pulaski County, Illinois



Source: C24010. SEX BY OCCUPATION FOR THE CIVILIAN EMPLOYED POPULATION 16 YEARS AND OVER  
Data Set: 2008-2012 American Community Survey 5-Year Estimates

**B25003. TENURE - Universe: OCCUPIED HOUSING UNITS**

Data Set: 2008-2012 American Community Survey 5-Year Estimates

	Pulaski County, Illinois					
	African American	Margin of Error (+/-)	% of AA Total	White, Not Hispanic	Margin of Error (+/-)	% of NHW Total
<b>Total:</b>	<b>789</b>	<b>74</b>	<b>100.0%</b>	<b>1,595</b>	<b>87</b>	<b>100.0%</b>
Owner occupied	535	55	67.8%	1,347	95	84.5%
Renter occupied	254	58	32.2%	248	61	15.5%

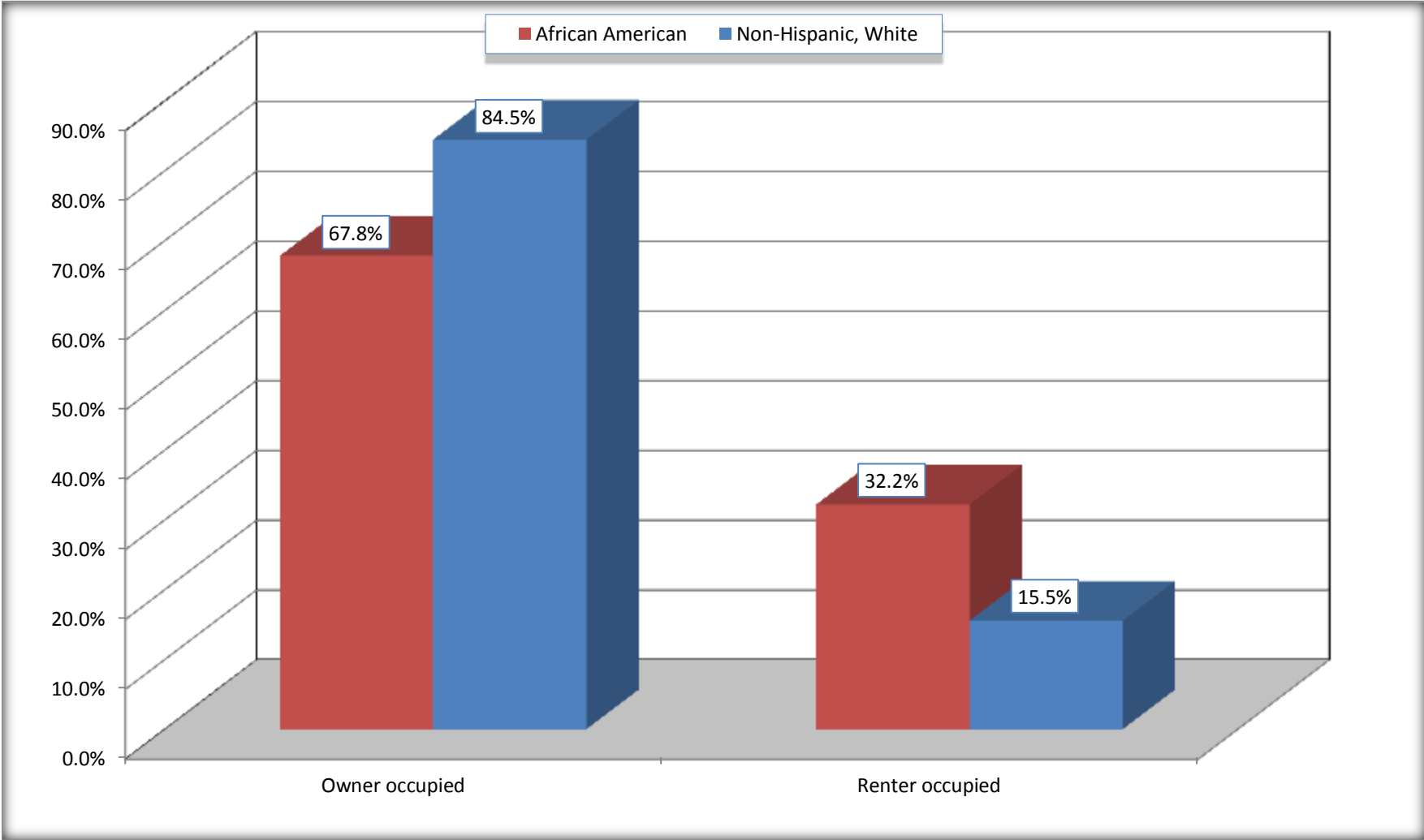
Source: U.S. Census Bureau, 2008-2012 American Community Survey

For information on confidentiality protection, sampling error, nonsampling error, and definitions, see Survey Methodology.

<http://www.census.gov/acs/www/UseData/index.h>

# Home Owners and Renters by Household

## Pulaski County, Illinois



Source: B25003. TENURE - Universe: OCCUPIED HOUSING UNITS  
Data Set: 2008-2012 American Community Survey 5-Year Estimates



**B25014. OCCUPANTS PER ROOM - Universe: OCCUPIED HOUSING UNITS**

Data Set: 2008-2012 American Community Survey 5-Year Estimates

	Pulaski County, Illinois					
	African American	Margin of Error (+/-)	% of AA Total	White, Not Hispanic	Margin of Error (+/-)	% of NHW Total
<b>Total:</b>	<b>789</b>	<b>74</b>	<b>100.0%</b>	<b>1,595</b>	<b>87</b>	<b>100.0%</b>
1.00 or less occupants per room	767	72	97.2%	1,552	90	97.3%
1.01 or more occupants per room	22	25	2.8%	43	29	2.7%

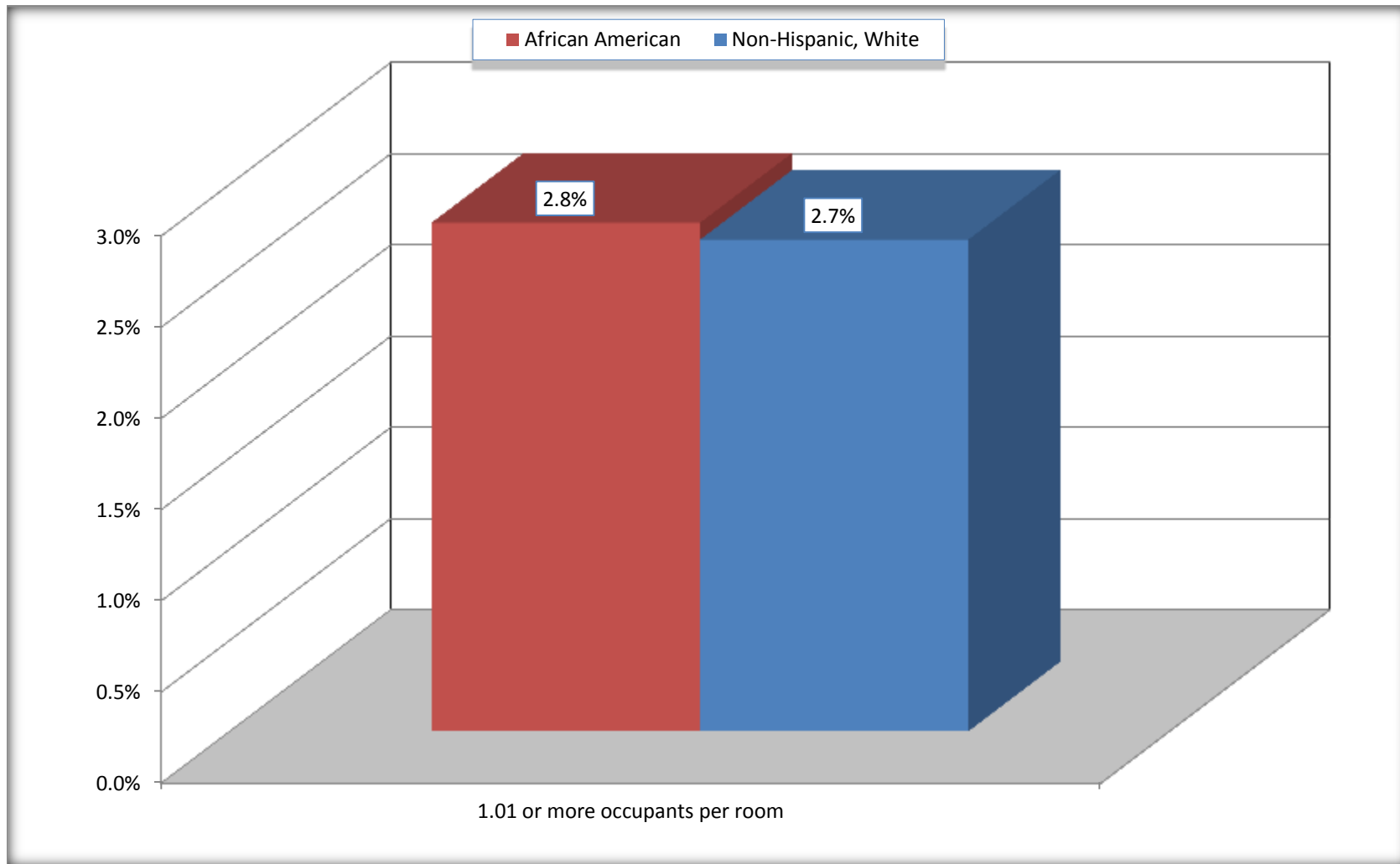
Source: U.S. Census Bureau, 2008-2012 American Community Survey

For information on confidentiality protection, sampling error, nonsampling error, and definitions, see Survey Methodology.

<http://www.census.gov/acs/www/UseData/index.ht>

# More than One Person per Room (Crowding) by Household

## Pulaski County, Illinois



Source: B25014. OCCUPANTS PER ROOM - Universe: OCCUPIED HOUSING UNITS  
Data Set: 2008-2012 American Community Survey 5-Year Estimates

**B18101. AGE BY DISABILITY STATUS**

Data Set: 2008-2012 American Community Survey 5-Year Estimates

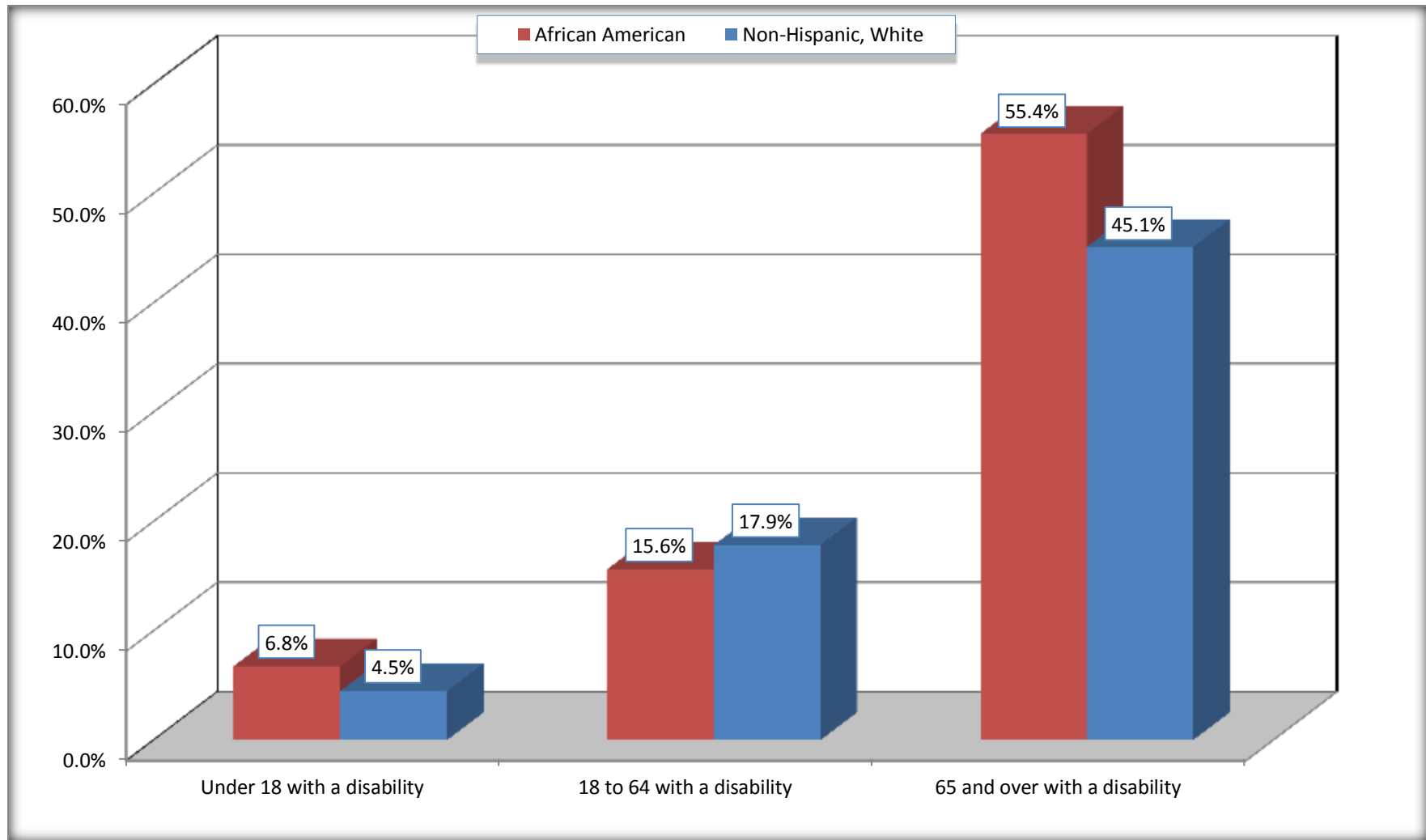
	Pulaski County, Illinois					
	African American	Margin of Error (+/-)	% of AA Total	White, Not Hispanic	Margin of Error (+/-)	% of NHW Total
<b>Total:</b>	<b>1,981</b>	<b>51</b>	<b>100.0%</b>	<b>3,840</b>	<b>29</b>	<b>100.0%</b>
Under 18 years:	577	21	29.1%	779	14	20.3%
With a disability	39	22	2.0%	35	27	0.9%
No disability	538	31	27.2%	744	27	19.4%
18 to 64 years:	1,101	49	55.6%	2,285	19	59.5%
With a disability	172	56	8.7%	408	84	10.6%
No disability	929	69	46.9%	1,877	87	48.9%
65 years and over:	303	21	15.3%	776	22	20.2%
With a disability	168	37	8.5%	350	58	9.1%
No disability	135	37	6.8%	426	58	11.1%

Source: U.S. Census Bureau, 2008-2012 American Community Survey

For information on confidentiality protection, sampling error, nonsampling error, and definitions, see Survey Methodology.

<http://www.census.gov/acs/www/UseData/index.htm>

## Disability by Age Pulaski County, Illinois



Source: B18101. AGE BY DISABILITY STATUS  
Data Set: 2008-2012 American Community Survey 5-Year Estimates

**C27001B. HEALTH INSURANCE COVERAGE STATUS BY AGE**

Data Set: 2008-2012 American Community Survey 5-Year Estimates

	<b>Pulaski County, Illinois</b>					
	African American	Margin of Error (+/-)	% of AA Total	White, Not Hispanic	Margin of Error (+/-)	% of NHW Total
<b>Total:</b>	<b>1,981</b>	<b>51</b>	<b>100.0%</b>	<b>3,840</b>	<b>29</b>	<b>100.0%</b>
Under 18 years:	577	21	29.1%	779	16	20.3%
With health insurance coverage	549	36	27.7%	751	36	19.6%
No health insurance coverage	28	29	1.4%	28	36	0.7%
18 to 64 years:	1,101	49	55.6%	2,285	19	59.5%
With health insurance coverage	901	65	45.5%	1,746	120	45.5%
No health insurance coverage	200	56	10.1%	539	119	14.0%
65 years and over:	303	21	15.3%	776	22	20.2%
With health insurance coverage	303	21	15.3%	772	23	20.1%
No health insurance coverage	0	16	0.0%	4	7	0.1%

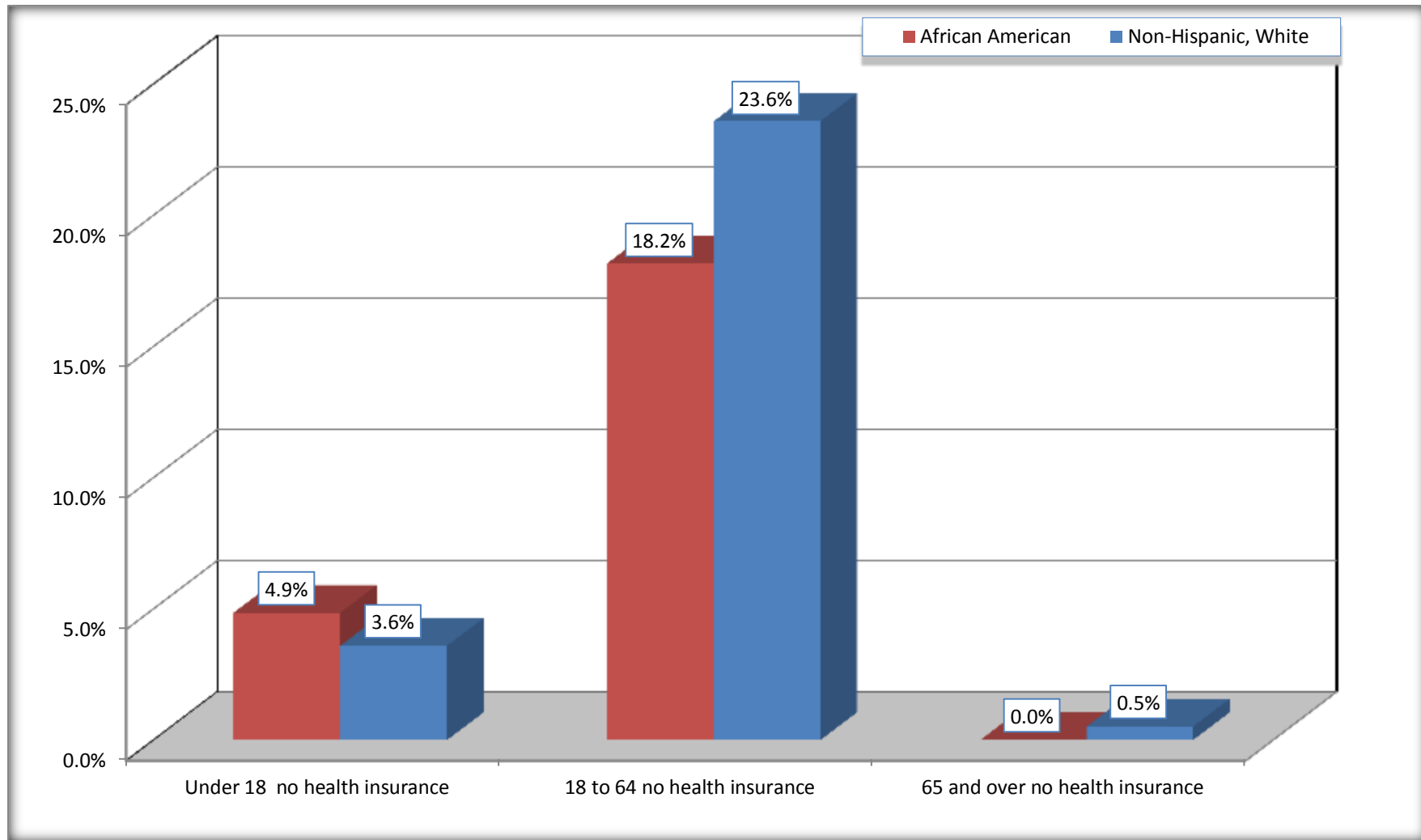
Source: U.S. Census Bureau, 2008-2012 American Community Survey

For information on confidentiality protection, sampling error, nonsampling error, and definitions, see Survey Methodology.

<http://www.census.gov/acs/www/UseData/index.htm>

# Lack of Health Insurance Coverage by Age

## Pulaski County, Illinois



Source: C27001B. HEALTH INSURANCE COVERAGE STATUS BY AGE  
Data Set: 2008-2012 American Community Survey 5-Year Estimates