

Selected Socio-Economic Data

Harvey city, Illinois

African American and White, Not Hispanic

Data Set: 2008-2012 American Community Survey 5-Year Estimates

www.fairvote2020.org

www.fairdata2000.com

[29-Dec-13](#)

C02003.DETAILED RACE - Universe: TOTAL POPULATION

Data Set: 2008-2012 American Community Survey 5-Year Estimates

	Harvey city, Illinois		
	Population	Margin of Error (+/-)	% of Total
Total:	24,959	591	100.0%
Population of one race:	24,666	613	98.8%
White	3,347	770	13.4%
Black or African American	18,961	810	76.0%
American Indian and Alaska Native	12	16	0.0%
Asian alone	94	80	0.4%
Native Hawaiian and Other Pacific Islander	2	4	0.0%
Some other race	2,250	652	9.0%
Population of two or more races:	293	203	1.2%
Two races including Some other race	130	155	0.5%
Two races excluding Some other race, and three or more races	163	128	0.7%
Population of two races:	240	184	1.0%
White; Black or African American	26	40	0.1%
White; American Indian and Alaska Native	73	89	0.3%
White; Asian	6	9	0.0%
Black or African American; American Indian and Alaska Native	5	8	0.0%
All other two race combinations	130	155	0.5%
Population of three races	53	82	0.2%
Population of four or more races	0	21	0.0%

Note: Hispanics may be of any race. See Table B03002 and chart.

Source: U.S. Census Bureau, 2008-2012 American Community Survey

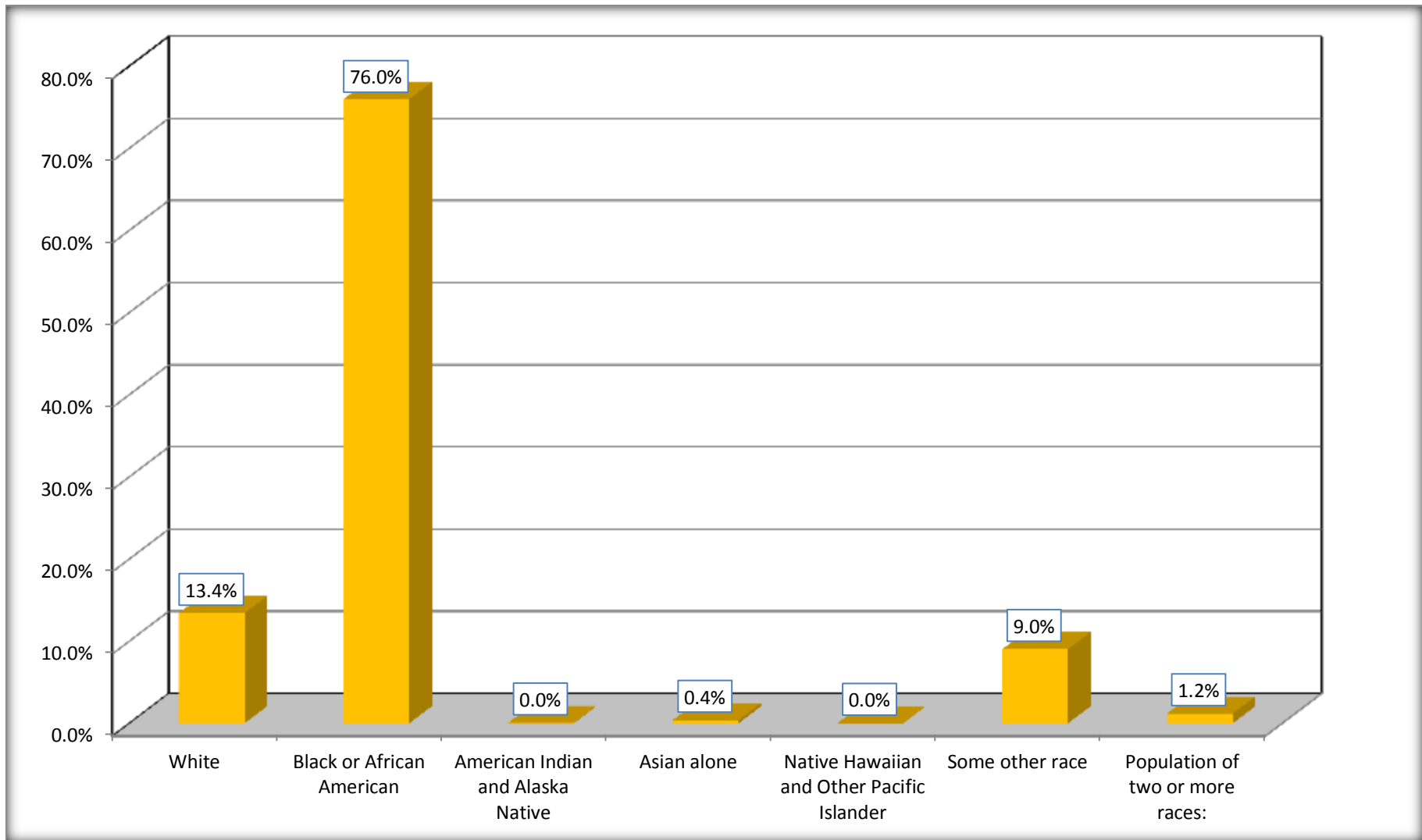
Although the American Community Survey (ACS) produces population, demographic and housing unit estimates, it is the Census Bureau's Population Estimates Program that produces and disseminates the official estimates of the population for the nation, states, counties, cities and towns and estimates of housing units for states and counties.

For information on confidentiality protection, sampling error, nonsampling error, and definitions, see Survey Methodology.

<http://www.census.gov/acs/www/UseData/index.htm>

Population by Race

Harvey city, Illinois



Source: C02003.DETAILED RACE - Universe: TOTAL POPULATION
Data Set: 2008-2012 American Community Survey 5-Year Estimates

B03002. HISPANIC OR LATINO ORIGIN BY RACE - Universe: TOTAL POPULATION

Data Set: 2008-2012 American Community Survey 5-Year Estimates

	Harvey city, Illinois		
	Population	Margin of Error (+/-)	% of Total
Total:	24,959	591	100.0%
Not Hispanic or Latino:	20,784	887	83.3%
White alone	1,335	515	5.3%
Black or African American alone	18,948	809	75.9%
American Indian and Alaska Native alone	12	16	0.0%
Asian alone	94	80	0.4%
Native Hawaiian and Other Pacific Islander alone	2	4	0.0%
Some other race alone	113	105	0.5%
Two or more races:	280	194	1.1%
Two races including Some other race	117	144	0.5%
Two races excluding Some other race, and three or more races	163	128	0.7%
Hispanic or Latino	4,175	776	16.7%

Source: U.S. Census Bureau, 2008-2012 American Community Survey

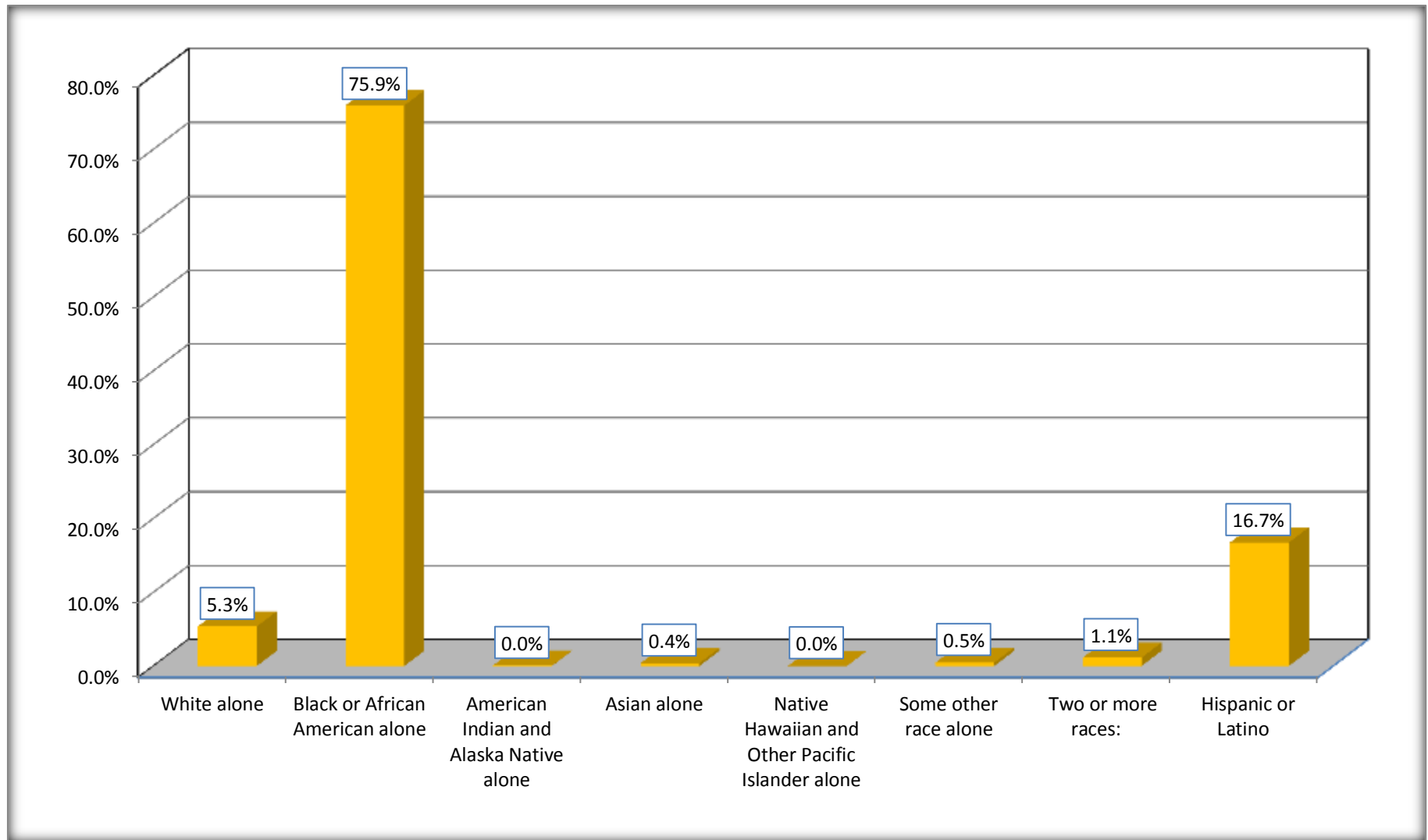
Although the American Community Survey (ACS) produces population, demographic and housing unit estimates, it is the Census Bureau's Population Estimates Program that produces and disseminates the official estimates of the population for the nation, states, counties, cities and towns and estimates of housing units for states and counties.

For information on confidentiality protection, sampling error, nonsampling error, and definitions, see Survey Methodology.

<http://www.census.gov/acs/www/UseData/index.htm>

Non-Hispanic by Race and Hispanic Population

Harvey city, Illinois



Source: B03002. HISPANIC OR LATINO ORIGIN BY RACE - Universe: TOTAL POPULATION
Data Set: 2008-2012 American Community Survey 5-Year Estimates

B03002. HISPANIC OR LATINO ORIGIN BY RACE

Data Set: 2008-2012 American Community Survey 5-Year Estimates

	Harvey city, Illinois		
	Population	Margin of Error (+/-)	% of Total
Hispanic or Latino:	4,175	776	100.0%
White alone	2,012	577	48.2%
Black or African American alone	13	19	0.3%
American Indian and Alaska Native alone	0	21	0.0%
Asian alone	0	21	0.0%
Native Hawaiian and Other Pacific Islander alone	0	21	0.0%
Some other race alone	2,137	636	51.2%
Two or more races:	13	21	0.3%
Two races including Some other race	13	21	0.3%
Two races excluding Some other race, and three or more races	0	21	0.0%

Source: U.S. Census Bureau, 2008-2012 American Community Survey

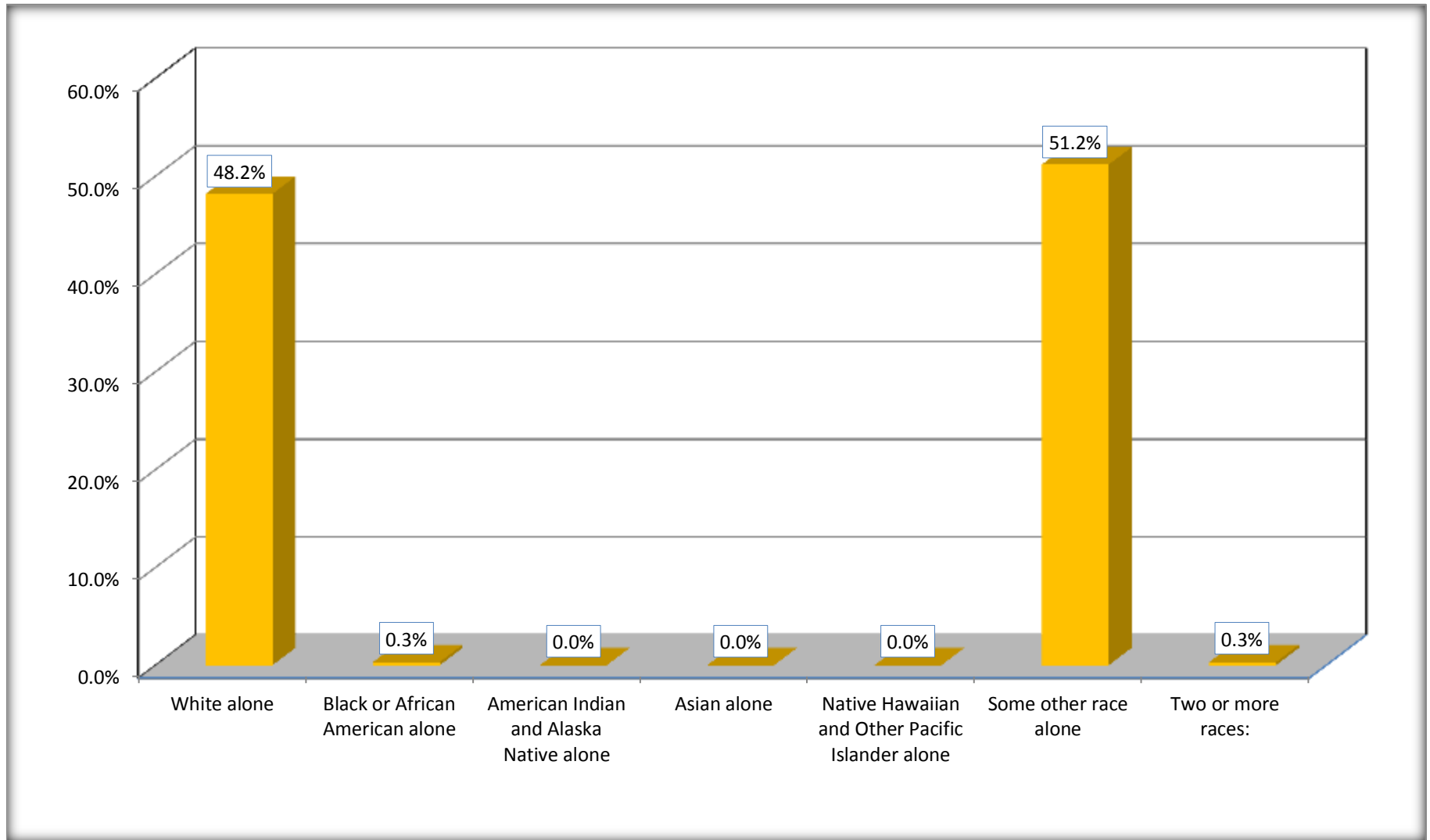
Although the American Community Survey (ACS) produces population, demographic and housing unit estimates, it is the Census Bureau's Population Estimates Program that produces and disseminates the official estimates of the population for the nation, states, counties, cities and towns and estimates of housing units for states and counties.

For information on confidentiality protection, sampling error, nonsampling error, and definitions, see Survey Methodology.

<http://www.census.gov/acs/www/UseData/index.htm>

Hispanic or Latino Origin by Race

Harvey city, Illinois



Source: B03002. HISPANIC OR LATINO ORIGIN BY RACE
Data Set: 2008-2012 American Community Survey 5-Year Estimates

B01001. SEX BY AGE

Data Set: 2008-2012 American Community Survey 5-Year Estimates

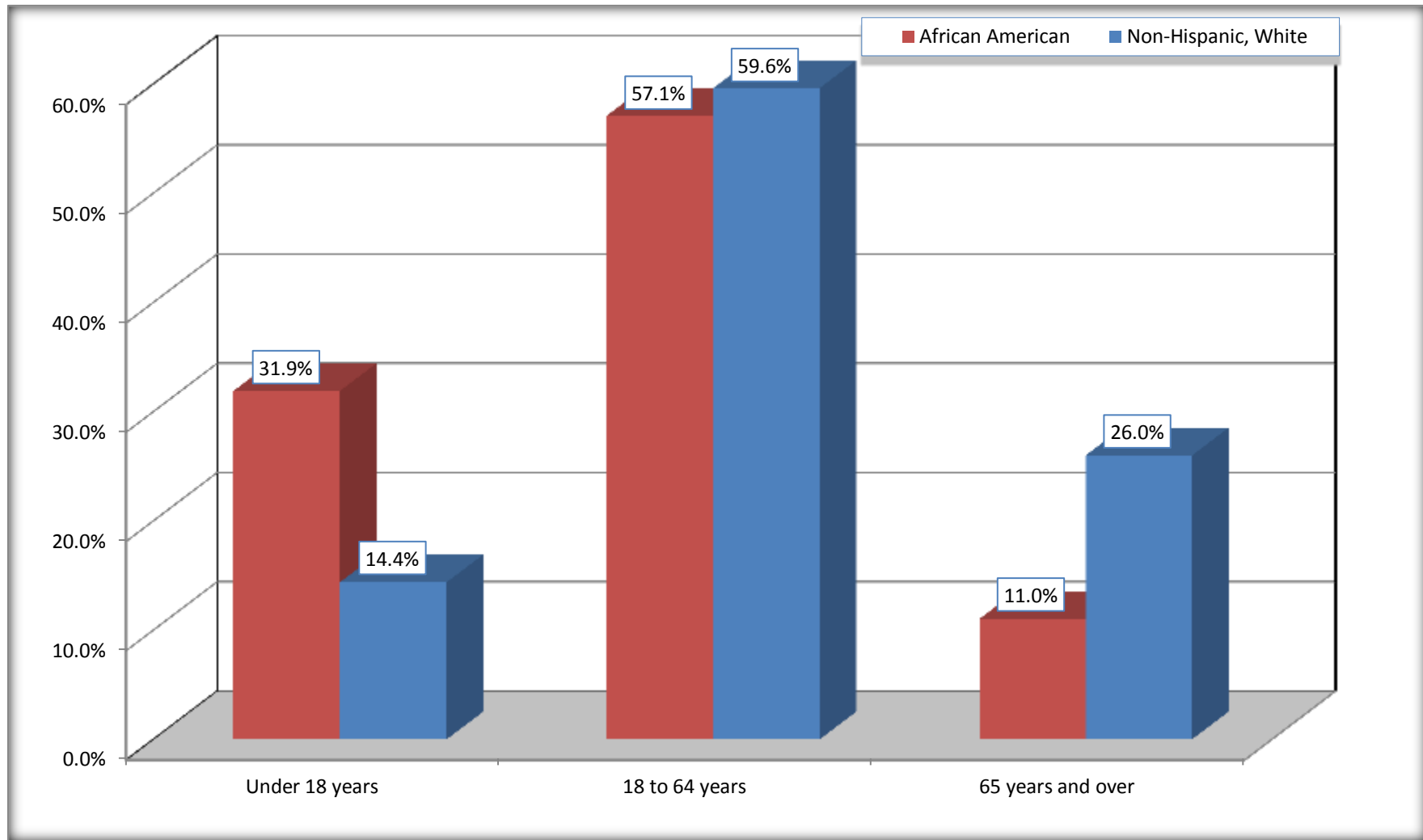
	Harvey city, Illinois					
	African American	Margin of Error (+/-)	% of AA Total	White, Not Hispanic	Margin of Error (+/-)	% of NHW Total
Total:	18,961	810	100.0%	1,335	515	100.0%
Under 18 years	6,047	NC	31.9%	192	NC	14.4%
18 to 64 years	10,824	NC	57.1%	796	NC	59.6%
65 years and over	2,090	NC	11.0%	347	NC	26.0%
Male:	8,394	623	44.3%	532	389	39.9%
Under 18 years	2486	NC	13.1%	37	NC	2.8%
18 to 64 years	4,964	NC	26.2%	371	NC	27.8%
65 years and over	944	NC	5.0%	124	NC	9.3%
Female:	10,567	702	55.7%	803	412	60.1%
Under 18 years	3,561	NC	18.8%	155	NC	11.6%
18 to 64 years	5,860	NC	30.9%	425	NC	31.8%
65 years and over	1,146	NC	6.0%	223	NC	16.7%

Source: U.S. Census Bureau, 2008-2012 American Community Survey

Although the American Community Survey (ACS) produces population, demographic and housing unit estimates, it is the Census Bureau's Population Estimates Program that produces and disseminates the official estimates of the population for the nation, states, counties, cities and towns and estimates of housing units for states and counties.

For information on confidentiality protection, sampling error, nonsampling error, and definitions, see Survey Methodology.
<http://www.census.gov/acs/www/UseData/index.htm>

Population by Age Harvey city, Illinois



Source: B01001. SEX BY AGE
Data Set: 2008-2012 American Community Survey 5-Year Estimates

B05003. SEX BY AGE BY CITIZENSHIP STATUS

Data Set: 2008-2012 American Community Survey 5-Year Estimates

	Harvey city, Illinois					
	African American	Margin of Error (+/-)	% of AA Total by Age	White, Not Hispanic	Margin of Error (+/-)	% of NHW Total by Age
Total:	18,961	810	100.0%	1,335	515	100.0%
Under 18 years:	6,047	NC	100.0%	192	NC	100.0%
Native	6,047	NC	100.0%	192	NC	100.0%
Foreign born:	0	NC	0.0%	0	NC	0.0%
Naturalized U.S. citizen	0	NC	0.0%	0	NC	0.0%
Not a U.S. citizen	0	NC	0.0%	0	NC	0.0%
18 years and over:	12,914	NC	100.0%	1,143	NC	100.0%
Native	12,784	NC	99.0%	907	NC	79.4%
Foreign born:	130	NC	1.0%	236	NC	20.6%
Naturalized U.S. citizen	54	NC	0.4%	0	NC	0.0%
Not a U.S. citizen	76	NC	0.6%	236	NC	20.6%
Male:	8,394	623	44.3%	532	211	39.9%
Under 18 years:	2,486	395	100.0%	37	40	100.0%
Native	2,486	395	100.0%	37	40	100.0%
Foreign born:	0	21	0.0%	0	21	0.0%
Naturalized U.S. citizen	0	21	0.0%	0	21	0.0%
Not a U.S. citizen	0	21	0.0%	0	21	0.0%
18 years and over:	5,908	562	100.0%	495	196	100.0%
Native	5,836	551	98.8%	410	131	82.8%
Foreign born:	72	83	1.2%	85	97	17.2%
Naturalized U.S. citizen	14	22	0.2%	0	21	0.0%
Not a U.S. citizen	58	63	1.0%	85	97	17.2%

	Harvey city, Illinois					
	African American	Margin of Error (+/-)	% of AA by Age	White, Not Hispanic	Margin of Error (+/-)	% of NHW by Age
Female:	10,567	702	55.7%	803	324	60.1%
Under 18 years:	3,561	619	100.0%	155	131	100.0%
Native	3,561	619	100.0%	155	131	100.0%
Foreign born:	0	21	0.0%	0	21	0.0%
Naturalized U.S. citizen	0	21	0.0%	0	21	0.0%
Not a U.S. citizen	0	21	0.0%	0	21	0.0%
18 years and over:	7,006	437	100.0%	648	230	100.0%
Native	6,948	447	99.2%	497	148	76.7%
Foreign born:	58	59	0.8%	151	176	23.3%
Naturalized U.S. citizen	40	51	0.6%	0	21	0.0%
Not a U.S. citizen	18	28	0.3%	151	176	23.3%

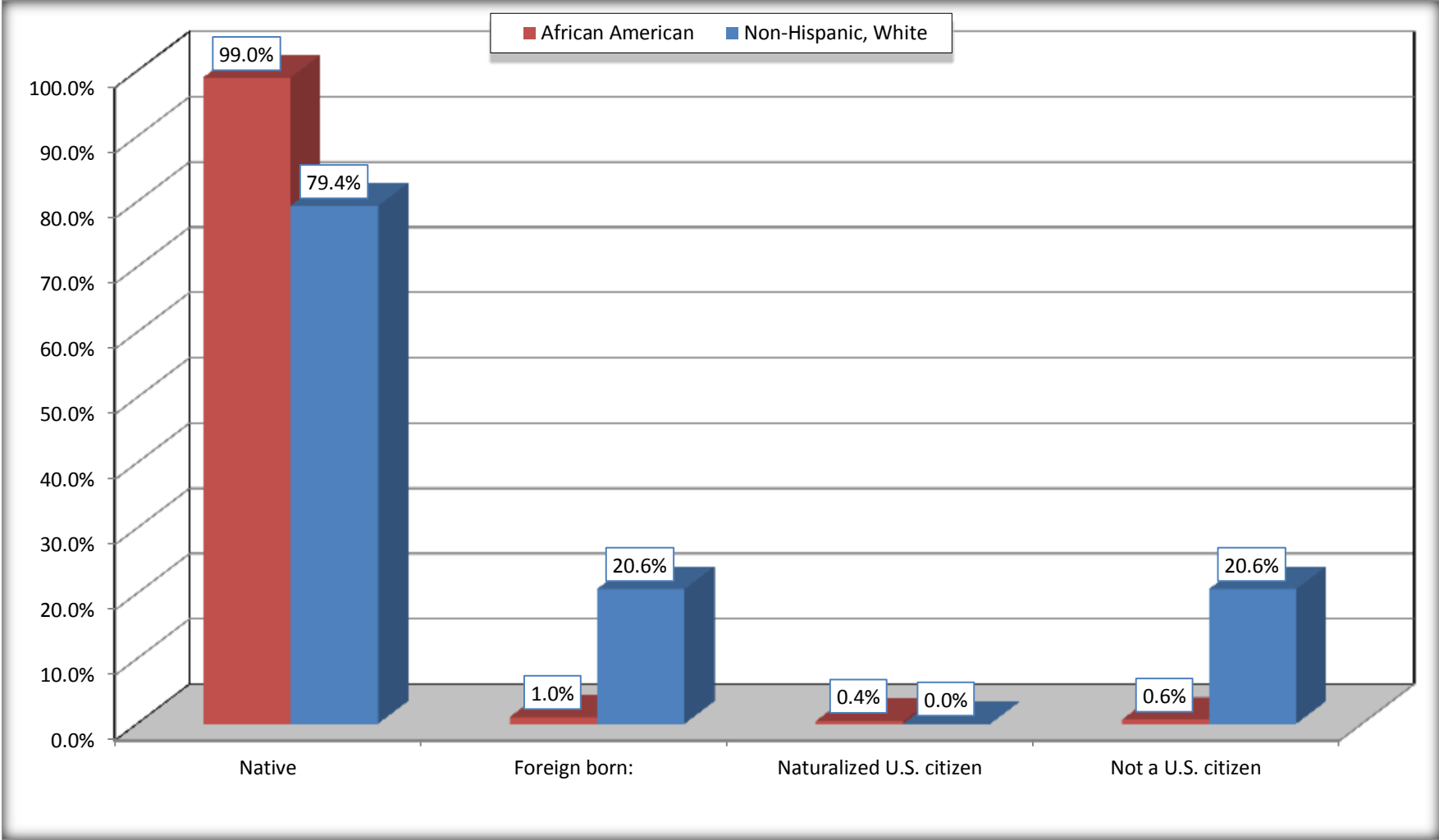
Source: U.S. Census Bureau, 2008-2012 American Community Survey

For information on confidentiality protection, sampling error, nonsampling error, and definitions, see Survey Methodology.

<http://www.census.gov/acs/www/UseData/index.htm>

Citizenship Status of Voting Age Population (18 and Over)

Harvey city, Illinois



Source: B05003. SEX BY AGE BY CITIZENSHIP STATUS
Data Set: 2008-2012 American Community Survey 5-Year Estimates

**B07004. GEOGRAPHICAL MOBILITY IN THE PAST YEAR BY RACE FOR CURRENT RESIDENCE IN THE UNITED STATES - Universe:
POPULATION 1 YEAR AND OVER**

Data Set: 2008-2012 American Community Survey 5-Year Estimates

	Harvey city, Illinois					
	African American	Margin of Error (+/-)	% of AA Total	White, Not Hispanic	Margin of Error (+/-)	% of NHW Total
Total:	18,644	803	100.0%	1,335	515	100.0%
Same house 1 year ago	15,884	842	85.2%	1,156	422	86.6%
Moved within same county	2,285	571	12.3%	96	66	7.2%
Moved from different county within same state	73	66	0.4%	22	33	1.6%
Moved from different state	402	480	2.2%	0	21	0.0%
Moved from abroad	0	21	0.0%	61	96	4.6%

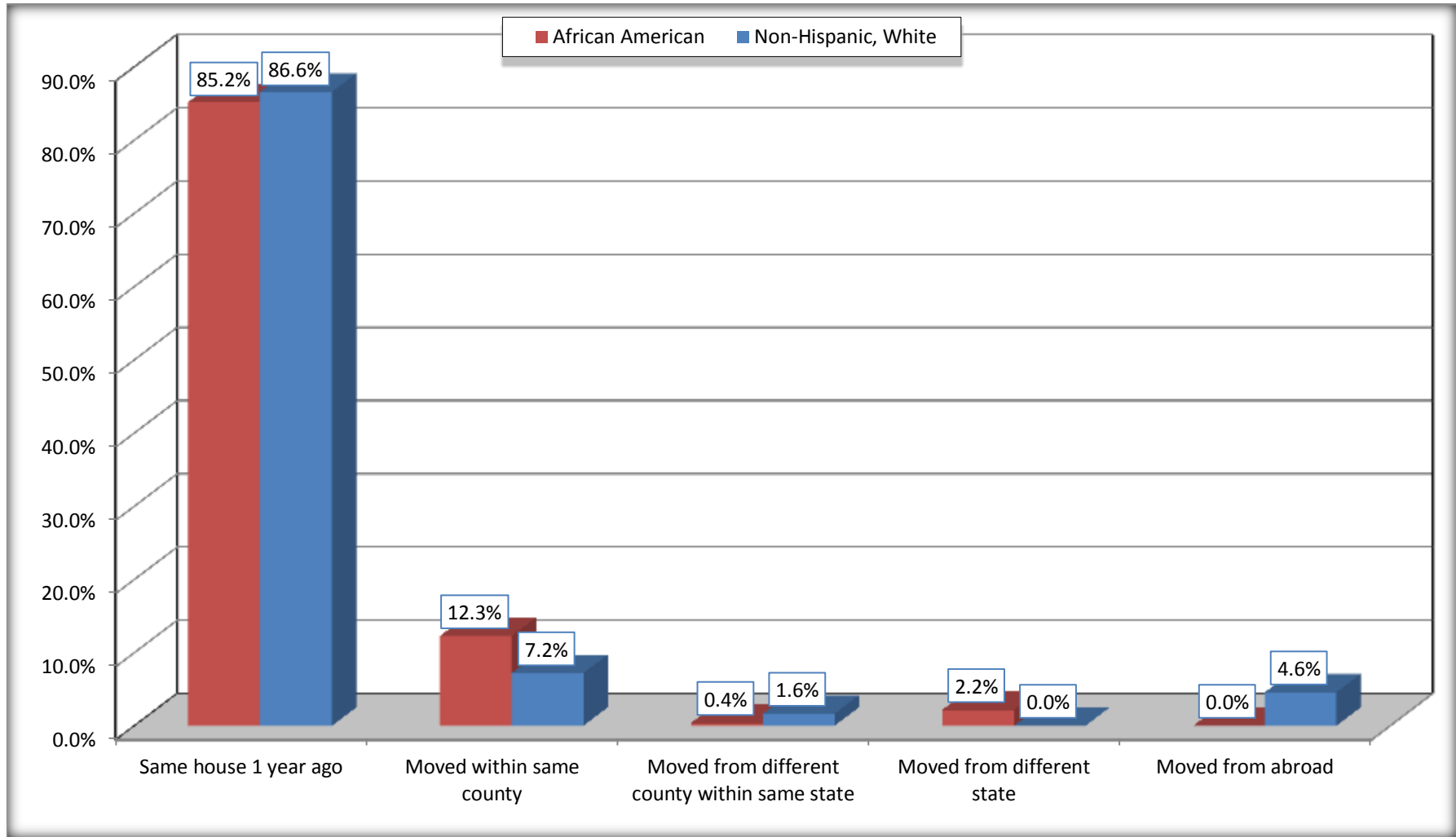
Source: U.S. Census Bureau, 2008-2012 American Community Survey

For information on confidentiality protection, sampling error, nonsampling error, and definitions, see Survey Methodology.

<http://www.census.gov/acs/www/UseData/index.htm>

Geographical Mobility in the Past Year (Population 1 Year and Over)

Harvey city, Illinois



Source: B07004. GEOGRAPHICAL MOBILITY IN THE PAST YEAR BY RACE FOR CURRENT RESIDENCE IN THE UNITED STATES - Universe: POPULATION 1 YEAR AND OVER

Data Set: 2008-2012 American Community Survey 5-Year Estimates

B08105. MEANS OF TRANSPORTATION TO WORK - Universe: WORKERS 16 YEARS AND OVER

Data Set: 2008-2012 American Community Survey 5-Year Estimates

	Harvey city, Illinois					
	African American	Margin of Error (+/-)	% of AA Total	White, Not Hispanic	Margin of Error (+/-)	% of NHW Total
Total:	5606	532	100.0%	393	155	100.0%
Car, truck, or van - drove alone	3909	453	69.7%	273	127	69.5%
Car, truck, or van - carpooled	526	200	9.4%	48	39	12.2%
Public transportation (excluding taxicab)	775	198	13.8%	8	13	2.0%
Walked	211	96	3.8%	48	42	12.2%
Taxicab, motorcycle, bicycle, or other means	51	54	0.9%	0	21	0.0%
Worked at home	134	87	2.4%	16	25	4.1%

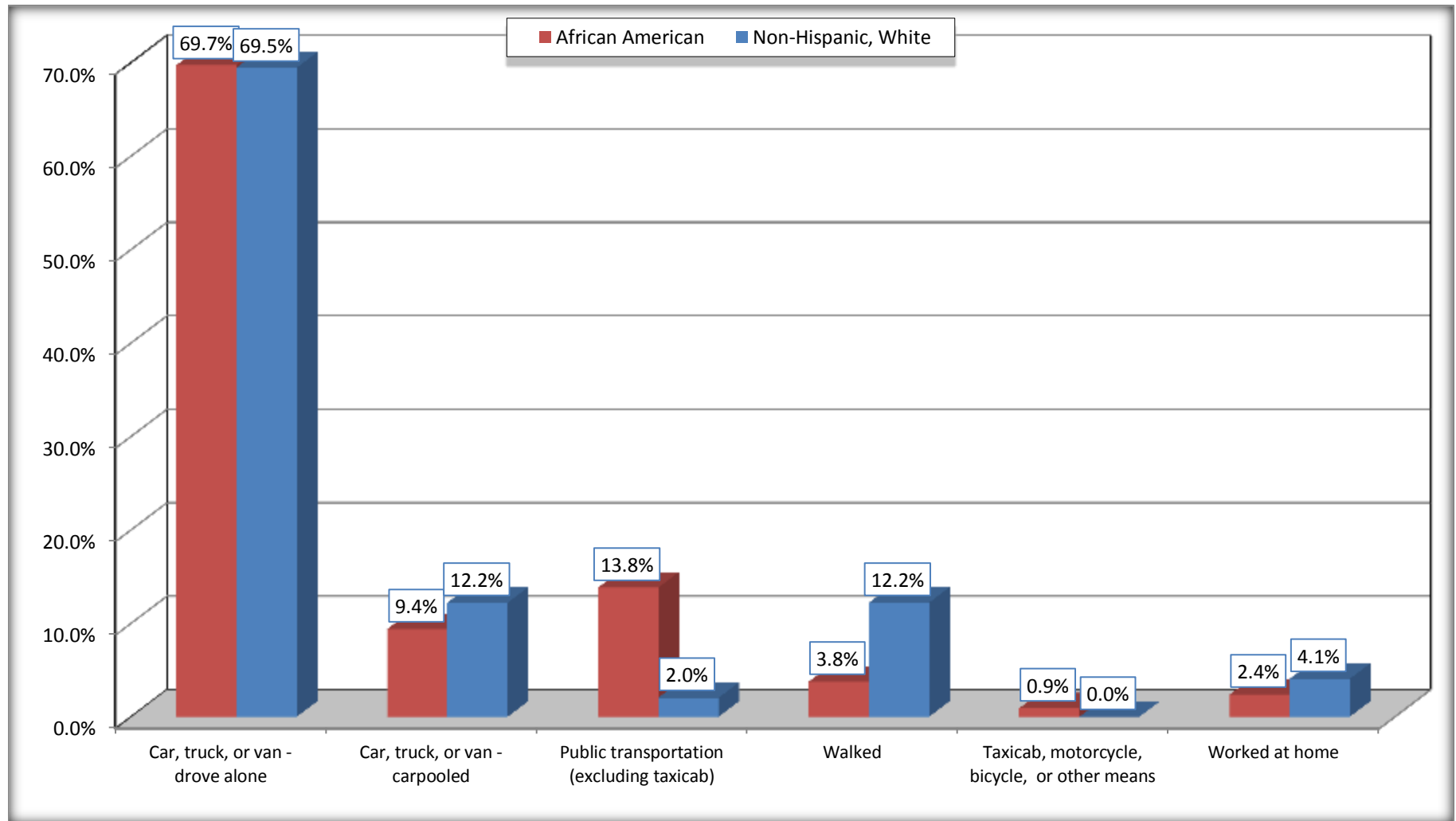
Source: U.S. Census Bureau, 2008-2012 American Community Survey

For information on confidentiality protection, sampling error, nonsampling error, and definitions, see Survey Methodology.

<http://www.census.gov/acs/www/UseData/index.htm>

Means of Transportation to Work (Workers 16 Years and Over)

Harvey city, Illinois



Source: B08105. MEANS OF TRANSPORTATION TO WORK - Universe: WORKERS 16 YEARS AND OVER
Data Set: 2008-2012 American Community Survey 5-Year Estimates

B11002. HOUSEHOLD TYPE BY RELATIVES AND NONRELATIVES FOR POPULATION IN HOUSEHOLDS

Data Set: 2008-2012 American Community Survey 5-Year Estimates

	Harvey city, Illinois					
	African American	Margin of Error (+/-)	% of AA Total	White, Not Hispanic	Margin of Error (+/-)	% of NHW Total
Total:	18987	821	100.0%	1275	554	100.0%
In family households	16775	883	88.3%	1105	538	86.7%
In nonfamily households	2212	386	11.7%	170	69	13.3%

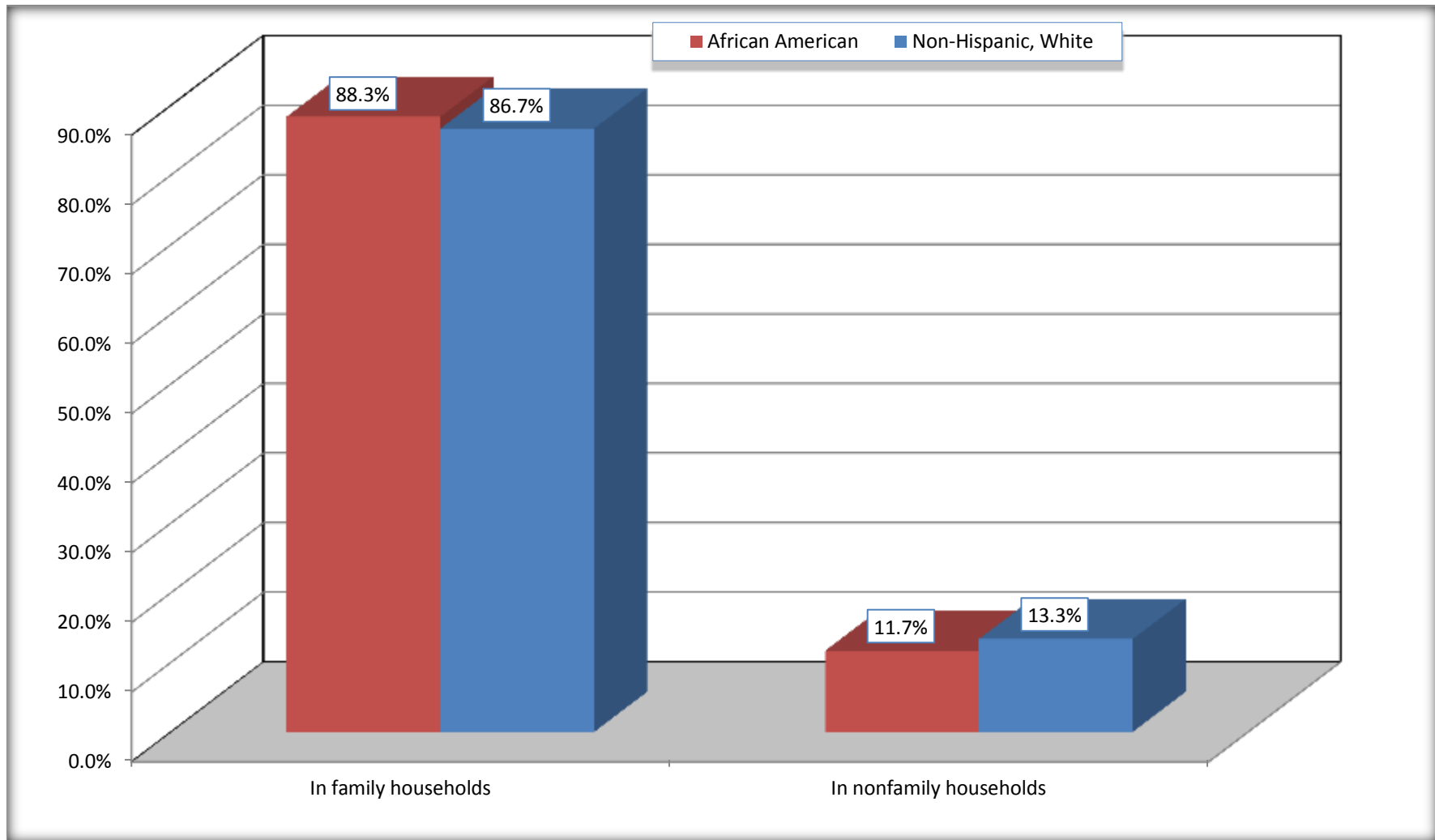
Source: U.S. Census Bureau, 2008-2012 American Community Survey

For information on confidentiality protection, sampling error, nonsampling error, and definitions, see Survey Methodology.

<http://www.census.gov/acs/www/UseData/index.htm>

Household Type for Population in Households

Harvey city, Illinois



Source: B11002. HOUSEHOLD TYPE BY RELATIVES AND NONRELATIVES FOR POPULATION IN HOUSEHOLDS
Data Set: 2008-2012 American Community Survey 5-Year Estimates

B12002. MARITAL STATUS FOR THE POPULATION 15 YEARS AND OVER

Data Set: 2008-2012 American Community Survey 5-Year Estimates

	Harvey city, Illinois					
	African American	Margin of Error (+/-)	% of AA Total	White, Not Hispanic	Margin of Error (+/-)	% of NHW Total
Total:	13,925	711	100.0%	1,188	464	100.0%
Never married	7,126	NC	51.2%	405	NC	34.1%
Now married (except separated)	3,414	NC	24.5%	513	NC	43.2%
Separated	563	NC	4.0%	54	NC	4.5%
Widowed	1,289	NC	9.3%	81	NC	6.8%
Divorced	1,533	NC	11.0%	135	NC	11.4%
Male:	6,284	561	45.1%	495	196	41.7%
Never married	3,180	404	22.8%	176	80	14.8%
Now married (except separated)	1,749	271	12.6%	238	110	20.0%
Separated	308	162	2.2%	17	22	1.4%
Widowed	280	131	2.0%	8	11	0.7%
Divorced	767	213	5.5%	56	42	4.7%
Female:	7,641	475	54.9%	693	288	58.3%
Never married	3,946	443	28.3%	229	177	19.3%
Now married (except separated)	1,665	251	12.0%	275	109	23.1%
Separated	255	117	1.8%	37	42	3.1%
Widowed	1,009	184	7.2%	73	46	6.1%
Divorced	766	152	5.5%	79	58	6.6%

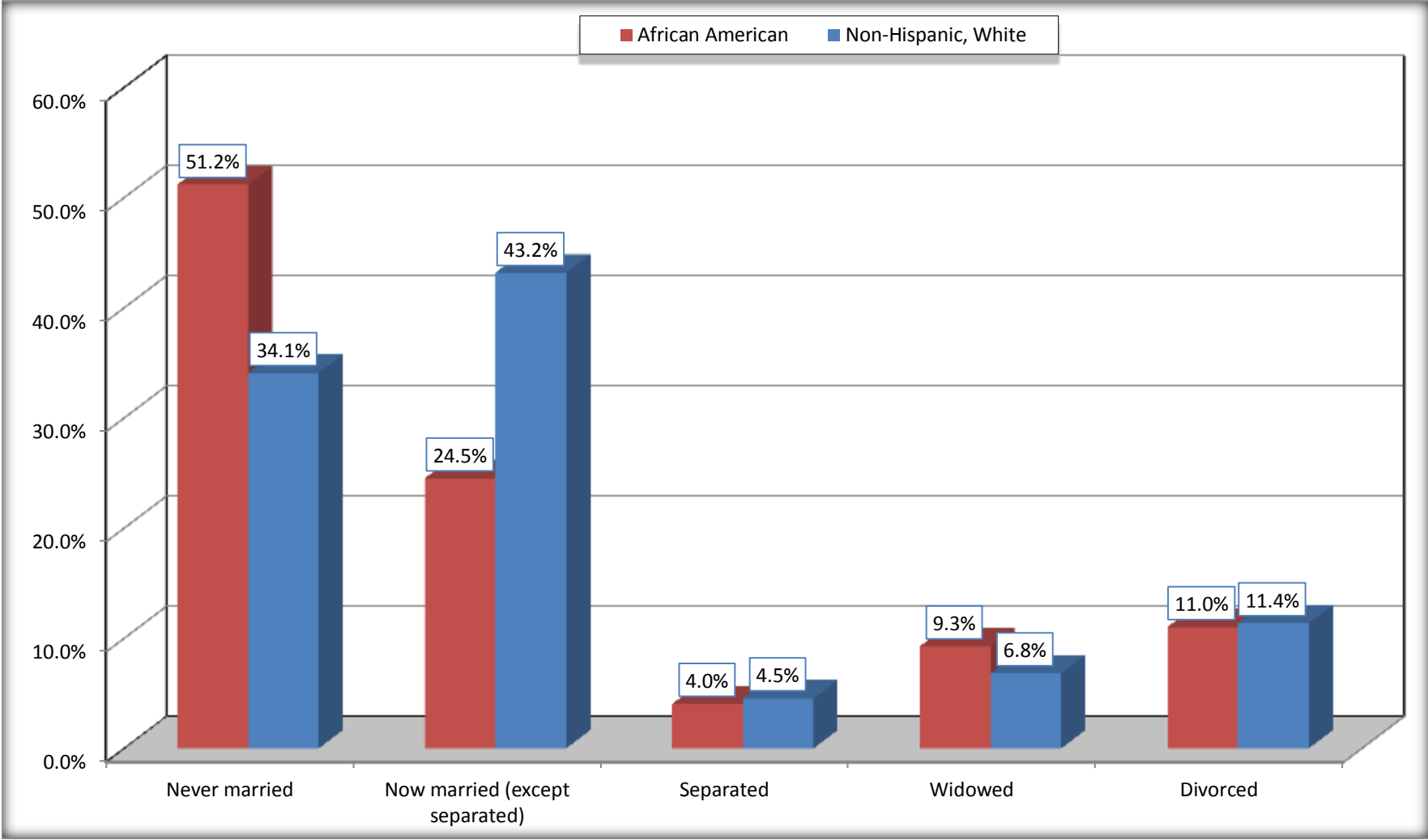
Source: U.S. Census Bureau, 2008-2012 American Community Survey

For information on confidentiality protection, sampling error, nonsampling error, and definitions, see Survey Methodology.

<http://www.census.gov/acs/www/UseData/index.htm>

Marital Status for the Population 15 Years and Over

Harvey city, Illinois



Source: B12002. MARITAL STATUS FOR THE POPULATION 15 YEARS AND OVER
Data Set: 2008-2012 American Community Survey 5-Year Estimates

C15002. SEX BY EDUCATIONAL ATTAINMENT FOR THE POPULATION 25 YEARS AND OVER

Data Set: 2008-2012 American Community Survey 5-Year Estimates

	Harvey city, Illinois					
	African American	Margin of Error (+/-)	% of AA Total	White, Not Hispanic	Margin of Error (+/-)	% of NHW Total
Total:	11,184	679	100.0%	1,056	339	100.0%
Less than high school diploma	1,966	NC	17.6%	278	NC	26.3%
High school graduate, GED, or alternative	4,313	NC	38.6%	560	NC	53.0%
Some college or associate's degree	3,659	NC	32.7%	127	NC	12.0%
Bachelor's degree or higher	1,246	NC	11.1%	91	NC	8.6%
Male:	5,260	522	47.0%	424	139	40.2%
Less than high school diploma	1,074	239	9.6%	159	107	15.1%
High school graduate, GED, or alternative	2,176	328	19.5%	174	73	16.5%
Some college or associate's degree	1,641	284	14.7%	57	42	5.4%
Bachelor's degree or higher	369	132	3.3%	34	31	3.2%
Female:	5,924	359	53.0%	632	230	59.8%
Less than high school diploma	892	211	8.0%	119	79	11.3%
High school graduate, GED, or alternative	2,137	287	19.1%	386	155	36.6%
Some college or associate's degree	2,018	306	18.0%	70	37	6.6%
Bachelor's degree or higher	877	215	7.8%	57	42	5.4%

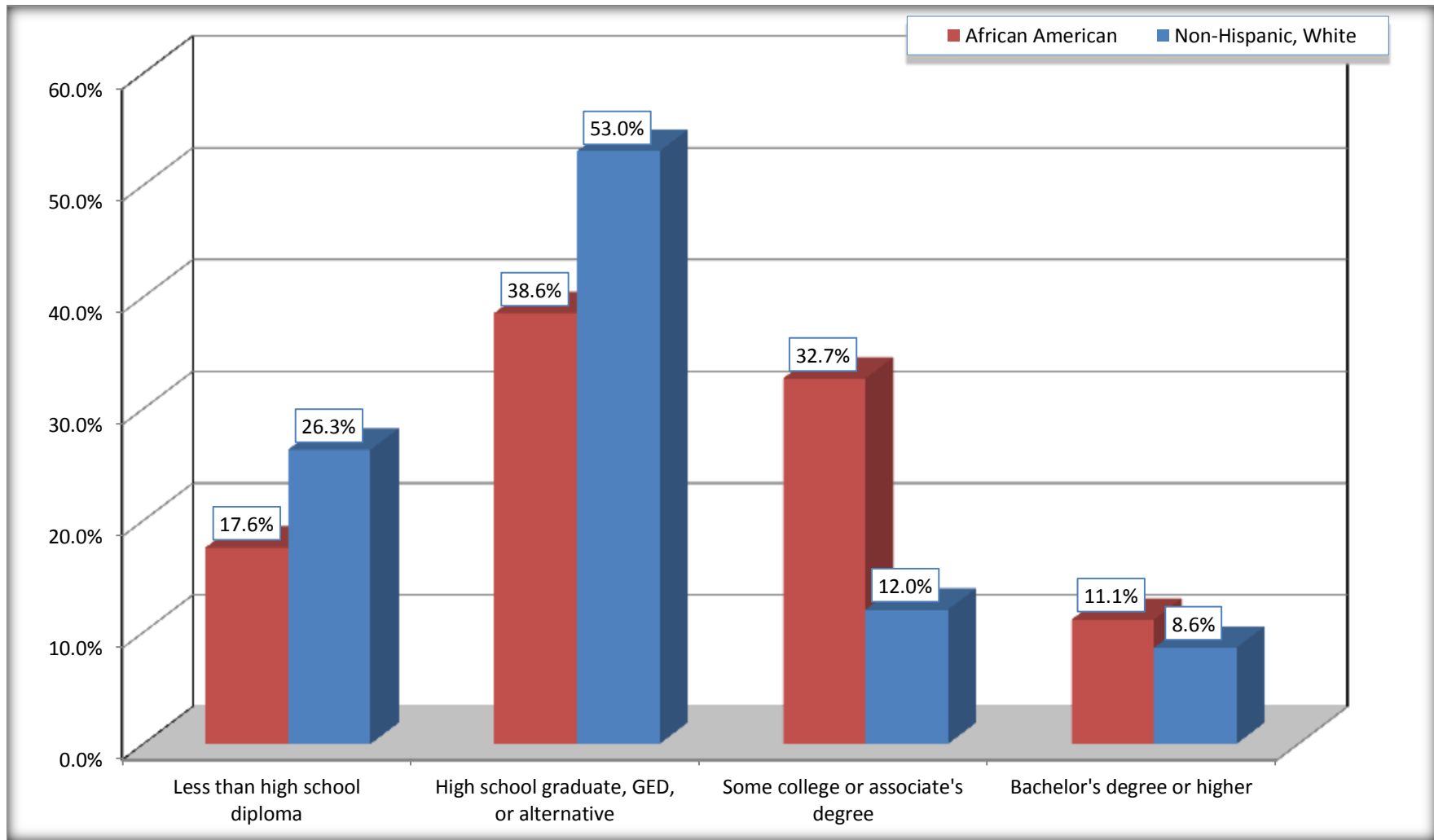
Source: U.S. Census Bureau, 2008-2012 American Community Survey

For information on confidentiality protection, sampling error, nonsampling error, and definitions, see Survey Methodology.

<http://www.census.gov/acs/www/UseData/index.htm>

Educational Attainment for the Population 25 Years and Older

Harvey city, Illinois



Source: C15002. SEX BY EDUCATIONAL ATTAINMENT FOR THE POPULATION 25 YEARS AND OVER
Data Set: 2008-2012 American Community Survey 5-Year Estimates

B17010. POVERTY STATUS IN THE PAST 12 MONTHS OF FAMILIES BY FAMILY TYPE BY PRESENCE OF RELATED CHILDREN UNDER 18 YEARS

Data Set: 2008-2012 American Community Survey 5-Year Estimates

	Harvey city, Illinois					
	African American	Margin of Error (+/-)	% of AA Total	White, Not Hispanic	Margin of Error (+/-)	% of NHW Total
Total:	4,238	304	100.0%	281	105	100.0%
Income in the past 12 months below poverty level:	1,138	201	26.9%	64	52	22.8%
Married-couple family:	89	69	2.1%	27	21	9.6%
With related children under 18 years	83	68	2.0%	8	12	2.8%
Other family:	1,049	200	24.8%	37	46	13.2%
Male householder, no wife present	165	111	3.9%	0	21	0.0%
With related children under 18 years	136	107	3.2%	0	21	0.0%
Female householder, no husband present	884	183	20.9%	37	46	13.2%
With related children under 18 years	765	186	18.1%	37	46	13.2%
Income in the past 12 months at or above poverty level:	3,100	291	73.1%	217	99	77.2%
Married-couple family:	1,278	213	30.2%	152	84	54.1%
With related children under 18 years	484	127	11.4%	60	75	21.4%
Other family:	1,822	287	43.0%	65	39	23.1%
Male householder, no wife present	361	149	8.5%	27	26	9.6%
With related children under 18 years	211	110	5.0%	0	21	0.0%
Female householder, no husband present	1,461	255	34.5%	38	33	13.5%
With related children under 18 years	773	185	18.2%	26	28	9.3%

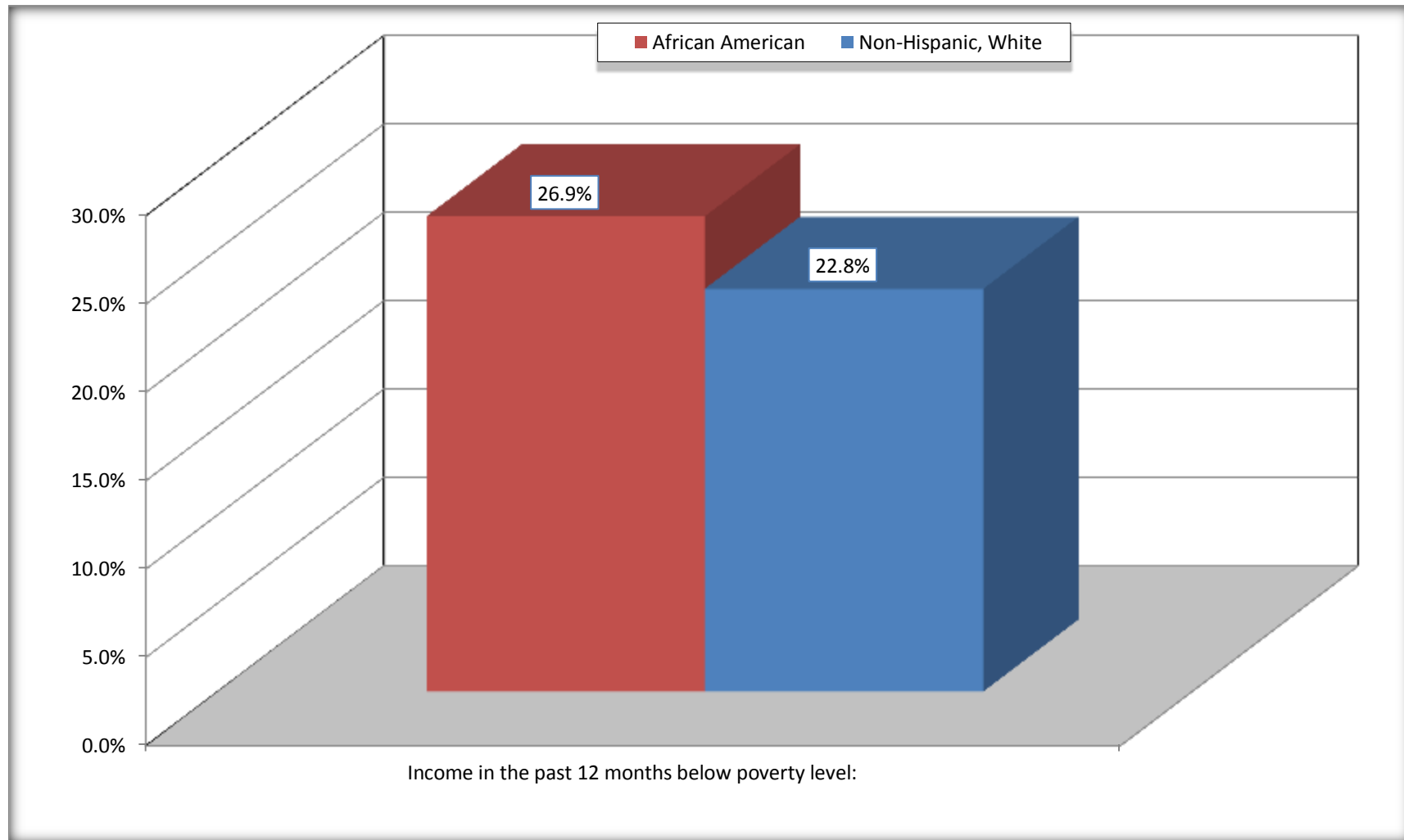
Source: U.S. Census Bureau, 2008-2012 American Community Survey

For information on confidentiality protection, sampling error, nonsampling error, and definitions, see Survey Methodology.

<http://www.census.gov/acs/www/UseData/index.htm>

Family Households Below Poverty in the Past 12 Months

Harvey city, Illinois

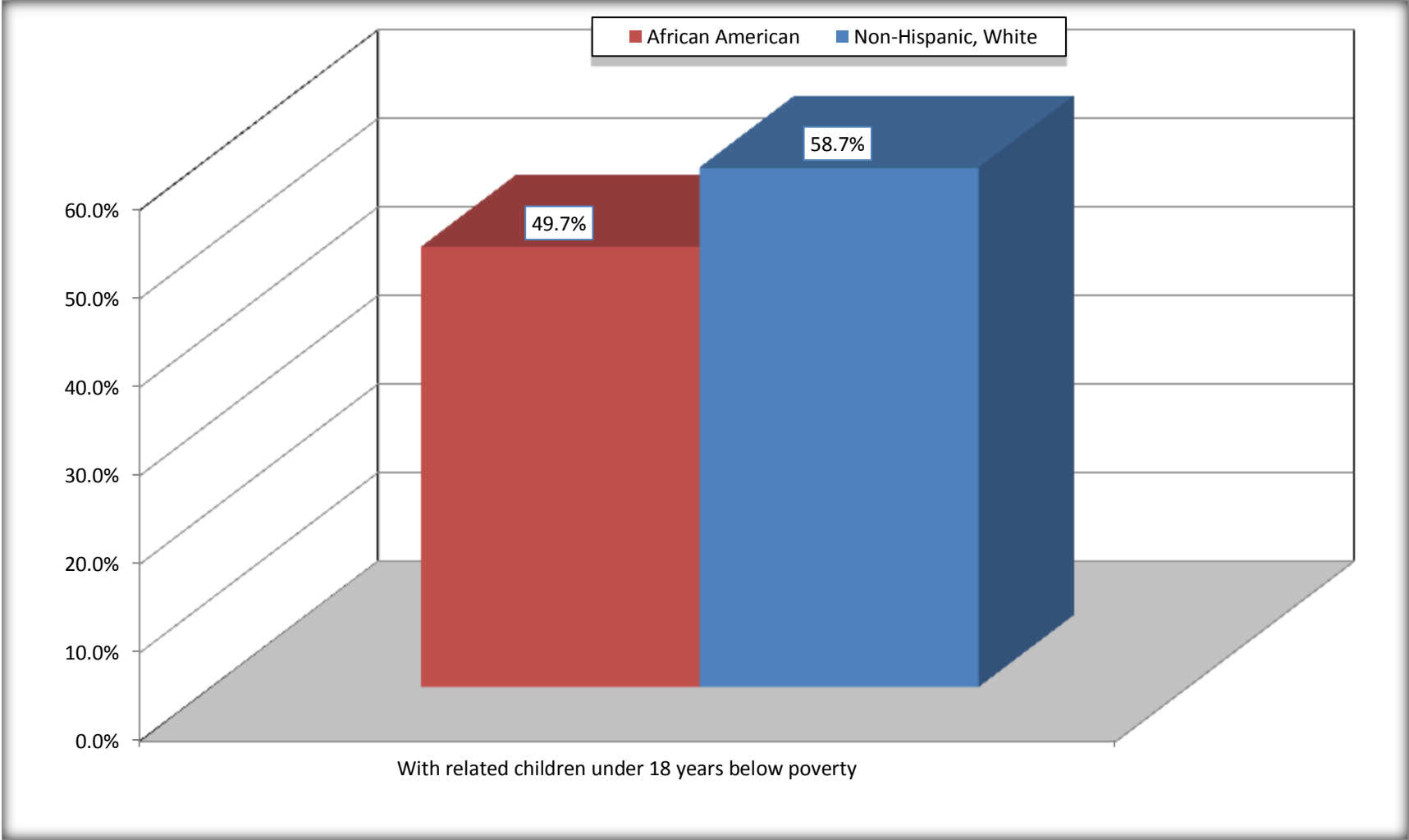


Source: B17010. POVERTY STATUS IN THE PAST 12 MONTHS OF FAMILIES BY FAMILY TYPE BY PRESENCE OF RELATED CHILDREN UNDER 18 YEARS

Data Set: 2008-2012 American Community Survey 5-Year Estimates

Female-headed Households with Related Children Below Poverty in the Past 12 Months

Harvey city, Illinois



Source: B17010. POVERTY STATUS IN THE PAST 12 MONTHS OF FAMILIES BY FAMILY TYPE BY PRESENCE OF RELATED CHILDREN UNDER 18 YEARS

Data Set: 2008-2012 American Community Survey 5-Year Estimates

B17020 POVERTY STATUS IN THE PAST 12 MONTHS BY AGE - Universe: POPULATION FOR WHOM POVERTY STATUS IS DETERMINED

Data Set: 2008-2012 American Community Survey 5-Year Estimates

	Harvey city, Illinois					
	African American	Margin of Error (+/-)	% of AA By Age	White, Not Hispanic	Margin of Error (+/-)	% of NHW By Age
Total:	18,683	820	100.0%	1,262	515	100.0%
Income in the past 12 months below poverty level:	6,160	994	33.0%	324	218	25.7%
Under 18 years	2,962	NC	50.6%	83	NC	43.2%
18 to 64 years	2,853	408	26.5%	163	123	21.9%
65 years and over	345	NC	16.9%	78	NC	23.9%
Income in the past 12 months at or above poverty level:	12,523	982	67.0%	938	489	74.3%
Under 18 years	2,894	NC	49.4%	109	NC	56.8%
18 to 64 years	7,927	690	73.5%	580	379	78.1%
65 years and over	1,702	NC	83.1%	249	NC	76.1%

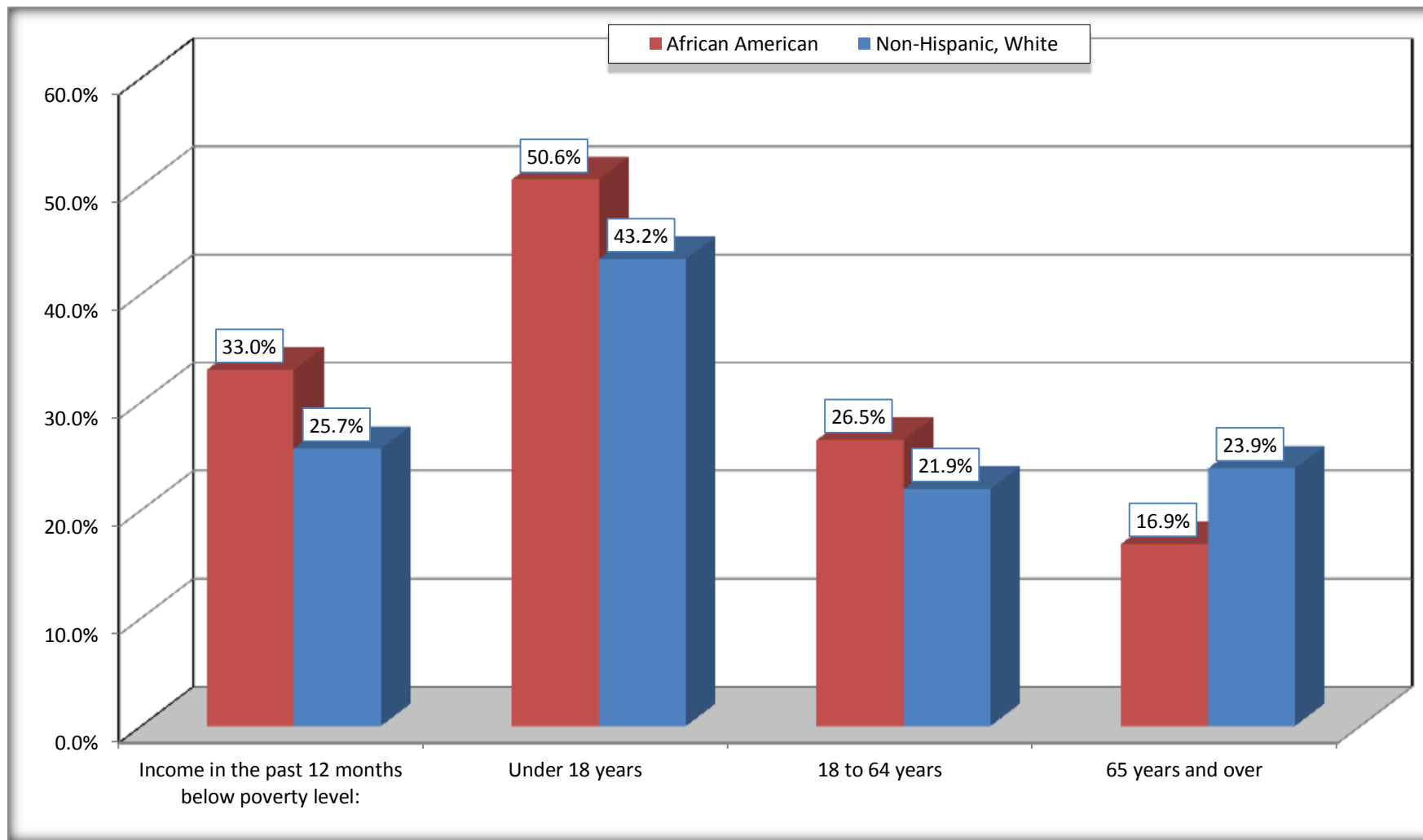
Source: U.S. Census Bureau, 2008-2012 American Community Survey

For information on confidentiality protection, sampling error, nonsampling error, and definitions, see Survey Methodology.

<http://www.census.gov/acs/www/UseData/index.htm>

Population Below Poverty in the Past 12 Months

Harvey city, Illinois



Source: B17020 POVERTY STATUS IN THE PAST 12 MONTHS BY AGE - Universe: POPULATION FOR WHOM POVERTY STATUS IS DETERMINED
Data Set: 2008-2012 American Community Survey 5-Year Estimates

B19001. HOUSEHOLD INCOME IN THE PAST 12 MONTHS (IN 2010 INFLATION-ADJUSTED DOLLARS)

Data Set: 2008-2012 American Community Survey 5-Year Estimates

	Harvey city, Illinois					
	African American	Margin of Error (+/-)	% of AA Total	White, Not Hispanic	Margin of Error (+/-)	% of NHW Total
Total:	6,135	367	100.0%	451	132	100.0%
Less than \$ 10,000	1,224	207	20.0%	54	46	12.0%
\$ 10,000 to \$ 14,999	614	175	10.0%	73	39	16.2%
\$ 15,000 to \$ 24,999	783	NC	12.8%	103	NC	22.8%
\$ 25,000 to \$ 34,999	782	NC	12.7%	86	NC	19.1%
\$ 35,000 to \$ 49,999	820	NC	13.4%	15	NC	3.3%
\$ 50,000 to \$ 74,999	985	NC	16.1%	72	NC	16.0%
\$ 75,000 to \$ 99,999	368	111	6.0%	8	13	1.8%
\$ 100,000 to \$ 149,999	405	NC	6.6%	29	NC	6.4%
\$ 150,000 to \$ 199,999	130	73	2.1%	11	15	2.4%
\$ 200,000 or more	24	24	0.4%	0	21	0.0%

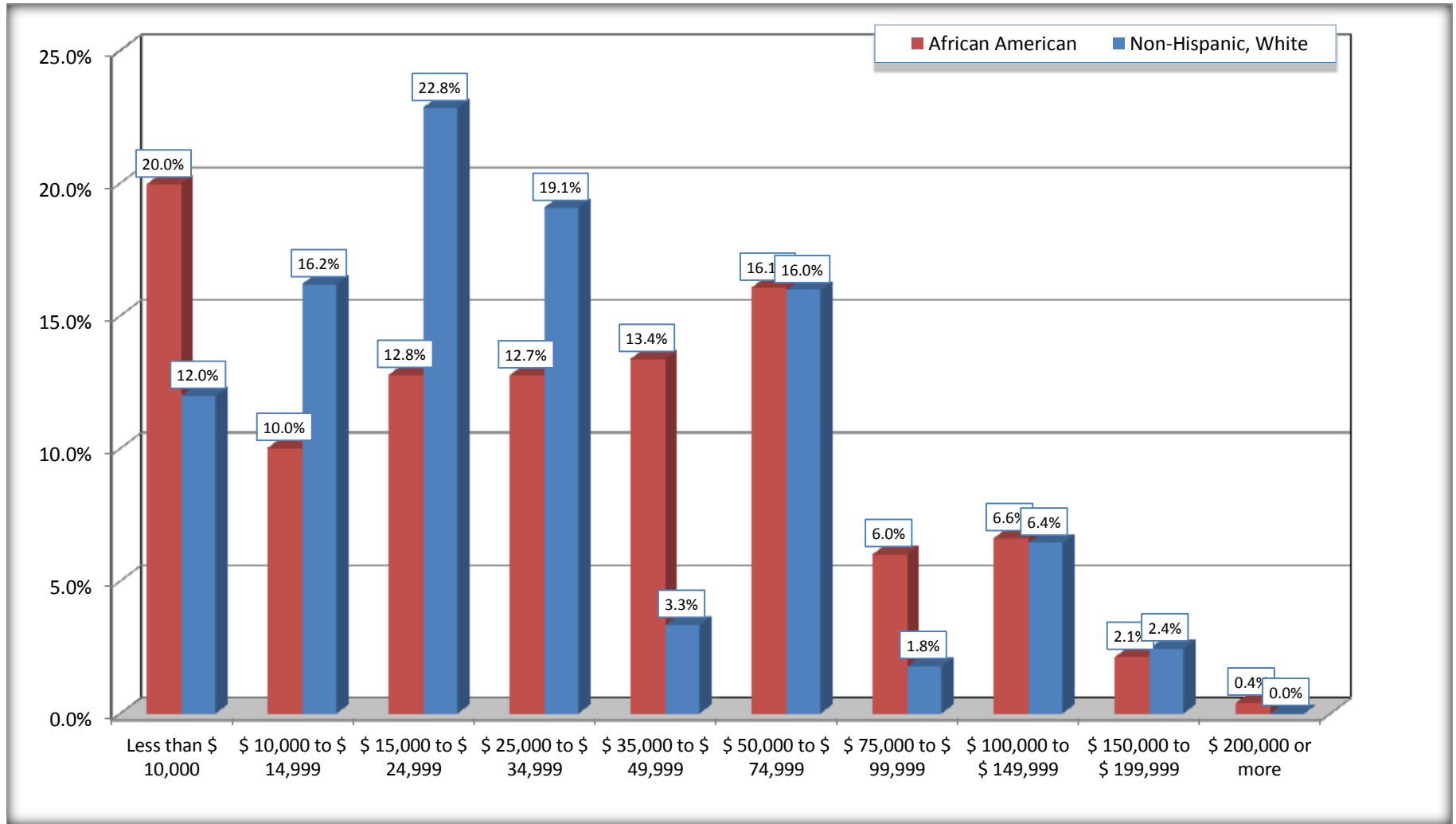
Source: U.S. Census Bureau, 2008-2012 American Community Survey

For information on confidentiality protection, sampling error, nonsampling error, and definitions, see Survey Methodology.

<http://www.census.gov/acs/www/UseData/index.htm>

Household Income in the Past 12 Months

Harvey city, Illinois



Source: B19001. HOUSEHOLD INCOME IN THE PAST 12 MONTHS (IN 2010 INFLATION-ADJUSTED DOLLARS)
Data Set: 2008-2012 American Community Survey 5-Year Estimates

B19013. MEDIAN HOUSEHOLD INCOME IN THE PAST 12 MONTHS (IN 2010 INFLATION-ADJUSTED DOLLARS)

Data Set: 2008-2012 American Community Survey 5-Year Estimates

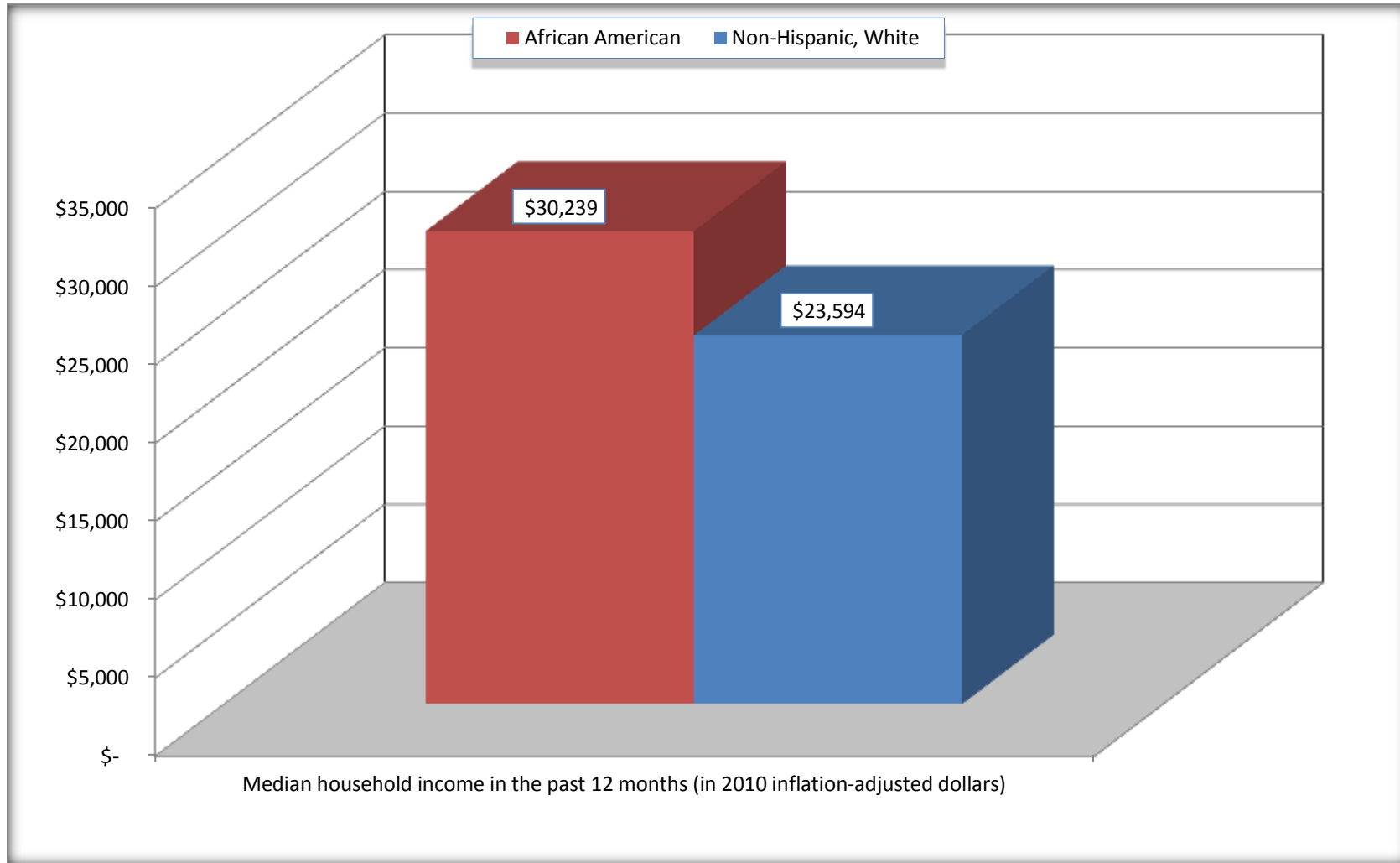
	Harvey city, Illinois			
	African American	Margin of Error (+/-)	White, Not Hispanic	Margin of Error (+/-)
Median household income in the past 12 months (in 2010 inflation-adjusted dollars)	\$ 30,239	\$ 3,179	\$ 23,594	\$ 14,035

Source: U.S. Census Bureau, 2008-2012 American Community Survey

For information on confidentiality protection, sampling error, nonsampling error, and definitions, see Survey Methodology.
<http://www.census.gov/acs/www/UseData/index.htm>

Median Household Income in the Past 12 Months

Harvey city, Illinois



Source: B19013. MEDIAN HOUSEHOLD INCOME IN THE PAST 12 MONTHS (IN 2010 INFLATION-ADJUSTED DOLLARS)
Data Set: 2008-2012 American Community Survey 5-Year Estimates

B19101. FAMILY INCOME IN THE PAST 12 MONTHS (IN 2010 INFLATION-ADJUSTED DOLLARS)

Data Set: 2008-2012 American Community Survey 5-Year Estimates

	Harvey city, Illinois					
	African American	Margin of Error (+/-)	% of AA Total	White, Not Hispanic	Margin of Error (+/-)	% of NHW Total
Total:	4,238	304	100.0%	281	105	100.0%
Less than \$ 10,000	652	160	15.4%	8	12	2.8%
\$ 10,000 to \$ 14,999	283	126	6.7%	28	24	10.0%
\$ 15,000 to \$ 24,999	488	NC	11.5%	51	NC	18.1%
\$ 25,000 to \$ 34,999	569	NC	13.4%	59	NC	21.0%
\$ 35,000 to \$ 49,999	612	NC	14.4%	15	NC	5.3%
\$ 50,000 to \$ 74,999	785	NC	18.5%	72	NC	25.6%
\$ 100,000 to \$ 149,999	377	NC	8.9%	29	NC	10.3%
\$ 150,000 to \$ 199,999	122	70	2.9%	11	15	3.9%
\$ 200,000 or more	24	24	0.6%	0	21	0.0%

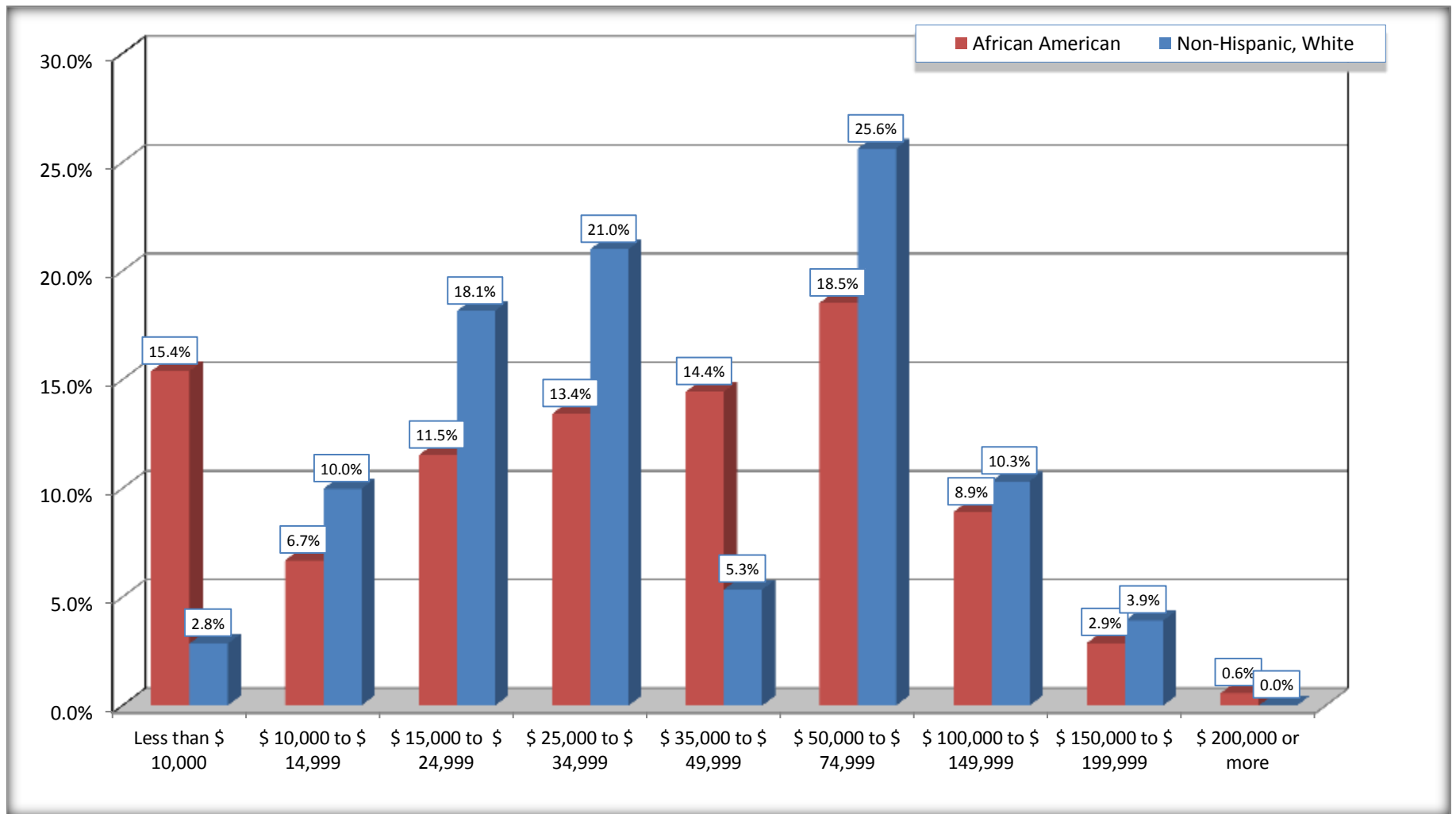
Source: U.S. Census Bureau, 2008-2012 American Community Survey

For information on confidentiality protection, sampling error, nonsampling error, and definitions, see Survey Methodology.

<http://www.census.gov/acs/www/UseData/index.htm>

Family Income in the Past 12 Months

Harvey city, Illinois



Source: B19101. FAMILY INCOME IN THE PAST 12 MONTHS (IN 2010 INFLATION-ADJUSTED DOLLARS)
Data Set: 2008-2012 American Community Survey 5-Year Estimates

B19113. MEDIAN FAMILY INCOME IN THE PAST 12 MONTHS (IN 2010 INFLATION-ADJUSTED DOLLARS)

Data Set: 2008-2012 American Community Survey 5-Year Estimates

	Harvey city, Illinois			
	African American	Margin of Error (+/-)	White, Not Hispanic	Margin of Error (+/-)
Median family income in the past 12 months (in 2010 inflation-adjusted dollars)	\$ 37,236	\$ 4,441	\$ 33,472	\$ 21,754

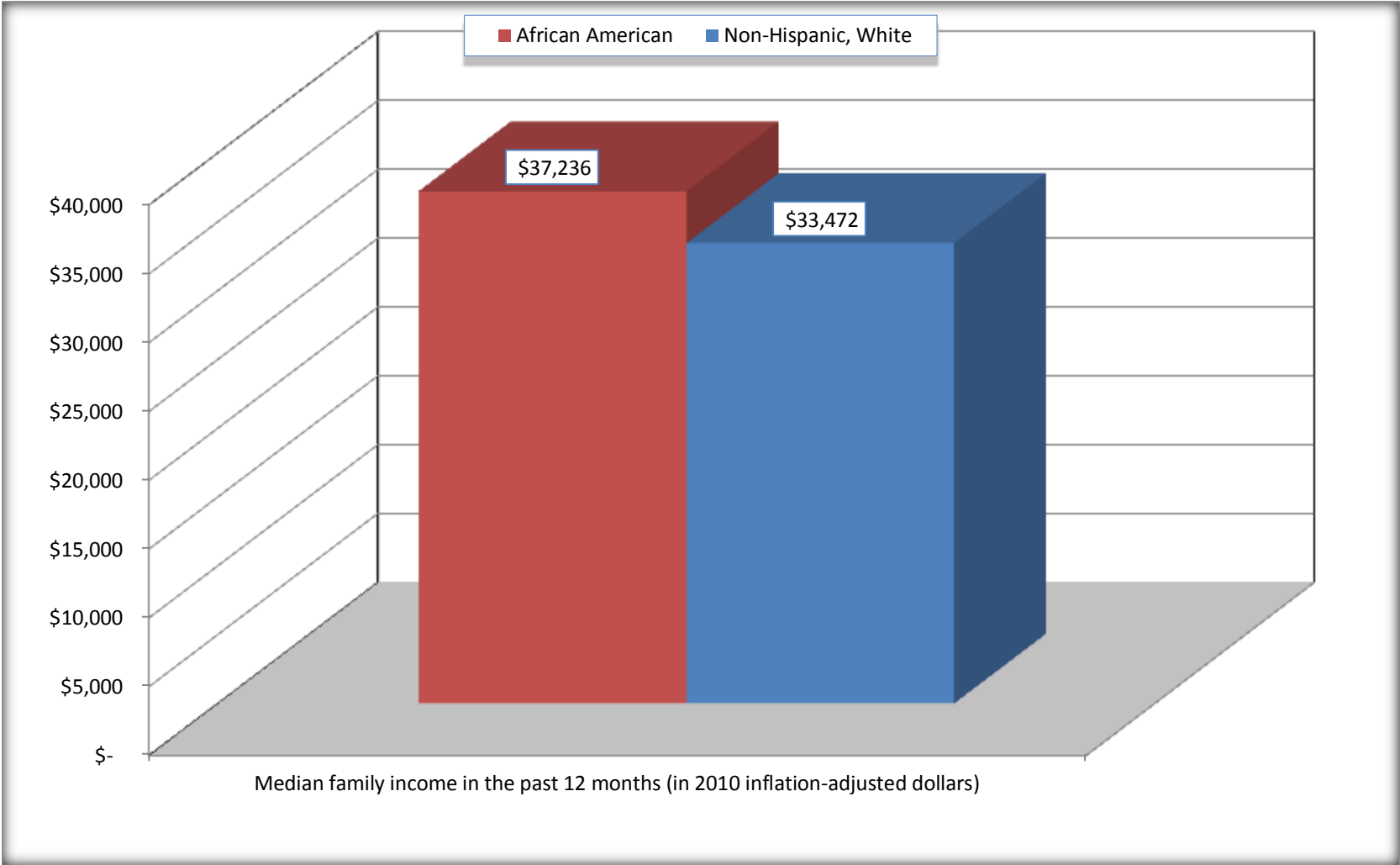
Source: U.S. Census Bureau, 2008-2012 American Community Survey

For information on confidentiality protection, sampling error, nonsampling error, and definitions, see Survey Methodology.

<http://www.census.gov/acs/www/UseData/index.htm>

Median Family Income in the Past 12 Months

Harvey city, Illinois



Source: B19113. MEDIAN FAMILY INCOME IN THE PAST 12 MONTHS (IN 2010 INFLATION-ADJUSTED DOLLARS)
Data Set: 2008-2012 American Community Survey 5-Year Estimates

B19202. MEDIAN NONFAMILY HOUSEHOLD INCOME IN THE PAST 12 MONTHS (IN 2010 INFLATION-ADJUSTED DOLLARS)

Data Set: 2008-2012 American Community Survey 5-Year Estimates

	Harvey city, Illinois			
	African American	Margin of Error (+/-)	White, Not Hispanic	Margin of Error (+/-)
Median nonfamily household income in the past 12 months (in 2010 inflation-adjusted dollars)	\$ 15,483	\$ 3,206	\$ 14,375	\$ 3,701

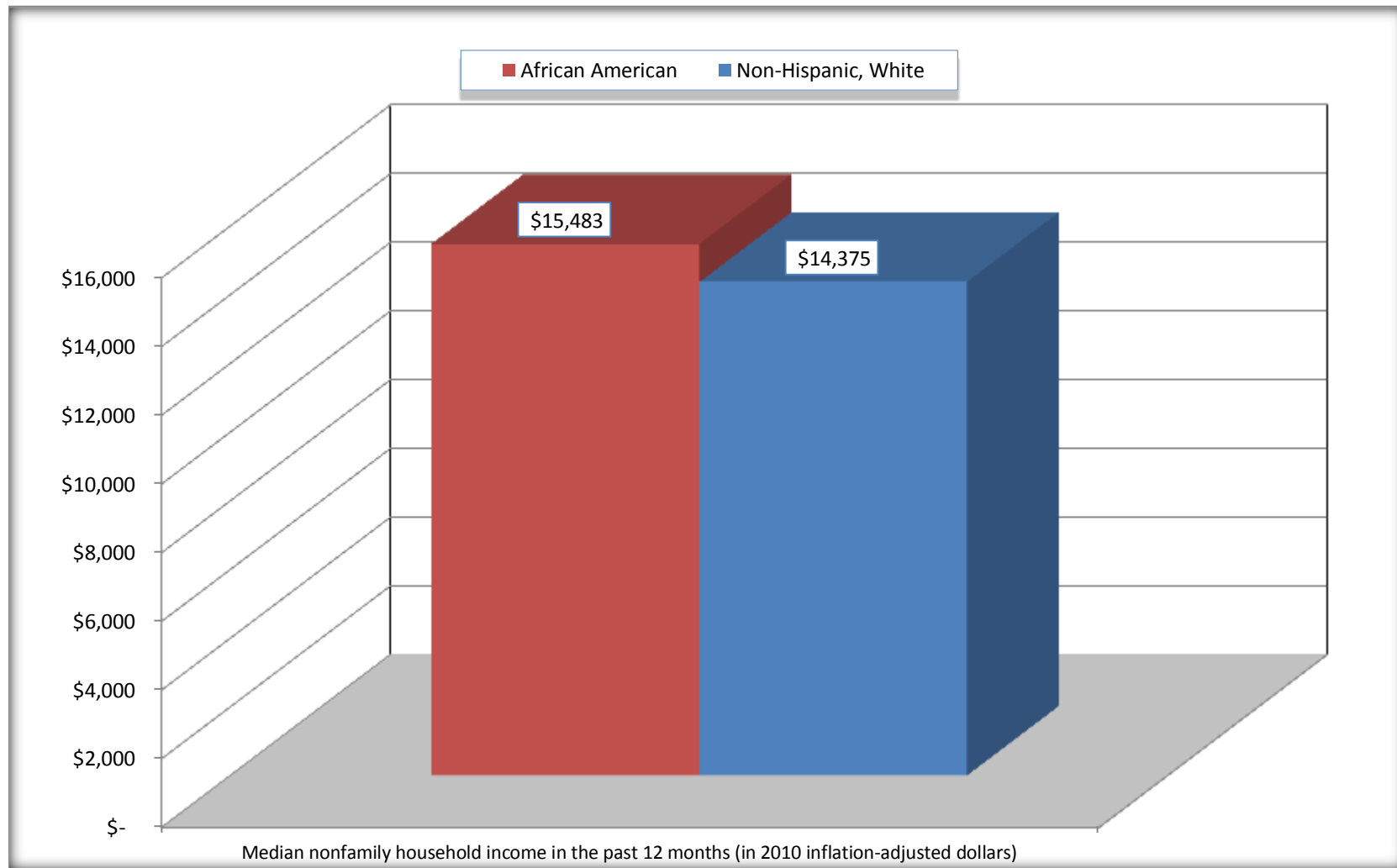
Source: U.S. Census Bureau, 2008-2012 American Community Survey

For information on confidentiality protection, sampling error, nonsampling error, and definitions, see Survey Methodology.

<http://www.census.gov/acs/www/UseData/index.htm>

Median Non-Family Income in the Past 12 Months

Harvey city, Illinois



Source: B19202. MEDIAN NONFAMILY HOUSEHOLD INCOME IN THE PAST 12 MONTHS (IN 2010 INFLATION-ADJUSTED DOLLARS)
Data Set: 2008-2012 American Community Survey 5-Year Estimates

B19301. PER CAPITA INCOME IN THE PAST 12 MONTHS (IN 2010 INFLATION-ADJUSTED DOLLARS)

Data Set: 2008-2012 American Community Survey 5-Year Estimates

	Harvey city, Illinois			
	African American	Margin of Error (+/-)	White, Not Hispanic	Margin of Error (+/-)
Per capita income in the past 12 months (in 2010 inflation-adjusted dollars)	\$ 14,925	\$ 1,270	\$ 14,985	\$ 4,323

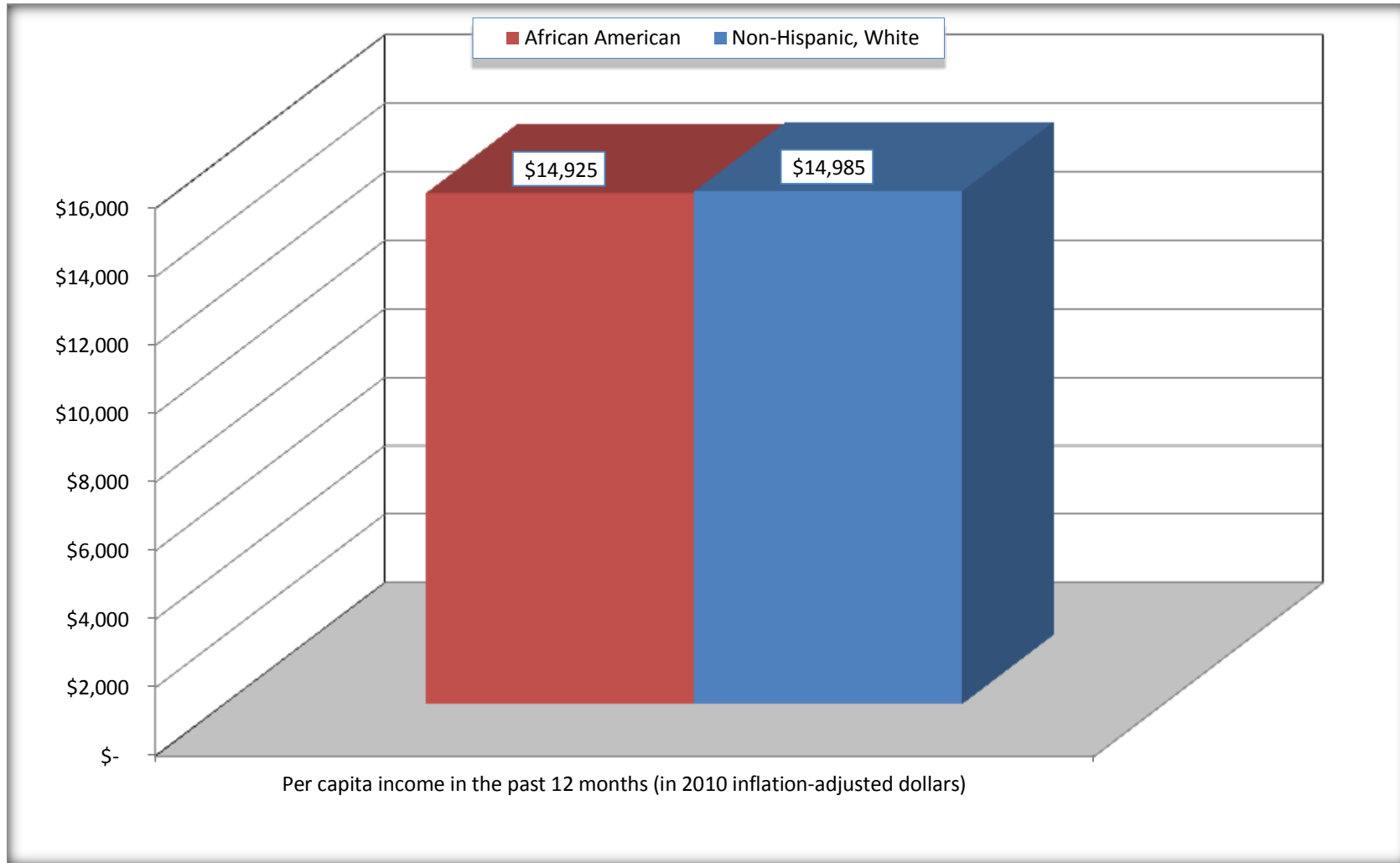
Source: U.S. Census Bureau, 2008-2012 American Community Survey

For information on confidentiality protection, sampling error, nonsampling error, and definitions, see Survey Methodology.

<http://www.census.gov/acs/www/UseData/index.htm>

Per capita Income in the Past 12 Months

Harvey city, Illinois



Source: B19301. PER CAPITA INCOME IN THE PAST 12 MONTHS (IN 2010 INFLATION-ADJUSTED DOLLARS)
Data Set: 2008-2012 American Community Survey 5-Year Estimates

B20017. MEDIAN EARNINGS IN THE PAST 12 MONTHS (IN 2010 INFLATION-ADJUSTED DOLLARS) BY SEX BY WORK EXPERIENCE IN THE PAST 12 MONTHS FOR THE POPULATION 16 YEARS AND OVER WITH EARNINGS IN THE PAST 12 MONTHS

Data Set: 2008-2012 American Community Survey 5-Year Estimates

	Harvey city, Illinois			
	African American	Margin of Error (+/-)	White, Not Hispanic	Margin of Error (+/-)
Median earnings in the past 12 months (in 2010 inflation-adjusted dollars) --				
Total:	\$ 26,175	\$ 1,524	\$ 9,643	\$ 10,505
Male --				
Total	\$ 26,977	\$ 1,968	\$ 7,078	\$ 10,868
Worked full-time, year-round in the past 12 months	\$ 39,909	\$ 6,881	\$ 33,636	\$ 30,250
Other	\$ 14,307	\$ 2,757	\$ 5,942	\$ 340
Female --				
Total	\$ 25,501	\$ 2,806	\$ 15,000	\$ 17,240
Worked full-time, year-round in the past 12 months	\$ 33,630	\$ 4,375	\$ 31,823	\$ 25,745
Other	\$ 11,407	\$ 2,289	\$ 4,866	\$ 4,199

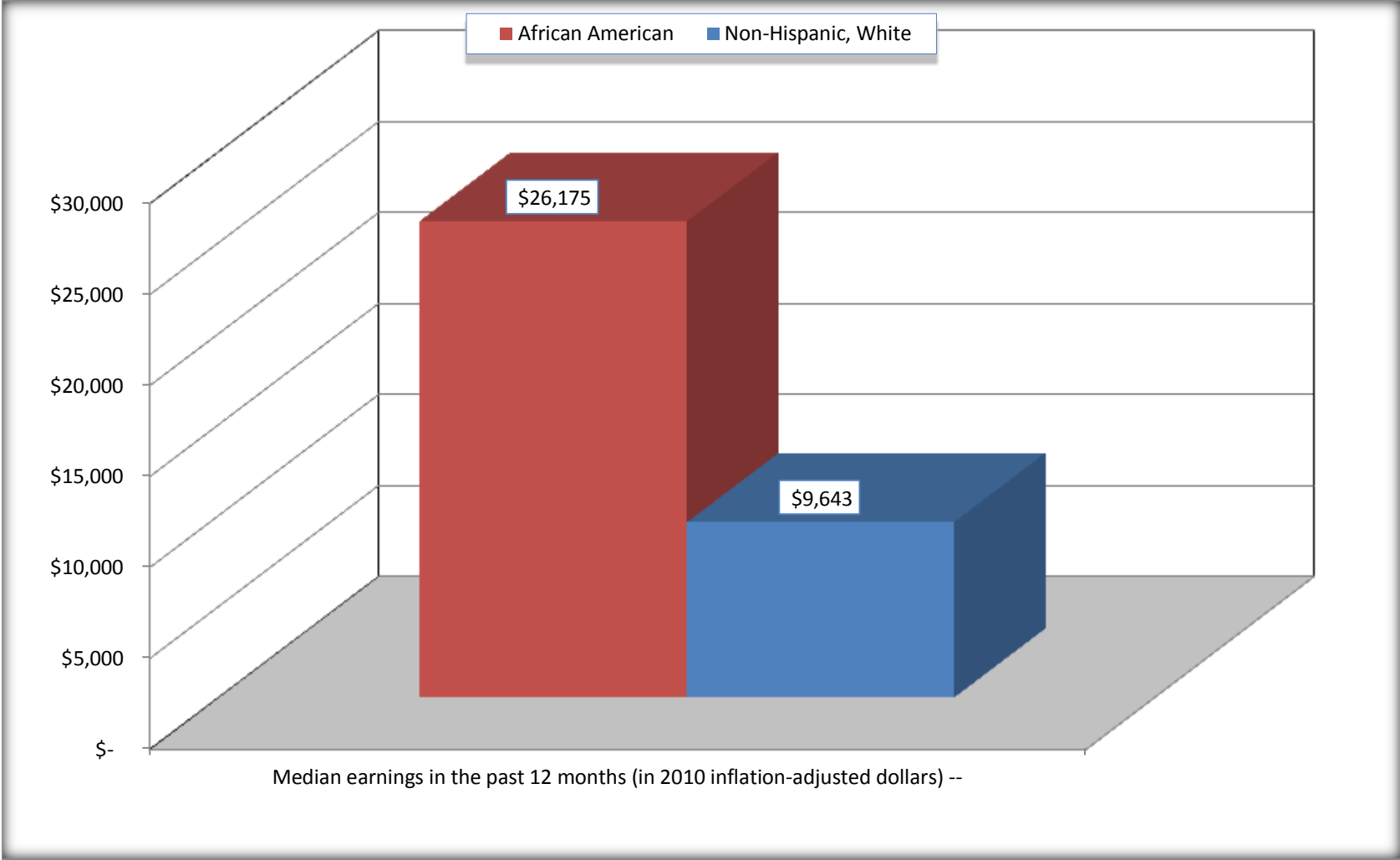
Source: U.S. Census Bureau, 2008-2012 American Community Survey

For information on confidentiality protection, sampling error, nonsampling error, and definitions, see Survey Methodology.

<http://www.census.gov/acs/www/UseData/index.htm>

Median earnings in the Past 12 Months (16 Years and Over with Earnings)

Harvey city, Illinois



Source: B20017. MEDIAN EARNINGS IN THE PAST 12 MONTHS (IN 2010 INFLATION-ADJUSTED DOLLARS) BY SEX BY WORK EXPERIENCE IN THE PAST 12 MONTHS FOR THE POPULATION 16 YEARS AND OVER WITH EARNINGS IN THE PAST 12 MONTHS
Data Set: 2008-2012 American Community Survey 5-Year Estimates

B20005. SEX BY WORK EXPERIENCE IN THE PAST 12 MONTHS BY EARNINGS IN THE PAST 12 MONTHS (IN 2010 INFLATION-ADJUSTED DOLLARS) FOR THE POPULATION 16 YEARS AND OVER

Data Set: 2008-2012 American Community Survey 5-Year Estimates

	Harvey city, Illinois					
	African American	Margin of Error (+/-)	% of AA Total	White, Not Hispanic	Margin of Error (+/-)	% of NHW Total
Total:	13,609	722	100.0%	1,188	464	100.0%
Worked full-time, year-round in the past 12 months:	3,959	NC	29.1%	205	NC	17.3%
No earnings	0	NC	0.0%	0	NC	0.0%
With earnings:	3,959	NC	29.1%	205	NC	17.3%
\$ 1 to \$ 9,999 or loss	45	NC	0.3%	0	NC	0.0%
\$ 10,000 to \$ 19,999	444	NC	3.3%	17	NC	1.4%
\$ 20,000 to \$ 29,999	983	NC	7.2%	63	NC	5.3%
\$ 30,000 to \$ 49,999	1,351	NC	9.9%	78	NC	6.6%
\$ 50,000 to \$ 74,999	858	NC	6.3%	19	NC	1.6%
\$ 75,000 or more	278	NC	2.0%	28	NC	2.4%
Other:	9,650	NC	70.9%	983	NC	82.7%
No earnings	6,776	NC	49.8%	728	NC	61.3%
With earnings: less than full time, year-round	2,874	NC	21.1%	255	NC	21.5%
Male:	6,140	571	45.1%	495	196	41.7%
Worked full-time, year-round in the past 12 months:	1,647	284	12.1%	70	48	5.9%
No earnings	0	21	0.0%	0	21	0.0%
With earnings:	1,647	284	12.1%	70	48	5.9%
\$ 1 to \$ 9,999 or loss	29	NC	0.2%	0	NC	0.0%
\$ 10,000 to \$ 19,999	221	NC	1.6%	17	NC	1.4%
\$ 20,000 to \$ 29,999	273	NC	2.0%	13	NC	1.1%
\$ 30,000 to \$ 49,999	555	NC	4.1%	27	NC	2.3%
\$ 50,000 to \$ 74,999	383	NC	2.8%	0	NC	0.0%
\$ 75,000 or more	186	NC	1.4%	13	NC	1.1%

	Harvey city, Illinois					
	African American	Margin of Error (+/-)	% of AA Total	White, Not Hispanic	Margin of Error (+/-)	% of NHW Total
Other:	4,493	458	33.0%	425	190	35.8%
No earnings	3,398	400	25.0%	329	171	27.7%
With earnings:	1,095	221	8.0%	96	66	8.1%
Female:	7,469	451	54.9%	693	288	58.3%
Worked full-time, year-round in the past 12 months:	2,312	301	17.0%	135	72	11.4%
No earnings	0	21	0.0%	0	21	0.0%
With earnings:	2,312	301	17.0%	135	72	11.4%
\$ 1 to \$ 9,999 or loss	16	NC	0.1%	0	NC	0.0%
\$ 10,000 to \$ 19,999	223	NC	1.6%	0	NC	0.0%
\$ 20,000 to \$ 29,999	710	NC	5.2%	50	NC	4.2%
\$ 30,000 to \$ 49,999	796	NC	5.8%	51	NC	4.3%
\$ 50,000 to \$ 74,999	475	NC	3.5%	19	NC	1.6%
\$ 75,000 or more	92	NC	0.7%	15	NC	1.3%
Other:	5,157	438	37.9%	558	256	47.0%
No earnings	3,378	386	24.8%	399	187	33.6%
With earnings:	1,779	230	13.1%	159	94	13.4%

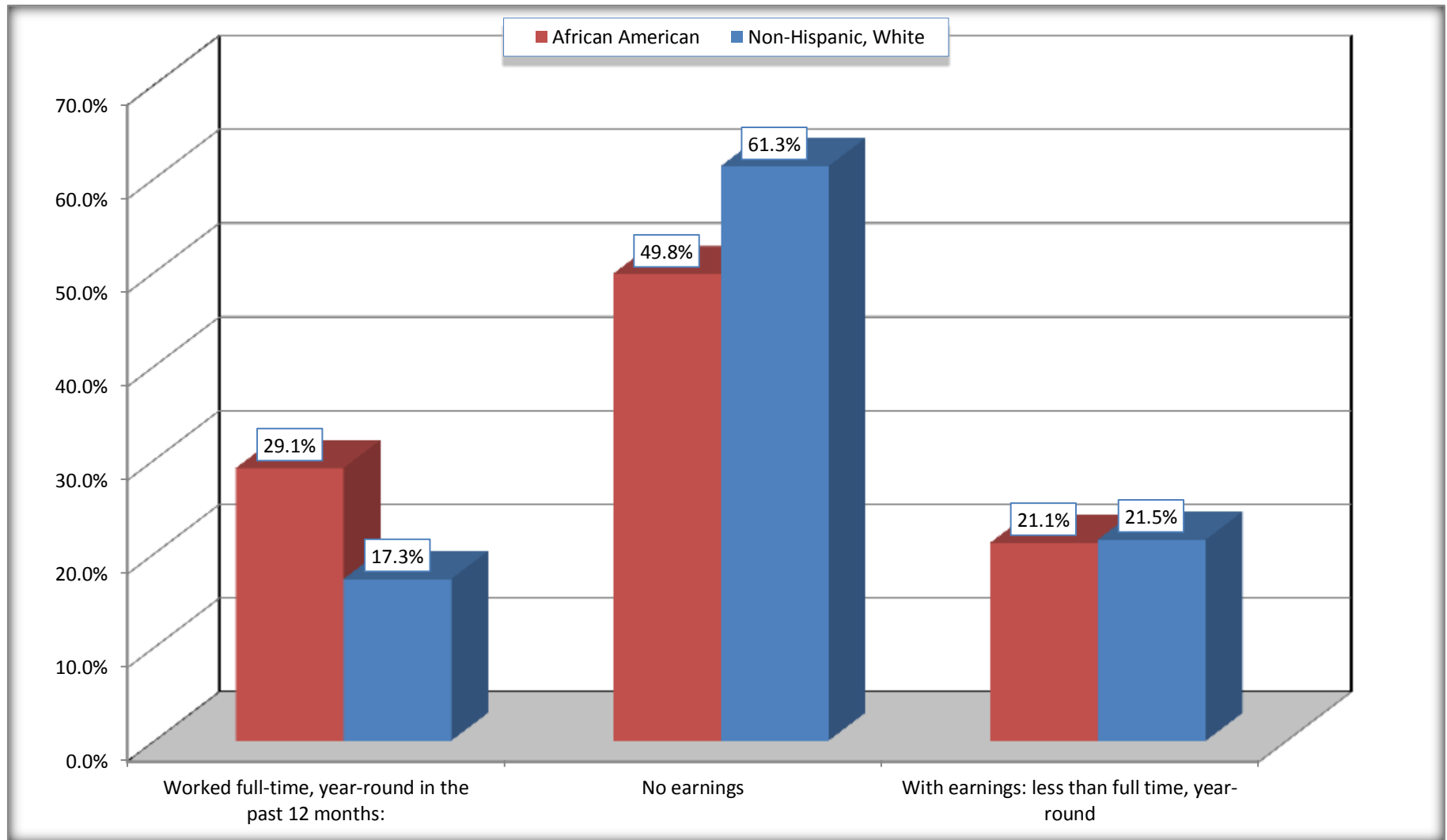
Source: U.S. Census Bureau, 2008-2012 American Community Survey

For information on confidentiality protection, sampling error, nonsampling error, and definitions, see Survey Methodology.

<http://www.census.gov/acs/www/UseData/index.htm>

Employment and Earnings in in the Past 12 Months (16 Years and Over)

Harvey city, Illinois



Source: B20005. SEX BY WORK EXPERIENCE IN THE PAST 12 MONTHS BY EARNINGS IN THE PAST 12 MONTHS (IN 2010 INFLATION-ADJUSTED DOLLARS) FOR THE POPULATION 16 YEARS AND OVER

Data Set: 2008-2012 American Community Survey 5-Year Estimates

C21001. SEX BY AGE BY VETERAN STATUS FOR THE CIVILIAN POPULATION 18 YEARS AND OVER

Data Set: 2008-2012 American Community Survey 5-Year Estimates

	Harvey city, Illinois					
	African American	Margin of Error (+/-)	% of AA Total	White, Not Hispanic	Margin of Error (+/-)	% of NHW Total
Total:	12,914	751	100.0%	1,143	402	100.0%
Veteran	1,172	NC	9.1%	86	NC	7.5%
Nonveteran	11,742	NC	90.9%	1,057	NC	92.5%
Male:	5,908	562	45.7%	495	196	43.3%
18 to 64 years:	4,964	513	38.4%	371	194	32.5%
Veteran	653	166	5.1%	16	22	1.4%
Nonveteran	4,311	475	33.4%	355	193	31.1%
65 years and over:	944	173	7.3%	124	53	10.8%
Veteran	476	124	3.7%	56	34	4.9%
Nonveteran	468	114	3.6%	68	43	5.9%
Female:	7,006	437	54.3%	648	230	56.7%
18 to 64 years:	5,860	394	45.4%	425	219	37.2%
Veteran	33	33	0.3%	0	21	0.0%
Nonveteran	5,827	393	45.1%	425	219	37.2%
65 years and over:	1,146	179	8.9%	223	73	19.5%
Veteran	10	16	0.1%	14	18	1.2%
Nonveteran	1,136	177	8.8%	209	68	18.3%

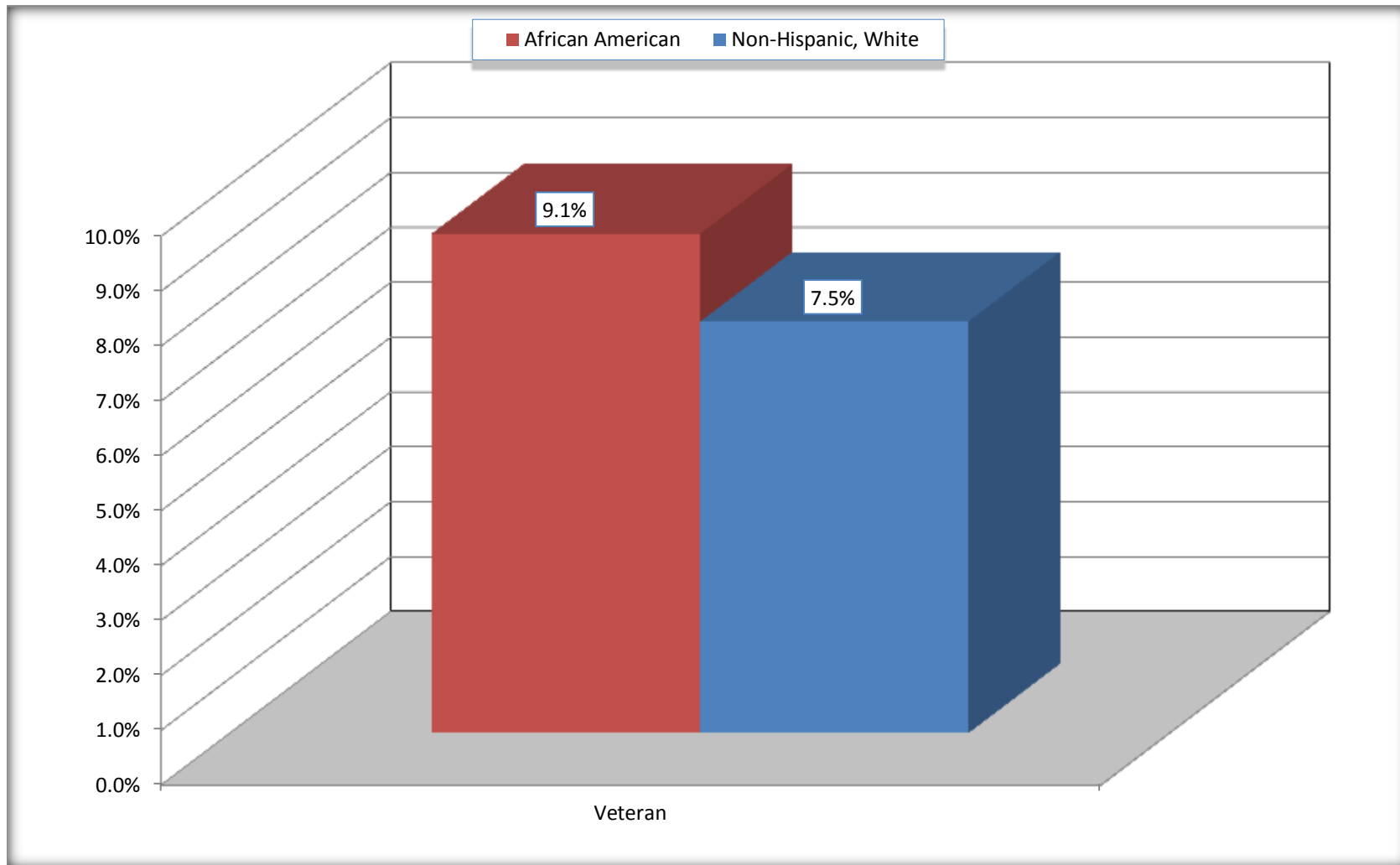
Source: U.S. Census Bureau, 2008-2012 American Community Survey

For information on confidentiality protection, sampling error, nonsampling error, and definitions, see Survey Methodology.

<http://www.census.gov/acs/www/UseData/index.htm>

Veterans in the Civilian Population 18 Years and Over

Harvey city, Illinois



Source: C21001. SEX BY AGE BY VETERAN STATUS FOR THE CIVILIAN POPULATION 18 YEARS AND OVER
Data Set: 2008-2012 American Community Survey 5-Year Estimates

B22005. RECEIPT OF FOOD STAMPS/SNAP IN THE PAST 12 MONTHS BY RACE OF HOUSEHOLDER

Data Set: 2008-2012 American Community Survey 5-Year Estimates

	Harvey city, Illinois					
	African American	Margin of Error (+/-)	% of AA Total	White, Not Hispanic	Margin of Error (+/-)	% of NHW Total
Total:	6,135	367	100.0%	451	132	100.0%
HH received Food Stamps/SNAP in the past 12 months	2,153	259	35.1%	48	35	10.6%
HH did not receive Food Stamps/SNAP in the past 12 months	3,982	407	64.9%	403	134	89.4%

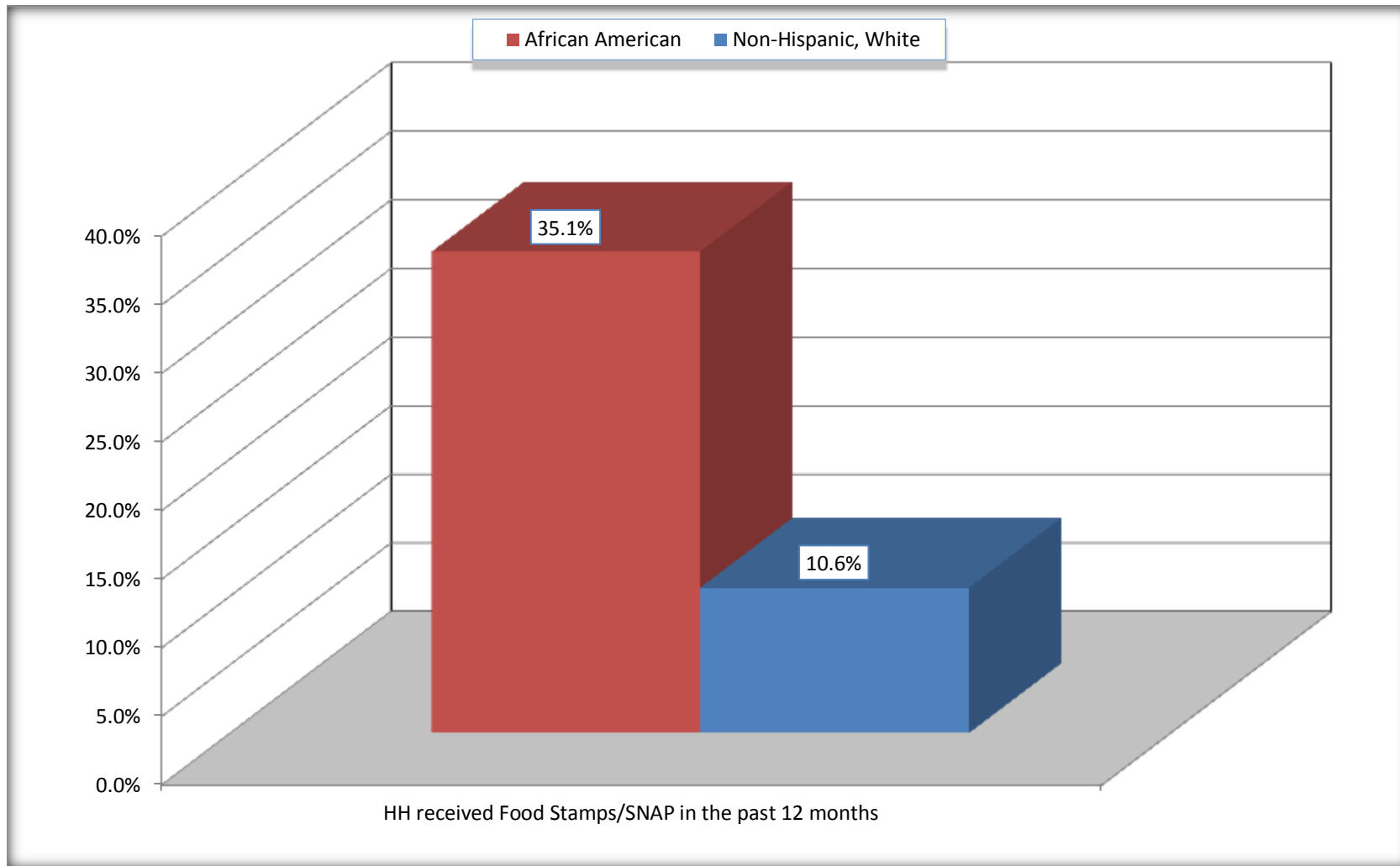
Source: U.S. Census Bureau, 2008-2012 American Community Survey

For information on confidentiality protection, sampling error, nonsampling error, and definitions, see Survey Methodology.

<http://www.census.gov/acs/www/UseData/index.htm>

Receipt of Food Stamps/SNAP in the Past 12 Months by Household

Harvey city, Illinois



Source: B22005. RECEIPT OF FOOD STAMPS/SNAP IN THE PAST 12 MONTHS BY RACE OF HOUSEHOLDER
Data Set: 2008-2012 American Community Survey 5-Year Estimates

C23002. SEX BY AGE BY EMPLOYMENT STATUS FOR THE POPULATION 16 YEARS AND OVER

Data Set: 2008-2012 American Community Survey 5-Year Estimates

	Harvey city, Illinois					
	African American	Margin of Error (+/-)	% of AA Total	White, Not Hispanic	Margin of Error (+/-)	% of NHW Total
Total:	13,609	722	100.0%	1,188	464	100.0%
In labor force:	8,217	NC	60.4%	498	NC	41.9%
In Armed Forces	0	NC	0.0%	0	NC	0.0%
Civilian:	7,950	NC	58.4%	446	NC	37.5%
Employed	5,858	NC	43.0%	393	NC	33.1%
Unemployed	2,359	NC	17.3%	105	NC	8.8%
Not in labor force	5,392	NC	39.6%	690	NC	58.1%
Male:	6,140	571	45.1%	495	196	41.7%
16 to 64 years:	5,196	526	38.2%	371	194	31.2%
In labor force:	3,568	405	26.2%	184	84	15.5%
In Armed Forces	0	21	0.0%	0	21	0.0%
Civilian:	3,568	405	26.2%	184	84	15.5%
Employed	2,269	352	16.7%	127	85	10.7%
Unemployed	1,299	252	9.5%	57	37	4.8%
Not in labor force	1,628	287	12.0%	187	164	15.7%
65 years and over:	944	173	6.9%	124	53	10.4%
In labor force:	116	62	0.9%	8	13	0.7%
Employed	92	59	0.7%	8	13	0.7%
Unemployed	24	27	0.2%	0	21	0.0%
Not in labor force	828	169	6.1%	116	52	9.8%

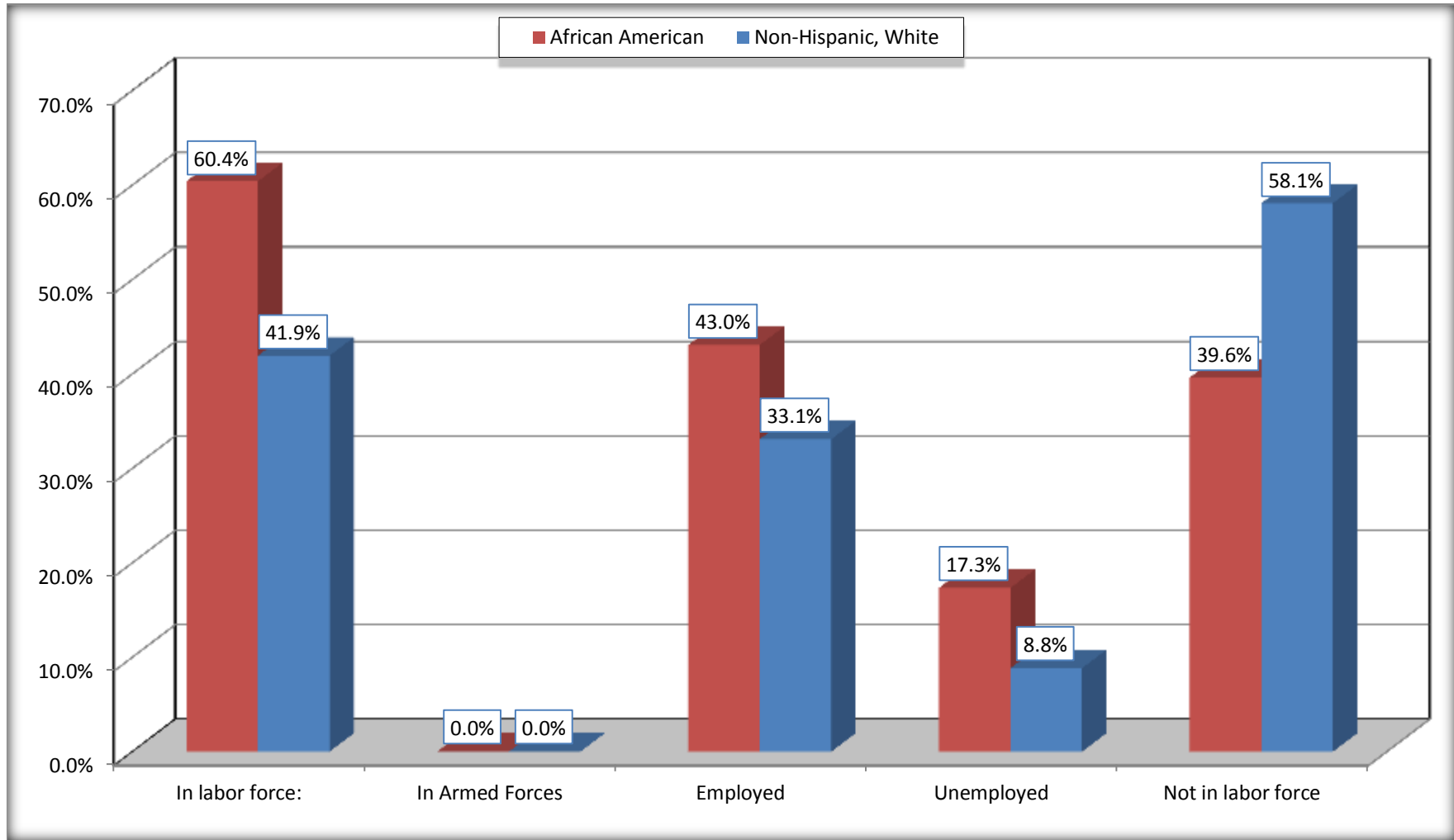
	Harvey city, Illinois					
	African American	Margin of Error (+/-)	% of AA Total	White, Not Hispanic	Margin of Error (+/-)	% of NHW Total
Female:	7,469	451	54.9%	693	288	58.3%
16 to 64 years:	6,323	421	46.5%	470	281	39.6%
In labor force:	4,382	381	32.2%	262	120	22.1%
In Armed Forces	0	21	0.0%	0	21	0.0%
Civilian:	4,382	381	32.2%	262	120	22.1%
Employed	3,356	332	24.7%	214	108	18.0%
Unemployed	1,026	211	7.5%	48	44	4.0%
Not in labor force	1,941	337	14.3%	208	185	17.5%
65 years and over:	1,146	179	8.4%	223	73	18.8%
In labor force:	151	72	1.1%	44	40	3.7%
Employed	141	69	1.0%	44	40	3.7%
Unemployed	10	17	0.1%	0	21	0.0%
Not in labor force	995	162	7.3%	179	65	15.1%

Source: U.S. Census Bureau, 2008-2012 American Community Survey

For information on confidentiality protection, sampling error, nonsampling error, and definitions, see Survey Methodology.
<http://www.census.gov/acs/www/UseData/index.htm>

Employment Status for the Population 16 years and over

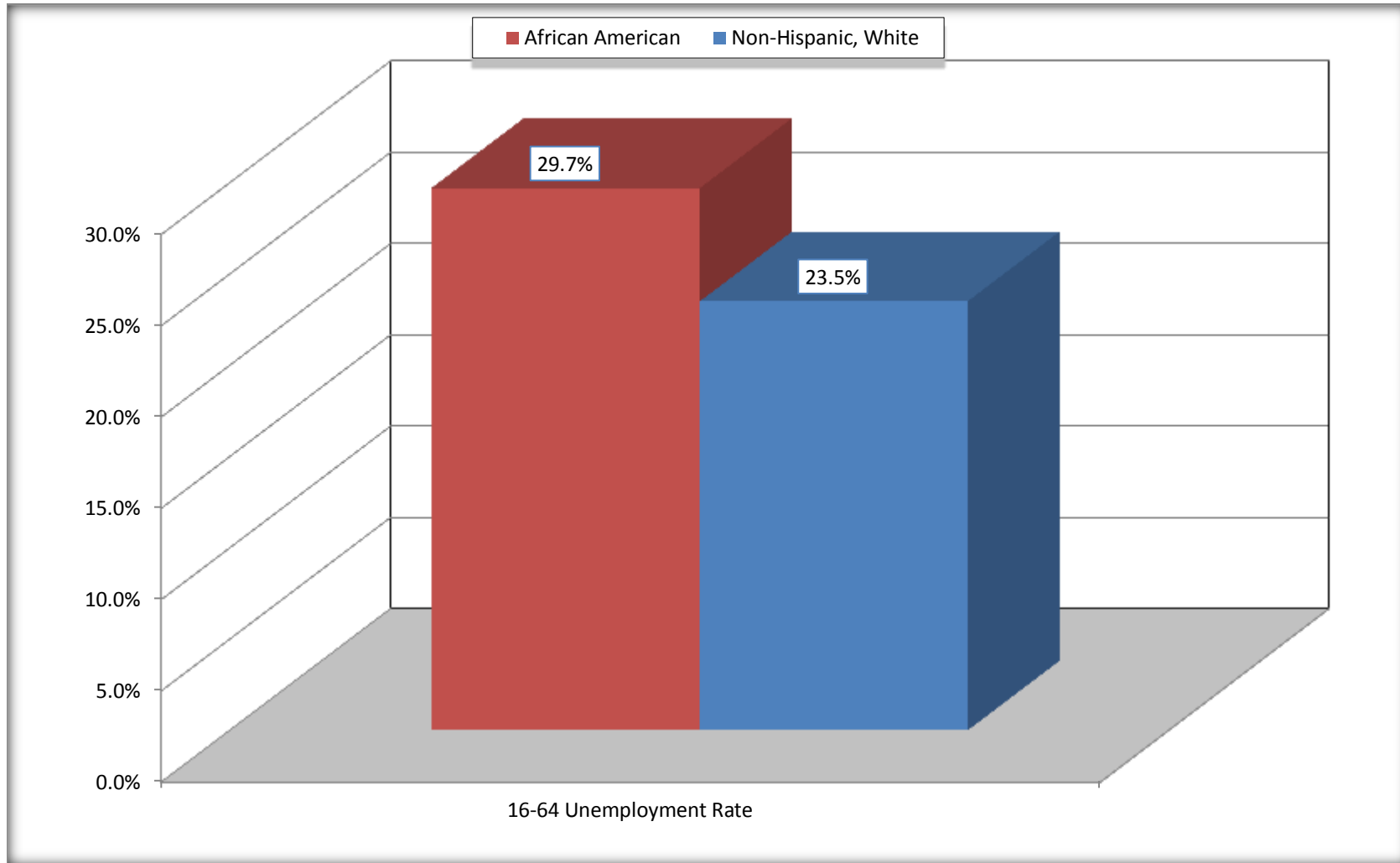
Harvey city, Illinois



Source: C23002. SEX BY AGE BY EMPLOYMENT STATUS FOR THE POPULATION 16 YEARS AND OVER
Data Set: 2008-2012 American Community Survey 5-Year Estimates

Unemployment of Working Age Population (Ages 16 to 64) (As a Percent of 16-64 Civilian Labor Force)

Harvey city, Illinois



Source: C23002. SEX BY AGE BY EMPLOYMENT STATUS FOR THE POPULATION 16 YEARS AND OVER
Data Set: 2008-2012 American Community Survey 5-Year Estimates

C24010. SEX BY OCCUPATION FOR THE CIVILIAN EMPLOYED POPULATION 16 YEARS AND OVER

Data Set: 2008-2012 American Community Survey 5-Year Estimates

	Harvey city, Illinois					
	African American	Margin of Error (+/-)	% of AA Total	White, Not Hispanic	Margin of Error (+/-)	% of NHW Total
Total:	5,858	512	100.0%	393	155	100.0%
Management, professional, and related occupations	1,219	NC	20.8%	37	NC	9.4%
Service occupations	1,553	NC	26.5%	164	NC	41.7%
Sales and office occupations	1,473	NC	25.1%	114	NC	29.0%
Natural resources, construction, and maintenance occupations:	454	NC	7.8%	24	NC	6.1%
Production, transportation, and material moving occupations	1,159	NC	19.8%	54	NC	13.7%
Male:	2,361	352	40.3%	135	85	34.4%
Management, business, science, and arts occupations:	235	108	4.0%	0	21	0.0%
Service occupations	542	177	9.3%	87	79	22.1%
Sales and office occupations	422	174	7.2%	0	21	0.0%
Natural resources, construction, and maintenance occupations:	454	177	7.8%	24	27	6.1%
Production, transportation, and material moving occupations	708	192	12.1%	24	27	6.1%
Female:	3,497	338	59.7%	258	125	65.6%
Management, professional, and related occupations	984	240	16.8%	37	30	9.4%
Service occupations	1,011	217	17.3%	77	54	19.6%
Sales and office occupations	1,051	206	17.9%	114	92	29.0%
Natural resources, construction, and maintenance occupations:	0	21	0.0%	0	21	0.0%
Production, transportation, and material moving occupations	451	207	7.7%	30	31	7.6%

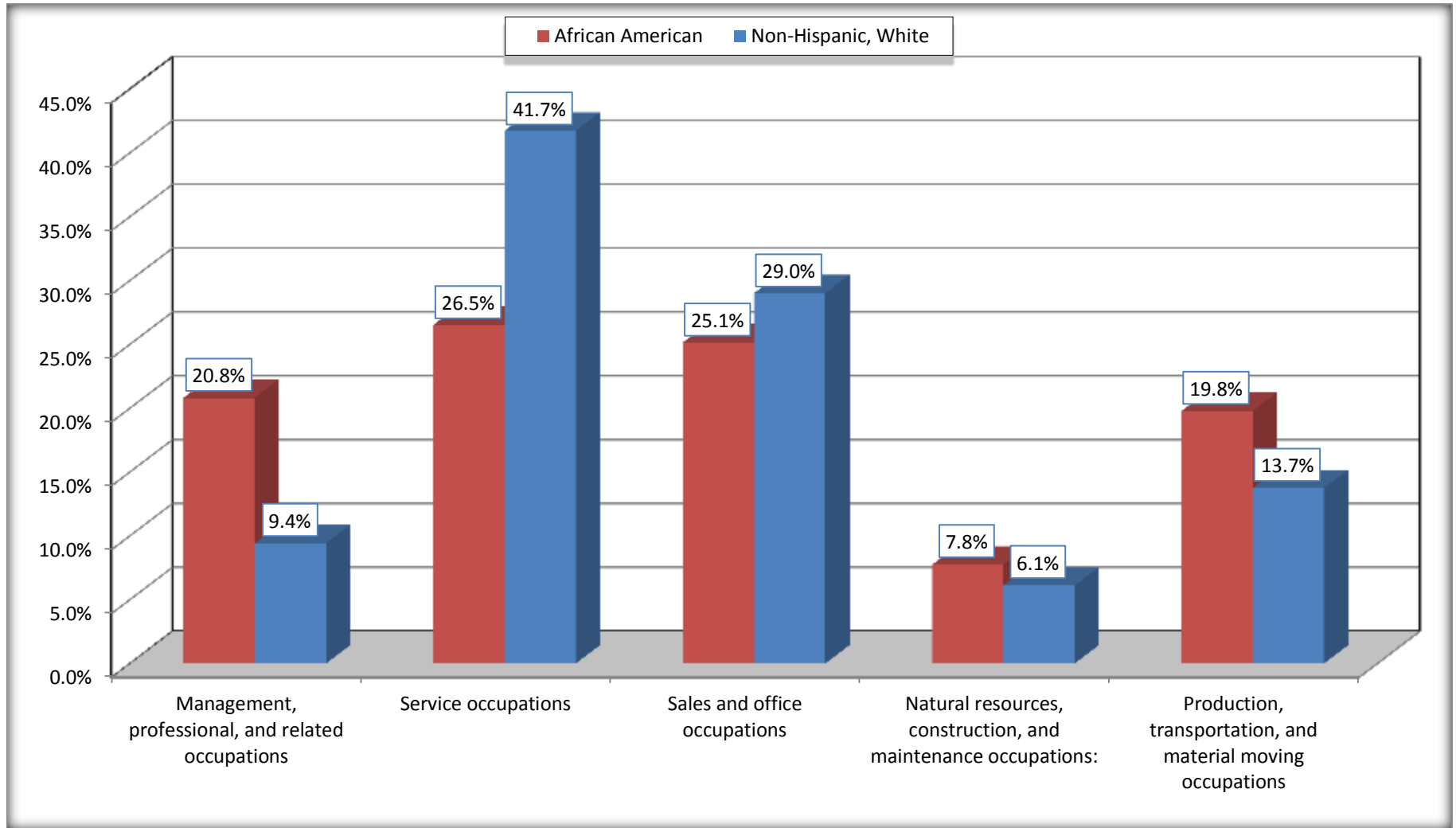
Source: U.S. Census Bureau, 2008-2012 American Community Survey

For information on confidentiality protection, sampling error, nonsampling error, and definitions, see Survey Methodology.

<http://www.census.gov/acs/www/UseData/index.htm>

Occupation for the Civilian Employed 16 Years and Over Population

Harvey city, Illinois



Source: C24010. SEX BY OCCUPATION FOR THE CIVILIAN EMPLOYED POPULATION 16 YEARS AND OVER
Data Set: 2008-2012 American Community Survey 5-Year Estimates

B25003. TENURE - Universe: OCCUPIED HOUSING UNITS

Data Set: 2008-2012 American Community Survey 5-Year Estimates

	Harvey city, Illinois					
	African American	Margin of Error (+/-)	% of AA Total	White, Not Hispanic	Margin of Error (+/-)	% of NHW Total
Total:	6,135	367	100.0%	451	132	100.0%
Owner occupied	3,118	323	50.8%	343	120	76.1%
Renter occupied	3,017	279	49.2%	108	60	23.9%

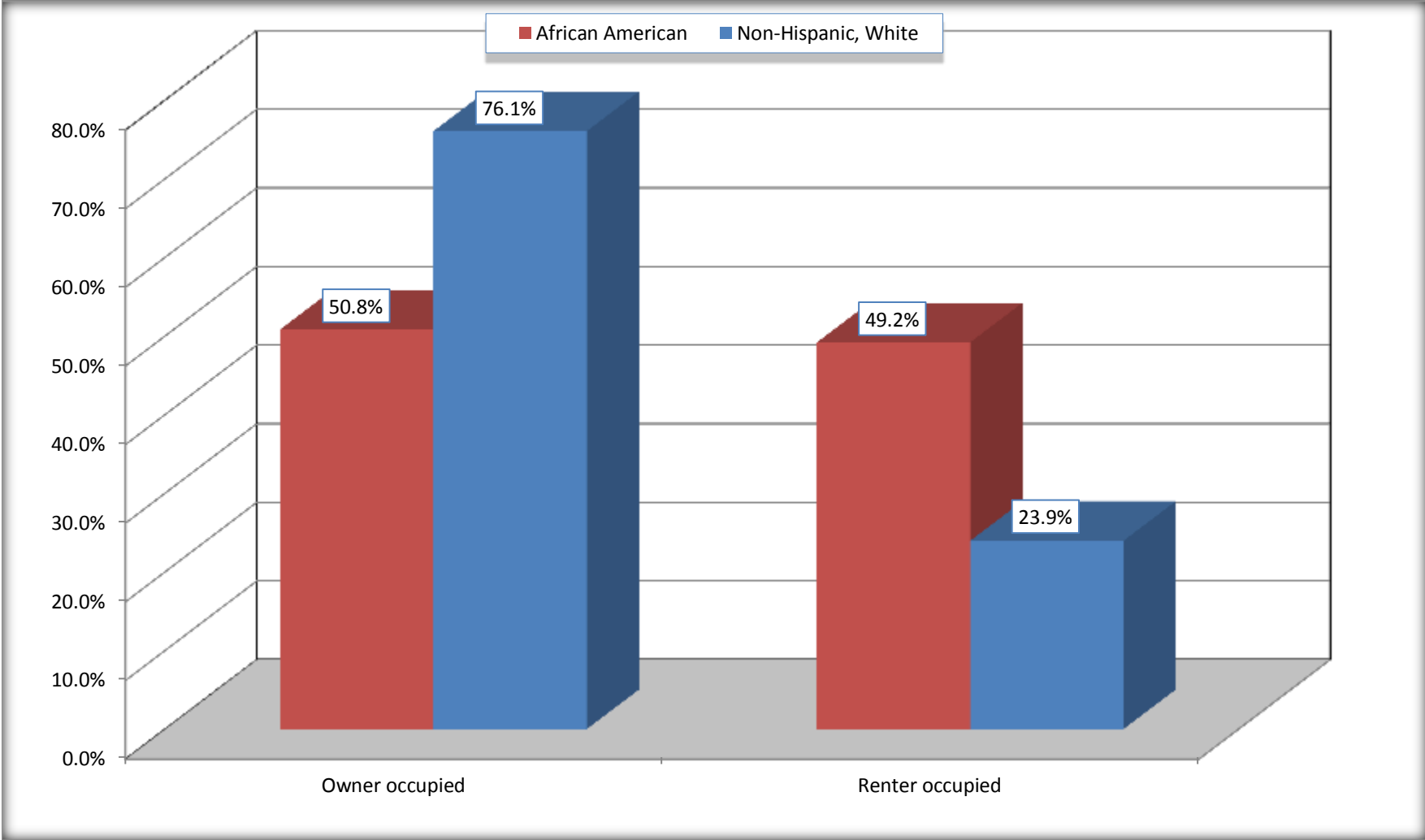
Source: U.S. Census Bureau, 2008-2012 American Community Survey

For information on confidentiality protection, sampling error, nonsampling error, and definitions, see Survey Methodology.

<http://www.census.gov/acs/www/UseData/index.h>

Home Owners and Renters by Household

Harvey city, Illinois



Source: B25003. TENURE - Universe: OCCUPIED HOUSING UNITS
Data Set: 2008-2012 American Community Survey 5-Year Estimates

B25014. OCCUPANTS PER ROOM - Universe: OCCUPIED HOUSING UNITS

Data Set: 2008-2012 American Community Survey 5-Year Estimates

	Harvey city, Illinois					
	African American	Margin of Error (+/-)	% of AA Total	White, Not Hispanic	Margin of Error (+/-)	% of NHW Total
Total:	6,135	367	100.0%	451	132	100.0%
1.00 or less occupants per room	5,723	433	93.3%	451	132	100.0%
1.01 or more occupants per room	412	146	6.7%	0	21	0.0%

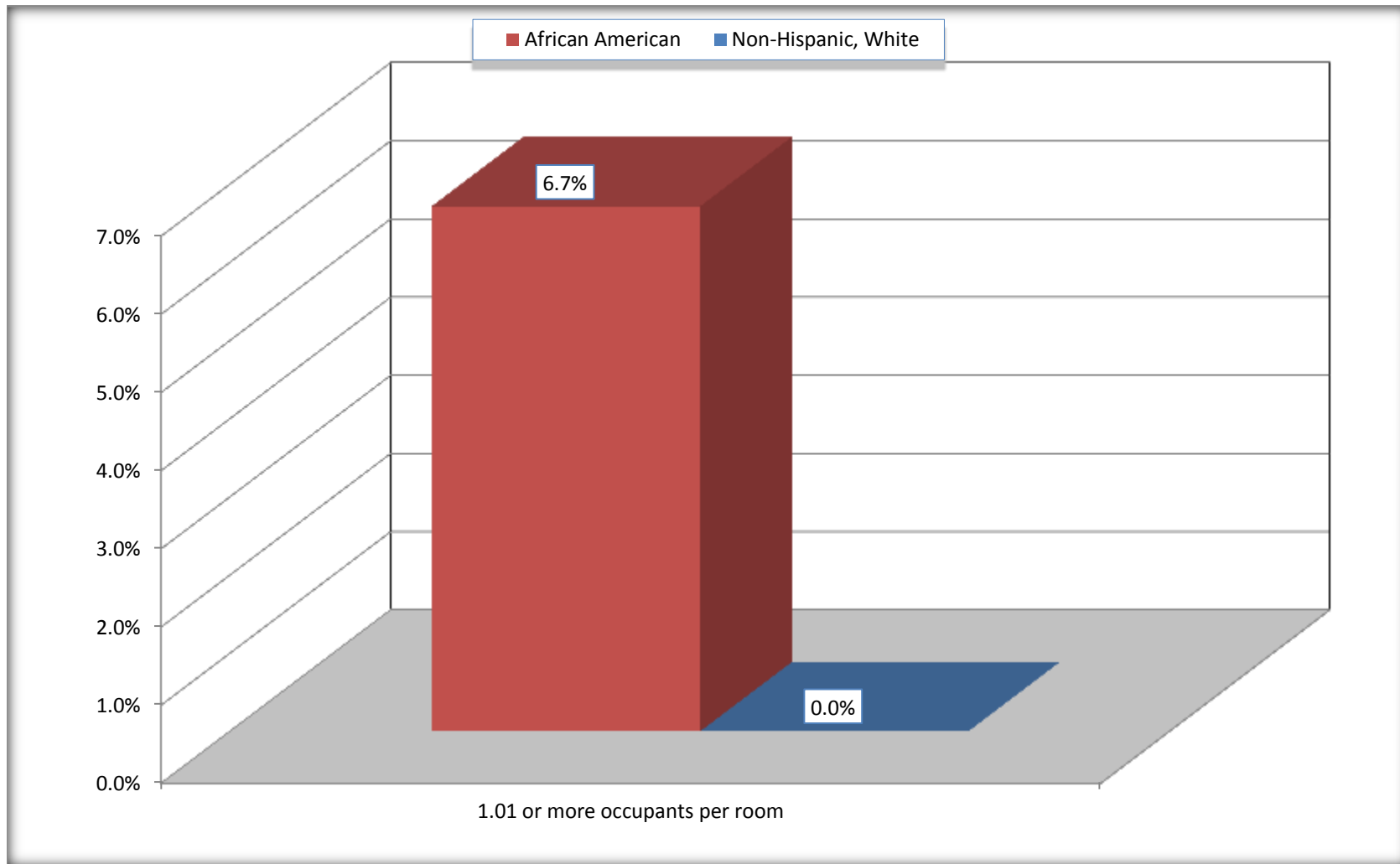
Source: U.S. Census Bureau, 2008-2012 American Community Survey

For information on confidentiality protection, sampling error, nonsampling error, and definitions, see Survey Methodology.

<http://www.census.gov/acs/www/UseData/index.ht>

More than One Person per Room (Crowding) by Household

Harvey city, Illinois



Source: B25014. OCCUPANTS PER ROOM - Universe: OCCUPIED HOUSING UNITS
Data Set: 2008-2012 American Community Survey 5-Year Estimates

B18101. AGE BY DISABILITY STATUS

Data Set: 2008-2012 American Community Survey 5-Year Estimates

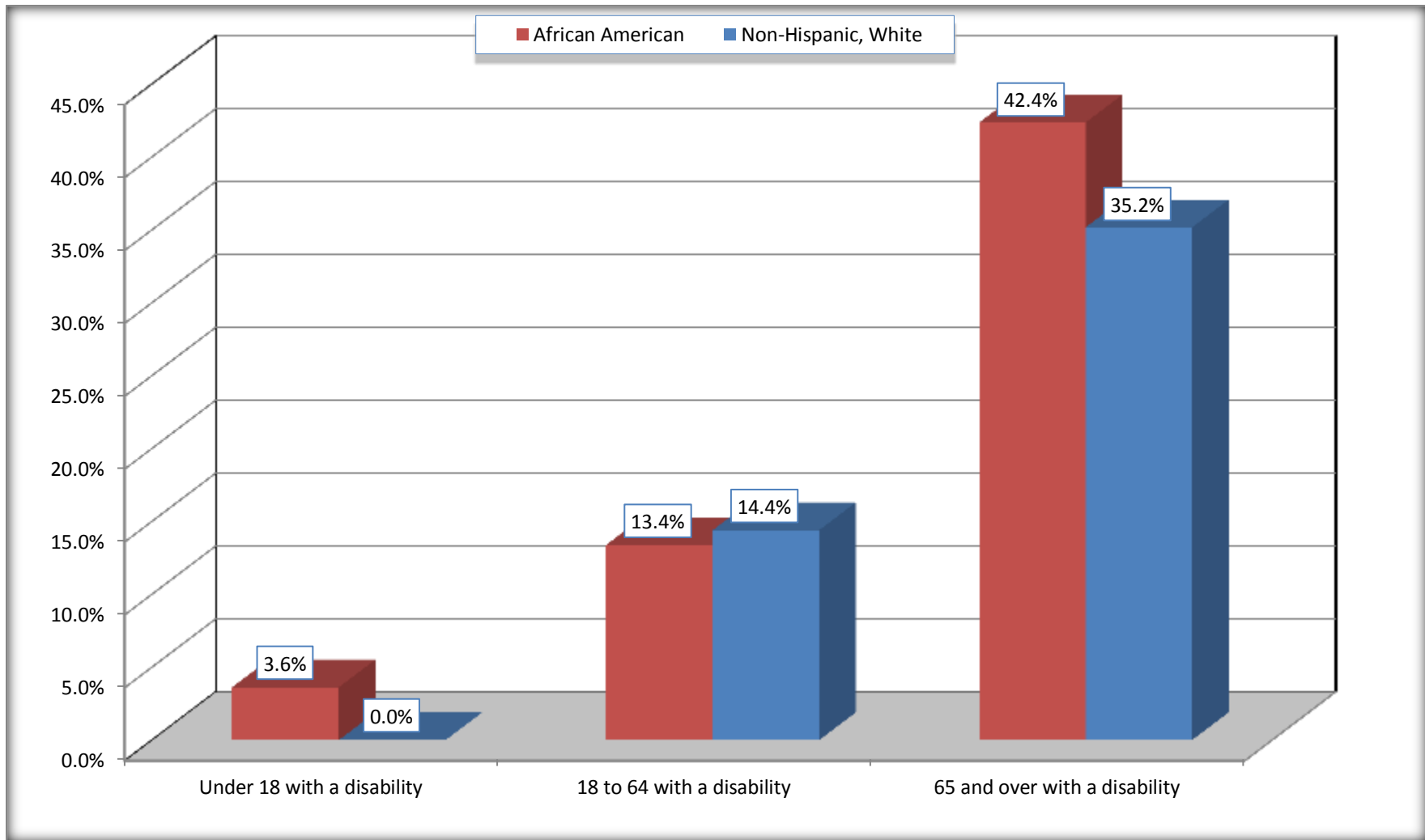
	Harvey city, Illinois					
	African American	Margin of Error (+/-)	% of AA Total	White, Not Hispanic	Margin of Error (+/-)	% of NHW Total
Total:	18,874	815	100.0%	1,262	515	100.0%
Under 18 years:	6,047	722	32.0%	192	21	15.2%
With a disability	219	119	1.2%	0	21	0.0%
No disability	5,828	680	30.9%	192	136	15.2%
18 to 64 years:	10,780	660	57.1%	743	400	58.9%
With a disability	1,442	289	7.6%	107	59	8.5%
No disability	9,338	687	49.5%	636	387	50.4%
65 years and over:	2,047	267	10.8%	327	105	25.9%
With a disability	867	182	4.6%	115	73	9.1%
No disability	1,180	206	6.3%	212	92	16.8%

Source: U.S. Census Bureau, 2008-2012 American Community Survey

For information on confidentiality protection, sampling error, nonsampling error, and definitions, see Survey Methodology.

<http://www.census.gov/acs/www/UseData/index.htm>

Disability by Age Harvey city, Illinois



Source: B18101. AGE BY DISABILITY STATUS
Data Set: 2008-2012 American Community Survey 5-Year Estimates

C27001B. HEALTH INSURANCE COVERAGE STATUS BY AGE

Data Set: 2008-2012 American Community Survey 5-Year Estimates

	Harvey city, Illinois					
	African American	Margin of Error (+/-)	% of AA Total	White, Not Hispanic	Margin of Error (+/-)	% of NHW Total
Total:	18,874	815	100.0%	1,262	515	100.0%
Under 18 years:	6,047	722	32.0%	192	136	15.2%
With health insurance coverage	5,318	760	28.2%	147	100	11.6%
No health insurance coverage	729	346	3.9%	45	71	3.6%
18 to 64 years:	10,780	660	57.1%	743	400	58.9%
With health insurance coverage	6,778	585	35.9%	398	166	31.5%
No health insurance coverage	4,002	616	21.2%	345	282	27.3%
65 years and over:	2,047	267	10.8%	327	105	25.9%
With health insurance coverage	2,047	267	10.8%	305	103	24.2%
No health insurance coverage	0	21	0.0%	22	33	1.7%

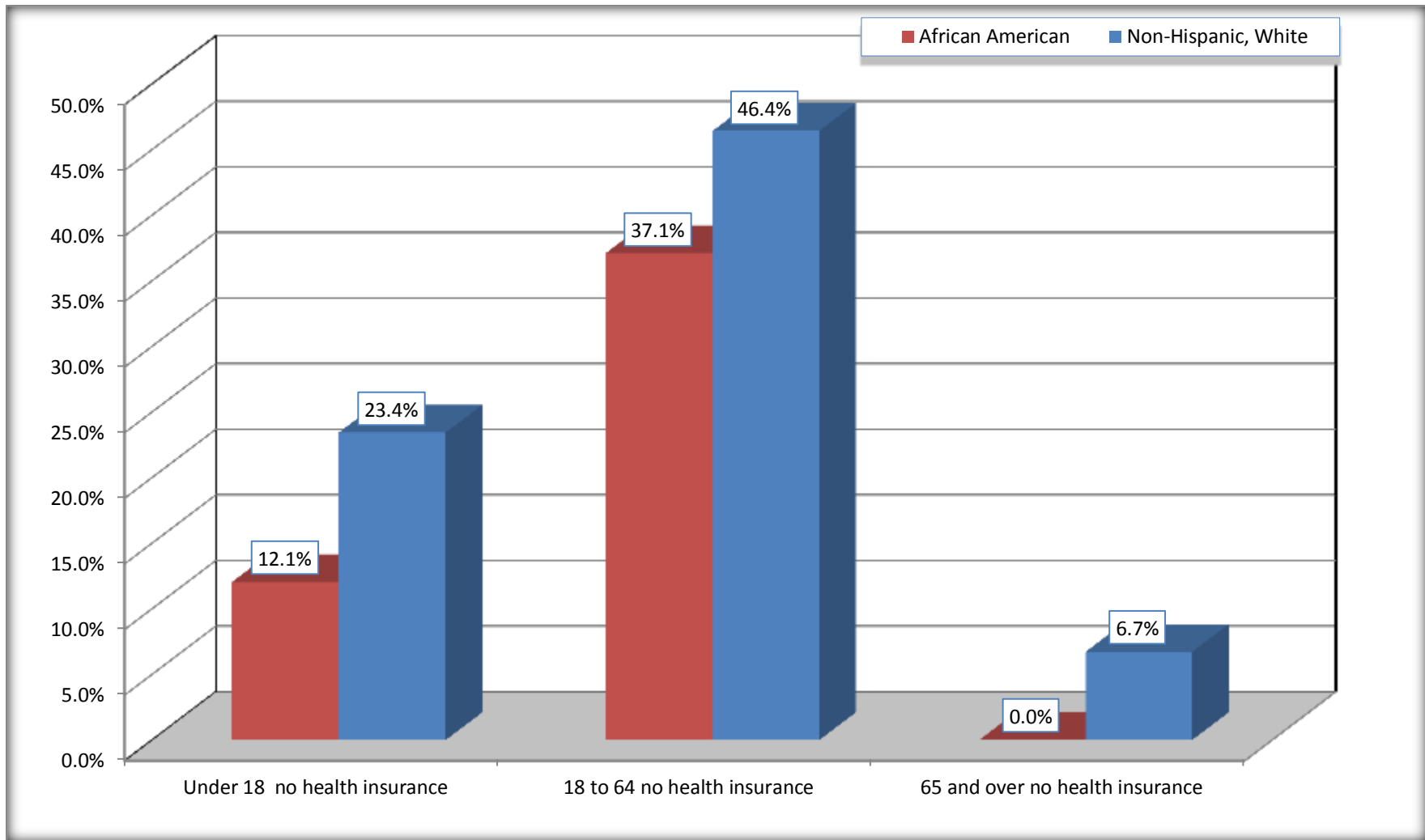
Source: U.S. Census Bureau, 2008-2012 American Community Survey

For information on confidentiality protection, sampling error, nonsampling error, and definitions, see Survey Methodology.

<http://www.census.gov/acs/www/UseData/index.htm>

Lack of Health Insurance Coverage by Age

Harvey city, Illinois



Source: C27001B. HEALTH INSURANCE COVERAGE STATUS BY AGE
Data Set: 2008-2012 American Community Survey 5-Year Estimates