

Selected Socio-Economic Data

Waycross city, Georgia

African American and White, Not Hispanic

Data Set: 2008-2012 American Community Survey 5-Year Estimates

www.fairvote2020.org

www.fairdata2000.com

[29-Dec-13](#)

C02003.DETAILED RACE - Universe: TOTAL POPULATION

Data Set: 2008-2012 American Community Survey 5-Year Estimates

	Waycross city, Georgia		
	Population	Margin of Error (+/-)	% of Total
Total:	14,576	35	100.0%
Population of one race:	14,388	122	98.7%
White	5,802	434	39.8%
Black or African American	8,184	429	56.1%
American Indian and Alaska Native	48	63	0.3%
Asian alone	26	34	0.2%
Native Hawaiian and Other Pacific Islander	0	21	0.0%
Some other race	328	232	2.3%
Population of two or more races:	188	117	1.3%
Two races including Some other race	0	21	0.0%
Two races excluding Some other race, and three or more races	188	117	1.3%
Population of two races:	188	117	1.3%
White; Black or African American	96	75	0.7%
White; American Indian and Alaska Native	35	44	0.2%
White; Asian	4	7	0.0%
Black or African American; American Indian and Alaska Native	53	79	0.4%
All other two race combinations	0	21	0.0%
Population of three races	0	21	0.0%
Population of four or more races	0	21	0.0%

Note: Hispanics may be of any race. See Table B03002 and chart.

Source: U.S. Census Bureau, 2008-2012 American Community Survey

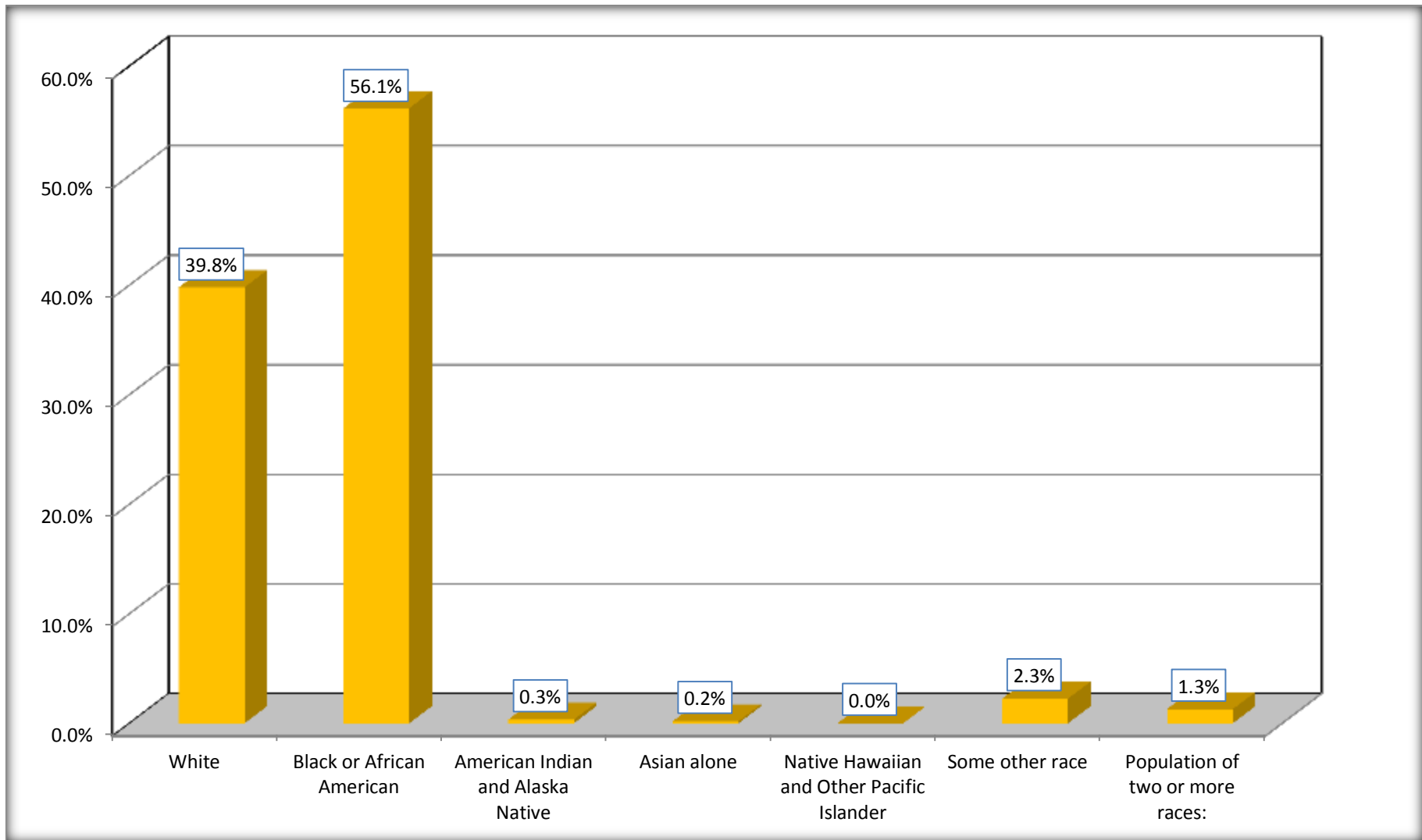
Although the American Community Survey (ACS) produces population, demographic and housing unit estimates, it is the Census Bureau's Population Estimates Program that produces and disseminates the official estimates of the population for the nation, states, counties, cities and towns and estimates of housing units for states and counties.

For information on confidentiality protection, sampling error, nonsampling error, and definitions, see Survey Methodology.

<http://www.census.gov/acs/www/UseData/index.htm>

Population by Race

Waycross city, Georgia



Source: C02003.DETAILED RACE - Universe: TOTAL POPULATION
Data Set: 2008-2012 American Community Survey 5-Year Estimates

B03002. HISPANIC OR LATINO ORIGIN BY RACE - Universe: TOTAL POPULATION

Data Set: 2008-2012 American Community Survey 5-Year Estimates

	Waycross city, Georgia		
	Population	Margin of Error (+/-)	% of Total
Total:	14,576	35	100.0%
Not Hispanic or Latino:	13,948	210	95.7%
White alone	5,538	439	38.0%
Black or African American alone	8,148	425	55.9%
American Indian and Alaska Native alone	48	63	0.3%
Asian alone	26	34	0.2%
Native Hawaiian and Other Pacific Islander alone	0	21	0.0%
Some other race alone	0	21	0.0%
Two or more races:	188	117	1.3%
Two races including Some other race	0	21	0.0%
Two races excluding Some other race, and three or more races	188	117	1.3%
Hispanic or Latino	628	213	4.3%

Source: U.S. Census Bureau, 2008-2012 American Community Survey

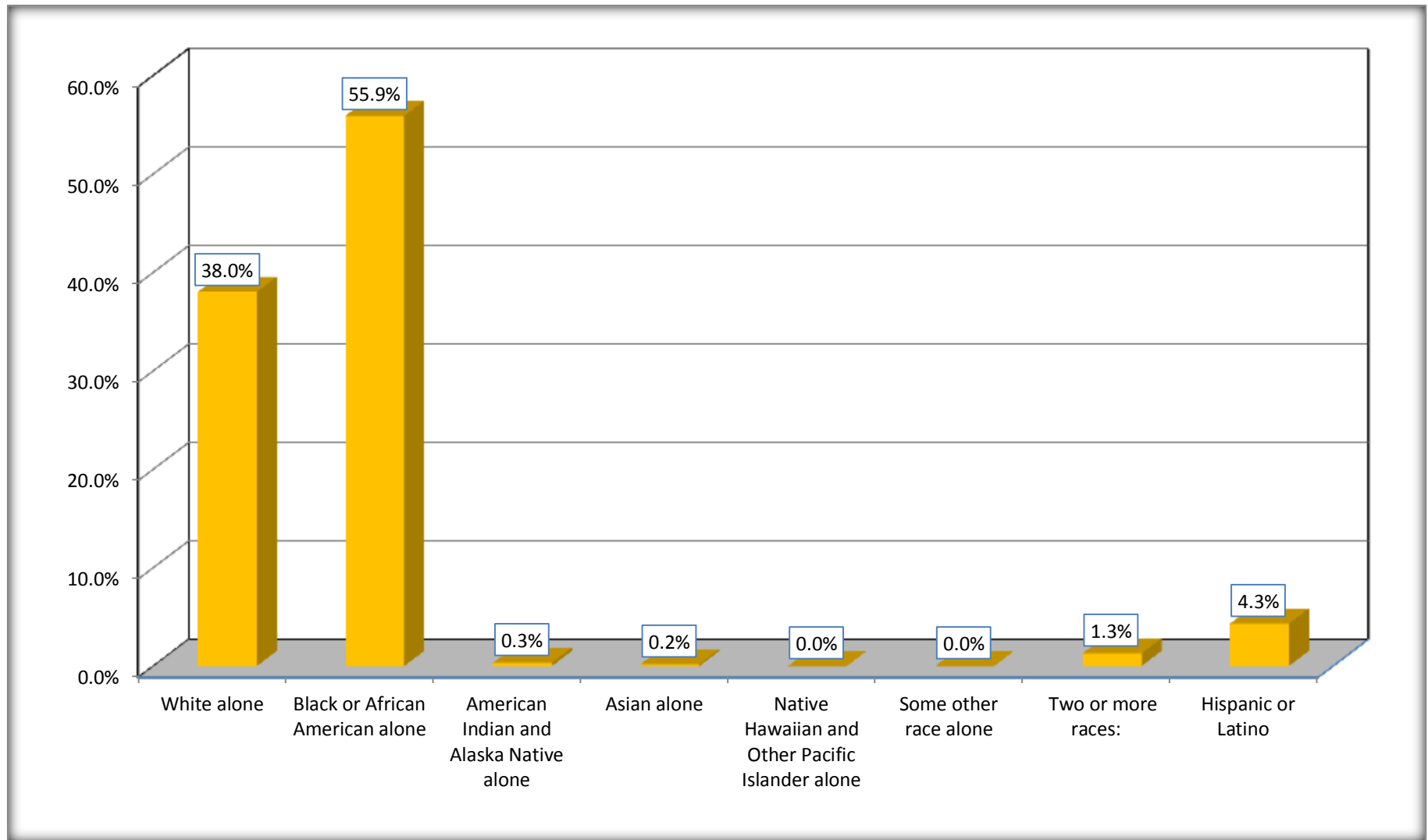
Although the American Community Survey (ACS) produces population, demographic and housing unit estimates, it is the Census Bureau's Population Estimates Program that produces and disseminates the official estimates of the population for the nation, states, counties, cities and towns and estimates of housing units for states and counties.

For information on confidentiality protection, sampling error, nonsampling error, and definitions, see Survey Methodology.

<http://www.census.gov/acs/www/UseData/index.htm>

Non-Hispanic by Race and Hispanic Population

Waycross city, Georgia



Source: B03002. HISPANIC OR LATINO ORIGIN BY RACE - Universe: TOTAL POPULATION
Data Set: 2008-2012 American Community Survey 5-Year Estimates

B03002. HISPANIC OR LATINO ORIGIN BY RACE

Data Set: 2008-2012 American Community Survey 5-Year Estimates

	Waycross city, Georgia		
	Population	Margin of Error (+/-)	% of Total
Hispanic or Latino:	628	213	100.0%
White alone	264	240	42.0%
Black or African American alone	36	36	5.7%
American Indian and Alaska Native alone	0	21	0.0%
Asian alone	0	21	0.0%
Native Hawaiian and Other Pacific Islander alone	0	21	0.0%
Some other race alone	328	232	52.2%
Two or more races:	0	21	0.0%
Two races including Some other race	0	21	0.0%
Two races excluding Some other race, and three or more races	0	21	0.0%

Source: U.S. Census Bureau, 2008-2012 American Community Survey

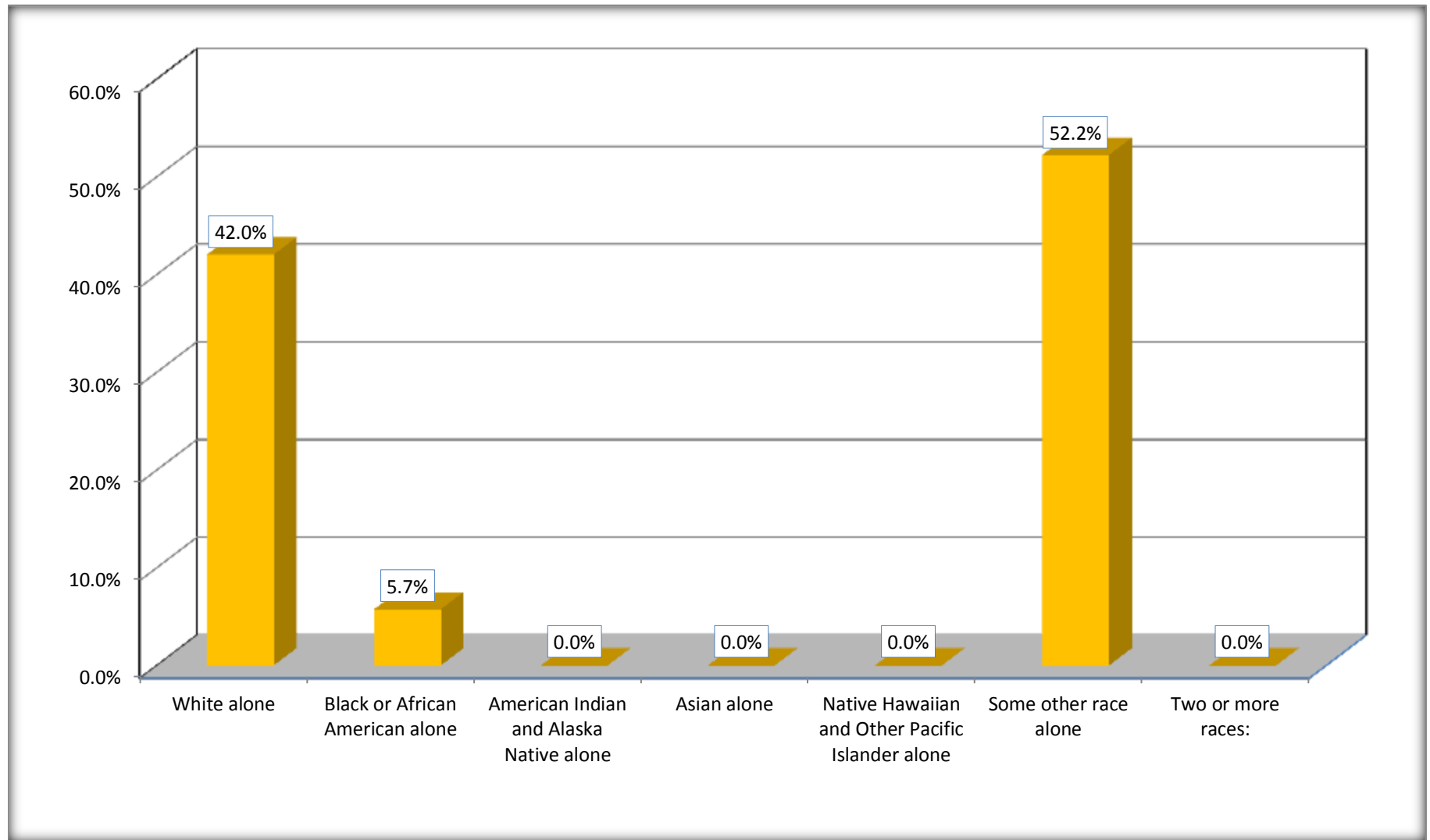
Although the American Community Survey (ACS) produces population, demographic and housing unit estimates, it is the Census Bureau's Population Estimates Program that produces and disseminates the official estimates of the population for the nation, states, counties, cities and towns and estimates of housing units for states and counties.

For information on confidentiality protection, sampling error, nonsampling error, and definitions, see Survey Methodology.

<http://www.census.gov/acs/www/UseData/index.htm>

Hispanic or Latino Origin by Race

Waycross city, Georgia



Source: B03002. HISPANIC OR LATINO ORIGIN BY RACE
Data Set: 2008-2012 American Community Survey 5-Year Estimates

B01001. SEX BY AGE

Data Set: 2008-2012 American Community Survey 5-Year Estimates

	Waycross city, Georgia					
	African American	Margin of Error (+/-)	% of AA Total	White, Not Hispanic	Margin of Error (+/-)	% of NHW Total
Total:	8,184	429	100.0%	5,538	439	100.0%
Under 18 years	2,564	NC	31.3%	735	NC	13.3%
18 to 64 years	4,628	NC	56.5%	3,016	NC	54.5%
65 years and over	992	NC	12.1%	1,787	NC	32.3%
Male:	3,585	247	43.8%	2,427	389	43.8%
Under 18 years	1,305	NC	15.9%	410	NC	7.4%
18 to 64 years	1,921	NC	23.5%	1,456	NC	26.3%
65 years and over	359	NC	4.4%	561	NC	10.1%
Female:	4,599	277	56.2%	3,111	412	56.2%
Under 18 years	1,259	NC	15.4%	325	NC	5.9%
18 to 64 years	2,707	NC	33.1%	1,560	NC	28.2%
65 years and over	633	NC	7.7%	1,226	NC	22.1%

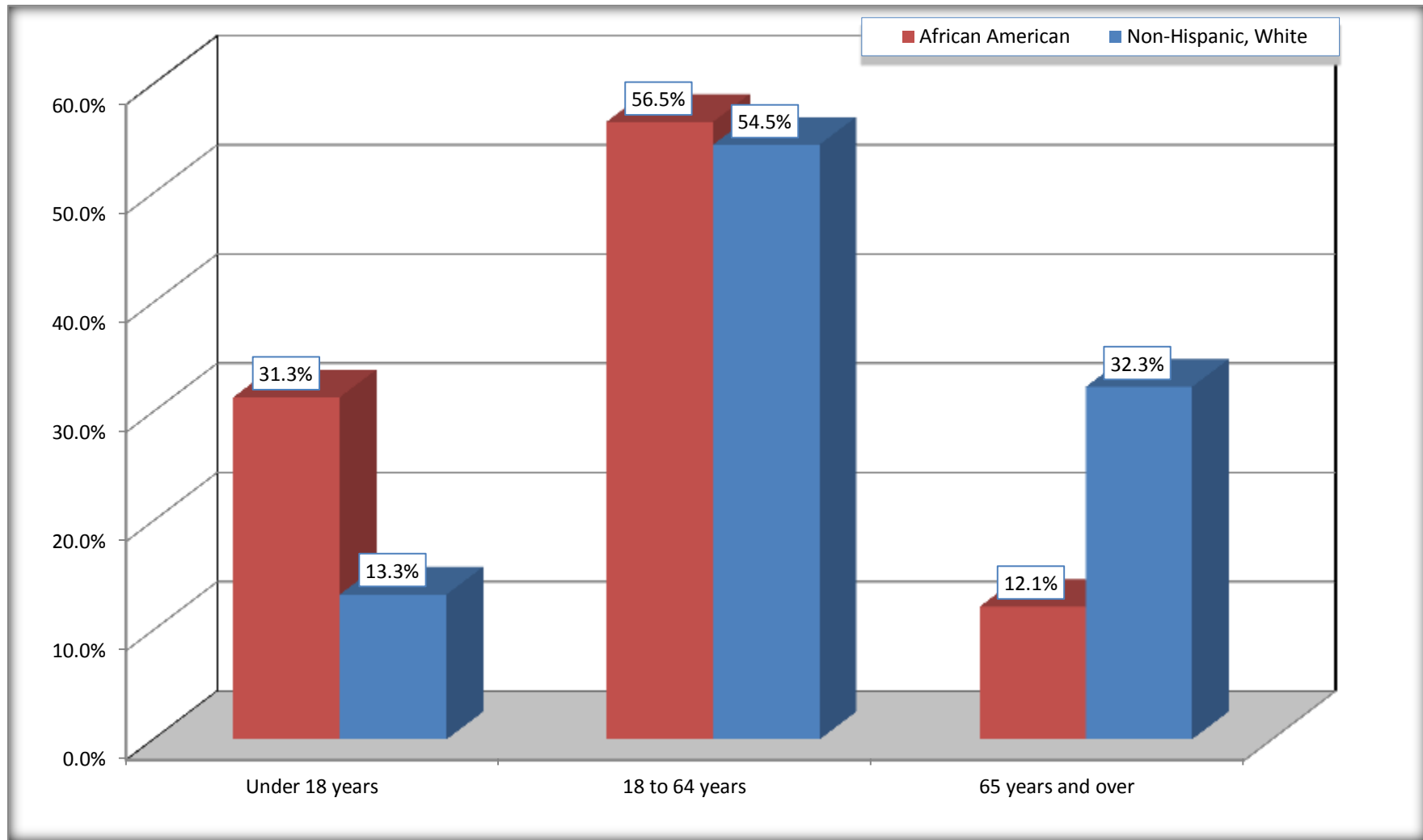
Source: U.S. Census Bureau, 2008-2012 American Community Survey

Although the American Community Survey (ACS) produces population, demographic and housing unit estimates, it is the Census Bureau's Population Estimates Program that produces and disseminates the official estimates of the population for the nation, states, counties, cities and towns and estimates of housing units for states and counties.

For information on confidentiality protection, sampling error, nonsampling error, and definitions, see Survey Methodology.
<http://www.census.gov/acs/www/UseData/index.htm>

Population by Age

Waycross city, Georgia



Source: B01001. SEX BY AGE
Data Set: 2008-2012 American Community Survey 5-Year Estimates

B05003. SEX BY AGE BY CITIZENSHIP STATUS

Data Set: 2008-2012 American Community Survey 5-Year Estimates

	Waycross city, Georgia					
	African American	Margin of Error (+/-)	% of AA Total by Age	White, Not Hispanic	Margin of Error (+/-)	% of NHW Total by Age
Total:	8,184	429	100.0%	5,538	439	100.0%
Under 18 years:	2,564	NC	100.0%	735	NC	100.0%
Native	2,542	NC	99.1%	684	NC	93.1%
Foreign born:	22	NC	0.9%	51	NC	6.9%
Naturalized U.S. citizen	18	NC	0.7%	51	NC	6.9%
Not a U.S. citizen	4	NC	0.2%	0	NC	0.0%
18 years and over:	5,620	NC	100.0%	4,803	NC	100.0%
Native	5,582	NC	99.3%	4,739	NC	98.7%
Foreign born:	38	NC	0.7%	64	NC	1.3%
Naturalized U.S. citizen	24	NC	0.4%	16	NC	0.3%
Not a U.S. citizen	14	NC	0.2%	48	NC	1.0%
Male:	3,585	247	43.8%	2,427	312	43.8%
Under 18 years:	1,305	131	100.0%	410	178	100.0%
Native	1,287	135	98.6%	386	176	94.1%
Foreign born:	18	28	1.4%	24	36	5.9%
Naturalized U.S. citizen	18	28	1.4%	24	36	5.9%
Not a U.S. citizen	0	21	0.0%	0	21	0.0%
18 years and over:	2,280	193	100.0%	2,017	235	100.0%
Native	2,264	194	99.3%	2,017	235	100.0%
Foreign born:	16	21	0.7%	0	21	0.0%
Naturalized U.S. citizen	3	6	0.1%	0	21	0.0%
Not a U.S. citizen	13	21	0.6%	0	21	0.0%

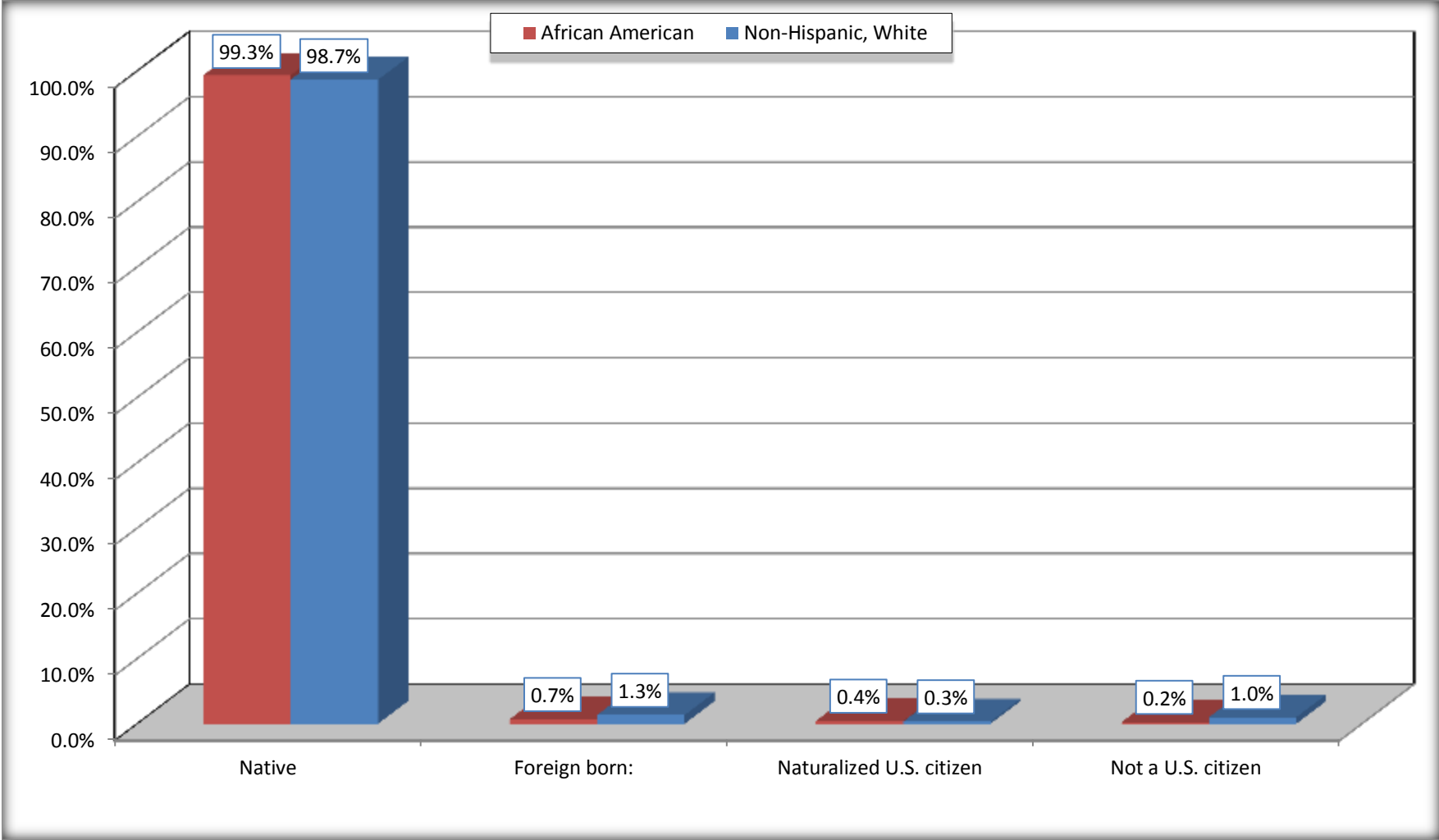
	Waycross city, Georgia					
	African American	Margin of Error (+/-)	% of AA by Age	White, Not Hispanic	Margin of Error (+/-)	% of NHW by Age
Female:	4,599	277	56.2%	3,111	307	56.2%
Under 18 years:	1,259	180	100.0%	325	137	100.0%
Native	1,255	180	99.7%	298	135	91.7%
Foreign born:	4	7	0.3%	27	39	8.3%
Naturalized U.S. citizen	0	21	0.0%	27	39	8.3%
Not a U.S. citizen	4	7	0.3%	0	21	0.0%
18 years and over:	3,340	143	100.0%	2,786	286	100.0%
Native	3,318	142	99.3%	2,722	296	97.7%
Foreign born:	22	32	0.7%	64	79	2.3%
Naturalized U.S. citizen	21	32	0.6%	16	24	0.6%
Not a U.S. citizen	1	3	0.0%	48	73	1.7%

Source: U.S. Census Bureau, 2008-2012 American Community Survey

For information on confidentiality protection, sampling error, nonsampling error, and definitions, see Survey Methodology.
<http://www.census.gov/acs/www/UseData/index.htm>

Citizenship Status of Voting Age Population (18 and Over)

Waycross city, Georgia



Source: B05003. SEX BY AGE BY CITIZENSHIP STATUS
Data Set: 2008-2012 American Community Survey 5-Year Estimates

**B07004. GEOGRAPHICAL MOBILITY IN THE PAST YEAR BY RACE FOR CURRENT RESIDENCE IN THE UNITED STATES - Universe:
POPULATION 1 YEAR AND OVER**

Data Set: 2008-2012 American Community Survey 5-Year Estimates

	Waycross city, Georgia					
	African American	Margin of Error (+/-)	% of AA Total	White, Not Hispanic	Margin of Error (+/-)	% of NHW Total
Total:	8,052	433	100.0%	5,479	431	100.0%
Same house 1 year ago	6,377	553	79.2%	4,611	456	84.2%
Moved within same county	1,077	373	13.4%	627	245	11.4%
Moved from different county within same state	250	167	3.1%	164	82	3.0%
Moved from different state	338	191	4.2%	77	72	1.4%
Moved from abroad	10	18	0.1%	0	21	0.0%

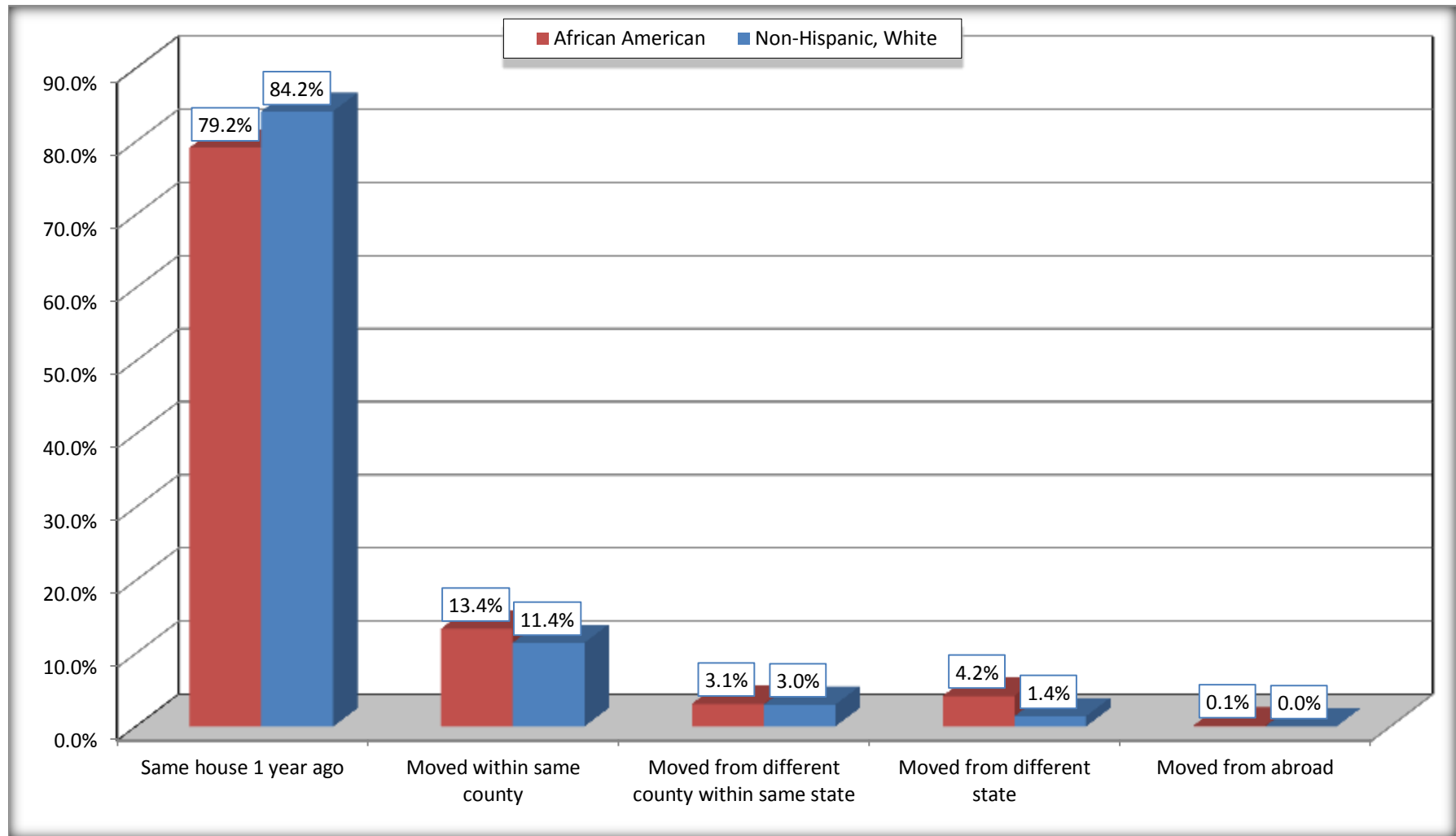
Source: U.S. Census Bureau, 2008-2012 American Community Survey

For information on confidentiality protection, sampling error, nonsampling error, and definitions, see Survey Methodology.

<http://www.census.gov/acs/www/UseData/index.htm>

Geographical Mobility in the Past Year (Population 1 Year and Over)

Waycross city, Georgia



Source: B07004. GEOGRAPHICAL MOBILITY IN THE PAST YEAR BY RACE FOR CURRENT RESIDENCE IN THE UNITED STATES - Universe: POPULATION 1 YEAR AND OVER

Data Set: 2008-2012 American Community Survey 5-Year Estimates

B08105. MEANS OF TRANSPORTATION TO WORK - Universe: WORKERS 16 YEARS AND OVER

Data Set: 2008-2012 American Community Survey 5-Year Estimates

	Waycross city, Georgia					
	African American	Margin of Error (+/-)	% of AA Total	White, Not Hispanic	Margin of Error (+/-)	% of NHW Total
Total:	2526	295	100.0%	1898	299	100.0%
Car, truck, or van - drove alone	1817	278	71.9%	1433	278	75.5%
Car, truck, or van - carpooled	487	188	19.3%	263	150	13.9%
Public transportation (excluding taxicab)	5	7	0.2%	0	21	0.0%
Walked	126	101	5.0%	64	88	3.4%
Taxicab, motorcycle, bicycle, or other means	41	43	1.6%	26	40	1.4%
Worked at home	50	55	2.0%	112	98	5.9%

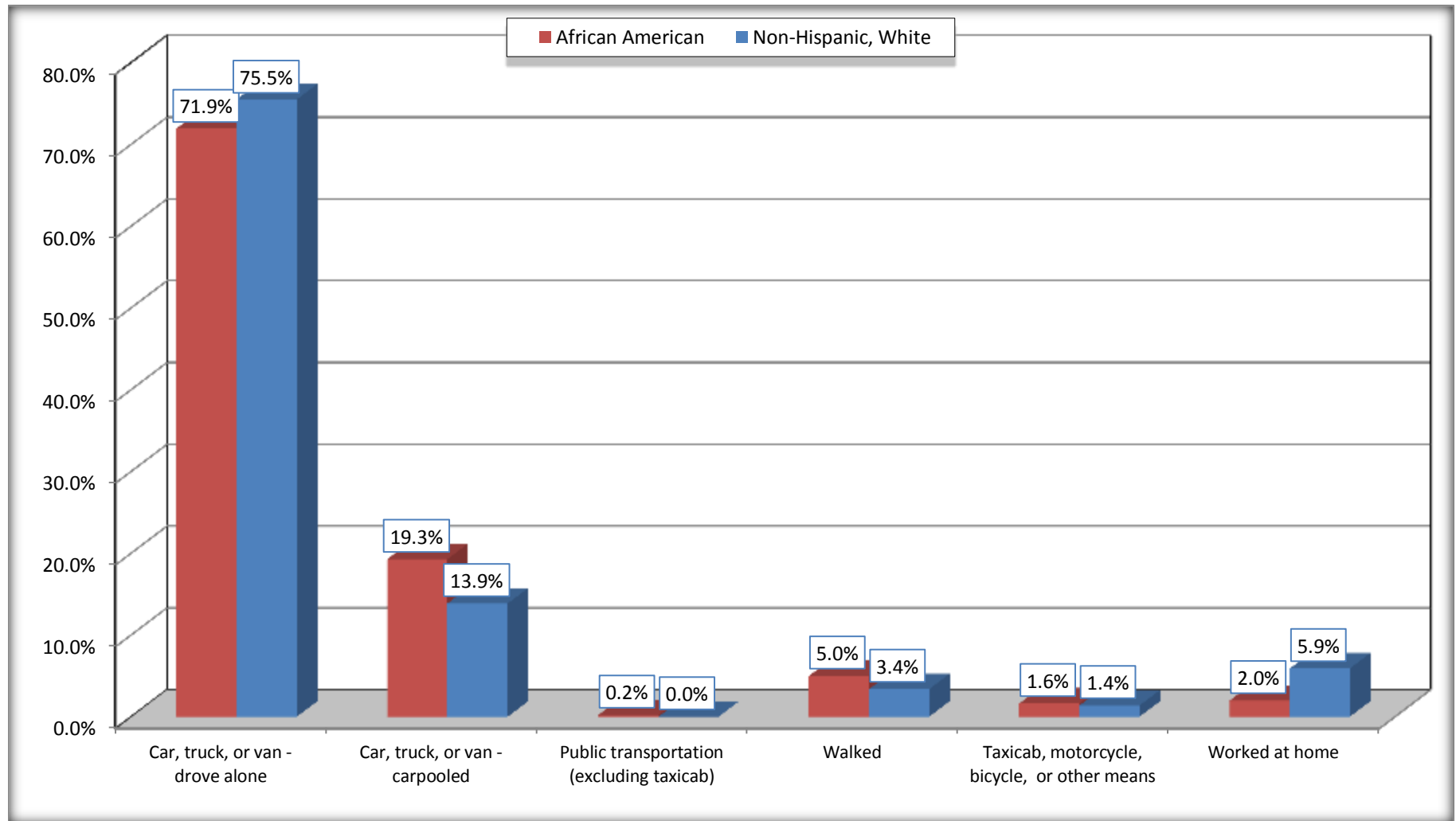
Source: U.S. Census Bureau, 2008-2012 American Community Survey

For information on confidentiality protection, sampling error, nonsampling error, and definitions, see Survey Methodology.

<http://www.census.gov/acs/www/UseData/index.htm>

Means of Transportation to Work (Workers 16 Years and Over)

Waycross city, Georgia



Source: B08105. MEANS OF TRANSPORTATION TO WORK - Universe: WORKERS 16 YEARS AND OVER
Data Set: 2008-2012 American Community Survey 5-Year Estimates

B11002. HOUSEHOLD TYPE BY RELATIVES AND NONRELATIVES FOR POPULATION IN HOUSEHOLDS

Data Set: 2008-2012 American Community Survey 5-Year Estimates

	Waycross city, Georgia					
	African American	Margin of Error (+/-)	% of AA Total	White, Not Hispanic	Margin of Error (+/-)	% of NHW Total
Total:	7968	450	100.0%	5264	489	100.0%
In family households	6458	463	81.0%	3850	547	73.1%
In nonfamily households	1510	290	19.0%	1414	302	26.9%

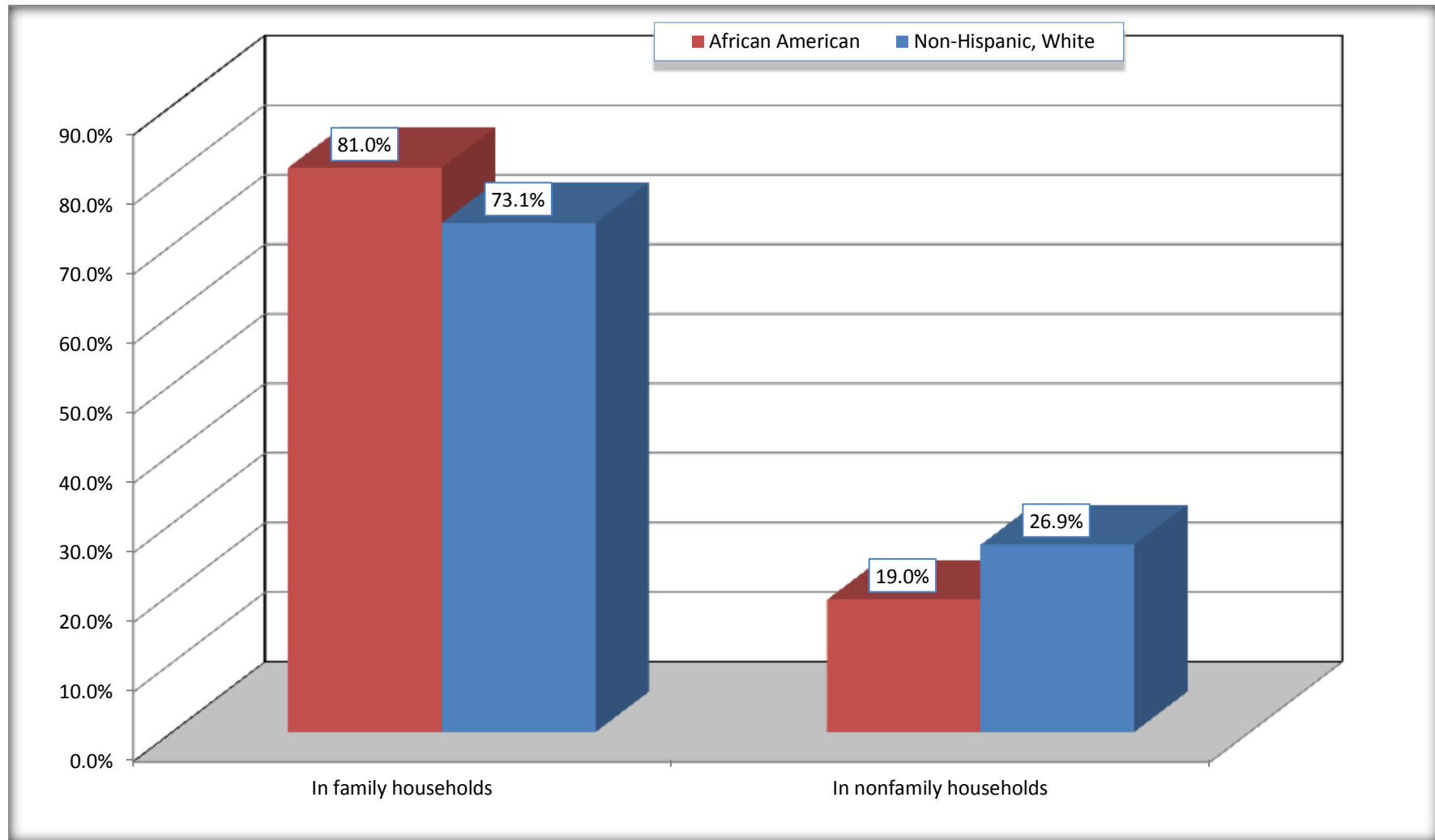
Source: U.S. Census Bureau, 2008-2012 American Community Survey

For information on confidentiality protection, sampling error, nonsampling error, and definitions, see Survey Methodology.

<http://www.census.gov/acs/www/UseData/index.htm>

Household Type for Population in Households

Waycross city, Georgia



Source: B11002. HOUSEHOLD TYPE BY RELATIVES AND NONRELATIVES FOR POPULATION IN HOUSEHOLDS
Data Set: 2008-2012 American Community Survey 5-Year Estimates

B12002. MARITAL STATUS FOR THE POPULATION 15 YEARS AND OVER

Data Set: 2008-2012 American Community Survey 5-Year Estimates

	Waycross city, Georgia					
	African American	Margin of Error (+/-)	% of AA Total	White, Not Hispanic	Margin of Error (+/-)	% of NHW Total
Total:	6,016	293	100.0%	4,866	387	100.0%
Never married	2,535	NC	42.1%	882	NC	18.1%
Now married (except separated)	1,677	NC	27.9%	2,346	NC	48.2%
Separated	303	NC	5.0%	52	NC	1.1%
Widowed	588	NC	9.8%	814	NC	16.7%
Divorced	913	NC	15.2%	772	NC	15.9%
Male:	2,506	192	41.7%	2,080	239	42.7%
Never married	1,094	149	18.2%	515	185	10.6%
Now married (except separated)	799	133	13.3%	1,162	186	23.9%
Separated	153	88	2.5%	22	25	0.5%
Widowed	105	64	1.7%	68	46	1.4%
Divorced	355	111	5.9%	313	125	6.4%
Female:	3,510	175	58.3%	2,786	286	57.3%
Never married	1,441	168	24.0%	367	174	7.5%
Now married (except separated)	878	173	14.6%	1,184	196	24.3%
Separated	150	66	2.5%	30	30	0.6%
Widowed	483	121	8.0%	746	190	15.3%
Divorced	558	146	9.3%	459	170	9.4%

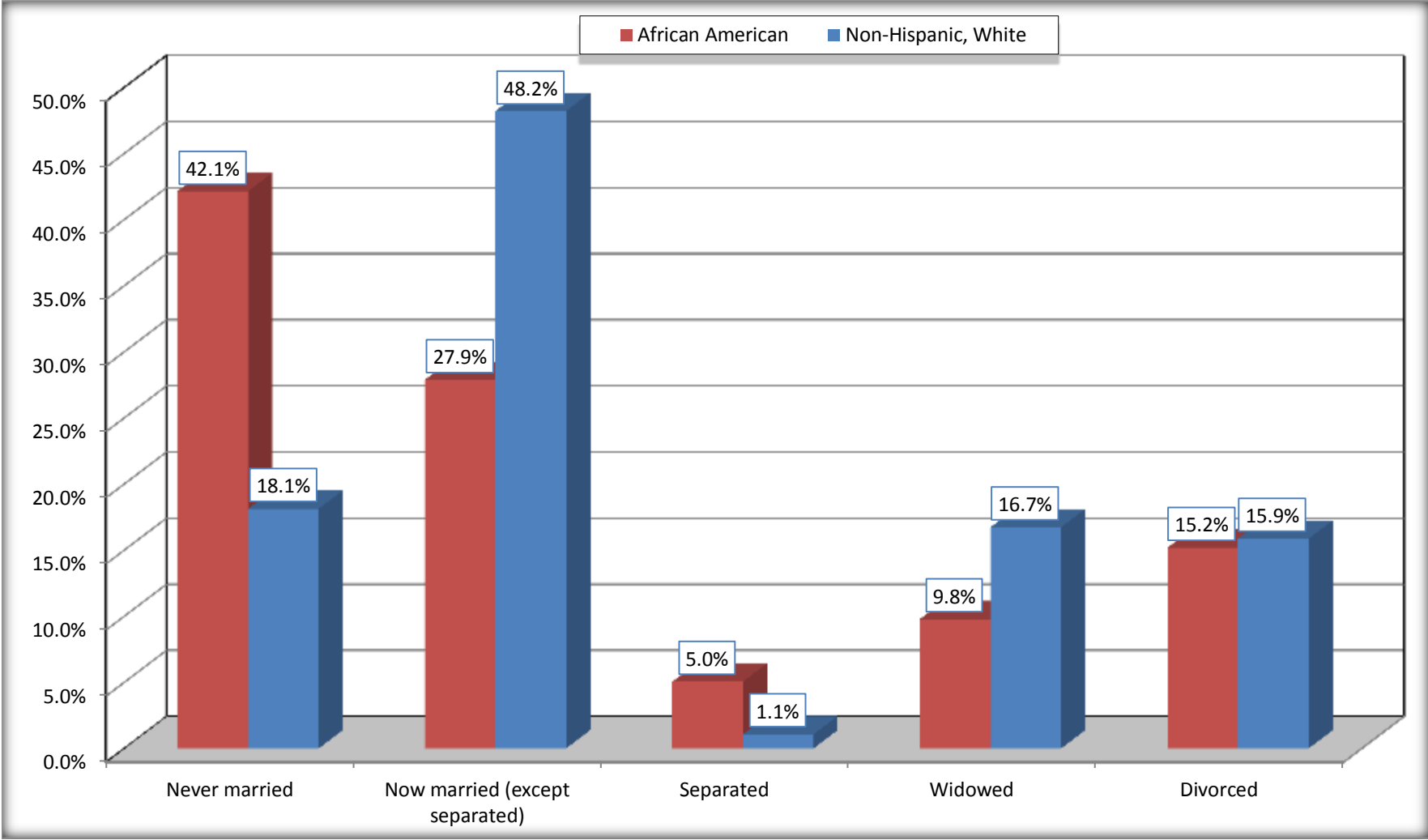
Source: U.S. Census Bureau, 2008-2012 American Community Survey

For information on confidentiality protection, sampling error, nonsampling error, and definitions, see Survey Methodology.

<http://www.census.gov/acs/www/UseData/index.htm>

Marital Status for the Population 15 Years and Over

Waycross city, Georgia



Source: B12002. MARITAL STATUS FOR THE POPULATION 15 YEARS AND OVER
Data Set: 2008-2012 American Community Survey 5-Year Estimates

C15002. SEX BY EDUCATIONAL ATTAINMENT FOR THE POPULATION 25 YEARS AND OVER

Data Set: 2008-2012 American Community Survey 5-Year Estimates

	Waycross city, Georgia					
	African American	Margin of Error (+/-)	% of AA Total	White, Not Hispanic	Margin of Error (+/-)	% of NHW Total
Total:	4,692	222	100.0%	4,459	397	100.0%
Less than high school diploma	965	NC	20.6%	724	NC	16.2%
High school graduate, GED, or alternative	2,199	NC	46.9%	1,627	NC	36.5%
Some college or associate's degree	1,042	NC	22.2%	1,138	NC	25.5%
Bachelor's degree or higher	486	NC	10.4%	970	NC	21.8%
Male:	1,912	157	40.8%	1,786	218	40.1%
Less than high school diploma	472	124	10.1%	297	115	6.7%
High school graduate, GED, or alternative	955	172	20.4%	595	159	13.3%
Some college or associate's degree	409	133	8.7%	419	130	9.4%
Bachelor's degree or higher	76	55	1.6%	475	167	10.7%
Female:	2,780	142	59.2%	2,673	287	59.9%
Less than high school diploma	493	114	10.5%	427	150	9.6%
High school graduate, GED, or alternative	1,244	206	26.5%	1,032	214	23.1%
Some college or associate's degree	633	148	13.5%	719	197	16.1%
Bachelor's degree or higher	410	147	8.7%	495	146	11.1%

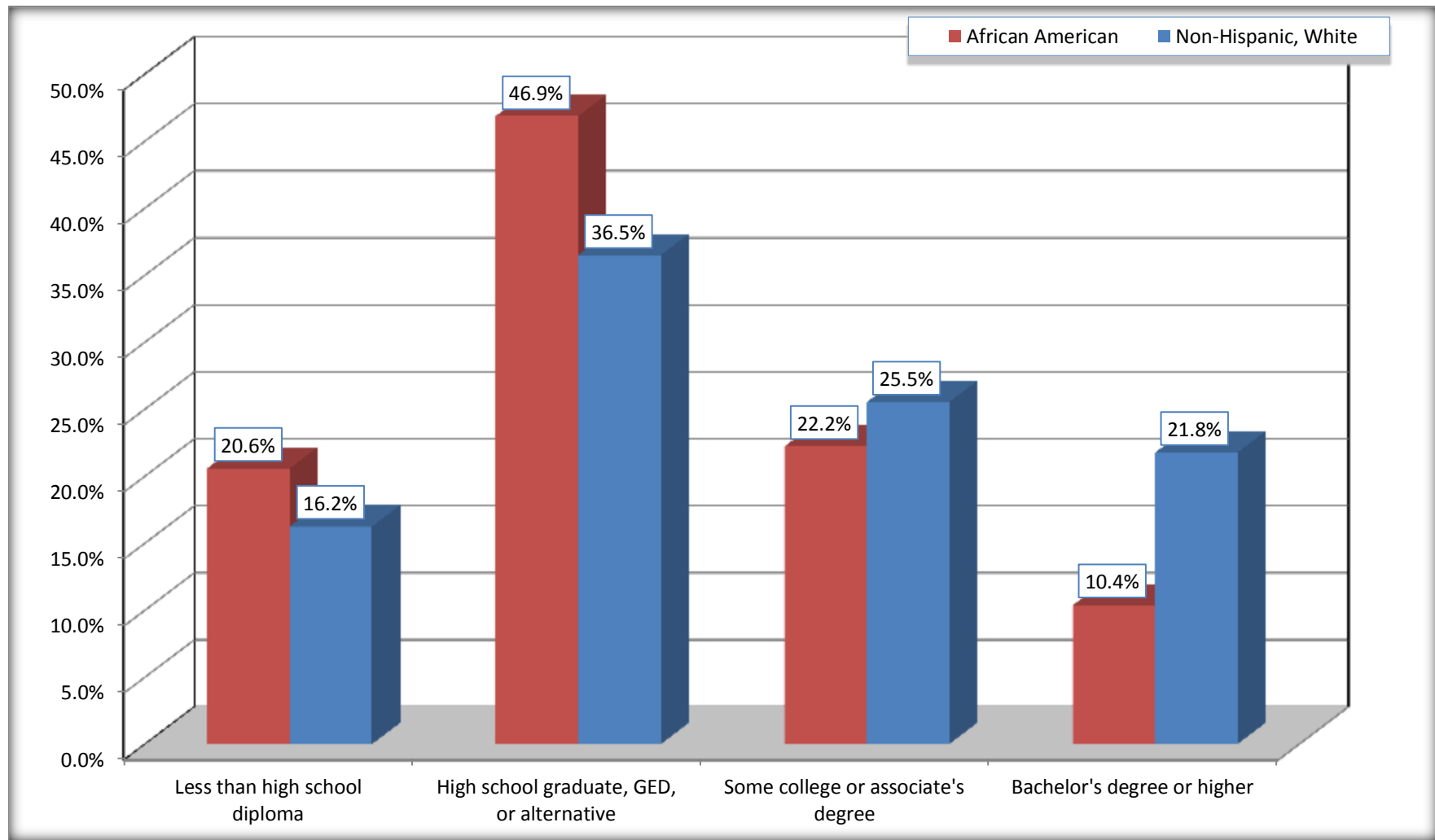
Source: U.S. Census Bureau, 2008-2012 American Community Survey

For information on confidentiality protection, sampling error, nonsampling error, and definitions, see Survey Methodology.

<http://www.census.gov/acs/www/UseData/index.htm>

Educational Attainment for the Population 25 Years and Older

Waycross city, Georgia



Source: C15002. SEX BY EDUCATIONAL ATTAINMENT FOR THE POPULATION 25 YEARS AND OVER
Data Set: 2008-2012 American Community Survey 5-Year Estimates

B16005. NATIVITY BY LANGUAGE SPOKEN AT HOME BY ABILITY TO SPEAK ENGLISH FOR THE POPULATION 5 YEARS AND OVER

Data Set: 2008-2012 American Community Survey 5-Year Estimates

	Waycross city, Georgia					
	African American	Margin of Error (+/-)	% of AA Total	White, Not Hispanic	Margin of Error (+/-)	% of NHW Total
Total:	7,399	379	100.0%	5,276	411	100.0%
Speak only English	7,333	NC	99.1%	5,030	NC	95.3%
Speak another language	66	NC	0.9%	246	NC	4.7%
Speak English "very well"	62	NC	0.8%	209	NC	4.0%
Speak English "less than very well"	4	NC	0.1%	37	NC	0.7%
Native:	7,339	384	99.2%	5,161	425	97.8%
Speak only English	7,274	387	98.3%	4,963	408	94.1%
Speak another language	65	56	0.9%	198	99	3.8%
Speak English "very well"	62	56	0.8%	161	82	3.1%
Speak English "less than very well"	3	5	0.0%	37	41	0.7%
Foreign born:	60	78	0.8%	115	111	2.2%
Speak only English	59	78	0.8%	67	80	1.3%
Speak another language	1	3	0.0%	48	73	0.9%
Speak English "very well"	0	21	0.0%	48	73	0.9%
Speak English "less than very well"	1	3	0.0%	0	21	0.0%

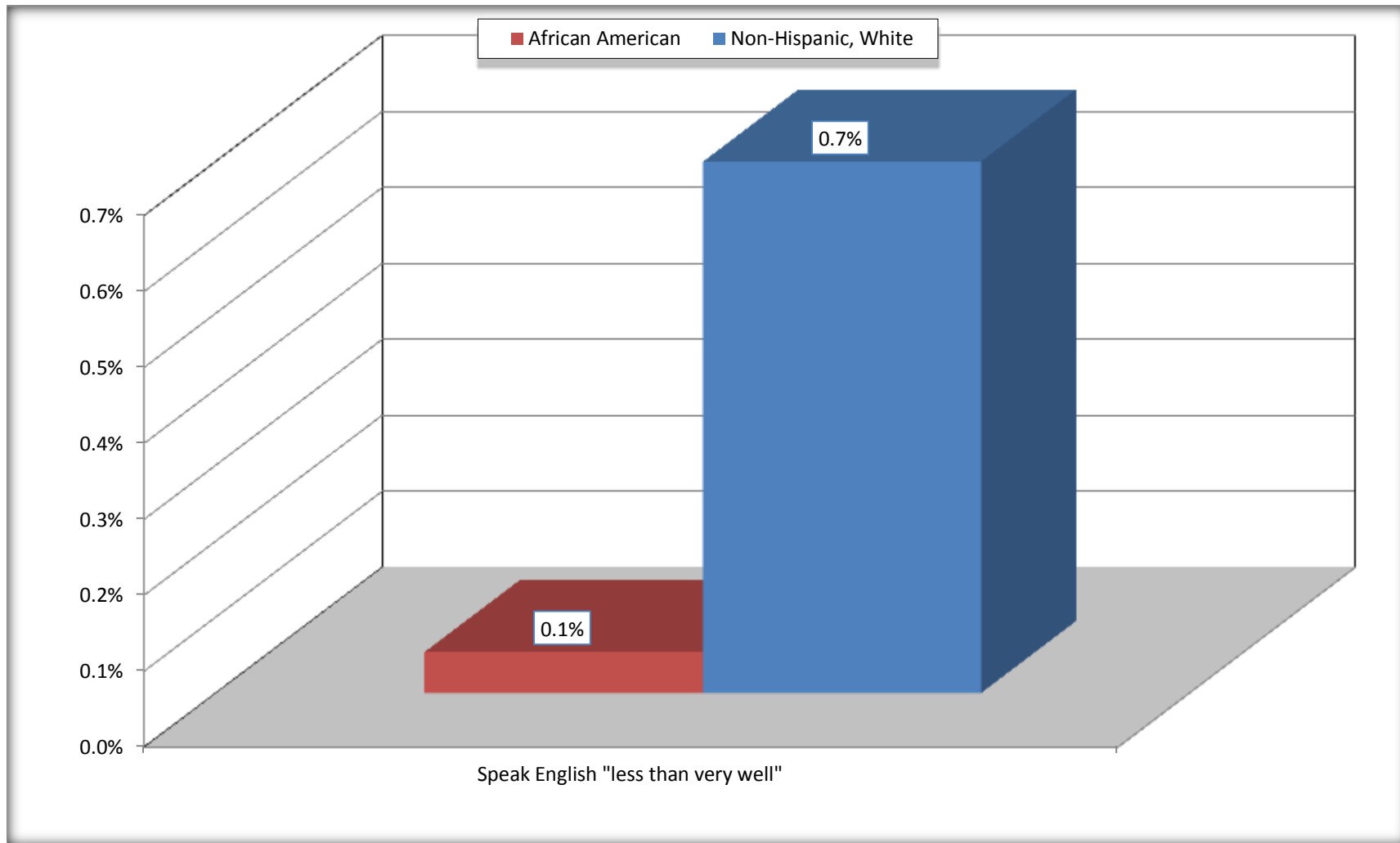
Source: U.S. Census Bureau, 2008-2012 American Community Survey

For information on confidentiality protection, sampling error, nonsampling error, and definitions, see Survey Methodology.

<http://www.census.gov/acs/www/UseData/index.htm>

Speak English "Less than Very Well" (Population 5 Years and Over)

Waycross city, Georgia



Source: B16005. NATIVITY BY LANGUAGE SPOKEN AT HOME BY ABILITY TO SPEAK ENGLISH FOR THE POPULATION 5 YEARS AND OVER
Data Set: 2008-2012 American Community Survey 5-Year Estimates

B17010. POVERTY STATUS IN THE PAST 12 MONTHS OF FAMILIES BY FAMILY TYPE BY PRESENCE OF RELATED CHILDREN UNDER 18 YEARS

Data Set: 2008-2012 American Community Survey 5-Year Estimates

	Waycross city, Georgia					
	African American	Margin of Error (+/-)	% of AA Total	White, Not Hispanic	Margin of Error (+/-)	% of NHW Total
Total:	1,882	210	100.0%	1,398	189	100.0%
Income in the past 12 months below poverty level:	676	165	35.9%	240	103	17.2%
Married-couple family:	76	42	4.0%	144	82	10.3%
With related children under 18 years	50	38	2.7%	62	58	4.4%
Other family:	600	163	31.9%	96	78	6.9%
Male householder, no wife present	35	28	1.9%	25	37	1.8%
With related children under 18 years	18	20	1.0%	0	21	0.0%
Female householder, no husband present	565	160	30.0%	71	68	5.1%
With related children under 18 years	504	160	26.8%	37	58	2.6%
Income in the past 12 months at or above poverty level:	1,206	164	64.1%	1,158	184	82.8%
Married-couple family:	712	128	37.8%	983	177	70.3%
With related children under 18 years	337	113	17.9%	310	142	22.2%
Other family:	494	125	26.2%	175	92	12.5%
Male householder, no wife present	101	77	5.4%	48	58	3.4%
With related children under 18 years	72	71	3.8%	18	27	1.3%
Female householder, no husband present	393	109	20.9%	127	70	9.1%
With related children under 18 years	124	56	6.6%	56	46	4.0%

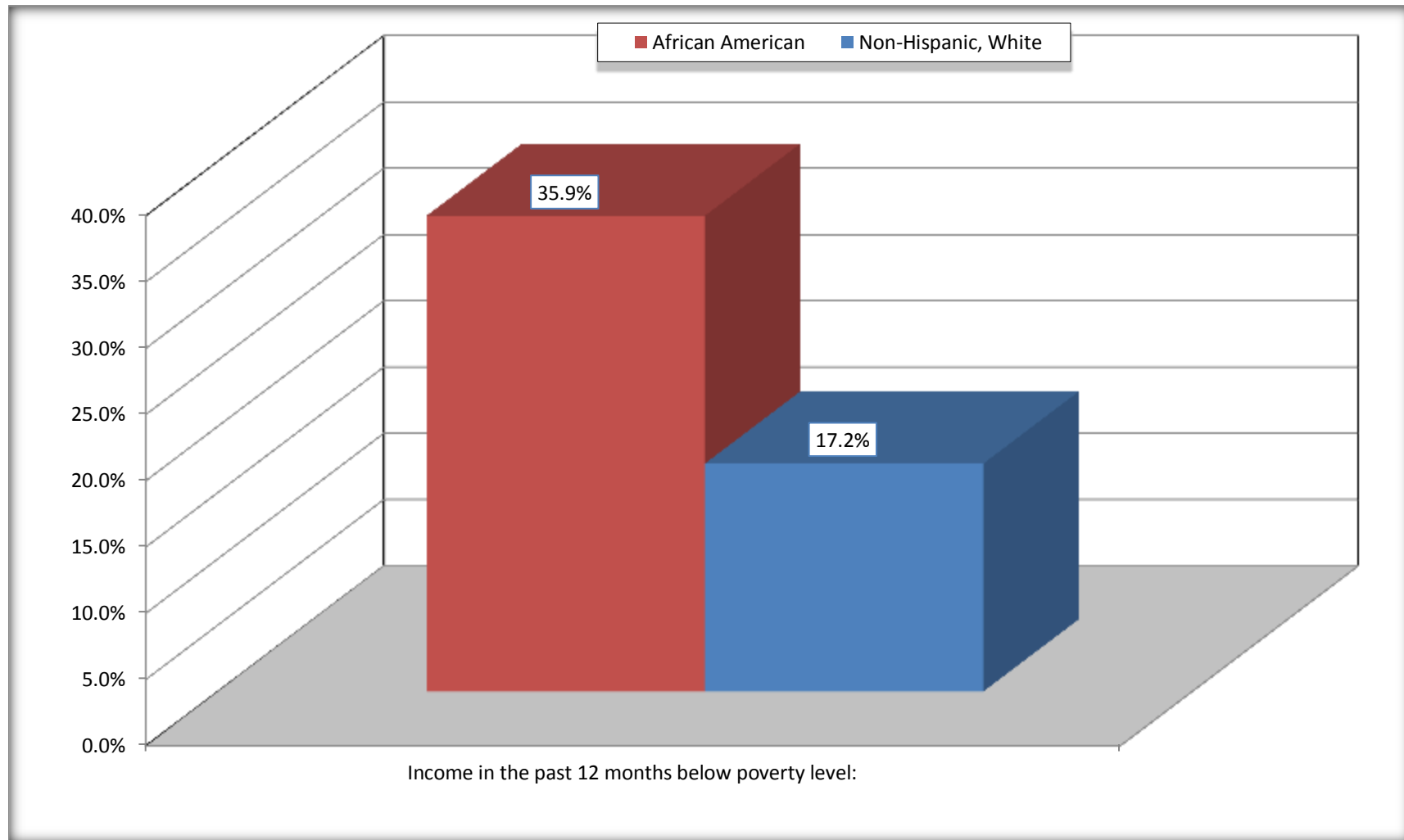
Source: U.S. Census Bureau, 2008-2012 American Community Survey

For information on confidentiality protection, sampling error, nonsampling error, and definitions, see Survey Methodology.

<http://www.census.gov/acs/www/UseData/index.htm>

Family Households Below Poverty in the Past 12 Months

Waycross city, Georgia

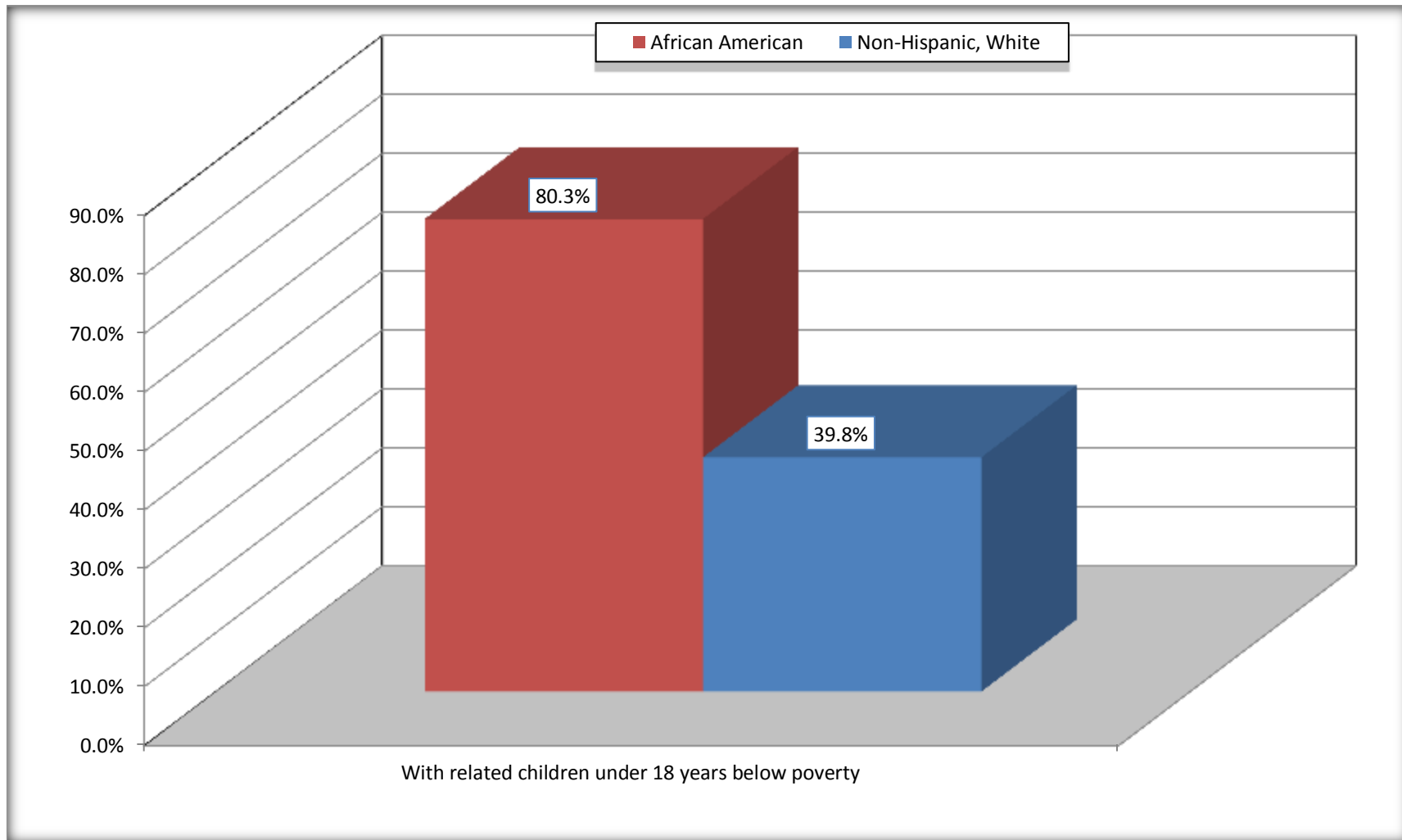


Source: B17010. POVERTY STATUS IN THE PAST 12 MONTHS OF FAMILIES BY FAMILY TYPE BY PRESENCE OF RELATED CHILDREN UNDER 18 YEARS

Data Set: 2008-2012 American Community Survey 5-Year Estimates

Female-headed Households with Related Children Below Poverty in the Past 12 Months

Waycross city, Georgia



Source: B17010. POVERTY STATUS IN THE PAST 12 MONTHS OF FAMILIES BY FAMILY TYPE BY PRESENCE OF RELATED CHILDREN UNDER 18 YEARS

Data Set: 2008-2012 American Community Survey 5-Year Estimates

B17020 POVERTY STATUS IN THE PAST 12 MONTHS BY AGE - Universe: POPULATION FOR WHOM POVERTY STATUS IS DETERMINED

Data Set: 2008-2012 American Community Survey 5-Year Estimates

	Waycross city, Georgia					
	African American	Margin of Error (+/-)	% of AA By Age	White, Not Hispanic	Margin of Error (+/-)	% of NHW By Age
Total:	7,877	431	100.0%	5,200	444	100.0%
Income in the past 12 months below poverty level:	3,127	506	39.7%	1,006	313	19.3%
Under 18 years	1,444	NC	59.0%	133	NC	18.2%
18 to 64 years	1,428	253	31.6%	770	224	26.4%
65 years and over	255	NC	27.8%	103	NC	6.6%
Income in the past 12 months at or above poverty level:	4,750	529	60.3%	4,194	487	80.7%
Under 18 years	1,003	NC	41.0%	596	NC	81.8%
18 to 64 years	3,085	323	68.4%	2,146	348	73.6%
65 years and over	662	NC	72.2%	1,452	NC	93.4%

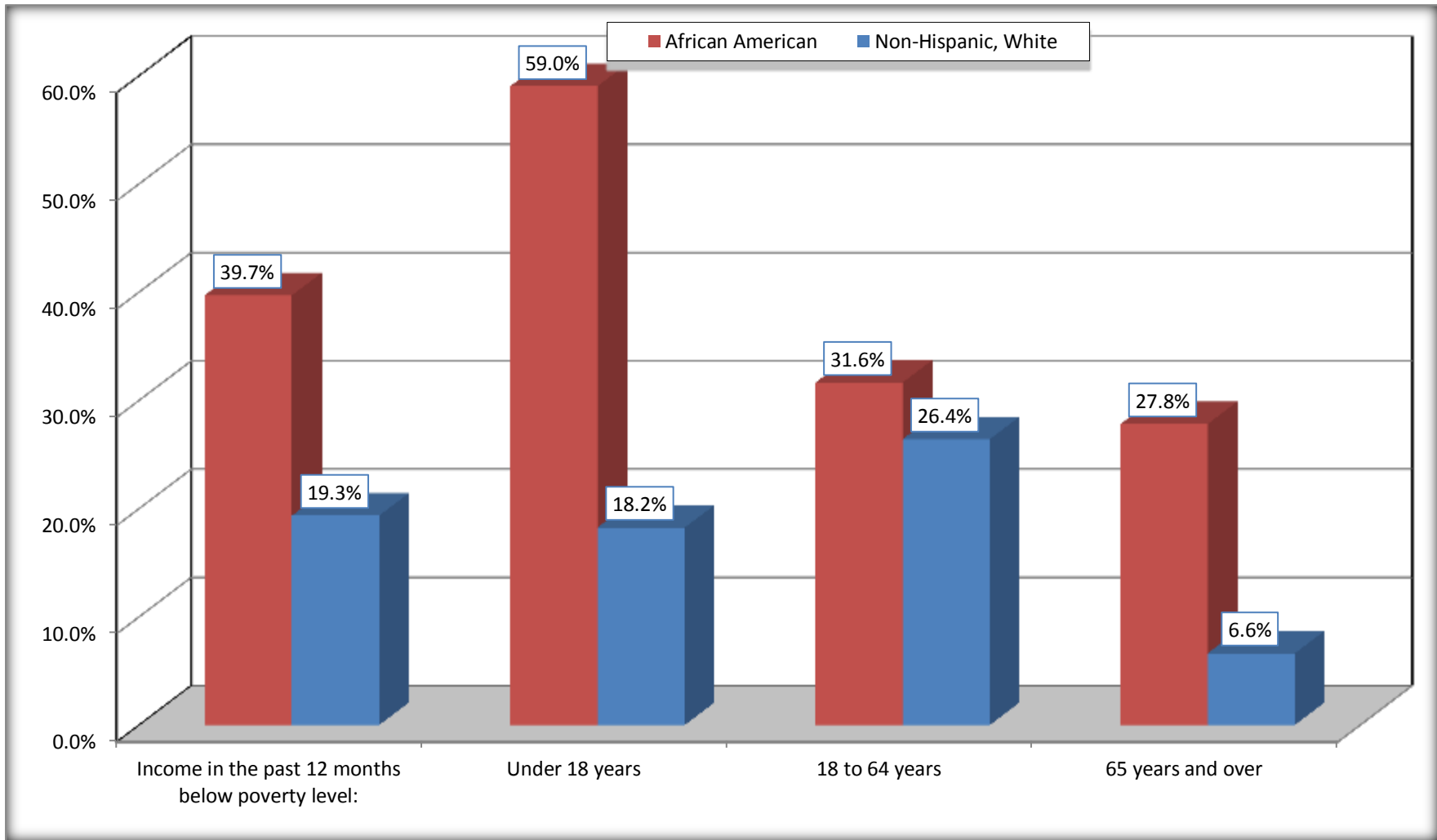
Source: U.S. Census Bureau, 2008-2012 American Community Survey

For information on confidentiality protection, sampling error, nonsampling error, and definitions, see Survey Methodology.

<http://www.census.gov/acs/www/UseData/index.htm>

Population Below Poverty in the Past 12 Months

Waycross city, Georgia



Source: B17020 POVERTY STATUS IN THE PAST 12 MONTHS BY AGE - Universe: POPULATION FOR WHOM POVERTY STATUS IS DETERMINED
Data Set: 2008-2012 American Community Survey 5-Year Estimates

B19001. HOUSEHOLD INCOME IN THE PAST 12 MONTHS (IN 2010 INFLATION-ADJUSTED DOLLARS)

Data Set: 2008-2012 American Community Survey 5-Year Estimates

	Waycross city, Georgia					
	African American	Margin of Error (+/-)	% of AA Total	White, Not Hispanic	Margin of Error (+/-)	% of NHW Total
Total:	3,148	246	100.0%	2,749	301	100.0%
Less than \$ 10,000	718	186	22.8%	291	125	10.6%
\$ 10,000 to \$ 14,999	485	162	15.4%	372	134	13.5%
\$ 15,000 to \$ 24,999	469	NC	14.9%	567	NC	20.6%
\$ 25,000 to \$ 34,999	465	NC	14.8%	380	NC	13.8%
\$ 35,000 to \$ 49,999	238	NC	7.6%	468	NC	17.0%
\$ 50,000 to \$ 74,999	357	NC	11.3%	342	NC	12.4%
\$ 75,000 to \$ 99,999	313	132	9.9%	186	120	6.8%
\$ 100,000 to \$ 149,999	93	NC	3.0%	133	NC	4.8%
\$ 150,000 to \$ 199,999	10	14	0.3%	0	21	0.0%
\$ 200,000 or more	0	21	0.0%	10	17	0.4%

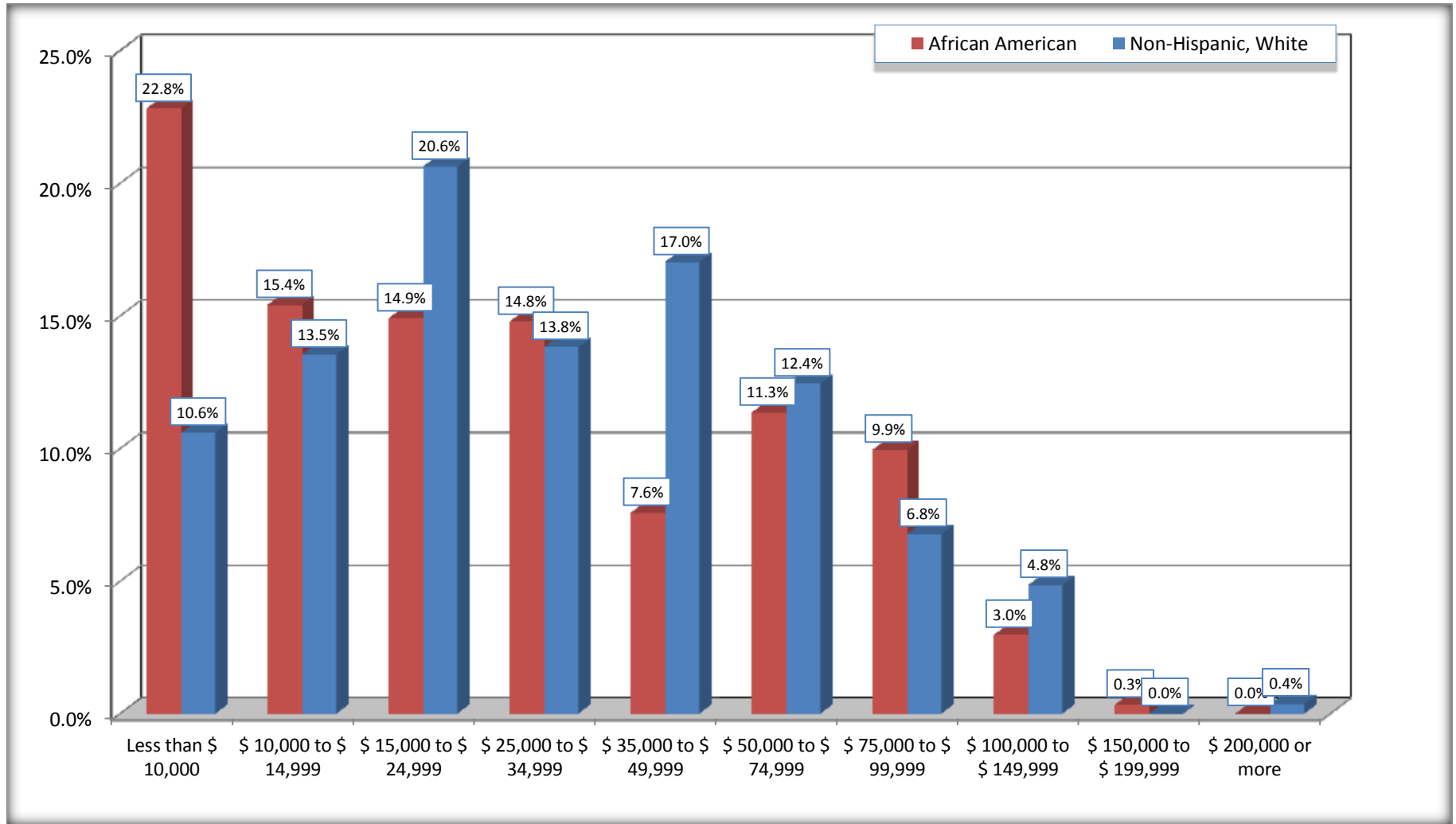
Source: U.S. Census Bureau, 2008-2012 American Community Survey

For information on confidentiality protection, sampling error, nonsampling error, and definitions, see Survey Methodology.

<http://www.census.gov/acs/www/UseData/index.htm>

Household Income in the Past 12 Months

Waycross city, Georgia



Source: B19001. HOUSEHOLD INCOME IN THE PAST 12 MONTHS (IN 2010 INFLATION-ADJUSTED DOLLARS)
Data Set: 2008-2012 American Community Survey 5-Year Estimates

B19013. MEDIAN HOUSEHOLD INCOME IN THE PAST 12 MONTHS (IN 2010 INFLATION-ADJUSTED DOLLARS)

Data Set: 2008-2012 American Community Survey 5-Year Estimates

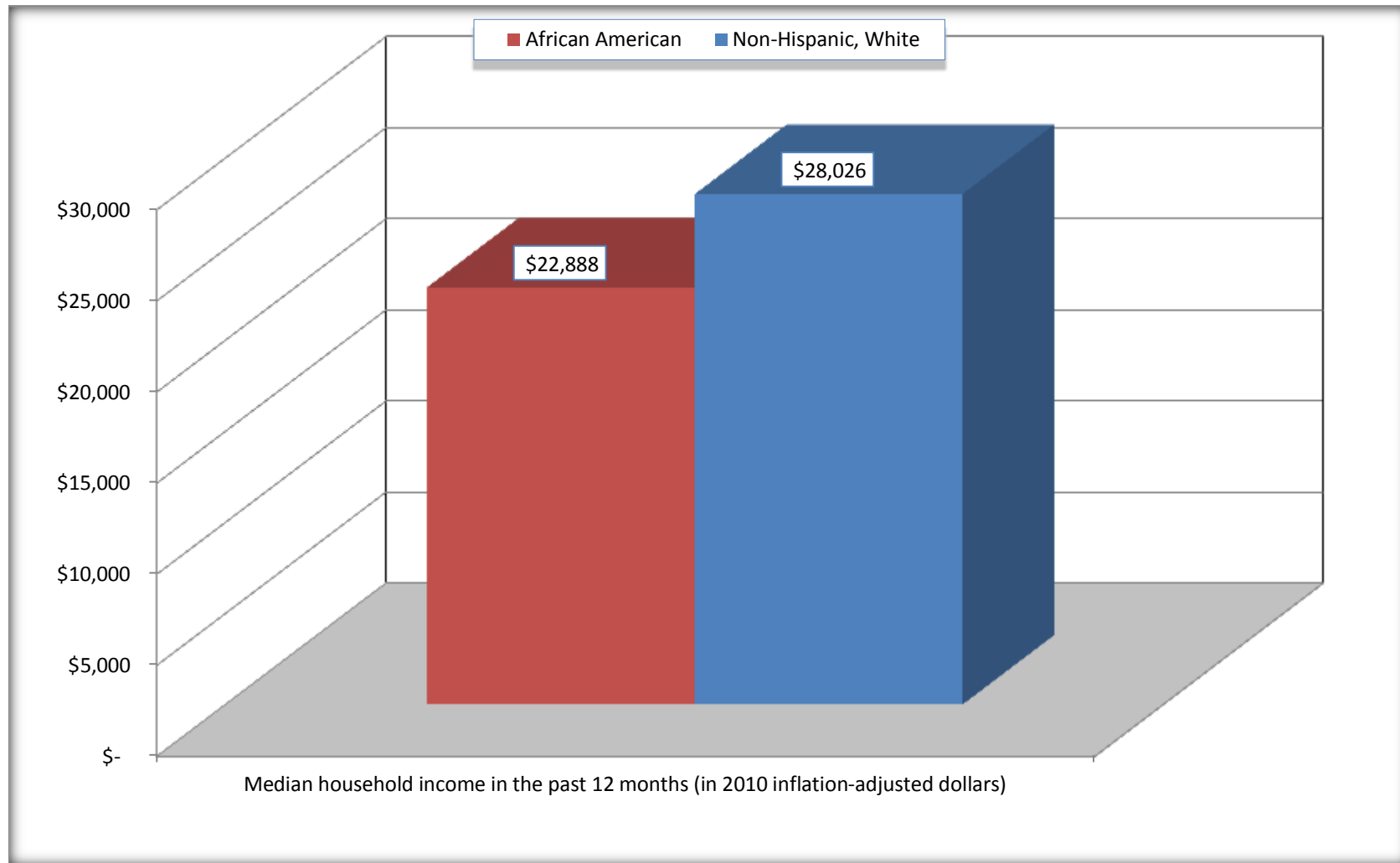
	Waycross city, Georgia			
	African American	Margin of Error (+/-)	White, Not Hispanic	Margin of Error (+/-)
Median household income in the past 12 months (in 2010 inflation-adjusted dollars)	\$ 22,888	\$ 4,056	\$ 28,026	\$ 4,754

Source: U.S. Census Bureau, 2008-2012 American Community Survey

For information on confidentiality protection, sampling error, nonsampling error, and definitions, see Survey Methodology.
<http://www.census.gov/acs/www/UseData/index.htm>

Median Household Income in the Past 12 Months

Waycross city, Georgia



Source: B19013. MEDIAN HOUSEHOLD INCOME IN THE PAST 12 MONTHS (IN 2010 INFLATION-ADJUSTED DOLLARS)
Data Set: 2008-2012 American Community Survey 5-Year Estimates

B19101. FAMILY INCOME IN THE PAST 12 MONTHS (IN 2010 INFLATION-ADJUSTED DOLLARS)

Data Set: 2008-2012 American Community Survey 5-Year Estimates

	Waycross city, Georgia					
	African American	Margin of Error (+/-)	% of AA Total	White, Not Hispanic	Margin of Error (+/-)	% of NHW Total
Total:	1,882	210	100.0%	1,398	189	100.0%
Less than \$ 10,000	437	152	23.2%	125	80	8.9%
\$ 10,000 to \$ 14,999	131	73	7.0%	84	58	6.0%
\$ 15,000 to \$ 24,999	346	NC	18.4%	168	NC	12.0%
\$ 25,000 to \$ 34,999	232	NC	12.3%	141	NC	10.1%
\$ 35,000 to \$ 49,999	137	NC	7.3%	291	NC	20.8%
\$ 50,000 to \$ 74,999	302	NC	16.0%	292	NC	20.9%
\$ 100,000 to \$ 149,999	90	NC	4.8%	117	NC	8.4%
\$ 150,000 to \$ 199,999	10	14	0.5%	0	21	0.0%
\$ 200,000 or more	0	21	0.0%	10	17	0.7%

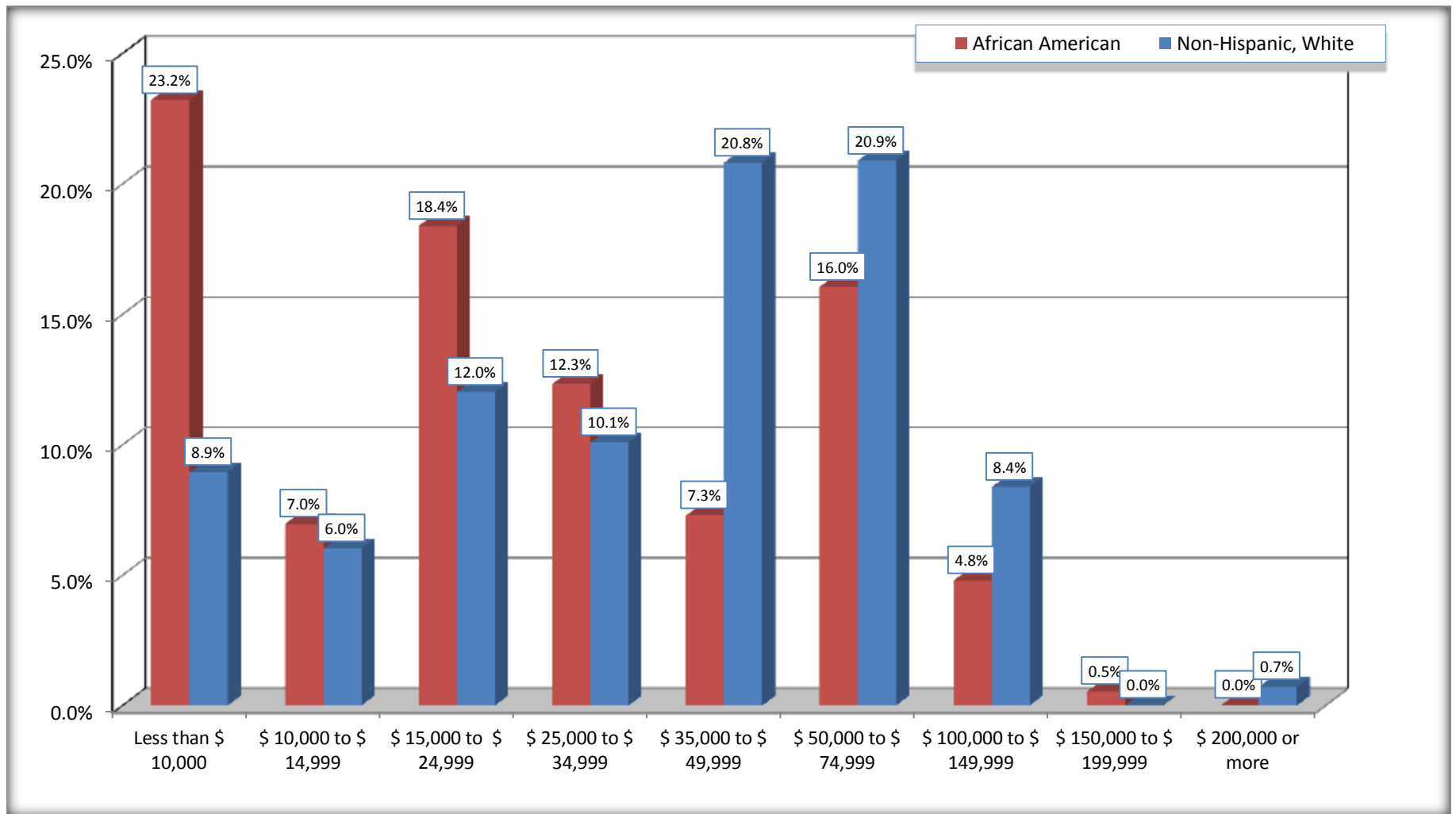
Source: U.S. Census Bureau, 2008-2012 American Community Survey

For information on confidentiality protection, sampling error, nonsampling error, and definitions, see Survey Methodology.

<http://www.census.gov/acs/www/UseData/index.htm>

Family Income in the Past 12 Months

Waycross city, Georgia



Source: B19101. FAMILY INCOME IN THE PAST 12 MONTHS (IN 2010 INFLATION-ADJUSTED DOLLARS)
Data Set: 2008-2012 American Community Survey 5-Year Estimates

B19113. MEDIAN FAMILY INCOME IN THE PAST 12 MONTHS (IN 2010 INFLATION-ADJUSTED DOLLARS)

Data Set: 2008-2012 American Community Survey 5-Year Estimates

	Waycross city, Georgia			
	African American	Margin of Error (+/-)	White, Not Hispanic	Margin of Error (+/-)
Median family income in the past 12 months (in 2010 inflation-adjusted dollars)	\$ 27,045	\$ 7,056	\$ 41,923	\$ 7,147

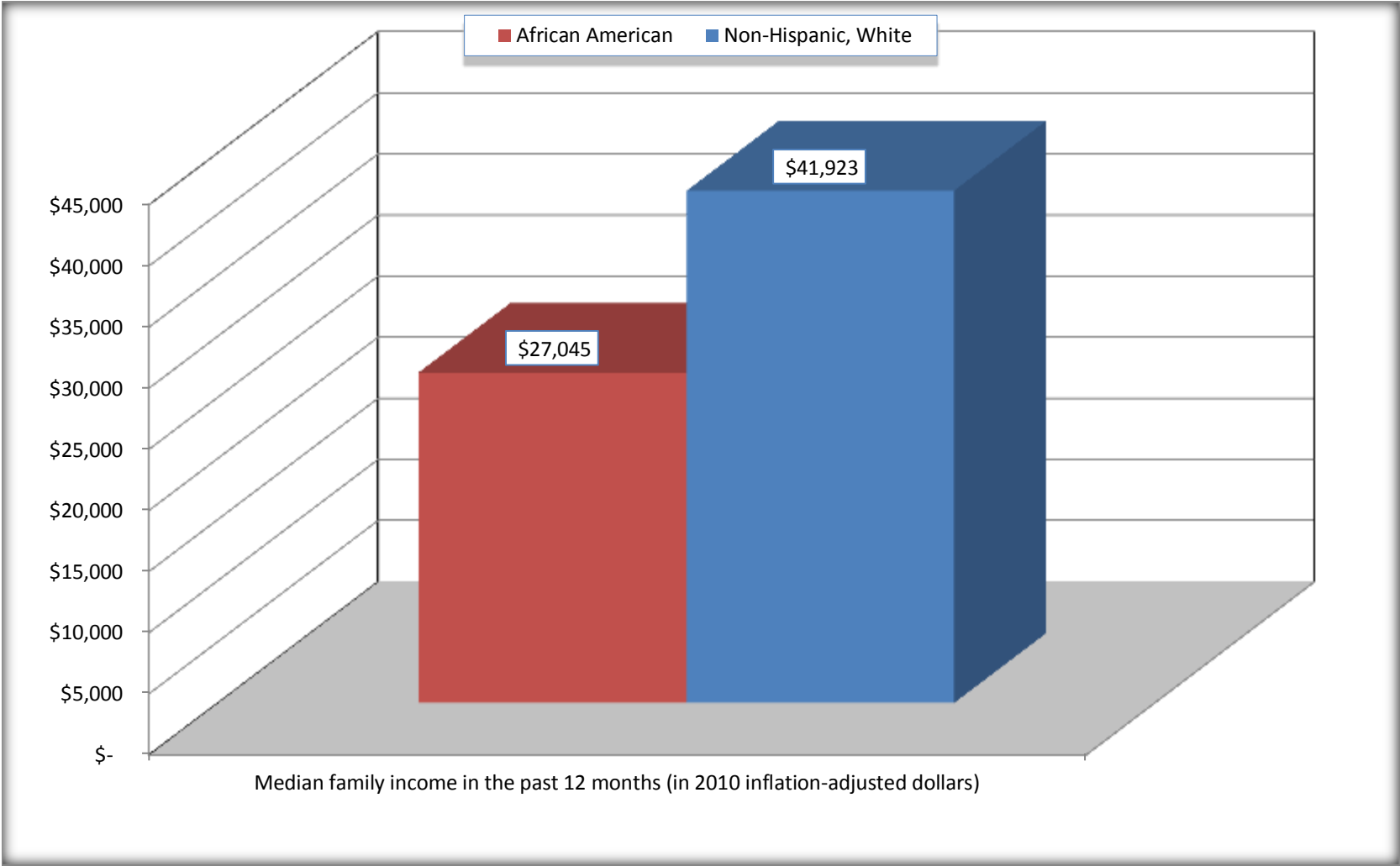
Source: U.S. Census Bureau, 2008-2012 American Community Survey

For information on confidentiality protection, sampling error, nonsampling error, and definitions, see Survey Methodology.

<http://www.census.gov/acs/www/UseData/index.htm>

Median Family Income in the Past 12 Months

Waycross city, Georgia



Source: B19113. MEDIAN FAMILY INCOME IN THE PAST 12 MONTHS (IN 2010 INFLATION-ADJUSTED DOLLARS)
Data Set: 2008-2012 American Community Survey 5-Year Estimates

B19202. MEDIAN NONFAMILY HOUSEHOLD INCOME IN THE PAST 12 MONTHS (IN 2010 INFLATION-ADJUSTED DOLLARS)

Data Set: 2008-2012 American Community Survey 5-Year Estimates

	Waycross city, Georgia			
	African American	Margin of Error (+/-)	White, Not Hispanic	Margin of Error (+/-)
Median nonfamily household income in the past 12 months (in 2010 inflation-adjusted dollars)	\$ 14,443	\$ 2,059	\$ 17,711	\$ 3,330

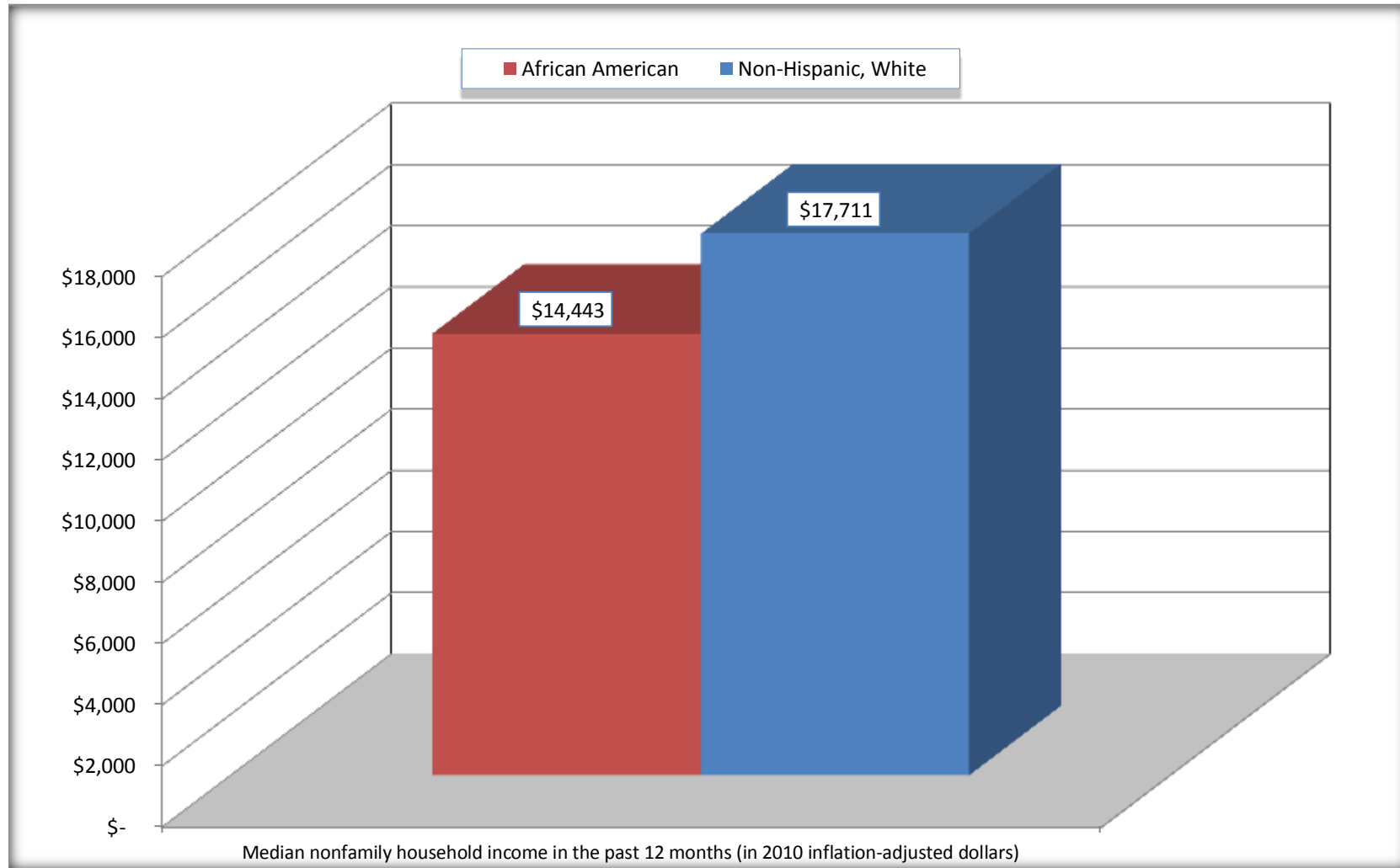
Source: U.S. Census Bureau, 2008-2012 American Community Survey

For information on confidentiality protection, sampling error, nonsampling error, and definitions, see Survey Methodology.

<http://www.census.gov/acs/www/UseData/index.htm>

Median Non-Family Income in the Past 12 Months

Waycross city, Georgia



Source: B19202. MEDIAN NONFAMILY HOUSEHOLD INCOME IN THE PAST 12 MONTHS (IN 2010 INFLATION-ADJUSTED DOLLARS)
Data Set: 2008-2012 American Community Survey 5-Year Estimates

B19301. PER CAPITA INCOME IN THE PAST 12 MONTHS (IN 2010 INFLATION-ADJUSTED DOLLARS)

Data Set: 2008-2012 American Community Survey 5-Year Estimates

	Waycross city, Georgia			
	African American	Margin of Error (+/-)	White, Not Hispanic	Margin of Error (+/-)
Per capita income in the past 12 months (in 2010 inflation-adjusted dollars)	\$ 13,220	\$ 1,264	\$ 19,410	\$ 1,790

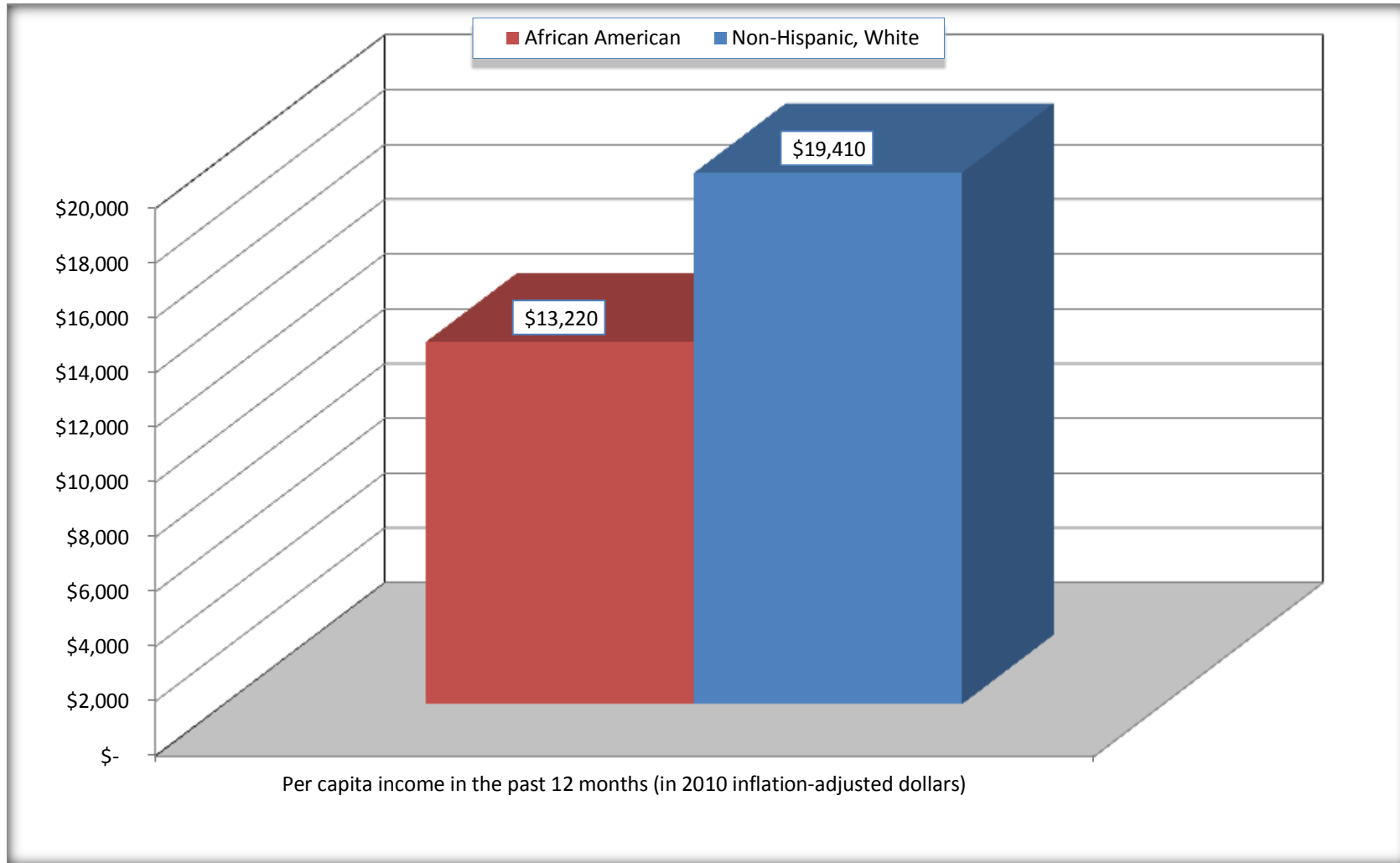
Source: U.S. Census Bureau, 2008-2012 American Community Survey

For information on confidentiality protection, sampling error, nonsampling error, and definitions, see Survey Methodology.

<http://www.census.gov/acs/www/UseData/index.htm>

Per capita Income in the Past 12 Months

Waycross city, Georgia



Source: B19301. PER CAPITA INCOME IN THE PAST 12 MONTHS (IN 2010 INFLATION-ADJUSTED DOLLARS)
Data Set: 2008-2012 American Community Survey 5-Year Estimates

B20017. MEDIAN EARNINGS IN THE PAST 12 MONTHS (IN 2010 INFLATION-ADJUSTED DOLLARS) BY SEX BY WORK EXPERIENCE IN THE PAST 12 MONTHS FOR THE POPULATION 16 YEARS AND OVER WITH EARNINGS IN THE PAST 12 MONTHS

Data Set: 2008-2012 American Community Survey 5-Year Estimates

	Waycross city, Georgia			
	African American	Margin of Error (+/-)	White, Not Hispanic	Margin of Error (+/-)
Median earnings in the past 12 months (in 2010 inflation-adjusted dollars) --				
Total:	\$ 19,737	\$ 5,364	\$ 19,172	\$ 3,366
Male --				
Total	\$ 26,806	\$ 2,923	\$ 22,149	\$ 7,589
Worked full-time, year-round in the past 12 months	\$ 32,081	\$ 1,753	\$ 40,132	\$ 19,304
Other	\$ 6,425	\$ 4,763	\$ 8,780	\$ 3,934
Female --				
Total	\$ 15,392	\$ 3,844	\$ 16,852	\$ 2,253
Worked full-time, year-round in the past 12 months	\$ 31,391	\$ 7,166	\$ 25,613	\$ 5,548
Other	\$ 8,770	\$ 2,774	\$ 8,462	\$ 3,638

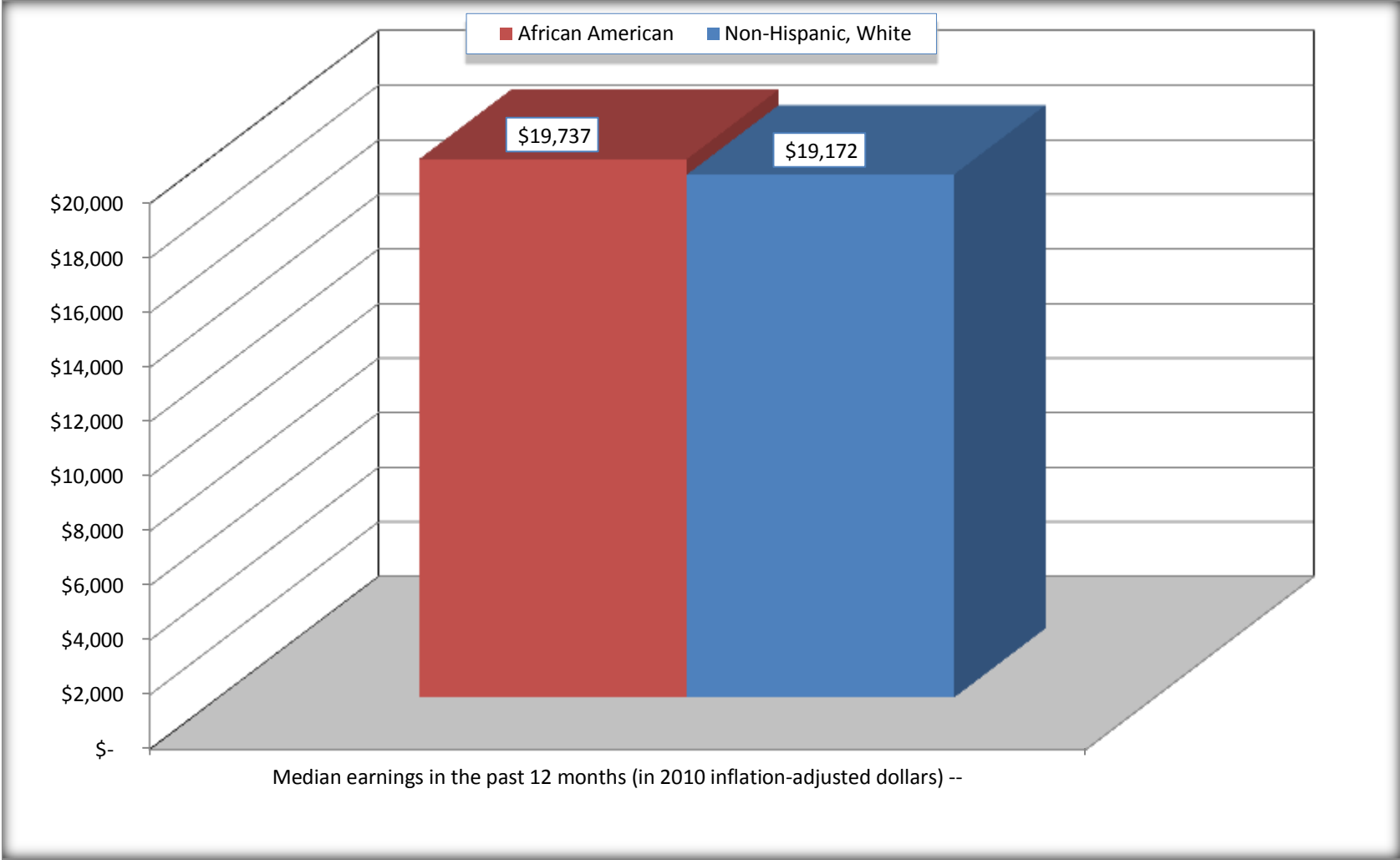
Source: U.S. Census Bureau, 2008-2012 American Community Survey

For information on confidentiality protection, sampling error, nonsampling error, and definitions, see Survey Methodology.

<http://www.census.gov/acs/www/UseData/index.htm>

Median earnings in the Past 12 Months (16 Years and Over with Earnings)

Waycross city, Georgia



Source: B20017. MEDIAN EARNINGS IN THE PAST 12 MONTHS (IN 2010 INFLATION-ADJUSTED DOLLARS) BY SEX BY WORK EXPERIENCE IN THE PAST 12 MONTHS FOR THE POPULATION 16 YEARS AND OVER WITH EARNINGS IN THE PAST 12 MONTHS
Data Set: 2008-2012 American Community Survey 5-Year Estimates

B20005. SEX BY WORK EXPERIENCE IN THE PAST 12 MONTHS BY EARNINGS IN THE PAST 12 MONTHS (IN 2010 INFLATION-ADJUSTED DOLLARS) FOR THE POPULATION 16 YEARS AND OVER

Data Set: 2008-2012 American Community Survey 5-Year Estimates

	Waycross city, Georgia					
	African American	Margin of Error (+/-)	% of AA Total	White, Not Hispanic	Margin of Error (+/-)	% of NHW Total
Total:	5,908	285	100.0%	4,854	388	100.0%
Worked full-time, year-round in the past 12 months:	1,836	NC	31.1%	1,300	NC	26.8%
No earnings	0	NC	0.0%	0	NC	0.0%
With earnings:	1,836	NC	31.1%	1,300	NC	26.8%
\$ 1 to \$ 9,999 or loss	68	NC	1.2%	59	NC	1.2%
\$ 10,000 to \$ 19,999	340	NC	5.8%	280	NC	5.8%
\$ 20,000 to \$ 29,999	334	NC	5.7%	359	NC	7.4%
\$ 30,000 to \$ 49,999	800	NC	13.5%	392	NC	8.1%
\$ 50,000 to \$ 74,999	185	NC	3.1%	96	NC	2.0%
\$ 75,000 or more	109	NC	1.8%	114	NC	2.3%
Other:	4,072	NC	68.9%	3,554	NC	73.2%
No earnings	2,693	NC	45.6%	2,608	NC	53.7%
With earnings: less than full time, year-round	1,379	NC	23.3%	946	NC	19.5%
Male:	2,448	200	41.4%	2,068	240	42.6%
Worked full-time, year-round in the past 12 months:	785	162	13.3%	566	150	11.7%
No earnings	0	21	0.0%	0	21	0.0%
With earnings:	785	162	13.3%	566	150	11.7%
\$ 1 to \$ 9,999 or loss	8	NC	0.1%	0	NC	0.0%
\$ 10,000 to \$ 19,999	57	NC	1.0%	82	NC	1.7%
\$ 20,000 to \$ 29,999	186	NC	3.1%	136	NC	2.8%
\$ 30,000 to \$ 49,999	383	NC	6.5%	200	NC	4.1%
\$ 50,000 to \$ 74,999	59	NC	1.0%	50	NC	1.0%
\$ 75,000 or more	92	NC	1.6%	98	NC	2.0%

	Waycross city, Georgia					
	African American	Margin of Error (+/-)	% of AA Total	White, Not Hispanic	Margin of Error (+/-)	% of NHW Total
Other:	1,663	191	28.1%	1,502	236	30.9%
No earnings	1,080	145	18.3%	978	205	20.1%
With earnings:	583	154	9.9%	524	133	10.8%
Female:	3,460	164	58.6%	2,786	286	57.4%
Worked full-time, year-round in the past 12 months:	1,051	204	17.8%	734	182	15.1%
No earnings	0	21	0.0%	0	21	0.0%
With earnings:	1,051	204	17.8%	734	182	15.1%
\$ 1 to \$ 9,999 or loss	60	NC	1.0%	59	NC	1.2%
\$ 10,000 to \$ 19,999	283	NC	4.8%	198	NC	4.1%
\$ 20,000 to \$ 29,999	148	NC	2.5%	223	NC	4.6%
\$ 30,000 to \$ 49,999	417	NC	7.1%	192	NC	4.0%
\$ 50,000 to \$ 74,999	126	NC	2.1%	46	NC	0.9%
\$ 75,000 or more	17	NC	0.3%	16	NC	0.3%
Other:	2,409	226	40.8%	2,052	267	42.3%
No earnings	1,613	195	27.3%	1,630	237	33.6%
With earnings:	796	189	13.5%	422	200	8.7%

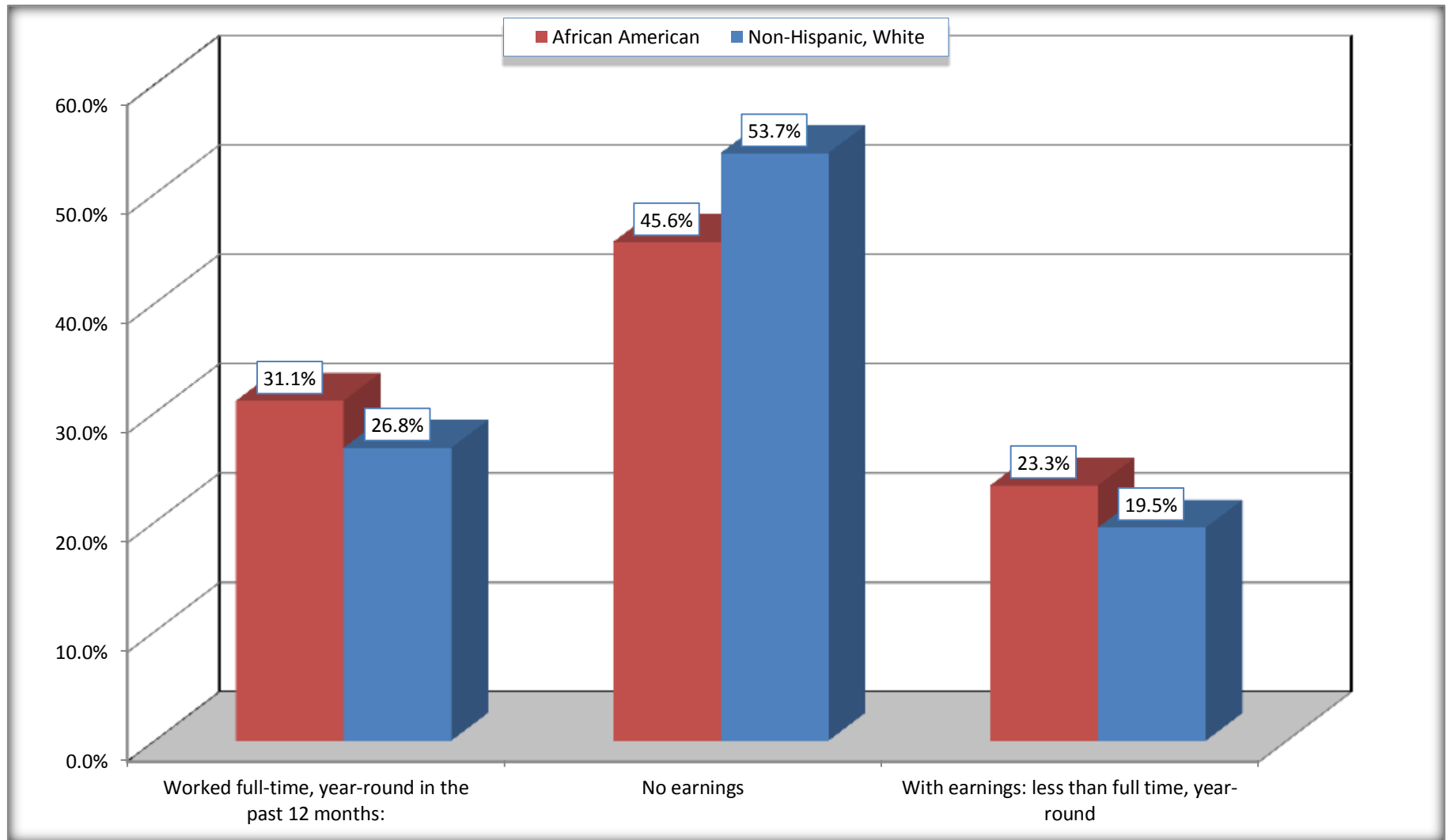
Source: U.S. Census Bureau, 2008-2012 American Community Survey

For information on confidentiality protection, sampling error, nonsampling error, and definitions, see Survey Methodology.

<http://www.census.gov/acs/www/UseData/index.htm>

Employment and Earnings in in the Past 12 Months (16 Years and Over)

Waycross city, Georgia



Source: B20005. SEX BY WORK EXPERIENCE IN THE PAST 12 MONTHS BY EARNINGS IN THE PAST 12 MONTHS (IN 2010 INFLATION-ADJUSTED DOLLARS) FOR THE POPULATION 16 YEARS AND OVER

Data Set: 2008-2012 American Community Survey 5-Year Estimates

C21001. SEX BY AGE BY VETERAN STATUS FOR THE CIVILIAN POPULATION 18 YEARS AND OVER

Data Set: 2008-2012 American Community Survey 5-Year Estimates

	Waycross city, Georgia					
	African American	Margin of Error (+/-)	% of AA Total	White, Not Hispanic	Margin of Error (+/-)	% of NHW Total
Total:	5,620	265	100.0%	4,803	388	100.0%
Veteran	417	NC	7.4%	617	NC	12.8%
Nonveteran	5,203	NC	92.6%	4,186	NC	87.2%
Male:	2,280	193	40.6%	2,017	235	42.0%
18 to 64 years:	1,921	199	34.2%	1,456	223	30.3%
Veteran	214	81	3.8%	276	116	5.7%
Nonveteran	1,707	190	30.4%	1,180	200	24.6%
65 years and over:	359	39	6.4%	561	118	11.7%
Veteran	115	50	2.0%	340	107	7.1%
Nonveteran	244	59	4.3%	221	77	4.6%
Female:	3,340	143	59.4%	2,786	286	58.0%
18 to 64 years:	2,707	132	48.2%	1,560	226	32.5%
Veteran	88	73	1.6%	0	21	0.0%
Nonveteran	2,619	137	46.6%	1,560	226	32.5%
65 years and over:	633	49	11.3%	1,226	210	25.5%
Veteran	0	21	0.0%	1	2	0.0%
Nonveteran	633	49	11.3%	1,225	210	25.5%

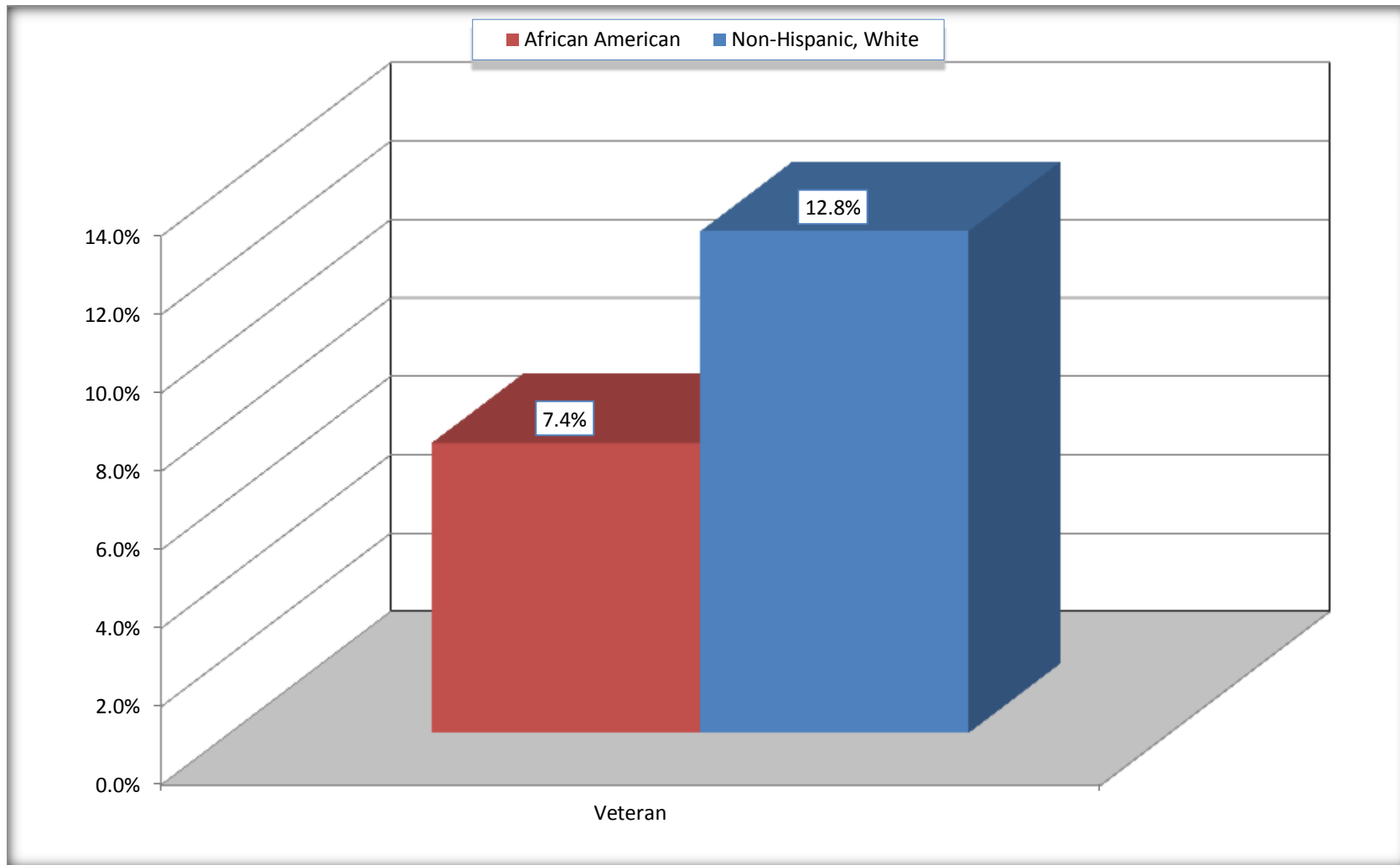
Source: U.S. Census Bureau, 2008-2012 American Community Survey

For information on confidentiality protection, sampling error, nonsampling error, and definitions, see Survey Methodology.

<http://www.census.gov/acs/www/UseData/index.htm>

Veterans in the Civilian Population 18 Years and Over

Waycross city, Georgia



Source: C21001. SEX BY AGE BY VETERAN STATUS FOR THE CIVILIAN POPULATION 18 YEARS AND OVER
Data Set: 2008-2012 American Community Survey 5-Year Estimates

B22005. RECEIPT OF FOOD STAMPS/SNAP IN THE PAST 12 MONTHS BY RACE OF HOUSEHOLDER

Data Set: 2008-2012 American Community Survey 5-Year Estimates

	Waycross city, Georgia					
	African American	Margin of Error (+/-)	% of AA Total	White, Not Hispanic	Margin of Error (+/-)	% of NHW Total
Total:	3,148	246	100.0%	2,749	301	100.0%
HH received Food Stamps/SNAP in the past 12 months	1,074	190	34.1%	438	131	15.9%
HH did not receive Food Stamps/SNAP in the past 12 months	2,074	205	65.9%	2,311	284	84.1%

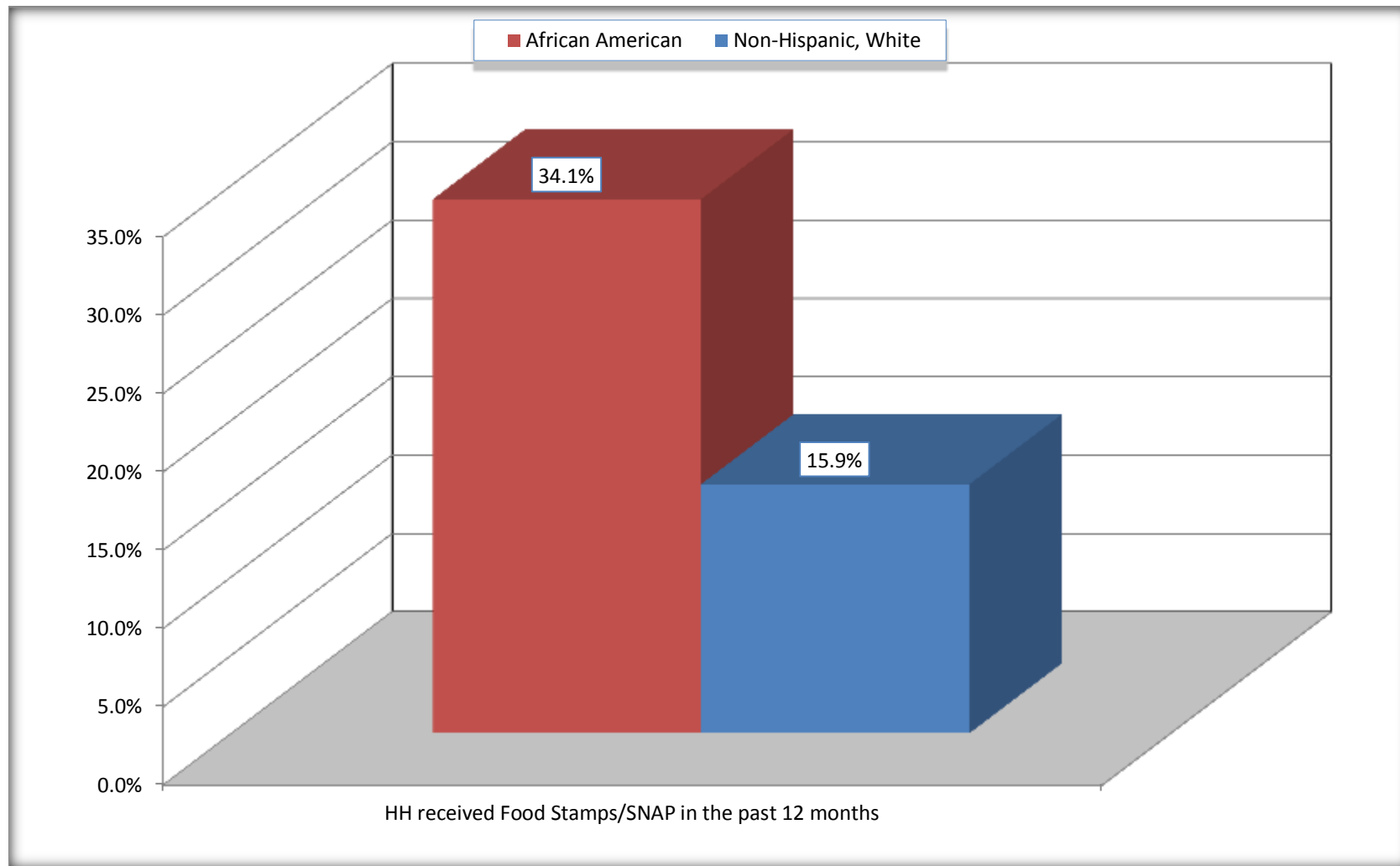
Source: U.S. Census Bureau, 2008-2012 American Community Survey

For information on confidentiality protection, sampling error, nonsampling error, and definitions, see Survey Methodology.

<http://www.census.gov/acs/www/UseData/index.htm>

Receipt of Food Stamps/SNAP in the Past 12 Months by Household

Waycross city, Georgia



Source: B22005. RECEIPT OF FOOD STAMPS/SNAP IN THE PAST 12 MONTHS BY RACE OF HOUSEHOLDER
Data Set: 2008-2012 American Community Survey 5-Year Estimates

C23002. SEX BY AGE BY EMPLOYMENT STATUS FOR THE POPULATION 16 YEARS AND OVER

Data Set: 2008-2012 American Community Survey 5-Year Estimates

	Waycross city, Georgia					
	African American	Margin of Error (+/-)	% of AA Total	White, Not Hispanic	Margin of Error (+/-)	% of NHW Total
Total:	5,908	285	100.0%	4,854	388	100.0%
In labor force:	3,251	NC	55.0%	2,134	NC	44.0%
In Armed Forces	0	NC	0.0%	0	NC	0.0%
Civilian:	3,194	NC	54.1%	1,934	NC	39.8%
Employed	2,615	NC	44.3%	1,924	NC	39.6%
Unemployed	636	NC	10.8%	210	NC	4.3%
Not in labor force	2,657	NC	45.0%	2,720	NC	56.0%
Male:	2,448	200	41.4%	2,068	240	42.6%
16 to 64 years:	2,089	205	35.4%	1,507	228	31.0%
In labor force:	1,305	210	22.1%	929	210	19.1%
In Armed Forces	0	21	0.0%	0	21	0.0%
Civilian:	1,305	210	22.1%	929	210	19.1%
Employed	1,040	179	17.6%	827	205	17.0%
Unemployed	265	98	4.5%	102	81	2.1%
Not in labor force	784	142	13.3%	578	175	11.9%
65 years and over:	359	39	6.1%	561	118	11.6%
In labor force:	47	39	0.8%	73	49	1.5%
Employed	47	39	0.8%	73	49	1.5%
Unemployed	0	21	0.0%	0	21	0.0%
Not in labor force	312	50	5.3%	488	113	10.1%

	Waycross city, Georgia					
	African American	Margin of Error (+/-)	% of AA Total	White, Not Hispanic	Margin of Error (+/-)	% of NHW Total
Female:	3,460	164	58.6%	2,786	286	57.4%
16 to 64 years:	2,827	152	47.9%	1,560	226	32.1%
In labor force:	1,889	196	32.0%	1,005	206	20.7%
In Armed Forces	0	21	0.0%	0	21	0.0%
Civilian:	1,889	196	32.0%	1,005	206	20.7%
Employed	1,518	205	25.7%	897	200	18.5%
Unemployed	371	110	6.3%	108	85	2.2%
Not in labor force	938	180	15.9%	555	158	11.4%
65 years and over:	633	49	10.7%	1,226	210	25.3%
In labor force:	10	14	0.2%	127	117	2.6%
Employed	10	14	0.2%	127	117	2.6%
Unemployed	0	21	0.0%	0	21	0.0%
Not in labor force	623	50	10.5%	1,099	194	22.6%

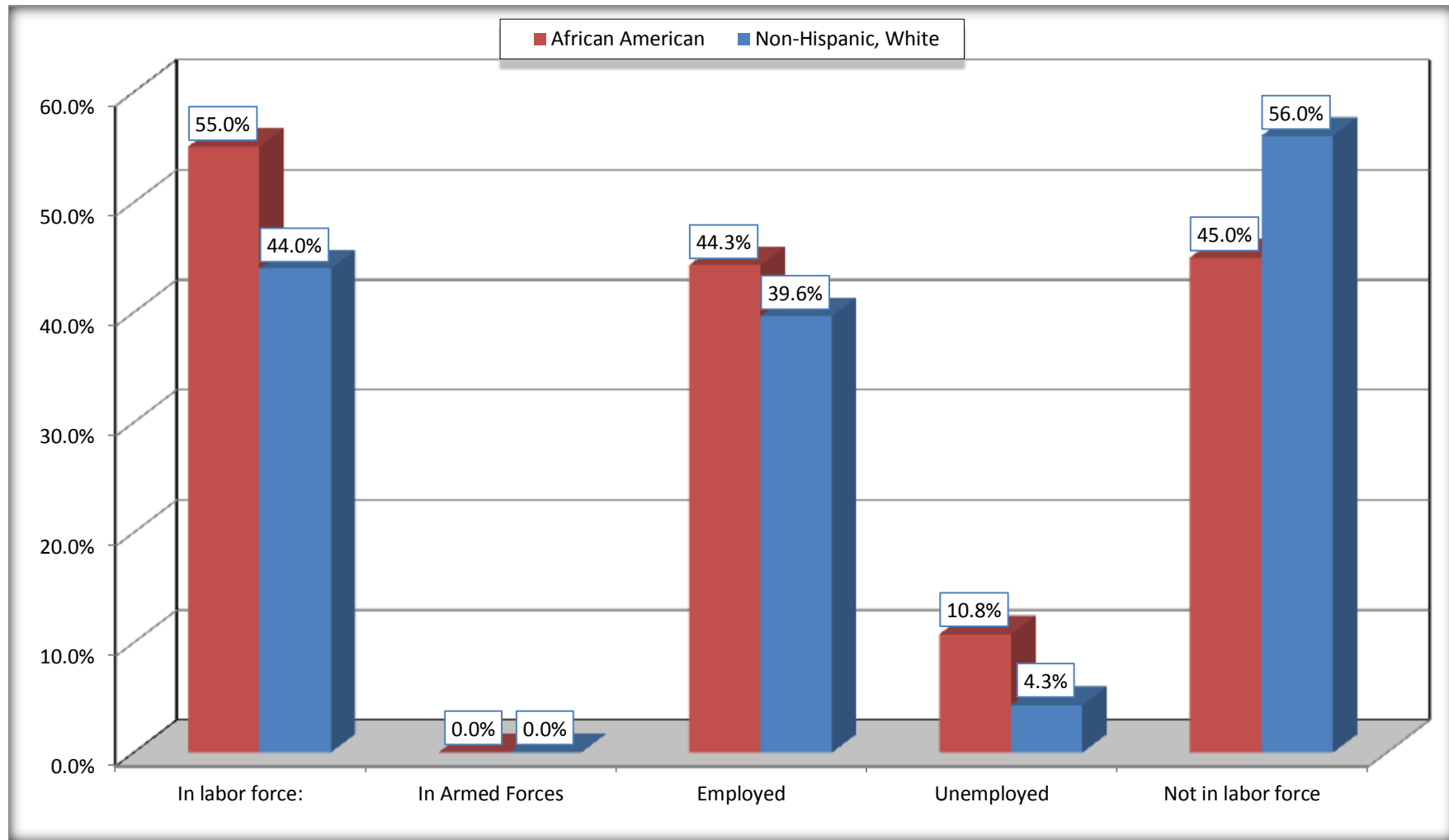
Source: U.S. Census Bureau, 2008-2012 American Community Survey

For information on confidentiality protection, sampling error, nonsampling error, and definitions, see Survey Methodology.

<http://www.census.gov/acs/www/UseData/index.htm>

Employment Status for the Population 16 years and over

Waycross city, Georgia

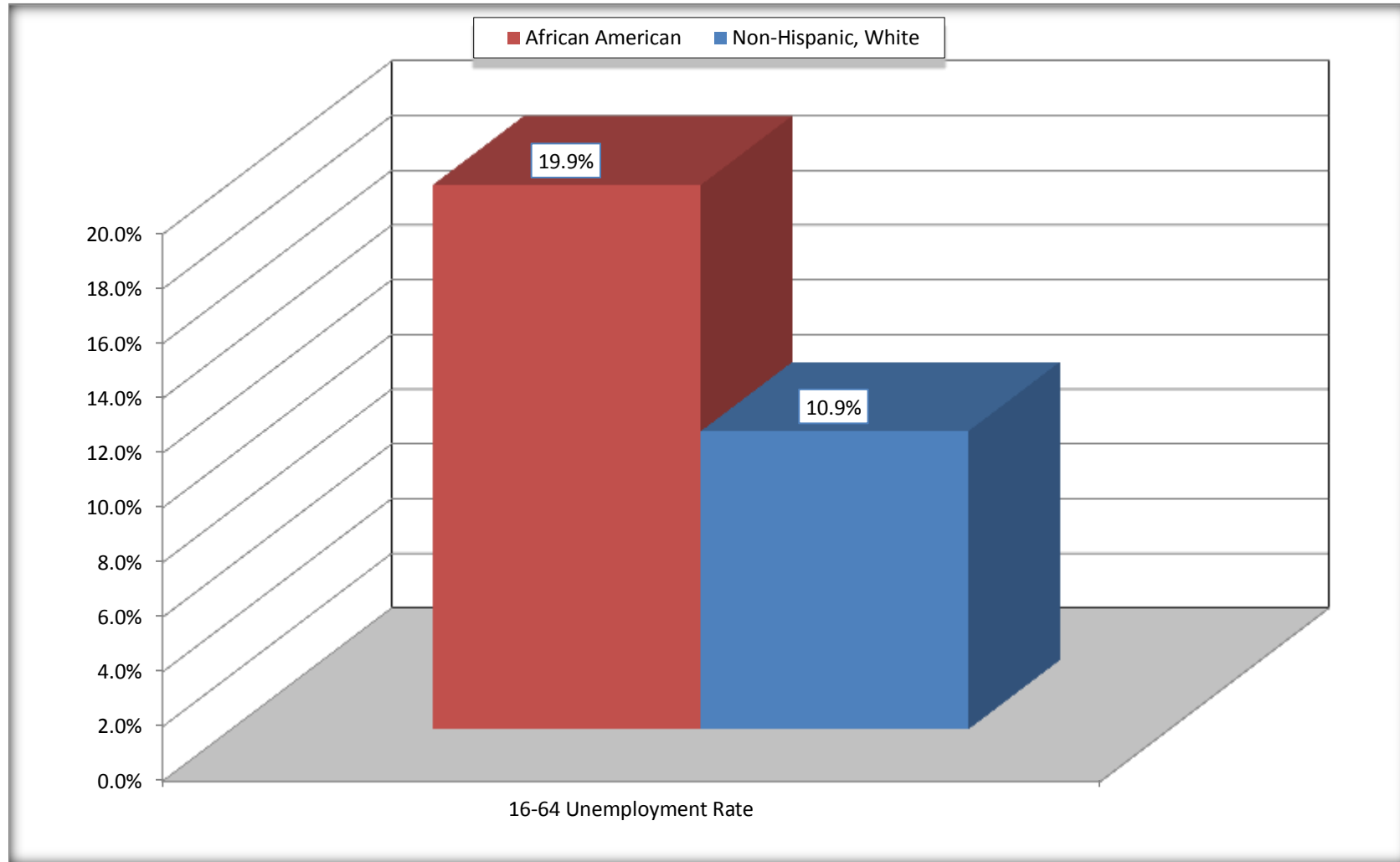


Source: C23002. SEX BY AGE BY EMPLOYMENT STATUS FOR THE POPULATION 16 YEARS AND OVER

Data Set: 2008-2012 American Community Survey 5-Year Estimates

Unemployment of Working Age Population (Ages 16 to 64) (As a Percent of 16-64 Civilian Labor Force)

Waycross city, Georgia



Source: C23002. SEX BY AGE BY EMPLOYMENT STATUS FOR THE POPULATION 16 YEARS AND OVER
Data Set: 2008-2012 American Community Survey 5-Year Estimates

C24010. SEX BY OCCUPATION FOR THE CIVILIAN EMPLOYED POPULATION 16 YEARS AND OVER

Data Set: 2008-2012 American Community Survey 5-Year Estimates

	Waycross city, Georgia					
	African American	Margin of Error (+/-)	% of AA Total	White, Not Hispanic	Margin of Error (+/-)	% of NHW Total
Total:	2,615	294	100.0%	1,924	300	100.0%
Management, professional, and related occupations	503	NC	19.2%	659	NC	34.3%
Service occupations	716	NC	27.4%	357	NC	18.6%
Sales and office occupations	494	NC	18.9%	629	NC	32.7%
Natural resources, construction, and maintenance occupations:	219	NC	8.4%	73	NC	3.8%
Production, transportation, and material moving occupations	683	NC	26.1%	206	NC	10.7%
Male:	1,087	181	41.6%	900	206	46.8%
Management, business, science, and arts occupations:	114	70	4.4%	350	127	18.2%
Service occupations	211	116	8.1%	104	76	5.4%
Sales and office occupations	125	87	4.8%	259	128	13.5%
Natural resources, construction, and maintenance occupations:	213	97	8.1%	73	71	3.8%
Production, transportation, and material moving occupations	424	123	16.2%	114	82	5.9%
Female:	1,528	207	58.4%	1,024	226	53.2%
Management, professional, and related occupations	389	145	14.9%	309	123	16.1%
Service occupations	505	154	19.3%	253	138	13.1%
Sales and office occupations	369	142	14.1%	370	155	19.2%
Natural resources, construction, and maintenance occupations:	6	12	0.2%	0	21	0.0%
Production, transportation, and material moving occupations	259	120	9.9%	92	76	4.8%

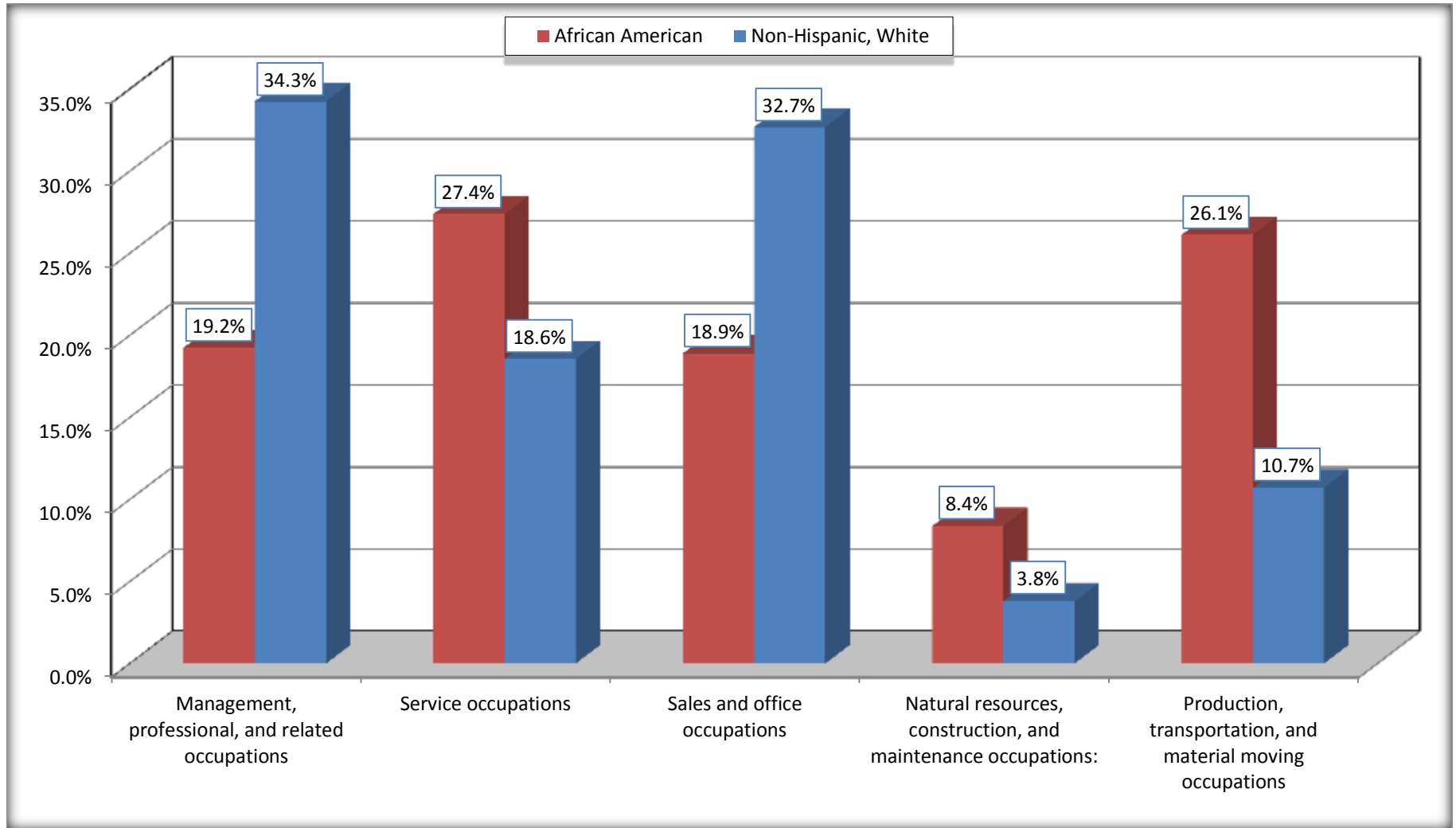
Source: U.S. Census Bureau, 2008-2012 American Community Survey

For information on confidentiality protection, sampling error, nonsampling error, and definitions, see Survey Methodology.

<http://www.census.gov/acs/www/UseData/index.htm>

Occupation for the Civilian Employed 16 Years and Over Population

Waycross city, Georgia



Source: C24010. SEX BY OCCUPATION FOR THE CIVILIAN EMPLOYED POPULATION 16 YEARS AND OVER
Data Set: 2008-2012 American Community Survey 5-Year Estimates

B25003. TENURE - Universe: OCCUPIED HOUSING UNITS

Data Set: 2008-2012 American Community Survey 5-Year Estimates

	Waycross city, Georgia					
	African American	Margin of Error (+/-)	% of AA Total	White, Not Hispanic	Margin of Error (+/-)	% of NHW Total
Total:	3,148	246	100.0%	2,749	301	100.0%
Owner occupied	1,408	163	44.7%	1,800	268	65.5%
Renter occupied	1,740	241	55.3%	949	196	34.5%

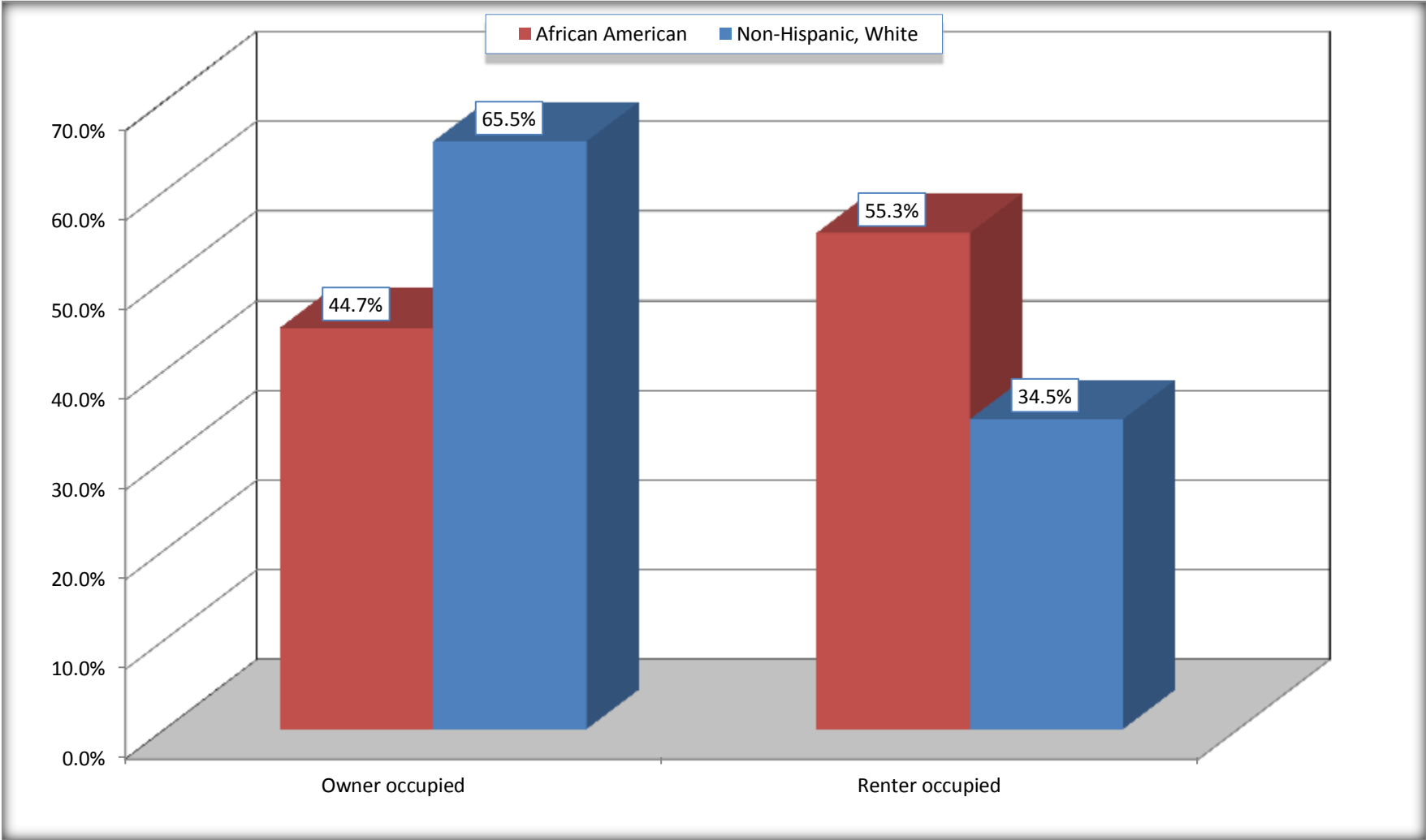
Source: U.S. Census Bureau, 2008-2012 American Community Survey

For information on confidentiality protection, sampling error, nonsampling error, and definitions, see Survey Methodology.

<http://www.census.gov/acs/www/UseData/index.h>

Home Owners and Renters by Household

Waycross city, Georgia



Source: B25003. TENURE - Universe: OCCUPIED HOUSING UNITS
Data Set: 2008-2012 American Community Survey 5-Year Estimates

B25014. OCCUPANTS PER ROOM - Universe: OCCUPIED HOUSING UNITS

Data Set: 2008-2012 American Community Survey 5-Year Estimates

	Waycross city, Georgia					
	African American	Margin of Error (+/-)	% of AA Total	White, Not Hispanic	Margin of Error (+/-)	% of NHW Total
Total:	3,148	246	100.0%	2,749	301	100.0%
1.00 or less occupants per room	3,016	271	95.8%	2,749	301	100.0%
1.01 or more occupants per room	132	98	4.2%	0	21	0.0%

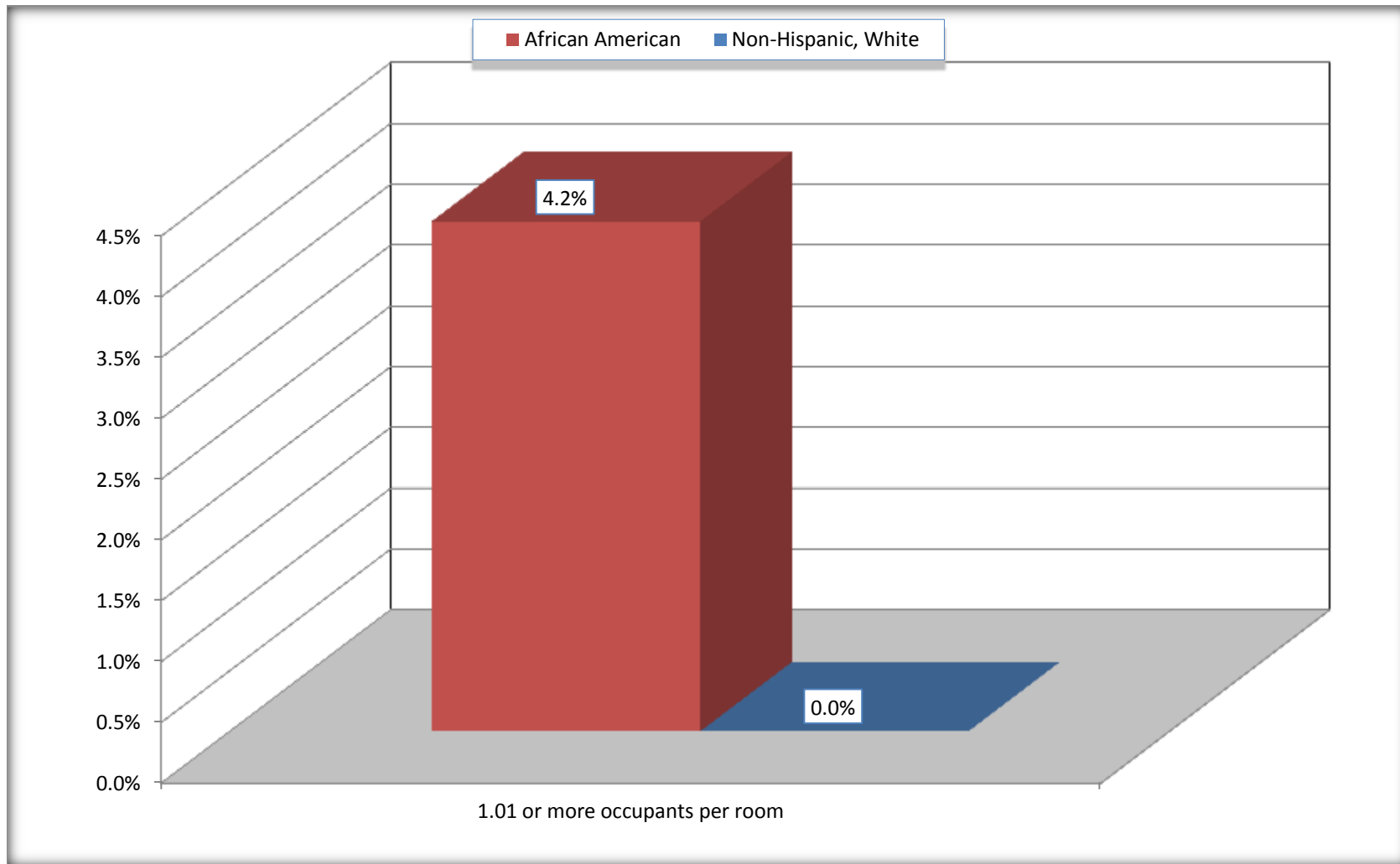
Source: U.S. Census Bureau, 2008-2012 American Community Survey

For information on confidentiality protection, sampling error, nonsampling error, and definitions, see Survey Methodology.

<http://www.census.gov/acs/www/UseData/index.ht>

More than One Person per Room (Crowding) by Household

Waycross city, Georgia



Source: B25014. OCCUPANTS PER ROOM - Universe: OCCUPIED HOUSING UNITS
Data Set: 2008-2012 American Community Survey 5-Year Estimates

B18101. AGE BY DISABILITY STATUS

Data Set: 2008-2012 American Community Survey 5-Year Estimates

	Waycross city, Georgia					
	African American	Margin of Error (+/-)	% of AA Total	White, Not Hispanic	Margin of Error (+/-)	% of NHW Total
Total:	7,994	441	100.0%	5,206	445	100.0%
Under 18 years:	2,564	237	32.1%	735	27	14.1%
With a disability	215	134	2.7%	202	123	3.9%
No disability	2,349	226	29.4%	533	195	10.2%
18 to 64 years:	4,513	263	56.5%	2,916	334	56.0%
With a disability	916	186	11.5%	678	150	13.0%
No disability	3,597	327	45.0%	2,238	315	43.0%
65 years and over:	917	83	11.5%	1,555	266	29.9%
With a disability	445	103	5.6%	633	150	12.2%
No disability	472	103	5.9%	922	211	17.7%

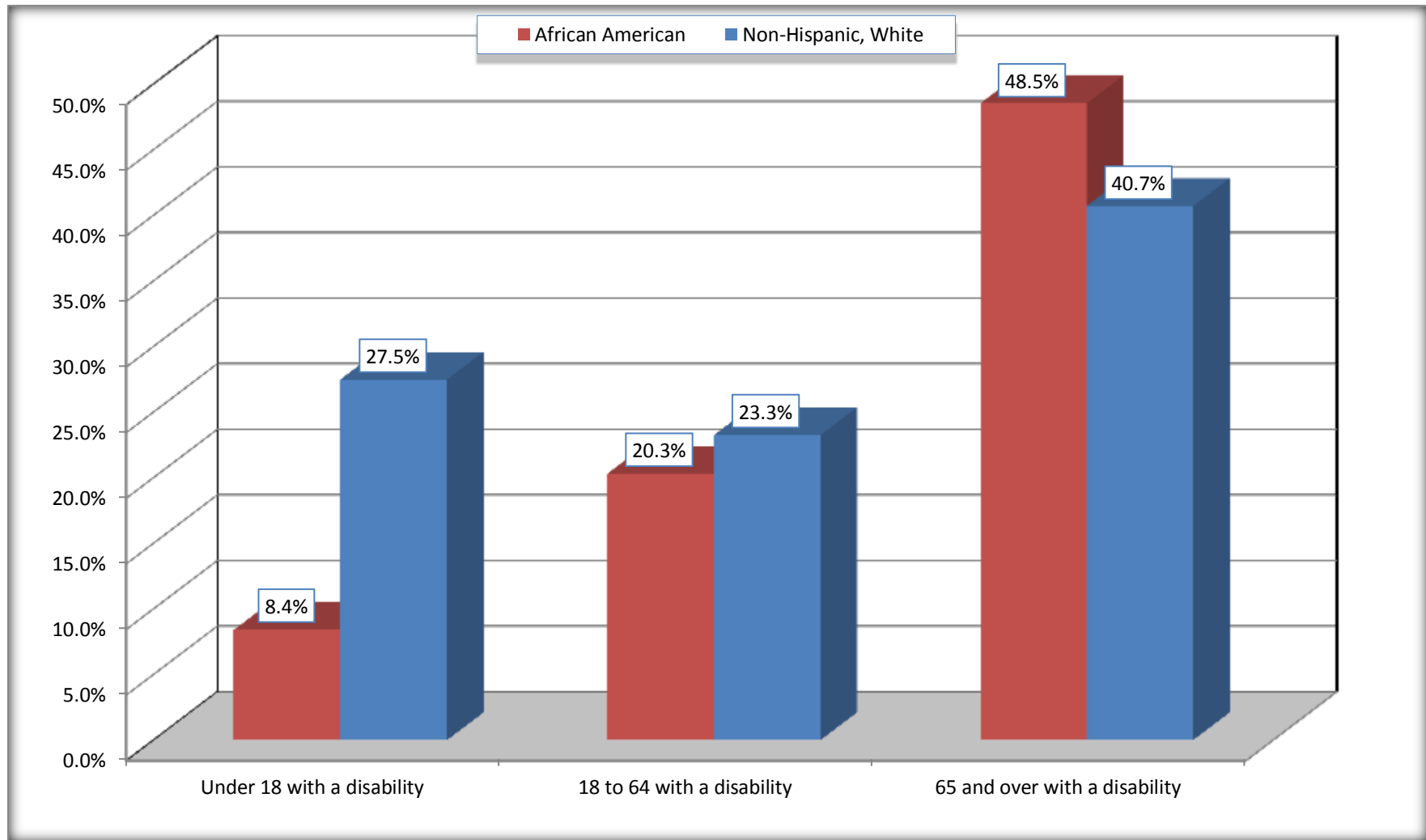
Source: U.S. Census Bureau, 2008-2012 American Community Survey

For information on confidentiality protection, sampling error, nonsampling error, and definitions, see Survey Methodology.

<http://www.census.gov/acs/www/UseData/index.htm>

Disability by Age

Waycross city, Georgia



Source: B18101. AGE BY DISABILITY STATUS
Data Set: 2008-2012 American Community Survey 5-Year Estimates

C27001B. HEALTH INSURANCE COVERAGE STATUS BY AGE

Data Set: 2008-2012 American Community Survey 5-Year Estimates

	Waycross city, Georgia					
	African American	Margin of Error (+/-)	% of AA Total	White, Not Hispanic	Margin of Error (+/-)	% of NHW Total
Total:	7,994	441	100.0%	5,206	445	100.0%
Under 18 years:	2,564	237	32.1%	735	254	14.1%
With health insurance coverage	2,305	260	28.8%	574	217	11.0%
No health insurance coverage	259	139	3.2%	161	178	3.1%
18 to 64 years:	4,513	263	56.5%	2,916	334	56.0%
With health insurance coverage	3,084	305	38.6%	1,883	300	36.2%
No health insurance coverage	1,429	250	17.9%	1,033	268	19.8%
65 years and over:	917	83	11.5%	1,555	266	29.9%
With health insurance coverage	917	83	11.5%	1,498	261	28.8%
No health insurance coverage	0	21	0.0%	57	87	1.1%

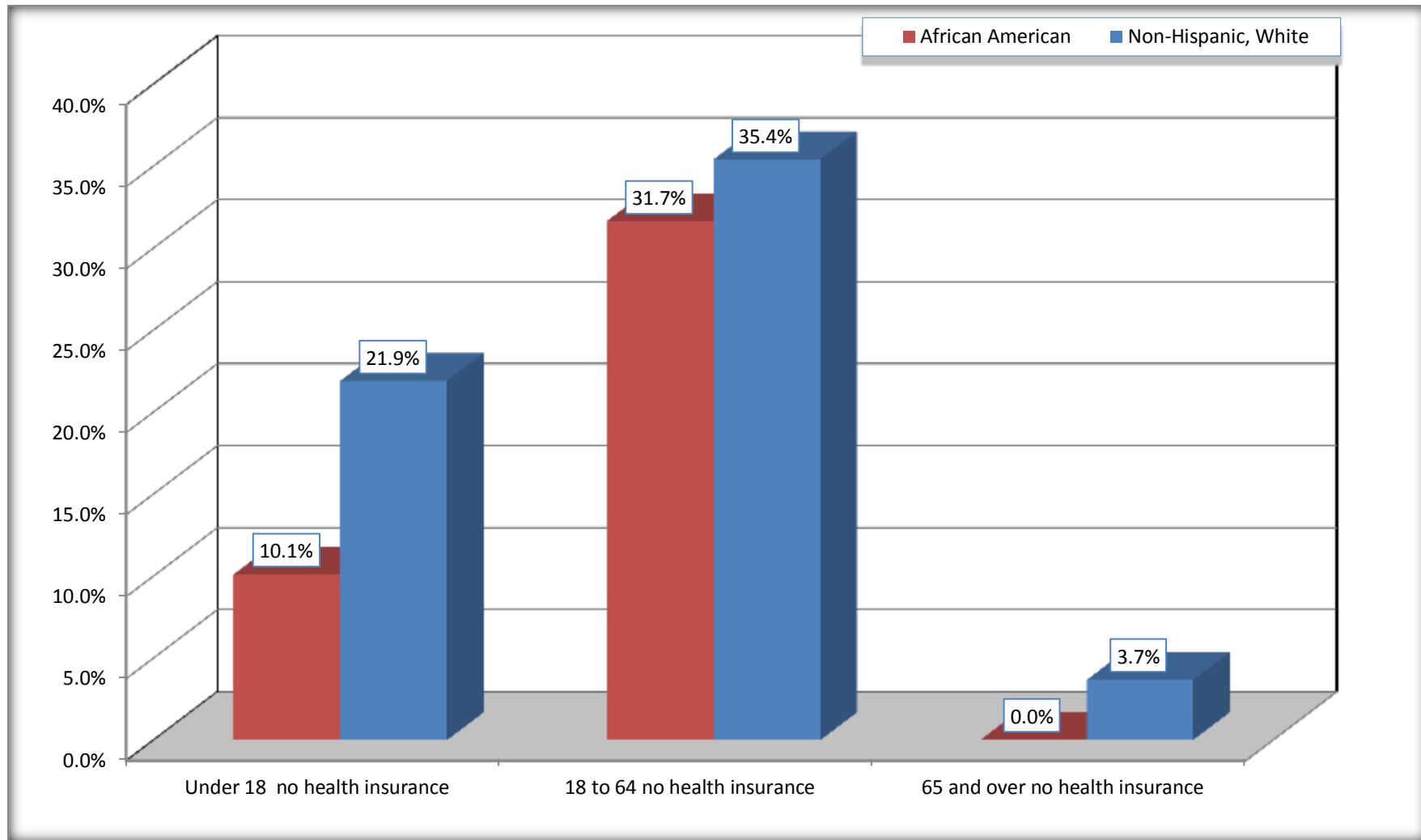
Source: U.S. Census Bureau, 2008-2012 American Community Survey

For information on confidentiality protection, sampling error, nonsampling error, and definitions, see Survey Methodology.

<http://www.census.gov/acs/www/UseData/index.htm>

Lack of Health Insurance Coverage by Age

Waycross city, Georgia



Source: C27001B. HEALTH INSURANCE COVERAGE STATUS BY AGE
Data Set: 2008-2012 American Community Survey 5-Year Estimates