

Selected Socio-Economic Data

Treutlen County, Georgia

African American and White, Not Hispanic

Data Set: 2008-2012 American Community Survey 5-Year Estimates

www.fairvote2020.org

www.fairdata2000.com

[29-Dec-13](#)

C02003.DETAILED RACE - Universe: TOTAL POPULATION

Data Set: 2008-2012 American Community Survey 5-Year Estimates

	Trentlen County, Georgia		
	Population	Margin of Error (+/-)	% of Total
Total:	6,851	*****	100.0%
Population of one race:	6,624	267	96.7%
White	4,600	305	67.1%
Black or African American	1,958	282	28.6%
American Indian and Alaska Native	0	19	0.0%
Asian alone	56	75	0.8%
Native Hawaiian and Other Pacific Islander	0	19	0.0%
Some other race	10	18	0.1%
Population of two or more races:	227	267	3.3%
Two races including Some other race	0	19	0.0%
Two races excluding Some other race, and three or more races	227	267	3.3%
Population of two races:	227	267	3.3%
White; Black or African American	219	272	3.2%
White; American Indian and Alaska Native	8	12	0.1%
White; Asian	0	19	0.0%
Black or African American; American Indian and Alaska Native	0	19	0.0%
All other two race combinations	0	19	0.0%
Population of three races	0	19	0.0%
Population of four or more races	0	19	0.0%

Note: Hispanics may be of any race. See Table B03002 and chart.

Source: U.S. Census Bureau, 2008-2012 American Community Survey

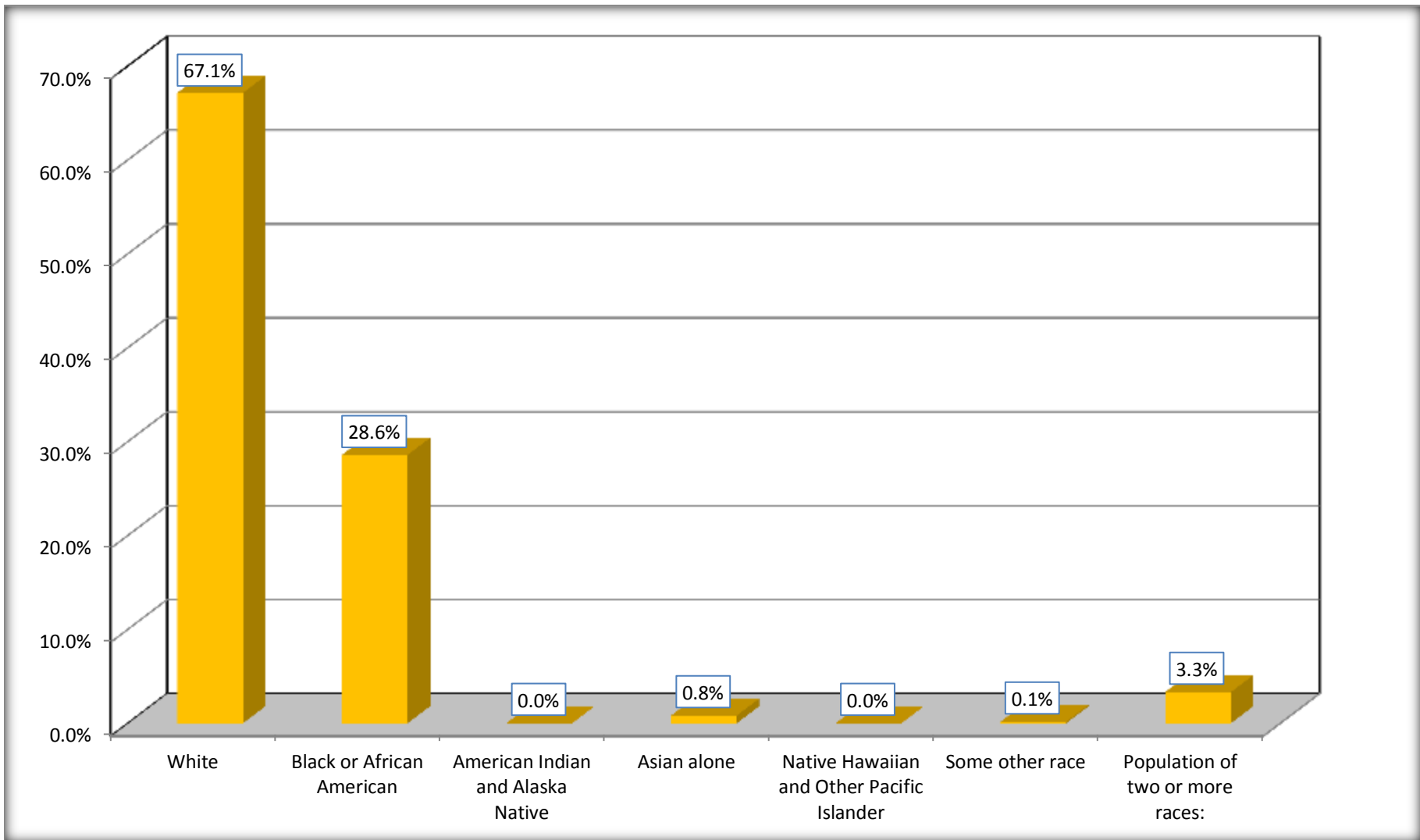
Although the American Community Survey (ACS) produces population, demographic and housing unit estimates, it is the Census Bureau's Population Estimates Program that produces and disseminates the official estimates of the population for the nation, states, counties, cities and towns and estimates of housing units for states and counties.

For information on confidentiality protection, sampling error, nonsampling error, and definitions, see Survey Methodology.

<http://www.census.gov/acs/www/UseData/index.htm>

Population by Race

Treutlen County, Georgia



Source: C02003.DETAILED RACE - Universe: TOTAL POPULATION
Data Set: 2008-2012 American Community Survey 5-Year Estimates

B03002. HISPANIC OR LATINO ORIGIN BY RACE - Universe: TOTAL POPULATION

Data Set: 2008-2012 American Community Survey 5-Year Estimates

	Trentlen County, Georgia		
	Population	Margin of Error (+/-)	% of Total
Total:	6,851	*****	100.0%
Not Hispanic or Latino:	6,815	39	99.5%
White alone	4,574	303	66.8%
Black or African American alone	1,958	282	28.6%
American Indian and Alaska Native alone	0	19	0.0%
Asian alone	56	75	0.8%
Native Hawaiian and Other Pacific Islander alone	0	19	0.0%
Some other race alone	0	19	0.0%
Two or more races:	227	267	3.3%
Two races including Some other race	0	19	0.0%
Two races excluding Some other race, and three or more races	227	267	3.3%
Hispanic or Latino	36	39	0.5%

Source: U.S. Census Bureau, 2008-2012 American Community Survey

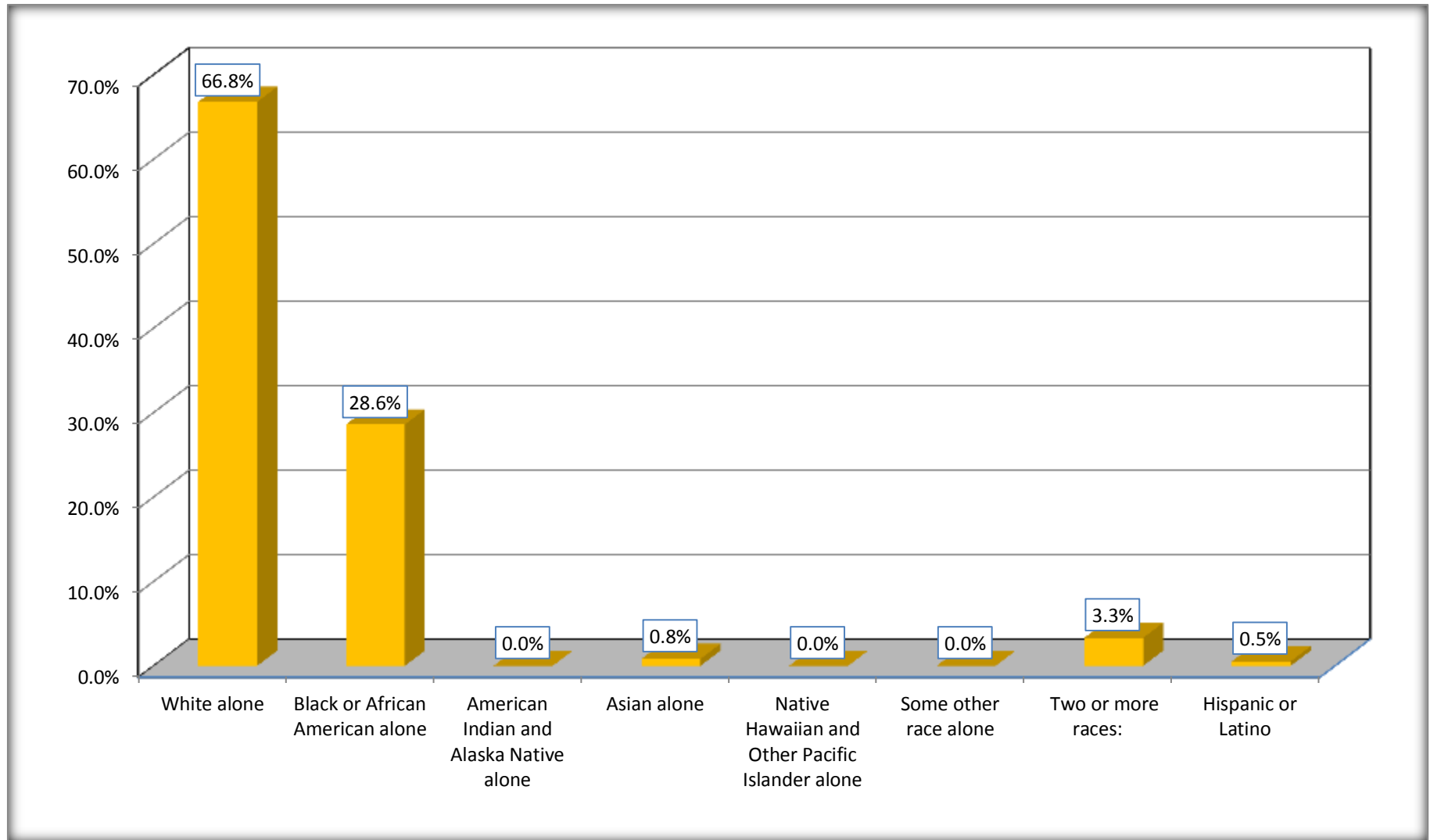
Although the American Community Survey (ACS) produces population, demographic and housing unit estimates, it is the Census Bureau's Population Estimates Program that produces and disseminates the official estimates of the population for the nation, states, counties, cities and towns and estimates of housing units for states and counties.

For information on confidentiality protection, sampling error, nonsampling error, and definitions, see Survey Methodology.

<http://www.census.gov/acs/www/UseData/index.htm>

Non-Hispanic by Race and Hispanic Population

Treutlen County, Georgia



Source: B03002. HISPANIC OR LATINO ORIGIN BY RACE - Universe: TOTAL POPULATION
Data Set: 2008-2012 American Community Survey 5-Year Estimates

B03002. HISPANIC OR LATINO ORIGIN BY RACE

Data Set: 2008-2012 American Community Survey 5-Year Estimates

	Treutlen County, Georgia		
	Population	Margin of Error (+/-)	% of Total
Hispanic or Latino:	36	39	100.0%
White alone	26	24	72.2%
Black or African American alone	0	19	0.0%
American Indian and Alaska Native alone	0	19	0.0%
Asian alone	0	19	0.0%
Native Hawaiian and Other Pacific Islander alone	0	19	0.0%
Some other race alone	10	18	27.8%
Two or more races:	0	19	0.0%
Two races including Some other race	0	19	0.0%
Two races excluding Some other race, and three or more races	0	19	0.0%

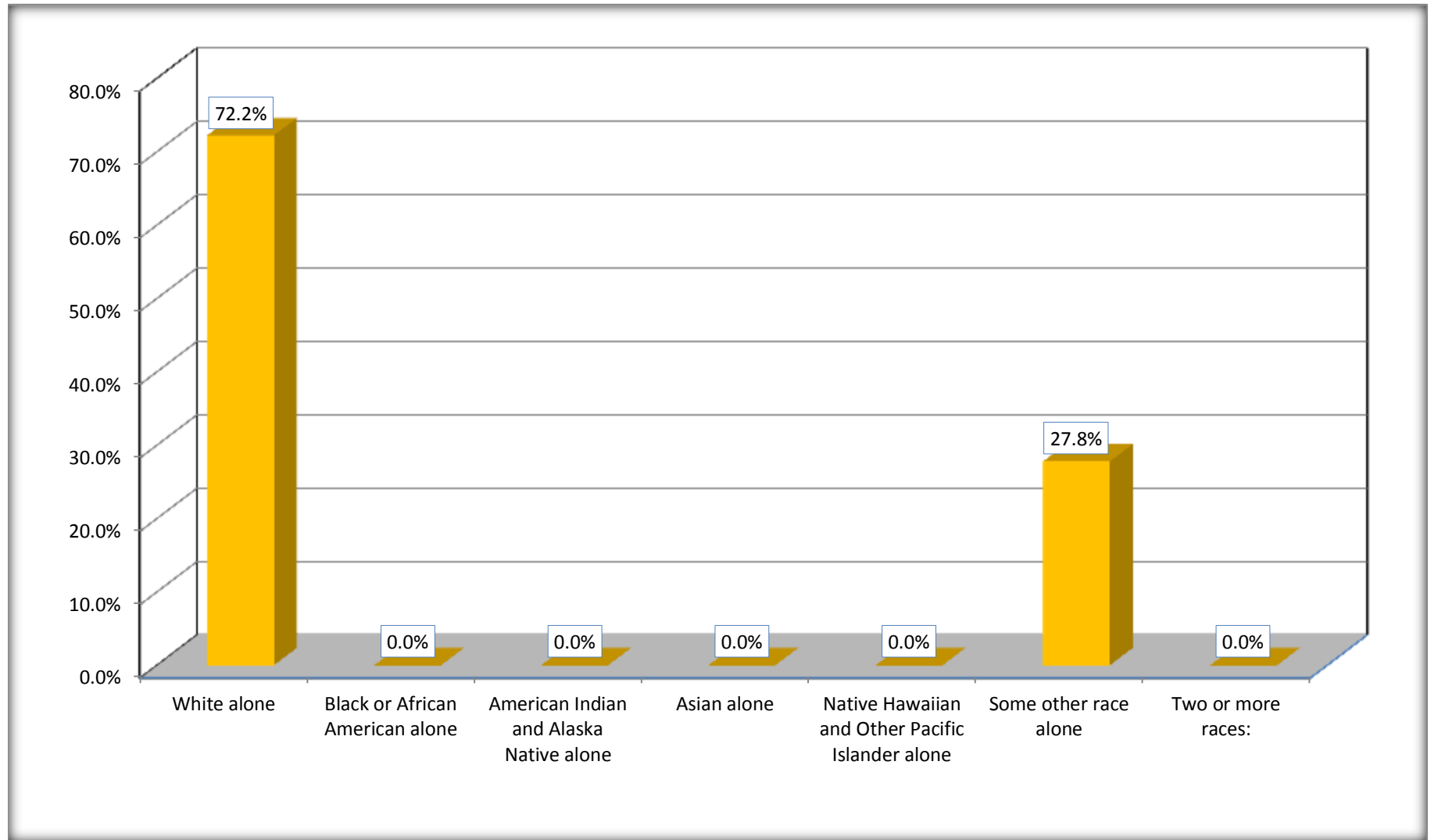
Source: U.S. Census Bureau, 2008-2012 American Community Survey

Although the American Community Survey (ACS) produces population, demographic and housing unit estimates, it is the Census Bureau's Population Estimates Program that produces and disseminates the official estimates of the population for the nation, states, counties, cities and towns and estimates of housing units for states and counties.

For information on confidentiality protection, sampling error, nonsampling error, and definitions, see Survey Methodology.

<http://www.census.gov/acs/www/UseData/index.htm>

Hispanic or Latino Origin by Race Treutlen County, Georgia



Source: B03002. HISPANIC OR LATINO ORIGIN BY RACE
Data Set: 2008-2012 American Community Survey 5-Year Estimates

B01001. SEX BY AGE

Data Set: 2008-2012 American Community Survey 5-Year Estimates

	Trentlen County, Georgia					
	African American	Margin of Error (+/-)	% of AA Total	White, Not Hispanic	Margin of Error (+/-)	% of NHW Total
Total:	1,958	282	100.0%	4,574	303	100.0%
Under 18 years	615	NC	31.4%	1,108	NC	24.2%
18 to 64 years	1,087	NC	55.5%	2,676	NC	58.5%
65 years and over	256	NC	13.1%	790	NC	17.3%
Male:	927	193	47.3%	2,385	389	52.1%
Under 18 years	299	NC	15.3%	621	NC	13.6%
18 to 64 years	583	NC	29.8%	1,413	NC	30.9%
65 years and over	45	NC	2.3%	351	NC	7.7%
Female:	1,031	196	52.7%	2,189	412	47.9%
Under 18 years	316	NC	16.1%	487	NC	10.6%
18 to 64 years	504	NC	25.7%	1,263	NC	27.6%
65 years and over	211	NC	10.8%	439	NC	9.6%

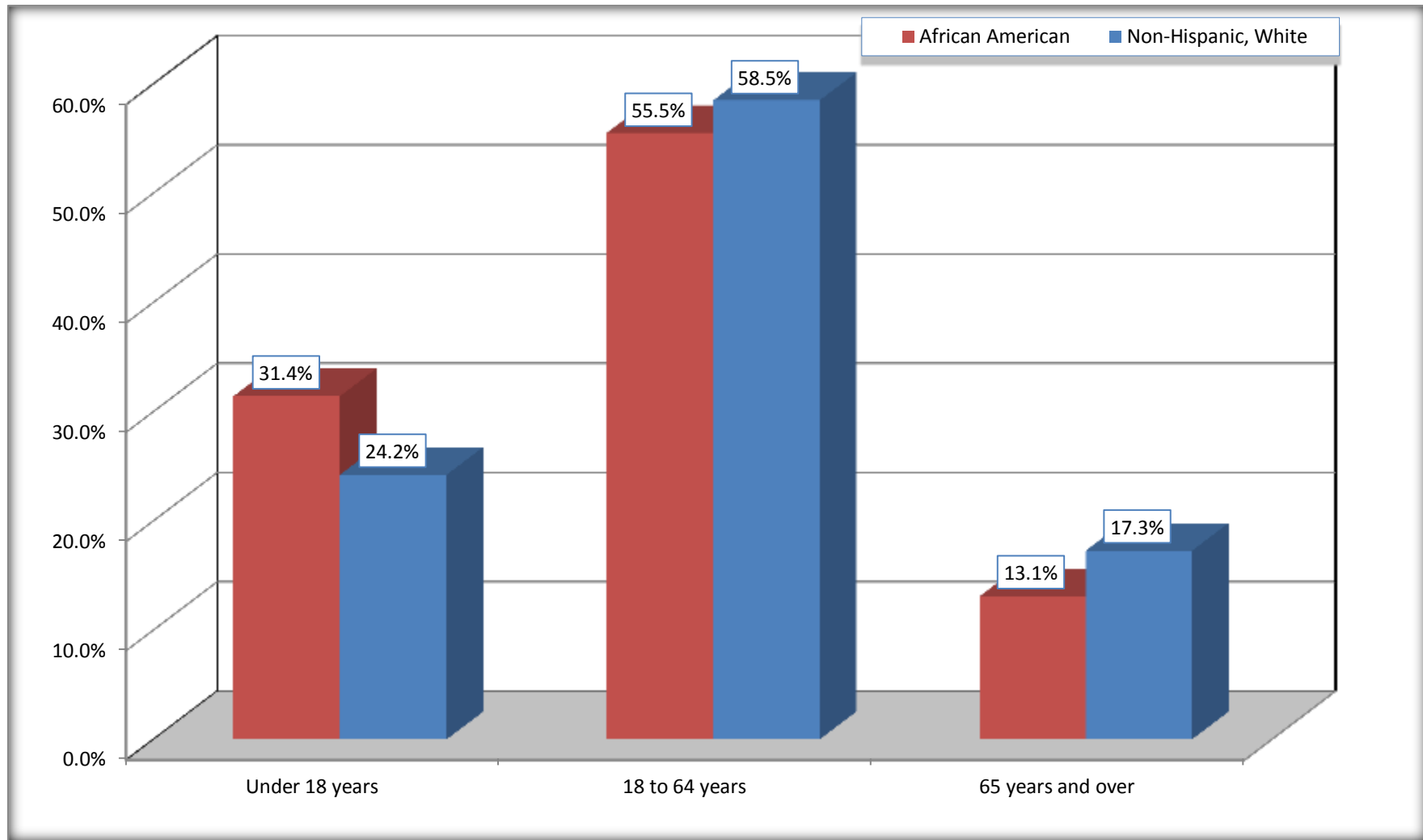
Source: U.S. Census Bureau, 2008-2012 American Community Survey

Although the American Community Survey (ACS) produces population, demographic and housing unit estimates, it is the Census Bureau's Population Estimates Program that produces and disseminates the official estimates of the population for the nation, states, counties, cities and towns and estimates of housing units for states and counties.

For information on confidentiality protection, sampling error, nonsampling error, and definitions, see Survey Methodology.
<http://www.census.gov/acs/www/UseData/index.htm>

Population by Age

Treutlen County, Georgia



Source: B01001. SEX BY AGE
Data Set: 2008-2012 American Community Survey 5-Year Estimates

B05003. SEX BY AGE BY CITIZENSHIP STATUS

Data Set: 2008-2012 American Community Survey 5-Year Estimates

	Treutlen County, Georgia					
	African American	Margin of Error (+/-)	% of AA Total by Age	White, Not Hispanic	Margin of Error (+/-)	% of NHW Total by Age
Total:	1,958	282	100.0%	4,574	303	100.0%
Under 18 years:	615	NC	100.0%	1,108	NC	100.0%
Native	615	NC	100.0%	1,108	NC	100.0%
Foreign born:	0	NC	0.0%	0	NC	0.0%
Naturalized U.S. citizen	0	NC	0.0%	0	NC	0.0%
Not a U.S. citizen	0	NC	0.0%	0	NC	0.0%
18 years and over:	1,343	NC	100.0%	3,466	NC	100.0%
Native	1,343	NC	100.0%	3,466	NC	100.0%
Foreign born:	0	NC	0.0%	0	NC	0.0%
Naturalized U.S. citizen	0	NC	0.0%	0	NC	0.0%
Not a U.S. citizen	0	NC	0.0%	0	NC	0.0%
Male:	927	193	47.3%	2,385	258	52.1%
Under 18 years:	299	108	100.0%	621	148	100.0%
Native	299	108	100.0%	621	148	100.0%
Foreign born:	0	19	0.0%	0	19	0.0%
Naturalized U.S. citizen	0	19	0.0%	0	19	0.0%
Not a U.S. citizen	0	19	0.0%	0	19	0.0%
18 years and over:	628	133	100.0%	1,764	211	100.0%
Native	628	133	100.0%	1,764	211	100.0%
Foreign born:	0	19	0.0%	0	19	0.0%
Naturalized U.S. citizen	0	19	0.0%	0	19	0.0%
Not a U.S. citizen	0	19	0.0%	0	19	0.0%

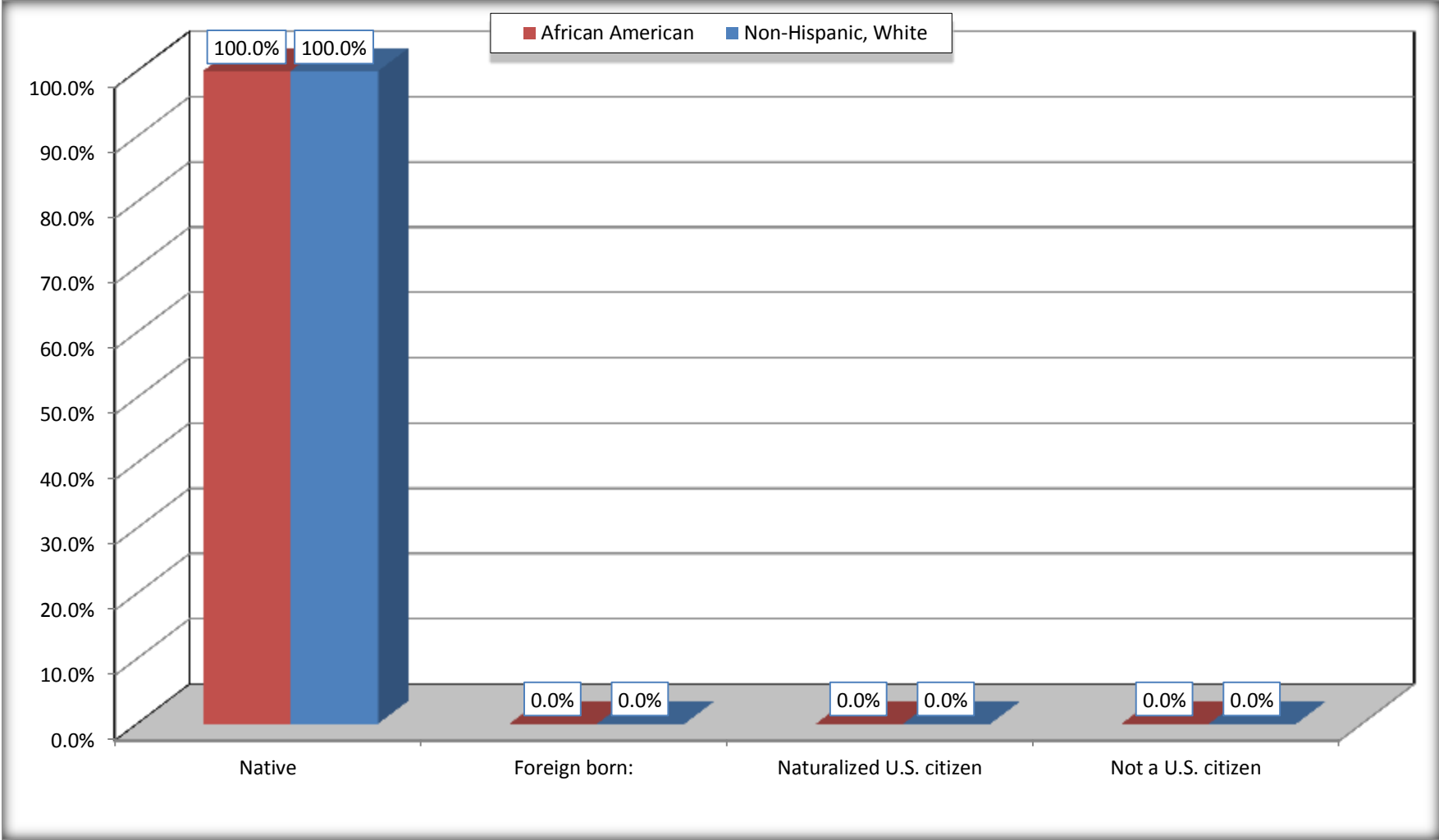
	Trentlen County, Georgia					
	African American	Margin of Error (+/-)	% of AA by Age	White, Not Hispanic	Margin of Error (+/-)	% of NHW by Age
Female:	1,031	196	52.7%	2,189	211	47.9%
Under 18 years:	316	111	100.0%	487	171	100.0%
Native	316	111	100.0%	487	171	100.0%
Foreign born:	0	19	0.0%	0	19	0.0%
Naturalized U.S. citizen	0	19	0.0%	0	19	0.0%
Not a U.S. citizen	0	19	0.0%	0	19	0.0%
18 years and over:	715	142	100.0%	1,702	201	100.0%
Native	715	142	100.0%	1,702	201	100.0%
Foreign born:	0	19	0.0%	0	19	0.0%
Naturalized U.S. citizen	0	19	0.0%	0	19	0.0%
Not a U.S. citizen	0	19	0.0%	0	19	0.0%

Source: U.S. Census Bureau, 2008-2012 American Community Survey

For information on confidentiality protection, sampling error, nonsampling error, and definitions, see Survey Methodology.
<http://www.census.gov/acs/www/UseData/index.htm>

Citizenship Status of Voting Age Population (18 and Over)

Treutlen County, Georgia



Source: B05003. SEX BY AGE BY CITIZENSHIP STATUS
Data Set: 2008-2012 American Community Survey 5-Year Estimates

**B07004. GEOGRAPHICAL MOBILITY IN THE PAST YEAR BY RACE FOR CURRENT RESIDENCE IN THE UNITED STATES - Universe:
POPULATION 1 YEAR AND OVER**

Data Set: 2008-2012 American Community Survey 5-Year Estimates

	Treutlen County, Georgia					
	African American	Margin of Error (+/-)	% of AA Total	White, Not Hispanic	Margin of Error (+/-)	% of NHW Total
Total:	1,958	282	100.0%	4,560	303	100.0%
Same house 1 year ago	1,673	285	85.4%	4,399	313	96.5%
Moved within same county	127	74	6.5%	39	44	0.9%
Moved from different county within same state	143	80	7.3%	113	71	2.5%
Moved from different state	15	24	0.8%	9	13	0.2%
Moved from abroad	0	19	0.0%	0	19	0.0%

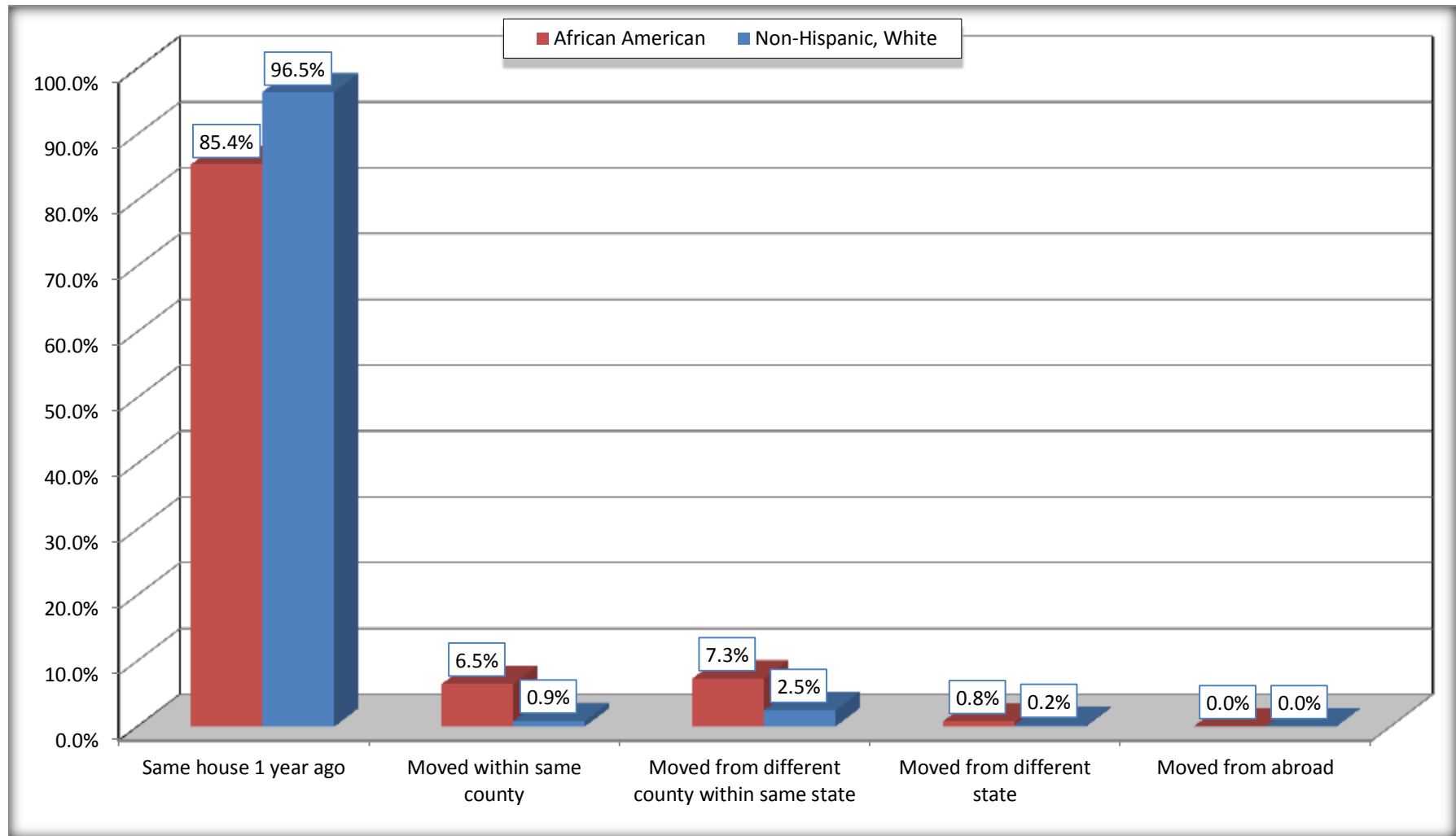
Source: U.S. Census Bureau, 2008-2012 American Community Survey

For information on confidentiality protection, sampling error, nonsampling error, and definitions, see Survey Methodology.

<http://www.census.gov/acs/www/UseData/index.htm>

Geographical Mobility in the Past Year (Population 1 Year and Over)

Treutlen County, Georgia



Source: B07004. GEOGRAPHICAL MOBILITY IN THE PAST YEAR BY RACE FOR CURRENT RESIDENCE IN THE UNITED STATES - Universe: POPULATION 1 YEAR AND OVER

Data Set: 2008-2012 American Community Survey 5-Year Estimates

B08105. MEANS OF TRANSPORTATION TO WORK - Universe: WORKERS 16 YEARS AND OVER

Data Set: 2008-2012 American Community Survey 5-Year Estimates

	Trentlen County, Georgia					
	African American	Margin of Error (+/-)	% of AA Total	White, Not Hispanic	Margin of Error (+/-)	% of NHW Total
Total:	389	94	100.0%	1741	279	100.0%
Car, truck, or van - drove alone	282	82	72.5%	1488	251	85.5%
Car, truck, or van - carpoled	66	46	17.0%	253	161	14.5%
Public transportation (excluding taxicab)	26	32	6.7%	0	19	0.0%
Walked	15	23	3.9%	0	19	0.0%
Taxicab, motorcycle, bicycle, or other means	0	19	0.0%	0	19	0.0%
Worked at home	0	19	0.0%	0	19	0.0%

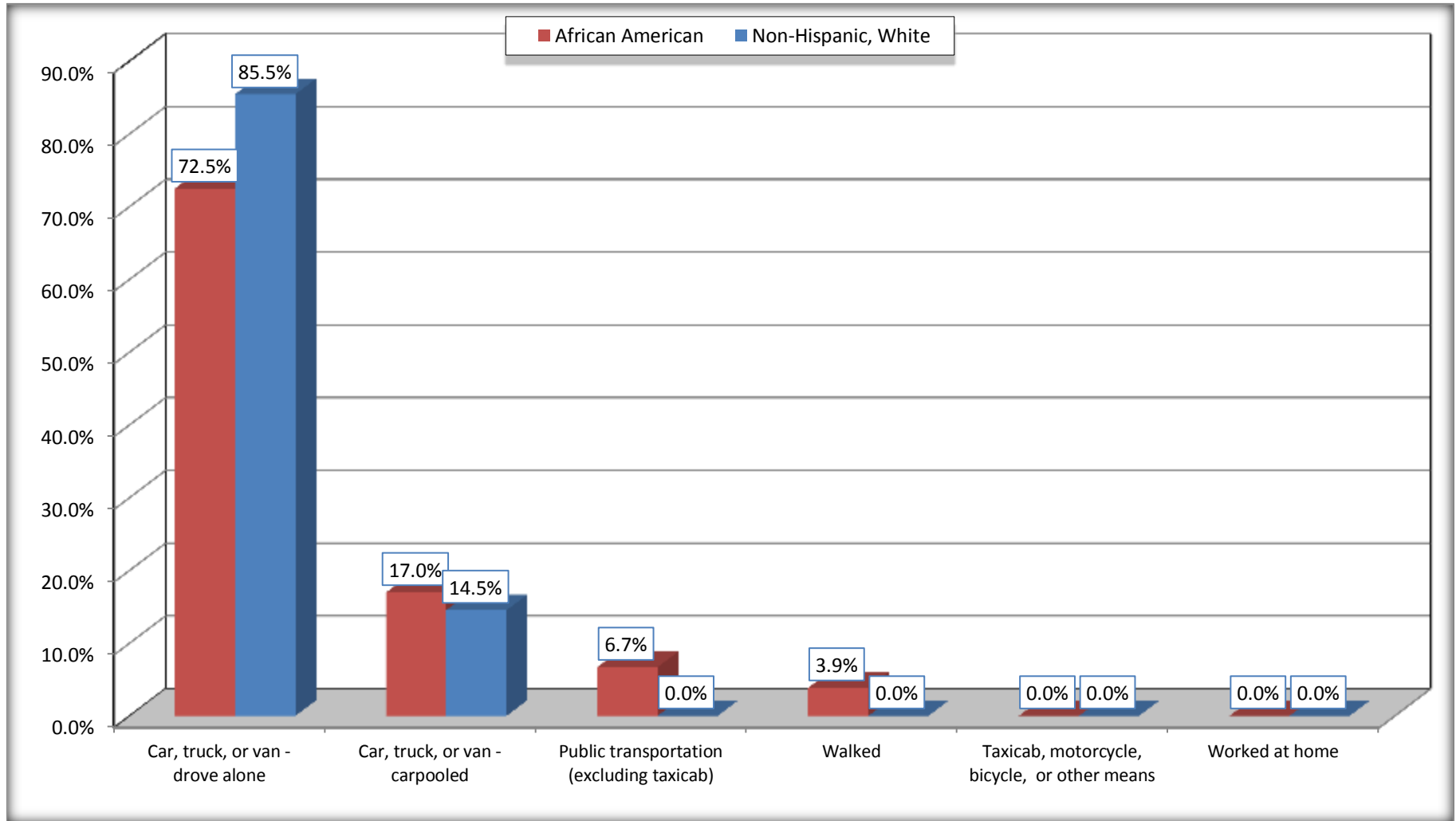
Source: U.S. Census Bureau, 2008-2012 American Community Survey

For information on confidentiality protection, sampling error, nonsampling error, and definitions, see Survey Methodology.

<http://www.census.gov/acs/www/UseData/index.htm>

Means of Transportation to Work (Workers 16 Years and Over)

Treutlen County, Georgia



Source: B08105. MEANS OF TRANSPORTATION TO WORK - Universe: WORKERS 16 YEARS AND OVER
Data Set: 2008-2012 American Community Survey 5-Year Estimates

B11002. HOUSEHOLD TYPE BY RELATIVES AND NONRELATIVES FOR POPULATION IN HOUSEHOLDS

Data Set: 2008-2012 American Community Survey 5-Year Estimates

	Trentlen County, Georgia					
	African American	Margin of Error (+/-)	% of AA Total	White, Not Hispanic	Margin of Error (+/-)	% of NHW Total
Total:	1931	336	100.0%	4369	331	100.0%
In family households	1719	369	89.0%	3622	427	82.9%
In nonfamily households	212	97	11.0%	747	288	17.1%

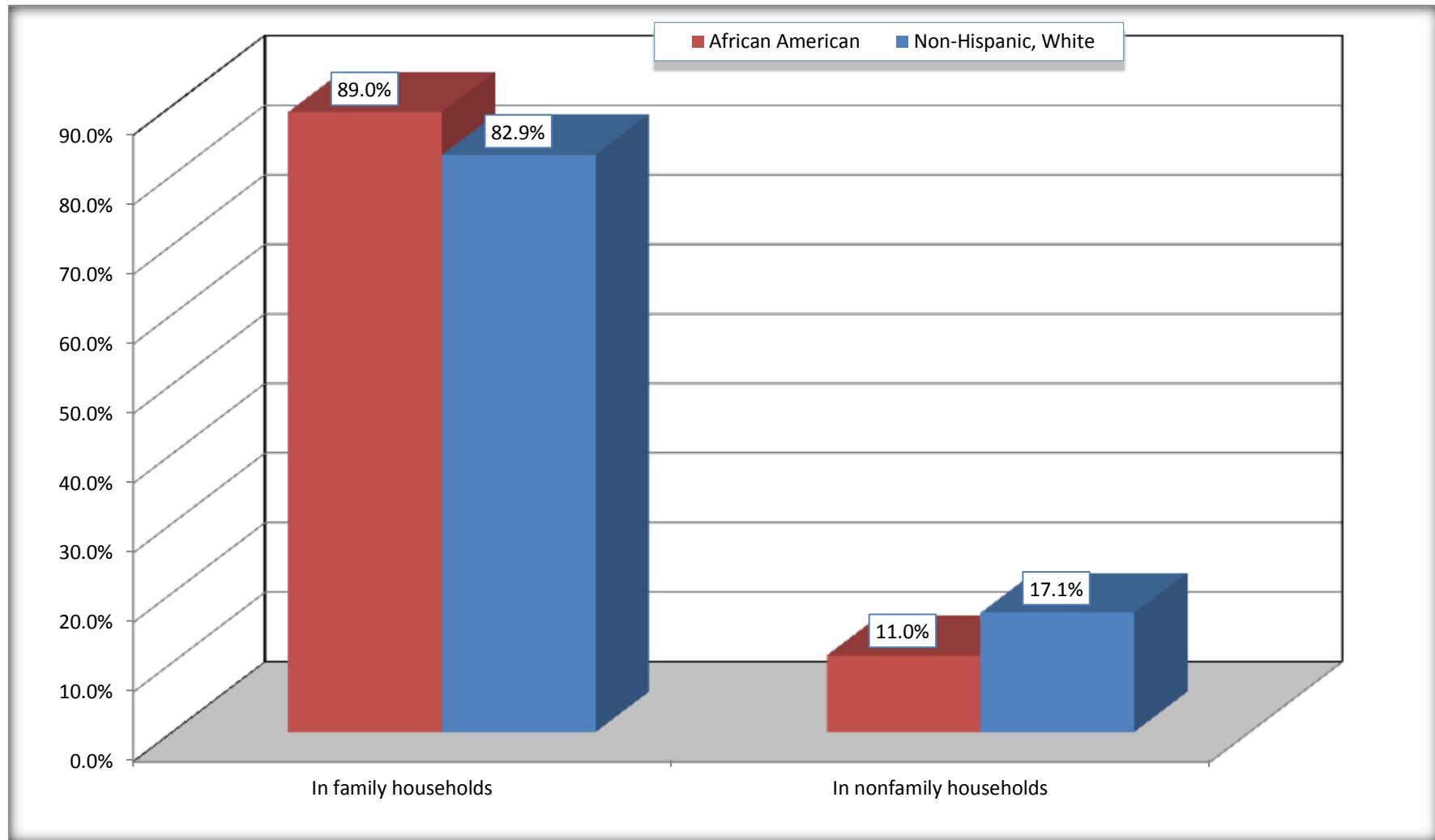
Source: U.S. Census Bureau, 2008-2012 American Community Survey

For information on confidentiality protection, sampling error, nonsampling error, and definitions, see Survey Methodology.

<http://www.census.gov/acs/www/UseData/index.htm>

Household Type for Population in Households

Treutlen County, Georgia



Source: B11002. HOUSEHOLD TYPE BY RELATIVES AND NONRELATIVES FOR POPULATION IN HOUSEHOLDS
Data Set: 2008-2012 American Community Survey 5-Year Estimates

B12002. MARITAL STATUS FOR THE POPULATION 15 YEARS AND OVER

Data Set: 2008-2012 American Community Survey 5-Year Estimates

	Treutlen County, Georgia					
	African American	Margin of Error (+/-)	% of AA Total	White, Not Hispanic	Margin of Error (+/-)	% of NHW Total
Total:	1,440	203	100.0%	3,681	273	100.0%
Never married	572	NC	39.7%	749	NC	20.3%
Now married (except separated)	356	NC	24.7%	1,990	NC	54.1%
Separated	68	NC	4.7%	96	NC	2.6%
Widowed	228	NC	15.8%	460	NC	12.5%
Divorced	216	NC	15.0%	386	NC	10.5%
Male:	691	138	48.0%	1,942	200	52.8%
Never married	374	100	26.0%	464	115	12.6%
Now married (except separated)	198	69	13.8%	1,027	168	27.9%
Separated	10	17	0.7%	52	60	1.4%
Widowed	16	21	1.1%	140	125	3.8%
Divorced	93	78	6.5%	259	128	7.0%
Female:	749	143	52.0%	1,739	196	47.2%
Never married	198	87	13.8%	285	143	7.7%
Now married (except separated)	158	60	11.0%	963	126	26.2%
Separated	58	43	4.0%	44	40	1.2%
Widowed	212	89	14.7%	320	119	8.7%
Divorced	123	74	8.5%	127	66	3.5%

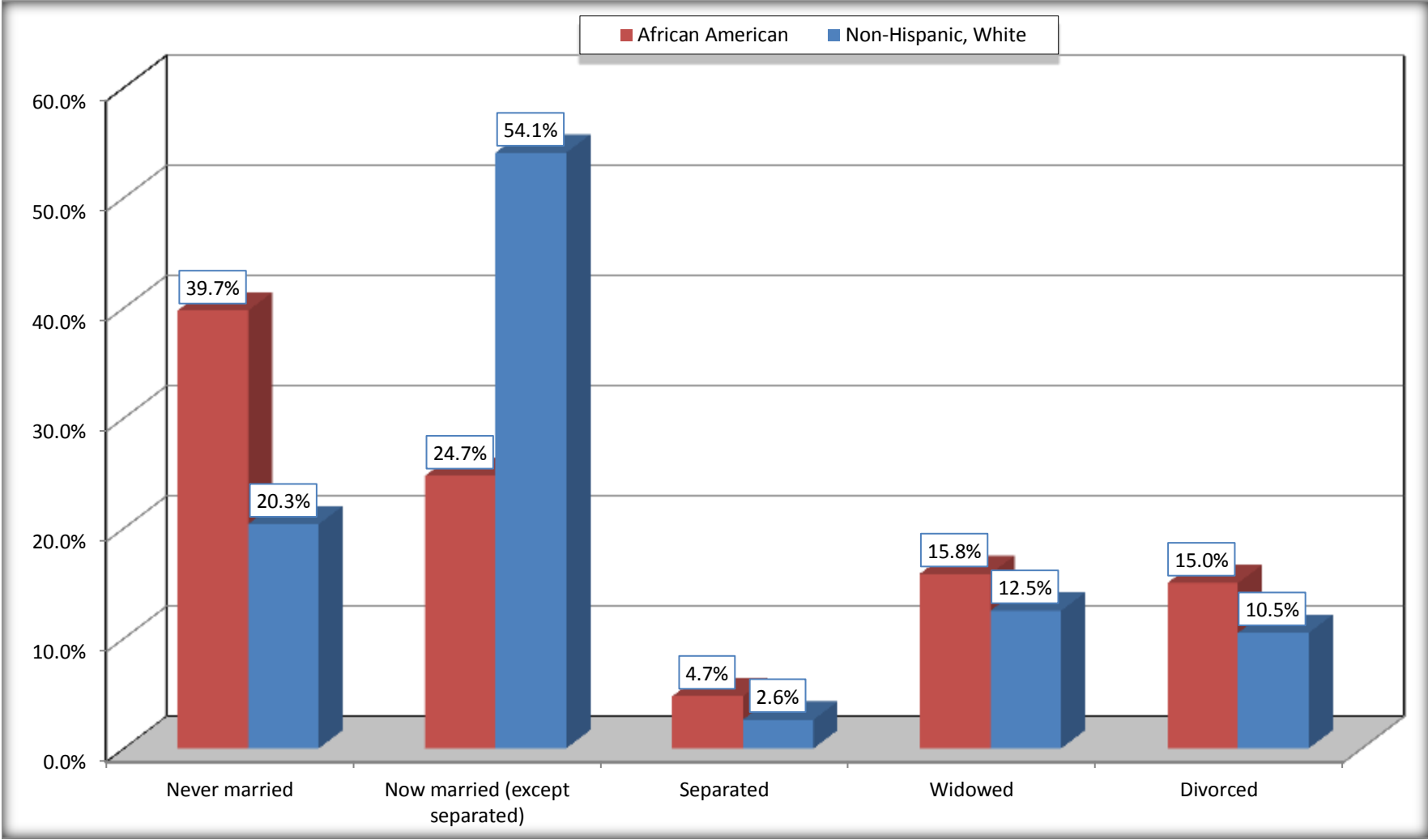
Source: U.S. Census Bureau, 2008-2012 American Community Survey

For information on confidentiality protection, sampling error, nonsampling error, and definitions, see Survey Methodology.

<http://www.census.gov/acs/www/UseData/index.htm>

Marital Status for the Population 15 Years and Over

Treutlen County, Georgia



Source: B12002. MARITAL STATUS FOR THE POPULATION 15 YEARS AND OVER
Data Set: 2008-2012 American Community Survey 5-Year Estimates

C15002. SEX BY EDUCATIONAL ATTAINMENT FOR THE POPULATION 25 YEARS AND OVER

Data Set: 2008-2012 American Community Survey 5-Year Estimates

	Trentlen County, Georgia					
	African American	Margin of Error (+/-)	% of AA Total	White, Not Hispanic	Margin of Error (+/-)	% of NHW Total
Total:	1,097	173	100.0%	3,184	313	100.0%
Less than high school diploma	342	NC	31.2%	819	NC	25.7%
High school graduate, GED, or alternative	543	NC	49.5%	1,537	NC	48.3%
Some college or associate's degree	147	NC	13.4%	516	NC	16.2%
Bachelor's degree or higher	65	NC	5.9%	312	NC	9.8%
Male:	501	116	45.7%	1,678	230	52.7%
Less than high school diploma	120	55	10.9%	565	157	17.7%
High school graduate, GED, or alternative	294	88	26.8%	793	191	24.9%
Some college or associate's degree	72	45	6.6%	157	86	4.9%
Bachelor's degree or higher	15	18	1.4%	163	84	5.1%
Female:	596	131	54.3%	1,506	184	47.3%
Less than high school diploma	222	85	20.2%	254	92	8.0%
High school graduate, GED, or alternative	249	98	22.7%	744	148	23.4%
Some college or associate's degree	75	35	6.8%	359	119	11.3%
Bachelor's degree or higher	50	41	4.6%	149	68	4.7%

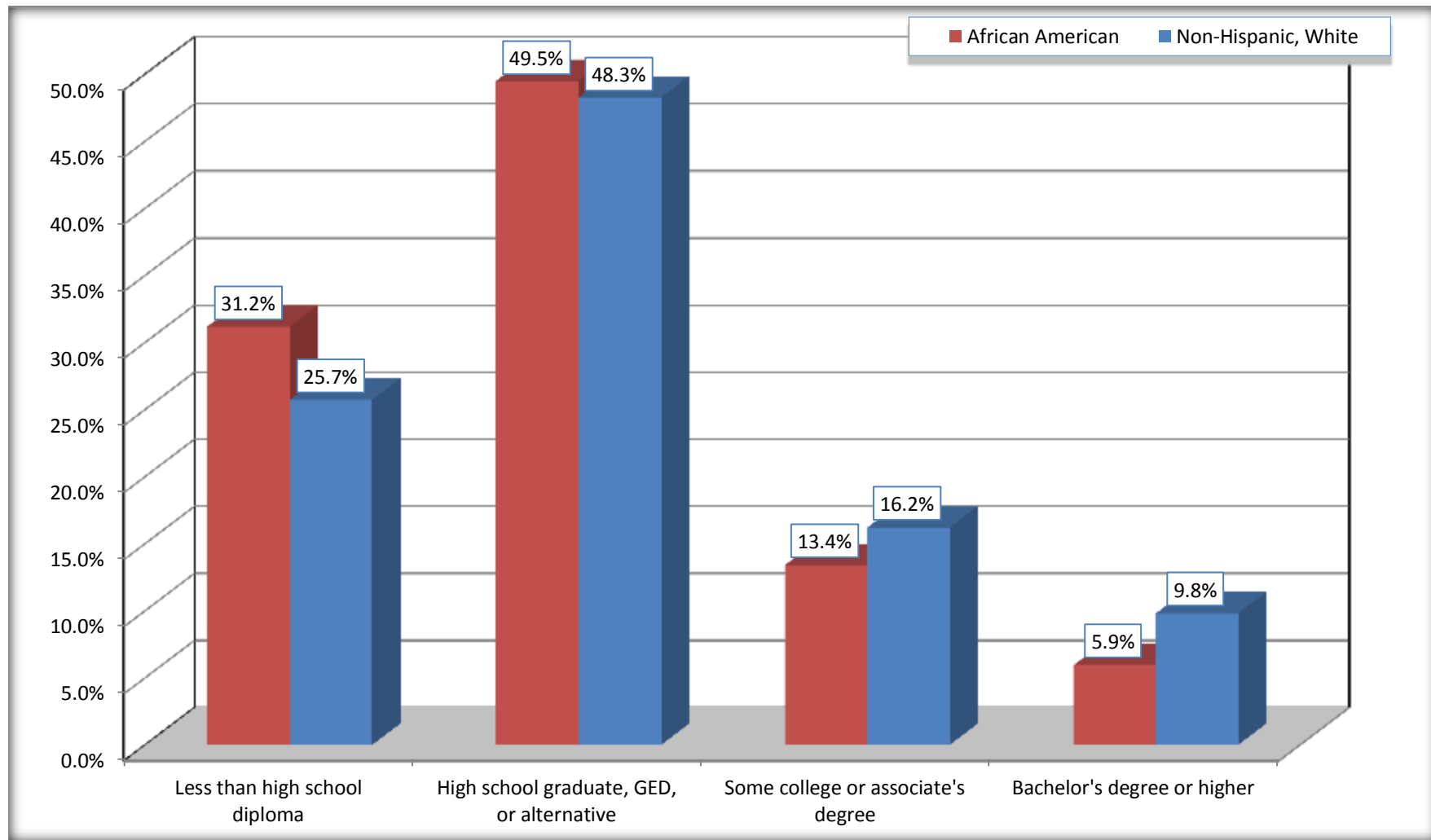
Source: U.S. Census Bureau, 2008-2012 American Community Survey

For information on confidentiality protection, sampling error, nonsampling error, and definitions, see Survey Methodology.

<http://www.census.gov/acs/www/UseData/index.htm>

Educational Attainment for the Population 25 Years and Older

Treutlen County, Georgia



Source: C15002. SEX BY EDUCATIONAL ATTAINMENT FOR THE POPULATION 25 YEARS AND OVER
Data Set: 2008-2012 American Community Survey 5-Year Estimates

B17010. POVERTY STATUS IN THE PAST 12 MONTHS OF FAMILIES BY FAMILY TYPE BY PRESENCE OF RELATED CHILDREN UNDER 18 YEARS

Data Set: 2008-2012 American Community Survey 5-Year Estimates

	Treutlen County, Georgia					
	African American	Margin of Error (+/-)	% of AA Total	White, Not Hispanic	Margin of Error (+/-)	% of NHW Total
Total:	396	79	100.0%	1,084	147	100.0%
Income in the past 12 months below poverty level:	195	70	49.2%	96	66	8.9%
Married-couple family:	51	46	12.9%	56	53	5.2%
With related children under 18 years	51	46	12.9%	30	42	2.8%
Other family:	144	75	36.4%	40	39	3.7%
Male householder, no wife present	5	7	1.3%	0	19	0.0%
With related children under 18 years	5	7	1.3%	0	19	0.0%
Female householder, no husband present	139	75	35.1%	40	39	3.7%
With related children under 18 years	132	75	33.3%	28	33	2.6%
Income in the past 12 months at or above poverty level:	201	78	50.8%	988	164	91.1%
Married-couple family:	118	58	29.8%	851	155	78.5%
With related children under 18 years	51	40	12.9%	426	114	39.3%
Other family:	83	53	21.0%	137	81	12.6%
Male householder, no wife present	35	23	8.8%	65	65	6.0%
With related children under 18 years	22	24	5.6%	42	62	3.9%
Female householder, no husband present	48	50	12.1%	72	47	6.6%
With related children under 18 years	46	48	11.6%	20	23	1.8%

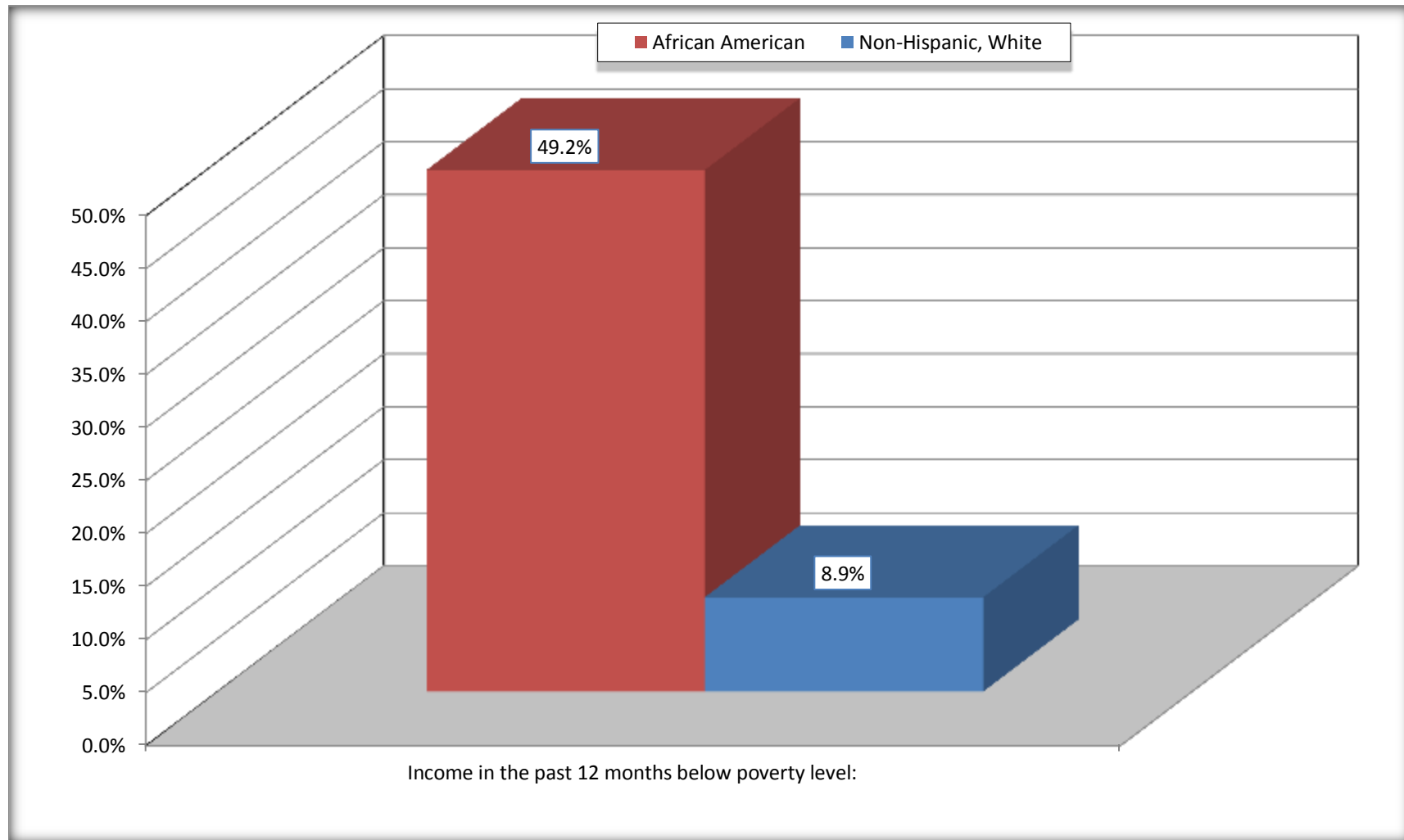
Source: U.S. Census Bureau, 2008-2012 American Community Survey

For information on confidentiality protection, sampling error, nonsampling error, and definitions, see Survey Methodology.

<http://www.census.gov/acs/www/UseData/index.htm>

Family Households Below Poverty in the Past 12 Months

Treutlen County, Georgia

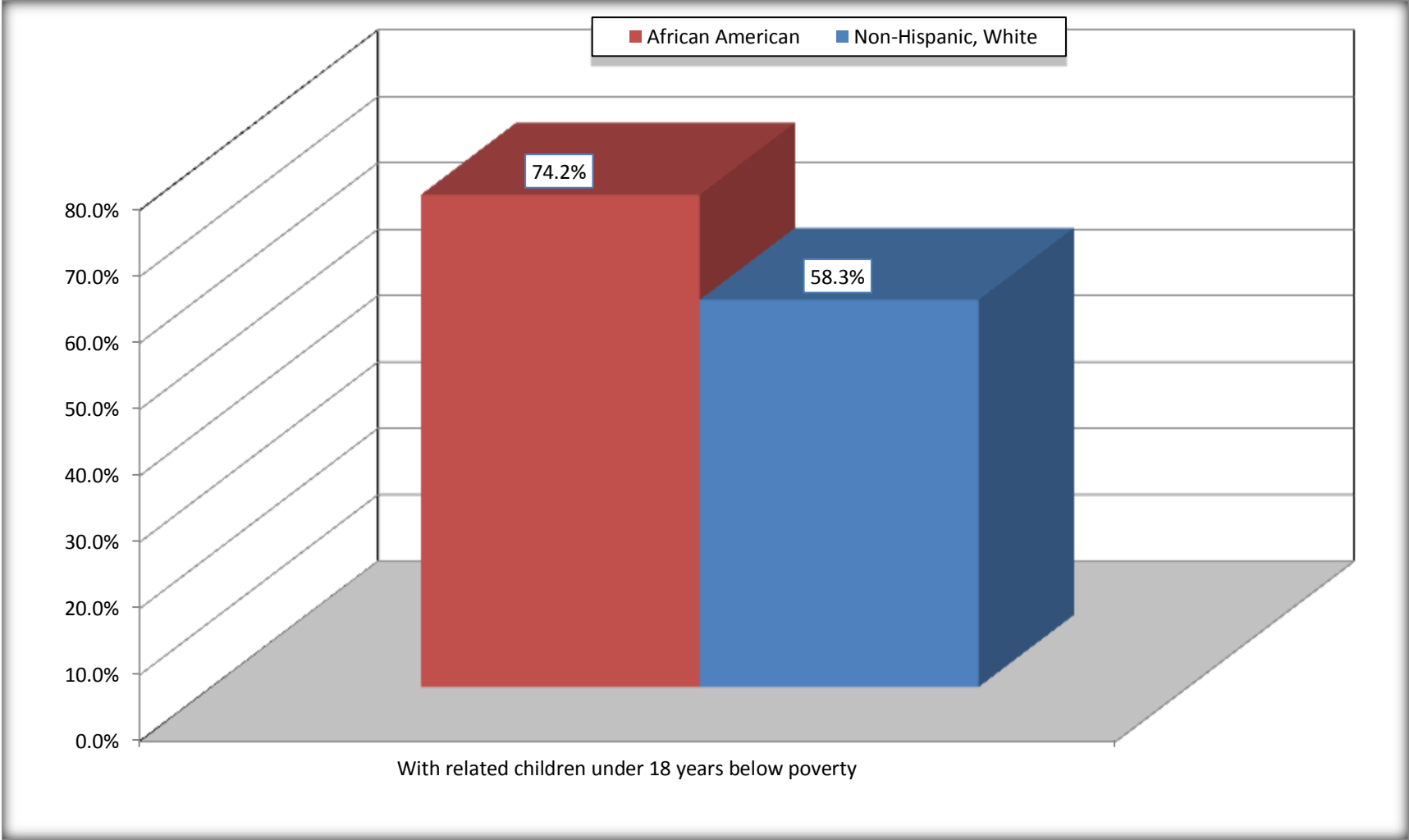


Source: B17010. POVERTY STATUS IN THE PAST 12 MONTHS OF FAMILIES BY FAMILY TYPE BY PRESENCE OF RELATED CHILDREN UNDER 18 YEARS

Data Set: 2008-2012 American Community Survey 5-Year Estimates

Female-headed Households with Related Children Below Poverty in the Past 12 Months

Treutlen County, Georgia



Source: B17010. POVERTY STATUS IN THE PAST 12 MONTHS OF FAMILIES BY FAMILY TYPE BY PRESENCE OF RELATED CHILDREN UNDER 18 YEARS

Data Set: 2008-2012 American Community Survey 5-Year Estimates

B17020 POVERTY STATUS IN THE PAST 12 MONTHS BY AGE - Universe: POPULATION FOR WHOM POVERTY STATUS IS DETERMINED

Data Set: 2008-2012 American Community Survey 5-Year Estimates

	Treutlen County, Georgia					
	African American	Margin of Error (+/-)	% of AA By Age	White, Not Hispanic	Margin of Error (+/-)	% of NHW By Age
Total:	1,721	287	100.0%	4,388	313	100.0%
Income in the past 12 months below poverty level:	814	264	47.3%	511	249	11.6%
Under 18 years	334	NC	54.3%	155	NC	14.7%
18 to 64 years	375	131	42.5%	308	135	11.9%
65 years and over	105	NC	47.1%	48	NC	6.4%
Income in the past 12 months at or above poverty level:	907	347	52.7%	3,877	423	88.4%
Under 18 years	281	NC	45.7%	899	NC	85.3%
18 to 64 years	508	175	57.5%	2,280	306	88.1%
65 years and over	118	NC	52.9%	698	NC	93.6%

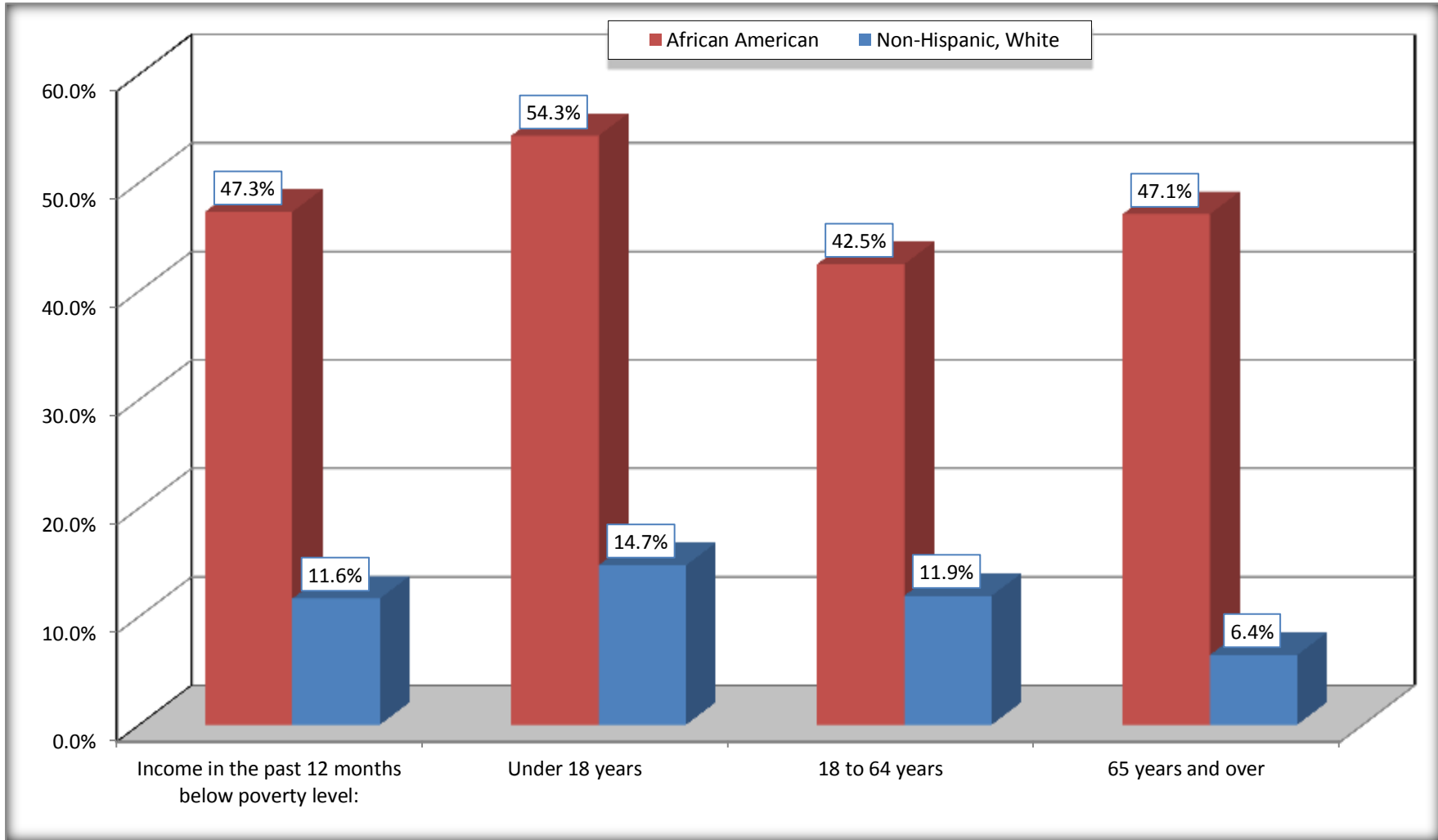
Source: U.S. Census Bureau, 2008-2012 American Community Survey

For information on confidentiality protection, sampling error, nonsampling error, and definitions, see Survey Methodology.

<http://www.census.gov/acs/www/UseData/index.htm>

Population Below Poverty in the Past 12 Months

Treutlen County, Georgia



Source: B17020 POVERTY STATUS IN THE PAST 12 MONTHS BY AGE - Universe: POPULATION FOR WHOM POVERTY STATUS IS DETERMINED
Data Set: 2008-2012 American Community Survey 5-Year Estimates

B19001. HOUSEHOLD INCOME IN THE PAST 12 MONTHS (IN 2010 INFLATION-ADJUSTED DOLLARS)

Data Set: 2008-2012 American Community Survey 5-Year Estimates

	Treutlen County, Georgia					
	African American	Margin of Error (+/-)	% of AA Total	White, Not Hispanic	Margin of Error (+/-)	% of NHW Total
Total:	596	97	100.0%	1,730	204	100.0%
Less than \$ 10,000	186	74	31.2%	122	74	7.1%
\$ 10,000 to \$ 14,999	108	66	18.1%	270	129	15.6%
\$ 15,000 to \$ 24,999	83	NC	13.9%	162	NC	9.4%
\$ 25,000 to \$ 34,999	57	NC	9.6%	157	NC	9.1%
\$ 35,000 to \$ 49,999	74	NC	12.4%	208	NC	12.0%
\$ 50,000 to \$ 74,999	48	NC	8.1%	379	NC	21.9%
\$ 75,000 to \$ 99,999	36	29	6.0%	302	148	17.5%
\$ 100,000 to \$ 149,999	4	NC	0.7%	92	NC	5.3%
\$ 150,000 to \$ 199,999	0	19	0.0%	0	19	0.0%
\$ 200,000 or more	0	19	0.0%	38	33	2.2%

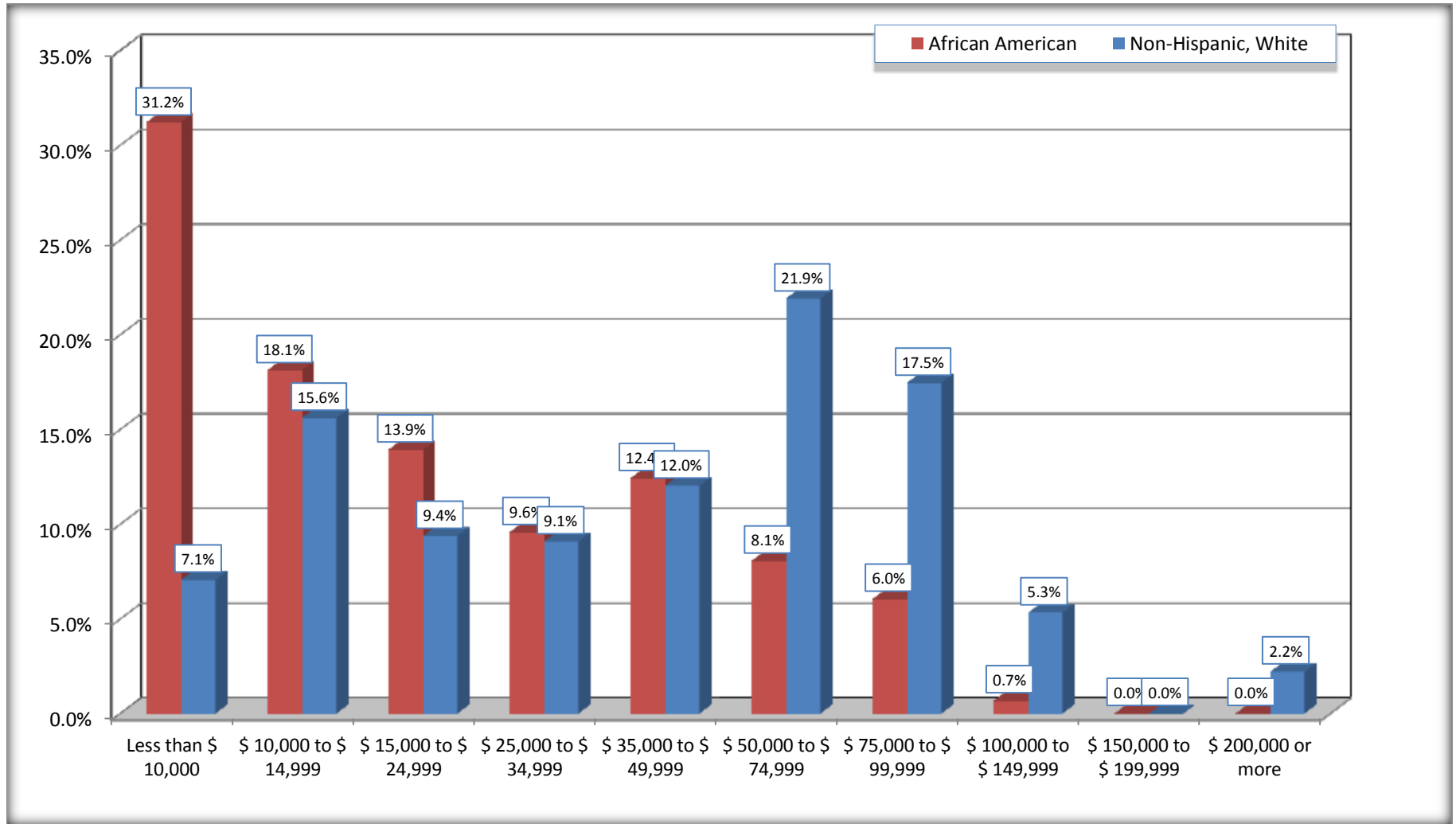
Source: U.S. Census Bureau, 2008-2012 American Community Survey

For information on confidentiality protection, sampling error, nonsampling error, and definitions, see Survey Methodology.

<http://www.census.gov/acs/www/UseData/index.htm>

Household Income in the Past 12 Months

Treutlen County, Georgia



Source: B19001. HOUSEHOLD INCOME IN THE PAST 12 MONTHS (IN 2010 INFLATION-ADJUSTED DOLLARS)
Data Set: 2008-2012 American Community Survey 5-Year Estimates

B19013. MEDIAN HOUSEHOLD INCOME IN THE PAST 12 MONTHS (IN 2010 INFLATION-ADJUSTED DOLLARS)

Data Set: 2008-2012 American Community Survey 5-Year Estimates

	Treutlen County, Georgia			
	African American	Margin of Error (+/-)	White, Not Hispanic	Margin of Error (+/-)
Median household income in the past 12 months (in 2010 inflation-adjusted dollars)	\$ 15,667	\$ 10,762	\$ 45,942	\$ 8,532

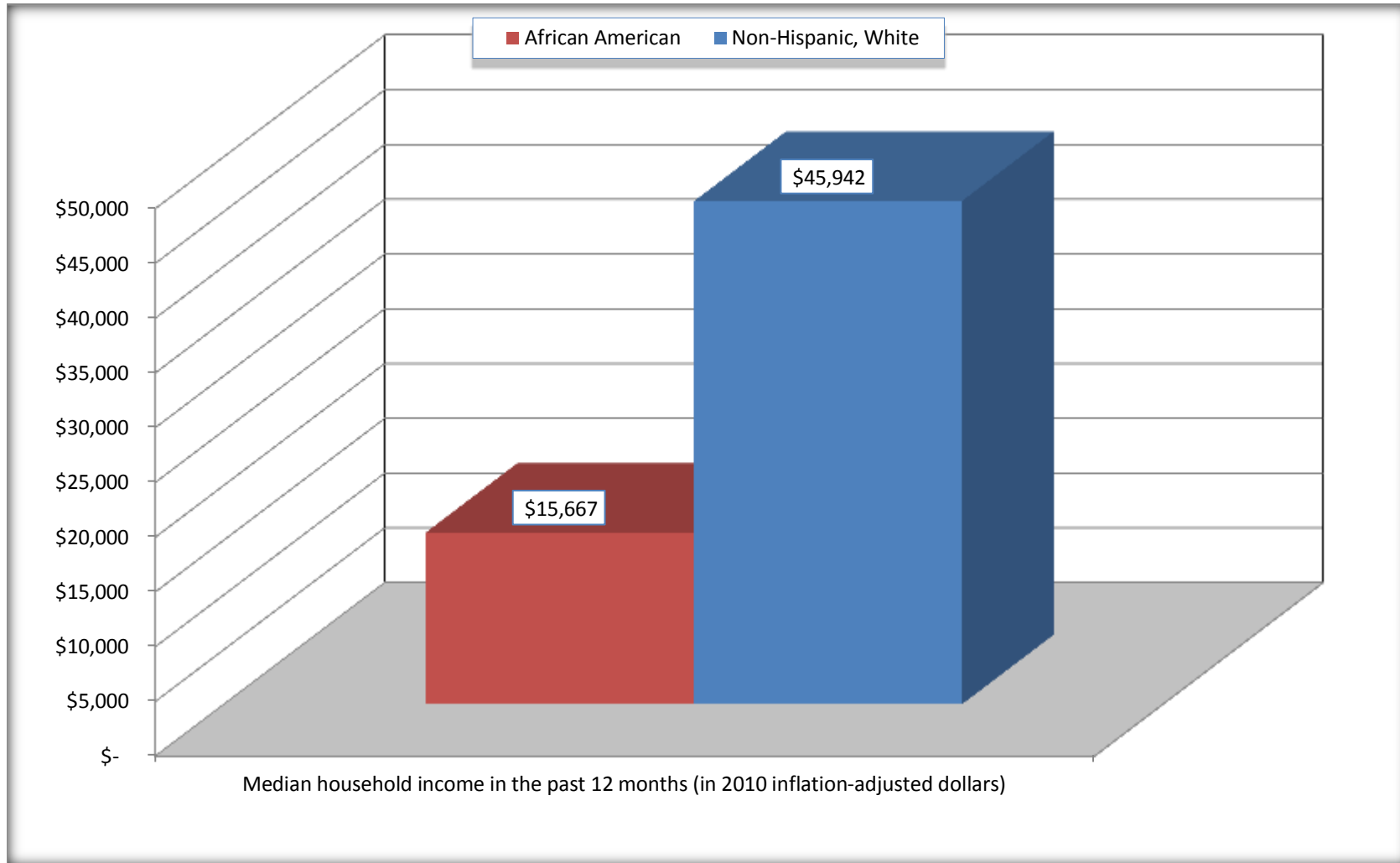
Source: U.S. Census Bureau, 2008-2012 American Community Survey

For information on confidentiality protection, sampling error, nonsampling error, and definitions, see Survey Methodology.

<http://www.census.gov/acs/www/UseData/index.htm>

Median Household Income in the Past 12 Months

Treutlen County, Georgia



Source: B19013. MEDIAN HOUSEHOLD INCOME IN THE PAST 12 MONTHS (IN 2010 INFLATION-ADJUSTED DOLLARS)
Data Set: 2008-2012 American Community Survey 5-Year Estimates

B19101. FAMILY INCOME IN THE PAST 12 MONTHS (IN 2010 INFLATION-ADJUSTED DOLLARS)

Data Set: 2008-2012 American Community Survey 5-Year Estimates

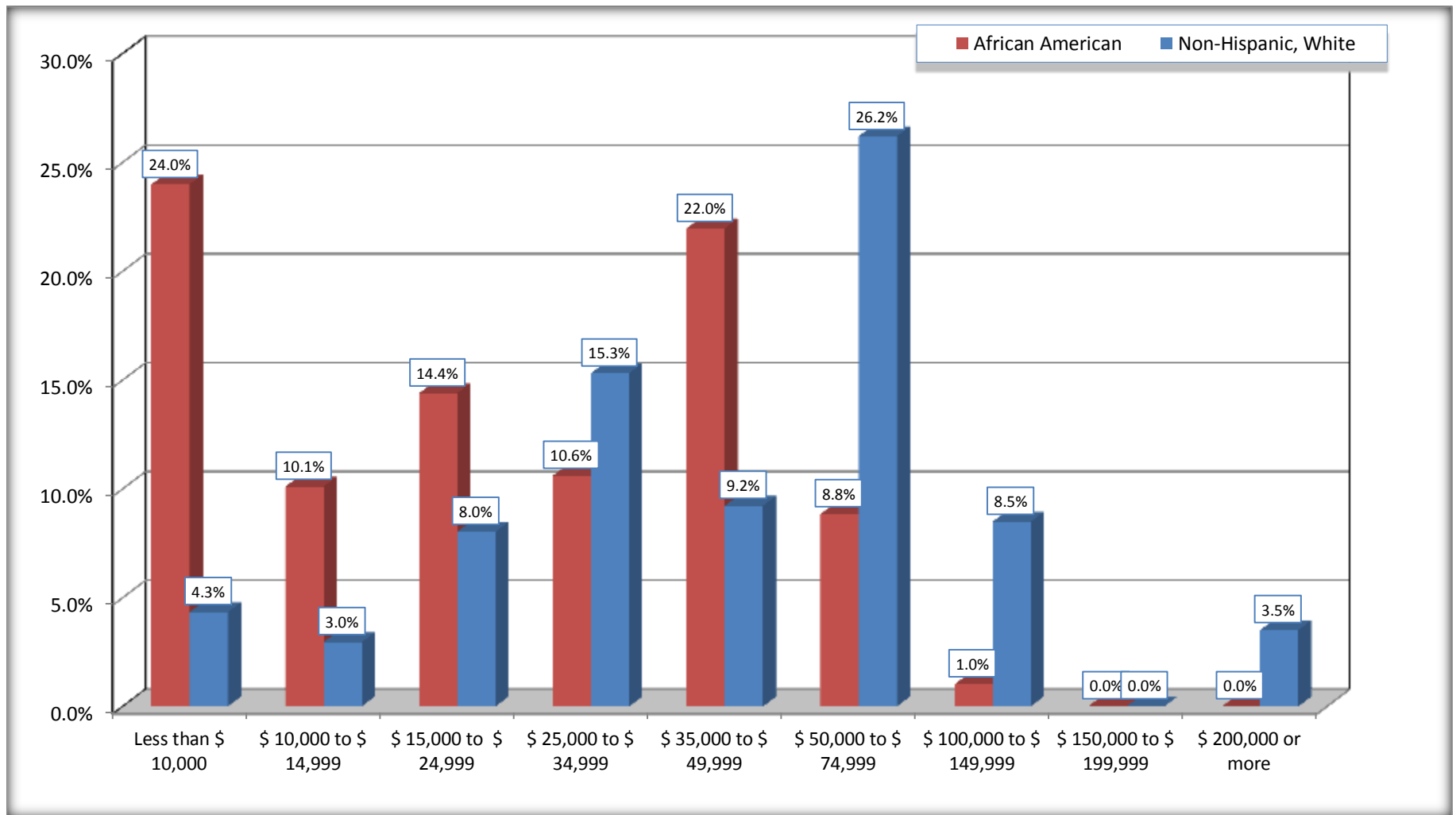
	Trentlen County, Georgia					
	African American	Margin of Error (+/-)	% of AA Total	White, Not Hispanic	Margin of Error (+/-)	% of NHW Total
Total:	396	79	100.0%	1,084	147	100.0%
Less than \$ 10,000	95	61	24.0%	47	50	4.3%
\$ 10,000 to \$ 14,999	40	39	10.1%	32	30	3.0%
\$ 15,000 to \$ 24,999	57	NC	14.4%	87	NC	8.0%
\$ 25,000 to \$ 34,999	42	NC	10.6%	166	NC	15.3%
\$ 35,000 to \$ 49,999	87	NC	22.0%	100	NC	9.2%
\$ 50,000 to \$ 74,999	35	NC	8.8%	284	NC	26.2%
\$ 100,000 to \$ 149,999	4	NC	1.0%	92	NC	8.5%
\$ 150,000 to \$ 199,999	0	19	0.0%	0	19	0.0%
\$ 200,000 or more	0	19	0.0%	38	33	3.5%

Source: U.S. Census Bureau, 2008-2012 American Community Survey

For information on confidentiality protection, sampling error, nonsampling error, and definitions, see Survey Methodology.

<http://www.census.gov/acs/www/UseData/index.htm>

Family Income in the Past 12 Months Trentlen County, Georgia



Source: B19101. FAMILY INCOME IN THE PAST 12 MONTHS (IN 2010 INFLATION-ADJUSTED DOLLARS)
Data Set: 2008-2012 American Community Survey 5-Year Estimates

B19113. MEDIAN FAMILY INCOME IN THE PAST 12 MONTHS (IN 2010 INFLATION-ADJUSTED DOLLARS)

Data Set: 2008-2012 American Community Survey 5-Year Estimates

	Treutlen County, Georgia			
	African American	Margin of Error (+/-)	White, Not Hispanic	Margin of Error (+/-)
Median family income in the past 12 months (in 2010 inflation-adjusted dollars)	\$ 26,364	\$ 9,385	\$ 57,414	\$ 14,823

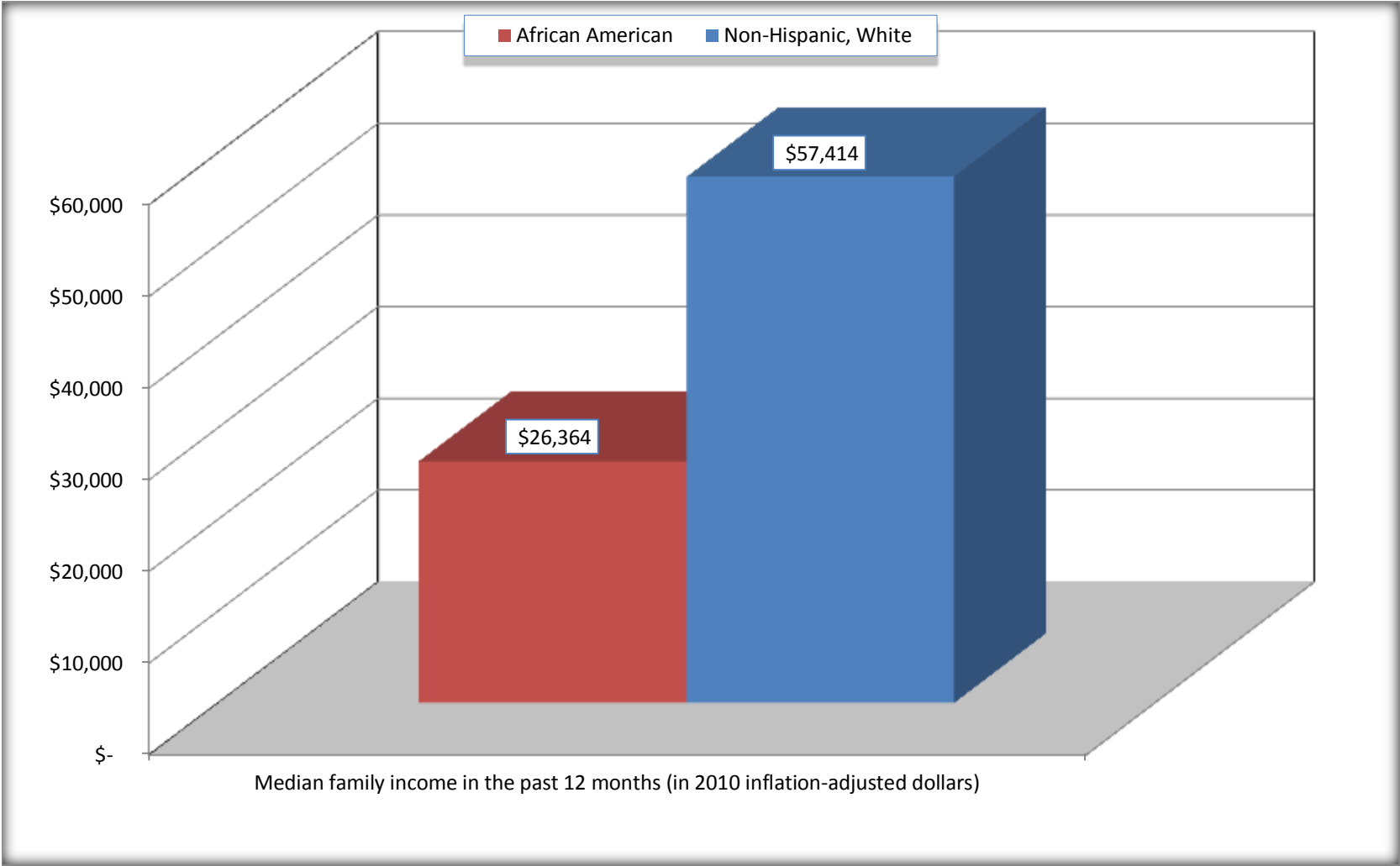
Source: U.S. Census Bureau, 2008-2012 American Community Survey

For information on confidentiality protection, sampling error, nonsampling error, and definitions, see Survey Methodology.

<http://www.census.gov/acs/www/UseData/index.htm>

Median Family Income in the Past 12 Months

Treutlen County, Georgia



Source: B19113. MEDIAN FAMILY INCOME IN THE PAST 12 MONTHS (IN 2010 INFLATION-ADJUSTED DOLLARS)
Data Set: 2008-2012 American Community Survey 5-Year Estimates

B19202. MEDIAN NONFAMILY HOUSEHOLD INCOME IN THE PAST 12 MONTHS (IN 2010 INFLATION-ADJUSTED DOLLARS)

Data Set: 2008-2012 American Community Survey 5-Year Estimates

	Treutlen County, Georgia			
	African American	Margin of Error (+/-)	White, Not Hispanic	Margin of Error (+/-)
Median nonfamily household income in the past 12 months (in 2010 inflation-adjusted dollars)	\$ 10,563	\$ 2,551	\$ 16,190	\$ 11,062

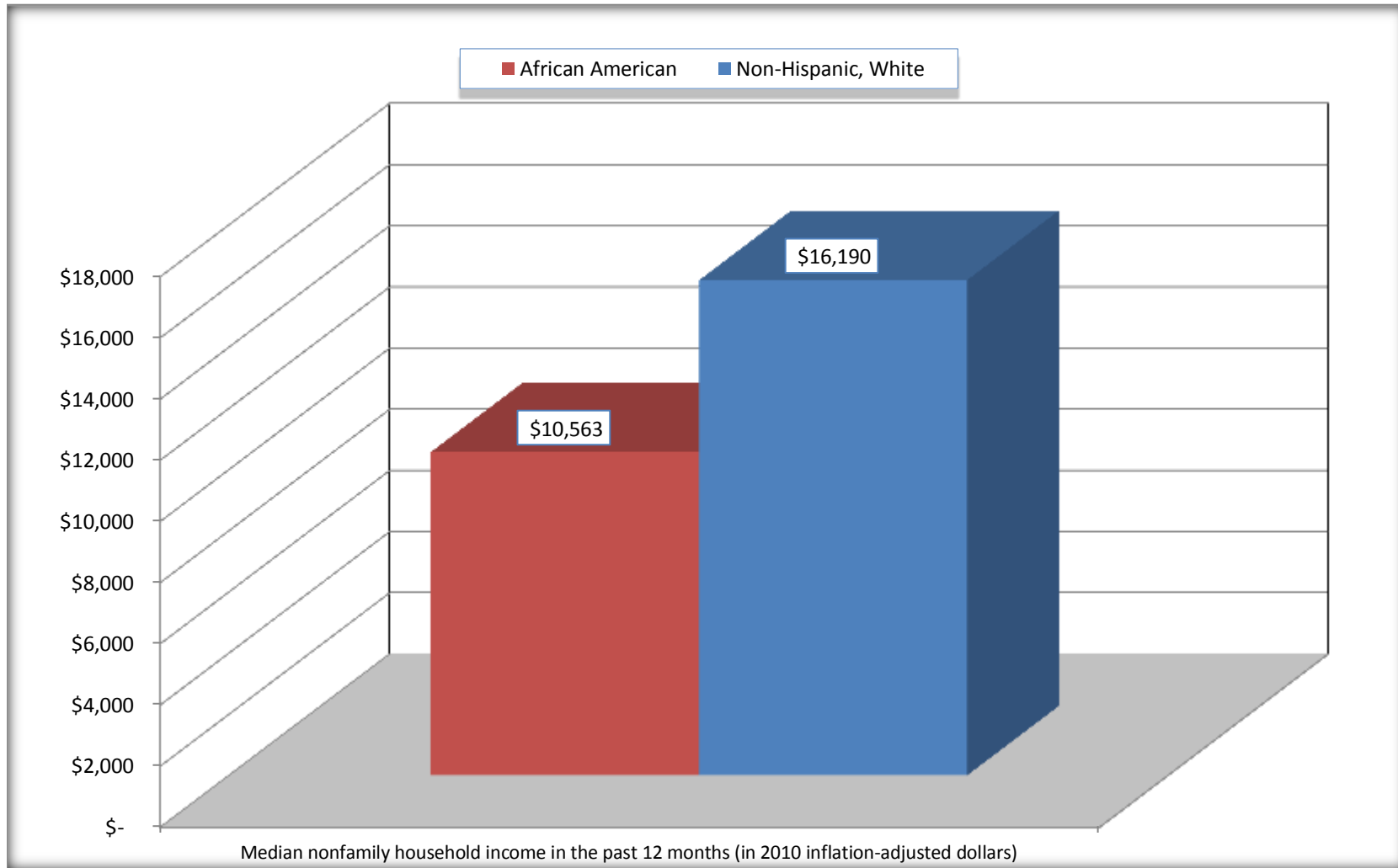
Source: U.S. Census Bureau, 2008-2012 American Community Survey

For information on confidentiality protection, sampling error, nonsampling error, and definitions, see Survey Methodology.

<http://www.census.gov/acs/www/UseData/index.htm>

Median Non-Family Income in the Past 12 Months

Treutlen County, Georgia



Source: B19202. MEDIAN NONFAMILY HOUSEHOLD INCOME IN THE PAST 12 MONTHS (IN 2010 INFLATION-ADJUSTED DOLLARS)
Data Set: 2008-2012 American Community Survey 5-Year Estimates

B19301. PER CAPITA INCOME IN THE PAST 12 MONTHS (IN 2010 INFLATION-ADJUSTED DOLLARS)

Data Set: 2008-2012 American Community Survey 5-Year Estimates

	Treutlen County, Georgia			
	African American	Margin of Error (+/-)	White, Not Hispanic	Margin of Error (+/-)
Per capita income in the past 12 months (in 2010 inflation-adjusted dollars)	\$ 8,821	\$ 1,727	\$ 21,997	\$ 4,197

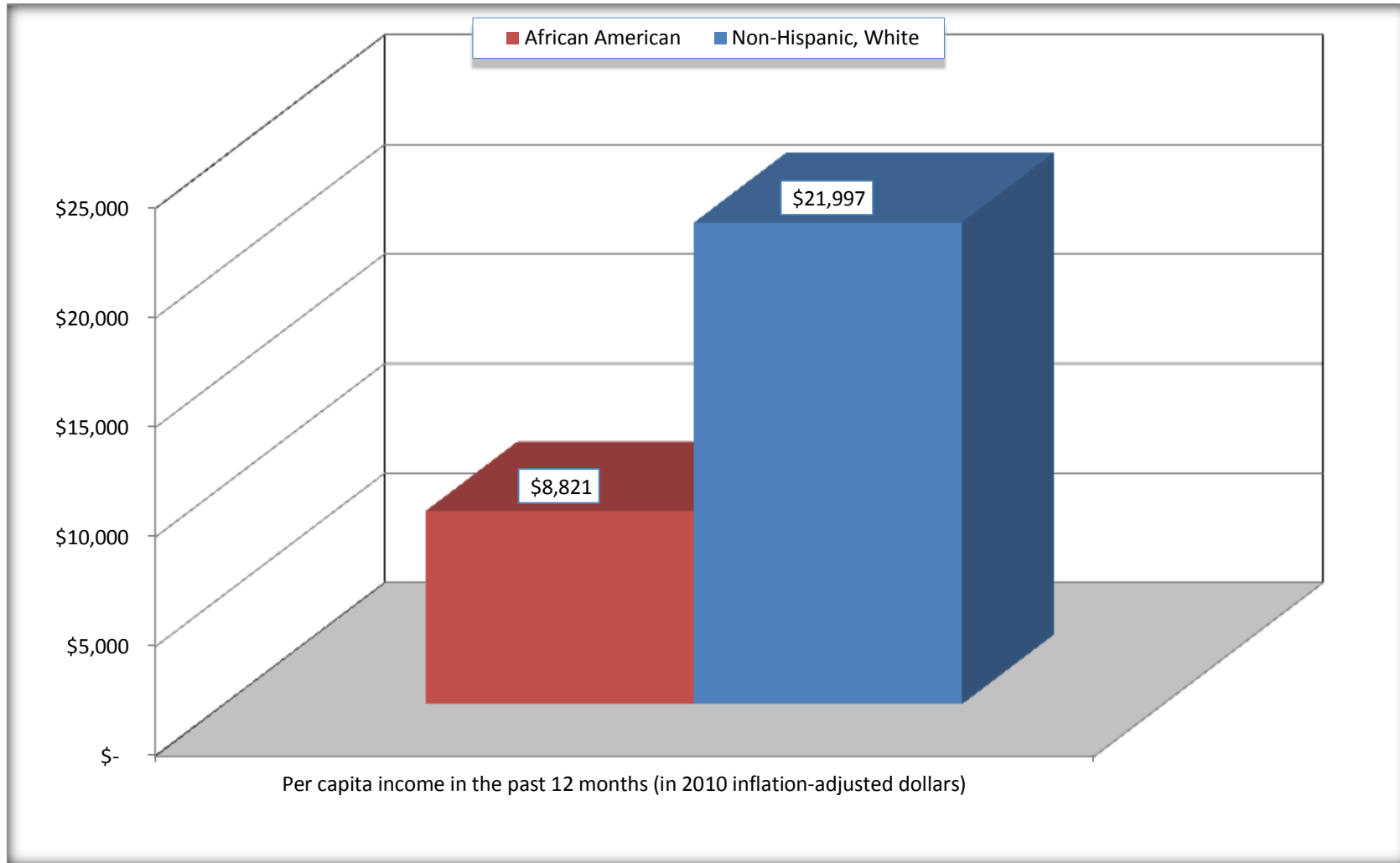
Source: U.S. Census Bureau, 2008-2012 American Community Survey

For information on confidentiality protection, sampling error, nonsampling error, and definitions, see Survey Methodology.

<http://www.census.gov/acs/www/UseData/index.htm>

Per capita Income in the Past 12 Months

Treutlen County, Georgia



Source: B19301. PER CAPITA INCOME IN THE PAST 12 MONTHS (IN 2010 INFLATION-ADJUSTED DOLLARS)
Data Set: 2008-2012 American Community Survey 5-Year Estimates

B20017. MEDIAN EARNINGS IN THE PAST 12 MONTHS (IN 2010 INFLATION-ADJUSTED DOLLARS) BY SEX BY WORK EXPERIENCE IN THE PAST 12 MONTHS FOR THE POPULATION 16 YEARS AND OVER WITH EARNINGS IN THE PAST 12 MONTHS

Data Set: 2008-2012 American Community Survey 5-Year Estimates

	Treutlen County, Georgia			
	African American	Margin of Error (+/-)	White, Not Hispanic	Margin of Error (+/-)
Median earnings in the past 12 months (in 2010 inflation-adjusted dollars) --				
Total:	\$ 19,194	\$ 7,260	\$ 28,034	\$ 4,627
Male --				
Total	\$ 26,429	\$ 7,526	\$ 37,917	\$ 7,179
Worked full-time, year-round in the past 12 months	\$ 30,776	\$ 3,142	\$ 41,767	\$ 8,335
Other	\$ 8,000	\$ 6,209	\$ 5,139	\$ 7,591
Female --				
Total	\$ 14,528	\$ 6,593	\$ 20,446	\$ 3,795
Worked full-time, year-round in the past 12 months	\$ 21,845	\$ 8,224	\$ 24,023	\$ 6,385
Other	\$ 4,943	\$ 2,904	\$ 9,598	\$ 1,466

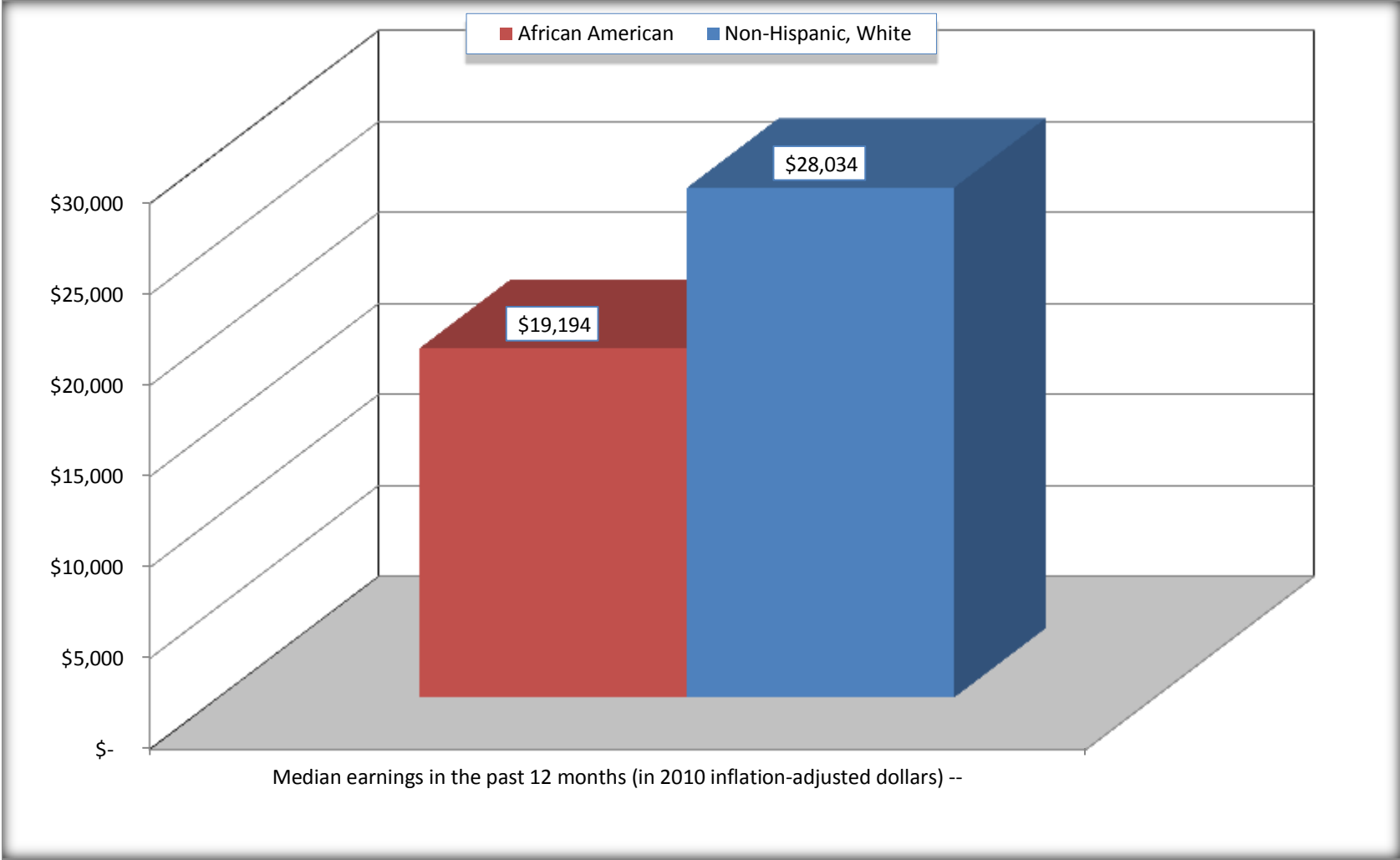
Source: U.S. Census Bureau, 2008-2012 American Community Survey

For information on confidentiality protection, sampling error, nonsampling error, and definitions, see Survey Methodology.

<http://www.census.gov/acs/www/UseData/index.htm>

Median earnings in the Past 12 Months (16 Years and Over with Earnings)

Treutlen County, Georgia



Source: B20017. MEDIAN EARNINGS IN THE PAST 12 MONTHS (IN 2010 INFLATION-ADJUSTED DOLLARS) BY SEX BY WORK EXPERIENCE IN THE PAST 12 MONTHS FOR THE POPULATION 16 YEARS AND OVER WITH EARNINGS IN THE PAST 12 MONTHS
Data Set: 2008-2012 American Community Survey 5-Year Estimates

B20005. SEX BY WORK EXPERIENCE IN THE PAST 12 MONTHS BY EARNINGS IN THE PAST 12 MONTHS (IN 2010 INFLATION-ADJUSTED DOLLARS) FOR THE POPULATION 16 YEARS AND OVER

Data Set: 2008-2012 American Community Survey 5-Year Estimates

	Trentlen County, Georgia					
	African American	Margin of Error (+/-)	% of AA Total	White, Not Hispanic	Margin of Error (+/-)	% of NHW Total
Total:	1,410	206	100.0%	3,625	282	100.0%
Worked full-time, year-round in the past 12 months:	313	NC	22.2%	1,503	NC	41.5%
No earnings	0	NC	0.0%	0	NC	0.0%
With earnings:	313	NC	22.2%	1,503	NC	41.5%
\$ 1 to \$ 9,999 or loss	0	NC	0.0%	0	NC	0.0%
\$ 10,000 to \$ 19,999	85	NC	6.0%	257	NC	7.1%
\$ 20,000 to \$ 29,999	89	NC	6.3%	382	NC	10.5%
\$ 30,000 to \$ 49,999	113	NC	8.0%	503	NC	13.9%
\$ 50,000 to \$ 74,999	19	NC	1.3%	218	NC	6.0%
\$ 75,000 or more	7	NC	0.5%	143	NC	3.9%
Other:	1,097	NC	77.8%	2,122	NC	58.5%
No earnings	872	NC	61.8%	1,680	NC	46.3%
With earnings: less than full time, year-round	225	NC	16.0%	442	NC	12.2%
Male:	670	137	47.5%	1,892	201	52.2%
Worked full-time, year-round in the past 12 months:	122	63	8.7%	840	168	23.2%
No earnings	0	19	0.0%	0	19	0.0%
With earnings:	122	63	8.7%	840	168	23.2%
\$ 1 to \$ 9,999 or loss	0	NC	0.0%	0	NC	0.0%
\$ 10,000 to \$ 19,999	5	NC	0.4%	26	NC	0.7%
\$ 20,000 to \$ 29,999	47	NC	3.3%	194	NC	5.4%
\$ 30,000 to \$ 49,999	44	NC	3.1%	301	NC	8.3%
\$ 50,000 to \$ 74,999	19	NC	1.3%	181	NC	5.0%
\$ 75,000 or more	7	NC	0.5%	138	NC	3.8%

	Trentlen County, Georgia					
	African American	Margin of Error (+/-)	% of AA Total	White, Not Hispanic	Margin of Error (+/-)	% of NHW Total
Other:	548	135	38.9%	1,052	187	29.0%
No earnings	430	117	30.5%	871	203	24.0%
With earnings:	118	64	8.4%	181	82	5.0%
Female:	740	144	52.5%	1,733	197	47.8%
Worked full-time, year-round in the past 12 months:	191	81	13.5%	663	177	18.3%
No earnings	0	19	0.0%	0	19	0.0%
With earnings:	191	81	13.5%	663	177	18.3%
\$ 1 to \$ 9,999 or loss	0	NC	0.0%	0	NC	0.0%
\$ 10,000 to \$ 19,999	80	NC	5.7%	231	NC	6.4%
\$ 20,000 to \$ 29,999	42	NC	3.0%	188	NC	5.2%
\$ 30,000 to \$ 49,999	69	NC	4.9%	202	NC	5.6%
\$ 50,000 to \$ 74,999	0	NC	0.0%	37	NC	1.0%
\$ 75,000 or more	0	NC	0.0%	5	NC	0.1%
Other:	549	122	38.9%	1,070	167	29.5%
No earnings	442	104	31.3%	809	133	22.3%
With earnings:	107	51	7.6%	261	137	7.2%

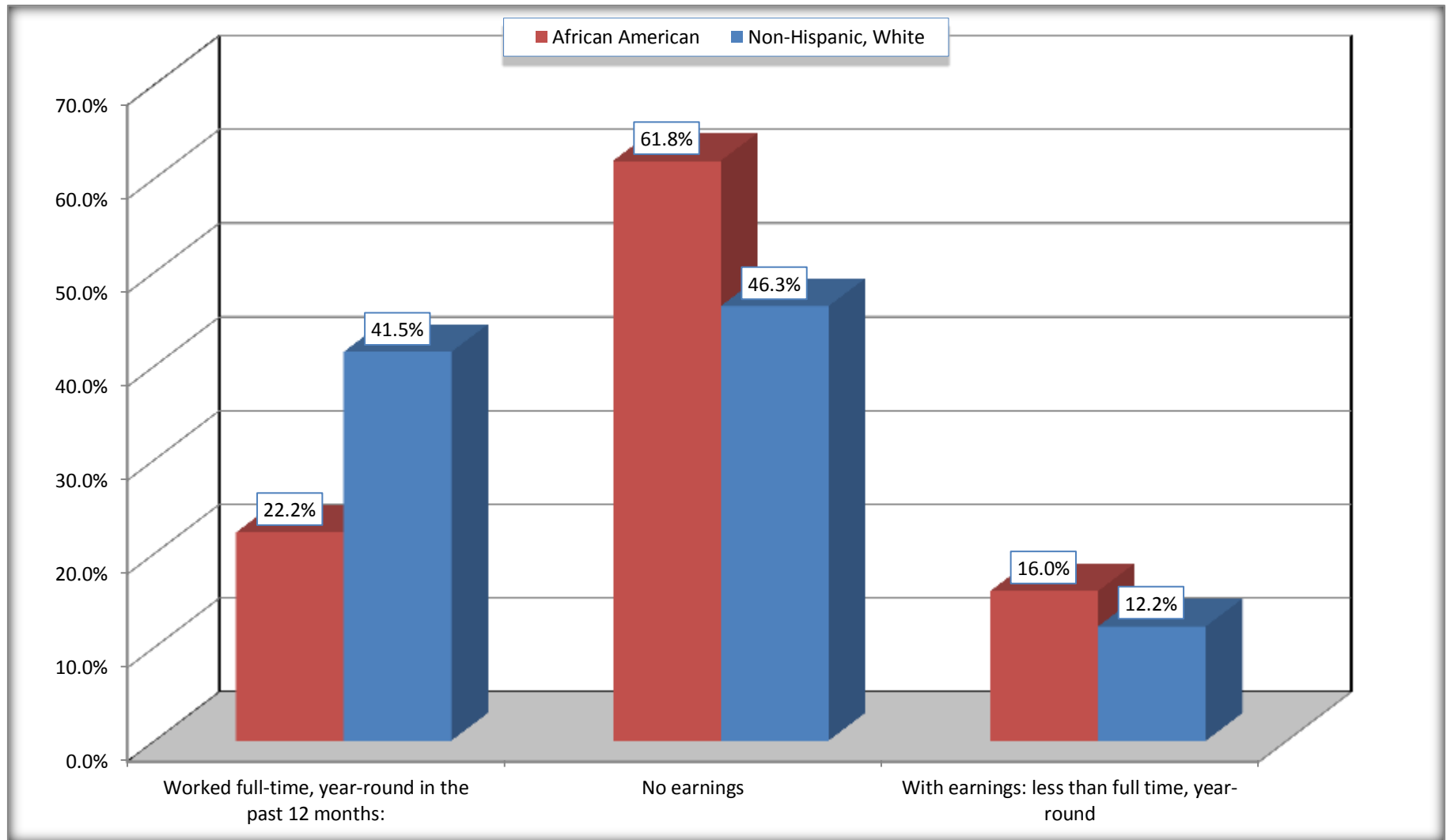
Source: U.S. Census Bureau, 2008-2012 American Community Survey

For information on confidentiality protection, sampling error, nonsampling error, and definitions, see Survey Methodology.

<http://www.census.gov/acs/www/UseData/index.htm>

Employment and Earnings in in the Past 12 Months (16 Years and Over)

Treutlen County, Georgia



Source: B20005. SEX BY WORK EXPERIENCE IN THE PAST 12 MONTHS BY EARNINGS IN THE PAST 12 MONTHS (IN 2010 INFLATION-ADJUSTED DOLLARS) FOR THE POPULATION 16 YEARS AND OVER
Data Set: 2008-2012 American Community Survey 5-Year Estimates

C21001. SEX BY AGE BY VETERAN STATUS FOR THE CIVILIAN POPULATION 18 YEARS AND OVER

Data Set: 2008-2012 American Community Survey 5-Year Estimates

	Treutlen County, Georgia					
	African American	Margin of Error (+/-)	% of AA Total	White, Not Hispanic	Margin of Error (+/-)	% of NHW Total
Total:	1,343	194	100.0%	3,466	272	100.0%
Veteran	70	NC	5.2%	256	NC	7.4%
Nonveteran	1,273	NC	94.8%	3,210	NC	92.6%
Male:	628	133	46.8%	1,764	211	50.9%
18 to 64 years:	583	126	43.4%	1,413	191	40.8%
Veteran	66	46	4.9%	132	92	3.8%
Nonveteran	517	118	38.5%	1,281	202	37.0%
65 years and over:	45	38	3.4%	351	123	10.1%
Veteran	4	7	0.3%	124	61	3.6%
Nonveteran	41	38	3.1%	227	118	6.5%
Female:	715	142	53.2%	1,702	201	49.1%
18 to 64 years:	504	112	37.5%	1,263	175	36.4%
Veteran	0	19	0.0%	0	19	0.0%
Nonveteran	504	112	37.5%	1,263	175	36.4%
65 years and over:	211	82	15.7%	439	109	12.7%
Veteran	0	19	0.0%	0	19	0.0%
Nonveteran	211	82	15.7%	439	109	12.7%

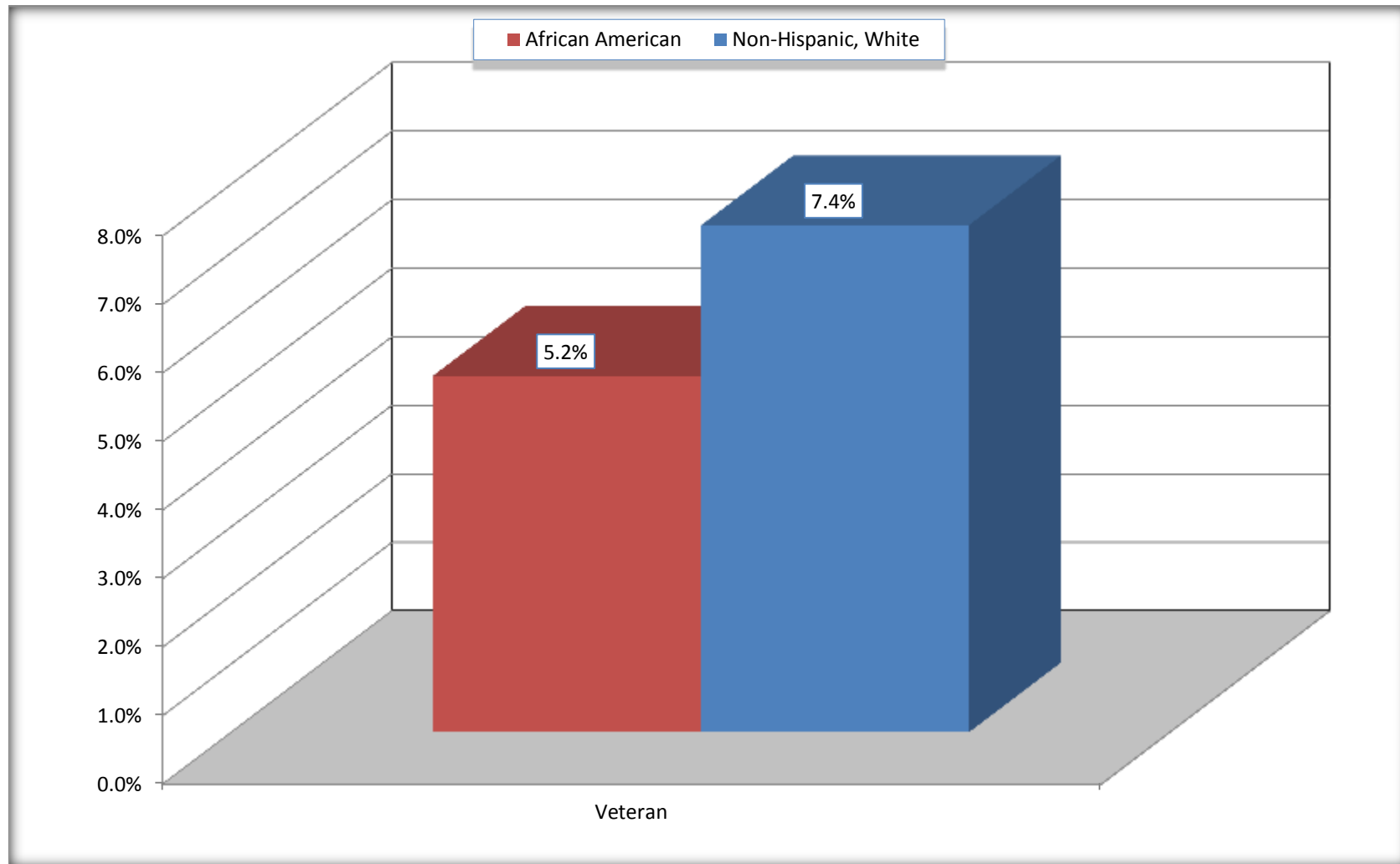
Source: U.S. Census Bureau, 2008-2012 American Community Survey

For information on confidentiality protection, sampling error, nonsampling error, and definitions, see Survey Methodology.

<http://www.census.gov/acs/www/UseData/index.htm>

Veterans in the Civilian Population 18 Years and Over

Treutlen County, Georgia



Source: C21001. SEX BY AGE BY VETERAN STATUS FOR THE CIVILIAN POPULATION 18 YEARS AND OVER
Data Set: 2008-2012 American Community Survey 5-Year Estimates

B22005. RECEIPT OF FOOD STAMPS/SNAP IN THE PAST 12 MONTHS BY RACE OF HOUSEHOLDER

Data Set: 2008-2012 American Community Survey 5-Year Estimates

	Treutlen County, Georgia					
	African American	Margin of Error (+/-)	% of AA Total	White, Not Hispanic	Margin of Error (+/-)	% of NHW Total
Total:	596	97	100.0%	1,730	204	100.0%
HH received Food Stamps/SNAP in the past 12 months	294	84	49.3%	293	127	16.9%
HH did not receive Food Stamps/SNAP in the past 12 months	302	85	50.7%	1,437	224	83.1%

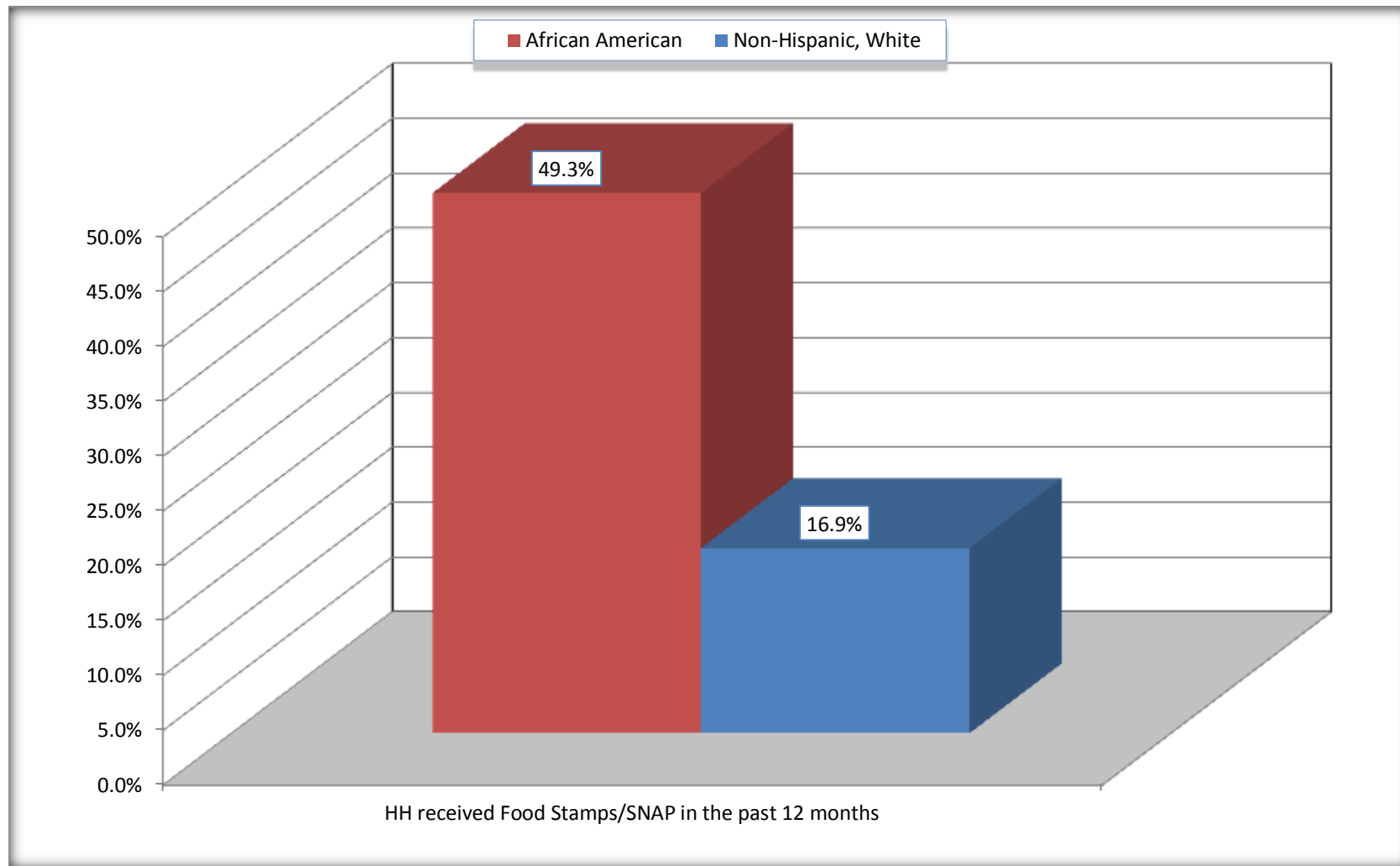
Source: U.S. Census Bureau, 2008-2012 American Community Survey

For information on confidentiality protection, sampling error, nonsampling error, and definitions, see Survey Methodology.

<http://www.census.gov/acs/www/UseData/index.htm>

Receipt of Food Stamps/SNAP in the Past 12 Months by Household

Treutlen County, Georgia



Source: B22005. RECEIPT OF FOOD STAMPS/SNAP IN THE PAST 12 MONTHS BY RACE OF HOUSEHOLDER
Data Set: 2008-2012 American Community Survey 5-Year Estimates

C23002. SEX BY AGE BY EMPLOYMENT STATUS FOR THE POPULATION 16 YEARS AND OVER

Data Set: 2008-2012 American Community Survey 5-Year Estimates

	Treutlen County, Georgia					
	African American	Margin of Error (+/-)	% of AA Total	White, Not Hispanic	Margin of Error (+/-)	% of NHW Total
Total:	1,410	206	100.0%	3,625	282	100.0%
In labor force:	470	NC	33.3%	1,787	NC	49.3%
In Armed Forces	0	NC	0.0%	0	NC	0.0%
Civilian:	464	NC	32.9%	1,698	NC	46.8%
Employed	403	NC	28.6%	1,751	NC	48.3%
Unemployed	67	NC	4.8%	36	NC	1.0%
Not in labor force	940	NC	66.7%	1,838	NC	50.7%
Male:	670	137	47.5%	1,892	201	52.2%
16 to 64 years:	625	129	44.3%	1,541	197	42.5%
In labor force:	195	81	13.8%	858	173	23.7%
In Armed Forces	0	19	0.0%	0	19	0.0%
Civilian:	195	81	13.8%	858	173	23.7%
Employed	159	73	11.3%	832	174	23.0%
Unemployed	36	34	2.6%	26	23	0.7%
Not in labor force	430	116	30.5%	683	197	18.8%
65 years and over:	45	38	3.2%	351	123	9.7%
In labor force:	6	9	0.4%	58	33	1.6%
Employed	6	9	0.4%	58	33	1.6%
Unemployed	0	19	0.0%	0	19	0.0%
Not in labor force	39	36	2.8%	293	124	8.1%

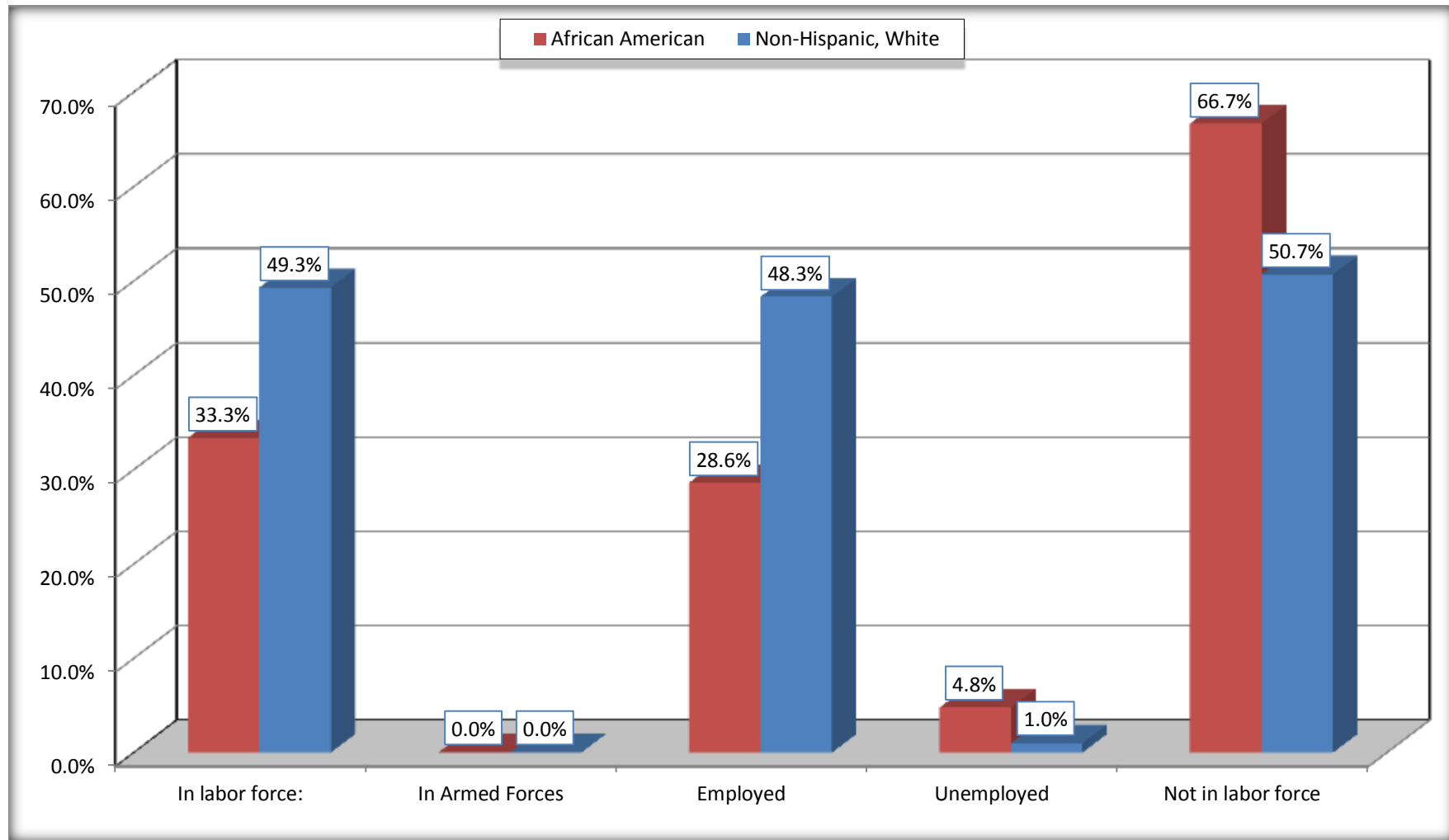
	Trentlen County, Georgia					
	African American	Margin of Error (+/-)	% of AA Total	White, Not Hispanic	Margin of Error (+/-)	% of NHW Total
Female:	740	144	52.5%	1,733	197	47.8%
16 to 64 years:	529	118	37.5%	1,294	175	35.7%
In labor force:	269	78	19.1%	840	202	23.2%
In Armed Forces	0	19	0.0%	0	19	0.0%
Civilian:	269	78	19.1%	840	202	23.2%
Employed	238	83	16.9%	830	203	22.9%
Unemployed	31	23	2.2%	10	11	0.3%
Not in labor force	260	88	18.4%	454	139	12.5%
65 years and over:	211	82	15.0%	439	109	12.1%
In labor force:	0	19	0.0%	31	28	0.9%
Employed	0	19	0.0%	31	28	0.9%
Unemployed	0	19	0.0%	0	19	0.0%
Not in labor force	211	82	15.0%	408	107	11.3%

Source: U.S. Census Bureau, 2008-2012 American Community Survey

For information on confidentiality protection, sampling error, nonsampling error, and definitions, see Survey Methodology.
<http://www.census.gov/acs/www/UseData/index.htm>

Employment Status for the Population 16 years and over

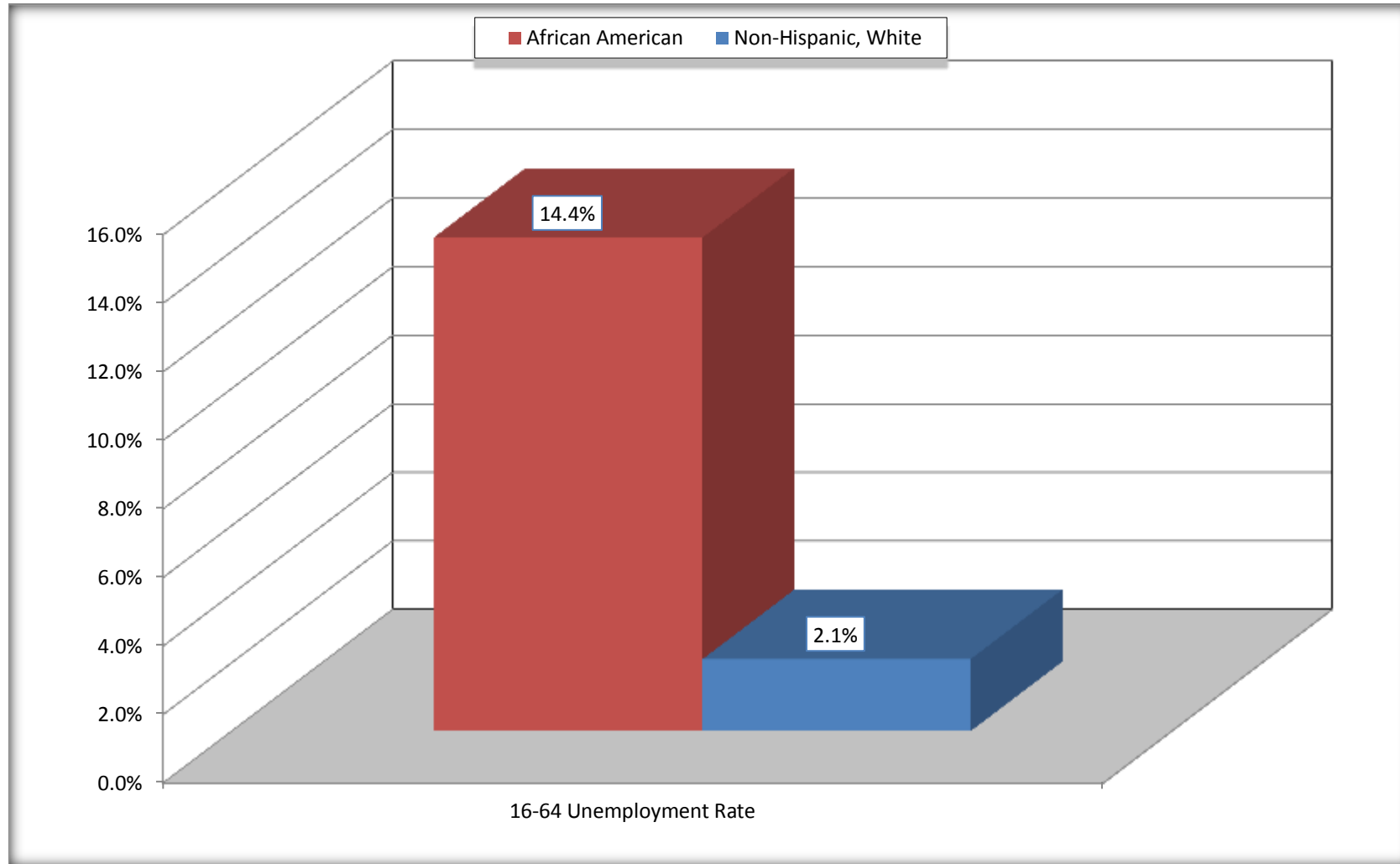
Treutlen County, Georgia



Source: C23002. SEX BY AGE BY EMPLOYMENT STATUS FOR THE POPULATION 16 YEARS AND OVER
Data Set: 2008-2012 American Community Survey 5-Year Estimates

Unemployment of Working Age Population (Ages 16 to 64) (As a Percent of 16-64 Civilian Labor Force)

Treutlen County, Georgia



Source: C23002. SEX BY AGE BY EMPLOYMENT STATUS FOR THE POPULATION 16 YEARS AND OVER
Data Set: 2008-2012 American Community Survey 5-Year Estimates

C24010. SEX BY OCCUPATION FOR THE CIVILIAN EMPLOYED POPULATION 16 YEARS AND OVER

Data Set: 2008-2012 American Community Survey 5-Year Estimates

	Trentlen County, Georgia					
	African American	Margin of Error (+/-)	% of AA Total	White, Not Hispanic	Margin of Error (+/-)	% of NHW Total
Total:	403	95	100.0%	1,751	280	100.0%
Management, professional, and related occupations	80	NC	19.9%	371	NC	21.2%
Service occupations	112	NC	27.8%	311	NC	17.8%
Sales and office occupations	67	NC	16.6%	422	NC	24.1%
Natural resources, construction, and maintenance occupations:	27	NC	6.7%	356	NC	20.3%
Production, transportation, and material moving occupations	117	NC	29.0%	291	NC	16.6%
Male:	165	75	40.9%	890	179	50.8%
Management, business, science, and arts occupations:	22	24	5.5%	146	82	8.3%
Service occupations	11	15	2.7%	119	74	6.8%
Sales and office occupations	7	9	1.7%	142	106	8.1%
Natural resources, construction, and maintenance occupations:	27	28	6.7%	356	153	20.3%
Production, transportation, and material moving occupations	98	61	24.3%	127	71	7.3%
Female:	238	83	59.1%	861	203	49.2%
Management, professional, and related occupations	58	46	14.4%	225	90	12.8%
Service occupations	101	54	25.1%	192	103	11.0%
Sales and office occupations	60	44	14.9%	280	112	16.0%
Natural resources, construction, and maintenance occupations:	0	19	0.0%	0	19	0.0%
Production, transportation, and material moving occupations	19	22	4.7%	164	110	9.4%

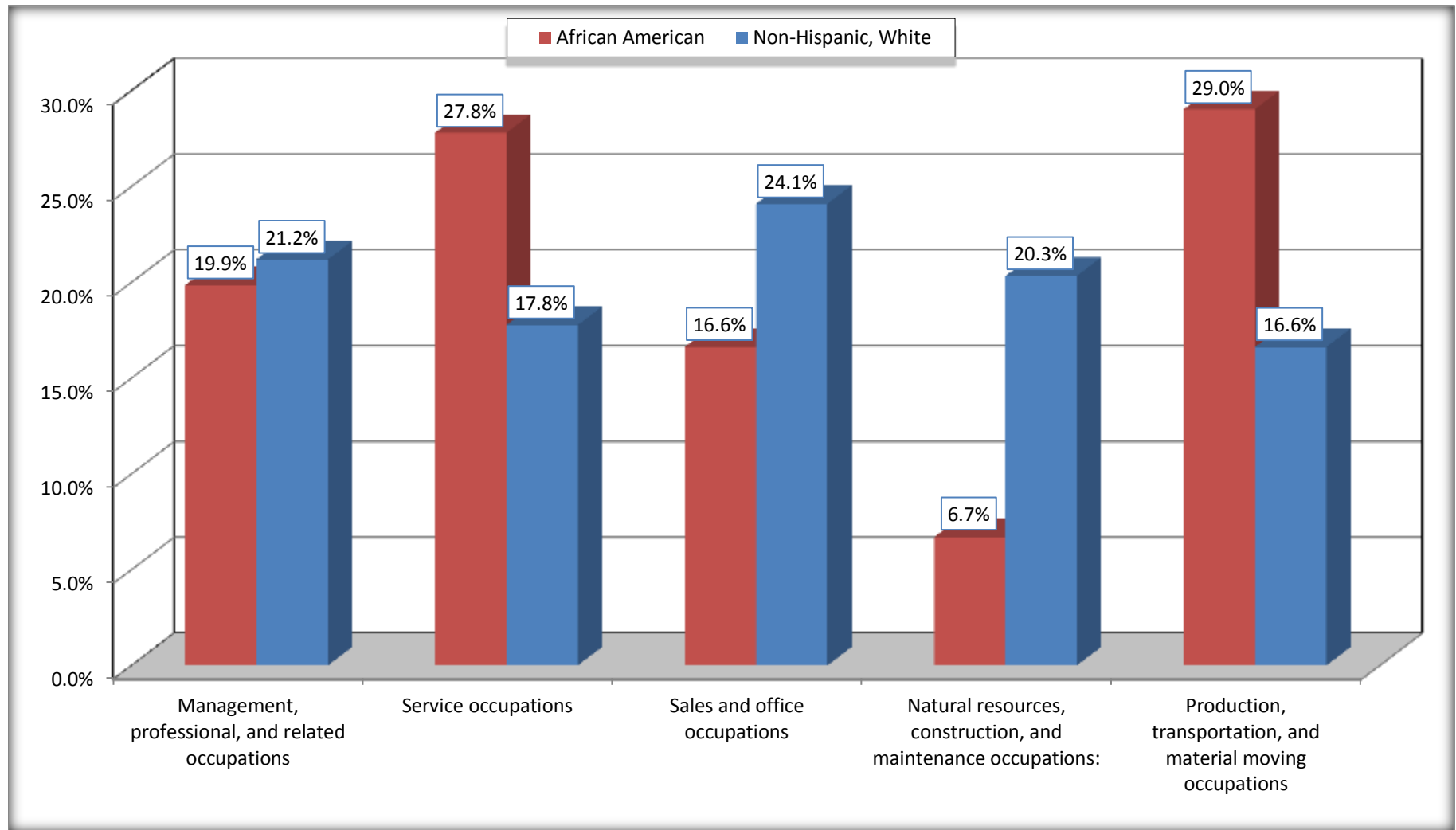
Source: U.S. Census Bureau, 2008-2012 American Community Survey

For information on confidentiality protection, sampling error, nonsampling error, and definitions, see Survey Methodology.

<http://www.census.gov/acs/www/UseData/index.htm>

Occupation for the Civilian Employed 16 Years and Over Population

Treutlen County, Georgia



Source: C24010. SEX BY OCCUPATION FOR THE CIVILIAN EMPLOYED POPULATION 16 YEARS AND OVER
Data Set: 2008-2012 American Community Survey 5-Year Estimates

B25003. TENURE - Universe: OCCUPIED HOUSING UNITS

Data Set: 2008-2012 American Community Survey 5-Year Estimates

	Trentlen County, Georgia					
	African American	Margin of Error (+/-)	% of AA Total	White, Not Hispanic	Margin of Error (+/-)	% of NHW Total
Total:	596	97	100.0%	1,730	204	100.0%
Owner occupied	298	86	50.0%	1,270	239	73.4%
Renter occupied	298	102	50.0%	460	126	26.6%

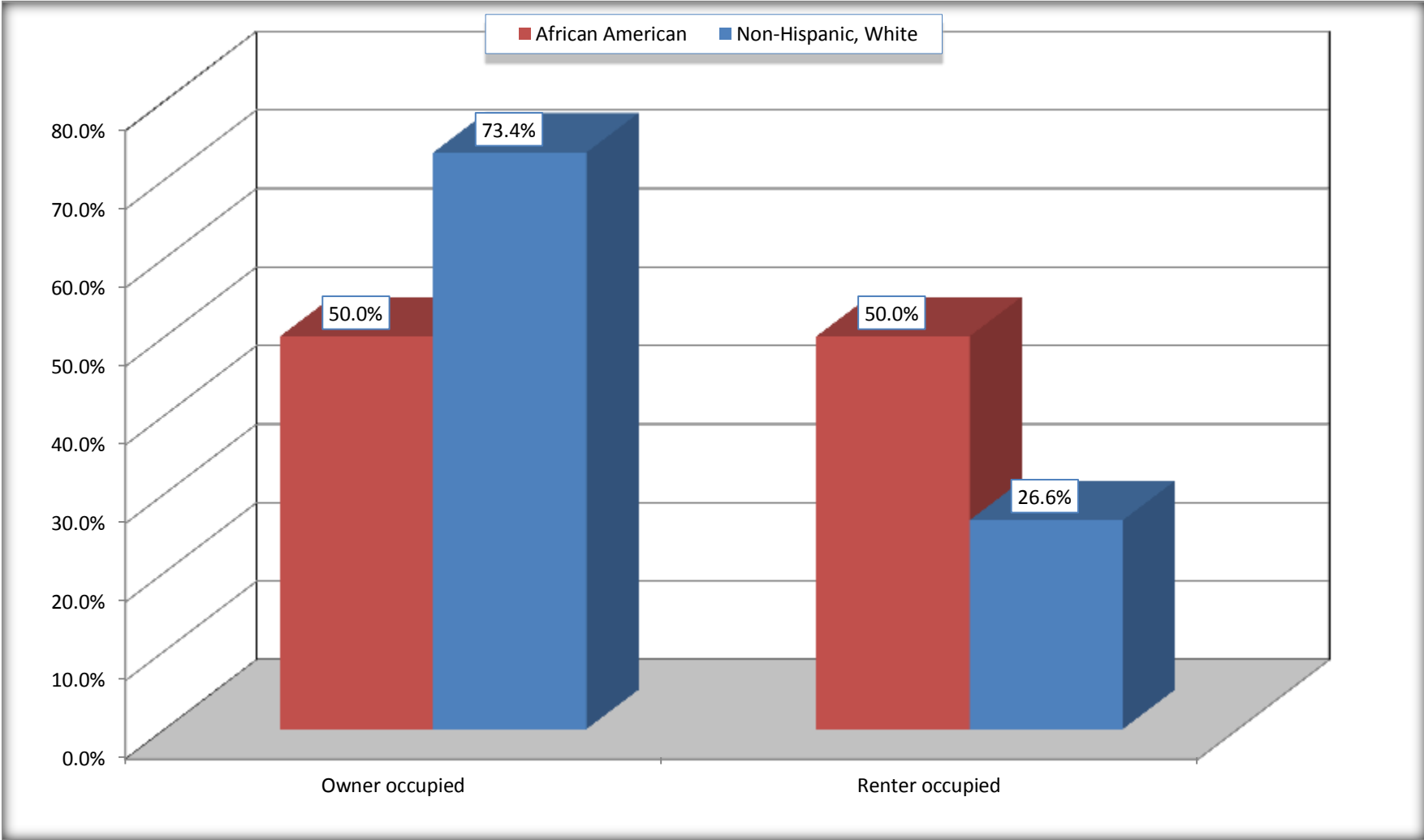
Source: U.S. Census Bureau, 2008-2012 American Community Survey

For information on confidentiality protection, sampling error, nonsampling error, and definitions, see Survey Methodology.

<http://www.census.gov/acs/www/UseData/index.h>

Home Owners and Renters by Household

Treutlen County, Georgia



Source: B25003. TENURE - Universe: OCCUPIED HOUSING UNITS
Data Set: 2008-2012 American Community Survey 5-Year Estimates

B25014. OCCUPANTS PER ROOM - Universe: OCCUPIED HOUSING UNITS

Data Set: 2008-2012 American Community Survey 5-Year Estimates

	Treutlen County, Georgia					
	African American	Margin of Error (+/-)	% of AA Total	White, Not Hispanic	Margin of Error (+/-)	% of NHW Total
Total:	596	97	100.0%	1,730	204	100.0%
1.00 or less occupants per room	591	97	99.2%	1,720	207	99.4%
1.01 or more occupants per room	5	7	0.8%	10	17	0.6%

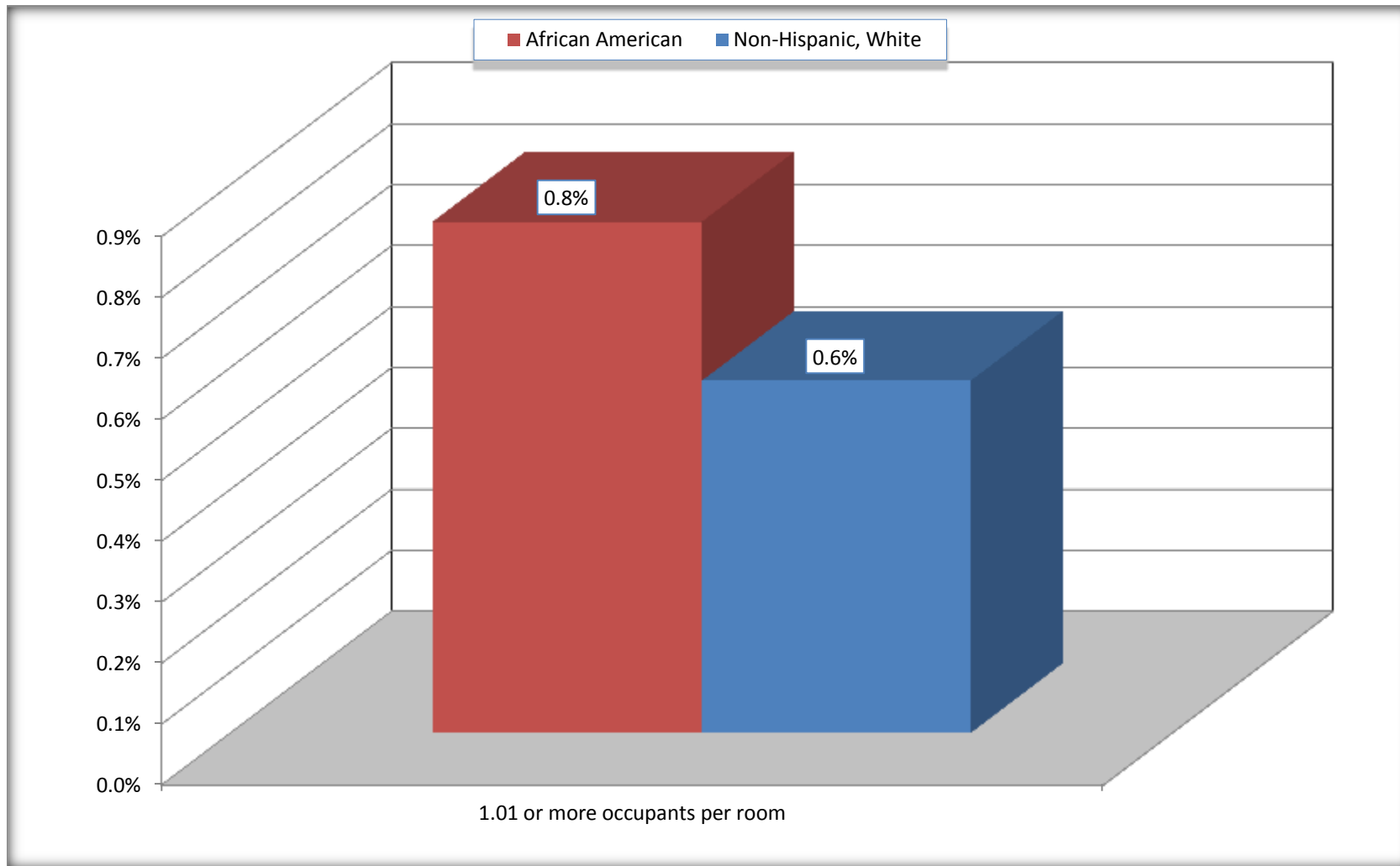
Source: U.S. Census Bureau, 2008-2012 American Community Survey

For information on confidentiality protection, sampling error, nonsampling error, and definitions, see Survey Methodology.

<http://www.census.gov/acs/www/UseData/index.ht>

More than One Person per Room (Crowding) by Household

Treutlen County, Georgia



Source: B25014. OCCUPANTS PER ROOM - Universe: OCCUPIED HOUSING UNITS
Data Set: 2008-2012 American Community Survey 5-Year Estimates

B18101. AGE BY DISABILITY STATUS

Data Set: 2008-2012 American Community Survey 5-Year Estimates

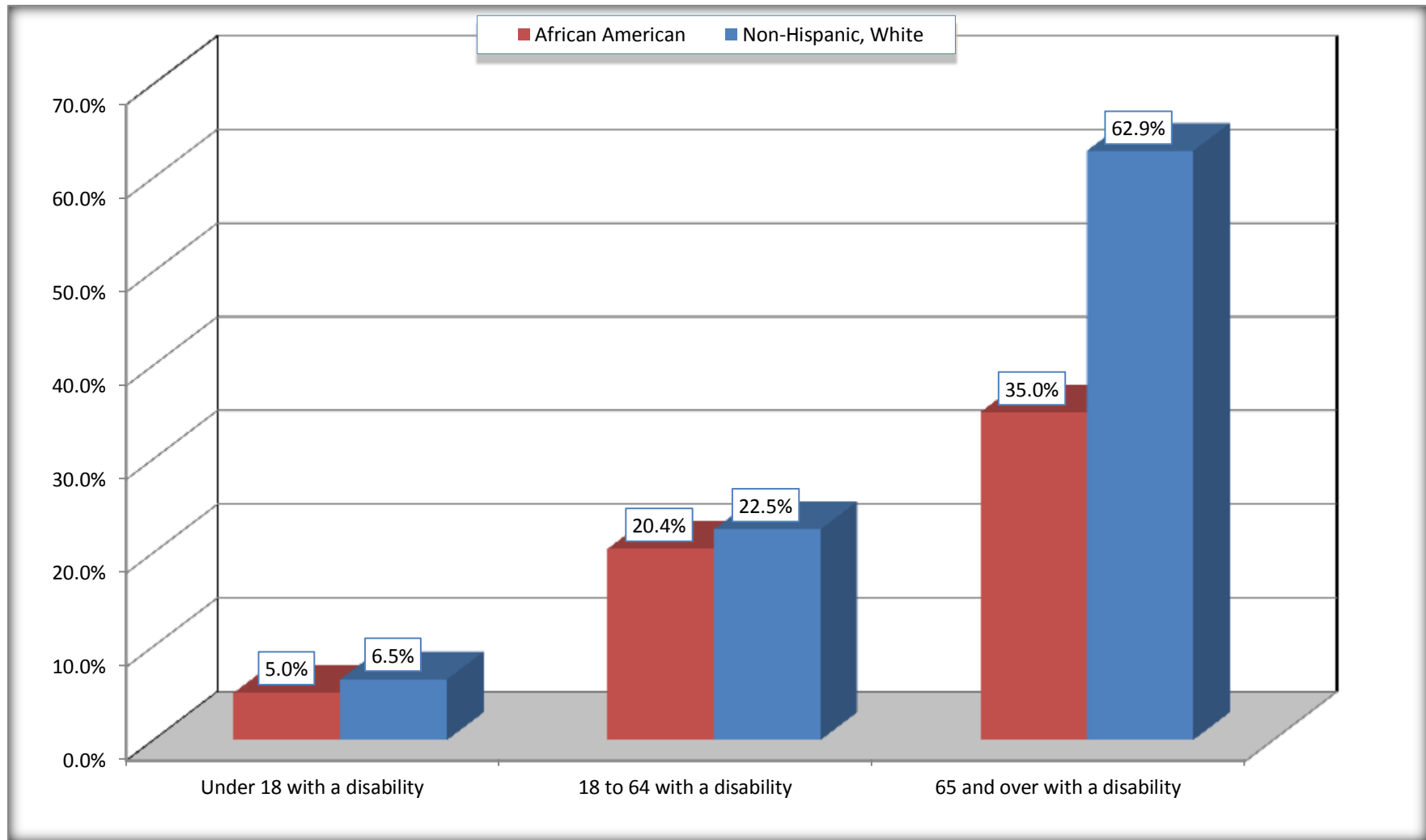
	Treutlen County, Georgia					
	African American	Margin of Error (+/-)	% of AA Total	White, Not Hispanic	Margin of Error (+/-)	% of NHW Total
Total:	1,721	287	100.0%	4,442	303	100.0%
Under 18 years:	615	178	35.7%	1,108	76	24.9%
With a disability	31	38	1.8%	72	66	1.6%
No disability	584	171	33.9%	1,036	271	23.3%
18 to 64 years:	883	151	51.3%	2,588	262	58.3%
With a disability	180	80	10.5%	582	178	13.1%
No disability	703	145	40.8%	2,006	271	45.2%
65 years and over:	223	83	13.0%	746	173	16.8%
With a disability	78	37	4.5%	469	131	10.6%
No disability	145	78	8.4%	277	123	6.2%

Source: U.S. Census Bureau, 2008-2012 American Community Survey

For information on confidentiality protection, sampling error, nonsampling error, and definitions, see Survey Methodology.

<http://www.census.gov/acs/www/UseData/index.htm>

Disability by Age Trentlen County, Georgia



Source: B18101. AGE BY DISABILITY STATUS
Data Set: 2008-2012 American Community Survey 5-Year Estimates

C27001B. HEALTH INSURANCE COVERAGE STATUS BY AGE

Data Set: 2008-2012 American Community Survey 5-Year Estimates

	Trentlen County, Georgia					
	African American	Margin of Error (+/-)	% of AA Total	White, Not Hispanic	Margin of Error (+/-)	% of NHW Total
Total:	1,721	287	100.0%	4,442	303	100.0%
Under 18 years:	615	178	35.7%	1,108	254	24.9%
With health insurance coverage	595	176	34.6%	1,025	242	23.1%
No health insurance coverage	20	21	1.2%	83	80	1.9%
18 to 64 years:	883	151	51.3%	2,588	262	58.3%
With health insurance coverage	551	111	32.0%	2,002	260	45.1%
No health insurance coverage	332	128	19.3%	586	163	13.2%
65 years and over:	223	83	13.0%	746	173	16.8%
With health insurance coverage	223	83	13.0%	746	173	16.8%
No health insurance coverage	0	19	0.0%	0	19	0.0%

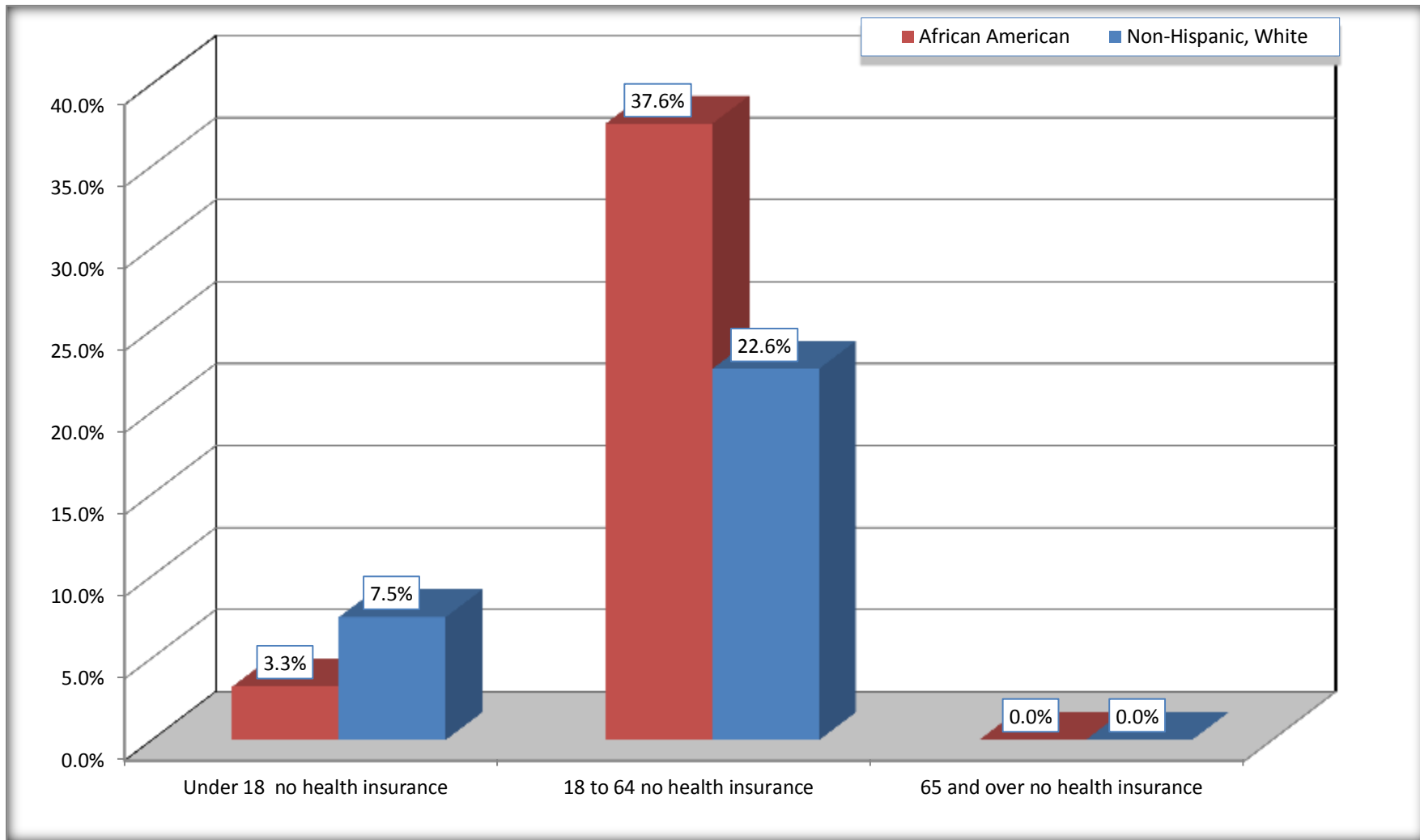
Source: U.S. Census Bureau, 2008-2012 American Community Survey

For information on confidentiality protection, sampling error, nonsampling error, and definitions, see Survey Methodology.

<http://www.census.gov/acs/www/UseData/index.htm>

Lack of Health Insurance Coverage by Age

Treutlen County, Georgia



Source: C27001B. HEALTH INSURANCE COVERAGE STATUS BY AGE
Data Set: 2008-2012 American Community Survey 5-Year Estimates