

# **Selected Socio-Economic Data**

## **Thomson city, Georgia**

### **African American and White, Not Hispanic**

**Data Set: 2008-2012 American Community Survey 5-Year Estimates**

[www.fairvote2020.org](http://www.fairvote2020.org)

[www.fairdata2000.com](http://www.fairdata2000.com)

[29-Dec-13](#)

**C02003.DETAILED RACE - Universe: TOTAL POPULATION**

Data Set: 2008-2012 American Community Survey 5-Year Estimates

	Thomson city, Georgia		
	Population	Margin of Error (+/-)	% of Total
<b>Total:</b>	<b>6,750</b>	<b>26</b>	<b>100.0%</b>
Population of one race:	6,713	63	99.5%
White	2,121	288	31.4%
Black or African American	4,578	295	67.8%
American Indian and Alaska Native	14	27	0.2%
Asian alone	0	19	0.0%
Native Hawaiian and Other Pacific Islander	0	19	0.0%
Some other race	0	19	0.0%
Population of two or more races:	37	60	0.5%
Two races including Some other race	0	19	0.0%
Two races excluding Some other race, and three or more races	37	60	0.5%
Population of two races:	37	60	0.5%
White; Black or African American	37	60	0.5%
White; American Indian and Alaska Native	0	19	0.0%
White; Asian	0	19	0.0%
Black or African American; American Indian and Alaska Native	0	19	0.0%
All other two race combinations	0	19	0.0%
Population of three races	0	19	0.0%
Population of four or more races	0	19	0.0%

Note: Hispanics may be of any race. See Table B03002 and chart.

Source: U.S. Census Bureau, 2008-2012 American Community Survey

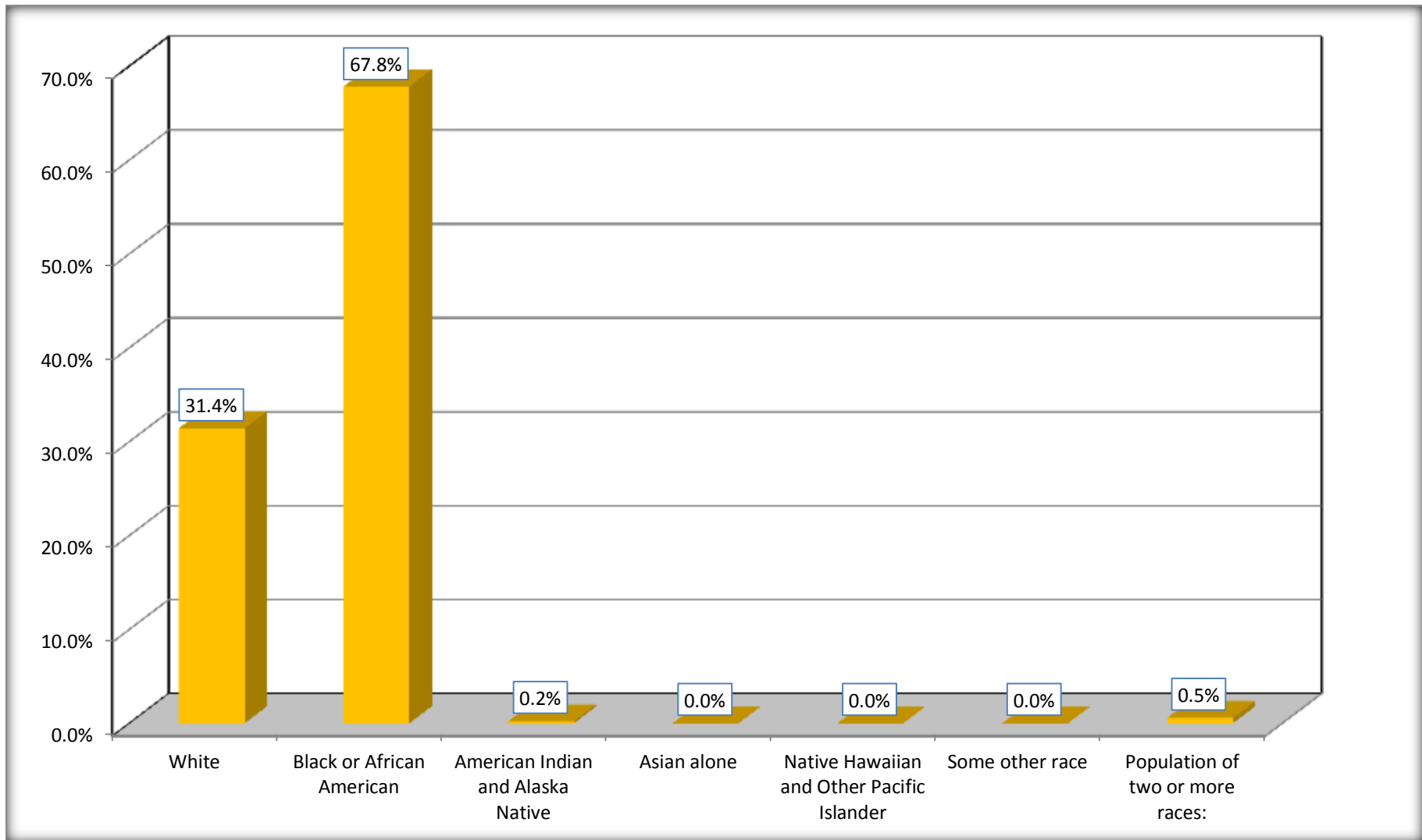
Although the American Community Survey (ACS) produces population, demographic and housing unit estimates, it is the Census Bureau's Population Estimates Program that produces and disseminates the official estimates of the population for the nation, states, counties, cities and towns and estimates of housing units for states and counties.

For information on confidentiality protection, sampling error, nonsampling error, and definitions, see Survey Methodology.

<http://www.census.gov/acs/www/UseData/index.htm>

# Population by Race

## Thomson city, Georgia



Source: C02003.DETAILED RACE - Universe: TOTAL POPULATION  
Data Set: 2008-2012 American Community Survey 5-Year Estimates

**B03002. HISPANIC OR LATINO ORIGIN BY RACE - Universe: TOTAL POPULATION**

Data Set: 2008-2012 American Community Survey 5-Year Estimates

	Thomson city, Georgia		
	Population	Margin of Error (+/-)	% of Total
<b>Total:</b>	6,750	26	<b>100.0%</b>
Not Hispanic or Latino:	6,616	112	98.0%
White alone	1,987	276	29.4%
Black or African American alone	4,578	295	67.8%
American Indian and Alaska Native alone	14	27	0.2%
Asian alone	0	19	0.0%
Native Hawaiian and Other Pacific Islander alone	0	19	0.0%
Some other race alone	0	19	0.0%
Two or more races:	37	60	0.5%
Two races including Some other race	0	19	0.0%
Two races excluding Some other race, and three or more races	37	60	0.5%
Hispanic or Latino	134	111	2.0%

Source: U.S. Census Bureau, 2008-2012 American Community Survey

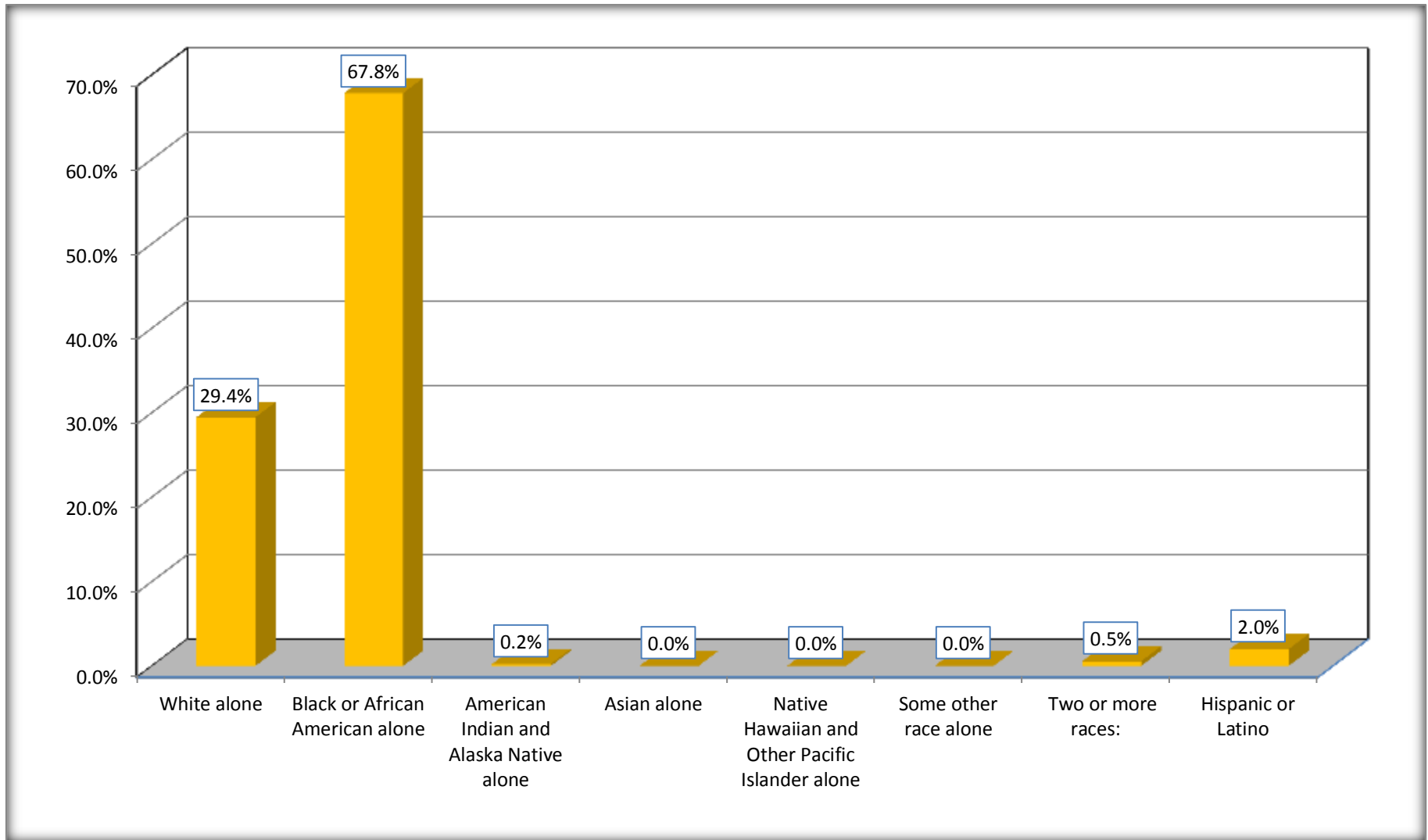
Although the American Community Survey (ACS) produces population, demographic and housing unit estimates, it is the Census Bureau's Population Estimates Program that produces and disseminates the official estimates of the population for the nation, states, counties, cities and towns and estimates of housing units for states and counties.

For information on confidentiality protection, sampling error, nonsampling error, and definitions, see Survey Methodology.

<http://www.census.gov/acs/www/UseData/index.htm>

# Non-Hispanic by Race and Hispanic Population

## Thomson city, Georgia



Source: B03002. HISPANIC OR LATINO ORIGIN BY RACE - Universe: TOTAL POPULATION

Data Set: 2008-2012 American Community Survey 5-Year Estimates

**B03002. HISPANIC OR LATINO ORIGIN BY RACE**

Data Set: 2008-2012 American Community Survey 5-Year Estimates

	Thomson city, Georgia		
	Population	Margin of Error (+/-)	% of Total
Hispanic or Latino:	134	111	<b>100.0%</b>
White alone	134	111	100.0%
Black or African American alone	0	19	0.0%
American Indian and Alaska Native alone	0	19	0.0%
Asian alone	0	19	0.0%
Native Hawaiian and Other Pacific Islander alone	0	19	0.0%
Some other race alone	0	19	0.0%
Two or more races:	0	19	0.0%
Two races including Some other race	0	19	0.0%
Two races excluding Some other race, and three or more races	0	19	0.0%

Source: U.S. Census Bureau, 2008-2012 American Community Survey

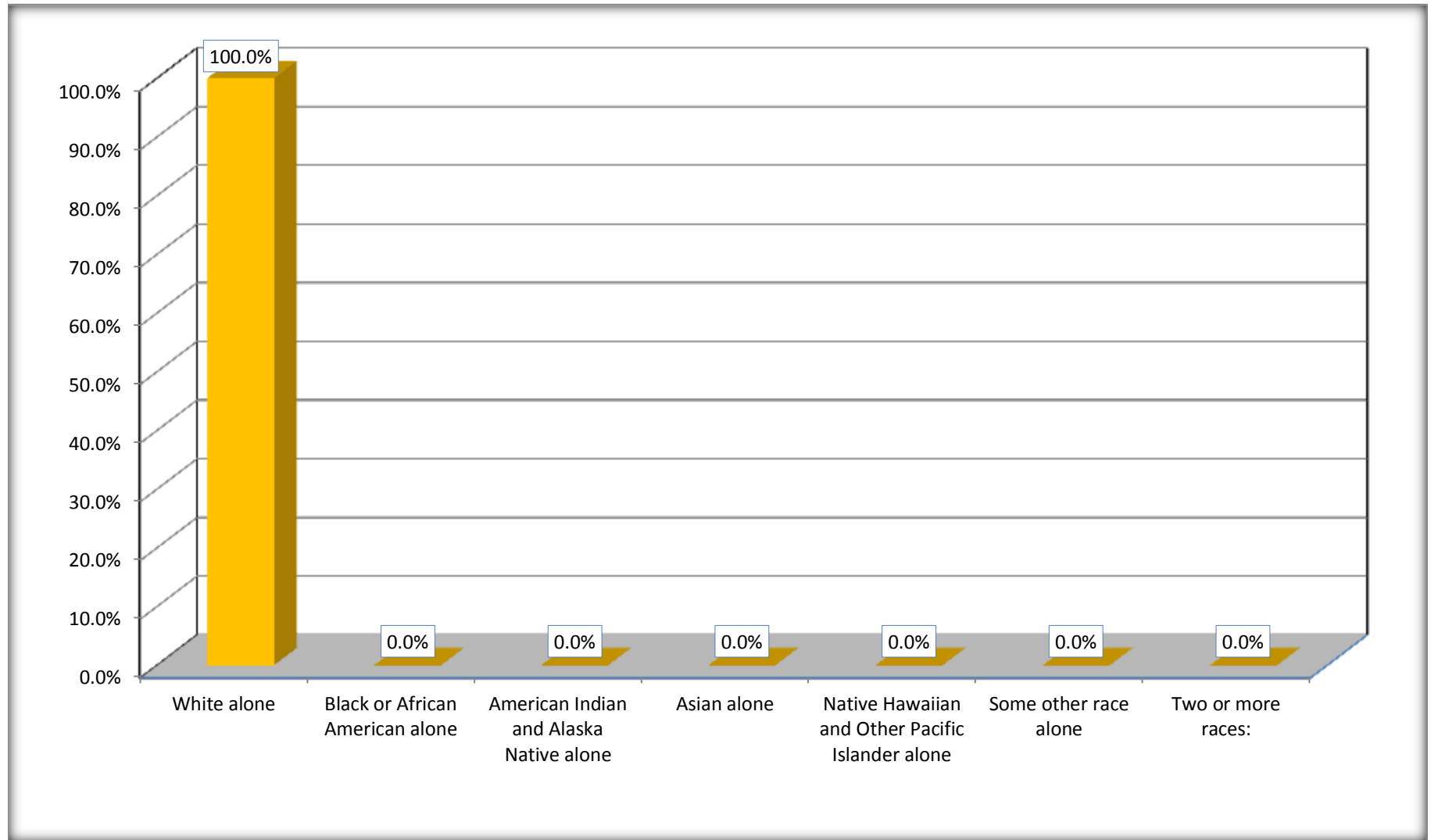
Although the American Community Survey (ACS) produces population, demographic and housing unit estimates, it is the Census Bureau's Population Estimates Program that produces and disseminates the official estimates of the population for the nation, states, counties, cities and towns and estimates of housing units for states and counties.

For information on confidentiality protection, sampling error, nonsampling error, and definitions, see Survey Methodology.

<http://www.census.gov/acs/www/UseData/index.htm>

# Hispanic or Latino Origin by Race

## Thomson city, Georgia



Source: B03002. HISPANIC OR LATINO ORIGIN BY RACE  
Data Set: 2008-2012 American Community Survey 5-Year Estimates

**B01001. SEX BY AGE**

Data Set: 2008-2012 American Community Survey 5-Year Estimates

	Thomson city, Georgia					
	African American	Margin of Error (+/-)	% of AA Total	White, Not Hispanic	Margin of Error (+/-)	% of NHW Total
<b>Total:</b>	<b>4,578</b>	<b>295</b>	<b>100.0%</b>	<b>1,987</b>	<b>276</b>	<b>100.0%</b>
Under 18 years	1,812	NC	39.6%	417	NC	21.0%
18 to 64 years	2,387	NC	52.1%	1,143	NC	57.5%
65 years and over	379	NC	8.3%	427	NC	21.5%
Male:	2,120	241	46.3%	894	389	45.0%
Under 18 years	1070	NC	23.4%	216	NC	10.9%
18 to 64 years	963	NC	21.0%	532	NC	26.8%
65 years and over	87	NC	1.9%	146	NC	7.3%
Female:	2,458	259	53.7%	1,093	412	55.0%
Under 18 years	742	NC	16.2%	201	NC	10.1%
18 to 64 years	1,424	NC	31.1%	611	NC	30.7%
65 years and over	292	NC	6.4%	281	NC	14.1%

Source: U.S. Census Bureau, 2008-2012 American Community Survey

Although the American Community Survey (ACS) produces population, demographic and housing unit estimates, it is the Census Bureau's Population Estimates Program that produces and disseminates the official estimates of the population for the nation, states, counties, cities and towns and estimates of housing units for states and counties.

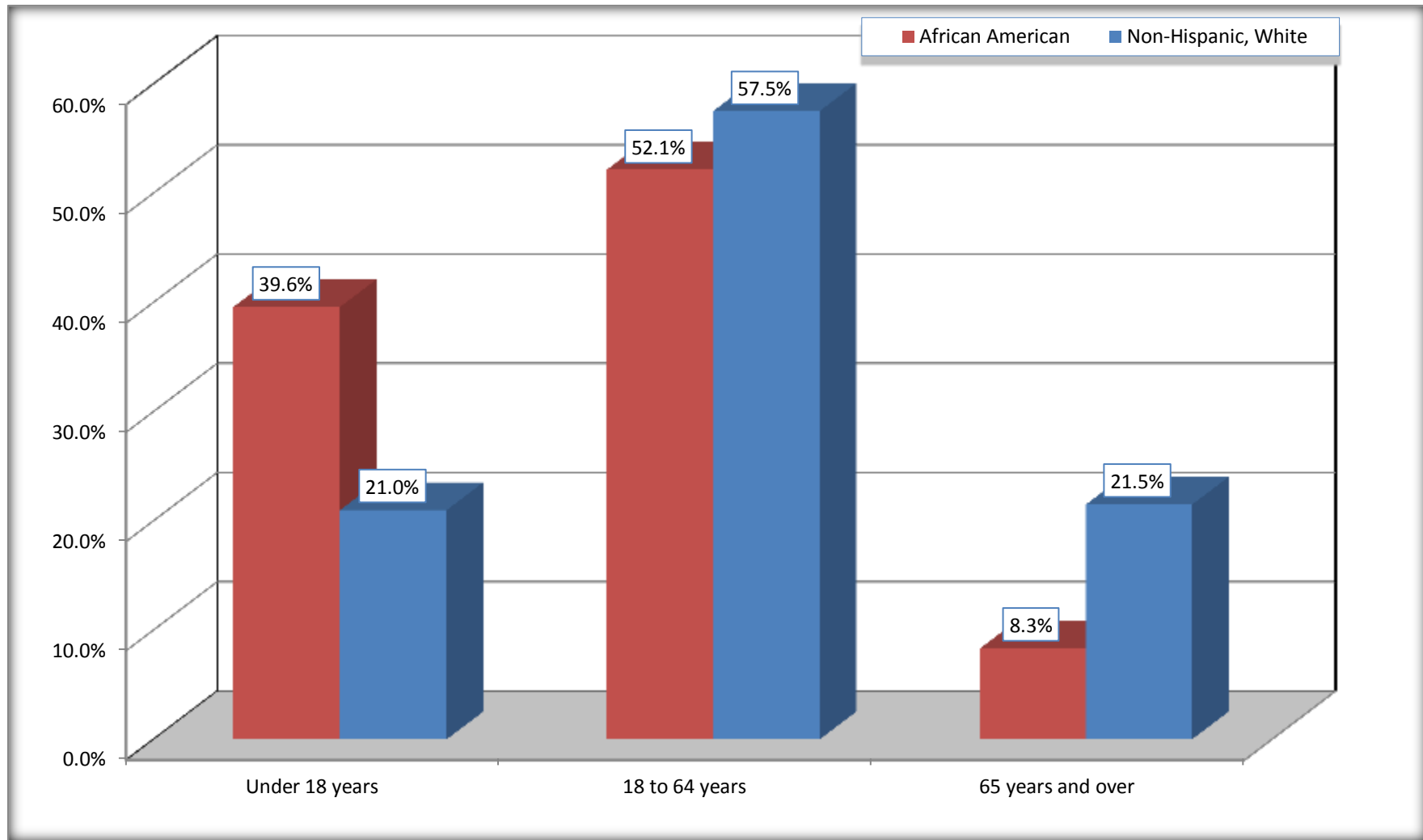
For information on confidentiality protection, sampling error, nonsampling error, and definitions, see Survey Methodology.

<http://www.census.gov/acs/www/UseData/index.htm>



# Population by Age

## Thomson city, Georgia



Source: B01001. SEX BY AGE  
Data Set: 2008-2012 American Community Survey 5-Year Estimates

**B05003. SEX BY AGE BY CITIZENSHIP STATUS**

Data Set: 2008-2012 American Community Survey 5-Year Estimates

	Thomson city, Georgia					
	African American	Margin of Error (+/-)	% of AA Total by Age	White, Not Hispanic	Margin of Error (+/-)	% of NHW Total by Age
<b>Total:</b>	<b>4,578</b>	<b>295</b>	<b>100.0%</b>	<b>1,987</b>	<b>276</b>	<b>100.0%</b>
<b>Under 18 years:</b>	<b>1,812</b>	<b>NC</b>	<b>100.0%</b>	<b>417</b>	<b>NC</b>	<b>100.0%</b>
Native	1,812	NC	100.0%	417	NC	100.0%
Foreign born:	0	NC	0.0%	0	NC	0.0%
Naturalized U.S. citizen	0	NC	0.0%	0	NC	0.0%
Not a U.S. citizen	0	NC	0.0%	0	NC	0.0%
<b>18 years and over:</b>	<b>2,766</b>	<b>NC</b>	<b>100.0%</b>	<b>1,570</b>	<b>NC</b>	<b>100.0%</b>
Native	2,766	NC	100.0%	1,548	NC	98.6%
Foreign born:	0	NC	0.0%	22	NC	1.4%
Naturalized U.S. citizen	0	NC	0.0%	0	NC	0.0%
Not a U.S. citizen	0	NC	0.0%	22	NC	1.4%
<b>Male:</b>	<b>2,120</b>	<b>241</b>	<b>46.3%</b>	<b>894</b>	<b>165</b>	<b>45.0%</b>
<b>Under 18 years:</b>	<b>1,070</b>	<b>178</b>	<b>100.0%</b>	<b>216</b>	<b>88</b>	<b>100.0%</b>
Native	1,070	178	100.0%	216	88	100.0%
Foreign born:	0	19	0.0%	0	19	0.0%
Naturalized U.S. citizen	0	19	0.0%	0	19	0.0%
Not a U.S. citizen	0	19	0.0%	0	19	0.0%
<b>18 years and over:</b>	<b>1,050</b>	<b>185</b>	<b>100.0%</b>	<b>678</b>	<b>137</b>	<b>100.0%</b>
Native	1,050	185	100.0%	670	140	98.8%
Foreign born:	0	19	0.0%	8	13	1.2%
Naturalized U.S. citizen	0	19	0.0%	0	19	0.0%
Not a U.S. citizen	0	19	0.0%	8	13	1.2%

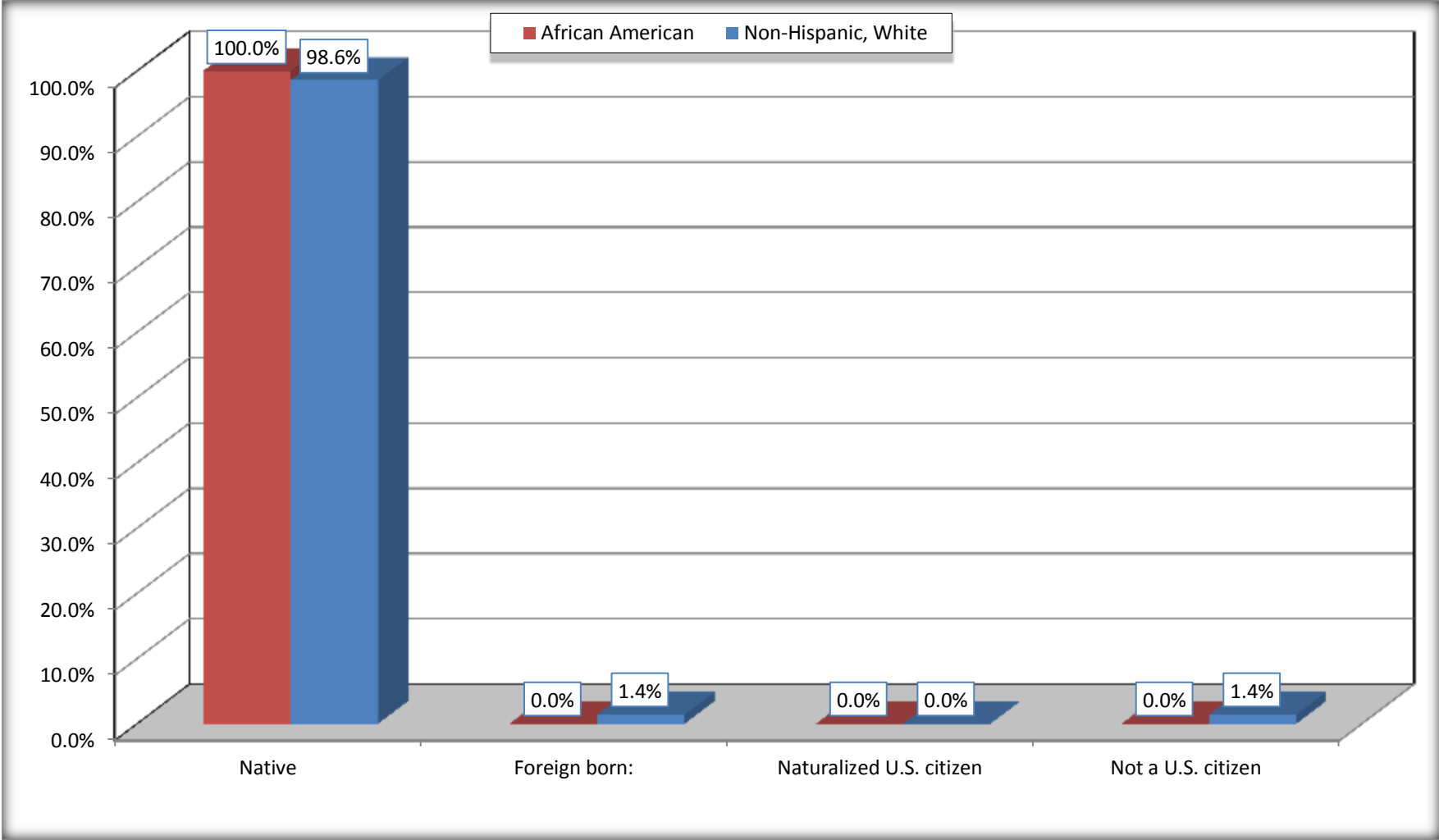
	Thomson city, Georgia					
	African American	Margin of Error (+/-)	% of AA by Age	White, Not Hispanic	Margin of Error (+/-)	% of NHW by Age
<b>Female:</b>	2,458	259	53.7%	1,093	193	55.0%
<b>Under 18 years:</b>	<b>742</b>	<b>224</b>	<b>100.0%</b>	<b>201</b>	<b>73</b>	<b>100.0%</b>
Native	742	224	100.0%	201	73	100.0%
Foreign born:	0	19	0.0%	0	19	0.0%
Naturalized U.S. citizen	0	19	0.0%	0	19	0.0%
Not a U.S. citizen	0	19	0.0%	0	19	0.0%
<b>18 years and over:</b>	<b>1,716</b>	<b>184</b>	<b>100.0%</b>	<b>892</b>	<b>157</b>	<b>100.0%</b>
Native	1,716	184	100.0%	878	152	98.4%
Foreign born:	0	19	0.0%	14	23	1.6%
Naturalized U.S. citizen	0	19	0.0%	0	19	0.0%
Not a U.S. citizen	0	19	0.0%	14	23	1.6%

Source: U.S. Census Bureau, 2008-2012 American Community Survey

For information on confidentiality protection, sampling error, nonsampling error, and definitions, see Survey Methodology.  
<http://www.census.gov/acs/www/UseData/index.htm>

# Citizenship Status of Voting Age Population (18 and Over)

## Thomson city, Georgia



Source: B05003. SEX BY AGE BY CITIZENSHIP STATUS  
Data Set: 2008-2012 American Community Survey 5-Year Estimates

**B07004. GEOGRAPHICAL MOBILITY IN THE PAST YEAR BY RACE FOR CURRENT RESIDENCE IN THE UNITED STATES - Universe:  
POPULATION 1 YEAR AND OVER**

Data Set: 2008-2012 American Community Survey 5-Year Estimates

	Thomson city, Georgia					
	African American	Margin of Error (+/-)	% of AA Total	White, Not Hispanic	Margin of Error (+/-)	% of NHW Total
Total:	<b>4,432</b>	<b>287</b>	<b>100.0%</b>	<b>1,987</b>	<b>276</b>	<b>100.0%</b>
Same house 1 year ago	3,330	379	75.1%	1,679	241	84.5%
Moved within same county	574	307	13.0%	227	128	11.4%
Moved from different county within same state	306	221	6.9%	40	46	2.0%
Moved from different state	211	240	4.8%	41	44	2.1%
Moved from abroad	11	15	0.2%	0	19	0.0%

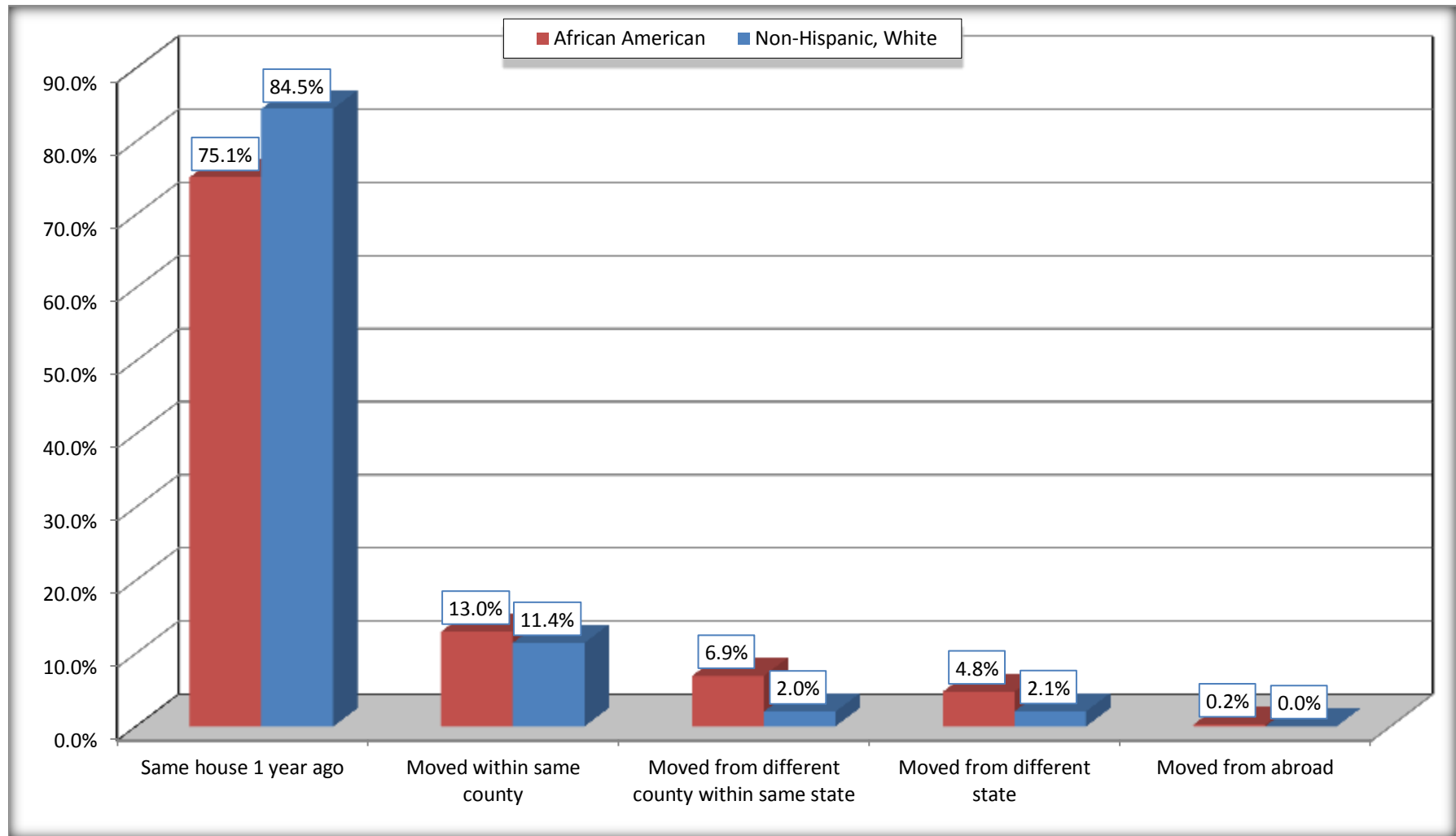
Source: U.S. Census Bureau, 2008-2012 American Community Survey

For information on confidentiality protection, sampling error, nonsampling error, and definitions, see Survey Methodology.

<http://www.census.gov/acs/www/UseData/index.htm>

# Geographical Mobility in the Past Year (Population 1 Year and Over)

## Thomson city, Georgia



Source: B07004. GEOGRAPHICAL MOBILITY IN THE PAST YEAR BY RACE FOR CURRENT RESIDENCE IN THE UNITED STATES - Universe: POPULATION 1 YEAR AND OVER

Data Set: 2008-2012 American Community Survey 5-Year Estimates

**B08105. MEANS OF TRANSPORTATION TO WORK - Universe: WORKERS 16 YEARS AND OVER**

Data Set: 2008-2012 American Community Survey 5-Year Estimates

	Thomson city, Georgia					
	African American	Margin of Error (+/-)	% of AA Total	White, Not Hispanic	Margin of Error (+/-)	% of NHW Total
<b>Total:</b>	1324	230	<b>100.0%</b>	822	191	<b>100.0%</b>
Car, truck, or van - drove alone	899	195	67.9%	729	185	88.7%
Car, truck, or van - carpooled	332	138	25.1%	76	58	9.2%
Public transportation (excluding taxicab)	0	19	0.0%	0	19	0.0%
Walked	42	43	3.2%	0	19	0.0%
Taxicab, motorcycle, bicycle, or other means	51	57	3.9%	0	19	0.0%
Worked at home	0	19	0.0%	17	20	2.1%

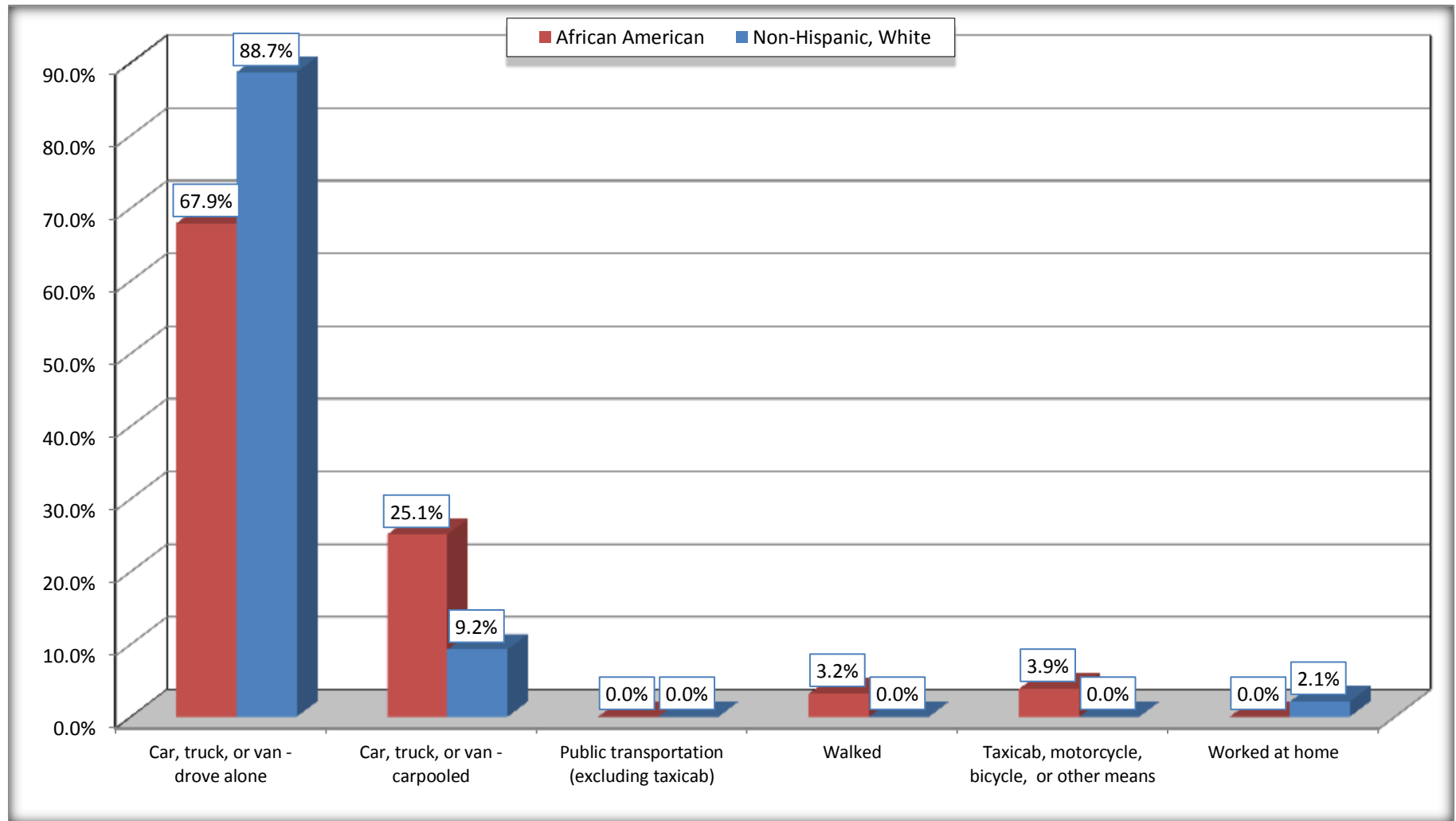
Source: U.S. Census Bureau, 2008-2012 American Community Survey

For information on confidentiality protection, sampling error, nonsampling error, and definitions, see Survey Methodology.

<http://www.census.gov/acs/www/UseData/index.htm>

# Means of Transportation to Work (Workers 16 Years and Over)

## Thomson city, Georgia



Source: B08105. MEANS OF TRANSPORTATION TO WORK - Universe: WORKERS 16 YEARS AND OVER  
Data Set: 2008-2012 American Community Survey 5-Year Estimates



**B11002. HOUSEHOLD TYPE BY RELATIVES AND NONRELATIVES FOR POPULATION IN HOUSEHOLDS**

Data Set: 2008-2012 American Community Survey 5-Year Estimates

	Thomson city, Georgia					
	African American	Margin of Error (+/-)	% of AA Total	White, Not Hispanic	Margin of Error (+/-)	% of NHW Total
<b>Total:</b>	4585	282	<b>100.0%</b>	1881	290	<b>100.0%</b>
In family households	4269	315	93.1%	1457	278	77.5%
In nonfamily households	316	121	6.9%	424	135	22.5%

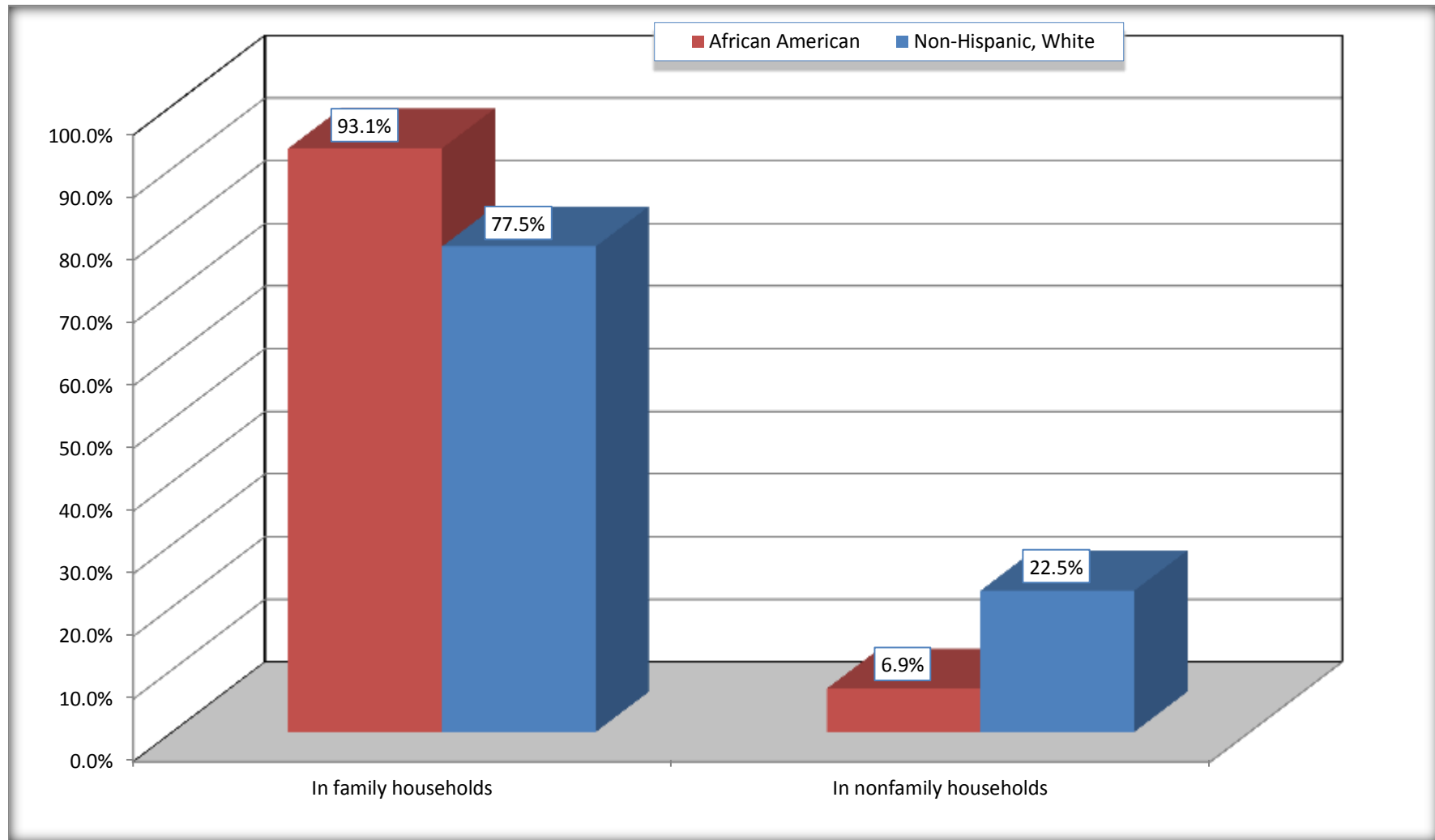
Source: U.S. Census Bureau, 2008-2012 American Community Survey

For information on confidentiality protection, sampling error, nonsampling error, and definitions, see Survey Methodology.

<http://www.census.gov/acs/www/UseData/index.htm>

# Household Type for Population in Households

## Thomson city, Georgia



Source: B11002. HOUSEHOLD TYPE BY RELATIVES AND NONRELATIVES FOR POPULATION IN HOUSEHOLDS  
Data Set: 2008-2012 American Community Survey 5-Year Estimates

**B12002. MARITAL STATUS FOR THE POPULATION 15 YEARS AND OVER**

Data Set: 2008-2012 American Community Survey 5-Year Estimates

	Thomson city, Georgia					
	African American	Margin of Error (+/-)	% of AA Total	White, Not Hispanic	Margin of Error (+/-)	% of NHW Total
<b>Total:</b>	<b>3,119</b>	<b>303</b>	<b>100.0%</b>	<b>1,636</b>	<b>235</b>	<b>100.0%</b>
Never married	1,685	NC	54.0%	327	NC	20.0%
Now married (except separated)	737	NC	23.6%	741	NC	45.3%
Separated	213	NC	6.8%	120	NC	7.3%
Widowed	218	NC	7.0%	222	NC	13.6%
Divorced	266	NC	8.5%	226	NC	13.8%
<b>Male:</b>	<b>1,269</b>	<b>233</b>	<b>40.7%</b>	<b>711</b>	<b>147</b>	<b>43.5%</b>
Never married	769	200	24.7%	177	77	10.8%
Now married (except separated)	320	116	10.3%	382	105	23.3%
Separated	51	61	1.6%	94	71	5.7%
Widowed	25	25	0.8%	10	18	0.6%
Divorced	104	73	3.3%	48	40	2.9%
<b>Female:</b>	<b>1,850</b>	<b>212</b>	<b>59.3%</b>	<b>925</b>	<b>159</b>	<b>56.5%</b>
Never married	916	208	29.4%	150	94	9.2%
Now married (except separated)	417	133	13.4%	359	115	21.9%
Separated	162	101	5.2%	26	27	1.6%
Widowed	193	90	6.2%	212	71	13.0%
Divorced	162	99	5.2%	178	93	10.9%

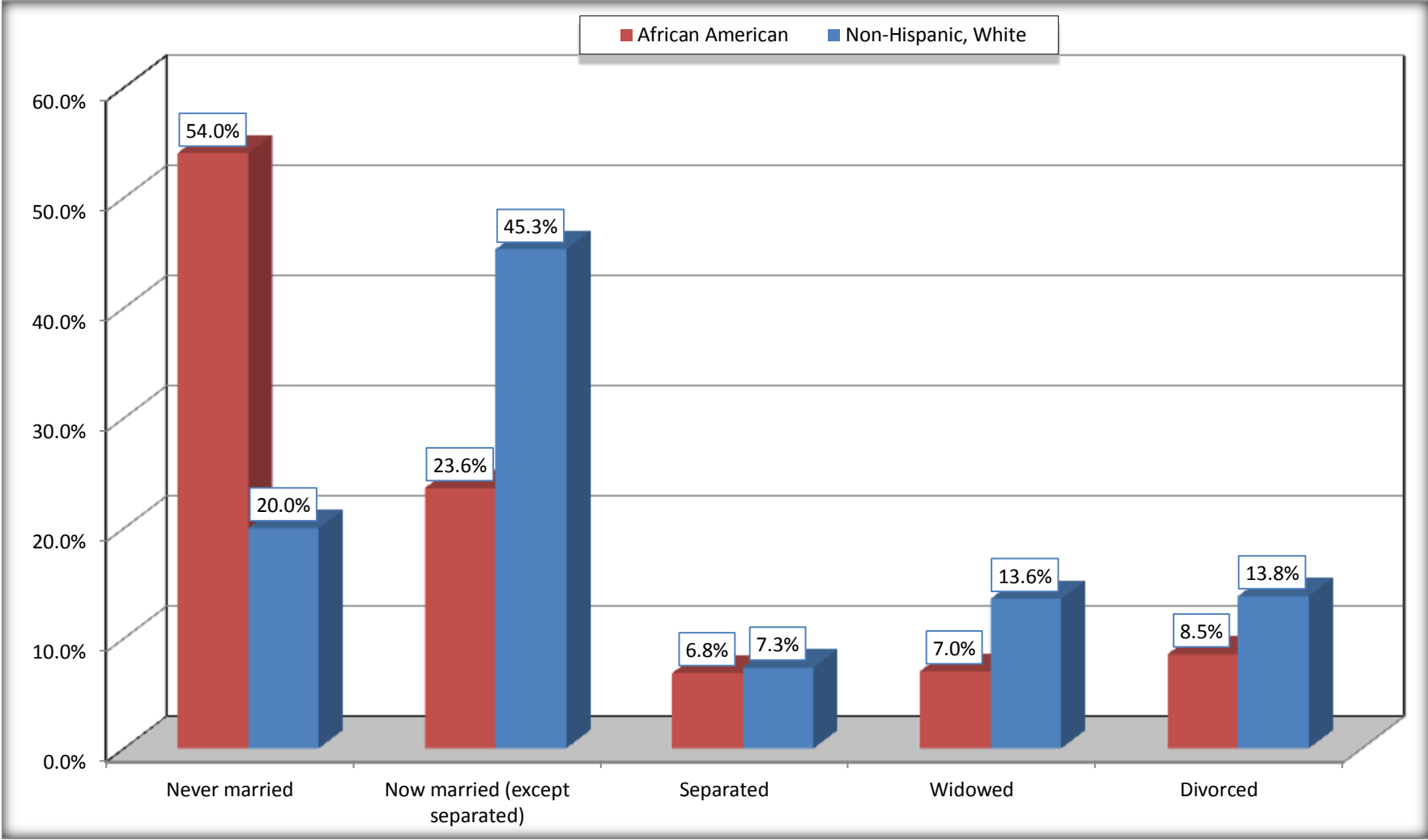
Source: U.S. Census Bureau, 2008-2012 American Community Survey

For information on confidentiality protection, sampling error, nonsampling error, and definitions, see Survey Methodology.

<http://www.census.gov/acs/www/UseData/index.htm>

# Marital Status for the Population 15 Years and Over

## Thomson city, Georgia



Source: B12002. MARITAL STATUS FOR THE POPULATION 15 YEARS AND OVER  
Data Set: 2008-2012 American Community Survey 5-Year Estimates

**C15002. SEX BY EDUCATIONAL ATTAINMENT FOR THE POPULATION 25 YEARS AND OVER**

Data Set: 2008-2012 American Community Survey 5-Year Estimates

	Thomson city, Georgia					
	African American	Margin of Error (+/-)	% of AA Total	White, Not Hispanic	Margin of Error (+/-)	% of NHW Total
<b>Total:</b>	<b>2,188</b>	<b>237</b>	<b>100.0%</b>	<b>1,338</b>	<b>209</b>	<b>100.0%</b>
Less than high school diploma	705	NC	32.2%	223	NC	16.7%
High school graduate, GED, or alternative	957	NC	43.7%	408	NC	30.5%
Some college or associate's degree	403	NC	18.4%	438	NC	32.7%
Bachelor's degree or higher	123	NC	5.6%	269	NC	20.1%
Male:	751	176	34.3%	568	128	42.5%
Less than high school diploma	297	134	13.6%	119	65	8.9%
High school graduate, GED, or alternative	355	118	16.2%	191	88	14.3%
Some college or associate's degree	99	54	4.5%	161	83	12.0%
Bachelor's degree or higher	0	19	0.0%	97	49	7.2%
Female:	1,437	148	65.7%	770	140	57.5%
Less than high school diploma	408	144	18.6%	104	56	7.8%
High school graduate, GED, or alternative	602	138	27.5%	217	79	16.2%
Some college or associate's degree	304	119	13.9%	277	99	20.7%
Bachelor's degree or higher	123	66	5.6%	172	77	12.9%

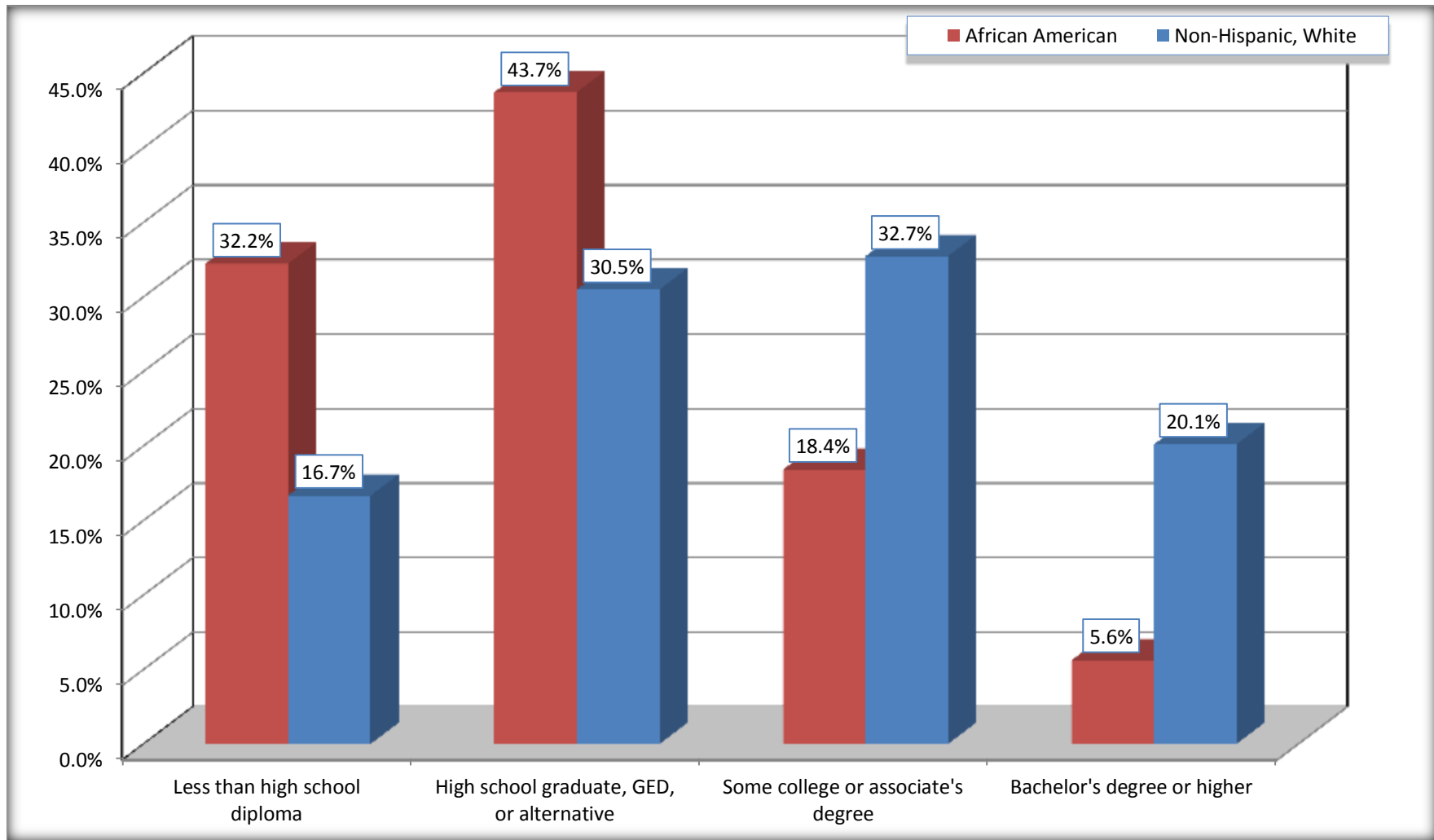
Source: U.S. Census Bureau, 2008-2012 American Community Survey

For information on confidentiality protection, sampling error, nonsampling error, and definitions, see Survey Methodology.

<http://www.census.gov/acs/www/UseData/index.htm>

# Educational Attainment for the Population 25 Years and Older

## Thomson city, Georgia



Source: C15002. SEX BY EDUCATIONAL ATTAINMENT FOR THE POPULATION 25 YEARS AND OVER  
Data Set: 2008-2012 American Community Survey 5-Year Estimates

**B17010. POVERTY STATUS IN THE PAST 12 MONTHS OF FAMILIES BY FAMILY TYPE BY PRESENCE OF RELATED CHILDREN UNDER 18 YEARS**

Data Set: 2008-2012 American Community Survey 5-Year Estimates

	Thomson city, Georgia					
	African American	Margin of Error (+/-)	% of AA Total	White, Not Hispanic	Margin of Error (+/-)	% of NHW Total
<b>Total:</b>	<b>1,165</b>	<b>166</b>	<b>100.0%</b>	<b>488</b>	<b>110</b>	<b>100.0%</b>
Income in the past 12 months below poverty level:	364	113	31.2%	11	14	2.3%
Married-couple family:	13	18	1.1%	0	19	0.0%
With related children under 18 years	0	19	0.0%	0	19	0.0%
Other family:	351	111	30.1%	11	14	2.3%
Male householder, no wife present	71	65	6.1%	0	19	0.0%
With related children under 18 years	24	32	2.1%	0	19	0.0%
Female householder, no husband present	280	97	24.0%	11	14	2.3%
With related children under 18 years	228	89	19.6%	11	14	2.3%
Income in the past 12 months at or above poverty level:	801	162	68.8%	477	109	97.7%
Married-couple family:	296	100	25.4%	370	105	75.8%
With related children under 18 years	130	82	11.2%	150	56	30.7%
Other family:	505	167	43.3%	107	75	21.9%
Male householder, no wife present	67	85	5.8%	5	8	1.0%
With related children under 18 years	67	85	5.8%	0	19	0.0%
Female householder, no husband present	438	145	37.6%	102	74	20.9%
With related children under 18 years	227	92	19.5%	26	35	5.3%

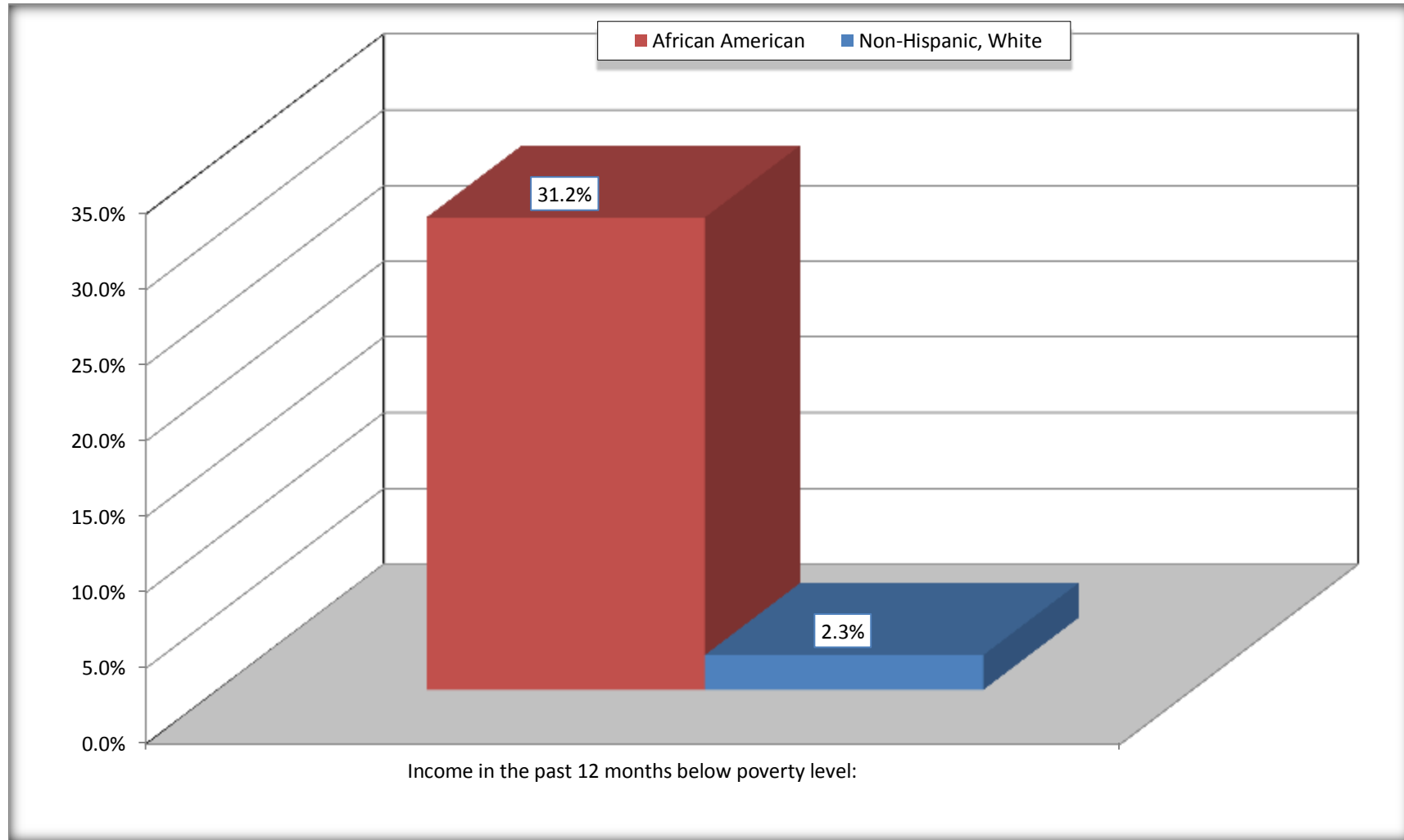
Source: U.S. Census Bureau, 2008-2012 American Community Survey

For information on confidentiality protection, sampling error, nonsampling error, and definitions, see Survey Methodology.

<http://www.census.gov/acs/www/UseData/index.htm>

# Family Households Below Poverty in the Past 12 Months

## Thomson city, Georgia



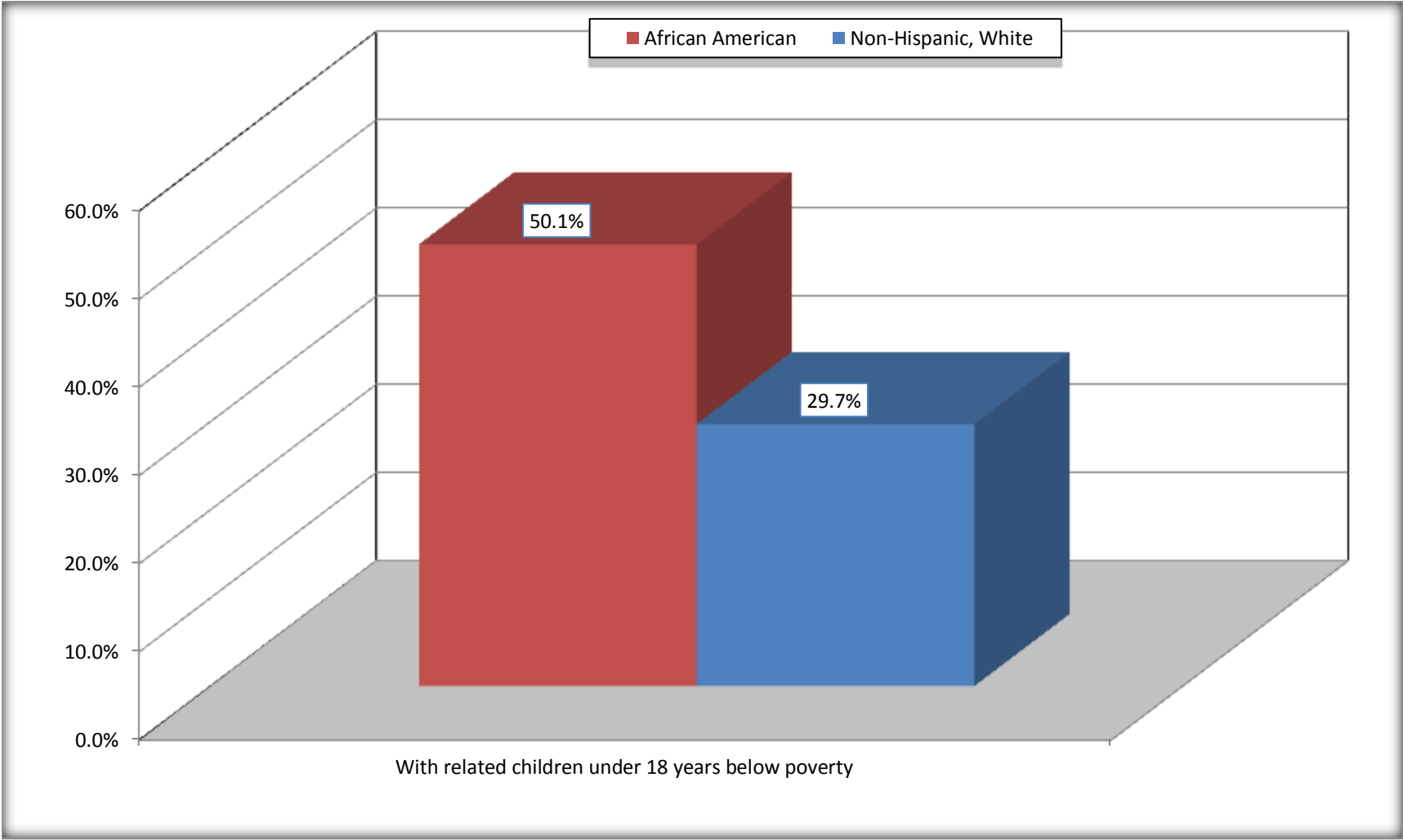
Source: B17010. POVERTY STATUS IN THE PAST 12 MONTHS OF FAMILIES BY FAMILY TYPE BY PRESENCE OF RELATED CHILDREN UNDER 18 YEARS

Data Set: 2008-2012 American Community Survey 5-Year Estimates



# Female-headed Households with Related Children Below Poverty in the Past 12 Months

## Thomson city, Georgia



Source: B17010. POVERTY STATUS IN THE PAST 12 MONTHS OF FAMILIES BY FAMILY TYPE BY PRESENCE OF RELATED CHILDREN UNDER 18 YEARS

Data Set: 2008-2012 American Community Survey 5-Year Estimates

**B17020 POVERTY STATUS IN THE PAST 12 MONTHS BY AGE - Universe: POPULATION FOR WHOM POVERTY STATUS IS DETERMINED**

Data Set: 2008-2012 American Community Survey 5-Year Estimates

	Thomson city, Georgia					
	African American	Margin of Error (+/-)	% of AA By Age	White, Not Hispanic	Margin of Error (+/-)	% of NHW By Age
<b>Total:</b>	<b>4,510</b>	<b>292</b>	<b>100.0%</b>	<b>1,889</b>	<b>281</b>	<b>100.0%</b>
Income in the past 12 months below poverty level:	1,626	471	36.1%	246	132	13.0%
<b>Under 18 years</b>	825	NC	45.6%	50	NC	13.0%
<b>18 to 64 years</b>	693	227	29.1%	187	99	16.5%
<b>65 years and over</b>	108	NC	33.3%	9	NC	2.4%
Income in the past 12 months at or above poverty level:	2,884	550	63.9%	1,643	283	87.0%
<b>Under 18 years</b>	983	NC	54.4%	336	NC	87.0%
<b>18 to 64 years</b>	1,685	351	70.9%	947	206	83.5%
<b>65 years and over</b>	216	NC	66.7%	360	NC	97.6%

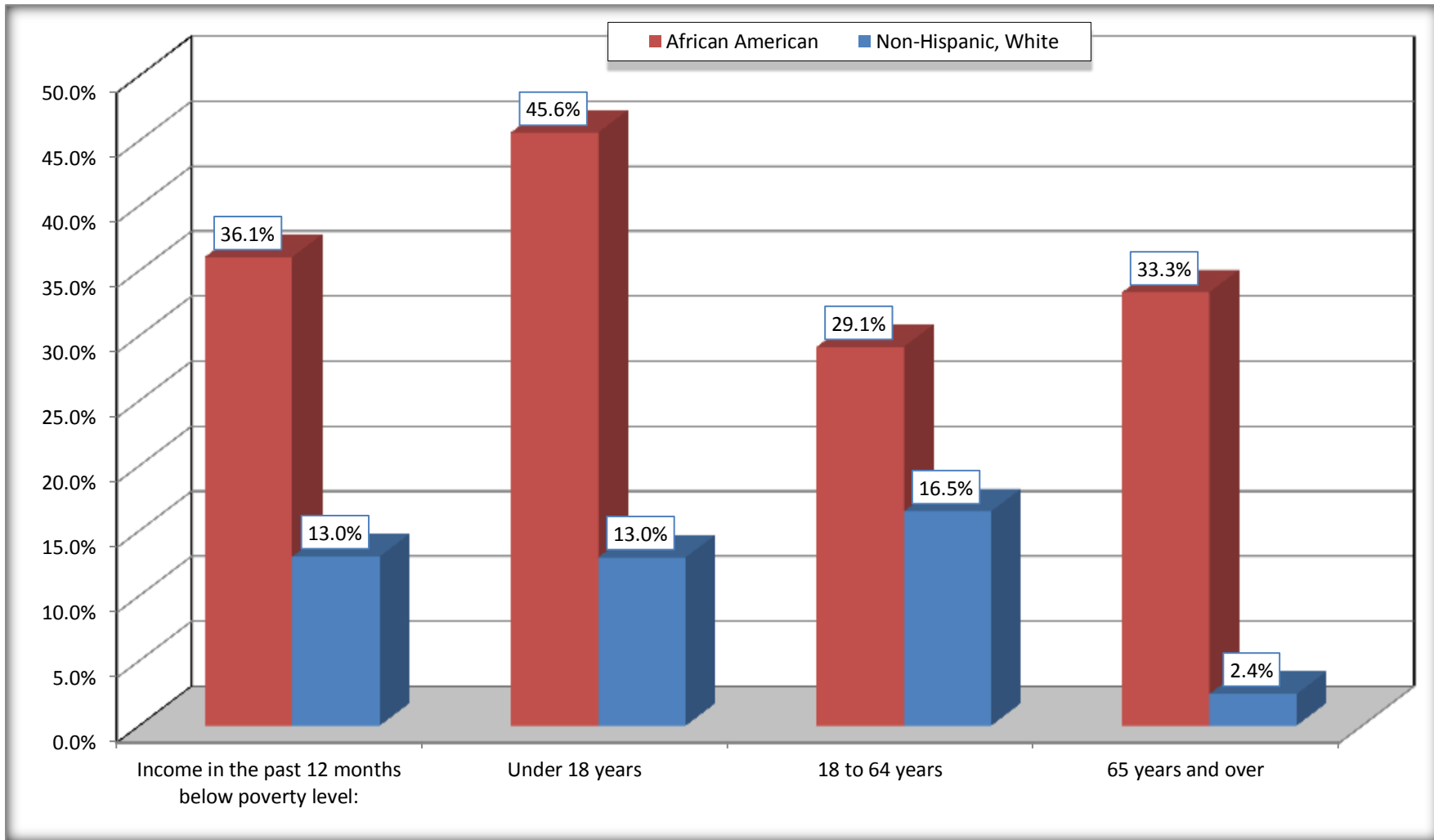
Source: U.S. Census Bureau, 2008-2012 American Community Survey

For information on confidentiality protection, sampling error, nonsampling error, and definitions, see Survey Methodology.

<http://www.census.gov/acs/www/UseData/index.htm>

# Population Below Poverty in the Past 12 Months

## Thomson city, Georgia



Source: B17020 POVERTY STATUS IN THE PAST 12 MONTHS BY AGE - Universe: POPULATION FOR WHOM POVERTY STATUS IS DETERMINED  
Data Set: 2008-2012 American Community Survey 5-Year Estimates

**B19001. HOUSEHOLD INCOME IN THE PAST 12 MONTHS (IN 2010 INFLATION-ADJUSTED DOLLARS)**

Data Set: 2008-2012 American Community Survey 5-Year Estimates

	Thomson city, Georgia					
	African American	Margin of Error (+/-)	% of AA Total	White, Not Hispanic	Margin of Error (+/-)	% of NHW Total
<b>Total:</b>	<b>1,472</b>	<b>169</b>	<b>100.0%</b>	<b>912</b>	<b>159</b>	<b>100.0%</b>
Less than \$ 10,000	371	126	25.2%	96	79	10.5%
\$ 10,000 to \$ 14,999	133	71	9.0%	104	69	11.4%
<b>\$ 15,000 to \$ 24,999</b>	330	NC	22.4%	151	NC	16.6%
<b>\$ 25,000 to \$ 34,999</b>	128	NC	8.7%	94	NC	10.3%
<b>\$ 35,000 to \$ 49,999</b>	262	NC	17.8%	130	NC	14.3%
<b>\$ 50,000 to \$ 74,999</b>	228	NC	15.5%	173	NC	19.0%
\$ 75,000 to \$ 99,999	20	29	1.4%	80	41	8.8%
<b>\$ 100,000 to \$ 149,999</b>	0	NC	0.0%	79	NC	8.7%
\$ 150,000 to \$ 199,999	0	19	0.0%	5	8	0.5%
\$ 200,000 or more	0	19	0.0%	0	19	0.0%

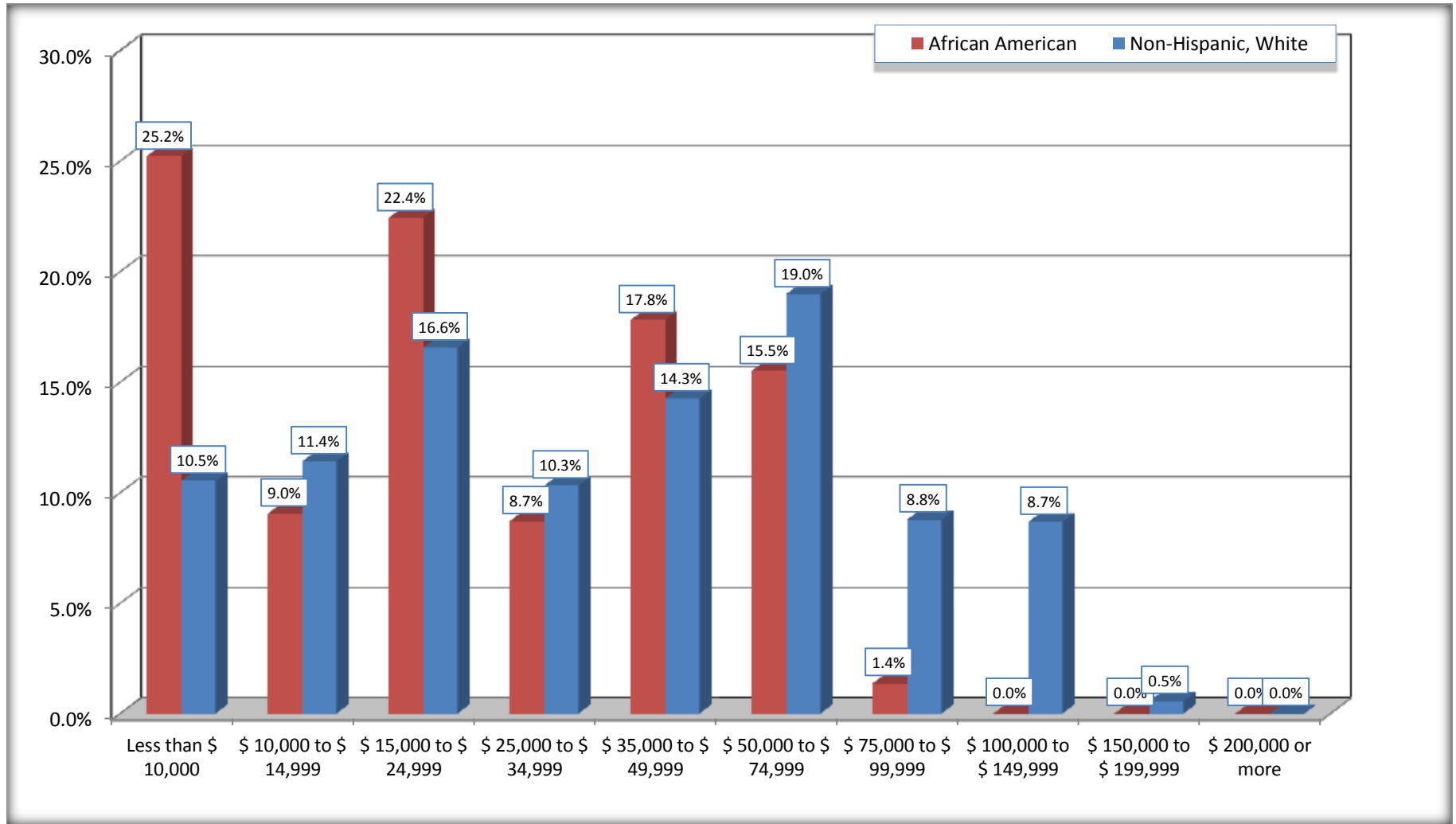
Source: U.S. Census Bureau, 2008-2012 American Community Survey

For information on confidentiality protection, sampling error, nonsampling error, and definitions, see Survey Methodology.

<http://www.census.gov/acs/www/UseData/index.htm>

# Household Income in the Past 12 Months

## Thomson city, Georgia



Source: B19001. HOUSEHOLD INCOME IN THE PAST 12 MONTHS (IN 2010 INFLATION-ADJUSTED DOLLARS)  
Data Set: 2008-2012 American Community Survey 5-Year Estimates

**B19013. MEDIAN HOUSEHOLD INCOME IN THE PAST 12 MONTHS (IN 2010 INFLATION-ADJUSTED DOLLARS)**

Data Set: 2008-2012 American Community Survey 5-Year Estimates

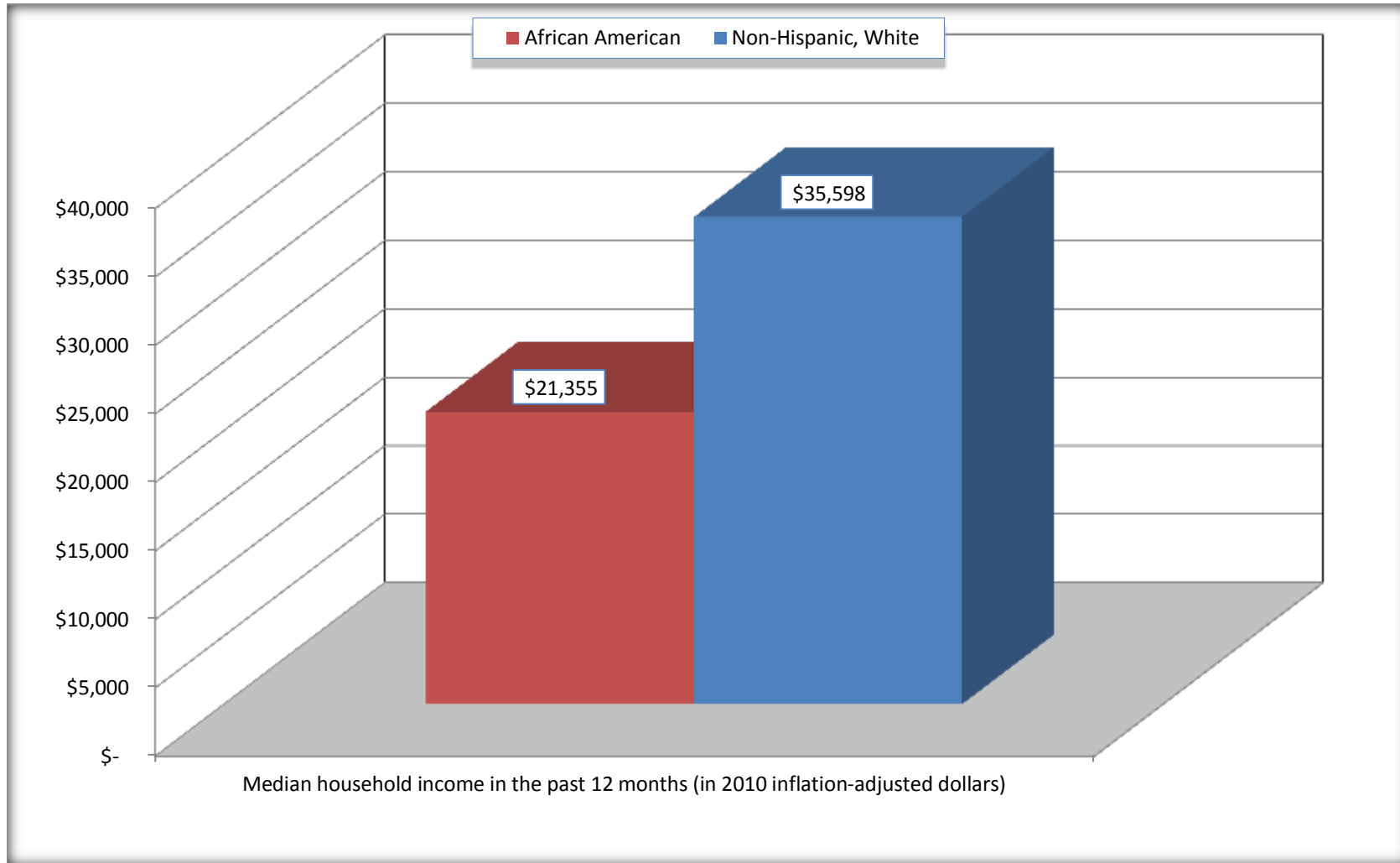
	Thomson city, Georgia			
	African American	Margin of Error (+/-)	White, Not Hispanic	Margin of Error (+/-)
Median household income in the past 12 months (in 2010 inflation-adjusted dollars)	\$ 21,355	\$ 2,271	\$ 35,598	\$ 6,100

Source: U.S. Census Bureau, 2008-2012 American Community Survey

For information on confidentiality protection, sampling error, nonsampling error, and definitions, see Survey Methodology.  
<http://www.census.gov/acs/www/UseData/index.htm>

# Median Household Income in the Past 12 Months

## Thomson city, Georgia



Source: B19013. MEDIAN HOUSEHOLD INCOME IN THE PAST 12 MONTHS (IN 2010 INFLATION-ADJUSTED DOLLARS)  
Data Set: 2008-2012 American Community Survey 5-Year Estimates

**B19101. FAMILY INCOME IN THE PAST 12 MONTHS (IN 2010 INFLATION-ADJUSTED DOLLARS)**

Data Set: 2008-2012 American Community Survey 5-Year Estimates

	Thomson city, Georgia					
	African American	Margin of Error (+/-)	% of AA Total	White, Not Hispanic	Margin of Error (+/-)	% of NHW Total
<b>Total:</b>	<b>1,165</b>	<b>166</b>	<b>100.0%</b>	<b>488</b>	<b>110</b>	<b>100.0%</b>
Less than \$ 10,000	217	85	18.6%	4	7	0.8%
\$ 10,000 to \$ 14,999	102	72	8.8%	0	19	0.0%
<b>\$ 15,000 to \$ 24,999</b>	<b>266</b>	<b>NC</b>	<b>22.8%</b>	<b>65</b>	<b>NC</b>	<b>13.3%</b>
<b>\$ 25,000 to \$ 34,999</b>	<b>128</b>	<b>NC</b>	<b>11.0%</b>	<b>42</b>	<b>NC</b>	<b>8.6%</b>
<b>\$ 35,000 to \$ 49,999</b>	<b>211</b>	<b>NC</b>	<b>18.1%</b>	<b>79</b>	<b>NC</b>	<b>16.2%</b>
<b>\$ 50,000 to \$ 74,999</b>	<b>228</b>	<b>NC</b>	<b>19.6%</b>	<b>154</b>	<b>NC</b>	<b>31.6%</b>
<b>\$ 100,000 to \$ 149,999</b>	<b>-</b>	<b>NC</b>	<b>0.0%</b>	<b>69</b>	<b>NC</b>	<b>14.1%</b>
\$ 150,000 to \$ 199,999	0	19	0.0%	5	8	1.0%
\$ 200,000 or more	0	19	0.0%	0	19	0.0%

Source: U.S. Census Bureau, 2008-2012 American Community Survey

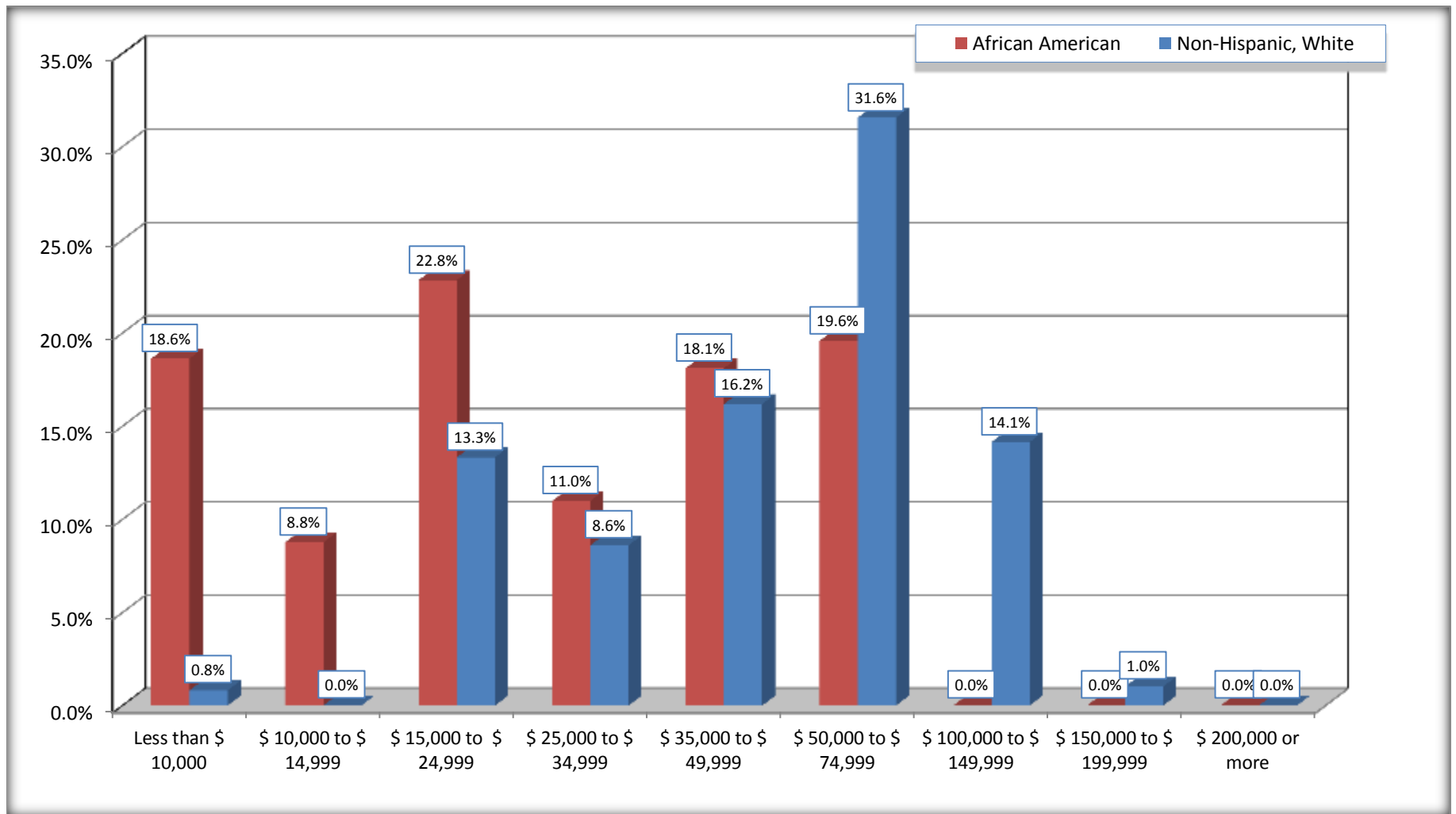
For information on confidentiality protection, sampling error, nonsampling error, and definitions, see Survey Methodology.

<http://www.census.gov/acs/www/UseData/index.htm>



# Family Income in the Past 12 Months

## Thomson city, Georgia



Source: B19101. FAMILY INCOME IN THE PAST 12 MONTHS (IN 2010 INFLATION-ADJUSTED DOLLARS)  
Data Set: 2008-2012 American Community Survey 5-Year Estimates

**B19113. MEDIAN FAMILY INCOME IN THE PAST 12 MONTHS (IN 2010 INFLATION-ADJUSTED DOLLARS)**

Data Set: 2008-2012 American Community Survey 5-Year Estimates

	Thomson city, Georgia			
	African American	Margin of Error (+/-)	White, Not Hispanic	Margin of Error (+/-)
Median family income in the past 12 months (in 2010 inflation-adjusted dollars)	\$ 24,479	\$ 7,766	\$ 56,618	\$ 10,727

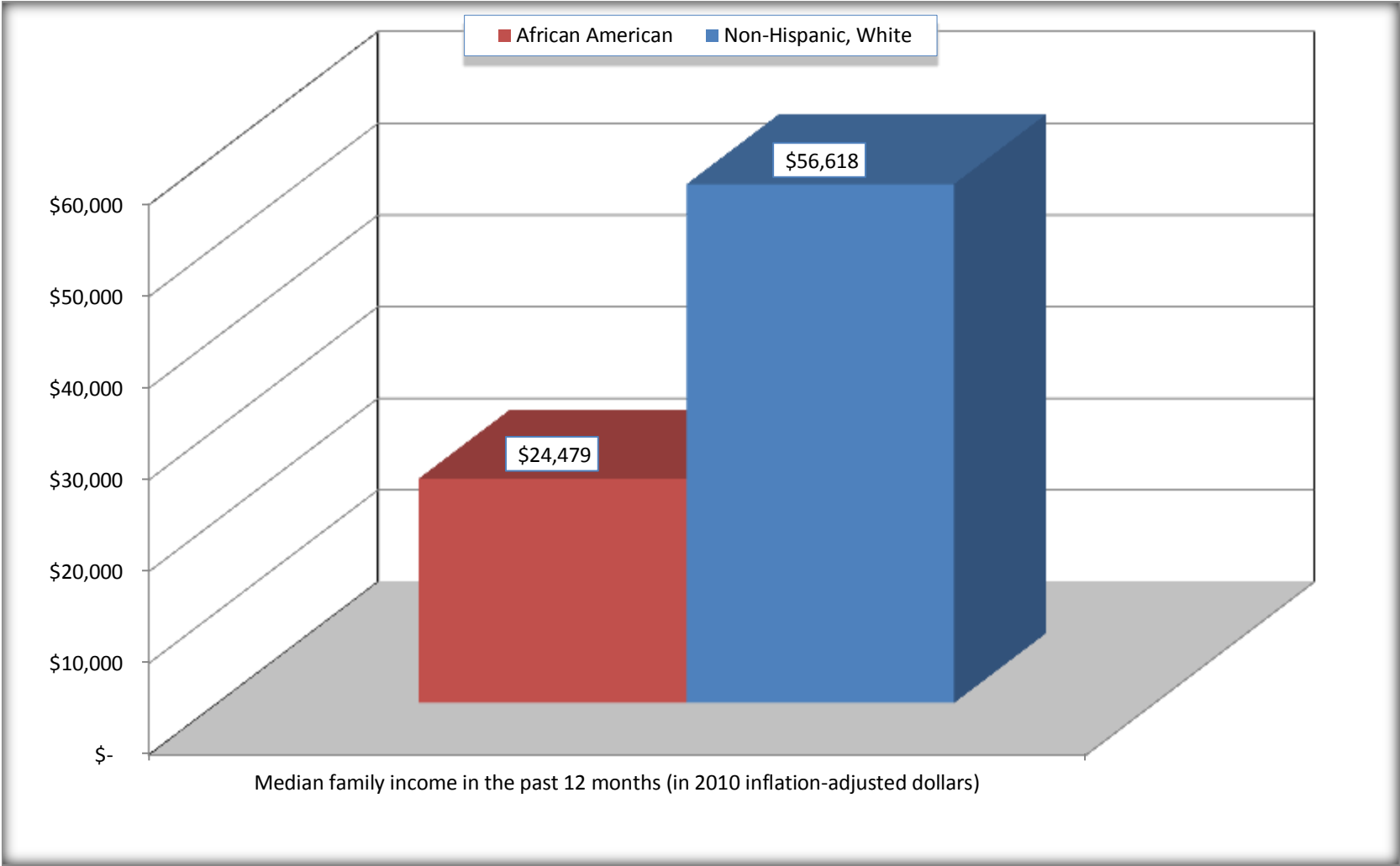
Source: U.S. Census Bureau, 2008-2012 American Community Survey

For information on confidentiality protection, sampling error, nonsampling error, and definitions, see Survey Methodology.

<http://www.census.gov/acs/www/UseData/index.htm>

# Median Family Income in the Past 12 Months

## Thomson city, Georgia



Source: B19113. MEDIAN FAMILY INCOME IN THE PAST 12 MONTHS (IN 2010 INFLATION-ADJUSTED DOLLARS)  
Data Set: 2008-2012 American Community Survey 5-Year Estimates

**B19202. MEDIAN NONFAMILY HOUSEHOLD INCOME IN THE PAST 12 MONTHS (IN 2010 INFLATION-ADJUSTED DOLLARS)**

Data Set: 2008-2012 American Community Survey 5-Year Estimates

	Thomson city, Georgia			
	African American	Margin of Error (+/-)	White, Not Hispanic	Margin of Error (+/-)
Median nonfamily household income in the past 12 months (in 2010 inflation-adjusted dollars)	\$ 9,663	\$ 3,471	\$ 15,615	\$ 3,357

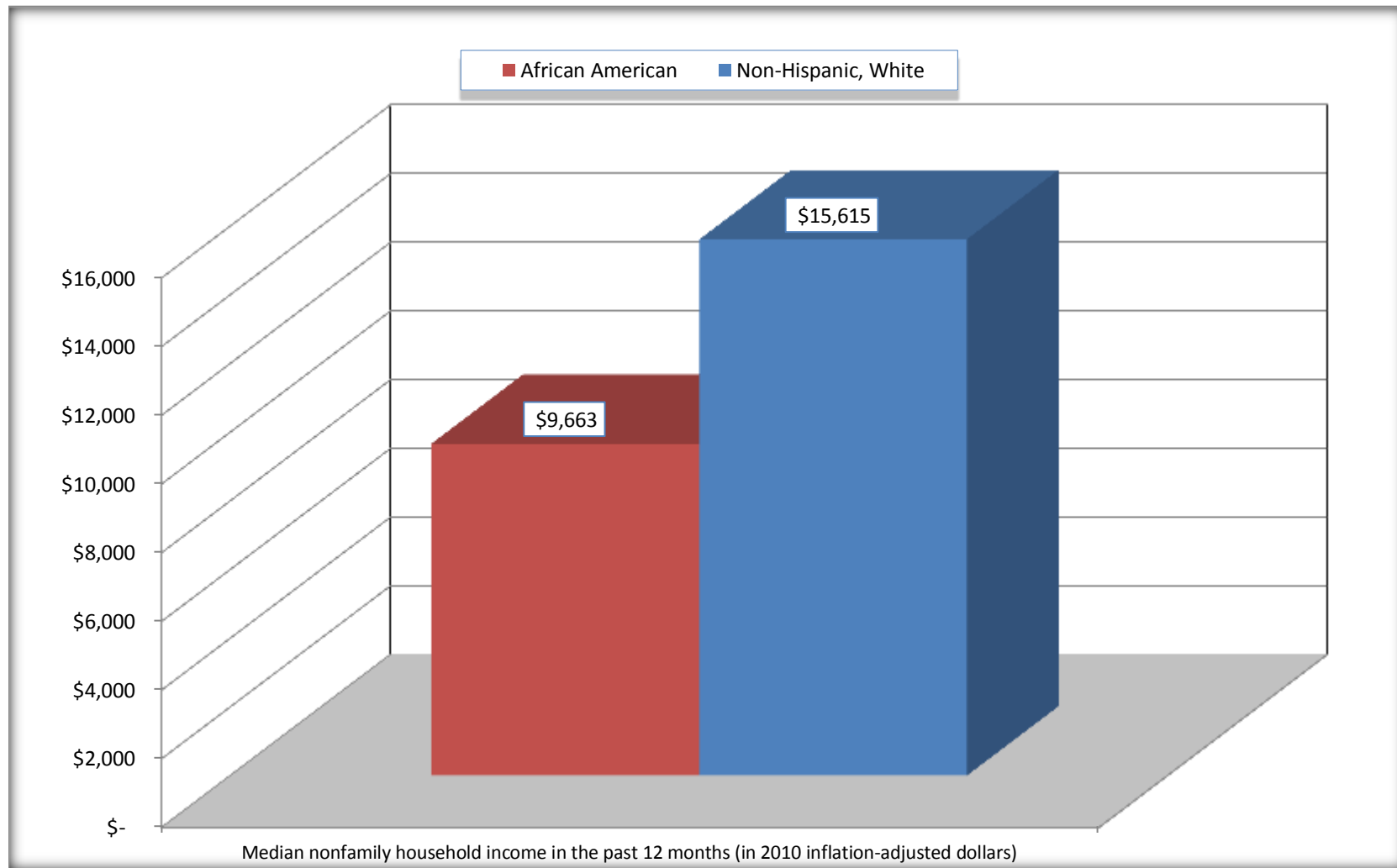
Source: U.S. Census Bureau, 2008-2012 American Community Survey

For information on confidentiality protection, sampling error, nonsampling error, and definitions, see Survey Methodology.

<http://www.census.gov/acs/www/UseData/index.htm>

# Median Non-Family Income in the Past 12 Months

## Thomson city, Georgia



Source: B19202. MEDIAN NONFAMILY HOUSEHOLD INCOME IN THE PAST 12 MONTHS (IN 2010 INFLATION-ADJUSTED DOLLARS)  
Data Set: 2008-2012 American Community Survey 5-Year Estimates

**B19301. PER CAPITA INCOME IN THE PAST 12 MONTHS (IN 2010 INFLATION-ADJUSTED DOLLARS)**

Data Set: 2008-2012 American Community Survey 5-Year Estimates

	Thomson city, Georgia			
	African American	Margin of Error (+/-)	White, Not Hispanic	Margin of Error (+/-)
Per capita income in the past 12 months (in 2010 inflation-adjusted dollars)	\$ 8,983	\$ 1,405	\$ 20,984	\$ 3,348

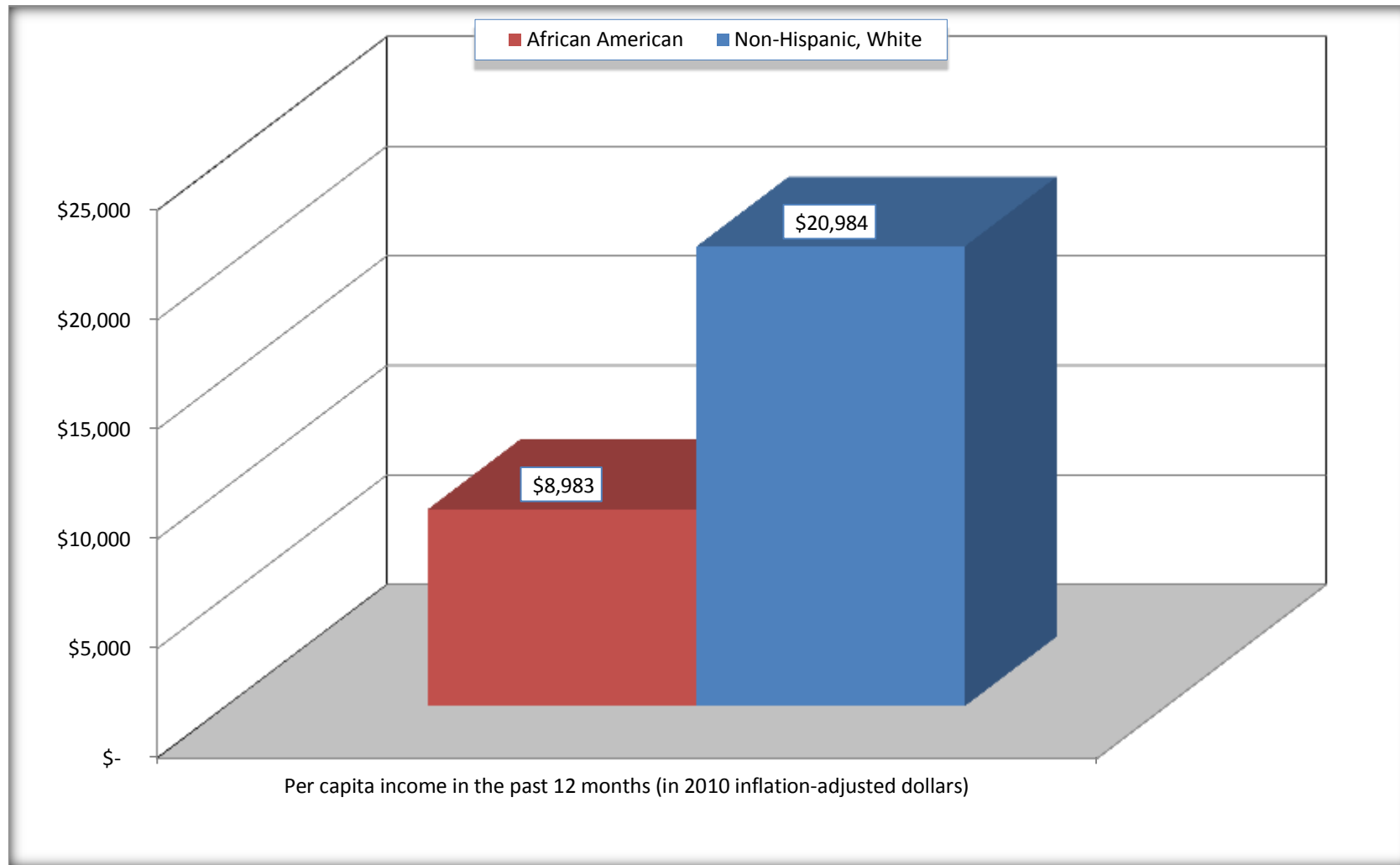
Source: U.S. Census Bureau, 2008-2012 American Community Survey

For information on confidentiality protection, sampling error, nonsampling error, and definitions, see Survey Methodology.

<http://www.census.gov/acs/www/UseData/index.htm>

## Per capita Income in the Past 12 Months

### Thomson city, Georgia



Source: B19301. PER CAPITA INCOME IN THE PAST 12 MONTHS (IN 2010 INFLATION-ADJUSTED DOLLARS)  
Data Set: 2008-2012 American Community Survey 5-Year Estimates

**B20017. MEDIAN EARNINGS IN THE PAST 12 MONTHS (IN 2010 INFLATION-ADJUSTED DOLLARS) BY SEX BY WORK EXPERIENCE IN THE PAST 12 MONTHS FOR THE POPULATION 16 YEARS AND OVER WITH EARNINGS IN THE PAST 12 MONTHS**

Data Set: 2008-2012 American Community Survey 5-Year Estimates

	Thomson city, Georgia			
	African American	Margin of Error (+/-)	White, Not Hispanic	Margin of Error (+/-)
Median earnings in the past 12 months (in 2010 inflation-adjusted dollars) --				
Total:	\$ 20,210	\$ 1,860	\$ 21,250	\$ 3,860
Male --				
Total	\$ 20,303	\$ 2,133	\$ 24,671	\$ 10,794
Worked full-time, year-round in the past 12 months	\$ 22,288	\$ 7,884	\$ 31,563	\$ 12,618
Other	\$ 3,322	\$ 12,177	\$ 5,170	\$ 7,474
Female --				
Total	\$ 20,137	\$ 4,486	\$ 20,497	\$ 2,956
Worked full-time, year-round in the past 12 months	\$ 23,607	\$ 3,549	\$ 21,651	\$ 10,560
Other	\$ 6,750	\$ 4,236	\$ 4,250	\$ 6,571

Source: U.S. Census Bureau, 2008-2012 American Community Survey

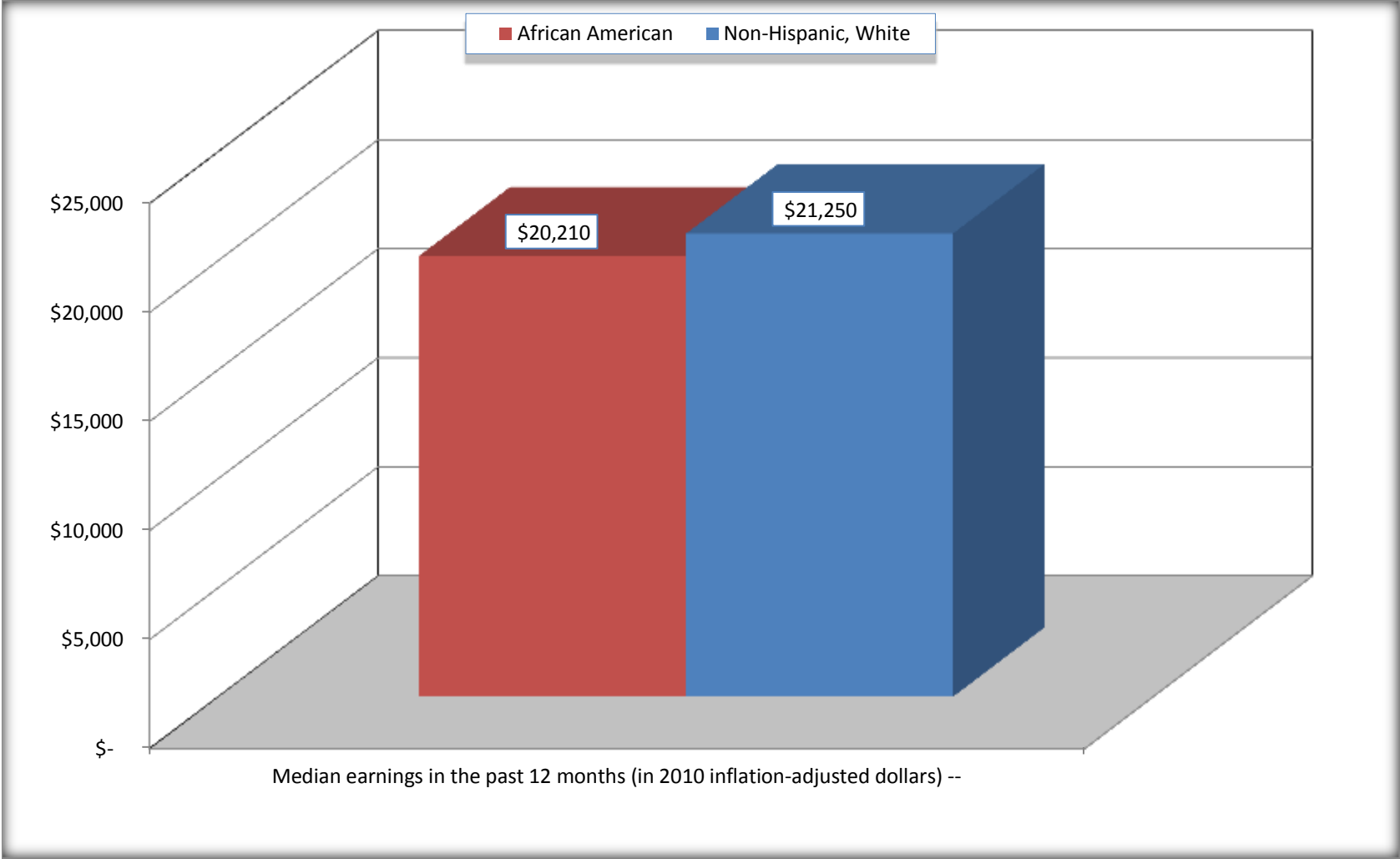
For information on confidentiality protection, sampling error, nonsampling error, and definitions, see Survey Methodology.

<http://www.census.gov/acs/www/UseData/index.htm>



# Median earnings in the Past 12 Months (16 Years and Over with Earnings)

## Thomson city, Georgia



Source: B20017. MEDIAN EARNINGS IN THE PAST 12 MONTHS (IN 2010 INFLATION-ADJUSTED DOLLARS) BY SEX BY WORK EXPERIENCE IN THE PAST 12 MONTHS FOR THE POPULATION 16 YEARS AND OVER WITH EARNINGS IN THE PAST 12 MONTHS  
Data Set: 2008-2012 American Community Survey 5-Year Estimates

**B20005. SEX BY WORK EXPERIENCE IN THE PAST 12 MONTHS BY EARNINGS IN THE PAST 12 MONTHS (IN 2010 INFLATION-ADJUSTED DOLLARS) FOR THE POPULATION 16 YEARS AND OVER**

Data Set: 2008-2012 American Community Survey 5-Year Estimates

	Thomson city, Georgia					
	African American	Margin of Error (+/-)	% of AA Total	White, Not Hispanic	Margin of Error (+/-)	% of NHW Total
<b>Total:</b>	<b>3,029</b>	<b>314</b>	<b>100.0%</b>	<b>1,586</b>	<b>226</b>	<b>100.0%</b>
Worked full-time, year-round in the past 12 months:	962	NC	31.8%	689	NC	43.4%
No earnings	0	NC	0.0%	0	NC	0.0%
With earnings:	962	NC	31.8%	689	NC	43.4%
\$ 1 to \$ 9,999 or loss	33	NC	1.1%	44	NC	2.8%
\$ 10,000 to \$ 19,999	257	NC	8.5%	189	NC	11.9%
\$ 20,000 to \$ 29,999	386	NC	12.7%	126	NC	7.9%
\$ 30,000 to \$ 49,999	153	NC	5.1%	133	NC	8.4%
\$ 50,000 to \$ 74,999	128	NC	4.2%	145	NC	9.1%
\$ 75,000 or more	5	NC	0.2%	52	NC	3.3%
Other:	2,067	NC	68.2%	897	NC	56.6%
No earnings	1,499	NC	49.5%	690	NC	43.5%
With earnings: less than full time, year-round	568	NC	18.8%	207	NC	13.1%
Male:	1,191	238	39.3%	682	138	43.0%
Worked full-time, year-round in the past 12 months:	370	135	12.2%	344	91	21.7%
No earnings	0	19	0.0%	0	19	0.0%
With earnings:	370	135	12.2%	344	91	21.7%
\$ 1 to \$ 9,999 or loss	16	NC	0.5%	44	NC	2.8%
\$ 10,000 to \$ 19,999	115	NC	3.8%	68	NC	4.3%
\$ 20,000 to \$ 29,999	143	NC	4.7%	45	NC	2.8%
\$ 30,000 to \$ 49,999	31	NC	1.0%	72	NC	4.5%
\$ 50,000 to \$ 74,999	60	NC	2.0%	63	NC	4.0%
\$ 75,000 or more	5	NC	0.2%	52	NC	3.3%

	Thomson city, Georgia					
	African American	Margin of Error (+/-)	% of AA Total	White, Not Hispanic	Margin of Error (+/-)	% of NHW Total
Other:	821	209	27.1%	338	124	21.3%
No earnings	576	178	19.0%	235	96	14.8%
With earnings:	245	99	8.1%	103	70	6.5%
Female:	1,838	218	60.7%	904	156	57.0%
Worked full-time, year-round in the past 12 months:	592	145	19.5%	345	126	21.8%
No earnings	0	19	0.0%	0	19	0.0%
With earnings:	592	145	19.5%	345	126	21.8%
\$ 1 to \$ 9,999 or loss	17	NC	0.6%	0	NC	0.0%
\$ 10,000 to \$ 19,999	142	NC	4.7%	121	NC	7.6%
\$ 20,000 to \$ 29,999	243	NC	8.0%	81	NC	5.1%
\$ 30,000 to \$ 49,999	122	NC	4.0%	61	NC	3.8%
\$ 50,000 to \$ 74,999	68	NC	2.2%	82	NC	5.2%
\$ 75,000 or more	0	NC	0.0%	0	NC	0.0%
Other:	1,246	234	41.1%	559	116	35.2%
No earnings	923	245	30.5%	455	110	28.7%
With earnings:	323	163	10.7%	104	55	6.6%

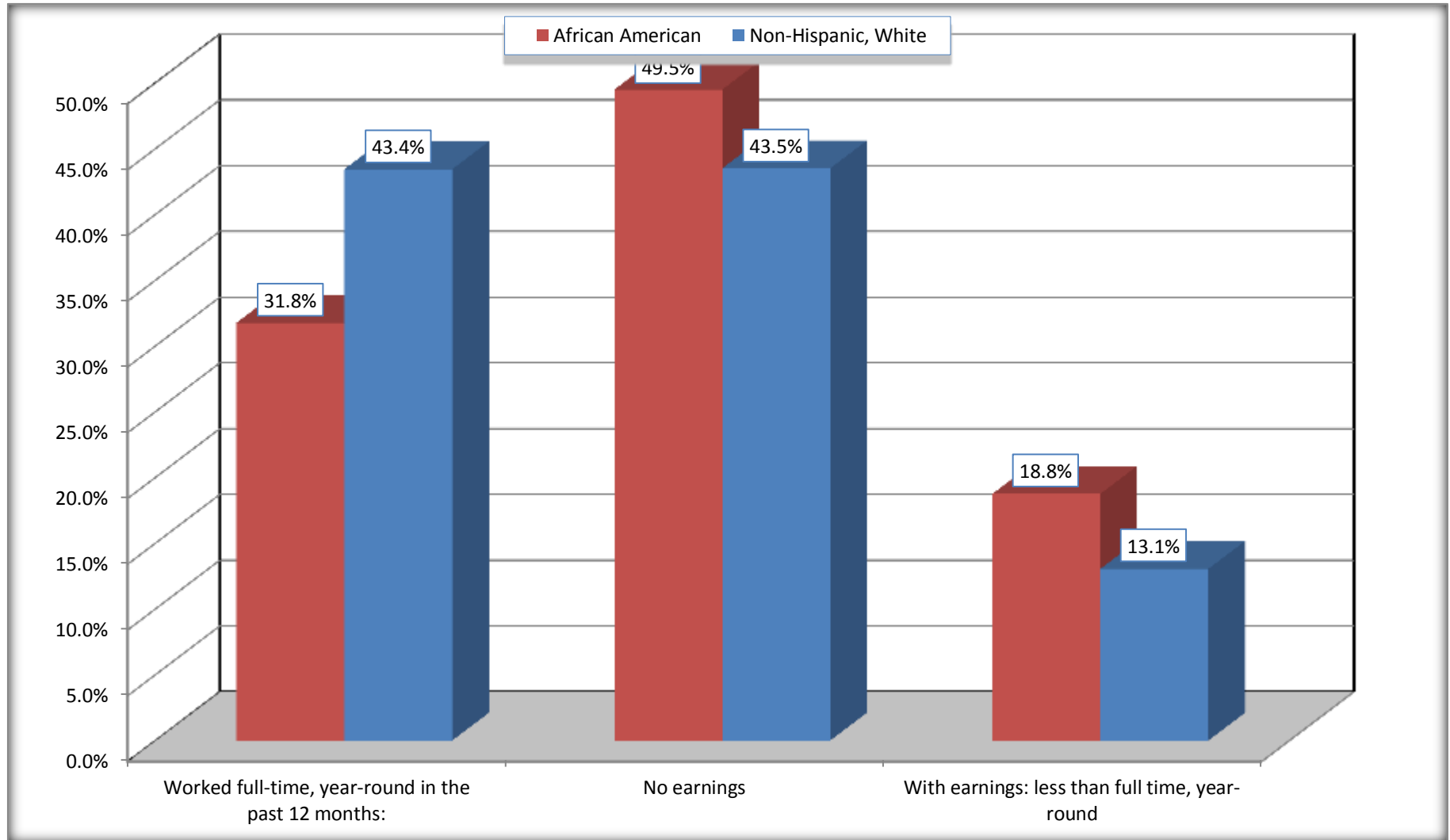
Source: U.S. Census Bureau, 2008-2012 American Community Survey

For information on confidentiality protection, sampling error, nonsampling error, and definitions, see Survey Methodology.

<http://www.census.gov/acs/www/UseData/index.htm>

# Employment and Earnings in in the Past 12 Months (16 Years and Over)

## Thomson city, Georgia



Source: B20005. SEX BY WORK EXPERIENCE IN THE PAST 12 MONTHS BY EARNINGS IN THE PAST 12 MONTHS (IN 2010 INFLATION-ADJUSTED DOLLARS) FOR THE POPULATION 16 YEARS AND OVER

Data Set: 2008-2012 American Community Survey 5-Year Estimates

**C21001. SEX BY AGE BY VETERAN STATUS FOR THE CIVILIAN POPULATION 18 YEARS AND OVER**

Data Set: 2008-2012 American Community Survey 5-Year Estimates

	Thomson city, Georgia					
	African American	Margin of Error (+/-)	% of AA Total	White, Not Hispanic	Margin of Error (+/-)	% of NHW Total
<b>Total:</b>	<b>2,766</b>	<b>282</b>	<b>100.0%</b>	<b>1,561</b>	<b>228</b>	<b>100.0%</b>
Veteran	54	NC	2.0%	166	NC	10.6%
Nonveteran	2,712	NC	98.0%	1,395	NC	89.4%
Male:	1,050	185	38.0%	669	139	42.9%
18 to 64 years:	963	182	34.8%	523	116	33.5%
Veteran	46	40	1.7%	13	16	0.8%
Nonveteran	917	178	33.2%	510	114	32.7%
65 years and over:	87	50	3.1%	146	67	9.4%
Veteran	8	14	0.3%	129	60	8.3%
Nonveteran	79	48	2.9%	17	20	1.1%
Female:	1,716	184	62.0%	892	157	57.1%
18 to 64 years:	1,424	188	51.5%	611	149	39.1%
Veteran	0	19	0.0%	24	34	1.5%
Nonveteran	1,424	188	51.5%	587	153	37.6%
65 years and over:	292	90	10.6%	281	67	18.0%
Veteran	0	19	0.0%	0	19	0.0%
Nonveteran	292	90	10.6%	281	67	18.0%

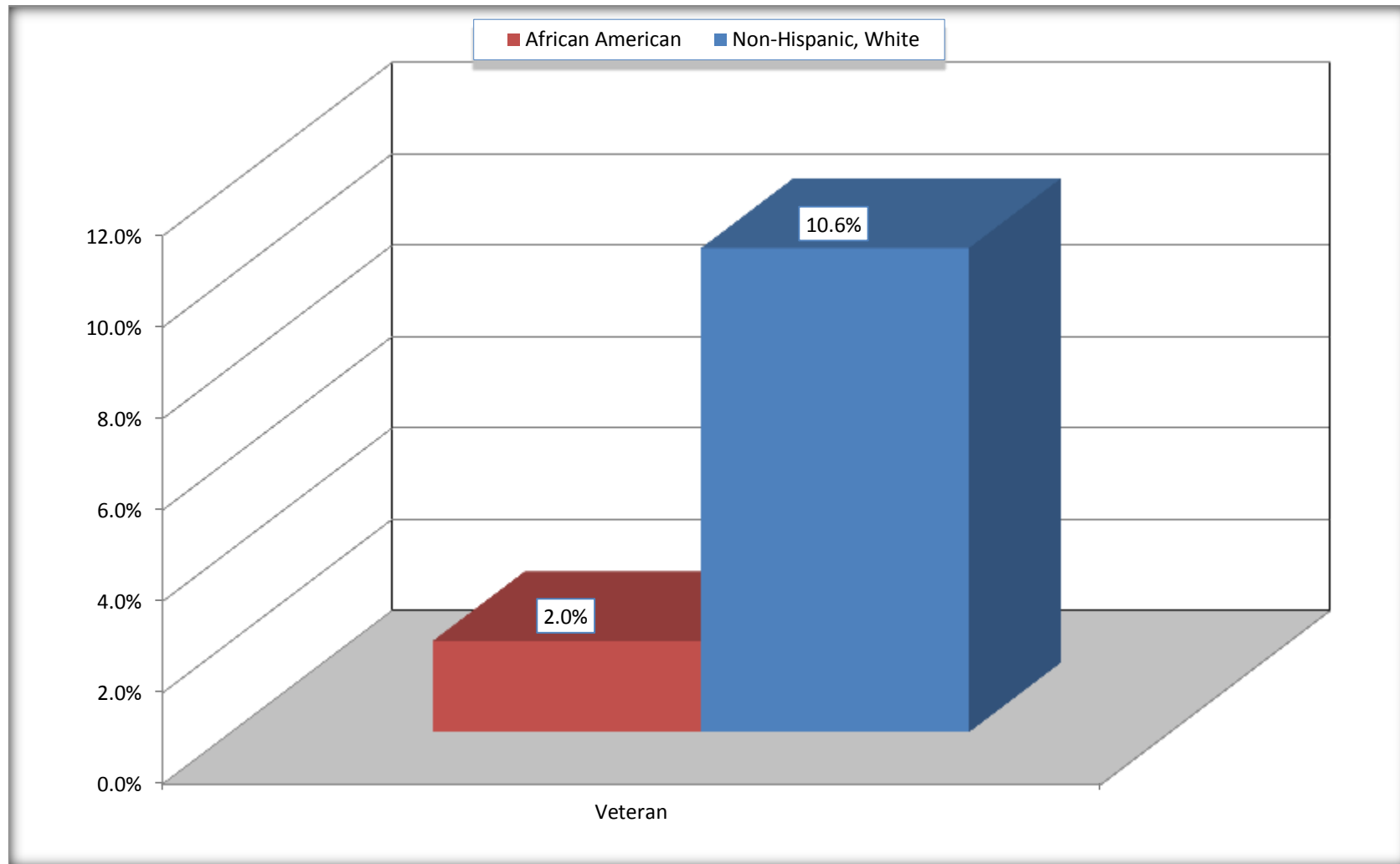
Source: U.S. Census Bureau, 2008-2012 American Community Survey

For information on confidentiality protection, sampling error, nonsampling error, and definitions, see Survey Methodology.

<http://www.census.gov/acs/www/UseData/index.htm>

# Veterans in the Civilian Population 18 Years and Over

## Thomson city, Georgia



Source: C21001. SEX BY AGE BY VETERAN STATUS FOR THE CIVILIAN POPULATION 18 YEARS AND OVER  
Data Set: 2008-2012 American Community Survey 5-Year Estimates

**B22005. RECEIPT OF FOOD STAMPS/SNAP IN THE PAST 12 MONTHS BY RACE OF HOUSEHOLDER**

Data Set: 2008-2012 American Community Survey 5-Year Estimates

	Thomson city, Georgia					
	African American	Margin of Error (+/-)	% of AA Total	White, Not Hispanic	Margin of Error (+/-)	% of NHW Total
<b>Total:</b>	<b>1,472</b>	<b>169</b>	<b>100.0%</b>	<b>912</b>	<b>159</b>	<b>100.0%</b>
HH received Food Stamps/SNAP in the past 12 months	552	137	37.5%	153	81	16.8%
HH did not receive Food Stamps/SNAP in the past 12 months	920	177	62.5%	759	142	83.2%

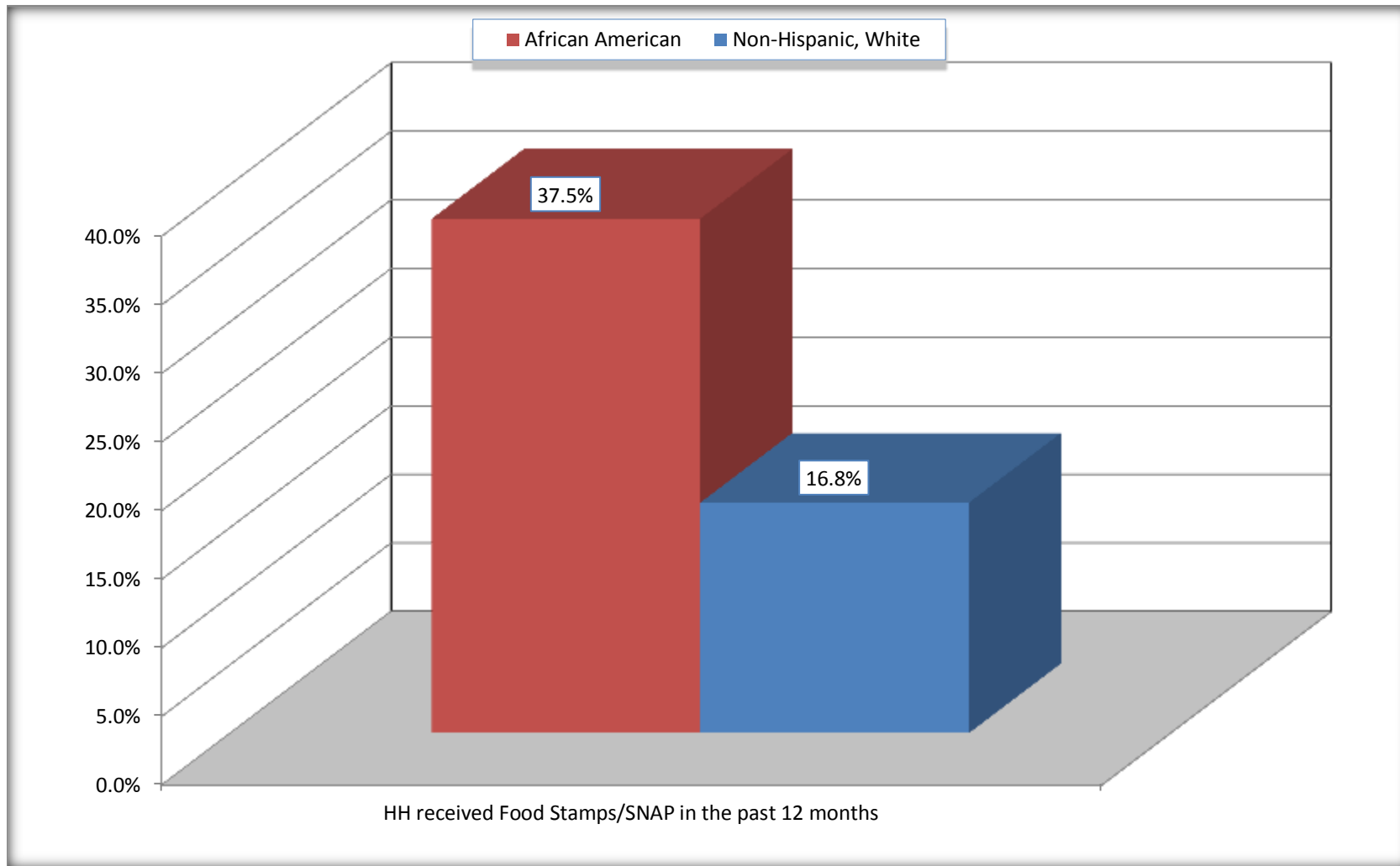
Source: U.S. Census Bureau, 2008-2012 American Community Survey

For information on confidentiality protection, sampling error, nonsampling error, and definitions, see Survey Methodology.

<http://www.census.gov/acs/www/UseData/index.htm>

# Receipt of Food Stamps/SNAP in the Past 12 Months by Household

## Thomson city, Georgia



Source: B22005. RECEIPT OF FOOD STAMPS/SNAP IN THE PAST 12 MONTHS BY RACE OF HOUSEHOLDER  
Data Set: 2008-2012 American Community Survey 5-Year Estimates



**C23002. SEX BY AGE BY EMPLOYMENT STATUS FOR THE POPULATION 16 YEARS AND OVER**

Data Set: 2008-2012 American Community Survey 5-Year Estimates

	Thomson city, Georgia					
	African American	Margin of Error (+/-)	% of AA Total	White, Not Hispanic	Margin of Error (+/-)	% of NHW Total
<b>Total:</b>	<b>3,029</b>	<b>314</b>	<b>100.0%</b>	<b>1,586</b>	<b>226</b>	<b>100.0%</b>
In labor force:	1,638	NC	54.1%	877	NC	55.3%
In Armed Forces	0	NC	0.0%	9	NC	0.6%
Civilian:	1,578	NC	52.1%	829	NC	52.3%
Employed	1,370	NC	45.2%	813	NC	51.3%
Unemployed	268	NC	8.8%	55	NC	3.5%
Not in labor force	1,391	NC	45.9%	709	NC	44.7%
Male:	1,191	238	39.3%	682	138	43.0%
16 to 64 years:	1,104	238	36.4%	536	115	33.8%
In labor force:	697	178	23.0%	416	97	26.2%
In Armed Forces	0	19	0.0%	9	15	0.6%
Civilian:	697	178	23.0%	407	102	25.7%
Employed	545	142	18.0%	381	101	24.0%
Unemployed	152	99	5.0%	26	29	1.6%
Not in labor force	407	180	13.4%	120	70	7.6%
65 years and over:	87	50	2.9%	146	67	9.2%
In labor force:	26	35	0.9%	16	28	1.0%
Employed	26	35	0.9%	16	28	1.0%
Unemployed	0	19	0.0%	0	19	0.0%
Not in labor force	61	39	2.0%	130	65	8.2%

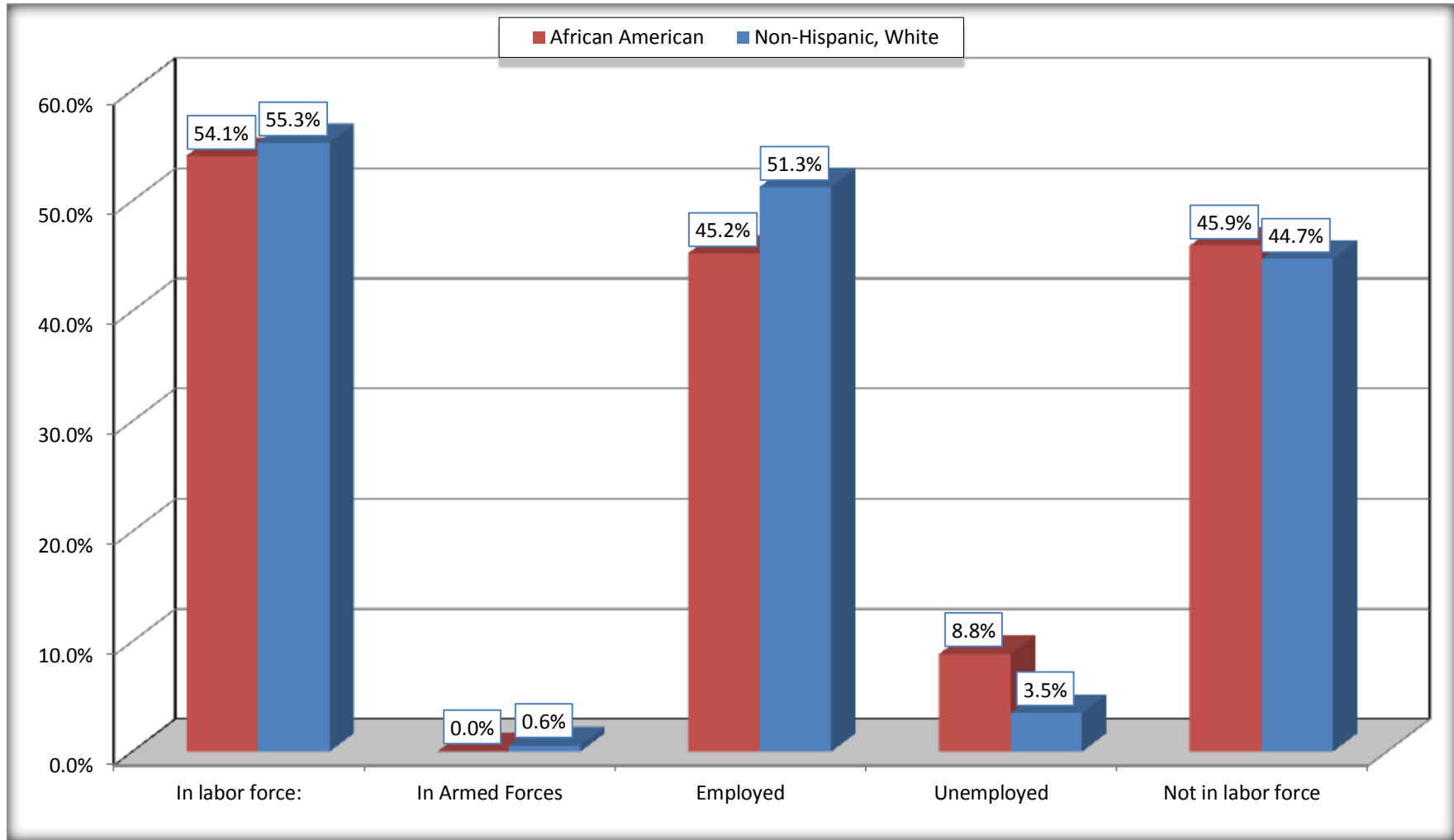
	Thomson city, Georgia					
	African American	Margin of Error (+/-)	% of AA Total	White, Not Hispanic	Margin of Error (+/-)	% of NHW Total
Female:	1,838	218	60.7%	904	156	57.0%
16 to 64 years:	1,546	230	51.0%	623	149	39.3%
In labor force:	881	170	29.1%	422	135	26.6%
In Armed Forces	0	19	0.0%	0	19	0.0%
Civilian:	881	170	29.1%	422	135	26.6%
Employed	765	151	25.3%	393	128	24.8%
Unemployed	116	74	3.8%	29	35	1.8%
Not in labor force	665	201	22.0%	201	75	12.7%
65 years and over:	292	90	9.6%	281	67	17.7%
In labor force:	34	39	1.1%	23	33	1.5%
Employed	34	39	1.1%	23	33	1.5%
Unemployed	0	19	0.0%	0	19	0.0%
Not in labor force	258	87	8.5%	258	64	16.3%

Source: U.S. Census Bureau, 2008-2012 American Community Survey

For information on confidentiality protection, sampling error, nonsampling error, and definitions, see Survey Methodology.  
<http://www.census.gov/acs/www/UseData/index.htm>

# Employment Status for the Population 16 years and over

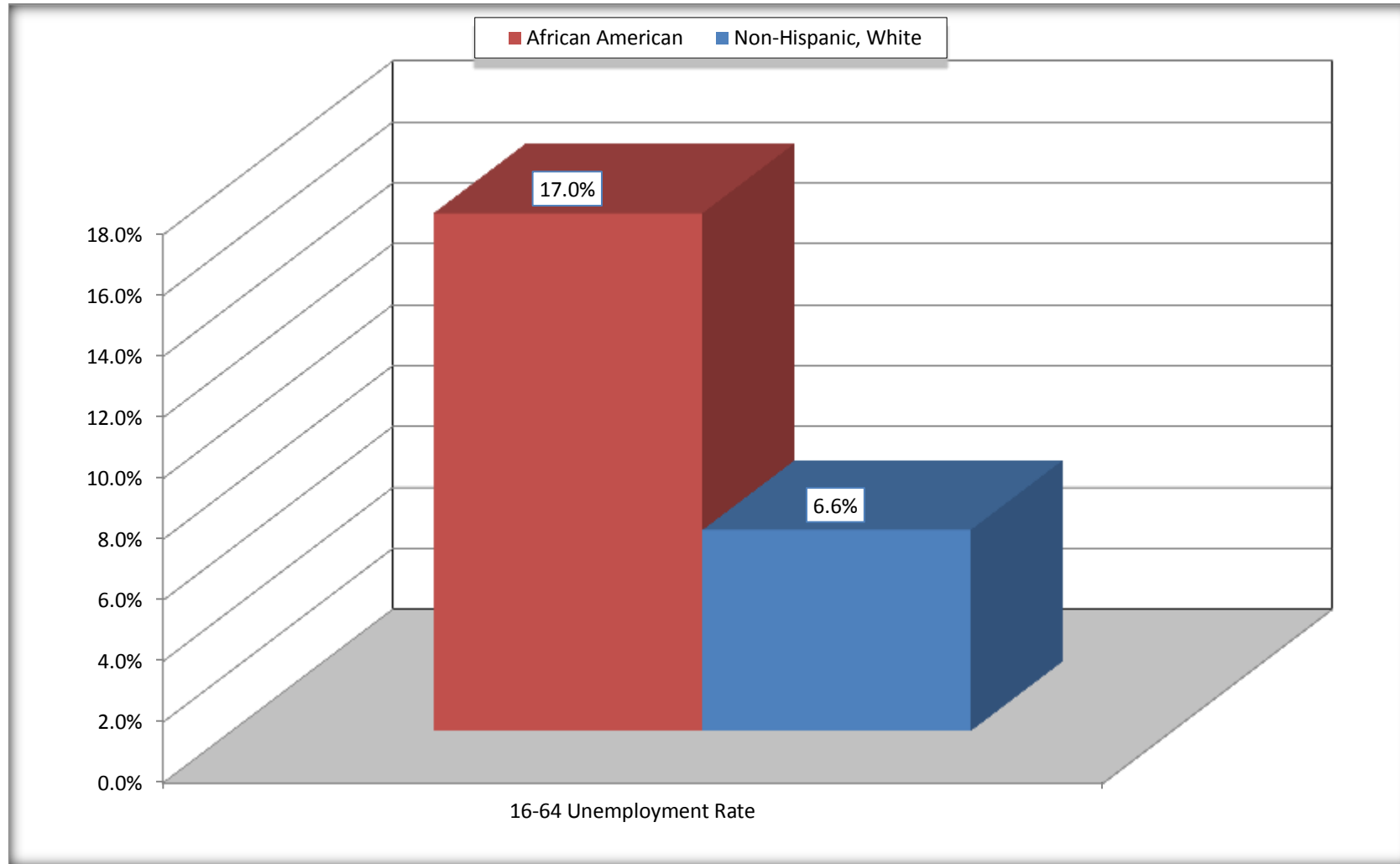
## Thomson city, Georgia



Source: C23002. SEX BY AGE BY EMPLOYMENT STATUS FOR THE POPULATION 16 YEARS AND OVER  
Data Set: 2008-2012 American Community Survey 5-Year Estimates

# Unemployment of Working Age Population (Ages 16 to 64) (As a Percent of 16-64 Civilian Labor Force)

## Thomson city, Georgia



Source: C23002. SEX BY AGE BY EMPLOYMENT STATUS FOR THE POPULATION 16 YEARS AND OVER  
Data Set: 2008-2012 American Community Survey 5-Year Estimates

**C24010. SEX BY OCCUPATION FOR THE CIVILIAN EMPLOYED POPULATION 16 YEARS AND OVER**

Data Set: 2008-2012 American Community Survey 5-Year Estimates

	Thomson city, Georgia					
	African American	Margin of Error (+/-)	% of AA Total	White, Not Hispanic	Margin of Error (+/-)	% of NHW Total
<b>Total:</b>	<b>1,370</b>	<b>234</b>	<b>100.0%</b>	<b>813</b>	<b>196</b>	<b>100.0%</b>
Management, professional, and related occupations	232	NC	16.9%	258	NC	31.7%
Service occupations	368	NC	26.9%	162	NC	19.9%
Sales and office occupations	276	NC	20.1%	290	NC	35.7%
Natural resources, construction, and maintenance occupations:	209	NC	15.3%	51	NC	6.3%
Production, transportation, and material moving occupations	285	NC	20.8%	52	NC	6.4%
Male:	571	144	41.7%	397	106	48.8%
Management, business, science, and arts occupations:	16	30	1.2%	163	72	20.0%
Service occupations	131	77	9.6%	99	60	12.2%
Sales and office occupations	94	76	6.9%	37	29	4.6%
Natural resources, construction, and maintenance occupations:	193	114	14.1%	51	51	6.3%
Production, transportation, and material moving occupations	137	72	10.0%	47	44	5.8%
Female:	799	151	58.3%	416	130	51.2%
Management, professional, and related occupations	216	113	15.8%	95	36	11.7%
Service occupations	237	100	17.3%	63	57	7.7%
Sales and office occupations	182	85	13.3%	253	116	31.1%
Natural resources, construction, and maintenance occupations:	16	25	1.2%	0	19	0.0%
Production, transportation, and material moving occupations	148	82	10.8%	5	9	0.6%

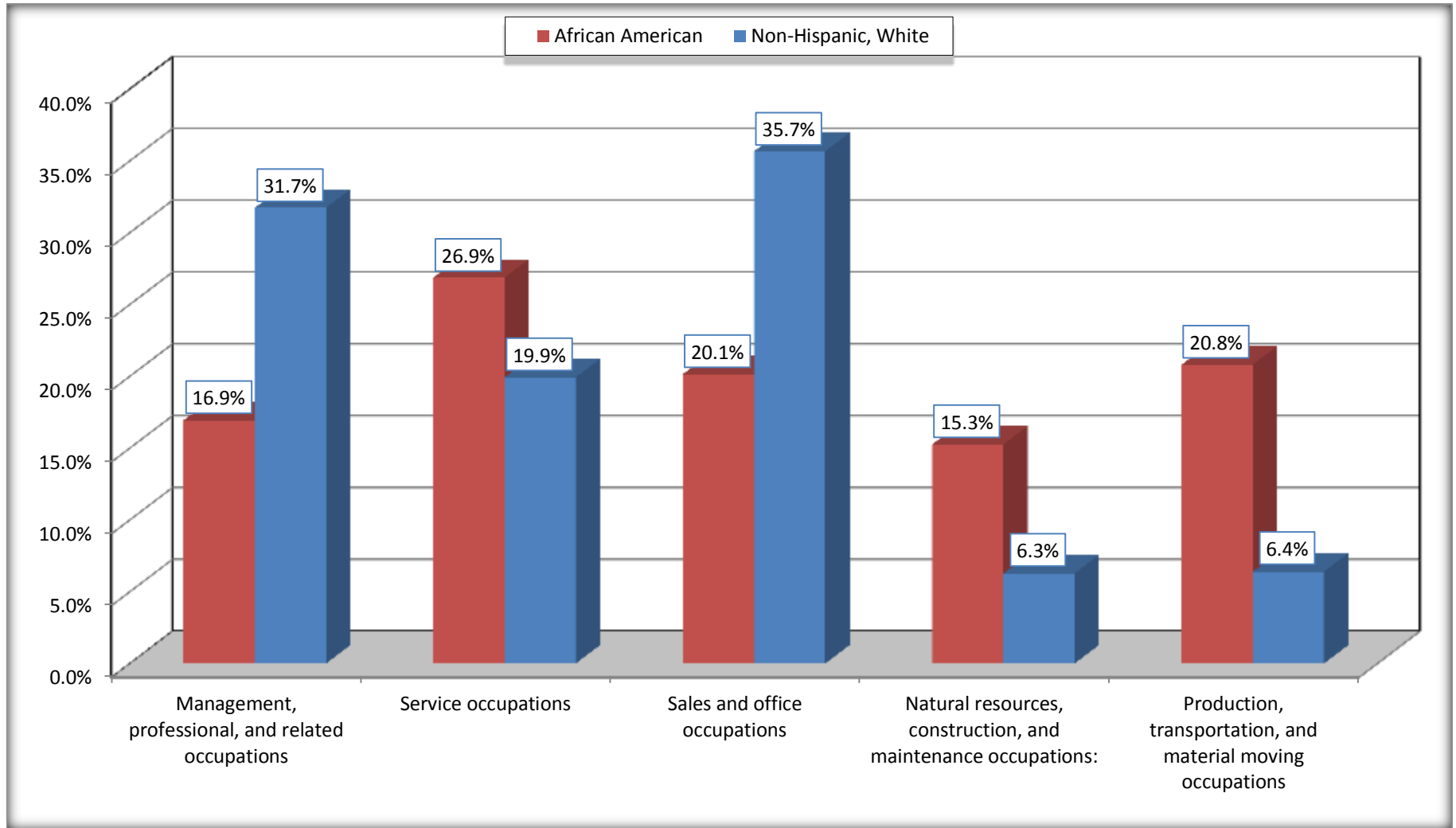
Source: U.S. Census Bureau, 2008-2012 American Community Survey

For information on confidentiality protection, sampling error, nonsampling error, and definitions, see Survey Methodology.

<http://www.census.gov/acs/www/UseData/index.htm>

# Occupation for the Civilian Employed 16 Years and Over Population

## Thomson city, Georgia



Source: C24010. SEX BY OCCUPATION FOR THE CIVILIAN EMPLOYED POPULATION 16 YEARS AND OVER  
Data Set: 2008-2012 American Community Survey 5-Year Estimates

**B25003. TENURE - Universe: OCCUPIED HOUSING UNITS**

Data Set: 2008-2012 American Community Survey 5-Year Estimates

	Thomson city, Georgia					
	African American	Margin of Error (+/-)	% of AA Total	White, Not Hispanic	Margin of Error (+/-)	% of NHW Total
<b>Total:</b>	<b>1,472</b>	<b>169</b>	<b>100.0%</b>	<b>912</b>	<b>159</b>	<b>100.0%</b>
Owner occupied	496	146	33.7%	532	112	58.3%
Renter occupied	976	166	66.3%	380	136	41.7%

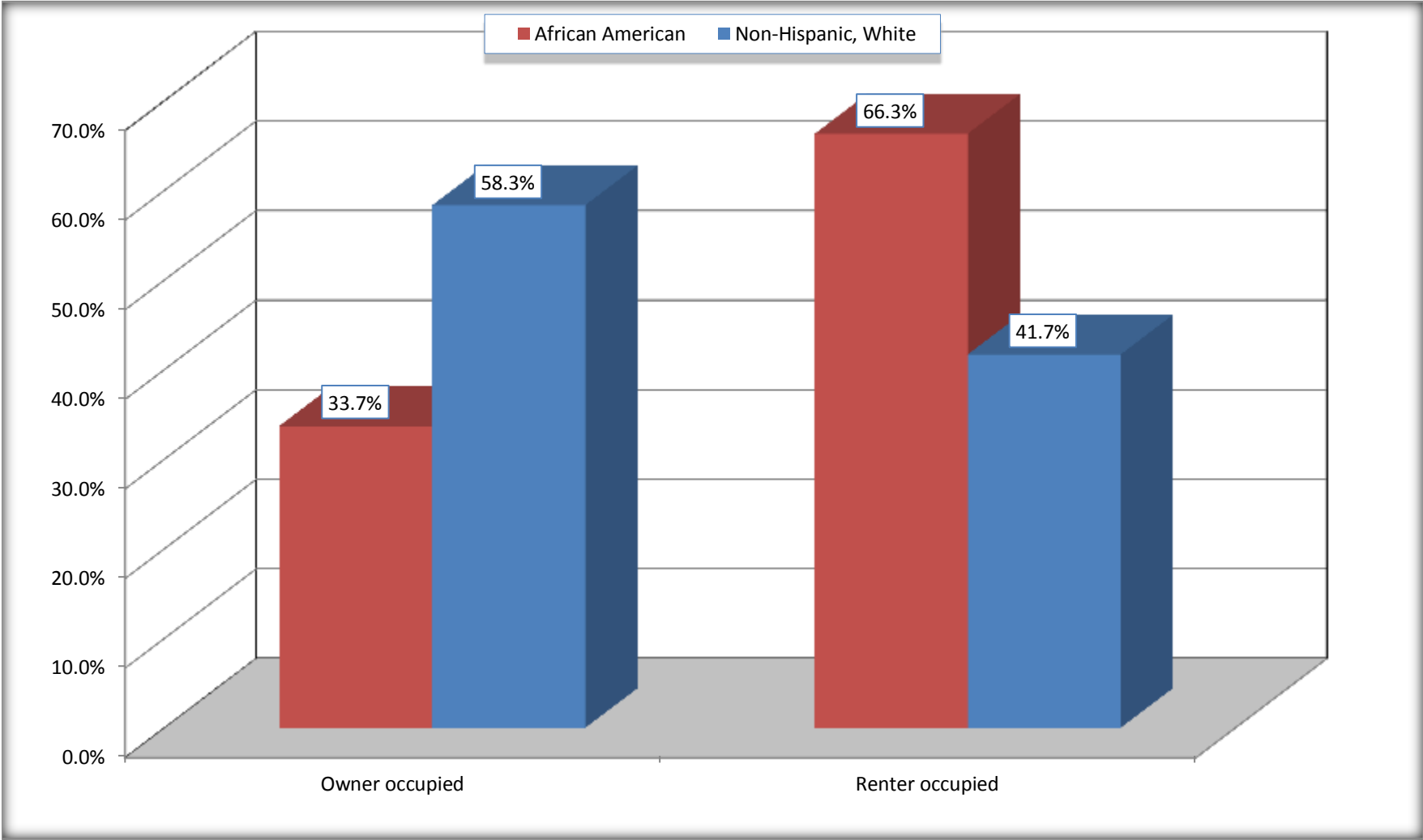
Source: U.S. Census Bureau, 2008-2012 American Community Survey

For information on confidentiality protection, sampling error, nonsampling error, and definitions, see Survey Methodology.

<http://www.census.gov/acs/www/UseData/index.h>

# Home Owners and Renters by Household

## Thomson city, Georgia



Source: B25003. TENURE - Universe: OCCUPIED HOUSING UNITS  
Data Set: 2008-2012 American Community Survey 5-Year Estimates



**B25014. OCCUPANTS PER ROOM - Universe: OCCUPIED HOUSING UNITS**

Data Set: 2008-2012 American Community Survey 5-Year Estimates

	Thomson city, Georgia					
	African American	Margin of Error (+/-)	% of AA Total	White, Not Hispanic	Margin of Error (+/-)	% of NHW Total
<b>Total:</b>	<b>1,472</b>	<b>169</b>	<b>100.0%</b>	<b>912</b>	<b>159</b>	<b>100.0%</b>
1.00 or less occupants per room	1,383	185	94.0%	912	159	100.0%
1.01 or more occupants per room	89	55	6.0%	0	19	0.0%

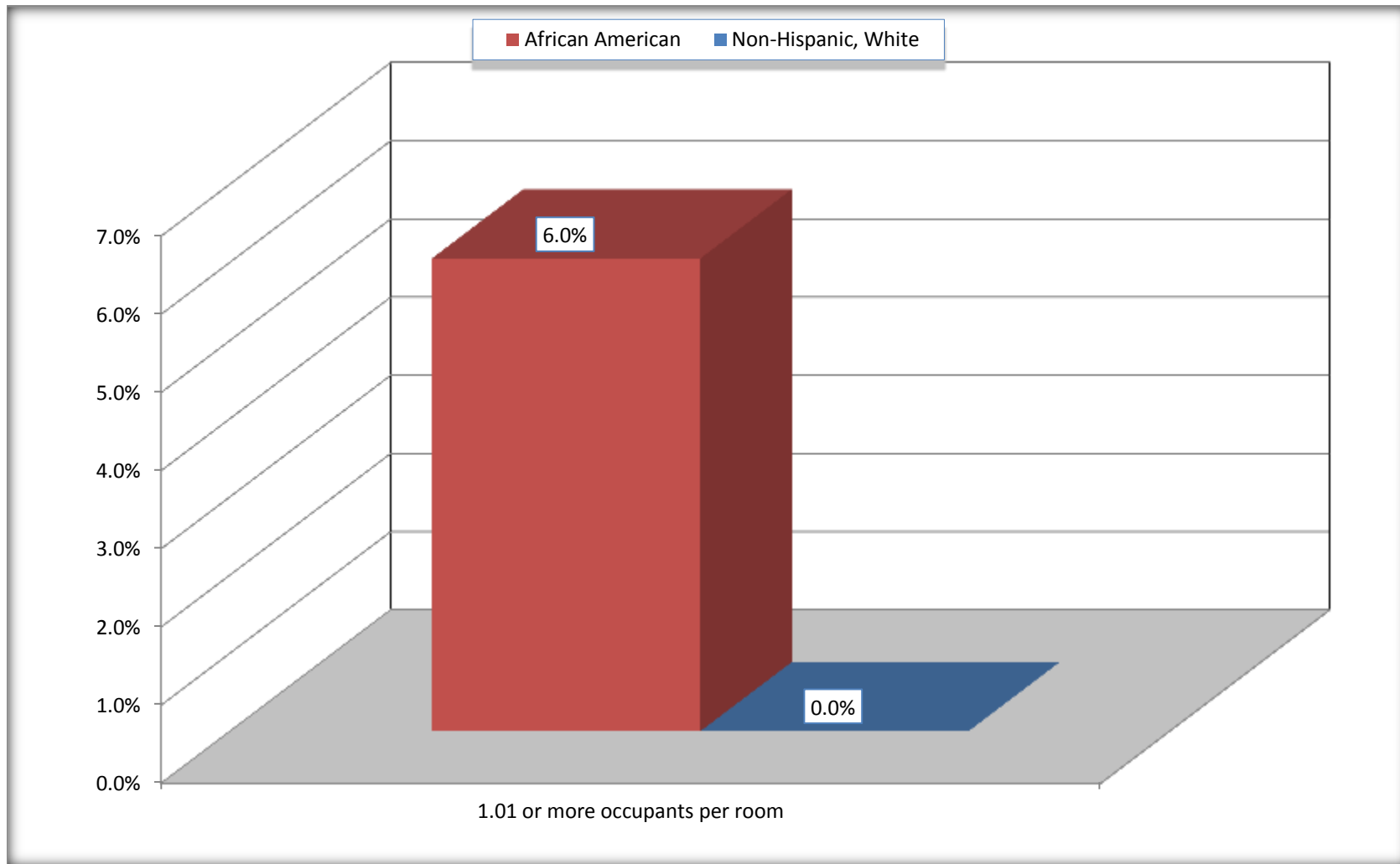
Source: U.S. Census Bureau, 2008-2012 American Community Survey

For information on confidentiality protection, sampling error, nonsampling error, and definitions, see Survey Methodology.

<http://www.census.gov/acs/www/UseData/index.ht>

# More than One Person per Room (Crowding) by Household

## Thomson city, Georgia



Source: B25014. OCCUPANTS PER ROOM - Universe: OCCUPIED HOUSING UNITS  
Data Set: 2008-2012 American Community Survey 5-Year Estimates

**B18101. AGE BY DISABILITY STATUS**

Data Set: 2008-2012 American Community Survey 5-Year Estimates

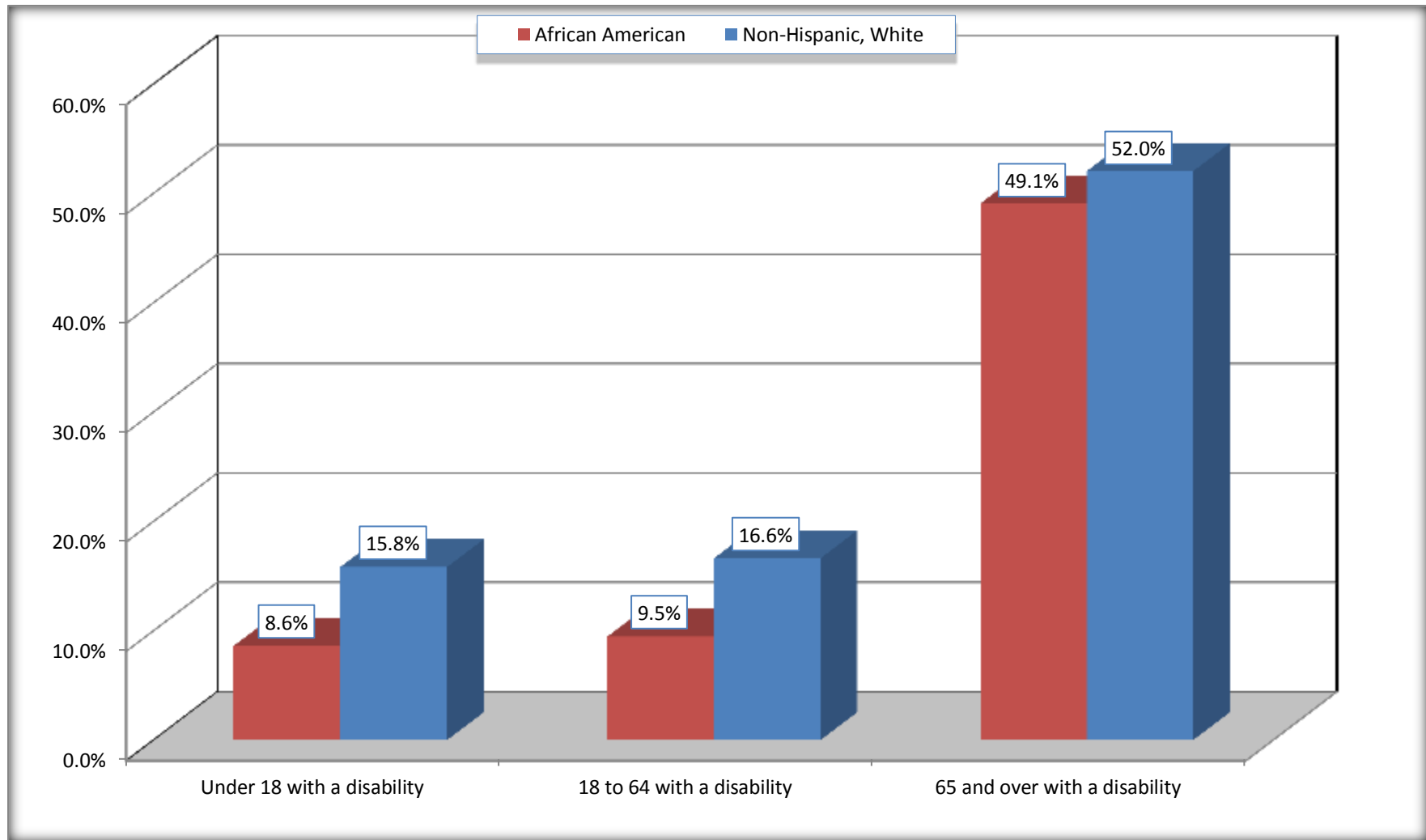
	Thomson city, Georgia					
	African American	Margin of Error (+/-)	% of AA Total	White, Not Hispanic	Margin of Error (+/-)	% of NHW Total
<b>Total:</b>	<b>4,514</b>	<b>291</b>	<b>100.0%</b>	<b>1,911</b>	<b>292</b>	<b>100.0%</b>
Under 18 years:	1,812	250	40.1%	417	19	21.8%
With a disability	156	109	3.5%	66	64	3.5%
No disability	1,656	254	36.7%	351	108	18.4%
18 to 64 years:	2,378	289	52.7%	1,125	206	58.9%
With a disability	225	101	5.0%	187	81	9.8%
No disability	2,153	268	47.7%	938	180	49.1%
65 years and over:	324	124	7.2%	369	107	19.3%
With a disability	159	80	3.5%	192	81	10.0%
No disability	165	92	3.7%	177	70	9.3%

Source: U.S. Census Bureau, 2008-2012 American Community Survey

For information on confidentiality protection, sampling error, nonsampling error, and definitions, see Survey Methodology.

<http://www.census.gov/acs/www/UseData/index.htm>

## Disability by Age Thomson city, Georgia



Source: B18101. AGE BY DISABILITY STATUS  
Data Set: 2008-2012 American Community Survey 5-Year Estimates

**C27001B. HEALTH INSURANCE COVERAGE STATUS BY AGE**

Data Set: 2008-2012 American Community Survey 5-Year Estimates

	<b>Thomson city, Georgia</b>					
	African American	Margin of Error (+/-)	% of AA Total	White, Not Hispanic	Margin of Error (+/-)	% of NHW Total
<b>Total:</b>	<b>4,514</b>	<b>291</b>	<b>100.0%</b>	<b>1,911</b>	<b>292</b>	<b>100.0%</b>
Under 18 years:	1,812	250	40.1%	417	114	21.8%
With health insurance coverage	1,506	268	33.4%	388	111	20.3%
No health insurance coverage	306	240	6.8%	29	42	1.5%
18 to 64 years:	2,378	289	52.7%	1,125	206	58.9%
With health insurance coverage	1,648	277	36.5%	775	165	40.6%
No health insurance coverage	730	244	16.2%	350	167	18.3%
65 years and over:	324	124	7.2%	369	107	19.3%
With health insurance coverage	319	124	7.1%	369	107	19.3%
No health insurance coverage	5	8	0.1%	0	19	0.0%

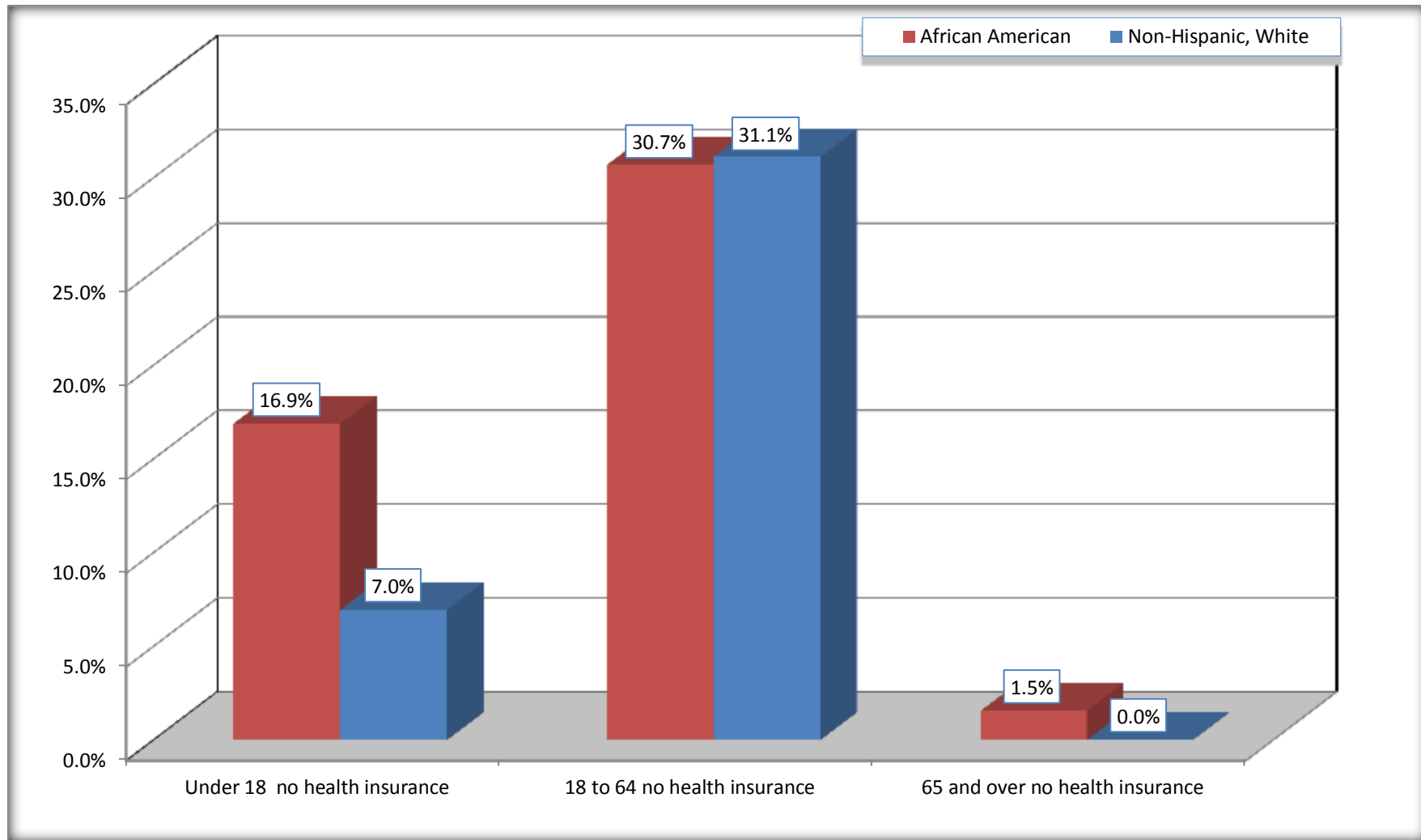
Source: U.S. Census Bureau, 2008-2012 American Community Survey

For information on confidentiality protection, sampling error, nonsampling error, and definitions, see Survey Methodology.

<http://www.census.gov/acs/www/UseData/index.htm>

# Lack of Health Insurance Coverage by Age

## Thomson city, Georgia



Source: C27001B. HEALTH INSURANCE COVERAGE STATUS BY AGE  
Data Set: 2008-2012 American Community Survey 5-Year Estimates