

# **Selected Socio-Economic Data**

## **Talbot County, Georgia**

### **African American and White, Not Hispanic**

**Data Set: 2008-2012 American Community Survey 5-Year Estimates**

[www.fairvote2020.org](http://www.fairvote2020.org)

[www.fairdata2000.com](http://www.fairdata2000.com)

[29-Dec-13](#)

**C02003.DETAILED RACE - Universe: TOTAL POPULATION**  
 Data Set: 2008-2012 American Community Survey 5-Year Estimates

	Talbot County, Georgia		
	Population	Margin of Error (+/-)	% of Total
<b>Total:</b>	<b>6,772</b>	<b>*****</b>	<b>100.0%</b>
Population of one race:	6,710	53	99.1%
White	2,626	36	38.8%
Black or African American	4,069	66	60.1%
American Indian and Alaska Native	0	19	0.0%
Asian alone	15	22	0.2%
Native Hawaiian and Other Pacific Islander	0	19	0.0%
Some other race	0	19	0.0%
Population of two or more races:	62	53	0.9%
Two races including Some other race	5	10	0.1%
Two races excluding Some other race, and three or more races	57	51	0.8%
Population of two races:	62	53	0.9%
White; Black or African American	47	49	0.7%
White; American Indian and Alaska Native	10	15	0.1%
White; Asian	0	19	0.0%
Black or African American; American Indian and Alaska Native	0	19	0.0%
All other two race combinations	5	10	0.1%
Population of three races	0	19	0.0%
Population of four or more races	0	19	0.0%

Note: Hispanics may be of any race. See Table B03002 and chart.

Source: U.S. Census Bureau, 2008-2012 American Community Survey

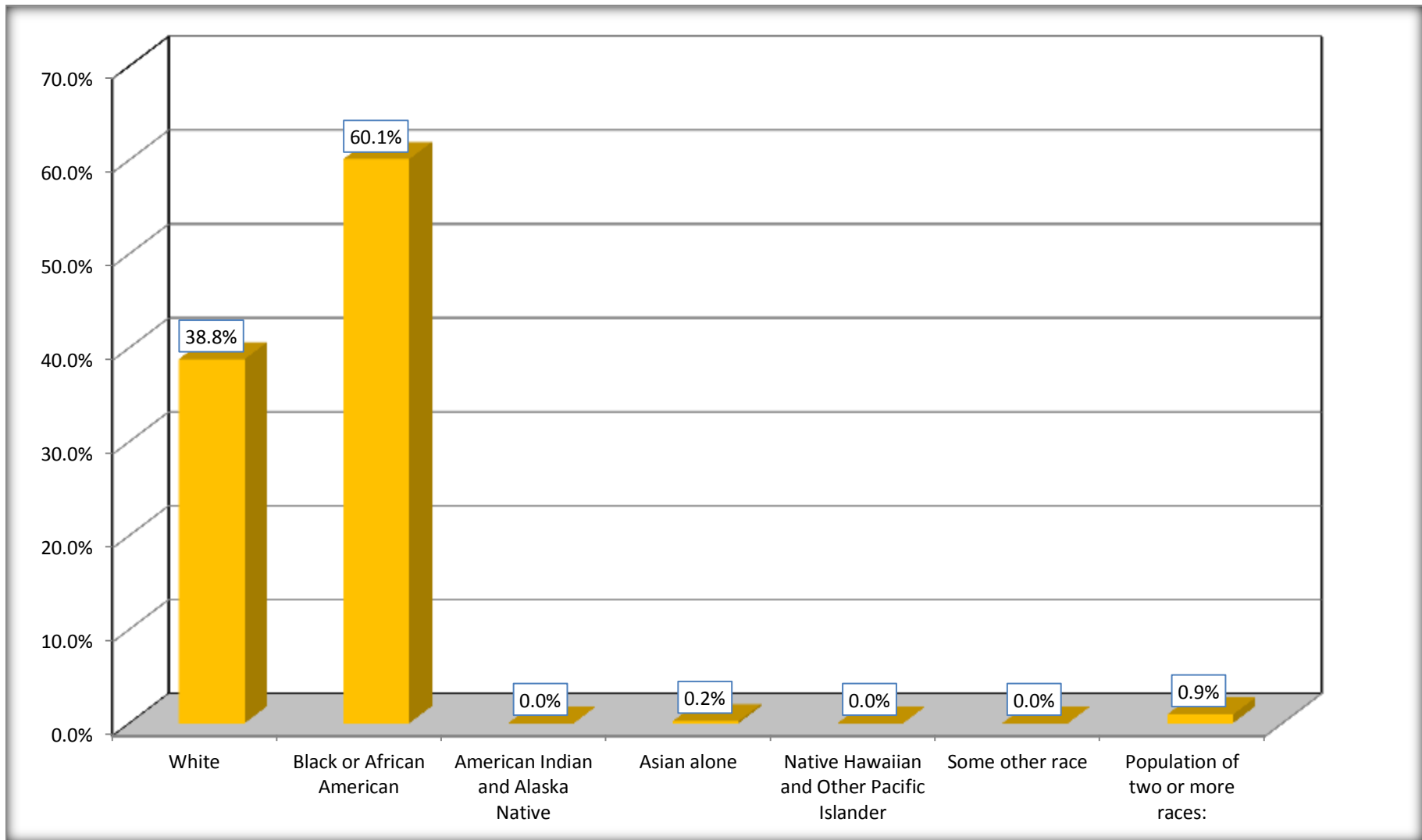
Although the American Community Survey (ACS) produces population, demographic and housing unit estimates, it is the Census Bureau's Population Estimates Program that produces and disseminates the official estimates of the population for the nation, states, counties, cities and towns and estimates of housing units for states and counties.

For information on confidentiality protection, sampling error, nonsampling error, and definitions, see Survey Methodology.

<http://www.census.gov/acs/www/UseData/index.htm>

# Population by Race

## Talbot County, Georgia



Source: C02003.DETAILED RACE - Universe: TOTAL POPULATION  
Data Set: 2008-2012 American Community Survey 5-Year Estimates

**B03002. HISPANIC OR LATINO ORIGIN BY RACE - Universe: TOTAL POPULATION**

Data Set: 2008-2012 American Community Survey 5-Year Estimates

	Talbot County, Georgia		
	Population	Margin of Error (+/-)	% of Total
<b>Total:</b>	6,772	*****	<b>100.0%</b>
Not Hispanic or Latino:	6,748	36	99.6%
White alone	2,602	10	38.4%
Black or African American alone	4,069	66	60.1%
American Indian and Alaska Native alone	0	19	0.0%
Asian alone	15	22	0.2%
Native Hawaiian and Other Pacific Islander alone	0	19	0.0%
Some other race alone	0	19	0.0%
Two or more races:	62	53	0.9%
Two races including Some other race	5	10	0.1%
Two races excluding Some other race, and three or more races	57	51	0.8%
Hispanic or Latino	24	36	0.4%

Source: U.S. Census Bureau, 2008-2012 American Community Survey

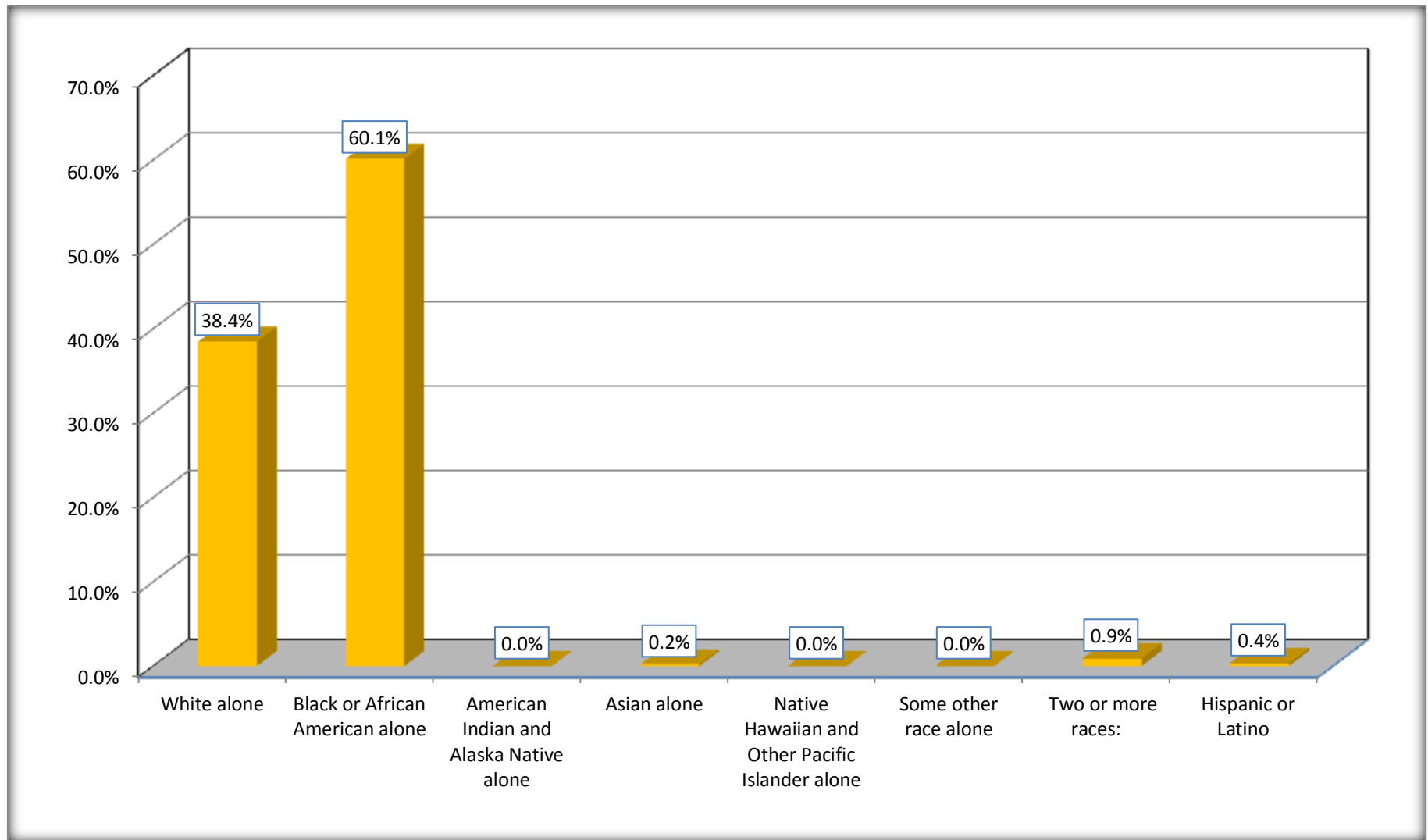
Although the American Community Survey (ACS) produces population, demographic and housing unit estimates, it is the Census Bureau's Population Estimates Program that produces and disseminates the official estimates of the population for the nation, states, counties, cities and towns and estimates of housing units for states and counties.

For information on confidentiality protection, sampling error, nonsampling error, and definitions, see Survey Methodology.

<http://www.census.gov/acs/www/UseData/index.htm>

# Non-Hispanic by Race and Hispanic Population

## Talbot County, Georgia



Source: B03002. HISPANIC OR LATINO ORIGIN BY RACE - Universe: TOTAL POPULATION  
Data Set: 2008-2012 American Community Survey 5-Year Estimates

**B03002. HISPANIC OR LATINO ORIGIN BY RACE**

Data Set: 2008-2012 American Community Survey 5-Year Estimates

	Talbot County, Georgia		
	Population	Margin of Error (+/-)	% of Total
Hispanic or Latino:	24	36	<b>100.0%</b>
White alone	24	36	100.0%
Black or African American alone	0	19	0.0%
American Indian and Alaska Native alone	0	19	0.0%
Asian alone	0	19	0.0%
Native Hawaiian and Other Pacific Islander alone	0	19	0.0%
Some other race alone	0	19	0.0%
Two or more races:	0	19	0.0%
Two races including Some other race	0	19	0.0%
Two races excluding Some other race, and three or more races	0	19	0.0%

Source: U.S. Census Bureau, 2008-2012 American Community Survey

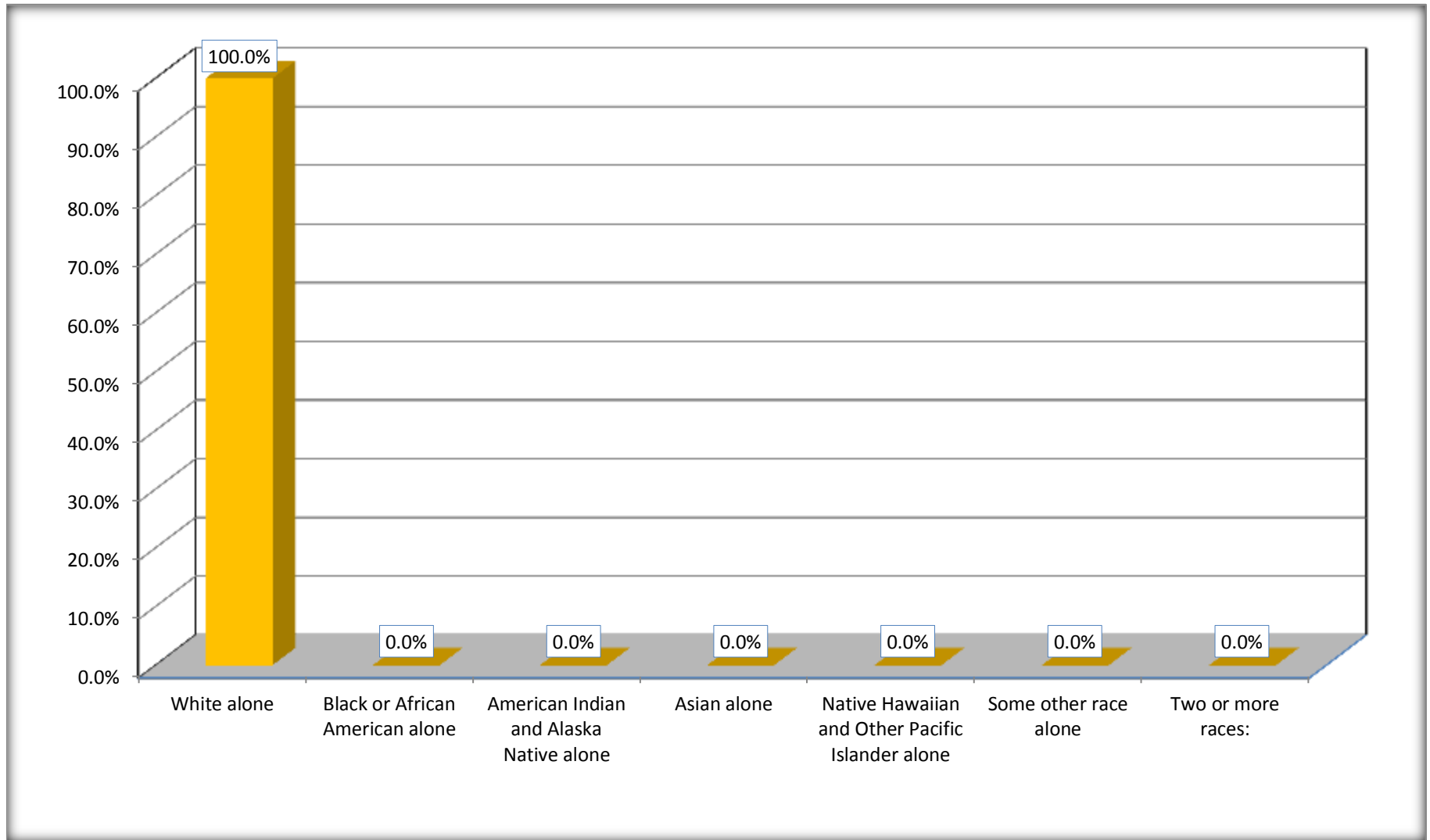
Although the American Community Survey (ACS) produces population, demographic and housing unit estimates, it is the Census Bureau's Population Estimates Program that produces and disseminates the official estimates of the population for the nation, states, counties, cities and towns and estimates of housing units for states and counties.

For information on confidentiality protection, sampling error, nonsampling error, and definitions, see Survey Methodology.

<http://www.census.gov/acs/www/UseData/index.htm>

# Hispanic or Latino Origin by Race

## Talbot County, Georgia



Source: B03002. HISPANIC OR LATINO ORIGIN BY RACE  
Data Set: 2008-2012 American Community Survey 5-Year Estimates

**B01001. SEX BY AGE**

Data Set: 2008-2012 American Community Survey 5-Year Estimates

	Talbot County, Georgia					
	African American	Margin of Error (+/-)	% of AA Total	White, Not Hispanic	Margin of Error (+/-)	% of NHW Total
<b>Total:</b>	<b>4,069</b>	<b>66</b>	<b>100.0%</b>	<b>2,602</b>	<b>10</b>	<b>100.0%</b>
Under 18 years	985	NC	24.2%	397	NC	15.3%
18 to 64 years	2,518	NC	61.9%	1,651	NC	63.5%
65 years and over	566	NC	13.9%	554	NC	21.3%
Male:	1,909	49	46.9%	1,279	389	49.2%
Under 18 years	554	NC	13.6%	164	NC	6.3%
18 to 64 years	1,152	NC	28.3%	850	NC	32.7%
65 years and over	203	NC	5.0%	265	NC	10.2%
Female:	2,160	45	53.1%	1,323	412	50.8%
Under 18 years	431	NC	10.6%	233	NC	9.0%
18 to 64 years	1,366	NC	33.6%	801	NC	30.8%
65 years and over	363	NC	8.9%	289	NC	11.1%

Source: U.S. Census Bureau, 2008-2012 American Community Survey

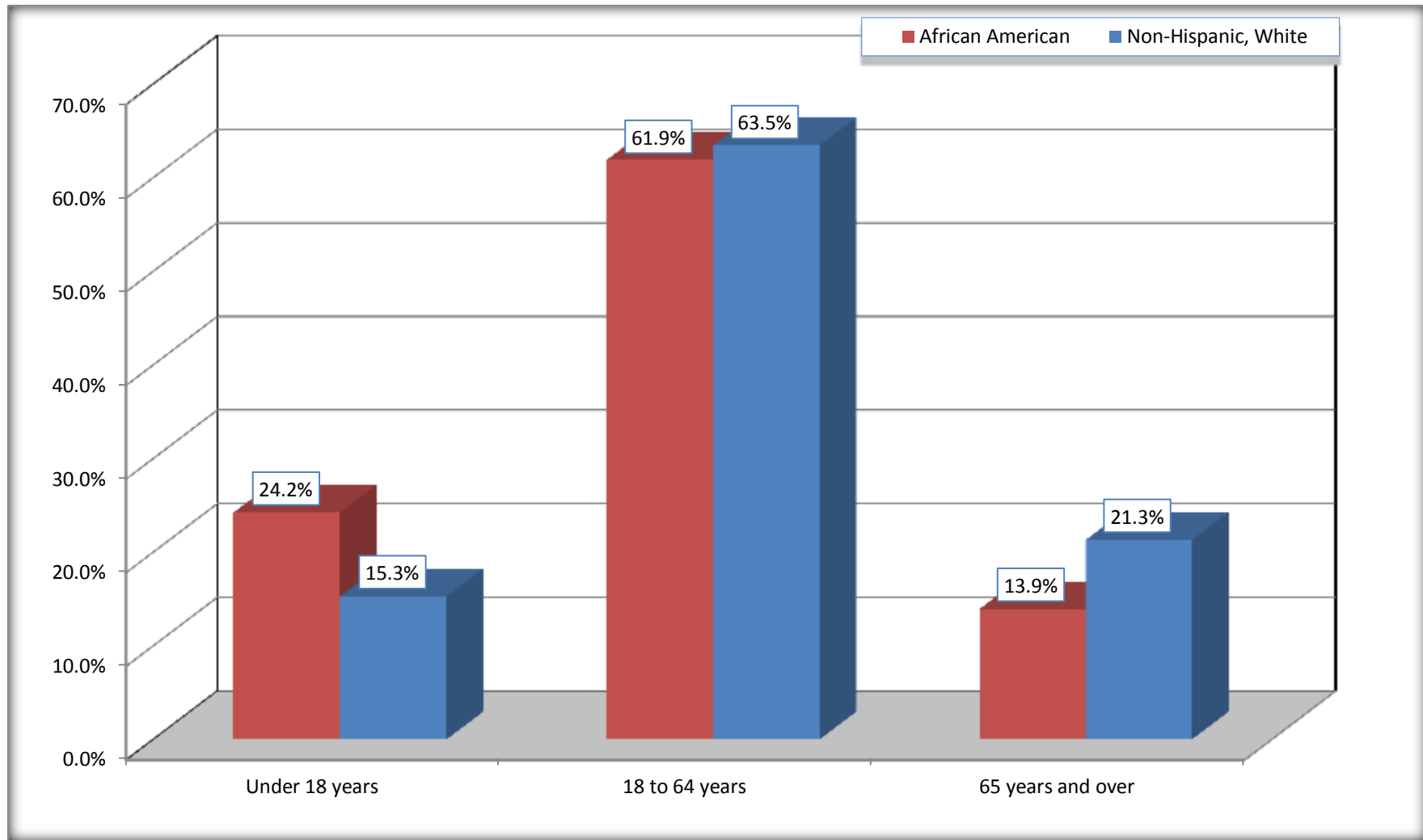
Although the American Community Survey (ACS) produces population, demographic and housing unit estimates, it is the Census Bureau's Population Estimates Program that produces and disseminates the official estimates of the population for the nation, states, counties, cities and towns and estimates of housing units for states and counties.

For information on confidentiality protection, sampling error, nonsampling error, and definitions, see Survey Methodology.  
<http://www.census.gov/acs/www/UseData/index.htm>



# Population by Age

## Talbot County, Georgia



Source: B01001. SEX BY AGE  
Data Set: 2008-2012 American Community Survey 5-Year Estimates

**B05003. SEX BY AGE BY CITIZENSHIP STATUS**

Data Set: 2008-2012 American Community Survey 5-Year Estimates

	Talbot County, Georgia					
	African American	Margin of Error (+/-)	% of AA Total by Age	White, Not Hispanic	Margin of Error (+/-)	% of NHW Total by Age
<b>Total:</b>	<b>4,069</b>	<b>66</b>	<b>100.0%</b>	<b>2,602</b>	<b>10</b>	<b>100.0%</b>
<b>Under 18 years:</b>	<b>985</b>	<b>NC</b>	<b>100.0%</b>	<b>397</b>	<b>NC</b>	<b>100.0%</b>
Native	985	NC	100.0%	397	NC	100.0%
Foreign born:	0	NC	0.0%	0	NC	0.0%
Naturalized U.S. citizen	0	NC	0.0%	0	NC	0.0%
Not a U.S. citizen	0	NC	0.0%	0	NC	0.0%
<b>18 years and over:</b>	<b>3,084</b>	<b>NC</b>	<b>100.0%</b>	<b>2,205</b>	<b>NC</b>	<b>100.0%</b>
Native	3,076	NC	99.7%	2,182	NC	99.0%
Foreign born:	8	NC	0.3%	23	NC	1.0%
Naturalized U.S. citizen	8	NC	0.3%	16	NC	0.7%
Not a U.S. citizen	0	NC	0.0%	7	NC	0.3%
<b>Male:</b>	<b>1,909</b>	<b>49</b>	<b>46.9%</b>	<b>1,279</b>	<b>72</b>	<b>49.2%</b>
<b>Under 18 years:</b>	<b>554</b>	<b>29</b>	<b>100.0%</b>	<b>164</b>	<b>71</b>	<b>100.0%</b>
Native	554	29	100.0%	164	71	100.0%
Foreign born:	0	19	0.0%	0	19	0.0%
Naturalized U.S. citizen	0	19	0.0%	0	19	0.0%
Not a U.S. citizen	0	19	0.0%	0	19	0.0%
<b>18 years and over:</b>	<b>1,355</b>	<b>33</b>	<b>100.0%</b>	<b>1,115</b>	<b>10</b>	<b>100.0%</b>
Native	1,347	37	99.4%	1,115	10	100.0%
Foreign born:	8	10	0.6%	0	19	0.0%
Naturalized U.S. citizen	8	10	0.6%	0	19	0.0%
Not a U.S. citizen	0	19	0.0%	0	19	0.0%

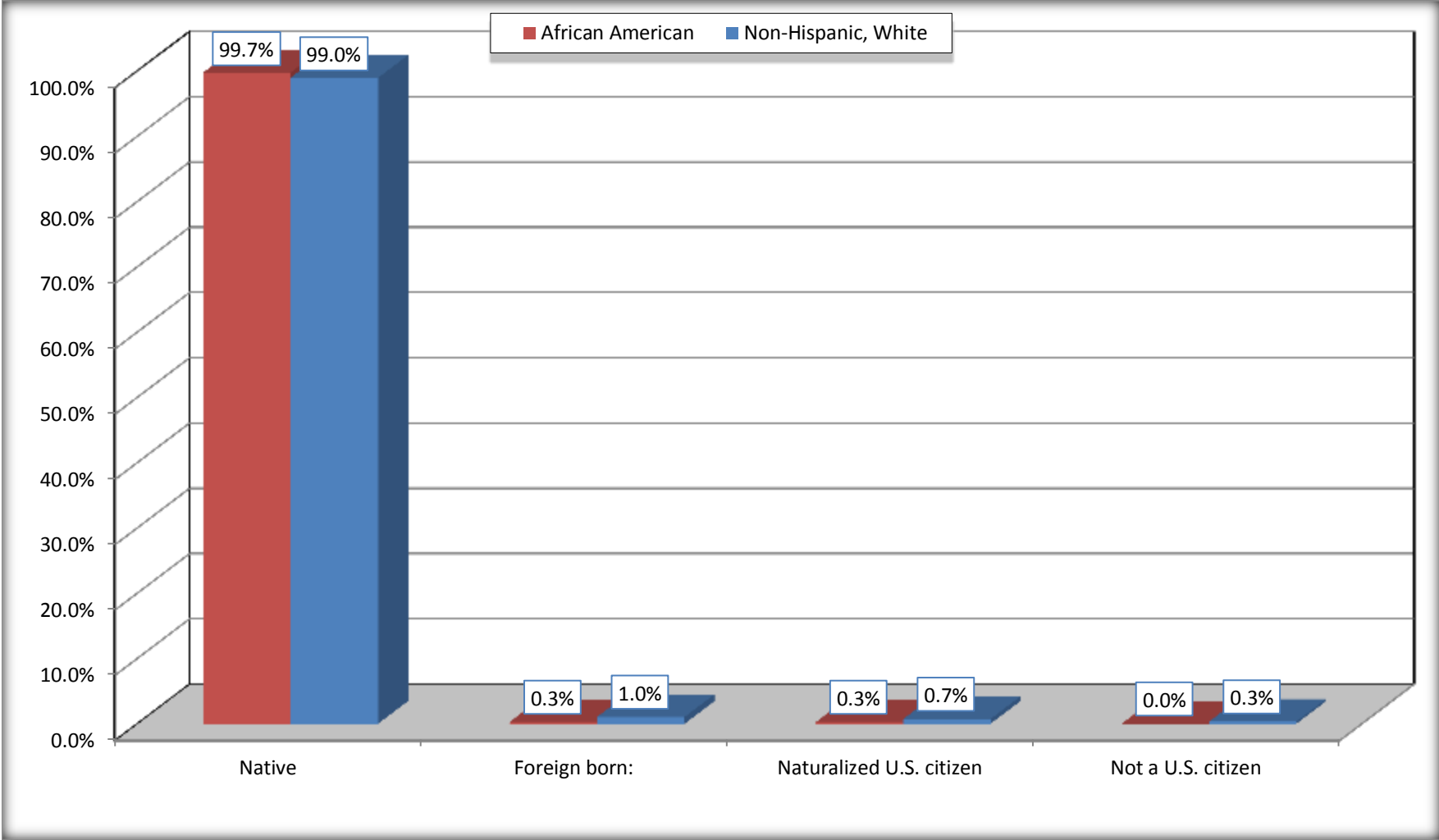
	Talbot County, Georgia					
	African American	Margin of Error (+/-)	% of AA by Age	White, Not Hispanic	Margin of Error (+/-)	% of NHW by Age
<b>Female:</b>	2,160	45	53.1%	1,323	71	50.8%
<b>Under 18 years:</b>	<b>431</b>	<b>27</b>	<b>100.0%</b>	<b>233</b>	<b>71</b>	<b>100.0%</b>
Native	431	27	100.0%	233	71	100.0%
Foreign born:	0	19	0.0%	0	19	0.0%
Naturalized U.S. citizen	0	19	0.0%	0	19	0.0%
Not a U.S. citizen	0	19	0.0%	0	19	0.0%
<b>18 years and over:</b>	<b>1,729</b>	<b>27</b>	<b>100.0%</b>	<b>1,090</b>	<b>19</b>	<b>100.0%</b>
Native	1,729	27	100.0%	1,067	22	97.9%
Foreign born:	0	19	0.0%	23	22	2.1%
Naturalized U.S. citizen	0	19	0.0%	16	18	1.5%
Not a U.S. citizen	0	19	0.0%	7	12	0.6%

Source: U.S. Census Bureau, 2008-2012 American Community Survey

For information on confidentiality protection, sampling error, nonsampling error, and definitions, see Survey Methodology.  
<http://www.census.gov/acs/www/UseData/index.htm>

# Citizenship Status of Voting Age Population (18 and Over)

## Talbot County, Georgia



Source: B05003. SEX BY AGE BY CITIZENSHIP STATUS  
Data Set: 2008-2012 American Community Survey 5-Year Estimates

**B07004. GEOGRAPHICAL MOBILITY IN THE PAST YEAR BY RACE FOR CURRENT RESIDENCE IN THE UNITED STATES - Universe:  
POPULATION 1 YEAR AND OVER**

Data Set: 2008-2012 American Community Survey 5-Year Estimates

	Talbot County, Georgia					
	African American	Margin of Error (+/-)	% of AA Total	White, Not Hispanic	Margin of Error (+/-)	% of NHW Total
<b>Total:</b>	<b>4,015</b>	<b>76</b>	<b>100.0%</b>	<b>2,575</b>	<b>36</b>	<b>100.0%</b>
Same house 1 year ago	3,628	203	90.4%	2,376	120	92.3%
Moved within same county	150	68	3.7%	50	64	1.9%
Moved from different county within same state	232	172	5.8%	72	75	2.8%
Moved from different state	5	9	0.1%	67	86	2.6%
Moved from abroad	0	19	0.0%	10	17	0.4%

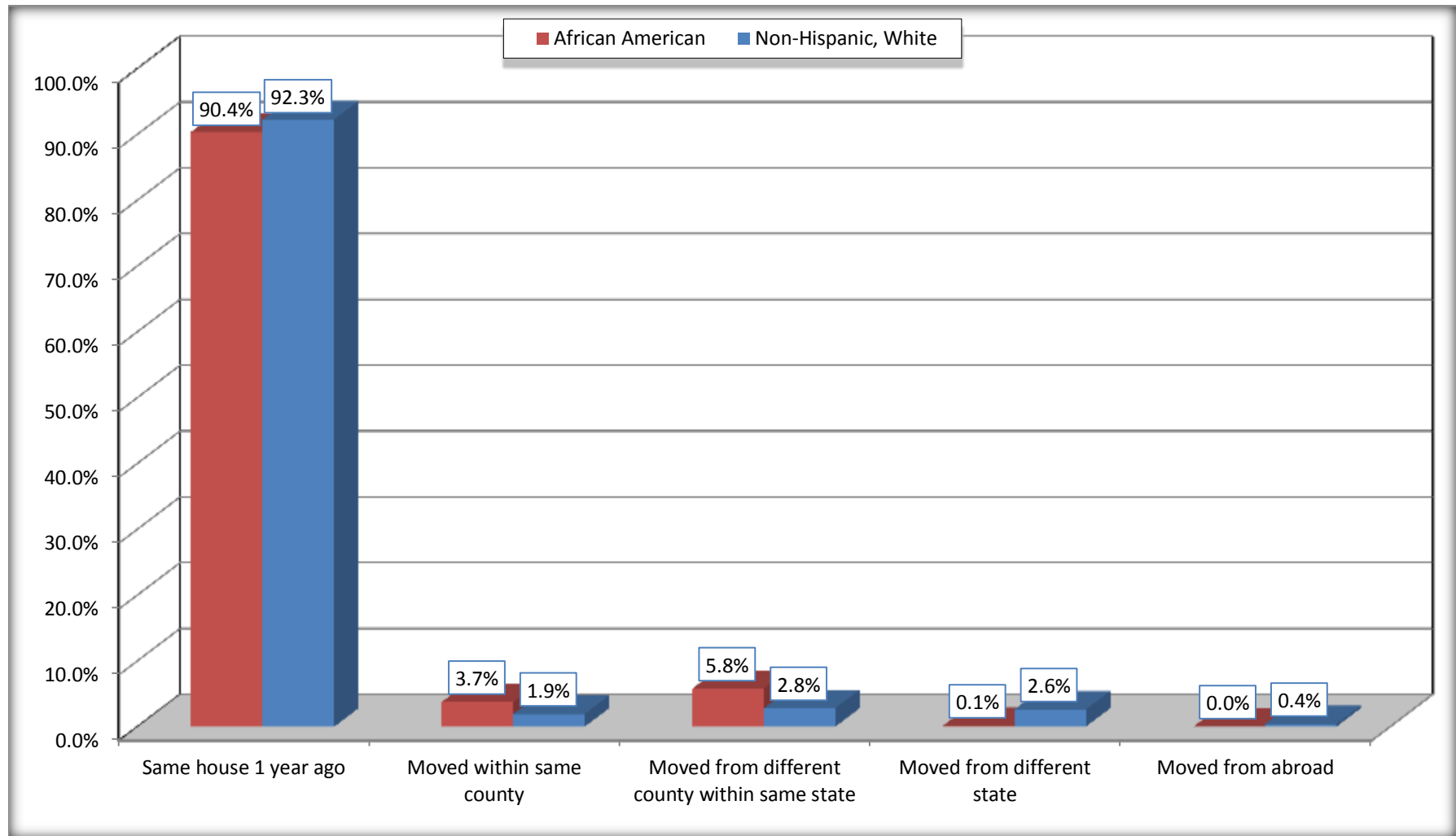
Source: U.S. Census Bureau, 2008-2012 American Community Survey

For information on confidentiality protection, sampling error, nonsampling error, and definitions, see Survey Methodology.

<http://www.census.gov/acs/www/UseData/index.htm>

# Geographical Mobility in the Past Year (Population 1 Year and Over)

## Talbot County, Georgia



Source: B07004. GEOGRAPHICAL MOBILITY IN THE PAST YEAR BY RACE FOR CURRENT RESIDENCE IN THE UNITED STATES - Universe: POPULATION 1 YEAR AND OVER

Data Set: 2008-2012 American Community Survey 5-Year Estimates

**B08105. MEANS OF TRANSPORTATION TO WORK - Universe: WORKERS 16 YEARS AND OVER**

Data Set: 2008-2012 American Community Survey 5-Year Estimates

	Talbot County, Georgia					
	African American	Margin of Error (+/-)	% of AA Total	White, Not Hispanic	Margin of Error (+/-)	% of NHW Total
<b>Total:</b>	1142	152	<b>100.0%</b>	1150	168	<b>100.0%</b>
Car, truck, or van - drove alone	850	150	74.4%	1025	159	89.1%
Car, truck, or van - carpooled	68	35	6.0%	81	58	7.0%
Public transportation (excluding taxicab)	0	19	0.0%	16	26	1.4%
Walked	28	29	2.5%	0	19	0.0%
Taxicab, motorcycle, bicycle, or other means	162	104	14.2%	25	36	2.2%
Worked at home	34	38	3.0%	3	6	0.3%

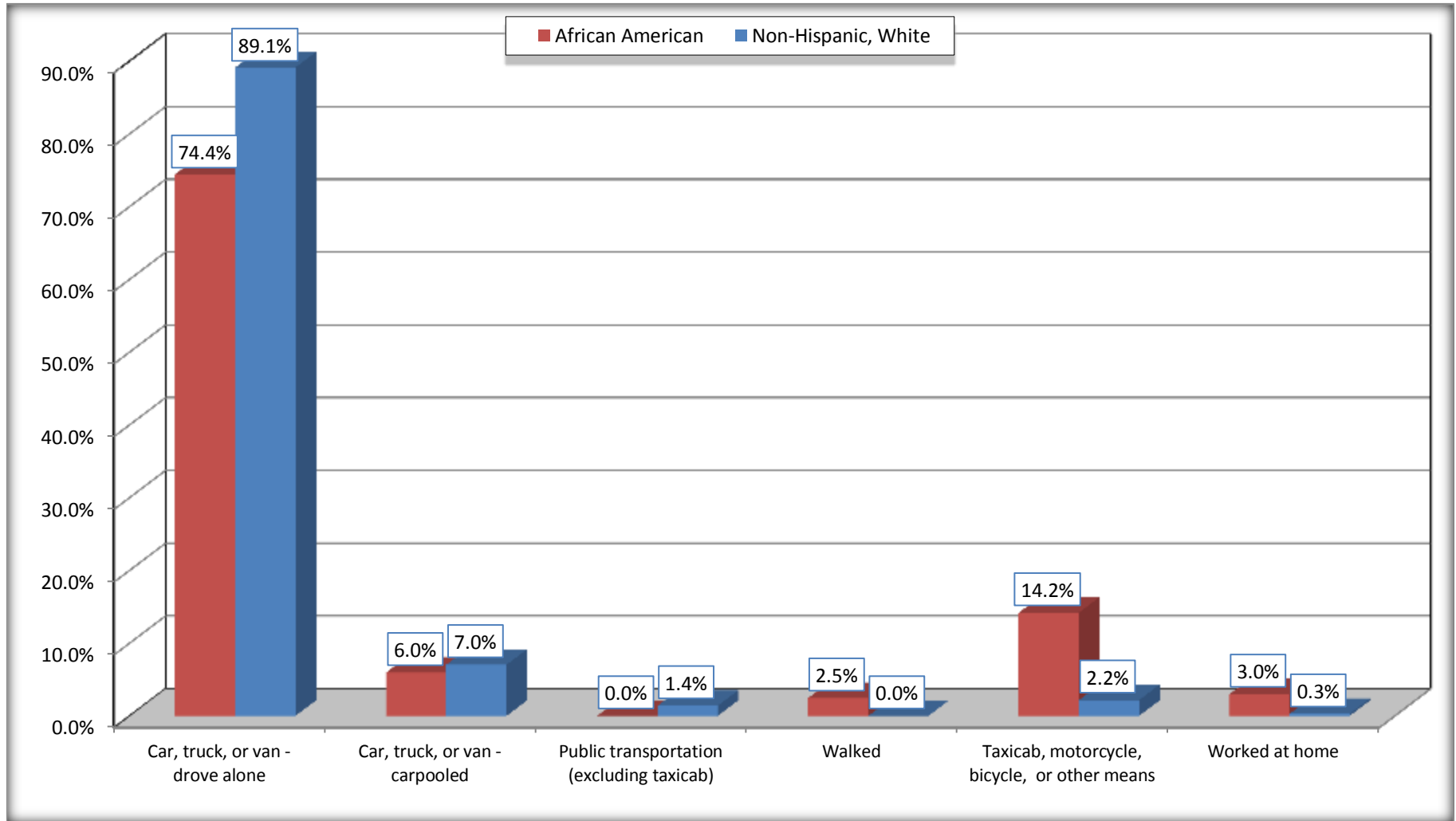
Source: U.S. Census Bureau, 2008-2012 American Community Survey

For information on confidentiality protection, sampling error, nonsampling error, and definitions, see Survey Methodology.

<http://www.census.gov/acs/www/UseData/index.htm>

# Means of Transportation to Work (Workers 16 Years and Over)

## Talbot County, Georgia



Source: B08105. MEANS OF TRANSPORTATION TO WORK - Universe: WORKERS 16 YEARS AND OVER  
Data Set: 2008-2012 American Community Survey 5-Year Estimates



**B11002. HOUSEHOLD TYPE BY RELATIVES AND NONRELATIVES FOR POPULATION IN HOUSEHOLDS**

Data Set: 2008-2012 American Community Survey 5-Year Estimates

	Talbot County, Georgia					
	African American	Margin of Error (+/-)	% of AA Total	White, Not Hispanic	Margin of Error (+/-)	% of NHW Total
<b>Total:</b>	4082	68	<b>100.0%</b>	2606	53	<b>100.0%</b>
In family households	3539	154	86.7%	2161	153	82.9%
In nonfamily households	543	132	13.3%	445	146	17.1%

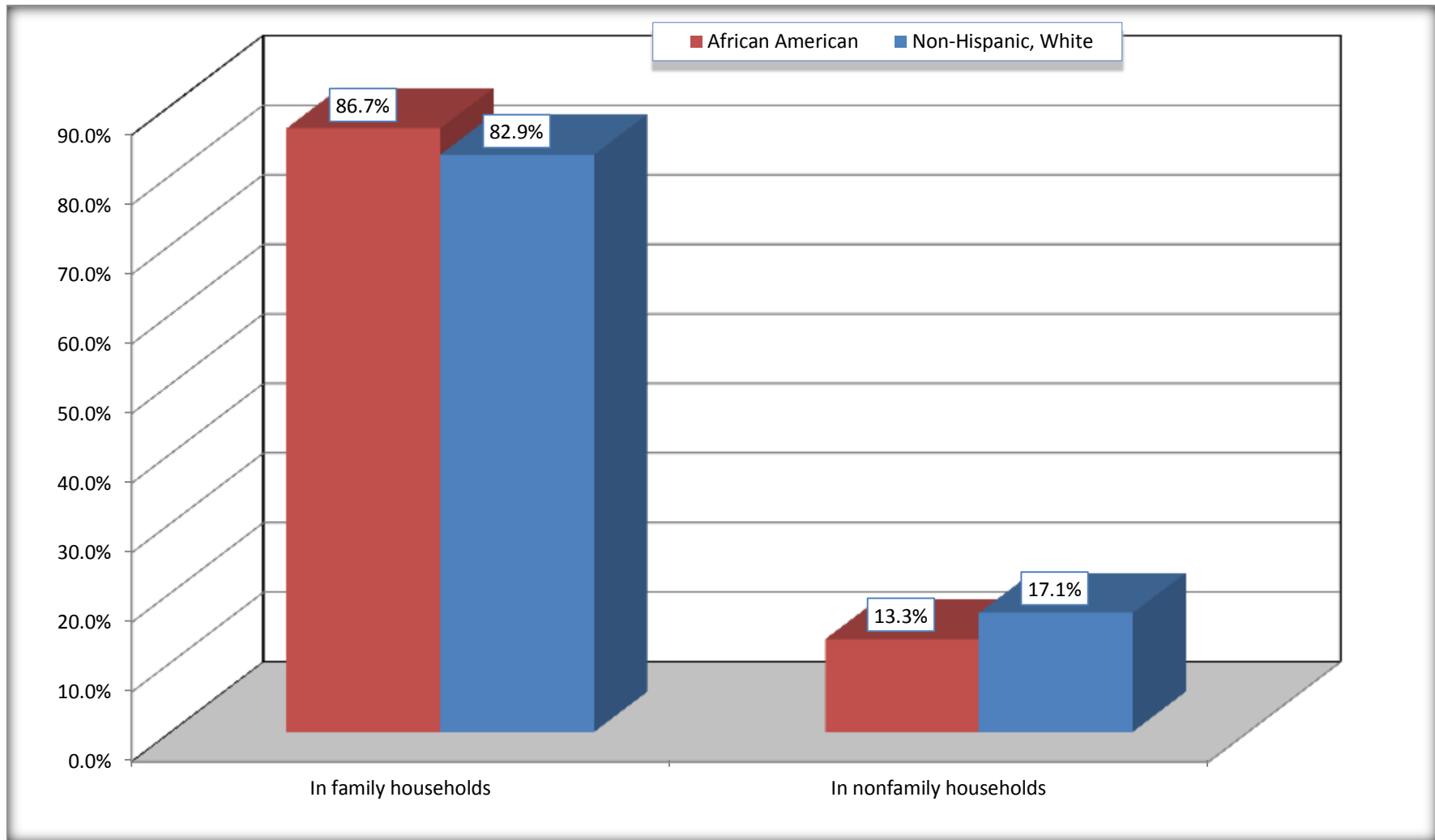
Source: U.S. Census Bureau, 2008-2012 American Community Survey

For information on confidentiality protection, sampling error, nonsampling error, and definitions, see Survey Methodology.

<http://www.census.gov/acs/www/UseData/index.htm>

# Household Type for Population in Households

## Talbot County, Georgia



Source: B11002. HOUSEHOLD TYPE BY RELATIVES AND NONRELATIVES FOR POPULATION IN HOUSEHOLDS  
Data Set: 2008-2012 American Community Survey 5-Year Estimates

**B12002. MARITAL STATUS FOR THE POPULATION 15 YEARS AND OVER**

Data Set: 2008-2012 American Community Survey 5-Year Estimates

	Talbot County, Georgia					
	African American	Margin of Error (+/-)	% of AA Total	White, Not Hispanic	Margin of Error (+/-)	% of NHW Total
<b>Total:</b>	<b>3,270</b>	<b>50</b>	<b>100.0%</b>	<b>2,304</b>	<b>54</b>	<b>100.0%</b>
Never married	1,248	NC	38.2%	457	NC	19.8%
Now married (except separated)	989	NC	30.2%	1,334	NC	57.9%
Separated	242	NC	7.4%	0	NC	0.0%
Widowed	406	NC	12.4%	215	NC	9.3%
Divorced	385	NC	11.8%	298	NC	12.9%
<b>Male:</b>	<b>1,506</b>	<b>44</b>	<b>46.1%</b>	<b>1,154</b>	<b>31</b>	<b>50.1%</b>
Never married	629	98	19.2%	257	89	11.2%
Now married (except separated)	496	111	15.2%	601	101	26.1%
Separated	116	75	3.5%	0	19	0.0%
Widowed	88	71	2.7%	84	43	3.6%
Divorced	177	89	5.4%	212	82	9.2%
<b>Female:</b>	<b>1,764</b>	<b>37</b>	<b>53.9%</b>	<b>1,150</b>	<b>46</b>	<b>49.9%</b>
Never married	619	112	18.9%	200	85	8.7%
Now married (except separated)	493	120	15.1%	733	97	31.8%
Separated	126	60	3.9%	0	19	0.0%
Widowed	318	102	9.7%	131	52	5.7%
Divorced	208	76	6.4%	86	60	3.7%

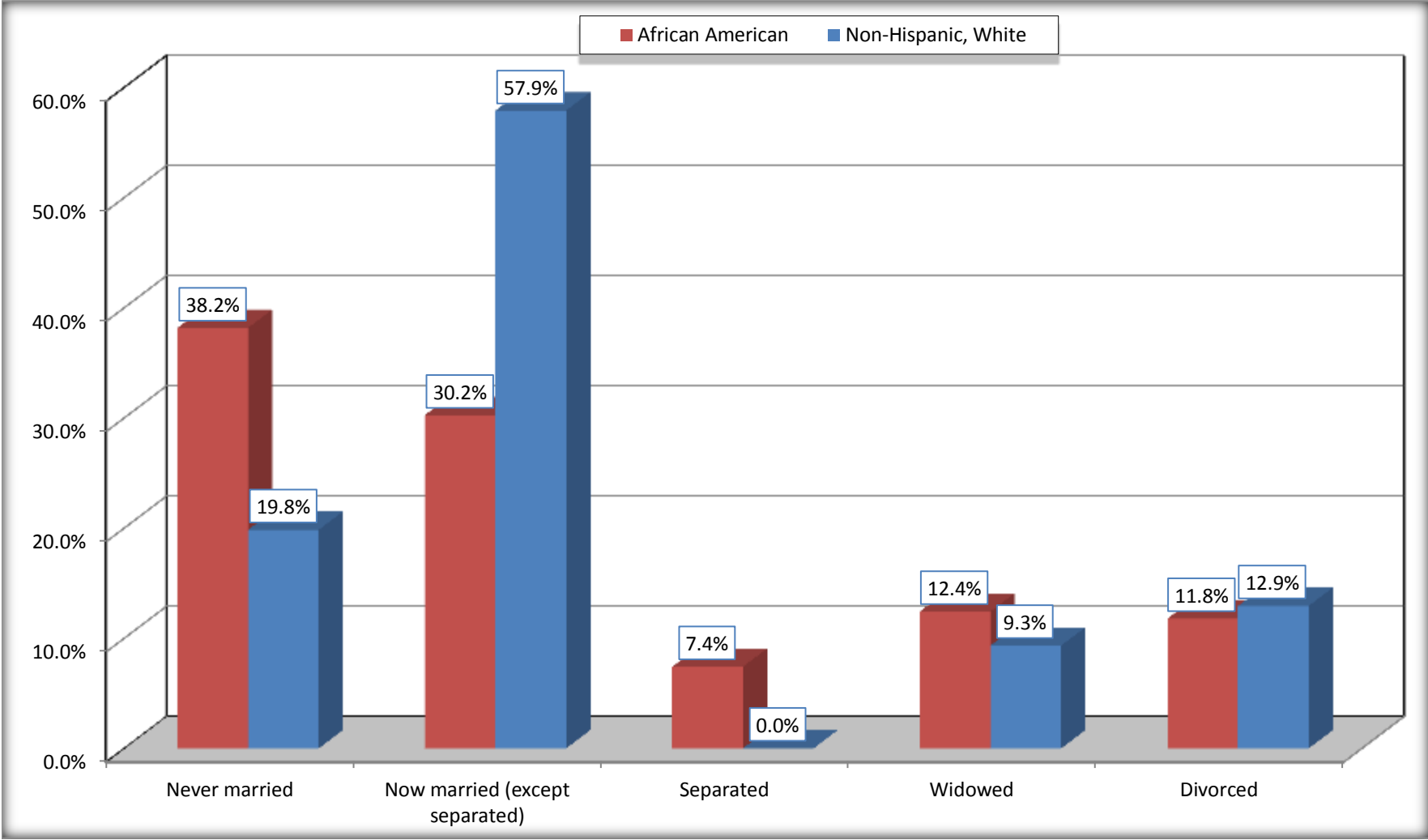
Source: U.S. Census Bureau, 2008-2012 American Community Survey

For information on confidentiality protection, sampling error, nonsampling error, and definitions, see Survey Methodology.

<http://www.census.gov/acs/www/UseData/index.htm>

# Marital Status for the Population 15 Years and Over

## Talbot County, Georgia



Source: B12002. MARITAL STATUS FOR THE POPULATION 15 YEARS AND OVER  
Data Set: 2008-2012 American Community Survey 5-Year Estimates

**C15002. SEX BY EDUCATIONAL ATTAINMENT FOR THE POPULATION 25 YEARS AND OVER**

Data Set: 2008-2012 American Community Survey 5-Year Estimates

	Talbot County, Georgia					
	African American	Margin of Error (+/-)	% of AA Total	White, Not Hispanic	Margin of Error (+/-)	% of NHW Total
<b>Total:</b>	<b>2,731</b>	<b>83</b>	<b>100.0%</b>	<b>2,066</b>	<b>56</b>	<b>100.0%</b>
Less than high school diploma	779	NC	28.5%	280	NC	13.6%
High school graduate, GED, or alternative	1,324	NC	48.5%	728	NC	35.2%
Some college or associate's degree	482	NC	17.6%	632	NC	30.6%
Bachelor's degree or higher	146	NC	5.3%	426	NC	20.6%
Male:	1,215	61	44.5%	1,076	28	52.1%
Less than high school diploma	332	72	12.2%	161	74	7.8%
High school graduate, GED, or alternative	674	107	24.7%	377	102	18.2%
Some college or associate's degree	187	65	6.8%	298	102	14.4%
Bachelor's degree or higher	22	24	0.8%	240	85	11.6%
Female:	1,516	46	55.5%	990	54	47.9%
Less than high school diploma	447	93	16.4%	119	61	5.8%
High school graduate, GED, or alternative	650	115	23.8%	351	88	17.0%
Some college or associate's degree	295	83	10.8%	334	91	16.2%
Bachelor's degree or higher	124	61	4.5%	186	73	9.0%

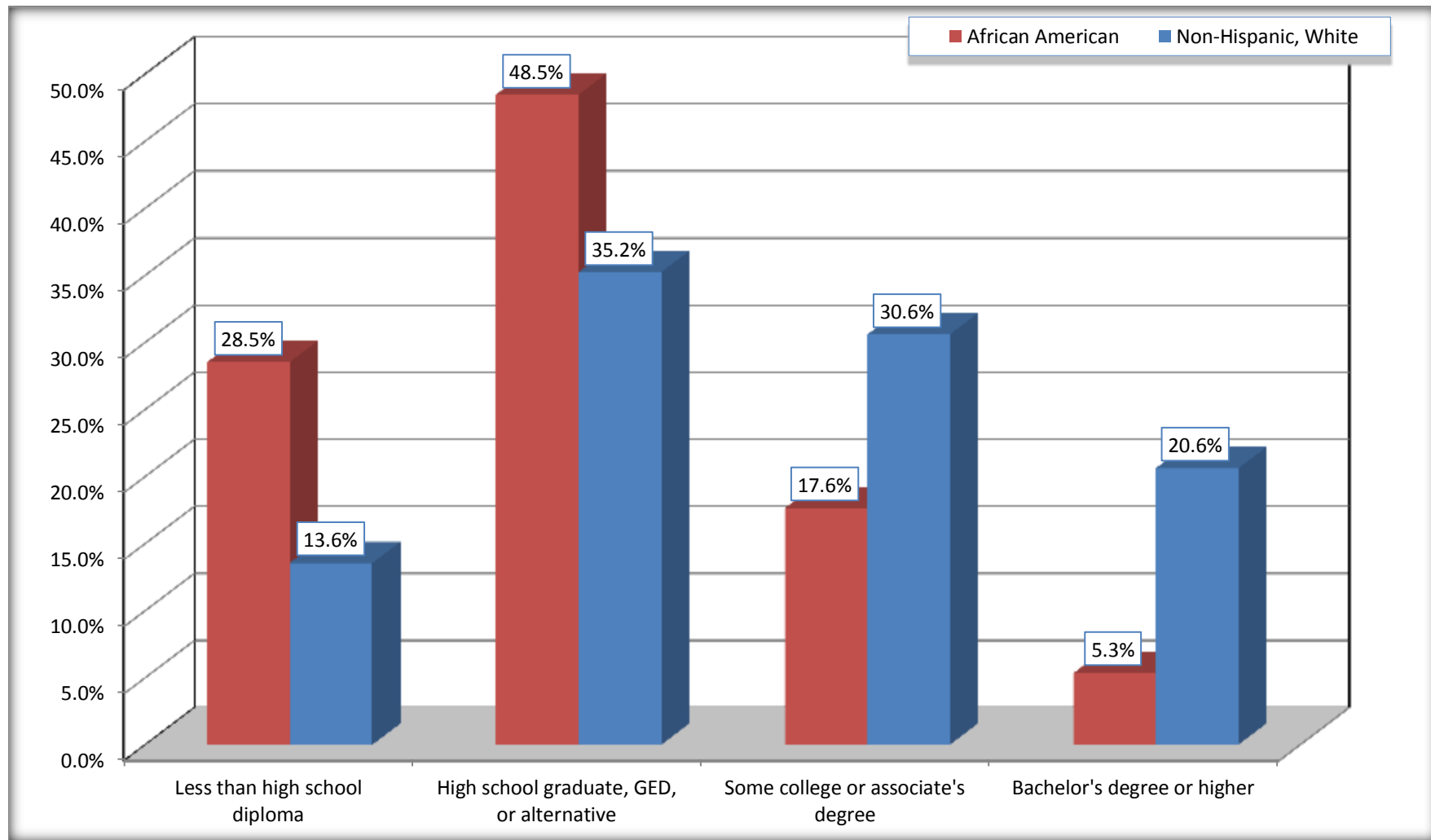
Source: U.S. Census Bureau, 2008-2012 American Community Survey

For information on confidentiality protection, sampling error, nonsampling error, and definitions, see Survey Methodology.

<http://www.census.gov/acs/www/UseData/index.htm>

# Educational Attainment for the Population 25 Years and Older

## Talbot County, Georgia



Source: C15002. SEX BY EDUCATIONAL ATTAINMENT FOR THE POPULATION 25 YEARS AND OVER  
Data Set: 2008-2012 American Community Survey 5-Year Estimates

**B17010. POVERTY STATUS IN THE PAST 12 MONTHS OF FAMILIES BY FAMILY TYPE BY PRESENCE OF RELATED CHILDREN UNDER 18 YEARS**

Data Set: 2008-2012 American Community Survey 5-Year Estimates

	Talbot County, Georgia					
	African American	Margin of Error (+/-)	% of AA Total	White, Not Hispanic	Margin of Error (+/-)	% of NHW Total
<b>Total:</b>	<b>1,050</b>	<b>146</b>	<b>100.0%</b>	<b>771</b>	<b>83</b>	<b>100.0%</b>
Income in the past 12 months below poverty level:	243	96	23.1%	89	55	11.5%
Married-couple family:	72	44	6.9%	50	42	6.5%
With related children under 18 years	65	46	6.2%	23	29	3.0%
Other family:	171	81	16.3%	39	30	5.1%
Male householder, no wife present	37	27	3.5%	17	27	2.2%
With related children under 18 years	14	17	1.3%	17	27	2.2%
Female householder, no husband present	134	71	12.8%	22	27	2.9%
With related children under 18 years	90	52	8.6%	15	25	1.9%
Income in the past 12 months at or above poverty level:	807	130	76.9%	682	88	88.5%
Married-couple family:	397	98	37.8%	573	93	74.3%
With related children under 18 years	144	55	13.7%	172	84	22.3%
Other family:	410	114	39.0%	109	57	14.1%
Male householder, no wife present	66	48	6.3%	55	37	7.1%
With related children under 18 years	38	33	3.6%	46	31	6.0%
Female householder, no husband present	344	108	32.8%	54	43	7.0%
With related children under 18 years	180	76	17.1%	15	22	1.9%

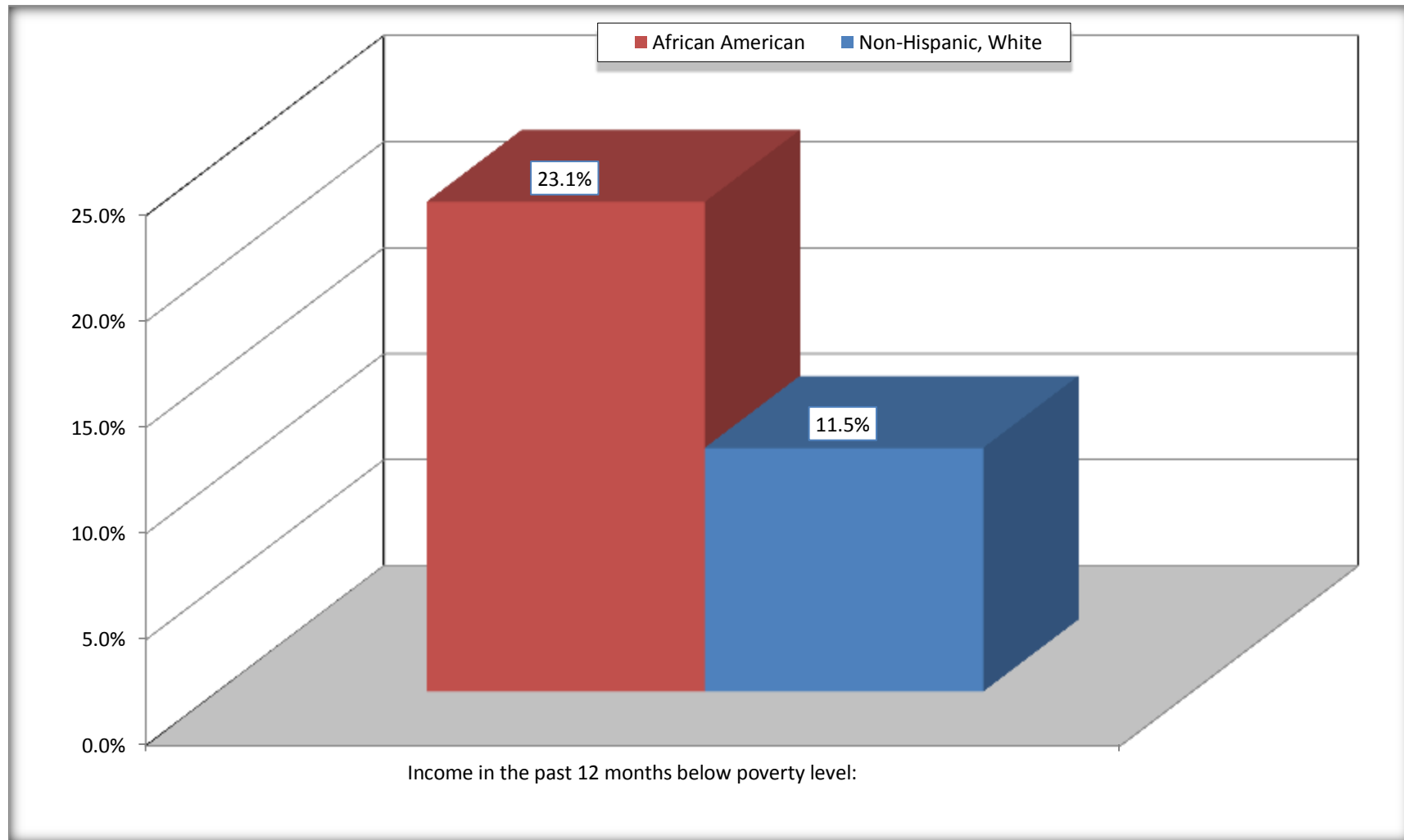
Source: U.S. Census Bureau, 2008-2012 American Community Survey

For information on confidentiality protection, sampling error, nonsampling error, and definitions, see Survey Methodology.

<http://www.census.gov/acs/www/UseData/index.htm>

# Family Households Below Poverty in the Past 12 Months

## Talbot County, Georgia



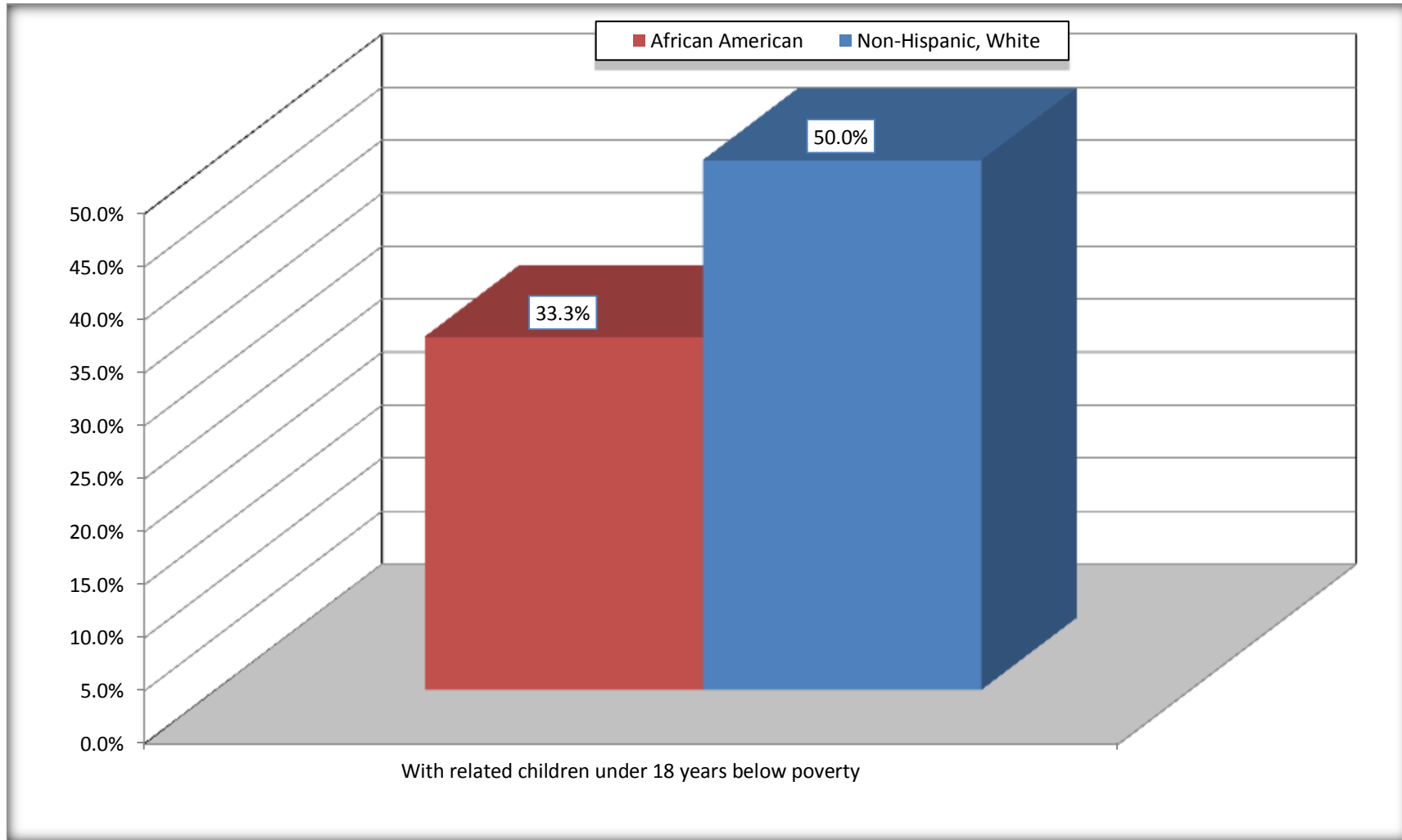
Source: B17010. POVERTY STATUS IN THE PAST 12 MONTHS OF FAMILIES BY FAMILY TYPE BY PRESENCE OF RELATED CHILDREN UNDER 18 YEARS

Data Set: 2008-2012 American Community Survey 5-Year Estimates



# Female-headed Households with Related Children Below Poverty in the Past 12 Months

## Talbot County, Georgia



Source: B17010. POVERTY STATUS IN THE PAST 12 MONTHS OF FAMILIES BY FAMILY TYPE BY PRESENCE OF RELATED CHILDREN UNDER 18 YEARS

Data Set: 2008-2012 American Community Survey 5-Year Estimates

**B17020 POVERTY STATUS IN THE PAST 12 MONTHS BY AGE - Universe: POPULATION FOR WHOM POVERTY STATUS IS DETERMINED**

Data Set: 2008-2012 American Community Survey 5-Year Estimates

	Talbot County, Georgia					
	African American	Margin of Error (+/-)	% of AA By Age	White, Not Hispanic	Margin of Error (+/-)	% of NHW By Age
<b>Total:</b>	<b>4,047</b>	<b>69</b>	<b>100.0%</b>	<b>2,600</b>	<b>11</b>	<b>100.0%</b>
Income in the past 12 months below poverty level:	1,181	313	29.2%	381	184	14.7%
<b>Under 18 years</b>	282	NC	28.6%	62	NC	15.6%
<b>18 to 64 years</b>	712	179	28.5%	233	117	14.1%
<b>65 years and over</b>	187	NC	33.0%	86	NC	15.5%
Income in the past 12 months at or above poverty level:	2,866	320	70.8%	2,219	184	85.3%
<b>Under 18 years</b>	703	NC	71.4%	335	NC	84.4%
<b>18 to 64 years</b>	1,784	192	71.5%	1,416	117	85.9%
<b>65 years and over</b>	379	NC	67.0%	468	NC	84.5%

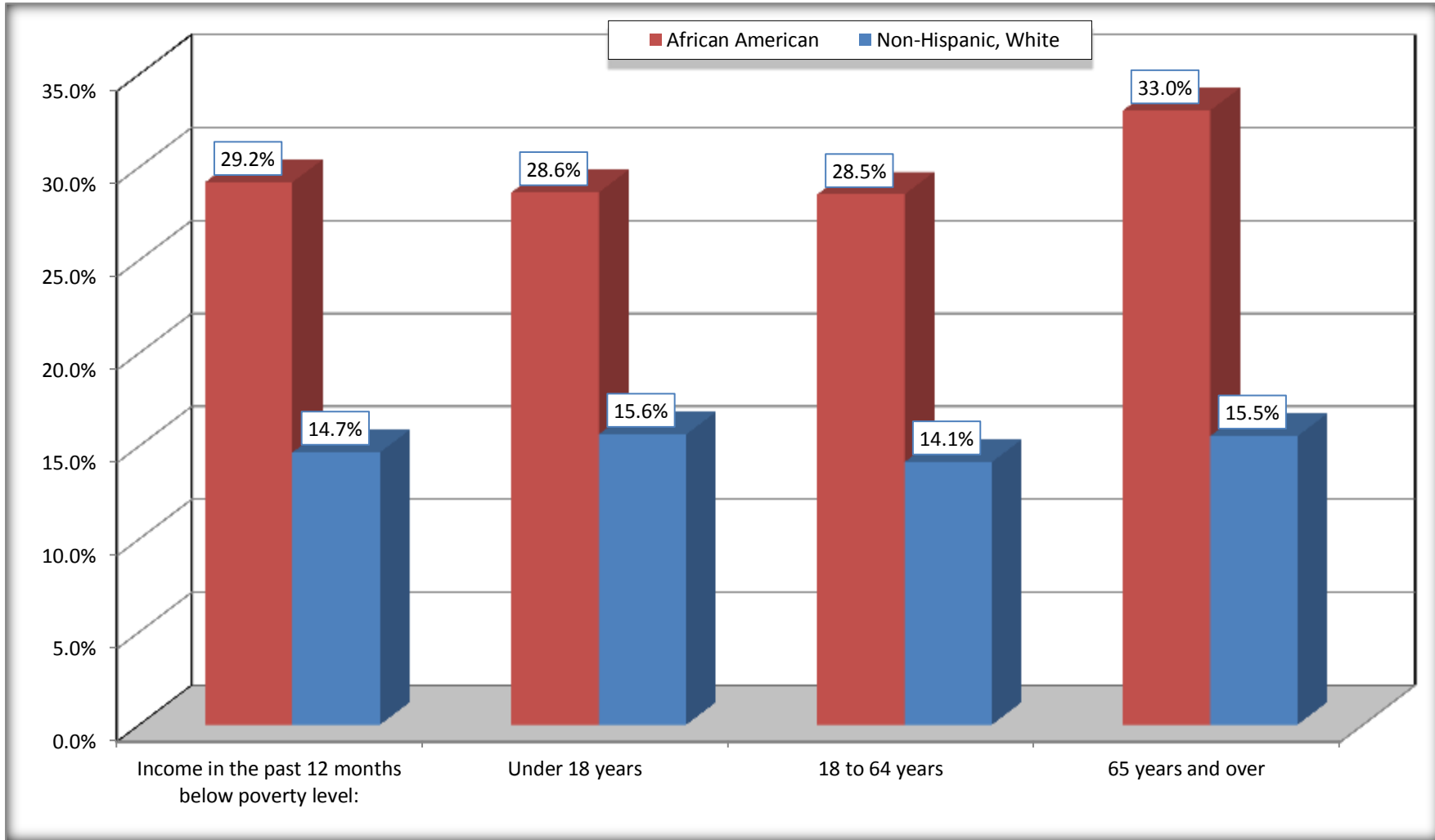
Source: U.S. Census Bureau, 2008-2012 American Community Survey

For information on confidentiality protection, sampling error, nonsampling error, and definitions, see Survey Methodology.

<http://www.census.gov/acs/www/UseData/index.htm>

# Population Below Poverty in the Past 12 Months

## Talbot County, Georgia



Source: B17020 POVERTY STATUS IN THE PAST 12 MONTHS BY AGE - Universe: POPULATION FOR WHOM POVERTY STATUS IS DETERMINED  
Data Set: 2008-2012 American Community Survey 5-Year Estimates

**B19001. HOUSEHOLD INCOME IN THE PAST 12 MONTHS (IN 2010 INFLATION-ADJUSTED DOLLARS)**

Data Set: 2008-2012 American Community Survey 5-Year Estimates

	Talbot County, Georgia					
	African American	Margin of Error (+/-)	% of AA Total	White, Not Hispanic	Margin of Error (+/-)	% of NHW Total
<b>Total:</b>	<b>1,507</b>	<b>129</b>	<b>100.0%</b>	<b>1,144</b>	<b>80</b>	<b>100.0%</b>
Less than \$ 10,000	382	103	25.3%	135	71	11.8%
\$ 10,000 to \$ 14,999	195	76	12.9%	89	46	7.8%
<b>\$ 15,000 to \$ 24,999</b>	312	NC	20.7%	159	NC	13.9%
<b>\$ 25,000 to \$ 34,999</b>	82	NC	5.4%	147	NC	12.8%
<b>\$ 35,000 to \$ 49,999</b>	245	NC	16.3%	134	NC	11.7%
<b>\$ 50,000 to \$ 74,999</b>	156	NC	10.4%	202	NC	17.7%
\$ 75,000 to \$ 99,999	99	57	6.6%	88	58	7.7%
<b>\$ 100,000 to \$ 149,999</b>	22	NC	1.5%	141	NC	12.3%
\$ 150,000 to \$ 199,999	10	17	0.7%	36	35	3.1%
\$ 200,000 or more	4	6	0.3%	13	22	1.1%

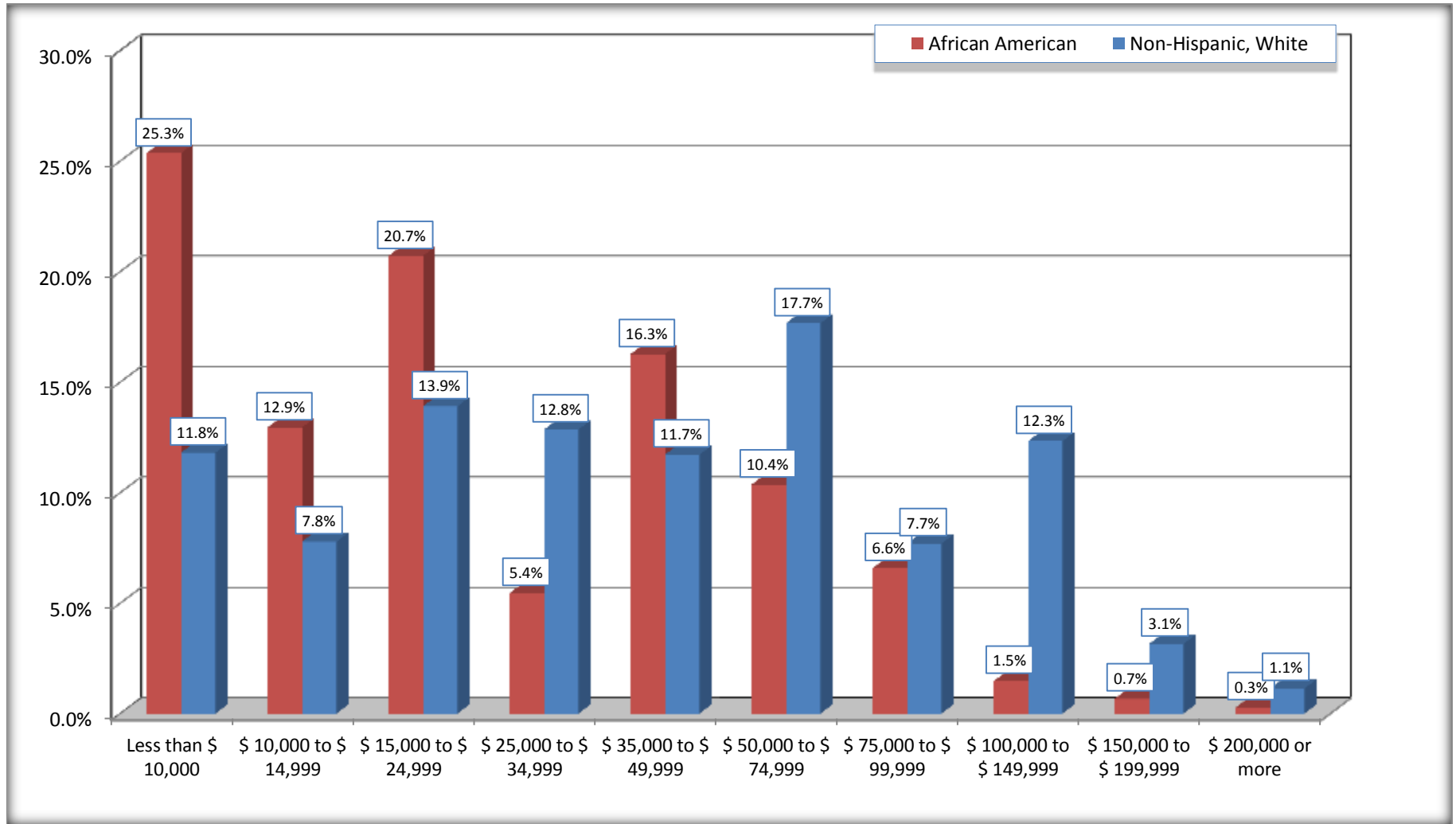
Source: U.S. Census Bureau, 2008-2012 American Community Survey

For information on confidentiality protection, sampling error, nonsampling error, and definitions, see Survey Methodology.

<http://www.census.gov/acs/www/UseData/index.htm>

# Household Income in the Past 12 Months

## Talbot County, Georgia



Source: B19001. HOUSEHOLD INCOME IN THE PAST 12 MONTHS (IN 2010 INFLATION-ADJUSTED DOLLARS)  
Data Set: 2008-2012 American Community Survey 5-Year Estimates

**B19013. MEDIAN HOUSEHOLD INCOME IN THE PAST 12 MONTHS (IN 2010 INFLATION-ADJUSTED DOLLARS)**

Data Set: 2008-2012 American Community Survey 5-Year Estimates

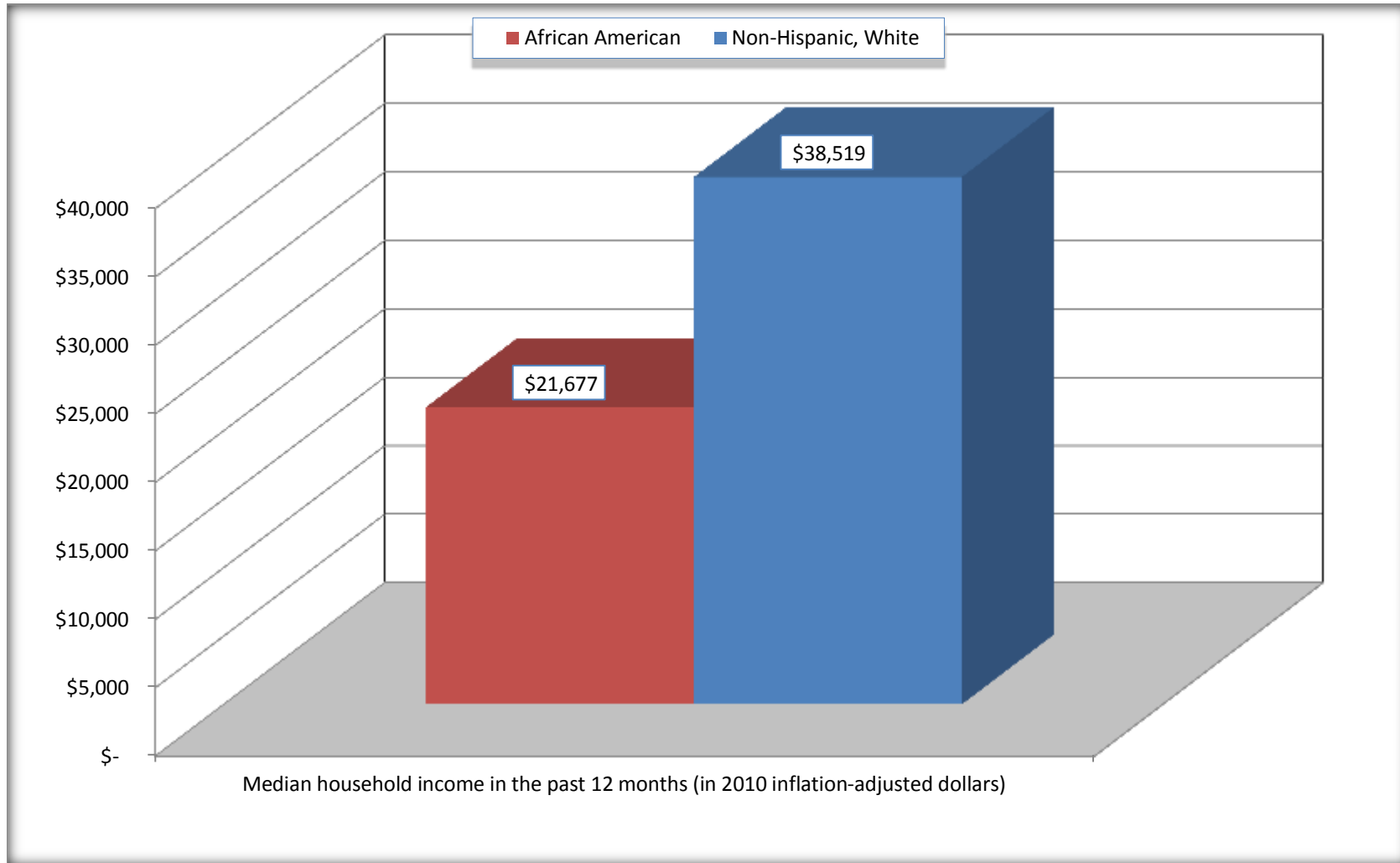
	Talbot County, Georgia			
	African American	Margin of Error (+/-)	White, Not Hispanic	Margin of Error (+/-)
Median household income in the past 12 months (in 2010 inflation-adjusted dollars)	\$ 21,677	\$ 5,054	\$ 38,519	\$ 5,690

Source: U.S. Census Bureau, 2008-2012 American Community Survey

For information on confidentiality protection, sampling error, nonsampling error, and definitions, see Survey Methodology.  
<http://www.census.gov/acs/www/UseData/index.htm>

# Median Household Income in the Past 12 Months

## Talbot County, Georgia



Source: B19013. MEDIAN HOUSEHOLD INCOME IN THE PAST 12 MONTHS (IN 2010 INFLATION-ADJUSTED DOLLARS)  
Data Set: 2008-2012 American Community Survey 5-Year Estimates

**B19101. FAMILY INCOME IN THE PAST 12 MONTHS (IN 2010 INFLATION-ADJUSTED DOLLARS)**

Data Set: 2008-2012 American Community Survey 5-Year Estimates

	Talbot County, Georgia					
	African American	Margin of Error (+/-)	% of AA Total	White, Not Hispanic	Margin of Error (+/-)	% of NHW Total
<b>Total:</b>	<b>1,050</b>	<b>146</b>	<b>100.0%</b>	<b>771</b>	<b>83</b>	<b>100.0%</b>
Less than \$ 10,000	124	76	11.8%	30	33	3.9%
\$ 10,000 to \$ 14,999	146	66	13.9%	36	33	4.7%
<b>\$ 15,000 to \$ 24,999</b>	<b>198</b>	<b>NC</b>	<b>18.9%</b>	<b>73</b>	<b>NC</b>	<b>9.5%</b>
<b>\$ 25,000 to \$ 34,999</b>	<b>87</b>	<b>NC</b>	<b>8.3%</b>	<b>139</b>	<b>NC</b>	<b>18.0%</b>
<b>\$ 35,000 to \$ 49,999</b>	<b>209</b>	<b>NC</b>	<b>19.9%</b>	<b>68</b>	<b>NC</b>	<b>8.8%</b>
<b>\$ 50,000 to \$ 74,999</b>	<b>160</b>	<b>NC</b>	<b>15.2%</b>	<b>185</b>	<b>NC</b>	<b>24.0%</b>
<b>\$ 100,000 to \$ 149,999</b>	<b>22</b>	<b>NC</b>	<b>2.1%</b>	<b>134</b>	<b>NC</b>	<b>17.4%</b>
\$ 150,000 to \$ 199,999	10	17	1.0%	34	36	4.4%
\$ 200,000 or more	4	6	0.4%	13	22	1.7%

Source: U.S. Census Bureau, 2008-2012 American Community Survey

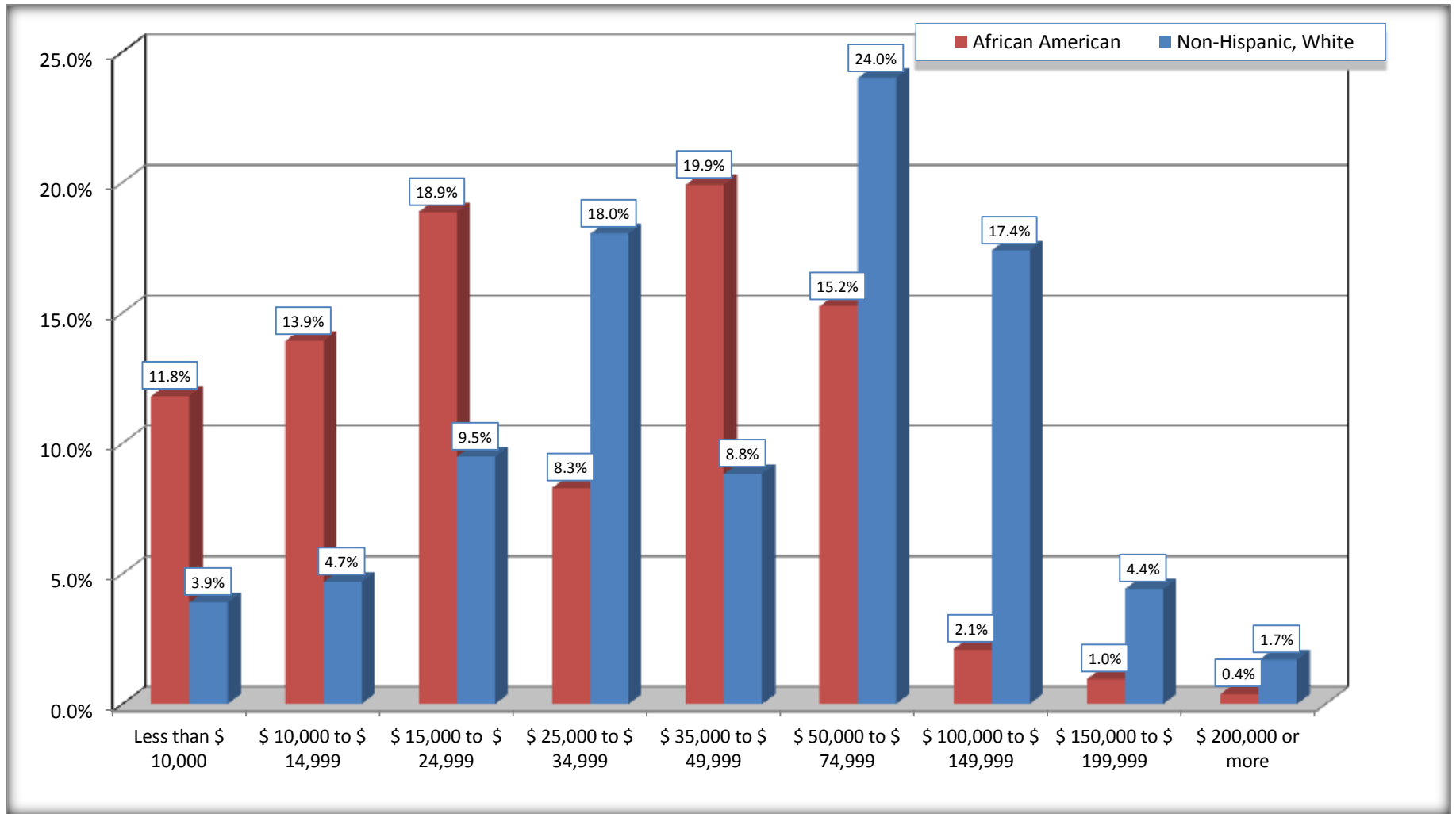
For information on confidentiality protection, sampling error, nonsampling error, and definitions, see Survey Methodology.

<http://www.census.gov/acs/www/UseData/index.htm>



# Family Income in the Past 12 Months

## Talbot County, Georgia



Source: B19101. FAMILY INCOME IN THE PAST 12 MONTHS (IN 2010 INFLATION-ADJUSTED DOLLARS)  
Data Set: 2008-2012 American Community Survey 5-Year Estimates

**B19113. MEDIAN FAMILY INCOME IN THE PAST 12 MONTHS (IN 2010 INFLATION-ADJUSTED DOLLARS)**

Data Set: 2008-2012 American Community Survey 5-Year Estimates

	<b>Talbot County, Georgia</b>			
	African American	Margin of Error (+/-)	White, Not Hispanic	Margin of Error (+/-)
Median family income in the past 12 months (in 2010 inflation-adjusted dollars)	\$ 33,125	\$ 8,940	\$ 54,047	\$ 9,457

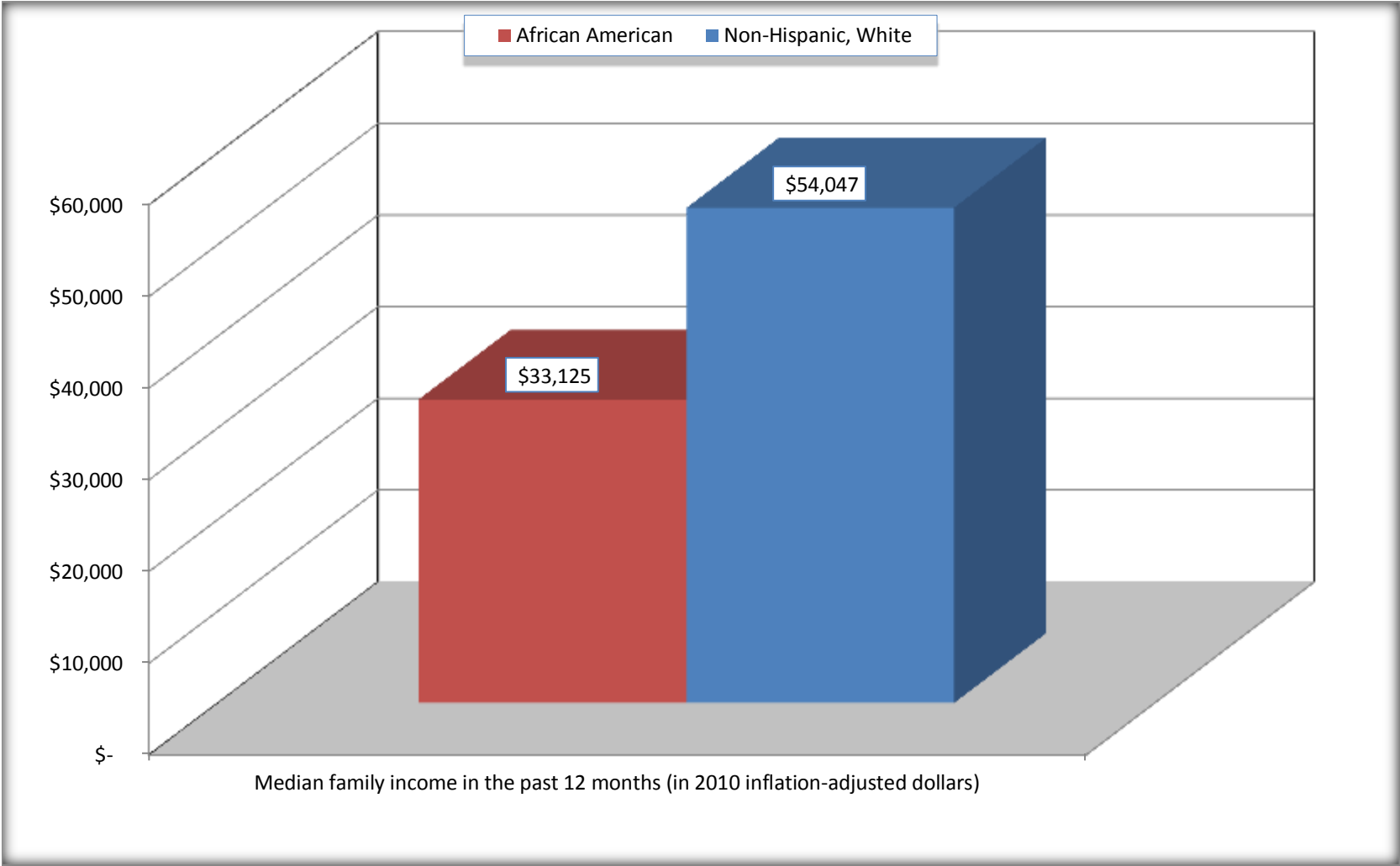
Source: U.S. Census Bureau, 2008-2012 American Community Survey

For information on confidentiality protection, sampling error, nonsampling error, and definitions, see Survey Methodology.

<http://www.census.gov/acs/www/UseData/index.htm>

# Median Family Income in the Past 12 Months

## Talbot County, Georgia



Source: B19113. MEDIAN FAMILY INCOME IN THE PAST 12 MONTHS (IN 2010 INFLATION-ADJUSTED DOLLARS)  
Data Set: 2008-2012 American Community Survey 5-Year Estimates

**B19202. MEDIAN NONFAMILY HOUSEHOLD INCOME IN THE PAST 12 MONTHS (IN 2010 INFLATION-ADJUSTED DOLLARS)**

Data Set: 2008-2012 American Community Survey 5-Year Estimates

	Talbot County, Georgia			
	African American	Margin of Error (+/-)	White, Not Hispanic	Margin of Error (+/-)
Median nonfamily household income in the past 12 months (in 2010 inflation-adjusted dollars)	\$ 9,163	\$ 1,397	\$ 16,738	\$ 4,818

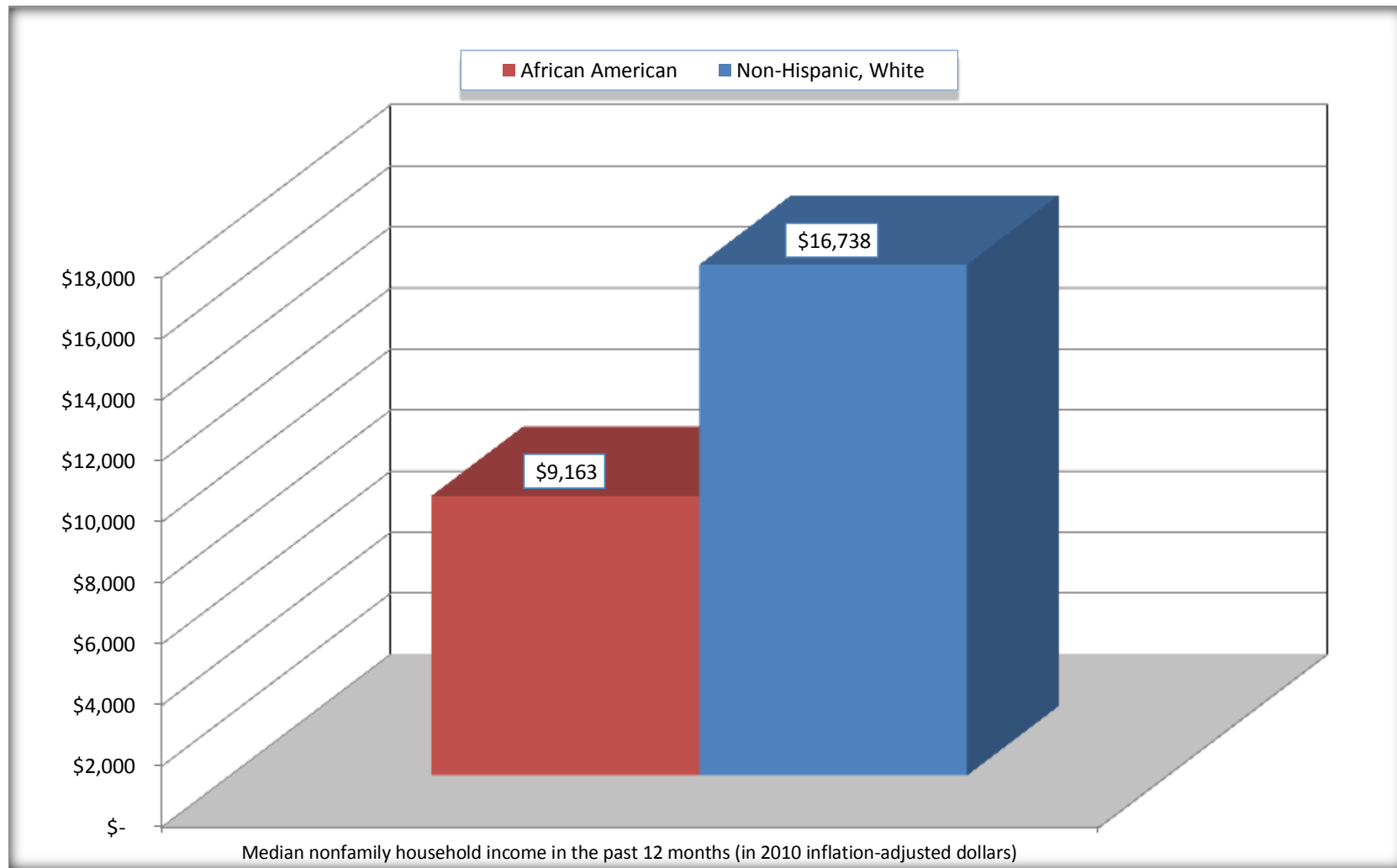
Source: U.S. Census Bureau, 2008-2012 American Community Survey

For information on confidentiality protection, sampling error, nonsampling error, and definitions, see Survey Methodology.

<http://www.census.gov/acs/www/UseData/index.htm>

# Median Non-Family Income in the Past 12 Months

## Talbot County, Georgia



Source: B19202. MEDIAN NONFAMILY HOUSEHOLD INCOME IN THE PAST 12 MONTHS (IN 2010 INFLATION-ADJUSTED DOLLARS)  
Data Set: 2008-2012 American Community Survey 5-Year Estimates

**B19301. PER CAPITA INCOME IN THE PAST 12 MONTHS (IN 2010 INFLATION-ADJUSTED DOLLARS)**

Data Set: 2008-2012 American Community Survey 5-Year Estimates

	Talbot County, Georgia			
	African American	Margin of Error (+/-)	White, Not Hispanic	Margin of Error (+/-)
Per capita income in the past 12 months (in 2010 inflation-adjusted dollars)	\$ 11,885	\$ 1,356	\$ 24,200	\$ 3,541

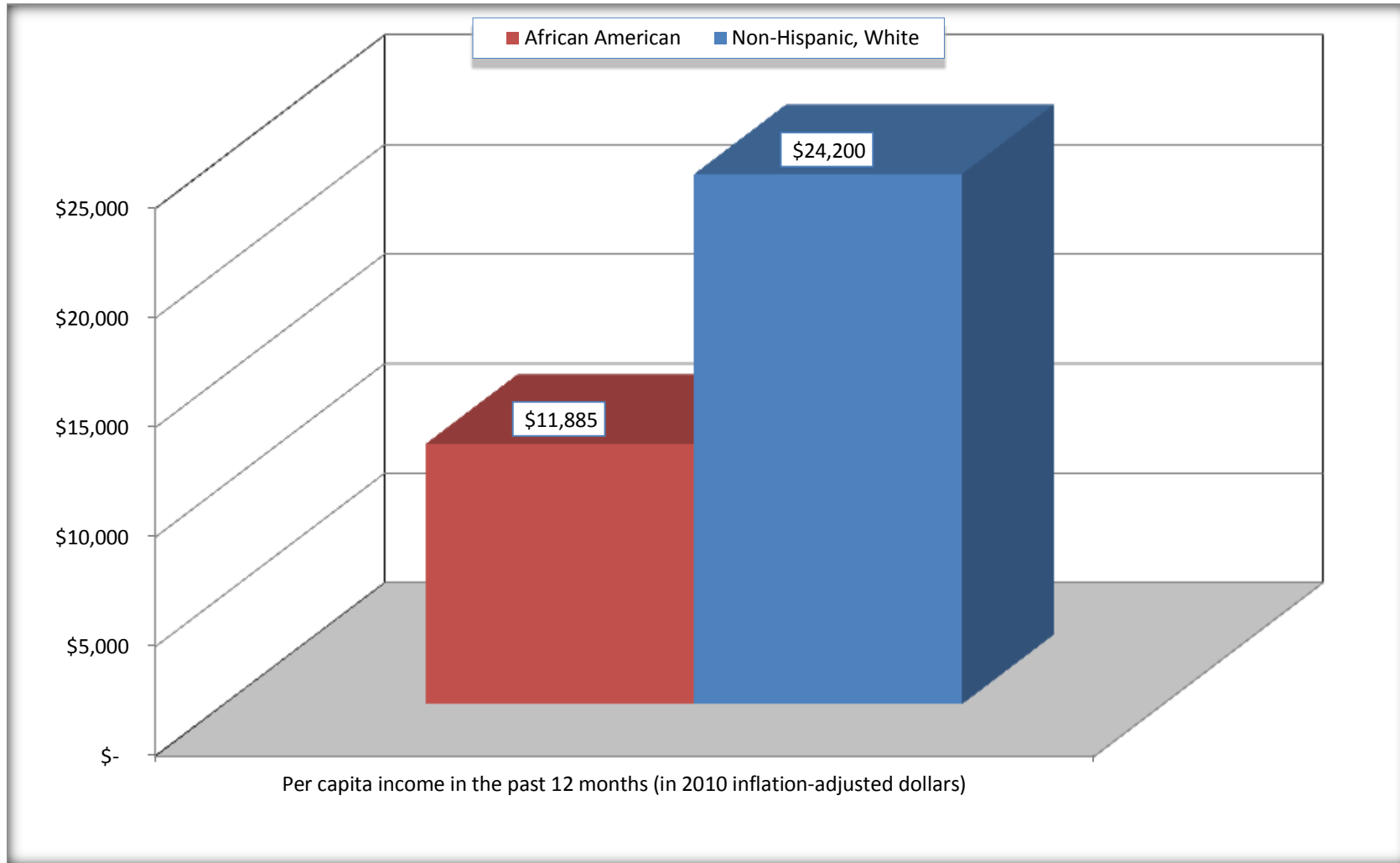
Source: U.S. Census Bureau, 2008-2012 American Community Survey

For information on confidentiality protection, sampling error, nonsampling error, and definitions, see Survey Methodology.

<http://www.census.gov/acs/www/UseData/index.htm>

## Per capita Income in the Past 12 Months

### Talbot County, Georgia



Source: B19301. PER CAPITA INCOME IN THE PAST 12 MONTHS (IN 2010 INFLATION-ADJUSTED DOLLARS)  
Data Set: 2008-2012 American Community Survey 5-Year Estimates

**B20017. MEDIAN EARNINGS IN THE PAST 12 MONTHS (IN 2010 INFLATION-ADJUSTED DOLLARS) BY SEX BY WORK EXPERIENCE IN THE PAST 12 MONTHS FOR THE POPULATION 16 YEARS AND OVER WITH EARNINGS IN THE PAST 12 MONTHS**

Data Set: 2008-2012 American Community Survey 5-Year Estimates

	Talbot County, Georgia			
	African American	Margin of Error (+/-)	White, Not Hispanic	Margin of Error (+/-)
Median earnings in the past 12 months (in 2010 inflation-adjusted dollars) --				
Total:	\$ 18,732	\$ 1,800	\$ 32,179	\$ 4,574
Male --				
Total	\$ 21,419	\$ 6,182	\$ 30,758	\$ 6,463
Worked full-time, year-round in the past 12 months	\$ 33,203	\$ 6,797	\$ 46,108	\$ 3,985
Other	\$ 10,417	\$ 5,477	\$ 13,382	\$ 5,331
Female --				
Total	\$ 17,989	\$ 1,375	\$ 34,361	\$ 7,389
Worked full-time, year-round in the past 12 months	\$ 19,942	\$ 5,941	\$ 39,202	\$ 4,144
Other	\$ 8,493	\$ 1,925	\$ 11,080	\$ 13,360

Source: U.S. Census Bureau, 2008-2012 American Community Survey

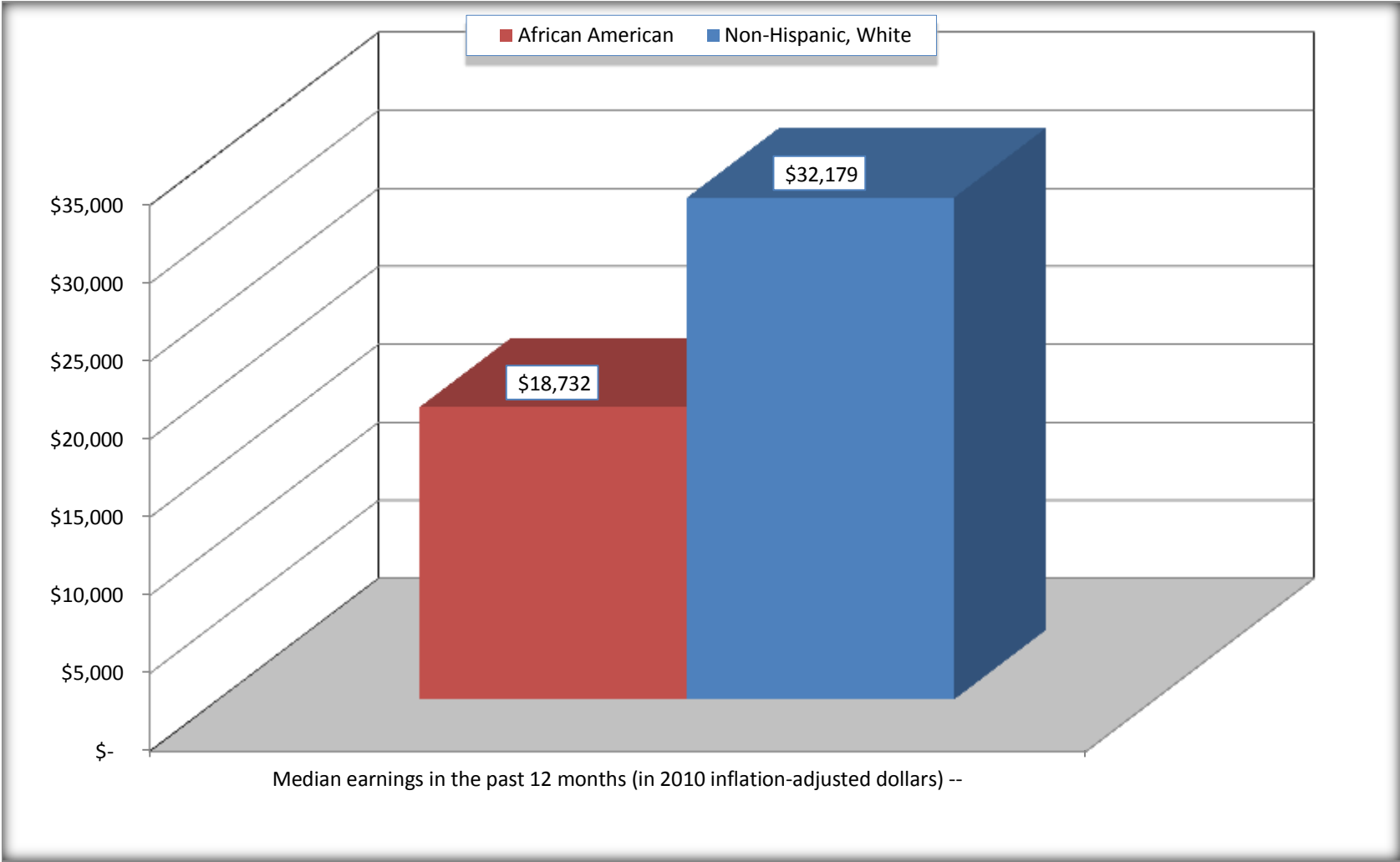
For information on confidentiality protection, sampling error, nonsampling error, and definitions, see Survey Methodology.

<http://www.census.gov/acs/www/UseData/index.htm>



# Median earnings in the Past 12 Months (16 Years and Over with Earnings)

## Talbot County, Georgia



Source: B20017. MEDIAN EARNINGS IN THE PAST 12 MONTHS (IN 2010 INFLATION-ADJUSTED DOLLARS) BY SEX BY WORK EXPERIENCE IN THE PAST 12 MONTHS FOR THE POPULATION 16 YEARS AND OVER WITH EARNINGS IN THE PAST 12 MONTHS  
Data Set: 2008-2012 American Community Survey 5-Year Estimates

**B20005. SEX BY WORK EXPERIENCE IN THE PAST 12 MONTHS BY EARNINGS IN THE PAST 12 MONTHS (IN 2010 INFLATION-ADJUSTED DOLLARS) FOR THE POPULATION 16 YEARS AND OVER**

Data Set: 2008-2012 American Community Survey 5-Year Estimates

	Talbot County, Georgia					
	African American	Margin of Error (+/-)	% of AA Total	White, Not Hispanic	Margin of Error (+/-)	% of NHW Total
<b>Total:</b>	<b>3,237</b>	<b>54</b>	<b>100.0%</b>	<b>2,256</b>	<b>42</b>	<b>100.0%</b>
Worked full-time, year-round in the past 12 months:	865	NC	26.7%	823	NC	36.5%
No earnings	0	NC	0.0%	0	NC	0.0%
With earnings:	865	NC	26.7%	823	NC	36.5%
\$ 1 to \$ 9,999 or loss	25	NC	0.8%	63	NC	2.8%
\$ 10,000 to \$ 19,999	306	NC	9.5%	12	NC	0.5%
\$ 20,000 to \$ 29,999	147	NC	4.5%	113	NC	5.0%
\$ 30,000 to \$ 49,999	306	NC	9.5%	387	NC	17.2%
\$ 50,000 to \$ 74,999	67	NC	2.1%	128	NC	5.7%
\$ 75,000 or more	14	NC	0.4%	120	NC	5.3%
Other:	2,372	NC	73.3%	1,433	NC	63.5%
No earnings	1,828	NC	56.5%	926	NC	41.0%
With earnings: less than full time, year-round	544	NC	16.8%	507	NC	22.5%
Male:	1,482	47	45.8%	1,140	26	50.5%
Worked full-time, year-round in the past 12 months:	408	87	12.6%	431	114	19.1%
No earnings	0	19	0.0%	0	19	0.0%
With earnings:	408	87	12.6%	431	114	19.1%
\$ 1 to \$ 9,999 or loss	2	NC	0.1%	19	NC	0.8%
\$ 10,000 to \$ 19,999	98	NC	3.0%	12	NC	0.5%
\$ 20,000 to \$ 29,999	78	NC	2.4%	31	NC	1.4%
\$ 30,000 to \$ 49,999	185	NC	5.7%	208	NC	9.2%
\$ 50,000 to \$ 74,999	36	NC	1.1%	66	NC	2.9%
\$ 75,000 or more	9	NC	0.3%	95	NC	4.2%

	Talbot County, Georgia					
	African American	Margin of Error (+/-)	% of AA Total	White, Not Hispanic	Margin of Error (+/-)	% of NHW Total
Other:	1,074	86	33.2%	709	115	31.4%
No earnings	852	121	26.3%	407	80	18.0%
With earnings:	222	83	6.9%	302	95	13.4%
Female:	1,755	37	54.2%	1,116	29	49.5%
Worked full-time, year-round in the past 12 months:	457	100	14.1%	392	107	17.4%
No earnings	0	19	0.0%	0	19	0.0%
With earnings:	457	100	14.1%	392	107	17.4%
\$ 1 to \$ 9,999 or loss	23	NC	0.7%	44	NC	2.0%
\$ 10,000 to \$ 19,999	208	NC	6.4%	0	NC	0.0%
\$ 20,000 to \$ 29,999	69	NC	2.1%	82	NC	3.6%
\$ 30,000 to \$ 49,999	121	NC	3.7%	179	NC	7.9%
\$ 50,000 to \$ 74,999	31	NC	1.0%	62	NC	2.7%
\$ 75,000 or more	5	NC	0.2%	25	NC	1.1%
Other:	1,298	99	40.1%	724	108	32.1%
No earnings	976	111	30.2%	519	99	23.0%
With earnings:	322	79	9.9%	205	80	9.1%

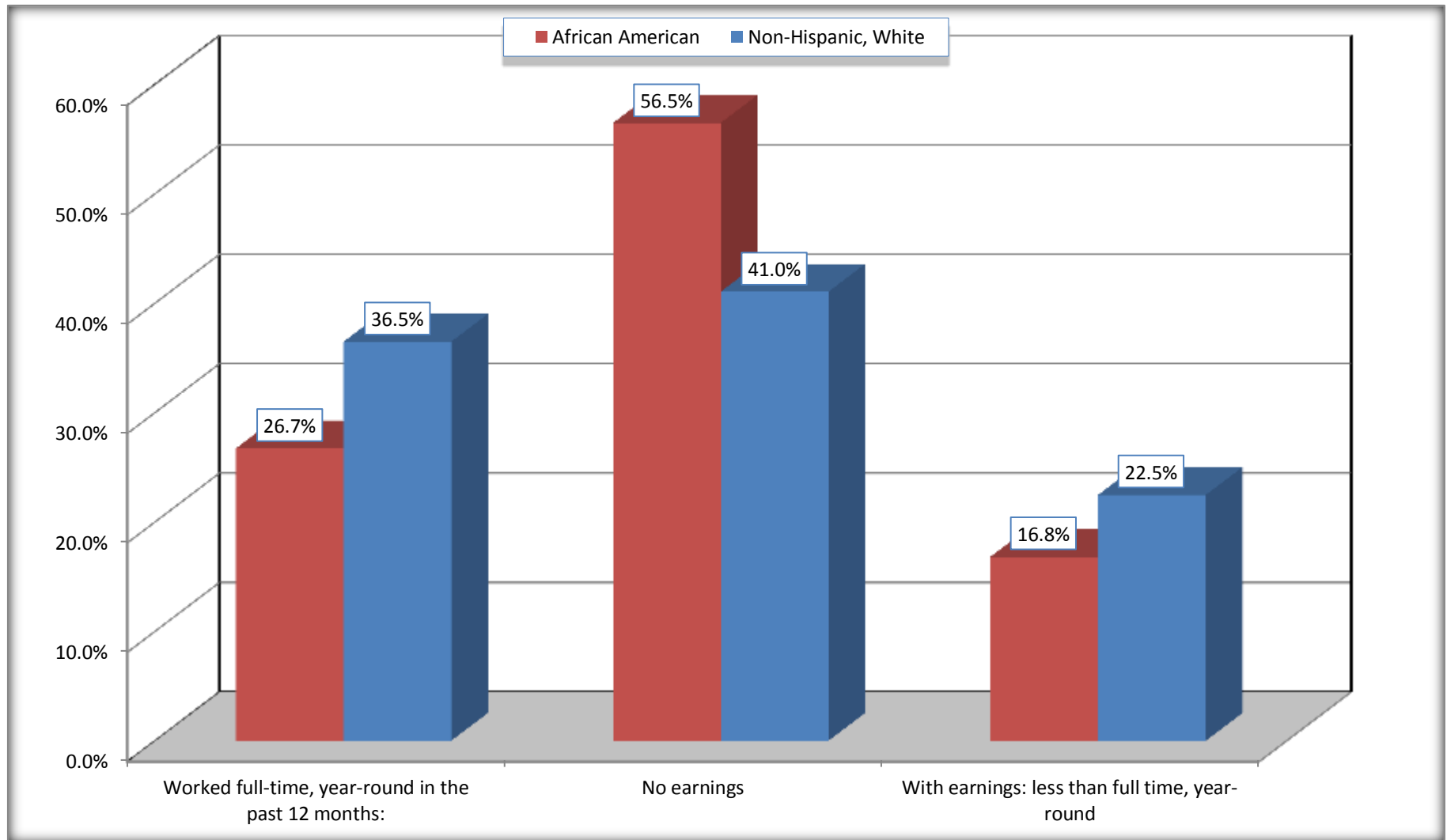
Source: U.S. Census Bureau, 2008-2012 American Community Survey

For information on confidentiality protection, sampling error, nonsampling error, and definitions, see Survey Methodology.

<http://www.census.gov/acs/www/UseData/index.htm>

# Employment and Earnings in in the Past 12 Months (16 Years and Over)

## Talbot County, Georgia



Source: B20005. SEX BY WORK EXPERIENCE IN THE PAST 12 MONTHS BY EARNINGS IN THE PAST 12 MONTHS (IN 2010 INFLATION-ADJUSTED DOLLARS) FOR THE POPULATION 16 YEARS AND OVER

Data Set: 2008-2012 American Community Survey 5-Year Estimates

**C21001. SEX BY AGE BY VETERAN STATUS FOR THE CIVILIAN POPULATION 18 YEARS AND OVER**

Data Set: 2008-2012 American Community Survey 5-Year Estimates

	Talbot County, Georgia					
	African American	Margin of Error (+/-)	% of AA Total	White, Not Hispanic	Margin of Error (+/-)	% of NHW Total
<b>Total:</b>	<b>3,051</b>	<b>62</b>	<b>100.0%</b>	<b>2,205</b>	<b>10</b>	<b>100.0%</b>
Veteran	265	NC	8.7%	298	NC	13.5%
Nonveteran	2,786	NC	91.3%	1,907	NC	86.5%
Male:	1,322	47	43.3%	1,115	10	50.6%
18 to 64 years:	1,119	47	36.7%	850	19	38.5%
Veteran	61	39	2.0%	133	62	6.0%
Nonveteran	1,058	60	34.7%	717	62	32.5%
65 years and over:	203	19	6.7%	265	10	12.0%
Veteran	100	44	3.3%	131	55	5.9%
Nonveteran	103	44	3.4%	134	56	6.1%
Female:	1,729	27	56.7%	1,090	19	49.4%
18 to 64 years:	1,366	27	44.8%	801	19	36.3%
Veteran	104	73	3.4%	34	37	1.5%
Nonveteran	1,262	78	41.4%	767	37	34.8%
65 years and over:	363	19	11.9%	289	19	13.1%
Veteran	0	19	0.0%	0	19	0.0%
Nonveteran	363	19	11.9%	289	19	13.1%

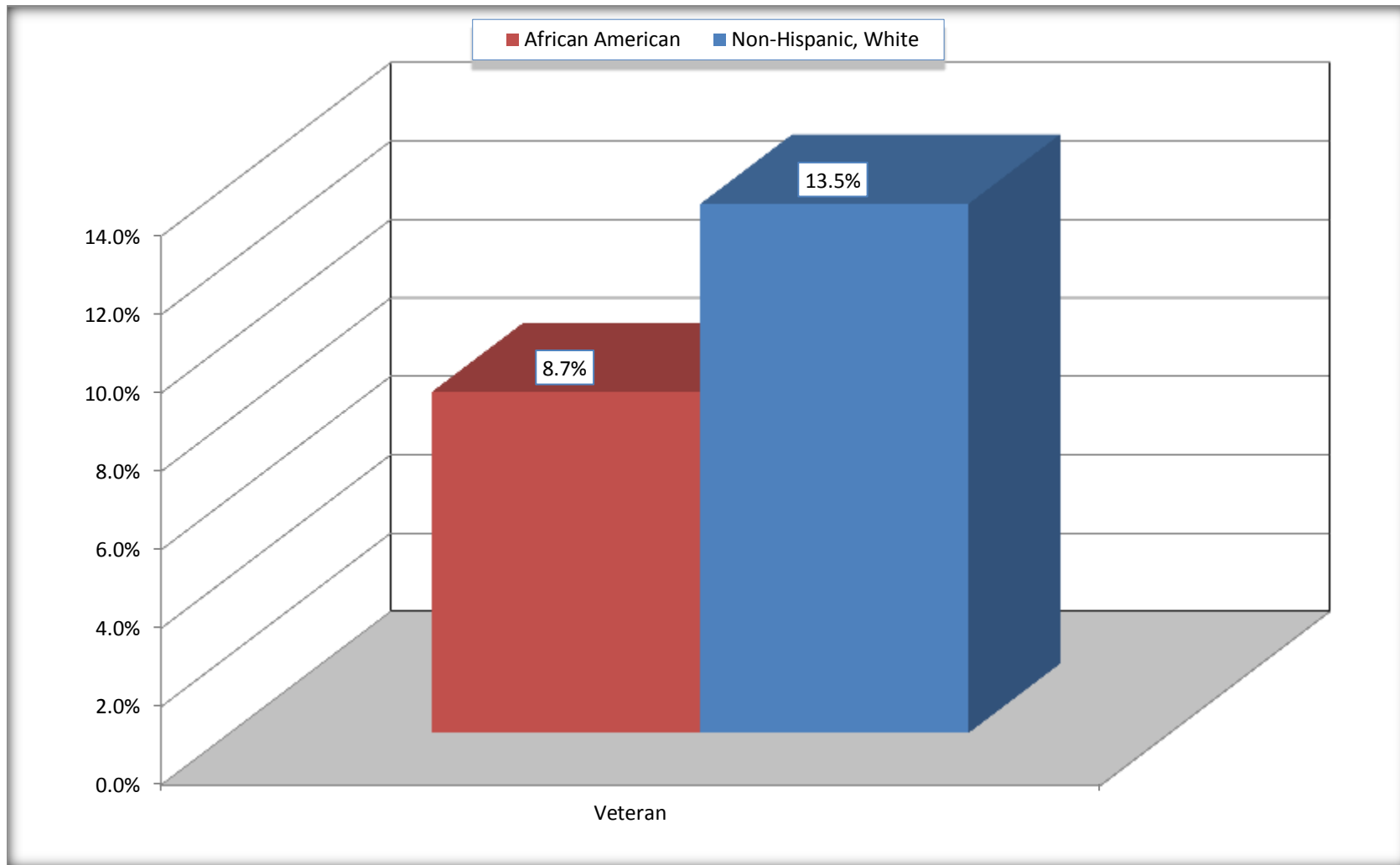
Source: U.S. Census Bureau, 2008-2012 American Community Survey

For information on confidentiality protection, sampling error, nonsampling error, and definitions, see Survey Methodology.

<http://www.census.gov/acs/www/UseData/index.htm>

# Veterans in the Civilian Population 18 Years and Over

## Talbot County, Georgia



Source: C21001. SEX BY AGE BY VETERAN STATUS FOR THE CIVILIAN POPULATION 18 YEARS AND OVER  
Data Set: 2008-2012 American Community Survey 5-Year Estimates

**B22005. RECEIPT OF FOOD STAMPS/SNAP IN THE PAST 12 MONTHS BY RACE OF HOUSEHOLDER**

Data Set: 2008-2012 American Community Survey 5-Year Estimates

	Talbot County, Georgia					
	African American	Margin of Error (+/-)	% of AA Total	White, Not Hispanic	Margin of Error (+/-)	% of NHW Total
<b>Total:</b>	<b>1,507</b>	<b>129</b>	<b>100.0%</b>	<b>1,144</b>	<b>80</b>	<b>100.0%</b>
HH received Food Stamps/SNAP in the past 12 months	471	128	31.3%	103	79	9.0%
HH did not receive Food Stamps/SNAP in the past 12 months	1,036	127	68.7%	1,041	101	91.0%

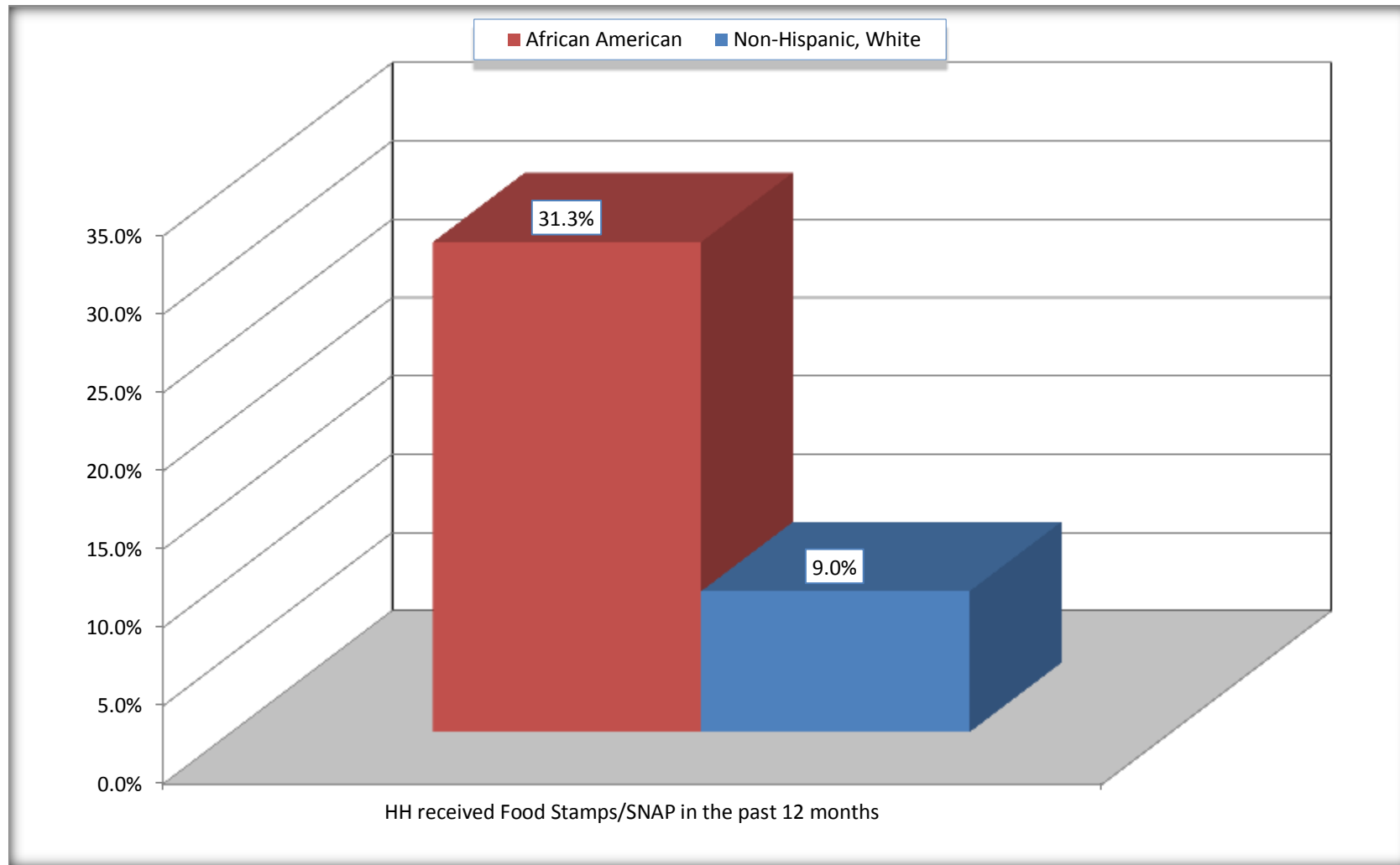
Source: U.S. Census Bureau, 2008-2012 American Community Survey

For information on confidentiality protection, sampling error, nonsampling error, and definitions, see Survey Methodology.

<http://www.census.gov/acs/www/UseData/index.htm>

# Receipt of Food Stamps/SNAP in the Past 12 Months by Household

## Talbot County, Georgia



Source: B22005. RECEIPT OF FOOD STAMPS/SNAP IN THE PAST 12 MONTHS BY RACE OF HOUSEHOLDER  
Data Set: 2008-2012 American Community Survey 5-Year Estimates



**C23002. SEX BY AGE BY EMPLOYMENT STATUS FOR THE POPULATION 16 YEARS AND OVER**

Data Set: 2008-2012 American Community Survey 5-Year Estimates

	Talbot County, Georgia					
	African American	Margin of Error (+/-)	% of AA Total	White, Not Hispanic	Margin of Error (+/-)	% of NHW Total
<b>Total:</b>	<b>3,237</b>	<b>54</b>	<b>100.0%</b>	<b>2,256</b>	<b>42</b>	<b>100.0%</b>
In labor force:	1,487	NC	45.9%	1,314	NC	58.2%
In Armed Forces	33	NC	1.0%	0	NC	0.0%
Civilian:	1,446	NC	44.7%	1,252	NC	55.5%
Employed	1,129	NC	34.9%	1,201	NC	53.2%
Unemployed	325	NC	10.0%	113	NC	5.0%
Not in labor force	1,750	NC	54.1%	942	NC	41.8%
Male:	1,482	47	45.8%	1,140	26	50.5%
16 to 64 years:	1,279	47	39.5%	875	24	38.8%
In labor force:	697	112	21.5%	661	82	29.3%
In Armed Forces	33	32	1.0%	0	19	0.0%
Civilian:	664	112	20.5%	661	82	29.3%
Employed	442	92	13.7%	582	93	25.8%
Unemployed	222	91	6.9%	79	46	3.5%
Not in labor force	582	107	18.0%	214	84	9.5%
65 years and over:	203	19	6.3%	265	10	11.7%
In labor force:	8	12	0.2%	53	36	2.3%
Employed	8	12	0.2%	48	36	2.1%
Unemployed	0	19	0.0%	5	8	0.2%
Not in labor force	195	12	6.0%	212	36	9.4%

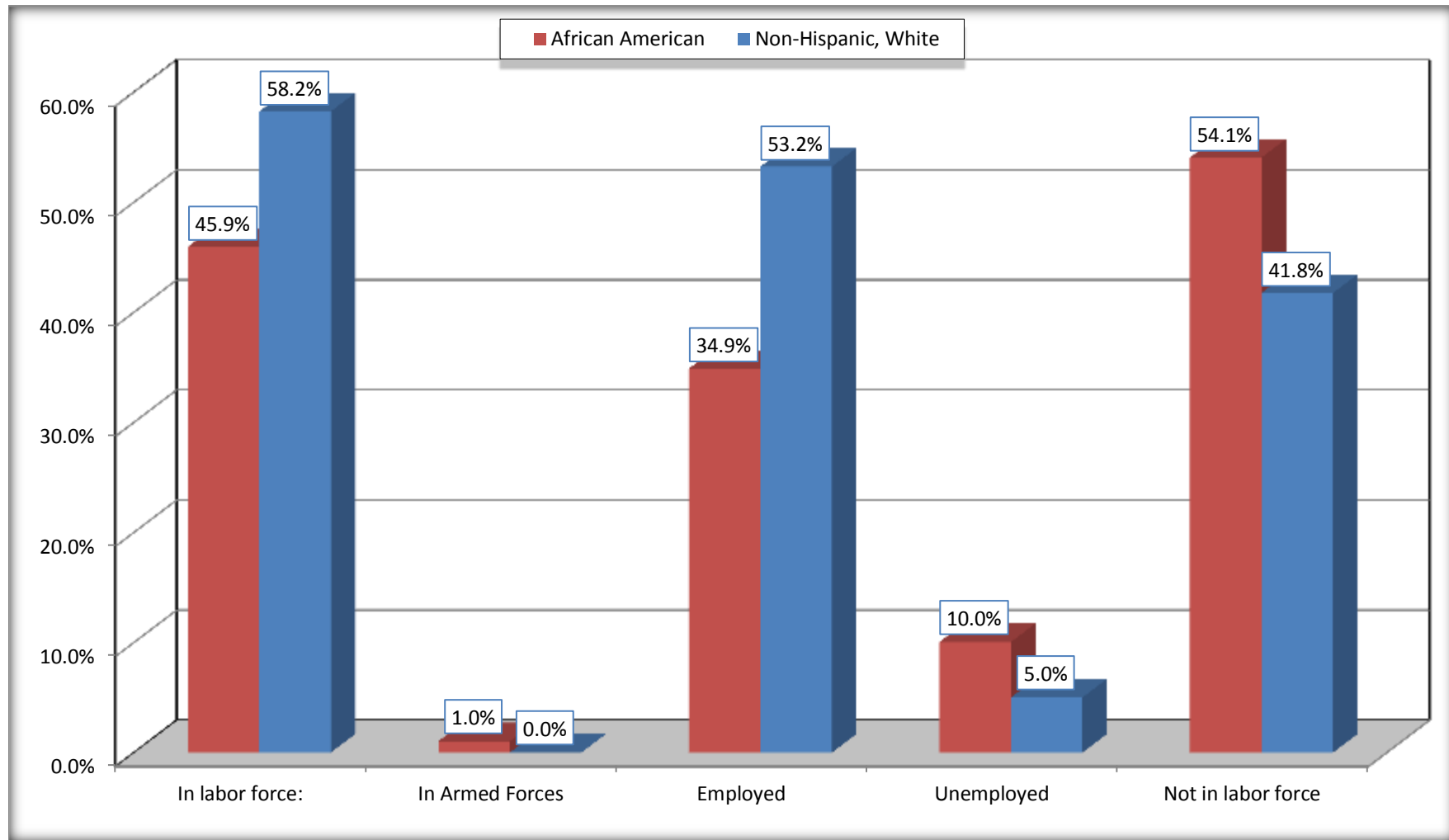
	Talbot County, Georgia					
	African American	Margin of Error (+/-)	% of AA Total	White, Not Hispanic	Margin of Error (+/-)	% of NHW Total
Female:	1,755	37	54.2%	1,116	29	49.5%
16 to 64 years:	1,392	37	43.0%	827	29	36.7%
In labor force:	782	117	24.2%	591	99	26.2%
In Armed Forces	0	19	0.0%	0	19	0.0%
Civilian:	782	117	24.2%	591	99	26.2%
Employed	679	120	21.0%	562	101	24.9%
Unemployed	103	51	3.2%	29	39	1.3%
Not in labor force	610	107	18.8%	236	98	10.5%
65 years and over:	363	19	11.2%	289	19	12.8%
In labor force:	0	19	0.0%	9	16	0.4%
Employed	0	19	0.0%	9	16	0.4%
Unemployed	0	19	0.0%	0	19	0.0%
Not in labor force	363	19	11.2%	280	16	12.4%

Source: U.S. Census Bureau, 2008-2012 American Community Survey

For information on confidentiality protection, sampling error, nonsampling error, and definitions, see Survey Methodology.  
<http://www.census.gov/acs/www/UseData/index.htm>

# Employment Status for the Population 16 years and over

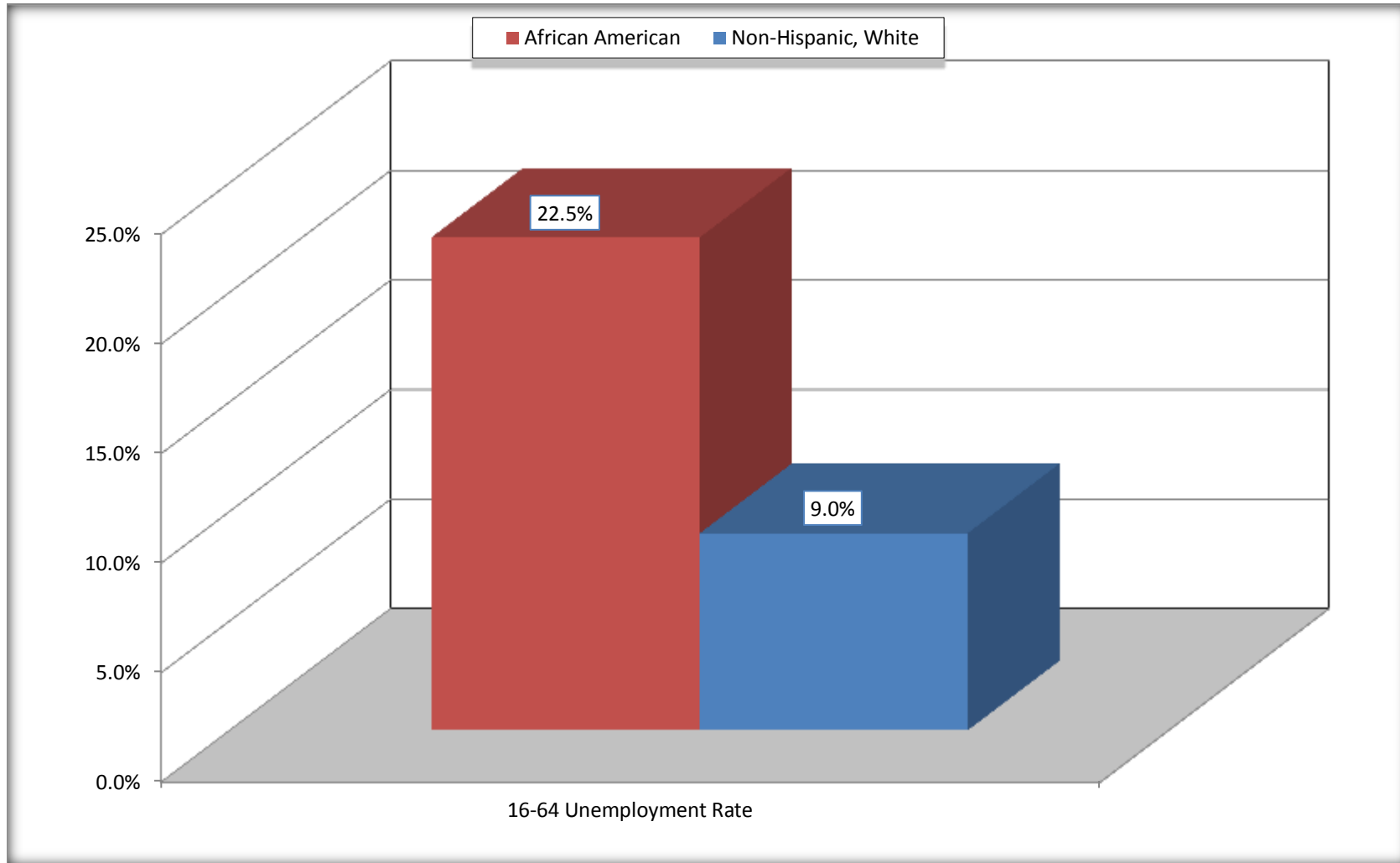
## Talbot County, Georgia



Source: C23002. SEX BY AGE BY EMPLOYMENT STATUS FOR THE POPULATION 16 YEARS AND OVER  
Data Set: 2008-2012 American Community Survey 5-Year Estimates

# Unemployment of Working Age Population (Ages 16 to 64) (As a Percent of 16-64 Civilian Labor Force)

## Talbot County, Georgia



Source: C23002. SEX BY AGE BY EMPLOYMENT STATUS FOR THE POPULATION 16 YEARS AND OVER  
Data Set: 2008-2012 American Community Survey 5-Year Estimates

**C24010. SEX BY OCCUPATION FOR THE CIVILIAN EMPLOYED POPULATION 16 YEARS AND OVER**

Data Set: 2008-2012 American Community Survey 5-Year Estimates

	Talbot County, Georgia					
	African American	Margin of Error (+/-)	% of AA Total	White, Not Hispanic	Margin of Error (+/-)	% of NHW Total
<b>Total:</b>	<b>1,129</b>	<b>156</b>	<b>100.0%</b>	<b>1,201</b>	<b>149</b>	<b>100.0%</b>
Management, professional, and related occupations	212	NC	18.8%	402	NC	33.5%
Service occupations	279	NC	24.7%	177	NC	14.7%
Sales and office occupations	156	NC	13.8%	308	NC	25.6%
Natural resources, construction, and maintenance occupations:	145	NC	12.8%	95	NC	7.9%
Production, transportation, and material moving occupations	337	NC	29.8%	219	NC	18.2%
Male:	450	93	39.9%	630	100	52.5%
Management, business, science, and arts occupations:	30	30	2.7%	140	71	11.7%
Service occupations	49	37	4.3%	81	72	6.7%
Sales and office occupations	37	33	3.3%	135	78	11.2%
Natural resources, construction, and maintenance occupations:	130	70	11.5%	95	41	7.9%
Production, transportation, and material moving occupations	204	81	18.1%	179	84	14.9%
Female:	679	120	60.1%	571	102	47.5%
Management, professional, and related occupations	182	89	16.1%	262	80	21.8%
Service occupations	230	87	20.4%	96	72	8.0%
Sales and office occupations	119	59	10.5%	173	62	14.4%
Natural resources, construction, and maintenance occupations:	15	14	1.3%	0	19	0.0%
Production, transportation, and material moving occupations	133	69	11.8%	40	44	3.3%

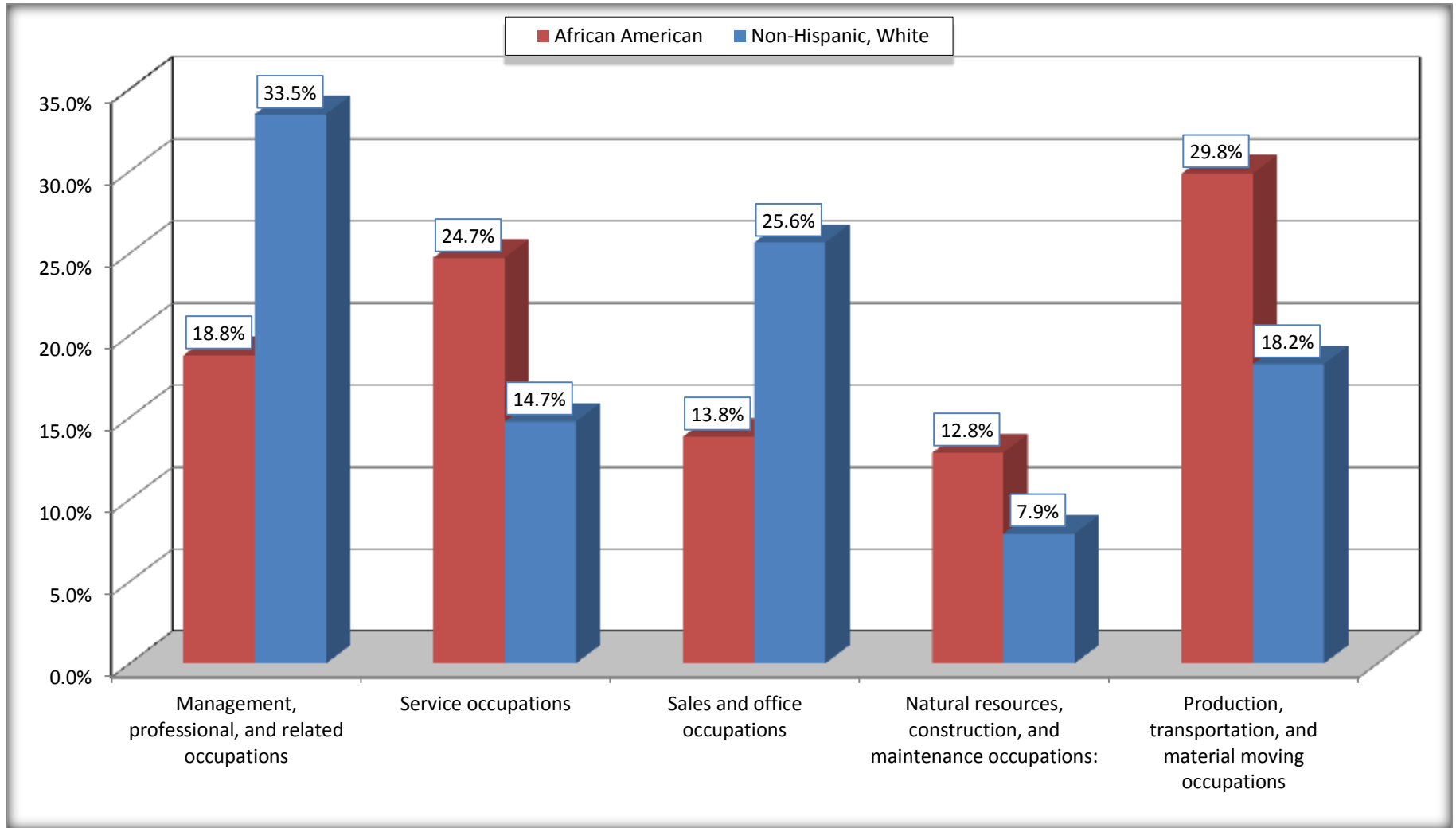
Source: U.S. Census Bureau, 2008-2012 American Community Survey

For information on confidentiality protection, sampling error, nonsampling error, and definitions, see Survey Methodology.

<http://www.census.gov/acs/www/UseData/index.htm>

# Occupation for the Civilian Employed 16 Years and Over Population

## Talbot County, Georgia



Source: C24010. SEX BY OCCUPATION FOR THE CIVILIAN EMPLOYED POPULATION 16 YEARS AND OVER  
Data Set: 2008-2012 American Community Survey 5-Year Estimates

**B25003. TENURE - Universe: OCCUPIED HOUSING UNITS**

Data Set: 2008-2012 American Community Survey 5-Year Estimates

	Talbot County, Georgia					
	African American	Margin of Error (+/-)	% of AA Total	White, Not Hispanic	Margin of Error (+/-)	% of NHW Total
<b>Total:</b>	<b>1,507</b>	<b>129</b>	<b>100.0%</b>	<b>1,144</b>	<b>80</b>	<b>100.0%</b>
Owner occupied	1,091	126	72.4%	964	92	84.3%
Renter occupied	416	107	27.6%	180	81	15.7%

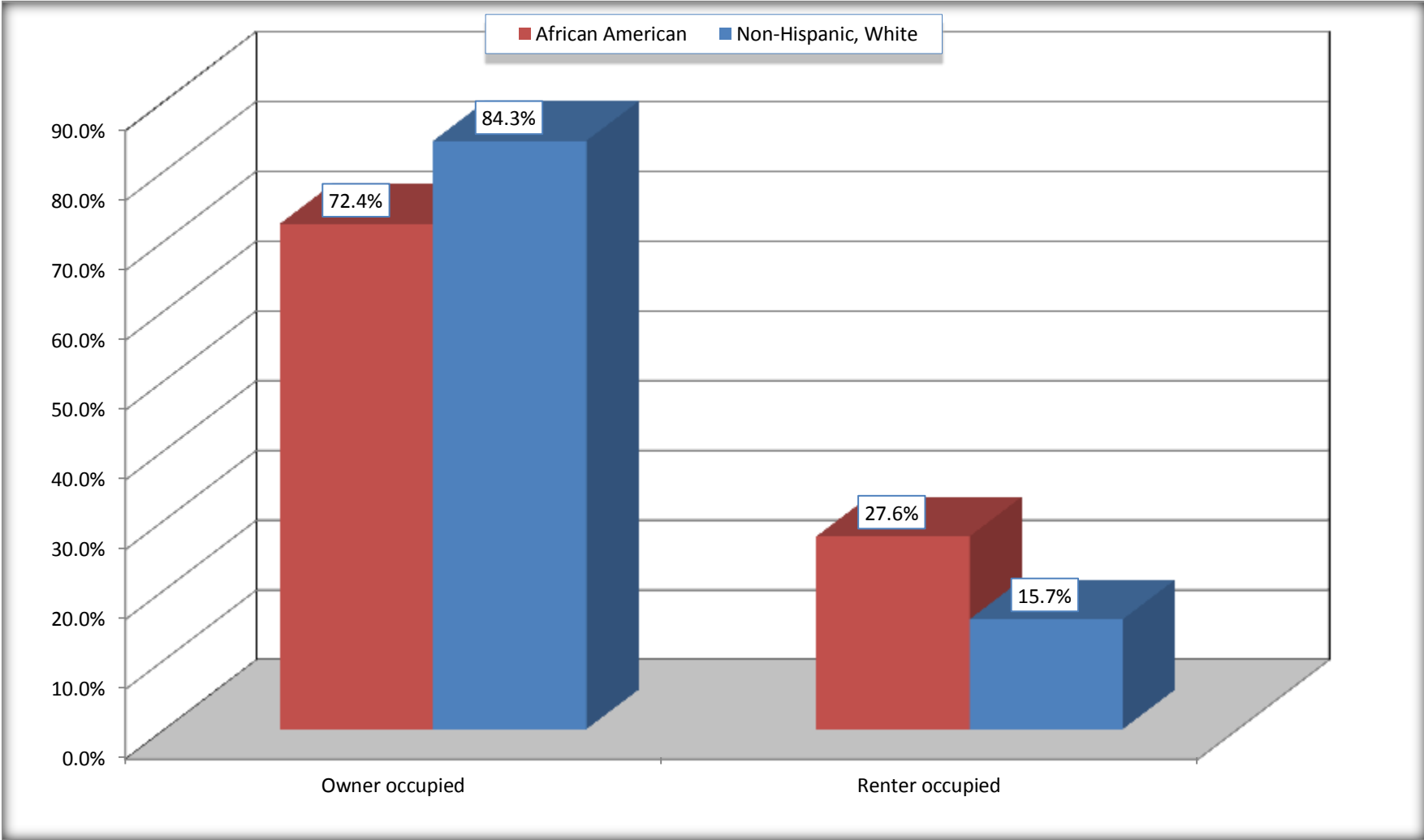
Source: U.S. Census Bureau, 2008-2012 American Community Survey

For information on confidentiality protection, sampling error, nonsampling error, and definitions, see Survey Methodology.

<http://www.census.gov/acs/www/UseData/index.h>

# Home Owners and Renters by Household

## Talbot County, Georgia



Source: B25003. TENURE - Universe: OCCUPIED HOUSING UNITS  
Data Set: 2008-2012 American Community Survey 5-Year Estimates



**B25014. OCCUPANTS PER ROOM - Universe: OCCUPIED HOUSING UNITS**

Data Set: 2008-2012 American Community Survey 5-Year Estimates

	Talbot County, Georgia					
	African American	Margin of Error (+/-)	% of AA Total	White, Not Hispanic	Margin of Error (+/-)	% of NHW Total
<b>Total:</b>	<b>1,507</b>	<b>129</b>	<b>100.0%</b>	<b>1,144</b>	<b>80</b>	<b>100.0%</b>
1.00 or less occupants per room	1,469	132	97.5%	1,144	80	100.0%
1.01 or more occupants per room	38	34	2.5%	0	19	0.0%

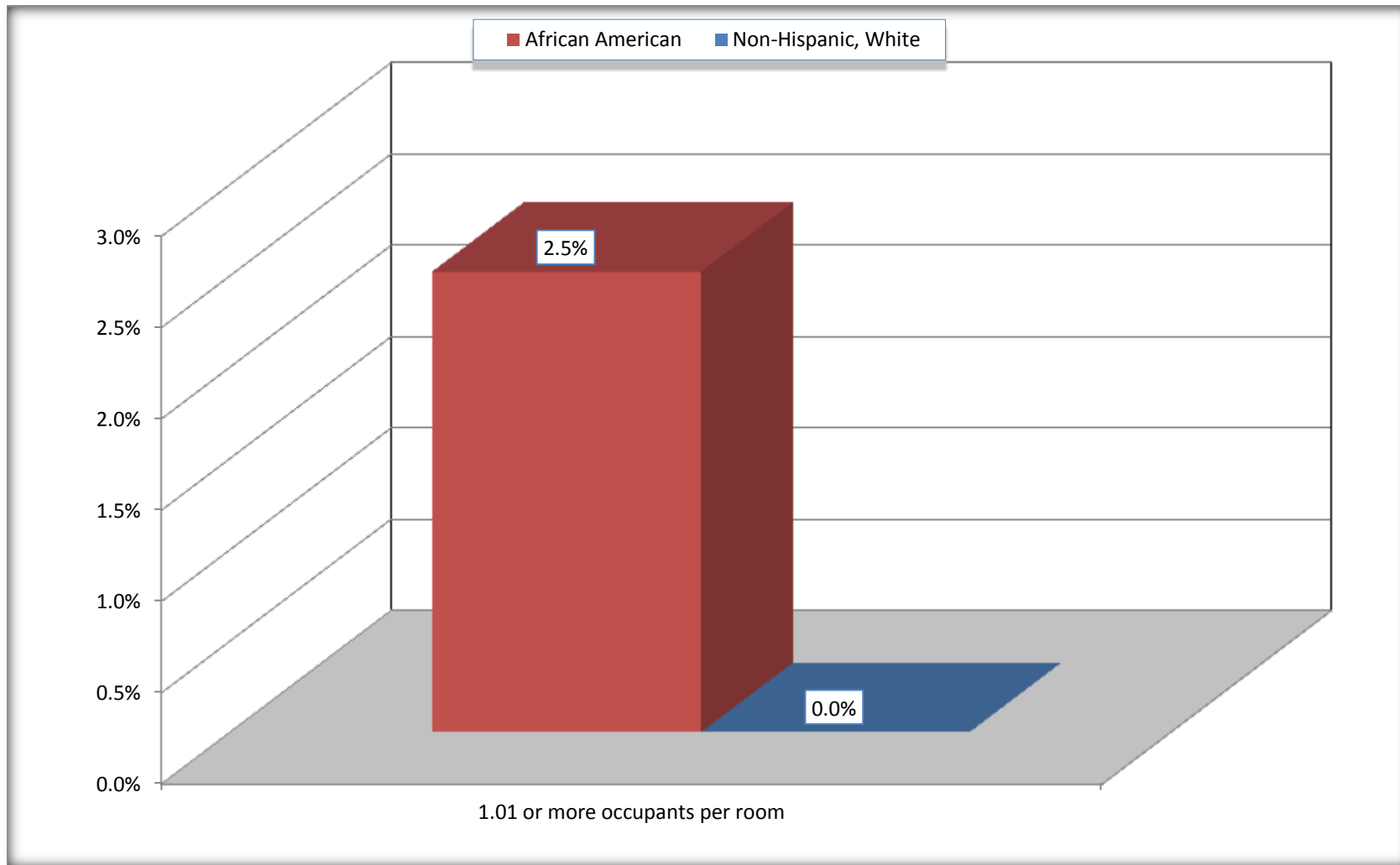
Source: U.S. Census Bureau, 2008-2012 American Community Survey

For information on confidentiality protection, sampling error, nonsampling error, and definitions, see Survey Methodology.

<http://www.census.gov/acs/www/UseData/index.ht>

# More than One Person per Room (Crowding) by Household

## Talbot County, Georgia



Source: B25014. OCCUPANTS PER ROOM - Universe: OCCUPIED HOUSING UNITS  
Data Set: 2008-2012 American Community Survey 5-Year Estimates

**B18101. AGE BY DISABILITY STATUS**

Data Set: 2008-2012 American Community Survey 5-Year Estimates

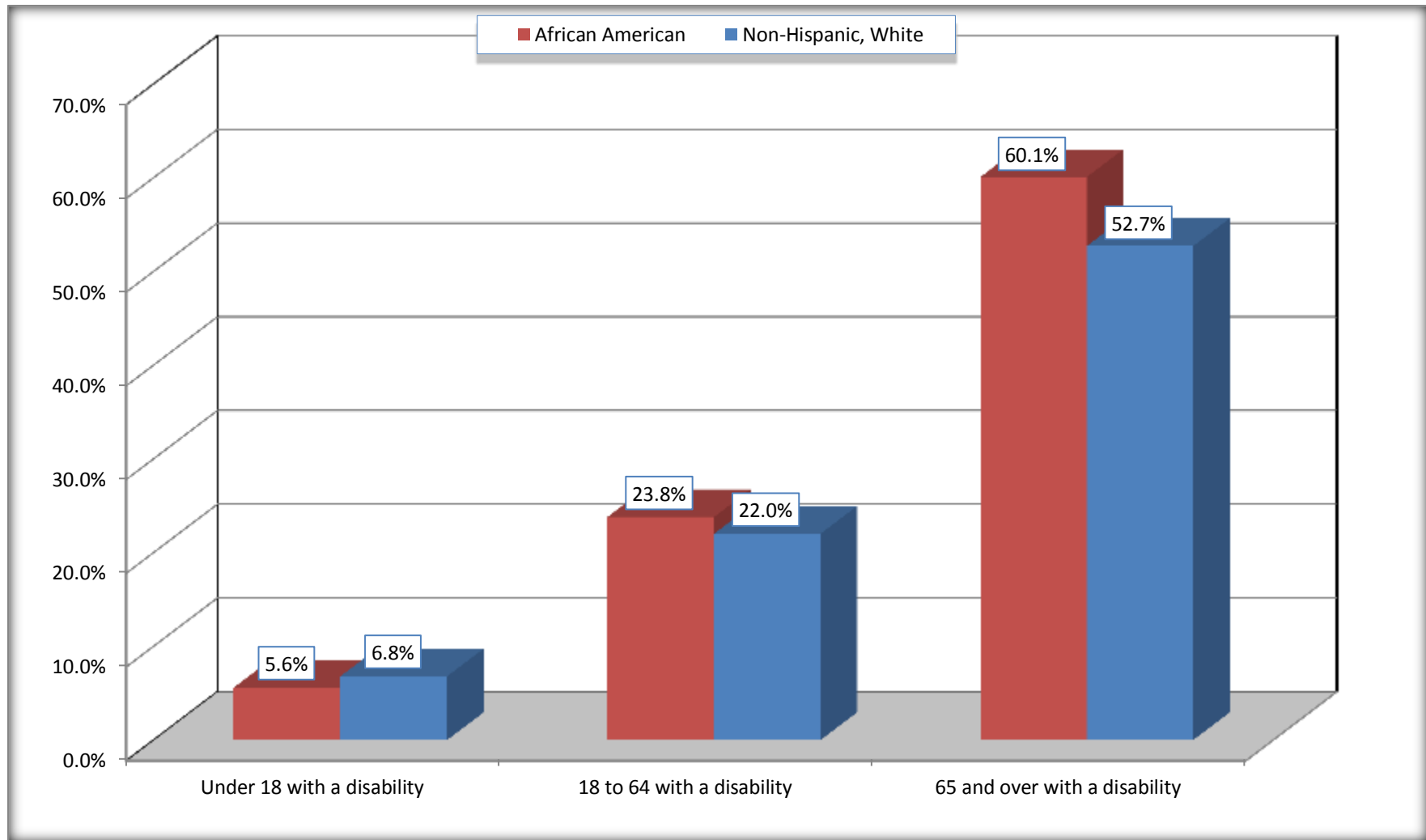
	Talbot County, Georgia					
	African American	Margin of Error (+/-)	% of AA Total	White, Not Hispanic	Margin of Error (+/-)	% of NHW Total
<b>Total:</b>	<b>4,014</b>	<b>81</b>	<b>100.0%</b>	<b>2,600</b>	<b>11</b>	<b>100.0%</b>
Under 18 years:	985	24	24.5%	397	27	15.3%
With a disability	55	37	1.4%	27	33	1.0%
No disability	930	45	23.2%	370	33	14.2%
18 to 64 years:	2,463	67	61.4%	1,649	4	63.4%
With a disability	586	147	14.6%	363	135	14.0%
No disability	1,877	157	46.8%	1,286	135	49.5%
65 years and over:	566	19	14.1%	554	10	21.3%
With a disability	340	90	8.5%	292	69	11.2%
No disability	226	90	5.6%	262	70	10.1%

Source: U.S. Census Bureau, 2008-2012 American Community Survey

For information on confidentiality protection, sampling error, nonsampling error, and definitions, see Survey Methodology.

<http://www.census.gov/acs/www/UseData/index.htm>

## Disability by Age Talbot County, Georgia



Source: B18101. AGE BY DISABILITY STATUS  
Data Set: 2008-2012 American Community Survey 5-Year Estimates

**C27001B. HEALTH INSURANCE COVERAGE STATUS BY AGE**

Data Set: 2008-2012 American Community Survey 5-Year Estimates

	Talbot County, Georgia					
	African American	Margin of Error (+/-)	% of AA Total	White, Not Hispanic	Margin of Error (+/-)	% of NHW Total
<b>Total:</b>	<b>4,014</b>	<b>81</b>	<b>100.0%</b>	<b>2,600</b>	<b>11</b>	<b>100.0%</b>
Under 18 years:	985	24	24.5%	397	19	15.3%
With health insurance coverage	946	43	23.6%	370	37	14.2%
No health insurance coverage	39	35	1.0%	27	37	1.0%
18 to 64 years:	2,463	67	61.4%	1,649	4	63.4%
With health insurance coverage	1,822	157	45.4%	1,347	119	51.8%
No health insurance coverage	641	160	16.0%	302	119	11.6%
65 years and over:	566	19	14.1%	554	10	21.3%
With health insurance coverage	566	19	14.1%	554	10	21.3%
No health insurance coverage	0	19	0.0%	0	19	0.0%

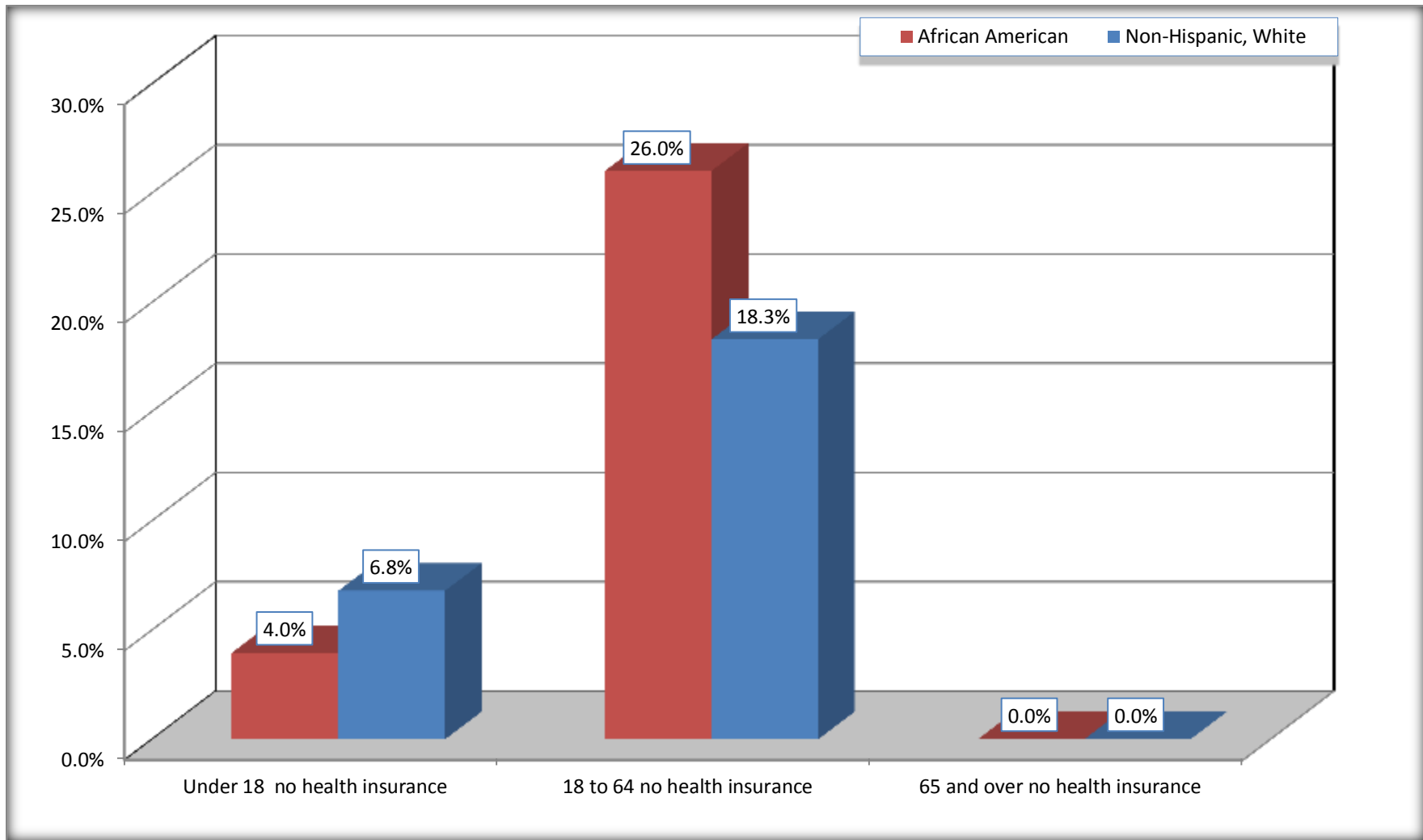
Source: U.S. Census Bureau, 2008-2012 American Community Survey

For information on confidentiality protection, sampling error, nonsampling error, and definitions, see Survey Methodology.

<http://www.census.gov/acs/www/UseData/index.htm>

# Lack of Health Insurance Coverage by Age

## Talbot County, Georgia



Source: C27001B. HEALTH INSURANCE COVERAGE STATUS BY AGE  
Data Set: 2008-2012 American Community Survey 5-Year Estimates