

Selected Socio-Economic Data

Oglethorpe County, Georgia

African American and White, Not Hispanic

Data Set: 2008-2012 American Community Survey 5-Year Estimates

www.fairvote2020.org

www.fairdata2000.com

[29-Dec-13](#)

C02003.DETAILED RACE - Universe: TOTAL POPULATION
 Data Set: 2008-2012 American Community Survey 5-Year Estimates

	Oglethorpe County, Georgia		
	Population	Margin of Error (+/-)	% of Total
Total:	14,745	*****	100.0%
Population of one race:	14,218	229	96.4%
White	11,563	127	78.4%
Black or African American	2,478	194	16.8%
American Indian and Alaska Native	18	21	0.1%
Asian alone	55	35	0.4%
Native Hawaiian and Other Pacific Islander	0	21	0.0%
Some other race	104	93	0.7%
Population of two or more races:	527	229	3.6%
Two races including Some other race	162	148	1.1%
Two races excluding Some other race, and three or more races	365	193	2.5%
Population of two races:	486	203	3.3%
White; Black or African American	218	156	1.5%
White; American Indian and Alaska Native	70	21	0.5%
White; Asian	36	39	0.2%
Black or African American; American Indian and Alaska Native	0	21	0.0%
All other two race combinations	162	148	1.1%
Population of three races	20	27	0.1%
Population of four or more races	21	50	0.1%

Note: Hispanics may be of any race. See Table B03002 and chart.

Source: U.S. Census Bureau, 2008-2012 American Community Survey

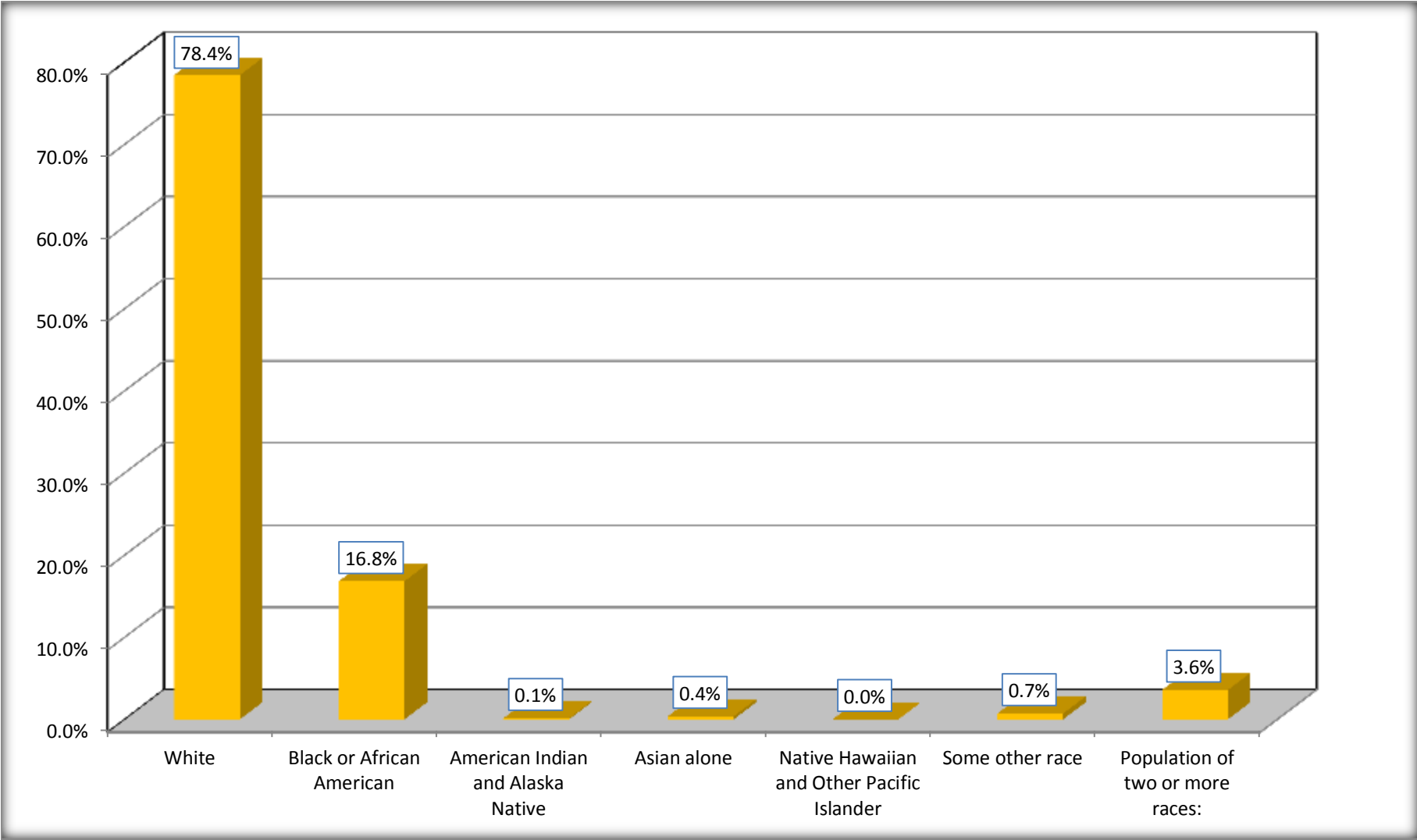
Although the American Community Survey (ACS) produces population, demographic and housing unit estimates, it is the Census Bureau's Population Estimates Program that produces and disseminates the official estimates of the population for the nation, states, counties, cities and towns and estimates of housing units for states and counties.

For information on confidentiality protection, sampling error, nonsampling error, and definitions, see Survey Methodology.

<http://www.census.gov/acs/www/UseData/index.htm>

Population by Race

Oglethorpe County, Georgia



Source: C02003.DETAILED RACE - Universe: TOTAL POPULATION
Data Set: 2008-2012 American Community Survey 5-Year Estimates

B03002. HISPANIC OR LATINO ORIGIN BY RACE - Universe: TOTAL POPULATION

Data Set: 2008-2012 American Community Survey 5-Year Estimates

	Oglethorpe County, Georgia		
	Population	Margin of Error (+/-)	% of Total
Total:	14,745	*****	100.0%
Not Hispanic or Latino:	14,198	*****	96.3%
White alone	11,320	21	76.8%
Black or African American alone	2,443	194	16.6%
American Indian and Alaska Native alone	18	21	0.1%
Asian alone	55	35	0.4%
Native Hawaiian and Other Pacific Islander alone	0	21	0.0%
Some other race alone	6	10	0.0%
Two or more races:	356	192	2.4%
Two races including Some other race	0	21	0.0%
Two races excluding Some other race, and three or more races	356	192	2.4%
Hispanic or Latino	547	*****	3.7%

Source: U.S. Census Bureau, 2008-2012 American Community Survey

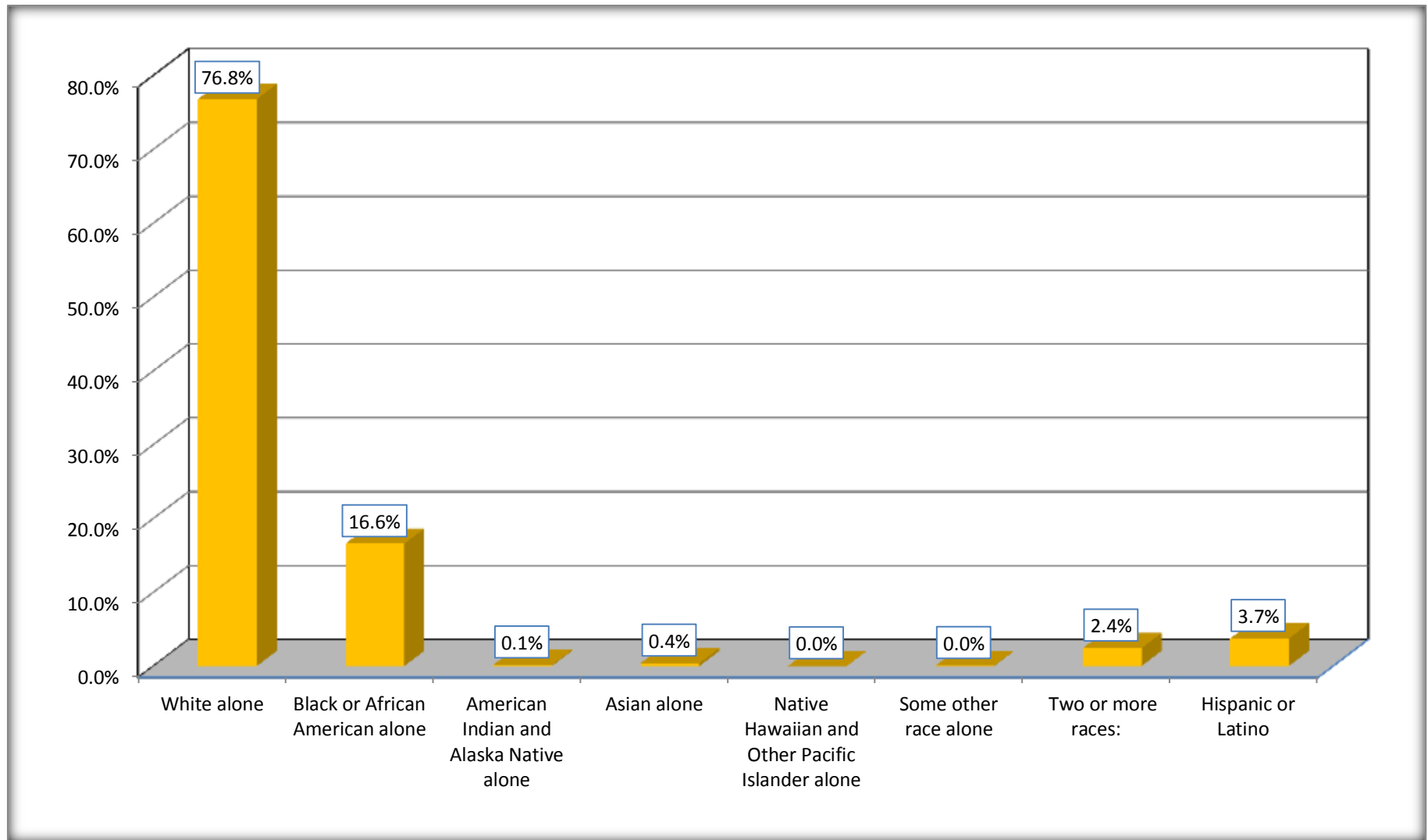
Although the American Community Survey (ACS) produces population, demographic and housing unit estimates, it is the Census Bureau's Population Estimates Program that produces and disseminates the official estimates of the population for the nation, states, counties, cities and towns and estimates of housing units for states and counties.

For information on confidentiality protection, sampling error, nonsampling error, and definitions, see Survey Methodology.

<http://www.census.gov/acs/www/UseData/index.htm>

Non-Hispanic by Race and Hispanic Population

Oglethorpe County, Georgia



Source: B03002. HISPANIC OR LATINO ORIGIN BY RACE - Universe: TOTAL POPULATION
Data Set: 2008-2012 American Community Survey 5-Year Estimates

B03002. HISPANIC OR LATINO ORIGIN BY RACE

Data Set: 2008-2012 American Community Survey 5-Year Estimates

	Oglethorpe County, Georgia		
	Population	Margin of Error (+/-)	% of Total
Hispanic or Latino:	547	*****	100.0%
White alone	243	127	44.4%
Black or African American alone	35	41	6.4%
American Indian and Alaska Native alone	0	21	0.0%
Asian alone	0	21	0.0%
Native Hawaiian and Other Pacific Islander alone	0	21	0.0%
Some other race alone	98	93	17.9%
Two or more races:	171	147	31.3%
Two races including Some other race	162	148	29.6%
Two races excluding Some other race, and three or more races	9	18	1.6%

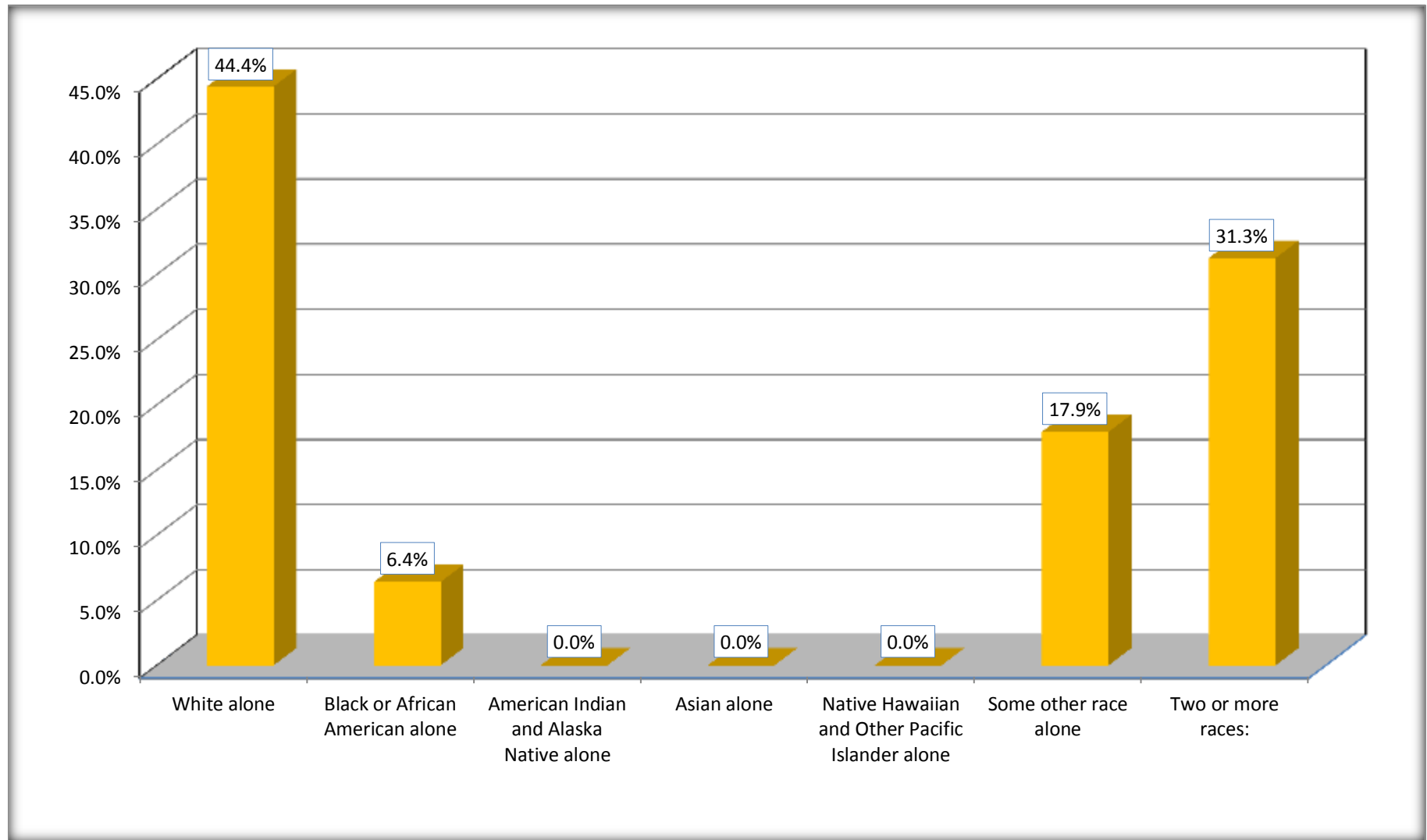
Source: U.S. Census Bureau, 2008-2012 American Community Survey

Although the American Community Survey (ACS) produces population, demographic and housing unit estimates, it is the Census Bureau's Population Estimates Program that produces and disseminates the official estimates of the population for the nation, states, counties, cities and towns and estimates of housing units for states and counties.

For information on confidentiality protection, sampling error, nonsampling error, and definitions, see Survey Methodology.

<http://www.census.gov/acs/www/UseData/index.htm>

Hispanic or Latino Origin by Race Oglethorpe County, Georgia



Source: B03002. HISPANIC OR LATINO ORIGIN BY RACE
Data Set: 2008-2012 American Community Survey 5-Year Estimates

B01001. SEX BY AGE

Data Set: 2008-2012 American Community Survey 5-Year Estimates

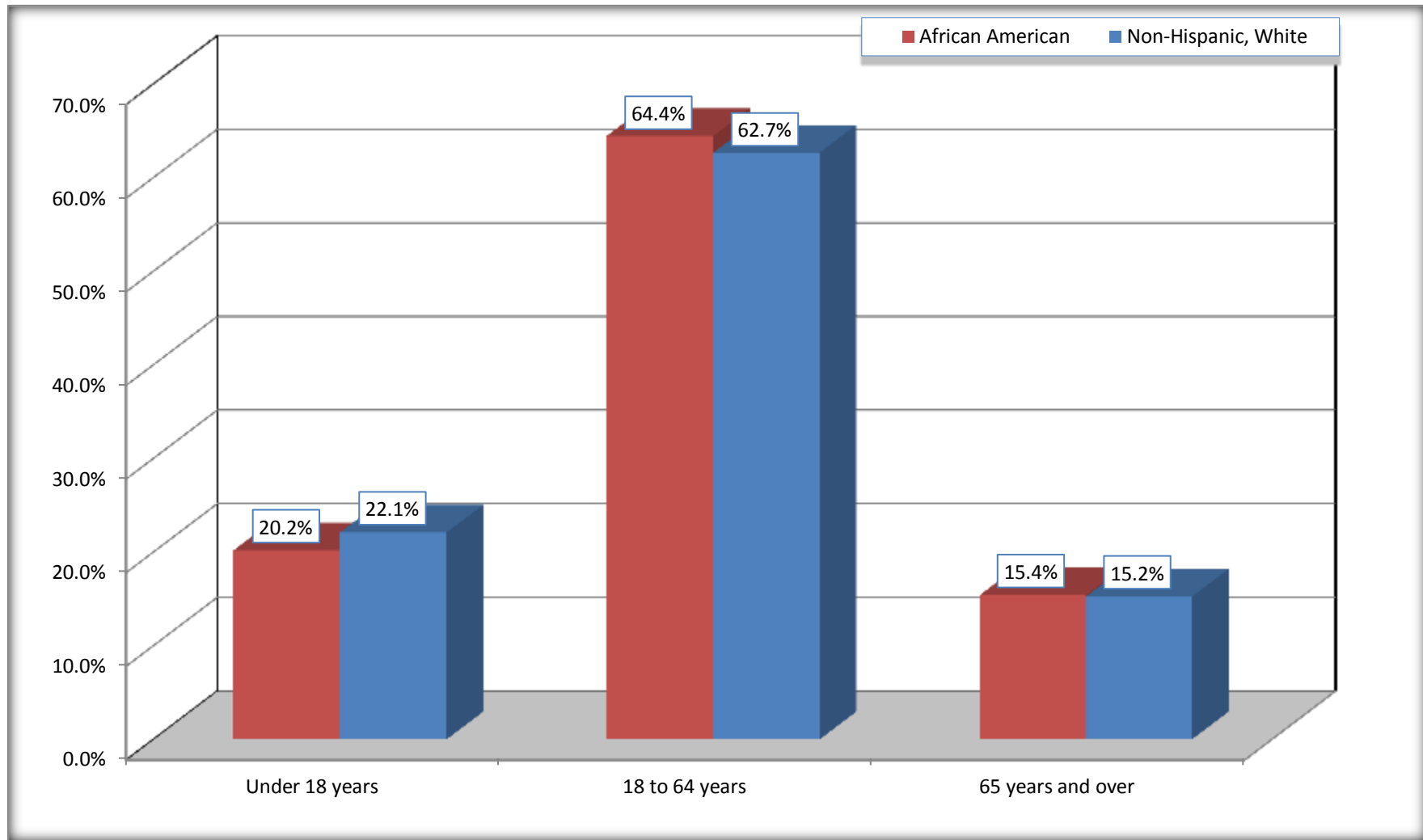
	Oglethorpe County, Georgia					
	African American	Margin of Error (+/-)	% of AA Total	White, Not Hispanic	Margin of Error (+/-)	% of NHW Total
Total:	2,478	194	100.0%	11,320	21	100.0%
Under 18 years	500	NC	20.2%	2,501	NC	22.1%
18 to 64 years	1,597	NC	64.4%	7,094	NC	62.7%
65 years and over	381	NC	15.4%	1,725	NC	15.2%
Male:	1,228	216	49.6%	5,636	389	49.8%
Under 18 years	307	NC	12.4%	1,318	NC	11.6%
18 to 64 years	772	NC	31.2%	3,525	NC	31.1%
65 years and over	149	NC	6.0%	793	NC	7.0%
Female:	1,250	124	50.4%	5,684	412	50.2%
Under 18 years	193	NC	7.8%	1,183	NC	10.5%
18 to 64 years	825	NC	33.3%	3,569	NC	31.5%
65 years and over	232	NC	9.4%	932	NC	8.2%

Source: U.S. Census Bureau, 2008-2012 American Community Survey

Although the American Community Survey (ACS) produces population, demographic and housing unit estimates, it is the Census Bureau's Population Estimates Program that produces and disseminates the official estimates of the population for the nation, states, counties, cities and towns and estimates of housing units for states and counties.

For information on confidentiality protection, sampling error, nonsampling error, and definitions, see Survey Methodology.
<http://www.census.gov/acs/www/UseData/index.htm>

Population by Age Oglethorpe County, Georgia



Source: B01001. SEX BY AGE
Data Set: 2008-2012 American Community Survey 5-Year Estimates

B05003. SEX BY AGE BY CITIZENSHIP STATUS

Data Set: 2008-2012 American Community Survey 5-Year Estimates

	Oglethorpe County, Georgia					
	African American	Margin of Error (+/-)	% of AA Total by Age	White, Not Hispanic	Margin of Error (+/-)	% of NHW Total by Age
Total:	2,478	194	100.0%	11,320	21	100.0%
Under 18 years:	500	NC	100.0%	2,501	NC	100.0%
Native	500	NC	100.0%	2,501	NC	100.0%
Foreign born:	0	NC	0.0%	0	NC	0.0%
Naturalized U.S. citizen	0	NC	0.0%	0	NC	0.0%
Not a U.S. citizen	0	NC	0.0%	0	NC	0.0%
18 years and over:	1,978	NC	100.0%	8,819	NC	100.0%
Native	1,978	NC	100.0%	8,768	NC	99.4%
Foreign born:	0	NC	0.0%	51	NC	0.6%
Naturalized U.S. citizen	0	NC	0.0%	17	NC	0.2%
Not a U.S. citizen	0	NC	0.0%	34	NC	0.4%
Male:	1,228	216	49.6%	5,636	21	49.8%
Under 18 years:	307	157	100.0%	1,318	21	100.0%
Native	307	157	100.0%	1,318	21	100.0%
Foreign born:	0	21	0.0%	0	21	0.0%
Naturalized U.S. citizen	0	21	0.0%	0	21	0.0%
Not a U.S. citizen	0	21	0.0%	0	21	0.0%
18 years and over:	921	100	100.0%	4,318	21	100.0%
Native	921	100	100.0%	4,303	19	99.7%
Foreign born:	0	21	0.0%	15	19	0.3%
Naturalized U.S. citizen	0	21	0.0%	2	3	0.0%
Not a U.S. citizen	0	21	0.0%	13	19	0.3%

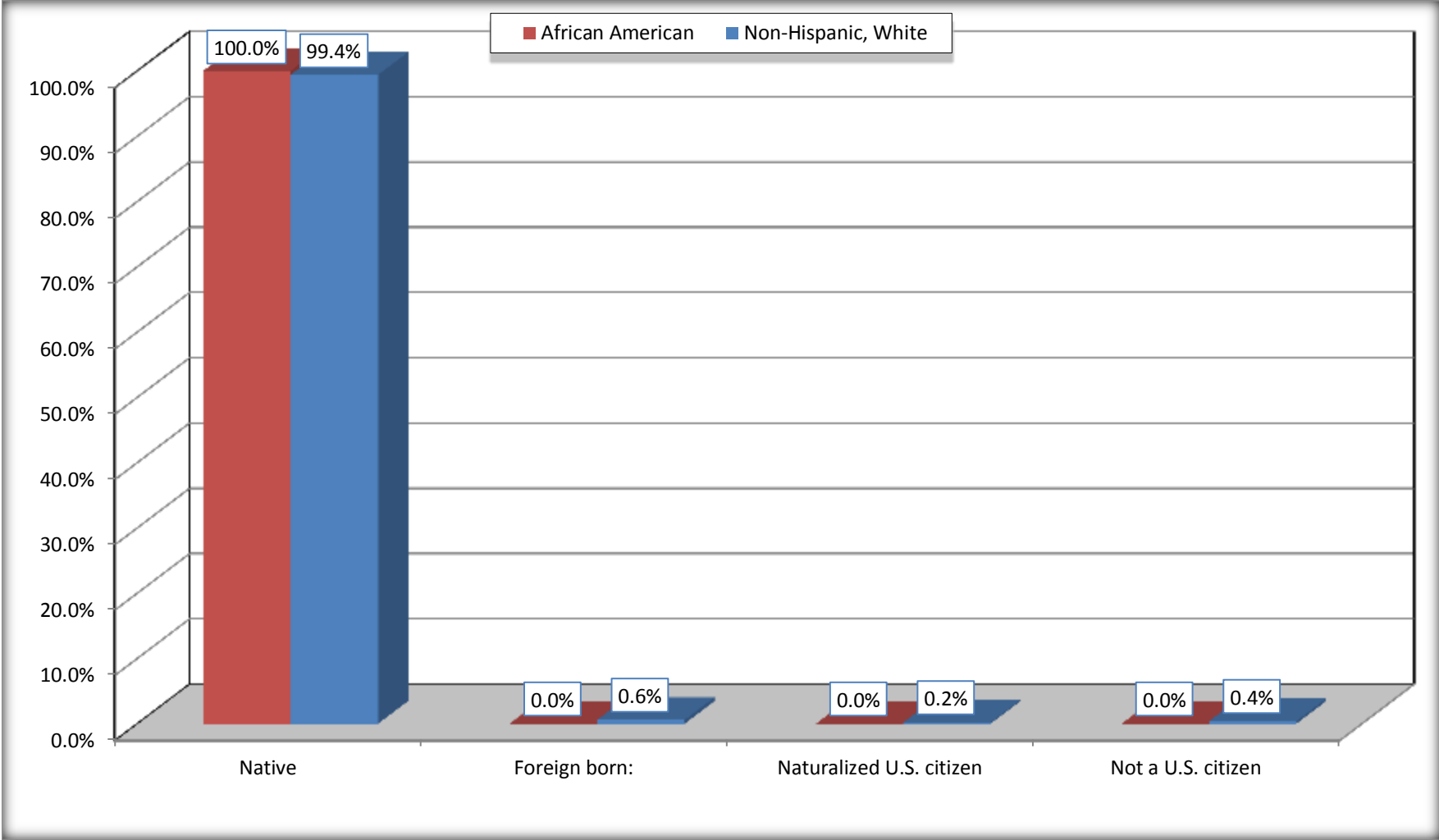
	Oglethorpe County, Georgia					
	African American	Margin of Error (+/-)	% of AA by Age	White, Not Hispanic	Margin of Error (+/-)	% of NHW by Age
Female:	1,250	124	50.4%	5,684	21	50.2%
Under 18 years:	193	123	100.0%	1,183	21	100.0%
Native	193	123	100.0%	1,183	21	100.0%
Foreign born:	0	21	0.0%	0	21	0.0%
Naturalized U.S. citizen	0	21	0.0%	0	21	0.0%
Not a U.S. citizen	0	21	0.0%	0	21	0.0%
18 years and over:	1,057	32	100.0%	4,501	21	100.0%
Native	1,057	32	100.0%	4,465	29	99.2%
Foreign born:	0	21	0.0%	36	29	0.8%
Naturalized U.S. citizen	0	21	0.0%	15	25	0.3%
Not a U.S. citizen	0	21	0.0%	21	25	0.5%

Source: U.S. Census Bureau, 2008-2012 American Community Survey

For information on confidentiality protection, sampling error, nonsampling error, and definitions, see Survey Methodology.
<http://www.census.gov/acs/www/UseData/index.htm>

Citizenship Status of Voting Age Population (18 and Over)

Oglethorpe County, Georgia



Source: B05003. SEX BY AGE BY CITIZENSHIP STATUS
Data Set: 2008-2012 American Community Survey 5-Year Estimates

**B07004. GEOGRAPHICAL MOBILITY IN THE PAST YEAR BY RACE FOR CURRENT RESIDENCE IN THE UNITED STATES - Universe:
POPULATION 1 YEAR AND OVER**

Data Set: 2008-2012 American Community Survey 5-Year Estimates

	Oglethorpe County, Georgia					
	African American	Margin of Error (+/-)	% of AA Total	White, Not Hispanic	Margin of Error (+/-)	% of NHW Total
Total:	2,467	197	100.0%	11,251	56	100.0%
Same house 1 year ago	2,297	219	93.1%	10,224	431	90.9%
Moved within same county	46	49	1.9%	137	104	1.2%
Moved from different county within same state	92	60	3.7%	818	410	7.3%
Moved from different state	0	21	0.0%	63	56	0.6%
Moved from abroad	32	55	1.3%	9	14	0.1%

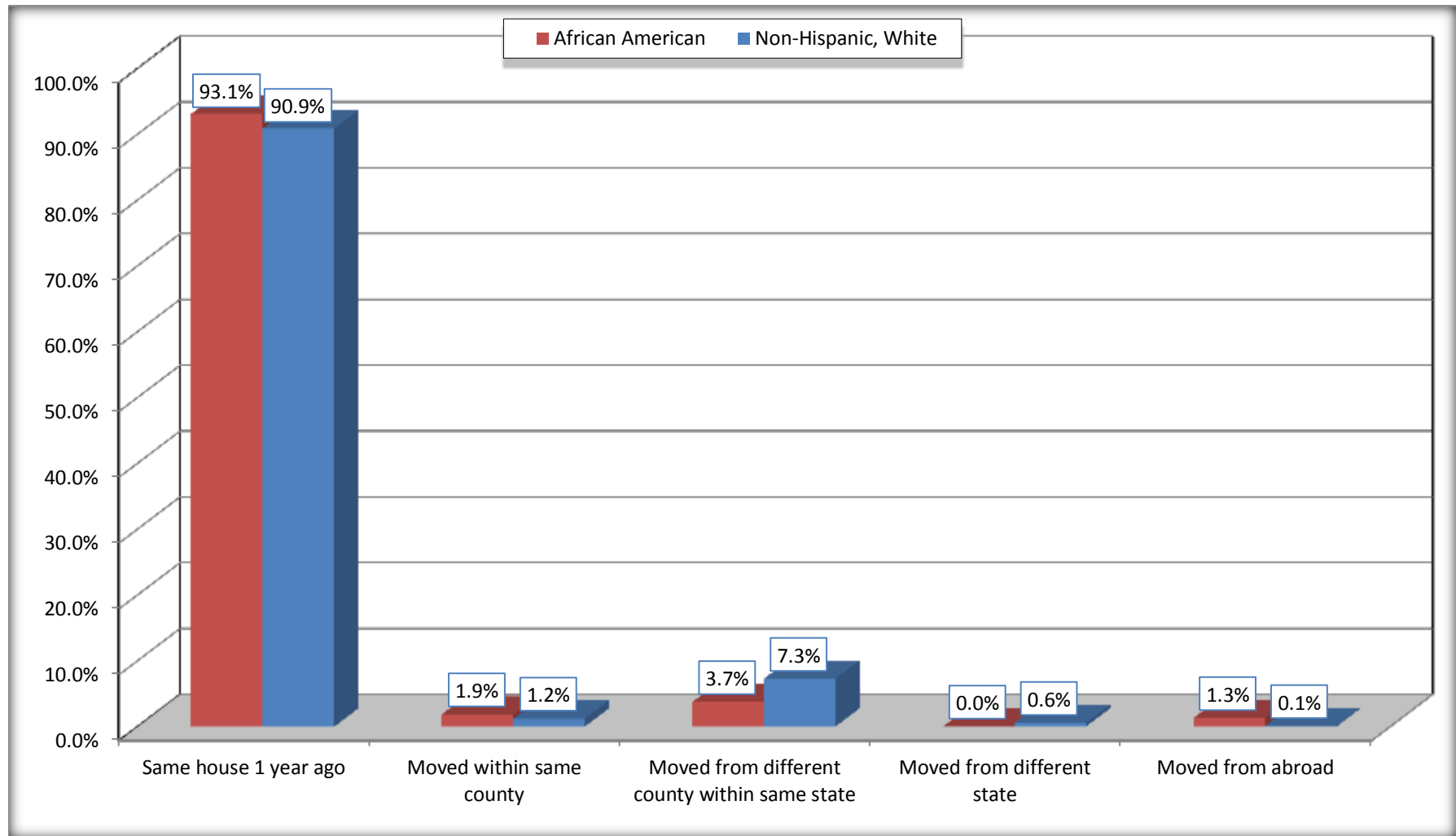
Source: U.S. Census Bureau, 2008-2012 American Community Survey

For information on confidentiality protection, sampling error, nonsampling error, and definitions, see Survey Methodology.

<http://www.census.gov/acs/www/UseData/index.htm>

Geographical Mobility in the Past Year (Population 1 Year and Over)

Oglethorpe County, Georgia



Source: B07004. GEOGRAPHICAL MOBILITY IN THE PAST YEAR BY RACE FOR CURRENT RESIDENCE IN THE UNITED STATES - Universe: POPULATION 1 YEAR AND OVER

Data Set: 2008-2012 American Community Survey 5-Year Estimates

B08105. MEANS OF TRANSPORTATION TO WORK - Universe: WORKERS 16 YEARS AND OVER

Data Set: 2008-2012 American Community Survey 5-Year Estimates

	Oglethorpe County, Georgia					
	African American	Margin of Error (+/-)	% of AA Total	White, Not Hispanic	Margin of Error (+/-)	% of NHW Total
Total:	969	178	100.0%	4842	328	100.0%
Car, truck, or van - drove alone	842	181	86.9%	3805	383	78.6%
Car, truck, or van - carpooled	114	116	11.8%	654	233	13.5%
Public transportation (excluding taxicab)	0	21	0.0%	2	7	0.0%
Walked	0	21	0.0%	105	72	2.2%
Taxicab, motorcycle, bicycle, or other means	0	21	0.0%	67	75	1.4%
Worked at home	13	22	1.3%	209	104	4.3%

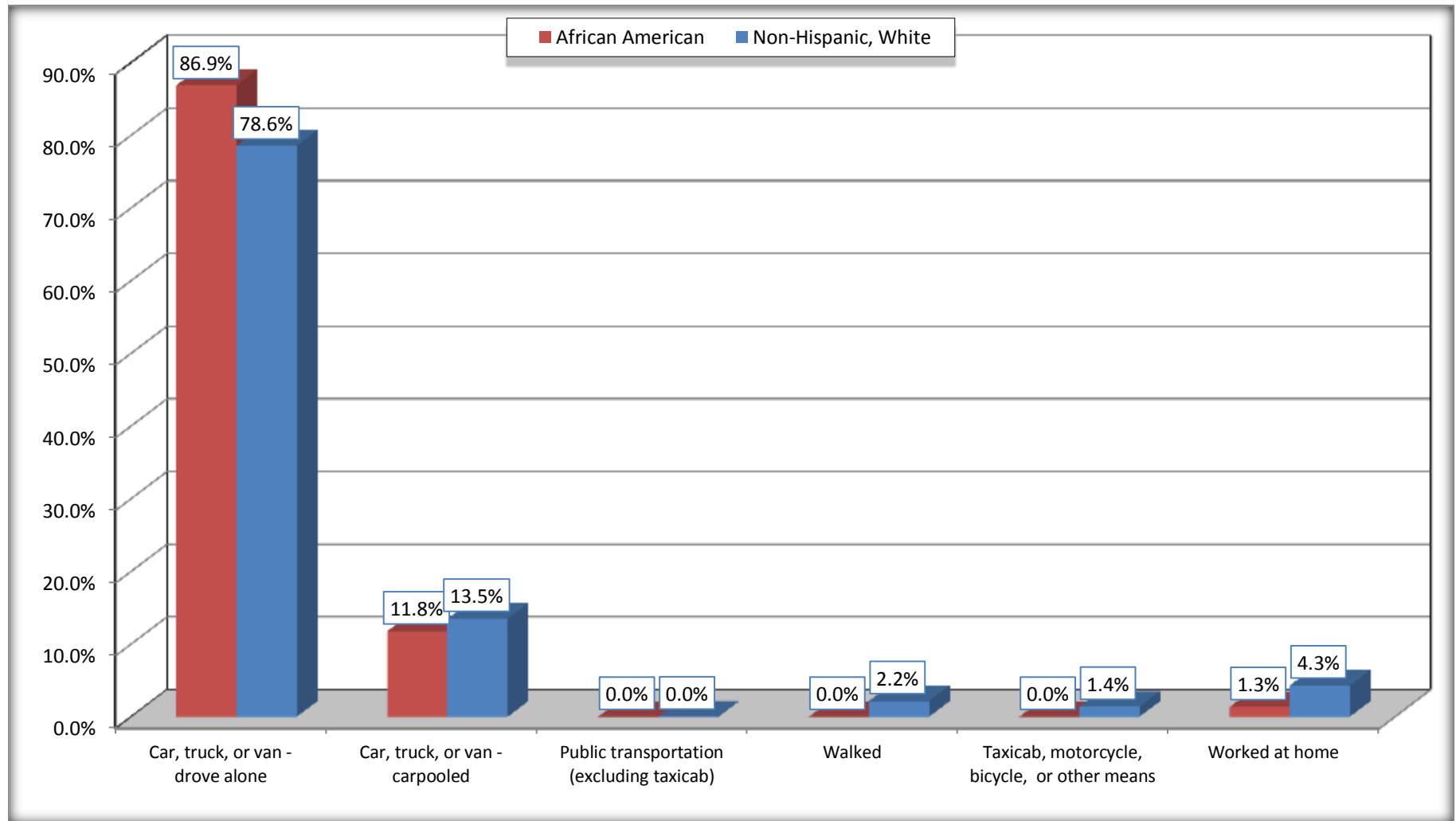
Source: U.S. Census Bureau, 2008-2012 American Community Survey

For information on confidentiality protection, sampling error, nonsampling error, and definitions, see Survey Methodology.

<http://www.census.gov/acs/www/UseData/index.htm>

Means of Transportation to Work (Workers 16 Years and Over)

Oglethorpe County, Georgia



Source: B08105. MEANS OF TRANSPORTATION TO WORK - Universe: WORKERS 16 YEARS AND OVER
Data Set: 2008-2012 American Community Survey 5-Year Estimates

B11002. HOUSEHOLD TYPE BY RELATIVES AND NONRELATIVES FOR POPULATION IN HOUSEHOLDS

Data Set: 2008-2012 American Community Survey 5-Year Estimates

	Oglethorpe County, Georgia					
	African American	Margin of Error (+/-)	% of AA Total	White, Not Hispanic	Margin of Error (+/-)	% of NHW Total
Total:	2413	215	100.0%	11556	276	100.0%
In family households	2006	230	83.1%	10425	361	90.2%
In nonfamily households	407	158	16.9%	1131	244	9.8%

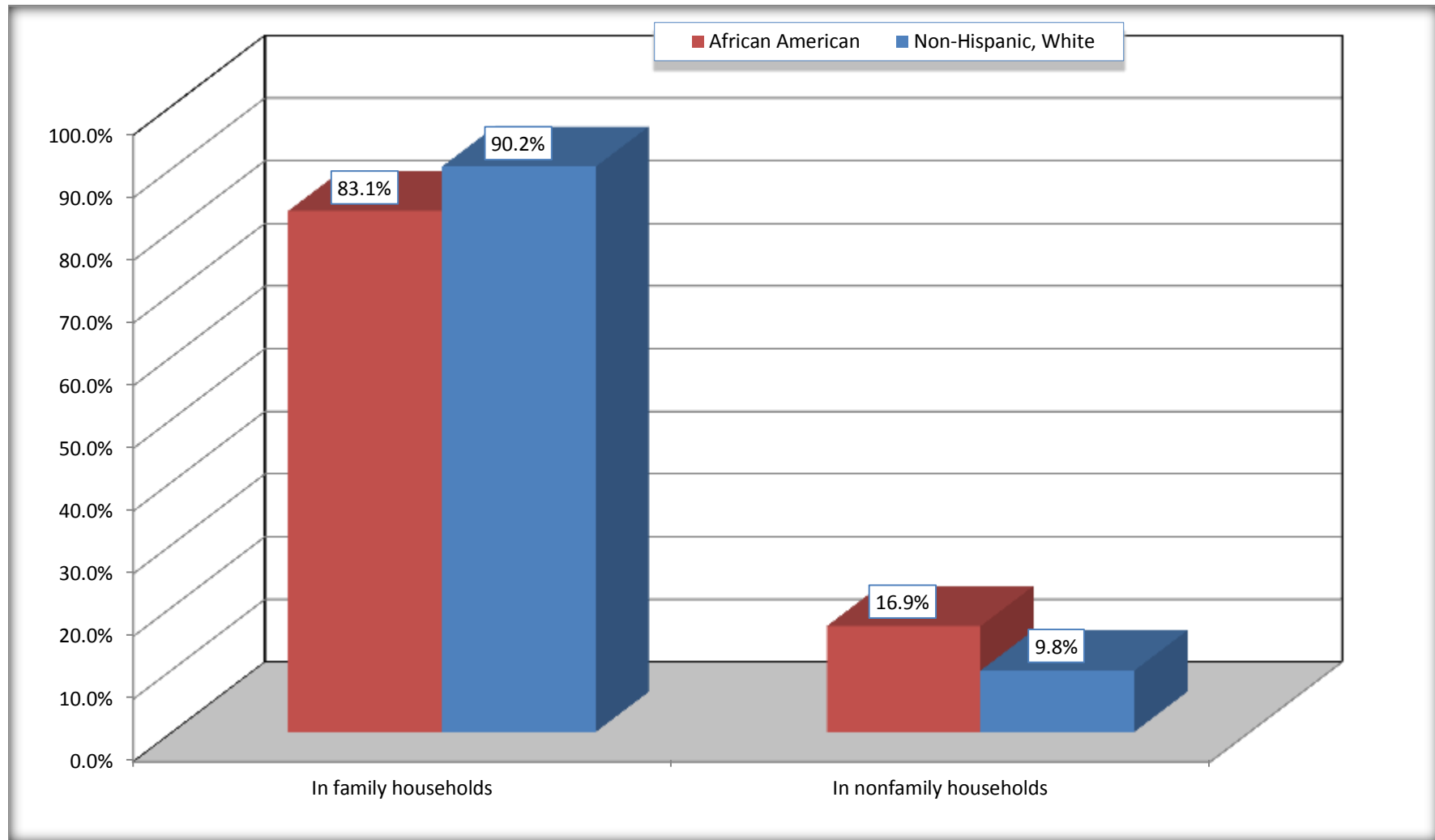
Source: U.S. Census Bureau, 2008-2012 American Community Survey

For information on confidentiality protection, sampling error, nonsampling error, and definitions, see Survey Methodology.

<http://www.census.gov/acs/www/UseData/index.htm>

Household Type for Population in Households

Oglethorpe County, Georgia



Source: B11002. HOUSEHOLD TYPE BY RELATIVES AND NONRELATIVES FOR POPULATION IN HOUSEHOLDS
Data Set: 2008-2012 American Community Survey 5-Year Estimates

B12002. MARITAL STATUS FOR THE POPULATION 15 YEARS AND OVER

Data Set: 2008-2012 American Community Survey 5-Year Estimates

	Oglethorpe County, Georgia					
	African American	Margin of Error (+/-)	% of AA Total	White, Not Hispanic	Margin of Error (+/-)	% of NHW Total
Total:	2,096	136	100.0%	9,286	21	100.0%
Never married	878	NC	41.9%	2,329	NC	25.1%
Now married (except separated)	688	NC	32.8%	5,346	NC	57.6%
Separated	44	NC	2.1%	185	NC	2.0%
Widowed	220	NC	10.5%	452	NC	4.9%
Divorced	266	NC	12.7%	974	NC	10.5%
Male:	1,007	133	48.0%	4,557	21	49.1%
Never married	534	147	25.5%	1,374	232	14.8%
Now married (except separated)	330	115	15.7%	2,590	248	27.9%
Separated	15	24	0.7%	103	92	1.1%
Widowed	34	43	1.6%	131	70	1.4%
Divorced	94	72	4.5%	359	126	3.9%
Female:	1,089	51	52.0%	4,729	21	50.9%
Never married	344	119	16.4%	955	175	10.3%
Now married (except separated)	358	127	17.1%	2,756	251	29.7%
Separated	29	29	1.4%	82	53	0.9%
Widowed	186	102	8.9%	321	98	3.5%
Divorced	172	121	8.2%	615	187	6.6%

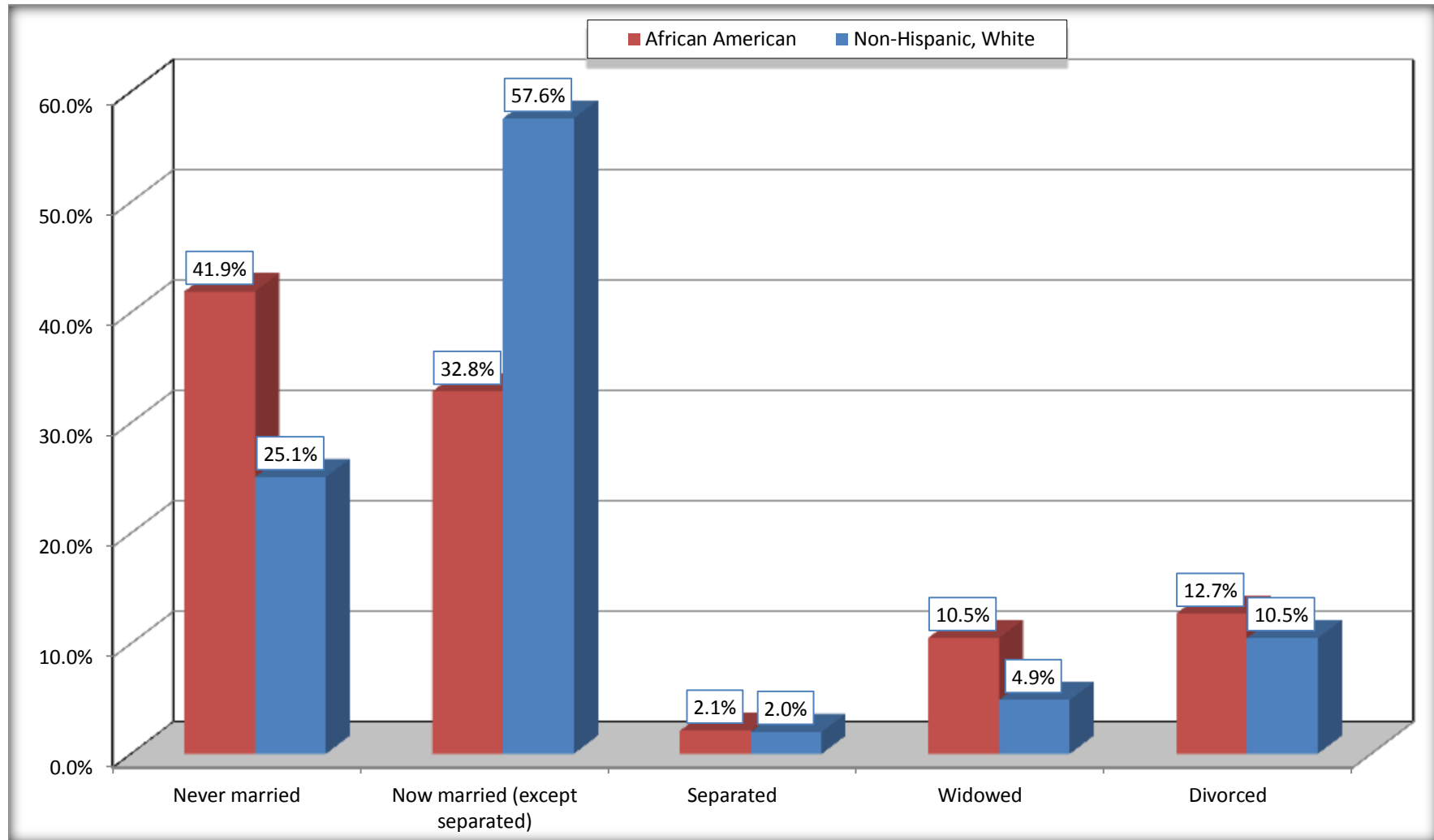
Source: U.S. Census Bureau, 2008-2012 American Community Survey

For information on confidentiality protection, sampling error, nonsampling error, and definitions, see Survey Methodology.

<http://www.census.gov/acs/www/UseData/index.htm>

Marital Status for the Population 15 Years and Over

Oglethorpe County, Georgia



Source: B12002. MARITAL STATUS FOR THE POPULATION 15 YEARS AND OVER
Data Set: 2008-2012 American Community Survey 5-Year Estimates

C15002. SEX BY EDUCATIONAL ATTAINMENT FOR THE POPULATION 25 YEARS AND OVER

Data Set: 2008-2012 American Community Survey 5-Year Estimates

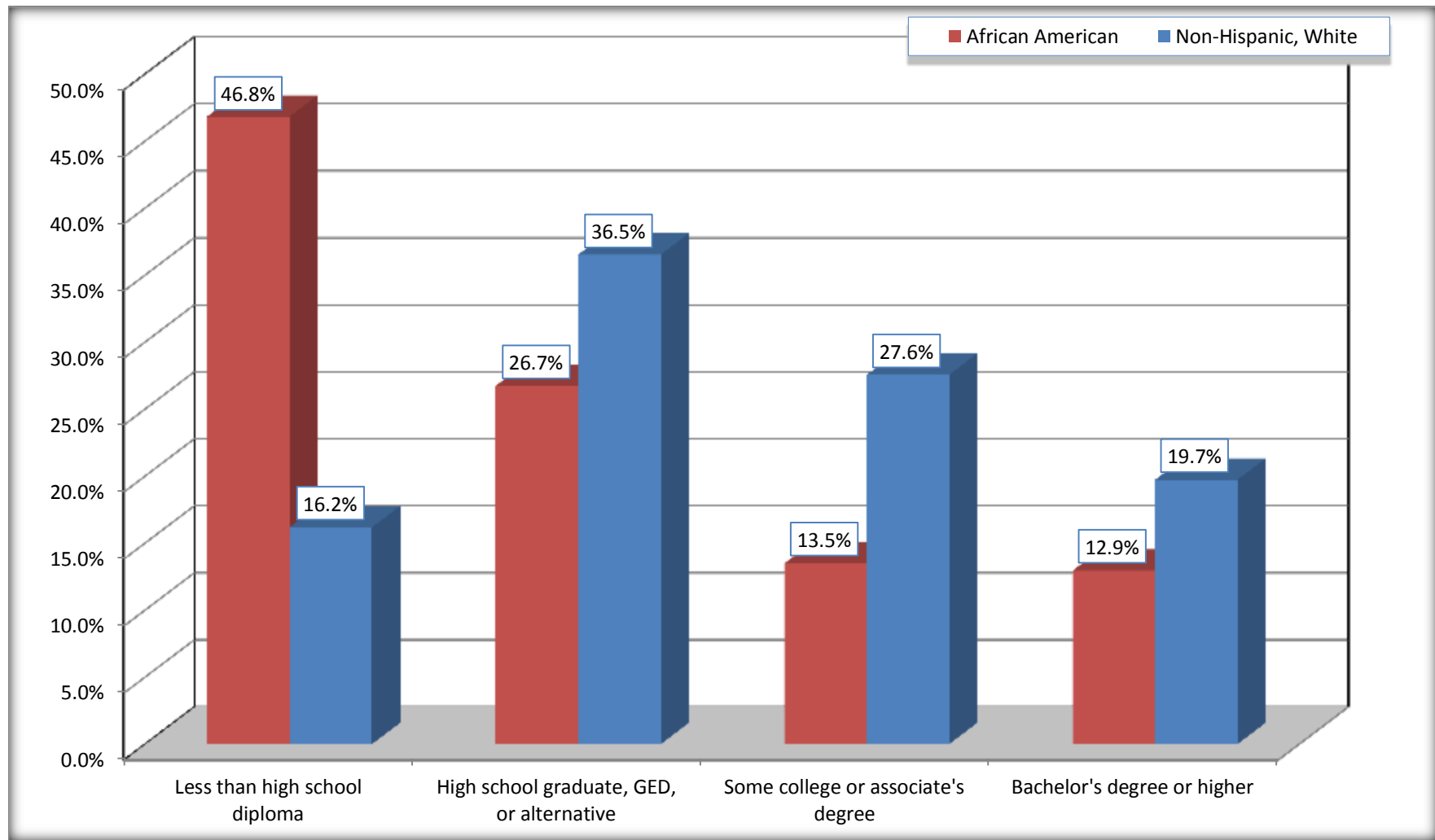
	Oglethorpe County, Georgia					
	African American	Margin of Error (+/-)	% of AA Total	White, Not Hispanic	Margin of Error (+/-)	% of NHW Total
Total:	1,668	156	100.0%	7,993	21	100.0%
Less than high school diploma	781	NC	46.8%	1,293	NC	16.2%
High school graduate, GED, or alternative	446	NC	26.7%	2,920	NC	36.5%
Some college or associate's degree	225	NC	13.5%	2,203	NC	27.6%
Bachelor's degree or higher	216	NC	12.9%	1,577	NC	19.7%
Male:	756	106	45.3%	3,890	21	48.7%
Less than high school diploma	369	90	22.1%	562	193	7.0%
High school graduate, GED, or alternative	282	117	16.9%	1,588	292	19.9%
Some college or associate's degree	71	85	4.3%	1,046	233	13.1%
Bachelor's degree or higher	34	42	2.0%	694	217	8.7%
Female:	912	115	54.7%	4,103	21	51.3%
Less than high school diploma	412	111	24.7%	731	196	9.1%
High school graduate, GED, or alternative	164	77	9.8%	1,332	223	16.7%
Some college or associate's degree	154	85	9.2%	1,157	170	14.5%
Bachelor's degree or higher	182	84	10.9%	883	162	11.0%

Source: U.S. Census Bureau, 2008-2012 American Community Survey

For information on confidentiality protection, sampling error, nonsampling error, and definitions, see Survey Methodology.

<http://www.census.gov/acs/www/UseData/index.htm>

Educational Attainment for the Population 25 Years and Older Oglethorpe County, Georgia



Source: C15002. SEX BY EDUCATIONAL ATTAINMENT FOR THE POPULATION 25 YEARS AND OVER
Data Set: 2008-2012 American Community Survey 5-Year Estimates

B17010. POVERTY STATUS IN THE PAST 12 MONTHS OF FAMILIES BY FAMILY TYPE BY PRESENCE OF RELATED CHILDREN UNDER 18 YEARS

Data Set: 2008-2012 American Community Survey 5-Year Estimates

	Oglethorpe County, Georgia					
	African American	Margin of Error (+/-)	% of AA Total	White, Not Hispanic	Margin of Error (+/-)	% of NHW Total
Total:	503	115	100.0%	3,073	202	100.0%
Income in the past 12 months below poverty level:	76	54	15.1%	254	104	8.3%
Married-couple family:	0	21	0.0%	99	50	3.2%
With related children under 18 years	0	21	0.0%	48	41	1.6%
Other family:	76	54	15.1%	155	94	5.0%
Male householder, no wife present	0	21	0.0%	21	29	0.7%
With related children under 18 years	0	21	0.0%	18	29	0.6%
Female householder, no husband present	76	54	15.1%	134	92	4.4%
With related children under 18 years	36	35	7.2%	108	86	3.5%
Income in the past 12 months at or above poverty level:	427	118	84.9%	2,819	214	91.7%
Married-couple family:	302	97	60.0%	2,486	219	80.9%
With related children under 18 years	117	66	23.3%	1,025	191	33.4%
Other family:	125	64	24.9%	333	119	10.8%
Male householder, no wife present	51	36	10.1%	95	58	3.1%
With related children under 18 years	32	33	6.4%	18	18	0.6%
Female householder, no husband present	74	54	14.7%	238	95	7.7%
With related children under 18 years	50	50	9.9%	162	84	5.3%

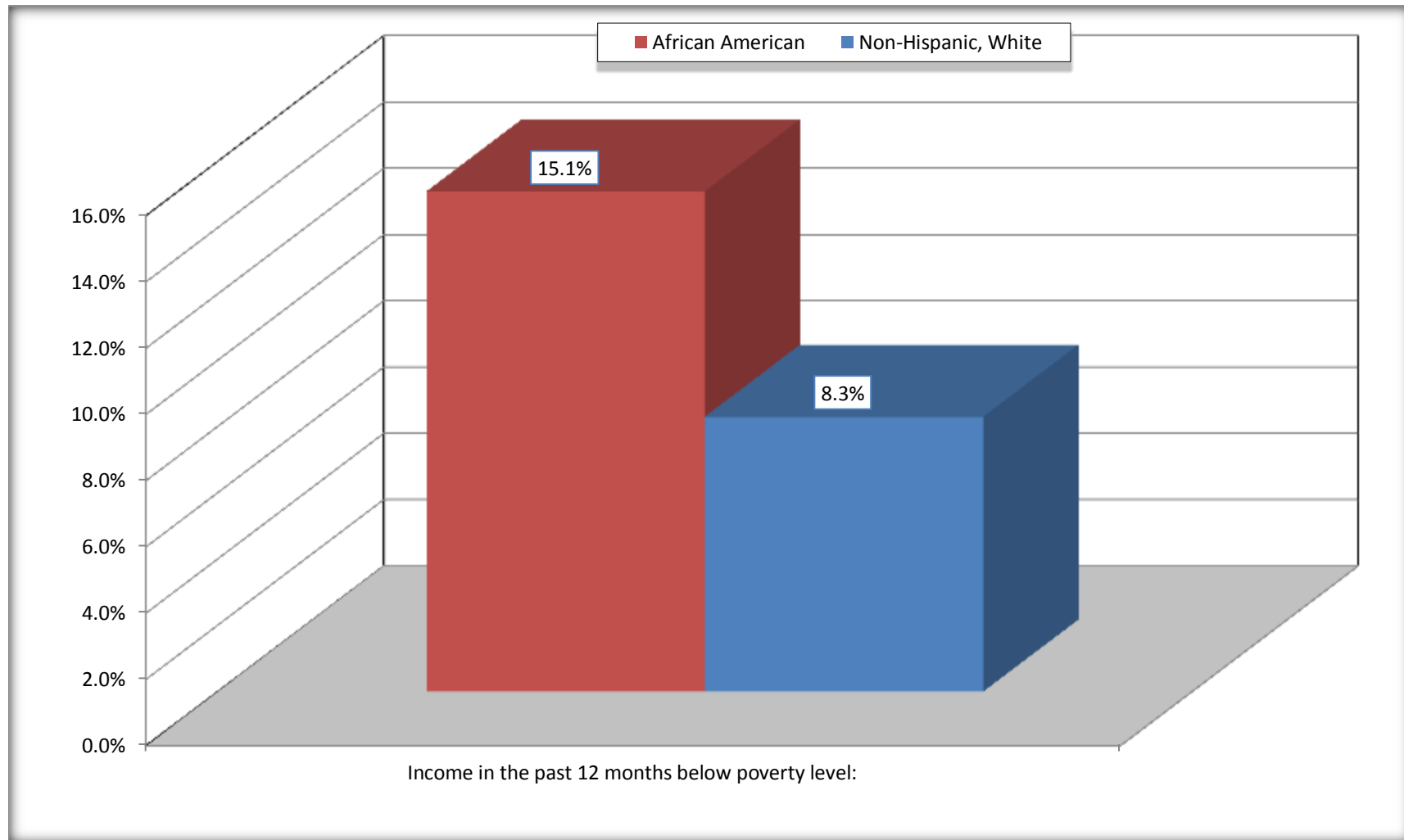
Source: U.S. Census Bureau, 2008-2012 American Community Survey

For information on confidentiality protection, sampling error, nonsampling error, and definitions, see Survey Methodology.

<http://www.census.gov/acs/www/UseData/index.htm>

Family Households Below Poverty in the Past 12 Months

Oglethorpe County, Georgia

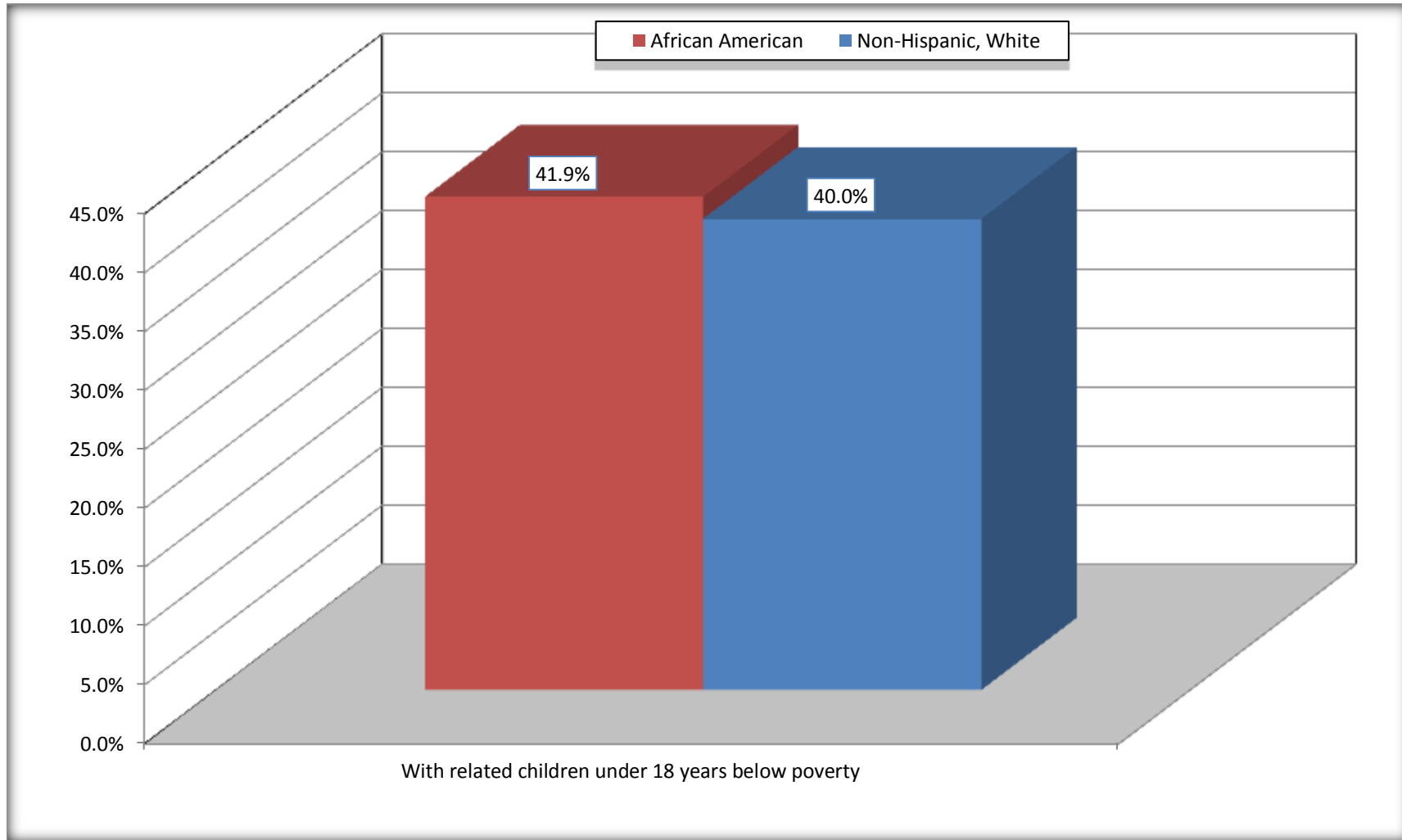


Source: B17010. POVERTY STATUS IN THE PAST 12 MONTHS OF FAMILIES BY FAMILY TYPE BY PRESENCE OF RELATED CHILDREN UNDER 18 YEARS

Data Set: 2008-2012 American Community Survey 5-Year Estimates

Female-headed Households with Related Children Below Poverty in the Past 12 Months

Oglethorpe County, Georgia



Source: B17010. POVERTY STATUS IN THE PAST 12 MONTHS OF FAMILIES BY FAMILY TYPE BY PRESENCE OF RELATED CHILDREN UNDER 18 YEARS

Data Set: 2008-2012 American Community Survey 5-Year Estimates

B17020 POVERTY STATUS IN THE PAST 12 MONTHS BY AGE - Universe: POPULATION FOR WHOM POVERTY STATUS IS DETERMINED

Data Set: 2008-2012 American Community Survey 5-Year Estimates

	Oglethorpe County, Georgia					
	African American	Margin of Error (+/-)	% of AA By Age	White, Not Hispanic	Margin of Error (+/-)	% of NHW By Age
Total:	2,436	196	100.0%	11,229	53	100.0%
Income in the past 12 months below poverty level:	577	306	23.7%	1,498	375	13.3%
Under 18 years	121	NC	24.2%	324	NC	13.0%
18 to 64 years	379	210	24.4%	961	283	13.6%
65 years and over	77	NC	20.2%	213	NC	12.9%
Income in the past 12 months at or above poverty level:	1,859	371	76.3%	9,731	374	86.7%
Under 18 years	379	NC	75.8%	2,177	NC	87.0%
18 to 64 years	1,176	243	75.6%	6,111	282	86.4%
65 years and over	304	NC	79.8%	1,443	NC	87.1%

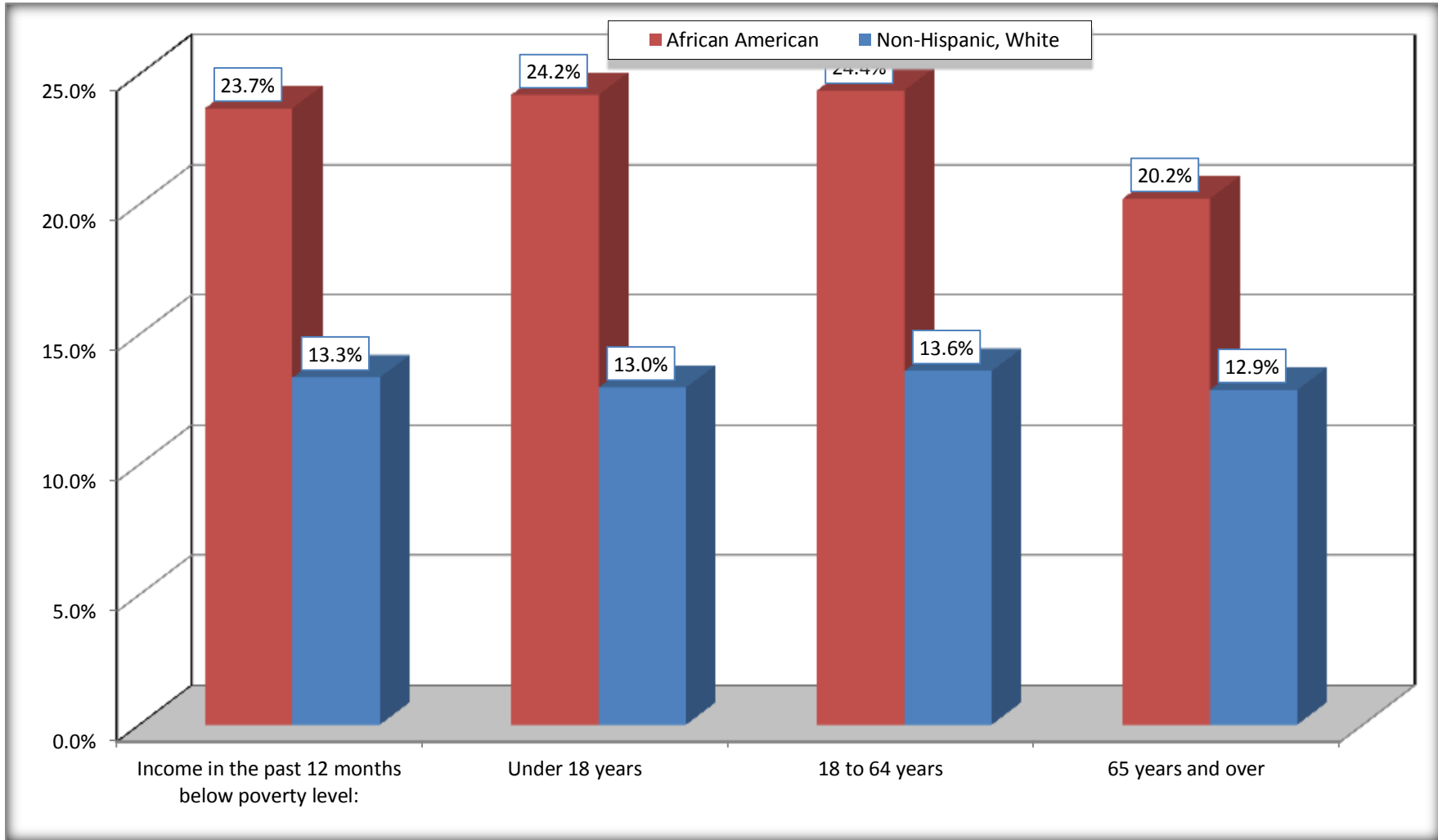
Source: U.S. Census Bureau, 2008-2012 American Community Survey

For information on confidentiality protection, sampling error, nonsampling error, and definitions, see Survey Methodology.

<http://www.census.gov/acs/www/UseData/index.htm>

Population Below Poverty in the Past 12 Months

Oglethorpe County, Georgia



Source: B17020 POVERTY STATUS IN THE PAST 12 MONTHS BY AGE - Universe: POPULATION FOR WHOM POVERTY STATUS IS DETERMINED
Data Set: 2008-2012 American Community Survey 5-Year Estimates

B19001. HOUSEHOLD INCOME IN THE PAST 12 MONTHS (IN 2010 INFLATION-ADJUSTED DOLLARS)

Data Set: 2008-2012 American Community Survey 5-Year Estimates

	Oglethorpe County, Georgia					
	African American	Margin of Error (+/-)	% of AA Total	White, Not Hispanic	Margin of Error (+/-)	% of NHW Total
Total:	876	150	100.0%	3,990	186	100.0%
Less than \$ 10,000	134	80	15.3%	243	111	6.1%
\$ 10,000 to \$ 14,999	81	47	9.2%	227	99	5.7%
\$ 15,000 to \$ 24,999	152	NC	17.4%	523	NC	13.1%
\$ 25,000 to \$ 34,999	208	NC	23.7%	469	NC	11.8%
\$ 35,000 to \$ 49,999	74	NC	8.4%	554	NC	13.9%
\$ 50,000 to \$ 74,999	83	NC	9.5%	958	NC	24.0%
\$ 75,000 to \$ 99,999	91	50	10.4%	490	149	12.3%
\$ 100,000 to \$ 149,999	53	NC	6.1%	406	NC	10.2%
\$ 150,000 to \$ 199,999	0	21	0.0%	72	49	1.8%
\$ 200,000 or more	0	21	0.0%	48	44	1.2%

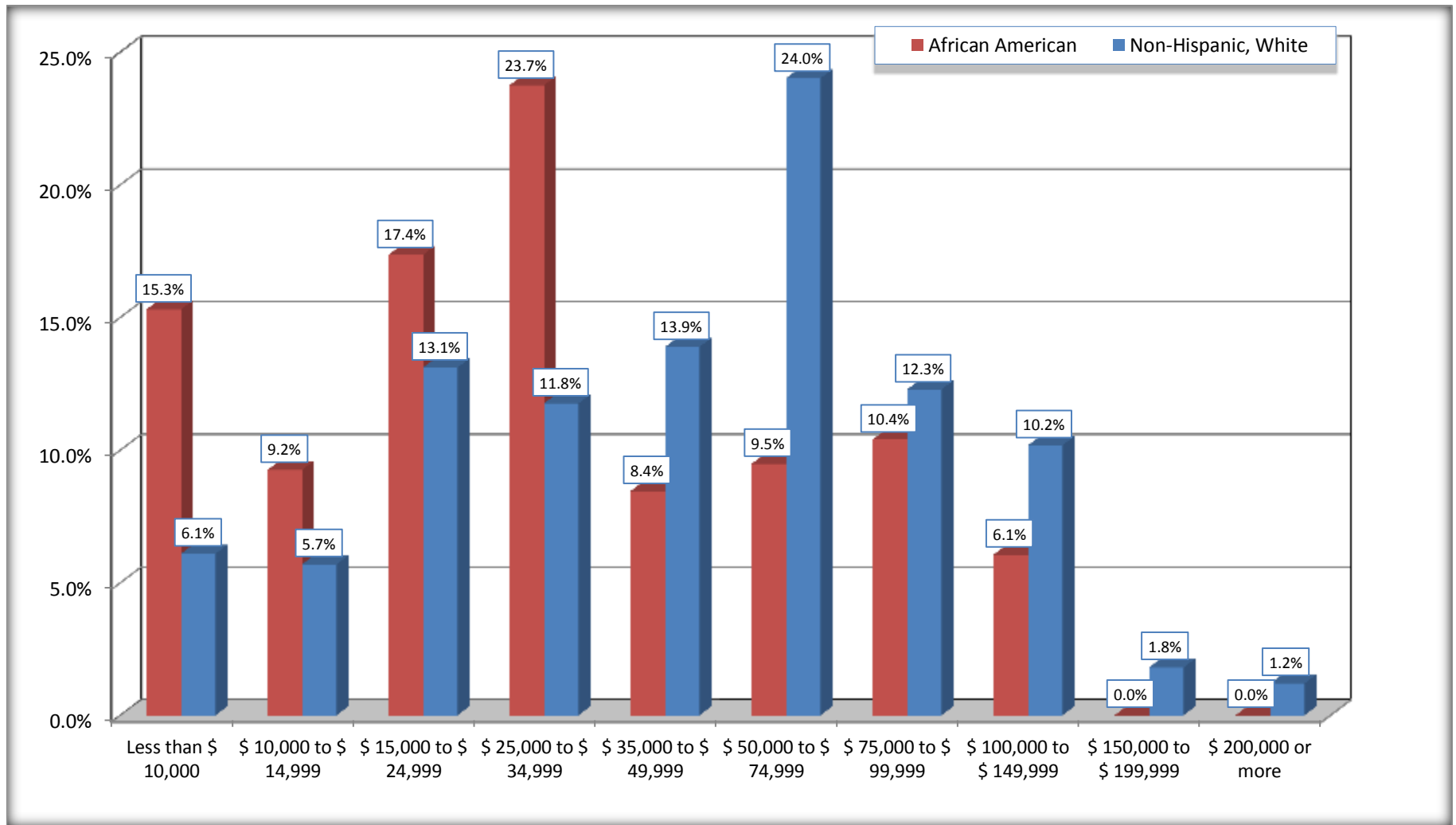
Source: U.S. Census Bureau, 2008-2012 American Community Survey

For information on confidentiality protection, sampling error, nonsampling error, and definitions, see Survey Methodology.

<http://www.census.gov/acs/www/UseData/index.htm>

Household Income in the Past 12 Months

Oglethorpe County, Georgia



Source: B19001. HOUSEHOLD INCOME IN THE PAST 12 MONTHS (IN 2010 INFLATION-ADJUSTED DOLLARS)
 Data Set: 2008-2012 American Community Survey 5-Year Estimates

B19013. MEDIAN HOUSEHOLD INCOME IN THE PAST 12 MONTHS (IN 2010 INFLATION-ADJUSTED DOLLARS)

Data Set: 2008-2012 American Community Survey 5-Year Estimates

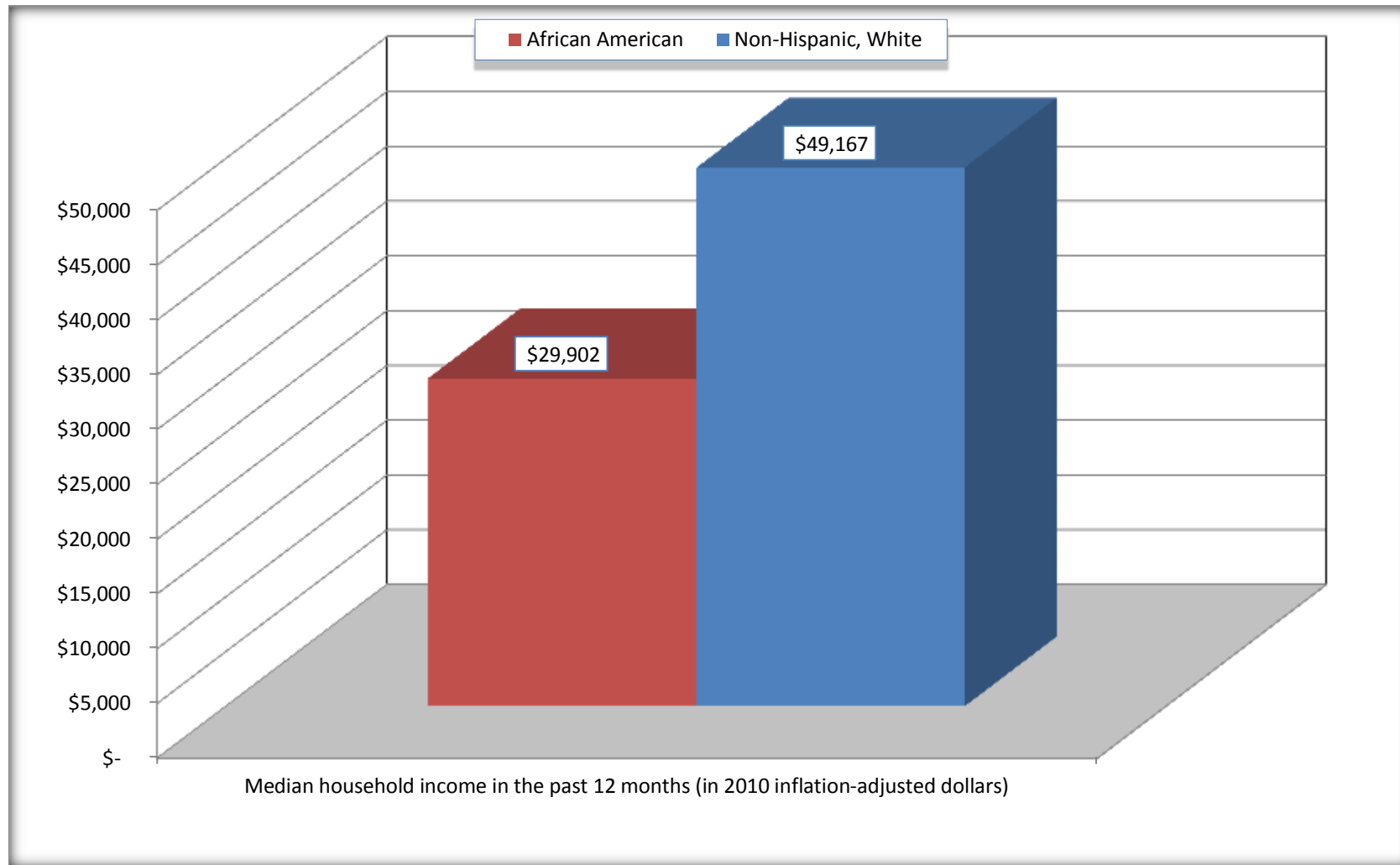
	Oglethorpe County, Georgia			
	African American	Margin of Error (+/-)	White, Not Hispanic	Margin of Error (+/-)
Median household income in the past 12 months (in 2010 inflation-adjusted dollars)	\$ 29,902	\$ 5,623	\$ 49,167	\$ 8,460

Source: U.S. Census Bureau, 2008-2012 American Community Survey

For information on confidentiality protection, sampling error, nonsampling error, and definitions, see Survey Methodology.
<http://www.census.gov/acs/www/UseData/index.htm>

Median Household Income in the Past 12 Months

Oglethorpe County, Georgia



Source: B19013. MEDIAN HOUSEHOLD INCOME IN THE PAST 12 MONTHS (IN 2010 INFLATION-ADJUSTED DOLLARS)
Data Set: 2008-2012 American Community Survey 5-Year Estimates

B19101. FAMILY INCOME IN THE PAST 12 MONTHS (IN 2010 INFLATION-ADJUSTED DOLLARS)

Data Set: 2008-2012 American Community Survey 5-Year Estimates

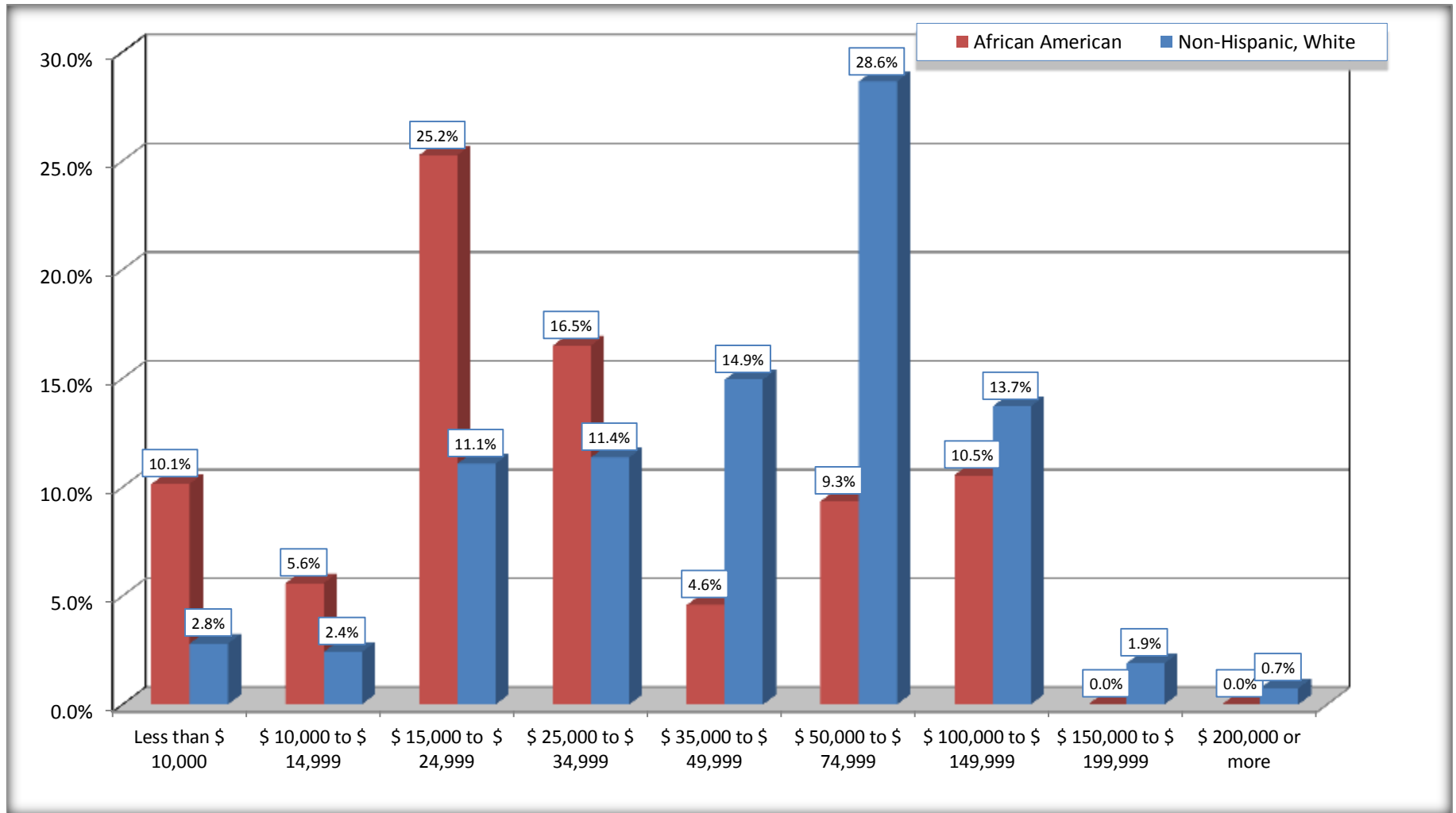
	Oglethorpe County, Georgia					
	African American	Margin of Error (+/-)	% of AA Total	White, Not Hispanic	Margin of Error (+/-)	% of NHW Total
Total:	503	115	100.0%	3,073	202	100.0%
Less than \$ 10,000	51	50	10.1%	86	50	2.8%
\$ 10,000 to \$ 14,999	28	30	5.6%	74	80	2.4%
\$ 15,000 to \$ 24,999	127	NC	25.2%	340	NC	11.1%
\$ 25,000 to \$ 34,999	83	NC	16.5%	349	NC	11.4%
\$ 35,000 to \$ 49,999	23	NC	4.6%	459	NC	14.9%
\$ 50,000 to \$ 74,999	47	NC	9.3%	880	NC	28.6%
\$ 100,000 to \$ 149,999	53	NC	10.5%	421	NC	13.7%
\$ 150,000 to \$ 199,999	0	21	0.0%	58	42	1.9%
\$ 200,000 or more	0	21	0.0%	23	25	0.7%

Source: U.S. Census Bureau, 2008-2012 American Community Survey

For information on confidentiality protection, sampling error, nonsampling error, and definitions, see Survey Methodology.

<http://www.census.gov/acs/www/UseData/index.htm>

Family Income in the Past 12 Months Oglethorpe County, Georgia



Source: B19101. FAMILY INCOME IN THE PAST 12 MONTHS (IN 2010 INFLATION-ADJUSTED DOLLARS)
Data Set: 2008-2012 American Community Survey 5-Year Estimates

B19113. MEDIAN FAMILY INCOME IN THE PAST 12 MONTHS (IN 2010 INFLATION-ADJUSTED DOLLARS)

Data Set: 2008-2012 American Community Survey 5-Year Estimates

	Oglethorpe County, Georgia			
	African American	Margin of Error (+/-)	White, Not Hispanic	Margin of Error (+/-)
Median family income in the past 12 months (in 2010 inflation-adjusted dollars)	\$ 28,899	\$ 7,891	\$ 58,194	\$ 3,879

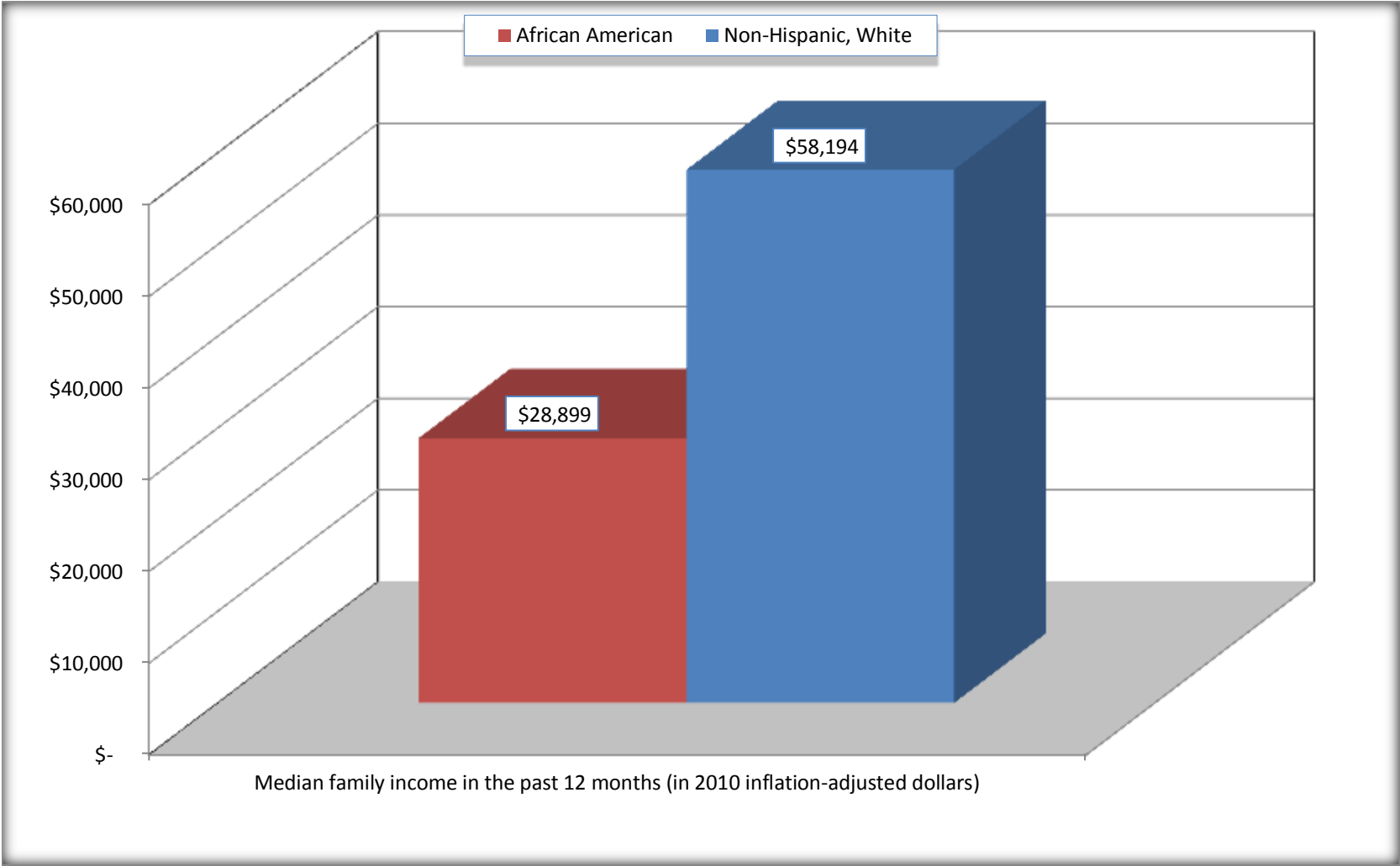
Source: U.S. Census Bureau, 2008-2012 American Community Survey

For information on confidentiality protection, sampling error, nonsampling error, and definitions, see Survey Methodology.

<http://www.census.gov/acs/www/UseData/index.htm>

Median Family Income in the Past 12 Months

Oglethorpe County, Georgia



Source: B19113. MEDIAN FAMILY INCOME IN THE PAST 12 MONTHS (IN 2010 INFLATION-ADJUSTED DOLLARS)
Data Set: 2008-2012 American Community Survey 5-Year Estimates

B19202. MEDIAN NONFAMILY HOUSEHOLD INCOME IN THE PAST 12 MONTHS (IN 2010 INFLATION-ADJUSTED DOLLARS)

Data Set: 2008-2012 American Community Survey 5-Year Estimates

	Oglethorpe County, Georgia			
	African American	Margin of Error (+/-)	White, Not Hispanic	Margin of Error (+/-)
Median nonfamily household income in the past 12 months (in 2010 inflation-adjusted dollars)	\$ 30,313	\$ 16,237	\$ 24,056	\$ 3,659

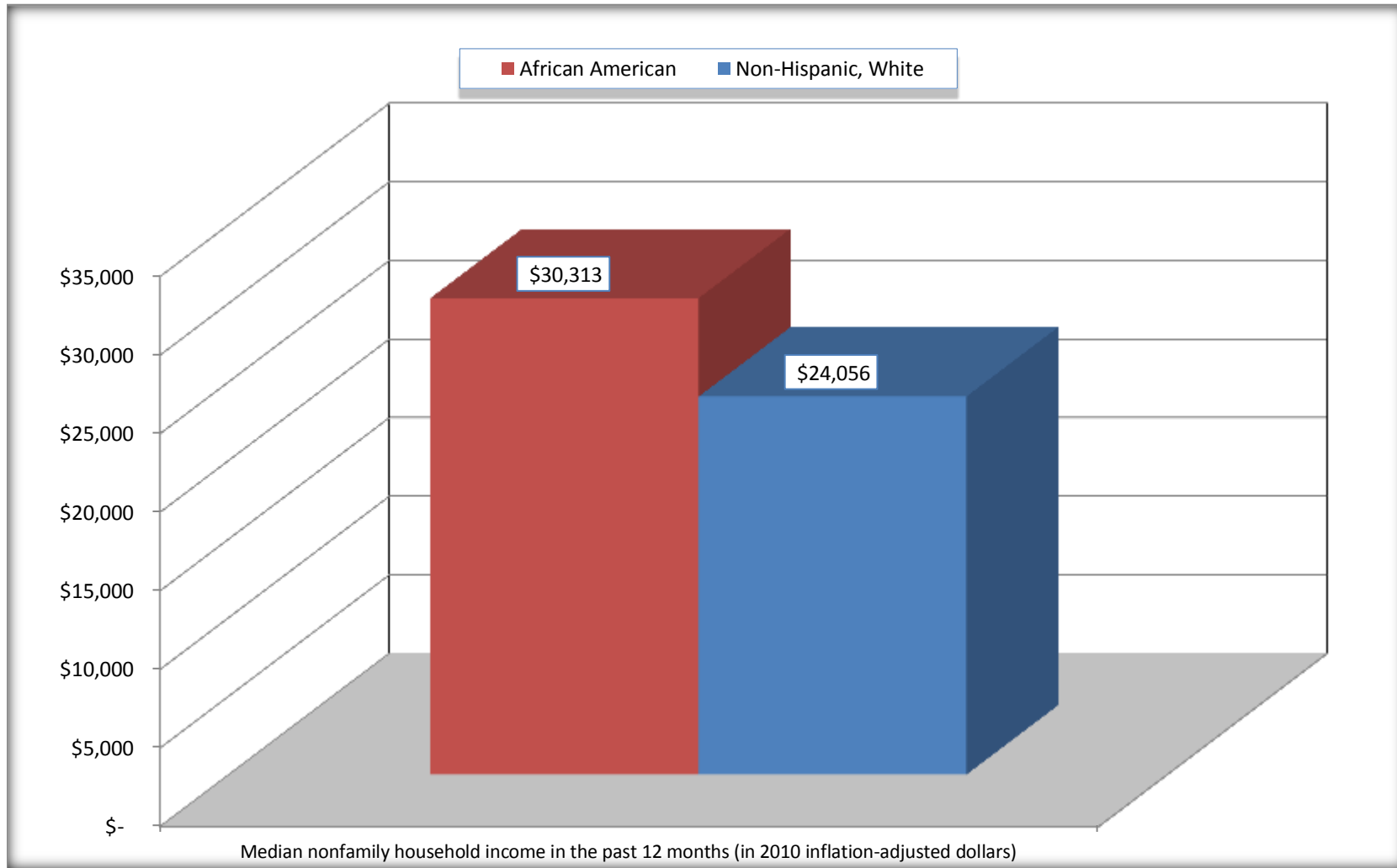
Source: U.S. Census Bureau, 2008-2012 American Community Survey

For information on confidentiality protection, sampling error, nonsampling error, and definitions, see Survey Methodology.

<http://www.census.gov/acs/www/UseData/index.htm>

Median Non-Family Income in the Past 12 Months

Oglethorpe County, Georgia



Source: B19202. MEDIAN NONFAMILY HOUSEHOLD INCOME IN THE PAST 12 MONTHS (IN 2010 INFLATION-ADJUSTED DOLLARS)
Data Set: 2008-2012 American Community Survey 5-Year Estimates

B19301. PER CAPITA INCOME IN THE PAST 12 MONTHS (IN 2010 INFLATION-ADJUSTED DOLLARS)

Data Set: 2008-2012 American Community Survey 5-Year Estimates

	Oglethorpe County, Georgia			
	African American	Margin of Error (+/-)	White, Not Hispanic	Margin of Error (+/-)
Per capita income in the past 12 months (in 2010 inflation-adjusted dollars)	\$ 16,673	\$ 2,982	\$ 21,218	\$ 1,770

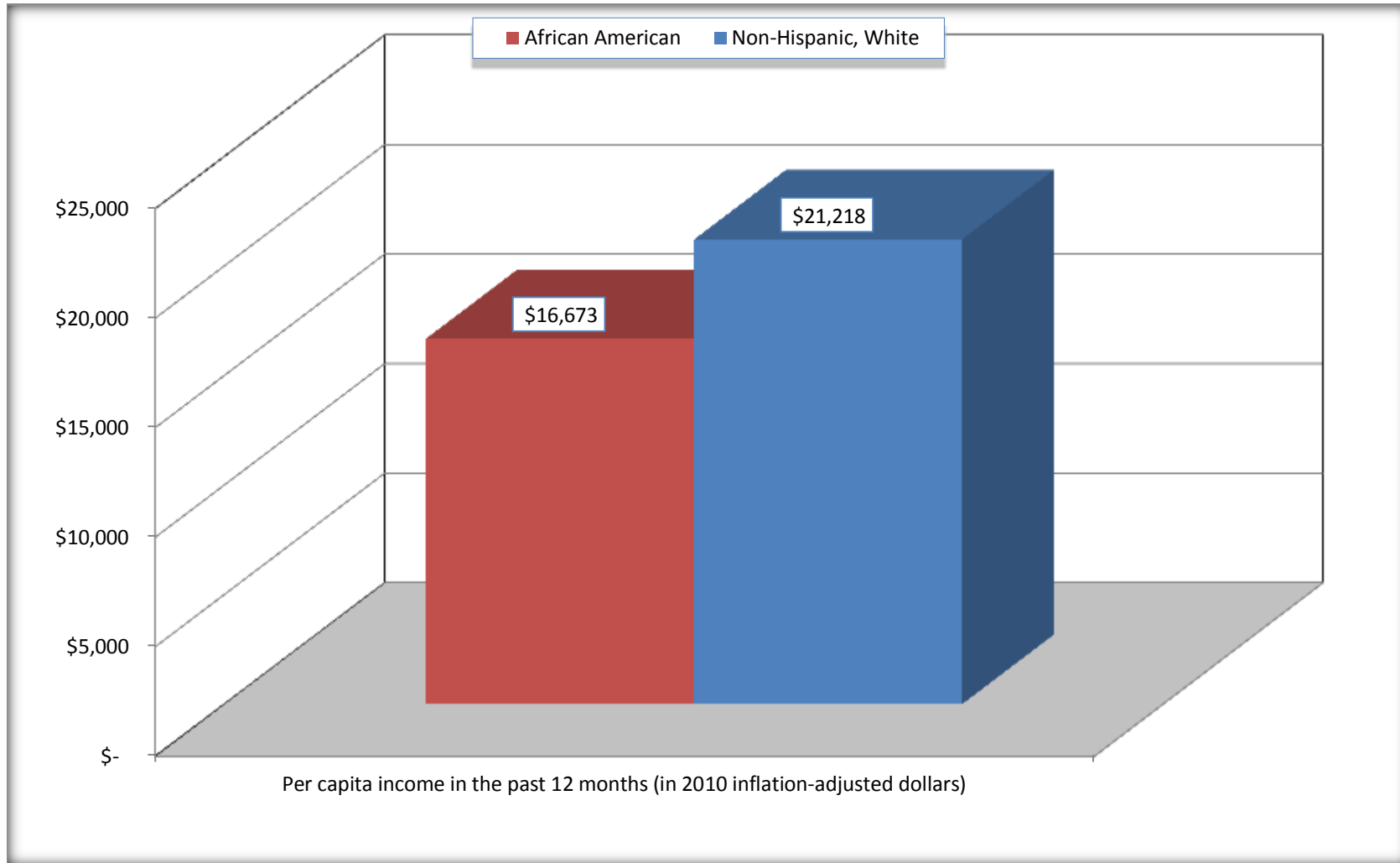
Source: U.S. Census Bureau, 2008-2012 American Community Survey

For information on confidentiality protection, sampling error, nonsampling error, and definitions, see Survey Methodology.

<http://www.census.gov/acs/www/UseData/index.htm>

Per capita Income in the Past 12 Months

Oglethorpe County, Georgia



Source: B19301. PER CAPITA INCOME IN THE PAST 12 MONTHS (IN 2010 INFLATION-ADJUSTED DOLLARS)
Data Set: 2008-2012 American Community Survey 5-Year Estimates

B20017. MEDIAN EARNINGS IN THE PAST 12 MONTHS (IN 2010 INFLATION-ADJUSTED DOLLARS) BY SEX BY WORK EXPERIENCE IN THE PAST 12 MONTHS FOR THE POPULATION 16 YEARS AND OVER WITH EARNINGS IN THE PAST 12 MONTHS

Data Set: 2008-2012 American Community Survey 5-Year Estimates

	Oglethorpe County, Georgia			
	African American	Margin of Error (+/-)	White, Not Hispanic	Margin of Error (+/-)
Median earnings in the past 12 months (in 2010 inflation-adjusted dollars) --				
Total:	\$ 30,229	\$ 6,156	\$ 30,826	\$ 2,047
Male --				
Total	\$ 31,651	\$ 2,518	\$ 34,138	\$ 3,756
Worked full-time, year-round in the past 12 months	\$ 35,049	\$ 5,231	\$ 41,446	\$ 7,925
Other	\$ 7,177	\$ 1,366	\$ 11,714	\$ 5,163
Female --				
Total	\$ 25,000	\$ 5,873	\$ 23,583	\$ 3,562
Worked full-time, year-round in the past 12 months	\$ 36,058	\$ 26,198	\$ 31,332	\$ 5,066
Other	\$ 6,722	\$ 2,294	\$ 11,818	\$ 3,404

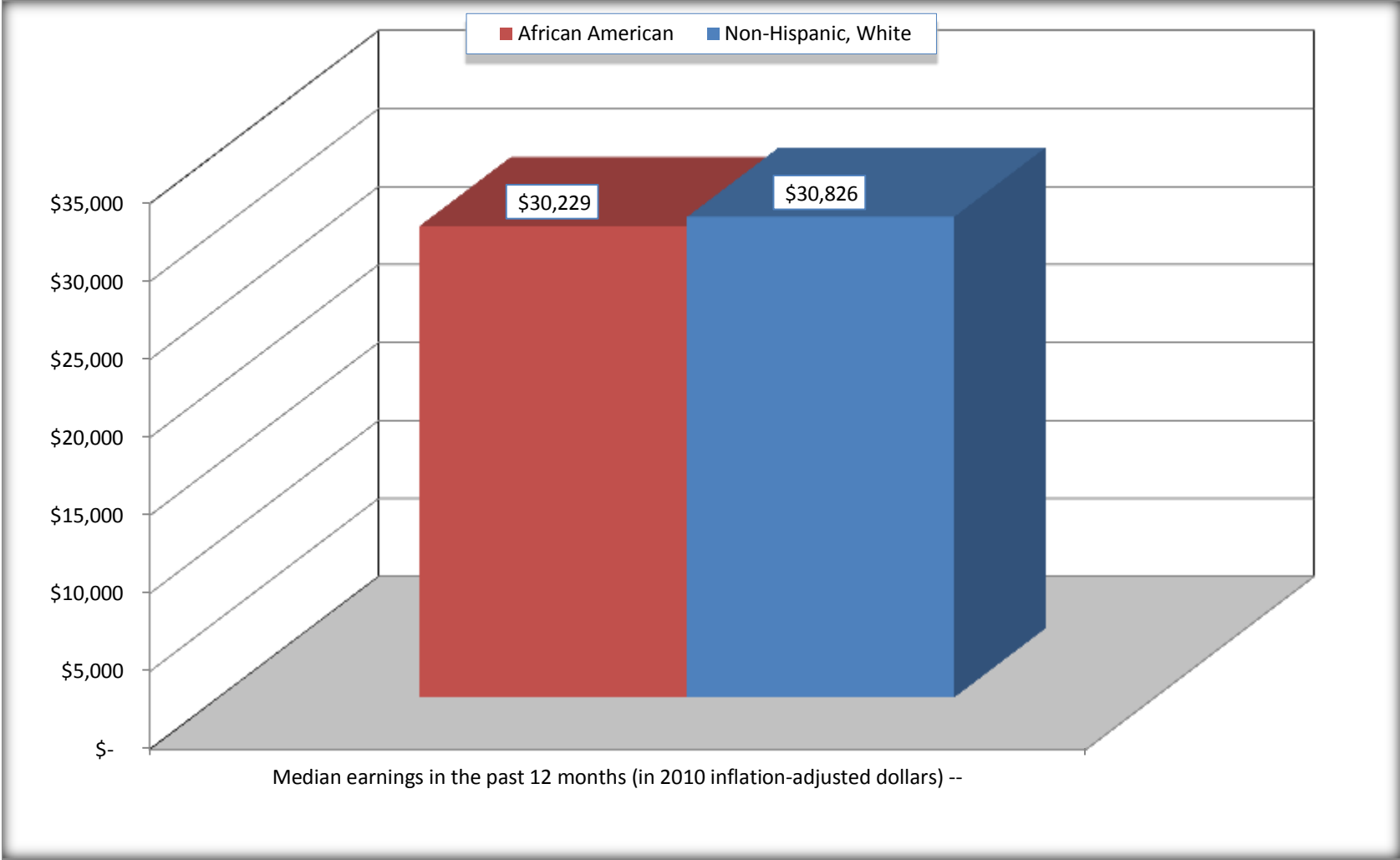
Source: U.S. Census Bureau, 2008-2012 American Community Survey

For information on confidentiality protection, sampling error, nonsampling error, and definitions, see Survey Methodology.

<http://www.census.gov/acs/www/UseData/index.htm>

Median earnings in the Past 12 Months (16 Years and Over with Earnings)

Oglethorpe County, Georgia



Source: B20017. MEDIAN EARNINGS IN THE PAST 12 MONTHS (IN 2010 INFLATION-ADJUSTED DOLLARS) BY SEX BY WORK EXPERIENCE IN THE PAST 12 MONTHS FOR THE POPULATION 16 YEARS AND OVER WITH EARNINGS IN THE PAST 12 MONTHS
Data Set: 2008-2012 American Community Survey 5-Year Estimates

B20005. SEX BY WORK EXPERIENCE IN THE PAST 12 MONTHS BY EARNINGS IN THE PAST 12 MONTHS (IN 2010 INFLATION-ADJUSTED DOLLARS) FOR THE POPULATION 16 YEARS AND OVER

Data Set: 2008-2012 American Community Survey 5-Year Estimates

	Oglethorpe County, Georgia					
	African American	Margin of Error (+/-)	% of AA Total	White, Not Hispanic	Margin of Error (+/-)	% of NHW Total
Total:	2,082	135	100.0%	9,077	79	100.0%
Worked full-time, year-round in the past 12 months:	785	NC	37.7%	3,809	NC	42.0%
No earnings	0	NC	0.0%	0	NC	0.0%
With earnings:	785	NC	37.7%	3,809	NC	42.0%
\$ 1 to \$ 9,999 or loss	0	NC	0.0%	111	NC	1.2%
\$ 10,000 to \$ 19,999	19	NC	0.9%	484	NC	5.3%
\$ 20,000 to \$ 29,999	236	NC	11.3%	694	NC	7.6%
\$ 30,000 to \$ 49,999	298	NC	14.3%	1,343	NC	14.8%
\$ 50,000 to \$ 74,999	214	NC	10.3%	873	NC	9.6%
\$ 75,000 or more	18	NC	0.9%	304	NC	3.3%
Other:	1,297	NC	62.3%	5,268	NC	58.0%
No earnings	1,042	NC	50.0%	3,854	NC	42.5%
With earnings: less than full time, year-round	255	NC	12.2%	1,414	NC	15.6%
Male:	1,007	133	48.4%	4,456	62	49.1%
Worked full-time, year-round in the past 12 months:	409	128	19.6%	2,153	260	23.7%
No earnings	0	21	0.0%	0	21	0.0%
With earnings:	409	128	19.6%	2,153	260	23.7%
\$ 1 to \$ 9,999 or loss	0	NC	0.0%	65	NC	0.7%
\$ 10,000 to \$ 19,999	5	NC	0.2%	133	NC	1.5%
\$ 20,000 to \$ 29,999	73	NC	3.5%	320	NC	3.5%
\$ 30,000 to \$ 49,999	258	NC	12.4%	807	NC	8.9%
\$ 50,000 to \$ 74,999	60	NC	2.9%	580	NC	6.4%
\$ 75,000 or more	13	NC	0.6%	248	NC	2.7%

	Oglethorpe County, Georgia					
	African American	Margin of Error (+/-)	% of AA Total	White, Not Hispanic	Margin of Error (+/-)	% of NHW Total
Other:	598	125	28.7%	2,303	272	25.4%
No earnings	489	114	23.5%	1,555	269	17.1%
With earnings:	109	73	5.2%	748	189	8.2%
Female:	1,075	47	51.6%	4,621	57	50.9%
Worked full-time, year-round in the past 12 months:	376	121	18.1%	1,656	234	18.2%
No earnings	0	21	0.0%	0	21	0.0%
With earnings:	376	121	18.1%	1,656	234	18.2%
\$ 1 to \$ 9,999 or loss	0	NC	0.0%	46	NC	0.5%
\$ 10,000 to \$ 19,999	14	NC	0.7%	351	NC	3.9%
\$ 20,000 to \$ 29,999	163	NC	7.8%	374	NC	4.1%
\$ 30,000 to \$ 49,999	40	NC	1.9%	536	NC	5.9%
\$ 50,000 to \$ 74,999	154	NC	7.4%	293	NC	3.2%
\$ 75,000 or more	5	NC	0.2%	56	NC	0.6%
Other:	699	125	33.6%	2,965	240	32.7%
No earnings	553	128	26.6%	2,299	222	25.3%
With earnings:	146	82	7.0%	666	171	7.3%

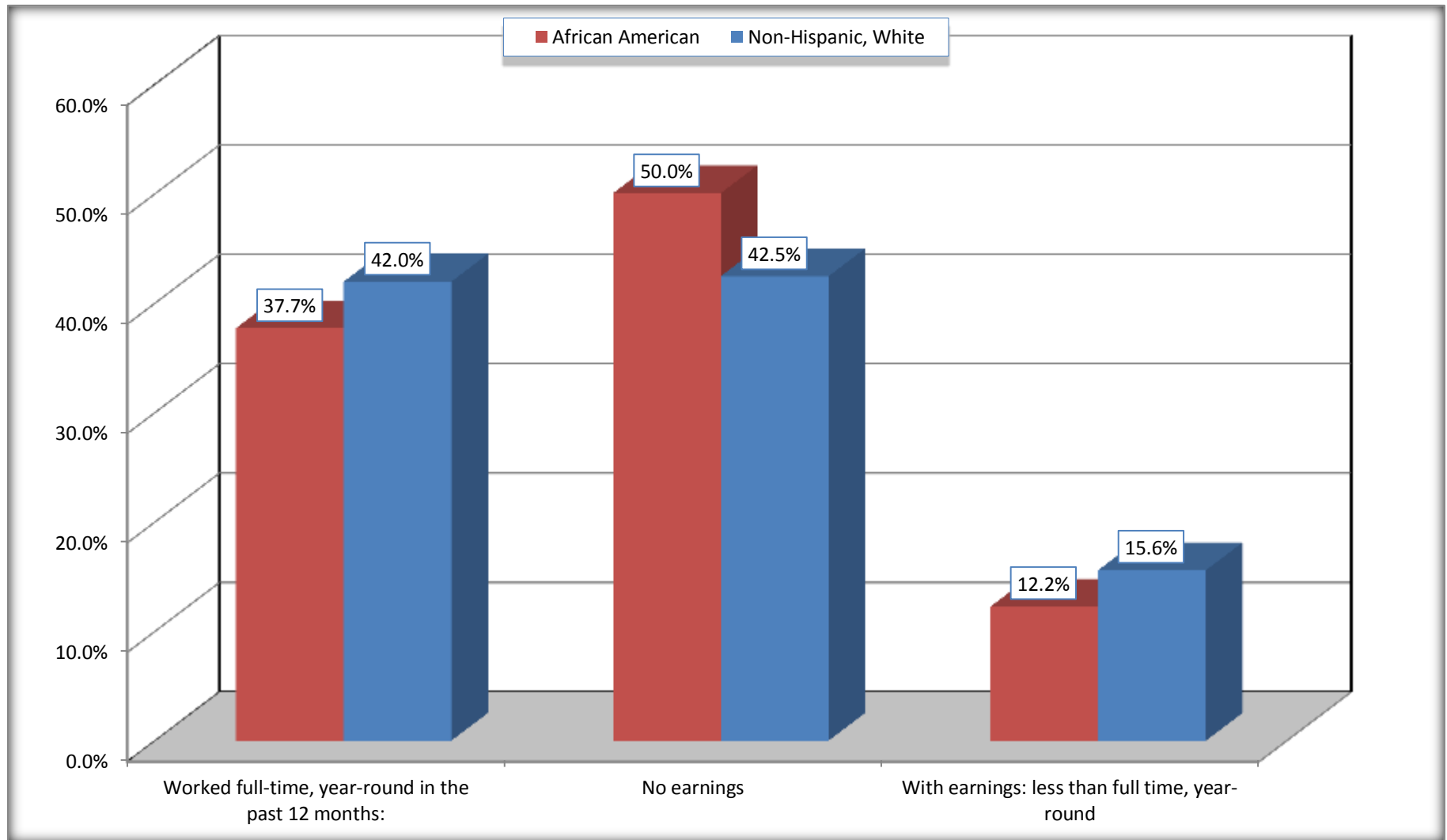
Source: U.S. Census Bureau, 2008-2012 American Community Survey

For information on confidentiality protection, sampling error, nonsampling error, and definitions, see Survey Methodology.

<http://www.census.gov/acs/www/UseData/index.htm>

Employment and Earnings in in the Past 12 Months (16 Years and Over)

Oglethorpe County, Georgia



Source: B20005. SEX BY WORK EXPERIENCE IN THE PAST 12 MONTHS BY EARNINGS IN THE PAST 12 MONTHS (IN 2010 INFLATION-ADJUSTED DOLLARS) FOR THE POPULATION 16 YEARS AND OVER
Data Set: 2008-2012 American Community Survey 5-Year Estimates

C21001. SEX BY AGE BY VETERAN STATUS FOR THE CIVILIAN POPULATION 18 YEARS AND OVER

Data Set: 2008-2012 American Community Survey 5-Year Estimates

	Oglethorpe County, Georgia					
	African American	Margin of Error (+/-)	% of AA Total	White, Not Hispanic	Margin of Error (+/-)	% of NHW Total
Total:	1,978	100	100.0%	8,819	21	100.0%
Veteran	116	NC	5.9%	842	NC	9.5%
Nonveteran	1,862	NC	94.1%	7,977	NC	90.5%
Male:	921	100	46.6%	4,318	21	49.0%
18 to 64 years:	772	100	39.0%	3,525	21	40.0%
Veteran	116	82	5.9%	386	126	4.4%
Nonveteran	656	100	33.2%	3,139	126	35.6%
65 years and over:	149	21	7.5%	793	21	9.0%
Veteran	0	21	0.0%	422	83	4.8%
Nonveteran	149	21	7.5%	371	83	4.2%
Female:	1,057	32	53.4%	4,501	21	51.0%
18 to 64 years:	825	32	41.7%	3,569	21	40.5%
Veteran	0	21	0.0%	33	42	0.4%
Nonveteran	825	32	41.7%	3,536	42	40.1%
65 years and over:	232	21	11.7%	932	21	10.6%
Veteran	0	21	0.0%	1	2	0.0%
Nonveteran	232	21	11.7%	931	2	10.6%

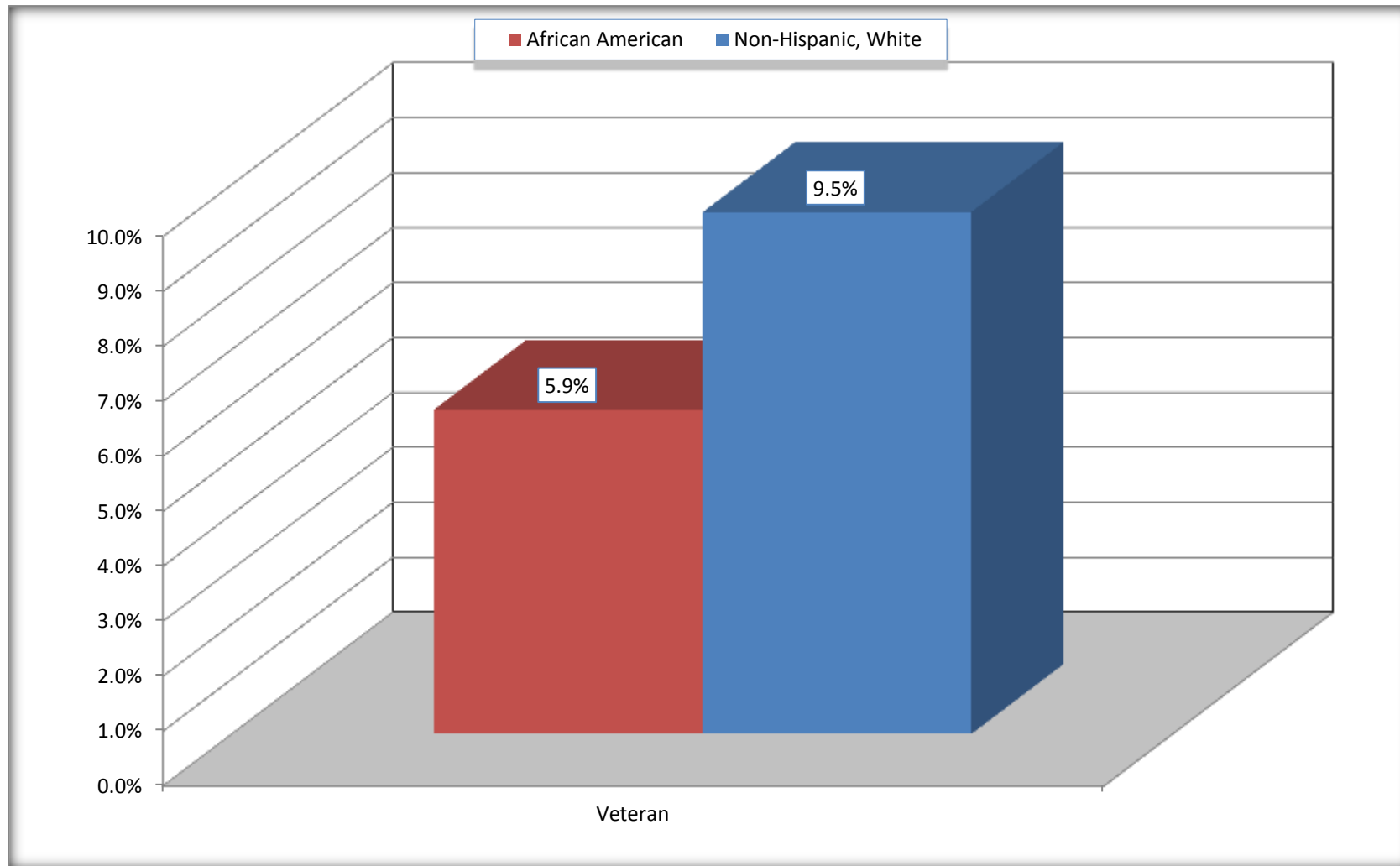
Source: U.S. Census Bureau, 2008-2012 American Community Survey

For information on confidentiality protection, sampling error, nonsampling error, and definitions, see Survey Methodology.

<http://www.census.gov/acs/www/UseData/index.htm>

Veterans in the Civilian Population 18 Years and Over

Oglethorpe County, Georgia



Source: C21001. SEX BY AGE BY VETERAN STATUS FOR THE CIVILIAN POPULATION 18 YEARS AND OVER
Data Set: 2008-2012 American Community Survey 5-Year Estimates

B22005. RECEIPT OF FOOD STAMPS/SNAP IN THE PAST 12 MONTHS BY RACE OF HOUSEHOLDER

Data Set: 2008-2012 American Community Survey 5-Year Estimates

	Oglethorpe County, Georgia					
	African American	Margin of Error (+/-)	% of AA Total	White, Not Hispanic	Margin of Error (+/-)	% of NHW Total
Total:	876	150	100.0%	3,990	186	100.0%
HH received Food Stamps/SNAP in the past 12 months	141	67	16.1%	331	123	8.3%
HH did not receive Food Stamps/SNAP in the past 12 months	735	143	83.9%	3,659	206	91.7%

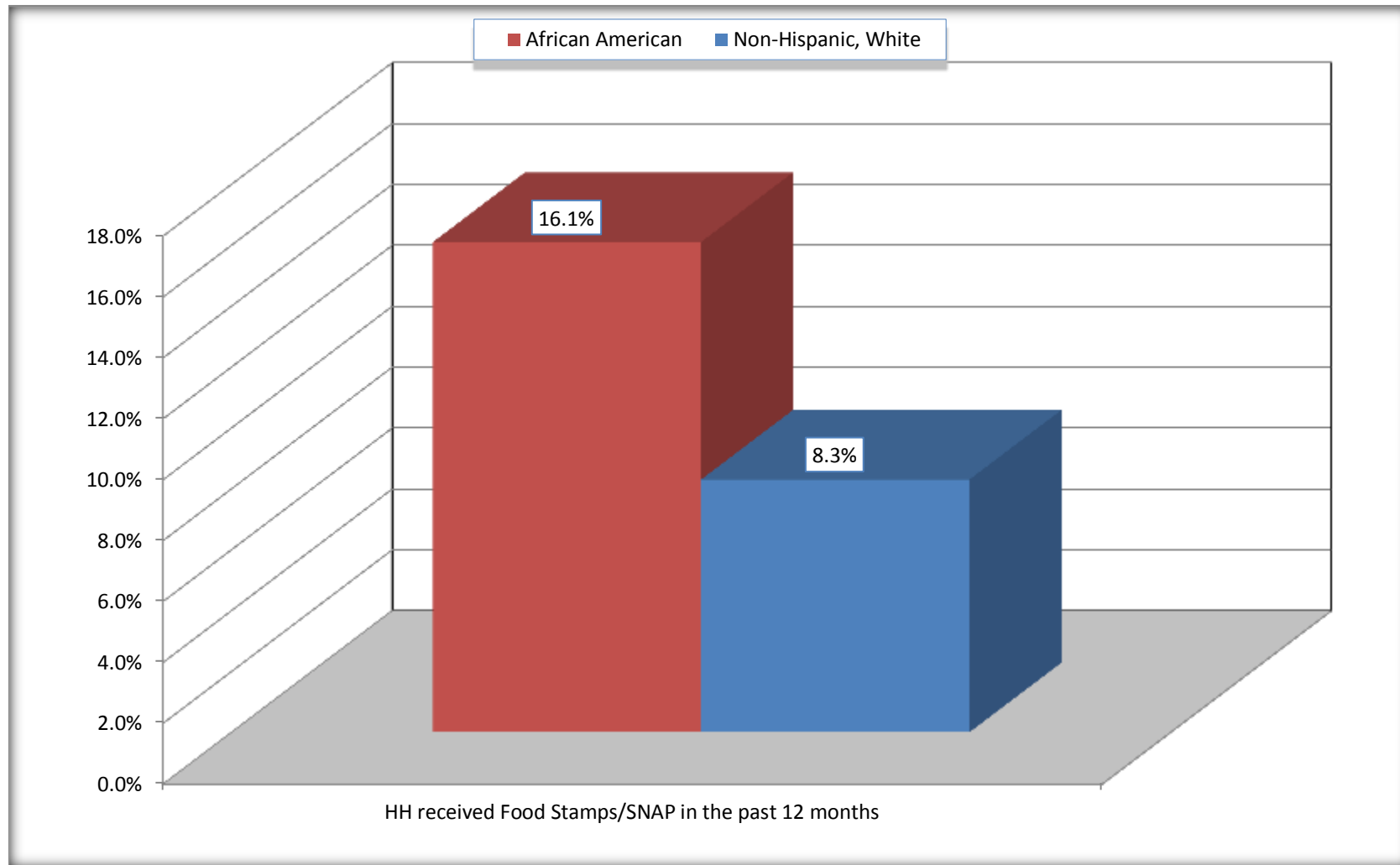
Source: U.S. Census Bureau, 2008-2012 American Community Survey

For information on confidentiality protection, sampling error, nonsampling error, and definitions, see Survey Methodology.

<http://www.census.gov/acs/www/UseData/index.htm>

Receipt of Food Stamps/SNAP in the Past 12 Months by Household

Oglethorpe County, Georgia



Source: B22005. RECEIPT OF FOOD STAMPS/SNAP IN THE PAST 12 MONTHS BY RACE OF HOUSEHOLDER
Data Set: 2008-2012 American Community Survey 5-Year Estimates

C23002. SEX BY AGE BY EMPLOYMENT STATUS FOR THE POPULATION 16 YEARS AND OVER

Data Set: 2008-2012 American Community Survey 5-Year Estimates

	Oglethorpe County, Georgia					
	African American	Margin of Error (+/-)	% of AA Total	White, Not Hispanic	Margin of Error (+/-)	% of NHW Total
Total:	2,082	135	100.0%	9,077	79	100.0%
In labor force:	1,029	NC	49.4%	5,141	NC	56.6%
In Armed Forces	0	NC	0.0%	0	NC	0.0%
Civilian:	988	NC	47.5%	4,962	NC	54.7%
Employed	971	NC	46.6%	4,876	NC	53.7%
Unemployed	58	NC	2.8%	265	NC	2.9%
Not in labor force	1,053	NC	50.6%	3,936	NC	43.4%
Male:	1,007	133	48.4%	4,456	62	49.1%
16 to 64 years:	858	133	41.2%	3,663	62	40.4%
In labor force:	516	136	24.8%	2,746	246	30.3%
In Armed Forces	0	21	0.0%	0	21	0.0%
Civilian:	516	136	24.8%	2,746	246	30.3%
Employed	491	133	23.6%	2,570	267	28.3%
Unemployed	25	23	1.2%	176	84	1.9%
Not in labor force	342	122	16.4%	917	231	10.1%
65 years and over:	149	21	7.2%	793	21	8.7%
In labor force:	15	22	0.7%	116	55	1.3%
Employed	15	22	0.7%	110	55	1.2%
Unemployed	0	21	0.0%	6	10	0.1%
Not in labor force	134	22	6.4%	677	55	7.5%

	Oglethorpe County, Georgia					
	African American	Margin of Error (+/-)	% of AA Total	White, Not Hispanic	Margin of Error (+/-)	% of NHW Total
Female:	1,075	47	51.6%	4,621	57	50.9%
16 to 64 years:	843	47	40.5%	3,689	57	40.6%
In labor force:	472	120	22.7%	2,216	213	24.4%
In Armed Forces	0	21	0.0%	0	21	0.0%
Civilian:	472	120	22.7%	2,216	213	24.4%
Employed	465	117	22.3%	2,139	205	23.6%
Unemployed	7	22	0.3%	77	59	0.8%
Not in labor force	371	120	17.8%	1,473	223	16.2%
65 years and over:	232	21	11.1%	932	21	10.3%
In labor force:	26	29	1.2%	63	46	0.7%
Employed	0	21	0.0%	57	45	0.6%
Unemployed	26	29	1.2%	6	8	0.1%
Not in labor force	206	29	9.9%	869	46	9.6%

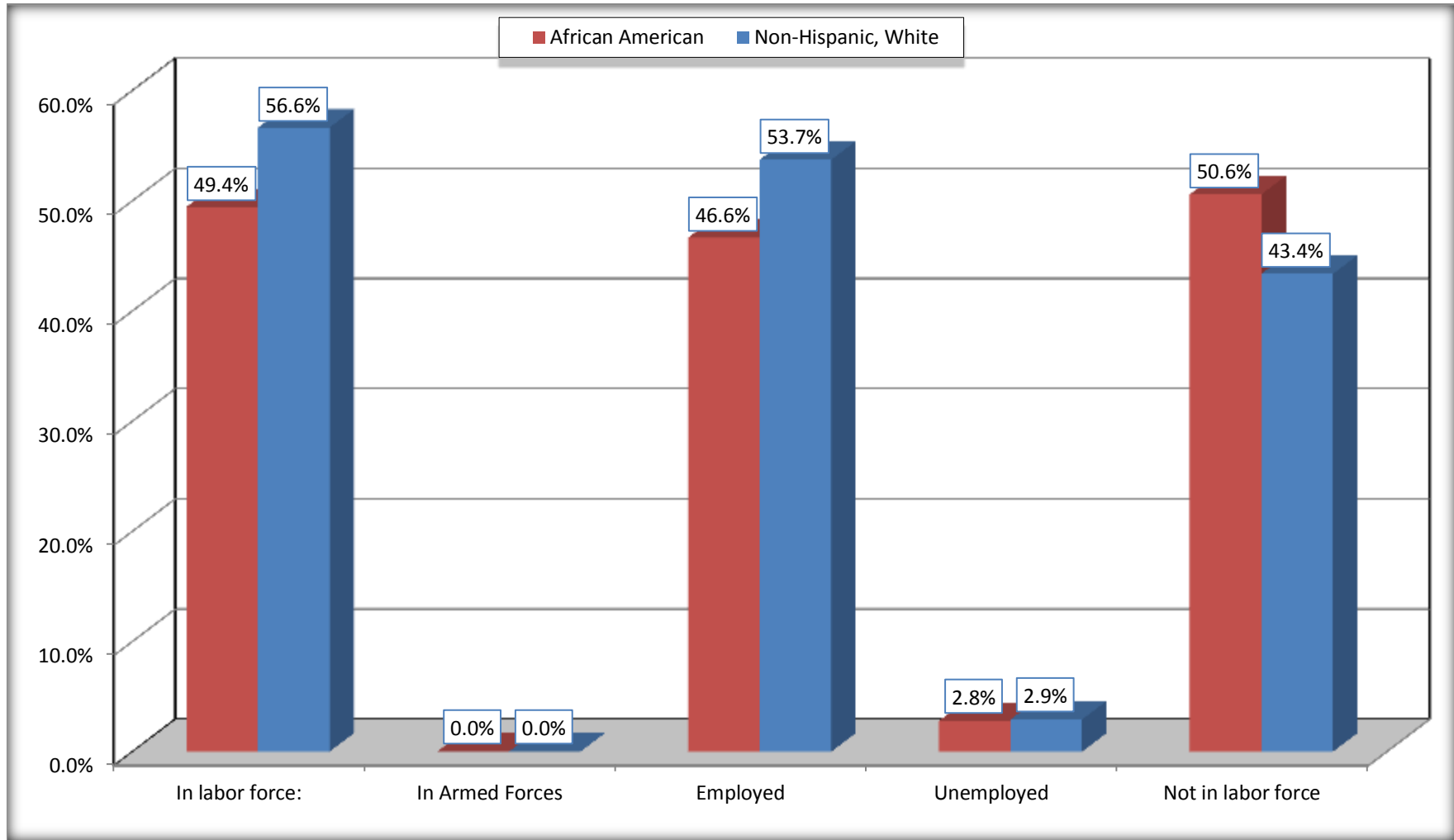
Source: U.S. Census Bureau, 2008-2012 American Community Survey

For information on confidentiality protection, sampling error, nonsampling error, and definitions, see Survey Methodology.

<http://www.census.gov/acs/www/UseData/index.htm>

Employment Status for the Population 16 years and over

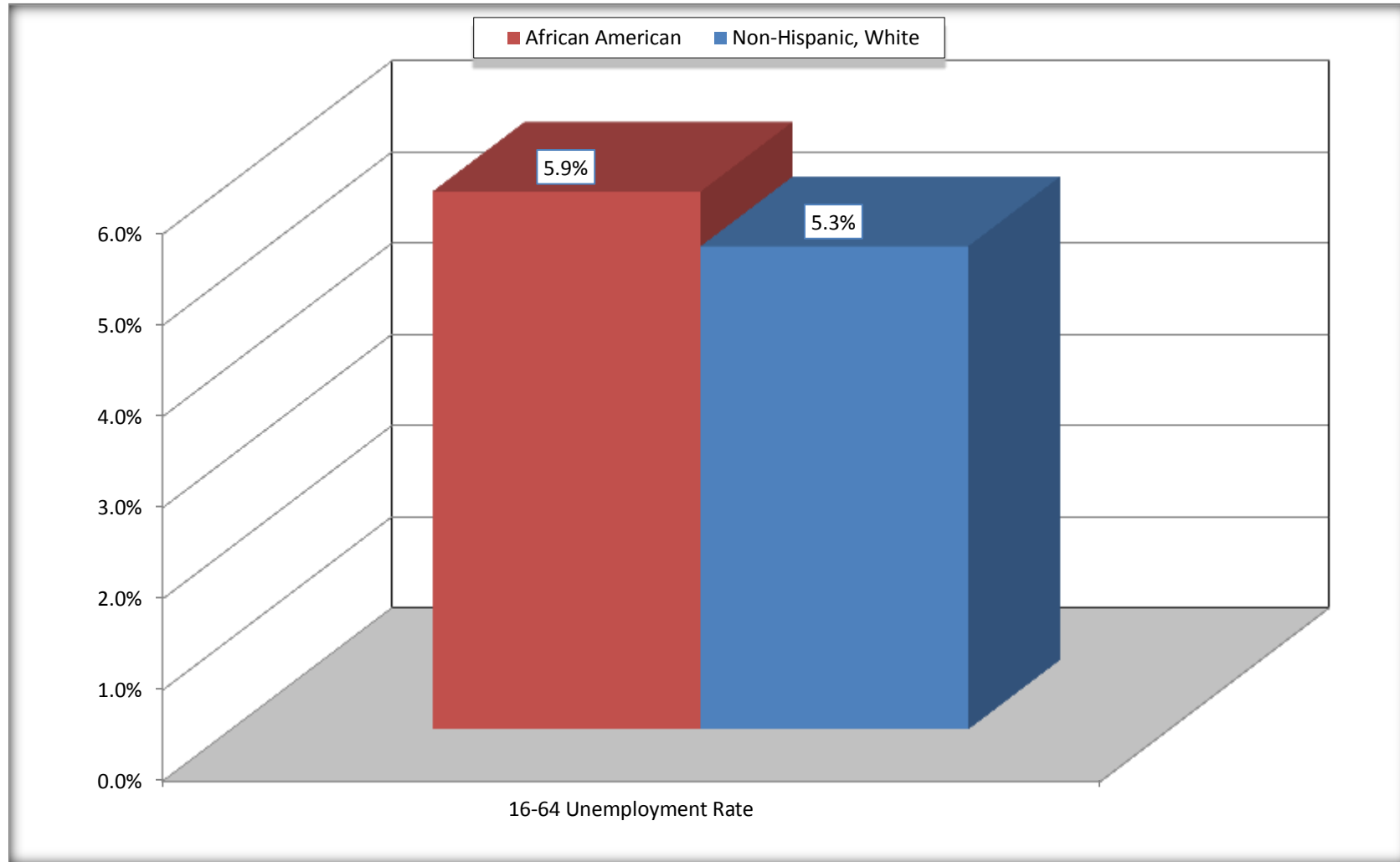
Oglethorpe County, Georgia



Source: C23002. SEX BY AGE BY EMPLOYMENT STATUS FOR THE POPULATION 16 YEARS AND OVER
Data Set: 2008-2012 American Community Survey 5-Year Estimates

Unemployment of Working Age Population (Ages 16 to 64) (As a Percent of 16-64 Civilian Labor Force)

Oglethorpe County, Georgia



Source: C23002. SEX BY AGE BY EMPLOYMENT STATUS FOR THE POPULATION 16 YEARS AND OVER
Data Set: 2008-2012 American Community Survey 5-Year Estimates

C24010. SEX BY OCCUPATION FOR THE CIVILIAN EMPLOYED POPULATION 16 YEARS AND OVER

Data Set: 2008-2012 American Community Survey 5-Year Estimates

	Oglethorpe County, Georgia					
	African American	Margin of Error (+/-)	% of AA Total	White, Not Hispanic	Margin of Error (+/-)	% of NHW Total
Total:	971	177	100.0%	4,876	323	100.0%
Management, professional, and related occupations	299	NC	30.8%	1,451	NC	29.8%
Service occupations	168	NC	17.3%	600	NC	12.3%
Sales and office occupations	126	NC	13.0%	1,280	NC	26.3%
Natural resources, construction, and maintenance occupations:	10	NC	1.0%	758	NC	15.5%
Production, transportation, and material moving occupations	368	NC	37.9%	787	NC	16.1%
Male:	506	134	52.1%	2,680	270	55.0%
Management, business, science, and arts occupations:	58	57	6.0%	632	162	13.0%
Service occupations	87	60	9.0%	278	126	5.7%
Sales and office occupations	32	43	3.3%	412	145	8.4%
Natural resources, construction, and maintenance occupations:	10	37	1.0%	670	184	13.7%
Production, transportation, and material moving occupations	319	124	32.9%	688	220	14.1%
Female:	465	117	47.9%	2,196	206	45.0%
Management, professional, and related occupations	241	107	24.8%	819	149	16.8%
Service occupations	81	72	8.3%	322	125	6.6%
Sales and office occupations	94	81	9.7%	868	222	17.8%
Natural resources, construction, and maintenance occupations:	0	21	0.0%	88	82	1.8%
Production, transportation, and material moving occupations	49	56	5.0%	99	65	2.0%

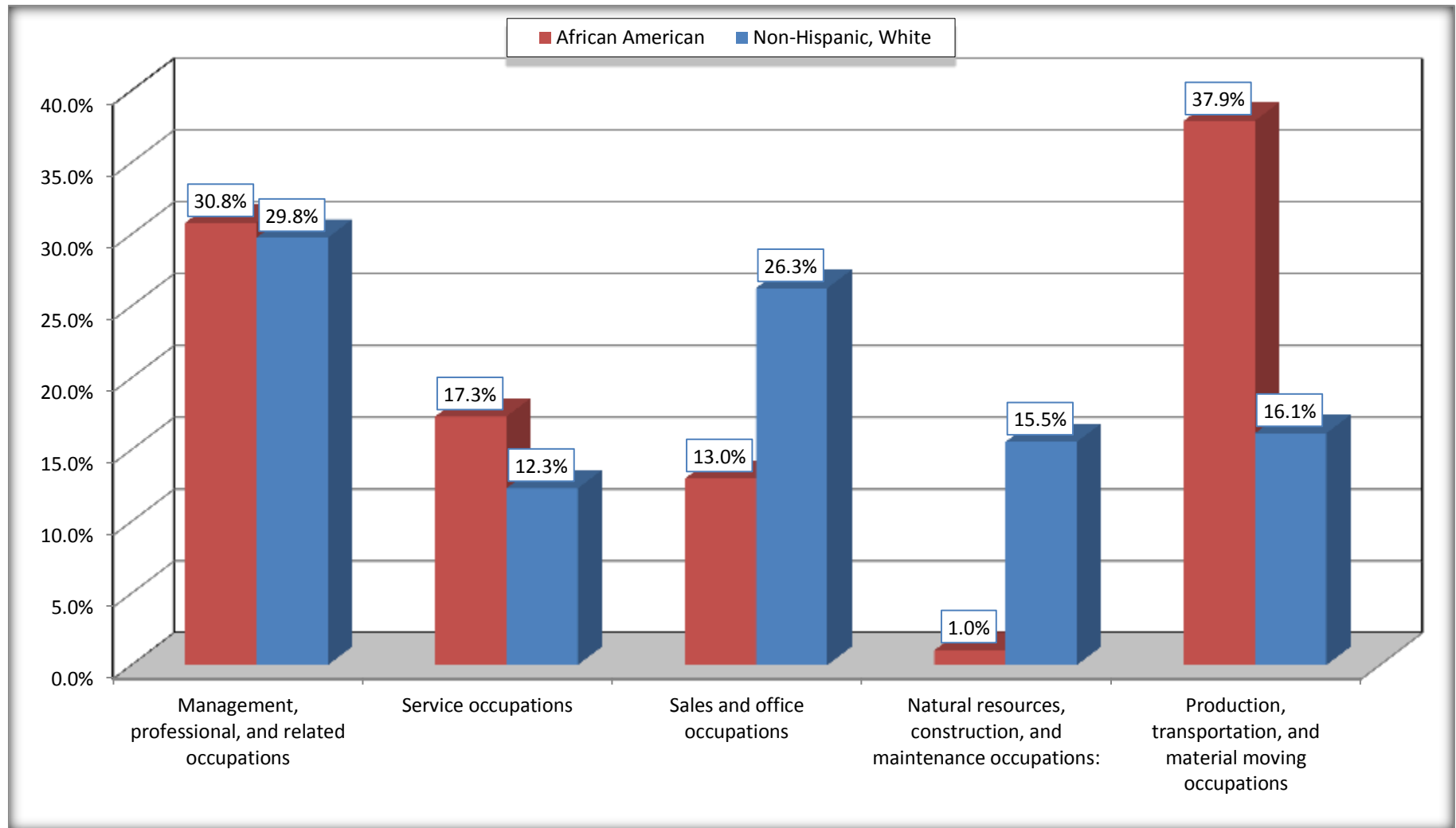
Source: U.S. Census Bureau, 2008-2012 American Community Survey

For information on confidentiality protection, sampling error, nonsampling error, and definitions, see Survey Methodology.

<http://www.census.gov/acs/www/UseData/index.htm>

Occupation for the Civilian Employed 16 Years and Over Population

Oglethorpe County, Georgia



Source: C24010. SEX BY OCCUPATION FOR THE CIVILIAN EMPLOYED POPULATION 16 YEARS AND OVER
Data Set: 2008-2012 American Community Survey 5-Year Estimates

B25003. TENURE - Universe: OCCUPIED HOUSING UNITS

Data Set: 2008-2012 American Community Survey 5-Year Estimates

	Oglethorpe County, Georgia					
	African American	Margin of Error (+/-)	% of AA Total	White, Not Hispanic	Margin of Error (+/-)	% of NHW Total
Total:	876	150	100.0%	3,990	186	100.0%
Owner occupied	773	139	88.2%	3,184	203	79.8%
Renter occupied	103	55	11.8%	806	166	20.2%

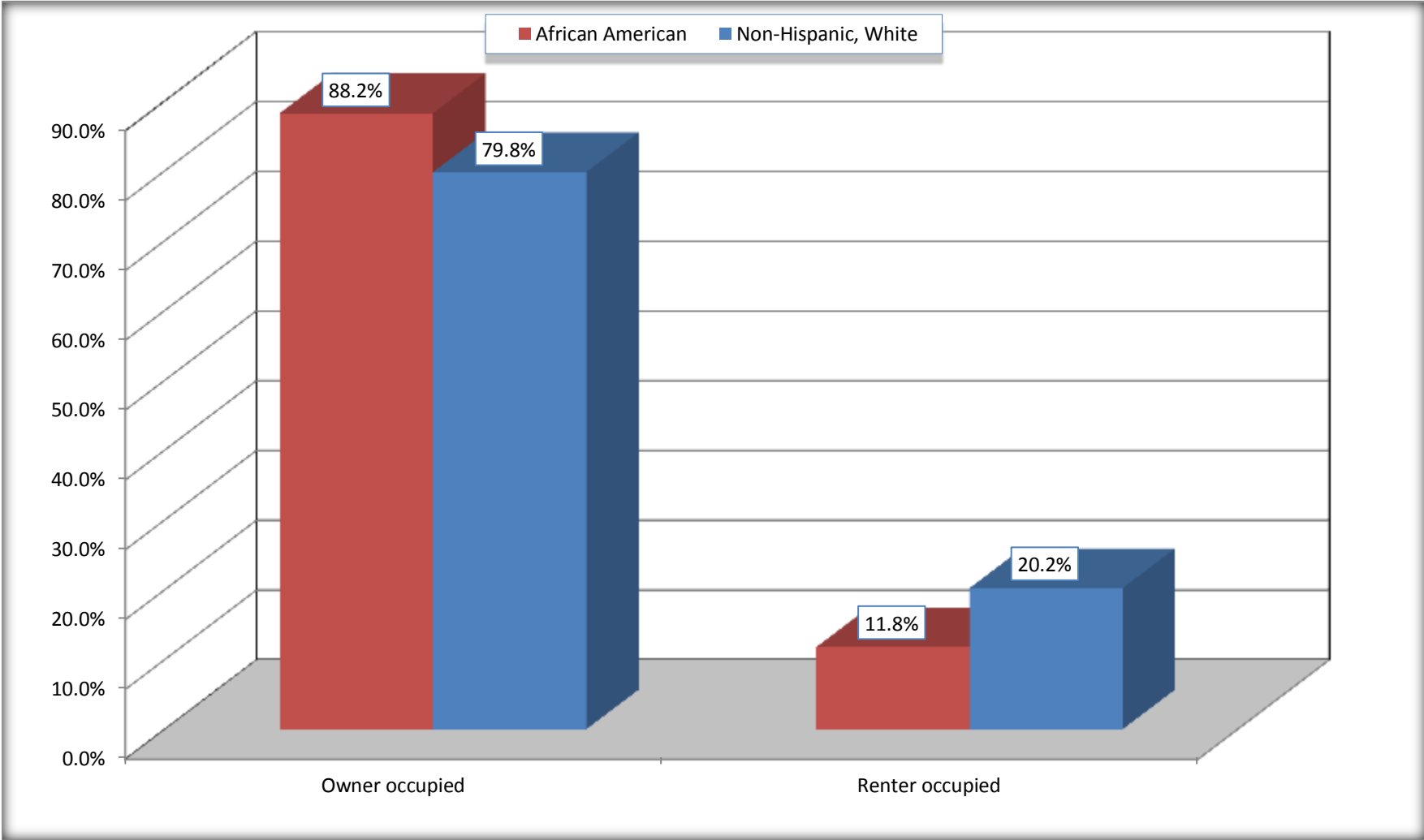
Source: U.S. Census Bureau, 2008-2012 American Community Survey

For information on confidentiality protection, sampling error, nonsampling error, and definitions, see Survey Methodology.

<http://www.census.gov/acs/www/UseData/index.h>

Home Owners and Renters by Household

Oglethorpe County, Georgia



Source: B25003. TENURE - Universe: OCCUPIED HOUSING UNITS
Data Set: 2008-2012 American Community Survey 5-Year Estimates

B25014. OCCUPANTS PER ROOM - Universe: OCCUPIED HOUSING UNITS

Data Set: 2008-2012 American Community Survey 5-Year Estimates

	Oglethorpe County, Georgia					
	African American	Margin of Error (+/-)	% of AA Total	White, Not Hispanic	Margin of Error (+/-)	% of NHW Total
Total:	876	150	100.0%	3,990	186	100.0%
1.00 or less occupants per room	870	147	99.3%	3,978	188	99.7%
1.01 or more occupants per room	6	10	0.7%	12	17	0.3%

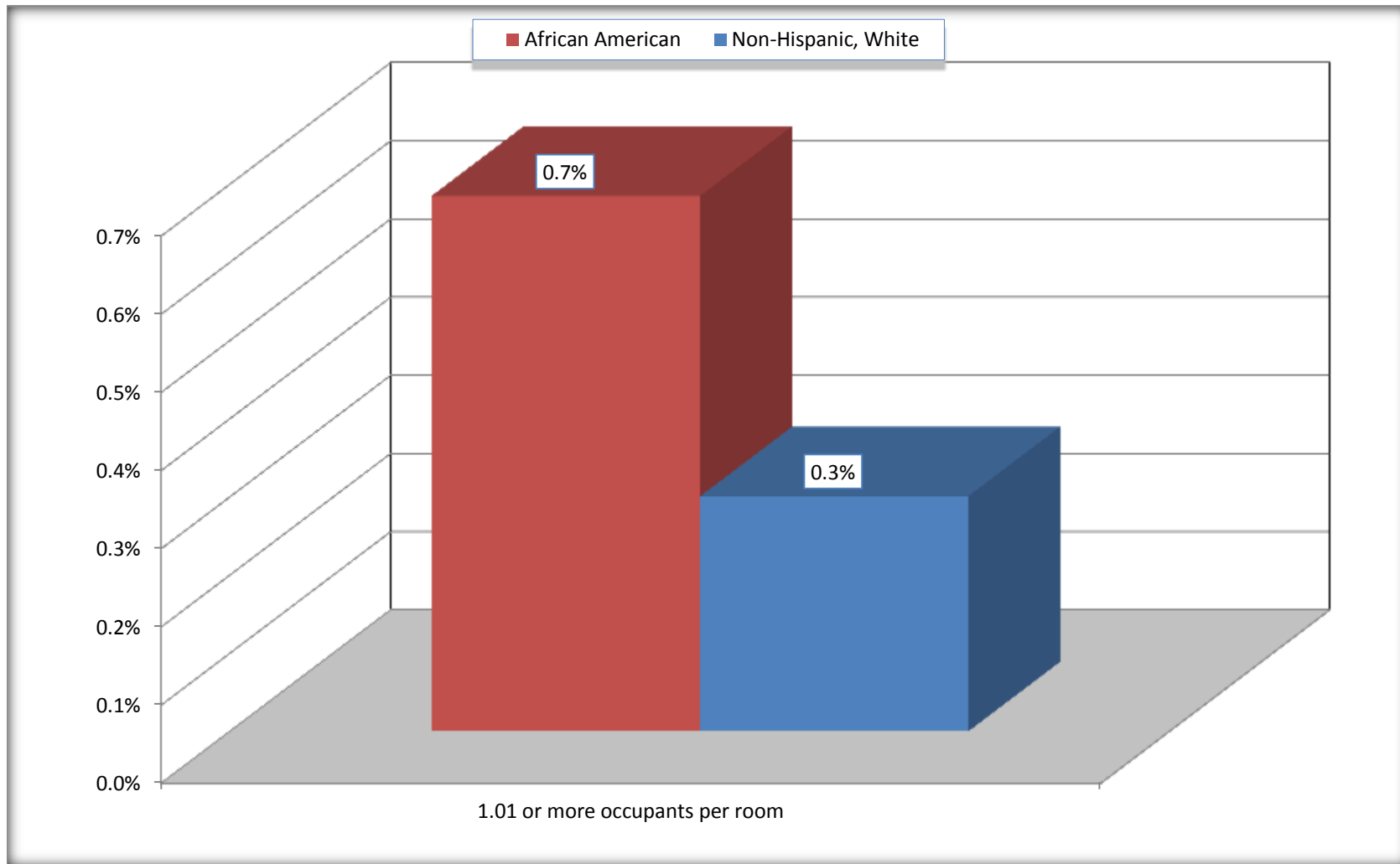
Source: U.S. Census Bureau, 2008-2012 American Community Survey

For information on confidentiality protection, sampling error, nonsampling error, and definitions, see Survey Methodology.

<http://www.census.gov/acs/www/UseData/index.ht>

More than One Person per Room (Crowding) by Household

Oglethorpe County, Georgia



Source: B25014. OCCUPANTS PER ROOM - Universe: OCCUPIED HOUSING UNITS
Data Set: 2008-2012 American Community Survey 5-Year Estimates

B18101. AGE BY DISABILITY STATUS

Data Set: 2008-2012 American Community Survey 5-Year Estimates

	Oglethorpe County, Georgia					
	African American	Margin of Error (+/-)	% of AA Total	White, Not Hispanic	Margin of Error (+/-)	% of NHW Total
Total:	2,436	196	100.0%	11,229	53	100.0%
Under 18 years:	500	121	20.5%	2,501	63	22.3%
With a disability	0	21	0.0%	85	62	0.8%
No disability	500	121	20.5%	2,416	62	21.5%
18 to 64 years:	1,555	102	63.8%	7,072	21	63.0%
With a disability	269	145	11.0%	1,438	250	12.8%
No disability	1,286	174	52.8%	5,634	254	50.2%
65 years and over:	381	21	15.6%	1,656	51	14.7%
With a disability	187	66	7.7%	688	105	6.1%
No disability	194	66	8.0%	968	111	8.6%

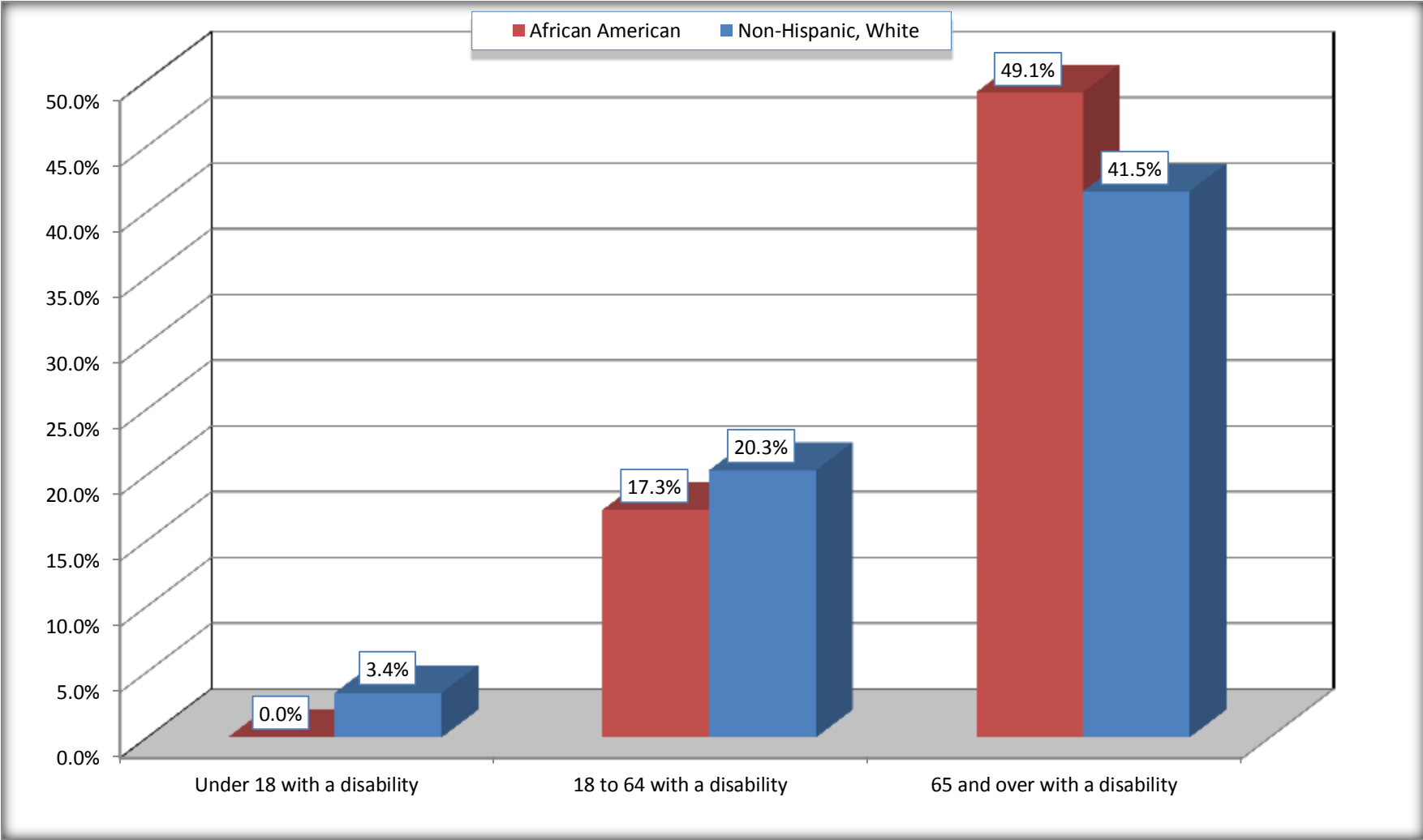
Source: U.S. Census Bureau, 2008-2012 American Community Survey

For information on confidentiality protection, sampling error, nonsampling error, and definitions, see Survey Methodology.

<http://www.census.gov/acs/www/UseData/index.htm>

Disability by Age

Oglethorpe County, Georgia



Source: B18101. AGE BY DISABILITY STATUS
Data Set: 2008-2012 American Community Survey 5-Year Estimates

C27001B. HEALTH INSURANCE COVERAGE STATUS BY AGE

Data Set: 2008-2012 American Community Survey 5-Year Estimates

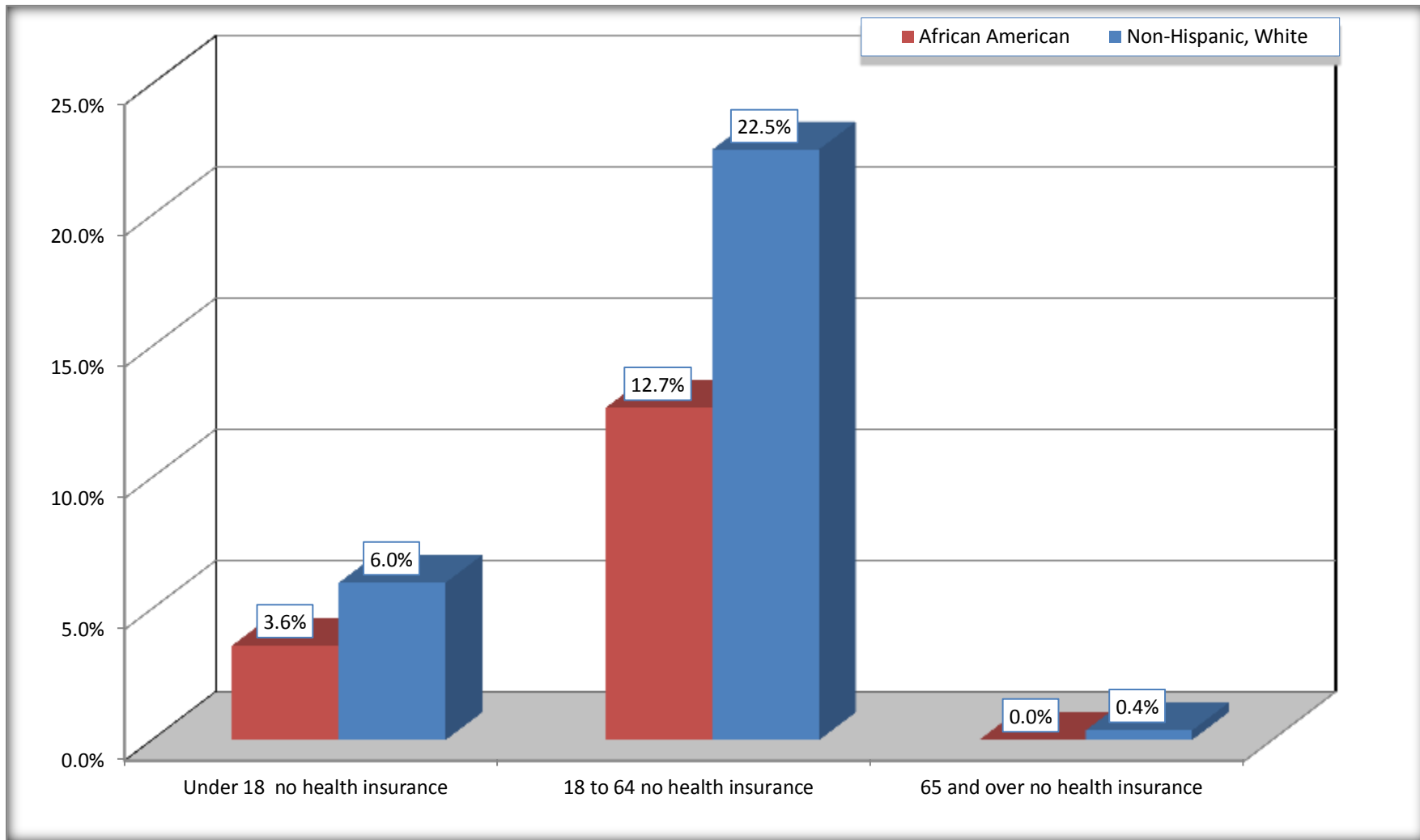
	Oglethorpe County, Georgia					
	African American	Margin of Error (+/-)	% of AA Total	White, Not Hispanic	Margin of Error (+/-)	% of NHW Total
Total:	2,436	196	100.0%	11,229	53	100.0%
Under 18 years:	500	121	20.5%	2,501	21	22.3%
With health insurance coverage	482	121	19.8%	2,351	112	20.9%
No health insurance coverage	18	30	0.7%	150	112	1.3%
18 to 64 years:	1,555	102	63.8%	7,072	21	63.0%
With health insurance coverage	1,358	156	55.7%	5,480	331	48.8%
No health insurance coverage	197	113	8.1%	1,592	334	14.2%
65 years and over:	381	21	15.6%	1,656	51	14.7%
With health insurance coverage	381	21	15.6%	1,650	53	14.7%
No health insurance coverage	0	21	0.0%	6	10	0.1%

Source: U.S. Census Bureau, 2008-2012 American Community Survey

For information on confidentiality protection, sampling error, nonsampling error, and definitions, see Survey Methodology.

<http://www.census.gov/acs/www/UseData/index.htm>

Lack of Health Insurance Coverage by Age Oglethorpe County, Georgia



Source: C27001B. HEALTH INSURANCE COVERAGE STATUS BY AGE
Data Set: 2008-2012 American Community Survey 5-Year Estimates