

Selected Socio-Economic Data

Mitchell County, Georgia

African American and White, Not Hispanic

Data Set: 2008-2012 American Community Survey 5-Year Estimates

www.fairvote2020.org

www.fairdata2000.com

[29-Dec-13](#)

C02003.DETAILED RACE - Universe: TOTAL POPULATION

Data Set: 2008-2012 American Community Survey 5-Year Estimates

	Mitchell County, Georgia		
	Population	Margin of Error (+/-)	% of Total
Total:	23,510	*****	100.0%
Population of one race:	23,223	256	98.8%
White	11,478	306	48.8%
Black or African American	11,320	254	48.1%
American Indian and Alaska Native	17	30	0.1%
Asian alone	13	23	0.1%
Native Hawaiian and Other Pacific Islander	6	12	0.0%
Some other race	389	295	1.7%
Population of two or more races:	287	256	1.2%
Two races including Some other race	13	22	0.1%
Two races excluding Some other race, and three or more races	274	256	1.2%
Population of two races:	287	256	1.2%
White; Black or African American	191	244	0.8%
White; American Indian and Alaska Native	59	56	0.3%
White; Asian	14	22	0.1%
Black or African American; American Indian and Alaska Native	9	14	0.0%
All other two race combinations	14	22	0.1%
Population of three races	0	25	0.0%
Population of four or more races	0	25	0.0%

Note: Hispanics may be of any race. See Table B03002 and chart.

Source: U.S. Census Bureau, 2008-2012 American Community Survey

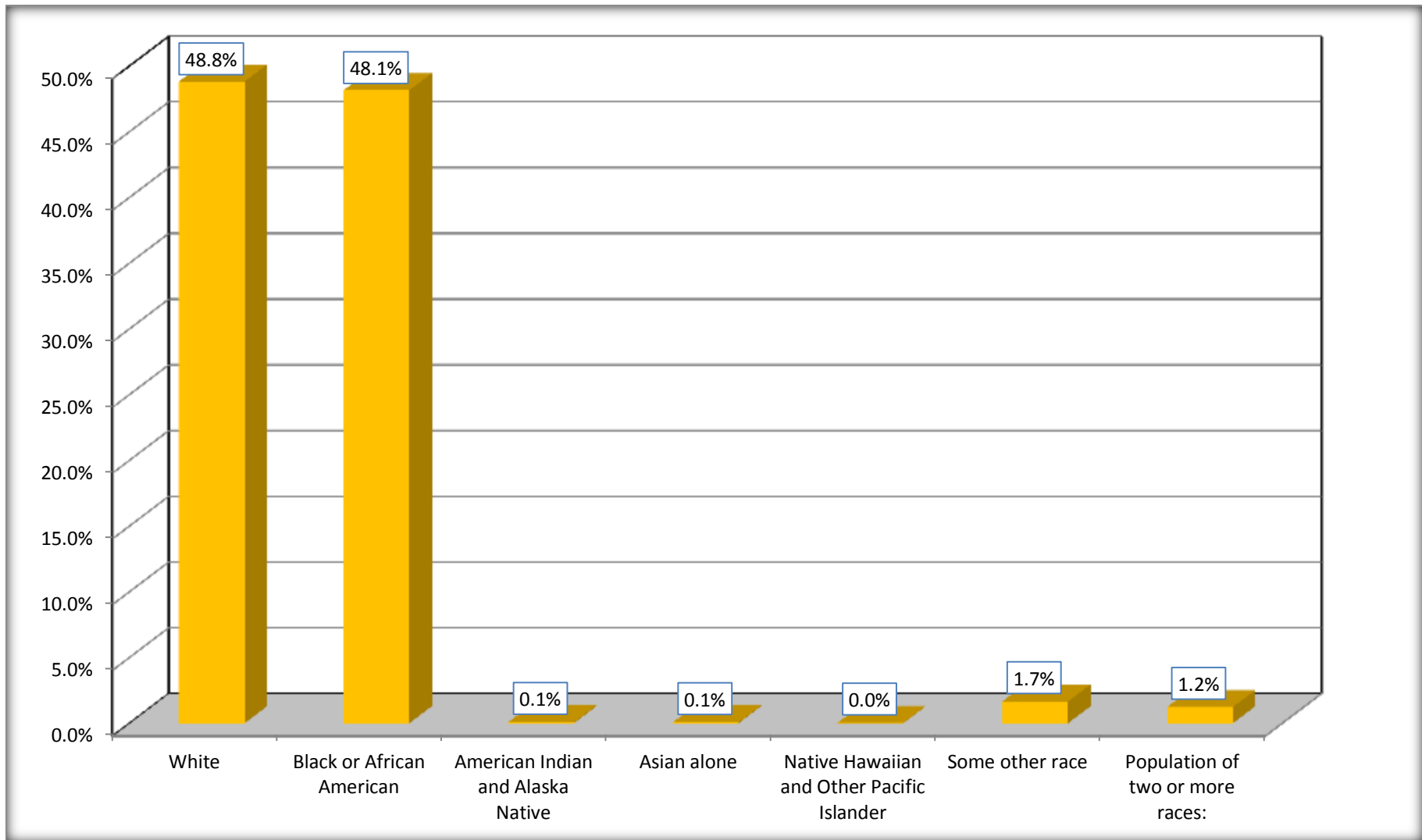
Although the American Community Survey (ACS) produces population, demographic and housing unit estimates, it is the Census Bureau's Population Estimates Program that produces and disseminates the official estimates of the population for the nation, states, counties, cities and towns and estimates of housing units for states and counties.

For information on confidentiality protection, sampling error, nonsampling error, and definitions, see Survey Methodology.

<http://www.census.gov/acs/www/UseData/index.htm>

Population by Race

Mitchell County, Georgia



Source: C02003.DETAILED RACE - Universe: TOTAL POPULATION
Data Set: 2008-2012 American Community Survey 5-Year Estimates

B03002. HISPANIC OR LATINO ORIGIN BY RACE - Universe: TOTAL POPULATION

Data Set: 2008-2012 American Community Survey 5-Year Estimates

	Mitchell County, Georgia		
	Population	Margin of Error (+/-)	% of Total
Total:	23,510	*****	100.0%
Not Hispanic or Latino:	22,487	*****	95.6%
White alone	10,895	25	46.3%
Black or African American alone	11,305	252	48.1%
American Indian and Alaska Native alone	0	25	0.0%
Asian alone	13	23	0.1%
Native Hawaiian and Other Pacific Islander alone	6	12	0.0%
Some other race alone	0	25	0.0%
Two or more races:	268	255	1.1%
Two races including Some other race	1	2	0.0%
Two races excluding Some other race, and three or more races	267	255	1.1%
Hispanic or Latino	1,023	*****	4.4%

Source: U.S. Census Bureau, 2008-2012 American Community Survey

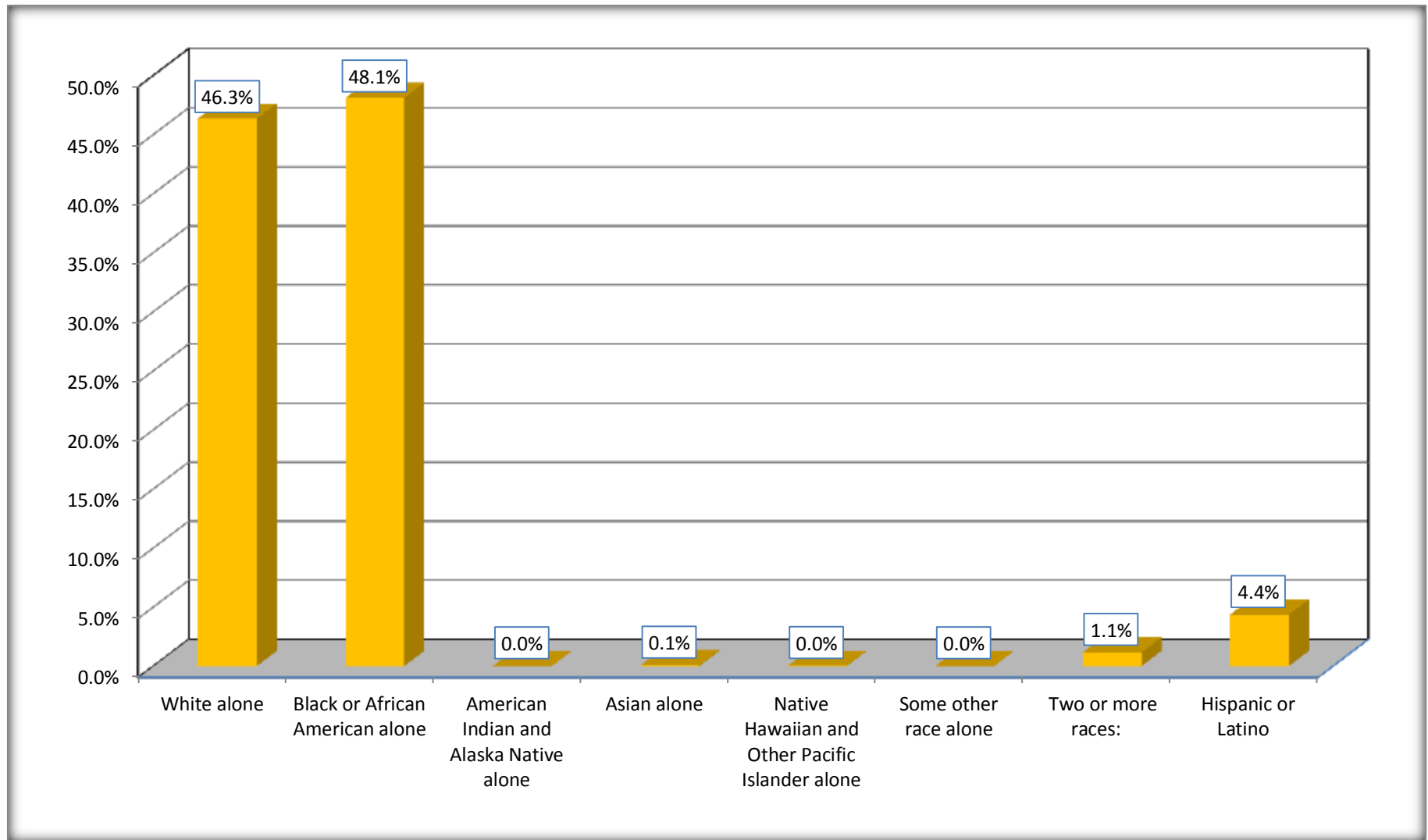
Although the American Community Survey (ACS) produces population, demographic and housing unit estimates, it is the Census Bureau's Population Estimates Program that produces and disseminates the official estimates of the population for the nation, states, counties, cities and towns and estimates of housing units for states and counties.

For information on confidentiality protection, sampling error, nonsampling error, and definitions, see Survey Methodology.

<http://www.census.gov/acs/www/UseData/index.htm>

Non-Hispanic by Race and Hispanic Population

Mitchell County, Georgia



Source: B03002. HISPANIC OR LATINO ORIGIN BY RACE - Universe: TOTAL POPULATION
Data Set: 2008-2012 American Community Survey 5-Year Estimates

B03002. HISPANIC OR LATINO ORIGIN BY RACE

Data Set: 2008-2012 American Community Survey 5-Year Estimates

	Mitchell County, Georgia		
	Population	Margin of Error (+/-)	% of Total
Hispanic or Latino:	1,023	*****	100.0%
White alone	583	306	57.0%
Black or African American alone	15	16	1.5%
American Indian and Alaska Native alone	17	30	1.7%
Asian alone	0	25	0.0%
Native Hawaiian and Other Pacific Islander alone	0	25	0.0%
Some other race alone	389	295	38.0%
Two or more races:	19	31	1.9%
Two races including Some other race	12	22	1.2%
Two races excluding Some other race, and three or more races	7	16	0.7%

Source: U.S. Census Bureau, 2008-2012 American Community Survey

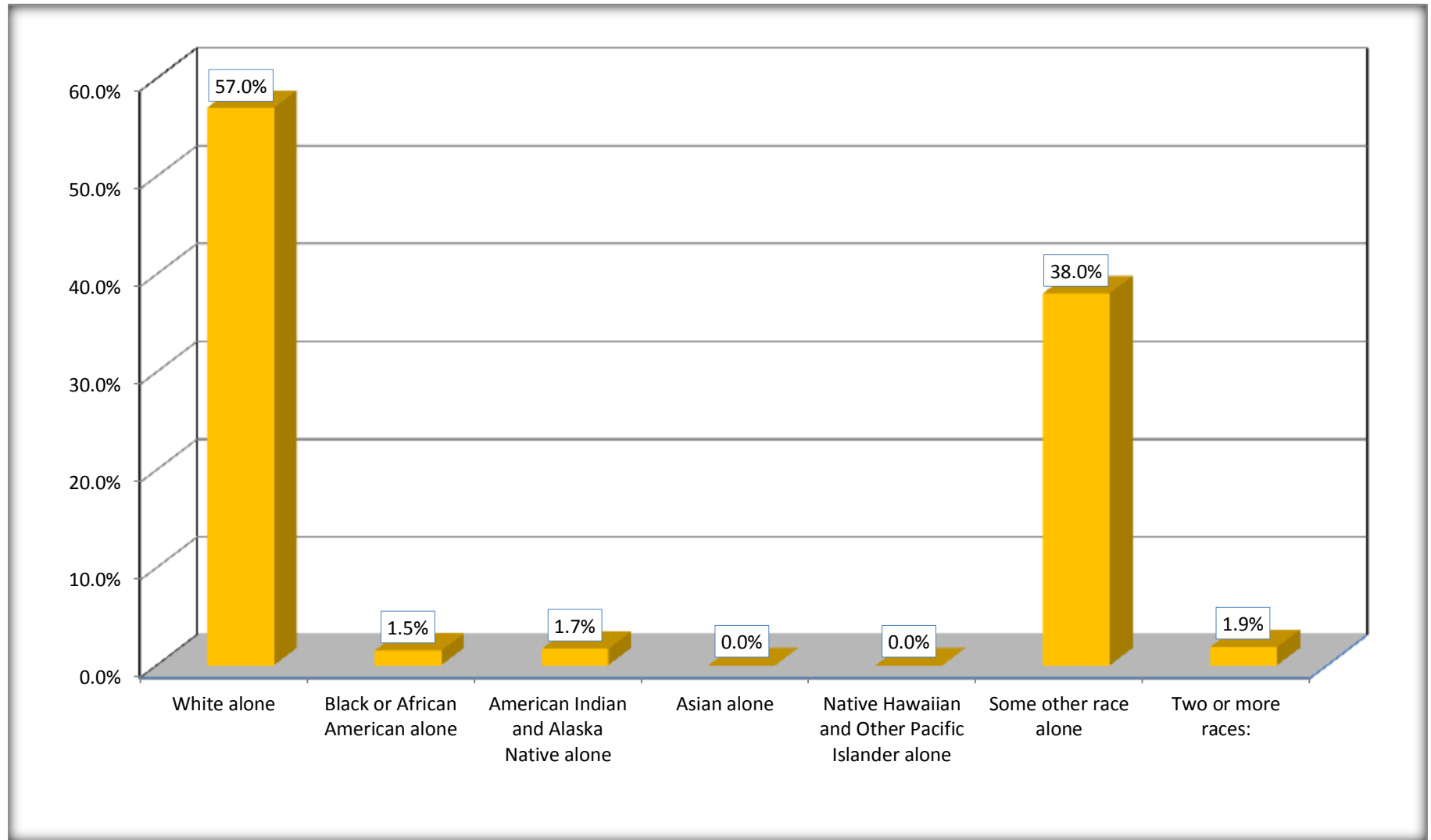
Although the American Community Survey (ACS) produces population, demographic and housing unit estimates, it is the Census Bureau's Population Estimates Program that produces and disseminates the official estimates of the population for the nation, states, counties, cities and towns and estimates of housing units for states and counties.

For information on confidentiality protection, sampling error, nonsampling error, and definitions, see Survey Methodology.

<http://www.census.gov/acs/www/UseData/index.htm>

Hispanic or Latino Origin by Race

Mitchell County, Georgia



Source: B03002. HISPANIC OR LATINO ORIGIN BY RACE
Data Set: 2008-2012 American Community Survey 5-Year Estimates

B01001. SEX BY AGE

Data Set: 2008-2012 American Community Survey 5-Year Estimates

	Mitchell County, Georgia					
	African American	Margin of Error (+/-)	% of AA Total	White, Not Hispanic	Margin of Error (+/-)	% of NHW Total
Total:	11,320	254	100.0%	10,895	25	100.0%
Under 18 years	3,068	NC	27.1%	2,266	NC	20.8%
18 to 64 years	7,180	NC	63.4%	6,679	NC	61.3%
65 years and over	1,072	NC	9.5%	1,950	NC	17.9%
Male:	5,823	203	51.4%	5,562	389	51.1%
Under 18 years	1,555	NC	13.7%	1,183	NC	10.9%
18 to 64 years	3,898	NC	34.4%	3,566	NC	32.7%
65 years and over	370	NC	3.3%	813	NC	7.5%
Female:	5,497	64	48.6%	5,333	412	48.9%
Under 18 years	1,513	NC	13.4%	1,083	NC	9.9%
18 to 64 years	3,282	NC	29.0%	3,113	NC	28.6%
65 years and over	702	NC	6.2%	1,137	NC	10.4%

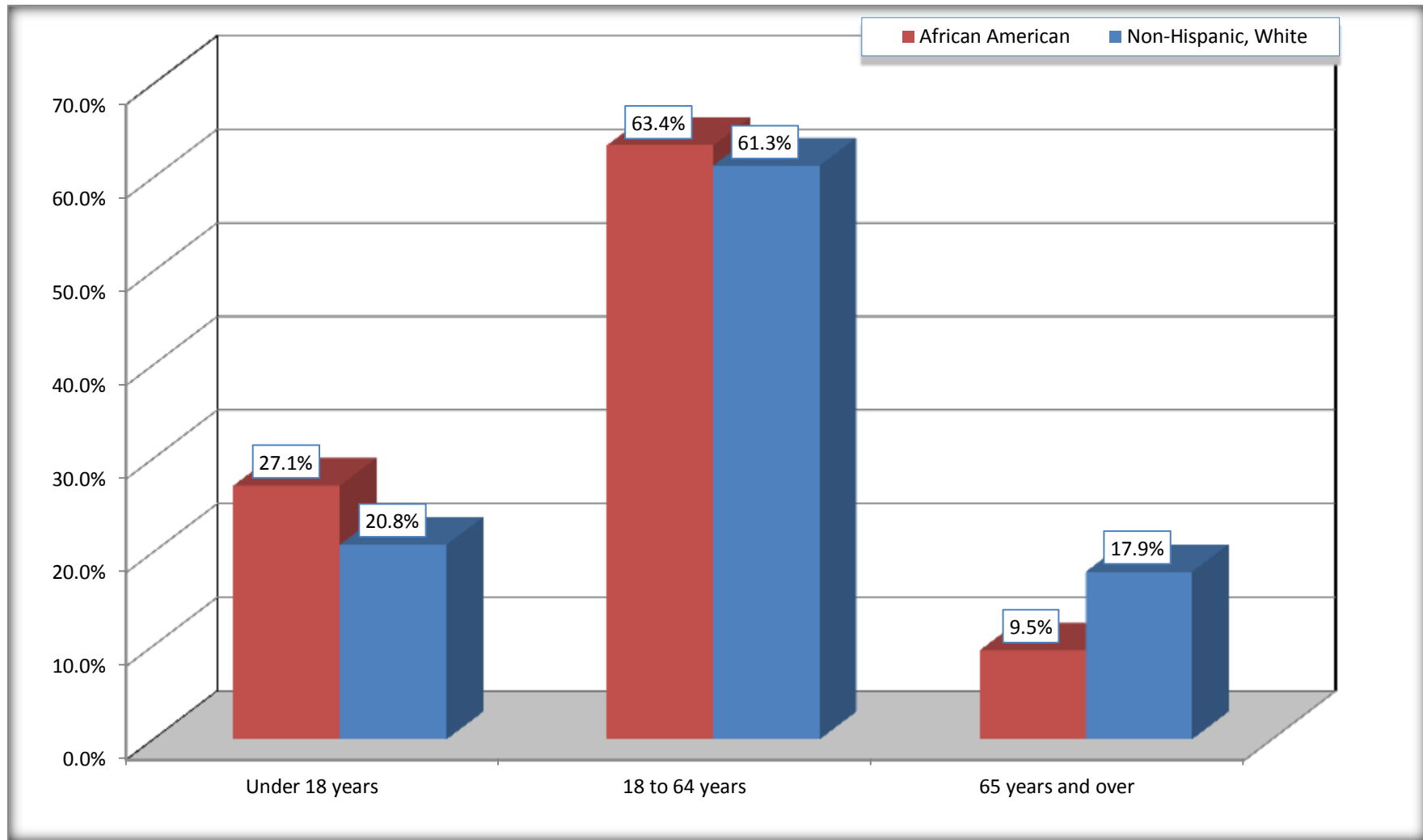
Source: U.S. Census Bureau, 2008-2012 American Community Survey

Although the American Community Survey (ACS) produces population, demographic and housing unit estimates, it is the Census Bureau's Population Estimates Program that produces and disseminates the official estimates of the population for the nation, states, counties, cities and towns and estimates of housing units for states and counties.

For information on confidentiality protection, sampling error, nonsampling error, and definitions, see Survey Methodology.

<http://www.census.gov/acs/www/UseData/index.htm>

Population by Age Mitchell County, Georgia



Source: B01001. SEX BY AGE
Data Set: 2008-2012 American Community Survey 5-Year Estimates

B05003. SEX BY AGE BY CITIZENSHIP STATUS

Data Set: 2008-2012 American Community Survey 5-Year Estimates

	Mitchell County, Georgia					
	African American	Margin of Error (+/-)	% of AA Total by Age	White, Not Hispanic	Margin of Error (+/-)	% of NHW Total by Age
Total:	11,320	254	100.0%	10,895	25	100.0%
Under 18 years:	3,068	NC	100.0%	2,266	NC	100.0%
Native	3,068	NC	100.0%	2,266	NC	100.0%
Foreign born:	0	NC	0.0%	0	NC	0.0%
Naturalized U.S. citizen	0	NC	0.0%	0	NC	0.0%
Not a U.S. citizen	0	NC	0.0%	0	NC	0.0%
18 years and over:	8,252	NC	100.0%	8,629	NC	100.0%
Native	8,247	NC	99.9%	8,563	NC	99.2%
Foreign born:	5	NC	0.1%	66	NC	0.8%
Naturalized U.S. citizen	5	NC	0.1%	44	NC	0.5%
Not a U.S. citizen	0	NC	0.0%	22	NC	0.3%
Male:	5,823	203	51.4%	5,562	25	51.1%
Under 18 years:	1,555	156	100.0%	1,183	25	100.0%
Native	1,555	156	100.0%	1,183	25	100.0%
Foreign born:	0	25	0.0%	0	25	0.0%
Naturalized U.S. citizen	0	25	0.0%	0	25	0.0%
Not a U.S. citizen	0	25	0.0%	0	25	0.0%
18 years and over:	4,268	61	100.0%	4,379	25	100.0%
Native	4,263	62	99.9%	4,357	28	99.5%
Foreign born:	5	10	0.1%	22	28	0.5%
Naturalized U.S. citizen	5	10	0.1%	0	25	0.0%
Not a U.S. citizen	0	25	0.0%	22	28	0.5%

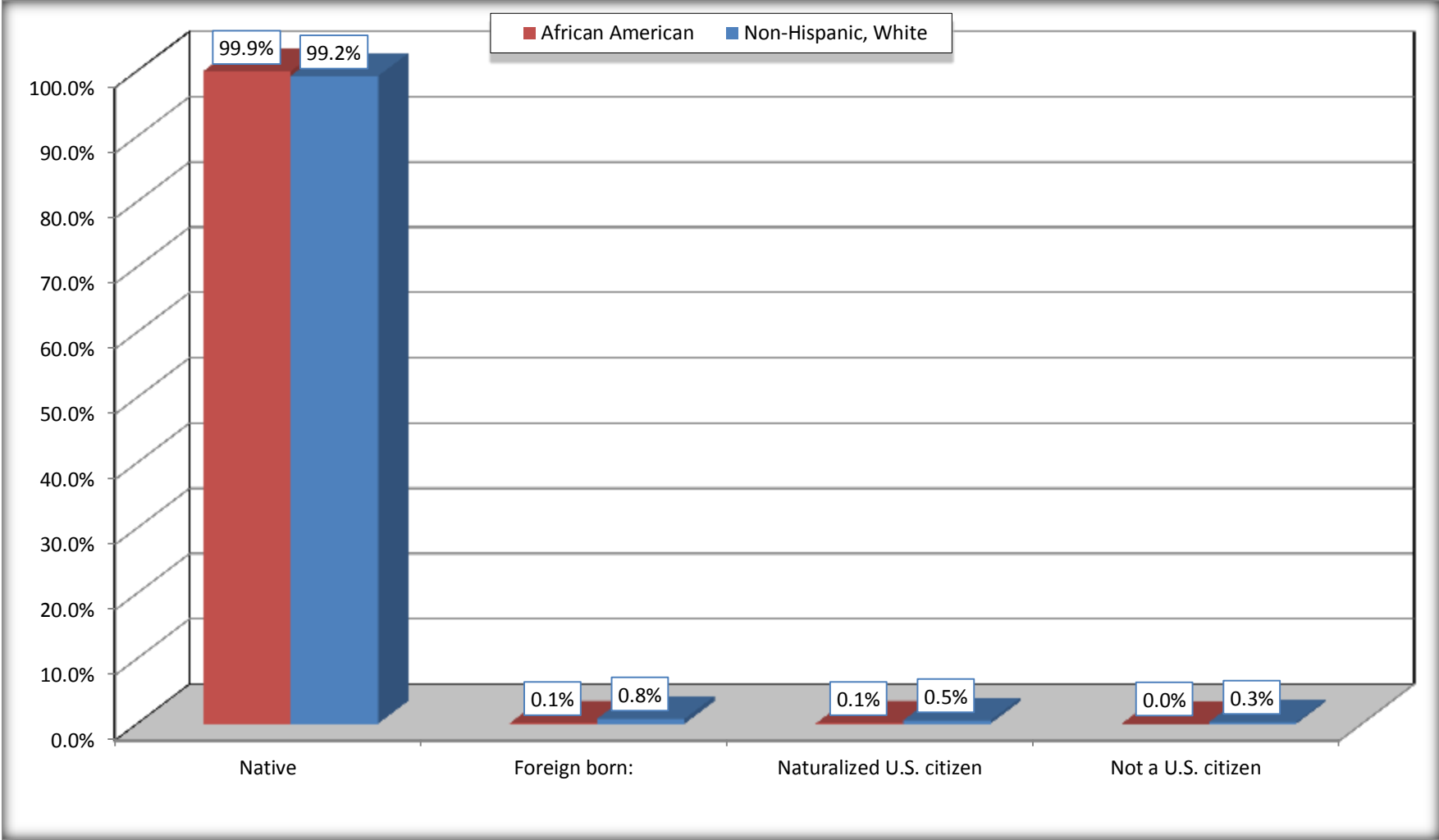
	Mitchell County, Georgia					
	African American	Margin of Error (+/-)	% of AA by Age	White, Not Hispanic	Margin of Error (+/-)	% of NHW by Age
Female:	5,497	64	48.6%	5,333	25	48.9%
Under 18 years:	1,513	25	100.0%	1,083	25	100.0%
Native	1,513	25	100.0%	1,083	25	100.0%
Foreign born:	0	25	0.0%	0	25	0.0%
Naturalized U.S. citizen	0	25	0.0%	0	25	0.0%
Not a U.S. citizen	0	25	0.0%	0	25	0.0%
18 years and over:	3,984	64	100.0%	4,250	25	100.0%
Native	3,984	64	100.0%	4,206	36	99.0%
Foreign born:	0	25	0.0%	44	36	1.0%
Naturalized U.S. citizen	0	25	0.0%	44	36	1.0%
Not a U.S. citizen	0	25	0.0%	0	25	0.0%

Source: U.S. Census Bureau, 2008-2012 American Community Survey

For information on confidentiality protection, sampling error, nonsampling error, and definitions, see Survey Methodology.
<http://www.census.gov/acs/www/UseData/index.htm>

Citizenship Status of Voting Age Population (18 and Over)

Mitchell County, Georgia



Source: B05003. SEX BY AGE BY CITIZENSHIP STATUS
Data Set: 2008-2012 American Community Survey 5-Year Estimates

**B07004. GEOGRAPHICAL MOBILITY IN THE PAST YEAR BY RACE FOR CURRENT RESIDENCE IN THE UNITED STATES - Universe:
POPULATION 1 YEAR AND OVER**

Data Set: 2008-2012 American Community Survey 5-Year Estimates

	Mitchell County, Georgia					
	African American	Margin of Error (+/-)	% of AA Total	White, Not Hispanic	Margin of Error (+/-)	% of NHW Total
Total:	11,269	250	100.0%	10,781	56	100.0%
Same house 1 year ago	9,989	417	88.6%	9,858	257	91.4%
Moved within same county	747	289	6.6%	356	170	3.3%
Moved from different county within same state	504	138	4.5%	488	156	4.5%
Moved from different state	29	25	0.3%	79	52	0.7%
Moved from abroad	0	25	0.0%	0	25	0.0%

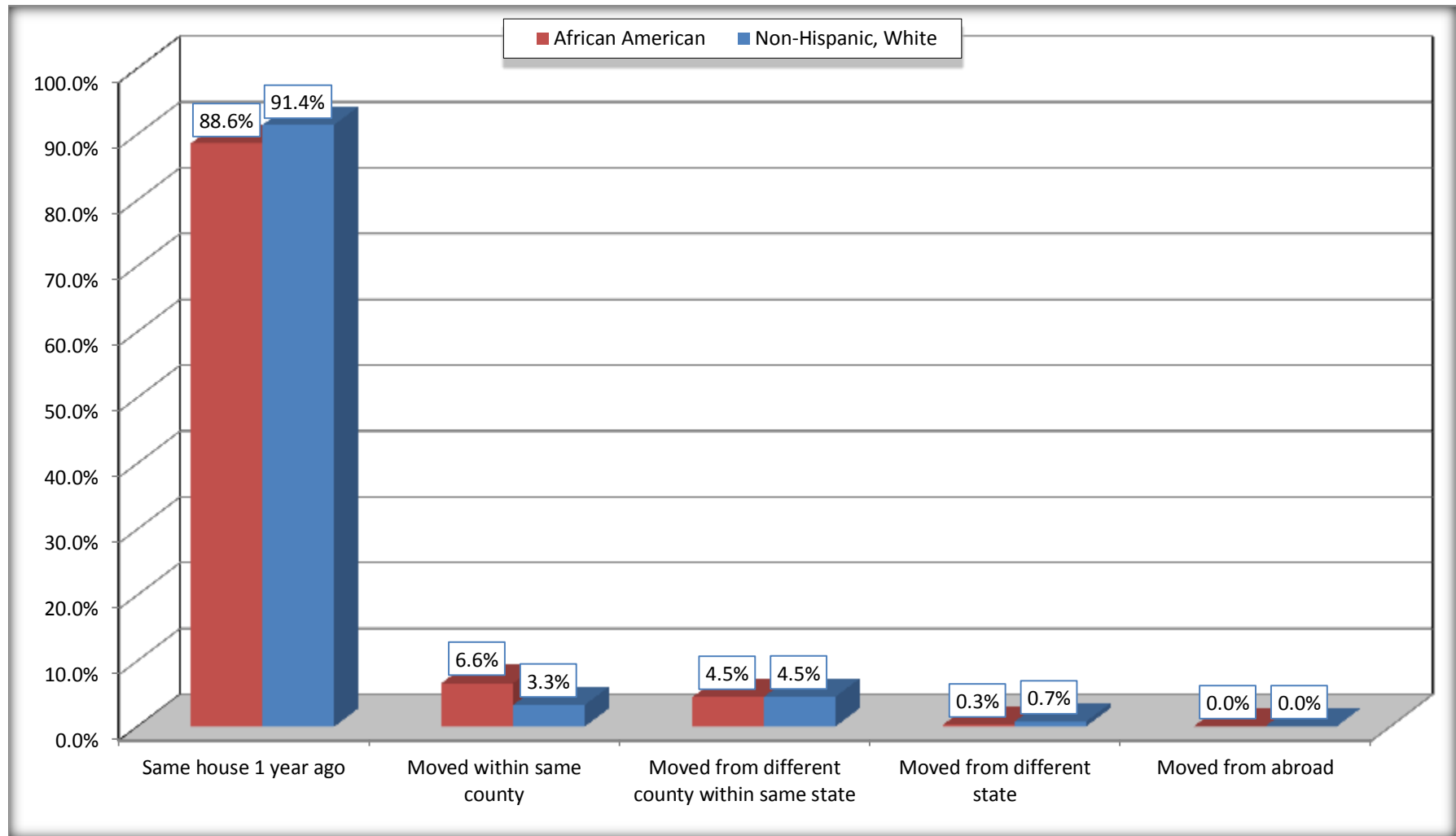
Source: U.S. Census Bureau, 2008-2012 American Community Survey

For information on confidentiality protection, sampling error, nonsampling error, and definitions, see Survey Methodology.

<http://www.census.gov/acs/www/UseData/index.htm>

Geographical Mobility in the Past Year (Population 1 Year and Over)

Mitchell County, Georgia



Source: B07004. GEOGRAPHICAL MOBILITY IN THE PAST YEAR BY RACE FOR CURRENT RESIDENCE IN THE UNITED STATES - Universe: POPULATION 1 YEAR AND OVER

Data Set: 2008-2012 American Community Survey 5-Year Estimates

B08105. MEANS OF TRANSPORTATION TO WORK - Universe: WORKERS 16 YEARS AND OVER

Data Set: 2008-2012 American Community Survey 5-Year Estimates

	Mitchell County, Georgia					
	African American	Margin of Error (+/-)	% of AA Total	White, Not Hispanic	Margin of Error (+/-)	% of NHW Total
Total:	3335	331	100.0%	4185	305	100.0%
Car, truck, or van - drove alone	2177	295	65.3%	3509	272	83.8%
Car, truck, or van - carpooled	580	208	17.4%	534	164	12.8%
Public transportation (excluding taxicab)	61	57	1.8%	0	25	0.0%
Walked	106	80	3.2%	30	31	0.7%
Taxicab, motorcycle, bicycle, or other means	309	163	9.3%	17	22	0.4%
Worked at home	102	82	3.1%	95	51	2.3%

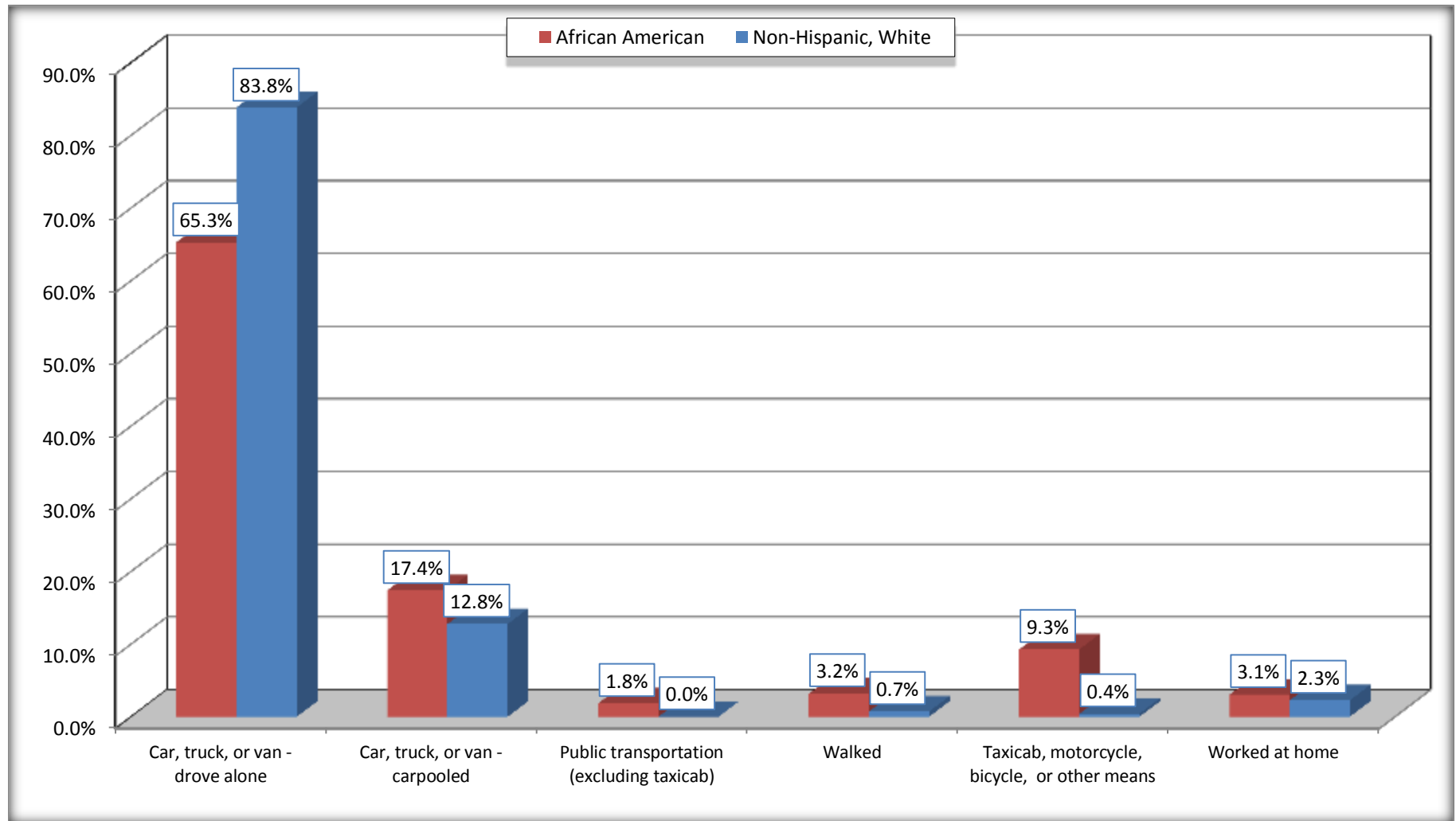
Source: U.S. Census Bureau, 2008-2012 American Community Survey

For information on confidentiality protection, sampling error, nonsampling error, and definitions, see Survey Methodology.

<http://www.census.gov/acs/www/UseData/index.htm>

Means of Transportation to Work (Workers 16 Years and Over)

Mitchell County, Georgia



Source: B08105. MEANS OF TRANSPORTATION TO WORK - Universe: WORKERS 16 YEARS AND OVER
Data Set: 2008-2012 American Community Survey 5-Year Estimates

B11002. HOUSEHOLD TYPE BY RELATIVES AND NONRELATIVES FOR POPULATION IN HOUSEHOLDS

Data Set: 2008-2012 American Community Survey 5-Year Estimates

	Mitchell County, Georgia					
	African American	Margin of Error (+/-)	% of AA Total	White, Not Hispanic	Margin of Error (+/-)	% of NHW Total
Total:	10056	298	100.0%	10270	188	100.0%
In family households	8805	358	87.6%	8689	332	84.6%
In nonfamily households	1251	203	12.4%	1581	302	15.4%

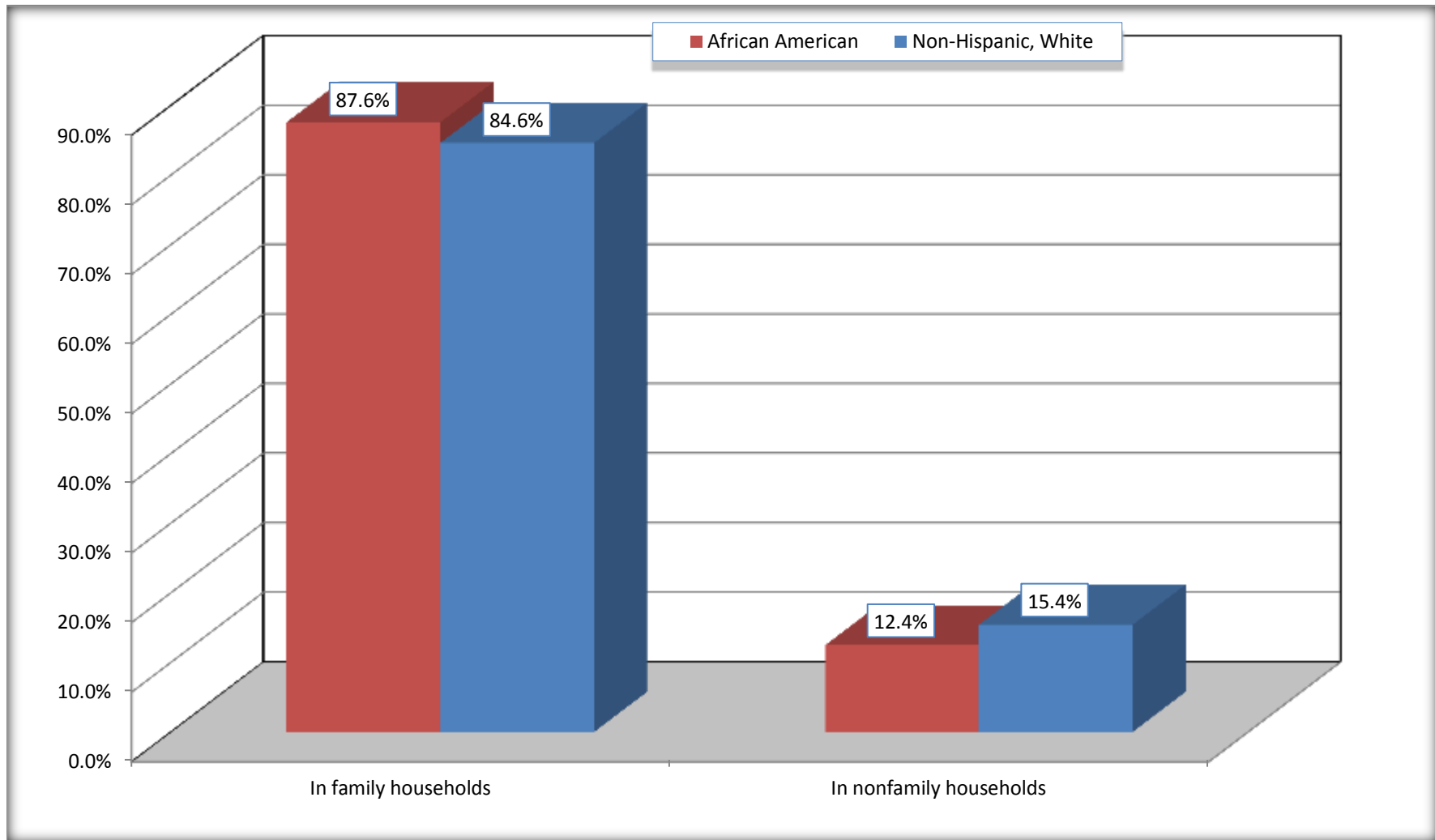
Source: U.S. Census Bureau, 2008-2012 American Community Survey

For information on confidentiality protection, sampling error, nonsampling error, and definitions, see Survey Methodology.

<http://www.census.gov/acs/www/UseData/index.htm>

Household Type for Population in Households

Mitchell County, Georgia



Source: B11002. HOUSEHOLD TYPE BY RELATIVES AND NONRELATIVES FOR POPULATION IN HOUSEHOLDS
Data Set: 2008-2012 American Community Survey 5-Year Estimates

B12002. MARITAL STATUS FOR THE POPULATION 15 YEARS AND OVER

Data Set: 2008-2012 American Community Survey 5-Year Estimates

	Mitchell County, Georgia					
	African American	Margin of Error (+/-)	% of AA Total	White, Not Hispanic	Margin of Error (+/-)	% of NHW Total
Total:	8,760	118	100.0%	8,999	25	100.0%
Never married	4,717	NC	53.8%	1,763	NC	19.6%
Now married (except separated)	2,127	NC	24.3%	5,015	NC	55.7%
Separated	549	NC	6.3%	168	NC	1.9%
Widowed	651	NC	7.4%	778	NC	8.6%
Divorced	716	NC	8.2%	1,275	NC	14.2%
Male:	4,546	61	51.9%	4,567	25	50.8%
Never married	2,624	166	30.0%	1,110	135	12.3%
Now married (except separated)	1,177	203	13.4%	2,547	176	28.3%
Separated	307	132	3.5%	62	36	0.7%
Widowed	124	66	1.4%	158	56	1.8%
Divorced	314	135	3.6%	690	141	7.7%
Female:	4,214	64	48.1%	4,432	25	49.2%
Never married	2,093	225	23.9%	653	113	7.3%
Now married (except separated)	950	215	10.8%	2,468	207	27.4%
Separated	242	118	2.8%	106	59	1.2%
Widowed	527	93	6.0%	620	114	6.9%
Divorced	402	129	4.6%	585	167	6.5%

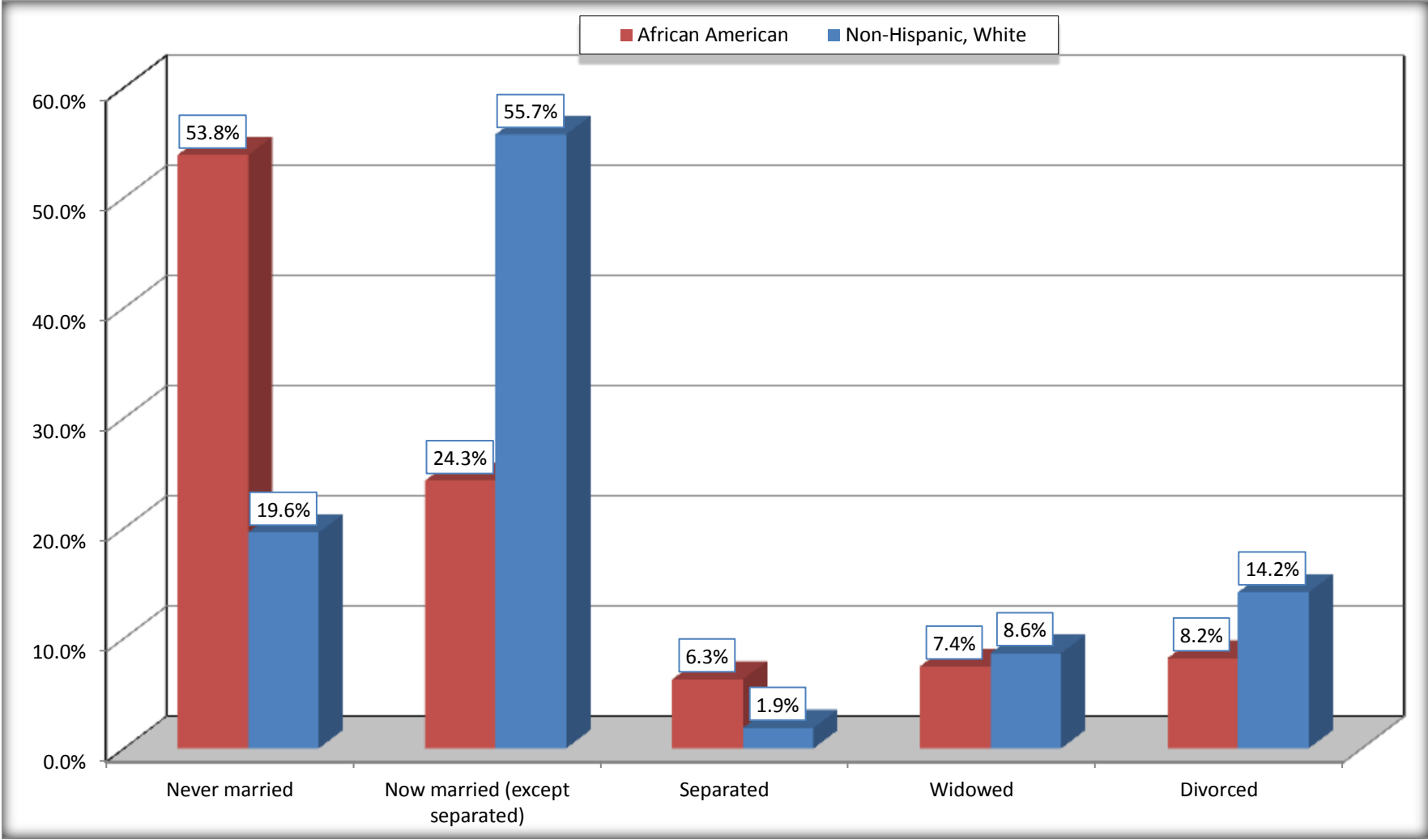
Source: U.S. Census Bureau, 2008-2012 American Community Survey

For information on confidentiality protection, sampling error, nonsampling error, and definitions, see Survey Methodology.

<http://www.census.gov/acs/www/UseData/index.htm>

Marital Status for the Population 15 Years and Over

Mitchell County, Georgia



Source: B12002. MARITAL STATUS FOR THE POPULATION 15 YEARS AND OVER
Data Set: 2008-2012 American Community Survey 5-Year Estimates

C15002. SEX BY EDUCATIONAL ATTAINMENT FOR THE POPULATION 25 YEARS AND OVER

Data Set: 2008-2012 American Community Survey 5-Year Estimates

	Mitchell County, Georgia					
	African American	Margin of Error (+/-)	% of AA Total	White, Not Hispanic	Margin of Error (+/-)	% of NHW Total
Total:	6,981	110	100.0%	7,857	25	100.0%
Less than high school diploma	2,600	NC	37.2%	1,718	NC	21.9%
High school graduate, GED, or alternative	2,994	NC	42.9%	2,924	NC	37.2%
Some college or associate's degree	1,099	NC	15.7%	2,054	NC	26.1%
Bachelor's degree or higher	288	NC	4.1%	1,161	NC	14.8%
Male:	3,545	54	50.8%	3,950	25	50.3%
Less than high school diploma	1,433	198	20.5%	863	158	11.0%
High school graduate, GED, or alternative	1,492	211	21.4%	1,535	222	19.5%
Some college or associate's degree	495	163	7.1%	1,110	208	14.1%
Bachelor's degree or higher	125	83	1.8%	442	120	5.6%
Female:	3,436	64	49.2%	3,907	25	49.7%
Less than high school diploma	1,167	177	16.7%	855	171	10.9%
High school graduate, GED, or alternative	1,502	196	21.5%	1,389	204	17.7%
Some college or associate's degree	604	147	8.7%	944	182	12.0%
Bachelor's degree or higher	163	88	2.3%	719	153	9.2%

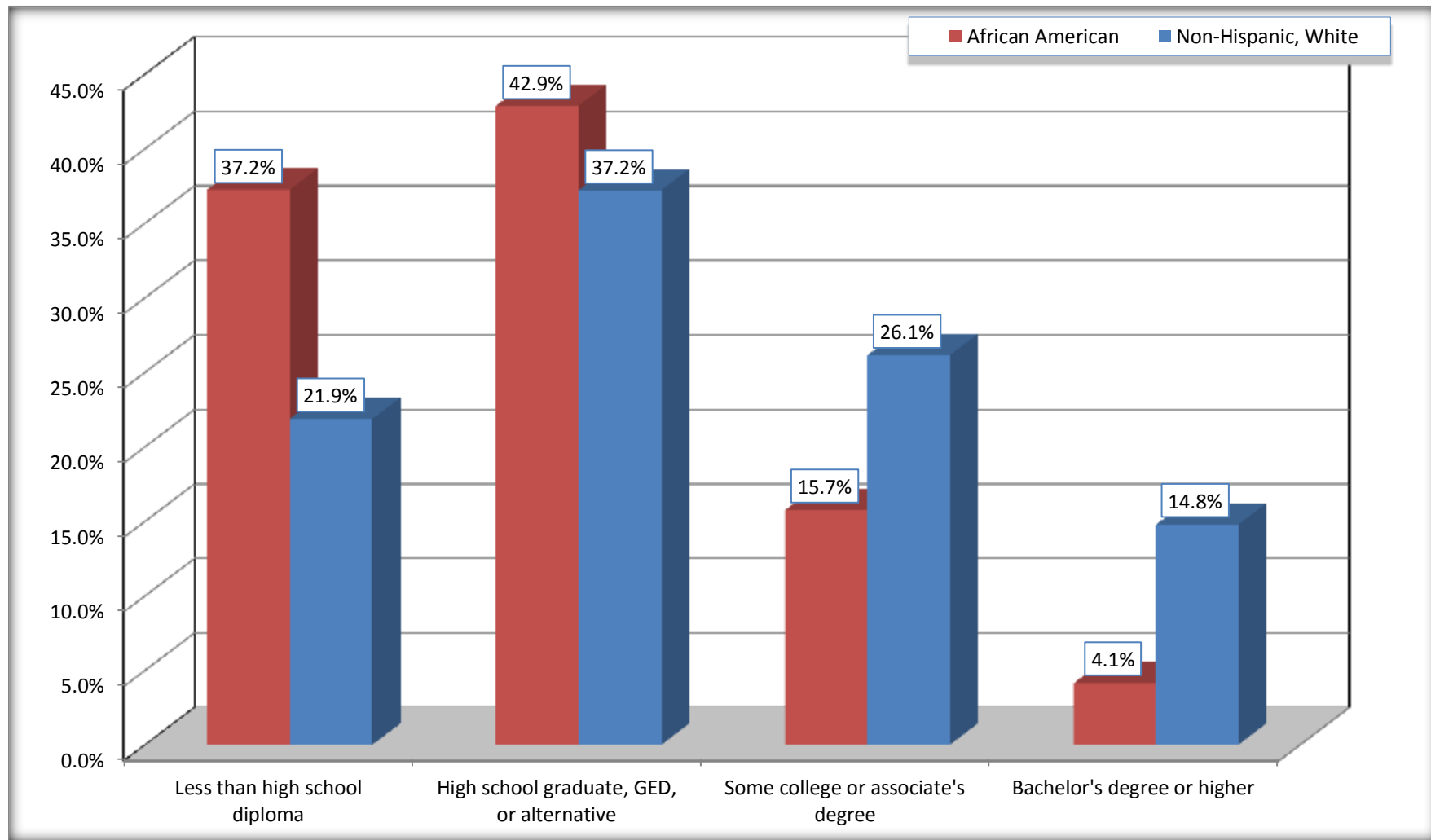
Source: U.S. Census Bureau, 2008-2012 American Community Survey

For information on confidentiality protection, sampling error, nonsampling error, and definitions, see Survey Methodology.

<http://www.census.gov/acs/www/UseData/index.htm>

Educational Attainment for the Population 25 Years and Older

Mitchell County, Georgia



Source: C15002. SEX BY EDUCATIONAL ATTAINMENT FOR THE POPULATION 25 YEARS AND OVER
Data Set: 2008-2012 American Community Survey 5-Year Estimates

B17010. POVERTY STATUS IN THE PAST 12 MONTHS OF FAMILIES BY FAMILY TYPE BY PRESENCE OF RELATED CHILDREN UNDER 18 YEARS

Data Set: 2008-2012 American Community Survey 5-Year Estimates

	Mitchell County, Georgia					
	African American	Margin of Error (+/-)	% of AA Total	White, Not Hispanic	Margin of Error (+/-)	% of NHW Total
Total:	2,388	217	100.0%	2,938	172	100.0%
Income in the past 12 months below poverty level:	638	167	26.7%	302	96	10.3%
Married-couple family:	79	53	3.3%	183	78	6.2%
With related children under 18 years	19	19	0.8%	89	53	3.0%
Other family:	559	155	23.4%	119	69	4.1%
Male householder, no wife present	68	48	2.8%	26	32	0.9%
With related children under 18 years	26	25	1.1%	26	32	0.9%
Female householder, no husband present	491	144	20.6%	93	58	3.2%
With related children under 18 years	466	139	19.5%	62	43	2.1%
Income in the past 12 months at or above poverty level:	1,750	236	73.3%	2,636	184	89.7%
Married-couple family:	889	191	37.2%	2,232	169	76.0%
With related children under 18 years	399	134	16.7%	902	144	30.7%
Other family:	861	190	36.1%	404	100	13.8%
Male householder, no wife present	120	89	5.0%	98	56	3.3%
With related children under 18 years	77	59	3.2%	56	49	1.9%
Female householder, no husband present	741	182	31.0%	306	94	10.4%
With related children under 18 years	399	139	16.7%	137	72	4.7%

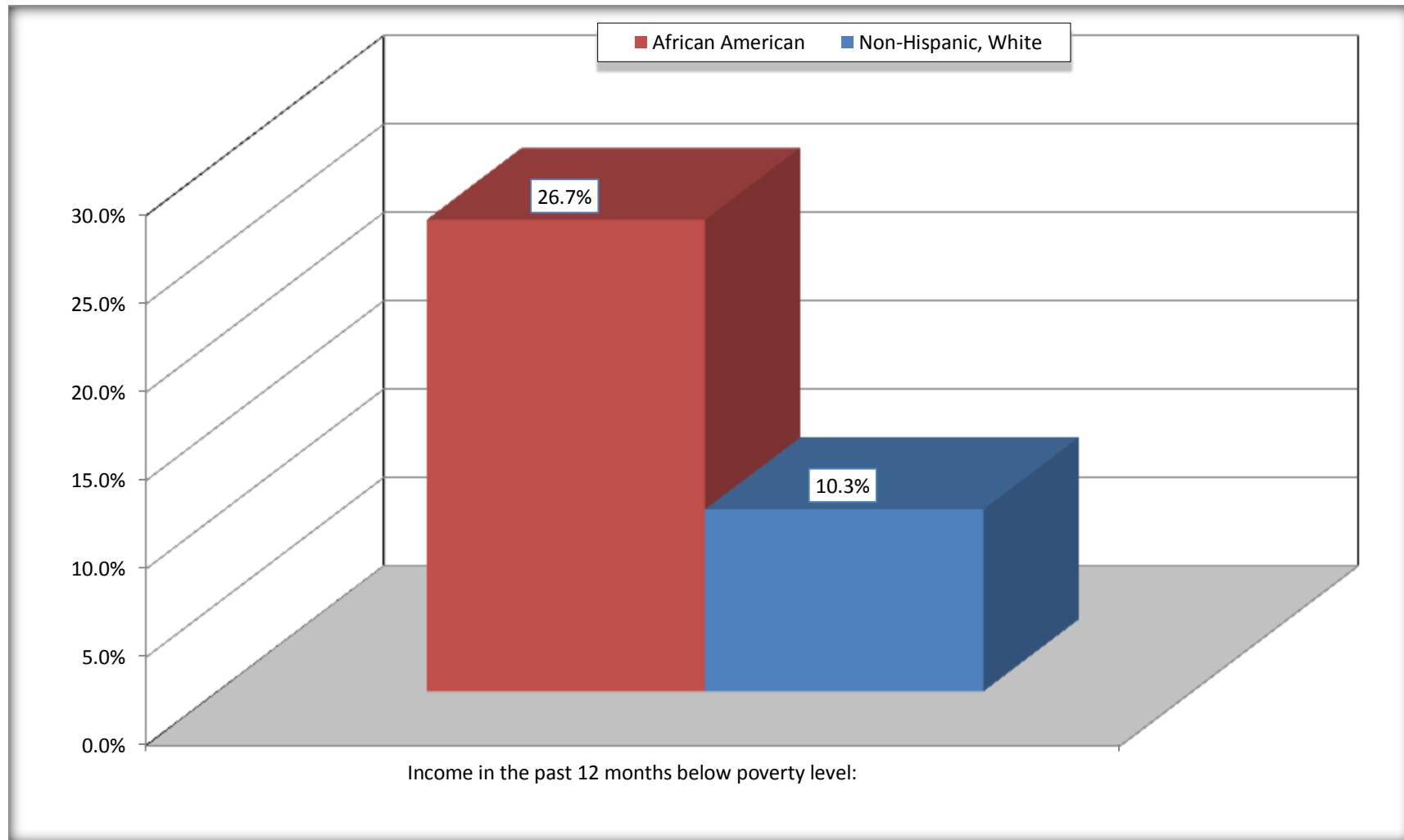
Source: U.S. Census Bureau, 2008-2012 American Community Survey

For information on confidentiality protection, sampling error, nonsampling error, and definitions, see Survey Methodology.

<http://www.census.gov/acs/www/UseData/index.htm>

Family Households Below Poverty in the Past 12 Months

Mitchell County, Georgia

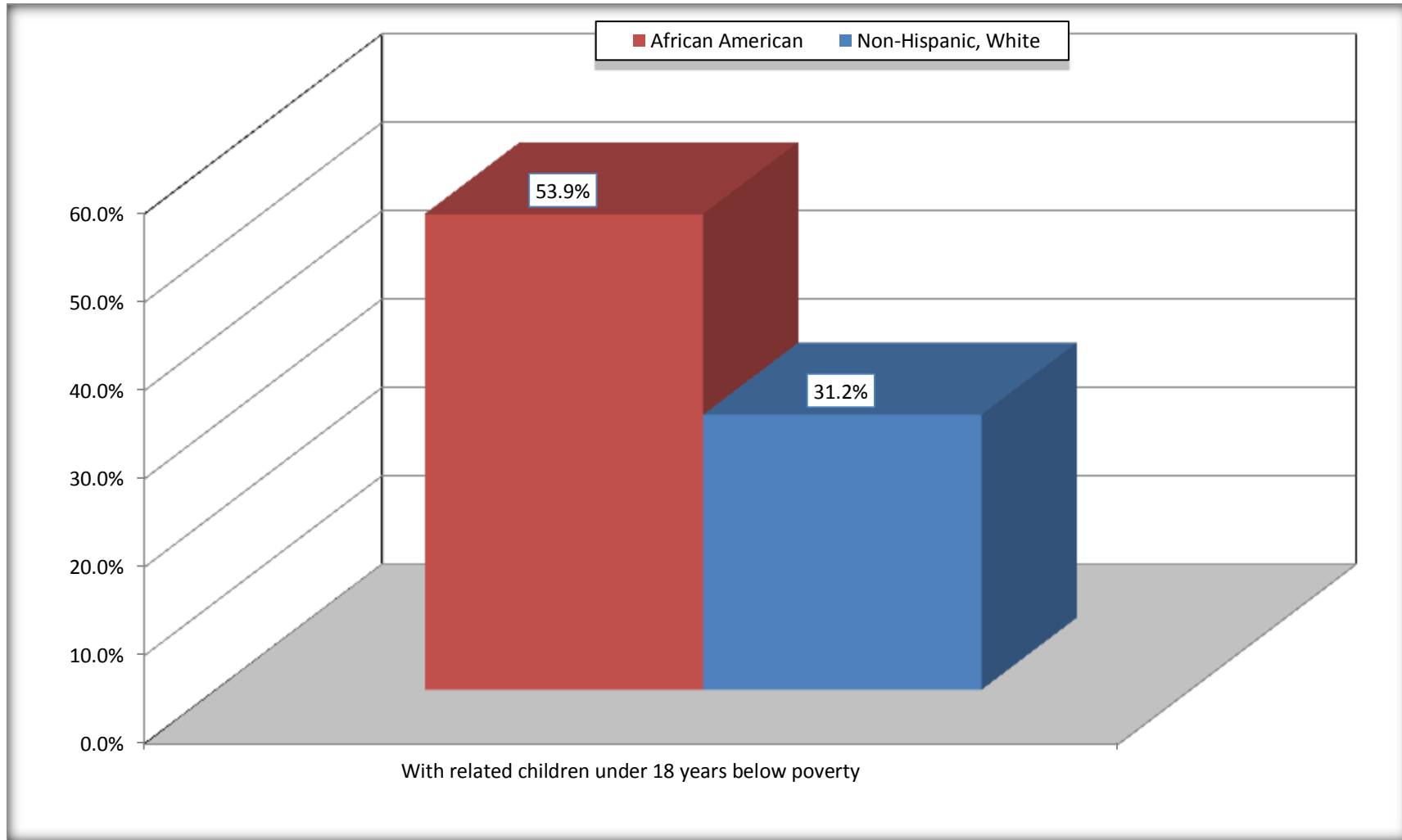


Source: B17010. POVERTY STATUS IN THE PAST 12 MONTHS OF FAMILIES BY FAMILY TYPE BY PRESENCE OF RELATED CHILDREN UNDER 18 YEARS

Data Set: 2008-2012 American Community Survey 5-Year Estimates

Female-headed Households with Related Children Below Poverty in the Past 12 Months

Mitchell County, Georgia



Source: B17010. POVERTY STATUS IN THE PAST 12 MONTHS OF FAMILIES BY FAMILY TYPE BY PRESENCE OF RELATED CHILDREN UNDER 18 YEARS

Data Set: 2008-2012 American Community Survey 5-Year Estimates

B17020 POVERTY STATUS IN THE PAST 12 MONTHS BY AGE - Universe: POPULATION FOR WHOM POVERTY STATUS IS DETERMINED

Data Set: 2008-2012 American Community Survey 5-Year Estimates

	Mitchell County, Georgia					
	African American	Margin of Error (+/-)	% of AA By Age	White, Not Hispanic	Margin of Error (+/-)	% of NHW By Age
Total:	10,057	302	100.0%	10,173	131	100.0%
Income in the past 12 months below poverty level:	3,466	656	34.5%	1,621	369	15.9%
Under 18 years	1,381	NC	45.2%	411	NC	18.2%
18 to 64 years	1,791	378	30.0%	1,039	257	17.1%
65 years and over	294	NC	28.7%	171	NC	9.2%
Income in the past 12 months at or above poverty level:	6,591	636	65.5%	8,552	362	84.1%
Under 18 years	1,674	NC	54.8%	1,851	NC	81.8%
18 to 64 years	4,185	372	70.0%	5,020	254	82.9%
65 years and over	732	NC	71.3%	1,681	NC	90.8%

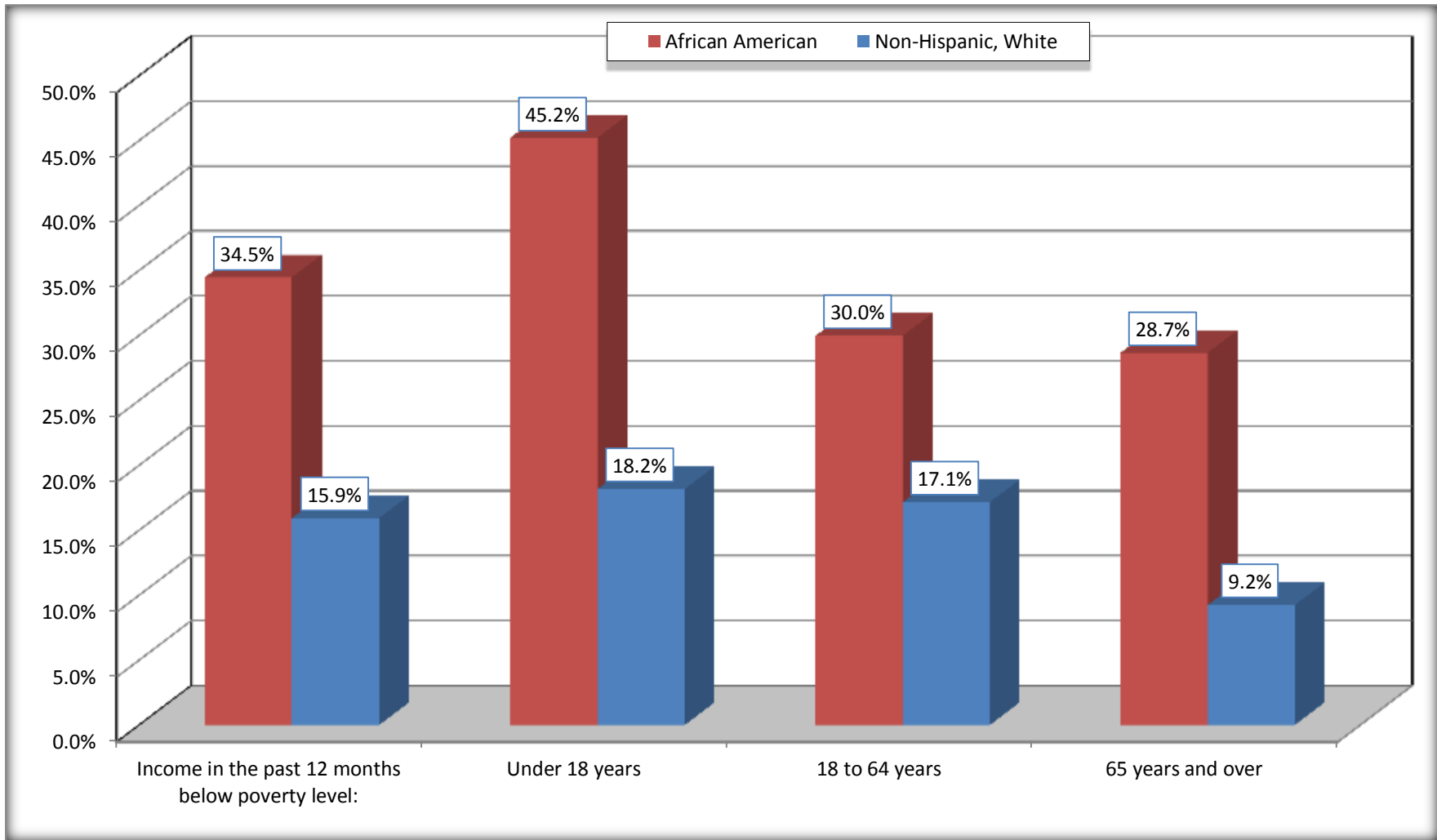
Source: U.S. Census Bureau, 2008-2012 American Community Survey

For information on confidentiality protection, sampling error, nonsampling error, and definitions, see Survey Methodology.

<http://www.census.gov/acs/www/UseData/index.htm>

Population Below Poverty in the Past 12 Months

Mitchell County, Georgia



Source: B17020 POVERTY STATUS IN THE PAST 12 MONTHS BY AGE - Universe: POPULATION FOR WHOM POVERTY STATUS IS DETERMINED
Data Set: 2008-2012 American Community Survey 5-Year Estimates

B19001. HOUSEHOLD INCOME IN THE PAST 12 MONTHS (IN 2010 INFLATION-ADJUSTED DOLLARS)

Data Set: 2008-2012 American Community Survey 5-Year Estimates

	Mitchell County, Georgia					
	African American	Margin of Error (+/-)	% of AA Total	White, Not Hispanic	Margin of Error (+/-)	% of NHW Total
Total:	3,574	208	100.0%	4,298	188	100.0%
Less than \$ 10,000	776	200	21.7%	376	139	8.7%
\$ 10,000 to \$ 14,999	366	116	10.2%	408	100	9.5%
\$ 15,000 to \$ 24,999	674	NC	18.9%	504	NC	11.7%
\$ 25,000 to \$ 34,999	506	NC	14.2%	572	NC	13.3%
\$ 35,000 to \$ 49,999	410	NC	11.5%	608	NC	14.1%
\$ 50,000 to \$ 74,999	576	NC	16.1%	700	NC	16.3%
\$ 75,000 to \$ 99,999	141	70	3.9%	519	142	12.1%
\$ 100,000 to \$ 149,999	72	NC	2.0%	516	NC	12.0%
\$ 150,000 to \$ 199,999	0	25	0.0%	56	47	1.3%
\$ 200,000 or more	53	59	1.5%	39	40	0.9%

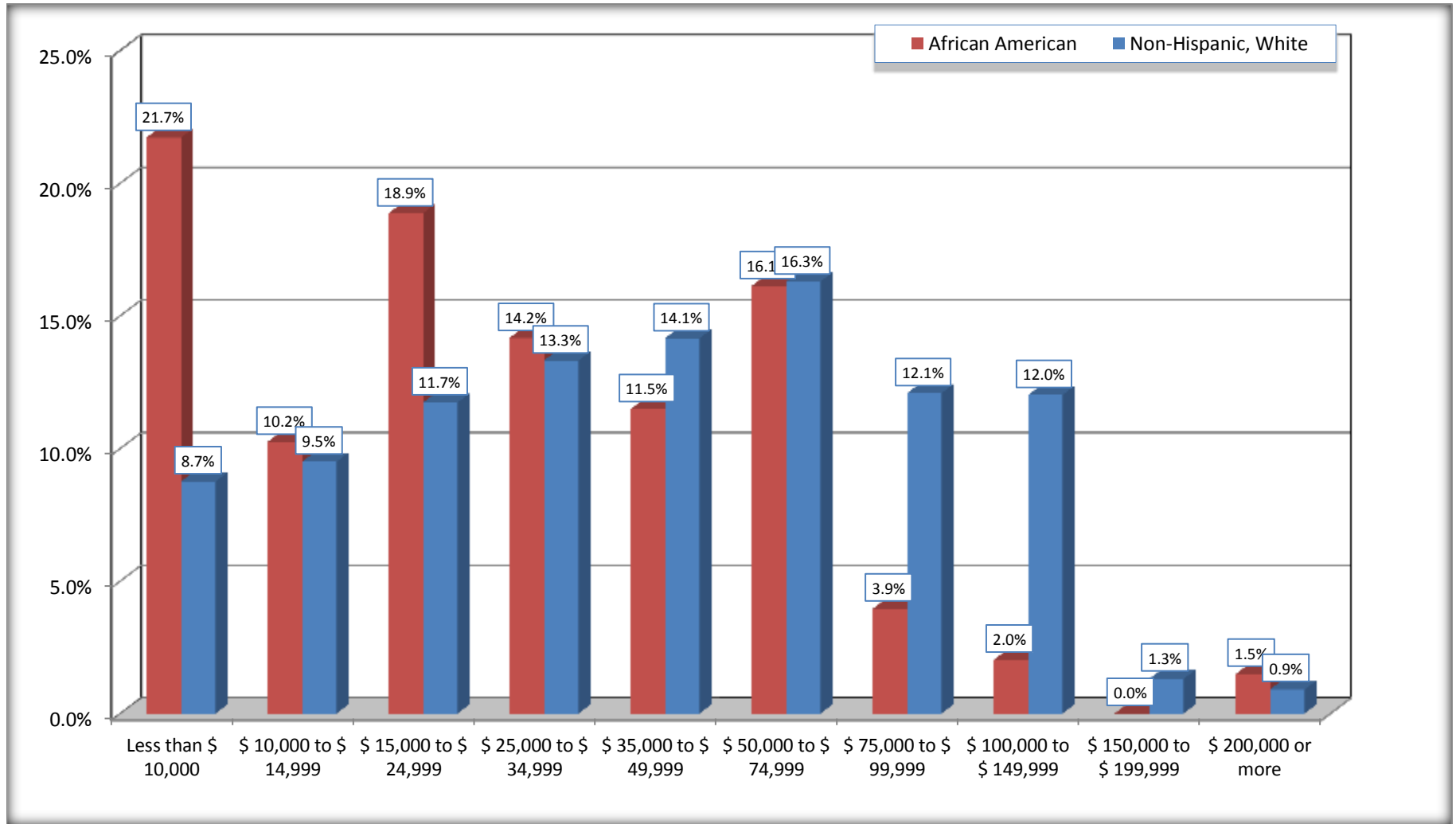
Source: U.S. Census Bureau, 2008-2012 American Community Survey

For information on confidentiality protection, sampling error, nonsampling error, and definitions, see Survey Methodology.

<http://www.census.gov/acs/www/UseData/index.htm>

Household Income in the Past 12 Months

Mitchell County, Georgia



Source: B19001. HOUSEHOLD INCOME IN THE PAST 12 MONTHS (IN 2010 INFLATION-ADJUSTED DOLLARS)
Data Set: 2008-2012 American Community Survey 5-Year Estimates

B19013. MEDIAN HOUSEHOLD INCOME IN THE PAST 12 MONTHS (IN 2010 INFLATION-ADJUSTED DOLLARS)

Data Set: 2008-2012 American Community Survey 5-Year Estimates

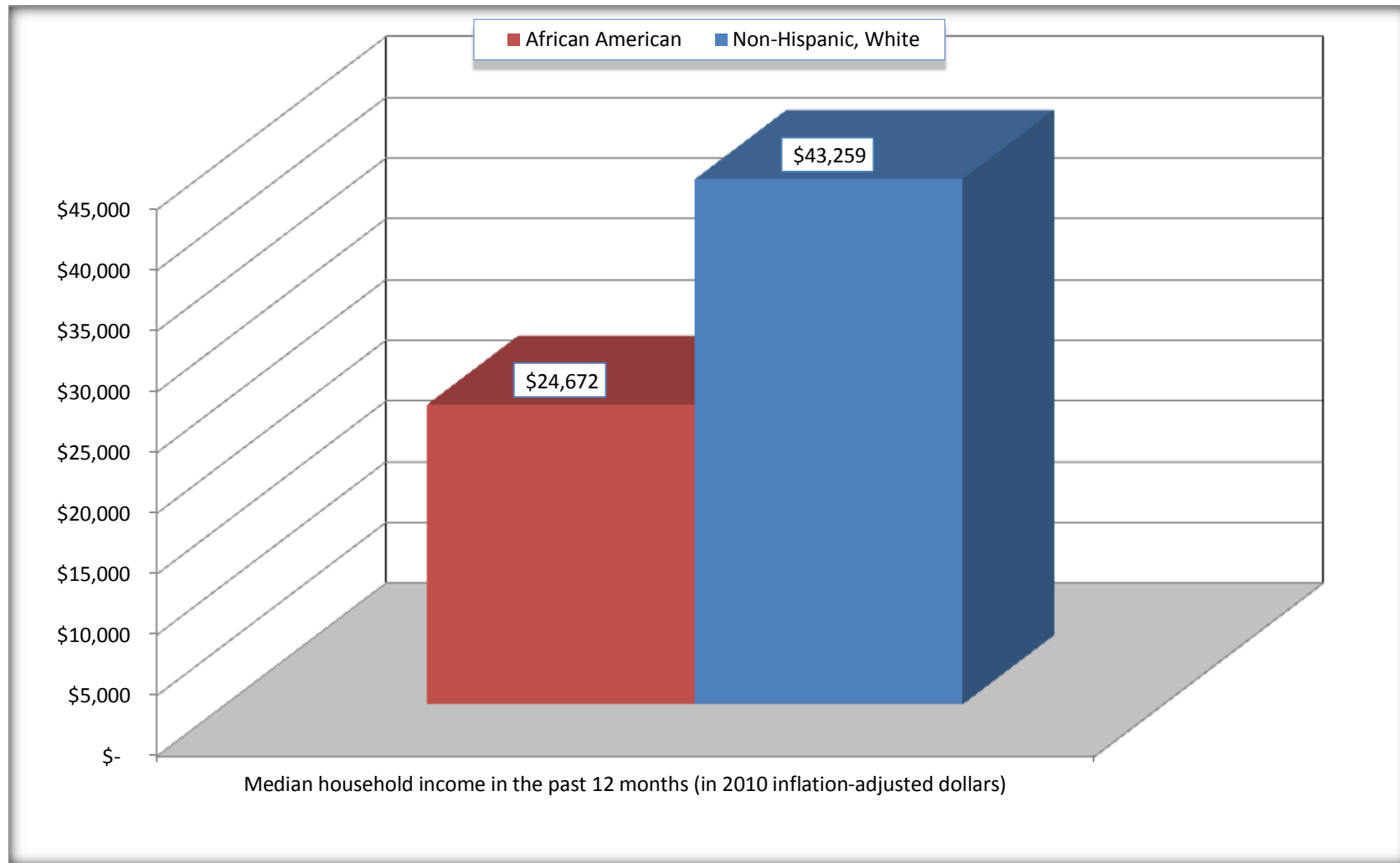
	Mitchell County, Georgia			
	African American	Margin of Error (+/-)	White, Not Hispanic	Margin of Error (+/-)
Median household income in the past 12 months (in 2010 inflation-adjusted dollars)	\$ 24,672	\$ 3,376	\$ 43,259	\$ 4,354

Source: U.S. Census Bureau, 2008-2012 American Community Survey

For information on confidentiality protection, sampling error, nonsampling error, and definitions, see Survey Methodology.
<http://www.census.gov/acs/www/UseData/index.htm>

Median Household Income in the Past 12 Months

Mitchell County, Georgia



Source: B19013. MEDIAN HOUSEHOLD INCOME IN THE PAST 12 MONTHS (IN 2010 INFLATION-ADJUSTED DOLLARS)
Data Set: 2008-2012 American Community Survey 5-Year Estimates

B19101. FAMILY INCOME IN THE PAST 12 MONTHS (IN 2010 INFLATION-ADJUSTED DOLLARS)

Data Set: 2008-2012 American Community Survey 5-Year Estimates

	Mitchell County, Georgia					
	African American	Margin of Error (+/-)	% of AA Total	White, Not Hispanic	Margin of Error (+/-)	% of NHW Total
Total:	2,388	217	100.0%	2,938	172	100.0%
Less than \$ 10,000	347	136	14.5%	98	53	3.3%
\$ 10,000 to \$ 14,999	136	74	5.7%	106	66	3.6%
\$ 15,000 to \$ 24,999	524	NC	21.9%	312	NC	10.6%
\$ 25,000 to \$ 34,999	306	NC	12.8%	435	NC	14.8%
\$ 35,000 to \$ 49,999	289	NC	12.1%	469	NC	16.0%
\$ 50,000 to \$ 74,999	560	NC	23.5%	480	NC	16.3%
\$ 100,000 to \$ 149,999	72	NC	3.0%	488	NC	16.6%
\$ 150,000 to \$ 199,999	0	25	0.0%	56	47	1.9%
\$ 200,000 or more	13	25	0.5%	39	40	1.3%

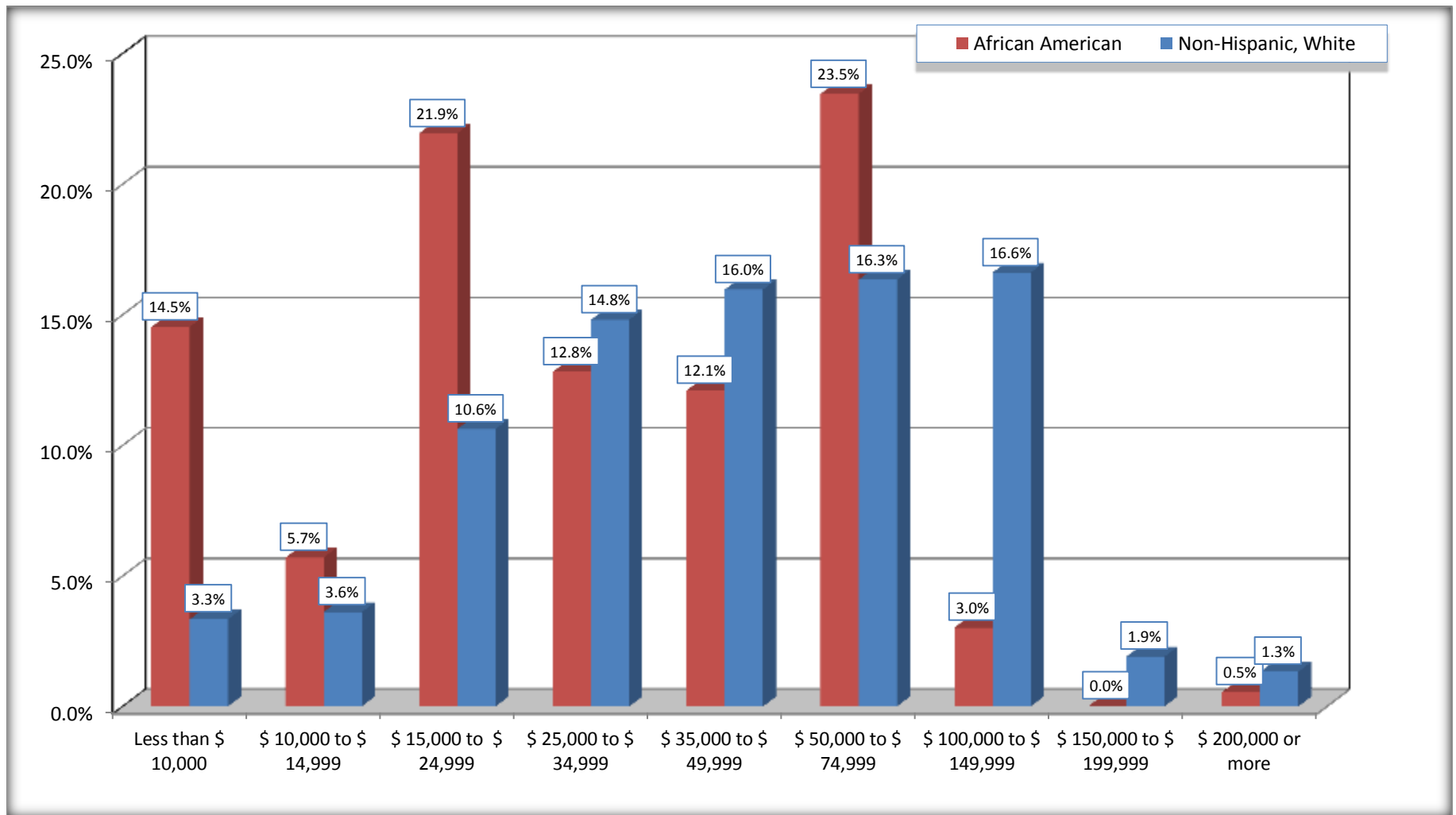
Source: U.S. Census Bureau, 2008-2012 American Community Survey

For information on confidentiality protection, sampling error, nonsampling error, and definitions, see Survey Methodology.

<http://www.census.gov/acs/www/UseData/index.htm>

Family Income in the Past 12 Months

Mitchell County, Georgia



Source: B19101. FAMILY INCOME IN THE PAST 12 MONTHS (IN 2010 INFLATION-ADJUSTED DOLLARS)
Data Set: 2008-2012 American Community Survey 5-Year Estimates

B19113. MEDIAN FAMILY INCOME IN THE PAST 12 MONTHS (IN 2010 INFLATION-ADJUSTED DOLLARS)

Data Set: 2008-2012 American Community Survey 5-Year Estimates

	Mitchell County, Georgia			
	African American	Margin of Error (+/-)	White, Not Hispanic	Margin of Error (+/-)
Median family income in the past 12 months (in 2010 inflation-adjusted dollars)	\$ 30,825	\$ 5,303	\$ 52,600	\$ 7,194

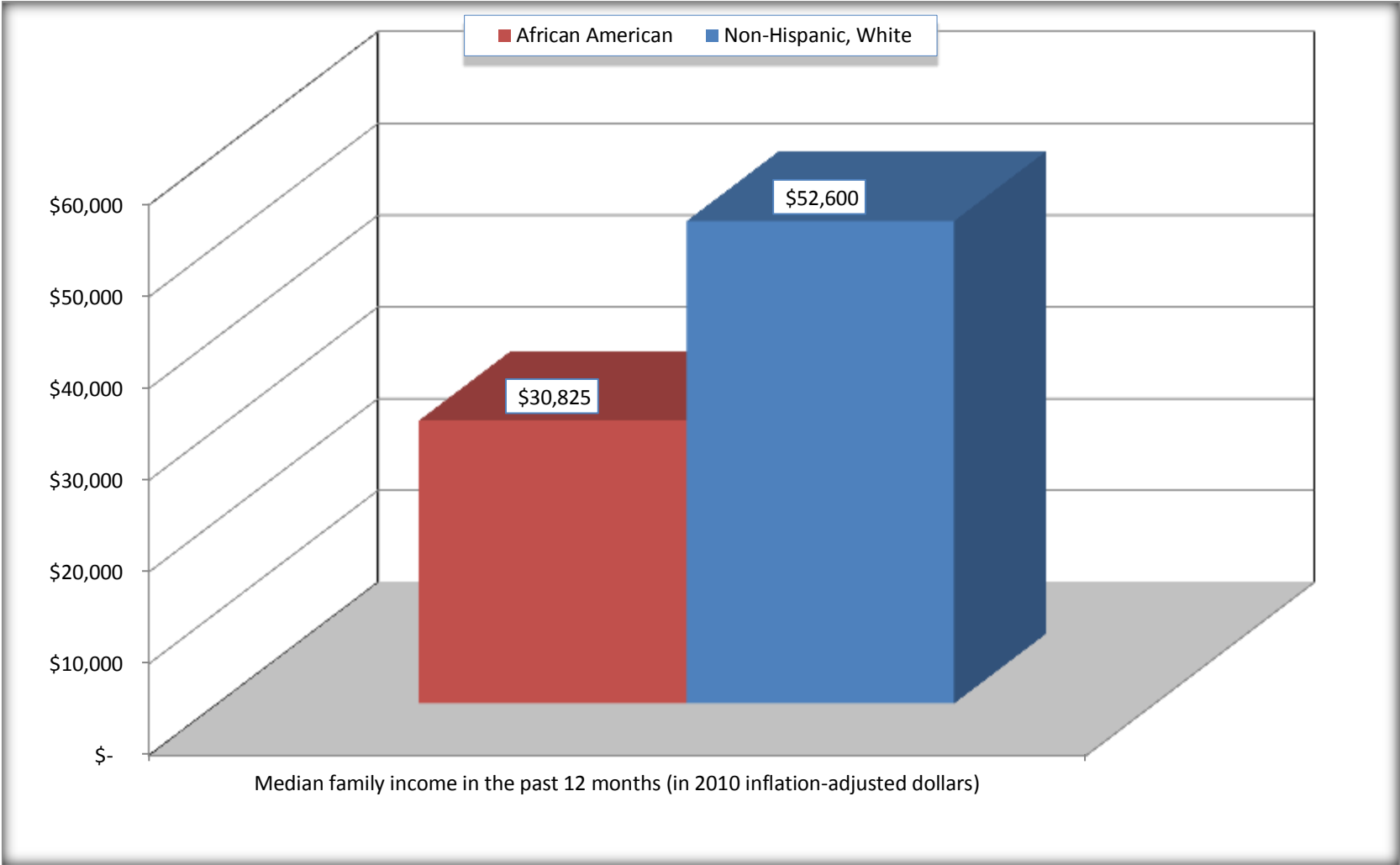
Source: U.S. Census Bureau, 2008-2012 American Community Survey

For information on confidentiality protection, sampling error, nonsampling error, and definitions, see Survey Methodology.

<http://www.census.gov/acs/www/UseData/index.htm>

Median Family Income in the Past 12 Months

Mitchell County, Georgia



Source: B19113. MEDIAN FAMILY INCOME IN THE PAST 12 MONTHS (IN 2010 INFLATION-ADJUSTED DOLLARS)
Data Set: 2008-2012 American Community Survey 5-Year Estimates

B19202. MEDIAN NONFAMILY HOUSEHOLD INCOME IN THE PAST 12 MONTHS (IN 2010 INFLATION-ADJUSTED DOLLARS)

Data Set: 2008-2012 American Community Survey 5-Year Estimates

	Mitchell County, Georgia			
	African American	Margin of Error (+/-)	White, Not Hispanic	Margin of Error (+/-)
Median nonfamily household income in the past 12 months (in 2010 inflation-adjusted dollars)	\$ 13,103	\$ 2,742	\$ 17,344	\$ 6,767

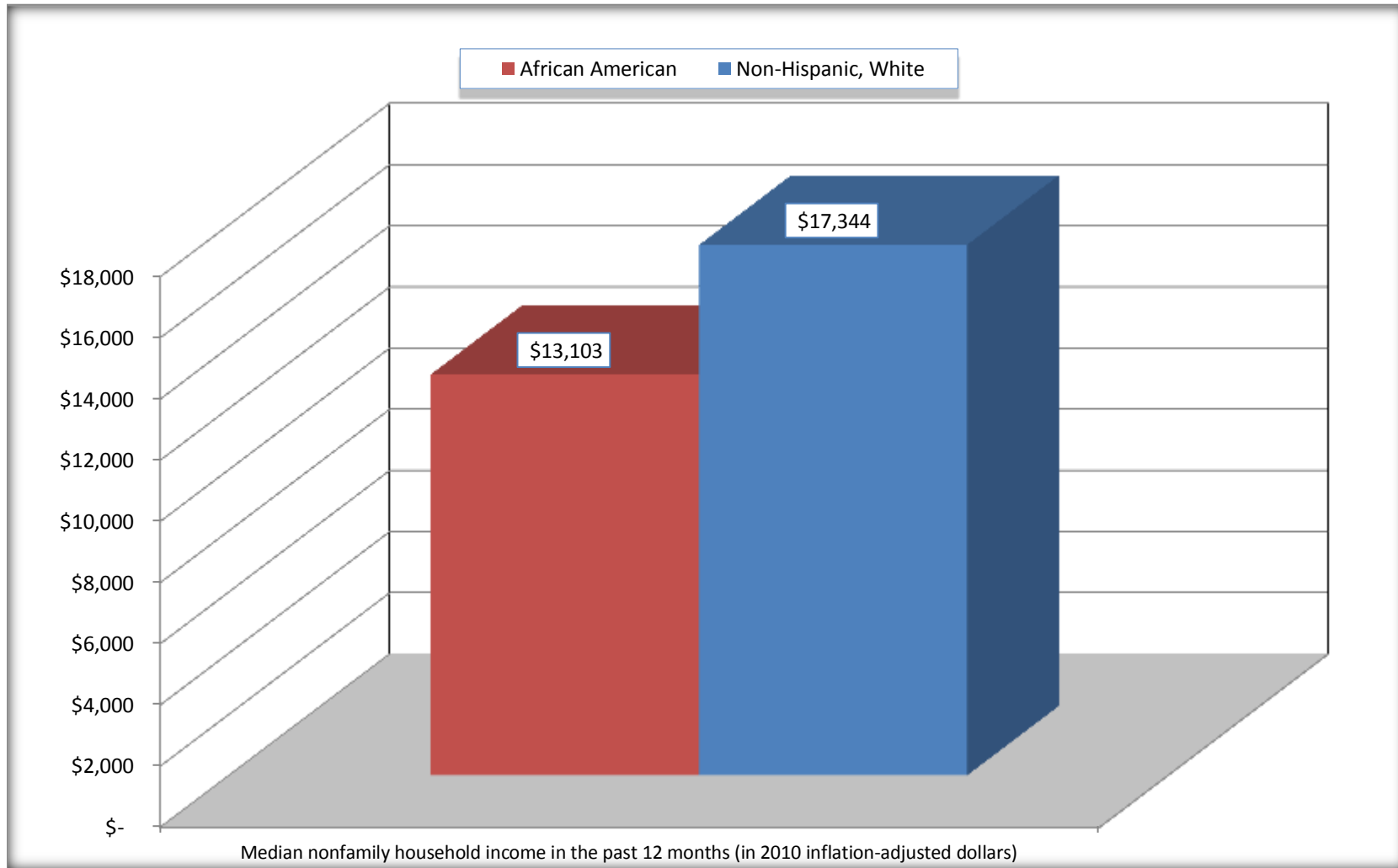
Source: U.S. Census Bureau, 2008-2012 American Community Survey

For information on confidentiality protection, sampling error, nonsampling error, and definitions, see Survey Methodology.

<http://www.census.gov/acs/www/UseData/index.htm>

Median Non-Family Income in the Past 12 Months

Mitchell County, Georgia



Source: B19202. MEDIAN NONFAMILY HOUSEHOLD INCOME IN THE PAST 12 MONTHS (IN 2010 INFLATION-ADJUSTED DOLLARS)
Data Set: 2008-2012 American Community Survey 5-Year Estimates

B19301. PER CAPITA INCOME IN THE PAST 12 MONTHS (IN 2010 INFLATION-ADJUSTED DOLLARS)

Data Set: 2008-2012 American Community Survey 5-Year Estimates

	Mitchell County, Georgia			
	African American	Margin of Error (+/-)	White, Not Hispanic	Margin of Error (+/-)
Per capita income in the past 12 months (in 2010 inflation-adjusted dollars)	\$ 11,564	\$ 1,332	\$ 21,168	\$ 1,548

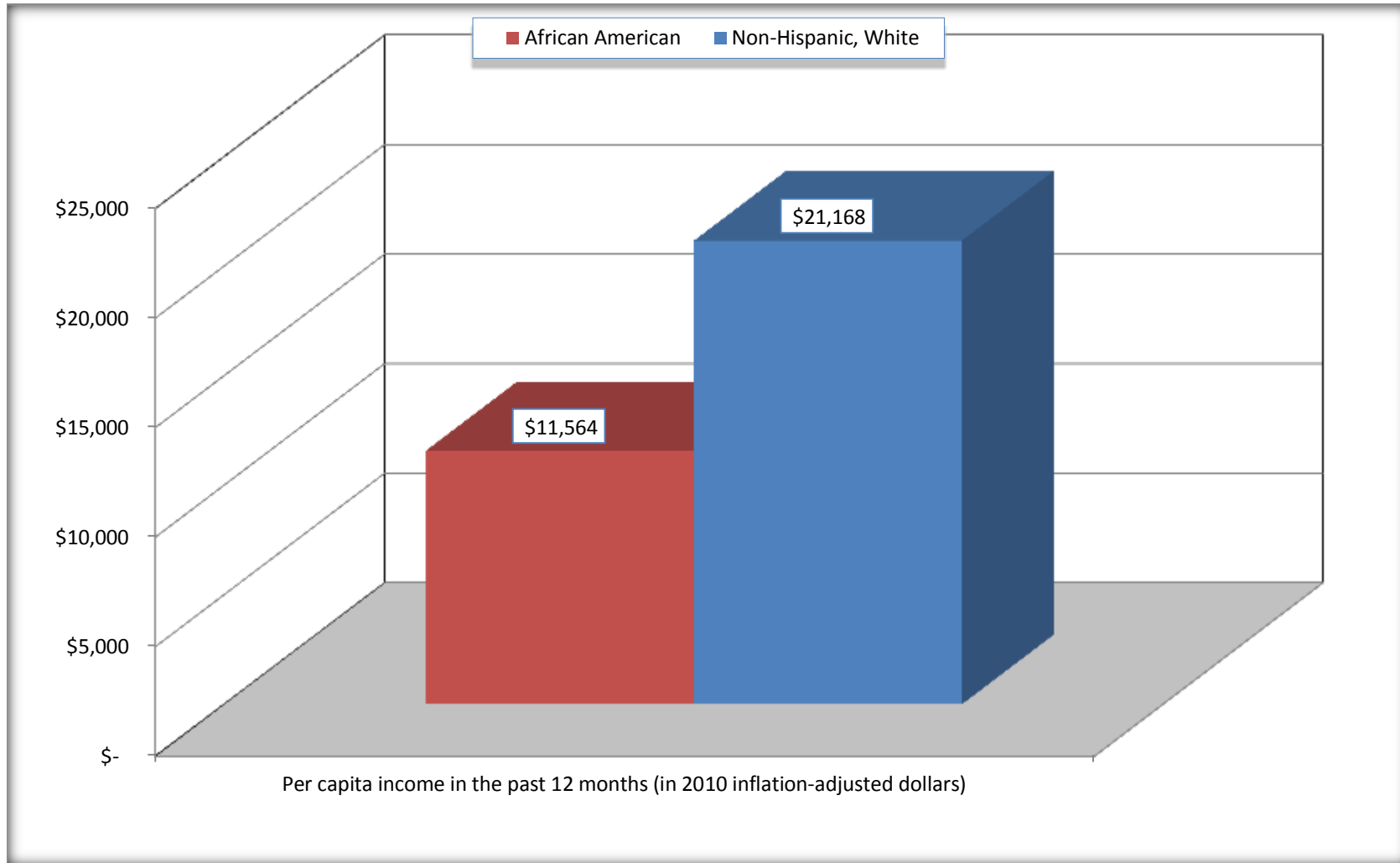
Source: U.S. Census Bureau, 2008-2012 American Community Survey

For information on confidentiality protection, sampling error, nonsampling error, and definitions, see Survey Methodology.

<http://www.census.gov/acs/www/UseData/index.htm>

Per capita Income in the Past 12 Months

Mitchell County, Georgia



Source: B19301. PER CAPITA INCOME IN THE PAST 12 MONTHS (IN 2010 INFLATION-ADJUSTED DOLLARS)
Data Set: 2008-2012 American Community Survey 5-Year Estimates

B20017. MEDIAN EARNINGS IN THE PAST 12 MONTHS (IN 2010 INFLATION-ADJUSTED DOLLARS) BY SEX BY WORK EXPERIENCE IN THE PAST 12 MONTHS FOR THE POPULATION 16 YEARS AND OVER WITH EARNINGS IN THE PAST 12 MONTHS

Data Set: 2008-2012 American Community Survey 5-Year Estimates

	Mitchell County, Georgia			
	African American	Margin of Error (+/-)	White, Not Hispanic	Margin of Error (+/-)
Median earnings in the past 12 months (in 2010 inflation-adjusted dollars) --				
Total:	\$ 21,445	\$ 1,501	\$ 32,864	\$ 2,635
Male --				
Total	\$ 23,768	\$ 4,528	\$ 37,838	\$ 4,190
Worked full-time, year-round in the past 12 months	\$ 31,465	\$ 3,800	\$ 41,687	\$ 3,645
Other	\$ 12,145	\$ 4,142	\$ 8,945	\$ 3,901
Female --				
Total	\$ 19,265	\$ 3,064	\$ 28,264	\$ 6,916
Worked full-time, year-round in the past 12 months	\$ 23,667	\$ 2,085	\$ 33,630	\$ 3,320
Other	\$ 8,706	\$ 1,179	\$ 8,657	\$ 2,853

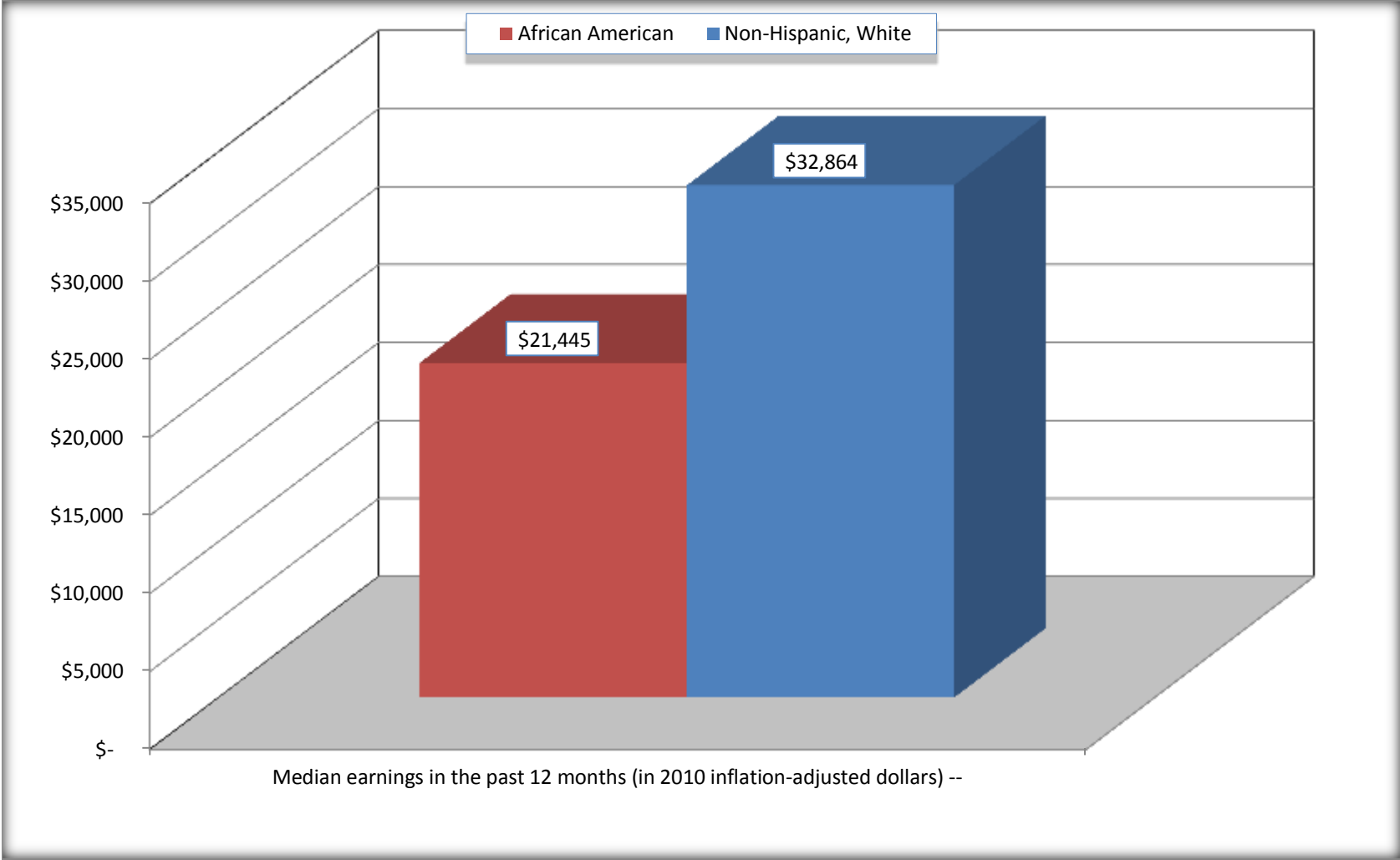
Source: U.S. Census Bureau, 2008-2012 American Community Survey

For information on confidentiality protection, sampling error, nonsampling error, and definitions, see Survey Methodology.

<http://www.census.gov/acs/www/UseData/index.htm>

Median earnings in the Past 12 Months (16 Years and Over with Earnings)

Mitchell County, Georgia



Source: B20017. MEDIAN EARNINGS IN THE PAST 12 MONTHS (IN 2010 INFLATION-ADJUSTED DOLLARS) BY SEX BY WORK EXPERIENCE IN THE PAST 12 MONTHS FOR THE POPULATION 16 YEARS AND OVER WITH EARNINGS IN THE PAST 12 MONTHS
Data Set: 2008-2012 American Community Survey 5-Year Estimates

B20005. SEX BY WORK EXPERIENCE IN THE PAST 12 MONTHS BY EARNINGS IN THE PAST 12 MONTHS (IN 2010 INFLATION-ADJUSTED DOLLARS) FOR THE POPULATION 16 YEARS AND OVER

Data Set: 2008-2012 American Community Survey 5-Year Estimates

	Mitchell County, Georgia					
	African American	Margin of Error (+/-)	% of AA Total	White, Not Hispanic	Margin of Error (+/-)	% of NHW Total
Total:	8,609	137	100.0%	8,906	50	100.0%
Worked full-time, year-round in the past 12 months:	2,501	NC	29.1%	3,603	NC	40.5%
No earnings	0	NC	0.0%	0	NC	0.0%
With earnings:	2,501	NC	29.1%	3,603	NC	40.5%
\$ 1 to \$ 9,999 or loss	158	NC	1.8%	42	NC	0.5%
\$ 10,000 to \$ 19,999	581	NC	6.7%	501	NC	5.6%
\$ 20,000 to \$ 29,999	745	NC	8.7%	637	NC	7.2%
\$ 30,000 to \$ 49,999	690	NC	8.0%	1,240	NC	13.9%
\$ 50,000 to \$ 74,999	232	NC	2.7%	777	NC	8.7%
\$ 75,000 or more	95	NC	1.1%	406	NC	4.6%
Other:	6,108	NC	70.9%	5,303	NC	59.5%
No earnings	4,707	NC	54.7%	4,166	NC	46.8%
With earnings: less than full time, year-round	1,401	NC	16.3%	1,137	NC	12.8%
Male:	4,400	92	51.1%	4,523	34	50.8%
Worked full-time, year-round in the past 12 months:	1,093	204	12.7%	1,993	181	22.4%
No earnings	0	25	0.0%	0	25	0.0%
With earnings:	1,093	204	12.7%	1,993	181	22.4%
\$ 1 to \$ 9,999 or loss	26	NC	0.3%	42	NC	0.5%
\$ 10,000 to \$ 19,999	165	NC	1.9%	153	NC	1.7%
\$ 20,000 to \$ 29,999	301	NC	3.5%	344	NC	3.9%
\$ 30,000 to \$ 49,999	421	NC	4.9%	683	NC	7.7%
\$ 50,000 to \$ 74,999	127	NC	1.5%	422	NC	4.7%
\$ 75,000 or more	53	NC	0.6%	349	NC	3.9%

	Mitchell County, Georgia					
	African American	Margin of Error (+/-)	% of AA Total	White, Not Hispanic	Margin of Error (+/-)	% of NHW Total
Other:	3,307	224	38.4%	2,530	184	28.4%
No earnings	2,597	212	30.2%	1,935	198	21.7%
With earnings:	710	202	8.2%	595	139	6.7%
Female:	4,209	65	48.9%	4,383	31	49.2%
Worked full-time, year-round in the past 12 months:	1,408	201	16.4%	1,610	205	18.1%
No earnings	0	25	0.0%	0	25	0.0%
With earnings:	1,408	201	16.4%	1,610	205	18.1%
\$ 1 to \$ 9,999 or loss	132	NC	1.5%	0	NC	0.0%
\$ 10,000 to \$ 19,999	416	NC	4.8%	348	NC	3.9%
\$ 20,000 to \$ 29,999	444	NC	5.2%	293	NC	3.3%
\$ 30,000 to \$ 49,999	269	NC	3.1%	557	NC	6.3%
\$ 50,000 to \$ 74,999	105	NC	1.2%	355	NC	4.0%
\$ 75,000 or more	42	NC	0.5%	57	NC	0.6%
Other:	2,801	209	32.5%	2,773	206	31.1%
No earnings	2,110	230	24.5%	2,231	187	25.1%
With earnings:	691	187	8.0%	542	129	6.1%

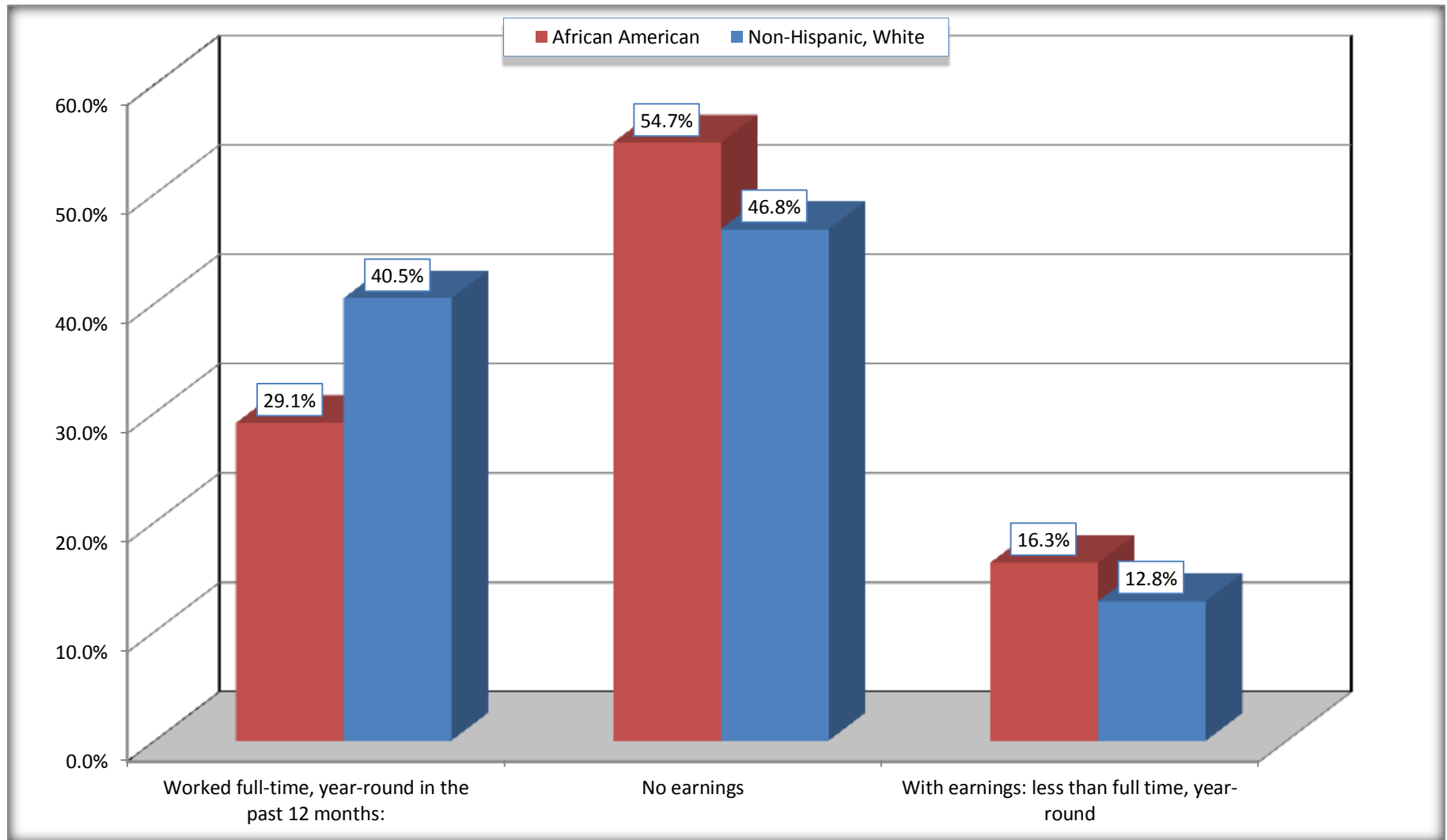
Source: U.S. Census Bureau, 2008-2012 American Community Survey

For information on confidentiality protection, sampling error, nonsampling error, and definitions, see Survey Methodology.

<http://www.census.gov/acs/www/UseData/index.htm>

Employment and Earnings in in the Past 12 Months (16 Years and Over)

Mitchell County, Georgia



Source: B20005. SEX BY WORK EXPERIENCE IN THE PAST 12 MONTHS BY EARNINGS IN THE PAST 12 MONTHS (IN 2010 INFLATION-ADJUSTED DOLLARS) FOR THE POPULATION 16 YEARS AND OVER

Data Set: 2008-2012 American Community Survey 5-Year Estimates

C21001. SEX BY AGE BY VETERAN STATUS FOR THE CIVILIAN POPULATION 18 YEARS AND OVER

Data Set: 2008-2012 American Community Survey 5-Year Estimates

	Mitchell County, Georgia					
	African American	Margin of Error (+/-)	% of AA Total	White, Not Hispanic	Margin of Error (+/-)	% of NHW Total
Total:	8,252	118	100.0%	8,629	25	100.0%
Veteran	469	NC	5.7%	1,016	NC	11.8%
Nonveteran	7,783	NC	94.3%	7,613	NC	88.2%
Male:	4,268	61	51.7%	4,379	25	50.7%
18 to 64 years:	3,898	49	47.2%	3,566	25	41.3%
Veteran	380	137	4.6%	499	136	5.8%
Nonveteran	3,518	137	42.6%	3,067	136	35.5%
65 years and over:	370	31	4.5%	813	25	9.4%
Veteran	45	35	0.5%	469	84	5.4%
Nonveteran	325	43	3.9%	344	84	4.0%
Female:	3,984	64	48.3%	4,250	25	49.3%
18 to 64 years:	3,282	63	39.8%	3,113	25	36.1%
Veteran	44	35	0.5%	14	22	0.2%
Nonveteran	3,238	72	39.2%	3,099	22	35.9%
65 years and over:	702	25	8.5%	1,137	25	13.2%
Veteran	0	25	0.0%	34	48	0.4%
Nonveteran	702	25	8.5%	1,103	48	12.8%

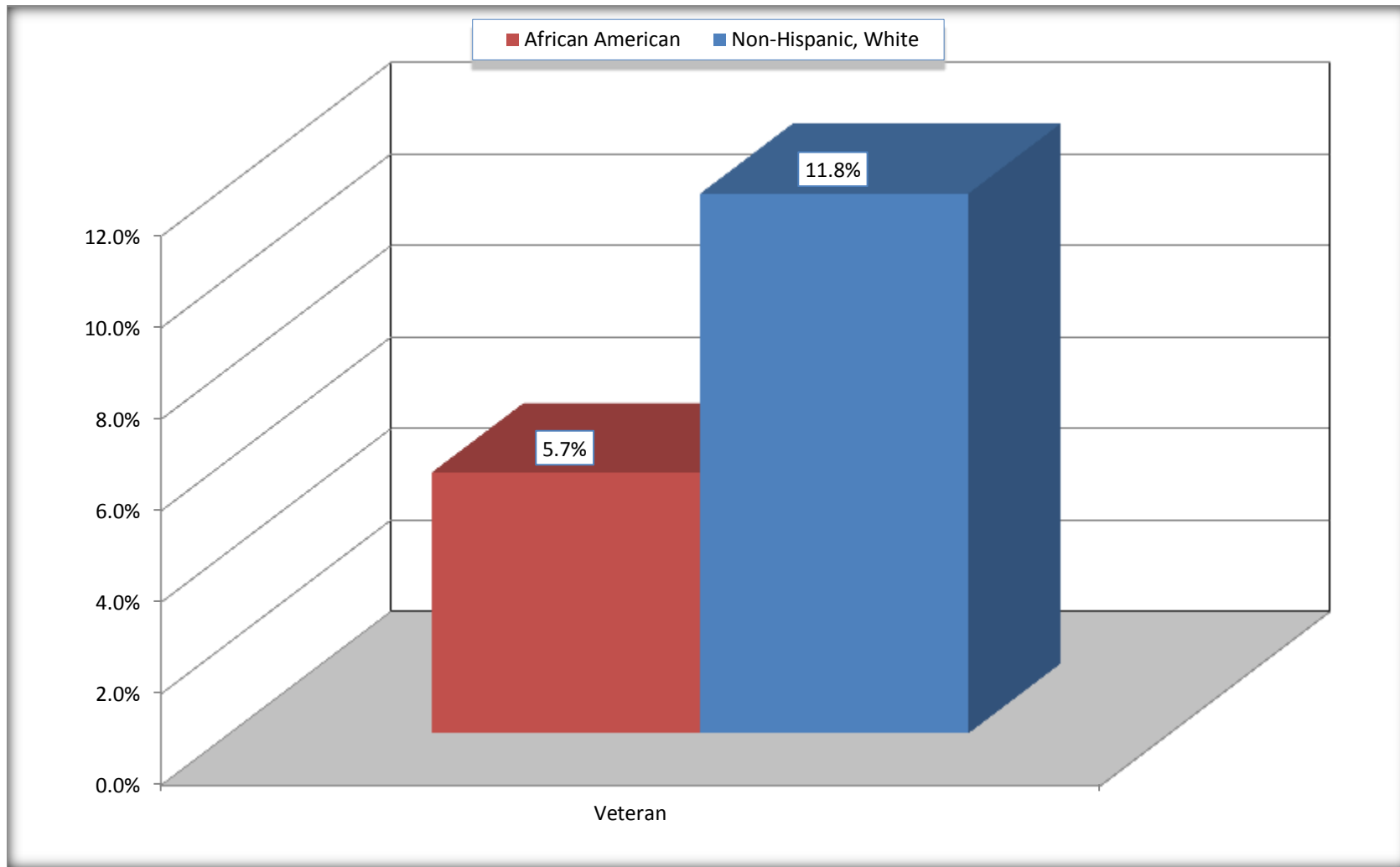
Source: U.S. Census Bureau, 2008-2012 American Community Survey

For information on confidentiality protection, sampling error, nonsampling error, and definitions, see Survey Methodology.

<http://www.census.gov/acs/www/UseData/index.htm>

Veterans in the Civilian Population 18 Years and Over

Mitchell County, Georgia



Source: C21001. SEX BY AGE BY VETERAN STATUS FOR THE CIVILIAN POPULATION 18 YEARS AND OVER
Data Set: 2008-2012 American Community Survey 5-Year Estimates

B22005. RECEIPT OF FOOD STAMPS/SNAP IN THE PAST 12 MONTHS BY RACE OF HOUSEHOLDER

Data Set: 2008-2012 American Community Survey 5-Year Estimates

	Mitchell County, Georgia					
	African American	Margin of Error (+/-)	% of AA Total	White, Not Hispanic	Margin of Error (+/-)	% of NHW Total
Total:	3,574	208	100.0%	4,298	188	100.0%
HH received Food Stamps/SNAP in the past 12 months	1,642	242	45.9%	472	143	11.0%
HH did not receive Food Stamps/SNAP in the past 12 months	1,932	242	54.1%	3,826	194	89.0%

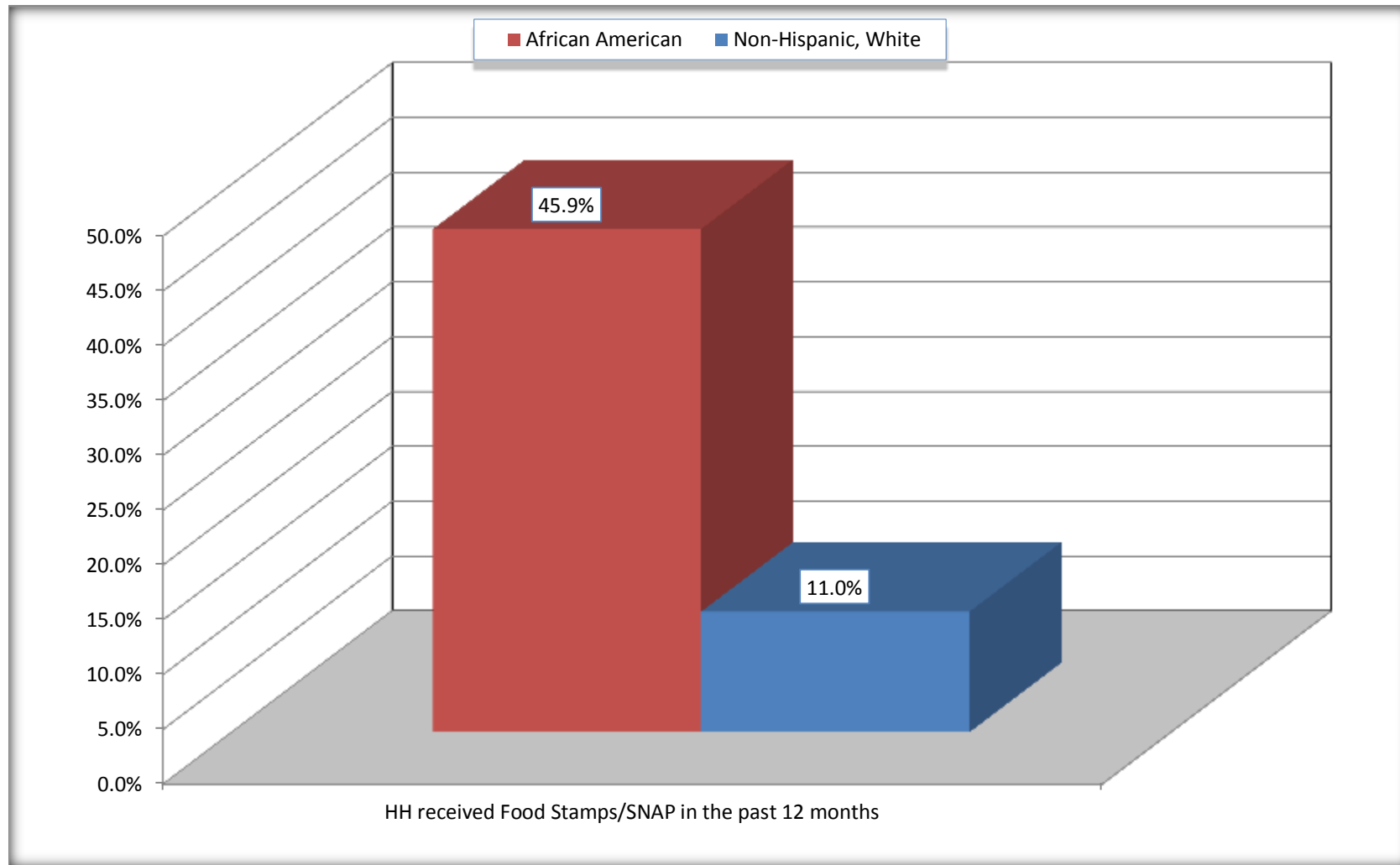
Source: U.S. Census Bureau, 2008-2012 American Community Survey

For information on confidentiality protection, sampling error, nonsampling error, and definitions, see Survey Methodology.

<http://www.census.gov/acs/www/UseData/index.htm>

Receipt of Food Stamps/SNAP in the Past 12 Months by Household

Mitchell County, Georgia



Source: B22005. RECEIPT OF FOOD STAMPS/SNAP IN THE PAST 12 MONTHS BY RACE OF HOUSEHOLDER
Data Set: 2008-2012 American Community Survey 5-Year Estimates

C23002. SEX BY AGE BY EMPLOYMENT STATUS FOR THE POPULATION 16 YEARS AND OVER

Data Set: 2008-2012 American Community Survey 5-Year Estimates

	Mitchell County, Georgia					
	African American	Margin of Error (+/-)	% of AA Total	White, Not Hispanic	Margin of Error (+/-)	% of NHW Total
Total:	8,609	137	100.0%	8,906	50	100.0%
In labor force:	4,073	NC	47.3%	4,543	NC	51.0%
In Armed Forces	0	NC	0.0%	0	NC	0.0%
Civilian:	3,952	NC	45.9%	4,288	NC	48.1%
Employed	3,390	NC	39.4%	4,334	NC	48.7%
Unemployed	683	NC	7.9%	209	NC	2.3%
Not in labor force	4,536	NC	52.7%	4,363	NC	49.0%
Male:	4,400	92	51.1%	4,523	34	50.8%
16 to 64 years:	4,030	82	46.8%	3,710	34	41.7%
In labor force:	1,779	188	20.7%	2,271	181	25.5%
In Armed Forces	0	25	0.0%	0	25	0.0%
Civilian:	1,779	188	20.7%	2,271	181	25.5%
Employed	1,458	201	16.9%	2,168	187	24.3%
Unemployed	321	148	3.7%	103	57	1.2%
Not in labor force	2,251	195	26.1%	1,439	183	16.2%
65 years and over:	370	31	4.3%	813	25	9.1%
In labor force:	43	37	0.5%	144	58	1.6%
Employed	43	37	0.5%	144	58	1.6%
Unemployed	0	25	0.0%	0	25	0.0%
Not in labor force	327	47	3.8%	669	58	7.5%

	Mitchell County, Georgia					
	African American	Margin of Error (+/-)	% of AA Total	White, Not Hispanic	Margin of Error (+/-)	% of NHW Total
Female:	4,209	65	48.9%	4,383	31	49.2%
16 to 64 years:	3,507	65	40.7%	3,246	31	36.4%
In labor force:	2,173	177	25.2%	2,017	171	22.6%
In Armed Forces	0	25	0.0%	0	25	0.0%
Civilian:	2,173	177	25.2%	2,017	171	22.6%
Employed	1,814	233	21.1%	1,911	171	21.5%
Unemployed	359	149	4.2%	106	59	1.2%
Not in labor force	1,334	183	15.5%	1,229	176	13.8%
65 years and over:	702	25	8.2%	1,137	25	12.8%
In labor force:	78	45	0.9%	111	57	1.2%
Employed	75	46	0.9%	111	57	1.2%
Unemployed	3	5	0.0%	0	25	0.0%
Not in labor force	624	49	7.2%	1,026	57	11.5%

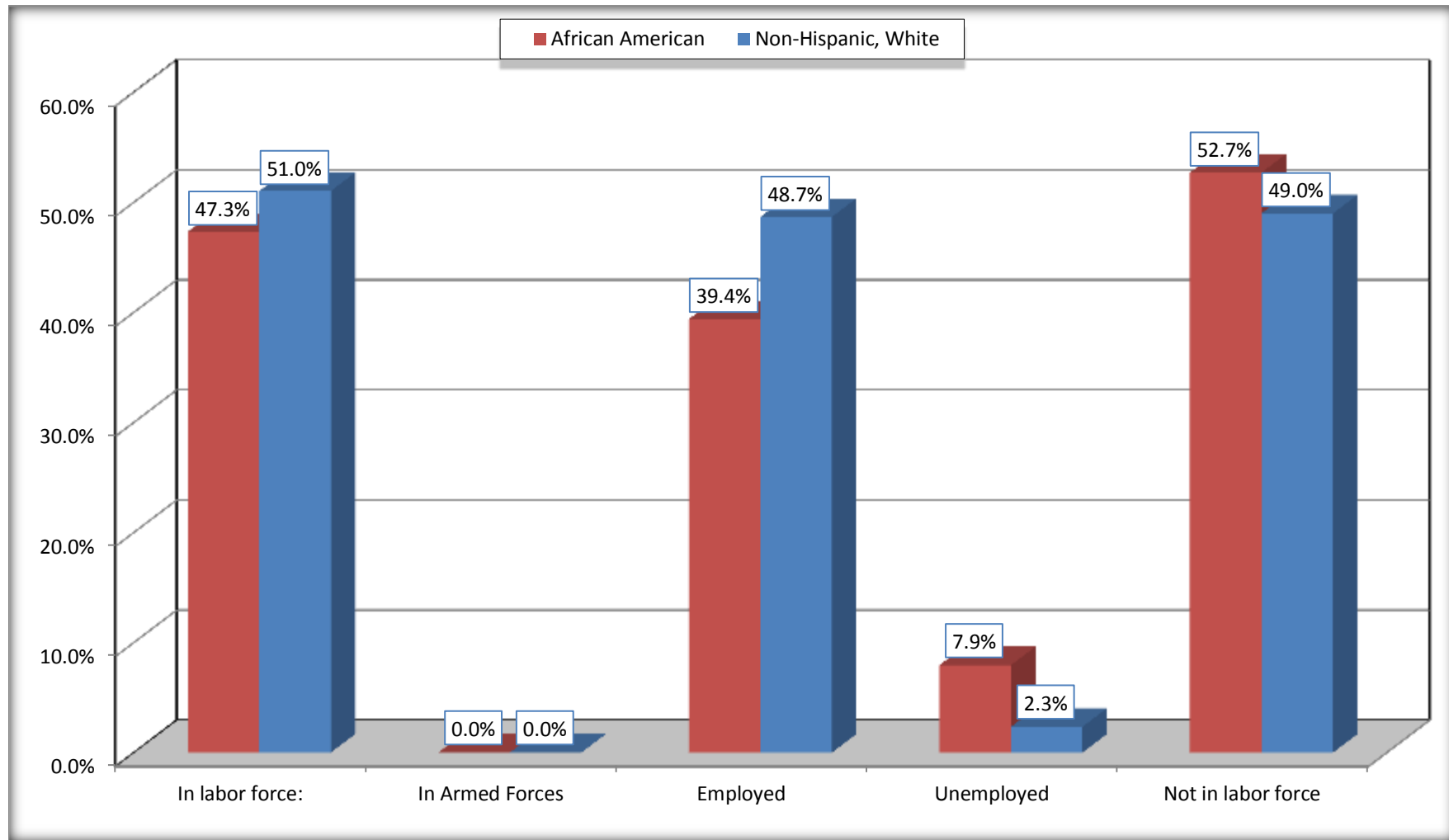
Source: U.S. Census Bureau, 2008-2012 American Community Survey

For information on confidentiality protection, sampling error, nonsampling error, and definitions, see Survey Methodology.

<http://www.census.gov/acs/www/UseData/index.htm>

Employment Status for the Population 16 years and over

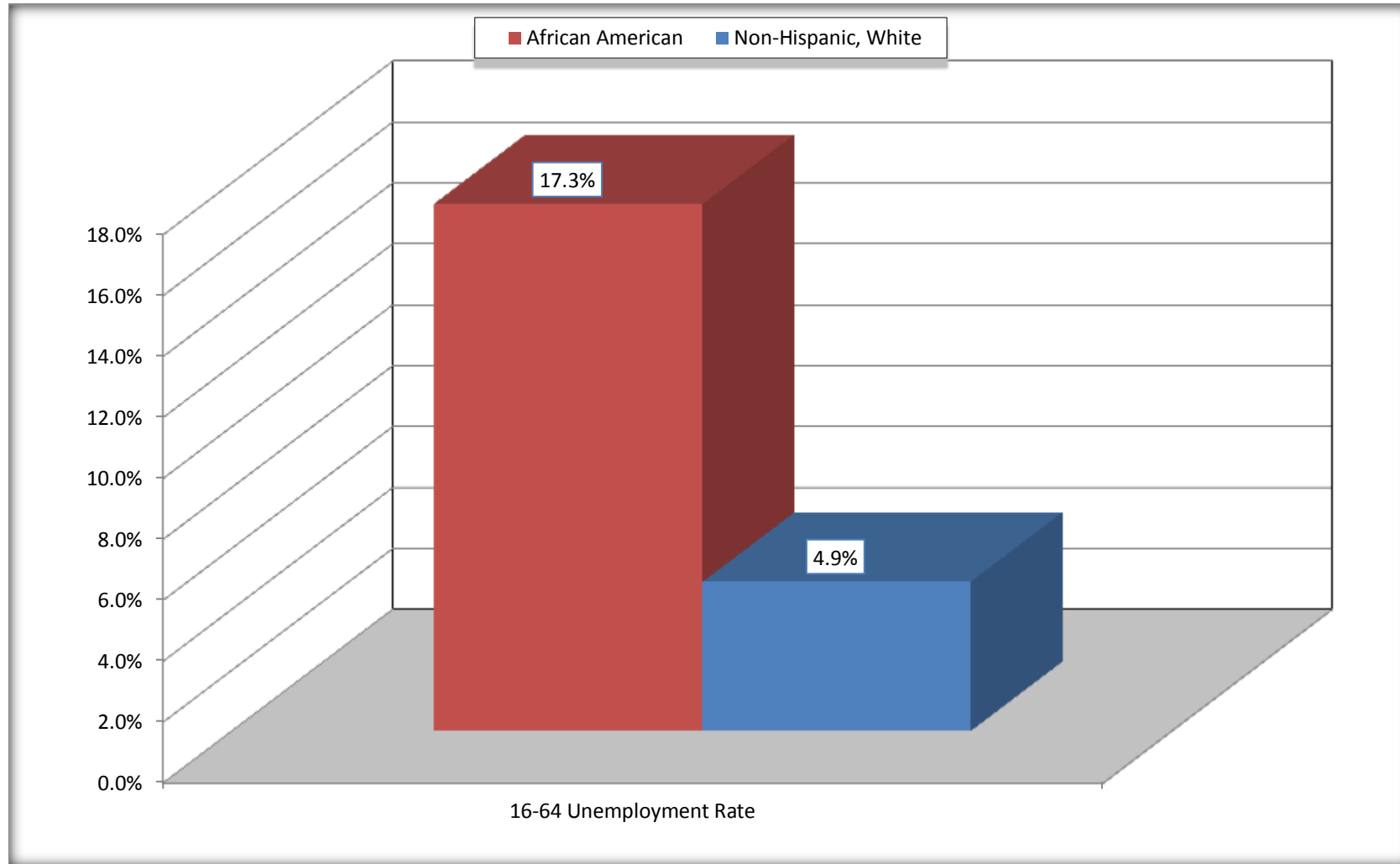
Mitchell County, Georgia



Source: C23002. SEX BY AGE BY EMPLOYMENT STATUS FOR THE POPULATION 16 YEARS AND OVER
Data Set: 2008-2012 American Community Survey 5-Year Estimates

Unemployment of Working Age Population (Ages 16 to 64) (As a Percent of 16-64 Civilian Labor Force)

Mitchell County, Georgia



Source: C23002. SEX BY AGE BY EMPLOYMENT STATUS FOR THE POPULATION 16 YEARS AND OVER
Data Set: 2008-2012 American Community Survey 5-Year Estimates

C24010. SEX BY OCCUPATION FOR THE CIVILIAN EMPLOYED POPULATION 16 YEARS AND OVER

Data Set: 2008-2012 American Community Survey 5-Year Estimates

	Mitchell County, Georgia					
	African American	Margin of Error (+/-)	% of AA Total	White, Not Hispanic	Margin of Error (+/-)	% of NHW Total
Total:	3,390	313	100.0%	4,334	290	100.0%
Management, professional, and related occupations	530	NC	15.6%	1,437	NC	33.2%
Service occupations	736	NC	21.7%	446	NC	10.3%
Sales and office occupations	738	NC	21.8%	1,171	NC	27.0%
Natural resources, construction, and maintenance occupations:	426	NC	12.6%	514	NC	11.9%
Production, transportation, and material moving occupations	960	NC	28.3%	766	NC	17.7%
Male:	1,501	200	44.3%	2,312	194	53.3%
Management, business, science, and arts occupations:	213	107	6.3%	644	158	14.9%
Service occupations	302	141	8.9%	241	92	5.6%
Sales and office occupations	96	109	2.8%	340	125	7.8%
Natural resources, construction, and maintenance occupations:	371	146	10.9%	490	112	11.3%
Production, transportation, and material moving occupations	519	150	15.3%	597	151	13.8%
Female:	1,889	241	55.7%	2,022	183	46.7%
Management, professional, and related occupations	317	119	9.4%	793	162	18.3%
Service occupations	434	131	12.8%	205	87	4.7%
Sales and office occupations	642	185	18.9%	831	167	19.2%
Natural resources, construction, and maintenance occupations:	55	51	1.6%	24	22	0.6%
Production, transportation, and material moving occupations	441	131	13.0%	169	74	3.9%

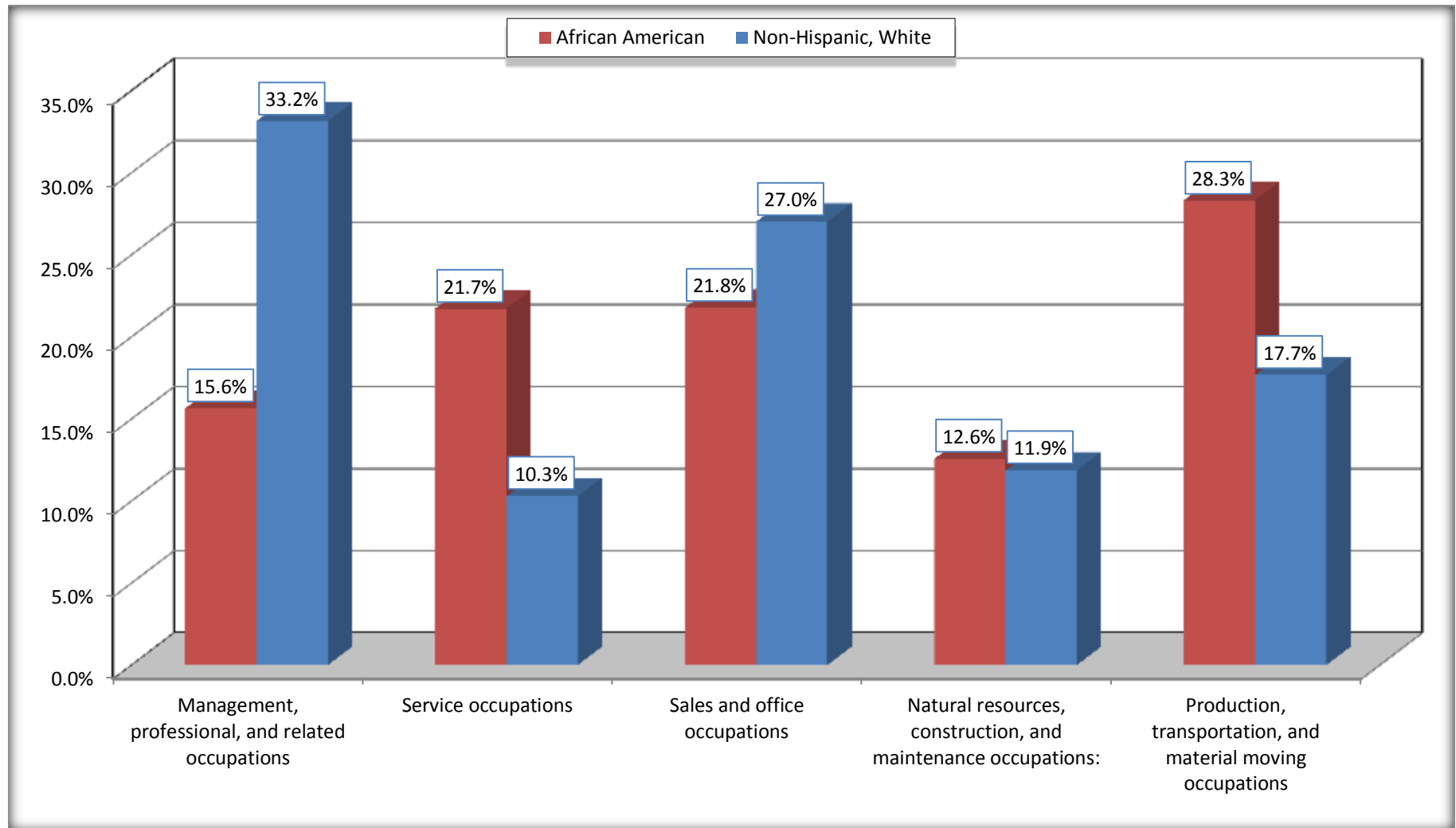
Source: U.S. Census Bureau, 2008-2012 American Community Survey

For information on confidentiality protection, sampling error, nonsampling error, and definitions, see Survey Methodology.

<http://www.census.gov/acs/www/UseData/index.htm>

Occupation for the Civilian Employed 16 Years and Over Population

Mitchell County, Georgia



Source: C24010. SEX BY OCCUPATION FOR THE CIVILIAN EMPLOYED POPULATION 16 YEARS AND OVER
Data Set: 2008-2012 American Community Survey 5-Year Estimates

B25003. TENURE - Universe: OCCUPIED HOUSING UNITS

Data Set: 2008-2012 American Community Survey 5-Year Estimates

	Mitchell County, Georgia					
	African American	Margin of Error (+/-)	% of AA Total	White, Not Hispanic	Margin of Error (+/-)	% of NHW Total
Total:	3,574	208	100.0%	4,298	188	100.0%
Owner occupied	1,846	213	51.7%	3,283	181	76.4%
Renter occupied	1,728	272	48.3%	1,015	213	23.6%

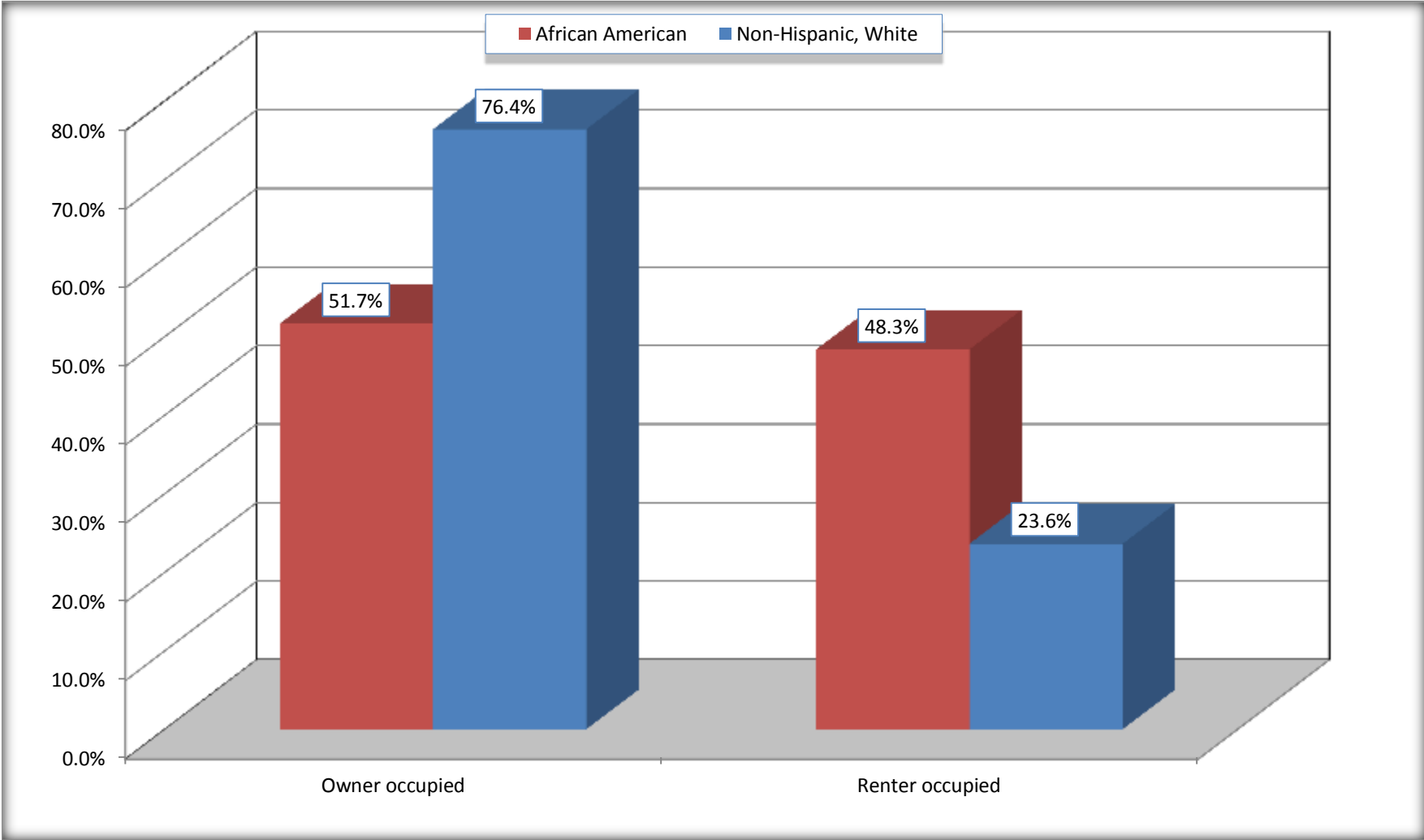
Source: U.S. Census Bureau, 2008-2012 American Community Survey

For information on confidentiality protection, sampling error, nonsampling error, and definitions, see Survey Methodology.

<http://www.census.gov/acs/www/UseData/index.h>

Home Owners and Renters by Household

Mitchell County, Georgia



Source: B25003. TENURE - Universe: OCCUPIED HOUSING UNITS
Data Set: 2008-2012 American Community Survey 5-Year Estimates

B25014. OCCUPANTS PER ROOM - Universe: OCCUPIED HOUSING UNITS

Data Set: 2008-2012 American Community Survey 5-Year Estimates

	Mitchell County, Georgia					
	African American	Margin of Error (+/-)	% of AA Total	White, Not Hispanic	Margin of Error (+/-)	% of NHW Total
Total:	3,574	208	100.0%	4,298	188	100.0%
1.00 or less occupants per room	3,318	204	92.8%	4,238	193	98.6%
1.01 or more occupants per room	256	125	7.2%	60	59	1.4%

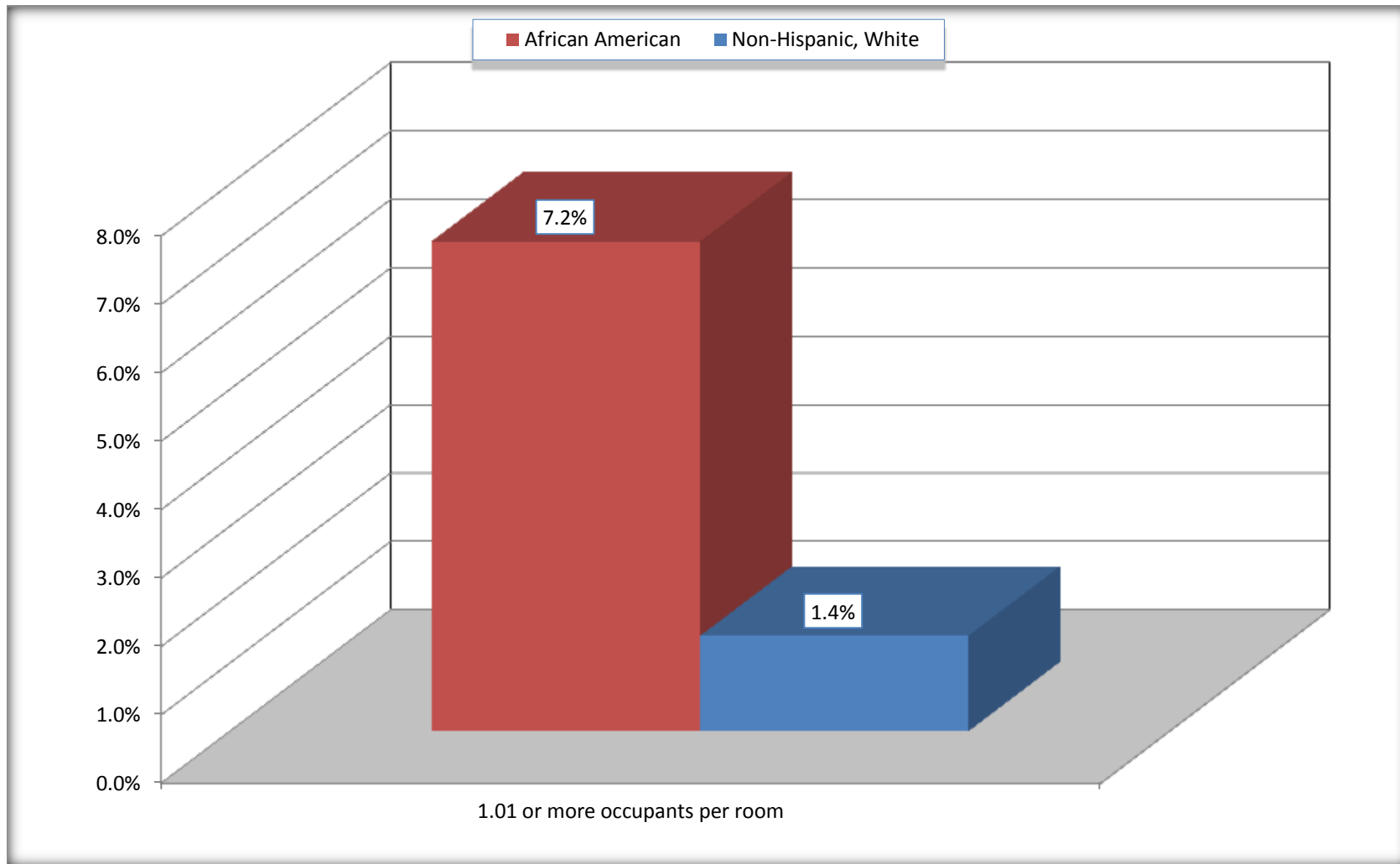
Source: U.S. Census Bureau, 2008-2012 American Community Survey

For information on confidentiality protection, sampling error, nonsampling error, and definitions, see Survey Methodology.

<http://www.census.gov/acs/www/UseData/index.ht>

More than One Person per Room (Crowding) by Household

Mitchell County, Georgia



Source: B25014. OCCUPANTS PER ROOM - Universe: OCCUPIED HOUSING UNITS
Data Set: 2008-2012 American Community Survey 5-Year Estimates

B18101. AGE BY DISABILITY STATUS

Data Set: 2008-2012 American Community Survey 5-Year Estimates

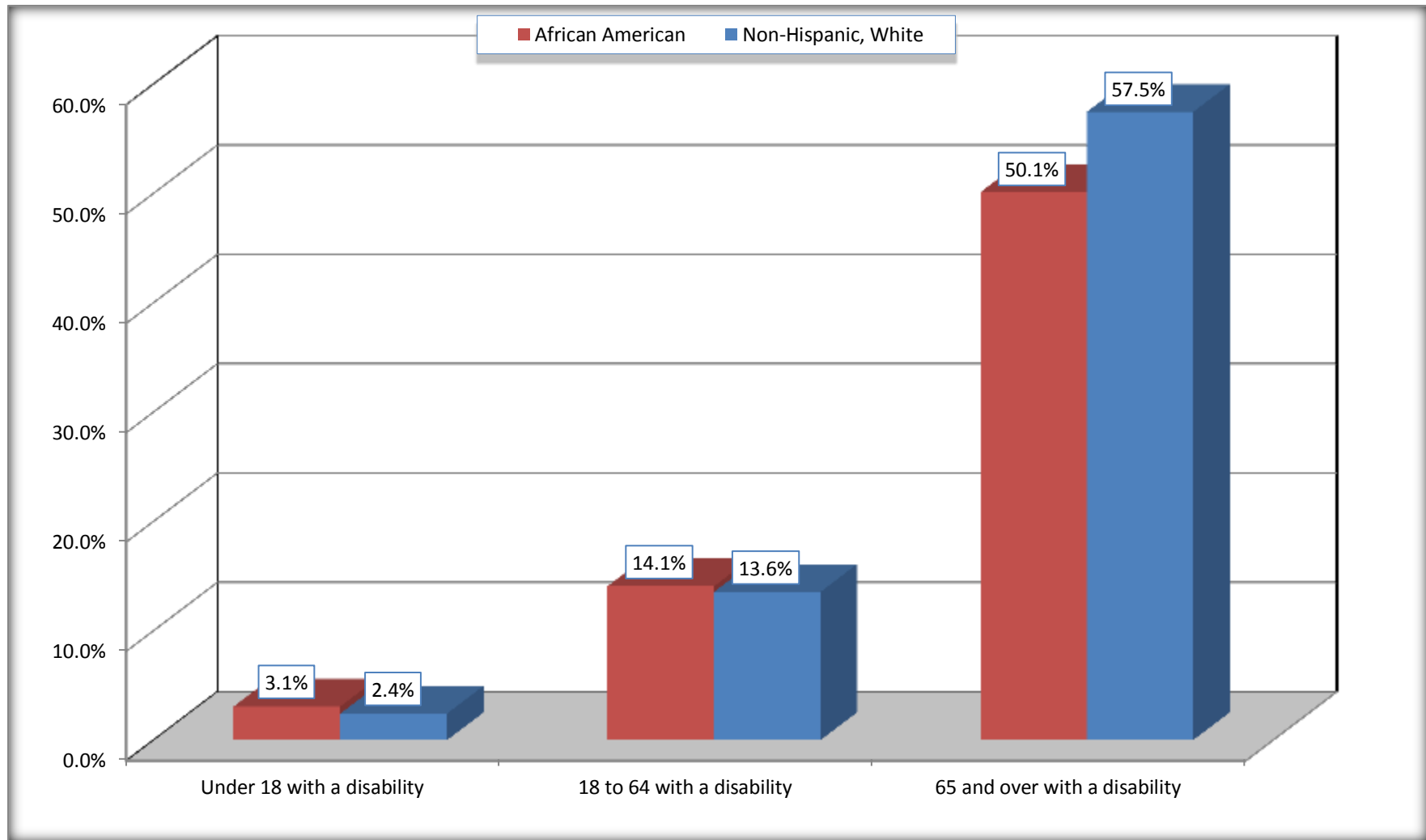
	Mitchell County, Georgia					
	African American	Margin of Error (+/-)	% of AA Total	White, Not Hispanic	Margin of Error (+/-)	% of NHW Total
Total:	10,065	301	100.0%	10,177	133	100.0%
Under 18 years:	3,063	151	30.4%	2,266	80	22.3%
With a disability	94	58	0.9%	55	50	0.5%
No disability	2,969	166	29.5%	2,211	50	21.7%
18 to 64 years:	5,976	188	59.4%	6,059	121	59.5%
With a disability	840	189	8.3%	821	179	8.1%
No disability	5,136	244	51.0%	5,238	213	51.5%
65 years and over:	1,026	59	10.2%	1,852	50	18.2%
With a disability	514	92	5.1%	1,064	153	10.5%
No disability	512	93	5.1%	788	152	7.7%

Source: U.S. Census Bureau, 2008-2012 American Community Survey

For information on confidentiality protection, sampling error, nonsampling error, and definitions, see Survey Methodology.

<http://www.census.gov/acs/www/UseData/index.htm>

Disability by Age Mitchell County, Georgia



Source: B18101. AGE BY DISABILITY STATUS
Data Set: 2008-2012 American Community Survey 5-Year Estimates

C27001B. HEALTH INSURANCE COVERAGE STATUS BY AGE

Data Set: 2008-2012 American Community Survey 5-Year Estimates

	Mitchell County, Georgia					
	African American	Margin of Error (+/-)	% of AA Total	White, Not Hispanic	Margin of Error (+/-)	% of NHW Total
Total:	10,065	301	100.0%	10,177	133	100.0%
Under 18 years:	3,063	151	30.4%	2,266	25	22.3%
With health insurance coverage	2,887	192	28.7%	2,056	141	20.2%
No health insurance coverage	176	118	1.7%	210	141	2.1%
18 to 64 years:	5,976	188	59.4%	6,059	121	59.5%
With health insurance coverage	4,249	330	42.2%	4,227	313	41.5%
No health insurance coverage	1,727	281	17.2%	1,832	307	18.0%
65 years and over:	1,026	59	10.2%	1,852	50	18.2%
With health insurance coverage	1,026	59	10.2%	1,852	50	18.2%
No health insurance coverage	0	25	0.0%	0	25	0.0%

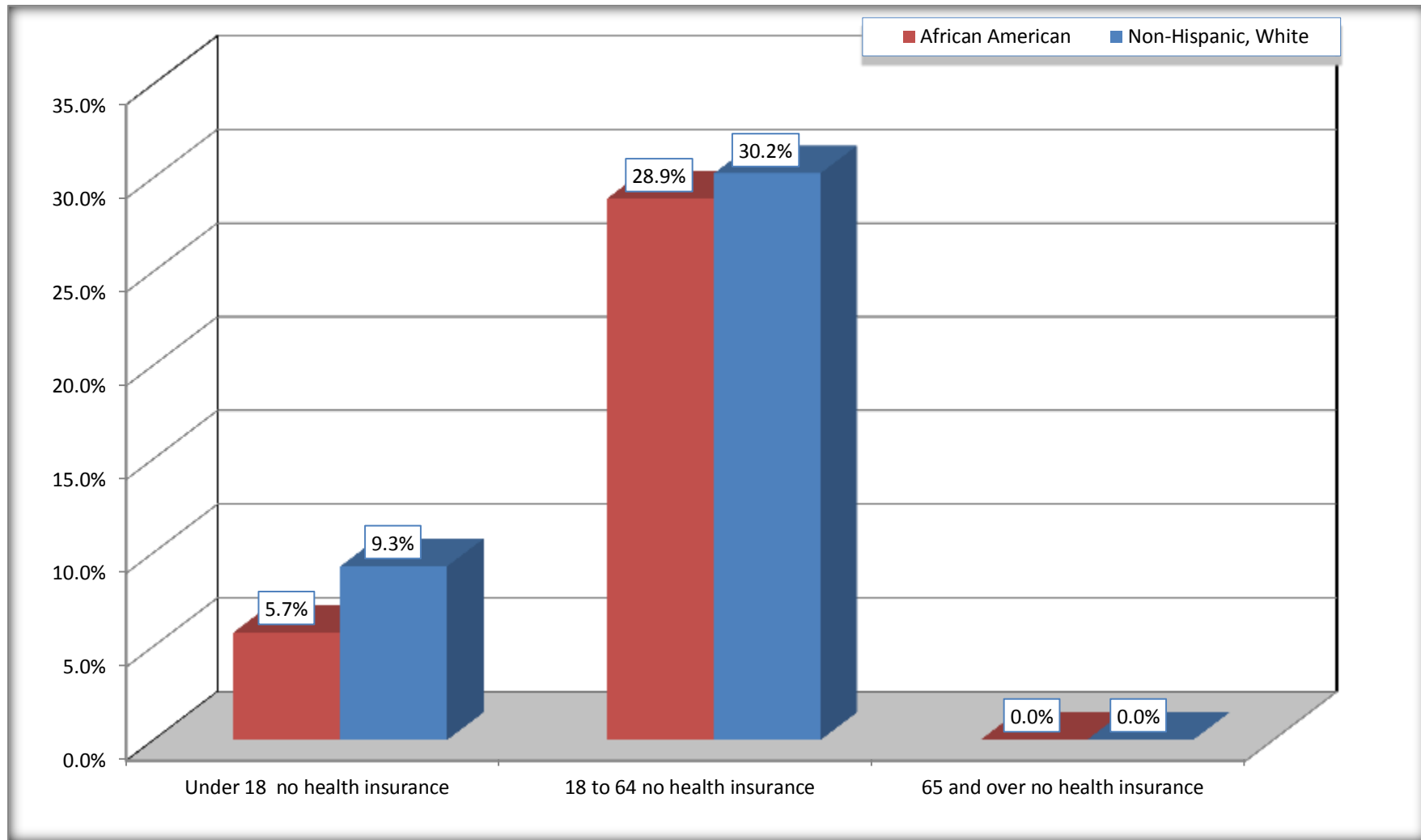
Source: U.S. Census Bureau, 2008-2012 American Community Survey

For information on confidentiality protection, sampling error, nonsampling error, and definitions, see Survey Methodology.

<http://www.census.gov/acs/www/UseData/index.htm>

Lack of Health Insurance Coverage by Age

Mitchell County, Georgia



Source: C27001B. HEALTH INSURANCE COVERAGE STATUS BY AGE
Data Set: 2008-2012 American Community Survey 5-Year Estimates