

# **Selected Socio-Economic Data**

## **McDuffie County, Georgia**

### **African American and White, Not Hispanic**

**Data Set: 2008-2012 American Community Survey 5-Year Estimates**

[www.fairvote2020.org](http://www.fairvote2020.org)

[www.fairdata2000.com](http://www.fairdata2000.com)

[29-Dec-13](#)

**C02003.DETAILED RACE - Universe: TOTAL POPULATION**

Data Set: 2008-2012 American Community Survey 5-Year Estimates

	<b>McDuffie County, Georgia</b>		
	Population	Margin of Error (+/-)	% of Total
<b>Total:</b>	<b>21,762</b>	<b>*****</b>	<b>100.0%</b>
Population of one race:	21,573	107	99.1%
White	12,564	132	57.7%
Black or African American	8,829	120	40.6%
American Indian and Alaska Native	70	58	0.3%
Asian alone	15	20	0.1%
Native Hawaiian and Other Pacific Islander	0	25	0.0%
Some other race	95	121	0.4%
Population of two or more races:	189	107	0.9%
Two races including Some other race	9	15	0.0%
Two races excluding Some other race, and three or more races	180	106	0.8%
Population of two races:	189	107	0.9%
White; Black or African American	74	74	0.3%
White; American Indian and Alaska Native	49	66	0.2%
White; Asian	13	21	0.1%
Black or African American; American Indian and Alaska Native	44	44	0.2%
All other two race combinations	9	15	0.0%
Population of three races	0	25	0.0%
Population of four or more races	0	25	0.0%

Note: Hispanics may be of any race. See Table B03002 and chart.

Source: U.S. Census Bureau, 2008-2012 American Community Survey

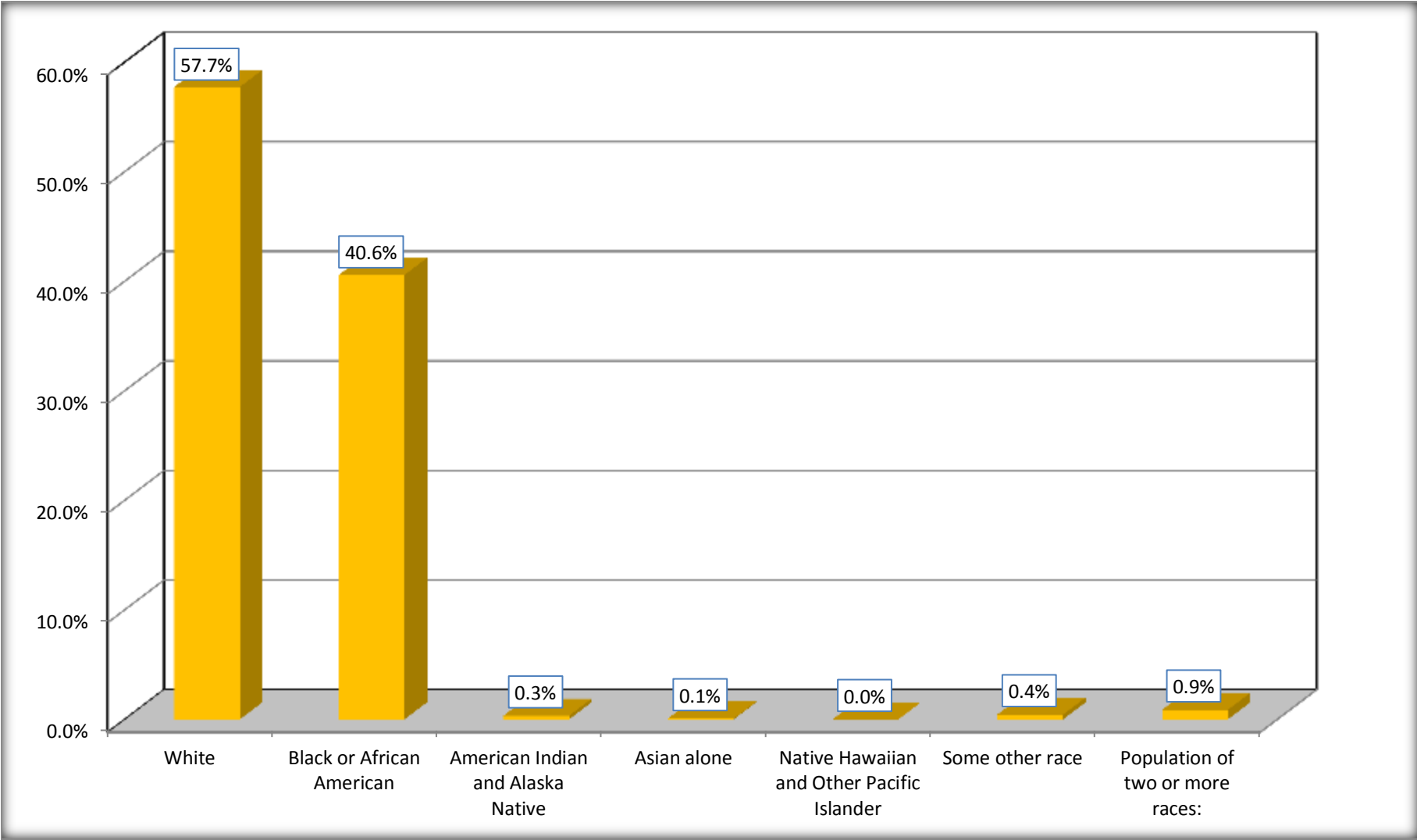
Although the American Community Survey (ACS) produces population, demographic and housing unit estimates, it is the Census Bureau's Population Estimates Program that produces and disseminates the official estimates of the population for the nation, states, counties, cities and towns and estimates of housing units for states and counties.

For information on confidentiality protection, sampling error, nonsampling error, and definitions, see Survey Methodology.

<http://www.census.gov/acs/www/UseData/index.htm>

# Population by Race

## McDuffie County, Georgia



Source: C02003.DETAILED RACE - Universe: TOTAL POPULATION  
Data Set: 2008-2012 American Community Survey 5-Year Estimates

**B03002. HISPANIC OR LATINO ORIGIN BY RACE - Universe: TOTAL POPULATION**

Data Set: 2008-2012 American Community Survey 5-Year Estimates

	McDuffie County, Georgia		
	Population	Margin of Error (+/-)	% of Total
<b>Total:</b>	21,762	*****	<b>100.0%</b>
Not Hispanic or Latino:	21,276	*****	97.8%
White alone	12,216	15	56.1%
Black or African American alone	8,808	114	40.5%
American Indian and Alaska Native alone	48	43	0.2%
Asian alone	15	20	0.1%
Native Hawaiian and Other Pacific Islander alone	0	25	0.0%
Some other race alone	0	25	0.0%
Two or more races:	189	107	0.9%
Two races including Some other race	9	15	0.0%
Two races excluding Some other race, and three or more races	180	106	0.8%
Hispanic or Latino	486	*****	2.2%

Source: U.S. Census Bureau, 2008-2012 American Community Survey

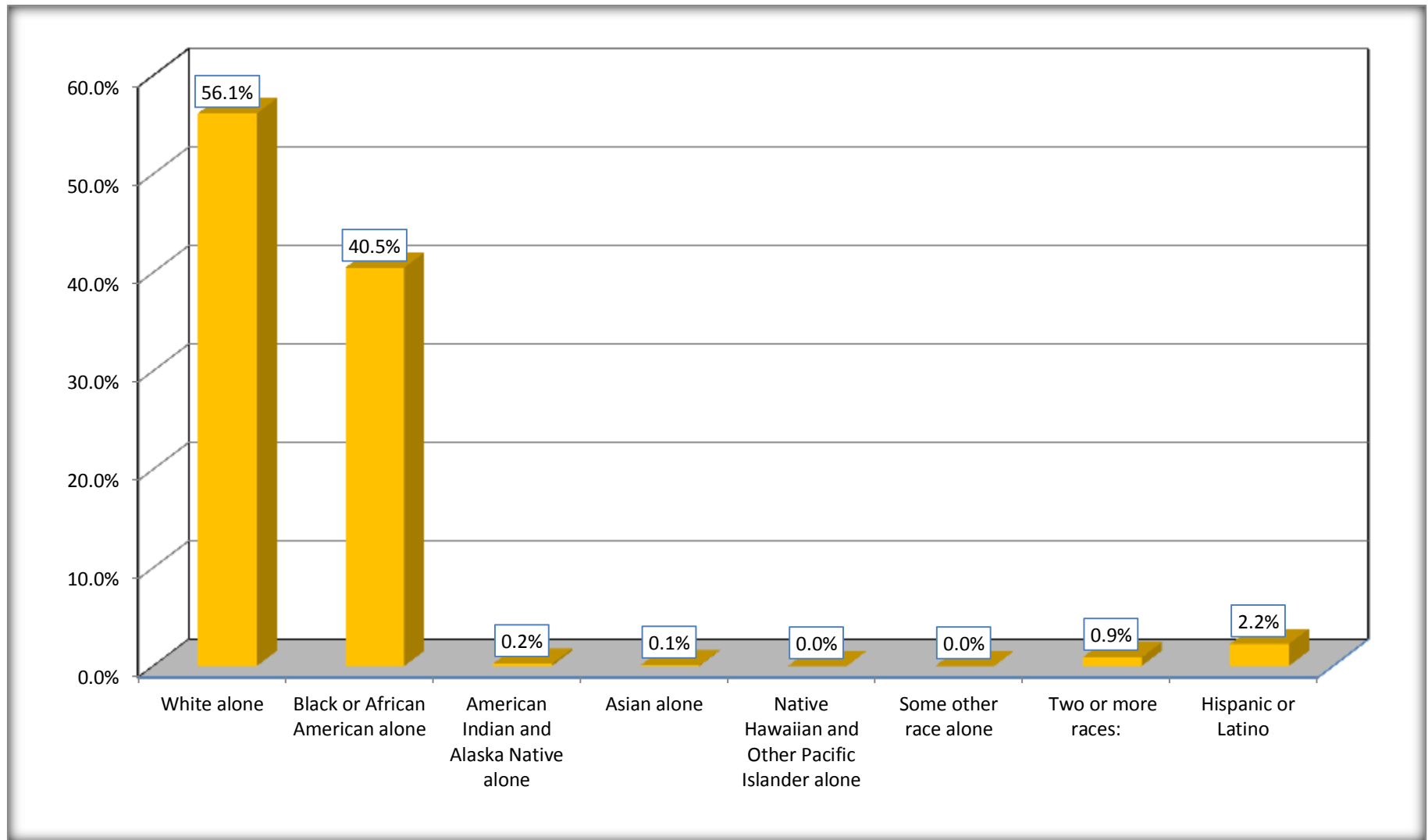
Although the American Community Survey (ACS) produces population, demographic and housing unit estimates, it is the Census Bureau's Population Estimates Program that produces and disseminates the official estimates of the population for the nation, states, counties, cities and towns and estimates of housing units for states and counties.

For information on confidentiality protection, sampling error, nonsampling error, and definitions, see Survey Methodology.

<http://www.census.gov/acs/www/UseData/index.htm>

# Non-Hispanic by Race and Hispanic Population

## McDuffie County, Georgia



Source: B03002. HISPANIC OR LATINO ORIGIN BY RACE - Universe: TOTAL POPULATION  
Data Set: 2008-2012 American Community Survey 5-Year Estimates

**B03002. HISPANIC OR LATINO ORIGIN BY RACE**

Data Set: 2008-2012 American Community Survey 5-Year Estimates

	McDuffie County, Georgia		
	Population	Margin of Error (+/-)	% of Total
Hispanic or Latino:	486	*****	<b>100.0%</b>
White alone	348	129	71.6%
Black or African American alone	21	35	4.3%
American Indian and Alaska Native alone	22	37	4.5%
Asian alone	0	25	0.0%
Native Hawaiian and Other Pacific Islander alone	0	25	0.0%
Some other race alone	95	121	19.5%
Two or more races:	0	25	0.0%
Two races including Some other race	0	25	0.0%
Two races excluding Some other race, and three or more races	0	25	0.0%

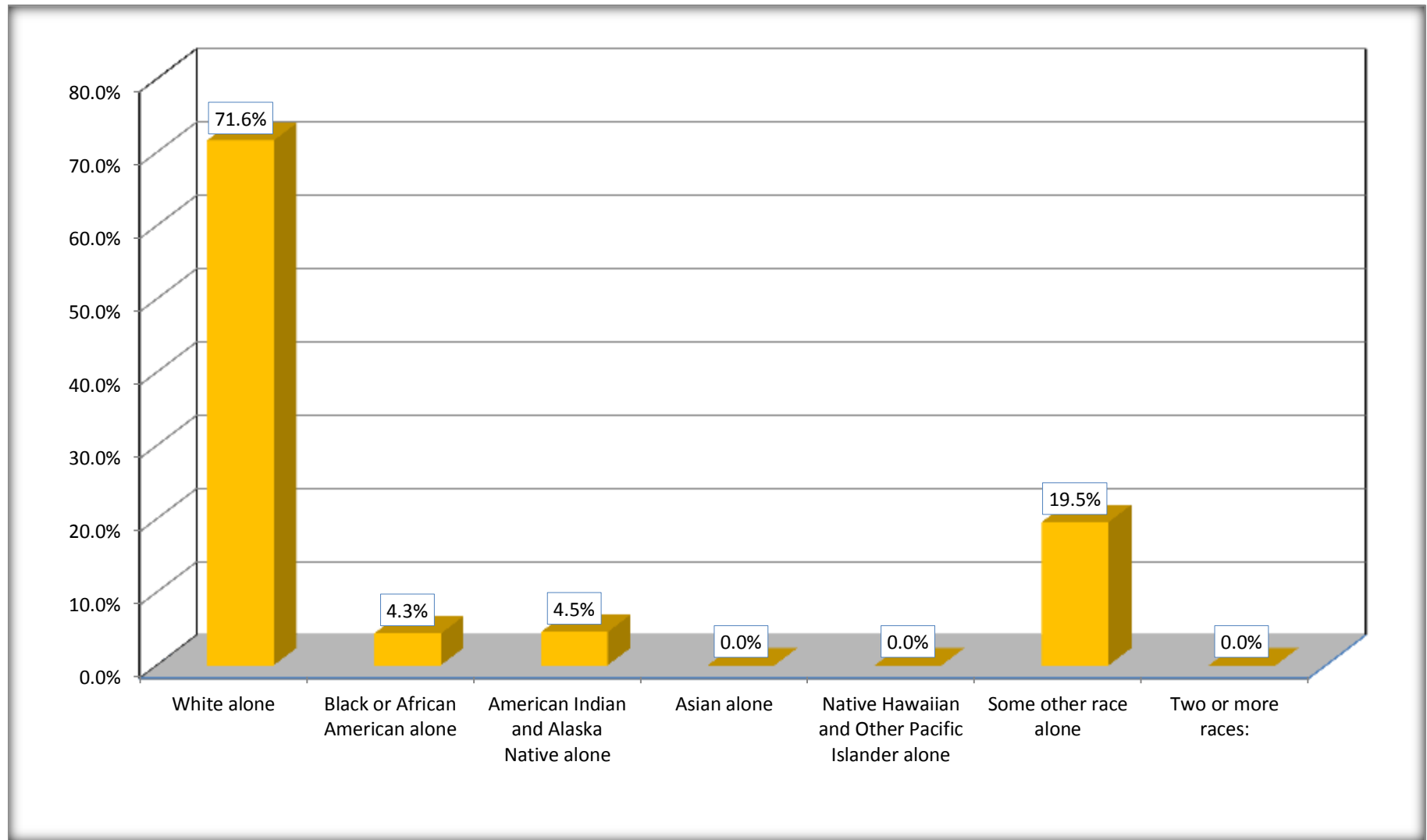
Source: U.S. Census Bureau, 2008-2012 American Community Survey

Although the American Community Survey (ACS) produces population, demographic and housing unit estimates, it is the Census Bureau's Population Estimates Program that produces and disseminates the official estimates of the population for the nation, states, counties, cities and towns and estimates of housing units for states and counties.

For information on confidentiality protection, sampling error, nonsampling error, and definitions, see Survey Methodology.

<http://www.census.gov/acs/www/UseData/index.htm>

## Hispanic or Latino Origin by Race McDuffie County, Georgia



Source: B03002. HISPANIC OR LATINO ORIGIN BY RACE  
Data Set: 2008-2012 American Community Survey 5-Year Estimates

**B01001. SEX BY AGE**

Data Set: 2008-2012 American Community Survey 5-Year Estimates

	<b>McDuffie County, Georgia</b>					
	African American	Margin of Error (+/-)	% of AA Total	White, Not Hispanic	Margin of Error (+/-)	% of NHW Total
<b>Total:</b>	<b>8,829</b>	<b>120</b>	<b>100.0%</b>	<b>12,216</b>	<b>15</b>	<b>100.0%</b>
Under 18 years	2,828	NC	32.0%	2,605	NC	21.3%
18 to 64 years	5,194	NC	58.8%	7,512	NC	61.5%
65 years and over	807	NC	9.1%	2,099	NC	17.2%
Male:	4,026	152	45.6%	5,832	389	47.7%
Under 18 years	1,464	NC	16.6%	1,306	NC	10.7%
18 to 64 years	2,314	NC	26.2%	3,651	NC	29.9%
65 years and over	248	NC	2.8%	875	NC	7.2%
Female:	4,803	113	54.4%	6,384	412	52.3%
Under 18 years	1,364	NC	15.4%	1,299	NC	10.6%
18 to 64 years	2,880	NC	32.6%	3,861	NC	31.6%
65 years and over	559	NC	6.3%	1,224	NC	10.0%

Source: U.S. Census Bureau, 2008-2012 American Community Survey

Although the American Community Survey (ACS) produces population, demographic and housing unit estimates, it is the Census Bureau's Population Estimates Program that produces and disseminates the official estimates of the population for the nation, states, counties, cities and towns and estimates of housing units for states and counties.

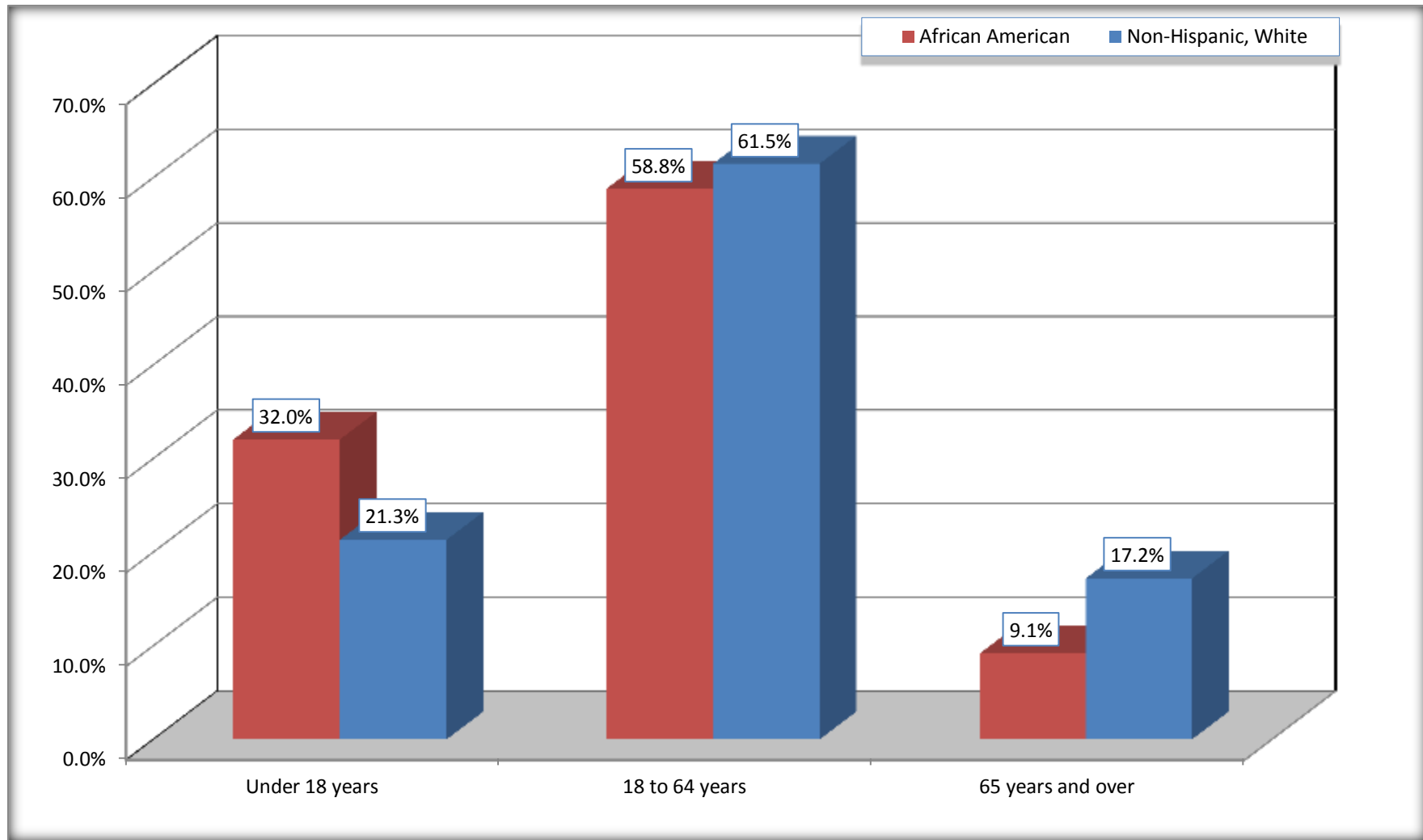
For information on confidentiality protection, sampling error, nonsampling error, and definitions, see Survey Methodology.

<http://www.census.gov/acs/www/UseData/index.htm>



# Population by Age

## McDuffie County, Georgia



Source: B01001. SEX BY AGE  
Data Set: 2008-2012 American Community Survey 5-Year Estimates

**B05003. SEX BY AGE BY CITIZENSHIP STATUS**

Data Set: 2008-2012 American Community Survey 5-Year Estimates

	McDuffie County, Georgia					
	African American	Margin of Error (+/-)	% of AA Total by Age	White, Not Hispanic	Margin of Error (+/-)	% of NHW Total by Age
<b>Total:</b>	<b>8,829</b>	<b>120</b>	<b>100.0%</b>	<b>12,216</b>	<b>15</b>	<b>100.0%</b>
<b>Under 18 years:</b>	<b>2,828</b>	<b>NC</b>	<b>100.0%</b>	<b>2,605</b>	<b>NC</b>	<b>100.0%</b>
Native	2,828	NC	100.0%	2,605	NC	100.0%
Foreign born:	0	NC	0.0%	0	NC	0.0%
Naturalized U.S. citizen	0	NC	0.0%	0	NC	0.0%
Not a U.S. citizen	0	NC	0.0%	0	NC	0.0%
<b>18 years and over:</b>	<b>6,001</b>	<b>NC</b>	<b>100.0%</b>	<b>9,611</b>	<b>NC</b>	<b>100.0%</b>
Native	6,001	NC	100.0%	9,564	NC	99.5%
Foreign born:	0	NC	0.0%	47	NC	0.5%
Naturalized U.S. citizen	0	NC	0.0%	25	NC	0.3%
Not a U.S. citizen	0	NC	0.0%	22	NC	0.2%
<b>Male:</b>	<b>4,026</b>	<b>152</b>	<b>45.6%</b>	<b>5,832</b>	<b>25</b>	<b>47.7%</b>
<b>Under 18 years:</b>	<b>1,464</b>	<b>111</b>	<b>100.0%</b>	<b>1,306</b>	<b>25</b>	<b>100.0%</b>
Native	1,464	111	100.0%	1,306	25	100.0%
Foreign born:	0	25	0.0%	0	25	0.0%
Naturalized U.S. citizen	0	25	0.0%	0	25	0.0%
Not a U.S. citizen	0	25	0.0%	0	25	0.0%
<b>18 years and over:</b>	<b>2,562</b>	<b>89</b>	<b>100.0%</b>	<b>4,526</b>	<b>25</b>	<b>100.0%</b>
Native	2,562	89	100.0%	4,511	19	99.7%
Foreign born:	0	25	0.0%	15	19	0.3%
Naturalized U.S. citizen	0	25	0.0%	7	14	0.2%
Not a U.S. citizen	0	25	0.0%	8	13	0.2%

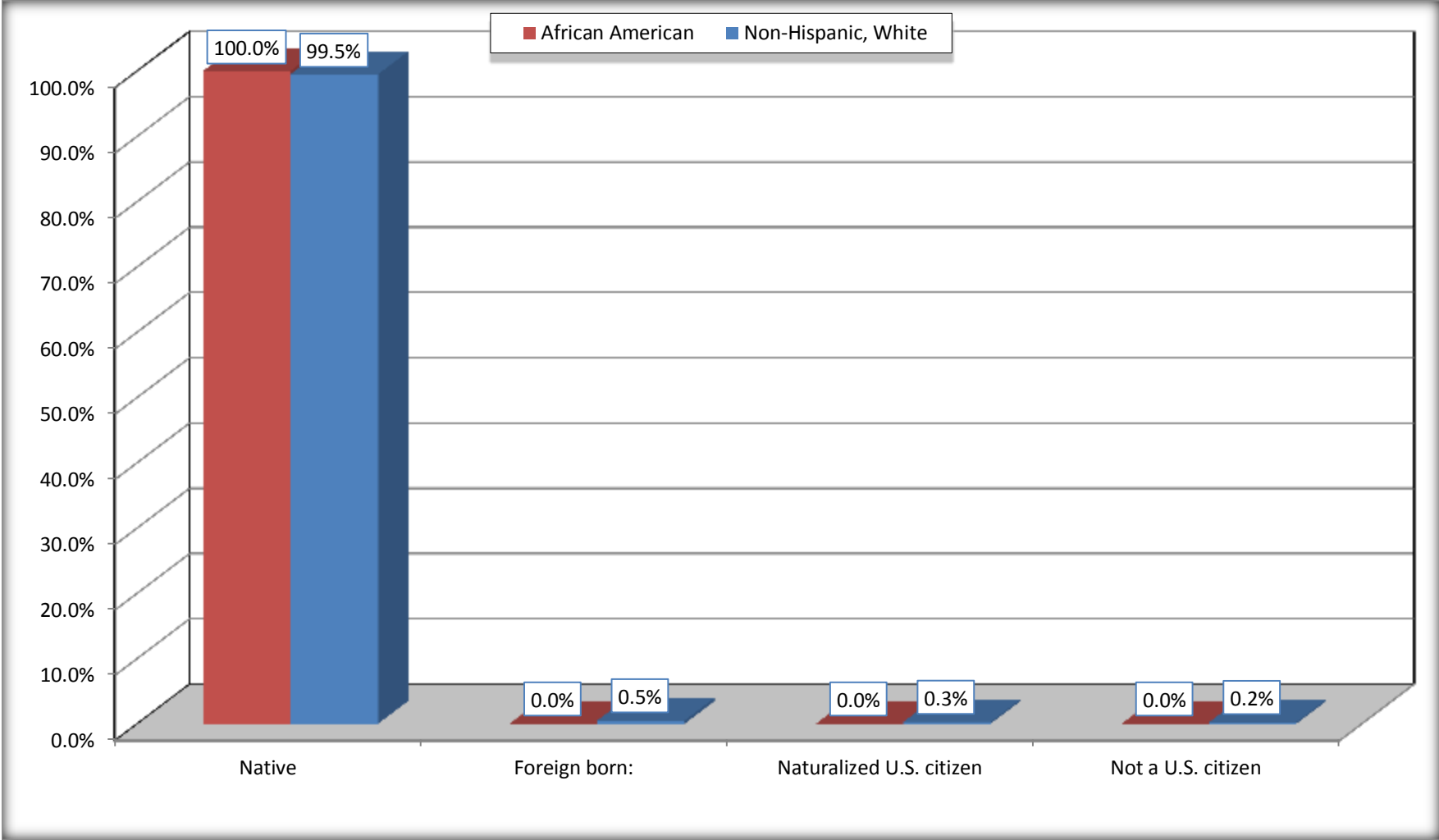
	<b>McDuffie County, Georgia</b>					
	African American	Margin of Error (+/-)	% of AA by Age	White, Not Hispanic	Margin of Error (+/-)	% of NHW by Age
<b>Female:</b>	4,803	113	54.4%	6,384	15	52.3%
<b>Under 18 years:</b>	<b>1,364</b>	<b>106</b>	<b>100.0%</b>	<b>1,299</b>	<b>15</b>	<b>100.0%</b>
Native	1,364	106	100.0%	1,299	15	100.0%
Foreign born:	0	25	0.0%	0	25	0.0%
Naturalized U.S. citizen	0	25	0.0%	0	25	0.0%
Not a U.S. citizen	0	25	0.0%	0	25	0.0%
<b>18 years and over:</b>	<b>3,439</b>	<b>39</b>	<b>100.0%</b>	<b>5,085</b>	<b>25</b>	<b>100.0%</b>
Native	3,439	39	100.0%	5,053	32	99.4%
Foreign born:	0	25	0.0%	32	32	0.6%
Naturalized U.S. citizen	0	25	0.0%	18	22	0.4%
Not a U.S. citizen	0	25	0.0%	14	23	0.3%

Source: U.S. Census Bureau, 2008-2012 American Community Survey

For information on confidentiality protection, sampling error, nonsampling error, and definitions, see Survey Methodology.  
<http://www.census.gov/acs/www/UseData/index.htm>

# Citizenship Status of Voting Age Population (18 and Over)

## McDuffie County, Georgia



Source: B05003. SEX BY AGE BY CITIZENSHIP STATUS  
Data Set: 2008-2012 American Community Survey 5-Year Estimates

**B07004. GEOGRAPHICAL MOBILITY IN THE PAST YEAR BY RACE FOR CURRENT RESIDENCE IN THE UNITED STATES - Universe:  
POPULATION 1 YEAR AND OVER**

Data Set: 2008-2012 American Community Survey 5-Year Estimates

	<b>McDuffie County, Georgia</b>					
	African American	Margin of Error (+/-)	% of AA Total	White, Not Hispanic	Margin of Error (+/-)	% of NHW Total
<b>Total:</b>	<b>8,643</b>	<b>152</b>	<b>100.0%</b>	<b>12,147</b>	<b>68</b>	<b>100.0%</b>
Same house 1 year ago	7,356	389	85.1%	11,248	273	92.6%
Moved within same county	660	316	7.6%	544	217	4.5%
Moved from different county within same state	383	227	4.4%	195	84	1.6%
Moved from different state	221	240	2.6%	160	103	1.3%
Moved from abroad	23	24	0.3%	0	25	0.0%

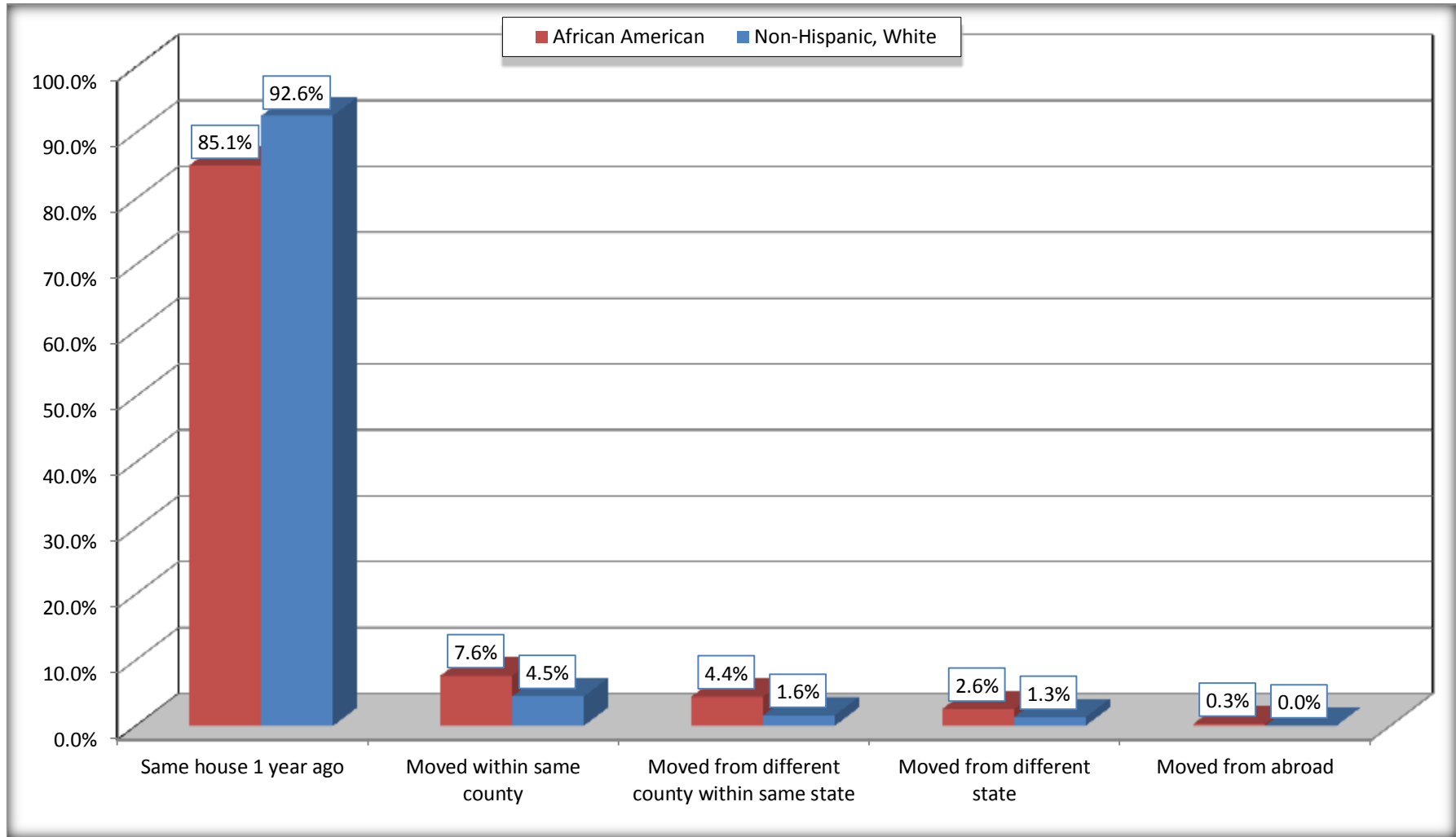
Source: U.S. Census Bureau, 2008-2012 American Community Survey

For information on confidentiality protection, sampling error, nonsampling error, and definitions, see Survey Methodology.

<http://www.census.gov/acs/www/UseData/index.htm>

# Geographical Mobility in the Past Year (Population 1 Year and Over)

## McDuffie County, Georgia



Source: B07004. GEOGRAPHICAL MOBILITY IN THE PAST YEAR BY RACE FOR CURRENT RESIDENCE IN THE UNITED STATES - Universe: POPULATION 1 YEAR AND OVER

Data Set: 2008-2012 American Community Survey 5-Year Estimates

**B08105. MEANS OF TRANSPORTATION TO WORK - Universe: WORKERS 16 YEARS AND OVER**

Data Set: 2008-2012 American Community Survey 5-Year Estimates

	McDuffie County, Georgia					
	African American	Margin of Error (+/-)	% of AA Total	White, Not Hispanic	Margin of Error (+/-)	% of NHW Total
<b>Total:</b>	3146	309	<b>100.0%</b>	4924	295	<b>100.0%</b>
Car, truck, or van - drove alone	2491	287	79.2%	4205	320	85.4%
Car, truck, or van - carpooled	543	189	17.3%	412	141	8.4%
Public transportation (excluding taxicab)	19	29	0.6%	8	13	0.2%
Walked	42	43	1.3%	29	27	0.6%
Taxicab, motorcycle, bicycle, or other means	51	57	1.6%	109	89	2.2%
Worked at home	0	25	0.0%	161	63	3.3%

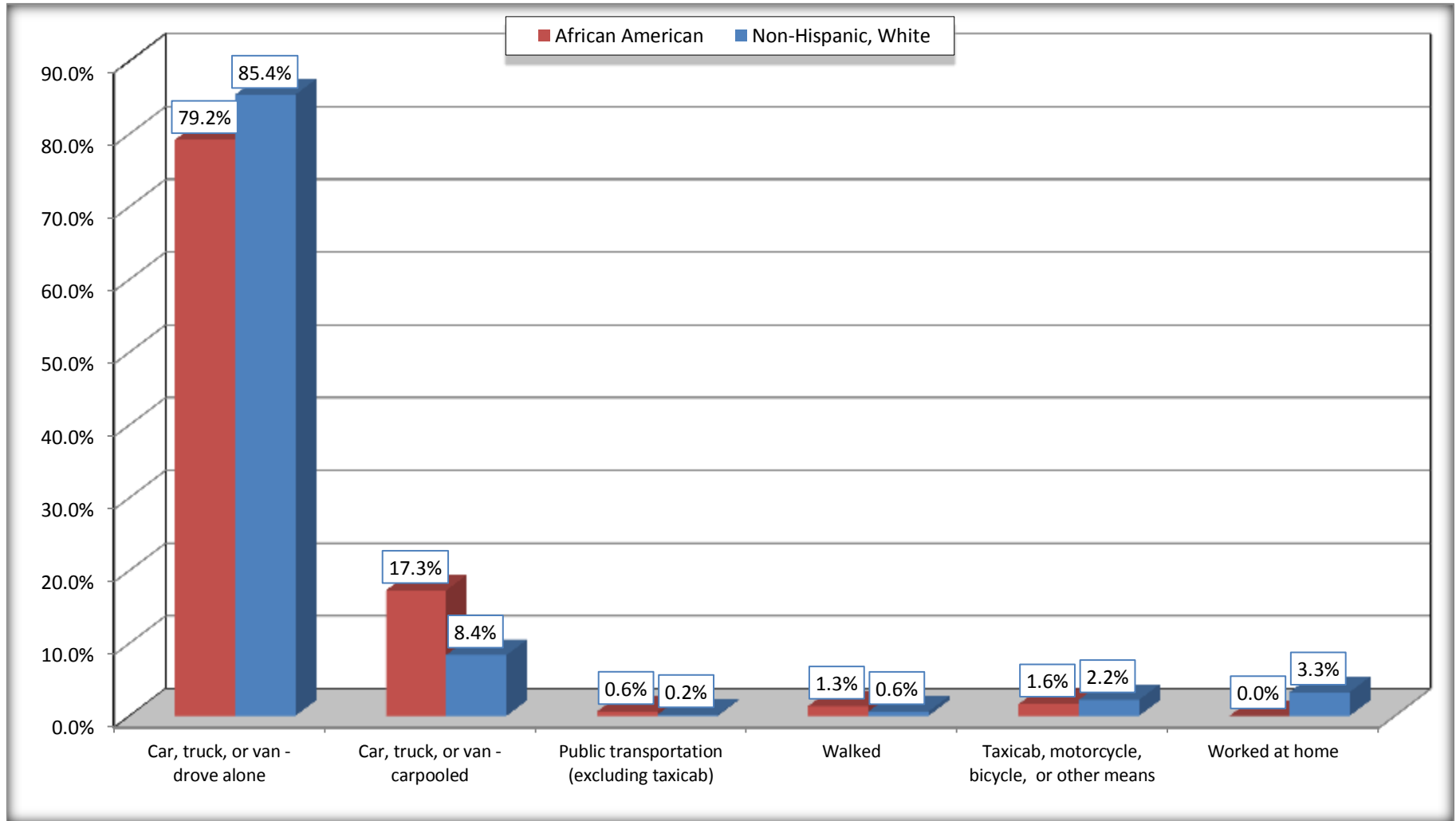
Source: U.S. Census Bureau, 2008-2012 American Community Survey

For information on confidentiality protection, sampling error, nonsampling error, and definitions, see Survey Methodology.

<http://www.census.gov/acs/www/UseData/index.htm>

# Means of Transportation to Work (Workers 16 Years and Over)

## McDuffie County, Georgia



Source: B08105. MEANS OF TRANSPORTATION TO WORK - Universe: WORKERS 16 YEARS AND OVER  
Data Set: 2008-2012 American Community Survey 5-Year Estimates



**B11002. HOUSEHOLD TYPE BY RELATIVES AND NONRELATIVES FOR POPULATION IN HOUSEHOLDS**

Data Set: 2008-2012 American Community Survey 5-Year Estimates

	<b>McDuffie County, Georgia</b>					
	African American	Margin of Error (+/-)	% of AA Total	White, Not Hispanic	Margin of Error (+/-)	% of NHW Total
<b>Total:</b>	8701	143	<b>100.0%</b>	11942	268	<b>100.0%</b>
In family households	8028	208	92.3%	10282	374	86.1%
In nonfamily households	673	159	7.7%	1660	277	13.9%

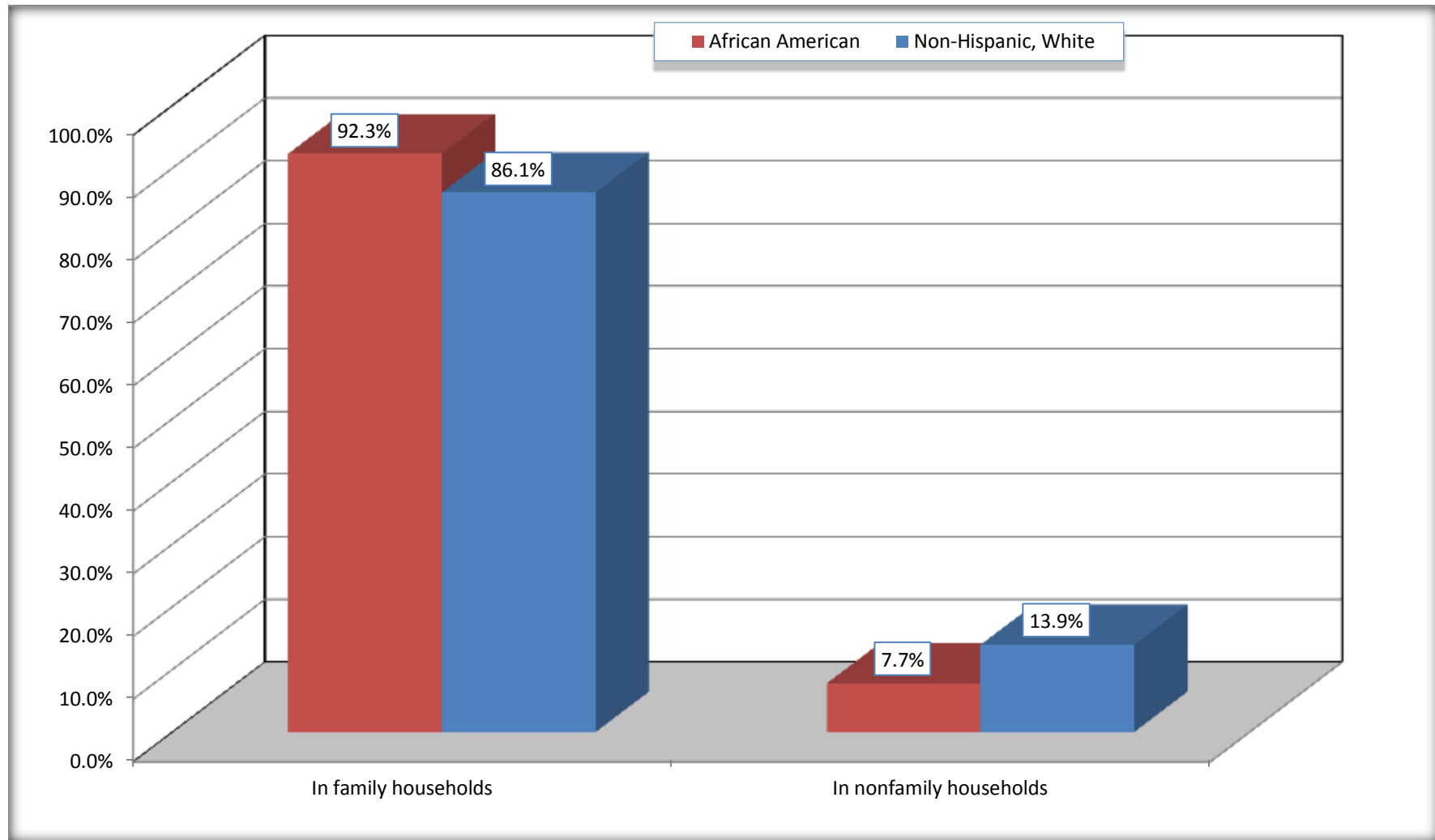
Source: U.S. Census Bureau, 2008-2012 American Community Survey

For information on confidentiality protection, sampling error, nonsampling error, and definitions, see Survey Methodology.

<http://www.census.gov/acs/www/UseData/index.htm>

# Household Type for Population in Households

## McDuffie County, Georgia



Source: B11002. HOUSEHOLD TYPE BY RELATIVES AND NONRELATIVES FOR POPULATION IN HOUSEHOLDS  
Data Set: 2008-2012 American Community Survey 5-Year Estimates

**B12002. MARITAL STATUS FOR THE POPULATION 15 YEARS AND OVER**

Data Set: 2008-2012 American Community Survey 5-Year Estimates

	McDuffie County, Georgia					
	African American	Margin of Error (+/-)	% of AA Total	White, Not Hispanic	Margin of Error (+/-)	% of NHW Total
<b>Total:</b>	<b>6,435</b>	<b>110</b>	<b>100.0%</b>	<b>10,075</b>	<b>25</b>	<b>100.0%</b>
Never married	2,948	NC	45.8%	1,914	NC	19.0%
Now married (except separated)	2,076	NC	32.3%	5,782	NC	57.4%
Separated	389	NC	6.0%	160	NC	1.6%
Widowed	467	NC	7.3%	886	NC	8.8%
Divorced	555	NC	8.6%	1,333	NC	13.2%
<b>Male:</b>	<b>2,818</b>	<b>152</b>	<b>43.8%</b>	<b>4,756</b>	<b>25</b>	<b>47.2%</b>
Never married	1,387	205	21.6%	1,024	155	10.2%
Now married (except separated)	954	180	14.8%	2,868	211	28.5%
Separated	115	79	1.8%	117	78	1.2%
Widowed	170	107	2.6%	123	71	1.2%
Divorced	192	99	3.0%	624	156	6.2%
<b>Female:</b>	<b>3,617</b>	<b>110</b>	<b>56.2%</b>	<b>5,319</b>	<b>25</b>	<b>52.8%</b>
Never married	1,561	199	24.3%	890	165	8.8%
Now married (except separated)	1,122	168	17.4%	2,914	247	28.9%
Separated	274	127	4.3%	43	38	0.4%
Widowed	297	105	4.6%	763	139	7.6%
Divorced	363	132	5.6%	709	173	7.0%

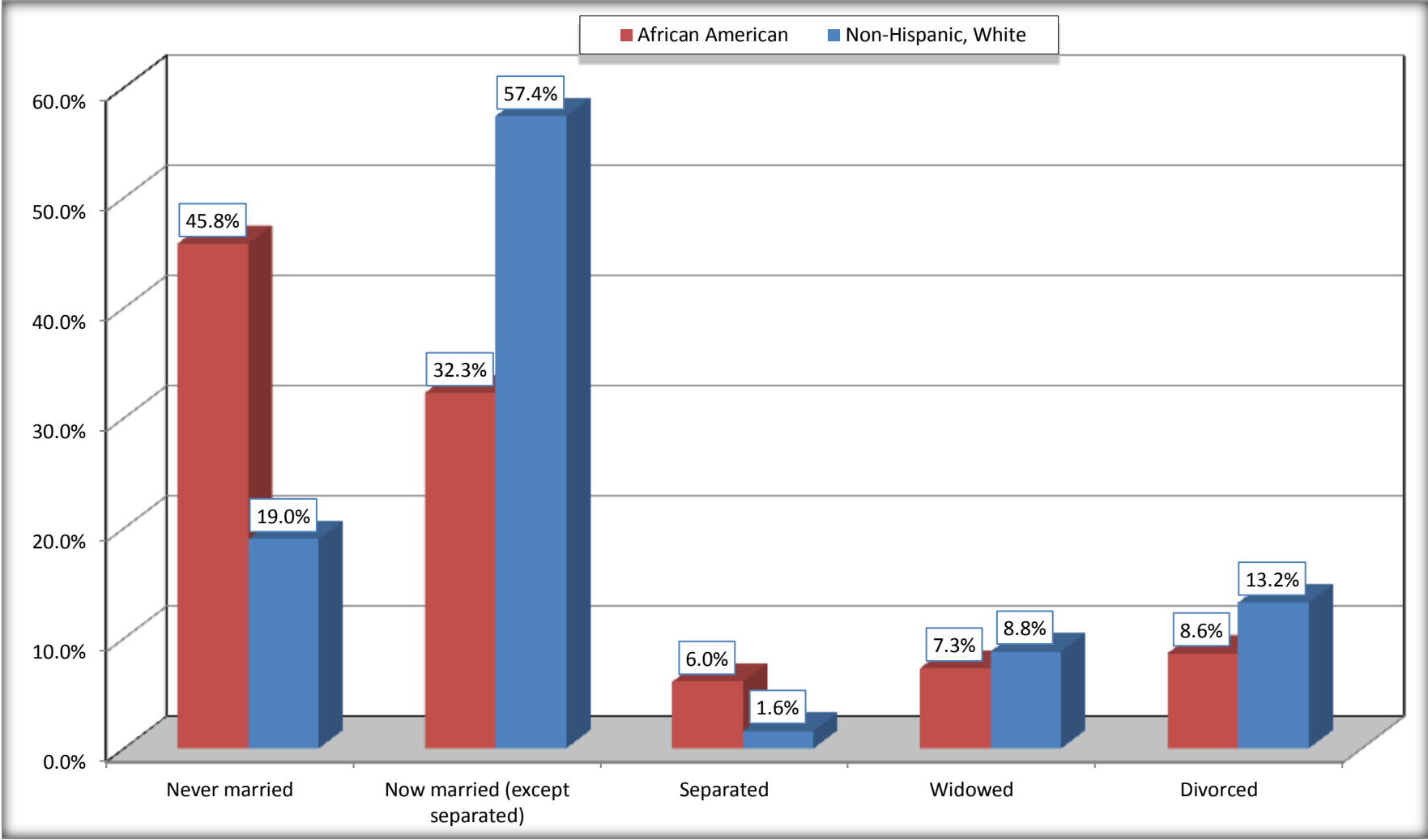
Source: U.S. Census Bureau, 2008-2012 American Community Survey

For information on confidentiality protection, sampling error, nonsampling error, and definitions, see Survey Methodology.

<http://www.census.gov/acs/www/UseData/index.htm>

# Marital Status for the Population 15 Years and Over

## McDuffie County, Georgia



Source: B12002. MARITAL STATUS FOR THE POPULATION 15 YEARS AND OVER  
Data Set: 2008-2012 American Community Survey 5-Year Estimates

**C15002. SEX BY EDUCATIONAL ATTAINMENT FOR THE POPULATION 25 YEARS AND OVER**

Data Set: 2008-2012 American Community Survey 5-Year Estimates

	McDuffie County, Georgia					
	African American	Margin of Error (+/-)	% of AA Total	White, Not Hispanic	Margin of Error (+/-)	% of NHW Total
<b>Total:</b>	<b>5,088</b>	<b>97</b>	<b>100.0%</b>	<b>8,693</b>	<b>25</b>	<b>100.0%</b>
Less than high school diploma	1,626	NC	32.0%	1,717	NC	19.8%
High school graduate, GED, or alternative	2,094	NC	41.2%	3,147	NC	36.2%
Some college or associate's degree	1,067	NC	21.0%	2,277	NC	26.2%
Bachelor's degree or higher	301	NC	5.9%	1,552	NC	17.9%
Male:	2,151	88	42.3%	4,063	25	46.7%
Less than high school diploma	689	198	13.5%	970	169	11.2%
High school graduate, GED, or alternative	982	193	19.3%	1,529	190	17.6%
Some college or associate's degree	401	145	7.9%	928	148	10.7%
Bachelor's degree or higher	79	68	1.6%	636	156	7.3%
Female:	2,937	32	57.7%	4,630	25	53.3%
Less than high school diploma	937	218	18.4%	747	139	8.6%
High school graduate, GED, or alternative	1,112	196	21.9%	1,618	229	18.6%
Some college or associate's degree	666	149	13.1%	1,349	189	15.5%
Bachelor's degree or higher	222	73	4.4%	916	184	10.5%

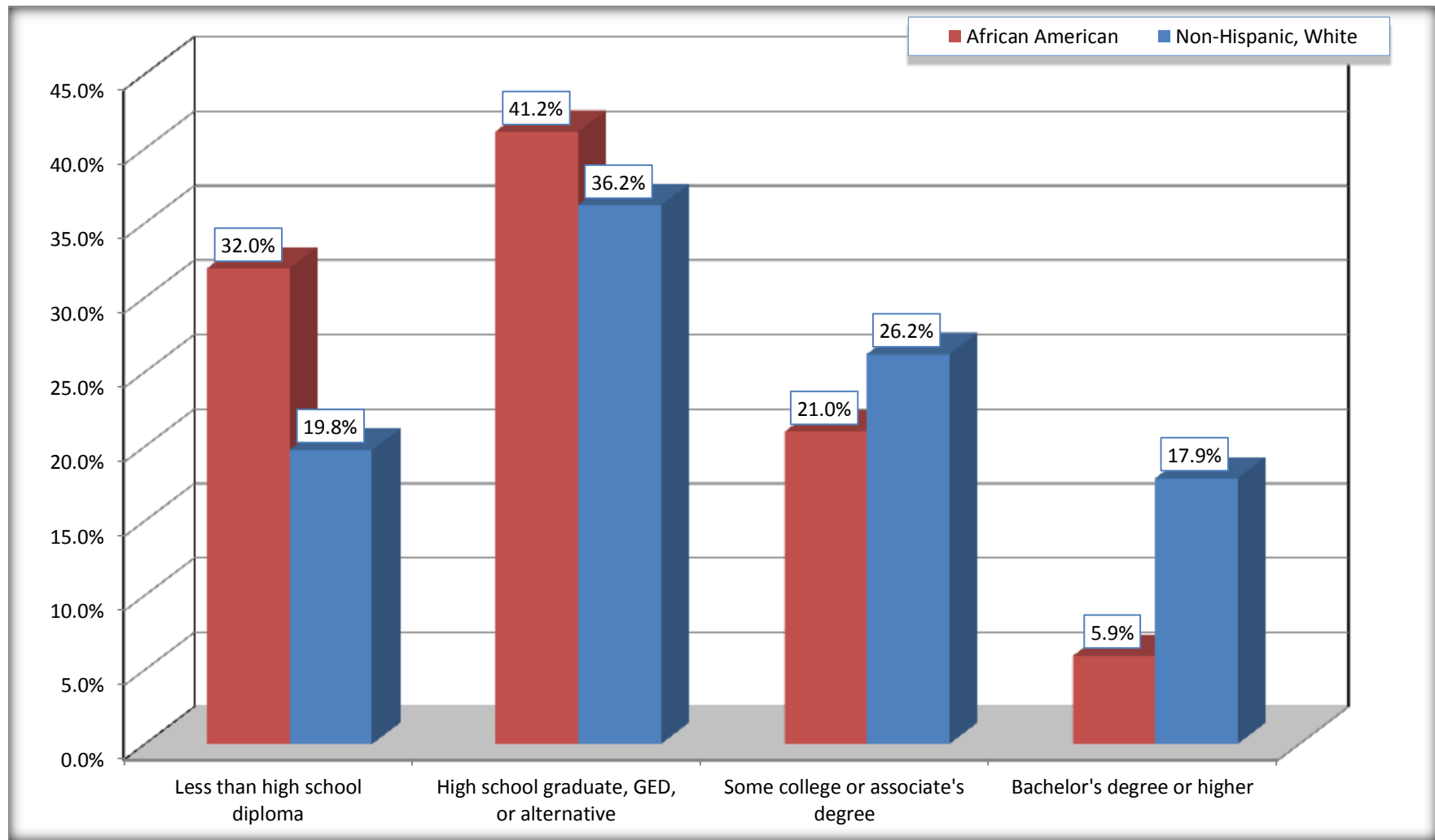
Source: U.S. Census Bureau, 2008-2012 American Community Survey

For information on confidentiality protection, sampling error, nonsampling error, and definitions, see Survey Methodology.

<http://www.census.gov/acs/www/UseData/index.htm>

# Educational Attainment for the Population 25 Years and Older

## McDuffie County, Georgia



Source: C15002. SEX BY EDUCATIONAL ATTAINMENT FOR THE POPULATION 25 YEARS AND OVER  
Data Set: 2008-2012 American Community Survey 5-Year Estimates

**B17010. POVERTY STATUS IN THE PAST 12 MONTHS OF FAMILIES BY FAMILY TYPE BY PRESENCE OF RELATED CHILDREN UNDER 18 YEARS**

Data Set: 2008-2012 American Community Survey 5-Year Estimates

	McDuffie County, Georgia					
	African American	Margin of Error (+/-)	% of AA Total	White, Not Hispanic	Margin of Error (+/-)	% of NHW Total
<b>Total:</b>	<b>2,334</b>	<b>182</b>	<b>100.0%</b>	<b>3,515</b>	<b>198</b>	<b>100.0%</b>
Income in the past 12 months below poverty level:	656	156	28.1%	323	115	9.2%
Married-couple family:	54	45	2.3%	115	61	3.3%
With related children under 18 years	21	27	0.9%	71	52	2.0%
Other family:	602	156	25.8%	208	107	5.9%
Male householder, no wife present	105	77	4.5%	32	36	0.9%
With related children under 18 years	24	32	1.0%	32	36	0.9%
Female householder, no husband present	497	134	21.3%	176	91	5.0%
With related children under 18 years	400	124	17.1%	151	85	4.3%
Income in the past 12 months at or above poverty level:	1,678	191	71.9%	3,192	201	90.8%
Married-couple family:	883	160	37.8%	2,730	211	77.7%
With related children under 18 years	266	117	11.4%	980	157	27.9%
Other family:	795	174	34.1%	462	139	13.1%
Male householder, no wife present	137	86	5.9%	172	86	4.9%
With related children under 18 years	74	84	3.2%	84	65	2.4%
Female householder, no husband present	658	154	28.2%	290	106	8.3%
With related children under 18 years	306	109	13.1%	80	59	2.3%

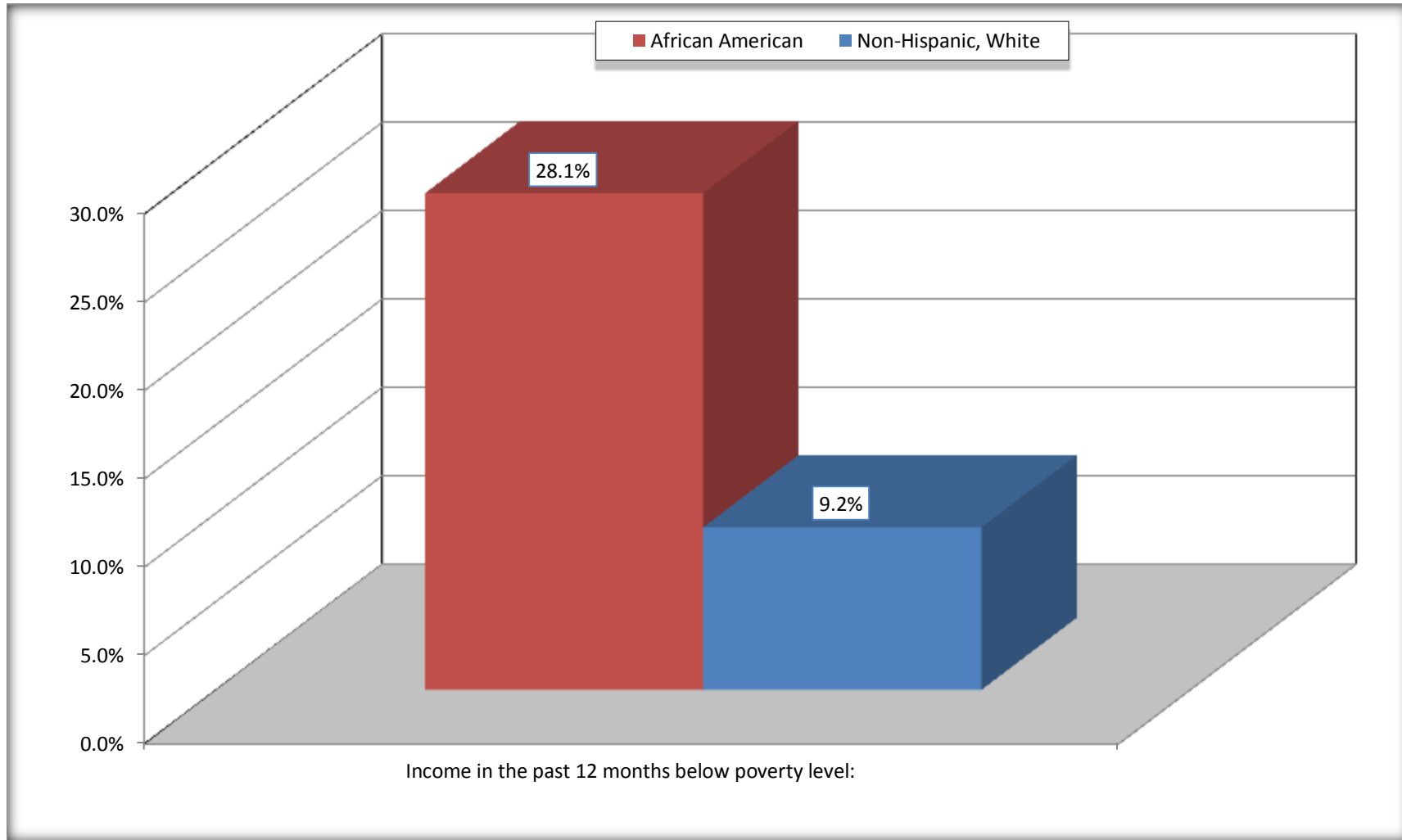
Source: U.S. Census Bureau, 2008-2012 American Community Survey

For information on confidentiality protection, sampling error, nonsampling error, and definitions, see Survey Methodology.

<http://www.census.gov/acs/www/UseData/index.htm>

# Family Households Below Poverty in the Past 12 Months

## McDuffie County, Georgia



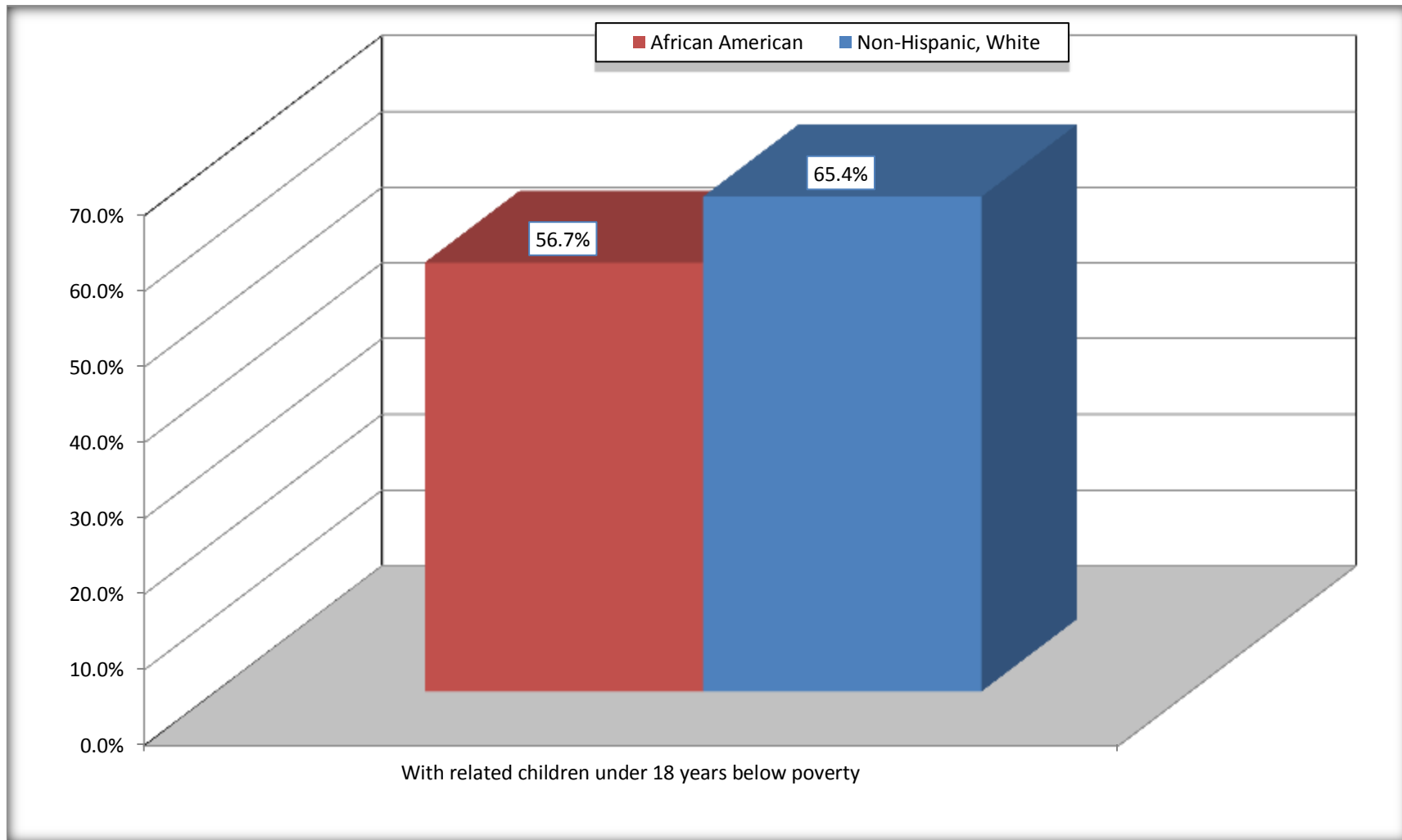
Source: B17010. POVERTY STATUS IN THE PAST 12 MONTHS OF FAMILIES BY FAMILY TYPE BY PRESENCE OF RELATED CHILDREN UNDER 18 YEARS

Data Set: 2008-2012 American Community Survey 5-Year Estimates



# Female-headed Households with Related Children Below Poverty in the Past 12 Months

## McDuffie County, Georgia



Source: B17010. POVERTY STATUS IN THE PAST 12 MONTHS OF FAMILIES BY FAMILY TYPE BY PRESENCE OF RELATED CHILDREN UNDER 18 YEARS

Data Set: 2008-2012 American Community Survey 5-Year Estimates

**B17020 POVERTY STATUS IN THE PAST 12 MONTHS BY AGE - Universe: POPULATION FOR WHOM POVERTY STATUS IS DETERMINED**

Data Set: 2008-2012 American Community Survey 5-Year Estimates

	McDuffie County, Georgia					
	African American	Margin of Error (+/-)	% of AA By Age	White, Not Hispanic	Margin of Error (+/-)	% of NHW By Age
<b>Total:</b>	<b>8,631</b>	<b>147</b>	<b>100.0%</b>	<b>12,036</b>	<b>109</b>	<b>100.0%</b>
Income in the past 12 months below poverty level:	2,713	598	31.4%	1,414	343	11.7%
<b>Under 18 years</b>	1,340	NC	47.5%	393	NC	15.5%
<b>18 to 64 years</b>	1,136	293	22.5%	873	207	11.7%
<b>65 years and over</b>	237	NC	31.5%	148	NC	7.3%
Income in the past 12 months at or above poverty level:	5,918	654	68.6%	10,622	352	88.3%
<b>Under 18 years</b>	1,484	NC	52.5%	2,145	NC	84.5%
<b>18 to 64 years</b>	3,919	310	77.5%	6,584	207	88.3%
<b>65 years and over</b>	515	NC	68.5%	1,893	NC	92.7%

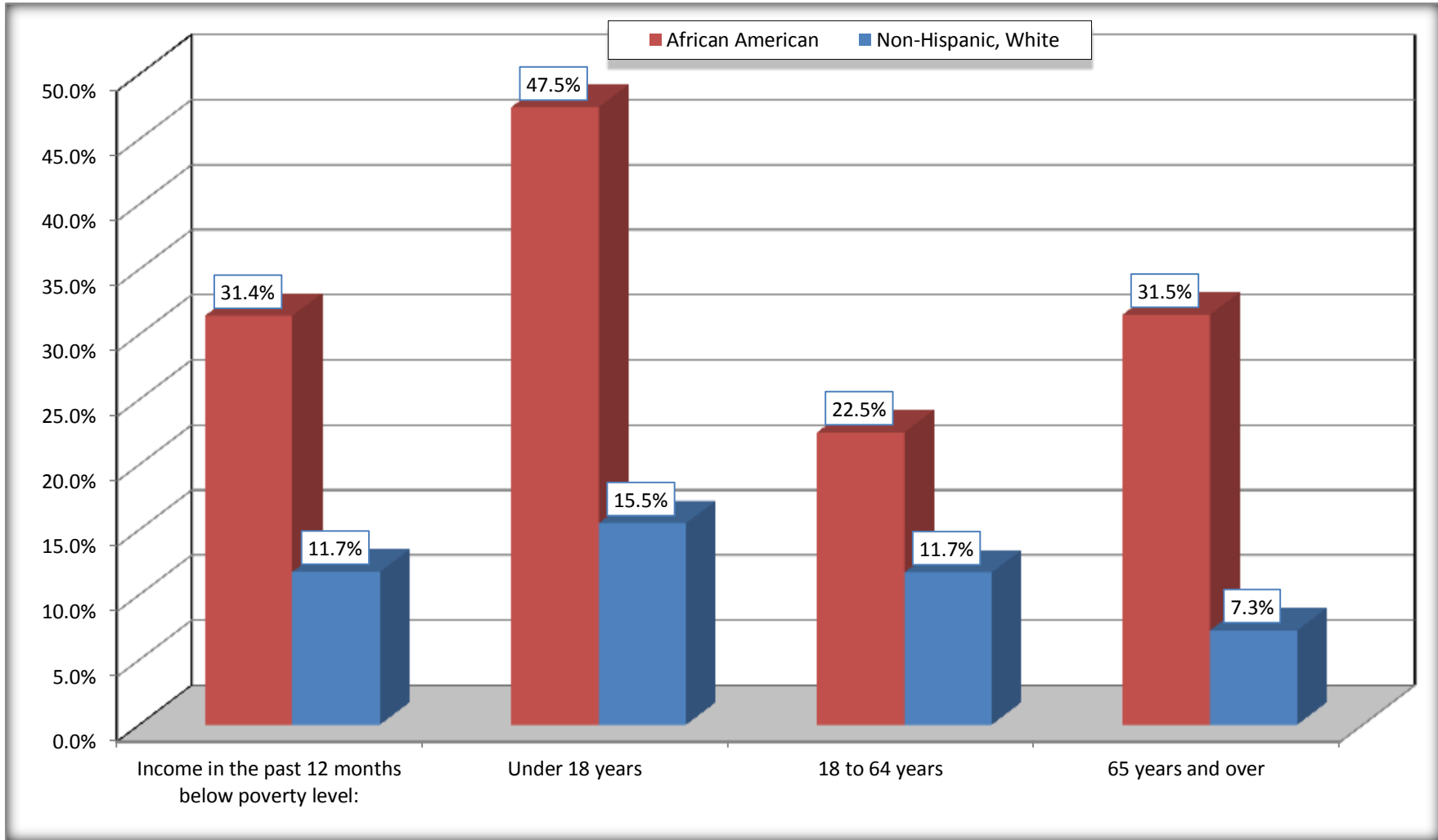
Source: U.S. Census Bureau, 2008-2012 American Community Survey

For information on confidentiality protection, sampling error, nonsampling error, and definitions, see Survey Methodology.

<http://www.census.gov/acs/www/UseData/index.htm>

# Population Below Poverty in the Past 12 Months

## McDuffie County, Georgia



Source: B17020 POVERTY STATUS IN THE PAST 12 MONTHS BY AGE - Universe: POPULATION FOR WHOM POVERTY STATUS IS DETERMINED  
Data Set: 2008-2012 American Community Survey 5-Year Estimates

**B19001. HOUSEHOLD INCOME IN THE PAST 12 MONTHS (IN 2010 INFLATION-ADJUSTED DOLLARS)**

Data Set: 2008-2012 American Community Survey 5-Year Estimates

	McDuffie County, Georgia					
	African American	Margin of Error (+/-)	% of AA Total	White, Not Hispanic	Margin of Error (+/-)	% of NHW Total
<b>Total:</b>	<b>2,925</b>	<b>183</b>	<b>100.0%</b>	<b>5,037</b>	<b>185</b>	<b>100.0%</b>
Less than \$ 10,000	621	167	21.2%	409	129	8.1%
\$ 10,000 to \$ 14,999	199	85	6.8%	421	161	8.4%
<b>\$ 15,000 to \$ 24,999</b>	483	NC	16.5%	591	NC	11.7%
<b>\$ 25,000 to \$ 34,999</b>	323	NC	11.0%	604	NC	12.0%
<b>\$ 35,000 to \$ 49,999</b>	657	NC	22.5%	770	NC	15.3%
<b>\$ 50,000 to \$ 74,999</b>	438	NC	15.0%	1,120	NC	22.2%
\$ 75,000 to \$ 99,999	162	79	5.5%	431	108	8.6%
<b>\$ 100,000 to \$ 149,999</b>	17	NC	0.6%	463	NC	9.2%
\$ 150,000 to \$ 199,999	16	26	0.5%	145	82	2.9%
\$ 200,000 or more	9	17	0.3%	83	46	1.6%

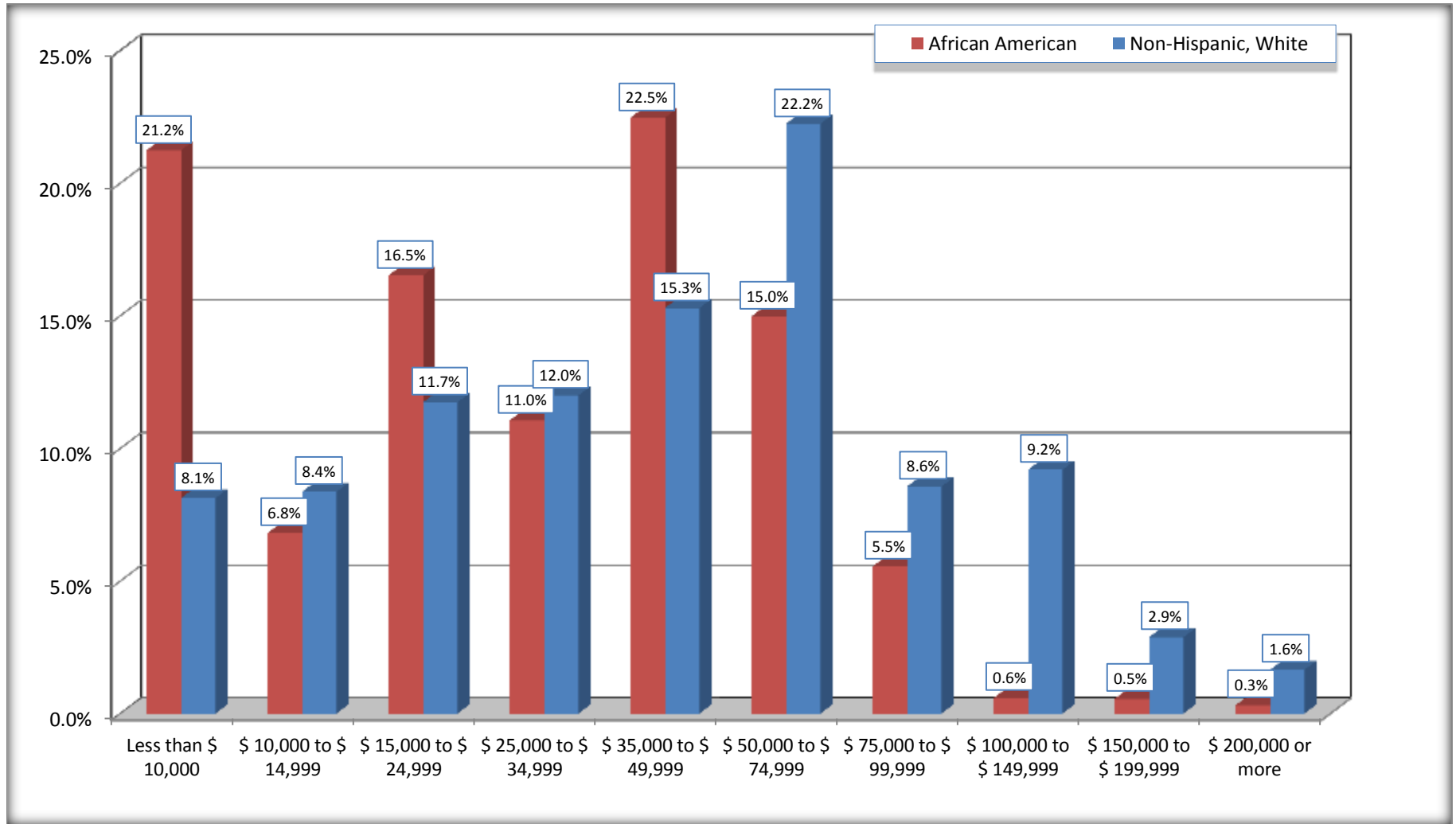
Source: U.S. Census Bureau, 2008-2012 American Community Survey

For information on confidentiality protection, sampling error, nonsampling error, and definitions, see Survey Methodology.

<http://www.census.gov/acs/www/UseData/index.htm>

# Household Income in the Past 12 Months

## McDuffie County, Georgia



Source: B19001. HOUSEHOLD INCOME IN THE PAST 12 MONTHS (IN 2010 INFLATION-ADJUSTED DOLLARS)  
Data Set: 2008-2012 American Community Survey 5-Year Estimates

**B19013. MEDIAN HOUSEHOLD INCOME IN THE PAST 12 MONTHS (IN 2010 INFLATION-ADJUSTED DOLLARS)**

Data Set: 2008-2012 American Community Survey 5-Year Estimates

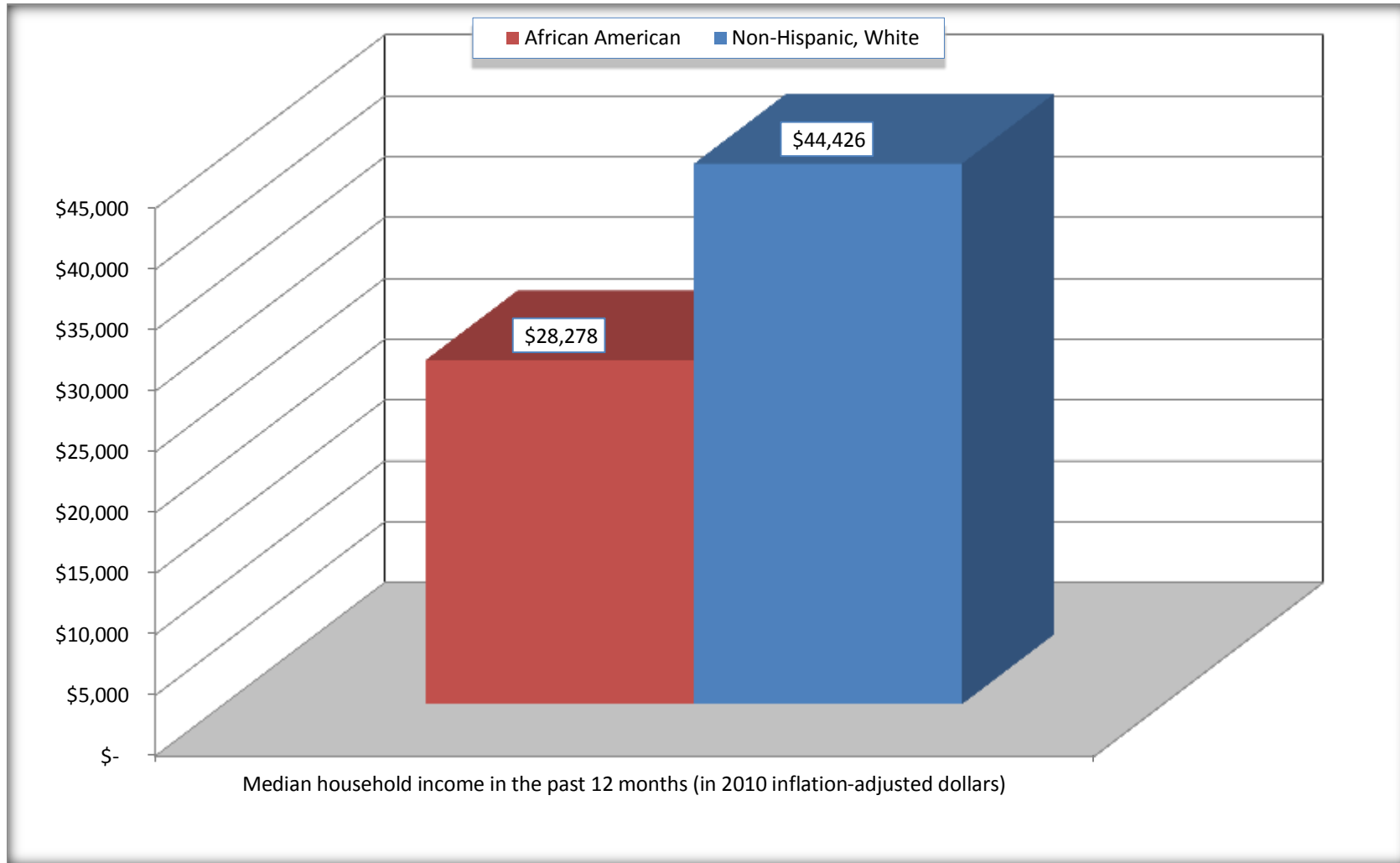
	<b>McDuffie County, Georgia</b>			
	African American	Margin of Error (+/-)	White, Not Hispanic	Margin of Error (+/-)
Median household income in the past 12 months (in 2010 inflation-adjusted dollars)	\$ 28,278	\$ 5,278	\$ 44,426	\$ 4,323

Source: U.S. Census Bureau, 2008-2012 American Community Survey

For information on confidentiality protection, sampling error, nonsampling error, and definitions, see Survey Methodology.  
<http://www.census.gov/acs/www/UseData/index.htm>

# Median Household Income in the Past 12 Months

## McDuffie County, Georgia



Source: B19013. MEDIAN HOUSEHOLD INCOME IN THE PAST 12 MONTHS (IN 2010 INFLATION-ADJUSTED DOLLARS)  
Data Set: 2008-2012 American Community Survey 5-Year Estimates

**B19101. FAMILY INCOME IN THE PAST 12 MONTHS (IN 2010 INFLATION-ADJUSTED DOLLARS)**

Data Set: 2008-2012 American Community Survey 5-Year Estimates

	McDuffie County, Georgia					
	African American	Margin of Error (+/-)	% of AA Total	White, Not Hispanic	Margin of Error (+/-)	% of NHW Total
<b>Total:</b>	<b>2,334</b>	<b>182</b>	<b>100.0%</b>	<b>3,515</b>	<b>198</b>	<b>100.0%</b>
Less than \$ 10,000	428	130	18.3%	165	88	4.7%
\$ 10,000 to \$ 14,999	152	87	6.5%	116	54	3.3%
<b>\$ 15,000 to \$ 24,999</b>	<b>361</b>	<b>NC</b>	<b>15.5%</b>	<b>342</b>	<b>NC</b>	<b>9.7%</b>
<b>\$ 25,000 to \$ 34,999</b>	<b>265</b>	<b>NC</b>	<b>11.4%</b>	<b>363</b>	<b>NC</b>	<b>10.3%</b>
<b>\$ 35,000 to \$ 49,999</b>	<b>549</b>	<b>NC</b>	<b>23.5%</b>	<b>505</b>	<b>NC</b>	<b>14.4%</b>
<b>\$ 50,000 to \$ 74,999</b>	<b>382</b>	<b>NC</b>	<b>16.4%</b>	<b>994</b>	<b>NC</b>	<b>28.3%</b>
<b>\$ 100,000 to \$ 149,999</b>	<b>33</b>	<b>NC</b>	<b>1.4%</b>	<b>381</b>	<b>NC</b>	<b>10.8%</b>
\$ 150,000 to \$ 199,999	0	25	0.0%	145	82	4.1%
\$ 200,000 or more	9	17	0.4%	83	46	2.4%

Source: U.S. Census Bureau, 2008-2012 American Community Survey

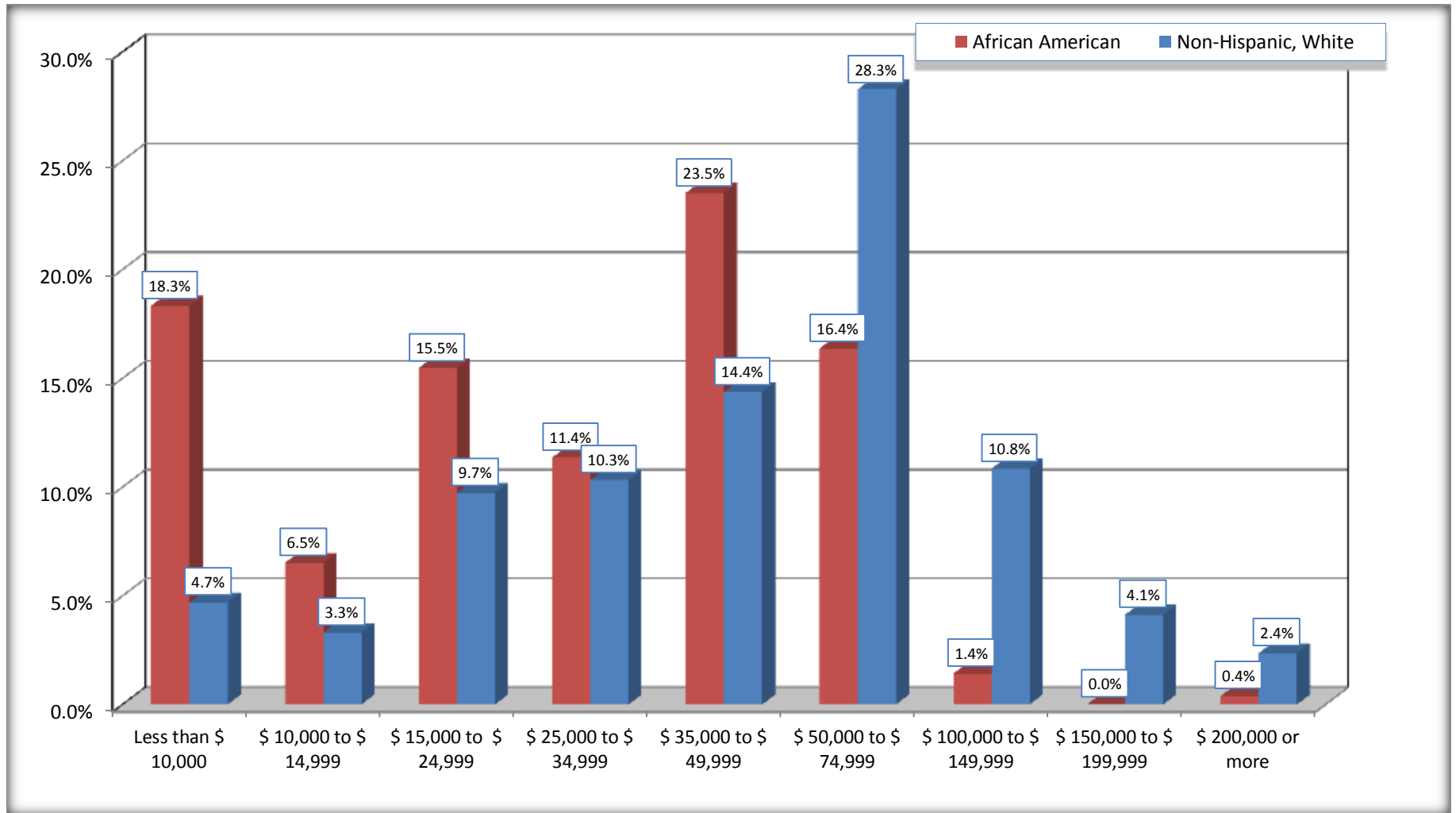
For information on confidentiality protection, sampling error, nonsampling error, and definitions, see Survey Methodology.

<http://www.census.gov/acs/www/UseData/index.htm>



# Family Income in the Past 12 Months

## McDuffie County, Georgia



Source: B19101. FAMILY INCOME IN THE PAST 12 MONTHS (IN 2010 INFLATION-ADJUSTED DOLLARS)  
Data Set: 2008-2012 American Community Survey 5-Year Estimates

**B19113. MEDIAN FAMILY INCOME IN THE PAST 12 MONTHS (IN 2010 INFLATION-ADJUSTED DOLLARS)**

Data Set: 2008-2012 American Community Survey 5-Year Estimates

	<b>McDuffie County, Georgia</b>			
	African American	Margin of Error (+/-)	White, Not Hispanic	Margin of Error (+/-)
Median family income in the past 12 months (in 2010 inflation-adjusted dollars)	\$ 31,688	\$ 7,574	\$ 55,170	\$ 3,627

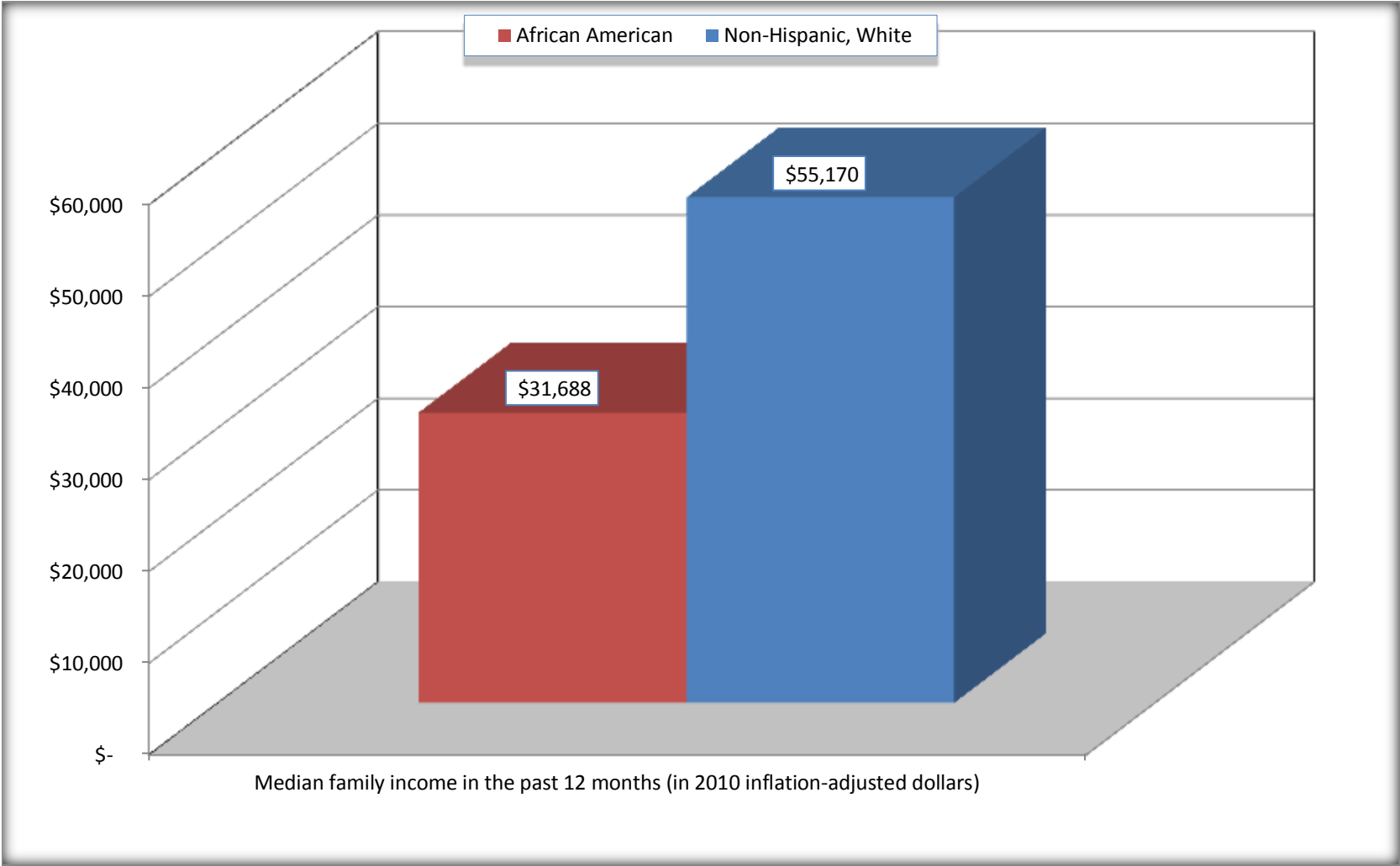
Source: U.S. Census Bureau, 2008-2012 American Community Survey

For information on confidentiality protection, sampling error, nonsampling error, and definitions, see Survey Methodology.

<http://www.census.gov/acs/www/UseData/index.htm>

# Median Family Income in the Past 12 Months

## McDuffie County, Georgia



Source: B19113. MEDIAN FAMILY INCOME IN THE PAST 12 MONTHS (IN 2010 INFLATION-ADJUSTED DOLLARS)  
Data Set: 2008-2012 American Community Survey 5-Year Estimates

**B19202. MEDIAN NONFAMILY HOUSEHOLD INCOME IN THE PAST 12 MONTHS (IN 2010 INFLATION-ADJUSTED DOLLARS)**

Data Set: 2008-2012 American Community Survey 5-Year Estimates

	<b>McDuffie County, Georgia</b>			
	African American	Margin of Error (+/-)	White, Not Hispanic	Margin of Error (+/-)
Median nonfamily household income in the past 12 months (in 2010 inflation-adjusted dollars)	\$ 15,980	\$ 3,269	\$ 20,625	\$ 8,952

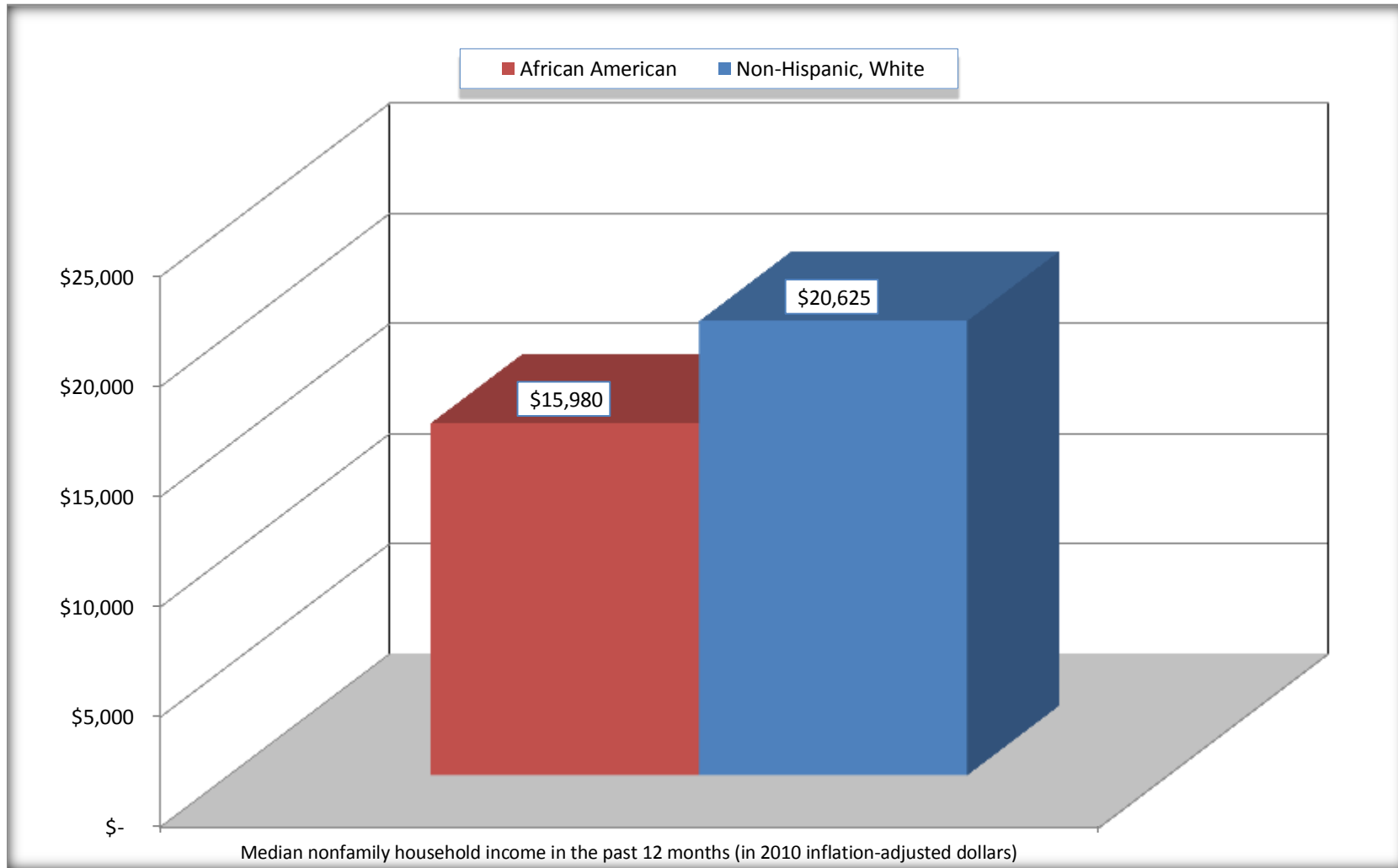
Source: U.S. Census Bureau, 2008-2012 American Community Survey

For information on confidentiality protection, sampling error, nonsampling error, and definitions, see Survey Methodology.

<http://www.census.gov/acs/www/UseData/index.htm>

# Median Non-Family Income in the Past 12 Months

## McDuffie County, Georgia



Source: B19202. MEDIAN NONFAMILY HOUSEHOLD INCOME IN THE PAST 12 MONTHS (IN 2010 INFLATION-ADJUSTED DOLLARS)  
Data Set: 2008-2012 American Community Survey 5-Year Estimates

**B19301. PER CAPITA INCOME IN THE PAST 12 MONTHS (IN 2010 INFLATION-ADJUSTED DOLLARS)**

Data Set: 2008-2012 American Community Survey 5-Year Estimates

	<b>McDuffie County, Georgia</b>			
	African American	Margin of Error (+/-)	White, Not Hispanic	Margin of Error (+/-)
Per capita income in the past 12 months (in 2010 inflation-adjusted dollars)	\$ 11,933	\$ 1,374	\$ 22,919	\$ 1,485

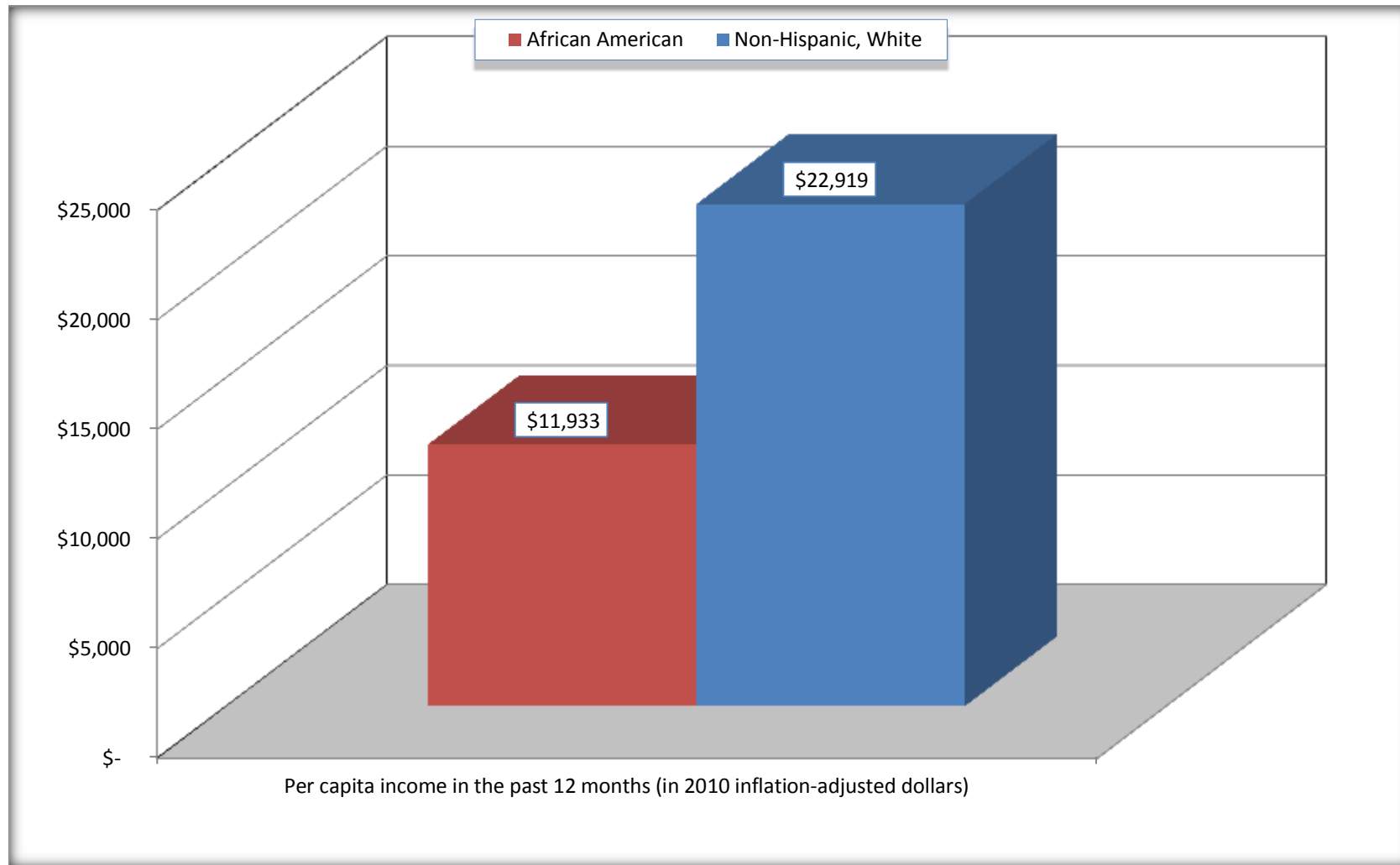
Source: U.S. Census Bureau, 2008-2012 American Community Survey

For information on confidentiality protection, sampling error, nonsampling error, and definitions, see Survey Methodology.

<http://www.census.gov/acs/www/UseData/index.htm>

## Per capita Income in the Past 12 Months

### McDuffie County, Georgia



Source: B19301. PER CAPITA INCOME IN THE PAST 12 MONTHS (IN 2010 INFLATION-ADJUSTED DOLLARS)  
Data Set: 2008-2012 American Community Survey 5-Year Estimates

**B20017. MEDIAN EARNINGS IN THE PAST 12 MONTHS (IN 2010 INFLATION-ADJUSTED DOLLARS) BY SEX BY WORK EXPERIENCE IN THE PAST 12 MONTHS FOR THE POPULATION 16 YEARS AND OVER WITH EARNINGS IN THE PAST 12 MONTHS**

Data Set: 2008-2012 American Community Survey 5-Year Estimates

	McDuffie County, Georgia			
	African American	Margin of Error (+/-)	White, Not Hispanic	Margin of Error (+/-)
Median earnings in the past 12 months (in 2010 inflation-adjusted dollars) --				
Total:	\$ 20,481	\$ 1,699	\$ 26,828	\$ 2,268
Male --				
Total	\$ 21,079	\$ 4,206	\$ 31,080	\$ 2,520
Worked full-time, year-round in the past 12 months	\$ 26,963	\$ 2,509	\$ 41,908	\$ 2,585
Other	\$ 11,261	\$ 3,924	\$ 7,471	\$ 2,989
Female --				
Total	\$ 20,231	\$ 2,249	\$ 22,201	\$ 2,574
Worked full-time, year-round in the past 12 months	\$ 23,260	\$ 1,885	\$ 24,713	\$ 5,935
Other	\$ 10,078	\$ 4,973	\$ 14,545	\$ 5,162

Source: U.S. Census Bureau, 2008-2012 American Community Survey

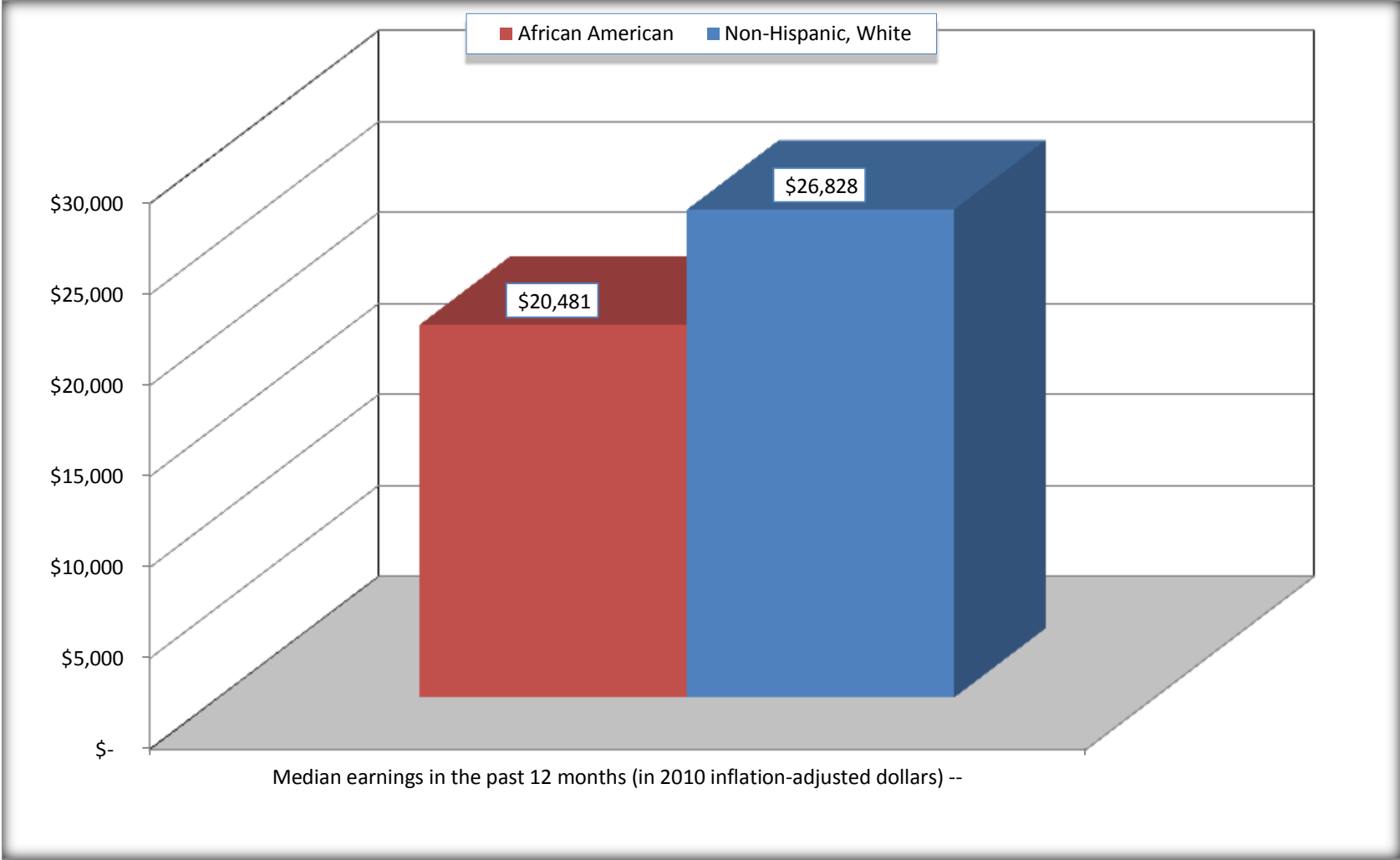
For information on confidentiality protection, sampling error, nonsampling error, and definitions, see Survey Methodology.

<http://www.census.gov/acs/www/UseData/index.htm>



# Median earnings in the Past 12 Months (16 Years and Over with Earnings)

## McDuffie County, Georgia



Source: B20017. MEDIAN EARNINGS IN THE PAST 12 MONTHS (IN 2010 INFLATION-ADJUSTED DOLLARS) BY SEX BY WORK EXPERIENCE IN THE PAST 12 MONTHS FOR THE POPULATION 16 YEARS AND OVER WITH EARNINGS IN THE PAST 12 MONTHS  
Data Set: 2008-2012 American Community Survey 5-Year Estimates

**B20005. SEX BY WORK EXPERIENCE IN THE PAST 12 MONTHS BY EARNINGS IN THE PAST 12 MONTHS (IN 2010 INFLATION-ADJUSTED DOLLARS) FOR THE POPULATION 16 YEARS AND OVER**

Data Set: 2008-2012 American Community Survey 5-Year Estimates

	McDuffie County, Georgia					
	African American	Margin of Error (+/-)	% of AA Total	White, Not Hispanic	Margin of Error (+/-)	% of NHW Total
<b>Total:</b>	<b>6,280</b>	<b>134</b>	<b>100.0%</b>	<b>9,920</b>	<b>89</b>	<b>100.0%</b>
Worked full-time, year-round in the past 12 months:	2,103	NC	33.5%	3,657	NC	36.9%
No earnings	0	NC	0.0%	0	NC	0.0%
With earnings:	2,103	NC	33.5%	3,657	NC	36.9%
\$ 1 to \$ 9,999 or loss	76	NC	1.2%	119	NC	1.2%
\$ 10,000 to \$ 19,999	536	NC	8.5%	600	NC	6.0%
\$ 20,000 to \$ 29,999	790	NC	12.6%	775	NC	7.8%
\$ 30,000 to \$ 49,999	401	NC	6.4%	1,058	NC	10.7%
\$ 50,000 to \$ 74,999	275	NC	4.4%	768	NC	7.7%
\$ 75,000 or more	25	NC	0.4%	337	NC	3.4%
Other:	4,177	NC	66.5%	6,263	NC	63.1%
No earnings	2,742	NC	43.7%	4,297	NC	43.3%
With earnings: less than full time, year-round	1,435	NC	22.9%	1,966	NC	19.8%
Male:	2,707	146	43.1%	4,704	52	47.4%
Worked full-time, year-round in the past 12 months:	958	196	15.3%	2,084	207	21.0%
No earnings	0	25	0.0%	0	25	0.0%
With earnings:	958	196	15.3%	2,084	207	21.0%
\$ 1 to \$ 9,999 or loss	41	NC	0.7%	60	NC	0.6%
\$ 10,000 to \$ 19,999	248	NC	3.9%	151	NC	1.5%
\$ 20,000 to \$ 29,999	303	NC	4.8%	375	NC	3.8%
\$ 30,000 to \$ 49,999	166	NC	2.6%	723	NC	7.3%
\$ 50,000 to \$ 74,999	175	NC	2.8%	468	NC	4.7%
\$ 75,000 or more	25	NC	0.4%	307	NC	3.1%

	McDuffie County, Georgia					
	African American	Margin of Error (+/-)	% of AA Total	White, Not Hispanic	Margin of Error (+/-)	% of NHW Total
Other:	1,749	217	27.9%	2,620	221	26.4%
No earnings	1,031	203	16.4%	1,560	184	15.7%
With earnings:	718	163	11.4%	1,060	178	10.7%
Female:	3,573	116	56.9%	5,216	59	52.6%
Worked full-time, year-round in the past 12 months:	1,145	223	18.2%	1,573	213	15.9%
No earnings	0	25	0.0%	0	25	0.0%
With earnings:	1,145	223	18.2%	1,573	213	15.9%
\$ 1 to \$ 9,999 or loss	35	NC	0.6%	59	NC	0.6%
\$ 10,000 to \$ 19,999	288	NC	4.6%	449	NC	4.5%
\$ 20,000 to \$ 29,999	487	NC	7.8%	400	NC	4.0%
\$ 30,000 to \$ 49,999	235	NC	3.7%	335	NC	3.4%
\$ 50,000 to \$ 74,999	100	NC	1.6%	300	NC	3.0%
\$ 75,000 or more	0	NC	0.0%	30	NC	0.3%
Other:	2,428	249	38.7%	3,643	235	36.7%
No earnings	1,711	340	27.2%	2,737	228	27.6%
With earnings:	717	226	11.4%	906	176	9.1%

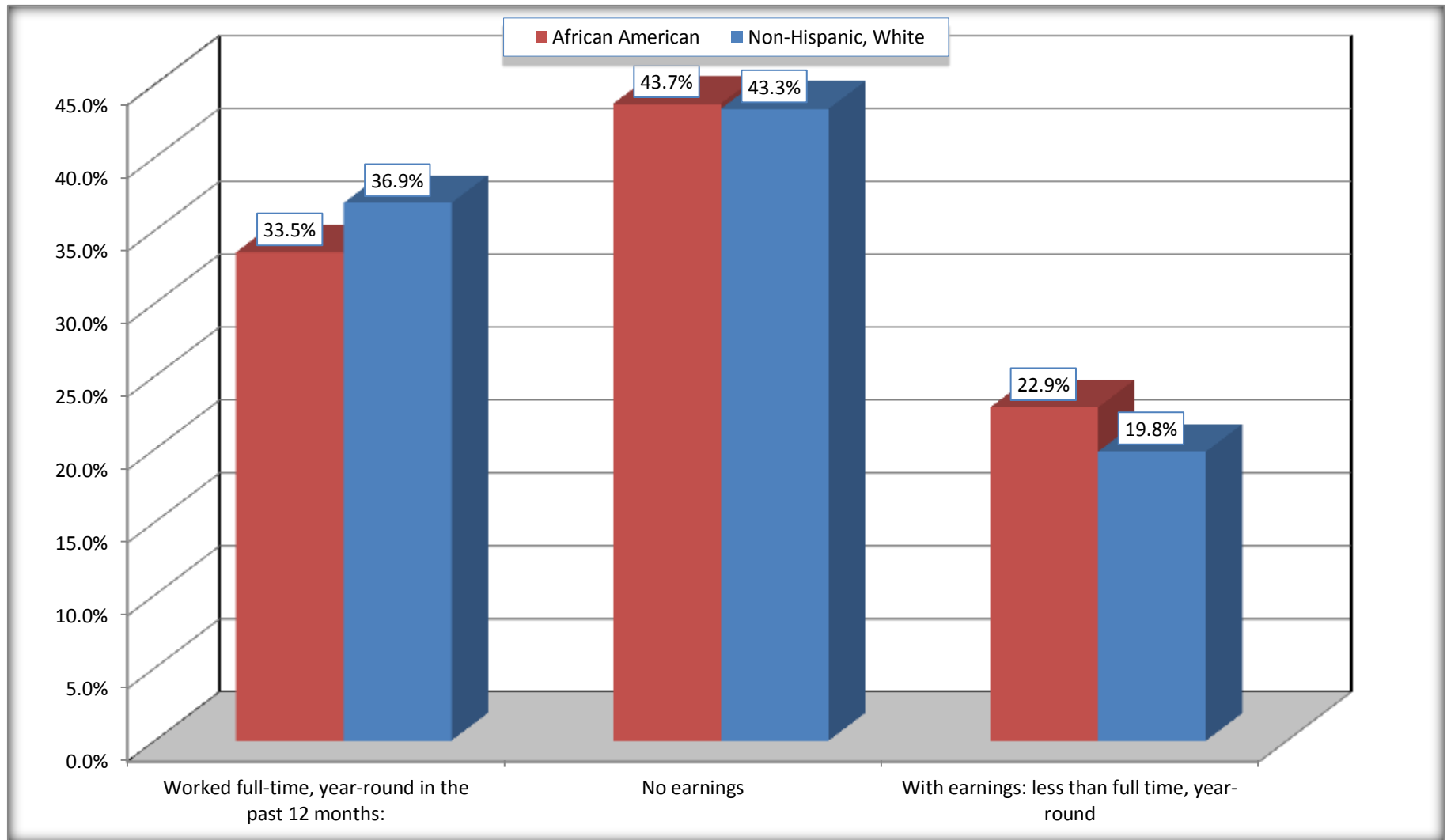
Source: U.S. Census Bureau, 2008-2012 American Community Survey

For information on confidentiality protection, sampling error, nonsampling error, and definitions, see Survey Methodology.

<http://www.census.gov/acs/www/UseData/index.htm>

# Employment and Earnings in in the Past 12 Months (16 Years and Over)

## McDuffie County, Georgia



Source: B20005. SEX BY WORK EXPERIENCE IN THE PAST 12 MONTHS BY EARNINGS IN THE PAST 12 MONTHS (IN 2010 INFLATION-ADJUSTED DOLLARS) FOR THE POPULATION 16 YEARS AND OVER

Data Set: 2008-2012 American Community Survey 5-Year Estimates

**C21001. SEX BY AGE BY VETERAN STATUS FOR THE CIVILIAN POPULATION 18 YEARS AND OVER**

Data Set: 2008-2012 American Community Survey 5-Year Estimates

	McDuffie County, Georgia					
	African American	Margin of Error (+/-)	% of AA Total	White, Not Hispanic	Margin of Error (+/-)	% of NHW Total
<b>Total:</b>	<b>6,001</b>	<b>100</b>	<b>100.0%</b>	<b>9,598</b>	<b>17</b>	<b>100.0%</b>
Veteran	325	NC	5.4%	946	NC	9.9%
Nonveteran	5,676	NC	94.6%	8,652	NC	90.1%
Male:	2,562	89	42.7%	4,517	15	47.1%
18 to 64 years:	2,314	57	38.6%	3,642	15	37.9%
Veteran	211	91	3.5%	472	126	4.9%
Nonveteran	2,103	114	35.0%	3,170	127	33.0%
65 years and over:	248	68	4.1%	875	25	9.1%
Veteran	44	31	0.7%	394	97	4.1%
Nonveteran	204	68	3.4%	481	97	5.0%
Female:	3,439	39	57.3%	5,081	8	52.9%
18 to 64 years:	2,880	39	48.0%	3,857	8	40.2%
Veteran	70	78	1.2%	63	45	0.7%
Nonveteran	2,810	85	46.8%	3,794	46	39.5%
65 years and over:	559	25	9.3%	1,224	25	12.8%
Veteran	0	25	0.0%	17	21	0.2%
Nonveteran	559	25	9.3%	1,207	21	12.6%

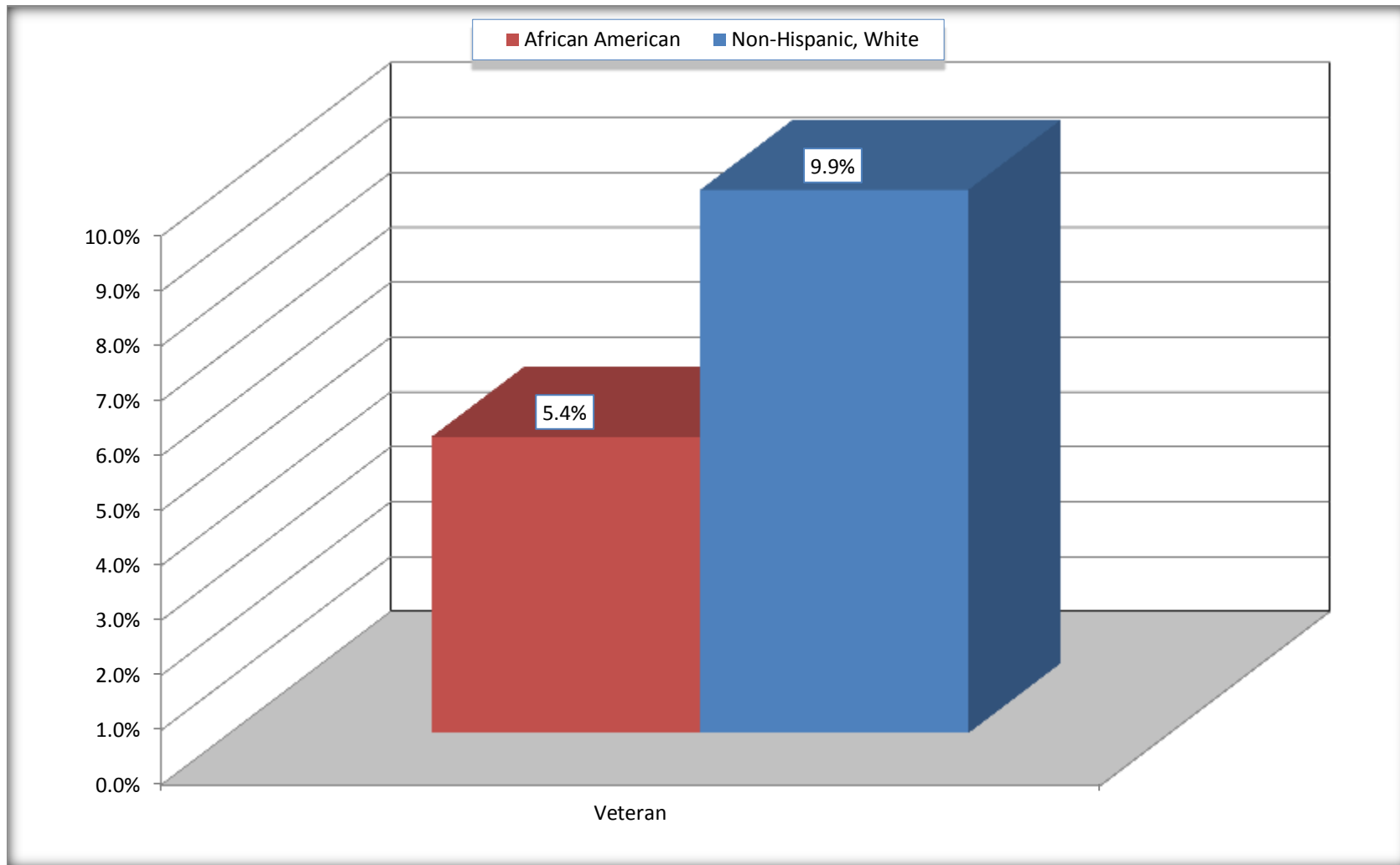
Source: U.S. Census Bureau, 2008-2012 American Community Survey

For information on confidentiality protection, sampling error, nonsampling error, and definitions, see Survey Methodology.

<http://www.census.gov/acs/www/UseData/index.htm>

# Veterans in the Civilian Population 18 Years and Over

## McDuffie County, Georgia



Source: C21001. SEX BY AGE BY VETERAN STATUS FOR THE CIVILIAN POPULATION 18 YEARS AND OVER  
Data Set: 2008-2012 American Community Survey 5-Year Estimates

**B22005. RECEIPT OF FOOD STAMPS/SNAP IN THE PAST 12 MONTHS BY RACE OF HOUSEHOLDER**

Data Set: 2008-2012 American Community Survey 5-Year Estimates

	<b>McDuffie County, Georgia</b>					
	African American	Margin of Error (+/-)	% of AA Total	White, Not Hispanic	Margin of Error (+/-)	% of NHW Total
<b>Total:</b>	<b>2,925</b>	<b>183</b>	<b>100.0%</b>	<b>5,037</b>	<b>185</b>	<b>100.0%</b>
HH received Food Stamps/SNAP in the past 12 months	876	176	29.9%	509	143	10.1%
HH did not receive Food Stamps/SNAP in the past 12 months	2,049	219	70.1%	4,528	218	89.9%

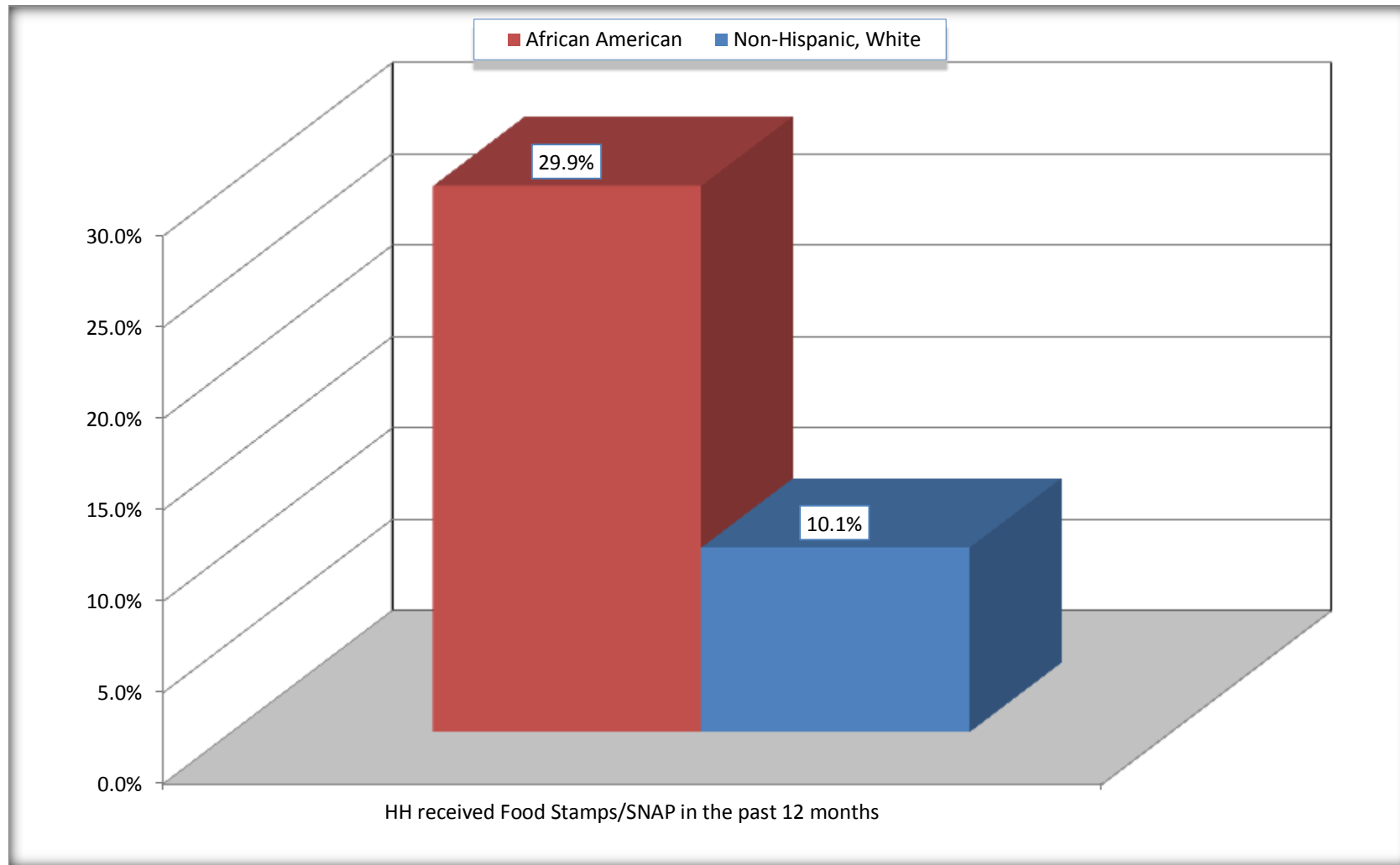
Source: U.S. Census Bureau, 2008-2012 American Community Survey

For information on confidentiality protection, sampling error, nonsampling error, and definitions, see Survey Methodology.

<http://www.census.gov/acs/www/UseData/index.htm>

# Receipt of Food Stamps/SNAP in the Past 12 Months by Household

## McDuffie County, Georgia



Source: B22005. RECEIPT OF FOOD STAMPS/SNAP IN THE PAST 12 MONTHS BY RACE OF HOUSEHOLDER  
Data Set: 2008-2012 American Community Survey 5-Year Estimates



**C23002. SEX BY AGE BY EMPLOYMENT STATUS FOR THE POPULATION 16 YEARS AND OVER**

Data Set: 2008-2012 American Community Survey 5-Year Estimates

	McDuffie County, Georgia					
	African American	Margin of Error (+/-)	% of AA Total	White, Not Hispanic	Margin of Error (+/-)	% of NHW Total
<b>Total:</b>	<b>6,280</b>	<b>134</b>	<b>100.0%</b>	<b>9,920</b>	<b>89</b>	<b>100.0%</b>
In labor force:	3,626	NC	57.7%	5,579	NC	56.2%
In Armed Forces	0	NC	0.0%	13	NC	0.1%
Civilian:	3,509	NC	55.9%	5,308	NC	53.5%
Employed	3,225	NC	51.4%	4,999	NC	50.4%
Unemployed	401	NC	6.4%	567	NC	5.7%
Not in labor force	2,654	NC	42.3%	4,341	NC	43.8%
Male:	2,707	146	43.1%	4,704	52	47.4%
16 to 64 years:	2,459	133	39.2%	3,829	52	38.6%
In labor force:	1,683	170	26.8%	2,901	165	29.2%
In Armed Forces	0	25	0.0%	9	15	0.1%
Civilian:	1,683	170	26.8%	2,892	169	29.2%
Employed	1,489	181	23.7%	2,648	158	26.7%
Unemployed	194	110	3.1%	244	99	2.5%
Not in labor force	776	203	12.4%	928	173	9.4%
65 years and over:	248	68	3.9%	875	25	8.8%
In labor force:	72	54	1.1%	149	84	1.5%
Employed	72	54	1.1%	149	84	1.5%
Unemployed	0	25	0.0%	0	25	0.0%
Not in labor force	176	60	2.8%	726	84	7.3%

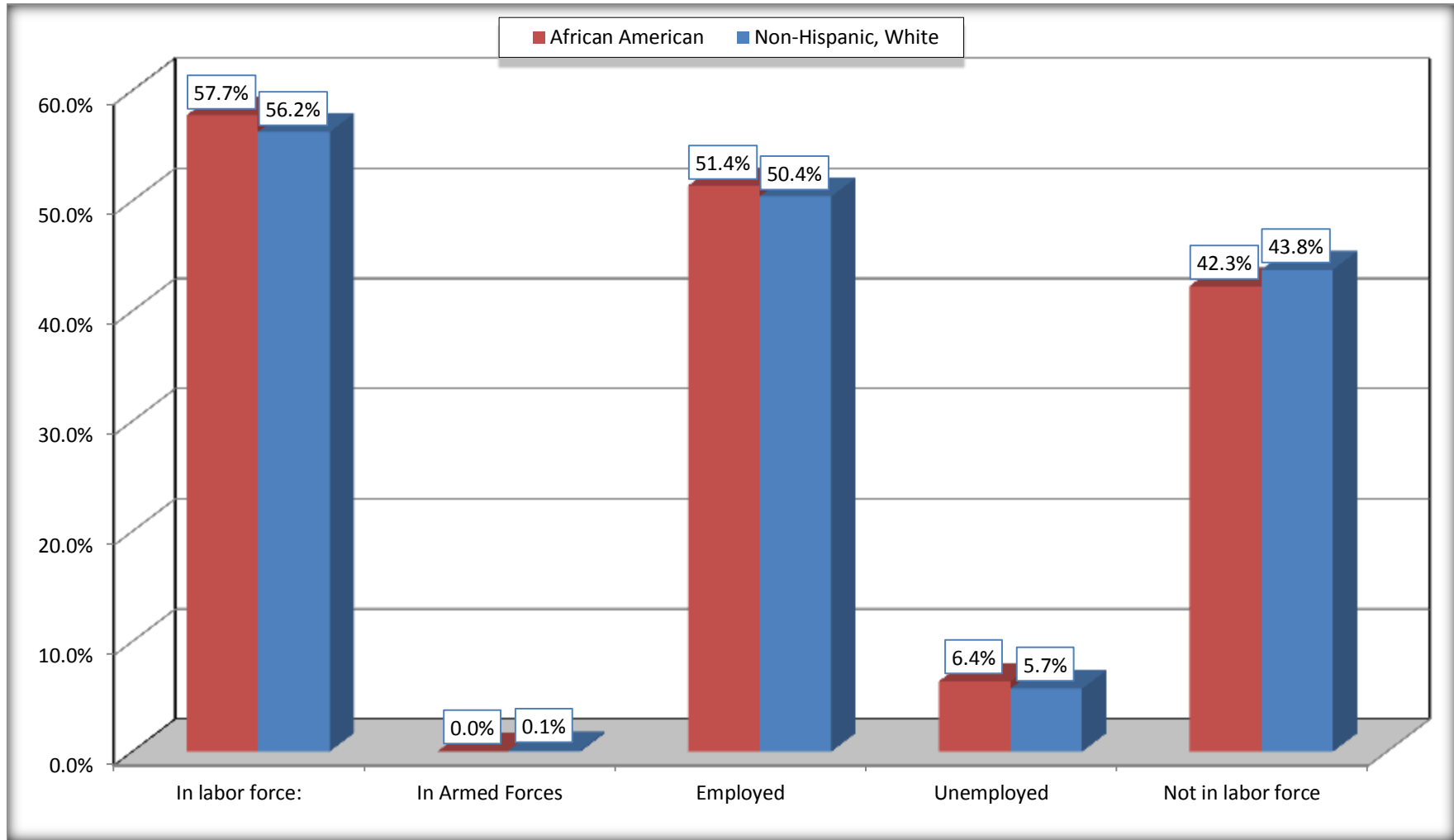
	McDuffie County, Georgia					
	African American	Margin of Error (+/-)	% of AA Total	White, Not Hispanic	Margin of Error (+/-)	% of NHW Total
Female:	3,573	116	56.9%	5,216	59	52.6%
16 to 64 years:	3,014	116	48.0%	3,992	59	40.2%
In labor force:	1,826	247	29.1%	2,420	182	24.4%
In Armed Forces	0	25	0.0%	4	8	0.0%
Civilian:	1,826	247	29.1%	2,416	181	24.4%
Employed	1,619	246	25.8%	2,093	225	21.1%
Unemployed	207	91	3.3%	323	99	3.3%
Not in labor force	1,188	259	18.9%	1,572	199	15.8%
65 years and over:	559	25	8.9%	1,224	25	12.3%
In labor force:	45	46	0.7%	109	57	1.1%
Employed	45	46	0.7%	109	57	1.1%
Unemployed	0	25	0.0%	0	25	0.0%
Not in labor force	514	46	8.2%	1,115	57	11.2%

Source: U.S. Census Bureau, 2008-2012 American Community Survey

For information on confidentiality protection, sampling error, nonsampling error, and definitions, see Survey Methodology.  
<http://www.census.gov/acs/www/UseData/index.htm>

# Employment Status for the Population 16 years and over

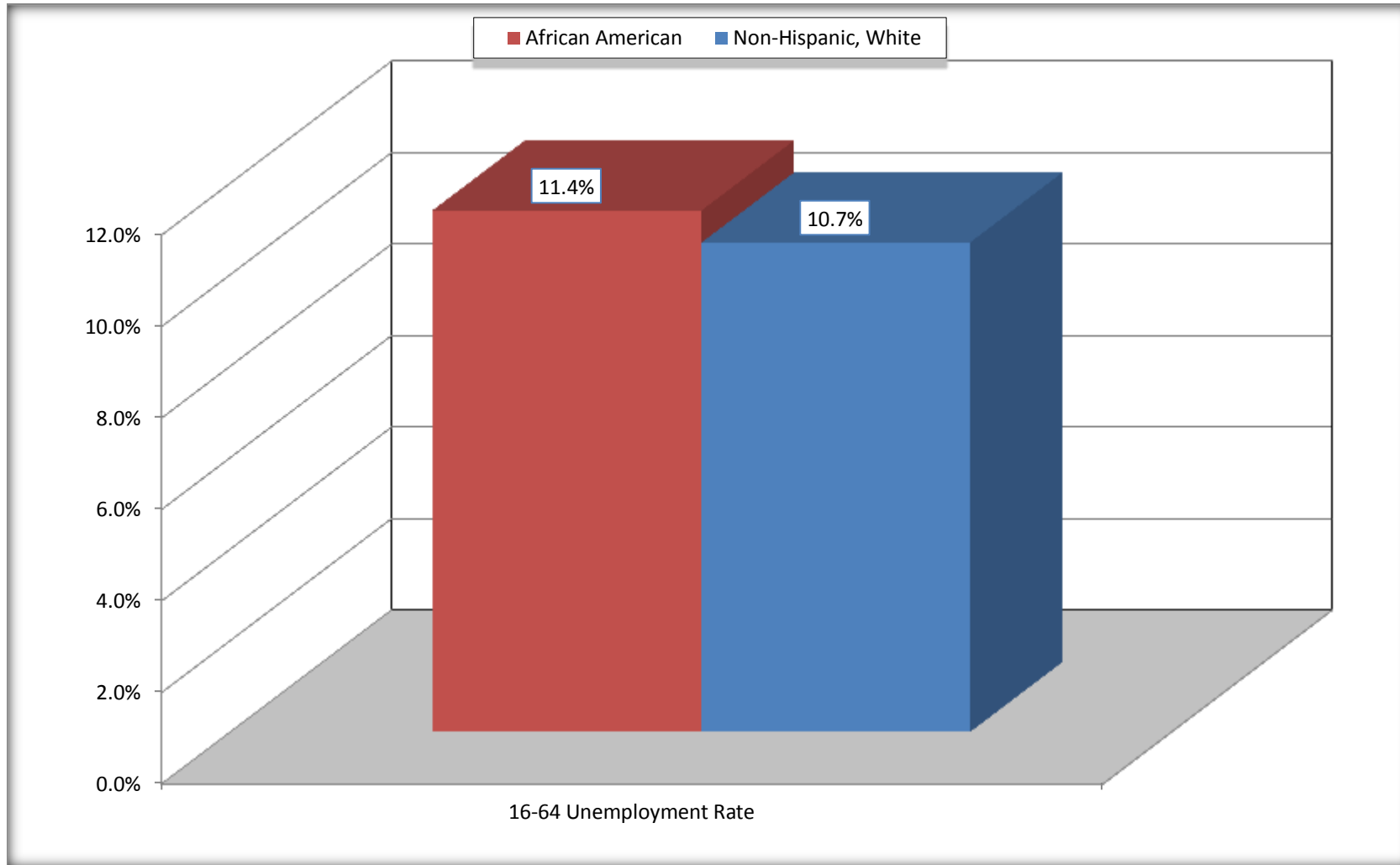
## McDuffie County, Georgia



Source: C23002. SEX BY AGE BY EMPLOYMENT STATUS FOR THE POPULATION 16 YEARS AND OVER  
Data Set: 2008-2012 American Community Survey 5-Year Estimates

# Unemployment of Working Age Population (Ages 16 to 64) (As a Percent of 16-64 Civilian Labor Force)

## McDuffie County, Georgia



Source: C23002. SEX BY AGE BY EMPLOYMENT STATUS FOR THE POPULATION 16 YEARS AND OVER  
Data Set: 2008-2012 American Community Survey 5-Year Estimates

**C24010. SEX BY OCCUPATION FOR THE CIVILIAN EMPLOYED POPULATION 16 YEARS AND OVER**

Data Set: 2008-2012 American Community Survey 5-Year Estimates

	McDuffie County, Georgia					
	African American	Margin of Error (+/-)	% of AA Total	White, Not Hispanic	Margin of Error (+/-)	% of NHW Total
<b>Total:</b>	<b>3,225</b>	<b>313</b>	<b>100.0%</b>	<b>4,999</b>	<b>285</b>	<b>100.0%</b>
Management, professional, and related occupations	561	NC	17.4%	1,431	NC	28.6%
Service occupations	852	NC	26.4%	619	NC	12.4%
Sales and office occupations	548	NC	17.0%	1,285	NC	25.7%
Natural resources, construction, and maintenance occupations:	324	NC	10.0%	1,002	NC	20.0%
Production, transportation, and material moving occupations	940	NC	29.1%	662	NC	13.2%
Male:	1,561	185	48.4%	2,797	177	56.0%
Management, business, science, and arts occupations:	167	106	5.2%	686	153	13.7%
Service occupations	238	88	7.4%	329	112	6.6%
Sales and office occupations	217	89	6.7%	308	99	6.2%
Natural resources, construction, and maintenance occupations:	308	123	9.6%	900	142	18.0%
Production, transportation, and material moving occupations	631	212	19.6%	574	125	11.5%
Female:	1,664	244	51.6%	2,202	227	44.0%
Management, professional, and related occupations	394	150	12.2%	745	126	14.9%
Service occupations	614	170	19.0%	290	116	5.8%
Sales and office occupations	331	149	10.3%	977	180	19.5%
Natural resources, construction, and maintenance occupations:	16	25	0.5%	102	82	2.0%
Production, transportation, and material moving occupations	309	123	9.6%	88	62	1.8%

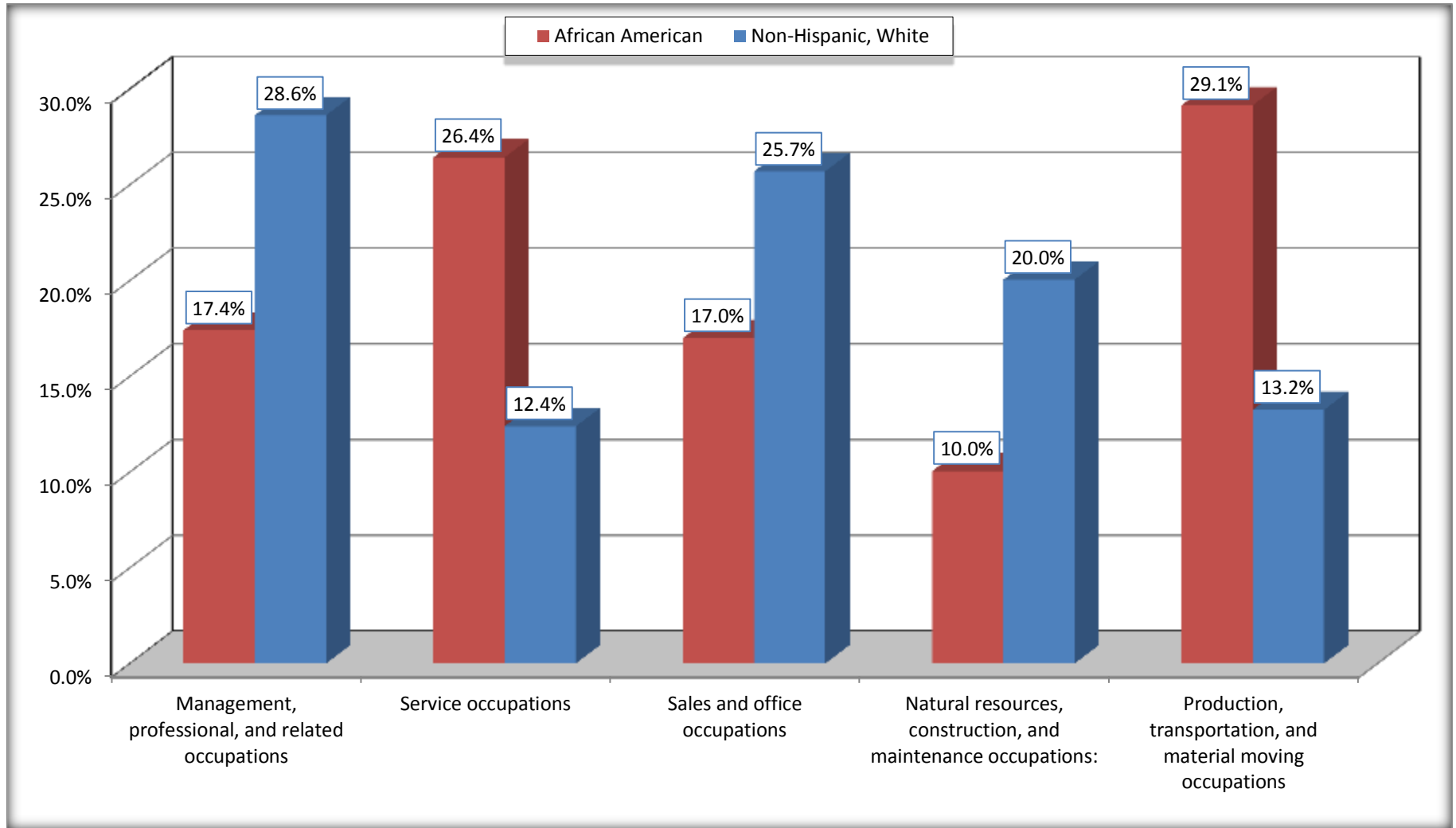
Source: U.S. Census Bureau, 2008-2012 American Community Survey

For information on confidentiality protection, sampling error, nonsampling error, and definitions, see Survey Methodology.

<http://www.census.gov/acs/www/UseData/index.htm>

# Occupation for the Civilian Employed 16 Years and Over Population

## McDuffie County, Georgia



Source: C24010. SEX BY OCCUPATION FOR THE CIVILIAN EMPLOYED POPULATION 16 YEARS AND OVER  
Data Set: 2008-2012 American Community Survey 5-Year Estimates

**B25003. TENURE - Universe: OCCUPIED HOUSING UNITS**

Data Set: 2008-2012 American Community Survey 5-Year Estimates

	<b>McDuffie County, Georgia</b>					
	African American	Margin of Error (+/-)	% of AA Total	White, Not Hispanic	Margin of Error (+/-)	% of NHW Total
<b>Total:</b>	<b>2,925</b>	<b>183</b>	<b>100.0%</b>	<b>5,037</b>	<b>185</b>	<b>100.0%</b>
Owner occupied	1,465	185	50.1%	3,905	203	77.5%
Renter occupied	1,460	192	49.9%	1,132	213	22.5%

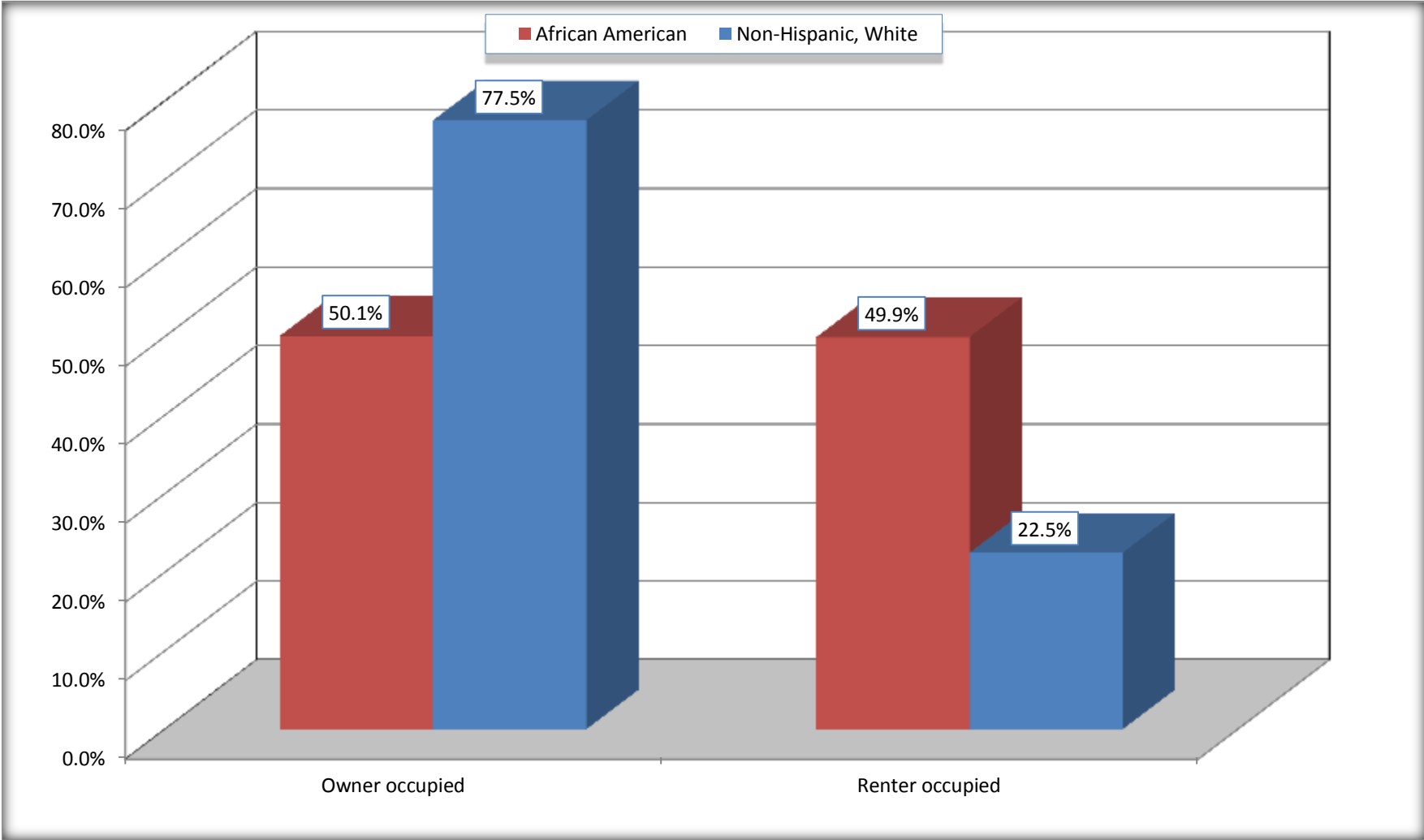
Source: U.S. Census Bureau, 2008-2012 American Community Survey

For information on confidentiality protection, sampling error, nonsampling error, and definitions, see Survey Methodology.

<http://www.census.gov/acs/www/UseData/index.h>

# Home Owners and Renters by Household

## McDuffie County, Georgia



Source: B25003. TENURE - Universe: OCCUPIED HOUSING UNITS  
Data Set: 2008-2012 American Community Survey 5-Year Estimates



**B25014. OCCUPANTS PER ROOM - Universe: OCCUPIED HOUSING UNITS**

Data Set: 2008-2012 American Community Survey 5-Year Estimates

	McDuffie County, Georgia					
	African American	Margin of Error (+/-)	% of AA Total	White, Not Hispanic	Margin of Error (+/-)	% of NHW Total
<b>Total:</b>	<b>2,925</b>	<b>183</b>	<b>100.0%</b>	<b>5,037</b>	<b>185</b>	<b>100.0%</b>
1.00 or less occupants per room	2,814	186	96.2%	5,018	183	99.6%
1.01 or more occupants per room	111	60	3.8%	19	29	0.4%

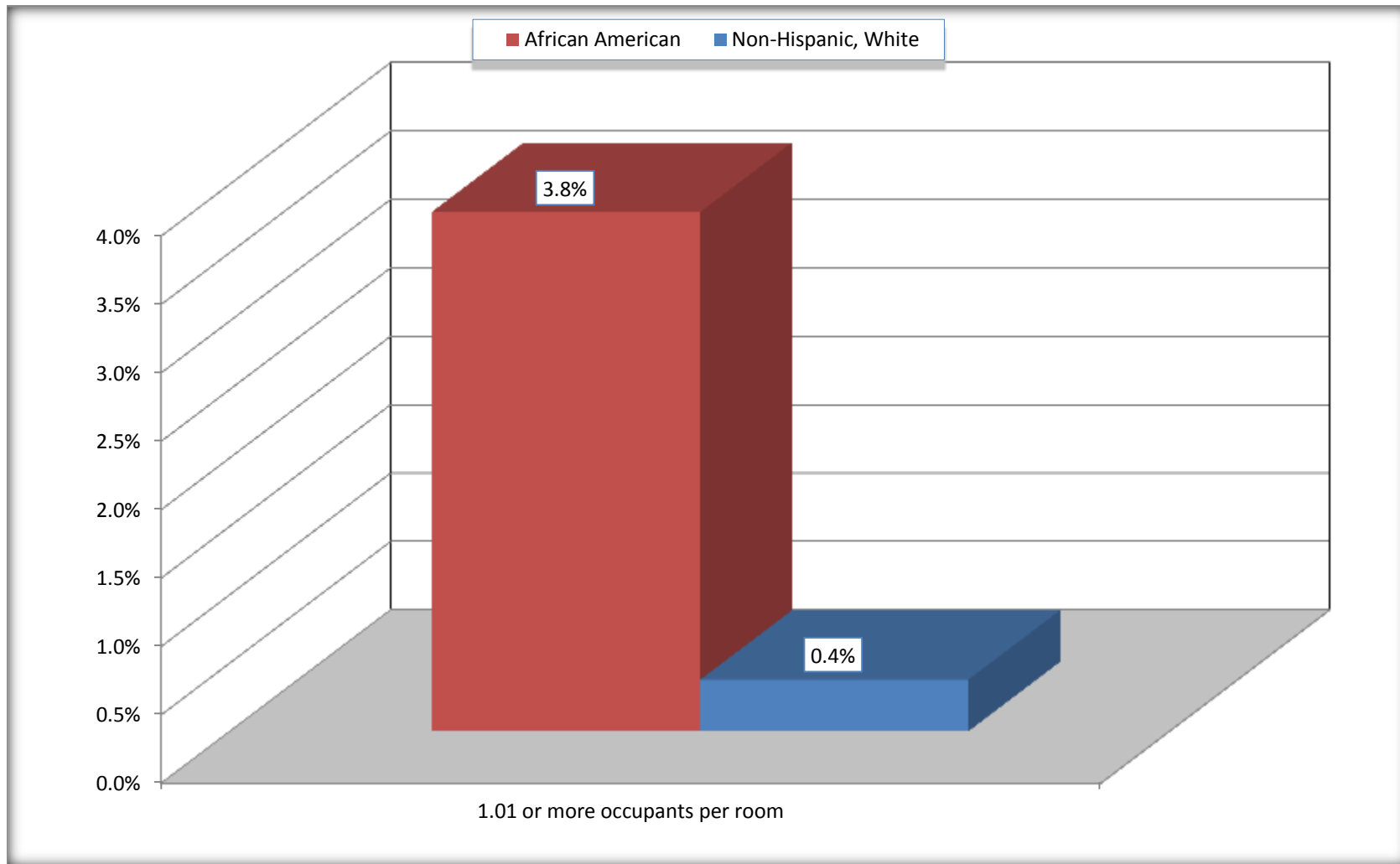
Source: U.S. Census Bureau, 2008-2012 American Community Survey

For information on confidentiality protection, sampling error, nonsampling error, and definitions, see Survey Methodology.

<http://www.census.gov/acs/www/UseData/index.ht>

# More than One Person per Room (Crowding) by Household

## McDuffie County, Georgia



Source: B25014. OCCUPANTS PER ROOM - Universe: OCCUPIED HOUSING UNITS  
Data Set: 2008-2012 American Community Survey 5-Year Estimates

**B18101. AGE BY DISABILITY STATUS**

Data Set: 2008-2012 American Community Survey 5-Year Estimates

	<b>McDuffie County, Georgia</b>					
	African American	Margin of Error (+/-)	% of AA Total	White, Not Hispanic	Margin of Error (+/-)	% of NHW Total
<b>Total:</b>	<b>8,635</b>	<b>146</b>	<b>100.0%</b>	<b>12,090</b>	<b>67</b>	<b>100.0%</b>
Under 18 years:	2,828	65	32.8%	2,605	95	21.5%
With a disability	194	113	2.2%	185	94	1.5%
No disability	2,634	138	30.5%	2,420	93	20.0%
18 to 64 years:	5,055	93	58.5%	7,444	35	61.6%
With a disability	755	204	8.7%	1,115	201	9.2%
No disability	4,300	241	49.8%	6,329	206	52.3%
65 years and over:	752	92	8.7%	2,041	52	16.9%
With a disability	477	87	5.5%	850	122	7.0%
No disability	275	106	3.2%	1,191	130	9.9%

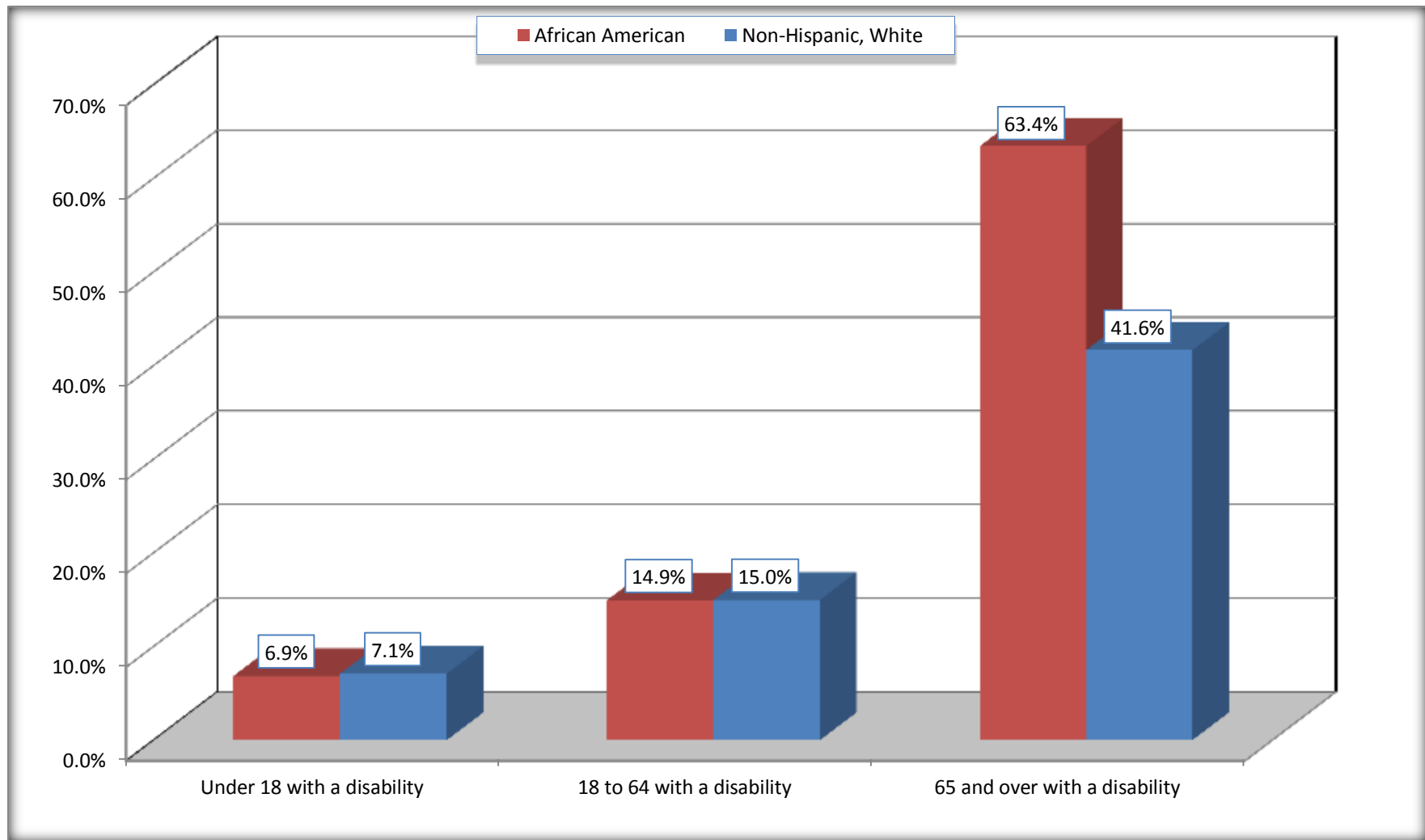
Source: U.S. Census Bureau, 2008-2012 American Community Survey

For information on confidentiality protection, sampling error, nonsampling error, and definitions, see Survey Methodology.

<http://www.census.gov/acs/www/UseData/index.htm>

## Disability by Age

### McDuffie County, Georgia



Source: B18101. AGE BY DISABILITY STATUS  
Data Set: 2008-2012 American Community Survey 5-Year Estimates

**C27001B. HEALTH INSURANCE COVERAGE STATUS BY AGE**

Data Set: 2008-2012 American Community Survey 5-Year Estimates

	<b>McDuffie County, Georgia</b>					
	African American	Margin of Error (+/-)	% of AA Total	White, Not Hispanic	Margin of Error (+/-)	% of NHW Total
<b>Total:</b>	<b>8,635</b>	<b>146</b>	<b>100.0%</b>	<b>12,090</b>	<b>67</b>	<b>100.0%</b>
Under 18 years:	2,828	65	32.8%	2,605	15	21.5%
With health insurance coverage	2,501	244	29.0%	2,326	158	19.2%
No health insurance coverage	327	240	3.8%	279	159	2.3%
18 to 64 years:	5,055	93	58.5%	7,444	35	61.6%
With health insurance coverage	3,449	363	39.9%	5,628	328	46.6%
No health insurance coverage	1,606	368	18.6%	1,816	333	15.0%
65 years and over:	752	92	8.7%	2,041	52	16.9%
With health insurance coverage	747	92	8.7%	2,041	52	16.9%
No health insurance coverage	5	8	0.1%	0	25	0.0%

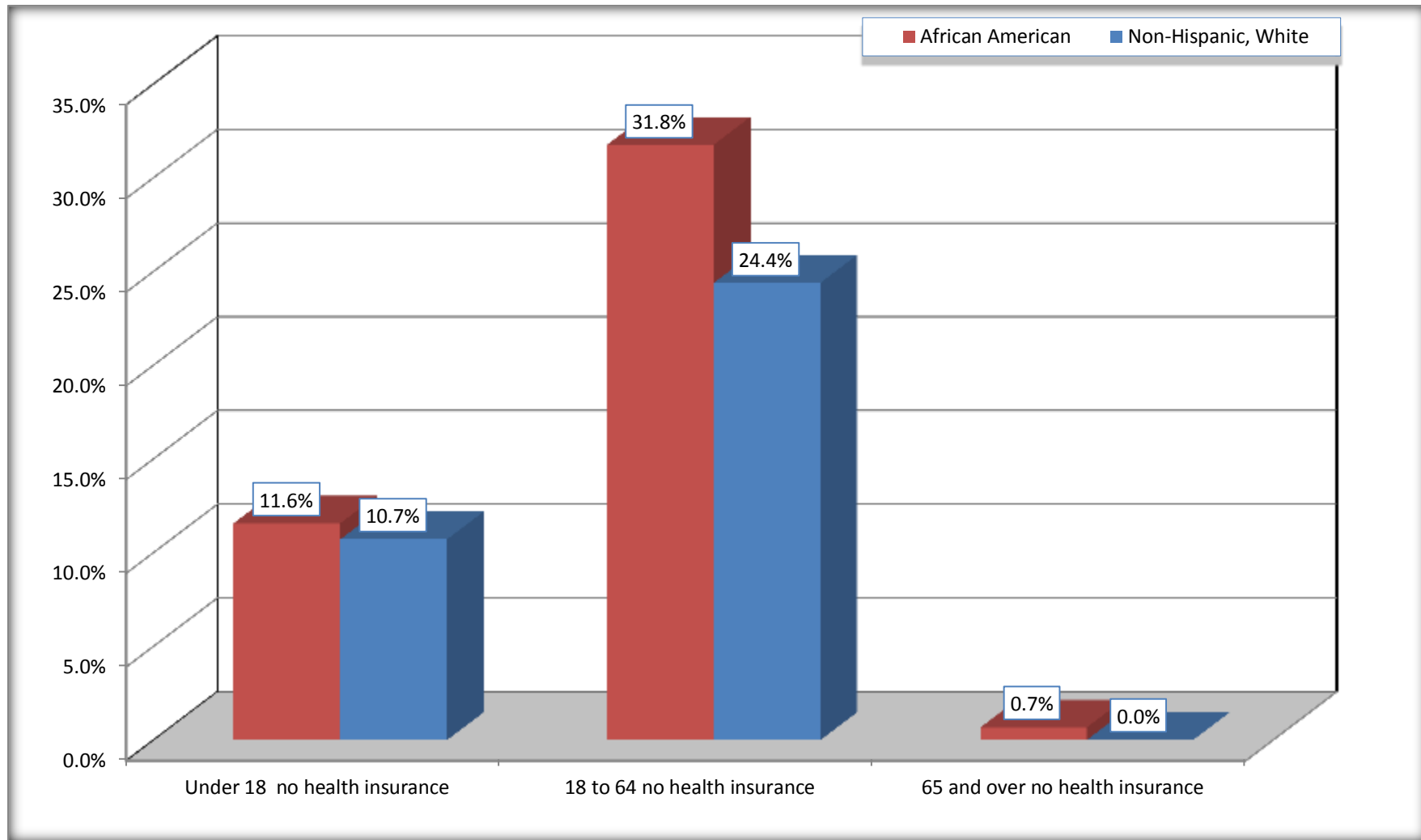
Source: U.S. Census Bureau, 2008-2012 American Community Survey

For information on confidentiality protection, sampling error, nonsampling error, and definitions, see Survey Methodology.

<http://www.census.gov/acs/www/UseData/index.htm>

# Lack of Health Insurance Coverage by Age

## McDuffie County, Georgia



Source: C27001B. HEALTH INSURANCE COVERAGE STATUS BY AGE  
Data Set: 2008-2012 American Community Survey 5-Year Estimates