

Selected Socio-Economic Data

Macon County, Georgia

African American and White, Not Hispanic

Data Set: 2008-2012 American Community Survey 5-Year Estimates

www.fairvote2020.org

www.fairdata2000.com

[29-Dec-13](#)

C02003.DETAILED RACE - Universe: TOTAL POPULATION

Data Set: 2008-2012 American Community Survey 5-Year Estimates

	Macon County, Georgia		
	Population	Margin of Error (+/-)	% of Total
Total:	14,552	*****	100.0%
Population of one race:	14,535	17	99.9%
White	5,239	244	36.0%
Black or African American	8,872	54	61.0%
American Indian and Alaska Native	20	17	0.1%
Asian alone	210	4	1.4%
Native Hawaiian and Other Pacific Islander	0	21	0.0%
Some other race	194	235	1.3%
Population of two or more races:	17	17	0.1%
Two races including Some other race	8	9	0.1%
Two races excluding Some other race, and three or more races	9	10	0.1%
Population of two races:	16	16	0.1%
White; Black or African American	8	9	0.1%
White; American Indian and Alaska Native	0	21	0.0%
White; Asian	0	21	0.0%
Black or African American; American Indian and Alaska Native	0	21	0.0%
All other two race combinations	8	9	0.1%
Population of three races	1	4	0.0%
Population of four or more races	0	21	0.0%

Note: Hispanics may be of any race. See Table B03002 and chart.

Source: U.S. Census Bureau, 2008-2012 American Community Survey

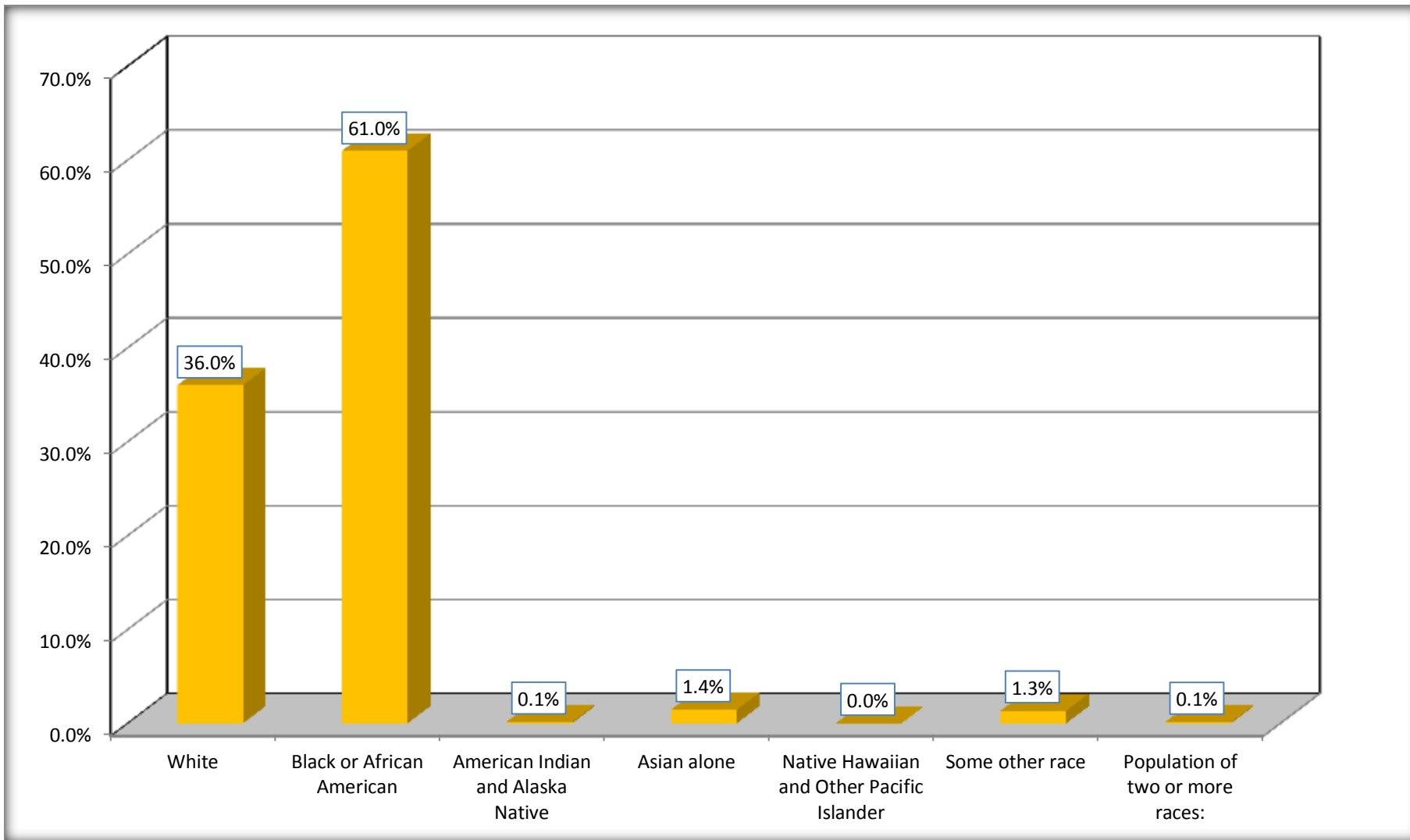
Although the American Community Survey (ACS) produces population, demographic and housing unit estimates, it is the Census Bureau's Population Estimates Program that produces and disseminates the official estimates of the population for the nation, states, counties, cities and towns and estimates of housing units for states and counties.

For information on confidentiality protection, sampling error, nonsampling error, and definitions, see Survey Methodology.

<http://www.census.gov/acs/www/UseData/index.htm>

Population by Race

Macon County, Georgia



Source: C02003.DETAILED RACE - Universe: TOTAL POPULATION
Data Set: 2008-2012 American Community Survey 5-Year Estimates

B03002. HISPANIC OR LATINO ORIGIN BY RACE - Universe: TOTAL POPULATION

Data Set: 2008-2012 American Community Survey 5-Year Estimates

	Macon County, Georgia		
	Population	Margin of Error (+/-)	% of Total
Total:	14,552	*****	100.0%
Not Hispanic or Latino:	14,017	*****	96.3%
White alone	4,747	236	32.6%
Black or African American alone	8,839	26	60.7%
American Indian and Alaska Native alone	20	17	0.1%
Asian alone	210	4	1.4%
Native Hawaiian and Other Pacific Islander alone	0	21	0.0%
Some other race alone	184	236	1.3%
Two or more races:	17	17	0.1%
Two races including Some other race	8	9	0.1%
Two races excluding Some other race, and three or more races	9	10	0.1%
Hispanic or Latino	535	*****	3.7%

Source: U.S. Census Bureau, 2008-2012 American Community Survey

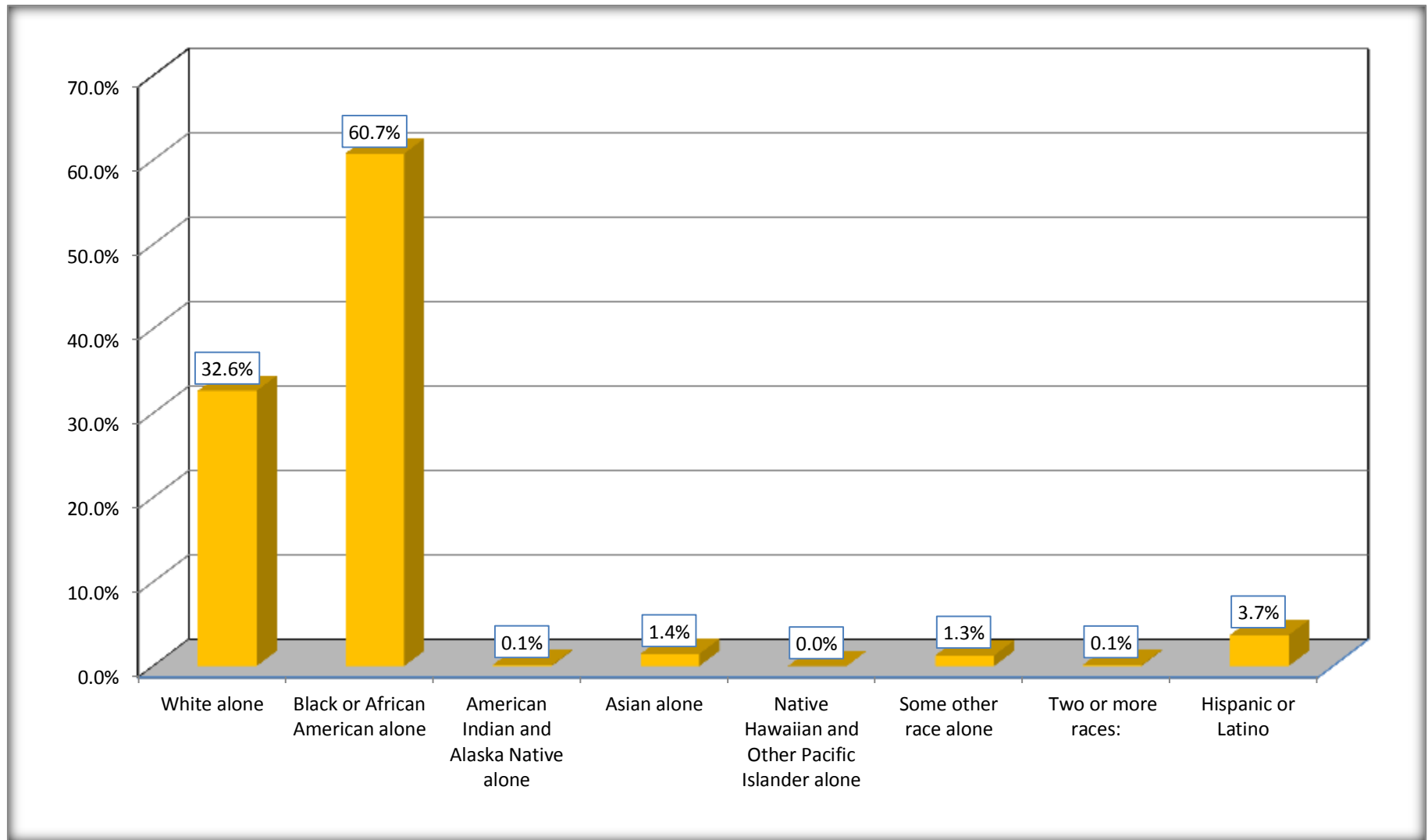
Although the American Community Survey (ACS) produces population, demographic and housing unit estimates, it is the Census Bureau's Population Estimates Program that produces and disseminates the official estimates of the population for the nation, states, counties, cities and towns and estimates of housing units for states and counties.

For information on confidentiality protection, sampling error, nonsampling error, and definitions, see Survey Methodology.

<http://www.census.gov/acs/www/UseData/index.htm>

Non-Hispanic by Race and Hispanic Population

Macon County, Georgia



Source: B03002. HISPANIC OR LATINO ORIGIN BY RACE - Universe: TOTAL POPULATION
Data Set: 2008-2012 American Community Survey 5-Year Estimates

B03002. HISPANIC OR LATINO ORIGIN BY RACE

Data Set: 2008-2012 American Community Survey 5-Year Estimates

	Macon County, Georgia		
	Population	Margin of Error (+/-)	% of Total
Hispanic or Latino:	535	*****	100.0%
White alone	492	55	92.0%
Black or African American alone	33	51	6.2%
American Indian and Alaska Native alone	0	21	0.0%
Asian alone	0	21	0.0%
Native Hawaiian and Other Pacific Islander alone	0	21	0.0%
Some other race alone	10	21	1.9%
Two or more races:	0	21	0.0%
Two races including Some other race	0	21	0.0%
Two races excluding Some other race, and three or more races	0	21	0.0%

Source: U.S. Census Bureau, 2008-2012 American Community Survey

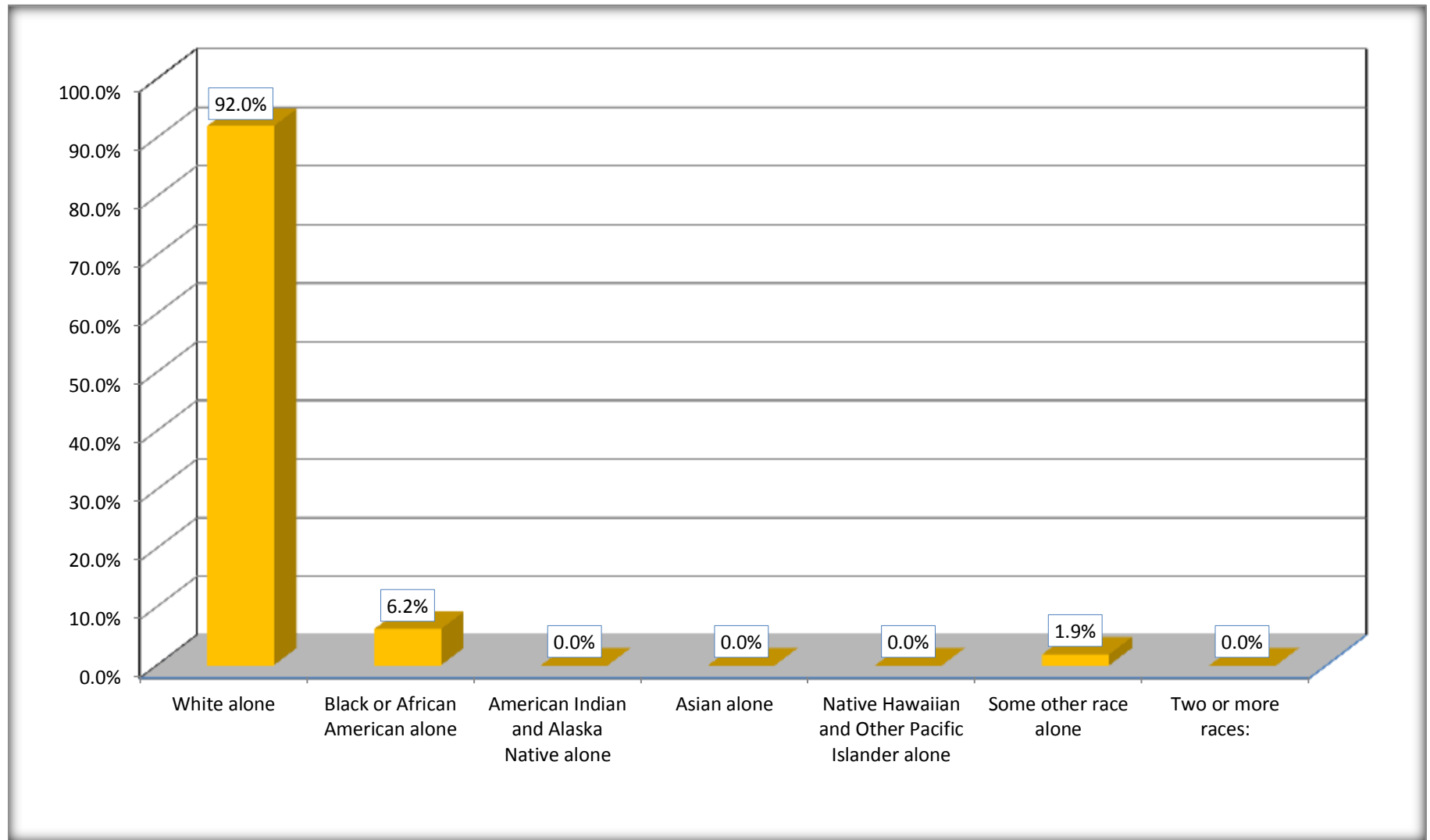
Although the American Community Survey (ACS) produces population, demographic and housing unit estimates, it is the Census Bureau's Population Estimates Program that produces and disseminates the official estimates of the population for the nation, states, counties, cities and towns and estimates of housing units for states and counties.

For information on confidentiality protection, sampling error, nonsampling error, and definitions, see Survey Methodology.

<http://www.census.gov/acs/www/UseData/index.htm>

Hispanic or Latino Origin by Race

Macon County, Georgia



Source: B03002. HISPANIC OR LATINO ORIGIN BY RACE
Data Set: 2008-2012 American Community Survey 5-Year Estimates

B01001. SEX BY AGE

Data Set: 2008-2012 American Community Survey 5-Year Estimates

	Macon County, Georgia					
	African American	Margin of Error (+/-)	% of AA Total	White, Not Hispanic	Margin of Error (+/-)	% of NHW Total
Total:	8,872	54	100.0%	4,747	236	100.0%
Under 18 years	2,070	NC	23.3%	916	NC	19.3%
18 to 64 years	5,872	NC	66.2%	2,932	NC	61.8%
65 years and over	930	NC	10.5%	899	NC	18.9%
Male:	4,738	54	53.4%	2,534	389	53.4%
Under 18 years	1,044	NC	11.8%	523	NC	11.0%
18 to 64 years	3,332	NC	37.6%	1,582	NC	33.3%
65 years and over	362	NC	4.1%	429	NC	9.0%
Female:	4,134	21	46.6%	2,213	412	46.6%
Under 18 years	1,026	NC	11.6%	393	NC	8.3%
18 to 64 years	2,540	NC	28.6%	1,350	NC	28.4%
65 years and over	568	NC	6.4%	470	NC	9.9%

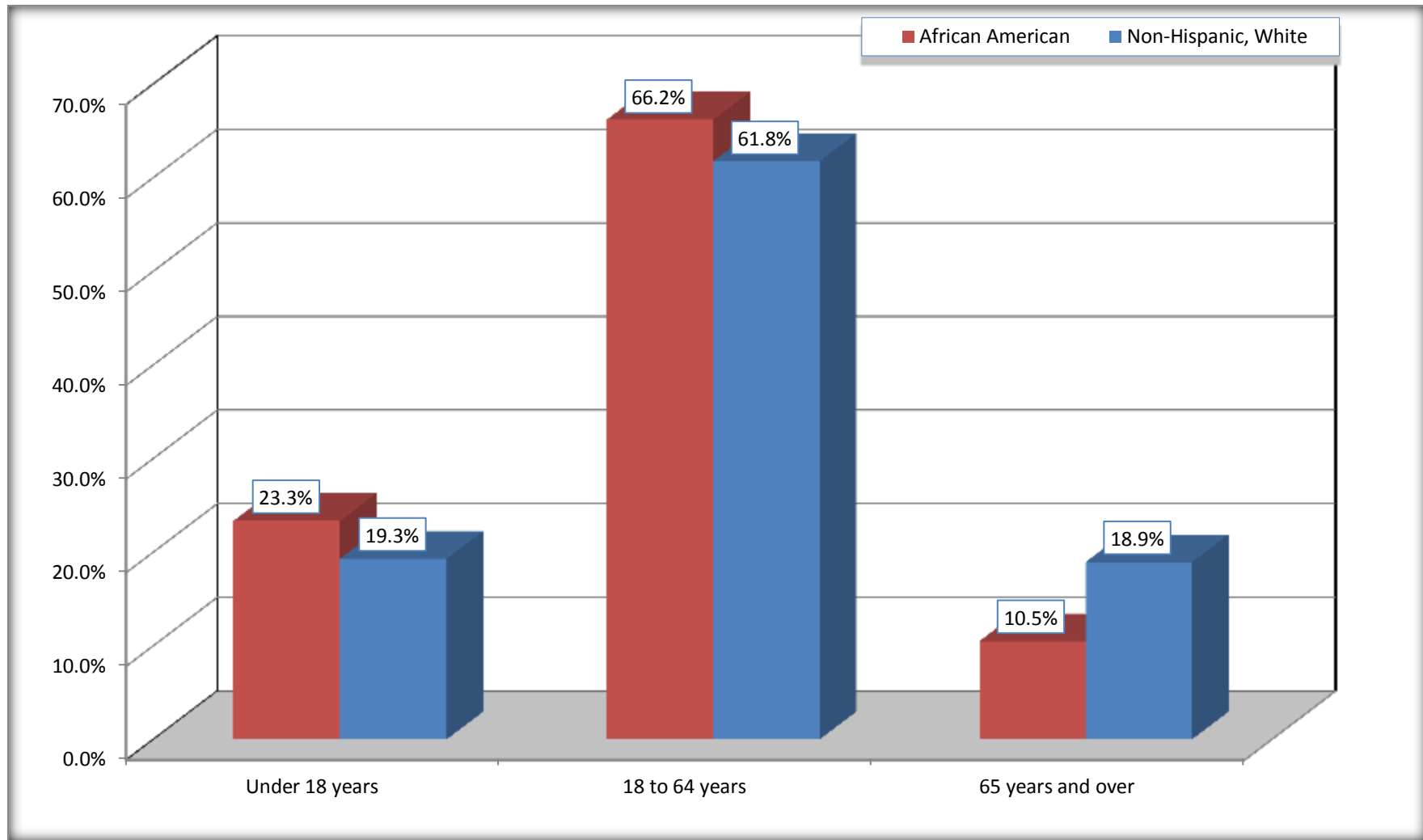
Source: U.S. Census Bureau, 2008-2012 American Community Survey

Although the American Community Survey (ACS) produces population, demographic and housing unit estimates, it is the Census Bureau's Population Estimates Program that produces and disseminates the official estimates of the population for the nation, states, counties, cities and towns and estimates of housing units for states and counties.

For information on confidentiality protection, sampling error, nonsampling error, and definitions, see Survey Methodology.
<http://www.census.gov/acs/www/UseData/index.htm>

Population by Age

Macon County, Georgia



Source: B01001. SEX BY AGE
Data Set: 2008-2012 American Community Survey 5-Year Estimates

B05003. SEX BY AGE BY CITIZENSHIP STATUS

Data Set: 2008-2012 American Community Survey 5-Year Estimates

	Macon County, Georgia					
	African American	Margin of Error (+/-)	% of AA Total by Age	White, Not Hispanic	Margin of Error (+/-)	% of NHW Total by Age
Total:	8,872	54	100.0%	4,747	236	100.0%
Under 18 years:	2,070	NC	100.0%	916	NC	100.0%
Native	2,070	NC	100.0%	916	NC	100.0%
Foreign born:	0	NC	0.0%	0	NC	0.0%
Naturalized U.S. citizen	0	NC	0.0%	0	NC	0.0%
Not a U.S. citizen	0	NC	0.0%	0	NC	0.0%
18 years and over:	6,802	NC	100.0%	3,831	NC	100.0%
Native	6,799	NC	100.0%	3,831	NC	100.0%
Foreign born:	3	NC	0.0%	0	NC	0.0%
Naturalized U.S. citizen	0	NC	0.0%	0	NC	0.0%
Not a U.S. citizen	3	NC	0.0%	0	NC	0.0%
Male:	4,738	54	53.4%	2,534	203	53.4%
Under 18 years:	1,044	28	100.0%	523	82	100.0%
Native	1,044	28	100.0%	523	82	100.0%
Foreign born:	0	21	0.0%	0	21	0.0%
Naturalized U.S. citizen	0	21	0.0%	0	21	0.0%
Not a U.S. citizen	0	21	0.0%	0	21	0.0%
18 years and over:	3,694	34	100.0%	2,011	178	100.0%
Native	3,691	34	99.9%	2,011	178	100.0%
Foreign born:	3	5	0.1%	0	21	0.0%
Naturalized U.S. citizen	0	21	0.0%	0	21	0.0%
Not a U.S. citizen	3	5	0.1%	0	21	0.0%

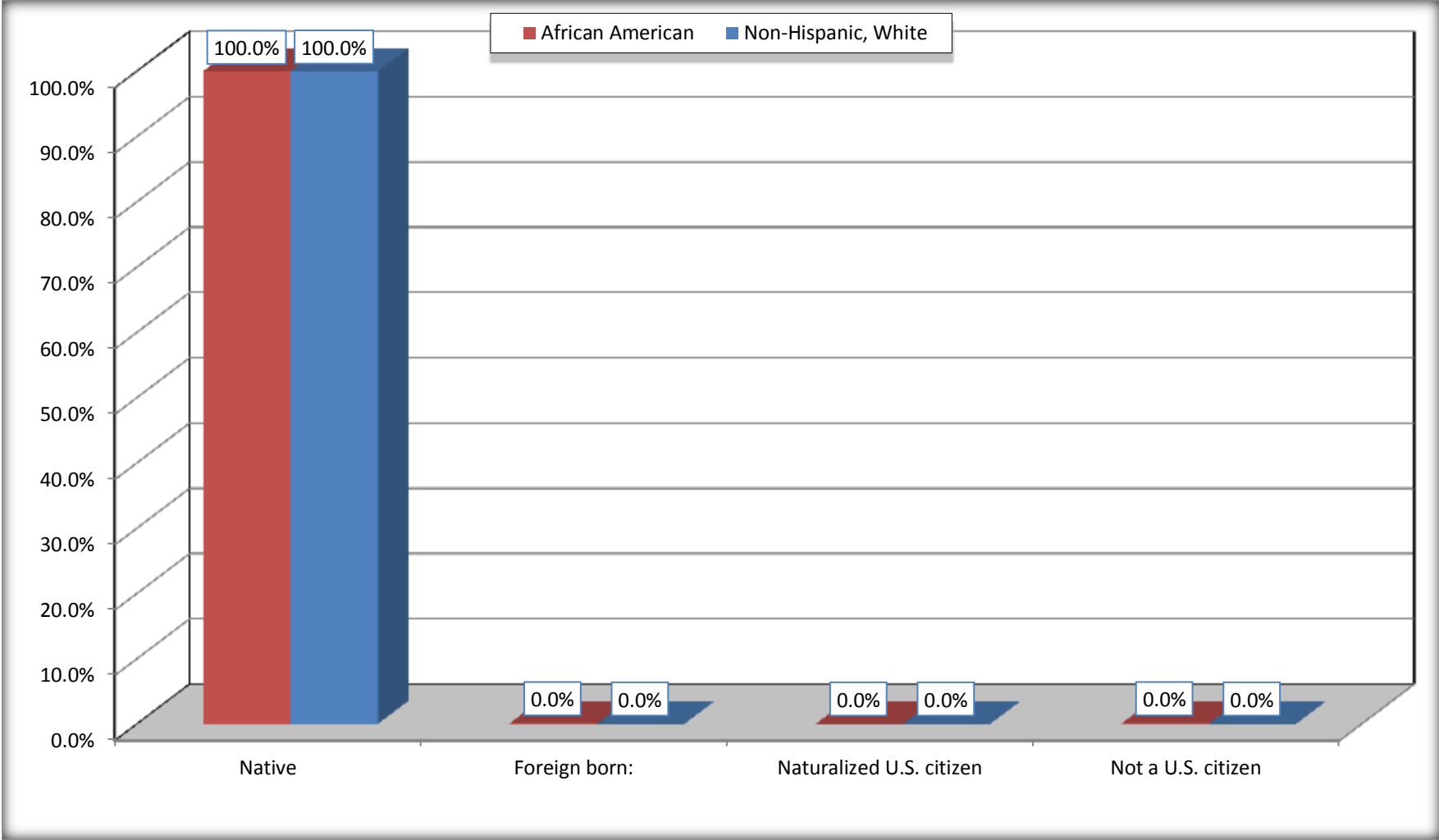
	Macon County, Georgia					
	African American	Margin of Error (+/-)	% of AA by Age	White, Not Hispanic	Margin of Error (+/-)	% of NHW by Age
Female:	4,134	21	46.6%	2,213	96	46.6%
Under 18 years:	1,026	21	100.0%	393	82	100.0%
Native	1,026	21	100.0%	393	82	100.0%
Foreign born:	0	21	0.0%	0	21	0.0%
Naturalized U.S. citizen	0	21	0.0%	0	21	0.0%
Not a U.S. citizen	0	21	0.0%	0	21	0.0%
18 years and over:	3,108	21	100.0%	1,820	60	100.0%
Native	3,108	21	100.0%	1,820	60	100.0%
Foreign born:	0	21	0.0%	0	21	0.0%
Naturalized U.S. citizen	0	21	0.0%	0	21	0.0%
Not a U.S. citizen	0	21	0.0%	0	21	0.0%

Source: U.S. Census Bureau, 2008-2012 American Community Survey

For information on confidentiality protection, sampling error, nonsampling error, and definitions, see Survey Methodology.
<http://www.census.gov/acs/www/UseData/index.htm>

Citizenship Status of Voting Age Population (18 and Over)

Macon County, Georgia



Source: B05003. SEX BY AGE BY CITIZENSHIP STATUS
Data Set: 2008-2012 American Community Survey 5-Year Estimates

**B07004. GEOGRAPHICAL MOBILITY IN THE PAST YEAR BY RACE FOR CURRENT RESIDENCE IN THE UNITED STATES - Universe:
POPULATION 1 YEAR AND OVER**

Data Set: 2008-2012 American Community Survey 5-Year Estimates

	Macon County, Georgia					
	African American	Margin of Error (+/-)	% of AA Total	White, Not Hispanic	Margin of Error (+/-)	% of NHW Total
Total:	8,836	60	100.0%	4,651	243	100.0%
Same house 1 year ago	7,992	294	90.4%	4,167	312	89.6%
Moved within same county	390	246	4.4%	197	216	4.2%
Moved from different county within same state	442	135	5.0%	243	175	5.2%
Moved from different state	12	12	0.1%	36	50	0.8%
Moved from abroad	0	21	0.0%	8	14	0.2%

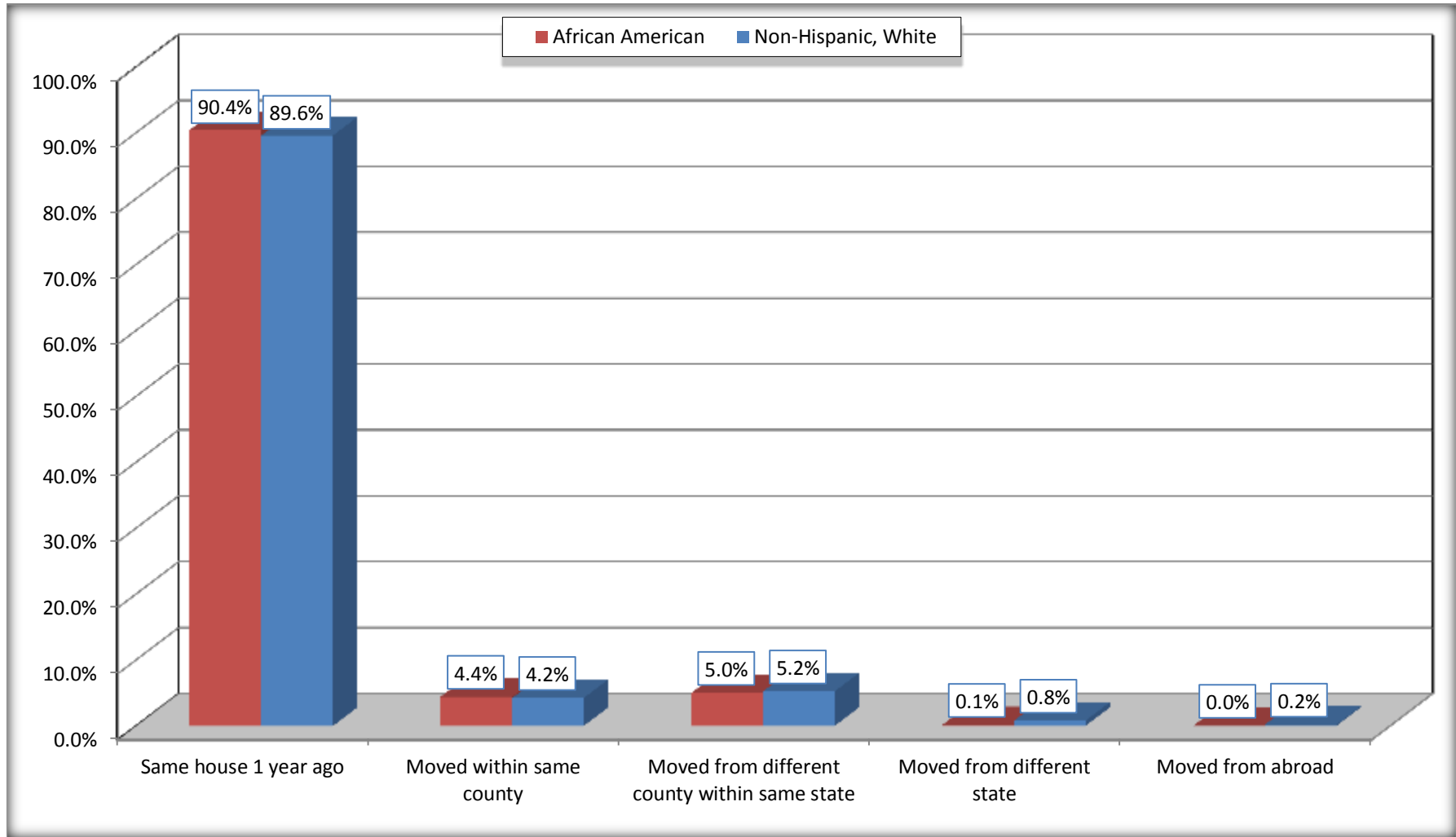
Source: U.S. Census Bureau, 2008-2012 American Community Survey

For information on confidentiality protection, sampling error, nonsampling error, and definitions, see Survey Methodology.

<http://www.census.gov/acs/www/UseData/index.htm>

Geographical Mobility in the Past Year (Population 1 Year and Over)

Macon County, Georgia



Source: B07004. GEOGRAPHICAL MOBILITY IN THE PAST YEAR BY RACE FOR CURRENT RESIDENCE IN THE UNITED STATES - Universe: POPULATION 1 YEAR AND OVER

Data Set: 2008-2012 American Community Survey 5-Year Estimates

B08105. MEANS OF TRANSPORTATION TO WORK - Universe: WORKERS 16 YEARS AND OVER

Data Set: 2008-2012 American Community Survey 5-Year Estimates

	Macon County, Georgia					
	African American	Margin of Error (+/-)	% of AA Total	White, Not Hispanic	Margin of Error (+/-)	% of NHW Total
Total:	2652	238	100.0%	1892	229	100.0%
Car, truck, or van - drove alone	2014	265	75.9%	1591	248	84.1%
Car, truck, or van - carpooled	449	178	16.9%	171	105	9.0%
Public transportation (excluding taxicab)	80	95	3.0%	40	61	2.1%
Walked	71	61	2.7%	30	31	1.6%
Taxicab, motorcycle, bicycle, or other means	38	35	1.4%	19	24	1.0%
Worked at home	0	21	0.0%	41	32	2.2%

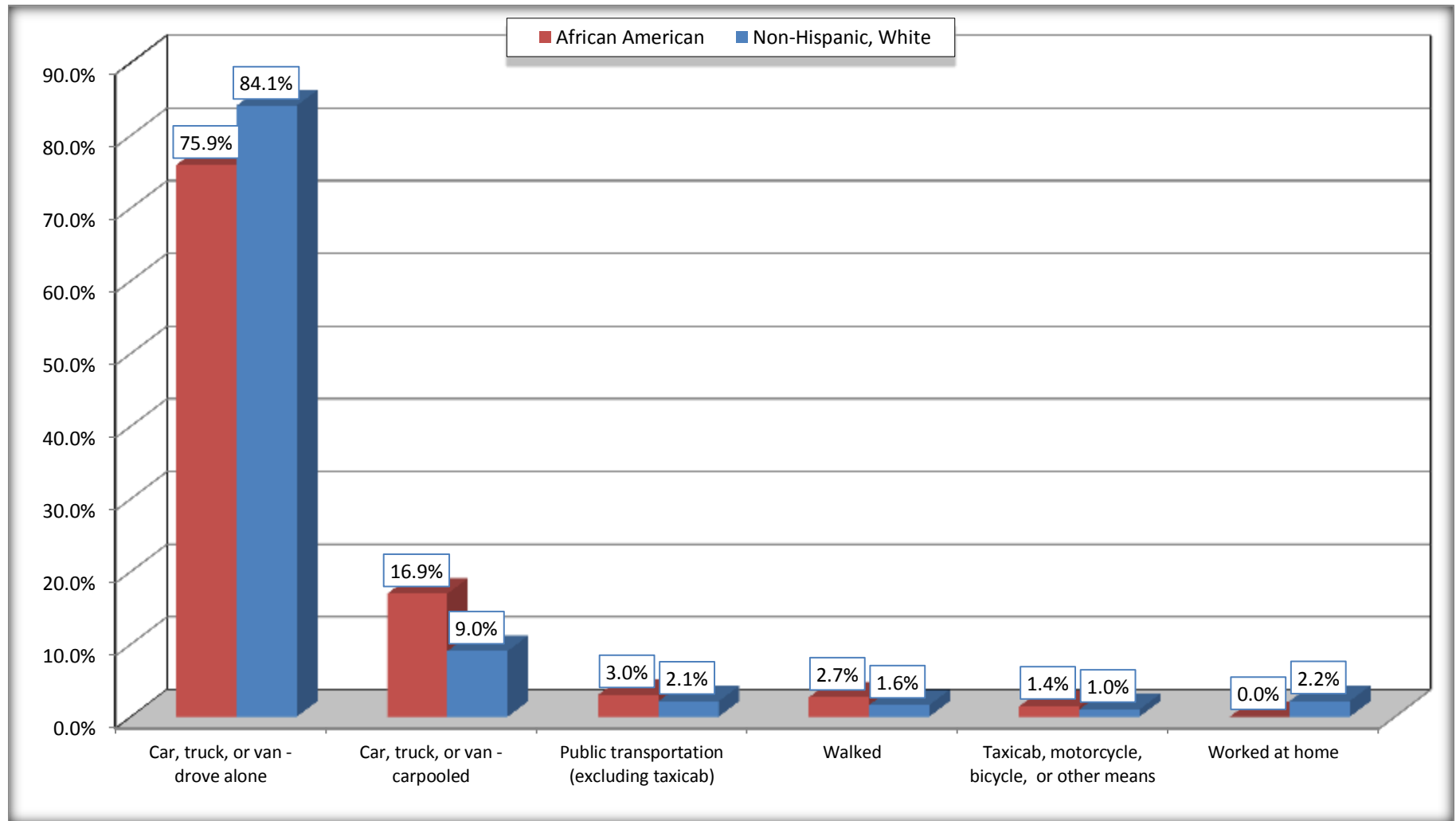
Source: U.S. Census Bureau, 2008-2012 American Community Survey

For information on confidentiality protection, sampling error, nonsampling error, and definitions, see Survey Methodology.

<http://www.census.gov/acs/www/UseData/index.htm>

Means of Transportation to Work (Workers 16 Years and Over)

Macon County, Georgia



Source: B08105. MEANS OF TRANSPORTATION TO WORK - Universe: WORKERS 16 YEARS AND OVER
Data Set: 2008-2012 American Community Survey 5-Year Estimates

B11002. HOUSEHOLD TYPE BY RELATIVES AND NONRELATIVES FOR POPULATION IN HOUSEHOLDS

Data Set: 2008-2012 American Community Survey 5-Year Estimates

	Macon County, Georgia					
	African American	Margin of Error (+/-)	% of AA Total	White, Not Hispanic	Margin of Error (+/-)	% of NHW Total
Total:	7814	134	100.0%	4488	266	100.0%
In family households	6883	229	88.1%	3853	296	85.9%
In nonfamily households	931	212	11.9%	635	168	14.1%

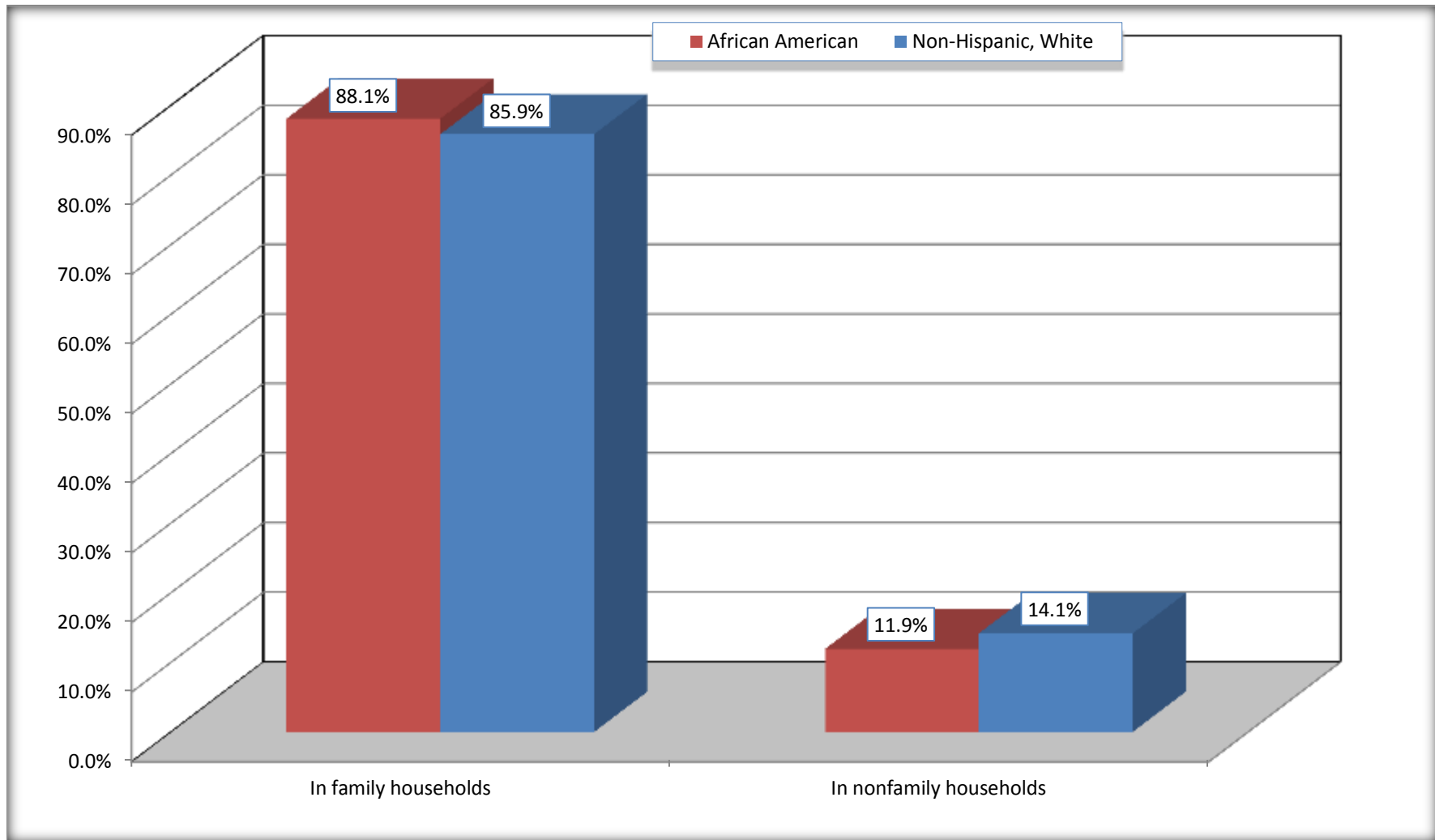
Source: U.S. Census Bureau, 2008-2012 American Community Survey

For information on confidentiality protection, sampling error, nonsampling error, and definitions, see Survey Methodology.

<http://www.census.gov/acs/www/UseData/index.htm>

Household Type for Population in Households

Macon County, Georgia



Source: B11002. HOUSEHOLD TYPE BY RELATIVES AND NONRELATIVES FOR POPULATION IN HOUSEHOLDS
Data Set: 2008-2012 American Community Survey 5-Year Estimates

B12002. MARITAL STATUS FOR THE POPULATION 15 YEARS AND OVER

Data Set: 2008-2012 American Community Survey 5-Year Estimates

	Macon County, Georgia					
	African American	Margin of Error (+/-)	% of AA Total	White, Not Hispanic	Margin of Error (+/-)	% of NHW Total
Total:	7,195	34	100.0%	4,004	236	100.0%
Never married	3,754	NC	52.2%	824	NC	20.6%
Now married (except separated)	1,752	NC	24.4%	2,338	NC	58.4%
Separated	330	NC	4.6%	41	NC	1.0%
Widowed	477	NC	6.6%	331	NC	8.3%
Divorced	882	NC	12.3%	470	NC	11.7%
Male:	3,890	34	54.1%	2,126	186	53.1%
Never married	2,163	180	30.1%	559	120	14.0%
Now married (except separated)	870	211	12.1%	1,222	163	30.5%
Separated	143	71	2.0%	24	25	0.6%
Widowed	148	79	2.1%	71	38	1.8%
Divorced	566	197	7.9%	250	90	6.2%
Female:	3,305	21	45.9%	1,878	75	46.9%
Never married	1,591	160	22.1%	265	111	6.6%
Now married (except separated)	882	194	12.3%	1,116	141	27.9%
Separated	187	71	2.6%	17	26	0.4%
Widowed	329	65	4.6%	260	91	6.5%
Divorced	316	89	4.4%	220	67	5.5%

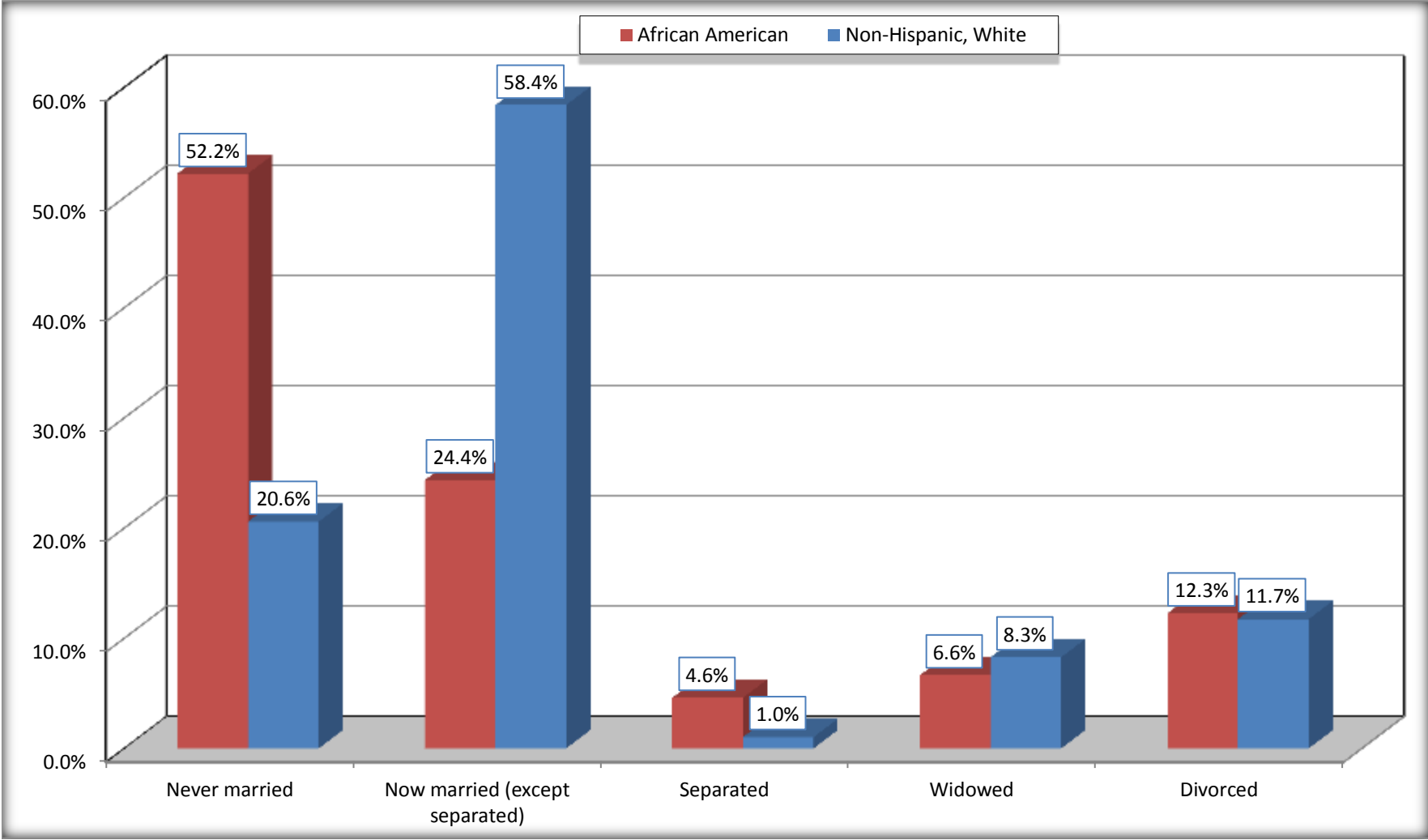
Source: U.S. Census Bureau, 2008-2012 American Community Survey

For information on confidentiality protection, sampling error, nonsampling error, and definitions, see Survey Methodology.

<http://www.census.gov/acs/www/UseData/index.htm>

Marital Status for the Population 15 Years and Over

Macon County, Georgia



Source: B12002. MARITAL STATUS FOR THE POPULATION 15 YEARS AND OVER
Data Set: 2008-2012 American Community Survey 5-Year Estimates

C15002. SEX BY EDUCATIONAL ATTAINMENT FOR THE POPULATION 25 YEARS AND OVER

Data Set: 2008-2012 American Community Survey 5-Year Estimates

	Macon County, Georgia					
	African American	Margin of Error (+/-)	% of AA Total	White, Not Hispanic	Margin of Error (+/-)	% of NHW Total
Total:	5,824	27	100.0%	3,413	155	100.0%
Less than high school diploma	1,671	NC	28.7%	736	NC	21.6%
High school graduate, GED, or alternative	2,418	NC	41.5%	1,457	NC	42.7%
Some college or associate's degree	1,375	NC	23.6%	706	NC	20.7%
Bachelor's degree or higher	360	NC	6.2%	514	NC	15.1%
Male:	3,102	27	53.3%	1,793	148	52.5%
Less than high school diploma	1,013	169	17.4%	474	140	13.9%
High school graduate, GED, or alternative	1,384	229	23.8%	739	136	21.7%
Some college or associate's degree	554	154	9.5%	357	118	10.5%
Bachelor's degree or higher	151	72	2.6%	223	113	6.5%
Female:	2,722	21	46.7%	1,620	29	47.5%
Less than high school diploma	658	123	11.3%	262	93	7.7%
High school graduate, GED, or alternative	1,034	164	17.8%	718	130	21.0%
Some college or associate's degree	821	162	14.1%	349	99	10.2%
Bachelor's degree or higher	209	80	3.6%	291	91	8.5%

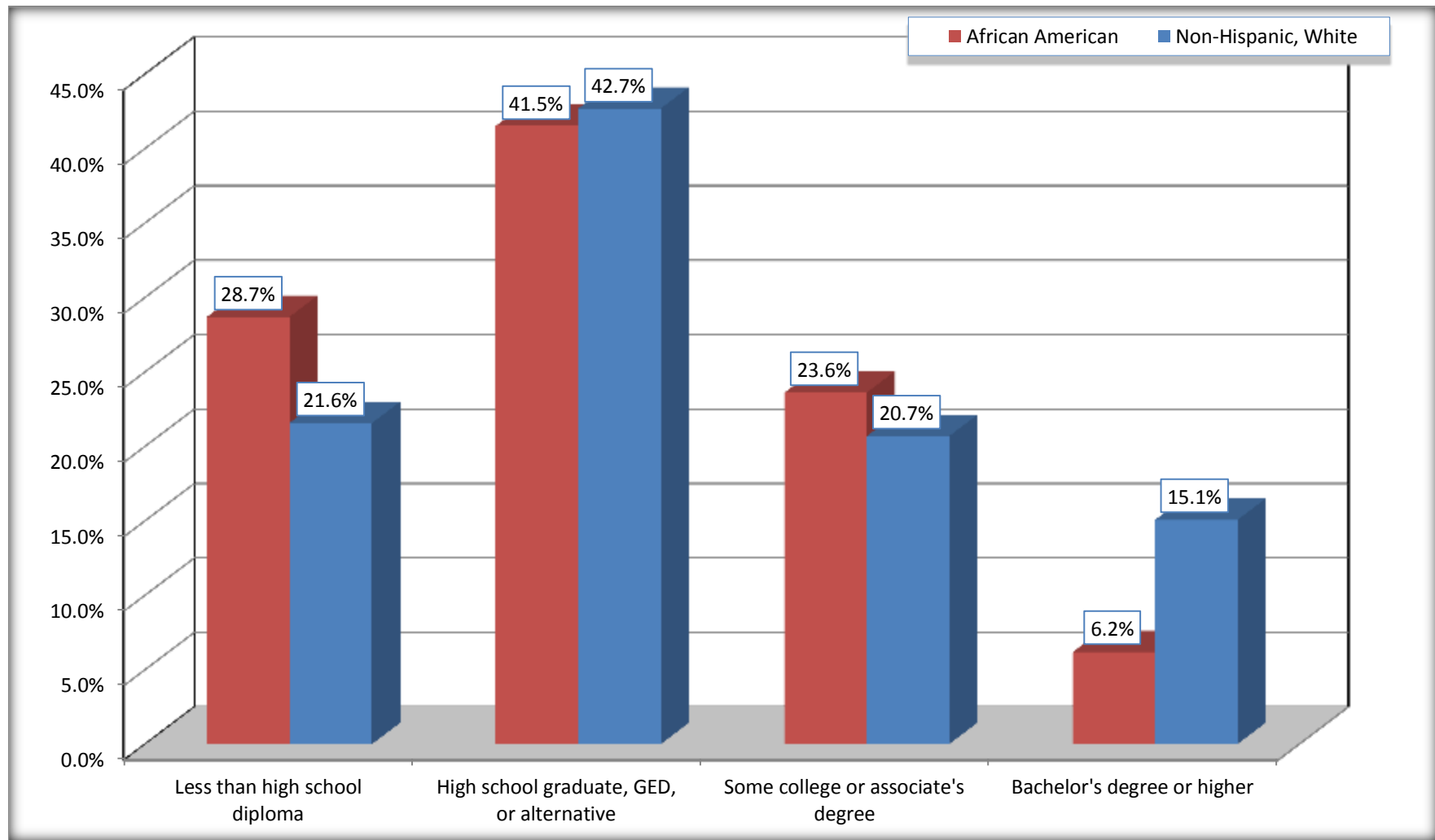
Source: U.S. Census Bureau, 2008-2012 American Community Survey

For information on confidentiality protection, sampling error, nonsampling error, and definitions, see Survey Methodology.

<http://www.census.gov/acs/www/UseData/index.htm>

Educational Attainment for the Population 25 Years and Older

Macon County, Georgia



Source: C15002. SEX BY EDUCATIONAL ATTAINMENT FOR THE POPULATION 25 YEARS AND OVER
Data Set: 2008-2012 American Community Survey 5-Year Estimates

B17010. POVERTY STATUS IN THE PAST 12 MONTHS OF FAMILIES BY FAMILY TYPE BY PRESENCE OF RELATED CHILDREN UNDER 18 YEARS

Data Set: 2008-2012 American Community Survey 5-Year Estimates

	Macon County, Georgia					
	African American	Margin of Error (+/-)	% of AA Total	White, Not Hispanic	Margin of Error (+/-)	% of NHW Total
Total:	1,945	221	100.0%	1,268	152	100.0%
Income in the past 12 months below poverty level:	512	165	26.3%	65	37	5.1%
Married-couple family:	76	48	3.9%	20	26	1.6%
With related children under 18 years	25	20	1.3%	17	26	1.3%
Other family:	436	155	22.4%	45	30	3.5%
Male householder, no wife present	39	40	2.0%	0	21	0.0%
With related children under 18 years	0	21	0.0%	0	21	0.0%
Female householder, no husband present	397	149	20.4%	45	30	3.5%
With related children under 18 years	305	131	15.7%	35	25	2.8%
Income in the past 12 months at or above poverty level:	1,433	210	73.7%	1,203	150	94.9%
Married-couple family:	639	177	32.9%	1,051	159	82.9%
With related children under 18 years	351	130	18.0%	256	76	20.2%
Other family:	794	194	40.8%	152	69	12.0%
Male householder, no wife present	264	114	13.6%	39	39	3.1%
With related children under 18 years	209	122	10.7%	0	21	0.0%
Female householder, no husband present	530	156	27.2%	113	55	8.9%
With related children under 18 years	236	110	12.1%	29	27	2.3%

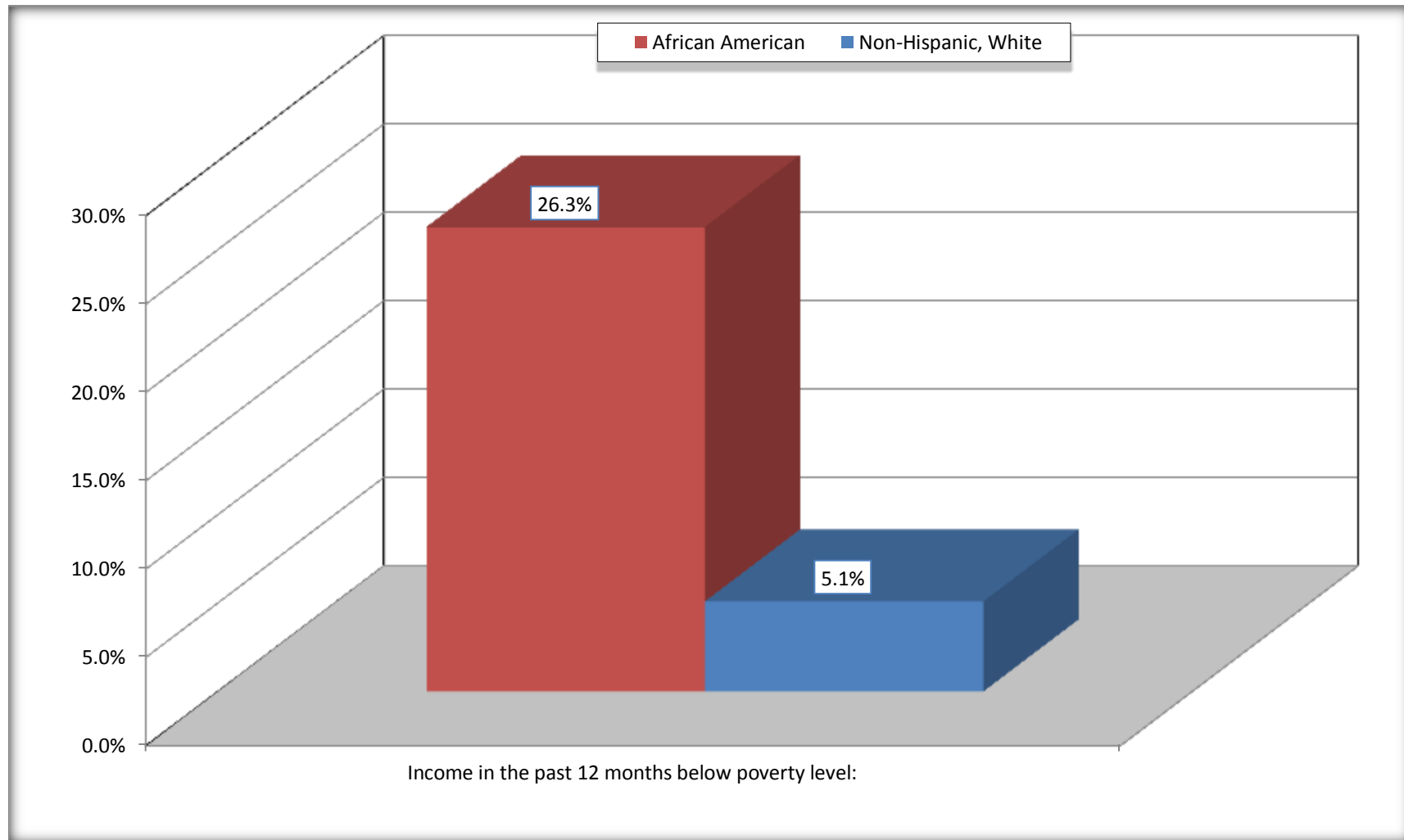
Source: U.S. Census Bureau, 2008-2012 American Community Survey

For information on confidentiality protection, sampling error, nonsampling error, and definitions, see Survey Methodology.

<http://www.census.gov/acs/www/UseData/index.htm>

Family Households Below Poverty in the Past 12 Months

Macon County, Georgia

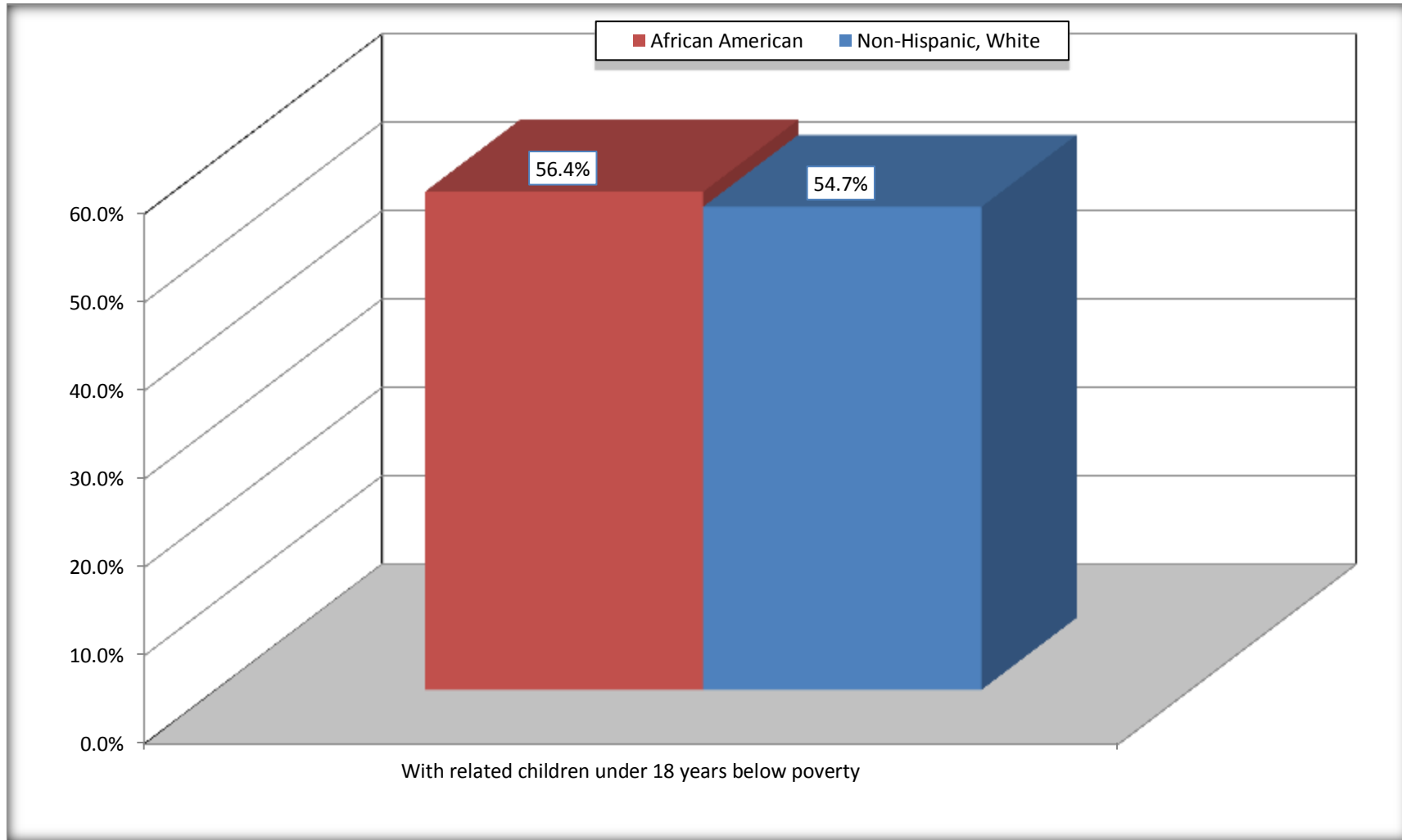


Source: B17010. POVERTY STATUS IN THE PAST 12 MONTHS OF FAMILIES BY FAMILY TYPE BY PRESENCE OF RELATED CHILDREN UNDER 18 YEARS

Data Set: 2008-2012 American Community Survey 5-Year Estimates

Female-headed Households with Related Children Below Poverty in the Past 12 Months

Macon County, Georgia



Source: B17010. POVERTY STATUS IN THE PAST 12 MONTHS OF FAMILIES BY FAMILY TYPE BY PRESENCE OF RELATED CHILDREN UNDER 18 YEARS

Data Set: 2008-2012 American Community Survey 5-Year Estimates

B17020 POVERTY STATUS IN THE PAST 12 MONTHS BY AGE - Universe: POPULATION FOR WHOM POVERTY STATUS IS DETERMINED

Data Set: 2008-2012 American Community Survey 5-Year Estimates

	Macon County, Georgia					
	African American	Margin of Error (+/-)	% of AA By Age	White, Not Hispanic	Margin of Error (+/-)	% of NHW By Age
Total:	7,800	135	100.0%	4,427	244	100.0%
Income in the past 12 months below poverty level:	2,555	569	32.8%	449	188	10.1%
Under 18 years	895	NC	43.3%	153	NC	16.9%
18 to 64 years	1,338	326	27.4%	234	109	8.7%
65 years and over	322	NC	37.6%	62	NC	7.4%
Income in the past 12 months at or above poverty level:	5,245	574	67.2%	3,978	270	89.9%
Under 18 years	1,173	NC	56.7%	754	NC	83.1%
18 to 64 years	3,538	324	72.6%	2,448	231	91.3%
65 years and over	534	NC	62.4%	776	NC	92.6%

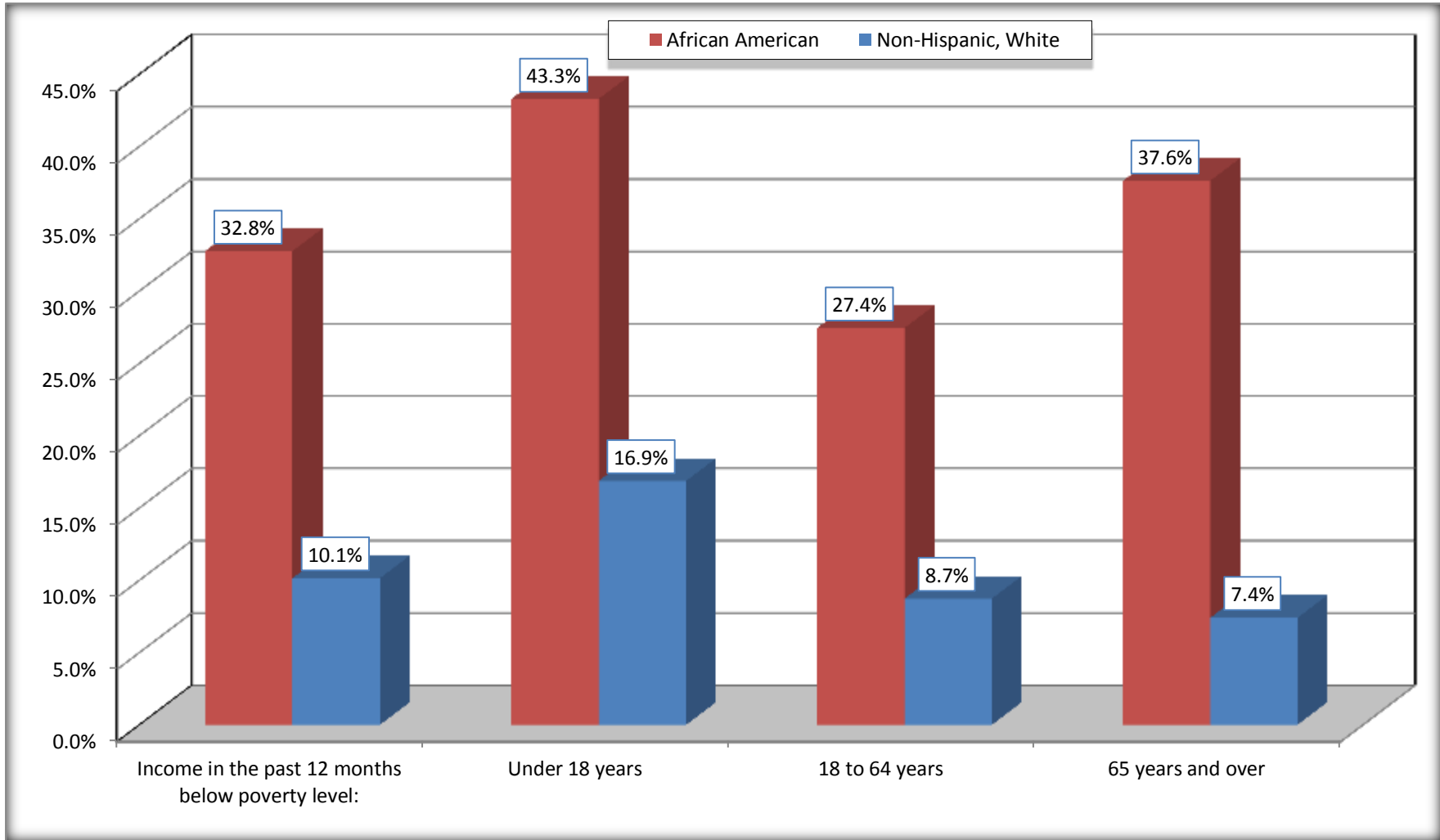
Source: U.S. Census Bureau, 2008-2012 American Community Survey

For information on confidentiality protection, sampling error, nonsampling error, and definitions, see Survey Methodology.

<http://www.census.gov/acs/www/UseData/index.htm>

Population Below Poverty in the Past 12 Months

Macon County, Georgia



Source: B17020 POVERTY STATUS IN THE PAST 12 MONTHS BY AGE - Universe: POPULATION FOR WHOM POVERTY STATUS IS DETERMINED
Data Set: 2008-2012 American Community Survey 5-Year Estimates

B19001. HOUSEHOLD INCOME IN THE PAST 12 MONTHS (IN 2010 INFLATION-ADJUSTED DOLLARS)

Data Set: 2008-2012 American Community Survey 5-Year Estimates

	Macon County, Georgia					
	African American	Margin of Error (+/-)	% of AA Total	White, Not Hispanic	Margin of Error (+/-)	% of NHW Total
Total:	2,786	222	100.0%	1,808	149	100.0%
Less than \$ 10,000	604	161	21.7%	88	49	4.9%
\$ 10,000 to \$ 14,999	185	74	6.6%	181	95	10.0%
\$ 15,000 to \$ 24,999	441	NC	15.8%	214	NC	11.8%
\$ 25,000 to \$ 34,999	505	NC	18.1%	332	NC	18.4%
\$ 35,000 to \$ 49,999	494	NC	17.7%	240	NC	13.3%
\$ 50,000 to \$ 74,999	374	NC	13.4%	449	NC	24.8%
\$ 75,000 to \$ 99,999	122	81	4.4%	212	105	11.7%
\$ 100,000 to \$ 149,999	44	NC	1.6%	63	NC	3.5%
\$ 150,000 to \$ 199,999	12	19	0.4%	7	12	0.4%
\$ 200,000 or more	5	9	0.2%	22	22	1.2%

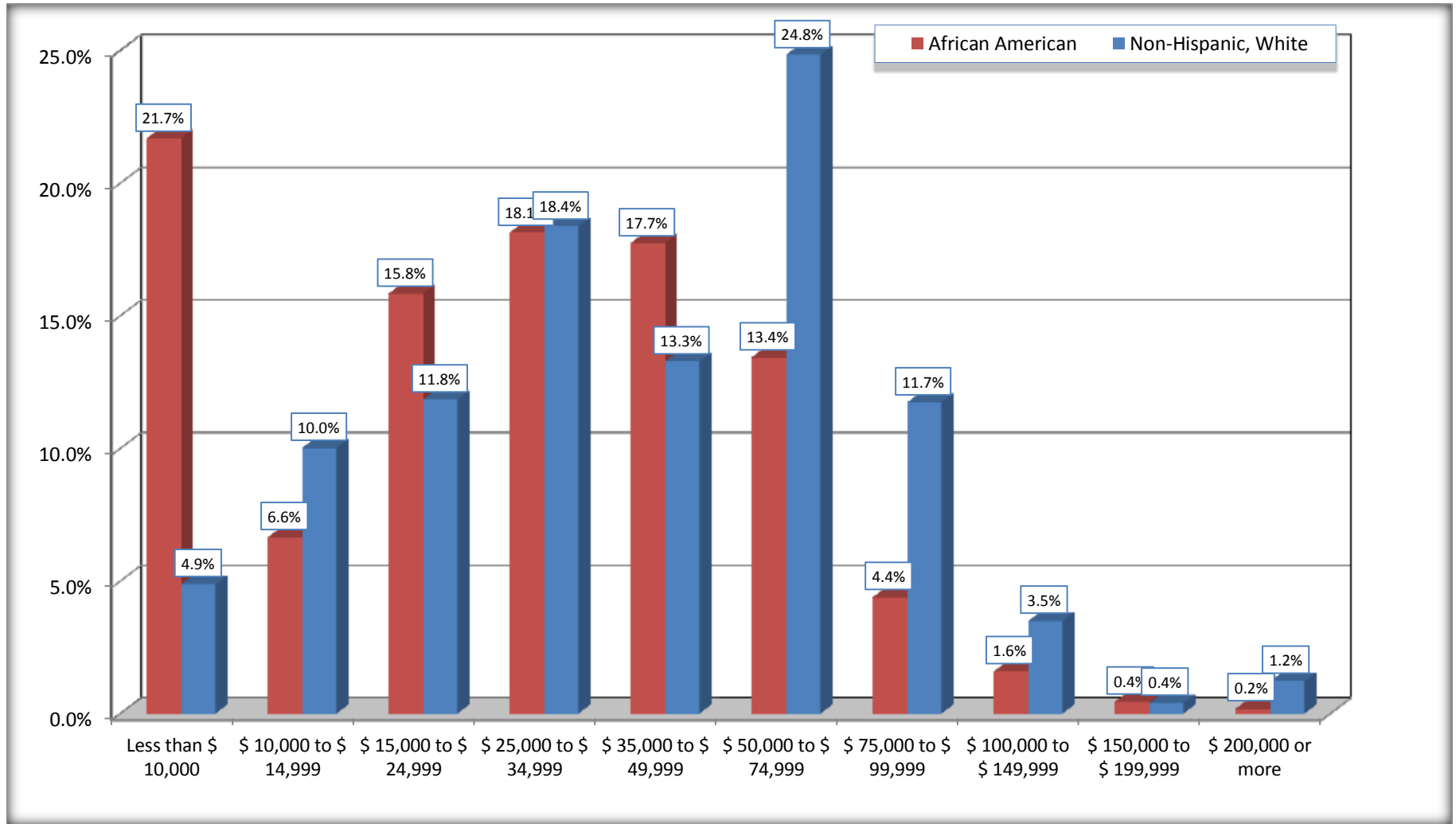
Source: U.S. Census Bureau, 2008-2012 American Community Survey

For information on confidentiality protection, sampling error, nonsampling error, and definitions, see Survey Methodology.

<http://www.census.gov/acs/www/UseData/index.htm>

Household Income in the Past 12 Months

Macon County, Georgia



Source: B19001. HOUSEHOLD INCOME IN THE PAST 12 MONTHS (IN 2010 INFLATION-ADJUSTED DOLLARS)
Data Set: 2008-2012 American Community Survey 5-Year Estimates

B19013. MEDIAN HOUSEHOLD INCOME IN THE PAST 12 MONTHS (IN 2010 INFLATION-ADJUSTED DOLLARS)

Data Set: 2008-2012 American Community Survey 5-Year Estimates

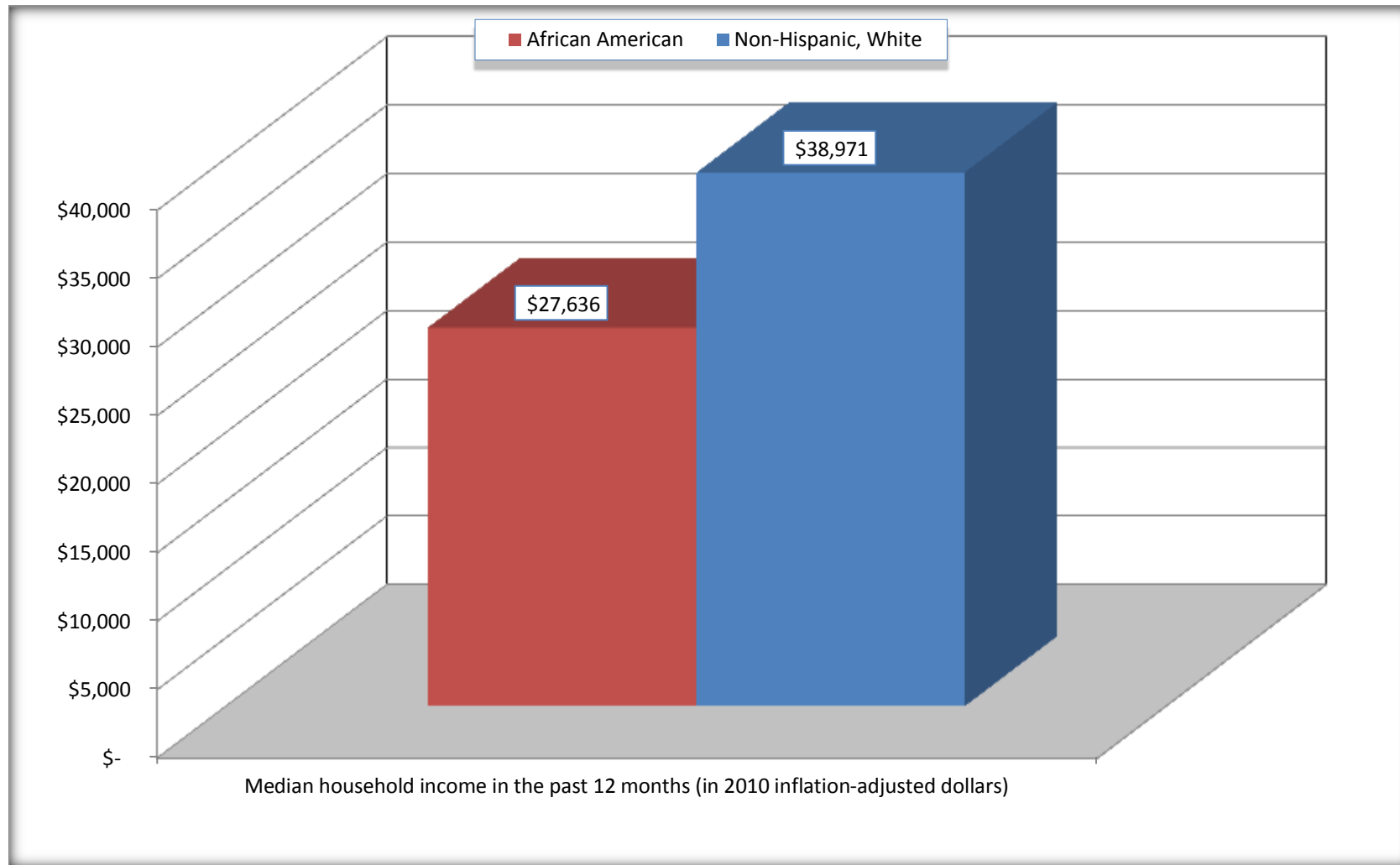
	Macon County, Georgia			
	African American	Margin of Error (+/-)	White, Not Hispanic	Margin of Error (+/-)
Median household income in the past 12 months (in 2010 inflation-adjusted dollars)	\$ 27,636	\$ 3,756	\$ 38,971	\$ 9,106

Source: U.S. Census Bureau, 2008-2012 American Community Survey

For information on confidentiality protection, sampling error, nonsampling error, and definitions, see Survey Methodology.
<http://www.census.gov/acs/www/UseData/index.htm>

Median Household Income in the Past 12 Months

Macon County, Georgia



Source: B19013. MEDIAN HOUSEHOLD INCOME IN THE PAST 12 MONTHS (IN 2010 INFLATION-ADJUSTED DOLLARS)
Data Set: 2008-2012 American Community Survey 5-Year Estimates

B19101. FAMILY INCOME IN THE PAST 12 MONTHS (IN 2010 INFLATION-ADJUSTED DOLLARS)

Data Set: 2008-2012 American Community Survey 5-Year Estimates

	Macon County, Georgia					
	African American	Margin of Error (+/-)	% of AA Total	White, Not Hispanic	Margin of Error (+/-)	% of NHW Total
Total:	1,945	221	100.0%	1,268	152	100.0%
Less than \$ 10,000	290	120	14.9%	16	19	1.3%
\$ 10,000 to \$ 14,999	102	64	5.2%	45	35	3.5%
\$ 15,000 to \$ 24,999	317	NC	16.3%	128	NC	10.1%
\$ 25,000 to \$ 34,999	337	NC	17.3%	229	NC	18.1%
\$ 35,000 to \$ 49,999	413	NC	21.2%	215	NC	17.0%
\$ 50,000 to \$ 74,999	306	NC	15.7%	342	NC	27.0%
\$ 100,000 to \$ 149,999	41	NC	2.1%	60	NC	4.7%
\$ 150,000 to \$ 199,999	12	19	0.6%	7	12	0.6%
\$ 200,000 or more	5	9	0.3%	22	22	1.7%

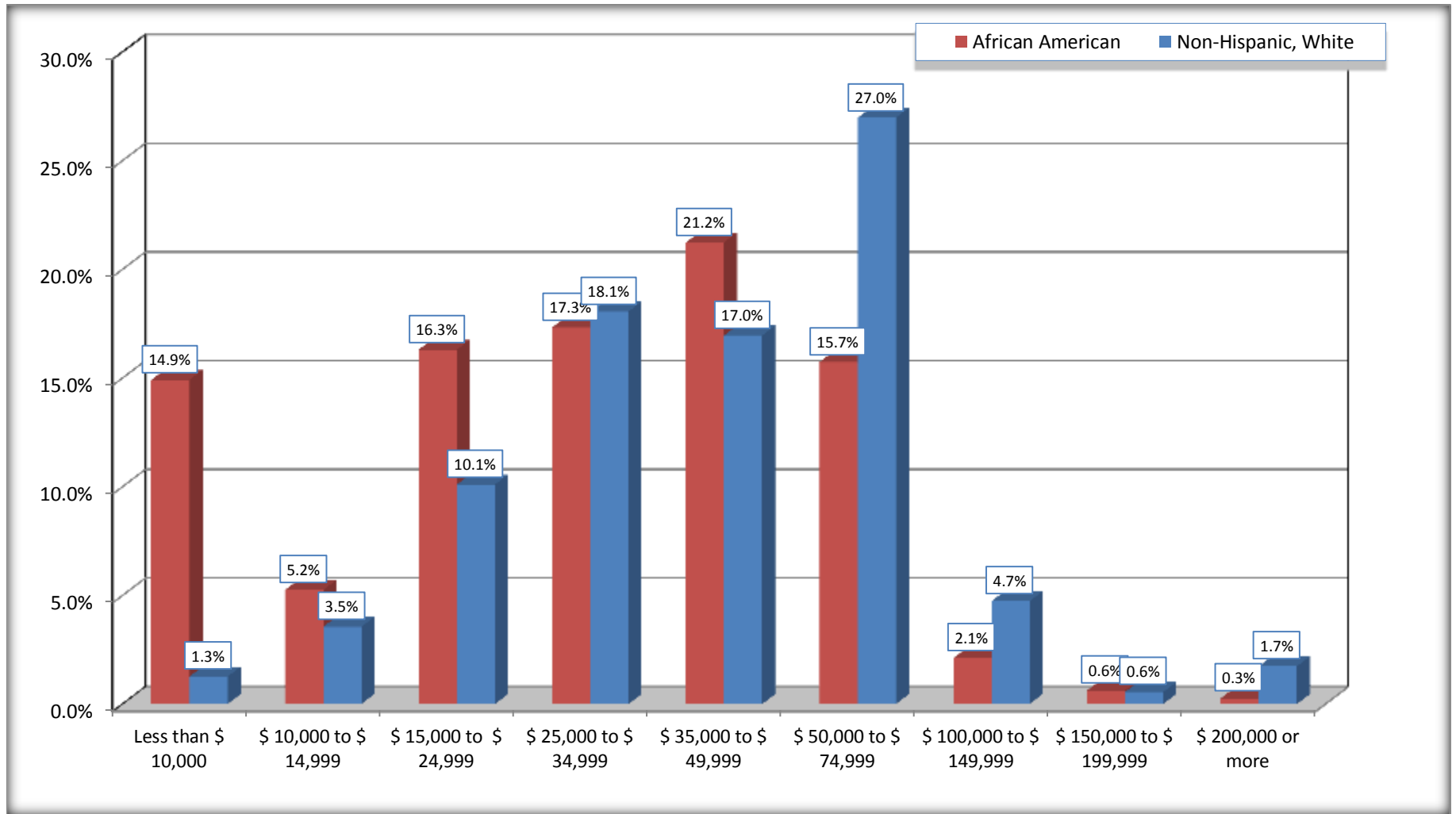
Source: U.S. Census Bureau, 2008-2012 American Community Survey

For information on confidentiality protection, sampling error, nonsampling error, and definitions, see Survey Methodology.

<http://www.census.gov/acs/www/UseData/index.htm>

Family Income in the Past 12 Months

Macon County, Georgia



Source: B19101. FAMILY INCOME IN THE PAST 12 MONTHS (IN 2010 INFLATION-ADJUSTED DOLLARS)
Data Set: 2008-2012 American Community Survey 5-Year Estimates

B19113. MEDIAN FAMILY INCOME IN THE PAST 12 MONTHS (IN 2010 INFLATION-ADJUSTED DOLLARS)

Data Set: 2008-2012 American Community Survey 5-Year Estimates

	Macon County, Georgia			
	African American	Margin of Error (+/-)	White, Not Hispanic	Margin of Error (+/-)
Median family income in the past 12 months (in 2010 inflation-adjusted dollars)	\$ 32,101	\$ 4,819	\$ 50,045	\$ 7,256

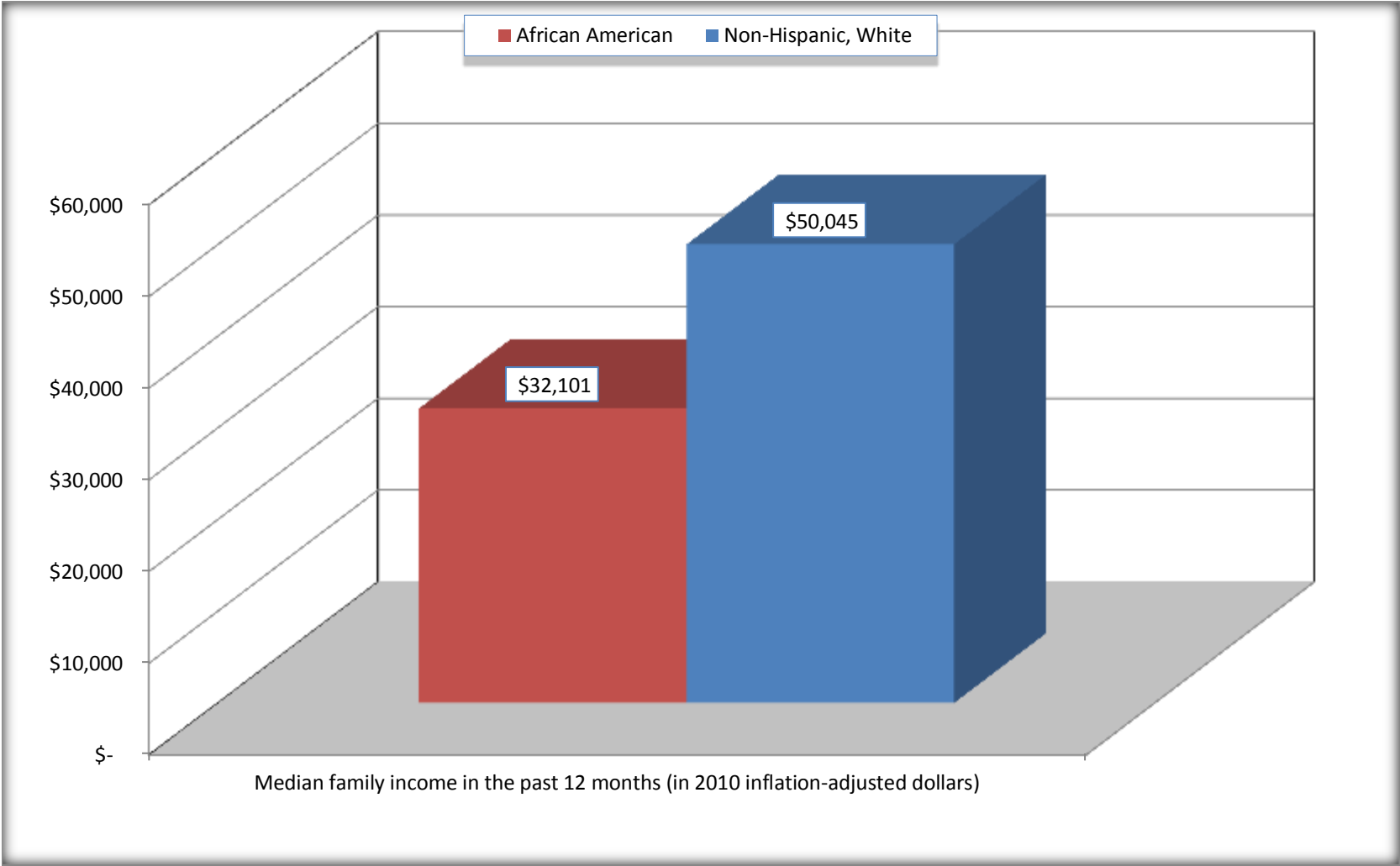
Source: U.S. Census Bureau, 2008-2012 American Community Survey

For information on confidentiality protection, sampling error, nonsampling error, and definitions, see Survey Methodology.

<http://www.census.gov/acs/www/UseData/index.htm>

Median Family Income in the Past 12 Months

Macon County, Georgia



Source: B19113. MEDIAN FAMILY INCOME IN THE PAST 12 MONTHS (IN 2010 INFLATION-ADJUSTED DOLLARS)
Data Set: 2008-2012 American Community Survey 5-Year Estimates

B19202. MEDIAN NONFAMILY HOUSEHOLD INCOME IN THE PAST 12 MONTHS (IN 2010 INFLATION-ADJUSTED DOLLARS)

Data Set: 2008-2012 American Community Survey 5-Year Estimates

	Macon County, Georgia			
	African American	Margin of Error (+/-)	White, Not Hispanic	Margin of Error (+/-)
Median nonfamily household income in the past 12 months (in 2010 inflation-adjusted dollars)	\$ 11,406	\$ 3,559	\$ 22,237	\$ 8,126

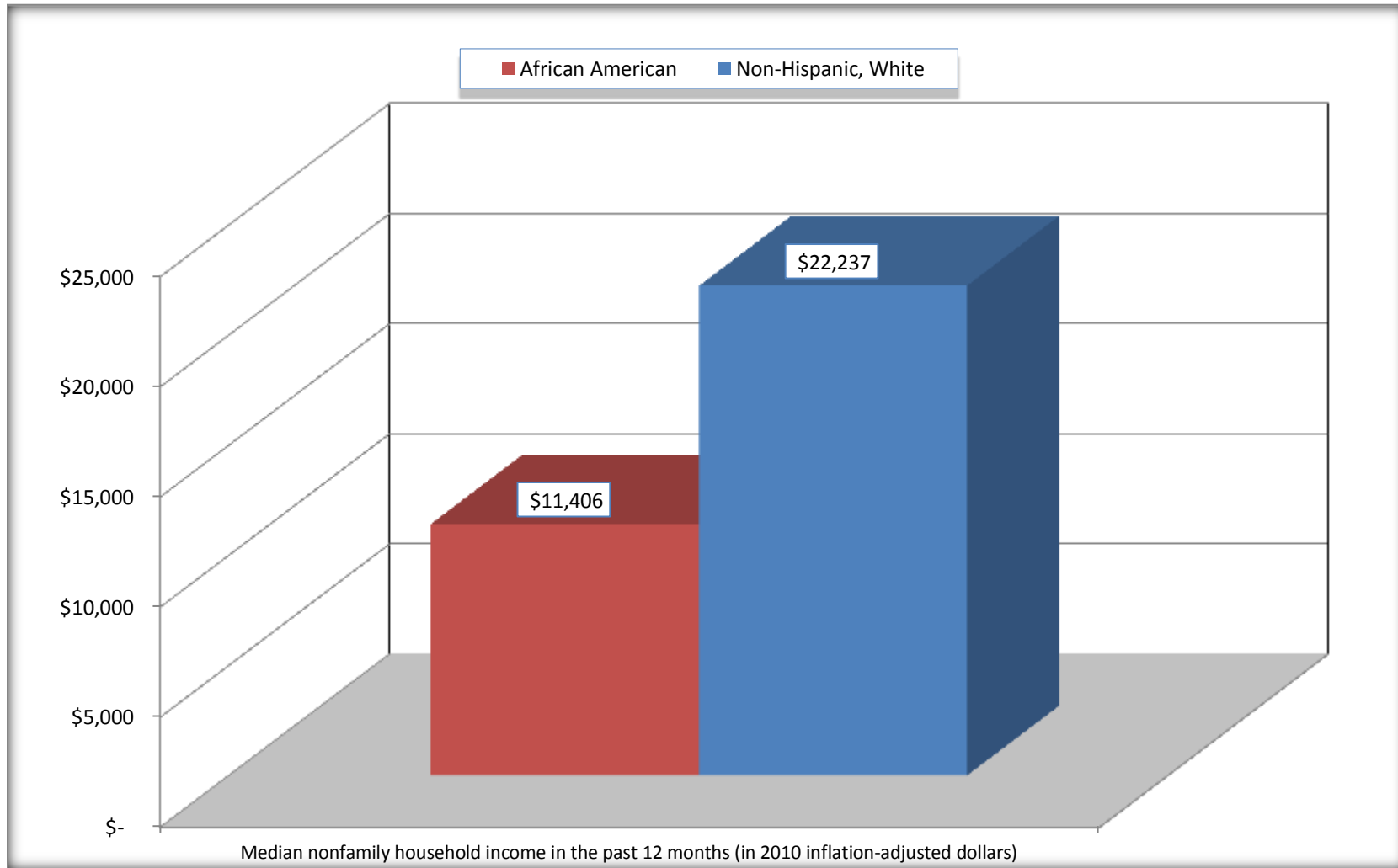
Source: U.S. Census Bureau, 2008-2012 American Community Survey

For information on confidentiality protection, sampling error, nonsampling error, and definitions, see Survey Methodology.

<http://www.census.gov/acs/www/UseData/index.htm>

Median Non-Family Income in the Past 12 Months

Macon County, Georgia



Source: B19202. MEDIAN NONFAMILY HOUSEHOLD INCOME IN THE PAST 12 MONTHS (IN 2010 INFLATION-ADJUSTED DOLLARS)
Data Set: 2008-2012 American Community Survey 5-Year Estimates

B19301. PER CAPITA INCOME IN THE PAST 12 MONTHS (IN 2010 INFLATION-ADJUSTED DOLLARS)

Data Set: 2008-2012 American Community Survey 5-Year Estimates

	Macon County, Georgia			
	African American	Margin of Error (+/-)	White, Not Hispanic	Margin of Error (+/-)
Per capita income in the past 12 months (in 2010 inflation-adjusted dollars)	\$ 11,761	\$ 1,192	\$ 19,527	\$ 1,980

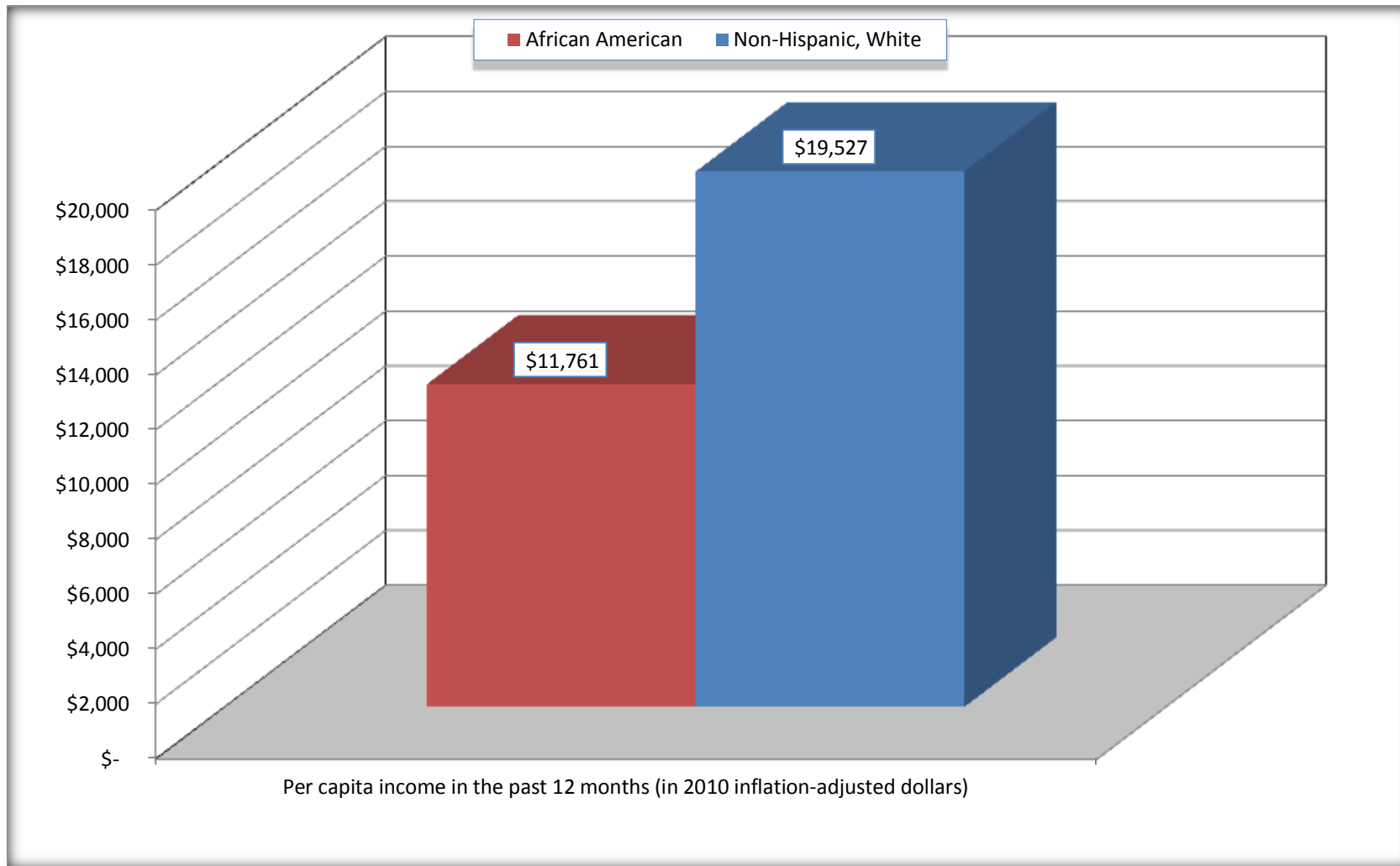
Source: U.S. Census Bureau, 2008-2012 American Community Survey

For information on confidentiality protection, sampling error, nonsampling error, and definitions, see Survey Methodology.

<http://www.census.gov/acs/www/UseData/index.htm>

Per capita Income in the Past 12 Months

Macon County, Georgia



Source: B19301. PER CAPITA INCOME IN THE PAST 12 MONTHS (IN 2010 INFLATION-ADJUSTED DOLLARS)
Data Set: 2008-2012 American Community Survey 5-Year Estimates

B20017. MEDIAN EARNINGS IN THE PAST 12 MONTHS (IN 2010 INFLATION-ADJUSTED DOLLARS) BY SEX BY WORK EXPERIENCE IN THE PAST 12 MONTHS FOR THE POPULATION 16 YEARS AND OVER WITH EARNINGS IN THE PAST 12 MONTHS

Data Set: 2008-2012 American Community Survey 5-Year Estimates

	Macon County, Georgia			
	African American	Margin of Error (+/-)	White, Not Hispanic	Margin of Error (+/-)
Median earnings in the past 12 months (in 2010 inflation-adjusted dollars) --				
Total:	\$ 20,562	\$ 1,904	\$ 23,640	\$ 1,810
Male --				
Total	\$ 24,469	\$ 4,304	\$ 26,165	\$ 4,670
Worked full-time, year-round in the past 12 months	\$ 30,391	\$ 3,305	\$ 32,563	\$ 13,499
Other	\$ 4,795	\$ 6,246	\$ 14,260	\$ 8,759
Female --				
Total	\$ 17,529	\$ 2,605	\$ 16,936	\$ 2,151
Worked full-time, year-round in the past 12 months	\$ 21,834	\$ 1,657	\$ 22,424	\$ 7,307
Other	\$ 6,375	\$ 2,398	\$ 7,697	\$ 6,180

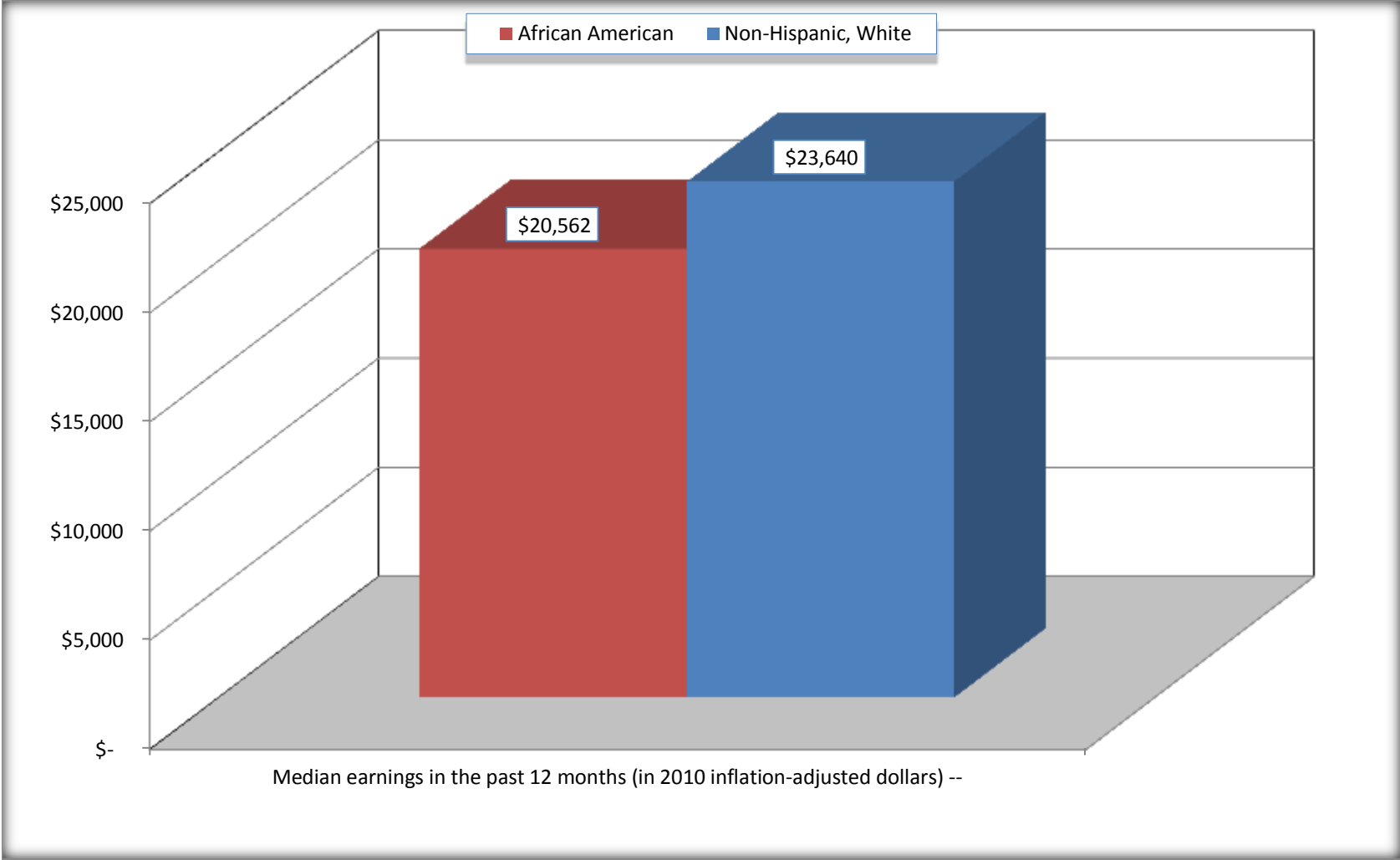
Source: U.S. Census Bureau, 2008-2012 American Community Survey

For information on confidentiality protection, sampling error, nonsampling error, and definitions, see Survey Methodology.

<http://www.census.gov/acs/www/UseData/index.htm>

Median earnings in the Past 12 Months (16 Years and Over with Earnings)

Macon County, Georgia



Source: B20017. MEDIAN EARNINGS IN THE PAST 12 MONTHS (IN 2010 INFLATION-ADJUSTED DOLLARS) BY SEX BY WORK EXPERIENCE IN THE PAST 12 MONTHS FOR THE POPULATION 16 YEARS AND OVER WITH EARNINGS IN THE PAST 12 MONTHS
Data Set: 2008-2012 American Community Survey 5-Year Estimates

B20005. SEX BY WORK EXPERIENCE IN THE PAST 12 MONTHS BY EARNINGS IN THE PAST 12 MONTHS (IN 2010 INFLATION-ADJUSTED DOLLARS) FOR THE POPULATION 16 YEARS AND OVER

Data Set: 2008-2012 American Community Survey 5-Year Estimates

	Macon County, Georgia					
	African American	Margin of Error (+/-)	% of AA Total	White, Not Hispanic	Margin of Error (+/-)	% of NHW Total
Total:	7,013	62	100.0%	3,974	238	100.0%
Worked full-time, year-round in the past 12 months:	2,115	NC	30.2%	1,395	NC	35.1%
No earnings	0	NC	0.0%	0	NC	0.0%
With earnings:	2,115	NC	30.2%	1,395	NC	35.1%
\$ 1 to \$ 9,999 or loss	118	NC	1.7%	27	NC	0.7%
\$ 10,000 to \$ 19,999	367	NC	5.2%	374	NC	9.4%
\$ 20,000 to \$ 29,999	768	NC	11.0%	336	NC	8.5%
\$ 30,000 to \$ 49,999	516	NC	7.4%	337	NC	8.5%
\$ 50,000 to \$ 74,999	338	NC	4.8%	254	NC	6.4%
\$ 75,000 or more	8	NC	0.1%	67	NC	1.7%
Other:	4,898	NC	69.8%	2,579	NC	64.9%
No earnings	3,567	NC	50.9%	1,757	NC	44.2%
With earnings: less than full time, year-round	1,331	NC	19.0%	822	NC	20.7%
Male:	3,804	50	54.2%	2,117	189	53.3%
Worked full-time, year-round in the past 12 months:	1,097	189	15.6%	811	151	20.4%
No earnings	0	21	0.0%	0	21	0.0%
With earnings:	1,097	189	15.6%	811	151	20.4%
\$ 1 to \$ 9,999 or loss	14	NC	0.2%	13	NC	0.3%
\$ 10,000 to \$ 19,999	75	NC	1.1%	128	NC	3.2%
\$ 20,000 to \$ 29,999	431	NC	6.1%	214	NC	5.4%
\$ 30,000 to \$ 49,999	361	NC	5.1%	211	NC	5.3%
\$ 50,000 to \$ 74,999	216	NC	3.1%	182	NC	4.6%
\$ 75,000 or more	0	NC	0.0%	63	NC	1.6%

	Macon County, Georgia					
	African American	Margin of Error (+/-)	% of AA Total	White, Not Hispanic	Margin of Error (+/-)	% of NHW Total
Other:	2,707	196	38.6%	1,306	151	32.9%
No earnings	2,003	243	28.6%	869	116	21.9%
With earnings:	704	207	10.0%	437	139	11.0%
Female:	3,209	53	45.8%	1,857	73	46.7%
Worked full-time, year-round in the past 12 months:	1,018	148	14.5%	584	121	14.7%
No earnings	0	21	0.0%	0	21	0.0%
With earnings:	1,018	148	14.5%	584	121	14.7%
\$ 1 to \$ 9,999 or loss	104	NC	1.5%	14	NC	0.4%
\$ 10,000 to \$ 19,999	292	NC	4.2%	246	NC	6.2%
\$ 20,000 to \$ 29,999	337	NC	4.8%	122	NC	3.1%
\$ 30,000 to \$ 49,999	155	NC	2.2%	126	NC	3.2%
\$ 50,000 to \$ 74,999	122	NC	1.7%	72	NC	1.8%
\$ 75,000 or more	8	NC	0.1%	4	NC	0.1%
Other:	2,191	164	31.2%	1,273	145	32.0%
No earnings	1,564	187	22.3%	888	139	22.3%
With earnings:	627	168	8.9%	385	135	9.7%

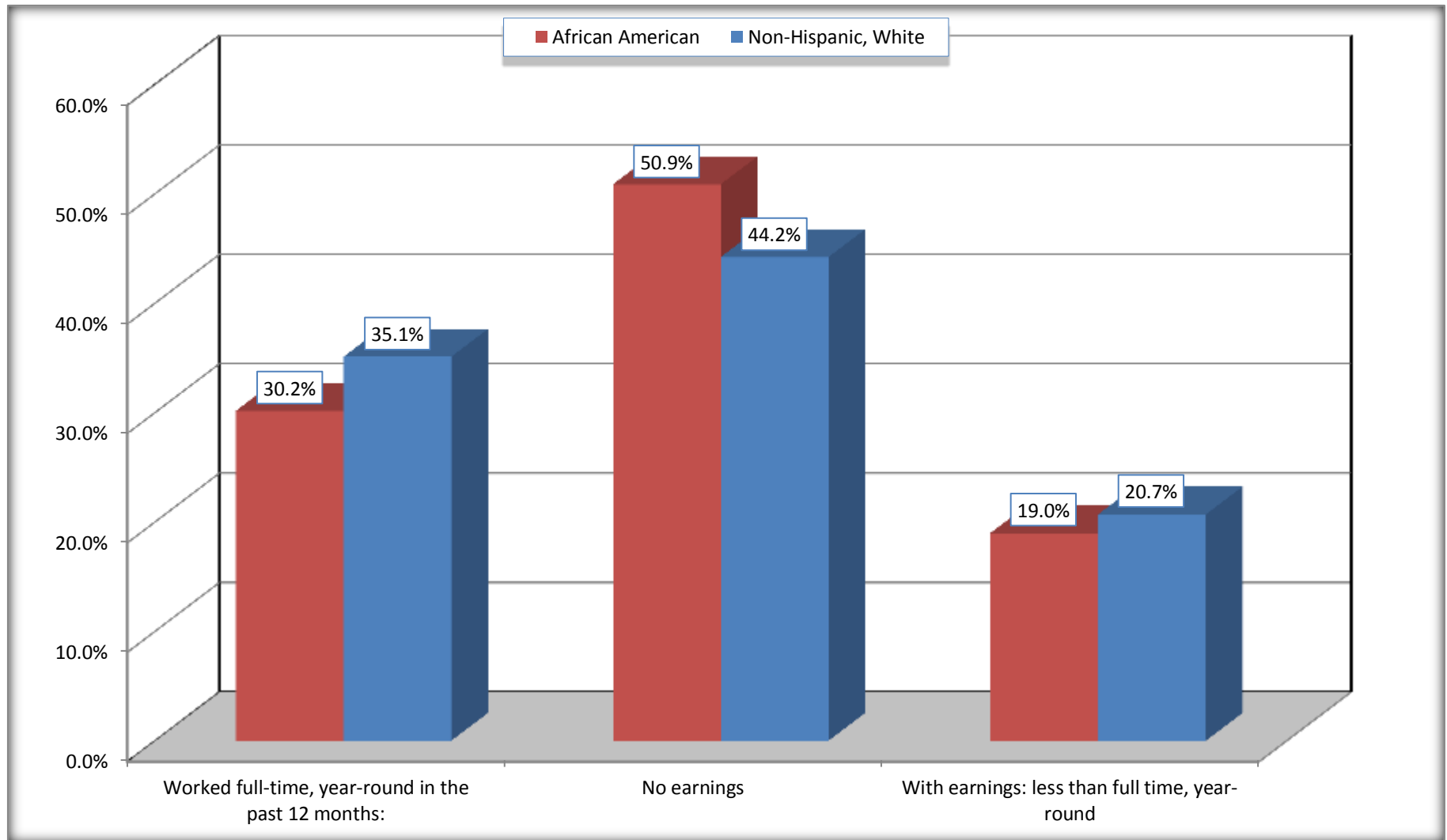
Source: U.S. Census Bureau, 2008-2012 American Community Survey

For information on confidentiality protection, sampling error, nonsampling error, and definitions, see Survey Methodology.

<http://www.census.gov/acs/www/UseData/index.htm>

Employment and Earnings in in the Past 12 Months (16 Years and Over)

Macon County, Georgia



Source: B20005. SEX BY WORK EXPERIENCE IN THE PAST 12 MONTHS BY EARNINGS IN THE PAST 12 MONTHS (IN 2010 INFLATION-ADJUSTED DOLLARS) FOR THE POPULATION 16 YEARS AND OVER

Data Set: 2008-2012 American Community Survey 5-Year Estimates

C21001. SEX BY AGE BY VETERAN STATUS FOR THE CIVILIAN POPULATION 18 YEARS AND OVER

Data Set: 2008-2012 American Community Survey 5-Year Estimates

	Macon County, Georgia					
	African American	Margin of Error (+/-)	% of AA Total	White, Not Hispanic	Margin of Error (+/-)	% of NHW Total
Total:	6,802	34	100.0%	3,831	236	100.0%
Veteran	343	NC	5.0%	518	NC	13.5%
Nonveteran	6,459	NC	95.0%	3,313	NC	86.5%
Male:	3,694	34	54.3%	2,011	178	52.5%
18 to 64 years:	3,332	34	49.0%	1,582	178	41.3%
Veteran	270	102	4.0%	284	90	7.4%
Nonveteran	3,062	109	45.0%	1,298	188	33.9%
65 years and over:	362	21	5.3%	429	21	11.2%
Veteran	73	44	1.1%	205	50	5.4%
Nonveteran	289	44	4.2%	224	50	5.8%
Female:	3,108	21	45.7%	1,820	60	47.5%
18 to 64 years:	2,540	21	37.3%	1,350	60	35.2%
Veteran	0	21	0.0%	3	6	0.1%
Nonveteran	2,540	21	37.3%	1,347	60	35.2%
65 years and over:	568	21	8.4%	470	21	12.3%
Veteran	0	21	0.0%	26	27	0.7%
Nonveteran	568	21	8.4%	444	27	11.6%

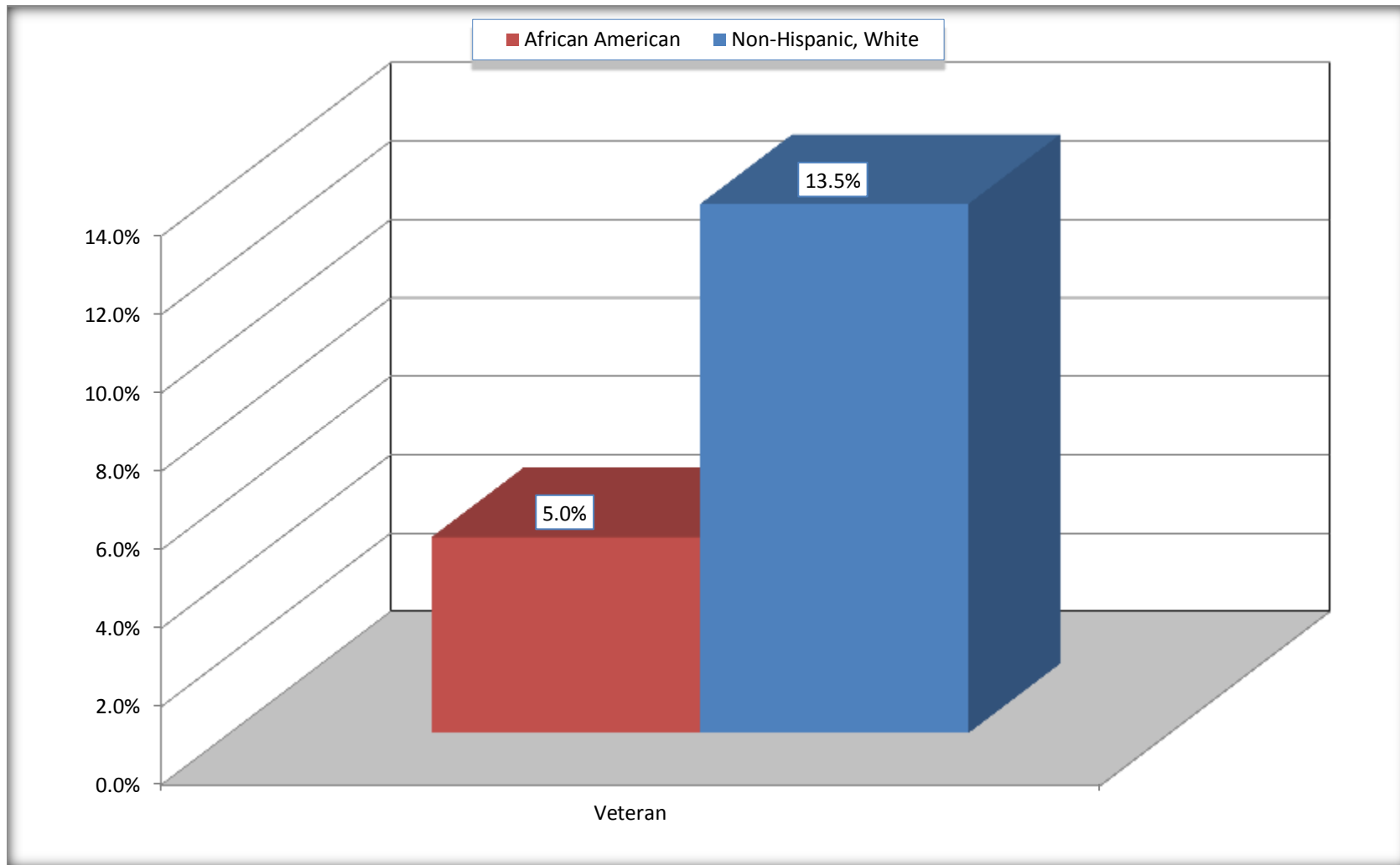
Source: U.S. Census Bureau, 2008-2012 American Community Survey

For information on confidentiality protection, sampling error, nonsampling error, and definitions, see Survey Methodology.

<http://www.census.gov/acs/www/UseData/index.htm>

Veterans in the Civilian Population 18 Years and Over

Macon County, Georgia



Source: C21001. SEX BY AGE BY VETERAN STATUS FOR THE CIVILIAN POPULATION 18 YEARS AND OVER
Data Set: 2008-2012 American Community Survey 5-Year Estimates

B22005. RECEIPT OF FOOD STAMPS/SNAP IN THE PAST 12 MONTHS BY RACE OF HOUSEHOLDER

Data Set: 2008-2012 American Community Survey 5-Year Estimates

	Macon County, Georgia					
	African American	Margin of Error (+/-)	% of AA Total	White, Not Hispanic	Margin of Error (+/-)	% of NHW Total
Total:	2,786	222	100.0%	1,808	149	100.0%
HH received Food Stamps/SNAP in the past 12 months	679	164	24.4%	257	97	14.2%
HH did not receive Food Stamps/SNAP in the past 12 months	2,107	236	75.6%	1,551	158	85.8%

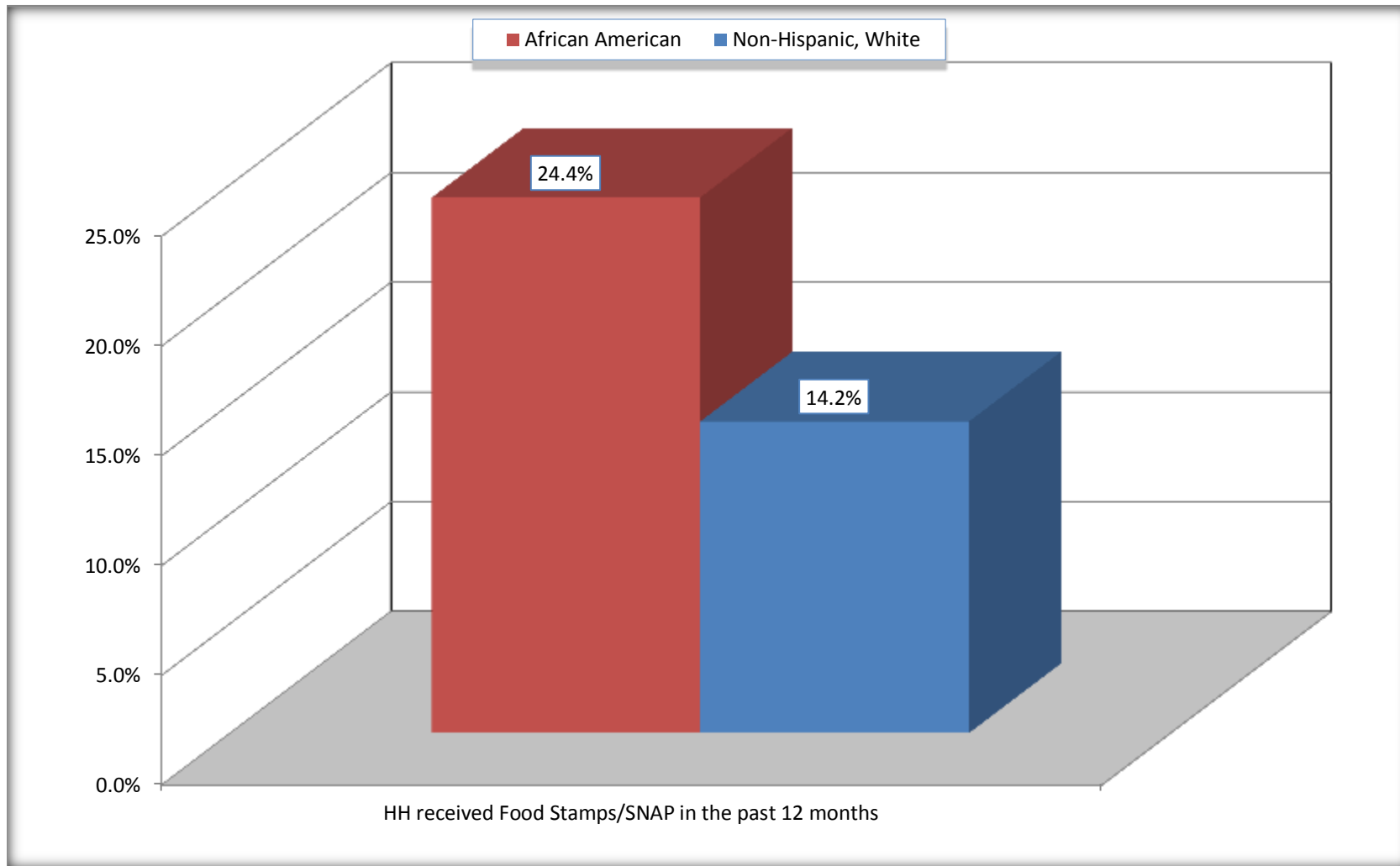
Source: U.S. Census Bureau, 2008-2012 American Community Survey

For information on confidentiality protection, sampling error, nonsampling error, and definitions, see Survey Methodology.

<http://www.census.gov/acs/www/UseData/index.htm>

Receipt of Food Stamps/SNAP in the Past 12 Months by Household

Macon County, Georgia



Source: B22005. RECEIPT OF FOOD STAMPS/SNAP IN THE PAST 12 MONTHS BY RACE OF HOUSEHOLDER
Data Set: 2008-2012 American Community Survey 5-Year Estimates

C23002. SEX BY AGE BY EMPLOYMENT STATUS FOR THE POPULATION 16 YEARS AND OVER

Data Set: 2008-2012 American Community Survey 5-Year Estimates

	Macon County, Georgia					
	African American	Margin of Error (+/-)	% of AA Total	White, Not Hispanic	Margin of Error (+/-)	% of NHW Total
Total:	7,013	62	100.0%	3,974	238	100.0%
In labor force:	3,362	NC	47.9%	2,154	NC	54.2%
In Armed Forces	0	NC	0.0%	0	NC	0.0%
Civilian:	3,272	NC	46.7%	2,042	NC	51.4%
Employed	2,811	NC	40.1%	2,010	NC	50.6%
Unemployed	551	NC	7.9%	144	NC	3.6%
Not in labor force	3,651	NC	52.1%	1,820	NC	45.8%
Male:	3,804	50	54.2%	2,117	189	53.3%
16 to 64 years:	3,442	50	49.1%	1,688	189	42.5%
In labor force:	1,705	198	24.3%	1,157	173	29.1%
In Armed Forces	0	21	0.0%	0	21	0.0%
Civilian:	1,705	198	24.3%	1,157	173	29.1%
Employed	1388	204	19.8%	1063	176	26.7%
Unemployed	317	161	4.5%	94	76	2.4%
Not in labor force	1,737	211	24.8%	531	108	13.4%
65 years and over:	362	21	5.2%	429	21	10.8%
In labor force:	49	35	0.7%	74	38	1.9%
Employed	49	35	0.7%	74	38	1.9%
Unemployed	0	21	0.0%	0	21	0.0%
Not in labor force	313	35	4.5%	355	38	8.9%

	Macon County, Georgia					
	African American	Margin of Error (+/-)	% of AA Total	White, Not Hispanic	Margin of Error (+/-)	% of NHW Total
Female:	3,209	53	45.8%	1,857	73	46.7%
16 to 64 years:	2,641	53	37.7%	1,387	73	34.9%
In labor force:	1,567	167	22.3%	885	135	22.3%
In Armed Forces	0	21	0.0%	0	21	0.0%
Civilian:	1,567	167	22.3%	885	135	22.3%
Employed	1,333	167	19.0%	835	135	21.0%
Unemployed	234	117	3.3%	50	32	1.3%
Not in labor force	1,074	179	15.3%	502	135	12.6%
65 years and over:	568	21	8.1%	470	21	11.8%
In labor force:	41	36	0.6%	38	29	1.0%
Employed	41	36	0.6%	38	29	1.0%
Unemployed	0	21	0.0%	0	21	0.0%
Not in labor force	527	36	7.5%	432	29	10.9%

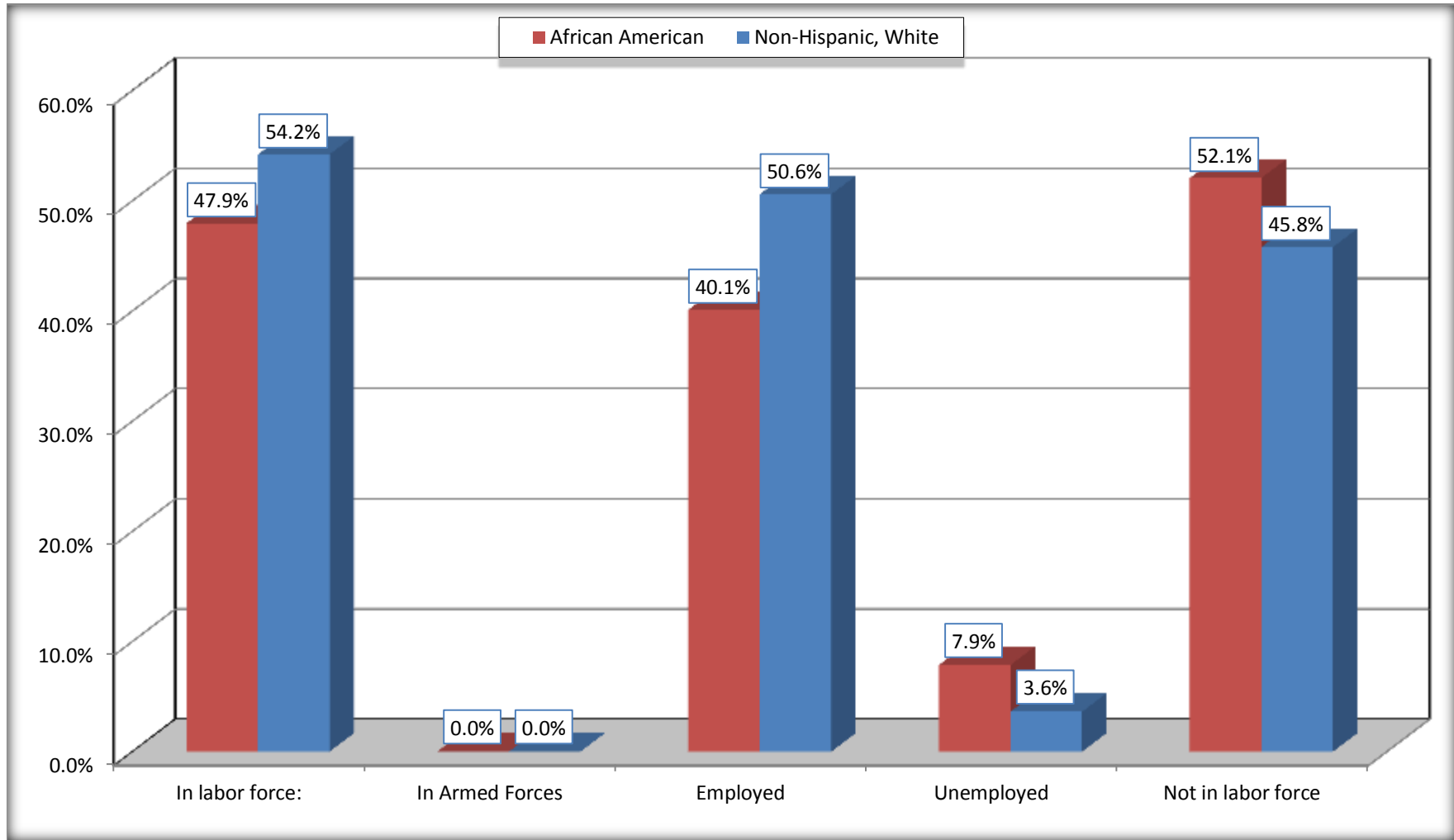
Source: U.S. Census Bureau, 2008-2012 American Community Survey

For information on confidentiality protection, sampling error, nonsampling error, and definitions, see Survey Methodology.

<http://www.census.gov/acs/www/UseData/index.htm>

Employment Status for the Population 16 years and over

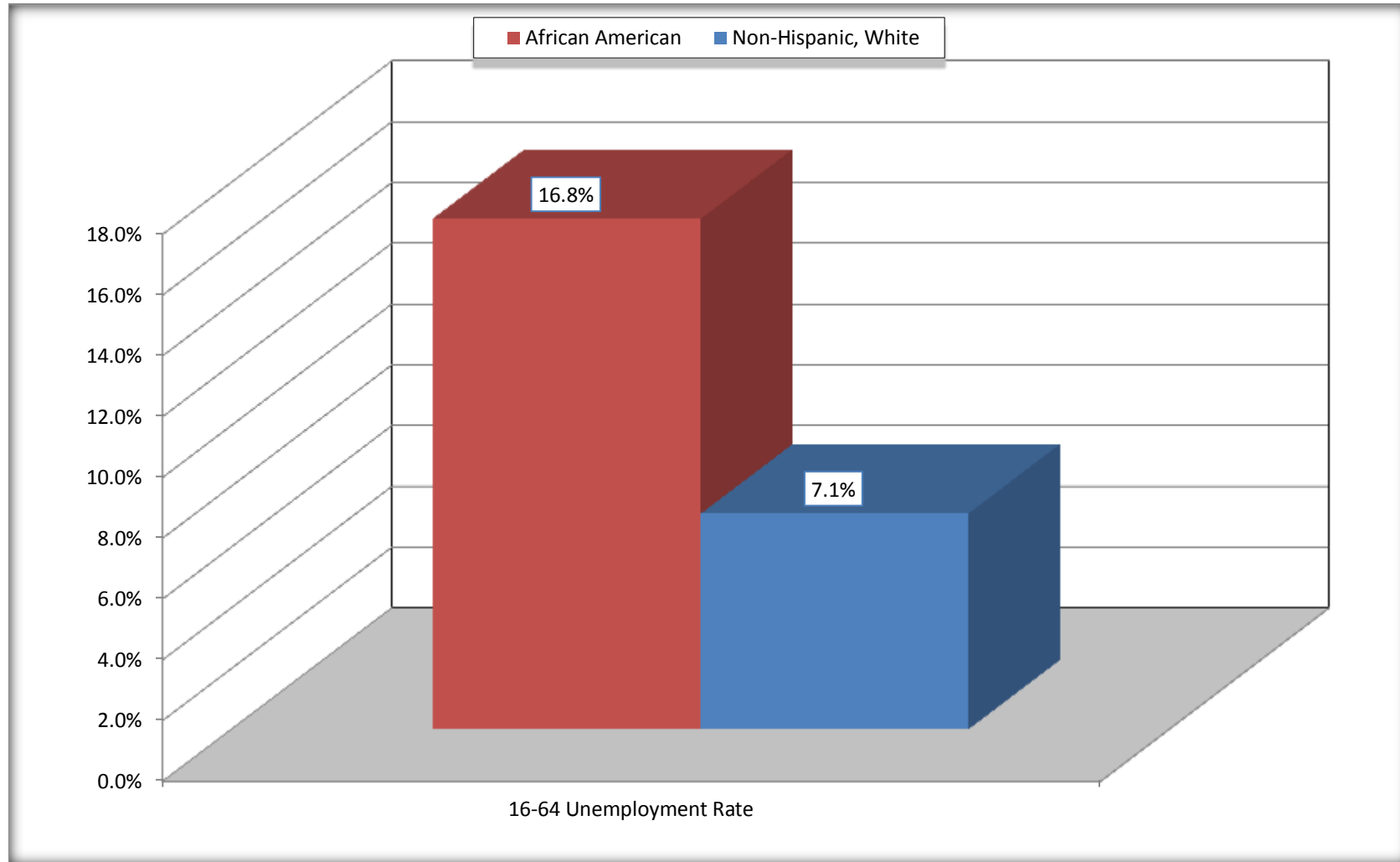
Macon County, Georgia



Source: C23002. SEX BY AGE BY EMPLOYMENT STATUS FOR THE POPULATION 16 YEARS AND OVER
Data Set: 2008-2012 American Community Survey 5-Year Estimates

Unemployment of Working Age Population (Ages 16 to 64) (As a Percent of 16-64 Civilian Labor Force)

Macon County, Georgia



Source: C23002. SEX BY AGE BY EMPLOYMENT STATUS FOR THE POPULATION 16 YEARS AND OVER
Data Set: 2008-2012 American Community Survey 5-Year Estimates

C24010. SEX BY OCCUPATION FOR THE CIVILIAN EMPLOYED POPULATION 16 YEARS AND OVER

Data Set: 2008-2012 American Community Survey 5-Year Estimates

	Macon County, Georgia					
	African American	Margin of Error (+/-)	% of AA Total	White, Not Hispanic	Margin of Error (+/-)	% of NHW Total
Total:	2,811	248	100.0%	2,010	246	100.0%
Management, professional, and related occupations	649	NC	23.1%	406	NC	20.2%
Service occupations	588	NC	20.9%	347	NC	17.3%
Sales and office occupations	418	NC	14.9%	408	NC	20.3%
Natural resources, construction, and maintenance occupations:	294	NC	10.5%	399	NC	19.9%
Production, transportation, and material moving occupations	862	NC	30.7%	450	NC	22.4%
Male:	1,437	204	51.1%	1,137	176	56.6%
Management, business, science, and arts occupations:	247	120	8.8%	130	64	6.5%
Service occupations	172	91	6.1%	132	90	6.6%
Sales and office occupations	124	92	4.4%	167	105	8.3%
Natural resources, construction, and maintenance occupations:	258	104	9.2%	380	120	18.9%
Production, transportation, and material moving occupations	636	210	22.6%	328	127	16.3%
Female:	1,374	170	48.9%	873	136	43.4%
Management, professional, and related occupations	402	117	14.3%	276	69	13.7%
Service occupations	416	127	14.8%	215	93	10.7%
Sales and office occupations	294	105	10.5%	241	95	12.0%
Natural resources, construction, and maintenance occupations:	36	33	1.3%	19	29	0.9%
Production, transportation, and material moving occupations	226	114	8.0%	122	94	6.1%

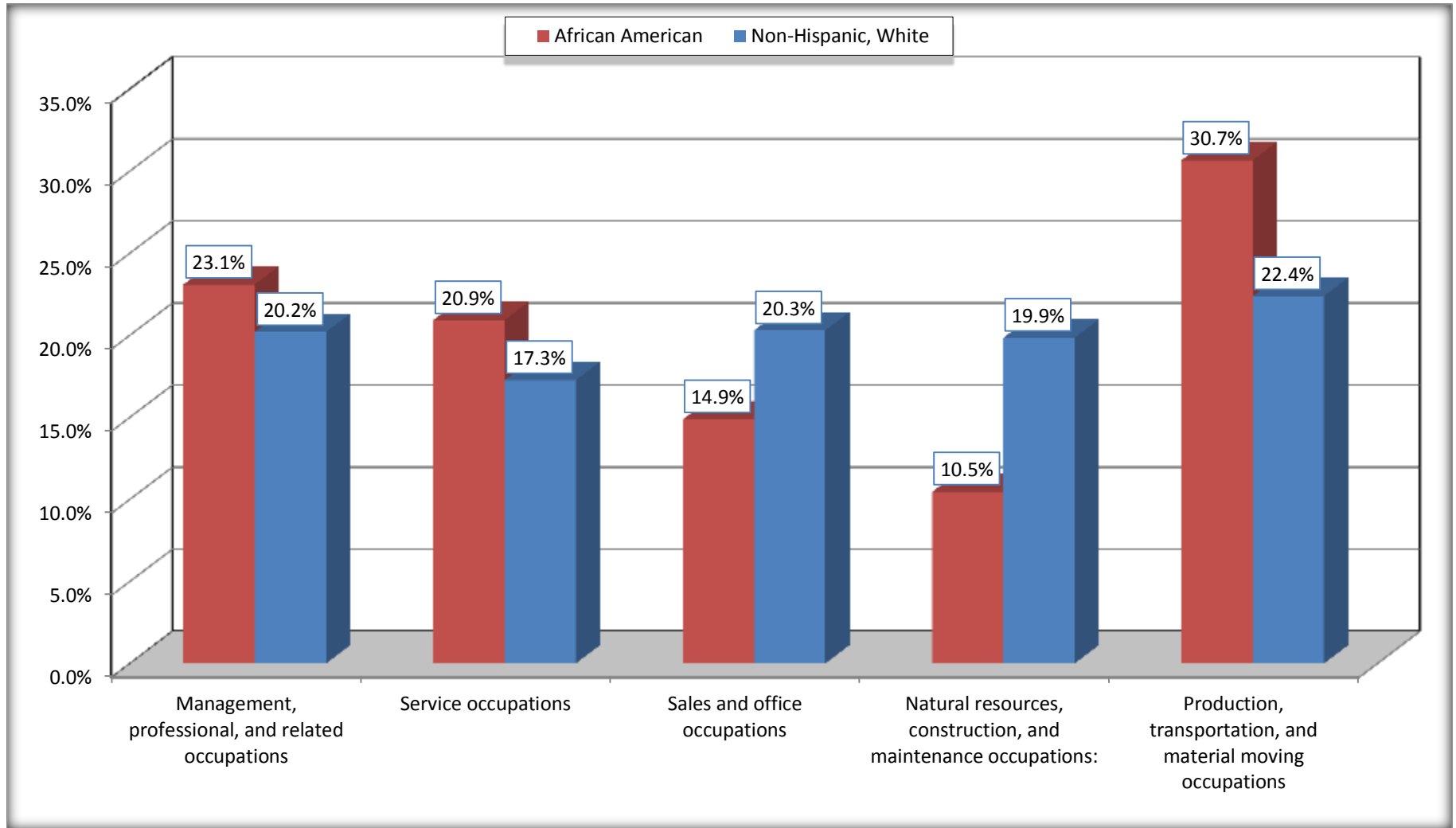
Source: U.S. Census Bureau, 2008-2012 American Community Survey

For information on confidentiality protection, sampling error, nonsampling error, and definitions, see Survey Methodology.

<http://www.census.gov/acs/www/UseData/index.htm>

Occupation for the Civilian Employed 16 Years and Over Population

Macon County, Georgia



Source: C24010. SEX BY OCCUPATION FOR THE CIVILIAN EMPLOYED POPULATION 16 YEARS AND OVER
Data Set: 2008-2012 American Community Survey 5-Year Estimates

B25003. TENURE - Universe: OCCUPIED HOUSING UNITS

Data Set: 2008-2012 American Community Survey 5-Year Estimates

	Macon County, Georgia					
	African American	Margin of Error (+/-)	% of AA Total	White, Not Hispanic	Margin of Error (+/-)	% of NHW Total
Total:	2,786	222	100.0%	1,808	149	100.0%
Owner occupied	1,660	230	59.6%	1,393	147	77.0%
Renter occupied	1,126	211	40.4%	415	136	23.0%

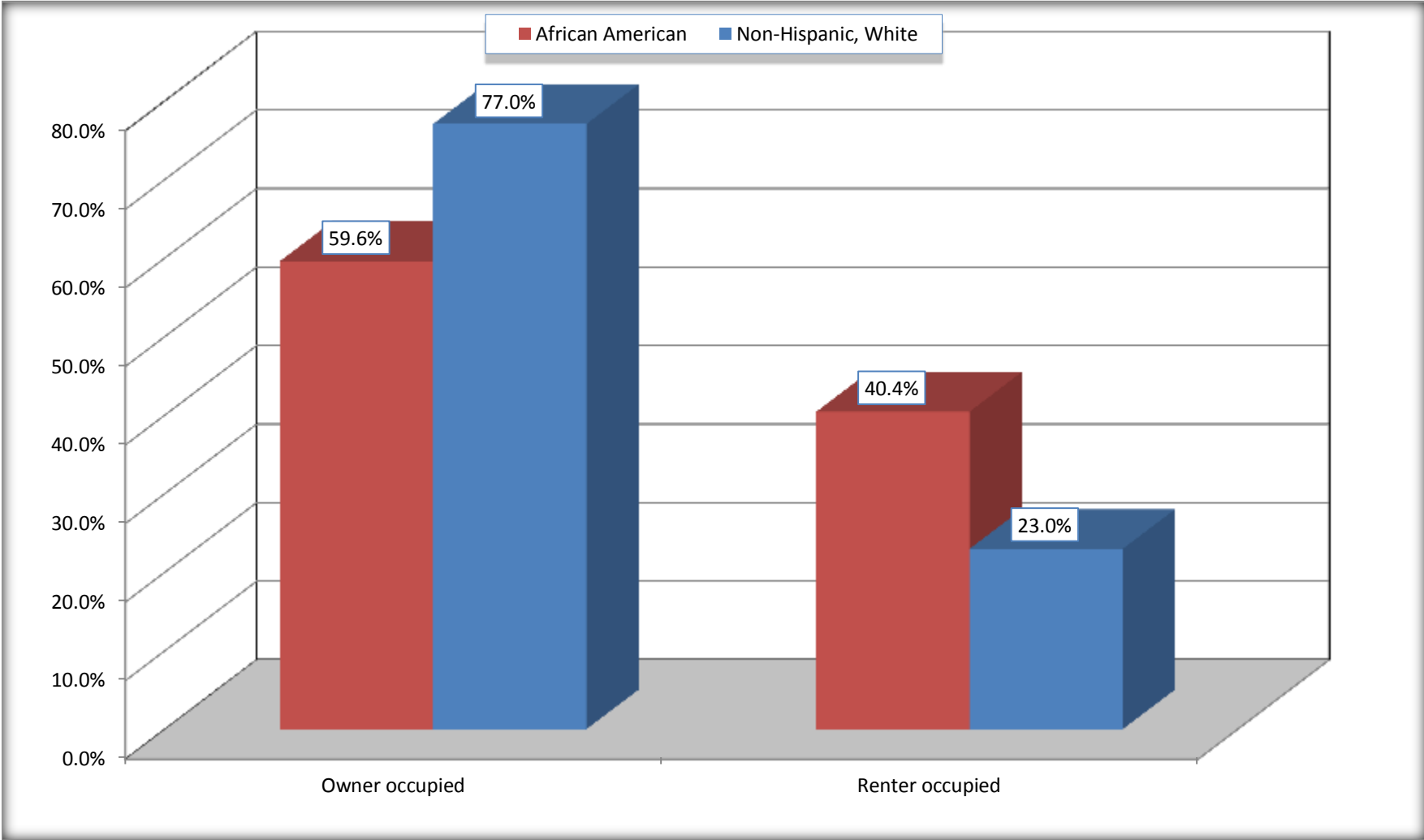
Source: U.S. Census Bureau, 2008-2012 American Community Survey

For information on confidentiality protection, sampling error, nonsampling error, and definitions, see Survey Methodology.

<http://www.census.gov/acs/www/UseData/index.h>

Home Owners and Renters by Household

Macon County, Georgia



Source: B25003. TENURE - Universe: OCCUPIED HOUSING UNITS
Data Set: 2008-2012 American Community Survey 5-Year Estimates

B25014. OCCUPANTS PER ROOM - Universe: OCCUPIED HOUSING UNITS

Data Set: 2008-2012 American Community Survey 5-Year Estimates

	Macon County, Georgia					
	African American	Margin of Error (+/-)	% of AA Total	White, Not Hispanic	Margin of Error (+/-)	% of NHW Total
Total:	2,786	222	100.0%	1,808	149	100.0%
1.00 or less occupants per room	2,731	228	98.0%	1,792	149	99.1%
1.01 or more occupants per room	55	42	2.0%	16	18	0.9%

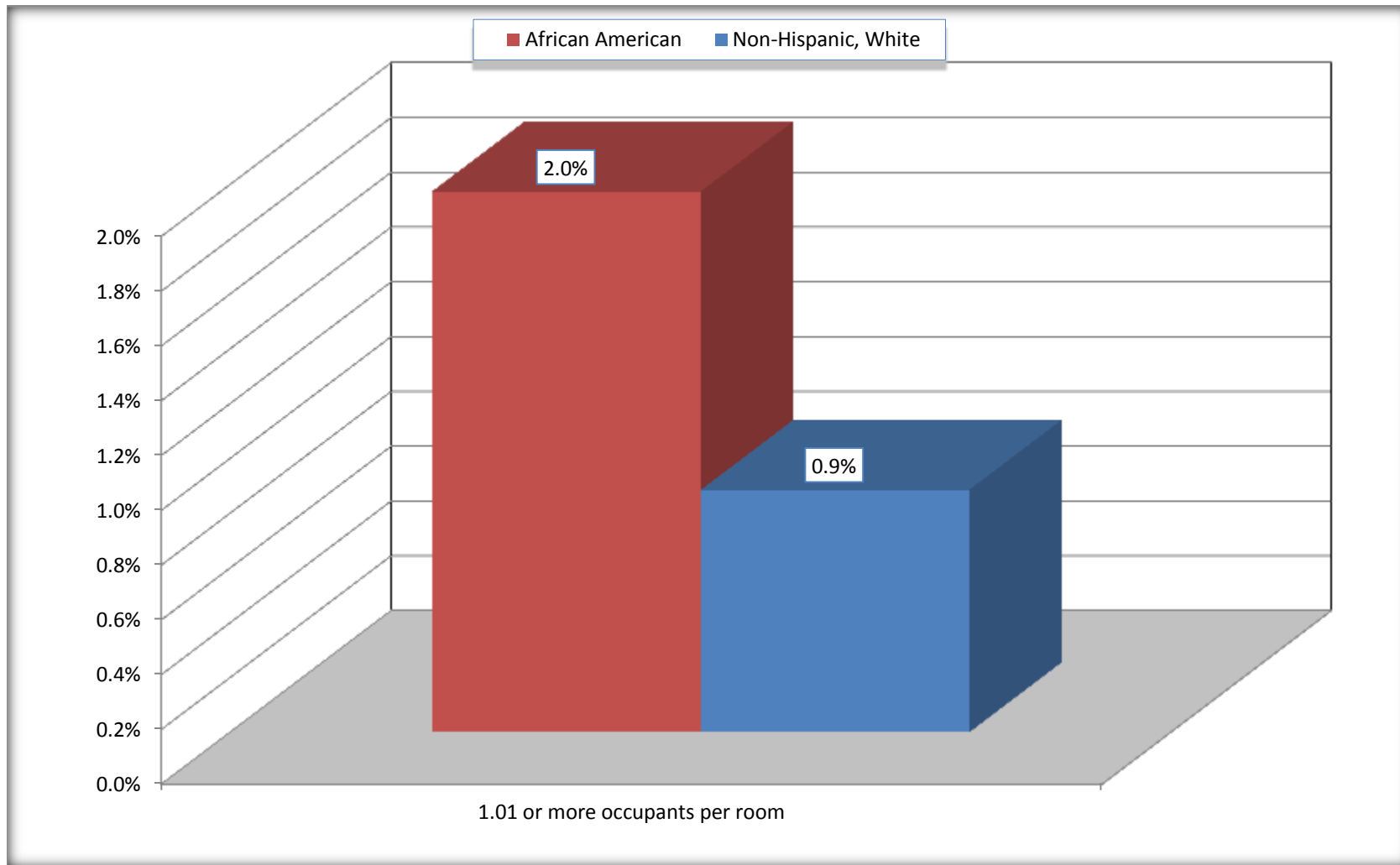
Source: U.S. Census Bureau, 2008-2012 American Community Survey

For information on confidentiality protection, sampling error, nonsampling error, and definitions, see Survey Methodology.

<http://www.census.gov/acs/www/UseData/index.ht>

More than One Person per Room (Crowding) by Household

Macon County, Georgia



Source: B25014. OCCUPANTS PER ROOM - Universe: OCCUPIED HOUSING UNITS
Data Set: 2008-2012 American Community Survey 5-Year Estimates

B18101. AGE BY DISABILITY STATUS

Data Set: 2008-2012 American Community Survey 5-Year Estimates

	Macon County, Georgia					
	African American	Margin of Error (+/-)	% of AA Total	White, Not Hispanic	Margin of Error (+/-)	% of NHW Total
Total:	7,800	135	100.0%	4,436	242	100.0%
Under 18 years:	2,068	29	26.5%	916	57	20.6%
With a disability	89	58	1.1%	81	77	1.8%
No disability	1,979	68	25.4%	835	77	18.8%
18 to 64 years:	4,876	109	62.5%	2,682	241	60.5%
With a disability	1,060	260	13.6%	720	205	16.2%
No disability	3,816	271	48.9%	1,962	254	44.2%
65 years and over:	856	61	11.0%	838	29	18.9%
With a disability	541	95	6.9%	387	76	8.7%
No disability	315	87	4.0%	451	76	10.2%

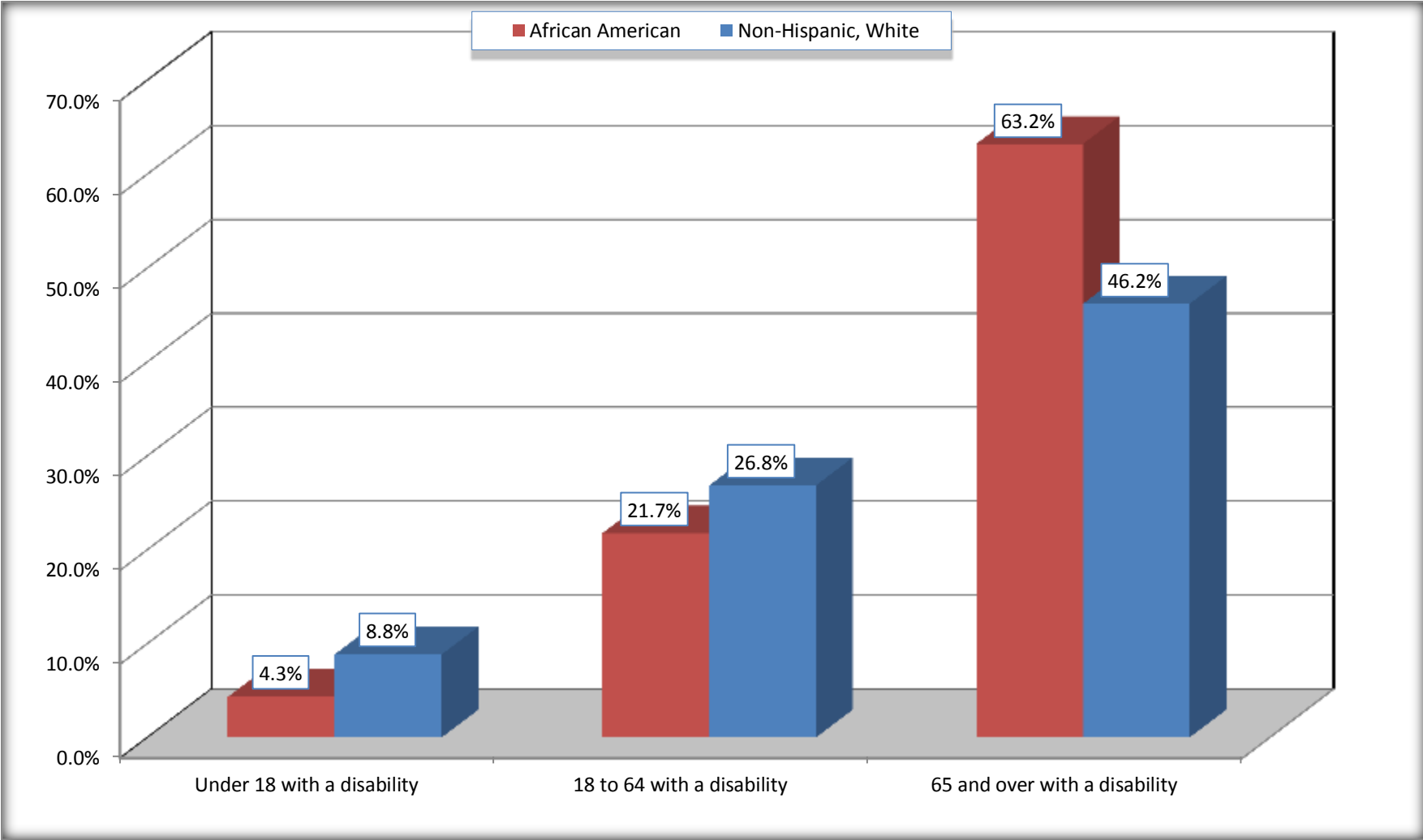
Source: U.S. Census Bureau, 2008-2012 American Community Survey

For information on confidentiality protection, sampling error, nonsampling error, and definitions, see Survey Methodology.

<http://www.census.gov/acs/www/UseData/index.htm>

Disability by Age

Macon County, Georgia



Source: B18101. AGE BY DISABILITY STATUS
Data Set: 2008-2012 American Community Survey 5-Year Estimates

C27001B. HEALTH INSURANCE COVERAGE STATUS BY AGE

Data Set: 2008-2012 American Community Survey 5-Year Estimates

	Macon County, Georgia					
	African American	Margin of Error (+/-)	% of AA Total	White, Not Hispanic	Margin of Error (+/-)	% of NHW Total
Total:	7,800	135	100.0%	4,436	242	100.0%
Under 18 years:	2,068	29	26.5%	916	21	20.6%
With health insurance coverage	1,754	149	22.5%	840	55	18.9%
No health insurance coverage	314	144	4.0%	76	55	1.7%
18 to 64 years:	4,876	109	62.5%	2,682	241	60.5%
With health insurance coverage	3,601	311	46.2%	1,786	264	40.3%
No health insurance coverage	1,275	316	16.3%	896	240	20.2%
65 years and over:	856	61	11.0%	838	29	18.9%
With health insurance coverage	839	67	10.8%	838	29	18.9%
No health insurance coverage	17	27	0.2%	0	21	0.0%

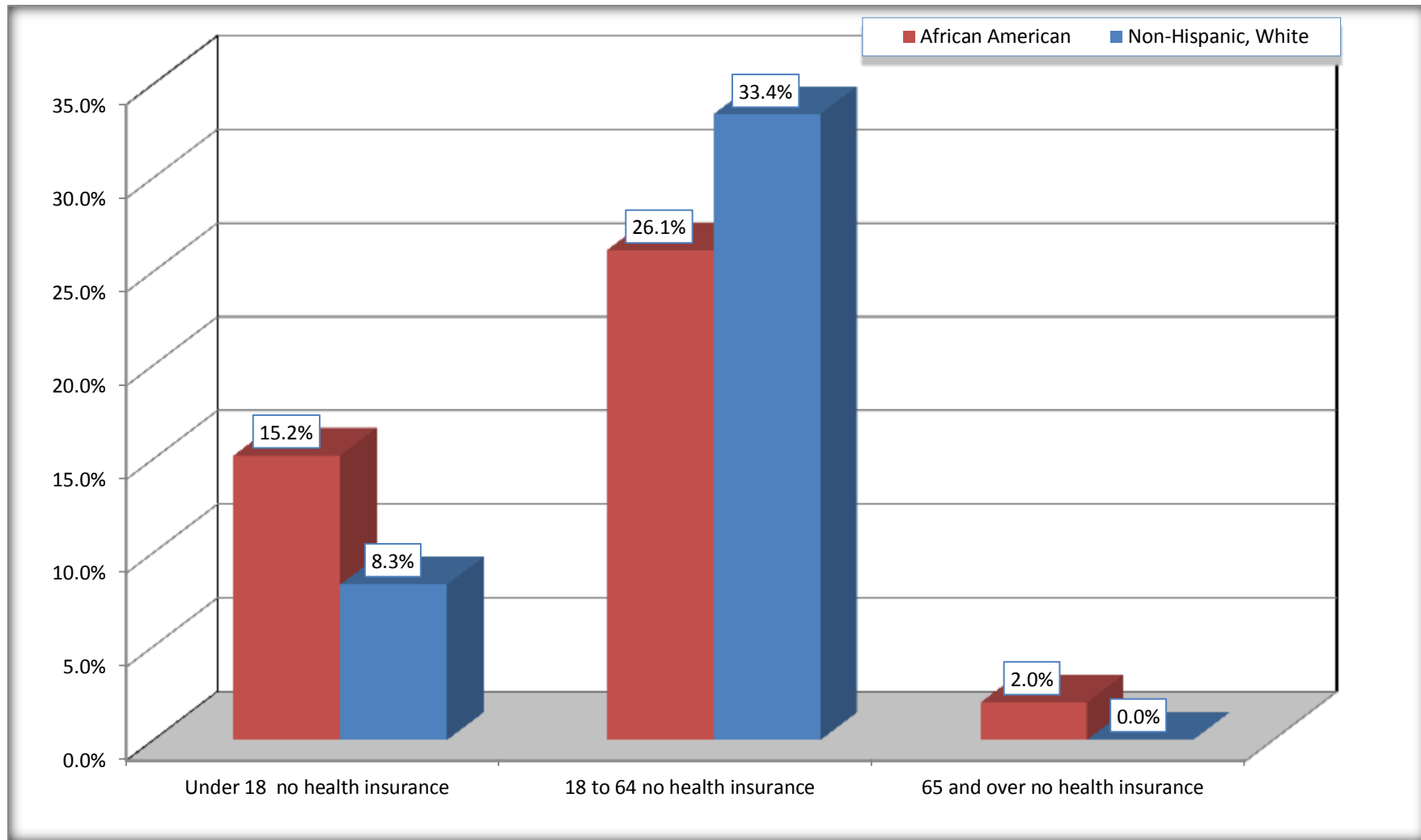
Source: U.S. Census Bureau, 2008-2012 American Community Survey

For information on confidentiality protection, sampling error, nonsampling error, and definitions, see Survey Methodology.

<http://www.census.gov/acs/www/UseData/index.htm>

Lack of Health Insurance Coverage by Age

Macon County, Georgia



Source: C27001B. HEALTH INSURANCE COVERAGE STATUS BY AGE
Data Set: 2008-2012 American Community Survey 5-Year Estimates