

Selected Socio-Economic Data

Jeff Davis County, Georgia

African American and White, Not Hispanic

Data Set: 2008-2012 American Community Survey 5-Year Estimates

www.fairvote2020.org

www.fairdata2000.com

[29-Dec-13](#)

C02003.DETAILED RACE - Universe: TOTAL POPULATION

Data Set: 2008-2012 American Community Survey 5-Year Estimates

	Jeff Davis County, Georgia		
	Population	Margin of Error (+/-)	% of Total
Total:	14,972	*****	100.0%
Population of one race:	14,928	51	99.7%
White	11,812	461	78.9%
Black or African American	2,279	114	15.2%
American Indian and Alaska Native	62	68	0.4%
Asian alone	47	79	0.3%
Native Hawaiian and Other Pacific Islander	27	47	0.2%
Some other race	701	459	4.7%
Population of two or more races:	44	51	0.3%
Two races including Some other race	0	21	0.0%
Two races excluding Some other race, and three or more races	44	51	0.3%
Population of two races:	44	51	0.3%
White; Black or African American	35	49	0.2%
White; American Indian and Alaska Native	9	19	0.1%
White; Asian	0	21	0.0%
Black or African American; American Indian and Alaska Native	0	21	0.0%
All other two race combinations	0	21	0.0%
Population of three races	0	21	0.0%
Population of four or more races	0	21	0.0%

Note: Hispanics may be of any race. See Table B03002 and chart.

Source: U.S. Census Bureau, 2008-2012 American Community Survey

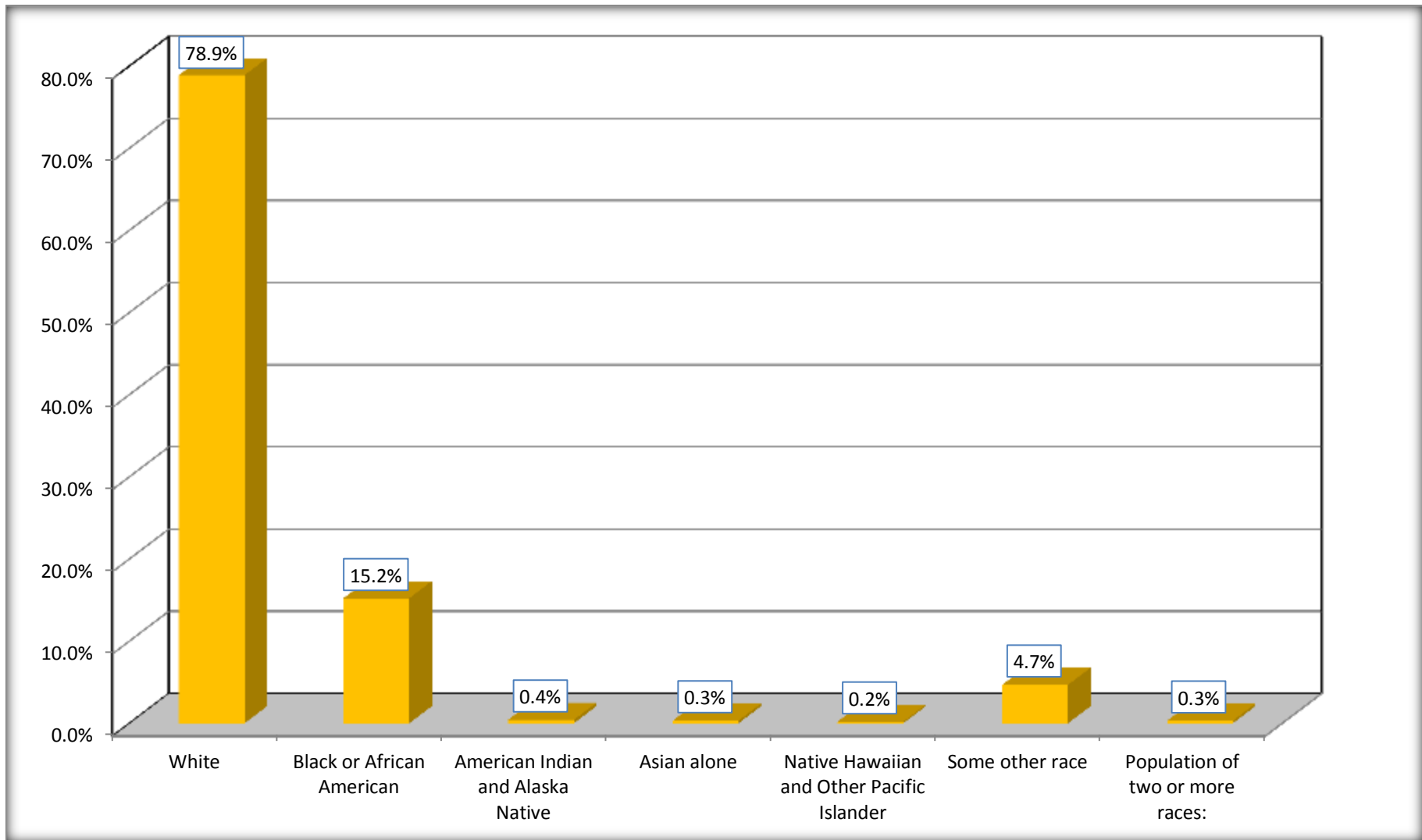
Although the American Community Survey (ACS) produces population, demographic and housing unit estimates, it is the Census Bureau's Population Estimates Program that produces and disseminates the official estimates of the population for the nation, states, counties, cities and towns and estimates of housing units for states and counties.

For information on confidentiality protection, sampling error, nonsampling error, and definitions, see Survey Methodology.

<http://www.census.gov/acs/www/UseData/index.htm>

Population by Race

Jeff Davis County, Georgia



Source: C02003.DETAILED RACE - Universe: TOTAL POPULATION
Data Set: 2008-2012 American Community Survey 5-Year Estimates

B03002. HISPANIC OR LATINO ORIGIN BY RACE - Universe: TOTAL POPULATION

Data Set: 2008-2012 American Community Survey 5-Year Estimates

	Jeff Davis County, Georgia		
	Population	Margin of Error (+/-)	% of Total
Total:	14,972	*****	100.0%
Not Hispanic or Latino:	13,433	*****	89.7%
White alone	11,009	21	73.5%
Black or African American alone	2,279	114	15.2%
American Indian and Alaska Native alone	27	33	0.2%
Asian alone	47	79	0.3%
Native Hawaiian and Other Pacific Islander alone	27	47	0.2%
Some other race alone	0	21	0.0%
Two or more races:	44	51	0.3%
Two races including Some other race	0	21	0.0%
Two races excluding Some other race, and three or more races	44	51	0.3%
Hispanic or Latino	1,539	*****	10.3%

Source: U.S. Census Bureau, 2008-2012 American Community Survey

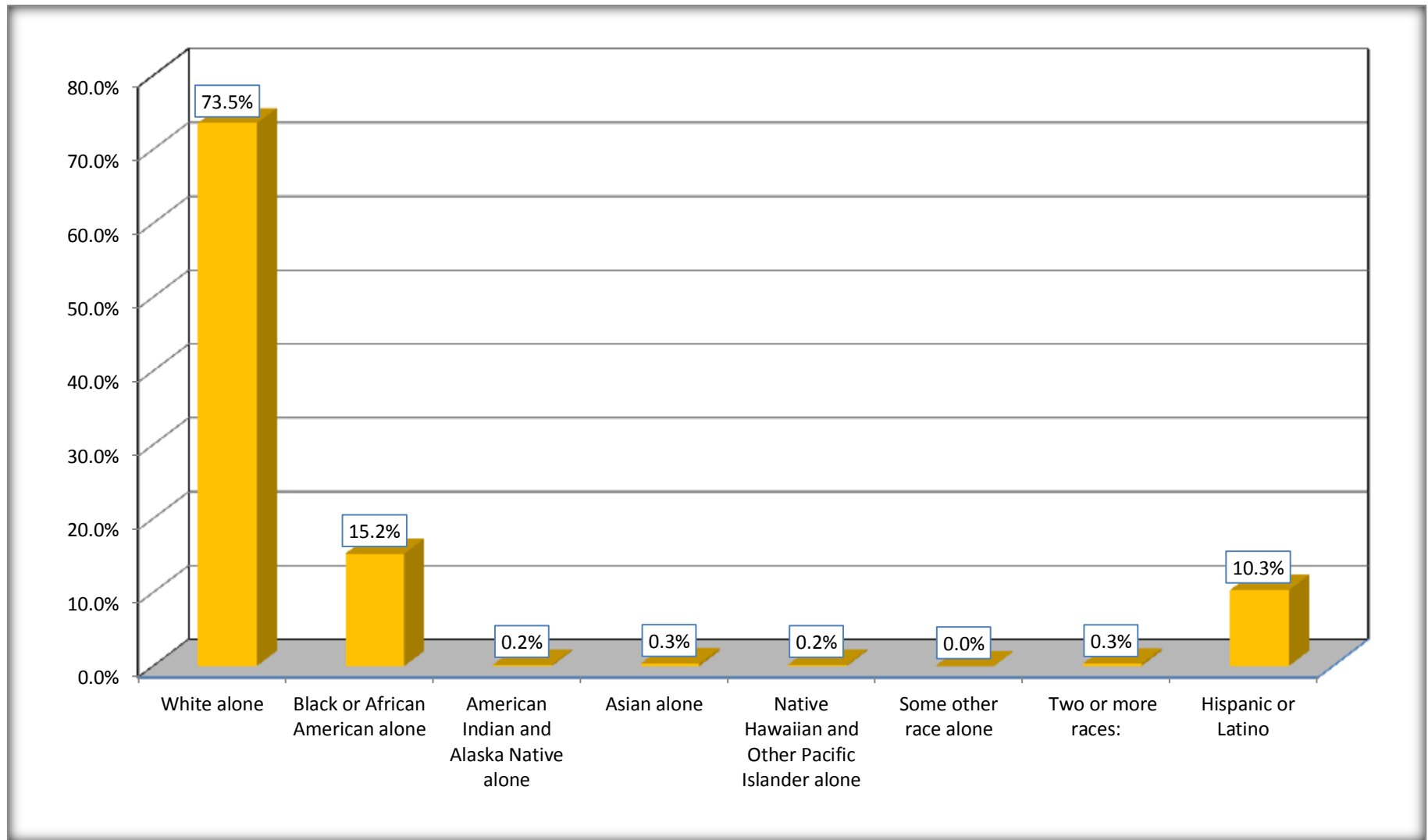
Although the American Community Survey (ACS) produces population, demographic and housing unit estimates, it is the Census Bureau's Population Estimates Program that produces and disseminates the official estimates of the population for the nation, states, counties, cities and towns and estimates of housing units for states and counties.

For information on confidentiality protection, sampling error, nonsampling error, and definitions, see Survey Methodology.

<http://www.census.gov/acs/www/UseData/index.htm>

Non-Hispanic by Race and Hispanic Population

Jeff Davis County, Georgia



Source: B03002. HISPANIC OR LATINO ORIGIN BY RACE - Universe: TOTAL POPULATION
Data Set: 2008-2012 American Community Survey 5-Year Estimates

B03002. HISPANIC OR LATINO ORIGIN BY RACE

Data Set: 2008-2012 American Community Survey 5-Year Estimates

	Jeff Davis County, Georgia		
	Population	Margin of Error (+/-)	% of Total
Hispanic or Latino:	1,539	*****	100.0%
White alone	803	461	52.2%
Black or African American alone	0	21	0.0%
American Indian and Alaska Native alone	35	57	2.3%
Asian alone	0	21	0.0%
Native Hawaiian and Other Pacific Islander alone	0	21	0.0%
Some other race alone	701	459	45.5%
Two or more races:	0	21	0.0%
Two races including Some other race	0	21	0.0%
Two races excluding Some other race, and three or more races	0	21	0.0%

Source: U.S. Census Bureau, 2008-2012 American Community Survey

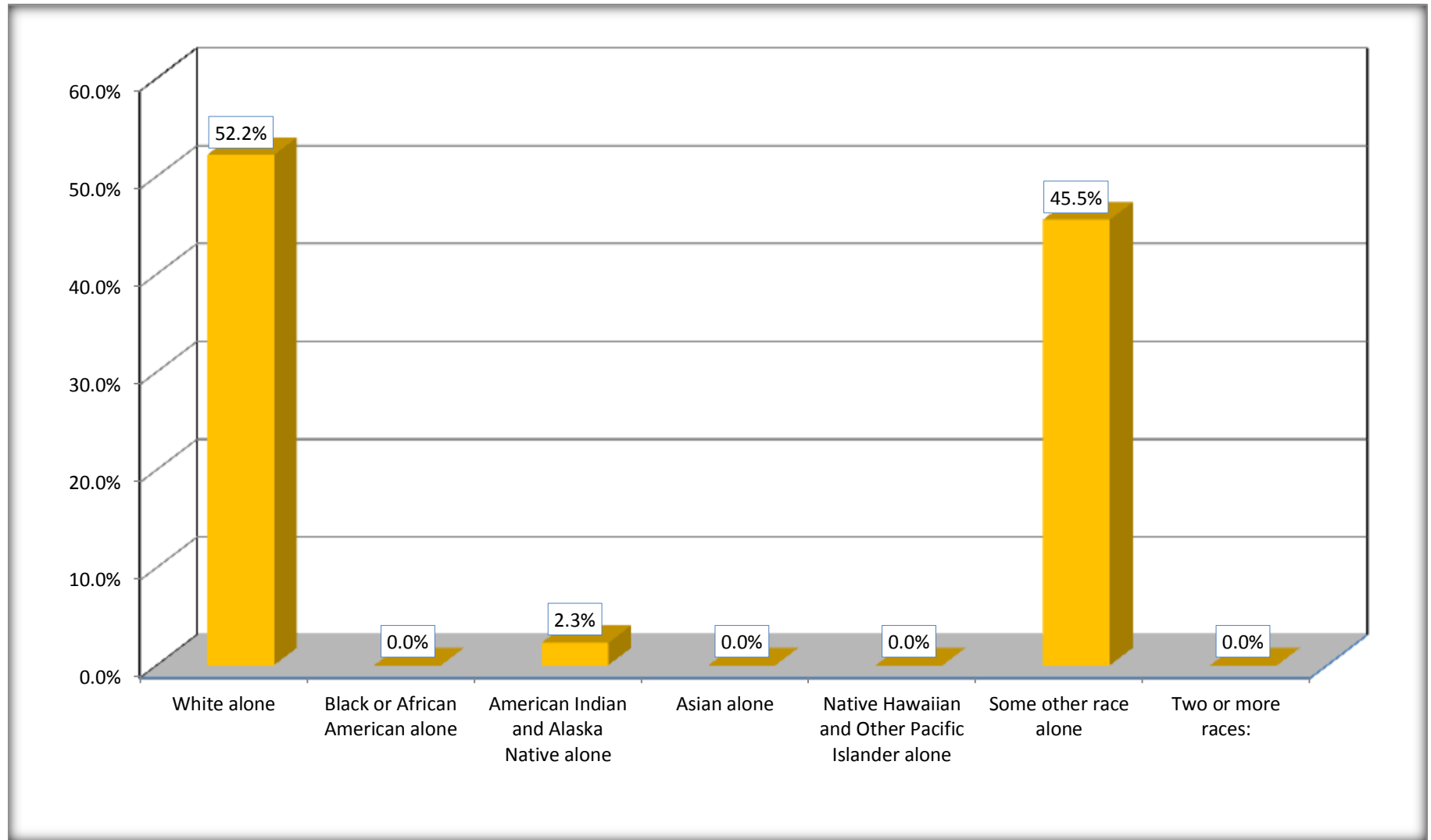
Although the American Community Survey (ACS) produces population, demographic and housing unit estimates, it is the Census Bureau's Population Estimates Program that produces and disseminates the official estimates of the population for the nation, states, counties, cities and towns and estimates of housing units for states and counties.

For information on confidentiality protection, sampling error, nonsampling error, and definitions, see Survey Methodology.

<http://www.census.gov/acs/www/UseData/index.htm>

Hispanic or Latino Origin by Race

Jeff Davis County, Georgia



Source: B03002. HISPANIC OR LATINO ORIGIN BY RACE
Data Set: 2008-2012 American Community Survey 5-Year Estimates

B01001. SEX BY AGE

Data Set: 2008-2012 American Community Survey 5-Year Estimates

	Jeff Davis County, Georgia					
	African American	Margin of Error (+/-)	% of AA Total	White, Not Hispanic	Margin of Error (+/-)	% of NHW Total
Total:	2,279	114	100.0%	11,009	21	100.0%
Under 18 years	713	NC	31.3%	2,712	NC	24.6%
18 to 64 years	1,321	NC	58.0%	6,685	NC	60.7%
65 years and over	245	NC	10.8%	1,612	NC	14.6%
Male:	1,109	86	48.7%	5,492	389	49.9%
Under 18 years	399	NC	17.5%	1,520	NC	13.8%
18 to 64 years	604	NC	26.5%	3,266	NC	29.7%
65 years and over	106	NC	4.7%	706	NC	6.4%
Female:	1,170	61	51.3%	5,517	412	50.1%
Under 18 years	314	NC	13.8%	1,192	NC	10.8%
18 to 64 years	717	NC	31.5%	3,419	NC	31.1%
65 years and over	139	NC	6.1%	906	NC	8.2%

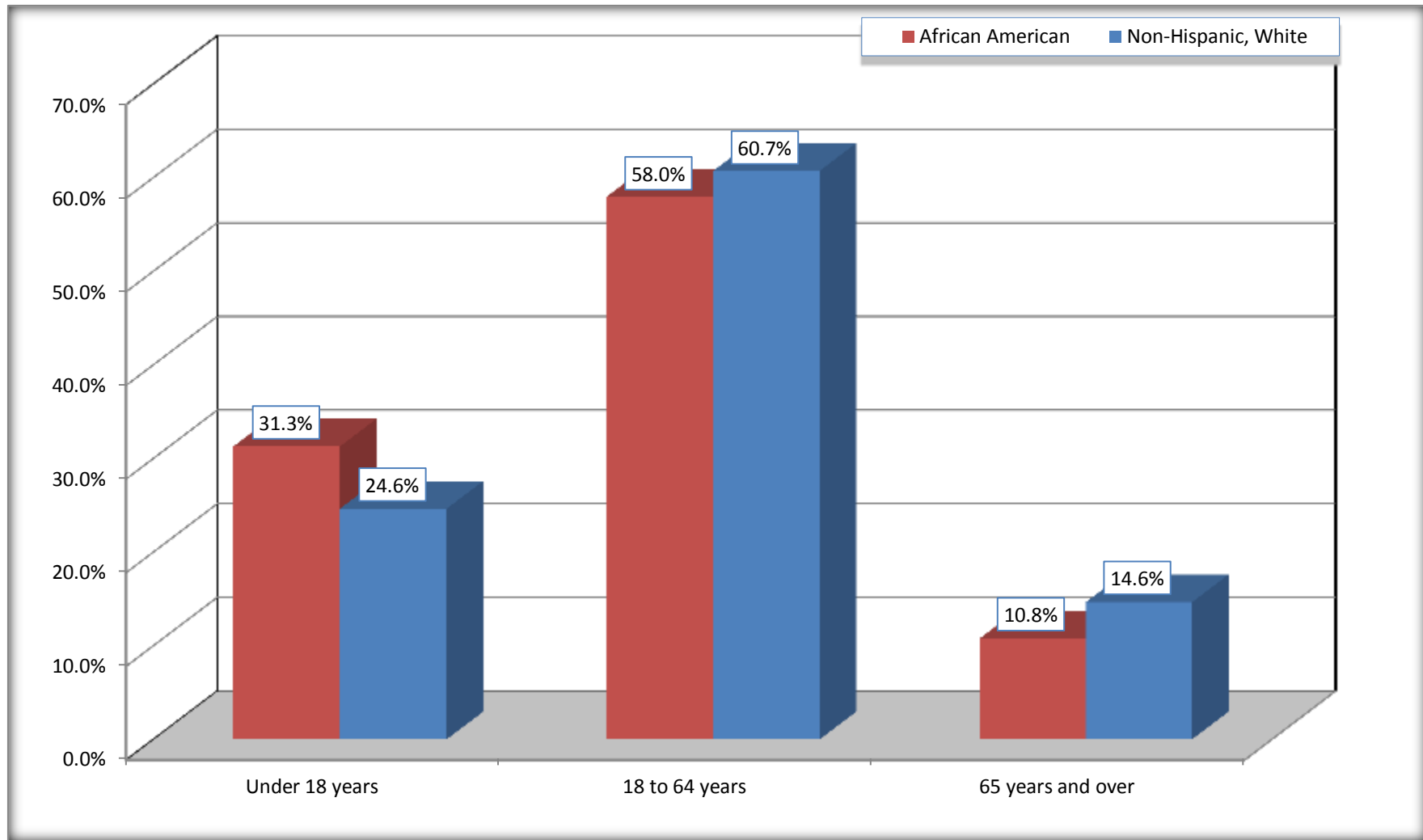
Source: U.S. Census Bureau, 2008-2012 American Community Survey

Although the American Community Survey (ACS) produces population, demographic and housing unit estimates, it is the Census Bureau's Population Estimates Program that produces and disseminates the official estimates of the population for the nation, states, counties, cities and towns and estimates of housing units for states and counties.

For information on confidentiality protection, sampling error, nonsampling error, and definitions, see Survey Methodology.
<http://www.census.gov/acs/www/UseData/index.htm>

Population by Age

Jeff Davis County, Georgia



Source: B01001. SEX BY AGE
Data Set: 2008-2012 American Community Survey 5-Year Estimates

B05003. SEX BY AGE BY CITIZENSHIP STATUS

Data Set: 2008-2012 American Community Survey 5-Year Estimates

	Jeff Davis County, Georgia					
	African American	Margin of Error (+/-)	% of AA Total by Age	White, Not Hispanic	Margin of Error (+/-)	% of NHW Total by Age
Total:	2,279	114	100.0%	11,009	21	100.0%
Under 18 years:	713	NC	100.0%	2,712	NC	100.0%
Native	713	NC	100.0%	2,712	NC	100.0%
Foreign born:	0	NC	0.0%	0	NC	0.0%
Naturalized U.S. citizen	0	NC	0.0%	0	NC	0.0%
Not a U.S. citizen	0	NC	0.0%	0	NC	0.0%
18 years and over:	1,566	NC	100.0%	8,297	NC	100.0%
Native	1,566	NC	100.0%	8,293	NC	100.0%
Foreign born:	0	NC	0.0%	4	NC	0.0%
Naturalized U.S. citizen	0	NC	0.0%	4	NC	0.0%
Not a U.S. citizen	0	NC	0.0%	0	NC	0.0%
Male:	1,109	86	48.7%	5,492	88	49.9%
Under 18 years:	399	53	100.0%	1,520	88	100.0%
Native	399	53	100.0%	1,520	88	100.0%
Foreign born:	0	21	0.0%	0	21	0.0%
Naturalized U.S. citizen	0	21	0.0%	0	21	0.0%
Not a U.S. citizen	0	21	0.0%	0	21	0.0%
18 years and over:	710	64	100.0%	3,972	21	100.0%
Native	710	64	100.0%	3,968	6	99.9%
Foreign born:	0	21	0.0%	4	6	0.1%
Naturalized U.S. citizen	0	21	0.0%	4	6	0.1%
Not a U.S. citizen	0	21	0.0%	0	21	0.0%

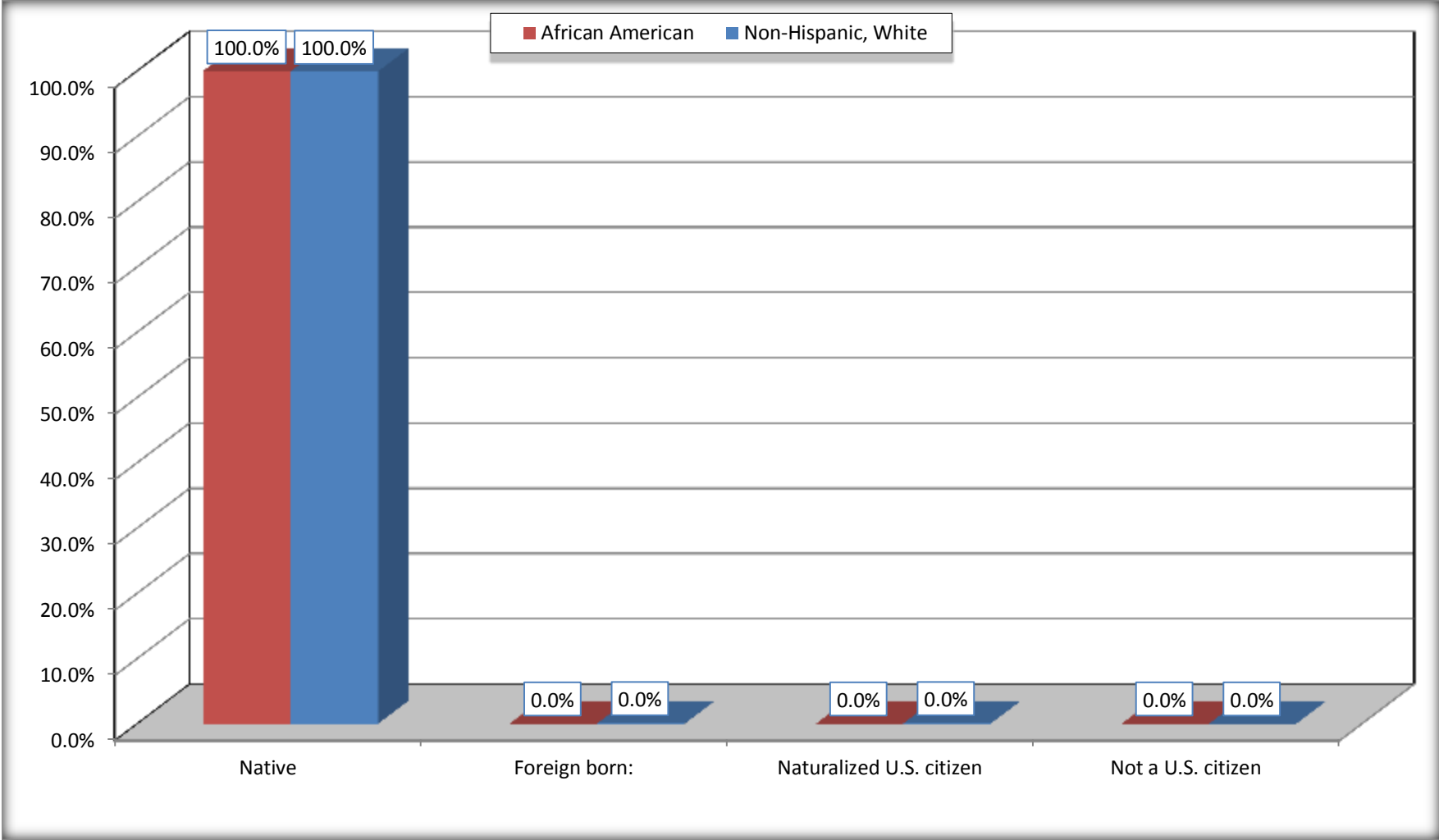
	Jeff Davis County, Georgia					
	African American	Margin of Error (+/-)	% of AA by Age	White, Not Hispanic	Margin of Error (+/-)	% of NHW by Age
Female:	1,170	61	51.3%	5,517	88	50.1%
Under 18 years:	314	39	100.0%	1,192	88	100.0%
Native	314	39	100.0%	1,192	88	100.0%
Foreign born:	0	21	0.0%	0	21	0.0%
Naturalized U.S. citizen	0	21	0.0%	0	21	0.0%
Not a U.S. citizen	0	21	0.0%	0	21	0.0%
18 years and over:	856	33	100.0%	4,325	21	100.0%
Native	856	33	100.0%	4,325	21	100.0%
Foreign born:	0	21	0.0%	0	21	0.0%
Naturalized U.S. citizen	0	21	0.0%	0	21	0.0%
Not a U.S. citizen	0	21	0.0%	0	21	0.0%

Source: U.S. Census Bureau, 2008-2012 American Community Survey

For information on confidentiality protection, sampling error, nonsampling error, and definitions, see Survey Methodology.
<http://www.census.gov/acs/www/UseData/index.htm>

Citizenship Status of Voting Age Population (18 and Over)

Jeff Davis County, Georgia



Source: B05003. SEX BY AGE BY CITIZENSHIP STATUS
Data Set: 2008-2012 American Community Survey 5-Year Estimates

**B07004. GEOGRAPHICAL MOBILITY IN THE PAST YEAR BY RACE FOR CURRENT RESIDENCE IN THE UNITED STATES - Universe:
POPULATION 1 YEAR AND OVER**

Data Set: 2008-2012 American Community Survey 5-Year Estimates

	Jeff Davis County, Georgia					
	African American	Margin of Error (+/-)	% of AA Total	White, Not Hispanic	Margin of Error (+/-)	% of NHW Total
Total:	2,279	114	100.0%	10,896	68	100.0%
Same house 1 year ago	2,061	208	90.4%	9,996	325	91.7%
Moved within same county	20	32	0.9%	549	266	5.0%
Moved from different county within same state	173	153	7.6%	304	217	2.8%
Moved from different state	25	47	1.1%	0	21	0.0%
Moved from abroad	0	21	0.0%	47	64	0.4%

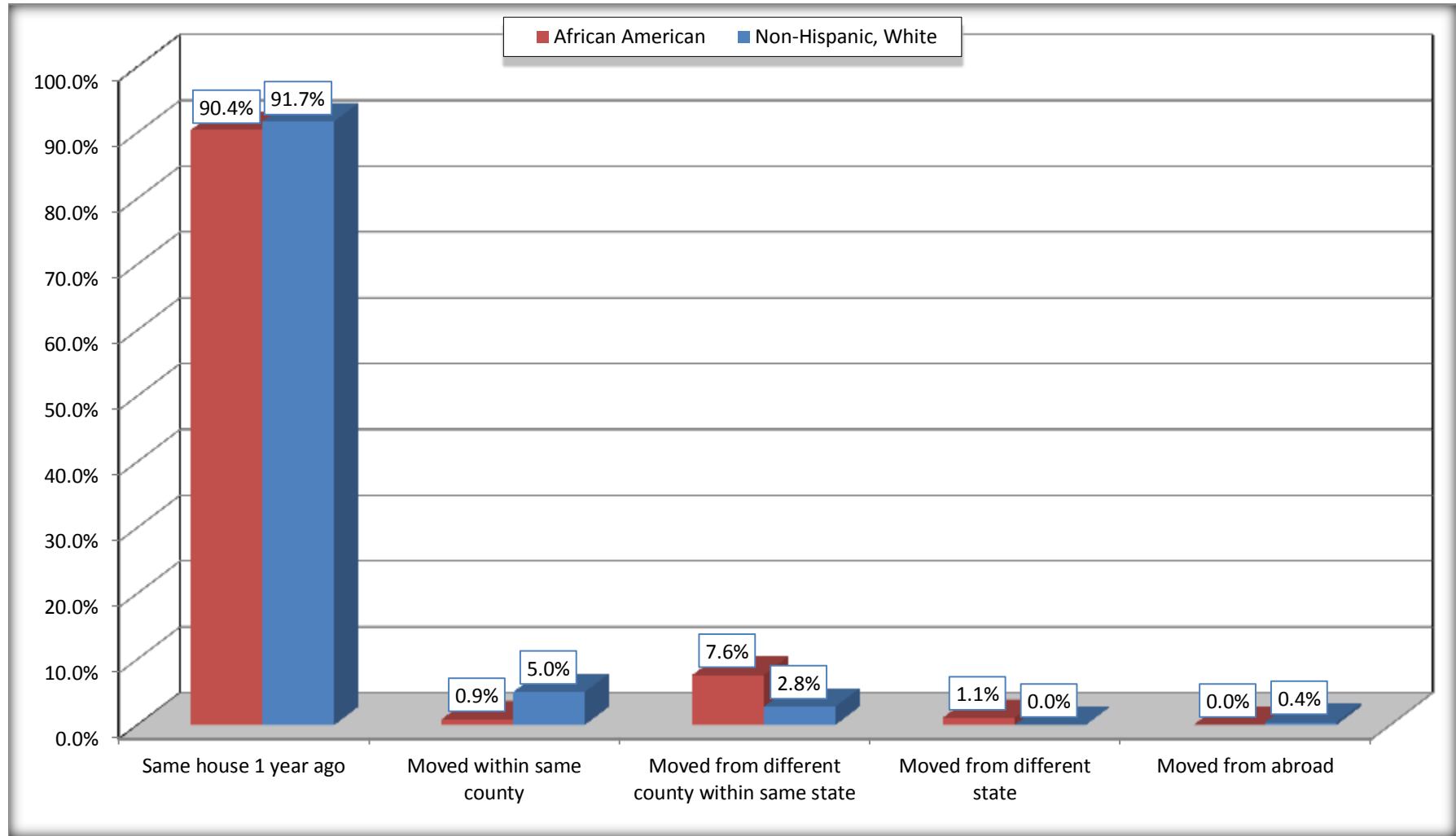
Source: U.S. Census Bureau, 2008-2012 American Community Survey

For information on confidentiality protection, sampling error, nonsampling error, and definitions, see Survey Methodology.

<http://www.census.gov/acs/www/UseData/index.htm>

Geographical Mobility in the Past Year (Population 1 Year and Over)

Jeff Davis County, Georgia



Source: B07004. GEOGRAPHICAL MOBILITY IN THE PAST YEAR BY RACE FOR CURRENT RESIDENCE IN THE UNITED STATES - Universe: POPULATION 1 YEAR AND OVER

Data Set: 2008-2012 American Community Survey 5-Year Estimates

B08105. MEANS OF TRANSPORTATION TO WORK - Universe: WORKERS 16 YEARS AND OVER

Data Set: 2008-2012 American Community Survey 5-Year Estimates

	Jeff Davis County, Georgia					
	African American	Margin of Error (+/-)	% of AA Total	White, Not Hispanic	Margin of Error (+/-)	% of NHW Total
Total:	622	186	100.0%	4355	334	100.0%
Car, truck, or van - drove alone	436	151	70.1%	3592	357	82.5%
Car, truck, or van - carpooled	139	115	22.3%	490	190	11.3%
Public transportation (excluding taxicab)	0	21	0.0%	0	21	0.0%
Walked	47	73	7.6%	53	60	1.2%
Taxicab, motorcycle, bicycle, or other means	0	21	0.0%	161	111	3.7%
Worked at home	0	21	0.0%	59	52	1.4%

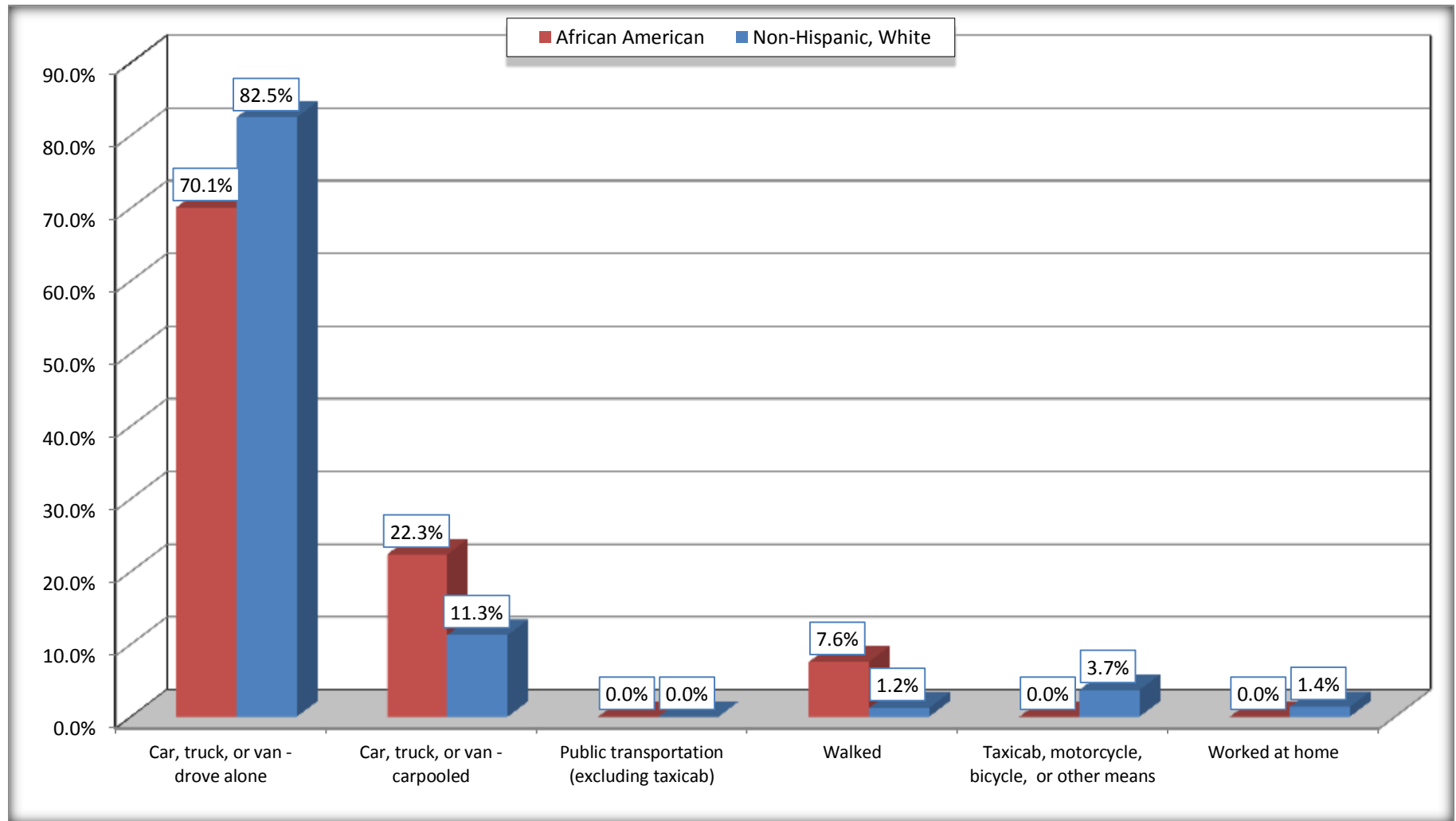
Source: U.S. Census Bureau, 2008-2012 American Community Survey

For information on confidentiality protection, sampling error, nonsampling error, and definitions, see Survey Methodology.

<http://www.census.gov/acs/www/UseData/index.htm>

Means of Transportation to Work (Workers 16 Years and Over)

Jeff Davis County, Georgia



Source: B08105. MEANS OF TRANSPORTATION TO WORK - Universe: WORKERS 16 YEARS AND OVER
Data Set: 2008-2012 American Community Survey 5-Year Estimates

B11002. HOUSEHOLD TYPE BY RELATIVES AND NONRELATIVES FOR POPULATION IN HOUSEHOLDS

Data Set: 2008-2012 American Community Survey 5-Year Estimates

	Jeff Davis County, Georgia					
	African American	Margin of Error (+/-)	% of AA Total	White, Not Hispanic	Margin of Error (+/-)	% of NHW Total
Total:	2578	315	100.0%	10684	276	100.0%
In family households	2251	345	87.3%	9351	444	87.5%
In nonfamily households	327	155	12.7%	1333	341	12.5%

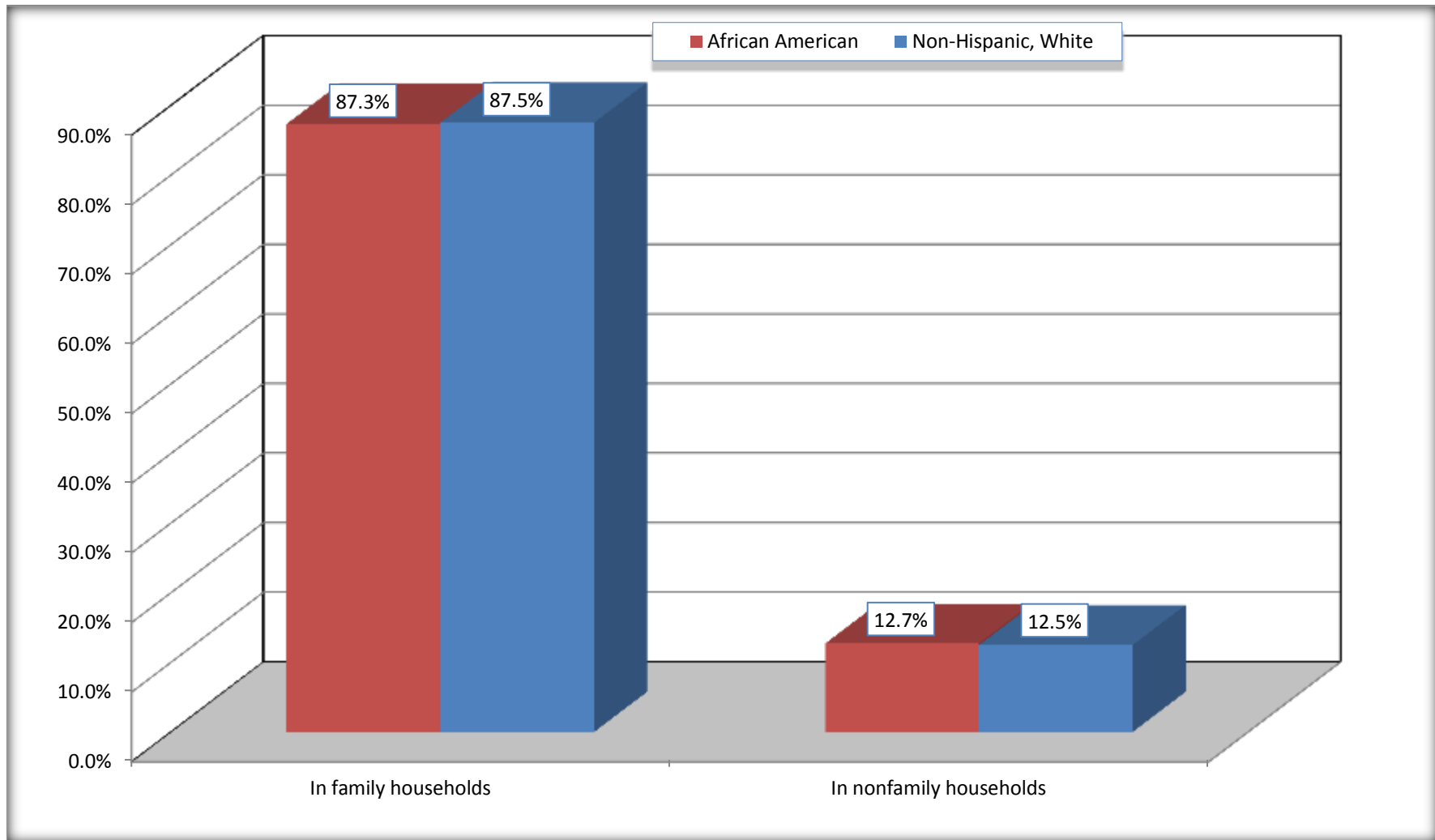
Source: U.S. Census Bureau, 2008-2012 American Community Survey

For information on confidentiality protection, sampling error, nonsampling error, and definitions, see Survey Methodology.

<http://www.census.gov/acs/www/UseData/index.htm>

Household Type for Population in Households

Jeff Davis County, Georgia



Source: B11002. HOUSEHOLD TYPE BY RELATIVES AND NONRELATIVES FOR POPULATION IN HOUSEHOLDS
Data Set: 2008-2012 American Community Survey 5-Year Estimates

B12002. MARITAL STATUS FOR THE POPULATION 15 YEARS AND OVER

Data Set: 2008-2012 American Community Survey 5-Year Estimates

	Jeff Davis County, Georgia					
	African American	Margin of Error (+/-)	% of AA Total	White, Not Hispanic	Margin of Error (+/-)	% of NHW Total
Total:	1,633	114	100.0%	8,747	21	100.0%
Never married	676	NC	41.4%	1,238	NC	14.2%
Now married (except separated)	606	NC	37.1%	5,315	NC	60.8%
Separated	121	NC	7.4%	166	NC	1.9%
Widowed	134	NC	8.2%	855	NC	9.8%
Divorced	96	NC	5.9%	1,173	NC	13.4%
Male:	721	68	44.2%	4,301	88	49.2%
Never married	231	131	14.1%	765	166	8.7%
Now married (except separated)	365	127	22.4%	2,694	266	30.8%
Separated	60	73	3.7%	36	42	0.4%
Widowed	23	28	1.4%	182	112	2.1%
Divorced	42	41	2.6%	624	162	7.1%
Female:	912	74	55.8%	4,446	88	50.8%
Never married	445	99	27.3%	473	155	5.4%
Now married (except separated)	241	87	14.8%	2,621	274	30.0%
Separated	61	51	3.7%	130	76	1.5%
Widowed	111	40	6.8%	673	125	7.7%
Divorced	54	45	3.3%	549	178	6.3%

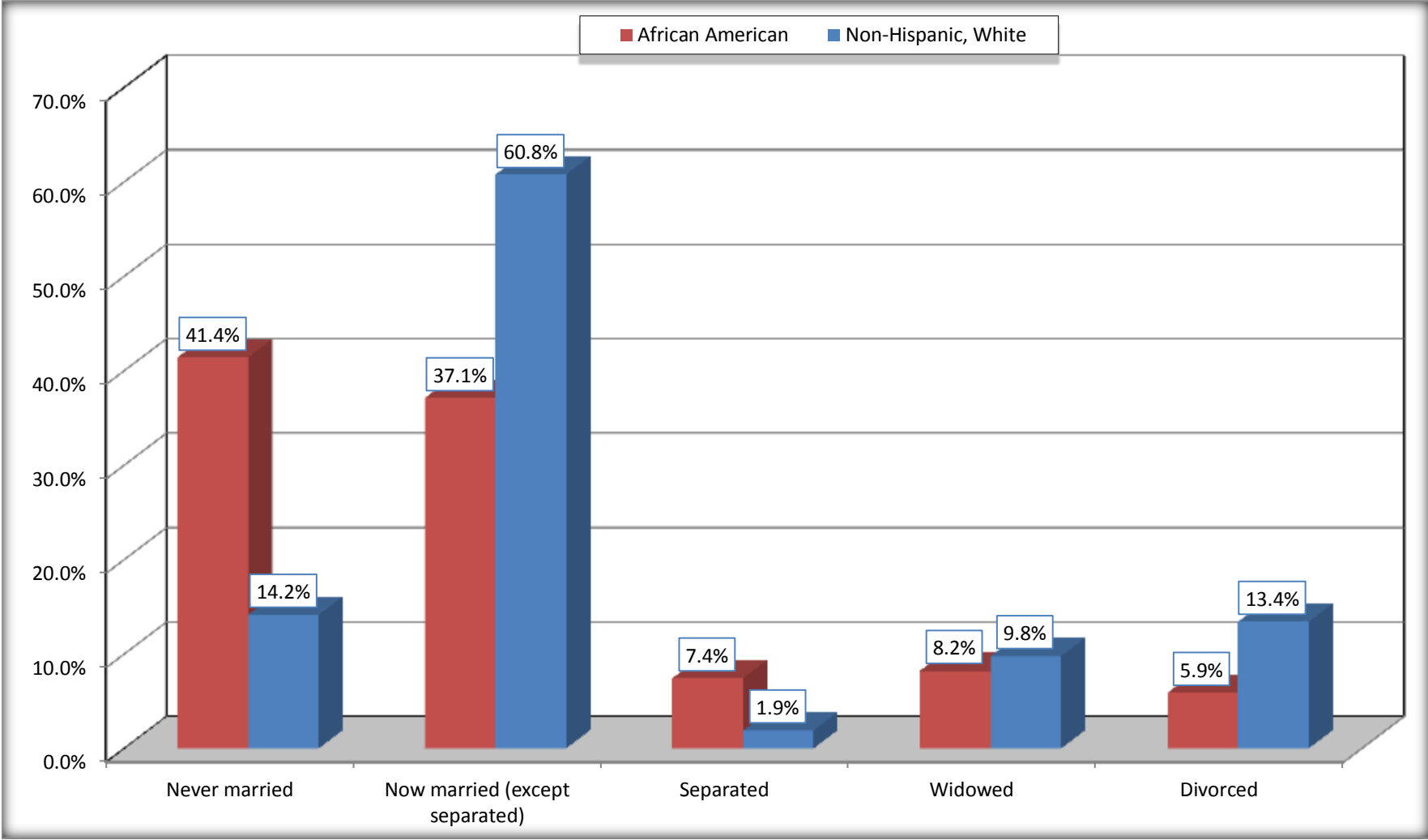
Source: U.S. Census Bureau, 2008-2012 American Community Survey

For information on confidentiality protection, sampling error, nonsampling error, and definitions, see Survey Methodology.

<http://www.census.gov/acs/www/UseData/index.htm>

Marital Status for the Population 15 Years and Over

Jeff Davis County, Georgia



Source: B12002. MARITAL STATUS FOR THE POPULATION 15 YEARS AND OVER
Data Set: 2008-2012 American Community Survey 5-Year Estimates

C15002. SEX BY EDUCATIONAL ATTAINMENT FOR THE POPULATION 25 YEARS AND OVER

Data Set: 2008-2012 American Community Survey 5-Year Estimates

	Jeff Davis County, Georgia					
	African American	Margin of Error (+/-)	% of AA Total	White, Not Hispanic	Margin of Error (+/-)	% of NHW Total
Total:	1,343	155	100.0%	7,385	21	100.0%
Less than high school diploma	276	NC	20.6%	1,348	NC	18.3%
High school graduate, GED, or alternative	710	NC	52.9%	3,291	NC	44.6%
Some college or associate's degree	316	NC	23.5%	1,742	NC	23.6%
Bachelor's degree or higher	41	NC	3.1%	1,004	NC	13.6%
Male:	594	125	44.2%	3,526	21	47.7%
Less than high school diploma	151	97	11.2%	686	217	9.3%
High school graduate, GED, or alternative	340	148	25.3%	1,644	232	22.3%
Some college or associate's degree	93	63	6.9%	810	201	11.0%
Bachelor's degree or higher	10	20	0.7%	386	158	5.2%
Female:	749	85	55.8%	3,859	21	52.3%
Less than high school diploma	125	80	9.3%	662	152	9.0%
High school graduate, GED, or alternative	370	94	27.6%	1,647	215	22.3%
Some college or associate's degree	223	142	16.6%	932	182	12.6%
Bachelor's degree or higher	31	38	2.3%	618	148	8.4%

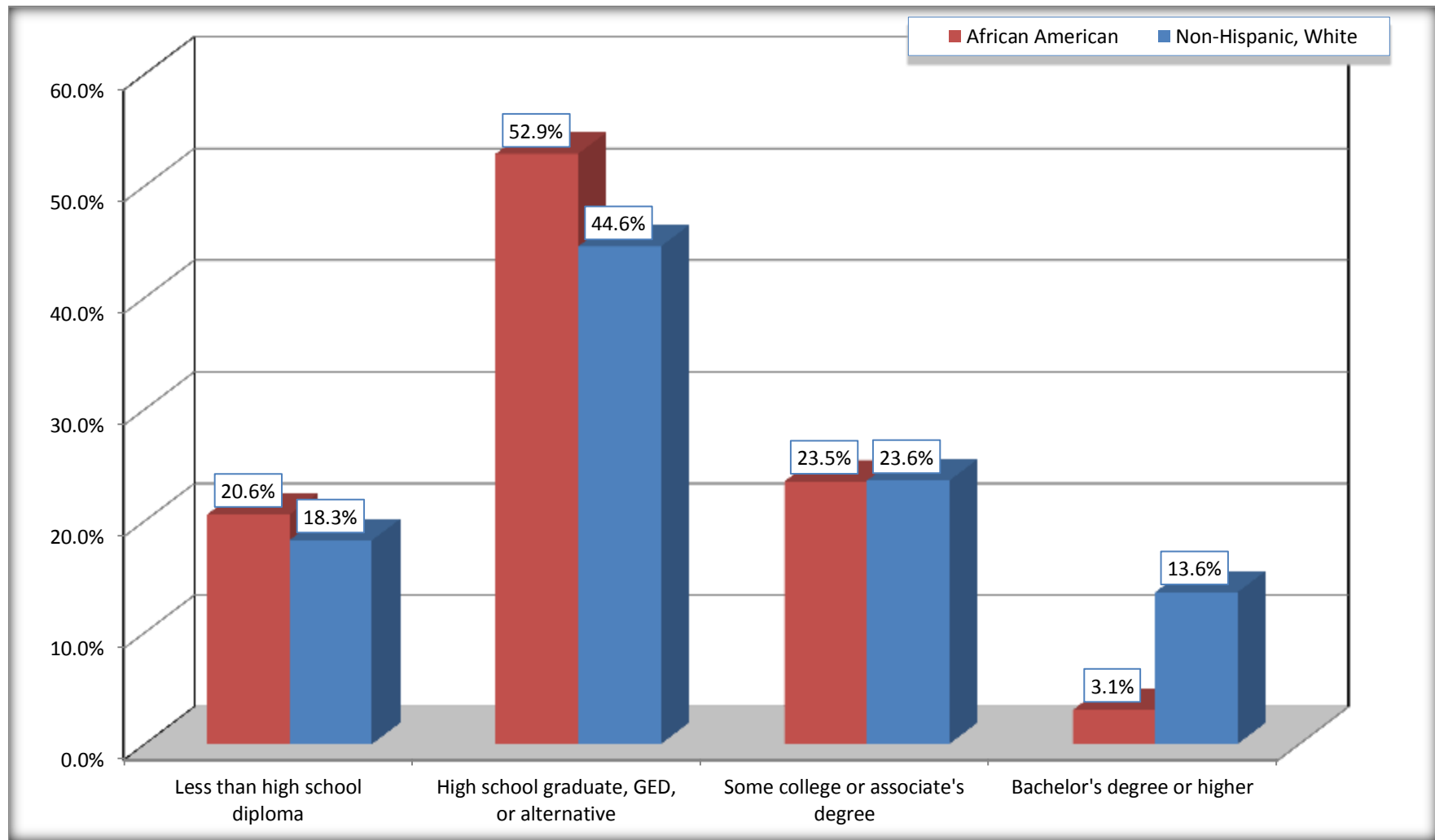
Source: U.S. Census Bureau, 2008-2012 American Community Survey

For information on confidentiality protection, sampling error, nonsampling error, and definitions, see Survey Methodology.

<http://www.census.gov/acs/www/UseData/index.htm>

Educational Attainment for the Population 25 Years and Older

Jeff Davis County, Georgia



Source: C15002. SEX BY EDUCATIONAL ATTAINMENT FOR THE POPULATION 25 YEARS AND OVER
Data Set: 2008-2012 American Community Survey 5-Year Estimates

B17010. POVERTY STATUS IN THE PAST 12 MONTHS OF FAMILIES BY FAMILY TYPE BY PRESENCE OF RELATED CHILDREN UNDER 18 YEARS

Data Set: 2008-2012 American Community Survey 5-Year Estimates

	Jeff Davis County, Georgia					
	African American	Margin of Error (+/-)	% of AA Total	White, Not Hispanic	Margin of Error (+/-)	% of NHW Total
Total:	646	157	100.0%	3,156	249	100.0%
Income in the past 12 months below poverty level:	233	149	36.1%	464	136	14.7%
Married-couple family:	83	97	12.8%	301	119	9.5%
With related children under 18 years	83	97	12.8%	178	102	5.6%
Other family:	150	103	23.2%	163	74	5.2%
Male householder, no wife present	0	21	0.0%	16	27	0.5%
With related children under 18 years	0	21	0.0%	0	21	0.0%
Female householder, no husband present	150	103	23.2%	147	67	4.7%
With related children under 18 years	150	103	23.2%	111	51	3.5%
Income in the past 12 months at or above poverty level:	413	116	63.9%	2,692	261	85.3%
Married-couple family:	229	113	35.4%	2,185	295	69.2%
With related children under 18 years	114	105	17.6%	813	192	25.8%
Other family:	184	78	28.5%	507	191	16.1%
Male householder, no wife present	38	61	5.9%	308	157	9.8%
With related children under 18 years	0	21	0.0%	248	137	7.9%
Female householder, no husband present	146	59	22.6%	199	89	6.3%
With related children under 18 years	71	50	11.0%	139	88	4.4%

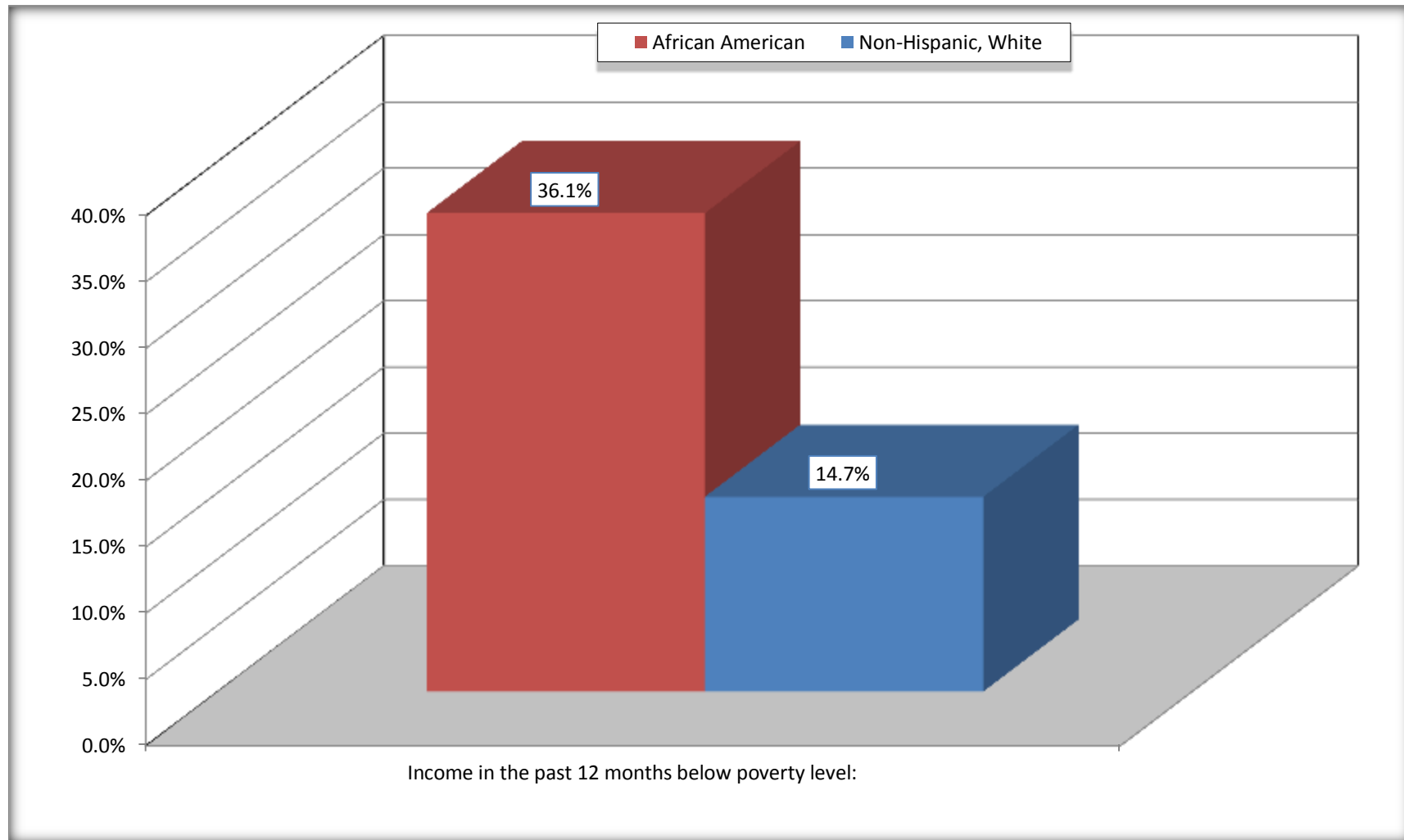
Source: U.S. Census Bureau, 2008-2012 American Community Survey

For information on confidentiality protection, sampling error, nonsampling error, and definitions, see Survey Methodology.

<http://www.census.gov/acs/www/UseData/index.htm>

Family Households Below Poverty in the Past 12 Months

Jeff Davis County, Georgia

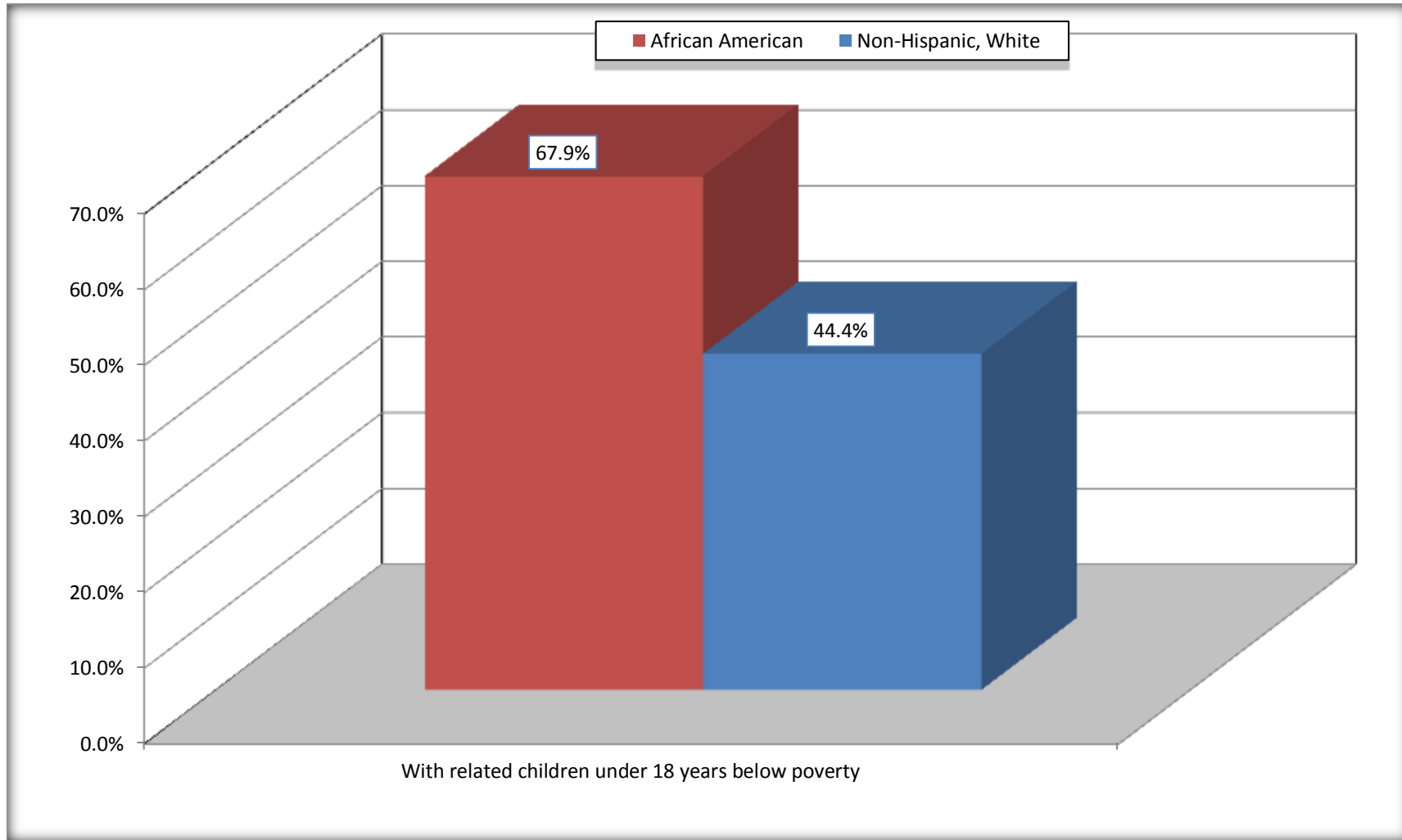


Source: B17010. POVERTY STATUS IN THE PAST 12 MONTHS OF FAMILIES BY FAMILY TYPE BY PRESENCE OF RELATED CHILDREN UNDER 18 YEARS

Data Set: 2008-2012 American Community Survey 5-Year Estimates

Female-headed Households with Related Children Below Poverty in the Past 12 Months

Jeff Davis County, Georgia



Source: B17010. POVERTY STATUS IN THE PAST 12 MONTHS OF FAMILIES BY FAMILY TYPE BY PRESENCE OF RELATED CHILDREN UNDER 18 YEARS

Data Set: 2008-2012 American Community Survey 5-Year Estimates

B17020 POVERTY STATUS IN THE PAST 12 MONTHS BY AGE - Universe: POPULATION FOR WHOM POVERTY STATUS IS DETERMINED

Data Set: 2008-2012 American Community Survey 5-Year Estimates

	Jeff Davis County, Georgia					
	African American	Margin of Error (+/-)	% of AA By Age	White, Not Hispanic	Margin of Error (+/-)	% of NHW By Age
Total:	2,250	118	100.0%	10,942	51	100.0%
Income in the past 12 months below poverty level:	863	335	38.4%	2,373	496	21.7%
Under 18 years	375	NC	52.8%	784	NC	29.0%
18 to 64 years	409	194	31.3%	1,237	281	18.6%
65 years and over	79	NC	34.1%	352	NC	22.2%
Income in the past 12 months at or above poverty level:	1,387	323	61.6%	8,569	495	78.3%
Under 18 years	335	NC	47.2%	1,917	NC	71.0%
18 to 64 years	899	199	68.7%	5,415	286	81.4%
65 years and over	153	NC	65.9%	1,237	NC	77.8%

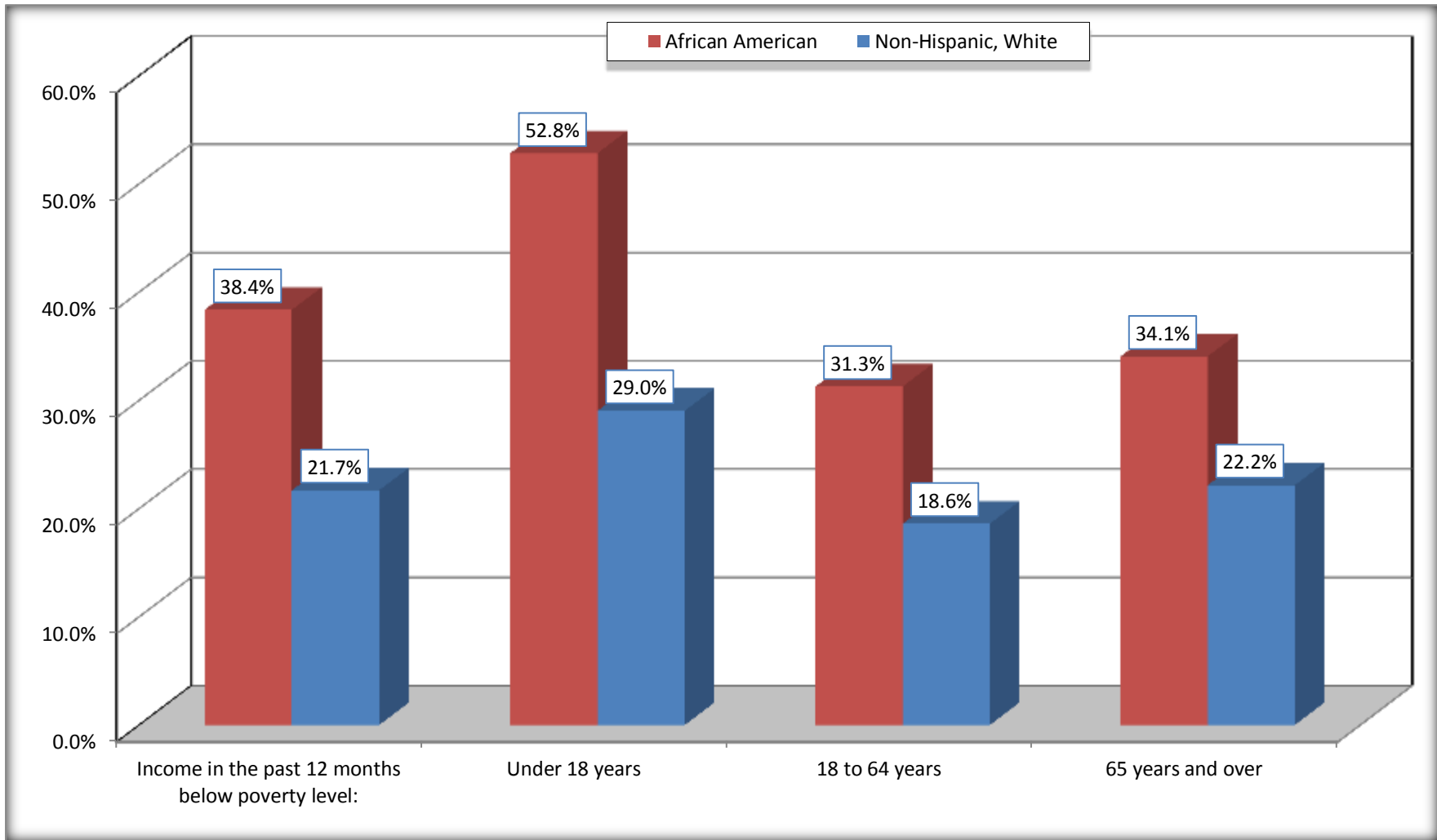
Source: U.S. Census Bureau, 2008-2012 American Community Survey

For information on confidentiality protection, sampling error, nonsampling error, and definitions, see Survey Methodology.

<http://www.census.gov/acs/www/UseData/index.htm>

Population Below Poverty in the Past 12 Months

Jeff Davis County, Georgia



Source: B17020 POVERTY STATUS IN THE PAST 12 MONTHS BY AGE - Universe: POPULATION FOR WHOM POVERTY STATUS IS DETERMINED
Data Set: 2008-2012 American Community Survey 5-Year Estimates

B19001. HOUSEHOLD INCOME IN THE PAST 12 MONTHS (IN 2010 INFLATION-ADJUSTED DOLLARS)

Data Set: 2008-2012 American Community Survey 5-Year Estimates

	Jeff Davis County, Georgia					
	African American	Margin of Error (+/-)	% of AA Total	White, Not Hispanic	Margin of Error (+/-)	% of NHW Total
Total:	914	164	100.0%	4,332	182	100.0%
Less than \$ 10,000	188	114	20.6%	476	177	11.0%
\$ 10,000 to \$ 14,999	77	70	8.4%	393	123	9.1%
\$ 15,000 to \$ 24,999	196	NC	21.4%	529	NC	12.2%
\$ 25,000 to \$ 34,999	206	NC	22.5%	515	NC	11.9%
\$ 35,000 to \$ 49,999	69	NC	7.5%	755	NC	17.4%
\$ 50,000 to \$ 74,999	96	NC	10.5%	851	NC	19.6%
\$ 75,000 to \$ 99,999	82	75	9.0%	332	133	7.7%
\$ 100,000 to \$ 149,999	0	NC	0.0%	406	NC	9.4%
\$ 150,000 to \$ 199,999	0	21	0.0%	33	34	0.8%
\$ 200,000 or more	0	21	0.0%	42	50	1.0%

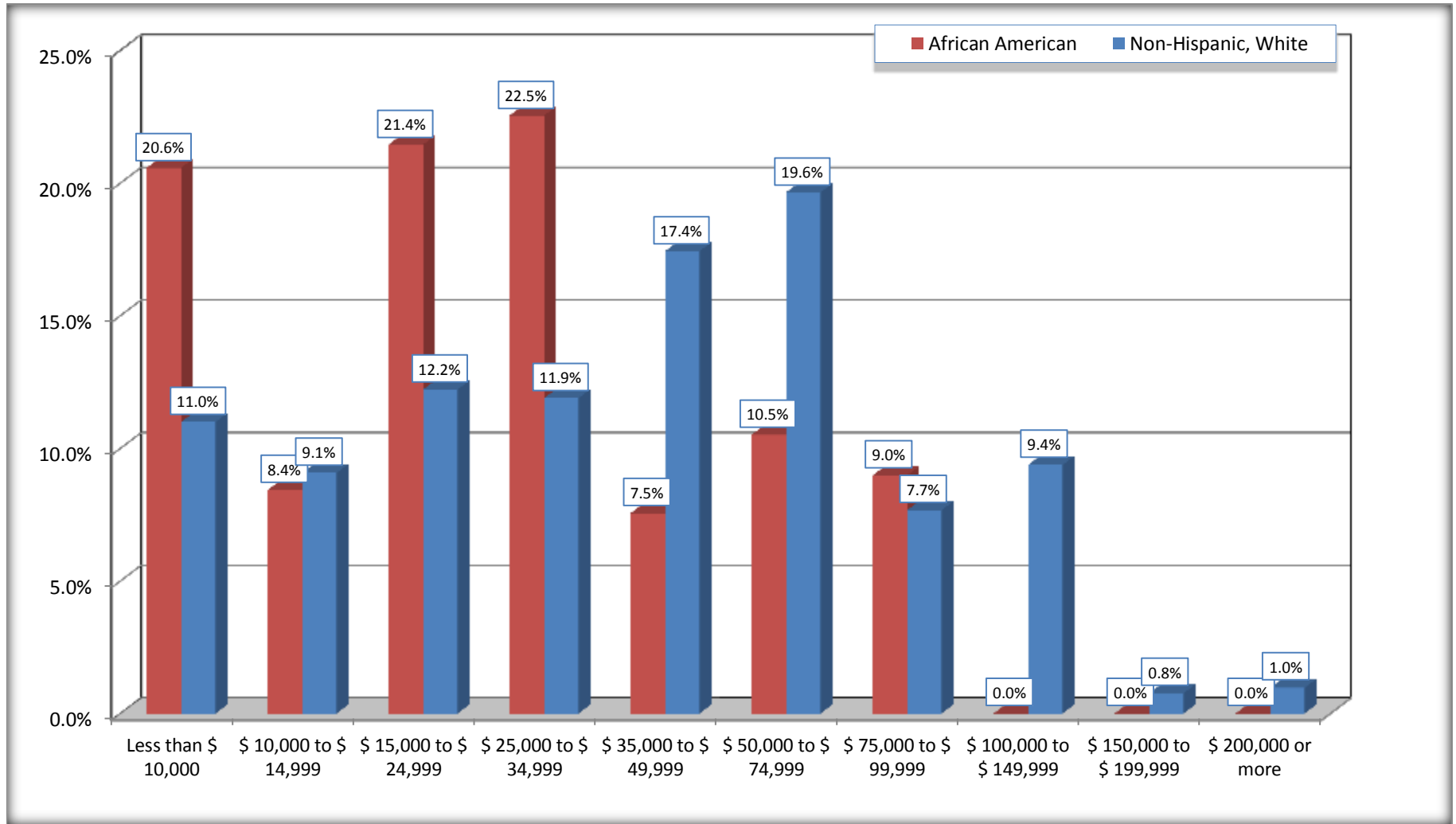
Source: U.S. Census Bureau, 2008-2012 American Community Survey

For information on confidentiality protection, sampling error, nonsampling error, and definitions, see Survey Methodology.

<http://www.census.gov/acs/www/UseData/index.htm>

Household Income in the Past 12 Months

Jeff Davis County, Georgia



Source: B19001. HOUSEHOLD INCOME IN THE PAST 12 MONTHS (IN 2010 INFLATION-ADJUSTED DOLLARS)
Data Set: 2008-2012 American Community Survey 5-Year Estimates

B19013. MEDIAN HOUSEHOLD INCOME IN THE PAST 12 MONTHS (IN 2010 INFLATION-ADJUSTED DOLLARS)

Data Set: 2008-2012 American Community Survey 5-Year Estimates

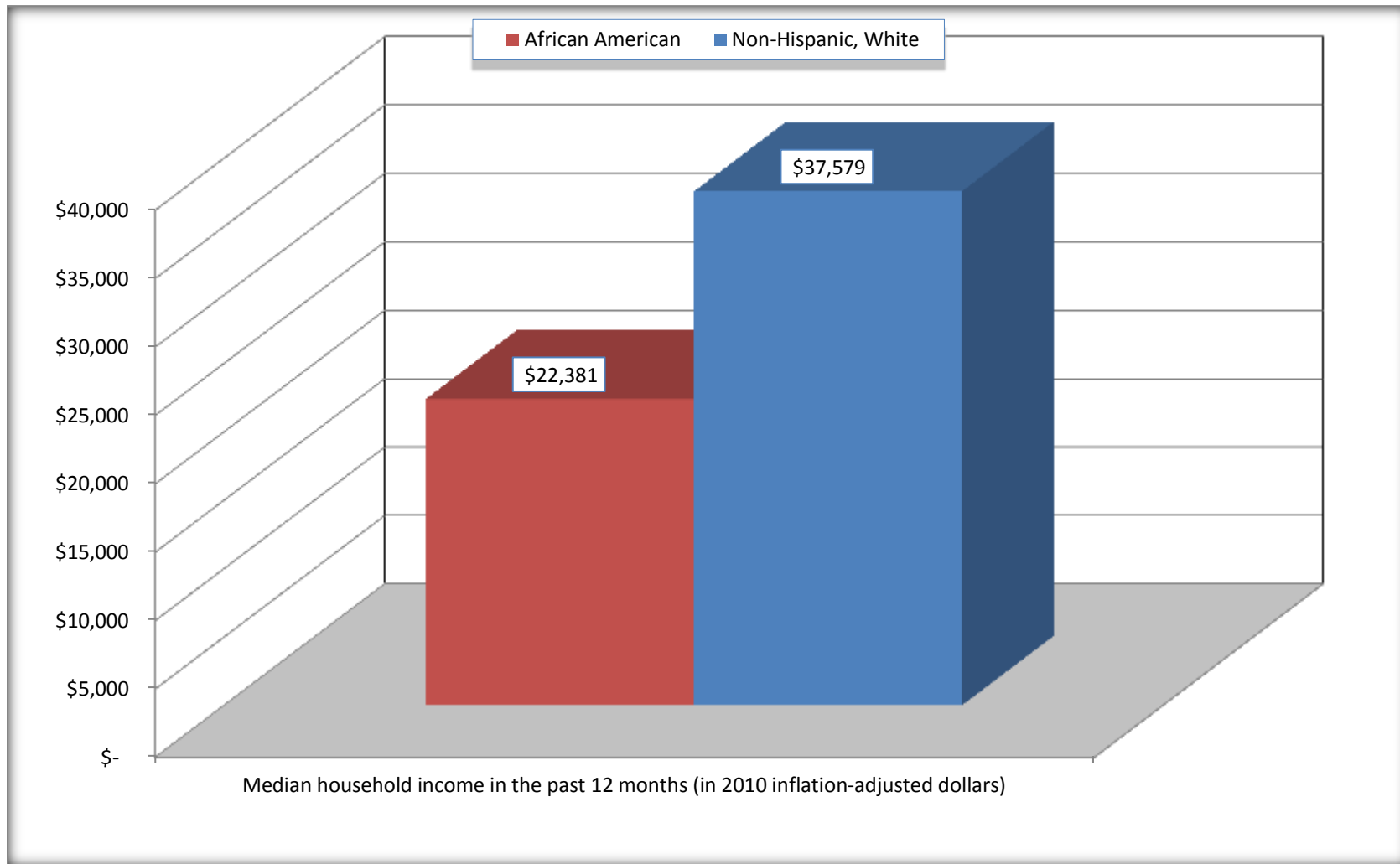
	Jeff Davis County, Georgia			
	African American	Margin of Error (+/-)	White, Not Hispanic	Margin of Error (+/-)
Median household income in the past 12 months (in 2010 inflation-adjusted dollars)	\$ 22,381	\$ 10,927	\$ 37,579	\$ 5,017

Source: U.S. Census Bureau, 2008-2012 American Community Survey

For information on confidentiality protection, sampling error, nonsampling error, and definitions, see Survey Methodology.
<http://www.census.gov/acs/www/UseData/index.htm>

Median Household Income in the Past 12 Months

Jeff Davis County, Georgia



Source: B19013. MEDIAN HOUSEHOLD INCOME IN THE PAST 12 MONTHS (IN 2010 INFLATION-ADJUSTED DOLLARS)
Data Set: 2008-2012 American Community Survey 5-Year Estimates

B19101. FAMILY INCOME IN THE PAST 12 MONTHS (IN 2010 INFLATION-ADJUSTED DOLLARS)

Data Set: 2008-2012 American Community Survey 5-Year Estimates

	Jeff Davis County, Georgia					
	African American	Margin of Error (+/-)	% of AA Total	White, Not Hispanic	Margin of Error (+/-)	% of NHW Total
Total:	646	157	100.0%	3,156	249	100.0%
Less than \$ 10,000	96	104	14.9%	230	115	7.3%
\$ 10,000 to \$ 14,999	54	67	8.4%	163	90	5.2%
\$ 15,000 to \$ 24,999	101	NC	15.6%	296	NC	9.4%
\$ 25,000 to \$ 34,999	165	NC	25.5%	392	NC	12.4%
\$ 35,000 to \$ 49,999	69	NC	10.7%	611	NC	19.4%
\$ 50,000 to \$ 74,999	96	NC	14.9%	694	NC	22.0%
\$ 100,000 to \$ 149,999	-	NC	0.0%	406	NC	12.9%
\$ 150,000 to \$ 199,999	0	21	0.0%	33	34	1.0%
\$ 200,000 or more	0	21	0.0%	42	50	1.3%

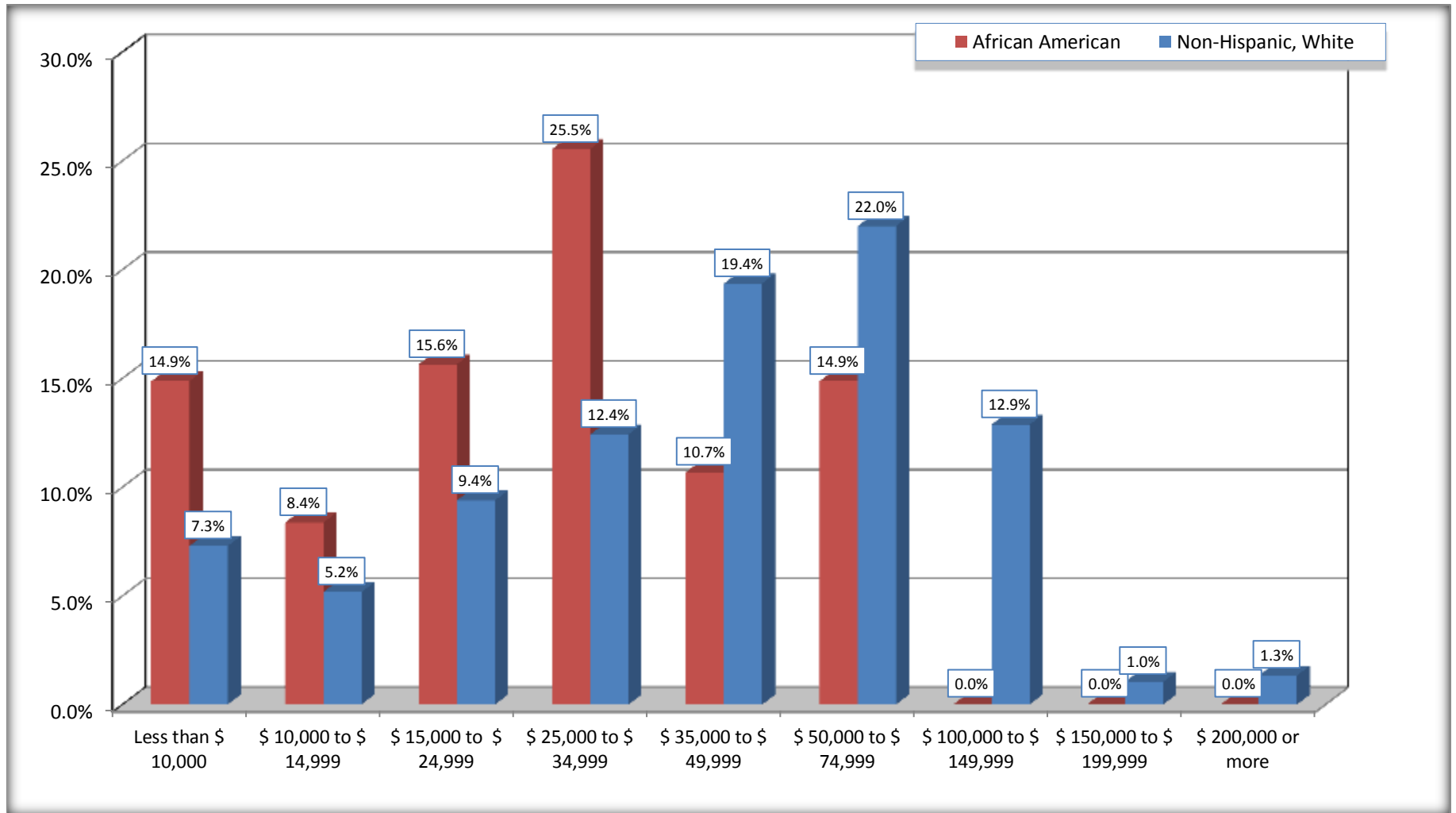
Source: U.S. Census Bureau, 2008-2012 American Community Survey

For information on confidentiality protection, sampling error, nonsampling error, and definitions, see Survey Methodology.

<http://www.census.gov/acs/www/UseData/index.htm>

Family Income in the Past 12 Months

Jeff Davis County, Georgia



Source: B19101. FAMILY INCOME IN THE PAST 12 MONTHS (IN 2010 INFLATION-ADJUSTED DOLLARS)
Data Set: 2008-2012 American Community Survey 5-Year Estimates

B19113. MEDIAN FAMILY INCOME IN THE PAST 12 MONTHS (IN 2010 INFLATION-ADJUSTED DOLLARS)

Data Set: 2008-2012 American Community Survey 5-Year Estimates

	Jeff Davis County, Georgia			
	African American	Margin of Error (+/-)	White, Not Hispanic	Margin of Error (+/-)
Median family income in the past 12 months (in 2010 inflation-adjusted dollars)	\$ 31,223	\$ 7,764	\$ 47,824	\$ 5,146

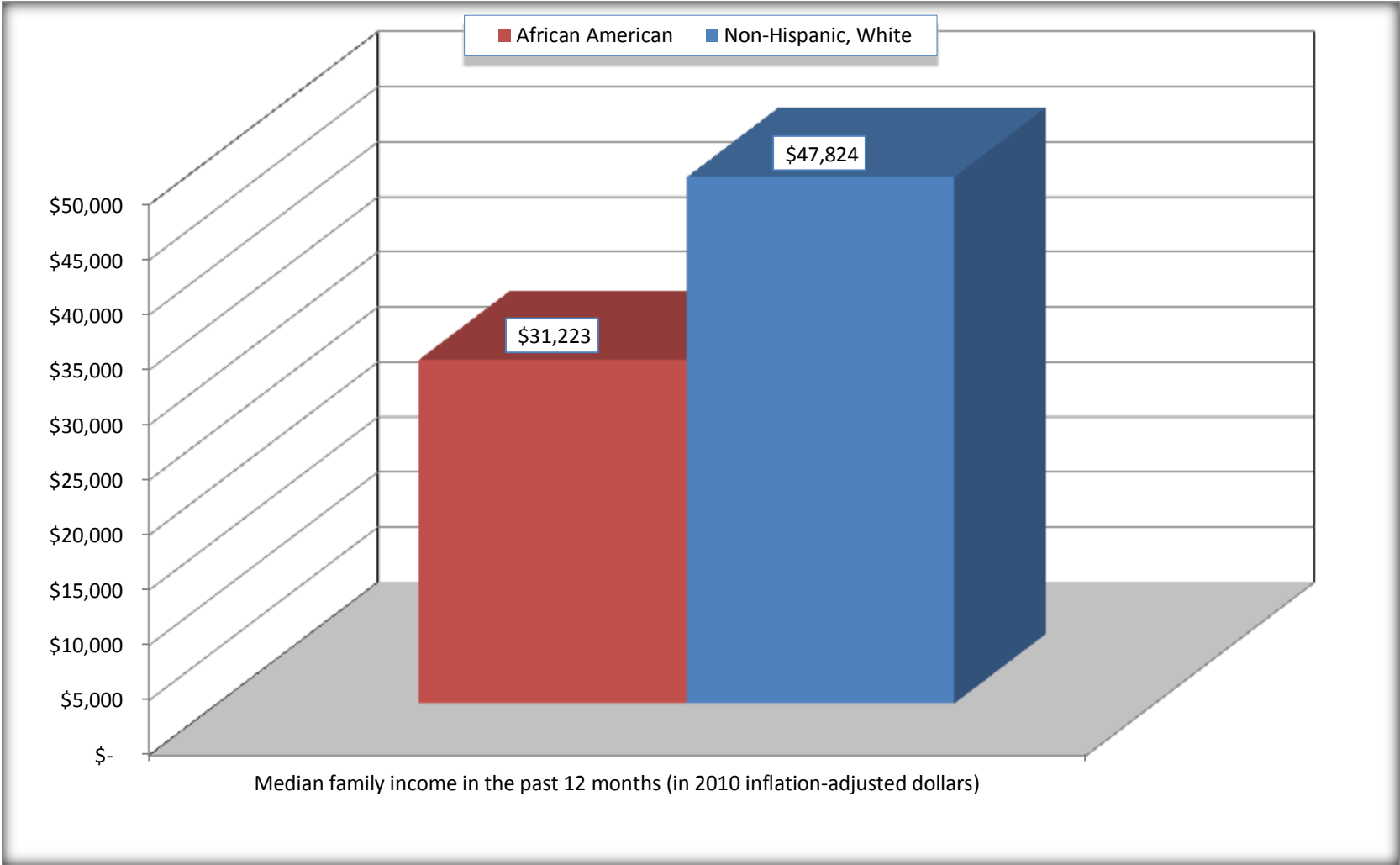
Source: U.S. Census Bureau, 2008-2012 American Community Survey

For information on confidentiality protection, sampling error, nonsampling error, and definitions, see Survey Methodology.

<http://www.census.gov/acs/www/UseData/index.htm>

Median Family Income in the Past 12 Months

Jeff Davis County, Georgia



Source: B19113. MEDIAN FAMILY INCOME IN THE PAST 12 MONTHS (IN 2010 INFLATION-ADJUSTED DOLLARS)
Data Set: 2008-2012 American Community Survey 5-Year Estimates

B19202. MEDIAN NONFAMILY HOUSEHOLD INCOME IN THE PAST 12 MONTHS (IN 2010 INFLATION-ADJUSTED DOLLARS)

Data Set: 2008-2012 American Community Survey 5-Year Estimates

	Jeff Davis County, Georgia			
	African American	Margin of Error (+/-)	White, Not Hispanic	Margin of Error (+/-)
Median nonfamily household income in the past 12 months (in 2010 inflation-adjusted dollars)	\$ 15,779	\$ 3,030	\$ 16,851	\$ 4,800

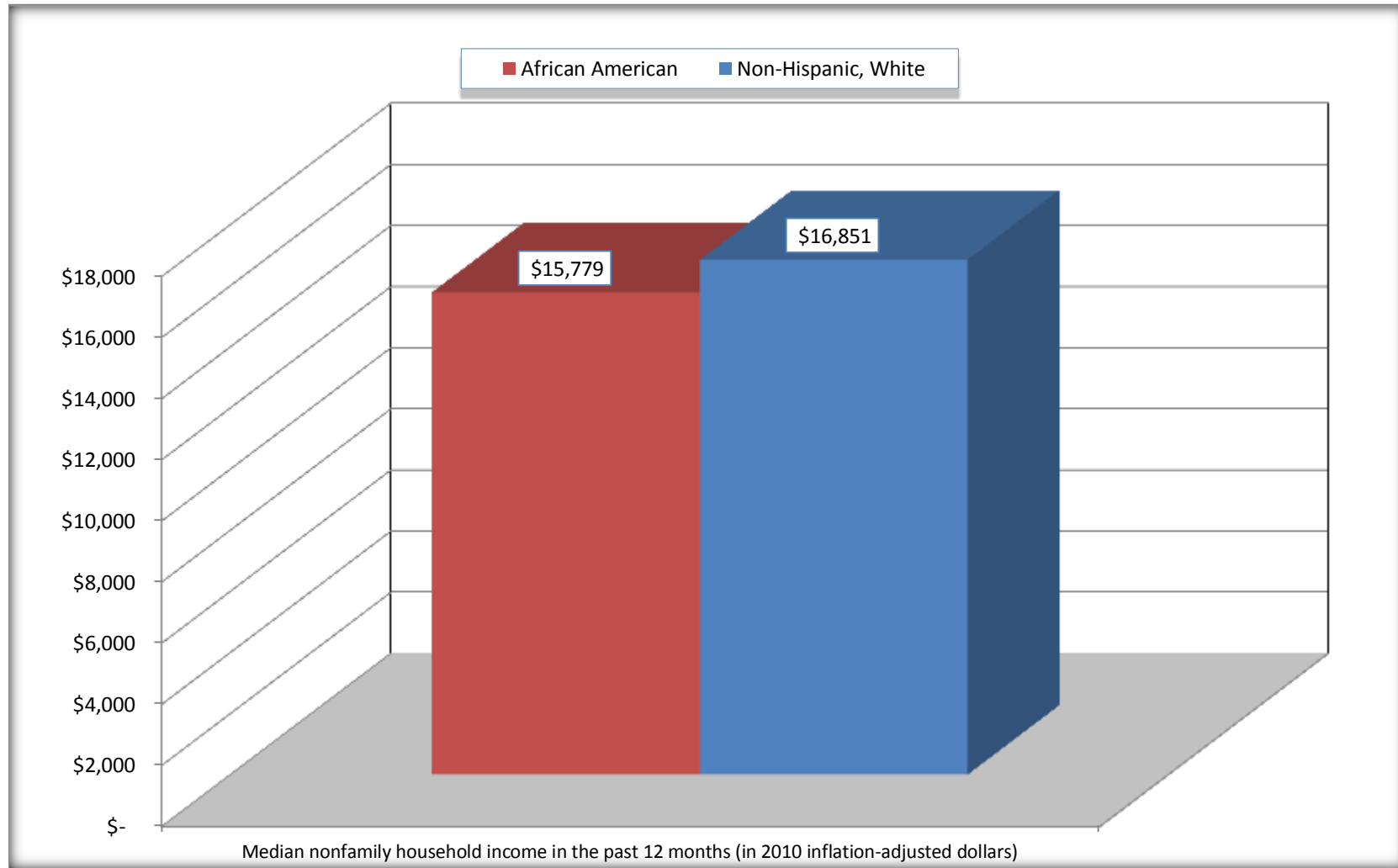
Source: U.S. Census Bureau, 2008-2012 American Community Survey

For information on confidentiality protection, sampling error, nonsampling error, and definitions, see Survey Methodology.

<http://www.census.gov/acs/www/UseData/index.htm>

Median Non-Family Income in the Past 12 Months

Jeff Davis County, Georgia



Source: B19202. MEDIAN NONFAMILY HOUSEHOLD INCOME IN THE PAST 12 MONTHS (IN 2010 INFLATION-ADJUSTED DOLLARS)
Data Set: 2008-2012 American Community Survey 5-Year Estimates

B19301. PER CAPITA INCOME IN THE PAST 12 MONTHS (IN 2010 INFLATION-ADJUSTED DOLLARS)

Data Set: 2008-2012 American Community Survey 5-Year Estimates

	Jeff Davis County, Georgia			
	African American	Margin of Error (+/-)	White, Not Hispanic	Margin of Error (+/-)
Per capita income in the past 12 months (in 2010 inflation-adjusted dollars)	\$ 12,314	\$ 2,005	\$ 19,135	\$ 1,718

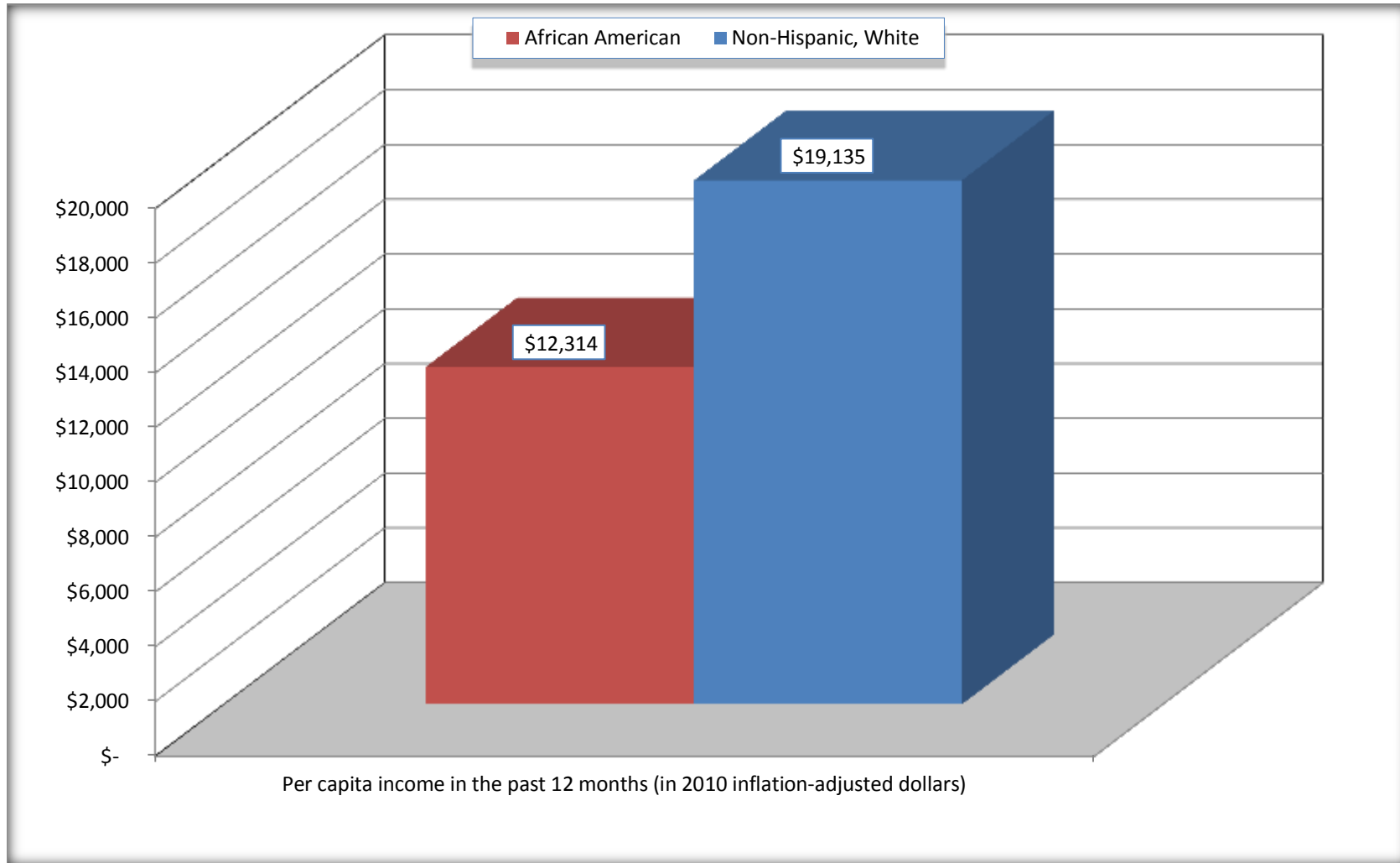
Source: U.S. Census Bureau, 2008-2012 American Community Survey

For information on confidentiality protection, sampling error, nonsampling error, and definitions, see Survey Methodology.

<http://www.census.gov/acs/www/UseData/index.htm>

Per capita Income in the Past 12 Months

Jeff Davis County, Georgia



Source: B19301. PER CAPITA INCOME IN THE PAST 12 MONTHS (IN 2010 INFLATION-ADJUSTED DOLLARS)
Data Set: 2008-2012 American Community Survey 5-Year Estimates

B20017. MEDIAN EARNINGS IN THE PAST 12 MONTHS (IN 2010 INFLATION-ADJUSTED DOLLARS) BY SEX BY WORK EXPERIENCE IN THE PAST 12 MONTHS FOR THE POPULATION 16 YEARS AND OVER WITH EARNINGS IN THE PAST 12 MONTHS

Data Set: 2008-2012 American Community Survey 5-Year Estimates

	Jeff Davis County, Georgia			
	African American	Margin of Error (+/-)	White, Not Hispanic	Margin of Error (+/-)
Median earnings in the past 12 months (in 2010 inflation-adjusted dollars) --				
Total:	\$ 20,367	\$ 3,918	\$ 29,314	\$ 3,319
Male --				
Total	\$ 20,787	\$ 4,318	\$ 33,255	\$ 2,961
Worked full-time, year-round in the past 12 months	\$ 31,513	\$ 16,477	\$ 40,947	\$ 3,423
Other	\$ 20,029	\$ 9,484	\$ 7,691	\$ 2,339
Female --				
Total	\$ 19,348	\$ 8,387	\$ 24,302	\$ 3,196
Worked full-time, year-round in the past 12 months	\$ 19,500	\$ 19,310	\$ 31,321	\$ 6,494
Other	\$ 18,864	\$ 9,695	\$ 8,827	\$ 1,581

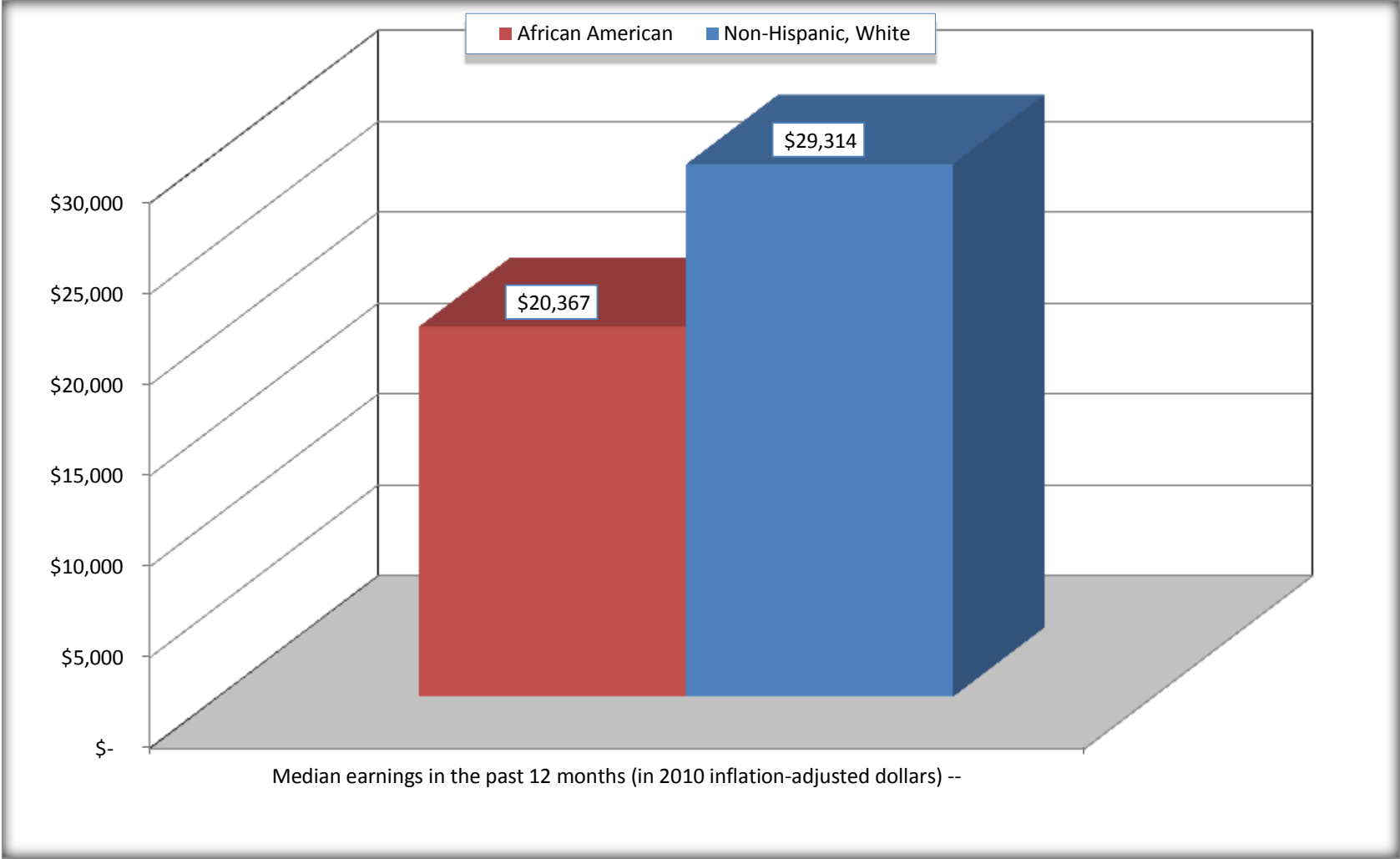
Source: U.S. Census Bureau, 2008-2012 American Community Survey

For information on confidentiality protection, sampling error, nonsampling error, and definitions, see Survey Methodology.

<http://www.census.gov/acs/www/UseData/index.htm>

Median earnings in the Past 12 Months (16 Years and Over with Earnings)

Jeff Davis County, Georgia



Source: B20017. MEDIAN EARNINGS IN THE PAST 12 MONTHS (IN 2010 INFLATION-ADJUSTED DOLLARS) BY SEX BY WORK EXPERIENCE IN THE PAST 12 MONTHS FOR THE POPULATION 16 YEARS AND OVER WITH EARNINGS IN THE PAST 12 MONTHS
Data Set: 2008-2012 American Community Survey 5-Year Estimates

B20005. SEX BY WORK EXPERIENCE IN THE PAST 12 MONTHS BY EARNINGS IN THE PAST 12 MONTHS (IN 2010 INFLATION-ADJUSTED DOLLARS) FOR THE POPULATION 16 YEARS AND OVER

Data Set: 2008-2012 American Community Survey 5-Year Estimates

	Jeff Davis County, Georgia					
	African American	Margin of Error (+/-)	% of AA Total	White, Not Hispanic	Margin of Error (+/-)	% of NHW Total
Total:	1,633	114	100.0%	8,613	82	100.0%
Worked full-time, year-round in the past 12 months:	402	NC	24.6%	3,346	NC	38.8%
No earnings	0	NC	0.0%	0	NC	0.0%
With earnings:	402	NC	24.6%	3,346	NC	38.8%
\$ 1 to \$ 9,999 or loss	9	NC	0.6%	43	NC	0.5%
\$ 10,000 to \$ 19,999	172	NC	10.5%	455	NC	5.3%
\$ 20,000 to \$ 29,999	34	NC	2.1%	628	NC	7.3%
\$ 30,000 to \$ 49,999	140	NC	8.6%	1,201	NC	13.9%
\$ 50,000 to \$ 74,999	8	NC	0.5%	760	NC	8.8%
\$ 75,000 or more	39	NC	2.4%	259	NC	3.0%
Other:	1,231	NC	75.4%	5,267	NC	61.2%
No earnings	865	NC	53.0%	3,712	NC	43.1%
With earnings: less than full time, year-round	366	NC	22.4%	1,555	NC	18.1%
Male:	721	68	44.2%	4,183	89	48.6%
Worked full-time, year-round in the past 12 months:	180	79	11.0%	1,940	249	22.5%
No earnings	0	21	0.0%	0	21	0.0%
With earnings:	180	79	11.0%	1,940	249	22.5%
\$ 1 to \$ 9,999 or loss	0	NC	0.0%	23	NC	0.3%
\$ 10,000 to \$ 19,999	63	NC	3.9%	151	NC	1.8%
\$ 20,000 to \$ 29,999	4	NC	0.2%	286	NC	3.3%
\$ 30,000 to \$ 49,999	66	NC	4.0%	816	NC	9.5%
\$ 50,000 to \$ 74,999	8	NC	0.5%	437	NC	5.1%
\$ 75,000 or more	39	NC	2.4%	227	NC	2.6%

	Jeff Davis County, Georgia					
	African American	Margin of Error (+/-)	% of AA Total	White, Not Hispanic	Margin of Error (+/-)	% of NHW Total
Other:	541	103	33.1%	2,243	276	26.0%
No earnings	291	121	17.8%	1,472	247	17.1%
With earnings:	250	137	15.3%	771	200	9.0%
Female:	912	74	55.8%	4,430	78	51.4%
Worked full-time, year-round in the past 12 months:	222	91	13.6%	1,406	191	16.3%
No earnings	0	21	0.0%	0	21	0.0%
With earnings:	222	91	13.6%	1,406	191	16.3%
\$ 1 to \$ 9,999 or loss	9	NC	0.6%	20	NC	0.2%
\$ 10,000 to \$ 19,999	109	NC	6.7%	304	NC	3.5%
\$ 20,000 to \$ 29,999	30	NC	1.8%	342	NC	4.0%
\$ 30,000 to \$ 49,999	74	NC	4.5%	385	NC	4.5%
\$ 50,000 to \$ 74,999	0	NC	0.0%	323	NC	3.8%
\$ 75,000 or more	0	NC	0.0%	32	NC	0.4%
Other:	690	111	42.3%	3,024	202	35.1%
No earnings	574	117	35.2%	2,240	239	26.0%
With earnings:	116	73	7.1%	784	189	9.1%

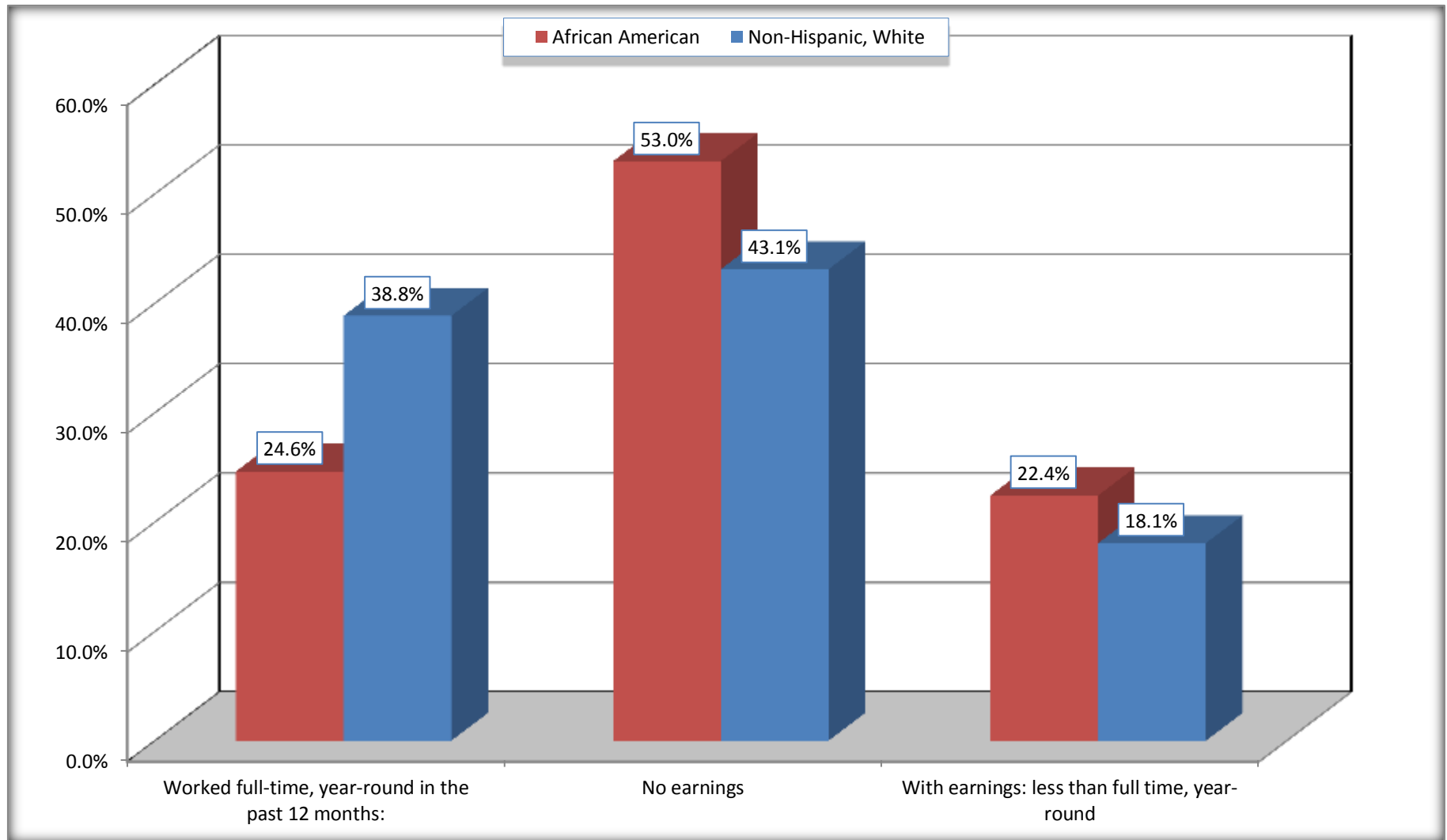
Source: U.S. Census Bureau, 2008-2012 American Community Survey

For information on confidentiality protection, sampling error, nonsampling error, and definitions, see Survey Methodology.

<http://www.census.gov/acs/www/UseData/index.htm>

Employment and Earnings in in the Past 12 Months (16 Years and Over)

Jeff Davis County, Georgia



Source: B20005. SEX BY WORK EXPERIENCE IN THE PAST 12 MONTHS BY EARNINGS IN THE PAST 12 MONTHS (IN 2010 INFLATION-ADJUSTED DOLLARS) FOR THE POPULATION 16 YEARS AND OVER

Data Set: 2008-2012 American Community Survey 5-Year Estimates

C21001. SEX BY AGE BY VETERAN STATUS FOR THE CIVILIAN POPULATION 18 YEARS AND OVER

Data Set: 2008-2012 American Community Survey 5-Year Estimates

	Jeff Davis County, Georgia					
	African American	Margin of Error (+/-)	% of AA Total	White, Not Hispanic	Margin of Error (+/-)	% of NHW Total
Total:	1,566	82	100.0%	8,297	21	100.0%
Veteran	98	NC	6.3%	740	NC	8.9%
Nonveteran	1,468	NC	93.7%	7,557	NC	91.1%
Male:	710	64	45.3%	3,972	21	47.9%
18 to 64 years:	604	76	38.6%	3,266	21	39.4%
Veteran	72	59	4.6%	417	160	5.0%
Nonveteran	532	93	34.0%	2,849	160	34.3%
65 years and over:	106	52	6.8%	706	21	8.5%
Veteran	19	24	1.2%	311	105	3.7%
Nonveteran	87	47	5.6%	395	105	4.8%
Female:	856	33	54.7%	4,325	21	52.1%
18 to 64 years:	717	28	45.8%	3,419	21	41.2%
Veteran	7	14	0.4%	12	18	0.1%
Nonveteran	710	30	45.3%	3,407	18	41.1%
65 years and over:	139	19	8.9%	906	21	10.9%
Veteran	0	21	0.0%	0	21	0.0%
Nonveteran	139	19	8.9%	906	21	10.9%

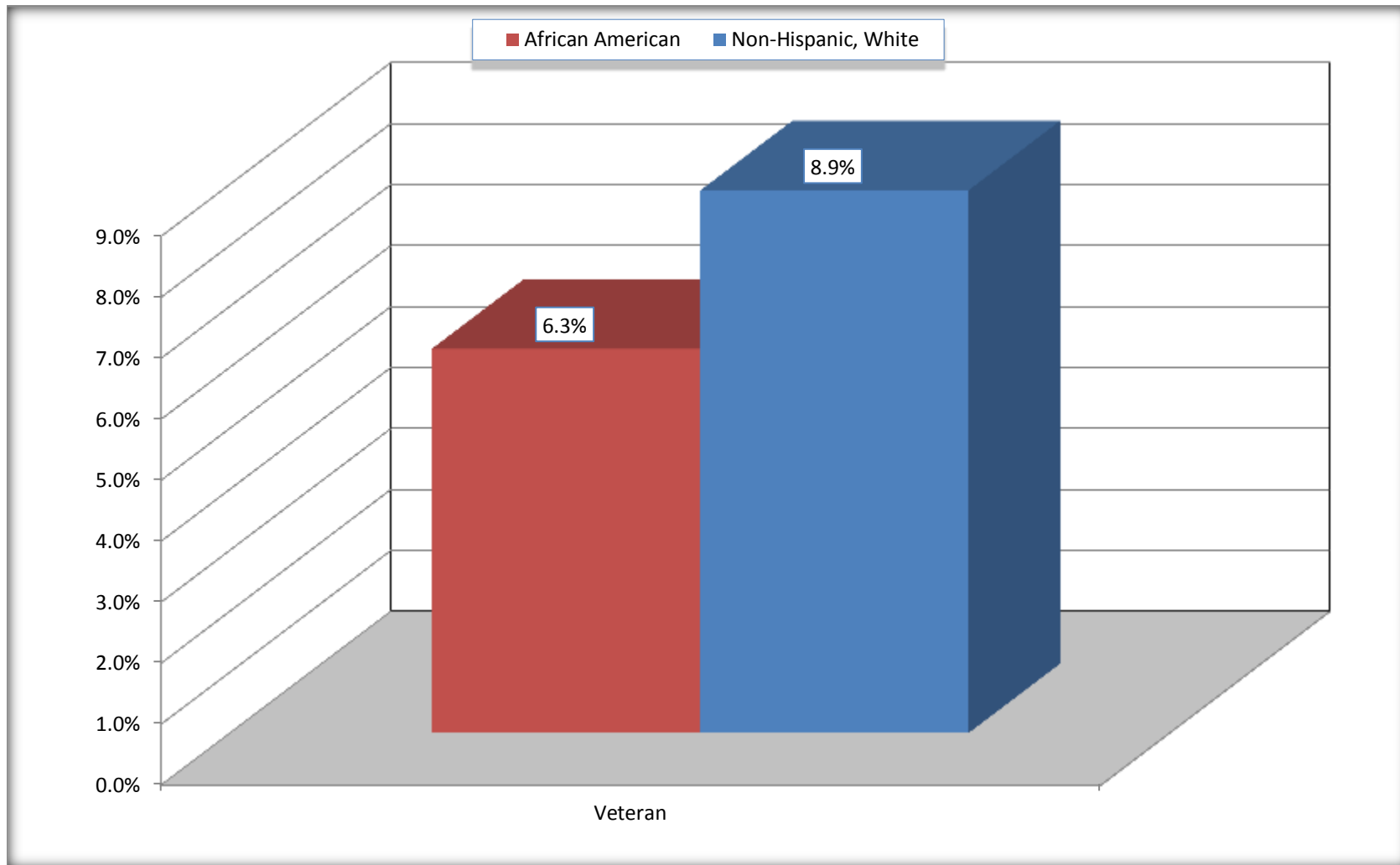
Source: U.S. Census Bureau, 2008-2012 American Community Survey

For information on confidentiality protection, sampling error, nonsampling error, and definitions, see Survey Methodology.

<http://www.census.gov/acs/www/UseData/index.htm>

Veterans in the Civilian Population 18 Years and Over

Jeff Davis County, Georgia



Source: C21001. SEX BY AGE BY VETERAN STATUS FOR THE CIVILIAN POPULATION 18 YEARS AND OVER
Data Set: 2008-2012 American Community Survey 5-Year Estimates

B22005. RECEIPT OF FOOD STAMPS/SNAP IN THE PAST 12 MONTHS BY RACE OF HOUSEHOLDER

Data Set: 2008-2012 American Community Survey 5-Year Estimates

	Jeff Davis County, Georgia					
	African American	Margin of Error (+/-)	% of AA Total	White, Not Hispanic	Margin of Error (+/-)	% of NHW Total
Total:	914	164	100.0%	4,332	182	100.0%
HH received Food Stamps/SNAP in the past 12 months	224	110	24.5%	574	161	13.3%
HH did not receive Food Stamps/SNAP in the past 12 months	690	164	75.5%	3,758	222	86.7%

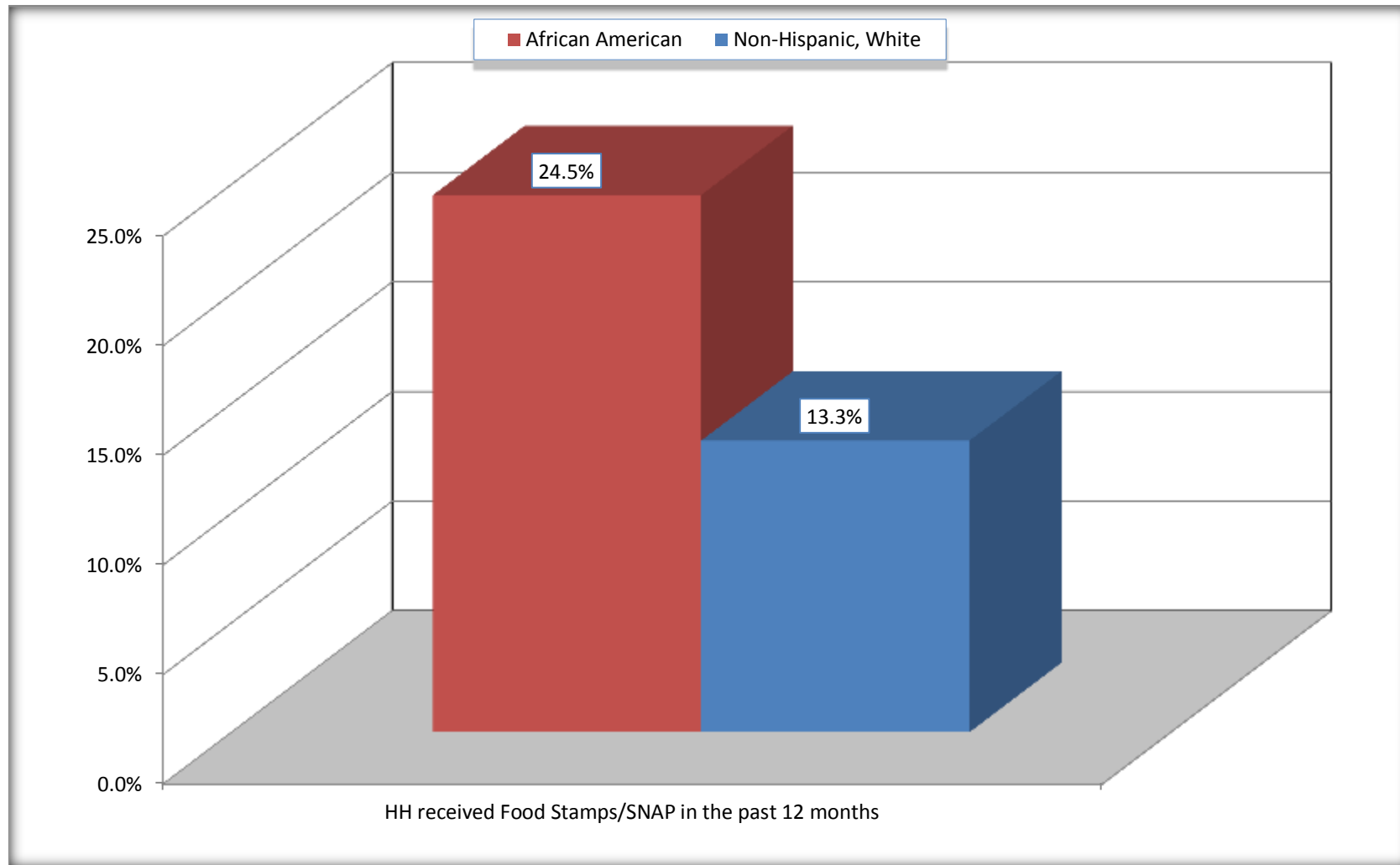
Source: U.S. Census Bureau, 2008-2012 American Community Survey

For information on confidentiality protection, sampling error, nonsampling error, and definitions, see Survey Methodology.

<http://www.census.gov/acs/www/UseData/index.htm>

Receipt of Food Stamps/SNAP in the Past 12 Months by Household

Jeff Davis County, Georgia



Source: B22005. RECEIPT OF FOOD STAMPS/SNAP IN THE PAST 12 MONTHS BY RACE OF HOUSEHOLDER
Data Set: 2008-2012 American Community Survey 5-Year Estimates

C23002. SEX BY AGE BY EMPLOYMENT STATUS FOR THE POPULATION 16 YEARS AND OVER

Data Set: 2008-2012 American Community Survey 5-Year Estimates

	Jeff Davis County, Georgia					
	African American	Margin of Error (+/-)	% of AA Total	White, Not Hispanic	Margin of Error (+/-)	% of NHW Total
Total:	1,633	114	100.0%	8,613	82	100.0%
In labor force:	845	NC	51.7%	4,806	NC	55.8%
In Armed Forces	0	NC	0.0%	0	NC	0.0%
Civilian:	827	NC	50.6%	4,681	NC	54.3%
Employed	622	NC	38.1%	4,454	NC	51.7%
Unemployed	223	NC	13.7%	352	NC	4.1%
Not in labor force	788	NC	48.3%	3,807	NC	44.2%
Male:	721	68	44.2%	4,183	89	48.6%
16 to 64 years:	615	80	37.7%	3,477	89	40.4%
In labor force:	484	96	29.6%	2,637	189	30.6%
In Armed Forces	0	21	0.0%	0	21	0.0%
Civilian:	484	96	29.6%	2,637	189	30.6%
Employed	331	125	20.3%	2,451	212	28.5%
Unemployed	153	118	9.4%	186	98	2.2%
Not in labor force	131	70	8.0%	840	217	9.8%
65 years and over:	106	52	6.5%	706	21	8.2%
In labor force:	18	25	1.1%	96	63	1.1%
Employed	18	25	1.1%	81	70	0.9%
Unemployed	0	21	0.0%	15	24	0.2%
Not in labor force	88	51	5.4%	610	63	7.1%

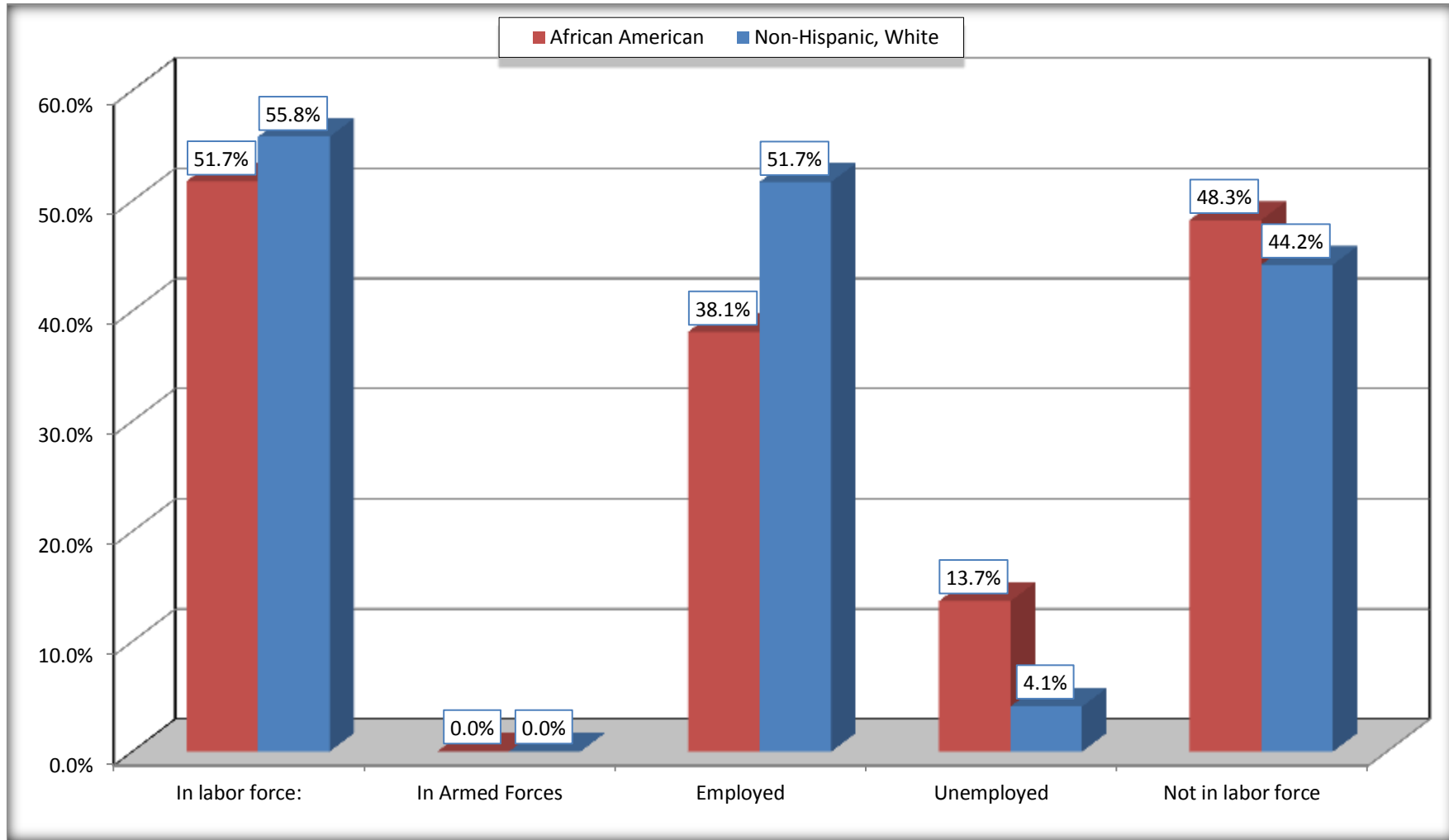
	Jeff Davis County, Georgia					
	African American	Margin of Error (+/-)	% of AA Total	White, Not Hispanic	Margin of Error (+/-)	% of NHW Total
Female:	912	74	55.8%	4,430	78	51.4%
16 to 64 years:	773	78	47.3%	3,524	78	40.9%
In labor force:	343	164	21.0%	2,044	211	23.7%
In Armed Forces	0	21	0.0%	0	21	0.0%
Civilian:	343	164	21.0%	2,044	211	23.7%
Employed	273	145	16.7%	1,893	215	22.0%
Unemployed	70	59	4.3%	151	89	1.8%
Not in labor force	430	135	26.3%	1,480	225	17.2%
65 years and over:	139	19	8.5%	906	21	10.5%
In labor force:	0	21	0.0%	29	35	0.3%
Employed	0	21	0.0%	29	35	0.3%
Unemployed	0	21	0.0%	0	21	0.0%
Not in labor force	139	19	8.5%	877	35	10.2%

Source: U.S. Census Bureau, 2008-2012 American Community Survey

For information on confidentiality protection, sampling error, nonsampling error, and definitions, see Survey Methodology.
<http://www.census.gov/acs/www/UseData/index.htm>

Employment Status for the Population 16 years and over

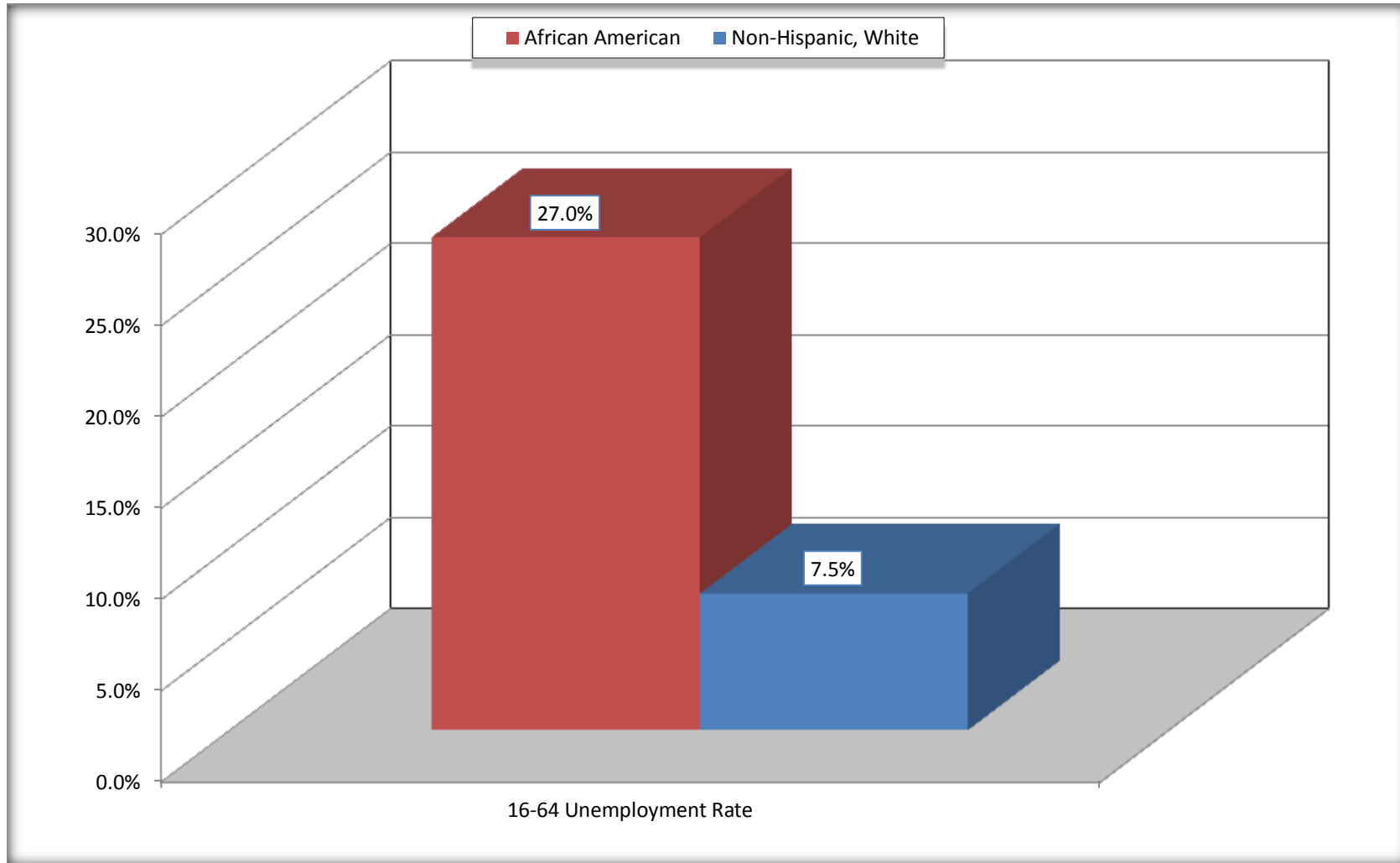
Jeff Davis County, Georgia



Source: C23002. SEX BY AGE BY EMPLOYMENT STATUS FOR THE POPULATION 16 YEARS AND OVER
Data Set: 2008-2012 American Community Survey 5-Year Estimates

Unemployment of Working Age Population (Ages 16 to 64) (As a Percent of 16-64 Civilian Labor Force)

Jeff Davis County, Georgia



Source: C23002. SEX BY AGE BY EMPLOYMENT STATUS FOR THE POPULATION 16 YEARS AND OVER
Data Set: 2008-2012 American Community Survey 5-Year Estimates

C24010. SEX BY OCCUPATION FOR THE CIVILIAN EMPLOYED POPULATION 16 YEARS AND OVER

Data Set: 2008-2012 American Community Survey 5-Year Estimates

	Jeff Davis County, Georgia					
	African American	Margin of Error (+/-)	% of AA Total	White, Not Hispanic	Margin of Error (+/-)	% of NHW Total
Total:	622	186	100.0%	4,454	329	100.0%
Management, professional, and related occupations	75	NC	12.1%	1,204	NC	27.0%
Service occupations	138	NC	22.2%	631	NC	14.2%
Sales and office occupations	114	NC	18.3%	1,077	NC	24.2%
Natural resources, construction, and maintenance occupations:	76	NC	12.2%	729	NC	16.4%
Production, transportation, and material moving occupations	219	NC	35.2%	813	NC	18.3%
Male:	349	122	56.1%	2,532	225	56.8%
Management, business, science, and arts occupations:	0	21	0.0%	395	149	8.9%
Service occupations	54	74	8.7%	389	146	8.7%
Sales and office occupations	49	54	7.9%	403	163	9.0%
Natural resources, construction, and maintenance occupations:	76	94	12.2%	729	190	16.4%
Production, transportation, and material moving occupations	170	87	27.3%	616	184	13.8%
Female:	273	145	43.9%	1,922	216	43.2%
Management, professional, and related occupations	75	66	12.1%	809	176	18.2%
Service occupations	84	64	13.5%	242	121	5.4%
Sales and office occupations	65	67	10.5%	674	174	15.1%
Natural resources, construction, and maintenance occupations:	0	21	0.0%	0	21	0.0%
Production, transportation, and material moving occupations	49	61	7.9%	197	120	4.4%

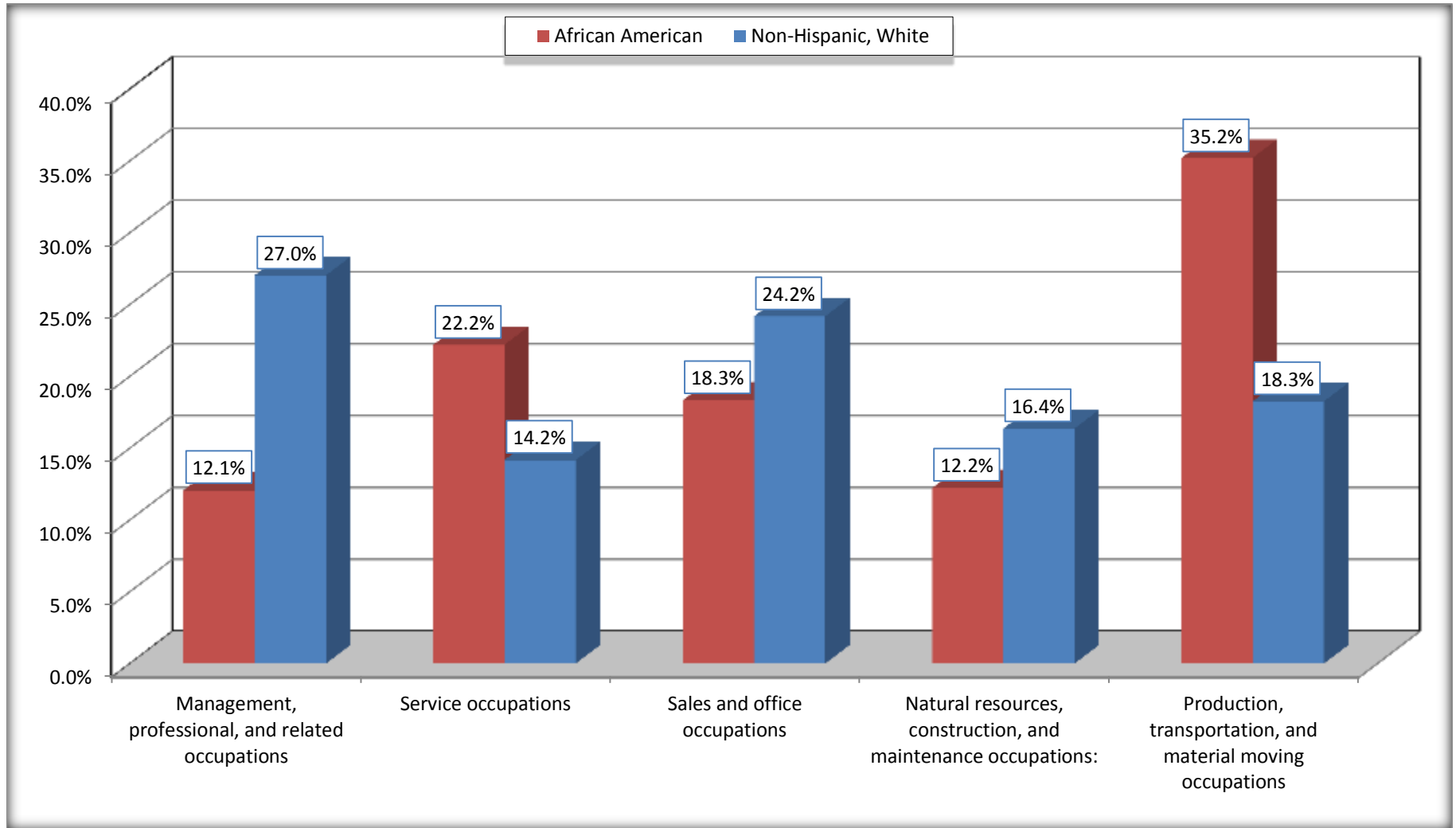
Source: U.S. Census Bureau, 2008-2012 American Community Survey

For information on confidentiality protection, sampling error, nonsampling error, and definitions, see Survey Methodology.

<http://www.census.gov/acs/www/UseData/index.htm>

Occupation for the Civilian Employed 16 Years and Over Population

Jeff Davis County, Georgia



Source: C24010. SEX BY OCCUPATION FOR THE CIVILIAN EMPLOYED POPULATION 16 YEARS AND OVER
Data Set: 2008-2012 American Community Survey 5-Year Estimates

B25003. TENURE - Universe: OCCUPIED HOUSING UNITS

Data Set: 2008-2012 American Community Survey 5-Year Estimates

	Jeff Davis County, Georgia					
	African American	Margin of Error (+/-)	% of AA Total	White, Not Hispanic	Margin of Error (+/-)	% of NHW Total
Total:	914	164	100.0%	4,332	182	100.0%
Owner occupied	459	117	50.2%	3,422	246	79.0%
Renter occupied	455	162	49.8%	910	252	21.0%

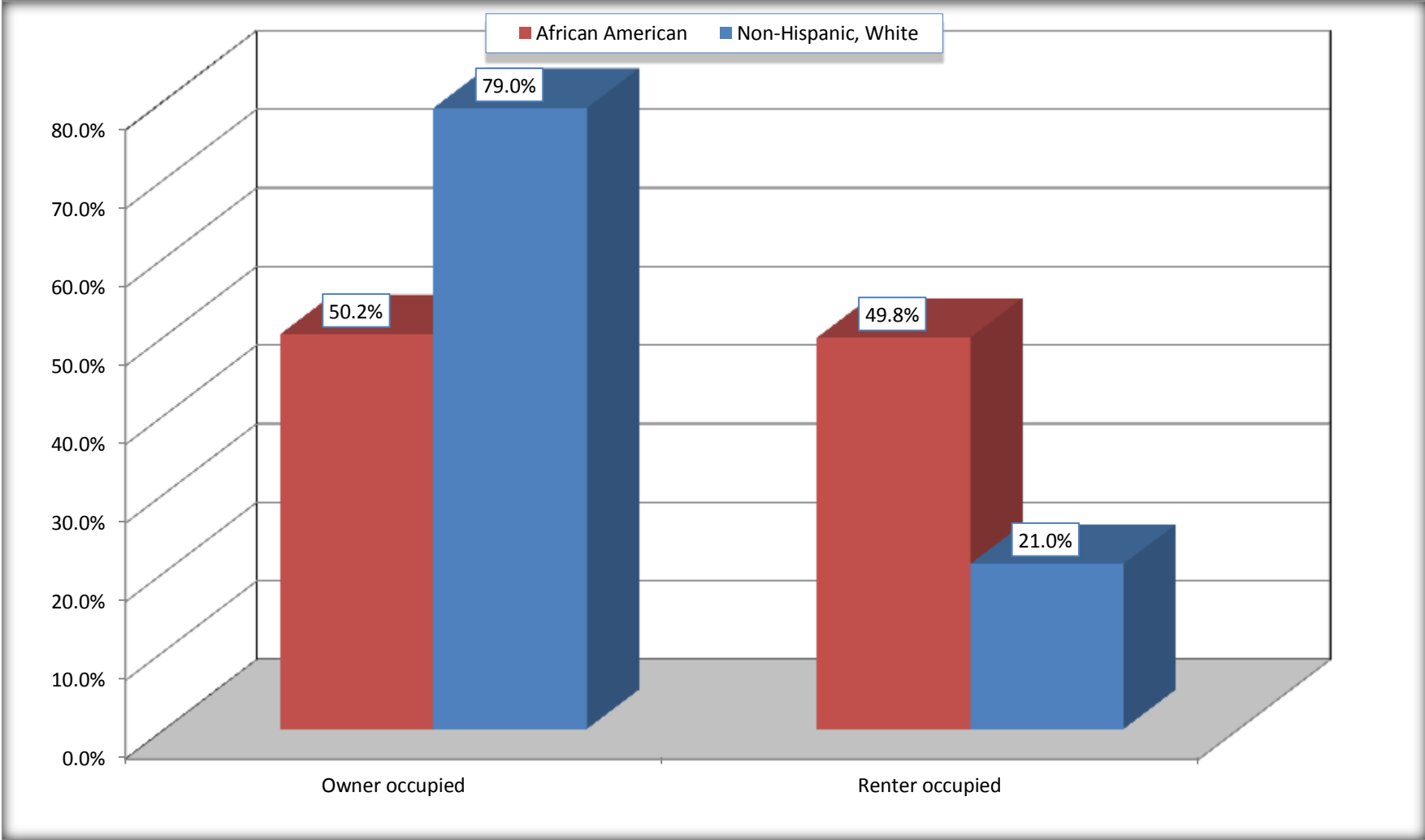
Source: U.S. Census Bureau, 2008-2012 American Community Survey

For information on confidentiality protection, sampling error, nonsampling error, and definitions, see Survey Methodology.

<http://www.census.gov/acs/www/UseData/index.h>

Home Owners and Renters by Household

Jeff Davis County, Georgia



Source: B25003. TENURE - Universe: OCCUPIED HOUSING UNITS
Data Set: 2008-2012 American Community Survey 5-Year Estimates

B25014. OCCUPANTS PER ROOM - Universe: OCCUPIED HOUSING UNITS

Data Set: 2008-2012 American Community Survey 5-Year Estimates

	Jeff Davis County, Georgia					
	African American	Margin of Error (+/-)	% of AA Total	White, Not Hispanic	Margin of Error (+/-)	% of NHW Total
Total:	914	164	100.0%	4,332	182	100.0%
1.00 or less occupants per room	821	140	89.8%	4,291	193	99.1%
1.01 or more occupants per room	93	98	10.2%	41	45	0.9%

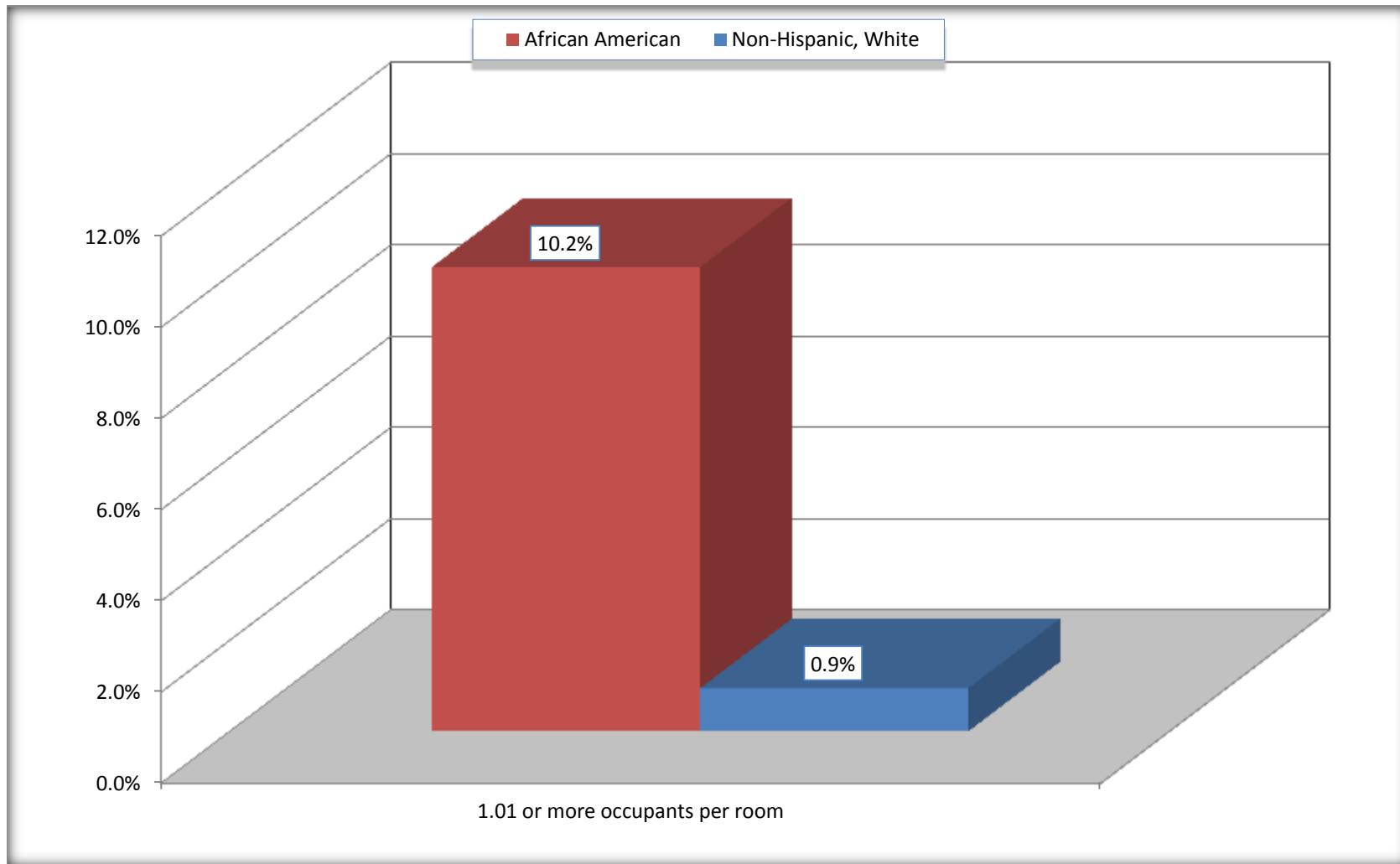
Source: U.S. Census Bureau, 2008-2012 American Community Survey

For information on confidentiality protection, sampling error, nonsampling error, and definitions, see Survey Methodology.

<http://www.census.gov/acs/www/UseData/index.ht>

More than One Person per Room (Crowding) by Household

Jeff Davis County, Georgia



Source: B25014. OCCUPANTS PER ROOM - Universe: OCCUPIED HOUSING UNITS
Data Set: 2008-2012 American Community Survey 5-Year Estimates

B18101. AGE BY DISABILITY STATUS

Data Set: 2008-2012 American Community Survey 5-Year Estimates

	Jeff Davis County, Georgia					
	African American	Margin of Error (+/-)	% of AA Total	White, Not Hispanic	Margin of Error (+/-)	% of NHW Total
Total:	2,250	118	100.0%	10,953	48	100.0%
Under 18 years:	710	60	31.6%	2,712	66	24.8%
With a disability	8	22	0.4%	154	100	1.4%
No disability	702	62	31.2%	2,558	100	23.4%
18 to 64 years:	1,308	94	58.1%	6,652	38	60.7%
With a disability	124	68	5.5%	832	213	7.6%
No disability	1,184	90	52.6%	5,820	206	53.1%
65 years and over:	232	58	10.3%	1,589	24	14.5%
With a disability	128	64	5.7%	754	117	6.9%
No disability	104	72	4.6%	835	113	7.6%

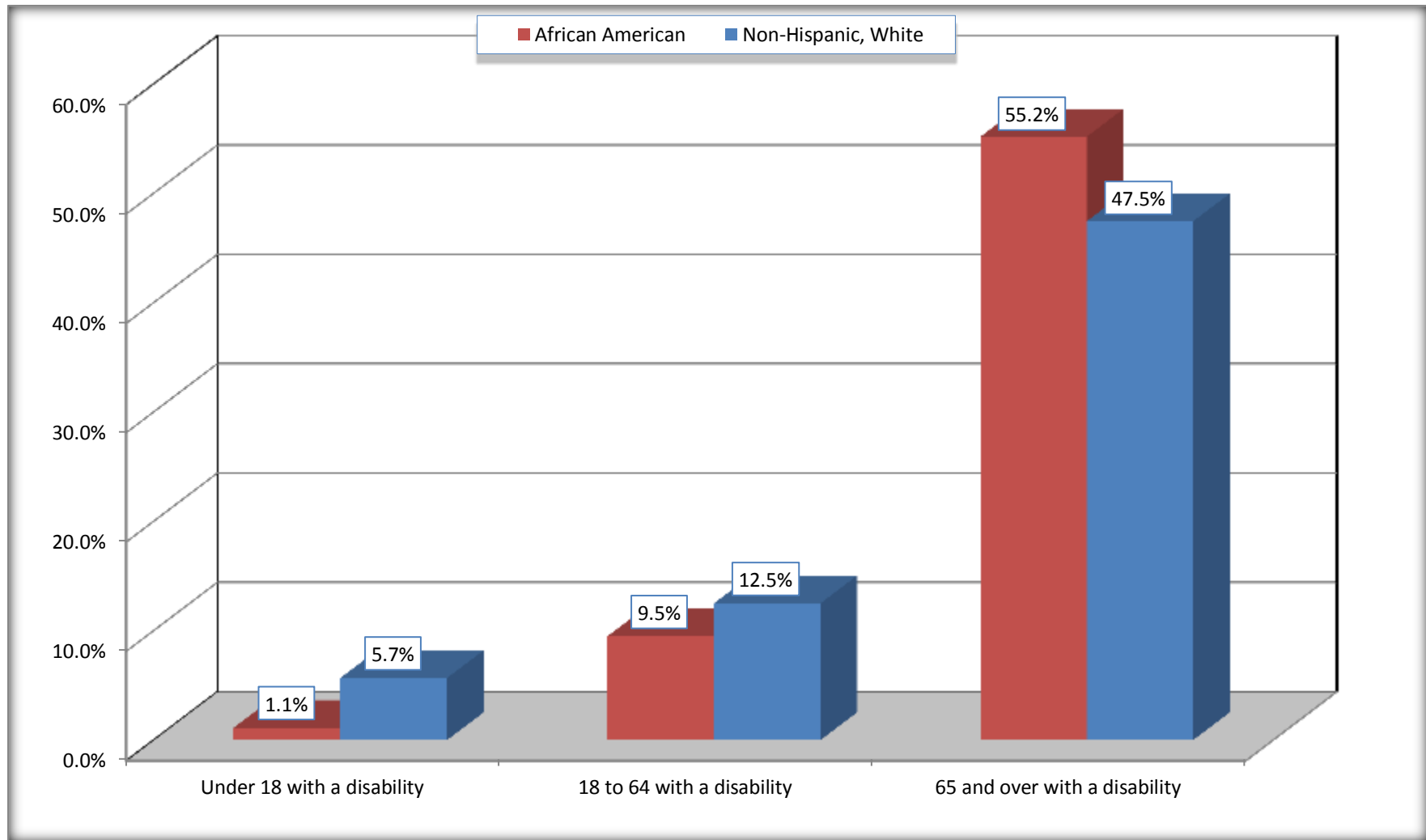
Source: U.S. Census Bureau, 2008-2012 American Community Survey

For information on confidentiality protection, sampling error, nonsampling error, and definitions, see Survey Methodology.

<http://www.census.gov/acs/www/UseData/index.htm>

Disability by Age

Jeff Davis County, Georgia



Source: B18101. AGE BY DISABILITY STATUS
Data Set: 2008-2012 American Community Survey 5-Year Estimates

C27001B. HEALTH INSURANCE COVERAGE STATUS BY AGE

Data Set: 2008-2012 American Community Survey 5-Year Estimates

	Jeff Davis County, Georgia					
	African American	Margin of Error (+/-)	% of AA Total	White, Not Hispanic	Margin of Error (+/-)	% of NHW Total
Total:	2,250	118	100.0%	10,953	48	100.0%
Under 18 years:	710	60	31.6%	2,712	21	24.8%
With health insurance coverage	536	162	23.8%	2,357	195	21.5%
No health insurance coverage	174	154	7.7%	355	195	3.2%
18 to 64 years:	1,308	94	58.1%	6,652	38	60.7%
With health insurance coverage	813	239	36.1%	4,657	292	42.5%
No health insurance coverage	495	243	22.0%	1,995	292	18.2%
65 years and over:	232	58	10.3%	1,589	24	14.5%
With health insurance coverage	232	58	10.3%	1,589	24	14.5%
No health insurance coverage	0	21	0.0%	0	21	0.0%

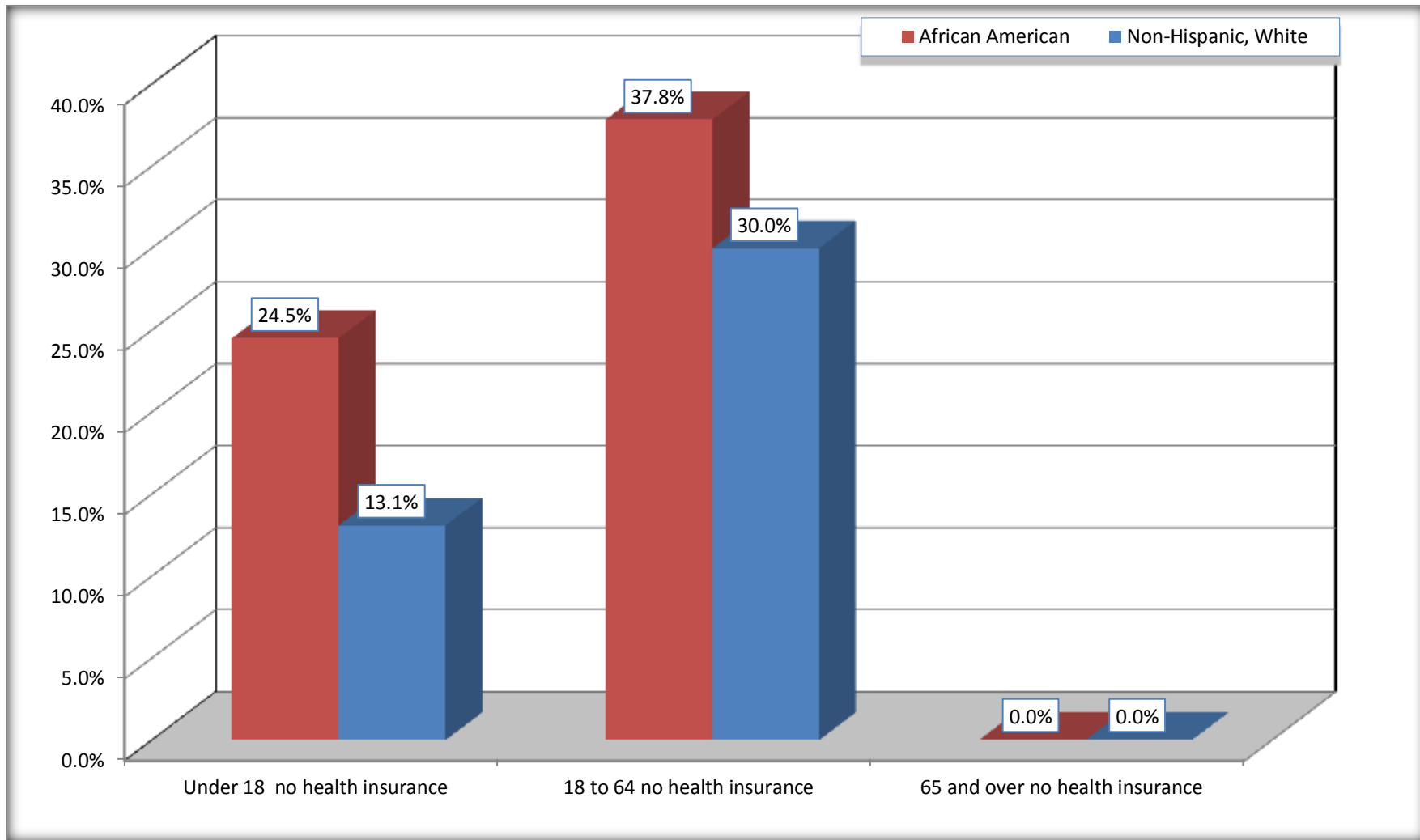
Source: U.S. Census Bureau, 2008-2012 American Community Survey

For information on confidentiality protection, sampling error, nonsampling error, and definitions, see Survey Methodology.

<http://www.census.gov/acs/www/UseData/index.htm>

Lack of Health Insurance Coverage by Age

Jeff Davis County, Georgia



Source: C27001B. HEALTH INSURANCE COVERAGE STATUS BY AGE
Data Set: 2008-2012 American Community Survey 5-Year Estimates