

# **Selected Socio-Economic Data**

## **Jackson city, Georgia**

### **African American and White, Not Hispanic**

**Data Set: 2008-2012 American Community Survey 5-Year Estimates**

[www.fairvote2020.org](http://www.fairvote2020.org)

[www.fairdata2000.com](http://www.fairdata2000.com)

[29-Dec-13](#)

**C02003.DETAILED RACE - Universe: TOTAL POPULATION**

Data Set: 2008-2012 American Community Survey 5-Year Estimates

	<b>Jackson city, Georgia</b>		
	Population	Margin of Error (+/-)	% of Total
<b>Total:</b>	<b>5,030</b>	<b>27</b>	<b>100.0%</b>
Population of one race:	5,030	27	100.0%
White	3,021	429	60.1%
Black or African American	1,953	426	38.8%
American Indian and Alaska Native	0	13	0.0%
Asian alone	53	81	1.1%
Native Hawaiian and Other Pacific Islander	0	13	0.0%
Some other race	3	7	0.1%
Population of two or more races:	0	13	0.0%
Two races including Some other race	0	13	0.0%
Two races excluding Some other race, and three or more races	0	13	0.0%
Population of two races:	0	13	0.0%
White; Black or African American	0	13	0.0%
White; American Indian and Alaska Native	0	13	0.0%
White; Asian	0	13	0.0%
Black or African American; American Indian and Alaska Native	0	13	0.0%
All other two race combinations	0	13	0.0%
Population of three races	0	13	0.0%
Population of four or more races	0	13	0.0%

Note: Hispanics may be of any race. See Table B03002 and chart.

Source: U.S. Census Bureau, 2008-2012 American Community Survey

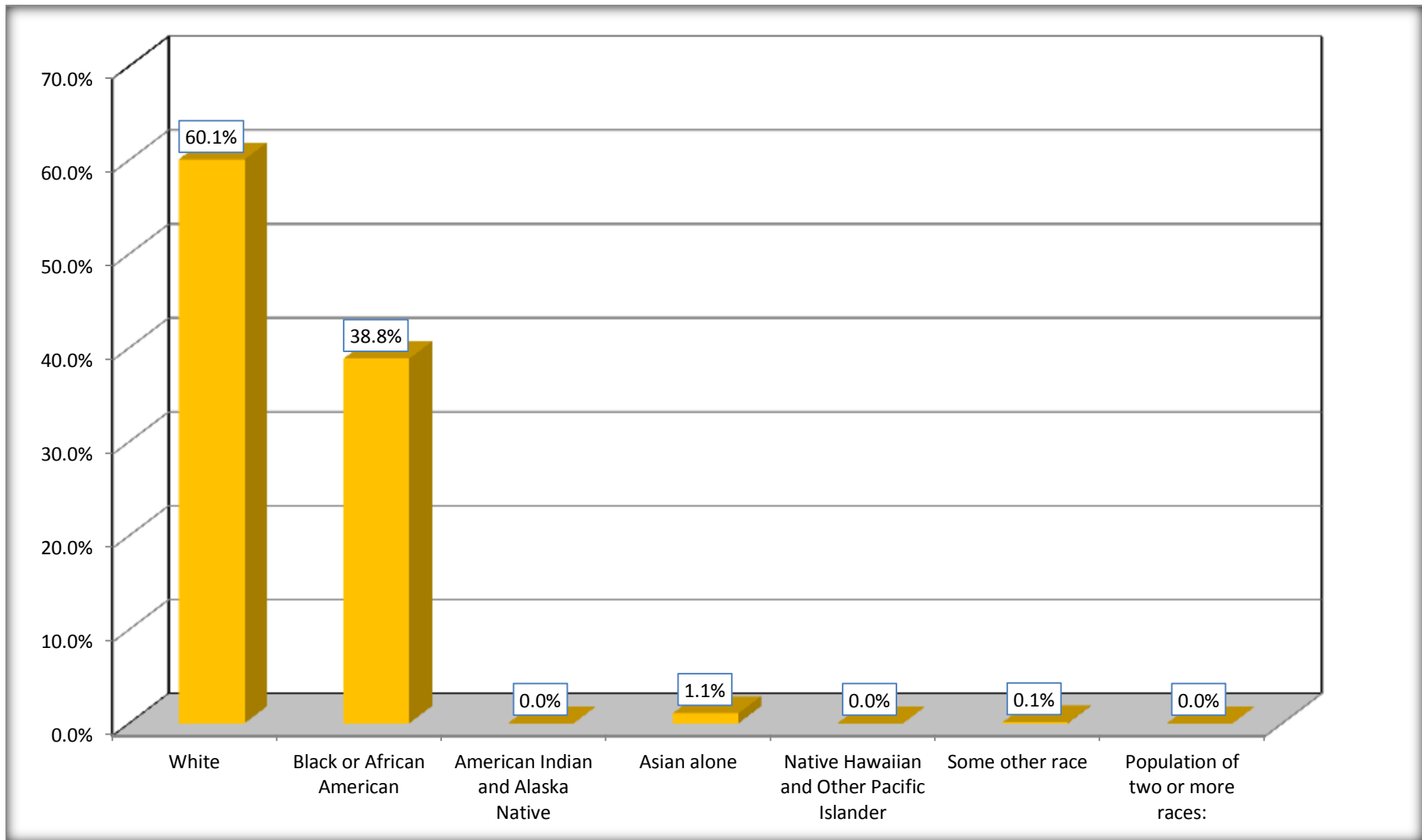
Although the American Community Survey (ACS) produces population, demographic and housing unit estimates, it is the Census Bureau's Population Estimates Program that produces and disseminates the official estimates of the population for the nation, states, counties, cities and towns and estimates of housing units for states and counties.

For information on confidentiality protection, sampling error, nonsampling error, and definitions, see Survey Methodology.

<http://www.census.gov/acs/www/UseData/index.htm>

# Population by Race

## Jackson city, Georgia



Source: C02003.DETAILED RACE - Universe: TOTAL POPULATION  
Data Set: 2008-2012 American Community Survey 5-Year Estimates

**B03002. HISPANIC OR LATINO ORIGIN BY RACE - Universe: TOTAL POPULATION**

Data Set: 2008-2012 American Community Survey 5-Year Estimates

	Jackson city, Georgia		
	Population	Margin of Error (+/-)	% of Total
<b>Total:</b>	5,030	27	<b>100.0%</b>
Not Hispanic or Latino:	4,789	203	95.2%
White alone	2,783	471	55.3%
Black or African American alone	1,953	426	38.8%
American Indian and Alaska Native alone	0	13	0.0%
Asian alone	53	81	1.1%
Native Hawaiian and Other Pacific Islander alone	0	13	0.0%
Some other race alone	0	13	0.0%
Two or more races:	0	13	0.0%
Two races including Some other race	0	13	0.0%
Two races excluding Some other race, and three or more races	0	13	0.0%
Hispanic or Latino	241	199	4.8%

Source: U.S. Census Bureau, 2008-2012 American Community Survey

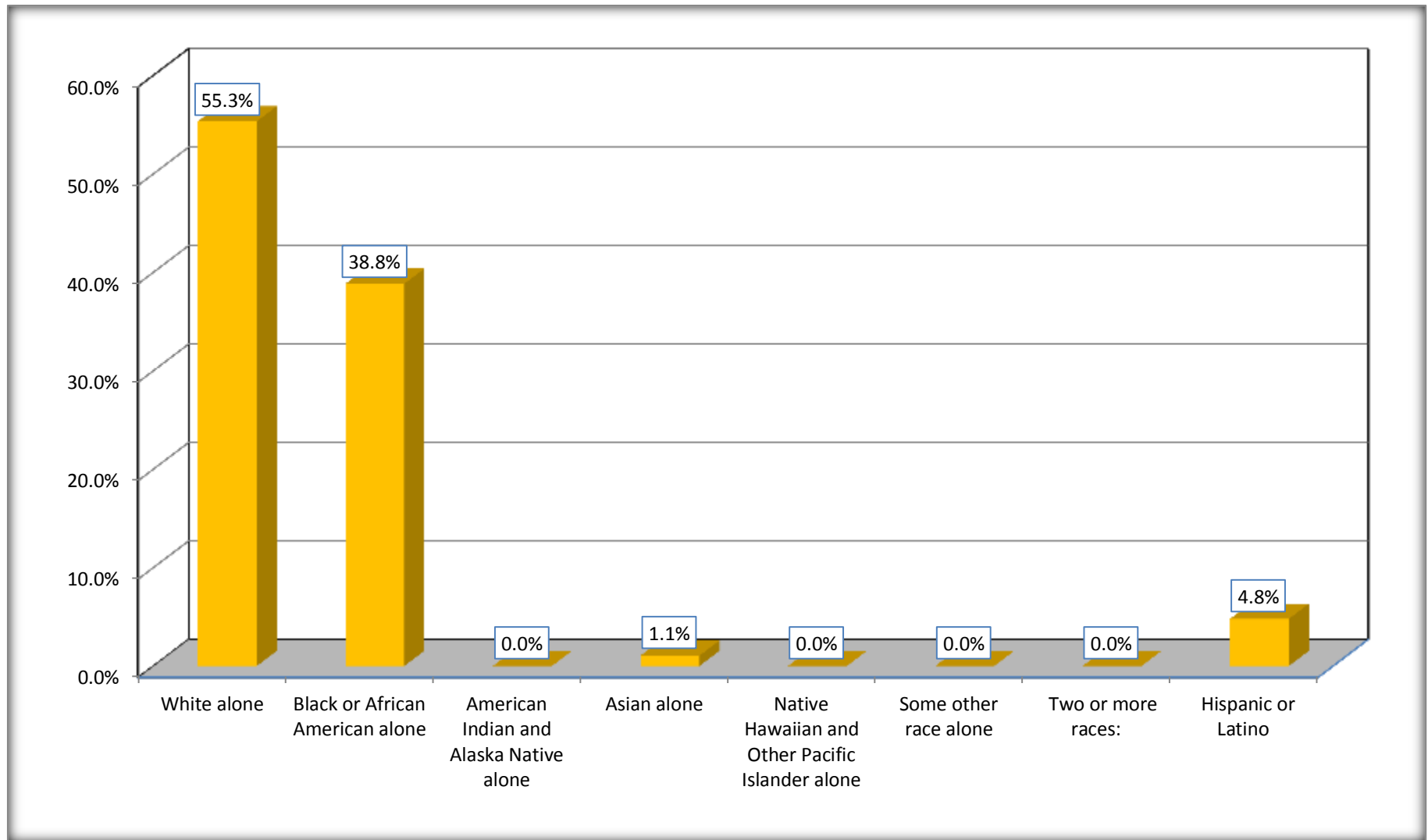
Although the American Community Survey (ACS) produces population, demographic and housing unit estimates, it is the Census Bureau's Population Estimates Program that produces and disseminates the official estimates of the population for the nation, states, counties, cities and towns and estimates of housing units for states and counties.

For information on confidentiality protection, sampling error, nonsampling error, and definitions, see Survey Methodology.

<http://www.census.gov/acs/www/UseData/index.htm>

# Non-Hispanic by Race and Hispanic Population

## Jackson city, Georgia



Source: B03002. HISPANIC OR LATINO ORIGIN BY RACE - Universe: TOTAL POPULATION  
Data Set: 2008-2012 American Community Survey 5-Year Estimates

**B03002. HISPANIC OR LATINO ORIGIN BY RACE**

Data Set: 2008-2012 American Community Survey 5-Year Estimates

	Jackson city, Georgia		
	Population	Margin of Error (+/-)	% of Total
Hispanic or Latino:	241	199	<b>100.0%</b>
White alone	238	199	98.8%
Black or African American alone	0	13	0.0%
American Indian and Alaska Native alone	0	13	0.0%
Asian alone	0	13	0.0%
Native Hawaiian and Other Pacific Islander alone	0	13	0.0%
Some other race alone	3	7	1.2%
Two or more races:	0	13	0.0%
Two races including Some other race	0	13	0.0%
Two races excluding Some other race, and three or more races	0	13	0.0%

Source: U.S. Census Bureau, 2008-2012 American Community Survey

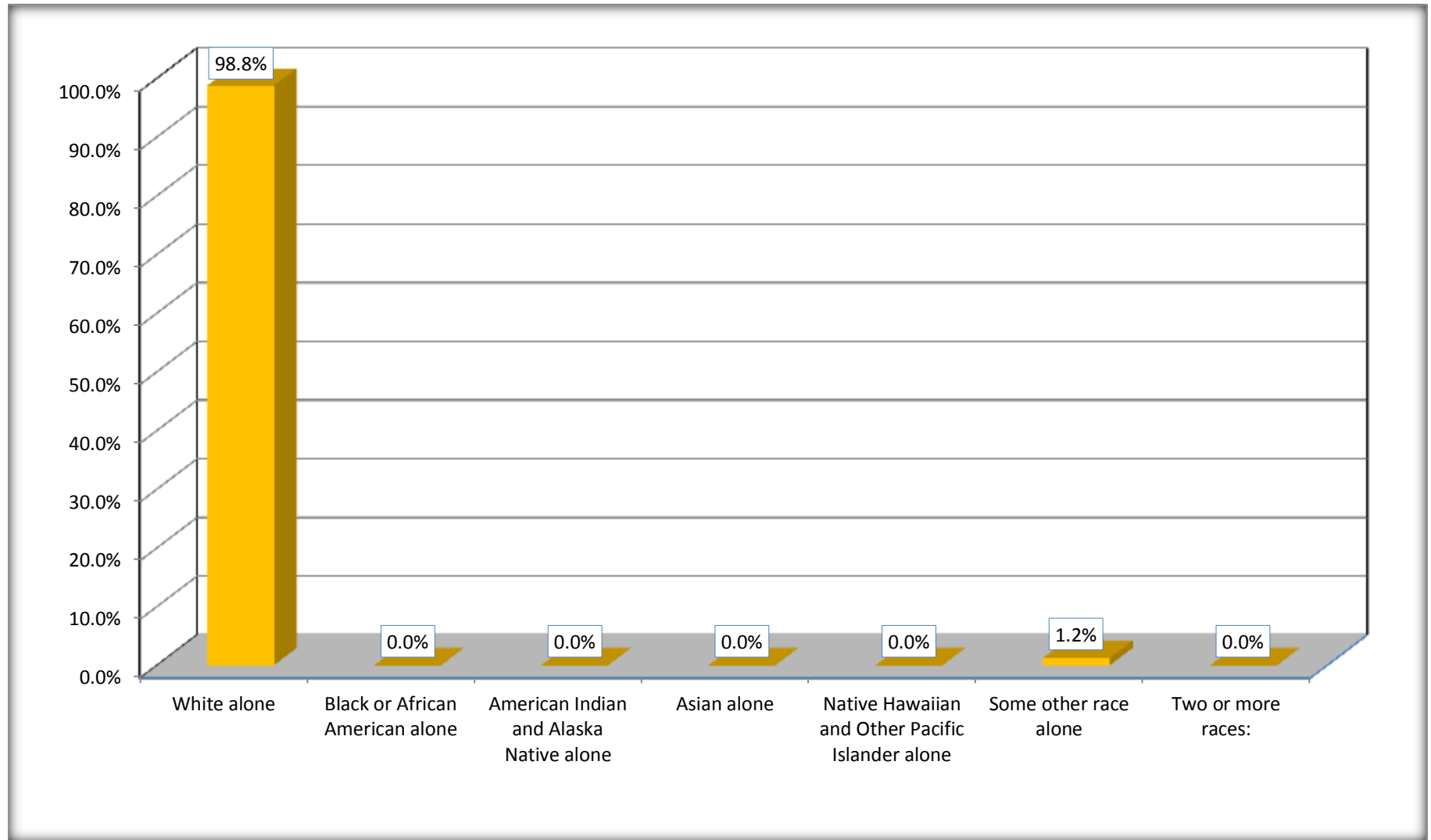
Although the American Community Survey (ACS) produces population, demographic and housing unit estimates, it is the Census Bureau's Population Estimates Program that produces and disseminates the official estimates of the population for the nation, states, counties, cities and towns and estimates of housing units for states and counties.

For information on confidentiality protection, sampling error, nonsampling error, and definitions, see Survey Methodology.

<http://www.census.gov/acs/www/UseData/index.htm>

# Hispanic or Latino Origin by Race

## Jackson city, Georgia



Source: B03002. HISPANIC OR LATINO ORIGIN BY RACE  
Data Set: 2008-2012 American Community Survey 5-Year Estimates

**B01001. SEX BY AGE**

Data Set: 2008-2012 American Community Survey 5-Year Estimates

	<b>Jackson city, Georgia</b>					
	African American	Margin of Error (+/-)	% of AA Total	White, Not Hispanic	Margin of Error (+/-)	% of NHW Total
<b>Total:</b>	<b>1,953</b>	<b>426</b>	<b>100.0%</b>	<b>2,783</b>	<b>471</b>	<b>100.0%</b>
Under 18 years	500	NC	25.6%	595	NC	21.4%
18 to 64 years	1,296	NC	66.4%	1,535	NC	55.2%
65 years and over	157	NC	8.0%	653	NC	23.5%
Male:	935	244	47.9%	1,290	389	46.4%
Under 18 years	293	NC	15.0%	273	NC	9.8%
18 to 64 years	611	NC	31.3%	811	NC	29.1%
65 years and over	31	NC	1.6%	206	NC	7.4%
Female:	1,018	284	52.1%	1,493	412	53.6%
Under 18 years	207	NC	10.6%	322	NC	11.6%
18 to 64 years	685	NC	35.1%	724	NC	26.0%
65 years and over	126	NC	6.5%	447	NC	16.1%

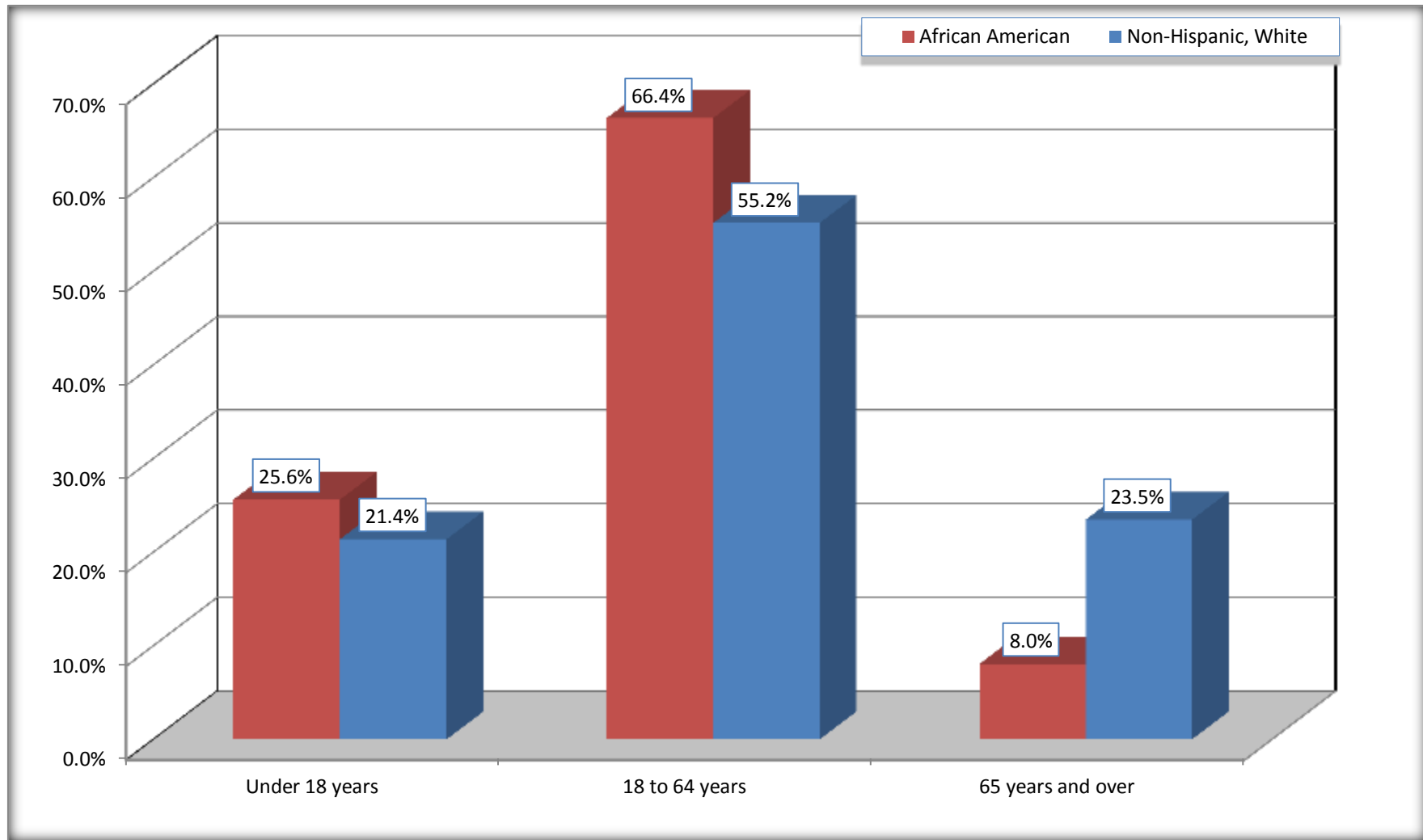
Source: U.S. Census Bureau, 2008-2012 American Community Survey

Although the American Community Survey (ACS) produces population, demographic and housing unit estimates, it is the Census Bureau's Population Estimates Program that produces and disseminates the official estimates of the population for the nation, states, counties, cities and towns and estimates of housing units for states and counties.

For information on confidentiality protection, sampling error, nonsampling error, and definitions, see Survey Methodology.  
<http://www.census.gov/acs/www/UseData/index.htm>



## Population by Age Jackson city, Georgia



Source: B01001. SEX BY AGE  
Data Set: 2008-2012 American Community Survey 5-Year Estimates

**B05003. SEX BY AGE BY CITIZENSHIP STATUS**

Data Set: 2008-2012 American Community Survey 5-Year Estimates

	Jackson city, Georgia					
	African American	Margin of Error (+/-)	% of AA Total by Age	White, Not Hispanic	Margin of Error (+/-)	% of NHW Total by Age
<b>Total:</b>	<b>1,953</b>	<b>426</b>	<b>100.0%</b>	<b>2,783</b>	<b>471</b>	<b>100.0%</b>
<b>Under 18 years:</b>	<b>500</b>	<b>NC</b>	<b>100.0%</b>	<b>595</b>	<b>NC</b>	<b>100.0%</b>
Native	500	NC	100.0%	595	NC	100.0%
Foreign born:	0	NC	0.0%	0	NC	0.0%
Naturalized U.S. citizen	0	NC	0.0%	0	NC	0.0%
Not a U.S. citizen	0	NC	0.0%	0	NC	0.0%
<b>18 years and over:</b>	<b>1,453</b>	<b>NC</b>	<b>100.0%</b>	<b>2,188</b>	<b>NC</b>	<b>100.0%</b>
Native	1,453	NC	100.0%	2,188	NC	100.0%
Foreign born:	0	NC	0.0%	0	NC	0.0%
Naturalized U.S. citizen	0	NC	0.0%	0	NC	0.0%
Not a U.S. citizen	0	NC	0.0%	0	NC	0.0%
<b>Male:</b>	935	244	47.9%	1,290	274	46.4%
<b>Under 18 years:</b>	293	160	<b>100.0%</b>	273	176	<b>100.0%</b>
Native	293	160	100.0%	273	176	100.0%
Foreign born:	0	13	0.0%	0	13	0.0%
Naturalized U.S. citizen	0	13	0.0%	0	13	0.0%
Not a U.S. citizen	0	13	0.0%	0	13	0.0%
<b>18 years and over:</b>	<b>642</b>	<b>177</b>	<b>100.0%</b>	<b>1,017</b>	<b>189</b>	<b>100.0%</b>
Native	642	177	100.0%	1,017	189	100.0%
Foreign born:	0	13	0.0%	0	13	0.0%
Naturalized U.S. citizen	0	13	0.0%	0	13	0.0%
Not a U.S. citizen	0	13	0.0%	0	13	0.0%

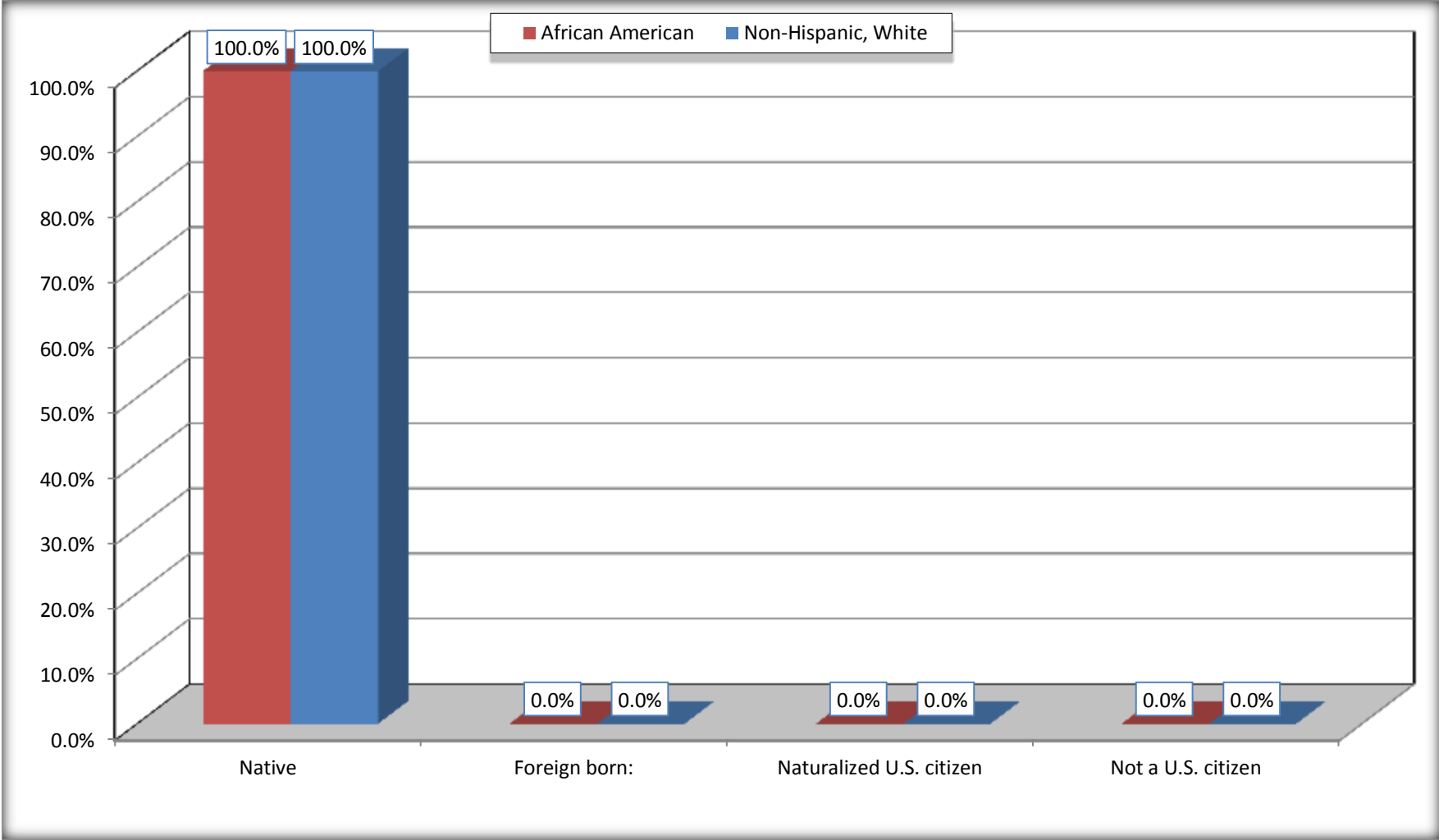
	Jackson city, Georgia					
	African American	Margin of Error (+/-)	% of AA by Age	White, Not Hispanic	Margin of Error (+/-)	% of NHW by Age
<b>Female:</b>	1,018	284	52.1%	1,493	289	53.6%
<b>Under 18 years:</b>	<b>207</b>	<b>131</b>	<b>100.0%</b>	<b>322</b>	<b>173</b>	<b>100.0%</b>
Native	207	131	100.0%	322	173	100.0%
Foreign born:	0	13	0.0%	0	13	0.0%
Naturalized U.S. citizen	0	13	0.0%	0	13	0.0%
Not a U.S. citizen	0	13	0.0%	0	13	0.0%
<b>18 years and over:</b>	<b>811</b>	<b>223</b>	<b>100.0%</b>	<b>1,171</b>	<b>216</b>	<b>100.0%</b>
Native	811	223	100.0%	1,171	216	100.0%
Foreign born:	0	13	0.0%	0	13	0.0%
Naturalized U.S. citizen	0	13	0.0%	0	13	0.0%
Not a U.S. citizen	0	13	0.0%	0	13	0.0%

Source: U.S. Census Bureau, 2008-2012 American Community Survey

For information on confidentiality protection, sampling error, nonsampling error, and definitions, see Survey Methodology.  
<http://www.census.gov/acs/www/UseData/index.htm>

# Citizenship Status of Voting Age Population (18 and Over)

## Jackson city, Georgia



Source: B05003. SEX BY AGE BY CITIZENSHIP STATUS  
Data Set: 2008-2012 American Community Survey 5-Year Estimates

**B07004. GEOGRAPHICAL MOBILITY IN THE PAST YEAR BY RACE FOR CURRENT RESIDENCE IN THE UNITED STATES - Universe:  
POPULATION 1 YEAR AND OVER**

Data Set: 2008-2012 American Community Survey 5-Year Estimates

	<b>Jackson city, Georgia</b>					
	African American	Margin of Error (+/-)	% of AA Total	White, Not Hispanic	Margin of Error (+/-)	% of NHW Total
<b>Total:</b>	<b>1,925</b>	<b>427</b>	<b>100.0%</b>	<b>2,721</b>	<b>471</b>	<b>100.0%</b>
Same house 1 year ago	1,801	415	93.6%	2,276	405	83.6%
Moved within same county	1	2	0.1%	151	118	5.5%
Moved from different county within same state	102	77	5.3%	235	142	8.6%
Moved from different state	21	34	1.1%	59	58	2.2%
Moved from abroad	0	13	0.0%	0	13	0.0%

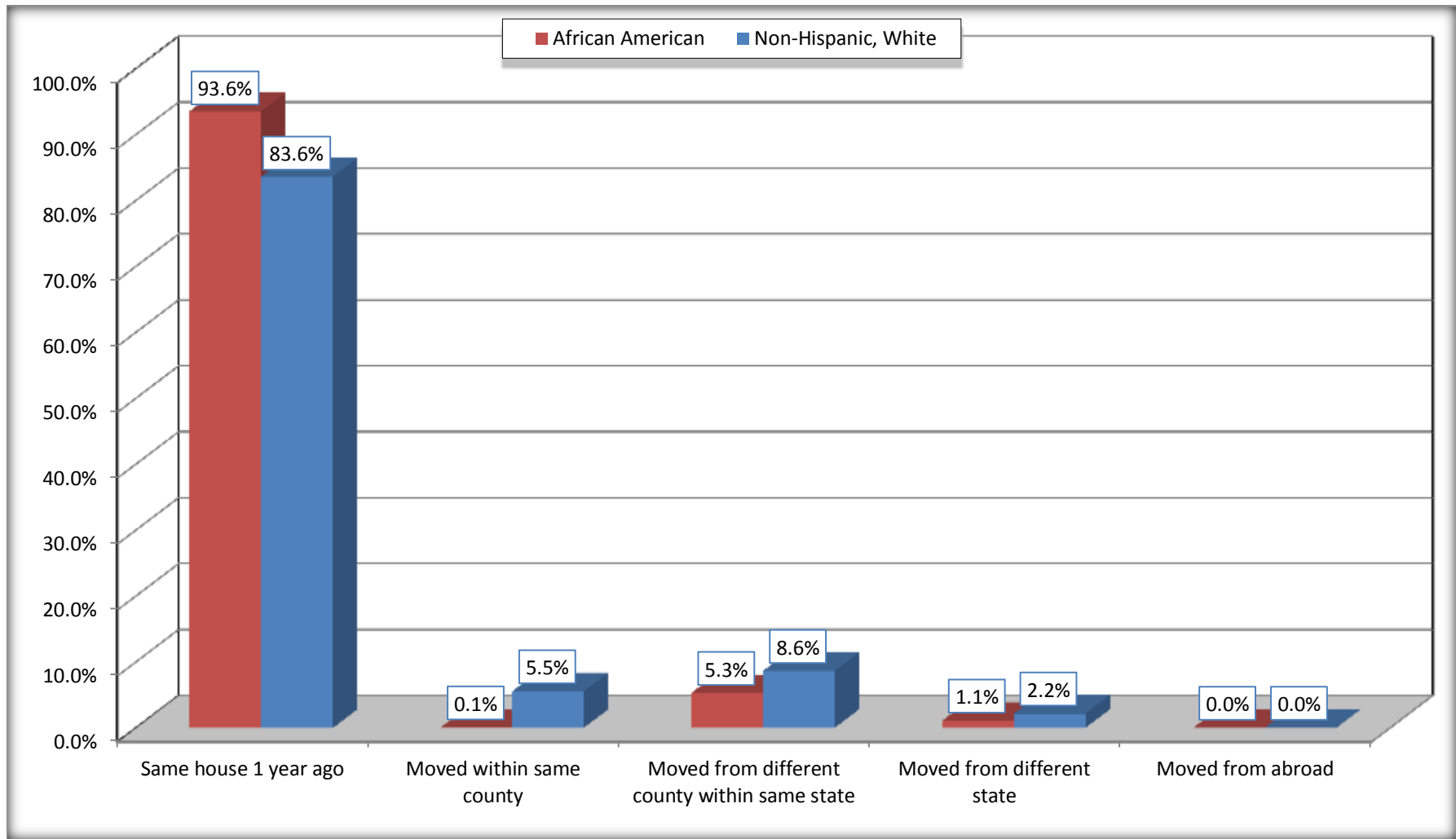
Source: U.S. Census Bureau, 2008-2012 American Community Survey

For information on confidentiality protection, sampling error, nonsampling error, and definitions, see Survey Methodology.

<http://www.census.gov/acs/www/UseData/index.htm>

# Geographical Mobility in the Past Year (Population 1 Year and Over)

## Jackson city, Georgia



Source: B07004. GEOGRAPHICAL MOBILITY IN THE PAST YEAR BY RACE FOR CURRENT RESIDENCE IN THE UNITED STATES - Universe: POPULATION 1 YEAR AND OVER

Data Set: 2008-2012 American Community Survey 5-Year Estimates

**B08105. MEANS OF TRANSPORTATION TO WORK - Universe: WORKERS 16 YEARS AND OVER**

Data Set: 2008-2012 American Community Survey 5-Year Estimates

	Jackson city, Georgia					
	African American	Margin of Error (+/-)	% of AA Total	White, Not Hispanic	Margin of Error (+/-)	% of NHW Total
<b>Total:</b>	689	228	<b>100.0%</b>	1059	260	<b>100.0%</b>
Car, truck, or van - drove alone	445	200	64.6%	873	212	82.4%
Car, truck, or van - carpooled	191	126	27.7%	168	114	15.9%
Public transportation (excluding taxicab)	0	13	0.0%	0	13	0.0%
Walked	53	77	7.7%	0	13	0.0%
Taxicab, motorcycle, bicycle, or other means	0	13	0.0%	0	13	0.0%
Worked at home	0	13	0.0%	18	30	1.7%

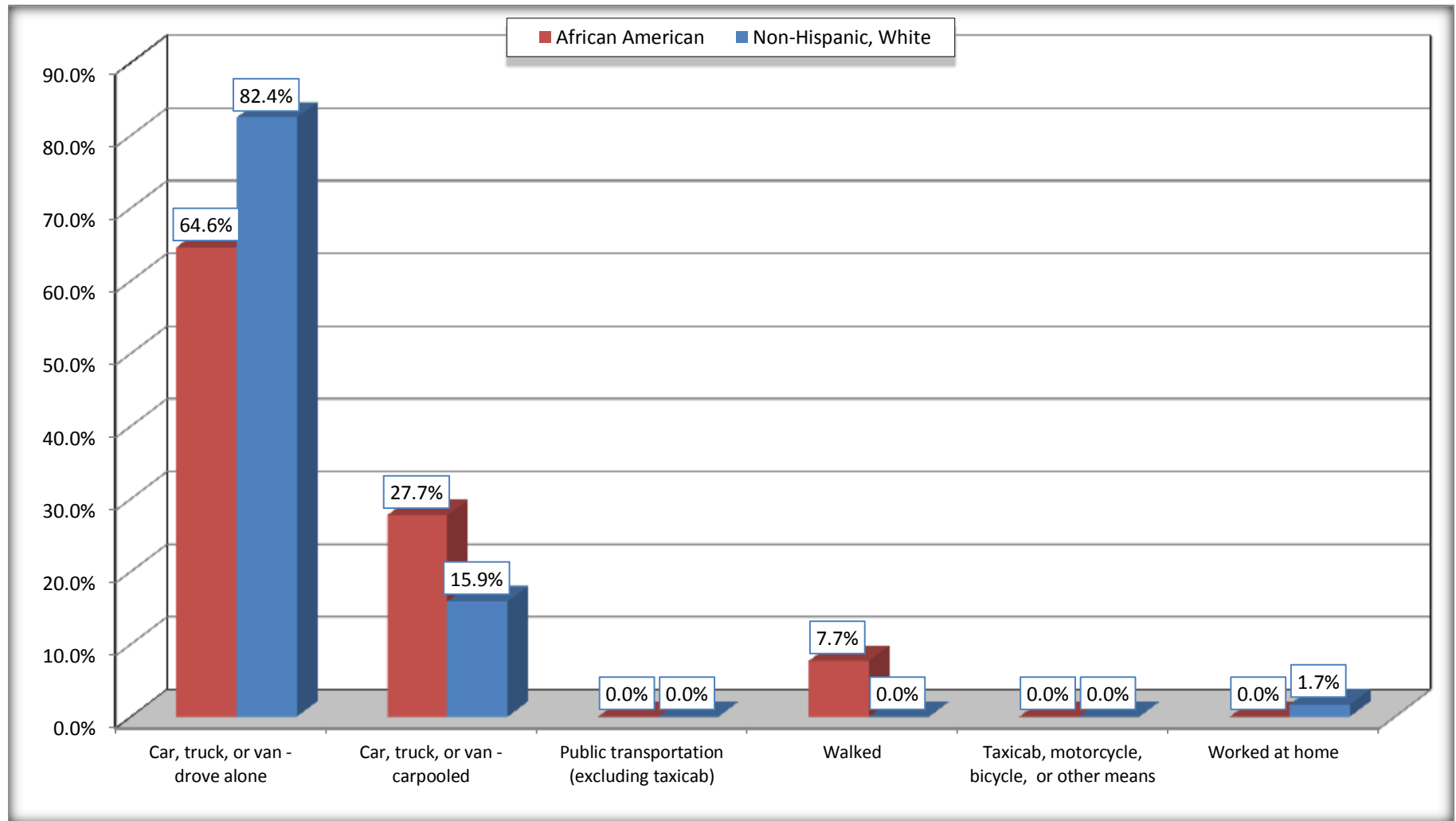
Source: U.S. Census Bureau, 2008-2012 American Community Survey

For information on confidentiality protection, sampling error, nonsampling error, and definitions, see Survey Methodology.

<http://www.census.gov/acs/www/UseData/index.htm>

# Means of Transportation to Work (Workers 16 Years and Over)

## Jackson city, Georgia



Source: B08105. MEANS OF TRANSPORTATION TO WORK - Universe: WORKERS 16 YEARS AND OVER  
Data Set: 2008-2012 American Community Survey 5-Year Estimates



**B11002. HOUSEHOLD TYPE BY RELATIVES AND NONRELATIVES FOR POPULATION IN HOUSEHOLDS**

Data Set: 2008-2012 American Community Survey 5-Year Estimates

	Jackson city, Georgia					
	African American	Margin of Error (+/-)	% of AA Total	White, Not Hispanic	Margin of Error (+/-)	% of NHW Total
<b>Total:</b>	1902	427	<b>100.0%</b>	2585	466	<b>100.0%</b>
In family households	1666	438	87.6%	2036	459	78.8%
In nonfamily households	236	105	12.4%	549	218	21.2%

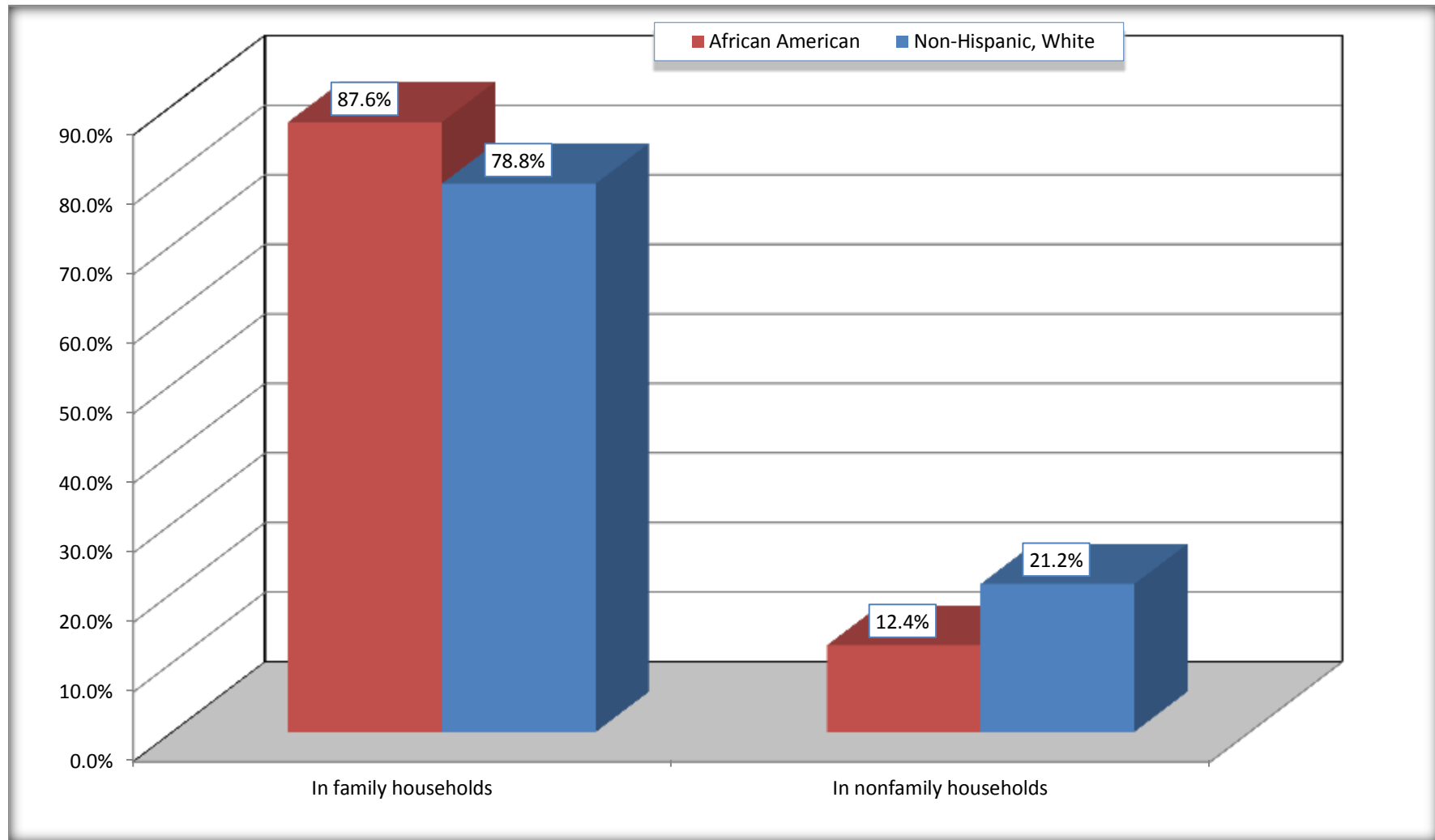
Source: U.S. Census Bureau, 2008-2012 American Community Survey

For information on confidentiality protection, sampling error, nonsampling error, and definitions, see Survey Methodology.

<http://www.census.gov/acs/www/UseData/index.htm>

# Household Type for Population in Households

## Jackson city, Georgia



Source: B11002. HOUSEHOLD TYPE BY RELATIVES AND NONRELATIVES FOR POPULATION IN HOUSEHOLDS  
Data Set: 2008-2012 American Community Survey 5-Year Estimates

**B12002. MARITAL STATUS FOR THE POPULATION 15 YEARS AND OVER**

Data Set: 2008-2012 American Community Survey 5-Year Estimates

	Jackson city, Georgia					
	African American	Margin of Error (+/-)	% of AA Total	White, Not Hispanic	Margin of Error (+/-)	% of NHW Total
<b>Total:</b>	<b>1,554</b>	<b>331</b>	<b>100.0%</b>	<b>2,248</b>	<b>350</b>	<b>100.0%</b>
Never married	788	NC	50.7%	462	NC	20.6%
Now married (except separated)	289	NC	18.6%	1,027	NC	45.7%
Separated	59	NC	3.8%	70	NC	3.1%
Widowed	145	NC	9.3%	352	NC	15.7%
Divorced	273	NC	17.6%	337	NC	15.0%
<b>Male:</b>	<b>698</b>	<b>187</b>	<b>44.9%</b>	<b>1,017</b>	<b>189</b>	<b>45.2%</b>
Never married	347	181	22.3%	254	136	11.3%
Now married (except separated)	161	98	10.4%	534	139	23.8%
Separated	34	45	2.2%	41	66	1.8%
Widowed	68	64	4.4%	69	55	3.1%
Divorced	88	91	5.7%	119	100	5.3%
<b>Female:</b>	<b>856</b>	<b>247</b>	<b>55.1%</b>	<b>1,231</b>	<b>237</b>	<b>54.8%</b>
Never married	441	190	28.4%	208	141	9.3%
Now married (except separated)	128	79	8.2%	493	147	21.9%
Separated	25	39	1.6%	29	43	1.3%
Widowed	77	50	5.0%	283	114	12.6%
Divorced	185	95	11.9%	218	129	9.7%

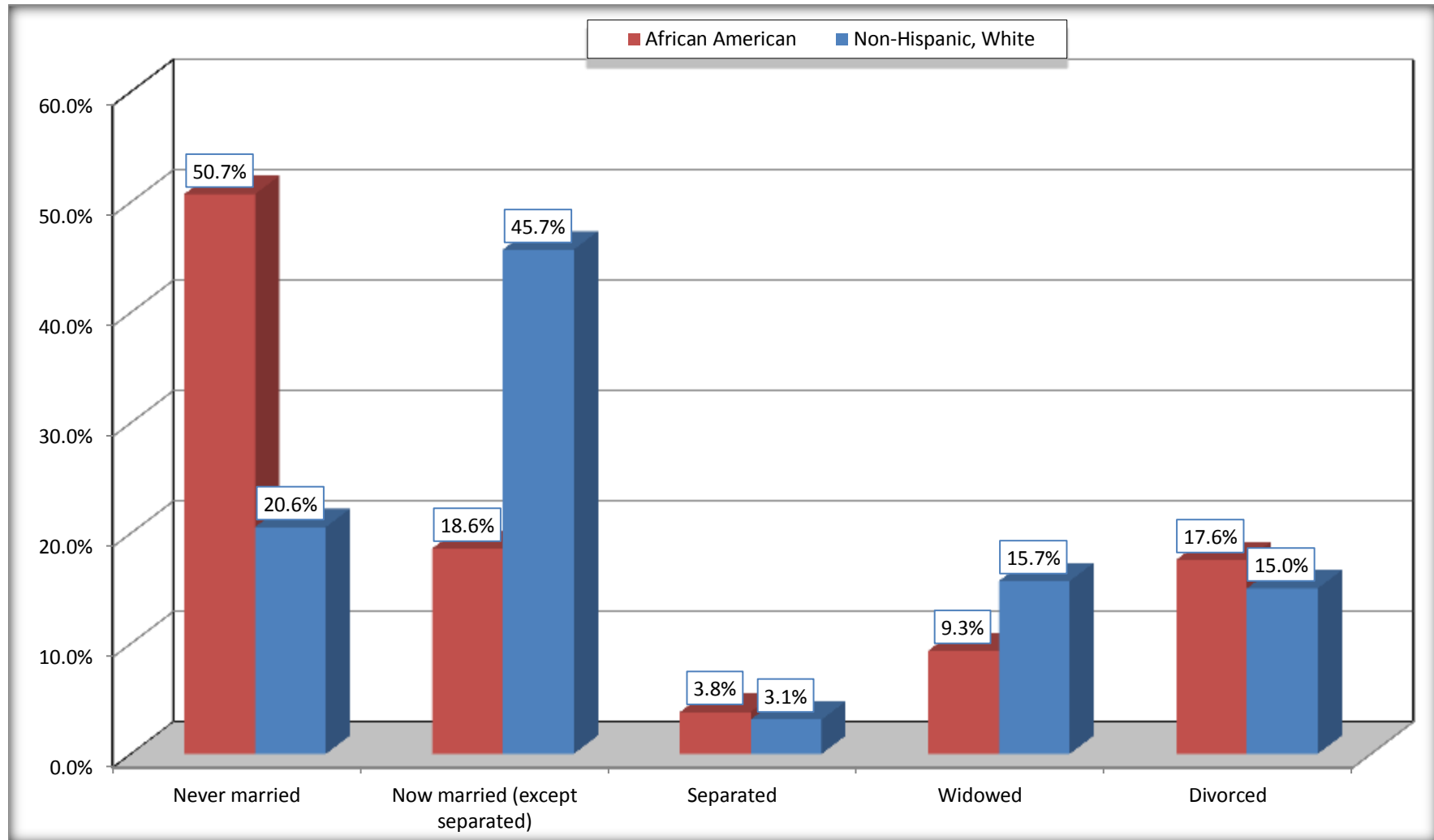
Source: U.S. Census Bureau, 2008-2012 American Community Survey

For information on confidentiality protection, sampling error, nonsampling error, and definitions, see Survey Methodology.

<http://www.census.gov/acs/www/UseData/index.htm>

# Marital Status for the Population 15 Years and Over

## Jackson city, Georgia



Source: B12002. MARITAL STATUS FOR THE POPULATION 15 YEARS AND OVER  
Data Set: 2008-2012 American Community Survey 5-Year Estimates

**C15002. SEX BY EDUCATIONAL ATTAINMENT FOR THE POPULATION 25 YEARS AND OVER**

Data Set: 2008-2012 American Community Survey 5-Year Estimates

	Jackson city, Georgia					
	African American	Margin of Error (+/-)	% of AA Total	White, Not Hispanic	Margin of Error (+/-)	% of NHW Total
<b>Total:</b>	<b>1,275</b>	<b>255</b>	<b>100.0%</b>	<b>1,993</b>	<b>325</b>	<b>100.0%</b>
Less than high school diploma	476	NC	37.3%	273	NC	13.7%
High school graduate, GED, or alternative	532	NC	41.7%	820	NC	41.1%
Some college or associate's degree	187	NC	14.7%	653	NC	32.8%
Bachelor's degree or higher	80	NC	6.3%	247	NC	12.4%
Male:	542	166	42.5%	896	169	45.0%
Less than high school diploma	213	105	16.7%	111	55	5.6%
High school graduate, GED, or alternative	174	120	13.6%	414	161	20.8%
Some college or associate's degree	97	89	7.6%	289	127	14.5%
Bachelor's degree or higher	58	62	4.5%	82	55	4.1%
Female:	733	194	57.5%	1,097	215	55.0%
Less than high school diploma	263	134	20.6%	162	91	8.1%
High school graduate, GED, or alternative	358	112	28.1%	406	133	20.4%
Some college or associate's degree	90	68	7.1%	364	135	18.3%
Bachelor's degree or higher	22	33	1.7%	165	108	8.3%

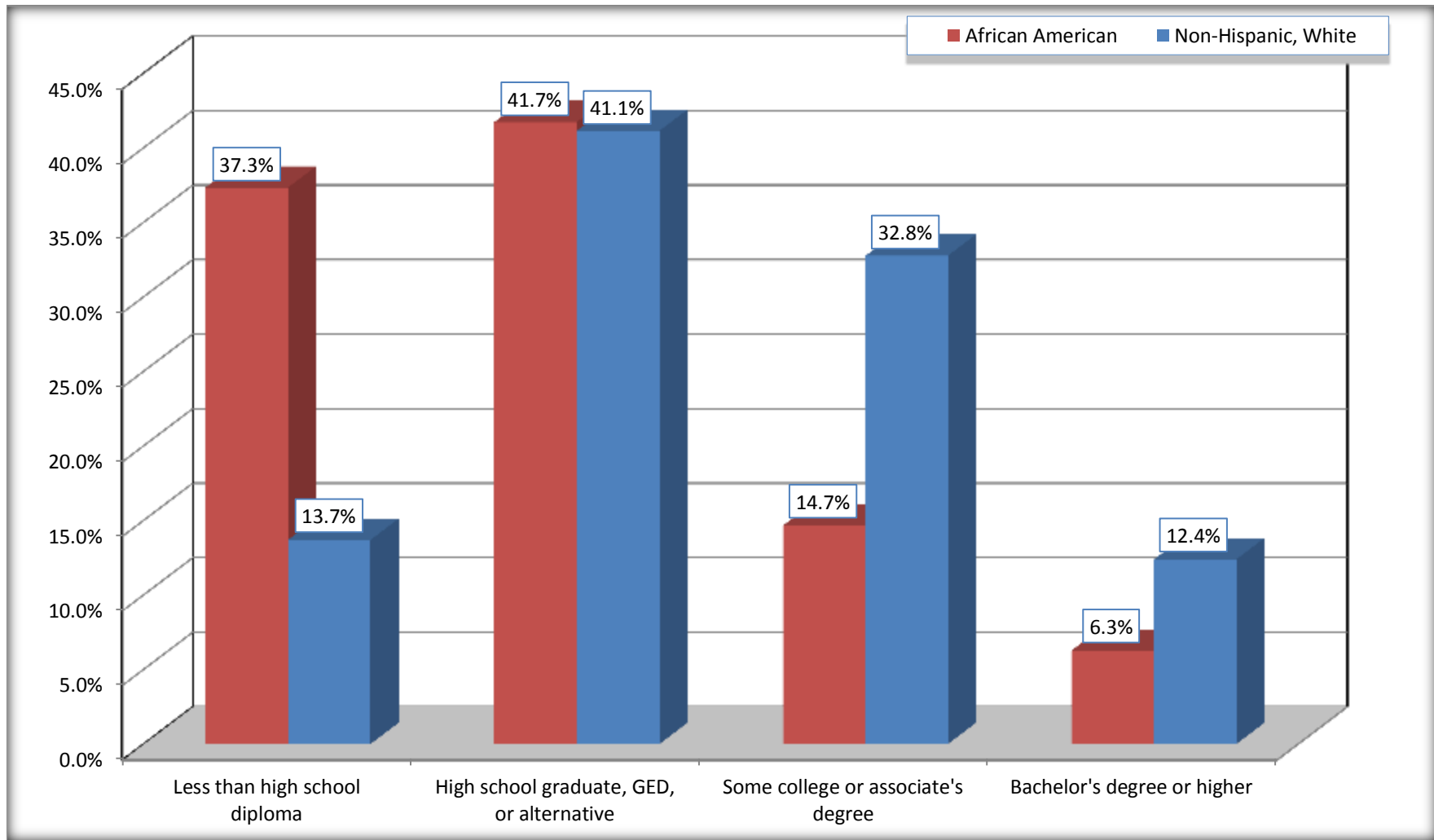
Source: U.S. Census Bureau, 2008-2012 American Community Survey

For information on confidentiality protection, sampling error, nonsampling error, and definitions, see Survey Methodology.

<http://www.census.gov/acs/www/UseData/index.htm>

# Educational Attainment for the Population 25 Years and Older

## Jackson city, Georgia



Source: C15002. SEX BY EDUCATIONAL ATTAINMENT FOR THE POPULATION 25 YEARS AND OVER  
Data Set: 2008-2012 American Community Survey 5-Year Estimates

**B17010. POVERTY STATUS IN THE PAST 12 MONTHS OF FAMILIES BY FAMILY TYPE BY PRESENCE OF RELATED CHILDREN UNDER 18 YEARS**

Data Set: 2008-2012 American Community Survey 5-Year Estimates

	Jackson city, Georgia					
	African American	Margin of Error (+/-)	% of AA Total	White, Not Hispanic	Margin of Error (+/-)	% of NHW Total
<b>Total:</b>	<b>426</b>	<b>109</b>	<b>100.0%</b>	<b>712</b>	<b>154</b>	<b>100.0%</b>
Income in the past 12 months below poverty level:	153	84	35.9%	27	45	3.8%
Married-couple family:	34	52	8.0%	0	13	0.0%
With related children under 18 years	34	52	8.0%	0	13	0.0%
Other family:	119	78	27.9%	27	45	3.8%
Male householder, no wife present	0	13	0.0%	0	13	0.0%
With related children under 18 years	0	13	0.0%	0	13	0.0%
Female householder, no husband present	119	78	27.9%	27	45	3.8%
With related children under 18 years	100	65	23.5%	27	45	3.8%
Income in the past 12 months at or above poverty level:	273	116	64.1%	685	149	96.2%
Married-couple family:	104	81	24.4%	502	145	70.5%
With related children under 18 years	21	36	4.9%	198	100	27.8%
Other family:	169	95	39.7%	183	98	25.7%
Male householder, no wife present	20	33	4.7%	42	63	5.9%
With related children under 18 years	0	13	0.0%	0	13	0.0%
Female householder, no husband present	149	89	35.0%	141	84	19.8%
With related children under 18 years	55	50	12.9%	29	43	4.1%

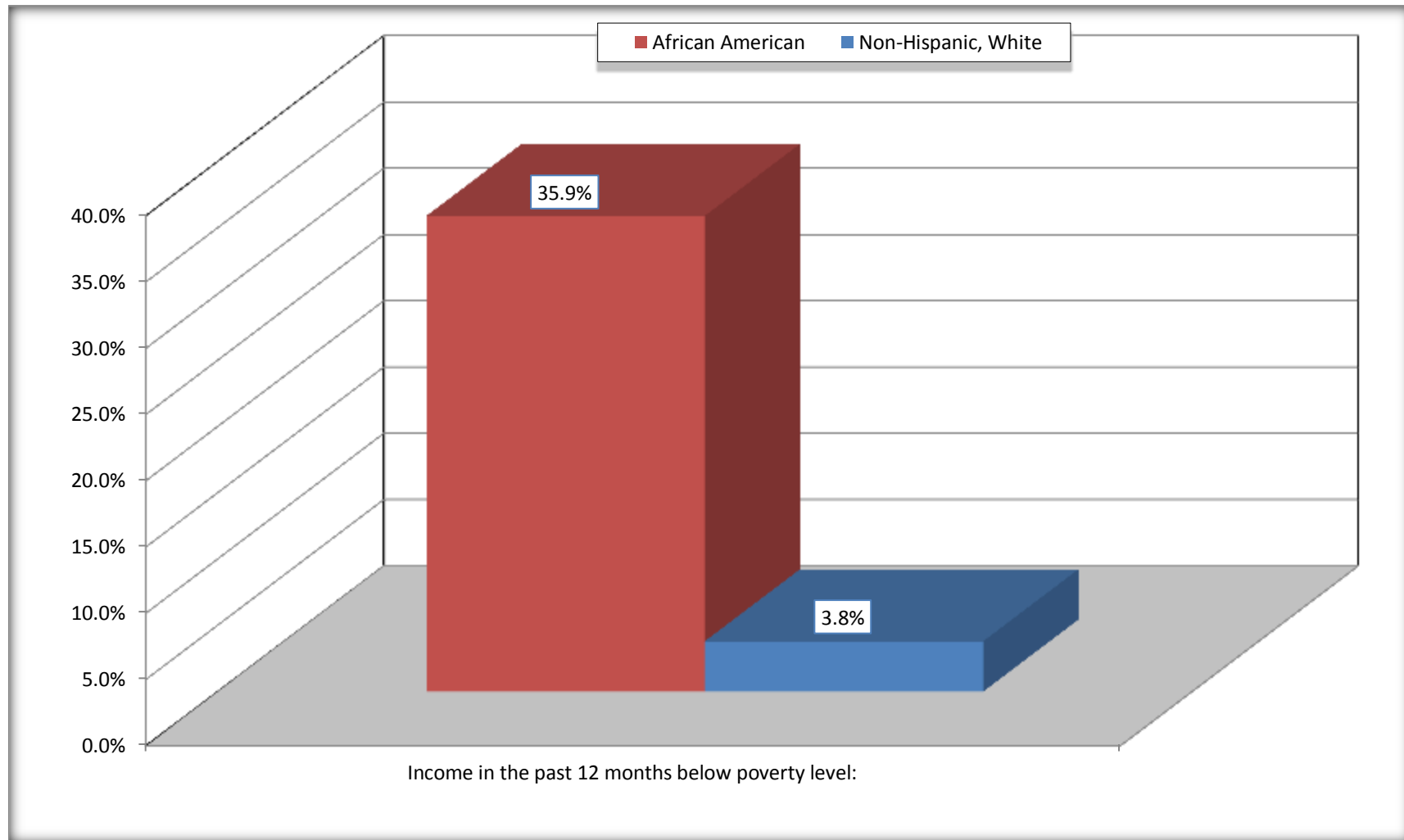
Source: U.S. Census Bureau, 2008-2012 American Community Survey

For information on confidentiality protection, sampling error, nonsampling error, and definitions, see Survey Methodology.

<http://www.census.gov/acs/www/UseData/index.htm>

# Family Households Below Poverty in the Past 12 Months

## Jackson city, Georgia



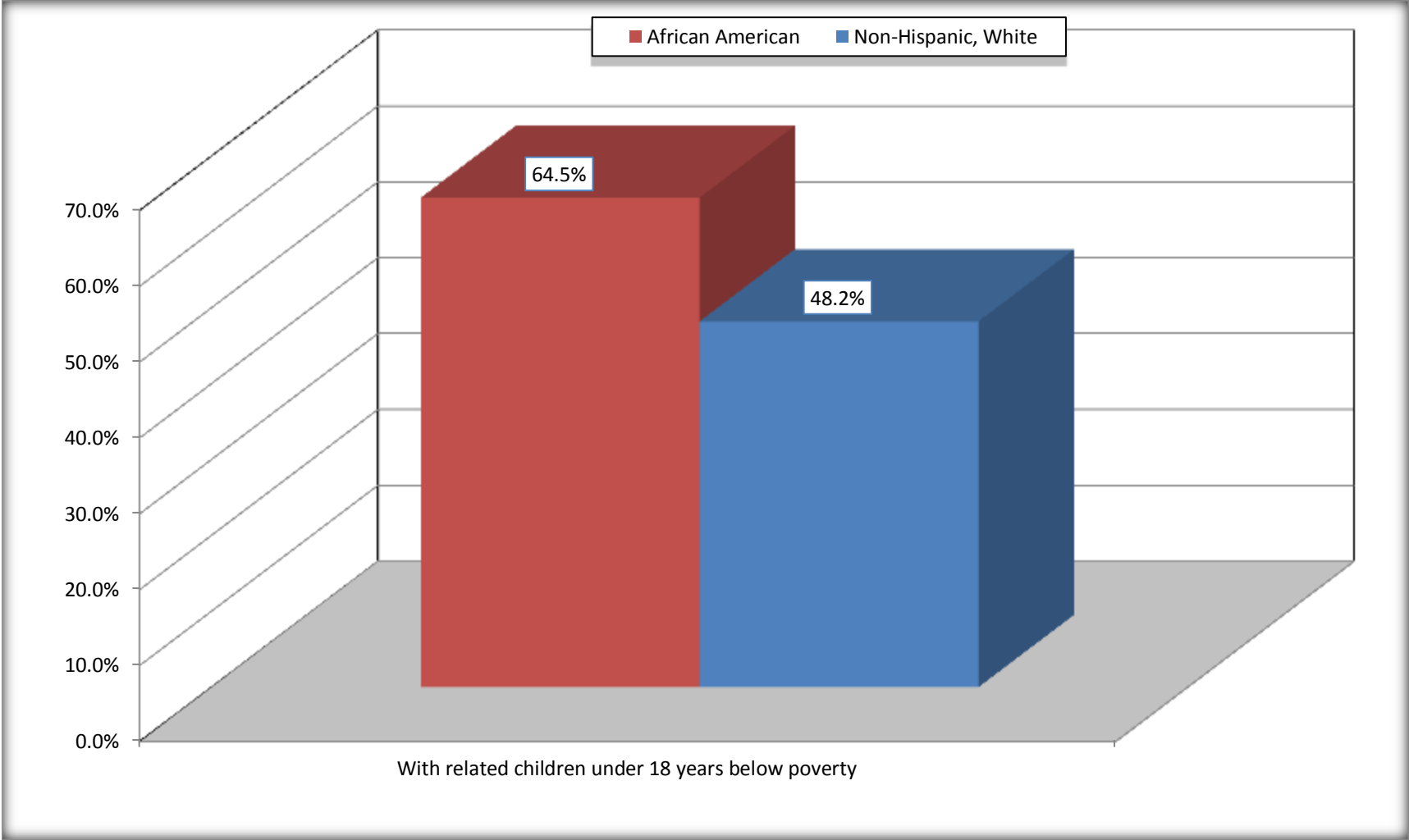
Source: B17010. POVERTY STATUS IN THE PAST 12 MONTHS OF FAMILIES BY FAMILY TYPE BY PRESENCE OF RELATED CHILDREN UNDER 18 YEARS

Data Set: 2008-2012 American Community Survey 5-Year Estimates



# Female-headed Households with Related Children Below Poverty in the Past 12 Months

## Jackson city, Georgia



Source: B17010. POVERTY STATUS IN THE PAST 12 MONTHS OF FAMILIES BY FAMILY TYPE BY PRESENCE OF RELATED CHILDREN UNDER 18 YEARS

Data Set: 2008-2012 American Community Survey 5-Year Estimates

**B17020 POVERTY STATUS IN THE PAST 12 MONTHS BY AGE - Universe: POPULATION FOR WHOM POVERTY STATUS IS DETERMINED**

Data Set: 2008-2012 American Community Survey 5-Year Estimates

	Jackson city, Georgia					
	African American	Margin of Error (+/-)	% of AA By Age	White, Not Hispanic	Margin of Error (+/-)	% of NHW By Age
<b>Total:</b>	<b>1,905</b>	<b>426</b>	<b>100.0%</b>	<b>2,539</b>	<b>453</b>	<b>100.0%</b>
Income in the past 12 months below poverty level:	843	374	44.3%	117	120	4.6%
<b>Under 18 years</b>	323	NC	64.6%	34	NC	6.2%
<b>18 to 64 years</b>	469	208	37.2%	83	79	5.5%
<b>65 years and over</b>	51	NC	35.2%	0	NC	0.0%
Income in the past 12 months at or above poverty level:	1,062	363	55.7%	2,422	461	95.4%
<b>Under 18 years</b>	177	NC	35.4%	515	NC	93.8%
<b>18 to 64 years</b>	791	282	62.8%	1,415	294	94.5%
<b>65 years and over</b>	94	NC	64.8%	492	NC	100.0%

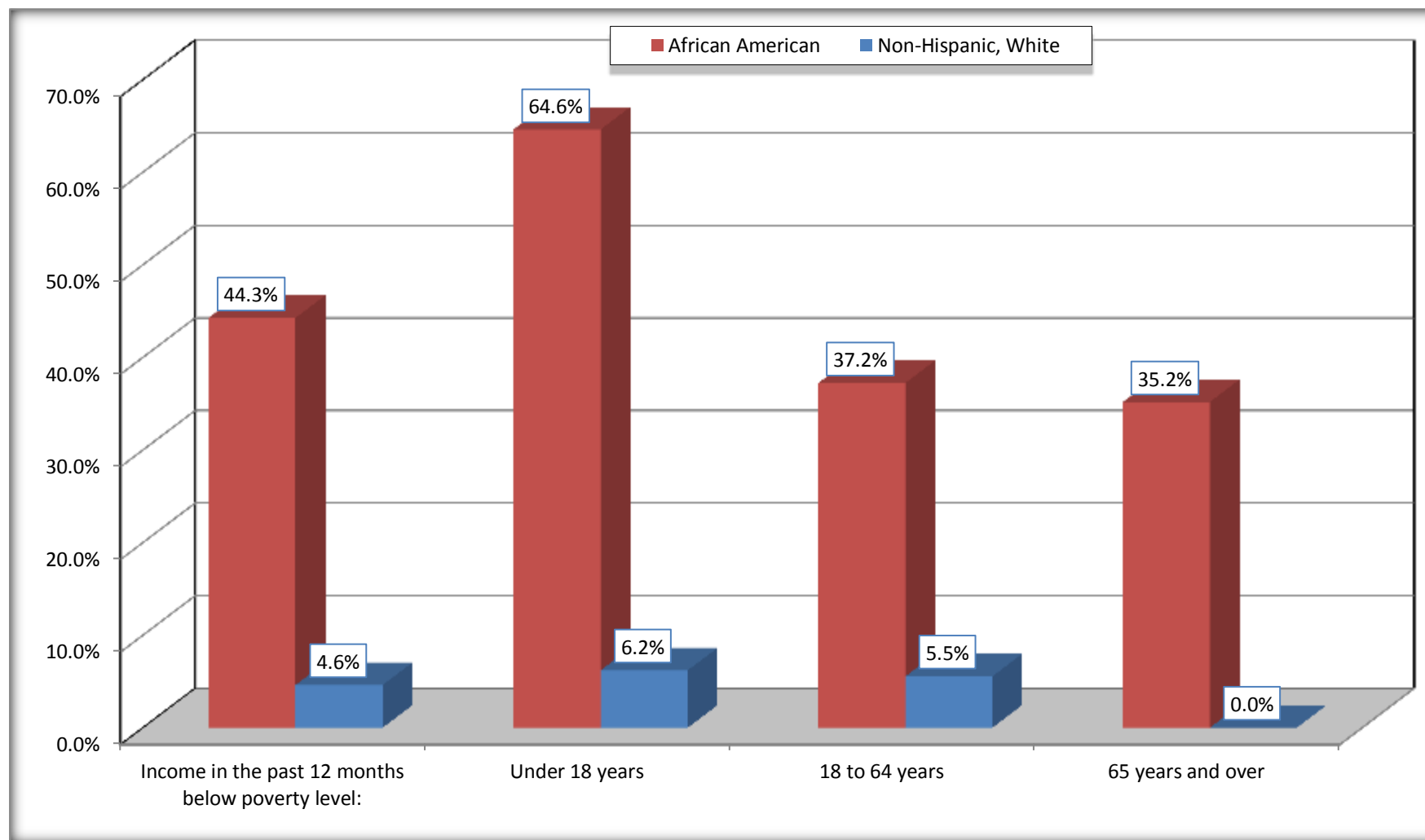
Source: U.S. Census Bureau, 2008-2012 American Community Survey

For information on confidentiality protection, sampling error, nonsampling error, and definitions, see Survey Methodology.

<http://www.census.gov/acs/www/UseData/index.htm>

## Population Below Poverty in the Past 12 Months

### Jackson city, Georgia



Source: B17020 POVERTY STATUS IN THE PAST 12 MONTHS BY AGE - Universe: POPULATION FOR WHOM POVERTY STATUS IS DETERMINED  
Data Set: 2008-2012 American Community Survey 5-Year Estimates

**B19001. HOUSEHOLD INCOME IN THE PAST 12 MONTHS (IN 2010 INFLATION-ADJUSTED DOLLARS)**

Data Set: 2008-2012 American Community Survey 5-Year Estimates

	Jackson city, Georgia					
	African American	Margin of Error (+/-)	% of AA Total	White, Not Hispanic	Margin of Error (+/-)	% of NHW Total
<b>Total:</b>	<b>662</b>	<b>127</b>	<b>100.0%</b>	<b>1,153</b>	<b>194</b>	<b>100.0%</b>
Less than \$ 10,000	142	99	21.5%	56	61	4.9%
\$ 10,000 to \$ 14,999	130	83	19.6%	102	62	8.8%
<b>\$ 15,000 to \$ 24,999</b>	90	NC	13.6%	115	NC	10.0%
<b>\$ 25,000 to \$ 34,999</b>	49	NC	7.4%	301	NC	26.1%
<b>\$ 35,000 to \$ 49,999</b>	136	NC	20.5%	171	NC	14.8%
<b>\$ 50,000 to \$ 74,999</b>	50	NC	7.6%	138	NC	12.0%
\$ 75,000 to \$ 99,999	20	34	3.0%	109	87	9.5%
<b>\$ 100,000 to \$ 149,999</b>	45	NC	6.8%	81	NC	7.0%
\$ 150,000 to \$ 199,999	0	13	0.0%	55	61	4.8%
\$ 200,000 or more	0	13	0.0%	25	30	2.2%

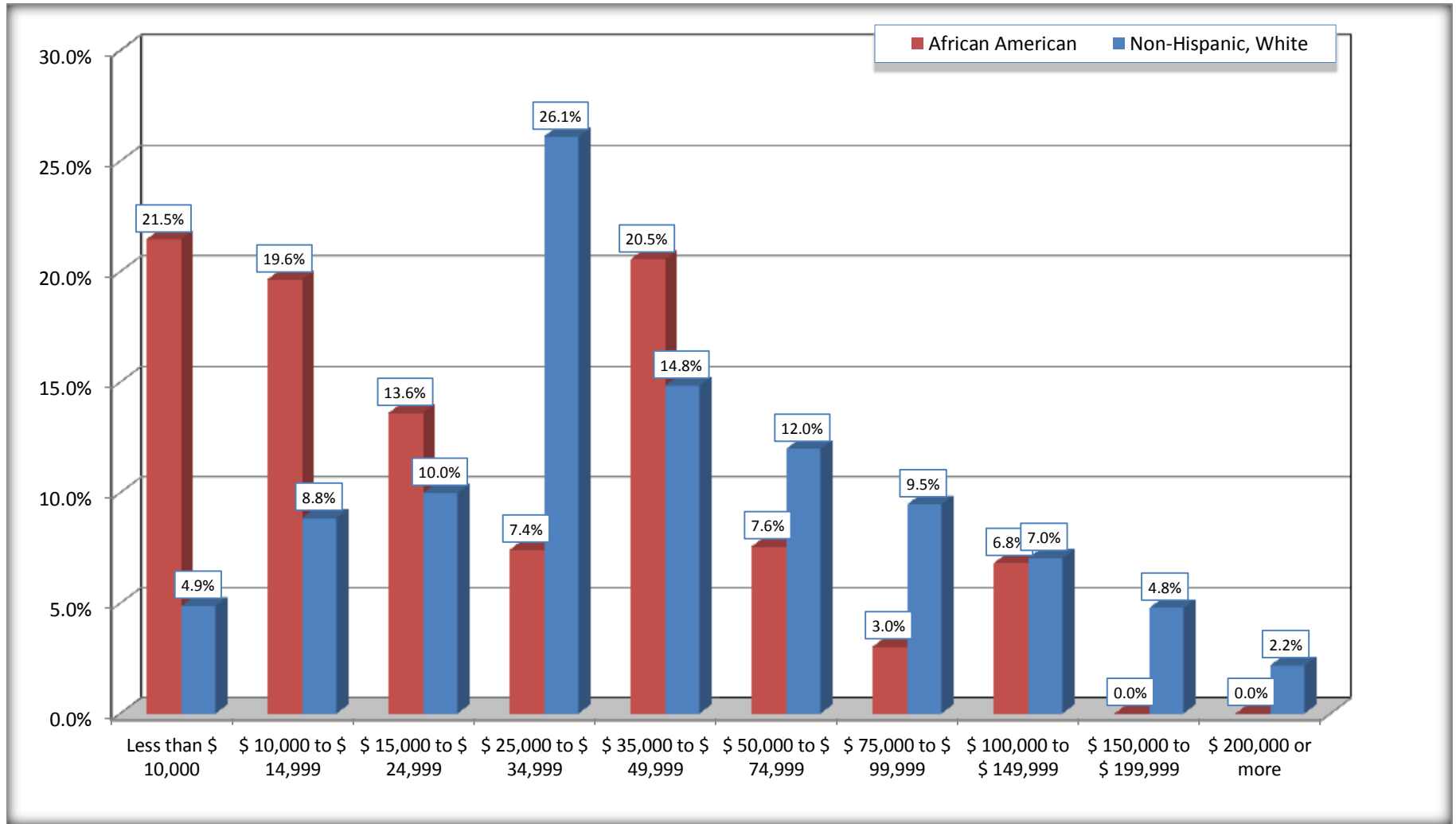
Source: U.S. Census Bureau, 2008-2012 American Community Survey

For information on confidentiality protection, sampling error, nonsampling error, and definitions, see Survey Methodology.

<http://www.census.gov/acs/www/UseData/index.htm>

# Household Income in the Past 12 Months

## Jackson city, Georgia



Source: B19001. HOUSEHOLD INCOME IN THE PAST 12 MONTHS (IN 2010 INFLATION-ADJUSTED DOLLARS)  
Data Set: 2008-2012 American Community Survey 5-Year Estimates

**B19013. MEDIAN HOUSEHOLD INCOME IN THE PAST 12 MONTHS (IN 2010 INFLATION-ADJUSTED DOLLARS)**

Data Set: 2008-2012 American Community Survey 5-Year Estimates

	<b>Jackson city, Georgia</b>			
	African American	Margin of Error (+/-)	White, Not Hispanic	Margin of Error (+/-)
Median household income in the past 12 months (in 2010 inflation-adjusted dollars)	\$ 21,438	\$ 16,640	\$ 35,080	\$ 4,705

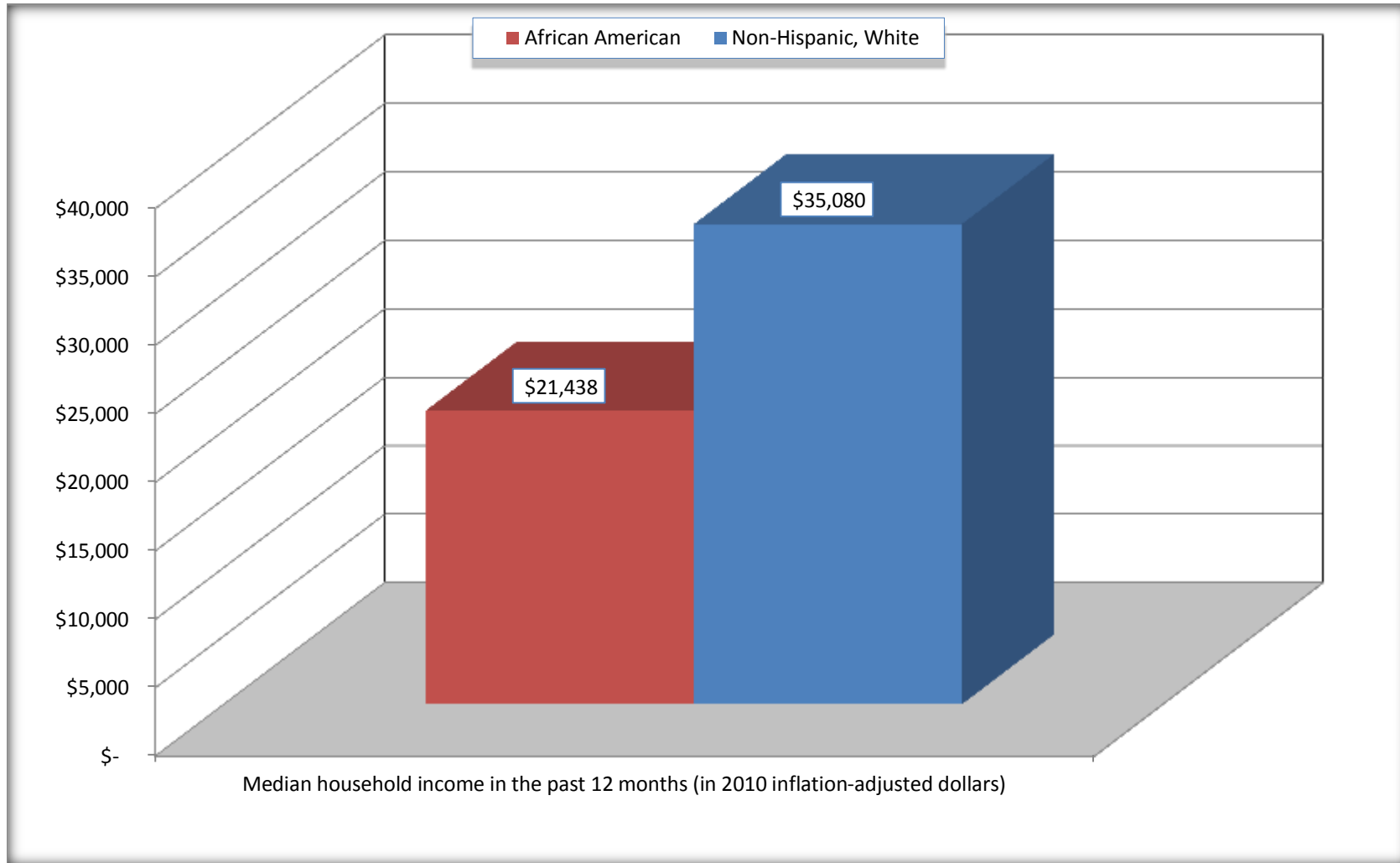
Source: U.S. Census Bureau, 2008-2012 American Community Survey

For information on confidentiality protection, sampling error, nonsampling error, and definitions, see Survey Methodology.

<http://www.census.gov/acs/www/UseData/index.htm>

# Median Household Income in the Past 12 Months

## Jackson city, Georgia



Source: B19013. MEDIAN HOUSEHOLD INCOME IN THE PAST 12 MONTHS (IN 2010 INFLATION-ADJUSTED DOLLARS)  
Data Set: 2008-2012 American Community Survey 5-Year Estimates

**B19101. FAMILY INCOME IN THE PAST 12 MONTHS (IN 2010 INFLATION-ADJUSTED DOLLARS)**

Data Set: 2008-2012 American Community Survey 5-Year Estimates

	Jackson city, Georgia					
	African American	Margin of Error (+/-)	% of AA Total	White, Not Hispanic	Margin of Error (+/-)	% of NHW Total
<b>Total:</b>	<b>426</b>	<b>109</b>	<b>100.0%</b>	<b>712</b>	<b>154</b>	<b>100.0%</b>
Less than \$ 10,000	46	59	10.8%	27	45	3.8%
\$ 10,000 to \$ 14,999	45	55	10.6%	0	13	0.0%
<b>\$ 15,000 to \$ 24,999</b>	<b>74</b>	<b>NC</b>	<b>17.4%</b>	<b>39</b>	<b>NC</b>	<b>5.5%</b>
<b>\$ 25,000 to \$ 34,999</b>	<b>18</b>	<b>NC</b>	<b>4.2%</b>	<b>152</b>	<b>NC</b>	<b>21.3%</b>
<b>\$ 35,000 to \$ 49,999</b>	<b>128</b>	<b>NC</b>	<b>30.0%</b>	<b>151</b>	<b>NC</b>	<b>21.2%</b>
<b>\$ 50,000 to \$ 74,999</b>	<b>50</b>	<b>NC</b>	<b>11.7%</b>	<b>120</b>	<b>NC</b>	<b>16.9%</b>
<b>\$ 100,000 to \$ 149,999</b>	<b>45</b>	<b>NC</b>	<b>10.6%</b>	<b>81</b>	<b>NC</b>	<b>11.4%</b>
\$ 150,000 to \$ 199,999	0	13	0.0%	55	61	7.7%
\$ 200,000 or more	0	13	0.0%	8	13	1.1%

Source: U.S. Census Bureau, 2008-2012 American Community Survey

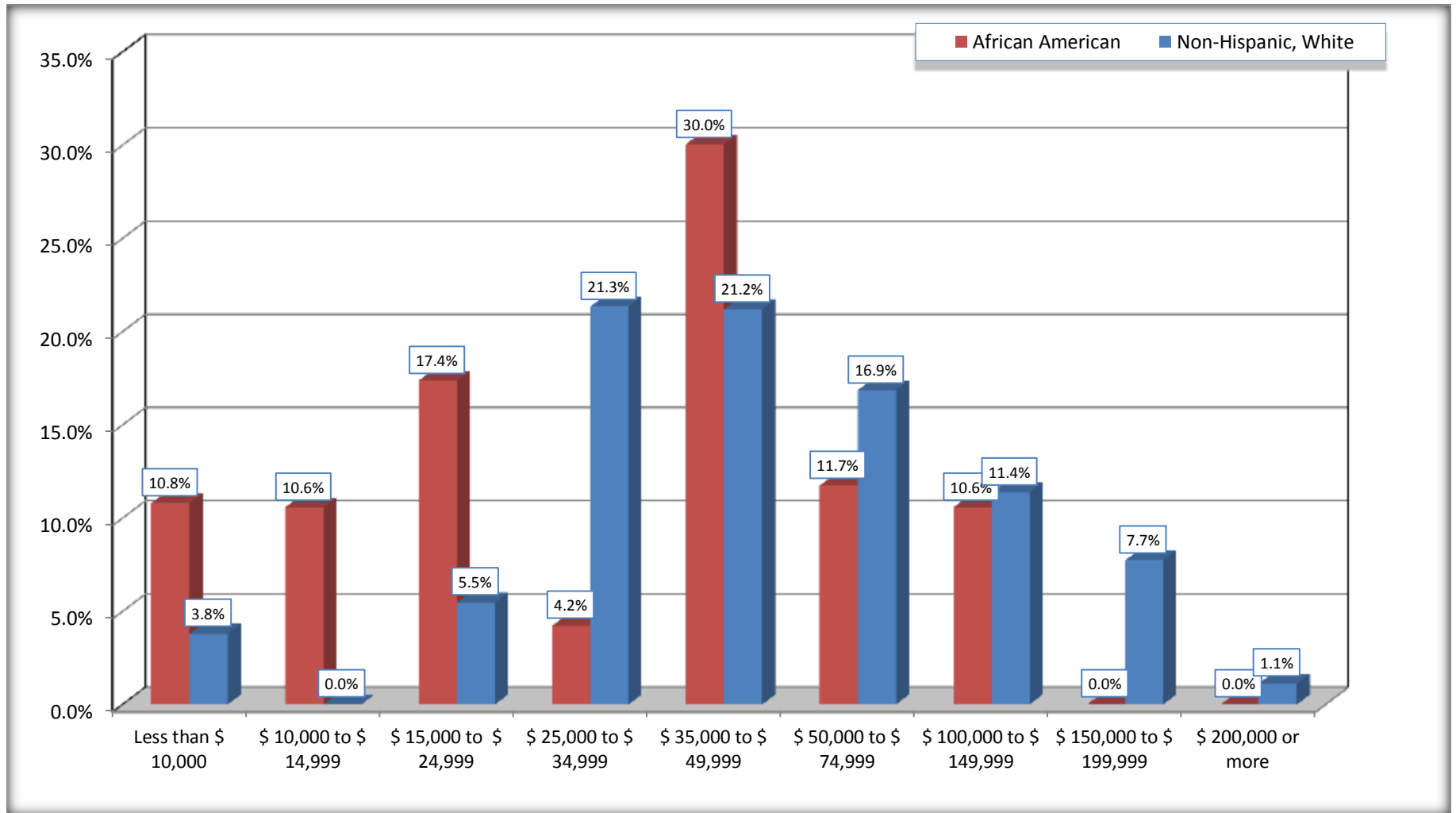
For information on confidentiality protection, sampling error, nonsampling error, and definitions, see Survey Methodology.

<http://www.census.gov/acs/www/UseData/index.htm>



# Family Income in the Past 12 Months

## Jackson city, Georgia



Source: B19101. FAMILY INCOME IN THE PAST 12 MONTHS (IN 2010 INFLATION-ADJUSTED DOLLARS)  
Data Set: 2008-2012 American Community Survey 5-Year Estimates

**B19113. MEDIAN FAMILY INCOME IN THE PAST 12 MONTHS (IN 2010 INFLATION-ADJUSTED DOLLARS)**

Data Set: 2008-2012 American Community Survey 5-Year Estimates

	<b>Jackson city, Georgia</b>			
	African American	Margin of Error (+/-)	White, Not Hispanic	Margin of Error (+/-)
Median family income in the past 12 months (in 2010 inflation-adjusted dollars)	\$ 40,931	\$ 13,548	\$ 41,761	\$ 23,805

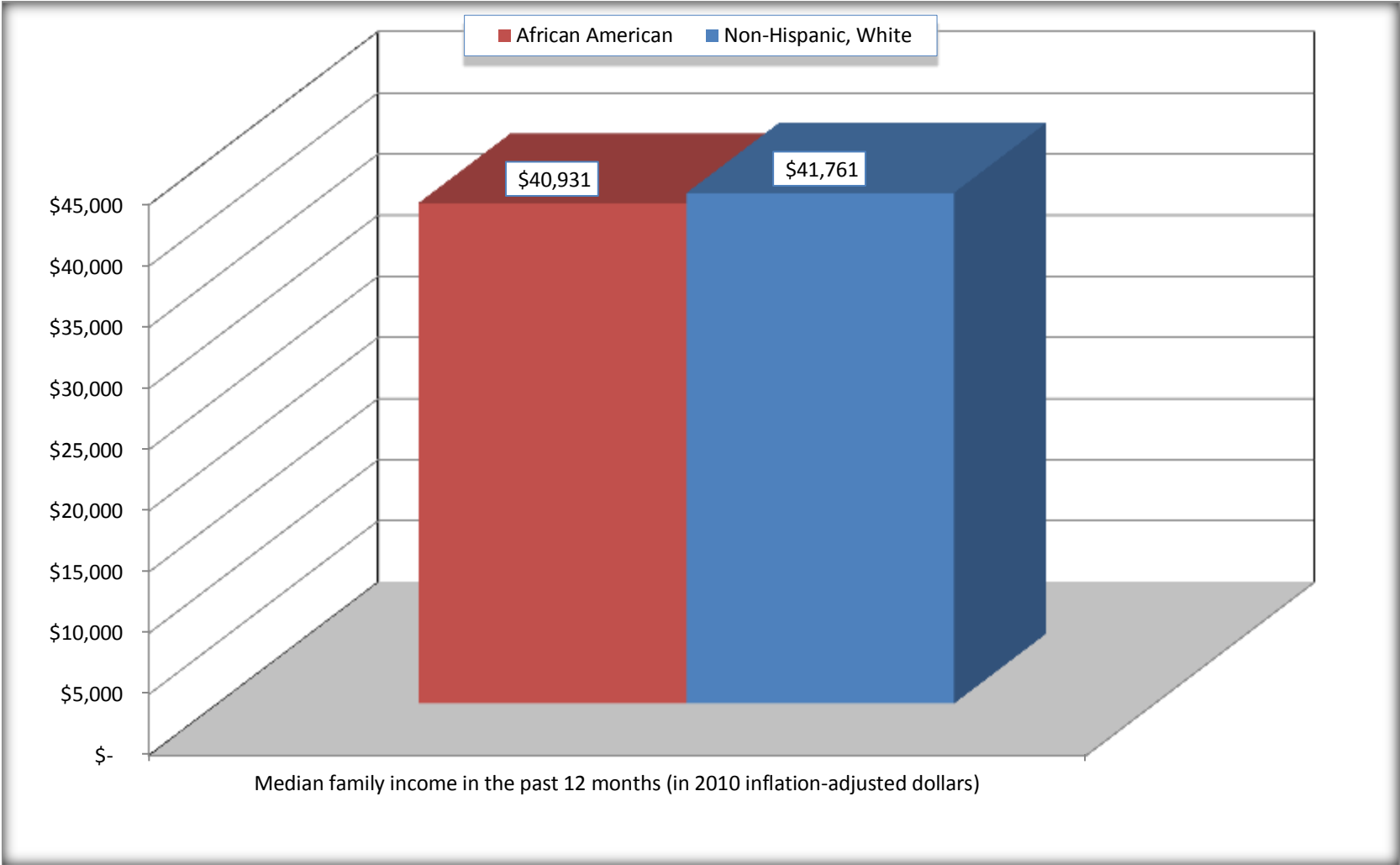
Source: U.S. Census Bureau, 2008-2012 American Community Survey

For information on confidentiality protection, sampling error, nonsampling error, and definitions, see Survey Methodology.

<http://www.census.gov/acs/www/UseData/index.htm>

# Median Family Income in the Past 12 Months

## Jackson city, Georgia



Source: B19113. MEDIAN FAMILY INCOME IN THE PAST 12 MONTHS (IN 2010 INFLATION-ADJUSTED DOLLARS)  
Data Set: 2008-2012 American Community Survey 5-Year Estimates

**B19202. MEDIAN NONFAMILY HOUSEHOLD INCOME IN THE PAST 12 MONTHS (IN 2010 INFLATION-ADJUSTED DOLLARS)**

Data Set: 2008-2012 American Community Survey 5-Year Estimates

	<b>Jackson city, Georgia</b>			
	African American	Margin of Error (+/-)	White, Not Hispanic	Margin of Error (+/-)
Median nonfamily household income in the past 12 months (in 2010 inflation-adjusted dollars)	\$ 10,647	\$ 1,648	\$ 24,397	\$ 8,719

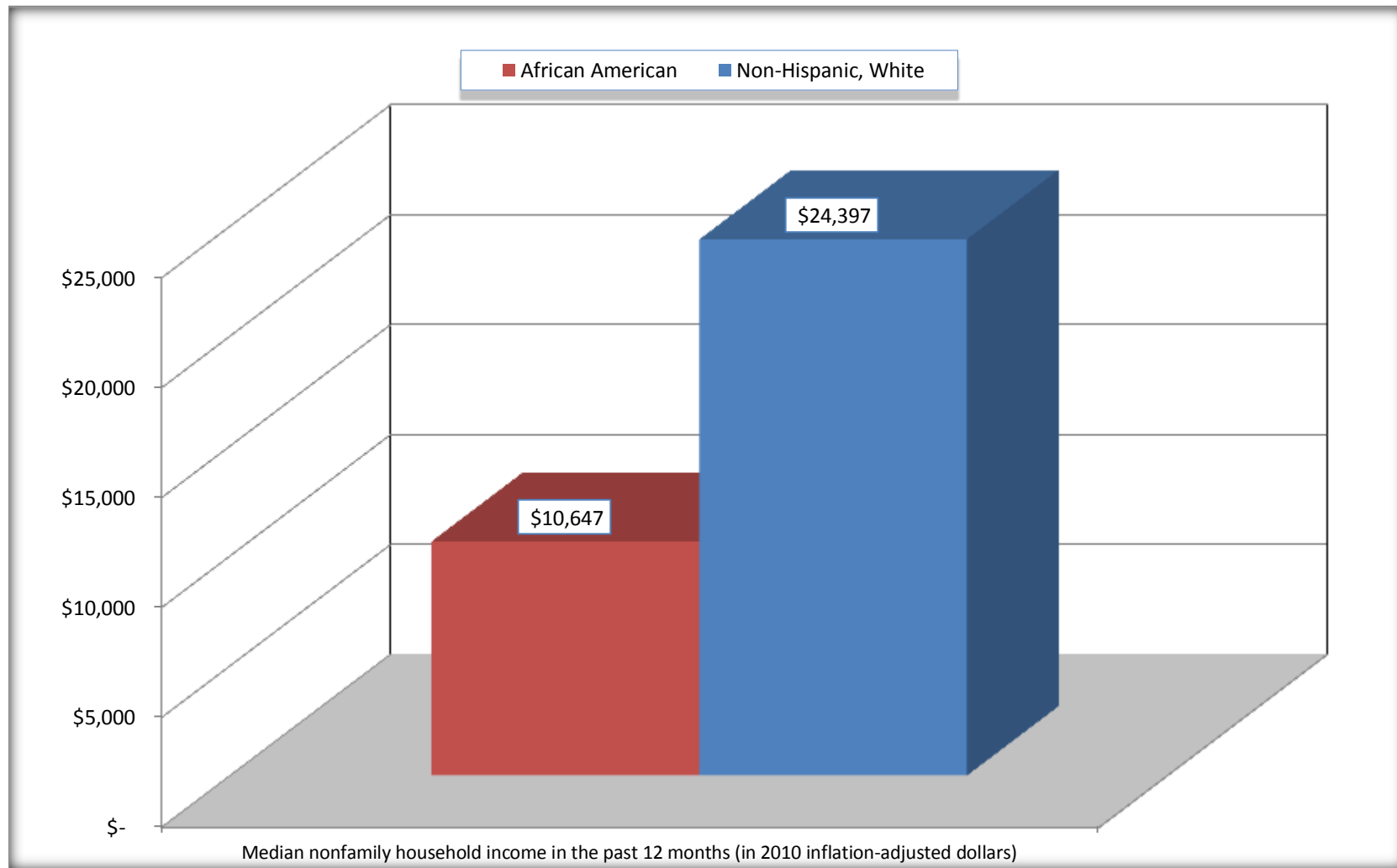
Source: U.S. Census Bureau, 2008-2012 American Community Survey

For information on confidentiality protection, sampling error, nonsampling error, and definitions, see Survey Methodology.

<http://www.census.gov/acs/www/UseData/index.htm>

# Median Non-Family Income in the Past 12 Months

## Jackson city, Georgia



Source: B19202. MEDIAN NONFAMILY HOUSEHOLD INCOME IN THE PAST 12 MONTHS (IN 2010 INFLATION-ADJUSTED DOLLARS)  
Data Set: 2008-2012 American Community Survey 5-Year Estimates

**B19301. PER CAPITA INCOME IN THE PAST 12 MONTHS (IN 2010 INFLATION-ADJUSTED DOLLARS)**

Data Set: 2008-2012 American Community Survey 5-Year Estimates

	<b>Jackson city, Georgia</b>			
	African American	Margin of Error (+/-)	White, Not Hispanic	Margin of Error (+/-)
Per capita income in the past 12 months (in 2010 inflation-adjusted dollars)	\$ 11,914	\$ 2,993	\$ 23,955	\$ 4,624

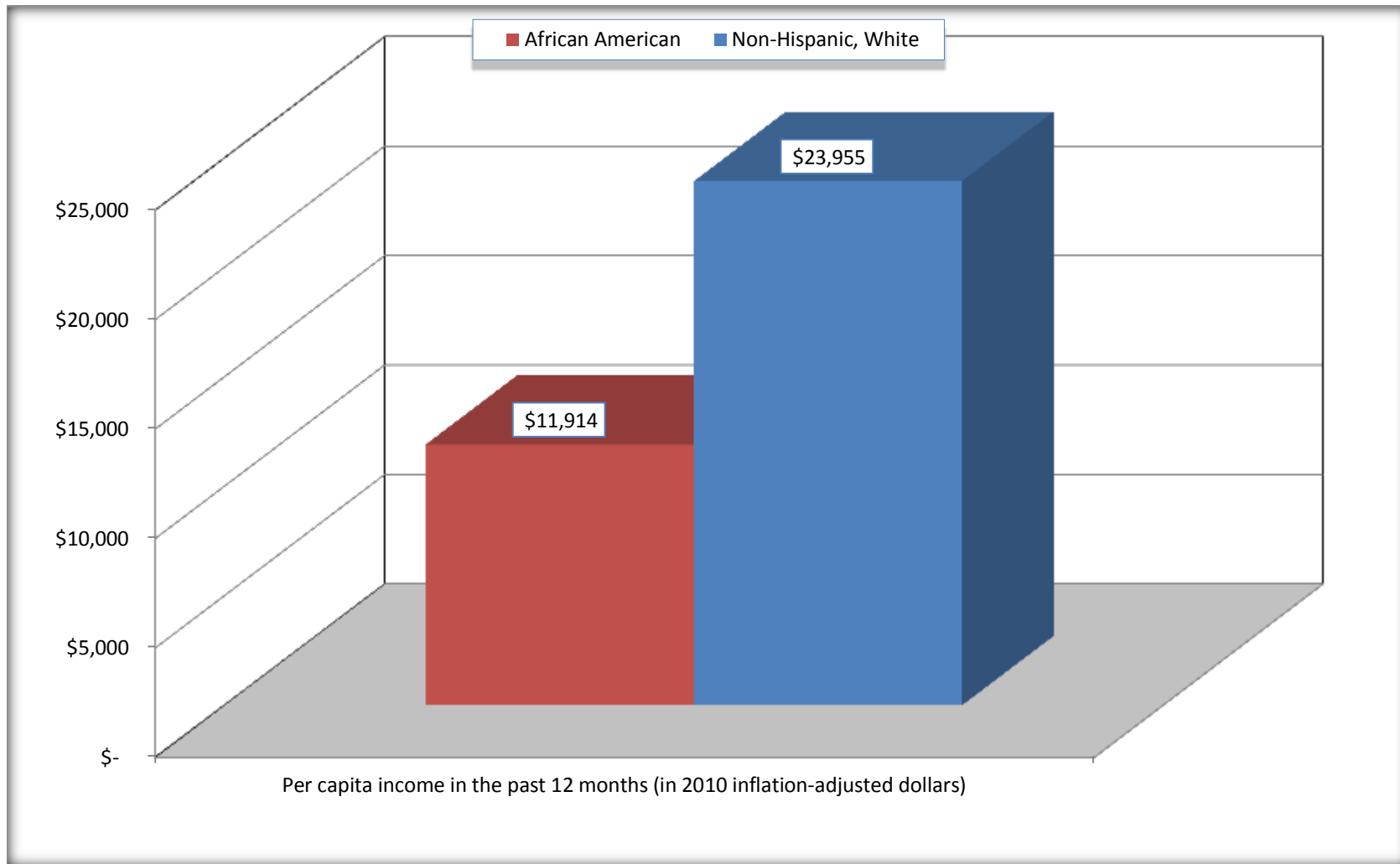
Source: U.S. Census Bureau, 2008-2012 American Community Survey

For information on confidentiality protection, sampling error, nonsampling error, and definitions, see Survey Methodology.

<http://www.census.gov/acs/www/UseData/index.htm>

## Per capita Income in the Past 12 Months

### Jackson city, Georgia



Source: B19301. PER CAPITA INCOME IN THE PAST 12 MONTHS (IN 2010 INFLATION-ADJUSTED DOLLARS)  
Data Set: 2008-2012 American Community Survey 5-Year Estimates

**B20017. MEDIAN EARNINGS IN THE PAST 12 MONTHS (IN 2010 INFLATION-ADJUSTED DOLLARS) BY SEX BY WORK EXPERIENCE IN THE PAST 12 MONTHS FOR THE POPULATION 16 YEARS AND OVER WITH EARNINGS IN THE PAST 12 MONTHS**

Data Set: 2008-2012 American Community Survey 5-Year Estimates

	Jackson city, Georgia			
	African American	Margin of Error (+/-)	White, Not Hispanic	Margin of Error (+/-)
Median earnings in the past 12 months (in 2010 inflation-adjusted dollars) --				
Total:	\$ 19,063	\$ 4,211	\$ 30,069	\$ 5,114
Male --				
Total	\$ 18,506	\$ 7,877	\$ 30,752	\$ 2,885
Worked full-time, year-round in the past 12 months	\$ 31,375	\$ 29,604	\$ 34,453	\$ 18,645
Other	\$ 8,207	\$ 9,428	\$ 21,190	\$ 8,267
Female --				
Total	\$ 20,054	\$ 4,711	\$ 26,373	\$ 8,982
Worked full-time, year-round in the past 12 months	\$ 21,598	\$ 5,764	\$ 33,405	\$ 15,459
Other	\$ 15,686	\$ 2,447	\$ 10,714	\$ 2,824

Source: U.S. Census Bureau, 2008-2012 American Community Survey

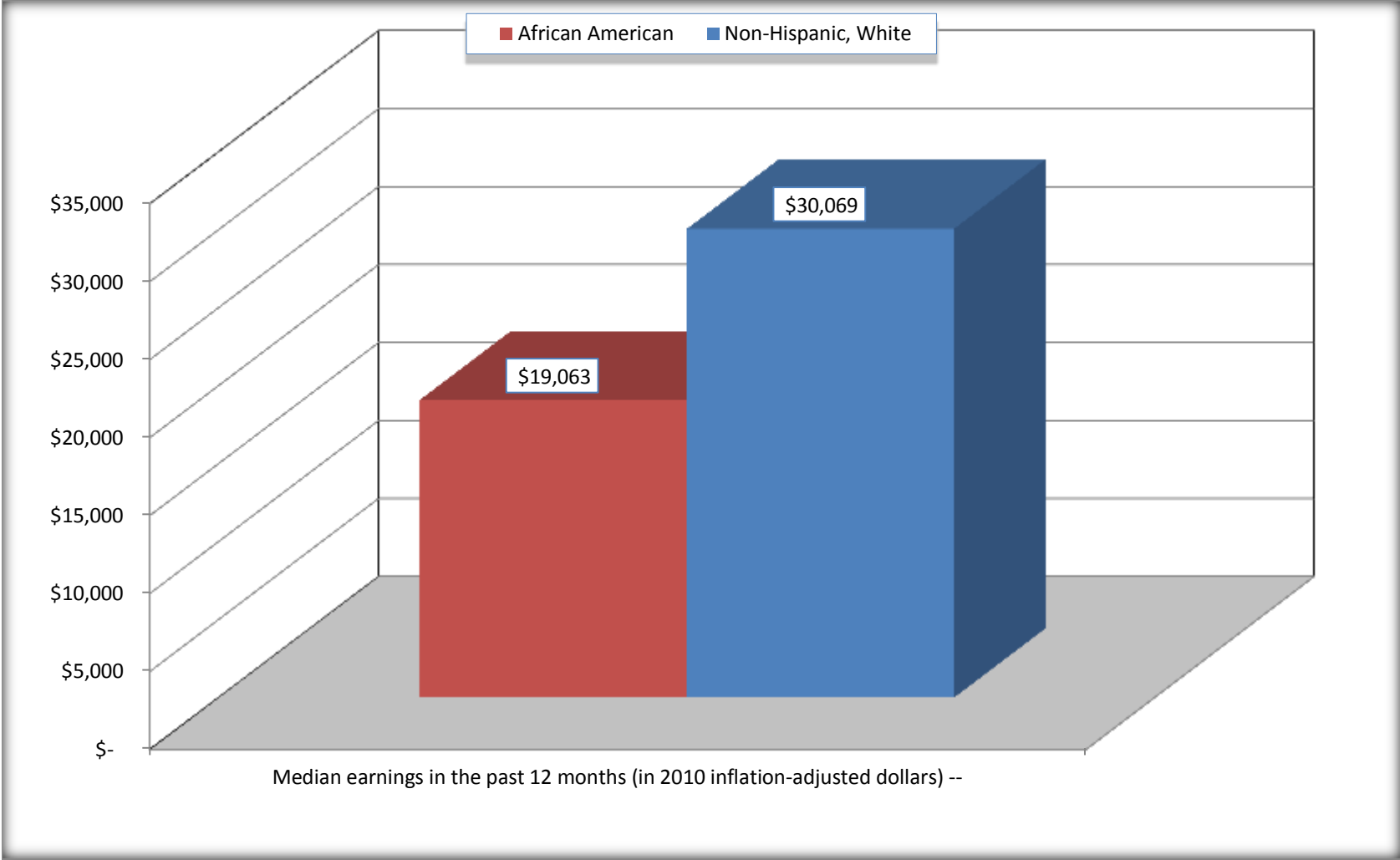
For information on confidentiality protection, sampling error, nonsampling error, and definitions, see Survey Methodology.

<http://www.census.gov/acs/www/UseData/index.htm>



# Median earnings in the Past 12 Months (16 Years and Over with Earnings)

## Jackson city, Georgia



Source: B20017. MEDIAN EARNINGS IN THE PAST 12 MONTHS (IN 2010 INFLATION-ADJUSTED DOLLARS) BY SEX BY WORK EXPERIENCE IN THE PAST 12 MONTHS FOR THE POPULATION 16 YEARS AND OVER WITH EARNINGS IN THE PAST 12 MONTHS  
Data Set: 2008-2012 American Community Survey 5-Year Estimates

**B20005. SEX BY WORK EXPERIENCE IN THE PAST 12 MONTHS BY EARNINGS IN THE PAST 12 MONTHS (IN 2010 INFLATION-ADJUSTED DOLLARS) FOR THE POPULATION 16 YEARS AND OVER**

Data Set: 2008-2012 American Community Survey 5-Year Estimates

	Jackson city, Georgia					
	African American	Margin of Error (+/-)	% of AA Total	White, Not Hispanic	Margin of Error (+/-)	% of NHW Total
<b>Total:</b>	<b>1,535</b>	<b>330</b>	<b>100.0%</b>	<b>2,248</b>	<b>350</b>	<b>100.0%</b>
Worked full-time, year-round in the past 12 months:	526	NC	34.3%	861	NC	38.3%
No earnings	0	NC	0.0%	0	NC	0.0%
With earnings:	526	NC	34.3%	861	NC	38.3%
\$ 1 to \$ 9,999 or loss	0	NC	0.0%	0	NC	0.0%
\$ 10,000 to \$ 19,999	166	NC	10.8%	126	NC	5.6%
\$ 20,000 to \$ 29,999	213	NC	13.9%	143	NC	6.4%
\$ 30,000 to \$ 49,999	94	NC	6.1%	314	NC	14.0%
\$ 50,000 to \$ 74,999	53	NC	3.5%	127	NC	5.6%
\$ 75,000 or more	0	NC	0.0%	151	NC	6.7%
Other:	1,009	NC	65.7%	1,387	NC	61.7%
No earnings	664	NC	43.3%	1,035	NC	46.0%
With earnings: less than full time, year-round	345	NC	22.5%	352	NC	15.7%
Male:	679	186	44.2%	1,017	189	45.2%
Worked full-time, year-round in the past 12 months:	180	122	11.7%	456	131	20.3%
No earnings	0	13	0.0%	0	13	0.0%
With earnings:	180	122	11.7%	456	131	20.3%
\$ 1 to \$ 9,999 or loss	0	NC	0.0%	0	NC	0.0%
\$ 10,000 to \$ 19,999	32	NC	2.1%	40	NC	1.8%
\$ 20,000 to \$ 29,999	47	NC	3.1%	60	NC	2.7%
\$ 30,000 to \$ 49,999	48	NC	3.1%	181	NC	8.1%
\$ 50,000 to \$ 74,999	53	NC	3.5%	42	NC	1.9%
\$ 75,000 or more	0	NC	0.0%	133	NC	5.9%

	Jackson city, Georgia					
	African American	Margin of Error (+/-)	% of AA Total	White, Not Hispanic	Margin of Error (+/-)	% of NHW Total
Other:	499	162	32.5%	561	171	25.0%
No earnings	334	134	21.8%	331	105	14.7%
With earnings:	165	96	10.7%	230	118	10.2%
Female:	856	247	55.8%	1,231	237	54.8%
Worked full-time, year-round in the past 12 months:	346	150	22.5%	405	149	18.0%
No earnings	0	13	0.0%	0	13	0.0%
With earnings:	346	150	22.5%	405	149	18.0%
\$ 1 to \$ 9,999 or loss	0	NC	0.0%	0	NC	0.0%
\$ 10,000 to \$ 19,999	134	NC	8.7%	86	NC	3.8%
\$ 20,000 to \$ 29,999	166	NC	10.8%	83	NC	3.7%
\$ 30,000 to \$ 49,999	46	NC	3.0%	133	NC	5.9%
\$ 50,000 to \$ 74,999	0	NC	0.0%	85	NC	3.8%
\$ 75,000 or more	0	NC	0.0%	18	NC	0.8%
Other:	510	185	33.2%	826	198	36.7%
No earnings	330	136	21.5%	704	192	31.3%
With earnings:	180	103	11.7%	122	67	5.4%

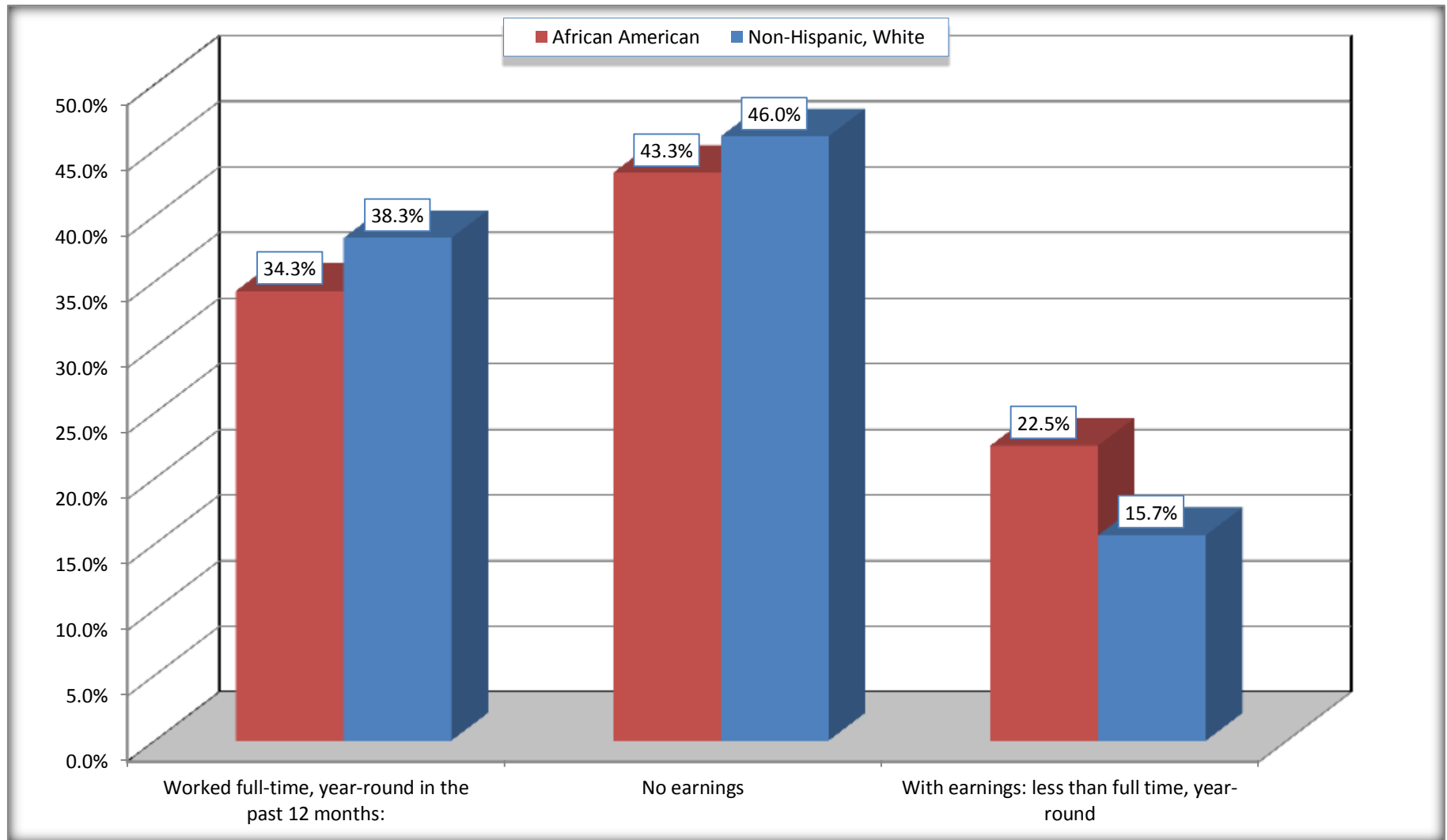
Source: U.S. Census Bureau, 2008-2012 American Community Survey

For information on confidentiality protection, sampling error, nonsampling error, and definitions, see Survey Methodology.

<http://www.census.gov/acs/www/UseData/index.htm>

# Employment and Earnings in in the Past 12 Months (16 Years and Over)

## Jackson city, Georgia



Source: B20005. SEX BY WORK EXPERIENCE IN THE PAST 12 MONTHS BY EARNINGS IN THE PAST 12 MONTHS (IN 2010 INFLATION-ADJUSTED DOLLARS) FOR THE POPULATION 16 YEARS AND OVER

Data Set: 2008-2012 American Community Survey 5-Year Estimates

**C21001. SEX BY AGE BY VETERAN STATUS FOR THE CIVILIAN POPULATION 18 YEARS AND OVER**

Data Set: 2008-2012 American Community Survey 5-Year Estimates

	Jackson city, Georgia					
	African American	Margin of Error (+/-)	% of AA Total	White, Not Hispanic	Margin of Error (+/-)	% of NHW Total
<b>Total:</b>	<b>1,453</b>	<b>308</b>	<b>100.0%</b>	<b>2,156</b>	<b>339</b>	<b>100.0%</b>
Veteran	85	NC	5.8%	243	NC	11.3%
Nonveteran	1,368	NC	94.2%	1,913	NC	88.7%
Male:	642	177	44.2%	985	195	45.7%
18 to 64 years:	611	178	42.1%	779	175	36.1%
Veteran	75	70	5.2%	58	60	2.7%
Nonveteran	536	200	36.9%	721	167	33.4%
65 years and over:	31	27	2.1%	206	68	9.6%
Veteran	0	13	0.0%	141	61	6.5%
Nonveteran	31	27	2.1%	65	38	3.0%
Female:	811	223	55.8%	1,171	216	54.3%
18 to 64 years:	685	193	47.1%	724	176	33.6%
Veteran	10	18	0.7%	0	13	0.0%
Nonveteran	675	192	46.5%	724	176	33.6%
65 years and over:	126	58	8.7%	447	149	20.7%
Veteran	0	13	0.0%	44	71	2.0%
Nonveteran	126	58	8.7%	403	141	18.7%

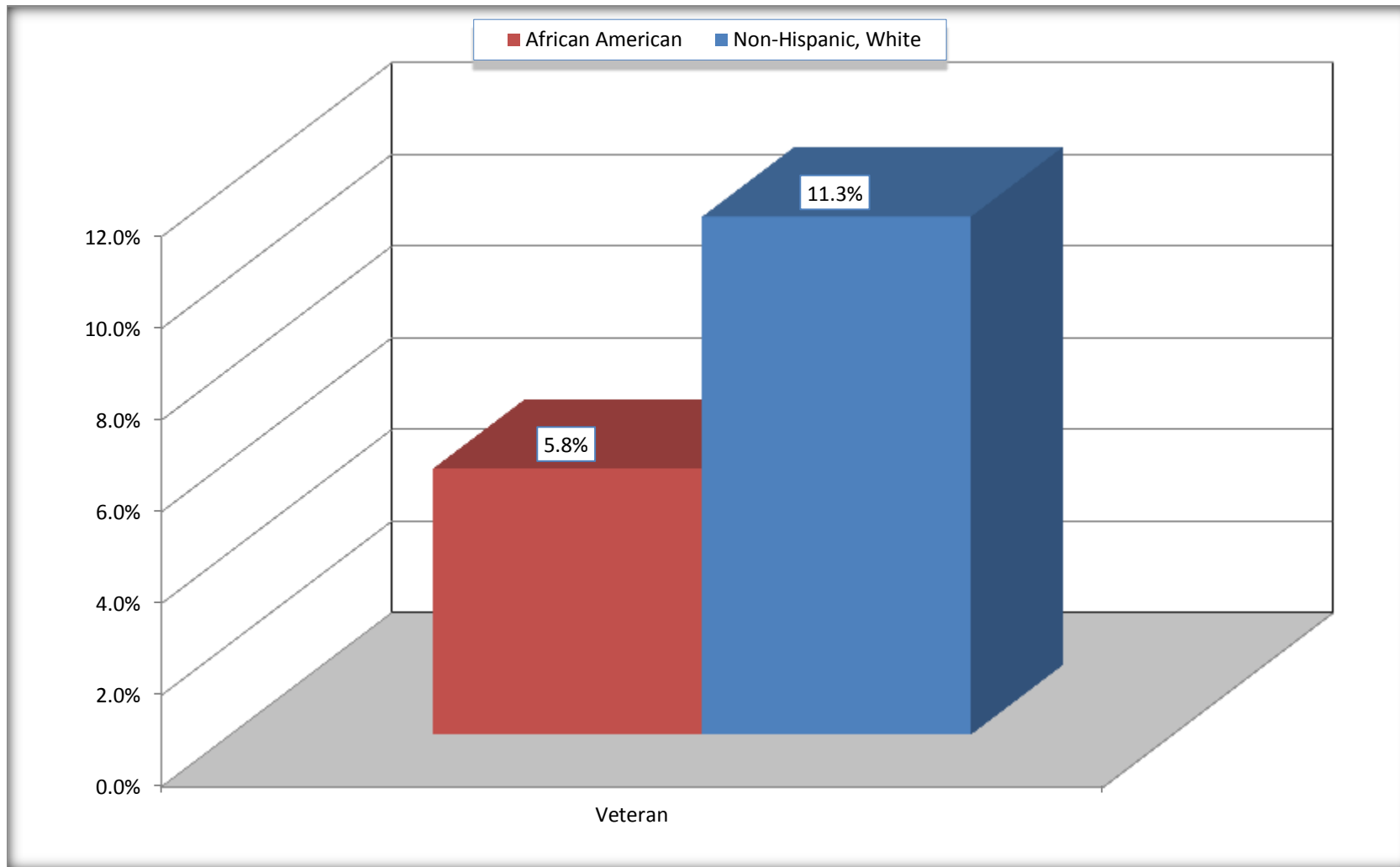
Source: U.S. Census Bureau, 2008-2012 American Community Survey

For information on confidentiality protection, sampling error, nonsampling error, and definitions, see Survey Methodology.

<http://www.census.gov/acs/www/UseData/index.htm>

# Veterans in the Civilian Population 18 Years and Over

## Jackson city, Georgia



Source: C21001. SEX BY AGE BY VETERAN STATUS FOR THE CIVILIAN POPULATION 18 YEARS AND OVER  
Data Set: 2008-2012 American Community Survey 5-Year Estimates

**B22005. RECEIPT OF FOOD STAMPS/SNAP IN THE PAST 12 MONTHS BY RACE OF HOUSEHOLDER**

Data Set: 2008-2012 American Community Survey 5-Year Estimates

	Jackson city, Georgia					
	African American	Margin of Error (+/-)	% of AA Total	White, Not Hispanic	Margin of Error (+/-)	% of NHW Total
<b>Total:</b>	<b>662</b>	<b>127</b>	<b>100.0%</b>	<b>1,153</b>	<b>194</b>	<b>100.0%</b>
HH received Food Stamps/SNAP in the past 12 months	333	122	50.3%	247	123	21.4%
HH did not receive Food Stamps/SNAP in the past 12 months	329	109	49.7%	906	199	78.6%

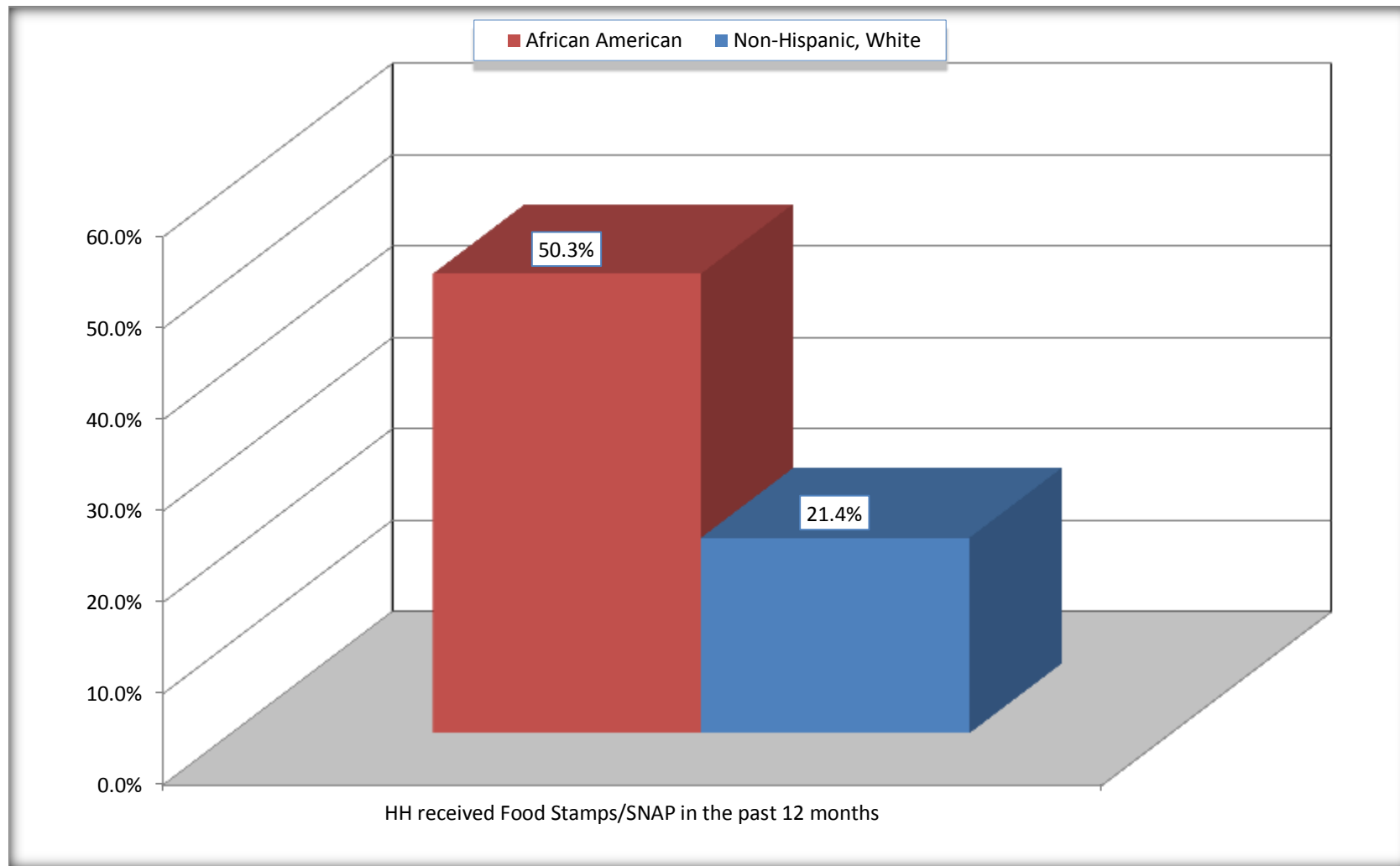
Source: U.S. Census Bureau, 2008-2012 American Community Survey

For information on confidentiality protection, sampling error, nonsampling error, and definitions, see Survey Methodology.

<http://www.census.gov/acs/www/UseData/index.htm>

# Receipt of Food Stamps/SNAP in the Past 12 Months by Household

## Jackson city, Georgia



Source: B22005. RECEIPT OF FOOD STAMPS/SNAP IN THE PAST 12 MONTHS BY RACE OF HOUSEHOLDER  
Data Set: 2008-2012 American Community Survey 5-Year Estimates



**C23002. SEX BY AGE BY EMPLOYMENT STATUS FOR THE POPULATION 16 YEARS AND OVER**

Data Set: 2008-2012 American Community Survey 5-Year Estimates

	Jackson city, Georgia					
	African American	Margin of Error (+/-)	% of AA Total	White, Not Hispanic	Margin of Error (+/-)	% of NHW Total
<b>Total:</b>	<b>1,535</b>	<b>330</b>	<b>100.0%</b>	<b>2,248</b>	<b>350</b>	<b>100.0%</b>
In labor force:	899	NC	58.6%	1,232	NC	54.8%
In Armed Forces	0	NC	0.0%	32	NC	1.4%
Civilian:	880	NC	57.3%	1,102	NC	49.0%
Employed	722	NC	47.0%	1,027	NC	45.7%
Unemployed	177	NC	11.5%	173	NC	7.7%
Not in labor force	636	NC	41.4%	1,016	NC	45.2%
Male:	679	186	44.2%	1,017	189	45.2%
16 to 64 years:	648	187	42.2%	811	173	36.1%
In labor force:	369	176	24.0%	667	149	29.7%
In Armed Forces	0	13	0.0%	32	50	1.4%
Civilian:	369	176	24.0%	635	147	28.2%
Employed	211	132	13.7%	549	149	24.4%
Unemployed	158	125	10.3%	86	91	3.8%
Not in labor force	279	131	18.2%	144	85	6.4%
65 years and over:	31	27	2.0%	206	68	9.2%
In labor force:	9	16	0.6%	0	13	0.0%
Employed	9	16	0.6%	0	13	0.0%
Unemployed	0	13	0.0%	0	13	0.0%
Not in labor force	22	23	1.4%	206	68	9.2%

	Jackson city, Georgia					
	African American	Margin of Error (+/-)	% of AA Total	White, Not Hispanic	Margin of Error (+/-)	% of NHW Total
Female:	856	247	55.8%	1,231	237	54.8%
16 to 64 years:	730	218	47.6%	784	207	34.9%
In labor force:	511	170	33.3%	467	168	20.8%
In Armed Forces	0	13	0.0%	0	13	0.0%
Civilian:	511	170	33.3%	467	168	20.8%
Employed	492	170	32.1%	380	150	16.9%
Unemployed	19	31	1.2%	87	76	3.9%
Not in labor force	219	101	14.3%	317	131	14.1%
65 years and over:	126	58	8.2%	447	149	19.9%
In labor force:	10	17	0.7%	98	91	4.4%
Employed	10	17	0.7%	98	91	4.4%
Unemployed	0	13	0.0%	0	13	0.0%
Not in labor force	116	55	7.6%	349	132	15.5%

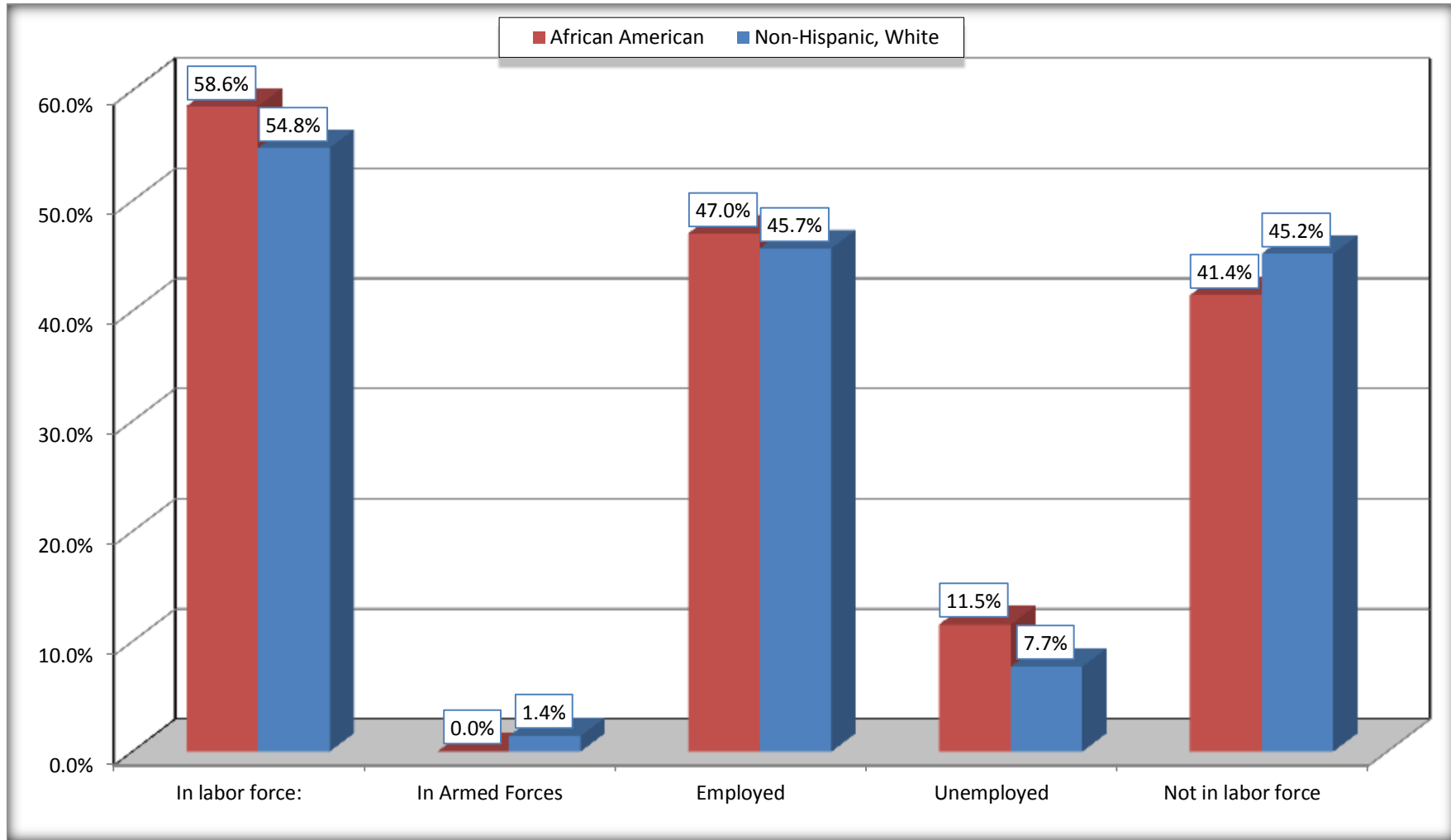
Source: U.S. Census Bureau, 2008-2012 American Community Survey

For information on confidentiality protection, sampling error, nonsampling error, and definitions, see Survey Methodology.

<http://www.census.gov/acs/www/UseData/index.htm>

# Employment Status for the Population 16 years and over

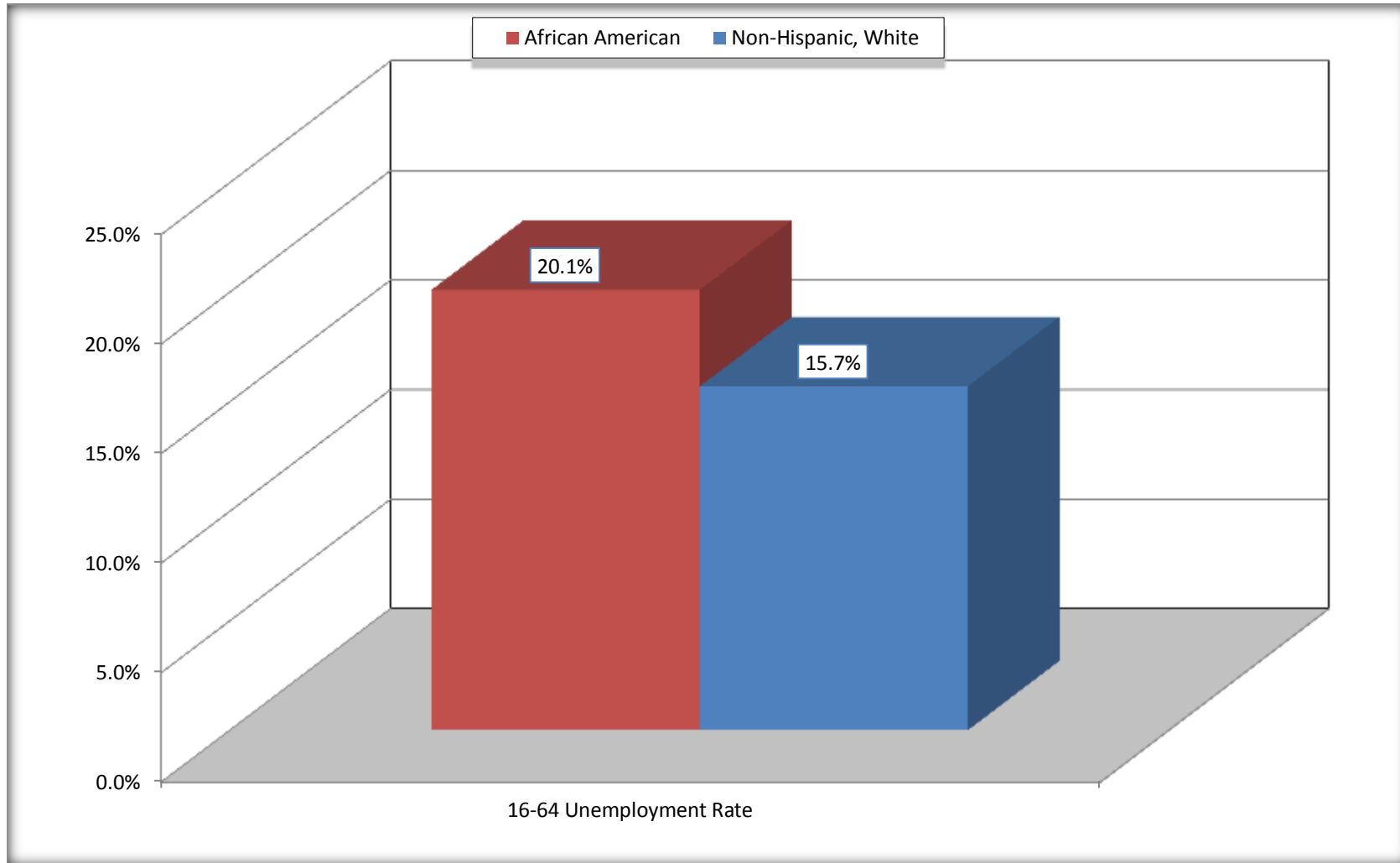
## Jackson city, Georgia



Source: C23002. SEX BY AGE BY EMPLOYMENT STATUS FOR THE POPULATION 16 YEARS AND OVER  
Data Set: 2008-2012 American Community Survey 5-Year Estimates

# Unemployment of Working Age Population (Ages 16 to 64) (As a Percent of 16-64 Civilian Labor Force)

## Jackson city, Georgia



Source: C23002. SEX BY AGE BY EMPLOYMENT STATUS FOR THE POPULATION 16 YEARS AND OVER  
Data Set: 2008-2012 American Community Survey 5-Year Estimates

**C24010. SEX BY OCCUPATION FOR THE CIVILIAN EMPLOYED POPULATION 16 YEARS AND OVER**

Data Set: 2008-2012 American Community Survey 5-Year Estimates

	Jackson city, Georgia					
	African American	Margin of Error (+/-)	% of AA Total	White, Not Hispanic	Margin of Error (+/-)	% of NHW Total
<b>Total:</b>	<b>722</b>	<b>226</b>	<b>100.0%</b>	<b>1,027</b>	<b>248</b>	<b>100.0%</b>
Management, professional, and related occupations	95	NC	13.2%	259	NC	25.2%
Service occupations	187	NC	25.9%	232	NC	22.6%
Sales and office occupations	96	NC	13.3%	265	NC	25.8%
Natural resources, construction, and maintenance occupations:	129	NC	17.9%	178	NC	17.3%
Production, transportation, and material moving occupations	215	NC	29.8%	93	NC	9.1%
Male:	220	133	30.5%	549	149	53.5%
Management, business, science, and arts occupations:	0	13	0.0%	128	73	12.5%
Service occupations	35	41	4.8%	69	87	6.7%
Sales and office occupations	0	13	0.0%	96	84	9.3%
Natural resources, construction, and maintenance occupations:	85	88	11.8%	178	114	17.3%
Production, transportation, and material moving occupations	100	89	13.9%	78	73	7.6%
Female:	502	169	69.5%	478	154	46.5%
Management, professional, and related occupations	95	65	13.2%	131	94	12.8%
Service occupations	152	85	21.1%	163	95	15.9%
Sales and office occupations	96	80	13.3%	169	114	16.5%
Natural resources, construction, and maintenance occupations:	44	50	6.1%	0	13	0.0%
Production, transportation, and material moving occupations	115	96	15.9%	15	25	1.5%

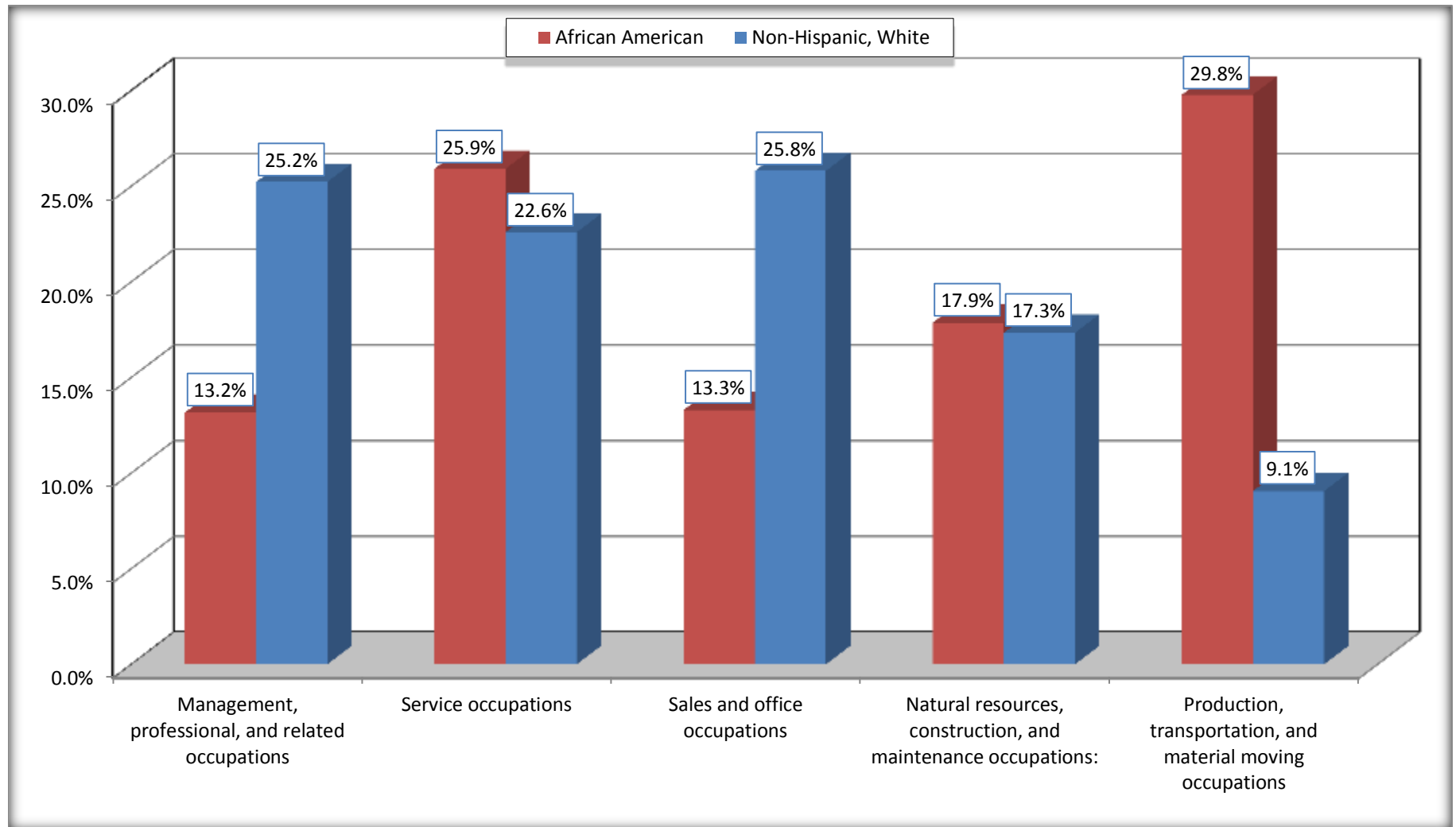
Source: U.S. Census Bureau, 2008-2012 American Community Survey

For information on confidentiality protection, sampling error, nonsampling error, and definitions, see Survey Methodology.

<http://www.census.gov/acs/www/UseData/index.htm>

# Occupation for the Civilian Employed 16 Years and Over Population

## Jackson city, Georgia



Source: C24010. SEX BY OCCUPATION FOR THE CIVILIAN EMPLOYED POPULATION 16 YEARS AND OVER  
Data Set: 2008-2012 American Community Survey 5-Year Estimates

**B25003. TENURE - Universe: OCCUPIED HOUSING UNITS**

Data Set: 2008-2012 American Community Survey 5-Year Estimates

	Jackson city, Georgia					
	African American	Margin of Error (+/-)	% of AA Total	White, Not Hispanic	Margin of Error (+/-)	% of NHW Total
<b>Total:</b>	<b>662</b>	<b>127</b>	<b>100.0%</b>	<b>1,153</b>	<b>194</b>	<b>100.0%</b>
Owner occupied	207	89	31.3%	738	165	64.0%
Renter occupied	455	117	68.7%	415	144	36.0%

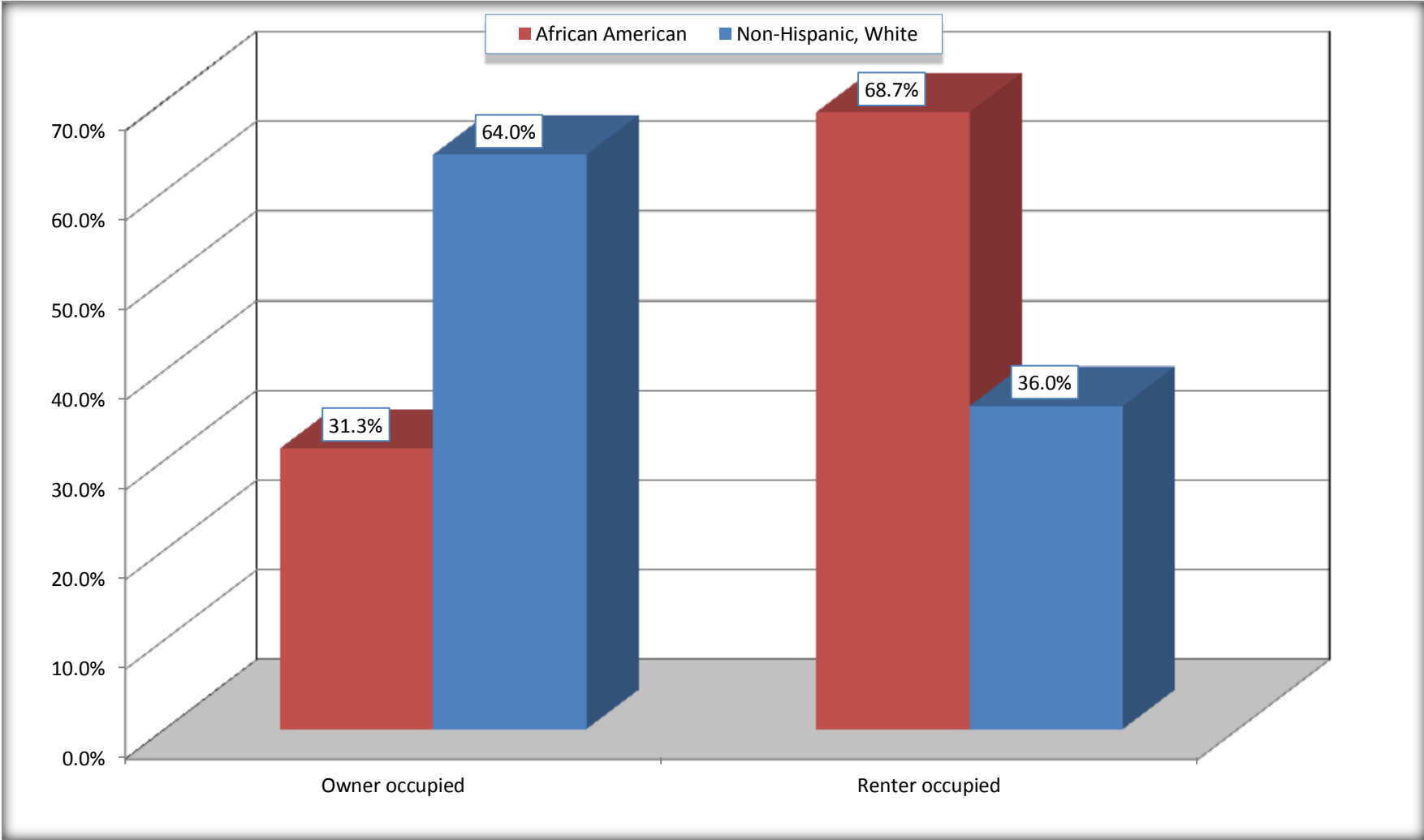
Source: U.S. Census Bureau, 2008-2012 American Community Survey

For information on confidentiality protection, sampling error, nonsampling error, and definitions, see Survey Methodology.

<http://www.census.gov/acs/www/UseData/index.h>

# Home Owners and Renters by Household

## Jackson city, Georgia



Source: B25003. TENURE - Universe: OCCUPIED HOUSING UNITS  
Data Set: 2008-2012 American Community Survey 5-Year Estimates



**B25014. OCCUPANTS PER ROOM - Universe: OCCUPIED HOUSING UNITS**

Data Set: 2008-2012 American Community Survey 5-Year Estimates

	Jackson city, Georgia					
	African American	Margin of Error (+/-)	% of AA Total	White, Not Hispanic	Margin of Error (+/-)	% of NHW Total
<b>Total:</b>	<b>662</b>	<b>127</b>	<b>100.0%</b>	<b>1,153</b>	<b>194</b>	<b>100.0%</b>
1.00 or less occupants per room	574	143	86.7%	1,153	194	100.0%
1.01 or more occupants per room	88	67	13.3%	0	13	0.0%

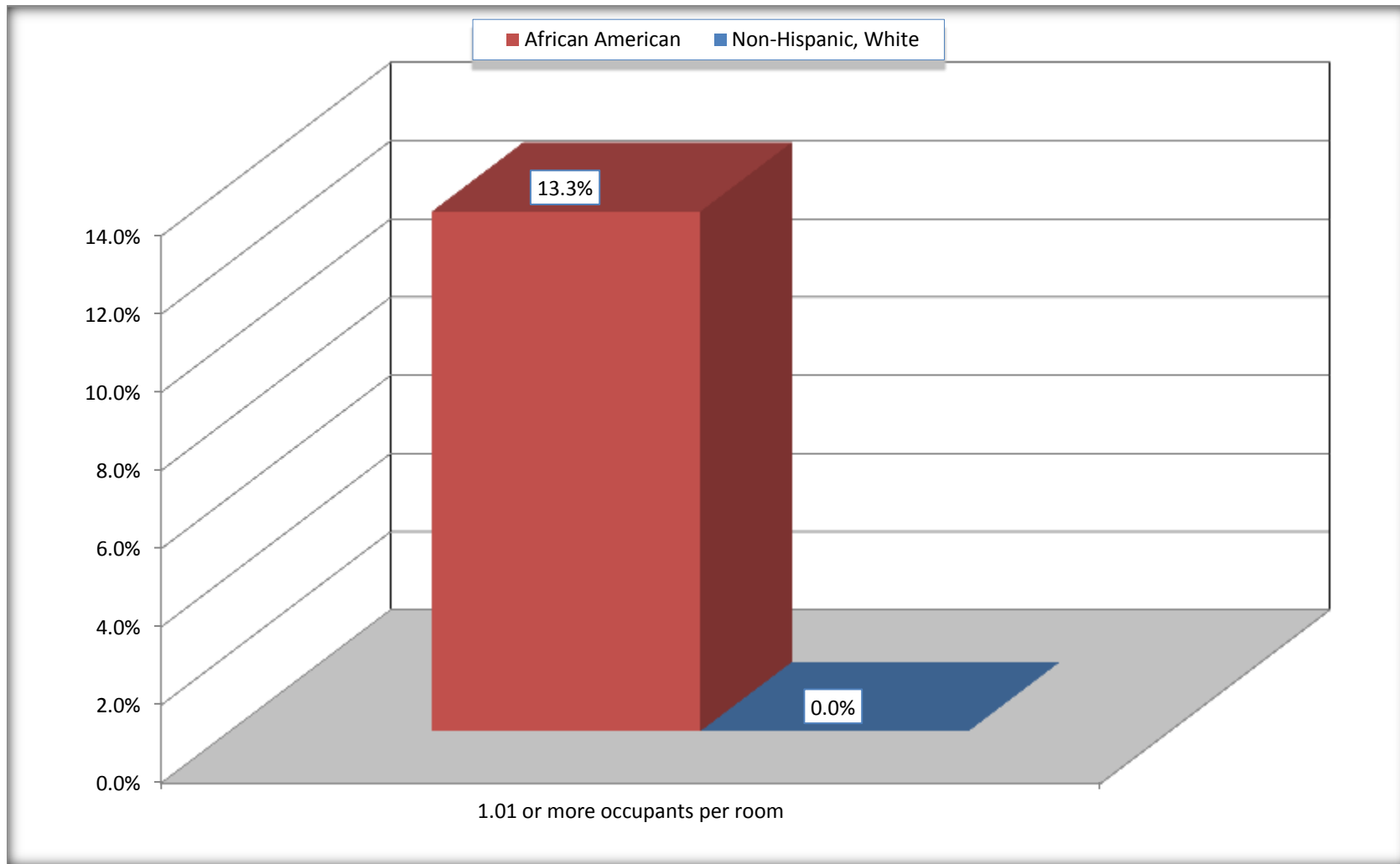
Source: U.S. Census Bureau, 2008-2012 American Community Survey

For information on confidentiality protection, sampling error, nonsampling error, and definitions, see Survey Methodology.

<http://www.census.gov/acs/www/UseData/index.ht>

# More than One Person per Room (Crowding) by Household

## Jackson city, Georgia



Source: B25014. OCCUPANTS PER ROOM - Universe: OCCUPIED HOUSING UNITS  
Data Set: 2008-2012 American Community Survey 5-Year Estimates

**B18101. AGE BY DISABILITY STATUS**

Data Set: 2008-2012 American Community Survey 5-Year Estimates

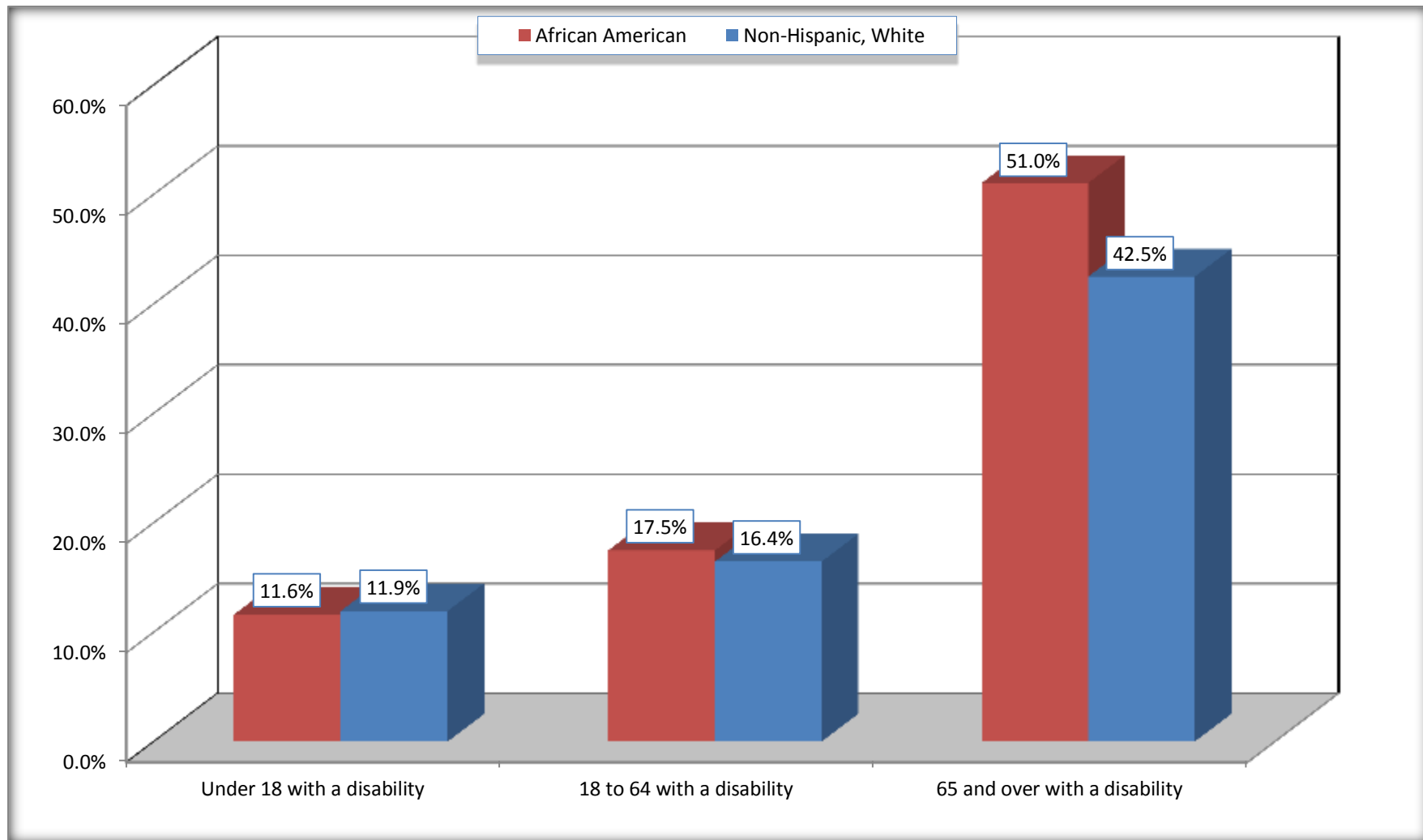
	Jackson city, Georgia					
	African American	Margin of Error (+/-)	% of AA Total	White, Not Hispanic	Margin of Error (+/-)	% of NHW Total
<b>Total:</b>	<b>1,905</b>	<b>426</b>	<b>100.0%</b>	<b>2,553</b>	<b>459</b>	<b>100.0%</b>
Under 18 years:	500	216	26.2%	595	13	23.3%
With a disability	58	60	3.0%	71	69	2.8%
No disability	442	188	23.2%	524	240	20.5%
18 to 64 years:	1,260	296	66.1%	1,466	283	57.4%
With a disability	220	120	11.5%	241	118	9.4%
No disability	1,040	281	54.6%	1,225	297	48.0%
65 years and over:	145	66	7.6%	492	154	19.3%
With a disability	74	46	3.9%	209	102	8.2%
No disability	71	51	3.7%	283	115	11.1%

Source: U.S. Census Bureau, 2008-2012 American Community Survey

For information on confidentiality protection, sampling error, nonsampling error, and definitions, see Survey Methodology.

<http://www.census.gov/acs/www/UseData/index.htm>

## Disability by Age Jackson city, Georgia



Source: B18101. AGE BY DISABILITY STATUS  
Data Set: 2008-2012 American Community Survey 5-Year Estimates

**C27001B. HEALTH INSURANCE COVERAGE STATUS BY AGE**

Data Set: 2008-2012 American Community Survey 5-Year Estimates

	<b>Jackson city, Georgia</b>					
	African American	Margin of Error (+/-)	% of AA Total	White, Not Hispanic	Margin of Error (+/-)	% of NHW Total
<b>Total:</b>	<b>1,905</b>	<b>426</b>	<b>100.0%</b>	<b>2,553</b>	<b>459</b>	<b>100.0%</b>
Under 18 years:	500	216	26.2%	595	260	23.3%
With health insurance coverage	471	222	24.7%	538	232	21.1%
No health insurance coverage	29	37	1.5%	57	66	2.2%
18 to 64 years:	1,260	296	66.1%	1,466	283	57.4%
With health insurance coverage	896	261	47.0%	1,003	258	39.3%
No health insurance coverage	364	233	19.1%	463	205	18.1%
65 years and over:	145	66	7.6%	492	154	19.3%
With health insurance coverage	145	66	7.6%	492	154	19.3%
No health insurance coverage	0	13	0.0%	0	13	0.0%

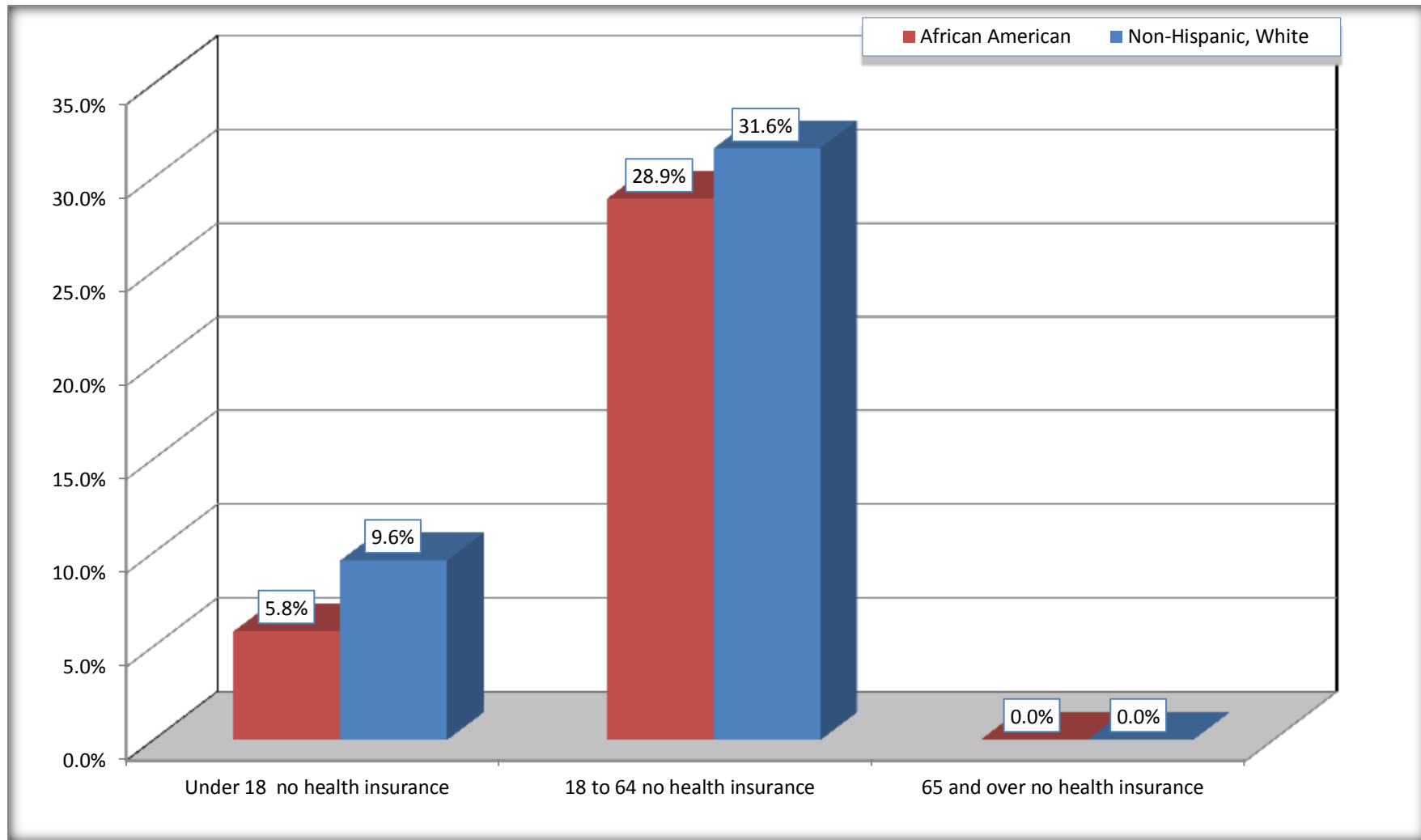
Source: U.S. Census Bureau, 2008-2012 American Community Survey

For information on confidentiality protection, sampling error, nonsampling error, and definitions, see Survey Methodology.

<http://www.census.gov/acs/www/UseData/index.htm>

# Lack of Health Insurance Coverage by Age

## Jackson city, Georgia



Source: C27001B. HEALTH INSURANCE COVERAGE STATUS BY AGE  
Data Set: 2008-2012 American Community Survey 5-Year Estimates