

Selected Socio-Economic Data

Irwin County, Georgia

African American and White, Not Hispanic

Data Set: 2008-2012 American Community Survey 5-Year Estimates

www.fairvote2020.org

www.fairdata2000.com

[29-Dec-13](#)

C02003.DETAILED RACE - Universe: TOTAL POPULATION

Data Set: 2008-2012 American Community Survey 5-Year Estimates

	Irwin County, Georgia		
	Population	Margin of Error (+/-)	% of Total
Total:	9,646	****	100.0%
Population of one race:	9,609	41	99.6%
White	6,763	80	70.1%
Black or African American	2,794	102	29.0%
American Indian and Alaska Native	10	16	0.1%
Asian alone	0	19	0.0%
Native Hawaiian and Other Pacific Islander	0	19	0.0%
Some other race	42	35	0.4%
Population of two or more races:	37	41	0.4%
Two races including Some other race	0	19	0.0%
Two races excluding Some other race, and three or more races	37	41	0.4%
Population of two races:	27	35	0.3%
White; Black or African American	27	35	0.3%
White; American Indian and Alaska Native	0	19	0.0%
White; Asian	0	19	0.0%
Black or African American; American Indian and Alaska Native	0	19	0.0%
All other two race combinations	0	19	0.0%
Population of three races	10	19	0.1%
Population of four or more races	0	19	0.0%

Note: Hispanics may be of any race. See Table B03002 and chart.

Source: U.S. Census Bureau, 2008-2012 American Community Survey

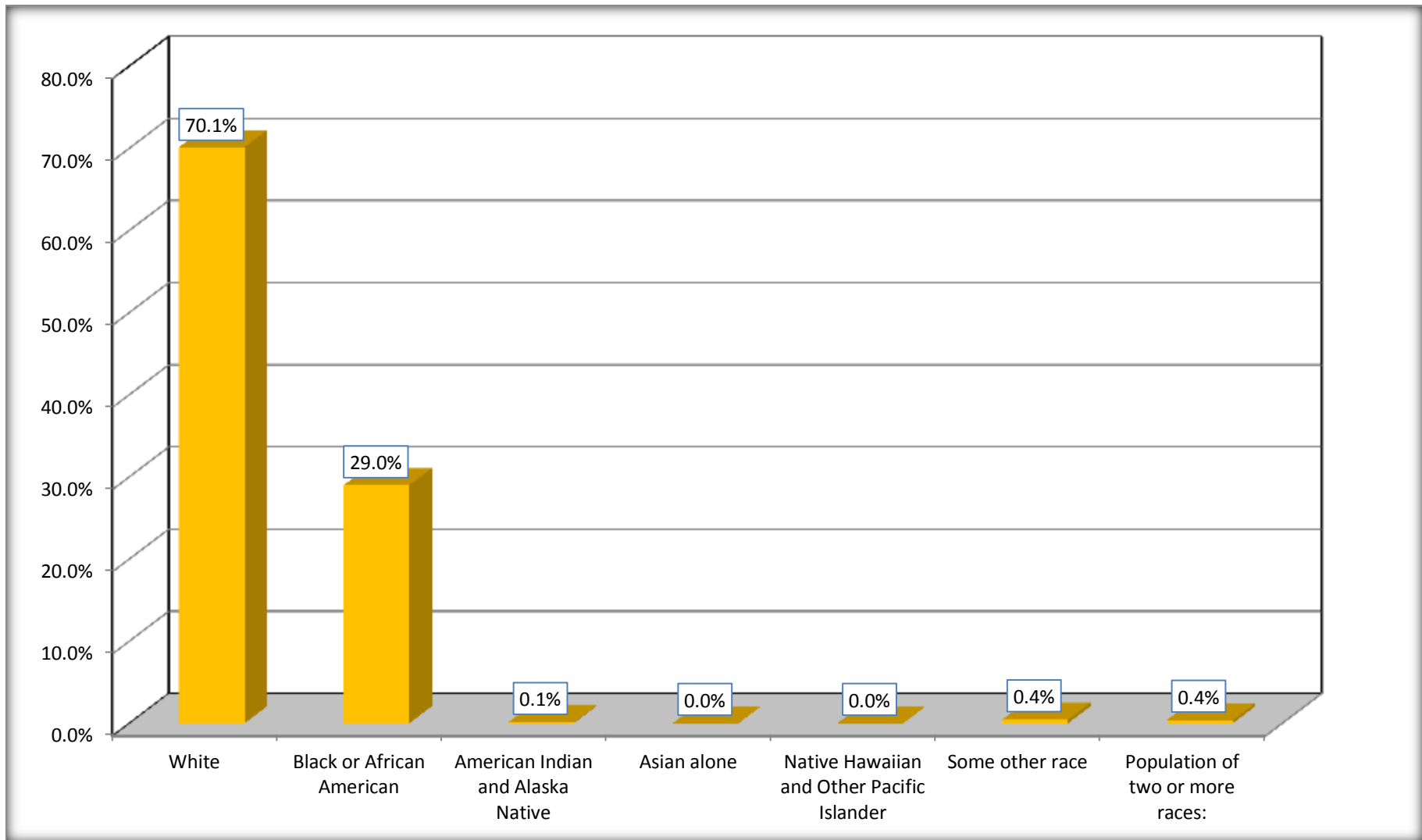
Although the American Community Survey (ACS) produces population, demographic and housing unit estimates, it is the Census Bureau's Population Estimates Program that produces and disseminates the official estimates of the population for the nation, states, counties, cities and towns and estimates of housing units for states and counties.

For information on confidentiality protection, sampling error, nonsampling error, and definitions, see Survey Methodology.

<http://www.census.gov/acs/www/UseData/index.htm>

Population by Race

Irwin County, Georgia



Source: C02003.DETAILED RACE - Universe: TOTAL POPULATION
Data Set: 2008-2012 American Community Survey 5-Year Estimates

B03002. HISPANIC OR LATINO ORIGIN BY RACE - Universe: TOTAL POPULATION

Data Set: 2008-2012 American Community Survey 5-Year Estimates

	Irwin County, Georgia		
	Population	Margin of Error (+/-)	% of Total
Total:	9,646	*****	100.0%
Not Hispanic or Latino:	9,547	88	99.0%
White alone	6,716	19	69.6%
Black or African American alone	2,794	102	29.0%
American Indian and Alaska Native alone	10	16	0.1%
Asian alone	0	19	0.0%
Native Hawaiian and Other Pacific Islander alone	0	19	0.0%
Some other race alone	0	19	0.0%
Two or more races:	27	35	0.3%
Two races including Some other race	0	19	0.0%
Two races excluding Some other race, and three or more races	27	35	0.3%
Hispanic or Latino	99	88	1.0%

Source: U.S. Census Bureau, 2008-2012 American Community Survey

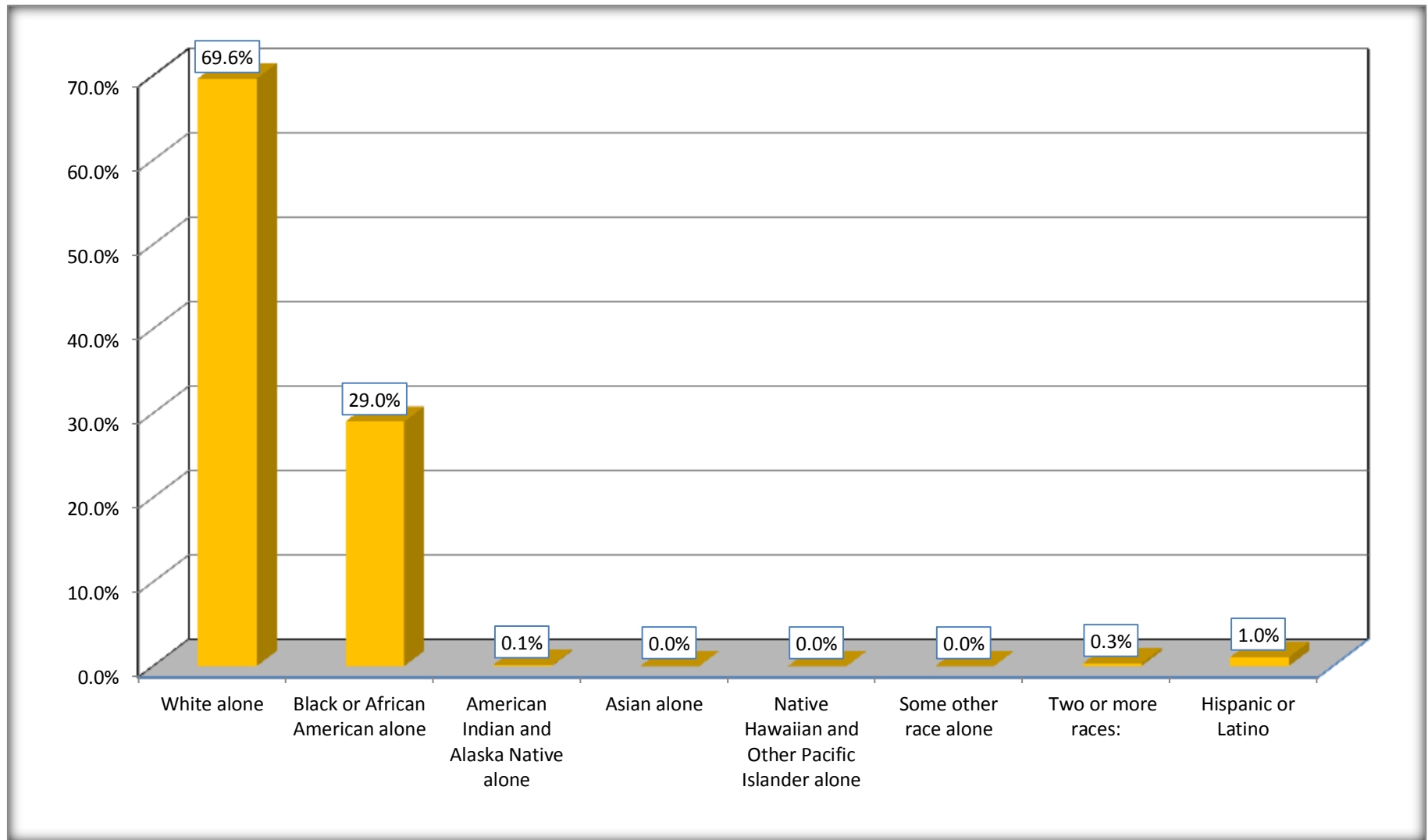
Although the American Community Survey (ACS) produces population, demographic and housing unit estimates, it is the Census Bureau's Population Estimates Program that produces and disseminates the official estimates of the population for the nation, states, counties, cities and towns and estimates of housing units for states and counties.

For information on confidentiality protection, sampling error, nonsampling error, and definitions, see Survey Methodology.

<http://www.census.gov/acs/www/UseData/index.htm>

Non-Hispanic by Race and Hispanic Population

Irwin County, Georgia



Source: B03002. HISPANIC OR LATINO ORIGIN BY RACE - Universe: TOTAL POPULATION
Data Set: 2008-2012 American Community Survey 5-Year Estimates

B03002. HISPANIC OR LATINO ORIGIN BY RACE

Data Set: 2008-2012 American Community Survey 5-Year Estimates

	Irwin County, Georgia		
	Population	Margin of Error (+/-)	% of Total
Hispanic or Latino:	99	88	100.0%
White alone	47	80	47.5%
Black or African American alone	0	19	0.0%
American Indian and Alaska Native alone	0	19	0.0%
Asian alone	0	19	0.0%
Native Hawaiian and Other Pacific Islander alone	0	19	0.0%
Some other race alone	42	35	42.4%
Two or more races:	10	19	10.1%
Two races including Some other race	0	19	0.0%
Two races excluding Some other race, and three or more races	10	19	10.1%

Source: U.S. Census Bureau, 2008-2012 American Community Survey

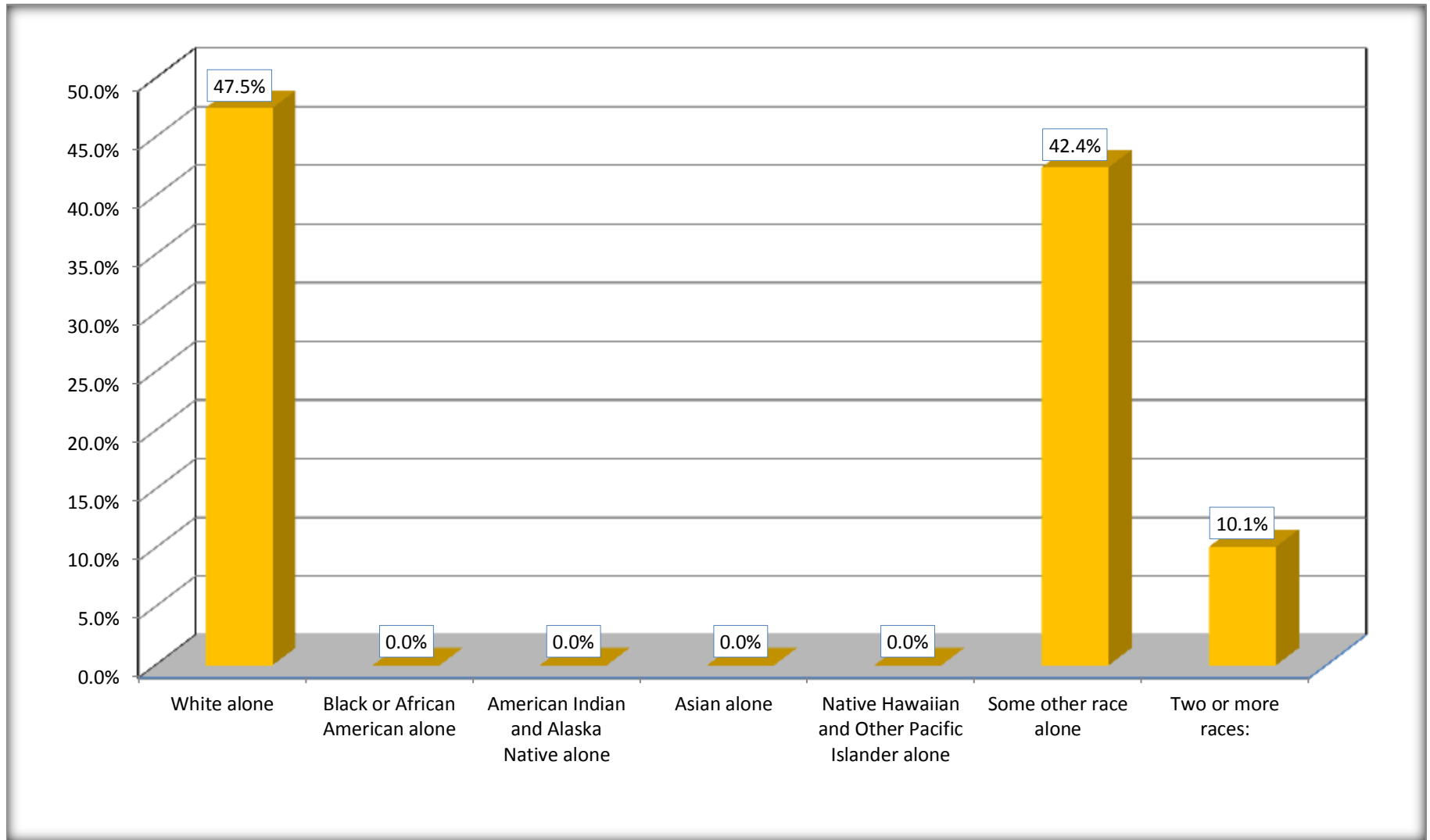
Although the American Community Survey (ACS) produces population, demographic and housing unit estimates, it is the Census Bureau's Population Estimates Program that produces and disseminates the official estimates of the population for the nation, states, counties, cities and towns and estimates of housing units for states and counties.

For information on confidentiality protection, sampling error, nonsampling error, and definitions, see Survey Methodology.

<http://www.census.gov/acs/www/UseData/index.htm>

Hispanic or Latino Origin by Race

Irwin County, Georgia



Source: B03002. HISPANIC OR LATINO ORIGIN BY RACE
Data Set: 2008-2012 American Community Survey 5-Year Estimates

B01001. SEX BY AGE

Data Set: 2008-2012 American Community Survey 5-Year Estimates

	Irwin County, Georgia					
	African American	Margin of Error (+/-)	% of AA Total	White, Not Hispanic	Margin of Error (+/-)	% of NHW Total
Total:	2,794	102	100.0%	6,716	19	100.0%
Under 18 years	753	NC	27.0%	1,493	NC	22.2%
18 to 64 years	1,849	NC	66.2%	3,994	NC	59.5%
65 years and over	192	NC	6.9%	1,229	NC	18.3%
Male:	1,467	106	52.5%	3,315	389	49.4%
Under 18 years	396	NC	14.2%	744	NC	11.1%
18 to 64 years	1,008	NC	36.1%	2,054	NC	30.6%
65 years and over	63	NC	2.3%	517	NC	7.7%
Female:	1,327	78	47.5%	3,401	412	50.6%
Under 18 years	357	NC	12.8%	749	NC	11.2%
18 to 64 years	841	NC	30.1%	1,940	NC	28.9%
65 years and over	129	NC	4.6%	712	NC	10.6%

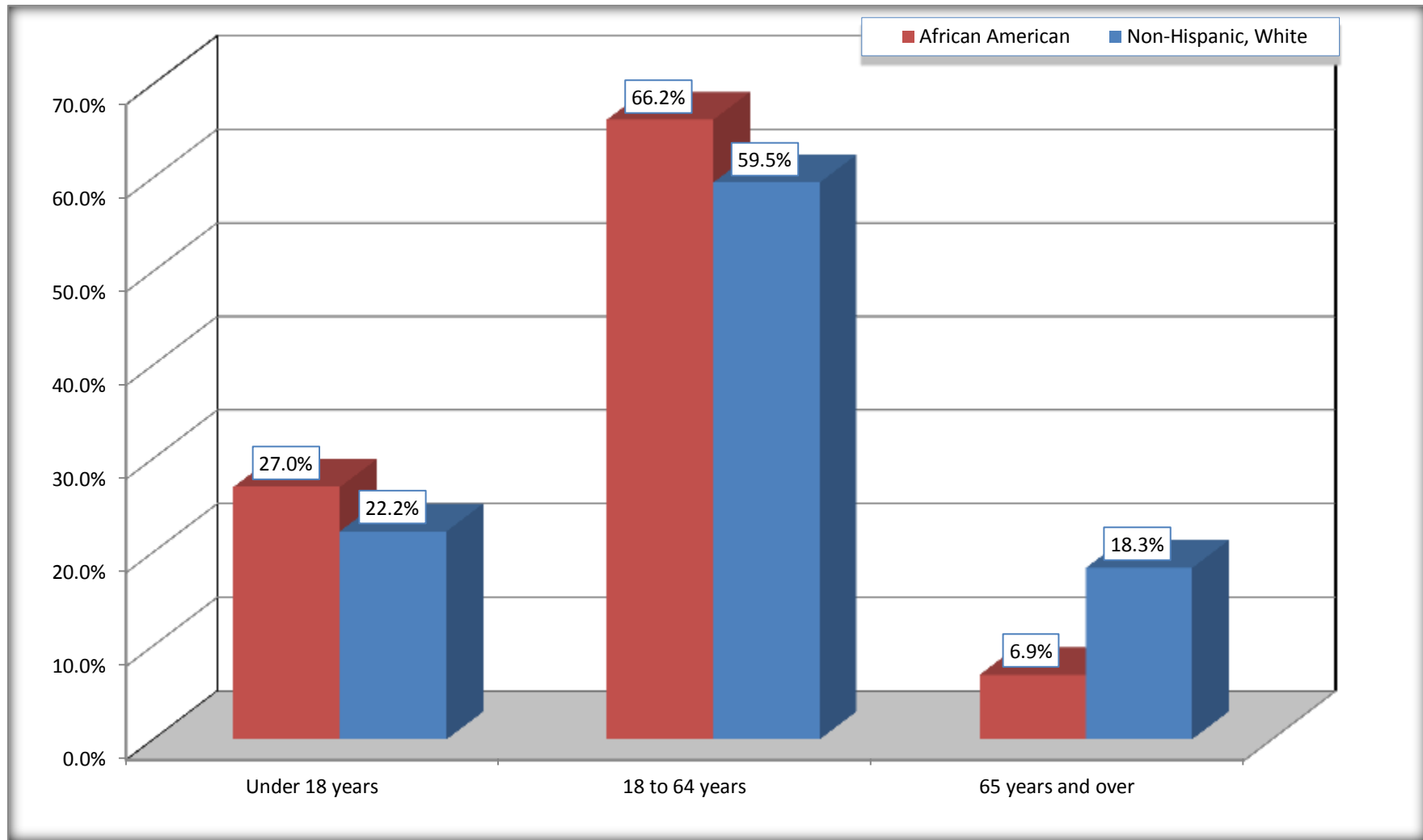
Source: U.S. Census Bureau, 2008-2012 American Community Survey

Although the American Community Survey (ACS) produces population, demographic and housing unit estimates, it is the Census Bureau's Population Estimates Program that produces and disseminates the official estimates of the population for the nation, states, counties, cities and towns and estimates of housing units for states and counties.

For information on confidentiality protection, sampling error, nonsampling error, and definitions, see Survey Methodology.
<http://www.census.gov/acs/www/UseData/index.htm>

Population by Age

Irwin County, Georgia



Source: B01001. SEX BY AGE
Data Set: 2008-2012 American Community Survey 5-Year Estimates

B05003. SEX BY AGE BY CITIZENSHIP STATUS

Data Set: 2008-2012 American Community Survey 5-Year Estimates

	Irwin County, Georgia					
	African American	Margin of Error (+/-)	% of AA Total by Age	White, Not Hispanic	Margin of Error (+/-)	% of NHW Total by Age
Total:	2,794	102	100.0%	6,716	19	100.0%
Under 18 years:	753	NC	100.0%	1,493	NC	100.0%
Native	753	NC	100.0%	1,493	NC	100.0%
Foreign born:	0	NC	0.0%	0	NC	0.0%
Naturalized U.S. citizen	0	NC	0.0%	0	NC	0.0%
Not a U.S. citizen	0	NC	0.0%	0	NC	0.0%
18 years and over:	2,041	NC	100.0%	5,223	NC	100.0%
Native	2,041	NC	100.0%	5,216	NC	99.9%
Foreign born:	0	NC	0.0%	7	NC	0.1%
Naturalized U.S. citizen	0	NC	0.0%	0	NC	0.0%
Not a U.S. citizen	0	NC	0.0%	7	NC	0.1%
Male:	1,467	106	52.5%	3,315	50	49.4%
Under 18 years:	396	94	100.0%	744	50	100.0%
Native	396	94	100.0%	744	50	100.0%
Foreign born:	0	19	0.0%	0	19	0.0%
Naturalized U.S. citizen	0	19	0.0%	0	19	0.0%
Not a U.S. citizen	0	19	0.0%	0	19	0.0%
18 years and over:	1,071	27	100.0%	2,571	19	100.0%
Native	1,071	27	100.0%	2,571	19	100.0%
Foreign born:	0	19	0.0%	0	19	0.0%
Naturalized U.S. citizen	0	19	0.0%	0	19	0.0%
Not a U.S. citizen	0	19	0.0%	0	19	0.0%

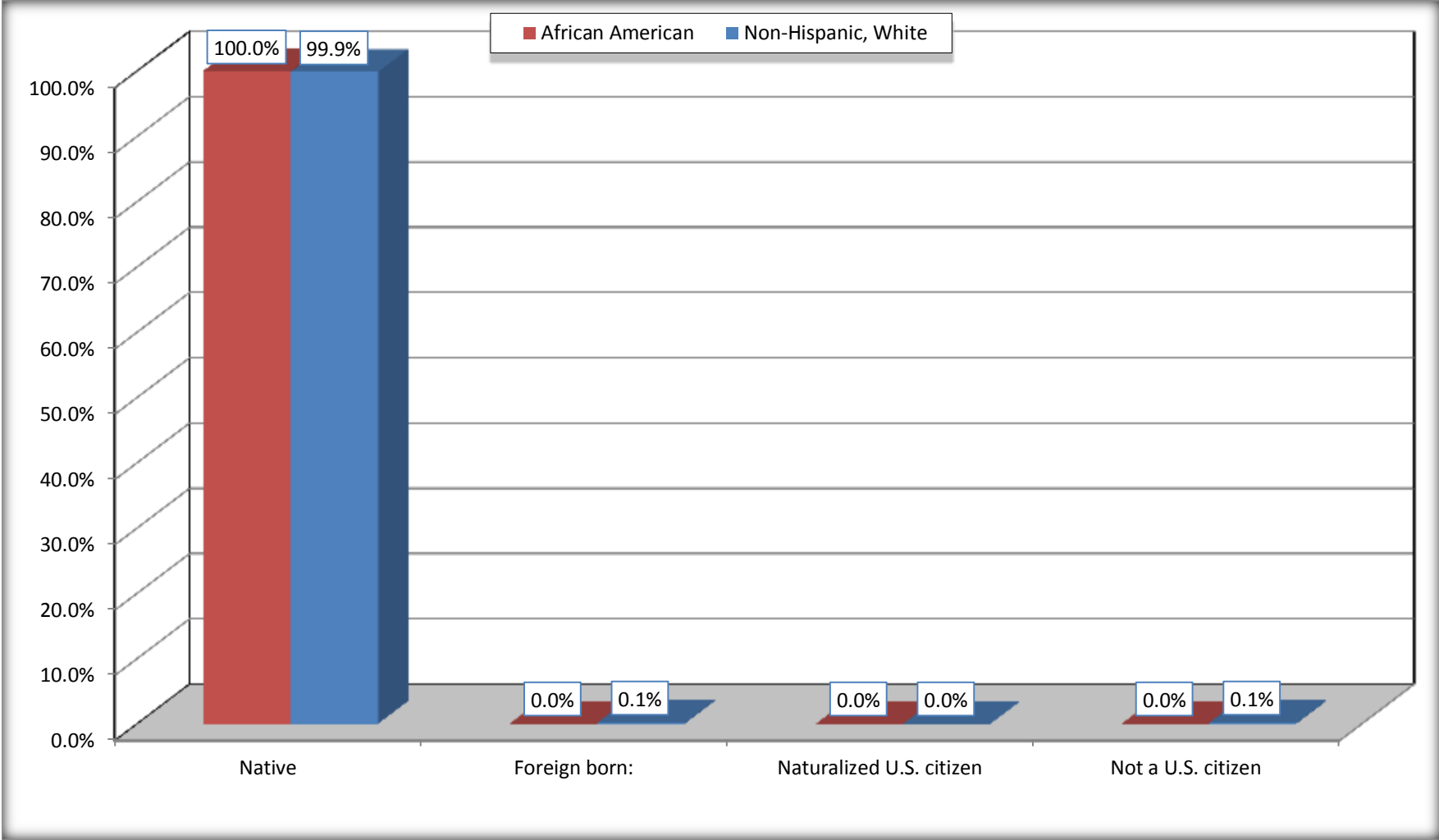
	Irwin County, Georgia					
	African American	Margin of Error (+/-)	% of AA by Age	White, Not Hispanic	Margin of Error (+/-)	% of NHW by Age
Female:	1,327	78	47.5%	3,401	50	50.6%
Under 18 years:	357	77	100.0%	749	50	100.0%
Native	357	77	100.0%	749	50	100.0%
Foreign born:	0	19	0.0%	0	19	0.0%
Naturalized U.S. citizen	0	19	0.0%	0	19	0.0%
Not a U.S. citizen	0	19	0.0%	0	19	0.0%
18 years and over:	970	21	100.0%	2,652	19	100.0%
Native	970	21	100.0%	2,645	15	99.7%
Foreign born:	0	19	0.0%	7	15	0.3%
Naturalized U.S. citizen	0	19	0.0%	0	19	0.0%
Not a U.S. citizen	0	19	0.0%	7	15	0.3%

Source: U.S. Census Bureau, 2008-2012 American Community Survey

For information on confidentiality protection, sampling error, nonsampling error, and definitions, see Survey Methodology.
<http://www.census.gov/acs/www/UseData/index.htm>

Citizenship Status of Voting Age Population (18 and Over)

Irwin County, Georgia



Source: B05003. SEX BY AGE BY CITIZENSHIP STATUS
Data Set: 2008-2012 American Community Survey 5-Year Estimates

**B07004. GEOGRAPHICAL MOBILITY IN THE PAST YEAR BY RACE FOR CURRENT RESIDENCE IN THE UNITED STATES - Universe:
POPULATION 1 YEAR AND OVER**

Data Set: 2008-2012 American Community Survey 5-Year Estimates

	Irwin County, Georgia					
	African American	Margin of Error (+/-)	% of AA Total	White, Not Hispanic	Margin of Error (+/-)	% of NHW Total
Total:	2,794	102	100.0%	6,639	51	100.0%
Same house 1 year ago	2,233	221	79.9%	6,026	246	90.8%
Moved within same county	208	143	7.4%	86	93	1.3%
Moved from different county within same state	256	112	9.2%	317	146	4.8%
Moved from different state	97	113	3.5%	210	176	3.2%
Moved from abroad	0	19	0.0%	0	19	0.0%

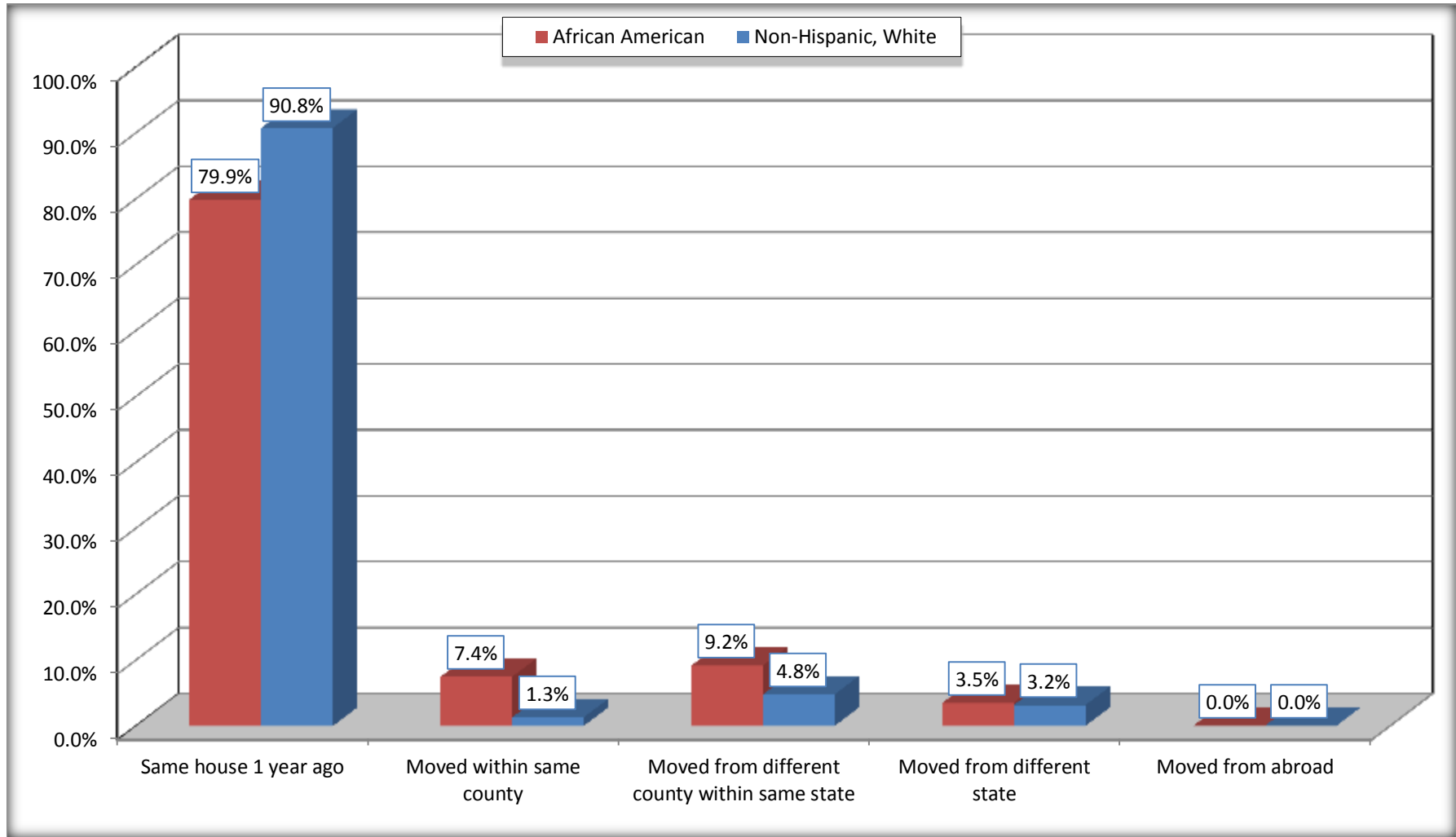
Source: U.S. Census Bureau, 2008-2012 American Community Survey

For information on confidentiality protection, sampling error, nonsampling error, and definitions, see Survey Methodology.

<http://www.census.gov/acs/www/UseData/index.htm>

Geographical Mobility in the Past Year (Population 1 Year and Over)

Irwin County, Georgia



Source: B07004. GEOGRAPHICAL MOBILITY IN THE PAST YEAR BY RACE FOR CURRENT RESIDENCE IN THE UNITED STATES - Universe: POPULATION 1 YEAR AND OVER

Data Set: 2008-2012 American Community Survey 5-Year Estimates

B08105. MEANS OF TRANSPORTATION TO WORK - Universe: WORKERS 16 YEARS AND OVER

Data Set: 2008-2012 American Community Survey 5-Year Estimates

	Irwin County, Georgia					
	African American	Margin of Error (+/-)	% of AA Total	White, Not Hispanic	Margin of Error (+/-)	% of NHW Total
Total:	806	193	100.0%	2667	263	100.0%
Car, truck, or van - drove alone	703	175	87.2%	1957	288	73.4%
Car, truck, or van - carpooled	81	79	10.0%	449	167	16.8%
Public transportation (excluding taxicab)	10	18	1.2%	12	24	0.4%
Walked	7	13	0.9%	10	20	0.4%
Taxicab, motorcycle, bicycle, or other means	0	19	0.0%	58	55	2.2%
Worked at home	5	8	0.6%	181	99	6.8%

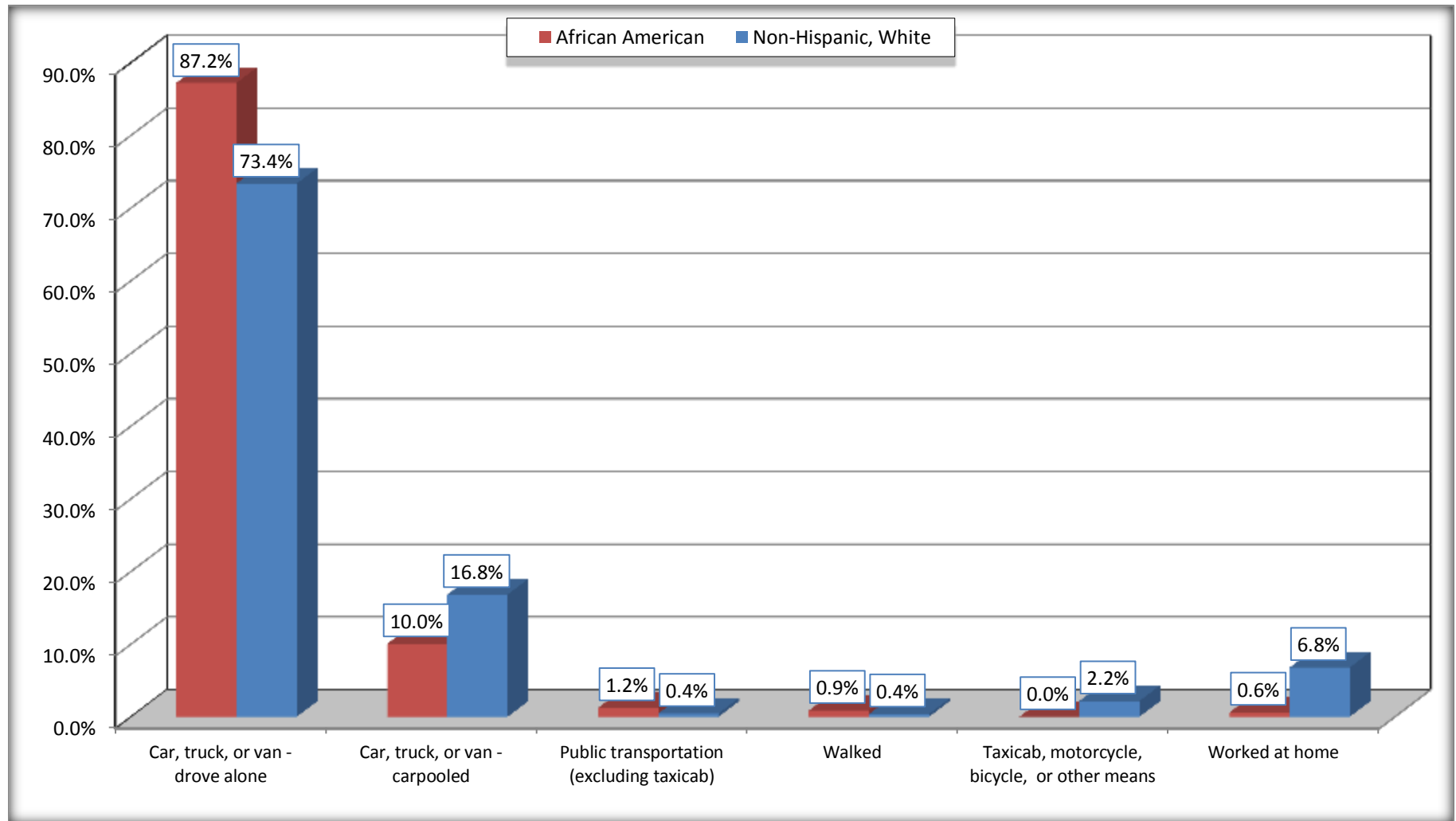
Source: U.S. Census Bureau, 2008-2012 American Community Survey

For information on confidentiality protection, sampling error, nonsampling error, and definitions, see Survey Methodology.

<http://www.census.gov/acs/www/UseData/index.htm>

Means of Transportation to Work (Workers 16 Years and Over)

Irwin County, Georgia



Source: B08105. MEANS OF TRANSPORTATION TO WORK - Universe: WORKERS 16 YEARS AND OVER
Data Set: 2008-2012 American Community Survey 5-Year Estimates

B11002. HOUSEHOLD TYPE BY RELATIVES AND NONRELATIVES FOR POPULATION IN HOUSEHOLDS

Data Set: 2008-2012 American Community Survey 5-Year Estimates

	Irwin County, Georgia					
	African American	Margin of Error (+/-)	% of AA Total	White, Not Hispanic	Margin of Error (+/-)	% of NHW Total
Total:	2416	166	100.0%	6481	140	100.0%
In family households	2069	213	85.6%	5881	200	90.7%
In nonfamily households	347	162	14.4%	600	158	9.3%

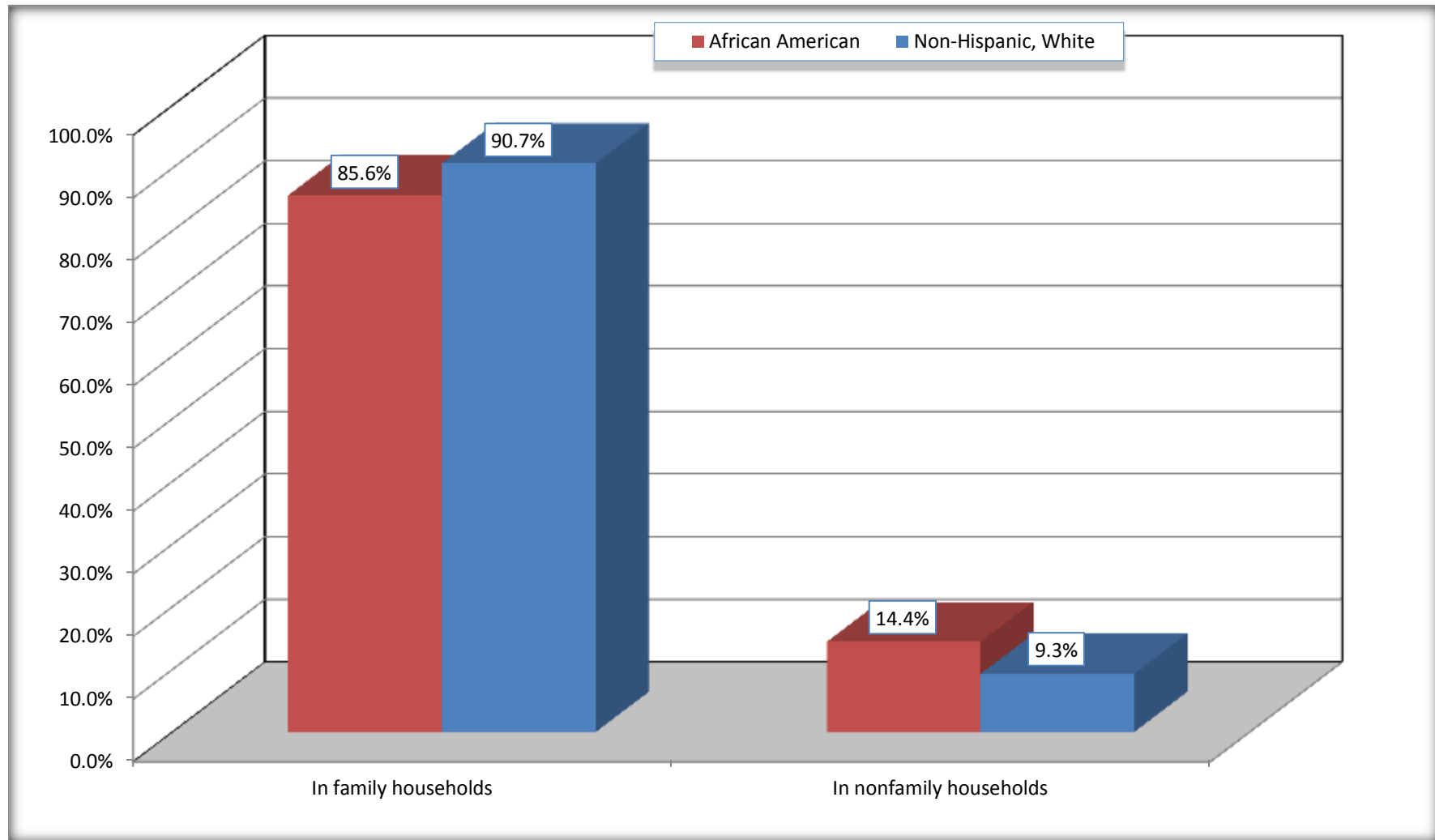
Source: U.S. Census Bureau, 2008-2012 American Community Survey

For information on confidentiality protection, sampling error, nonsampling error, and definitions, see Survey Methodology.

<http://www.census.gov/acs/www/UseData/index.htm>

Household Type for Population in Households

Irwin County, Georgia



Source: B11002. HOUSEHOLD TYPE BY RELATIVES AND NONRELATIVES FOR POPULATION IN HOUSEHOLDS
Data Set: 2008-2012 American Community Survey 5-Year Estimates

B12002. MARITAL STATUS FOR THE POPULATION 15 YEARS AND OVER

Data Set: 2008-2012 American Community Survey 5-Year Estimates

	Irwin County, Georgia					
	African American	Margin of Error (+/-)	% of AA Total	White, Not Hispanic	Margin of Error (+/-)	% of NHW Total
Total:	2,159	70	100.0%	5,469	19	100.0%
Never married	1,018	NC	47.2%	1,222	NC	22.3%
Now married (except separated)	726	NC	33.6%	3,263	NC	59.7%
Separated	61	NC	2.8%	109	NC	2.0%
Widowed	119	NC	5.5%	376	NC	6.9%
Divorced	235	NC	10.9%	499	NC	9.1%
Male:	1,130	56	52.3%	2,652	50	48.5%
Never married	579	139	26.8%	641	120	11.7%
Now married (except separated)	308	97	14.3%	1,735	161	31.7%
Separated	46	51	2.1%	47	34	0.9%
Widowed	26	42	1.2%	44	33	0.8%
Divorced	171	89	7.9%	185	136	3.4%
Female:	1,029	58	47.7%	2,817	50	51.5%
Never married	439	127	20.3%	581	137	10.6%
Now married (except separated)	418	126	19.4%	1,528	212	27.9%
Separated	15	27	0.7%	62	64	1.1%
Widowed	93	70	4.3%	332	94	6.1%
Divorced	64	55	3.0%	314	120	5.7%

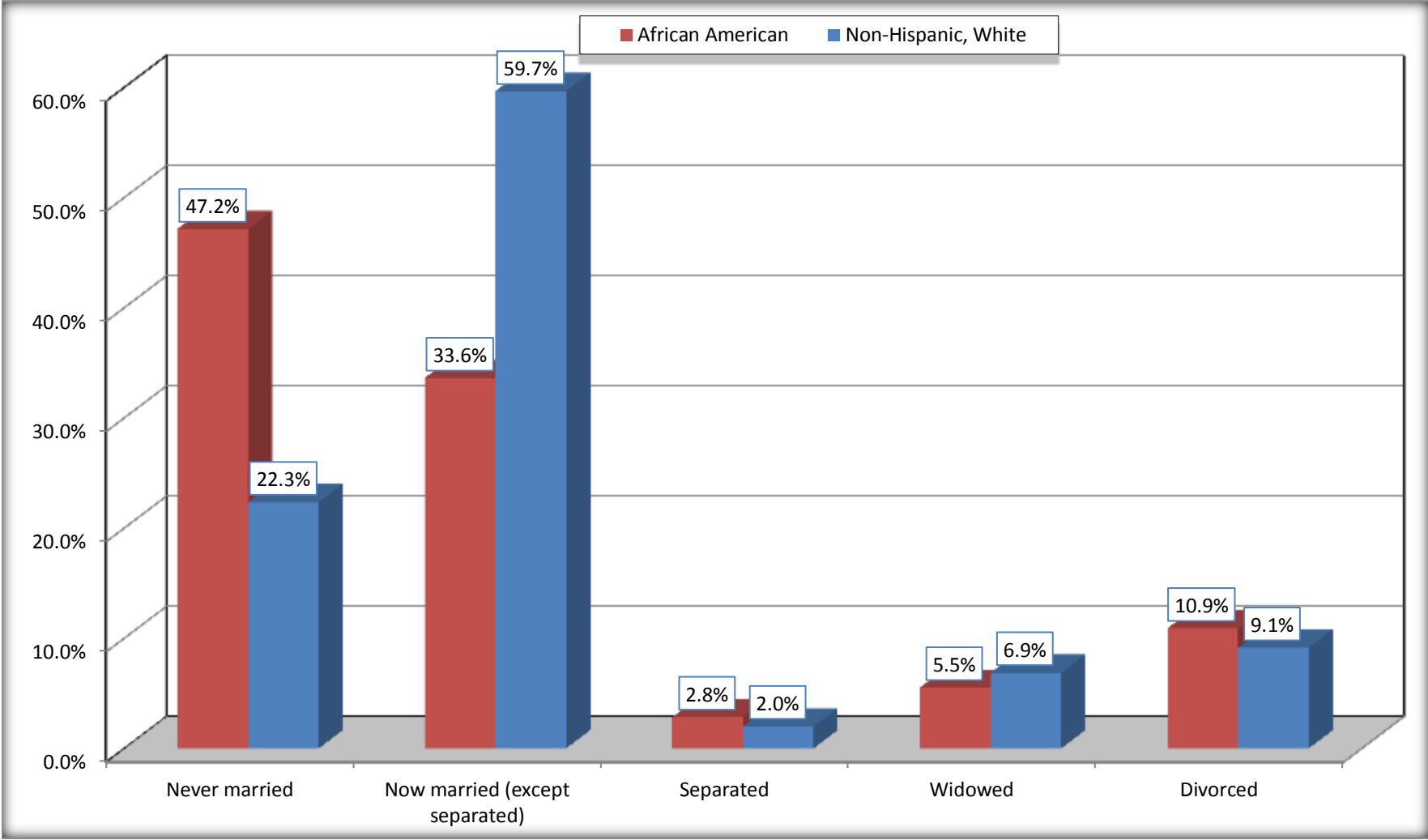
Source: U.S. Census Bureau, 2008-2012 American Community Survey

For information on confidentiality protection, sampling error, nonsampling error, and definitions, see Survey Methodology.

<http://www.census.gov/acs/www/UseData/index.htm>

Marital Status for the Population 15 Years and Over

Irwin County, Georgia



Source: B12002. MARITAL STATUS FOR THE POPULATION 15 YEARS AND OVER
Data Set: 2008-2012 American Community Survey 5-Year Estimates

C15002. SEX BY EDUCATIONAL ATTAINMENT FOR THE POPULATION 25 YEARS AND OVER

Data Set: 2008-2012 American Community Survey 5-Year Estimates

	Irwin County, Georgia					
	African American	Margin of Error (+/-)	% of AA Total	White, Not Hispanic	Margin of Error (+/-)	% of NHW Total
Total:	1,756	99	100.0%	4,674	71	100.0%
Less than high school diploma	516	NC	29.4%	946	NC	20.2%
High school graduate, GED, or alternative	684	NC	39.0%	1,889	NC	40.4%
Some college or associate's degree	464	NC	26.4%	1,419	NC	30.4%
Bachelor's degree or higher	92	NC	5.2%	420	NC	9.0%
Male:	871	61	49.6%	2,286	19	48.9%
Less than high school diploma	253	86	14.4%	489	223	10.5%
High school graduate, GED, or alternative	418	123	23.8%	966	181	20.7%
Some college or associate's degree	168	91	9.6%	627	175	13.4%
Bachelor's degree or higher	32	31	1.8%	204	91	4.4%
Female:	885	79	50.4%	2,388	71	51.1%
Less than high school diploma	263	112	15.0%	457	153	9.8%
High school graduate, GED, or alternative	266	97	15.1%	923	159	19.7%
Some college or associate's degree	296	123	16.9%	792	157	16.9%
Bachelor's degree or higher	60	48	3.4%	216	87	4.6%

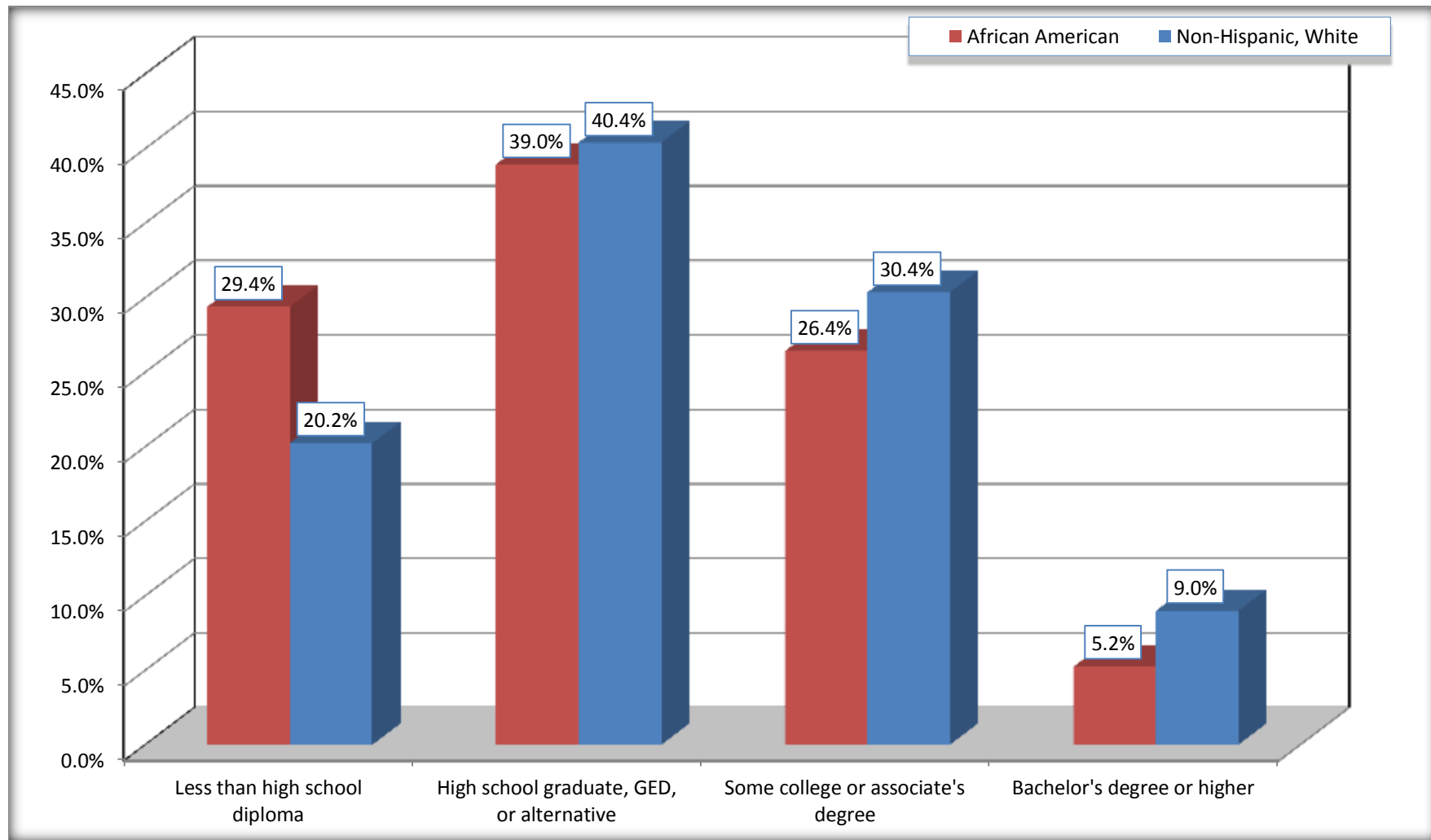
Source: U.S. Census Bureau, 2008-2012 American Community Survey

For information on confidentiality protection, sampling error, nonsampling error, and definitions, see Survey Methodology.

<http://www.census.gov/acs/www/UseData/index.htm>

Educational Attainment for the Population 25 Years and Older

Irwin County, Georgia



Source: C15002. SEX BY EDUCATIONAL ATTAINMENT FOR THE POPULATION 25 YEARS AND OVER
Data Set: 2008-2012 American Community Survey 5-Year Estimates

B17010. POVERTY STATUS IN THE PAST 12 MONTHS OF FAMILIES BY FAMILY TYPE BY PRESENCE OF RELATED CHILDREN UNDER 18 YEARS

Data Set: 2008-2012 American Community Survey 5-Year Estimates

	Irwin County, Georgia					
	African American	Margin of Error (+/-)	% of AA Total	White, Not Hispanic	Margin of Error (+/-)	% of NHW Total
Total:	570	104	100.0%	1,805	163	100.0%
Income in the past 12 months below poverty level:	119	77	20.9%	257	107	14.2%
Married-couple family:	0	19	0.0%	83	51	4.6%
With related children under 18 years	0	19	0.0%	29	29	1.6%
Other family:	119	77	20.9%	174	97	9.6%
Male householder, no wife present	27	43	4.7%	3	6	0.2%
With related children under 18 years	0	19	0.0%	3	6	0.2%
Female householder, no husband present	92	69	16.1%	171	98	9.5%
With related children under 18 years	88	70	15.4%	161	94	8.9%
Income in the past 12 months at or above poverty level:	451	80	79.1%	1,548	192	85.8%
Married-couple family:	317	101	55.6%	1,427	207	79.1%
With related children under 18 years	127	79	22.3%	564	159	31.2%
Other family:	134	86	23.5%	121	73	6.7%
Male householder, no wife present	37	44	6.5%	24	33	1.3%
With related children under 18 years	0	19	0.0%	6	10	0.3%
Female householder, no husband present	97	64	17.0%	97	67	5.4%
With related children under 18 years	11	15	1.9%	43	44	2.4%

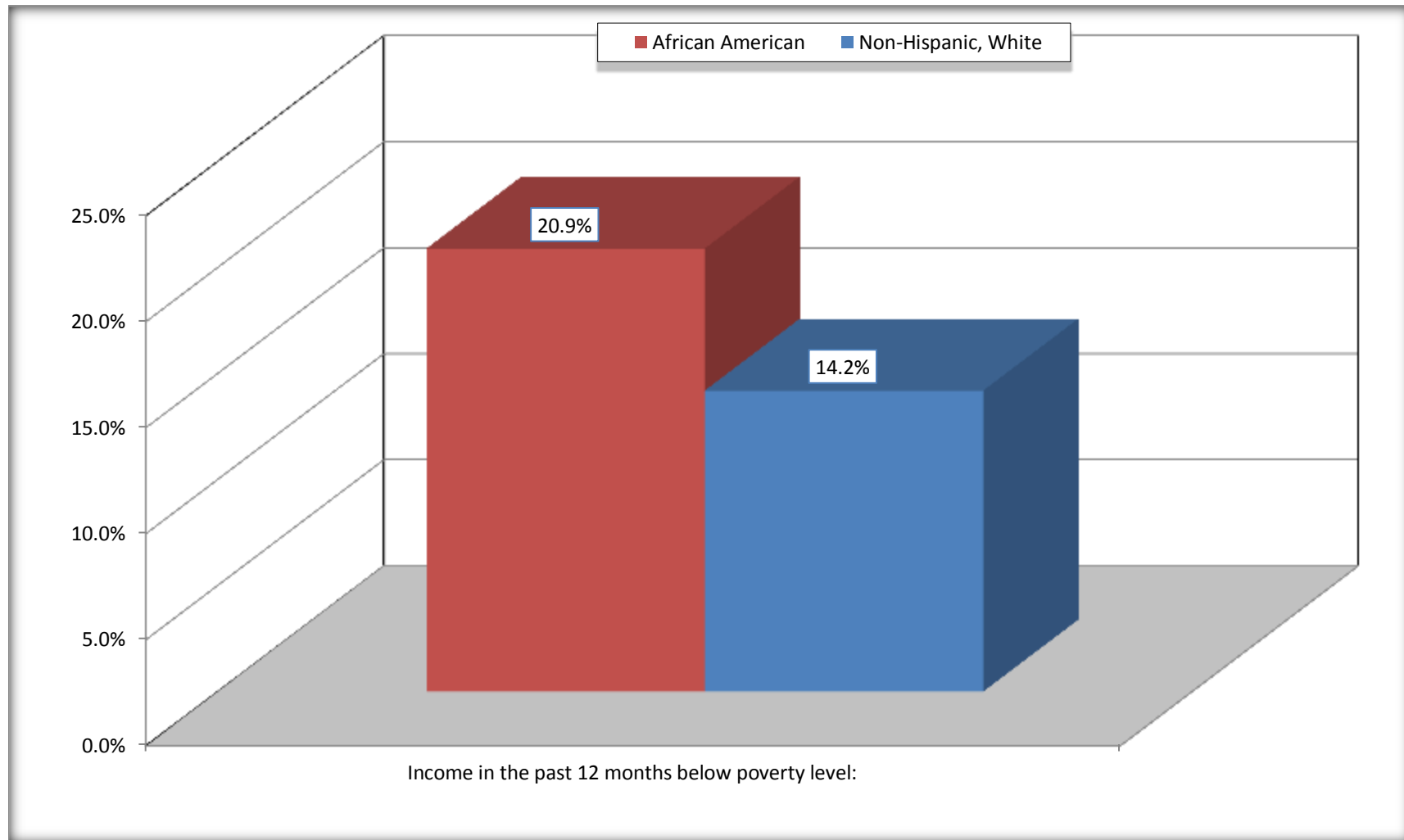
Source: U.S. Census Bureau, 2008-2012 American Community Survey

For information on confidentiality protection, sampling error, nonsampling error, and definitions, see Survey Methodology.

<http://www.census.gov/acs/www/UseData/index.htm>

Family Households Below Poverty in the Past 12 Months

Irwin County, Georgia

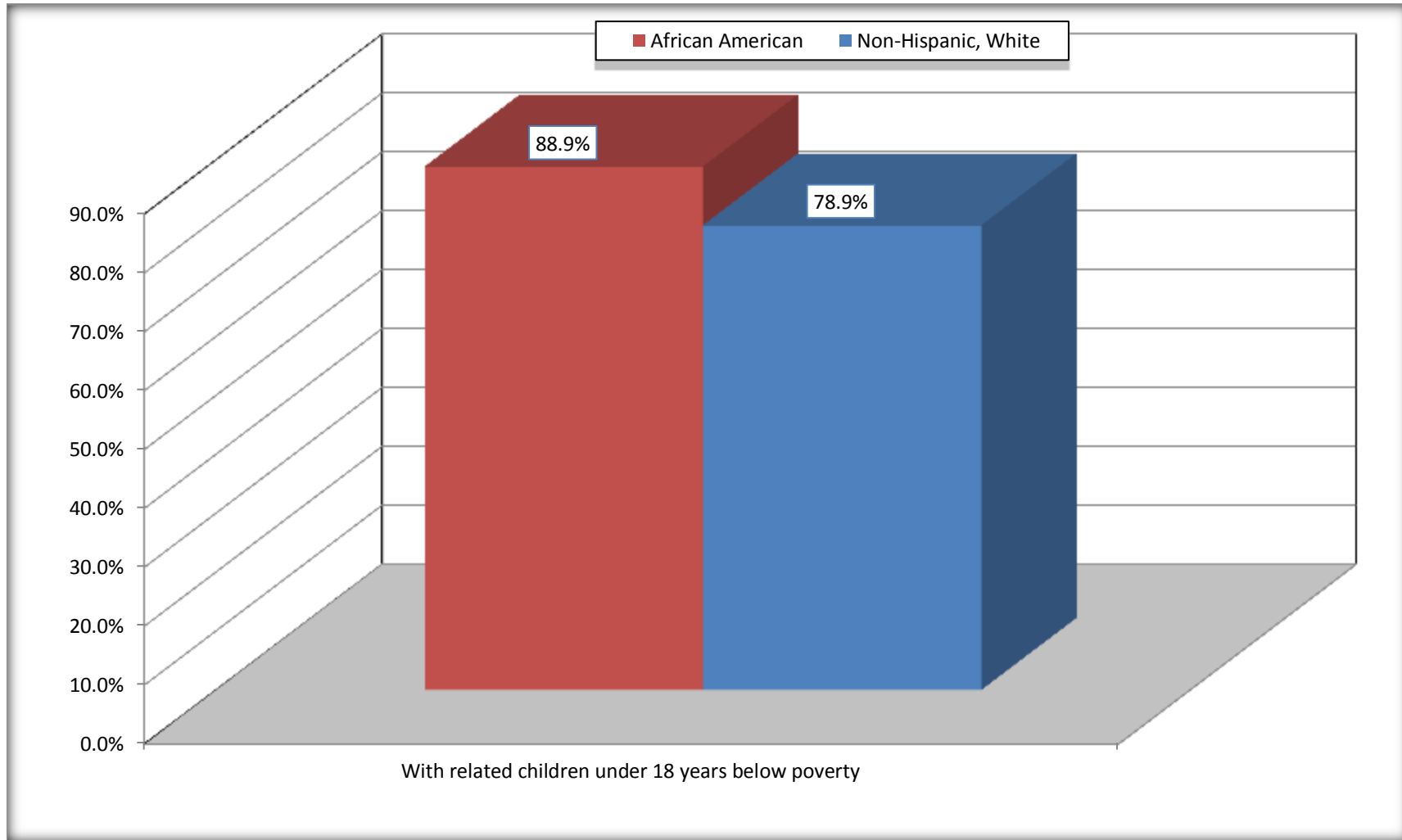


Source: B17010. POVERTY STATUS IN THE PAST 12 MONTHS OF FAMILIES BY FAMILY TYPE BY PRESENCE OF RELATED CHILDREN UNDER 18 YEARS

Data Set: 2008-2012 American Community Survey 5-Year Estimates

Female-headed Households with Related Children Below Poverty in the Past 12 Months

Irwin County, Georgia



Source: B17010. POVERTY STATUS IN THE PAST 12 MONTHS OF FAMILIES BY FAMILY TYPE BY PRESENCE OF RELATED CHILDREN UNDER 18 YEARS

Data Set: 2008-2012 American Community Survey 5-Year Estimates

B17020 POVERTY STATUS IN THE PAST 12 MONTHS BY AGE - Universe: POPULATION FOR WHOM POVERTY STATUS IS DETERMINED

Data Set: 2008-2012 American Community Survey 5-Year Estimates

	Irwin County, Georgia					
	African American	Margin of Error (+/-)	% of AA By Age	White, Not Hispanic	Margin of Error (+/-)	% of NHW By Age
Total:	2,454	159	100.0%	6,427	103	100.0%
Income in the past 12 months below poverty level:	734	287	29.9%	1,117	414	17.4%
Under 18 years	293	NC	40.6%	485	NC	32.8%
18 to 64 years	393	147	25.4%	555	204	14.6%
65 years and over	48	NC	25.7%	77	NC	6.7%
Income in the past 12 months at or above poverty level:	1,720	272	70.1%	5,310	420	82.6%
Under 18 years	428	NC	59.4%	995	NC	67.2%
18 to 64 years	1,153	181	74.6%	3,245	214	85.4%
65 years and over	139	NC	74.3%	1,070	NC	93.3%

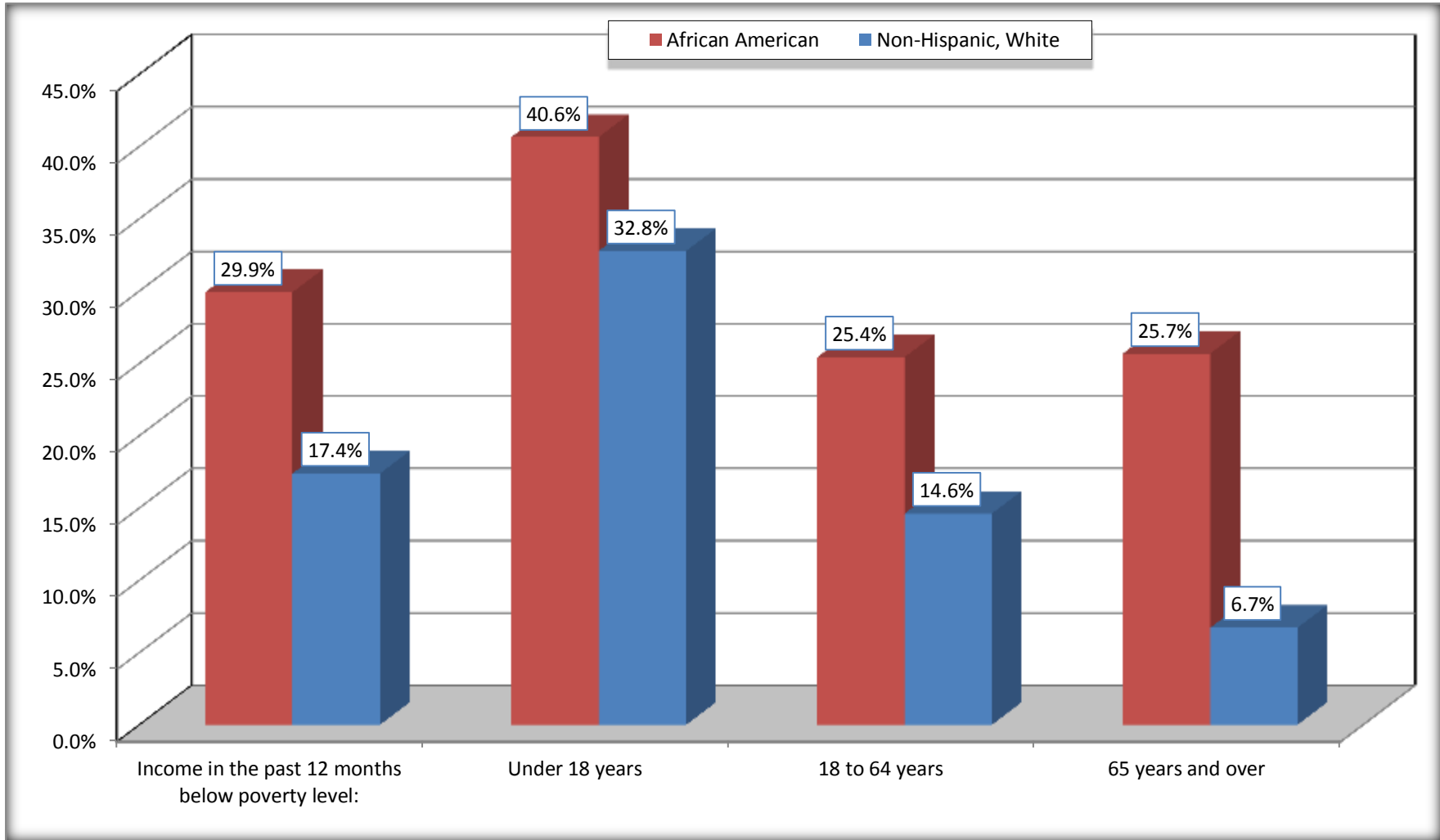
Source: U.S. Census Bureau, 2008-2012 American Community Survey

For information on confidentiality protection, sampling error, nonsampling error, and definitions, see Survey Methodology.

<http://www.census.gov/acs/www/UseData/index.htm>

Population Below Poverty in the Past 12 Months

Irwin County, Georgia



Source: B17020 POVERTY STATUS IN THE PAST 12 MONTHS BY AGE - Universe: POPULATION FOR WHOM POVERTY STATUS IS DETERMINED
Data Set: 2008-2012 American Community Survey 5-Year Estimates

B19001. HOUSEHOLD INCOME IN THE PAST 12 MONTHS (IN 2010 INFLATION-ADJUSTED DOLLARS)

Data Set: 2008-2012 American Community Survey 5-Year Estimates

	Irwin County, Georgia					
	African American	Margin of Error (+/-)	% of AA Total	White, Not Hispanic	Margin of Error (+/-)	% of NHW Total
Total:	833	131	100.0%	2,352	169	100.0%
Less than \$ 10,000	235	106	28.2%	192	97	8.2%
\$ 10,000 to \$ 14,999	62	66	7.4%	120	56	5.1%
\$ 15,000 to \$ 24,999	51	NC	6.1%	407	NC	17.3%
\$ 25,000 to \$ 34,999	140	NC	16.8%	261	NC	11.1%
\$ 35,000 to \$ 49,999	99	NC	11.9%	403	NC	17.1%
\$ 50,000 to \$ 74,999	174	NC	20.9%	488	NC	20.7%
\$ 75,000 to \$ 99,999	41	45	4.9%	208	87	8.8%
\$ 100,000 to \$ 149,999	7	NC	0.8%	194	NC	8.2%
\$ 150,000 to \$ 199,999	5	10	0.6%	56	54	2.4%
\$ 200,000 or more	19	30	2.3%	23	29	1.0%

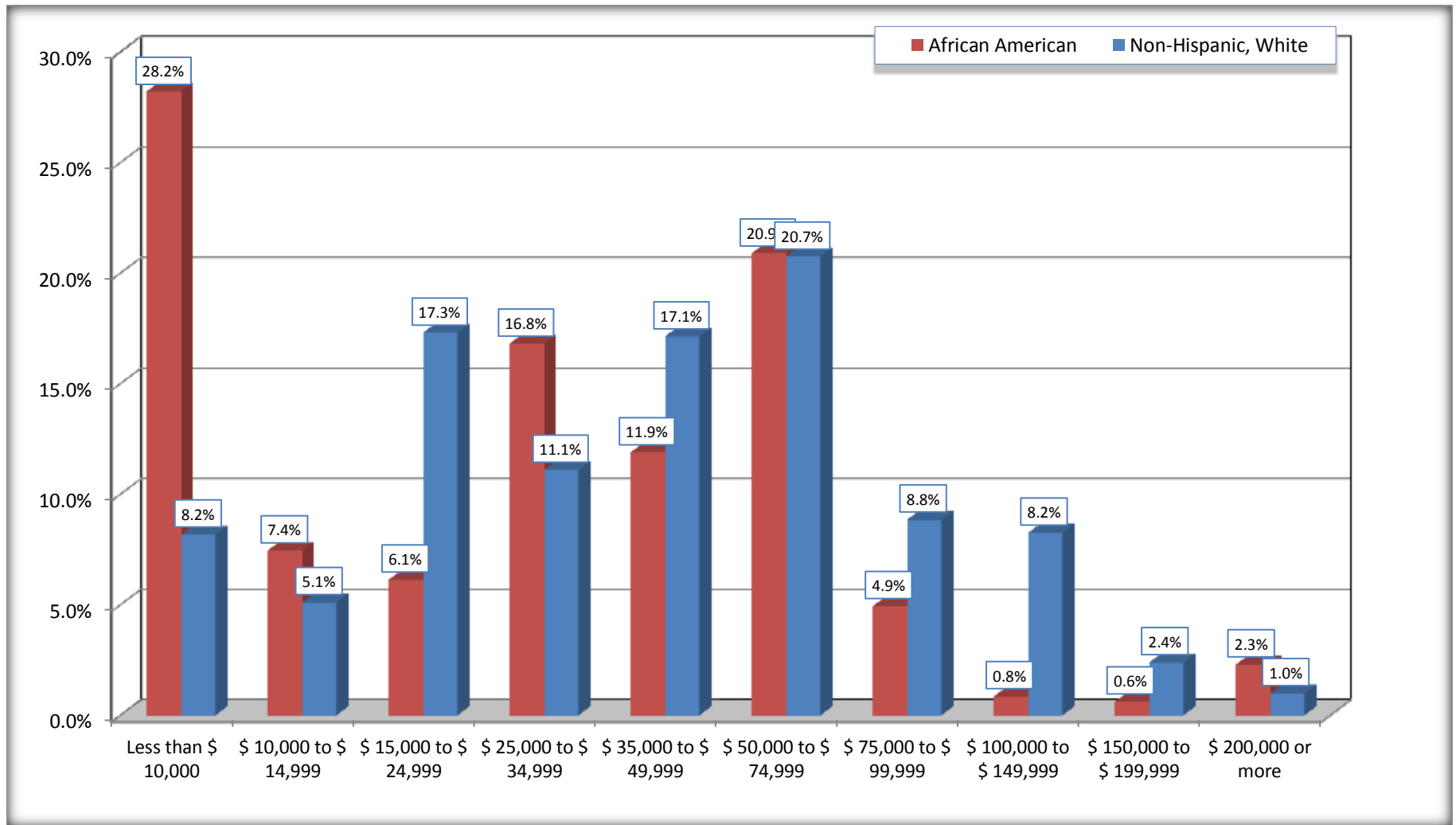
Source: U.S. Census Bureau, 2008-2012 American Community Survey

For information on confidentiality protection, sampling error, nonsampling error, and definitions, see Survey Methodology.

<http://www.census.gov/acs/www/UseData/index.htm>

Household Income in the Past 12 Months

Irwin County, Georgia



Source: B19001. HOUSEHOLD INCOME IN THE PAST 12 MONTHS (IN 2010 INFLATION-ADJUSTED DOLLARS)
Data Set: 2008-2012 American Community Survey 5-Year Estimates

B19013. MEDIAN HOUSEHOLD INCOME IN THE PAST 12 MONTHS (IN 2010 INFLATION-ADJUSTED DOLLARS)

Data Set: 2008-2012 American Community Survey 5-Year Estimates

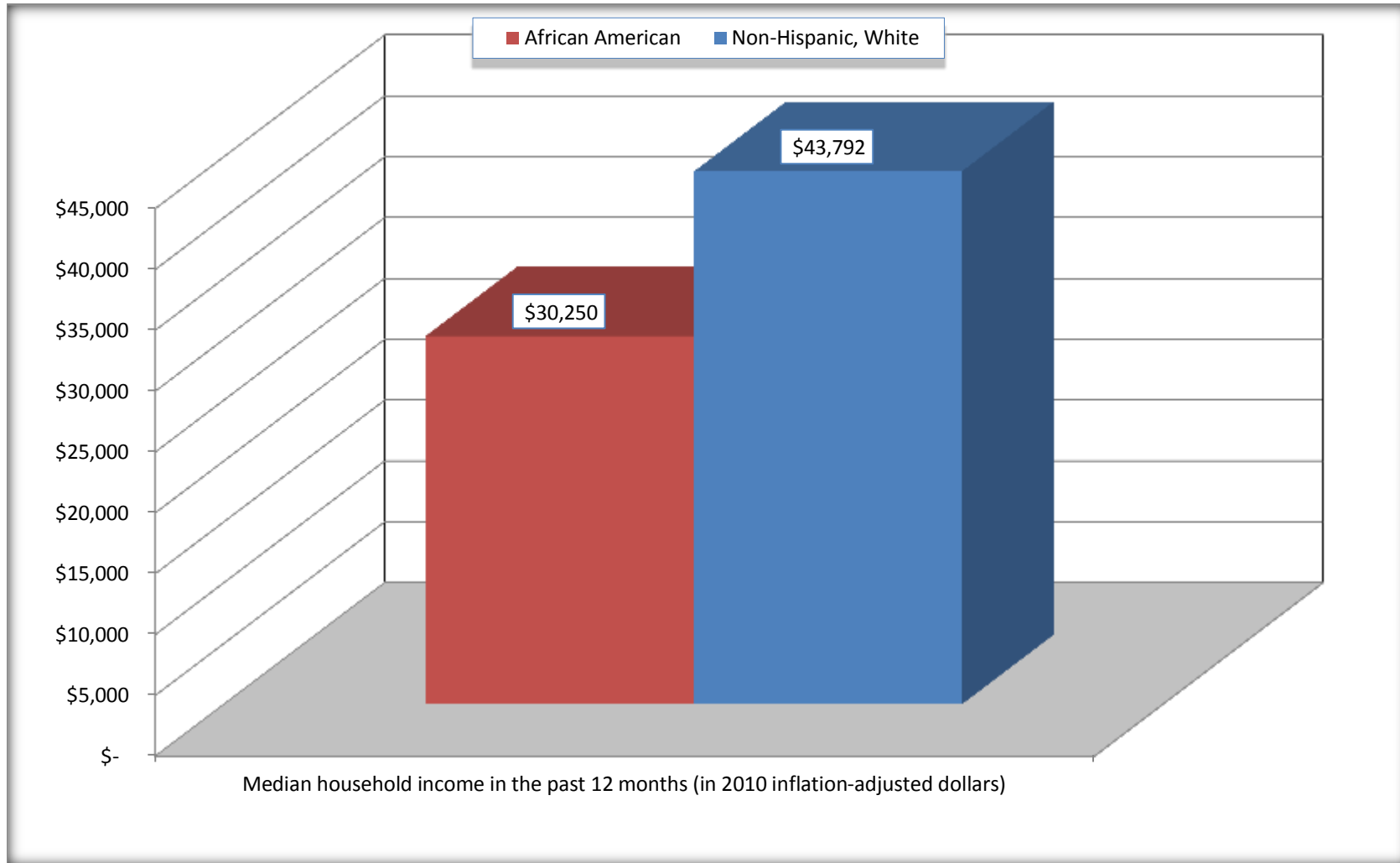
	Irwin County, Georgia			
	African American	Margin of Error (+/-)	White, Not Hispanic	Margin of Error (+/-)
Median household income in the past 12 months (in 2010 inflation-adjusted dollars)	\$ 30,250	\$ 6,789	\$ 43,792	\$ 6,116

Source: U.S. Census Bureau, 2008-2012 American Community Survey

For information on confidentiality protection, sampling error, nonsampling error, and definitions, see Survey Methodology.
<http://www.census.gov/acs/www/UseData/index.htm>

Median Household Income in the Past 12 Months

Irwin County, Georgia



Source: B19013. MEDIAN HOUSEHOLD INCOME IN THE PAST 12 MONTHS (IN 2010 INFLATION-ADJUSTED DOLLARS)
Data Set: 2008-2012 American Community Survey 5-Year Estimates

B19101. FAMILY INCOME IN THE PAST 12 MONTHS (IN 2010 INFLATION-ADJUSTED DOLLARS)

Data Set: 2008-2012 American Community Survey 5-Year Estimates

	Irwin County, Georgia					
	African American	Margin of Error (+/-)	% of AA Total	White, Not Hispanic	Margin of Error (+/-)	% of NHW Total
Total:	570	104	100.0%	1,805	163	100.0%
Less than \$ 10,000	119	77	20.9%	132	76	7.3%
\$ 10,000 to \$ 14,999	0	19	0.0%	32	29	1.8%
\$ 15,000 to \$ 24,999	51	NC	8.9%	261	NC	14.5%
\$ 25,000 to \$ 34,999	64	NC	11.2%	229	NC	12.7%
\$ 35,000 to \$ 49,999	99	NC	17.4%	283	NC	15.7%
\$ 50,000 to \$ 74,999	165	NC	28.9%	428	NC	23.7%
\$ 100,000 to \$ 149,999	7	NC	1.2%	194	NC	10.7%
\$ 150,000 to \$ 199,999	5	10	0.9%	56	54	3.1%
\$ 200,000 or more	19	30	3.3%	23	29	1.3%

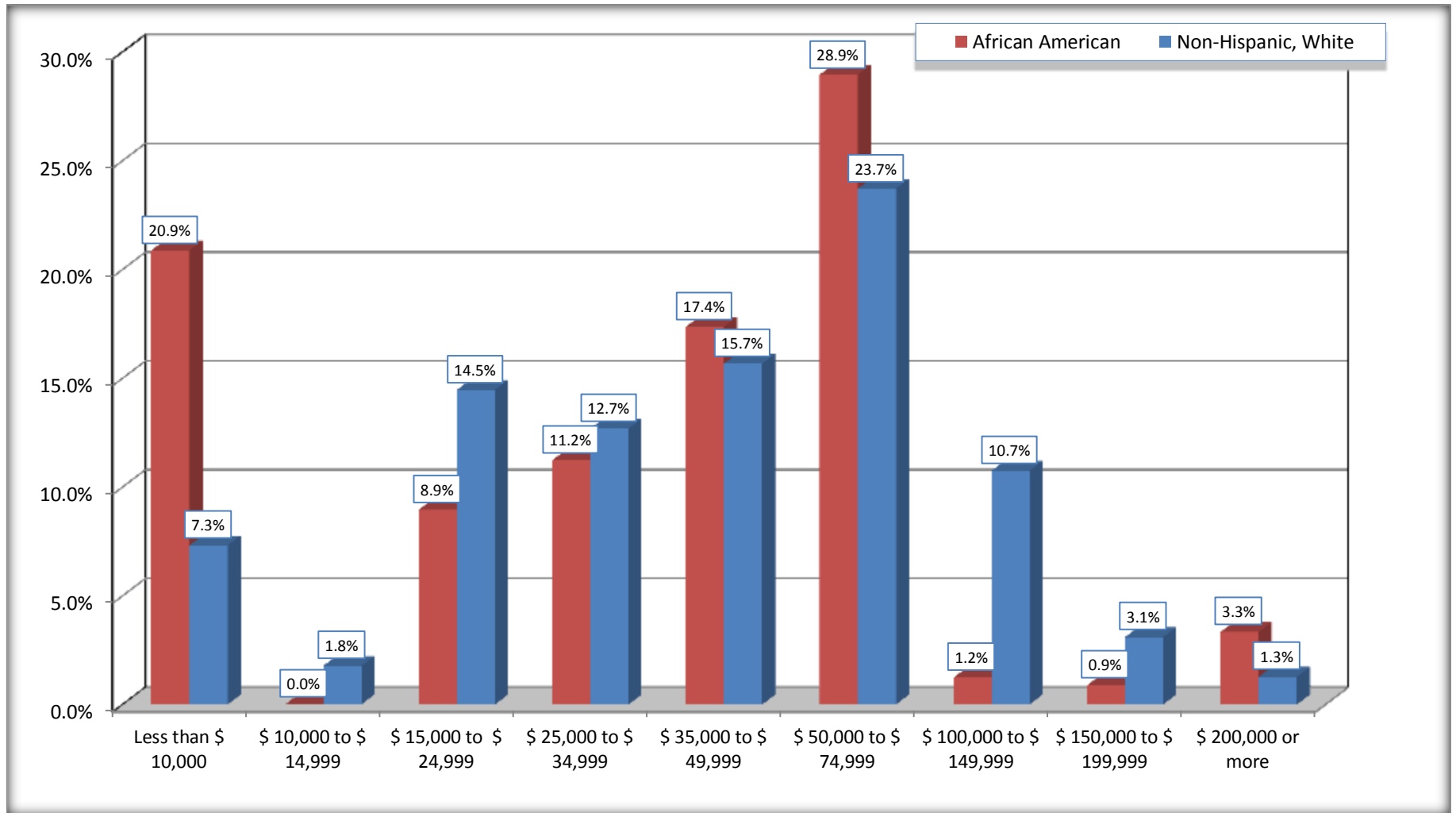
Source: U.S. Census Bureau, 2008-2012 American Community Survey

For information on confidentiality protection, sampling error, nonsampling error, and definitions, see Survey Methodology.

<http://www.census.gov/acs/www/UseData/index.htm>

Family Income in the Past 12 Months

Irwin County, Georgia



Source: B19101. FAMILY INCOME IN THE PAST 12 MONTHS (IN 2010 INFLATION-ADJUSTED DOLLARS)
Data Set: 2008-2012 American Community Survey 5-Year Estimates

B19113. MEDIAN FAMILY INCOME IN THE PAST 12 MONTHS (IN 2010 INFLATION-ADJUSTED DOLLARS)

Data Set: 2008-2012 American Community Survey 5-Year Estimates

	Irwin County, Georgia			
	African American	Margin of Error (+/-)	White, Not Hispanic	Margin of Error (+/-)
Median family income in the past 12 months (in 2010 inflation-adjusted dollars)	\$ 39,286	\$ 14,381	\$ 49,223	\$ 6,817

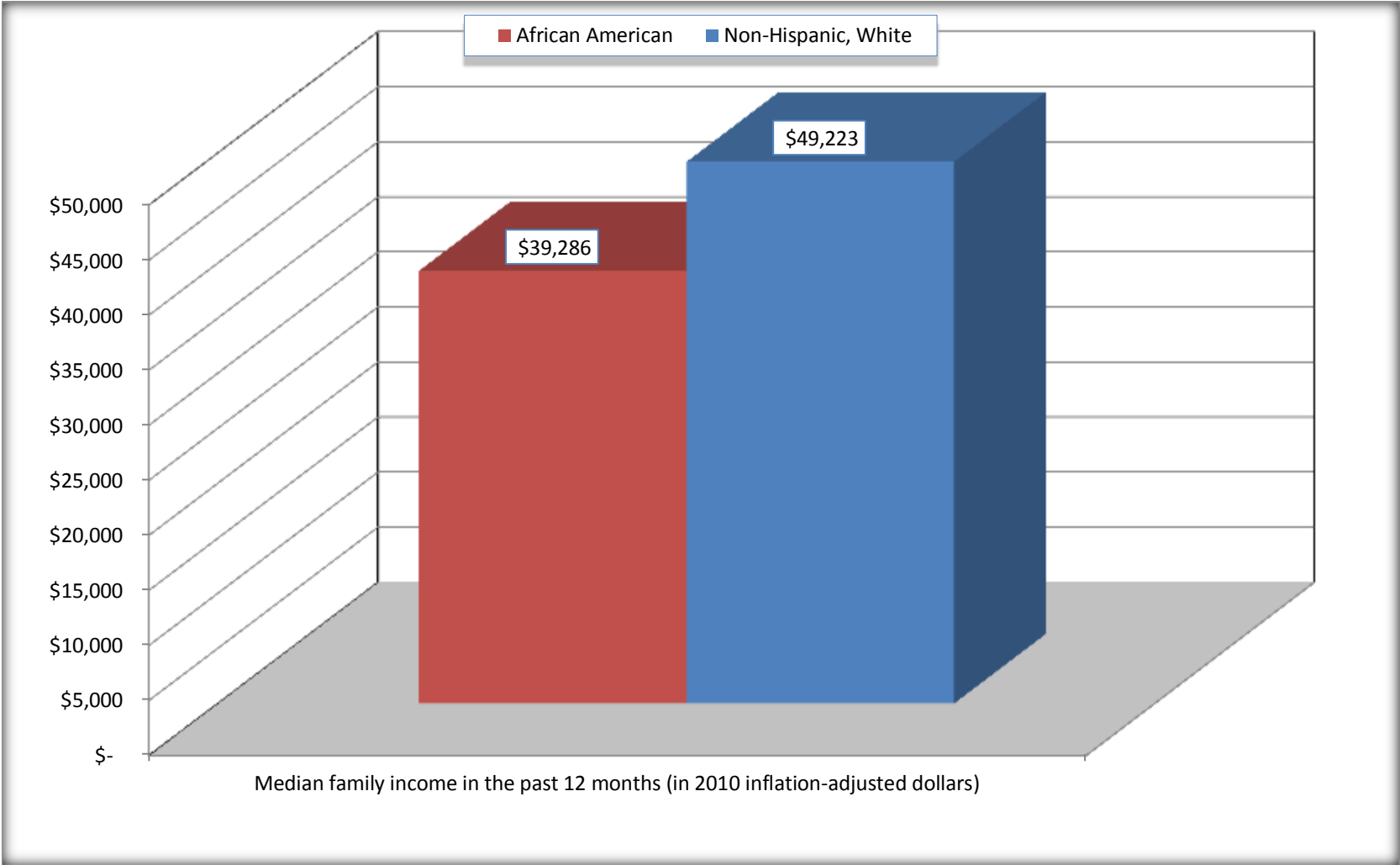
Source: U.S. Census Bureau, 2008-2012 American Community Survey

For information on confidentiality protection, sampling error, nonsampling error, and definitions, see Survey Methodology.

<http://www.census.gov/acs/www/UseData/index.htm>

Median Family Income in the Past 12 Months

Irwin County, Georgia



Source: B19113. MEDIAN FAMILY INCOME IN THE PAST 12 MONTHS (IN 2010 INFLATION-ADJUSTED DOLLARS)
Data Set: 2008-2012 American Community Survey 5-Year Estimates

B19202. MEDIAN NONFAMILY HOUSEHOLD INCOME IN THE PAST 12 MONTHS (IN 2010 INFLATION-ADJUSTED DOLLARS)

Data Set: 2008-2012 American Community Survey 5-Year Estimates

	Irwin County, Georgia			
	African American	Margin of Error (+/-)	White, Not Hispanic	Margin of Error (+/-)
Median nonfamily household income in the past 12 months (in 2010 inflation-adjusted dollars)	\$ 12,039	\$ 8,311	\$ 17,130	\$ 8,954

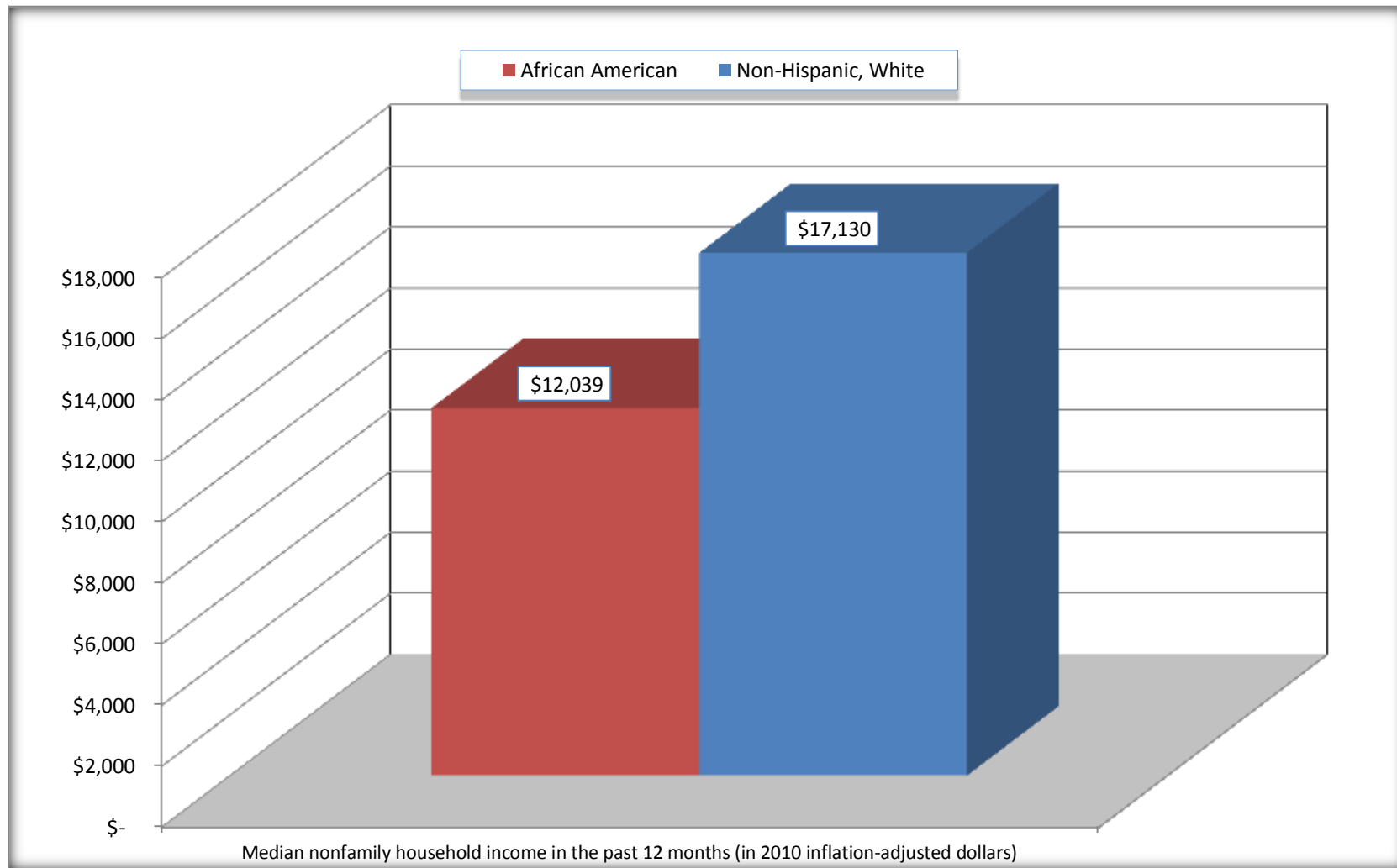
Source: U.S. Census Bureau, 2008-2012 American Community Survey

For information on confidentiality protection, sampling error, nonsampling error, and definitions, see Survey Methodology.

<http://www.census.gov/acs/www/UseData/index.htm>

Median Non-Family Income in the Past 12 Months

Irwin County, Georgia



Source: B19202. MEDIAN NONFAMILY HOUSEHOLD INCOME IN THE PAST 12 MONTHS (IN 2010 INFLATION-ADJUSTED DOLLARS)
Data Set: 2008-2012 American Community Survey 5-Year Estimates

B19301. PER CAPITA INCOME IN THE PAST 12 MONTHS (IN 2010 INFLATION-ADJUSTED DOLLARS)

Data Set: 2008-2012 American Community Survey 5-Year Estimates

	Irwin County, Georgia			
	African American	Margin of Error (+/-)	White, Not Hispanic	Margin of Error (+/-)
Per capita income in the past 12 months (in 2010 inflation-adjusted dollars)	\$ 12,229	\$ 3,275	\$ 20,200	\$ 2,204

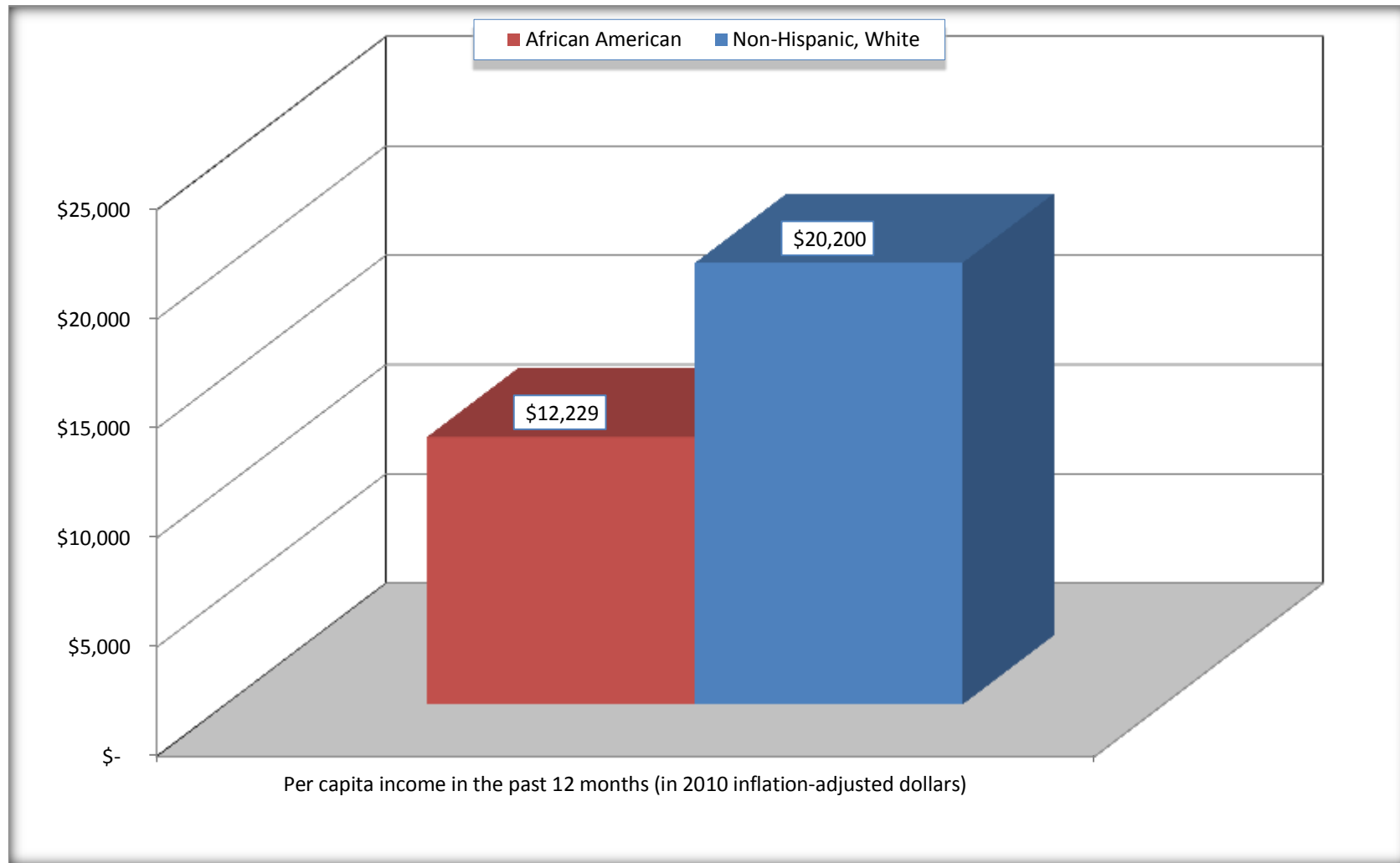
Source: U.S. Census Bureau, 2008-2012 American Community Survey

For information on confidentiality protection, sampling error, nonsampling error, and definitions, see Survey Methodology.

<http://www.census.gov/acs/www/UseData/index.htm>

Per capita Income in the Past 12 Months

Irwin County, Georgia



Source: B19301. PER CAPITA INCOME IN THE PAST 12 MONTHS (IN 2010 INFLATION-ADJUSTED DOLLARS)
Data Set: 2008-2012 American Community Survey 5-Year Estimates

B20017. MEDIAN EARNINGS IN THE PAST 12 MONTHS (IN 2010 INFLATION-ADJUSTED DOLLARS) BY SEX BY WORK EXPERIENCE IN THE PAST 12 MONTHS FOR THE POPULATION 16 YEARS AND OVER WITH EARNINGS IN THE PAST 12 MONTHS

Data Set: 2008-2012 American Community Survey 5-Year Estimates

	Irwin County, Georgia			
	African American	Margin of Error (+/-)	White, Not Hispanic	Margin of Error (+/-)
Median earnings in the past 12 months (in 2010 inflation-adjusted dollars) --				
Total:	\$ 16,473	\$ 1,647	\$ 26,278	\$ 3,856
Male --				
Total	\$ 24,000	\$ 4,848	\$ 33,171	\$ 5,946
Worked full-time, year-round in the past 12 months	\$ 26,064	\$ 1,398	\$ 38,030	\$ 7,189
Other	\$ 10,870	\$ 5,937	\$ 7,370	\$ 8,273
Female --				
Total	\$ 14,981	\$ 3,534	\$ 17,813	\$ 3,964
Worked full-time, year-round in the past 12 months	\$ 17,324	\$ 5,127	\$ 30,702	\$ 2,616
Other	\$ 6,250	\$ 2,067	\$ 7,023	\$ 2,189

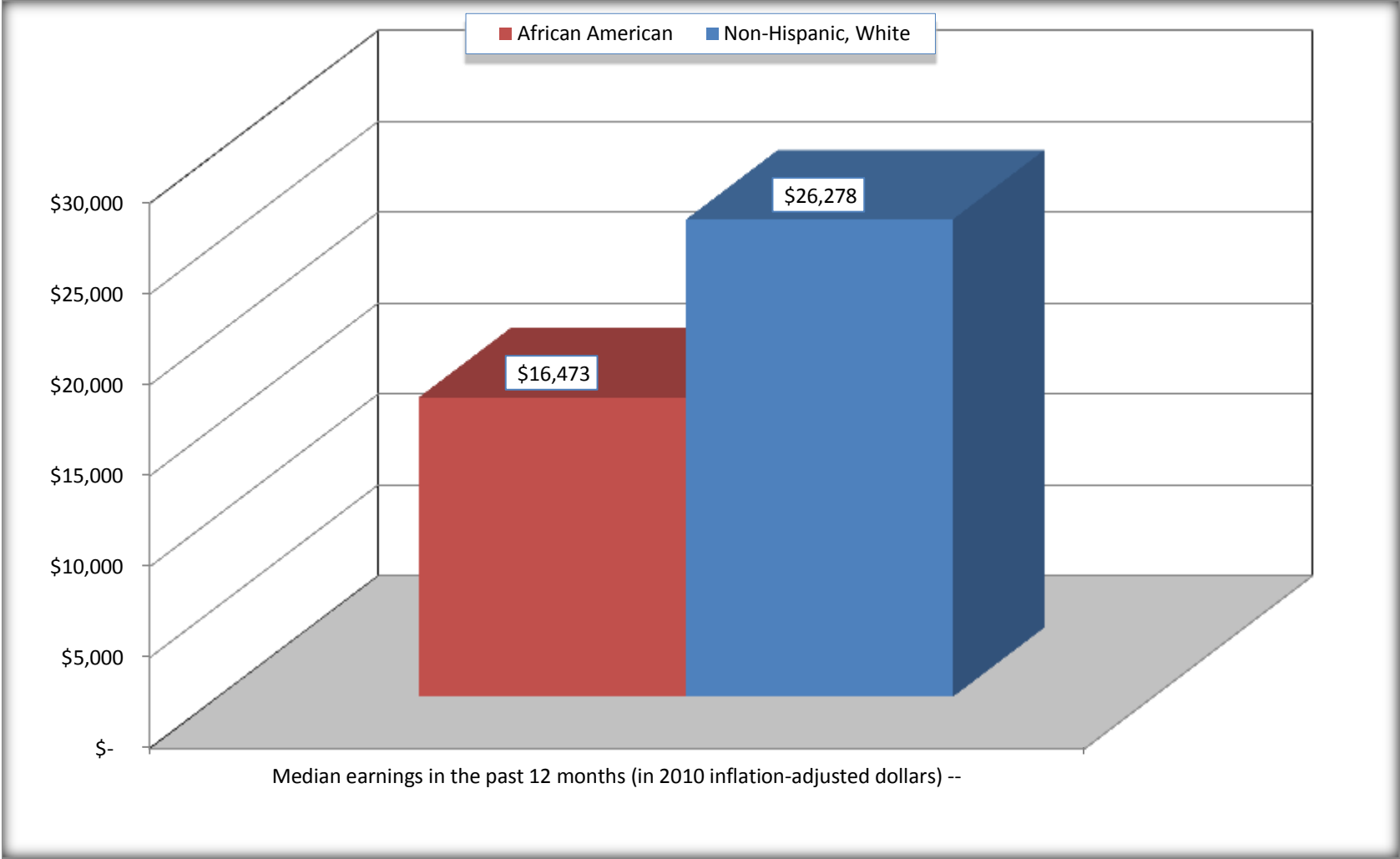
Source: U.S. Census Bureau, 2008-2012 American Community Survey

For information on confidentiality protection, sampling error, nonsampling error, and definitions, see Survey Methodology.

<http://www.census.gov/acs/www/UseData/index.htm>

Median earnings in the Past 12 Months (16 Years and Over with Earnings)

Irwin County, Georgia



Source: B20017. MEDIAN EARNINGS IN THE PAST 12 MONTHS (IN 2010 INFLATION-ADJUSTED DOLLARS) BY SEX BY WORK EXPERIENCE IN THE PAST 12 MONTHS FOR THE POPULATION 16 YEARS AND OVER WITH EARNINGS IN THE PAST 12 MONTHS
Data Set: 2008-2012 American Community Survey 5-Year Estimates

B20005. SEX BY WORK EXPERIENCE IN THE PAST 12 MONTHS BY EARNINGS IN THE PAST 12 MONTHS (IN 2010 INFLATION-ADJUSTED DOLLARS) FOR THE POPULATION 16 YEARS AND OVER

Data Set: 2008-2012 American Community Survey 5-Year Estimates

	Irwin County, Georgia					
	African American	Margin of Error (+/-)	% of AA Total	White, Not Hispanic	Margin of Error (+/-)	% of NHW Total
Total:	2,121	75	100.0%	5,391	41	100.0%
Worked full-time, year-round in the past 12 months:	615	NC	29.0%	1,953	NC	36.2%
No earnings	0	NC	0.0%	0	NC	0.0%
With earnings:	615	NC	29.0%	1,953	NC	36.2%
\$ 1 to \$ 9,999 or loss	44	NC	2.1%	46	NC	0.9%
\$ 10,000 to \$ 19,999	183	NC	8.6%	368	NC	6.8%
\$ 20,000 to \$ 29,999	235	NC	11.1%	339	NC	6.3%
\$ 30,000 to \$ 49,999	70	NC	3.3%	697	NC	12.9%
\$ 50,000 to \$ 74,999	70	NC	3.3%	350	NC	6.5%
\$ 75,000 or more	13	NC	0.6%	153	NC	2.8%
Other:	1,506	NC	71.0%	3,438	NC	63.8%
No earnings	1,136	NC	53.6%	2,284	NC	42.4%
With earnings: less than full time, year-round	370	NC	17.4%	1,154	NC	21.4%
Male:	1,101	45	51.9%	2,601	32	48.2%
Worked full-time, year-round in the past 12 months:	312	106	14.7%	1,250	199	23.2%
No earnings	0	19	0.0%	0	19	0.0%
With earnings:	312	106	14.7%	1,250	199	23.2%
\$ 1 to \$ 9,999 or loss	31	NC	1.5%	0	NC	0.0%
\$ 10,000 to \$ 19,999	24	NC	1.1%	178	NC	3.3%
\$ 20,000 to \$ 29,999	159	NC	7.5%	251	NC	4.7%
\$ 30,000 to \$ 49,999	21	NC	1.0%	460	NC	8.5%
\$ 50,000 to \$ 74,999	64	NC	3.0%	231	NC	4.3%
\$ 75,000 or more	13	NC	0.6%	130	NC	2.4%

	Irwin County, Georgia					
	African American	Margin of Error (+/-)	% of AA Total	White, Not Hispanic	Margin of Error (+/-)	% of NHW Total
Other:	789	119	37.2%	1,351	206	25.1%
No earnings	663	150	31.3%	835	137	15.5%
With earnings:	126	78	5.9%	516	175	9.6%
Female:	1,020	59	48.1%	2,790	52	51.8%
Worked full-time, year-round in the past 12 months:	303	117	14.3%	703	152	13.0%
No earnings	0	19	0.0%	0	19	0.0%
With earnings:	303	117	14.3%	703	152	13.0%
\$ 1 to \$ 9,999 or loss	13	NC	0.6%	46	NC	0.9%
\$ 10,000 to \$ 19,999	159	NC	7.5%	190	NC	3.5%
\$ 20,000 to \$ 29,999	76	NC	3.6%	88	NC	1.6%
\$ 30,000 to \$ 49,999	49	NC	2.3%	237	NC	4.4%
\$ 50,000 to \$ 74,999	6	NC	0.3%	119	NC	2.2%
\$ 75,000 or more	0	NC	0.0%	23	NC	0.4%
Other:	717	112	33.8%	2,087	159	38.7%
No earnings	473	111	22.3%	1,449	211	26.9%
With earnings:	244	128	11.5%	638	183	11.8%

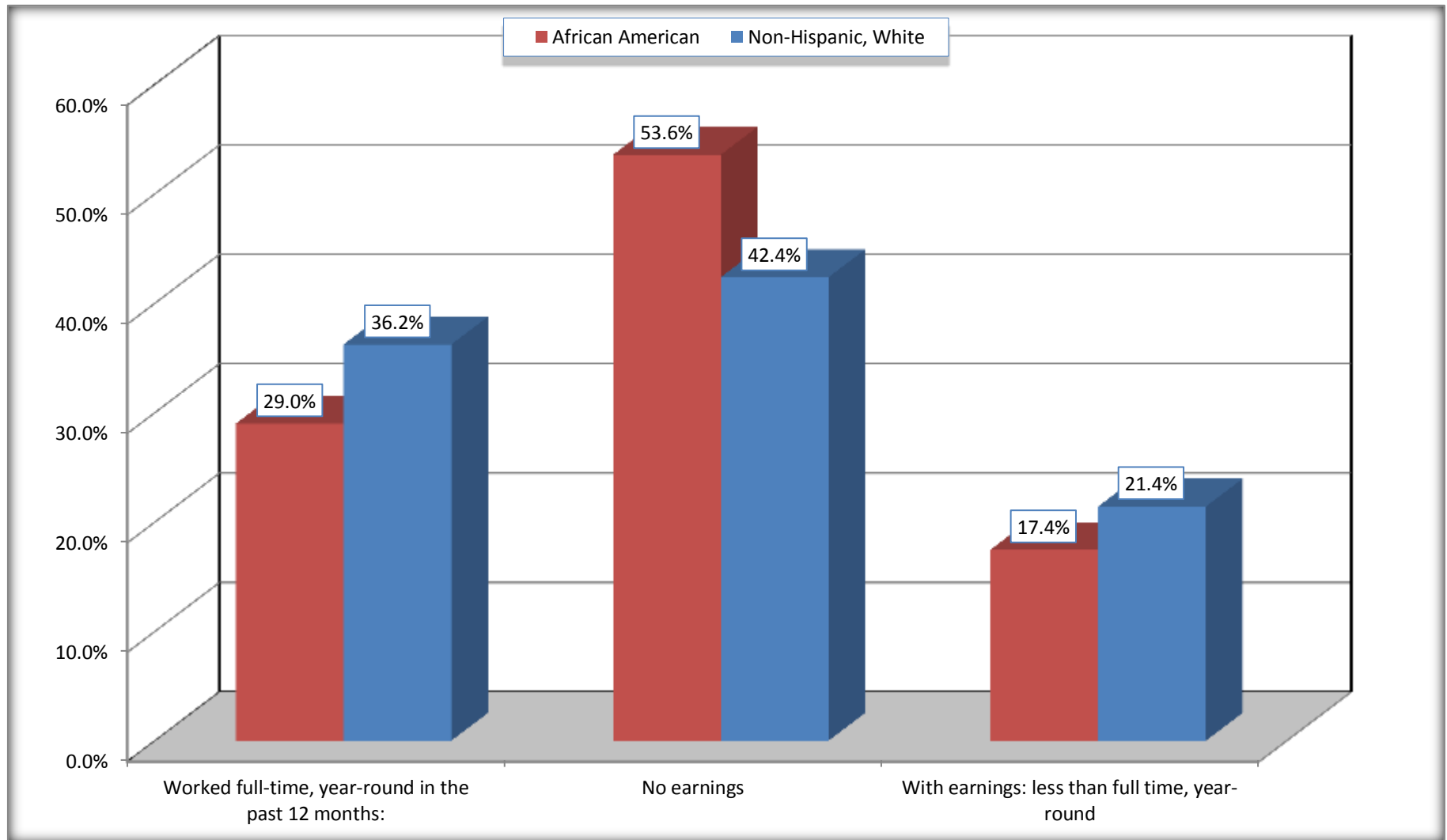
Source: U.S. Census Bureau, 2008-2012 American Community Survey

For information on confidentiality protection, sampling error, nonsampling error, and definitions, see Survey Methodology.

<http://www.census.gov/acs/www/UseData/index.htm>

Employment and Earnings in in the Past 12 Months (16 Years and Over)

Irwin County, Georgia



Source: B20005. SEX BY WORK EXPERIENCE IN THE PAST 12 MONTHS BY EARNINGS IN THE PAST 12 MONTHS (IN 2010 INFLATION-ADJUSTED DOLLARS) FOR THE POPULATION 16 YEARS AND OVER

Data Set: 2008-2012 American Community Survey 5-Year Estimates

C21001. SEX BY AGE BY VETERAN STATUS FOR THE CIVILIAN POPULATION 18 YEARS AND OVER

Data Set: 2008-2012 American Community Survey 5-Year Estimates

	Irwin County, Georgia					
	African American	Margin of Error (+/-)	% of AA Total	White, Not Hispanic	Margin of Error (+/-)	% of NHW Total
Total:	2,041	42	100.0%	5,223	19	100.0%
Veteran	321	NC	15.7%	711	NC	13.6%
Nonveteran	1,720	NC	84.3%	4,512	NC	86.4%
Male:	1,071	27	52.5%	2,571	19	49.2%
18 to 64 years:	1,008	72	49.4%	2,054	19	39.3%
Veteran	272	122	13.3%	359	118	6.9%
Nonveteran	736	118	36.1%	1,695	118	32.5%
65 years and over:	63	55	3.1%	517	19	9.9%
Veteran	49	55	2.4%	330	66	6.3%
Nonveteran	14	16	0.7%	187	66	3.6%
Female:	970	21	47.5%	2,652	19	50.8%
18 to 64 years:	841	66	41.2%	1,940	19	37.1%
Veteran	0	19	0.0%	22	27	0.4%
Nonveteran	841	66	41.2%	1,918	27	36.7%
65 years and over:	129	66	6.3%	712	19	13.6%
Veteran	0	19	0.0%	0	19	0.0%
Nonveteran	129	66	6.3%	712	19	13.6%

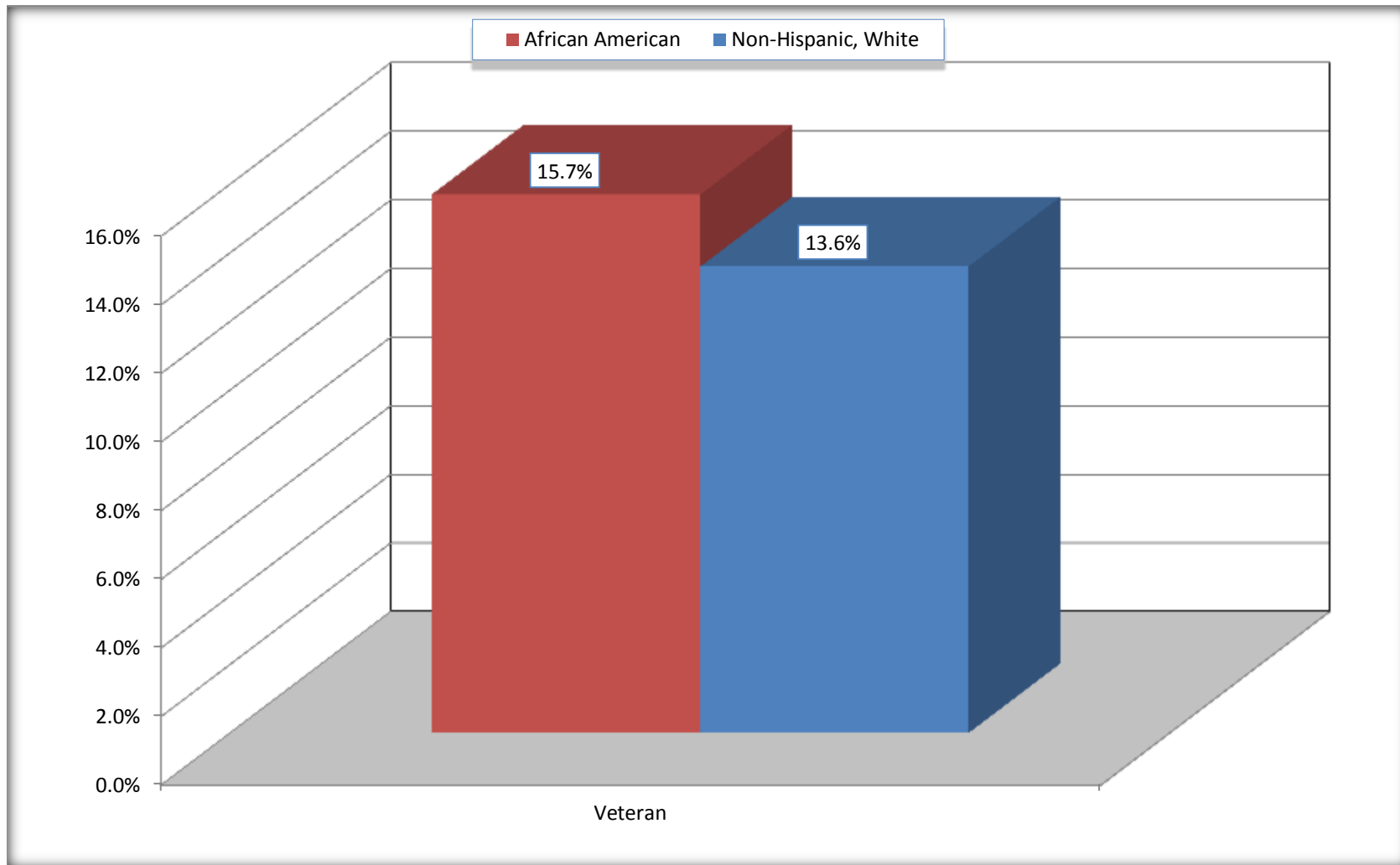
Source: U.S. Census Bureau, 2008-2012 American Community Survey

For information on confidentiality protection, sampling error, nonsampling error, and definitions, see Survey Methodology.

<http://www.census.gov/acs/www/UseData/index.htm>

Veterans in the Civilian Population 18 Years and Over

Irwin County, Georgia



Source: C21001. SEX BY AGE BY VETERAN STATUS FOR THE CIVILIAN POPULATION 18 YEARS AND OVER
Data Set: 2008-2012 American Community Survey 5-Year Estimates

B22005. RECEIPT OF FOOD STAMPS/SNAP IN THE PAST 12 MONTHS BY RACE OF HOUSEHOLDER

Data Set: 2008-2012 American Community Survey 5-Year Estimates

	Irwin County, Georgia					
	African American	Margin of Error (+/-)	% of AA Total	White, Not Hispanic	Margin of Error (+/-)	% of NHW Total
Total:	833	131	100.0%	2,352	169	100.0%
HH received Food Stamps/SNAP in the past 12 months	190	97	22.8%	263	117	11.2%
HH did not receive Food Stamps/SNAP in the past 12 months	643	115	77.2%	2,089	193	88.8%

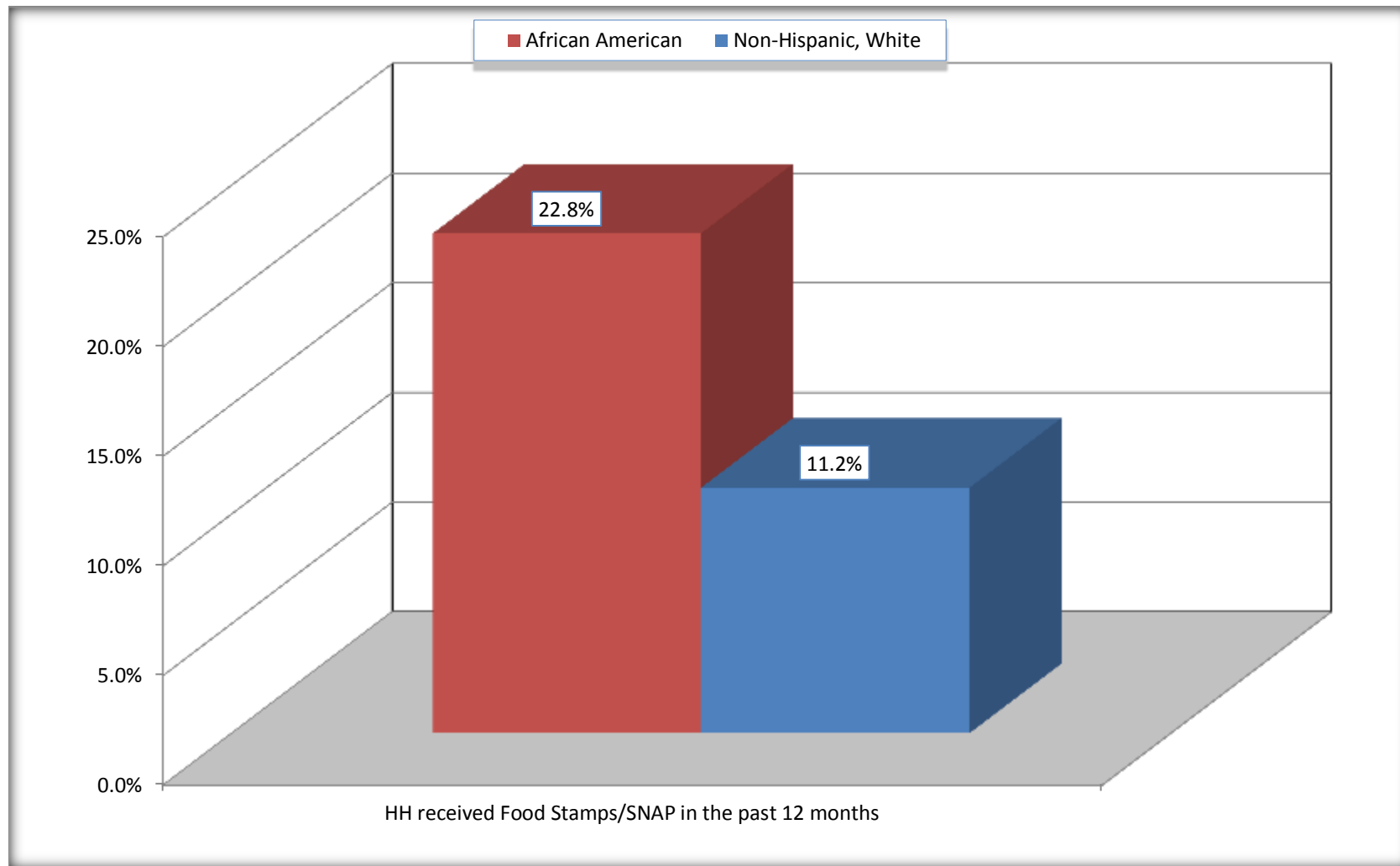
Source: U.S. Census Bureau, 2008-2012 American Community Survey

For information on confidentiality protection, sampling error, nonsampling error, and definitions, see Survey Methodology.

<http://www.census.gov/acs/www/UseData/index.htm>

Receipt of Food Stamps/SNAP in the Past 12 Months by Household

Irwin County, Georgia



Source: B22005. RECEIPT OF FOOD STAMPS/SNAP IN THE PAST 12 MONTHS BY RACE OF HOUSEHOLDER
Data Set: 2008-2012 American Community Survey 5-Year Estimates

C23002. SEX BY AGE BY EMPLOYMENT STATUS FOR THE POPULATION 16 YEARS AND OVER

Data Set: 2008-2012 American Community Survey 5-Year Estimates

	Irwin County, Georgia					
	African American	Margin of Error (+/-)	% of AA Total	White, Not Hispanic	Margin of Error (+/-)	% of NHW Total
Total:	2,121	75	100.0%	5,391	41	100.0%
In labor force:	1,006	NC	47.4%	2,937	NC	54.5%
In Armed Forces	0	NC	0.0%	0	NC	0.0%
Civilian:	957	NC	45.1%	2,794	NC	51.8%
Employed	811	NC	38.2%	2,726	NC	50.6%
Unemployed	195	NC	9.2%	211	NC	3.9%
Not in labor force	1,115	NC	52.6%	2,454	NC	45.5%
Male:	1,101	45	51.9%	2,601	32	48.2%
16 to 64 years:	1,038	87	48.9%	2,084	32	38.7%
In labor force:	430	157	20.3%	1,606	125	29.8%
In Armed Forces	0	19	0.0%	0	19	0.0%
Civilian:	430	157	20.3%	1,606	125	29.8%
Employed	281	107	13.2%	1,525	119	28.3%
Unemployed	149	102	7.0%	81	80	1.5%
Not in labor force	608	172	28.7%	478	135	8.9%
65 years and over:	63	55	3.0%	517	19	9.6%
In labor force:	49	55	2.3%	85	51	1.6%
Employed	49	55	2.3%	85	51	1.6%
Unemployed	0	19	0.0%	0	19	0.0%
Not in labor force	14	16	0.7%	432	51	8.0%

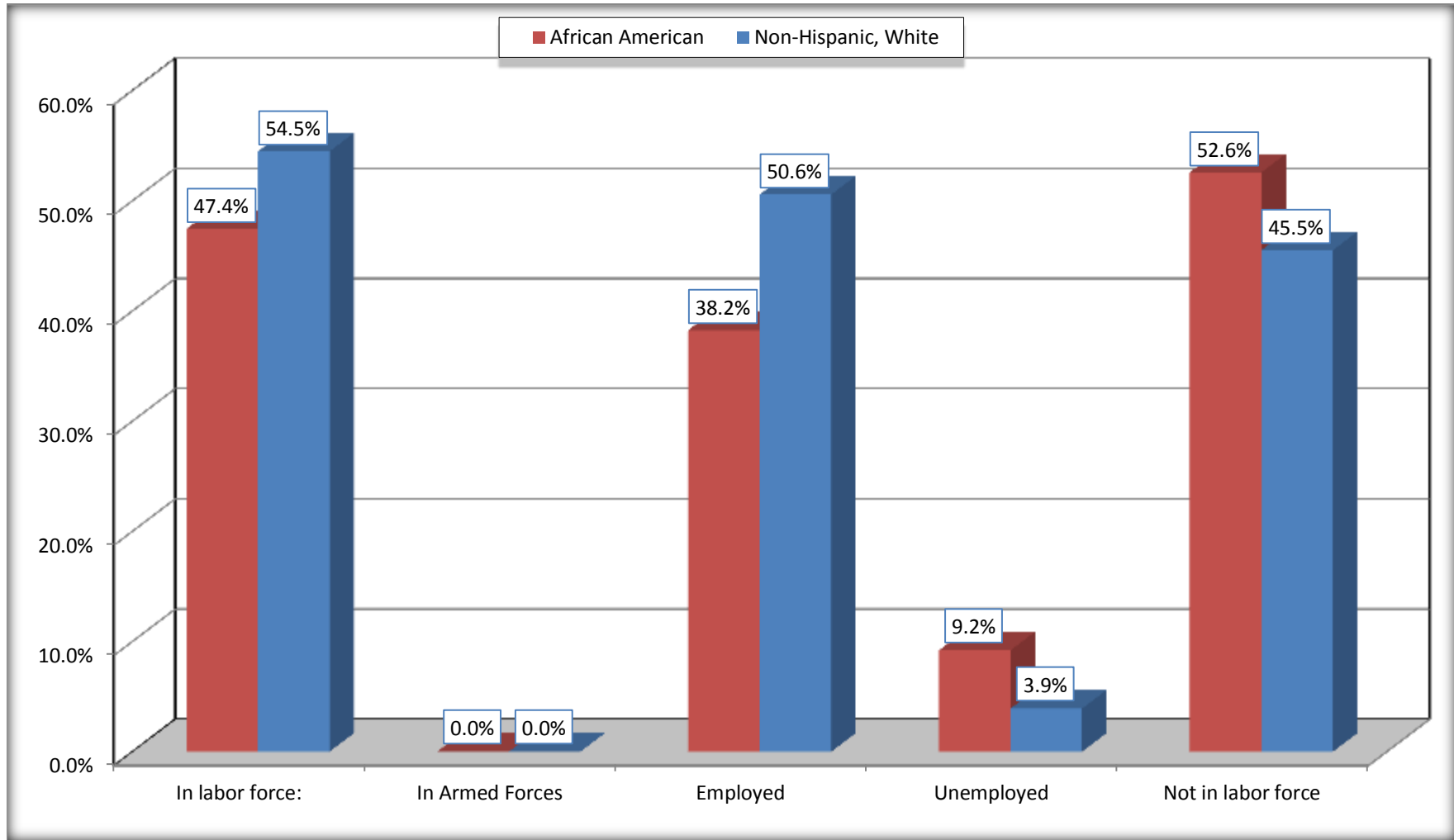
	Irwin County, Georgia					
	African American	Margin of Error (+/-)	% of AA Total	White, Not Hispanic	Margin of Error (+/-)	% of NHW Total
Female:	1,020	59	48.1%	2,790	52	51.8%
16 to 64 years:	891	88	42.0%	2,078	52	38.5%
In labor force:	527	112	24.8%	1,188	199	22.0%
In Armed Forces	0	19	0.0%	0	19	0.0%
Civilian:	527	112	24.8%	1,188	199	22.0%
Employed	481	130	22.7%	1,058	180	19.6%
Unemployed	46	57	2.2%	130	84	2.4%
Not in labor force	364	129	17.2%	890	190	16.5%
65 years and over:	129	66	6.1%	712	19	13.2%
In labor force:	0	19	0.0%	58	42	1.1%
Employed	0	19	0.0%	58	42	1.1%
Unemployed	0	19	0.0%	0	19	0.0%
Not in labor force	129	66	6.1%	654	42	12.1%

Source: U.S. Census Bureau, 2008-2012 American Community Survey

For information on confidentiality protection, sampling error, nonsampling error, and definitions, see Survey Methodology.
<http://www.census.gov/acs/www/UseData/index.htm>

Employment Status for the Population 16 years and over

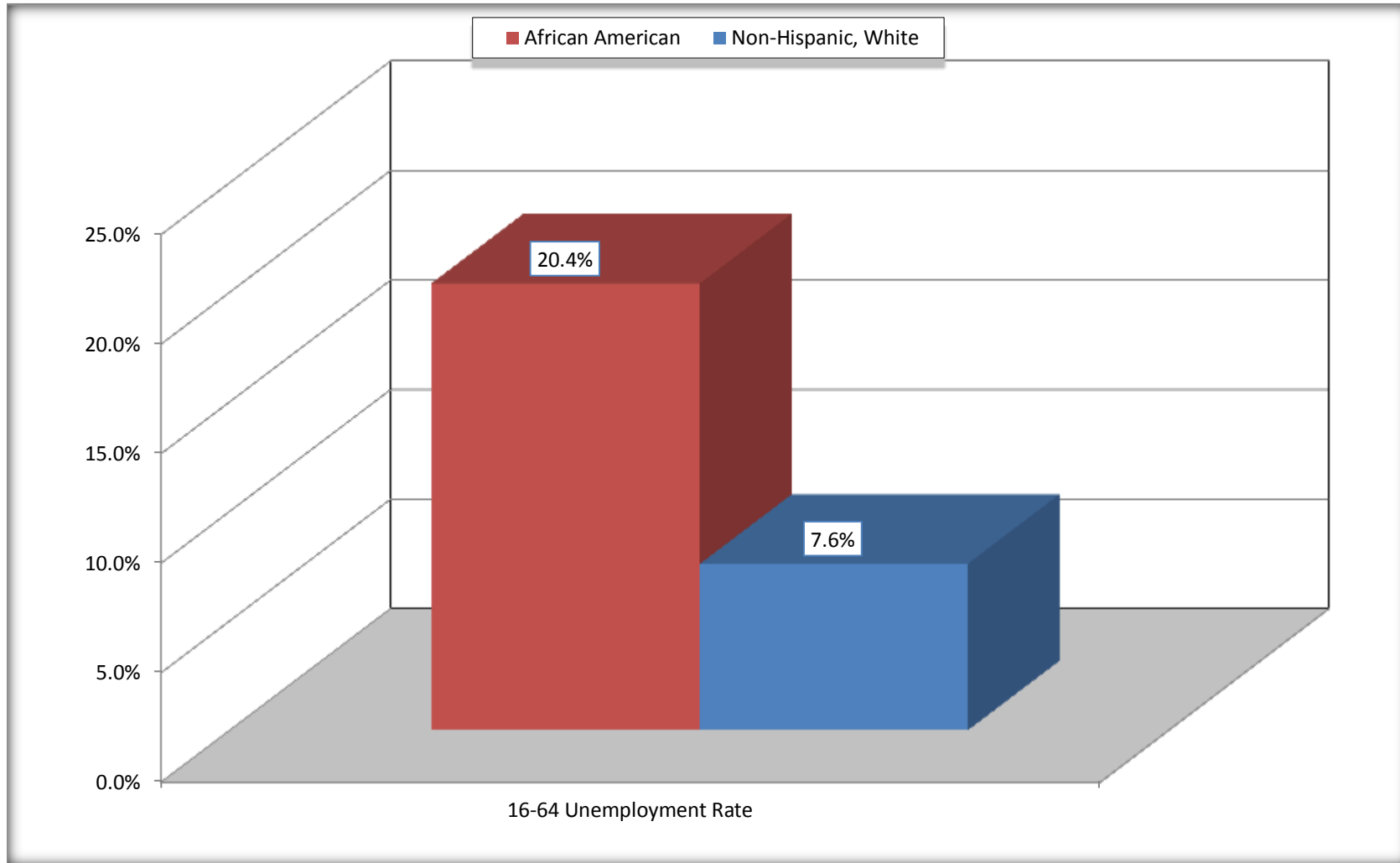
Irwin County, Georgia



Source: C23002. SEX BY AGE BY EMPLOYMENT STATUS FOR THE POPULATION 16 YEARS AND OVER
Data Set: 2008-2012 American Community Survey 5-Year Estimates

Unemployment of Working Age Population (Ages 16 to 64) (As a Percent of 16-64 Civilian Labor Force)

Irwin County, Georgia



Source: C23002. SEX BY AGE BY EMPLOYMENT STATUS FOR THE POPULATION 16 YEARS AND OVER
Data Set: 2008-2012 American Community Survey 5-Year Estimates

C24010. SEX BY OCCUPATION FOR THE CIVILIAN EMPLOYED POPULATION 16 YEARS AND OVER

Data Set: 2008-2012 American Community Survey 5-Year Estimates

	Irwin County, Georgia					
	African American	Margin of Error (+/-)	% of AA Total	White, Not Hispanic	Margin of Error (+/-)	% of NHW Total
Total:	811	195	100.0%	2,726	257	100.0%
Management, professional, and related occupations	60	NC	7.4%	776	NC	28.5%
Service occupations	269	NC	33.2%	390	NC	14.3%
Sales and office occupations	101	NC	12.5%	739	NC	27.1%
Natural resources, construction, and maintenance occupations:	57	NC	7.0%	316	NC	11.6%
Production, transportation, and material moving occupations	324	NC	40.0%	505	NC	18.5%
Male:	330	116	40.7%	1,610	135	59.1%
Management, business, science, and arts occupations:	21	28	2.6%	407	159	14.9%
Service occupations	59	54	7.3%	176	116	6.5%
Sales and office occupations	21	27	2.6%	318	187	11.7%
Natural resources, construction, and maintenance occupations:	57	60	7.0%	316	120	11.6%
Production, transportation, and material moving occupations	172	90	21.2%	393	148	14.4%
Female:	481	130	59.3%	1,116	193	40.9%
Management, professional, and related occupations	39	32	4.8%	369	101	13.5%
Service occupations	210	116	25.9%	214	108	7.9%
Sales and office occupations	80	80	9.9%	421	145	15.4%
Natural resources, construction, and maintenance occupations:	0	19	0.0%	0	19	0.0%
Production, transportation, and material moving occupations	152	94	18.7%	112	80	4.1%

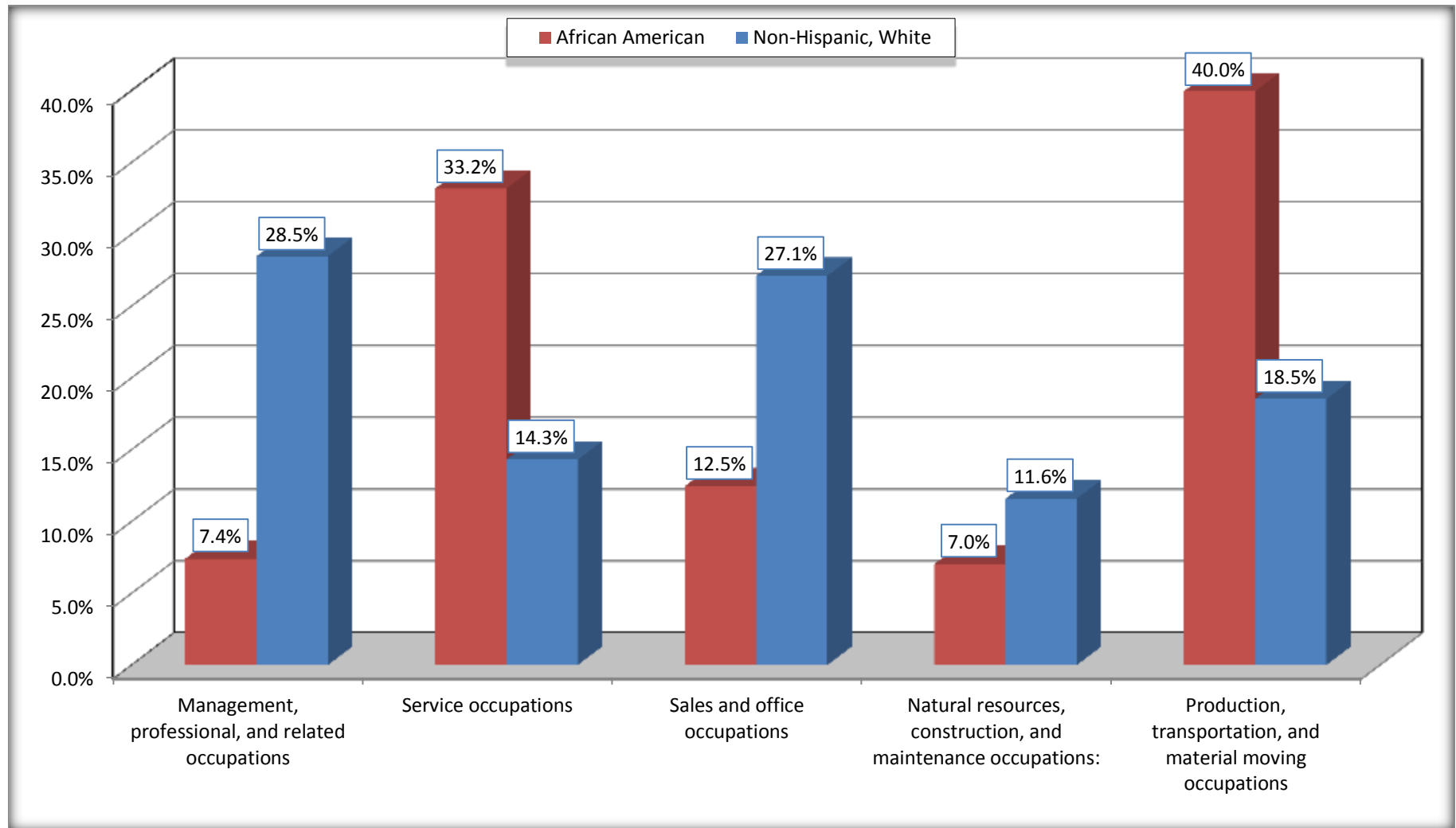
Source: U.S. Census Bureau, 2008-2012 American Community Survey

For information on confidentiality protection, sampling error, nonsampling error, and definitions, see Survey Methodology.

<http://www.census.gov/acs/www/UseData/index.htm>

Occupation for the Civilian Employed 16 Years and Over Population

Irwin County, Georgia



Source: C24010. SEX BY OCCUPATION FOR THE CIVILIAN EMPLOYED POPULATION 16 YEARS AND OVER
Data Set: 2008-2012 American Community Survey 5-Year Estimates

B25003. TENURE - Universe: OCCUPIED HOUSING UNITS

Data Set: 2008-2012 American Community Survey 5-Year Estimates

	Irwin County, Georgia					
	African American	Margin of Error (+/-)	% of AA Total	White, Not Hispanic	Margin of Error (+/-)	% of NHW Total
Total:	833	131	100.0%	2,352	169	100.0%
Owner occupied	458	123	55.0%	1,906	201	81.0%
Renter occupied	375	150	45.0%	446	125	19.0%

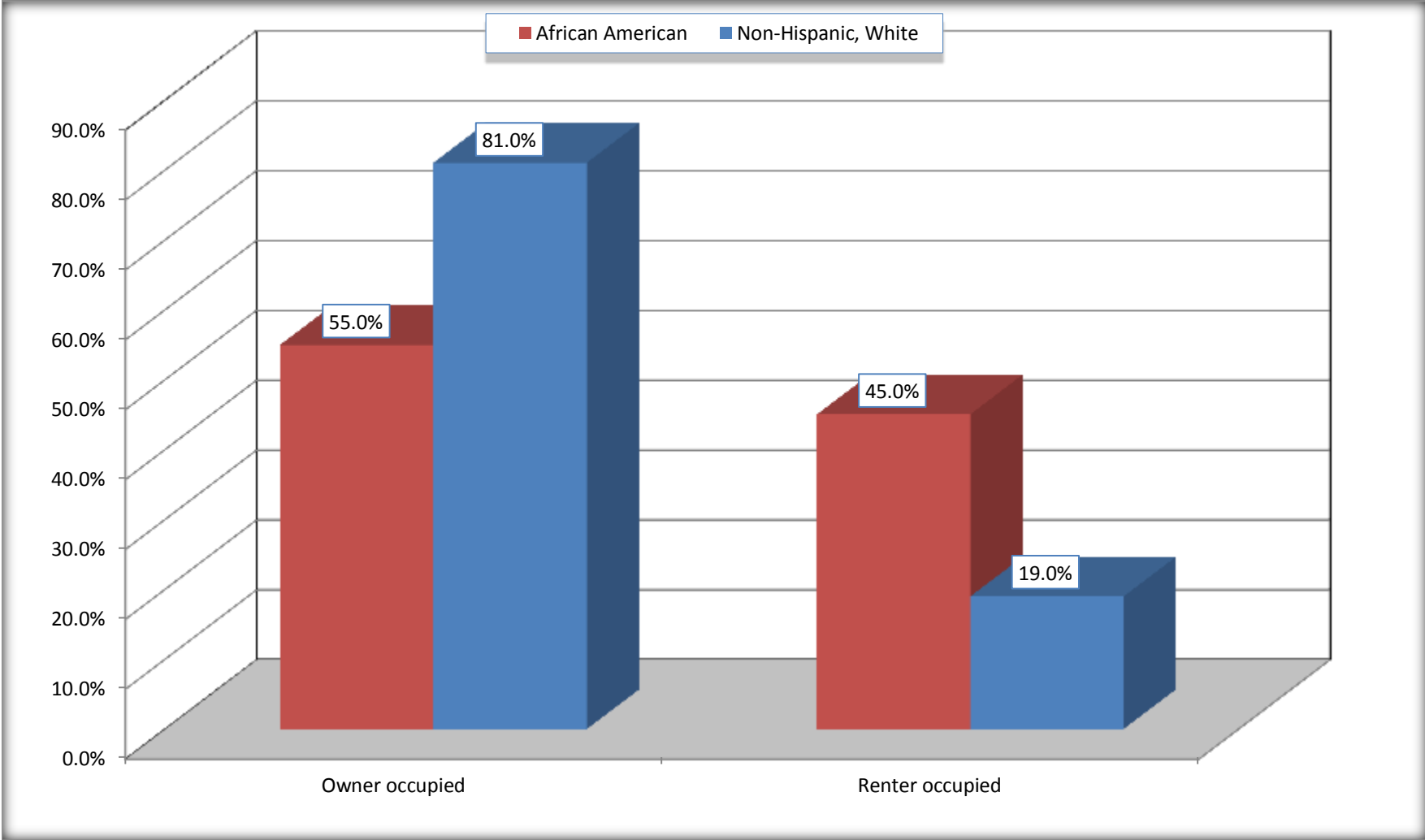
Source: U.S. Census Bureau, 2008-2012 American Community Survey

For information on confidentiality protection, sampling error, nonsampling error, and definitions, see Survey Methodology.

<http://www.census.gov/acs/www/UseData/index.h>

Home Owners and Renters by Household

Irwin County, Georgia



Source: B25003. TENURE - Universe: OCCUPIED HOUSING UNITS
Data Set: 2008-2012 American Community Survey 5-Year Estimates

B25014. OCCUPANTS PER ROOM - Universe: OCCUPIED HOUSING UNITS

Data Set: 2008-2012 American Community Survey 5-Year Estimates

	Irwin County, Georgia					
	African American	Margin of Error (+/-)	% of AA Total	White, Not Hispanic	Margin of Error (+/-)	% of NHW Total
Total:	833	131	100.0%	2,352	169	100.0%
1.00 or less occupants per room	795	132	95.4%	2,318	169	98.6%
1.01 or more occupants per room	38	52	4.6%	34	35	1.4%

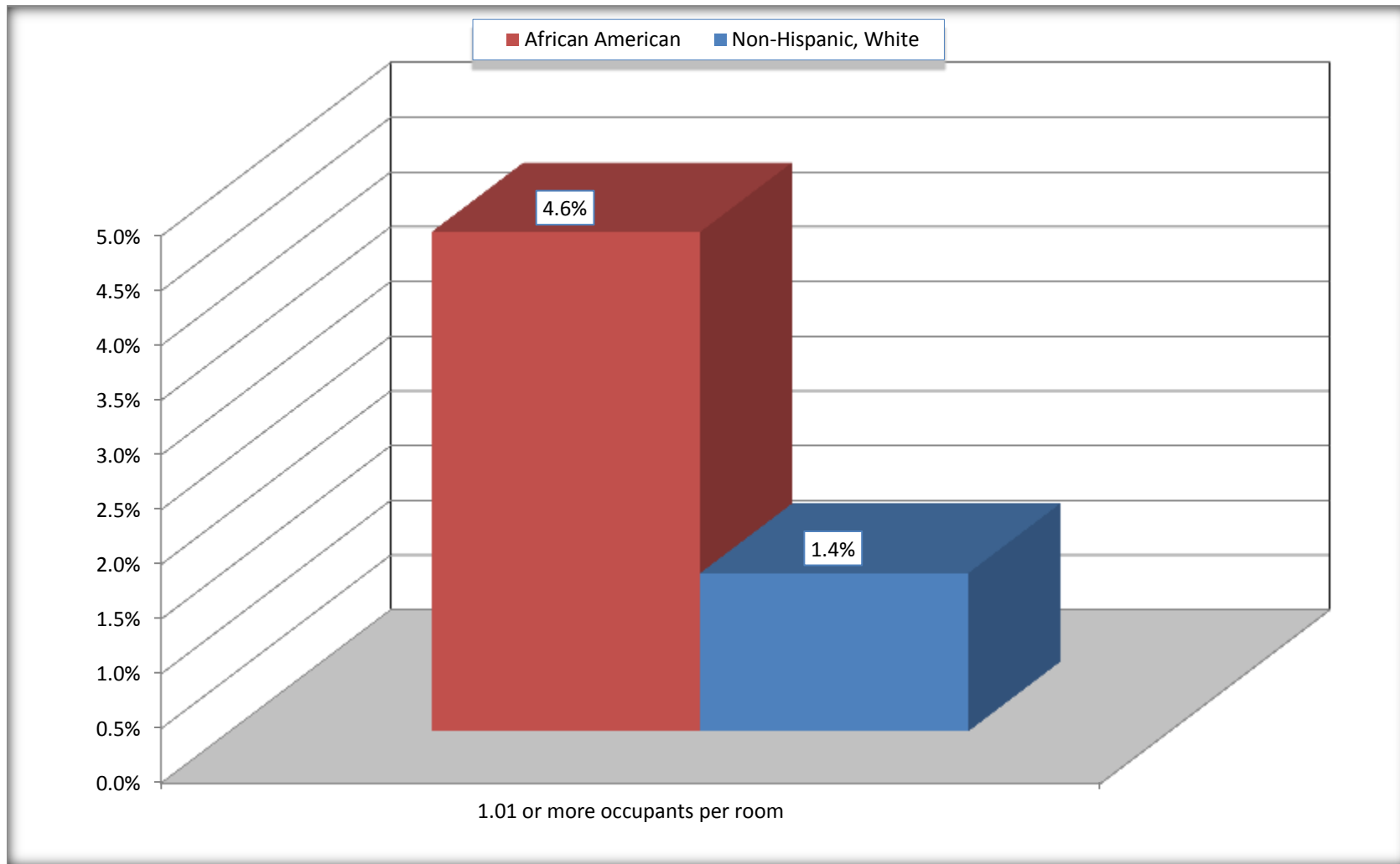
Source: U.S. Census Bureau, 2008-2012 American Community Survey

For information on confidentiality protection, sampling error, nonsampling error, and definitions, see Survey Methodology.

<http://www.census.gov/acs/www/UseData/index.ht>

More than One Person per Room (Crowding) by Household

Irwin County, Georgia



Source: B25014. OCCUPANTS PER ROOM - Universe: OCCUPIED HOUSING UNITS
Data Set: 2008-2012 American Community Survey 5-Year Estimates

B18101. AGE BY DISABILITY STATUS

Data Set: 2008-2012 American Community Survey 5-Year Estimates

	Irwin County, Georgia					
	African American	Margin of Error (+/-)	% of AA Total	White, Not Hispanic	Margin of Error (+/-)	% of NHW Total
Total:	2,463	159	100.0%	6,427	103	100.0%
Under 18 years:	730	80	29.6%	1,480	41	23.0%
With a disability	11	18	0.4%	40	41	0.6%
No disability	719	84	29.2%	1,440	46	22.4%
18 to 64 years:	1,546	139	62.8%	3,800	83	59.1%
With a disability	273	104	11.1%	572	157	8.9%
No disability	1,273	175	51.7%	3,228	171	50.2%
65 years and over:	187	65	7.6%	1,147	62	17.8%
With a disability	48	41	1.9%	682	131	10.6%
No disability	139	61	5.6%	465	127	7.2%

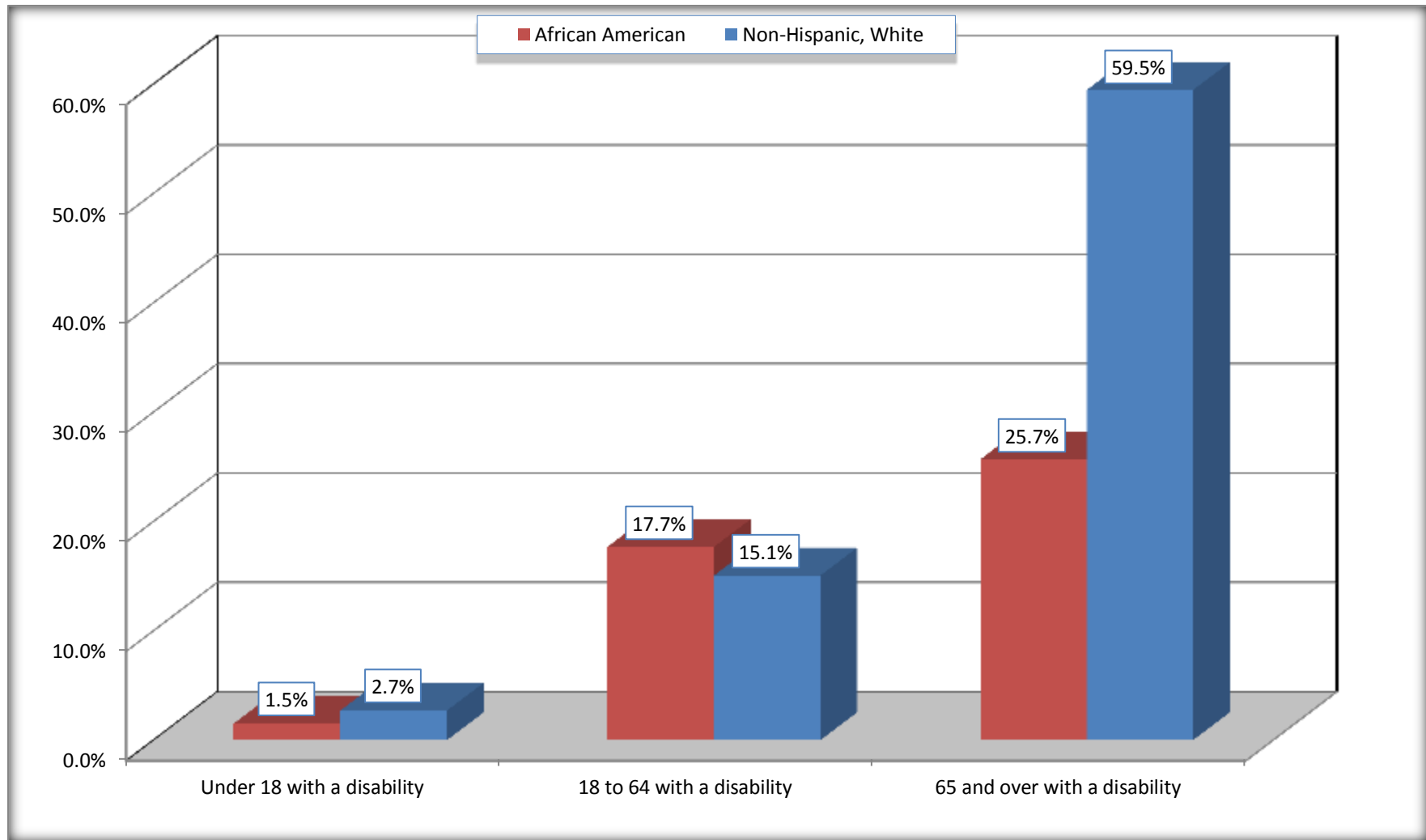
Source: U.S. Census Bureau, 2008-2012 American Community Survey

For information on confidentiality protection, sampling error, nonsampling error, and definitions, see Survey Methodology.

<http://www.census.gov/acs/www/UseData/index.htm>

Disability by Age

Irwin County, Georgia



Source: B18101. AGE BY DISABILITY STATUS
Data Set: 2008-2012 American Community Survey 5-Year Estimates

C27001B. HEALTH INSURANCE COVERAGE STATUS BY AGE

Data Set: 2008-2012 American Community Survey 5-Year Estimates

	Irwin County, Georgia					
	African American	Margin of Error (+/-)	% of AA Total	White, Not Hispanic	Margin of Error (+/-)	% of NHW Total
Total:	2,463	159	100.0%	6,427	103	100.0%
Under 18 years:	730	80	29.6%	1,480	26	23.0%
With health insurance coverage	626	118	25.4%	1,467	38	22.8%
No health insurance coverage	104	103	4.2%	13	28	0.2%
18 to 64 years:	1,546	139	62.8%	3,800	83	59.1%
With health insurance coverage	804	206	32.6%	2,752	259	42.8%
No health insurance coverage	742	222	30.1%	1,048	243	16.3%
65 years and over:	187	65	7.6%	1,147	62	17.8%
With health insurance coverage	187	65	7.6%	1,147	62	17.8%
No health insurance coverage	0	19	0.0%	0	19	0.0%

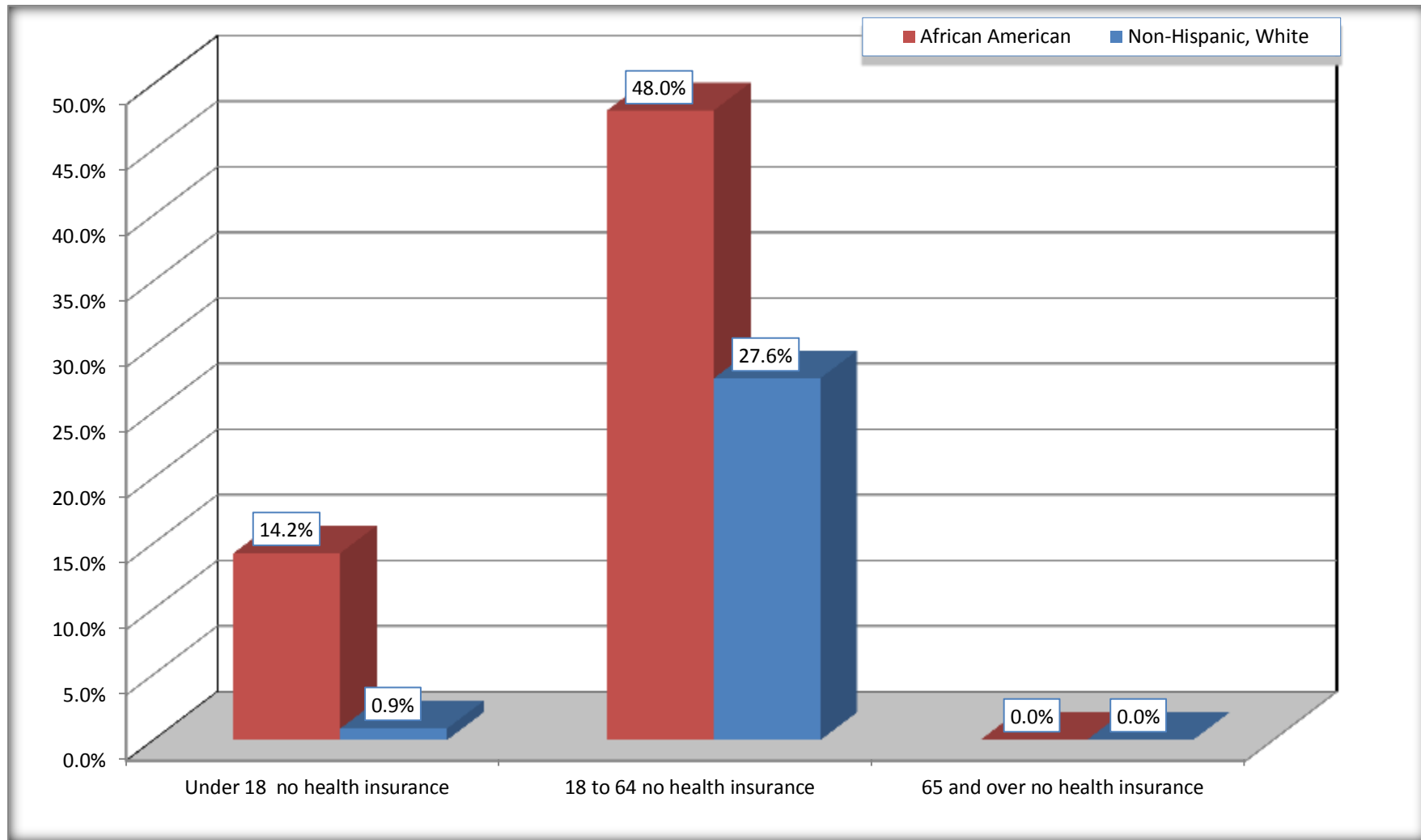
Source: U.S. Census Bureau, 2008-2012 American Community Survey

For information on confidentiality protection, sampling error, nonsampling error, and definitions, see Survey Methodology.

<http://www.census.gov/acs/www/UseData/index.htm>

Lack of Health Insurance Coverage by Age

Irwin County, Georgia



Source: C27001B. HEALTH INSURANCE COVERAGE STATUS BY AGE
Data Set: 2008-2012 American Community Survey 5-Year Estimates