

Selected Socio-Economic Data

Hampton city, Georgia

African American and White, Not Hispanic

Data Set: 2008-2012 American Community Survey 5-Year Estimates

www.fairvote2020.org

www.fairdata2000.com

[29-Dec-13](#)

C02003.DETAILED RACE - Universe: TOTAL POPULATION
 Data Set: 2008-2012 American Community Survey 5-Year Estimates

	Hampton city, Georgia		
	Population	Margin of Error (+/-)	% of Total
Total:	6,915	28	100.0%
Population of one race:	6,520	328	94.3%
White	3,843	577	55.6%
Black or African American	2,249	592	32.5%
American Indian and Alaska Native	100	105	1.4%
Asian alone	108	143	1.6%
Native Hawaiian and Other Pacific Islander	0	19	0.0%
Some other race	220	245	3.2%
Population of two or more races:	395	332	5.7%
Two races including Some other race	0	19	0.0%
Two races excluding Some other race, and three or more races	395	332	5.7%
Population of two races:	131	95	1.9%
White; Black or African American	77	74	1.1%
White; American Indian and Alaska Native	0	19	0.0%
White; Asian	0	19	0.0%
Black or African American; American Indian and Alaska Native	0	19	0.0%
All other two race combinations	54	64	0.8%
Population of three races	122	132	1.8%
Population of four or more races	142	208	2.1%

Note: Hispanics may be of any race. See Table B03002 and chart.

Source: U.S. Census Bureau, 2008-2012 American Community Survey

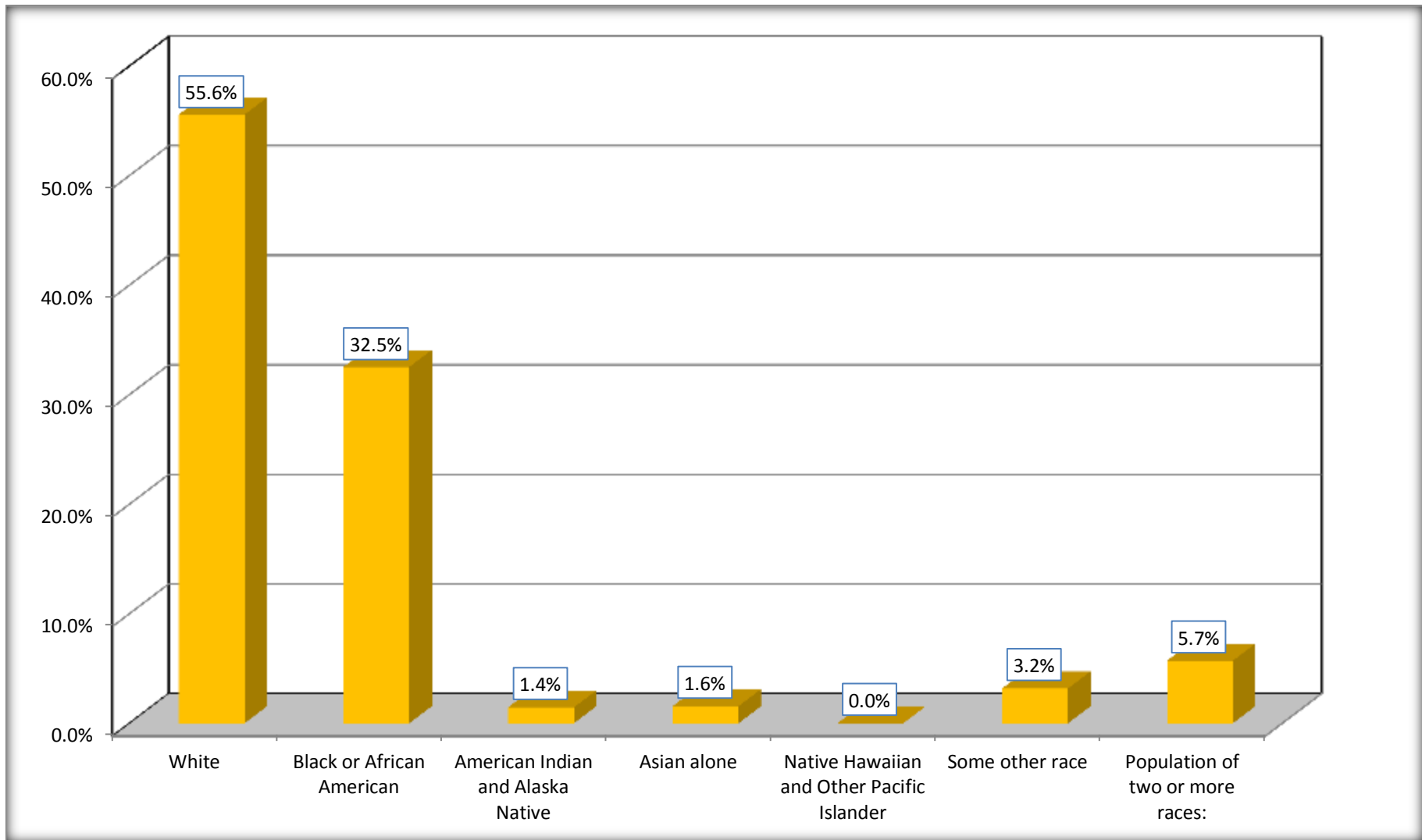
Although the American Community Survey (ACS) produces population, demographic and housing unit estimates, it is the Census Bureau's Population Estimates Program that produces and disseminates the official estimates of the population for the nation, states, counties, cities and towns and estimates of housing units for states and counties.

For information on confidentiality protection, sampling error, nonsampling error, and definitions, see Survey Methodology.

<http://www.census.gov/acs/www/UseData/index.htm>

Population by Race

Hampton city, Georgia



Source: C02003.DETAILED RACE - Universe: TOTAL POPULATION
Data Set: 2008-2012 American Community Survey 5-Year Estimates

B03002. HISPANIC OR LATINO ORIGIN BY RACE - Universe: TOTAL POPULATION

Data Set: 2008-2012 American Community Survey 5-Year Estimates

	Hampton city, Georgia		
	Population	Margin of Error (+/-)	% of Total
Total:	6,915	28	100.0%
Not Hispanic or Latino:	6,298	316	91.1%
White alone	3,586	612	51.9%
Black or African American alone	2,233	592	32.3%
American Indian and Alaska Native alone	11	21	0.2%
Asian alone	108	143	1.6%
Native Hawaiian and Other Pacific Islander alone	0	19	0.0%
Some other race alone	7	14	0.1%
Two or more races:	353	327	5.1%
Two races including Some other race	0	19	0.0%
Two races excluding Some other race, and three or more races	353	327	5.1%
Hispanic or Latino	617	317	8.9%

Source: U.S. Census Bureau, 2008-2012 American Community Survey

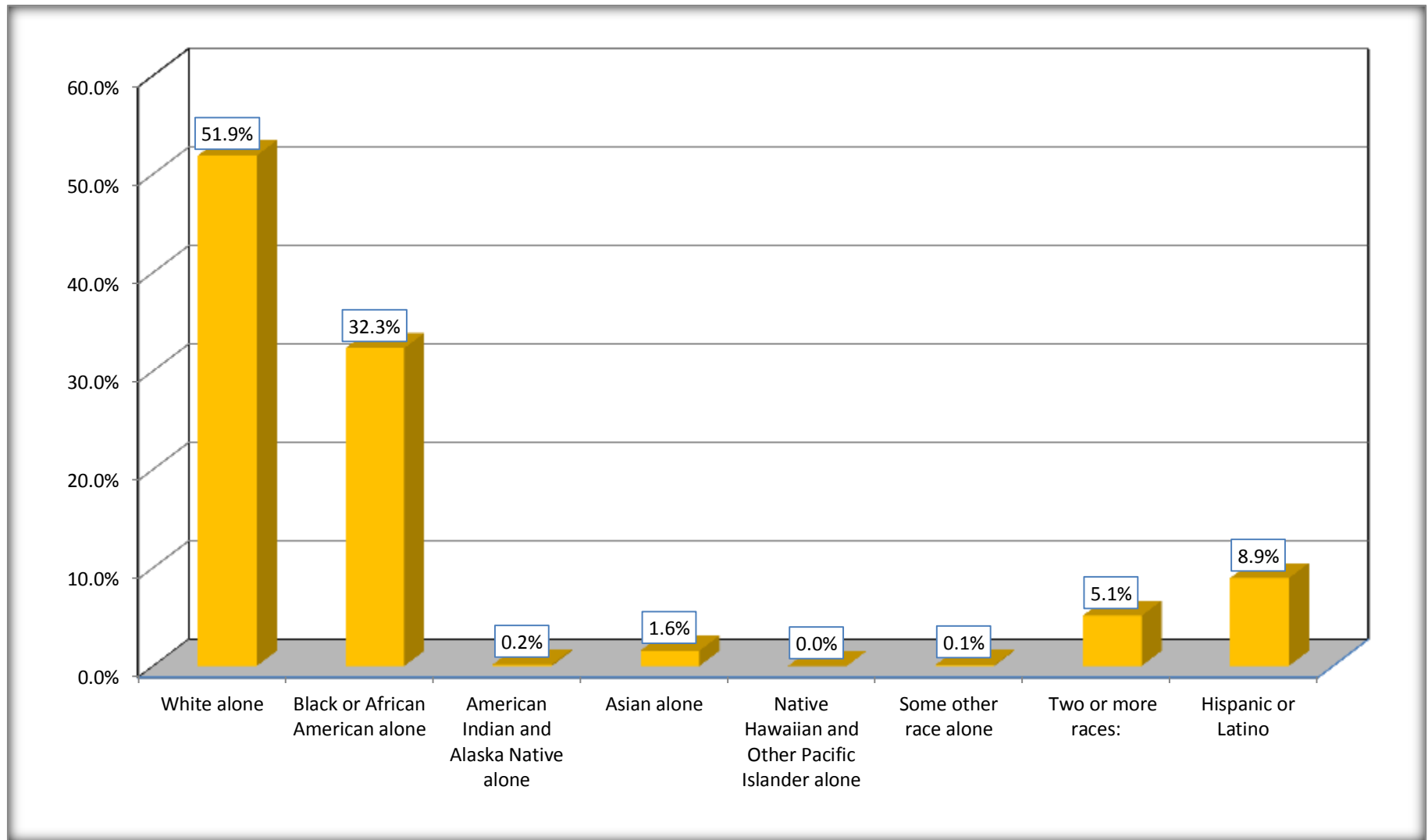
Although the American Community Survey (ACS) produces population, demographic and housing unit estimates, it is the Census Bureau's Population Estimates Program that produces and disseminates the official estimates of the population for the nation, states, counties, cities and towns and estimates of housing units for states and counties.

For information on confidentiality protection, sampling error, nonsampling error, and definitions, see Survey Methodology.

<http://www.census.gov/acs/www/UseData/index.htm>

Non-Hispanic by Race and Hispanic Population

Hampton city, Georgia



Source: B03002. HISPANIC OR LATINO ORIGIN BY RACE - Universe: TOTAL POPULATION
Data Set: 2008-2012 American Community Survey 5-Year Estimates

B03002. HISPANIC OR LATINO ORIGIN BY RACE

Data Set: 2008-2012 American Community Survey 5-Year Estimates

	Hampton city, Georgia		
	Population	Margin of Error (+/-)	% of Total
Hispanic or Latino:	617	317	100.0%
White alone	257	234	41.7%
Black or African American alone	16	25	2.6%
American Indian and Alaska Native alone	89	101	14.4%
Asian alone	0	19	0.0%
Native Hawaiian and Other Pacific Islander alone	0	19	0.0%
Some other race alone	213	244	34.5%
Two or more races:	42	48	6.8%
Two races including Some other race	0	19	0.0%
Two races excluding Some other race, and three or more races	42	48	6.8%

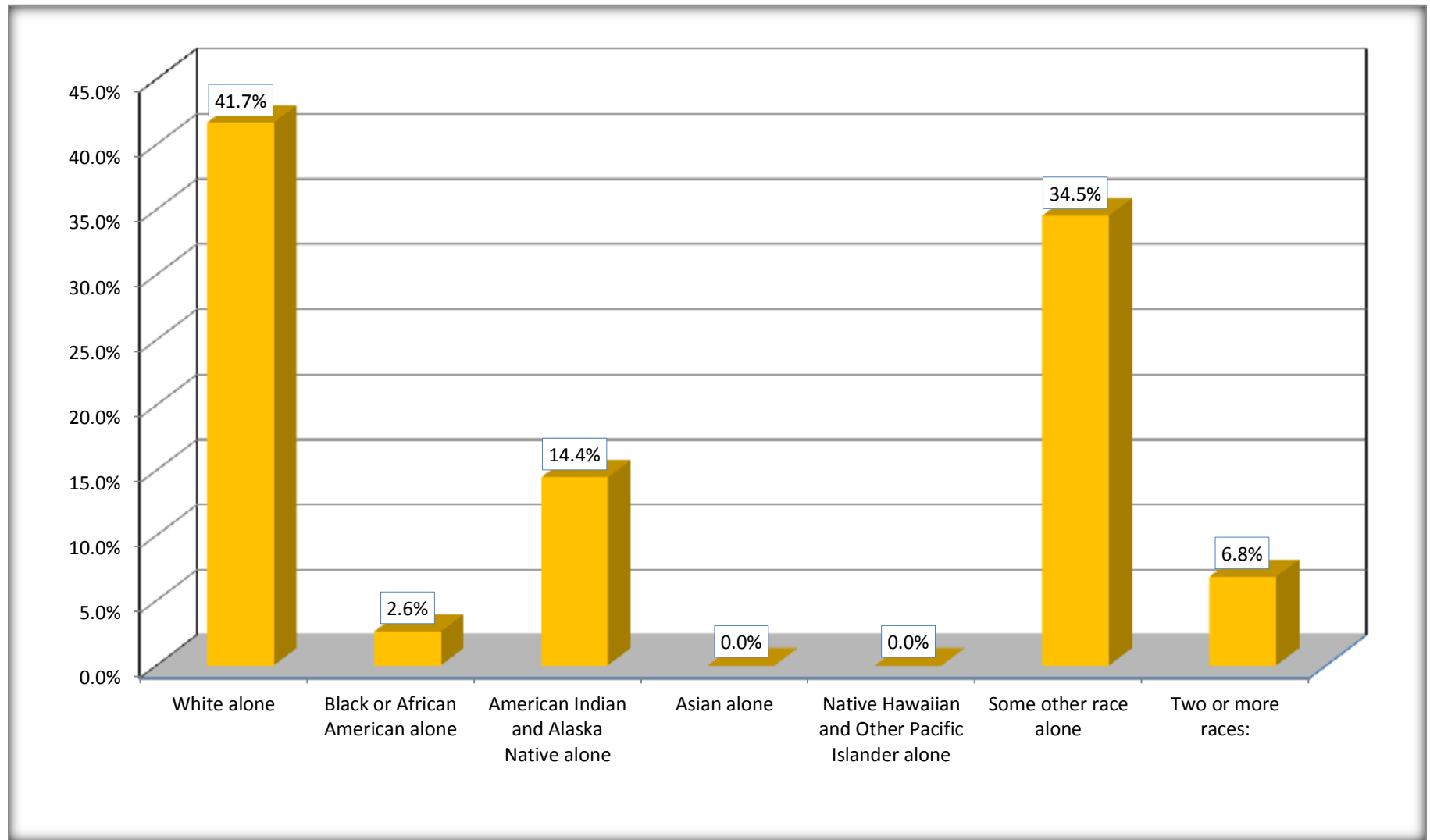
Source: U.S. Census Bureau, 2008-2012 American Community Survey

Although the American Community Survey (ACS) produces population, demographic and housing unit estimates, it is the Census Bureau's Population Estimates Program that produces and disseminates the official estimates of the population for the nation, states, counties, cities and towns and estimates of housing units for states and counties.

For information on confidentiality protection, sampling error, nonsampling error, and definitions, see Survey Methodology.

<http://www.census.gov/acs/www/UseData/index.htm>

Hispanic or Latino Origin by Race Hampton city, Georgia



Source: B03002. HISPANIC OR LATINO ORIGIN BY RACE
Data Set: 2008-2012 American Community Survey 5-Year Estimates

B01001. SEX BY AGE

Data Set: 2008-2012 American Community Survey 5-Year Estimates

	Hampton city, Georgia					
	African American	Margin of Error (+/-)	% of AA Total	White, Not Hispanic	Margin of Error (+/-)	% of NHW Total
Total:	2,249	592	100.0%	3,586	612	100.0%
Under 18 years	971	NC	43.2%	1,304	NC	36.4%
18 to 64 years	1,254	NC	55.8%	2,017	NC	56.2%
65 years and over	24	NC	1.1%	265	NC	7.4%
Male:	1,299	424	57.8%	1,548	389	43.2%
Under 18 years	554	NC	24.6%	565	NC	15.8%
18 to 64 years	745	NC	33.1%	900	NC	25.1%
65 years and over	0	NC	0.0%	83	NC	2.3%
Female:	950	314	42.2%	2,038	412	56.8%
Under 18 years	417	NC	18.5%	739	NC	20.6%
18 to 64 years	509	NC	22.6%	1,117	NC	31.1%
65 years and over	24	NC	1.1%	182	NC	5.1%

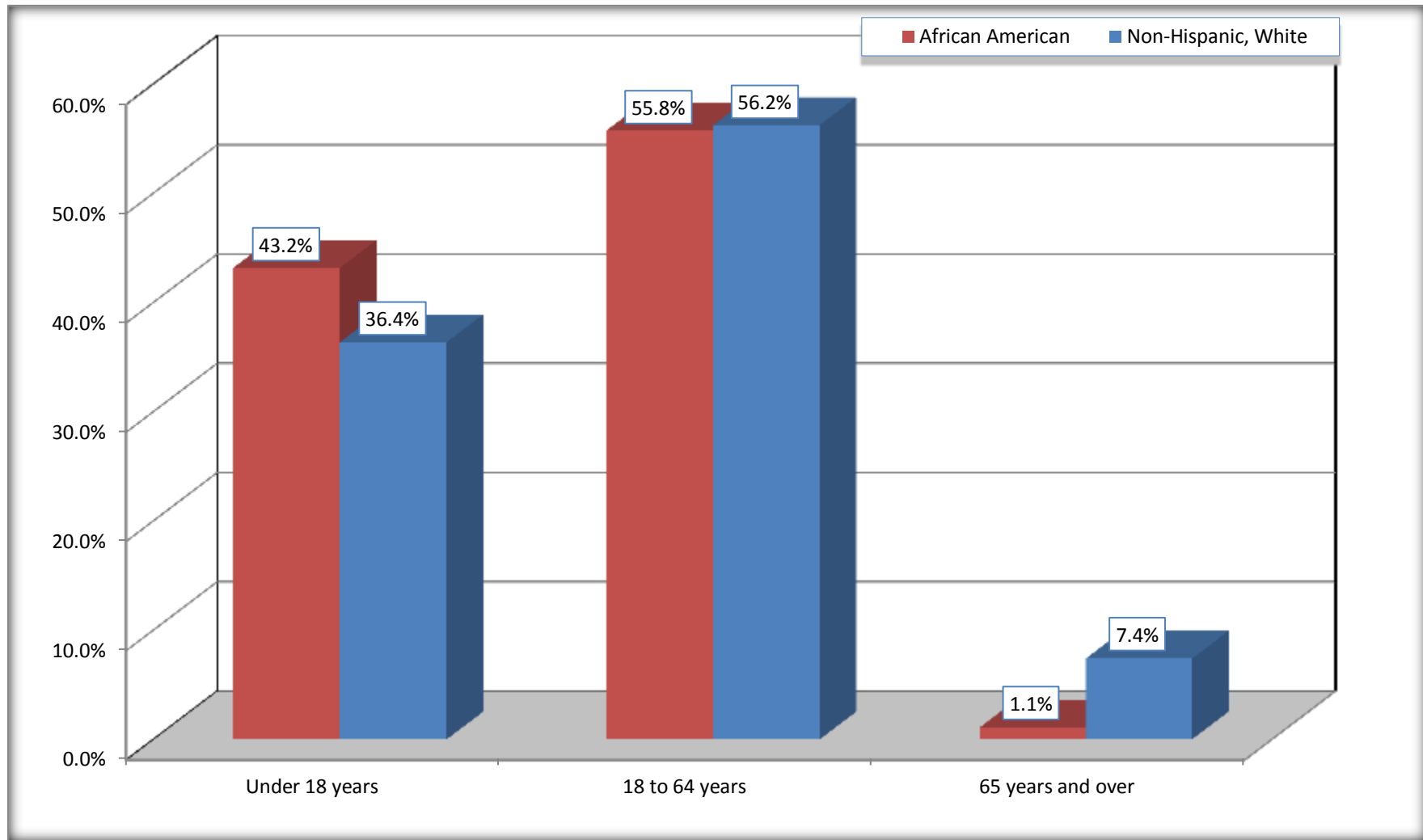
Source: U.S. Census Bureau, 2008-2012 American Community Survey

Although the American Community Survey (ACS) produces population, demographic and housing unit estimates, it is the Census Bureau's Population Estimates Program that produces and disseminates the official estimates of the population for the nation, states, counties, cities and towns and estimates of housing units for states and counties.

For information on confidentiality protection, sampling error, nonsampling error, and definitions, see Survey Methodology.
<http://www.census.gov/acs/www/UseData/index.htm>

Population by Age

Hampton city, Georgia



Source: B01001. SEX BY AGE
Data Set: 2008-2012 American Community Survey 5-Year Estimates

B05003. SEX BY AGE BY CITIZENSHIP STATUS

Data Set: 2008-2012 American Community Survey 5-Year Estimates

	Hampton city, Georgia					
	African American	Margin of Error (+/-)	% of AA Total by Age	White, Not Hispanic	Margin of Error (+/-)	% of NHW Total by Age
Total:	2,249	592	100.0%	3,586	612	100.0%
Under 18 years:	971	NC	100.0%	1,304	NC	100.0%
Native	965	NC	99.4%	1,304	NC	100.0%
Foreign born:	6	NC	0.6%	0	NC	0.0%
Naturalized U.S. citizen	6	NC	0.6%	0	NC	0.0%
Not a U.S. citizen	0	NC	0.0%	0	NC	0.0%
18 years and over:	1,278	NC	100.0%	2,282	NC	100.0%
Native	1,096	NC	85.8%	2,282	NC	100.0%
Foreign born:	182	NC	14.2%	0	NC	0.0%
Naturalized U.S. citizen	119	NC	9.3%	0	NC	0.0%
Not a U.S. citizen	63	NC	4.9%	0	NC	0.0%
Male:	1,299	424	57.8%	1,548	358	43.2%
Under 18 years:	554	262	100.0%	565	175	100.0%
Native	548	263	98.9%	565	175	100.0%
Foreign born:	6	10	1.1%	0	19	0.0%
Naturalized U.S. citizen	6	10	1.1%	0	19	0.0%
Not a U.S. citizen	0	19	0.0%	0	19	0.0%
18 years and over:	745	312	100.0%	983	285	100.0%
Native	620	309	83.2%	983	285	100.0%
Foreign born:	125	84	16.8%	0	19	0.0%
Naturalized U.S. citizen	114	87	15.3%	0	19	0.0%
Not a U.S. citizen	11	18	1.5%	0	19	0.0%

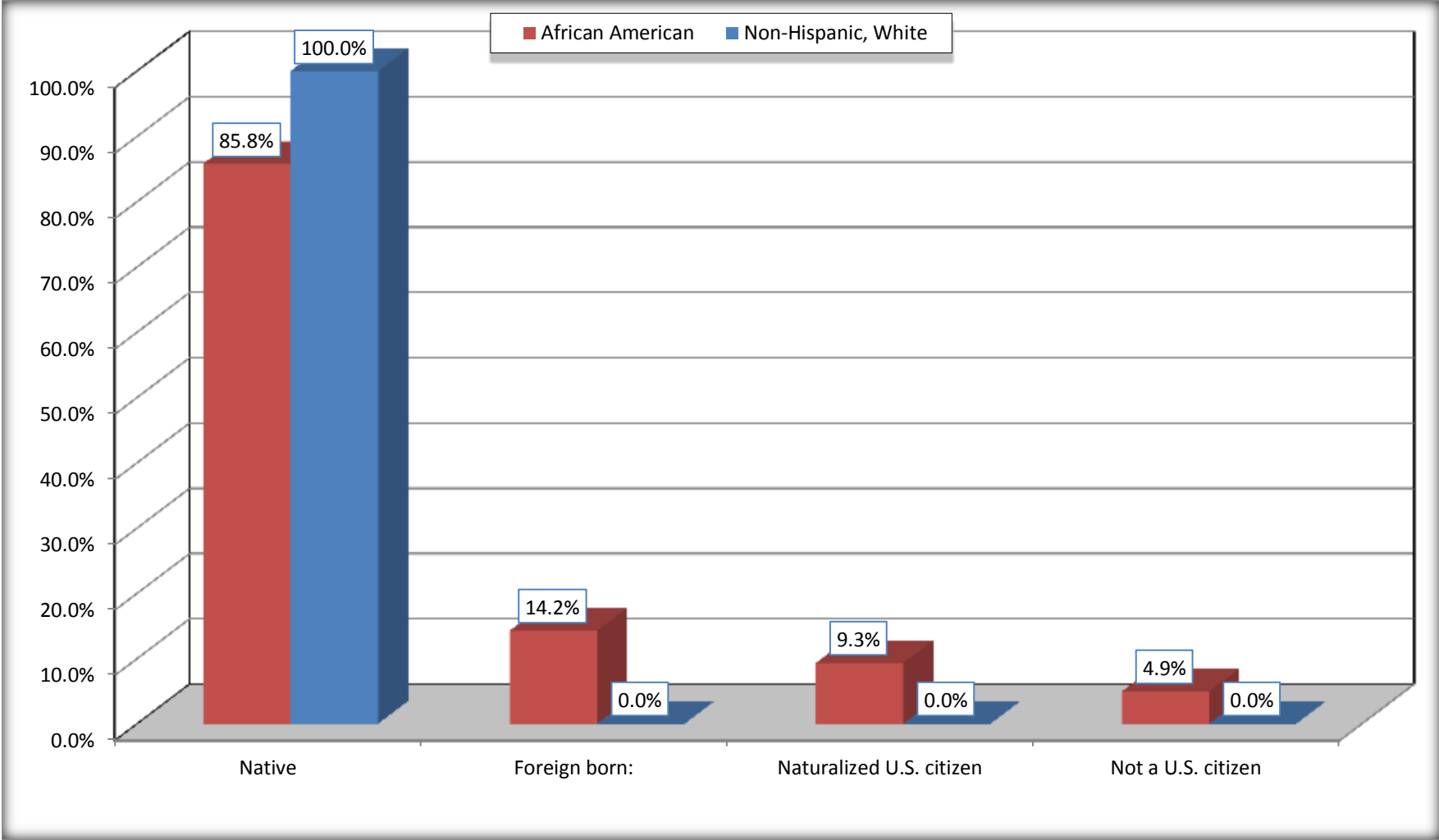
	Hampton city, Georgia					
	African American	Margin of Error (+/-)	% of AA by Age	White, Not Hispanic	Margin of Error (+/-)	% of NHW by Age
Female:	950	314	42.2%	2,038	370	56.8%
Under 18 years:	417	215	100.0%	739	225	100.0%
Native	417	215	100.0%	739	225	100.0%
Foreign born:	0	19	0.0%	0	19	0.0%
Naturalized U.S. citizen	0	19	0.0%	0	19	0.0%
Not a U.S. citizen	0	19	0.0%	0	19	0.0%
18 years and over:	533	152	100.0%	1,299	222	100.0%
Native	476	147	89.3%	1,299	222	100.0%
Foreign born:	57	57	10.7%	0	19	0.0%
Naturalized U.S. citizen	5	9	0.9%	0	19	0.0%
Not a U.S. citizen	52	57	9.8%	0	19	0.0%

Source: U.S. Census Bureau, 2008-2012 American Community Survey

For information on confidentiality protection, sampling error, nonsampling error, and definitions, see Survey Methodology.
<http://www.census.gov/acs/www/UseData/index.htm>

Citizenship Status of Voting Age Population (18 and Over)

Hampton city, Georgia



Source: B05003. SEX BY AGE BY CITIZENSHIP STATUS
Data Set: 2008-2012 American Community Survey 5-Year Estimates

**B07004. GEOGRAPHICAL MOBILITY IN THE PAST YEAR BY RACE FOR CURRENT RESIDENCE IN THE UNITED STATES - Universe:
POPULATION 1 YEAR AND OVER**

Data Set: 2008-2012 American Community Survey 5-Year Estimates

	Hampton city, Georgia					
	African American	Margin of Error (+/-)	% of AA Total	White, Not Hispanic	Margin of Error (+/-)	% of NHW Total
Total:	2,249	592	100.0%	3,371	565	100.0%
Same house 1 year ago	1,760	531	78.3%	3,023	577	89.7%
Moved within same county	155	222	6.9%	227	168	6.7%
Moved from different county within same state	122	105	5.4%	85	79	2.5%
Moved from different state	212	216	9.4%	36	42	1.1%
Moved from abroad	0	19	0.0%	0	19	0.0%

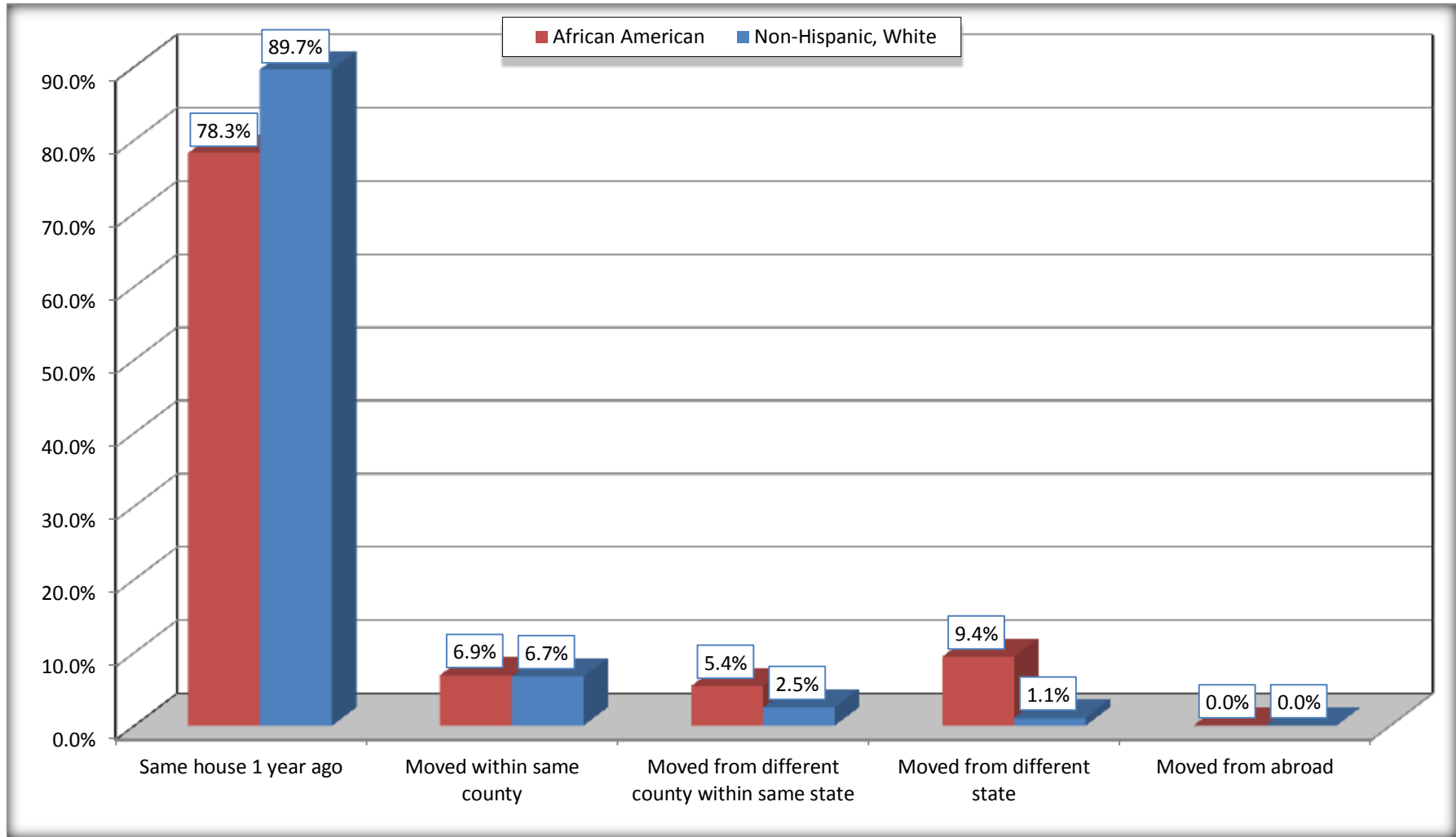
Source: U.S. Census Bureau, 2008-2012 American Community Survey

For information on confidentiality protection, sampling error, nonsampling error, and definitions, see Survey Methodology.

<http://www.census.gov/acs/www/UseData/index.htm>

Geographical Mobility in the Past Year (Population 1 Year and Over)

Hampton city, Georgia



Source: B07004. GEOGRAPHICAL MOBILITY IN THE PAST YEAR BY RACE FOR CURRENT RESIDENCE IN THE UNITED STATES - Universe: POPULATION 1 YEAR AND OVER

Data Set: 2008-2012 American Community Survey 5-Year Estimates

B08105. MEANS OF TRANSPORTATION TO WORK - Universe: WORKERS 16 YEARS AND OVER

Data Set: 2008-2012 American Community Survey 5-Year Estimates

	Hampton city, Georgia					
	African American	Margin of Error (+/-)	% of AA Total	White, Not Hispanic	Margin of Error (+/-)	% of NHW Total
Total:	821	247	100.0%	1335	321	100.0%
Car, truck, or van - drove alone	607	241	73.9%	1175	294	88.0%
Car, truck, or van - carpooled	169	176	20.6%	101	85	7.6%
Public transportation (excluding taxicab)	0	19	0.0%	0	19	0.0%
Walked	0	19	0.0%	34	52	2.5%
Taxicab, motorcycle, bicycle, or other means	33	44	4.0%	0	19	0.0%
Worked at home	12	16	1.5%	25	28	1.9%

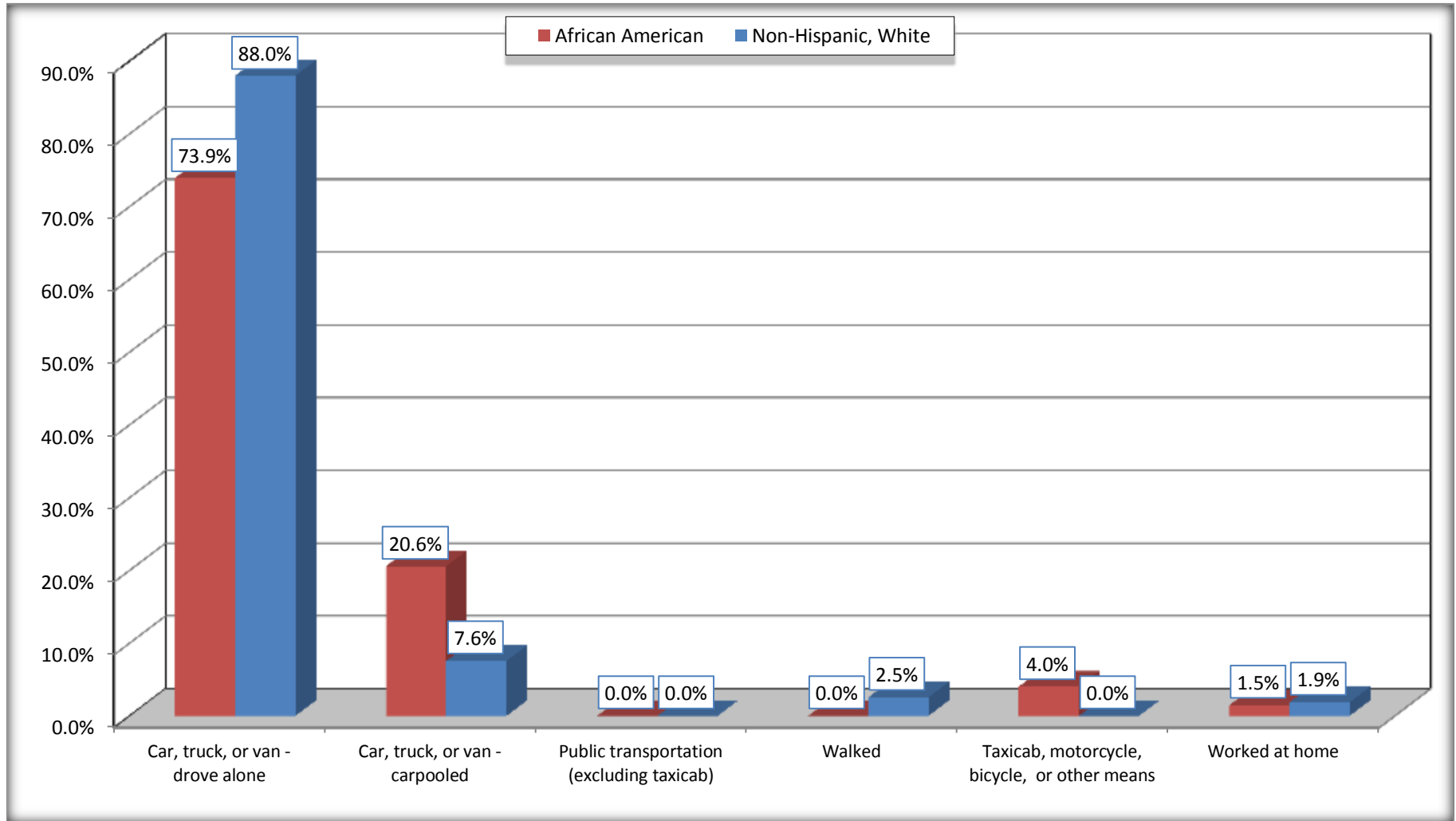
Source: U.S. Census Bureau, 2008-2012 American Community Survey

For information on confidentiality protection, sampling error, nonsampling error, and definitions, see Survey Methodology.

<http://www.census.gov/acs/www/UseData/index.htm>

Means of Transportation to Work (Workers 16 Years and Over)

Hampton city, Georgia



Source: B08105. MEANS OF TRANSPORTATION TO WORK - Universe: WORKERS 16 YEARS AND OVER
Data Set: 2008-2012 American Community Survey 5-Year Estimates

B11002. HOUSEHOLD TYPE BY RELATIVES AND NONRELATIVES FOR POPULATION IN HOUSEHOLDS

Data Set: 2008-2012 American Community Survey 5-Year Estimates

	Hampton city, Georgia					
	African American	Margin of Error (+/-)	% of AA Total	White, Not Hispanic	Margin of Error (+/-)	% of NHW Total
Total:	2175	600	100.0%	3958	636	100.0%
In family households	2077	605	95.5%	3729	647	94.2%
In nonfamily households	98	69	4.5%	229	117	5.8%

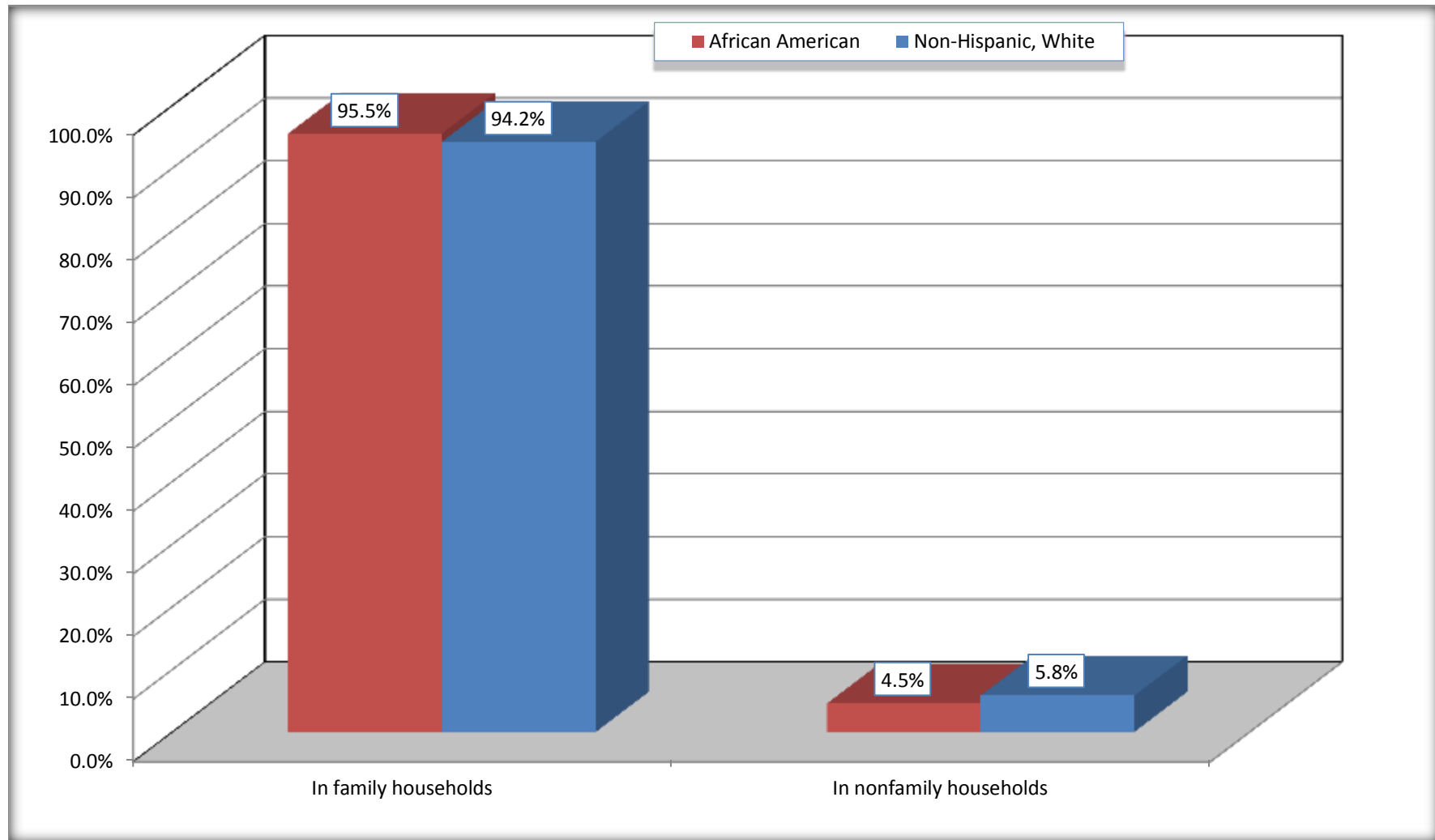
Source: U.S. Census Bureau, 2008-2012 American Community Survey

For information on confidentiality protection, sampling error, nonsampling error, and definitions, see Survey Methodology.

<http://www.census.gov/acs/www/UseData/index.htm>

Household Type for Population in Households

Hampton city, Georgia



Source: B11002. HOUSEHOLD TYPE BY RELATIVES AND NONRELATIVES FOR POPULATION IN HOUSEHOLDS
Data Set: 2008-2012 American Community Survey 5-Year Estimates

B12002. MARITAL STATUS FOR THE POPULATION 15 YEARS AND OVER

Data Set: 2008-2012 American Community Survey 5-Year Estimates

	Hampton city, Georgia					
	African American	Margin of Error (+/-)	% of AA Total	White, Not Hispanic	Margin of Error (+/-)	% of NHW Total
Total:	1,530	466	100.0%	2,448	426	100.0%
Never married	748	NC	48.9%	462	NC	18.9%
Now married (except separated)	603	NC	39.4%	1,365	NC	55.8%
Separated	61	NC	4.0%	84	NC	3.4%
Widowed	20	NC	1.3%	230	NC	9.4%
Divorced	98	NC	6.4%	307	NC	12.5%
Male:	952	385	62.2%	1,065	288	43.5%
Never married	583	382	38.1%	227	141	9.3%
Now married (except separated)	341	132	22.3%	716	187	29.2%
Separated	9	14	0.6%	27	33	1.1%
Widowed	0	19	0.0%	70	95	2.9%
Divorced	19	25	1.2%	25	32	1.0%
Female:	578	165	37.8%	1,383	229	56.5%
Never married	165	90	10.8%	235	95	9.6%
Now married (except separated)	262	126	17.1%	649	193	26.5%
Separated	52	59	3.4%	57	70	2.3%
Widowed	20	23	1.3%	160	117	6.5%
Divorced	79	60	5.2%	282	193	11.5%

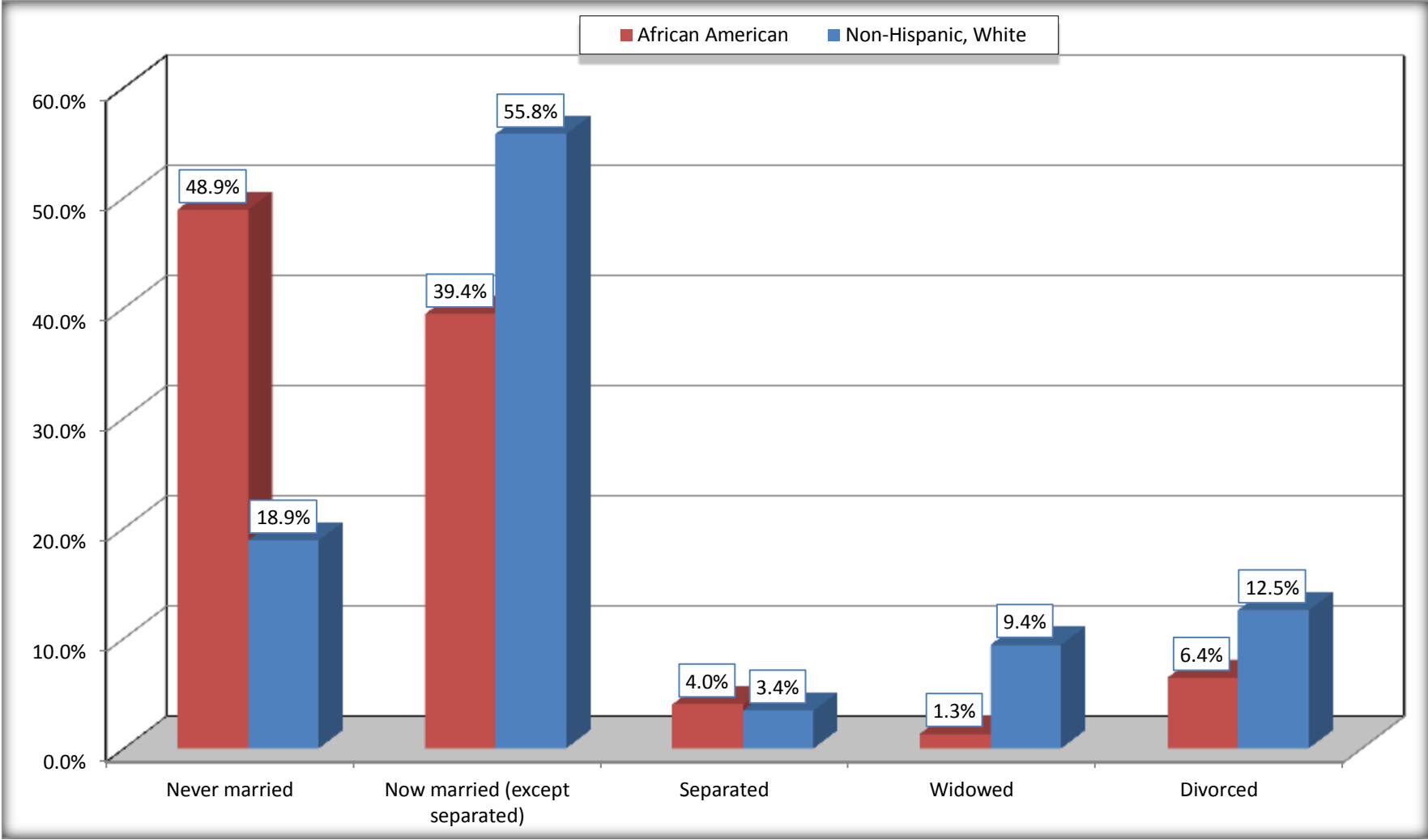
Source: U.S. Census Bureau, 2008-2012 American Community Survey

For information on confidentiality protection, sampling error, nonsampling error, and definitions, see Survey Methodology.

<http://www.census.gov/acs/www/UseData/index.htm>

Marital Status for the Population 15 Years and Over

Hampton city, Georgia



Source: B12002. MARITAL STATUS FOR THE POPULATION 15 YEARS AND OVER
Data Set: 2008-2012 American Community Survey 5-Year Estimates

C15002. SEX BY EDUCATIONAL ATTAINMENT FOR THE POPULATION 25 YEARS AND OVER

Data Set: 2008-2012 American Community Survey 5-Year Estimates

	Hampton city, Georgia					
	African American	Margin of Error (+/-)	% of AA Total	White, Not Hispanic	Margin of Error (+/-)	% of NHW Total
Total:	1,036	275	100.0%	1,938	409	100.0%
Less than high school diploma	128	NC	12.4%	351	NC	18.1%
High school graduate, GED, or alternative	236	NC	22.8%	859	NC	44.3%
Some college or associate's degree	557	NC	53.8%	409	NC	21.1%
Bachelor's degree or higher	115	NC	11.1%	319	NC	16.5%
Male:	530	180	51.2%	842	265	43.4%
Less than high school diploma	89	90	8.6%	167	136	8.6%
High school graduate, GED, or alternative	176	112	17.0%	429	150	22.1%
Some college or associate's degree	219	114	21.1%	132	68	6.8%
Bachelor's degree or higher	46	37	4.4%	114	57	5.9%
Female:	506	144	48.8%	1,096	232	56.6%
Less than high school diploma	39	52	3.8%	184	135	9.5%
High school graduate, GED, or alternative	60	53	5.8%	430	195	22.2%
Some college or associate's degree	338	125	32.6%	277	113	14.3%
Bachelor's degree or higher	69	44	6.7%	205	118	10.6%

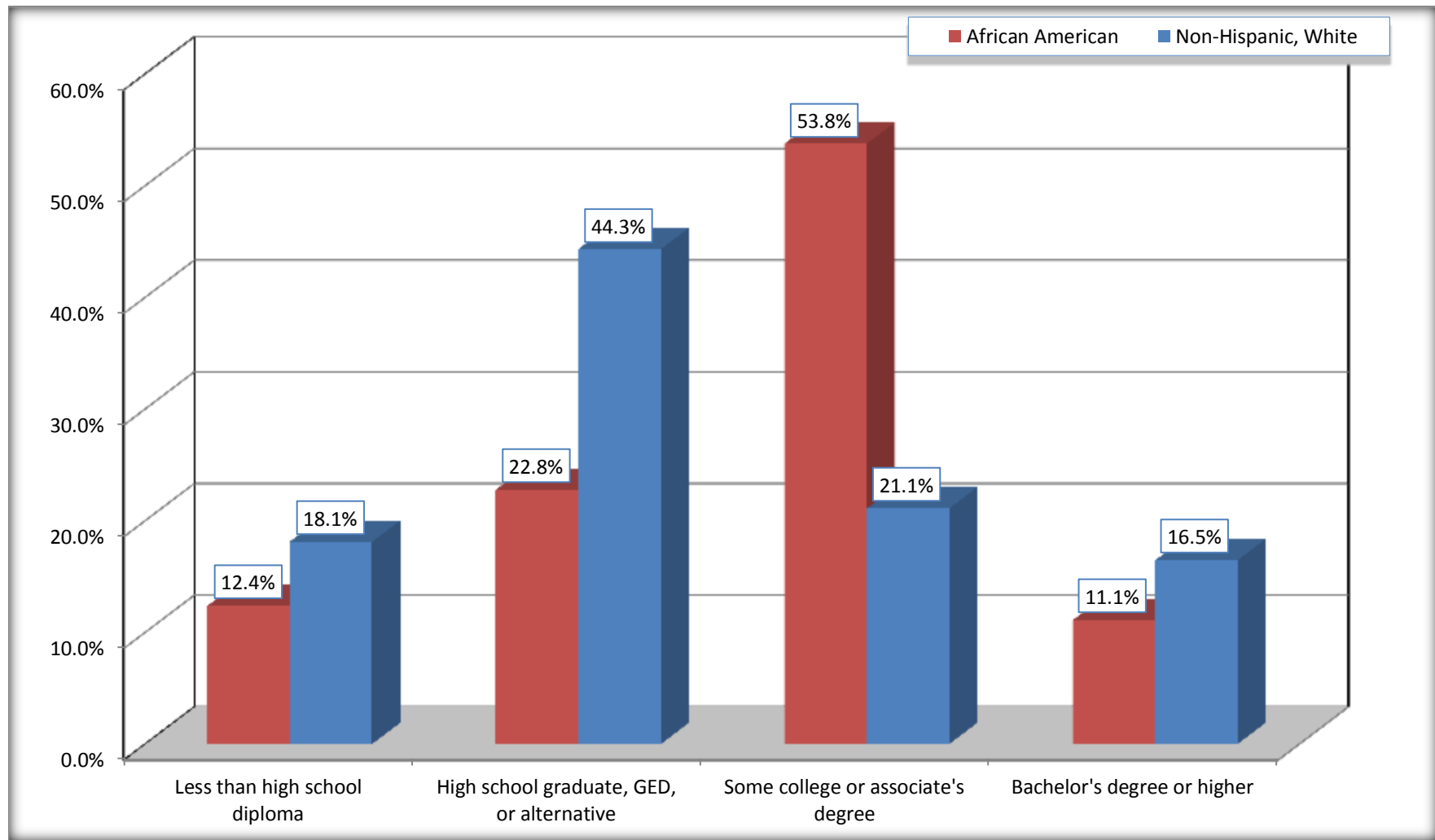
Source: U.S. Census Bureau, 2008-2012 American Community Survey

For information on confidentiality protection, sampling error, nonsampling error, and definitions, see Survey Methodology.

<http://www.census.gov/acs/www/UseData/index.htm>

Educational Attainment for the Population 25 Years and Older

Hampton city, Georgia



Source: C15002. SEX BY EDUCATIONAL ATTAINMENT FOR THE POPULATION 25 YEARS AND OVER
Data Set: 2008-2012 American Community Survey 5-Year Estimates

B17010. POVERTY STATUS IN THE PAST 12 MONTHS OF FAMILIES BY FAMILY TYPE BY PRESENCE OF RELATED CHILDREN UNDER 18 YEARS

Data Set: 2008-2012 American Community Survey 5-Year Estimates

	Hampton city, Georgia					
	African American	Margin of Error (+/-)	% of AA Total	White, Not Hispanic	Margin of Error (+/-)	% of NHW Total
Total:	464	142	100.0%	1,036	197	100.0%
Income in the past 12 months below poverty level:	118	86	25.4%	301	180	29.1%
Married-couple family:	0	19	0.0%	66	74	6.4%
With related children under 18 years	0	19	0.0%	66	74	6.4%
Other family:	118	86	25.4%	235	178	22.7%
Male householder, no wife present	0	19	0.0%	0	19	0.0%
With related children under 18 years	0	19	0.0%	0	19	0.0%
Female householder, no husband present	118	86	25.4%	235	178	22.7%
With related children under 18 years	118	86	25.4%	235	178	22.7%
Income in the past 12 months at or above poverty level:	346	137	74.6%	735	185	70.9%
Married-couple family:	271	127	58.4%	523	174	50.5%
With related children under 18 years	255	126	55.0%	338	136	32.6%
Other family:	75	57	16.2%	212	132	20.5%
Male householder, no wife present	11	20	2.4%	84	96	8.1%
With related children under 18 years	11	20	2.4%	70	95	6.8%
Female householder, no husband present	64	51	13.8%	128	96	12.4%
With related children under 18 years	64	51	13.8%	99	89	9.6%

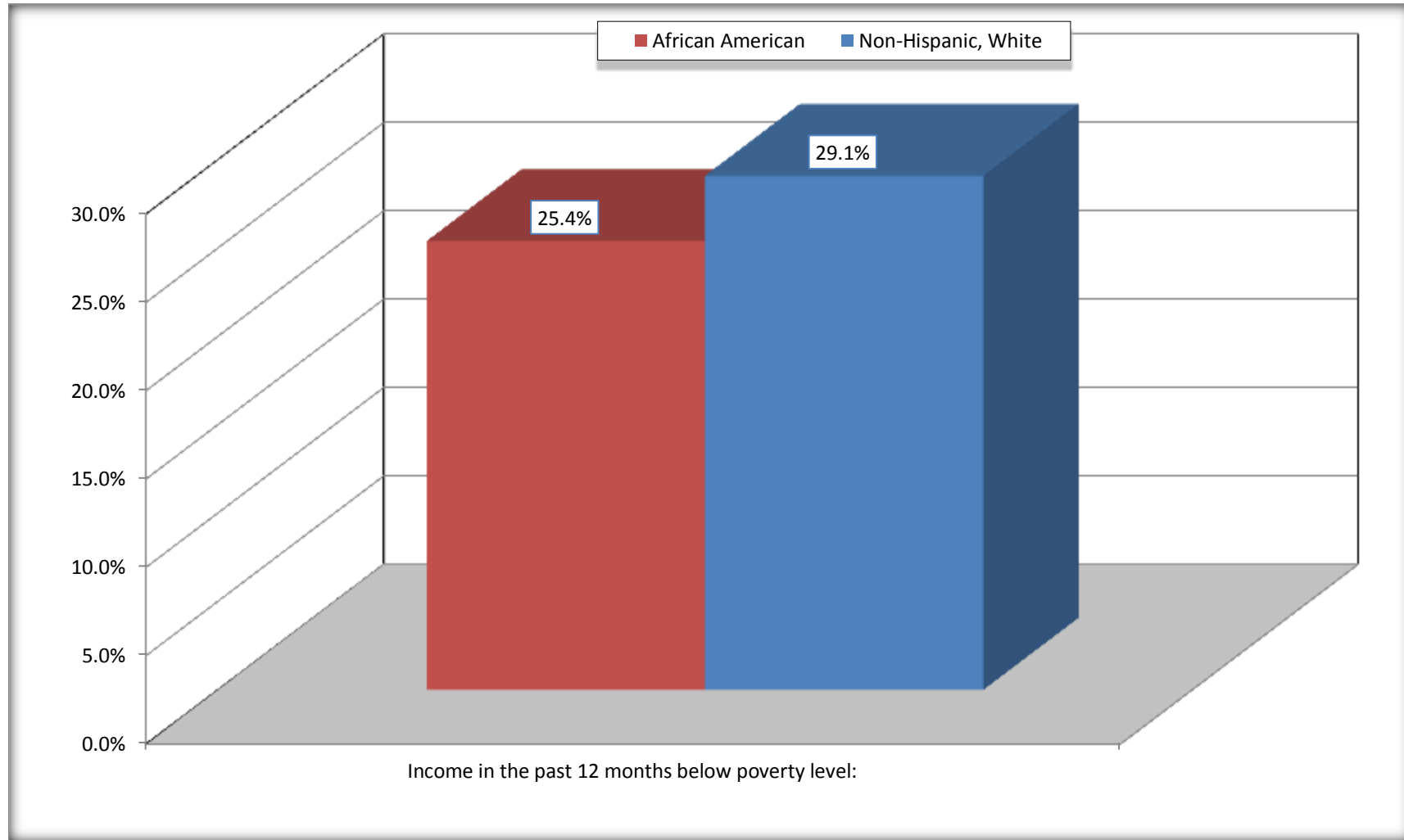
Source: U.S. Census Bureau, 2008-2012 American Community Survey

For information on confidentiality protection, sampling error, nonsampling error, and definitions, see Survey Methodology.

<http://www.census.gov/acs/www/UseData/index.htm>

Family Households Below Poverty in the Past 12 Months

Hampton city, Georgia

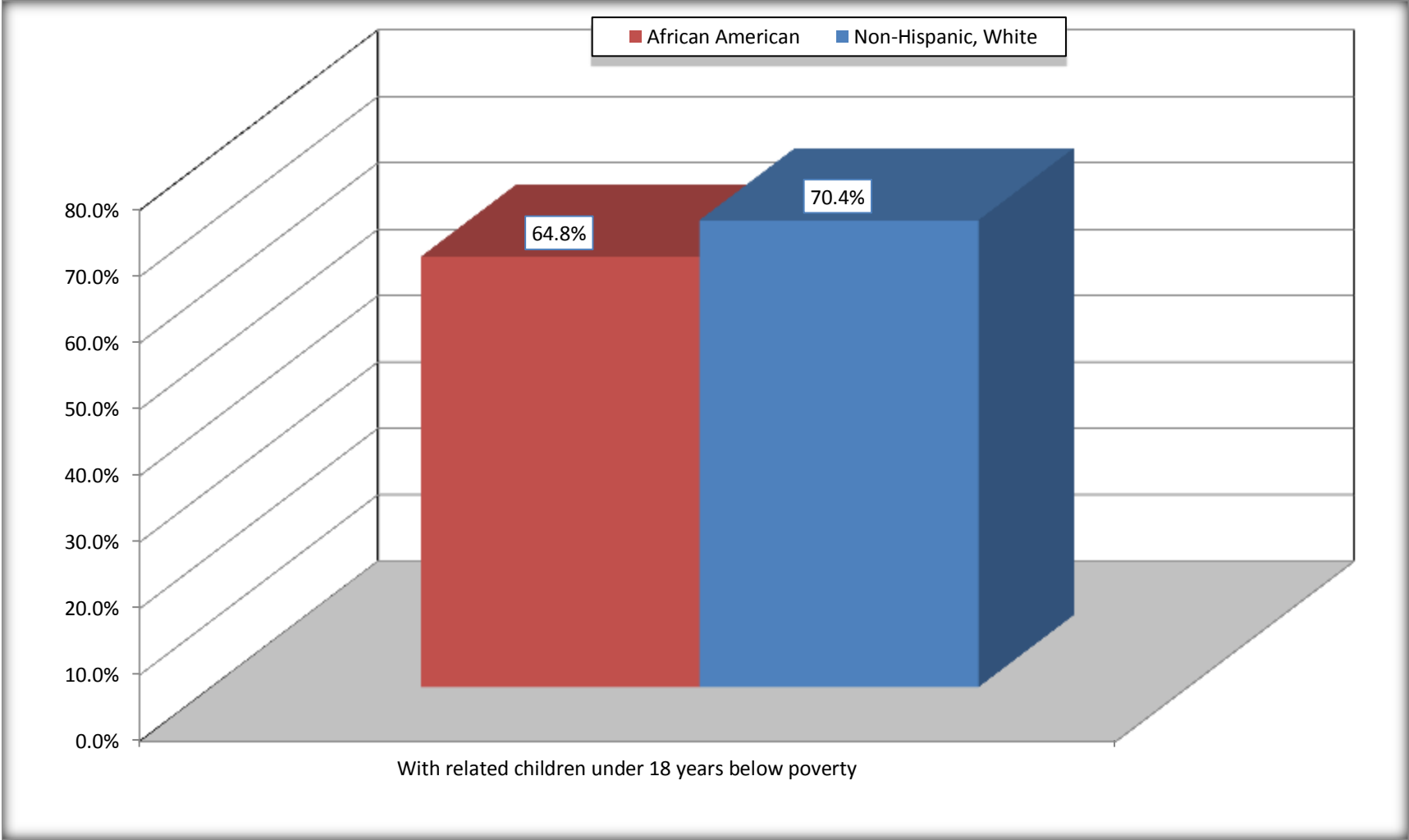


Source: B17010. POVERTY STATUS IN THE PAST 12 MONTHS OF FAMILIES BY FAMILY TYPE BY PRESENCE OF RELATED CHILDREN UNDER 18 YEARS

Data Set: 2008-2012 American Community Survey 5-Year Estimates

Female-headed Households with Related Children Below Poverty in the Past 12 Months

Hampton city, Georgia



Source: B17010. POVERTY STATUS IN THE PAST 12 MONTHS OF FAMILIES BY FAMILY TYPE BY PRESENCE OF RELATED CHILDREN UNDER 18 YEARS

Data Set: 2008-2012 American Community Survey 5-Year Estimates

B17020 POVERTY STATUS IN THE PAST 12 MONTHS BY AGE - Universe: POPULATION FOR WHOM POVERTY STATUS IS DETERMINED

Data Set: 2008-2012 American Community Survey 5-Year Estimates

	Hampton city, Georgia					
	African American	Margin of Error (+/-)	% of AA By Age	White, Not Hispanic	Margin of Error (+/-)	% of NHW By Age
Total:	2,249	592	100.0%	3,586	612	100.0%
Income in the past 12 months below poverty level:	734	501	32.6%	948	534	26.4%
Under 18 years	396	NC	40.8%	508	NC	39.0%
18 to 64 years	338	313	27.0%	440	265	21.8%
65 years and over	0	NC	0.0%	0	NC	0.0%
Income in the past 12 months at or above poverty level:	1,515	494	67.4%	2,638	625	73.6%
Under 18 years	575	NC	59.2%	796	NC	61.0%
18 to 64 years	916	273	73.0%	1,577	410	78.2%
65 years and over	24	NC	100.0%	265	NC	100.0%

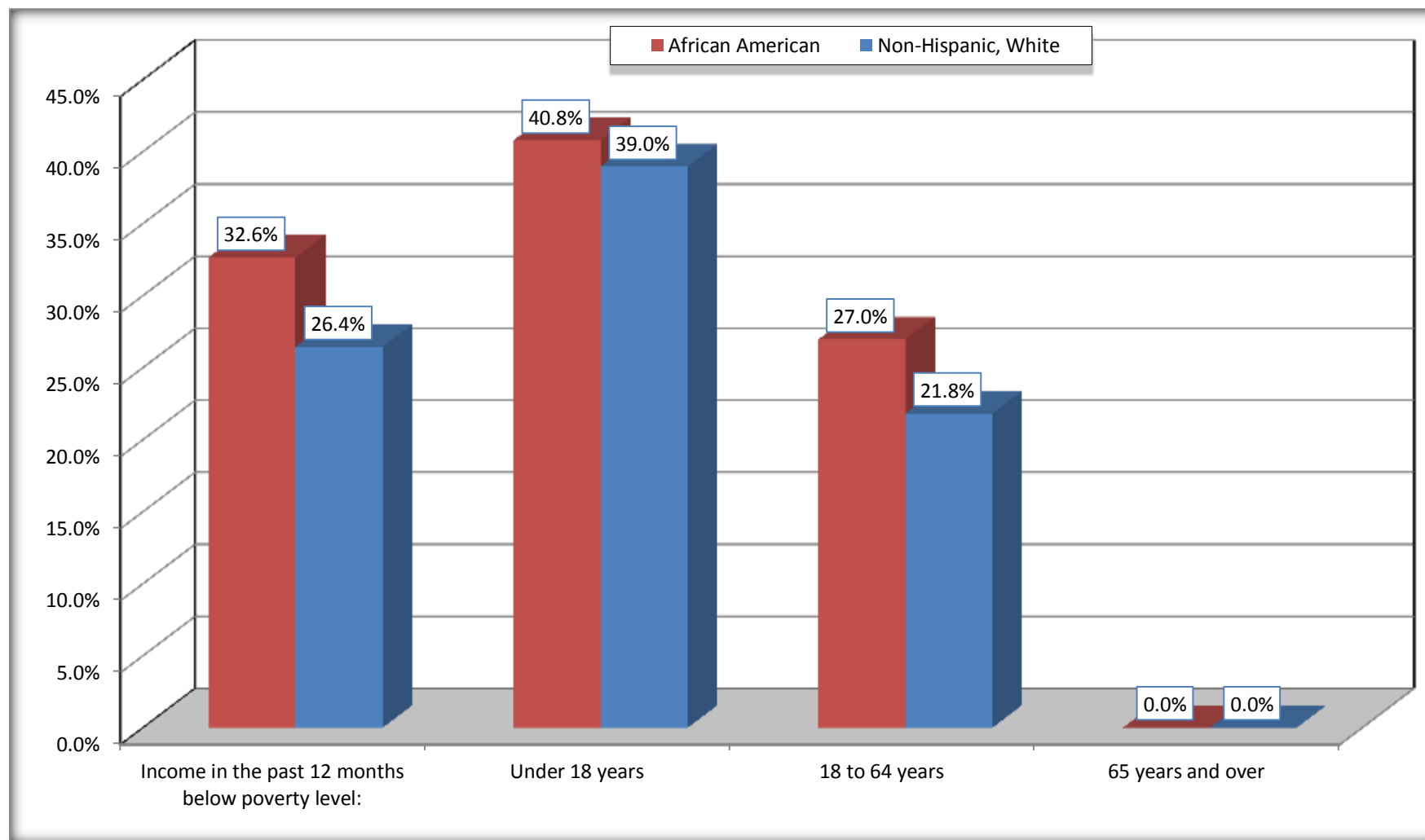
Source: U.S. Census Bureau, 2008-2012 American Community Survey

For information on confidentiality protection, sampling error, nonsampling error, and definitions, see Survey Methodology.

<http://www.census.gov/acs/www/UseData/index.htm>

Population Below Poverty in the Past 12 Months

Hampton city, Georgia



Source: B17020 POVERTY STATUS IN THE PAST 12 MONTHS BY AGE - Universe: POPULATION FOR WHOM POVERTY STATUS IS DETERMINED
Data Set: 2008-2012 American Community Survey 5-Year Estimates

B19001. HOUSEHOLD INCOME IN THE PAST 12 MONTHS (IN 2010 INFLATION-ADJUSTED DOLLARS)

Data Set: 2008-2012 American Community Survey 5-Year Estimates

	Hampton city, Georgia					
	African American	Margin of Error (+/-)	% of AA Total	White, Not Hispanic	Margin of Error (+/-)	% of NHW Total
Total:	562	156	100.0%	1,259	208	100.0%
Less than \$ 10,000	40	51	7.1%	11	19	0.9%
\$ 10,000 to \$ 14,999	0	19	0.0%	153	179	12.2%
\$ 15,000 to \$ 24,999	30	NC	5.3%	204	NC	16.2%
\$ 25,000 to \$ 34,999	8	NC	1.4%	170	NC	13.5%
\$ 35,000 to \$ 49,999	61	NC	10.9%	331	NC	26.3%
\$ 50,000 to \$ 74,999	141	NC	25.1%	200	NC	15.9%
\$ 75,000 to \$ 99,999	97	65	17.3%	109	78	8.7%
\$ 100,000 to \$ 149,999	170	NC	30.2%	67	NC	5.3%
\$ 150,000 to \$ 199,999	9	13	1.6%	8	14	0.6%
\$ 200,000 or more	6	11	1.1%	6	12	0.5%

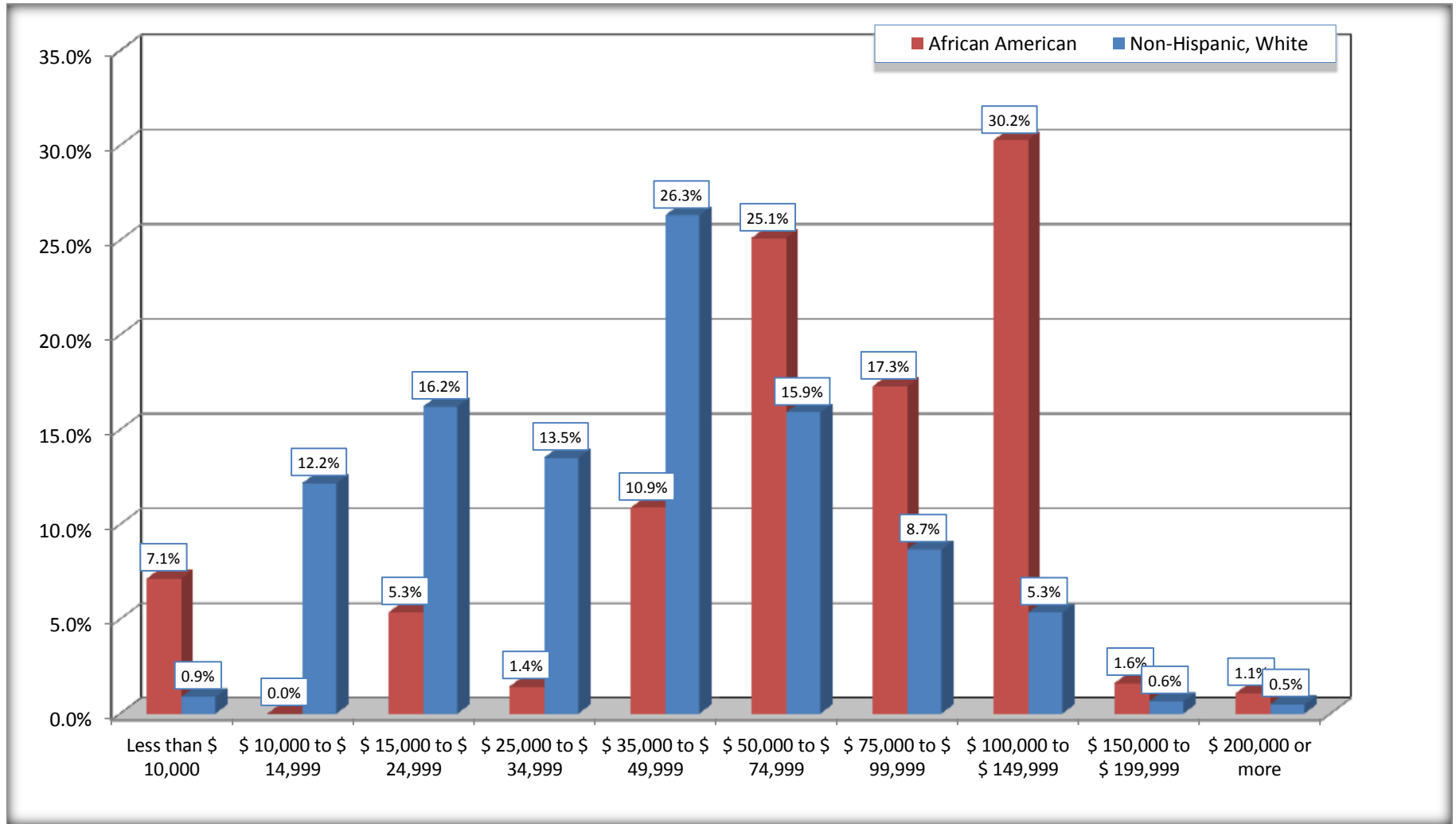
Source: U.S. Census Bureau, 2008-2012 American Community Survey

For information on confidentiality protection, sampling error, nonsampling error, and definitions, see Survey Methodology.

<http://www.census.gov/acs/www/UseData/index.htm>

Household Income in the Past 12 Months

Hampton city, Georgia



Source: B19001. HOUSEHOLD INCOME IN THE PAST 12 MONTHS (IN 2010 INFLATION-ADJUSTED DOLLARS)
Data Set: 2008-2012 American Community Survey 5-Year Estimates

B19013. MEDIAN HOUSEHOLD INCOME IN THE PAST 12 MONTHS (IN 2010 INFLATION-ADJUSTED DOLLARS)

Data Set: 2008-2012 American Community Survey 5-Year Estimates

	Hampton city, Georgia			
	African American	Margin of Error (+/-)	White, Not Hispanic	Margin of Error (+/-)
Median household income in the past 12 months (in 2010 inflation-adjusted dollars)	\$ 77,600	\$ 26,425	\$ 39,657	\$ 6,804

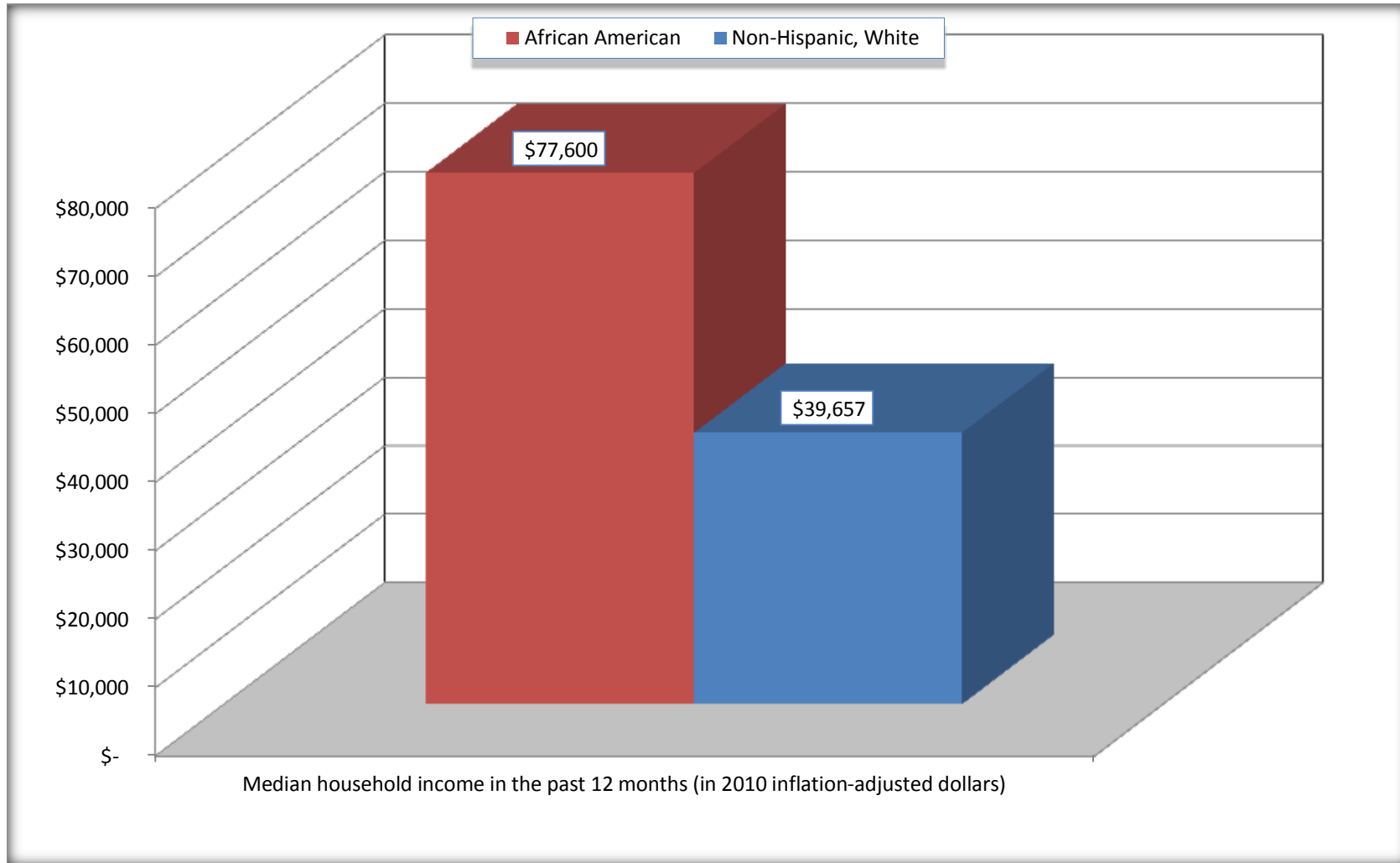
Source: U.S. Census Bureau, 2008-2012 American Community Survey

For information on confidentiality protection, sampling error, nonsampling error, and definitions, see Survey Methodology.

<http://www.census.gov/acs/www/UseData/index.htm>

Median Household Income in the Past 12 Months

Hampton city, Georgia



Source: B19013. MEDIAN HOUSEHOLD INCOME IN THE PAST 12 MONTHS (IN 2010 INFLATION-ADJUSTED DOLLARS)
Data Set: 2008-2012 American Community Survey 5-Year Estimates

B19101. FAMILY INCOME IN THE PAST 12 MONTHS (IN 2010 INFLATION-ADJUSTED DOLLARS)

Data Set: 2008-2012 American Community Survey 5-Year Estimates

	Hampton city, Georgia					
	African American	Margin of Error (+/-)	% of AA Total	White, Not Hispanic	Margin of Error (+/-)	% of NHW Total
Total:	464	142	100.0%	1,036	197	100.0%
Less than \$ 10,000	40	51	8.6%	11	19	1.1%
\$ 10,000 to \$ 14,999	48	59	10.3%	133	177	12.8%
\$ 15,000 to \$ 24,999	30	NC	6.5%	157	NC	15.2%
\$ 25,000 to \$ 34,999	0	NC	0.0%	170	NC	16.4%
\$ 35,000 to \$ 49,999	53	NC	11.4%	207	NC	20.0%
\$ 50,000 to \$ 74,999	45	NC	9.7%	173	NC	16.7%
\$ 100,000 to \$ 149,999	160	NC	34.5%	62	NC	6.0%
\$ 150,000 to \$ 199,999	9	13	1.9%	8	14	0.8%
\$ 200,000 or more	6	11	1.3%	6	12	0.6%

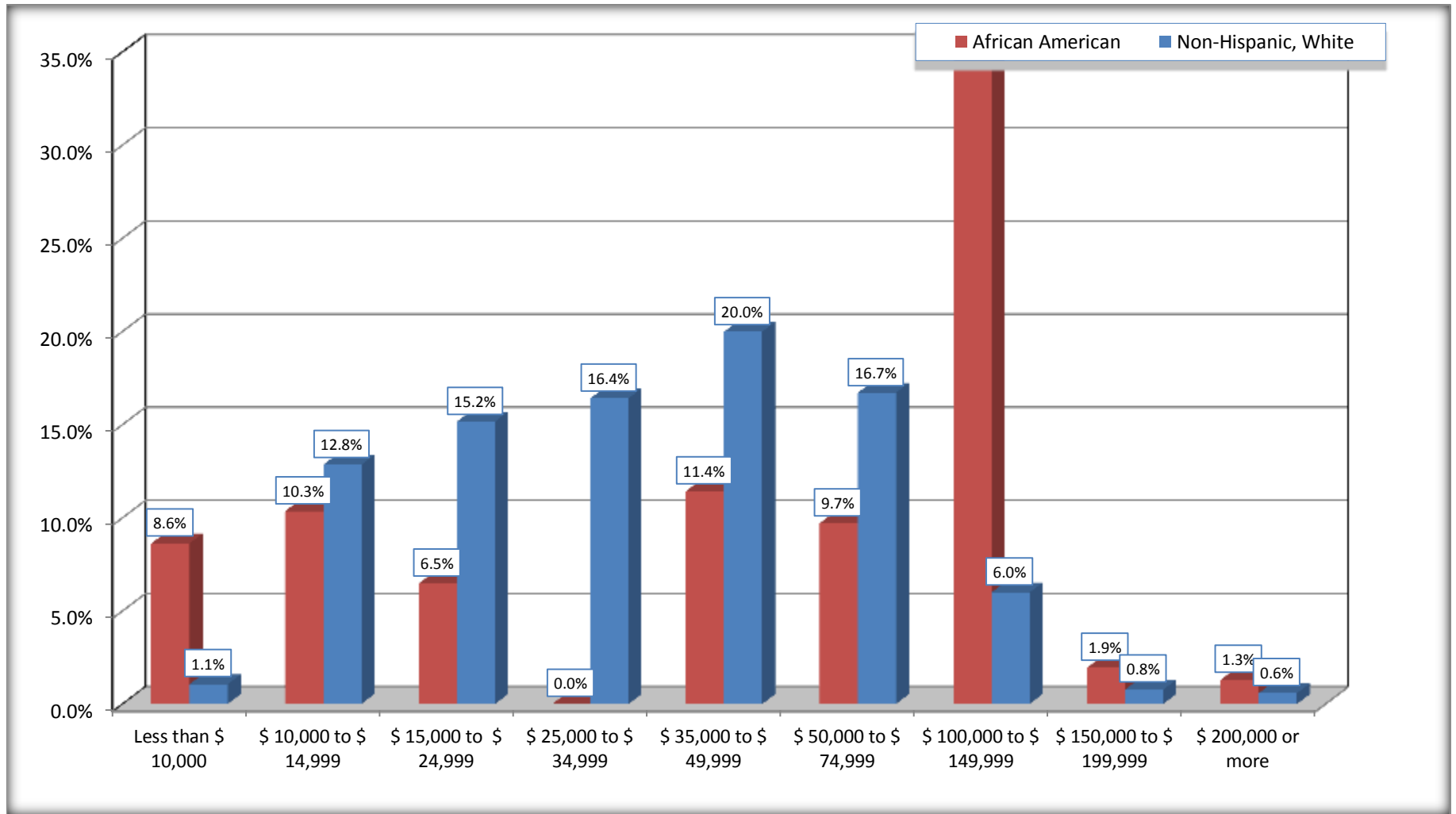
Source: U.S. Census Bureau, 2008-2012 American Community Survey

For information on confidentiality protection, sampling error, nonsampling error, and definitions, see Survey Methodology.

<http://www.census.gov/acs/www/UseData/index.htm>

Family Income in the Past 12 Months

Hampton city, Georgia



Source: B19101. FAMILY INCOME IN THE PAST 12 MONTHS (IN 2010 INFLATION-ADJUSTED DOLLARS)
Data Set: 2008-2012 American Community Survey 5-Year Estimates

B19113. MEDIAN FAMILY INCOME IN THE PAST 12 MONTHS (IN 2010 INFLATION-ADJUSTED DOLLARS)

Data Set: 2008-2012 American Community Survey 5-Year Estimates

	Hampton city, Georgia			
	African American	Margin of Error (+/-)	White, Not Hispanic	Margin of Error (+/-)
Median family income in the past 12 months (in 2010 inflation-adjusted dollars)	\$ 78,600	\$ 36,239	\$ 38,110	\$ 8,876

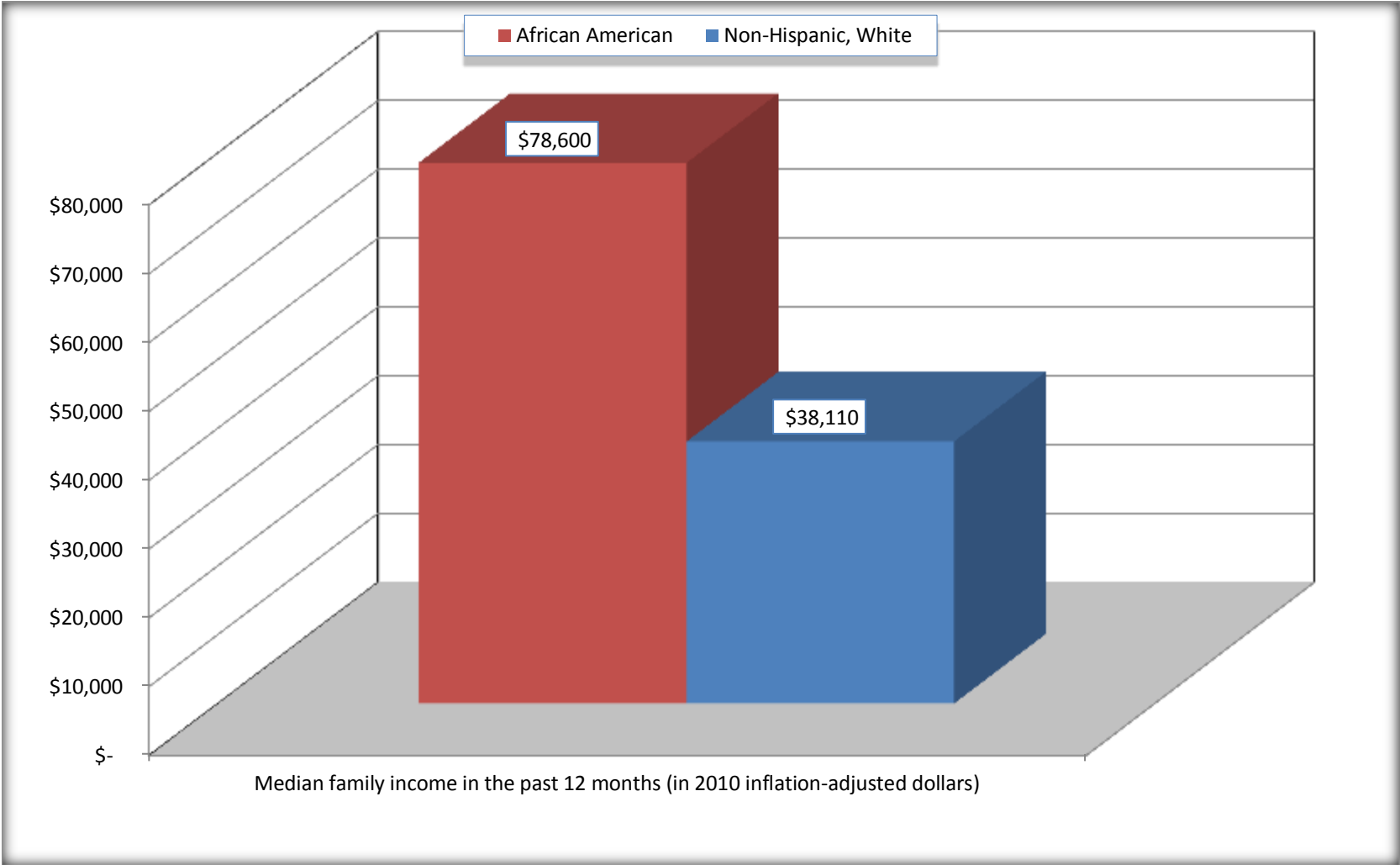
Source: U.S. Census Bureau, 2008-2012 American Community Survey

For information on confidentiality protection, sampling error, nonsampling error, and definitions, see Survey Methodology.

<http://www.census.gov/acs/www/UseData/index.htm>

Median Family Income in the Past 12 Months

Hampton city, Georgia



Source: B19113. MEDIAN FAMILY INCOME IN THE PAST 12 MONTHS (IN 2010 INFLATION-ADJUSTED DOLLARS)
Data Set: 2008-2012 American Community Survey 5-Year Estimates

B19202. MEDIAN NONFAMILY HOUSEHOLD INCOME IN THE PAST 12 MONTHS (IN 2010 INFLATION-ADJUSTED DOLLARS)

Data Set: 2008-2012 American Community Survey 5-Year Estimates

	Hampton city, Georgia			
	African American	Margin of Error (+/-)	White, Not Hispanic	Margin of Error (+/-)
Median nonfamily household income in the past 12 months (in 2010 inflation-adjusted dollars)	\$ 58,824	\$ 25,083	\$ 42,741	\$ 28,554

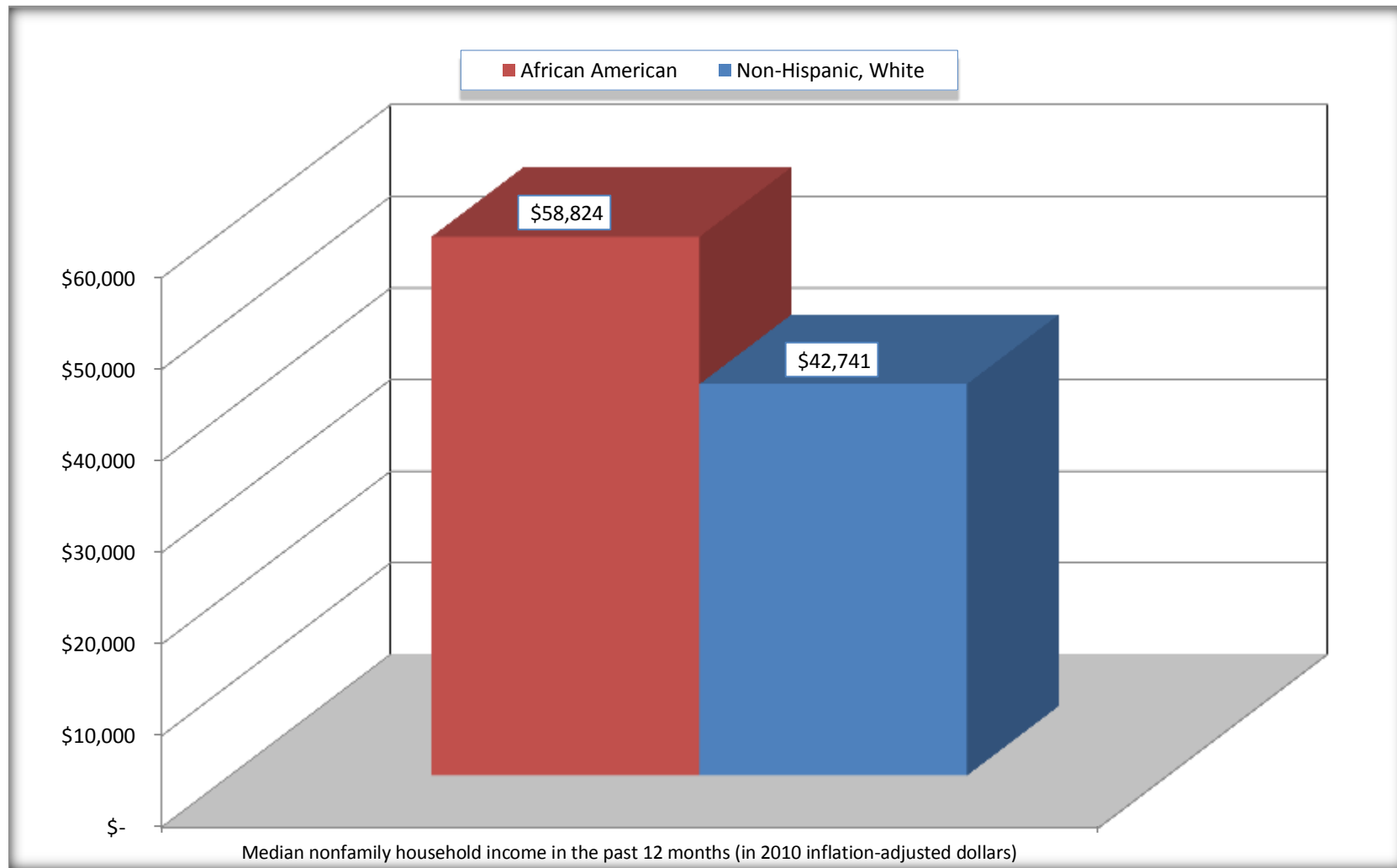
Source: U.S. Census Bureau, 2008-2012 American Community Survey

For information on confidentiality protection, sampling error, nonsampling error, and definitions, see Survey Methodology.

<http://www.census.gov/acs/www/UseData/index.htm>

Median Non-Family Income in the Past 12 Months

Hampton city, Georgia



Source: B19202. MEDIAN NONFAMILY HOUSEHOLD INCOME IN THE PAST 12 MONTHS (IN 2010 INFLATION-ADJUSTED DOLLARS)
Data Set: 2008-2012 American Community Survey 5-Year Estimates

B19301. PER CAPITA INCOME IN THE PAST 12 MONTHS (IN 2010 INFLATION-ADJUSTED DOLLARS)

Data Set: 2008-2012 American Community Survey 5-Year Estimates

	Hampton city, Georgia			
	African American	Margin of Error (+/-)	White, Not Hispanic	Margin of Error (+/-)
Per capita income in the past 12 months (in 2010 inflation-adjusted dollars)	\$ 20,465	\$ 5,094	\$ 16,188	\$ 3,177

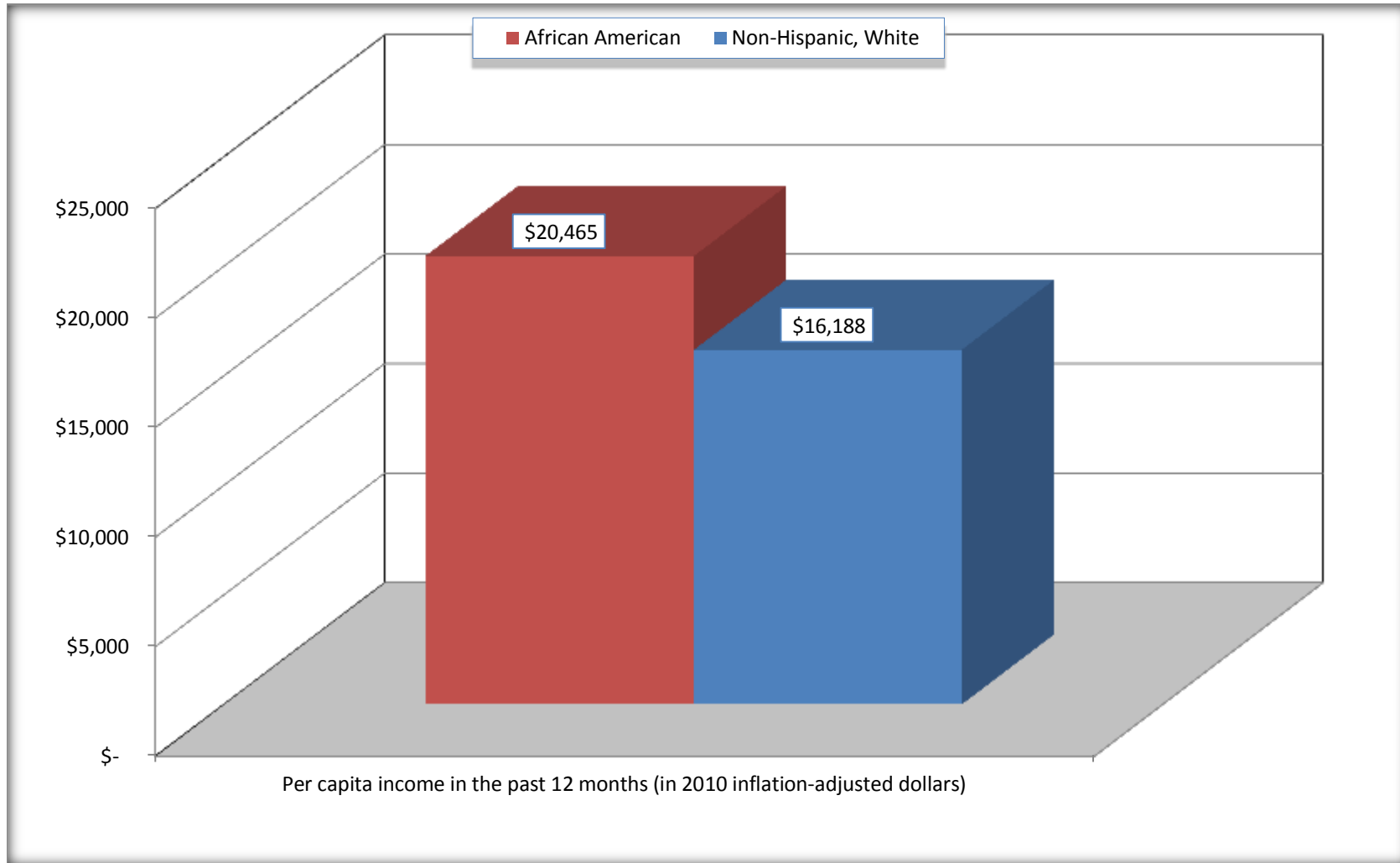
Source: U.S. Census Bureau, 2008-2012 American Community Survey

For information on confidentiality protection, sampling error, nonsampling error, and definitions, see Survey Methodology.

<http://www.census.gov/acs/www/UseData/index.htm>

Per capita Income in the Past 12 Months

Hampton city, Georgia



Source: B19301. PER CAPITA INCOME IN THE PAST 12 MONTHS (IN 2010 INFLATION-ADJUSTED DOLLARS)
Data Set: 2008-2012 American Community Survey 5-Year Estimates

B20017. MEDIAN EARNINGS IN THE PAST 12 MONTHS (IN 2010 INFLATION-ADJUSTED DOLLARS) BY SEX BY WORK EXPERIENCE IN THE PAST 12 MONTHS FOR THE POPULATION 16 YEARS AND OVER WITH EARNINGS IN THE PAST 12 MONTHS

Data Set: 2008-2012 American Community Survey 5-Year Estimates

	Hampton city, Georgia			
	African American	Margin of Error (+/-)	White, Not Hispanic	Margin of Error (+/-)
Median earnings in the past 12 months (in 2010 inflation-adjusted dollars) --				
Total:	\$ 48,964	\$ 6,878	\$ 28,274	\$ 4,753
Male --				
Total	\$ 48,464	\$ 9,319	\$ 43,017	\$ 3,476
Worked full-time, year-round in the past 12 months	\$ 53,051	\$ 6,545	\$ 46,813	\$ 14,401
Other	\$ 12,408	\$ 60,549	\$ 16,369	\$ 15,190
Female --				
Total	\$ 50,246	\$ 19,283	\$ 21,474	\$ 9,352
Worked full-time, year-round in the past 12 months	\$ 51,567	\$ 6,928	\$ 28,949	\$ 6,270
Other	\$ 9,364	\$ 10,850	\$ 13,607	\$ 2,150

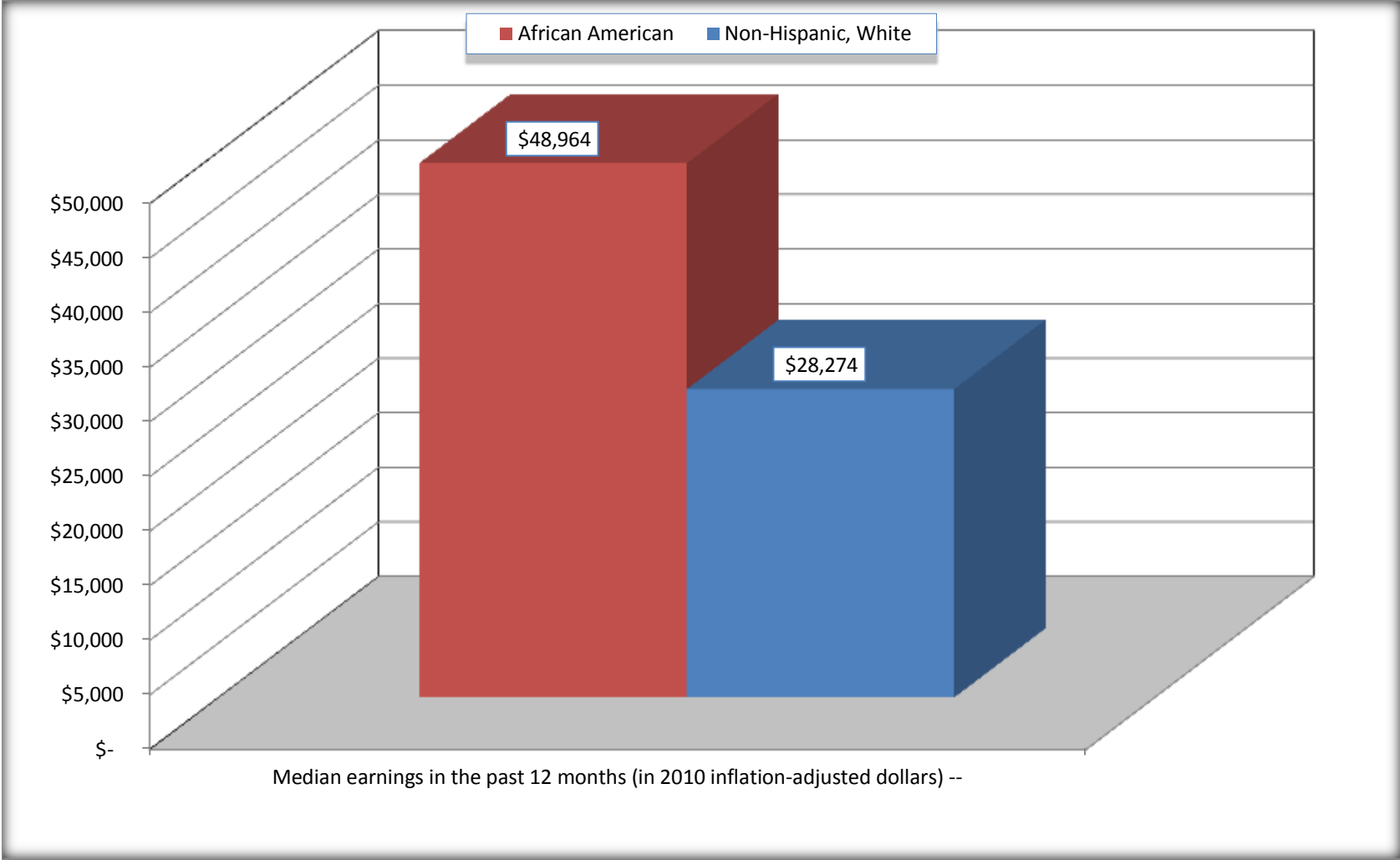
Source: U.S. Census Bureau, 2008-2012 American Community Survey

For information on confidentiality protection, sampling error, nonsampling error, and definitions, see Survey Methodology.

<http://www.census.gov/acs/www/UseData/index.htm>

Median earnings in the Past 12 Months (16 Years and Over with Earnings)

Hampton city, Georgia



Source: B20017. MEDIAN EARNINGS IN THE PAST 12 MONTHS (IN 2010 INFLATION-ADJUSTED DOLLARS) BY SEX BY WORK EXPERIENCE IN THE PAST 12 MONTHS FOR THE POPULATION 16 YEARS AND OVER WITH EARNINGS IN THE PAST 12 MONTHS
Data Set: 2008-2012 American Community Survey 5-Year Estimates

B20005. SEX BY WORK EXPERIENCE IN THE PAST 12 MONTHS BY EARNINGS IN THE PAST 12 MONTHS (IN 2010 INFLATION-ADJUSTED DOLLARS) FOR THE POPULATION 16 YEARS AND OVER

Data Set: 2008-2012 American Community Survey 5-Year Estimates

	Hampton city, Georgia					
	African American	Margin of Error (+/-)	% of AA Total	White, Not Hispanic	Margin of Error (+/-)	% of NHW Total
Total:	1,451	470	100.0%	2,359	429	100.0%
Worked full-time, year-round in the past 12 months:	579	NC	39.9%	1,028	NC	43.6%
No earnings	0	NC	0.0%	0	NC	0.0%
With earnings:	579	NC	39.9%	1,028	NC	43.6%
\$ 1 to \$ 9,999 or loss	0	NC	0.0%	0	NC	0.0%
\$ 10,000 to \$ 19,999	0	NC	0.0%	206	NC	8.7%
\$ 20,000 to \$ 29,999	5	NC	0.3%	200	NC	8.5%
\$ 30,000 to \$ 49,999	219	NC	15.1%	343	NC	14.5%
\$ 50,000 to \$ 74,999	271	NC	18.7%	234	NC	9.9%
\$ 75,000 or more	84	NC	5.8%	45	NC	1.9%
Other:	872	NC	60.1%	1,331	NC	56.4%
No earnings	568	NC	39.1%	837	NC	35.5%
With earnings: less than full time, year-round	304	NC	21.0%	494	NC	20.9%
Male:	893	399	61.5%	1,023	296	43.4%
Worked full-time, year-round in the past 12 months:	322	133	22.2%	467	154	19.8%
No earnings	0	19	0.0%	0	19	0.0%
With earnings:	322	133	22.2%	467	154	19.8%
\$ 1 to \$ 9,999 or loss	0	NC	0.0%	0	NC	0.0%
\$ 10,000 to \$ 19,999	0	NC	0.0%	50	NC	2.1%
\$ 20,000 to \$ 29,999	0	NC	0.0%	28	NC	1.2%
\$ 30,000 to \$ 49,999	140	NC	9.6%	161	NC	6.8%
\$ 50,000 to \$ 74,999	109	NC	7.5%	191	NC	8.1%
\$ 75,000 or more	73	NC	5.0%	37	NC	1.6%

	Hampton city, Georgia					
	African American	Margin of Error (+/-)	% of AA Total	White, Not Hispanic	Margin of Error (+/-)	% of NHW Total
Other:	571	330	39.4%	556	269	23.6%
No earnings	352	235	24.3%	435	264	18.4%
With earnings:	219	136	15.1%	121	74	5.1%
Female:	558	156	38.5%	1,336	224	56.6%
Worked full-time, year-round in the past 12 months:	257	122	17.7%	561	220	23.8%
No earnings	0	19	0.0%	0	19	0.0%
With earnings:	257	122	17.7%	561	220	23.8%
\$ 1 to \$ 9,999 or loss	0	NC	0.0%	0	NC	0.0%
\$ 10,000 to \$ 19,999	0	NC	0.0%	156	NC	6.6%
\$ 20,000 to \$ 29,999	5	NC	0.3%	172	NC	7.3%
\$ 30,000 to \$ 49,999	79	NC	5.4%	182	NC	7.7%
\$ 50,000 to \$ 74,999	162	NC	11.2%	43	NC	1.8%
\$ 75,000 or more	11	NC	0.8%	8	NC	0.3%
Other:	301	112	20.7%	775	188	32.9%
No earnings	216	97	14.9%	402	160	17.0%
With earnings:	85	62	5.9%	373	140	15.8%

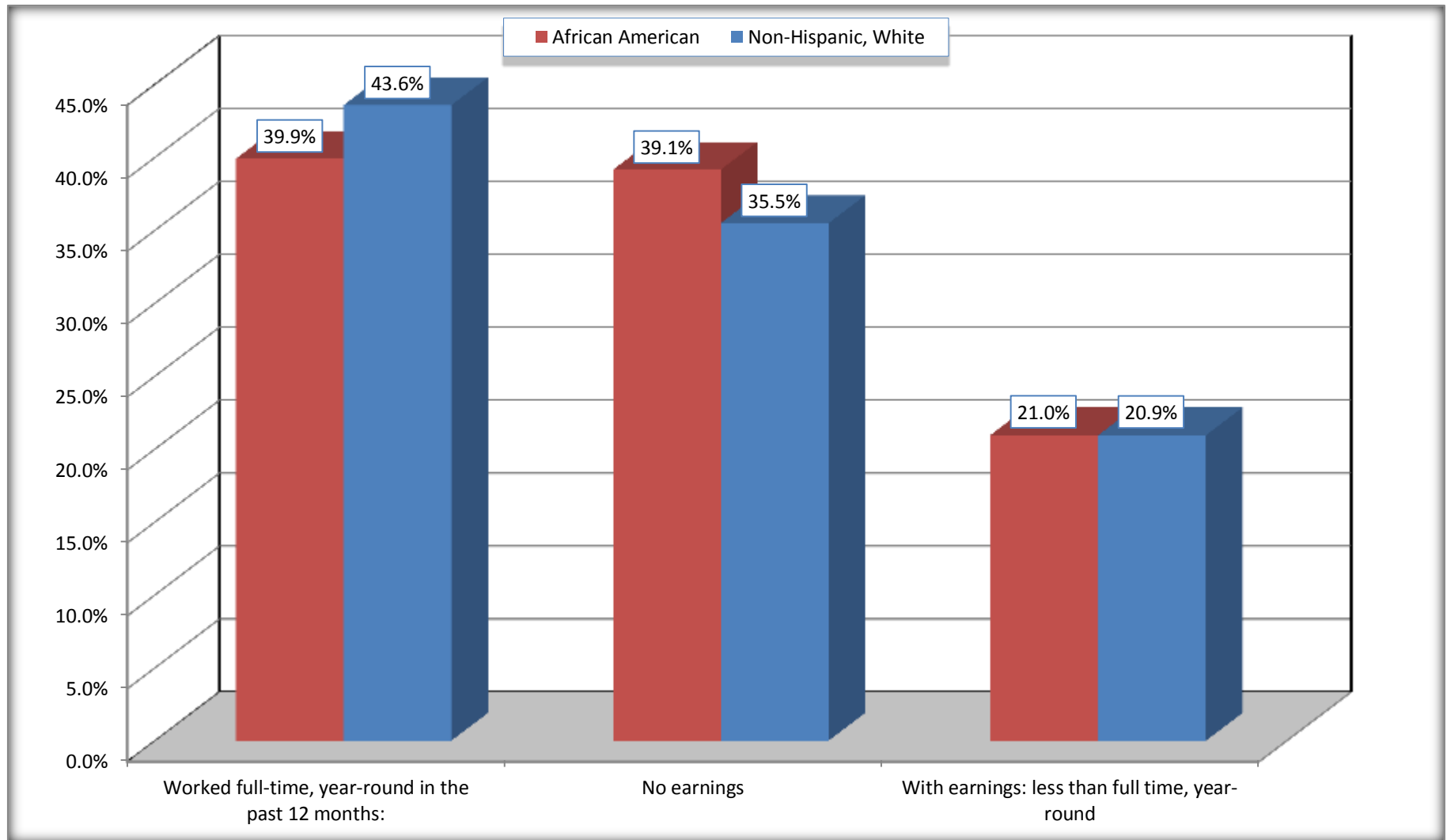
Source: U.S. Census Bureau, 2008-2012 American Community Survey

For information on confidentiality protection, sampling error, nonsampling error, and definitions, see Survey Methodology.

<http://www.census.gov/acs/www/UseData/index.htm>

Employment and Earnings in in the Past 12 Months (16 Years and Over)

Hampton city, Georgia



Source: B20005. SEX BY WORK EXPERIENCE IN THE PAST 12 MONTHS BY EARNINGS IN THE PAST 12 MONTHS (IN 2010 INFLATION-ADJUSTED DOLLARS) FOR THE POPULATION 16 YEARS AND OVER

Data Set: 2008-2012 American Community Survey 5-Year Estimates

C21001. SEX BY AGE BY VETERAN STATUS FOR THE CIVILIAN POPULATION 18 YEARS AND OVER

Data Set: 2008-2012 American Community Survey 5-Year Estimates

	Hampton city, Georgia					
	African American	Margin of Error (+/-)	% of AA Total	White, Not Hispanic	Margin of Error (+/-)	% of NHW Total
Total:	1,278	385	100.0%	2,263	423	100.0%
Veteran	113	NC	8.8%	263	NC	11.6%
Nonveteran	1,165	NC	91.2%	2,000	NC	88.4%
Male:	745	312	58.3%	964	290	42.6%
18 to 64 years:	745	312	58.3%	881	285	38.9%
Veteran	79	45	6.2%	162	111	7.2%
Nonveteran	666	316	52.1%	719	226	31.8%
65 years and over:	0	19	0.0%	83	59	3.7%
Veteran	0	19	0.0%	57	46	2.5%
Nonveteran	0	19	0.0%	26	30	1.1%
Female:	533	152	41.7%	1,299	222	57.4%
18 to 64 years:	509	144	39.8%	1,117	215	49.4%
Veteran	34	28	2.7%	0	19	0.0%
Nonveteran	475	142	37.2%	1,117	215	49.4%
65 years and over:	24	30	1.9%	182	111	8.0%
Veteran	0	19	0.0%	44	65	1.9%
Nonveteran	24	30	1.9%	138	80	6.1%

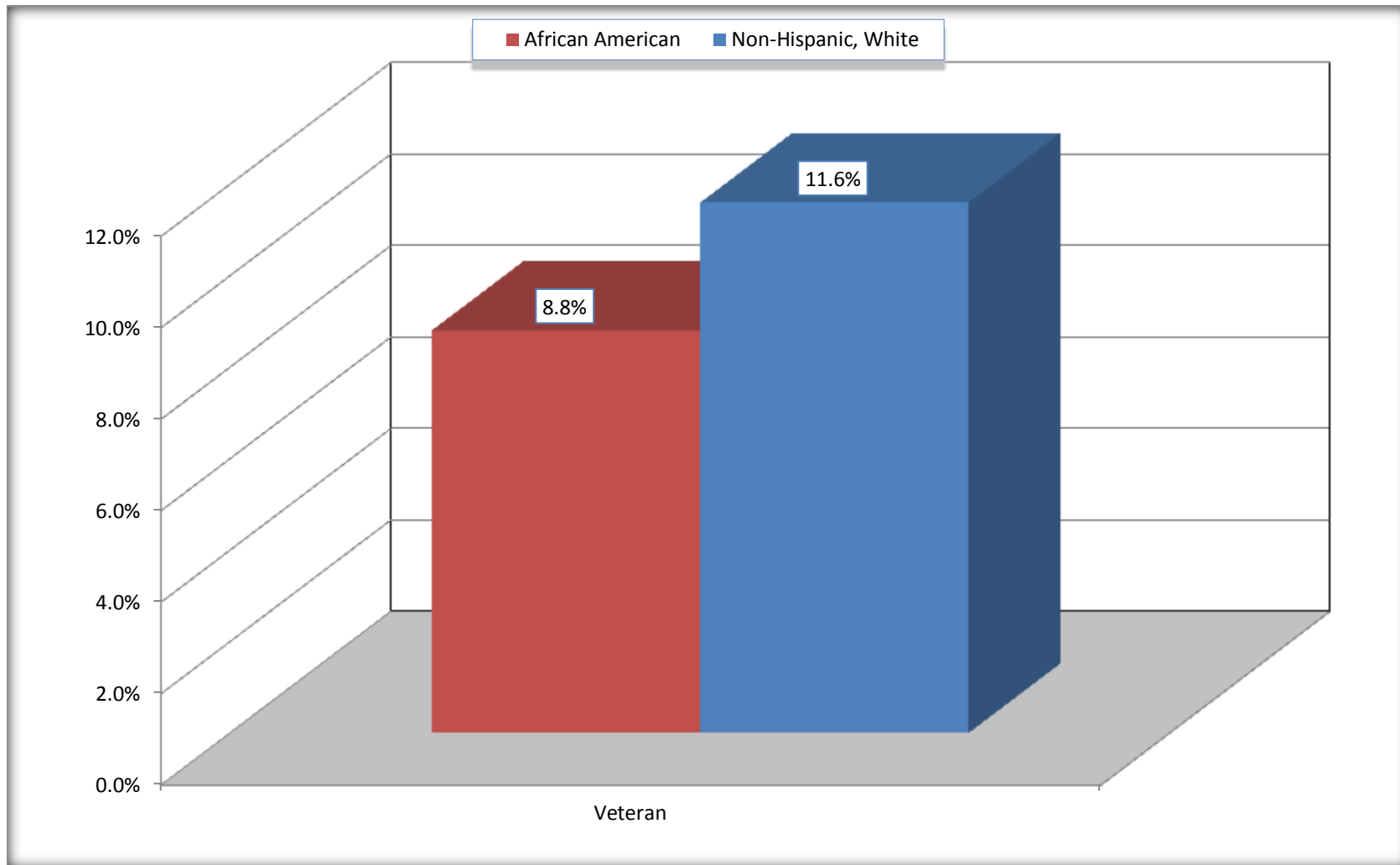
Source: U.S. Census Bureau, 2008-2012 American Community Survey

For information on confidentiality protection, sampling error, nonsampling error, and definitions, see Survey Methodology.

<http://www.census.gov/acs/www/UseData/index.htm>

Veterans in the Civilian Population 18 Years and Over

Hampton city, Georgia



Source: C21001. SEX BY AGE BY VETERAN STATUS FOR THE CIVILIAN POPULATION 18 YEARS AND OVER
Data Set: 2008-2012 American Community Survey 5-Year Estimates

B22005. RECEIPT OF FOOD STAMPS/SNAP IN THE PAST 12 MONTHS BY RACE OF HOUSEHOLDER

Data Set: 2008-2012 American Community Survey 5-Year Estimates

	Hampton city, Georgia					
	African American	Margin of Error (+/-)	% of AA Total	White, Not Hispanic	Margin of Error (+/-)	% of NHW Total
Total:	562	156	100.0%	1,259	208	100.0%
HH received Food Stamps/SNAP in the past 12 months	96	79	17.1%	380	173	30.2%
HH did not receive Food Stamps/SNAP in the past 12 months	466	134	82.9%	879	247	69.8%

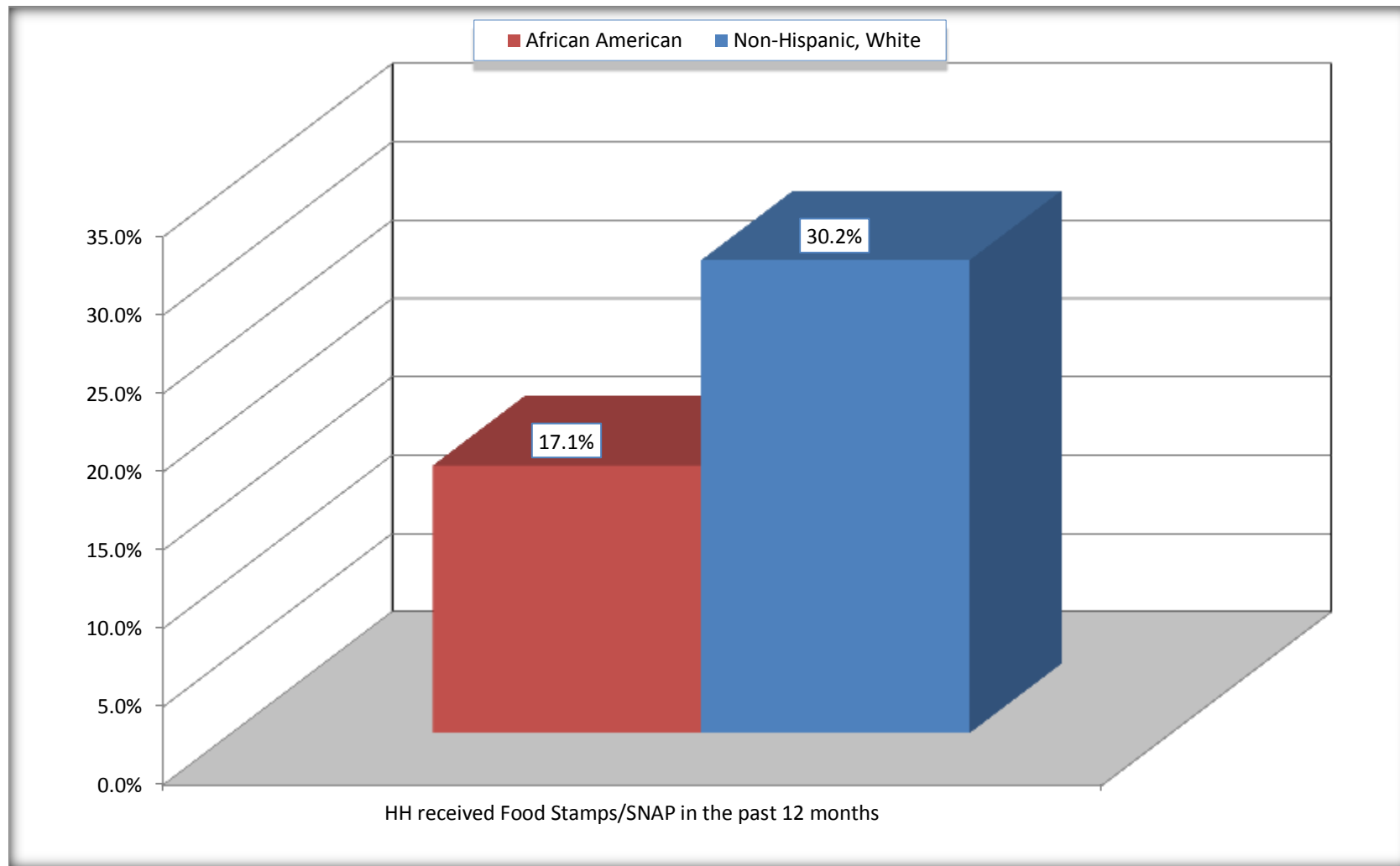
Source: U.S. Census Bureau, 2008-2012 American Community Survey

For information on confidentiality protection, sampling error, nonsampling error, and definitions, see Survey Methodology.

<http://www.census.gov/acs/www/UseData/index.htm>

Receipt of Food Stamps/SNAP in the Past 12 Months by Household

Hampton city, Georgia



Source: B22005. RECEIPT OF FOOD STAMPS/SNAP IN THE PAST 12 MONTHS BY RACE OF HOUSEHOLDER
Data Set: 2008-2012 American Community Survey 5-Year Estimates

C23002. SEX BY AGE BY EMPLOYMENT STATUS FOR THE POPULATION 16 YEARS AND OVER

Data Set: 2008-2012 American Community Survey 5-Year Estimates

	Hampton city, Georgia					
	African American	Margin of Error (+/-)	% of AA Total	White, Not Hispanic	Margin of Error (+/-)	% of NHW Total
Total:	1,451	470	100.0%	2,359	429	100.0%
In labor force:	974	NC	67.1%	1,712	NC	72.6%
In Armed Forces	0	NC	0.0%	19	NC	0.8%
Civilian:	974	NC	67.1%	1,602	NC	67.9%
Employed	821	NC	56.6%	1,348	NC	57.1%
Unemployed	153	NC	10.5%	345	NC	14.6%
Not in labor force	477	NC	32.9%	647	NC	27.4%
Male:	893	399	61.5%	1,023	296	43.4%
16 to 64 years:	893	399	61.5%	940	289	39.8%
In labor force:	602	239	41.5%	760	218	32.2%
In Armed Forces	0	19	0.0%	19	28	0.8%
Civilian:	602	239	41.5%	741	220	31.4%
Employed	499	183	34.4%	515	179	21.8%
Unemployed	103	83	7.1%	226	173	9.6%
Not in labor force	291	181	20.1%	180	120	7.6%
65 years and over:	0	19	0.0%	83	59	3.5%
In labor force:	0	19	0.0%	39	41	1.7%
Employed	0	19	0.0%	29	33	1.2%
Unemployed	0	19	0.0%	10	16	0.4%
Not in labor force	0	19	0.0%	44	37	1.9%

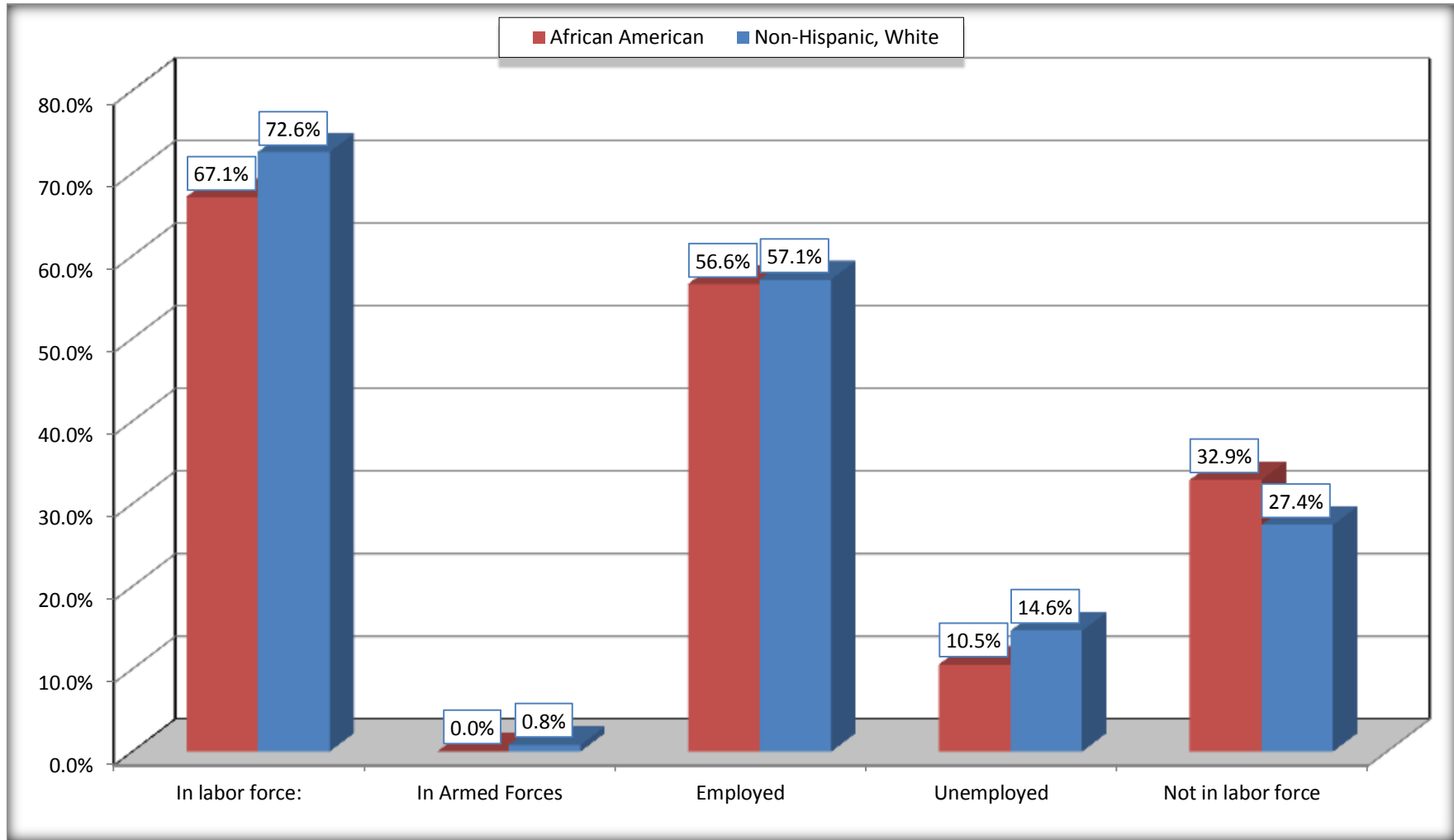
	Hampton city, Georgia					
	African American	Margin of Error (+/-)	% of AA Total	White, Not Hispanic	Margin of Error (+/-)	% of NHW Total
Female:	558	156	38.5%	1,336	224	56.6%
16 to 64 years:	534	147	36.8%	1,154	216	48.9%
In labor force:	372	141	25.6%	861	224	36.5%
In Armed Forces	0	19	0.0%	0	19	0.0%
Civilian:	372	141	25.6%	861	224	36.5%
Employed	322	132	22.2%	796	225	33.7%
Unemployed	50	39	3.4%	65	60	2.8%
Not in labor force	162	81	11.2%	293	150	12.4%
65 years and over:	24	30	1.7%	182	111	7.7%
In labor force:	0	19	0.0%	52	60	2.2%
Employed	0	19	0.0%	8	14	0.3%
Unemployed	0	19	0.0%	44	65	1.9%
Not in labor force	24	30	1.7%	130	77	5.5%

Source: U.S. Census Bureau, 2008-2012 American Community Survey

For information on confidentiality protection, sampling error, nonsampling error, and definitions, see Survey Methodology.
<http://www.census.gov/acs/www/UseData/index.htm>

Employment Status for the Population 16 years and over

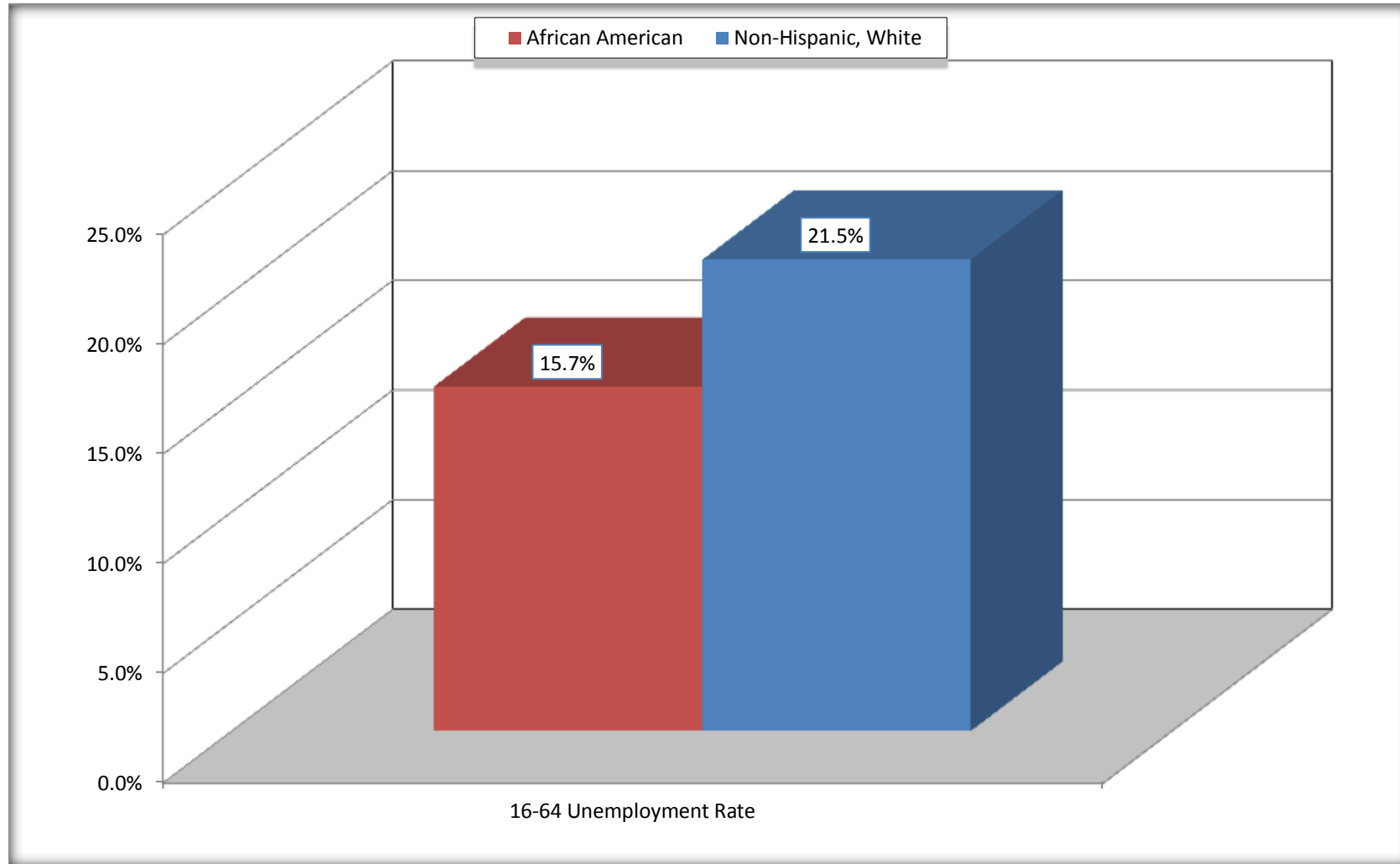
Hampton city, Georgia



Source: C23002. SEX BY AGE BY EMPLOYMENT STATUS FOR THE POPULATION 16 YEARS AND OVER
Data Set: 2008-2012 American Community Survey 5-Year Estimates

Unemployment of Working Age Population (Ages 16 to 64) (As a Percent of 16-64 Civilian Labor Force)

Hampton city, Georgia



Source: C23002. SEX BY AGE BY EMPLOYMENT STATUS FOR THE POPULATION 16 YEARS AND OVER
Data Set: 2008-2012 American Community Survey 5-Year Estimates

C24010. SEX BY OCCUPATION FOR THE CIVILIAN EMPLOYED POPULATION 16 YEARS AND OVER

Data Set: 2008-2012 American Community Survey 5-Year Estimates

	Hampton city, Georgia					
	African American	Margin of Error (+/-)	% of AA Total	White, Not Hispanic	Margin of Error (+/-)	% of NHW Total
Total:	821	247	100.0%	1,348	325	100.0%
Management, professional, and related occupations	226	NC	27.5%	331	NC	24.6%
Service occupations	26	NC	3.2%	208	NC	15.4%
Sales and office occupations	280	NC	34.1%	388	NC	28.8%
Natural resources, construction, and maintenance occupations:	64	NC	7.8%	113	NC	8.4%
Production, transportation, and material moving occupations	225	NC	27.4%	308	NC	22.8%
Male:	499	183	60.8%	544	188	40.4%
Management, business, science, and arts occupations:	82	66	10.0%	97	49	7.2%
Service occupations	0	19	0.0%	26	32	1.9%
Sales and office occupations	133	98	16.2%	112	85	8.3%
Natural resources, construction, and maintenance occupations:	64	46	7.8%	113	67	8.4%
Production, transportation, and material moving occupations	220	134	26.8%	196	106	14.5%
Female:	322	132	39.2%	804	230	59.6%
Management, professional, and related occupations	144	106	17.5%	234	116	17.4%
Service occupations	26	27	3.2%	182	167	13.5%
Sales and office occupations	147	89	17.9%	276	114	20.5%
Natural resources, construction, and maintenance occupations:	0	19	0.0%	0	19	0.0%
Production, transportation, and material moving occupations	5	10	0.6%	112	133	8.3%

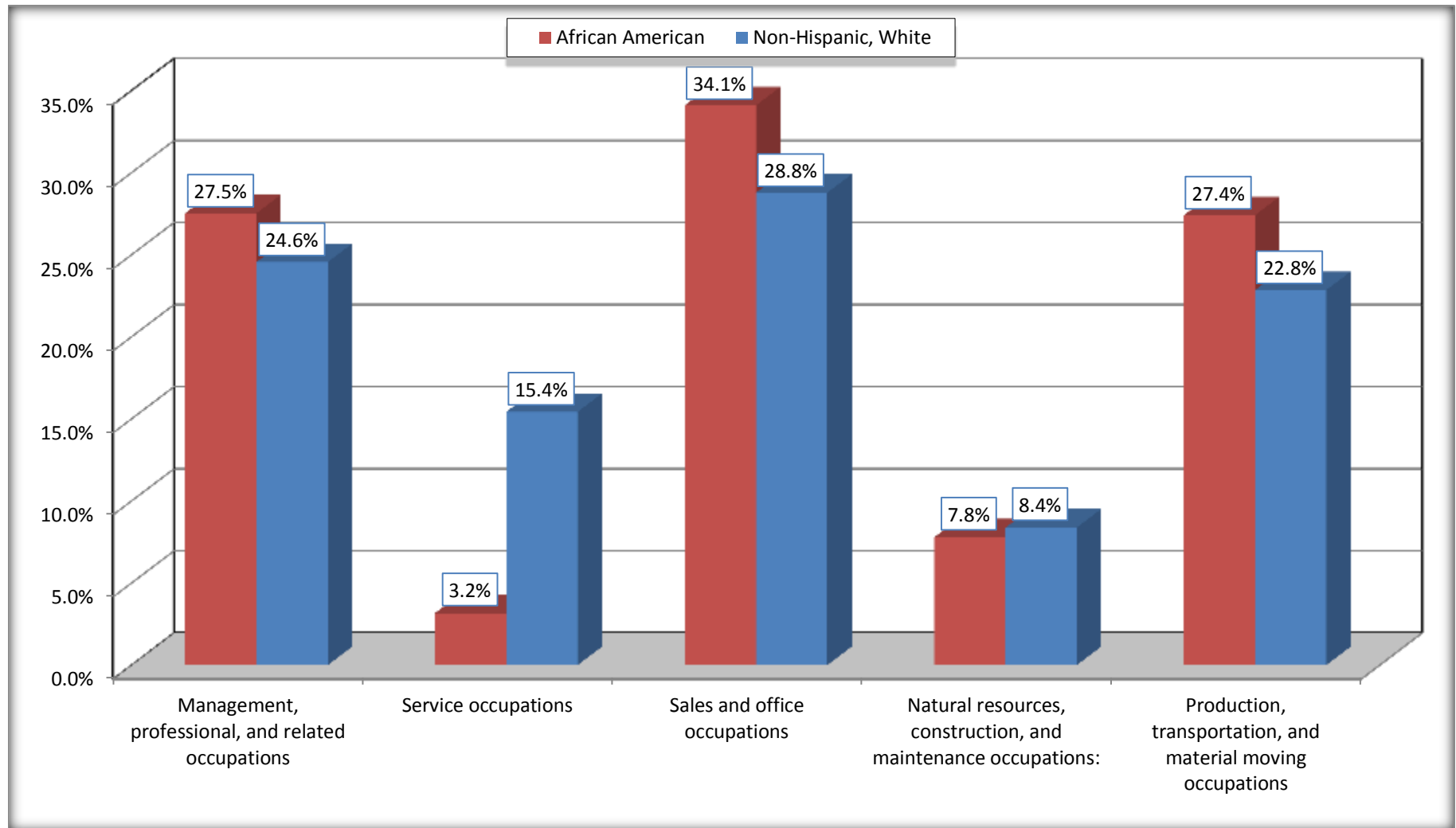
Source: U.S. Census Bureau, 2008-2012 American Community Survey

For information on confidentiality protection, sampling error, nonsampling error, and definitions, see Survey Methodology.

<http://www.census.gov/acs/www/UseData/index.htm>

Occupation for the Civilian Employed 16 Years and Over Population

Hampton city, Georgia



Source: C24010. SEX BY OCCUPATION FOR THE CIVILIAN EMPLOYED POPULATION 16 YEARS AND OVER
Data Set: 2008-2012 American Community Survey 5-Year Estimates

B25003. TENURE - Universe: OCCUPIED HOUSING UNITS

Data Set: 2008-2012 American Community Survey 5-Year Estimates

	Hampton city, Georgia					
	African American	Margin of Error (+/-)	% of AA Total	White, Not Hispanic	Margin of Error (+/-)	% of NHW Total
Total:	562	156	100.0%	1,259	208	100.0%
Owner occupied	427	145	76.0%	711	201	56.5%
Renter occupied	135	90	24.0%	548	217	43.5%

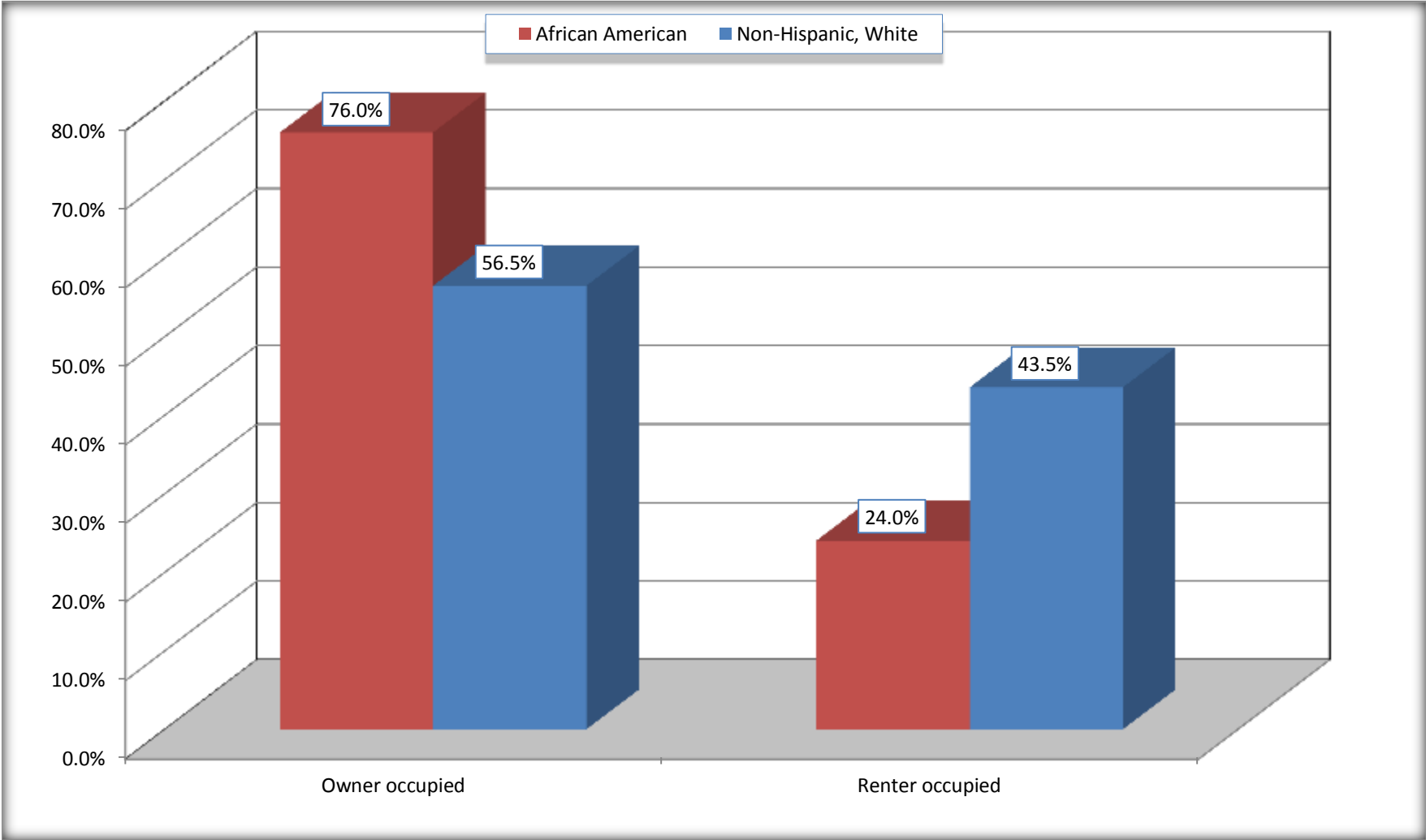
Source: U.S. Census Bureau, 2008-2012 American Community Survey

For information on confidentiality protection, sampling error, nonsampling error, and definitions, see Survey Methodology.

<http://www.census.gov/acs/www/UseData/index.h>

Home Owners and Renters by Household

Hampton city, Georgia



Source: B25003. TENURE - Universe: OCCUPIED HOUSING UNITS
Data Set: 2008-2012 American Community Survey 5-Year Estimates

B25014. OCCUPANTS PER ROOM - Universe: OCCUPIED HOUSING UNITS

Data Set: 2008-2012 American Community Survey 5-Year Estimates

	Hampton city, Georgia					
	African American	Margin of Error (+/-)	% of AA Total	White, Not Hispanic	Margin of Error (+/-)	% of NHW Total
Total:	562	156	100.0%	1,259	208	100.0%
1.00 or less occupants per room	549	156	97.7%	1,199	215	95.2%
1.01 or more occupants per room	13	19	2.3%	60	57	4.8%

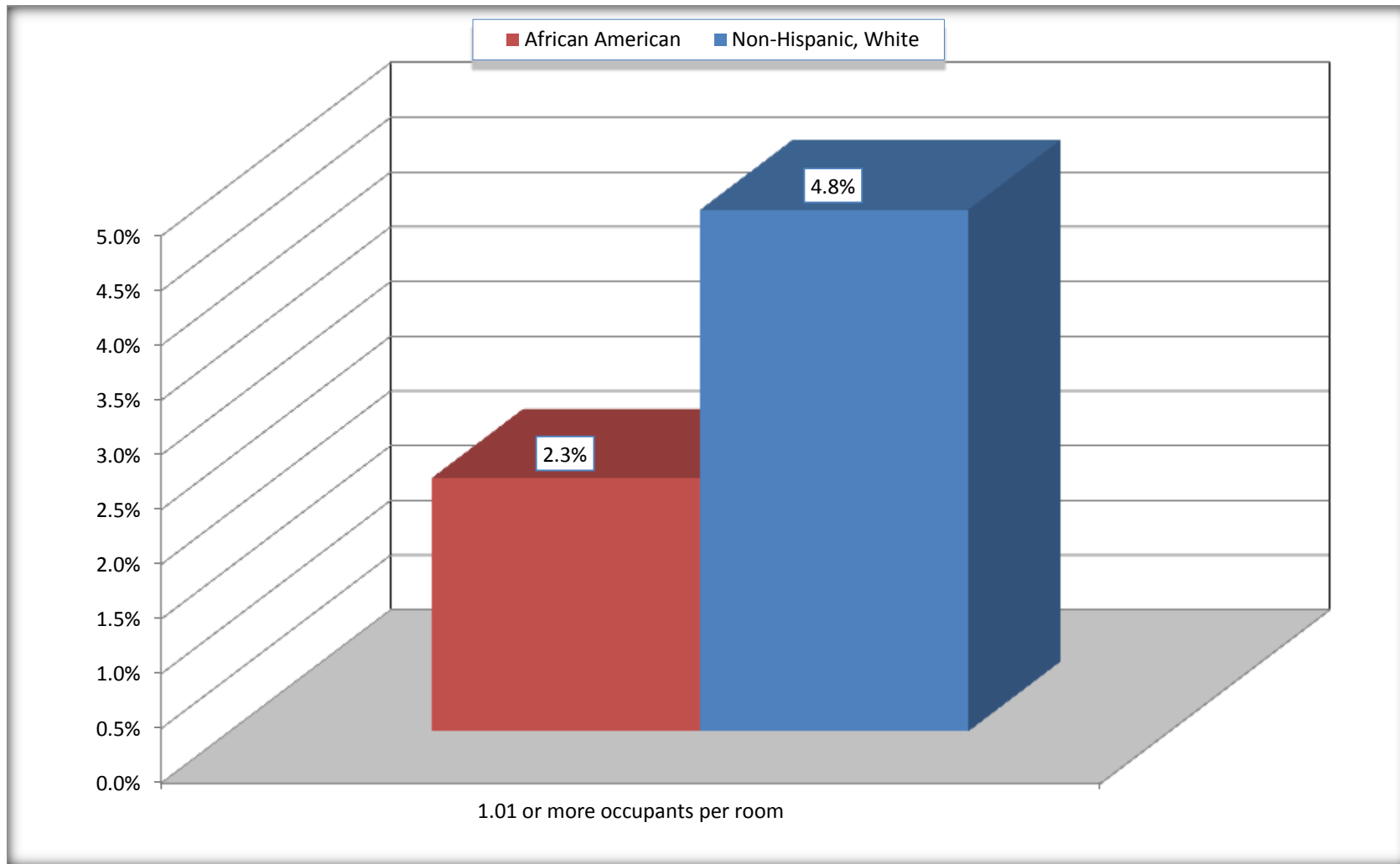
Source: U.S. Census Bureau, 2008-2012 American Community Survey

For information on confidentiality protection, sampling error, nonsampling error, and definitions, see Survey Methodology.

<http://www.census.gov/acs/www/UseData/index.ht>

More than One Person per Room (Crowding) by Household

Hampton city, Georgia



Source: B25014. OCCUPANTS PER ROOM - Universe: OCCUPIED HOUSING UNITS
Data Set: 2008-2012 American Community Survey 5-Year Estimates

B18101. AGE BY DISABILITY STATUS

Data Set: 2008-2012 American Community Survey 5-Year Estimates

	Hampton city, Georgia					
	African American	Margin of Error (+/-)	% of AA Total	White, Not Hispanic	Margin of Error (+/-)	% of NHW Total
Total:	2,249	592	100.0%	3,567	618	100.0%
Under 18 years:	971	378	43.2%	1,304	45	36.6%
With a disability	14	18	0.6%	15	29	0.4%
No disability	957	376	42.6%	1,289	339	36.1%
18 to 64 years:	1,254	383	55.8%	1,998	414	56.0%
With a disability	107	70	4.8%	175	121	4.9%
No disability	1,147	350	51.0%	1,823	348	51.1%
65 years and over:	24	30	1.1%	265	134	7.4%
With a disability	4	8	0.2%	130	78	3.6%
No disability	20	28	0.9%	135	89	3.8%

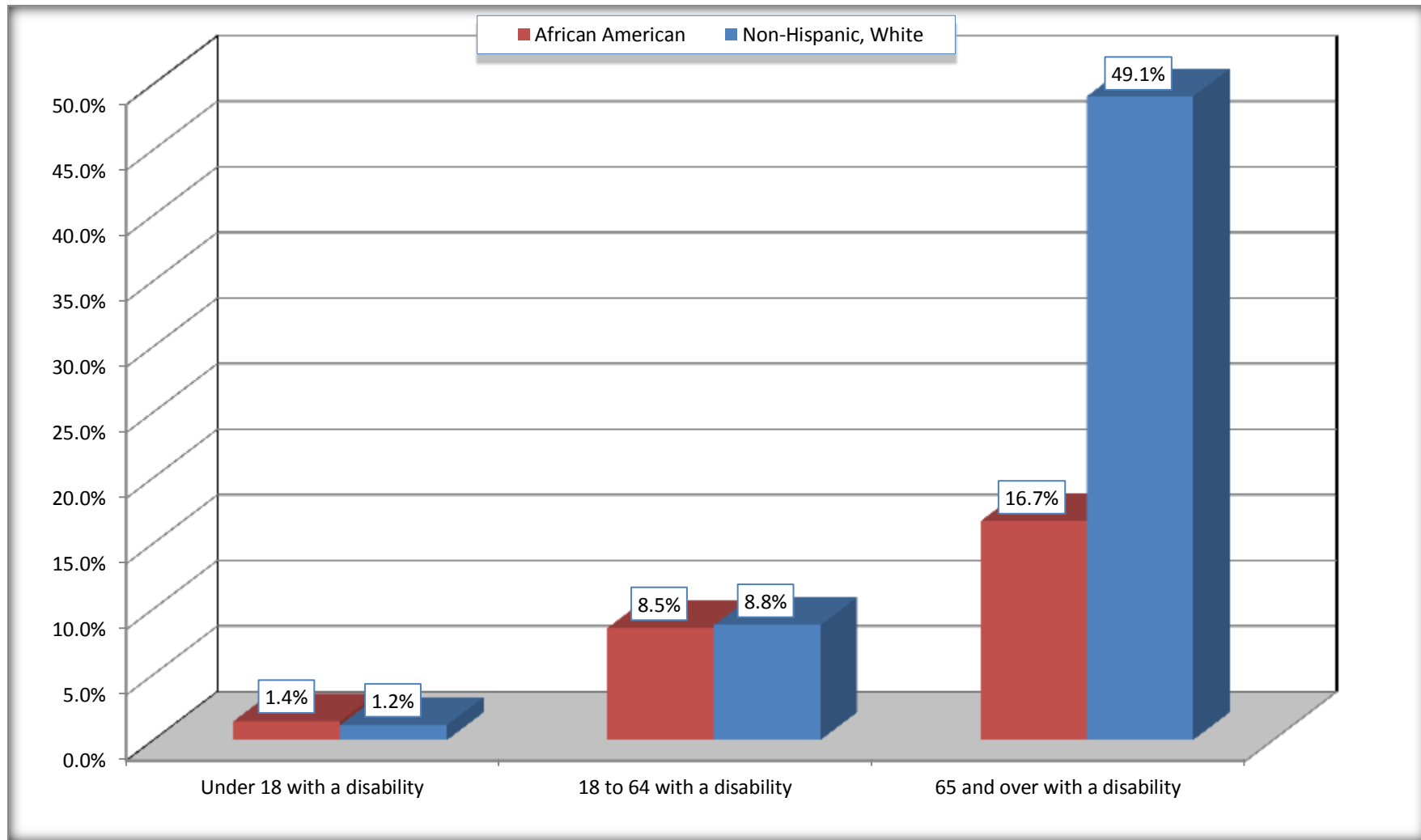
Source: U.S. Census Bureau, 2008-2012 American Community Survey

For information on confidentiality protection, sampling error, nonsampling error, and definitions, see Survey Methodology.

<http://www.census.gov/acs/www/UseData/index.htm>

Disability by Age

Hampton city, Georgia



Source: B18101. AGE BY DISABILITY STATUS
Data Set: 2008-2012 American Community Survey 5-Year Estimates

C27001B. HEALTH INSURANCE COVERAGE STATUS BY AGE

Data Set: 2008-2012 American Community Survey 5-Year Estimates

	Hampton city, Georgia					
	African American	Margin of Error (+/-)	% of AA Total	White, Not Hispanic	Margin of Error (+/-)	% of NHW Total
Total:	2,249	592	100.0%	3,567	618	100.0%
Under 18 years:	971	378	43.2%	1,304	344	36.6%
With health insurance coverage	849	320	37.8%	1,227	362	34.4%
No health insurance coverage	122	205	5.4%	77	96	2.2%
18 to 64 years:	1,254	383	55.8%	1,998	414	56.0%
With health insurance coverage	912	240	40.6%	1,286	303	36.1%
No health insurance coverage	342	268	15.2%	712	294	20.0%
65 years and over:	24	30	1.1%	265	134	7.4%
With health insurance coverage	24	30	1.1%	250	131	7.0%
No health insurance coverage	0	19	0.0%	15	25	0.4%

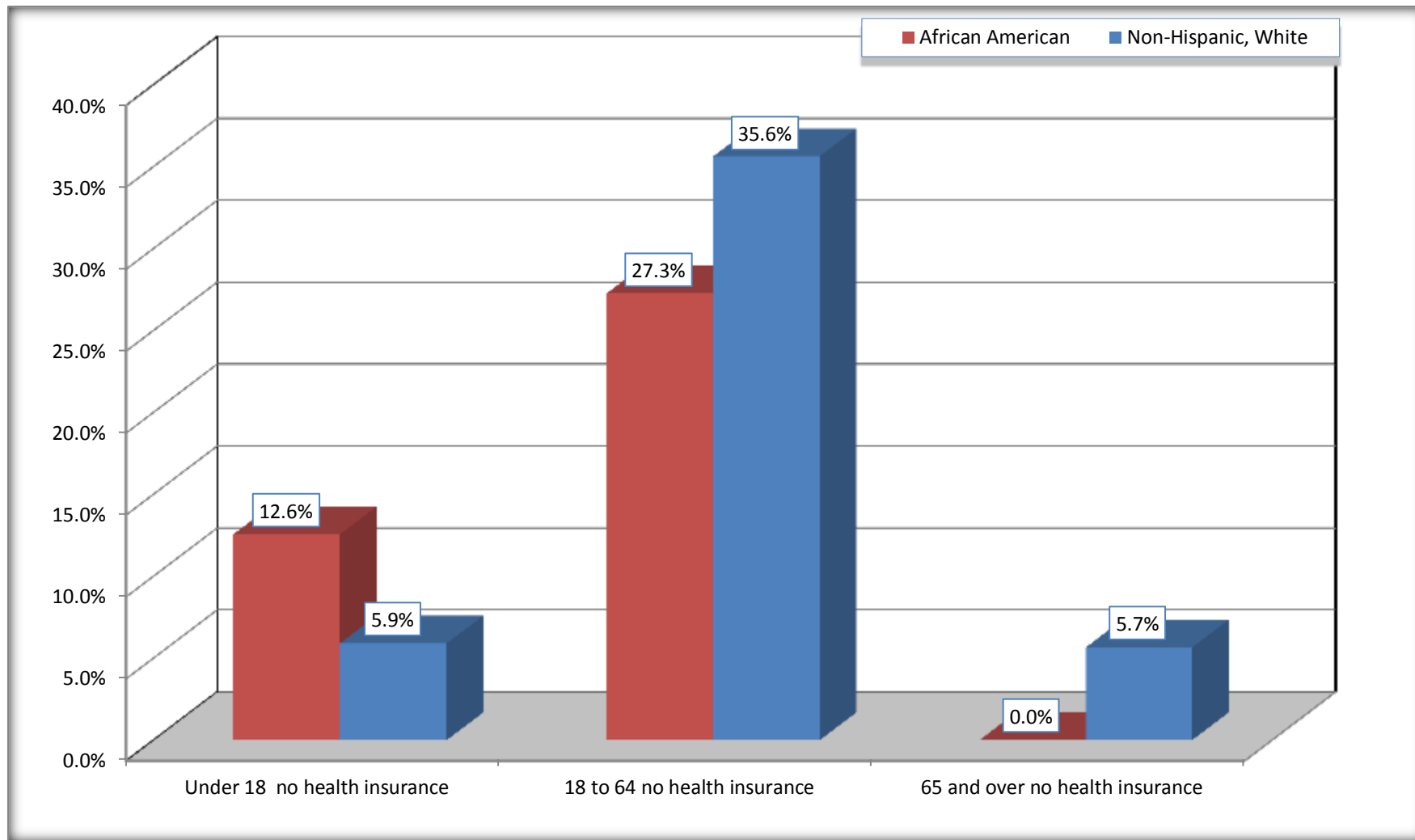
Source: U.S. Census Bureau, 2008-2012 American Community Survey

For information on confidentiality protection, sampling error, nonsampling error, and definitions, see Survey Methodology.

<http://www.census.gov/acs/www/UseData/index.htm>

Lack of Health Insurance Coverage by Age

Hampton city, Georgia



Source: C27001B. HEALTH INSURANCE COVERAGE STATUS BY AGE
Data Set: 2008-2012 American Community Survey 5-Year Estimates