

Selected Socio-Economic Data

Evans County, Georgia

African American and White, Not Hispanic

Data Set: 2008-2012 American Community Survey 5-Year Estimates

www.fairvote2020.org

www.fairdata2000.com

[29-Dec-13](#)

C02003.DETAILED RACE - Universe: TOTAL POPULATION

Data Set: 2008-2012 American Community Survey 5-Year Estimates

	Evans County, Georgia		
	Population	Margin of Error (+/-)	% of Total
Total:	10,935	*****	100.0%
Population of one race:	10,827	88	99.0%
White	6,614	171	60.5%
Black or African American	3,158	104	28.9%
American Indian and Alaska Native	33	26	0.3%
Asian alone	54	57	0.5%
Native Hawaiian and Other Pacific Islander	0	21	0.0%
Some other race	968	171	8.9%
Population of two or more races:	108	88	1.0%
Two races including Some other race	5	9	0.0%
Two races excluding Some other race, and three or more races	103	88	0.9%
Population of two races:	108	88	1.0%
White; Black or African American	60	54	0.5%
White; American Indian and Alaska Native	0	21	0.0%
White; Asian	4	7	0.0%
Black or African American; American Indian and Alaska Native	39	63	0.4%
All other two race combinations	5	9	0.0%
Population of three races	0	21	0.0%
Population of four or more races	0	21	0.0%

Note: Hispanics may be of any race. See Table B03002 and chart.

Source: U.S. Census Bureau, 2008-2012 American Community Survey

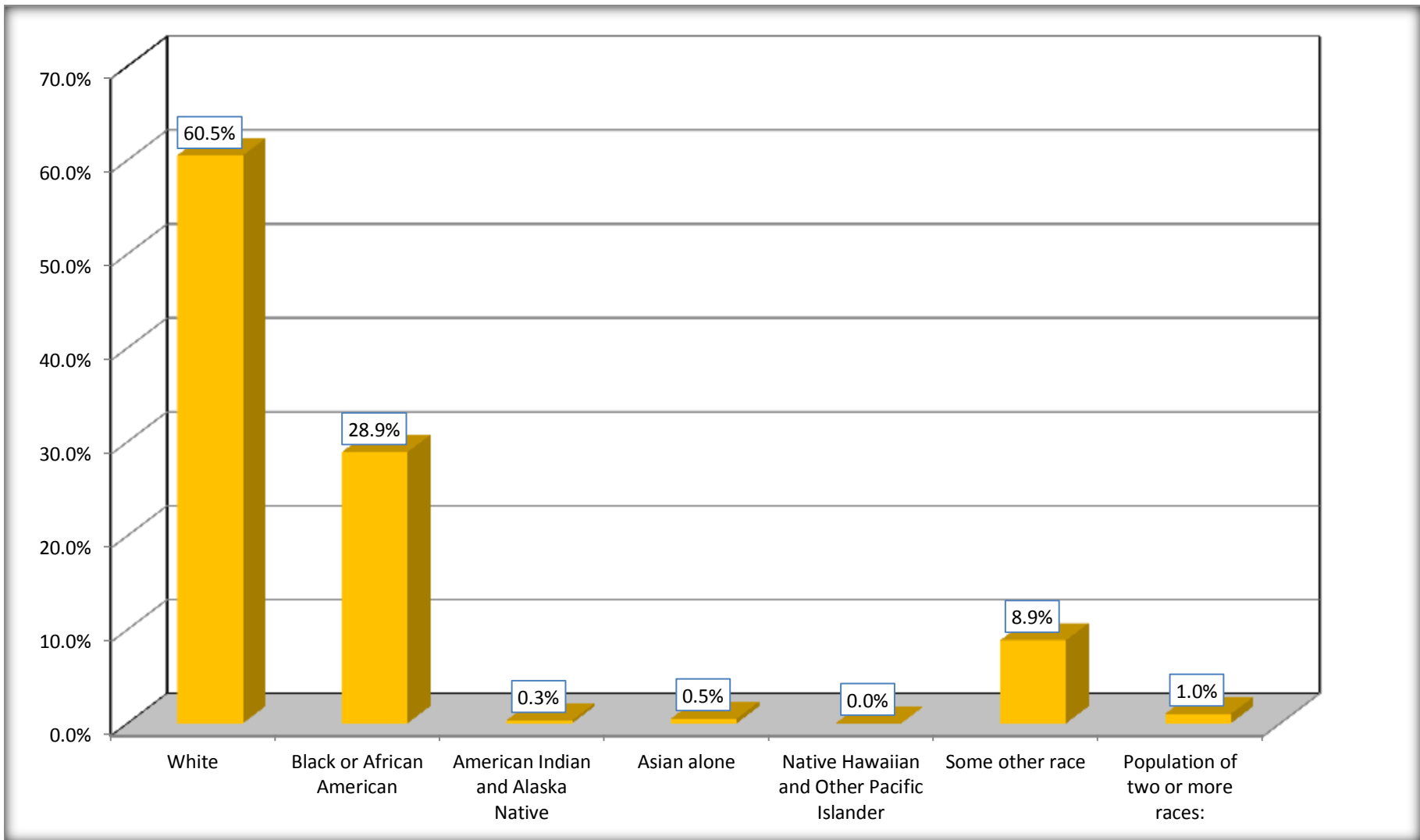
Although the American Community Survey (ACS) produces population, demographic and housing unit estimates, it is the Census Bureau's Population Estimates Program that produces and disseminates the official estimates of the population for the nation, states, counties, cities and towns and estimates of housing units for states and counties.

For information on confidentiality protection, sampling error, nonsampling error, and definitions, see Survey Methodology.

<http://www.census.gov/acs/www/UseData/index.htm>

Population by Race

Evans County, Georgia



Source: C02003.DETAILED RACE - Universe: TOTAL POPULATION
Data Set: 2008-2012 American Community Survey 5-Year Estimates

B03002. HISPANIC OR LATINO ORIGIN BY RACE - Universe: TOTAL POPULATION

Data Set: 2008-2012 American Community Survey 5-Year Estimates

	Evans County, Georgia		
	Population	Margin of Error (+/-)	% of Total
Total:	10,935	*****	100.0%
Not Hispanic or Latino:	9,572	*****	87.5%
White alone	6,224	21	56.9%
Black or African American alone	3,158	104	28.9%
American Indian and Alaska Native alone	33	26	0.3%
Asian alone	54	57	0.5%
Native Hawaiian and Other Pacific Islander alone	0	21	0.0%
Some other race alone	0	21	0.0%
Two or more races:	103	88	0.9%
Two races including Some other race	0	21	0.0%
Two races excluding Some other race, and three or more races	103	88	0.9%
Hispanic or Latino	1,363	*****	12.5%

Source: U.S. Census Bureau, 2008-2012 American Community Survey

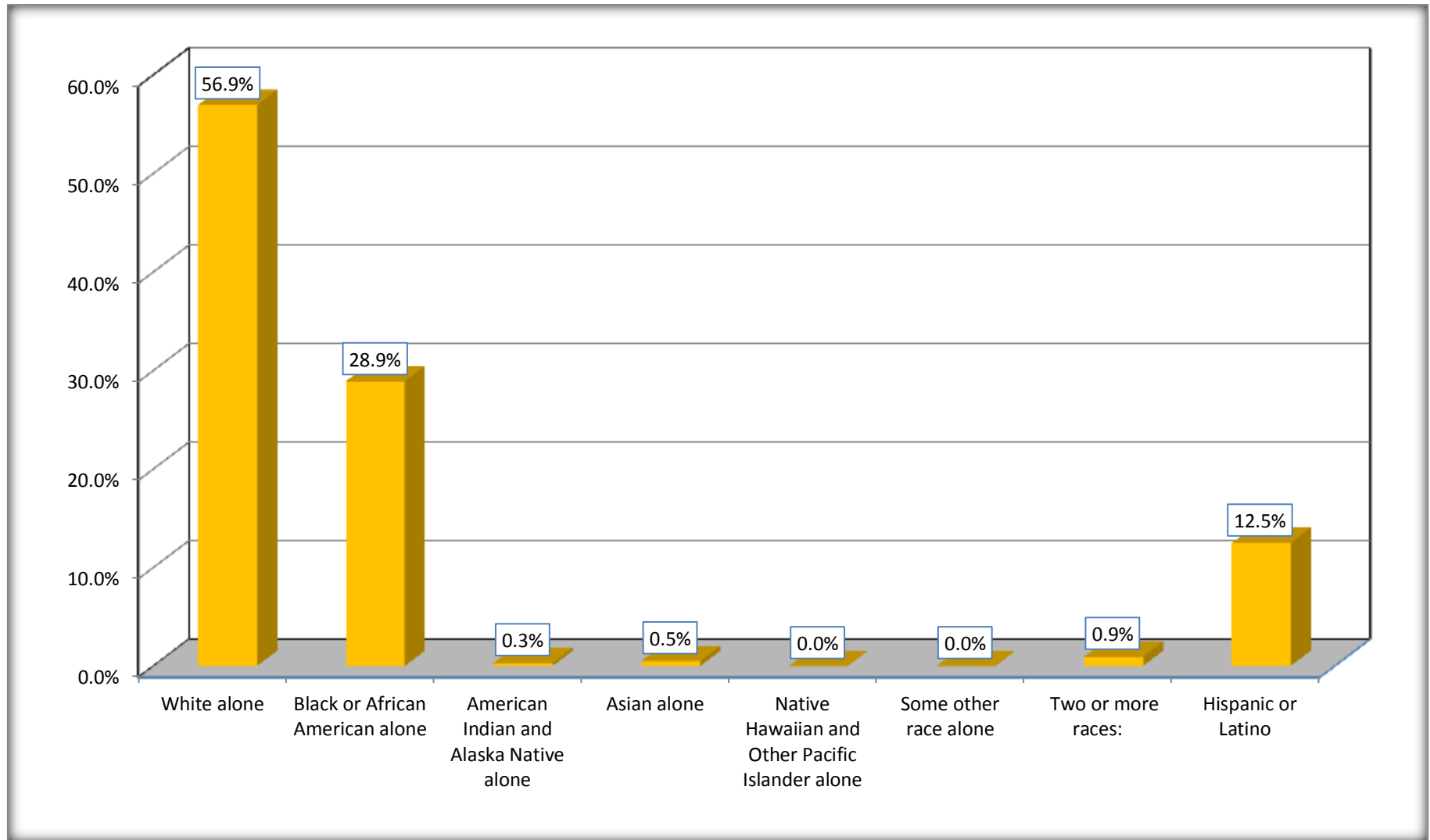
Although the American Community Survey (ACS) produces population, demographic and housing unit estimates, it is the Census Bureau's Population Estimates Program that produces and disseminates the official estimates of the population for the nation, states, counties, cities and towns and estimates of housing units for states and counties.

For information on confidentiality protection, sampling error, nonsampling error, and definitions, see Survey Methodology.

<http://www.census.gov/acs/www/UseData/index.htm>

Non-Hispanic by Race and Hispanic Population

Evans County, Georgia



Source: B03002. HISPANIC OR LATINO ORIGIN BY RACE - Universe: TOTAL POPULATION
Data Set: 2008-2012 American Community Survey 5-Year Estimates

B03002. HISPANIC OR LATINO ORIGIN BY RACE

Data Set: 2008-2012 American Community Survey 5-Year Estimates

	Evans County, Georgia		
	Population	Margin of Error (+/-)	% of Total
Hispanic or Latino:	1,363	*****	100.0%
White alone	390	171	28.6%
Black or African American alone	0	21	0.0%
American Indian and Alaska Native alone	0	21	0.0%
Asian alone	0	21	0.0%
Native Hawaiian and Other Pacific Islander alone	0	21	0.0%
Some other race alone	968	171	71.0%
Two or more races:	5	9	0.4%
Two races including Some other race	5	9	0.4%
Two races excluding Some other race, and three or more races	0	21	0.0%

Source: U.S. Census Bureau, 2008-2012 American Community Survey

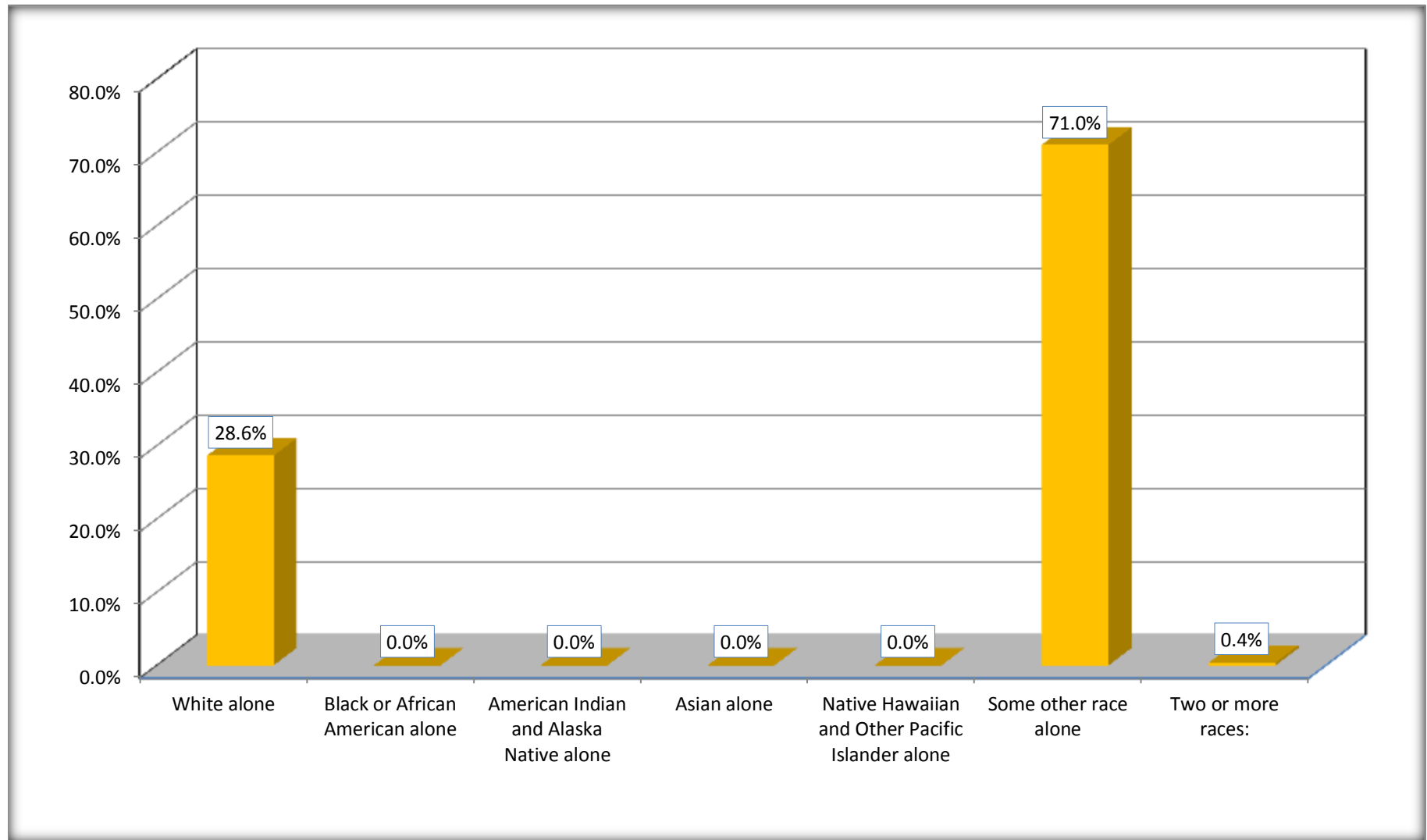
Although the American Community Survey (ACS) produces population, demographic and housing unit estimates, it is the Census Bureau's Population Estimates Program that produces and disseminates the official estimates of the population for the nation, states, counties, cities and towns and estimates of housing units for states and counties.

For information on confidentiality protection, sampling error, nonsampling error, and definitions, see Survey Methodology.

<http://www.census.gov/acs/www/UseData/index.htm>

Hispanic or Latino Origin by Race

Evans County, Georgia



Source: B03002. HISPANIC OR LATINO ORIGIN BY RACE
Data Set: 2008-2012 American Community Survey 5-Year Estimates

B01001. SEX BY AGE

Data Set: 2008-2012 American Community Survey 5-Year Estimates

	Evans County, Georgia					
	African American	Margin of Error (+/-)	% of AA Total	White, Not Hispanic	Margin of Error (+/-)	% of NHW Total
Total:	3,158	104	100.0%	6,224	21	100.0%
Under 18 years	879	NC	27.8%	1,305	NC	21.0%
18 to 64 years	1,950	NC	61.7%	3,793	NC	60.9%
65 years and over	329	NC	10.4%	1,126	NC	18.1%
Male:	1,581	66	50.1%	2,993	389	48.1%
Under 18 years	514	NC	16.3%	658	NC	10.6%
18 to 64 years	945	NC	29.9%	1,853	NC	29.8%
65 years and over	122	NC	3.9%	482	NC	7.7%
Female:	1,577	97	49.9%	3,231	412	51.9%
Under 18 years	365	NC	11.6%	647	NC	10.4%
18 to 64 years	1,005	NC	31.8%	1,940	NC	31.2%
65 years and over	207	NC	6.6%	644	NC	10.3%

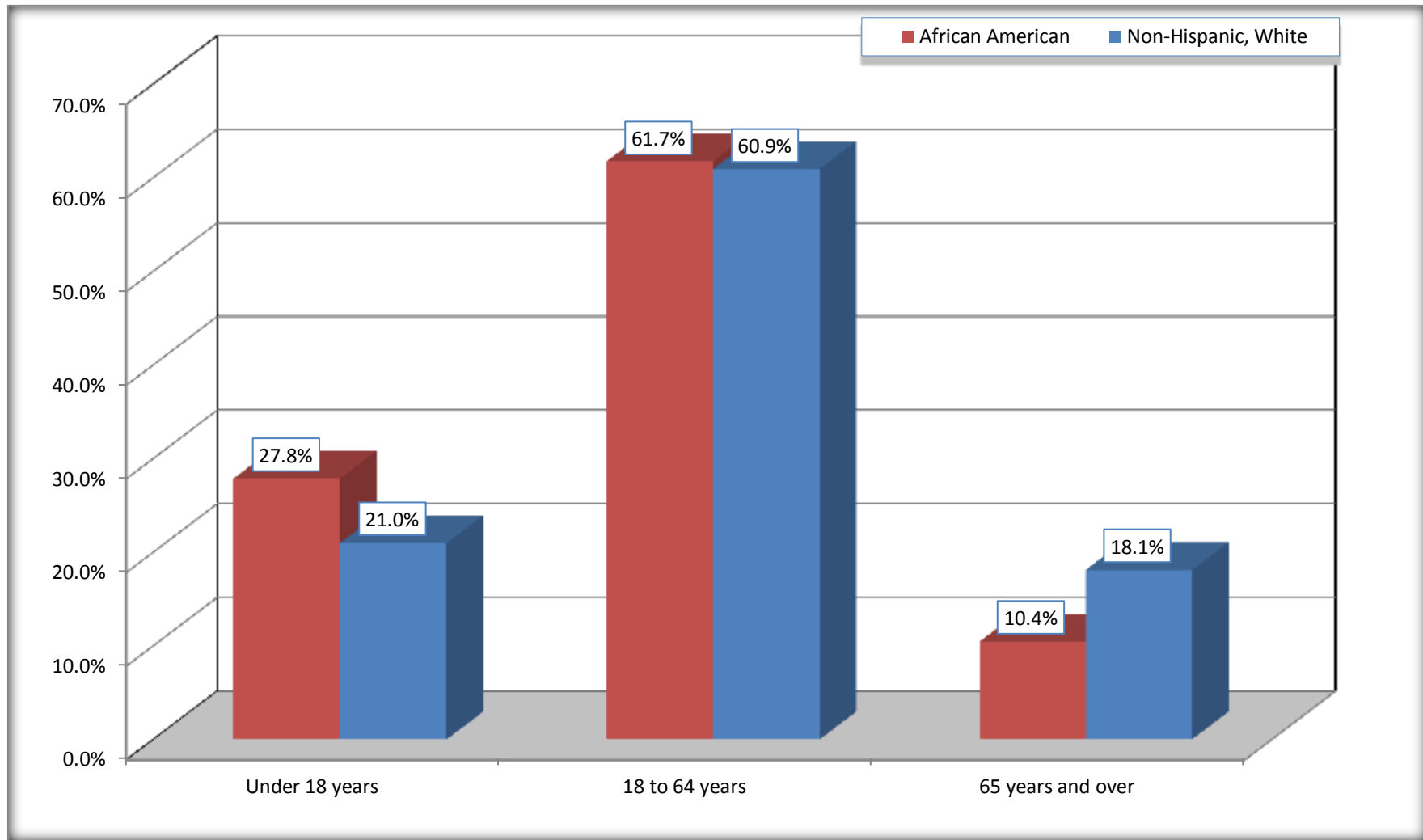
Source: U.S. Census Bureau, 2008-2012 American Community Survey

Although the American Community Survey (ACS) produces population, demographic and housing unit estimates, it is the Census Bureau's Population Estimates Program that produces and disseminates the official estimates of the population for the nation, states, counties, cities and towns and estimates of housing units for states and counties.

For information on confidentiality protection, sampling error, nonsampling error, and definitions, see Survey Methodology.
<http://www.census.gov/acs/www/UseData/index.htm>

Population by Age

Evans County, Georgia



Source: B01001. SEX BY AGE
Data Set: 2008-2012 American Community Survey 5-Year Estimates

B05003. SEX BY AGE BY CITIZENSHIP STATUS

Data Set: 2008-2012 American Community Survey 5-Year Estimates

	Evans County, Georgia					
	African American	Margin of Error (+/-)	% of AA Total by Age	White, Not Hispanic	Margin of Error (+/-)	% of NHW Total by Age
Total:	3,158	104	100.0%	6,224	21	100.0%
Under 18 years:	879	NC	100.0%	1,305	NC	100.0%
Native	879	NC	100.0%	1,305	NC	100.0%
Foreign born:	0	NC	0.0%	0	NC	0.0%
Naturalized U.S. citizen	0	NC	0.0%	0	NC	0.0%
Not a U.S. citizen	0	NC	0.0%	0	NC	0.0%
18 years and over:	2,279	NC	100.0%	4,919	NC	100.0%
Native	2,279	NC	100.0%	4,915	NC	99.9%
Foreign born:	0	NC	0.0%	4	NC	0.1%
Naturalized U.S. citizen	0	NC	0.0%	3	NC	0.1%
Not a U.S. citizen	0	NC	0.0%	1	NC	0.0%
Male:	1,581	66	50.1%	2,993	83	48.1%
Under 18 years:	514	62	100.0%	658	83	100.0%
Native	514	62	100.0%	658	83	100.0%
Foreign born:	0	21	0.0%	0	21	0.0%
Naturalized U.S. citizen	0	21	0.0%	0	21	0.0%
Not a U.S. citizen	0	21	0.0%	0	21	0.0%
18 years and over:	1,067	26	100.0%	2,335	21	100.0%
Native	1,067	26	100.0%	2,334	3	100.0%
Foreign born:	0	21	0.0%	1	3	0.0%
Naturalized U.S. citizen	0	21	0.0%	0	21	0.0%
Not a U.S. citizen	0	21	0.0%	1	3	0.0%

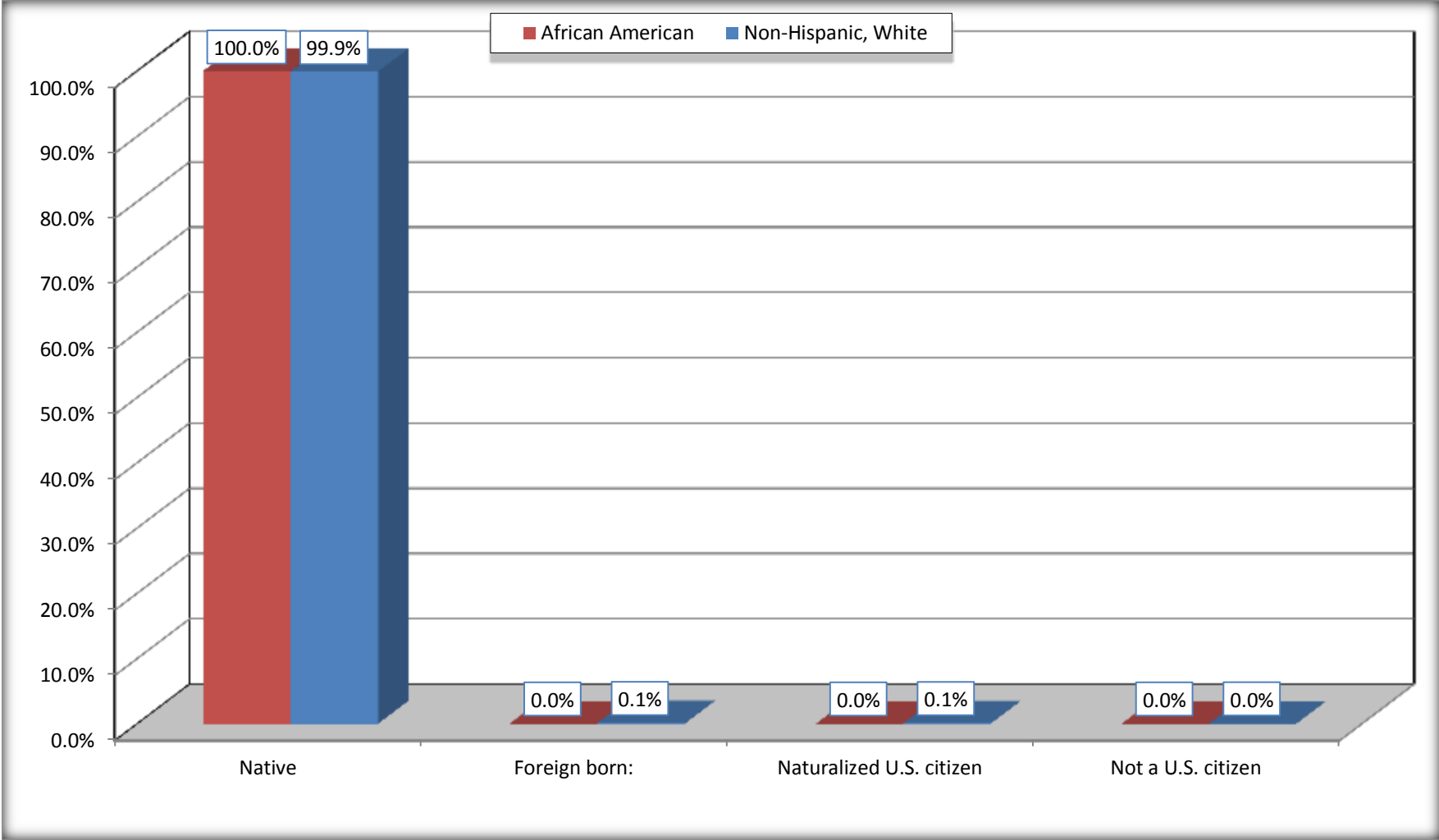
	Evans County, Georgia					
	African American	Margin of Error (+/-)	% of AA by Age	White, Not Hispanic	Margin of Error (+/-)	% of NHW by Age
Female:	1,577	97	49.9%	3,231	83	51.9%
Under 18 years:	365	72	100.0%	647	83	100.0%
Native	365	72	100.0%	647	83	100.0%
Foreign born:	0	21	0.0%	0	21	0.0%
Naturalized U.S. citizen	0	21	0.0%	0	21	0.0%
Not a U.S. citizen	0	21	0.0%	0	21	0.0%
18 years and over:	1,212	48	100.0%	2,584	21	100.0%
Native	1,212	48	100.0%	2,581	5	99.9%
Foreign born:	0	21	0.0%	3	5	0.1%
Naturalized U.S. citizen	0	21	0.0%	3	5	0.1%
Not a U.S. citizen	0	21	0.0%	0	21	0.0%

Source: U.S. Census Bureau, 2008-2012 American Community Survey

For information on confidentiality protection, sampling error, nonsampling error, and definitions, see Survey Methodology.
<http://www.census.gov/acs/www/UseData/index.htm>

Citizenship Status of Voting Age Population (18 and Over)

Evans County, Georgia



Source: B05003. SEX BY AGE BY CITIZENSHIP STATUS
Data Set: 2008-2012 American Community Survey 5-Year Estimates

**B07004. GEOGRAPHICAL MOBILITY IN THE PAST YEAR BY RACE FOR CURRENT RESIDENCE IN THE UNITED STATES - Universe:
POPULATION 1 YEAR AND OVER**

Data Set: 2008-2012 American Community Survey 5-Year Estimates

	Evans County, Georgia					
	African American	Margin of Error (+/-)	% of AA Total	White, Not Hispanic	Margin of Error (+/-)	% of NHW Total
Total:	3,132	103	100.0%	6,213	12	100.0%
Same house 1 year ago	2,626	186	83.8%	5,330	255	85.8%
Moved within same county	240	126	7.7%	219	123	3.5%
Moved from different county within same state	247	109	7.9%	521	175	8.4%
Moved from different state	19	15	0.6%	113	126	1.8%
Moved from abroad	0	21	0.0%	30	33	0.5%

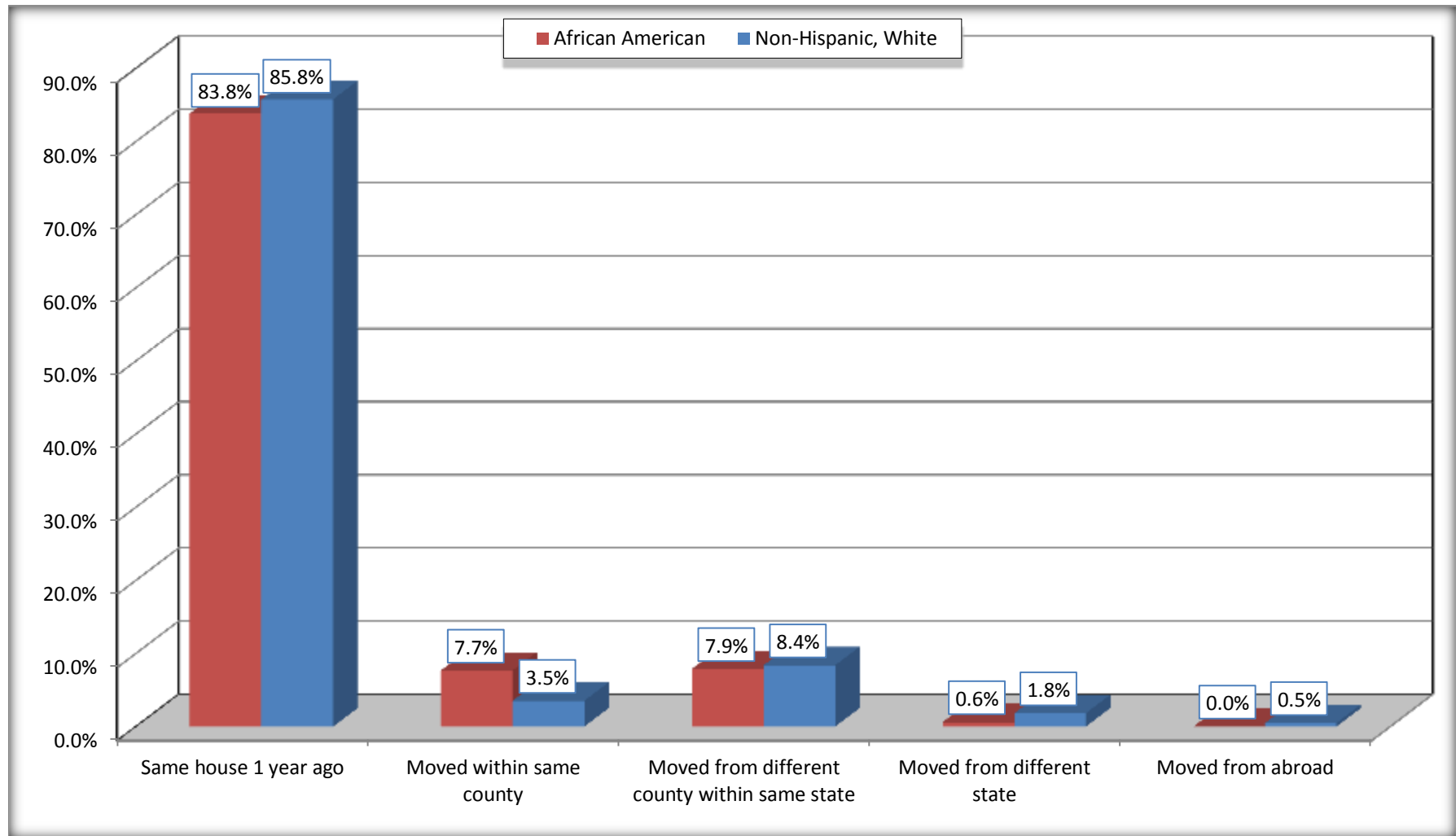
Source: U.S. Census Bureau, 2008-2012 American Community Survey

For information on confidentiality protection, sampling error, nonsampling error, and definitions, see Survey Methodology.

<http://www.census.gov/acs/www/UseData/index.htm>

Geographical Mobility in the Past Year (Population 1 Year and Over)

Evans County, Georgia



Source: B07004. GEOGRAPHICAL MOBILITY IN THE PAST YEAR BY RACE FOR CURRENT RESIDENCE IN THE UNITED STATES - Universe: POPULATION 1 YEAR AND OVER

Data Set: 2008-2012 American Community Survey 5-Year Estimates

B08105. MEANS OF TRANSPORTATION TO WORK - Universe: WORKERS 16 YEARS AND OVER

Data Set: 2008-2012 American Community Survey 5-Year Estimates

	Evans County, Georgia					
	African American	Margin of Error (+/-)	% of AA Total	White, Not Hispanic	Margin of Error (+/-)	% of NHW Total
Total:	1062	136	100.0%	2646	178	100.0%
Car, truck, or van - drove alone	711	151	66.9%	2110	185	79.7%
Car, truck, or van - carpooled	144	58	13.6%	278	94	10.5%
Public transportation (excluding taxicab)	0	21	0.0%	0	21	0.0%
Walked	20	23	1.9%	16	20	0.6%
Taxicab, motorcycle, bicycle, or other means	187	70	17.6%	128	63	4.8%
Worked at home	0	21	0.0%	114	71	4.3%

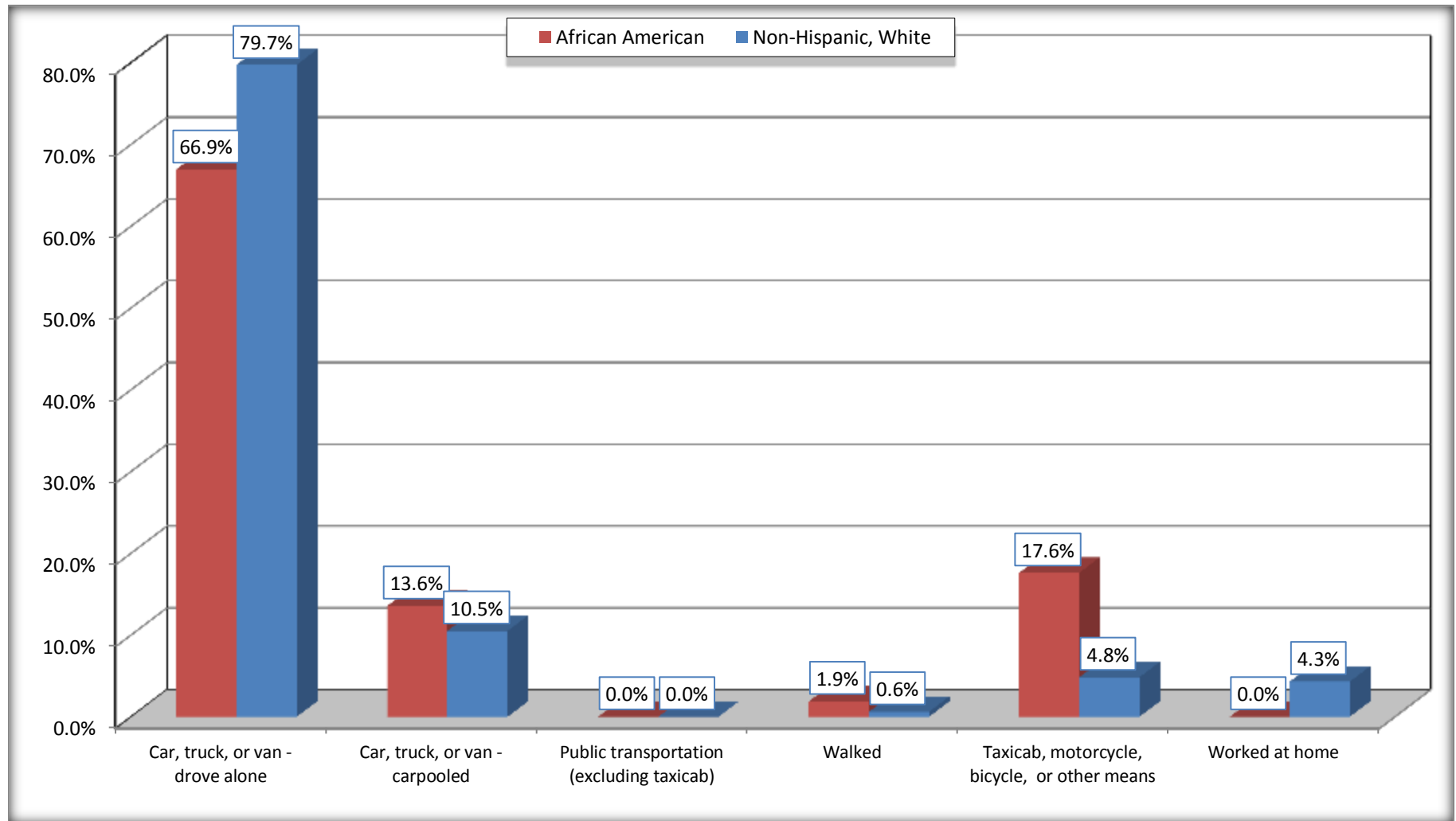
Source: U.S. Census Bureau, 2008-2012 American Community Survey

For information on confidentiality protection, sampling error, nonsampling error, and definitions, see Survey Methodology.

<http://www.census.gov/acs/www/UseData/index.htm>

Means of Transportation to Work (Workers 16 Years and Over)

Evans County, Georgia



Source: B08105. MEANS OF TRANSPORTATION TO WORK - Universe: WORKERS 16 YEARS AND OVER
Data Set: 2008-2012 American Community Survey 5-Year Estimates

B11002. HOUSEHOLD TYPE BY RELATIVES AND NONRELATIVES FOR POPULATION IN HOUSEHOLDS

Data Set: 2008-2012 American Community Survey 5-Year Estimates

	Evans County, Georgia					
	African American	Margin of Error (+/-)	% of AA Total	White, Not Hispanic	Margin of Error (+/-)	% of NHW Total
Total:	2822	140	100.0%	6092	151	100.0%
In family households	2470	172	87.5%	4843	275	79.5%
In nonfamily households	352	104	12.5%	1249	246	20.5%

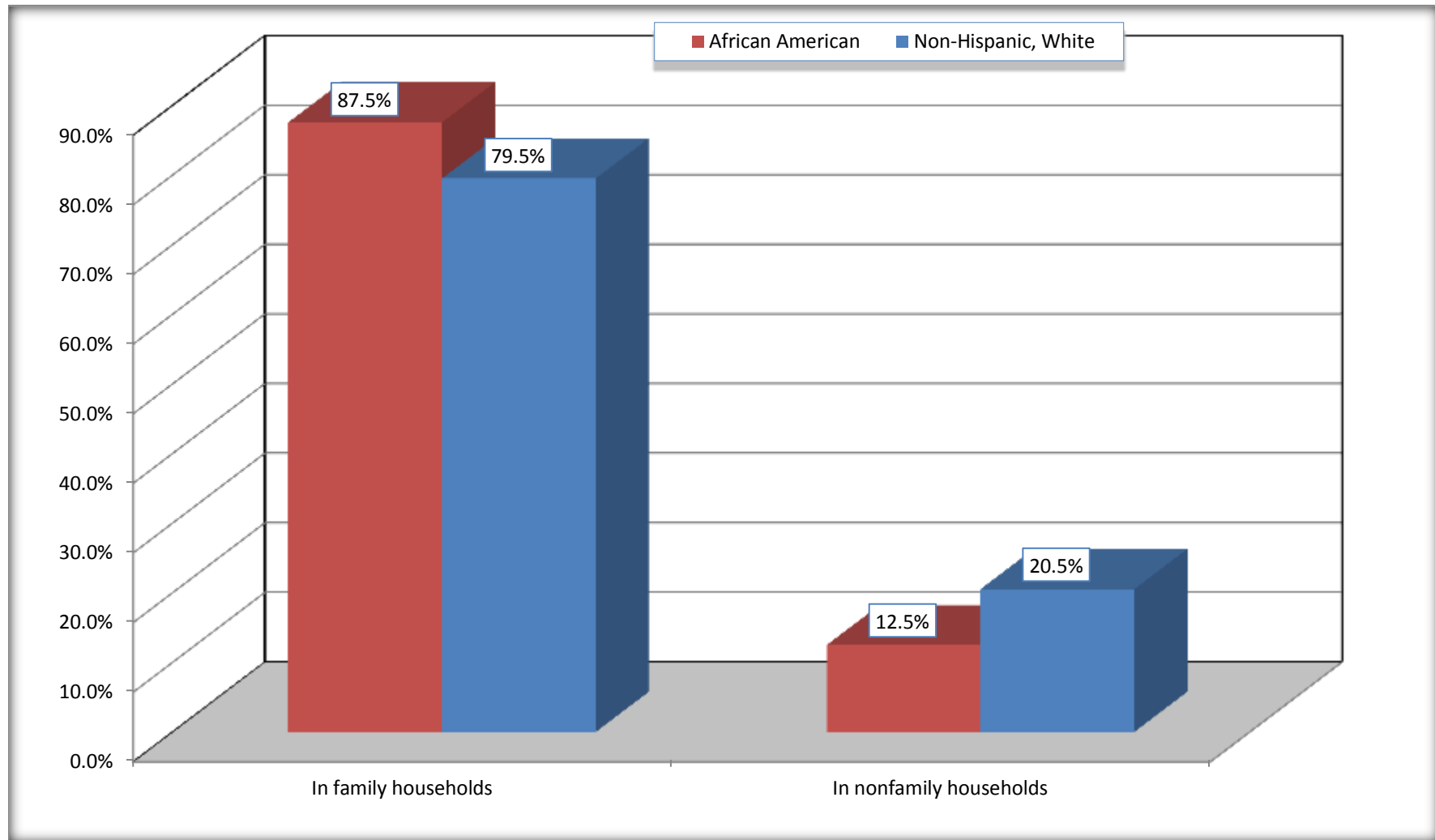
Source: U.S. Census Bureau, 2008-2012 American Community Survey

For information on confidentiality protection, sampling error, nonsampling error, and definitions, see Survey Methodology.

<http://www.census.gov/acs/www/UseData/index.htm>

Household Type for Population in Households

Evans County, Georgia



Source: B11002. HOUSEHOLD TYPE BY RELATIVES AND NONRELATIVES FOR POPULATION IN HOUSEHOLDS
Data Set: 2008-2012 American Community Survey 5-Year Estimates

B12002. MARITAL STATUS FOR THE POPULATION 15 YEARS AND OVER

Data Set: 2008-2012 American Community Survey 5-Year Estimates

	Evans County, Georgia					
	African American	Margin of Error (+/-)	% of AA Total	White, Not Hispanic	Margin of Error (+/-)	% of NHW Total
Total:	2,447	70	100.0%	5,132	2	100.0%
Never married	1,140	NC	46.6%	1,075	NC	20.9%
Now married (except separated)	684	NC	28.0%	2,637	NC	51.4%
Separated	190	NC	7.8%	53	NC	1.0%
Widowed	135	NC	5.5%	534	NC	10.4%
Divorced	298	NC	12.2%	833	NC	16.2%
Male:	1,207	44	49.3%	2,446	43	47.7%
Never married	675	88	27.6%	613	142	11.9%
Now married (except separated)	367	94	15.0%	1,340	147	26.1%
Separated	77	69	3.1%	16	16	0.3%
Widowed	32	31	1.3%	105	51	2.0%
Divorced	56	46	2.3%	372	141	7.2%
Female:	1,240	58	50.7%	2,686	43	52.3%
Never married	465	86	19.0%	462	92	9.0%
Now married (except separated)	317	89	13.0%	1,297	139	25.3%
Separated	113	51	4.6%	37	33	0.7%
Widowed	103	50	4.2%	429	86	8.4%
Divorced	242	95	9.9%	461	120	9.0%

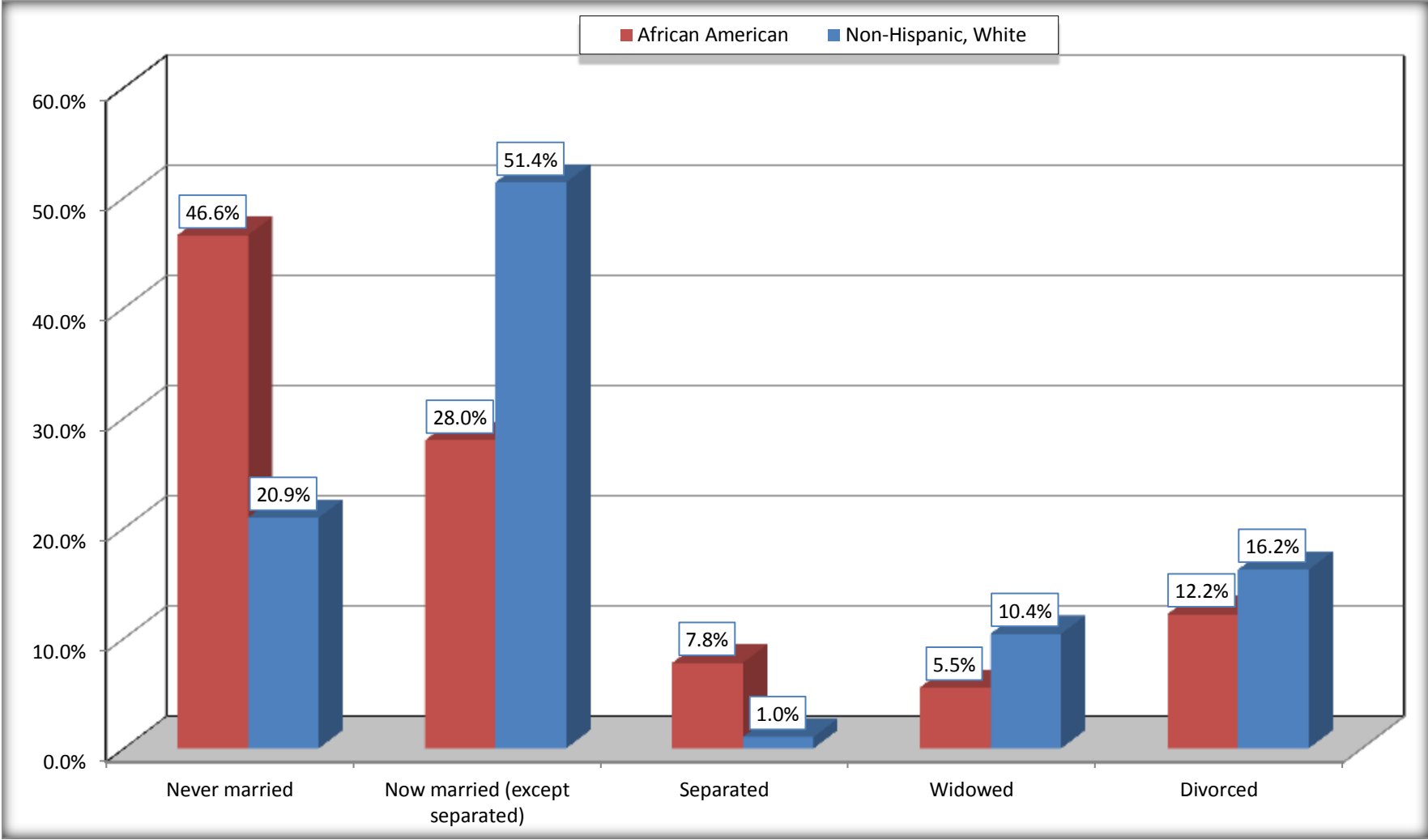
Source: U.S. Census Bureau, 2008-2012 American Community Survey

For information on confidentiality protection, sampling error, nonsampling error, and definitions, see Survey Methodology.

<http://www.census.gov/acs/www/UseData/index.htm>

Marital Status for the Population 15 Years and Over

Evans County, Georgia



Source: B12002. MARITAL STATUS FOR THE POPULATION 15 YEARS AND OVER
Data Set: 2008-2012 American Community Survey 5-Year Estimates

C15002. SEX BY EDUCATIONAL ATTAINMENT FOR THE POPULATION 25 YEARS AND OVER

Data Set: 2008-2012 American Community Survey 5-Year Estimates

	Evans County, Georgia					
	African American	Margin of Error (+/-)	% of AA Total	White, Not Hispanic	Margin of Error (+/-)	% of NHW Total
Total:	1,880	63	100.0%	4,426	21	100.0%
Less than high school diploma	540	NC	28.7%	554	NC	12.5%
High school graduate, GED, or alternative	764	NC	40.6%	1,810	NC	40.9%
Some college or associate's degree	459	NC	24.4%	1,222	NC	27.6%
Bachelor's degree or higher	117	NC	6.2%	840	NC	19.0%
Male:	841	47	44.7%	2,086	21	47.1%
Less than high school diploma	310	98	16.5%	305	91	6.9%
High school graduate, GED, or alternative	330	91	17.6%	895	126	20.2%
Some college or associate's degree	167	63	8.9%	473	112	10.7%
Bachelor's degree or higher	34	42	1.8%	413	111	9.3%
Female:	1,039	42	55.3%	2,340	21	52.9%
Less than high school diploma	230	73	12.2%	249	67	5.6%
High school graduate, GED, or alternative	434	87	23.1%	915	150	20.7%
Some college or associate's degree	292	84	15.5%	749	142	16.9%
Bachelor's degree or higher	83	47	4.4%	427	134	9.6%

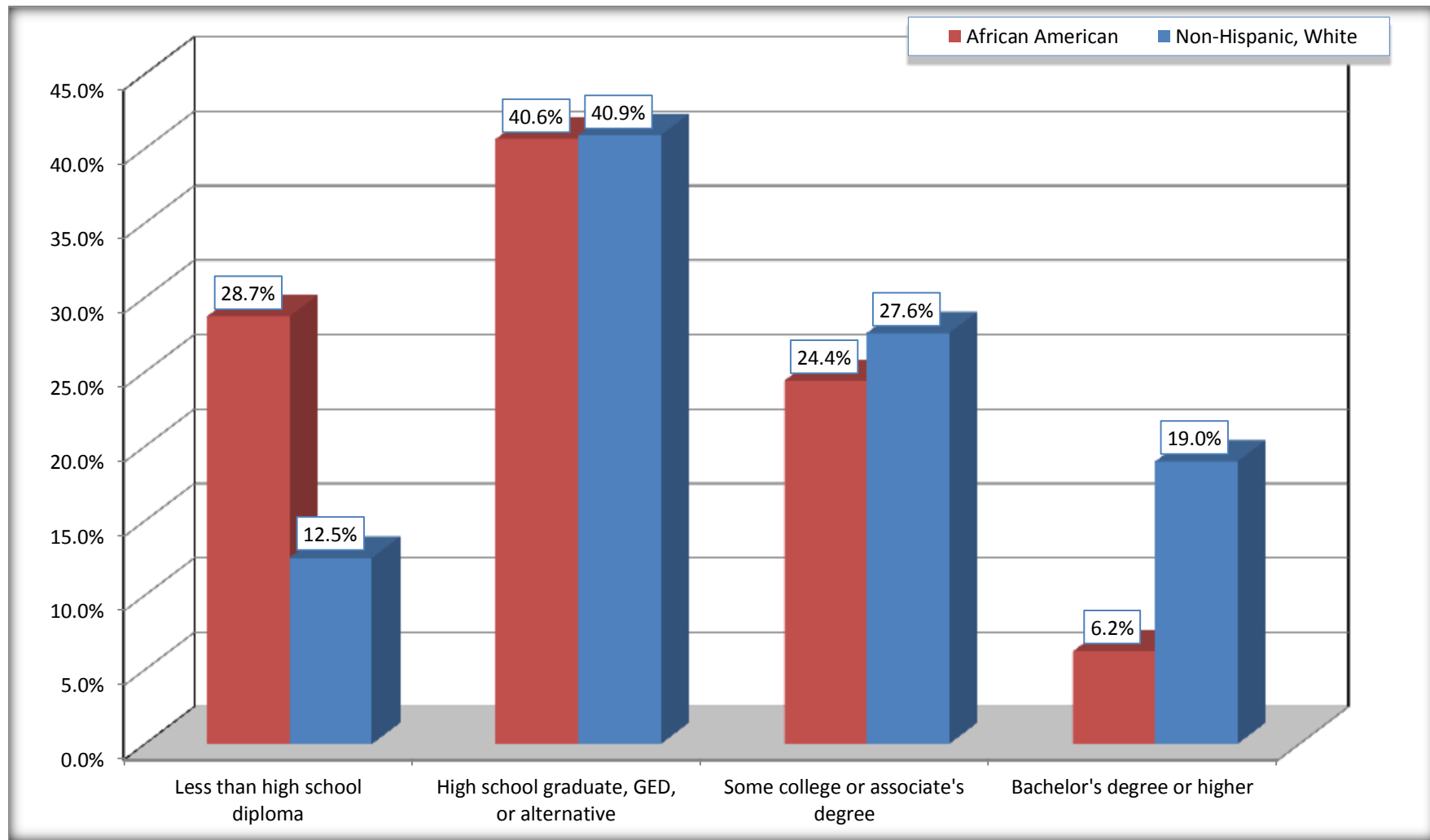
Source: U.S. Census Bureau, 2008-2012 American Community Survey

For information on confidentiality protection, sampling error, nonsampling error, and definitions, see Survey Methodology.

<http://www.census.gov/acs/www/UseData/index.htm>

Educational Attainment for the Population 25 Years and Older

Evans County, Georgia



Source: C15002. SEX BY EDUCATIONAL ATTAINMENT FOR THE POPULATION 25 YEARS AND OVER
Data Set: 2008-2012 American Community Survey 5-Year Estimates

B17010. POVERTY STATUS IN THE PAST 12 MONTHS OF FAMILIES BY FAMILY TYPE BY PRESENCE OF RELATED CHILDREN UNDER 18 YEARS

Data Set: 2008-2012 American Community Survey 5-Year Estimates

	Evans County, Georgia					
	African American	Margin of Error (+/-)	% of AA Total	White, Not Hispanic	Margin of Error (+/-)	% of NHW Total
Total:	731	83	100.0%	1,665	159	100.0%
Income in the past 12 months below poverty level:	209	63	28.6%	169	76	10.2%
Married-couple family:	44	40	6.0%	36	28	2.2%
With related children under 18 years	11	15	1.5%	22	23	1.3%
Other family:	165	57	22.6%	133	77	8.0%
Male householder, no wife present	3	5	0.4%	6	11	0.4%
With related children under 18 years	0	21	0.0%	0	21	0.0%
Female householder, no husband present	162	57	22.2%	127	73	7.6%
With related children under 18 years	120	53	16.4%	104	65	6.2%
Income in the past 12 months at or above poverty level:	522	94	71.4%	1,496	155	89.8%
Married-couple family:	226	74	30.9%	1,246	138	74.8%
With related children under 18 years	102	60	14.0%	512	121	30.8%
Other family:	296	86	40.5%	250	95	15.0%
Male householder, no wife present	81	66	11.1%	39	36	2.3%
With related children under 18 years	62	61	8.5%	33	37	2.0%
Female householder, no husband present	215	66	29.4%	211	85	12.7%
With related children under 18 years	137	59	18.7%	112	59	6.7%

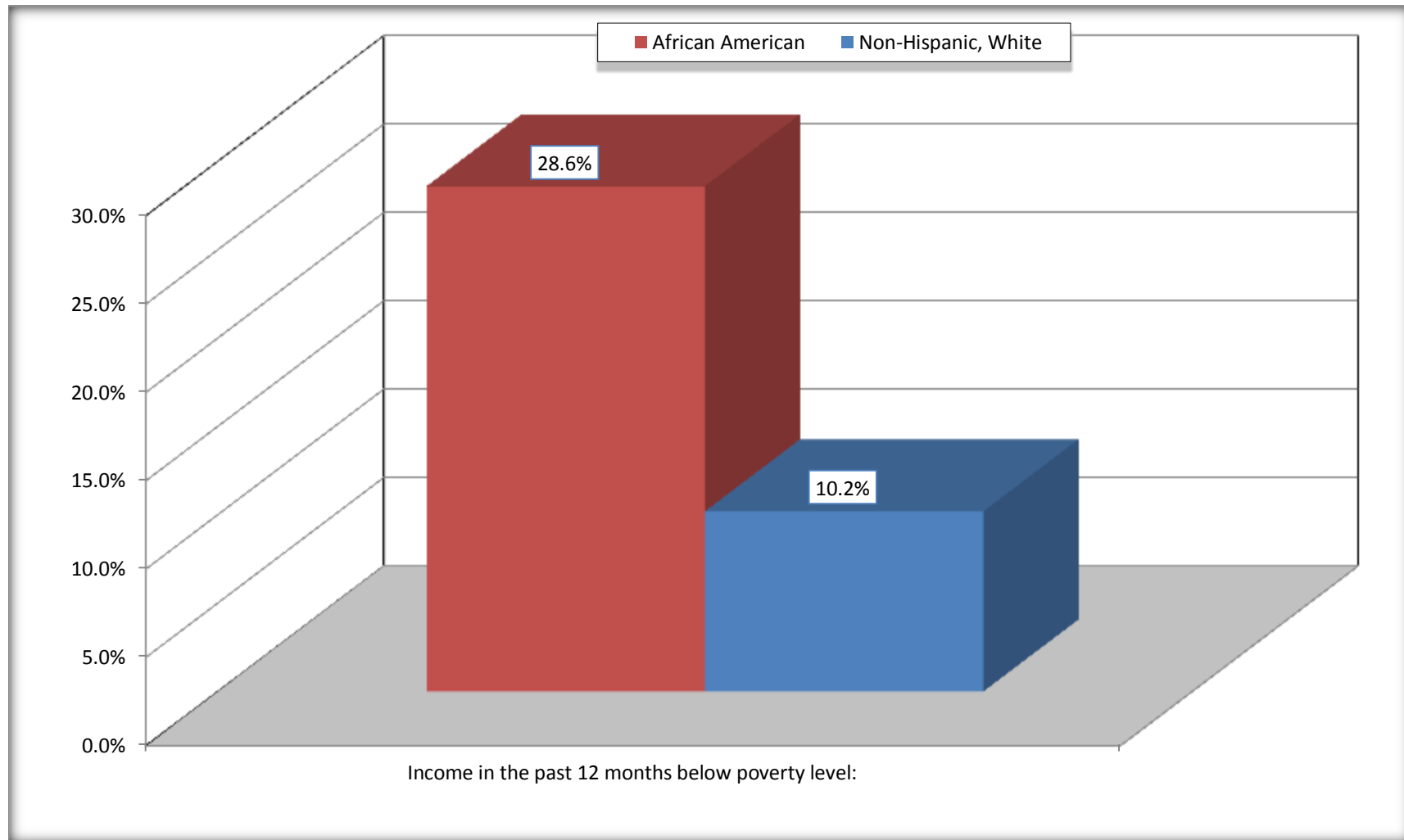
Source: U.S. Census Bureau, 2008-2012 American Community Survey

For information on confidentiality protection, sampling error, nonsampling error, and definitions, see Survey Methodology.

<http://www.census.gov/acs/www/UseData/index.htm>

Family Households Below Poverty in the Past 12 Months

Evans County, Georgia

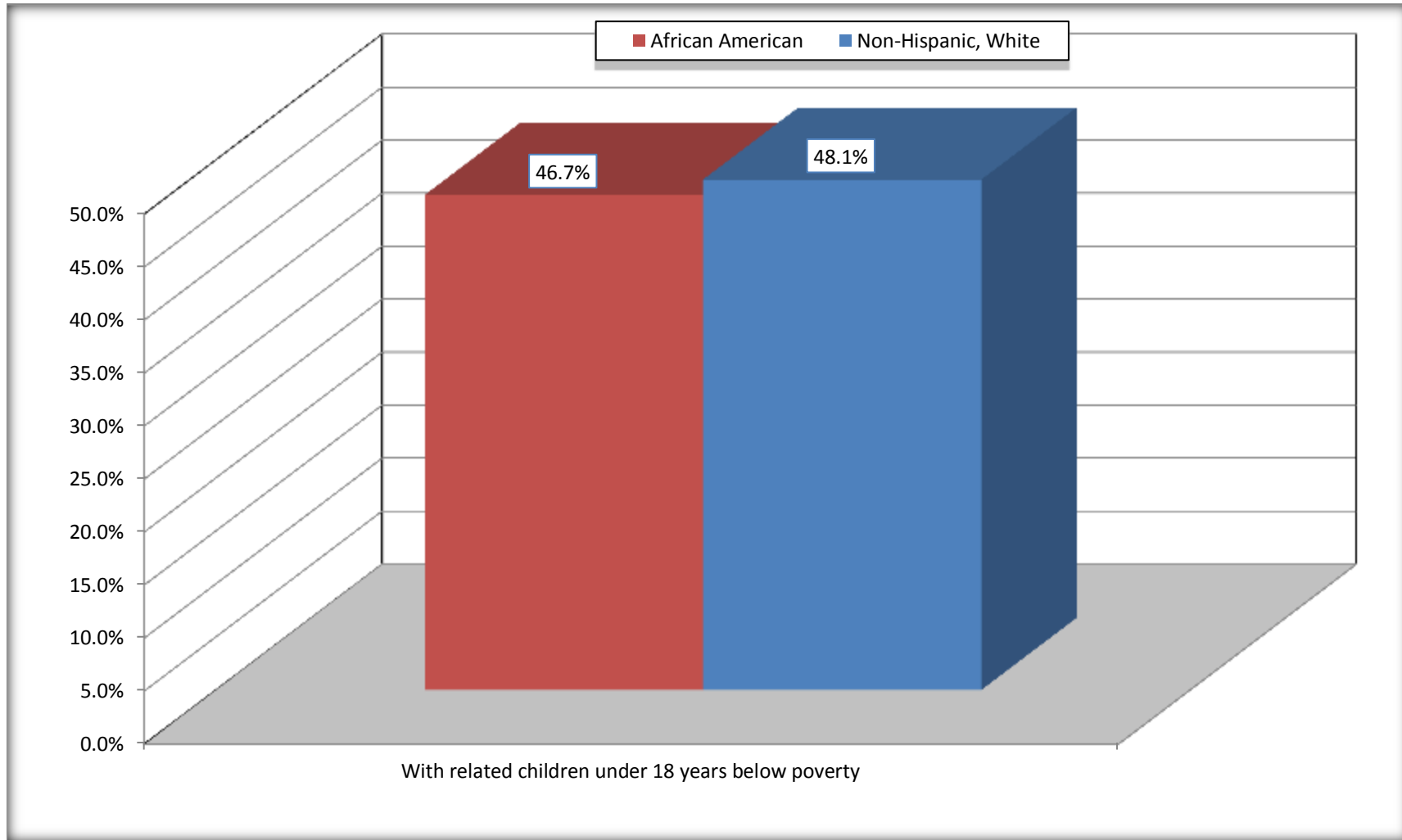


Source: B17010. POVERTY STATUS IN THE PAST 12 MONTHS OF FAMILIES BY FAMILY TYPE BY PRESENCE OF RELATED CHILDREN UNDER 18 YEARS

Data Set: 2008-2012 American Community Survey 5-Year Estimates

Female-headed Households with Related Children Below Poverty in the Past 12 Months

Evans County, Georgia



Source: B17010. POVERTY STATUS IN THE PAST 12 MONTHS OF FAMILIES BY FAMILY TYPE BY PRESENCE OF RELATED CHILDREN UNDER 18 YEARS

Data Set: 2008-2012 American Community Survey 5-Year Estimates

B17020 POVERTY STATUS IN THE PAST 12 MONTHS BY AGE - Universe: POPULATION FOR WHOM POVERTY STATUS IS DETERMINED

Data Set: 2008-2012 American Community Survey 5-Year Estimates

	Evans County, Georgia					
	African American	Margin of Error (+/-)	% of AA By Age	White, Not Hispanic	Margin of Error (+/-)	% of NHW By Age
Total:	2,846	118	100.0%	5,984	74	100.0%
Income in the past 12 months below poverty level:	994	258	34.9%	783	223	13.1%
Under 18 years	367	NC	42.4%	174	NC	14.1%
18 to 64 years	530	178	31.8%	512	159	14.1%
65 years and over	97	NC	30.8%	97	NC	8.8%
Income in the past 12 months at or above poverty level:	1,852	284	65.1%	5,201	243	86.9%
Under 18 years	499	NC	57.6%	1,062	NC	85.9%
18 to 64 years	1,135	161	68.2%	3,130	166	85.9%
65 years and over	218	NC	69.2%	1,009	NC	91.2%

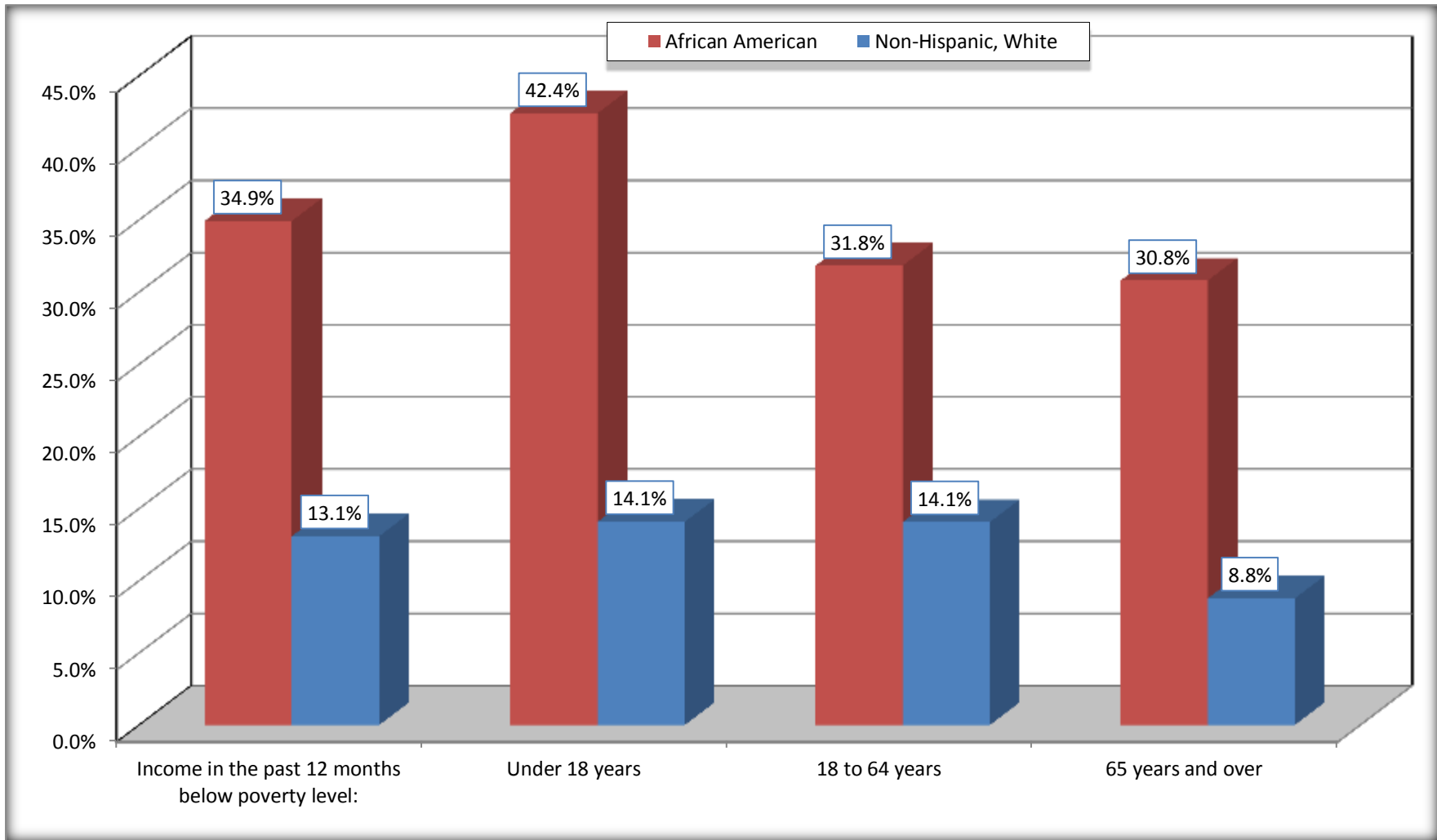
Source: U.S. Census Bureau, 2008-2012 American Community Survey

For information on confidentiality protection, sampling error, nonsampling error, and definitions, see Survey Methodology.

<http://www.census.gov/acs/www/UseData/index.htm>

Population Below Poverty in the Past 12 Months

Evans County, Georgia



Source: B17020 POVERTY STATUS IN THE PAST 12 MONTHS BY AGE - Universe: POPULATION FOR WHOM POVERTY STATUS IS DETERMINED
Data Set: 2008-2012 American Community Survey 5-Year Estimates

B19001. HOUSEHOLD INCOME IN THE PAST 12 MONTHS (IN 2010 INFLATION-ADJUSTED DOLLARS)

Data Set: 2008-2012 American Community Survey 5-Year Estimates

	Evans County, Georgia					
	African American	Margin of Error (+/-)	% of AA Total	White, Not Hispanic	Margin of Error (+/-)	% of NHW Total
Total:	1,063	95	100.0%	2,722	121	100.0%
Less than \$ 10,000	222	71	20.9%	258	101	9.5%
\$ 10,000 to \$ 14,999	121	68	11.4%	132	49	4.8%
\$ 15,000 to \$ 24,999	76	NC	7.1%	372	NC	13.7%
\$ 25,000 to \$ 34,999	137	NC	12.9%	393	NC	14.4%
\$ 35,000 to \$ 49,999	217	NC	20.4%	456	NC	16.8%
\$ 50,000 to \$ 74,999	103	NC	9.7%	451	NC	16.6%
\$ 75,000 to \$ 99,999	154	72	14.5%	290	96	10.7%
\$ 100,000 to \$ 149,999	22	NC	2.1%	299	NC	11.0%
\$ 150,000 to \$ 199,999	11	22	1.0%	47	32	1.7%
\$ 200,000 or more	0	21	0.0%	24	22	0.9%

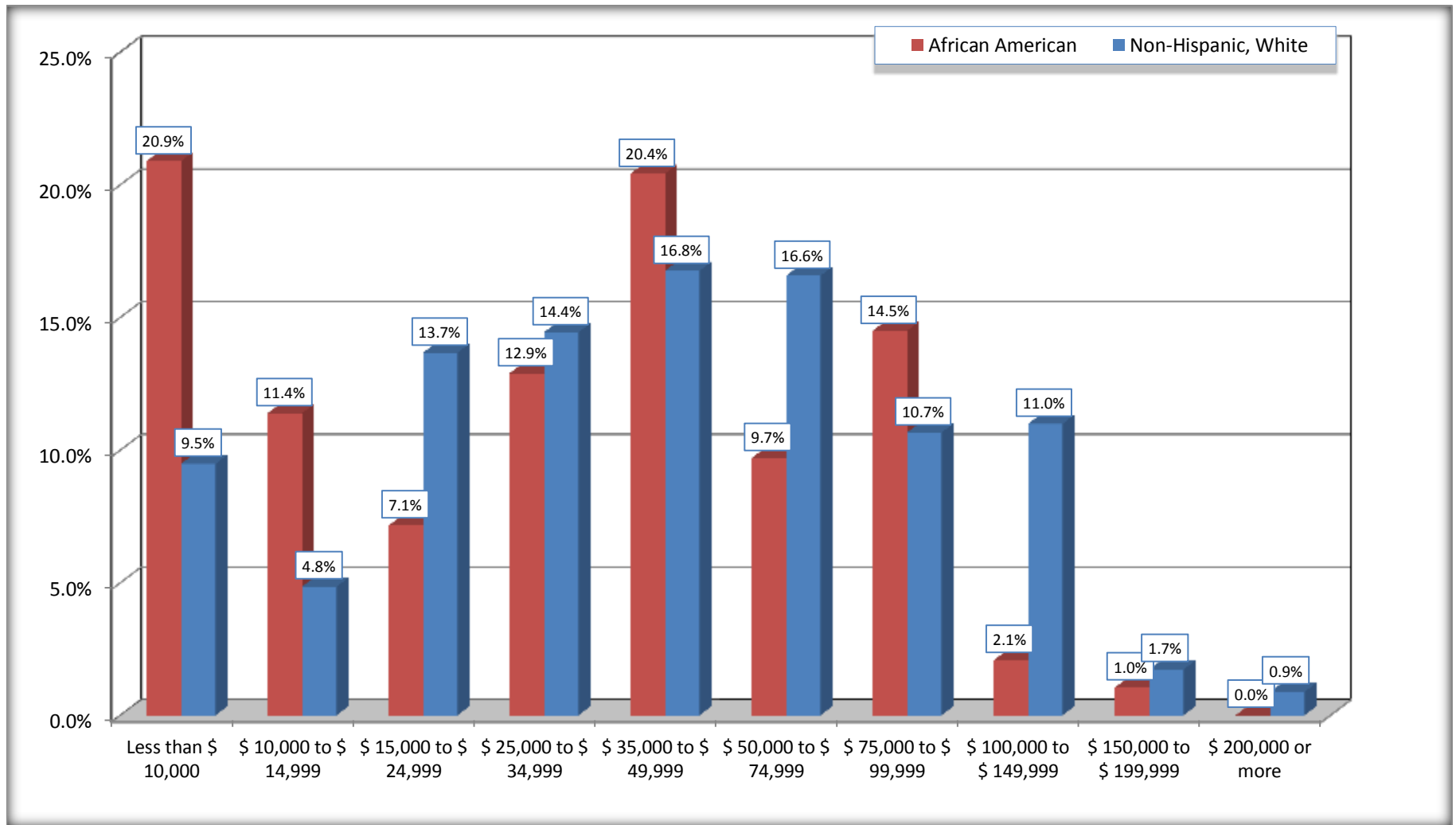
Source: U.S. Census Bureau, 2008-2012 American Community Survey

For information on confidentiality protection, sampling error, nonsampling error, and definitions, see Survey Methodology.

<http://www.census.gov/acs/www/UseData/index.htm>

Household Income in the Past 12 Months

Evans County, Georgia



Source: B19001. HOUSEHOLD INCOME IN THE PAST 12 MONTHS (IN 2010 INFLATION-ADJUSTED DOLLARS)
Data Set: 2008-2012 American Community Survey 5-Year Estimates

B19013. MEDIAN HOUSEHOLD INCOME IN THE PAST 12 MONTHS (IN 2010 INFLATION-ADJUSTED DOLLARS)

Data Set: 2008-2012 American Community Survey 5-Year Estimates

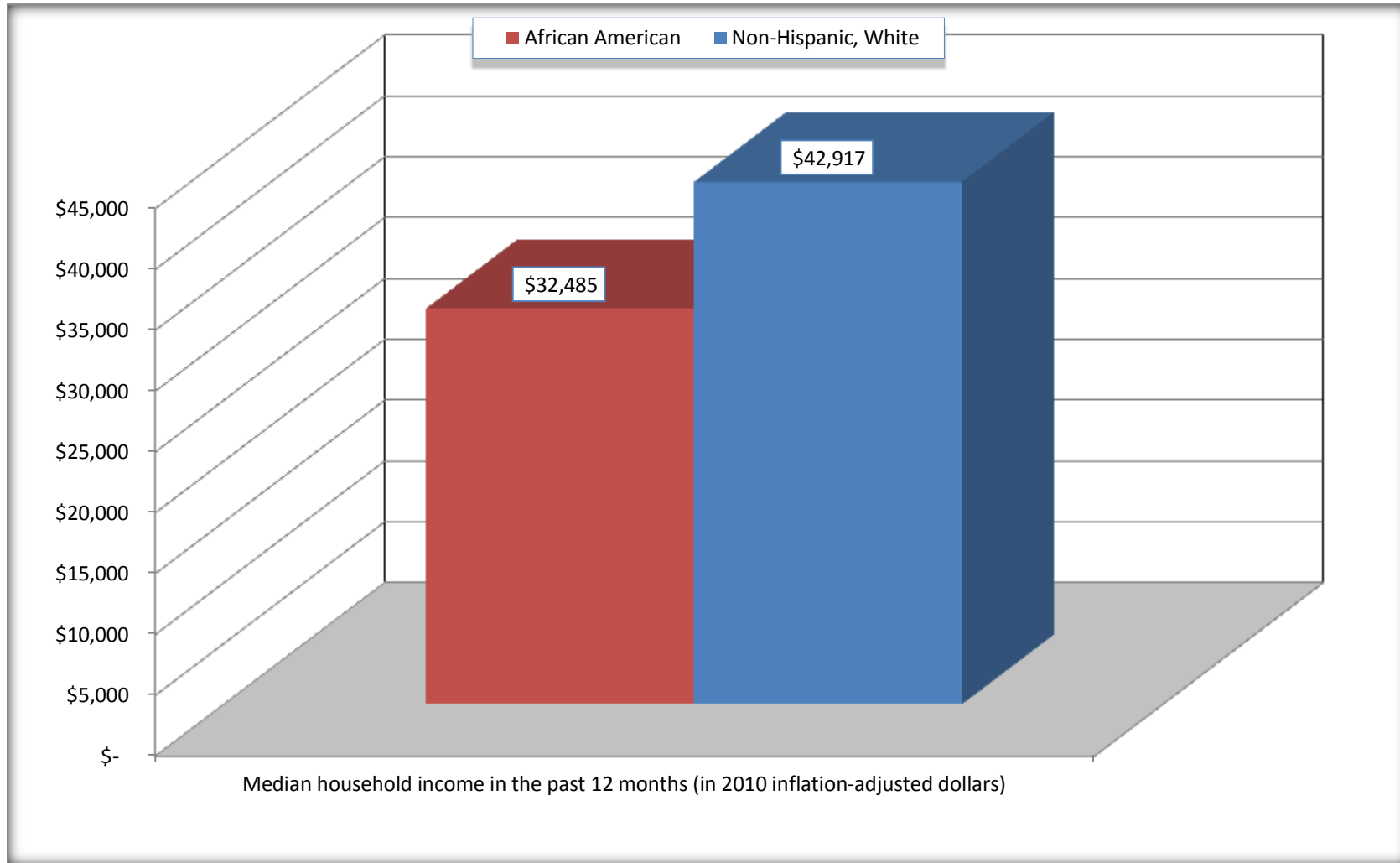
	Evans County, Georgia			
	African American	Margin of Error (+/-)	White, Not Hispanic	Margin of Error (+/-)
Median household income in the past 12 months (in 2010 inflation-adjusted dollars)	\$ 32,485	\$ 5,178	\$ 42,917	\$ 6,776

Source: U.S. Census Bureau, 2008-2012 American Community Survey

For information on confidentiality protection, sampling error, nonsampling error, and definitions, see Survey Methodology.
<http://www.census.gov/acs/www/UseData/index.htm>

Median Household Income in the Past 12 Months

Evans County, Georgia



Source: B19013. MEDIAN HOUSEHOLD INCOME IN THE PAST 12 MONTHS (IN 2010 INFLATION-ADJUSTED DOLLARS)
Data Set: 2008-2012 American Community Survey 5-Year Estimates

B19101. FAMILY INCOME IN THE PAST 12 MONTHS (IN 2010 INFLATION-ADJUSTED DOLLARS)

Data Set: 2008-2012 American Community Survey 5-Year Estimates

	Evans County, Georgia					
	African American	Margin of Error (+/-)	% of AA Total	White, Not Hispanic	Margin of Error (+/-)	% of NHW Total
Total:	731	83	100.0%	1,665	159	100.0%
Less than \$ 10,000	91	53	12.4%	90	61	5.4%
\$ 10,000 to \$ 14,999	79	48	10.8%	65	53	3.9%
\$ 15,000 to \$ 24,999	68	NC	9.3%	123	NC	7.4%
\$ 25,000 to \$ 34,999	120	NC	16.4%	183	NC	11.0%
\$ 35,000 to \$ 49,999	130	NC	17.8%	234	NC	14.1%
\$ 50,000 to \$ 74,999	56	NC	7.7%	360	NC	21.6%
\$ 100,000 to \$ 149,999	22	NC	3.0%	297	NC	17.8%
\$ 150,000 to \$ 199,999	11	22	1.5%	47	32	2.8%
\$ 200,000 or more	0	21	0.0%	24	22	1.4%

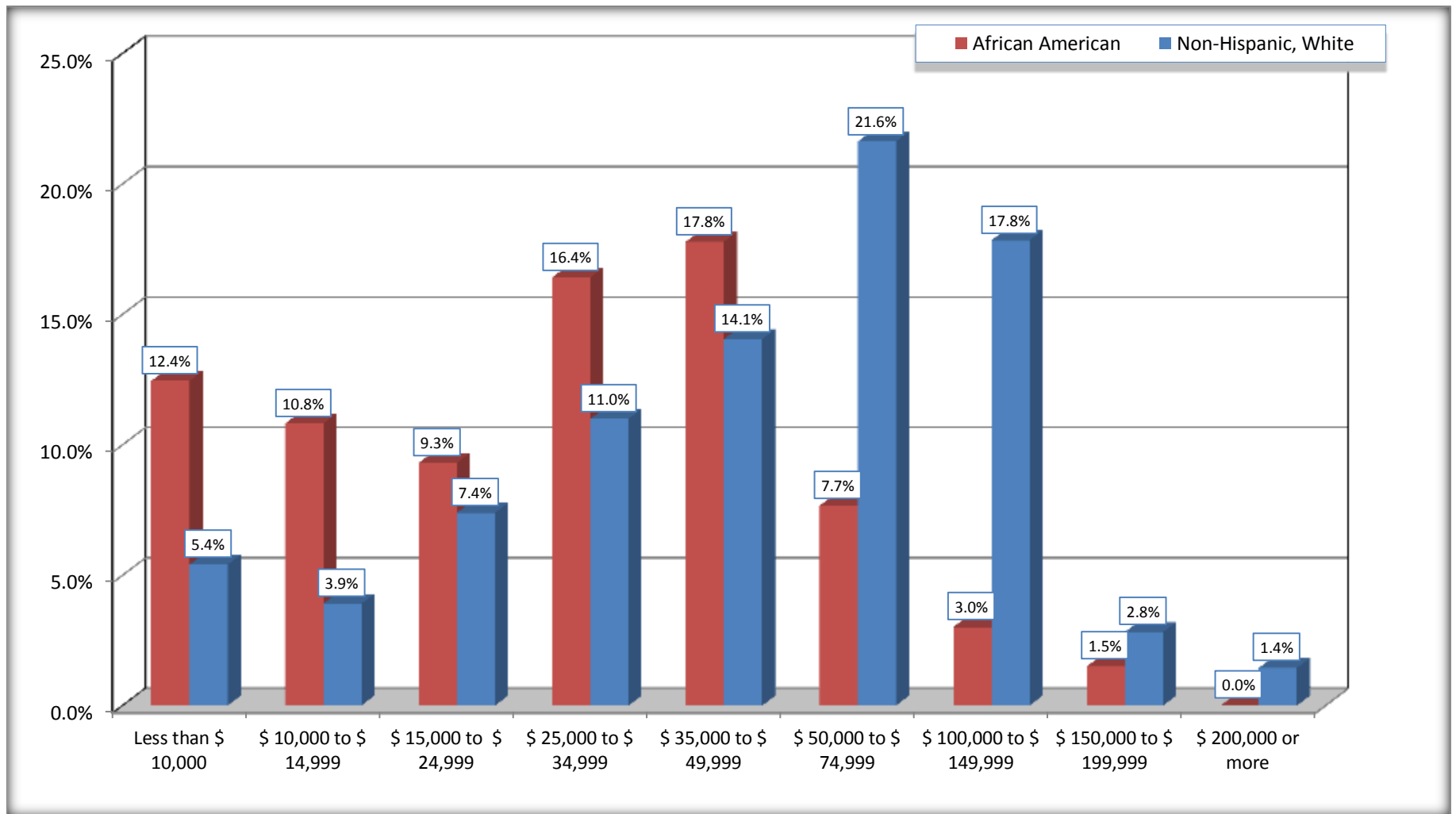
Source: U.S. Census Bureau, 2008-2012 American Community Survey

For information on confidentiality protection, sampling error, nonsampling error, and definitions, see Survey Methodology.

<http://www.census.gov/acs/www/UseData/index.htm>

Family Income in the Past 12 Months

Evans County, Georgia



Source: B19101. FAMILY INCOME IN THE PAST 12 MONTHS (IN 2010 INFLATION-ADJUSTED DOLLARS)
Data Set: 2008-2012 American Community Survey 5-Year Estimates

B19113. MEDIAN FAMILY INCOME IN THE PAST 12 MONTHS (IN 2010 INFLATION-ADJUSTED DOLLARS)

Data Set: 2008-2012 American Community Survey 5-Year Estimates

	Evans County, Georgia			
	African American	Margin of Error (+/-)	White, Not Hispanic	Margin of Error (+/-)
Median family income in the past 12 months (in 2010 inflation-adjusted dollars)	\$ 35,302	\$ 6,059	\$ 59,145	\$ 10,823

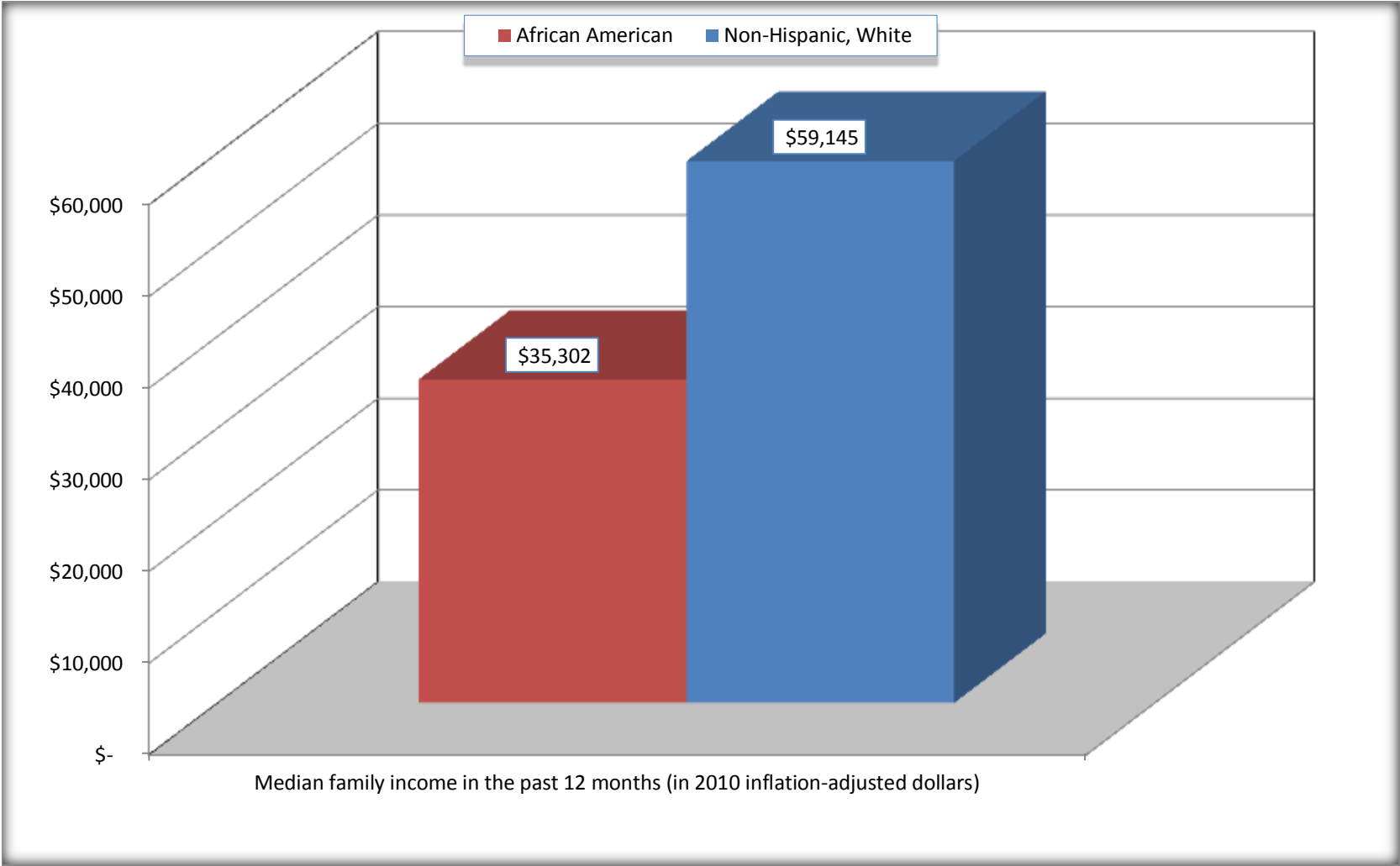
Source: U.S. Census Bureau, 2008-2012 American Community Survey

For information on confidentiality protection, sampling error, nonsampling error, and definitions, see Survey Methodology.

<http://www.census.gov/acs/www/UseData/index.htm>

Median Family Income in the Past 12 Months

Evans County, Georgia



Source: B19113. MEDIAN FAMILY INCOME IN THE PAST 12 MONTHS (IN 2010 INFLATION-ADJUSTED DOLLARS)
Data Set: 2008-2012 American Community Survey 5-Year Estimates

B19202. MEDIAN NONFAMILY HOUSEHOLD INCOME IN THE PAST 12 MONTHS (IN 2010 INFLATION-ADJUSTED DOLLARS)

Data Set: 2008-2012 American Community Survey 5-Year Estimates

	Evans County, Georgia			
	African American	Margin of Error (+/-)	White, Not Hispanic	Margin of Error (+/-)
Median nonfamily household income in the past 12 months (in 2010 inflation-adjusted dollars)	\$ 14,028	\$ 14,325	\$ 27,652	\$ 5,126

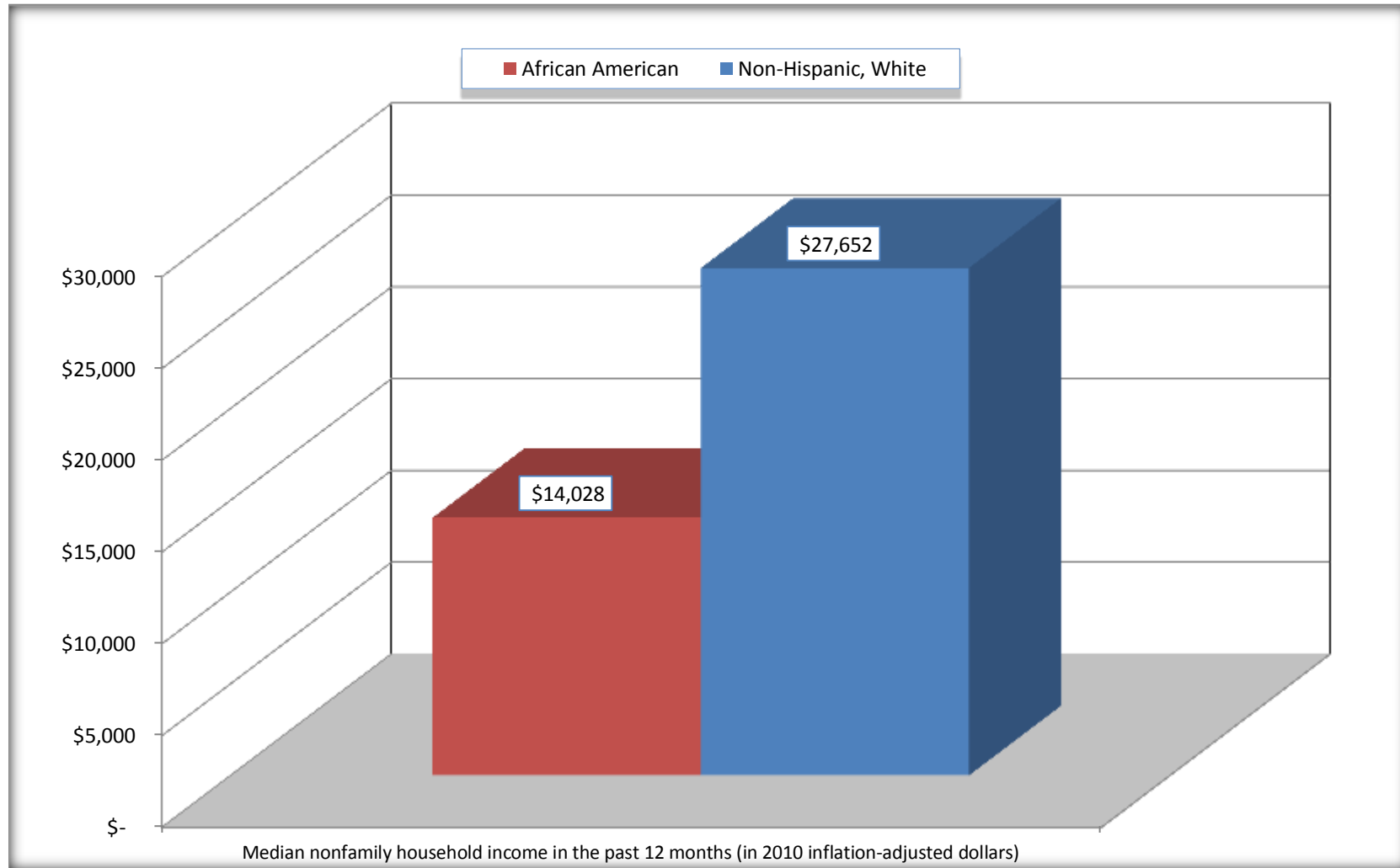
Source: U.S. Census Bureau, 2008-2012 American Community Survey

For information on confidentiality protection, sampling error, nonsampling error, and definitions, see Survey Methodology.

<http://www.census.gov/acs/www/UseData/index.htm>

Median Non-Family Income in the Past 12 Months

Evans County, Georgia



Source: B19202. MEDIAN NONFAMILY HOUSEHOLD INCOME IN THE PAST 12 MONTHS (IN 2010 INFLATION-ADJUSTED DOLLARS)
Data Set: 2008-2012 American Community Survey 5-Year Estimates

B19301. PER CAPITA INCOME IN THE PAST 12 MONTHS (IN 2010 INFLATION-ADJUSTED DOLLARS)

Data Set: 2008-2012 American Community Survey 5-Year Estimates

	Evans County, Georgia			
	African American	Margin of Error (+/-)	White, Not Hispanic	Margin of Error (+/-)
Per capita income in the past 12 months (in 2010 inflation-adjusted dollars)	\$ 13,596	\$ 1,978	\$ 23,898	\$ 2,190

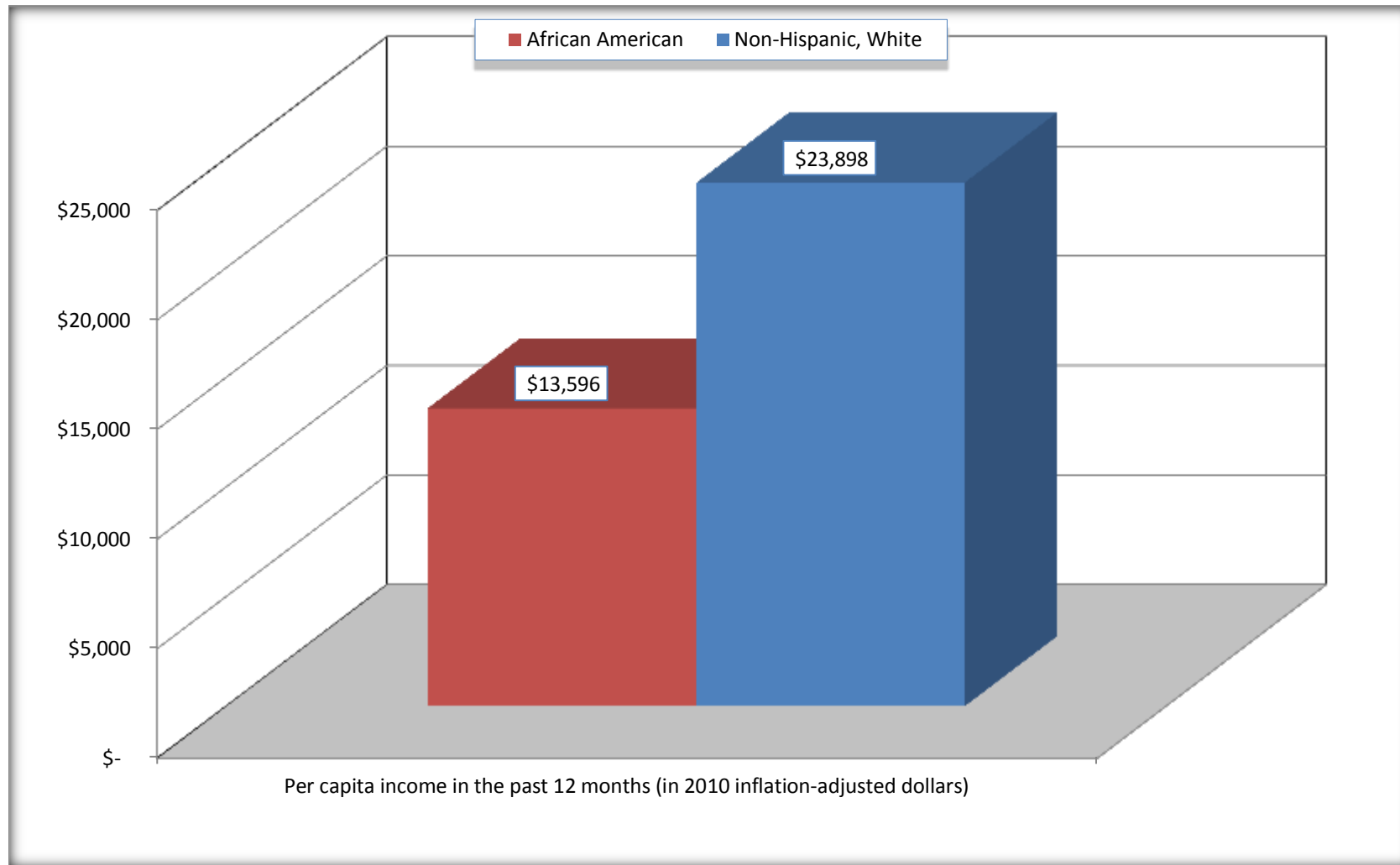
Source: U.S. Census Bureau, 2008-2012 American Community Survey

For information on confidentiality protection, sampling error, nonsampling error, and definitions, see Survey Methodology.

<http://www.census.gov/acs/www/UseData/index.htm>

Per capita Income in the Past 12 Months

Evans County, Georgia



Source: B19301. PER CAPITA INCOME IN THE PAST 12 MONTHS (IN 2010 INFLATION-ADJUSTED DOLLARS)
Data Set: 2008-2012 American Community Survey 5-Year Estimates

B20017. MEDIAN EARNINGS IN THE PAST 12 MONTHS (IN 2010 INFLATION-ADJUSTED DOLLARS) BY SEX BY WORK EXPERIENCE IN THE PAST 12 MONTHS FOR THE POPULATION 16 YEARS AND OVER WITH EARNINGS IN THE PAST 12 MONTHS

Data Set: 2008-2012 American Community Survey 5-Year Estimates

	Evans County, Georgia			
	African American	Margin of Error (+/-)	White, Not Hispanic	Margin of Error (+/-)
Median earnings in the past 12 months (in 2010 inflation-adjusted dollars) --				
Total:	\$ 23,047	\$ 5,541	\$ 27,927	\$ 2,478
Male --				
Total	\$ 23,611	\$ 11,345	\$ 32,622	\$ 4,293
Worked full-time, year-round in the past 12 months	\$ 35,230	\$ 7,530	\$ 41,075	\$ 4,298
Other	\$ 6,440	\$ 1,618	\$ 7,373	\$ 4,924
Female --				
Total	\$ 22,708	\$ 5,601	\$ 23,093	\$ 2,792
Worked full-time, year-round in the past 12 months	\$ 26,345	\$ 2,669	\$ 31,970	\$ 7,002
Other	\$ 4,762	\$ 2,633	\$ 11,165	\$ 2,923

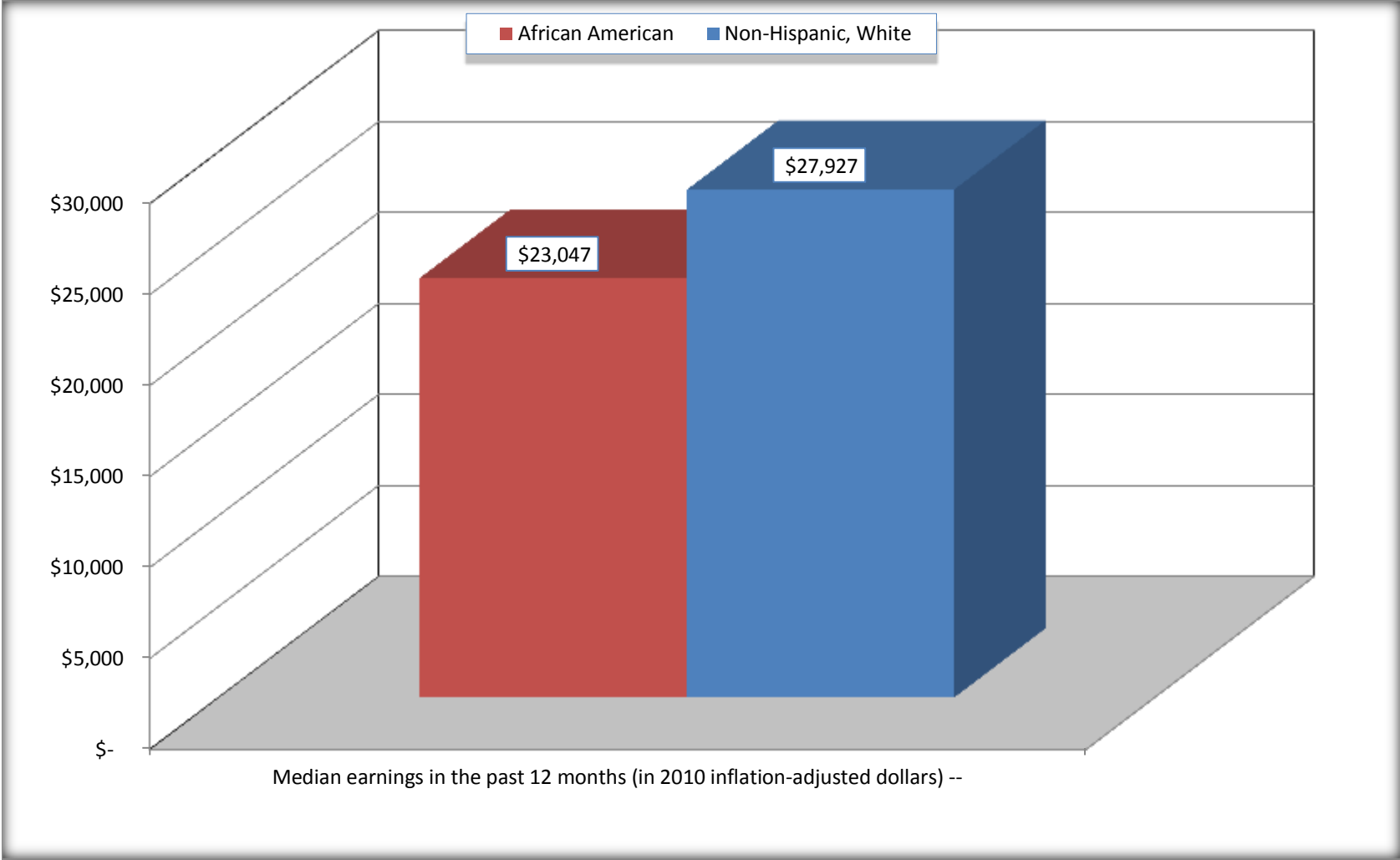
Source: U.S. Census Bureau, 2008-2012 American Community Survey

For information on confidentiality protection, sampling error, nonsampling error, and definitions, see Survey Methodology.

<http://www.census.gov/acs/www/UseData/index.htm>

Median earnings in the Past 12 Months (16 Years and Over with Earnings)

Evans County, Georgia



Source: B20017. MEDIAN EARNINGS IN THE PAST 12 MONTHS (IN 2010 INFLATION-ADJUSTED DOLLARS) BY SEX BY WORK EXPERIENCE IN THE PAST 12 MONTHS FOR THE POPULATION 16 YEARS AND OVER WITH EARNINGS IN THE PAST 12 MONTHS
Data Set: 2008-2012 American Community Survey 5-Year Estimates

B20005. SEX BY WORK EXPERIENCE IN THE PAST 12 MONTHS BY EARNINGS IN THE PAST 12 MONTHS (IN 2010 INFLATION-ADJUSTED DOLLARS) FOR THE POPULATION 16 YEARS AND OVER

Data Set: 2008-2012 American Community Survey 5-Year Estimates

	Evans County, Georgia					
	African American	Margin of Error (+/-)	% of AA Total	White, Not Hispanic	Margin of Error (+/-)	% of NHW Total
Total:	2,358	77	100.0%	5,107	20	100.0%
Worked full-time, year-round in the past 12 months:	908	NC	38.5%	2,097	NC	41.1%
No earnings	0	NC	0.0%	0	NC	0.0%
With earnings:	908	NC	38.5%	2,097	NC	41.1%
\$ 1 to \$ 9,999 or loss	43	NC	1.8%	81	NC	1.6%
\$ 10,000 to \$ 19,999	171	NC	7.3%	202	NC	4.0%
\$ 20,000 to \$ 29,999	231	NC	9.8%	475	NC	9.3%
\$ 30,000 to \$ 49,999	328	NC	13.9%	702	NC	13.7%
\$ 50,000 to \$ 74,999	82	NC	3.5%	417	NC	8.2%
\$ 75,000 or more	53	NC	2.2%	220	NC	4.3%
Other:	1,450	NC	61.5%	3,010	NC	58.9%
No earnings	989	NC	41.9%	1,969	NC	38.6%
With earnings: less than full time, year-round	461	NC	19.6%	1,041	NC	20.4%
Male:	1,134	52	48.1%	2,430	42	47.6%
Worked full-time, year-round in the past 12 months:	423	106	17.9%	1,195	127	23.4%
No earnings	0	21	0.0%	0	21	0.0%
With earnings:	423	106	17.9%	1,195	127	23.4%
\$ 1 to \$ 9,999 or loss	16	NC	0.7%	42	NC	0.8%
\$ 10,000 to \$ 19,999	51	NC	2.2%	67	NC	1.3%
\$ 20,000 to \$ 29,999	71	NC	3.0%	250	NC	4.9%
\$ 30,000 to \$ 49,999	178	NC	7.5%	424	NC	8.3%
\$ 50,000 to \$ 74,999	54	NC	2.3%	253	NC	5.0%
\$ 75,000 or more	53	NC	2.2%	159	NC	3.1%

	Evans County, Georgia					
	African American	Margin of Error (+/-)	% of AA Total	White, Not Hispanic	Margin of Error (+/-)	% of NHW Total
Other:	711	114	30.2%	1,235	138	24.2%
No earnings	384	88	16.3%	811	115	15.9%
With earnings:	327	96	13.9%	424	91	8.3%
Female:	1,224	55	51.9%	2,677	44	52.4%
Worked full-time, year-round in the past 12 months:	485	101	20.6%	902	148	17.7%
No earnings	0	21	0.0%	0	21	0.0%
With earnings:	485	101	20.6%	902	148	17.7%
\$ 1 to \$ 9,999 or loss	27	NC	1.1%	39	NC	0.8%
\$ 10,000 to \$ 19,999	120	NC	5.1%	135	NC	2.6%
\$ 20,000 to \$ 29,999	160	NC	6.8%	225	NC	4.4%
\$ 30,000 to \$ 49,999	150	NC	6.4%	278	NC	5.4%
\$ 50,000 to \$ 74,999	28	NC	1.2%	164	NC	3.2%
\$ 75,000 or more	0	NC	0.0%	61	NC	1.2%
Other:	739	117	31.3%	1,775	159	34.8%
No earnings	605	114	25.7%	1,158	127	22.7%
With earnings:	134	66	5.7%	617	131	12.1%

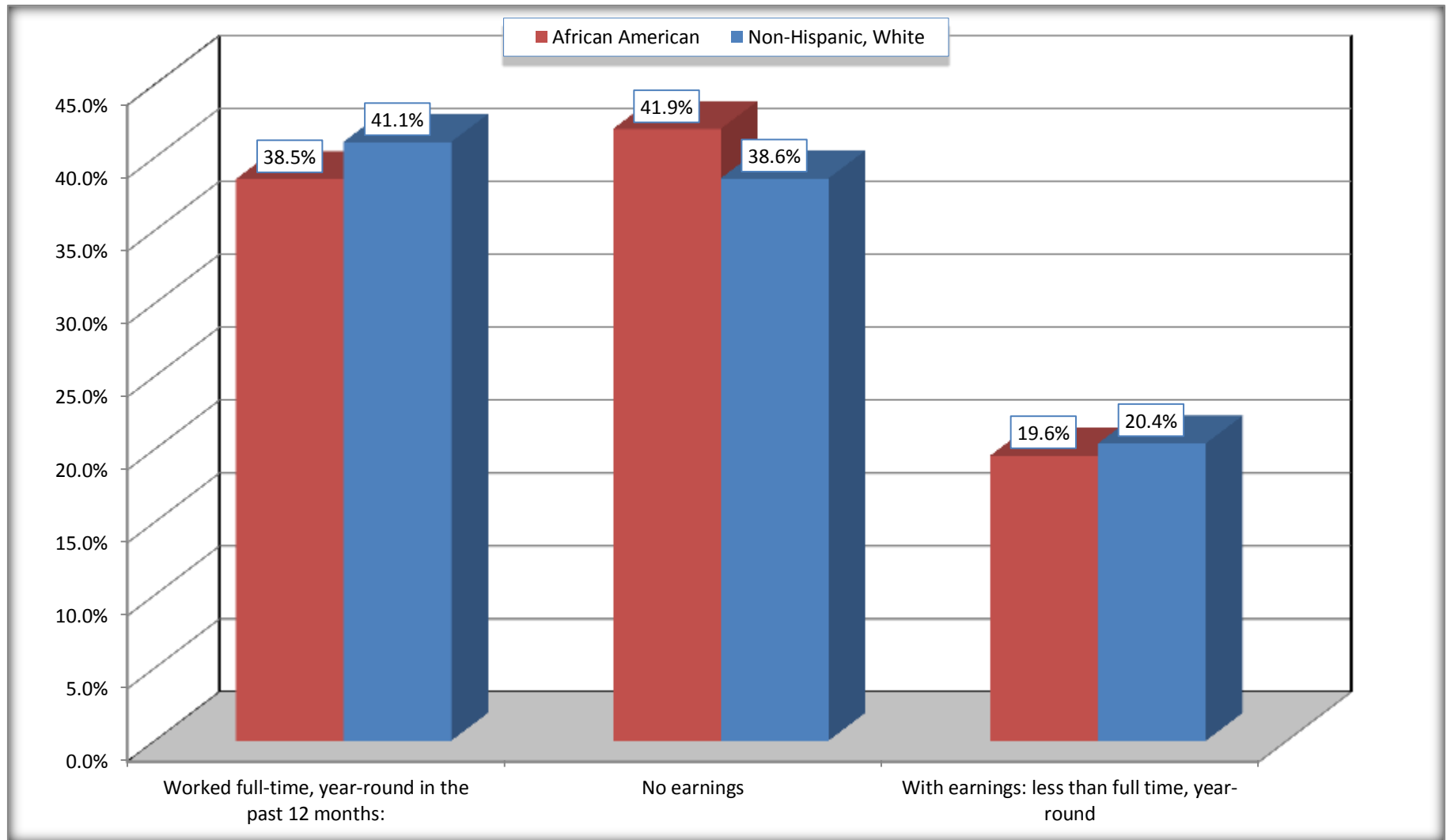
Source: U.S. Census Bureau, 2008-2012 American Community Survey

For information on confidentiality protection, sampling error, nonsampling error, and definitions, see Survey Methodology.

<http://www.census.gov/acs/www/UseData/index.htm>

Employment and Earnings in in the Past 12 Months (16 Years and Over)

Evans County, Georgia



Source: B20005. SEX BY WORK EXPERIENCE IN THE PAST 12 MONTHS BY EARNINGS IN THE PAST 12 MONTHS (IN 2010 INFLATION-ADJUSTED DOLLARS) FOR THE POPULATION 16 YEARS AND OVER

Data Set: 2008-2012 American Community Survey 5-Year Estimates

C21001. SEX BY AGE BY VETERAN STATUS FOR THE CIVILIAN POPULATION 18 YEARS AND OVER

Data Set: 2008-2012 American Community Survey 5-Year Estimates

	Evans County, Georgia					
	African American	Margin of Error (+/-)	% of AA Total	White, Not Hispanic	Margin of Error (+/-)	% of NHW Total
Total:	2,279	59	100.0%	4,905	16	100.0%
Veteran	91	NC	4.0%	614	NC	12.5%
Nonveteran	2,188	NC	96.0%	4,291	NC	87.5%
Male:	1,067	26	46.8%	2,321	16	47.3%
18 to 64 years:	945	60	41.5%	1,839	16	37.5%
Veteran	70	48	3.1%	297	84	6.1%
Nonveteran	875	71	38.4%	1,542	87	31.4%
65 years and over:	122	54	5.4%	482	21	9.8%
Veteran	21	19	0.9%	289	55	5.9%
Nonveteran	101	54	4.4%	193	55	3.9%
Female:	1,212	48	53.2%	2,584	21	52.7%
18 to 64 years:	1,005	47	44.1%	1,940	21	39.6%
Veteran	0	21	0.0%	13	16	0.3%
Nonveteran	1,005	47	44.1%	1,927	16	39.3%
65 years and over:	207	18	9.1%	644	21	13.1%
Veteran	0	21	0.0%	15	18	0.3%
Nonveteran	207	18	9.1%	629	18	12.8%

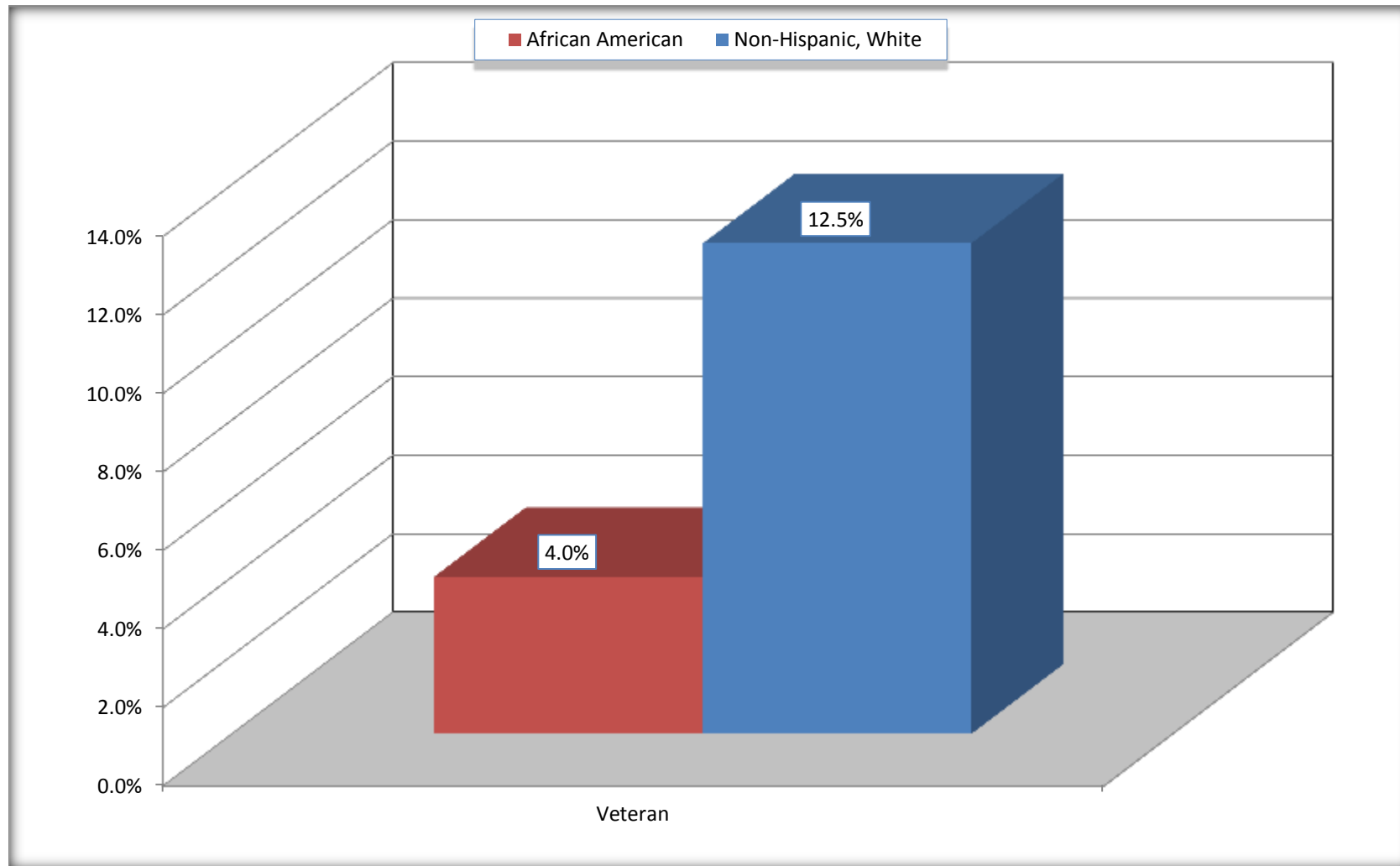
Source: U.S. Census Bureau, 2008-2012 American Community Survey

For information on confidentiality protection, sampling error, nonsampling error, and definitions, see Survey Methodology.

<http://www.census.gov/acs/www/UseData/index.htm>

Veterans in the Civilian Population 18 Years and Over

Evans County, Georgia



Source: C21001. SEX BY AGE BY VETERAN STATUS FOR THE CIVILIAN POPULATION 18 YEARS AND OVER
Data Set: 2008-2012 American Community Survey 5-Year Estimates

B22005. RECEIPT OF FOOD STAMPS/SNAP IN THE PAST 12 MONTHS BY RACE OF HOUSEHOLDER

Data Set: 2008-2012 American Community Survey 5-Year Estimates

	Evans County, Georgia					
	African American	Margin of Error (+/-)	% of AA Total	White, Not Hispanic	Margin of Error (+/-)	% of NHW Total
Total:	1,063	95	100.0%	2,722	121	100.0%
HH received Food Stamps/SNAP in the past 12 months	414	102	38.9%	230	89	8.4%
HH did not receive Food Stamps/SNAP in the past 12 months	649	119	61.1%	2,492	143	91.6%

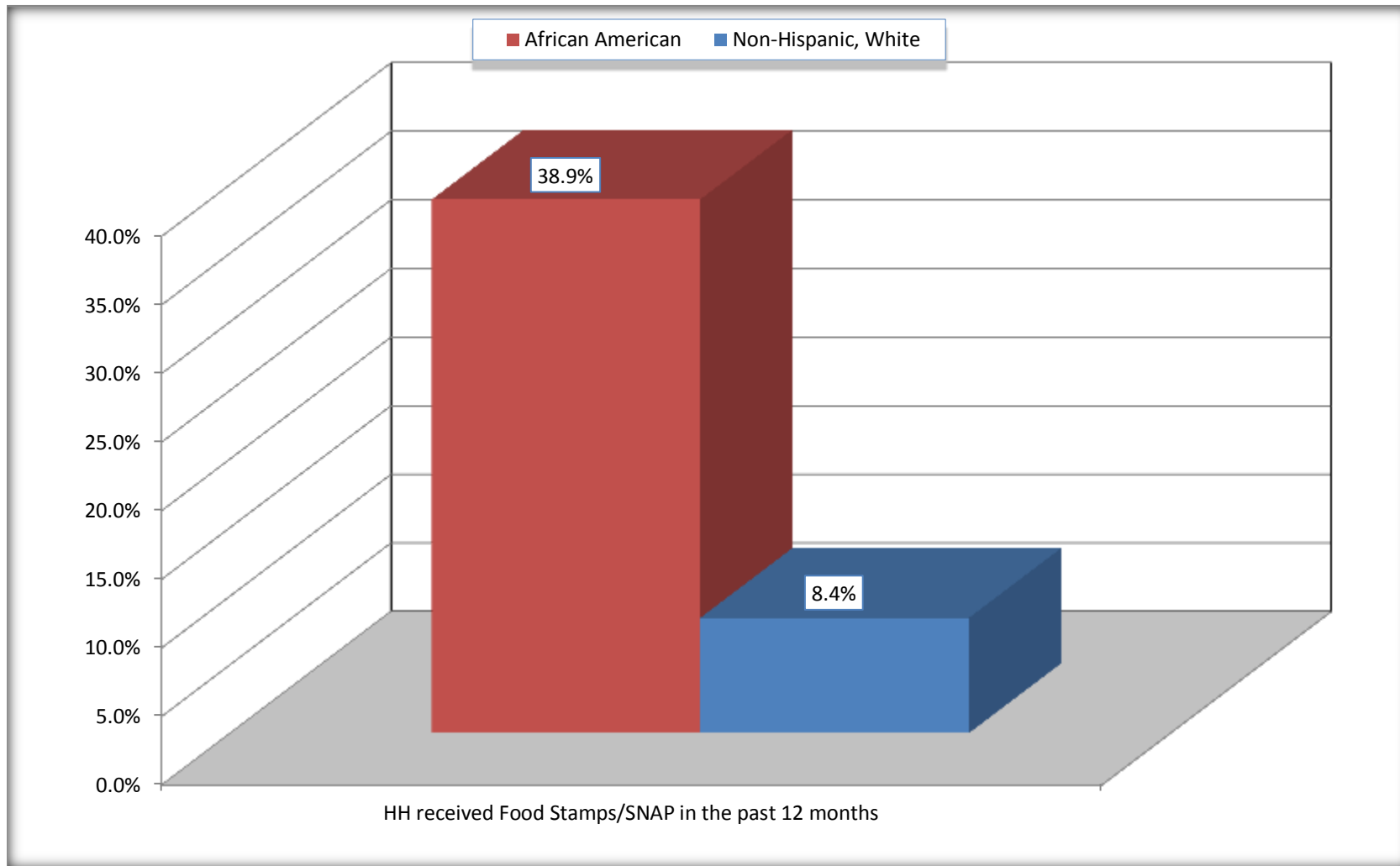
Source: U.S. Census Bureau, 2008-2012 American Community Survey

For information on confidentiality protection, sampling error, nonsampling error, and definitions, see Survey Methodology.

<http://www.census.gov/acs/www/UseData/index.htm>

Receipt of Food Stamps/SNAP in the Past 12 Months by Household

Evans County, Georgia



Source: B22005. RECEIPT OF FOOD STAMPS/SNAP IN THE PAST 12 MONTHS BY RACE OF HOUSEHOLDER
Data Set: 2008-2012 American Community Survey 5-Year Estimates

C23002. SEX BY AGE BY EMPLOYMENT STATUS FOR THE POPULATION 16 YEARS AND OVER

Data Set: 2008-2012 American Community Survey 5-Year Estimates

	Evans County, Georgia					
	African American	Margin of Error (+/-)	% of AA Total	White, Not Hispanic	Margin of Error (+/-)	% of NHW Total
Total:	2,358	77	100.0%	5,107	20	100.0%
In labor force:	1,215	NC	51.5%	2,964	NC	58.0%
In Armed Forces	0	NC	0.0%	14	NC	0.3%
Civilian:	1,137	NC	48.2%	2,790	NC	54.6%
Employed	1,084	NC	46.0%	2,732	NC	53.5%
Unemployed	131	NC	5.6%	218	NC	4.3%
Not in labor force	1,143	NC	48.5%	2,143	NC	42.0%
Male:	1,134	52	48.1%	2,430	42	47.6%
16 to 64 years:	1,012	76	42.9%	1,948	42	38.1%
In labor force:	543	100	23.0%	1,442	114	28.2%
In Armed Forces	0	21	0.0%	14	16	0.3%
Civilian:	543	100	23.0%	1,428	112	28.0%
Employed	504	95	21.4%	1326	124	26.0%
Unemployed	39	34	1.7%	102	70	2.0%
Not in labor force	469	103	19.9%	506	117	9.9%
65 years and over:	122	54	5.2%	482	21	9.4%
In labor force:	40	51	1.7%	108	52	2.1%
Employed	40	51	1.7%	107	52	2.1%
Unemployed	0	21	0.0%	1	3	0.0%
Not in labor force	82	39	3.5%	374	52	7.3%

	Evans County, Georgia					
	African American	Margin of Error (+/-)	% of AA Total	White, Not Hispanic	Margin of Error (+/-)	% of NHW Total
Female:	1,224	55	51.9%	2,677	44	52.4%
16 to 64 years:	1,017	54	43.1%	2,033	44	39.8%
In labor force:	594	120	25.2%	1,362	138	26.7%
In Armed Forces	0	21	0.0%	0	21	0.0%
Civilian:	594	120	25.2%	1,362	138	26.7%
Employed	502	117	21.3%	1,247	144	24.4%
Unemployed	92	66	3.9%	115	66	2.3%
Not in labor force	423	118	17.9%	671	140	13.1%
65 years and over:	207	18	8.8%	644	21	12.6%
In labor force:	38	29	1.6%	52	30	1.0%
Employed	38	29	1.6%	52	30	1.0%
Unemployed	0	21	0.0%	0	21	0.0%
Not in labor force	169	34	7.2%	592	30	11.6%

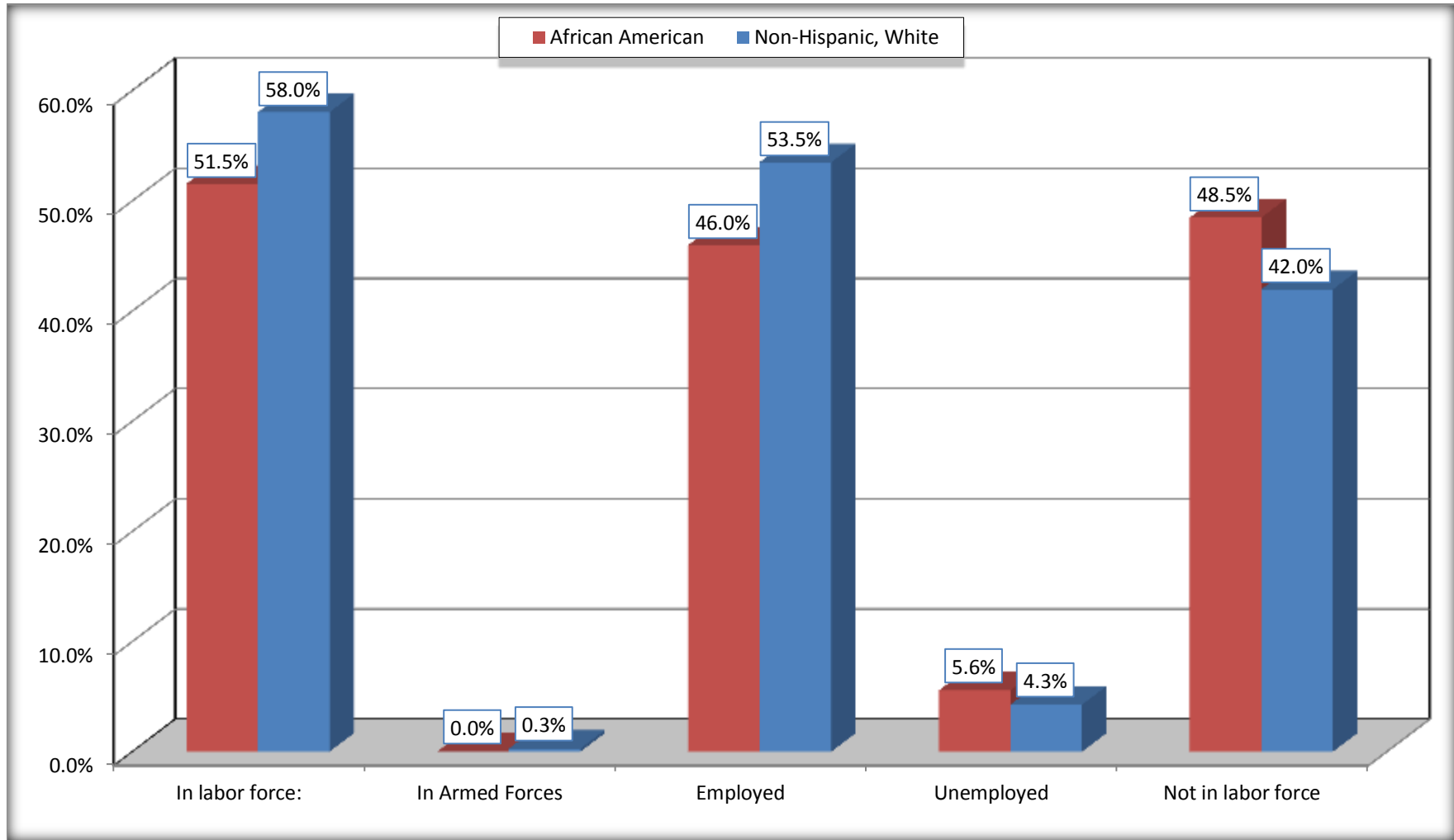
Source: U.S. Census Bureau, 2008-2012 American Community Survey

For information on confidentiality protection, sampling error, nonsampling error, and definitions, see Survey Methodology.

<http://www.census.gov/acs/www/UseData/index.htm>

Employment Status for the Population 16 years and over

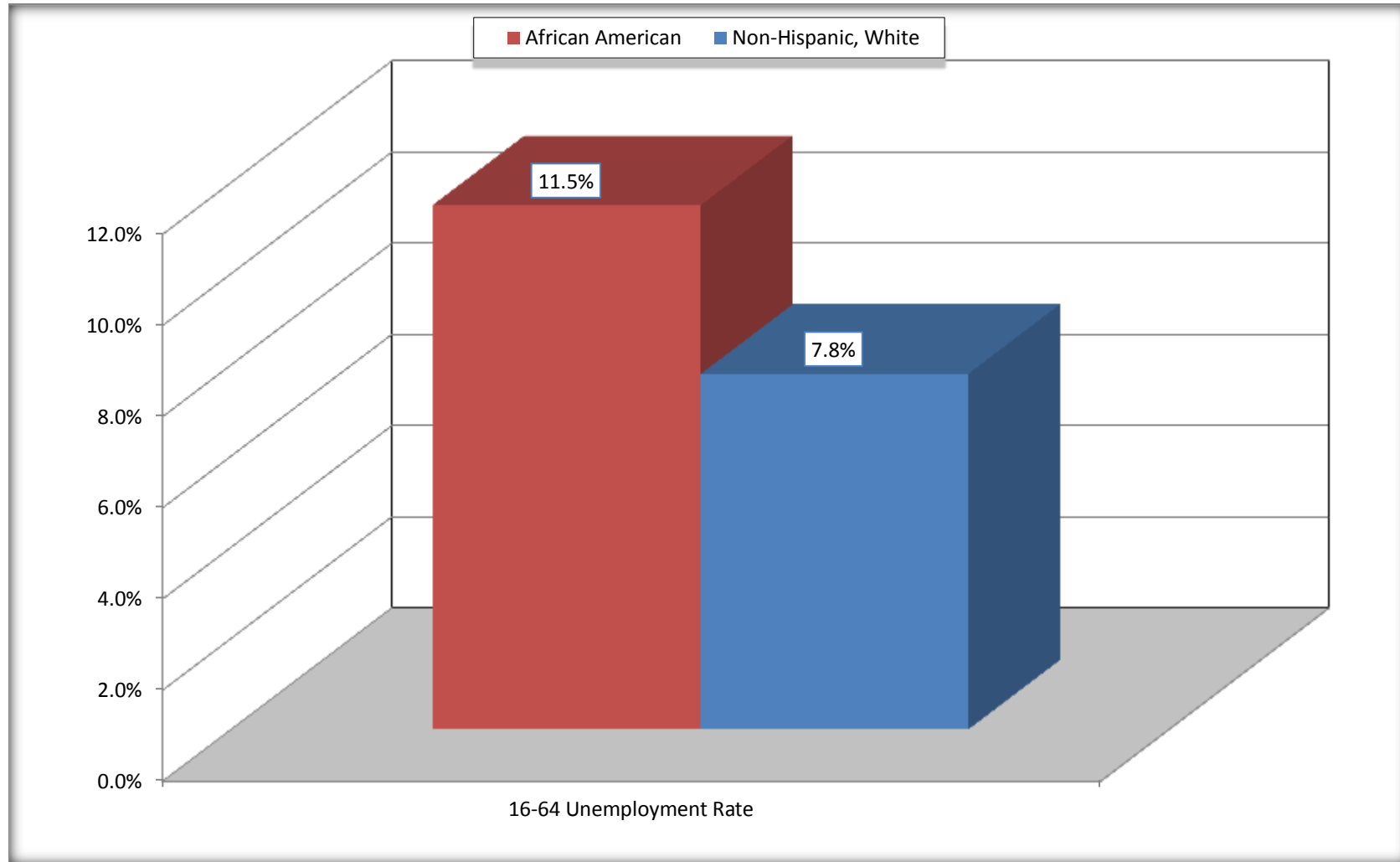
Evans County, Georgia



Source: C23002. SEX BY AGE BY EMPLOYMENT STATUS FOR THE POPULATION 16 YEARS AND OVER
Data Set: 2008-2012 American Community Survey 5-Year Estimates

Unemployment of Working Age Population (Ages 16 to 64) (As a Percent of 16-64 Civilian Labor Force)

Evans County, Georgia



Source: C23002. SEX BY AGE BY EMPLOYMENT STATUS FOR THE POPULATION 16 YEARS AND OVER
Data Set: 2008-2012 American Community Survey 5-Year Estimates

C24010. SEX BY OCCUPATION FOR THE CIVILIAN EMPLOYED POPULATION 16 YEARS AND OVER

Data Set: 2008-2012 American Community Survey 5-Year Estimates

	Evans County, Georgia					
	African American	Margin of Error (+/-)	% of AA Total	White, Not Hispanic	Margin of Error (+/-)	% of NHW Total
Total:	1,084	141	100.0%	2,732	198	100.0%
Management, professional, and related occupations	194	NC	17.9%	1,054	NC	38.6%
Service occupations	180	NC	16.6%	239	NC	8.7%
Sales and office occupations	313	NC	28.9%	676	NC	24.7%
Natural resources, construction, and maintenance occupations:	103	NC	9.5%	397	NC	14.5%
Production, transportation, and material moving occupations	294	NC	27.1%	366	NC	13.4%
Male:	544	95	50.2%	1,433	130	52.5%
Management, business, science, and arts occupations:	88	76	8.1%	475	117	17.4%
Service occupations	67	51	6.2%	98	50	3.6%
Sales and office occupations	101	50	9.3%	195	91	7.1%
Natural resources, construction, and maintenance occupations:	96	73	8.9%	345	101	12.6%
Production, transportation, and material moving occupations	192	76	17.7%	320	110	11.7%
Female:	540	113	49.8%	1,299	146	47.5%
Management, professional, and related occupations	106	50	9.8%	579	128	21.2%
Service occupations	113	63	10.4%	141	60	5.2%
Sales and office occupations	212	65	19.6%	481	117	17.6%
Natural resources, construction, and maintenance occupations:	7	12	0.6%	52	43	1.9%
Production, transportation, and material moving occupations	102	62	9.4%	46	42	1.7%

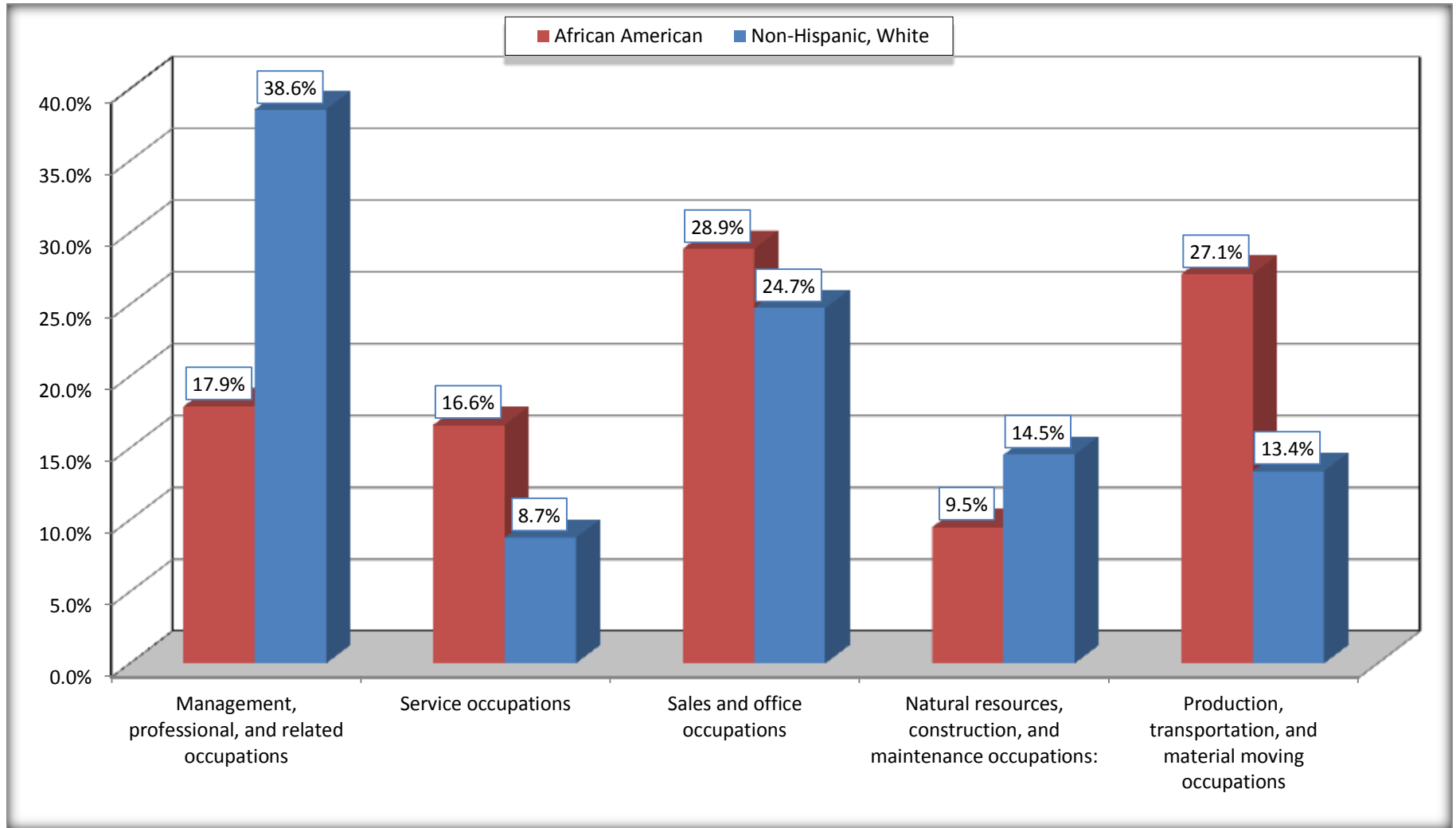
Source: U.S. Census Bureau, 2008-2012 American Community Survey

For information on confidentiality protection, sampling error, nonsampling error, and definitions, see Survey Methodology.

<http://www.census.gov/acs/www/UseData/index.htm>

Occupation for the Civilian Employed 16 Years and Over Population

Evans County, Georgia



Source: C24010. SEX BY OCCUPATION FOR THE CIVILIAN EMPLOYED POPULATION 16 YEARS AND OVER
Data Set: 2008-2012 American Community Survey 5-Year Estimates

B25003. TENURE - Universe: OCCUPIED HOUSING UNITS

Data Set: 2008-2012 American Community Survey 5-Year Estimates

	Evans County, Georgia					
	African American	Margin of Error (+/-)	% of AA Total	White, Not Hispanic	Margin of Error (+/-)	% of NHW Total
Total:	1,063	95	100.0%	2,722	121	100.0%
Owner occupied	572	104	53.8%	1,865	181	68.5%
Renter occupied	491	116	46.2%	857	172	31.5%

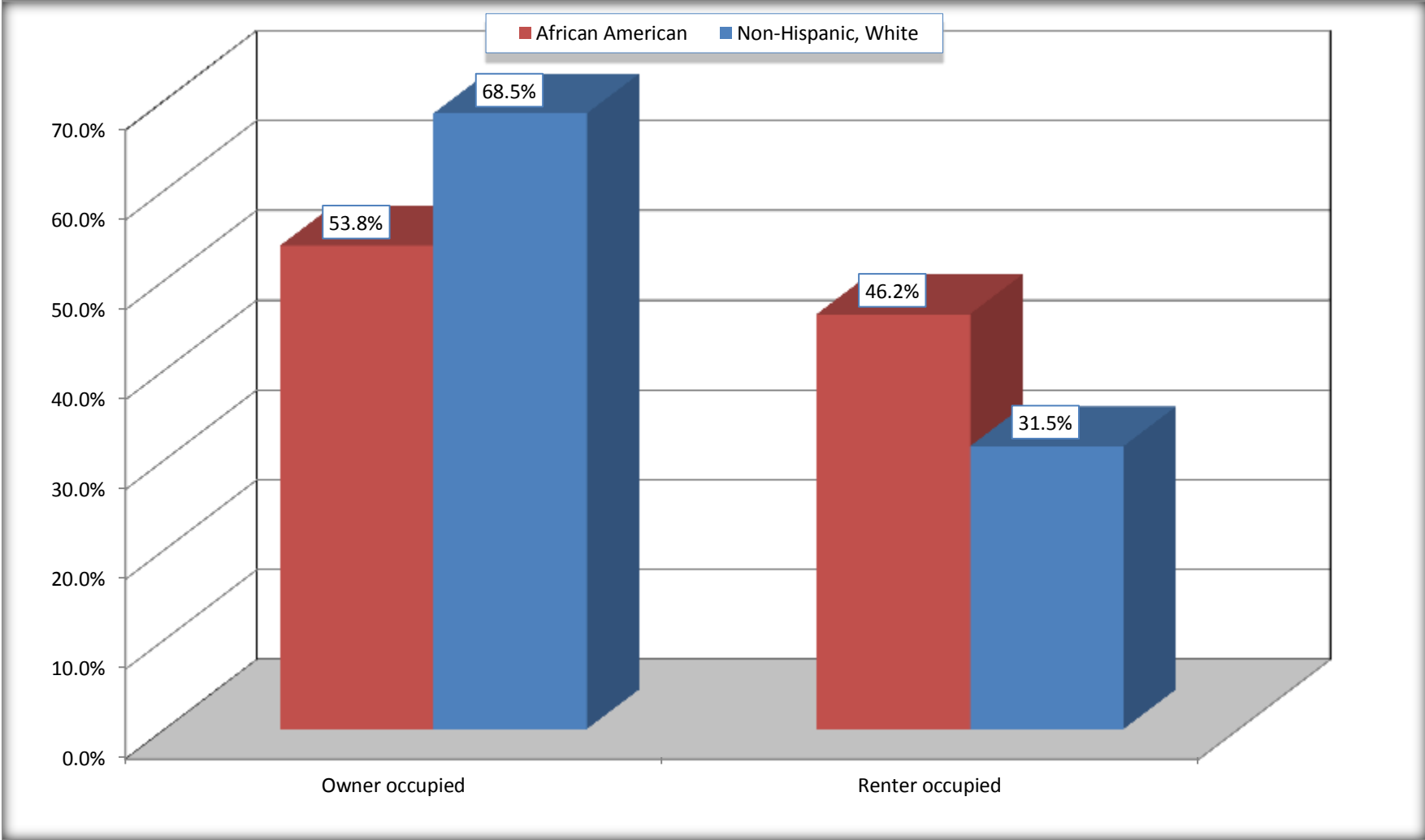
Source: U.S. Census Bureau, 2008-2012 American Community Survey

For information on confidentiality protection, sampling error, nonsampling error, and definitions, see Survey Methodology.

<http://www.census.gov/acs/www/UseData/index.h>

Home Owners and Renters by Household

Evans County, Georgia



Source: B25003. TENURE - Universe: OCCUPIED HOUSING UNITS
Data Set: 2008-2012 American Community Survey 5-Year Estimates

B25014. OCCUPANTS PER ROOM - Universe: OCCUPIED HOUSING UNITS

Data Set: 2008-2012 American Community Survey 5-Year Estimates

	Evans County, Georgia					
	African American	Margin of Error (+/-)	% of AA Total	White, Not Hispanic	Margin of Error (+/-)	% of NHW Total
Total:	1,063	95	100.0%	2,722	121	100.0%
1.00 or less occupants per room	1,063	95	100.0%	2,722	121	100.0%
1.01 or more occupants per room	0	21	0.0%	0	21	0.0%

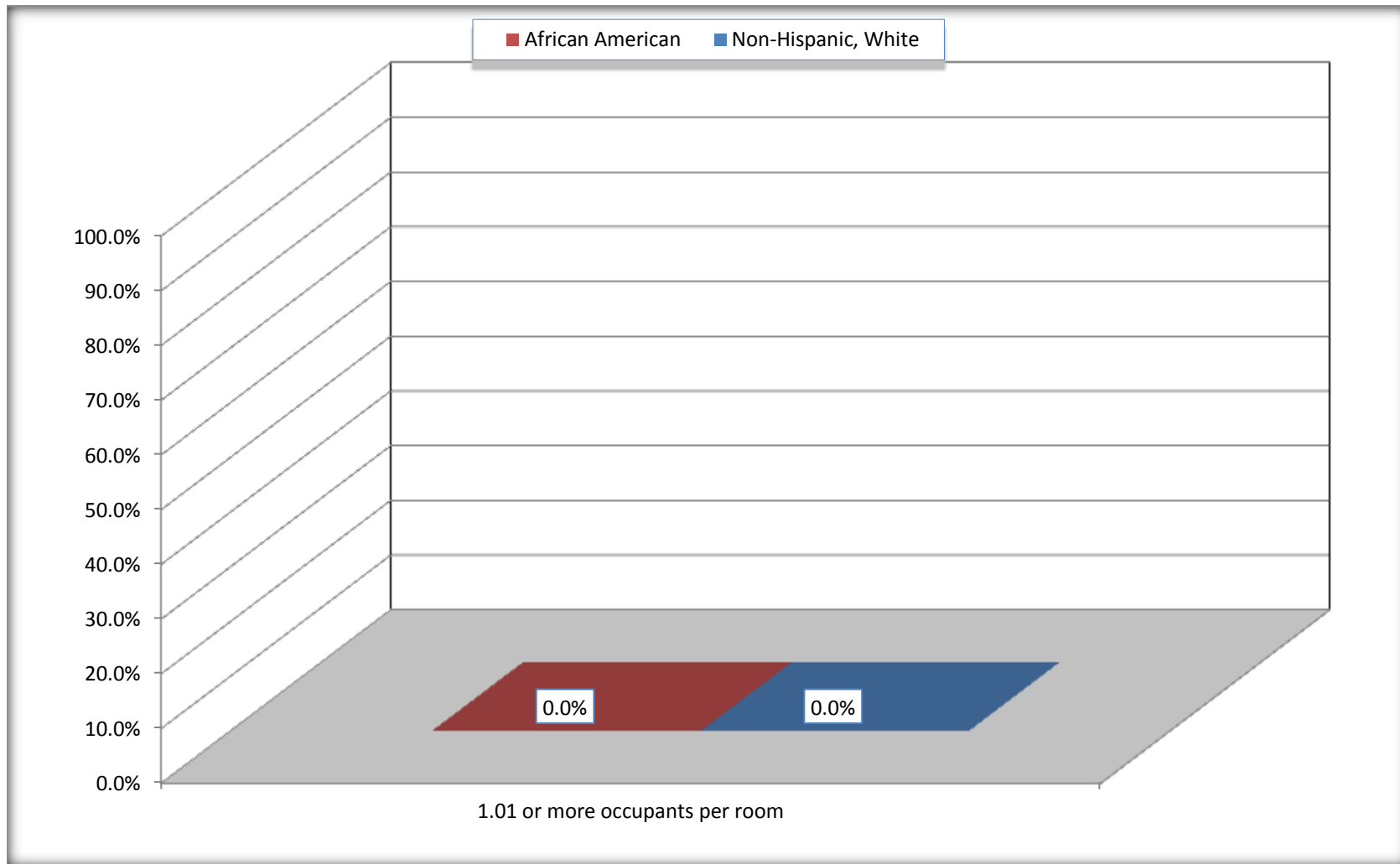
Source: U.S. Census Bureau, 2008-2012 American Community Survey

For information on confidentiality protection, sampling error, nonsampling error, and definitions, see Survey Methodology.

<http://www.census.gov/acs/www/UseData/index.ht>

More than One Person per Room (Crowding) by Household

Evans County, Georgia



Source: B25014. OCCUPANTS PER ROOM - Universe: OCCUPIED HOUSING UNITS
Data Set: 2008-2012 American Community Survey 5-Year Estimates

B18101. AGE BY DISABILITY STATUS

Data Set: 2008-2012 American Community Survey 5-Year Estimates

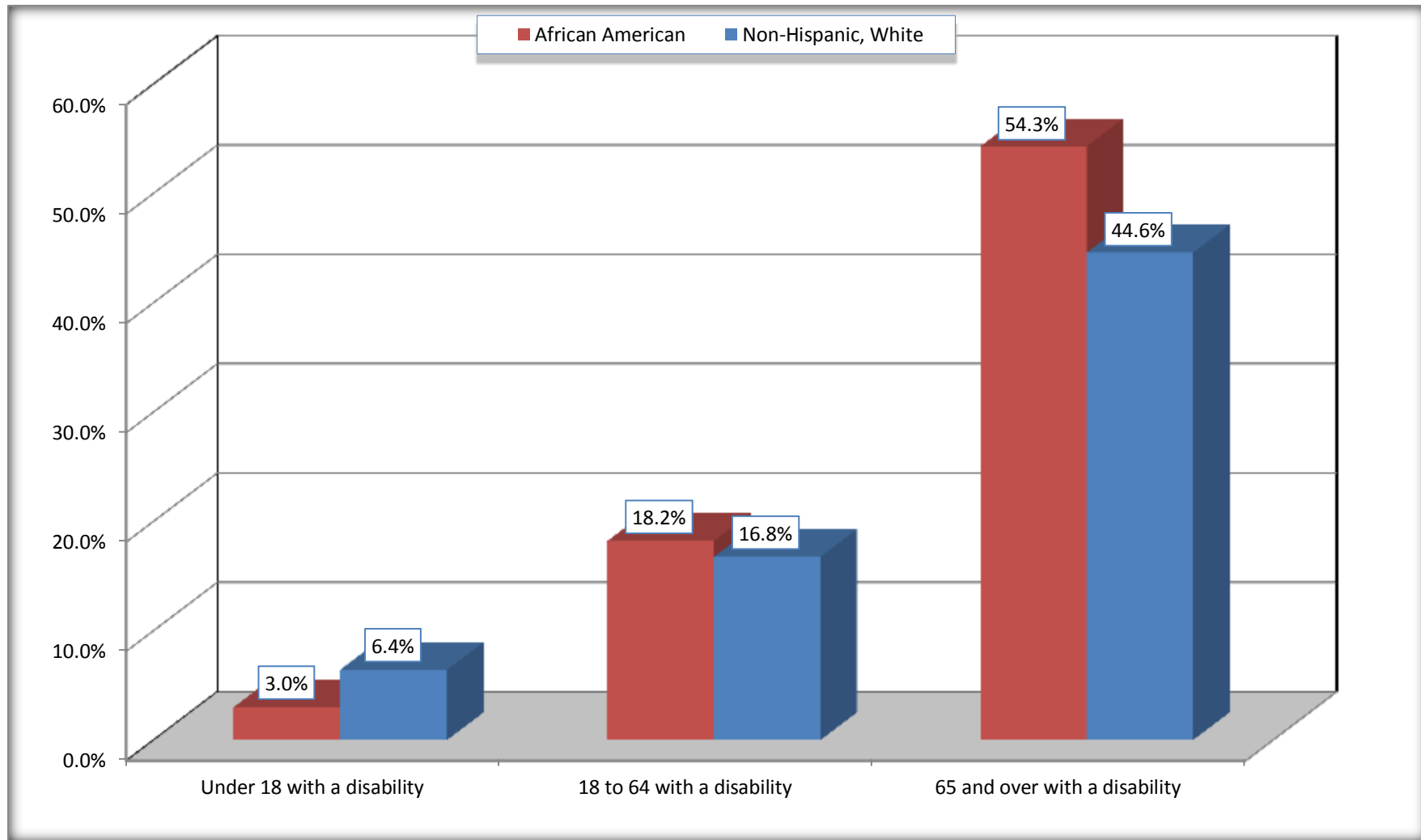
	Evans County, Georgia					
	African American	Margin of Error (+/-)	% of AA Total	White, Not Hispanic	Margin of Error (+/-)	% of NHW Total
Total:	2,846	118	100.0%	6,023	61	100.0%
Under 18 years:	866	68	30.4%	1,289	39	21.4%
With a disability	26	31	0.9%	83	58	1.4%
No disability	840	72	29.5%	1,206	61	20.0%
18 to 64 years:	1,665	100	58.5%	3,628	54	60.2%
With a disability	303	96	10.6%	608	129	10.1%
No disability	1,362	130	47.9%	3,020	135	50.1%
65 years and over:	315	57	11.1%	1,106	18	18.4%
With a disability	171	45	6.0%	493	96	8.2%
No disability	144	61	5.1%	613	100	10.2%

Source: U.S. Census Bureau, 2008-2012 American Community Survey

For information on confidentiality protection, sampling error, nonsampling error, and definitions, see Survey Methodology.

<http://www.census.gov/acs/www/UseData/index.htm>

Disability by Age Evans County, Georgia



Source: B18101. AGE BY DISABILITY STATUS
Data Set: 2008-2012 American Community Survey 5-Year Estimates

C27001B. HEALTH INSURANCE COVERAGE STATUS BY AGE

Data Set: 2008-2012 American Community Survey 5-Year Estimates

	Evans County, Georgia					
	African American	Margin of Error (+/-)	% of AA Total	White, Not Hispanic	Margin of Error (+/-)	% of NHW Total
Total:	2,846	118	100.0%	6,023	61	100.0%
Under 18 years:	866	68	30.4%	1,289	21	21.4%
With health insurance coverage	813	84	28.6%	1,175	68	19.5%
No health insurance coverage	53	52	1.9%	114	64	1.9%
18 to 64 years:	1,665	100	58.5%	3,628	54	60.2%
With health insurance coverage	1,164	156	40.9%	2,742	204	45.5%
No health insurance coverage	501	157	17.6%	886	202	14.7%
65 years and over:	315	57	11.1%	1,106	18	18.4%
With health insurance coverage	304	60	10.7%	1,106	18	18.4%
No health insurance coverage	11	16	0.4%	0	21	0.0%

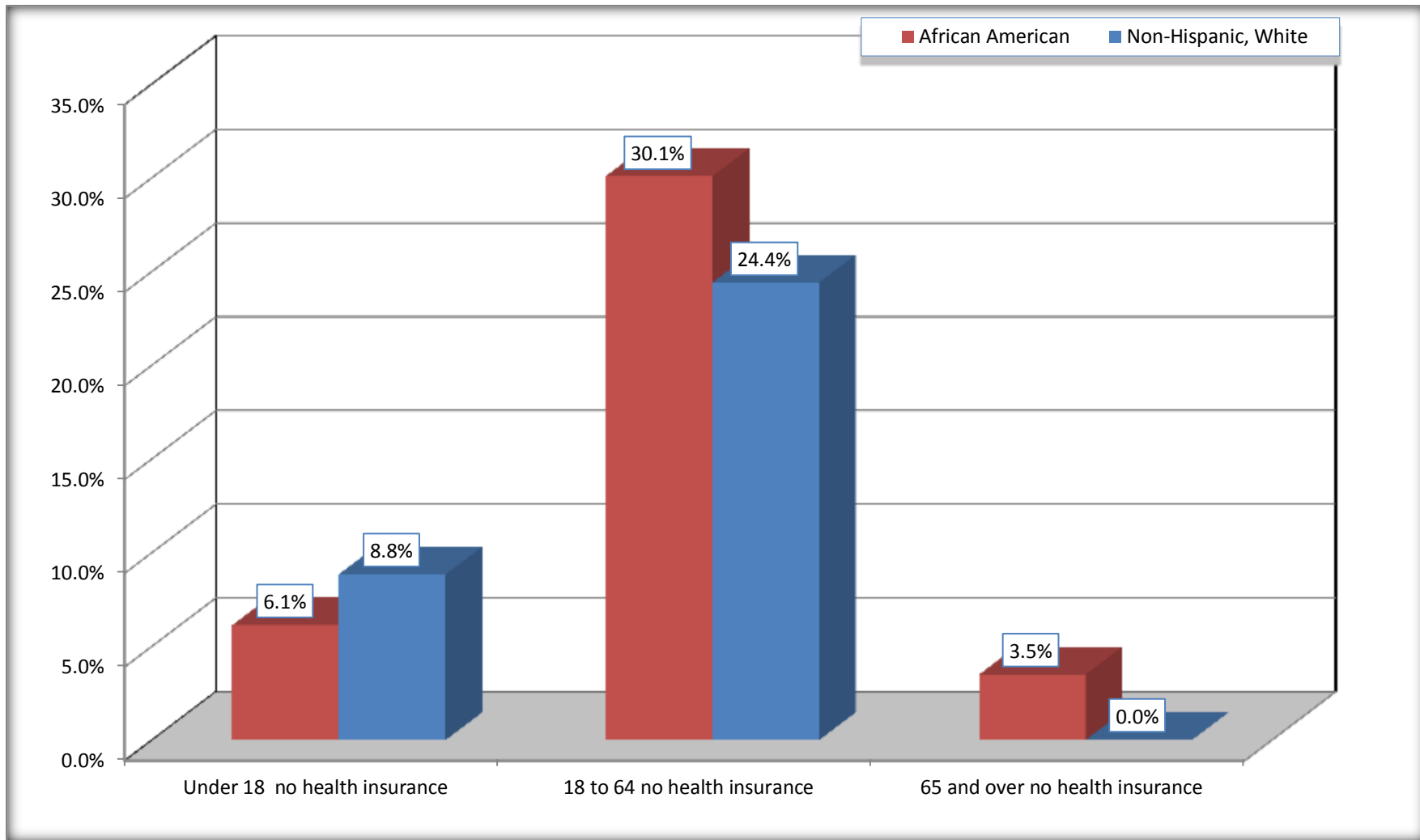
Source: U.S. Census Bureau, 2008-2012 American Community Survey

For information on confidentiality protection, sampling error, nonsampling error, and definitions, see Survey Methodology.

<http://www.census.gov/acs/www/UseData/index.htm>

Lack of Health Insurance Coverage by Age

Evans County, Georgia



Source: C27001B. HEALTH INSURANCE COVERAGE STATUS BY AGE
Data Set: 2008-2012 American Community Survey 5-Year Estimates