

# **Selected Socio-Economic Data**

## **Eatonton city, Georgia**

### **African American and White, Not Hispanic**

**Data Set: 2008-2012 American Community Survey 5-Year Estimates**

[www.fairvote2020.org](http://www.fairvote2020.org)

[www.fairdata2000.com](http://www.fairdata2000.com)

[29-Dec-13](#)

**C02003.DETAILED RACE - Universe: TOTAL POPULATION**

Data Set: 2008-2012 American Community Survey 5-Year Estimates

	Eatonton city, Georgia		
	Population	Margin of Error (+/-)	% of Total
<b>Total:</b>	<b>6,510</b>	<b>23</b>	<b>100.0%</b>
Population of one race:	6,471	61	99.4%
White	2,273	375	34.9%
Black or African American	4,198	358	64.5%
American Indian and Alaska Native	0	19	0.0%
Asian alone	0	19	0.0%
Native Hawaiian and Other Pacific Islander	0	19	0.0%
Some other race	0	19	0.0%
Population of two or more races:	39	58	0.6%
Two races including Some other race	0	19	0.0%
Two races excluding Some other race, and three or more races	39	58	0.6%
Population of two races:	39	58	0.6%
White; Black or African American	39	58	0.6%
White; American Indian and Alaska Native	0	19	0.0%
White; Asian	0	19	0.0%
Black or African American; American Indian and Alaska Native	0	19	0.0%
All other two race combinations	0	19	0.0%
Population of three races	0	19	0.0%
Population of four or more races	0	19	0.0%

Note: Hispanics may be of any race. See Table B03002 and chart.

Source: U.S. Census Bureau, 2008-2012 American Community Survey

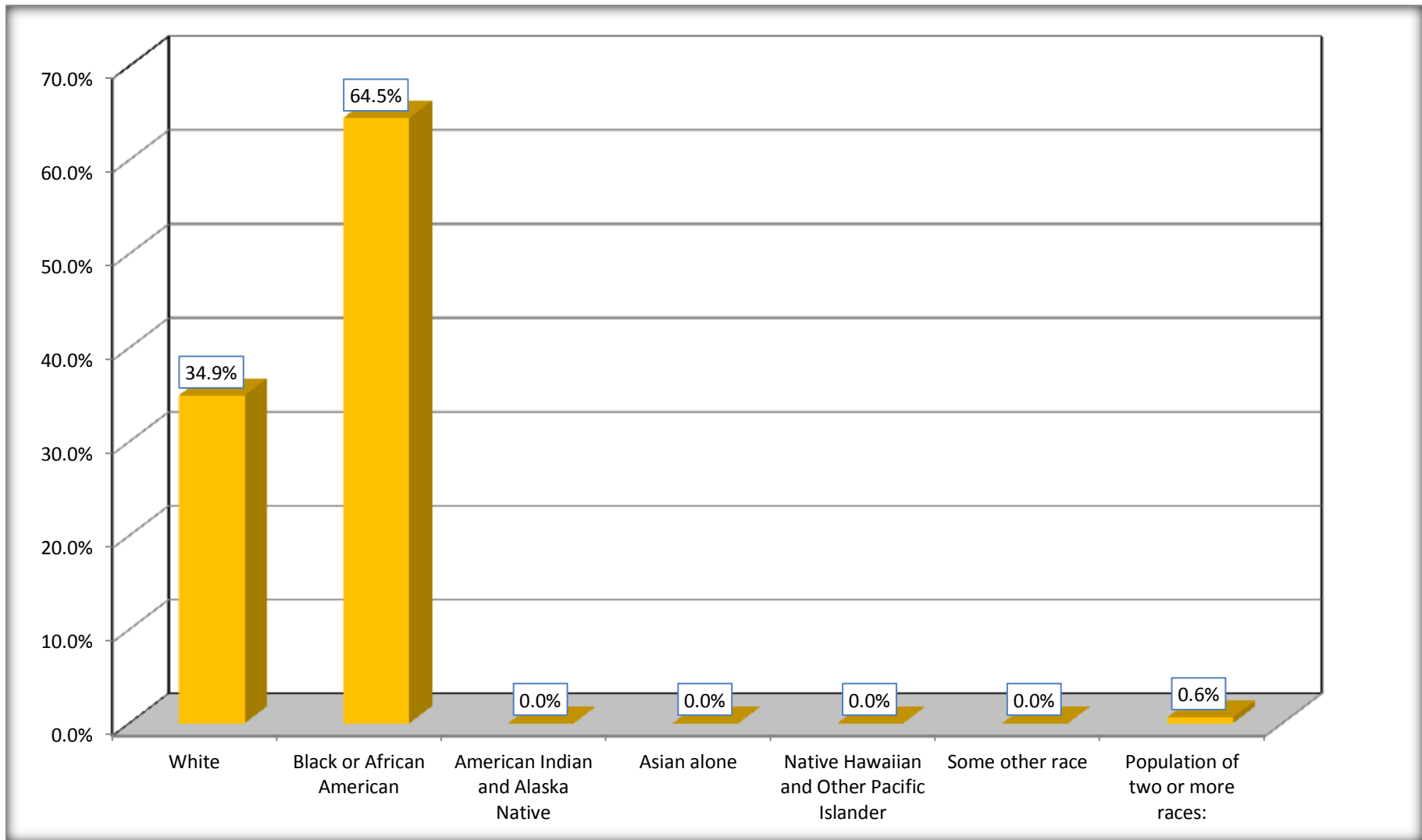
Although the American Community Survey (ACS) produces population, demographic and housing unit estimates, it is the Census Bureau's Population Estimates Program that produces and disseminates the official estimates of the population for the nation, states, counties, cities and towns and estimates of housing units for states and counties.

For information on confidentiality protection, sampling error, nonsampling error, and definitions, see Survey Methodology.

<http://www.census.gov/acs/www/UseData/index.htm>

# Population by Race

## Eatonton city, Georgia



Source: C02003.DETAILED RACE - Universe: TOTAL POPULATION  
Data Set: 2008-2012 American Community Survey 5-Year Estimates

**B03002. HISPANIC OR LATINO ORIGIN BY RACE - Universe: TOTAL POPULATION**

Data Set: 2008-2012 American Community Survey 5-Year Estimates

	Eatonton city, Georgia		
	Population	Margin of Error (+/-)	% of Total
<b>Total:</b>	6,510	23	<b>100.0%</b>
Not Hispanic or Latino:	6,075	433	93.3%
White alone	1,838	409	28.2%
Black or African American alone	4,198	358	64.5%
American Indian and Alaska Native alone	0	19	0.0%
Asian alone	0	19	0.0%
Native Hawaiian and Other Pacific Islander alone	0	19	0.0%
Some other race alone	0	19	0.0%
Two or more races:	39	58	0.6%
Two races including Some other race	0	19	0.0%
Two races excluding Some other race, and three or more races	39	58	0.6%
Hispanic or Latino	435	434	6.7%

Source: U.S. Census Bureau, 2008-2012 American Community Survey

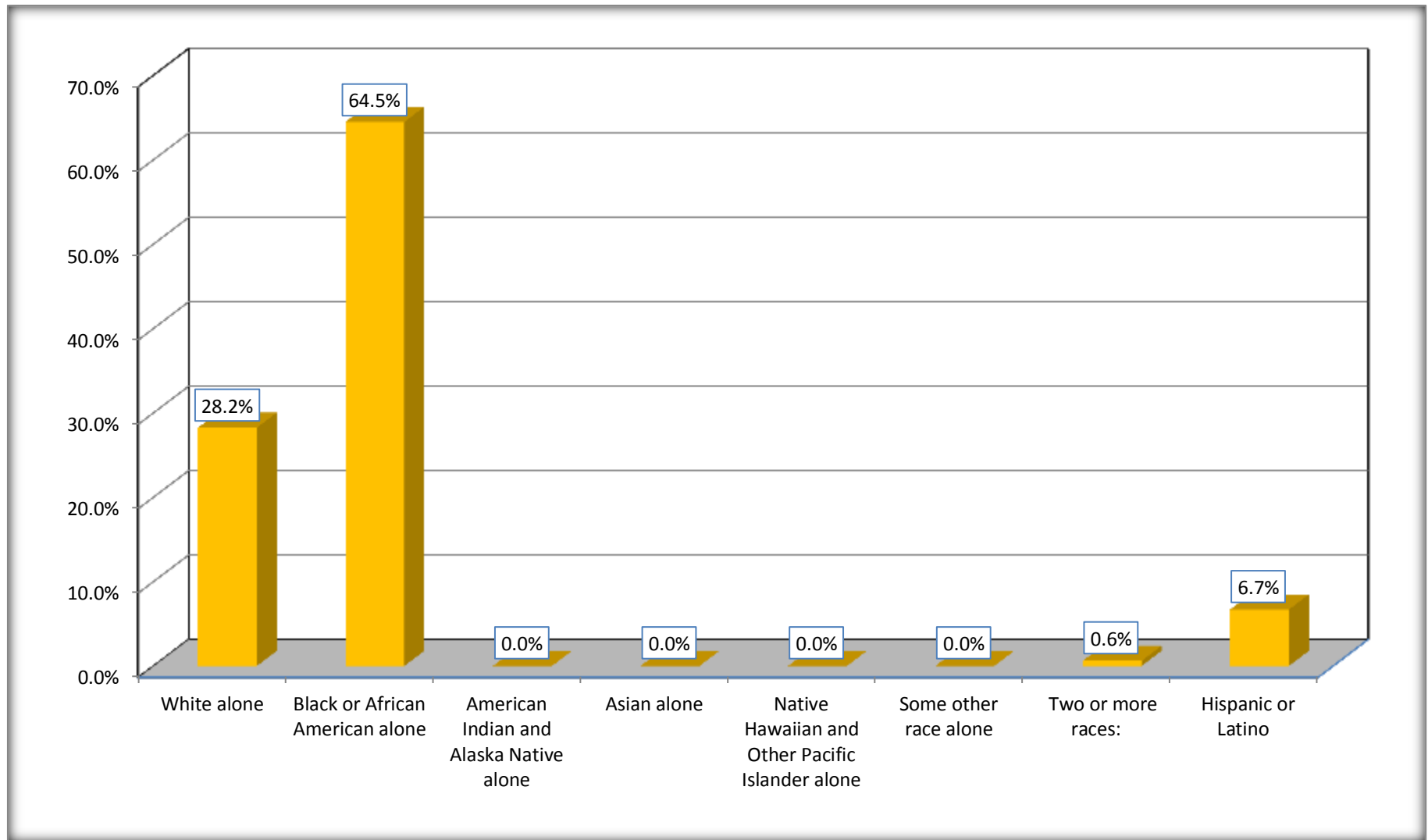
Although the American Community Survey (ACS) produces population, demographic and housing unit estimates, it is the Census Bureau's Population Estimates Program that produces and disseminates the official estimates of the population for the nation, states, counties, cities and towns and estimates of housing units for states and counties.

For information on confidentiality protection, sampling error, nonsampling error, and definitions, see Survey Methodology.

<http://www.census.gov/acs/www/UseData/index.htm>

# Non-Hispanic by Race and Hispanic Population

## Eatonton city, Georgia



Source: B03002. HISPANIC OR LATINO ORIGIN BY RACE - Universe: TOTAL POPULATION  
Data Set: 2008-2012 American Community Survey 5-Year Estimates

**B03002. HISPANIC OR LATINO ORIGIN BY RACE**

Data Set: 2008-2012 American Community Survey 5-Year Estimates

	Eatonton city, Georgia		
	Population	Margin of Error (+/-)	% of Total
Hispanic or Latino:	435	434	<b>100.0%</b>
White alone	435	434	100.0%
Black or African American alone	0	19	0.0%
American Indian and Alaska Native alone	0	19	0.0%
Asian alone	0	19	0.0%
Native Hawaiian and Other Pacific Islander alone	0	19	0.0%
Some other race alone	0	19	0.0%
Two or more races:	0	19	0.0%
Two races including Some other race	0	19	0.0%
Two races excluding Some other race, and three or more races	0	19	0.0%

Source: U.S. Census Bureau, 2008-2012 American Community Survey

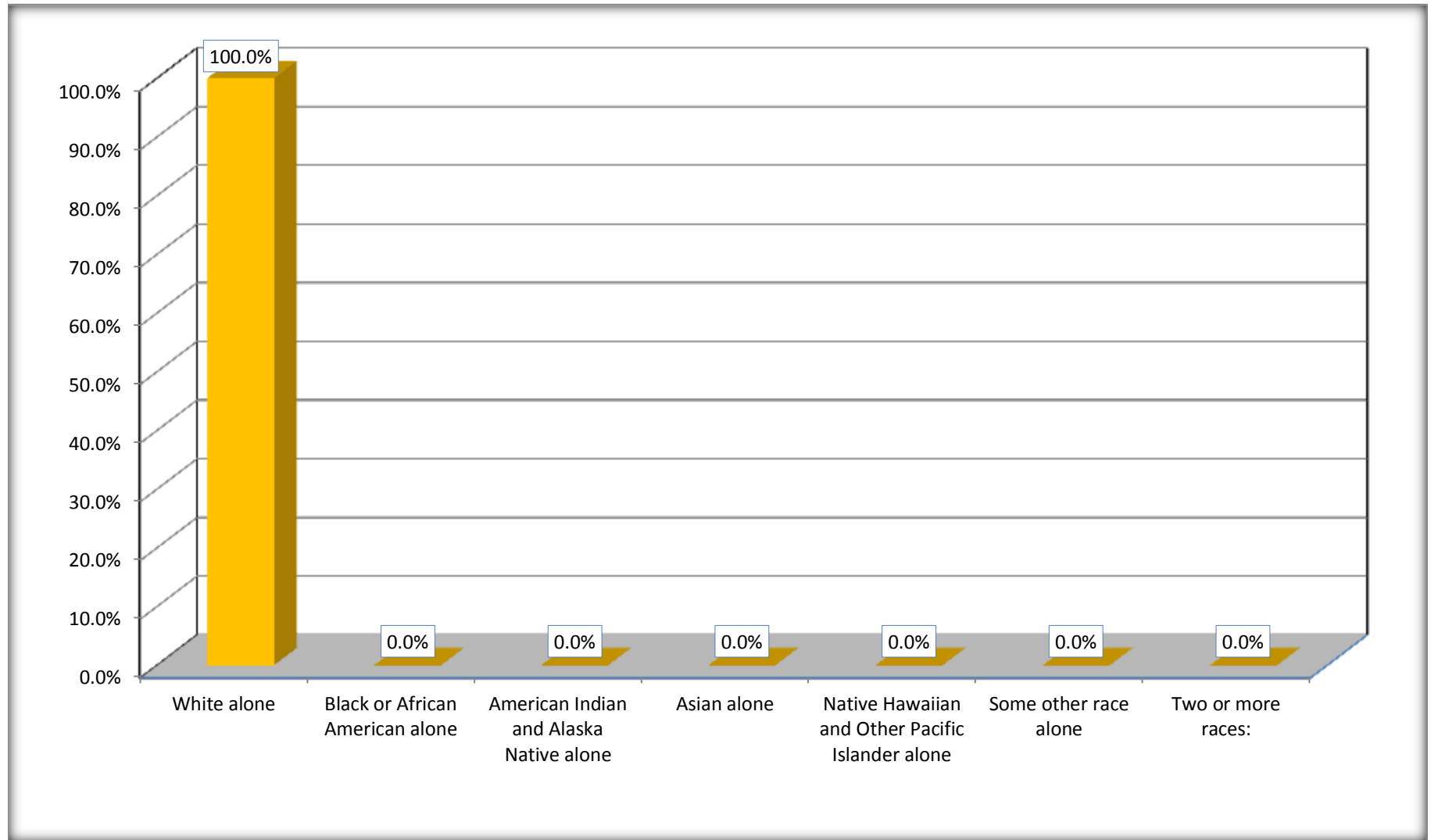
Although the American Community Survey (ACS) produces population, demographic and housing unit estimates, it is the Census Bureau's Population Estimates Program that produces and disseminates the official estimates of the population for the nation, states, counties, cities and towns and estimates of housing units for states and counties.

For information on confidentiality protection, sampling error, nonsampling error, and definitions, see Survey Methodology.

<http://www.census.gov/acs/www/UseData/index.htm>

# Hispanic or Latino Origin by Race

## Eatonton city, Georgia



Source: B03002. HISPANIC OR LATINO ORIGIN BY RACE  
Data Set: 2008-2012 American Community Survey 5-Year Estimates

**B01001. SEX BY AGE**

Data Set: 2008-2012 American Community Survey 5-Year Estimates

	<b>Eatonton city, Georgia</b>					
	African American	Margin of Error (+/-)	% of AA Total	White, Not Hispanic	Margin of Error (+/-)	% of NHW Total
<b>Total:</b>	<b>4,198</b>	<b>358</b>	<b>100.0%</b>	<b>1,838</b>	<b>409</b>	<b>100.0%</b>
Under 18 years	1,212	NC	28.9%	413	NC	22.5%
18 to 64 years	2,586	NC	61.6%	1,107	NC	60.2%
65 years and over	400	NC	9.5%	318	NC	17.3%
Male:	2,056	197	49.0%	886	389	48.2%
Under 18 years	640	NC	15.2%	234	NC	12.7%
18 to 64 years	1,264	NC	30.1%	493	NC	26.8%
65 years and over	152	NC	3.6%	159	NC	8.7%
Female:	2,142	231	51.0%	952	412	51.8%
Under 18 years	572	NC	13.6%	179	NC	9.7%
18 to 64 years	1,322	NC	31.5%	614	NC	33.4%
65 years and over	248	NC	5.9%	159	NC	8.7%

Source: U.S. Census Bureau, 2008-2012 American Community Survey

Although the American Community Survey (ACS) produces population, demographic and housing unit estimates, it is the Census Bureau's Population Estimates Program that produces and disseminates the official estimates of the population for the nation, states, counties, cities and towns and estimates of housing units for states and counties.

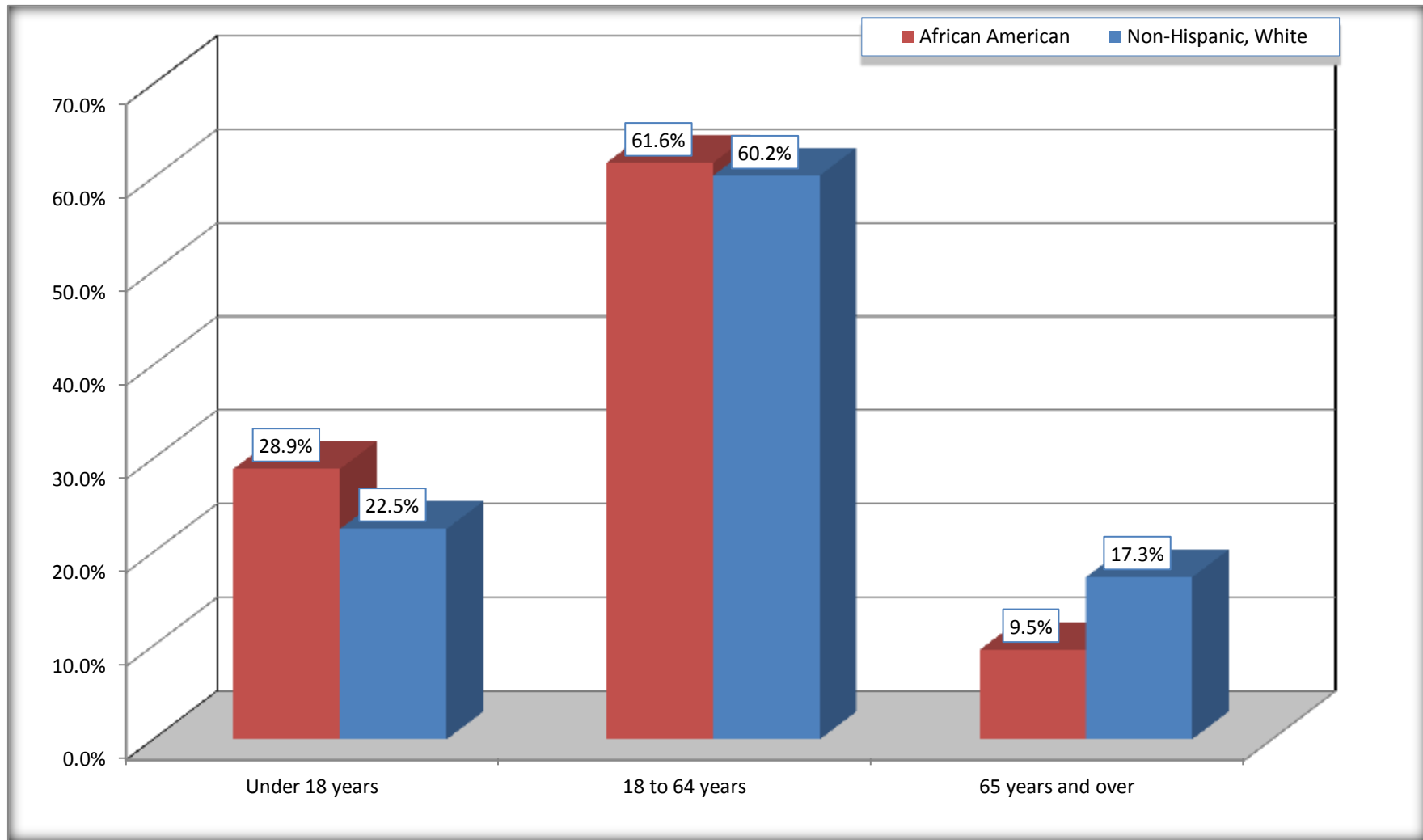
For information on confidentiality protection, sampling error, nonsampling error, and definitions, see Survey Methodology.

<http://www.census.gov/acs/www/UseData/index.htm>



# Population by Age

## Eatonton city, Georgia



Source: B01001. SEX BY AGE  
Data Set: 2008-2012 American Community Survey 5-Year Estimates

**B05003. SEX BY AGE BY CITIZENSHIP STATUS**

Data Set: 2008-2012 American Community Survey 5-Year Estimates

	Eatonton city, Georgia					
	African American	Margin of Error (+/-)	% of AA Total by Age	White, Not Hispanic	Margin of Error (+/-)	% of NHW Total by Age
<b>Total:</b>	<b>4,198</b>	<b>358</b>	<b>100.0%</b>	<b>1,838</b>	<b>409</b>	<b>100.0%</b>
<b>Under 18 years:</b>	<b>1,212</b>	<b>NC</b>	<b>100.0%</b>	<b>413</b>	<b>NC</b>	<b>100.0%</b>
Native	1,212	NC	100.0%	413	NC	100.0%
Foreign born:	0	NC	0.0%	0	NC	0.0%
Naturalized U.S. citizen	0	NC	0.0%	0	NC	0.0%
Not a U.S. citizen	0	NC	0.0%	0	NC	0.0%
<b>18 years and over:</b>	<b>2,986</b>	<b>NC</b>	<b>100.0%</b>	<b>1,425</b>	<b>NC</b>	<b>100.0%</b>
Native	2,986	NC	100.0%	1,425	NC	100.0%
Foreign born:	0	NC	0.0%	0	NC	0.0%
Naturalized U.S. citizen	0	NC	0.0%	0	NC	0.0%
Not a U.S. citizen	0	NC	0.0%	0	NC	0.0%
<b>Male:</b>	2,056	197	49.0%	886	233	48.2%
<b>Under 18 years:</b>	640	158	<b>100.0%</b>	234	115	<b>100.0%</b>
Native	640	158	100.0%	234	115	100.0%
Foreign born:	0	19	0.0%	0	19	0.0%
Naturalized U.S. citizen	0	19	0.0%	0	19	0.0%
Not a U.S. citizen	0	19	0.0%	0	19	0.0%
<b>18 years and over:</b>	<b>1,416</b>	<b>148</b>	<b>100.0%</b>	<b>652</b>	<b>188</b>	<b>100.0%</b>
Native	1,416	148	100.0%	652	188	100.0%
Foreign born:	0	19	0.0%	0	19	0.0%
Naturalized U.S. citizen	0	19	0.0%	0	19	0.0%
Not a U.S. citizen	0	19	0.0%	0	19	0.0%

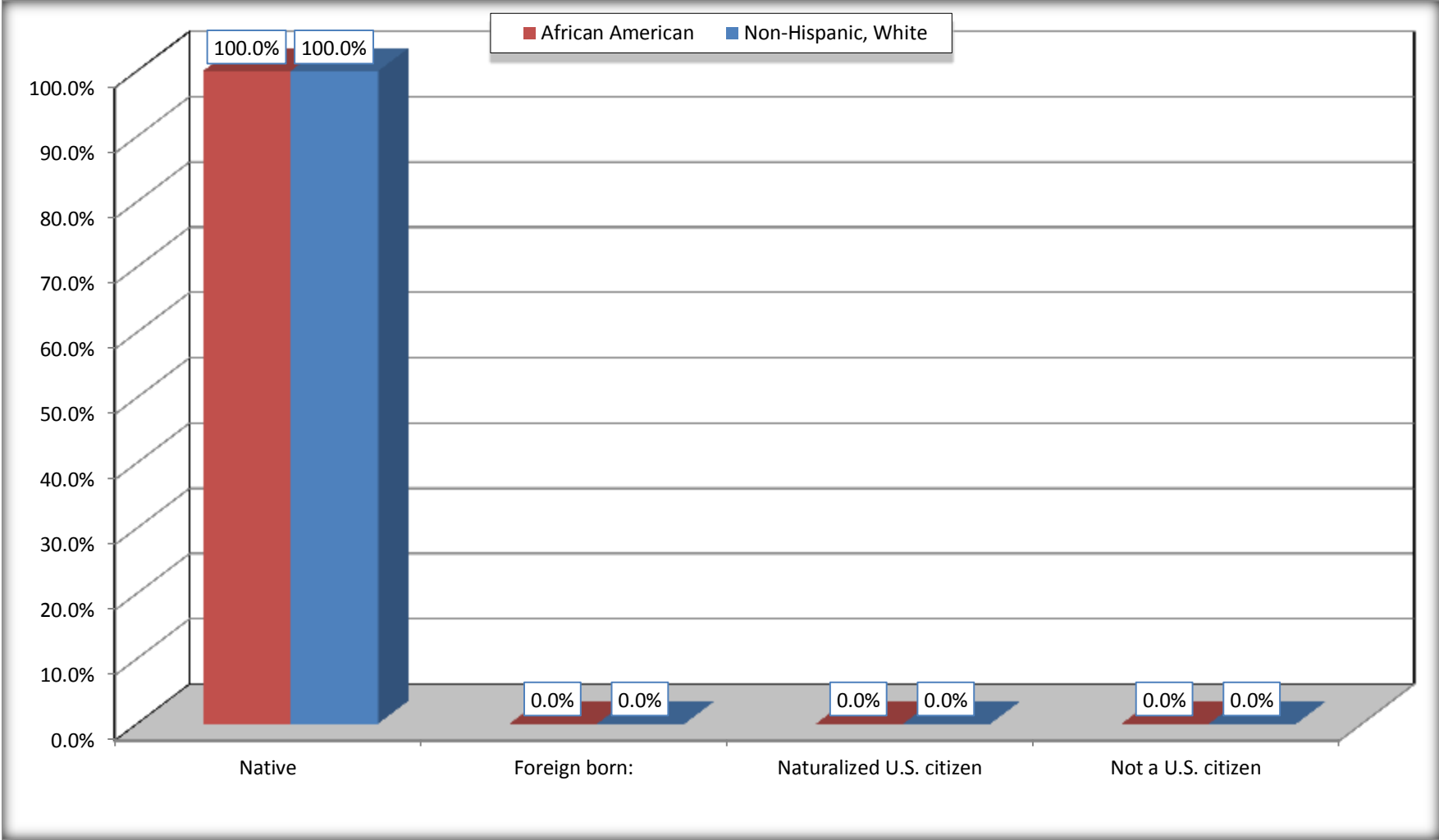
	Eatonton city, Georgia					
	African American	Margin of Error (+/-)	% of AA by Age	White, Not Hispanic	Margin of Error (+/-)	% of NHW by Age
<b>Female:</b>	2,142	231	51.0%	952	238	51.8%
<b>Under 18 years:</b>	<b>572</b>	<b>117</b>	<b>100.0%</b>	<b>179</b>	<b>111</b>	<b>100.0%</b>
Native	572	117	100.0%	179	111	100.0%
Foreign born:	0	19	0.0%	0	19	0.0%
Naturalized U.S. citizen	0	19	0.0%	0	19	0.0%
Not a U.S. citizen	0	19	0.0%	0	19	0.0%
<b>18 years and over:</b>	<b>1,570</b>	<b>182</b>	<b>100.0%</b>	<b>773</b>	<b>192</b>	<b>100.0%</b>
Native	1,570	182	100.0%	773	192	100.0%
Foreign born:	0	19	0.0%	0	19	0.0%
Naturalized U.S. citizen	0	19	0.0%	0	19	0.0%
Not a U.S. citizen	0	19	0.0%	0	19	0.0%

Source: U.S. Census Bureau, 2008-2012 American Community Survey

For information on confidentiality protection, sampling error, nonsampling error, and definitions, see Survey Methodology.  
<http://www.census.gov/acs/www/UseData/index.htm>

# Citizenship Status of Voting Age Population (18 and Over)

## Eatonton city, Georgia



Source: B05003. SEX BY AGE BY CITIZENSHIP STATUS  
Data Set: 2008-2012 American Community Survey 5-Year Estimates

**B07004. GEOGRAPHICAL MOBILITY IN THE PAST YEAR BY RACE FOR CURRENT RESIDENCE IN THE UNITED STATES - Universe:  
POPULATION 1 YEAR AND OVER**

Data Set: 2008-2012 American Community Survey 5-Year Estimates

	Eatonton city, Georgia					
	African American	Margin of Error (+/-)	% of AA Total	White, Not Hispanic	Margin of Error (+/-)	% of NHW Total
<b>Total:</b>	<b>4,198</b>	<b>358</b>	<b>100.0%</b>	<b>1,824</b>	<b>410</b>	<b>100.0%</b>
Same house 1 year ago	3,710	396	88.4%	1,679	368	92.1%
Moved within same county	310	333	7.4%	84	96	4.6%
Moved from different county within same state	178	151	4.2%	60	44	3.3%
Moved from different state	0	19	0.0%	1	4	0.1%
Moved from abroad	0	19	0.0%	0	19	0.0%

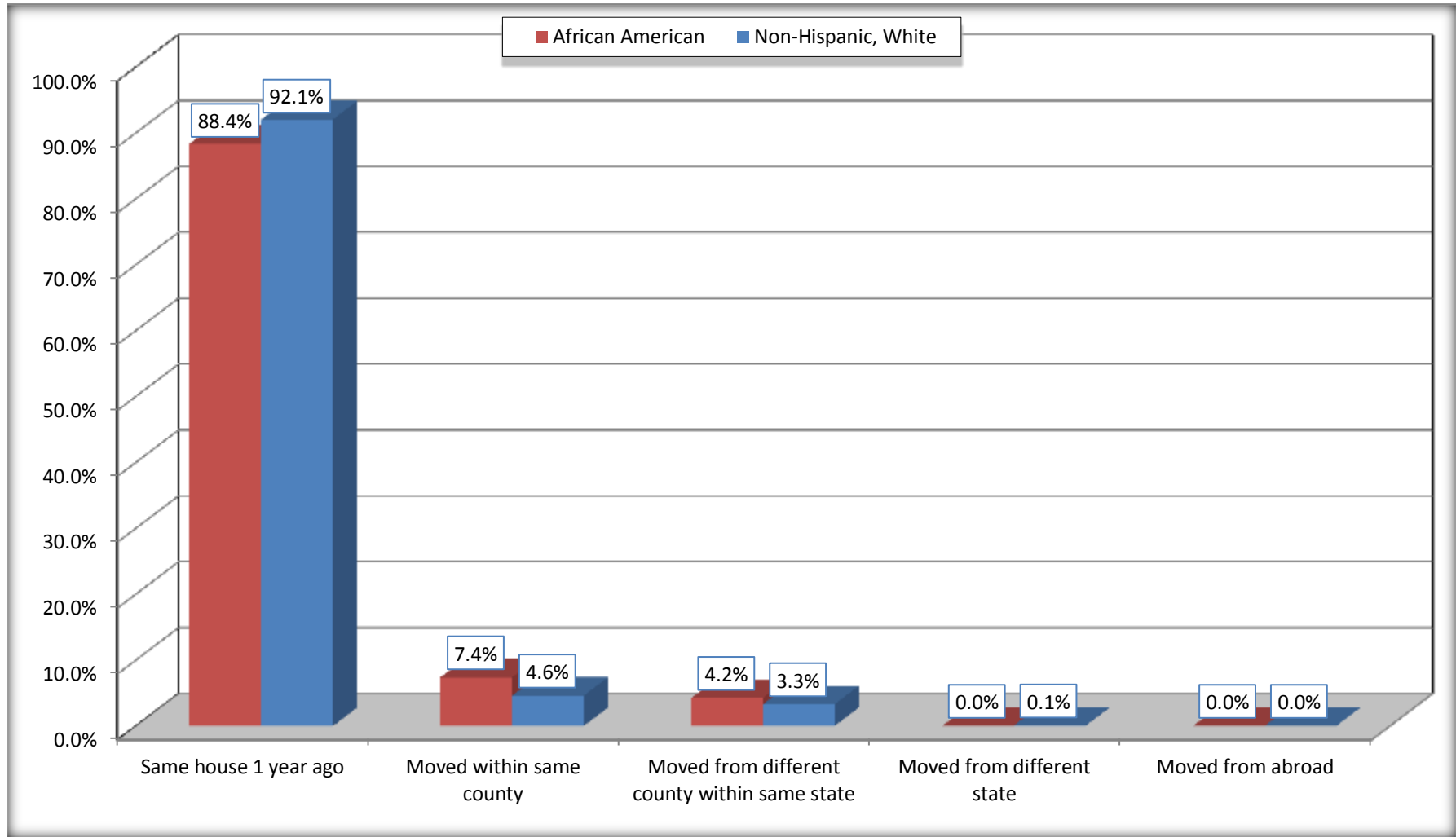
Source: U.S. Census Bureau, 2008-2012 American Community Survey

For information on confidentiality protection, sampling error, nonsampling error, and definitions, see Survey Methodology.

<http://www.census.gov/acs/www/UseData/index.htm>

# Geographical Mobility in the Past Year (Population 1 Year and Over)

## Eatonton city, Georgia



Source: B07004. GEOGRAPHICAL MOBILITY IN THE PAST YEAR BY RACE FOR CURRENT RESIDENCE IN THE UNITED STATES - Universe: POPULATION 1 YEAR AND OVER

Data Set: 2008-2012 American Community Survey 5-Year Estimates

**B08105. MEANS OF TRANSPORTATION TO WORK - Universe: WORKERS 16 YEARS AND OVER**

Data Set: 2008-2012 American Community Survey 5-Year Estimates

	Eatonton city, Georgia					
	African American	Margin of Error (+/-)	% of AA Total	White, Not Hispanic	Margin of Error (+/-)	% of NHW Total
<b>Total:</b>	1672	251	<b>100.0%</b>	838	227	<b>100.0%</b>
Car, truck, or van - drove alone	1087	256	65.0%	690	196	82.3%
Car, truck, or van - carpooled	453	230	27.1%	90	77	10.7%
Public transportation (excluding taxicab)	0	19	0.0%	0	19	0.0%
Walked	132	119	7.9%	0	19	0.0%
Taxicab, motorcycle, bicycle, or other means	0	19	0.0%	10	19	1.2%
Worked at home	0	19	0.0%	48	44	5.7%

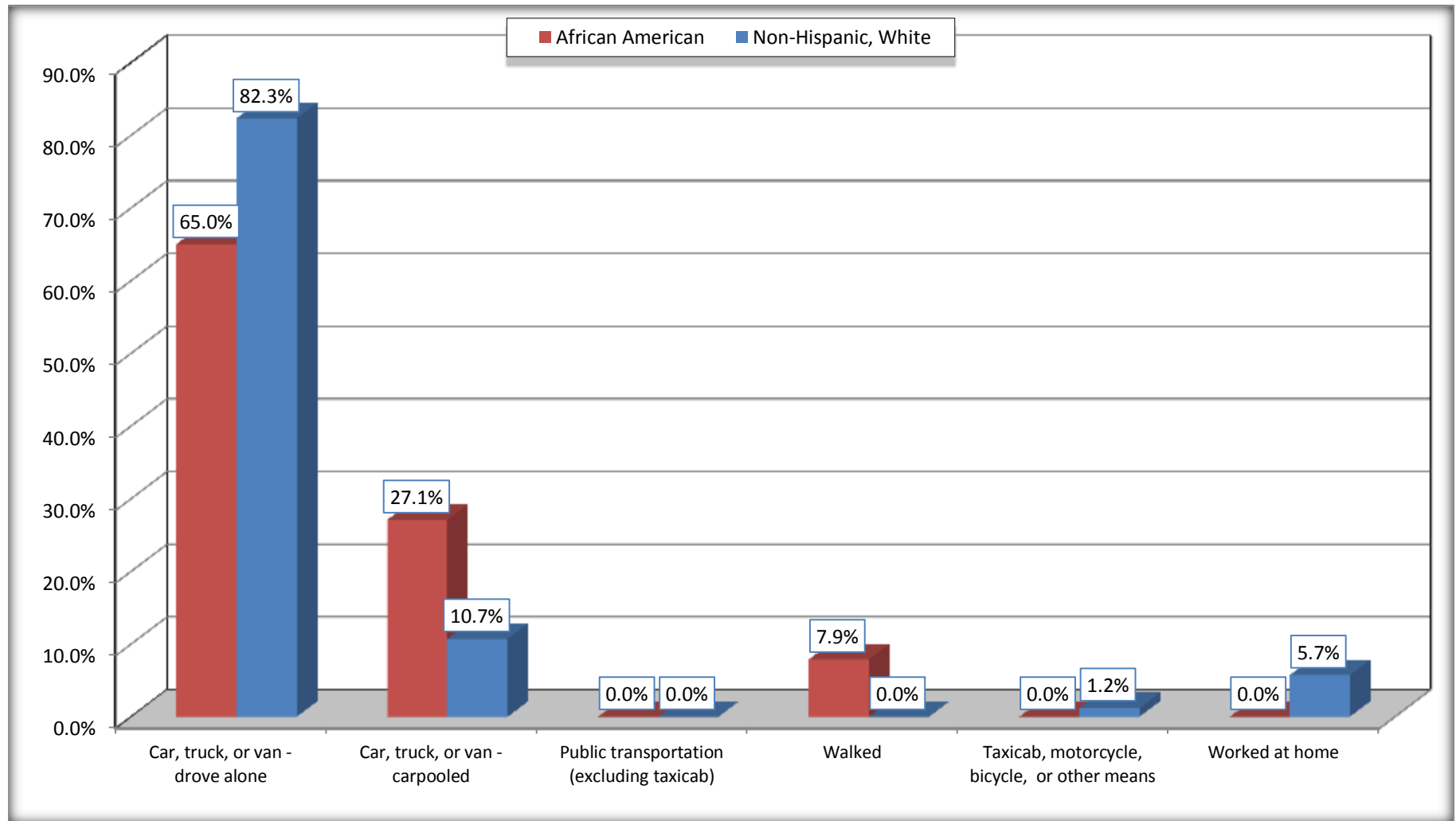
Source: U.S. Census Bureau, 2008-2012 American Community Survey

For information on confidentiality protection, sampling error, nonsampling error, and definitions, see Survey Methodology.

<http://www.census.gov/acs/www/UseData/index.htm>

# Means of Transportation to Work (Workers 16 Years and Over)

## Eatonton city, Georgia



Source: B08105. MEANS OF TRANSPORTATION TO WORK - Universe: WORKERS 16 YEARS AND OVER  
Data Set: 2008-2012 American Community Survey 5-Year Estimates



**B11002. HOUSEHOLD TYPE BY RELATIVES AND NONRELATIVES FOR POPULATION IN HOUSEHOLDS**

Data Set: 2008-2012 American Community Survey 5-Year Estimates

	Eatonton city, Georgia					
	African American	Margin of Error (+/-)	% of AA Total	White, Not Hispanic	Margin of Error (+/-)	% of NHW Total
<b>Total:</b>	4140	373	<b>100.0%</b>	1714	412	<b>100.0%</b>
In family households	3596	440	86.9%	1481	380	86.4%
In nonfamily households	544	243	13.1%	233	131	13.6%

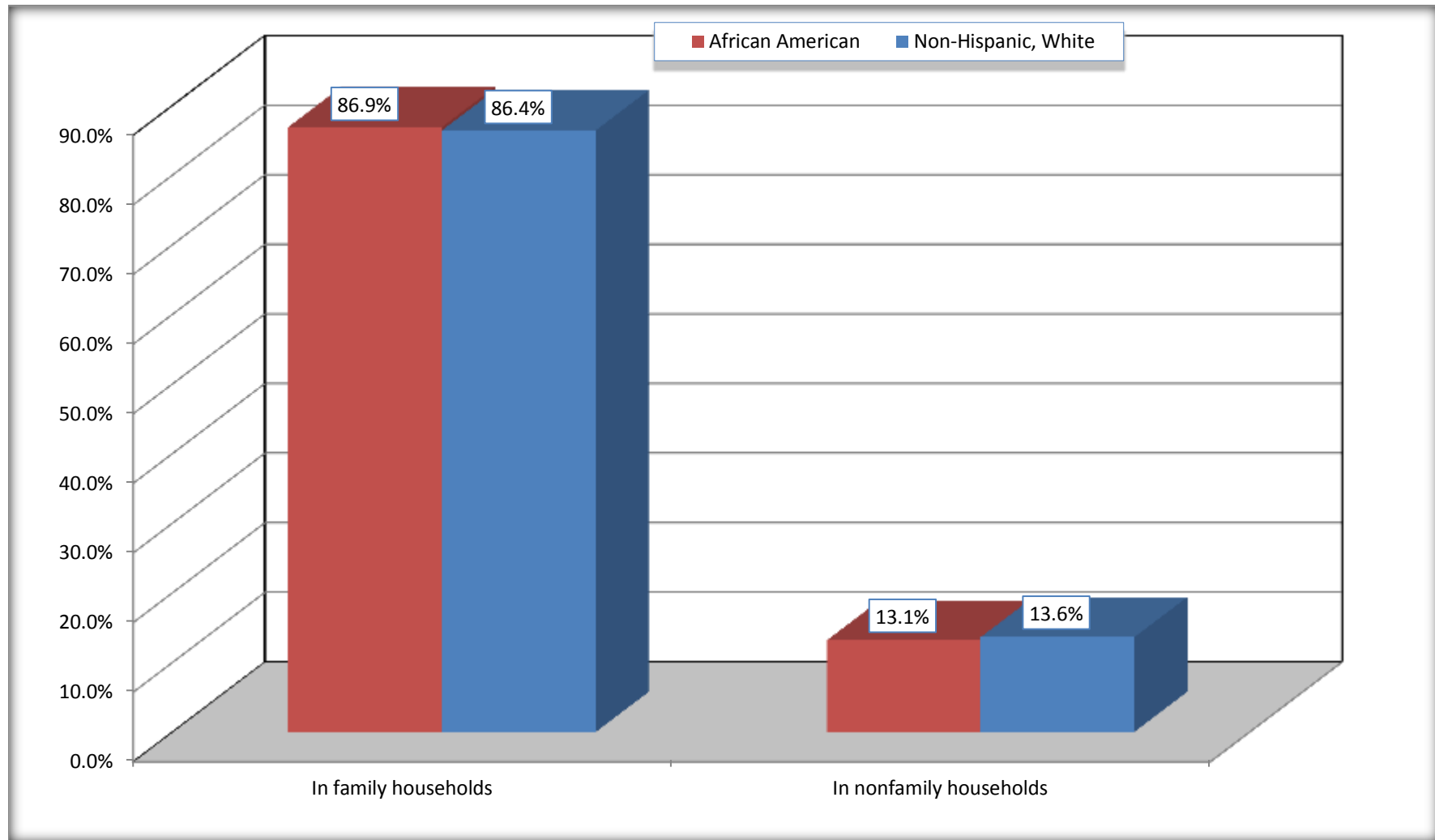
Source: U.S. Census Bureau, 2008-2012 American Community Survey

For information on confidentiality protection, sampling error, nonsampling error, and definitions, see Survey Methodology.

<http://www.census.gov/acs/www/UseData/index.htm>

# Household Type for Population in Households

## Eatonton city, Georgia



Source: B11002. HOUSEHOLD TYPE BY RELATIVES AND NONRELATIVES FOR POPULATION IN HOUSEHOLDS  
Data Set: 2008-2012 American Community Survey 5-Year Estimates

**B12002. MARITAL STATUS FOR THE POPULATION 15 YEARS AND OVER**

Data Set: 2008-2012 American Community Survey 5-Year Estimates

	Eatonton city, Georgia					
	African American	Margin of Error (+/-)	% of AA Total	White, Not Hispanic	Margin of Error (+/-)	% of NHW Total
<b>Total:</b>	<b>3,244</b>	<b>276</b>	<b>100.0%</b>	<b>1,486</b>	<b>359</b>	<b>100.0%</b>
Never married	1,790	NC	55.2%	370	NC	24.9%
Now married (except separated)	666	NC	20.5%	825	NC	55.5%
Separated	134	NC	4.1%	32	NC	2.2%
Widowed	179	NC	5.5%	116	NC	7.8%
Divorced	475	NC	14.6%	143	NC	9.6%
<b>Male:</b>	<b>1,597</b>	<b>138</b>	<b>49.2%</b>	<b>684</b>	<b>195</b>	<b>46.0%</b>
Never married	1,004	152	30.9%	207	102	13.9%
Now married (except separated)	319	131	9.8%	414	136	27.9%
Separated	61	75	1.9%	7	15	0.5%
Widowed	36	54	1.1%	23	27	1.5%
Divorced	177	104	5.5%	33	34	2.2%
<b>Female:</b>	<b>1,647</b>	<b>200</b>	<b>50.8%</b>	<b>802</b>	<b>201</b>	<b>54.0%</b>
Never married	786	214	24.2%	163	104	11.0%
Now married (except separated)	347	157	10.7%	411	128	27.7%
Separated	73	76	2.3%	25	32	1.7%
Widowed	143	89	4.4%	93	50	6.3%
Divorced	298	111	9.2%	110	73	7.4%

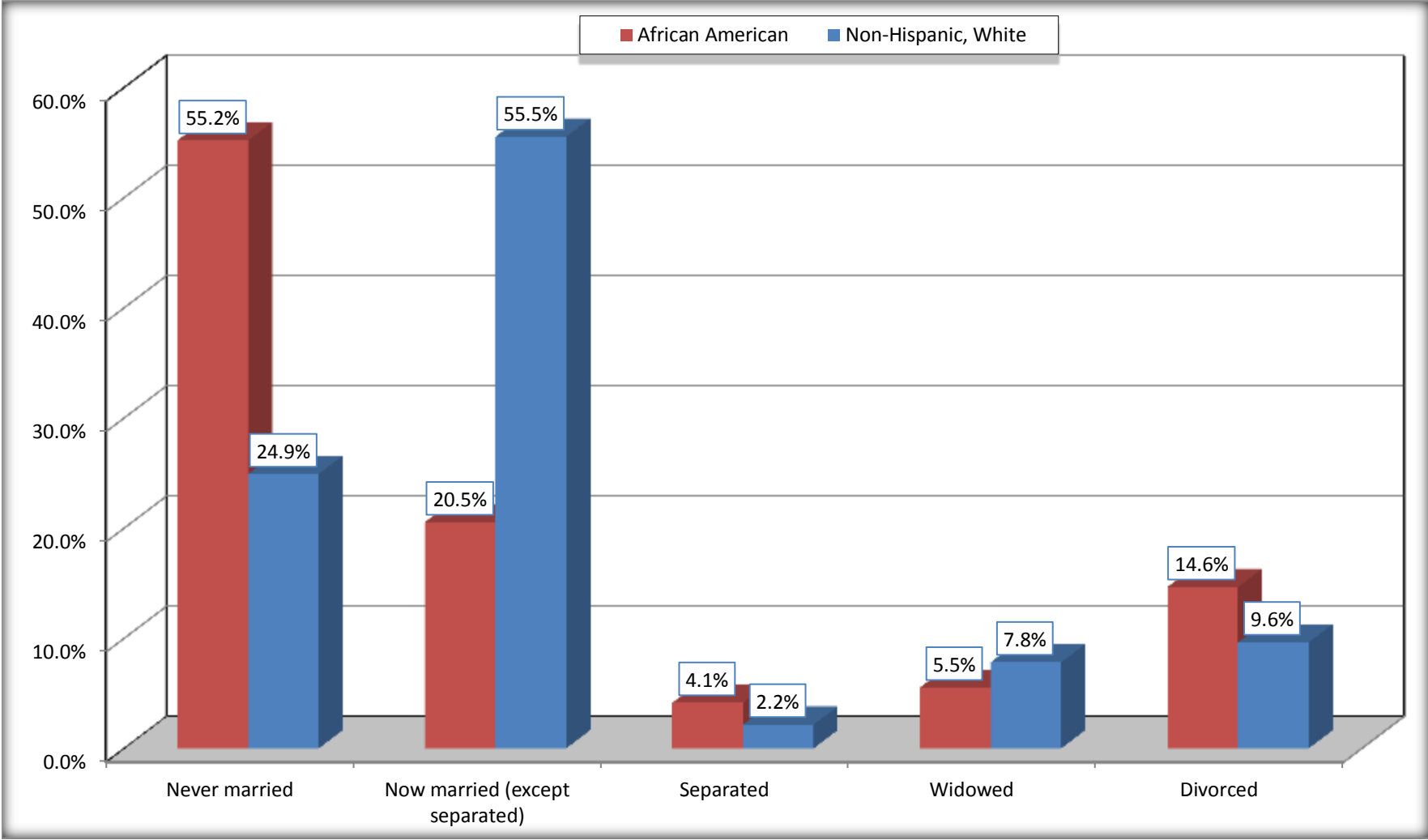
Source: U.S. Census Bureau, 2008-2012 American Community Survey

For information on confidentiality protection, sampling error, nonsampling error, and definitions, see Survey Methodology.

<http://www.census.gov/acs/www/UseData/index.htm>

# Marital Status for the Population 15 Years and Over

## Eatonton city, Georgia



Source: B12002. MARITAL STATUS FOR THE POPULATION 15 YEARS AND OVER  
Data Set: 2008-2012 American Community Survey 5-Year Estimates

**C15002. SEX BY EDUCATIONAL ATTAINMENT FOR THE POPULATION 25 YEARS AND OVER**

Data Set: 2008-2012 American Community Survey 5-Year Estimates

	Eatonton city, Georgia					
	African American	Margin of Error (+/-)	% of AA Total	White, Not Hispanic	Margin of Error (+/-)	% of NHW Total
<b>Total:</b>	<b>2,537</b>	<b>291</b>	<b>100.0%</b>	<b>1,229</b>	<b>299</b>	<b>100.0%</b>
Less than high school diploma	635	NC	25.0%	236	NC	19.2%
High school graduate, GED, or alternative	1,133	NC	44.7%	358	NC	29.1%
Some college or associate's degree	535	NC	21.1%	305	NC	24.8%
Bachelor's degree or higher	234	NC	9.2%	330	NC	26.9%
Male:	1,214	176	47.9%	576	166	46.9%
Less than high school diploma	387	156	15.3%	101	65	8.2%
High school graduate, GED, or alternative	536	150	21.1%	134	72	10.9%
Some college or associate's degree	220	136	8.7%	174	90	14.2%
Bachelor's degree or higher	71	63	2.8%	167	90	13.6%
Female:	1,323	187	52.1%	653	161	53.1%
Less than high school diploma	248	163	9.8%	135	73	11.0%
High school graduate, GED, or alternative	597	178	23.5%	224	94	18.2%
Some college or associate's degree	315	164	12.4%	131	69	10.7%
Bachelor's degree or higher	163	129	6.4%	163	83	13.3%

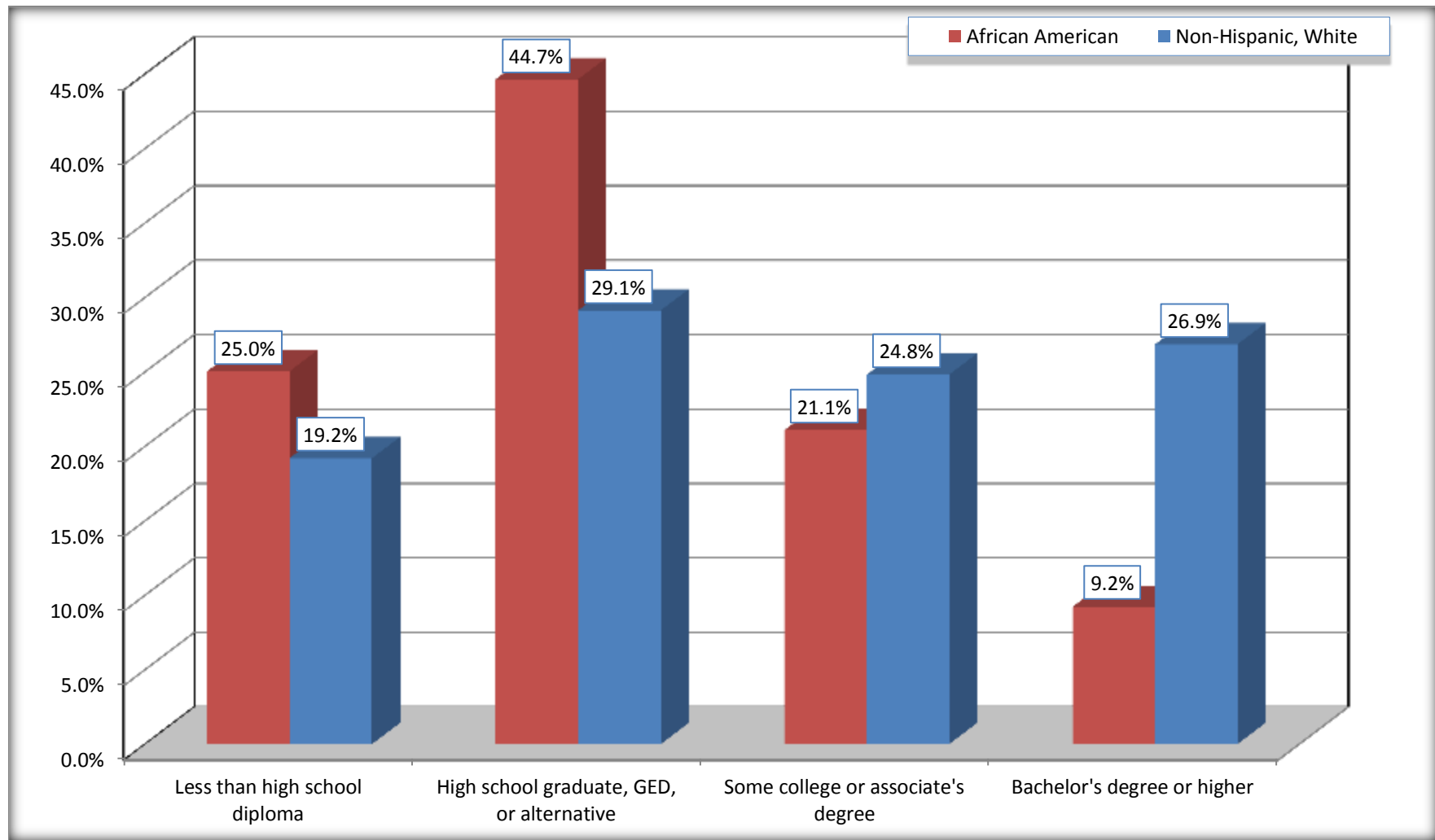
Source: U.S. Census Bureau, 2008-2012 American Community Survey

For information on confidentiality protection, sampling error, nonsampling error, and definitions, see Survey Methodology.

<http://www.census.gov/acs/www/UseData/index.htm>

# Educational Attainment for the Population 25 Years and Older

## Eatonton city, Georgia



Source: C15002. SEX BY EDUCATIONAL ATTAINMENT FOR THE POPULATION 25 YEARS AND OVER  
Data Set: 2008-2012 American Community Survey 5-Year Estimates

**B17010. POVERTY STATUS IN THE PAST 12 MONTHS OF FAMILIES BY FAMILY TYPE BY PRESENCE OF RELATED CHILDREN UNDER 18 YEARS**

Data Set: 2008-2012 American Community Survey 5-Year Estimates

	Eatonton city, Georgia					
	African American	Margin of Error (+/-)	% of AA Total	White, Not Hispanic	Margin of Error (+/-)	% of NHW Total
<b>Total:</b>	<b>1,245</b>	<b>200</b>	<b>100.0%</b>	<b>500</b>	<b>132</b>	<b>100.0%</b>
Income in the past 12 months below poverty level:	453	183	36.4%	49	44	9.8%
Married-couple family:	24	41	1.9%	0	19	0.0%
With related children under 18 years	0	19	0.0%	0	19	0.0%
Other family:	429	181	34.5%	49	44	9.8%
Male householder, no wife present	73	79	5.9%	9	15	1.8%
With related children under 18 years	0	19	0.0%	0	19	0.0%
Female householder, no husband present	356	144	28.6%	40	40	8.0%
With related children under 18 years	302	143	24.3%	40	40	8.0%
Income in the past 12 months at or above poverty level:	792	205	63.6%	451	137	90.2%
Married-couple family:	295	137	23.7%	403	137	80.6%
With related children under 18 years	104	101	8.4%	129	85	25.8%
Other family:	497	197	39.9%	48	41	9.6%
Male householder, no wife present	169	119	13.6%	0	19	0.0%
With related children under 18 years	54	63	4.3%	0	19	0.0%
Female householder, no husband present	328	146	26.3%	48	41	9.6%
With related children under 18 years	272	130	21.8%	29	37	5.8%

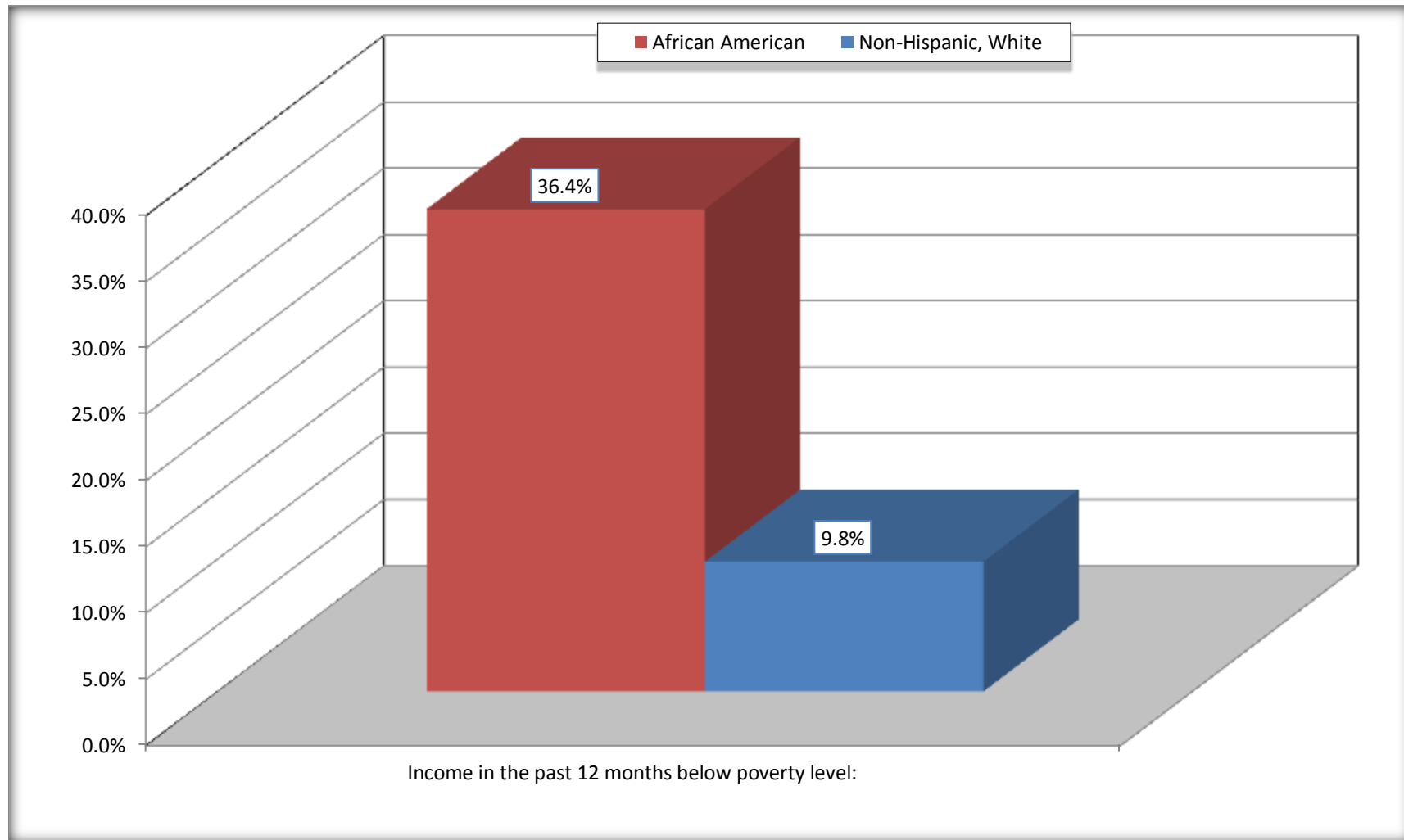
Source: U.S. Census Bureau, 2008-2012 American Community Survey

For information on confidentiality protection, sampling error, nonsampling error, and definitions, see Survey Methodology.

<http://www.census.gov/acs/www/UseData/index.htm>

# Family Households Below Poverty in the Past 12 Months

## Eatonton city, Georgia



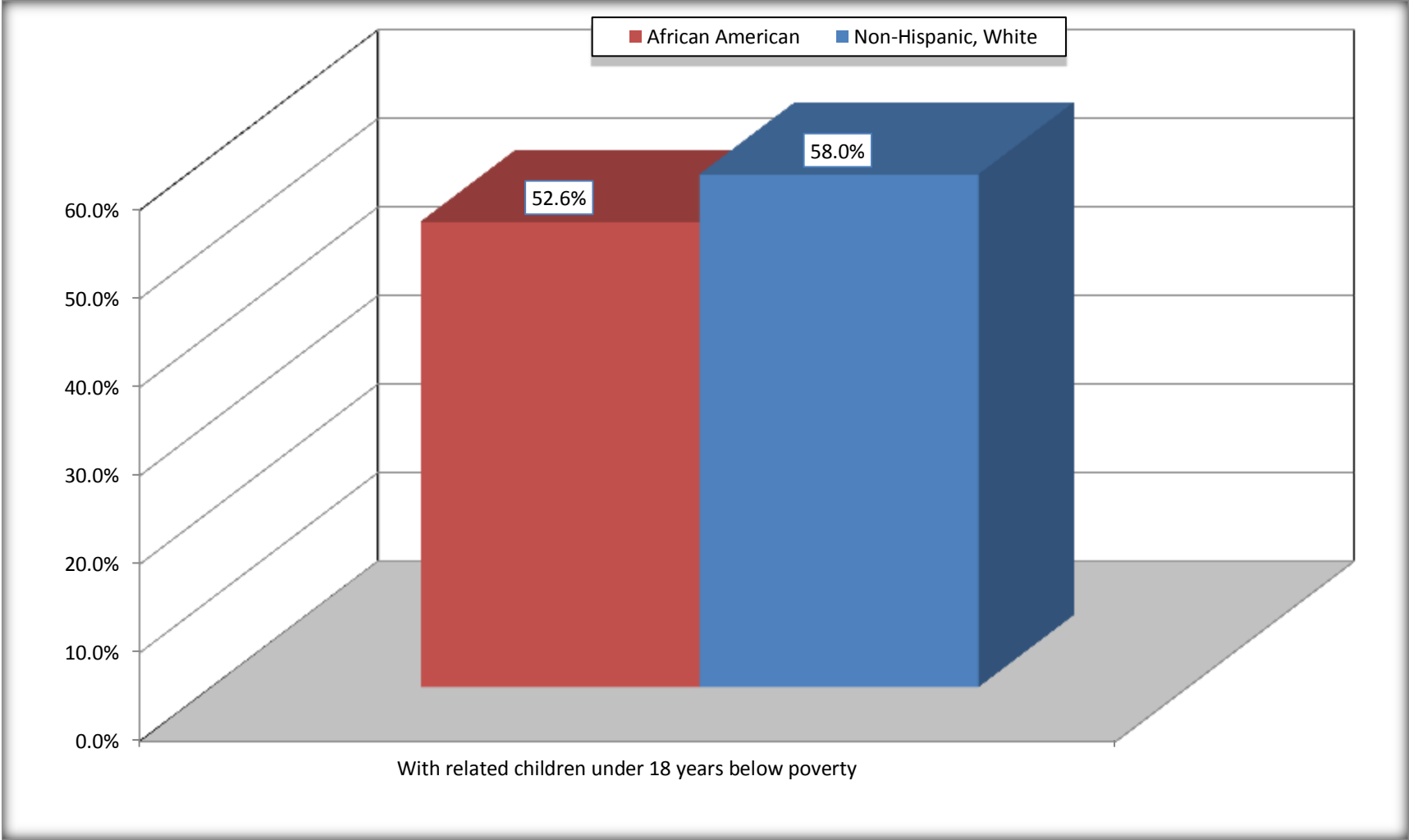
Source: B17010. POVERTY STATUS IN THE PAST 12 MONTHS OF FAMILIES BY FAMILY TYPE BY PRESENCE OF RELATED CHILDREN UNDER 18 YEARS

Data Set: 2008-2012 American Community Survey 5-Year Estimates



# Female-headed Households with Related Children Below Poverty in the Past 12 Months

## Eatonton city, Georgia



Source: B17010. POVERTY STATUS IN THE PAST 12 MONTHS OF FAMILIES BY FAMILY TYPE BY PRESENCE OF RELATED CHILDREN UNDER 18 YEARS

Data Set: 2008-2012 American Community Survey 5-Year Estimates

**B17020 POVERTY STATUS IN THE PAST 12 MONTHS BY AGE - Universe: POPULATION FOR WHOM POVERTY STATUS IS DETERMINED**

Data Set: 2008-2012 American Community Survey 5-Year Estimates

	Eatonton city, Georgia					
	African American	Margin of Error (+/-)	% of AA By Age	White, Not Hispanic	Margin of Error (+/-)	% of NHW By Age
<b>Total:</b>	<b>4,139</b>	<b>376</b>	<b>100.0%</b>	<b>1,736</b>	<b>408</b>	<b>100.0%</b>
Income in the past 12 months below poverty level:	1,577	559	38.1%	278	209	16.0%
<b>Under 18 years</b>	662	NC	55.2%	171	NC	41.4%
<b>18 to 64 years</b>	826	301	32.5%	81	54	7.6%
<b>65 years and over</b>	89	NC	22.3%	26	NC	9.9%
Income in the past 12 months at or above poverty level:	2,562	552	61.9%	1,458	378	84.0%
<b>Under 18 years</b>	537	NC	44.8%	242	NC	58.6%
<b>18 to 64 years</b>	1,714	318	67.5%	979	273	92.4%
<b>65 years and over</b>	311	NC	77.8%	237	NC	90.1%

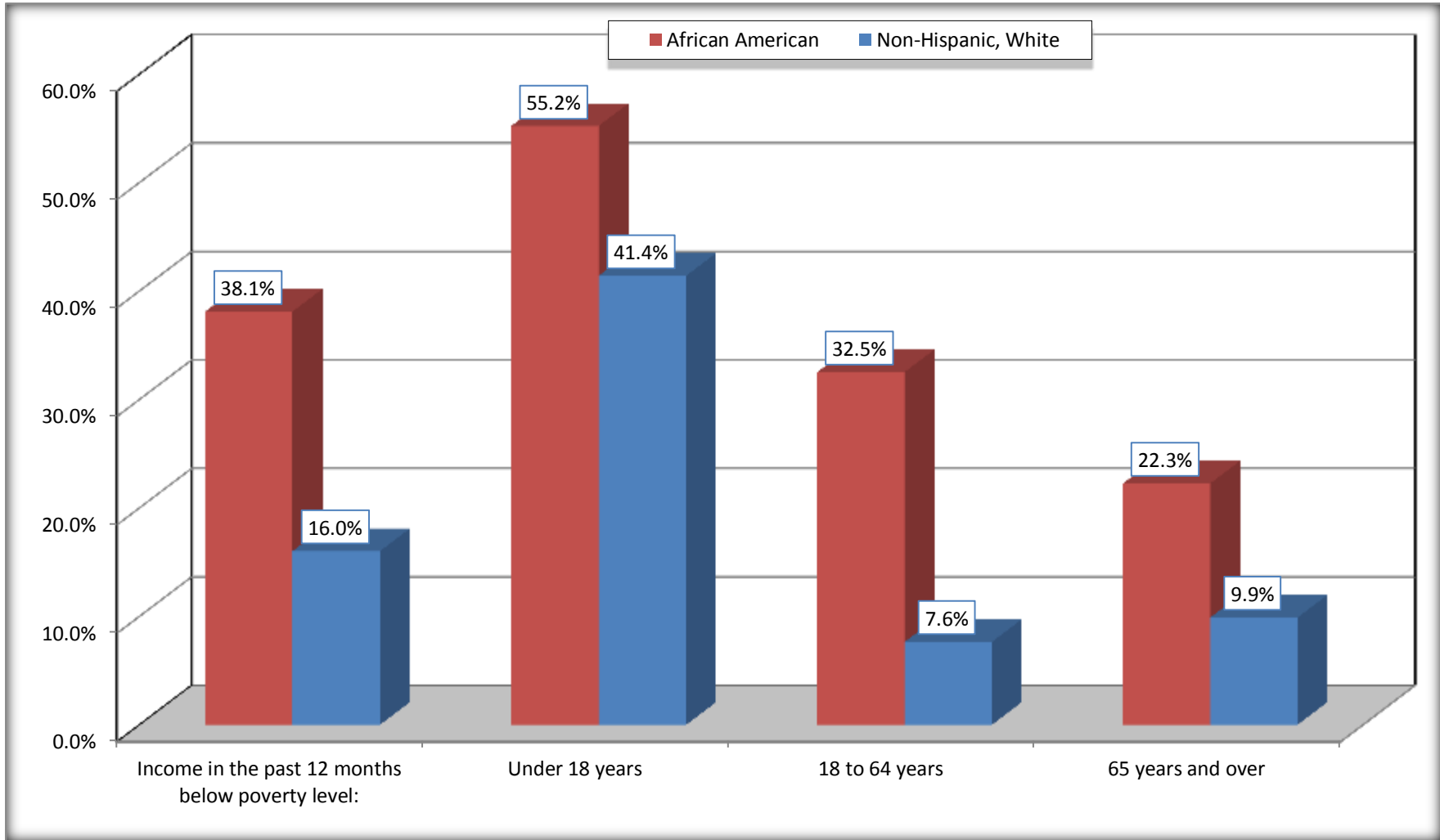
Source: U.S. Census Bureau, 2008-2012 American Community Survey

For information on confidentiality protection, sampling error, nonsampling error, and definitions, see Survey Methodology.

<http://www.census.gov/acs/www/UseData/index.htm>

# Population Below Poverty in the Past 12 Months

## Eatonton city, Georgia



Source: B17020 POVERTY STATUS IN THE PAST 12 MONTHS BY AGE - Universe: POPULATION FOR WHOM POVERTY STATUS IS DETERMINED  
Data Set: 2008-2012 American Community Survey 5-Year Estimates

**B19001. HOUSEHOLD INCOME IN THE PAST 12 MONTHS (IN 2010 INFLATION-ADJUSTED DOLLARS)**

Data Set: 2008-2012 American Community Survey 5-Year Estimates

	Eatonton city, Georgia					
	African American	Margin of Error (+/-)	% of AA Total	White, Not Hispanic	Margin of Error (+/-)	% of NHW Total
<b>Total:</b>	<b>1,705</b>	<b>220</b>	<b>100.0%</b>	<b>704</b>	<b>180</b>	<b>100.0%</b>
Less than \$ 10,000	258	154	15.1%	33	26	4.7%
\$ 10,000 to \$ 14,999	325	162	19.1%	70	60	9.9%
<b>\$ 15,000 to \$ 24,999</b>	491	NC	28.8%	74	NC	10.5%
<b>\$ 25,000 to \$ 34,999</b>	283	NC	16.6%	88	NC	12.5%
<b>\$ 35,000 to \$ 49,999</b>	182	NC	10.7%	117	NC	16.6%
<b>\$ 50,000 to \$ 74,999</b>	111	NC	6.5%	96	NC	13.6%
\$ 75,000 to \$ 99,999	36	63	2.1%	98	68	13.9%
<b>\$ 100,000 to \$ 149,999</b>	19	NC	1.1%	89	NC	12.6%
\$ 150,000 to \$ 199,999	0	19	0.0%	31	28	4.4%
\$ 200,000 or more	0	19	0.0%	8	13	1.1%

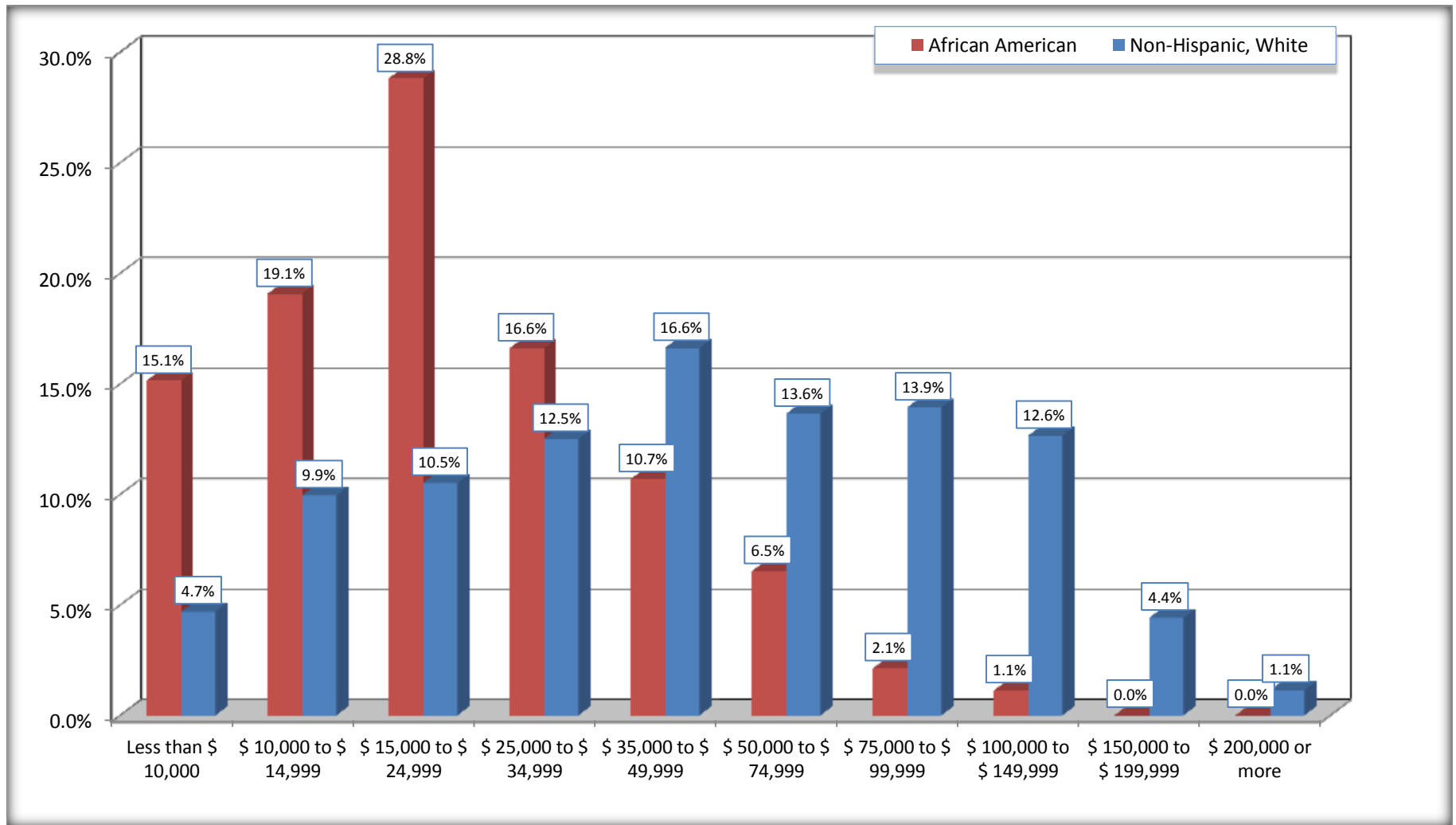
Source: U.S. Census Bureau, 2008-2012 American Community Survey

For information on confidentiality protection, sampling error, nonsampling error, and definitions, see Survey Methodology.

<http://www.census.gov/acs/www/UseData/index.htm>

# Household Income in the Past 12 Months

## Eatonton city, Georgia



Source: B19001. HOUSEHOLD INCOME IN THE PAST 12 MONTHS (IN 2010 INFLATION-ADJUSTED DOLLARS)  
Data Set: 2008-2012 American Community Survey 5-Year Estimates

**B19013. MEDIAN HOUSEHOLD INCOME IN THE PAST 12 MONTHS (IN 2010 INFLATION-ADJUSTED DOLLARS)**

Data Set: 2008-2012 American Community Survey 5-Year Estimates

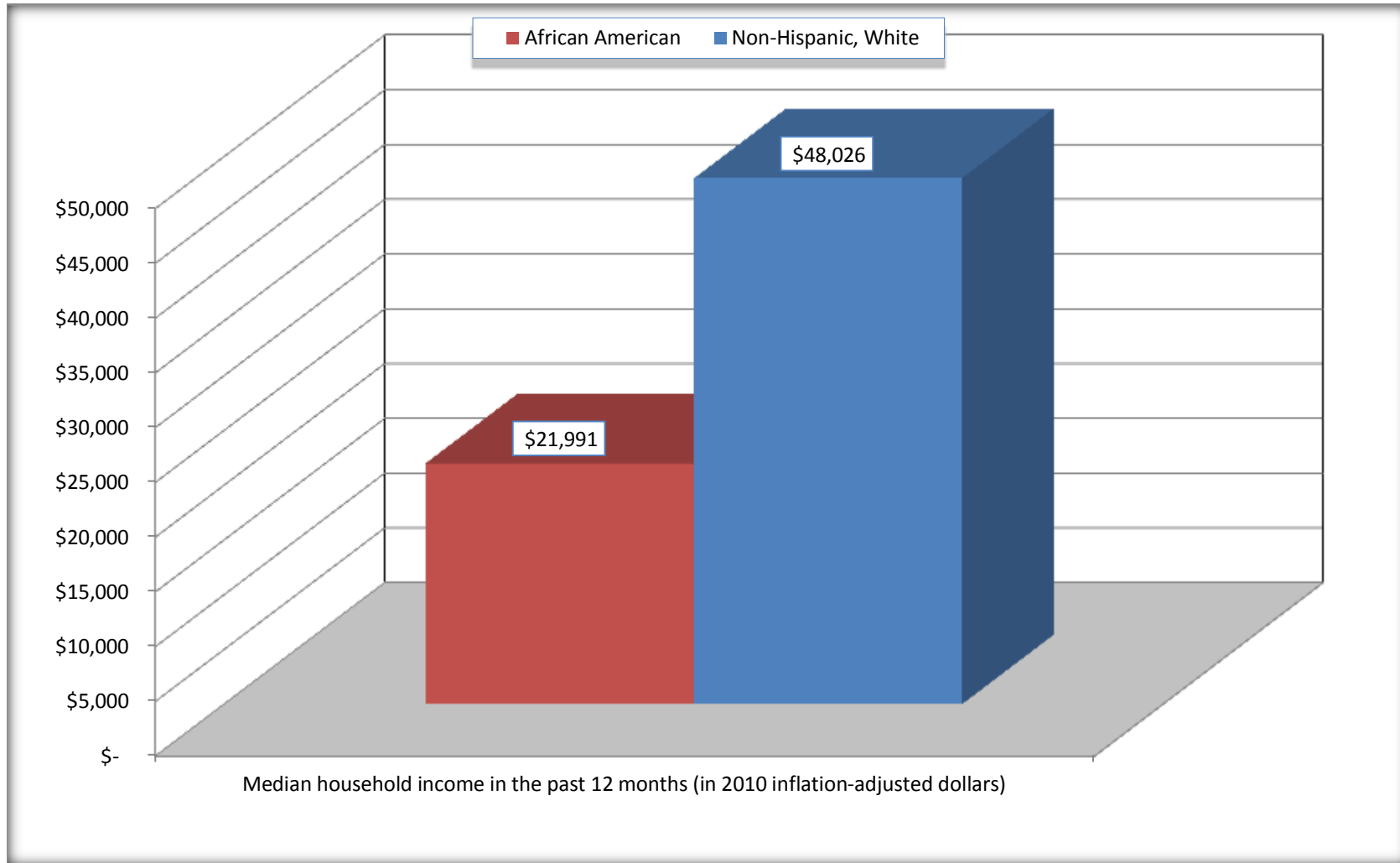
	<b>Eatonton city, Georgia</b>			
	African American	Margin of Error (+/-)	White, Not Hispanic	Margin of Error (+/-)
Median household income in the past 12 months (in 2010 inflation-adjusted dollars)	\$ 21,991	\$ 2,361	\$ 48,026	\$ 16,876

Source: U.S. Census Bureau, 2008-2012 American Community Survey

For information on confidentiality protection, sampling error, nonsampling error, and definitions, see Survey Methodology.  
<http://www.census.gov/acs/www/UseData/index.htm>

# Median Household Income in the Past 12 Months

## Eatonton city, Georgia



Source: B19013. MEDIAN HOUSEHOLD INCOME IN THE PAST 12 MONTHS (IN 2010 INFLATION-ADJUSTED DOLLARS)  
Data Set: 2008-2012 American Community Survey 5-Year Estimates

**B19101. FAMILY INCOME IN THE PAST 12 MONTHS (IN 2010 INFLATION-ADJUSTED DOLLARS)**

Data Set: 2008-2012 American Community Survey 5-Year Estimates

	Eatonton city, Georgia					
	African American	Margin of Error (+/-)	% of AA Total	White, Not Hispanic	Margin of Error (+/-)	% of NHW Total
<b>Total:</b>	<b>1,245</b>	<b>200</b>	<b>100.0%</b>	<b>500</b>	<b>132</b>	<b>100.0%</b>
Less than \$ 10,000	188	142	15.1%	10	17	2.0%
\$ 10,000 to \$ 14,999	150	142	12.0%	24	29	4.8%
<b>\$ 15,000 to \$ 24,999</b>	<b>346</b>	<b>NC</b>	<b>27.8%</b>	<b>54</b>	<b>NC</b>	<b>10.8%</b>
<b>\$ 25,000 to \$ 34,999</b>	<b>350</b>	<b>NC</b>	<b>28.1%</b>	<b>61</b>	<b>NC</b>	<b>12.2%</b>
<b>\$ 35,000 to \$ 49,999</b>	<b>85</b>	<b>NC</b>	<b>6.8%</b>	<b>56</b>	<b>NC</b>	<b>11.2%</b>
<b>\$ 50,000 to \$ 74,999</b>	<b>71</b>	<b>NC</b>	<b>5.7%</b>	<b>79</b>	<b>NC</b>	<b>15.8%</b>
<b>\$ 100,000 to \$ 149,999</b>	<b>19</b>	<b>NC</b>	<b>1.5%</b>	<b>89</b>	<b>NC</b>	<b>17.8%</b>
\$ 150,000 to \$ 199,999	0	19	0.0%	31	28	6.2%
\$ 200,000 or more	0	19	0.0%	8	13	1.6%

Source: U.S. Census Bureau, 2008-2012 American Community Survey

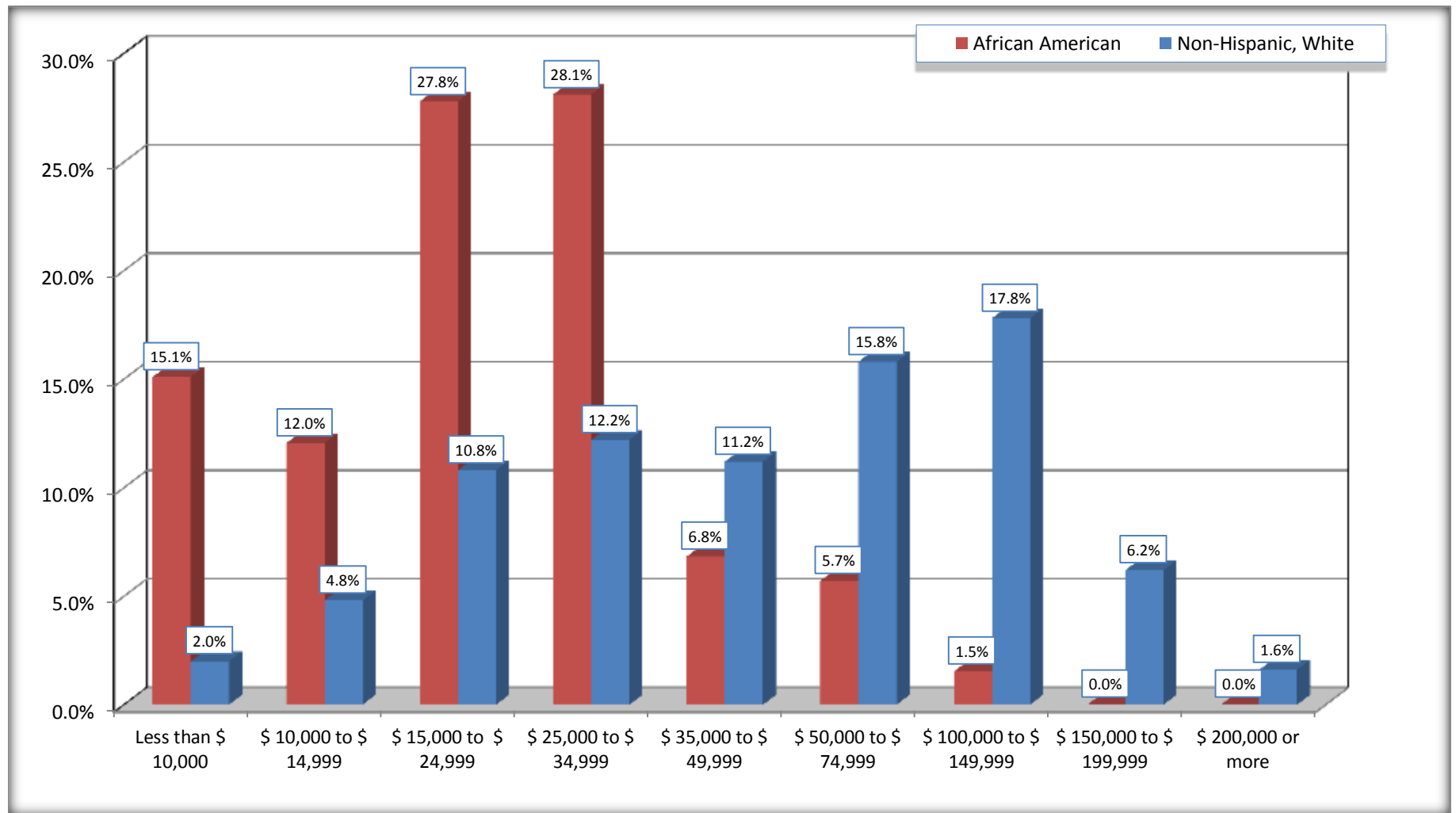
For information on confidentiality protection, sampling error, nonsampling error, and definitions, see Survey Methodology.

<http://www.census.gov/acs/www/UseData/index.htm>



# Family Income in the Past 12 Months

## Eatonton city, Georgia



Source: B19101. FAMILY INCOME IN THE PAST 12 MONTHS (IN 2010 INFLATION-ADJUSTED DOLLARS)  
Data Set: 2008-2012 American Community Survey 5-Year Estimates

**B19113. MEDIAN FAMILY INCOME IN THE PAST 12 MONTHS (IN 2010 INFLATION-ADJUSTED DOLLARS)**

Data Set: 2008-2012 American Community Survey 5-Year Estimates

	Eatonton city, Georgia			
	African American	Margin of Error (+/-)	White, Not Hispanic	Margin of Error (+/-)
Median family income in the past 12 months (in 2010 inflation-adjusted dollars)	\$ 23,835	\$ 3,730	\$ 65,238	\$ 19,998

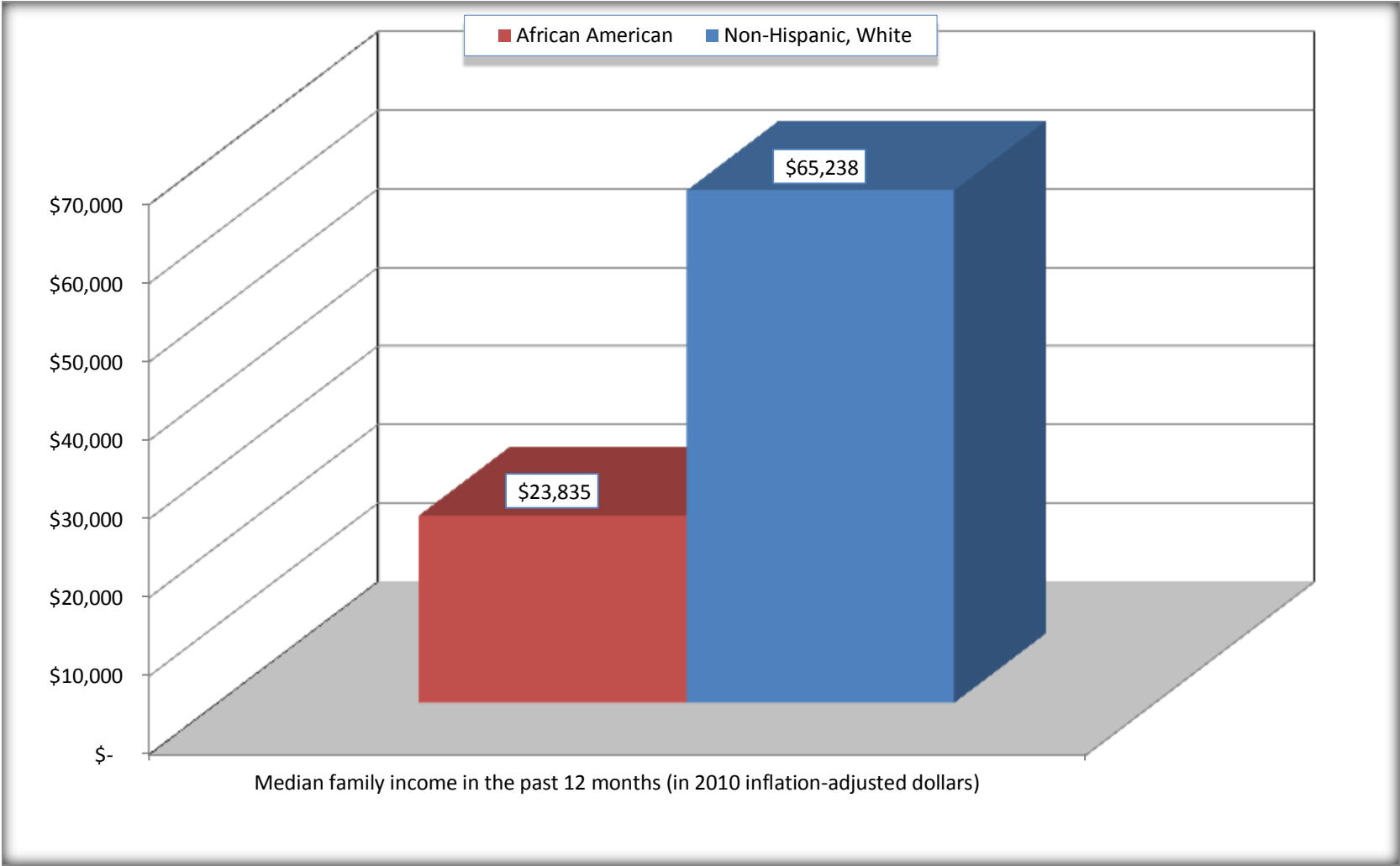
Source: U.S. Census Bureau, 2008-2012 American Community Survey

For information on confidentiality protection, sampling error, nonsampling error, and definitions, see Survey Methodology.

<http://www.census.gov/acs/www/UseData/index.htm>

# Median Family Income in the Past 12 Months

## Eatonton city, Georgia



Source: B19113. MEDIAN FAMILY INCOME IN THE PAST 12 MONTHS (IN 2010 INFLATION-ADJUSTED DOLLARS)  
Data Set: 2008-2012 American Community Survey 5-Year Estimates

**B19202. MEDIAN NONFAMILY HOUSEHOLD INCOME IN THE PAST 12 MONTHS (IN 2010 INFLATION-ADJUSTED DOLLARS)**

Data Set: 2008-2012 American Community Survey 5-Year Estimates

	Eatonton city, Georgia			
	African American	Margin of Error (+/-)	White, Not Hispanic	Margin of Error (+/-)
Median nonfamily household income in the past 12 months (in 2010 inflation-adjusted dollars)	\$ 14,579	\$ 6,398	\$ 32,667	\$ 17,552

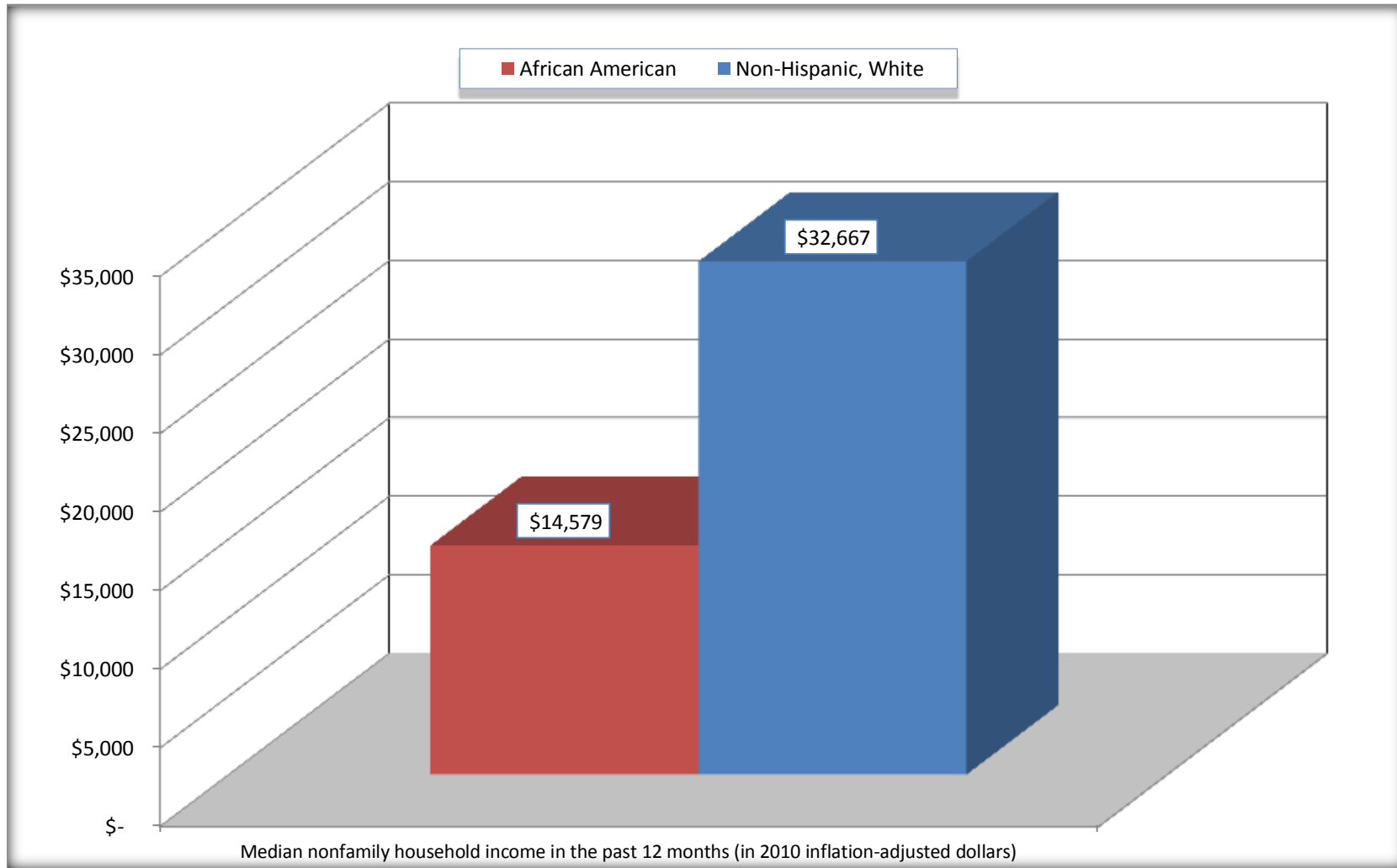
Source: U.S. Census Bureau, 2008-2012 American Community Survey

For information on confidentiality protection, sampling error, nonsampling error, and definitions, see Survey Methodology.

<http://www.census.gov/acs/www/UseData/index.htm>

# Median Non-Family Income in the Past 12 Months

## Eatonton city, Georgia



Source: B19202. MEDIAN NONFAMILY HOUSEHOLD INCOME IN THE PAST 12 MONTHS (IN 2010 INFLATION-ADJUSTED DOLLARS)  
Data Set: 2008-2012 American Community Survey 5-Year Estimates

**B19301. PER CAPITA INCOME IN THE PAST 12 MONTHS (IN 2010 INFLATION-ADJUSTED DOLLARS)**

Data Set: 2008-2012 American Community Survey 5-Year Estimates

	Eatonton city, Georgia			
	African American	Margin of Error (+/-)	White, Not Hispanic	Margin of Error (+/-)
Per capita income in the past 12 months (in 2010 inflation-adjusted dollars)	\$ 10,970	\$ 1,817	\$ 24,308	\$ 5,410

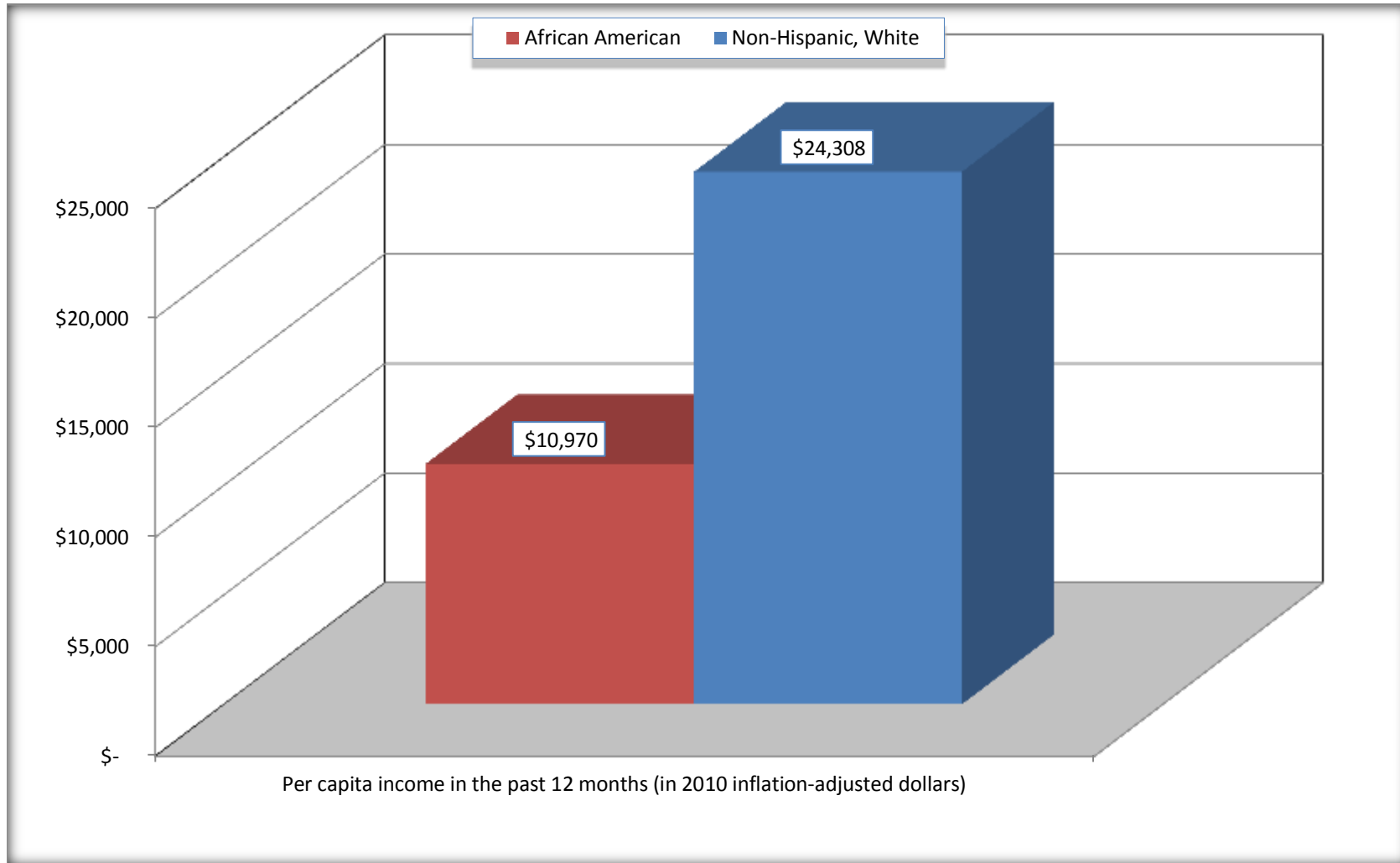
Source: U.S. Census Bureau, 2008-2012 American Community Survey

For information on confidentiality protection, sampling error, nonsampling error, and definitions, see Survey Methodology.

<http://www.census.gov/acs/www/UseData/index.htm>

## Per capita Income in the Past 12 Months

### Eatonton city, Georgia



Source: B19301. PER CAPITA INCOME IN THE PAST 12 MONTHS (IN 2010 INFLATION-ADJUSTED DOLLARS)  
Data Set: 2008-2012 American Community Survey 5-Year Estimates

**B20017. MEDIAN EARNINGS IN THE PAST 12 MONTHS (IN 2010 INFLATION-ADJUSTED DOLLARS) BY SEX BY WORK EXPERIENCE IN THE PAST 12 MONTHS FOR THE POPULATION 16 YEARS AND OVER WITH EARNINGS IN THE PAST 12 MONTHS**

Data Set: 2008-2012 American Community Survey 5-Year Estimates

	Eatonton city, Georgia			
	African American	Margin of Error (+/-)	White, Not Hispanic	Margin of Error (+/-)
Median earnings in the past 12 months (in 2010 inflation-adjusted dollars) --				
Total:	\$ 14,177	\$ 1,257	\$ 29,332	\$ 5,691
Male --				
Total	\$ 13,389	\$ 2,008	\$ 31,875	\$ 9,168
Worked full-time, year-round in the past 12 months	\$ 14,778	\$ 4,929	\$ 36,708	\$ 13,375
Other	\$ 7,674	\$ 3,542	\$ 11,897	\$ 7,681
Female --				
Total	\$ 14,705	\$ 1,687	\$ 27,143	\$ 7,952
Worked full-time, year-round in the past 12 months	\$ 16,505	\$ 3,361	\$ 31,471	\$ 7,518
Other	\$ 10,514	\$ 2,926	\$ 8,100	\$ 4,283

Source: U.S. Census Bureau, 2008-2012 American Community Survey

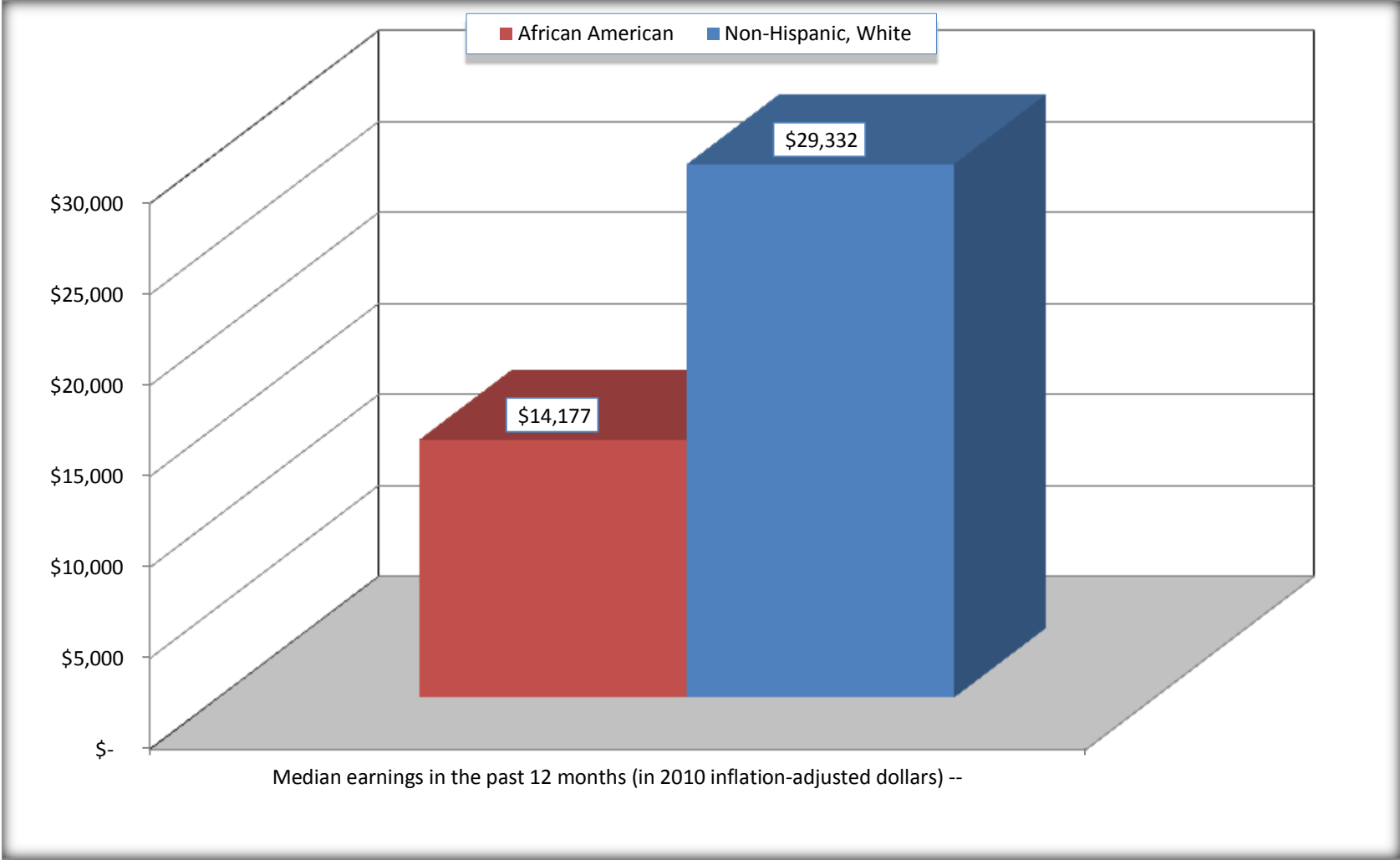
For information on confidentiality protection, sampling error, nonsampling error, and definitions, see Survey Methodology.

<http://www.census.gov/acs/www/UseData/index.htm>



# Median earnings in the Past 12 Months (16 Years and Over with Earnings)

## Eatonton city, Georgia



Source: B20017. MEDIAN EARNINGS IN THE PAST 12 MONTHS (IN 2010 INFLATION-ADJUSTED DOLLARS) BY SEX BY WORK EXPERIENCE IN THE PAST 12 MONTHS FOR THE POPULATION 16 YEARS AND OVER WITH EARNINGS IN THE PAST 12 MONTHS  
Data Set: 2008-2012 American Community Survey 5-Year Estimates

**B20005. SEX BY WORK EXPERIENCE IN THE PAST 12 MONTHS BY EARNINGS IN THE PAST 12 MONTHS (IN 2010 INFLATION-ADJUSTED DOLLARS) FOR THE POPULATION 16 YEARS AND OVER**

Data Set: 2008-2012 American Community Survey 5-Year Estimates

	Eatonton city, Georgia					
	African American	Margin of Error (+/-)	% of AA Total	White, Not Hispanic	Margin of Error (+/-)	% of NHW Total
<b>Total:</b>	<b>3,113</b>	<b>273</b>	<b>100.0%</b>	<b>1,454</b>	<b>349</b>	<b>100.0%</b>
Worked full-time, year-round in the past 12 months:	1,264	NC	40.6%	629	NC	43.3%
No earnings	0	NC	0.0%	0	NC	0.0%
With earnings:	1,264	NC	40.6%	629	NC	43.3%
\$ 1 to \$ 9,999 or loss	55	NC	1.8%	12	NC	0.8%
\$ 10,000 to \$ 19,999	804	NC	25.8%	110	NC	7.6%
\$ 20,000 to \$ 29,999	146	NC	4.7%	137	NC	9.4%
\$ 30,000 to \$ 49,999	160	NC	5.1%	220	NC	15.1%
\$ 50,000 to \$ 74,999	63	NC	2.0%	61	NC	4.2%
\$ 75,000 or more	36	NC	1.2%	89	NC	6.1%
Other:	1,849	NC	59.4%	825	NC	56.7%
No earnings	1,186	NC	38.1%	519	NC	35.7%
With earnings: less than full time, year-round	663	NC	21.3%	306	NC	21.0%
Male:	1,521	140	48.9%	652	188	44.8%
Worked full-time, year-round in the past 12 months:	687	222	22.1%	311	121	21.4%
No earnings	0	19	0.0%	0	19	0.0%
With earnings:	687	222	22.1%	311	121	21.4%
\$ 1 to \$ 9,999 or loss	41	NC	1.3%	8	NC	0.6%
\$ 10,000 to \$ 19,999	453	NC	14.6%	42	NC	2.9%
\$ 20,000 to \$ 29,999	75	NC	2.4%	70	NC	4.8%
\$ 30,000 to \$ 49,999	118	NC	3.8%	72	NC	5.0%
\$ 50,000 to \$ 74,999	0	NC	0.0%	40	NC	2.8%
\$ 75,000 or more	0	NC	0.0%	79	NC	5.4%

	Eatonton city, Georgia					
	African American	Margin of Error (+/-)	% of AA Total	White, Not Hispanic	Margin of Error (+/-)	% of NHW Total
Other:	834	250	26.8%	341	127	23.5%
No earnings	552	205	17.7%	219	99	15.1%
With earnings:	282	147	9.1%	122	69	8.4%
Female:	1,592	185	51.1%	802	201	55.2%
Worked full-time, year-round in the past 12 months:	577	166	18.5%	318	119	21.9%
No earnings	0	19	0.0%	0	19	0.0%
With earnings:	577	166	18.5%	318	119	21.9%
\$ 1 to \$ 9,999 or loss	14	NC	0.4%	4	NC	0.3%
\$ 10,000 to \$ 19,999	351	NC	11.3%	68	NC	4.7%
\$ 20,000 to \$ 29,999	71	NC	2.3%	67	NC	4.6%
\$ 30,000 to \$ 49,999	42	NC	1.3%	148	NC	10.2%
\$ 50,000 to \$ 74,999	63	NC	2.0%	21	NC	1.4%
\$ 75,000 or more	36	NC	1.2%	10	NC	0.7%
Other:	1,015	203	32.6%	484	156	33.3%
No earnings	634	194	20.4%	300	106	20.6%
With earnings:	381	192	12.2%	184	107	12.7%

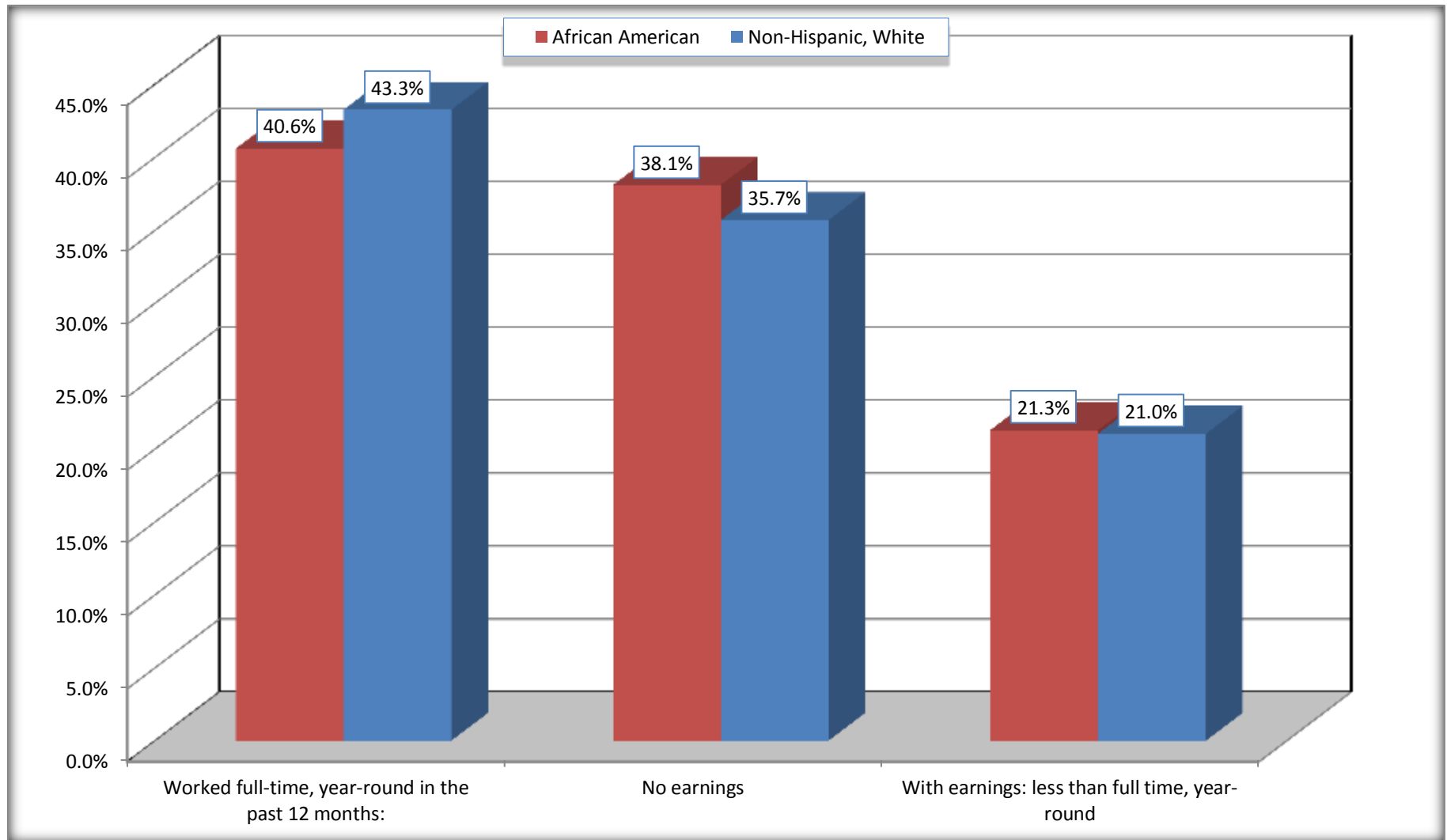
Source: U.S. Census Bureau, 2008-2012 American Community Survey

For information on confidentiality protection, sampling error, nonsampling error, and definitions, see Survey Methodology.

<http://www.census.gov/acs/www/UseData/index.htm>

# Employment and Earnings in in the Past 12 Months (16 Years and Over)

## Eatonton city, Georgia



Source: B20005. SEX BY WORK EXPERIENCE IN THE PAST 12 MONTHS BY EARNINGS IN THE PAST 12 MONTHS (IN 2010 INFLATION-ADJUSTED DOLLARS) FOR THE POPULATION 16 YEARS AND OVER

Data Set: 2008-2012 American Community Survey 5-Year Estimates

**C21001. SEX BY AGE BY VETERAN STATUS FOR THE CIVILIAN POPULATION 18 YEARS AND OVER**

Data Set: 2008-2012 American Community Survey 5-Year Estimates

	Eatonton city, Georgia					
	African American	Margin of Error (+/-)	% of AA Total	White, Not Hispanic	Margin of Error (+/-)	% of NHW Total
<b>Total:</b>	<b>2,986</b>	<b>272</b>	<b>100.0%</b>	<b>1,425</b>	<b>344</b>	<b>100.0%</b>
Veteran	88	NC	2.9%	117	NC	8.2%
Nonveteran	2,898	NC	97.1%	1,308	NC	91.8%
Male:	1,416	148	47.4%	652	188	45.8%
18 to 64 years:	1,264	134	42.3%	493	165	34.6%
Veteran	14	24	0.5%	46	46	3.2%
Nonveteran	1,250	133	41.9%	447	163	31.4%
65 years and over:	152	51	5.1%	159	72	11.2%
Veteran	57	49	1.9%	71	43	5.0%
Nonveteran	95	60	3.2%	88	57	6.2%
Female:	1,570	182	52.6%	773	192	54.2%
18 to 64 years:	1,322	167	44.3%	614	158	43.1%
Veteran	17	30	0.6%	0	19	0.0%
Nonveteran	1,305	174	43.7%	614	158	43.1%
65 years and over:	248	84	8.3%	159	73	11.2%
Veteran	0	19	0.0%	0	19	0.0%
Nonveteran	248	84	8.3%	159	73	11.2%

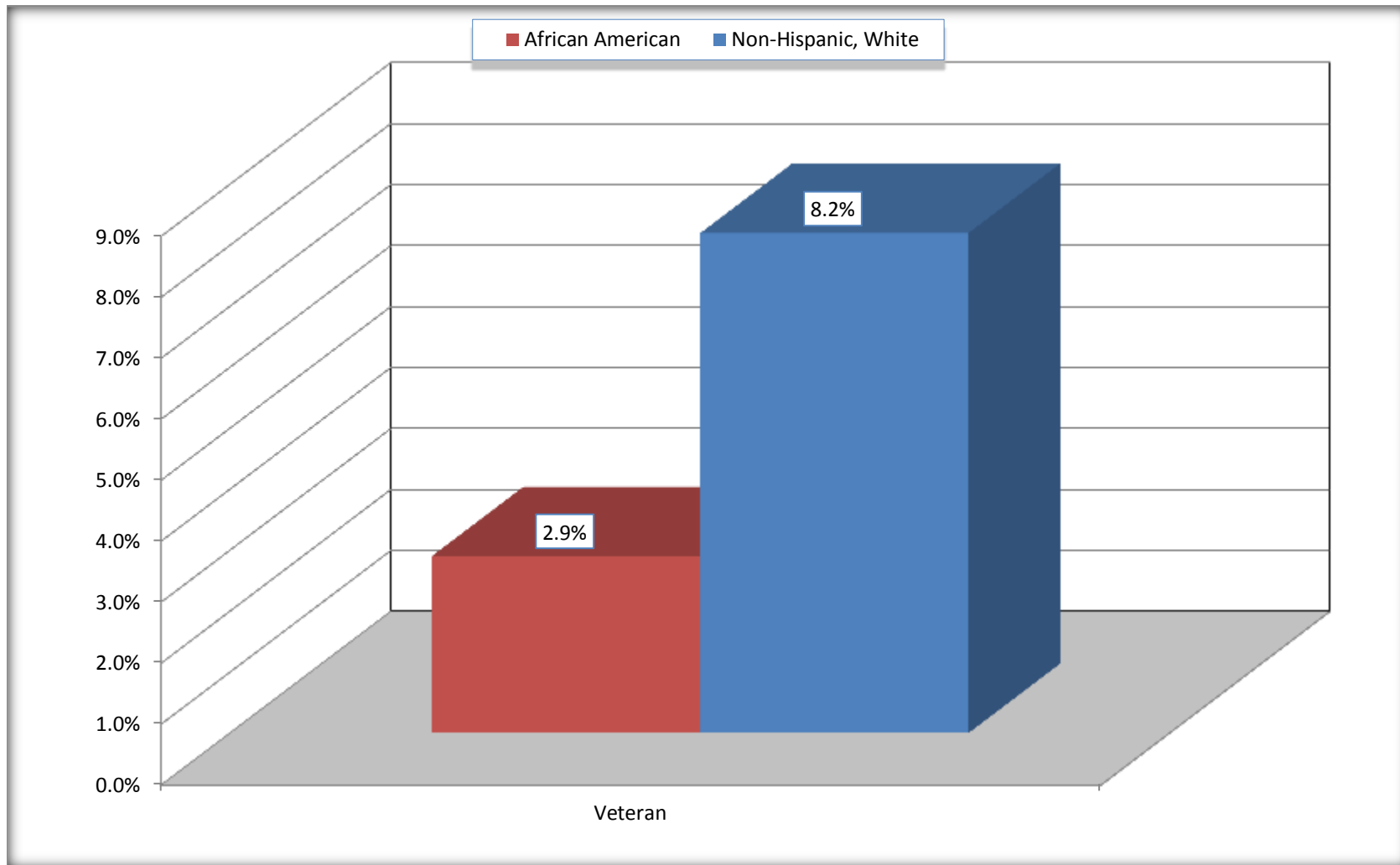
Source: U.S. Census Bureau, 2008-2012 American Community Survey

For information on confidentiality protection, sampling error, nonsampling error, and definitions, see Survey Methodology.

<http://www.census.gov/acs/www/UseData/index.htm>

# Veterans in the Civilian Population 18 Years and Over

## Eatonton city, Georgia



Source: C21001. SEX BY AGE BY VETERAN STATUS FOR THE CIVILIAN POPULATION 18 YEARS AND OVER  
Data Set: 2008-2012 American Community Survey 5-Year Estimates

**B22005. RECEIPT OF FOOD STAMPS/SNAP IN THE PAST 12 MONTHS BY RACE OF HOUSEHOLDER**

Data Set: 2008-2012 American Community Survey 5-Year Estimates

	Eatonton city, Georgia					
	African American	Margin of Error (+/-)	% of AA Total	White, Not Hispanic	Margin of Error (+/-)	% of NHW Total
<b>Total:</b>	<b>1,705</b>	<b>220</b>	<b>100.0%</b>	<b>704</b>	<b>180</b>	<b>100.0%</b>
HH received Food Stamps/SNAP in the past 12 months	490	189	28.7%	93	63	13.2%
HH did not receive Food Stamps/SNAP in the past 12 months	1,215	243	71.3%	611	175	86.8%

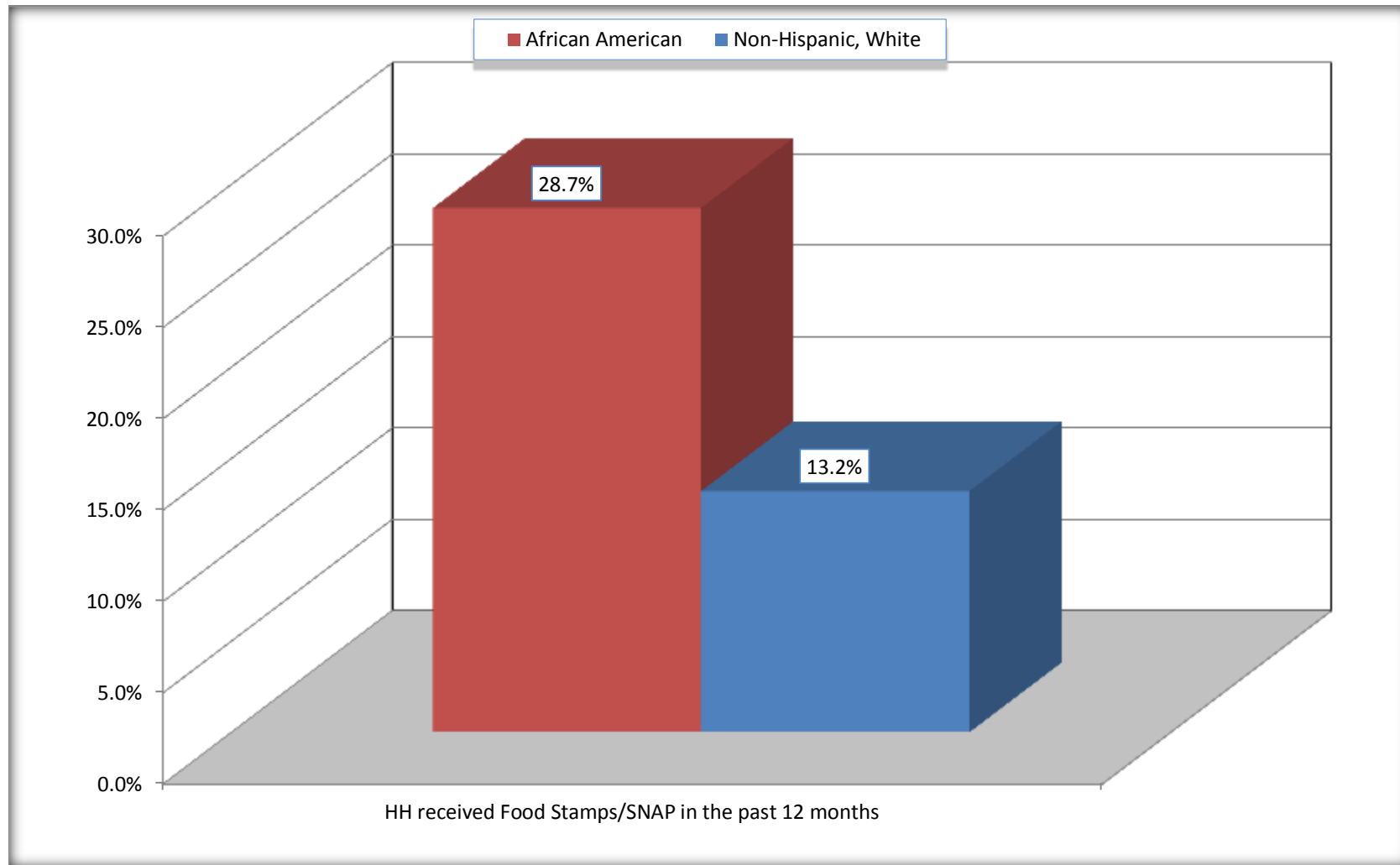
Source: U.S. Census Bureau, 2008-2012 American Community Survey

For information on confidentiality protection, sampling error, nonsampling error, and definitions, see Survey Methodology.

<http://www.census.gov/acs/www/UseData/index.htm>

# Receipt of Food Stamps/SNAP in the Past 12 Months by Household

## Eatonton city, Georgia



Source: B22005. RECEIPT OF FOOD STAMPS/SNAP IN THE PAST 12 MONTHS BY RACE OF HOUSEHOLDER  
Data Set: 2008-2012 American Community Survey 5-Year Estimates



**C23002. SEX BY AGE BY EMPLOYMENT STATUS FOR THE POPULATION 16 YEARS AND OVER**

Data Set: 2008-2012 American Community Survey 5-Year Estimates

	Eatonton city, Georgia					
	African American	Margin of Error (+/-)	% of AA Total	White, Not Hispanic	Margin of Error (+/-)	% of NHW Total
<b>Total:</b>	<b>3,113</b>	<b>273</b>	<b>100.0%</b>	<b>1,454</b>	<b>349</b>	<b>100.0%</b>
In labor force:	2,062	NC	66.2%	921	NC	63.3%
In Armed Forces	0	NC	0.0%	0	NC	0.0%
Civilian:	1,975	NC	63.4%	873	NC	60.0%
Employed	1,745	NC	56.1%	869	NC	59.8%
Unemployed	317	NC	10.2%	52	NC	3.6%
Not in labor force	1,051	NC	33.8%	533	NC	36.7%
Male:	1,521	140	48.9%	652	188	44.8%
16 to 64 years:	1,369	127	44.0%	493	165	33.9%
In labor force:	870	177	27.9%	371	140	25.5%
In Armed Forces	0	19	0.0%	0	19	0.0%
Civilian:	870	177	27.9%	371	140	25.5%
Employed	720	212	23.1%	349	137	24.0%
Unemployed	150	119	4.8%	22	26	1.5%
Not in labor force	499	179	16.0%	122	65	8.4%
65 years and over:	152	51	4.9%	159	72	10.9%
In labor force:	87	59	2.8%	41	32	2.8%
Employed	87	59	2.8%	36	30	2.5%
Unemployed	0	19	0.0%	5	9	0.3%
Not in labor force	65	60	2.1%	118	64	8.1%

	Eatonton city, Georgia					
	African American	Margin of Error (+/-)	% of AA Total	White, Not Hispanic	Margin of Error (+/-)	% of NHW Total
Female:	1,592	185	51.1%	802	201	55.2%
16 to 64 years:	1,344	167	43.2%	643	168	44.2%
In labor force:	1,105	162	35.5%	502	152	34.5%
In Armed Forces	0	19	0.0%	0	19	0.0%
Civilian:	1,105	162	35.5%	502	152	34.5%
Employed	938	211	30.1%	477	148	32.8%
Unemployed	167	139	5.4%	25	32	1.7%
Not in labor force	239	111	7.7%	141	78	9.7%
65 years and over:	248	84	8.0%	159	73	10.9%
In labor force:	0	19	0.0%	7	12	0.5%
Employed	0	19	0.0%	7	12	0.5%
Unemployed	0	19	0.0%	0	19	0.0%
Not in labor force	248	84	8.0%	152	70	10.5%

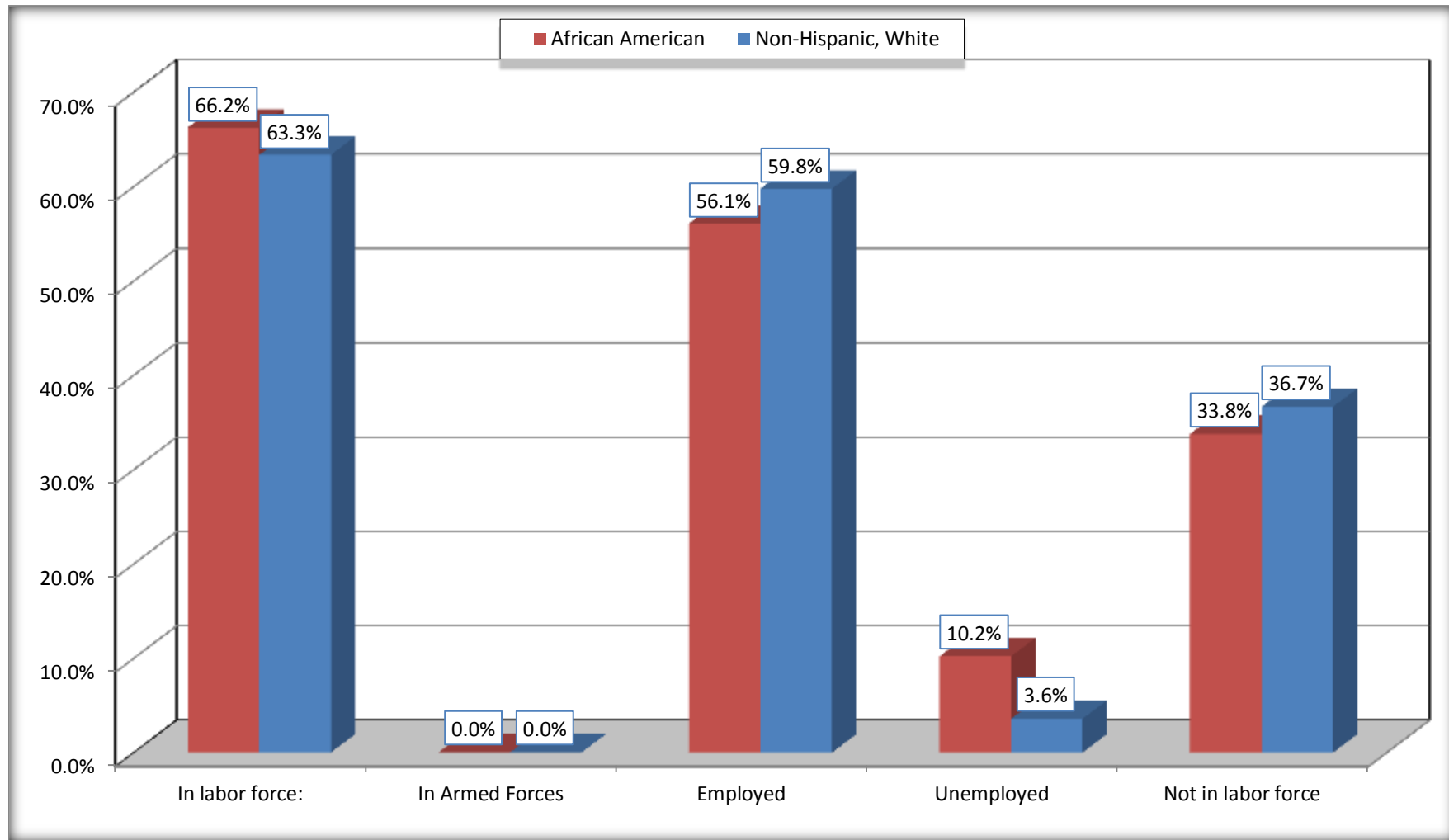
Source: U.S. Census Bureau, 2008-2012 American Community Survey

For information on confidentiality protection, sampling error, nonsampling error, and definitions, see Survey Methodology.

<http://www.census.gov/acs/www/UseData/index.htm>

# Employment Status for the Population 16 years and over

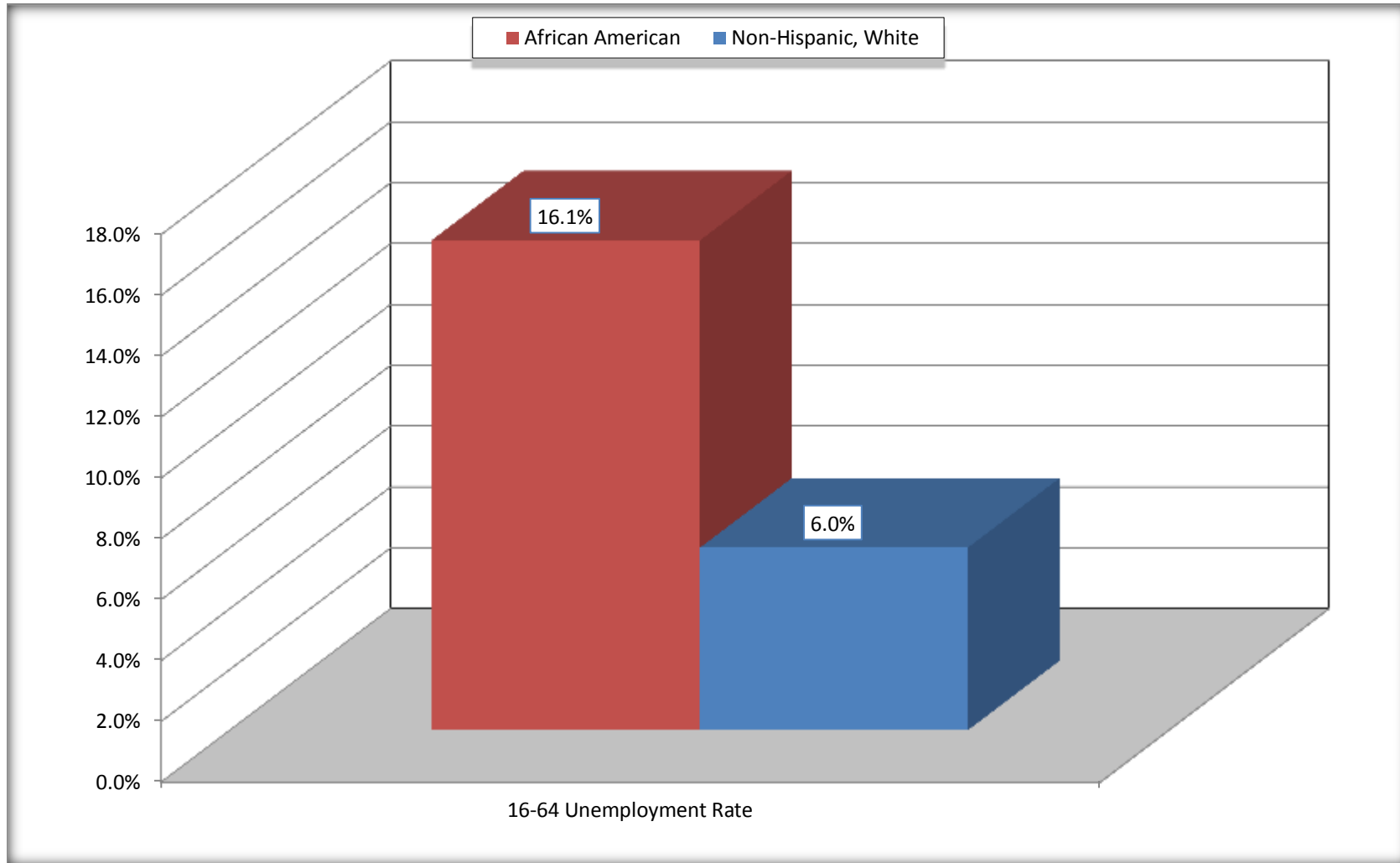
## Eatonton city, Georgia



Source: C23002. SEX BY AGE BY EMPLOYMENT STATUS FOR THE POPULATION 16 YEARS AND OVER  
Data Set: 2008-2012 American Community Survey 5-Year Estimates

# Unemployment of Working Age Population (Ages 16 to 64) (As a Percent of 16-64 Civilian Labor Force)

## Eatonton city, Georgia



Source: C23002. SEX BY AGE BY EMPLOYMENT STATUS FOR THE POPULATION 16 YEARS AND OVER  
Data Set: 2008-2012 American Community Survey 5-Year Estimates

**C24010. SEX BY OCCUPATION FOR THE CIVILIAN EMPLOYED POPULATION 16 YEARS AND OVER**

Data Set: 2008-2012 American Community Survey 5-Year Estimates

	Eatonton city, Georgia					
	African American	Margin of Error (+/-)	% of AA Total	White, Not Hispanic	Margin of Error (+/-)	% of NHW Total
<b>Total:</b>	<b>1,745</b>	<b>267</b>	<b>100.0%</b>	<b>869</b>	<b>241</b>	<b>100.0%</b>
Management, professional, and related occupations	190	NC	10.9%	346	NC	39.8%
Service occupations	633	NC	36.3%	97	NC	11.2%
Sales and office occupations	361	NC	20.7%	275	NC	31.6%
Natural resources, construction, and maintenance occupations:	158	NC	9.1%	81	NC	9.3%
Production, transportation, and material moving occupations	403	NC	23.1%	70	NC	8.1%
Male:	807	206	46.2%	385	142	44.3%
Management, business, science, and arts occupations:	60	63	3.4%	149	82	17.1%
Service occupations	247	197	14.2%	47	47	5.4%
Sales and office occupations	47	78	2.7%	86	66	9.9%
Natural resources, construction, and maintenance occupations:	142	93	8.1%	52	49	6.0%
Production, transportation, and material moving occupations	311	139	17.8%	51	58	5.9%
Female:	938	211	53.8%	484	148	55.7%
Management, professional, and related occupations	130	106	7.4%	197	103	22.7%
Service occupations	386	222	22.1%	50	48	5.8%
Sales and office occupations	314	132	18.0%	189	93	21.7%
Natural resources, construction, and maintenance occupations:	16	26	0.9%	29	33	3.3%
Production, transportation, and material moving occupations	92	68	5.3%	19	26	2.2%

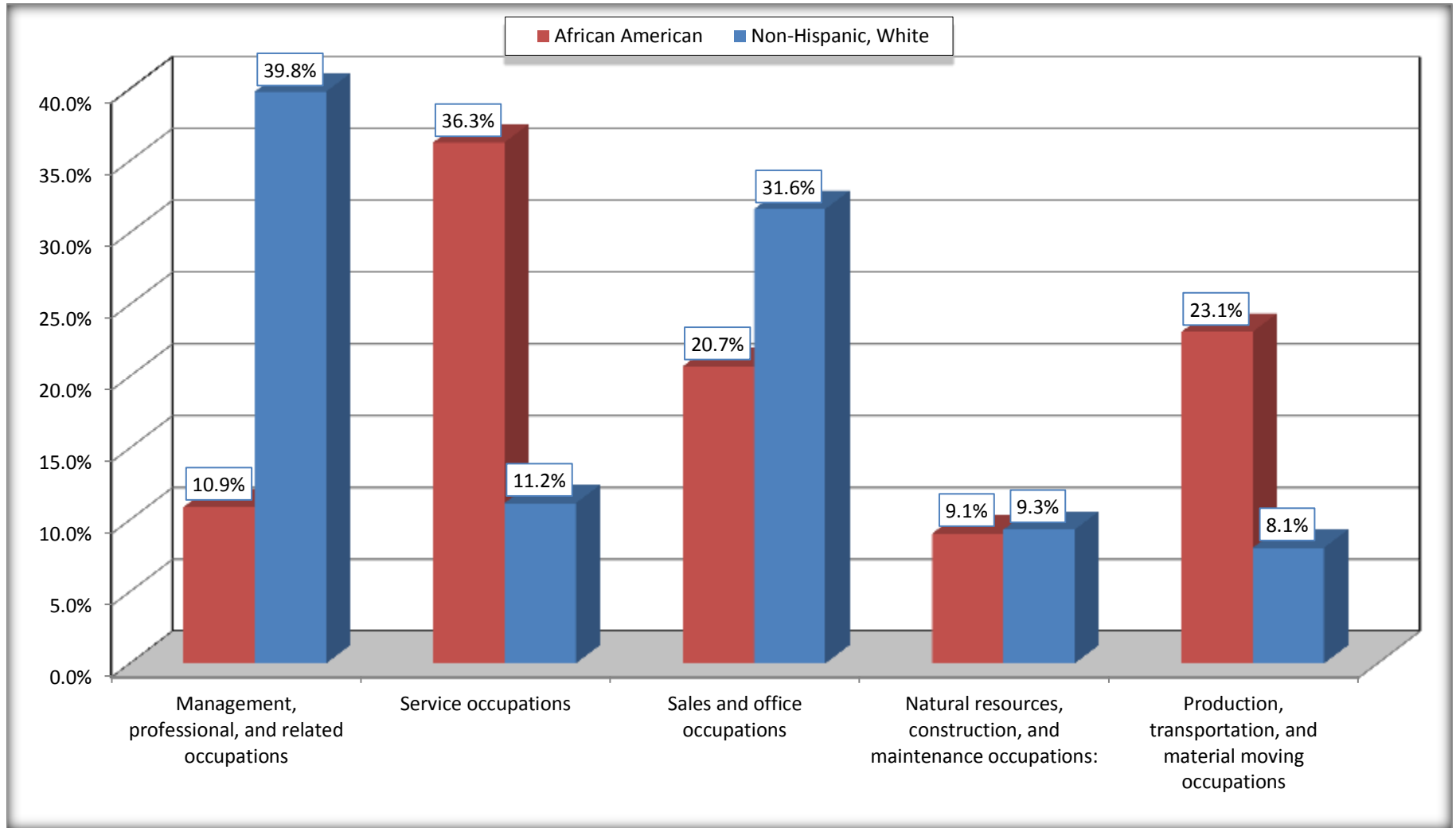
Source: U.S. Census Bureau, 2008-2012 American Community Survey

For information on confidentiality protection, sampling error, nonsampling error, and definitions, see Survey Methodology.

<http://www.census.gov/acs/www/UseData/index.htm>

# Occupation for the Civilian Employed 16 Years and Over Population

## Eatonton city, Georgia



Source: C24010. SEX BY OCCUPATION FOR THE CIVILIAN EMPLOYED POPULATION 16 YEARS AND OVER  
Data Set: 2008-2012 American Community Survey 5-Year Estimates

**B25003. TENURE - Universe: OCCUPIED HOUSING UNITS**

Data Set: 2008-2012 American Community Survey 5-Year Estimates

	Eatonton city, Georgia					
	African American	Margin of Error (+/-)	% of AA Total	White, Not Hispanic	Margin of Error (+/-)	% of NHW Total
<b>Total:</b>	<b>1,705</b>	<b>220</b>	<b>100.0%</b>	<b>704</b>	<b>180</b>	<b>100.0%</b>
Owner occupied	915	252	53.7%	555	149	78.8%
Renter occupied	790	233	46.3%	149	71	21.2%

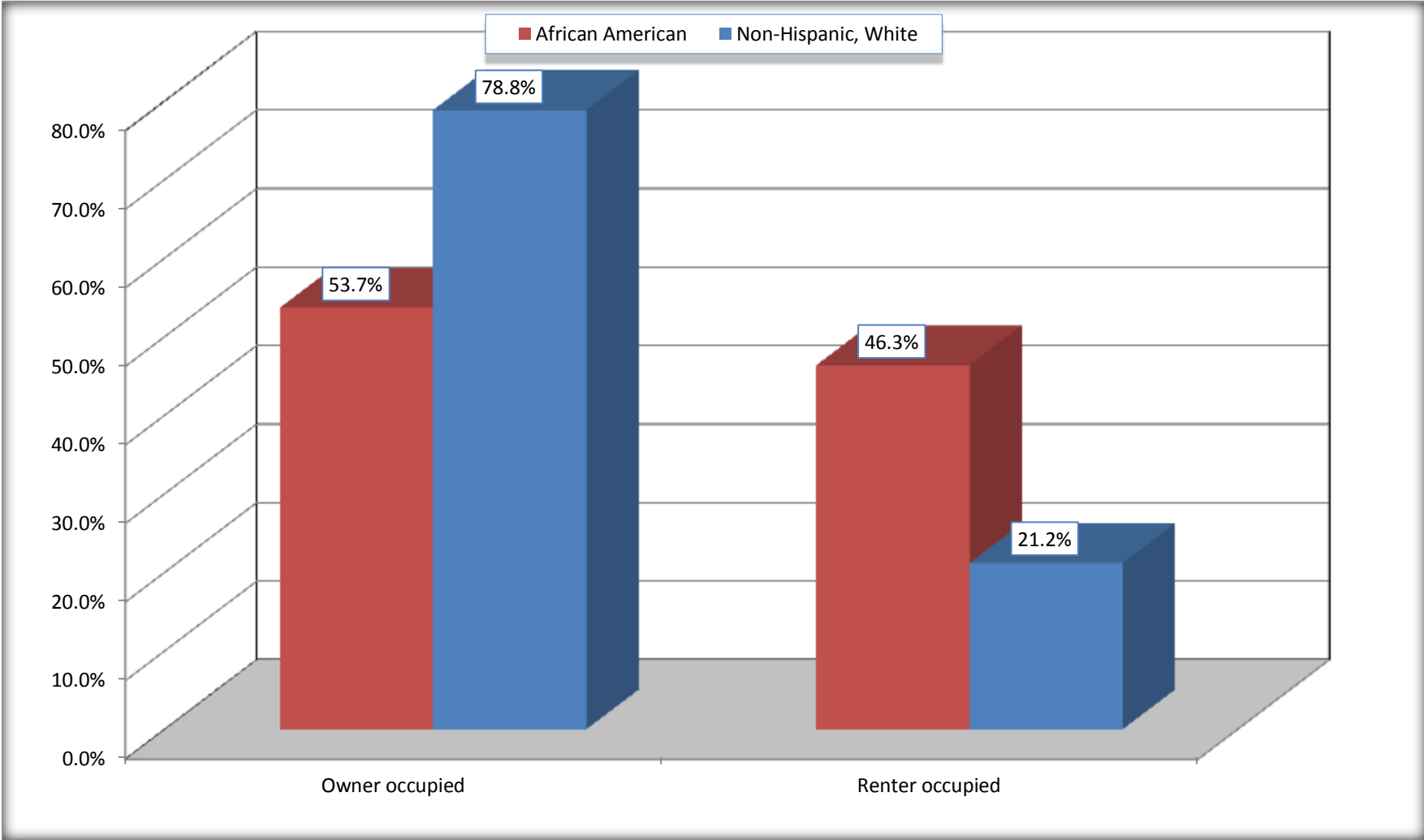
Source: U.S. Census Bureau, 2008-2012 American Community Survey

For information on confidentiality protection, sampling error, nonsampling error, and definitions, see Survey Methodology.

<http://www.census.gov/acs/www/UseData/index.h>

# Home Owners and Renters by Household

## Eatonton city, Georgia



Source: B25003. TENURE - Universe: OCCUPIED HOUSING UNITS  
Data Set: 2008-2012 American Community Survey 5-Year Estimates



**B25014. OCCUPANTS PER ROOM - Universe: OCCUPIED HOUSING UNITS**

Data Set: 2008-2012 American Community Survey 5-Year Estimates

	Eatonton city, Georgia					
	African American	Margin of Error (+/-)	% of AA Total	White, Not Hispanic	Margin of Error (+/-)	% of NHW Total
<b>Total:</b>	<b>1,705</b>	<b>220</b>	<b>100.0%</b>	<b>704</b>	<b>180</b>	<b>100.0%</b>
1.00 or less occupants per room	1,705	220	100.0%	679	177	96.4%
1.01 or more occupants per room	0	19	0.0%	25	31	3.6%

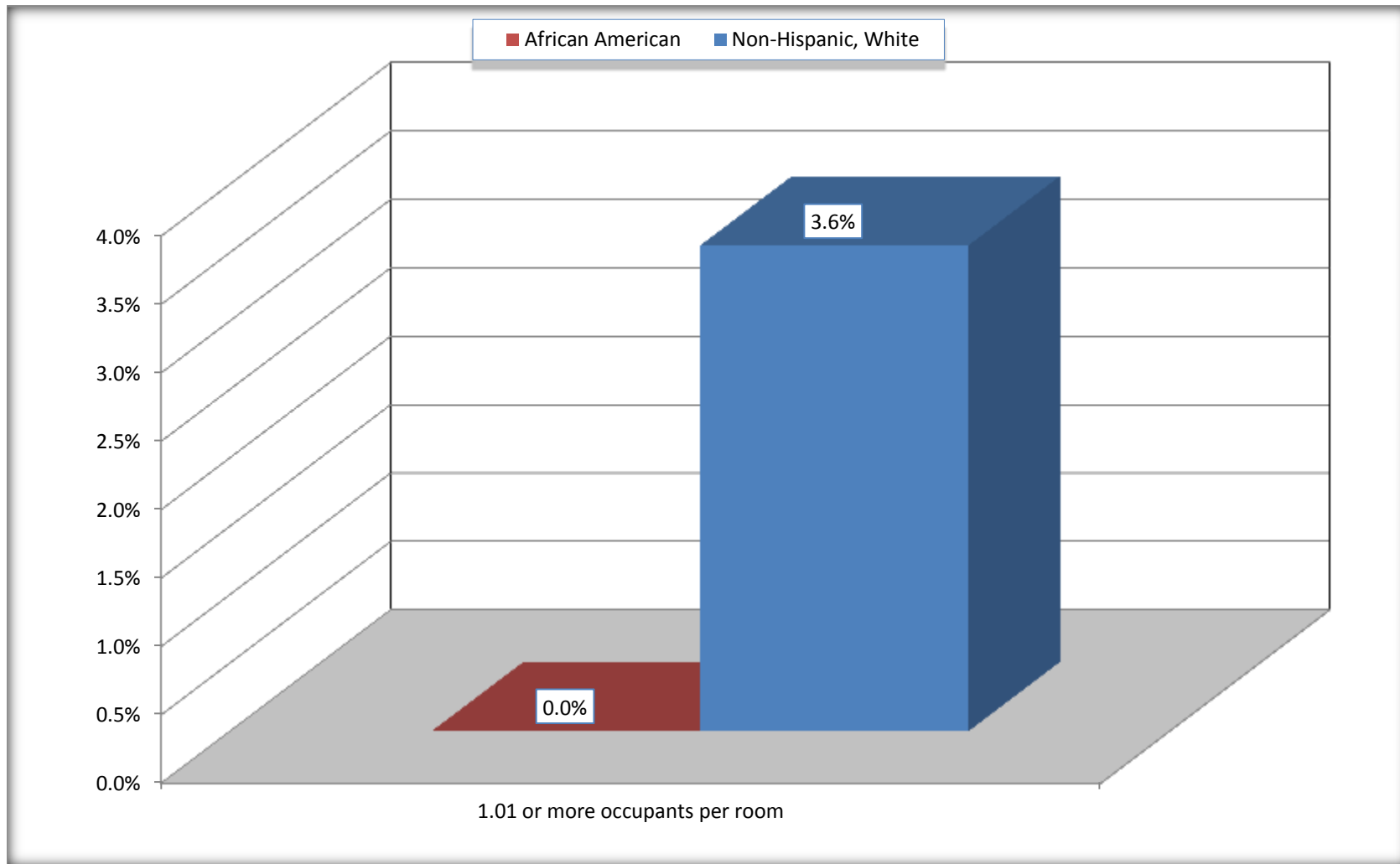
Source: U.S. Census Bureau, 2008-2012 American Community Survey

For information on confidentiality protection, sampling error, nonsampling error, and definitions, see Survey Methodology.

<http://www.census.gov/acs/www/UseData/index.ht>

# More than One Person per Room (Crowding) by Household

## Eatonton city, Georgia



Source: B25014. OCCUPANTS PER ROOM - Universe: OCCUPIED HOUSING UNITS  
Data Set: 2008-2012 American Community Survey 5-Year Estimates

**B18101. AGE BY DISABILITY STATUS**

Data Set: 2008-2012 American Community Survey 5-Year Estimates

	Eatonton city, Georgia					
	African American	Margin of Error (+/-)	% of AA Total	White, Not Hispanic	Margin of Error (+/-)	% of NHW Total
<b>Total:</b>	<b>4,152</b>	<b>376</b>	<b>100.0%</b>	<b>1,736</b>	<b>408</b>	<b>100.0%</b>
Under 18 years:	1,212	214	29.2%	413	26	23.8%
With a disability	81	91	2.0%	65	65	3.7%
No disability	1,131	252	27.2%	348	150	20.0%
18 to 64 years:	2,540	253	61.2%	1,060	283	61.1%
With a disability	169	123	4.1%	123	89	7.1%
No disability	2,371	275	57.1%	937	264	54.0%
65 years and over:	400	111	9.6%	263	122	15.1%
With a disability	155	82	3.7%	111	62	6.4%
No disability	245	105	5.9%	152	80	8.8%

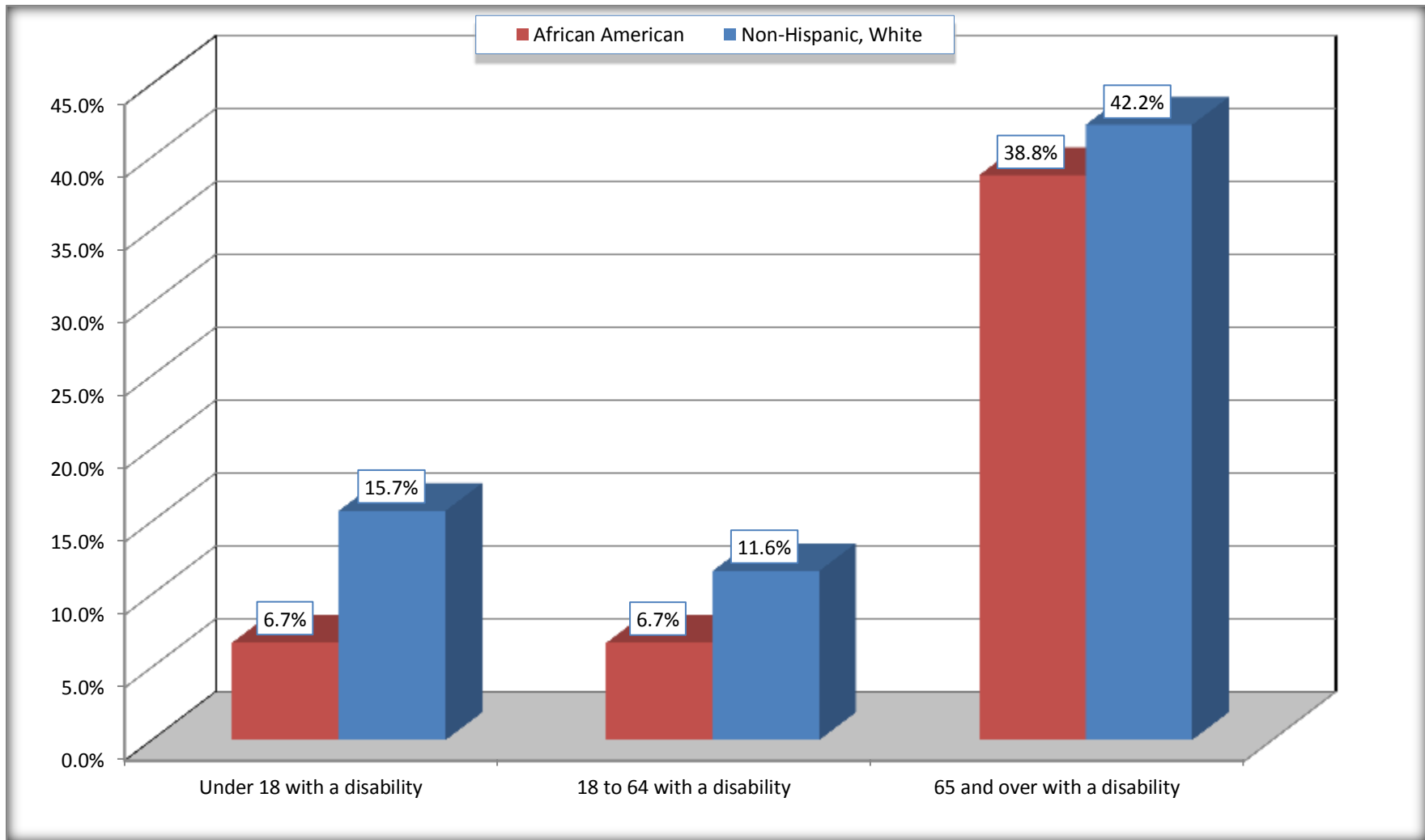
Source: U.S. Census Bureau, 2008-2012 American Community Survey

For information on confidentiality protection, sampling error, nonsampling error, and definitions, see Survey Methodology.

<http://www.census.gov/acs/www/UseData/index.htm>

## Disability by Age

### Eatonton city, Georgia



Source: B18101. AGE BY DISABILITY STATUS  
Data Set: 2008-2012 American Community Survey 5-Year Estimates

**C27001B. HEALTH INSURANCE COVERAGE STATUS BY AGE**

Data Set: 2008-2012 American Community Survey 5-Year Estimates

	<b>Eatonton city, Georgia</b>					
	African American	Margin of Error (+/-)	% of AA Total	White, Not Hispanic	Margin of Error (+/-)	% of NHW Total
<b>Total:</b>	<b>4,152</b>	<b>376</b>	<b>100.0%</b>	<b>1,736</b>	<b>408</b>	<b>100.0%</b>
Under 18 years:	1,212	214	29.2%	413	178	23.8%
With health insurance coverage	1,169	222	28.2%	395	173	22.8%
No health insurance coverage	43	54	1.0%	18	29	1.0%
18 to 64 years:	2,540	253	61.2%	1,060	283	61.1%
With health insurance coverage	1,689	300	40.7%	885	257	51.0%
No health insurance coverage	851	258	20.5%	175	114	10.1%
65 years and over:	400	111	9.6%	263	122	15.1%
With health insurance coverage	400	111	9.6%	254	119	14.6%
No health insurance coverage	0	19	0.0%	9	15	0.5%

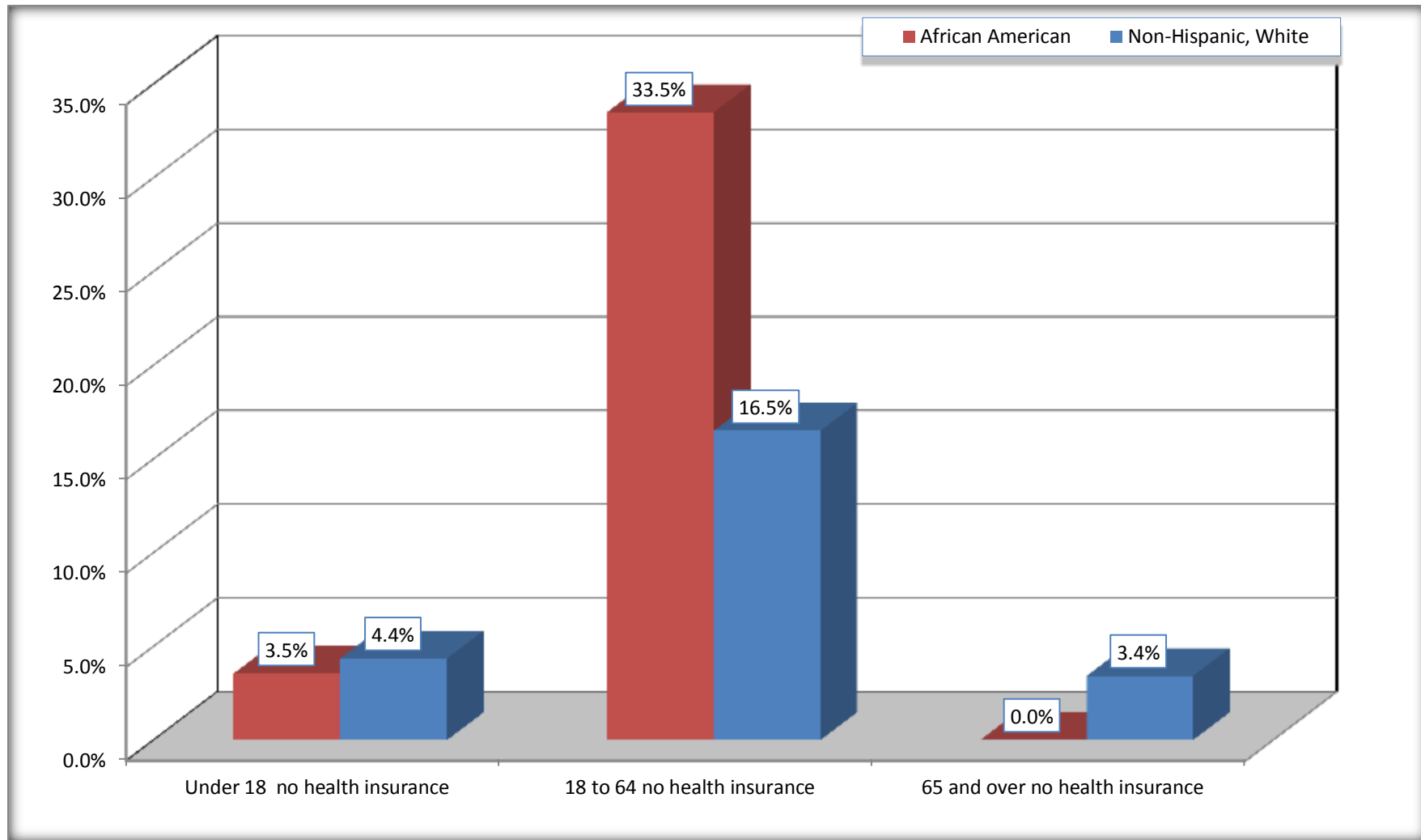
Source: U.S. Census Bureau, 2008-2012 American Community Survey

For information on confidentiality protection, sampling error, nonsampling error, and definitions, see Survey Methodology.

<http://www.census.gov/acs/www/UseData/index.htm>

# Lack of Health Insurance Coverage by Age

## Eatonton city, Georgia



Source: C27001B. HEALTH INSURANCE COVERAGE STATUS BY AGE  
Data Set: 2008-2012 American Community Survey 5-Year Estimates