

Selected Socio-Economic Data

Crawford County, Georgia

African American and White, Not Hispanic

Data Set: 2008-2012 American Community Survey 5-Year Estimates

www.fairvote2020.org

www.fairdata2000.com

[29-Dec-13](#)

C02003.DETAILED RACE - Universe: TOTAL POPULATION

Data Set: 2008-2012 American Community Survey 5-Year Estimates

	Crawford County, Georgia		
	Population	Margin of Error (+/-)	% of Total
Total:	12,701	*****	100.0%
Population of one race:	12,439	143	97.9%
White	9,308	91	73.3%
Black or African American	2,985	226	23.5%
American Indian and Alaska Native	104	138	0.8%
Asian alone	30	49	0.2%
Native Hawaiian and Other Pacific Islander	0	21	0.0%
Some other race	12	25	0.1%
Population of two or more races:	262	143	2.1%
Two races including Some other race	79	86	0.6%
Two races excluding Some other race, and three or more races	183	120	1.4%
Population of two races:	262	143	2.1%
White; Black or African American	104	105	0.8%
White; American Indian and Alaska Native	64	55	0.5%
White; Asian	0	21	0.0%
Black or African American; American Indian and Alaska Native	0	21	0.0%
All other two race combinations	94	89	0.7%
Population of three races	0	21	0.0%
Population of four or more races	0	21	0.0%

Note: Hispanics may be of any race. See Table B03002 and chart.

Source: U.S. Census Bureau, 2008-2012 American Community Survey

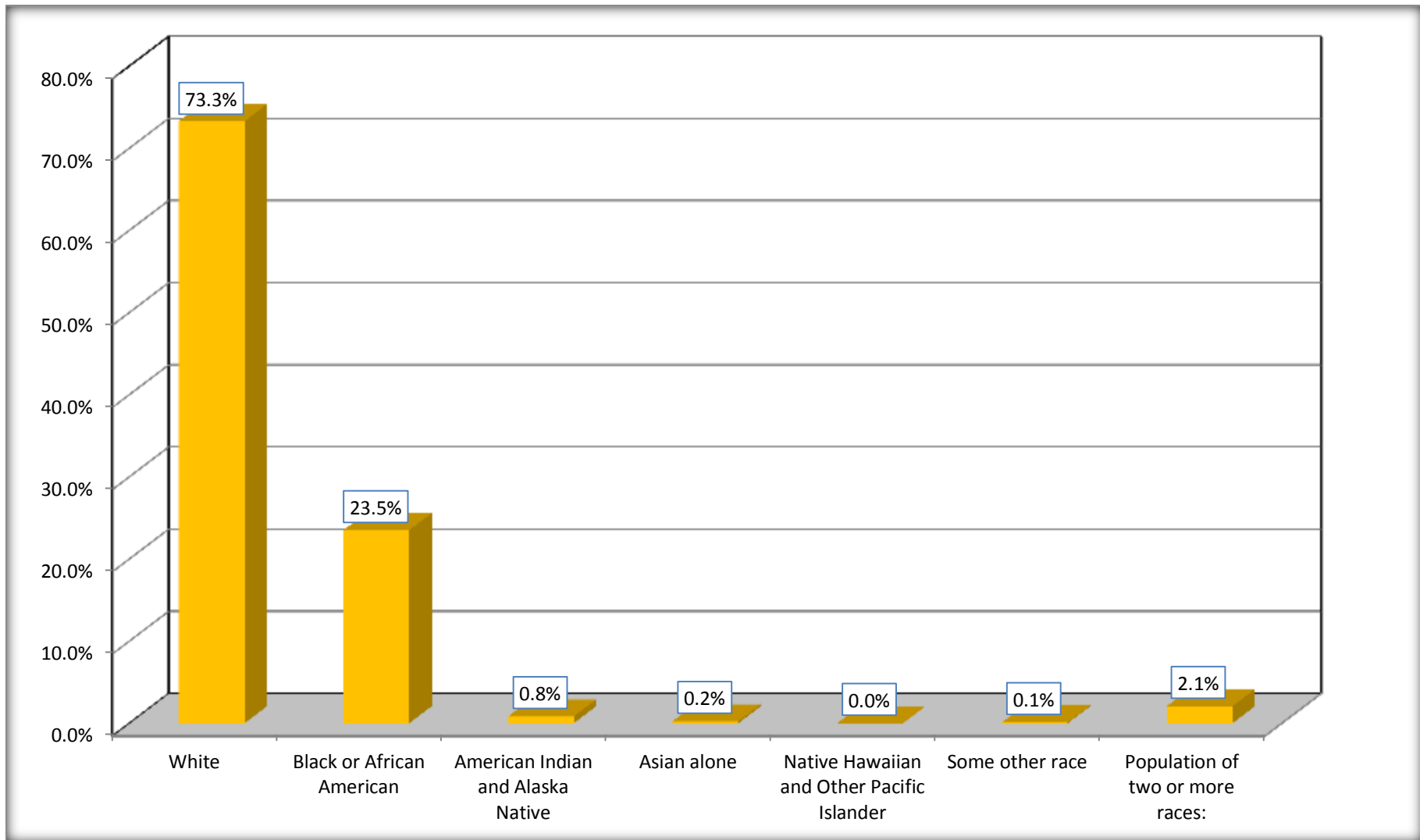
Although the American Community Survey (ACS) produces population, demographic and housing unit estimates, it is the Census Bureau's Population Estimates Program that produces and disseminates the official estimates of the population for the nation, states, counties, cities and towns and estimates of housing units for states and counties.

For information on confidentiality protection, sampling error, nonsampling error, and definitions, see Survey Methodology.

<http://www.census.gov/acs/www/UseData/index.htm>

Population by Race

Crawford County, Georgia



Source: C02003.DETAILED RACE - Universe: TOTAL POPULATION
Data Set: 2008-2012 American Community Survey 5-Year Estimates

B03002. HISPANIC OR LATINO ORIGIN BY RACE - Universe: TOTAL POPULATION

Data Set: 2008-2012 American Community Survey 5-Year Estimates

	Crawford County, Georgia		
	Population	Margin of Error (+/-)	% of Total
Total:	12,701	*****	100.0%
Not Hispanic or Latino:	12,610	94	99.3%
White alone	9,266	68	73.0%
Black or African American alone	2,985	226	23.5%
American Indian and Alaska Native alone	104	138	0.8%
Asian alone	30	49	0.2%
Native Hawaiian and Other Pacific Islander alone	0	21	0.0%
Some other race alone	0	21	0.0%
Two or more races:	225	138	1.8%
Two races including Some other race	42	68	0.3%
Two races excluding Some other race, and three or more races	183	120	1.4%
Hispanic or Latino	91	94	0.7%

Source: U.S. Census Bureau, 2008-2012 American Community Survey

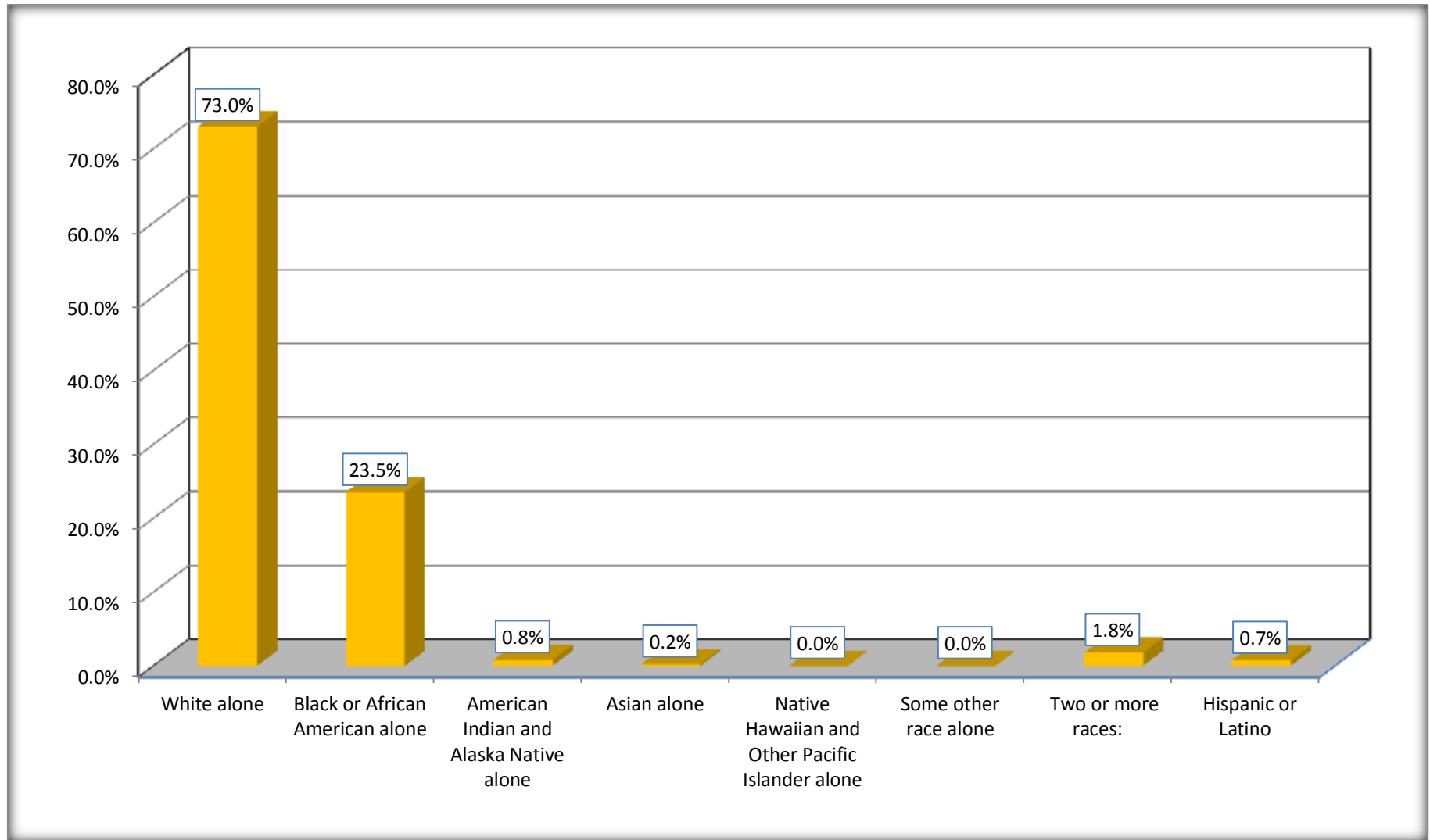
Although the American Community Survey (ACS) produces population, demographic and housing unit estimates, it is the Census Bureau's Population Estimates Program that produces and disseminates the official estimates of the population for the nation, states, counties, cities and towns and estimates of housing units for states and counties.

For information on confidentiality protection, sampling error, nonsampling error, and definitions, see Survey Methodology.

<http://www.census.gov/acs/www/UseData/index.htm>

Non-Hispanic by Race and Hispanic Population

Crawford County, Georgia



Source: B03002. HISPANIC OR LATINO ORIGIN BY RACE - Universe: TOTAL POPULATION
Data Set: 2008-2012 American Community Survey 5-Year Estimates

B03002. HISPANIC OR LATINO ORIGIN BY RACE

Data Set: 2008-2012 American Community Survey 5-Year Estimates

	Crawford County, Georgia		
	Population	Margin of Error (+/-)	% of Total
Hispanic or Latino:	91	94	100.0%
White alone	42	46	46.2%
Black or African American alone	0	21	0.0%
American Indian and Alaska Native alone	0	21	0.0%
Asian alone	0	21	0.0%
Native Hawaiian and Other Pacific Islander alone	0	21	0.0%
Some other race alone	12	25	13.2%
Two or more races:	37	56	40.7%
Two races including Some other race	37	56	40.7%
Two races excluding Some other race, and three or more races	0	21	0.0%

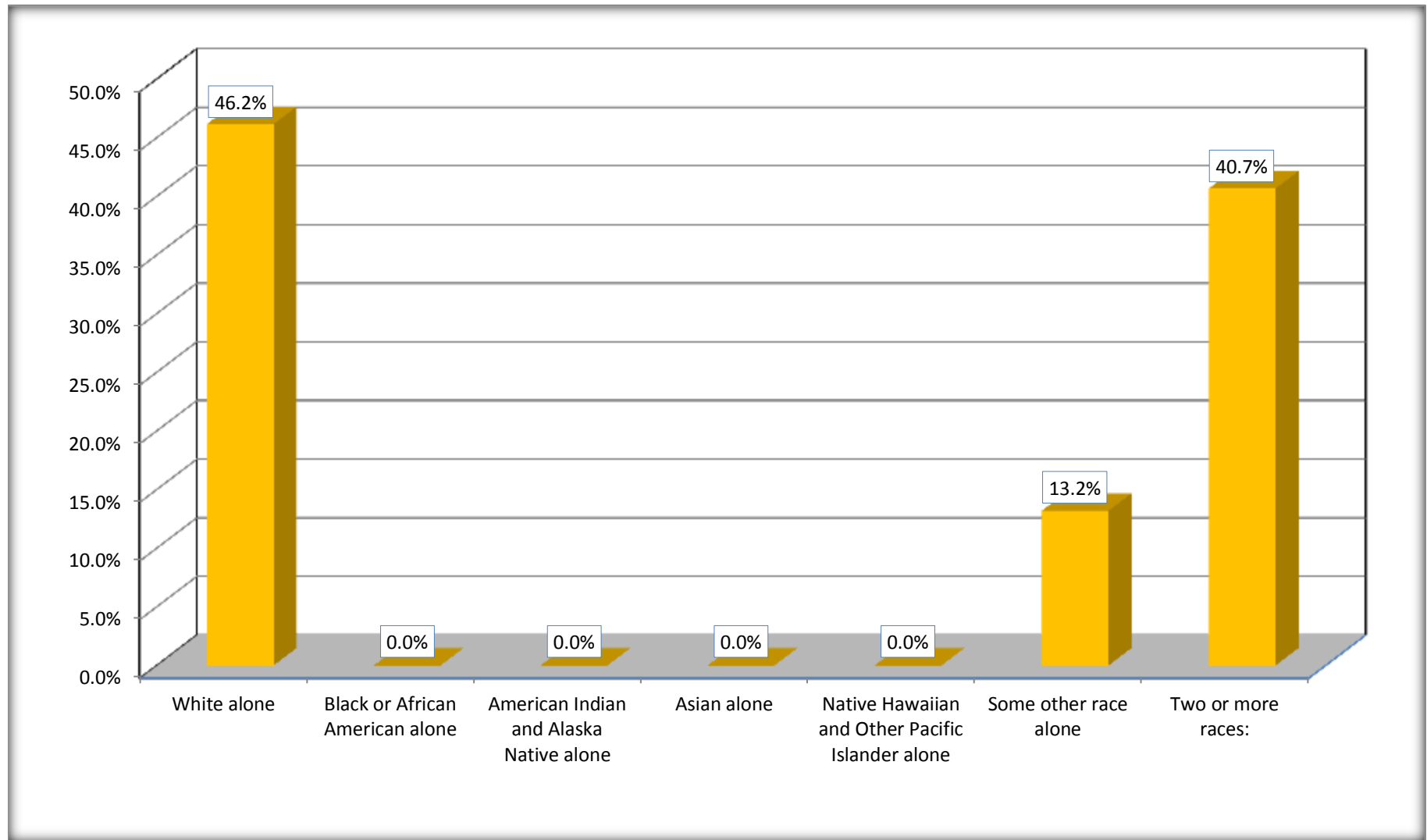
Source: U.S. Census Bureau, 2008-2012 American Community Survey

Although the American Community Survey (ACS) produces population, demographic and housing unit estimates, it is the Census Bureau's Population Estimates Program that produces and disseminates the official estimates of the population for the nation, states, counties, cities and towns and estimates of housing units for states and counties.

For information on confidentiality protection, sampling error, nonsampling error, and definitions, see Survey Methodology.

<http://www.census.gov/acs/www/UseData/index.htm>

Hispanic or Latino Origin by Race Crawford County, Georgia



Source: B03002. HISPANIC OR LATINO ORIGIN BY RACE
Data Set: 2008-2012 American Community Survey 5-Year Estimates

B01001. SEX BY AGE

Data Set: 2008-2012 American Community Survey 5-Year Estimates

	Crawford County, Georgia					
	African American	Margin of Error (+/-)	% of AA Total	White, Not Hispanic	Margin of Error (+/-)	% of NHW Total
Total:	2,985	226	100.0%	9,266	68	100.0%
Under 18 years	725	NC	24.3%	2,046	NC	22.1%
18 to 64 years	1,913	NC	64.1%	5,904	NC	63.7%
65 years and over	347	NC	11.6%	1,316	NC	14.2%
Male:	1,566	171	52.5%	4,725	389	51.0%
Under 18 years	517	NC	17.3%	1,070	NC	11.5%
18 to 64 years	910	NC	30.5%	3,013	NC	32.5%
65 years and over	139	NC	4.7%	642	NC	6.9%
Female:	1,419	108	47.5%	4,541	412	49.0%
Under 18 years	208	NC	7.0%	976	NC	10.5%
18 to 64 years	1,003	NC	33.6%	2,891	NC	31.2%
65 years and over	208	NC	7.0%	674	NC	7.3%

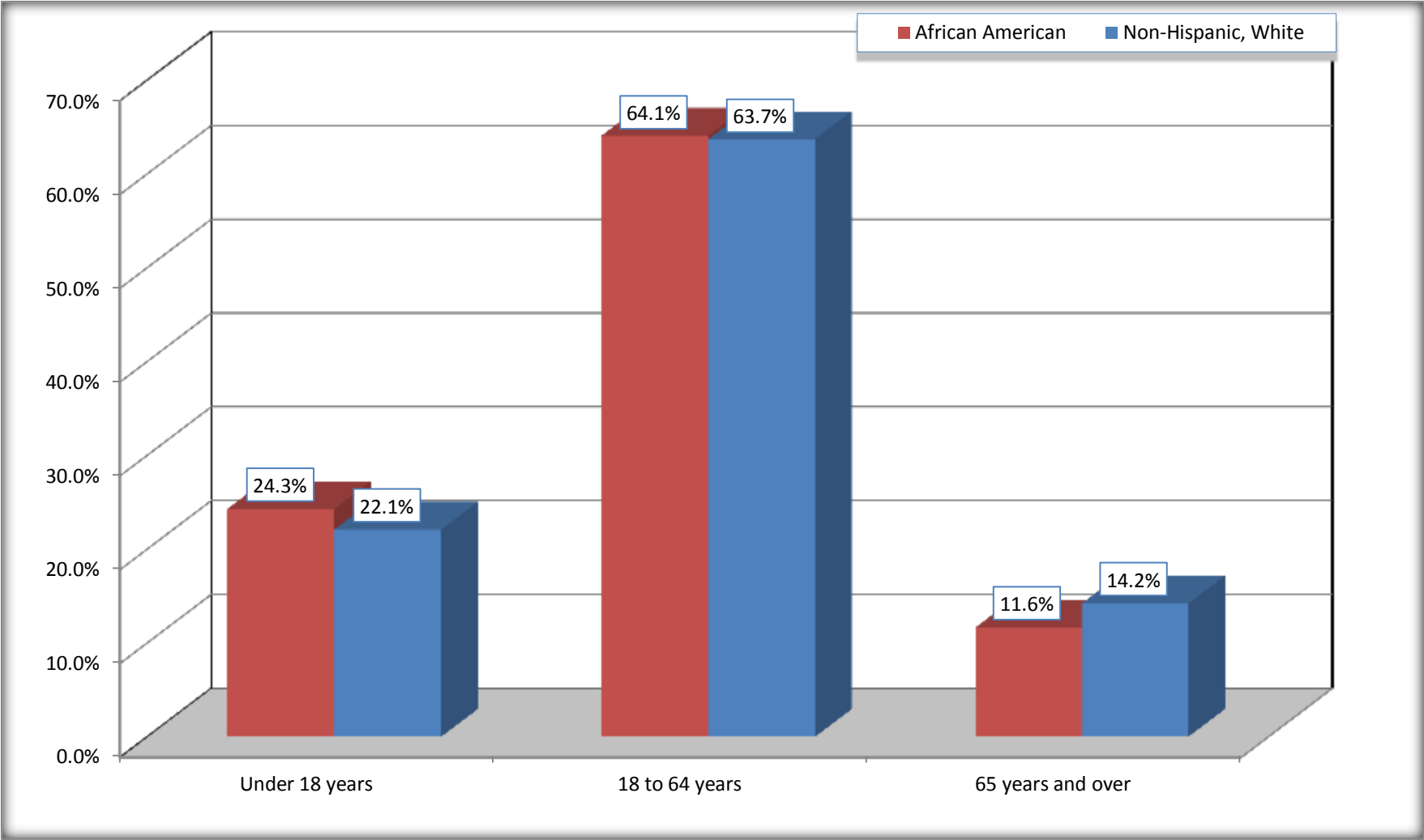
Source: U.S. Census Bureau, 2008-2012 American Community Survey

Although the American Community Survey (ACS) produces population, demographic and housing unit estimates, it is the Census Bureau's Population Estimates Program that produces and disseminates the official estimates of the population for the nation, states, counties, cities and towns and estimates of housing units for states and counties.

For information on confidentiality protection, sampling error, nonsampling error, and definitions, see Survey Methodology.
<http://www.census.gov/acs/www/UseData/index.htm>

Population by Age

Crawford County, Georgia



Source: B01001. SEX BY AGE
Data Set: 2008-2012 American Community Survey 5-Year Estimates

B05003. SEX BY AGE BY CITIZENSHIP STATUS

Data Set: 2008-2012 American Community Survey 5-Year Estimates

	Crawford County, Georgia					
	African American	Margin of Error (+/-)	% of AA Total by Age	White, Not Hispanic	Margin of Error (+/-)	% of NHW Total by Age
Total:	2,985	226	100.0%	9,266	68	100.0%
Under 18 years:	725	NC	100.0%	2,046	NC	100.0%
Native	725	NC	100.0%	2,046	NC	100.0%
Foreign born:	0	NC	0.0%	0	NC	0.0%
Naturalized U.S. citizen	0	NC	0.0%	0	NC	0.0%
Not a U.S. citizen	0	NC	0.0%	0	NC	0.0%
18 years and over:	2,260	NC	100.0%	7,220	NC	100.0%
Native	2,260	NC	100.0%	7,208	NC	99.8%
Foreign born:	0	NC	0.0%	12	NC	0.2%
Naturalized U.S. citizen	0	NC	0.0%	12	NC	0.2%
Not a U.S. citizen	0	NC	0.0%	0	NC	0.0%
Male:	1,566	171	52.5%	4,725	84	51.0%
Under 18 years:	517	119	100.0%	1,070	86	100.0%
Native	517	119	100.0%	1,070	86	100.0%
Foreign born:	0	21	0.0%	0	21	0.0%
Naturalized U.S. citizen	0	21	0.0%	0	21	0.0%
Not a U.S. citizen	0	21	0.0%	0	21	0.0%
18 years and over:	1,049	100	100.0%	3,655	26	100.0%
Native	1,049	100	100.0%	3,655	26	100.0%
Foreign born:	0	21	0.0%	0	21	0.0%
Naturalized U.S. citizen	0	21	0.0%	0	21	0.0%
Not a U.S. citizen	0	21	0.0%	0	21	0.0%

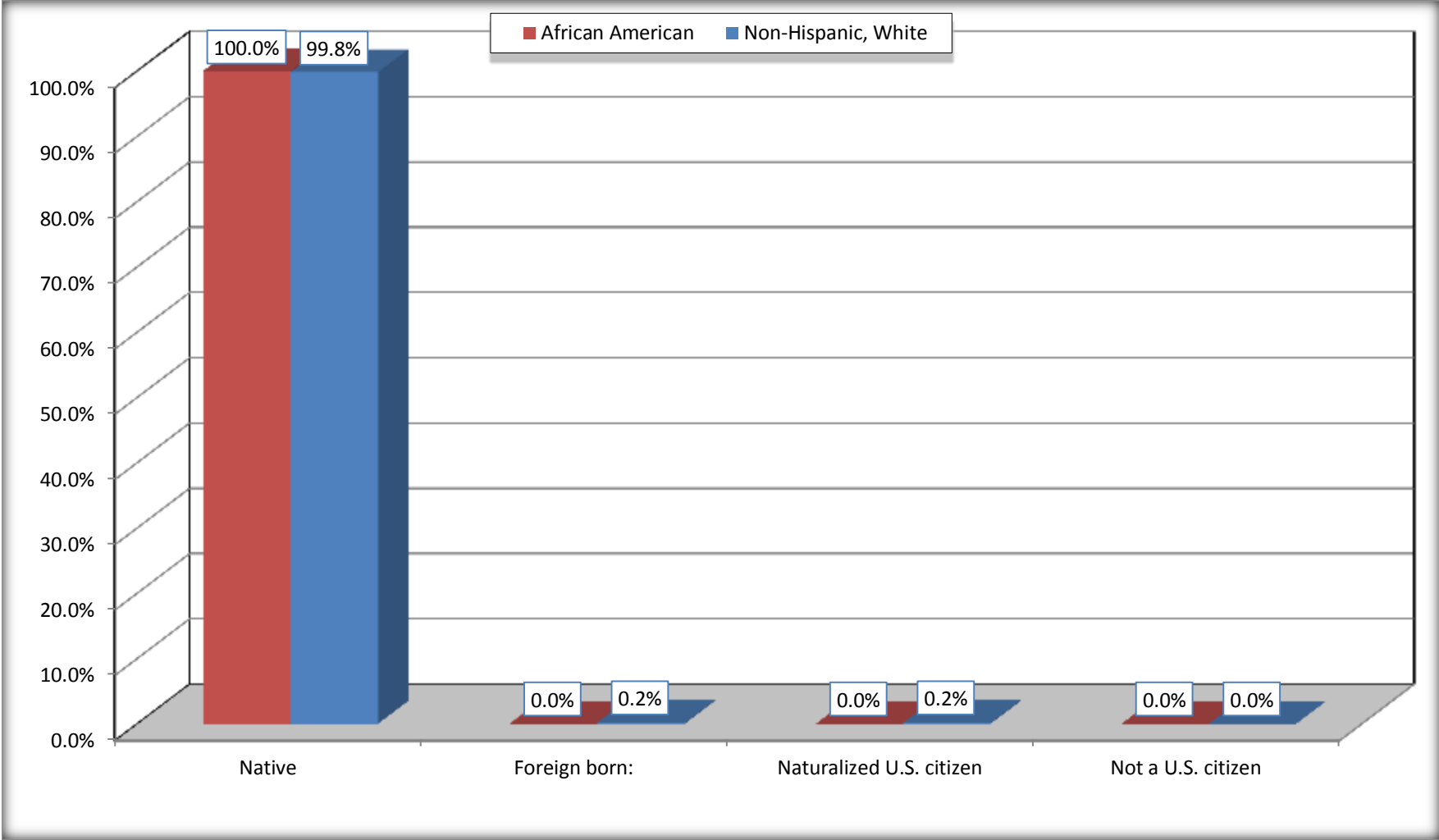
	Crawford County, Georgia					
	African American	Margin of Error (+/-)	% of AA by Age	White, Not Hispanic	Margin of Error (+/-)	% of NHW by Age
Female:	1,419	108	47.5%	4,541	105	49.0%
Under 18 years:	208	75	100.0%	976	86	100.0%
Native	208	75	100.0%	976	86	100.0%
Foreign born:	0	21	0.0%	0	21	0.0%
Naturalized U.S. citizen	0	21	0.0%	0	21	0.0%
Not a U.S. citizen	0	21	0.0%	0	21	0.0%
18 years and over:	1,211	73	100.0%	3,565	42	100.0%
Native	1,211	73	100.0%	3,553	48	99.7%
Foreign born:	0	21	0.0%	12	19	0.3%
Naturalized U.S. citizen	0	21	0.0%	12	19	0.3%
Not a U.S. citizen	0	21	0.0%	0	21	0.0%

Source: U.S. Census Bureau, 2008-2012 American Community Survey

For information on confidentiality protection, sampling error, nonsampling error, and definitions, see Survey Methodology.
<http://www.census.gov/acs/www/UseData/index.htm>

Citizenship Status of Voting Age Population (18 and Over)

Crawford County, Georgia



Source: B05003. SEX BY AGE BY CITIZENSHIP STATUS
Data Set: 2008-2012 American Community Survey 5-Year Estimates

**B07004. GEOGRAPHICAL MOBILITY IN THE PAST YEAR BY RACE FOR CURRENT RESIDENCE IN THE UNITED STATES - Universe:
POPULATION 1 YEAR AND OVER**

Data Set: 2008-2012 American Community Survey 5-Year Estimates

	Crawford County, Georgia					
	African American	Margin of Error (+/-)	% of AA Total	White, Not Hispanic	Margin of Error (+/-)	% of NHW Total
Total:	2,910	215	100.0%	9,216	88	100.0%
Same house 1 year ago	2,607	288	89.6%	8,359	300	90.7%
Moved within same county	278	215	9.6%	187	130	2.0%
Moved from different county within same state	25	30	0.9%	651	254	7.1%
Moved from different state	0	21	0.0%	4	8	0.0%
Moved from abroad	0	21	0.0%	15	27	0.2%

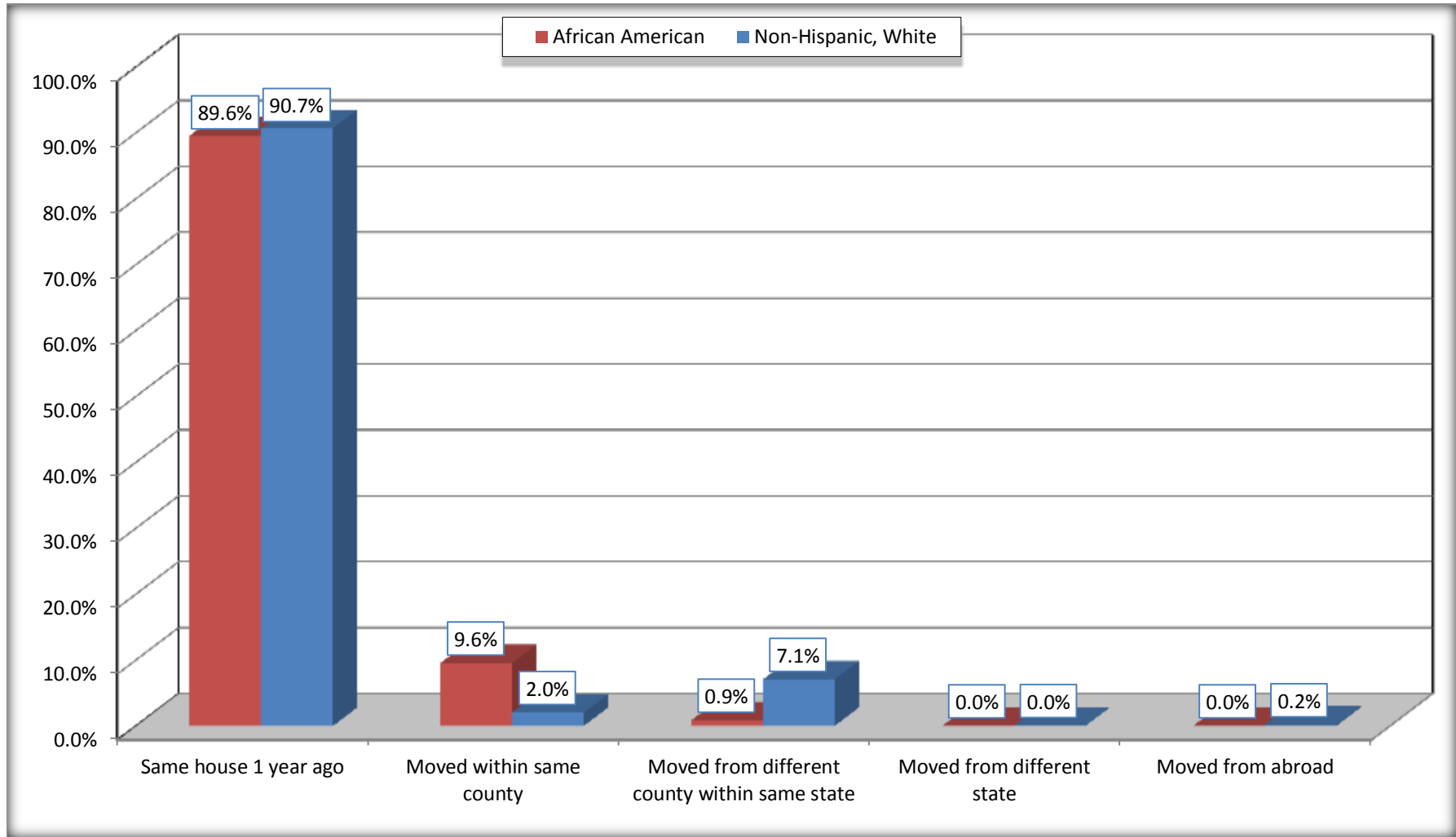
Source: U.S. Census Bureau, 2008-2012 American Community Survey

For information on confidentiality protection, sampling error, nonsampling error, and definitions, see Survey Methodology.

<http://www.census.gov/acs/www/UseData/index.htm>

Geographical Mobility in the Past Year (Population 1 Year and Over)

Crawford County, Georgia



Source: B07004. GEOGRAPHICAL MOBILITY IN THE PAST YEAR BY RACE FOR CURRENT RESIDENCE IN THE UNITED STATES - Universe: POPULATION 1 YEAR AND OVER

Data Set: 2008-2012 American Community Survey 5-Year Estimates

B08105. MEANS OF TRANSPORTATION TO WORK - Universe: WORKERS 16 YEARS AND OVER

Data Set: 2008-2012 American Community Survey 5-Year Estimates

	Crawford County, Georgia					
	African American	Margin of Error (+/-)	% of AA Total	White, Not Hispanic	Margin of Error (+/-)	% of NHW Total
Total:	1291	213	100.0%	3951	265	100.0%
Car, truck, or van - drove alone	1203	214	93.2%	3265	314	82.6%
Car, truck, or van - carpooled	81	50	6.3%	559	165	14.1%
Public transportation (excluding taxicab)	0	21	0.0%	52	57	1.3%
Walked	7	13	0.5%	21	25	0.5%
Taxicab, motorcycle, bicycle, or other means	0	21	0.0%	19	30	0.5%
Worked at home	0	21	0.0%	35	40	0.9%

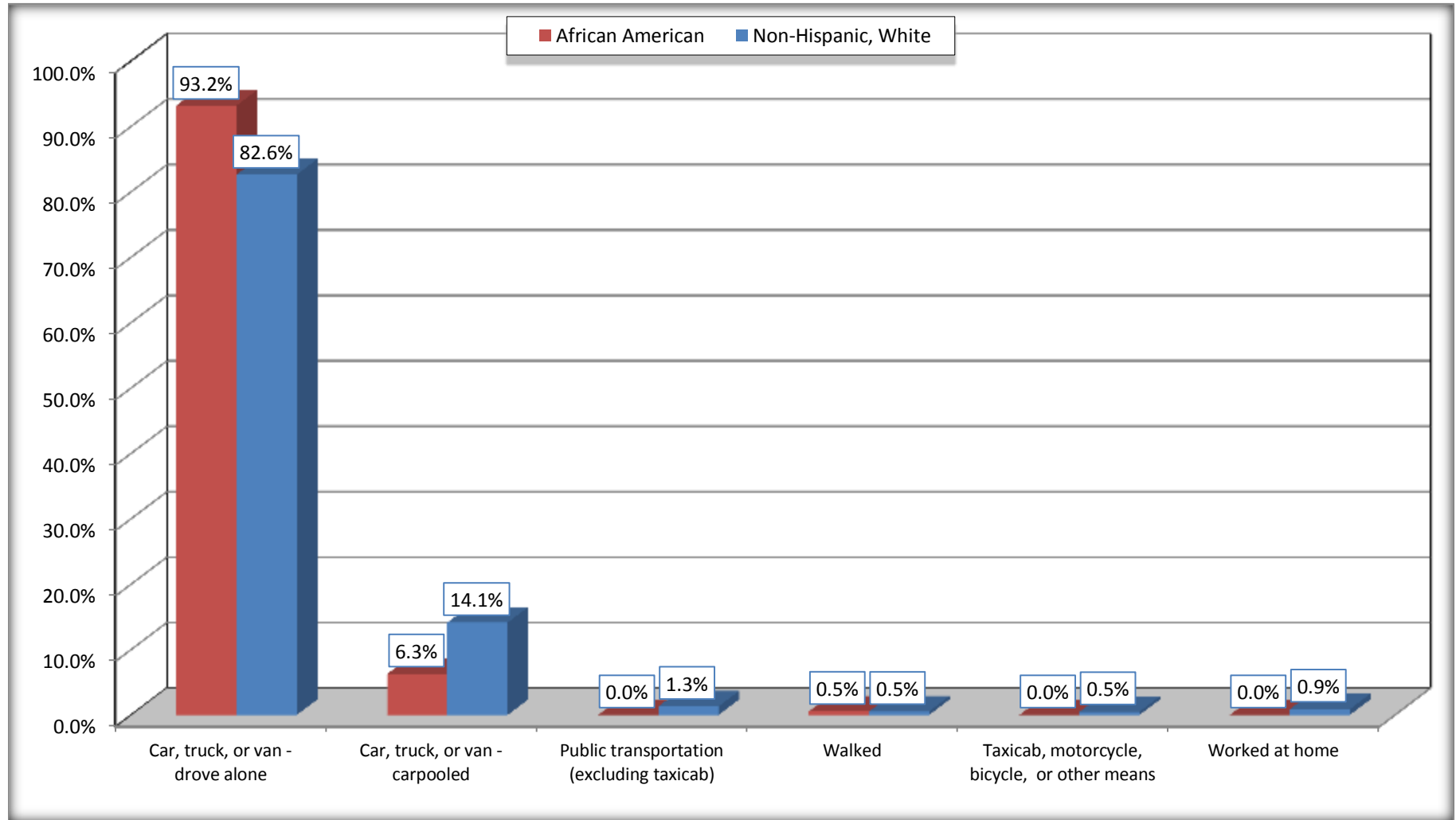
Source: U.S. Census Bureau, 2008-2012 American Community Survey

For information on confidentiality protection, sampling error, nonsampling error, and definitions, see Survey Methodology.

<http://www.census.gov/acs/www/UseData/index.htm>

Means of Transportation to Work (Workers 16 Years and Over)

Crawford County, Georgia



Source: B08105. MEANS OF TRANSPORTATION TO WORK - Universe: WORKERS 16 YEARS AND OVER
Data Set: 2008-2012 American Community Survey 5-Year Estimates

B11002. HOUSEHOLD TYPE BY RELATIVES AND NONRELATIVES FOR POPULATION IN HOUSEHOLDS

Data Set: 2008-2012 American Community Survey 5-Year Estimates

	Crawford County, Georgia					
	African American	Margin of Error (+/-)	% of AA Total	White, Not Hispanic	Margin of Error (+/-)	% of NHW Total
Total:	2822	252	100.0%	9425	253	100.0%
In family households	2416	297	85.6%	8592	351	91.2%
In nonfamily households	406	135	14.4%	833	207	8.8%

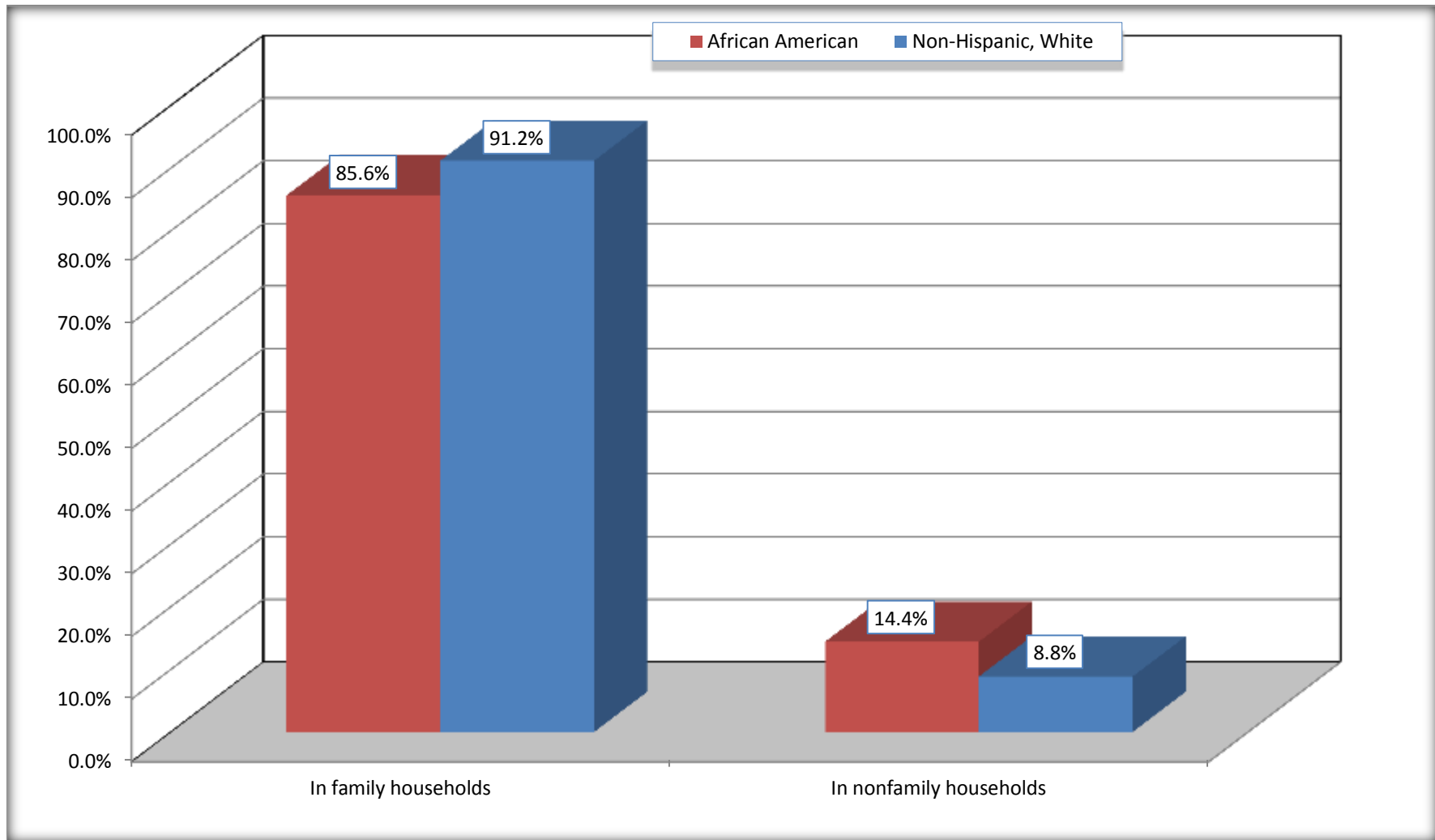
Source: U.S. Census Bureau, 2008-2012 American Community Survey

For information on confidentiality protection, sampling error, nonsampling error, and definitions, see Survey Methodology.

<http://www.census.gov/acs/www/UseData/index.htm>

Household Type for Population in Households

Crawford County, Georgia



Source: B11002. HOUSEHOLD TYPE BY RELATIVES AND NONRELATIVES FOR POPULATION IN HOUSEHOLDS
Data Set: 2008-2012 American Community Survey 5-Year Estimates

B12002. MARITAL STATUS FOR THE POPULATION 15 YEARS AND OVER

Data Set: 2008-2012 American Community Survey 5-Year Estimates

	Crawford County, Georgia					
	African American	Margin of Error (+/-)	% of AA Total	White, Not Hispanic	Margin of Error (+/-)	% of NHW Total
Total:	2,497	196	100.0%	7,591	68	100.0%
Never married	1,156	NC	46.3%	1,592	NC	21.0%
Now married (except separated)	748	NC	30.0%	4,628	NC	61.0%
Separated	158	NC	6.3%	74	NC	1.0%
Widowed	89	NC	3.6%	423	NC	5.6%
Divorced	346	NC	13.9%	874	NC	11.5%
Male:	1,254	138	50.2%	3,848	84	50.7%
Never married	705	147	28.2%	859	153	11.3%
Now married (except separated)	387	110	15.5%	2,472	226	32.6%
Separated	98	75	3.9%	29	46	0.4%
Widowed	0	21	0.0%	52	45	0.7%
Divorced	64	55	2.6%	436	164	5.7%
Female:	1,243	82	49.8%	3,743	105	49.3%
Never married	451	137	18.1%	733	170	9.7%
Now married (except separated)	361	129	14.5%	2,156	245	28.4%
Separated	60	51	2.4%	45	50	0.6%
Widowed	89	38	3.6%	371	105	4.9%
Divorced	282	104	11.3%	438	141	5.8%

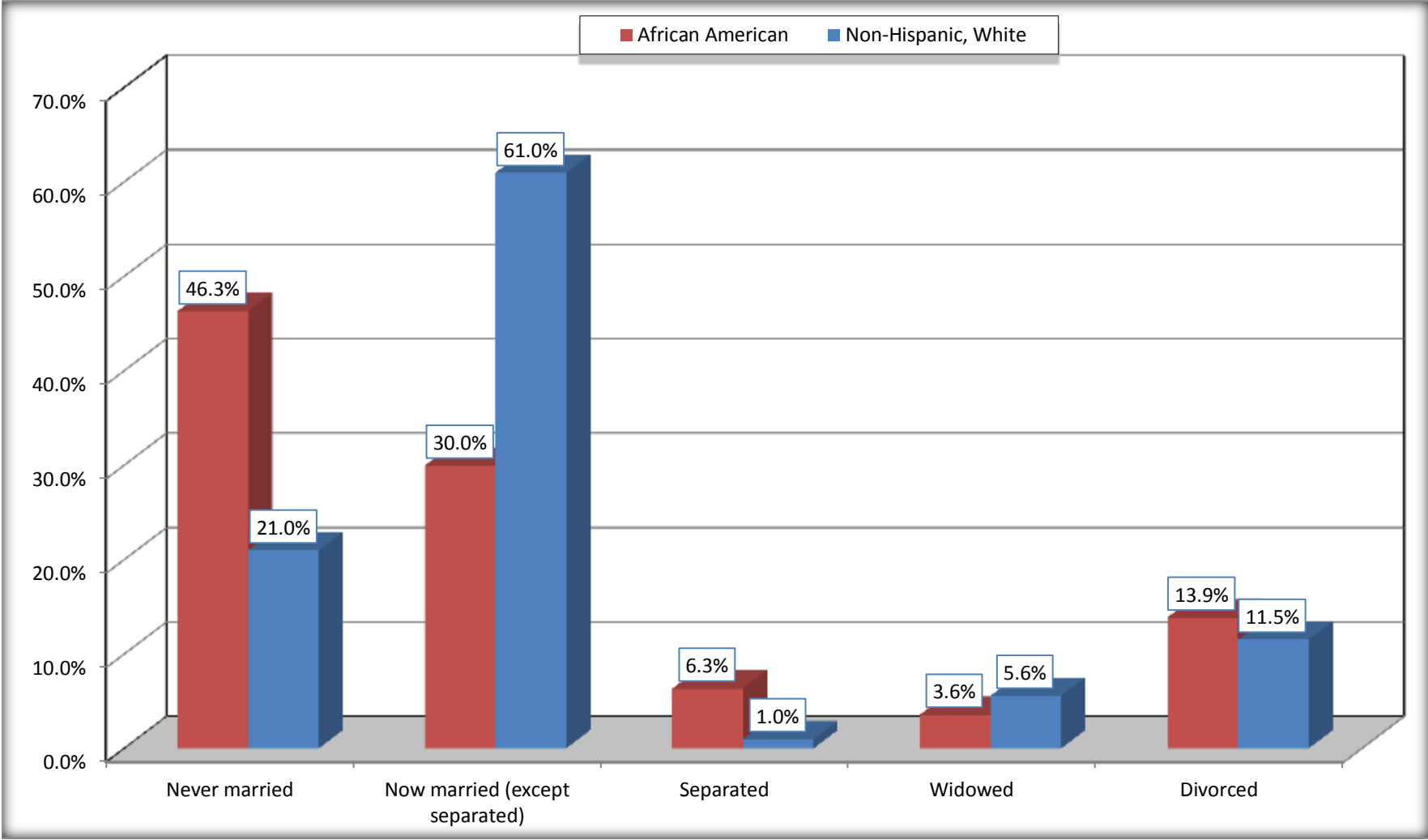
Source: U.S. Census Bureau, 2008-2012 American Community Survey

For information on confidentiality protection, sampling error, nonsampling error, and definitions, see Survey Methodology.

<http://www.census.gov/acs/www/UseData/index.htm>

Marital Status for the Population 15 Years and Over

Crawford County, Georgia



Source: B12002. MARITAL STATUS FOR THE POPULATION 15 YEARS AND OVER
Data Set: 2008-2012 American Community Survey 5-Year Estimates

C15002. SEX BY EDUCATIONAL ATTAINMENT FOR THE POPULATION 25 YEARS AND OVER

Data Set: 2008-2012 American Community Survey 5-Year Estimates

	Crawford County, Georgia					
	African American	Margin of Error (+/-)	% of AA Total	White, Not Hispanic	Margin of Error (+/-)	% of NHW Total
Total:	1,931	161	100.0%	6,449	47	100.0%
Less than high school diploma	592	NC	30.7%	1,357	NC	21.0%
High school graduate, GED, or alternative	744	NC	38.5%	2,377	NC	36.9%
Some college or associate's degree	430	NC	22.3%	1,814	NC	28.1%
Bachelor's degree or higher	165	NC	8.5%	901	NC	14.0%
Male:	893	121	46.2%	3,237	26	50.2%
Less than high school diploma	316	130	16.4%	818	196	12.7%
High school graduate, GED, or alternative	370	161	19.2%	1,015	198	15.7%
Some college or associate's degree	169	100	8.8%	928	204	14.4%
Bachelor's degree or higher	38	38	2.0%	476	185	7.4%
Female:	1,038	76	53.8%	3,212	22	49.8%
Less than high school diploma	276	76	14.3%	539	154	8.4%
High school graduate, GED, or alternative	374	127	19.4%	1,362	213	21.1%
Some college or associate's degree	261	134	13.5%	886	168	13.7%
Bachelor's degree or higher	127	88	6.6%	425	144	6.6%

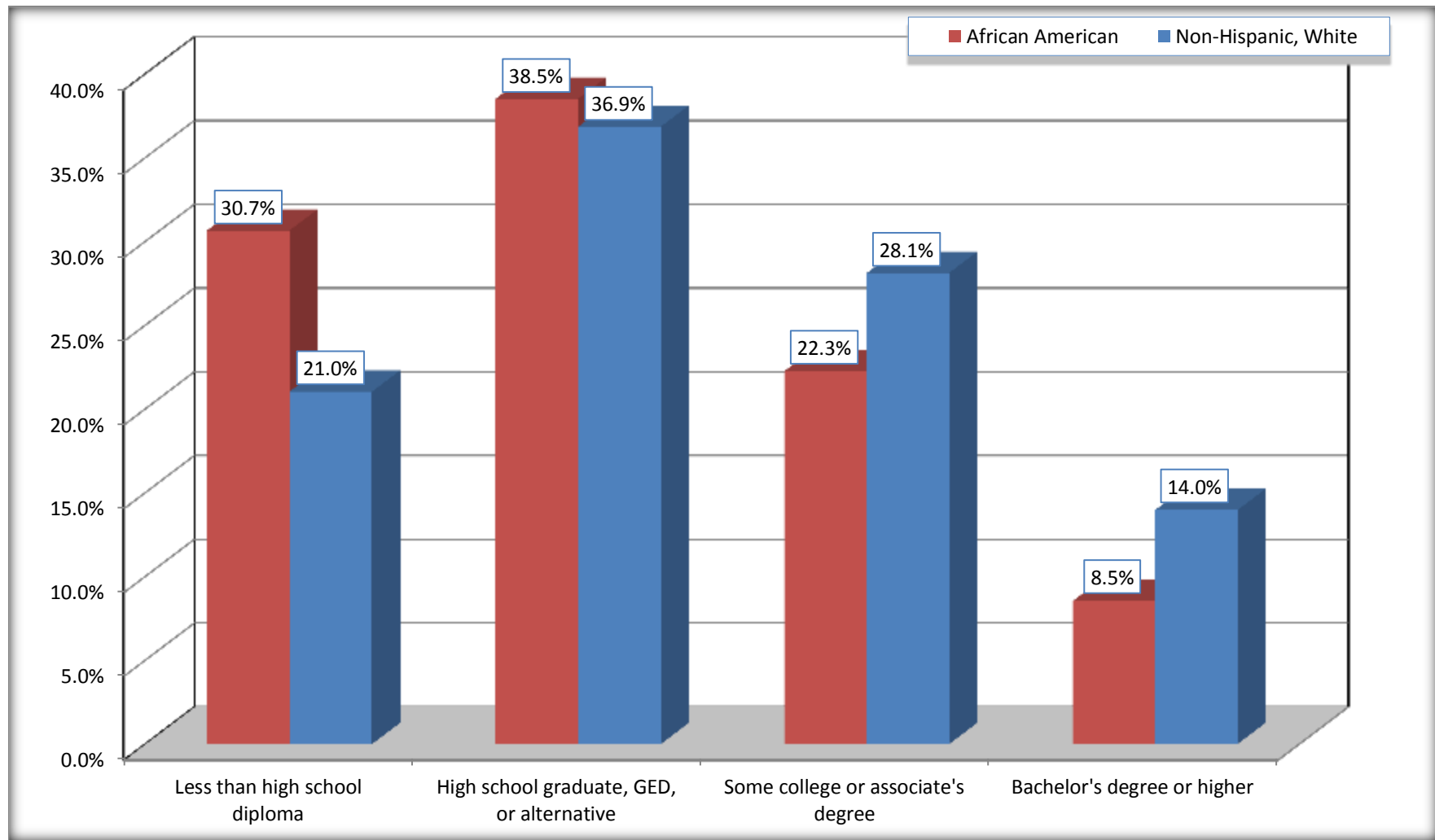
Source: U.S. Census Bureau, 2008-2012 American Community Survey

For information on confidentiality protection, sampling error, nonsampling error, and definitions, see Survey Methodology.

<http://www.census.gov/acs/www/UseData/index.htm>

Educational Attainment for the Population 25 Years and Older

Crawford County, Georgia



Source: C15002. SEX BY EDUCATIONAL ATTAINMENT FOR THE POPULATION 25 YEARS AND OVER
Data Set: 2008-2012 American Community Survey 5-Year Estimates

B17010. POVERTY STATUS IN THE PAST 12 MONTHS OF FAMILIES BY FAMILY TYPE BY PRESENCE OF RELATED CHILDREN UNDER 18 YEARS

Data Set: 2008-2012 American Community Survey 5-Year Estimates

	Crawford County, Georgia					
	African American	Margin of Error (+/-)	% of AA Total	White, Not Hispanic	Margin of Error (+/-)	% of NHW Total
Total:	799	109	100.0%	2,676	217	100.0%
Income in the past 12 months below poverty level:	270	120	33.8%	253	101	9.5%
Married-couple family:	64	54	8.0%	128	79	4.8%
With related children under 18 years	53	52	6.6%	98	68	3.7%
Other family:	206	113	25.8%	125	66	4.7%
Male householder, no wife present	60	52	7.5%	0	21	0.0%
With related children under 18 years	60	52	7.5%	0	21	0.0%
Female householder, no husband present	146	104	18.3%	125	66	4.7%
With related children under 18 years	130	100	16.3%	107	62	4.0%
Income in the past 12 months at or above poverty level:	529	124	66.2%	2,423	220	90.5%
Married-couple family:	280	103	35.0%	1,966	240	73.5%
With related children under 18 years	70	78	8.8%	636	177	23.8%
Other family:	249	92	31.2%	457	155	17.1%
Male householder, no wife present	9	15	1.1%	155	86	5.8%
With related children under 18 years	0	21	0.0%	93	72	3.5%
Female householder, no husband present	240	93	30.0%	302	123	11.3%
With related children under 18 years	111	56	13.9%	179	105	6.7%

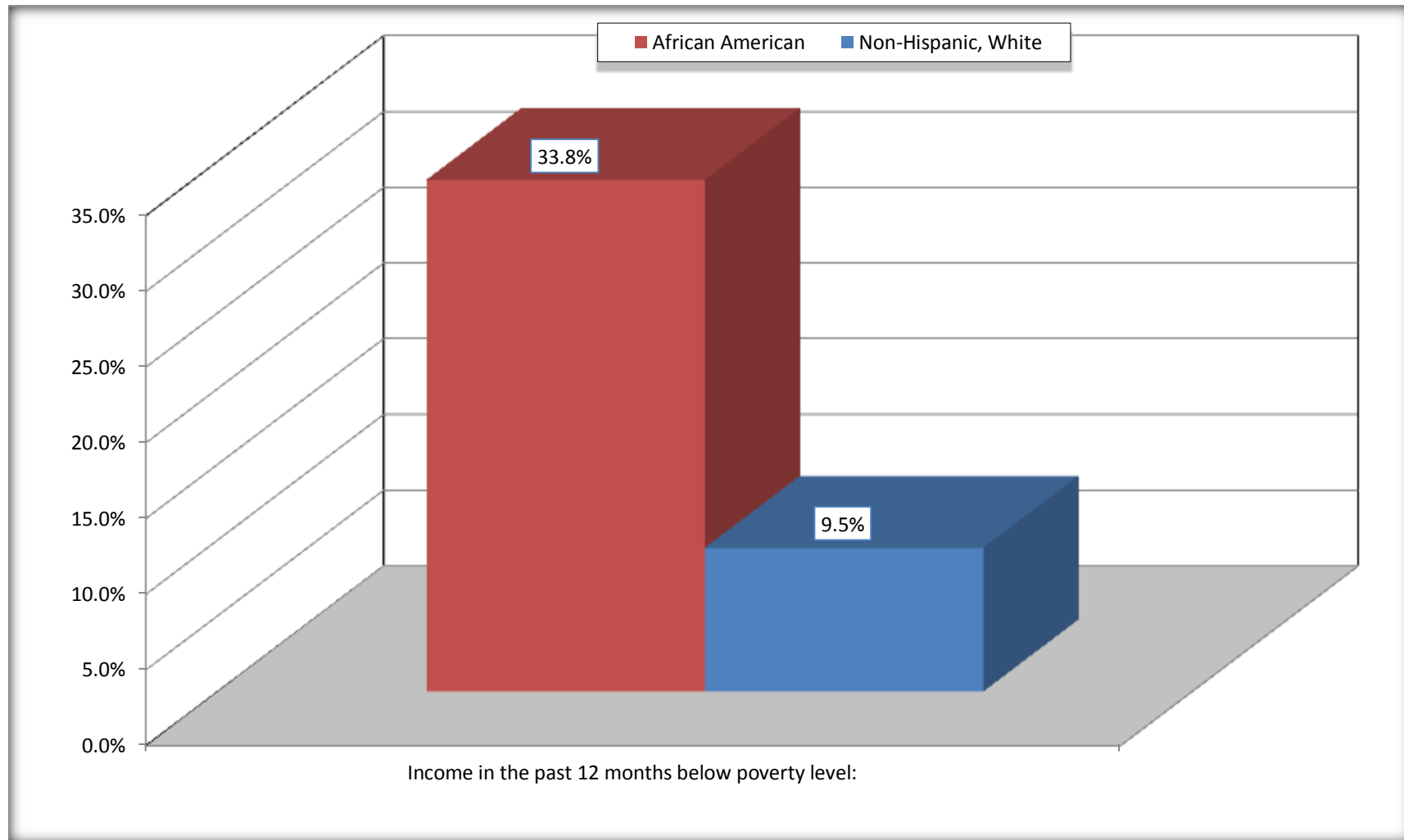
Source: U.S. Census Bureau, 2008-2012 American Community Survey

For information on confidentiality protection, sampling error, nonsampling error, and definitions, see Survey Methodology.

<http://www.census.gov/acs/www/UseData/index.htm>

Family Households Below Poverty in the Past 12 Months

Crawford County, Georgia

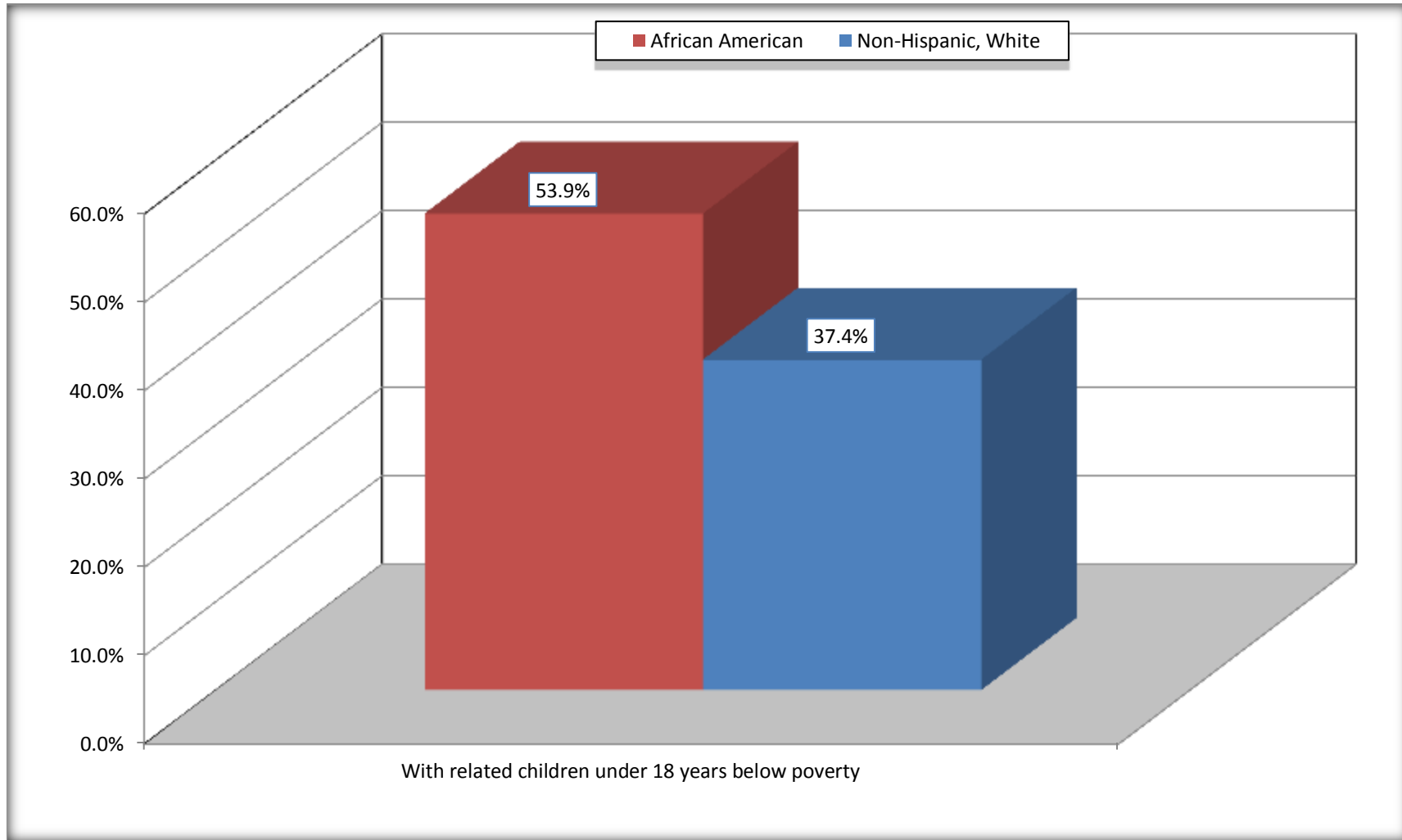


Source: B17010. POVERTY STATUS IN THE PAST 12 MONTHS OF FAMILIES BY FAMILY TYPE BY PRESENCE OF RELATED CHILDREN UNDER 18 YEARS

Data Set: 2008-2012 American Community Survey 5-Year Estimates

Female-headed Households with Related Children Below Poverty in the Past 12 Months

Crawford County, Georgia



Source: B17010. POVERTY STATUS IN THE PAST 12 MONTHS OF FAMILIES BY FAMILY TYPE BY PRESENCE OF RELATED CHILDREN UNDER 18 YEARS

Data Set: 2008-2012 American Community Survey 5-Year Estimates

B17020 POVERTY STATUS IN THE PAST 12 MONTHS BY AGE - Universe: POPULATION FOR WHOM POVERTY STATUS IS DETERMINED

Data Set: 2008-2012 American Community Survey 5-Year Estimates

	Crawford County, Georgia					
	African American	Margin of Error (+/-)	% of AA By Age	White, Not Hispanic	Margin of Error (+/-)	% of NHW By Age
Total:	2,938	221	100.0%	9,196	84	100.0%
Income in the past 12 months below poverty level:	1,332	347	45.3%	1,210	364	13.2%
Under 18 years	554	NC	76.4%	395	NC	19.3%
18 to 64 years	605	234	32.1%	764	266	13.0%
65 years and over	173	NC	52.4%	51	NC	4.0%
Income in the past 12 months at or above poverty level:	1,606	354	54.7%	7,986	383	86.8%
Under 18 years	171	NC	23.6%	1,651	NC	80.7%
18 to 64 years	1,278	269	67.9%	5,119	283	87.0%
65 years and over	157	NC	47.6%	1,216	NC	96.0%

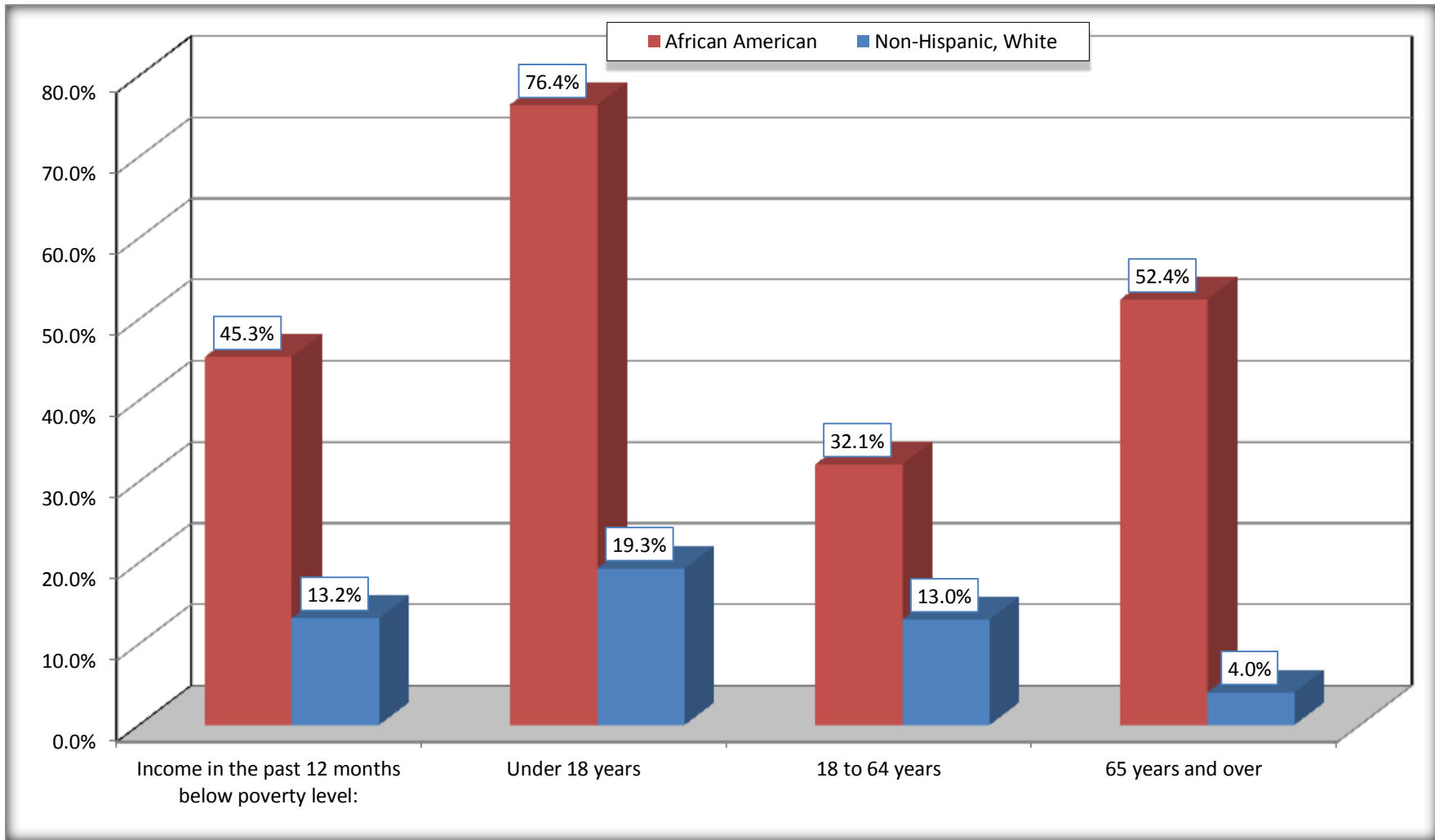
Source: U.S. Census Bureau, 2008-2012 American Community Survey

For information on confidentiality protection, sampling error, nonsampling error, and definitions, see Survey Methodology.

<http://www.census.gov/acs/www/UseData/index.htm>

Population Below Poverty in the Past 12 Months

Crawford County, Georgia



Source: B17020 POVERTY STATUS IN THE PAST 12 MONTHS BY AGE - Universe: POPULATION FOR WHOM POVERTY STATUS IS DETERMINED
Data Set: 2008-2012 American Community Survey 5-Year Estimates

B19001. HOUSEHOLD INCOME IN THE PAST 12 MONTHS (IN 2010 INFLATION-ADJUSTED DOLLARS)

Data Set: 2008-2012 American Community Survey 5-Year Estimates

	Crawford County, Georgia					
	African American	Margin of Error (+/-)	% of AA Total	White, Not Hispanic	Margin of Error (+/-)	% of NHW Total
Total:	1,161	116	100.0%	3,424	176	100.0%
Less than \$ 10,000	365	143	31.4%	281	101	8.2%
\$ 10,000 to \$ 14,999	83	64	7.1%	115	58	3.4%
\$ 15,000 to \$ 24,999	149	NC	12.8%	330	NC	9.6%
\$ 25,000 to \$ 34,999	90	NC	7.8%	561	NC	16.4%
\$ 35,000 to \$ 49,999	182	NC	15.7%	659	NC	19.2%
\$ 50,000 to \$ 74,999	108	NC	9.3%	701	NC	20.5%
\$ 75,000 to \$ 99,999	71	57	6.1%	330	131	9.6%
\$ 100,000 to \$ 149,999	113	NC	9.7%	324	NC	9.5%
\$ 150,000 to \$ 199,999	0	21	0.0%	89	90	2.6%
\$ 200,000 or more	0	21	0.0%	34	48	1.0%

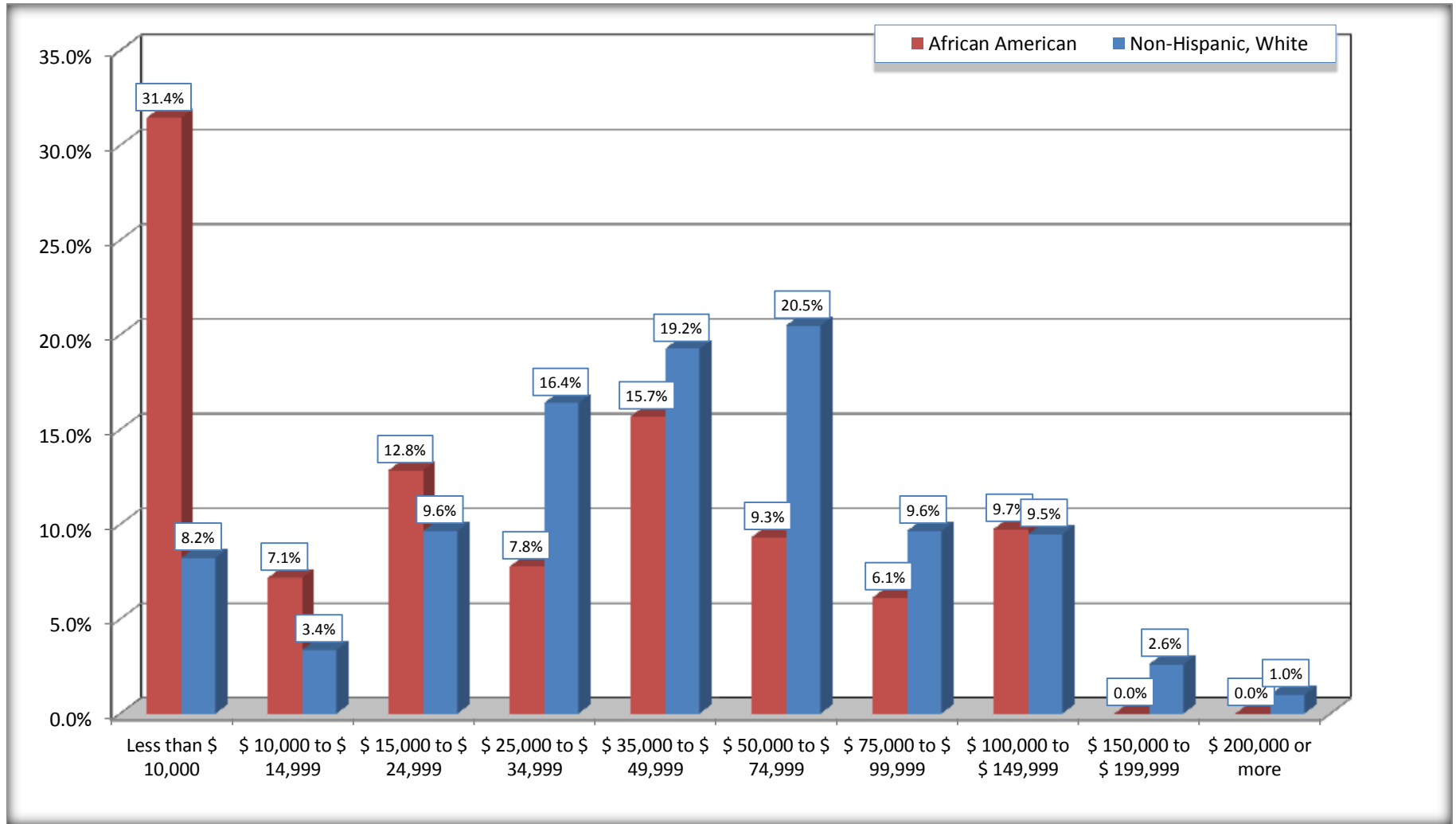
Source: U.S. Census Bureau, 2008-2012 American Community Survey

For information on confidentiality protection, sampling error, nonsampling error, and definitions, see Survey Methodology.

<http://www.census.gov/acs/www/UseData/index.htm>

Household Income in the Past 12 Months

Crawford County, Georgia



Source: B19001. HOUSEHOLD INCOME IN THE PAST 12 MONTHS (IN 2010 INFLATION-ADJUSTED DOLLARS)
Data Set: 2008-2012 American Community Survey 5-Year Estimates

B19013. MEDIAN HOUSEHOLD INCOME IN THE PAST 12 MONTHS (IN 2010 INFLATION-ADJUSTED DOLLARS)

Data Set: 2008-2012 American Community Survey 5-Year Estimates

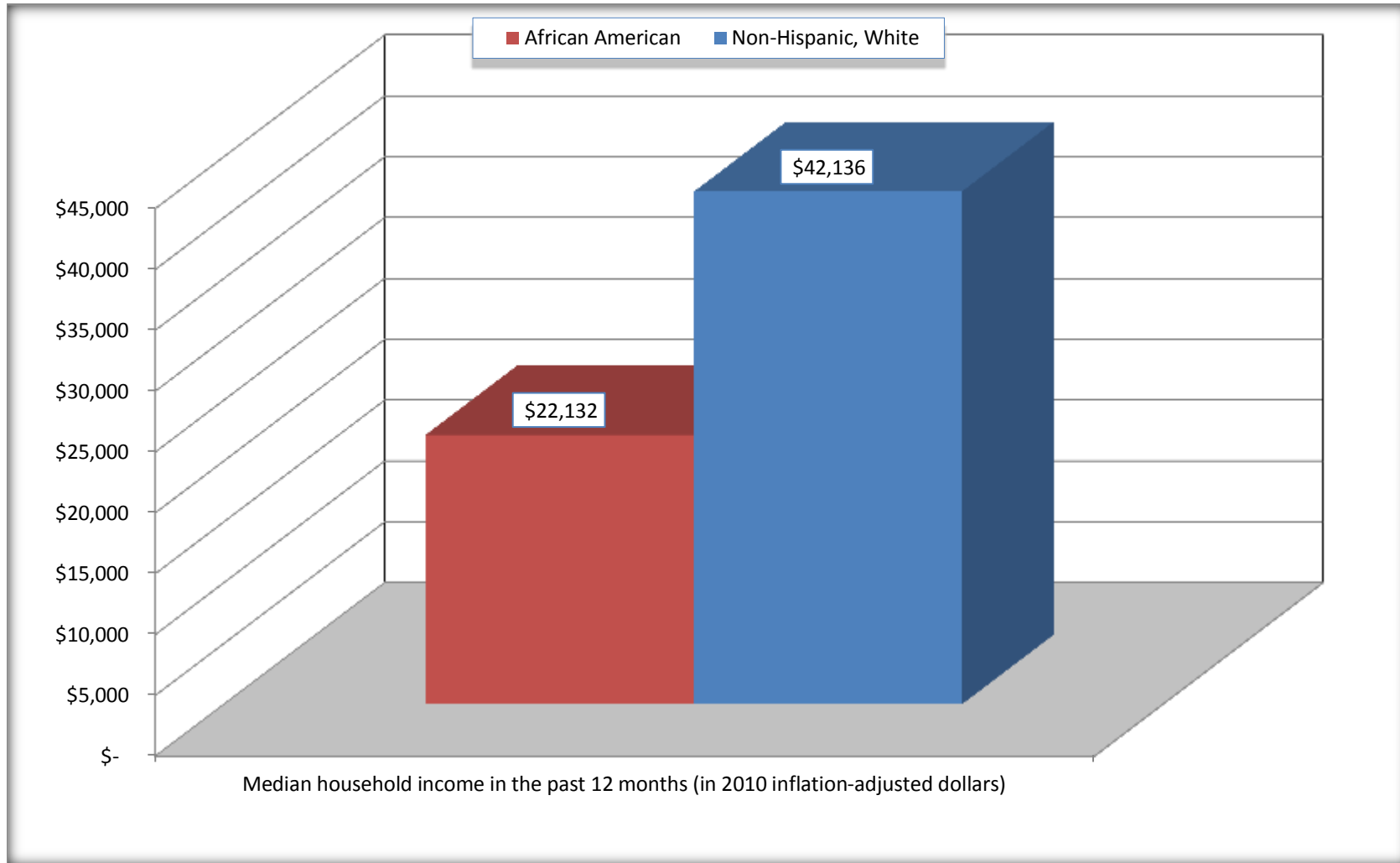
	Crawford County, Georgia			
	African American	Margin of Error (+/-)	White, Not Hispanic	Margin of Error (+/-)
Median household income in the past 12 months (in 2010 inflation-adjusted dollars)	\$ 22,132	\$ 10,751	\$ 42,136	\$ 5,982

Source: U.S. Census Bureau, 2008-2012 American Community Survey

For information on confidentiality protection, sampling error, nonsampling error, and definitions, see Survey Methodology.
<http://www.census.gov/acs/www/UseData/index.htm>

Median Household Income in the Past 12 Months

Crawford County, Georgia



Source: B19013. MEDIAN HOUSEHOLD INCOME IN THE PAST 12 MONTHS (IN 2010 INFLATION-ADJUSTED DOLLARS)
Data Set: 2008-2012 American Community Survey 5-Year Estimates

B19101. FAMILY INCOME IN THE PAST 12 MONTHS (IN 2010 INFLATION-ADJUSTED DOLLARS)

Data Set: 2008-2012 American Community Survey 5-Year Estimates

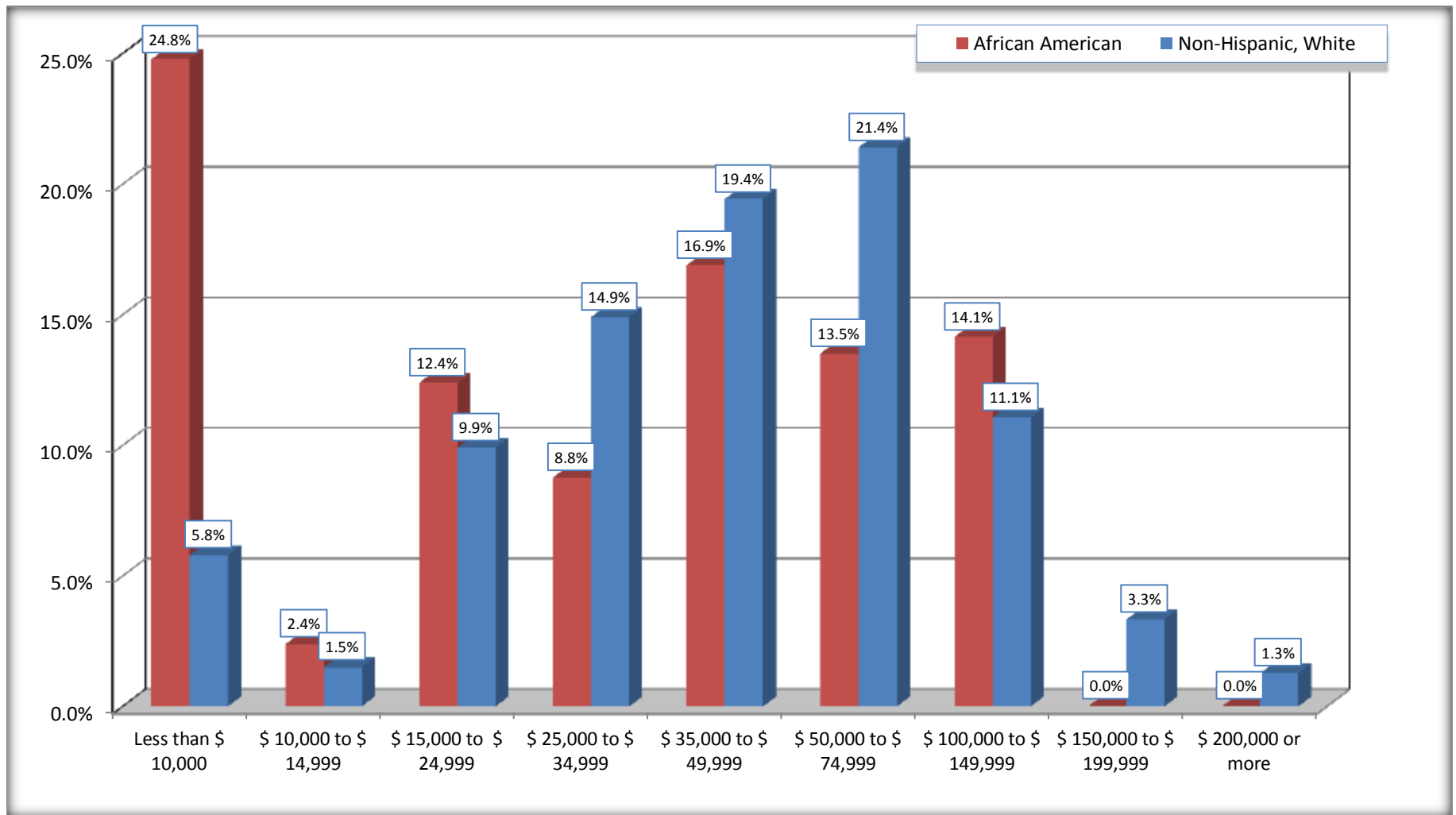
	Crawford County, Georgia					
	African American	Margin of Error (+/-)	% of AA Total	White, Not Hispanic	Margin of Error (+/-)	% of NHW Total
Total:	799	109	100.0%	2,676	217	100.0%
Less than \$ 10,000	198	112	24.8%	155	85	5.8%
\$ 10,000 to \$ 14,999	19	27	2.4%	40	36	1.5%
\$ 15,000 to \$ 24,999	99	NC	12.4%	265	NC	9.9%
\$ 25,000 to \$ 34,999	70	NC	8.8%	399	NC	14.9%
\$ 35,000 to \$ 49,999	135	NC	16.9%	520	NC	19.4%
\$ 50,000 to \$ 74,999	108	NC	13.5%	573	NC	21.4%
\$ 100,000 to \$ 149,999	113	NC	14.1%	296	NC	11.1%
\$ 150,000 to \$ 199,999	0	21	0.0%	89	90	3.3%
\$ 200,000 or more	0	21	0.0%	34	48	1.3%

Source: U.S. Census Bureau, 2008-2012 American Community Survey

For information on confidentiality protection, sampling error, nonsampling error, and definitions, see Survey Methodology.

<http://www.census.gov/acs/www/UseData/index.htm>

Family Income in the Past 12 Months Crawford County, Georgia



Source: B19101. FAMILY INCOME IN THE PAST 12 MONTHS (IN 2010 INFLATION-ADJUSTED DOLLARS)
Data Set: 2008-2012 American Community Survey 5-Year Estimates

B19113. MEDIAN FAMILY INCOME IN THE PAST 12 MONTHS (IN 2010 INFLATION-ADJUSTED DOLLARS)

Data Set: 2008-2012 American Community Survey 5-Year Estimates

	Crawford County, Georgia			
	African American	Margin of Error (+/-)	White, Not Hispanic	Margin of Error (+/-)
Median family income in the past 12 months (in 2010 inflation-adjusted dollars)	\$ 37,250	\$ 15,535	\$ 48,943	\$ 6,411

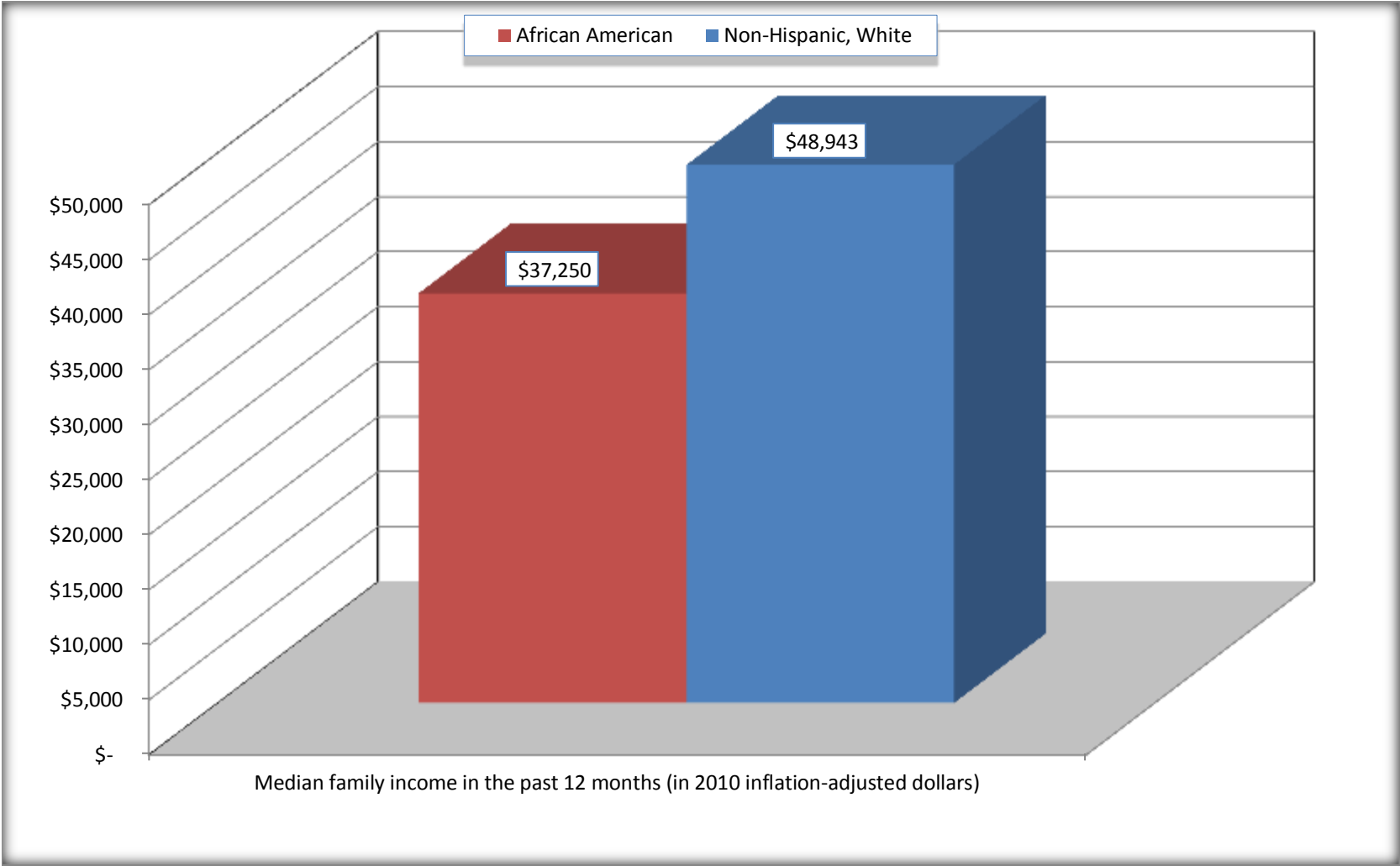
Source: U.S. Census Bureau, 2008-2012 American Community Survey

For information on confidentiality protection, sampling error, nonsampling error, and definitions, see Survey Methodology.

<http://www.census.gov/acs/www/UseData/index.htm>

Median Family Income in the Past 12 Months

Crawford County, Georgia



Source: B19113. MEDIAN FAMILY INCOME IN THE PAST 12 MONTHS (IN 2010 INFLATION-ADJUSTED DOLLARS)
Data Set: 2008-2012 American Community Survey 5-Year Estimates

B19202. MEDIAN NONFAMILY HOUSEHOLD INCOME IN THE PAST 12 MONTHS (IN 2010 INFLATION-ADJUSTED DOLLARS)

Data Set: 2008-2012 American Community Survey 5-Year Estimates

	Crawford County, Georgia			
	African American	Margin of Error (+/-)	White, Not Hispanic	Margin of Error (+/-)
Median nonfamily household income in the past 12 months (in 2010 inflation-adjusted dollars)	\$ 11,167	\$ 4,567	\$ 33,466	\$ 1,988

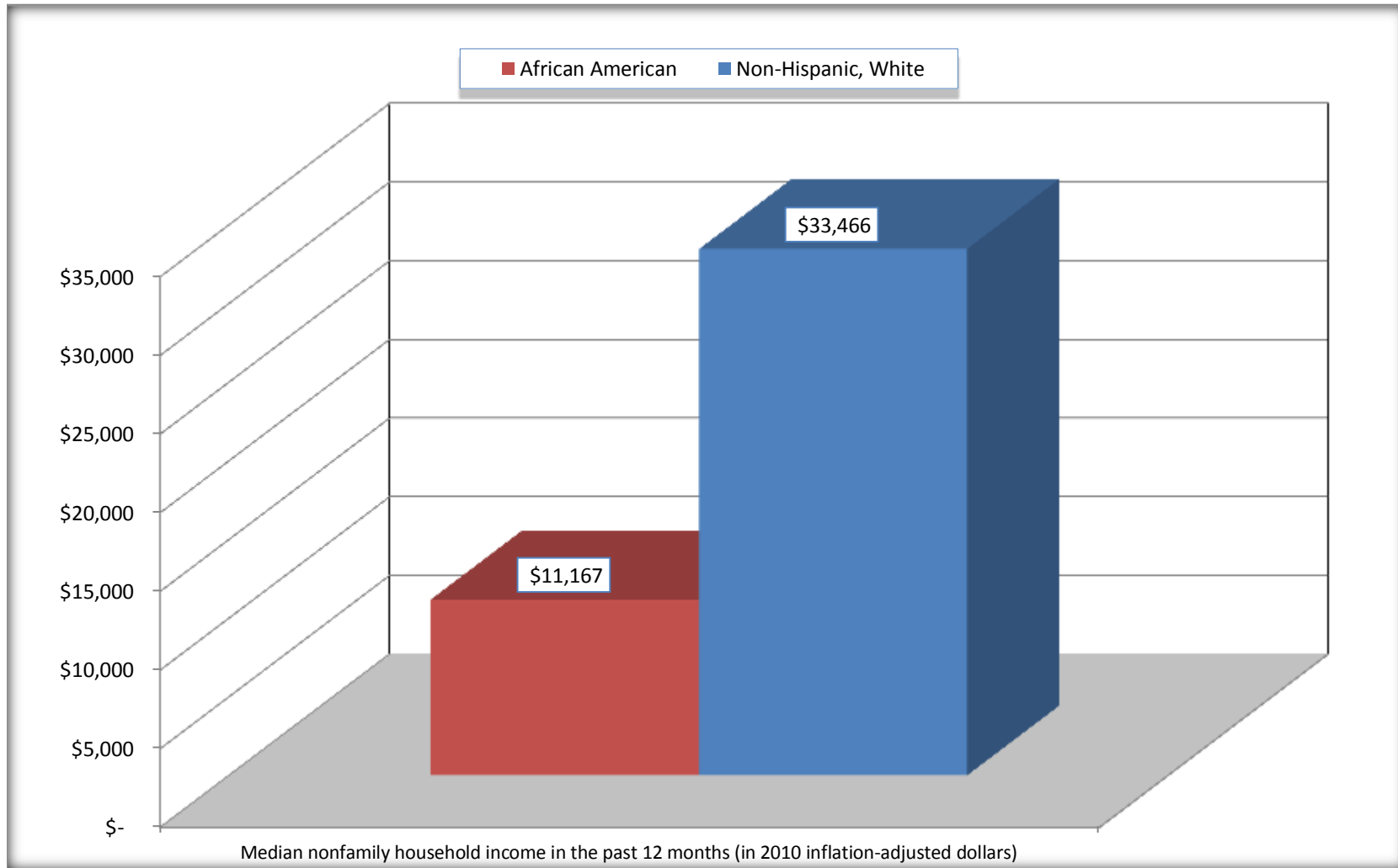
Source: U.S. Census Bureau, 2008-2012 American Community Survey

For information on confidentiality protection, sampling error, nonsampling error, and definitions, see Survey Methodology.

<http://www.census.gov/acs/www/UseData/index.htm>

Median Non-Family Income in the Past 12 Months

Crawford County, Georgia



Source: B19202. MEDIAN NONFAMILY HOUSEHOLD INCOME IN THE PAST 12 MONTHS (IN 2010 INFLATION-ADJUSTED DOLLARS)
Data Set: 2008-2012 American Community Survey 5-Year Estimates

B19301. PER CAPITA INCOME IN THE PAST 12 MONTHS (IN 2010 INFLATION-ADJUSTED DOLLARS)

Data Set: 2008-2012 American Community Survey 5-Year Estimates

	Crawford County, Georgia			
	African American	Margin of Error (+/-)	White, Not Hispanic	Margin of Error (+/-)
Per capita income in the past 12 months (in 2010 inflation-adjusted dollars)	\$ 14,893	\$ 3,055	\$ 21,481	\$ 1,921

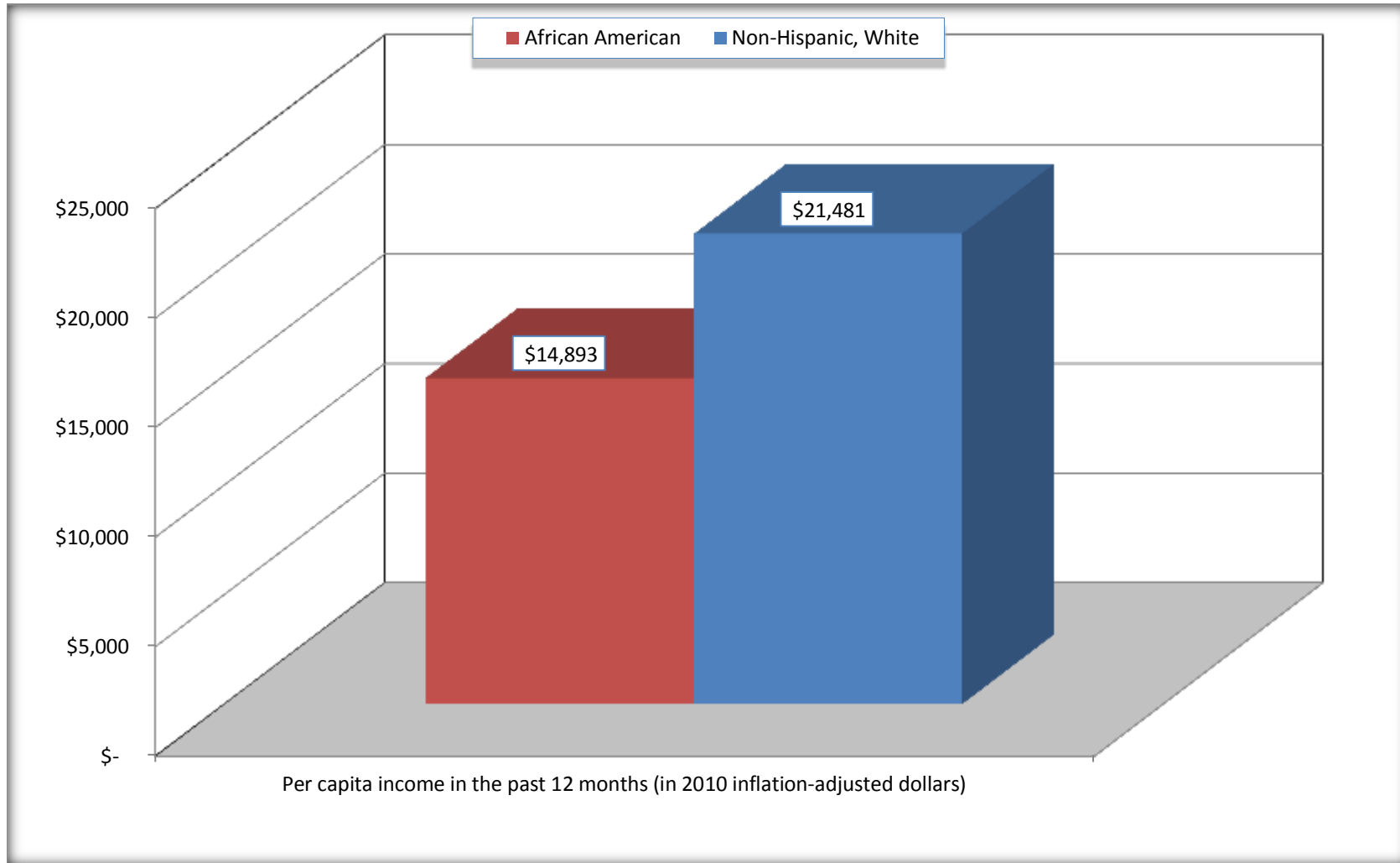
Source: U.S. Census Bureau, 2008-2012 American Community Survey

For information on confidentiality protection, sampling error, nonsampling error, and definitions, see Survey Methodology.

<http://www.census.gov/acs/www/UseData/index.htm>

Per capita Income in the Past 12 Months

Crawford County, Georgia



Source: B19301. PER CAPITA INCOME IN THE PAST 12 MONTHS (IN 2010 INFLATION-ADJUSTED DOLLARS)
Data Set: 2008-2012 American Community Survey 5-Year Estimates

B20017. MEDIAN EARNINGS IN THE PAST 12 MONTHS (IN 2010 INFLATION-ADJUSTED DOLLARS) BY SEX BY WORK EXPERIENCE IN THE PAST 12 MONTHS FOR THE POPULATION 16 YEARS AND OVER WITH EARNINGS IN THE PAST 12 MONTHS

Data Set: 2008-2012 American Community Survey 5-Year Estimates

	Crawford County, Georgia			
	African American	Margin of Error (+/-)	White, Not Hispanic	Margin of Error (+/-)
Median earnings in the past 12 months (in 2010 inflation-adjusted dollars) --				
Total:	\$ 25,021	\$ 7,335	\$ 28,598	\$ 4,210
Male --				
Total	\$ 27,026	\$ 10,953	\$ 34,963	\$ 4,688
Worked full-time, year-round in the past 12 months	\$ 35,542	\$ 11,207	\$ 40,444	\$ 2,746
Other	\$ 11,528	\$ 10,791	\$ 9,688	\$ 3,747
Female --				
Total	\$ 23,017	\$ 7,578	\$ 19,598	\$ 3,198
Worked full-time, year-round in the past 12 months	\$ 39,612	\$ 19,678	\$ 25,797	\$ 4,240
Other	\$ 11,875	\$ 17,665	\$ 8,725	\$ 2,088

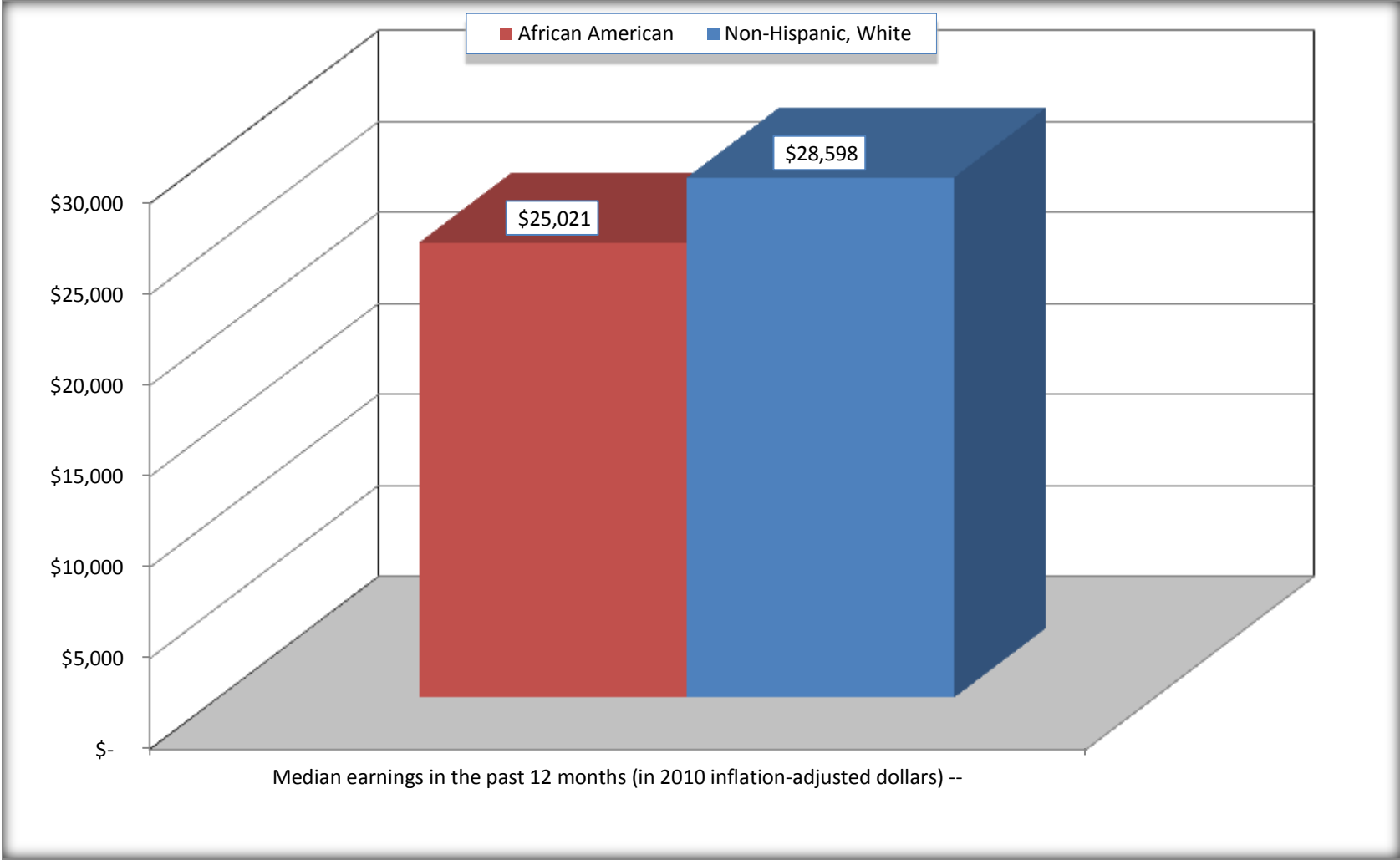
Source: U.S. Census Bureau, 2008-2012 American Community Survey

For information on confidentiality protection, sampling error, nonsampling error, and definitions, see Survey Methodology.

<http://www.census.gov/acs/www/UseData/index.htm>

Median earnings in the Past 12 Months (16 Years and Over with Earnings)

Crawford County, Georgia



Source: B20017. MEDIAN EARNINGS IN THE PAST 12 MONTHS (IN 2010 INFLATION-ADJUSTED DOLLARS) BY SEX BY WORK EXPERIENCE IN THE PAST 12 MONTHS FOR THE POPULATION 16 YEARS AND OVER WITH EARNINGS IN THE PAST 12 MONTHS
Data Set: 2008-2012 American Community Survey 5-Year Estimates

B20005. SEX BY WORK EXPERIENCE IN THE PAST 12 MONTHS BY EARNINGS IN THE PAST 12 MONTHS (IN 2010 INFLATION-ADJUSTED DOLLARS) FOR THE POPULATION 16 YEARS AND OVER

Data Set: 2008-2012 American Community Survey 5-Year Estimates

	Crawford County, Georgia					
	African American	Margin of Error (+/-)	% of AA Total	White, Not Hispanic	Margin of Error (+/-)	% of NHW Total
Total:	2,395	186	100.0%	7,465	90	100.0%
Worked full-time, year-round in the past 12 months:	916	NC	38.2%	3,065	NC	41.1%
No earnings	0	NC	0.0%	0	NC	0.0%
With earnings:	916	NC	38.2%	3,065	NC	41.1%
\$ 1 to \$ 9,999 or loss	1	NC	0.0%	115	NC	1.5%
\$ 10,000 to \$ 19,999	163	NC	6.8%	434	NC	5.8%
\$ 20,000 to \$ 29,999	258	NC	10.8%	491	NC	6.6%
\$ 30,000 to \$ 49,999	286	NC	11.9%	1,158	NC	15.5%
\$ 50,000 to \$ 74,999	152	NC	6.3%	458	NC	6.1%
\$ 75,000 or more	56	NC	2.3%	409	NC	5.5%
Other:	1,479	NC	61.8%	4,400	NC	58.9%
No earnings	1,080	NC	45.1%	2,922	NC	39.1%
With earnings: less than full time, year-round	399	NC	16.7%	1,478	NC	19.8%
Male:	1,152	128	48.1%	3,768	71	50.5%
Worked full-time, year-round in the past 12 months:	433	162	18.1%	1,788	199	24.0%
No earnings	0	21	0.0%	0	21	0.0%
With earnings:	433	162	18.1%	1,788	199	24.0%
\$ 1 to \$ 9,999 or loss	1	NC	0.0%	29	NC	0.4%
\$ 10,000 to \$ 19,999	91	NC	3.8%	61	NC	0.8%
\$ 20,000 to \$ 29,999	113	NC	4.7%	236	NC	3.2%
\$ 30,000 to \$ 49,999	204	NC	8.5%	785	NC	10.5%
\$ 50,000 to \$ 74,999	24	NC	1.0%	407	NC	5.5%
\$ 75,000 or more	0	NC	0.0%	270	NC	3.6%

	Crawford County, Georgia					
	African American	Margin of Error (+/-)	% of AA Total	White, Not Hispanic	Margin of Error (+/-)	% of NHW Total
Other:	719	181	30.0%	1,980	208	26.5%
No earnings	577	159	24.1%	1,278	202	17.1%
With earnings:	142	76	5.9%	702	177	9.4%
Female:	1,243	82	51.9%	3,697	87	49.5%
Worked full-time, year-round in the past 12 months:	483	135	20.2%	1,277	173	17.1%
No earnings	0	21	0.0%	0	21	0.0%
With earnings:	483	135	20.2%	1,277	173	17.1%
\$ 1 to \$ 9,999 or loss	0	NC	0.0%	86	NC	1.2%
\$ 10,000 to \$ 19,999	72	NC	3.0%	373	NC	5.0%
\$ 20,000 to \$ 29,999	145	NC	6.1%	255	NC	3.4%
\$ 30,000 to \$ 49,999	82	NC	3.4%	373	NC	5.0%
\$ 50,000 to \$ 74,999	128	NC	5.3%	51	NC	0.7%
\$ 75,000 or more	56	NC	2.3%	139	NC	1.9%
Other:	760	135	31.7%	2,420	184	32.4%
No earnings	503	104	21.0%	1,644	211	22.0%
With earnings:	257	121	10.7%	776	188	10.4%

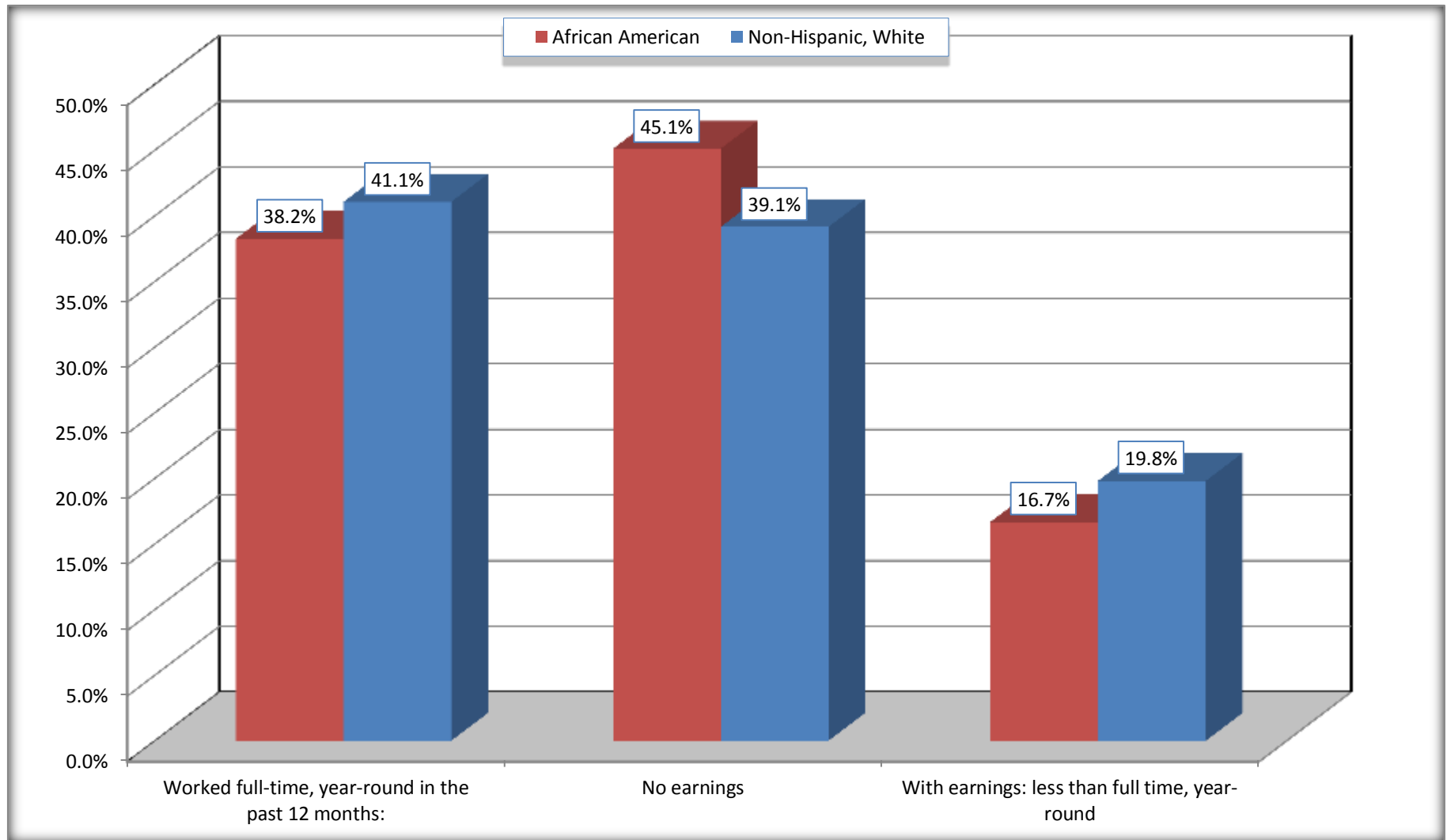
Source: U.S. Census Bureau, 2008-2012 American Community Survey

For information on confidentiality protection, sampling error, nonsampling error, and definitions, see Survey Methodology.

<http://www.census.gov/acs/www/UseData/index.htm>

Employment and Earnings in in the Past 12 Months (16 Years and Over)

Crawford County, Georgia



Source: B20005. SEX BY WORK EXPERIENCE IN THE PAST 12 MONTHS BY EARNINGS IN THE PAST 12 MONTHS (IN 2010 INFLATION-ADJUSTED DOLLARS) FOR THE POPULATION 16 YEARS AND OVER

Data Set: 2008-2012 American Community Survey 5-Year Estimates

C21001. SEX BY AGE BY VETERAN STATUS FOR THE CIVILIAN POPULATION 18 YEARS AND OVER

Data Set: 2008-2012 American Community Survey 5-Year Estimates

	Crawford County, Georgia					
	African American	Margin of Error (+/-)	% of AA Total	White, Not Hispanic	Margin of Error (+/-)	% of NHW Total
Total:	2,260	155	100.0%	7,212	71	100.0%
Veteran	129	NC	5.7%	862	NC	12.0%
Nonveteran	2,131	NC	94.3%	6,350	NC	88.0%
Male:	1,049	100	46.4%	3,647	31	50.6%
18 to 64 years:	910	79	40.3%	3,005	31	41.7%
Veteran	98	72	4.3%	434	126	6.0%
Nonveteran	812	110	35.9%	2,571	129	35.6%
65 years and over:	139	36	6.2%	642	21	8.9%
Veteran	31	37	1.4%	367	91	5.1%
Nonveteran	108	43	4.8%	275	91	3.8%
Female:	1,211	73	53.6%	3,565	42	49.4%
18 to 64 years:	1,003	73	44.4%	2,891	42	40.1%
Veteran	0	21	0.0%	39	57	0.5%
Nonveteran	1,003	73	44.4%	2,852	69	39.5%
65 years and over:	208	21	9.2%	674	21	9.3%
Veteran	0	21	0.0%	22	34	0.3%
Nonveteran	208	21	9.2%	652	34	9.0%

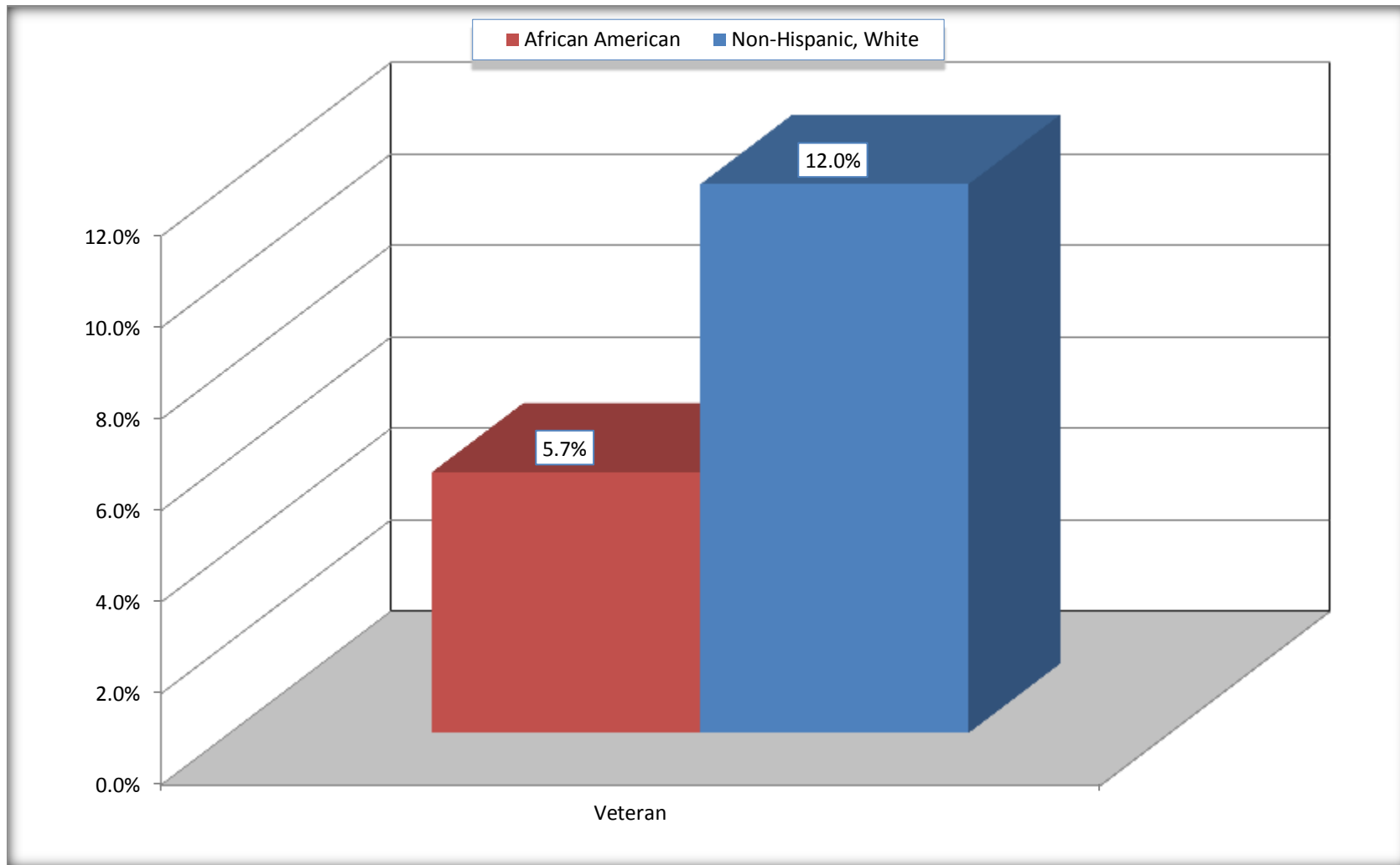
Source: U.S. Census Bureau, 2008-2012 American Community Survey

For information on confidentiality protection, sampling error, nonsampling error, and definitions, see Survey Methodology.

<http://www.census.gov/acs/www/UseData/index.htm>

Veterans in the Civilian Population 18 Years and Over

Crawford County, Georgia



Source: C21001. SEX BY AGE BY VETERAN STATUS FOR THE CIVILIAN POPULATION 18 YEARS AND OVER
Data Set: 2008-2012 American Community Survey 5-Year Estimates

B22005. RECEIPT OF FOOD STAMPS/SNAP IN THE PAST 12 MONTHS BY RACE OF HOUSEHOLDER

Data Set: 2008-2012 American Community Survey 5-Year Estimates

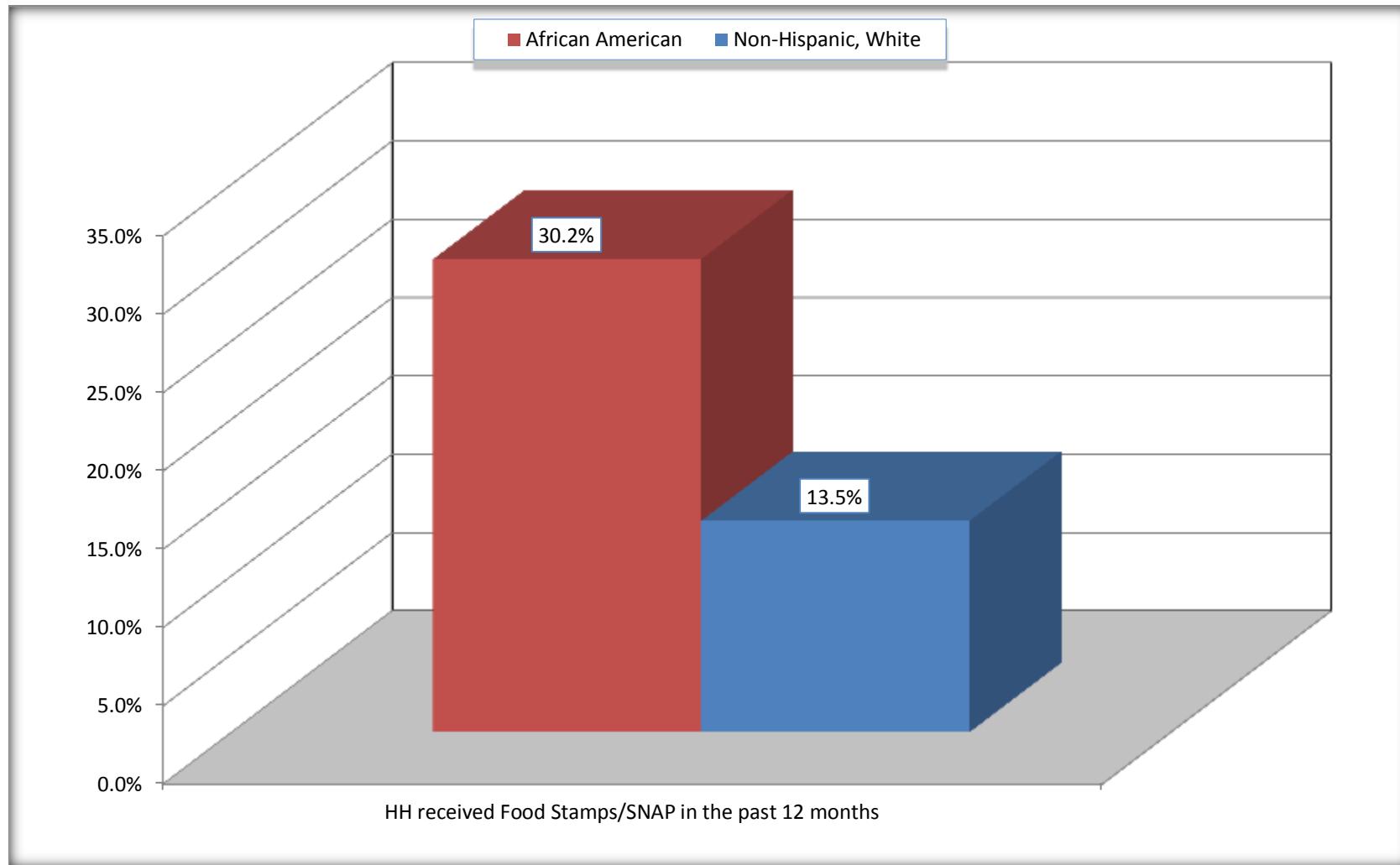
	Crawford County, Georgia					
	African American	Margin of Error (+/-)	% of AA Total	White, Not Hispanic	Margin of Error (+/-)	% of NHW Total
Total:	1,161	116	100.0%	3,424	176	100.0%
HH received Food Stamps/SNAP in the past 12 months	351	158	30.2%	463	142	13.5%
HH did not receive Food Stamps/SNAP in the past 12 months	810	163	69.8%	2,961	226	86.5%

Source: U.S. Census Bureau, 2008-2012 American Community Survey

For information on confidentiality protection, sampling error, nonsampling error, and definitions, see Survey Methodology.

<http://www.census.gov/acs/www/UseData/index.htm>

Receipt of Food Stamps/SNAP in the Past 12 Months by Household Crawford County, Georgia



Source: B22005. RECEIPT OF FOOD STAMPS/SNAP IN THE PAST 12 MONTHS BY RACE OF HOUSEHOLDER
Data Set: 2008-2012 American Community Survey 5-Year Estimates

C23002. SEX BY AGE BY EMPLOYMENT STATUS FOR THE POPULATION 16 YEARS AND OVER

Data Set: 2008-2012 American Community Survey 5-Year Estimates

	Crawford County, Georgia					
	African American	Margin of Error (+/-)	% of AA Total	White, Not Hispanic	Margin of Error (+/-)	% of NHW Total
Total:	2,395	186	100.0%	7,465	90	100.0%
In labor force:	1,446	NC	60.4%	4,354	NC	58.3%
In Armed Forces	0	NC	0.0%	8	NC	0.1%
Civilian:	1,437	NC	60.0%	4,180	NC	56.0%
Employed	1,291	NC	53.9%	3,954	NC	53.0%
Unemployed	155	NC	6.5%	392	NC	5.3%
Not in labor force	949	NC	39.6%	3,111	NC	41.7%
Male:	1,152	128	48.1%	3,768	71	50.5%
16 to 64 years:	1,013	109	42.3%	3,126	71	41.9%
In labor force:	637	129	26.6%	2,371	182	31.8%
In Armed Forces	0	21	0.0%	8	17	0.1%
Civilian:	637	129	26.6%	2,363	183	31.7%
Employed	542	143	22.6%	2,085	206	27.9%
Unemployed	95	76	4.0%	278	139	3.7%
Not in labor force	376	140	15.7%	755	184	10.1%
65 years and over:	139	36	5.8%	642	21	8.6%
In labor force:	9	16	0.4%	148	74	2.0%
Employed	9	16	0.4%	142	75	1.9%
Unemployed	0	21	0.0%	6	12	0.1%
Not in labor force	130	37	5.4%	494	74	6.6%

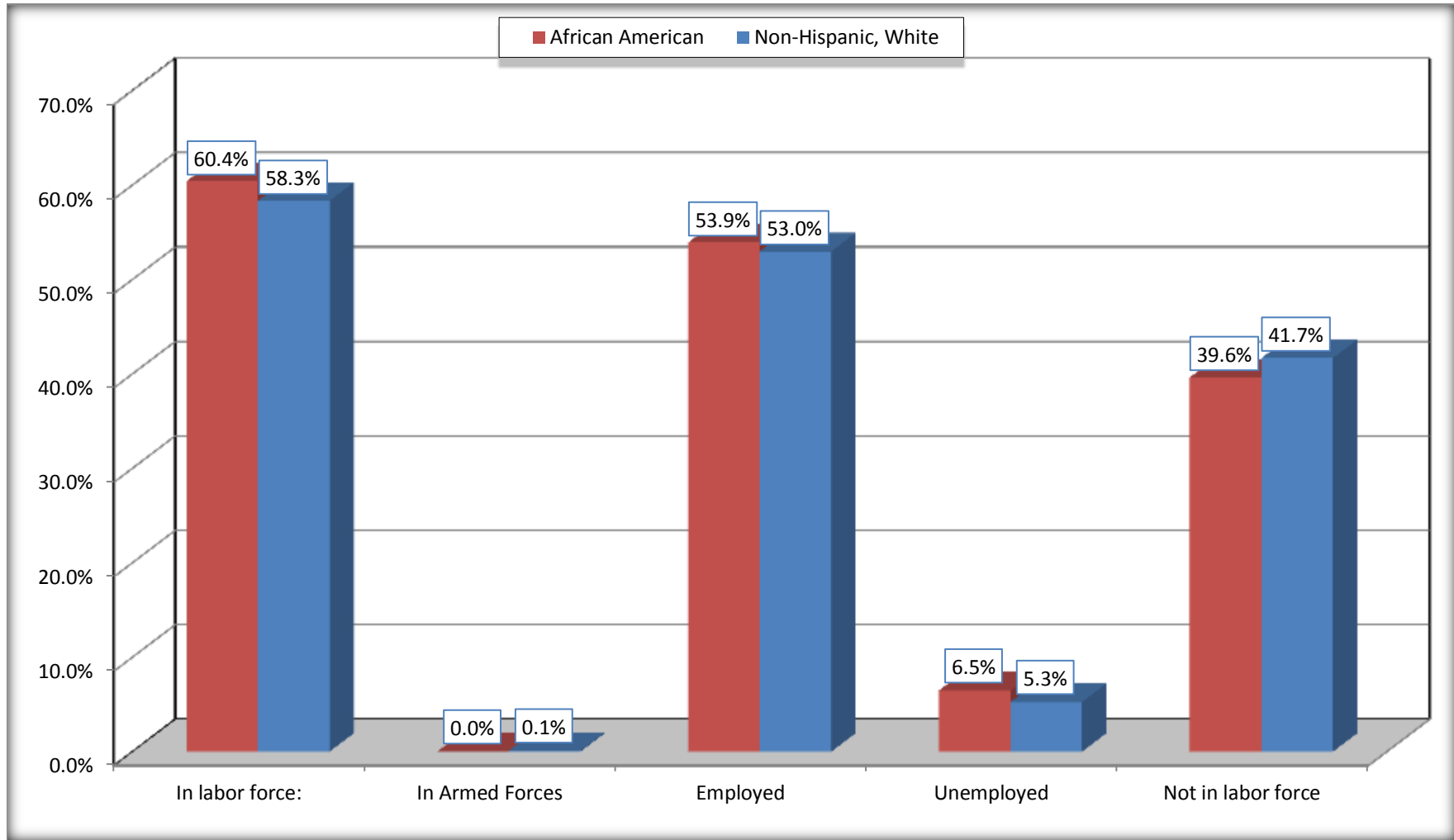
	Crawford County, Georgia					
	African American	Margin of Error (+/-)	% of AA Total	White, Not Hispanic	Margin of Error (+/-)	% of NHW Total
Female:	1,243	82	51.9%	3,697	87	49.5%
16 to 64 years:	1,035	82	43.2%	3,023	87	40.5%
In labor force:	800	110	33.4%	1,817	198	24.3%
In Armed Forces	0	21	0.0%	0	21	0.0%
Civilian:	800	110	33.4%	1,817	198	24.3%
Employed	740	118	30.9%	1,709	187	22.9%
Unemployed	60	48	2.5%	108	81	1.4%
Not in labor force	235	100	9.8%	1,206	224	16.2%
65 years and over:	208	21	8.7%	674	21	9.0%
In labor force:	0	21	0.0%	18	18	0.2%
Employed	0	21	0.0%	18	18	0.2%
Unemployed	0	21	0.0%	0	21	0.0%
Not in labor force	208	21	8.7%	656	18	8.8%

Source: U.S. Census Bureau, 2008-2012 American Community Survey

For information on confidentiality protection, sampling error, nonsampling error, and definitions, see Survey Methodology.
<http://www.census.gov/acs/www/UseData/index.htm>

Employment Status for the Population 16 years and over

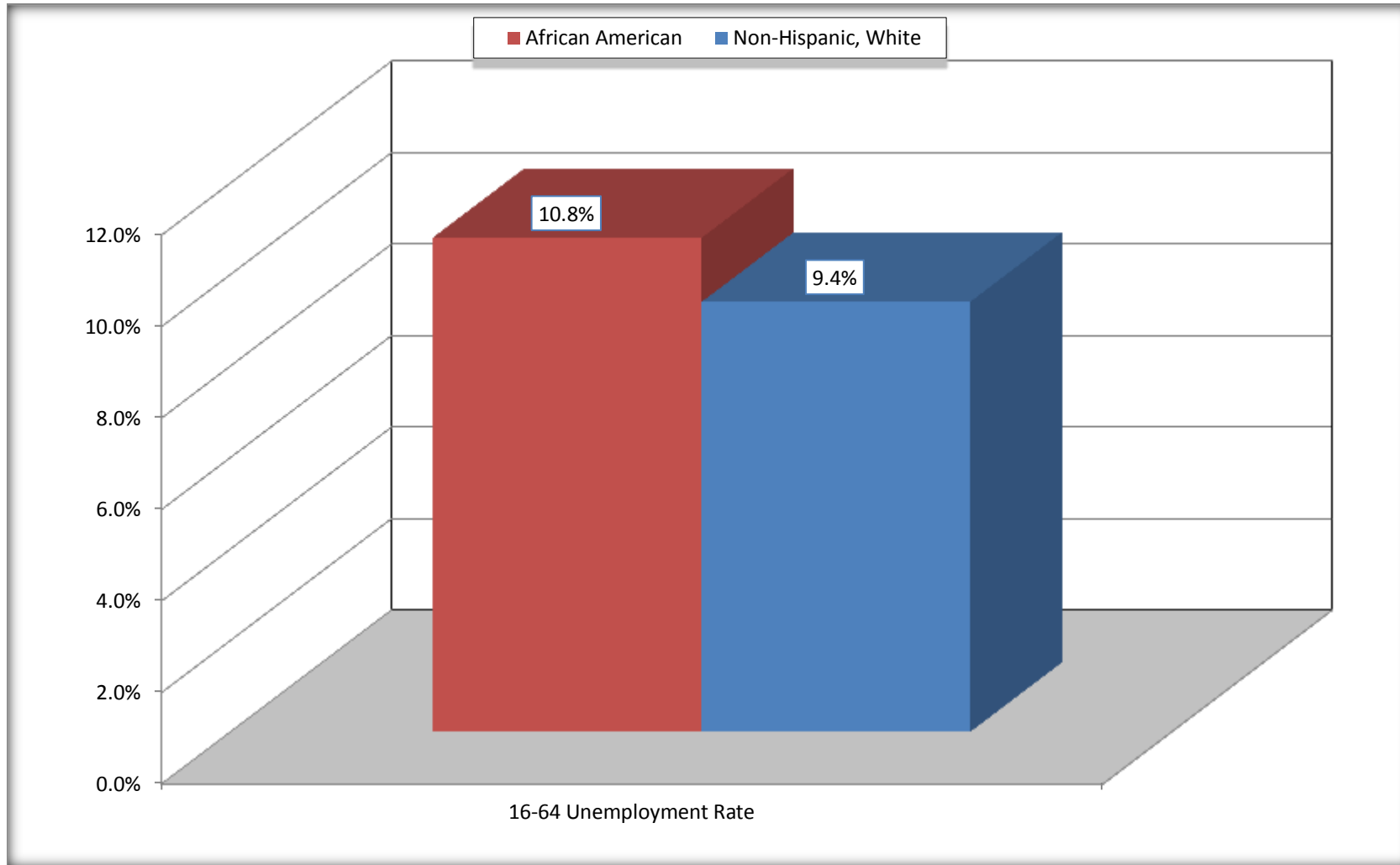
Crawford County, Georgia



Source: C23002. SEX BY AGE BY EMPLOYMENT STATUS FOR THE POPULATION 16 YEARS AND OVER
Data Set: 2008-2012 American Community Survey 5-Year Estimates

Unemployment of Working Age Population (Ages 16 to 64) (As a Percent of 16-64 Civilian Labor Force)

Crawford County, Georgia



Source: C23002. SEX BY AGE BY EMPLOYMENT STATUS FOR THE POPULATION 16 YEARS AND OVER
Data Set: 2008-2012 American Community Survey 5-Year Estimates

C24010. SEX BY OCCUPATION FOR THE CIVILIAN EMPLOYED POPULATION 16 YEARS AND OVER

Data Set: 2008-2012 American Community Survey 5-Year Estimates

	Crawford County, Georgia					
	African American	Margin of Error (+/-)	% of AA Total	White, Not Hispanic	Margin of Error (+/-)	% of NHW Total
Total:	1,291	213	100.0%	3,954	264	100.0%
Management, professional, and related occupations	300	NC	23.2%	1,072	NC	27.1%
Service occupations	422	NC	32.7%	472	NC	11.9%
Sales and office occupations	202	NC	15.6%	1,128	NC	28.5%
Natural resources, construction, and maintenance occupations:	165	NC	12.8%	543	NC	13.7%
Production, transportation, and material moving occupations	202	NC	15.6%	739	NC	18.7%
Male:	551	143	42.7%	2,227	216	56.3%
Management, business, science, and arts occupations:	59	51	4.6%	514	172	13.0%
Service occupations	117	87	9.1%	174	90	4.4%
Sales and office occupations	59	74	4.6%	433	147	11.0%
Natural resources, construction, and maintenance occupations:	165	96	12.8%	543	166	13.7%
Production, transportation, and material moving occupations	151	104	11.7%	563	159	14.2%
Female:	740	118	57.3%	1,727	190	43.7%
Management, professional, and related occupations	241	132	18.7%	558	151	14.1%
Service occupations	305	159	23.6%	298	128	7.5%
Sales and office occupations	143	76	11.1%	695	182	17.6%
Natural resources, construction, and maintenance occupations:	0	21	0.0%	0	21	0.0%
Production, transportation, and material moving occupations	51	53	4.0%	176	117	4.5%

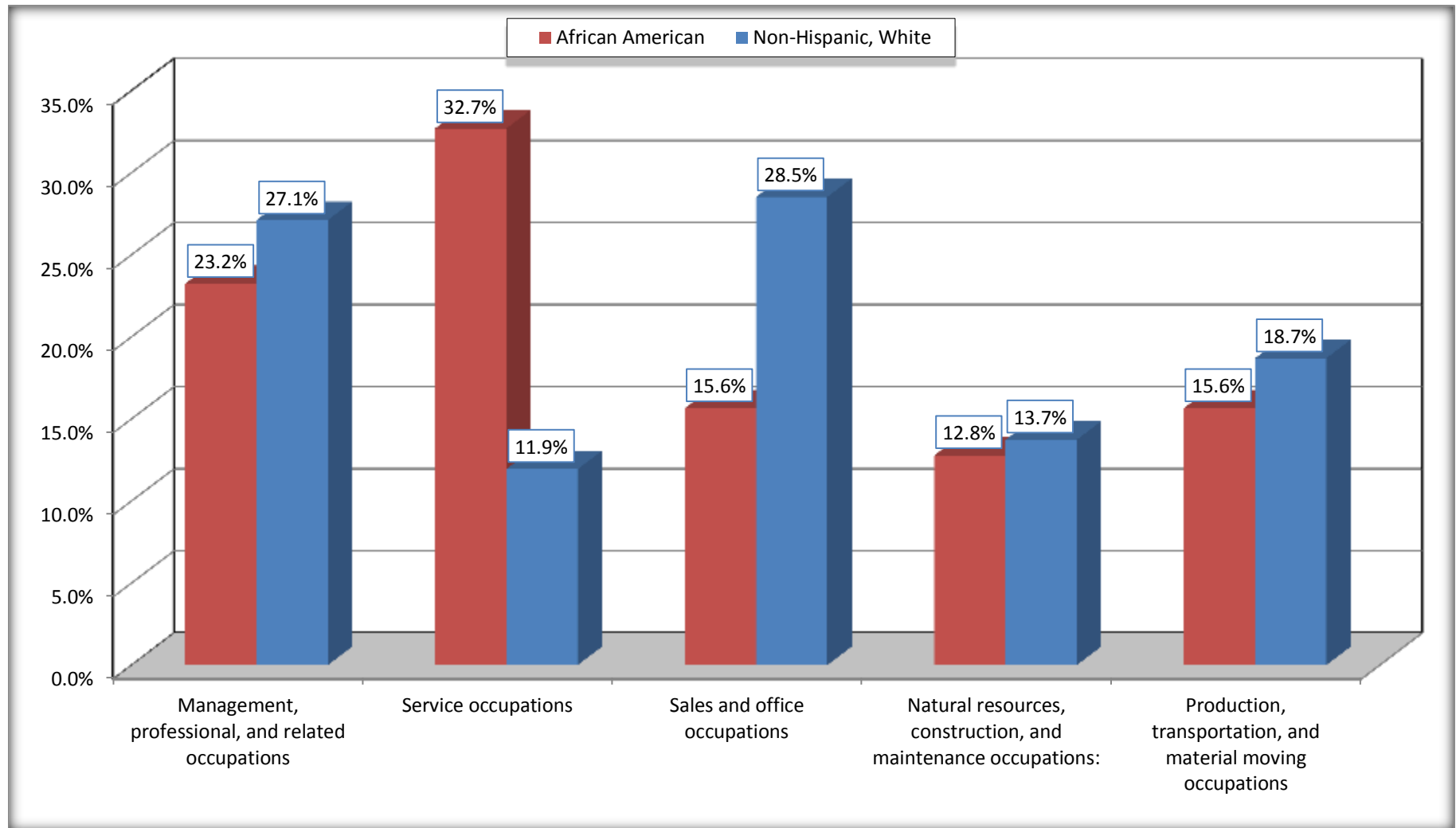
Source: U.S. Census Bureau, 2008-2012 American Community Survey

For information on confidentiality protection, sampling error, nonsampling error, and definitions, see Survey Methodology.

<http://www.census.gov/acs/www/UseData/index.htm>

Occupation for the Civilian Employed 16 Years and Over Population

Crawford County, Georgia



Source: C24010. SEX BY OCCUPATION FOR THE CIVILIAN EMPLOYED POPULATION 16 YEARS AND OVER
Data Set: 2008-2012 American Community Survey 5-Year Estimates

B25003. TENURE - Universe: OCCUPIED HOUSING UNITS

Data Set: 2008-2012 American Community Survey 5-Year Estimates

	Crawford County, Georgia					
	African American	Margin of Error (+/-)	% of AA Total	White, Not Hispanic	Margin of Error (+/-)	% of NHW Total
Total:	1,161	116	100.0%	3,424	176	100.0%
Owner occupied	685	126	59.0%	3,011	215	87.9%
Renter occupied	476	138	41.0%	413	135	12.1%

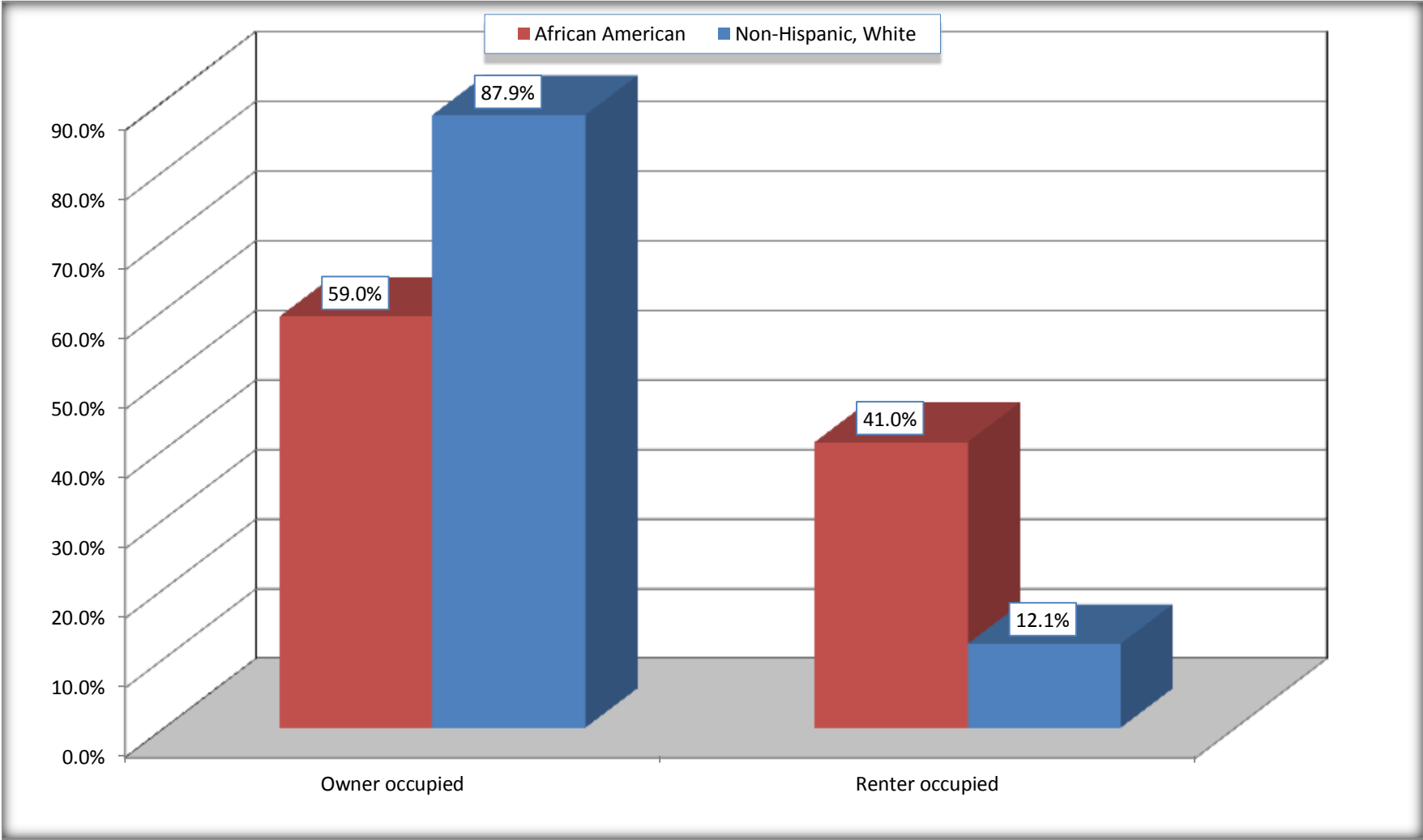
Source: U.S. Census Bureau, 2008-2012 American Community Survey

For information on confidentiality protection, sampling error, nonsampling error, and definitions, see Survey Methodology.

<http://www.census.gov/acs/www/UseData/index.h>

Home Owners and Renters by Household

Crawford County, Georgia



Source: B25003. TENURE - Universe: OCCUPIED HOUSING UNITS
Data Set: 2008-2012 American Community Survey 5-Year Estimates

B25014. OCCUPANTS PER ROOM - Universe: OCCUPIED HOUSING UNITS

Data Set: 2008-2012 American Community Survey 5-Year Estimates

	Crawford County, Georgia					
	African American	Margin of Error (+/-)	% of AA Total	White, Not Hispanic	Margin of Error (+/-)	% of NHW Total
Total:	1,161	116	100.0%	3,424	176	100.0%
1.00 or less occupants per room	1,161	116	100.0%	3,381	177	98.7%
1.01 or more occupants per room	0	21	0.0%	43	42	1.3%

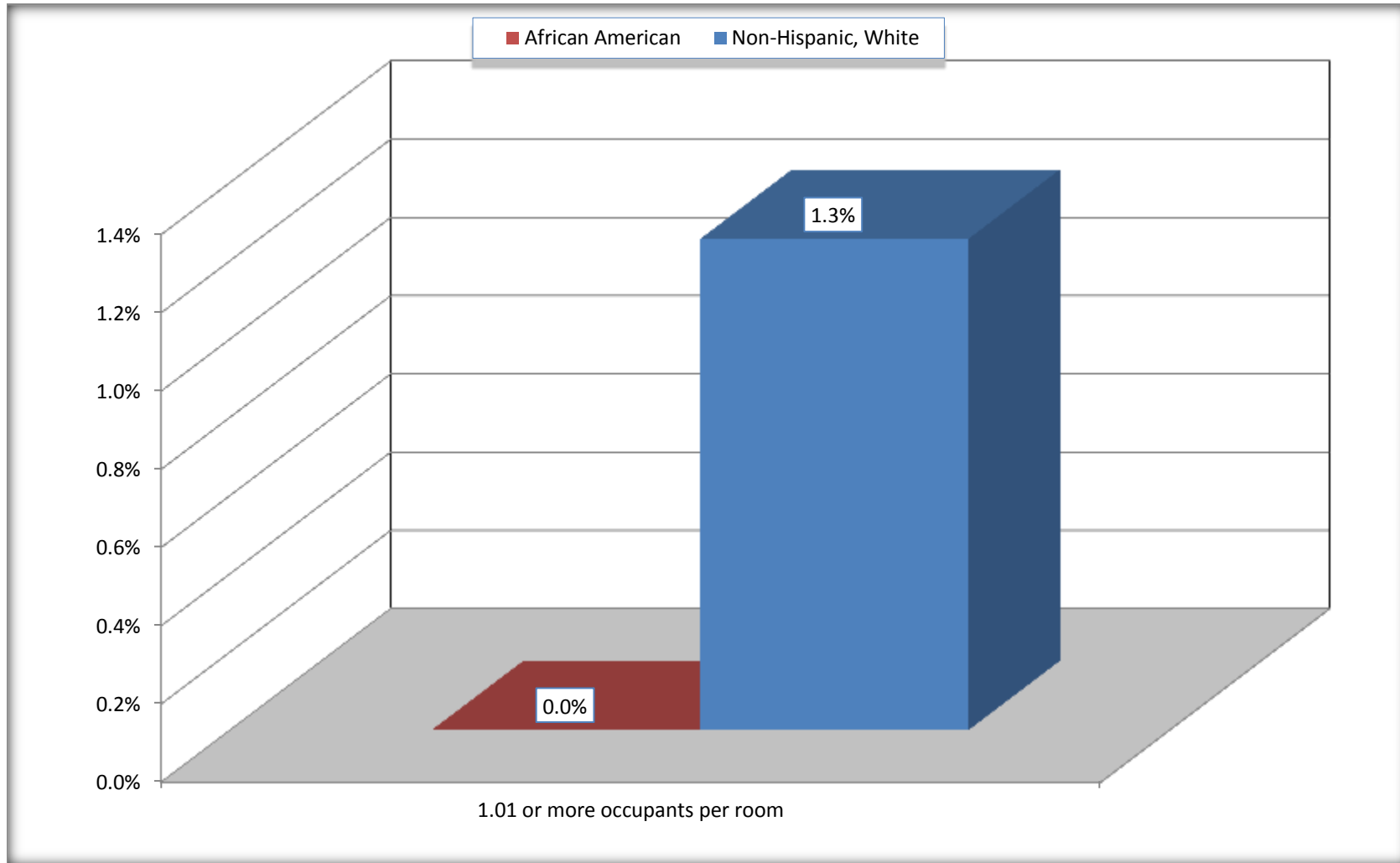
Source: U.S. Census Bureau, 2008-2012 American Community Survey

For information on confidentiality protection, sampling error, nonsampling error, and definitions, see Survey Methodology.

<http://www.census.gov/acs/www/UseData/index.ht>

More than One Person per Room (Crowding) by Household

Crawford County, Georgia



Source: B25014. OCCUPANTS PER ROOM - Universe: OCCUPIED HOUSING UNITS
Data Set: 2008-2012 American Community Survey 5-Year Estimates

B18101. AGE BY DISABILITY STATUS

Data Set: 2008-2012 American Community Survey 5-Year Estimates

	Crawford County, Georgia					
	African American	Margin of Error (+/-)	% of AA Total	White, Not Hispanic	Margin of Error (+/-)	% of NHW Total
Total:	2,938	221	100.0%	9,188	86	100.0%
Under 18 years:	725	122	24.7%	2,046	112	22.3%
With a disability	35	45	1.2%	109	59	1.2%
No disability	690	118	23.5%	1,937	59	21.1%
18 to 64 years:	1,883	134	64.1%	5,875	73	63.9%
With a disability	276	145	9.4%	747	187	8.1%
No disability	1,607	194	54.7%	5,128	204	55.8%
65 years and over:	330	37	11.2%	1,267	46	13.8%
With a disability	137	61	4.7%	308	104	3.4%
No disability	193	62	6.6%	959	99	10.4%

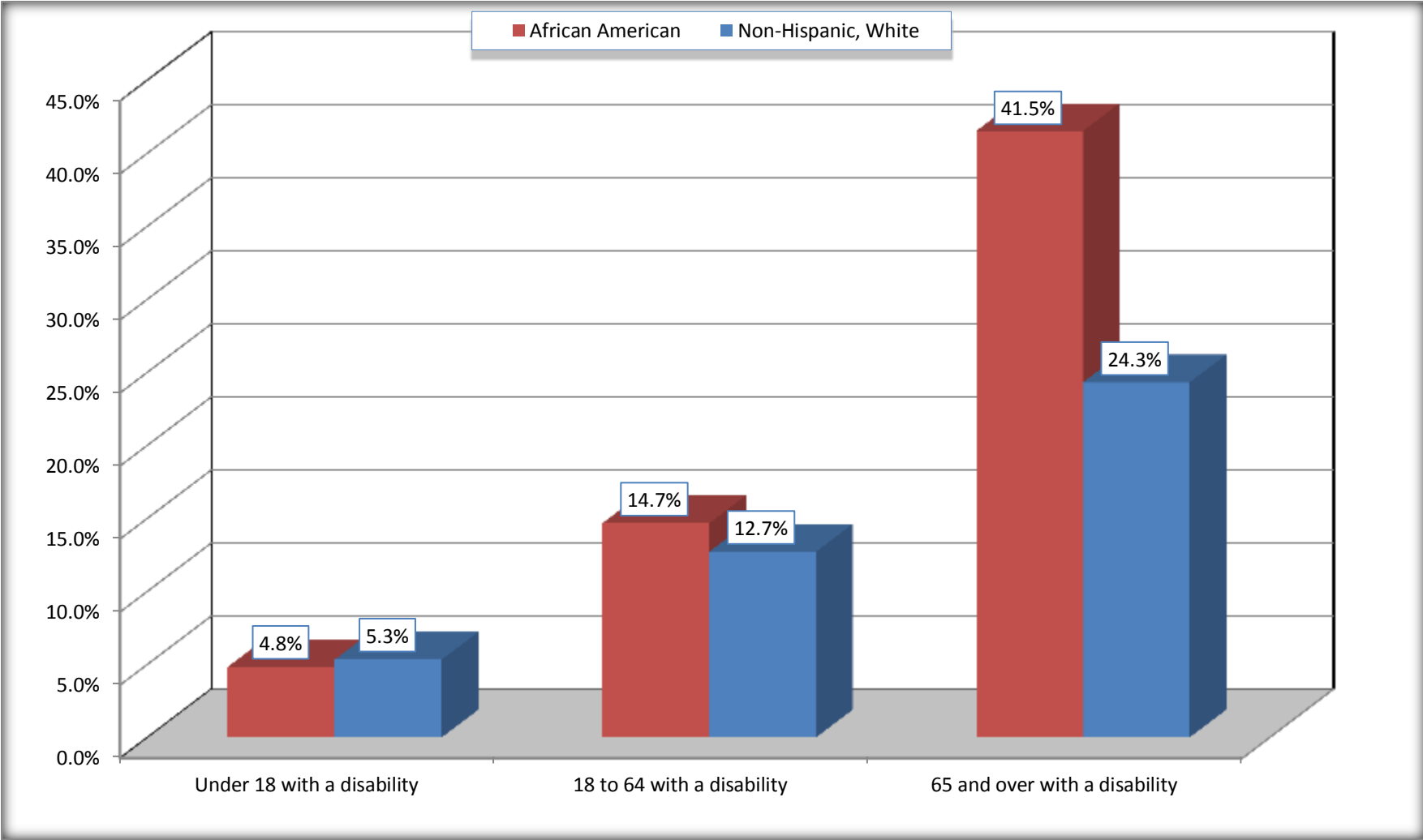
Source: U.S. Census Bureau, 2008-2012 American Community Survey

For information on confidentiality protection, sampling error, nonsampling error, and definitions, see Survey Methodology.

<http://www.census.gov/acs/www/UseData/index.htm>

Disability by Age

Crawford County, Georgia



Source: B18101. AGE BY DISABILITY STATUS
Data Set: 2008-2012 American Community Survey 5-Year Estimates

C27001B. HEALTH INSURANCE COVERAGE STATUS BY AGE

Data Set: 2008-2012 American Community Survey 5-Year Estimates

	Crawford County, Georgia					
	African American	Margin of Error (+/-)	% of AA Total	White, Not Hispanic	Margin of Error (+/-)	% of NHW Total
Total:	2,938	221	100.0%	9,188	86	100.0%
Under 18 years:	725	122	24.7%	2,046	21	22.3%
With health insurance coverage	594	139	20.2%	1,828	133	19.9%
No health insurance coverage	131	101	4.5%	218	133	2.4%
18 to 64 years:	1,883	134	64.1%	5,875	73	63.9%
With health insurance coverage	1,312	208	44.7%	4,531	286	49.3%
No health insurance coverage	571	197	19.4%	1,344	284	14.6%
65 years and over:	330	37	11.2%	1,267	46	13.8%
With health insurance coverage	330	37	11.2%	1,267	46	13.8%
No health insurance coverage	0	21	0.0%	0	21	0.0%

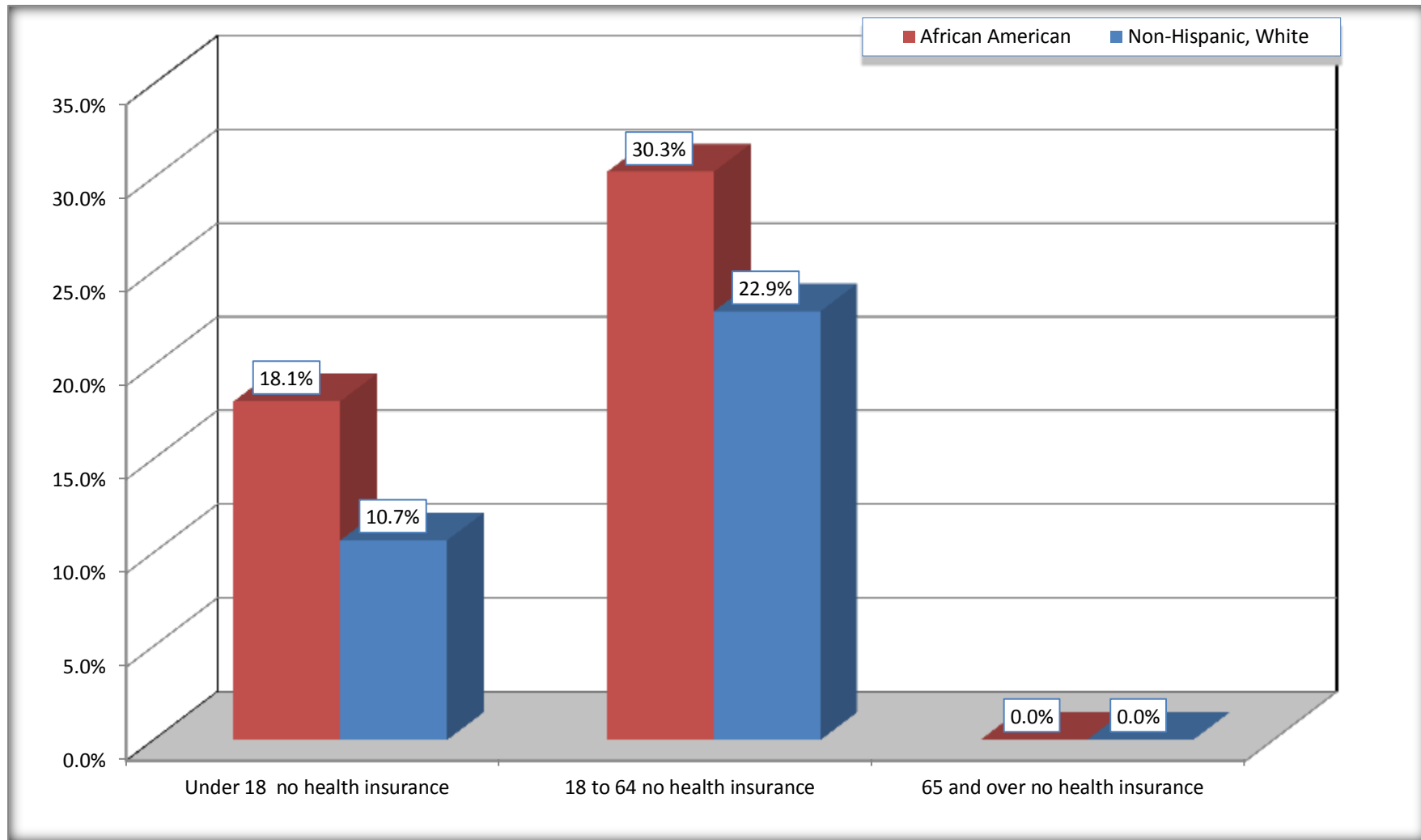
Source: U.S. Census Bureau, 2008-2012 American Community Survey

For information on confidentiality protection, sampling error, nonsampling error, and definitions, see Survey Methodology.

<http://www.census.gov/acs/www/UseData/index.htm>

Lack of Health Insurance Coverage by Age

Crawford County, Georgia



Source: C27001B. HEALTH INSURANCE COVERAGE STATUS BY AGE
Data Set: 2008-2012 American Community Survey 5-Year Estimates