

Selected Socio-Economic Data

Conley CDP, Georgia

African American and White, Not Hispanic

Data Set: 2008-2012 American Community Survey 5-Year Estimates

www.fairvote2020.org

www.fairdata2000.com

[29-Dec-13](#)

C02003.DETAILED RACE - Universe: TOTAL POPULATION

Data Set: 2008-2012 American Community Survey 5-Year Estimates

	Conley CDP, Georgia		
	Population	Margin of Error (+/-)	% of Total
Total:	5,989	950	100.0%
Population of one race:	5,917	939	98.8%
White	1,458	439	24.3%
Black or African American	4,010	950	67.0%
American Indian and Alaska Native	0	19	0.0%
Asian alone	63	63	1.1%
Native Hawaiian and Other Pacific Islander	0	19	0.0%
Some other race	386	429	6.4%
Population of two or more races:	72	81	1.2%
Two races including Some other race	0	19	0.0%
Two races excluding Some other race, and three or more races	72	81	1.2%
Population of two races:	72	81	1.2%
White; Black or African American	0	19	0.0%
White; American Indian and Alaska Native	0	19	0.0%
White; Asian	0	19	0.0%
Black or African American; American Indian and Alaska Native	0	19	0.0%
All other two race combinations	72	81	1.2%
Population of three races	0	19	0.0%
Population of four or more races	0	19	0.0%

Note: Hispanics may be of any race. See Table B03002 and chart.

Source: U.S. Census Bureau, 2008-2012 American Community Survey

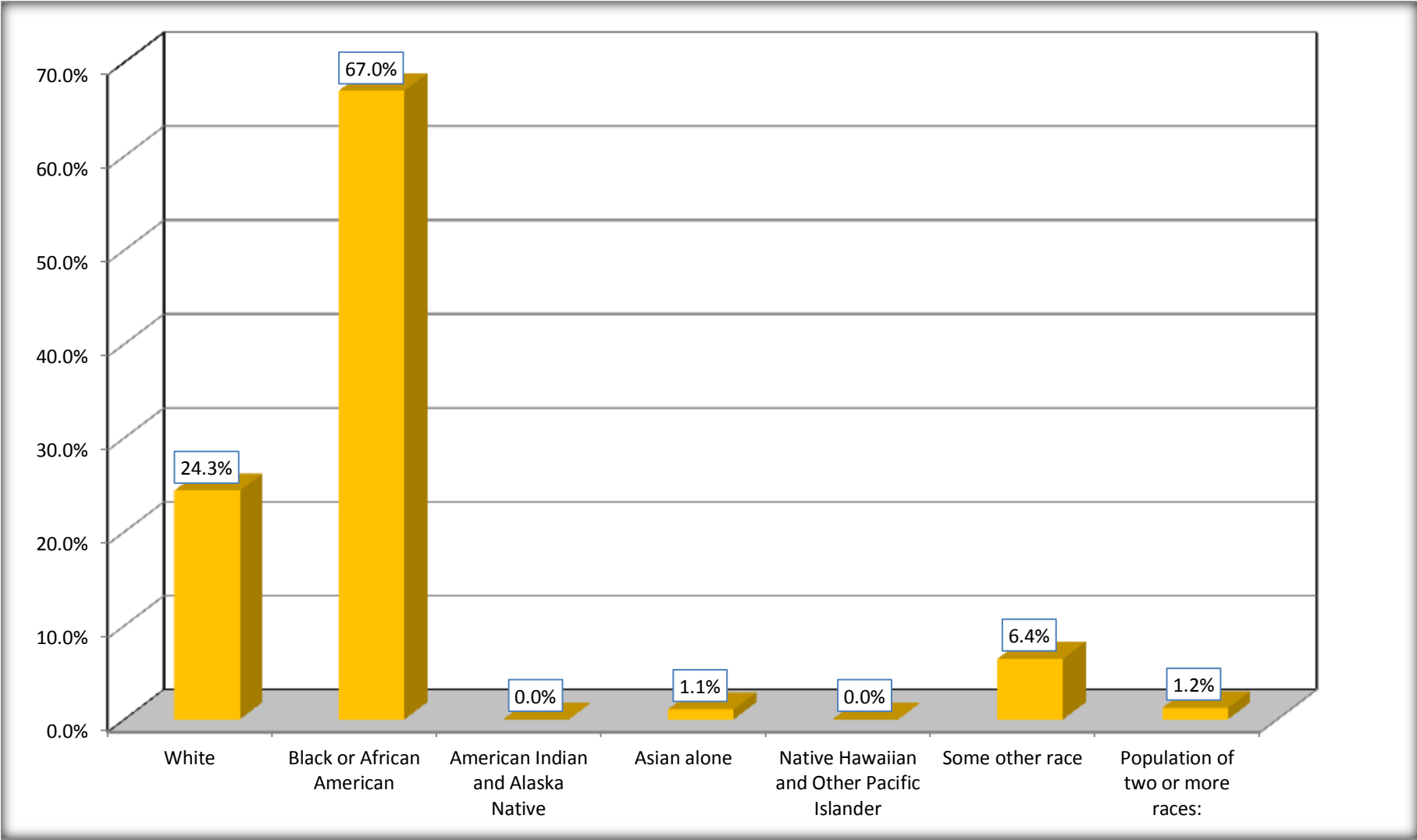
Although the American Community Survey (ACS) produces population, demographic and housing unit estimates, it is the Census Bureau's Population Estimates Program that produces and disseminates the official estimates of the population for the nation, states, counties, cities and towns and estimates of housing units for states and counties.

For information on confidentiality protection, sampling error, nonsampling error, and definitions, see Survey Methodology.

<http://www.census.gov/acs/www/UseData/index.htm>

Population by Race

Conley CDP, Georgia



Source: C02003.DETAILED RACE - Universe: TOTAL POPULATION
Data Set: 2008-2012 American Community Survey 5-Year Estimates

B03002. HISPANIC OR LATINO ORIGIN BY RACE - Universe: TOTAL POPULATION

Data Set: 2008-2012 American Community Survey 5-Year Estimates

	Conley CDP, Georgia		
	Population	Margin of Error (+/-)	% of Total
Total:	5,989	950	100.0%
Not Hispanic or Latino:	5,064	931	84.6%
White alone	955	283	15.9%
Black or African American alone	3,974	935	66.4%
American Indian and Alaska Native alone	0	19	0.0%
Asian alone	63	63	1.1%
Native Hawaiian and Other Pacific Islander alone	0	19	0.0%
Some other race alone	0	19	0.0%
Two or more races:	72	81	1.2%
Two races including Some other race	0	19	0.0%
Two races excluding Some other race, and three or more races	72	81	1.2%
Hispanic or Latino	925	466	15.4%

Source: U.S. Census Bureau, 2008-2012 American Community Survey

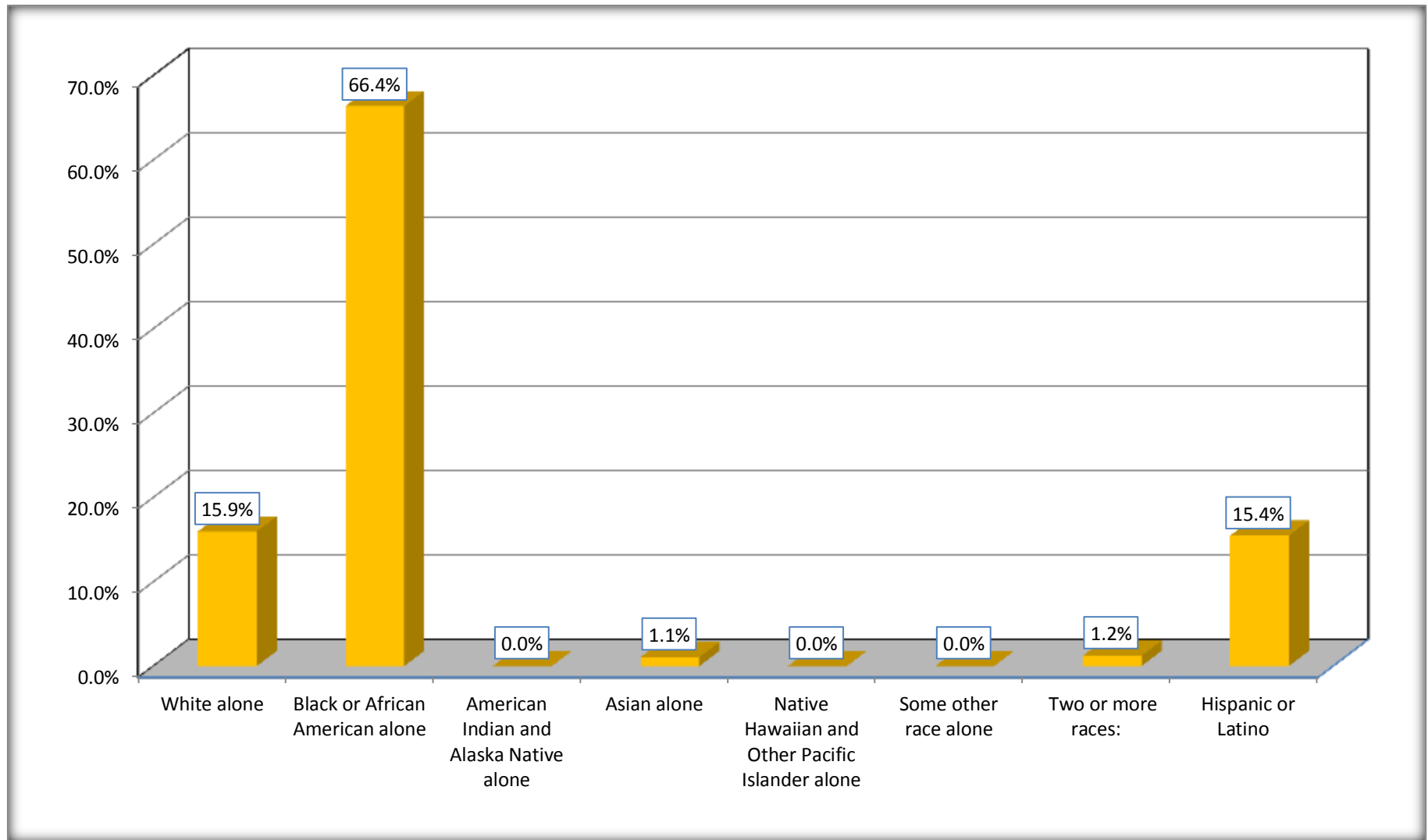
Although the American Community Survey (ACS) produces population, demographic and housing unit estimates, it is the Census Bureau's Population Estimates Program that produces and disseminates the official estimates of the population for the nation, states, counties, cities and towns and estimates of housing units for states and counties.

For information on confidentiality protection, sampling error, nonsampling error, and definitions, see Survey Methodology.

<http://www.census.gov/acs/www/UseData/index.htm>

Non-Hispanic by Race and Hispanic Population

Conley CDP, Georgia



Source: B03002. HISPANIC OR LATINO ORIGIN BY RACE - Universe: TOTAL POPULATION
Data Set: 2008-2012 American Community Survey 5-Year Estimates

B03002. HISPANIC OR LATINO ORIGIN BY RACE

Data Set: 2008-2012 American Community Survey 5-Year Estimates

	Conley CDP, Georgia		
	Population	Margin of Error (+/-)	% of Total
Hispanic or Latino:	925	466	100.0%
White alone	503	310	54.4%
Black or African American alone	36	58	3.9%
American Indian and Alaska Native alone	0	19	0.0%
Asian alone	0	19	0.0%
Native Hawaiian and Other Pacific Islander alone	0	19	0.0%
Some other race alone	386	429	41.7%
Two or more races:	0	19	0.0%
Two races including Some other race	0	19	0.0%
Two races excluding Some other race, and three or more races	0	19	0.0%

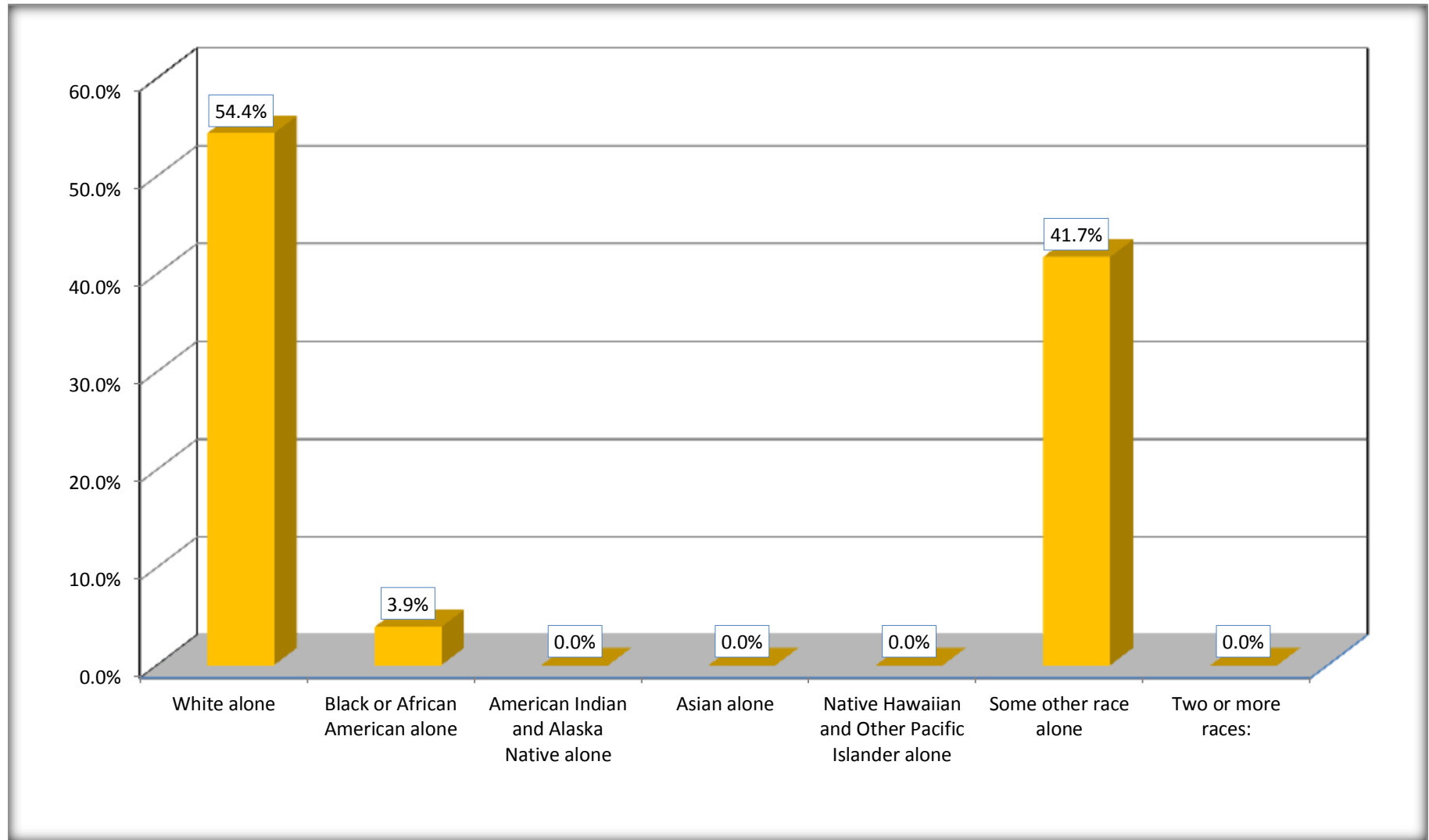
Source: U.S. Census Bureau, 2008-2012 American Community Survey

Although the American Community Survey (ACS) produces population, demographic and housing unit estimates, it is the Census Bureau's Population Estimates Program that produces and disseminates the official estimates of the population for the nation, states, counties, cities and towns and estimates of housing units for states and counties.

For information on confidentiality protection, sampling error, nonsampling error, and definitions, see Survey Methodology.

<http://www.census.gov/acs/www/UseData/index.htm>

Hispanic or Latino Origin by Race Conley CDP, Georgia



Source: B03002. HISPANIC OR LATINO ORIGIN BY RACE
Data Set: 2008-2012 American Community Survey 5-Year Estimates

B01001. SEX BY AGE

Data Set: 2008-2012 American Community Survey 5-Year Estimates

	Conley CDP, Georgia					
	African American	Margin of Error (+/-)	% of AA Total	White, Not Hispanic	Margin of Error (+/-)	% of NHW Total
Total:	4,010	950	100.0%	955	283	100.0%
Under 18 years	1,217	NC	30.3%	110	NC	11.5%
18 to 64 years	2,678	NC	66.8%	498	NC	52.1%
65 years and over	115	NC	2.9%	347	NC	36.3%
Male:	1,686	514	42.0%	455	389	47.6%
Under 18 years	513	NC	12.8%	57	NC	6.0%
18 to 64 years	1,117	NC	27.9%	263	NC	27.5%
65 years and over	56	NC	1.4%	135	NC	14.1%
Female:	2,324	613	58.0%	500	412	52.4%
Under 18 years	704	NC	17.6%	53	NC	5.5%
18 to 64 years	1,561	NC	38.9%	235	NC	24.6%
65 years and over	59	NC	1.5%	212	NC	22.2%

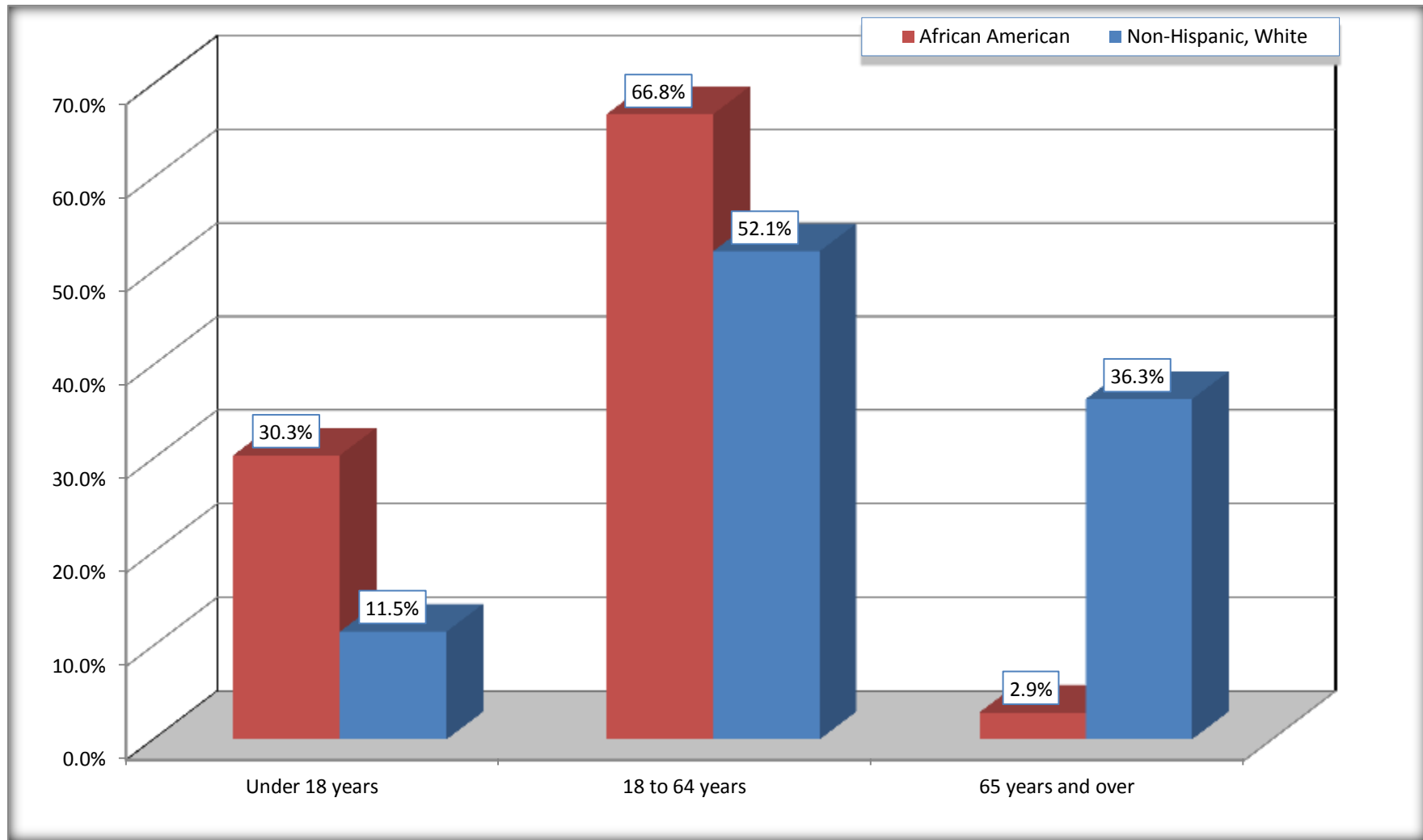
Source: U.S. Census Bureau, 2008-2012 American Community Survey

Although the American Community Survey (ACS) produces population, demographic and housing unit estimates, it is the Census Bureau's Population Estimates Program that produces and disseminates the official estimates of the population for the nation, states, counties, cities and towns and estimates of housing units for states and counties.

For information on confidentiality protection, sampling error, nonsampling error, and definitions, see Survey Methodology.

<http://www.census.gov/acs/www/UseData/index.htm>

Population by Age Conley CDP, Georgia



Source: B01001. SEX BY AGE
Data Set: 2008-2012 American Community Survey 5-Year Estimates

B05003. SEX BY AGE BY CITIZENSHIP STATUS

Data Set: 2008-2012 American Community Survey 5-Year Estimates

	Conley CDP, Georgia					
	African American	Margin of Error (+/-)	% of AA Total by Age	White, Not Hispanic	Margin of Error (+/-)	% of NHW Total by Age
Total:	4,010	950	100.0%	955	283	100.0%
Under 18 years:	1,217	NC	100.0%	110	NC	100.0%
Native	1,217	NC	100.0%	110	NC	100.0%
Foreign born:	0	NC	0.0%	0	NC	0.0%
Naturalized U.S. citizen	0	NC	0.0%	0	NC	0.0%
Not a U.S. citizen	0	NC	0.0%	0	NC	0.0%
18 years and over:	2,793	NC	100.0%	845	NC	100.0%
Native	2,734	NC	97.9%	845	NC	100.0%
Foreign born:	59	NC	2.1%	0	NC	0.0%
Naturalized U.S. citizen	48	NC	1.7%	0	NC	0.0%
Not a U.S. citizen	11	NC	0.4%	0	NC	0.0%
Male:	1,686	514	42.0%	455	152	47.6%
Under 18 years:	513	221	100.0%	57	55	100.0%
Native	513	221	100.0%	57	55	100.0%
Foreign born:	0	19	0.0%	0	19	0.0%
Naturalized U.S. citizen	0	19	0.0%	0	19	0.0%
Not a U.S. citizen	0	19	0.0%	0	19	0.0%
18 years and over:	1,173	382	100.0%	398	133	100.0%
Native	1,162	383	99.1%	398	133	100.0%
Foreign born:	11	18	0.9%	0	19	0.0%
Naturalized U.S. citizen	11	18	0.9%	0	19	0.0%
Not a U.S. citizen	0	19	0.0%	0	19	0.0%

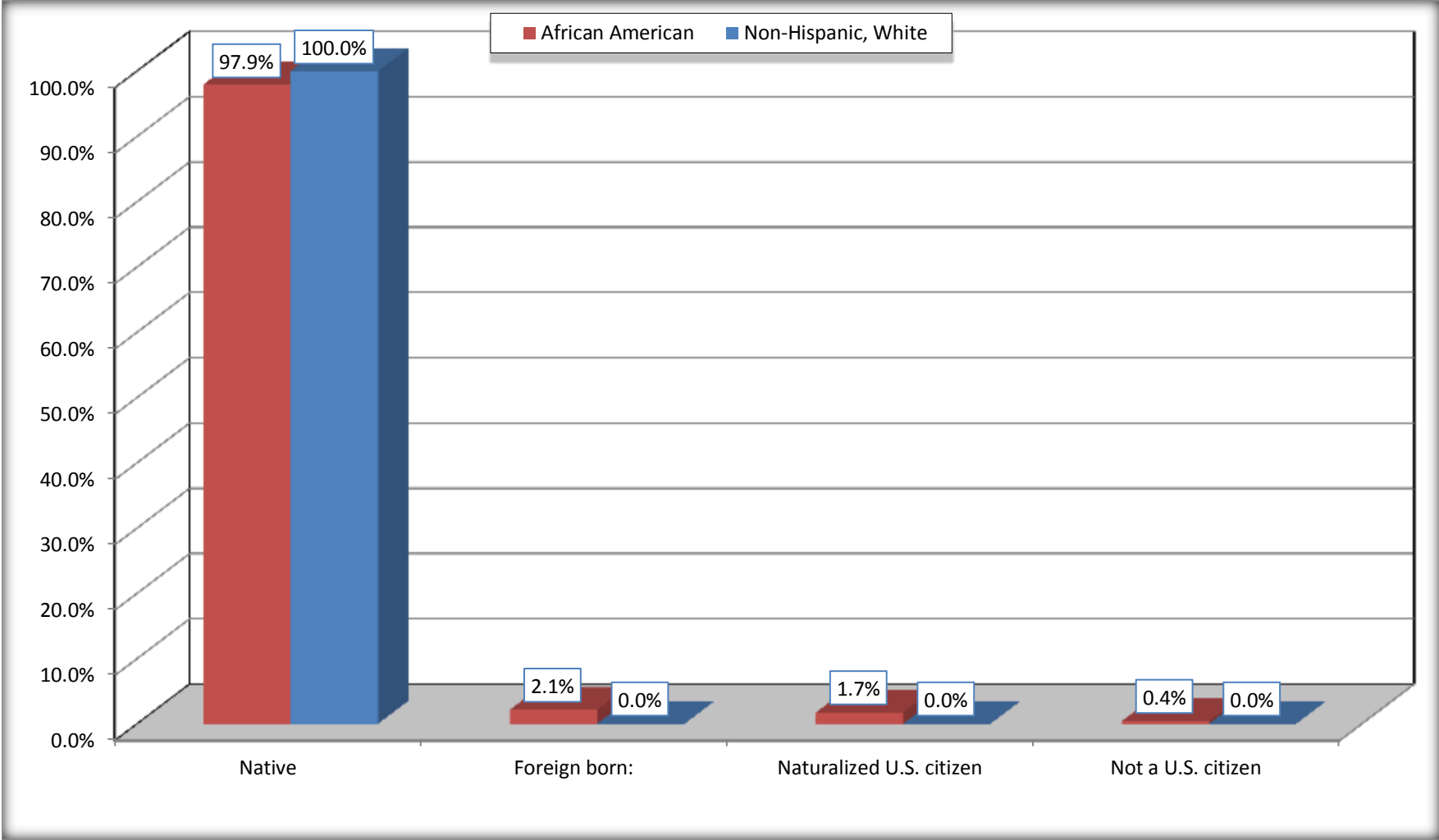
	Conley CDP, Georgia					
	African American	Margin of Error (+/-)	% of AA by Age	White, Not Hispanic	Margin of Error (+/-)	% of NHW by Age
Female:	2,324	613	58.0%	500	174	52.4%
Under 18 years:	704	331	100.0%	53	53	100.0%
Native	704	331	100.0%	53	53	100.0%
Foreign born:	0	19	0.0%	0	19	0.0%
Naturalized U.S. citizen	0	19	0.0%	0	19	0.0%
Not a U.S. citizen	0	19	0.0%	0	19	0.0%
18 years and over:	1,620	378	100.0%	447	166	100.0%
Native	1,572	381	97.0%	447	166	100.0%
Foreign born:	48	63	3.0%	0	19	0.0%
Naturalized U.S. citizen	37	59	2.3%	0	19	0.0%
Not a U.S. citizen	11	19	0.7%	0	19	0.0%

Source: U.S. Census Bureau, 2008-2012 American Community Survey

For information on confidentiality protection, sampling error, nonsampling error, and definitions, see Survey Methodology.
<http://www.census.gov/acs/www/UseData/index.htm>

Citizenship Status of Voting Age Population (18 and Over)

Conley CDP, Georgia



Source: B05003. SEX BY AGE BY CITIZENSHIP STATUS
Data Set: 2008-2012 American Community Survey 5-Year Estimates

**B07004. GEOGRAPHICAL MOBILITY IN THE PAST YEAR BY RACE FOR CURRENT RESIDENCE IN THE UNITED STATES - Universe:
POPULATION 1 YEAR AND OVER**

Data Set: 2008-2012 American Community Survey 5-Year Estimates

	Conley CDP, Georgia					
	African American	Margin of Error (+/-)	% of AA Total	White, Not Hispanic	Margin of Error (+/-)	% of NHW Total
Total:	3,936	929	100.0%	955	283	100.0%
Same house 1 year ago	3,454	850	87.8%	913	279	95.6%
Moved within same county	316	333	8.0%	17	28	1.8%
Moved from different county within same state	166	152	4.2%	25	39	2.6%
Moved from different state	0	19	0.0%	0	19	0.0%
Moved from abroad	0	19	0.0%	0	19	0.0%

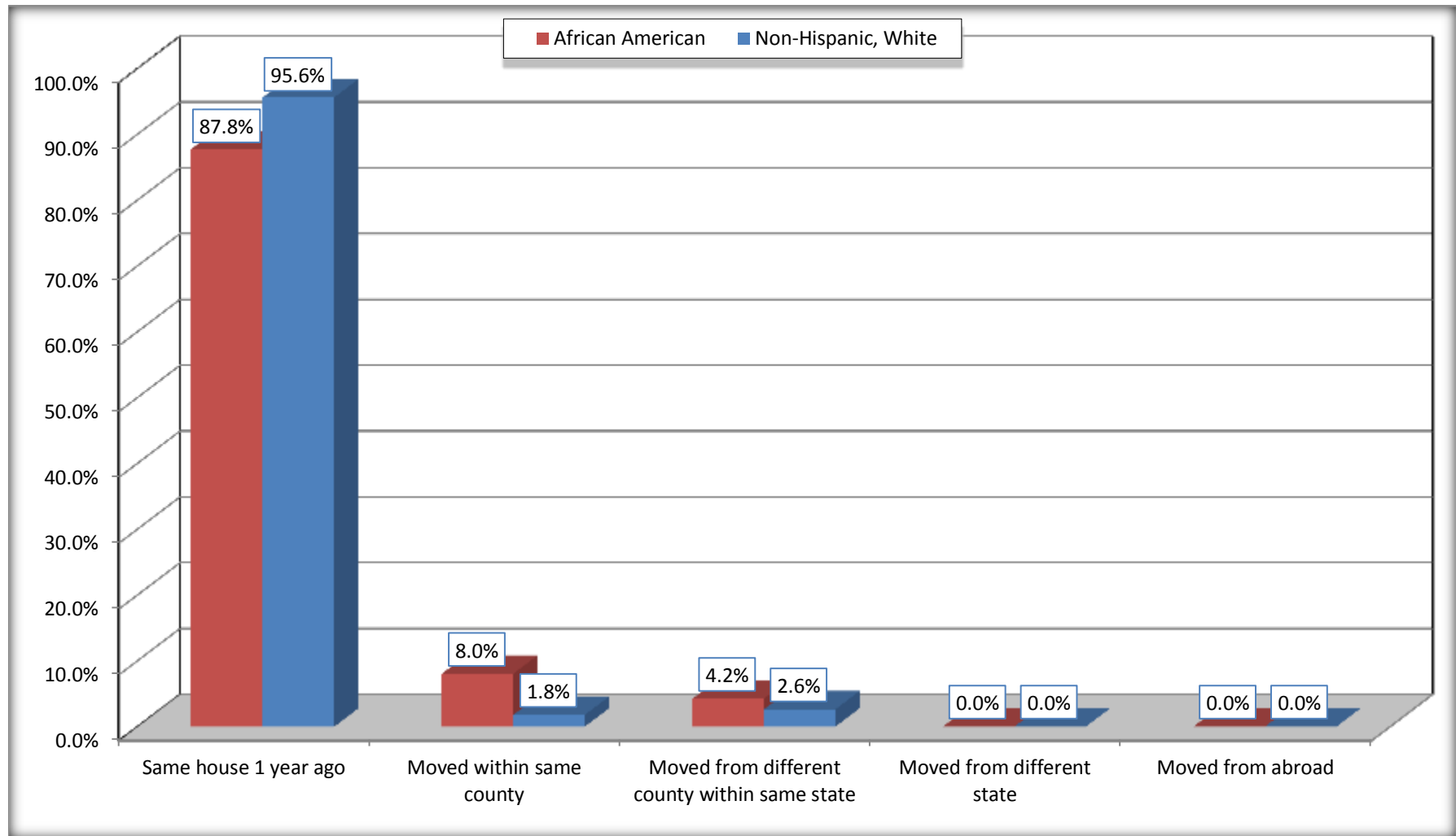
Source: U.S. Census Bureau, 2008-2012 American Community Survey

For information on confidentiality protection, sampling error, nonsampling error, and definitions, see Survey Methodology.

<http://www.census.gov/acs/www/UseData/index.htm>

Geographical Mobility in the Past Year (Population 1 Year and Over)

Conley CDP, Georgia



Source: B07004. GEOGRAPHICAL MOBILITY IN THE PAST YEAR BY RACE FOR CURRENT RESIDENCE IN THE UNITED STATES - Universe: POPULATION 1 YEAR AND OVER

Data Set: 2008-2012 American Community Survey 5-Year Estimates

B08105. MEANS OF TRANSPORTATION TO WORK - Universe: WORKERS 16 YEARS AND OVER

Data Set: 2008-2012 American Community Survey 5-Year Estimates

	Conley CDP, Georgia					
	African American	Margin of Error (+/-)	% of AA Total	White, Not Hispanic	Margin of Error (+/-)	% of NHW Total
Total:	1442	339	100.0%	274	114	100.0%
Car, truck, or van - drove alone	1182	306	82.0%	261	111	95.3%
Car, truck, or van - carpooled	119	125	8.3%	7	13	2.6%
Public transportation (excluding taxicab)	39	46	2.7%	6	10	2.2%
Walked	0	19	0.0%	0	19	0.0%
Taxicab, motorcycle, bicycle, or other means	0	19	0.0%	0	19	0.0%
Worked at home	102	133	7.1%	0	19	0.0%

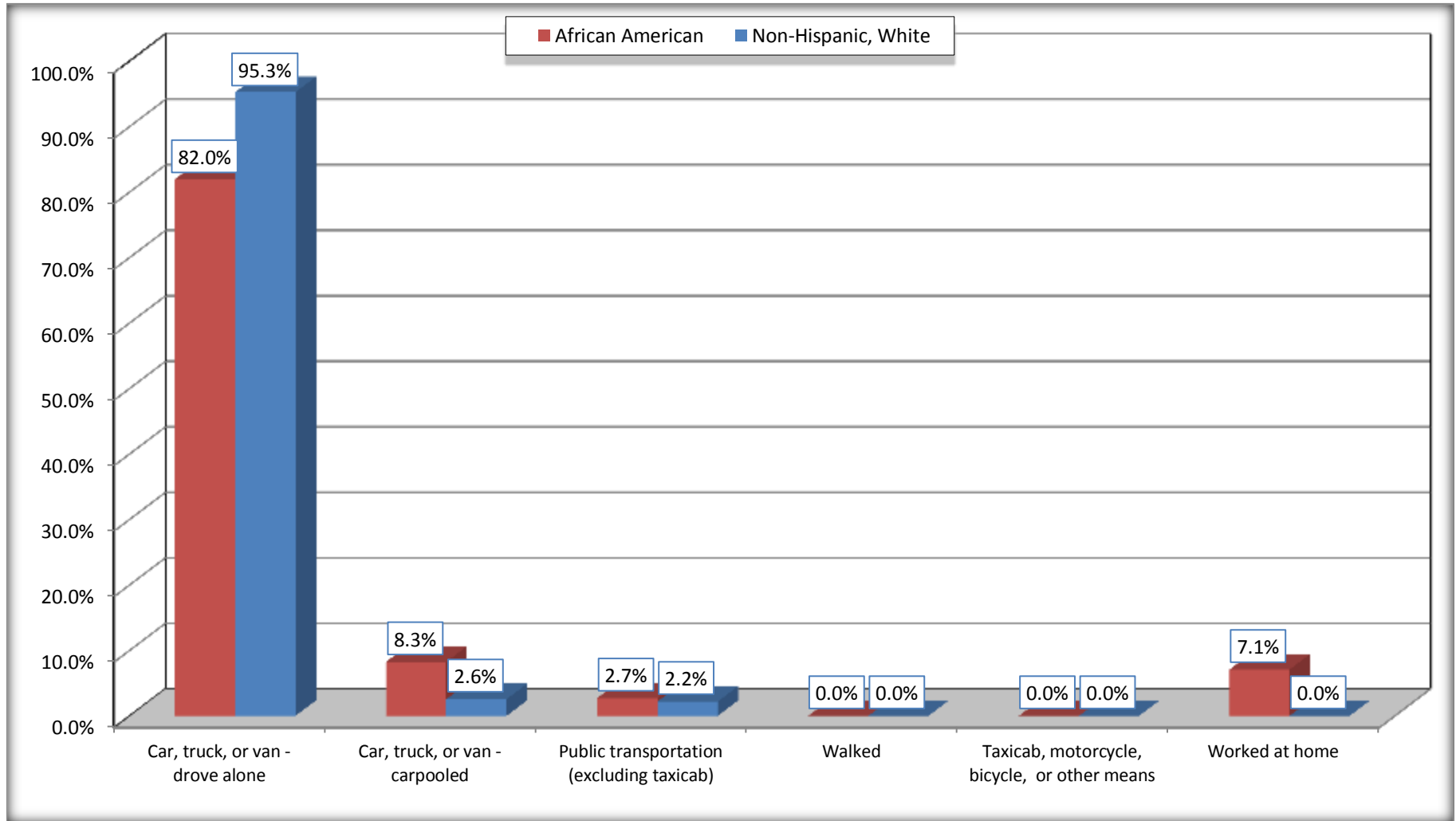
Source: U.S. Census Bureau, 2008-2012 American Community Survey

For information on confidentiality protection, sampling error, nonsampling error, and definitions, see Survey Methodology.

<http://www.census.gov/acs/www/UseData/index.htm>

Means of Transportation to Work (Workers 16 Years and Over)

Conley CDP, Georgia



Source: B08105. MEANS OF TRANSPORTATION TO WORK - Universe: WORKERS 16 YEARS AND OVER
Data Set: 2008-2012 American Community Survey 5-Year Estimates

B11002. HOUSEHOLD TYPE BY RELATIVES AND NONRELATIVES FOR POPULATION IN HOUSEHOLDS

Data Set: 2008-2012 American Community Survey 5-Year Estimates

	Conley CDP, Georgia					
	African American	Margin of Error (+/-)	% of AA Total	White, Not Hispanic	Margin of Error (+/-)	% of NHW Total
Total:	4091	975	100.0%	961	283	100.0%
In family households	3680	998	90.0%	864	266	89.9%
In nonfamily households	411	147	10.0%	97	78	10.1%

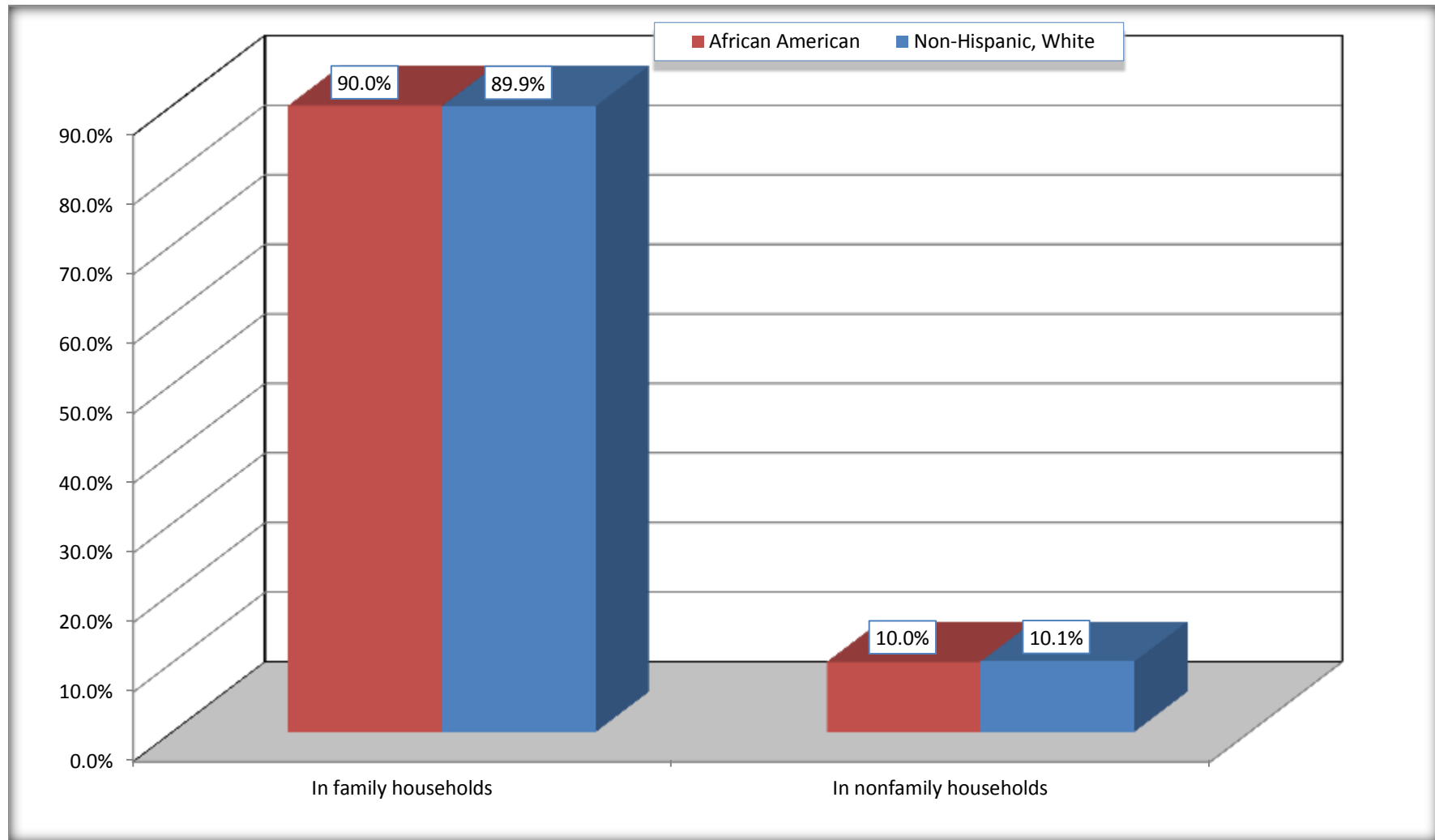
Source: U.S. Census Bureau, 2008-2012 American Community Survey

For information on confidentiality protection, sampling error, nonsampling error, and definitions, see Survey Methodology.

<http://www.census.gov/acs/www/UseData/index.htm>

Household Type for Population in Households

Conley CDP, Georgia



Source: B11002. HOUSEHOLD TYPE BY RELATIVES AND NONRELATIVES FOR POPULATION IN HOUSEHOLDS
Data Set: 2008-2012 American Community Survey 5-Year Estimates

B12002. MARITAL STATUS FOR THE POPULATION 15 YEARS AND OVER

Data Set: 2008-2012 American Community Survey 5-Year Estimates

	Conley CDP, Georgia					
	African American	Margin of Error (+/-)	% of AA Total	White, Not Hispanic	Margin of Error (+/-)	% of NHW Total
Total:	2,902	618	100.0%	860	264	100.0%
Never married	1,281	NC	44.1%	131	NC	15.2%
Now married (except separated)	793	NC	27.3%	341	NC	39.7%
Separated	123	NC	4.2%	5	NC	0.6%
Widowed	114	NC	3.9%	121	NC	14.1%
Divorced	591	NC	20.4%	262	NC	30.5%
Male:	1,224	390	42.2%	398	133	46.3%
Never married	518	317	17.8%	77	64	9.0%
Now married (except separated)	384	158	13.2%	164	74	19.1%
Separated	51	64	1.8%	5	14	0.6%
Widowed	38	56	1.3%	22	23	2.6%
Divorced	233	208	8.0%	130	77	15.1%
Female:	1,678	390	57.8%	462	166	53.7%
Never married	763	289	26.3%	54	60	6.3%
Now married (except separated)	409	147	14.1%	177	79	20.6%
Separated	72	71	2.5%	0	19	0.0%
Widowed	76	67	2.6%	99	62	11.5%
Divorced	358	150	12.3%	132	100	15.3%

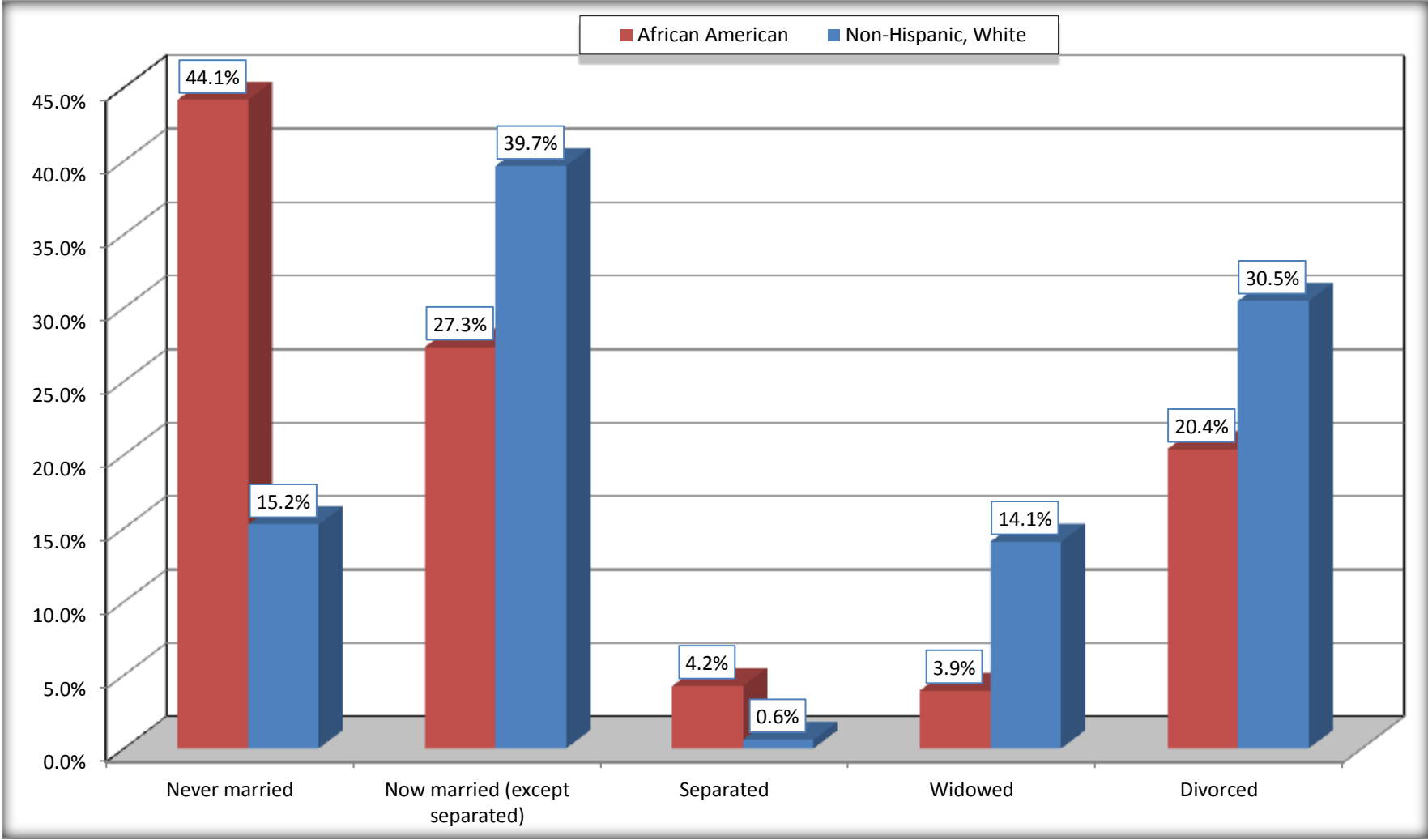
Source: U.S. Census Bureau, 2008-2012 American Community Survey

For information on confidentiality protection, sampling error, nonsampling error, and definitions, see Survey Methodology.

<http://www.census.gov/acs/www/UseData/index.htm>

Marital Status for the Population 15 Years and Over

Conley CDP, Georgia



Source: B12002. MARITAL STATUS FOR THE POPULATION 15 YEARS AND OVER
Data Set: 2008-2012 American Community Survey 5-Year Estimates

C15002. SEX BY EDUCATIONAL ATTAINMENT FOR THE POPULATION 25 YEARS AND OVER

Data Set: 2008-2012 American Community Survey 5-Year Estimates

	Conley CDP, Georgia					
	African American	Margin of Error (+/-)	% of AA Total	White, Not Hispanic	Margin of Error (+/-)	% of NHW Total
Total:	2,479	520	100.0%	845	261	100.0%
Less than high school diploma	349	NC	14.1%	325	NC	38.5%
High school graduate, GED, or alternative	1,019	NC	41.1%	325	NC	38.5%
Some college or associate's degree	898	NC	36.2%	195	NC	23.1%
Bachelor's degree or higher	213	NC	8.6%	0	NC	0.0%
Male:	971	314	39.2%	398	133	47.1%
Less than high school diploma	105	80	4.2%	128	66	15.1%
High school graduate, GED, or alternative	502	249	20.3%	153	72	18.1%
Some college or associate's degree	364	228	14.7%	117	79	13.8%
Bachelor's degree or higher	0	19	0.0%	0	19	0.0%
Female:	1,508	351	60.8%	447	166	52.9%
Less than high school diploma	244	147	9.8%	197	90	23.3%
High school graduate, GED, or alternative	517	219	20.9%	172	100	20.4%
Some college or associate's degree	534	186	21.5%	78	78	9.2%
Bachelor's degree or higher	213	111	8.6%	0	19	0.0%

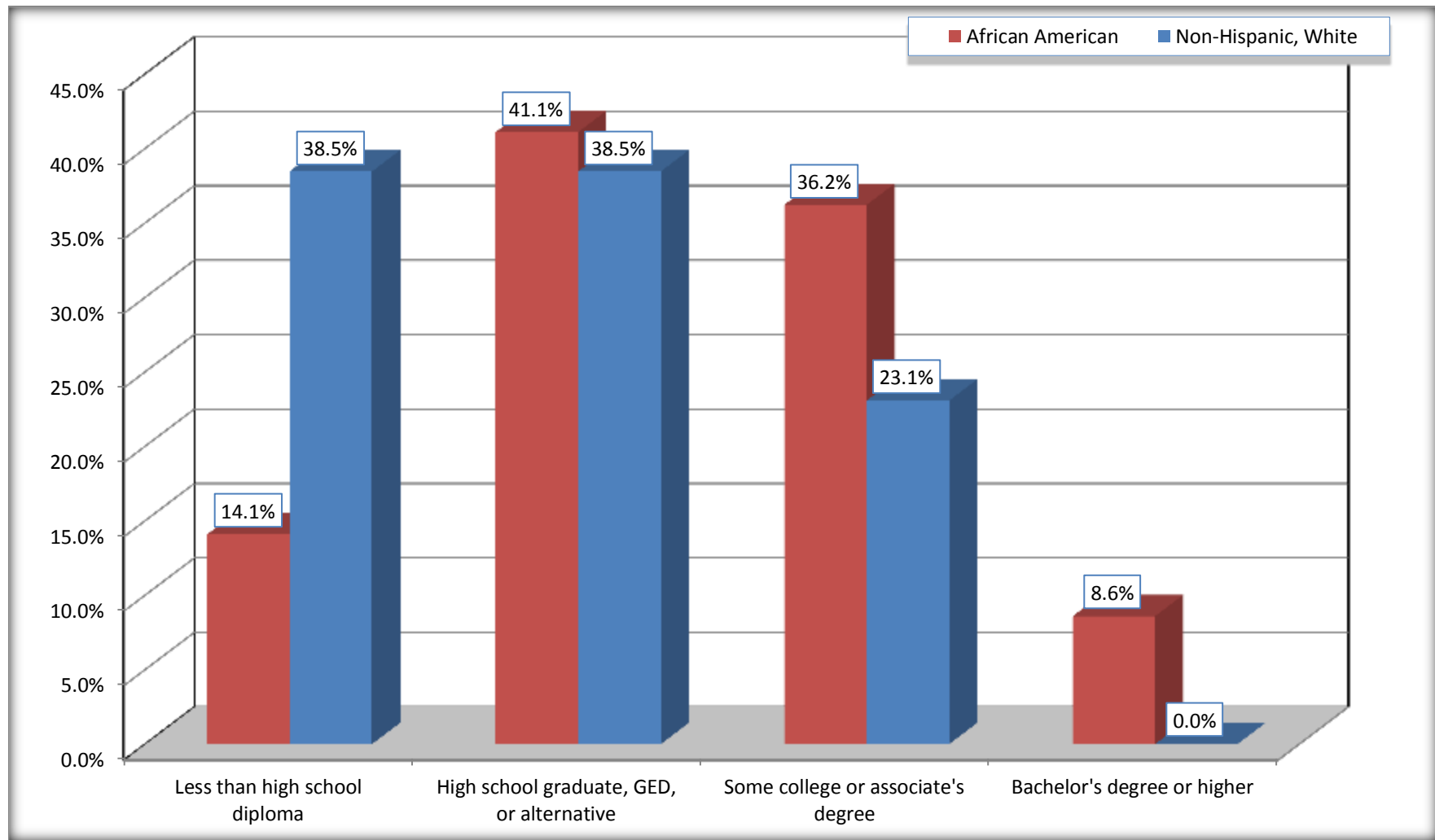
Source: U.S. Census Bureau, 2008-2012 American Community Survey

For information on confidentiality protection, sampling error, nonsampling error, and definitions, see Survey Methodology.

<http://www.census.gov/acs/www/UseData/index.htm>

Educational Attainment for the Population 25 Years and Older

Conley CDP, Georgia



Source: C15002. SEX BY EDUCATIONAL ATTAINMENT FOR THE POPULATION 25 YEARS AND OVER
Data Set: 2008-2012 American Community Survey 5-Year Estimates

B17010. POVERTY STATUS IN THE PAST 12 MONTHS OF FAMILIES BY FAMILY TYPE BY PRESENCE OF RELATED CHILDREN UNDER 18 YEARS

Data Set: 2008-2012 American Community Survey 5-Year Estimates

	Conley CDP, Georgia					
	African American	Margin of Error (+/-)	% of AA Total	White, Not Hispanic	Margin of Error (+/-)	% of NHW Total
Total:	1,010	253	100.0%	252	80	100.0%
Income in the past 12 months below poverty level:	311	191	30.8%	10	16	4.0%
Married-couple family:	80	102	7.9%	0	19	0.0%
With related children under 18 years	67	99	6.6%	0	19	0.0%
Other family:	231	158	22.9%	10	16	4.0%
Male householder, no wife present	54	74	5.3%	10	16	4.0%
With related children under 18 years	54	74	5.3%	10	16	4.0%
Female householder, no husband present	177	128	17.5%	0	19	0.0%
With related children under 18 years	114	90	11.3%	0	19	0.0%
Income in the past 12 months at or above poverty level:	699	191	69.2%	242	82	96.0%
Married-couple family:	283	120	28.0%	147	70	58.3%
With related children under 18 years	179	109	17.7%	9	14	3.6%
Other family:	416	144	41.2%	95	55	37.7%
Male householder, no wife present	72	74	7.1%	11	17	4.4%
With related children under 18 years	0	19	0.0%	0	19	0.0%
Female householder, no husband present	344	139	34.1%	84	52	33.3%
With related children under 18 years	301	136	29.8%	24	24	9.5%

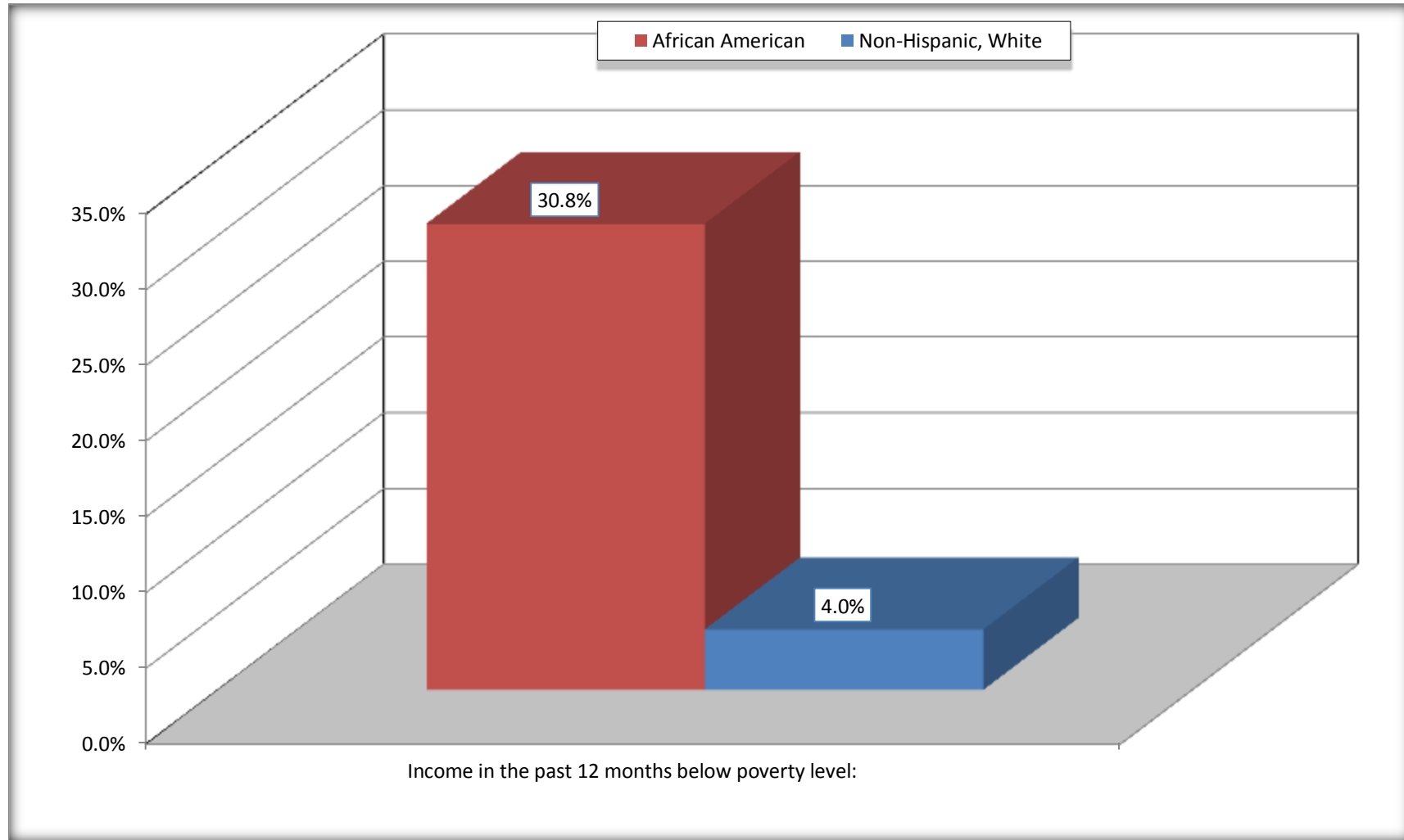
Source: U.S. Census Bureau, 2008-2012 American Community Survey

For information on confidentiality protection, sampling error, nonsampling error, and definitions, see Survey Methodology.

<http://www.census.gov/acs/www/UseData/index.htm>

Family Households Below Poverty in the Past 12 Months

Conley CDP, Georgia

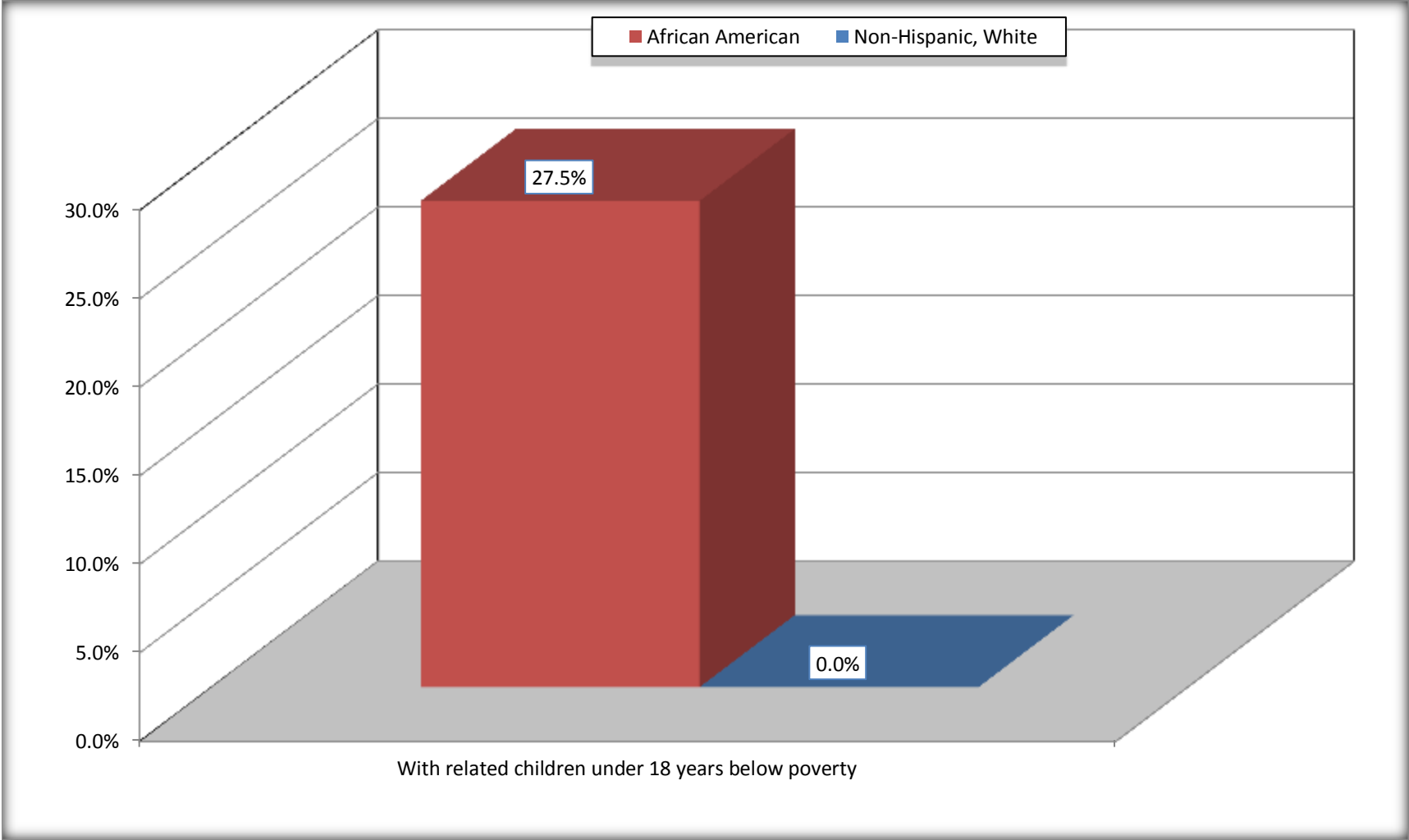


Source: B17010. POVERTY STATUS IN THE PAST 12 MONTHS OF FAMILIES BY FAMILY TYPE BY PRESENCE OF RELATED CHILDREN UNDER 18 YEARS

Data Set: 2008-2012 American Community Survey 5-Year Estimates

Female-headed Households with Related Children Below Poverty in the Past 12 Months

Conley CDP, Georgia



Source: B17010. POVERTY STATUS IN THE PAST 12 MONTHS OF FAMILIES BY FAMILY TYPE BY PRESENCE OF RELATED CHILDREN UNDER 18 YEARS

Data Set: 2008-2012 American Community Survey 5-Year Estimates

B17020 POVERTY STATUS IN THE PAST 12 MONTHS BY AGE - Universe: POPULATION FOR WHOM POVERTY STATUS IS DETERMINED

Data Set: 2008-2012 American Community Survey 5-Year Estimates

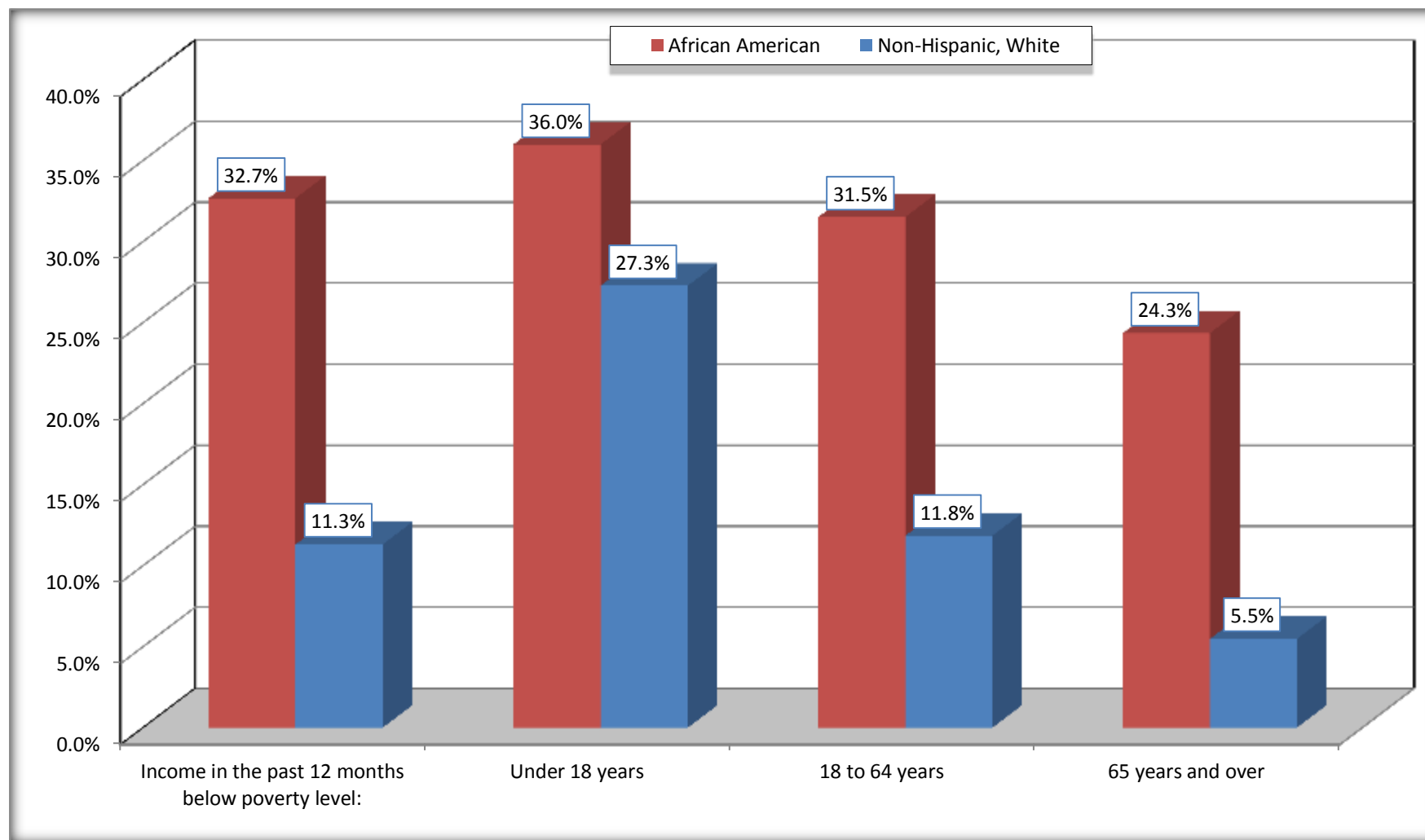
	Conley CDP, Georgia					
	African American	Margin of Error (+/-)	% of AA By Age	White, Not Hispanic	Margin of Error (+/-)	% of NHW By Age
Total:	4,010	950	100.0%	955	283	100.0%
Income in the past 12 months below poverty level:	1,310	735	32.7%	108	110	11.3%
Under 18 years	438	NC	36.0%	30	NC	27.3%
18 to 64 years	844	461	31.5%	59	62	11.8%
65 years and over	28	NC	24.3%	19	NC	5.5%
Income in the past 12 months at or above poverty level:	2,700	699	67.3%	847	268	88.7%
Under 18 years	779	NC	64.0%	80	NC	72.7%
18 to 64 years	1,834	435	68.5%	439	159	88.2%
65 years and over	87	NC	75.7%	328	NC	94.5%

Source: U.S. Census Bureau, 2008-2012 American Community Survey

For information on confidentiality protection, sampling error, nonsampling error, and definitions, see Survey Methodology.

<http://www.census.gov/acs/www/UseData/index.htm>

Population Below Poverty in the Past 12 Months Conley CDP, Georgia



Source: B17020 POVERTY STATUS IN THE PAST 12 MONTHS BY AGE - Universe: POPULATION FOR WHOM POVERTY STATUS IS DETERMINED
Data Set: 2008-2012 American Community Survey 5-Year Estimates

B19001. HOUSEHOLD INCOME IN THE PAST 12 MONTHS (IN 2010 INFLATION-ADJUSTED DOLLARS)

Data Set: 2008-2012 American Community Survey 5-Year Estimates

	Conley CDP, Georgia					
	African American	Margin of Error (+/-)	% of AA Total	White, Not Hispanic	Margin of Error (+/-)	% of NHW Total
Total:	1,397	266	100.0%	330	107	100.0%
Less than \$ 10,000	227	146	16.2%	34	54	10.3%
\$ 10,000 to \$ 14,999	85	59	6.1%	0	19	0.0%
\$ 15,000 to \$ 24,999	225	NC	16.1%	53	NC	16.1%
\$ 25,000 to \$ 34,999	223	NC	16.0%	58	NC	17.6%
\$ 35,000 to \$ 49,999	246	NC	17.6%	34	NC	10.3%
\$ 50,000 to \$ 74,999	207	NC	14.8%	75	NC	22.7%
\$ 75,000 to \$ 99,999	101	59	7.2%	37	36	11.2%
\$ 100,000 to \$ 149,999	83	NC	5.9%	31	NC	9.4%
\$ 150,000 to \$ 199,999	0	19	0.0%	8	13	2.4%
\$ 200,000 or more	0	19	0.0%	0	19	0.0%

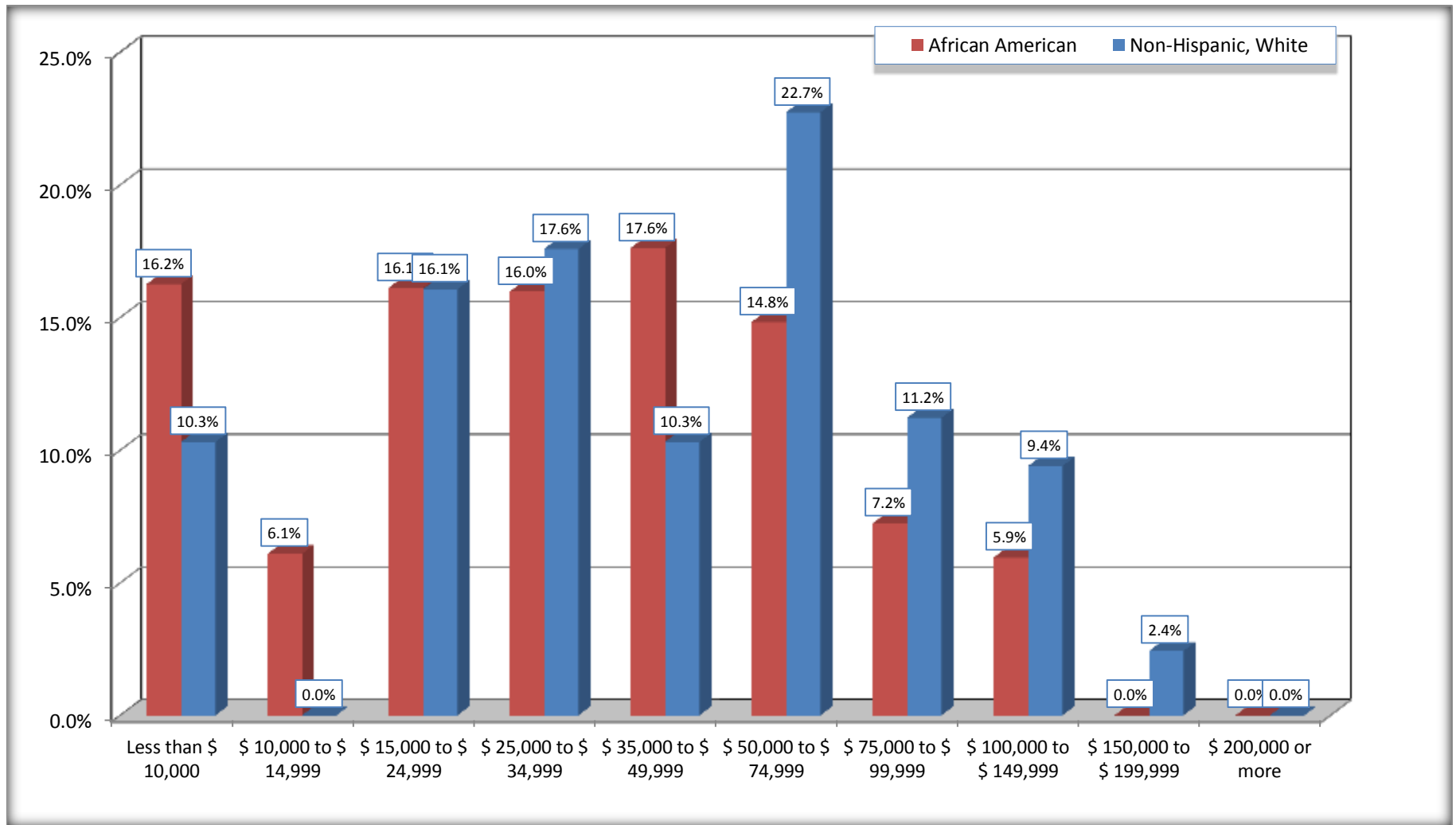
Source: U.S. Census Bureau, 2008-2012 American Community Survey

For information on confidentiality protection, sampling error, nonsampling error, and definitions, see Survey Methodology.

<http://www.census.gov/acs/www/UseData/index.htm>

Household Income in the Past 12 Months

Conley CDP, Georgia



Source: B19001. HOUSEHOLD INCOME IN THE PAST 12 MONTHS (IN 2010 INFLATION-ADJUSTED DOLLARS)
Data Set: 2008-2012 American Community Survey 5-Year Estimates

B19013. MEDIAN HOUSEHOLD INCOME IN THE PAST 12 MONTHS (IN 2010 INFLATION-ADJUSTED DOLLARS)

Data Set: 2008-2012 American Community Survey 5-Year Estimates

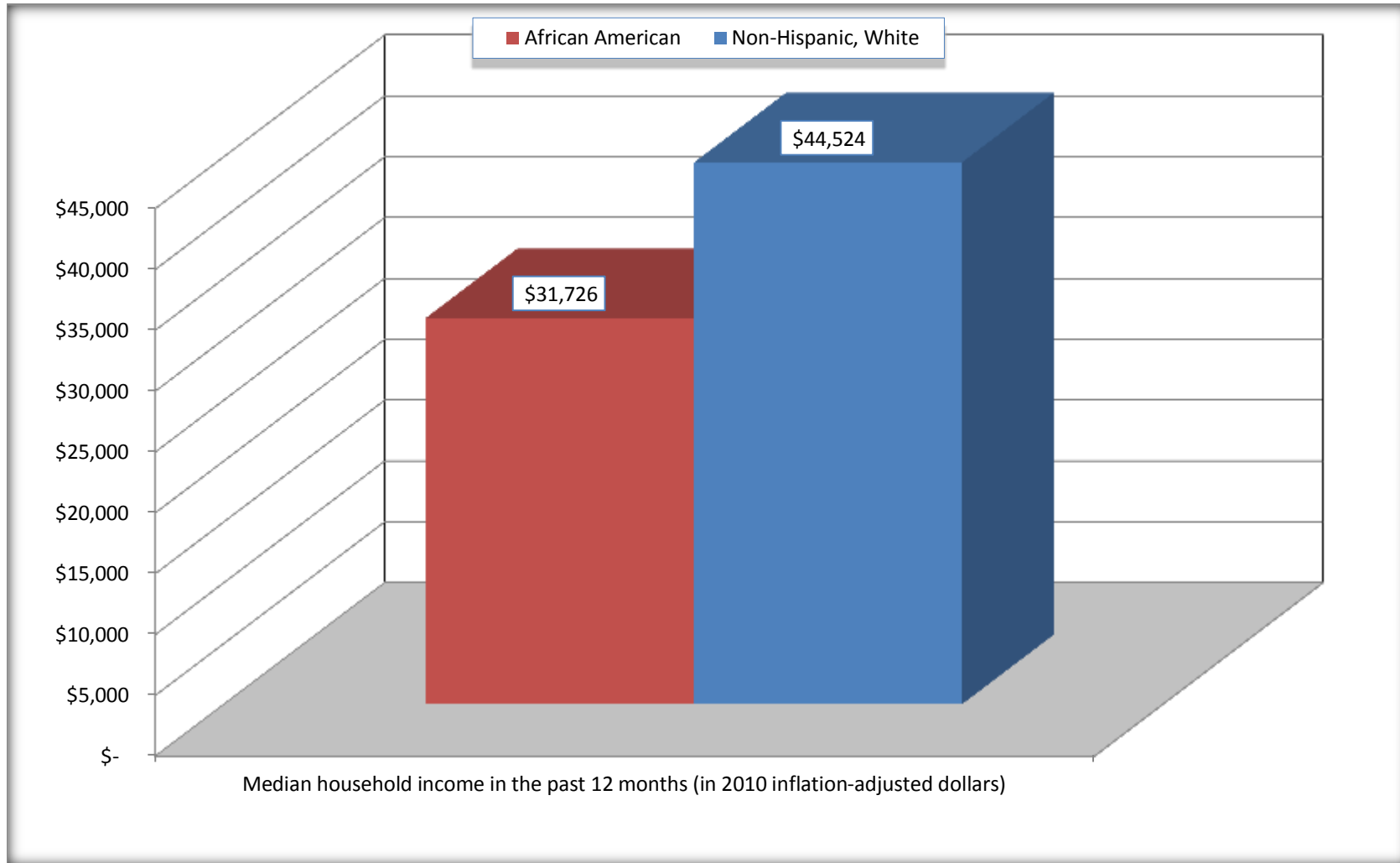
	Conley CDP, Georgia			
	African American	Margin of Error (+/-)	White, Not Hispanic	Margin of Error (+/-)
Median household income in the past 12 months (in 2010 inflation-adjusted dollars)	\$ 31,726	\$ 9,631	\$ 44,524	\$ 19,777

Source: U.S. Census Bureau, 2008-2012 American Community Survey

For information on confidentiality protection, sampling error, nonsampling error, and definitions, see Survey Methodology.
<http://www.census.gov/acs/www/UseData/index.htm>

Median Household Income in the Past 12 Months

Conley CDP, Georgia



Source: B19013. MEDIAN HOUSEHOLD INCOME IN THE PAST 12 MONTHS (IN 2010 INFLATION-ADJUSTED DOLLARS)
Data Set: 2008-2012 American Community Survey 5-Year Estimates

B19101. FAMILY INCOME IN THE PAST 12 MONTHS (IN 2010 INFLATION-ADJUSTED DOLLARS)

Data Set: 2008-2012 American Community Survey 5-Year Estimates

	Conley CDP, Georgia					
	African American	Margin of Error (+/-)	% of AA Total	White, Not Hispanic	Margin of Error (+/-)	% of NHW Total
Total:	1,010	253	100.0%	252	80	100.0%
Less than \$ 10,000	194	151	19.2%	0	19	0.0%
\$ 10,000 to \$ 14,999	46	54	4.6%	0	19	0.0%
\$ 15,000 to \$ 24,999	120	NC	11.9%	41	NC	16.3%
\$ 25,000 to \$ 34,999	139	NC	13.8%	54	NC	21.4%
\$ 35,000 to \$ 49,999	158	NC	15.6%	22	NC	8.7%
\$ 50,000 to \$ 74,999	194	NC	19.2%	70	NC	27.8%
\$ 100,000 to \$ 149,999	83	NC	8.2%	20	NC	7.9%
\$ 150,000 to \$ 199,999	0	19	0.0%	8	13	3.2%
\$ 200,000 or more	0	19	0.0%	0	19	0.0%

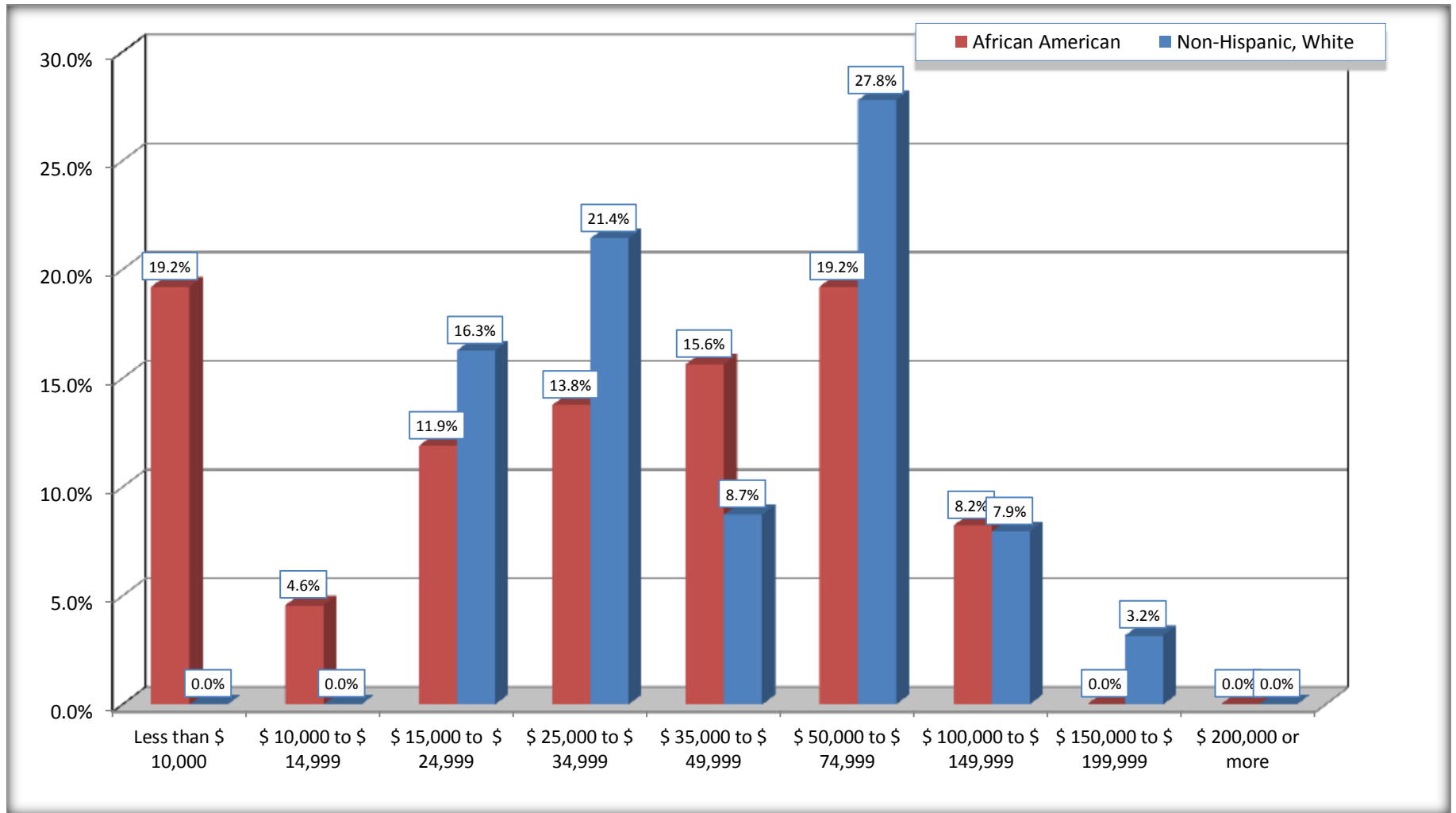
Source: U.S. Census Bureau, 2008-2012 American Community Survey

For information on confidentiality protection, sampling error, nonsampling error, and definitions, see Survey Methodology.

<http://www.census.gov/acs/www/UseData/index.htm>

Family Income in the Past 12 Months

Conley CDP, Georgia



Source: B19101. FAMILY INCOME IN THE PAST 12 MONTHS (IN 2010 INFLATION-ADJUSTED DOLLARS)
Data Set: 2008-2012 American Community Survey 5-Year Estimates

B19113. MEDIAN FAMILY INCOME IN THE PAST 12 MONTHS (IN 2010 INFLATION-ADJUSTED DOLLARS)

Data Set: 2008-2012 American Community Survey 5-Year Estimates

	Conley CDP, Georgia			
	African American	Margin of Error (+/-)	White, Not Hispanic	Margin of Error (+/-)
Median family income in the past 12 months (in 2010 inflation-adjusted dollars)	\$ 37,806	\$ 18,432	\$ 52,778	\$ 19,206

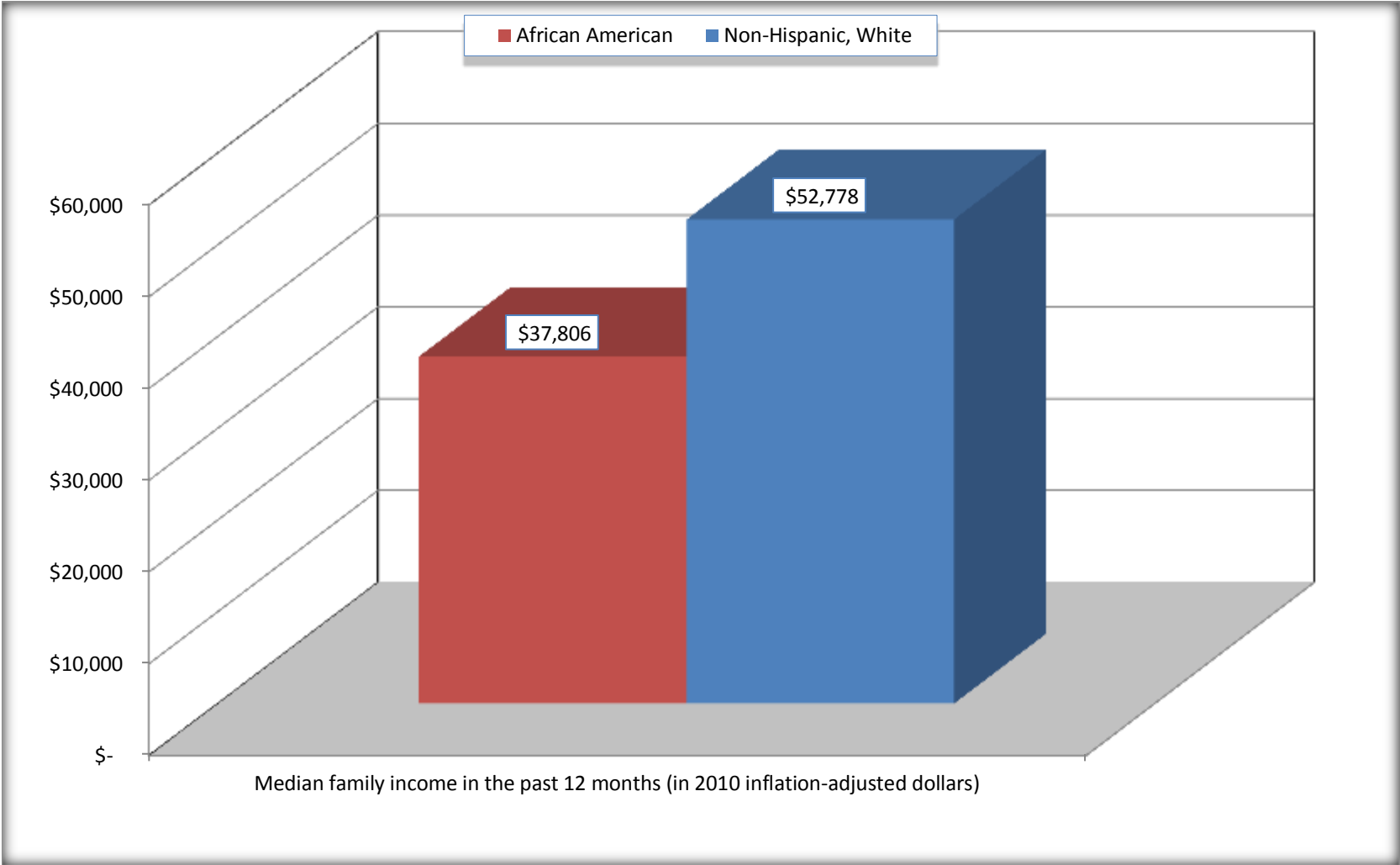
Source: U.S. Census Bureau, 2008-2012 American Community Survey

For information on confidentiality protection, sampling error, nonsampling error, and definitions, see Survey Methodology.

<http://www.census.gov/acs/www/UseData/index.htm>

Median Family Income in the Past 12 Months

Conley CDP, Georgia



Source: B19113. MEDIAN FAMILY INCOME IN THE PAST 12 MONTHS (IN 2010 INFLATION-ADJUSTED DOLLARS)
Data Set: 2008-2012 American Community Survey 5-Year Estimates

B19202. MEDIAN NONFAMILY HOUSEHOLD INCOME IN THE PAST 12 MONTHS (IN 2010 INFLATION-ADJUSTED DOLLARS)

Data Set: 2008-2012 American Community Survey 5-Year Estimates

	Conley CDP, Georgia			
	African American	Margin of Error (+/-)	White, Not Hispanic	Margin of Error (+/-)
Median nonfamily household income in the past 12 months (in 2010 inflation-adjusted dollars)	\$ 20,230	\$ 9,026	\$ 16,042	\$ 39,232

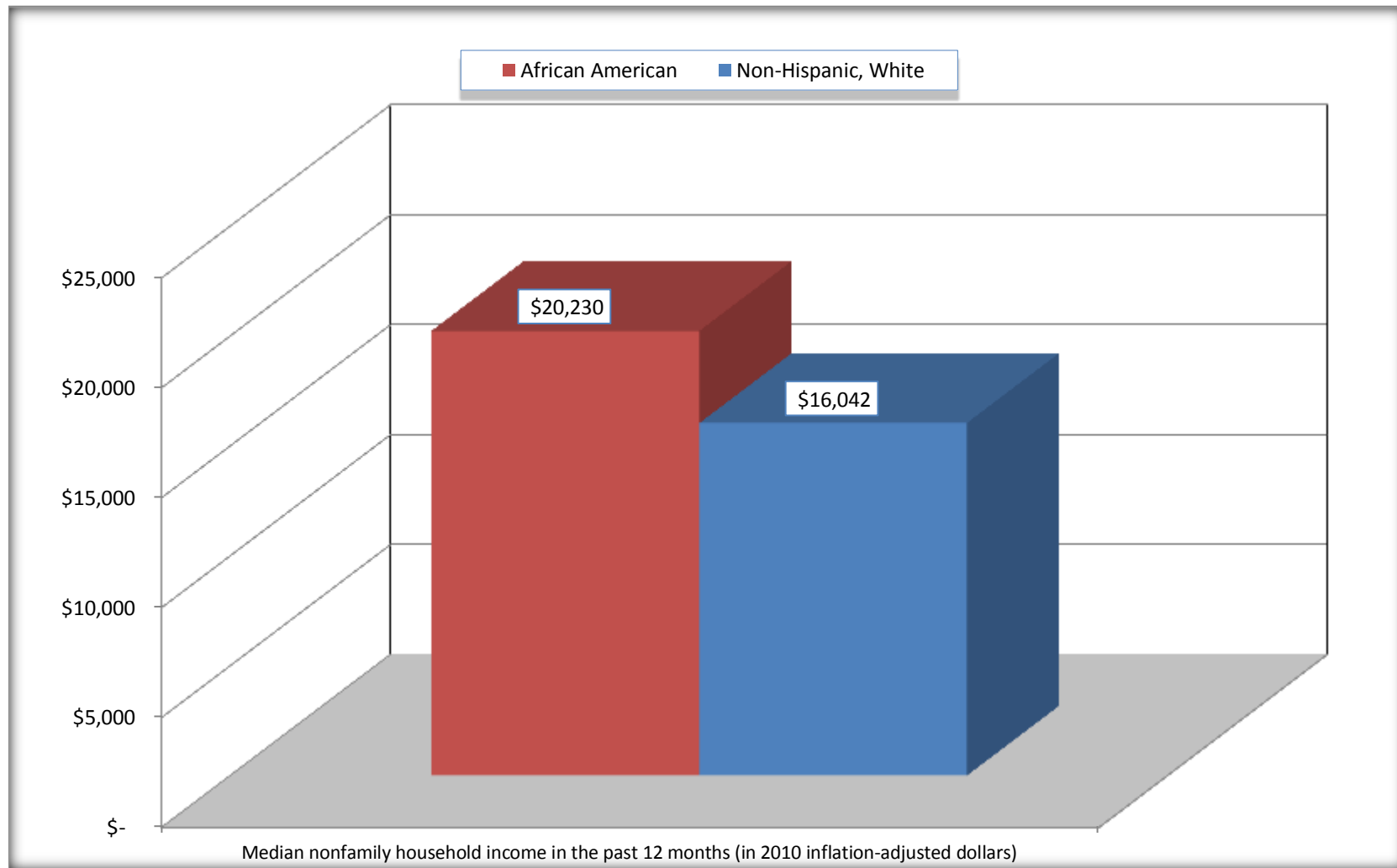
Source: U.S. Census Bureau, 2008-2012 American Community Survey

For information on confidentiality protection, sampling error, nonsampling error, and definitions, see Survey Methodology.

<http://www.census.gov/acs/www/UseData/index.htm>

Median Non-Family Income in the Past 12 Months

Conley CDP, Georgia



Source: B19202. MEDIAN NONFAMILY HOUSEHOLD INCOME IN THE PAST 12 MONTHS (IN 2010 INFLATION-ADJUSTED DOLLARS)
Data Set: 2008-2012 American Community Survey 5-Year Estimates

B19301. PER CAPITA INCOME IN THE PAST 12 MONTHS (IN 2010 INFLATION-ADJUSTED DOLLARS)

Data Set: 2008-2012 American Community Survey 5-Year Estimates

	Conley CDP, Georgia			
	African American	Margin of Error (+/-)	White, Not Hispanic	Margin of Error (+/-)
Per capita income in the past 12 months (in 2010 inflation-adjusted dollars)	\$ 14,660	\$ 3,192	\$ 20,763	\$ 3,856

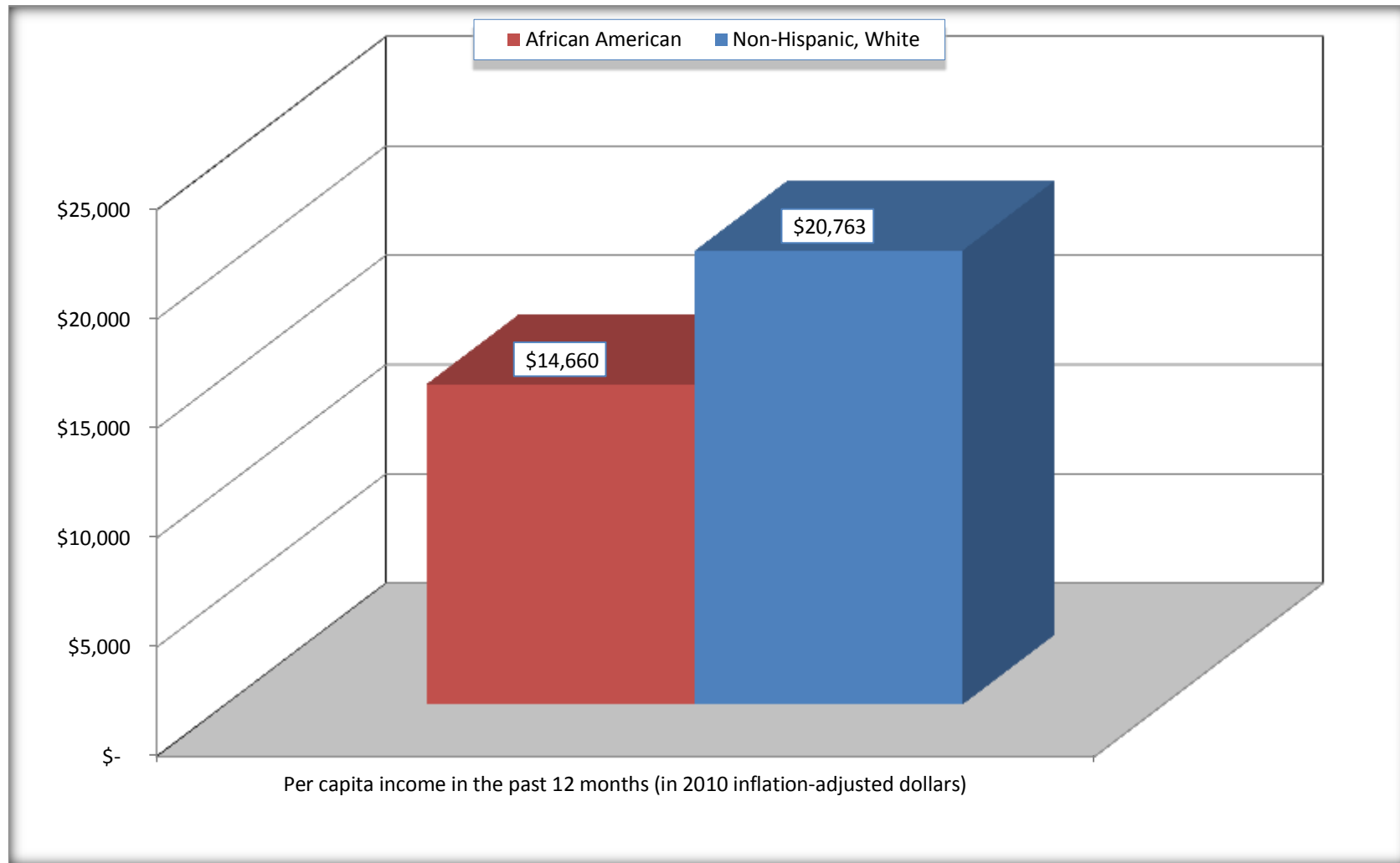
Source: U.S. Census Bureau, 2008-2012 American Community Survey

For information on confidentiality protection, sampling error, nonsampling error, and definitions, see Survey Methodology.

<http://www.census.gov/acs/www/UseData/index.htm>

Per capita Income in the Past 12 Months

Conley CDP, Georgia



Source: B19301. PER CAPITA INCOME IN THE PAST 12 MONTHS (IN 2010 INFLATION-ADJUSTED DOLLARS)
Data Set: 2008-2012 American Community Survey 5-Year Estimates

B20017. MEDIAN EARNINGS IN THE PAST 12 MONTHS (IN 2010 INFLATION-ADJUSTED DOLLARS) BY SEX BY WORK EXPERIENCE IN THE PAST 12 MONTHS FOR THE POPULATION 16 YEARS AND OVER WITH EARNINGS IN THE PAST 12 MONTHS

Data Set: 2008-2012 American Community Survey 5-Year Estimates

	Conley CDP, Georgia			
	African American	Margin of Error (+/-)	White, Not Hispanic	Margin of Error (+/-)
Median earnings in the past 12 months (in 2010 inflation-adjusted dollars) --				
Total:	\$ 27,340	\$ 5,975	\$ 30,194	\$ 9,917
Male --				
Total	\$ 25,581	\$ 20,517	\$ 31,659	\$ 7,671
Worked full-time, year-round in the past 12 months	\$ 44,063	\$ 17,605	\$ 45,750	\$ 18,181
Other	\$ 8,661	\$ 5,059	\$ 30,396	\$ 33,992
Female --				
Total	\$ 28,354	\$ 5,419	\$ 18,438	\$ 11,938
Worked full-time, year-round in the past 12 months	\$ 32,012	\$ 3,457	\$ 21,667	\$ 14,145
Other	\$ 13,806	\$ 5,850	\$ 10,093	\$ 3,347

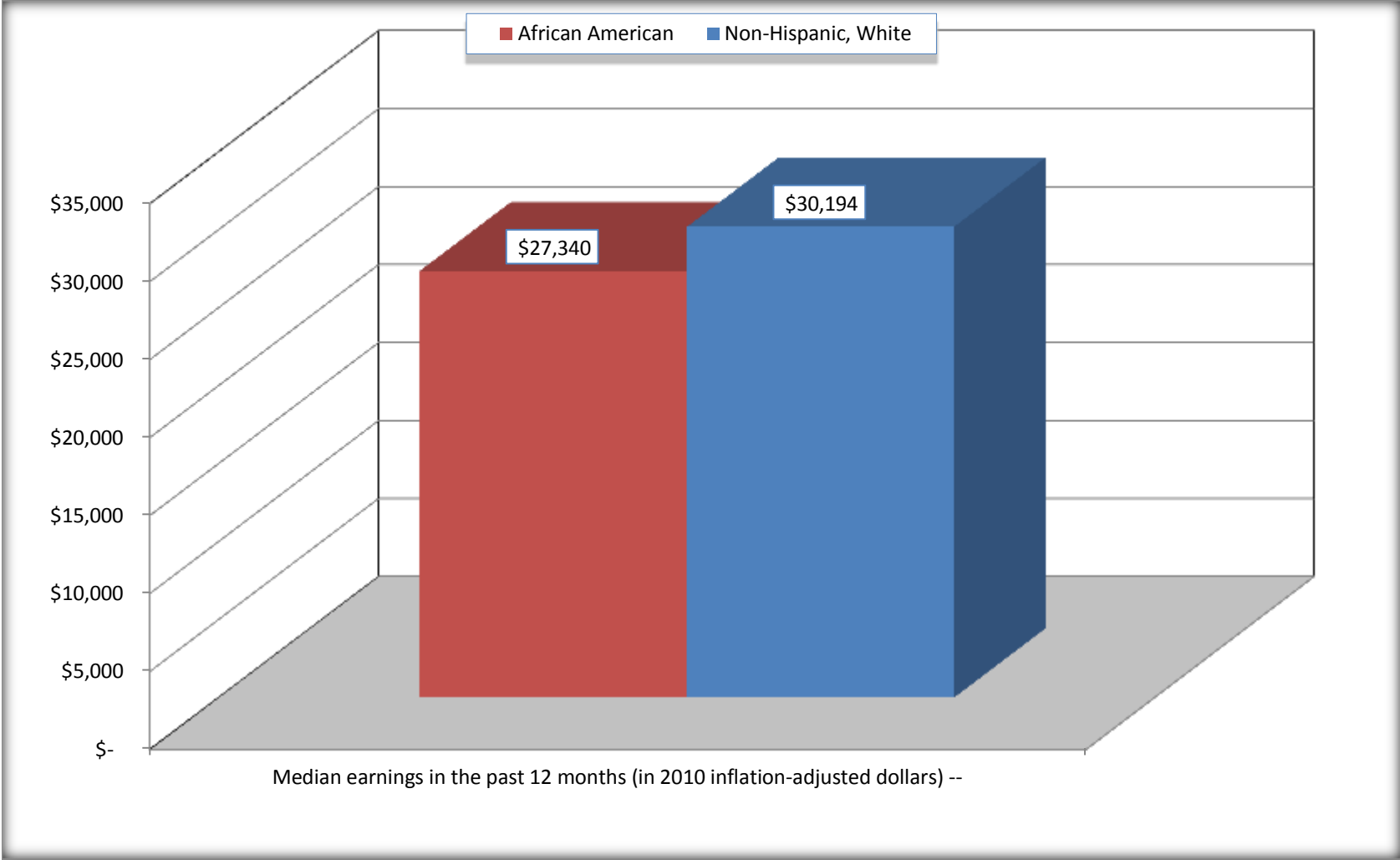
Source: U.S. Census Bureau, 2008-2012 American Community Survey

For information on confidentiality protection, sampling error, nonsampling error, and definitions, see Survey Methodology.

<http://www.census.gov/acs/www/UseData/index.htm>

Median earnings in the Past 12 Months (16 Years and Over with Earnings)

Conley CDP, Georgia



Source: B20017. MEDIAN EARNINGS IN THE PAST 12 MONTHS (IN 2010 INFLATION-ADJUSTED DOLLARS) BY SEX BY WORK EXPERIENCE IN THE PAST 12 MONTHS FOR THE POPULATION 16 YEARS AND OVER WITH EARNINGS IN THE PAST 12 MONTHS
Data Set: 2008-2012 American Community Survey 5-Year Estimates

B20005. SEX BY WORK EXPERIENCE IN THE PAST 12 MONTHS BY EARNINGS IN THE PAST 12 MONTHS (IN 2010 INFLATION-ADJUSTED DOLLARS) FOR THE POPULATION 16 YEARS AND OVER

Data Set: 2008-2012 American Community Survey 5-Year Estimates

	Conley CDP, Georgia					
	African American	Margin of Error (+/-)	% of AA Total	White, Not Hispanic	Margin of Error (+/-)	% of NHW Total
Total:	2,826	593	100.0%	860	264	100.0%
Worked full-time, year-round in the past 12 months:	1,154	NC	40.8%	188	NC	21.9%
No earnings	0	NC	0.0%	0	NC	0.0%
With earnings:	1,154	NC	40.8%	188	NC	21.9%
\$ 1 to \$ 9,999 or loss	21	NC	0.7%	0	NC	0.0%
\$ 10,000 to \$ 19,999	73	NC	2.6%	26	NC	3.0%
\$ 20,000 to \$ 29,999	342	NC	12.1%	44	NC	5.1%
\$ 30,000 to \$ 49,999	476	NC	16.8%	63	NC	7.3%
\$ 50,000 to \$ 74,999	201	NC	7.1%	47	NC	5.5%
\$ 75,000 or more	41	NC	1.5%	8	NC	0.9%
Other:	1,672	NC	59.2%	672	NC	78.1%
No earnings	1,092	NC	38.6%	535	NC	62.2%
With earnings: less than full time, year-round	580	NC	20.5%	137	NC	15.9%
Male:	1,191	385	42.1%	398	133	46.3%
Worked full-time, year-round in the past 12 months:	432	228	15.3%	124	69	14.4%
No earnings	0	19	0.0%	0	19	0.0%
With earnings:	432	228	15.3%	124	69	14.4%
\$ 1 to \$ 9,999 or loss	0	NC	0.0%	0	NC	0.0%
\$ 10,000 to \$ 19,999	34	NC	1.2%	10	NC	1.2%
\$ 20,000 to \$ 29,999	107	NC	3.8%	20	NC	2.3%
\$ 30,000 to \$ 49,999	203	NC	7.2%	39	NC	4.5%
\$ 50,000 to \$ 74,999	88	NC	3.1%	47	NC	5.5%
\$ 75,000 or more	0	NC	0.0%	8	NC	0.9%

	Conley CDP, Georgia					
	African American	Margin of Error (+/-)	% of AA Total	White, Not Hispanic	Margin of Error (+/-)	% of NHW Total
Other:	759	349	26.9%	274	112	31.9%
No earnings	481	296	17.0%	189	75	22.0%
With earnings:	278	137	9.8%	85	69	9.9%
Female:	1,635	378	57.9%	462	166	53.7%
Worked full-time, year-round in the past 12 months:	722	252	25.5%	64	48	7.4%
No earnings	0	19	0.0%	0	19	0.0%
With earnings:	722	252	25.5%	64	48	7.4%
\$ 1 to \$ 9,999 or loss	21	NC	0.7%	0	NC	0.0%
\$ 10,000 to \$ 19,999	39	NC	1.4%	16	NC	1.9%
\$ 20,000 to \$ 29,999	235	NC	8.3%	24	NC	2.8%
\$ 30,000 to \$ 49,999	273	NC	9.7%	24	NC	2.8%
\$ 50,000 to \$ 74,999	113	NC	4.0%	0	NC	0.0%
\$ 75,000 or more	41	NC	1.5%	0	NC	0.0%
Other:	913	256	32.3%	398	157	46.3%
No earnings	611	208	21.6%	346	147	40.2%
With earnings:	302	130	10.7%	52	39	6.0%

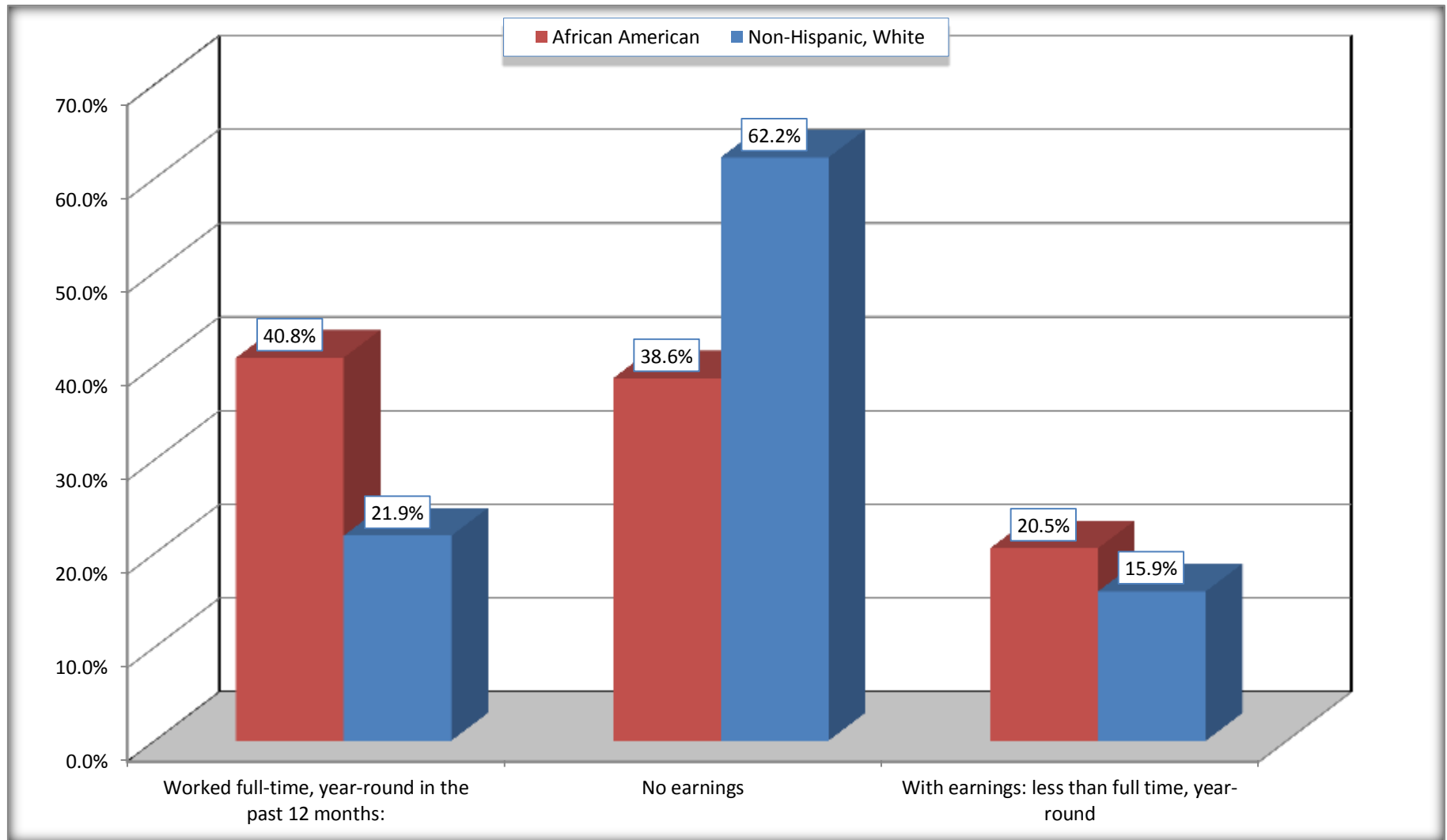
Source: U.S. Census Bureau, 2008-2012 American Community Survey

For information on confidentiality protection, sampling error, nonsampling error, and definitions, see Survey Methodology.

<http://www.census.gov/acs/www/UseData/index.htm>

Employment and Earnings in in the Past 12 Months (16 Years and Over)

Conley CDP, Georgia



Source: B20005. SEX BY WORK EXPERIENCE IN THE PAST 12 MONTHS BY EARNINGS IN THE PAST 12 MONTHS (IN 2010 INFLATION-ADJUSTED DOLLARS) FOR THE POPULATION 16 YEARS AND OVER

Data Set: 2008-2012 American Community Survey 5-Year Estimates

C21001. SEX BY AGE BY VETERAN STATUS FOR THE CIVILIAN POPULATION 18 YEARS AND OVER

Data Set: 2008-2012 American Community Survey 5-Year Estimates

	Conley CDP, Georgia					
	African American	Margin of Error (+/-)	% of AA Total	White, Not Hispanic	Margin of Error (+/-)	% of NHW Total
Total:	2,793	593	100.0%	845	261	100.0%
Veteran	279	NC	10.0%	153	NC	18.1%
Nonveteran	2,514	NC	90.0%	692	NC	81.9%
Male:	1,173	382	42.0%	398	133	47.1%
18 to 64 years:	1,117	396	40.0%	263	110	31.1%
Veteran	250	149	9.0%	45	45	5.3%
Nonveteran	867	350	31.0%	218	100	25.8%
65 years and over:	56	61	2.0%	135	75	16.0%
Veteran	0	19	0.0%	89	66	10.5%
Nonveteran	56	61	2.0%	46	36	5.4%
Female:	1,620	378	58.0%	447	166	52.9%
18 to 64 years:	1,561	378	55.9%	235	112	27.8%
Veteran	29	32	1.0%	0	19	0.0%
Nonveteran	1,532	379	54.9%	235	112	27.8%
65 years and over:	59	45	2.1%	212	96	25.1%
Veteran	0	19	0.0%	19	32	2.2%
Nonveteran	59	45	2.1%	193	89	22.8%

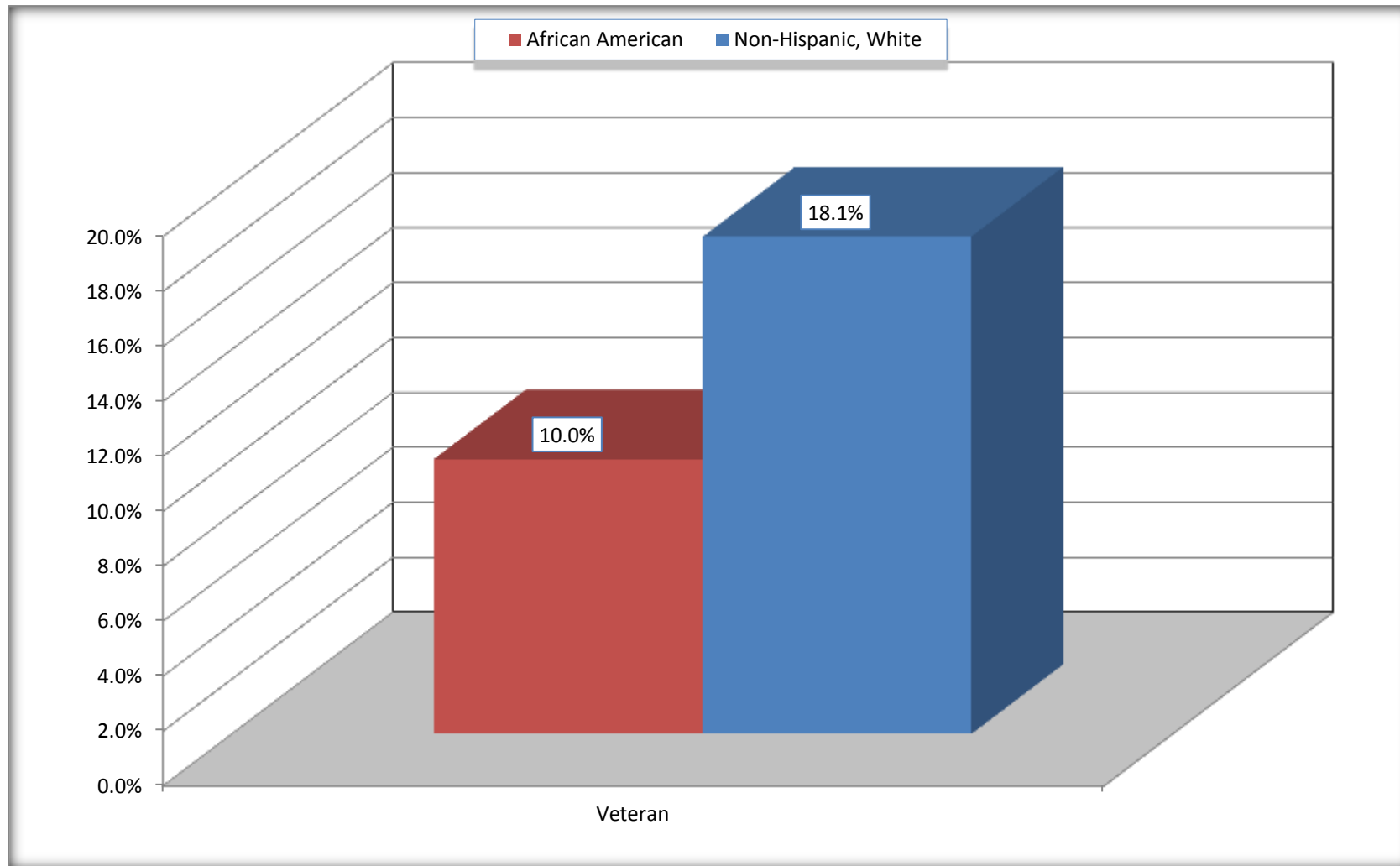
Source: U.S. Census Bureau, 2008-2012 American Community Survey

For information on confidentiality protection, sampling error, nonsampling error, and definitions, see Survey Methodology.

<http://www.census.gov/acs/www/UseData/index.htm>

Veterans in the Civilian Population 18 Years and Over

Conley CDP, Georgia



Source: C21001. SEX BY AGE BY VETERAN STATUS FOR THE CIVILIAN POPULATION 18 YEARS AND OVER
Data Set: 2008-2012 American Community Survey 5-Year Estimates

B22005. RECEIPT OF FOOD STAMPS/SNAP IN THE PAST 12 MONTHS BY RACE OF HOUSEHOLDER

Data Set: 2008-2012 American Community Survey 5-Year Estimates

	Conley CDP, Georgia					
	African American	Margin of Error (+/-)	% of AA Total	White, Not Hispanic	Margin of Error (+/-)	% of NHW Total
Total:	1,397	266	100.0%	330	107	100.0%
HH received Food Stamps/SNAP in the past 12 months	283	143	20.3%	46	39	13.9%
HH did not receive Food Stamps/SNAP in the past 12 months	1,114	236	79.7%	284	102	86.1%

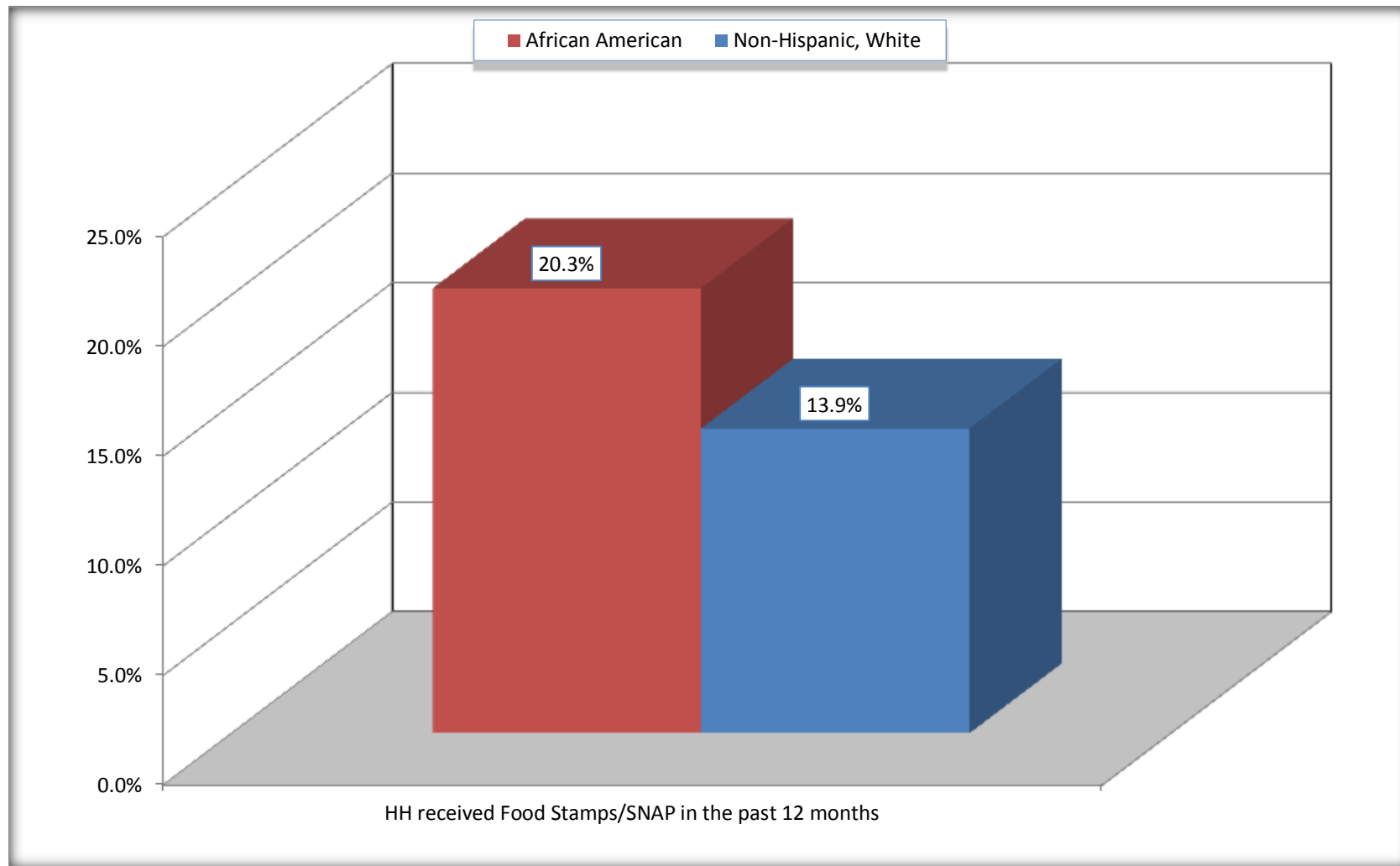
Source: U.S. Census Bureau, 2008-2012 American Community Survey

For information on confidentiality protection, sampling error, nonsampling error, and definitions, see Survey Methodology.

<http://www.census.gov/acs/www/UseData/index.htm>

Receipt of Food Stamps/SNAP in the Past 12 Months by Household

Conley CDP, Georgia



Source: B22005. RECEIPT OF FOOD STAMPS/SNAP IN THE PAST 12 MONTHS BY RACE OF HOUSEHOLDER
Data Set: 2008-2012 American Community Survey 5-Year Estimates

C23002. SEX BY AGE BY EMPLOYMENT STATUS FOR THE POPULATION 16 YEARS AND OVER

Data Set: 2008-2012 American Community Survey 5-Year Estimates

	Conley CDP, Georgia					
	African American	Margin of Error (+/-)	% of AA Total	White, Not Hispanic	Margin of Error (+/-)	% of NHW Total
Total:	2,826	593	100.0%	860	264	100.0%
In labor force:	1,977	NC	70.0%	386	NC	44.9%
In Armed Forces	0	NC	0.0%	0	NC	0.0%
Civilian:	1,977	NC	70.0%	323	NC	37.6%
Employed	1,480	NC	52.4%	286	NC	33.3%
Unemployed	497	NC	17.6%	100	NC	11.6%
Not in labor force	849	NC	30.0%	474	NC	55.1%
Male:	1,191	385	42.1%	398	133	46.3%
16 to 64 years:	1,135	398	40.2%	263	110	30.6%
In labor force:	733	285	25.9%	195	93	22.7%
In Armed Forces	0	19	0.0%	0	19	0.0%
Civilian:	733	285	25.9%	195	93	22.7%
Employed	554	240	19.6%	165	83	19.2%
Unemployed	179	132	6.3%	30	41	3.5%
Not in labor force	402	311	14.2%	68	46	7.9%
65 years and over:	56	61	2.0%	135	75	15.7%
In labor force:	0	19	0.0%	31	50	3.6%
Employed	0	19	0.0%	31	50	3.6%
Unemployed	0	19	0.0%	0	19	0.0%
Not in labor force	56	61	2.0%	104	61	12.1%

	Conley CDP, Georgia					
	African American	Margin of Error (+/-)	% of AA Total	White, Not Hispanic	Margin of Error (+/-)	% of NHW Total
Female:	1,635	378	57.9%	462	166	53.7%
16 to 64 years:	1,576	378	55.8%	250	115	29.1%
In labor force:	1,244	341	44.0%	128	74	14.9%
In Armed Forces	0	19	0.0%	0	19	0.0%
Civilian:	1,244	341	44.0%	128	74	14.9%
Employed	926	276	32.8%	58	43	6.7%
Unemployed	318	178	11.3%	70	69	8.1%
Not in labor force	332	142	11.7%	122	84	14.2%
65 years and over:	59	45	2.1%	212	96	24.7%
In labor force:	0	19	0.0%	32	32	3.7%
Employed	0	19	0.0%	32	32	3.7%
Unemployed	0	19	0.0%	0	19	0.0%
Not in labor force	59	45	2.1%	180	89	20.9%

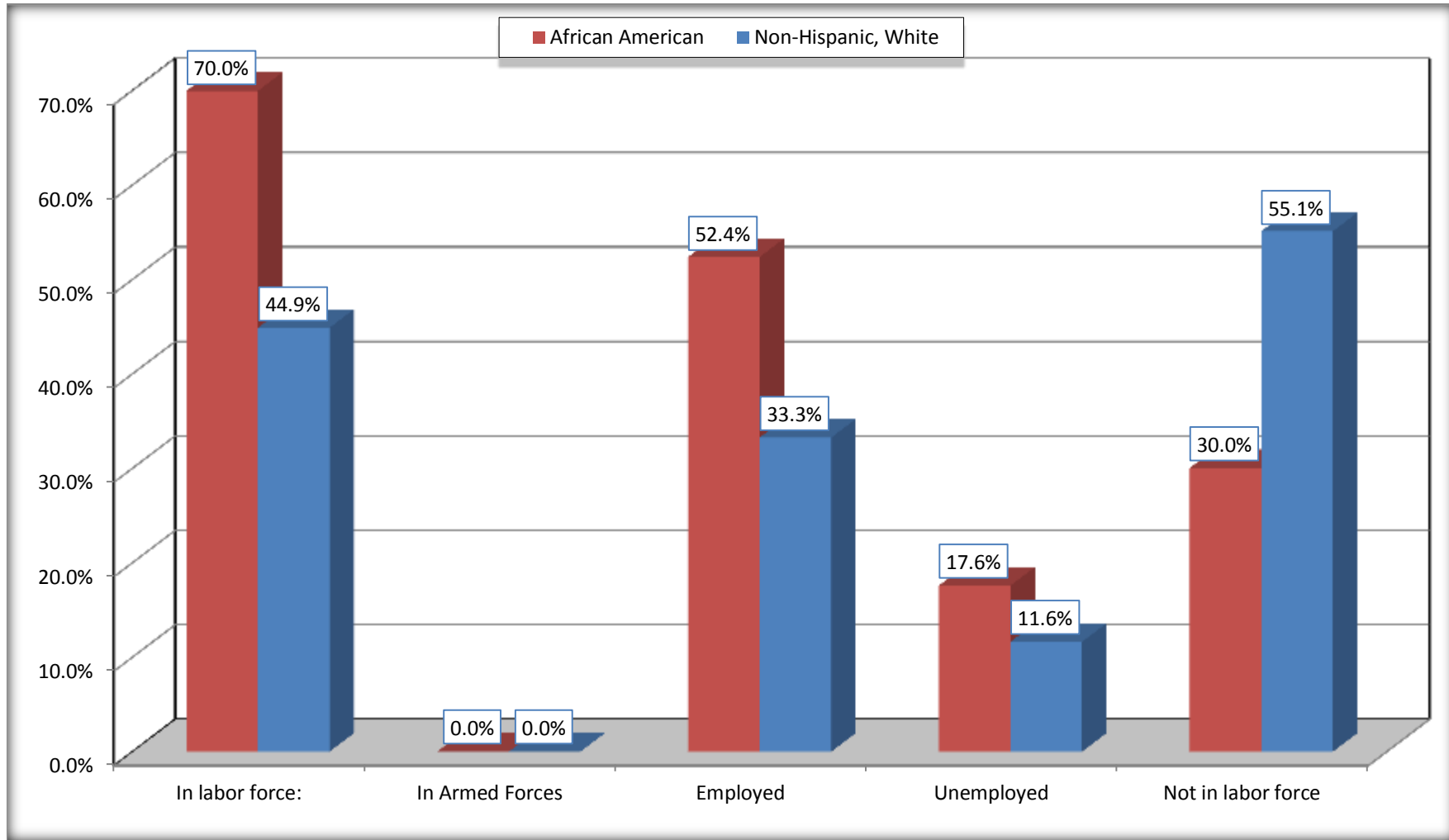
Source: U.S. Census Bureau, 2008-2012 American Community Survey

For information on confidentiality protection, sampling error, nonsampling error, and definitions, see Survey Methodology.

<http://www.census.gov/acs/www/UseData/index.htm>

Employment Status for the Population 16 years and over

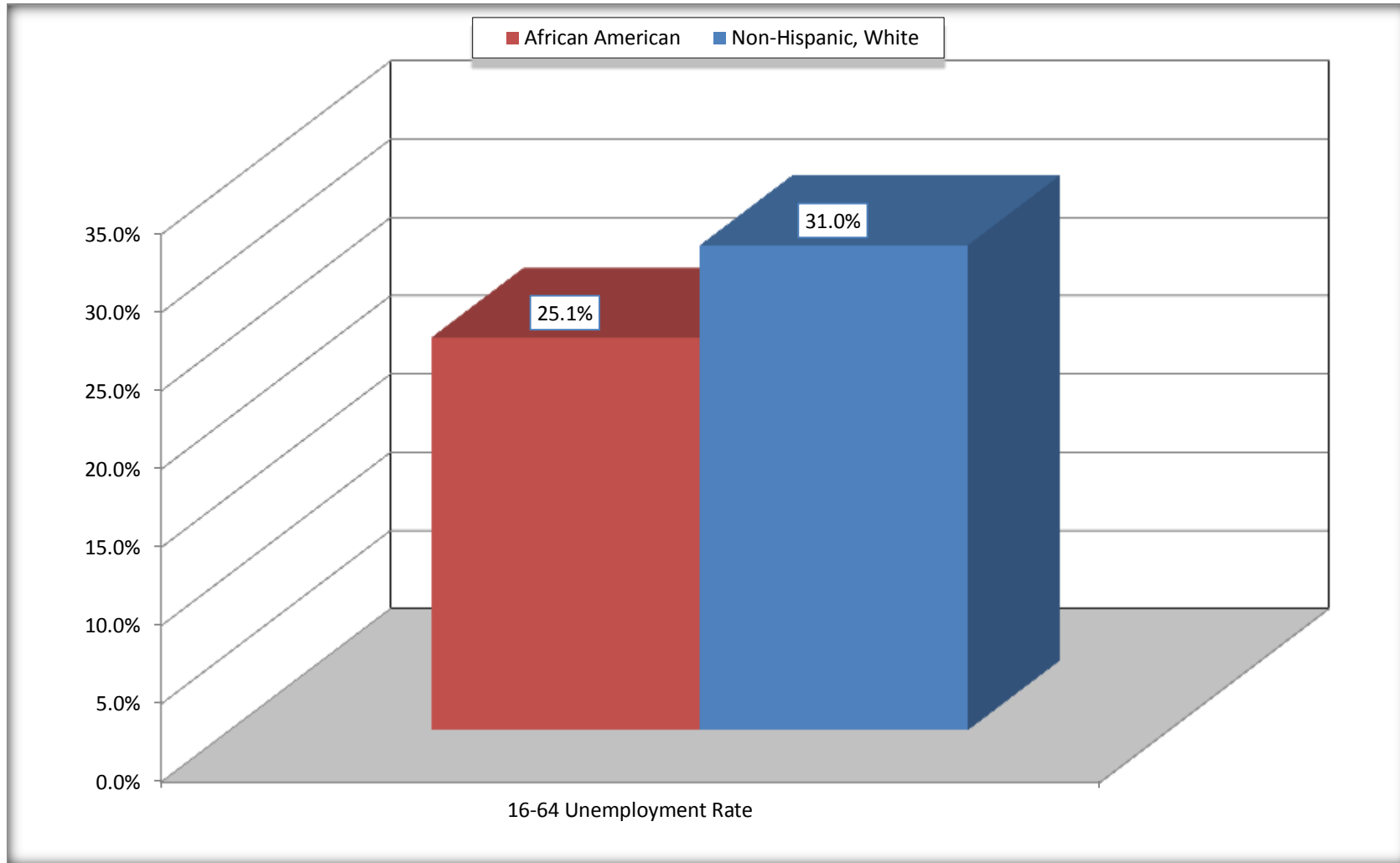
Conley CDP, Georgia



Source: C23002. SEX BY AGE BY EMPLOYMENT STATUS FOR THE POPULATION 16 YEARS AND OVER
Data Set: 2008-2012 American Community Survey 5-Year Estimates

Unemployment of Working Age Population (Ages 16 to 64) (As a Percent of 16-64 Civilian Labor Force)

Conley CDP, Georgia



Source: C23002. SEX BY AGE BY EMPLOYMENT STATUS FOR THE POPULATION 16 YEARS AND OVER
Data Set: 2008-2012 American Community Survey 5-Year Estimates

C24010. SEX BY OCCUPATION FOR THE CIVILIAN EMPLOYED POPULATION 16 YEARS AND OVER

Data Set: 2008-2012 American Community Survey 5-Year Estimates

	Conley CDP, Georgia					
	African American	Margin of Error (+/-)	% of AA Total	White, Not Hispanic	Margin of Error (+/-)	% of NHW Total
Total:	1,480	342	100.0%	286	114	100.0%
Management, professional, and related occupations	275	NC	18.6%	23	NC	8.0%
Service occupations	229	NC	15.5%	41	NC	14.3%
Sales and office occupations	358	NC	24.2%	70	NC	24.5%
Natural resources, construction, and maintenance occupations:	99	NC	6.7%	73	NC	25.5%
Production, transportation, and material moving occupations	519	NC	35.1%	79	NC	27.6%
Male:	554	240	37.4%	196	93	68.5%
Management, business, science, and arts occupations:	16	28	1.1%	11	17	3.8%
Service occupations	43	53	2.9%	0	19	0.0%
Sales and office occupations	28	34	1.9%	52	43	18.2%
Natural resources, construction, and maintenance occupations:	99	92	6.7%	73	56	25.5%
Production, transportation, and material moving occupations	368	236	24.9%	60	59	21.0%
Female:	926	276	62.6%	90	53	31.5%
Management, professional, and related occupations	259	132	17.5%	12	14	4.2%
Service occupations	186	136	12.6%	41	39	14.3%
Sales and office occupations	330	128	22.3%	18	19	6.3%
Natural resources, construction, and maintenance occupations:	0	19	0.0%	0	19	0.0%
Production, transportation, and material moving occupations	151	132	10.2%	19	27	6.6%

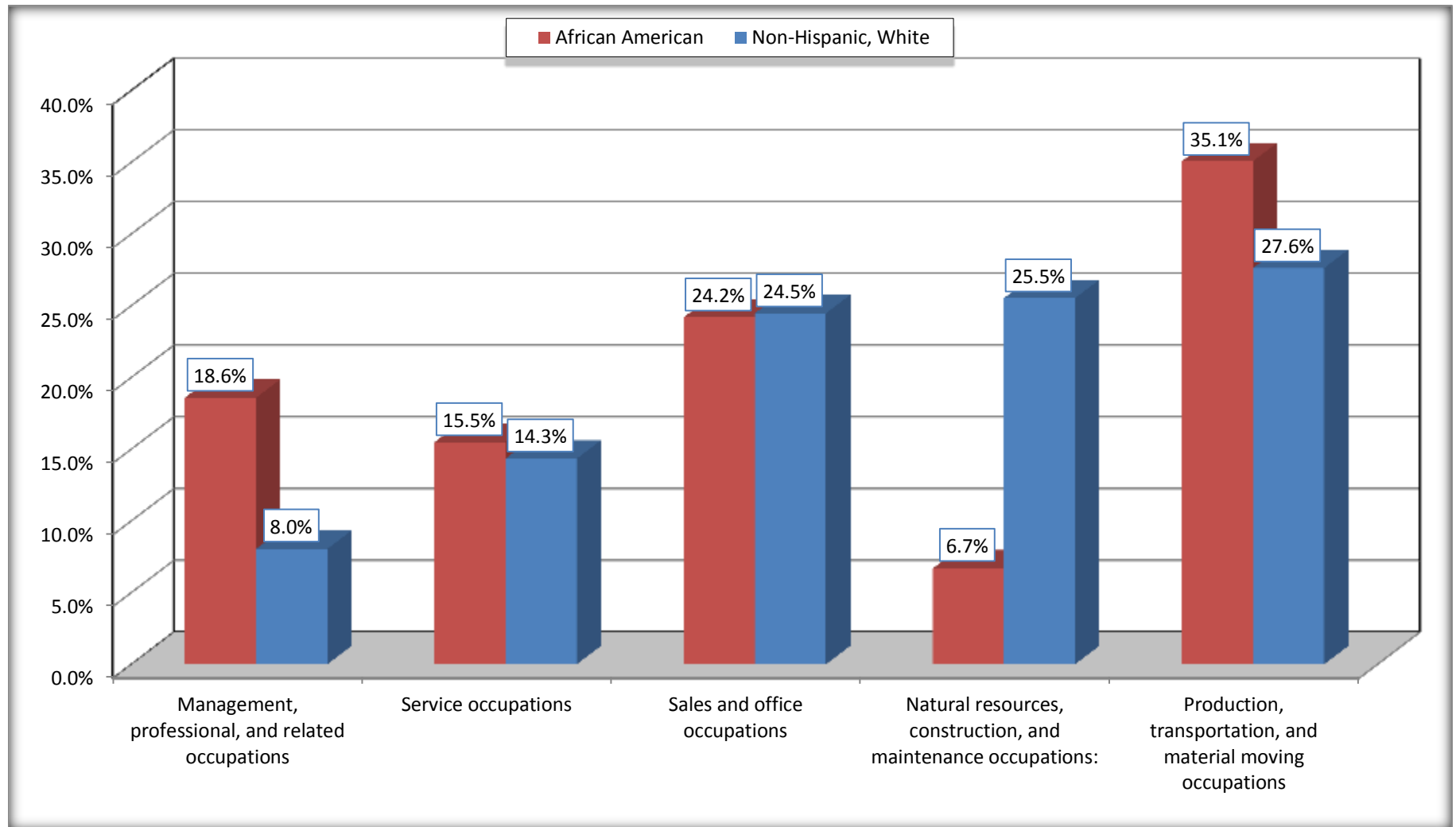
Source: U.S. Census Bureau, 2008-2012 American Community Survey

For information on confidentiality protection, sampling error, nonsampling error, and definitions, see Survey Methodology.

<http://www.census.gov/acs/www/UseData/index.htm>

Occupation for the Civilian Employed 16 Years and Over Population

Conley CDP, Georgia



Source: C24010. SEX BY OCCUPATION FOR THE CIVILIAN EMPLOYED POPULATION 16 YEARS AND OVER
Data Set: 2008-2012 American Community Survey 5-Year Estimates

B25003. TENURE - Universe: OCCUPIED HOUSING UNITS

Data Set: 2008-2012 American Community Survey 5-Year Estimates

	Conley CDP, Georgia					
	African American	Margin of Error (+/-)	% of AA Total	White, Not Hispanic	Margin of Error (+/-)	% of NHW Total
Total:	1,397	266	100.0%	330	107	100.0%
Owner occupied	808	189	57.8%	260	84	78.8%
Renter occupied	589	192	42.2%	70	63	21.2%

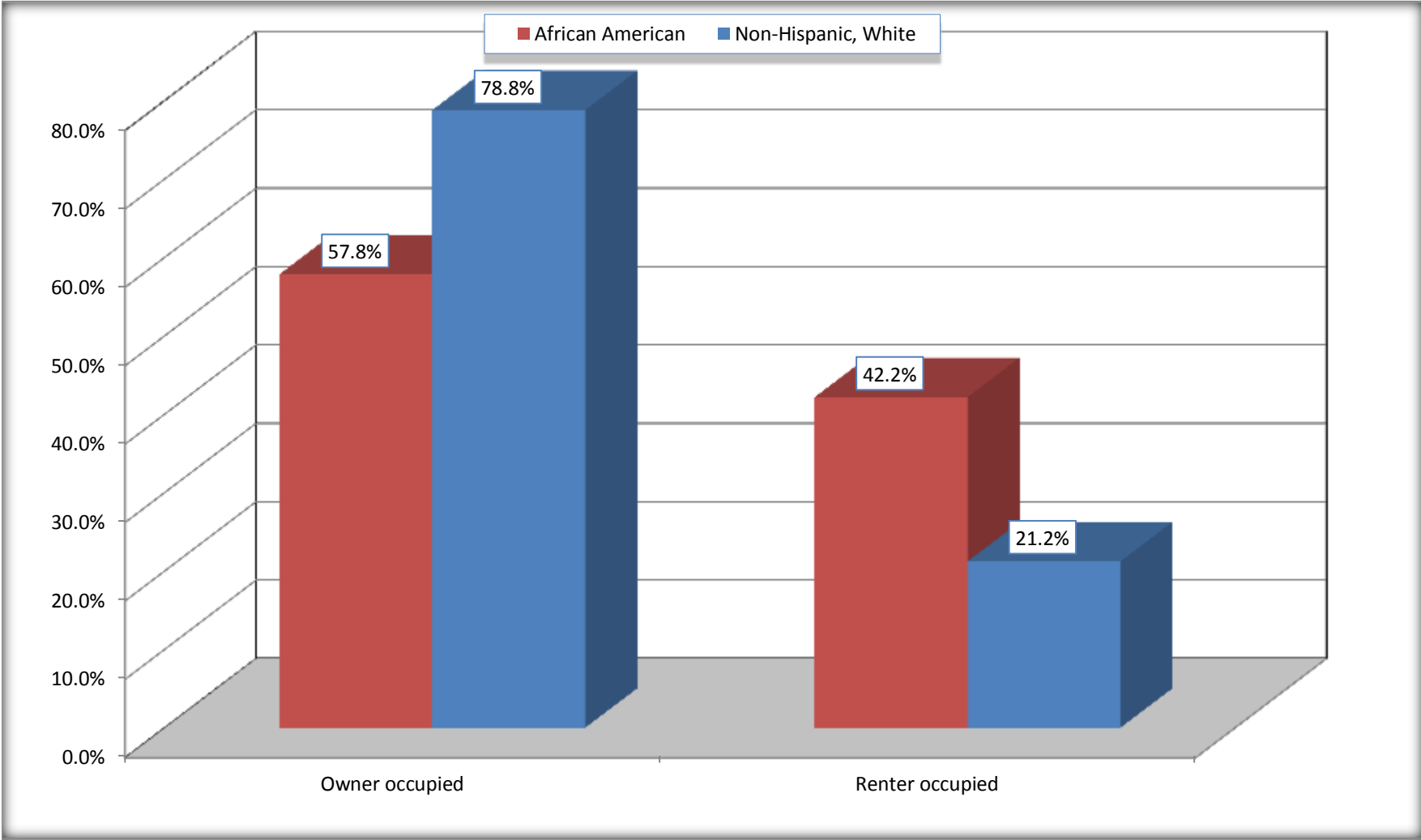
Source: U.S. Census Bureau, 2008-2012 American Community Survey

For information on confidentiality protection, sampling error, nonsampling error, and definitions, see Survey Methodology.

<http://www.census.gov/acs/www/UseData/index.h>

Home Owners and Renters by Household

Conley CDP, Georgia



Source: B25003. TENURE - Universe: OCCUPIED HOUSING UNITS
Data Set: 2008-2012 American Community Survey 5-Year Estimates

B25014. OCCUPANTS PER ROOM - Universe: OCCUPIED HOUSING UNITS

Data Set: 2008-2012 American Community Survey 5-Year Estimates

	Conley CDP, Georgia					
	African American	Margin of Error (+/-)	% of AA Total	White, Not Hispanic	Margin of Error (+/-)	% of NHW Total
Total:	1,397	266	100.0%	330	107	100.0%
1.00 or less occupants per room	1,397	266	100.0%	330	107	100.0%
1.01 or more occupants per room	0	19	0.0%	0	19	0.0%

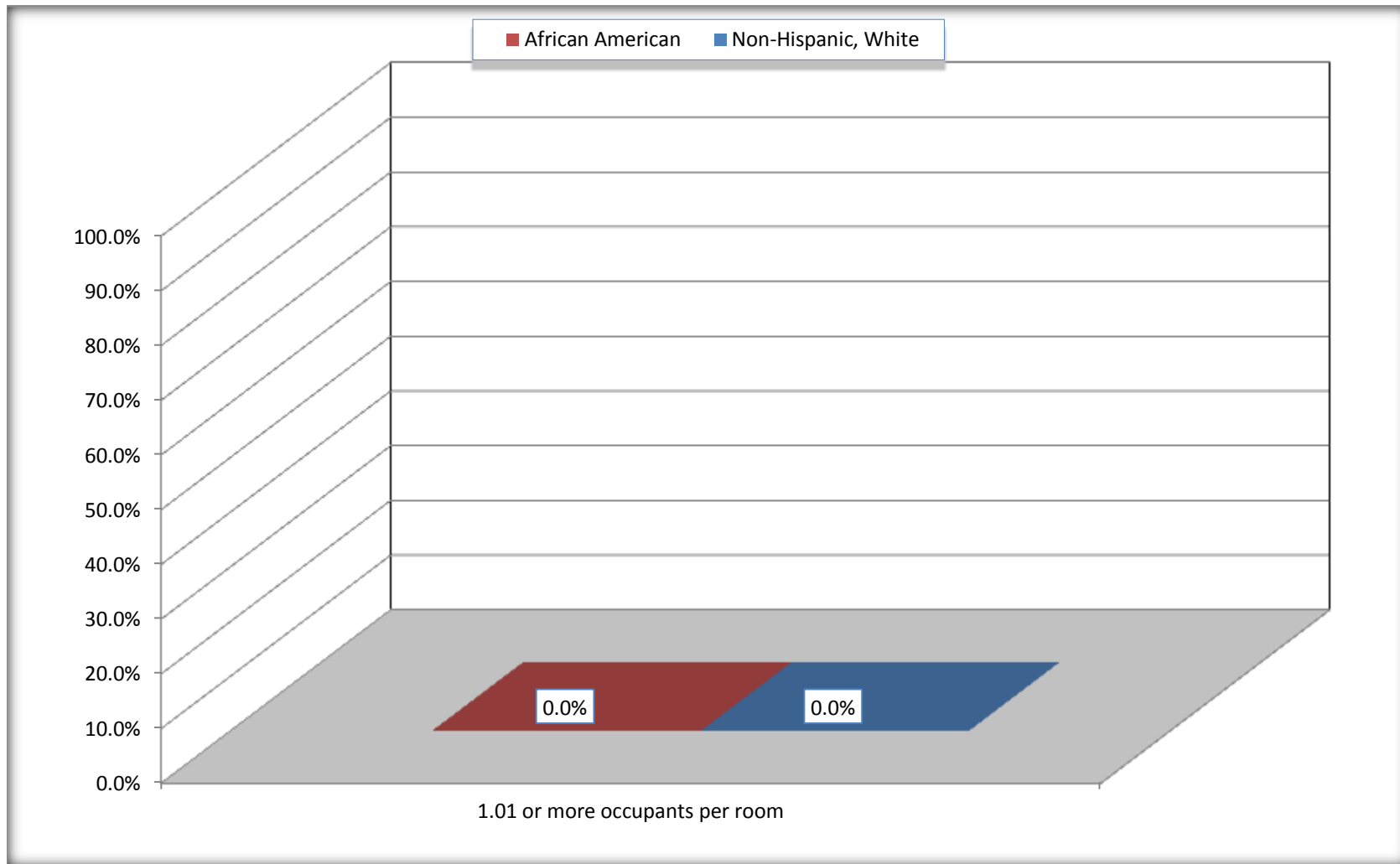
Source: U.S. Census Bureau, 2008-2012 American Community Survey

For information on confidentiality protection, sampling error, nonsampling error, and definitions, see Survey Methodology.

<http://www.census.gov/acs/www/UseData/index.ht>

More than One Person per Room (Crowding) by Household

Conley CDP, Georgia



Source: B25014. OCCUPANTS PER ROOM - Universe: OCCUPIED HOUSING UNITS
Data Set: 2008-2012 American Community Survey 5-Year Estimates

B18101. AGE BY DISABILITY STATUS

Data Set: 2008-2012 American Community Survey 5-Year Estimates

	Conley CDP, Georgia					
	African American	Margin of Error (+/-)	% of AA Total	White, Not Hispanic	Margin of Error (+/-)	% of NHW Total
Total:	4,010	950	100.0%	955	283	100.0%
Under 18 years:	1,217	465	30.3%	110	31	11.5%
With a disability	63	61	1.6%	8	13	0.8%
No disability	1,154	450	28.8%	102	68	10.7%
18 to 64 years:	2,678	604	66.8%	498	183	52.1%
With a disability	342	169	8.5%	172	93	18.0%
No disability	2,336	572	58.3%	326	130	34.1%
65 years and over:	115	82	2.9%	347	157	36.3%
With a disability	55	59	1.4%	203	125	21.3%
No disability	60	62	1.5%	144	80	15.1%

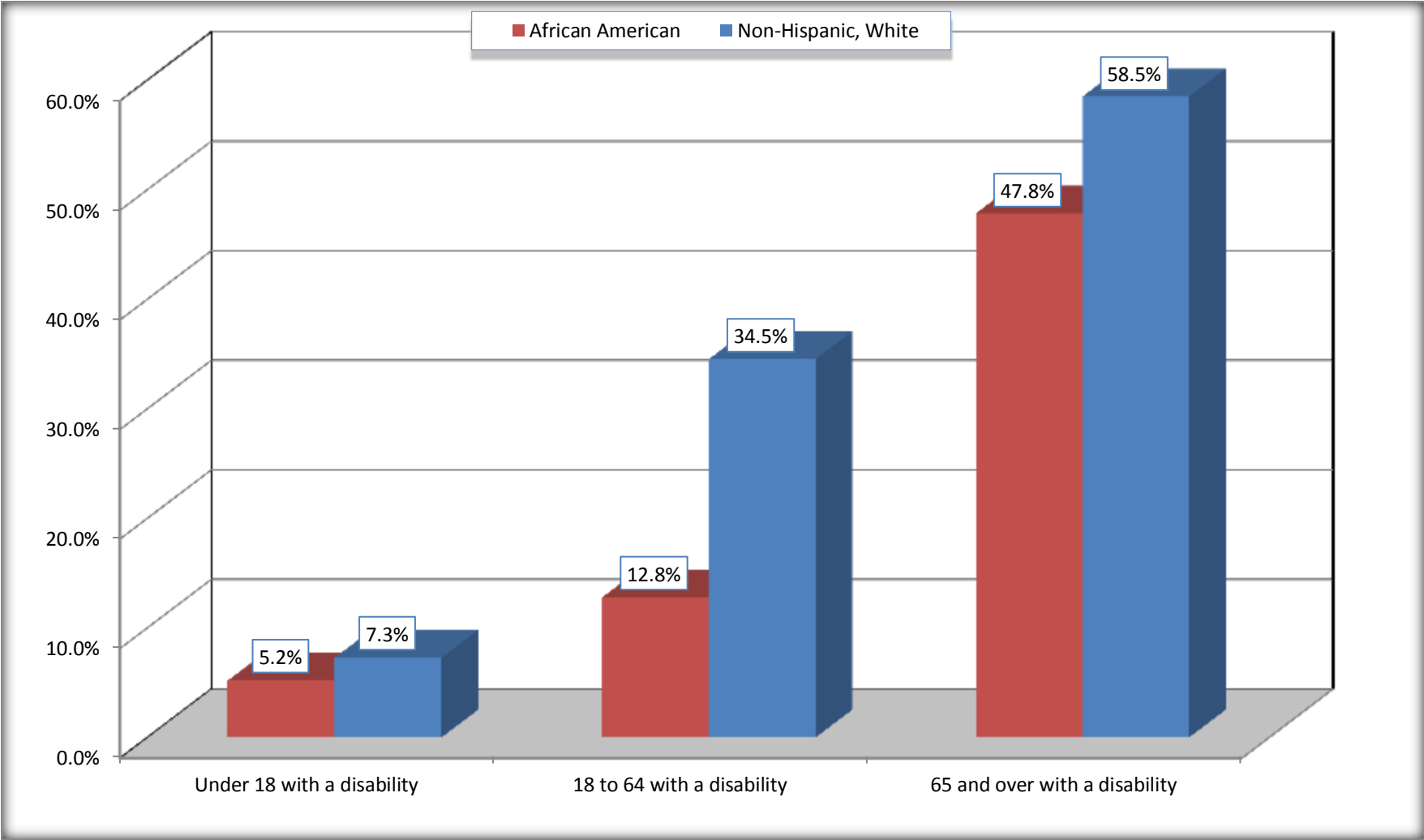
Source: U.S. Census Bureau, 2008-2012 American Community Survey

For information on confidentiality protection, sampling error, nonsampling error, and definitions, see Survey Methodology.

<http://www.census.gov/acs/www/UseData/index.htm>

Disability by Age

Conley CDP, Georgia



Source: B18101. AGE BY DISABILITY STATUS
Data Set: 2008-2012 American Community Survey 5-Year Estimates

C27001B. HEALTH INSURANCE COVERAGE STATUS BY AGE

Data Set: 2008-2012 American Community Survey 5-Year Estimates

	Conley CDP, Georgia					
	African American	Margin of Error (+/-)	% of AA Total	White, Not Hispanic	Margin of Error (+/-)	% of NHW Total
Total:	4,010	950	100.0%	955	283	100.0%
Under 18 years:	1,217	465	30.3%	110	73	11.5%
With health insurance coverage	1,022	440	25.5%	110	73	11.5%
No health insurance coverage	195	153	4.9%	0	19	0.0%
18 to 64 years:	2,678	604	66.8%	498	183	52.1%
With health insurance coverage	1,887	473	47.1%	402	155	42.1%
No health insurance coverage	791	376	19.7%	96	73	10.1%
65 years and over:	115	82	2.9%	347	157	36.3%
With health insurance coverage	115	82	2.9%	347	157	36.3%
No health insurance coverage	0	19	0.0%	0	19	0.0%

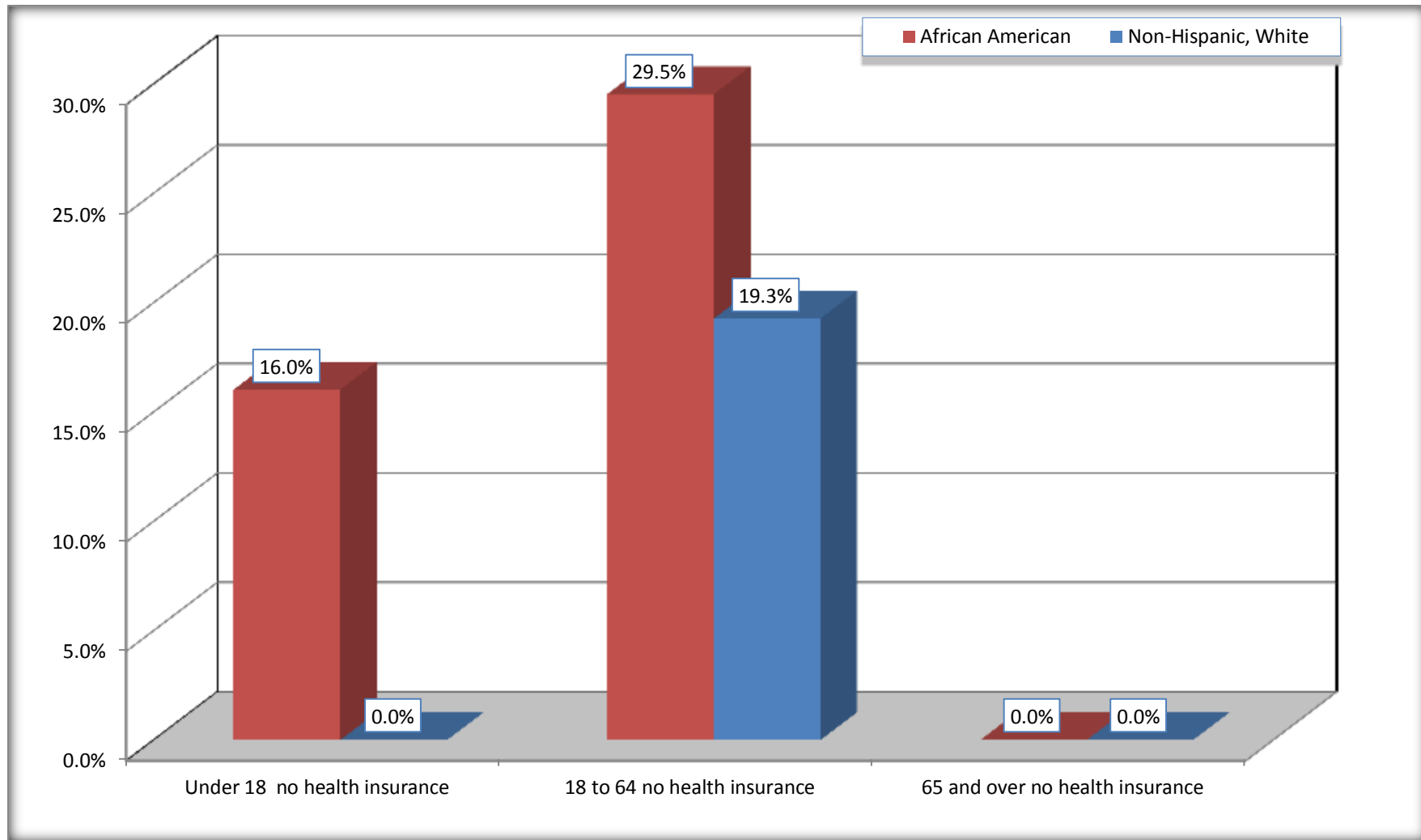
Source: U.S. Census Bureau, 2008-2012 American Community Survey

For information on confidentiality protection, sampling error, nonsampling error, and definitions, see Survey Methodology.

<http://www.census.gov/acs/www/UseData/index.htm>

Lack of Health Insurance Coverage by Age

Conley CDP, Georgia



Source: C27001B. HEALTH INSURANCE COVERAGE STATUS BY AGE
Data Set: 2008-2012 American Community Survey 5-Year Estimates