

# **Selected Socio-Economic Data**

## **Blakely city, Georgia**

### **African American and White, Not Hispanic**

**Data Set: 2008-2012 American Community Survey 5-Year Estimates**

[www.fairvote2020.org](http://www.fairvote2020.org)

[www.fairdata2000.com](http://www.fairdata2000.com)

[29-Dec-13](#)

**C02003.DETAILED RACE - Universe: TOTAL POPULATION**

Data Set: 2008-2012 American Community Survey 5-Year Estimates

	<b>Blakely city, Georgia</b>		
	Population	Margin of Error (+/-)	% of Total
<b>Total:</b>	<b>5,012</b>	<b>19</b>	<b>100.0%</b>
Population of one race:	4,958	47	98.9%
White	1,694	249	33.8%
Black or African American	3,205	251	63.9%
American Indian and Alaska Native	0	13	0.0%
Asian alone	25	23	0.5%
Native Hawaiian and Other Pacific Islander	0	13	0.0%
Some other race	34	42	0.7%
Population of two or more races:	54	44	1.1%
Two races including Some other race	17	25	0.3%
Two races excluding Some other race, and three or more races	37	31	0.7%
Population of two races:	54	44	1.1%
White; Black or African American	25	25	0.5%
White; American Indian and Alaska Native	0	13	0.0%
White; Asian	12	20	0.2%
Black or African American; American Indian and Alaska Native	0	13	0.0%
All other two race combinations	17	25	0.3%
Population of three races	0	13	0.0%
Population of four or more races	0	13	0.0%

Note: Hispanics may be of any race. See Table B03002 and chart.

Source: U.S. Census Bureau, 2008-2012 American Community Survey

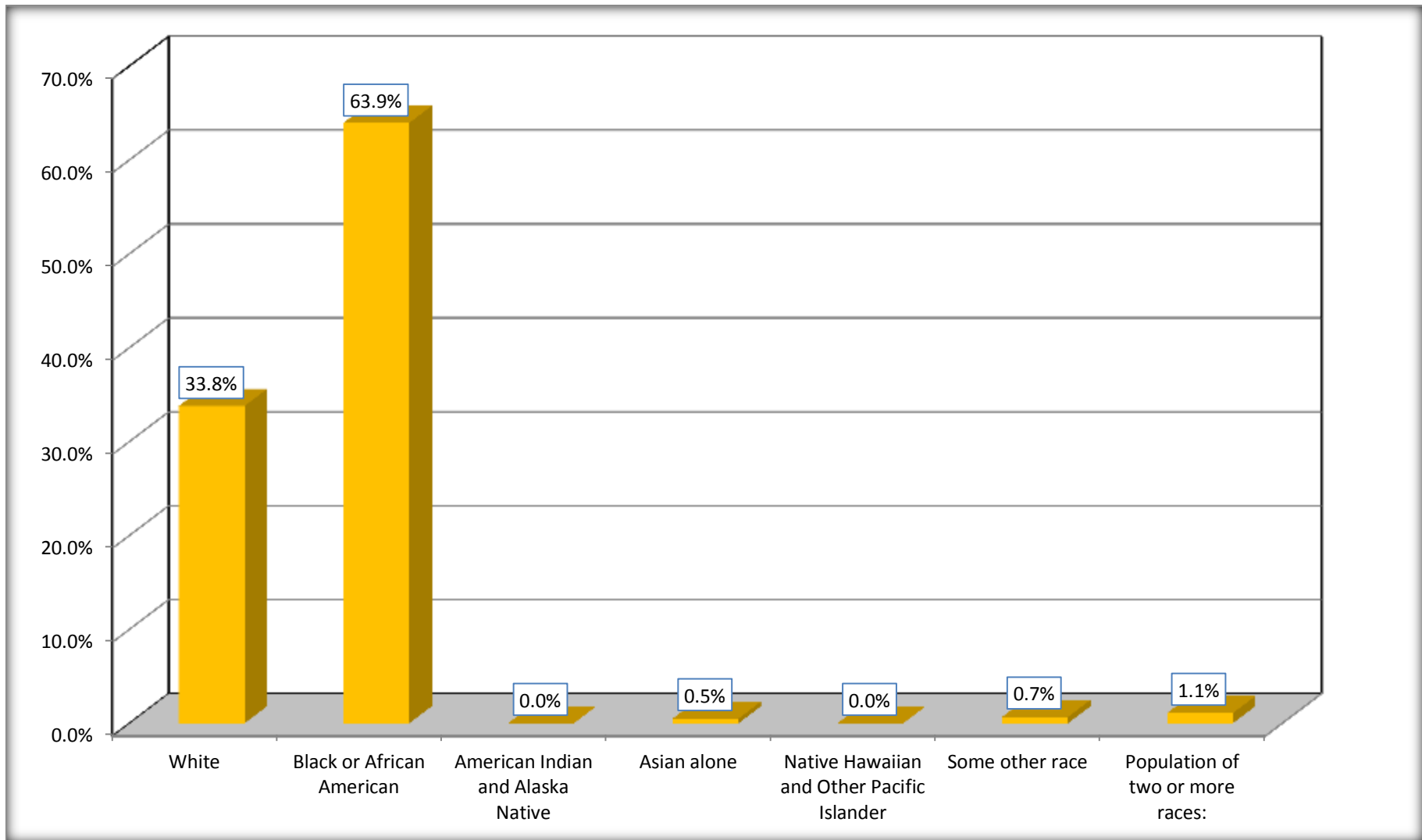
Although the American Community Survey (ACS) produces population, demographic and housing unit estimates, it is the Census Bureau's Population Estimates Program that produces and disseminates the official estimates of the population for the nation, states, counties, cities and towns and estimates of housing units for states and counties.

For information on confidentiality protection, sampling error, nonsampling error, and definitions, see Survey Methodology.

<http://www.census.gov/acs/www/UseData/index.htm>

# Population by Race

## Blakely city, Georgia



Source: C02003.DETAILED RACE - Universe: TOTAL POPULATION  
Data Set: 2008-2012 American Community Survey 5-Year Estimates

**B03002. HISPANIC OR LATINO ORIGIN BY RACE - Universe: TOTAL POPULATION**

Data Set: 2008-2012 American Community Survey 5-Year Estimates

	<b>Blakely city, Georgia</b>		
	Population	Margin of Error (+/-)	% of Total
<b>Total:</b>	5,012	19	<b>100.0%</b>
Not Hispanic or Latino:	4,960	50	99.0%
White alone	1,670	251	33.3%
Black or African American alone	3,201	249	63.9%
American Indian and Alaska Native alone	0	13	0.0%
Asian alone	25	23	0.5%
Native Hawaiian and Other Pacific Islander alone	0	13	0.0%
Some other race alone	27	40	0.5%
Two or more races:	37	31	0.7%
Two races including Some other race	0	13	0.0%
Two races excluding Some other race, and three or more races	37	31	0.7%
Hispanic or Latino	52	50	1.0%

Source: U.S. Census Bureau, 2008-2012 American Community Survey

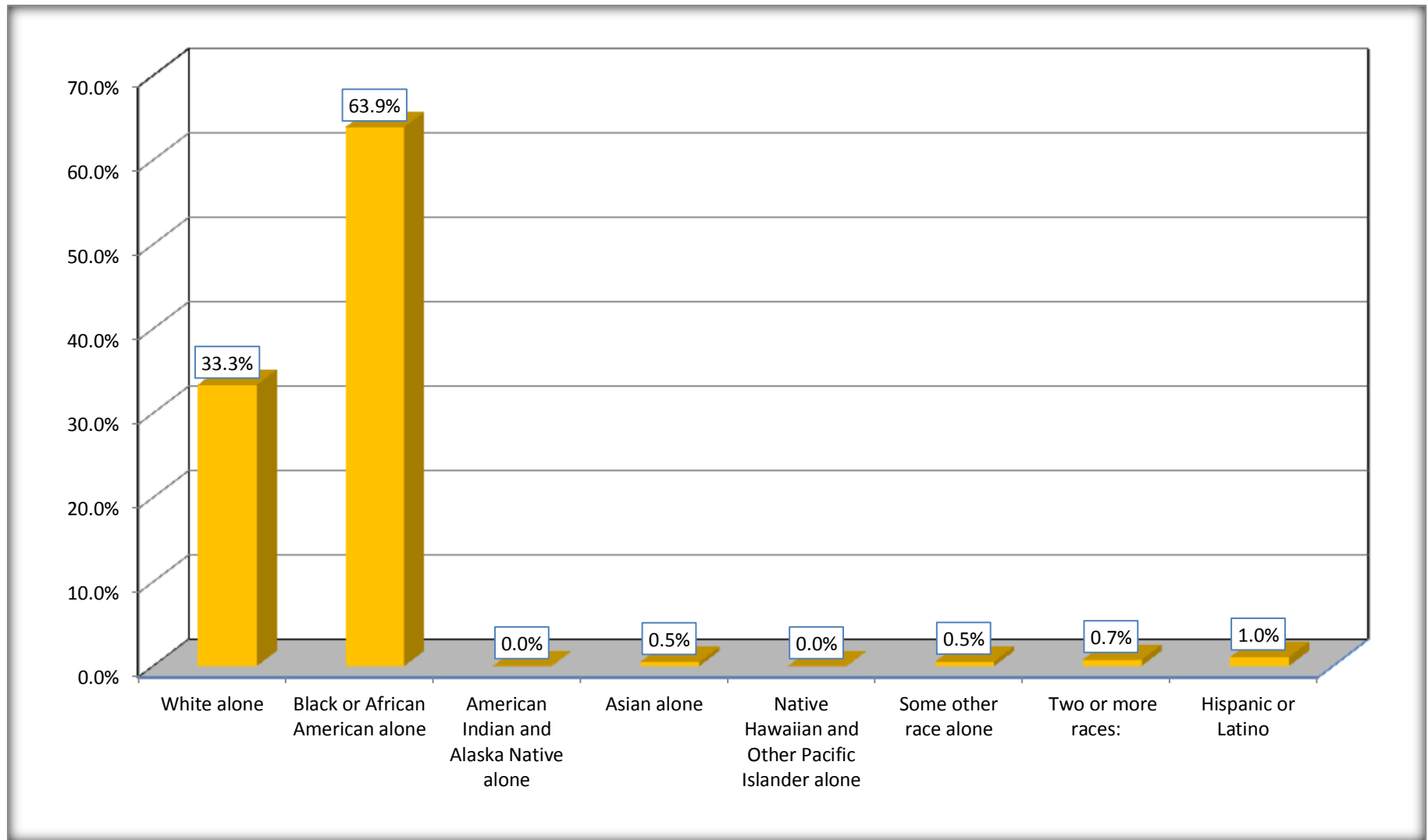
Although the American Community Survey (ACS) produces population, demographic and housing unit estimates, it is the Census Bureau's Population Estimates Program that produces and disseminates the official estimates of the population for the nation, states, counties, cities and towns and estimates of housing units for states and counties.

For information on confidentiality protection, sampling error, nonsampling error, and definitions, see Survey Methodology.

<http://www.census.gov/acs/www/UseData/index.htm>

# Non-Hispanic by Race and Hispanic Population

## Blakely city, Georgia



Source: B03002. HISPANIC OR LATINO ORIGIN BY RACE - Universe: TOTAL POPULATION  
Data Set: 2008-2012 American Community Survey 5-Year Estimates

**B03002. HISPANIC OR LATINO ORIGIN BY RACE**

Data Set: 2008-2012 American Community Survey 5-Year Estimates

	Blakely city, Georgia		
	Population	Margin of Error (+/-)	% of Total
Hispanic or Latino:	52	50	<b>100.0%</b>
White alone	24	26	46.2%
Black or African American alone	4	13	7.7%
American Indian and Alaska Native alone	0	13	0.0%
Asian alone	0	13	0.0%
Native Hawaiian and Other Pacific Islander alone	0	13	0.0%
Some other race alone	7	12	13.5%
Two or more races:	17	25	32.7%
Two races including Some other race	17	25	32.7%
Two races excluding Some other race, and three or more races	0	13	0.0%

Source: U.S. Census Bureau, 2008-2012 American Community Survey

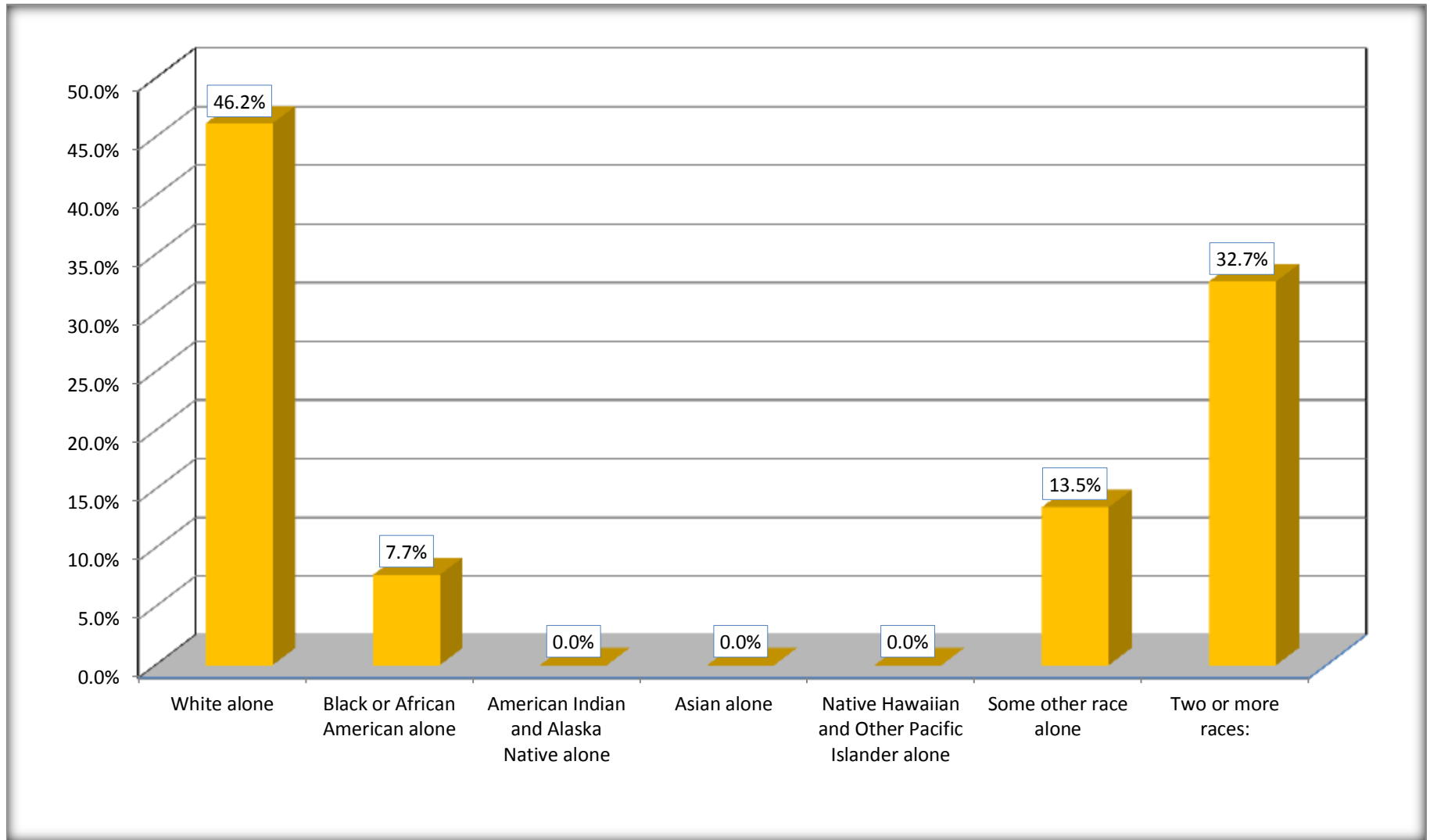
Although the American Community Survey (ACS) produces population, demographic and housing unit estimates, it is the Census Bureau's Population Estimates Program that produces and disseminates the official estimates of the population for the nation, states, counties, cities and towns and estimates of housing units for states and counties.

For information on confidentiality protection, sampling error, nonsampling error, and definitions, see Survey Methodology.

<http://www.census.gov/acs/www/UseData/index.htm>

# Hispanic or Latino Origin by Race

## Blakely city, Georgia



Source: B03002. HISPANIC OR LATINO ORIGIN BY RACE  
Data Set: 2008-2012 American Community Survey 5-Year Estimates

**B01001. SEX BY AGE**

Data Set: 2008-2012 American Community Survey 5-Year Estimates

	<b>Blakely city, Georgia</b>					
	African American	Margin of Error (+/-)	% of AA Total	White, Not Hispanic	Margin of Error (+/-)	% of NHW Total
<b>Total:</b>	<b>3,205</b>	<b>251</b>	<b>100.0%</b>	<b>1,670</b>	<b>251</b>	<b>100.0%</b>
Under 18 years	1,150	NC	35.9%	347	NC	20.8%
18 to 64 years	1,696	NC	52.9%	861	NC	51.6%
65 years and over	359	NC	11.2%	462	NC	27.7%
Male:	1,404	132	43.8%	770	389	46.1%
Under 18 years	540	NC	16.8%	142	NC	8.5%
18 to 64 years	758	NC	23.7%	440	NC	26.3%
65 years and over	106	NC	3.3%	188	NC	11.3%
Female:	1,801	164	56.2%	900	412	53.9%
Under 18 years	610	NC	19.0%	205	NC	12.3%
18 to 64 years	938	NC	29.3%	421	NC	25.2%
65 years and over	253	NC	7.9%	274	NC	16.4%

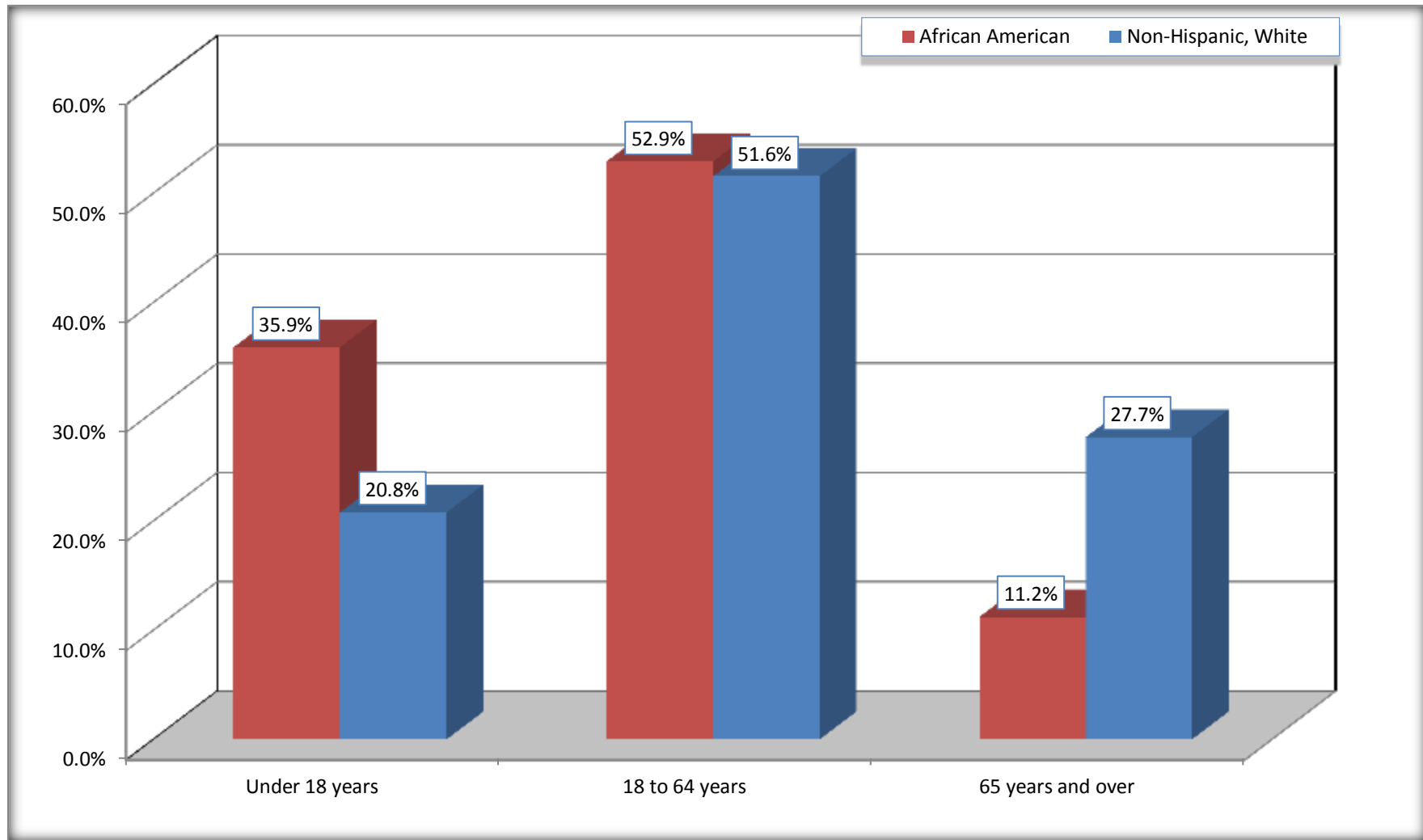
Source: U.S. Census Bureau, 2008-2012 American Community Survey

Although the American Community Survey (ACS) produces population, demographic and housing unit estimates, it is the Census Bureau's Population Estimates Program that produces and disseminates the official estimates of the population for the nation, states, counties, cities and towns and estimates of housing units for states and counties.

For information on confidentiality protection, sampling error, nonsampling error, and definitions, see Survey Methodology.  
<http://www.census.gov/acs/www/UseData/index.htm>



## Population by Age Blakely city, Georgia



Source: B01001. SEX BY AGE  
Data Set: 2008-2012 American Community Survey 5-Year Estimates

**B05003. SEX BY AGE BY CITIZENSHIP STATUS**

Data Set: 2008-2012 American Community Survey 5-Year Estimates

	Blakely city, Georgia					
	African American	Margin of Error (+/-)	% of AA Total by Age	White, Not Hispanic	Margin of Error (+/-)	% of NHW Total by Age
<b>Total:</b>	<b>3,205</b>	<b>251</b>	<b>100.0%</b>	<b>1,670</b>	<b>251</b>	<b>100.0%</b>
<b>Under 18 years:</b>	<b>1,150</b>	<b>NC</b>	<b>100.0%</b>	<b>347</b>	<b>NC</b>	<b>100.0%</b>
Native	1,150	NC	100.0%	347	NC	100.0%
Foreign born:	0	NC	0.0%	0	NC	0.0%
Naturalized U.S. citizen	0	NC	0.0%	0	NC	0.0%
Not a U.S. citizen	0	NC	0.0%	0	NC	0.0%
<b>18 years and over:</b>	<b>2,055</b>	<b>NC</b>	<b>100.0%</b>	<b>1,323</b>	<b>NC</b>	<b>100.0%</b>
Native	2,055	NC	100.0%	1,299	NC	98.2%
Foreign born:	0	NC	0.0%	24	NC	1.8%
Naturalized U.S. citizen	0	NC	0.0%	24	NC	1.8%
Not a U.S. citizen	0	NC	0.0%	0	NC	0.0%
<b>Male:</b>	<b>1,404</b>	<b>132</b>	<b>43.8%</b>	<b>770</b>	<b>149</b>	<b>46.1%</b>
<b>Under 18 years:</b>	<b>540</b>	<b>84</b>	<b>100.0%</b>	<b>142</b>	<b>66</b>	<b>100.0%</b>
Native	540	84	100.0%	142	66	100.0%
Foreign born:	0	13	0.0%	0	13	0.0%
Naturalized U.S. citizen	0	13	0.0%	0	13	0.0%
Not a U.S. citizen	0	13	0.0%	0	13	0.0%
<b>18 years and over:</b>	<b>864</b>	<b>122</b>	<b>100.0%</b>	<b>628</b>	<b>113</b>	<b>100.0%</b>
Native	864	122	100.0%	619	113	98.6%
Foreign born:	0	13	0.0%	9	14	1.4%
Naturalized U.S. citizen	0	13	0.0%	9	14	1.4%
Not a U.S. citizen	0	13	0.0%	0	13	0.0%

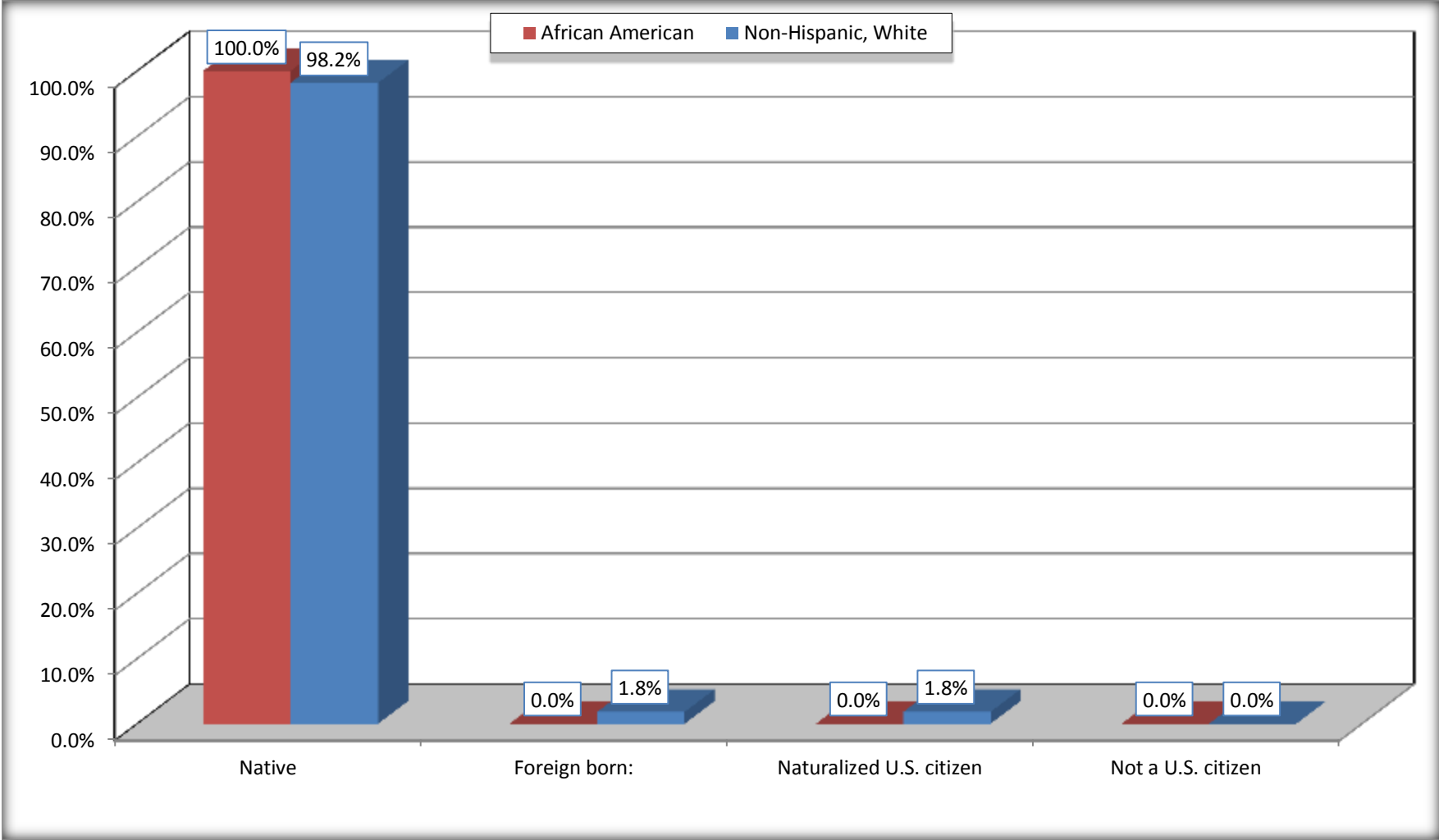
	<b>Blakely city, Georgia</b>					
	African American	Margin of Error (+/-)	% of AA by Age	White, Not Hispanic	Margin of Error (+/-)	% of NHW by Age
<b>Female:</b>	1,801	164	56.2%	900	152	53.9%
<b>Under 18 years:</b>	<b>610</b>	<b>87</b>	<b>100.0%</b>	<b>205</b>	<b>79</b>	<b>100.0%</b>
Native	610	87	100.0%	205	79	100.0%
Foreign born:	0	13	0.0%	0	13	0.0%
Naturalized U.S. citizen	0	13	0.0%	0	13	0.0%
Not a U.S. citizen	0	13	0.0%	0	13	0.0%
<b>18 years and over:</b>	<b>1,191</b>	<b>124</b>	<b>100.0%</b>	<b>695</b>	<b>120</b>	<b>100.0%</b>
Native	1,191	124	100.0%	680	120	97.8%
Foreign born:	0	13	0.0%	15	27	2.2%
Naturalized U.S. citizen	0	13	0.0%	15	27	2.2%
Not a U.S. citizen	0	13	0.0%	0	13	0.0%

Source: U.S. Census Bureau, 2008-2012 American Community Survey

For information on confidentiality protection, sampling error, nonsampling error, and definitions, see Survey Methodology.  
<http://www.census.gov/acs/www/UseData/index.htm>

# Citizenship Status of Voting Age Population (18 and Over)

## Blakely city, Georgia



Source: B05003. SEX BY AGE BY CITIZENSHIP STATUS  
Data Set: 2008-2012 American Community Survey 5-Year Estimates

**B07004. GEOGRAPHICAL MOBILITY IN THE PAST YEAR BY RACE FOR CURRENT RESIDENCE IN THE UNITED STATES - Universe:  
POPULATION 1 YEAR AND OVER**

Data Set: 2008-2012 American Community Survey 5-Year Estimates

	Blakely city, Georgia					
	African American	Margin of Error (+/-)	% of AA Total	White, Not Hispanic	Margin of Error (+/-)	% of NHW Total
Total:	<b>3,178</b>	<b>249</b>	<b>100.0%</b>	<b>1,670</b>	<b>251</b>	<b>100.0%</b>
Same house 1 year ago	2,706	284	85.1%	1,377	234	82.5%
Moved within same county	339	200	10.7%	240	171	14.4%
Moved from different county within same state	95	64	3.0%	45	31	2.7%
Moved from different state	36	35	1.1%	8	11	0.5%
Moved from abroad	2	7	0.1%	0	13	0.0%

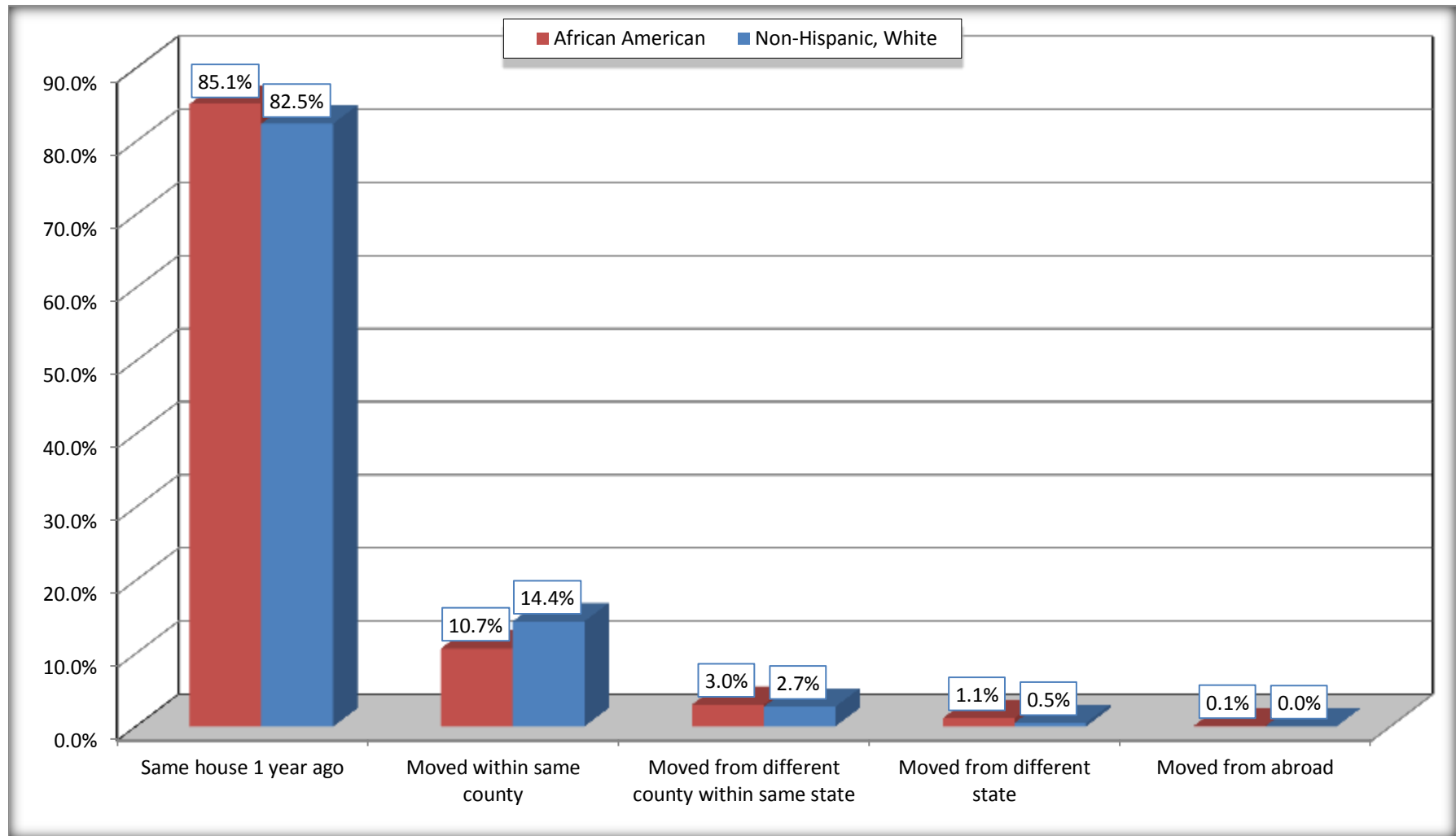
Source: U.S. Census Bureau, 2008-2012 American Community Survey

For information on confidentiality protection, sampling error, nonsampling error, and definitions, see Survey Methodology.

<http://www.census.gov/acs/www/UseData/index.htm>

# Geographical Mobility in the Past Year (Population 1 Year and Over)

## Blakely city, Georgia



Source: B07004. GEOGRAPHICAL MOBILITY IN THE PAST YEAR BY RACE FOR CURRENT RESIDENCE IN THE UNITED STATES - Universe: POPULATION 1 YEAR AND OVER

Data Set: 2008-2012 American Community Survey 5-Year Estimates

**B08105. MEANS OF TRANSPORTATION TO WORK - Universe: WORKERS 16 YEARS AND OVER**

Data Set: 2008-2012 American Community Survey 5-Year Estimates

	Blakely city, Georgia					
	African American	Margin of Error (+/-)	% of AA Total	White, Not Hispanic	Margin of Error (+/-)	% of NHW Total
<b>Total:</b>	725	137	<b>100.0%</b>	576	126	<b>100.0%</b>
Car, truck, or van - drove alone	556	122	76.7%	496	125	86.1%
Car, truck, or van - carpooled	90	58	12.4%	22	25	3.8%
Public transportation (excluding taxicab)	15	25	2.1%	0	13	0.0%
Walked	14	23	1.9%	0	13	0.0%
Taxicab, motorcycle, bicycle, or other means	50	50	6.9%	20	25	3.5%
Worked at home	0	13	0.0%	38	33	6.6%

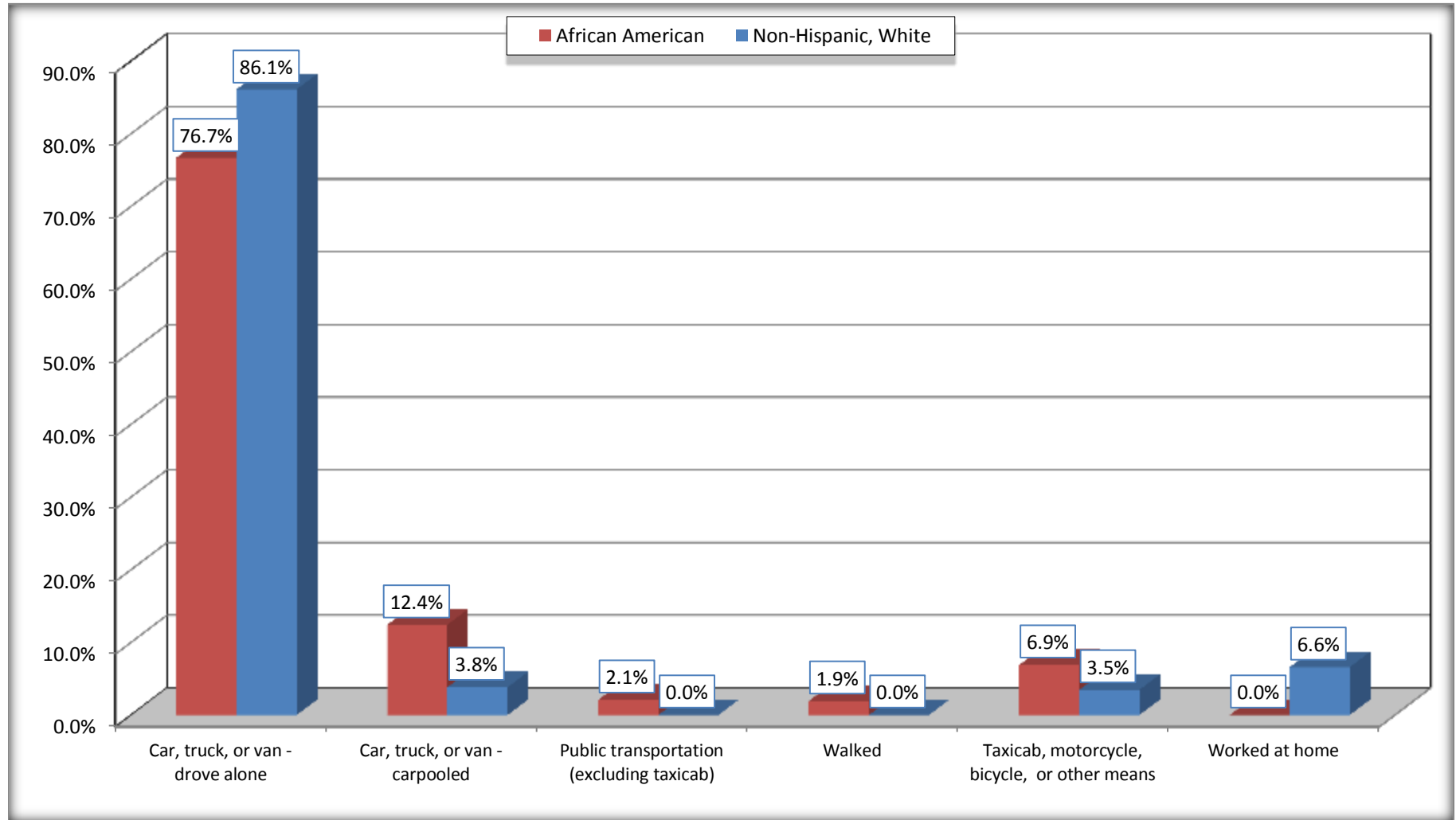
Source: U.S. Census Bureau, 2008-2012 American Community Survey

For information on confidentiality protection, sampling error, nonsampling error, and definitions, see Survey Methodology.

<http://www.census.gov/acs/www/UseData/index.htm>

# Means of Transportation to Work (Workers 16 Years and Over)

## Blakely city, Georgia



Source: B08105. MEANS OF TRANSPORTATION TO WORK - Universe: WORKERS 16 YEARS AND OVER  
Data Set: 2008-2012 American Community Survey 5-Year Estimates



**B11002. HOUSEHOLD TYPE BY RELATIVES AND NONRELATIVES FOR POPULATION IN HOUSEHOLDS**

Data Set: 2008-2012 American Community Survey 5-Year Estimates

	Blakely city, Georgia					
	African American	Margin of Error (+/-)	% of AA Total	White, Not Hispanic	Margin of Error (+/-)	% of NHW Total
<b>Total:</b>	3035	241	<b>100.0%</b>	1619	259	<b>100.0%</b>
In family households	2555	255	84.2%	1313	252	81.1%
In nonfamily households	480	147	15.8%	306	106	18.9%

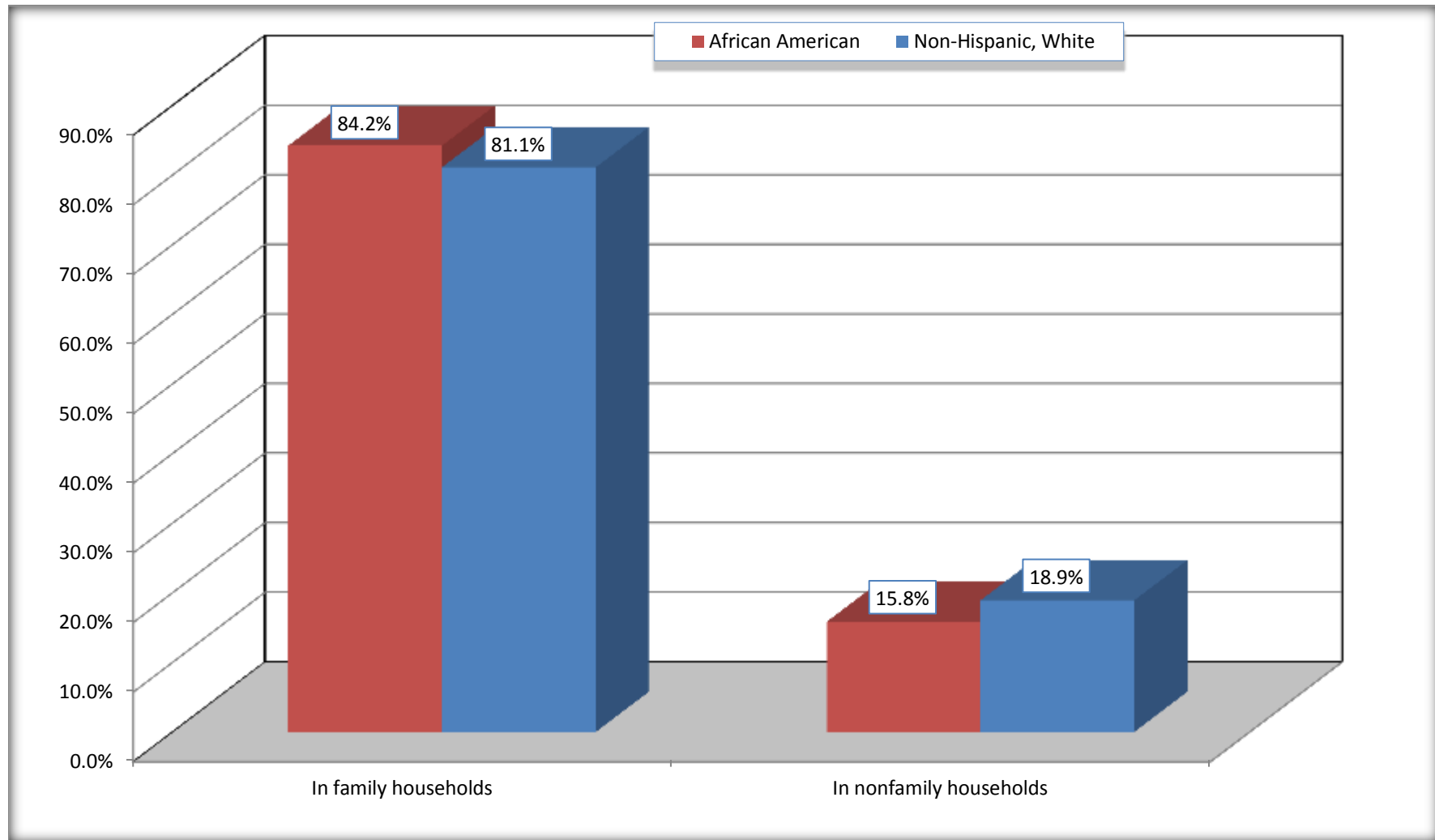
Source: U.S. Census Bureau, 2008-2012 American Community Survey

For information on confidentiality protection, sampling error, nonsampling error, and definitions, see Survey Methodology.

<http://www.census.gov/acs/www/UseData/index.htm>

# Household Type for Population in Households

## Blakely city, Georgia



Source: B11002. HOUSEHOLD TYPE BY RELATIVES AND NONRELATIVES FOR POPULATION IN HOUSEHOLDS  
Data Set: 2008-2012 American Community Survey 5-Year Estimates

**B12002. MARITAL STATUS FOR THE POPULATION 15 YEARS AND OVER**

Data Set: 2008-2012 American Community Survey 5-Year Estimates

	Blakely city, Georgia					
	African American	Margin of Error (+/-)	% of AA Total	White, Not Hispanic	Margin of Error (+/-)	% of NHW Total
<b>Total:</b>	<b>2,290</b>	<b>198</b>	<b>100.0%</b>	<b>1,338</b>	<b>189</b>	<b>100.0%</b>
Never married	1,247	NC	54.5%	160	NC	12.0%
Now married (except separated)	403	NC	17.6%	725	NC	54.2%
Separated	162	NC	7.1%	59	NC	4.4%
Widowed	198	NC	8.6%	256	NC	19.1%
Divorced	280	NC	12.2%	138	NC	10.3%
<b>Male:</b>	952	129	41.6%	643	116	48.1%
Never married	590	107	25.8%	106	63	7.9%
Now married (except separated)	210	74	9.2%	386	101	28.8%
Separated	55	52	2.4%	47	40	3.5%
Widowed	18	16	0.8%	49	45	3.7%
Divorced	79	59	3.4%	55	46	4.1%
<b>Female:</b>	1,338	125	58.4%	695	120	51.9%
Never married	657	112	28.7%	54	44	4.0%
Now married (except separated)	193	68	8.4%	339	90	25.3%
Separated	107	58	4.7%	12	16	0.9%
Widowed	180	71	7.9%	207	65	15.5%
Divorced	201	77	8.8%	83	56	6.2%

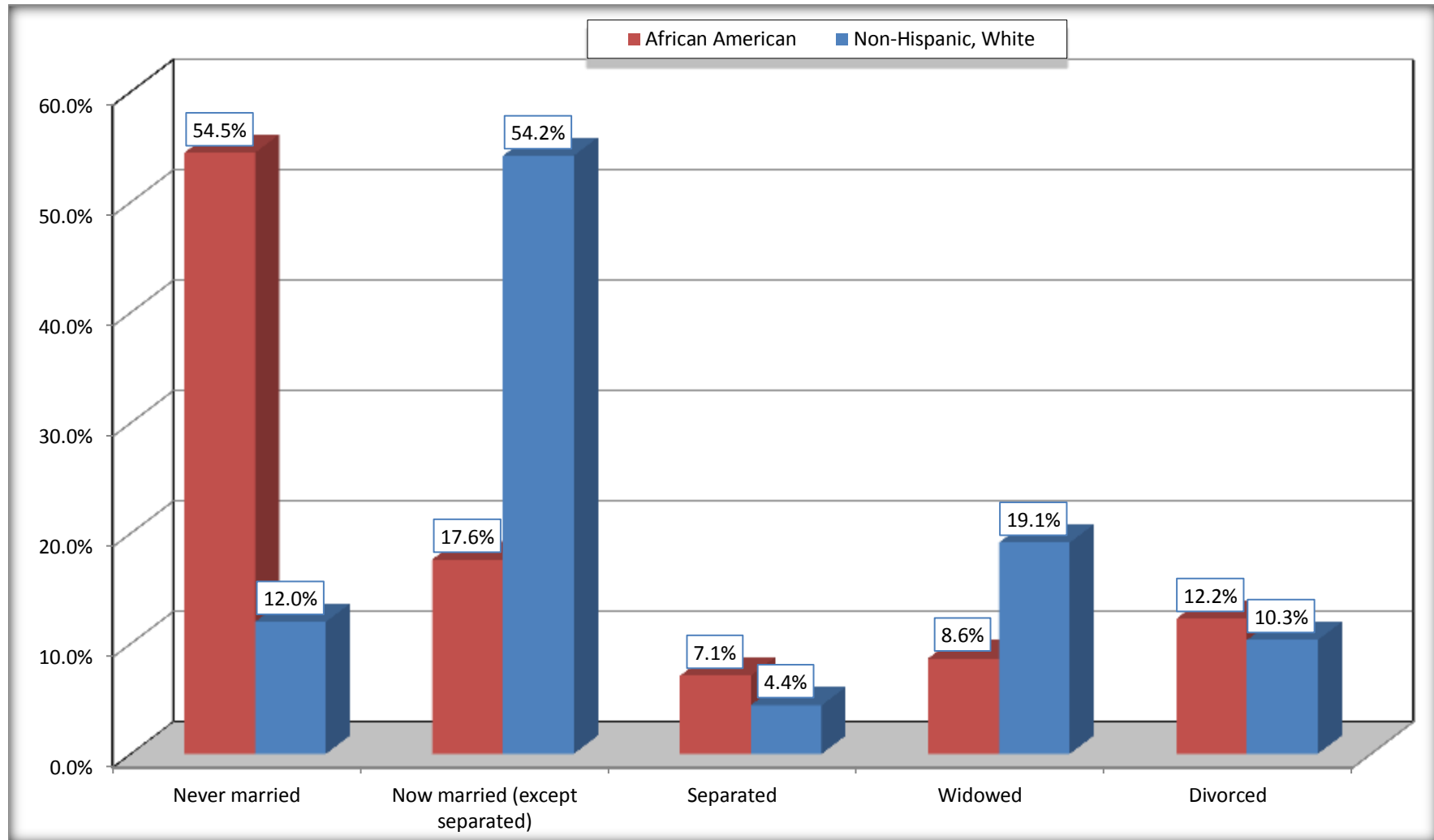
Source: U.S. Census Bureau, 2008-2012 American Community Survey

For information on confidentiality protection, sampling error, nonsampling error, and definitions, see Survey Methodology.

<http://www.census.gov/acs/www/UseData/index.htm>

# Marital Status for the Population 15 Years and Over

## Blakely city, Georgia



Source: B12002. MARITAL STATUS FOR THE POPULATION 15 YEARS AND OVER  
Data Set: 2008-2012 American Community Survey 5-Year Estimates

**C15002. SEX BY EDUCATIONAL ATTAINMENT FOR THE POPULATION 25 YEARS AND OVER**

Data Set: 2008-2012 American Community Survey 5-Year Estimates

	Blakely city, Georgia					
	African American	Margin of Error (+/-)	% of AA Total	White, Not Hispanic	Margin of Error (+/-)	% of NHW Total
<b>Total:</b>	<b>1,718</b>	<b>187</b>	<b>100.0%</b>	<b>1,258</b>	<b>187</b>	<b>100.0%</b>
Less than high school diploma	530	NC	30.8%	242	NC	19.2%
High school graduate, GED, or alternative	686	NC	39.9%	479	NC	38.1%
Some college or associate's degree	434	NC	25.3%	279	NC	22.2%
Bachelor's degree or higher	68	NC	4.0%	258	NC	20.5%
Male:	691	110	40.2%	599	109	47.6%
Less than high school diploma	220	97	12.8%	134	63	10.7%
High school graduate, GED, or alternative	289	106	16.8%	234	92	18.6%
Some college or associate's degree	154	66	9.0%	139	59	11.0%
Bachelor's degree or higher	28	30	1.6%	92	44	7.3%
Female:	1,027	120	59.8%	659	120	52.4%
Less than high school diploma	310	92	18.0%	108	58	8.6%
High school graduate, GED, or alternative	397	122	23.1%	245	83	19.5%
Some college or associate's degree	280	85	16.3%	140	65	11.1%
Bachelor's degree or higher	40	34	2.3%	166	66	13.2%

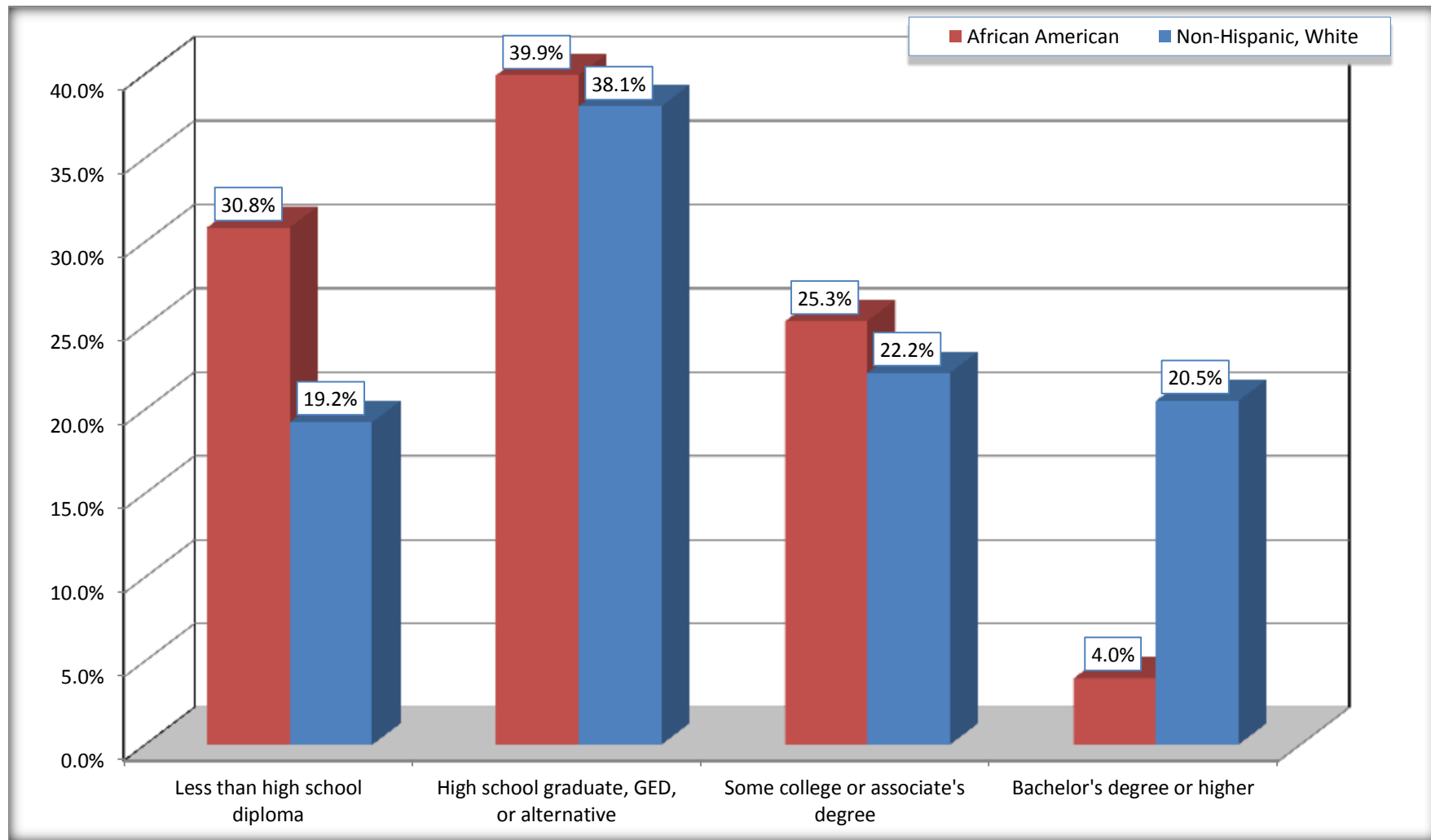
Source: U.S. Census Bureau, 2008-2012 American Community Survey

For information on confidentiality protection, sampling error, nonsampling error, and definitions, see Survey Methodology.

<http://www.census.gov/acs/www/UseData/index.htm>

# Educational Attainment for the Population 25 Years and Older

## Blakely city, Georgia



Source: C15002. SEX BY EDUCATIONAL ATTAINMENT FOR THE POPULATION 25 YEARS AND OVER  
Data Set: 2008-2012 American Community Survey 5-Year Estimates

**B17010. POVERTY STATUS IN THE PAST 12 MONTHS OF FAMILIES BY FAMILY TYPE BY PRESENCE OF RELATED CHILDREN UNDER 18 YEARS**

Data Set: 2008-2012 American Community Survey 5-Year Estimates

	Blakely city, Georgia					
	African American	Margin of Error (+/-)	% of AA Total	White, Not Hispanic	Margin of Error (+/-)	% of NHW Total
<b>Total:</b>	<b>675</b>	<b>117</b>	<b>100.0%</b>	<b>437</b>	<b>88</b>	<b>100.0%</b>
Income in the past 12 months below poverty level:	308	93	45.6%	59	39	13.5%
Married-couple family:	42	39	6.2%	30	24	6.9%
With related children under 18 years	36	37	5.3%	26	24	5.9%
Other family:	266	83	39.4%	29	31	6.6%
Male householder, no wife present	7	13	1.0%	0	13	0.0%
With related children under 18 years	7	13	1.0%	0	13	0.0%
Female householder, no husband present	259	83	38.4%	29	31	6.6%
With related children under 18 years	259	83	38.4%	29	31	6.6%
Income in the past 12 months at or above poverty level:	367	91	54.4%	378	86	86.5%
Married-couple family:	135	60	20.0%	324	76	74.1%
With related children under 18 years	32	26	4.7%	148	55	33.9%
Other family:	232	77	34.4%	54	42	12.4%
Male householder, no wife present	62	44	9.2%	18	20	4.1%
With related children under 18 years	30	33	4.4%	13	17	3.0%
Female householder, no husband present	170	75	25.2%	36	40	8.2%
With related children under 18 years	99	59	14.7%	0	13	0.0%

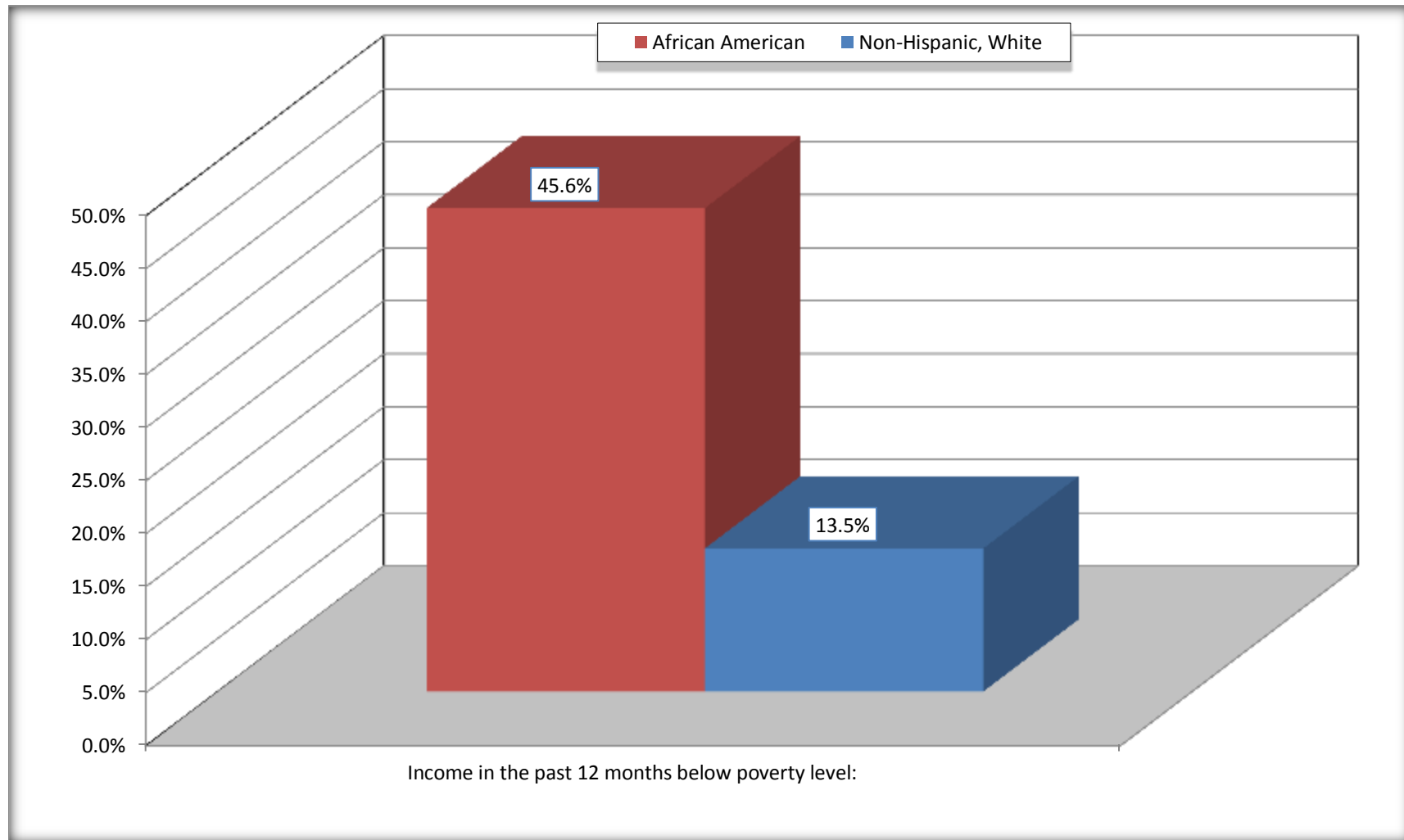
Source: U.S. Census Bureau, 2008-2012 American Community Survey

For information on confidentiality protection, sampling error, nonsampling error, and definitions, see Survey Methodology.

<http://www.census.gov/acs/www/UseData/index.htm>

# Family Households Below Poverty in the Past 12 Months

## Blakely city, Georgia



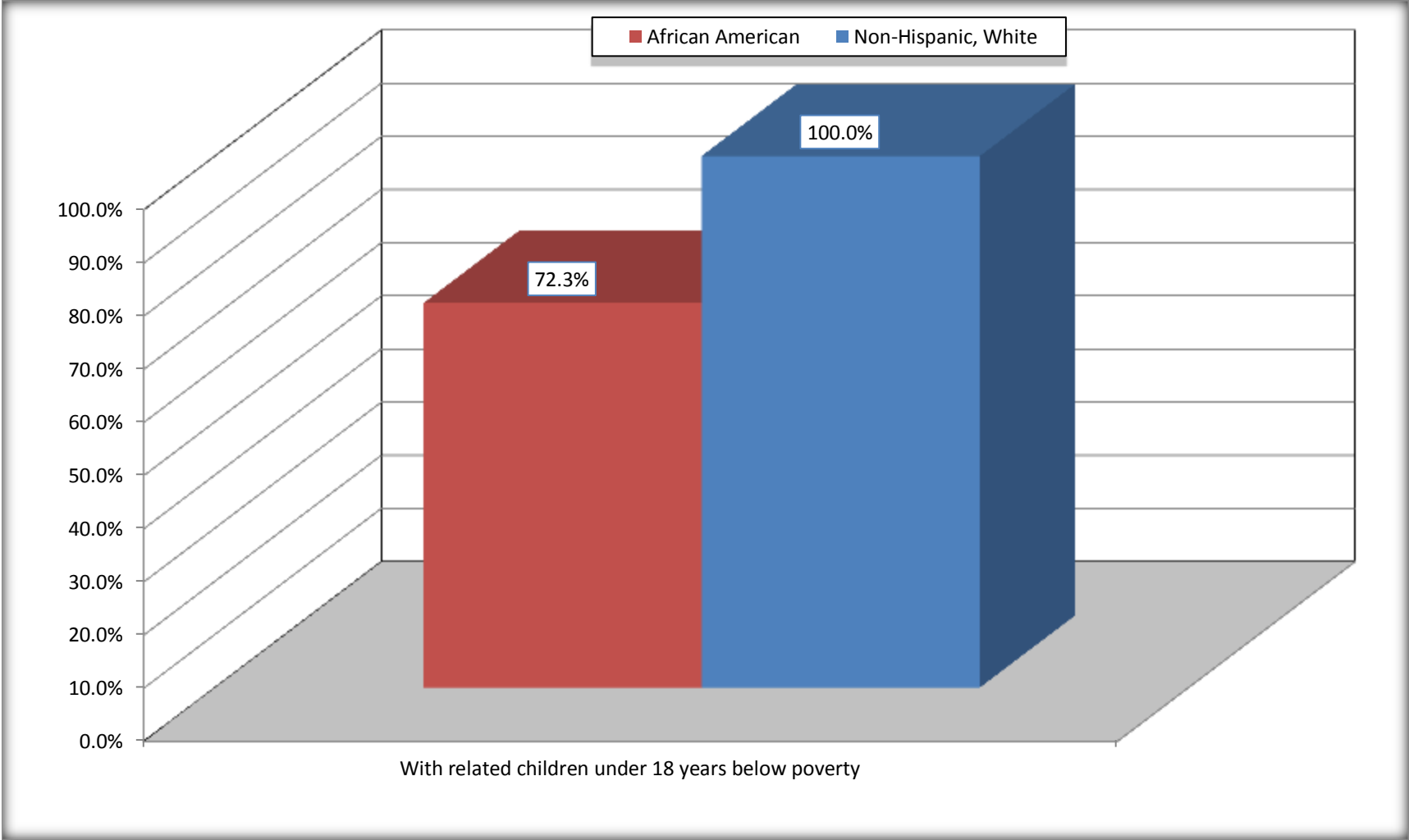
Source: B17010. POVERTY STATUS IN THE PAST 12 MONTHS OF FAMILIES BY FAMILY TYPE BY PRESENCE OF RELATED CHILDREN UNDER 18 YEARS

Data Set: 2008-2012 American Community Survey 5-Year Estimates



# Female-headed Households with Related Children Below Poverty in the Past 12 Months

## Blakely city, Georgia



Source: B17010. POVERTY STATUS IN THE PAST 12 MONTHS OF FAMILIES BY FAMILY TYPE BY PRESENCE OF RELATED CHILDREN UNDER 18 YEARS

Data Set: 2008-2012 American Community Survey 5-Year Estimates

**B17020 POVERTY STATUS IN THE PAST 12 MONTHS BY AGE - Universe: POPULATION FOR WHOM POVERTY STATUS IS DETERMINED**

Data Set: 2008-2012 American Community Survey 5-Year Estimates

	Blakely city, Georgia					
	African American	Margin of Error (+/-)	% of AA By Age	White, Not Hispanic	Margin of Error (+/-)	% of NHW By Age
<b>Total:</b>	<b>3,043</b>	<b>240</b>	<b>100.0%</b>	<b>1,543</b>	<b>255</b>	<b>100.0%</b>
Income in the past 12 months below poverty level:	1,473	345	48.4%	242	128	15.7%
<b>Under 18 years</b>	684	NC	59.8%	80	NC	23.4%
<b>18 to 64 years</b>	645	201	41.0%	133	75	17.1%
<b>65 years and over</b>	144	NC	43.9%	29	NC	6.8%
Income in the past 12 months at or above poverty level:	1,570	373	51.6%	1,301	240	84.3%
<b>Under 18 years</b>	459	NC	40.2%	262	NC	76.6%
<b>18 to 64 years</b>	927	225	59.0%	643	153	82.9%
<b>65 years and over</b>	184	NC	56.1%	396	NC	93.2%

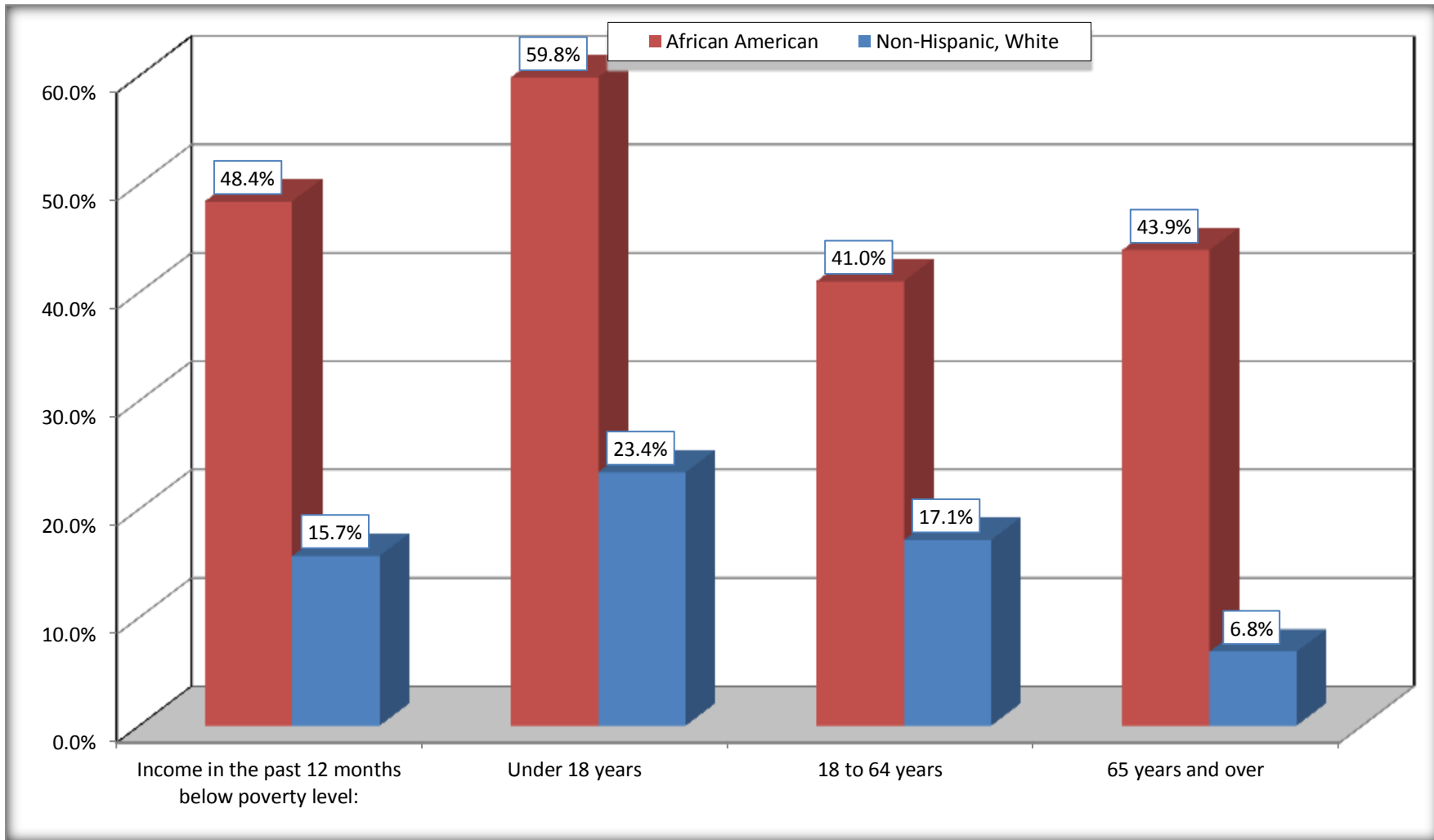
Source: U.S. Census Bureau, 2008-2012 American Community Survey

For information on confidentiality protection, sampling error, nonsampling error, and definitions, see Survey Methodology.

<http://www.census.gov/acs/www/UseData/index.htm>

# Population Below Poverty in the Past 12 Months

## Blakely city, Georgia



Source: B17020 POVERTY STATUS IN THE PAST 12 MONTHS BY AGE - Universe: POPULATION FOR WHOM POVERTY STATUS IS DETERMINED  
Data Set: 2008-2012 American Community Survey 5-Year Estimates

**B19001. HOUSEHOLD INCOME IN THE PAST 12 MONTHS (IN 2010 INFLATION-ADJUSTED DOLLARS)**

Data Set: 2008-2012 American Community Survey 5-Year Estimates

	Blakely city, Georgia					
	African American	Margin of Error (+/-)	% of AA Total	White, Not Hispanic	Margin of Error (+/-)	% of NHW Total
<b>Total:</b>	<b>1,105</b>	<b>142</b>	<b>100.0%</b>	<b>743</b>	<b>120</b>	<b>100.0%</b>
Less than \$ 10,000	309	110	28.0%	63	30	8.5%
\$ 10,000 to \$ 14,999	125	67	11.3%	110	59	14.8%
<b>\$ 15,000 to \$ 24,999</b>	268	NC	24.3%	94	NC	12.7%
<b>\$ 25,000 to \$ 34,999</b>	117	NC	10.6%	58	NC	7.8%
<b>\$ 35,000 to \$ 49,999</b>	170	NC	15.4%	94	NC	12.7%
<b>\$ 50,000 to \$ 74,999</b>	72	NC	6.5%	149	NC	20.1%
\$ 75,000 to \$ 99,999	17	18	1.5%	60	40	8.1%
<b>\$ 100,000 to \$ 149,999</b>	24	NC	2.2%	100	NC	13.5%
\$ 150,000 to \$ 199,999	3	14	0.3%	0	13	0.0%
\$ 200,000 or more	0	13	0.0%	15	24	2.0%

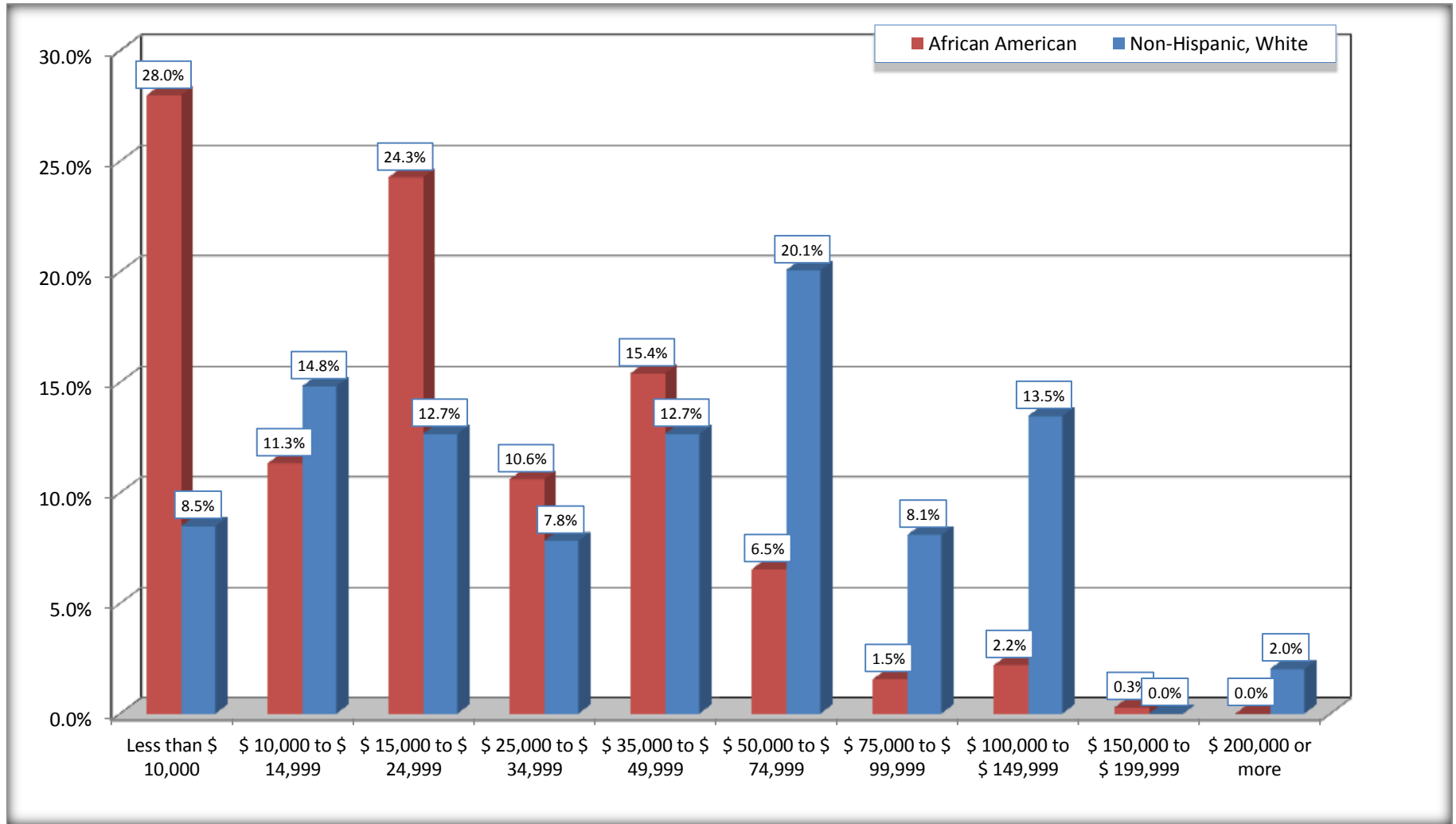
Source: U.S. Census Bureau, 2008-2012 American Community Survey

For information on confidentiality protection, sampling error, nonsampling error, and definitions, see Survey Methodology.

<http://www.census.gov/acs/www/UseData/index.htm>

# Household Income in the Past 12 Months

## Blakely city, Georgia



Source: B19001. HOUSEHOLD INCOME IN THE PAST 12 MONTHS (IN 2010 INFLATION-ADJUSTED DOLLARS)  
Data Set: 2008-2012 American Community Survey 5-Year Estimates

**B19013. MEDIAN HOUSEHOLD INCOME IN THE PAST 12 MONTHS (IN 2010 INFLATION-ADJUSTED DOLLARS)**

Data Set: 2008-2012 American Community Survey 5-Year Estimates

	Blakely city, Georgia			
	African American	Margin of Error (+/-)	White, Not Hispanic	Margin of Error (+/-)
Median household income in the past 12 months (in 2010 inflation-adjusted dollars)	\$ 18,454	\$ 2,706	\$ 42,768	\$ 13,994

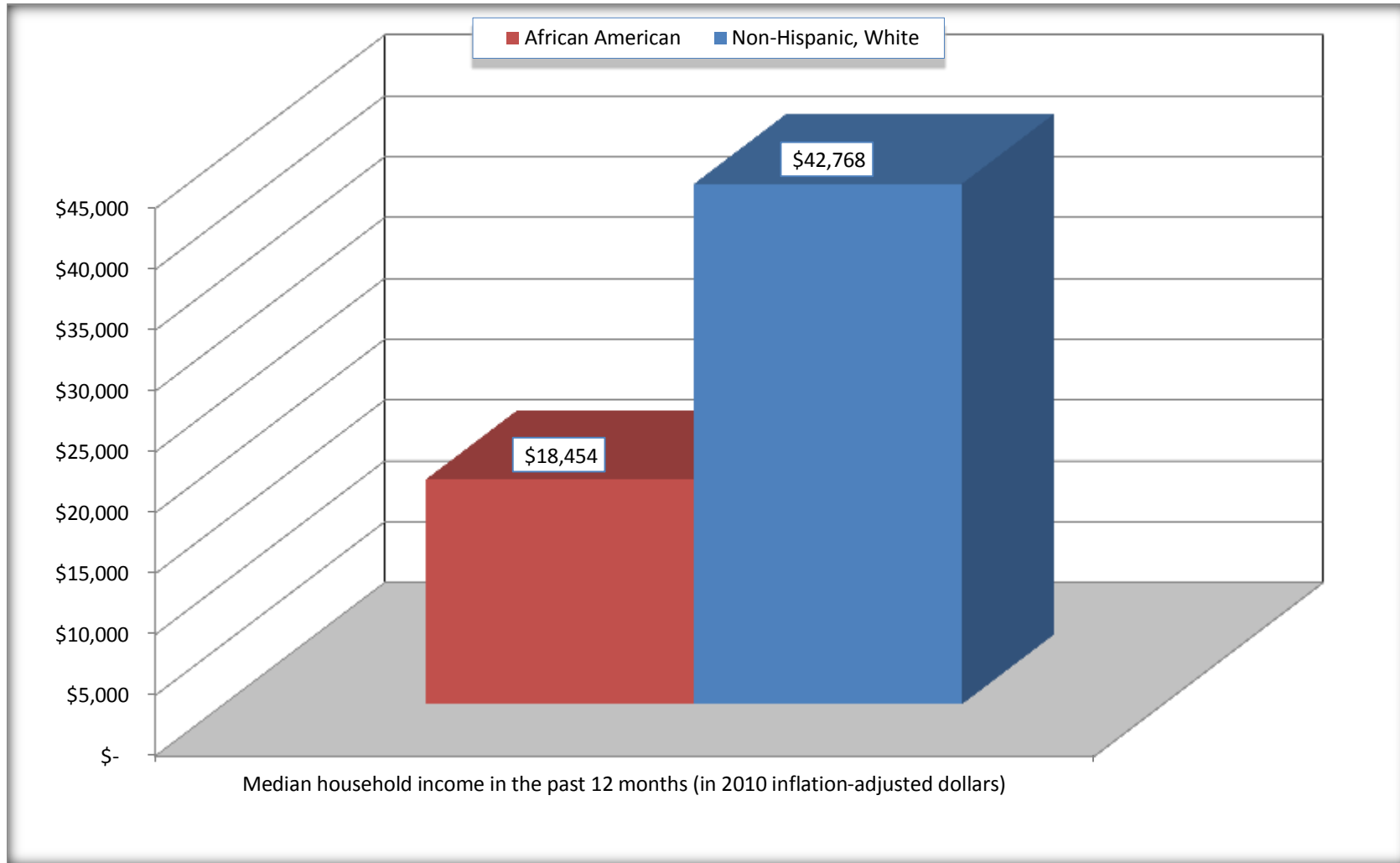
Source: U.S. Census Bureau, 2008-2012 American Community Survey

For information on confidentiality protection, sampling error, nonsampling error, and definitions, see Survey Methodology.

<http://www.census.gov/acs/www/UseData/index.htm>

# Median Household Income in the Past 12 Months

## Blakely city, Georgia



Source: B19013. MEDIAN HOUSEHOLD INCOME IN THE PAST 12 MONTHS (IN 2010 INFLATION-ADJUSTED DOLLARS)  
Data Set: 2008-2012 American Community Survey 5-Year Estimates

**B19101. FAMILY INCOME IN THE PAST 12 MONTHS (IN 2010 INFLATION-ADJUSTED DOLLARS)**

Data Set: 2008-2012 American Community Survey 5-Year Estimates

	Blakely city, Georgia					
	African American	Margin of Error (+/-)	% of AA Total	White, Not Hispanic	Margin of Error (+/-)	% of NHW Total
<b>Total:</b>	<b>675</b>	<b>117</b>	<b>100.0%</b>	<b>437</b>	<b>88</b>	<b>100.0%</b>
Less than \$ 10,000	128	61	19.0%	22	21	5.0%
\$ 10,000 to \$ 14,999	51	42	7.6%	26	29	5.9%
<b>\$ 15,000 to \$ 24,999</b>	<b>175</b>	<b>NC</b>	<b>25.9%</b>	<b>11</b>	<b>NC</b>	<b>2.5%</b>
<b>\$ 25,000 to \$ 34,999</b>	<b>111</b>	<b>NC</b>	<b>16.4%</b>	<b>14</b>	<b>NC</b>	<b>3.2%</b>
<b>\$ 35,000 to \$ 49,999</b>	<b>118</b>	<b>NC</b>	<b>17.5%</b>	<b>77</b>	<b>NC</b>	<b>17.6%</b>
<b>\$ 50,000 to \$ 74,999</b>	<b>72</b>	<b>NC</b>	<b>10.7%</b>	<b>141</b>	<b>NC</b>	<b>32.3%</b>
<b>\$ 100,000 to \$ 149,999</b>	<b>-</b>	<b>NC</b>	<b>0.0%</b>	<b>71</b>	<b>NC</b>	<b>16.2%</b>
\$ 150,000 to \$ 199,999	3	14	0.4%	0	13	0.0%
\$ 200,000 or more	0	13	0.0%	15	24	3.4%

Source: U.S. Census Bureau, 2008-2012 American Community Survey

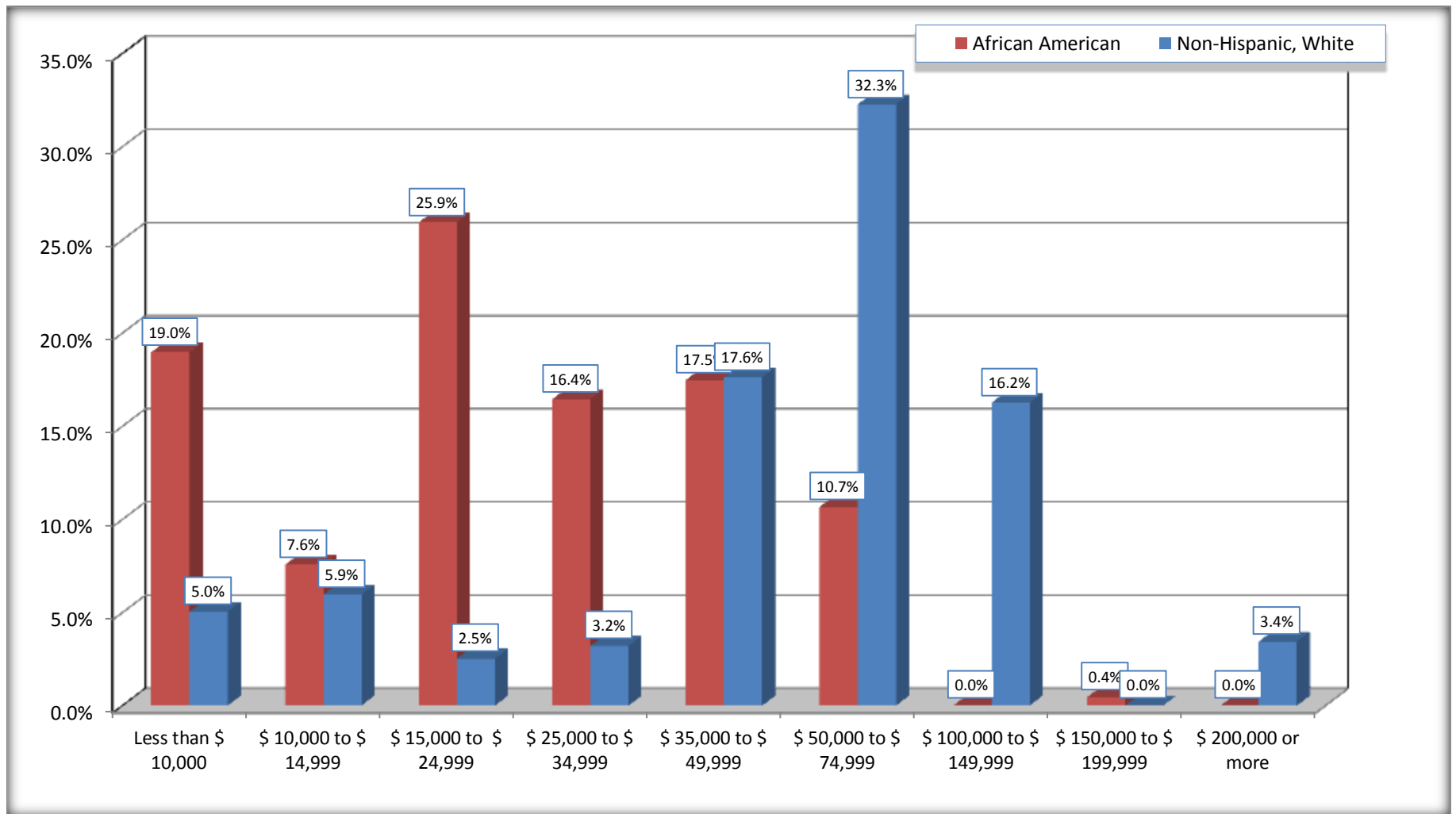
For information on confidentiality protection, sampling error, nonsampling error, and definitions, see Survey Methodology.

<http://www.census.gov/acs/www/UseData/index.htm>



# Family Income in the Past 12 Months

## Blakely city, Georgia



Source: B19101. FAMILY INCOME IN THE PAST 12 MONTHS (IN 2010 INFLATION-ADJUSTED DOLLARS)  
Data Set: 2008-2012 American Community Survey 5-Year Estimates

**B19113. MEDIAN FAMILY INCOME IN THE PAST 12 MONTHS (IN 2010 INFLATION-ADJUSTED DOLLARS)**

Data Set: 2008-2012 American Community Survey 5-Year Estimates

	<b>Blakely city, Georgia</b>			
	African American	Margin of Error (+/-)	White, Not Hispanic	Margin of Error (+/-)
Median family income in the past 12 months (in 2010 inflation-adjusted dollars)	\$ 24,141	\$ 4,130	\$ 59,792	\$ 13,614

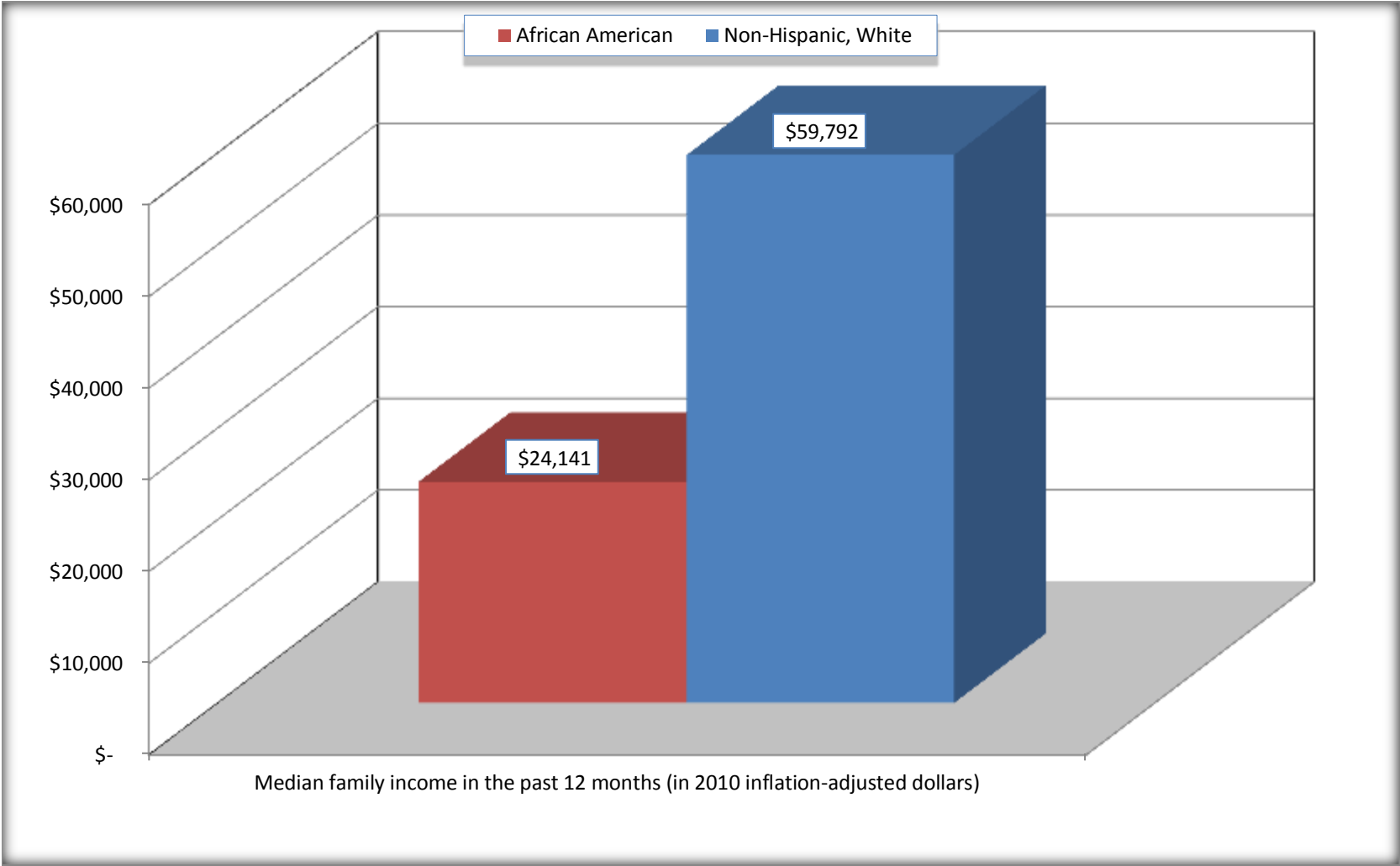
Source: U.S. Census Bureau, 2008-2012 American Community Survey

For information on confidentiality protection, sampling error, nonsampling error, and definitions, see Survey Methodology.

<http://www.census.gov/acs/www/UseData/index.htm>

# Median Family Income in the Past 12 Months

## Blakely city, Georgia



Source: B19113. MEDIAN FAMILY INCOME IN THE PAST 12 MONTHS (IN 2010 INFLATION-ADJUSTED DOLLARS)  
Data Set: 2008-2012 American Community Survey 5-Year Estimates

**B19202. MEDIAN NONFAMILY HOUSEHOLD INCOME IN THE PAST 12 MONTHS (IN 2010 INFLATION-ADJUSTED DOLLARS)**

Data Set: 2008-2012 American Community Survey 5-Year Estimates

	Blakely city, Georgia			
	African American	Margin of Error (+/-)	White, Not Hispanic	Margin of Error (+/-)
Median nonfamily household income in the past 12 months (in 2010 inflation-adjusted dollars)	\$ 11,688	\$ 4,606	\$ 16,522	\$ 2,757

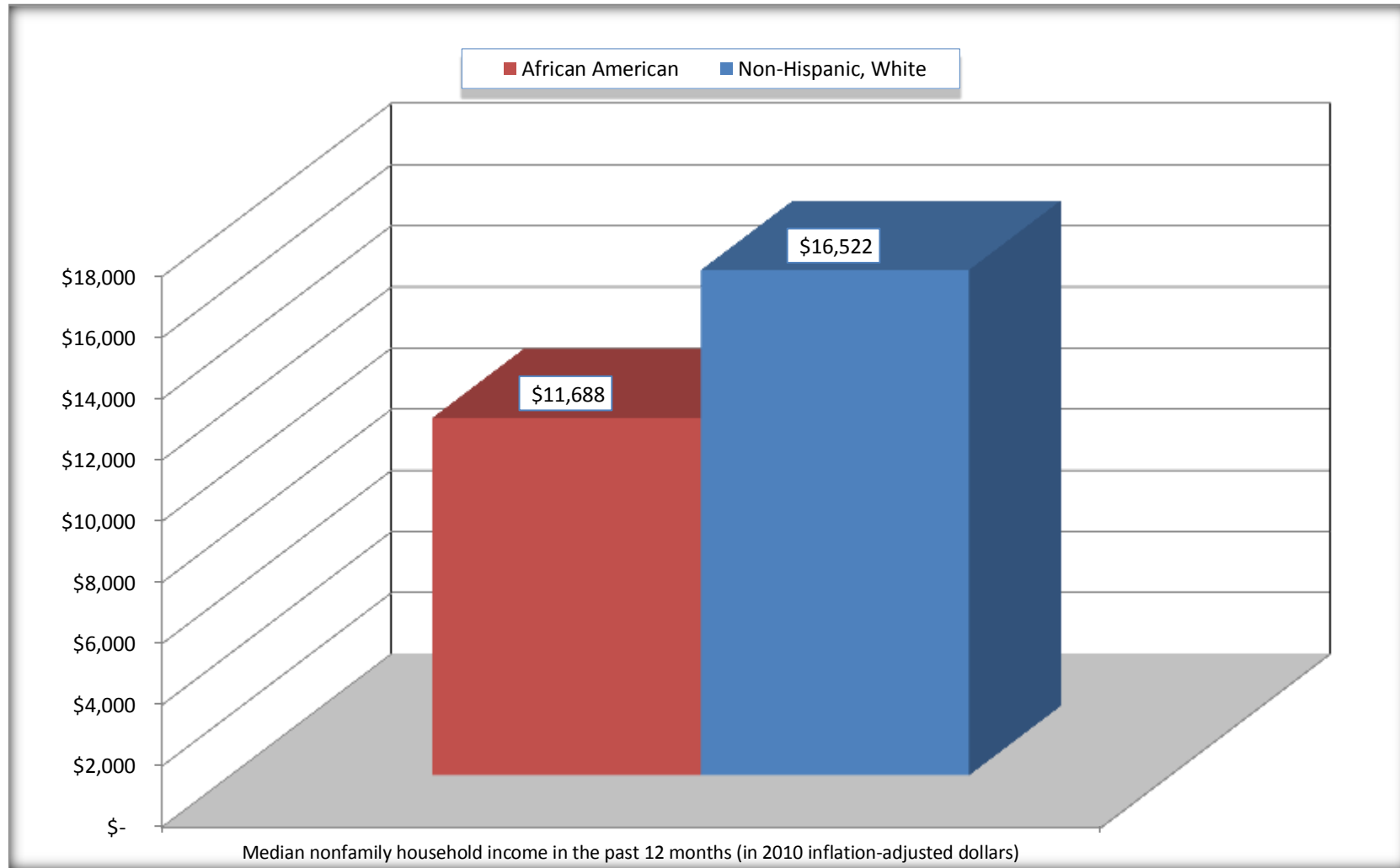
Source: U.S. Census Bureau, 2008-2012 American Community Survey

For information on confidentiality protection, sampling error, nonsampling error, and definitions, see Survey Methodology.

<http://www.census.gov/acs/www/UseData/index.htm>

# Median Non-Family Income in the Past 12 Months

## Blakely city, Georgia



Source: B19202. MEDIAN NONFAMILY HOUSEHOLD INCOME IN THE PAST 12 MONTHS (IN 2010 INFLATION-ADJUSTED DOLLARS)  
Data Set: 2008-2012 American Community Survey 5-Year Estimates

**B19301. PER CAPITA INCOME IN THE PAST 12 MONTHS (IN 2010 INFLATION-ADJUSTED DOLLARS)**

Data Set: 2008-2012 American Community Survey 5-Year Estimates

	Blakely city, Georgia			
	African American	Margin of Error (+/-)	White, Not Hispanic	Margin of Error (+/-)
Per capita income in the past 12 months (in 2010 inflation-adjusted dollars)	\$ 9,752	\$ 1,506	\$ 24,852	\$ 5,581

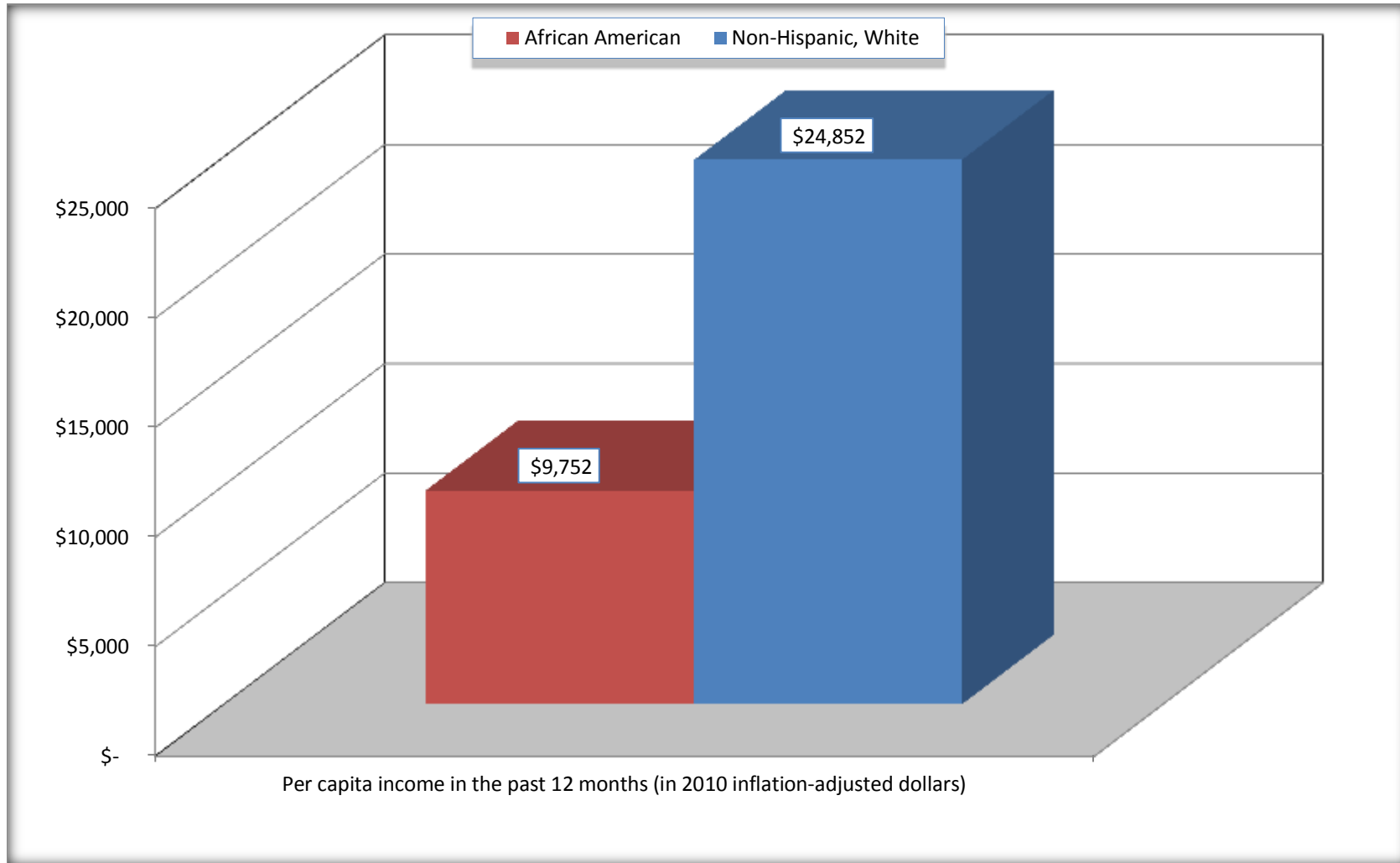
Source: U.S. Census Bureau, 2008-2012 American Community Survey

For information on confidentiality protection, sampling error, nonsampling error, and definitions, see Survey Methodology.

<http://www.census.gov/acs/www/UseData/index.htm>

## Per capita Income in the Past 12 Months

### Blakely city, Georgia



Source: B19301. PER CAPITA INCOME IN THE PAST 12 MONTHS (IN 2010 INFLATION-ADJUSTED DOLLARS)  
Data Set: 2008-2012 American Community Survey 5-Year Estimates

**B20017. MEDIAN EARNINGS IN THE PAST 12 MONTHS (IN 2010 INFLATION-ADJUSTED DOLLARS) BY SEX BY WORK EXPERIENCE IN THE PAST 12 MONTHS FOR THE POPULATION 16 YEARS AND OVER WITH EARNINGS IN THE PAST 12 MONTHS**

Data Set: 2008-2012 American Community Survey 5-Year Estimates

	Blakely city, Georgia			
	African American	Margin of Error (+/-)	White, Not Hispanic	Margin of Error (+/-)
Median earnings in the past 12 months (in 2010 inflation-adjusted dollars) --				
Total:	\$ 17,079	\$ 2,144	\$ 30,316	\$ 6,139
Male --				
Total	\$ 21,625	\$ 4,127	\$ 35,417	\$ 10,243
Worked full-time, year-round in the past 12 months	\$ 40,366	\$ 24,328	\$ 42,917	\$ 9,939
Other	\$ -	\$ -	\$ 15,795	\$ 17,477
Female --				
Total	\$ 15,791	\$ 3,365	\$ 20,114	\$ 11,057
Worked full-time, year-round in the past 12 months	\$ 18,750	\$ 1,769	\$ 30,625	\$ 10,648
Other	\$ 6,679	\$ 1,422	\$ 7,094	\$ 14,054

Source: U.S. Census Bureau, 2008-2012 American Community Survey

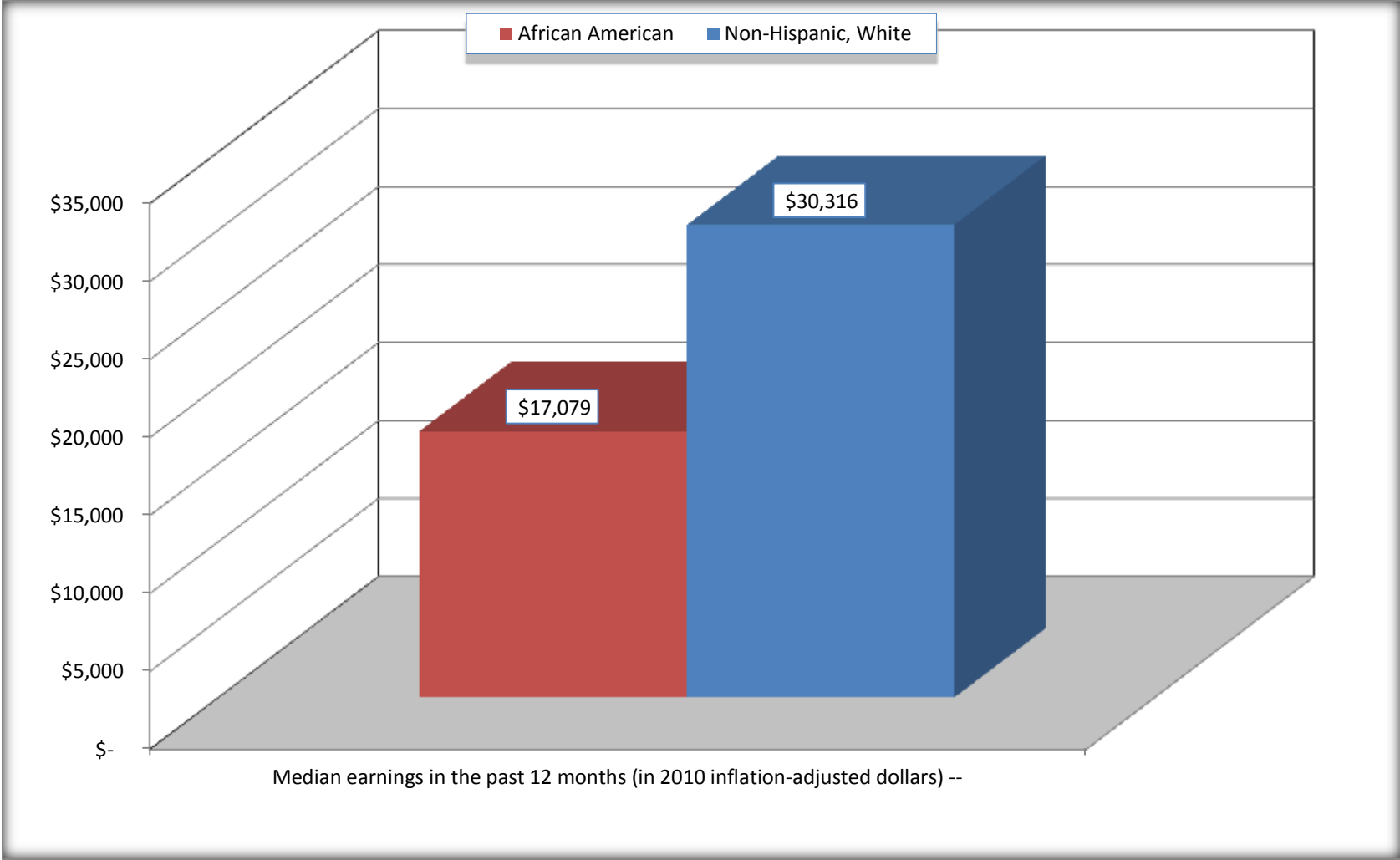
For information on confidentiality protection, sampling error, nonsampling error, and definitions, see Survey Methodology.

<http://www.census.gov/acs/www/UseData/index.htm>



# Median earnings in the Past 12 Months (16 Years and Over with Earnings)

## Blakely city, Georgia



Source: B20017. MEDIAN EARNINGS IN THE PAST 12 MONTHS (IN 2010 INFLATION-ADJUSTED DOLLARS) BY SEX BY WORK EXPERIENCE IN THE PAST 12 MONTHS FOR THE POPULATION 16 YEARS AND OVER WITH EARNINGS IN THE PAST 12 MONTHS  
Data Set: 2008-2012 American Community Survey 5-Year Estimates

**B20005. SEX BY WORK EXPERIENCE IN THE PAST 12 MONTHS BY EARNINGS IN THE PAST 12 MONTHS (IN 2010 INFLATION-ADJUSTED DOLLARS) FOR THE POPULATION 16 YEARS AND OVER**

Data Set: 2008-2012 American Community Survey 5-Year Estimates

	Blakely city, Georgia					
	African American	Margin of Error (+/-)	% of AA Total	White, Not Hispanic	Margin of Error (+/-)	% of NHW Total
<b>Total:</b>	<b>2,200</b>	<b>198</b>	<b>100.0%</b>	<b>1,338</b>	<b>189</b>	<b>100.0%</b>
Worked full-time, year-round in the past 12 months:	599	NC	27.2%	486	NC	36.3%
No earnings	0	NC	0.0%	0	NC	0.0%
With earnings:	599	NC	27.2%	486	NC	36.3%
\$ 1 to \$ 9,999 or loss	4	NC	0.2%	25	NC	1.9%
\$ 10,000 to \$ 19,999	236	NC	10.7%	56	NC	4.2%
\$ 20,000 to \$ 29,999	170	NC	7.7%	73	NC	5.5%
\$ 30,000 to \$ 49,999	110	NC	5.0%	189	NC	14.1%
\$ 50,000 to \$ 74,999	49	NC	2.2%	106	NC	7.9%
\$ 75,000 or more	30	NC	1.4%	37	NC	2.8%
Other:	1,601	NC	72.8%	852	NC	63.7%
No earnings	1,207	NC	54.9%	604	NC	45.1%
With earnings: less than full time, year-round	394	NC	17.9%	248	NC	18.5%
Male:	900	125	40.9%	643	116	48.1%
Worked full-time, year-round in the past 12 months:	279	79	12.7%	340	86	25.4%
No earnings	0	13	0.0%	0	13	0.0%
With earnings:	279	79	12.7%	340	86	25.4%
\$ 1 to \$ 9,999 or loss	0	NC	0.0%	0	NC	0.0%
\$ 10,000 to \$ 19,999	43	NC	2.0%	38	NC	2.8%
\$ 20,000 to \$ 29,999	88	NC	4.0%	53	NC	4.0%
\$ 30,000 to \$ 49,999	81	NC	3.7%	130	NC	9.7%
\$ 50,000 to \$ 74,999	49	NC	2.2%	82	NC	6.1%
\$ 75,000 or more	18	NC	0.8%	37	NC	2.8%

	Blakely city, Georgia					
	African American	Margin of Error (+/-)	% of AA Total	White, Not Hispanic	Margin of Error (+/-)	% of NHW Total
Other:	621	119	28.2%	303	86	22.6%
No earnings	477	126	21.7%	166	64	12.4%
With earnings:	144	67	6.5%	137	68	10.2%
Female:	1,300	135	59.1%	695	120	51.9%
Worked full-time, year-round in the past 12 months:	320	94	14.5%	146	62	10.9%
No earnings	0	13	0.0%	0	13	0.0%
With earnings:	320	94	14.5%	146	62	10.9%
\$ 1 to \$ 9,999 or loss	4	NC	0.2%	25	NC	1.9%
\$ 10,000 to \$ 19,999	193	NC	8.8%	18	NC	1.3%
\$ 20,000 to \$ 29,999	82	NC	3.7%	20	NC	1.5%
\$ 30,000 to \$ 49,999	29	NC	1.3%	59	NC	4.4%
\$ 50,000 to \$ 74,999	0	NC	0.0%	24	NC	1.8%
\$ 75,000 or more	12	NC	0.5%	0	NC	0.0%
Other:	980	116	44.5%	549	116	41.0%
No earnings	730	106	33.2%	438	104	32.7%
With earnings:	250	102	11.4%	111	67	8.3%

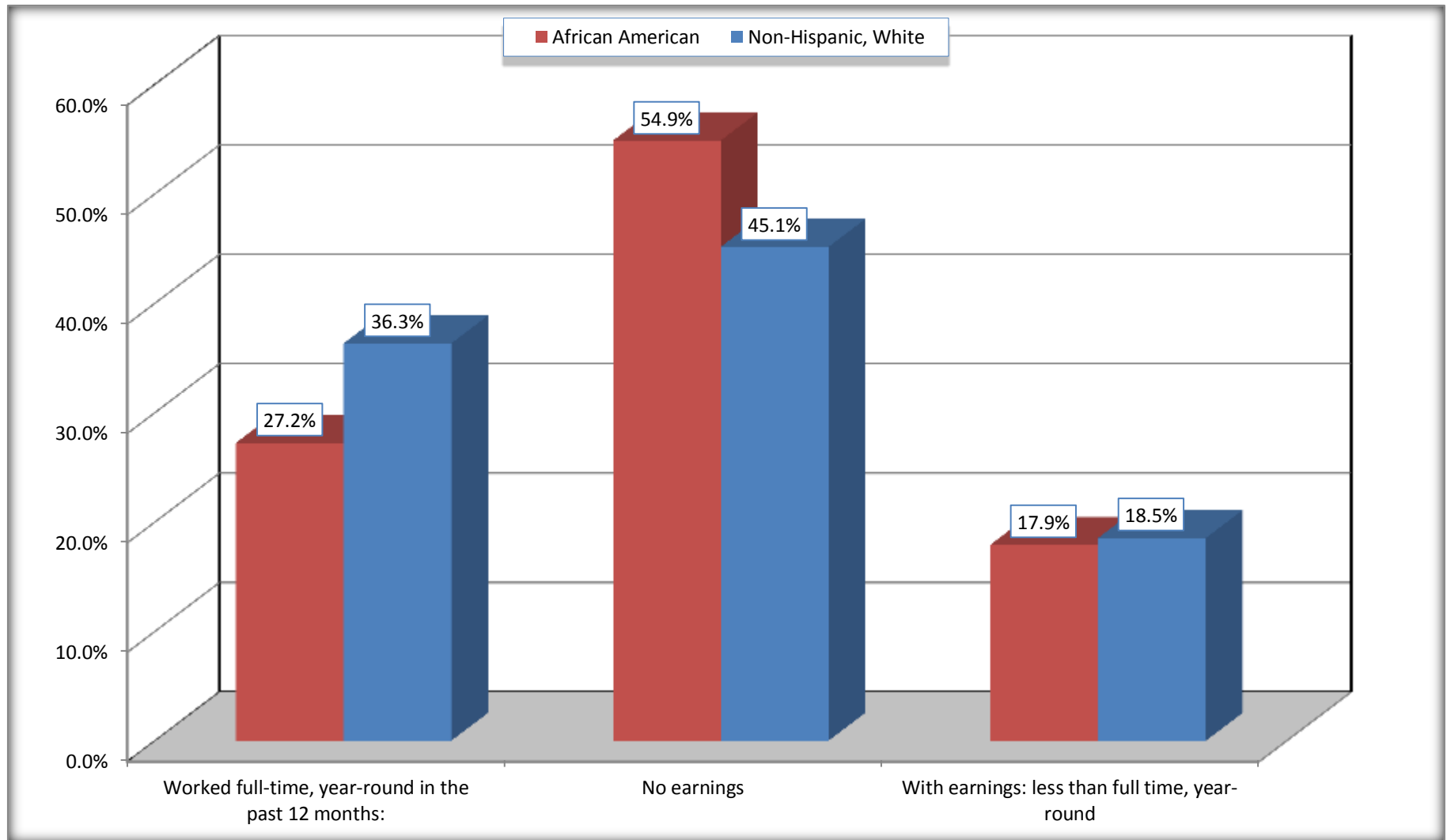
Source: U.S. Census Bureau, 2008-2012 American Community Survey

For information on confidentiality protection, sampling error, nonsampling error, and definitions, see Survey Methodology.

<http://www.census.gov/acs/www/UseData/index.htm>

# Employment and Earnings in in the Past 12 Months (16 Years and Over)

## Blakely city, Georgia



Source: B20005. SEX BY WORK EXPERIENCE IN THE PAST 12 MONTHS BY EARNINGS IN THE PAST 12 MONTHS (IN 2010 INFLATION-ADJUSTED DOLLARS) FOR THE POPULATION 16 YEARS AND OVER

Data Set: 2008-2012 American Community Survey 5-Year Estimates

**C21001. SEX BY AGE BY VETERAN STATUS FOR THE CIVILIAN POPULATION 18 YEARS AND OVER**

Data Set: 2008-2012 American Community Survey 5-Year Estimates

	Blakely city, Georgia					
	African American	Margin of Error (+/-)	% of AA Total	White, Not Hispanic	Margin of Error (+/-)	% of NHW Total
<b>Total:</b>	<b>2,055</b>	<b>193</b>	<b>100.0%</b>	<b>1,323</b>	<b>187</b>	<b>100.0%</b>
Veteran	122	NC	5.9%	151	NC	11.4%
Nonveteran	1,933	NC	94.1%	1,172	NC	88.6%
Male:	864	122	42.0%	628	113	47.5%
18 to 64 years:	758	116	36.9%	440	107	33.3%
Veteran	104	55	5.1%	50	44	3.8%
Nonveteran	654	114	31.8%	390	97	29.5%
65 years and over:	106	51	5.2%	188	69	14.2%
Veteran	13	16	0.6%	101	58	7.6%
Nonveteran	93	51	4.5%	87	54	6.6%
Female:	1,191	124	58.0%	695	120	52.5%
18 to 64 years:	938	122	45.6%	421	105	31.8%
Veteran	5	10	0.2%	0	13	0.0%
Nonveteran	933	121	45.4%	421	105	31.8%
65 years and over:	253	57	12.3%	274	67	20.7%
Veteran	0	13	0.0%	0	13	0.0%
Nonveteran	253	57	12.3%	274	67	20.7%

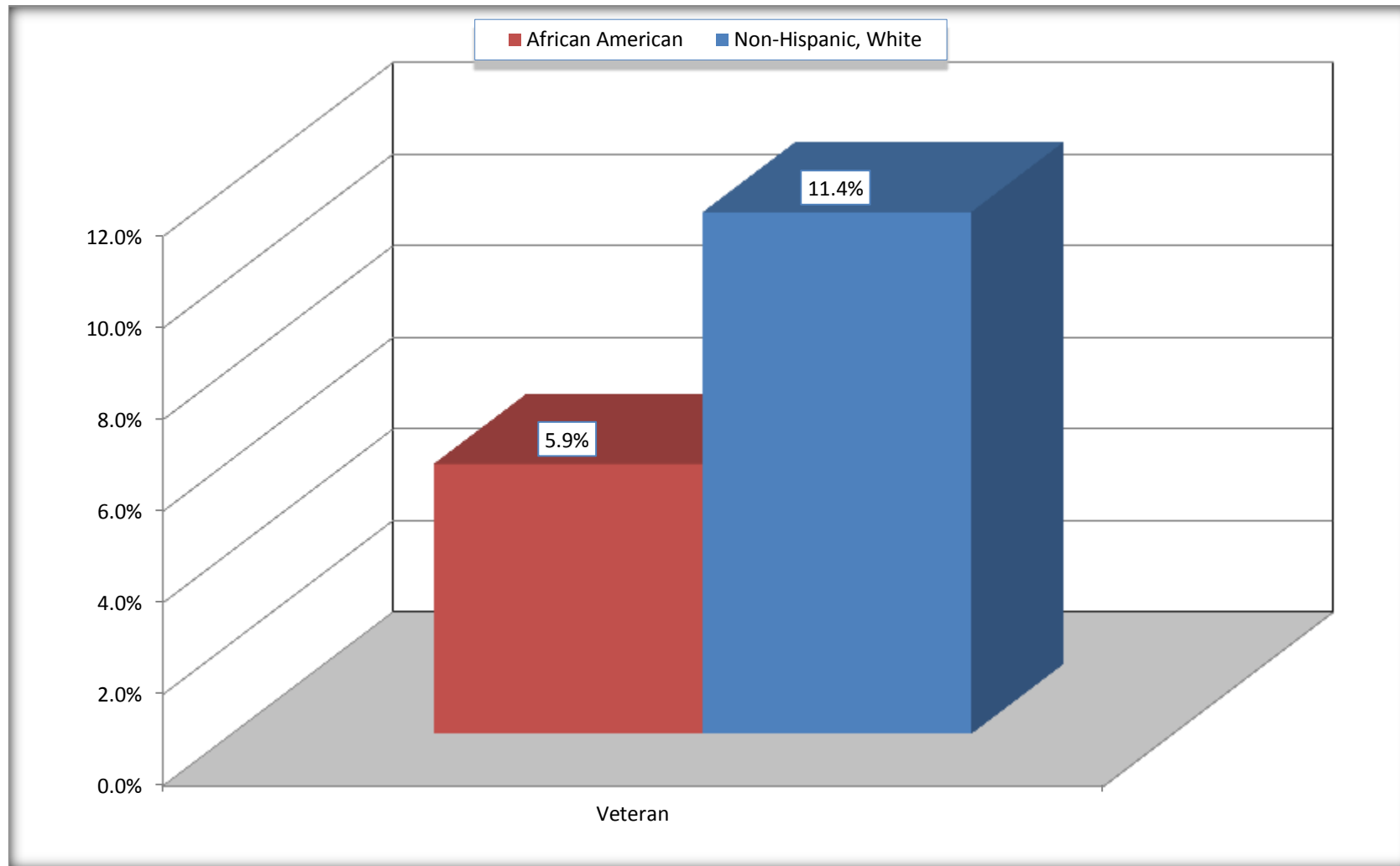
Source: U.S. Census Bureau, 2008-2012 American Community Survey

For information on confidentiality protection, sampling error, nonsampling error, and definitions, see Survey Methodology.

<http://www.census.gov/acs/www/UseData/index.htm>

# Veterans in the Civilian Population 18 Years and Over

## Blakely city, Georgia



Source: C21001. SEX BY AGE BY VETERAN STATUS FOR THE CIVILIAN POPULATION 18 YEARS AND OVER  
Data Set: 2008-2012 American Community Survey 5-Year Estimates

**B22005. RECEIPT OF FOOD STAMPS/SNAP IN THE PAST 12 MONTHS BY RACE OF HOUSEHOLDER**

Data Set: 2008-2012 American Community Survey 5-Year Estimates

	<b>Blakely city, Georgia</b>					
	African American	Margin of Error (+/-)	% of AA Total	White, Not Hispanic	Margin of Error (+/-)	% of NHW Total
<b>Total:</b>	<b>1,105</b>	<b>142</b>	<b>100.0%</b>	<b>743</b>	<b>120</b>	<b>100.0%</b>
HH received Food Stamps/SNAP in the past 12 months	539	139	48.8%	123	65	16.6%
HH did not receive Food Stamps/SNAP in the past 12 months	566	126	51.2%	620	114	83.4%

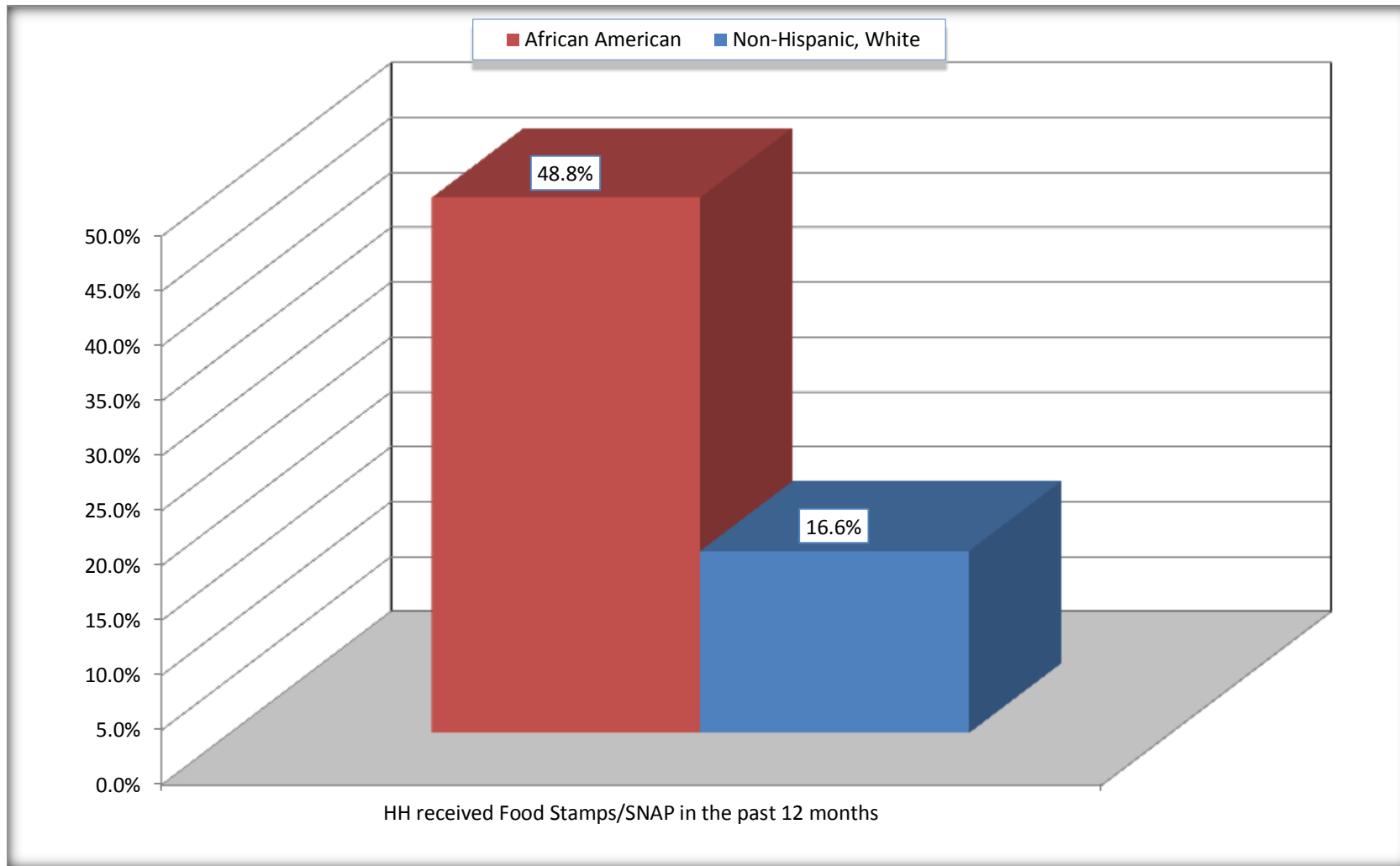
Source: U.S. Census Bureau, 2008-2012 American Community Survey

For information on confidentiality protection, sampling error, nonsampling error, and definitions, see Survey Methodology.

<http://www.census.gov/acs/www/UseData/index.htm>

# Receipt of Food Stamps/SNAP in the Past 12 Months by Household

## Blakely city, Georgia



Source: B22005. RECEIPT OF FOOD STAMPS/SNAP IN THE PAST 12 MONTHS BY RACE OF HOUSEHOLDER  
Data Set: 2008-2012 American Community Survey 5-Year Estimates



**C23002. SEX BY AGE BY EMPLOYMENT STATUS FOR THE POPULATION 16 YEARS AND OVER**

Data Set: 2008-2012 American Community Survey 5-Year Estimates

	Blakely city, Georgia					
	African American	Margin of Error (+/-)	% of AA Total	White, Not Hispanic	Margin of Error (+/-)	% of NHW Total
<b>Total:</b>	<b>2,200</b>	<b>198</b>	<b>100.0%</b>	<b>1,338</b>	<b>189</b>	<b>100.0%</b>
In labor force:	950	NC	43.2%	635	NC	47.5%
In Armed Forces	0	NC	0.0%	0	NC	0.0%
Civilian:	950	NC	43.2%	510	NC	38.1%
Employed	733	NC	33.3%	597	NC	44.6%
Unemployed	217	NC	9.9%	38	NC	2.8%
Not in labor force	1,250	NC	56.8%	703	NC	52.5%
Male:	900	125	40.9%	643	116	48.1%
16 to 64 years:	794	119	36.1%	455	111	34.0%
In labor force:	428	106	19.5%	334	85	25.0%
In Armed Forces	0	13	0.0%	0	13	0.0%
Civilian:	428	106	19.5%	334	85	25.0%
Employed	306	89	13.9%	327	84	24.4%
Unemployed	122	59	5.5%	7	11	0.5%
Not in labor force	366	107	16.6%	121	56	9.0%
65 years and over:	106	51	4.8%	188	69	14.1%
In labor force:	0	13	0.0%	64	49	4.8%
Employed	0	13	0.0%	64	49	4.8%
Unemployed	0	13	0.0%	0	13	0.0%
Not in labor force	106	51	4.8%	124	59	9.3%

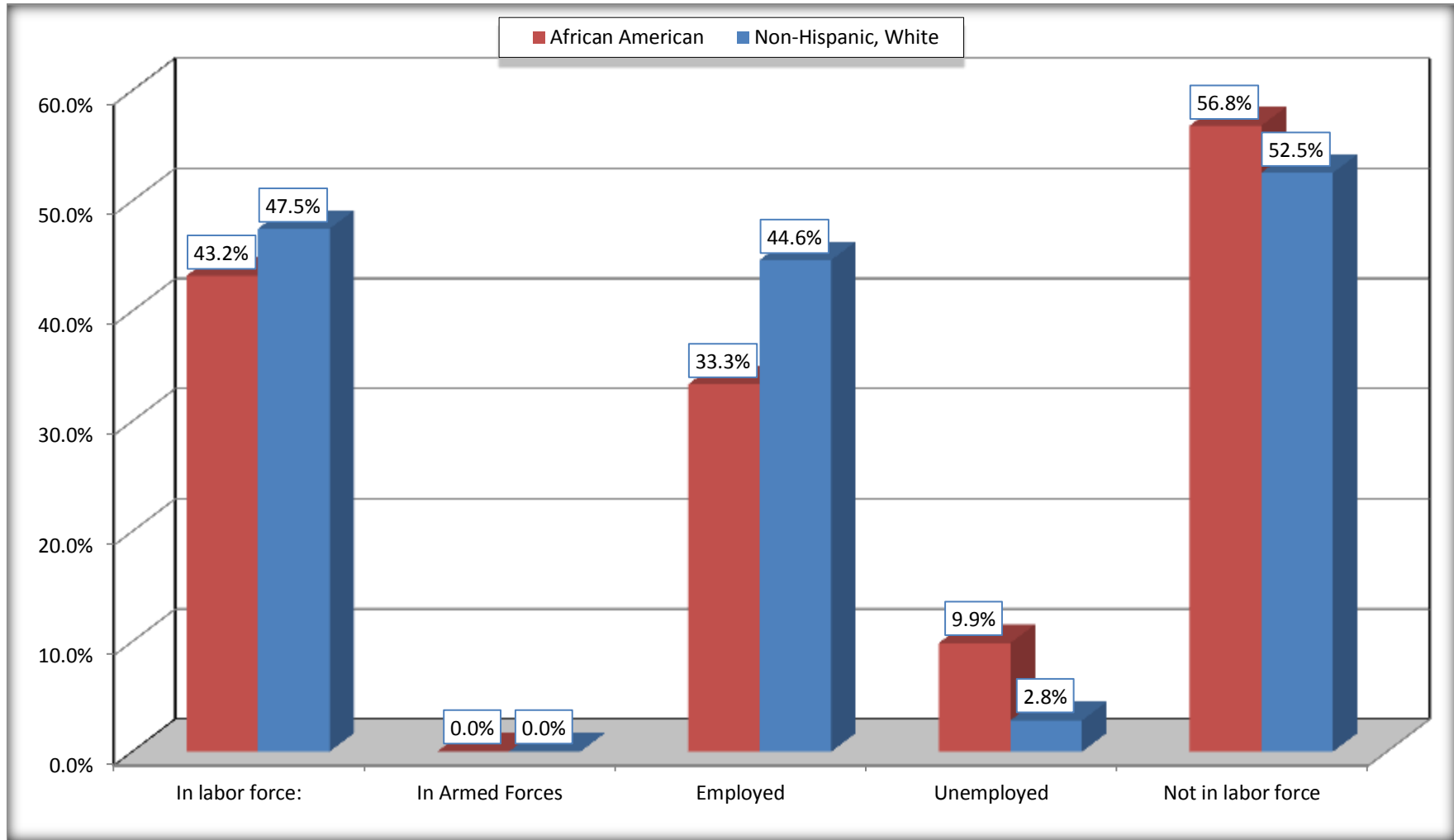
	Blakely city, Georgia					
	African American	Margin of Error (+/-)	% of AA Total	White, Not Hispanic	Margin of Error (+/-)	% of NHW Total
Female:	1,300	135	59.1%	695	120	51.9%
16 to 64 years:	1,047	131	47.6%	421	105	31.5%
In labor force:	522	117	23.7%	176	69	13.2%
In Armed Forces	0	13	0.0%	0	13	0.0%
Civilian:	522	117	23.7%	176	69	13.2%
Employed	427	106	19.4%	153	60	11.4%
Unemployed	95	62	4.3%	23	30	1.7%
Not in labor force	525	99	23.9%	245	87	18.3%
65 years and over:	253	57	11.5%	274	67	20.5%
In labor force:	0	13	0.0%	61	39	4.6%
Employed	0	13	0.0%	53	37	4.0%
Unemployed	0	13	0.0%	8	14	0.6%
Not in labor force	253	57	11.5%	213	70	15.9%

Source: U.S. Census Bureau, 2008-2012 American Community Survey

For information on confidentiality protection, sampling error, nonsampling error, and definitions, see Survey Methodology.  
<http://www.census.gov/acs/www/UseData/index.htm>

# Employment Status for the Population 16 years and over

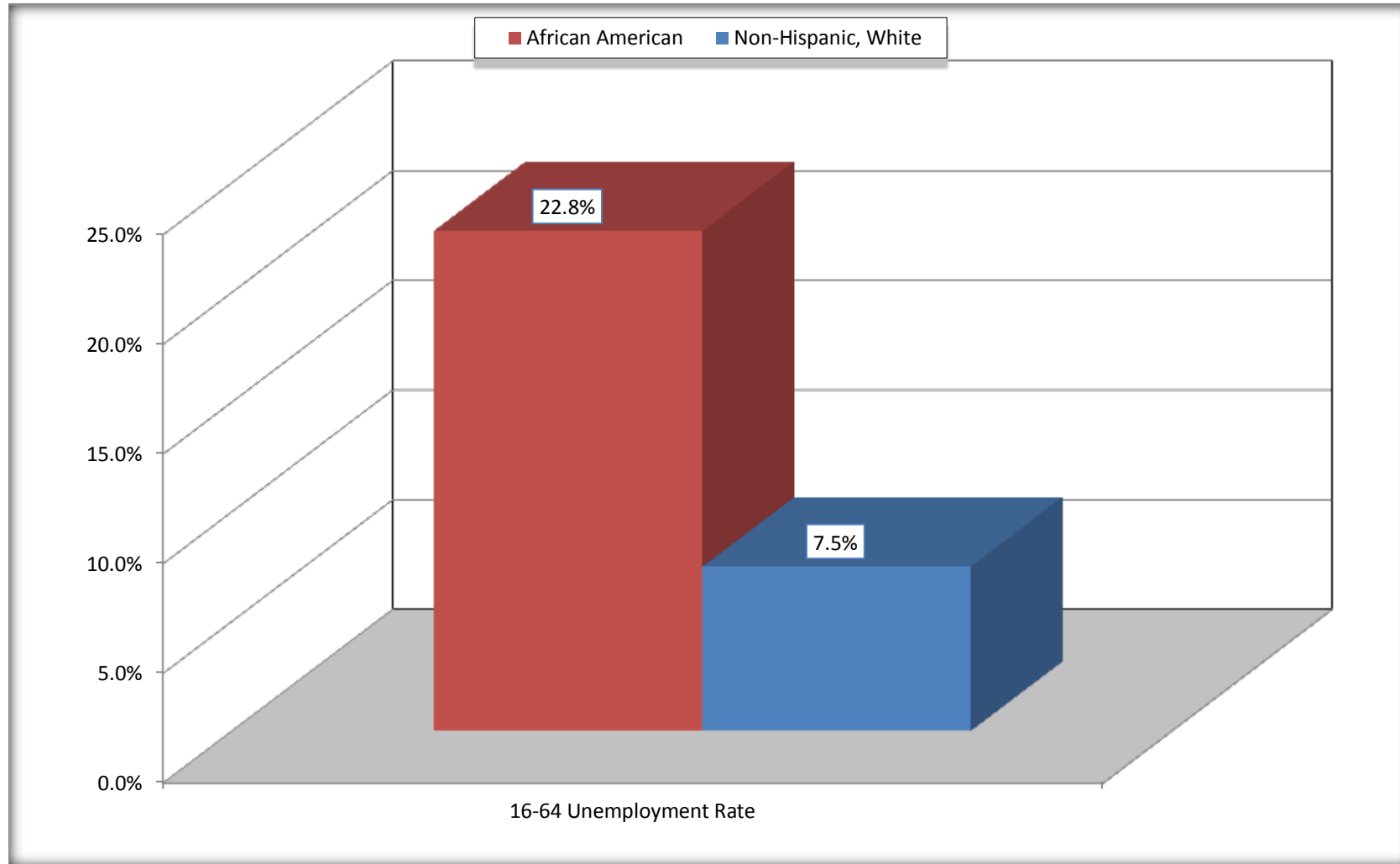
## Blakely city, Georgia



Source: C23002. SEX BY AGE BY EMPLOYMENT STATUS FOR THE POPULATION 16 YEARS AND OVER  
Data Set: 2008-2012 American Community Survey 5-Year Estimates

# Unemployment of Working Age Population (Ages 16 to 64) (As a Percent of 16-64 Civilian Labor Force)

## Blakely city, Georgia



Source: C23002. SEX BY AGE BY EMPLOYMENT STATUS FOR THE POPULATION 16 YEARS AND OVER  
Data Set: 2008-2012 American Community Survey 5-Year Estimates

**C24010. SEX BY OCCUPATION FOR THE CIVILIAN EMPLOYED POPULATION 16 YEARS AND OVER**

Data Set: 2008-2012 American Community Survey 5-Year Estimates

	Blakely city, Georgia					
	African American	Margin of Error (+/-)	% of AA Total	White, Not Hispanic	Margin of Error (+/-)	% of NHW Total
<b>Total:</b>	<b>733</b>	<b>137</b>	<b>100.0%</b>	<b>597</b>	<b>133</b>	<b>100.0%</b>
Management, professional, and related occupations	203	NC	27.7%	188	NC	31.5%
Service occupations	224	NC	30.6%	76	NC	12.7%
Sales and office occupations	99	NC	13.5%	157	NC	26.3%
Natural resources, construction, and maintenance occupations:	51	NC	7.0%	113	NC	18.9%
Production, transportation, and material moving occupations	156	NC	21.3%	63	NC	10.6%
Male:	306	89	41.7%	391	89	65.5%
Management, business, science, and arts occupations:	44	39	6.0%	85	46	14.2%
Service occupations	65	49	8.9%	40	41	6.7%
Sales and office occupations	30	34	4.1%	92	54	15.4%
Natural resources, construction, and maintenance occupations:	51	40	7.0%	111	61	18.6%
Production, transportation, and material moving occupations	116	67	15.8%	63	43	10.6%
Female:	427	106	58.3%	206	72	34.5%
Management, professional, and related occupations	159	72	21.7%	103	49	17.3%
Service occupations	159	77	21.7%	36	32	6.0%
Sales and office occupations	69	42	9.4%	65	46	10.9%
Natural resources, construction, and maintenance occupations:	0	13	0.0%	2	3	0.3%
Production, transportation, and material moving occupations	40	31	5.5%	0	13	0.0%

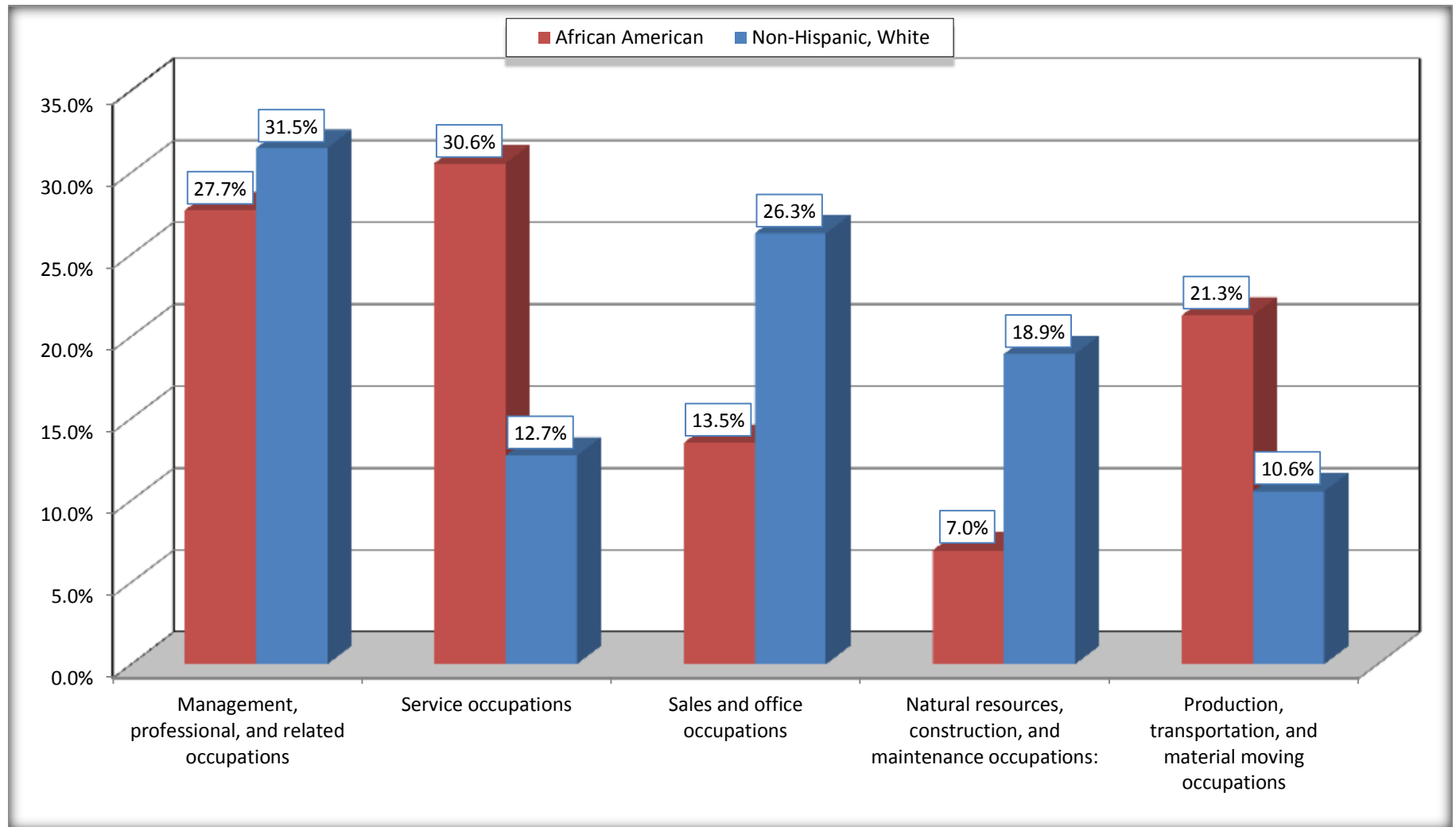
Source: U.S. Census Bureau, 2008-2012 American Community Survey

For information on confidentiality protection, sampling error, nonsampling error, and definitions, see Survey Methodology.

<http://www.census.gov/acs/www/UseData/index.htm>

# Occupation for the Civilian Employed 16 Years and Over Population

## Blakely city, Georgia



Source: C24010. SEX BY OCCUPATION FOR THE CIVILIAN EMPLOYED POPULATION 16 YEARS AND OVER  
Data Set: 2008-2012 American Community Survey 5-Year Estimates

**B25003. TENURE - Universe: OCCUPIED HOUSING UNITS**

Data Set: 2008-2012 American Community Survey 5-Year Estimates

	Blakely city, Georgia					
	African American	Margin of Error (+/-)	% of AA Total	White, Not Hispanic	Margin of Error (+/-)	% of NHW Total
<b>Total:</b>	<b>1,105</b>	<b>142</b>	<b>100.0%</b>	<b>743</b>	<b>120</b>	<b>100.0%</b>
Owner occupied	406	101	36.7%	498	103	67.0%
Renter occupied	699	126	63.3%	245	85	33.0%

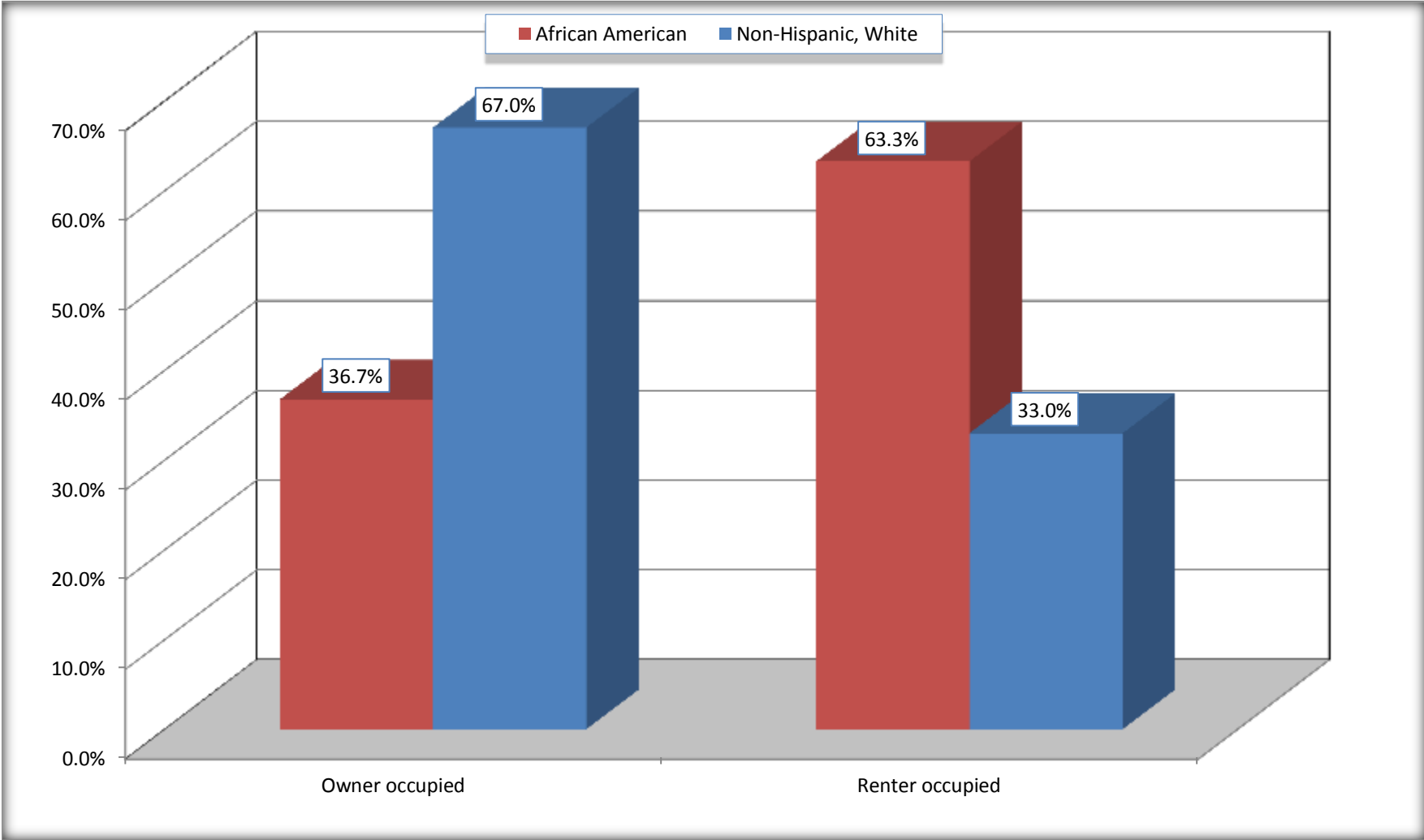
Source: U.S. Census Bureau, 2008-2012 American Community Survey

For information on confidentiality protection, sampling error, nonsampling error, and definitions, see Survey Methodology.

<http://www.census.gov/acs/www/UseData/index.h>

# Home Owners and Renters by Household

## Blakely city, Georgia



Source: B25003. TENURE - Universe: OCCUPIED HOUSING UNITS  
Data Set: 2008-2012 American Community Survey 5-Year Estimates



**B25014. OCCUPANTS PER ROOM - Universe: OCCUPIED HOUSING UNITS**

Data Set: 2008-2012 American Community Survey 5-Year Estimates

	Blakely city, Georgia					
	African American	Margin of Error (+/-)	% of AA Total	White, Not Hispanic	Margin of Error (+/-)	% of NHW Total
<b>Total:</b>	<b>1,105</b>	<b>142</b>	<b>100.0%</b>	<b>743</b>	<b>120</b>	<b>100.0%</b>
1.00 or less occupants per room	1,035	140	93.7%	732	119	98.5%
1.01 or more occupants per room	70	47	6.3%	11	19	1.5%

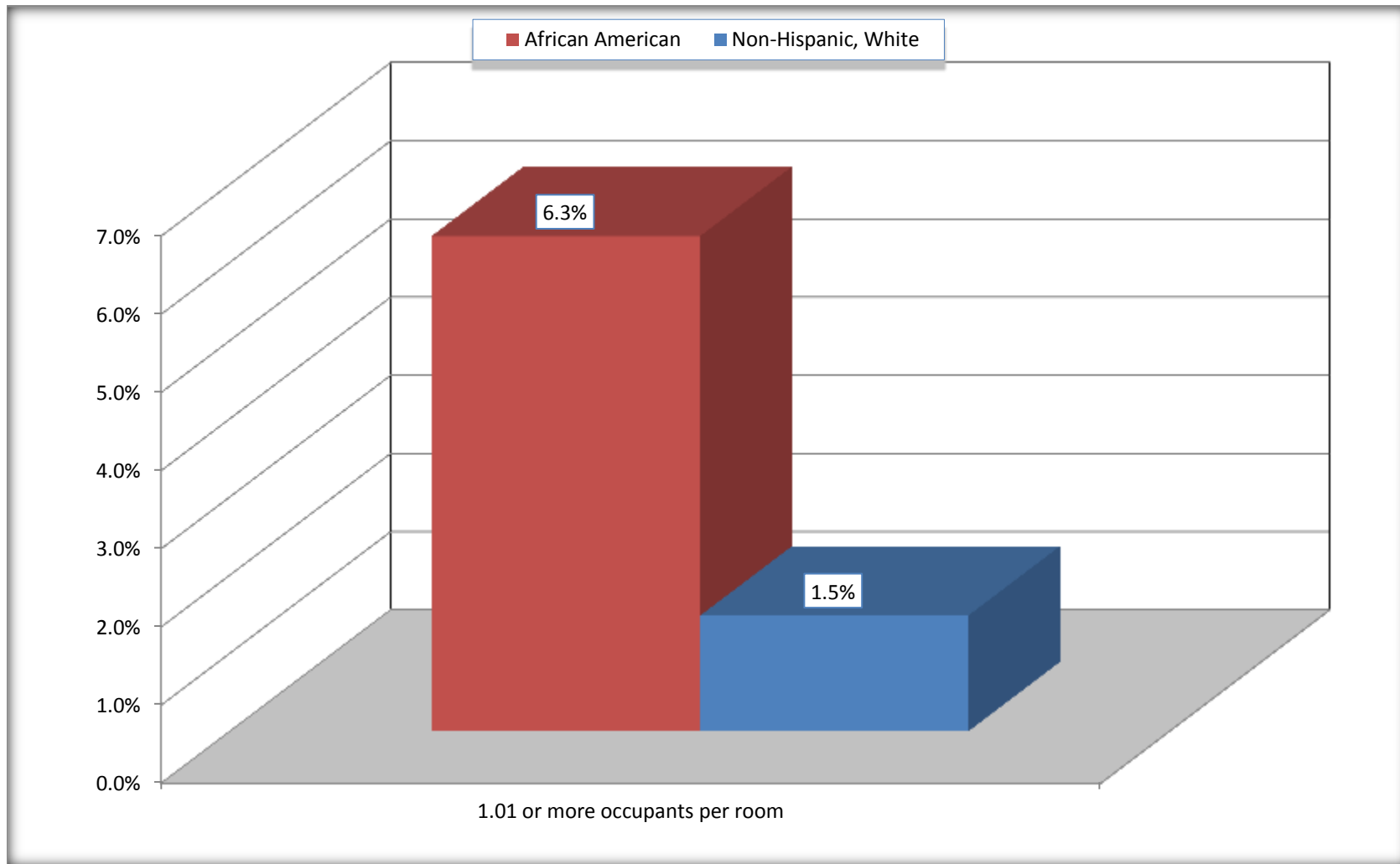
Source: U.S. Census Bureau, 2008-2012 American Community Survey

For information on confidentiality protection, sampling error, nonsampling error, and definitions, see Survey Methodology.

<http://www.census.gov/acs/www/UseData/index.ht>

# More than One Person per Room (Crowding) by Household

## Blakely city, Georgia



Source: B25014. OCCUPANTS PER ROOM - Universe: OCCUPIED HOUSING UNITS  
Data Set: 2008-2012 American Community Survey 5-Year Estimates

**B18101. AGE BY DISABILITY STATUS**

Data Set: 2008-2012 American Community Survey 5-Year Estimates

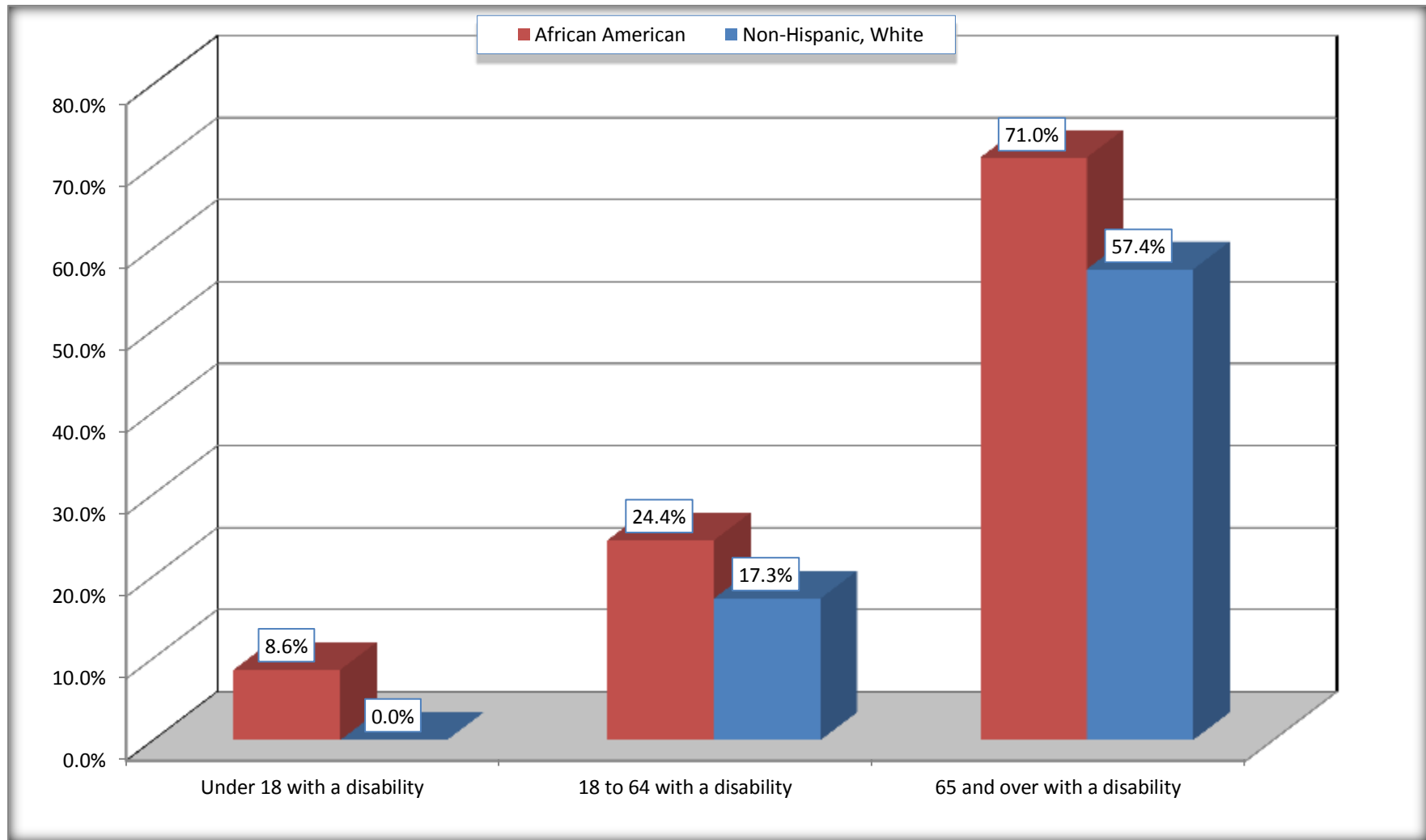
	Blakely city, Georgia					
	African American	Margin of Error (+/-)	% of AA Total	White, Not Hispanic	Margin of Error (+/-)	% of NHW Total
<b>Total:</b>	<b>3,043</b>	<b>240</b>	<b>100.0%</b>	<b>1,543</b>	<b>255</b>	<b>100.0%</b>
Under 18 years:	1,143	148	37.6%	342	36	22.2%
With a disability	98	70	3.2%	0	13	0.0%
No disability	1,045	161	34.3%	342	112	22.2%
18 to 64 years:	1,572	184	51.7%	776	162	50.3%
With a disability	383	140	12.6%	134	65	8.7%
No disability	1,189	156	39.1%	642	148	41.6%
65 years and over:	328	79	10.8%	425	113	27.5%
With a disability	233	81	7.7%	244	92	15.8%
No disability	95	44	3.1%	181	69	11.7%

Source: U.S. Census Bureau, 2008-2012 American Community Survey

For information on confidentiality protection, sampling error, nonsampling error, and definitions, see Survey Methodology.

<http://www.census.gov/acs/www/UseData/index.htm>

## Disability by Age Blakely city, Georgia



Source: B18101. AGE BY DISABILITY STATUS  
Data Set: 2008-2012 American Community Survey 5-Year Estimates

**C27001B. HEALTH INSURANCE COVERAGE STATUS BY AGE**

Data Set: 2008-2012 American Community Survey 5-Year Estimates

	<b>Blakely city, Georgia</b>					
	African American	Margin of Error (+/-)	% of AA Total	White, Not Hispanic	Margin of Error (+/-)	% of NHW Total
<b>Total:</b>	<b>3,043</b>	<b>240</b>	<b>100.0%</b>	<b>1,543</b>	<b>255</b>	<b>100.0%</b>
Under 18 years:	1,143	148	37.6%	342	112	22.2%
With health insurance coverage	1,089	152	35.8%	327	115	21.2%
No health insurance coverage	54	42	1.8%	15	24	1.0%
18 to 64 years:	1,572	184	51.7%	776	162	50.3%
With health insurance coverage	1,099	183	36.1%	594	142	38.5%
No health insurance coverage	473	137	15.5%	182	91	11.8%
65 years and over:	328	79	10.8%	425	113	27.5%
With health insurance coverage	328	79	10.8%	425	113	27.5%
No health insurance coverage	0	13	0.0%	0	13	0.0%

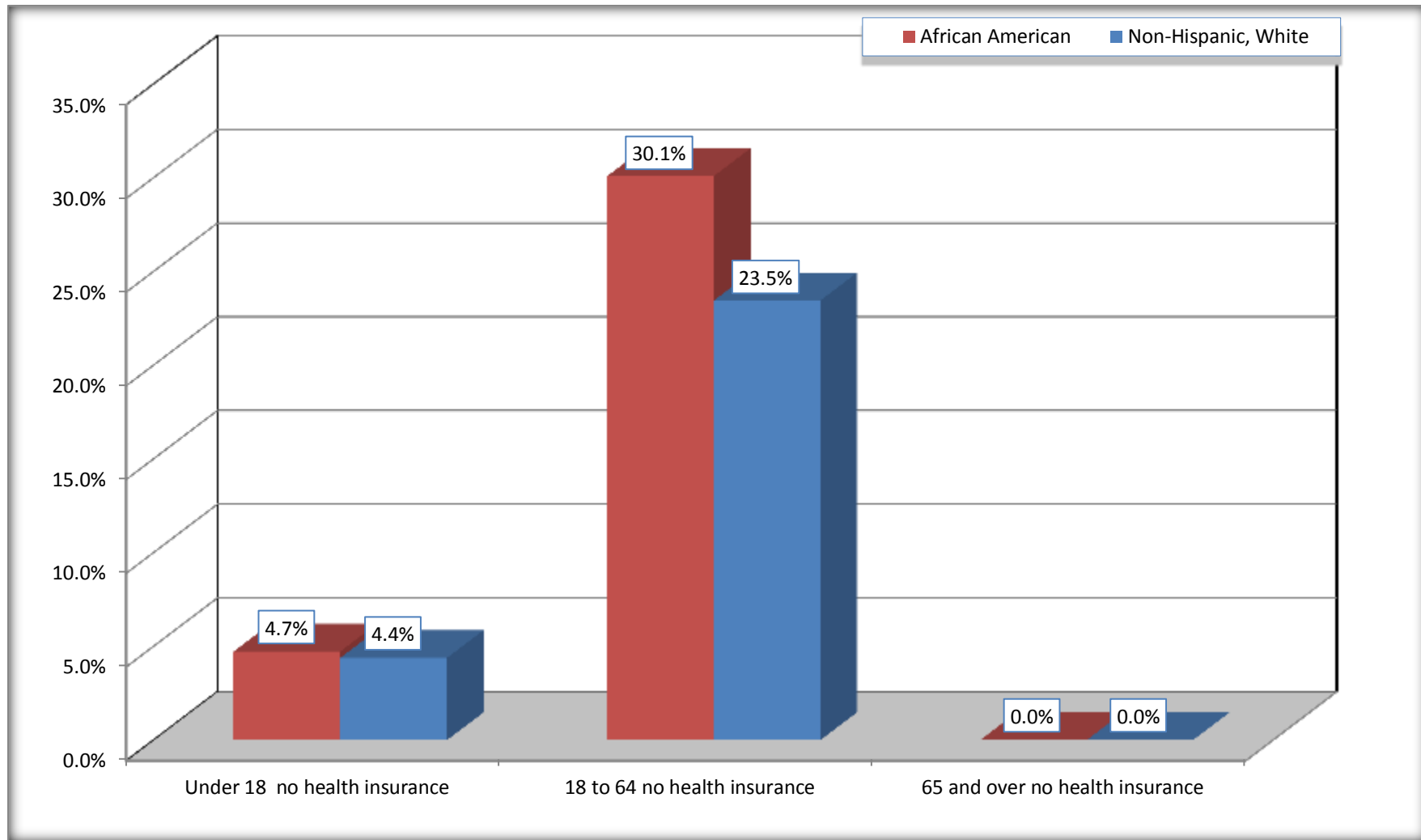
Source: U.S. Census Bureau, 2008-2012 American Community Survey

For information on confidentiality protection, sampling error, nonsampling error, and definitions, see Survey Methodology.

<http://www.census.gov/acs/www/UseData/index.htm>

# Lack of Health Insurance Coverage by Age

## Blakely city, Georgia



Source: C27001B. HEALTH INSURANCE COVERAGE STATUS BY AGE  
Data Set: 2008-2012 American Community Survey 5-Year Estimates