

Selected Socio-Economic Data

Jefferson County, Florida

African American and White, Not Hispanic

Data Set: 2008-2012 American Community Survey 5-Year Estimates

www.fairvote2020.org

www.fairdata2000.com

[29-Dec-13](#)

C02003.DETAILED RACE - Universe: TOTAL POPULATION

Data Set: 2008-2012 American Community Survey 5-Year Estimates

	Jefferson County, Florida		
	Population	Margin of Error (+/-)	% of Total
Total:	14,564	*****	100.0%
Population of one race:	14,388	94	98.8%
White	8,769	249	60.2%
Black or African American	5,376	93	36.9%
American Indian and Alaska Native	30	35	0.2%
Asian alone	12	19	0.1%
Native Hawaiian and Other Pacific Islander	10	16	0.1%
Some other race	191	181	1.3%
Population of two or more races:	176	94	1.2%
Two races including Some other race	42	58	0.3%
Two races excluding Some other race, and three or more races	134	72	0.9%
Population of two races:	146	82	1.0%
White; Black or African American	36	32	0.2%
White; American Indian and Alaska Native	58	42	0.4%
White; Asian	0	21	0.0%
Black or African American; American Indian and Alaska Native	10	18	0.1%
All other two race combinations	42	58	0.3%
Population of three races	30	47	0.2%
Population of four or more races	0	21	0.0%

Note: Hispanics may be of any race. See Table B03002 and chart.

Source: U.S. Census Bureau, 2008-2012 American Community Survey

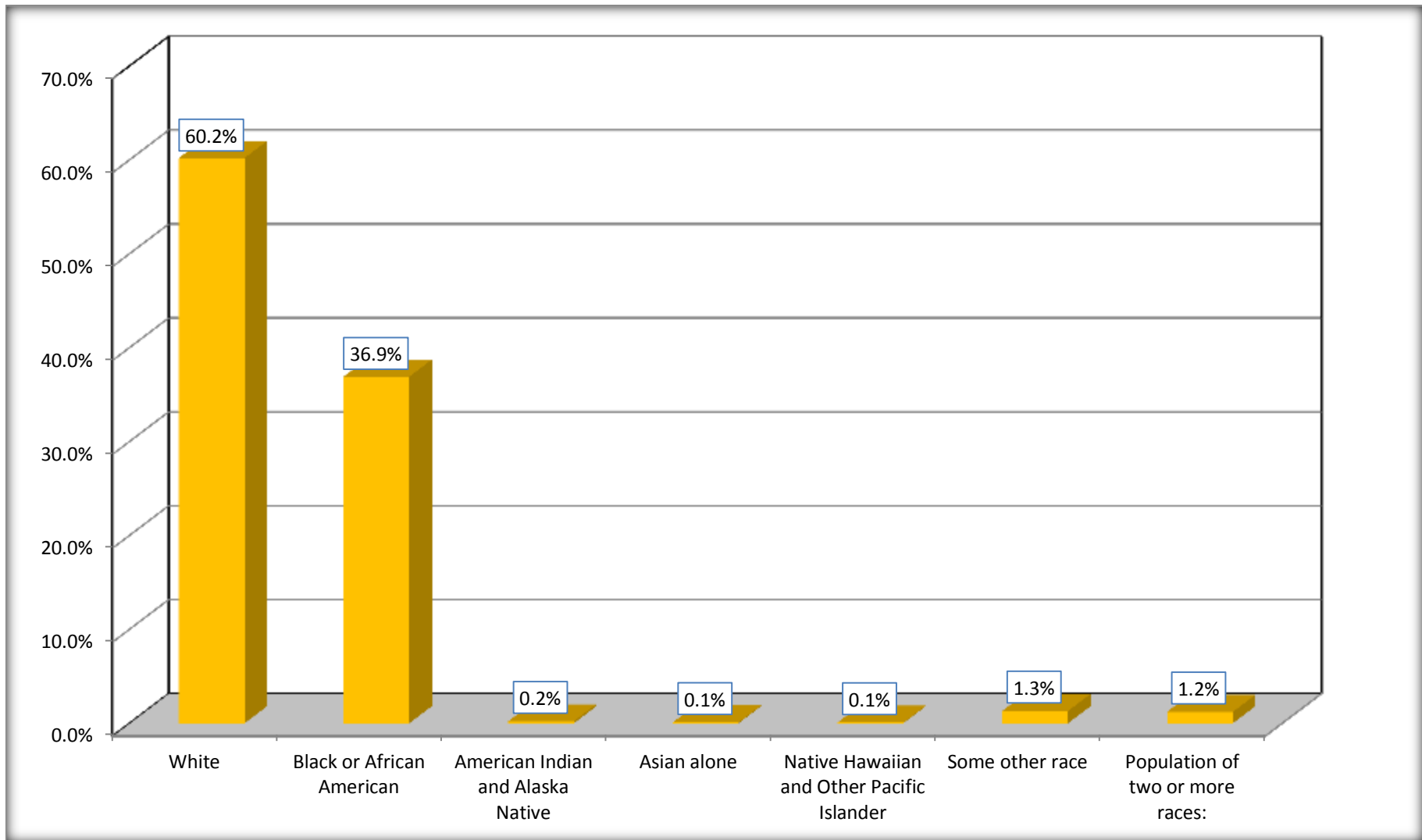
Although the American Community Survey (ACS) produces population, demographic and housing unit estimates, it is the Census Bureau's Population Estimates Program that produces and disseminates the official estimates of the population for the nation, states, counties, cities and towns and estimates of housing units for states and counties.

For information on confidentiality protection, sampling error, nonsampling error, and definitions, see Survey Methodology.

<http://www.census.gov/acs/www/UseData/index.htm>

Population by Race

Jefferson County, Florida



Source: C02003.DETAILED RACE - Universe: TOTAL POPULATION
Data Set: 2008-2012 American Community Survey 5-Year Estimates

B03002. HISPANIC OR LATINO ORIGIN BY RACE - Universe: TOTAL POPULATION

Data Set: 2008-2012 American Community Survey 5-Year Estimates

	Jefferson County, Florida		
	Population	Margin of Error (+/-)	% of Total
Total:	14,564	*****	100.0%
Not Hispanic or Latino:	14,020	*****	96.3%
White alone	8,400	210	57.7%
Black or African American alone	5,316	81	36.5%
American Indian and Alaska Native alone	30	35	0.2%
Asian alone	12	19	0.1%
Native Hawaiian and Other Pacific Islander alone	10	16	0.1%
Some other race alone	112	154	0.8%
Two or more races:	140	87	1.0%
Two races including Some other race	42	58	0.3%
Two races excluding Some other race, and three or more races	98	65	0.7%
Hispanic or Latino	544	*****	3.7%

Source: U.S. Census Bureau, 2008-2012 American Community Survey

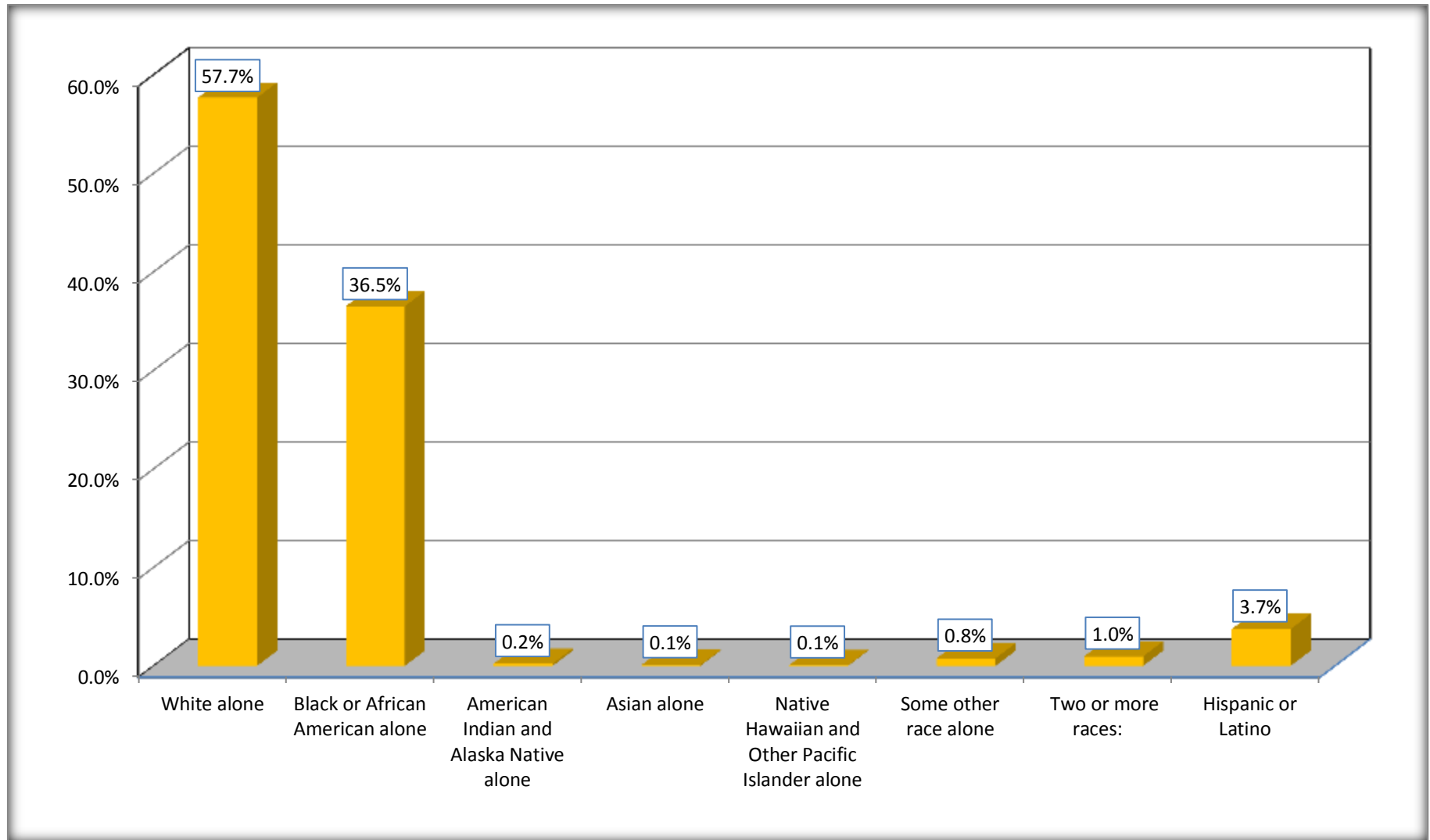
Although the American Community Survey (ACS) produces population, demographic and housing unit estimates, it is the Census Bureau's Population Estimates Program that produces and disseminates the official estimates of the population for the nation, states, counties, cities and towns and estimates of housing units for states and counties.

For information on confidentiality protection, sampling error, nonsampling error, and definitions, see Survey Methodology.

<http://www.census.gov/acs/www/UseData/index.htm>

Non-Hispanic by Race and Hispanic Population

Jefferson County, Florida



Source: B03002. HISPANIC OR LATINO ORIGIN BY RACE - Universe: TOTAL POPULATION
Data Set: 2008-2012 American Community Survey 5-Year Estimates

B03002. HISPANIC OR LATINO ORIGIN BY RACE

Data Set: 2008-2012 American Community Survey 5-Year Estimates

	Jefferson County, Florida		
	Population	Margin of Error (+/-)	% of Total
Hispanic or Latino:	544	*****	100.0%
White alone	369	69	67.8%
Black or African American alone	60	41	11.0%
American Indian and Alaska Native alone	0	21	0.0%
Asian alone	0	21	0.0%
Native Hawaiian and Other Pacific Islander alone	0	21	0.0%
Some other race alone	79	44	14.5%
Two or more races:	36	32	6.6%
Two races including Some other race	0	21	0.0%
Two races excluding Some other race, and three or more races	36	32	6.6%

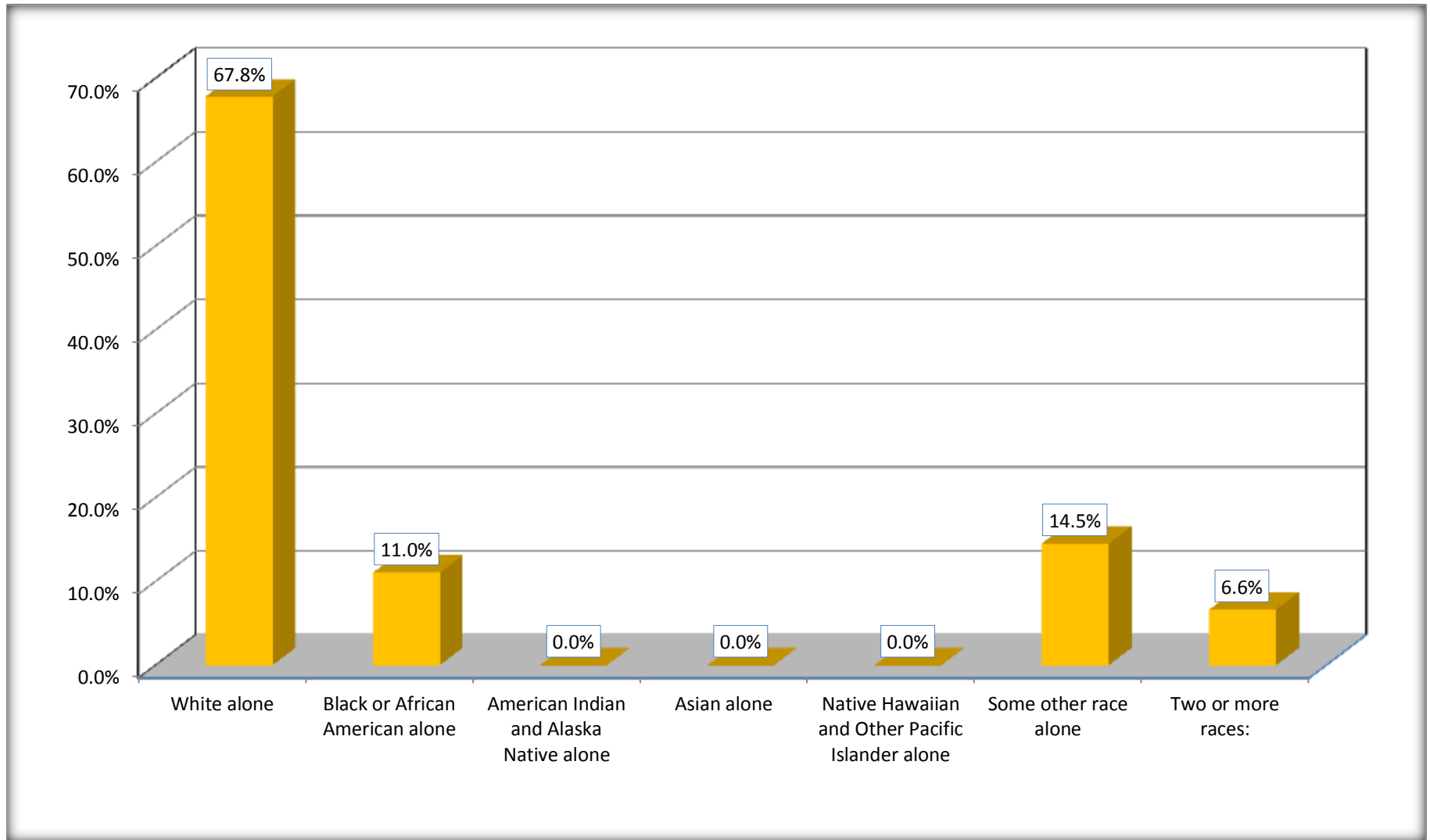
Source: U.S. Census Bureau, 2008-2012 American Community Survey

Although the American Community Survey (ACS) produces population, demographic and housing unit estimates, it is the Census Bureau's Population Estimates Program that produces and disseminates the official estimates of the population for the nation, states, counties, cities and towns and estimates of housing units for states and counties.

For information on confidentiality protection, sampling error, nonsampling error, and definitions, see Survey Methodology.

<http://www.census.gov/acs/www/UseData/index.htm>

Hispanic or Latino Origin by Race Jefferson County, Florida



Source: B03002. HISPANIC OR LATINO ORIGIN BY RACE
Data Set: 2008-2012 American Community Survey 5-Year Estimates

B01001. SEX BY AGE

Data Set: 2008-2012 American Community Survey 5-Year Estimates

	Jefferson County, Florida					
	African American	Margin of Error (+/-)	% of AA Total	White, Not Hispanic	Margin of Error (+/-)	% of NHW Total
Total:	5,376	93	100.0%	8,400	210	100.0%
Under 18 years	1,293	NC	24.1%	1,190	NC	14.2%
18 to 64 years	3,409	NC	63.4%	5,481	NC	65.3%
65 years and over	674	NC	12.5%	1,729	NC	20.6%
Male:	2,785	144	51.8%	4,345	389	51.7%
Under 18 years	643	NC	12.0%	617	NC	7.3%
18 to 64 years	1,870	NC	34.8%	2,905	NC	34.6%
65 years and over	272	NC	5.1%	823	NC	9.8%
Female:	2,591	117	48.2%	4,055	412	48.3%
Under 18 years	650	NC	12.1%	573	NC	6.8%
18 to 64 years	1,539	NC	28.6%	2,576	NC	30.7%
65 years and over	402	NC	7.5%	906	NC	10.8%

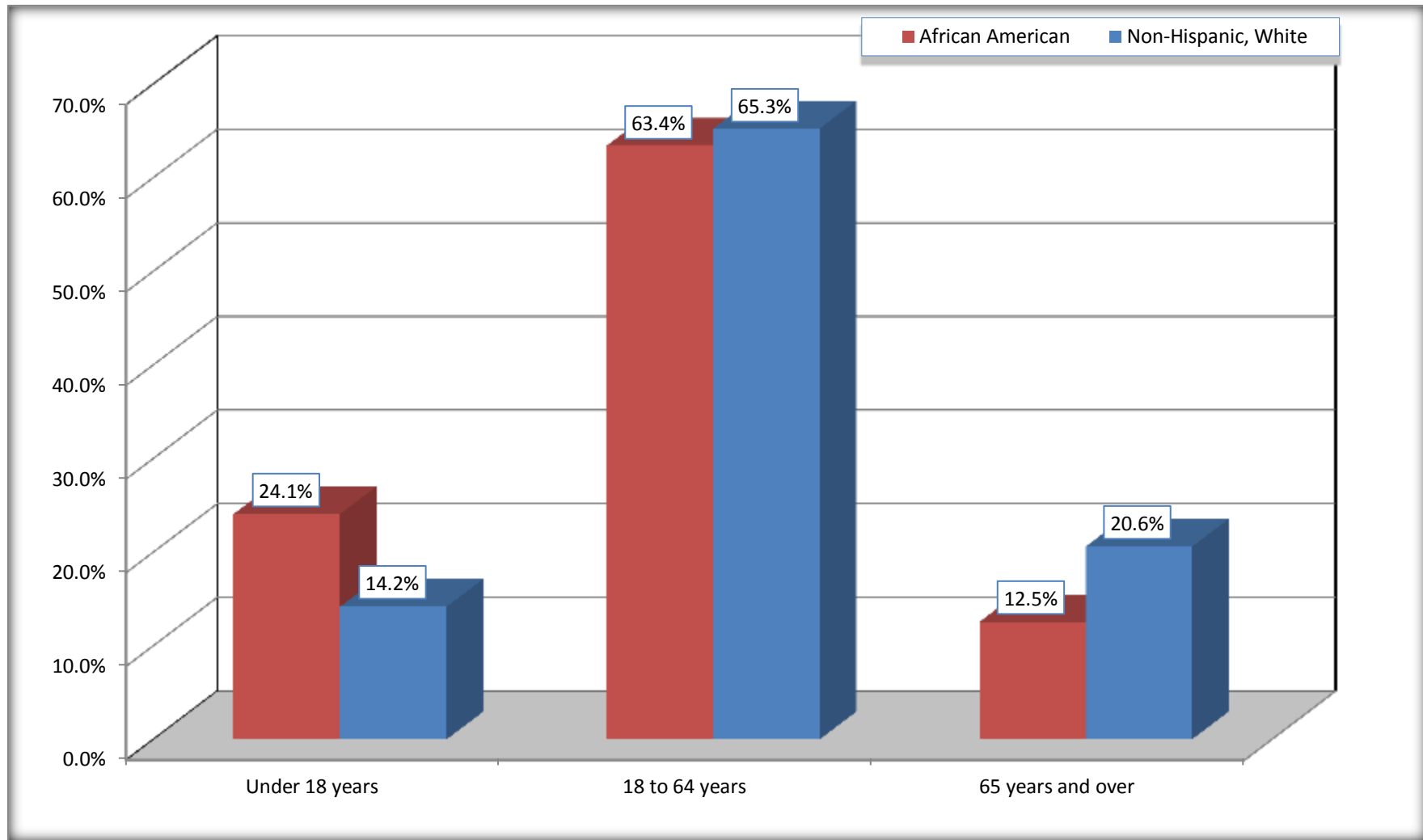
Source: U.S. Census Bureau, 2008-2012 American Community Survey

Although the American Community Survey (ACS) produces population, demographic and housing unit estimates, it is the Census Bureau's Population Estimates Program that produces and disseminates the official estimates of the population for the nation, states, counties, cities and towns and estimates of housing units for states and counties.

For information on confidentiality protection, sampling error, nonsampling error, and definitions, see Survey Methodology.
<http://www.census.gov/acs/www/UseData/index.htm>

Population by Age

Jefferson County, Florida



Source: B01001. SEX BY AGE
Data Set: 2008-2012 American Community Survey 5-Year Estimates

B05003. SEX BY AGE BY CITIZENSHIP STATUS

Data Set: 2008-2012 American Community Survey 5-Year Estimates

	Jefferson County, Florida					
	African American	Margin of Error (+/-)	% of AA Total by Age	White, Not Hispanic	Margin of Error (+/-)	% of NHW Total by Age
Total:	5,376	93	100.0%	8,400	210	100.0%
Under 18 years:	1,293	NC	100.0%	1,190	NC	100.0%
Native	1,293	NC	100.0%	1,190	NC	100.0%
Foreign born:	0	NC	0.0%	0	NC	0.0%
Naturalized U.S. citizen	0	NC	0.0%	0	NC	0.0%
Not a U.S. citizen	0	NC	0.0%	0	NC	0.0%
18 years and over:	4,083	NC	100.0%	7,210	NC	100.0%
Native	3,968	NC	97.2%	7,068	NC	98.0%
Foreign born:	115	NC	2.8%	142	NC	2.0%
Naturalized U.S. citizen	77	NC	1.9%	112	NC	1.6%
Not a U.S. citizen	38	NC	0.9%	30	NC	0.4%
Male:	2,785	144	51.8%	4,345	117	51.7%
Under 18 years:	643	125	100.0%	617	85	100.0%
Native	643	125	100.0%	617	85	100.0%
Foreign born:	0	21	0.0%	0	21	0.0%
Naturalized U.S. citizen	0	21	0.0%	0	21	0.0%
Not a U.S. citizen	0	21	0.0%	0	21	0.0%
18 years and over:	2,142	70	100.0%	3,728	58	100.0%
Native	2,088	83	97.5%	3,668	69	98.4%
Foreign born:	54	44	2.5%	60	39	1.6%
Naturalized U.S. citizen	16	16	0.7%	30	24	0.8%
Not a U.S. citizen	38	44	1.8%	30	29	0.8%

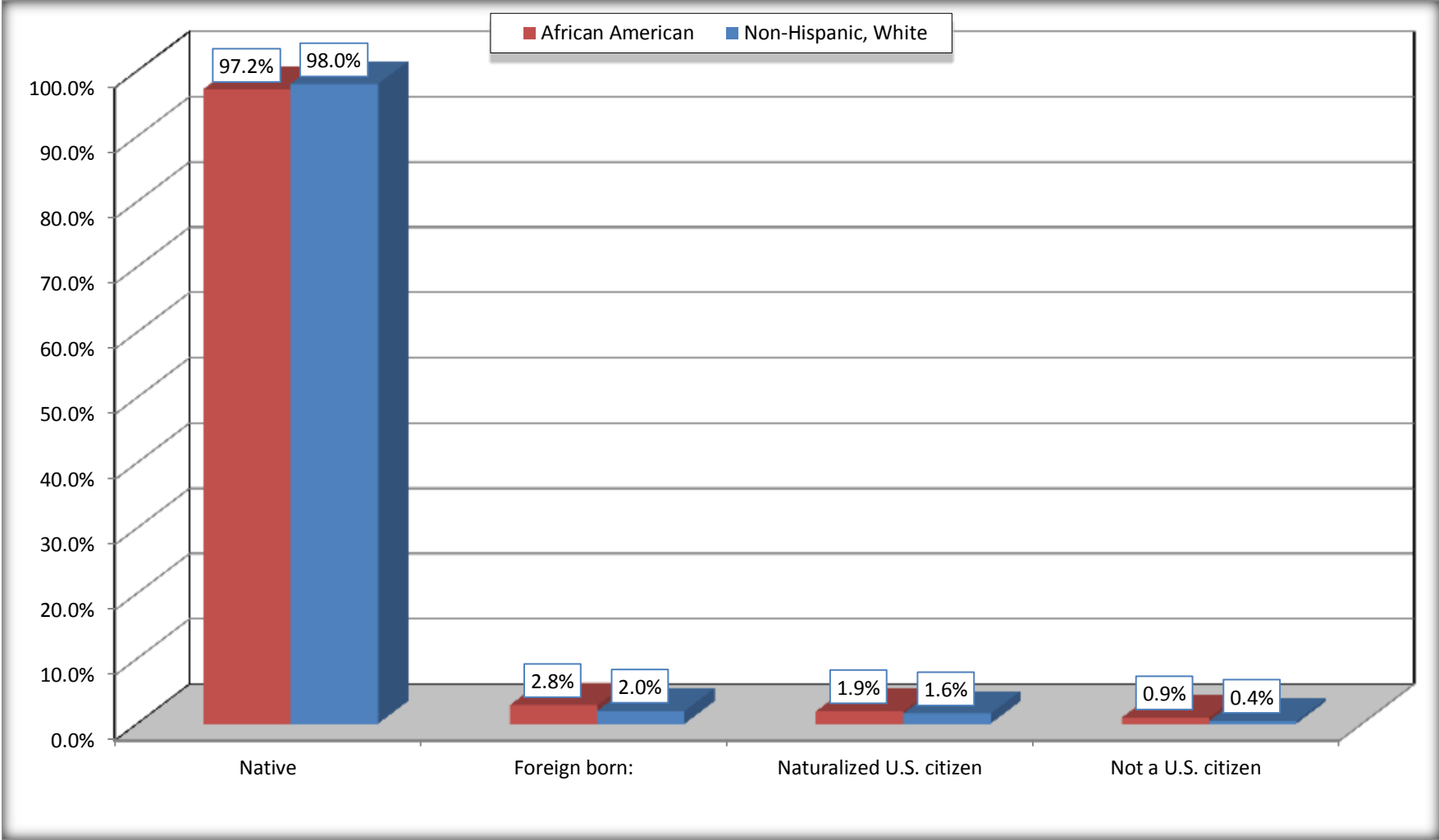
	Jefferson County, Florida					
	African American	Margin of Error (+/-)	% of AA by Age	White, Not Hispanic	Margin of Error (+/-)	% of NHW by Age
Female:	2,591	117	48.2%	4,055	147	48.3%
Under 18 years:	650	113	100.0%	573	147	100.0%
Native	650	113	100.0%	573	147	100.0%
Foreign born:	0	21	0.0%	0	21	0.0%
Naturalized U.S. citizen	0	21	0.0%	0	21	0.0%
Not a U.S. citizen	0	21	0.0%	0	21	0.0%
18 years and over:	1,941	47	100.0%	3,482	21	100.0%
Native	1,880	69	96.9%	3,400	69	97.6%
Foreign born:	61	57	3.1%	82	69	2.4%
Naturalized U.S. citizen	61	57	3.1%	82	69	2.4%
Not a U.S. citizen	0	21	0.0%	0	21	0.0%

Source: U.S. Census Bureau, 2008-2012 American Community Survey

For information on confidentiality protection, sampling error, nonsampling error, and definitions, see Survey Methodology.
<http://www.census.gov/acs/www/UseData/index.htm>

Citizenship Status of Voting Age Population (18 and Over)

Jefferson County, Florida



Source: B05003. SEX BY AGE BY CITIZENSHIP STATUS
Data Set: 2008-2012 American Community Survey 5-Year Estimates

**B07004. GEOGRAPHICAL MOBILITY IN THE PAST YEAR BY RACE FOR CURRENT RESIDENCE IN THE UNITED STATES - Universe:
POPULATION 1 YEAR AND OVER**

Data Set: 2008-2012 American Community Survey 5-Year Estimates

	Jefferson County, Florida					
	African American	Margin of Error (+/-)	% of AA Total	White, Not Hispanic	Margin of Error (+/-)	% of NHW Total
Total:	5,277	113	100.0%	8,372	210	100.0%
Same house 1 year ago	4,597	217	87.1%	7,560	260	90.3%
Moved within same county	376	189	7.1%	210	139	2.5%
Moved from different county within same state	272	75	5.2%	387	83	4.6%
Moved from different state	10	20	0.2%	215	167	2.6%
Moved from abroad	22	30	0.4%	0	21	0.0%

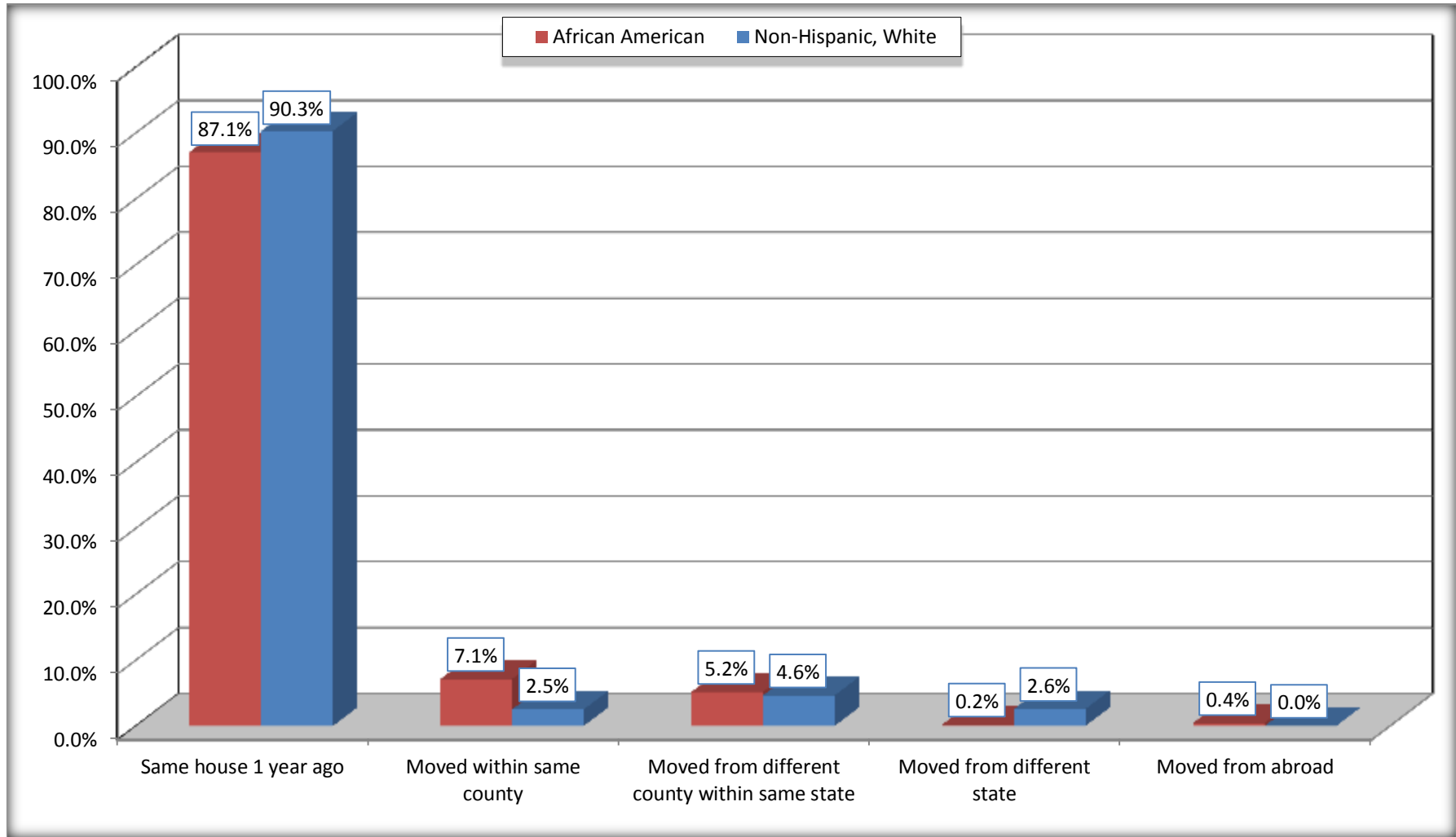
Source: U.S. Census Bureau, 2008-2012 American Community Survey

For information on confidentiality protection, sampling error, nonsampling error, and definitions, see Survey Methodology.

<http://www.census.gov/acs/www/UseData/index.htm>

Geographical Mobility in the Past Year (Population 1 Year and Over)

Jefferson County, Florida



Source: B07004. GEOGRAPHICAL MOBILITY IN THE PAST YEAR BY RACE FOR CURRENT RESIDENCE IN THE UNITED STATES - Universe: POPULATION 1 YEAR AND OVER

Data Set: 2008-2012 American Community Survey 5-Year Estimates

B08105. MEANS OF TRANSPORTATION TO WORK - Universe: WORKERS 16 YEARS AND OVER

Data Set: 2008-2012 American Community Survey 5-Year Estimates

	Jefferson County, Florida					
	African American	Margin of Error (+/-)	% of AA Total	White, Not Hispanic	Margin of Error (+/-)	% of NHW Total
Total:	1817	185	100.0%	3245	292	100.0%
Car, truck, or van - drove alone	1424	179	78.4%	2576	288	79.4%
Car, truck, or van - carpooled	275	121	15.1%	448	131	13.8%
Public transportation (excluding taxicab)	19	30	1.0%	10	17	0.3%
Walked	9	16	0.5%	31	42	1.0%
Taxicab, motorcycle, bicycle, or other means	0	21	0.0%	43	51	1.3%
Worked at home	90	88	5.0%	137	75	4.2%

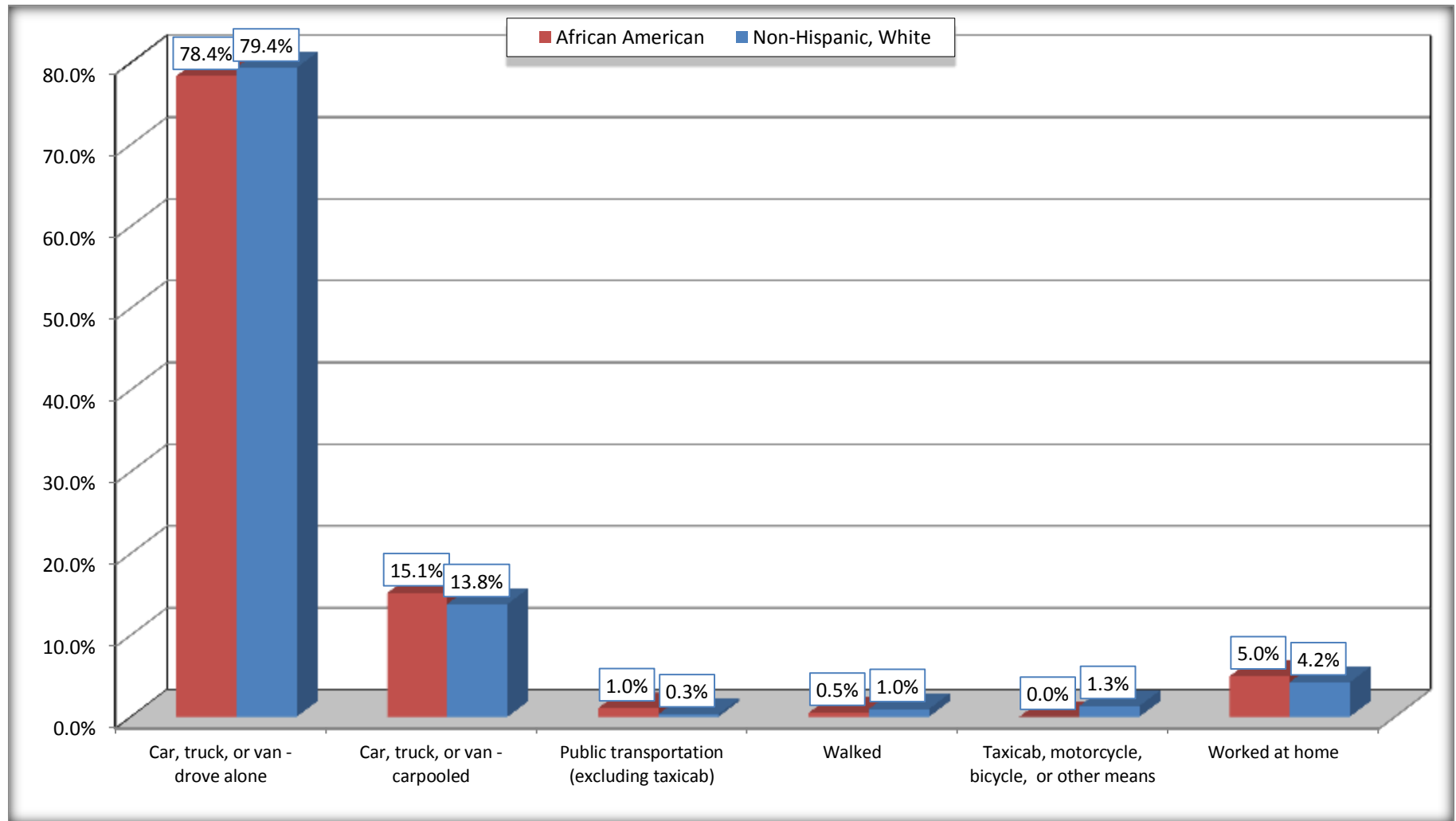
Source: U.S. Census Bureau, 2008-2012 American Community Survey

For information on confidentiality protection, sampling error, nonsampling error, and definitions, see Survey Methodology.

<http://www.census.gov/acs/www/UseData/index.htm>

Means of Transportation to Work (Workers 16 Years and Over)

Jefferson County, Florida



Source: B08105. MEANS OF TRANSPORTATION TO WORK - Universe: WORKERS 16 YEARS AND OVER
Data Set: 2008-2012 American Community Survey 5-Year Estimates

B11002. HOUSEHOLD TYPE BY RELATIVES AND NONRELATIVES FOR POPULATION IN HOUSEHOLDS

Data Set: 2008-2012 American Community Survey 5-Year Estimates

	Jefferson County, Florida					
	African American	Margin of Error (+/-)	% of AA Total	White, Not Hispanic	Margin of Error (+/-)	% of NHW Total
Total:	4669	169	100.0%	7814	275	100.0%
In family households	4005	232	85.8%	6616	360	84.7%
In nonfamily households	664	174	14.2%	1198	248	15.3%

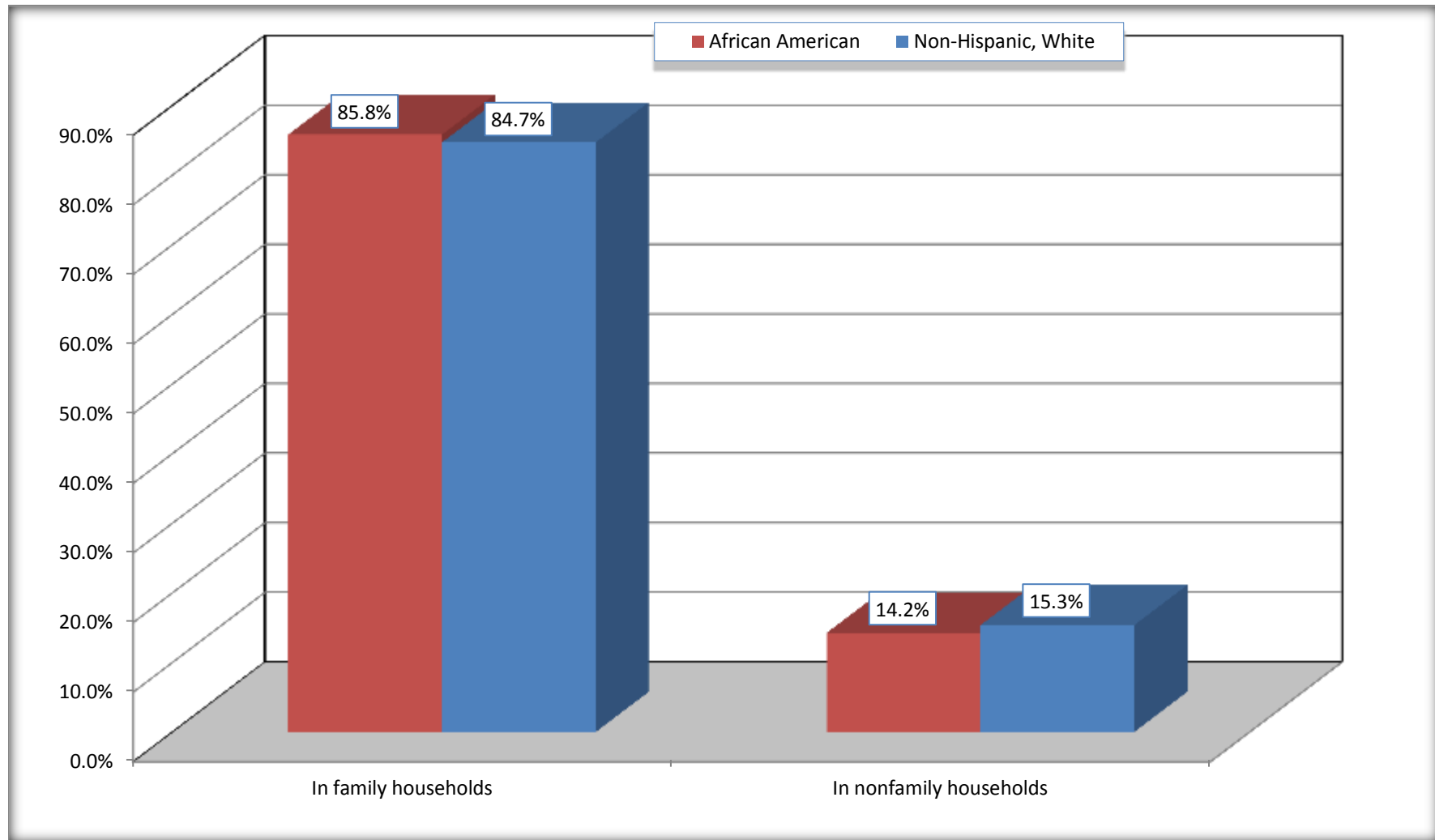
Source: U.S. Census Bureau, 2008-2012 American Community Survey

For information on confidentiality protection, sampling error, nonsampling error, and definitions, see Survey Methodology.

<http://www.census.gov/acs/www/UseData/index.htm>

Household Type for Population in Households

Jefferson County, Florida



Source: B11002. HOUSEHOLD TYPE BY RELATIVES AND NONRELATIVES FOR POPULATION IN HOUSEHOLDS
Data Set: 2008-2012 American Community Survey 5-Year Estimates

B12002. MARITAL STATUS FOR THE POPULATION 15 YEARS AND OVER

Data Set: 2008-2012 American Community Survey 5-Year Estimates

	Jefferson County, Florida					
	African American	Margin of Error (+/-)	% of AA Total	White, Not Hispanic	Margin of Error (+/-)	% of NHW Total
Total:	4,266	132	100.0%	7,425	58	100.0%
Never married	1,997	NC	46.8%	1,584	NC	21.3%
Now married (except separated)	1,219	NC	28.6%	4,167	NC	56.1%
Separated	124	NC	2.9%	79	NC	1.1%
Widowed	402	NC	9.4%	544	NC	7.3%
Divorced	524	NC	12.3%	1,051	NC	14.2%
Male:	2,252	106	52.8%	3,878	74	52.2%
Never married	1,191	182	27.9%	1,014	138	13.7%
Now married (except separated)	656	158	15.4%	1,987	198	26.8%
Separated	62	41	1.5%	69	43	0.9%
Widowed	56	45	1.3%	118	61	1.6%
Divorced	287	101	6.7%	690	129	9.3%
Female:	2,014	71	47.2%	3,547	33	47.8%
Never married	806	172	18.9%	570	134	7.7%
Now married (except separated)	563	156	13.2%	2,180	211	29.4%
Separated	62	50	1.5%	10	16	0.1%
Widowed	346	92	8.1%	426	109	5.7%
Divorced	237	96	5.6%	361	132	4.9%

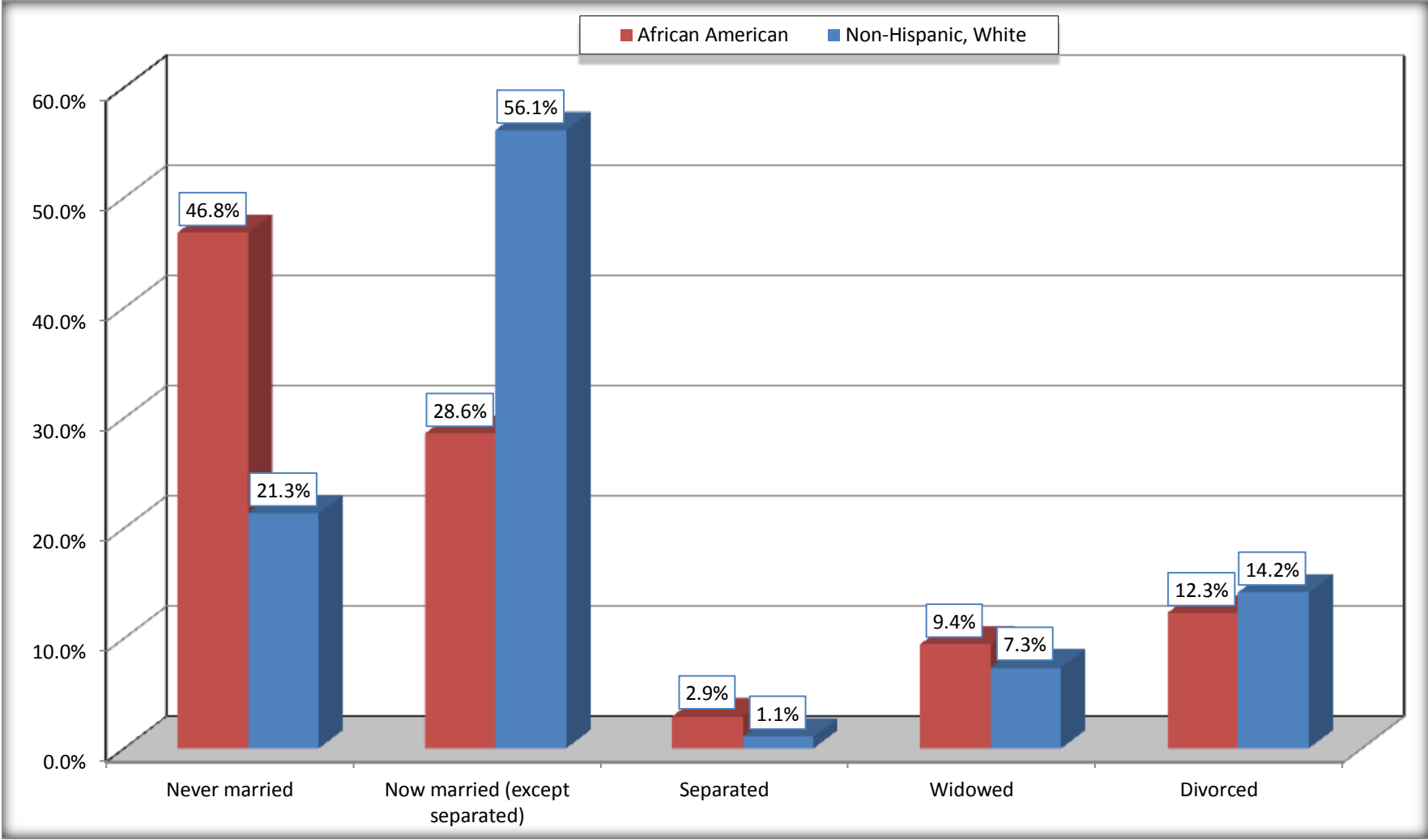
Source: U.S. Census Bureau, 2008-2012 American Community Survey

For information on confidentiality protection, sampling error, nonsampling error, and definitions, see Survey Methodology.

<http://www.census.gov/acs/www/UseData/index.htm>

Marital Status for the Population 15 Years and Over

Jefferson County, Florida



Source: B12002. MARITAL STATUS FOR THE POPULATION 15 YEARS AND OVER
Data Set: 2008-2012 American Community Survey 5-Year Estimates

C15002. SEX BY EDUCATIONAL ATTAINMENT FOR THE POPULATION 25 YEARS AND OVER

Data Set: 2008-2012 American Community Survey 5-Year Estimates

	Jefferson County, Florida					
	African American	Margin of Error (+/-)	% of AA Total	White, Not Hispanic	Margin of Error (+/-)	% of NHW Total
Total:	3,617	114	100.0%	6,620	92	100.0%
Less than high school diploma	1,106	NC	30.6%	848	NC	12.8%
High school graduate, GED, or alternative	1,498	NC	41.4%	2,194	NC	33.1%
Some college or associate's degree	610	NC	16.9%	2,401	NC	36.3%
Bachelor's degree or higher	403	NC	11.1%	1,177	NC	17.8%
Male:	1,894	90	52.4%	3,445	58	52.0%
Less than high school diploma	710	154	19.6%	501	102	7.6%
High school graduate, GED, or alternative	840	153	23.2%	1,155	164	17.4%
Some college or associate's degree	296	119	8.2%	1,154	168	17.4%
Bachelor's degree or higher	48	37	1.3%	635	134	9.6%
Female:	1,723	89	47.6%	3,175	67	48.0%
Less than high school diploma	396	120	10.9%	347	142	5.2%
High school graduate, GED, or alternative	658	170	18.2%	1,039	181	15.7%
Some college or associate's degree	314	113	8.7%	1,247	216	18.8%
Bachelor's degree or higher	355	142	9.8%	542	143	8.2%

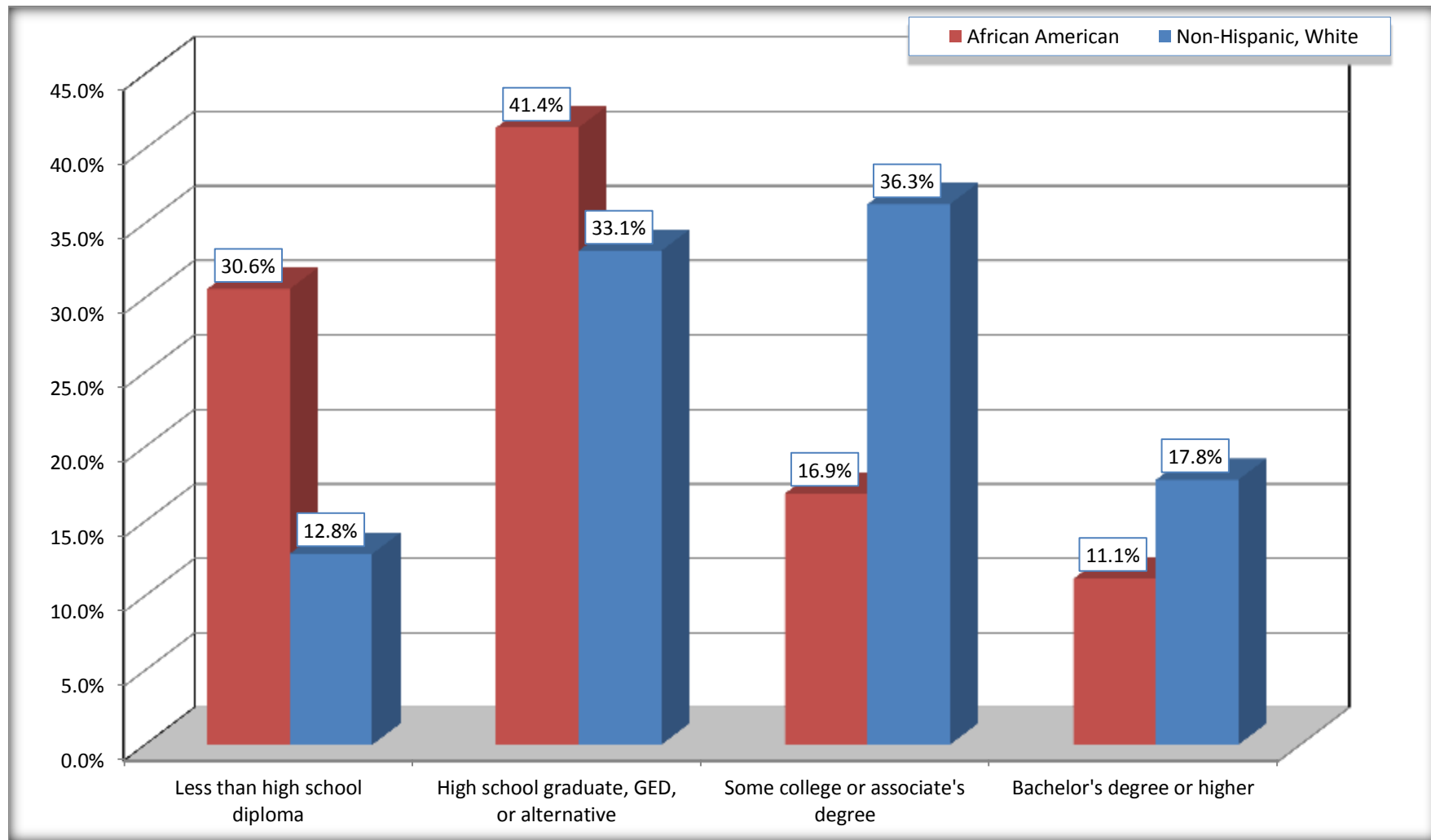
Source: U.S. Census Bureau, 2008-2012 American Community Survey

For information on confidentiality protection, sampling error, nonsampling error, and definitions, see Survey Methodology.

<http://www.census.gov/acs/www/UseData/index.htm>

Educational Attainment for the Population 25 Years and Older

Jefferson County, Florida



Source: C15002. SEX BY EDUCATIONAL ATTAINMENT FOR THE POPULATION 25 YEARS AND OVER
Data Set: 2008-2012 American Community Survey 5-Year Estimates

B17010. POVERTY STATUS IN THE PAST 12 MONTHS OF FAMILIES BY FAMILY TYPE BY PRESENCE OF RELATED CHILDREN UNDER 18 YEARS

Data Set: 2008-2012 American Community Survey 5-Year Estimates

	Jefferson County, Florida					
	African American	Margin of Error (+/-)	% of AA Total	White, Not Hispanic	Margin of Error (+/-)	% of NHW Total
Total:	1,205	148	100.0%	2,422	184	100.0%
Income in the past 12 months below poverty level:	373	149	31.0%	246	114	10.2%
Married-couple family:	100	88	8.3%	188	108	7.8%
With related children under 18 years	29	29	2.4%	52	46	2.1%
Other family:	273	122	22.7%	58	52	2.4%
Male householder, no wife present	93	83	7.7%	28	26	1.2%
With related children under 18 years	80	78	6.6%	17	26	0.7%
Female householder, no husband present	180	112	14.9%	30	49	1.2%
With related children under 18 years	174	111	14.4%	30	49	1.2%
Income in the past 12 months at or above poverty level:	832	150	69.0%	2,176	209	89.8%
Married-couple family:	466	141	38.7%	1,851	204	76.4%
With related children under 18 years	244	111	20.2%	551	149	22.7%
Other family:	366	131	30.4%	325	129	13.4%
Male householder, no wife present	79	49	6.6%	137	68	5.7%
With related children under 18 years	18	28	1.5%	74	51	3.1%
Female householder, no husband present	287	126	23.8%	188	109	7.8%
With related children under 18 years	118	73	9.8%	88	76	3.6%

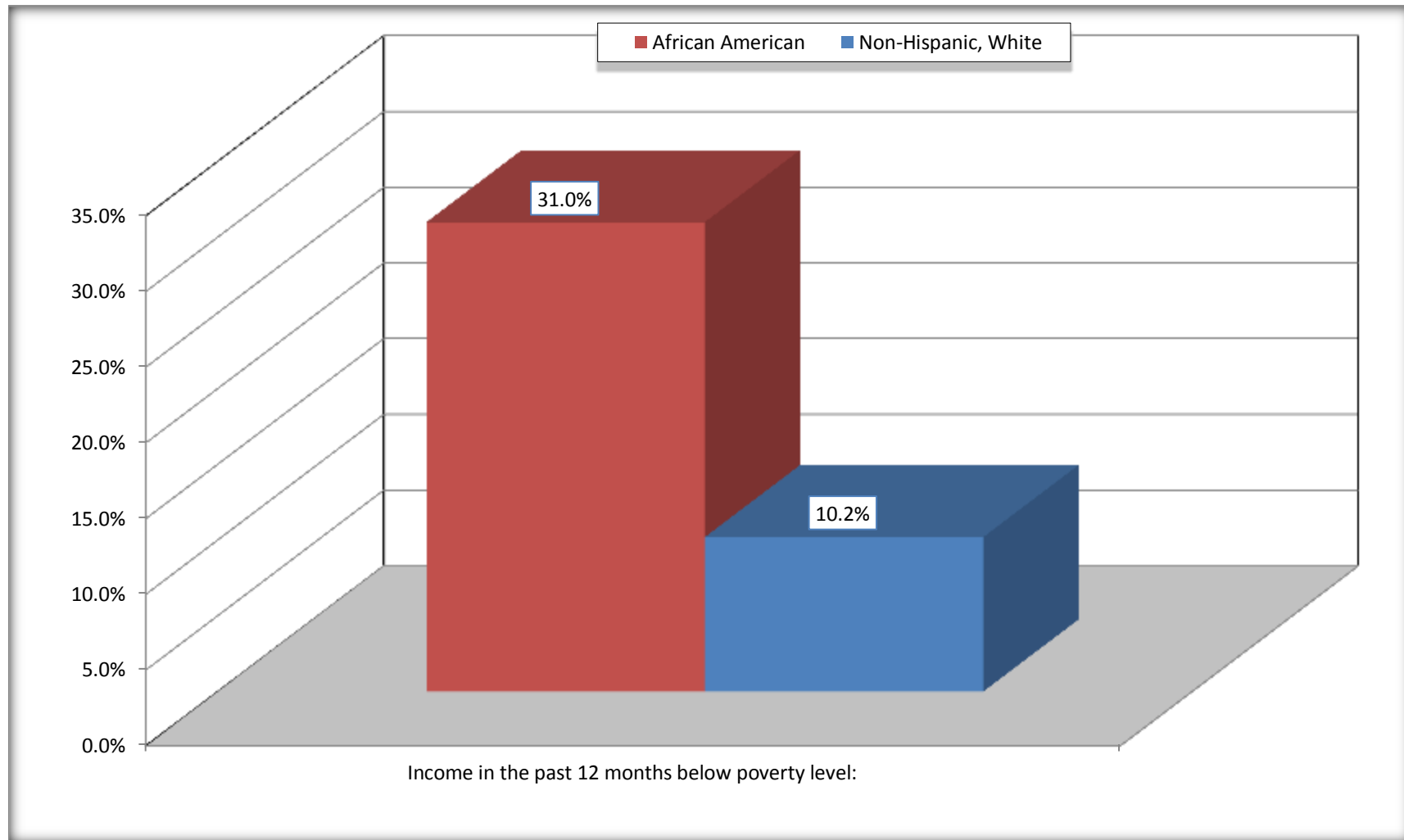
Source: U.S. Census Bureau, 2008-2012 American Community Survey

For information on confidentiality protection, sampling error, nonsampling error, and definitions, see Survey Methodology.

<http://www.census.gov/acs/www/UseData/index.htm>

Family Households Below Poverty in the Past 12 Months

Jefferson County, Florida

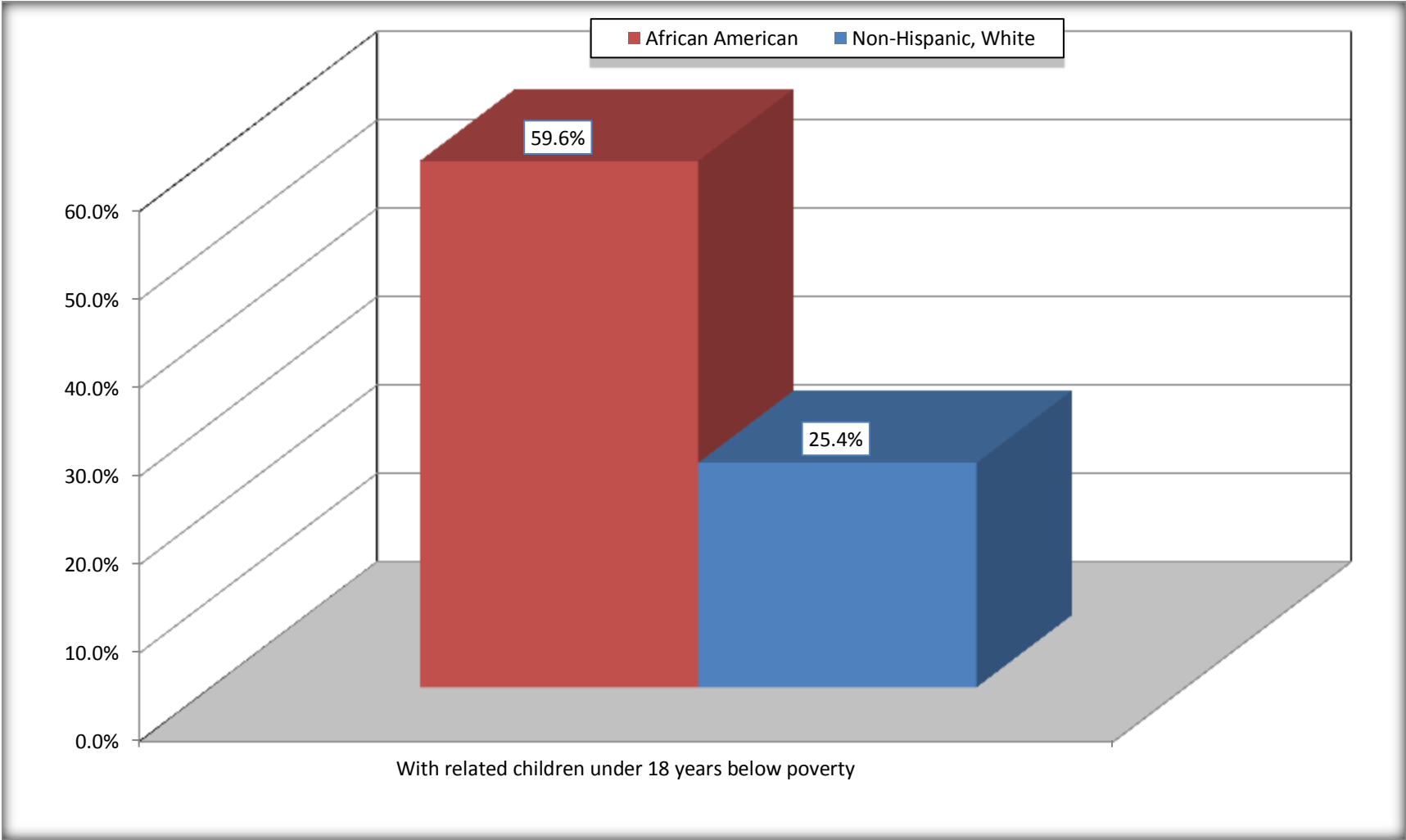


Source: B17010. POVERTY STATUS IN THE PAST 12 MONTHS OF FAMILIES BY FAMILY TYPE BY PRESENCE OF RELATED CHILDREN UNDER 18 YEARS

Data Set: 2008-2012 American Community Survey 5-Year Estimates

Female-headed Households with Related Children Below Poverty in the Past 12 Months

Jefferson County, Florida



Source: B17010. POVERTY STATUS IN THE PAST 12 MONTHS OF FAMILIES BY FAMILY TYPE BY PRESENCE OF RELATED CHILDREN UNDER 18 YEARS

Data Set: 2008-2012 American Community Survey 5-Year Estimates

B17020 POVERTY STATUS IN THE PAST 12 MONTHS BY AGE - Universe: POPULATION FOR WHOM POVERTY STATUS IS DETERMINED

Data Set: 2008-2012 American Community Survey 5-Year Estimates

	Jefferson County, Florida					
	African American	Margin of Error (+/-)	% of AA By Age	White, Not Hispanic	Margin of Error (+/-)	% of NHW By Age
Total:	4,687	142	100.0%	7,682	252	100.0%
Income in the past 12 months below poverty level:	1,406	403	30.0%	959	302	12.5%
Under 18 years	461	NC	36.7%	176	NC	15.2%
18 to 64 years	855	254	31.0%	610	227	12.4%
65 years and over	90	NC	13.5%	173	NC	10.9%
Income in the past 12 months at or above poverty level:	3,281	394	70.0%	6,723	394	87.5%
Under 18 years	796	NC	63.3%	980	NC	84.8%
18 to 64 years	1,907	250	69.0%	4,326	276	87.6%
65 years and over	578	NC	86.5%	1,417	NC	89.1%

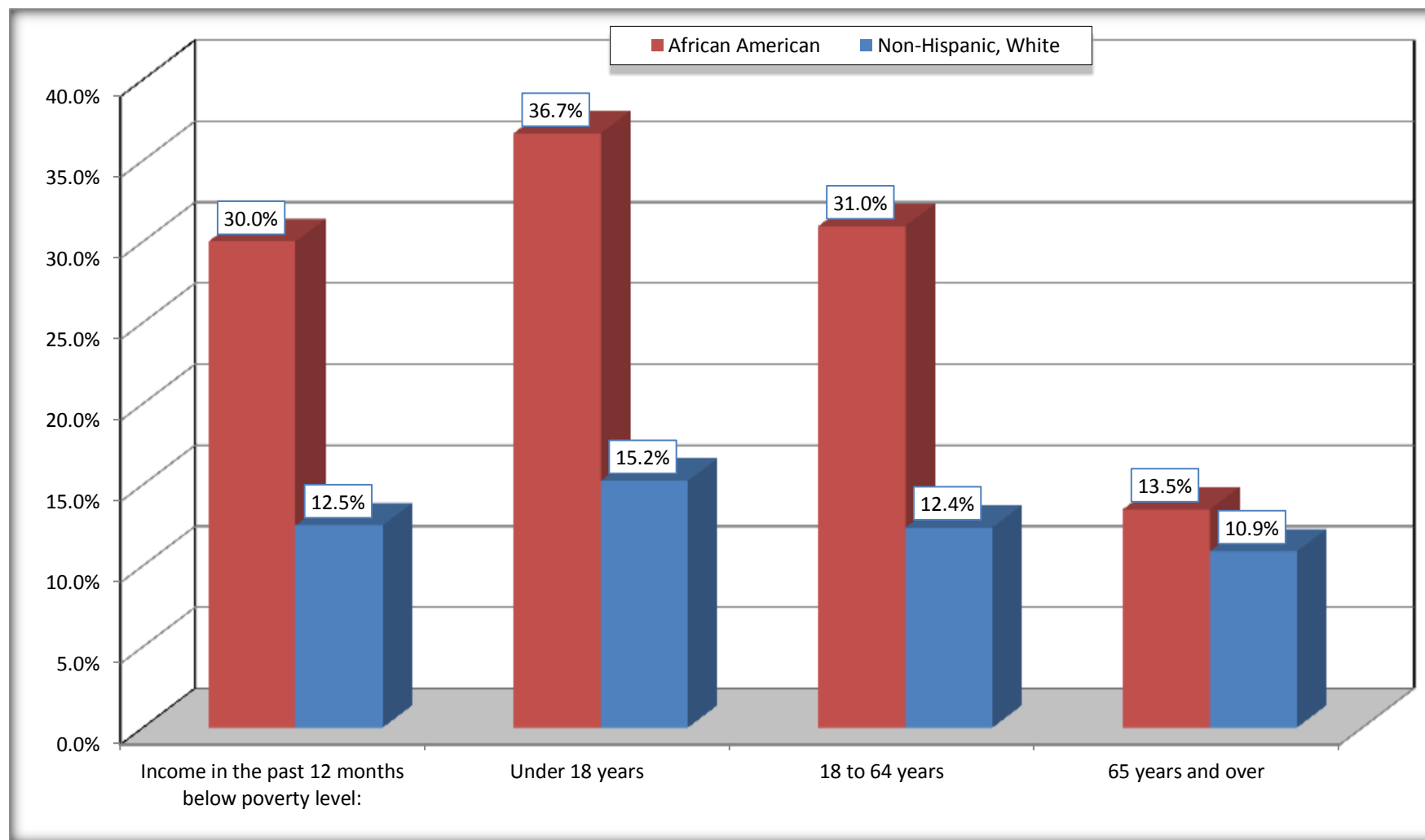
Source: U.S. Census Bureau, 2008-2012 American Community Survey

For information on confidentiality protection, sampling error, nonsampling error, and definitions, see Survey Methodology.

<http://www.census.gov/acs/www/UseData/index.htm>

Population Below Poverty in the Past 12 Months

Jefferson County, Florida



Source: B17020 POVERTY STATUS IN THE PAST 12 MONTHS BY AGE - Universe: POPULATION FOR WHOM POVERTY STATUS IS DETERMINED
Data Set: 2008-2012 American Community Survey 5-Year Estimates

B19001. HOUSEHOLD INCOME IN THE PAST 12 MONTHS (IN 2010 INFLATION-ADJUSTED DOLLARS)

Data Set: 2008-2012 American Community Survey 5-Year Estimates

	Jefferson County, Florida					
	African American	Margin of Error (+/-)	% of AA Total	White, Not Hispanic	Margin of Error (+/-)	% of NHW Total
Total:	1,849	171	100.0%	3,460	148	100.0%
Less than \$ 10,000	372	153	20.1%	99	71	2.9%
\$ 10,000 to \$ 14,999	199	99	10.8%	297	102	8.6%
\$ 15,000 to \$ 24,999	354	NC	19.1%	411	NC	11.9%
\$ 25,000 to \$ 34,999	277	NC	15.0%	307	NC	8.9%
\$ 35,000 to \$ 49,999	188	NC	10.2%	671	NC	19.4%
\$ 50,000 to \$ 74,999	251	NC	13.6%	779	NC	22.5%
\$ 75,000 to \$ 99,999	142	102	7.7%	430	142	12.4%
\$ 100,000 to \$ 149,999	60	NC	3.2%	261	NC	7.5%
\$ 150,000 to \$ 199,999	6	10	0.3%	141	82	4.1%
\$ 200,000 or more	0	21	0.0%	64	44	1.8%

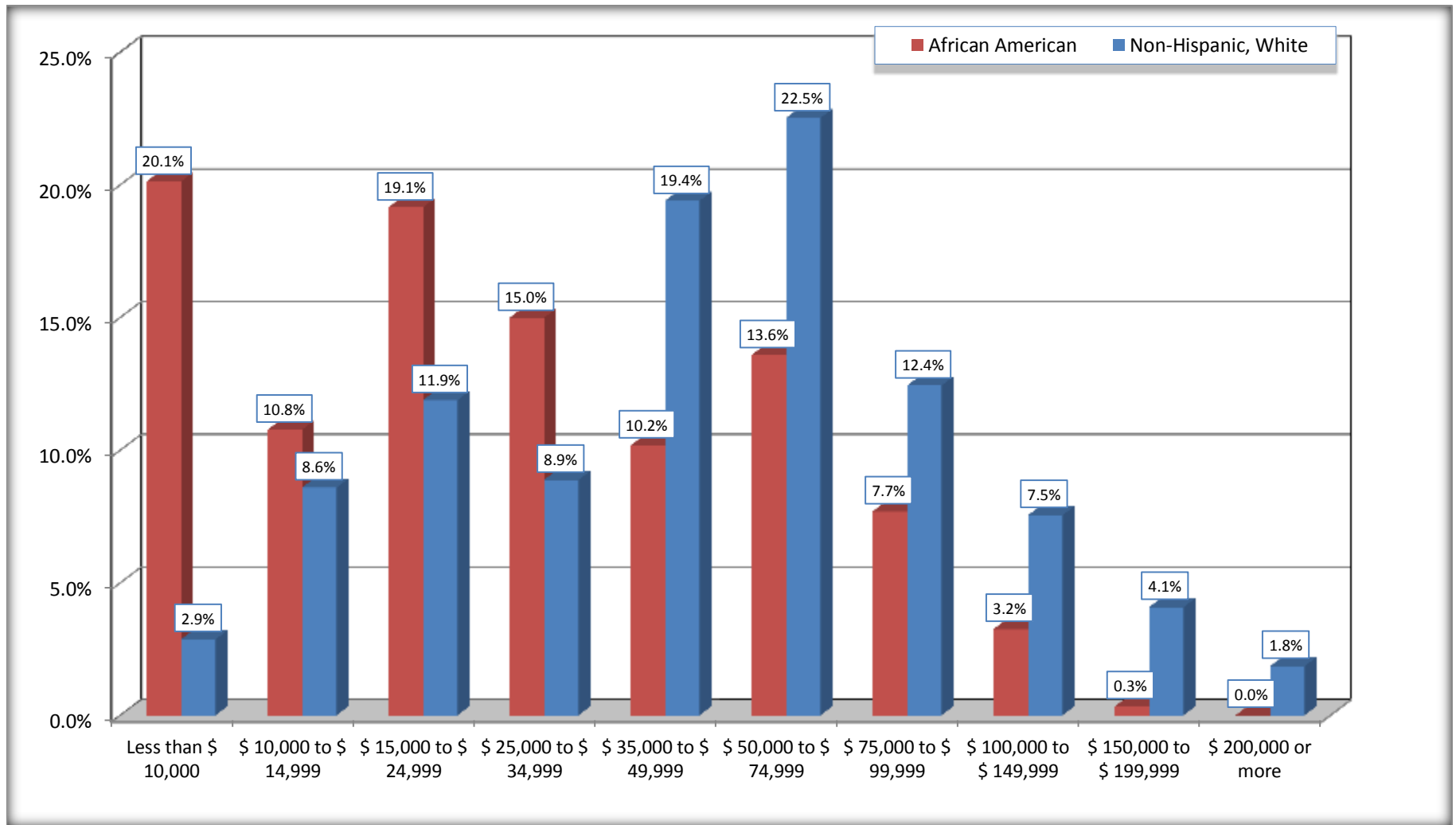
Source: U.S. Census Bureau, 2008-2012 American Community Survey

For information on confidentiality protection, sampling error, nonsampling error, and definitions, see Survey Methodology.

<http://www.census.gov/acs/www/UseData/index.htm>

Household Income in the Past 12 Months

Jefferson County, Florida



Source: B19001. HOUSEHOLD INCOME IN THE PAST 12 MONTHS (IN 2010 INFLATION-ADJUSTED DOLLARS)
Data Set: 2008-2012 American Community Survey 5-Year Estimates

B19013. MEDIAN HOUSEHOLD INCOME IN THE PAST 12 MONTHS (IN 2010 INFLATION-ADJUSTED DOLLARS)

Data Set: 2008-2012 American Community Survey 5-Year Estimates

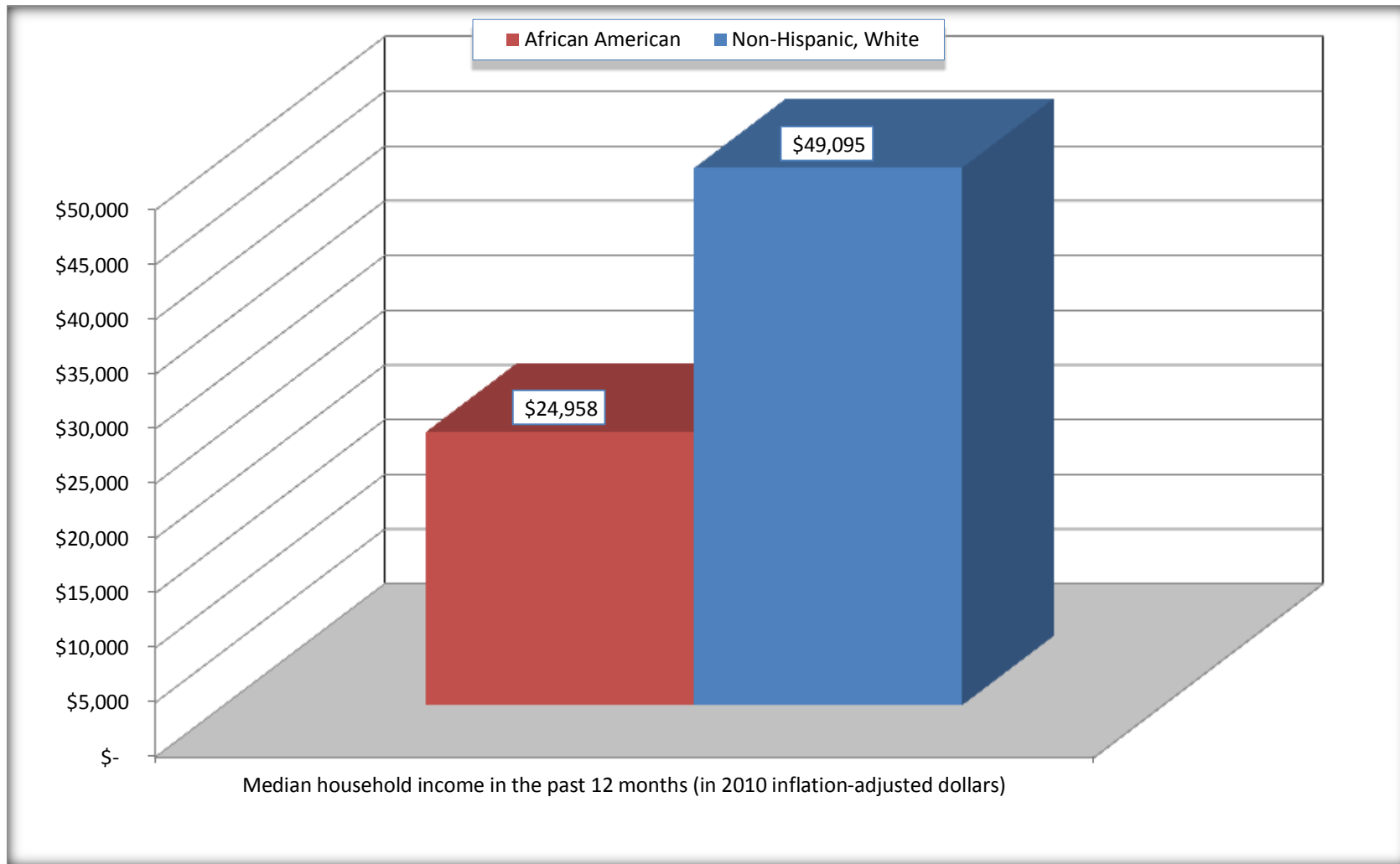
	Jefferson County, Florida			
	African American	Margin of Error (+/-)	White, Not Hispanic	Margin of Error (+/-)
Median household income in the past 12 months (in 2010 inflation-adjusted dollars)	\$ 24,958	\$ 9,640	\$ 49,095	\$ 4,703

Source: U.S. Census Bureau, 2008-2012 American Community Survey

For information on confidentiality protection, sampling error, nonsampling error, and definitions, see Survey Methodology.
<http://www.census.gov/acs/www/UseData/index.htm>

Median Household Income in the Past 12 Months

Jefferson County, Florida



Source: B19013. MEDIAN HOUSEHOLD INCOME IN THE PAST 12 MONTHS (IN 2010 INFLATION-ADJUSTED DOLLARS)
Data Set: 2008-2012 American Community Survey 5-Year Estimates

B19101. FAMILY INCOME IN THE PAST 12 MONTHS (IN 2010 INFLATION-ADJUSTED DOLLARS)

Data Set: 2008-2012 American Community Survey 5-Year Estimates

	Jefferson County, Florida					
	African American	Margin of Error (+/-)	% of AA Total	White, Not Hispanic	Margin of Error (+/-)	% of NHW Total
Total:	1,205	148	100.0%	2,422	184	100.0%
Less than \$ 10,000	219	129	18.2%	30	49	1.2%
\$ 10,000 to \$ 14,999	86	74	7.1%	144	76	5.9%
\$ 15,000 to \$ 24,999	251	NC	20.8%	261	NC	10.8%
\$ 25,000 to \$ 34,999	175	NC	14.5%	137	NC	5.7%
\$ 35,000 to \$ 49,999	135	NC	11.2%	503	NC	20.8%
\$ 50,000 to \$ 74,999	148	NC	12.3%	529	NC	21.8%
\$ 100,000 to \$ 149,999	43	NC	3.6%	227	NC	9.4%
\$ 150,000 to \$ 199,999	6	10	0.5%	107	73	4.4%
\$ 200,000 or more	0	21	0.0%	64	44	2.6%

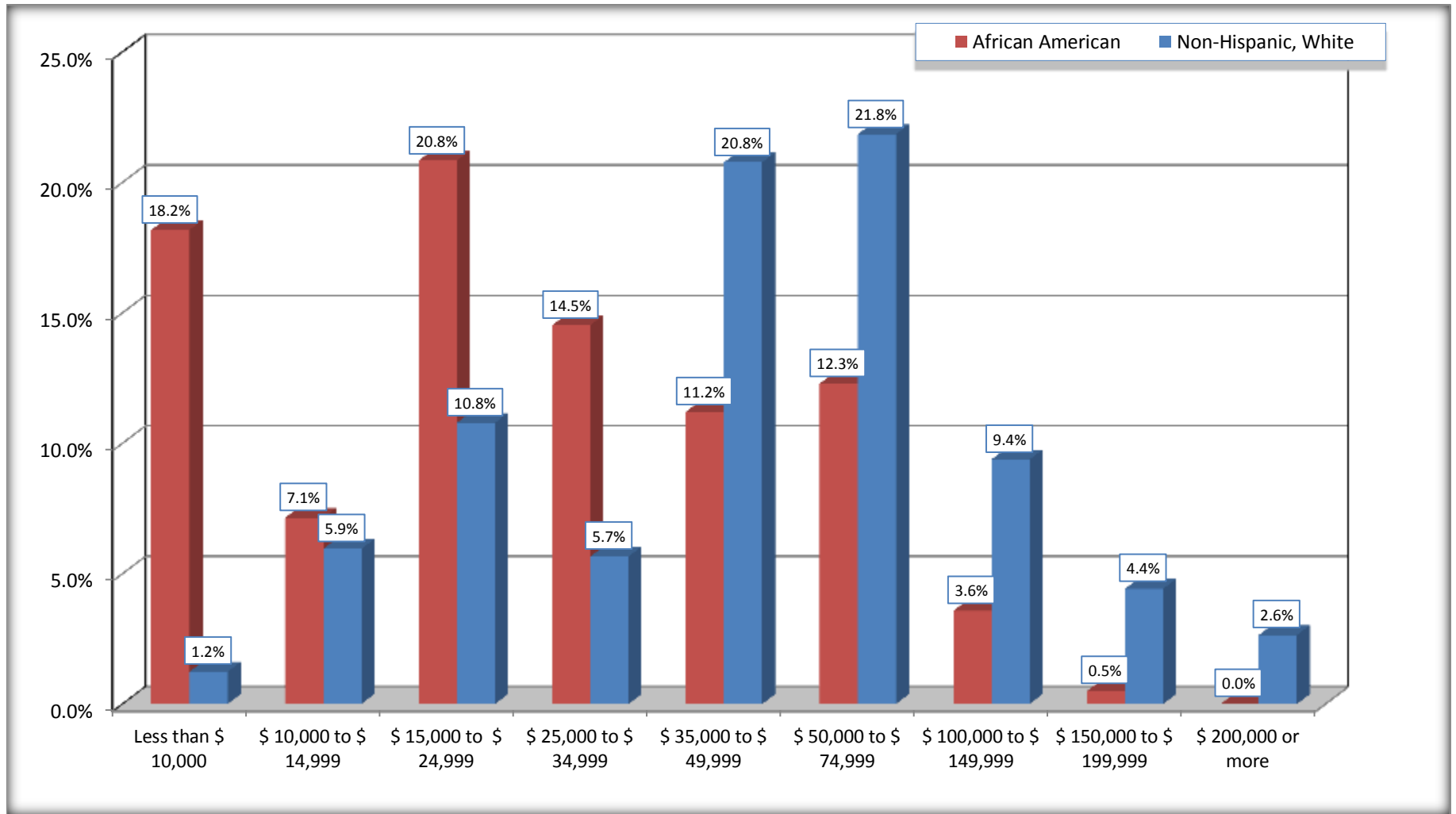
Source: U.S. Census Bureau, 2008-2012 American Community Survey

For information on confidentiality protection, sampling error, nonsampling error, and definitions, see Survey Methodology.

<http://www.census.gov/acs/www/UseData/index.htm>

Family Income in the Past 12 Months

Jefferson County, Florida



Source: B19101. FAMILY INCOME IN THE PAST 12 MONTHS (IN 2010 INFLATION-ADJUSTED DOLLARS)
Data Set: 2008-2012 American Community Survey 5-Year Estimates

B19113. MEDIAN FAMILY INCOME IN THE PAST 12 MONTHS (IN 2010 INFLATION-ADJUSTED DOLLARS)

Data Set: 2008-2012 American Community Survey 5-Year Estimates

	Jefferson County, Florida			
	African American	Margin of Error (+/-)	White, Not Hispanic	Margin of Error (+/-)
Median family income in the past 12 months (in 2010 inflation-adjusted dollars)	\$ 29,175	\$ 9,874	\$ 59,286	\$ 4,335

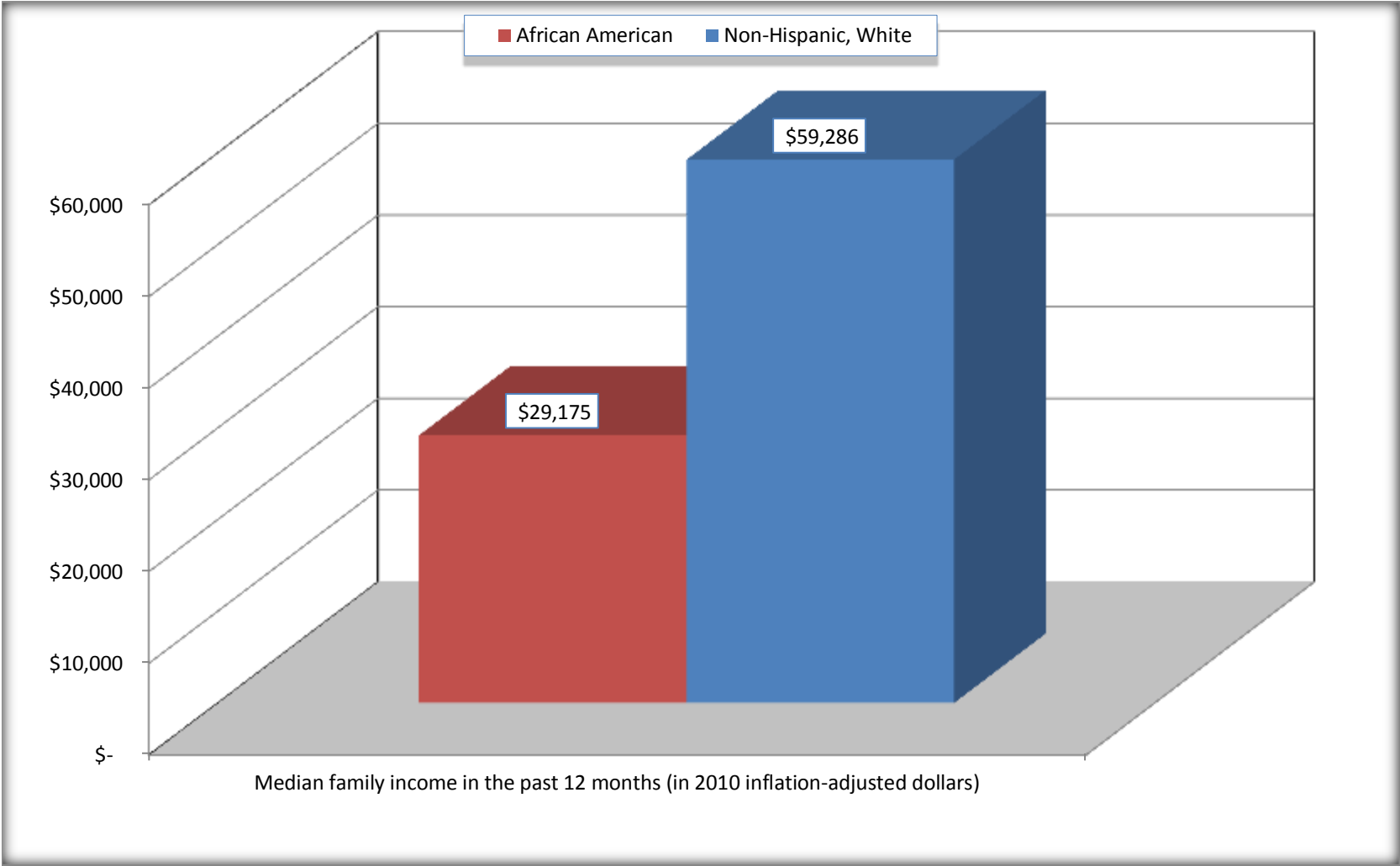
Source: U.S. Census Bureau, 2008-2012 American Community Survey

For information on confidentiality protection, sampling error, nonsampling error, and definitions, see Survey Methodology.

<http://www.census.gov/acs/www/UseData/index.htm>

Median Family Income in the Past 12 Months

Jefferson County, Florida



Source: B19113. MEDIAN FAMILY INCOME IN THE PAST 12 MONTHS (IN 2010 INFLATION-ADJUSTED DOLLARS)
Data Set: 2008-2012 American Community Survey 5-Year Estimates

B19202. MEDIAN NONFAMILY HOUSEHOLD INCOME IN THE PAST 12 MONTHS (IN 2010 INFLATION-ADJUSTED DOLLARS)

Data Set: 2008-2012 American Community Survey 5-Year Estimates

	Jefferson County, Florida			
	African American	Margin of Error (+/-)	White, Not Hispanic	Margin of Error (+/-)
Median nonfamily household income in the past 12 months (in 2010 inflation-adjusted dollars)	\$ 19,149	\$ 5,434	\$ 32,067	\$ 7,454

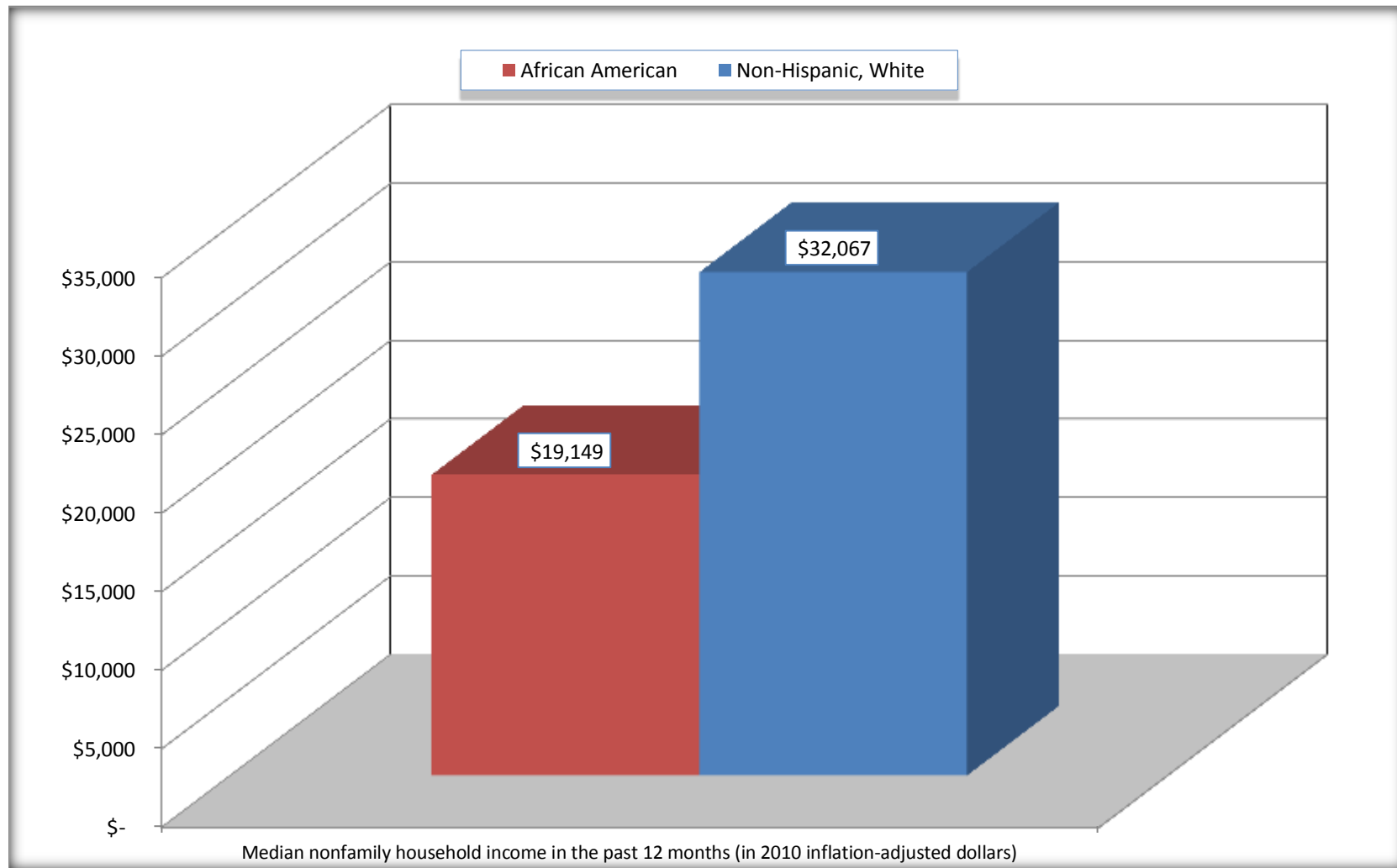
Source: U.S. Census Bureau, 2008-2012 American Community Survey

For information on confidentiality protection, sampling error, nonsampling error, and definitions, see Survey Methodology.

<http://www.census.gov/acs/www/UseData/index.htm>

Median Non-Family Income in the Past 12 Months

Jefferson County, Florida



Source: B19202. MEDIAN NONFAMILY HOUSEHOLD INCOME IN THE PAST 12 MONTHS (IN 2010 INFLATION-ADJUSTED DOLLARS)
Data Set: 2008-2012 American Community Survey 5-Year Estimates

B19301. PER CAPITA INCOME IN THE PAST 12 MONTHS (IN 2010 INFLATION-ADJUSTED DOLLARS)

Data Set: 2008-2012 American Community Survey 5-Year Estimates

	Jefferson County, Florida			
	African American	Margin of Error (+/-)	White, Not Hispanic	Margin of Error (+/-)
Per capita income in the past 12 months (in 2010 inflation-adjusted dollars)	\$ 12,362	\$ 1,761	\$ 25,227	\$ 2,042

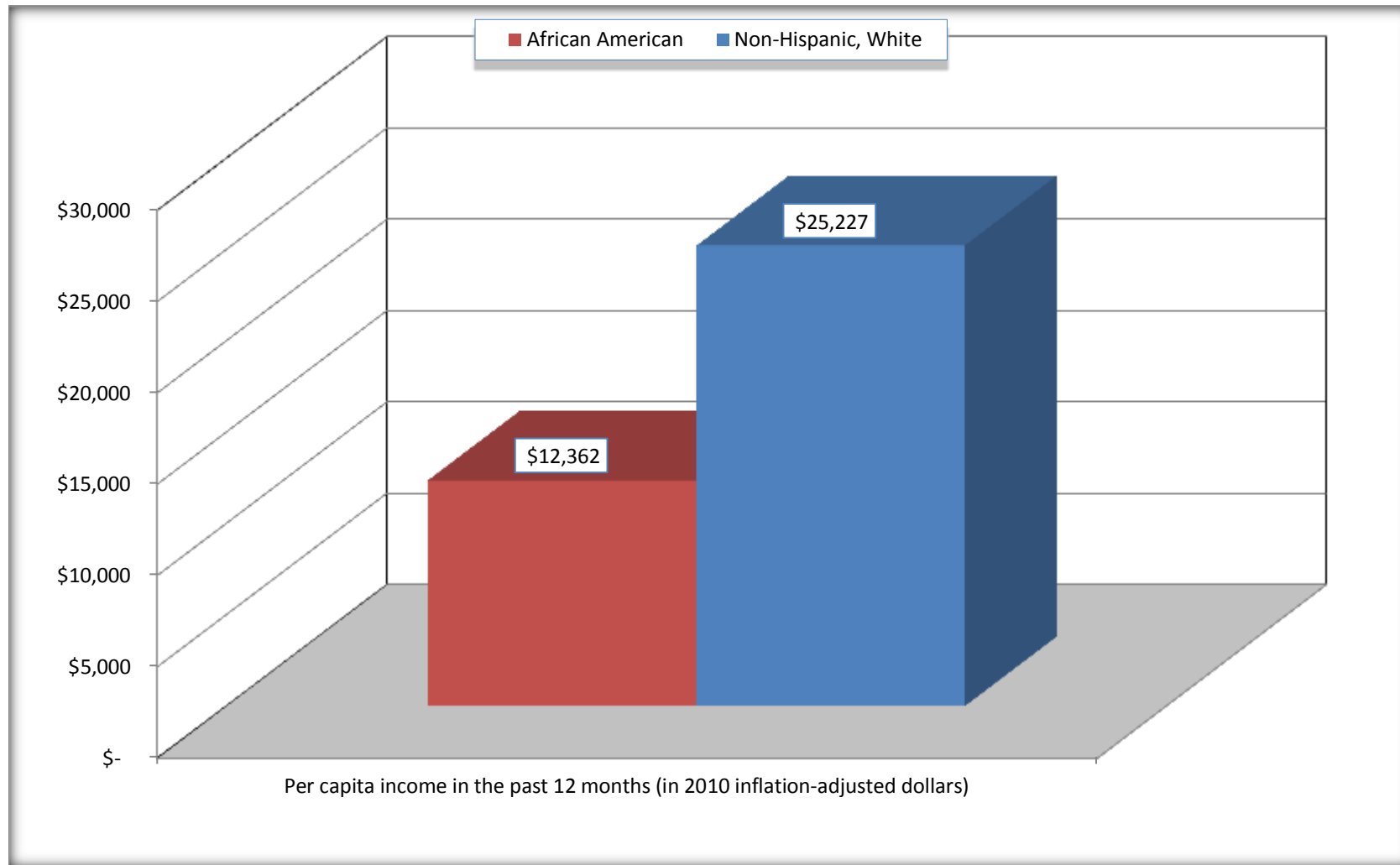
Source: U.S. Census Bureau, 2008-2012 American Community Survey

For information on confidentiality protection, sampling error, nonsampling error, and definitions, see Survey Methodology.

<http://www.census.gov/acs/www/UseData/index.htm>

Per capita Income in the Past 12 Months

Jefferson County, Florida



Source: B19301. PER CAPITA INCOME IN THE PAST 12 MONTHS (IN 2010 INFLATION-ADJUSTED DOLLARS)
Data Set: 2008-2012 American Community Survey 5-Year Estimates

B20017. MEDIAN EARNINGS IN THE PAST 12 MONTHS (IN 2010 INFLATION-ADJUSTED DOLLARS) BY SEX BY WORK EXPERIENCE IN THE PAST 12 MONTHS FOR THE POPULATION 16 YEARS AND OVER WITH EARNINGS IN THE PAST 12 MONTHS

Data Set: 2008-2012 American Community Survey 5-Year Estimates

	Jefferson County, Florida			
	African American	Margin of Error (+/-)	White, Not Hispanic	Margin of Error (+/-)
Median earnings in the past 12 months (in 2010 inflation-adjusted dollars) --				
Total:	\$ 16,169	\$ 3,729	\$ 31,803	\$ 3,970
Male --				
Total	\$ 19,722	\$ 14,485	\$ 35,295	\$ 6,110
Worked full-time, year-round in the past 12 months	\$ 32,969	\$ 11,228	\$ 42,036	\$ 4,681
Other	\$ 8,664	\$ 1,291	\$ 12,409	\$ 7,868
Female --				
Total	\$ 15,989	\$ 2,028	\$ 28,429	\$ 4,699
Worked full-time, year-round in the past 12 months	\$ 21,857	\$ 4,834	\$ 42,076	\$ 5,491
Other	\$ 7,537	\$ 3,032	\$ 6,984	\$ 2,581

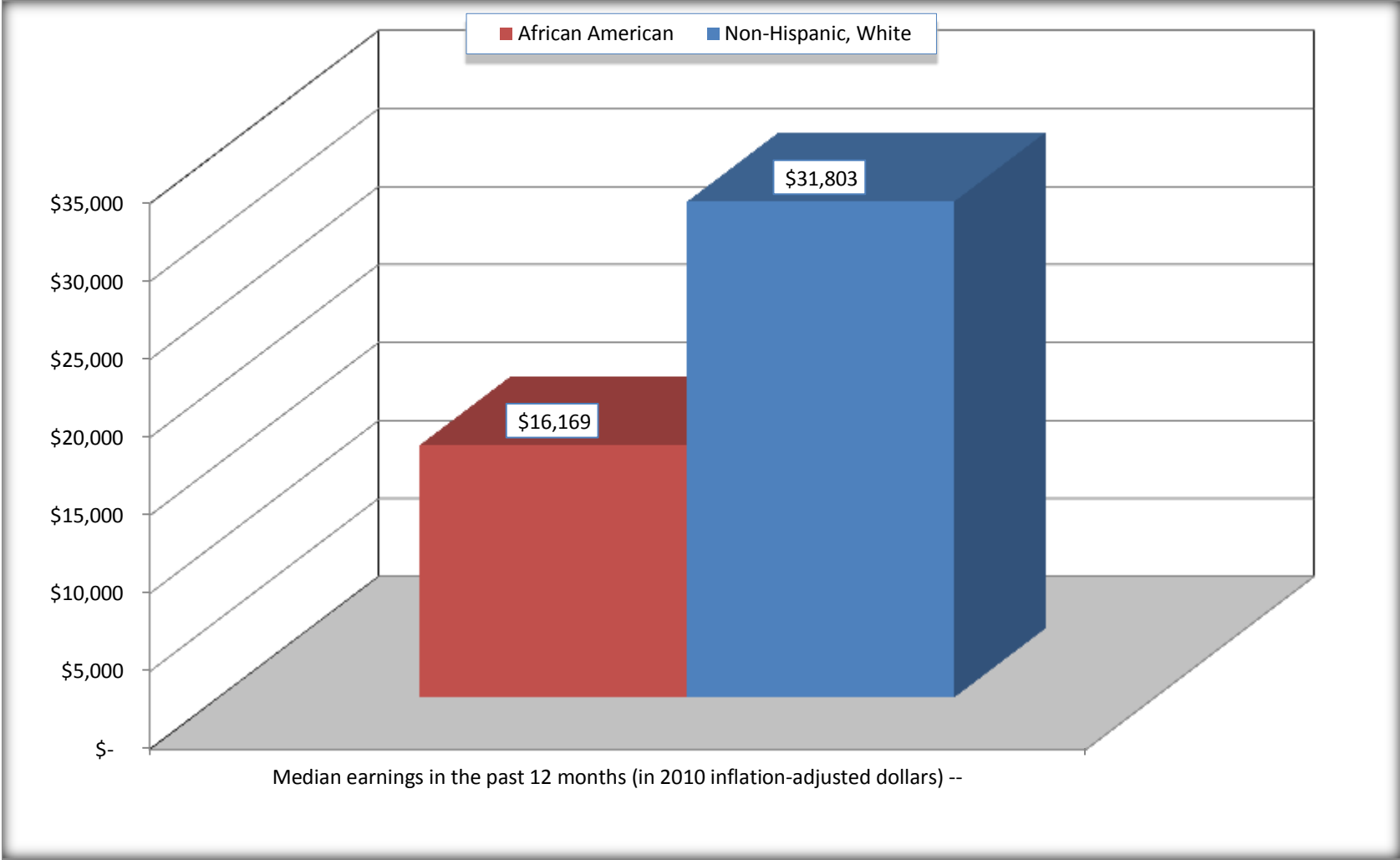
Source: U.S. Census Bureau, 2008-2012 American Community Survey

For information on confidentiality protection, sampling error, nonsampling error, and definitions, see Survey Methodology.

<http://www.census.gov/acs/www/UseData/index.htm>

Median earnings in the Past 12 Months (16 Years and Over with Earnings)

Jefferson County, Florida



Source: B20017. MEDIAN EARNINGS IN THE PAST 12 MONTHS (IN 2010 INFLATION-ADJUSTED DOLLARS) BY SEX BY WORK EXPERIENCE IN THE PAST 12 MONTHS FOR THE POPULATION 16 YEARS AND OVER WITH EARNINGS IN THE PAST 12 MONTHS
Data Set: 2008-2012 American Community Survey 5-Year Estimates

B20005. SEX BY WORK EXPERIENCE IN THE PAST 12 MONTHS BY EARNINGS IN THE PAST 12 MONTHS (IN 2010 INFLATION-ADJUSTED DOLLARS) FOR THE POPULATION 16 YEARS AND OVER

Data Set: 2008-2012 American Community Survey 5-Year Estimates

	Jefferson County, Florida					
	African American	Margin of Error (+/-)	% of AA Total	White, Not Hispanic	Margin of Error (+/-)	% of NHW Total
Total:	4,219	119	100.0%	7,342	83	100.0%
Worked full-time, year-round in the past 12 months:	1,138	NC	27.0%	2,630	NC	35.8%
No earnings	0	NC	0.0%	0	NC	0.0%
With earnings:	1,138	NC	27.0%	2,630	NC	35.8%
\$ 1 to \$ 9,999 or loss	90	NC	2.1%	92	NC	1.3%
\$ 10,000 to \$ 19,999	272	NC	6.4%	331	NC	4.5%
\$ 20,000 to \$ 29,999	300	NC	7.1%	359	NC	4.9%
\$ 30,000 to \$ 49,999	309	NC	7.3%	786	NC	10.7%
\$ 50,000 to \$ 74,999	134	NC	3.2%	710	NC	9.7%
\$ 75,000 or more	33	NC	0.8%	352	NC	4.8%
Other:	3,081	NC	73.0%	4,712	NC	64.2%
No earnings	2,222	NC	52.7%	3,502	NC	47.7%
With earnings: less than full time, year-round	859	NC	20.4%	1,210	NC	16.5%
Male:	2,219	91	52.6%	3,815	81	52.0%
Worked full-time, year-round in the past 12 months:	543	131	12.9%	1,396	214	19.0%
No earnings	0	21	0.0%	0	21	0.0%
With earnings:	543	131	12.9%	1,396	214	19.0%
\$ 1 to \$ 9,999 or loss	83	NC	2.0%	63	NC	0.9%
\$ 10,000 to \$ 19,999	61	NC	1.4%	184	NC	2.5%
\$ 20,000 to \$ 29,999	85	NC	2.0%	123	NC	1.7%
\$ 30,000 to \$ 49,999	202	NC	4.8%	442	NC	6.0%
\$ 50,000 to \$ 74,999	107	NC	2.5%	346	NC	4.7%
\$ 75,000 or more	5	NC	0.1%	238	NC	3.2%

	Jefferson County, Florida					
	African American	Margin of Error (+/-)	% of AA Total	White, Not Hispanic	Margin of Error (+/-)	% of NHW Total
Other:	1,676	146	39.7%	2,419	217	32.9%
No earnings	1,295	137	30.7%	1,814	245	24.7%
With earnings:	381	139	9.0%	605	165	8.2%
Female:	2,000	67	47.4%	3,527	35	48.0%
Worked full-time, year-round in the past 12 months:	595	151	14.1%	1,234	196	16.8%
No earnings	0	21	0.0%	0	21	0.0%
With earnings:	595	151	14.1%	1,234	196	16.8%
\$ 1 to \$ 9,999 or loss	7	NC	0.2%	29	NC	0.4%
\$ 10,000 to \$ 19,999	211	NC	5.0%	147	NC	2.0%
\$ 20,000 to \$ 29,999	215	NC	5.1%	236	NC	3.2%
\$ 30,000 to \$ 49,999	107	NC	2.5%	344	NC	4.7%
\$ 50,000 to \$ 74,999	27	NC	0.6%	364	NC	5.0%
\$ 75,000 or more	28	NC	0.7%	114	NC	1.6%
Other:	1,405	148	33.3%	2,293	204	31.2%
No earnings	927	124	22.0%	1,688	157	23.0%
With earnings:	478	130	11.3%	605	177	8.2%

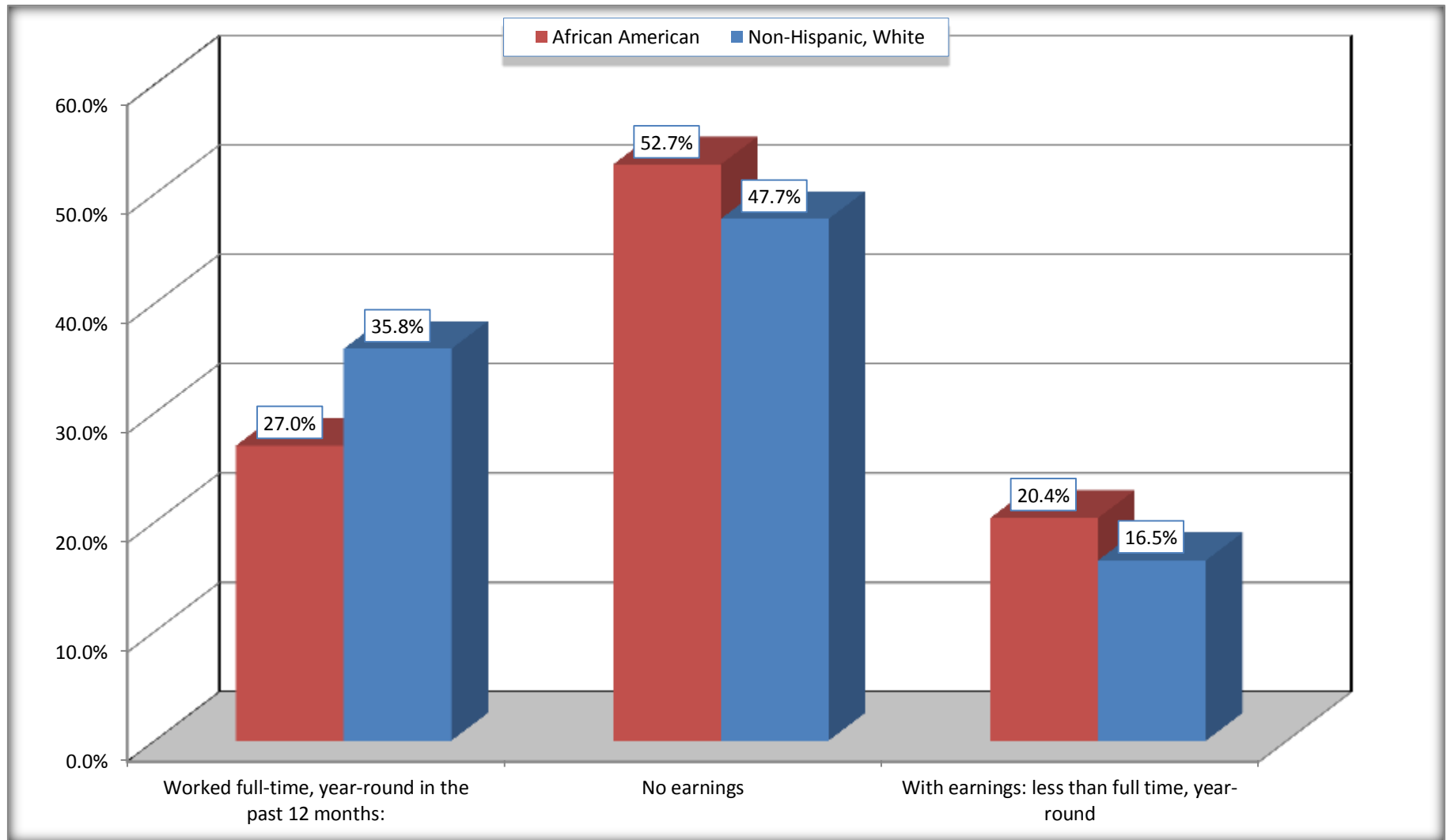
Source: U.S. Census Bureau, 2008-2012 American Community Survey

For information on confidentiality protection, sampling error, nonsampling error, and definitions, see Survey Methodology.

<http://www.census.gov/acs/www/UseData/index.htm>

Employment and Earnings in in the Past 12 Months (16 Years and Over)

Jefferson County, Florida



Source: B20005. SEX BY WORK EXPERIENCE IN THE PAST 12 MONTHS BY EARNINGS IN THE PAST 12 MONTHS (IN 2010 INFLATION-ADJUSTED DOLLARS) FOR THE POPULATION 16 YEARS AND OVER

Data Set: 2008-2012 American Community Survey 5-Year Estimates

C21001. SEX BY AGE BY VETERAN STATUS FOR THE CIVILIAN POPULATION 18 YEARS AND OVER

Data Set: 2008-2012 American Community Survey 5-Year Estimates

	Jefferson County, Florida					
	African American	Margin of Error (+/-)	% of AA Total	White, Not Hispanic	Margin of Error (+/-)	% of NHW Total
Total:	4,075	90	100.0%	7,197	63	100.0%
Veteran	349	NC	8.6%	1,277	NC	17.7%
Nonveteran	3,726	NC	91.4%	5,920	NC	82.3%
Male:	2,134	70	52.4%	3,715	63	51.6%
18 to 64 years:	1,862	69	45.7%	2,892	63	40.2%
Veteran	221	115	5.4%	649	124	9.0%
Nonveteran	1,641	123	40.3%	2,243	131	31.2%
65 years and over:	272	9	6.7%	823	21	11.4%
Veteran	89	56	2.2%	528	95	7.3%
Nonveteran	183	57	4.5%	295	95	4.1%
Female:	1,941	47	47.6%	3,482	21	48.4%
18 to 64 years:	1,539	39	37.8%	2,576	21	35.8%
Veteran	39	40	1.0%	80	67	1.1%
Nonveteran	1,500	56	36.8%	2,496	67	34.7%
65 years and over:	402	23	9.9%	906	21	12.6%
Veteran	0	21	0.0%	20	29	0.3%
Nonveteran	402	23	9.9%	886	29	12.3%

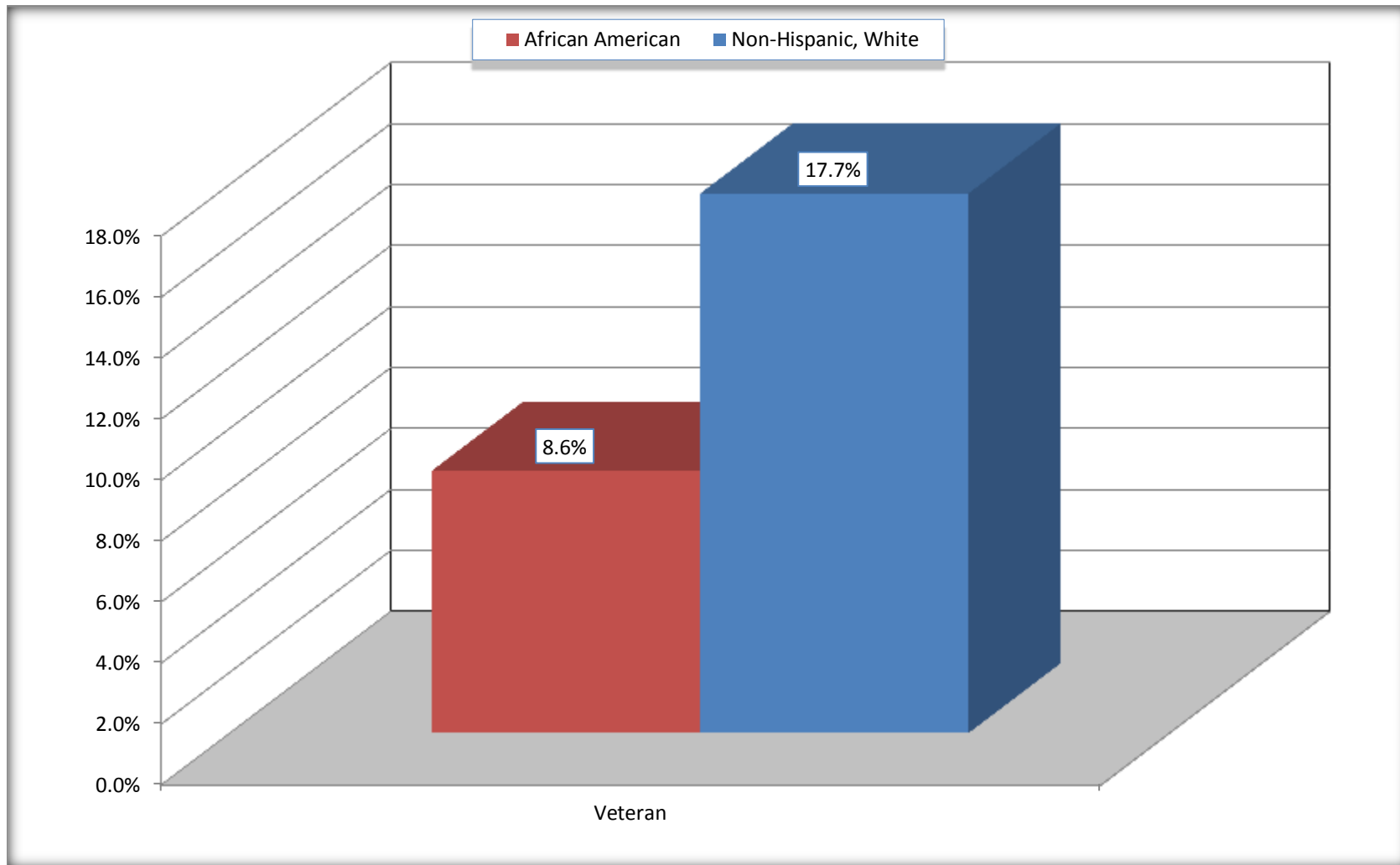
Source: U.S. Census Bureau, 2008-2012 American Community Survey

For information on confidentiality protection, sampling error, nonsampling error, and definitions, see Survey Methodology.

<http://www.census.gov/acs/www/UseData/index.htm>

Veterans in the Civilian Population 18 Years and Over

Jefferson County, Florida



Source: C21001. SEX BY AGE BY VETERAN STATUS FOR THE CIVILIAN POPULATION 18 YEARS AND OVER
Data Set: 2008-2012 American Community Survey 5-Year Estimates

B22005. RECEIPT OF FOOD STAMPS/SNAP IN THE PAST 12 MONTHS BY RACE OF HOUSEHOLDER

Data Set: 2008-2012 American Community Survey 5-Year Estimates

	Jefferson County, Florida					
	African American	Margin of Error (+/-)	% of AA Total	White, Not Hispanic	Margin of Error (+/-)	% of NHW Total
Total:	1,849	171	100.0%	3,460	148	100.0%
HH received Food Stamps/SNAP in the past 12 months	446	148	24.1%	453	134	13.1%
HH did not receive Food Stamps/SNAP in the past 12 months	1,403	154	75.9%	3,007	181	86.9%

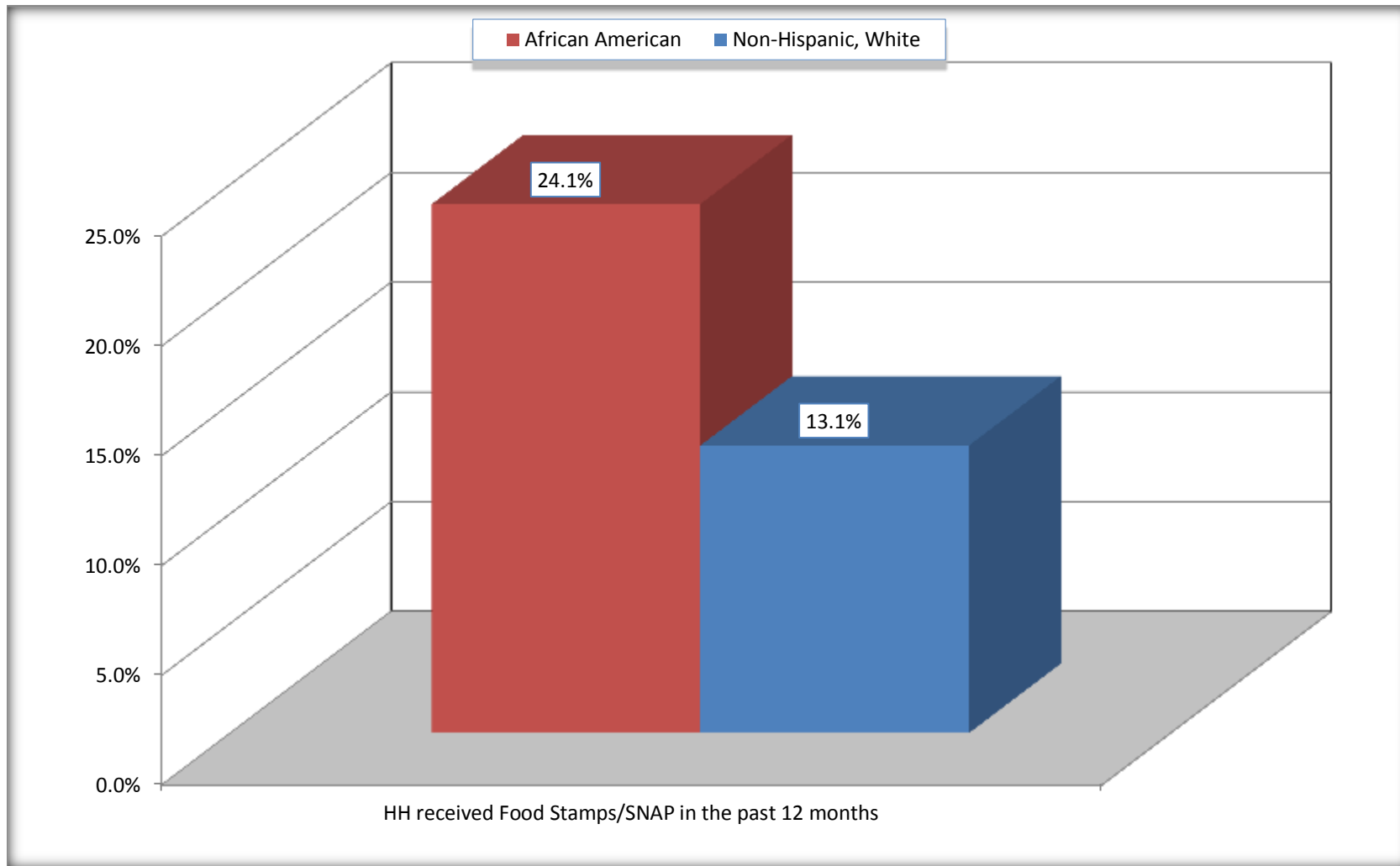
Source: U.S. Census Bureau, 2008-2012 American Community Survey

For information on confidentiality protection, sampling error, nonsampling error, and definitions, see Survey Methodology.

<http://www.census.gov/acs/www/UseData/index.htm>

Receipt of Food Stamps/SNAP in the Past 12 Months by Household

Jefferson County, Florida



Source: B22005. RECEIPT OF FOOD STAMPS/SNAP IN THE PAST 12 MONTHS BY RACE OF HOUSEHOLDER
Data Set: 2008-2012 American Community Survey 5-Year Estimates

C23002. SEX BY AGE BY EMPLOYMENT STATUS FOR THE POPULATION 16 YEARS AND OVER

Data Set: 2008-2012 American Community Survey 5-Year Estimates

	Jefferson County, Florida					
	African American	Margin of Error (+/-)	% of AA Total	White, Not Hispanic	Margin of Error (+/-)	% of NHW Total
Total:	4,219	119	100.0%	7,342	83	100.0%
In labor force:	2,246	NC	53.2%	3,813	NC	51.9%
In Armed Forces	8	NC	0.2%	13	NC	0.2%
Civilian:	2,189	NC	51.9%	3,613	NC	49.2%
Employed	1,826	NC	43.3%	3,370	NC	45.9%
Unemployed	412	NC	9.8%	430	NC	5.9%
Not in labor force	1,973	NC	46.8%	3,529	NC	48.1%
Male:	2,219	91	52.6%	3,815	81	52.0%
16 to 64 years:	1,947	90	46.1%	2,992	81	40.8%
In labor force:	999	135	23.7%	1,835	194	25.0%
In Armed Forces	8	15	0.2%	13	20	0.2%
Civilian:	991	134	23.5%	1,822	193	24.8%
Employed	826	141	19.6%	1,677	212	22.8%
Unemployed	165	95	3.9%	145	74	2.0%
Not in labor force	948	148	22.5%	1,157	189	15.8%
65 years and over:	272	9	6.4%	823	21	11.2%
In labor force:	0	21	0.0%	126	63	1.7%
Employed	0	21	0.0%	113	60	1.5%
Unemployed	0	21	0.0%	13	18	0.2%
Not in labor force	272	9	6.4%	697	63	9.5%

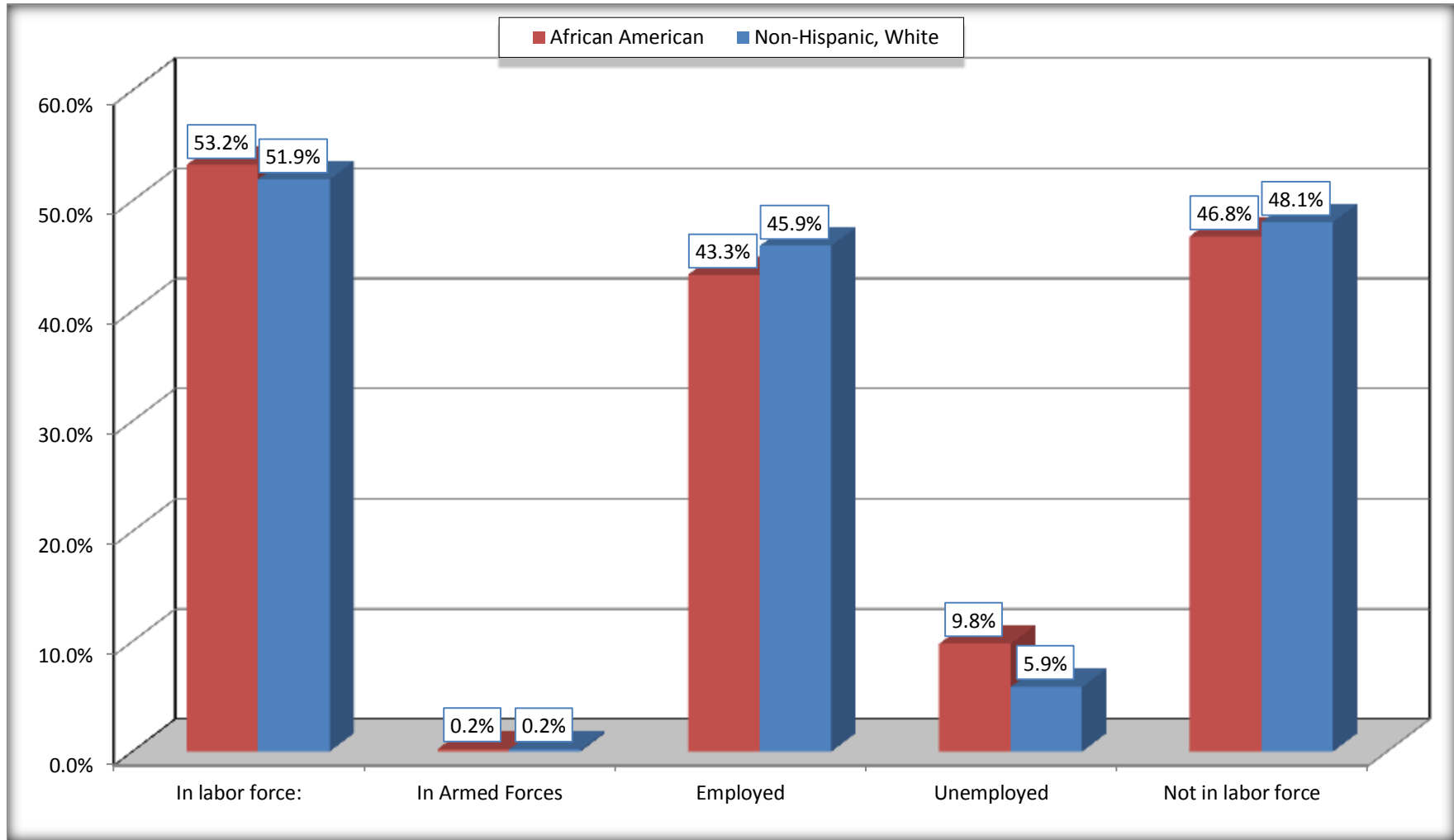
	Jefferson County, Florida					
	African American	Margin of Error (+/-)	% of AA Total	White, Not Hispanic	Margin of Error (+/-)	% of NHW Total
Female:	2,000	67	47.4%	3,527	35	48.0%
16 to 64 years:	1,598	66	37.9%	2,621	35	35.7%
In labor force:	1,198	134	28.4%	1,791	169	24.4%
In Armed Forces	0	21	0.0%	0	21	0.0%
Civilian:	1,198	134	28.4%	1,791	169	24.4%
Employed	951	131	22.5%	1,519	168	20.7%
Unemployed	247	97	5.9%	272	116	3.7%
Not in labor force	400	134	9.5%	830	171	11.3%
65 years and over:	402	23	9.5%	906	21	12.3%
In labor force:	49	41	1.2%	61	37	0.8%
Employed	49	41	1.2%	61	37	0.8%
Unemployed	0	21	0.0%	0	21	0.0%
Not in labor force	353	48	8.4%	845	37	11.5%

Source: U.S. Census Bureau, 2008-2012 American Community Survey

For information on confidentiality protection, sampling error, nonsampling error, and definitions, see Survey Methodology.
<http://www.census.gov/acs/www/UseData/index.htm>

Employment Status for the Population 16 years and over

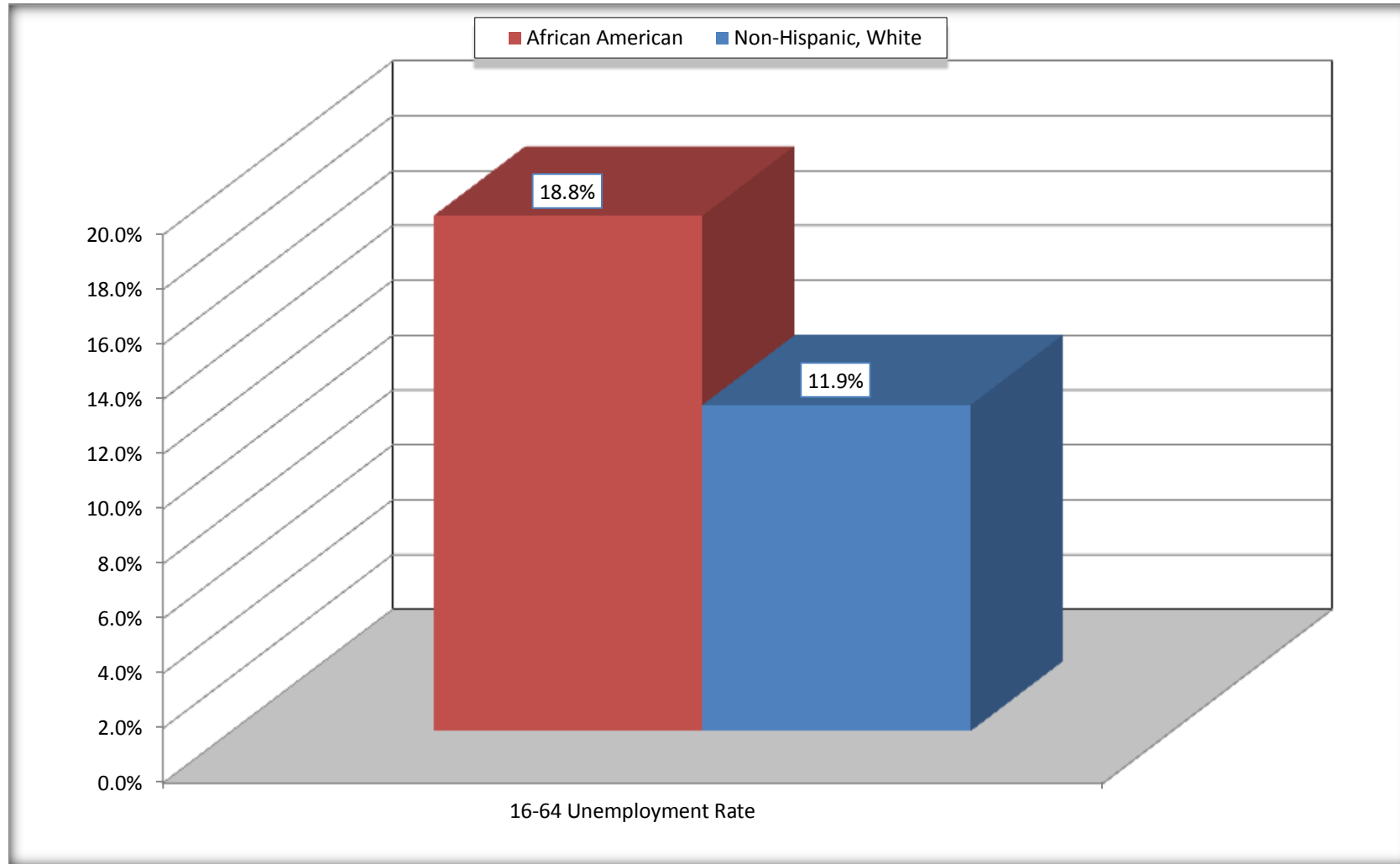
Jefferson County, Florida



Source: C23002. SEX BY AGE BY EMPLOYMENT STATUS FOR THE POPULATION 16 YEARS AND OVER
Data Set: 2008-2012 American Community Survey 5-Year Estimates

Unemployment of Working Age Population (Ages 16 to 64) (As a Percent of 16-64 Civilian Labor Force)

Jefferson County, Florida



Source: C23002. SEX BY AGE BY EMPLOYMENT STATUS FOR THE POPULATION 16 YEARS AND OVER
Data Set: 2008-2012 American Community Survey 5-Year Estimates

C24010. SEX BY OCCUPATION FOR THE CIVILIAN EMPLOYED POPULATION 16 YEARS AND OVER

Data Set: 2008-2012 American Community Survey 5-Year Estimates

	Jefferson County, Florida					
	African American	Margin of Error (+/-)	% of AA Total	White, Not Hispanic	Margin of Error (+/-)	% of NHW Total
Total:	1,826	187	100.0%	3,370	293	100.0%
Management, professional, and related occupations	361	NC	19.8%	1,307	NC	38.8%
Service occupations	520	NC	28.5%	601	NC	17.8%
Sales and office occupations	435	NC	23.8%	790	NC	23.4%
Natural resources, construction, and maintenance occupations:	214	NC	11.7%	405	NC	12.0%
Production, transportation, and material moving occupations	296	NC	16.2%	267	NC	7.9%
Male:	826	141	45.2%	1,790	224	53.1%
Management, business, science, and arts occupations:	127	85	7.0%	559	155	16.6%
Service occupations	81	64	4.4%	347	116	10.3%
Sales and office occupations	218	137	11.9%	268	91	8.0%
Natural resources, construction, and maintenance occupations:	214	110	11.7%	379	107	11.2%
Production, transportation, and material moving occupations	186	89	10.2%	237	108	7.0%
Female:	1,000	128	54.8%	1,580	170	46.9%
Management, professional, and related occupations	234	95	12.8%	748	166	22.2%
Service occupations	439	130	24.0%	254	86	7.5%
Sales and office occupations	217	106	11.9%	522	146	15.5%
Natural resources, construction, and maintenance occupations:	0	21	0.0%	26	41	0.8%
Production, transportation, and material moving occupations	110	101	6.0%	30	36	0.9%

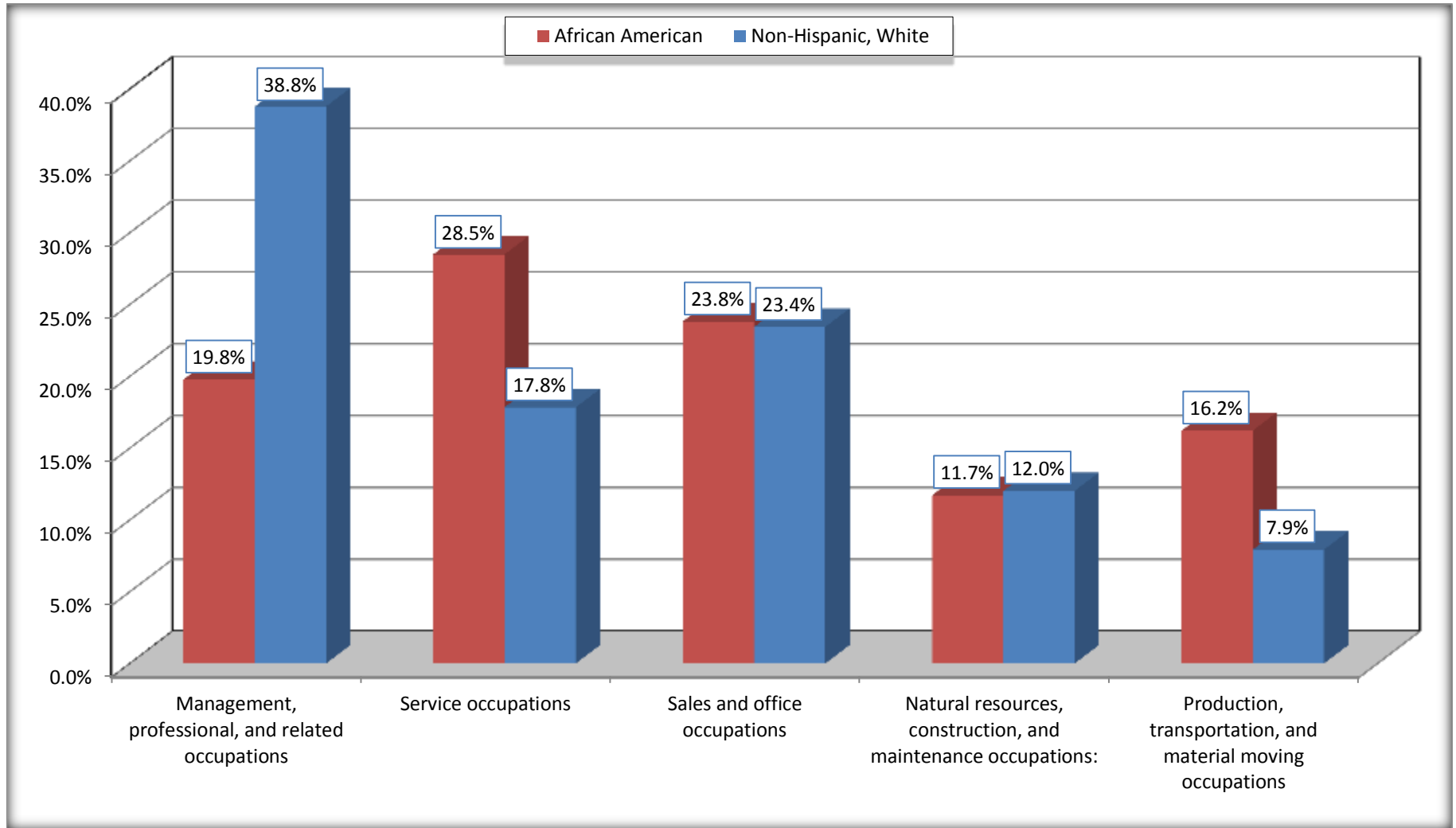
Source: U.S. Census Bureau, 2008-2012 American Community Survey

For information on confidentiality protection, sampling error, nonsampling error, and definitions, see Survey Methodology.

<http://www.census.gov/acs/www/UseData/index.htm>

Occupation for the Civilian Employed 16 Years and Over Population

Jefferson County, Florida



Source: C24010. SEX BY OCCUPATION FOR THE CIVILIAN EMPLOYED POPULATION 16 YEARS AND OVER
Data Set: 2008-2012 American Community Survey 5-Year Estimates

B25003. TENURE - Universe: OCCUPIED HOUSING UNITS

Data Set: 2008-2012 American Community Survey 5-Year Estimates

	Jefferson County, Florida					
	African American	Margin of Error (+/-)	% of AA Total	White, Not Hispanic	Margin of Error (+/-)	% of NHW Total
Total:	1,849	171	100.0%	3,460	148	100.0%
Owner occupied	1,282	155	69.3%	2,849	151	82.3%
Renter occupied	567	157	30.7%	611	159	17.7%

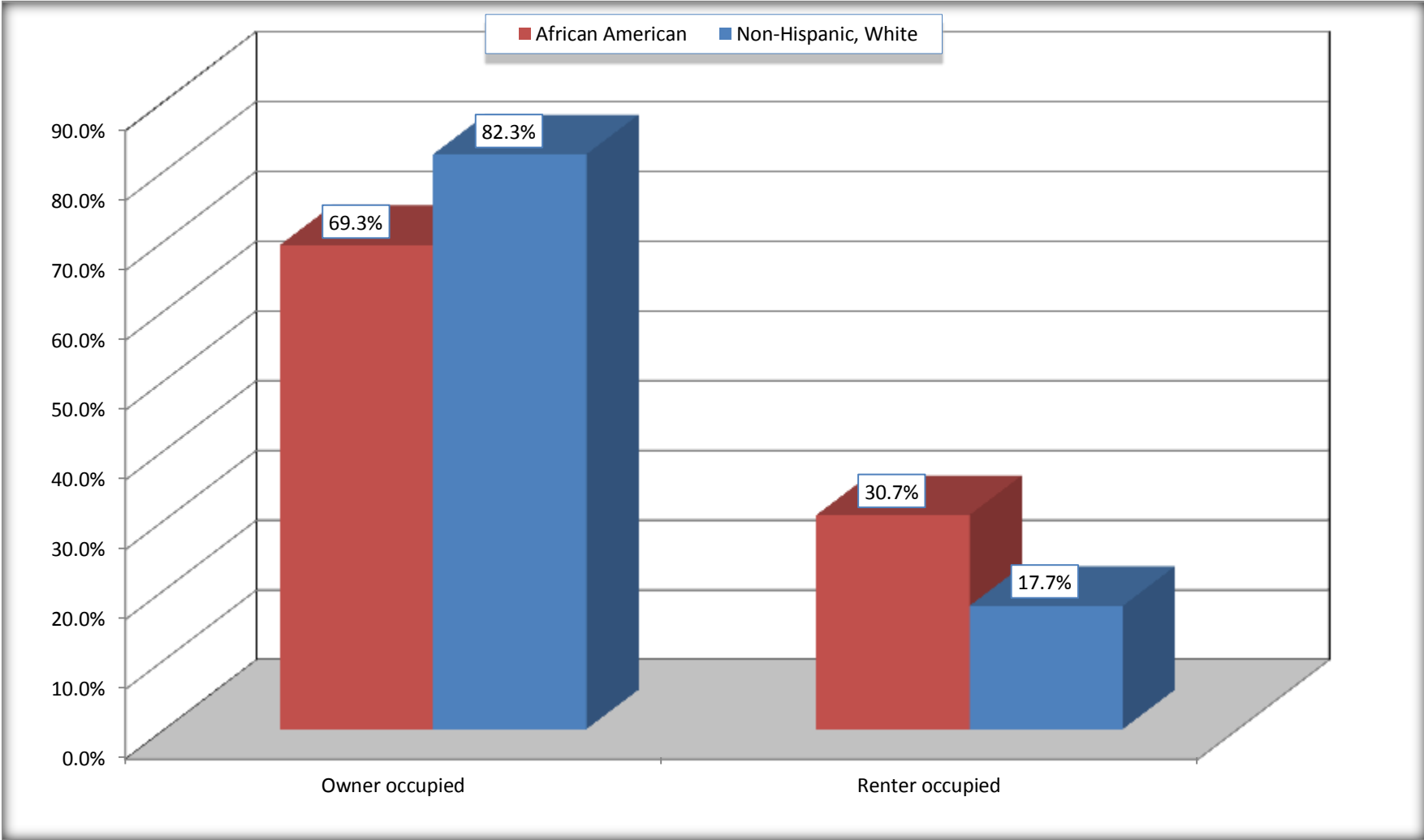
Source: U.S. Census Bureau, 2008-2012 American Community Survey

For information on confidentiality protection, sampling error, nonsampling error, and definitions, see Survey Methodology.

<http://www.census.gov/acs/www/UseData/index.h>

Home Owners and Renters by Household

Jefferson County, Florida



Source: B25003. TENURE - Universe: OCCUPIED HOUSING UNITS
Data Set: 2008-2012 American Community Survey 5-Year Estimates

B25014. OCCUPANTS PER ROOM - Universe: OCCUPIED HOUSING UNITS

Data Set: 2008-2012 American Community Survey 5-Year Estimates

	Jefferson County, Florida					
	African American	Margin of Error (+/-)	% of AA Total	White, Not Hispanic	Margin of Error (+/-)	% of NHW Total
Total:	1,849	171	100.0%	3,460	148	100.0%
1.00 or less occupants per room	1,820	167	98.4%	3,454	149	99.8%
1.01 or more occupants per room	29	30	1.6%	6	10	0.2%

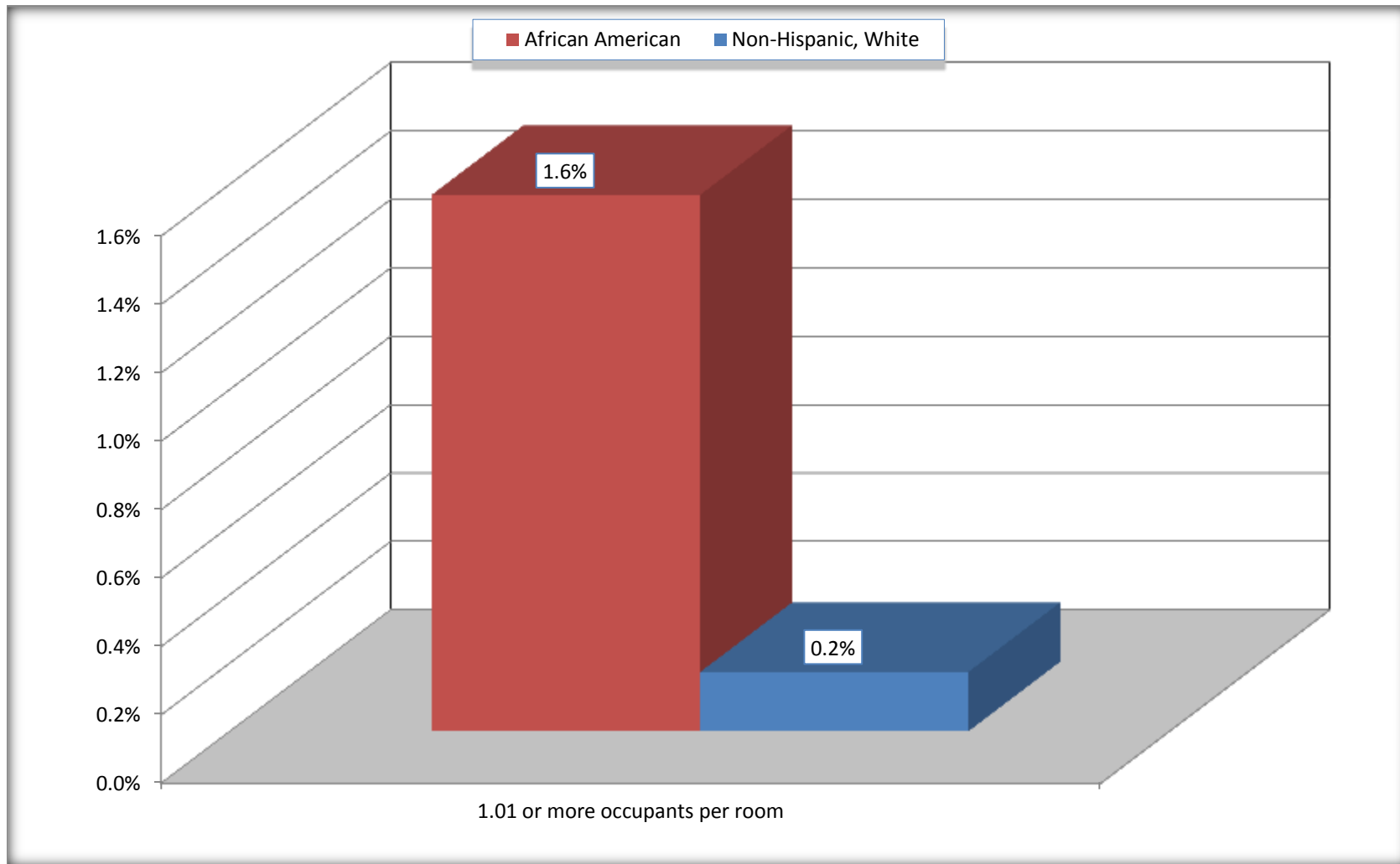
Source: U.S. Census Bureau, 2008-2012 American Community Survey

For information on confidentiality protection, sampling error, nonsampling error, and definitions, see Survey Methodology.

<http://www.census.gov/acs/www/UseData/index.ht>

More than One Person per Room (Crowding) by Household

Jefferson County, Florida



Source: B25014. OCCUPANTS PER ROOM - Universe: OCCUPIED HOUSING UNITS
Data Set: 2008-2012 American Community Survey 5-Year Estimates

B18101. AGE BY DISABILITY STATUS

Data Set: 2008-2012 American Community Survey 5-Year Estimates

	Jefferson County, Florida					
	African American	Margin of Error (+/-)	% of AA Total	White, Not Hispanic	Margin of Error (+/-)	% of NHW Total
Total:	4,708	145	100.0%	7,696	256	100.0%
Under 18 years:	1,286	34	27.3%	1,183	58	15.4%
With a disability	88	57	1.9%	39	41	0.5%
No disability	1,198	65	25.4%	1,144	149	14.9%
18 to 64 years:	2,754	139	58.5%	4,923	151	64.0%
With a disability	460	175	9.8%	882	214	11.5%
No disability	2,294	184	48.7%	4,041	231	52.5%
65 years and over:	668	26	14.2%	1,590	55	20.7%
With a disability	363	93	7.7%	733	105	9.5%
No disability	305	92	6.5%	857	107	11.1%

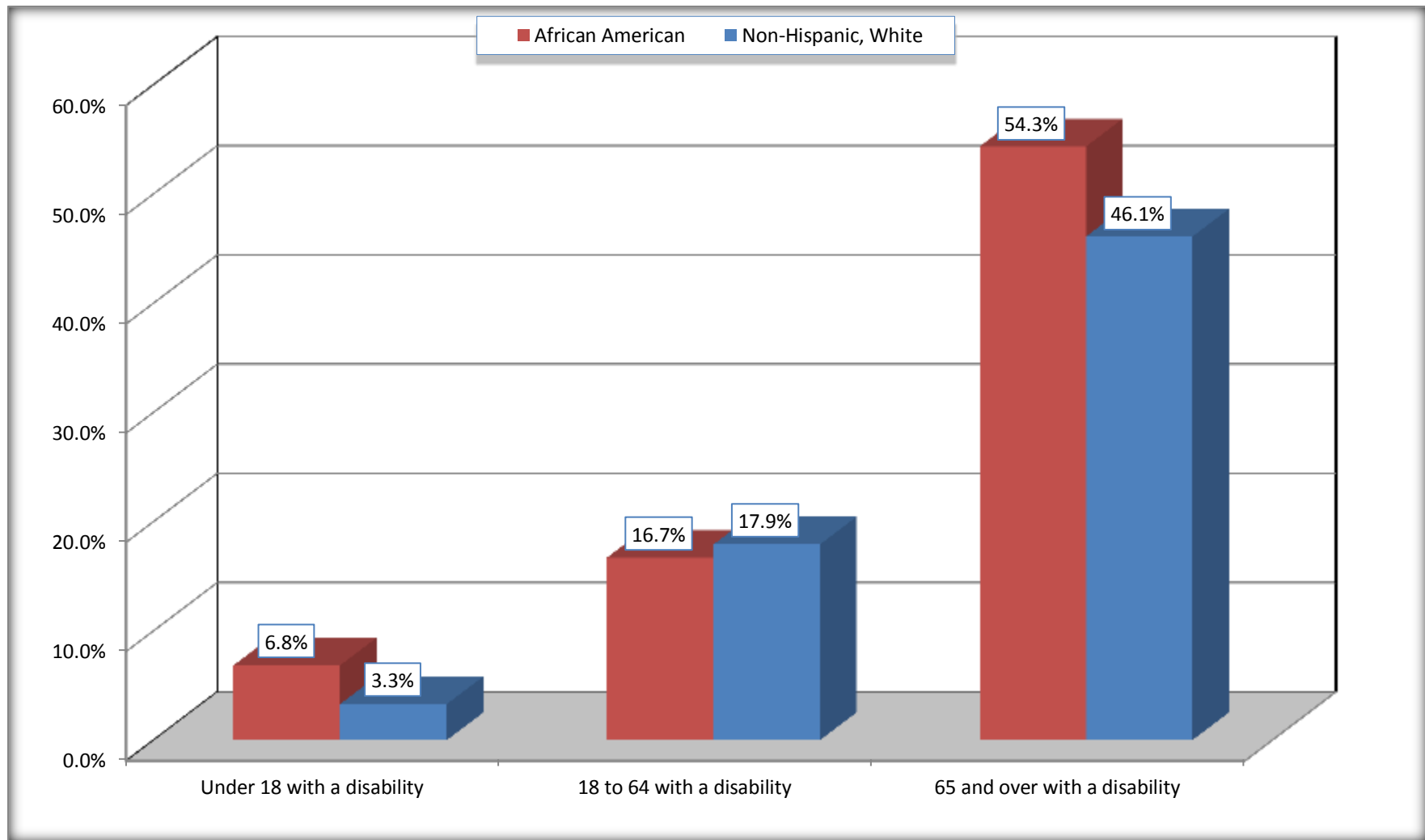
Source: U.S. Census Bureau, 2008-2012 American Community Survey

For information on confidentiality protection, sampling error, nonsampling error, and definitions, see Survey Methodology.

<http://www.census.gov/acs/www/UseData/index.htm>

Disability by Age

Jefferson County, Florida



Source: B18101. AGE BY DISABILITY STATUS
Data Set: 2008-2012 American Community Survey 5-Year Estimates

C27001B. HEALTH INSURANCE COVERAGE STATUS BY AGE

Data Set: 2008-2012 American Community Survey 5-Year Estimates

	Jefferson County, Florida					
	African American	Margin of Error (+/-)	% of AA Total	White, Not Hispanic	Margin of Error (+/-)	% of NHW Total
Total:	4,708	145	100.0%	7,696	256	100.0%
Under 18 years:	1,286	34	27.3%	1,183	148	15.4%
With health insurance coverage	1,197	94	25.4%	1,091	139	14.2%
No health insurance coverage	89	88	1.9%	92	51	1.2%
18 to 64 years:	2,754	139	58.5%	4,923	151	64.0%
With health insurance coverage	1,597	250	33.9%	3,663	298	47.6%
No health insurance coverage	1,157	233	24.6%	1,260	273	16.4%
65 years and over:	668	26	14.2%	1,590	55	20.7%
With health insurance coverage	668	26	14.2%	1,590	55	20.7%
No health insurance coverage	0	21	0.0%	0	21	0.0%

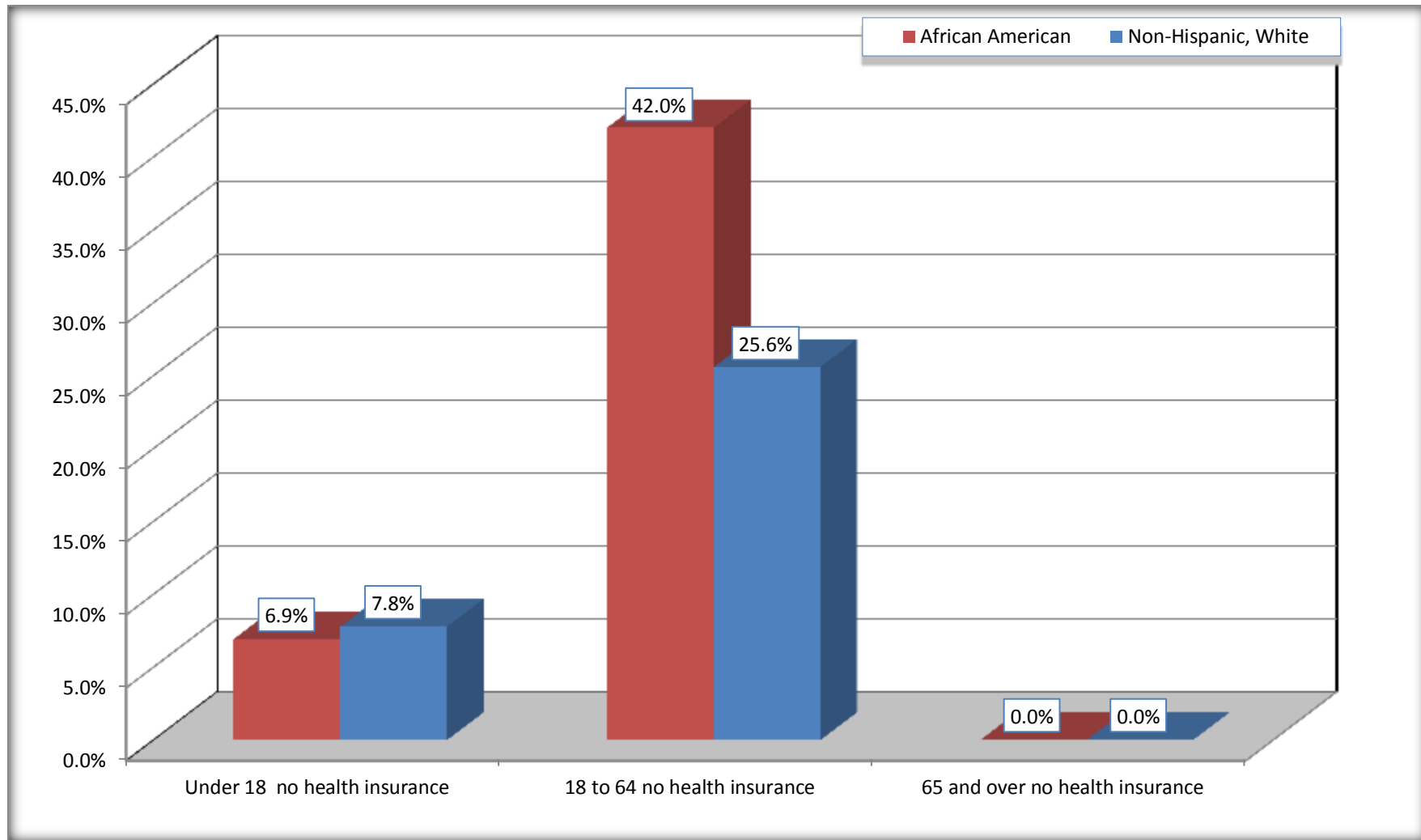
Source: U.S. Census Bureau, 2008-2012 American Community Survey

For information on confidentiality protection, sampling error, nonsampling error, and definitions, see Survey Methodology.

<http://www.census.gov/acs/www/UseData/index.htm>

Lack of Health Insurance Coverage by Age

Jefferson County, Florida



Source: C27001B. HEALTH INSURANCE COVERAGE STATUS BY AGE
Data Set: 2008-2012 American Community Survey 5-Year Estimates