

Selected Socio-Economic Data

East Lake-Orient Park CDP, Florida

African American and White, Not Hispanic

Data Set: 2008-2012 American Community Survey 5-Year Estimates

www.fairvote2020.org

www.fairdata2000.com

[29-Dec-13](#)

C02003.DETAILED RACE - Universe: TOTAL POPULATION

Data Set: 2008-2012 American Community Survey 5-Year Estimates

	East Lake-Orient Park CDP, Florida		
	Population	Margin of Error (+/-)	% of Total
Total:	24,177	1,356	100.0%
Population of one race:	23,256	1,232	96.2%
White	12,152	1,183	50.3%
Black or African American	9,088	1,108	37.6%
American Indian and Alaska Native	216	162	0.9%
Asian alone	788	413	3.3%
Native Hawaiian and Other Pacific Islander	156	229	0.6%
Some other race	856	444	3.5%
Population of two or more races:	921	489	3.8%
Two races including Some other race	234	210	1.0%
Two races excluding Some other race, and three or more races	687	339	2.8%
Population of two races:	856	474	3.5%
White; Black or African American	526	318	2.2%
White; American Indian and Alaska Native	30	25	0.1%
White; Asian	62	63	0.3%
Black or African American; American Indian and Alaska Native	0	25	0.0%
All other two race combinations	238	212	1.0%
Population of three races	65	63	0.3%
Population of four or more races	0	25	0.0%

Note: Hispanics may be of any race. See Table B03002 and chart.

Source: U.S. Census Bureau, 2008-2012 American Community Survey

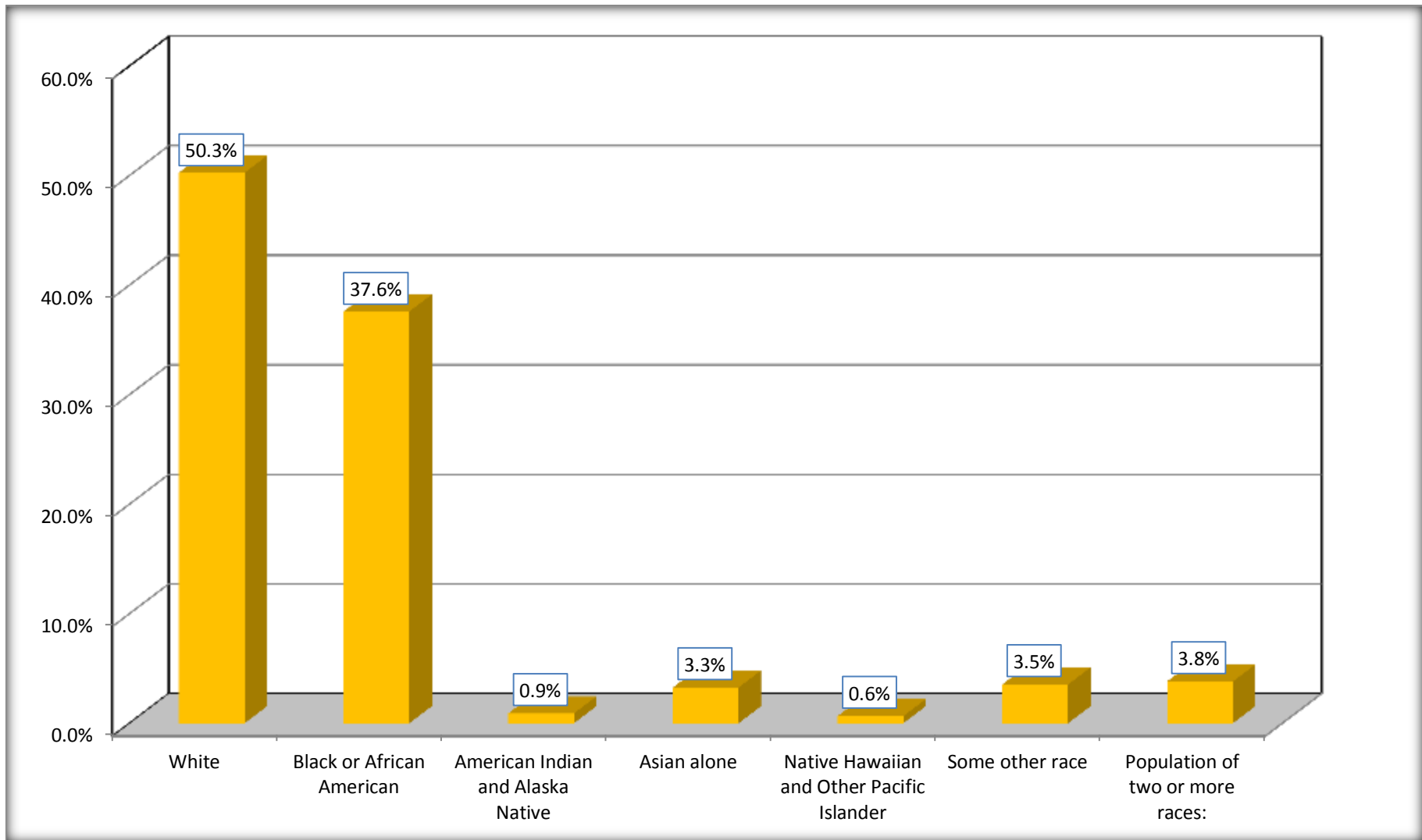
Although the American Community Survey (ACS) produces population, demographic and housing unit estimates, it is the Census Bureau's Population Estimates Program that produces and disseminates the official estimates of the population for the nation, states, counties, cities and towns and estimates of housing units for states and counties.

For information on confidentiality protection, sampling error, nonsampling error, and definitions, see Survey Methodology.

<http://www.census.gov/acs/www/UseData/index.htm>

Population by Race

East Lake-Orient Park CDP, Florida



Source: C02003.DETAILED RACE - Universe: TOTAL POPULATION
Data Set: 2008-2012 American Community Survey 5-Year Estimates

B03002. HISPANIC OR LATINO ORIGIN BY RACE - Universe: TOTAL POPULATION

Data Set: 2008-2012 American Community Survey 5-Year Estimates

	East Lake-Orient Park CDP, Florida		
	Population	Margin of Error (+/-)	% of Total
Total:	24,177	1,356	100.0%
Not Hispanic or Latino:	19,115	1,248	79.1%
White alone	8,831	960	36.5%
Black or African American alone	8,755	1,105	36.2%
American Indian and Alaska Native alone	63	46	0.3%
Asian alone	788	413	3.3%
Native Hawaiian and Other Pacific Islander alone	0	25	0.0%
Some other race alone	53	65	0.2%
Two or more races:	625	327	2.6%
Two races including Some other race	77	111	0.3%
Two races excluding Some other race, and three or more races	548	309	2.3%
Hispanic or Latino	5,062	880	20.9%

Source: U.S. Census Bureau, 2008-2012 American Community Survey

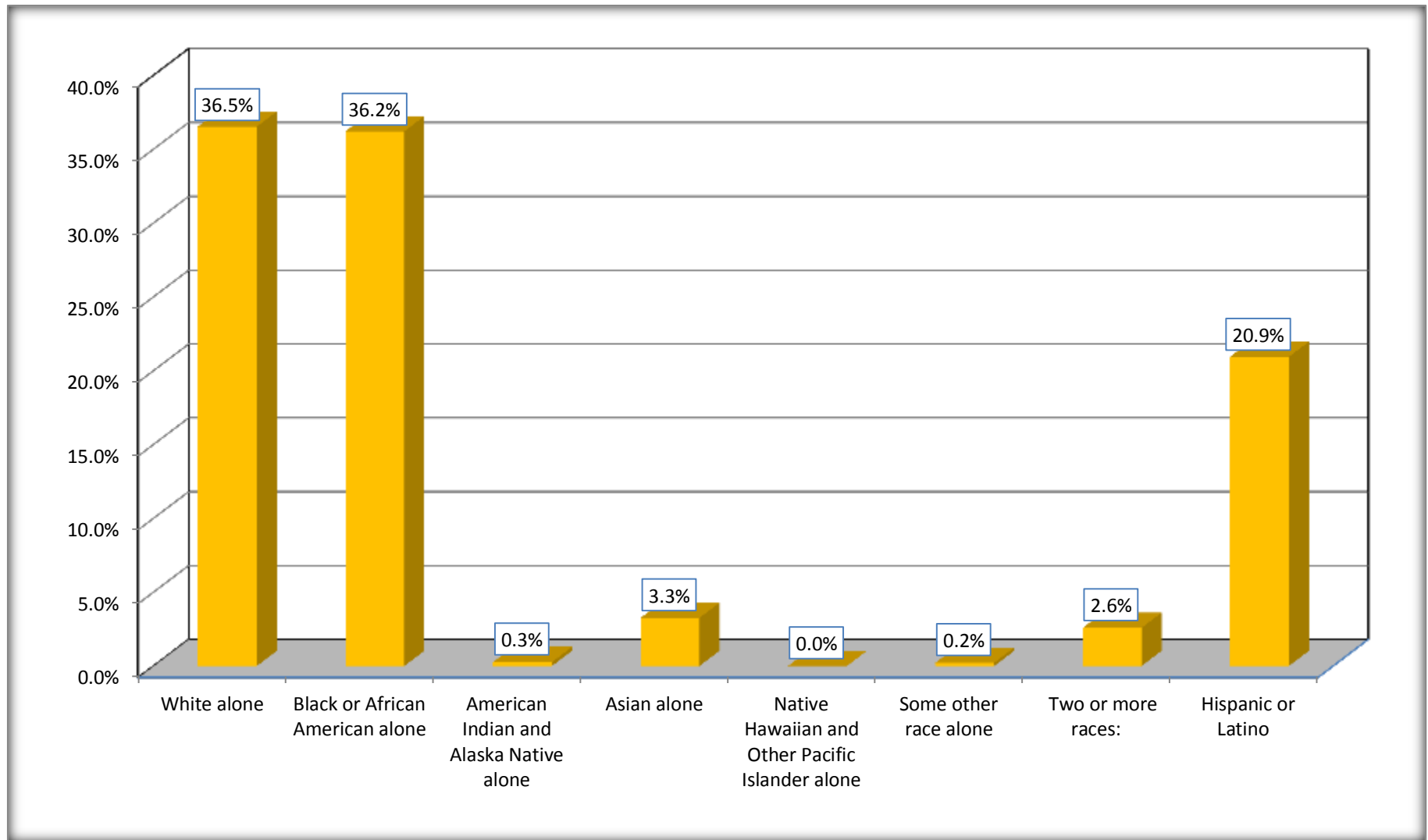
Although the American Community Survey (ACS) produces population, demographic and housing unit estimates, it is the Census Bureau's Population Estimates Program that produces and disseminates the official estimates of the population for the nation, states, counties, cities and towns and estimates of housing units for states and counties.

For information on confidentiality protection, sampling error, nonsampling error, and definitions, see Survey Methodology.

<http://www.census.gov/acs/www/UseData/index.htm>

Non-Hispanic by Race and Hispanic Population

East Lake-Orient Park CDP, Florida



Source: B03002. HISPANIC OR LATINO ORIGIN BY RACE - Universe: TOTAL POPULATION
Data Set: 2008-2012 American Community Survey 5-Year Estimates

B03002. HISPANIC OR LATINO ORIGIN BY RACE

Data Set: 2008-2012 American Community Survey 5-Year Estimates

	East Lake-Orient Park CDP, Florida		
	Population	Margin of Error (+/-)	% of Total
Hispanic or Latino:	5,062	880	100.0%
White alone	3,321	697	65.6%
Black or African American alone	333	310	6.6%
American Indian and Alaska Native alone	153	153	3.0%
Asian alone	0	25	0.0%
Native Hawaiian and Other Pacific Islander alone	156	229	3.1%
Some other race alone	803	423	15.9%
Two or more races:	296	224	5.8%
Two races including Some other race	157	157	3.1%
Two races excluding Some other race, and three or more races	139	156	2.7%

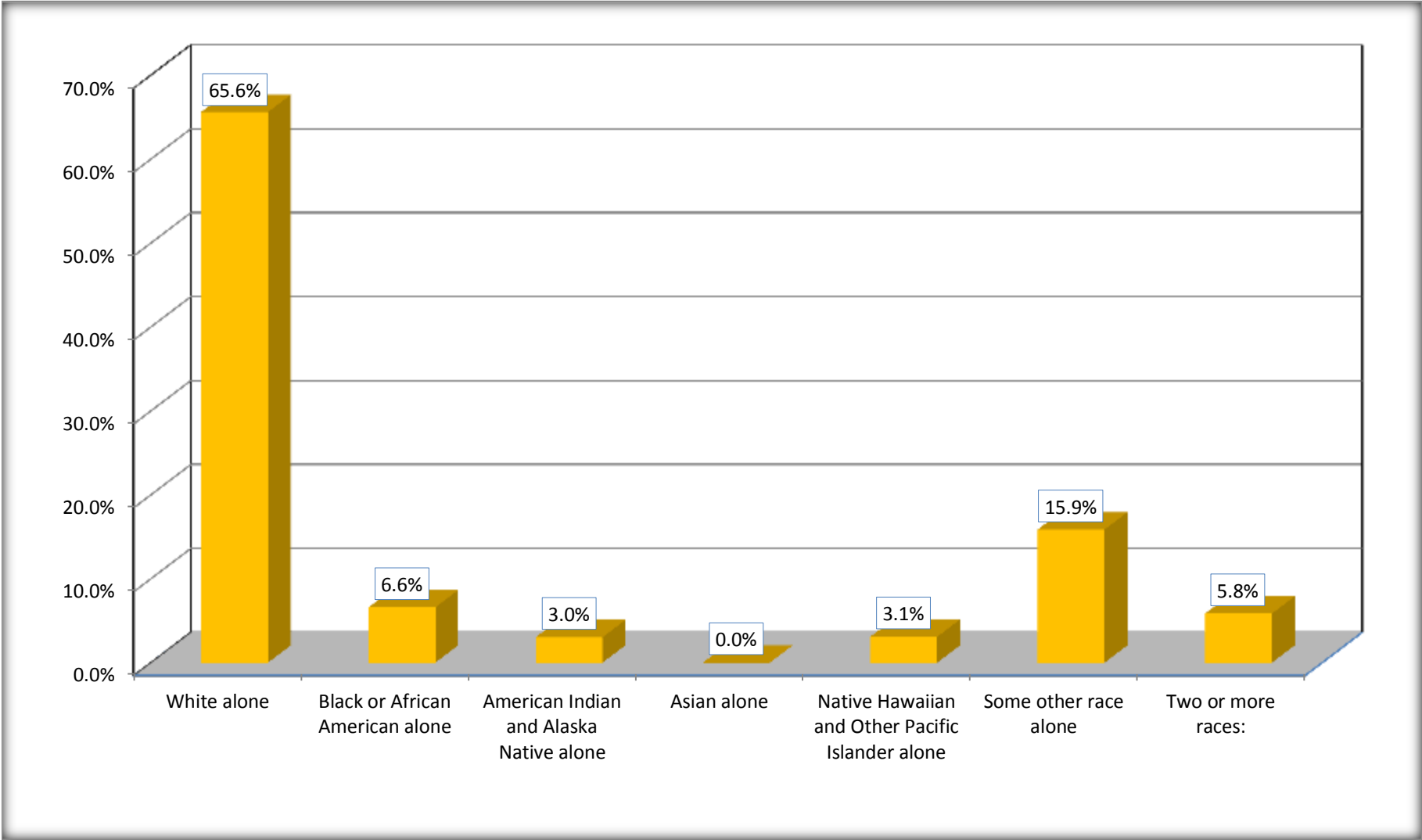
Source: U.S. Census Bureau, 2008-2012 American Community Survey

Although the American Community Survey (ACS) produces population, demographic and housing unit estimates, it is the Census Bureau's Population Estimates Program that produces and disseminates the official estimates of the population for the nation, states, counties, cities and towns and estimates of housing units for states and counties.

For information on confidentiality protection, sampling error, nonsampling error, and definitions, see Survey Methodology.

<http://www.census.gov/acs/www/UseData/index.htm>

Hispanic or Latino Origin by Race
East Lake-Orient Park CDP, Florida



Source: B03002. HISPANIC OR LATINO ORIGIN BY RACE
Data Set: 2008-2012 American Community Survey 5-Year Estimates

B01001. SEX BY AGE

Data Set: 2008-2012 American Community Survey 5-Year Estimates

	East Lake-Orient Park CDP, Florida					
	African American	Margin of Error (+/-)	% of AA Total	White, Not Hispanic	Margin of Error (+/-)	% of NHW Total
Total:	9,088	1,108	100.0%	8,831	960	100.0%
Under 18 years	2,962	NC	32.6%	1,639	NC	18.6%
18 to 64 years	5,577	NC	61.4%	6,282	NC	71.1%
65 years and over	549	NC	6.0%	910	NC	10.3%
Male:	4,103	600	45.1%	4,498	389	50.9%
Under 18 years	1474	NC	16.2%	663	NC	7.5%
18 to 64 years	2,383	NC	26.2%	3,385	NC	38.3%
65 years and over	246	NC	2.7%	450	NC	5.1%
Female:	4,985	690	54.9%	4,333	412	49.1%
Under 18 years	1,488	NC	16.4%	976	NC	11.1%
18 to 64 years	3,194	NC	35.1%	2,897	NC	32.8%
65 years and over	303	NC	3.3%	460	NC	5.2%

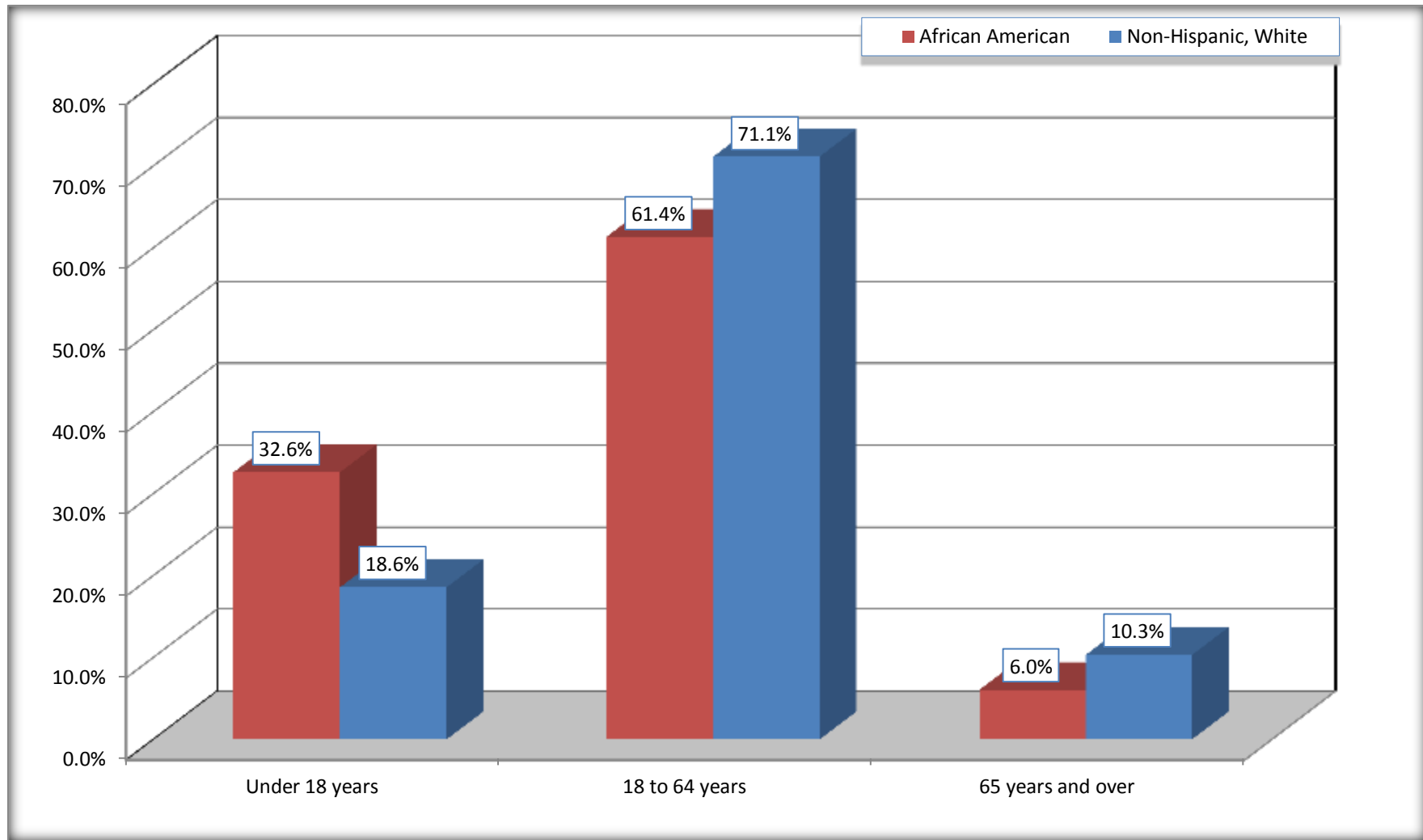
Source: U.S. Census Bureau, 2008-2012 American Community Survey

Although the American Community Survey (ACS) produces population, demographic and housing unit estimates, it is the Census Bureau's Population Estimates Program that produces and disseminates the official estimates of the population for the nation, states, counties, cities and towns and estimates of housing units for states and counties.

For information on confidentiality protection, sampling error, nonsampling error, and definitions, see Survey Methodology.
<http://www.census.gov/acs/www/UseData/index.htm>

Population by Age

East Lake-Orient Park CDP, Florida



Source: B01001. SEX BY AGE
Data Set: 2008-2012 American Community Survey 5-Year Estimates

B05003. SEX BY AGE BY CITIZENSHIP STATUS

Data Set: 2008-2012 American Community Survey 5-Year Estimates

	East Lake-Orient Park CDP, Florida					
	African American	Margin of Error (+/-)	% of AA Total by Age	White, Not Hispanic	Margin of Error (+/-)	% of NHW Total by Age
Total:	9,088	1,108	100.0%	8,831	960	100.0%
Under 18 years:	2,962	NC	100.0%	1,639	NC	100.0%
Native	2,960	NC	99.9%	1,556	NC	94.9%
Foreign born:	2	NC	0.1%	83	NC	5.1%
Naturalized U.S. citizen	0	NC	0.0%	38	NC	2.3%
Not a U.S. citizen	2	NC	0.1%	45	NC	2.7%
18 years and over:	6,126	NC	100.0%	7,192	NC	100.0%
Native	5,309	NC	86.7%	6,707	NC	93.3%
Foreign born:	817	NC	13.3%	485	NC	6.7%
Naturalized U.S. citizen	387	NC	6.3%	262	NC	3.6%
Not a U.S. citizen	430	NC	7.0%	223	NC	3.1%
Male:	4,103	600	45.1%	4,498	555	50.9%
Under 18 years:	1,474	298	100.0%	663	200	100.0%
Native	1,474	298	100.0%	656	200	98.9%
Foreign born:	0	25	0.0%	7	13	1.1%
Naturalized U.S. citizen	0	25	0.0%	7	13	1.1%
Not a U.S. citizen	0	25	0.0%	0	25	0.0%
18 years and over:	2,629	497	100.0%	3,835	496	100.0%
Native	2,247	439	85.5%	3,575	497	93.2%
Foreign born:	382	146	14.5%	260	127	6.8%
Naturalized U.S. citizen	145	74	5.5%	166	93	4.3%
Not a U.S. citizen	237	116	9.0%	94	94	2.5%

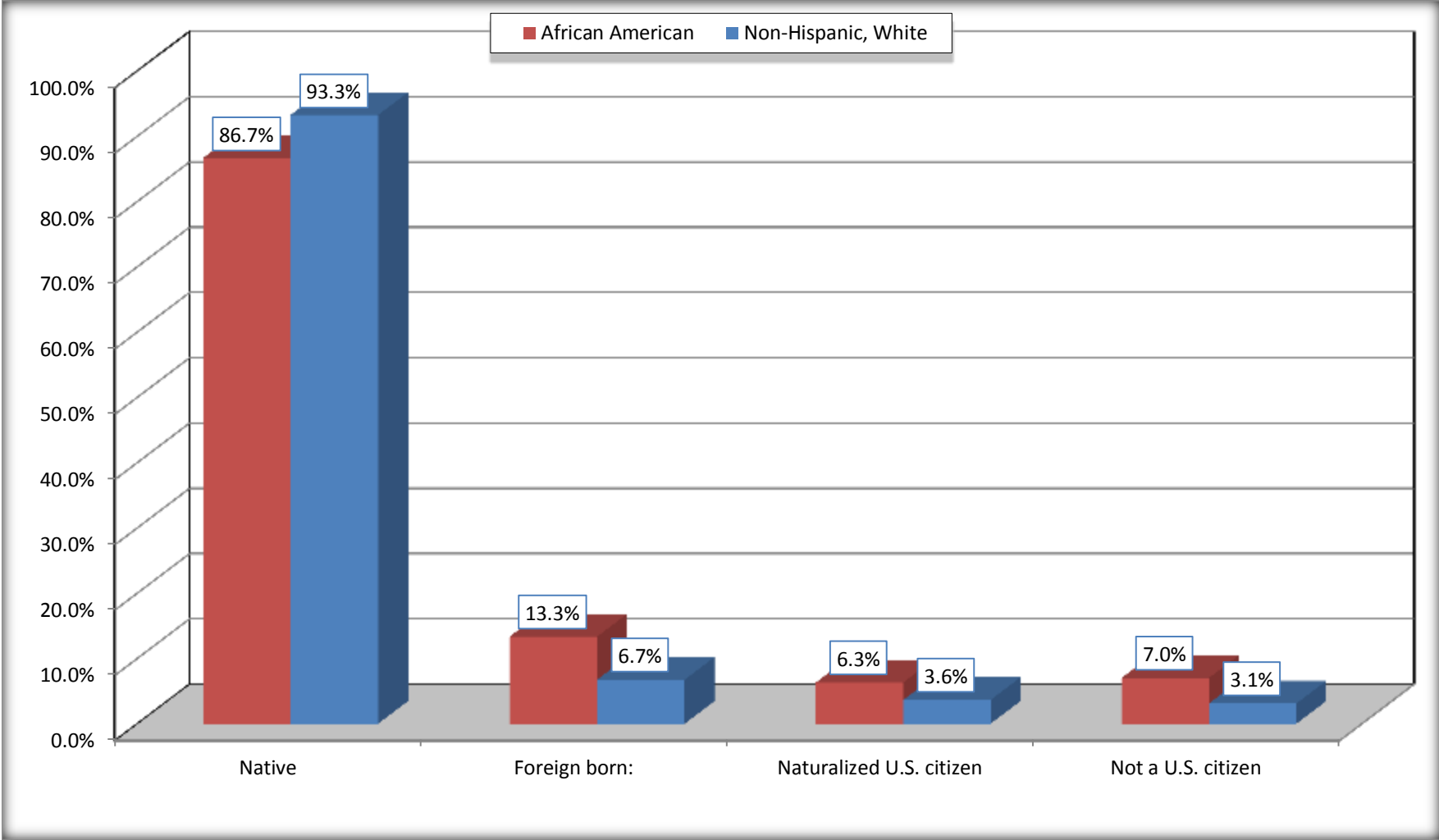
	East Lake-Orient Park CDP, Florida					
	African American	Margin of Error (+/-)	% of AA by Age	White, Not Hispanic	Margin of Error (+/-)	% of NHW by Age
Female:	4,985	690	54.9%	4,333	589	49.1%
Under 18 years:	1,488	360	100.0%	976	315	100.0%
Native	1,486	358	99.9%	900	309	92.2%
Foreign born:	2	12	0.1%	76	88	7.8%
Naturalized U.S. citizen	0	25	0.0%	31	52	3.2%
Not a U.S. citizen	2	12	0.1%	45	71	4.6%
18 years and over:	3,497	483	100.0%	3,357	376	100.0%
Native	3,062	492	87.6%	3,132	367	93.3%
Foreign born:	435	150	12.4%	225	102	6.7%
Naturalized U.S. citizen	242	126	6.9%	96	62	2.9%
Not a U.S. citizen	193	106	5.5%	129	79	3.8%

Source: U.S. Census Bureau, 2008-2012 American Community Survey

For information on confidentiality protection, sampling error, nonsampling error, and definitions, see Survey Methodology.
<http://www.census.gov/acs/www/UseData/index.htm>

Citizenship Status of Voting Age Population (18 and Over)

East Lake-Orient Park CDP, Florida



Source: B05003. SEX BY AGE BY CITIZENSHIP STATUS
Data Set: 2008-2012 American Community Survey 5-Year Estimates

**B07004. GEOGRAPHICAL MOBILITY IN THE PAST YEAR BY RACE FOR CURRENT RESIDENCE IN THE UNITED STATES - Universe:
POPULATION 1 YEAR AND OVER**

Data Set: 2008-2012 American Community Survey 5-Year Estimates

	East Lake-Orient Park CDP, Florida					
	African American	Margin of Error (+/-)	% of AA Total	White, Not Hispanic	Margin of Error (+/-)	% of NHW Total
Total:	8,925	1,095	100.0%	8,734	937	100.0%
Same house 1 year ago	7,357	976	82.4%	7,214	843	82.6%
Moved within same county	1,244	429	13.9%	1,122	453	12.8%
Moved from different county within same state	165	103	1.8%	262	154	3.0%
Moved from different state	139	104	1.6%	107	103	1.2%
Moved from abroad	20	33	0.2%	29	30	0.3%

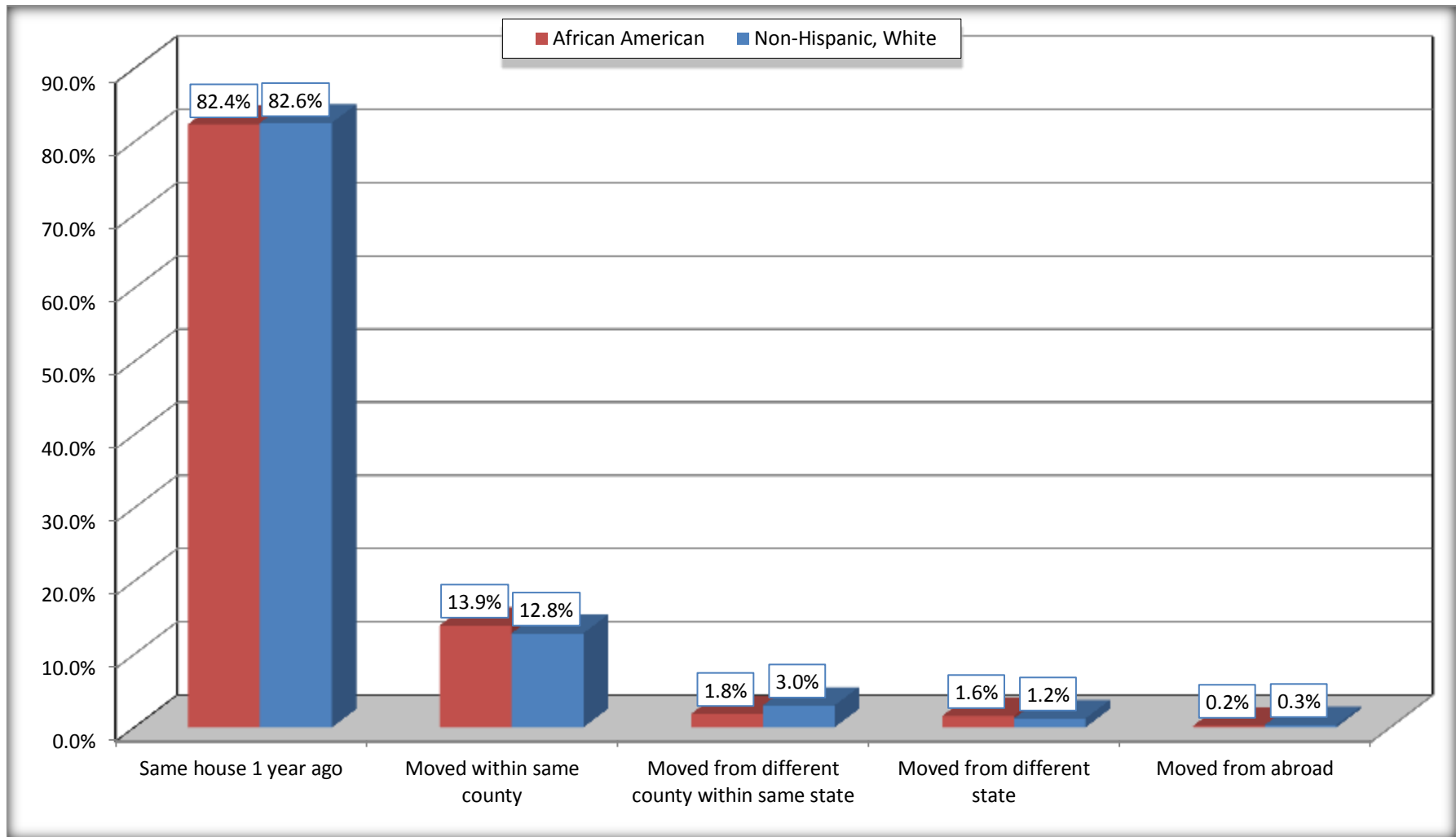
Source: U.S. Census Bureau, 2008-2012 American Community Survey

For information on confidentiality protection, sampling error, nonsampling error, and definitions, see Survey Methodology.

<http://www.census.gov/acs/www/UseData/index.htm>

Geographical Mobility in the Past Year (Population 1 Year and Over)

East Lake-Orient Park CDP, Florida



Source: B07004. GEOGRAPHICAL MOBILITY IN THE PAST YEAR BY RACE FOR CURRENT RESIDENCE IN THE UNITED STATES - Universe: POPULATION 1 YEAR AND OVER

Data Set: 2008-2012 American Community Survey 5-Year Estimates

B08105. MEANS OF TRANSPORTATION TO WORK - Universe: WORKERS 16 YEARS AND OVER

Data Set: 2008-2012 American Community Survey 5-Year Estimates

	East Lake-Orient Park CDP, Florida					
	African American	Margin of Error (+/-)	% of AA Total	White, Not Hispanic	Margin of Error (+/-)	% of NHW Total
Total:	3668	596	100.0%	4298	533	100.0%
Car, truck, or van - drove alone	2822	471	76.9%	3715	454	86.4%
Car, truck, or van - carpooled	359	144	9.8%	258	115	6.0%
Public transportation (excluding taxicab)	311	164	8.5%	117	104	2.7%
Walked	59	65	1.6%	75	65	1.7%
Taxicab, motorcycle, bicycle, or other means	29	43	0.8%	55	44	1.3%
Worked at home	88	60	2.4%	78	51	1.8%

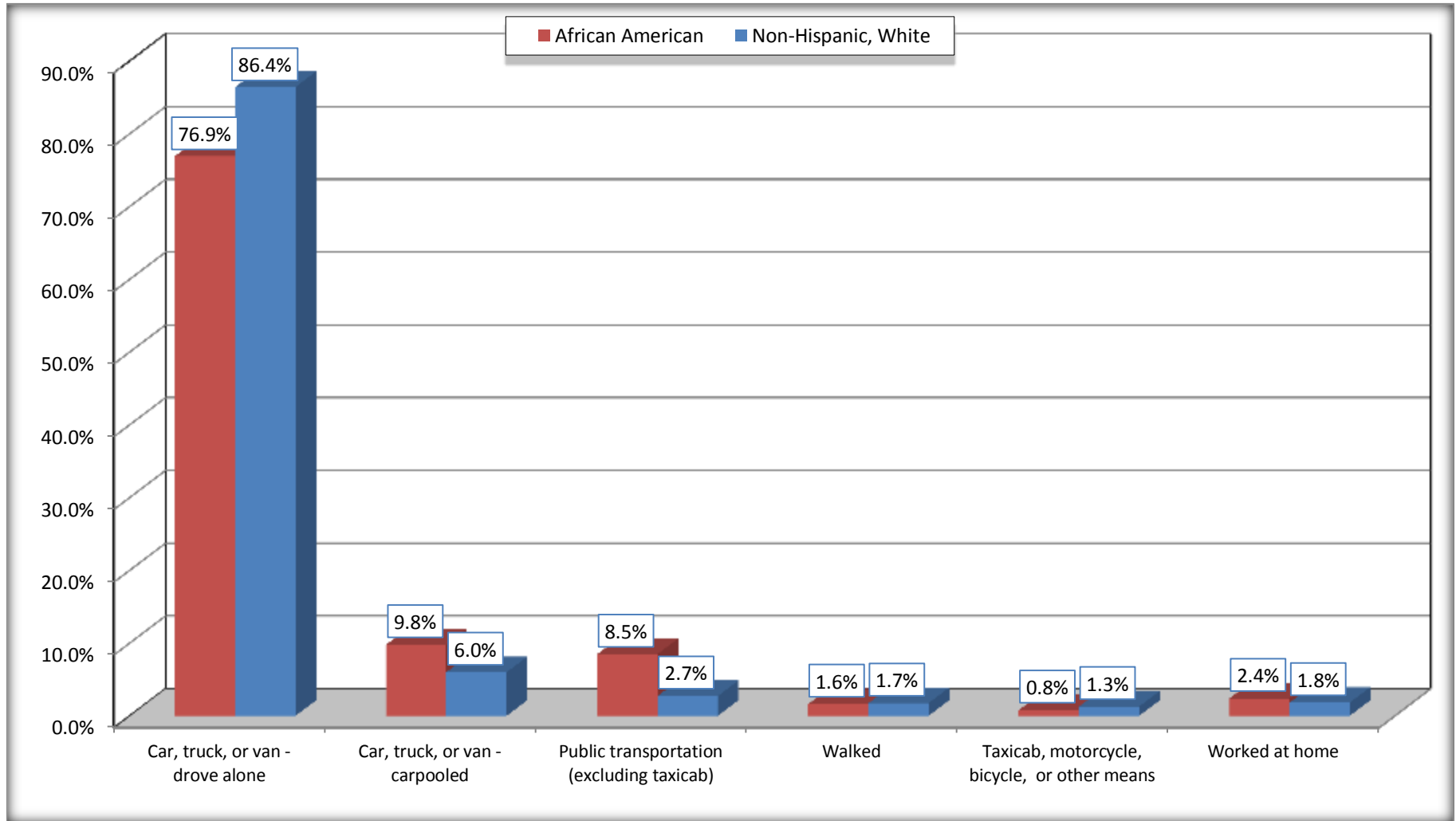
Source: U.S. Census Bureau, 2008-2012 American Community Survey

For information on confidentiality protection, sampling error, nonsampling error, and definitions, see Survey Methodology.

<http://www.census.gov/acs/www/UseData/index.htm>

Means of Transportation to Work (Workers 16 Years and Over)

East Lake-Orient Park CDP, Florida



Source: B08105. MEANS OF TRANSPORTATION TO WORK - Universe: WORKERS 16 YEARS AND OVER
Data Set: 2008-2012 American Community Survey 5-Year Estimates

B11002. HOUSEHOLD TYPE BY RELATIVES AND NONRELATIVES FOR POPULATION IN HOUSEHOLDS

Data Set: 2008-2012 American Community Survey 5-Year Estimates

	East Lake-Orient Park CDP, Florida					
	African American	Margin of Error (+/-)	% of AA Total	White, Not Hispanic	Margin of Error (+/-)	% of NHW Total
Total:	8835	1081	100.0%	9316	1037	100.0%
In family households	7237	1011	81.9%	7252	895	77.8%
In nonfamily households	1598	355	18.1%	2064	471	22.2%

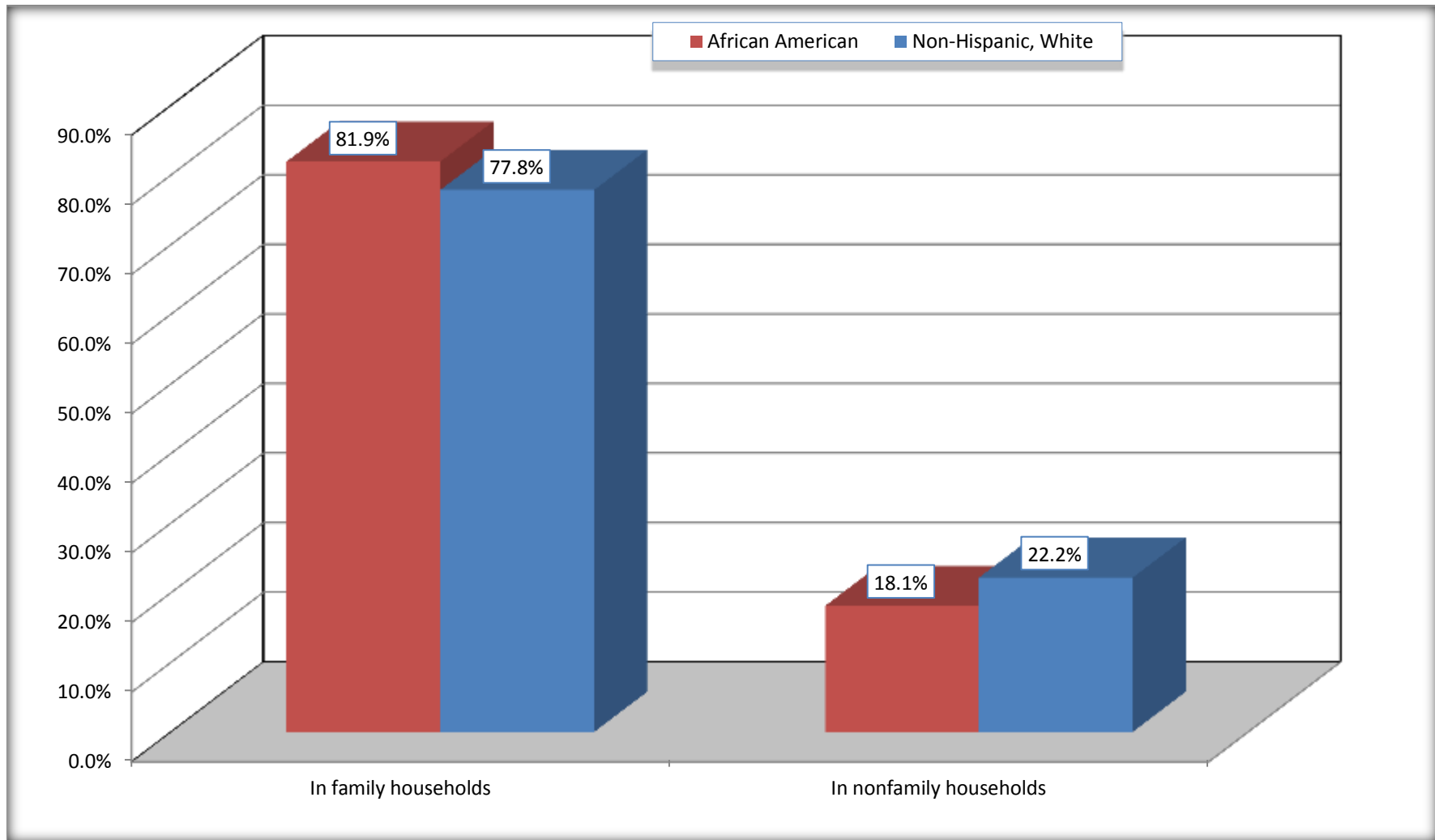
Source: U.S. Census Bureau, 2008-2012 American Community Survey

For information on confidentiality protection, sampling error, nonsampling error, and definitions, see Survey Methodology.

<http://www.census.gov/acs/www/UseData/index.htm>

Household Type for Population in Households

East Lake-Orient Park CDP, Florida



Source: B11002. HOUSEHOLD TYPE BY RELATIVES AND NONRELATIVES FOR POPULATION IN HOUSEHOLDS
Data Set: 2008-2012 American Community Survey 5-Year Estimates

B12002. MARITAL STATUS FOR THE POPULATION 15 YEARS AND OVER

Data Set: 2008-2012 American Community Survey 5-Year Estimates

	East Lake-Orient Park CDP, Florida					
	African American	Margin of Error (+/-)	% of AA Total	White, Not Hispanic	Margin of Error (+/-)	% of NHW Total
Total:	6,716	866	100.0%	7,327	754	100.0%
Never married	2,947	NC	43.9%	2,704	NC	36.9%
Now married (except separated)	2,123	NC	31.6%	3,011	NC	41.1%
Separated	370	NC	5.5%	302	NC	4.1%
Widowed	403	NC	6.0%	252	NC	3.4%
Divorced	873	NC	13.0%	1,058	NC	14.4%
Male:	2,944	513	43.8%	3,911	501	53.4%
Never married	1,284	367	19.1%	1,655	376	22.6%
Now married (except separated)	1,110	230	16.5%	1,484	262	20.3%
Separated	157	91	2.3%	166	85	2.3%
Widowed	35	34	0.5%	74	44	1.0%
Divorced	358	155	5.3%	532	162	7.3%
Female:	3,772	529	56.2%	3,416	392	46.6%
Never married	1,663	338	24.8%	1,049	221	14.3%
Now married (except separated)	1,013	216	15.1%	1,527	243	20.8%
Separated	213	103	3.2%	136	92	1.9%
Widowed	368	129	5.5%	178	65	2.4%
Divorced	515	183	7.7%	526	131	7.2%

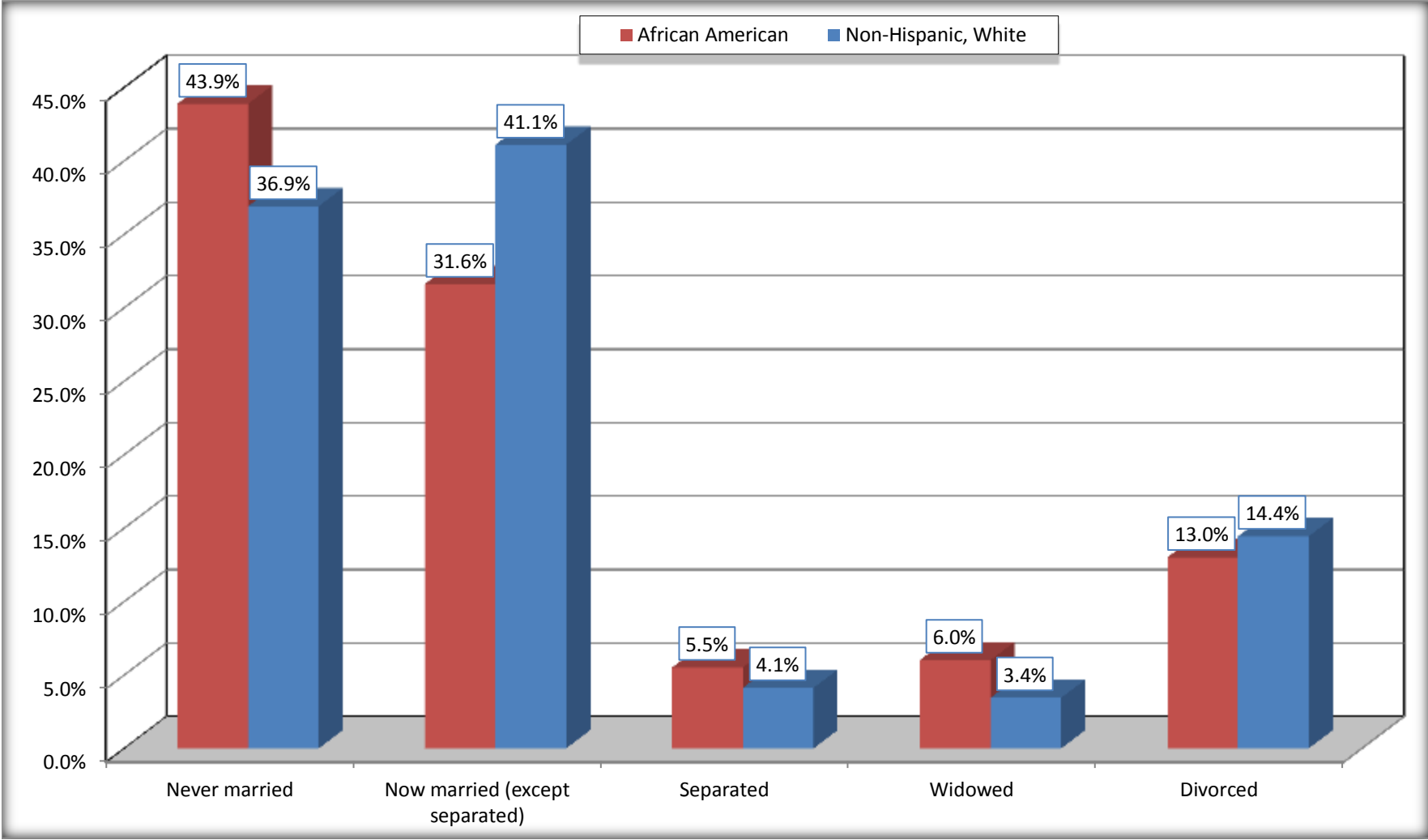
Source: U.S. Census Bureau, 2008-2012 American Community Survey

For information on confidentiality protection, sampling error, nonsampling error, and definitions, see Survey Methodology.

<http://www.census.gov/acs/www/UseData/index.htm>

Marital Status for the Population 15 Years and Over

East Lake-Orient Park CDP, Florida



Source: B12002. MARITAL STATUS FOR THE POPULATION 15 YEARS AND OVER
Data Set: 2008-2012 American Community Survey 5-Year Estimates

C15002. SEX BY EDUCATIONAL ATTAINMENT FOR THE POPULATION 25 YEARS AND OVER

Data Set: 2008-2012 American Community Survey 5-Year Estimates

	East Lake-Orient Park CDP, Florida					
	African American	Margin of Error (+/-)	% of AA Total	White, Not Hispanic	Margin of Error (+/-)	% of NHW Total
Total:	5,238	682	100.0%	6,202	666	100.0%
Less than high school diploma	805	NC	15.4%	1,073	NC	17.3%
High school graduate, GED, or alternative	1,952	NC	37.3%	2,286	NC	36.9%
Some college or associate's degree	1,932	NC	36.9%	2,021	NC	32.6%
Bachelor's degree or higher	549	NC	10.5%	822	NC	13.3%
Male:	2,177	424	41.6%	3,333	476	53.7%
Less than high school diploma	315	144	6.0%	711	195	11.5%
High school graduate, GED, or alternative	913	266	17.4%	1,363	281	22.0%
Some college or associate's degree	675	260	12.9%	822	230	13.3%
Bachelor's degree or higher	274	138	5.2%	437	180	7.0%
Female:	3,061	398	58.4%	2,869	317	46.3%
Less than high school diploma	490	139	9.4%	362	111	5.8%
High school graduate, GED, or alternative	1,039	290	19.8%	923	163	14.9%
Some college or associate's degree	1,257	256	24.0%	1,199	233	19.3%
Bachelor's degree or higher	275	105	5.3%	385	131	6.2%

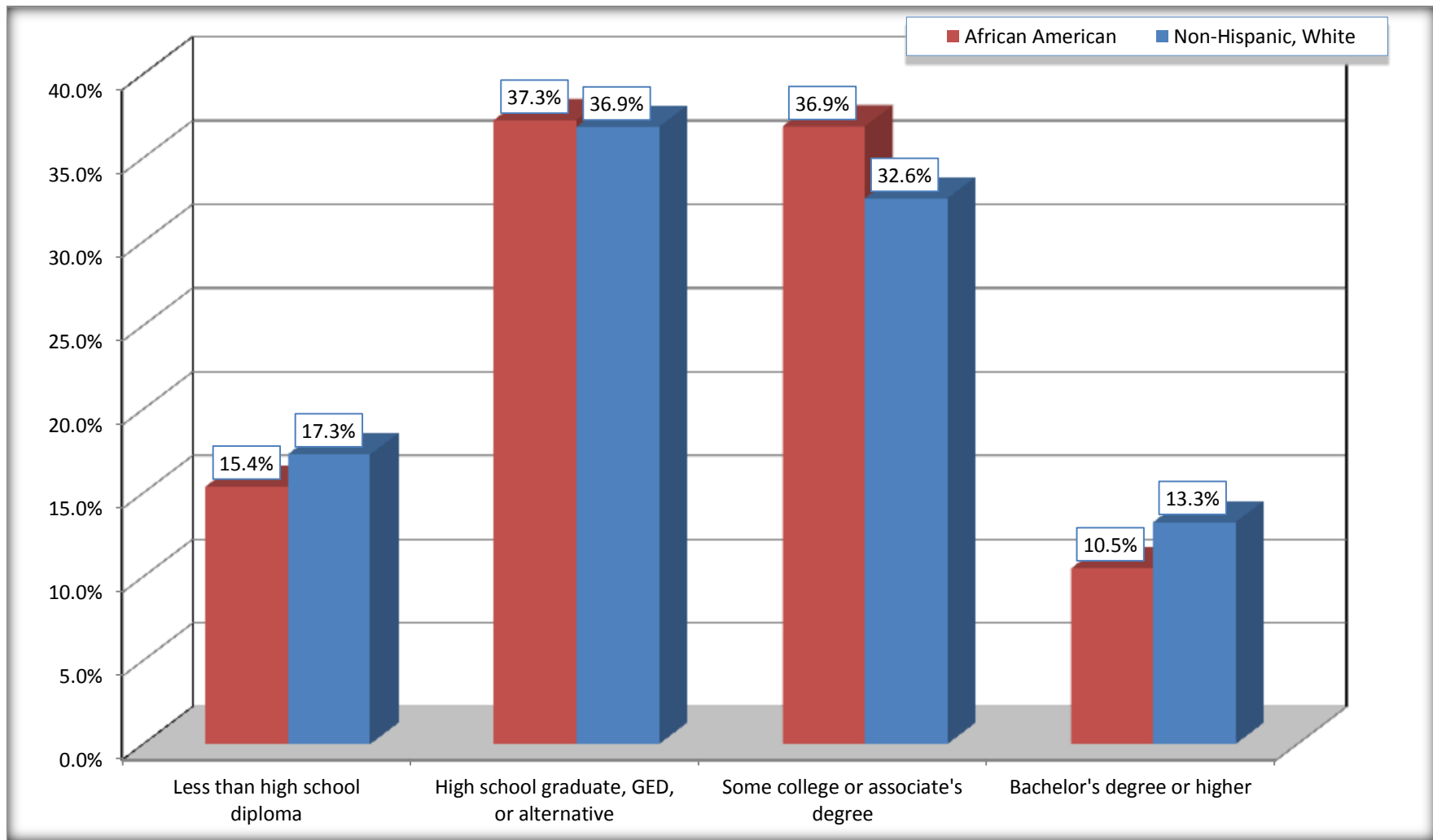
Source: U.S. Census Bureau, 2008-2012 American Community Survey

For information on confidentiality protection, sampling error, nonsampling error, and definitions, see Survey Methodology.

<http://www.census.gov/acs/www/UseData/index.htm>

Educational Attainment for the Population 25 Years and Older

East Lake-Orient Park CDP, Florida



Source: C15002. SEX BY EDUCATIONAL ATTAINMENT FOR THE POPULATION 25 YEARS AND OVER
Data Set: 2008-2012 American Community Survey 5-Year Estimates

B16005. NATIVITY BY LANGUAGE SPOKEN AT HOME BY ABILITY TO SPEAK ENGLISH FOR THE POPULATION 5 YEARS AND OVER

Data Set: 2008-2012 American Community Survey 5-Year Estimates

	East Lake-Orient Park CDP, Florida					
	African American	Margin of Error (+/-)	% of AA Total	White, Not Hispanic	Margin of Error (+/-)	% of NHW Total
Total:	8,316	972	100.0%	8,425	893	100.0%
Speak only English	7,418	NC	89.2%	7,950	NC	94.4%
Speak another language	898	NC	10.8%	475	NC	5.6%
Speak English "very well"	592	NC	7.1%	283	NC	3.4%
Speak English "less than very well"	306	NC	3.7%	192	NC	2.3%
Native:	7,497	924	90.2%	7,880	872	93.5%
Speak only English	6,958	950	83.7%	7,747	874	92.0%
Speak another language	539	291	6.5%	133	80	1.6%
Speak English "very well"	423	249	5.1%	100	53	1.2%
Speak English "less than very well"	116	83	1.4%	33	52	0.4%
Foreign born:	819	258	9.8%	545	236	6.5%
Speak only English	460	185	5.5%	203	109	2.4%
Speak another language	359	171	4.3%	342	219	4.1%
Speak English "very well"	169	85	2.0%	183	121	2.2%
Speak English "less than very well"	190	153	2.3%	159	130	1.9%

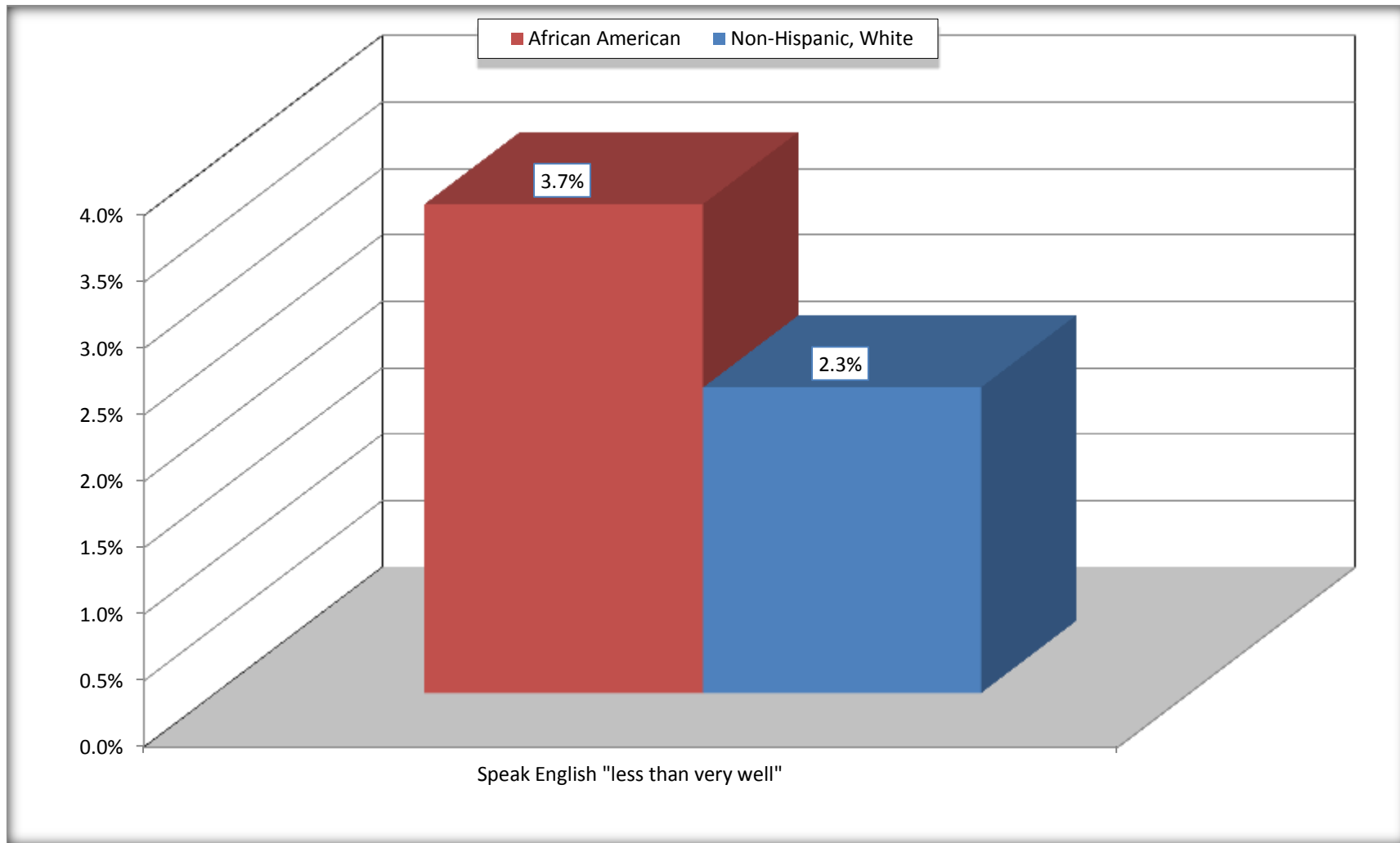
Source: U.S. Census Bureau, 2008-2012 American Community Survey

For information on confidentiality protection, sampling error, nonsampling error, and definitions, see Survey Methodology.

<http://www.census.gov/acs/www/UseData/index.htm>

Speak English "Less than Very Well" (Population 5 Years and Over)

East Lake-Orient Park CDP, Florida



Source: B16005. NATIVITY BY LANGUAGE SPOKEN AT HOME BY ABILITY TO SPEAK ENGLISH FOR THE POPULATION 5 YEARS AND OVER
Data Set: 2008-2012 American Community Survey 5-Year Estimates

B17010. POVERTY STATUS IN THE PAST 12 MONTHS OF FAMILIES BY FAMILY TYPE BY PRESENCE OF RELATED CHILDREN UNDER 18 YEARS

Data Set: 2008-2012 American Community Survey 5-Year Estimates

	East Lake-Orient Park CDP, Florida					
	African American	Margin of Error (+/-)	% of AA Total	White, Not Hispanic	Margin of Error (+/-)	% of NHW Total
Total:	2,028	288	100.0%	2,107	257	100.0%
Income in the past 12 months below poverty level:	269	139	13.3%	338	110	16.0%
Married-couple family:	68	62	3.4%	137	78	6.5%
With related children under 18 years	63	62	3.1%	104	69	4.9%
Other family:	201	116	9.9%	201	70	9.5%
Male householder, no wife present	2	11	0.1%	98	61	4.7%
With related children under 18 years	2	11	0.1%	78	54	3.7%
Female householder, no husband present	199	115	9.8%	103	57	4.9%
With related children under 18 years	143	100	7.1%	91	57	4.3%
Income in the past 12 months at or above poverty level:	1,759	282	86.7%	1,769	247	84.0%
Married-couple family:	904	202	44.6%	1,161	218	55.1%
With related children under 18 years	398	152	19.6%	407	145	19.3%
Other family:	855	192	42.2%	608	167	28.9%
Male householder, no wife present	92	54	4.5%	132	69	6.3%
With related children under 18 years	37	40	1.8%	73	64	3.5%
Female householder, no husband present	763	185	37.6%	476	170	22.6%
With related children under 18 years	672	173	33.1%	296	152	14.0%

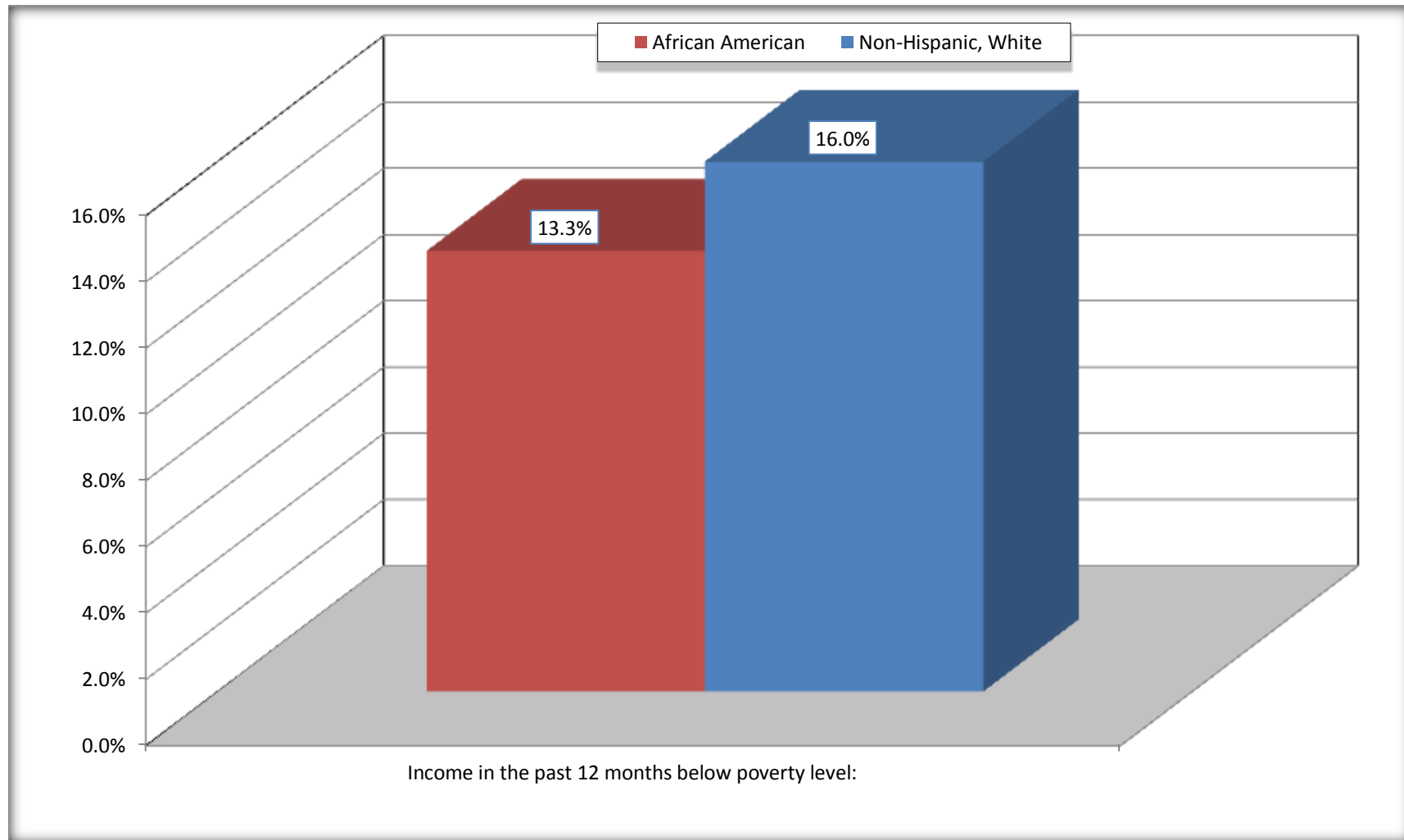
Source: U.S. Census Bureau, 2008-2012 American Community Survey

For information on confidentiality protection, sampling error, nonsampling error, and definitions, see Survey Methodology.

<http://www.census.gov/acs/www/UseData/index.htm>

Family Households Below Poverty in the Past 12 Months

East Lake-Orient Park CDP, Florida

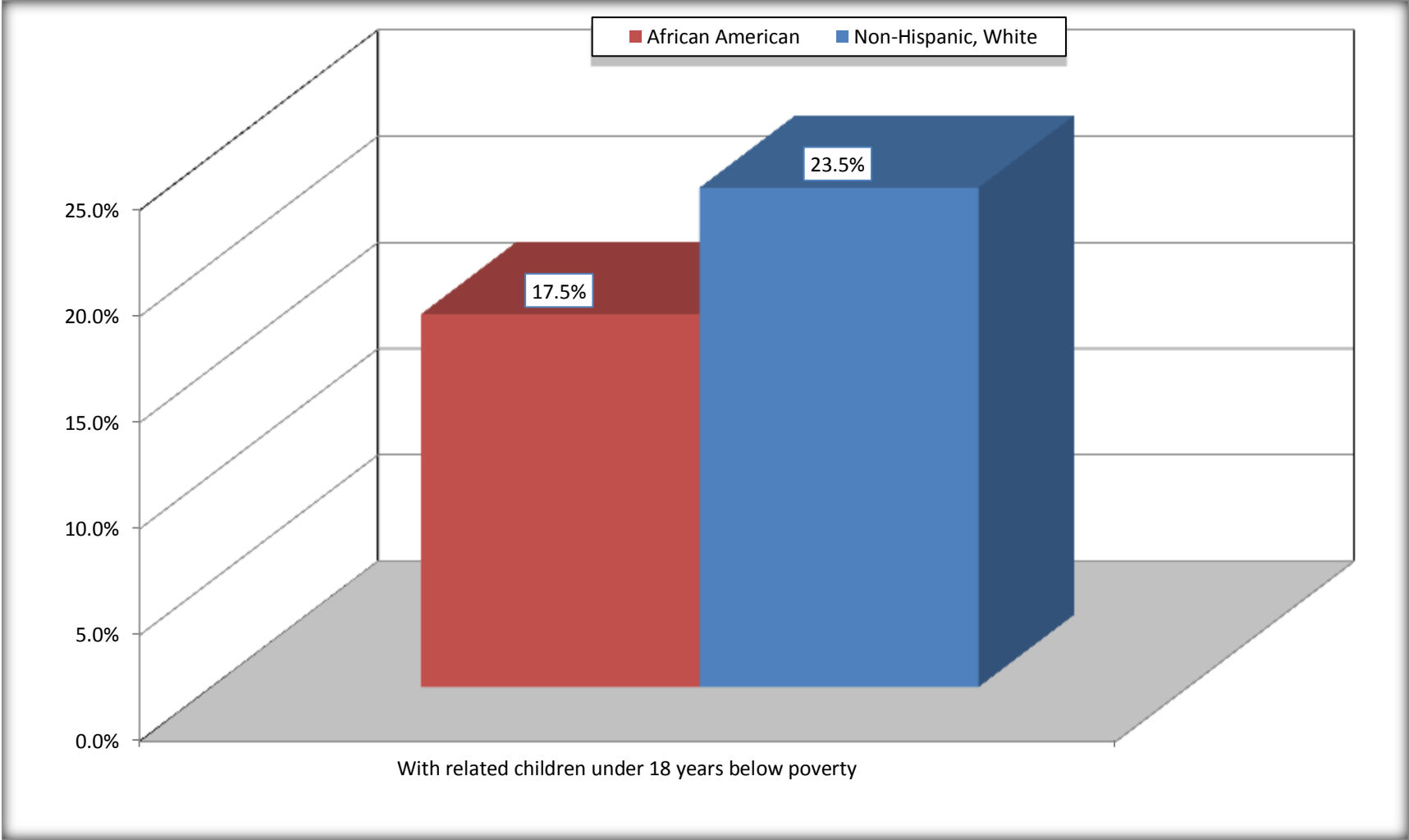


Source: B17010. POVERTY STATUS IN THE PAST 12 MONTHS OF FAMILIES BY FAMILY TYPE BY PRESENCE OF RELATED CHILDREN UNDER 18 YEARS

Data Set: 2008-2012 American Community Survey 5-Year Estimates

Female-headed Households with Related Children Below Poverty in the Past 12 Months

East Lake-Orient Park CDP, Florida



Source: B17010. POVERTY STATUS IN THE PAST 12 MONTHS OF FAMILIES BY FAMILY TYPE BY PRESENCE OF RELATED CHILDREN UNDER 18 YEARS

Data Set: 2008-2012 American Community Survey 5-Year Estimates

B17020 POVERTY STATUS IN THE PAST 12 MONTHS BY AGE - Universe: POPULATION FOR WHOM POVERTY STATUS IS DETERMINED

Data Set: 2008-2012 American Community Survey 5-Year Estimates

	East Lake-Orient Park CDP, Florida					
	African American	Margin of Error (+/-)	% of AA By Age	White, Not Hispanic	Margin of Error (+/-)	% of NHW By Age
Total:	9,086	1,108	100.0%	8,751	947	100.0%
Income in the past 12 months below poverty level:	1,858	609	20.4%	1,669	463	19.1%
Under 18 years	751	NC	25.4%	547	NC	35.1%
18 to 64 years	1,061	330	19.0%	1,064	291	16.9%
65 years and over	46	NC	8.4%	58	NC	6.4%
Income in the past 12 months at or above poverty level:	7,228	1,036	79.6%	7,082	798	80.9%
Under 18 years	2,209	NC	74.6%	1,012	NC	64.9%
18 to 64 years	4,516	707	81.0%	5,218	593	83.1%
65 years and over	503	NC	91.6%	852	NC	93.6%

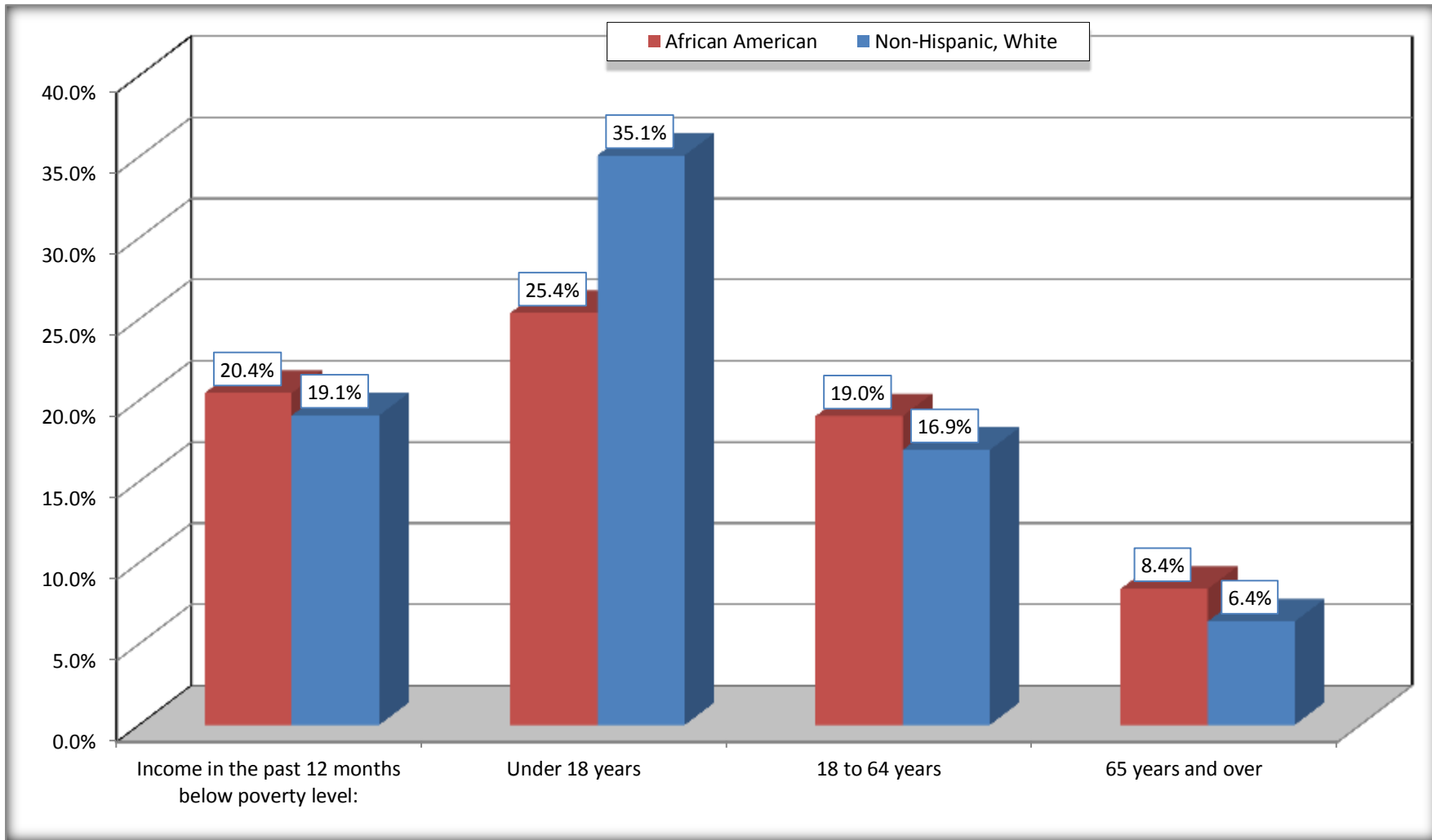
Source: U.S. Census Bureau, 2008-2012 American Community Survey

For information on confidentiality protection, sampling error, nonsampling error, and definitions, see Survey Methodology.

<http://www.census.gov/acs/www/UseData/index.htm>

Population Below Poverty in the Past 12 Months

East Lake-Orient Park CDP, Florida



Source: B17020 POVERTY STATUS IN THE PAST 12 MONTHS BY AGE - Universe: POPULATION FOR WHOM POVERTY STATUS IS DETERMINED
Data Set: 2008-2012 American Community Survey 5-Year Estimates

B19001. HOUSEHOLD INCOME IN THE PAST 12 MONTHS (IN 2010 INFLATION-ADJUSTED DOLLARS)

Data Set: 2008-2012 American Community Survey 5-Year Estimates

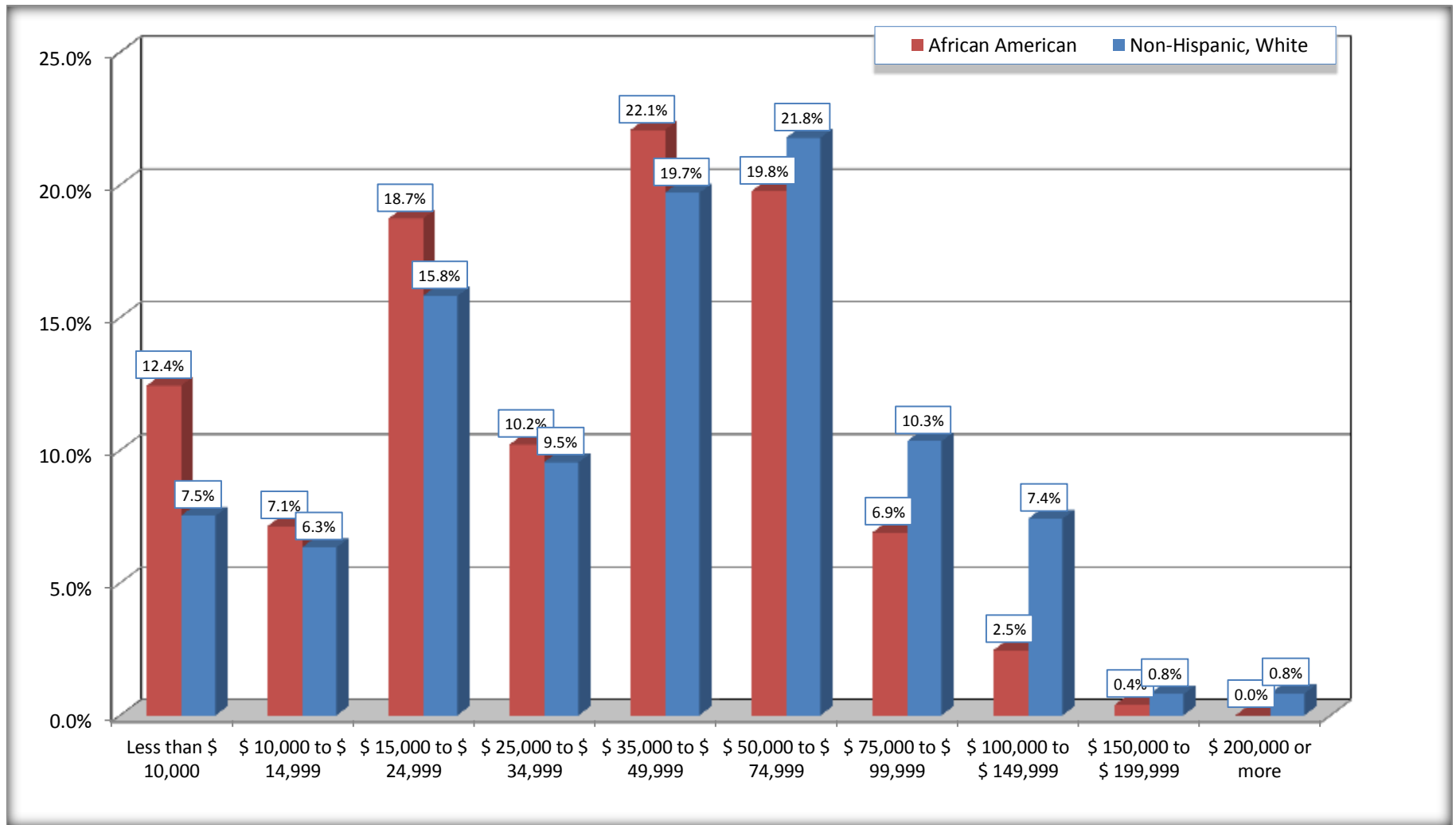
	East Lake-Orient Park CDP, Florida					
	African American	Margin of Error (+/-)	% of AA Total	White, Not Hispanic	Margin of Error (+/-)	% of NHW Total
Total:	3,382	404	100.0%	3,524	363	100.0%
Less than \$ 10,000	420	184	12.4%	265	94	7.5%
\$ 10,000 to \$ 14,999	241	126	7.1%	223	96	6.3%
\$ 15,000 to \$ 24,999	633	NC	18.7%	557	NC	15.8%
\$ 25,000 to \$ 34,999	345	NC	10.2%	336	NC	9.5%
\$ 35,000 to \$ 49,999	746	NC	22.1%	694	NC	19.7%
\$ 50,000 to \$ 74,999	668	NC	19.8%	767	NC	21.8%
\$ 75,000 to \$ 99,999	233	105	6.9%	364	120	10.3%
\$ 100,000 to \$ 149,999	83	NC	2.5%	261	NC	7.4%
\$ 150,000 to \$ 199,999	13	21	0.4%	28	27	0.8%
\$ 200,000 or more	0	25	0.0%	29	27	0.8%

Source: U.S. Census Bureau, 2008-2012 American Community Survey

For information on confidentiality protection, sampling error, nonsampling error, and definitions, see Survey Methodology.

<http://www.census.gov/acs/www/UseData/index.htm>

Household Income in the Past 12 Months East Lake-Orient Park CDP, Florida



Source: B19001. HOUSEHOLD INCOME IN THE PAST 12 MONTHS (IN 2010 INFLATION-ADJUSTED DOLLARS)
Data Set: 2008-2012 American Community Survey 5-Year Estimates

B19013. MEDIAN HOUSEHOLD INCOME IN THE PAST 12 MONTHS (IN 2010 INFLATION-ADJUSTED DOLLARS)

Data Set: 2008-2012 American Community Survey 5-Year Estimates

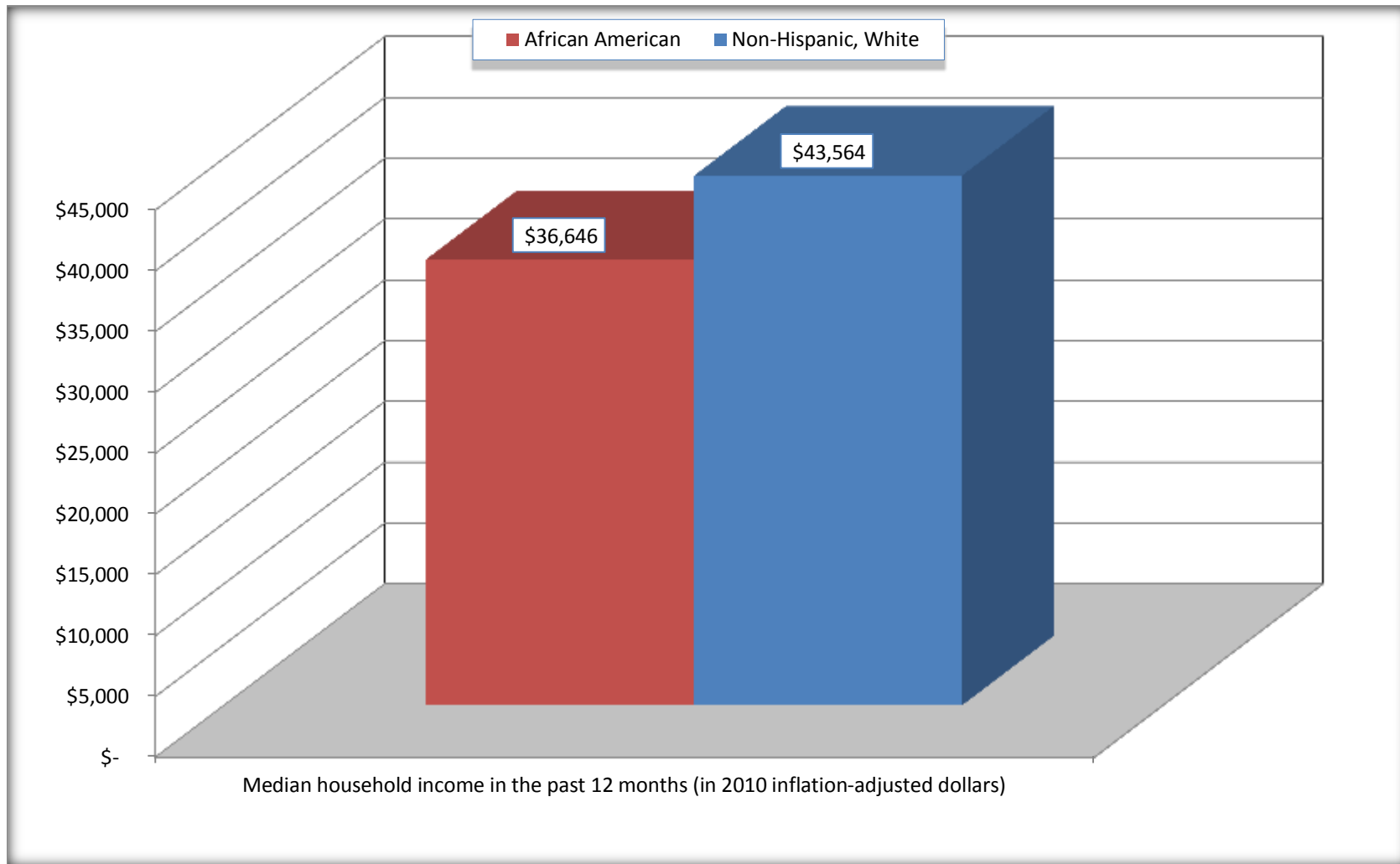
	East Lake-Orient Park CDP, Florida			
	African American	Margin of Error (+/-)	White, Not Hispanic	Margin of Error (+/-)
Median household income in the past 12 months (in 2010 inflation-adjusted dollars)	\$ 36,646	\$ 7,537	\$ 43,564	\$ 2,795

Source: U.S. Census Bureau, 2008-2012 American Community Survey

For information on confidentiality protection, sampling error, nonsampling error, and definitions, see Survey Methodology.
<http://www.census.gov/acs/www/UseData/index.htm>

Median Household Income in the Past 12 Months

East Lake-Orient Park CDP, Florida



Source: B19013. MEDIAN HOUSEHOLD INCOME IN THE PAST 12 MONTHS (IN 2010 INFLATION-ADJUSTED DOLLARS)
Data Set: 2008-2012 American Community Survey 5-Year Estimates

B19101. FAMILY INCOME IN THE PAST 12 MONTHS (IN 2010 INFLATION-ADJUSTED DOLLARS)

Data Set: 2008-2012 American Community Survey 5-Year Estimates

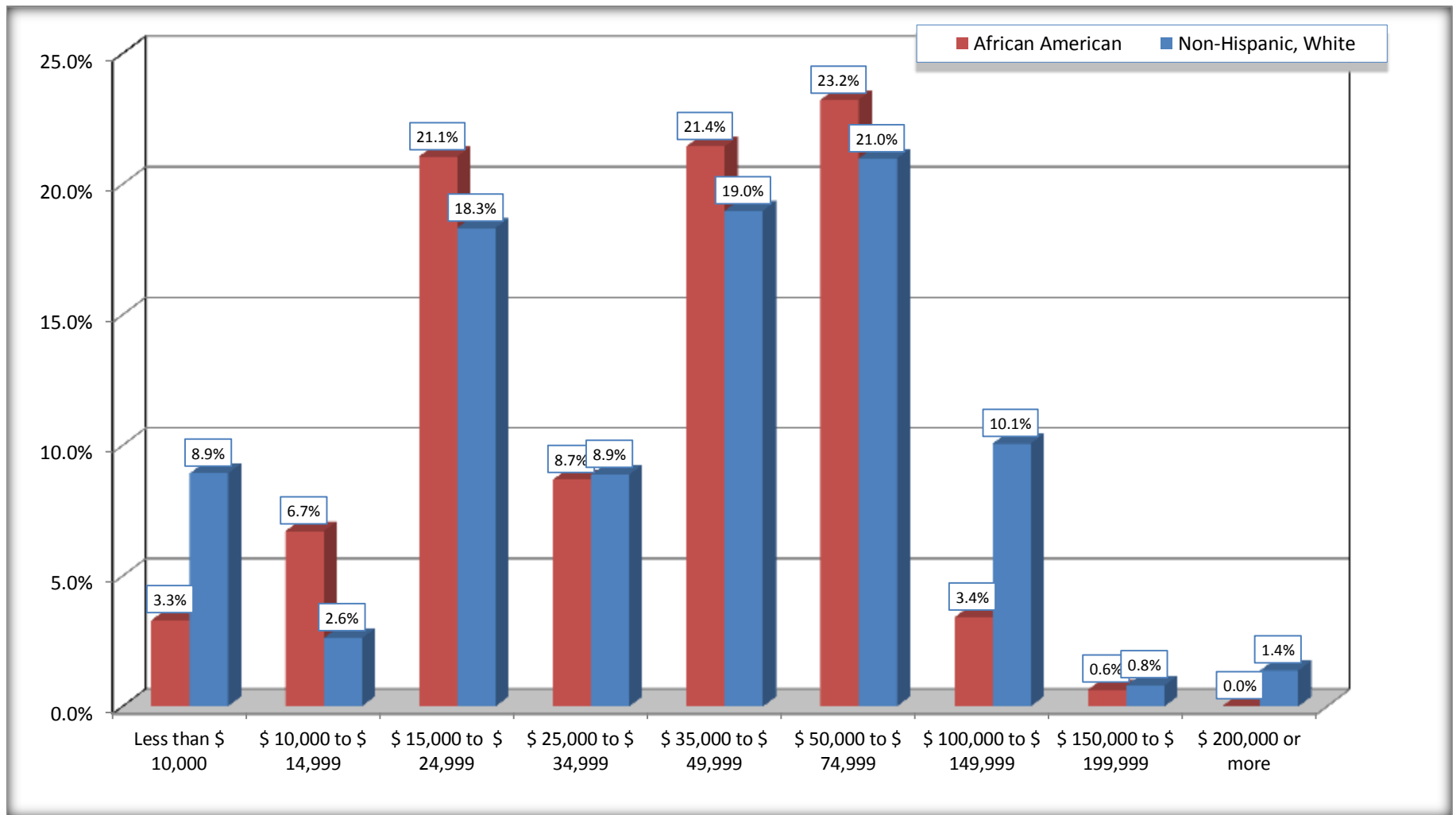
	East Lake-Orient Park CDP, Florida					
	African American	Margin of Error (+/-)	% of AA Total	White, Not Hispanic	Margin of Error (+/-)	% of NHW Total
Total:	2,028	288	100.0%	2,107	257	100.0%
Less than \$ 10,000	67	78	3.3%	188	85	8.9%
\$ 10,000 to \$ 14,999	136	107	6.7%	55	35	2.6%
\$ 15,000 to \$ 24,999	427	NC	21.1%	386	NC	18.3%
\$ 25,000 to \$ 34,999	176	NC	8.7%	187	NC	8.9%
\$ 35,000 to \$ 49,999	435	NC	21.4%	400	NC	19.0%
\$ 50,000 to \$ 74,999	471	NC	23.2%	442	NC	21.0%
\$ 100,000 to \$ 149,999	69	NC	3.4%	212	NC	10.1%
\$ 150,000 to \$ 199,999	13	21	0.6%	17	21	0.8%
\$ 200,000 or more	0	25	0.0%	29	27	1.4%

Source: U.S. Census Bureau, 2008-2012 American Community Survey

For information on confidentiality protection, sampling error, nonsampling error, and definitions, see Survey Methodology.

<http://www.census.gov/acs/www/UseData/index.htm>

Family Income in the Past 12 Months East Lake-Orient Park CDP, Florida



Source: B19101. FAMILY INCOME IN THE PAST 12 MONTHS (IN 2010 INFLATION-ADJUSTED DOLLARS)
Data Set: 2008-2012 American Community Survey 5-Year Estimates

B19113. MEDIAN FAMILY INCOME IN THE PAST 12 MONTHS (IN 2010 INFLATION-ADJUSTED DOLLARS)

Data Set: 2008-2012 American Community Survey 5-Year Estimates

	East Lake-Orient Park CDP, Florida			
	African American	Margin of Error (+/-)	White, Not Hispanic	Margin of Error (+/-)
Median family income in the past 12 months (in 2010 inflation-adjusted dollars)	\$ 41,310	\$ 3,774	\$ 45,394	\$ 3,577

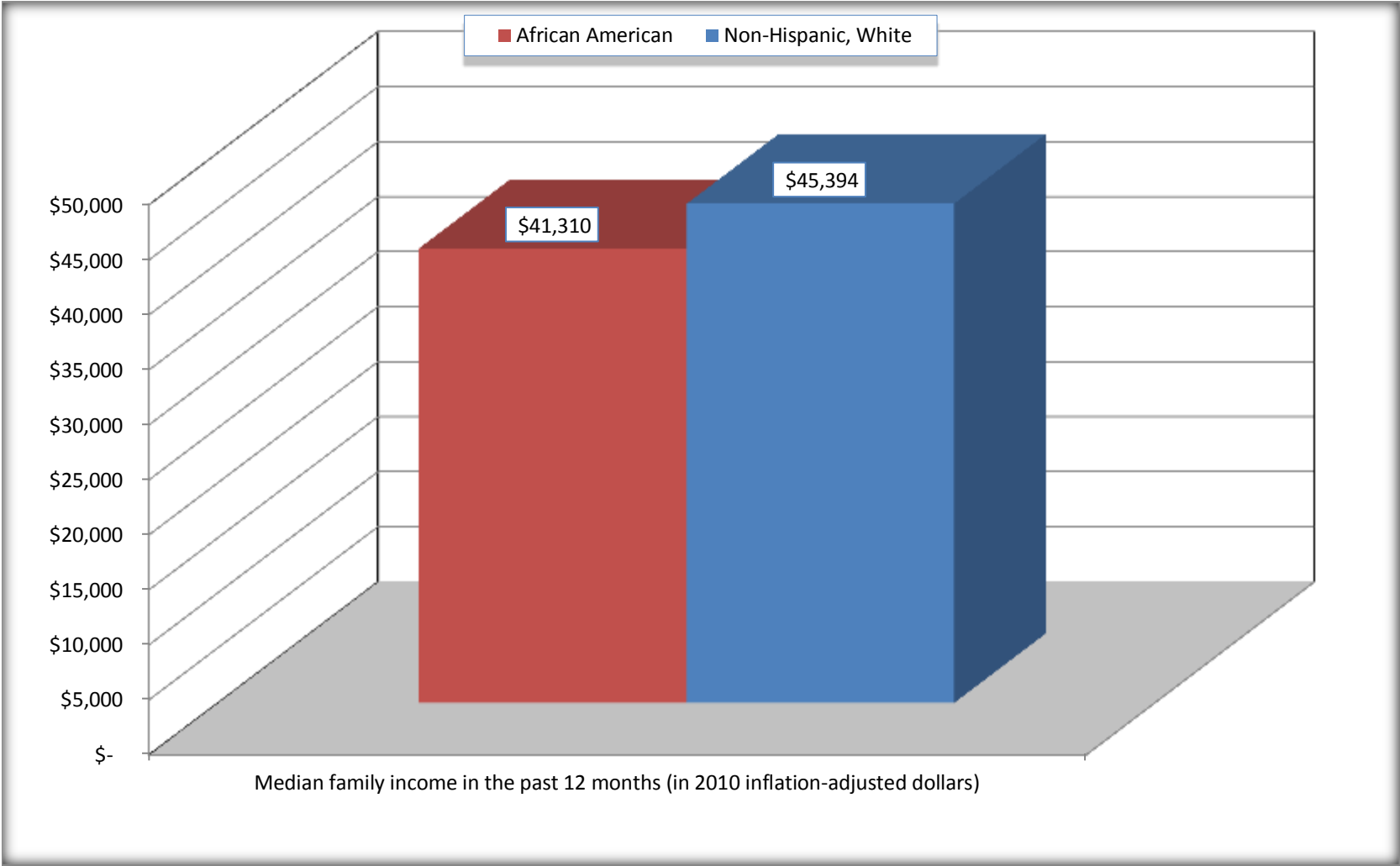
Source: U.S. Census Bureau, 2008-2012 American Community Survey

For information on confidentiality protection, sampling error, nonsampling error, and definitions, see Survey Methodology.

<http://www.census.gov/acs/www/UseData/index.htm>

Median Family Income in the Past 12 Months

East Lake-Orient Park CDP, Florida



Source: B19113. MEDIAN FAMILY INCOME IN THE PAST 12 MONTHS (IN 2010 INFLATION-ADJUSTED DOLLARS)
Data Set: 2008-2012 American Community Survey 5-Year Estimates

B19202. MEDIAN NONFAMILY HOUSEHOLD INCOME IN THE PAST 12 MONTHS (IN 2010 INFLATION-ADJUSTED DOLLARS)

Data Set: 2008-2012 American Community Survey 5-Year Estimates

	East Lake-Orient Park CDP, Florida			
	African American	Margin of Error (+/-)	White, Not Hispanic	Margin of Error (+/-)
Median nonfamily household income in the past 12 months (in 2010 inflation-adjusted dollars)	\$ 24,368	\$ 4,748	\$ 41,383	\$ 4,700

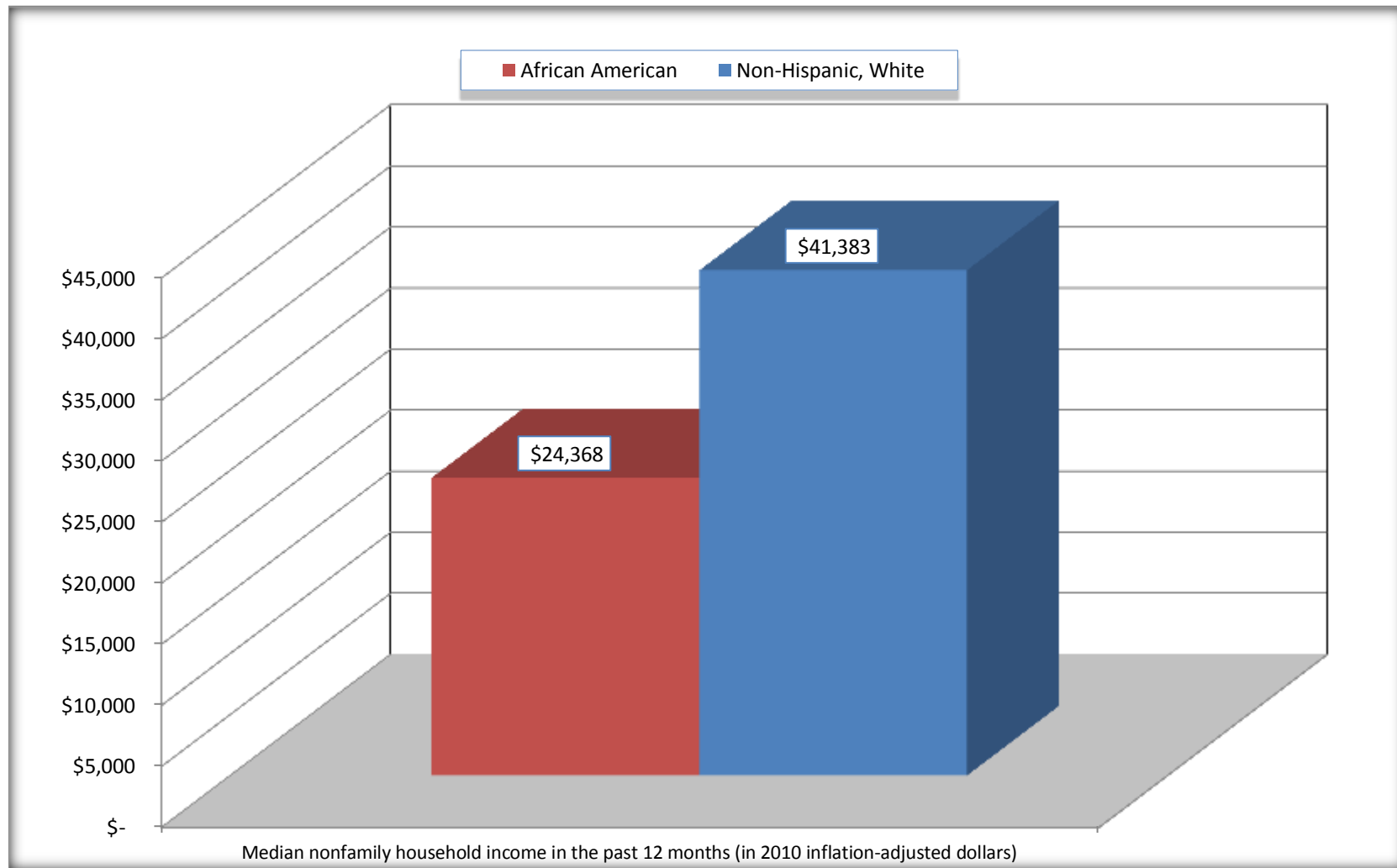
Source: U.S. Census Bureau, 2008-2012 American Community Survey

For information on confidentiality protection, sampling error, nonsampling error, and definitions, see Survey Methodology.

<http://www.census.gov/acs/www/UseData/index.htm>

Median Non-Family Income in the Past 12 Months

East Lake-Orient Park CDP, Florida



Source: B19202. MEDIAN NONFAMILY HOUSEHOLD INCOME IN THE PAST 12 MONTHS (IN 2010 INFLATION-ADJUSTED DOLLARS)
Data Set: 2008-2012 American Community Survey 5-Year Estimates

B19301. PER CAPITA INCOME IN THE PAST 12 MONTHS (IN 2010 INFLATION-ADJUSTED DOLLARS)

Data Set: 2008-2012 American Community Survey 5-Year Estimates

	East Lake-Orient Park CDP, Florida			
	African American	Margin of Error (+/-)	White, Not Hispanic	Margin of Error (+/-)
Per capita income in the past 12 months (in 2010 inflation-adjusted dollars)	\$ 15,222	\$ 1,484	\$ 21,411	\$ 2,059

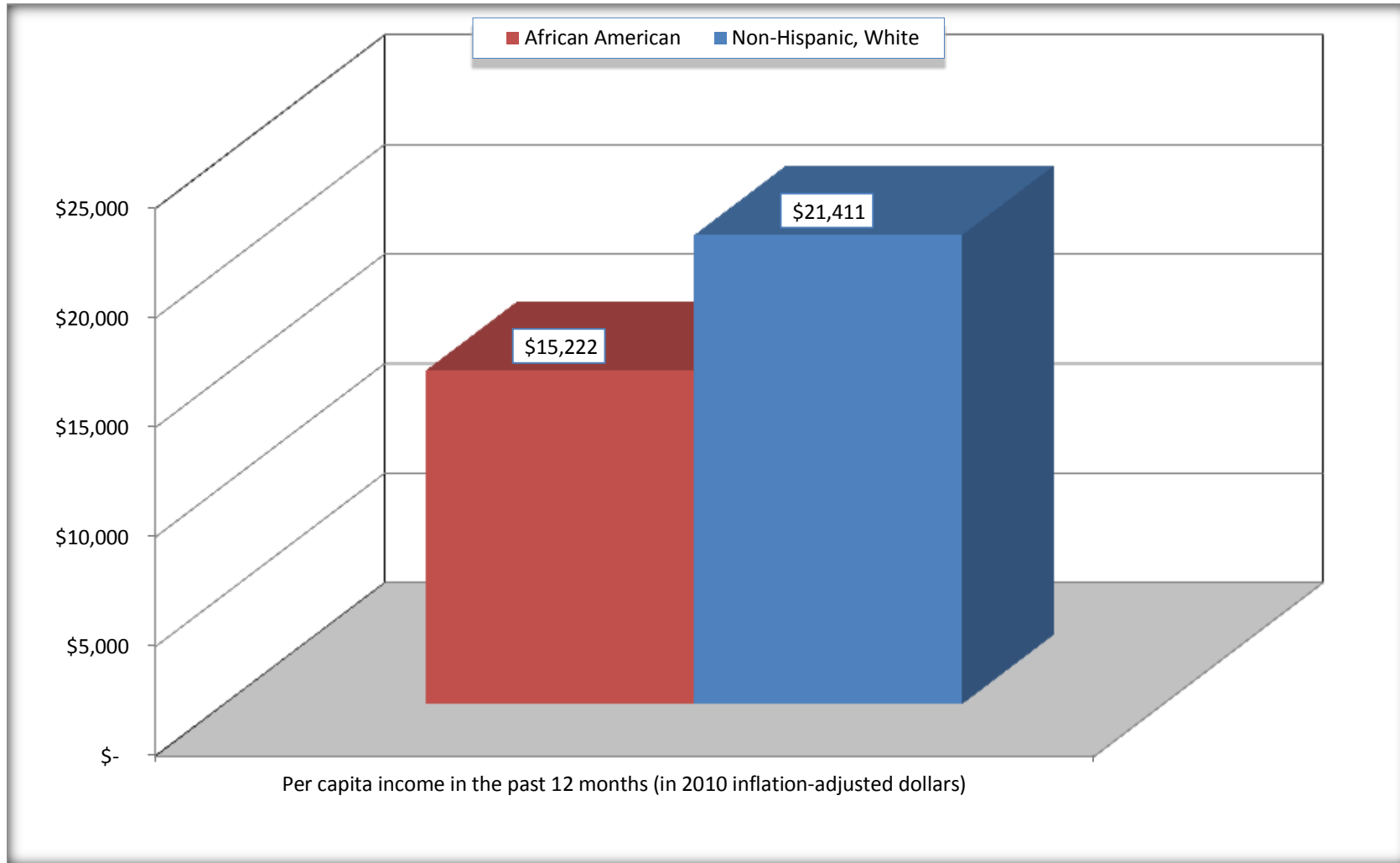
Source: U.S. Census Bureau, 2008-2012 American Community Survey

For information on confidentiality protection, sampling error, nonsampling error, and definitions, see Survey Methodology.

<http://www.census.gov/acs/www/UseData/index.htm>

Per capita Income in the Past 12 Months

East Lake-Orient Park CDP, Florida



Source: B19301. PER CAPITA INCOME IN THE PAST 12 MONTHS (IN 2010 INFLATION-ADJUSTED DOLLARS)
Data Set: 2008-2012 American Community Survey 5-Year Estimates

B20017. MEDIAN EARNINGS IN THE PAST 12 MONTHS (IN 2010 INFLATION-ADJUSTED DOLLARS) BY SEX BY WORK EXPERIENCE IN THE PAST 12 MONTHS FOR THE POPULATION 16 YEARS AND OVER WITH EARNINGS IN THE PAST 12 MONTHS

Data Set: 2008-2012 American Community Survey 5-Year Estimates

	East Lake-Orient Park CDP, Florida			
	African American	Margin of Error (+/-)	White, Not Hispanic	Margin of Error (+/-)
Median earnings in the past 12 months (in 2010 inflation-adjusted dollars) --				
Total:	\$ 24,717	\$ 2,279	\$ 26,963	\$ 3,789
Male --				
Total	\$ 25,043	\$ 5,195	\$ 30,179	\$ 6,460
Worked full-time, year-round in the past 12 months	\$ 35,729	\$ 11,247	\$ 41,408	\$ 5,448
Other	\$ 12,772	\$ 3,925	\$ 9,967	\$ 5,279
Female --				
Total	\$ 24,621	\$ 2,068	\$ 25,591	\$ 3,834
Worked full-time, year-round in the past 12 months	\$ 27,700	\$ 2,074	\$ 33,288	\$ 2,408
Other	\$ 16,476	\$ 2,756	\$ 10,487	\$ 3,803

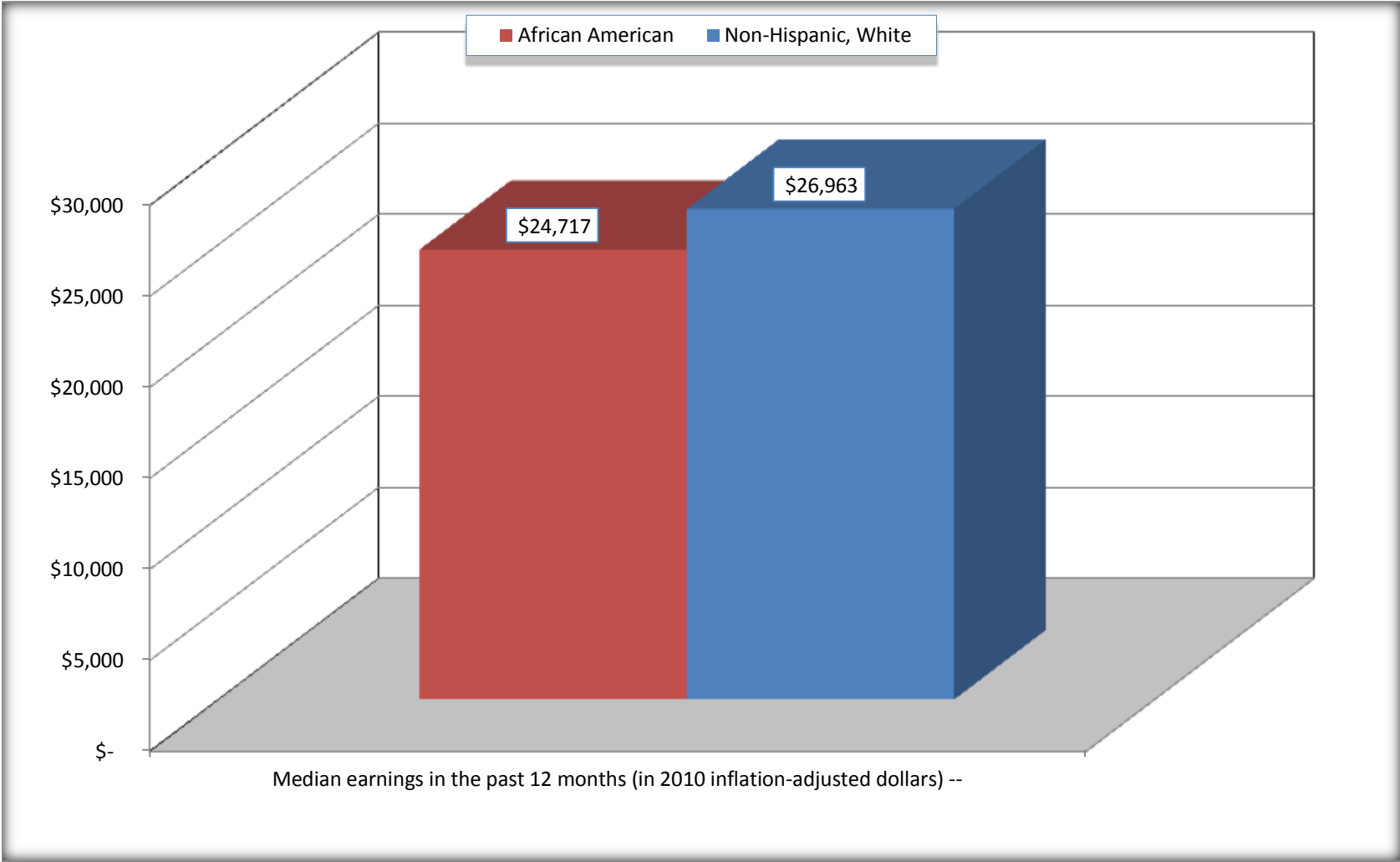
Source: U.S. Census Bureau, 2008-2012 American Community Survey

For information on confidentiality protection, sampling error, nonsampling error, and definitions, see Survey Methodology.

<http://www.census.gov/acs/www/UseData/index.htm>

Median earnings in the Past 12 Months (16 Years and Over with Earnings)

East Lake-Orient Park CDP, Florida



Source: B20017. MEDIAN EARNINGS IN THE PAST 12 MONTHS (IN 2010 INFLATION-ADJUSTED DOLLARS) BY SEX BY WORK EXPERIENCE IN THE PAST 12 MONTHS FOR THE POPULATION 16 YEARS AND OVER WITH EARNINGS IN THE PAST 12 MONTHS
Data Set: 2008-2012 American Community Survey 5-Year Estimates

B20005. SEX BY WORK EXPERIENCE IN THE PAST 12 MONTHS BY EARNINGS IN THE PAST 12 MONTHS (IN 2010 INFLATION-ADJUSTED DOLLARS) FOR THE POPULATION 16 YEARS AND OVER

Data Set: 2008-2012 American Community Survey 5-Year Estimates

	East Lake-Orient Park CDP, Florida					
	African American	Margin of Error (+/-)	% of AA Total	White, Not Hispanic	Margin of Error (+/-)	% of NHW Total
Total:	6,515	841	100.0%	7,319	754	100.0%
Worked full-time, year-round in the past 12 months:	2,638	NC	40.5%	3,195	NC	43.7%
No earnings	0	NC	0.0%	0	NC	0.0%
With earnings:	2,638	NC	40.5%	3,195	NC	43.7%
\$ 1 to \$ 9,999 or loss	30	NC	0.5%	48	NC	0.7%
\$ 10,000 to \$ 19,999	456	NC	7.0%	278	NC	3.8%
\$ 20,000 to \$ 29,999	921	NC	14.1%	756	NC	10.3%
\$ 30,000 to \$ 49,999	817	NC	12.5%	1,298	NC	17.7%
\$ 50,000 to \$ 74,999	363	NC	5.6%	644	NC	8.8%
\$ 75,000 or more	51	NC	0.8%	171	NC	2.3%
Other:	3,877	NC	59.5%	4,124	NC	56.3%
No earnings	2,276	NC	34.9%	2,424	NC	33.1%
With earnings: less than full time, year-round	1,601	NC	24.6%	1,700	NC	23.2%
Male:	2,850	496	43.7%	3,903	501	53.3%
Worked full-time, year-round in the past 12 months:	949	248	14.6%	1,731	314	23.7%
No earnings	0	25	0.0%	0	25	0.0%
With earnings:	949	248	14.6%	1,731	314	23.7%
\$ 1 to \$ 9,999 or loss	18	NC	0.3%	16	NC	0.2%
\$ 10,000 to \$ 19,999	73	NC	1.1%	94	NC	1.3%
\$ 20,000 to \$ 29,999	270	NC	4.1%	392	NC	5.4%
\$ 30,000 to \$ 49,999	380	NC	5.8%	696	NC	9.5%
\$ 50,000 to \$ 74,999	157	NC	2.4%	409	NC	5.6%
\$ 75,000 or more	51	NC	0.8%	124	NC	1.7%

	East Lake-Orient Park CDP, Florida					
	African American	Margin of Error (+/-)	% of AA Total	White, Not Hispanic	Margin of Error (+/-)	% of NHW Total
Other:	1,901	398	29.2%	2,172	339	29.7%
No earnings	1,216	296	18.7%	1,197	230	16.4%
With earnings:	685	283	10.5%	975	260	13.3%
Female:	3,665	517	56.3%	3,416	392	46.7%
Worked full-time, year-round in the past 12 months:	1,689	362	25.9%	1,464	274	20.0%
No earnings	0	25	0.0%	0	25	0.0%
With earnings:	1,689	362	25.9%	1,464	274	20.0%
\$ 1 to \$ 9,999 or loss	12	NC	0.2%	32	NC	0.4%
\$ 10,000 to \$ 19,999	383	NC	5.9%	184	NC	2.5%
\$ 20,000 to \$ 29,999	651	NC	10.0%	364	NC	5.0%
\$ 30,000 to \$ 49,999	437	NC	6.7%	602	NC	8.2%
\$ 50,000 to \$ 74,999	206	NC	3.2%	235	NC	3.2%
\$ 75,000 or more	0	NC	0.0%	47	NC	0.6%
Other:	1,976	318	30.3%	1,952	318	26.7%
No earnings	1,060	226	16.3%	1,227	249	16.8%
With earnings:	916	207	14.1%	725	183	9.9%

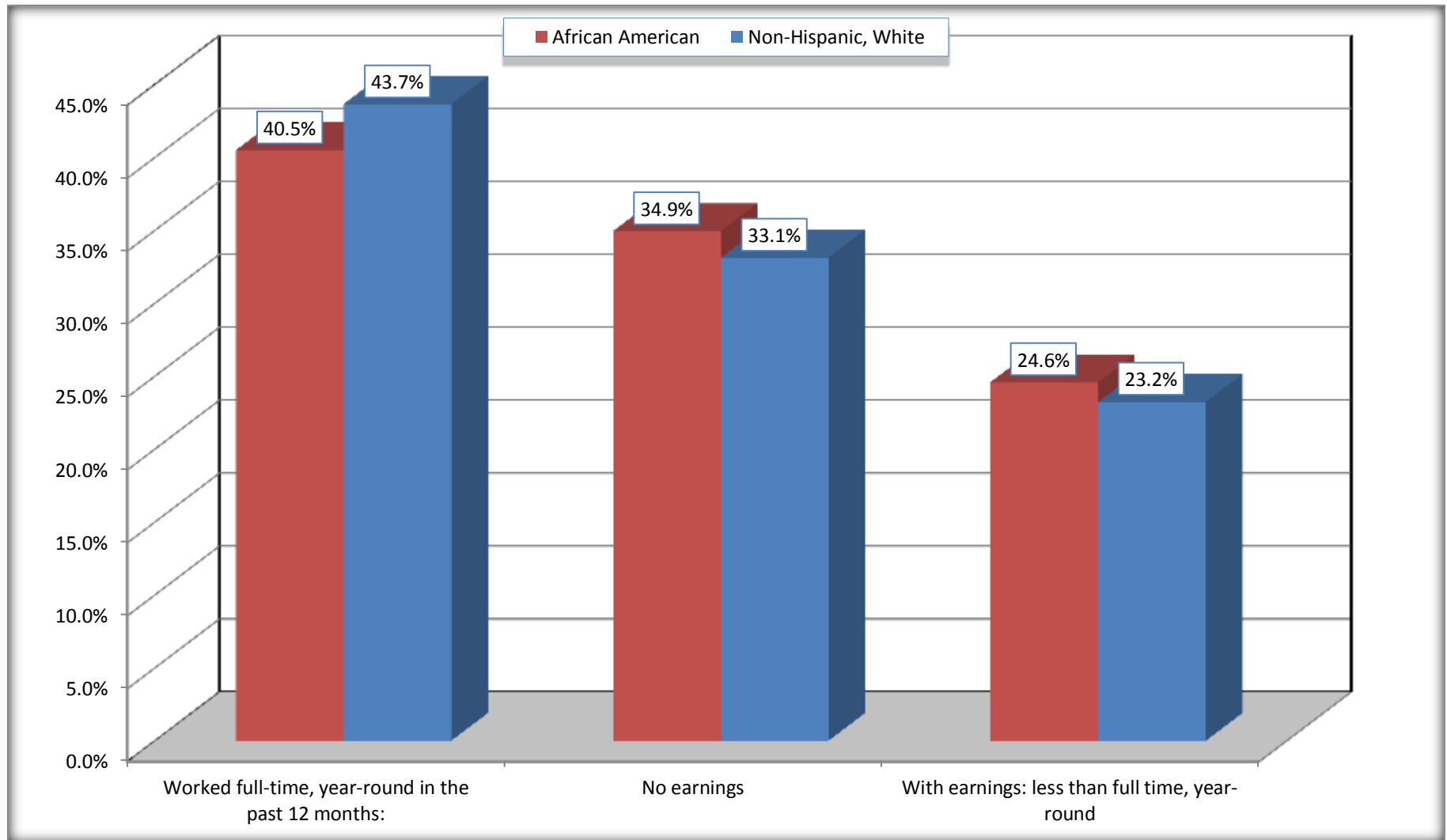
Source: U.S. Census Bureau, 2008-2012 American Community Survey

For information on confidentiality protection, sampling error, nonsampling error, and definitions, see Survey Methodology.

<http://www.census.gov/acs/www/UseData/index.htm>

Employment and Earnings in in the Past 12 Months (16 Years and Over)

East Lake-Orient Park CDP, Florida



Source: B20005. SEX BY WORK EXPERIENCE IN THE PAST 12 MONTHS BY EARNINGS IN THE PAST 12 MONTHS (IN 2010 INFLATION-ADJUSTED DOLLARS) FOR THE POPULATION 16 YEARS AND OVER

Data Set: 2008-2012 American Community Survey 5-Year Estimates

C21001. SEX BY AGE BY VETERAN STATUS FOR THE CIVILIAN POPULATION 18 YEARS AND OVER

Data Set: 2008-2012 American Community Survey 5-Year Estimates

	East Lake-Orient Park CDP, Florida					
	African American	Margin of Error (+/-)	% of AA Total	White, Not Hispanic	Margin of Error (+/-)	% of NHW Total
Total:	6,126	816	100.0%	7,192	735	100.0%
Veteran	737	NC	12.0%	821	NC	11.4%
Nonveteran	5,389	NC	88.0%	6,371	NC	88.6%
Male:	2,629	497	42.9%	3,835	496	53.3%
18 to 64 years:	2,383	480	38.9%	3,385	482	47.1%
Veteran	536	184	8.7%	493	172	6.9%
Nonveteran	1,847	457	30.2%	2,892	434	40.2%
65 years and over:	246	83	4.0%	450	112	6.3%
Veteran	113	57	1.8%	277	95	3.9%
Nonveteran	133	70	2.2%	173	68	2.4%
Female:	3,497	483	57.1%	3,357	376	46.7%
18 to 64 years:	3,194	437	52.1%	2,897	364	40.3%
Veteran	70	59	1.1%	51	46	0.7%
Nonveteran	3,124	422	51.0%	2,846	371	39.6%
65 years and over:	303	92	4.9%	460	101	6.4%
Veteran	18	27	0.3%	0	25	0.0%
Nonveteran	285	79	4.7%	460	101	6.4%

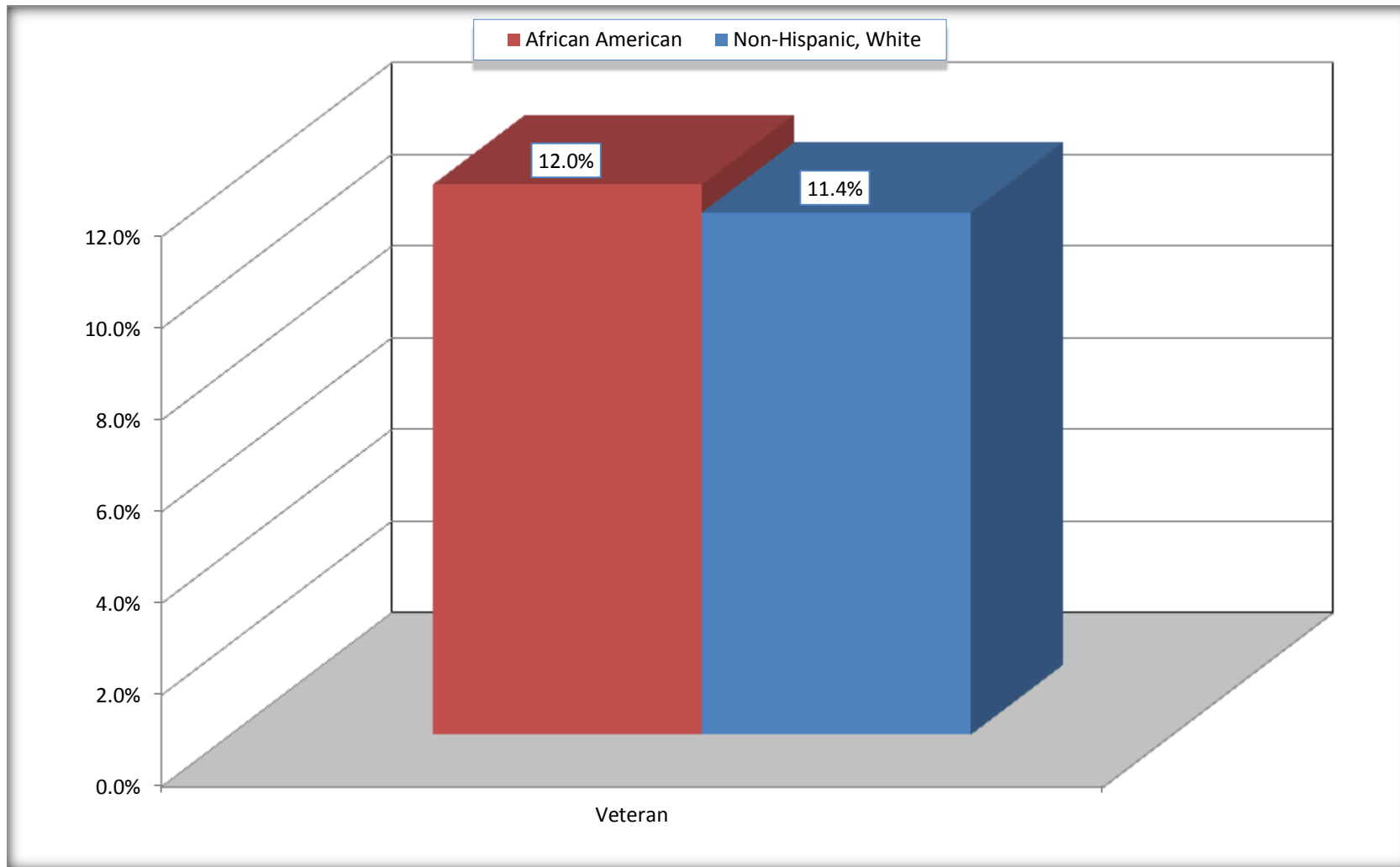
Source: U.S. Census Bureau, 2008-2012 American Community Survey

For information on confidentiality protection, sampling error, nonsampling error, and definitions, see Survey Methodology.

<http://www.census.gov/acs/www/UseData/index.htm>

Veterans in the Civilian Population 18 Years and Over

East Lake-Orient Park CDP, Florida



Source: C21001. SEX BY AGE BY VETERAN STATUS FOR THE CIVILIAN POPULATION 18 YEARS AND OVER
Data Set: 2008-2012 American Community Survey 5-Year Estimates

B22005. RECEIPT OF FOOD STAMPS/SNAP IN THE PAST 12 MONTHS BY RACE OF HOUSEHOLDER

Data Set: 2008-2012 American Community Survey 5-Year Estimates

	East Lake-Orient Park CDP, Florida					
	African American	Margin of Error (+/-)	% of AA Total	White, Not Hispanic	Margin of Error (+/-)	% of NHW Total
Total:	3,382	404	100.0%	3,524	363	100.0%
HH received Food Stamps/SNAP in the past 12 months	784	221	23.2%	610	160	17.3%
HH did not receive Food Stamps/SNAP in the past 12 months	2,598	351	76.8%	2,914	333	82.7%

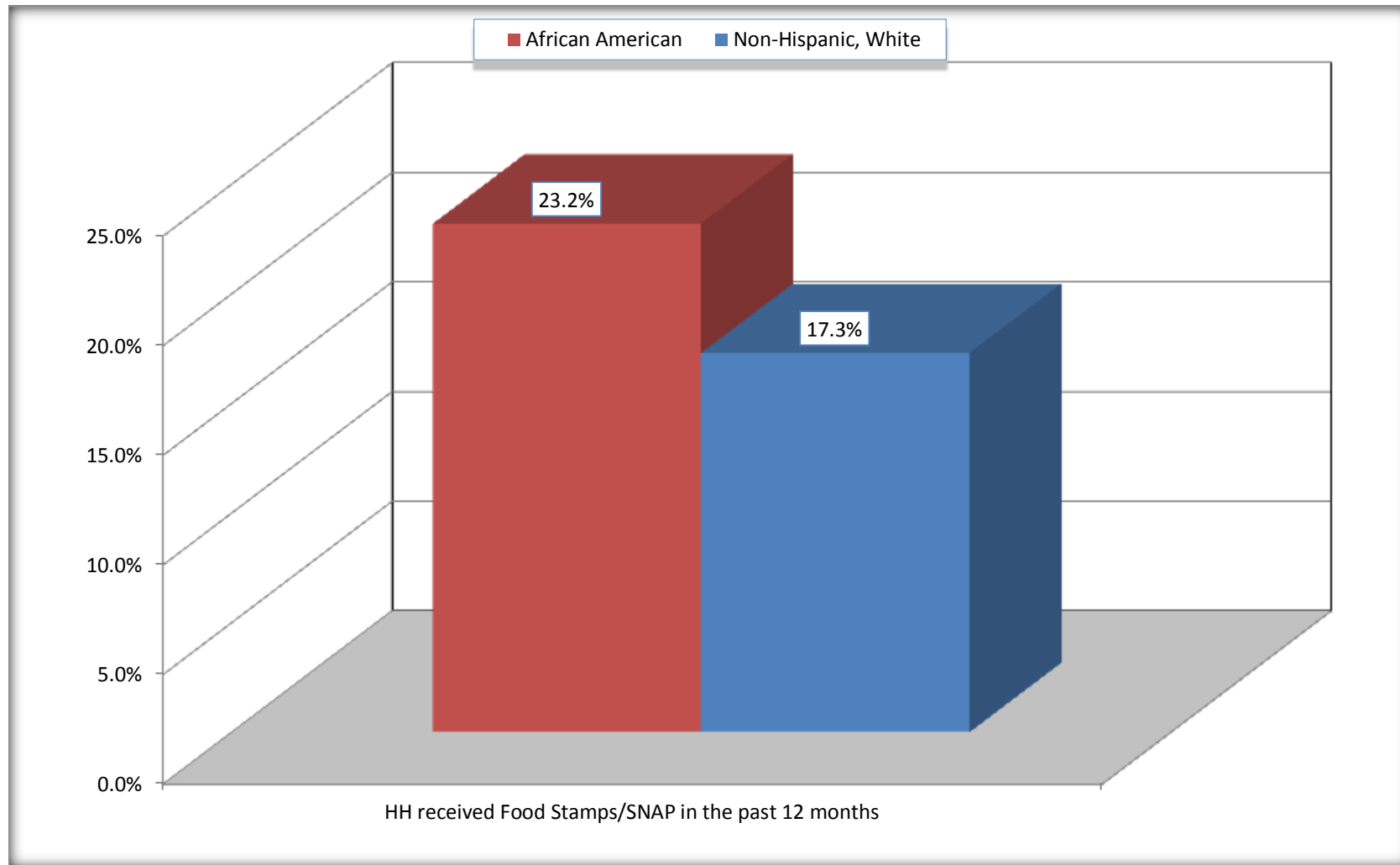
Source: U.S. Census Bureau, 2008-2012 American Community Survey

For information on confidentiality protection, sampling error, nonsampling error, and definitions, see Survey Methodology.

<http://www.census.gov/acs/www/UseData/index.htm>

Receipt of Food Stamps/SNAP in the Past 12 Months by Household

East Lake-Orient Park CDP, Florida



Source: B22005. RECEIPT OF FOOD STAMPS/SNAP IN THE PAST 12 MONTHS BY RACE OF HOUSEHOLDER
Data Set: 2008-2012 American Community Survey 5-Year Estimates

C23002. SEX BY AGE BY EMPLOYMENT STATUS FOR THE POPULATION 16 YEARS AND OVER

Data Set: 2008-2012 American Community Survey 5-Year Estimates

	East Lake-Orient Park CDP, Florida					
	African American	Margin of Error (+/-)	% of AA Total	White, Not Hispanic	Margin of Error (+/-)	% of NHW Total
Total:	6,515	841	100.0%	7,319	754	100.0%
In labor force:	4,596	NC	70.5%	5,082	NC	69.4%
In Armed Forces	0	NC	0.0%	0	NC	0.0%
Civilian:	4,498	NC	69.0%	4,974	NC	68.0%
Employed	3,699	NC	56.8%	4,443	NC	60.7%
Unemployed	897	NC	13.8%	639	NC	8.7%
Not in labor force	1,919	NC	29.5%	2,237	NC	30.6%
Male:	2,850	496	43.7%	3,903	501	53.3%
16 to 64 years:	2,604	480	40.0%	3,453	486	47.2%
In labor force:	1,956	443	30.0%	2,776	456	37.9%
In Armed Forces	0	25	0.0%	0	25	0.0%
Civilian:	1,956	443	30.0%	2,776	456	37.9%
Employed	1350	321	20.7%	2353	436	32.1%
Unemployed	606	243	9.3%	423	167	5.8%
Not in labor force	648	185	9.9%	677	189	9.2%
65 years and over:	246	83	3.8%	450	112	6.1%
In labor force:	32	39	0.5%	53	35	0.7%
Employed	23	36	0.4%	29	19	0.4%
Unemployed	9	15	0.1%	24	27	0.3%
Not in labor force	214	79	3.3%	397	105	5.4%

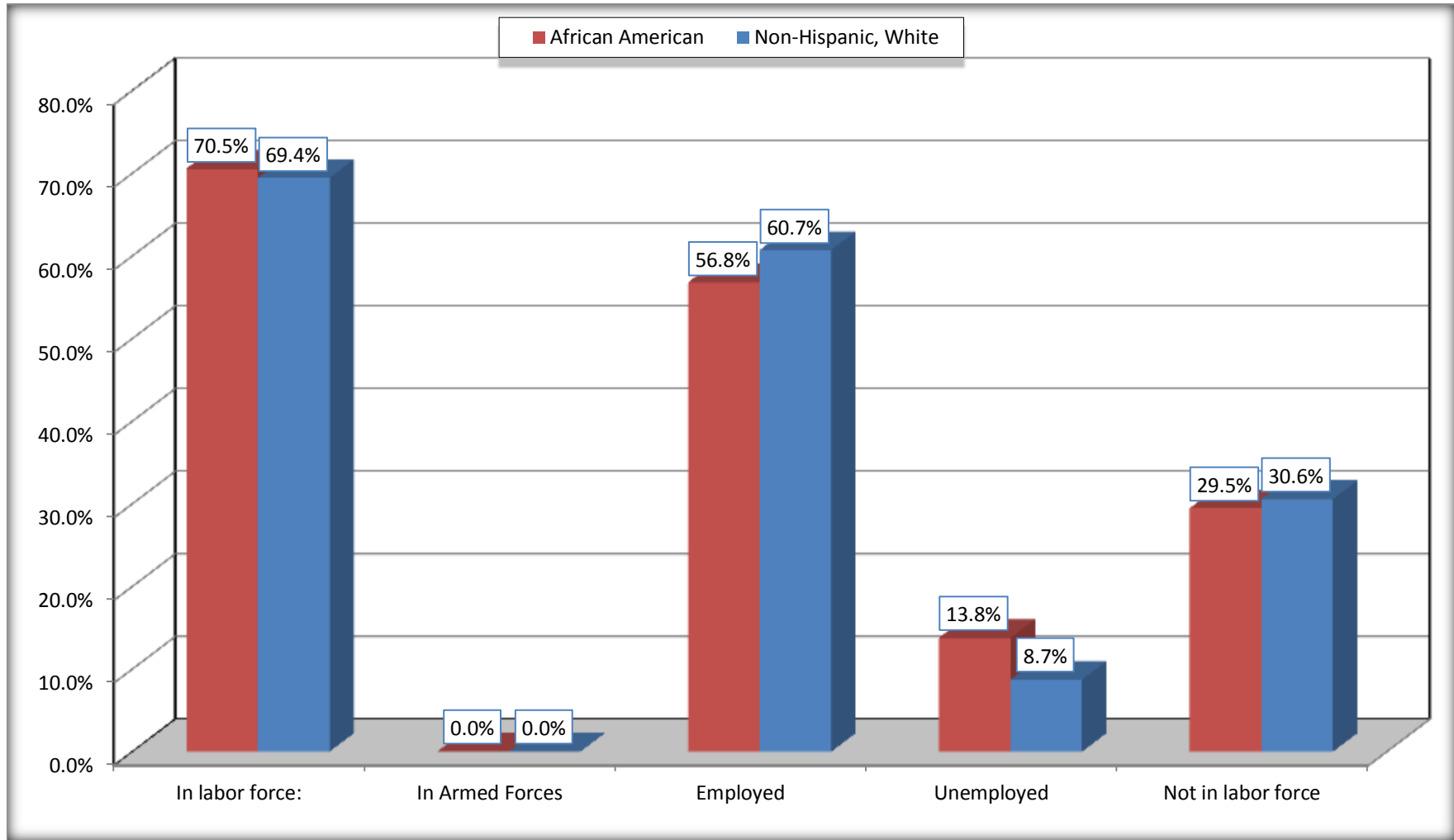
	East Lake-Orient Park CDP, Florida					
	African American	Margin of Error (+/-)	% of AA Total	White, Not Hispanic	Margin of Error (+/-)	% of NHW Total
Female:	3,665	517	56.3%	3,416	392	46.7%
16 to 64 years:	3,362	473	51.6%	2,956	382	40.4%
In labor force:	2,542	425	39.0%	2,198	320	30.0%
In Armed Forces	0	25	0.0%	0	25	0.0%
Civilian:	2,542	425	39.0%	2,198	320	30.0%
Employed	2,260	423	34.7%	2,006	293	27.4%
Unemployed	282	136	4.3%	192	86	2.6%
Not in labor force	820	181	12.6%	758	211	10.4%
65 years and over:	303	92	4.7%	460	101	6.3%
In labor force:	66	49	1.0%	55	41	0.8%
Employed	66	49	1.0%	55	41	0.8%
Unemployed	0	25	0.0%	0	25	0.0%
Not in labor force	237	81	3.6%	405	90	5.5%

Source: U.S. Census Bureau, 2008-2012 American Community Survey

For information on confidentiality protection, sampling error, nonsampling error, and definitions, see Survey Methodology.
<http://www.census.gov/acs/www/UseData/index.htm>

Employment Status for the Population 16 years and over

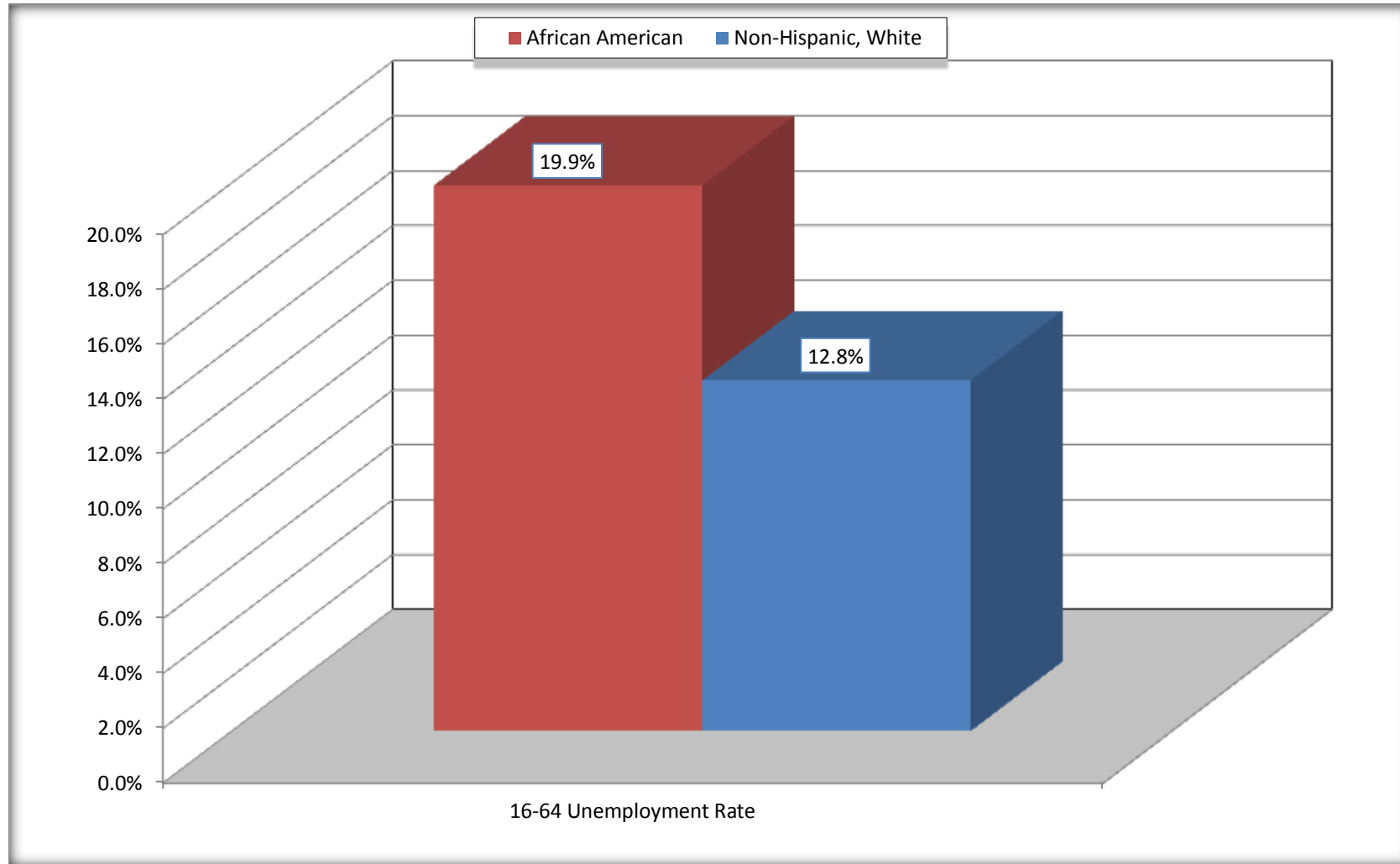
East Lake-Orient Park CDP, Florida



Source: C23002. SEX BY AGE BY EMPLOYMENT STATUS FOR THE POPULATION 16 YEARS AND OVER
Data Set: 2008-2012 American Community Survey 5-Year Estimates

Unemployment of Working Age Population (Ages 16 to 64) (As a Percent of 16-64 Civilian Labor Force)

East Lake-Orient Park CDP, Florida



Source: C23002. SEX BY AGE BY EMPLOYMENT STATUS FOR THE POPULATION 16 YEARS AND OVER
Data Set: 2008-2012 American Community Survey 5-Year Estimates

C24010. SEX BY OCCUPATION FOR THE CIVILIAN EMPLOYED POPULATION 16 YEARS AND OVER

Data Set: 2008-2012 American Community Survey 5-Year Estimates

	East Lake-Orient Park CDP, Florida					
	African American	Margin of Error (+/-)	% of AA Total	White, Not Hispanic	Margin of Error (+/-)	% of NHW Total
Total:	3,699	608	100.0%	4,443	544	100.0%
Management, professional, and related occupations	1,110	NC	30.0%	936	NC	21.1%
Service occupations	768	NC	20.8%	801	NC	18.0%
Sales and office occupations	1,065	NC	28.8%	1,737	NC	39.1%
Natural resources, construction, and maintenance occupations:	208	NC	5.6%	573	NC	12.9%
Production, transportation, and material moving occupations	548	NC	14.8%	396	NC	8.9%
Male:	1,373	326	37.1%	2,382	436	53.6%
Management, business, science, and arts occupations:	254	131	6.9%	380	151	8.6%
Service occupations	358	172	9.7%	448	202	10.1%
Sales and office occupations	199	111	5.4%	651	264	14.7%
Natural resources, construction, and maintenance occupations:	198	86	5.4%	557	154	12.5%
Production, transportation, and material moving occupations	364	173	9.8%	346	134	7.8%
Female:	2,326	424	62.9%	2,061	288	46.4%
Management, professional, and related occupations	856	244	23.1%	556	154	12.5%
Service occupations	410	144	11.1%	353	125	7.9%
Sales and office occupations	866	278	23.4%	1,086	239	24.4%
Natural resources, construction, and maintenance occupations:	10	14	0.3%	16	26	0.4%
Production, transportation, and material moving occupations	184	117	5.0%	50	57	1.1%

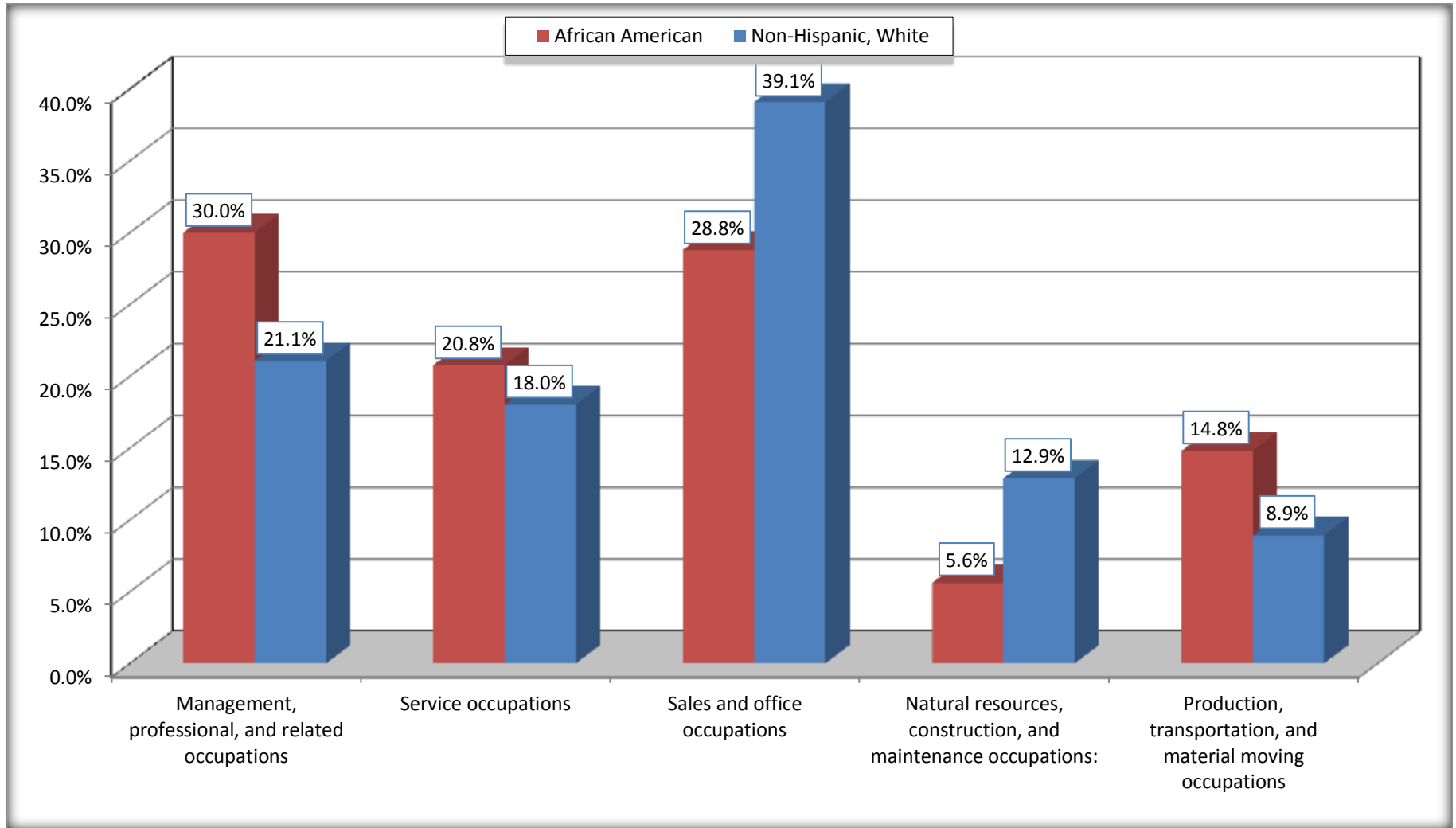
Source: U.S. Census Bureau, 2008-2012 American Community Survey

For information on confidentiality protection, sampling error, nonsampling error, and definitions, see Survey Methodology.

<http://www.census.gov/acs/www/UseData/index.htm>

Occupation for the Civilian Employed 16 Years and Over Population

East Lake-Orient Park CDP, Florida



Source: C24010. SEX BY OCCUPATION FOR THE CIVILIAN EMPLOYED POPULATION 16 YEARS AND OVER
Data Set: 2008-2012 American Community Survey 5-Year Estimates

B25003. TENURE - Universe: OCCUPIED HOUSING UNITS

Data Set: 2008-2012 American Community Survey 5-Year Estimates

	East Lake-Orient Park CDP, Florida					
	African American	Margin of Error (+/-)	% of AA Total	White, Not Hispanic	Margin of Error (+/-)	% of NHW Total
Total:	3,382	404	100.0%	3,524	363	100.0%
Owner occupied	1,500	245	44.4%	2,062	241	58.5%
Renter occupied	1,882	314	55.6%	1,462	301	41.5%

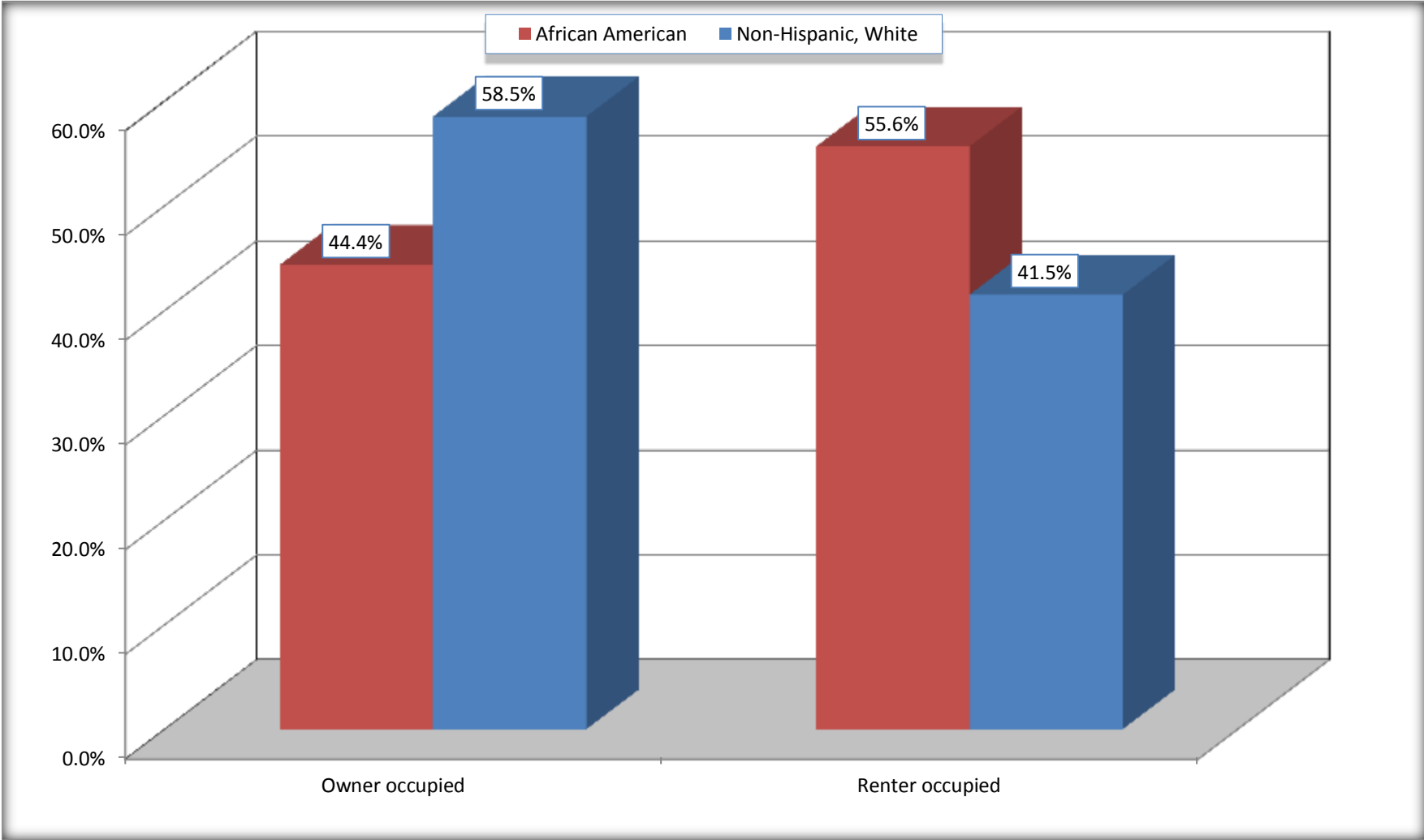
Source: U.S. Census Bureau, 2008-2012 American Community Survey

For information on confidentiality protection, sampling error, nonsampling error, and definitions, see Survey Methodology.

<http://www.census.gov/acs/www/UseData/index.h>

Home Owners and Renters by Household

East Lake-Orient Park CDP, Florida



Source: B25003. TENURE - Universe: OCCUPIED HOUSING UNITS
Data Set: 2008-2012 American Community Survey 5-Year Estimates

B25014. OCCUPANTS PER ROOM - Universe: OCCUPIED HOUSING UNITS

Data Set: 2008-2012 American Community Survey 5-Year Estimates

	East Lake-Orient Park CDP, Florida					
	African American	Margin of Error (+/-)	% of AA Total	White, Not Hispanic	Margin of Error (+/-)	% of NHW Total
Total:	3,382	404	100.0%	3,524	363	100.0%
1.00 or less occupants per room	3,302	404	97.6%	3,414	364	96.9%
1.01 or more occupants per room	80	65	2.4%	110	73	3.1%

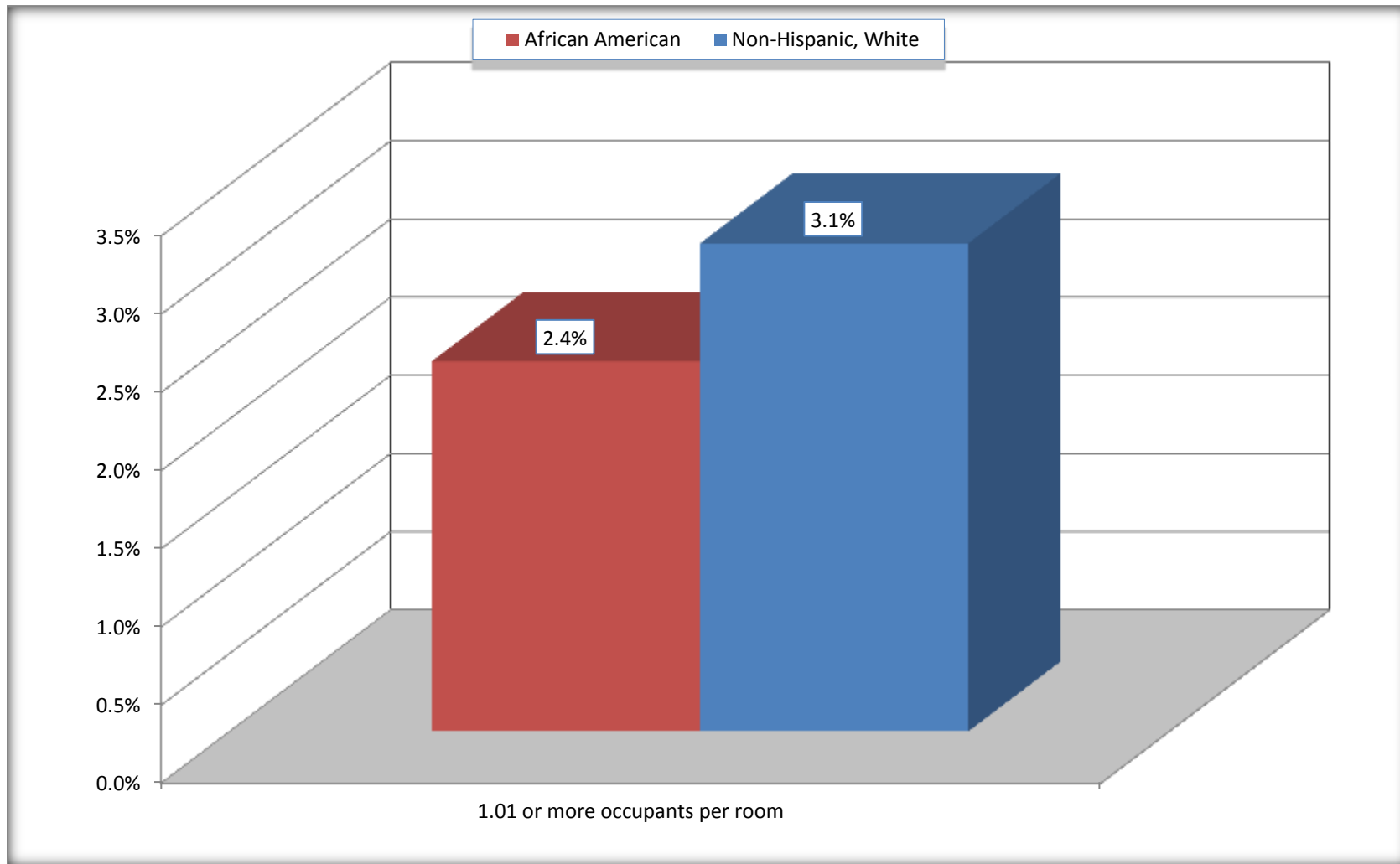
Source: U.S. Census Bureau, 2008-2012 American Community Survey

For information on confidentiality protection, sampling error, nonsampling error, and definitions, see Survey Methodology.

<http://www.census.gov/acs/www/UseData/index.ht>

More than One Person per Room (Crowding) by Household

East Lake-Orient Park CDP, Florida



Source: B25014. OCCUPANTS PER ROOM - Universe: OCCUPIED HOUSING UNITS
Data Set: 2008-2012 American Community Survey 5-Year Estimates

B18101. AGE BY DISABILITY STATUS

Data Set: 2008-2012 American Community Survey 5-Year Estimates

	East Lake-Orient Park CDP, Florida					
	African American	Margin of Error (+/-)	% of AA Total	White, Not Hispanic	Margin of Error (+/-)	% of NHW Total
Total:	9,086	1,108	100.0%	8,831	960	100.0%
Under 18 years:	2,960	546	32.6%	1,639	102	18.6%
With a disability	46	44	0.5%	81	67	0.9%
No disability	2,914	546	32.1%	1,558	406	17.6%
18 to 64 years:	5,577	753	61.4%	6,282	701	71.1%
With a disability	616	188	6.8%	704	184	8.0%
No disability	4,961	719	54.6%	5,578	655	63.2%
65 years and over:	549	128	6.0%	910	179	10.3%
With a disability	252	114	2.8%	442	124	5.0%
No disability	297	103	3.3%	468	131	5.3%

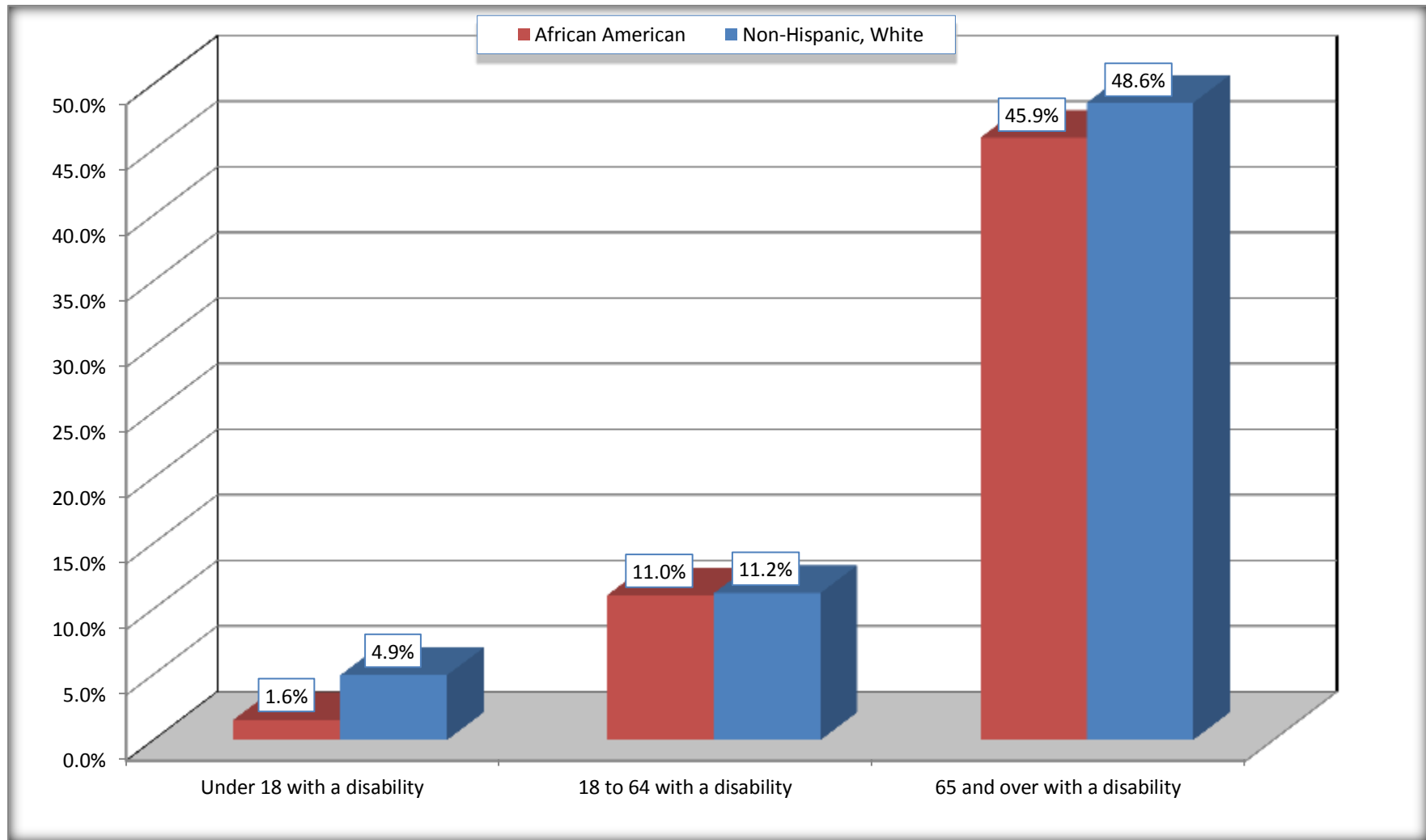
Source: U.S. Census Bureau, 2008-2012 American Community Survey

For information on confidentiality protection, sampling error, nonsampling error, and definitions, see Survey Methodology.

<http://www.census.gov/acs/www/UseData/index.htm>

Disability by Age

East Lake-Orient Park CDP, Florida



Source: B18101. AGE BY DISABILITY STATUS
Data Set: 2008-2012 American Community Survey 5-Year Estimates

C27001B. HEALTH INSURANCE COVERAGE STATUS BY AGE

Data Set: 2008-2012 American Community Survey 5-Year Estimates

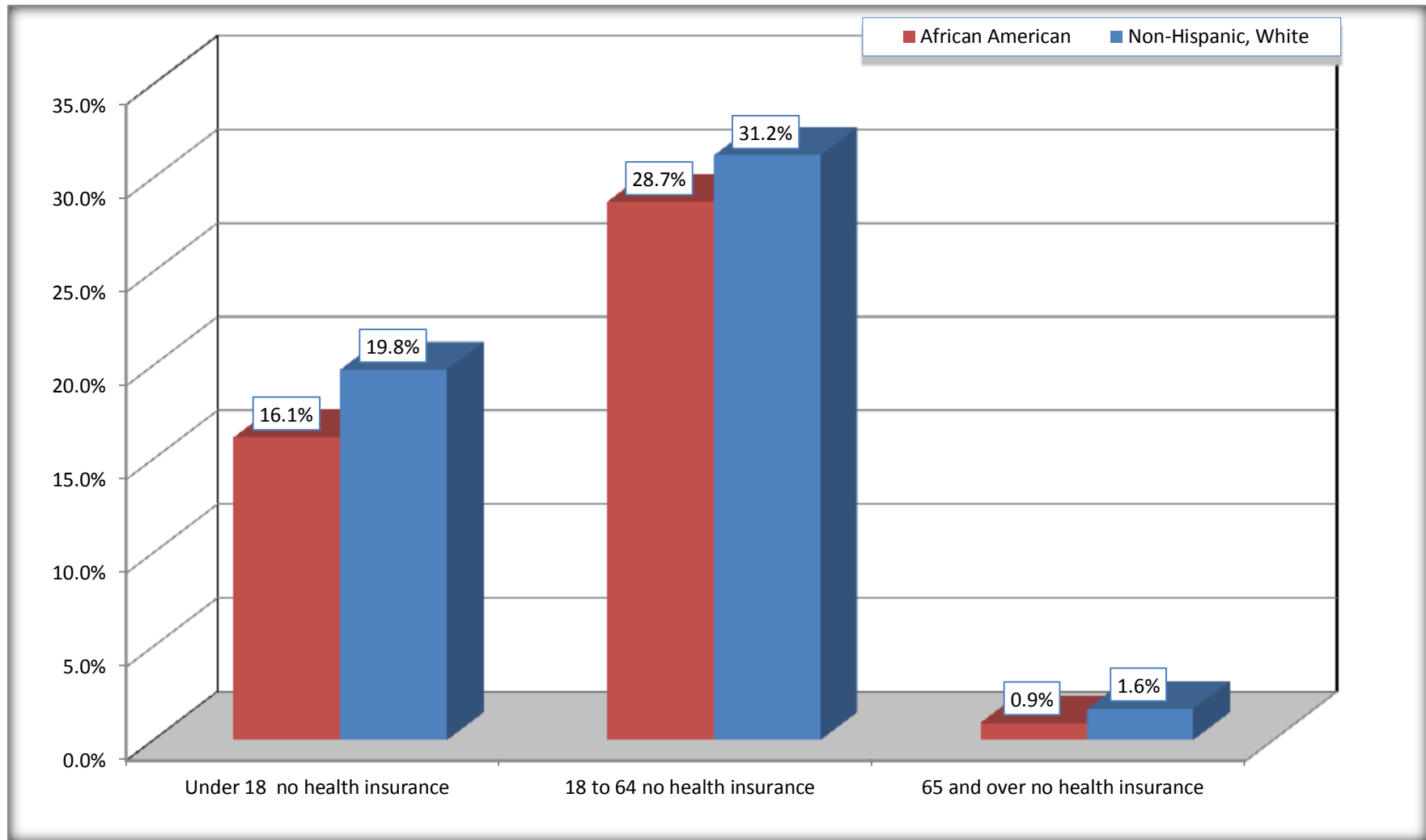
	East Lake-Orient Park CDP, Florida					
	African American	Margin of Error (+/-)	% of AA Total	White, Not Hispanic	Margin of Error (+/-)	% of NHW Total
Total:	9,086	1,108	100.0%	8,831	960	100.0%
Under 18 years:	2,960	546	32.6%	1,639	422	18.6%
With health insurance coverage	2,482	526	27.3%	1,315	368	14.9%
No health insurance coverage	478	256	5.3%	324	186	3.7%
18 to 64 years:	5,577	753	61.4%	6,282	701	71.1%
With health insurance coverage	3,975	620	43.7%	4,322	498	48.9%
No health insurance coverage	1,602	440	17.6%	1,960	462	22.2%
65 years and over:	549	128	6.0%	910	179	10.3%
With health insurance coverage	544	127	6.0%	895	183	10.1%
No health insurance coverage	5	17	0.1%	15	25	0.2%

Source: U.S. Census Bureau, 2008-2012 American Community Survey

For information on confidentiality protection, sampling error, nonsampling error, and definitions, see Survey Methodology.

<http://www.census.gov/acs/www/UseData/index.htm>

Lack of Health Insurance Coverage by Age East Lake-Orient Park CDP, Florida



Source: C27001B. HEALTH INSURANCE COVERAGE STATUS BY AGE
Data Set: 2008-2012 American Community Survey 5-Year Estimates