

# **Selected Socio-Economic Data**

## **Warren city, Arkansas**

### **African American and White, Not Hispanic**

**Data Set: 2008-2012 American Community Survey 5-Year Estimates**

[www.fairvote2020.org](http://www.fairvote2020.org)

[www.fairdata2000.com](http://www.fairdata2000.com)

[29-Dec-13](#)

**C02003.DETAILED RACE - Universe: TOTAL POPULATION**

Data Set: 2008-2012 American Community Survey 5-Year Estimates

	Warren city, Arkansas		
	Population	Margin of Error (+/-)	% of Total
<b>Total:</b>	<b>5,997</b>	<b>31</b>	<b>100.0%</b>
Population of one race:	5,952	49	99.2%
White	2,672	337	44.6%
Black or African American	2,491	244	41.5%
American Indian and Alaska Native	61	86	1.0%
Asian alone	0	17	0.0%
Native Hawaiian and Other Pacific Islander	0	17	0.0%
Some other race	728	234	12.1%
Population of two or more races:	45	39	0.8%
Two races including Some other race	0	17	0.0%
Two races excluding Some other race, and three or more races	45	39	0.8%
Population of two races:	36	28	0.6%
White; Black or African American	34	28	0.6%
White; American Indian and Alaska Native	2	5	0.0%
White; Asian	0	17	0.0%
Black or African American; American Indian and Alaska Native	0	17	0.0%
All other two race combinations	0	17	0.0%
Population of three races	9	17	0.2%
Population of four or more races	0	17	0.0%

Note: Hispanics may be of any race. See Table B03002 and chart.

Source: U.S. Census Bureau, 2008-2012 American Community Survey

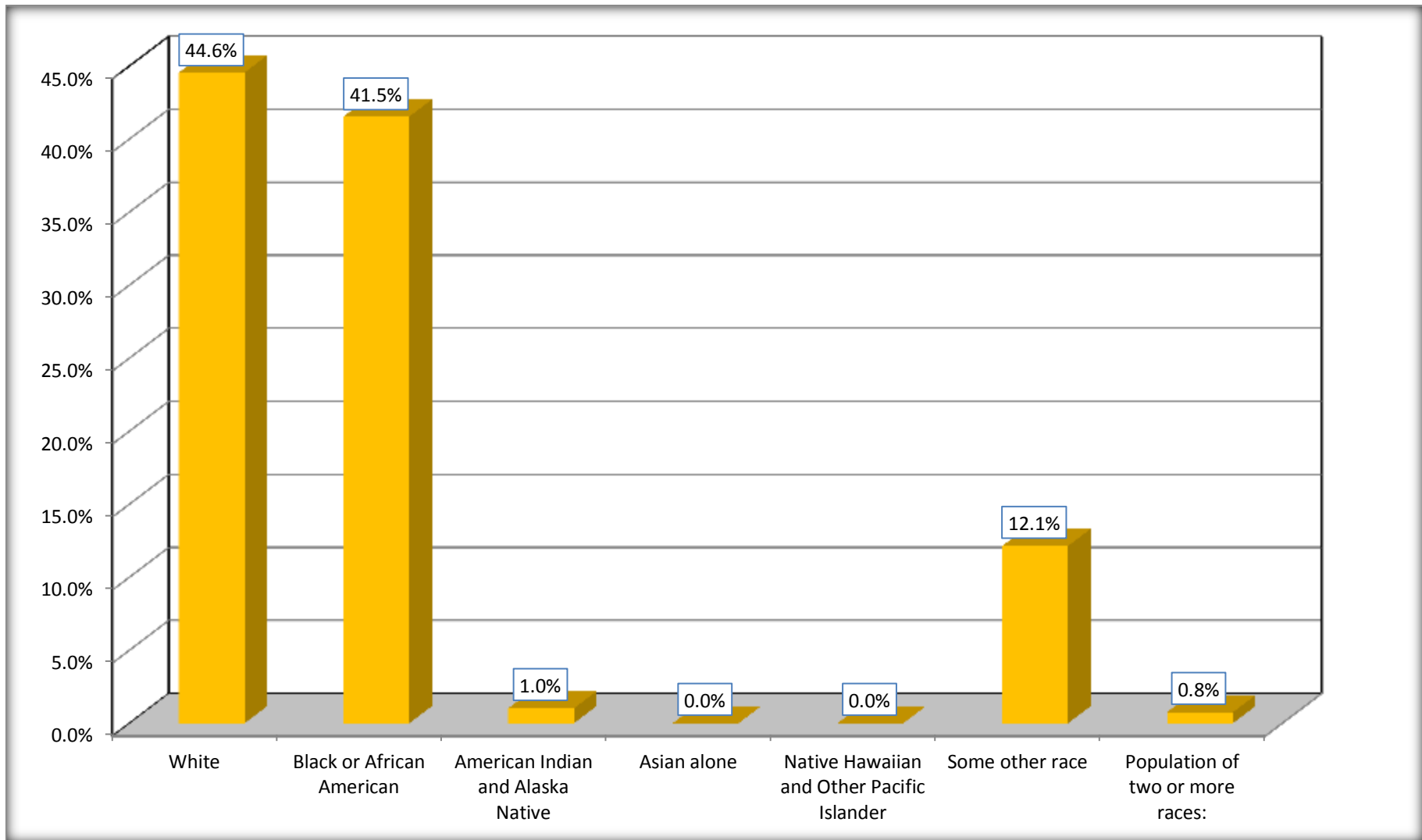
Although the American Community Survey (ACS) produces population, demographic and housing unit estimates, it is the Census Bureau's Population Estimates Program that produces and disseminates the official estimates of the population for the nation, states, counties, cities and towns and estimates of housing units for states and counties.

For information on confidentiality protection, sampling error, nonsampling error, and definitions, see Survey Methodology.

<http://www.census.gov/acs/www/UseData/index.htm>

# Population by Race

## Warren city, Arkansas



Source: C02003.DETAILED RACE - Universe: TOTAL POPULATION  
Data Set: 2008-2012 American Community Survey 5-Year Estimates

**B03002. HISPANIC OR LATINO ORIGIN BY RACE - Universe: TOTAL POPULATION**

Data Set: 2008-2012 American Community Survey 5-Year Estimates

	Warren city, Arkansas		
	Population	Margin of Error (+/-)	% of Total
<b>Total:</b>	5,997	31	<b>100.0%</b>
Not Hispanic or Latino:	4,940	180	82.4%
White alone	2,423	272	40.4%
Black or African American alone	2,478	244	41.3%
American Indian and Alaska Native alone	0	17	0.0%
Asian alone	0	17	0.0%
Native Hawaiian and Other Pacific Islander alone	0	17	0.0%
Some other race alone	0	17	0.0%
Two or more races:	39	37	0.7%
Two races including Some other race	0	17	0.0%
Two races excluding Some other race, and three or more races	39	37	0.7%
Hispanic or Latino	1,057	181	17.6%

Source: U.S. Census Bureau, 2008-2012 American Community Survey

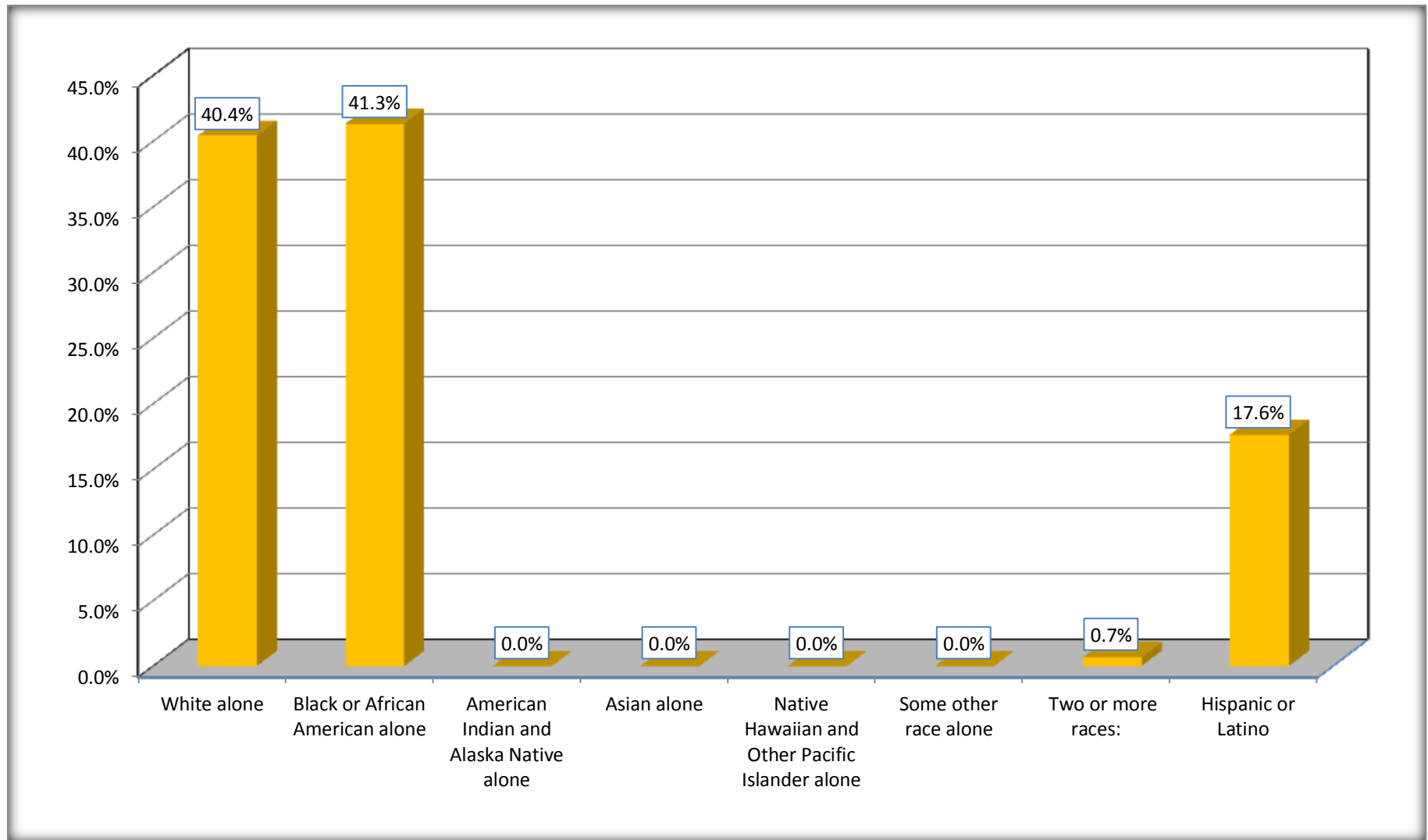
Although the American Community Survey (ACS) produces population, demographic and housing unit estimates, it is the Census Bureau's Population Estimates Program that produces and disseminates the official estimates of the population for the nation, states, counties, cities and towns and estimates of housing units for states and counties.

For information on confidentiality protection, sampling error, nonsampling error, and definitions, see Survey Methodology.

<http://www.census.gov/acs/www/UseData/index.htm>

# Non-Hispanic by Race and Hispanic Population

## Warren city, Arkansas



Source: B03002. HISPANIC OR LATINO ORIGIN BY RACE - Universe: TOTAL POPULATION  
Data Set: 2008-2012 American Community Survey 5-Year Estimates

**B03002. HISPANIC OR LATINO ORIGIN BY RACE**

Data Set: 2008-2012 American Community Survey 5-Year Estimates

	Warren city, Arkansas		
	Population	Margin of Error (+/-)	% of Total
Hispanic or Latino:	1,057	181	<b>100.0%</b>
White alone	249	203	23.6%
Black or African American alone	13	15	1.2%
American Indian and Alaska Native alone	61	86	5.8%
Asian alone	0	17	0.0%
Native Hawaiian and Other Pacific Islander alone	0	17	0.0%
Some other race alone	728	234	68.9%
Two or more races:	6	11	0.6%
Two races including Some other race	0	17	0.0%
Two races excluding Some other race, and three or more races	6	11	0.6%

Source: U.S. Census Bureau, 2008-2012 American Community Survey

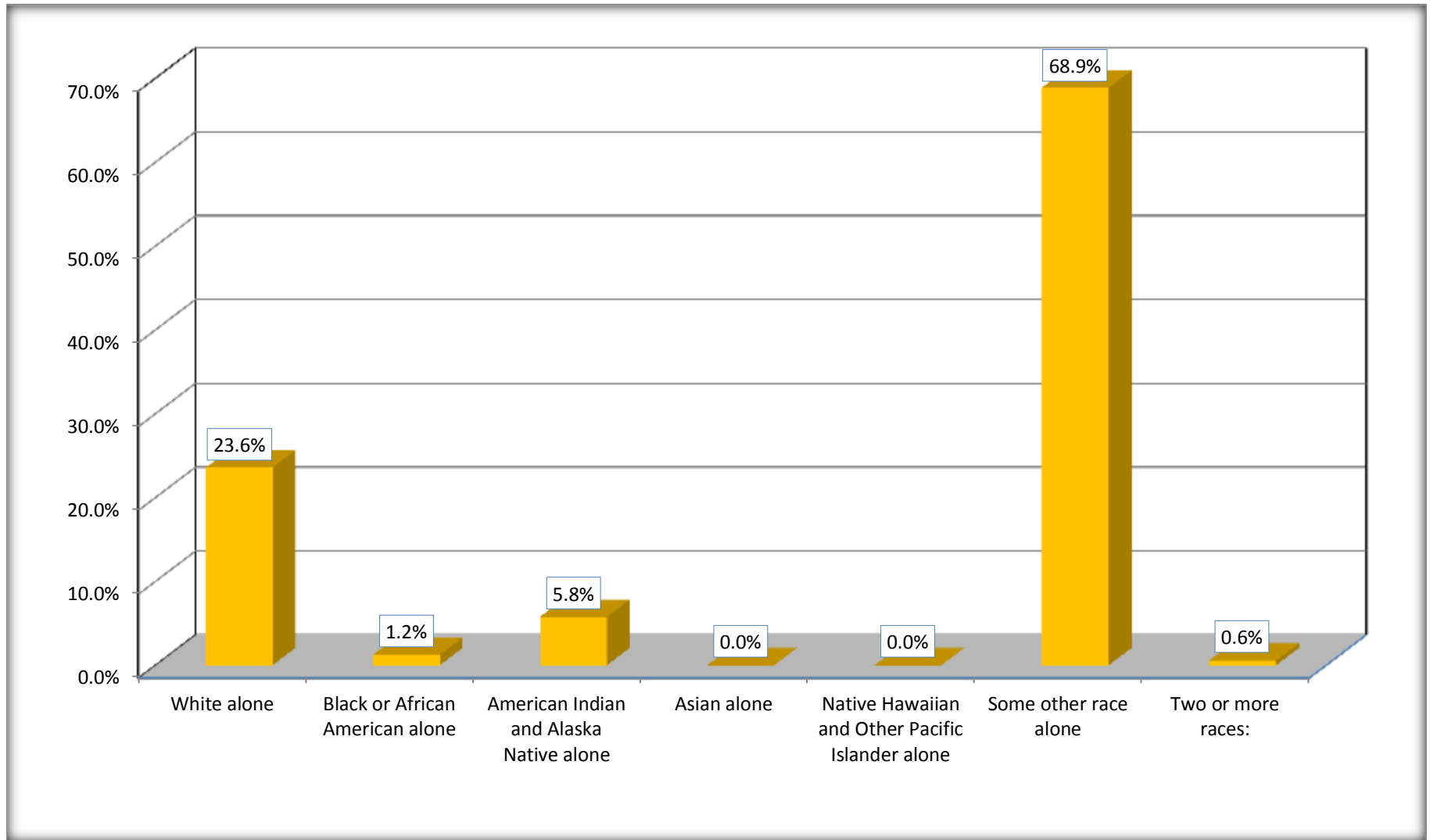
Although the American Community Survey (ACS) produces population, demographic and housing unit estimates, it is the Census Bureau's Population Estimates Program that produces and disseminates the official estimates of the population for the nation, states, counties, cities and towns and estimates of housing units for states and counties.

For information on confidentiality protection, sampling error, nonsampling error, and definitions, see Survey Methodology.

<http://www.census.gov/acs/www/UseData/index.htm>

# Hispanic or Latino Origin by Race

## Warren city, Arkansas



Source: B03002. HISPANIC OR LATINO ORIGIN BY RACE  
Data Set: 2008-2012 American Community Survey 5-Year Estimates

**B01001. SEX BY AGE**

Data Set: 2008-2012 American Community Survey 5-Year Estimates

	Warren city, Arkansas					
	African American	Margin of Error (+/-)	% of AA Total	White, Not Hispanic	Margin of Error (+/-)	% of NHW Total
<b>Total:</b>	<b>2,491</b>	<b>244</b>	<b>100.0%</b>	<b>2,423</b>	<b>272</b>	<b>100.0%</b>
Under 18 years	655	NC	26.3%	411	NC	17.0%
18 to 64 years	1,486	NC	59.7%	1,295	NC	53.4%
65 years and over	350	NC	14.1%	717	NC	29.6%
Male:	1,121	182	45.0%	1,049	389	43.3%
Under 18 years	328	NC	13.2%	223	NC	9.2%
18 to 64 years	643	NC	25.8%	571	NC	23.6%
65 years and over	150	NC	6.0%	255	NC	10.5%
Female:	1,370	144	55.0%	1,374	412	56.7%
Under 18 years	327	NC	13.1%	188	NC	7.8%
18 to 64 years	843	NC	33.8%	724	NC	29.9%
65 years and over	200	NC	8.0%	462	NC	19.1%

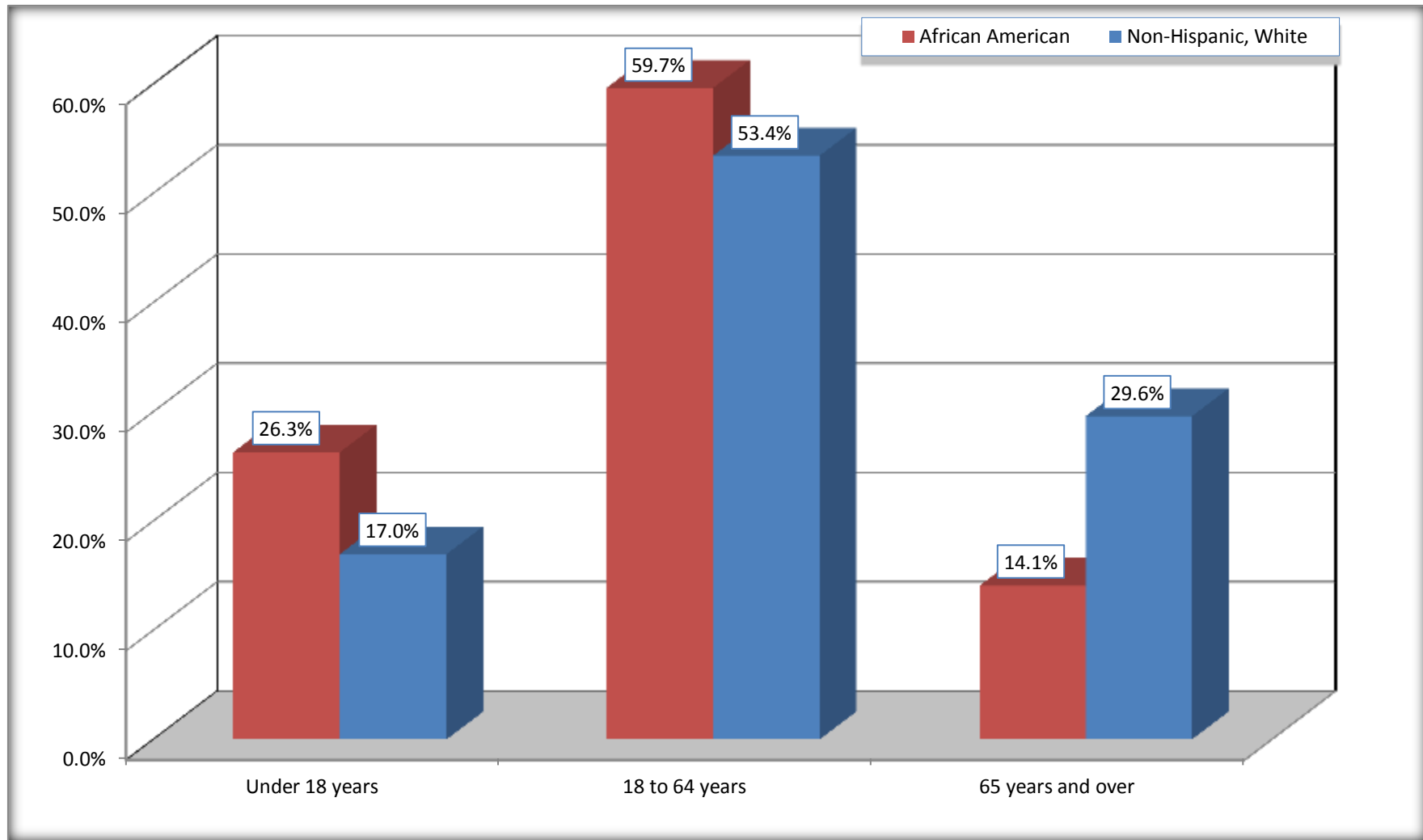
Source: U.S. Census Bureau, 2008-2012 American Community Survey

Although the American Community Survey (ACS) produces population, demographic and housing unit estimates, it is the Census Bureau's Population Estimates Program that produces and disseminates the official estimates of the population for the nation, states, counties, cities and towns and estimates of housing units for states and counties.

For information on confidentiality protection, sampling error, nonsampling error, and definitions, see Survey Methodology.  
<http://www.census.gov/acs/www/UseData/index.htm>



## Population by Age Warren city, Arkansas



Source: B01001. SEX BY AGE  
Data Set: 2008-2012 American Community Survey 5-Year Estimates

**B05003. SEX BY AGE BY CITIZENSHIP STATUS**

Data Set: 2008-2012 American Community Survey 5-Year Estimates

	Warren city, Arkansas					
	African American	Margin of Error (+/-)	% of AA Total by Age	White, Not Hispanic	Margin of Error (+/-)	% of NHW Total by Age
<b>Total:</b>	<b>2,491</b>	<b>244</b>	<b>100.0%</b>	<b>2,423</b>	<b>272</b>	<b>100.0%</b>
<b>Under 18 years:</b>	<b>655</b>	<b>NC</b>	<b>100.0%</b>	<b>411</b>	<b>NC</b>	<b>100.0%</b>
Native	655	NC	100.0%	411	NC	100.0%
Foreign born:	0	NC	0.0%	0	NC	0.0%
Naturalized U.S. citizen	0	NC	0.0%	0	NC	0.0%
Not a U.S. citizen	0	NC	0.0%	0	NC	0.0%
<b>18 years and over:</b>	<b>1,836</b>	<b>NC</b>	<b>100.0%</b>	<b>2,012</b>	<b>NC</b>	<b>100.0%</b>
Native	1,836	NC	100.0%	2,012	NC	100.0%
Foreign born:	0	NC	0.0%	0	NC	0.0%
Naturalized U.S. citizen	0	NC	0.0%	0	NC	0.0%
Not a U.S. citizen	0	NC	0.0%	0	NC	0.0%
<b>Male:</b>	<b>1,121</b>	<b>182</b>	<b>45.0%</b>	<b>1,049</b>	<b>155</b>	<b>43.3%</b>
<b>Under 18 years:</b>	<b>328</b>	<b>76</b>	<b>100.0%</b>	<b>223</b>	<b>95</b>	<b>100.0%</b>
Native	328	76	100.0%	223	95	100.0%
Foreign born:	0	17	0.0%	0	17	0.0%
Naturalized U.S. citizen	0	17	0.0%	0	17	0.0%
Not a U.S. citizen	0	17	0.0%	0	17	0.0%
<b>18 years and over:</b>	<b>793</b>	<b>160</b>	<b>100.0%</b>	<b>826</b>	<b>131</b>	<b>100.0%</b>
Native	793	160	100.0%	826	131	100.0%
Foreign born:	0	17	0.0%	0	17	0.0%
Naturalized U.S. citizen	0	17	0.0%	0	17	0.0%
Not a U.S. citizen	0	17	0.0%	0	17	0.0%

	Warren city, Arkansas					
	African American	Margin of Error (+/-)	% of AA by Age	White, Not Hispanic	Margin of Error (+/-)	% of NHW by Age
<b>Female:</b>	1,370	144	55.0%	1,374	150	56.7%
<b>Under 18 years:</b>	<b>327</b>	<b>85</b>	<b>100.0%</b>	<b>188</b>	<b>74</b>	<b>100.0%</b>
Native	327	85	100.0%	188	74	100.0%
Foreign born:	0	17	0.0%	0	17	0.0%
Naturalized U.S. citizen	0	17	0.0%	0	17	0.0%
Not a U.S. citizen	0	17	0.0%	0	17	0.0%
<b>18 years and over:</b>	<b>1,043</b>	<b>93</b>	<b>100.0%</b>	<b>1,186</b>	<b>125</b>	<b>100.0%</b>
Native	1,043	93	100.0%	1,186	125	100.0%
Foreign born:	0	17	0.0%	0	17	0.0%
Naturalized U.S. citizen	0	17	0.0%	0	17	0.0%
Not a U.S. citizen	0	17	0.0%	0	17	0.0%

Source: U.S. Census Bureau, 2008-2012 American Community Survey

For information on confidentiality protection, sampling error, nonsampling error, and definitions, see Survey Methodology.  
<http://www.census.gov/acs/www/UseData/index.htm>

# Citizenship Status of Voting Age Population (18 and Over)

## Warren city, Arkansas



Source: B05003. SEX BY AGE BY CITIZENSHIP STATUS  
Data Set: 2008-2012 American Community Survey 5-Year Estimates

**B07004. GEOGRAPHICAL MOBILITY IN THE PAST YEAR BY RACE FOR CURRENT RESIDENCE IN THE UNITED STATES - Universe:  
POPULATION 1 YEAR AND OVER**

Data Set: 2008-2012 American Community Survey 5-Year Estimates

	Warren city, Arkansas					
	African American	Margin of Error (+/-)	% of AA Total	White, Not Hispanic	Margin of Error (+/-)	% of NHW Total
<b>Total:</b>	<b>2,439</b>	<b>238</b>	<b>100.0%</b>	<b>2,423</b>	<b>272</b>	<b>100.0%</b>
Same house 1 year ago	1,945	289	79.7%	2,078	282	85.8%
Moved within same county	335	166	13.7%	246	124	10.2%
Moved from different county within same state	52	59	2.1%	46	49	1.9%
Moved from different state	102	106	4.2%	53	51	2.2%
Moved from abroad	5	10	0.2%	0	17	0.0%

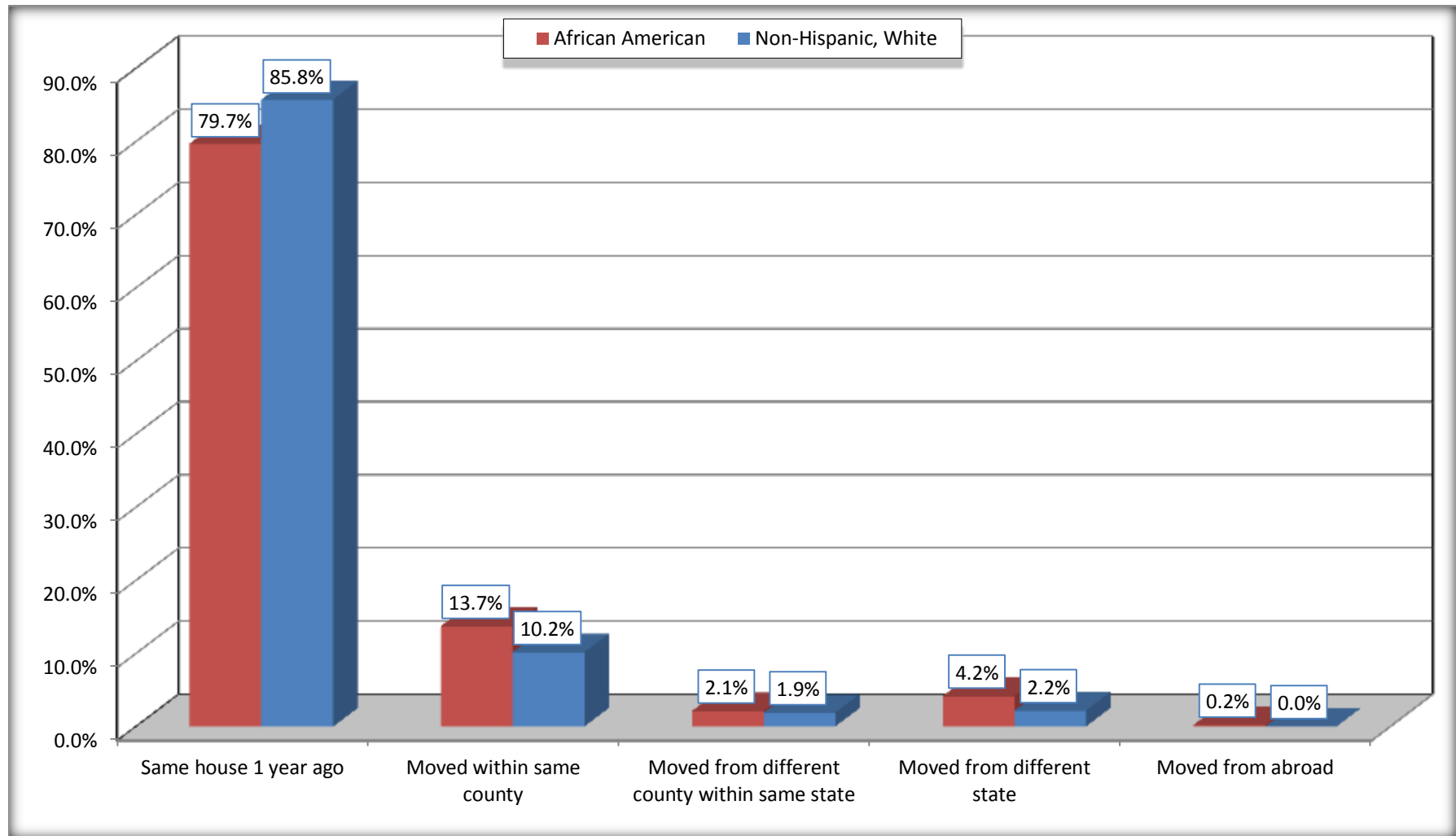
Source: U.S. Census Bureau, 2008-2012 American Community Survey

For information on confidentiality protection, sampling error, nonsampling error, and definitions, see Survey Methodology.

<http://www.census.gov/acs/www/UseData/index.htm>

# Geographical Mobility in the Past Year (Population 1 Year and Over)

## Warren city, Arkansas



Source: B07004. GEOGRAPHICAL MOBILITY IN THE PAST YEAR BY RACE FOR CURRENT RESIDENCE IN THE UNITED STATES - Universe: POPULATION 1 YEAR AND OVER

Data Set: 2008-2012 American Community Survey 5-Year Estimates

**B08105. MEANS OF TRANSPORTATION TO WORK - Universe: WORKERS 16 YEARS AND OVER**

Data Set: 2008-2012 American Community Survey 5-Year Estimates

	Warren city, Arkansas					
	African American	Margin of Error (+/-)	% of AA Total	White, Not Hispanic	Margin of Error (+/-)	% of NHW Total
<b>Total:</b>	965	162	<b>100.0%</b>	905	165	<b>100.0%</b>
Car, truck, or van - drove alone	854	171	88.5%	727	153	80.3%
Car, truck, or van - carpooled	29	38	3.0%	106	76	11.7%
Public transportation (excluding taxicab)	5	10	0.5%	16	17	1.8%
Walked	50	59	5.2%	51	46	5.6%
Taxicab, motorcycle, bicycle, or other means	5	8	0.5%	5	10	0.6%
Worked at home	22	27	2.3%	0	17	0.0%

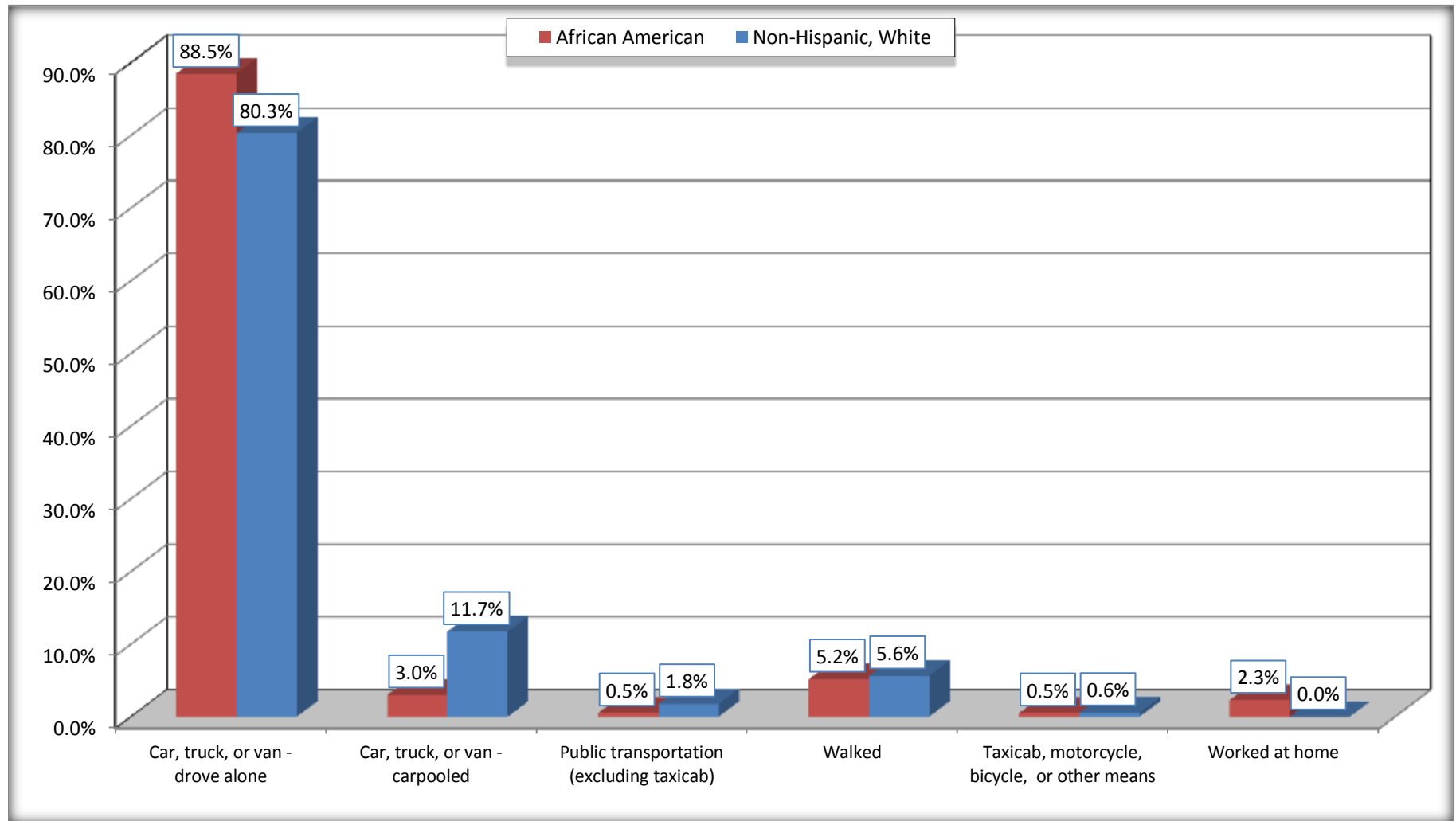
Source: U.S. Census Bureau, 2008-2012 American Community Survey

For information on confidentiality protection, sampling error, nonsampling error, and definitions, see Survey Methodology.

<http://www.census.gov/acs/www/UseData/index.htm>

# Means of Transportation to Work (Workers 16 Years and Over)

## Warren city, Arkansas



Source: B08105. MEANS OF TRANSPORTATION TO WORK - Universe: WORKERS 16 YEARS AND OVER  
Data Set: 2008-2012 American Community Survey 5-Year Estimates



**B11002. HOUSEHOLD TYPE BY RELATIVES AND NONRELATIVES FOR POPULATION IN HOUSEHOLDS**

Data Set: 2008-2012 American Community Survey 5-Year Estimates

	Warren city, Arkansas					
	African American	Margin of Error (+/-)	% of AA Total	White, Not Hispanic	Margin of Error (+/-)	% of NHW Total
<b>Total:</b>	2472	270	<b>100.0%</b>	2179	298	<b>100.0%</b>
In family households	1947	250	78.8%	1635	315	75.0%
In nonfamily households	525	192	21.2%	544	155	25.0%

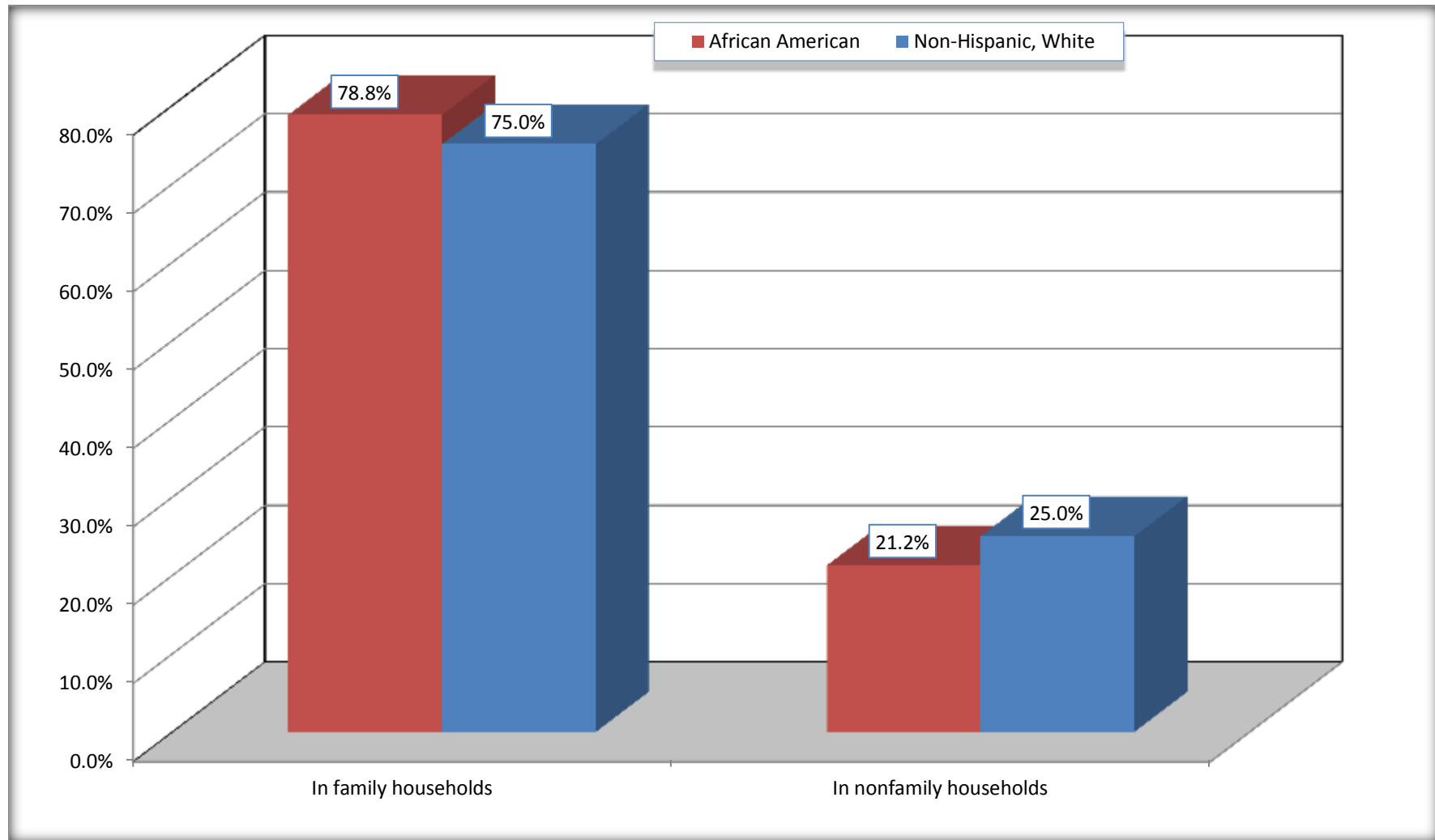
Source: U.S. Census Bureau, 2008-2012 American Community Survey

For information on confidentiality protection, sampling error, nonsampling error, and definitions, see Survey Methodology.

<http://www.census.gov/acs/www/UseData/index.htm>

# Household Type for Population in Households

## Warren city, Arkansas



Source: B11002. HOUSEHOLD TYPE BY RELATIVES AND NONRELATIVES FOR POPULATION IN HOUSEHOLDS  
Data Set: 2008-2012 American Community Survey 5-Year Estimates

**B12002. MARITAL STATUS FOR THE POPULATION 15 YEARS AND OVER**

Data Set: 2008-2012 American Community Survey 5-Year Estimates

	Warren city, Arkansas					
	African American	Margin of Error (+/-)	% of AA Total	White, Not Hispanic	Margin of Error (+/-)	% of NHW Total
<b>Total:</b>	<b>1,898</b>	<b>202</b>	<b>100.0%</b>	<b>2,111</b>	<b>225</b>	<b>100.0%</b>
Never married	627	NC	33.0%	446	NC	21.1%
Now married (except separated)	591	NC	31.1%	987	NC	46.8%
Separated	116	NC	6.1%	79	NC	3.7%
Widowed	149	NC	7.9%	364	NC	17.2%
Divorced	415	NC	21.9%	235	NC	11.1%
<b>Male:</b>	<b>850</b>	<b>166</b>	<b>44.8%</b>	<b>876</b>	<b>134</b>	<b>41.5%</b>
Never married	263	88	13.9%	183	84	8.7%
Now married (except separated)	322	99	17.0%	477	126	22.6%
Separated	15	18	0.8%	48	45	2.3%
Widowed	37	51	1.9%	107	66	5.1%
Divorced	213	109	11.2%	61	34	2.9%
<b>Female:</b>	<b>1,048</b>	<b>93</b>	<b>55.2%</b>	<b>1,235</b>	<b>125</b>	<b>58.5%</b>
Never married	364	86	19.2%	263	93	12.5%
Now married (except separated)	269	91	14.2%	510	112	24.2%
Separated	101	72	5.3%	31	33	1.5%
Widowed	112	41	5.9%	257	78	12.2%
Divorced	202	77	10.6%	174	73	8.2%

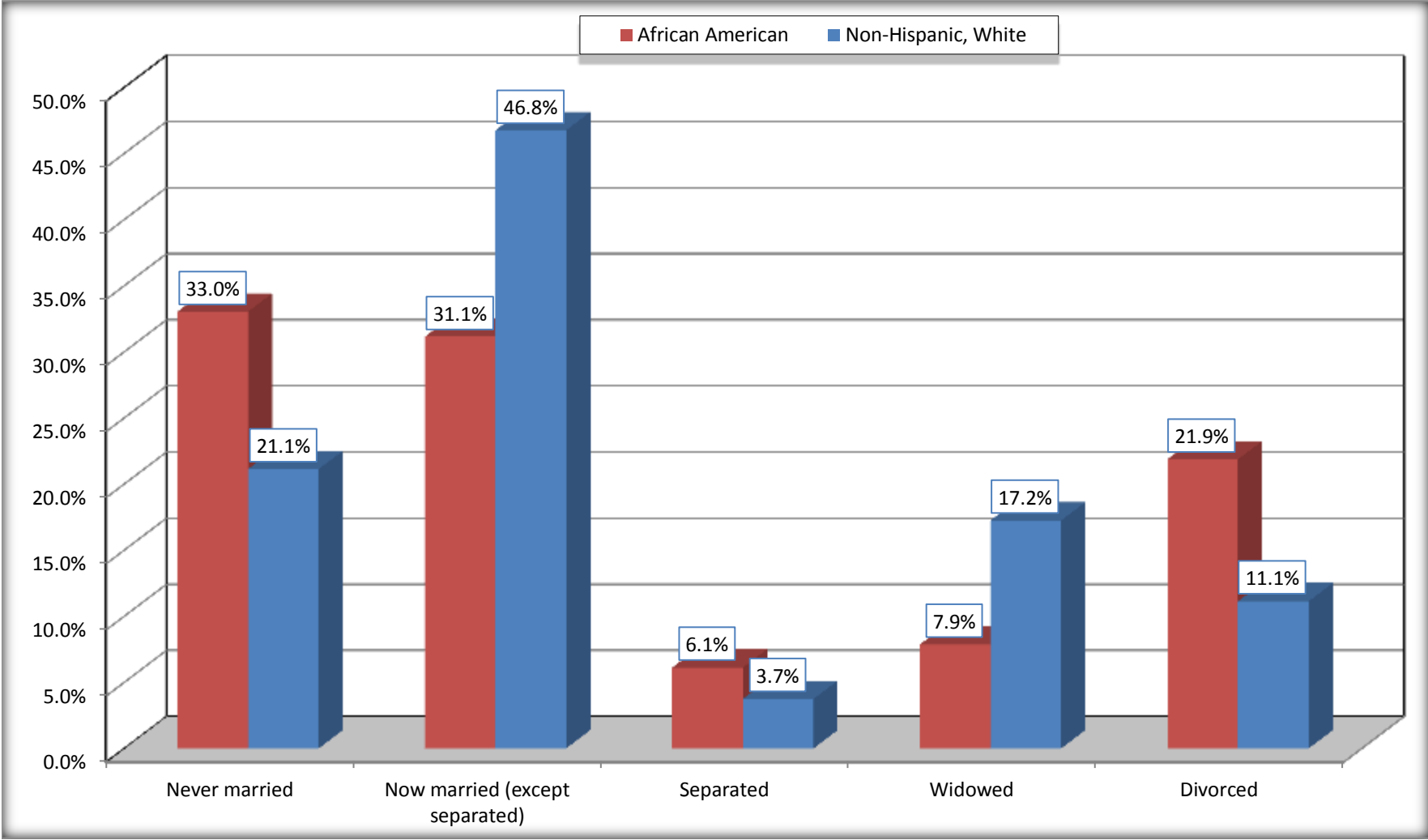
Source: U.S. Census Bureau, 2008-2012 American Community Survey

For information on confidentiality protection, sampling error, nonsampling error, and definitions, see Survey Methodology.

<http://www.census.gov/acs/www/UseData/index.htm>

# Marital Status for the Population 15 Years and Over

## Warren city, Arkansas



Source: B12002. MARITAL STATUS FOR THE POPULATION 15 YEARS AND OVER  
Data Set: 2008-2012 American Community Survey 5-Year Estimates

**C15002. SEX BY EDUCATIONAL ATTAINMENT FOR THE POPULATION 25 YEARS AND OVER**

Data Set: 2008-2012 American Community Survey 5-Year Estimates

	Warren city, Arkansas					
	African American	Margin of Error (+/-)	% of AA Total	White, Not Hispanic	Margin of Error (+/-)	% of NHW Total
<b>Total:</b>	<b>1,604</b>	<b>161</b>	<b>100.0%</b>	<b>1,812</b>	<b>230</b>	<b>100.0%</b>
Less than high school diploma	445	NC	27.7%	335	NC	18.5%
High school graduate, GED, or alternative	706	NC	44.0%	683	NC	37.7%
Some college or associate's degree	396	NC	24.7%	463	NC	25.6%
Bachelor's degree or higher	57	NC	3.6%	331	NC	18.3%
Male:	692	133	43.1%	763	124	42.1%
Less than high school diploma	237	116	14.8%	145	71	8.0%
High school graduate, GED, or alternative	300	103	18.7%	240	85	13.2%
Some college or associate's degree	146	94	9.1%	201	81	11.1%
Bachelor's degree or higher	9	17	0.6%	177	71	9.8%
Female:	912	105	56.9%	1,049	133	57.9%
Less than high school diploma	208	59	13.0%	190	89	10.5%
High school graduate, GED, or alternative	406	102	25.3%	443	89	24.4%
Some college or associate's degree	250	100	15.6%	262	79	14.5%
Bachelor's degree or higher	48	46	3.0%	154	55	8.5%

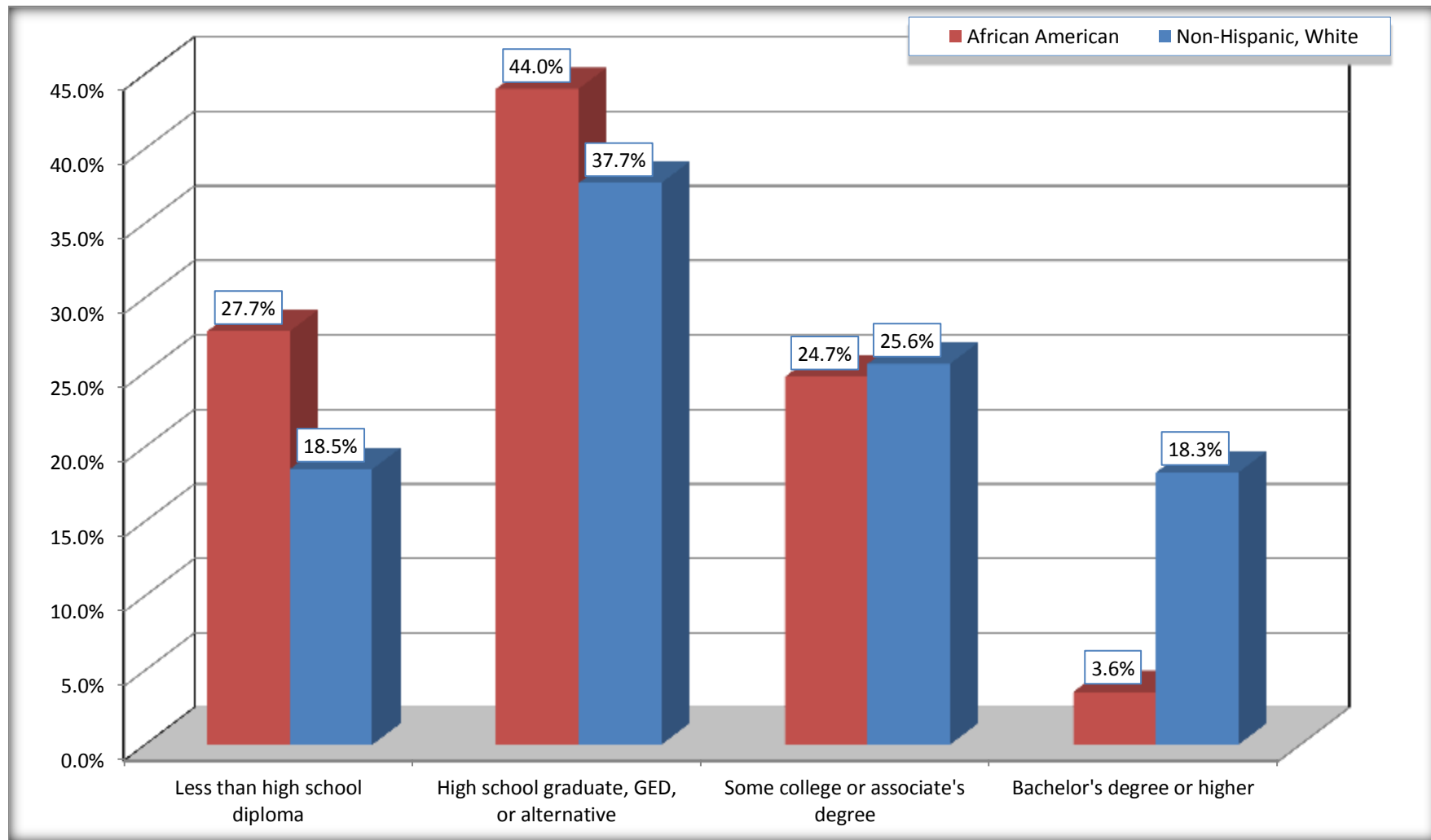
Source: U.S. Census Bureau, 2008-2012 American Community Survey

For information on confidentiality protection, sampling error, nonsampling error, and definitions, see Survey Methodology.

<http://www.census.gov/acs/www/UseData/index.htm>

# Educational Attainment for the Population 25 Years and Older

## Warren city, Arkansas



Source: C15002. SEX BY EDUCATIONAL ATTAINMENT FOR THE POPULATION 25 YEARS AND OVER  
Data Set: 2008-2012 American Community Survey 5-Year Estimates

**B17010. POVERTY STATUS IN THE PAST 12 MONTHS OF FAMILIES BY FAMILY TYPE BY PRESENCE OF RELATED CHILDREN UNDER 18 YEARS**

Data Set: 2008-2012 American Community Survey 5-Year Estimates

	Warren city, Arkansas					
	African American	Margin of Error (+/-)	% of AA Total	White, Not Hispanic	Margin of Error (+/-)	% of NHW Total
<b>Total:</b>	<b>705</b>	<b>129</b>	<b>100.0%</b>	<b>605</b>	<b>122</b>	<b>100.0%</b>
Income in the past 12 months below poverty level:	179	87	25.4%	84	58	13.9%
Married-couple family:	7	12	1.0%	16	15	2.6%
With related children under 18 years	7	12	1.0%	6	9	1.0%
Other family:	172	87	24.4%	68	54	11.2%
Male householder, no wife present	0	17	0.0%	0	17	0.0%
With related children under 18 years	0	17	0.0%	0	17	0.0%
Female householder, no husband present	172	87	24.4%	68	54	11.2%
With related children under 18 years	153	81	21.7%	48	44	7.9%
Income in the past 12 months at or above poverty level:	526	117	74.6%	521	122	86.1%
Married-couple family:	278	106	39.4%	441	114	72.9%
With related children under 18 years	52	48	7.4%	131	53	21.7%
Other family:	248	93	35.2%	80	59	13.2%
Male householder, no wife present	49	55	7.0%	17	23	2.8%
With related children under 18 years	12	19	1.7%	4	7	0.7%
Female householder, no husband present	199	75	28.2%	63	48	10.4%
With related children under 18 years	110	58	15.6%	12	21	2.0%

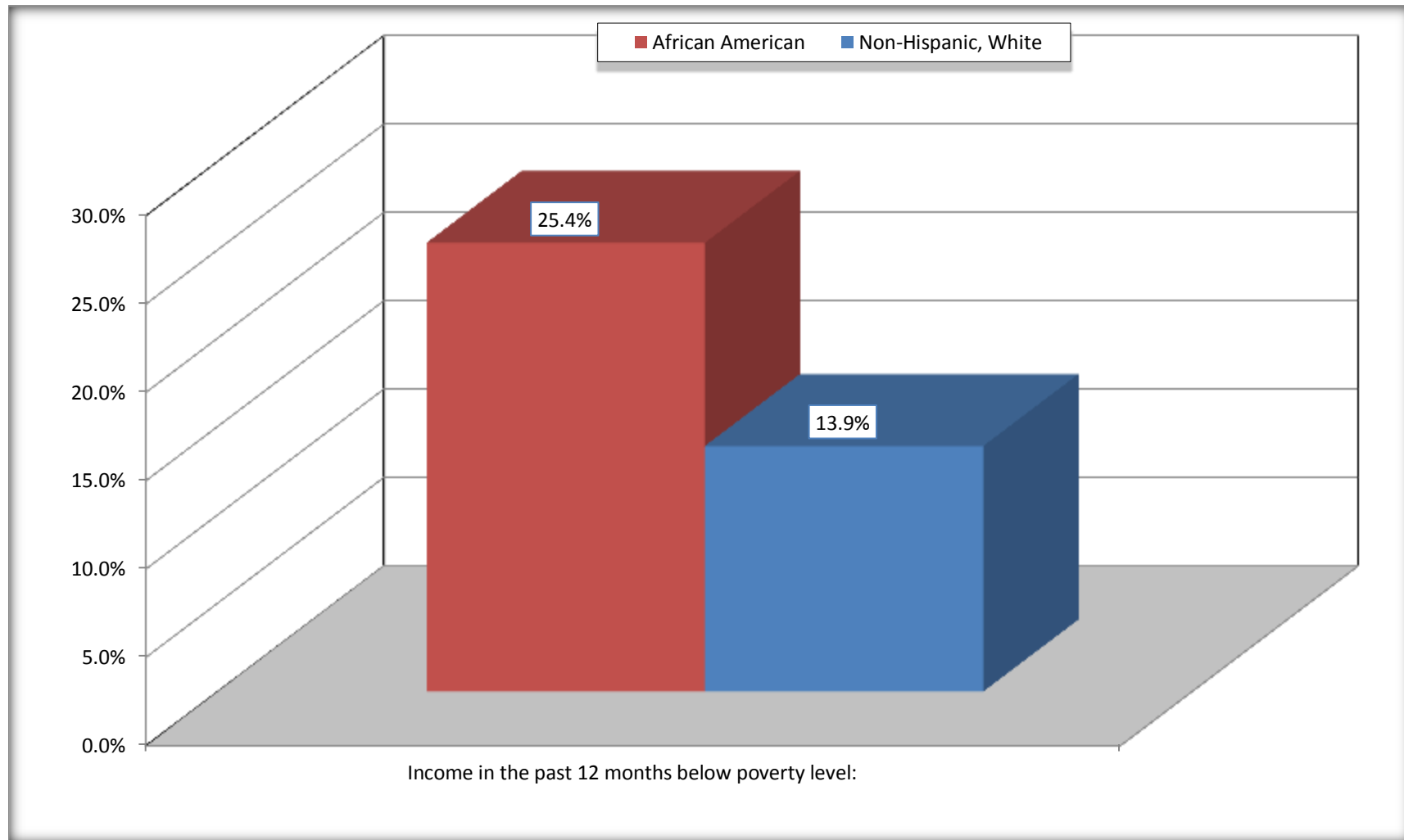
Source: U.S. Census Bureau, 2008-2012 American Community Survey

For information on confidentiality protection, sampling error, nonsampling error, and definitions, see Survey Methodology.

<http://www.census.gov/acs/www/UseData/index.htm>

# Family Households Below Poverty in the Past 12 Months

## Warren city, Arkansas



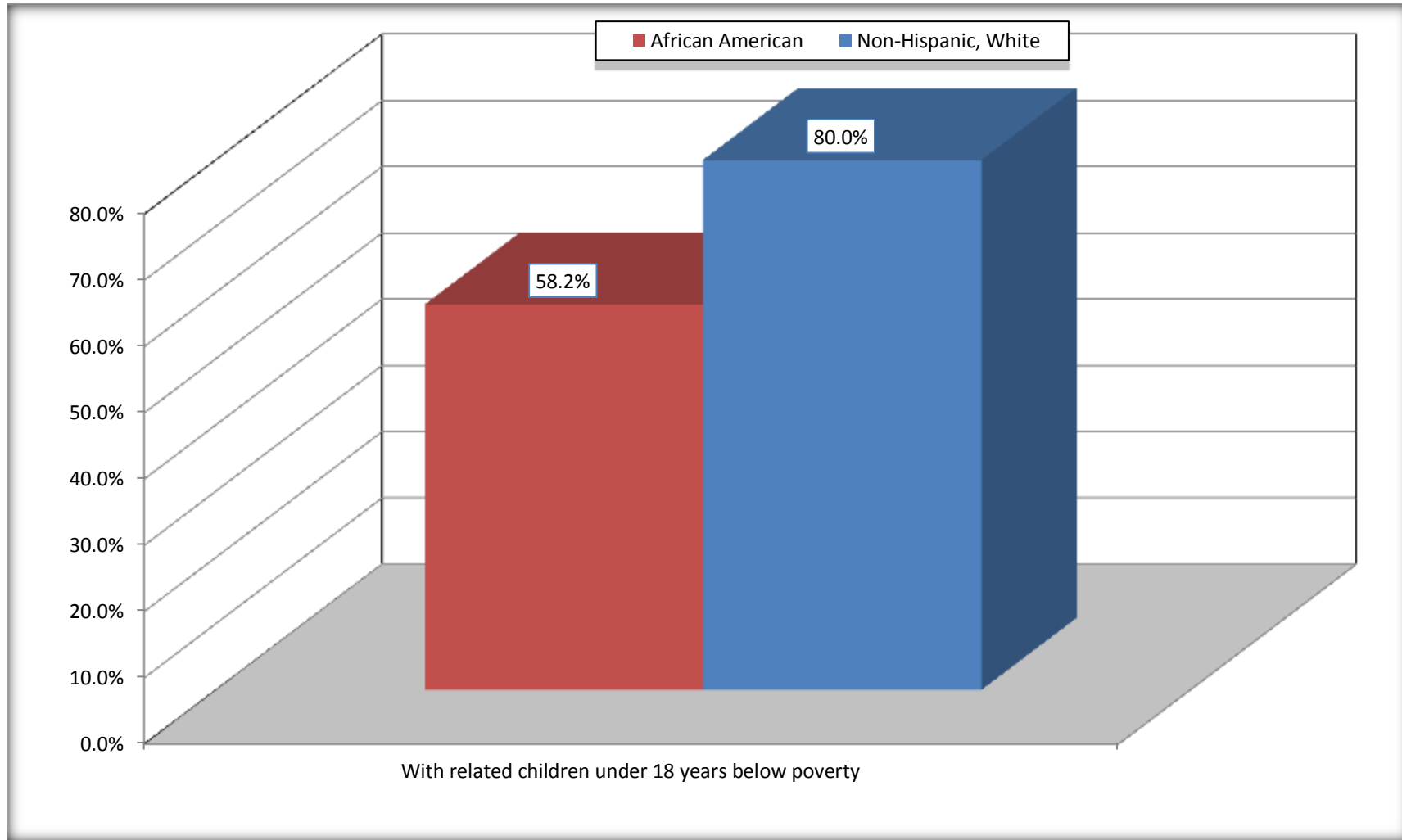
Source: B17010. POVERTY STATUS IN THE PAST 12 MONTHS OF FAMILIES BY FAMILY TYPE BY PRESENCE OF RELATED CHILDREN UNDER 18 YEARS

Data Set: 2008-2012 American Community Survey 5-Year Estimates



# Female-headed Households with Related Children Below Poverty in the Past 12 Months

## Warren city, Arkansas



Source: B17010. POVERTY STATUS IN THE PAST 12 MONTHS OF FAMILIES BY FAMILY TYPE BY PRESENCE OF RELATED CHILDREN UNDER 18 YEARS

Data Set: 2008-2012 American Community Survey 5-Year Estimates

**B17020 POVERTY STATUS IN THE PAST 12 MONTHS BY AGE - Universe: POPULATION FOR WHOM POVERTY STATUS IS DETERMINED**

Data Set: 2008-2012 American Community Survey 5-Year Estimates

	Warren city, Arkansas					
	African American	Margin of Error (+/-)	% of AA By Age	White, Not Hispanic	Margin of Error (+/-)	% of NHW By Age
<b>Total:</b>	<b>2,451</b>	<b>237</b>	<b>100.0%</b>	<b>2,305</b>	<b>287</b>	<b>100.0%</b>
Income in the past 12 months below poverty level:	855	253	34.9%	451	168	19.6%
<b>Under 18 years</b>	317	NC	49.0%	99	NC	24.1%
<b>18 to 64 years</b>	452	169	30.7%	268	99	21.0%
<b>65 years and over</b>	86	NC	25.7%	84	NC	13.6%
Income in the past 12 months at or above poverty level:	1,596	303	65.1%	1,854	311	80.4%
<b>Under 18 years</b>	330	NC	51.0%	312	NC	75.9%
<b>18 to 64 years</b>	1,018	212	69.3%	1,008	196	79.0%
<b>65 years and over</b>	248	NC	74.3%	534	NC	86.4%

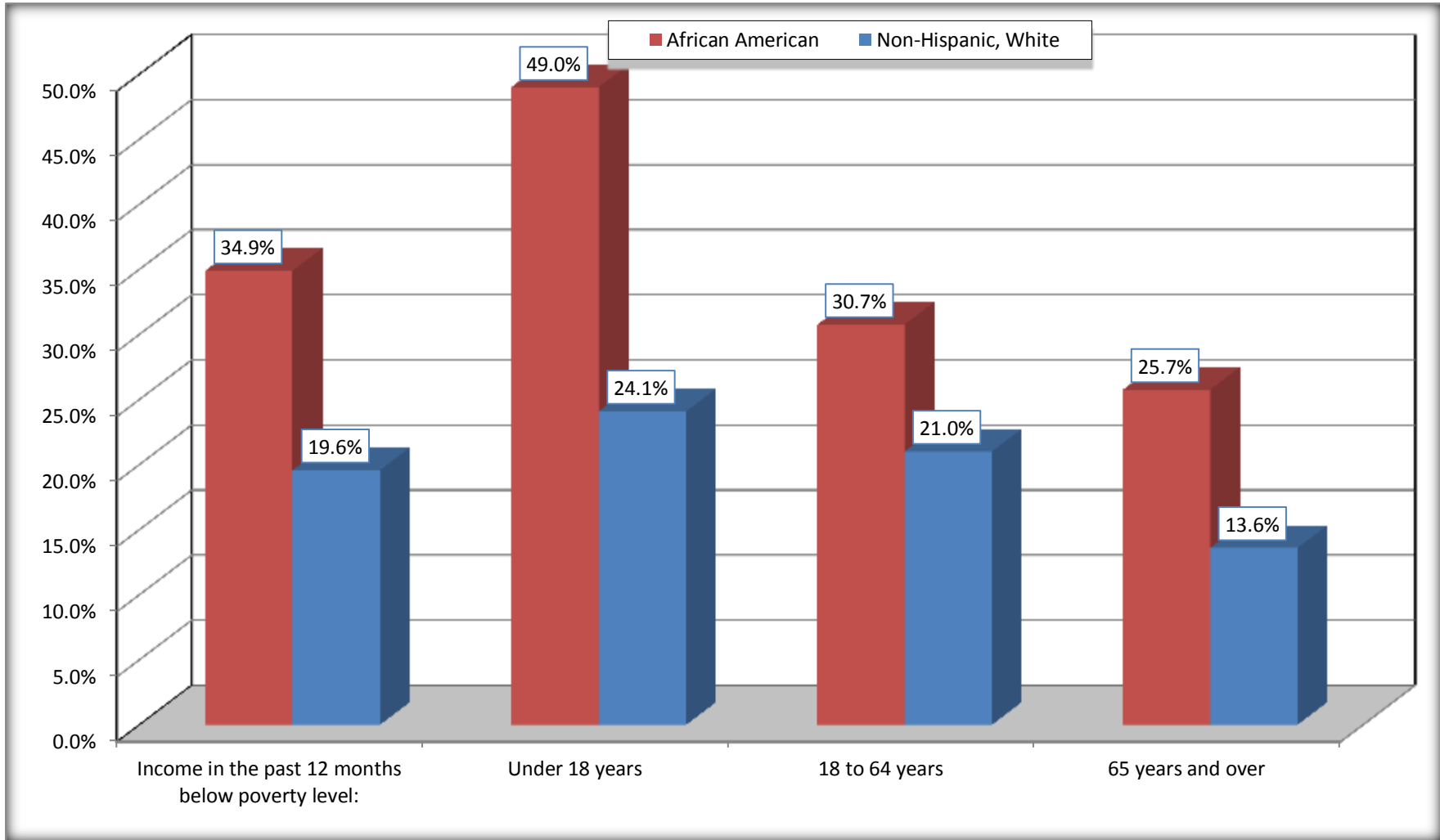
Source: U.S. Census Bureau, 2008-2012 American Community Survey

For information on confidentiality protection, sampling error, nonsampling error, and definitions, see Survey Methodology.

<http://www.census.gov/acs/www/UseData/index.htm>

# Population Below Poverty in the Past 12 Months

## Warren city, Arkansas



Source: B17020 POVERTY STATUS IN THE PAST 12 MONTHS BY AGE - Universe: POPULATION FOR WHOM POVERTY STATUS IS DETERMINED  
Data Set: 2008-2012 American Community Survey 5-Year Estimates

**B19001. HOUSEHOLD INCOME IN THE PAST 12 MONTHS (IN 2010 INFLATION-ADJUSTED DOLLARS)**

Data Set: 2008-2012 American Community Survey 5-Year Estimates

	Warren city, Arkansas					
	African American	Margin of Error (+/-)	% of AA Total	White, Not Hispanic	Margin of Error (+/-)	% of NHW Total
<b>Total:</b>	<b>1,159</b>	<b>168</b>	<b>100.0%</b>	<b>1,117</b>	<b>156</b>	<b>100.0%</b>
Less than \$ 10,000	288	158	24.8%	83	48	7.4%
\$ 10,000 to \$ 14,999	92	49	7.9%	151	71	13.5%
<b>\$ 15,000 to \$ 24,999</b>	220	NC	19.0%	172	NC	15.4%
<b>\$ 25,000 to \$ 34,999</b>	248	NC	21.4%	175	NC	15.7%
<b>\$ 35,000 to \$ 49,999</b>	90	NC	7.8%	114	NC	10.2%
<b>\$ 50,000 to \$ 74,999</b>	81	NC	7.0%	249	NC	22.3%
\$ 75,000 to \$ 99,999	125	88	10.8%	93	50	8.3%
<b>\$ 100,000 to \$ 149,999</b>	9	NC	0.8%	63	NC	5.6%
\$ 150,000 to \$ 199,999	6	9	0.5%	9	15	0.8%
\$ 200,000 or more	0	17	0.0%	8	16	0.7%

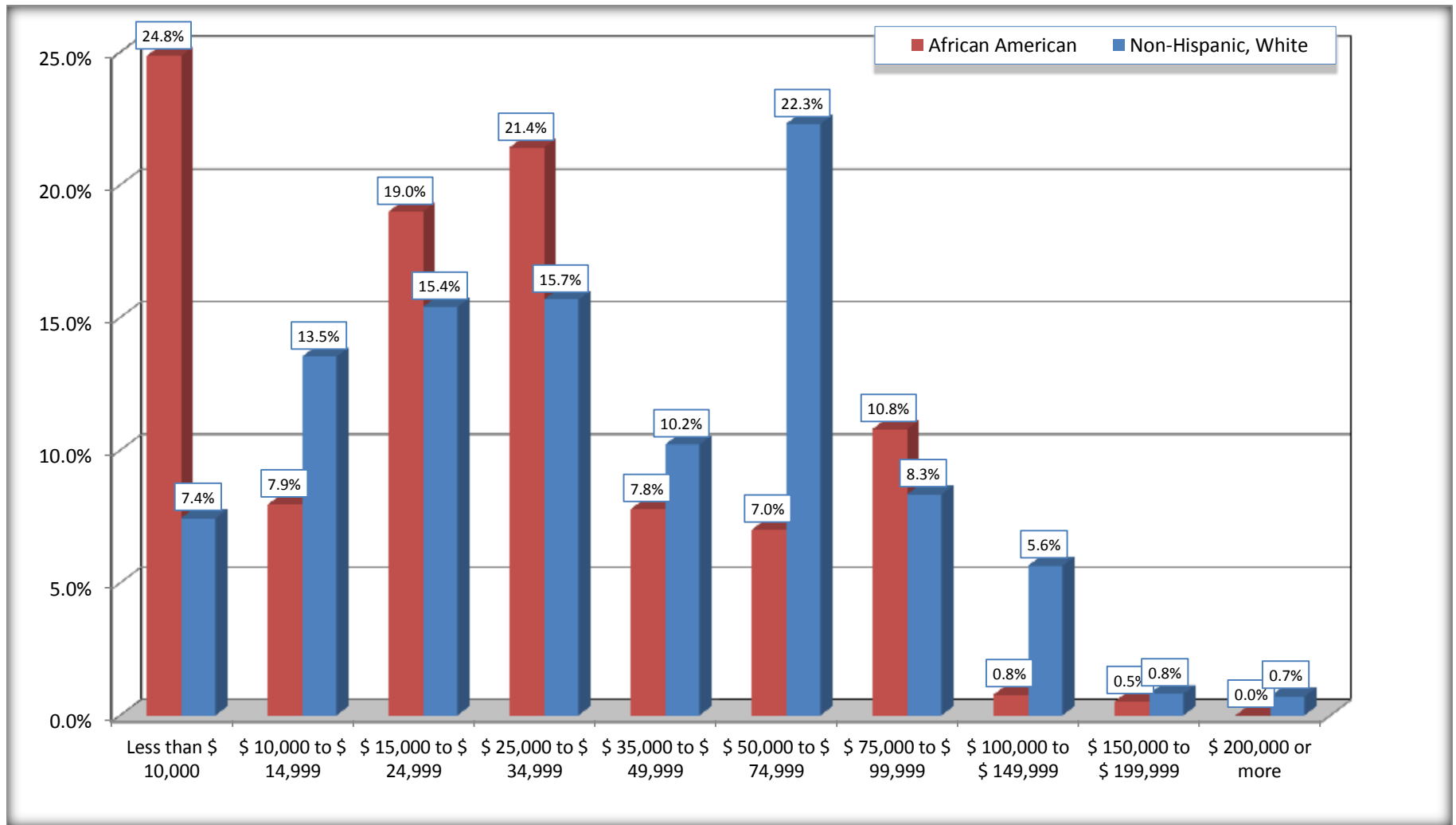
Source: U.S. Census Bureau, 2008-2012 American Community Survey

For information on confidentiality protection, sampling error, nonsampling error, and definitions, see Survey Methodology.

<http://www.census.gov/acs/www/UseData/index.htm>

# Household Income in the Past 12 Months

## Warren city, Arkansas



Source: B19001. HOUSEHOLD INCOME IN THE PAST 12 MONTHS (IN 2010 INFLATION-ADJUSTED DOLLARS)  
Data Set: 2008-2012 American Community Survey 5-Year Estimates

**B19013. MEDIAN HOUSEHOLD INCOME IN THE PAST 12 MONTHS (IN 2010 INFLATION-ADJUSTED DOLLARS)**

Data Set: 2008-2012 American Community Survey 5-Year Estimates

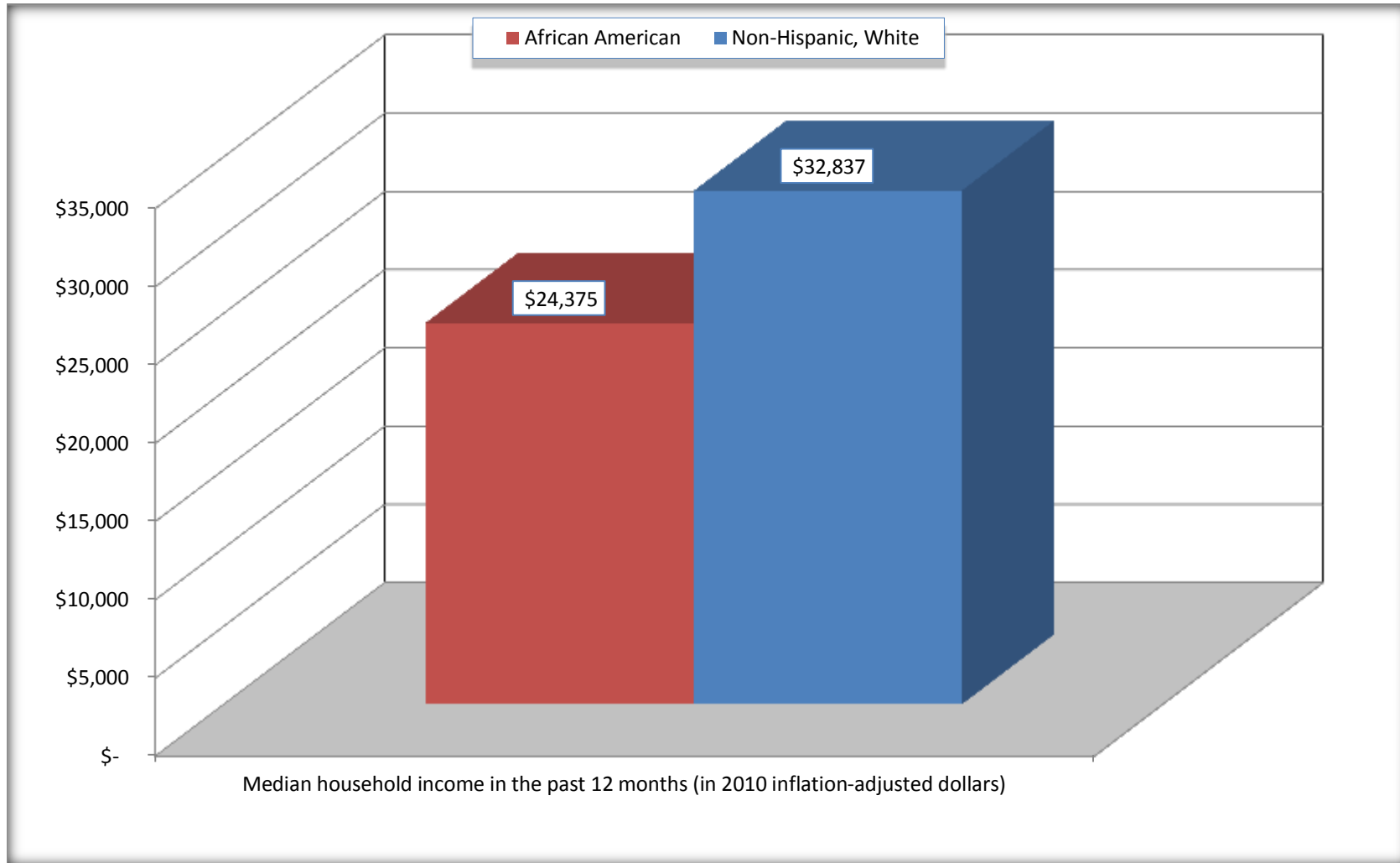
	Warren city, Arkansas			
	African American	Margin of Error (+/-)	White, Not Hispanic	Margin of Error (+/-)
Median household income in the past 12 months (in 2010 inflation-adjusted dollars)	\$ 24,375	\$ 8,905	\$ 32,837	\$ 15,177

Source: U.S. Census Bureau, 2008-2012 American Community Survey

For information on confidentiality protection, sampling error, nonsampling error, and definitions, see Survey Methodology.  
<http://www.census.gov/acs/www/UseData/index.htm>

# Median Household Income in the Past 12 Months

## Warren city, Arkansas



Source: B19013. MEDIAN HOUSEHOLD INCOME IN THE PAST 12 MONTHS (IN 2010 INFLATION-ADJUSTED DOLLARS)  
Data Set: 2008-2012 American Community Survey 5-Year Estimates

**B19101. FAMILY INCOME IN THE PAST 12 MONTHS (IN 2010 INFLATION-ADJUSTED DOLLARS)**

Data Set: 2008-2012 American Community Survey 5-Year Estimates

	Warren city, Arkansas					
	African American	Margin of Error (+/-)	% of AA Total	White, Not Hispanic	Margin of Error (+/-)	% of NHW Total
<b>Total:</b>	<b>705</b>	<b>129</b>	<b>100.0%</b>	<b>605</b>	<b>122</b>	<b>100.0%</b>
Less than \$ 10,000	113	87	16.0%	20	23	3.3%
\$ 10,000 to \$ 14,999	28	30	4.0%	45	41	7.4%
<b>\$ 15,000 to \$ 24,999</b>	<b>135</b>	<b>NC</b>	<b>19.1%</b>	<b>73</b>	<b>NC</b>	<b>12.1%</b>
<b>\$ 25,000 to \$ 34,999</b>	<b>150</b>	<b>NC</b>	<b>21.3%</b>	<b>67</b>	<b>NC</b>	<b>11.1%</b>
<b>\$ 35,000 to \$ 49,999</b>	<b>75</b>	<b>NC</b>	<b>10.6%</b>	<b>80</b>	<b>NC</b>	<b>13.2%</b>
<b>\$ 50,000 to \$ 74,999</b>	<b>73</b>	<b>NC</b>	<b>10.4%</b>	<b>162</b>	<b>NC</b>	<b>26.8%</b>
<b>\$ 100,000 to \$ 149,999</b>	<b>6</b>	<b>NC</b>	<b>0.9%</b>	<b>63</b>	<b>NC</b>	<b>10.4%</b>
\$ 150,000 to \$ 199,999	0	17	0.0%	9	15	1.5%
\$ 200,000 or more	0	17	0.0%	8	16	1.3%

Source: U.S. Census Bureau, 2008-2012 American Community Survey

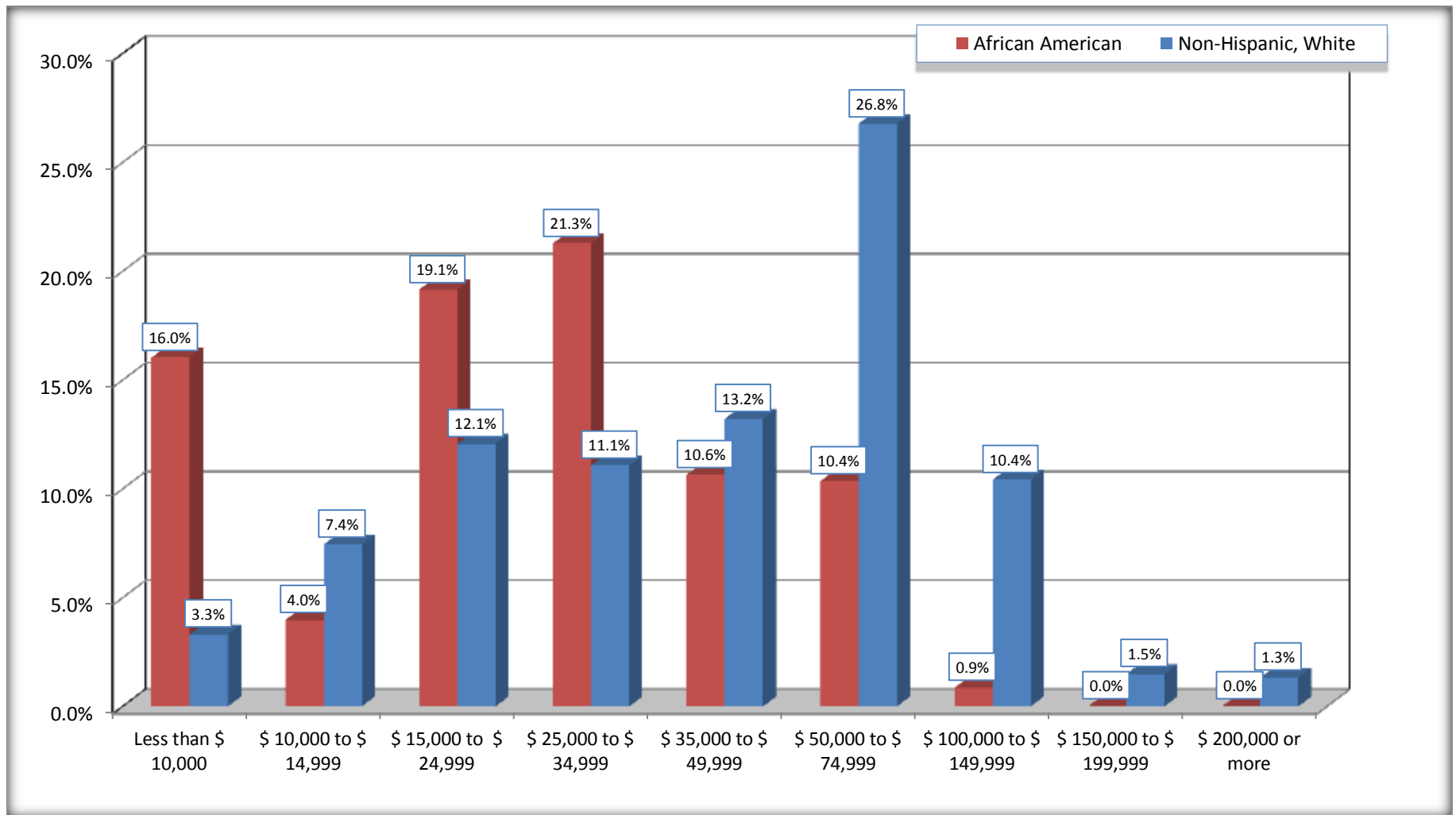
For information on confidentiality protection, sampling error, nonsampling error, and definitions, see Survey Methodology.

<http://www.census.gov/acs/www/UseData/index.htm>



# Family Income in the Past 12 Months

## Warren city, Arkansas



Source: B19101. FAMILY INCOME IN THE PAST 12 MONTHS (IN 2010 INFLATION-ADJUSTED DOLLARS)  
Data Set: 2008-2012 American Community Survey 5-Year Estimates

**B19113. MEDIAN FAMILY INCOME IN THE PAST 12 MONTHS (IN 2010 INFLATION-ADJUSTED DOLLARS)**

Data Set: 2008-2012 American Community Survey 5-Year Estimates

	Warren city, Arkansas			
	African American	Margin of Error (+/-)	White, Not Hispanic	Margin of Error (+/-)
Median family income in the past 12 months (in 2010 inflation-adjusted dollars)	\$ 31,601	\$ 4,142	\$ 51,122	\$ 8,662

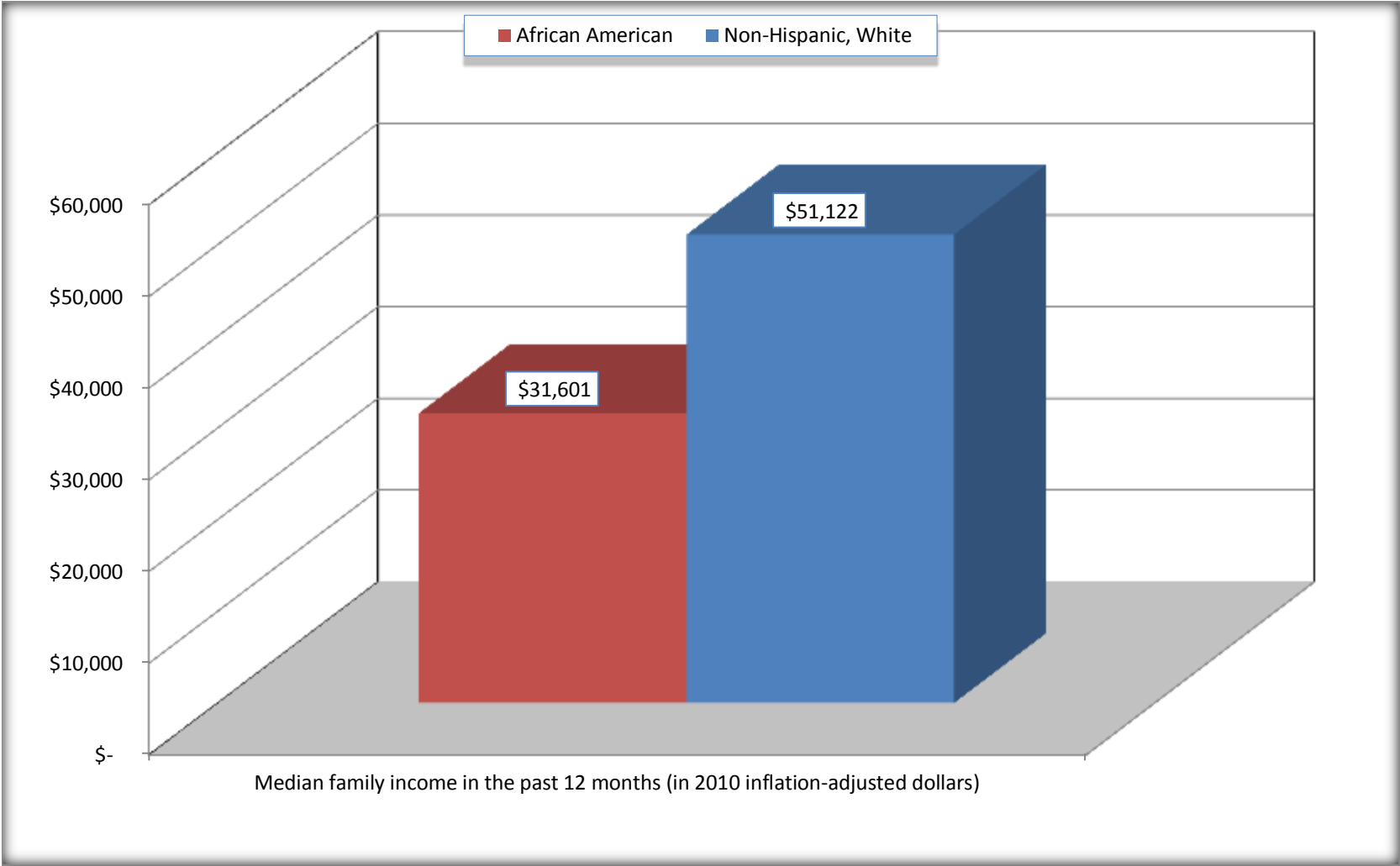
Source: U.S. Census Bureau, 2008-2012 American Community Survey

For information on confidentiality protection, sampling error, nonsampling error, and definitions, see Survey Methodology.

<http://www.census.gov/acs/www/UseData/index.htm>

# Median Family Income in the Past 12 Months

## Warren city, Arkansas



Source: B19113. MEDIAN FAMILY INCOME IN THE PAST 12 MONTHS (IN 2010 INFLATION-ADJUSTED DOLLARS)  
Data Set: 2008-2012 American Community Survey 5-Year Estimates

**B19202. MEDIAN NONFAMILY HOUSEHOLD INCOME IN THE PAST 12 MONTHS (IN 2010 INFLATION-ADJUSTED DOLLARS)**

Data Set: 2008-2012 American Community Survey 5-Year Estimates

	Warren city, Arkansas			
	African American	Margin of Error (+/-)	White, Not Hispanic	Margin of Error (+/-)
Median nonfamily household income in the past 12 months (in 2010 inflation-adjusted dollars)	\$ 12,759	\$ 10,393	\$ 22,273	\$ 7,033

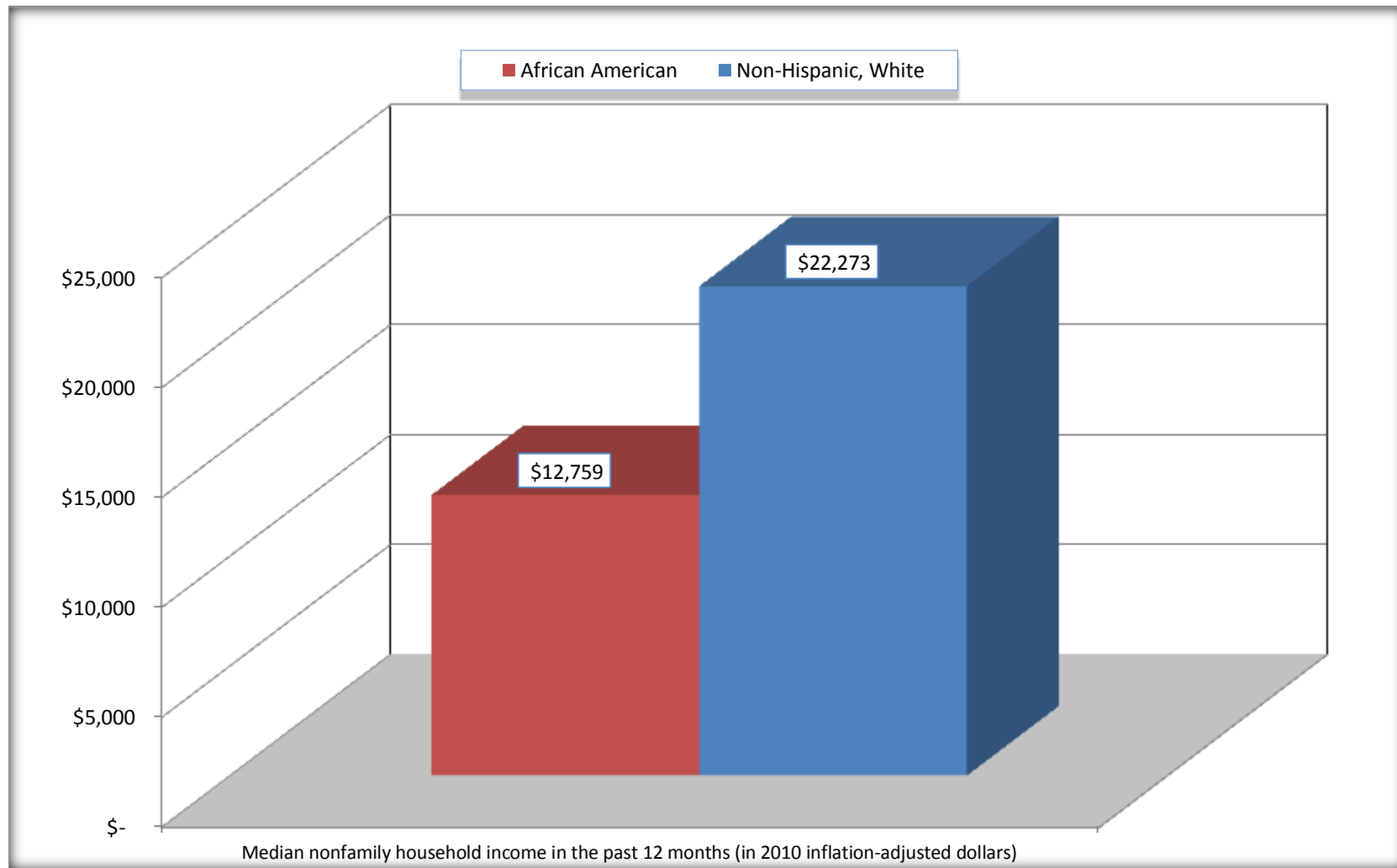
Source: U.S. Census Bureau, 2008-2012 American Community Survey

For information on confidentiality protection, sampling error, nonsampling error, and definitions, see Survey Methodology.

<http://www.census.gov/acs/www/UseData/index.htm>

# Median Non-Family Income in the Past 12 Months

## Warren city, Arkansas



Source: B19202. MEDIAN NONFAMILY HOUSEHOLD INCOME IN THE PAST 12 MONTHS (IN 2010 INFLATION-ADJUSTED DOLLARS)  
Data Set: 2008-2012 American Community Survey 5-Year Estimates

**B19301. PER CAPITA INCOME IN THE PAST 12 MONTHS (IN 2010 INFLATION-ADJUSTED DOLLARS)**

Data Set: 2008-2012 American Community Survey 5-Year Estimates

	Warren city, Arkansas			
	African American	Margin of Error (+/-)	White, Not Hispanic	Margin of Error (+/-)
Per capita income in the past 12 months (in 2010 inflation-adjusted dollars)	\$ 12,765	\$ 2,072	\$ 22,164	\$ 3,910

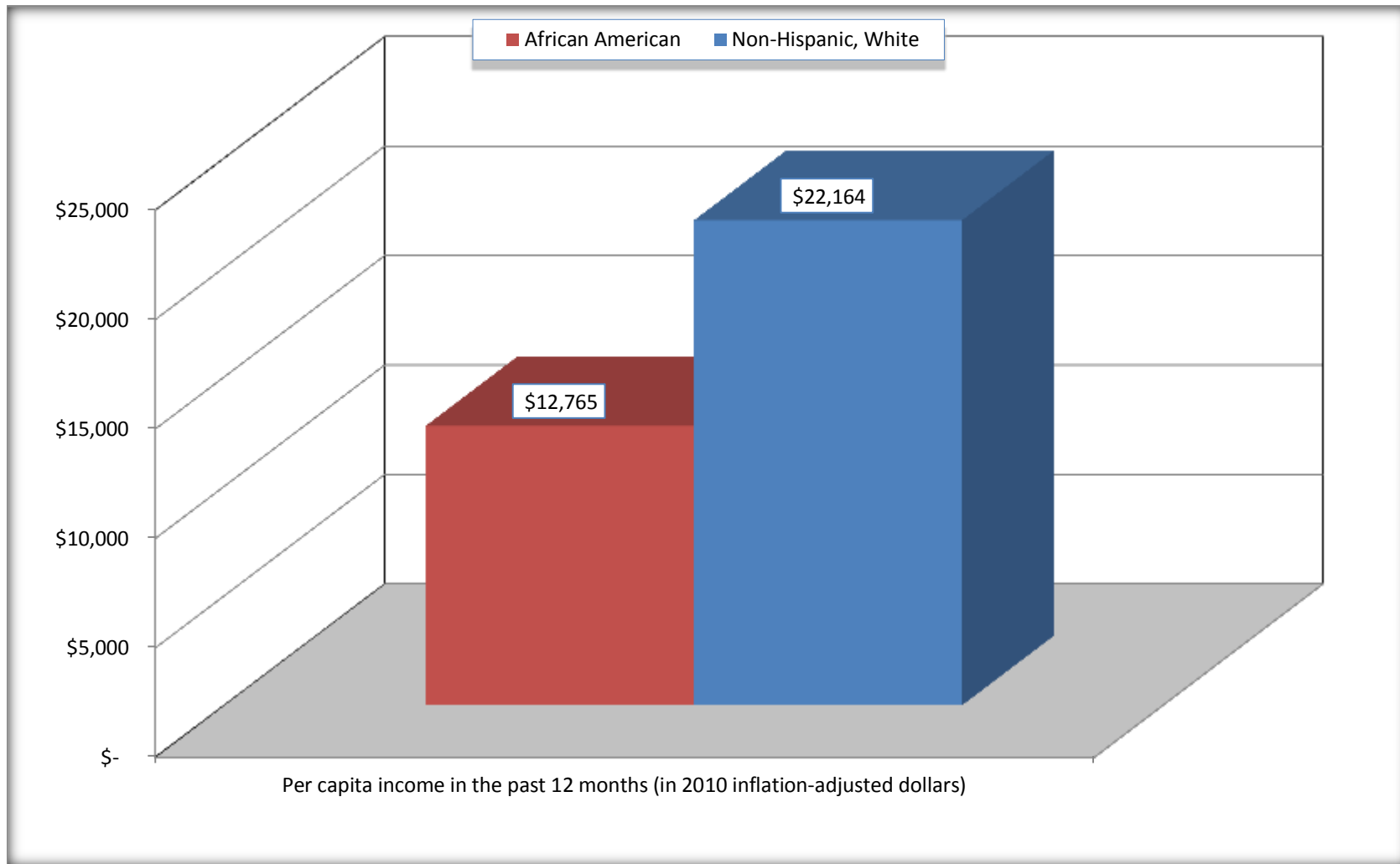
Source: U.S. Census Bureau, 2008-2012 American Community Survey

For information on confidentiality protection, sampling error, nonsampling error, and definitions, see Survey Methodology.

<http://www.census.gov/acs/www/UseData/index.htm>

## Per capita Income in the Past 12 Months

### Warren city, Arkansas



Source: B19301. PER CAPITA INCOME IN THE PAST 12 MONTHS (IN 2010 INFLATION-ADJUSTED DOLLARS)  
Data Set: 2008-2012 American Community Survey 5-Year Estimates

**B20017. MEDIAN EARNINGS IN THE PAST 12 MONTHS (IN 2010 INFLATION-ADJUSTED DOLLARS) BY SEX BY WORK EXPERIENCE IN THE PAST 12 MONTHS FOR THE POPULATION 16 YEARS AND OVER WITH EARNINGS IN THE PAST 12 MONTHS**

Data Set: 2008-2012 American Community Survey 5-Year Estimates

	Warren city, Arkansas			
	African American	Margin of Error (+/-)	White, Not Hispanic	Margin of Error (+/-)
Median earnings in the past 12 months (in 2010 inflation-adjusted dollars) --				
Total:	\$ 20,795	\$ 6,264	\$ 24,756	\$ 4,392
Male --				
Total	\$ 27,995	\$ 18,174	\$ 29,028	\$ 8,594
Worked full-time, year-round in the past 12 months	\$ 31,883	\$ 12,435	\$ 40,417	\$ 8,191
Other	\$ 6,406	\$ 7,055	\$ 16,813	\$ 6,639
Female --				
Total	\$ 19,798	\$ 5,534	\$ 21,359	\$ 7,584
Worked full-time, year-round in the past 12 months	\$ 22,474	\$ 3,292	\$ 27,813	\$ 4,750
Other	\$ 15,221	\$ 11,070	\$ 9,514	\$ 7,005

Source: U.S. Census Bureau, 2008-2012 American Community Survey

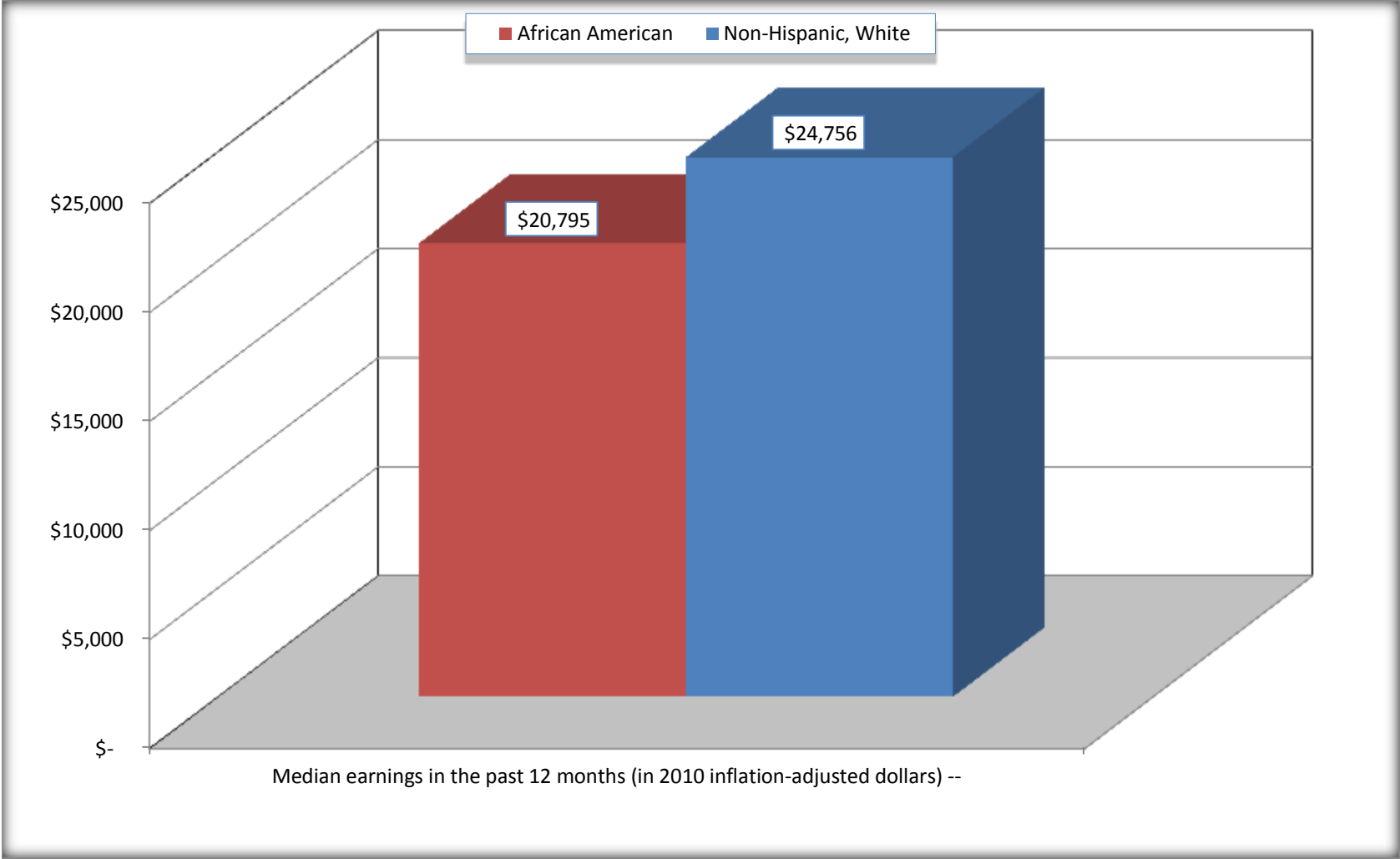
For information on confidentiality protection, sampling error, nonsampling error, and definitions, see Survey Methodology.

<http://www.census.gov/acs/www/UseData/index.htm>



# Median earnings in the Past 12 Months (16 Years and Over with Earnings)

## Warren city, Arkansas



Source: B20017. MEDIAN EARNINGS IN THE PAST 12 MONTHS (IN 2010 INFLATION-ADJUSTED DOLLARS) BY SEX BY WORK EXPERIENCE IN THE PAST 12 MONTHS FOR THE POPULATION 16 YEARS AND OVER WITH EARNINGS IN THE PAST 12 MONTHS  
Data Set: 2008-2012 American Community Survey 5-Year Estimates

**B20005. SEX BY WORK EXPERIENCE IN THE PAST 12 MONTHS BY EARNINGS IN THE PAST 12 MONTHS (IN 2010 INFLATION-ADJUSTED DOLLARS) FOR THE POPULATION 16 YEARS AND OVER**

Data Set: 2008-2012 American Community Survey 5-Year Estimates

	Warren city, Arkansas					
	African American	Margin of Error (+/-)	% of AA Total	White, Not Hispanic	Margin of Error (+/-)	% of NHW Total
<b>Total:</b>	<b>1,877</b>	<b>201</b>	<b>100.0%</b>	<b>2,069</b>	<b>223</b>	<b>100.0%</b>
Worked full-time, year-round in the past 12 months:	563	NC	30.0%	564	NC	27.3%
No earnings	0	NC	0.0%	0	NC	0.0%
With earnings:	563	NC	30.0%	564	NC	27.3%
\$ 1 to \$ 9,999 or loss	54	NC	2.9%	35	NC	1.7%
\$ 10,000 to \$ 19,999	118	NC	6.3%	73	NC	3.5%
\$ 20,000 to \$ 29,999	124	NC	6.6%	112	NC	5.4%
\$ 30,000 to \$ 49,999	240	NC	12.8%	178	NC	8.6%
\$ 50,000 to \$ 74,999	27	NC	1.4%	113	NC	5.5%
\$ 75,000 or more	0	NC	0.0%	53	NC	2.6%
Other:	1,314	NC	70.0%	1,505	NC	72.7%
No earnings	783	NC	41.7%	977	NC	47.2%
With earnings: less than full time, year-round	531	NC	28.3%	528	NC	25.5%
Male:	829	164	44.2%	854	131	41.3%
Worked full-time, year-round in the past 12 months:	218	121	11.6%	322	88	15.6%
No earnings	0	17	0.0%	0	17	0.0%
With earnings:	218	121	11.6%	322	88	15.6%
\$ 1 to \$ 9,999 or loss	0	NC	0.0%	8	NC	0.4%
\$ 10,000 to \$ 19,999	47	NC	2.5%	43	NC	2.1%
\$ 20,000 to \$ 29,999	4	NC	0.2%	20	NC	1.0%
\$ 30,000 to \$ 49,999	162	NC	8.6%	123	NC	5.9%
\$ 50,000 to \$ 74,999	5	NC	0.3%	84	NC	4.1%
\$ 75,000 or more	0	NC	0.0%	44	NC	2.1%

	Warren city, Arkansas					
	African American	Margin of Error (+/-)	% of AA Total	White, Not Hispanic	Margin of Error (+/-)	% of NHW Total
Other:	611	169	32.6%	532	104	25.7%
No earnings	408	120	21.7%	263	82	12.7%
With earnings:	203	108	10.8%	269	85	13.0%
Female:	1,048	93	55.8%	1,215	127	58.7%
Worked full-time, year-round in the past 12 months:	345	112	18.4%	242	78	11.7%
No earnings	0	17	0.0%	0	17	0.0%
With earnings:	345	112	18.4%	242	78	11.7%
\$ 1 to \$ 9,999 or loss	54	NC	2.9%	27	NC	1.3%
\$ 10,000 to \$ 19,999	71	NC	3.8%	30	NC	1.4%
\$ 20,000 to \$ 29,999	120	NC	6.4%	92	NC	4.4%
\$ 30,000 to \$ 49,999	78	NC	4.2%	55	NC	2.7%
\$ 50,000 to \$ 74,999	22	NC	1.2%	29	NC	1.4%
\$ 75,000 or more	0	NC	0.0%	9	NC	0.4%
Other:	703	115	37.5%	973	121	47.0%
No earnings	375	89	20.0%	714	131	34.5%
With earnings:	328	116	17.5%	259	88	12.5%

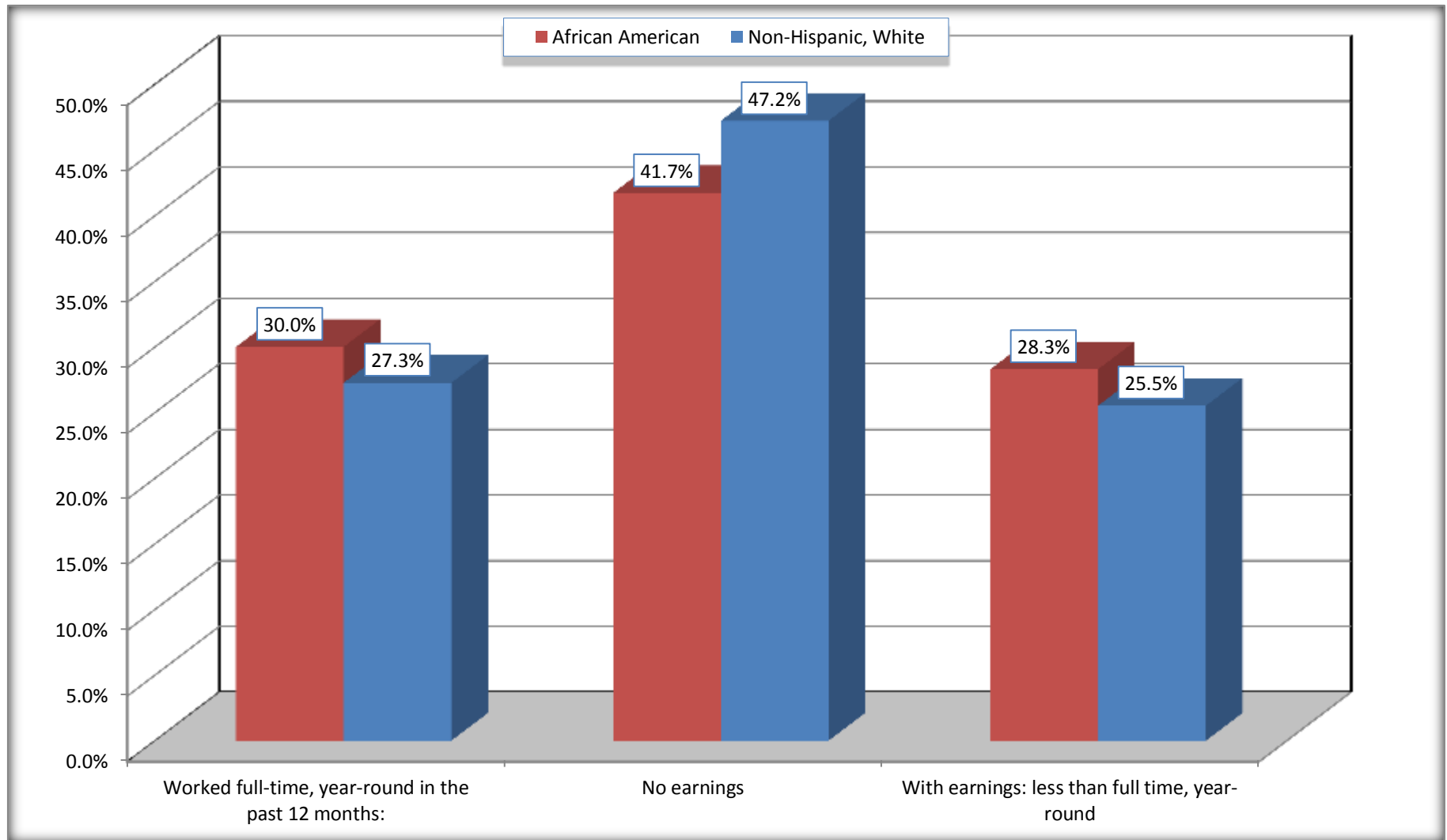
Source: U.S. Census Bureau, 2008-2012 American Community Survey

For information on confidentiality protection, sampling error, nonsampling error, and definitions, see Survey Methodology.

<http://www.census.gov/acs/www/UseData/index.htm>

# Employment and Earnings in in the Past 12 Months (16 Years and Over)

## Warren city, Arkansas



Source: B20005. SEX BY WORK EXPERIENCE IN THE PAST 12 MONTHS BY EARNINGS IN THE PAST 12 MONTHS (IN 2010 INFLATION-ADJUSTED DOLLARS) FOR THE POPULATION 16 YEARS AND OVER

Data Set: 2008-2012 American Community Survey 5-Year Estimates

**C21001. SEX BY AGE BY VETERAN STATUS FOR THE CIVILIAN POPULATION 18 YEARS AND OVER**

Data Set: 2008-2012 American Community Survey 5-Year Estimates

	Warren city, Arkansas					
	African American	Margin of Error (+/-)	% of AA Total	White, Not Hispanic	Margin of Error (+/-)	% of NHW Total
<b>Total:</b>	<b>1,836</b>	<b>194</b>	<b>100.0%</b>	<b>2,012</b>	<b>222</b>	<b>100.0%</b>
Veteran	31	NC	1.7%	282	NC	14.0%
Nonveteran	1,805	NC	98.3%	1,730	NC	86.0%
Male:	793	160	43.2%	826	131	41.1%
18 to 64 years:	643	156	35.0%	571	108	28.4%
Veteran	31	28	1.7%	118	67	5.9%
Nonveteran	612	156	33.3%	453	107	22.5%
65 years and over:	150	35	8.2%	255	79	12.7%
Veteran	0	17	0.0%	153	71	7.6%
Nonveteran	150	35	8.2%	102	52	5.1%
Female:	1,043	93	56.8%	1,186	125	58.9%
18 to 64 years:	843	90	45.9%	724	111	36.0%
Veteran	0	17	0.0%	0	17	0.0%
Nonveteran	843	90	45.9%	724	111	36.0%
65 years and over:	200	28	10.9%	462	83	23.0%
Veteran	0	17	0.0%	11	16	0.5%
Nonveteran	200	28	10.9%	451	81	22.4%

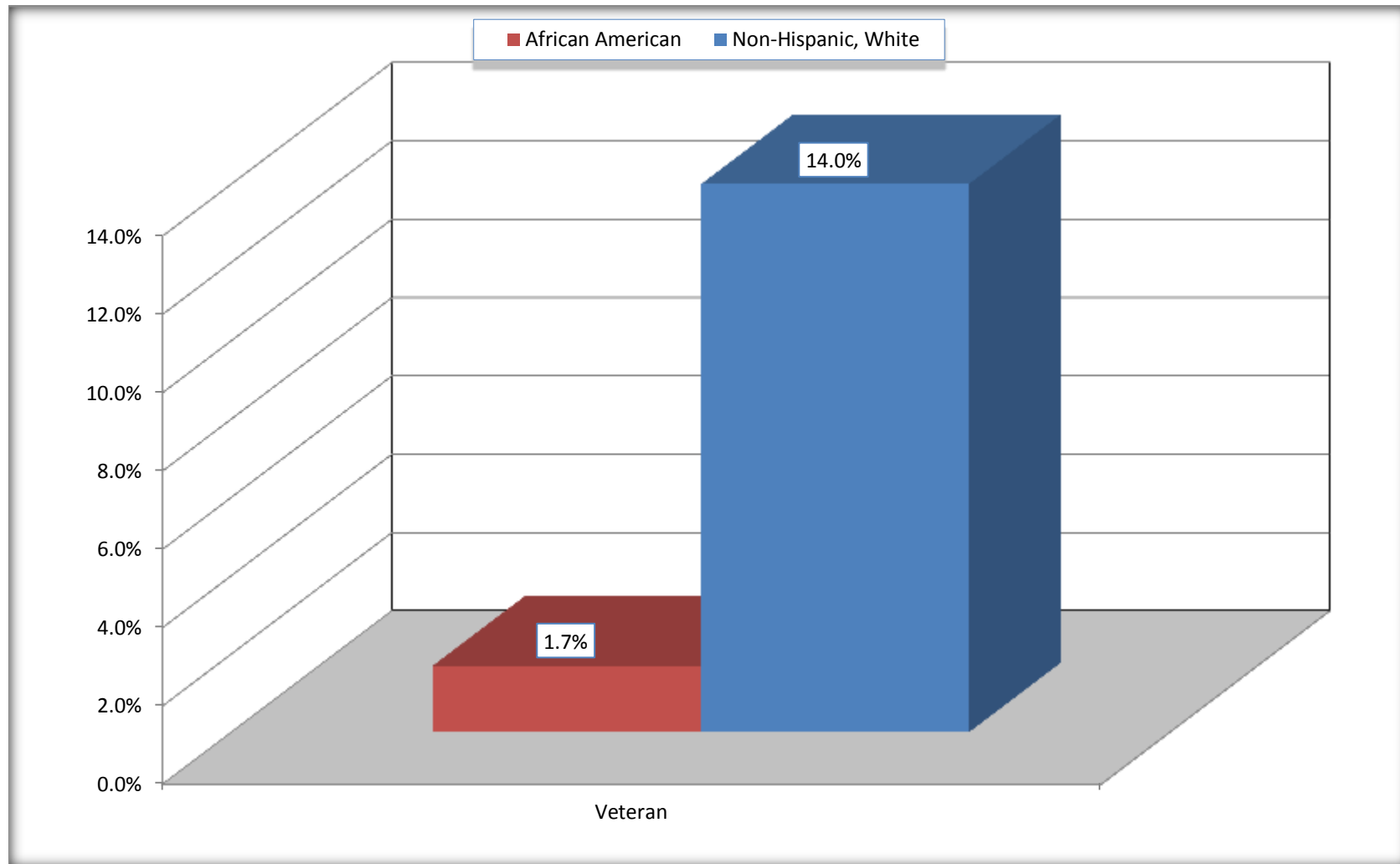
Source: U.S. Census Bureau, 2008-2012 American Community Survey

For information on confidentiality protection, sampling error, nonsampling error, and definitions, see Survey Methodology.

<http://www.census.gov/acs/www/UseData/index.htm>

# Veterans in the Civilian Population 18 Years and Over

## Warren city, Arkansas



Source: C21001. SEX BY AGE BY VETERAN STATUS FOR THE CIVILIAN POPULATION 18 YEARS AND OVER  
Data Set: 2008-2012 American Community Survey 5-Year Estimates

**B22005. RECEIPT OF FOOD STAMPS/SNAP IN THE PAST 12 MONTHS BY RACE OF HOUSEHOLDER**

Data Set: 2008-2012 American Community Survey 5-Year Estimates

	Warren city, Arkansas					
	African American	Margin of Error (+/-)	% of AA Total	White, Not Hispanic	Margin of Error (+/-)	% of NHW Total
<b>Total:</b>	<b>1,159</b>	<b>168</b>	<b>100.0%</b>	<b>1,117</b>	<b>156</b>	<b>100.0%</b>
HH received Food Stamps/SNAP in the past 12 months	429	152	37.0%	136	64	12.2%
HH did not receive Food Stamps/SNAP in the past 12 months	730	136	63.0%	981	141	87.8%

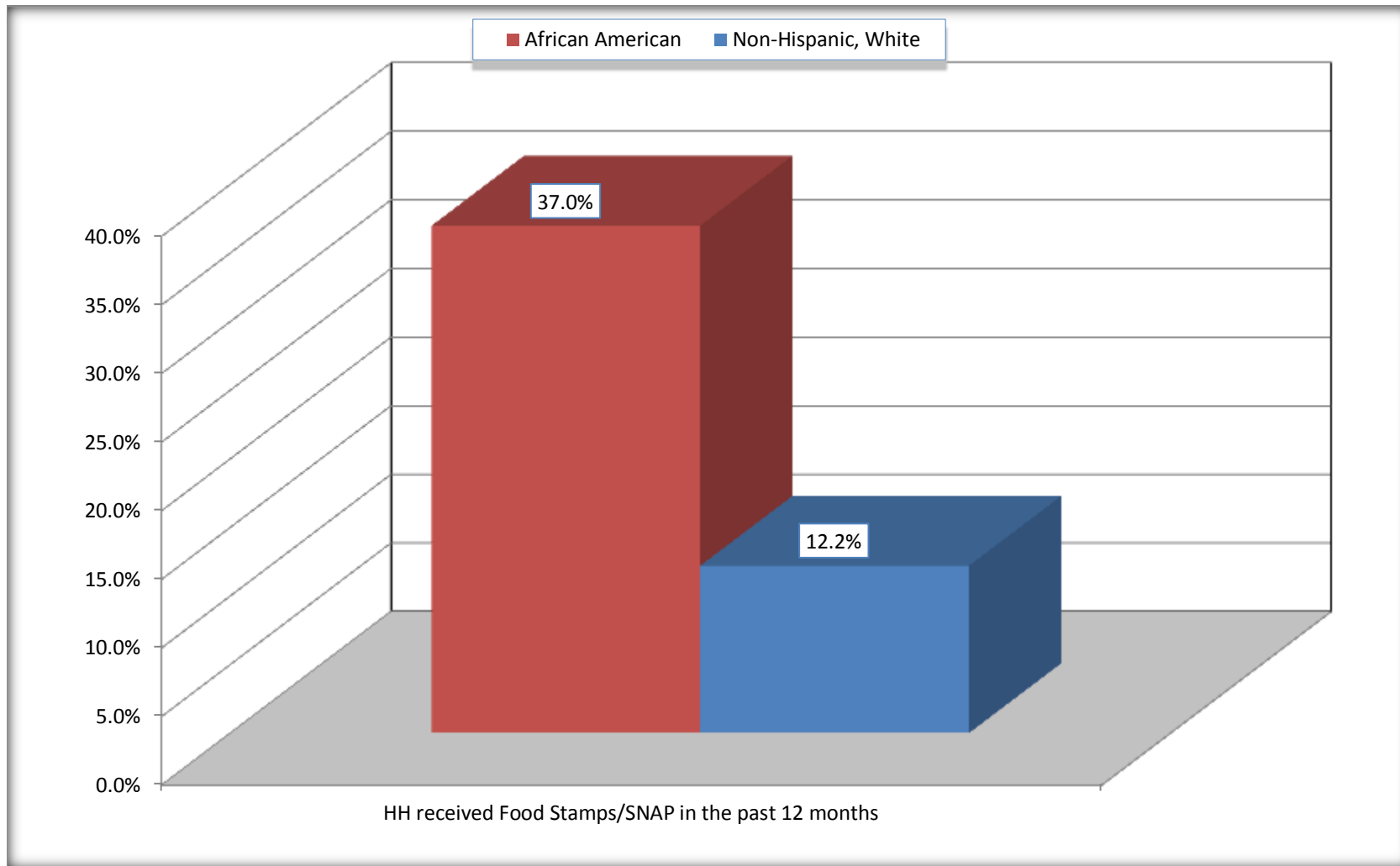
Source: U.S. Census Bureau, 2008-2012 American Community Survey

For information on confidentiality protection, sampling error, nonsampling error, and definitions, see Survey Methodology.

<http://www.census.gov/acs/www/UseData/index.htm>

# Receipt of Food Stamps/SNAP in the Past 12 Months by Household

## Warren city, Arkansas



Source: B22005. RECEIPT OF FOOD STAMPS/SNAP IN THE PAST 12 MONTHS BY RACE OF HOUSEHOLDER  
Data Set: 2008-2012 American Community Survey 5-Year Estimates



**C23002. SEX BY AGE BY EMPLOYMENT STATUS FOR THE POPULATION 16 YEARS AND OVER**

Data Set: 2008-2012 American Community Survey 5-Year Estimates

	Warren city, Arkansas					
	African American	Margin of Error (+/-)	% of AA Total	White, Not Hispanic	Margin of Error (+/-)	% of NHW Total
<b>Total:</b>	<b>1,877</b>	<b>201</b>	<b>100.0%</b>	<b>2,069</b>	<b>223</b>	<b>100.0%</b>
In labor force:	1,131	NC	60.3%	955	NC	46.2%
In Armed Forces	0	NC	0.0%	0	NC	0.0%
Civilian:	1,108	NC	59.0%	902	NC	43.6%
Employed	974	NC	51.9%	928	NC	44.9%
Unemployed	157	NC	8.4%	27	NC	1.3%
Not in labor force	746	NC	39.7%	1,114	NC	53.8%
Male:	829	164	44.2%	854	131	41.3%
16 to 64 years:	679	160	36.2%	599	114	29.0%
In labor force:	423	149	22.5%	463	110	22.4%
In Armed Forces	0	17	0.0%	0	17	0.0%
Civilian:	423	149	22.5%	463	110	22.4%
Employed	311	115	16.6%	444	106	21.5%
Unemployed	112	123	6.0%	19	18	0.9%
Not in labor force	256	100	13.6%	136	58	6.6%
65 years and over:	150	35	8.0%	255	79	12.3%
In labor force:	0	17	0.0%	40	37	1.9%
Employed	0	17	0.0%	40	37	1.9%
Unemployed	0	17	0.0%	0	17	0.0%
Not in labor force	150	35	8.0%	215	76	10.4%

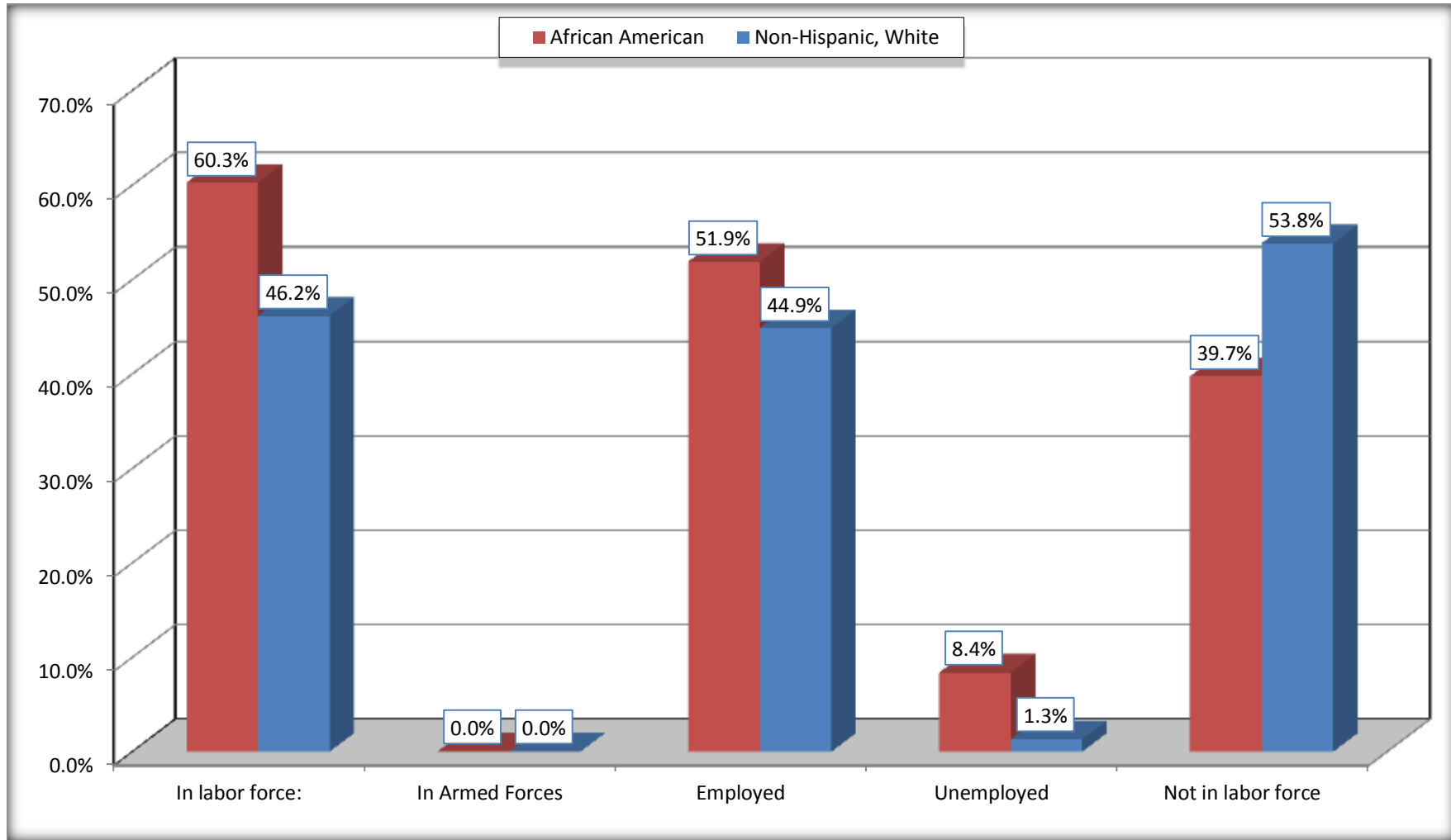
	Warren city, Arkansas					
	African American	Margin of Error (+/-)	% of AA Total	White, Not Hispanic	Margin of Error (+/-)	% of NHW Total
Female:	1,048	93	55.8%	1,215	127	58.7%
16 to 64 years:	848	90	45.2%	753	121	36.4%
In labor force:	685	100	36.5%	439	96	21.2%
In Armed Forces	0	17	0.0%	0	17	0.0%
Civilian:	685	100	36.5%	439	96	21.2%
Employed	640	104	34.1%	431	98	20.8%
Unemployed	45	54	2.4%	8	15	0.4%
Not in labor force	163	63	8.7%	314	110	15.2%
65 years and over:	200	28	10.7%	462	83	22.3%
In labor force:	23	24	1.2%	13	16	0.6%
Employed	23	24	1.2%	13	16	0.6%
Unemployed	0	17	0.0%	0	17	0.0%
Not in labor force	177	36	9.4%	449	82	21.7%

Source: U.S. Census Bureau, 2008-2012 American Community Survey

For information on confidentiality protection, sampling error, nonsampling error, and definitions, see Survey Methodology.  
<http://www.census.gov/acs/www/UseData/index.htm>

# Employment Status for the Population 16 years and over

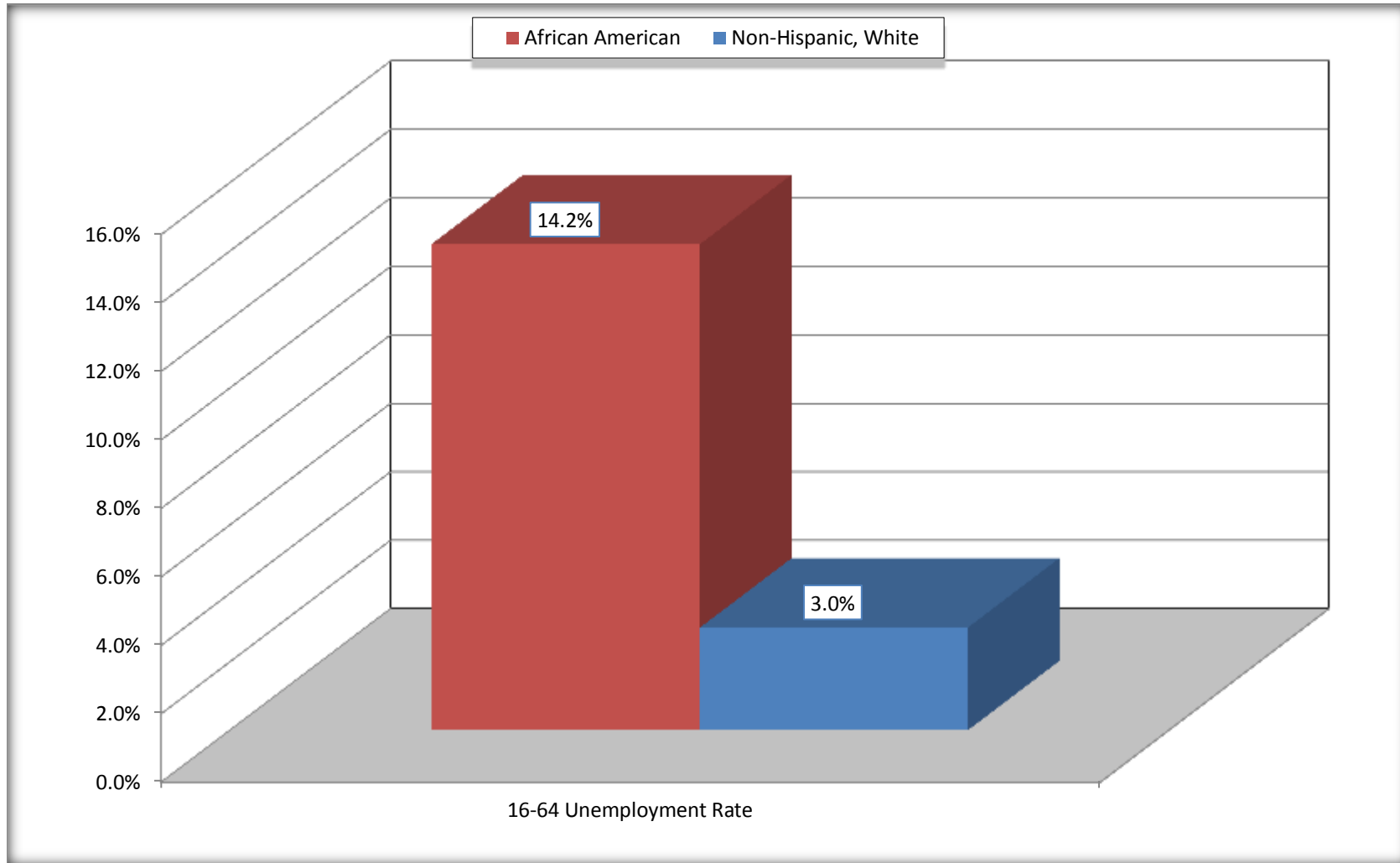
## Warren city, Arkansas



Source: C23002. SEX BY AGE BY EMPLOYMENT STATUS FOR THE POPULATION 16 YEARS AND OVER  
Data Set: 2008-2012 American Community Survey 5-Year Estimates

# Unemployment of Working Age Population (Ages 16 to 64) (As a Percent of 16-64 Civilian Labor Force)

## Warren city, Arkansas



Source: C23002. SEX BY AGE BY EMPLOYMENT STATUS FOR THE POPULATION 16 YEARS AND OVER  
Data Set: 2008-2012 American Community Survey 5-Year Estimates

**C24010. SEX BY OCCUPATION FOR THE CIVILIAN EMPLOYED POPULATION 16 YEARS AND OVER**

Data Set: 2008-2012 American Community Survey 5-Year Estimates

	Warren city, Arkansas					
	African American	Margin of Error (+/-)	% of AA Total	White, Not Hispanic	Margin of Error (+/-)	% of NHW Total
<b>Total:</b>	<b>974</b>	<b>164</b>	<b>100.0%</b>	<b>928</b>	<b>171</b>	<b>100.0%</b>
Management, professional, and related occupations	109	NC	11.2%	286	NC	30.8%
Service occupations	274	NC	28.1%	144	NC	15.5%
Sales and office occupations	245	NC	25.2%	205	NC	22.1%
Natural resources, construction, and maintenance occupations:	31	NC	3.2%	182	NC	19.6%
Production, transportation, and material moving occupations	315	NC	32.3%	111	NC	12.0%
Male:	311	115	31.9%	484	111	52.2%
Management, business, science, and arts occupations:	0	17	0.0%	132	56	14.2%
Service occupations	31	52	3.2%	41	39	4.4%
Sales and office occupations	20	25	2.1%	60	42	6.5%
Natural resources, construction, and maintenance occupations:	31	32	3.2%	167	73	18.0%
Production, transportation, and material moving occupations	229	97	23.5%	84	48	9.1%
Female:	663	103	68.1%	444	101	47.8%
Management, professional, and related occupations	109	45	11.2%	154	63	16.6%
Service occupations	243	89	24.9%	103	71	11.1%
Sales and office occupations	225	104	23.1%	145	59	15.6%
Natural resources, construction, and maintenance occupations:	0	17	0.0%	15	23	1.6%
Production, transportation, and material moving occupations	86	54	8.8%	27	23	2.9%

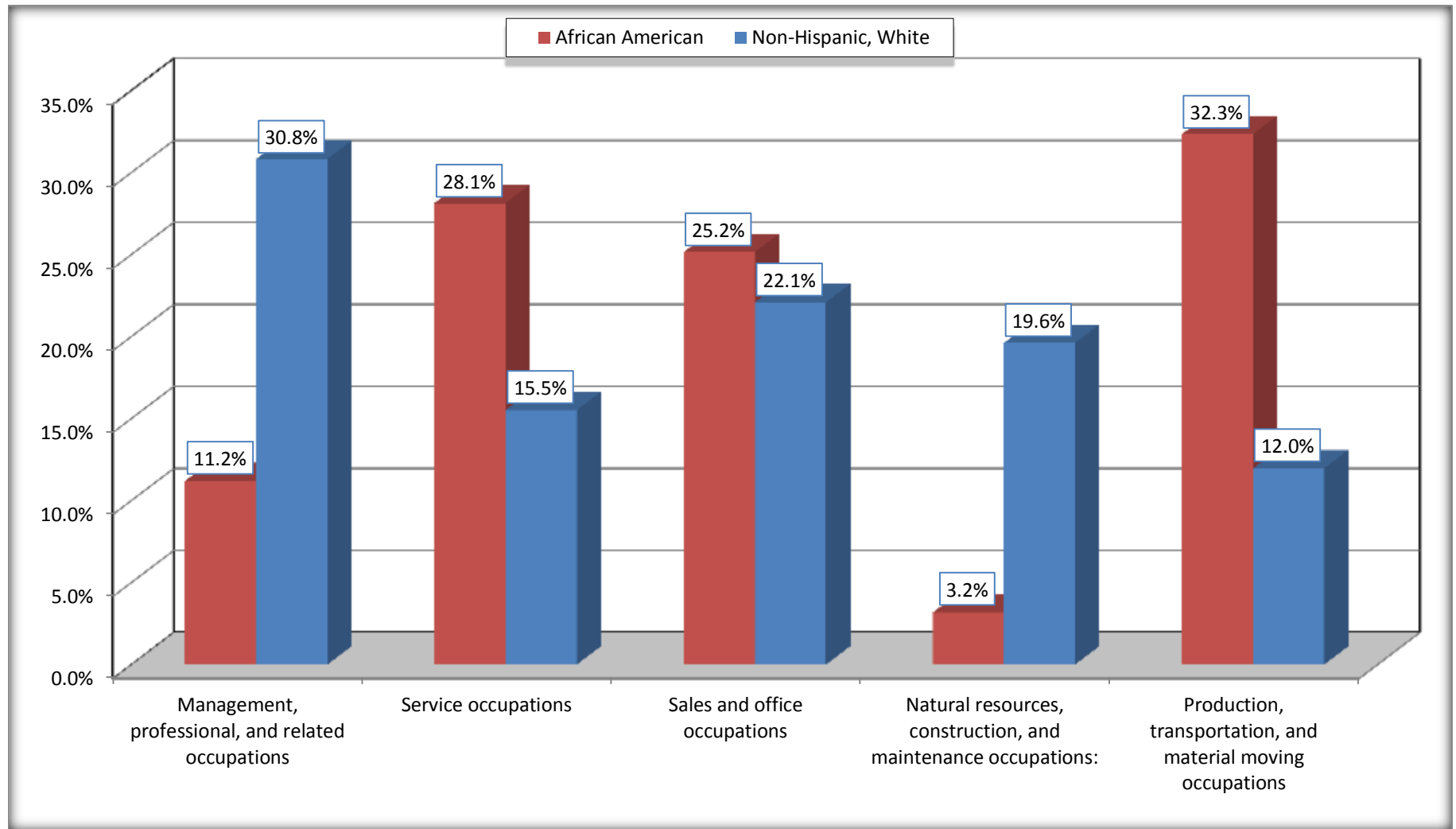
Source: U.S. Census Bureau, 2008-2012 American Community Survey

For information on confidentiality protection, sampling error, nonsampling error, and definitions, see Survey Methodology.

<http://www.census.gov/acs/www/UseData/index.htm>

# Occupation for the Civilian Employed 16 Years and Over Population

## Warren city, Arkansas



Source: C24010. SEX BY OCCUPATION FOR THE CIVILIAN EMPLOYED POPULATION 16 YEARS AND OVER  
Data Set: 2008-2012 American Community Survey 5-Year Estimates

**B25003. TENURE - Universe: OCCUPIED HOUSING UNITS**

Data Set: 2008-2012 American Community Survey 5-Year Estimates

	Warren city, Arkansas					
	African American	Margin of Error (+/-)	% of AA Total	White, Not Hispanic	Margin of Error (+/-)	% of NHW Total
<b>Total:</b>	<b>1,159</b>	<b>168</b>	<b>100.0%</b>	<b>1,117</b>	<b>156</b>	<b>100.0%</b>
Owner occupied	631	112	54.4%	755	130	67.6%
Renter occupied	528	154	45.6%	362	109	32.4%

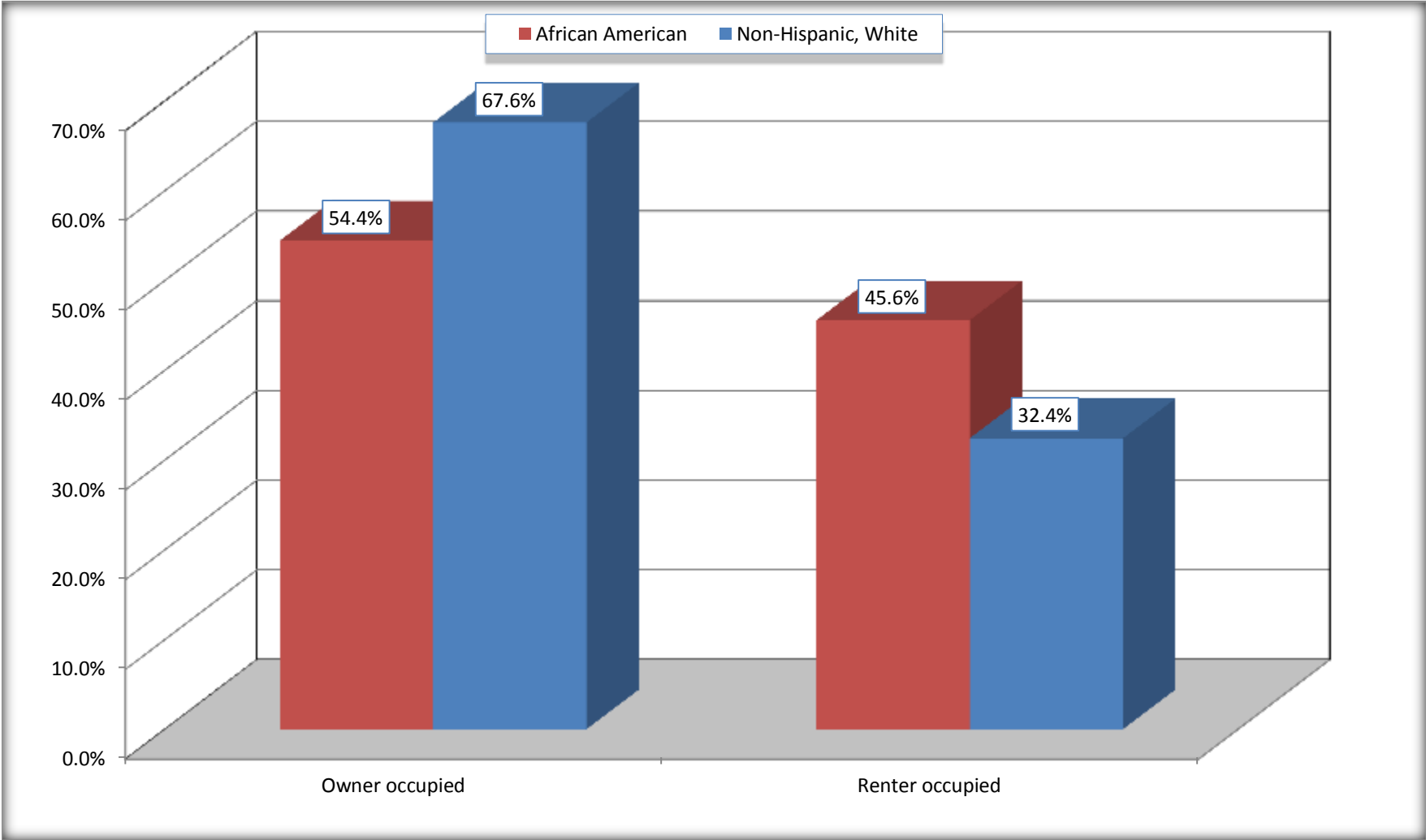
Source: U.S. Census Bureau, 2008-2012 American Community Survey

For information on confidentiality protection, sampling error, nonsampling error, and definitions, see Survey Methodology.

<http://www.census.gov/acs/www/UseData/index.h>

# Home Owners and Renters by Household

## Warren city, Arkansas



Source: B25003. TENURE - Universe: OCCUPIED HOUSING UNITS  
Data Set: 2008-2012 American Community Survey 5-Year Estimates



**B25014. OCCUPANTS PER ROOM - Universe: OCCUPIED HOUSING UNITS**

Data Set: 2008-2012 American Community Survey 5-Year Estimates

	Warren city, Arkansas					
	African American	Margin of Error (+/-)	% of AA Total	White, Not Hispanic	Margin of Error (+/-)	% of NHW Total
<b>Total:</b>	<b>1,159</b>	<b>168</b>	<b>100.0%</b>	<b>1,117</b>	<b>156</b>	<b>100.0%</b>
1.00 or less occupants per room	1,121	172	96.7%	1,081	171	96.8%
1.01 or more occupants per room	38	37	3.3%	36	38	3.2%

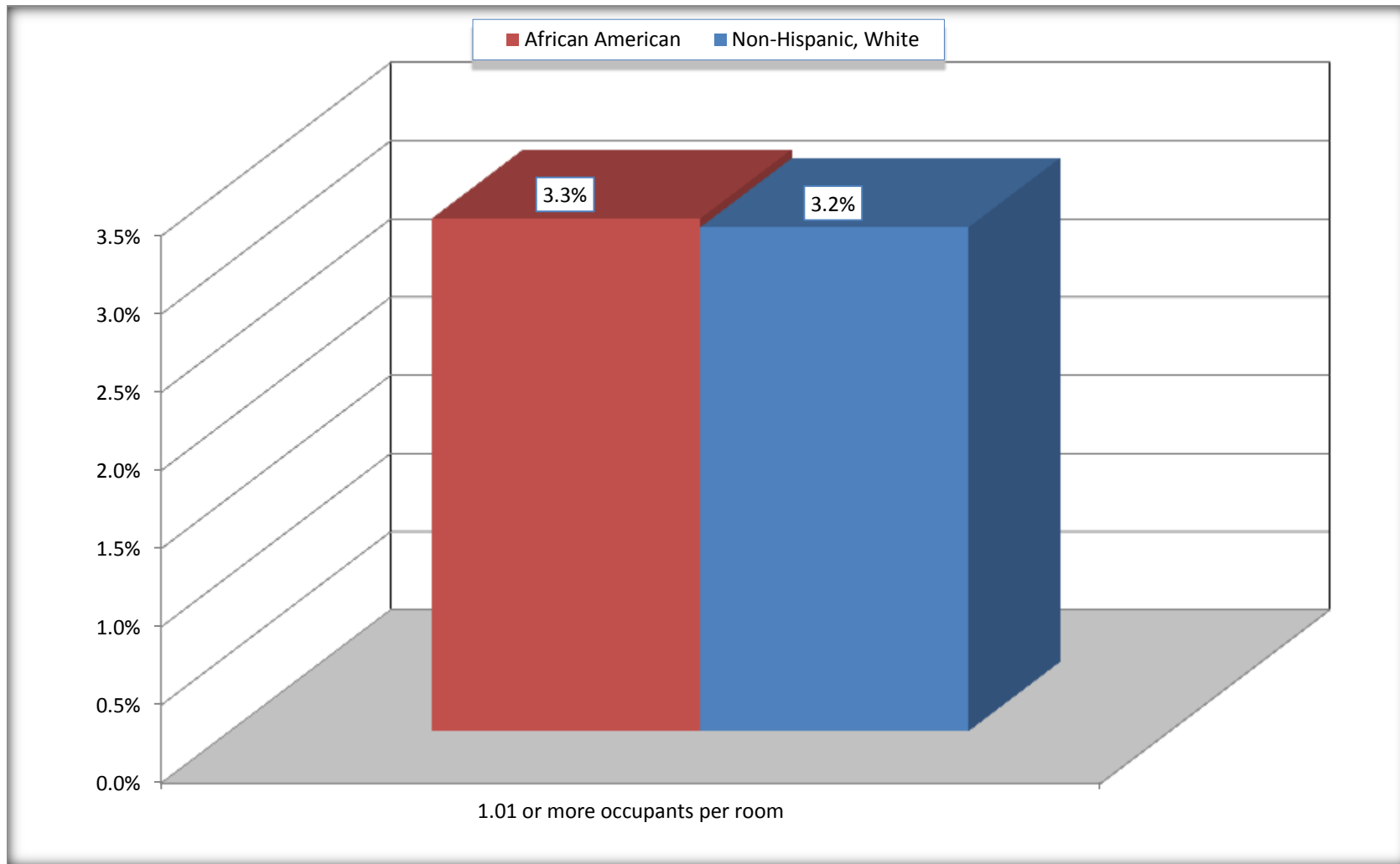
Source: U.S. Census Bureau, 2008-2012 American Community Survey

For information on confidentiality protection, sampling error, nonsampling error, and definitions, see Survey Methodology.

<http://www.census.gov/acs/www/UseData/index.ht>

# More than One Person per Room (Crowding) by Household

## Warren city, Arkansas



Source: B25014. OCCUPANTS PER ROOM - Universe: OCCUPIED HOUSING UNITS  
Data Set: 2008-2012 American Community Survey 5-Year Estimates

**B18101. AGE BY DISABILITY STATUS**

Data Set: 2008-2012 American Community Survey 5-Year Estimates

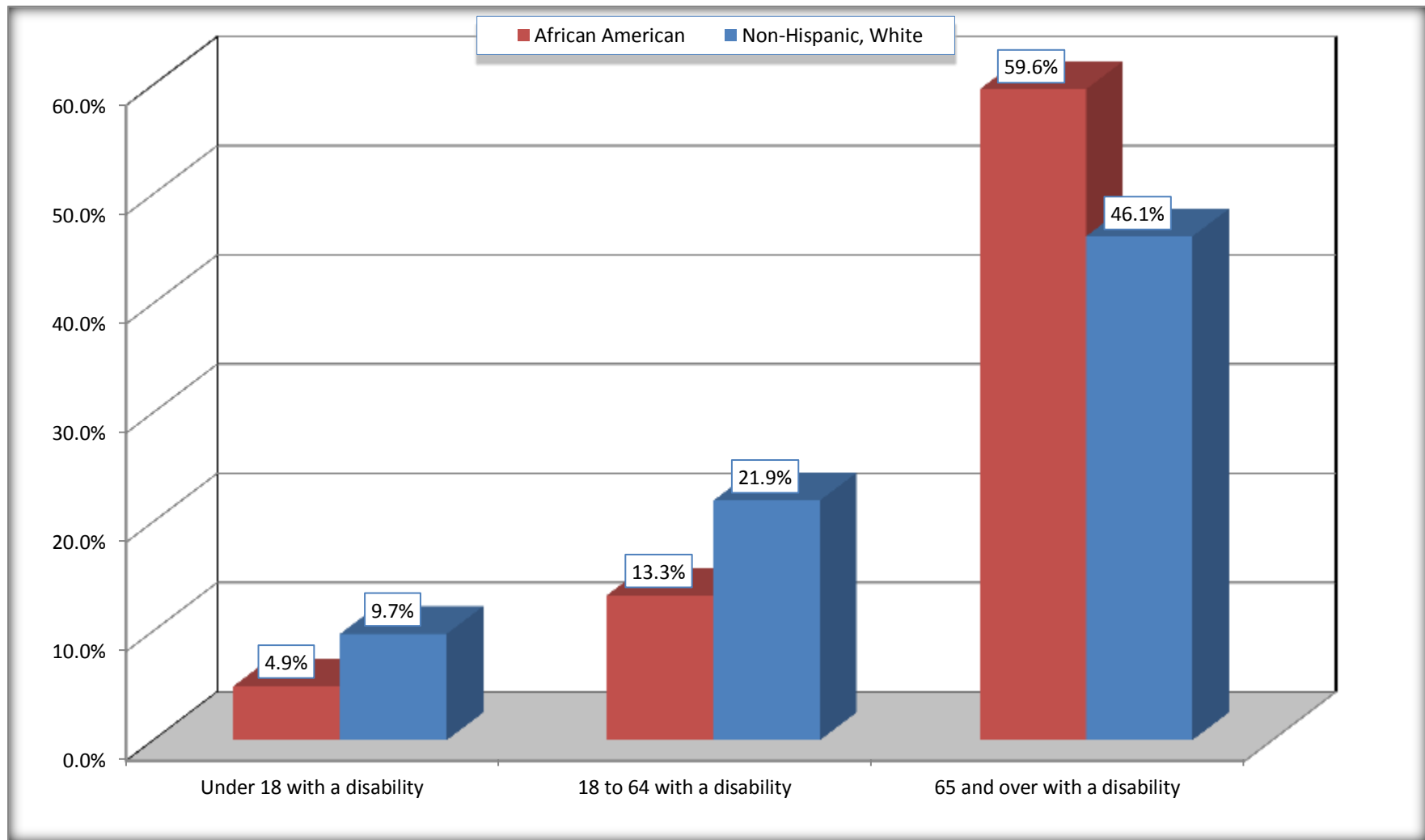
	Warren city, Arkansas					
	African American	Margin of Error (+/-)	% of AA Total	White, Not Hispanic	Margin of Error (+/-)	% of NHW Total
<b>Total:</b>	<b>2,451</b>	<b>237</b>	<b>100.0%</b>	<b>2,305</b>	<b>287</b>	<b>100.0%</b>
Under 18 years:	647	83	26.4%	411	35	17.8%
With a disability	32	33	1.3%	40	39	1.7%
No disability	615	93	25.1%	371	129	16.1%
18 to 64 years:	1,470	192	60.0%	1,276	186	55.4%
With a disability	195	61	8.0%	280	101	12.1%
No disability	1,275	209	52.0%	996	170	43.2%
65 years and over:	334	56	13.6%	618	136	26.8%
With a disability	199	56	8.1%	285	89	12.4%
No disability	135	49	5.5%	333	116	14.4%

Source: U.S. Census Bureau, 2008-2012 American Community Survey

For information on confidentiality protection, sampling error, nonsampling error, and definitions, see Survey Methodology.

<http://www.census.gov/acs/www/UseData/index.htm>

## Disability by Age Warren city, Arkansas



Source: B18101. AGE BY DISABILITY STATUS  
Data Set: 2008-2012 American Community Survey 5-Year Estimates

**C27001B. HEALTH INSURANCE COVERAGE STATUS BY AGE**

Data Set: 2008-2012 American Community Survey 5-Year Estimates

	Warren city, Arkansas					
	African American	Margin of Error (+/-)	% of AA Total	White, Not Hispanic	Margin of Error (+/-)	% of NHW Total
<b>Total:</b>	<b>2,451</b>	<b>237</b>	<b>100.0%</b>	<b>2,305</b>	<b>287</b>	<b>100.0%</b>
Under 18 years:	647	83	26.4%	411	156	17.8%
With health insurance coverage	617	93	25.2%	392	156	17.0%
No health insurance coverage	30	33	1.2%	19	22	0.8%
18 to 64 years:	1,470	192	60.0%	1,276	186	55.4%
With health insurance coverage	926	166	37.8%	976	188	42.3%
No health insurance coverage	544	188	22.2%	300	108	13.0%
65 years and over:	334	56	13.6%	618	136	26.8%
With health insurance coverage	334	56	13.6%	618	136	26.8%
No health insurance coverage	0	17	0.0%	0	17	0.0%

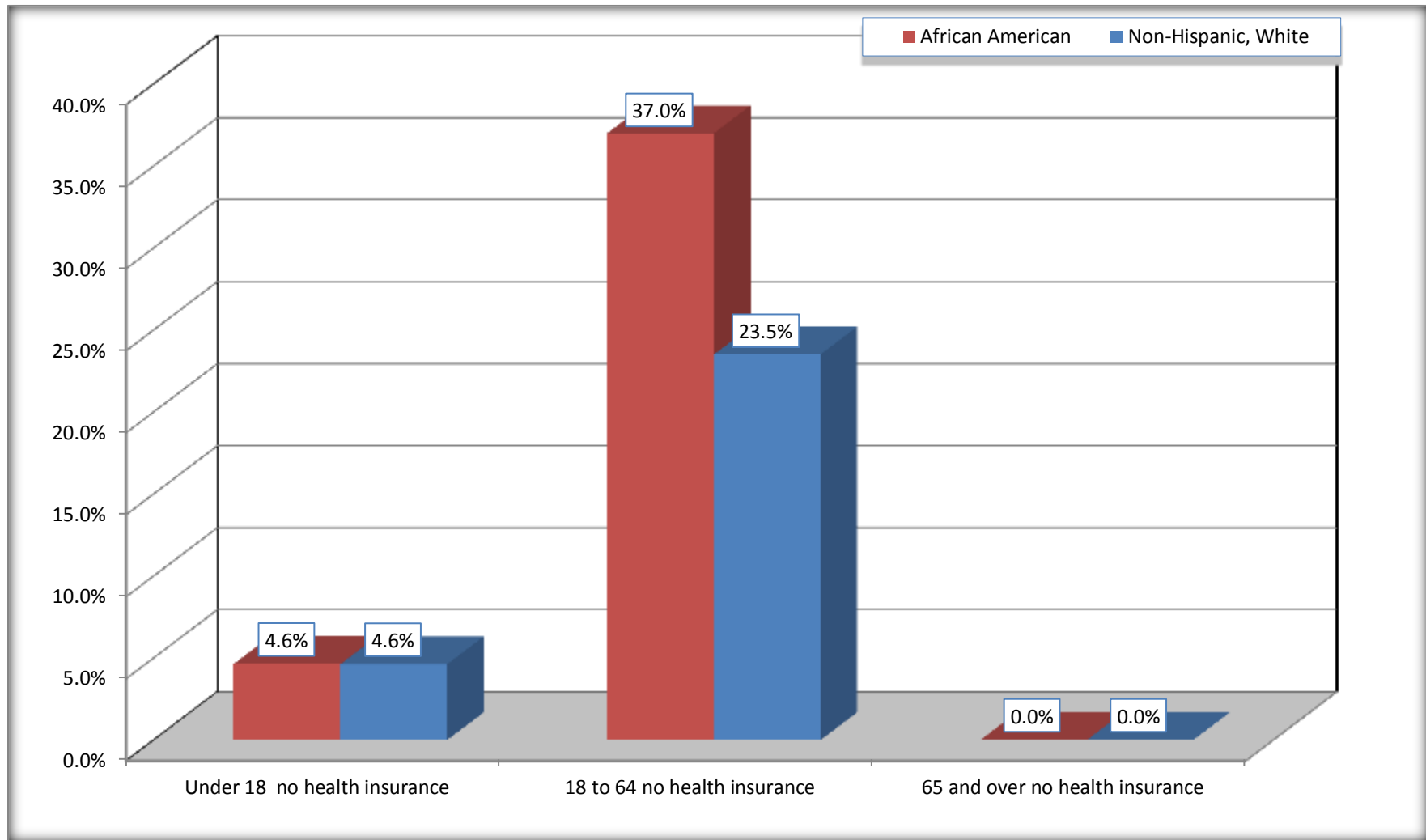
Source: U.S. Census Bureau, 2008-2012 American Community Survey

For information on confidentiality protection, sampling error, nonsampling error, and definitions, see Survey Methodology.

<http://www.census.gov/acs/www/UseData/index.htm>

# Lack of Health Insurance Coverage by Age

## Warren city, Arkansas



Source: C27001B. HEALTH INSURANCE COVERAGE STATUS BY AGE  
Data Set: 2008-2012 American Community Survey 5-Year Estimates