

Selected Socio-Economic Data

Nevada County, Arkansas

African American and White, Not Hispanic

Data Set: 2008-2012 American Community Survey 5-Year Estimates

www.fairvote2020.org

www.fairdata2000.com

[29-Dec-13](#)

C02003.DETAILED RACE - Universe: TOTAL POPULATION
 Data Set: 2008-2012 American Community Survey 5-Year Estimates

	Nevada County, Arkansas		
	Population	Margin of Error (+/-)	% of Total
Total:	9,003	*****	100.0%
Population of one race:	8,924	56	99.1%
White	6,034	9	67.0%
Black or African American	2,857	51	31.7%
American Indian and Alaska Native	33	20	0.4%
Asian alone	0	17	0.0%
Native Hawaiian and Other Pacific Islander	0	17	0.0%
Some other race	0	17	0.0%
Population of two or more races:	79	56	0.9%
Two races including Some other race	0	17	0.0%
Two races excluding Some other race, and three or more races	79	56	0.9%
Population of two races:	50	36	0.6%
White; Black or African American	19	31	0.2%
White; American Indian and Alaska Native	31	20	0.3%
White; Asian	0	17	0.0%
Black or African American; American Indian and Alaska Native	0	17	0.0%
All other two race combinations	0	17	0.0%
Population of three races	29	46	0.3%
Population of four or more races	0	17	0.0%

Note: Hispanics may be of any race. See Table B03002 and chart.

Source: U.S. Census Bureau, 2008-2012 American Community Survey

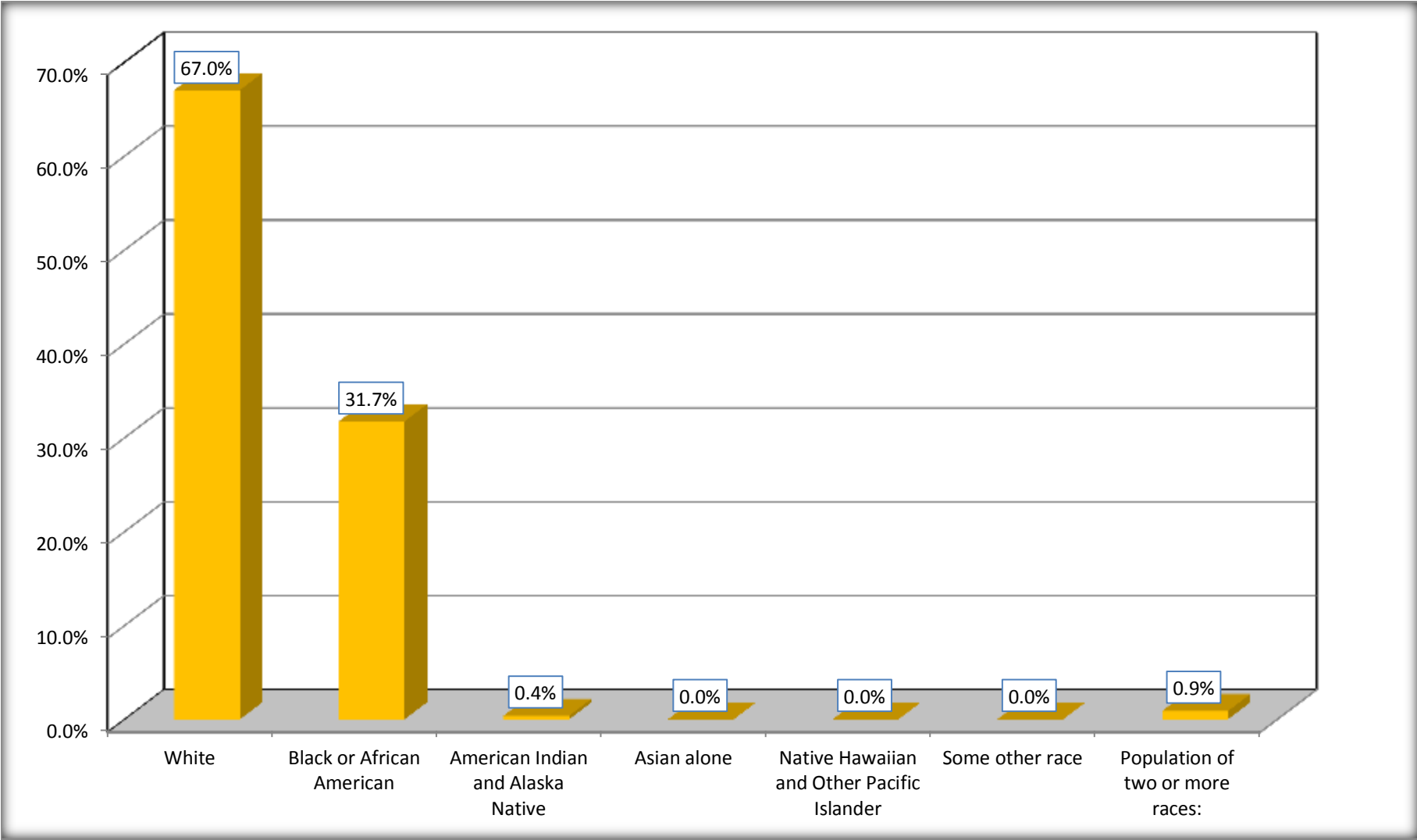
Although the American Community Survey (ACS) produces population, demographic and housing unit estimates, it is the Census Bureau's Population Estimates Program that produces and disseminates the official estimates of the population for the nation, states, counties, cities and towns and estimates of housing units for states and counties.

For information on confidentiality protection, sampling error, nonsampling error, and definitions, see Survey Methodology.

<http://www.census.gov/acs/www/UseData/index.htm>

Population by Race

Nevada County, Arkansas



Source: C02003.DETAILED RACE - Universe: TOTAL POPULATION
Data Set: 2008-2012 American Community Survey 5-Year Estimates

B03002. HISPANIC OR LATINO ORIGIN BY RACE - Universe: TOTAL POPULATION

Data Set: 2008-2012 American Community Survey 5-Year Estimates

	Nevada County, Arkansas		
	Population	Margin of Error (+/-)	% of Total
Total:	9,003	*****	100.0%
Not Hispanic or Latino:	8,765	*****	97.4%
White alone	5,799	17	64.4%
Black or African American alone	2,854	51	31.7%
American Indian and Alaska Native alone	33	20	0.4%
Asian alone	0	17	0.0%
Native Hawaiian and Other Pacific Islander alone	0	17	0.0%
Some other race alone	0	17	0.0%
Two or more races:	79	56	0.9%
Two races including Some other race	0	17	0.0%
Two races excluding Some other race, and three or more races	79	56	0.9%
Hispanic or Latino	238	*****	2.6%

Source: U.S. Census Bureau, 2008-2012 American Community Survey

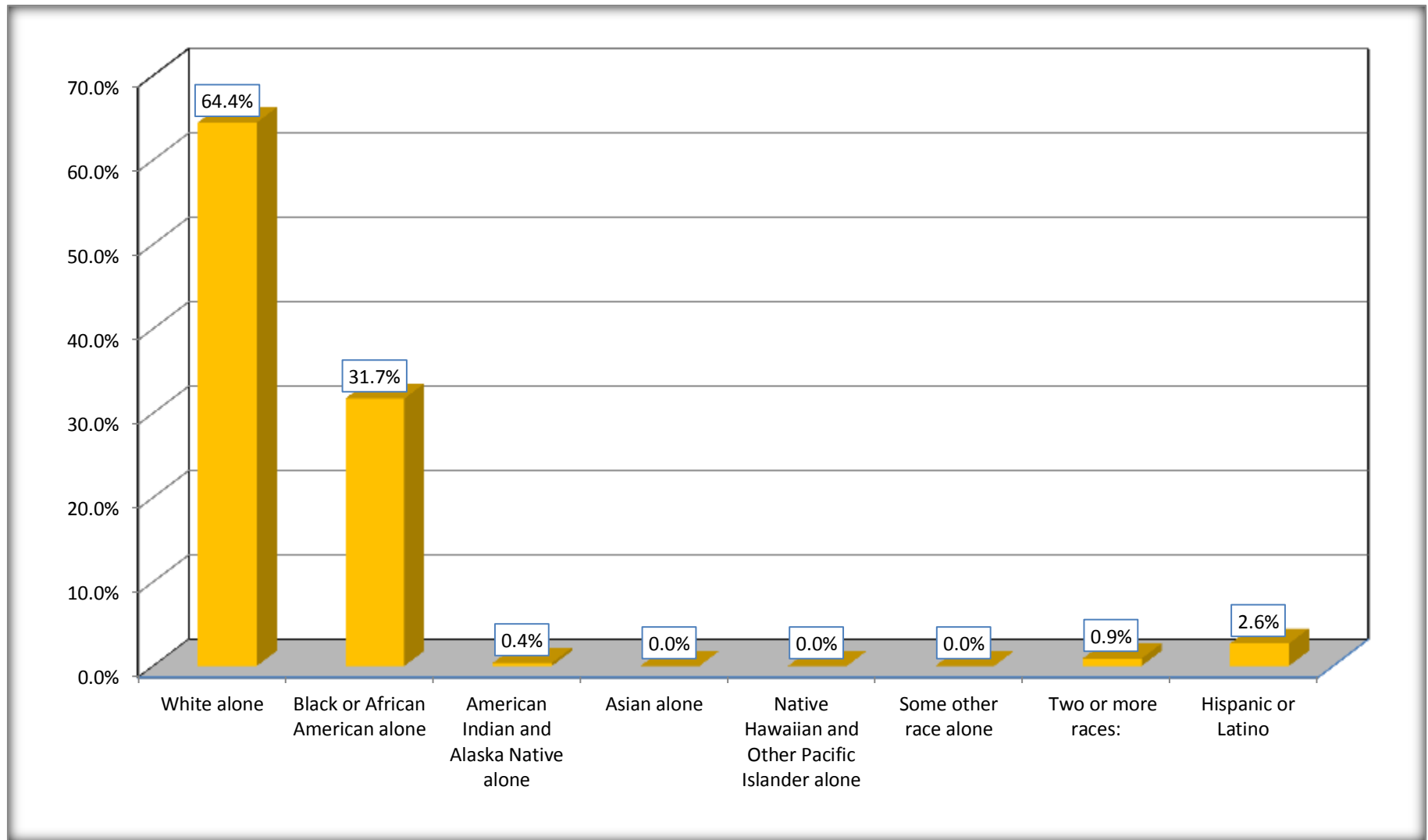
Although the American Community Survey (ACS) produces population, demographic and housing unit estimates, it is the Census Bureau's Population Estimates Program that produces and disseminates the official estimates of the population for the nation, states, counties, cities and towns and estimates of housing units for states and counties.

For information on confidentiality protection, sampling error, nonsampling error, and definitions, see Survey Methodology.

<http://www.census.gov/acs/www/UseData/index.htm>

Non-Hispanic by Race and Hispanic Population

Nevada County, Arkansas



Source: B03002. HISPANIC OR LATINO ORIGIN BY RACE - Universe: TOTAL POPULATION
Data Set: 2008-2012 American Community Survey 5-Year Estimates

B03002. HISPANIC OR LATINO ORIGIN BY RACE

Data Set: 2008-2012 American Community Survey 5-Year Estimates

	Nevada County, Arkansas		
	Population	Margin of Error (+/-)	% of Total
Hispanic or Latino:	238	*****	100.0%
White alone	235	9	98.7%
Black or African American alone	3	9	1.3%
American Indian and Alaska Native alone	0	17	0.0%
Asian alone	0	17	0.0%
Native Hawaiian and Other Pacific Islander alone	0	17	0.0%
Some other race alone	0	17	0.0%
Two or more races:	0	17	0.0%
Two races including Some other race	0	17	0.0%
Two races excluding Some other race, and three or more races	0	17	0.0%

Source: U.S. Census Bureau, 2008-2012 American Community Survey

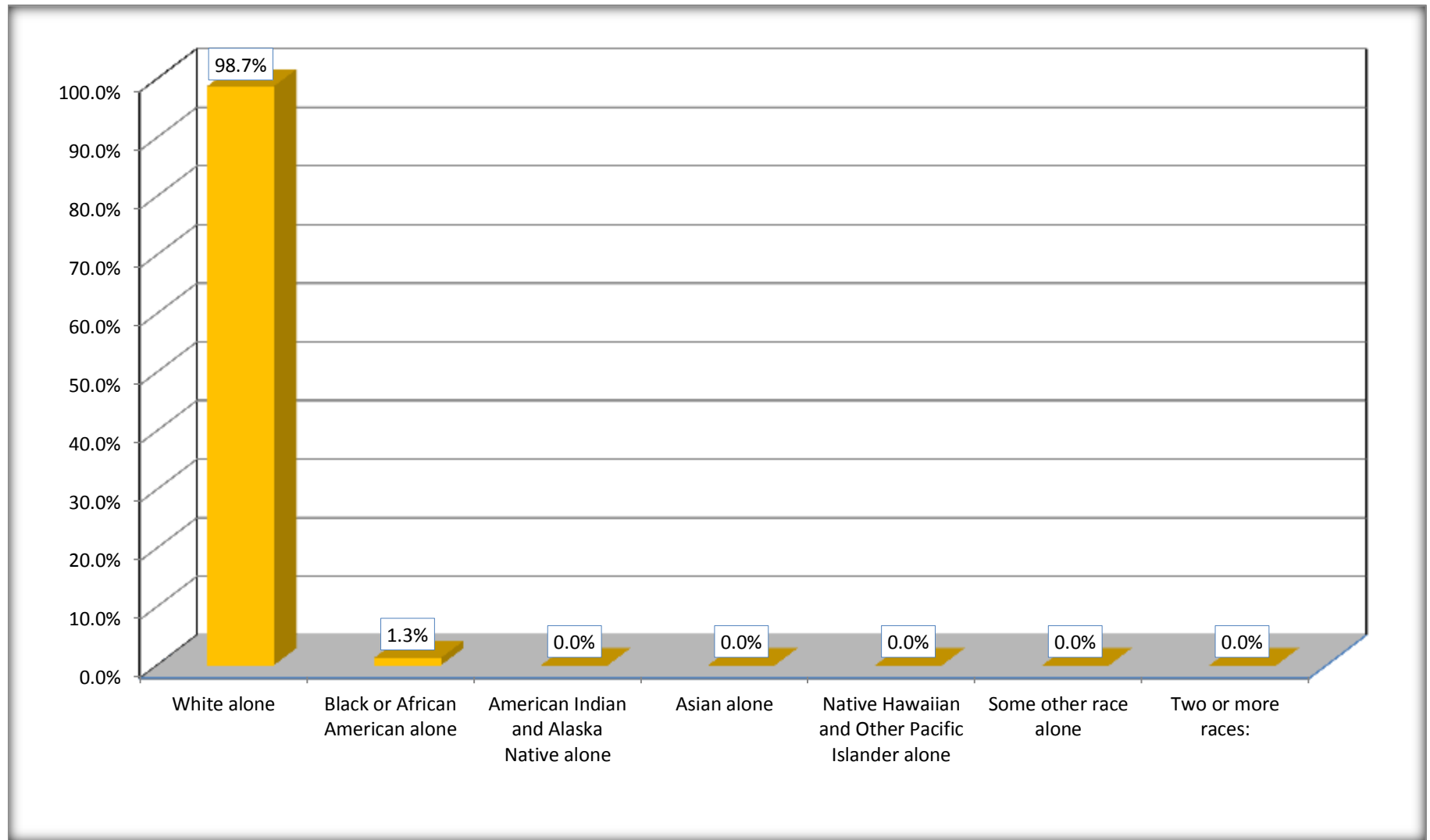
Although the American Community Survey (ACS) produces population, demographic and housing unit estimates, it is the Census Bureau's Population Estimates Program that produces and disseminates the official estimates of the population for the nation, states, counties, cities and towns and estimates of housing units for states and counties.

For information on confidentiality protection, sampling error, nonsampling error, and definitions, see Survey Methodology.

<http://www.census.gov/acs/www/UseData/index.htm>

Hispanic or Latino Origin by Race

Nevada County, Arkansas



Source: B03002. HISPANIC OR LATINO ORIGIN BY RACE
Data Set: 2008-2012 American Community Survey 5-Year Estimates

B01001. SEX BY AGE

Data Set: 2008-2012 American Community Survey 5-Year Estimates

	Nevada County, Arkansas					
	African American	Margin of Error (+/-)	% of AA Total	White, Not Hispanic	Margin of Error (+/-)	% of NHW Total
Total:	2,857	51	100.0%	5,799	17	100.0%
Under 18 years	790	NC	27.7%	1,215	NC	21.0%
18 to 64 years	1,646	NC	57.6%	3,414	NC	58.9%
65 years and over	421	NC	14.7%	1,170	NC	20.2%
Male:	1,394	84	48.8%	2,894	389	49.9%
Under 18 years	437	NC	15.3%	672	NC	11.6%
18 to 64 years	780	NC	27.3%	1,708	NC	29.5%
65 years and over	177	NC	6.2%	514	NC	8.9%
Female:	1,463	72	51.2%	2,905	412	50.1%
Under 18 years	353	NC	12.4%	543	NC	9.4%
18 to 64 years	866	NC	30.3%	1,706	NC	29.4%
65 years and over	244	NC	8.5%	656	NC	11.3%

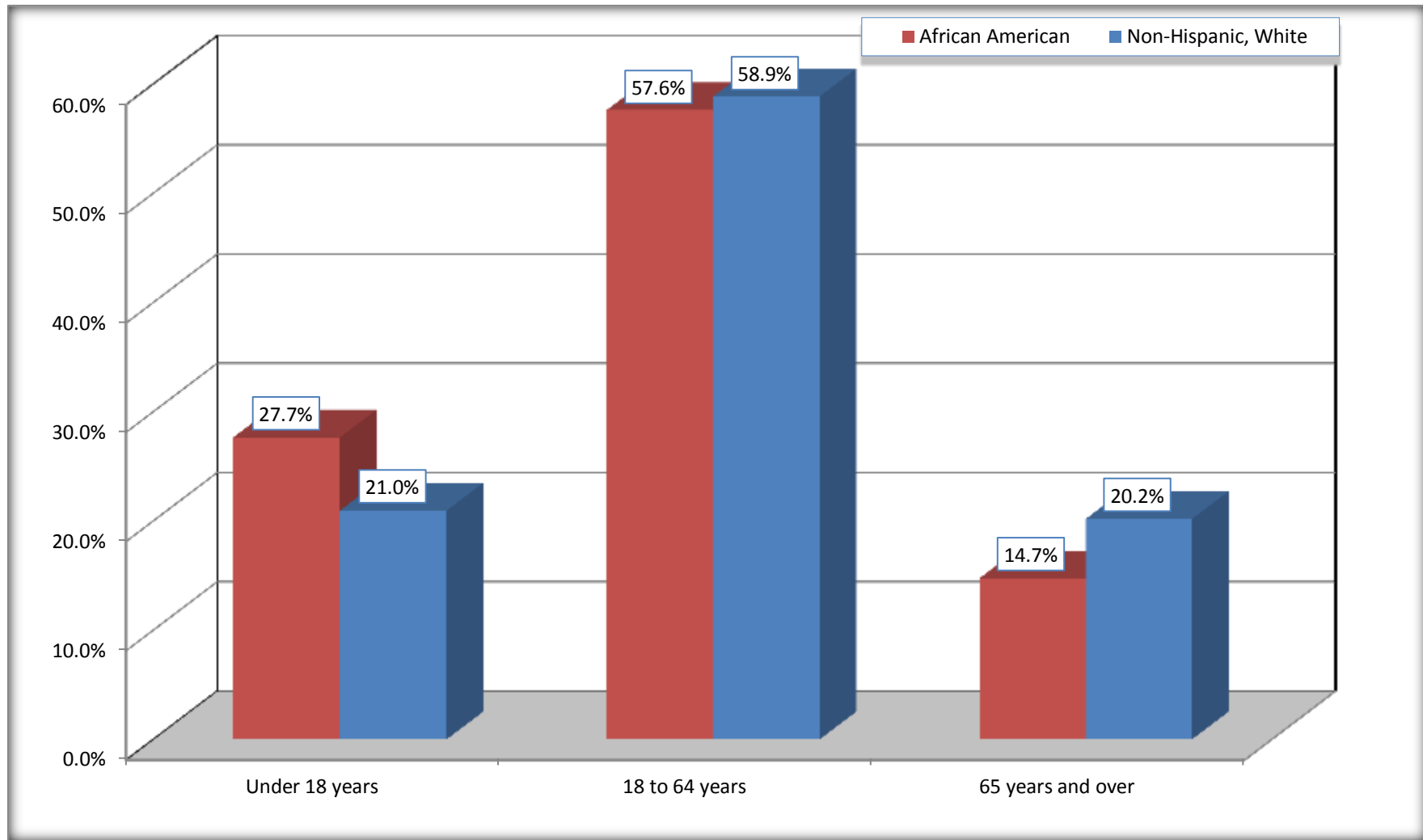
Source: U.S. Census Bureau, 2008-2012 American Community Survey

Although the American Community Survey (ACS) produces population, demographic and housing unit estimates, it is the Census Bureau's Population Estimates Program that produces and disseminates the official estimates of the population for the nation, states, counties, cities and towns and estimates of housing units for states and counties.

For information on confidentiality protection, sampling error, nonsampling error, and definitions, see Survey Methodology.
<http://www.census.gov/acs/www/UseData/index.htm>

Population by Age

Nevada County, Arkansas



Source: B01001. SEX BY AGE
Data Set: 2008-2012 American Community Survey 5-Year Estimates

B05003. SEX BY AGE BY CITIZENSHIP STATUS

Data Set: 2008-2012 American Community Survey 5-Year Estimates

	Nevada County, Arkansas					
	African American	Margin of Error (+/-)	% of AA Total by Age	White, Not Hispanic	Margin of Error (+/-)	% of NHW Total by Age
Total:	2,857	51	100.0%	5,799	17	100.0%
Under 18 years:	790	NC	100.0%	1,215	NC	100.0%
Native	790	NC	100.0%	1,215	NC	100.0%
Foreign born:	0	NC	0.0%	0	NC	0.0%
Naturalized U.S. citizen	0	NC	0.0%	0	NC	0.0%
Not a U.S. citizen	0	NC	0.0%	0	NC	0.0%
18 years and over:	2,067	NC	100.0%	4,584	NC	100.0%
Native	2,067	NC	100.0%	4,581	NC	99.9%
Foreign born:	0	NC	0.0%	3	NC	0.1%
Naturalized U.S. citizen	0	NC	0.0%	3	NC	0.1%
Not a U.S. citizen	0	NC	0.0%	0	NC	0.0%
Male:	1,394	84	48.8%	2,894	54	49.9%
Under 18 years:	437	84	100.0%	672	53	100.0%
Native	437	84	100.0%	672	53	100.0%
Foreign born:	0	17	0.0%	0	17	0.0%
Naturalized U.S. citizen	0	17	0.0%	0	17	0.0%
Not a U.S. citizen	0	17	0.0%	0	17	0.0%
18 years and over:	957	17	100.0%	2,222	3	100.0%
Native	957	17	100.0%	2,222	3	100.0%
Foreign born:	0	17	0.0%	0	17	0.0%
Naturalized U.S. citizen	0	17	0.0%	0	17	0.0%
Not a U.S. citizen	0	17	0.0%	0	17	0.0%

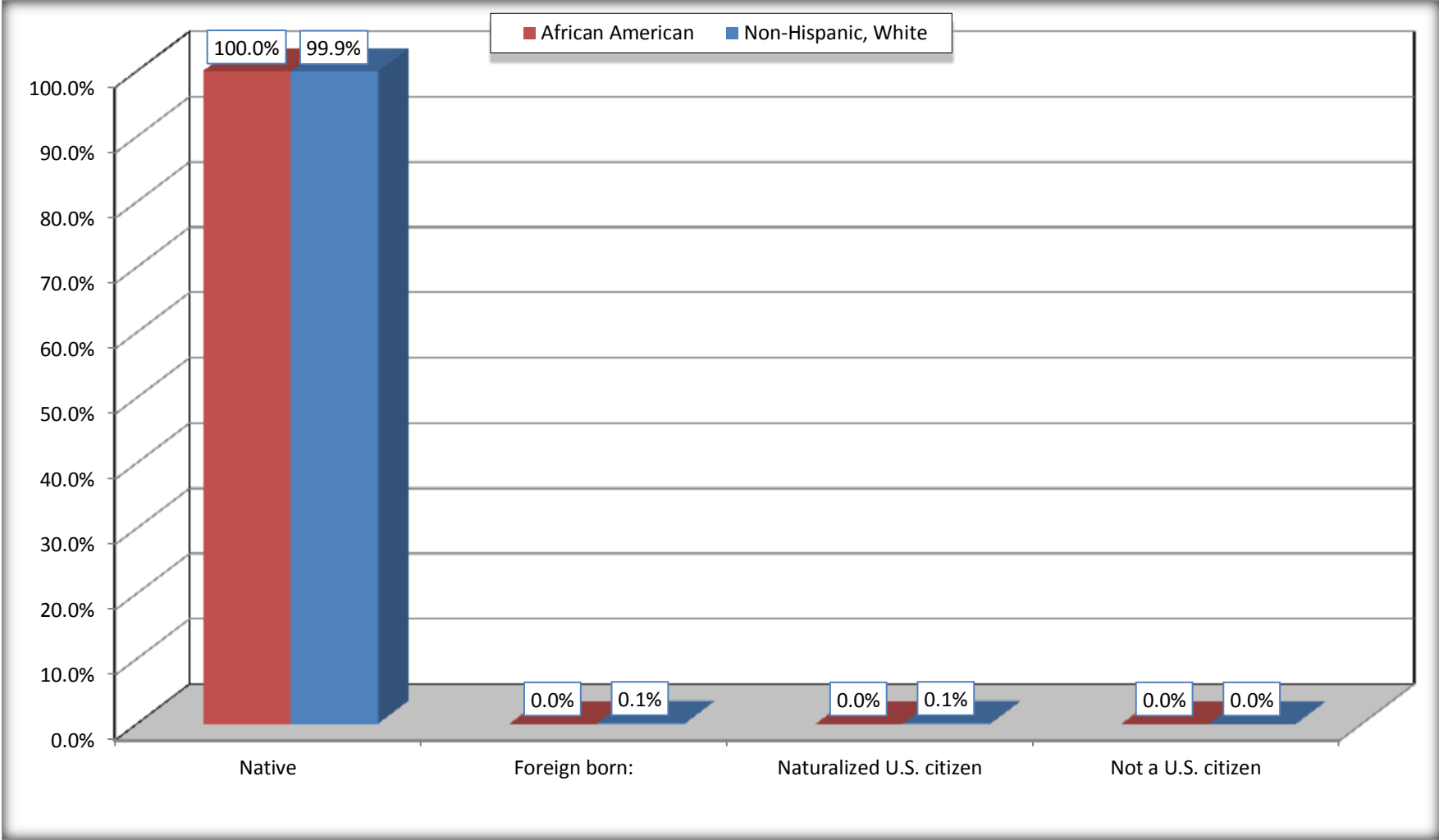
	Nevada County, Arkansas					
	African American	Margin of Error (+/-)	% of AA by Age	White, Not Hispanic	Margin of Error (+/-)	% of NHW by Age
Female:	1,463	72	51.2%	2,905	54	50.1%
Under 18 years:	353	65	100.0%	543	54	100.0%
Native	353	65	100.0%	543	54	100.0%
Foreign born:	0	17	0.0%	0	17	0.0%
Naturalized U.S. citizen	0	17	0.0%	0	17	0.0%
Not a U.S. citizen	0	17	0.0%	0	17	0.0%
18 years and over:	1,110	31	100.0%	2,362	17	100.0%
Native	1,110	31	100.0%	2,359	5	99.9%
Foreign born:	0	17	0.0%	3	5	0.1%
Naturalized U.S. citizen	0	17	0.0%	3	5	0.1%
Not a U.S. citizen	0	17	0.0%	0	17	0.0%

Source: U.S. Census Bureau, 2008-2012 American Community Survey

For information on confidentiality protection, sampling error, nonsampling error, and definitions, see Survey Methodology.
<http://www.census.gov/acs/www/UseData/index.htm>

Citizenship Status of Voting Age Population (18 and Over)

Nevada County, Arkansas



Source: B05003. SEX BY AGE BY CITIZENSHIP STATUS
Data Set: 2008-2012 American Community Survey 5-Year Estimates

**B07004. GEOGRAPHICAL MOBILITY IN THE PAST YEAR BY RACE FOR CURRENT RESIDENCE IN THE UNITED STATES - Universe:
POPULATION 1 YEAR AND OVER**

Data Set: 2008-2012 American Community Survey 5-Year Estimates

	Nevada County, Arkansas					
	African American	Margin of Error (+/-)	% of AA Total	White, Not Hispanic	Margin of Error (+/-)	% of NHW Total
Total:	2,818	70	100.0%	5,734	52	100.0%
Same house 1 year ago	2,528	232	89.7%	5,108	304	89.1%
Moved within same county	234	190	8.3%	295	195	5.1%
Moved from different county within same state	47	58	1.7%	244	139	4.3%
Moved from different state	9	16	0.3%	85	66	1.5%
Moved from abroad	0	17	0.0%	2	4	0.0%

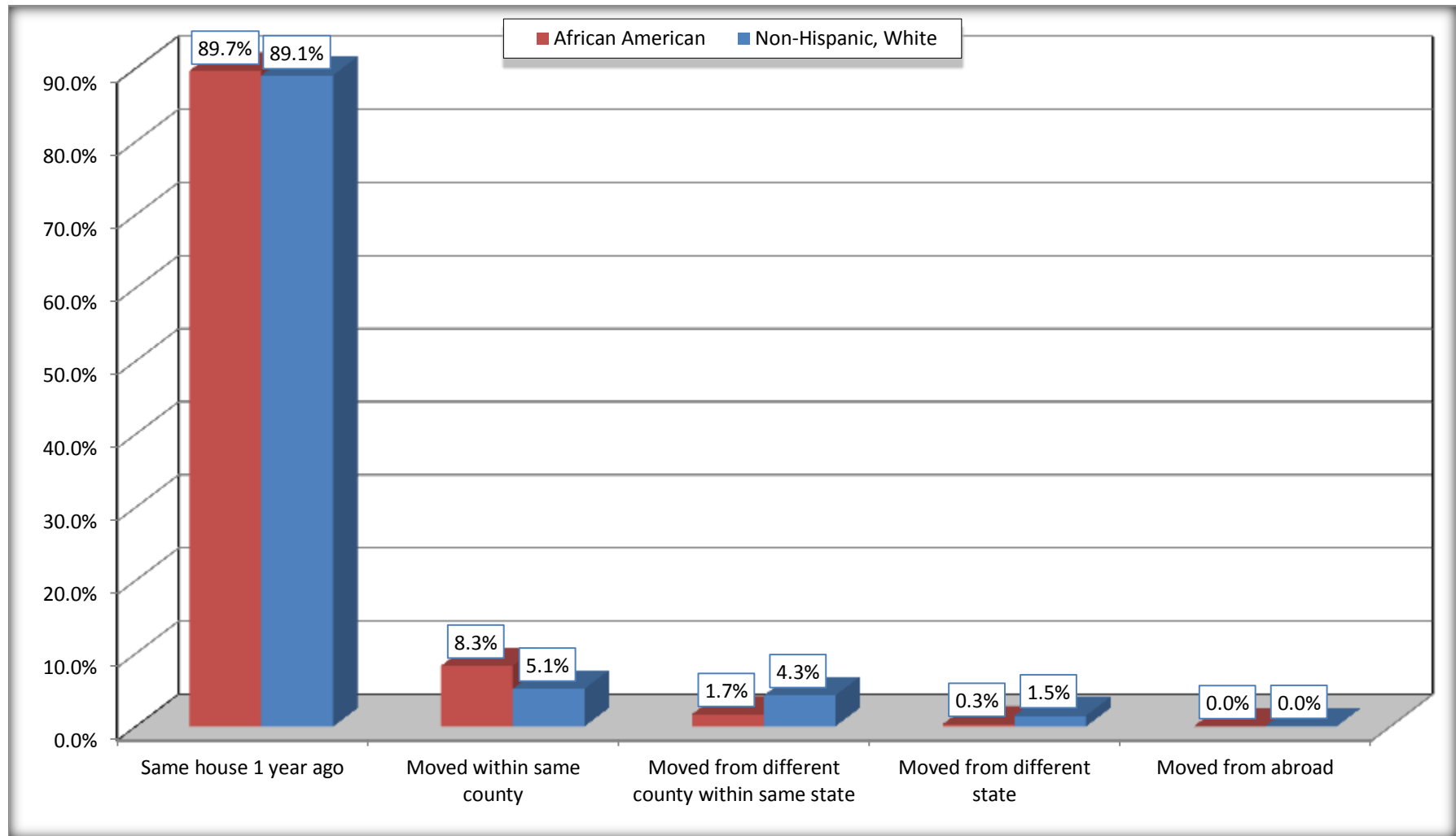
Source: U.S. Census Bureau, 2008-2012 American Community Survey

For information on confidentiality protection, sampling error, nonsampling error, and definitions, see Survey Methodology.

<http://www.census.gov/acs/www/UseData/index.htm>

Geographical Mobility in the Past Year (Population 1 Year and Over)

Nevada County, Arkansas



Source: B07004. GEOGRAPHICAL MOBILITY IN THE PAST YEAR BY RACE FOR CURRENT RESIDENCE IN THE UNITED STATES - Universe: POPULATION 1 YEAR AND OVER

Data Set: 2008-2012 American Community Survey 5-Year Estimates

B08105. MEANS OF TRANSPORTATION TO WORK - Universe: WORKERS 16 YEARS AND OVER

Data Set: 2008-2012 American Community Survey 5-Year Estimates

	Nevada County, Arkansas					
	African American	Margin of Error (+/-)	% of AA Total	White, Not Hispanic	Margin of Error (+/-)	% of NHW Total
Total:	1058	175	100.0%	2431	225	100.0%
Car, truck, or van - drove alone	875	172	82.7%	2168	199	89.2%
Car, truck, or van - carpooled	148	89	14.0%	167	58	6.9%
Public transportation (excluding taxicab)	7	12	0.7%	0	17	0.0%
Walked	0	17	0.0%	0	17	0.0%
Taxicab, motorcycle, bicycle, or other means	19	27	1.8%	16	24	0.7%
Worked at home	9	11	0.9%	80	57	3.3%

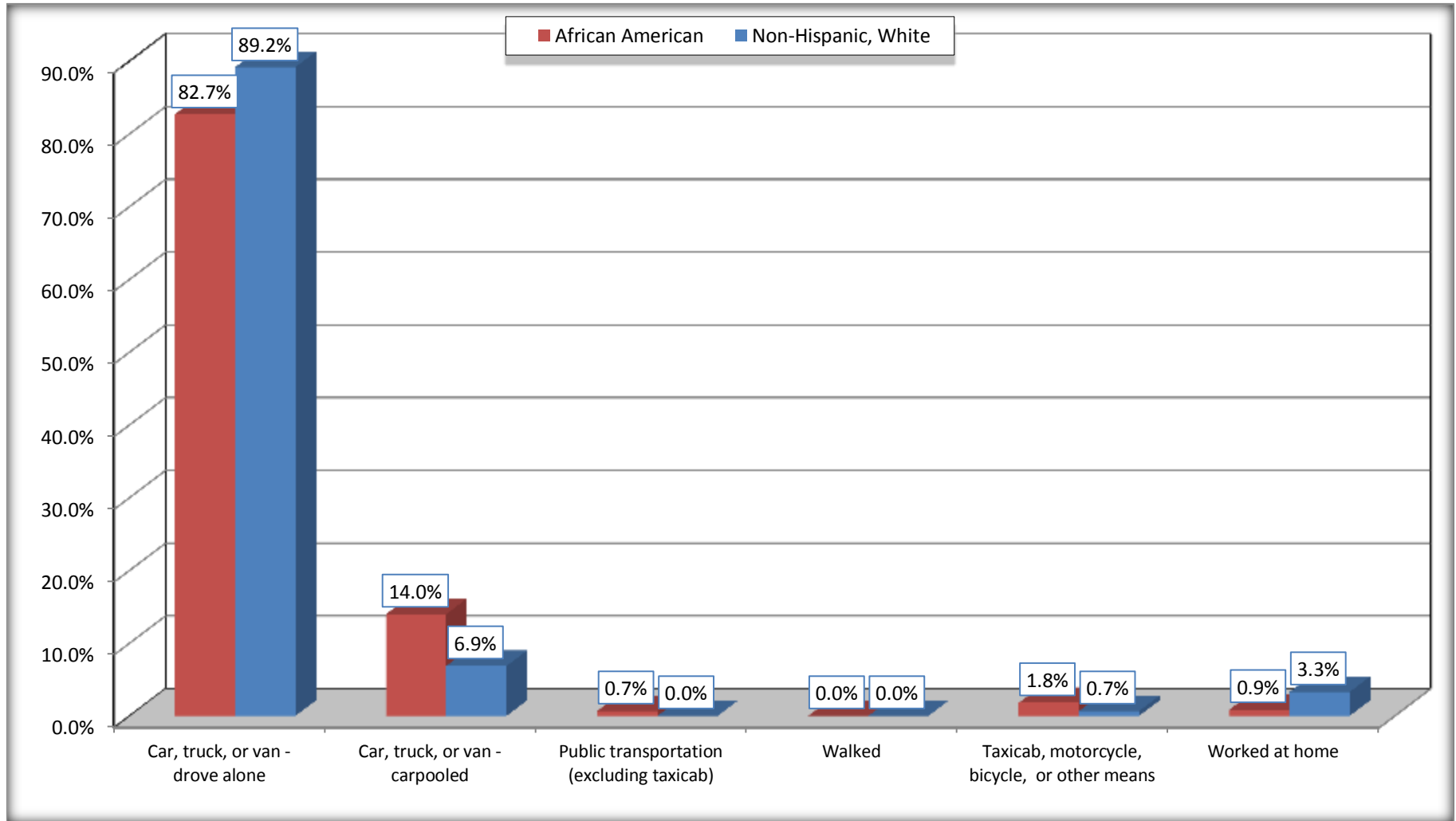
Source: U.S. Census Bureau, 2008-2012 American Community Survey

For information on confidentiality protection, sampling error, nonsampling error, and definitions, see Survey Methodology.

<http://www.census.gov/acs/www/UseData/index.htm>

Means of Transportation to Work (Workers 16 Years and Over)

Nevada County, Arkansas



Source: B08105. MEANS OF TRANSPORTATION TO WORK - Universe: WORKERS 16 YEARS AND OVER
Data Set: 2008-2012 American Community Survey 5-Year Estimates

B11002. HOUSEHOLD TYPE BY RELATIVES AND NONRELATIVES FOR POPULATION IN HOUSEHOLDS

Data Set: 2008-2012 American Community Survey 5-Year Estimates

	Nevada County, Arkansas					
	African American	Margin of Error (+/-)	% of AA Total	White, Not Hispanic	Margin of Error (+/-)	% of NHW Total
Total:	2809	88	100.0%	5672	96	100.0%
In family households	2142	126	76.3%	4834	238	85.2%
In nonfamily households	667	114	23.7%	838	227	14.8%

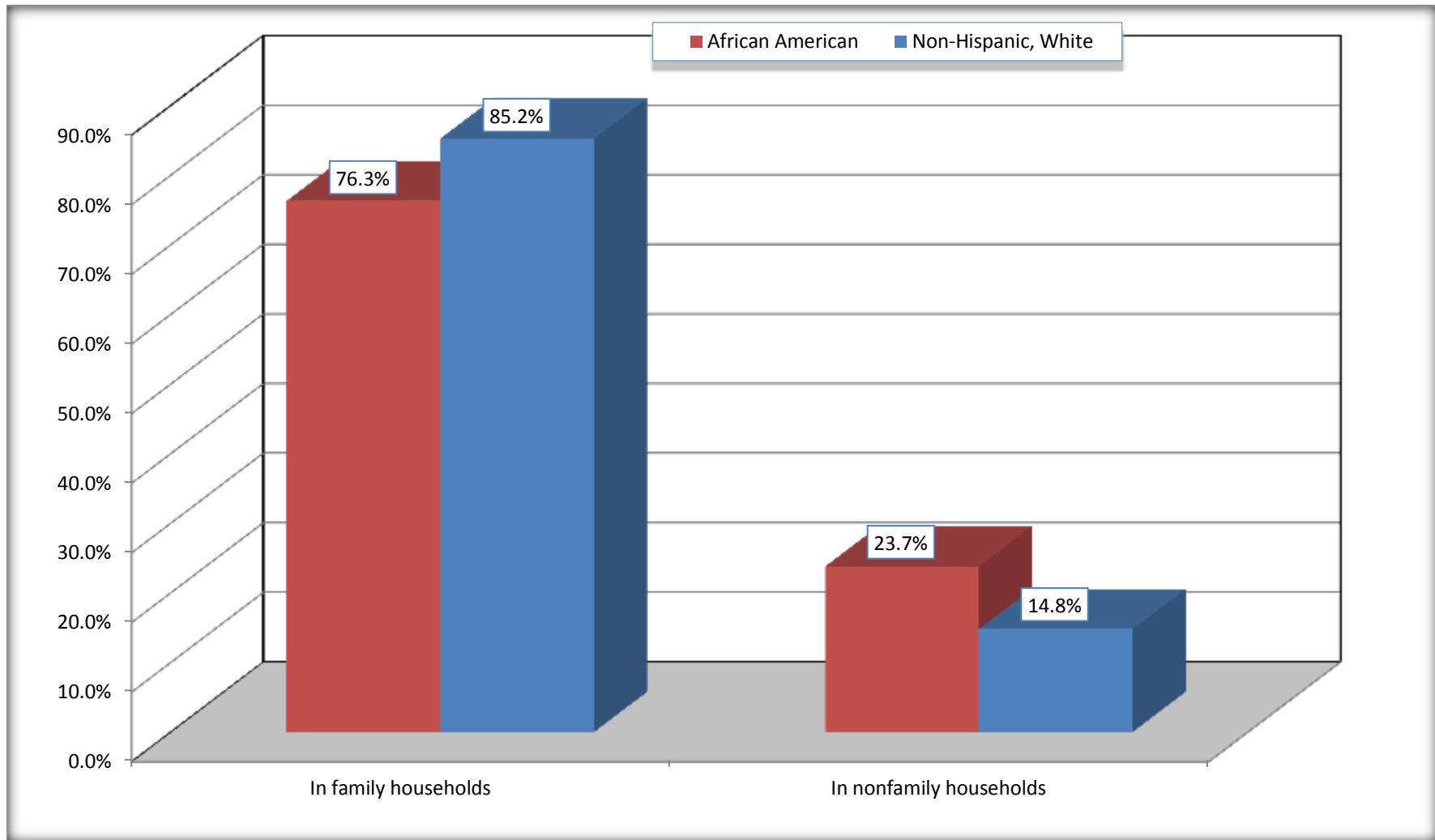
Source: U.S. Census Bureau, 2008-2012 American Community Survey

For information on confidentiality protection, sampling error, nonsampling error, and definitions, see Survey Methodology.

<http://www.census.gov/acs/www/UseData/index.htm>

Household Type for Population in Households

Nevada County, Arkansas



Source: B11002. HOUSEHOLD TYPE BY RELATIVES AND NONRELATIVES FOR POPULATION IN HOUSEHOLDS
Data Set: 2008-2012 American Community Survey 5-Year Estimates

B12002. MARITAL STATUS FOR THE POPULATION 15 YEARS AND OVER

Data Set: 2008-2012 American Community Survey 5-Year Estimates

	Nevada County, Arkansas					
	African American	Margin of Error (+/-)	% of AA Total	White, Not Hispanic	Margin of Error (+/-)	% of NHW Total
Total:	2,249	105	100.0%	4,781	3	100.0%
Never married	815	NC	36.2%	783	NC	16.4%
Now married (except separated)	637	NC	28.3%	2,905	NC	60.8%
Separated	174	NC	7.7%	70	NC	1.5%
Widowed	195	NC	8.7%	373	NC	7.8%
Divorced	428	NC	19.0%	650	NC	13.6%
Male:	1,040	77	46.2%	2,324	3	48.6%
Never married	346	79	15.4%	426	109	8.9%
Now married (except separated)	373	94	16.6%	1,469	159	30.7%
Separated	117	71	5.2%	51	47	1.1%
Widowed	64	48	2.8%	53	35	1.1%
Divorced	140	75	6.2%	325	97	6.8%
Female:	1,209	89	53.8%	2,457	17	51.4%
Never married	469	163	20.9%	357	48	7.5%
Now married (except separated)	264	69	11.7%	1,436	143	30.0%
Separated	57	58	2.5%	19	17	0.4%
Widowed	131	76	5.8%	320	78	6.7%
Divorced	288	113	12.8%	325	109	6.8%

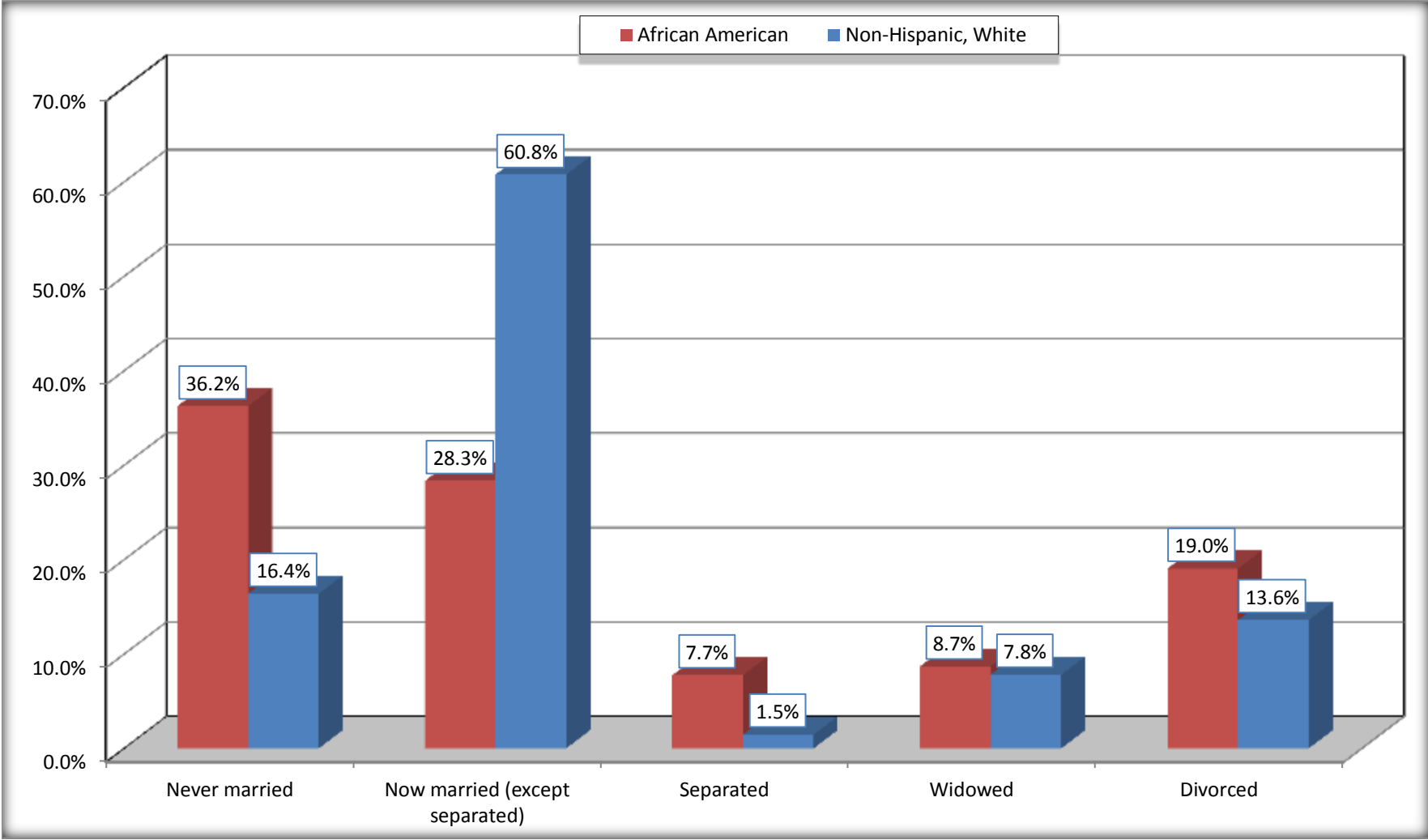
Source: U.S. Census Bureau, 2008-2012 American Community Survey

For information on confidentiality protection, sampling error, nonsampling error, and definitions, see Survey Methodology.

<http://www.census.gov/acs/www/UseData/index.htm>

Marital Status for the Population 15 Years and Over

Nevada County, Arkansas



Source: B12002. MARITAL STATUS FOR THE POPULATION 15 YEARS AND OVER
Data Set: 2008-2012 American Community Survey 5-Year Estimates

C15002. SEX BY EDUCATIONAL ATTAINMENT FOR THE POPULATION 25 YEARS AND OVER

Data Set: 2008-2012 American Community Survey 5-Year Estimates

	Nevada County, Arkansas					
	African American	Margin of Error (+/-)	% of AA Total	White, Not Hispanic	Margin of Error (+/-)	% of NHW Total
Total:	1,809	102	100.0%	4,220	73	100.0%
Less than high school diploma	442	NC	24.4%	626	NC	14.8%
High school graduate, GED, or alternative	831	NC	45.9%	1,587	NC	37.6%
Some college or associate's degree	406	NC	22.4%	1,457	NC	34.5%
Bachelor's degree or higher	130	NC	7.2%	550	NC	13.0%
Male:	820	75	45.3%	2,061	73	48.8%
Less than high school diploma	242	63	13.4%	338	85	8.0%
High school graduate, GED, or alternative	438	100	24.2%	844	164	20.0%
Some college or associate's degree	120	62	6.6%	630	131	14.9%
Bachelor's degree or higher	20	23	1.1%	249	103	5.9%
Female:	989	77	54.7%	2,159	17	51.2%
Less than high school diploma	200	117	11.1%	288	80	6.8%
High school graduate, GED, or alternative	393	98	21.7%	743	138	17.6%
Some college or associate's degree	286	128	15.8%	827	129	19.6%
Bachelor's degree or higher	110	63	6.1%	301	83	7.1%

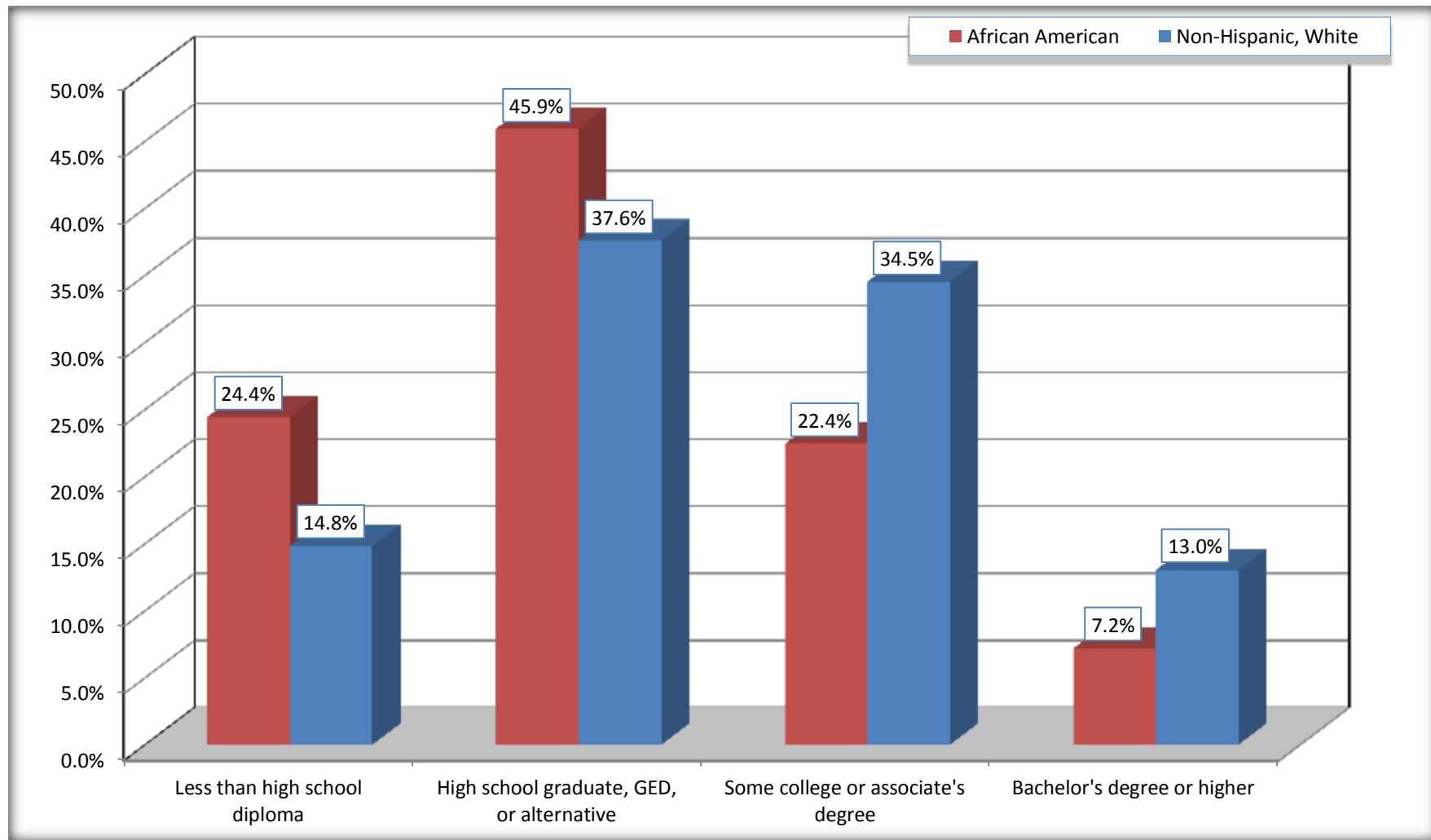
Source: U.S. Census Bureau, 2008-2012 American Community Survey

For information on confidentiality protection, sampling error, nonsampling error, and definitions, see Survey Methodology.

<http://www.census.gov/acs/www/UseData/index.htm>

Educational Attainment for the Population 25 Years and Older

Nevada County, Arkansas



Source: C15002. SEX BY EDUCATIONAL ATTAINMENT FOR THE POPULATION 25 YEARS AND OVER
Data Set: 2008-2012 American Community Survey 5-Year Estimates

B17010. POVERTY STATUS IN THE PAST 12 MONTHS OF FAMILIES BY FAMILY TYPE BY PRESENCE OF RELATED CHILDREN UNDER 18 YEARS

Data Set: 2008-2012 American Community Survey 5-Year Estimates

	Nevada County, Arkansas					
	African American	Margin of Error (+/-)	% of AA Total	White, Not Hispanic	Margin of Error (+/-)	% of NHW Total
Total:	634	100	100.0%	1,763	139	100.0%
Income in the past 12 months below poverty level:	276	110	43.5%	187	65	10.6%
Married-couple family:	20	34	3.2%	55	38	3.1%
With related children under 18 years	20	34	3.2%	50	38	2.8%
Other family:	256	100	40.4%	132	62	7.5%
Male householder, no wife present	20	26	3.2%	50	35	2.8%
With related children under 18 years	0	17	0.0%	21	28	1.2%
Female householder, no husband present	236	97	37.2%	82	57	4.7%
With related children under 18 years	222	98	35.0%	81	57	4.6%
Income in the past 12 months at or above poverty level:	358	84	56.5%	1,576	150	89.4%
Married-couple family:	218	56	34.4%	1,394	154	79.1%
With related children under 18 years	108	50	17.0%	378	115	21.4%
Other family:	140	80	22.1%	182	71	10.3%
Male householder, no wife present	12	18	1.9%	86	41	4.9%
With related children under 18 years	3	5	0.5%	44	25	2.5%
Female householder, no husband present	128	77	20.2%	96	55	5.4%
With related children under 18 years	70	59	11.0%	39	32	2.2%

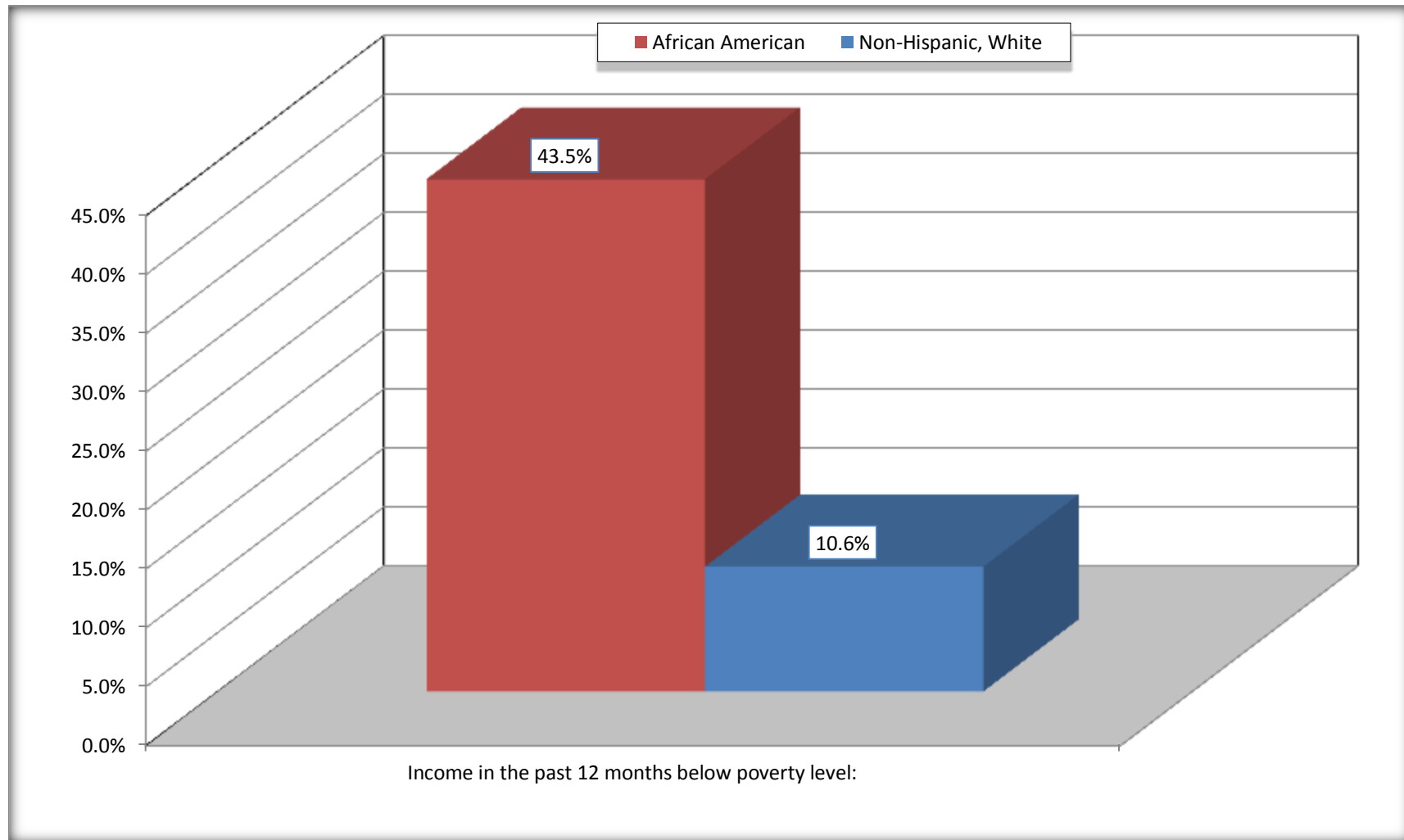
Source: U.S. Census Bureau, 2008-2012 American Community Survey

For information on confidentiality protection, sampling error, nonsampling error, and definitions, see Survey Methodology.

<http://www.census.gov/acs/www/UseData/index.htm>

Family Households Below Poverty in the Past 12 Months

Nevada County, Arkansas

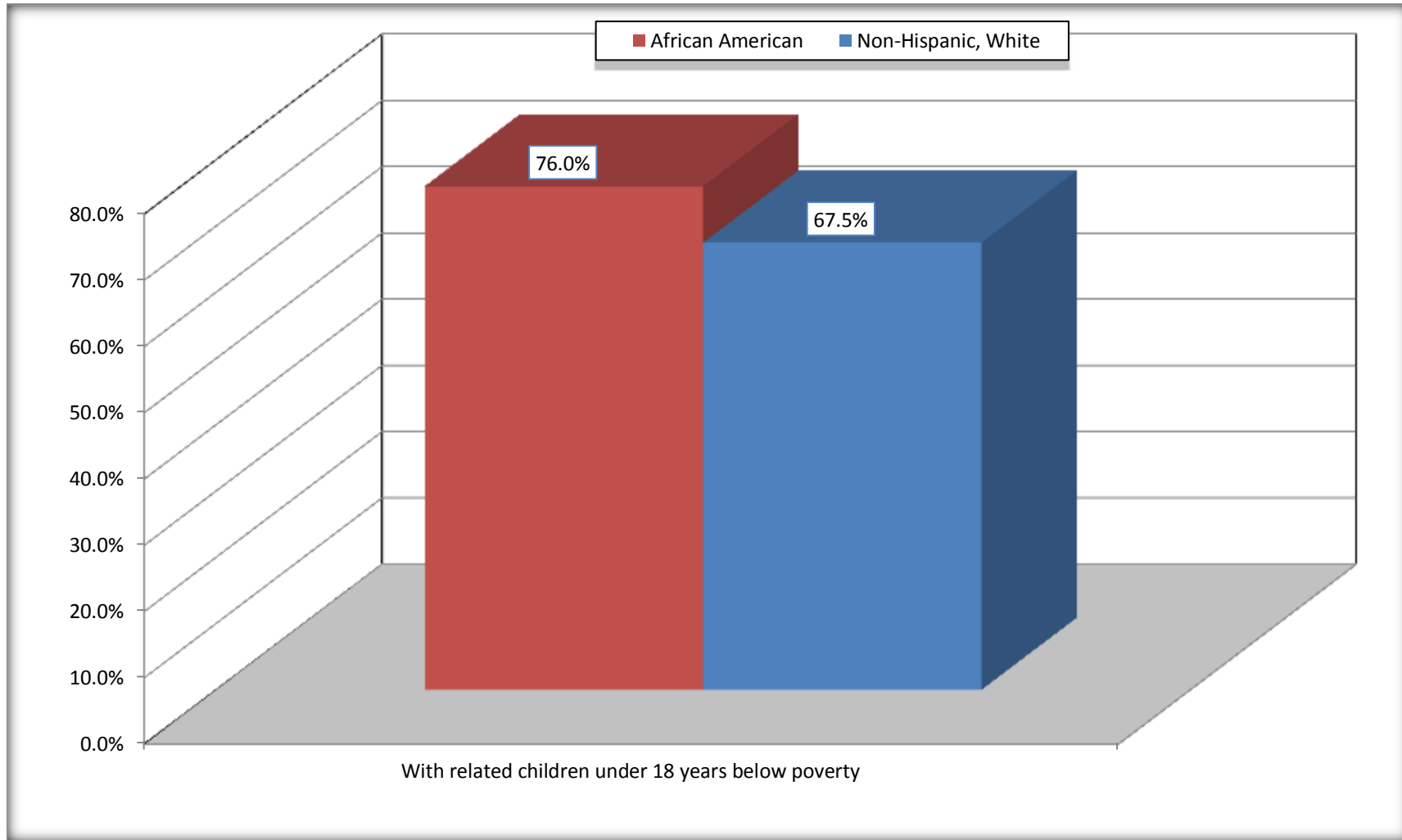


Source: B17010. POVERTY STATUS IN THE PAST 12 MONTHS OF FAMILIES BY FAMILY TYPE BY PRESENCE OF RELATED CHILDREN UNDER 18 YEARS

Data Set: 2008-2012 American Community Survey 5-Year Estimates

Female-headed Households with Related Children Below Poverty in the Past 12 Months

Nevada County, Arkansas



Source: B17010. POVERTY STATUS IN THE PAST 12 MONTHS OF FAMILIES BY FAMILY TYPE BY PRESENCE OF RELATED CHILDREN UNDER 18 YEARS

Data Set: 2008-2012 American Community Survey 5-Year Estimates

B17020 POVERTY STATUS IN THE PAST 12 MONTHS BY AGE - Universe: POPULATION FOR WHOM POVERTY STATUS IS DETERMINED

Data Set: 2008-2012 American Community Survey 5-Year Estimates

	Nevada County, Arkansas					
	African American	Margin of Error (+/-)	% of AA By Age	White, Not Hispanic	Margin of Error (+/-)	% of NHW By Age
Total:	2,804	84	100.0%	5,658	103	100.0%
Income in the past 12 months below poverty level:	1,039	303	37.1%	1,160	308	20.5%
Under 18 years	484	NC	61.3%	474	NC	40.6%
18 to 64 years	468	150	29.2%	527	155	15.7%
65 years and over	87	NC	21.2%	159	NC	14.0%
Income in the past 12 months at or above poverty level:	1,765	293	62.9%	4,498	310	79.5%
Under 18 years	306	NC	38.7%	693	NC	59.4%
18 to 64 years	1,135	161	70.8%	2,832	161	84.3%
65 years and over	324	NC	78.8%	973	NC	86.0%

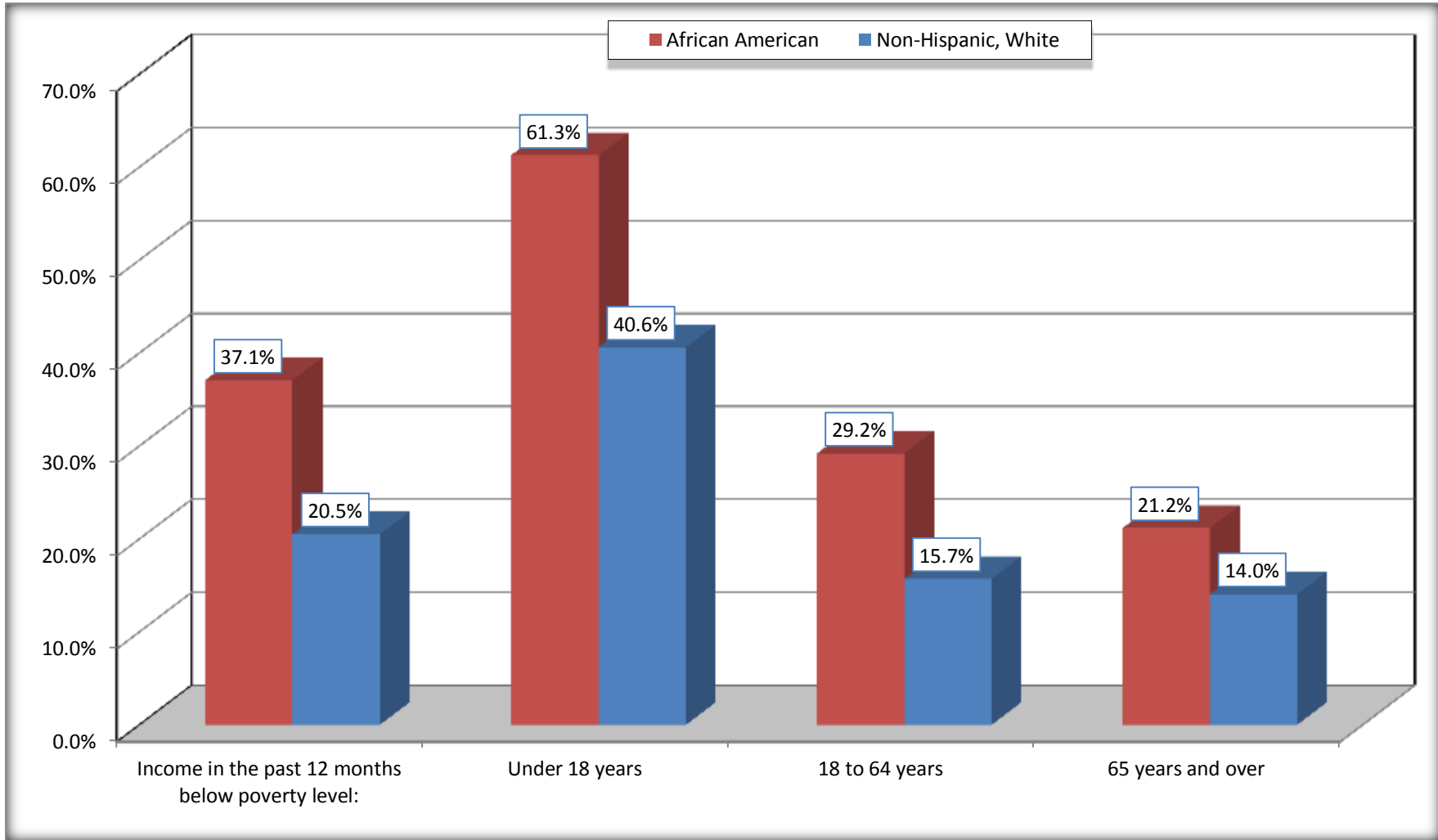
Source: U.S. Census Bureau, 2008-2012 American Community Survey

For information on confidentiality protection, sampling error, nonsampling error, and definitions, see Survey Methodology.

<http://www.census.gov/acs/www/UseData/index.htm>

Population Below Poverty in the Past 12 Months

Nevada County, Arkansas



Source: B17020 POVERTY STATUS IN THE PAST 12 MONTHS BY AGE - Universe: POPULATION FOR WHOM POVERTY STATUS IS DETERMINED
Data Set: 2008-2012 American Community Survey 5-Year Estimates

B19001. HOUSEHOLD INCOME IN THE PAST 12 MONTHS (IN 2010 INFLATION-ADJUSTED DOLLARS)

Data Set: 2008-2012 American Community Survey 5-Year Estimates

	Nevada County, Arkansas					
	African American	Margin of Error (+/-)	% of AA Total	White, Not Hispanic	Margin of Error (+/-)	% of NHW Total
Total:	1,235	126	100.0%	2,455	130	100.0%
Less than \$ 10,000	302	143	24.5%	178	77	7.3%
\$ 10,000 to \$ 14,999	117	68	9.5%	263	93	10.7%
\$ 15,000 to \$ 24,999	281	NC	22.8%	263	NC	10.7%
\$ 25,000 to \$ 34,999	150	NC	12.1%	210	NC	8.6%
\$ 35,000 to \$ 49,999	219	NC	17.7%	421	NC	17.1%
\$ 50,000 to \$ 74,999	110	NC	8.9%	503	NC	20.5%
\$ 75,000 to \$ 99,999	32	27	2.6%	353	125	14.4%
\$ 100,000 to \$ 149,999	24	NC	1.9%	147	NC	6.0%
\$ 150,000 to \$ 199,999	0	17	0.0%	58	50	2.4%
\$ 200,000 or more	0	17	0.0%	59	49	2.4%

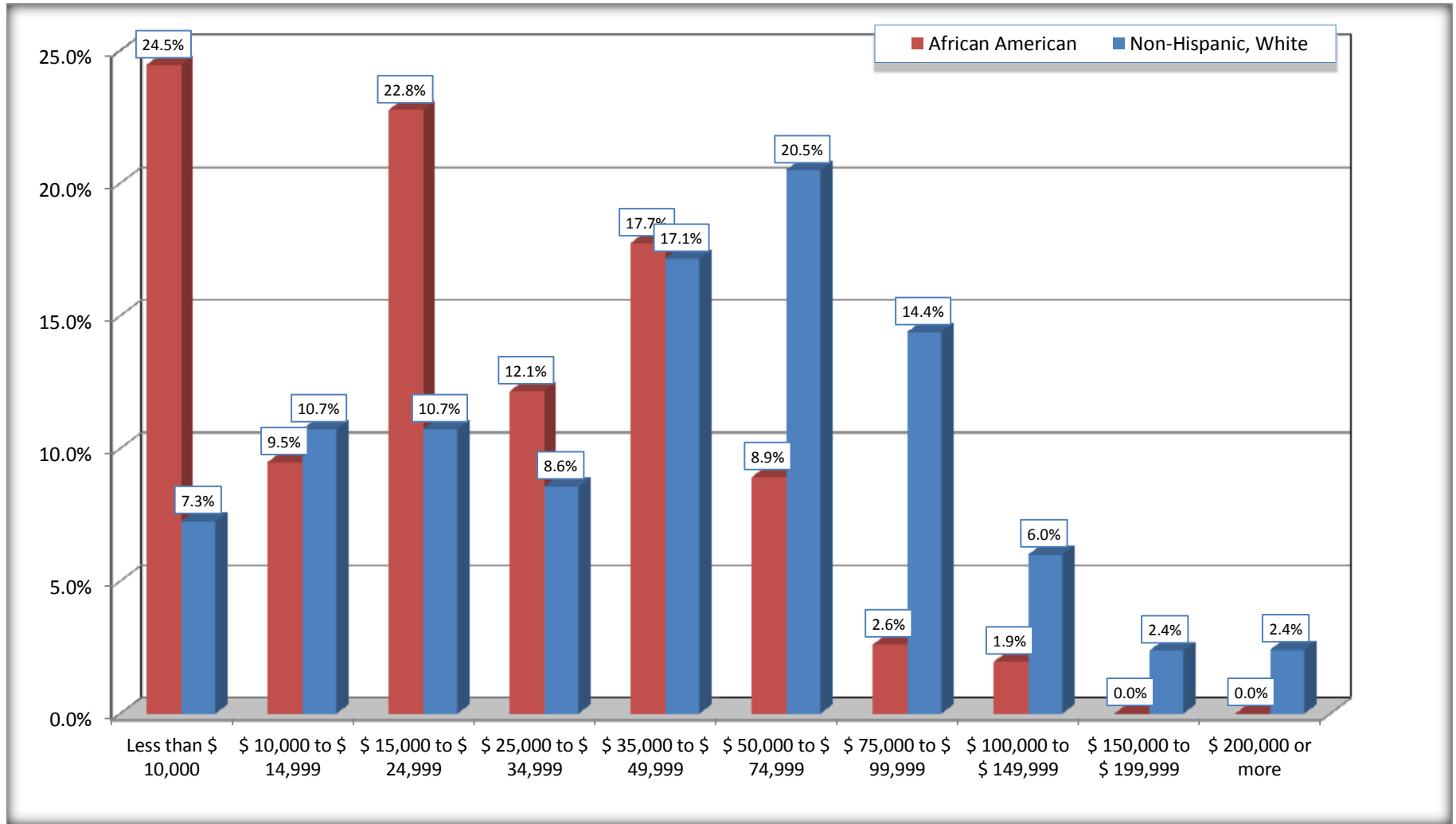
Source: U.S. Census Bureau, 2008-2012 American Community Survey

For information on confidentiality protection, sampling error, nonsampling error, and definitions, see Survey Methodology.

<http://www.census.gov/acs/www/UseData/index.htm>

Household Income in the Past 12 Months

Nevada County, Arkansas



Source: B19001. HOUSEHOLD INCOME IN THE PAST 12 MONTHS (IN 2010 INFLATION-ADJUSTED DOLLARS)
Data Set: 2008-2012 American Community Survey 5-Year Estimates

B19013. MEDIAN HOUSEHOLD INCOME IN THE PAST 12 MONTHS (IN 2010 INFLATION-ADJUSTED DOLLARS)

Data Set: 2008-2012 American Community Survey 5-Year Estimates

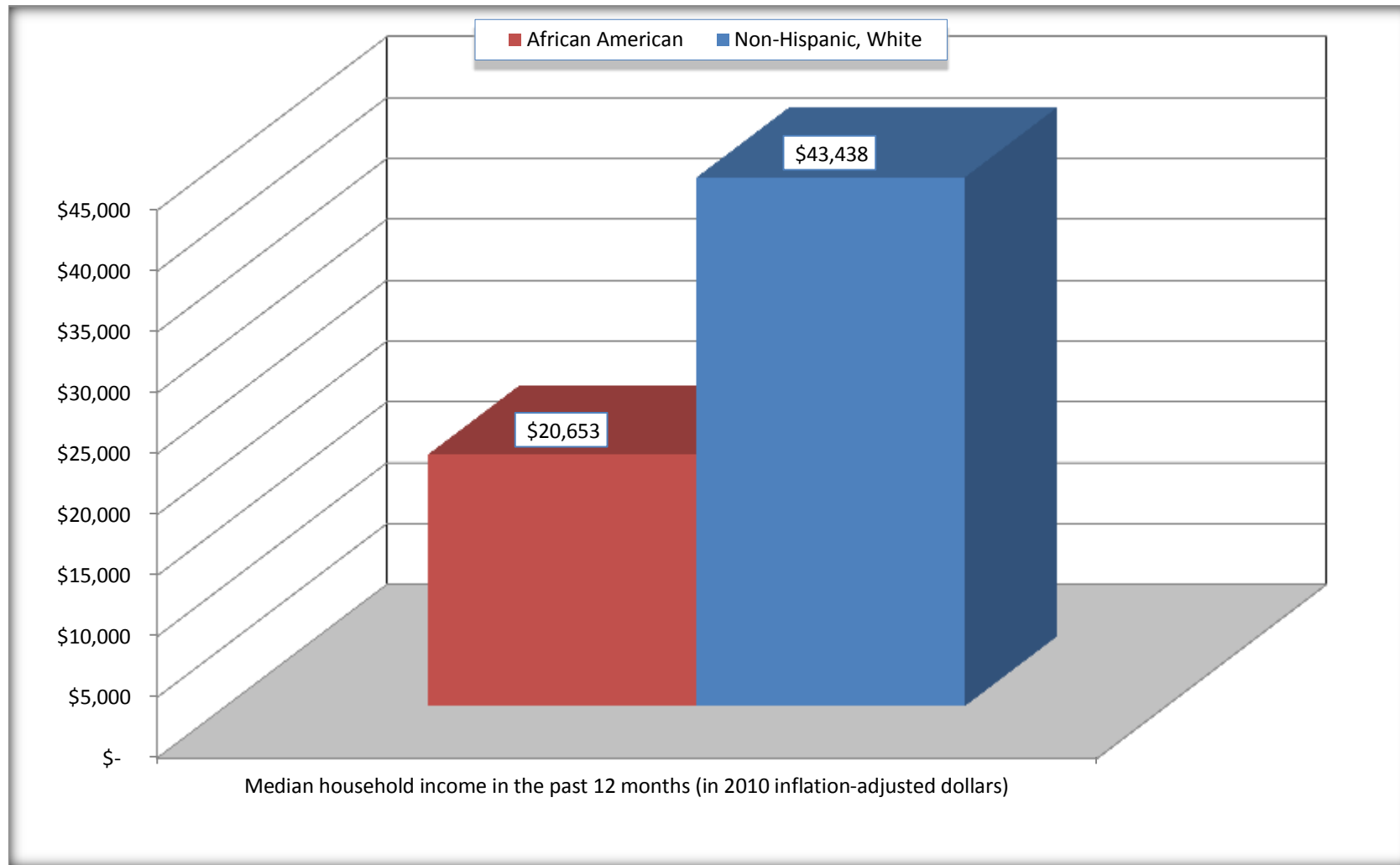
	Nevada County, Arkansas			
	African American	Margin of Error (+/-)	White, Not Hispanic	Margin of Error (+/-)
Median household income in the past 12 months (in 2010 inflation-adjusted dollars)	\$ 20,653	\$ 7,423	\$ 43,438	\$ 5,487

Source: U.S. Census Bureau, 2008-2012 American Community Survey

For information on confidentiality protection, sampling error, nonsampling error, and definitions, see Survey Methodology.
<http://www.census.gov/acs/www/UseData/index.htm>

Median Household Income in the Past 12 Months

Nevada County, Arkansas



Source: B19013. MEDIAN HOUSEHOLD INCOME IN THE PAST 12 MONTHS (IN 2010 INFLATION-ADJUSTED DOLLARS)
Data Set: 2008-2012 American Community Survey 5-Year Estimates

B19101. FAMILY INCOME IN THE PAST 12 MONTHS (IN 2010 INFLATION-ADJUSTED DOLLARS)

Data Set: 2008-2012 American Community Survey 5-Year Estimates

	Nevada County, Arkansas					
	African American	Margin of Error (+/-)	% of AA Total	White, Not Hispanic	Margin of Error (+/-)	% of NHW Total
Total:	634	100	100.0%	1,763	139	100.0%
Less than \$ 10,000	100	97	15.8%	60	44	3.4%
\$ 10,000 to \$ 14,999	91	62	14.4%	89	54	5.0%
\$ 15,000 to \$ 24,999	135	NC	21.3%	192	NC	10.9%
\$ 25,000 to \$ 34,999	88	NC	13.9%	160	NC	9.1%
\$ 35,000 to \$ 49,999	79	NC	12.5%	332	NC	18.8%
\$ 50,000 to \$ 74,999	88	NC	13.9%	421	NC	23.9%
\$ 100,000 to \$ 149,999	21	NC	3.3%	99	NC	5.6%
\$ 150,000 to \$ 199,999	0	17	0.0%	15	21	0.9%
\$ 200,000 or more	0	17	0.0%	54	48	3.1%

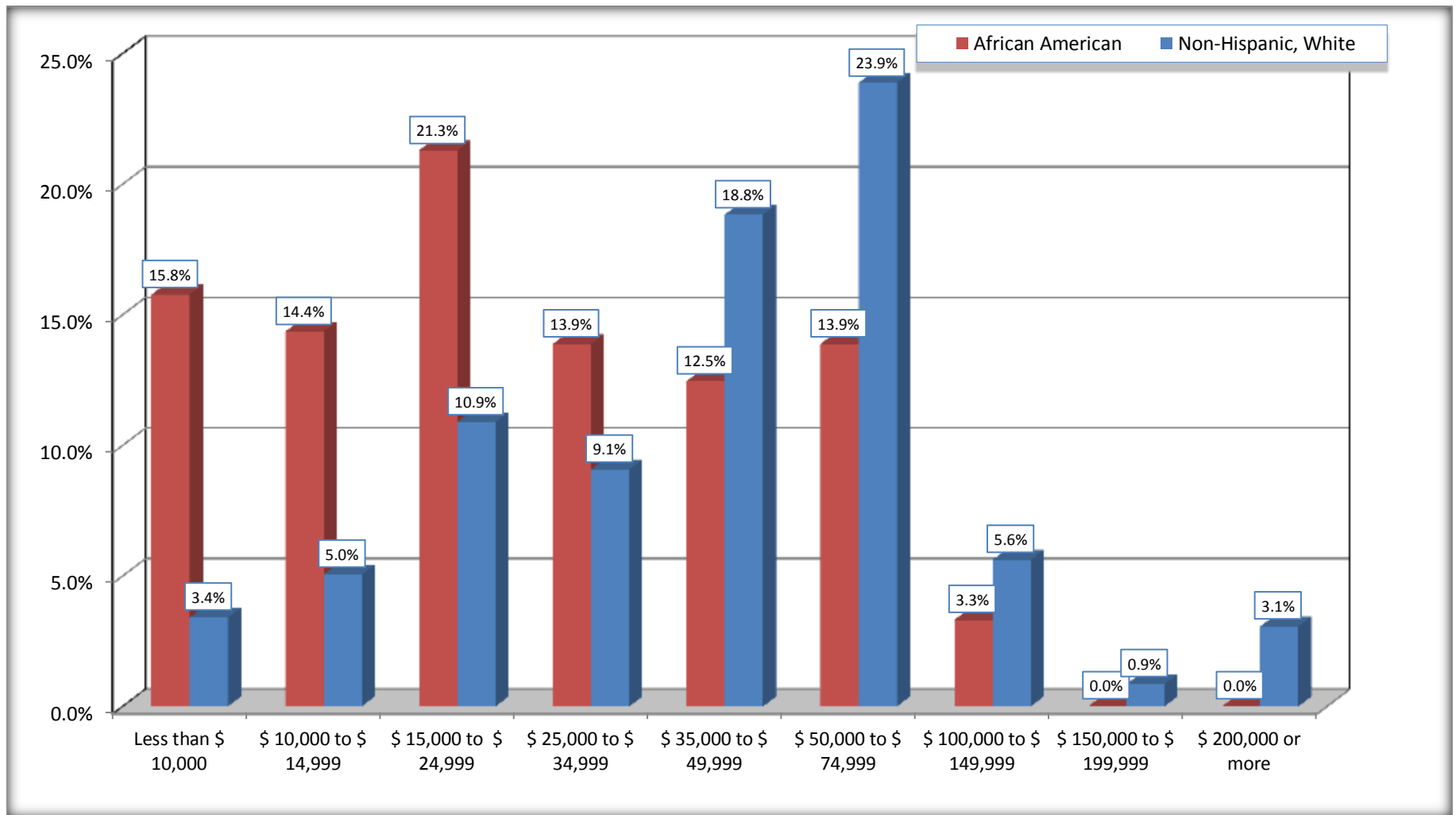
Source: U.S. Census Bureau, 2008-2012 American Community Survey

For information on confidentiality protection, sampling error, nonsampling error, and definitions, see Survey Methodology.

<http://www.census.gov/acs/www/UseData/index.htm>

Family Income in the Past 12 Months

Nevada County, Arkansas



Source: B19101. FAMILY INCOME IN THE PAST 12 MONTHS (IN 2010 INFLATION-ADJUSTED DOLLARS)
Data Set: 2008-2012 American Community Survey 5-Year Estimates

B19113. MEDIAN FAMILY INCOME IN THE PAST 12 MONTHS (IN 2010 INFLATION-ADJUSTED DOLLARS)

Data Set: 2008-2012 American Community Survey 5-Year Estimates

	Nevada County, Arkansas			
	African American	Margin of Error (+/-)	White, Not Hispanic	Margin of Error (+/-)
Median family income in the past 12 months (in 2010 inflation-adjusted dollars)	\$ 24,250	\$ 6,165	\$ 51,925	\$ 12,300

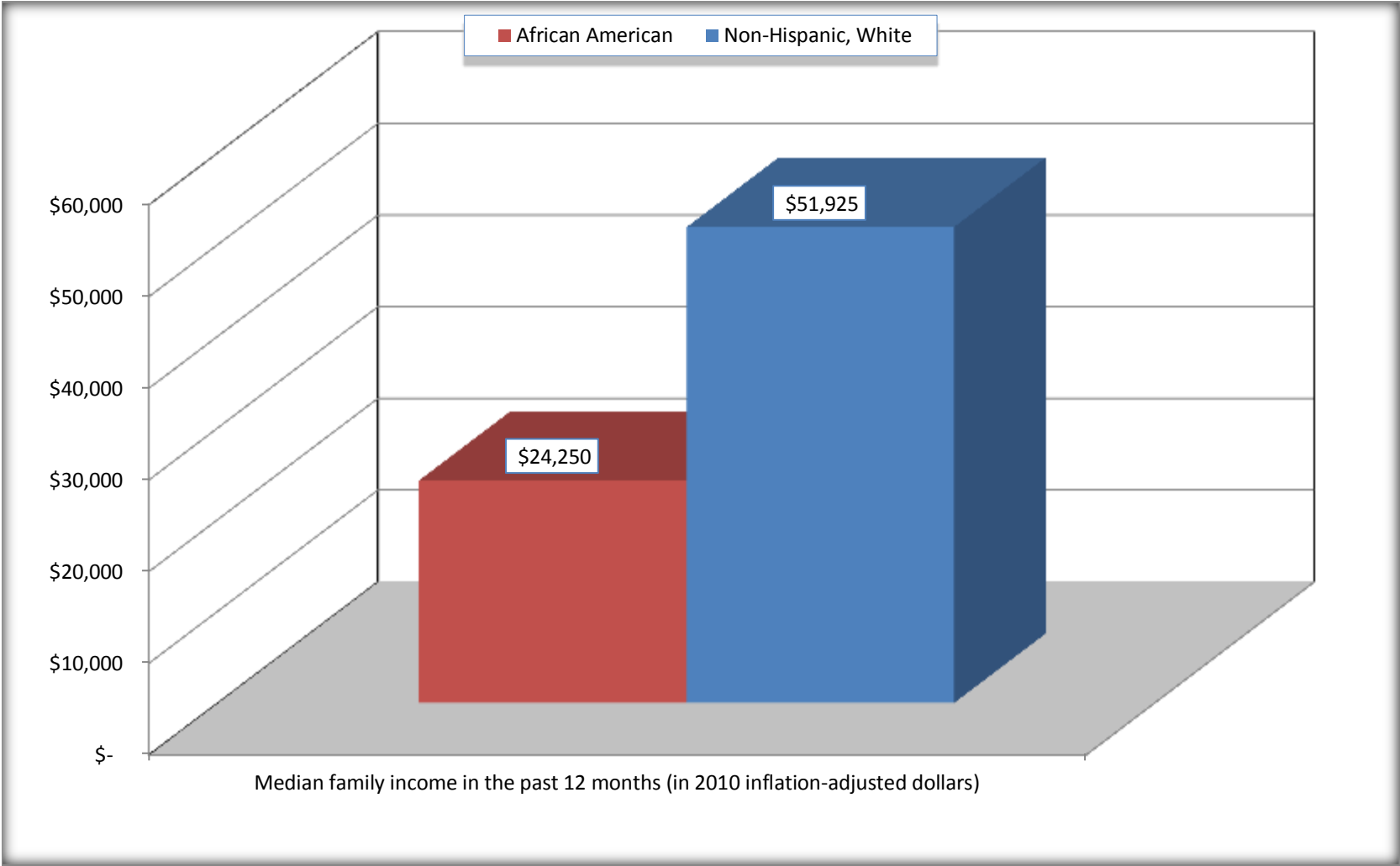
Source: U.S. Census Bureau, 2008-2012 American Community Survey

For information on confidentiality protection, sampling error, nonsampling error, and definitions, see Survey Methodology.

<http://www.census.gov/acs/www/UseData/index.htm>

Median Family Income in the Past 12 Months

Nevada County, Arkansas



Source: B19113. MEDIAN FAMILY INCOME IN THE PAST 12 MONTHS (IN 2010 INFLATION-ADJUSTED DOLLARS)
Data Set: 2008-2012 American Community Survey 5-Year Estimates

B19202. MEDIAN NONFAMILY HOUSEHOLD INCOME IN THE PAST 12 MONTHS (IN 2010 INFLATION-ADJUSTED DOLLARS)

Data Set: 2008-2012 American Community Survey 5-Year Estimates

	Nevada County, Arkansas			
	African American	Margin of Error (+/-)	White, Not Hispanic	Margin of Error (+/-)
Median nonfamily household income in the past 12 months (in 2010 inflation-adjusted dollars)	\$ 16,633	\$ 4,804	\$ 17,857	\$ 5,579

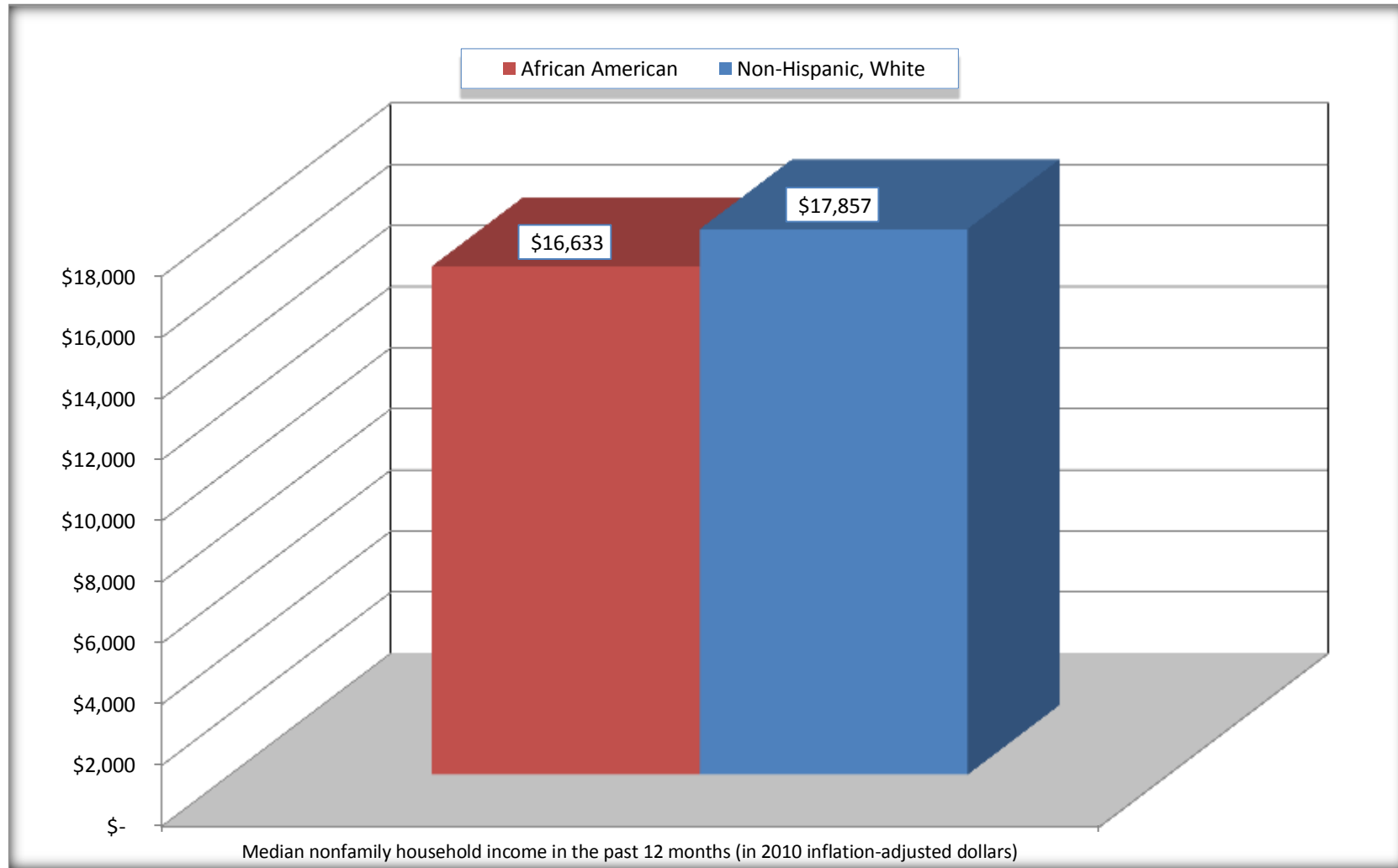
Source: U.S. Census Bureau, 2008-2012 American Community Survey

For information on confidentiality protection, sampling error, nonsampling error, and definitions, see Survey Methodology.

<http://www.census.gov/acs/www/UseData/index.htm>

Median Non-Family Income in the Past 12 Months

Nevada County, Arkansas



Source: B19202. MEDIAN NONFAMILY HOUSEHOLD INCOME IN THE PAST 12 MONTHS (IN 2010 INFLATION-ADJUSTED DOLLARS)
Data Set: 2008-2012 American Community Survey 5-Year Estimates

B19301. PER CAPITA INCOME IN THE PAST 12 MONTHS (IN 2010 INFLATION-ADJUSTED DOLLARS)

Data Set: 2008-2012 American Community Survey 5-Year Estimates

	Nevada County, Arkansas			
	African American	Margin of Error (+/-)	White, Not Hispanic	Margin of Error (+/-)
Per capita income in the past 12 months (in 2010 inflation-adjusted dollars)	\$ 12,997	\$ 1,663	\$ 23,915	\$ 3,194

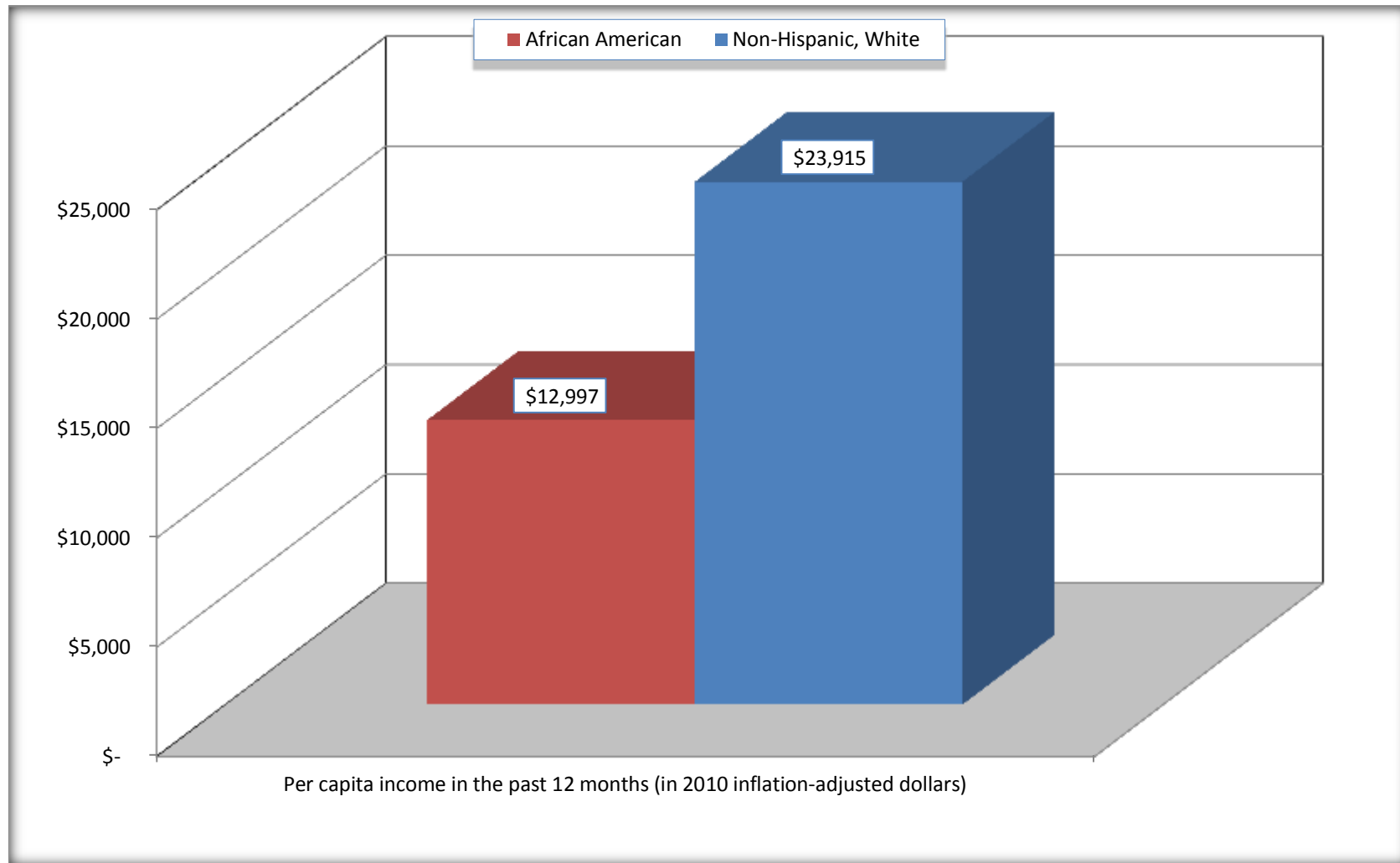
Source: U.S. Census Bureau, 2008-2012 American Community Survey

For information on confidentiality protection, sampling error, nonsampling error, and definitions, see Survey Methodology.

<http://www.census.gov/acs/www/UseData/index.htm>

Per capita Income in the Past 12 Months

Nevada County, Arkansas



Source: B19301. PER CAPITA INCOME IN THE PAST 12 MONTHS (IN 2010 INFLATION-ADJUSTED DOLLARS)
Data Set: 2008-2012 American Community Survey 5-Year Estimates

B20017. MEDIAN EARNINGS IN THE PAST 12 MONTHS (IN 2010 INFLATION-ADJUSTED DOLLARS) BY SEX BY WORK EXPERIENCE IN THE PAST 12 MONTHS FOR THE POPULATION 16 YEARS AND OVER WITH EARNINGS IN THE PAST 12 MONTHS

Data Set: 2008-2012 American Community Survey 5-Year Estimates

	Nevada County, Arkansas			
	African American	Margin of Error (+/-)	White, Not Hispanic	Margin of Error (+/-)
Median earnings in the past 12 months (in 2010 inflation-adjusted dollars) --				
Total:	\$ 16,550	\$ 2,127	\$ 26,080	\$ 5,300
Male --				
Total	\$ 17,153	\$ 5,521	\$ 29,502	\$ 4,650
Worked full-time, year-round in the past 12 months	\$ 23,097	\$ 3,405	\$ 35,454	\$ 2,268
Other	\$ 6,042	\$ 1,115	\$ 9,808	\$ 4,658
Female --				
Total	\$ 16,471	\$ 2,180	\$ 18,398	\$ 3,060
Worked full-time, year-round in the past 12 months	\$ 20,694	\$ 1,885	\$ 30,360	\$ 4,853
Other	\$ 11,121	\$ 799	\$ 10,169	\$ 3,384

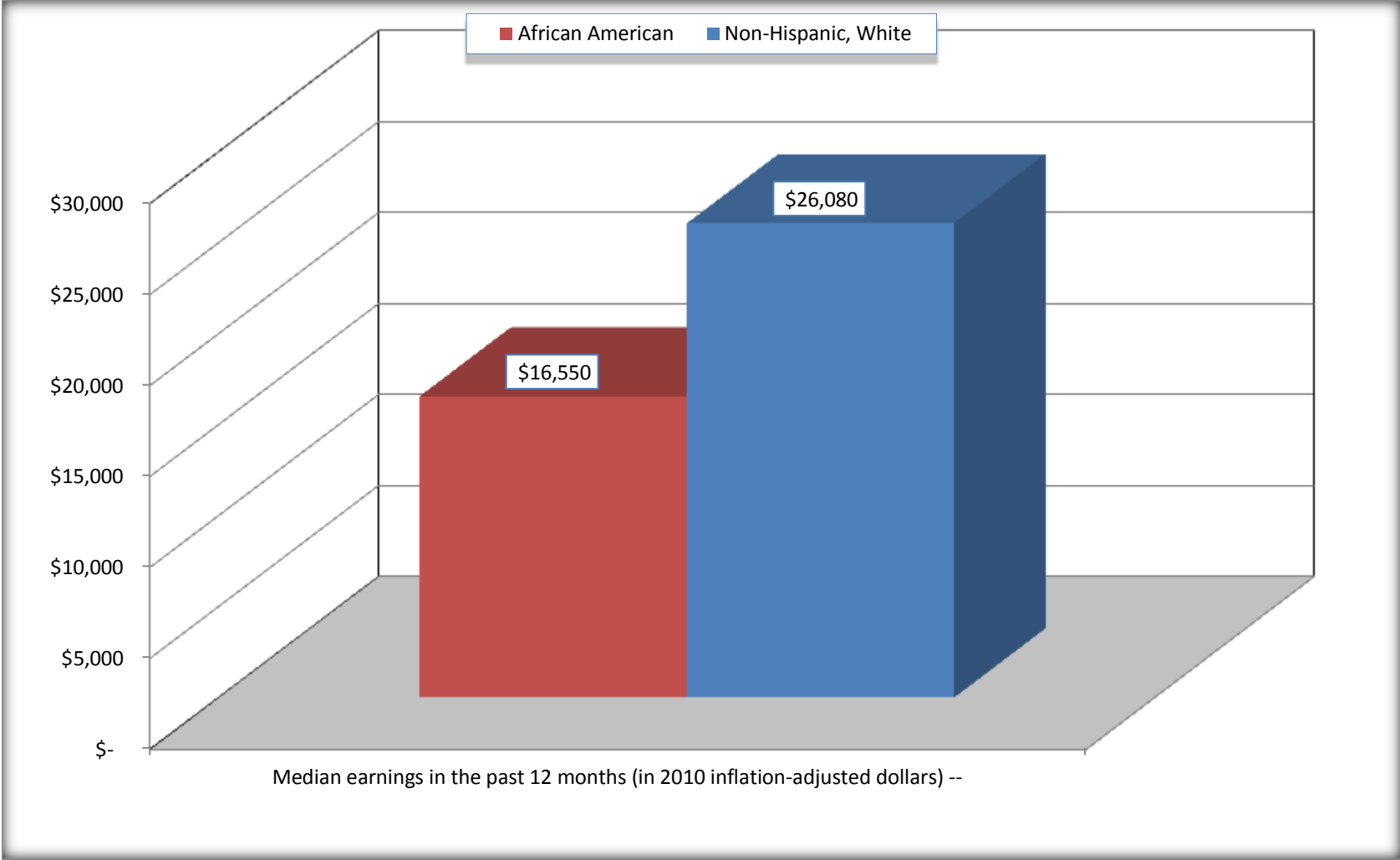
Source: U.S. Census Bureau, 2008-2012 American Community Survey

For information on confidentiality protection, sampling error, nonsampling error, and definitions, see Survey Methodology.

<http://www.census.gov/acs/www/UseData/index.htm>

Median earnings in the Past 12 Months (16 Years and Over with Earnings)

Nevada County, Arkansas



Source: B20017. MEDIAN EARNINGS IN THE PAST 12 MONTHS (IN 2010 INFLATION-ADJUSTED DOLLARS) BY SEX BY WORK EXPERIENCE IN THE PAST 12 MONTHS FOR THE POPULATION 16 YEARS AND OVER WITH EARNINGS IN THE PAST 12 MONTHS
Data Set: 2008-2012 American Community Survey 5-Year Estimates

B20005. SEX BY WORK EXPERIENCE IN THE PAST 12 MONTHS BY EARNINGS IN THE PAST 12 MONTHS (IN 2010 INFLATION-ADJUSTED DOLLARS) FOR THE POPULATION 16 YEARS AND OVER

Data Set: 2008-2012 American Community Survey 5-Year Estimates

	Nevada County, Arkansas					
	African American	Margin of Error (+/-)	% of AA Total	White, Not Hispanic	Margin of Error (+/-)	% of NHW Total
Total:	2,242	103	100.0%	4,722	39	100.0%
Worked full-time, year-round in the past 12 months:	778	NC	34.7%	1,777	NC	37.6%
No earnings	0	NC	0.0%	0	NC	0.0%
With earnings:	778	NC	34.7%	1,777	NC	37.6%
\$ 1 to \$ 9,999 or loss	11	NC	0.5%	90	NC	1.9%
\$ 10,000 to \$ 19,999	298	NC	13.3%	295	NC	6.2%
\$ 20,000 to \$ 29,999	276	NC	12.3%	356	NC	7.5%
\$ 30,000 to \$ 49,999	112	NC	5.0%	644	NC	13.6%
\$ 50,000 to \$ 74,999	80	NC	3.6%	306	NC	6.5%
\$ 75,000 or more	1	NC	0.0%	86	NC	1.8%
Other:	1,464	NC	65.3%	2,945	NC	62.4%
No earnings	893	NC	39.8%	1,850	NC	39.2%
With earnings: less than full time, year-round	571	NC	25.5%	1,095	NC	23.2%
Male:	1,040	77	46.4%	2,298	29	48.7%
Worked full-time, year-round in the past 12 months:	298	100	13.3%	953	153	20.2%
No earnings	0	17	0.0%	0	17	0.0%
With earnings:	298	100	13.3%	953	153	20.2%
\$ 1 to \$ 9,999 or loss	1	NC	0.0%	18	NC	0.4%
\$ 10,000 to \$ 19,999	113	NC	5.0%	83	NC	1.8%
\$ 20,000 to \$ 29,999	100	NC	4.5%	245	NC	5.2%
\$ 30,000 to \$ 49,999	25	NC	1.1%	332	NC	7.0%
\$ 50,000 to \$ 74,999	59	NC	2.6%	200	NC	4.2%
\$ 75,000 or more	0	NC	0.0%	75	NC	1.6%

	Nevada County, Arkansas					
	African American	Margin of Error (+/-)	% of AA Total	White, Not Hispanic	Margin of Error (+/-)	% of NHW Total
Other:	742	112	33.1%	1,345	162	28.5%
No earnings	457	143	20.4%	797	121	16.9%
With earnings:	285	77	12.7%	548	135	11.6%
Female:	1,202	90	53.6%	2,424	22	51.3%
Worked full-time, year-round in the past 12 months:	480	130	21.4%	824	108	17.5%
No earnings	0	17	0.0%	0	17	0.0%
With earnings:	480	130	21.4%	824	108	17.5%
\$ 1 to \$ 9,999 or loss	10	NC	0.4%	72	NC	1.5%
\$ 10,000 to \$ 19,999	185	NC	8.3%	212	NC	4.5%
\$ 20,000 to \$ 29,999	176	NC	7.9%	111	NC	2.4%
\$ 30,000 to \$ 49,999	87	NC	3.9%	312	NC	6.6%
\$ 50,000 to \$ 74,999	21	NC	0.9%	106	NC	2.2%
\$ 75,000 or more	1	NC	0.0%	11	NC	0.2%
Other:	722	170	32.2%	1,600	113	33.9%
No earnings	436	154	19.4%	1,053	133	22.3%
With earnings:	286	100	12.8%	547	132	11.6%

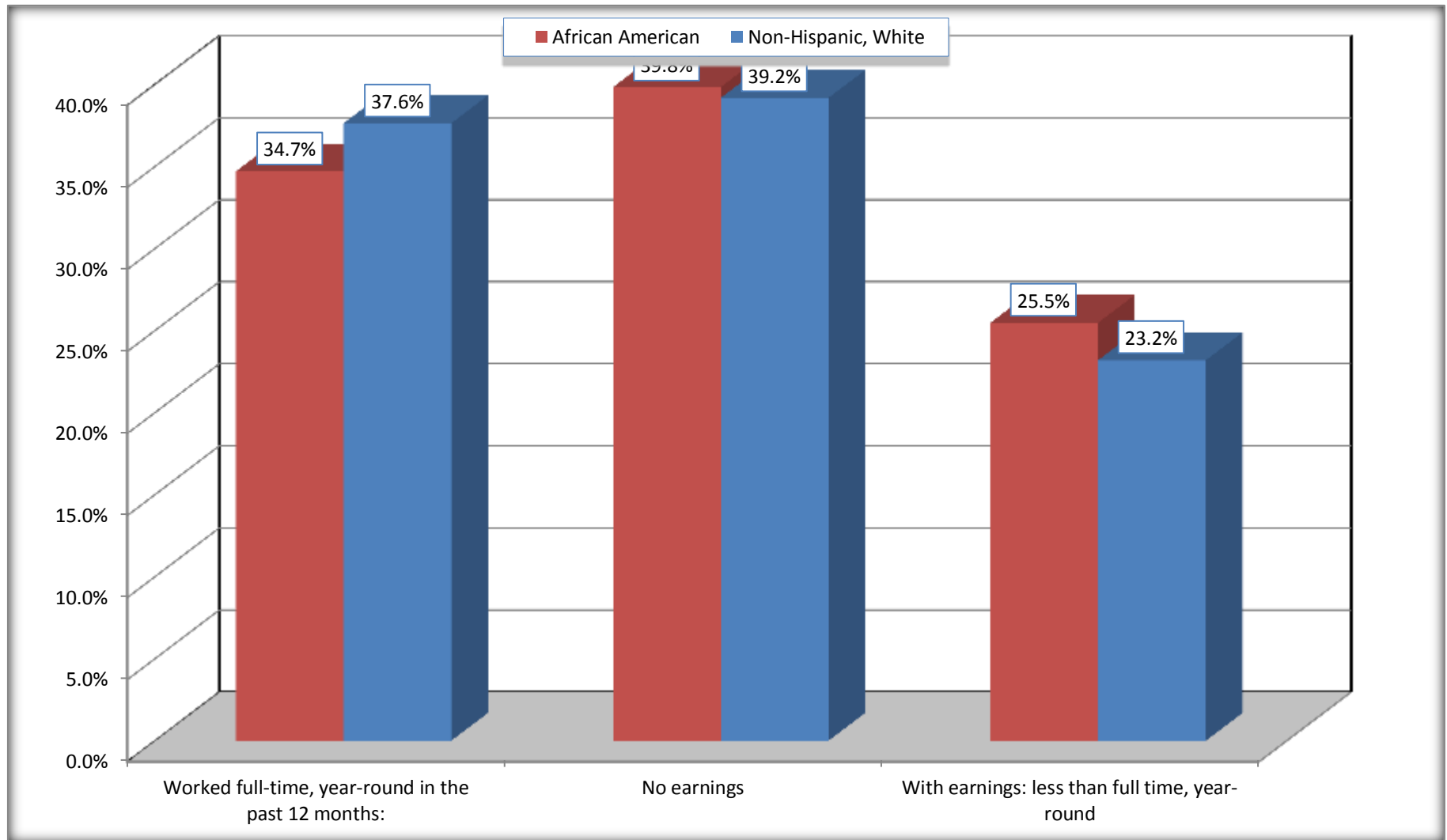
Source: U.S. Census Bureau, 2008-2012 American Community Survey

For information on confidentiality protection, sampling error, nonsampling error, and definitions, see Survey Methodology.

<http://www.census.gov/acs/www/UseData/index.htm>

Employment and Earnings in in the Past 12 Months (16 Years and Over)

Nevada County, Arkansas



Source: B20005. SEX BY WORK EXPERIENCE IN THE PAST 12 MONTHS BY EARNINGS IN THE PAST 12 MONTHS (IN 2010 INFLATION-ADJUSTED DOLLARS) FOR THE POPULATION 16 YEARS AND OVER

Data Set: 2008-2012 American Community Survey 5-Year Estimates

C21001. SEX BY AGE BY VETERAN STATUS FOR THE CIVILIAN POPULATION 18 YEARS AND OVER

Data Set: 2008-2012 American Community Survey 5-Year Estimates

	Nevada County, Arkansas					
	African American	Margin of Error (+/-)	% of AA Total	White, Not Hispanic	Margin of Error (+/-)	% of NHW Total
Total:	2,067	31	100.0%	4,569	23	100.0%
Veteran	202	NC	9.8%	664	NC	14.5%
Nonveteran	1,865	NC	90.2%	3,905	NC	85.5%
Male:	957	17	46.3%	2,207	23	48.3%
18 to 64 years:	780	17	37.7%	1,693	23	37.1%
Veteran	187	80	9.0%	299	89	6.5%
Nonveteran	593	80	28.7%	1,394	92	30.5%
65 years and over:	177	17	8.6%	514	3	11.2%
Veteran	0	17	0.0%	326	48	7.1%
Nonveteran	177	17	8.6%	188	48	4.1%
Female:	1,110	31	53.7%	2,362	17	51.7%
18 to 64 years:	866	31	41.9%	1,706	17	37.3%
Veteran	15	21	0.7%	37	55	0.8%
Nonveteran	851	38	41.2%	1,669	55	36.5%
65 years and over:	244	17	11.8%	656	17	14.4%
Veteran	0	17	0.0%	2	4	0.0%
Nonveteran	244	17	11.8%	654	4	14.3%

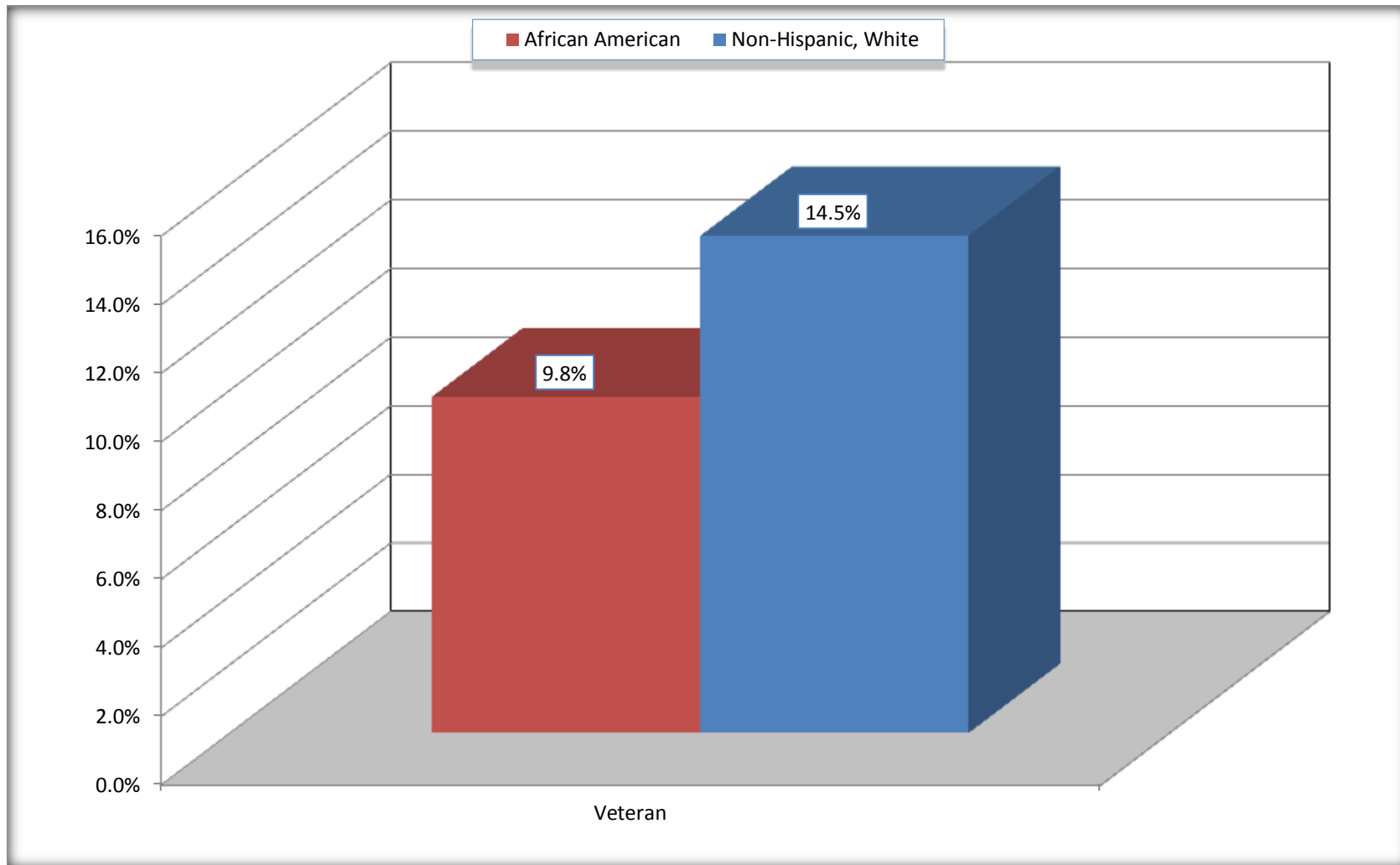
Source: U.S. Census Bureau, 2008-2012 American Community Survey

For information on confidentiality protection, sampling error, nonsampling error, and definitions, see Survey Methodology.

<http://www.census.gov/acs/www/UseData/index.htm>

Veterans in the Civilian Population 18 Years and Over

Nevada County, Arkansas



Source: C21001. SEX BY AGE BY VETERAN STATUS FOR THE CIVILIAN POPULATION 18 YEARS AND OVER
Data Set: 2008-2012 American Community Survey 5-Year Estimates

B22005. RECEIPT OF FOOD STAMPS/SNAP IN THE PAST 12 MONTHS BY RACE OF HOUSEHOLDER

Data Set: 2008-2012 American Community Survey 5-Year Estimates

	Nevada County, Arkansas					
	African American	Margin of Error (+/-)	% of AA Total	White, Not Hispanic	Margin of Error (+/-)	% of NHW Total
Total:	1,235	126	100.0%	2,455	130	100.0%
HH received Food Stamps/SNAP in the past 12 months	372	125	30.1%	300	99	12.2%
HH did not receive Food Stamps/SNAP in the past 12 months	863	123	69.9%	2,155	124	87.8%

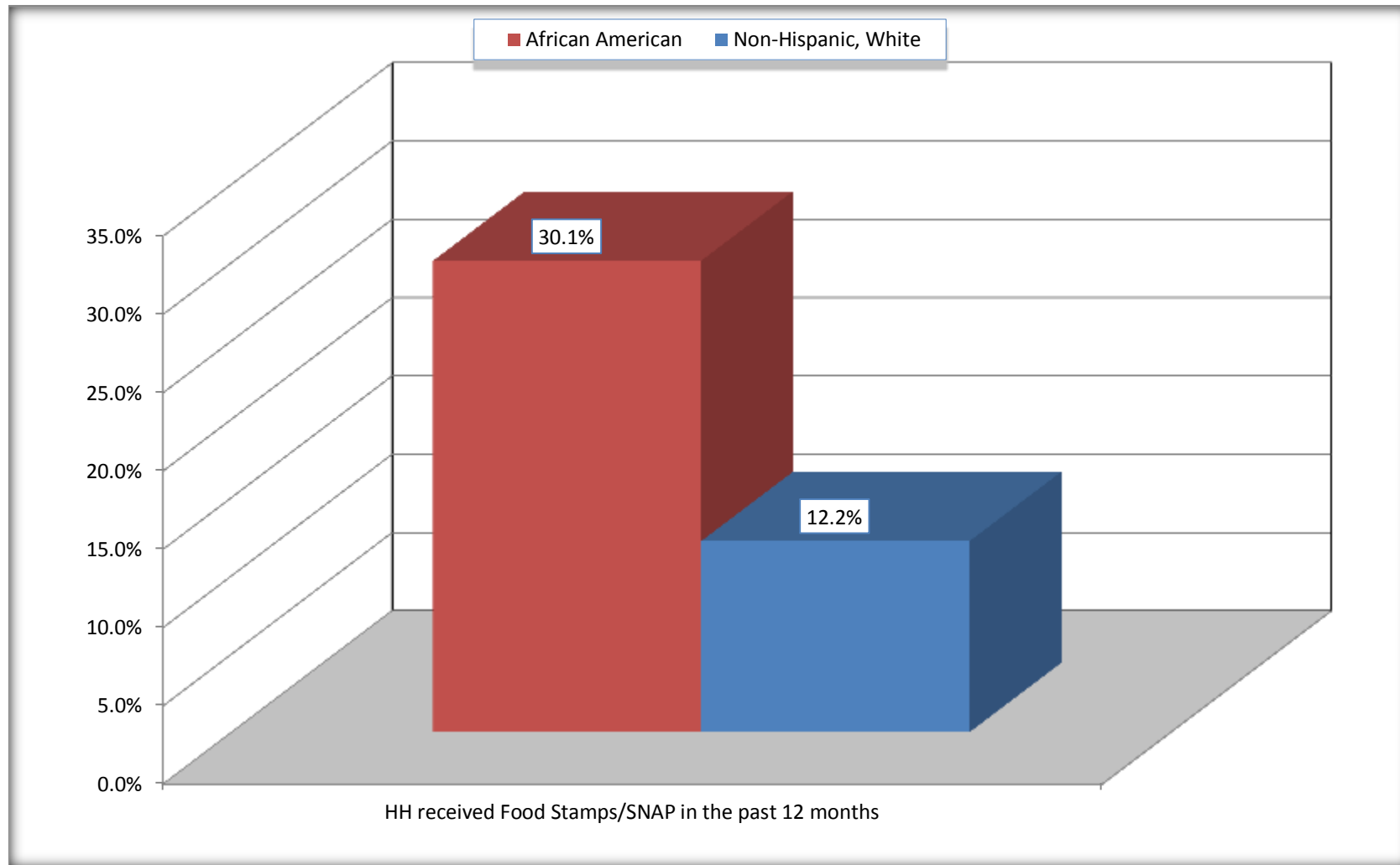
Source: U.S. Census Bureau, 2008-2012 American Community Survey

For information on confidentiality protection, sampling error, nonsampling error, and definitions, see Survey Methodology.

<http://www.census.gov/acs/www/UseData/index.htm>

Receipt of Food Stamps/SNAP in the Past 12 Months by Household

Nevada County, Arkansas



Source: B22005. RECEIPT OF FOOD STAMPS/SNAP IN THE PAST 12 MONTHS BY RACE OF HOUSEHOLDER
Data Set: 2008-2012 American Community Survey 5-Year Estimates

C23002. SEX BY AGE BY EMPLOYMENT STATUS FOR THE POPULATION 16 YEARS AND OVER

Data Set: 2008-2012 American Community Survey 5-Year Estimates

	Nevada County, Arkansas					
	African American	Margin of Error (+/-)	% of AA Total	White, Not Hispanic	Margin of Error (+/-)	% of NHW Total
Total:	2,242	103	100.0%	4,722	39	100.0%
In labor force:	1,318	NC	58.8%	2,772	NC	58.7%
In Armed Forces	0	NC	0.0%	15	NC	0.3%
Civilian:	1,169	NC	52.1%	2,553	NC	54.1%
Employed	1,071	NC	47.8%	2,458	NC	52.1%
Unemployed	247	NC	11.0%	299	NC	6.3%
Not in labor force	924	NC	41.2%	1,950	NC	41.3%
Male:	1,040	77	46.4%	2,298	29	48.7%
16 to 64 years:	863	77	38.5%	1,784	28	37.8%
In labor force:	525	130	23.4%	1,345	108	28.5%
In Armed Forces	0	17	0.0%	15	23	0.3%
Civilian:	525	130	23.4%	1,330	112	28.2%
Employed	410	113	18.3%	1231	118	26.1%
Unemployed	115	63	5.1%	99	63	2.1%
Not in labor force	338	147	15.1%	439	114	9.3%
65 years and over:	177	17	7.9%	514	3	10.9%
In labor force:	12	16	0.5%	92	48	1.9%
Employed	12	16	0.5%	79	46	1.7%
Unemployed	0	17	0.0%	13	20	0.3%
Not in labor force	165	16	7.4%	422	49	8.9%

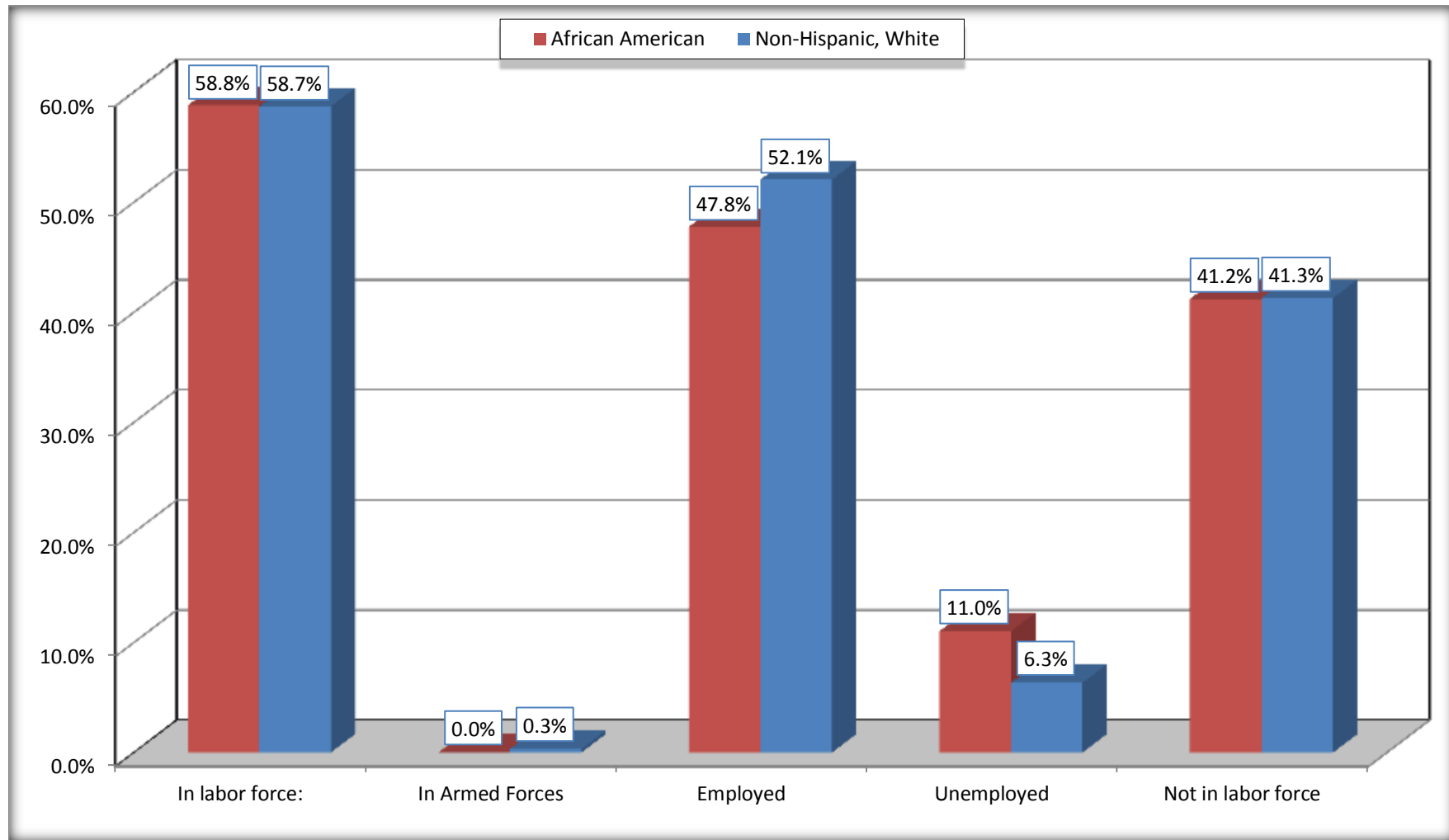
	Nevada County, Arkansas					
	African American	Margin of Error (+/-)	% of AA Total	White, Not Hispanic	Margin of Error (+/-)	% of NHW Total
Female:	1,202	90	53.6%	2,424	22	51.3%
16 to 64 years:	958	90	42.7%	1,768	22	37.4%
In labor force:	644	109	28.7%	1,223	92	25.9%
In Armed Forces	0	17	0.0%	0	17	0.0%
Civilian:	644	109	28.7%	1,223	92	25.9%
Employed	530	89	23.6%	1,044	127	22.1%
Unemployed	114	77	5.1%	179	95	3.8%
Not in labor force	314	124	14.0%	545	89	11.5%
65 years and over:	244	17	10.9%	656	17	13.9%
In labor force:	137	76	6.1%	112	61	2.4%
Employed	119	84	5.3%	104	58	2.2%
Unemployed	18	26	0.8%	8	13	0.2%
Not in labor force	107	76	4.8%	544	61	11.5%

Source: U.S. Census Bureau, 2008-2012 American Community Survey

For information on confidentiality protection, sampling error, nonsampling error, and definitions, see Survey Methodology.
<http://www.census.gov/acs/www/UseData/index.htm>

Employment Status for the Population 16 years and over

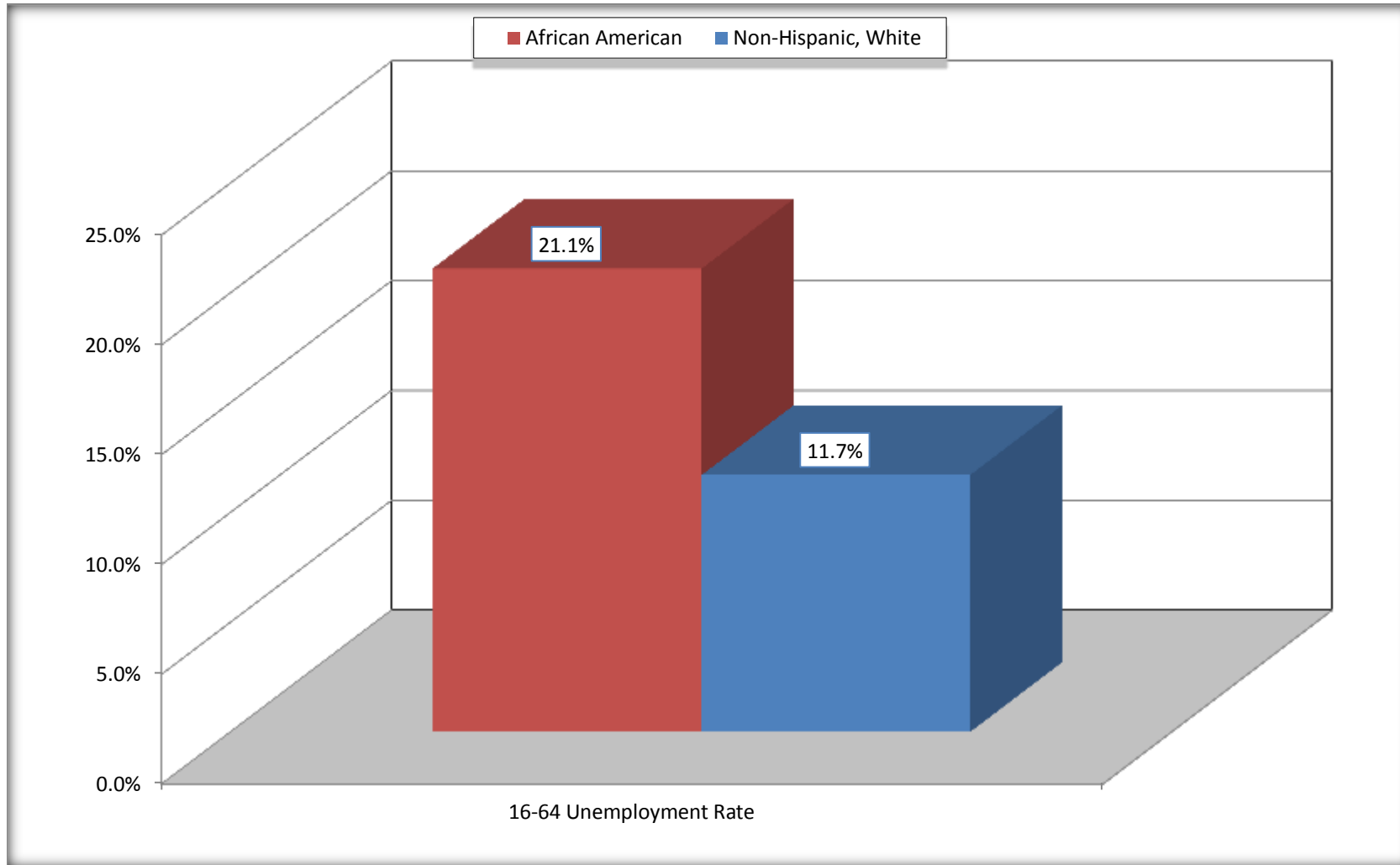
Nevada County, Arkansas



Source: C23002. SEX BY AGE BY EMPLOYMENT STATUS FOR THE POPULATION 16 YEARS AND OVER
Data Set: 2008-2012 American Community Survey 5-Year Estimates

Unemployment of Working Age Population (Ages 16 to 64) (As a Percent of 16-64 Civilian Labor Force)

Nevada County, Arkansas



Source: C23002. SEX BY AGE BY EMPLOYMENT STATUS FOR THE POPULATION 16 YEARS AND OVER
Data Set: 2008-2012 American Community Survey 5-Year Estimates

C24010. SEX BY OCCUPATION FOR THE CIVILIAN EMPLOYED POPULATION 16 YEARS AND OVER

Data Set: 2008-2012 American Community Survey 5-Year Estimates

	Nevada County, Arkansas					
	African American	Margin of Error (+/-)	% of AA Total	White, Not Hispanic	Margin of Error (+/-)	% of NHW Total
Total:	1,071	179	100.0%	2,458	220	100.0%
Management, professional, and related occupations	171	NC	16.0%	678	NC	27.6%
Service occupations	296	NC	27.6%	195	NC	7.9%
Sales and office occupations	149	NC	13.9%	677	NC	27.5%
Natural resources, construction, and maintenance occupations:	90	NC	8.4%	356	NC	14.5%
Production, transportation, and material moving occupations	365	NC	34.1%	552	NC	22.5%
Male:	422	116	39.4%	1,310	121	53.3%
Management, business, science, and arts occupations:	38	33	3.5%	170	83	6.9%
Service occupations	60	55	5.6%	62	55	2.5%
Sales and office occupations	18	19	1.7%	248	116	10.1%
Natural resources, construction, and maintenance occupations:	90	79	8.4%	356	134	14.5%
Production, transportation, and material moving occupations	216	97	20.2%	474	103	19.3%
Female:	649	122	60.6%	1,148	144	46.7%
Management, professional, and related occupations	133	74	12.4%	508	134	20.7%
Service occupations	236	102	22.0%	133	69	5.4%
Sales and office occupations	131	101	12.2%	429	123	17.5%
Natural resources, construction, and maintenance occupations:	0	17	0.0%	0	17	0.0%
Production, transportation, and material moving occupations	149	62	13.9%	78	57	3.2%

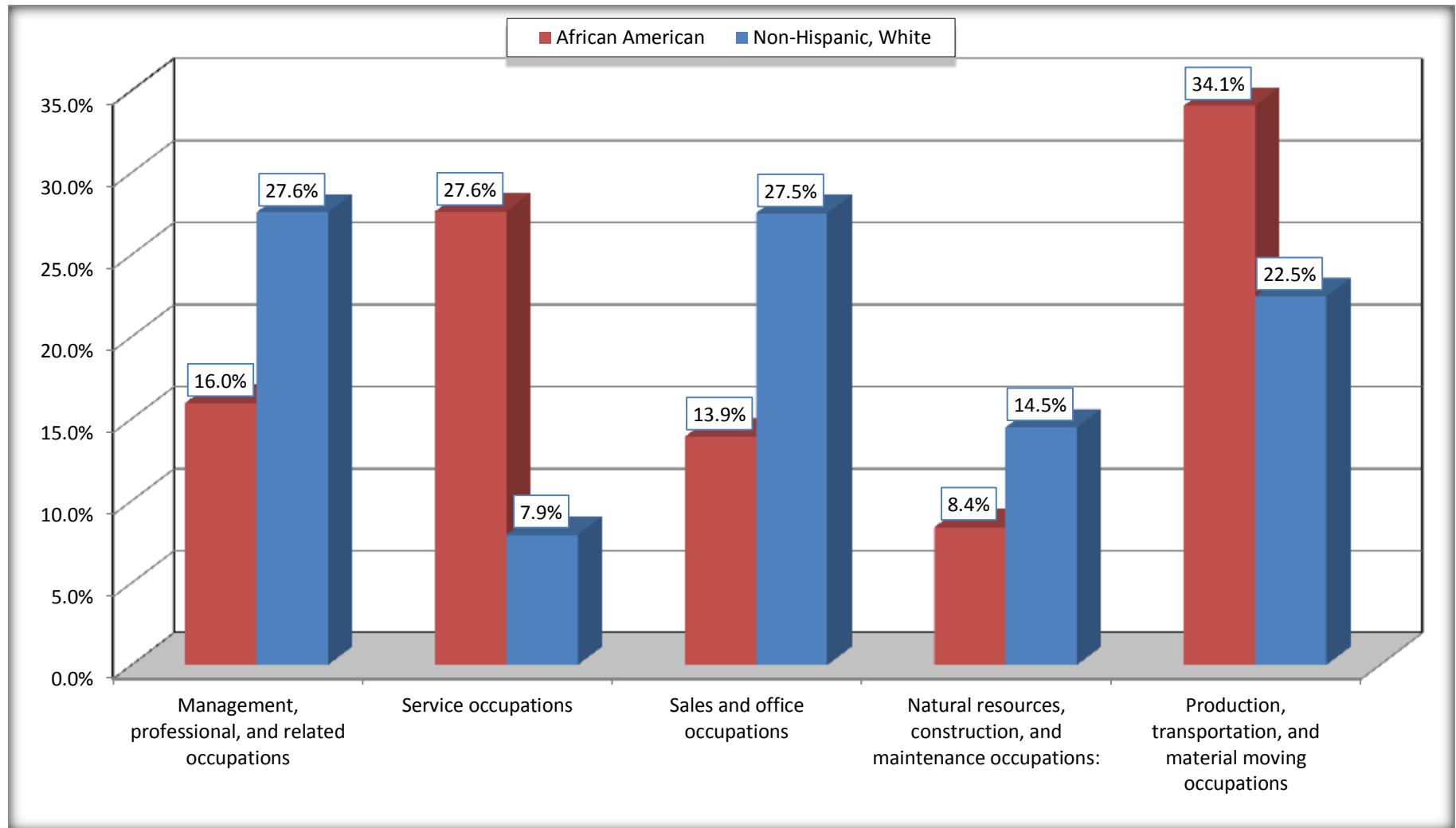
Source: U.S. Census Bureau, 2008-2012 American Community Survey

For information on confidentiality protection, sampling error, nonsampling error, and definitions, see Survey Methodology.

<http://www.census.gov/acs/www/UseData/index.htm>

Occupation for the Civilian Employed 16 Years and Over Population

Nevada County, Arkansas



Source: C24010. SEX BY OCCUPATION FOR THE CIVILIAN EMPLOYED POPULATION 16 YEARS AND OVER
Data Set: 2008-2012 American Community Survey 5-Year Estimates

B25003. TENURE - Universe: OCCUPIED HOUSING UNITS

Data Set: 2008-2012 American Community Survey 5-Year Estimates

	Nevada County, Arkansas					
	African American	Margin of Error (+/-)	% of AA Total	White, Not Hispanic	Margin of Error (+/-)	% of NHW Total
Total:	1,235	126	100.0%	2,455	130	100.0%
Owner occupied	728	122	58.9%	1,971	138	80.3%
Renter occupied	507	134	41.1%	484	120	19.7%

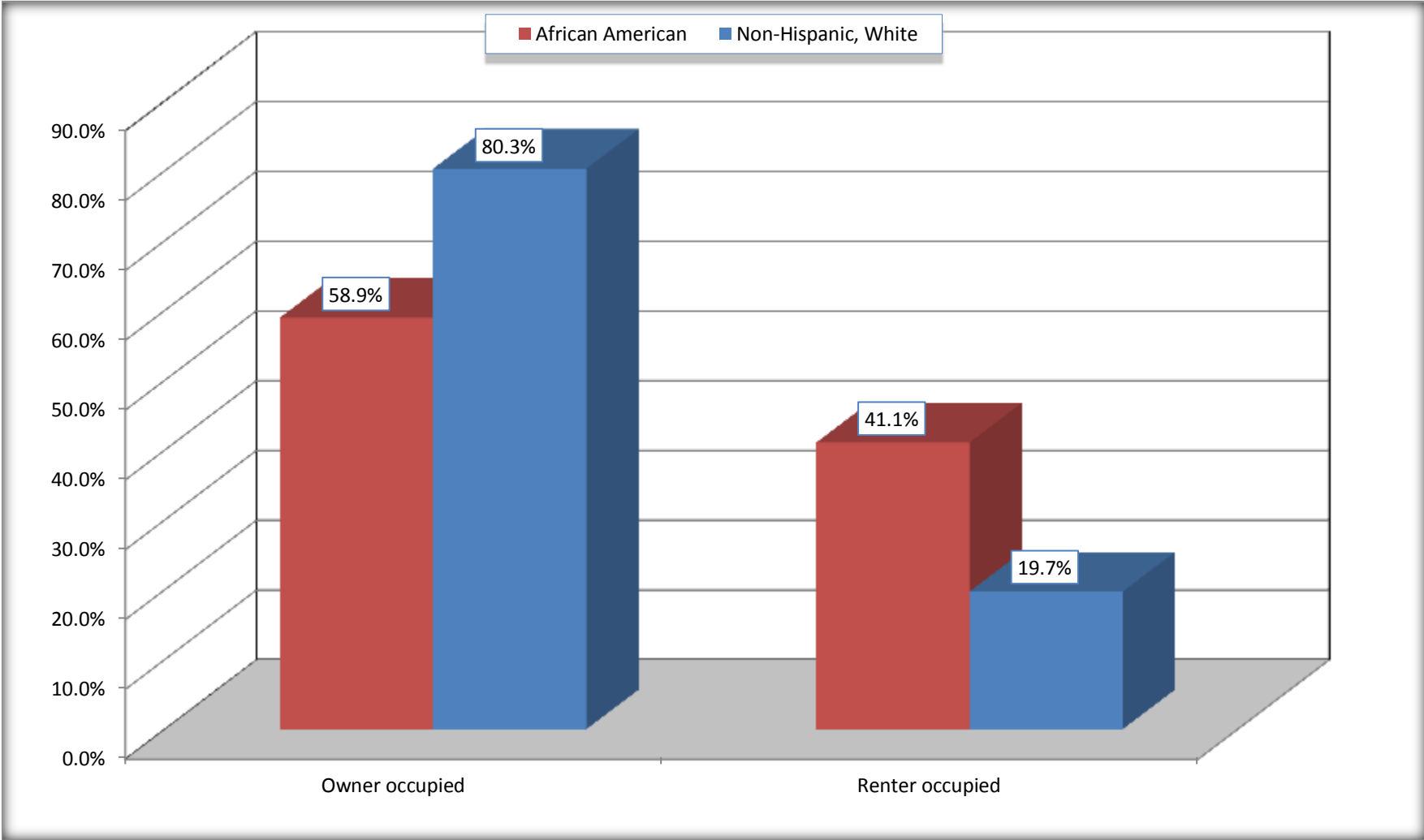
Source: U.S. Census Bureau, 2008-2012 American Community Survey

For information on confidentiality protection, sampling error, nonsampling error, and definitions, see Survey Methodology.

<http://www.census.gov/acs/www/UseData/index.h>

Home Owners and Renters by Household

Nevada County, Arkansas



Source: B25003. TENURE - Universe: OCCUPIED HOUSING UNITS
Data Set: 2008-2012 American Community Survey 5-Year Estimates

B25014. OCCUPANTS PER ROOM - Universe: OCCUPIED HOUSING UNITS

Data Set: 2008-2012 American Community Survey 5-Year Estimates

	Nevada County, Arkansas					
	African American	Margin of Error (+/-)	% of AA Total	White, Not Hispanic	Margin of Error (+/-)	% of NHW Total
Total:	1,235	126	100.0%	2,455	130	100.0%
1.00 or less occupants per room	1,234	125	99.9%	2,391	132	97.4%
1.01 or more occupants per room	1	6	0.1%	64	57	2.6%

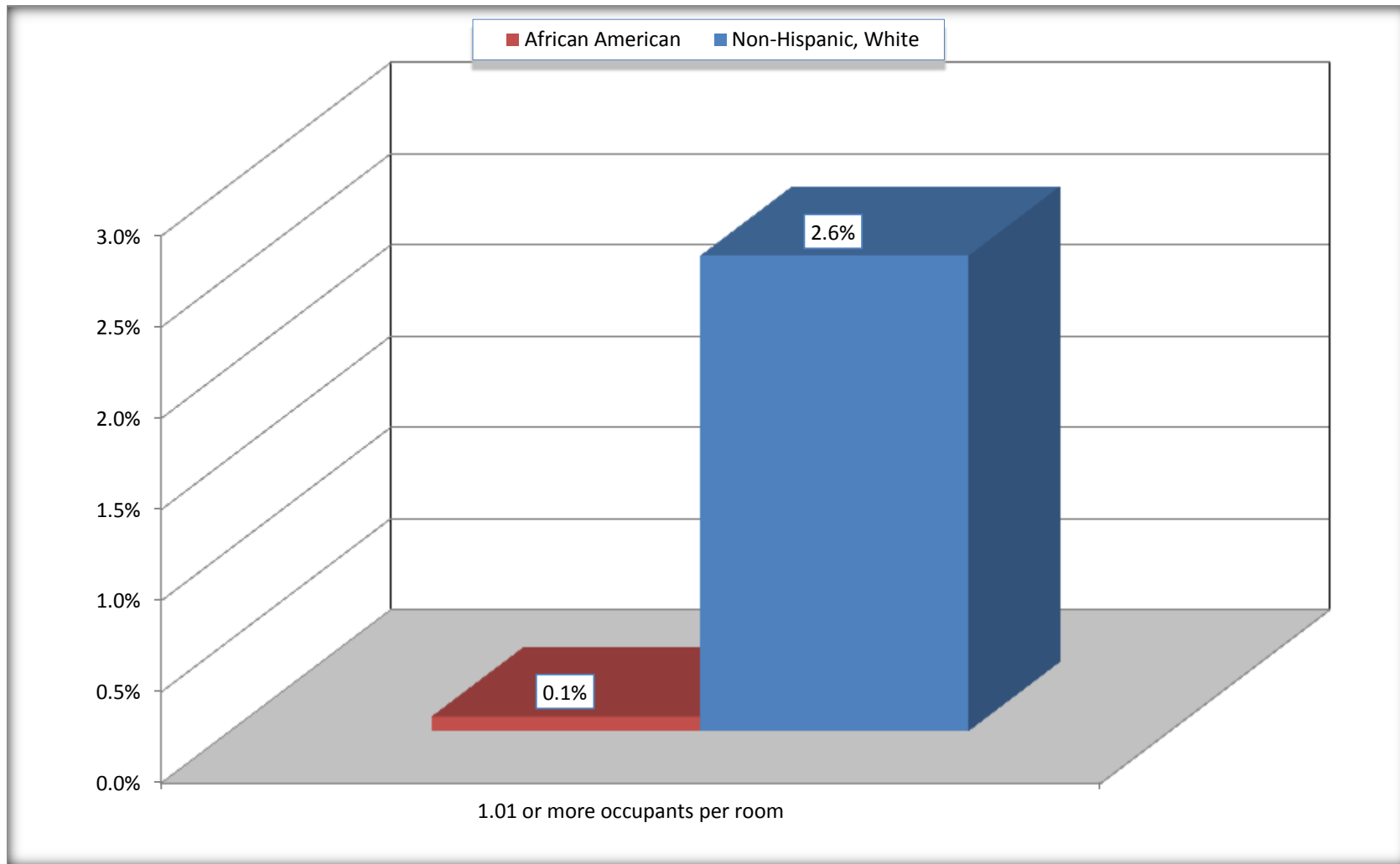
Source: U.S. Census Bureau, 2008-2012 American Community Survey

For information on confidentiality protection, sampling error, nonsampling error, and definitions, see Survey Methodology.

<http://www.census.gov/acs/www/UseData/index.ht>

More than One Person per Room (Crowding) by Household

Nevada County, Arkansas



Source: B25014. OCCUPANTS PER ROOM - Universe: OCCUPIED HOUSING UNITS
Data Set: 2008-2012 American Community Survey 5-Year Estimates

B18101. AGE BY DISABILITY STATUS

Data Set: 2008-2012 American Community Survey 5-Year Estimates

	Nevada County, Arkansas					
	African American	Margin of Error (+/-)	% of AA Total	White, Not Hispanic	Margin of Error (+/-)	% of NHW Total
Total:	2,804	84	100.0%	5,691	82	100.0%
Under 18 years:	790	48	28.2%	1,215	26	21.3%
With a disability	58	43	2.1%	56	37	1.0%
No disability	732	57	26.1%	1,159	37	20.4%
18 to 64 years:	1,603	70	57.2%	3,344	49	58.8%
With a disability	322	83	11.5%	786	152	13.8%
No disability	1,281	75	45.7%	2,558	155	44.9%
65 years and over:	411	15	14.7%	1,132	39	19.9%
With a disability	145	95	5.2%	679	113	11.9%
No disability	266	94	9.5%	453	105	8.0%

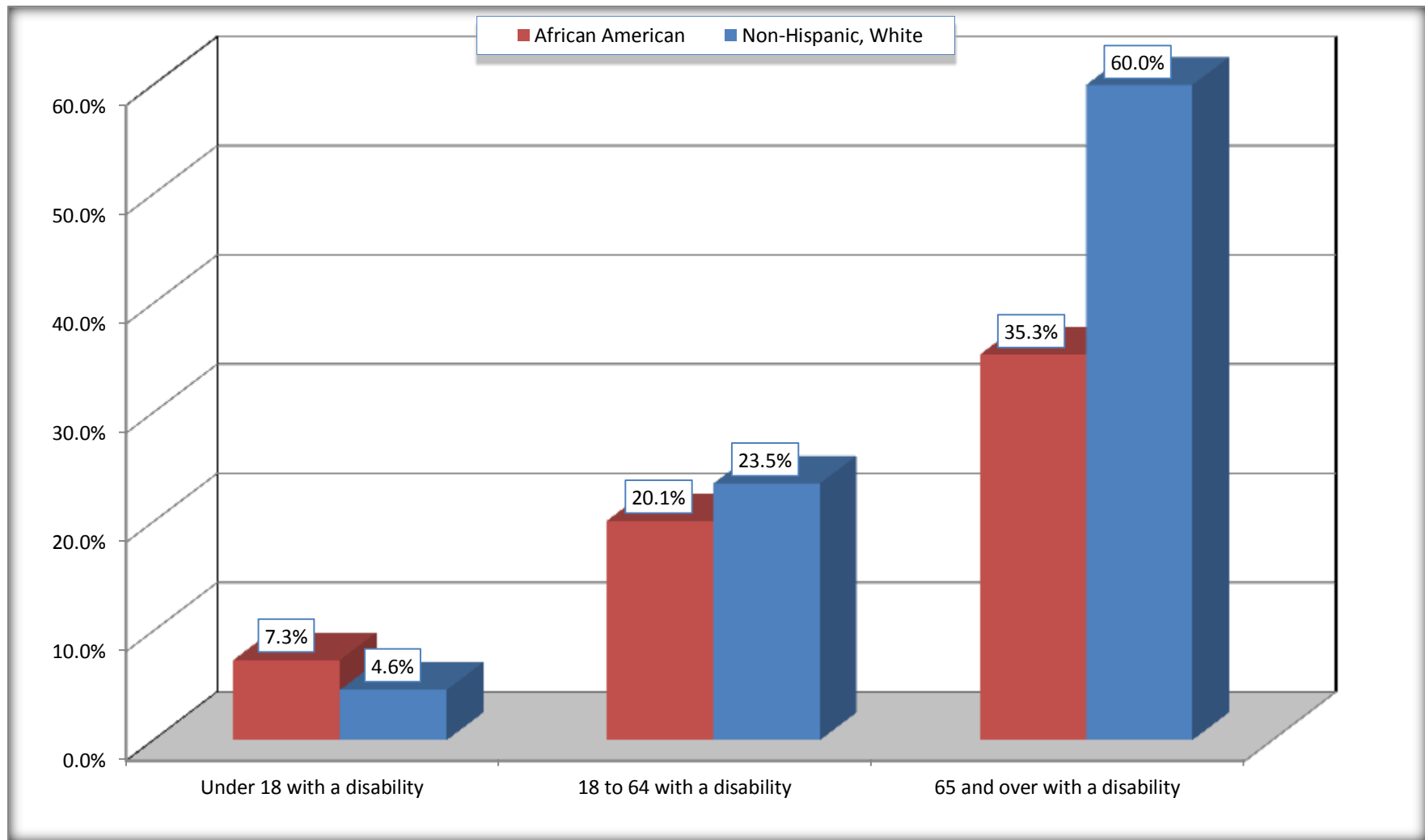
Source: U.S. Census Bureau, 2008-2012 American Community Survey

For information on confidentiality protection, sampling error, nonsampling error, and definitions, see Survey Methodology.

<http://www.census.gov/acs/www/UseData/index.htm>

Disability by Age

Nevada County, Arkansas



Source: B18101. AGE BY DISABILITY STATUS
Data Set: 2008-2012 American Community Survey 5-Year Estimates

C27001B. HEALTH INSURANCE COVERAGE STATUS BY AGE

Data Set: 2008-2012 American Community Survey 5-Year Estimates

	Nevada County, Arkansas					
	African American	Margin of Error (+/-)	% of AA Total	White, Not Hispanic	Margin of Error (+/-)	% of NHW Total
Total:	2,804	84	100.0%	5,691	82	100.0%
Under 18 years:	790	48	28.2%	1,215	3	21.3%
With health insurance coverage	732	88	26.1%	1,164	54	20.5%
No health insurance coverage	58	73	2.1%	51	54	0.9%
18 to 64 years:	1,603	70	57.2%	3,344	49	58.8%
With health insurance coverage	1,102	145	39.3%	2,427	209	42.6%
No health insurance coverage	501	145	17.9%	917	211	16.1%
65 years and over:	411	15	14.7%	1,132	39	19.9%
With health insurance coverage	391	31	13.9%	1,125	39	19.8%
No health insurance coverage	20	28	0.7%	7	11	0.1%

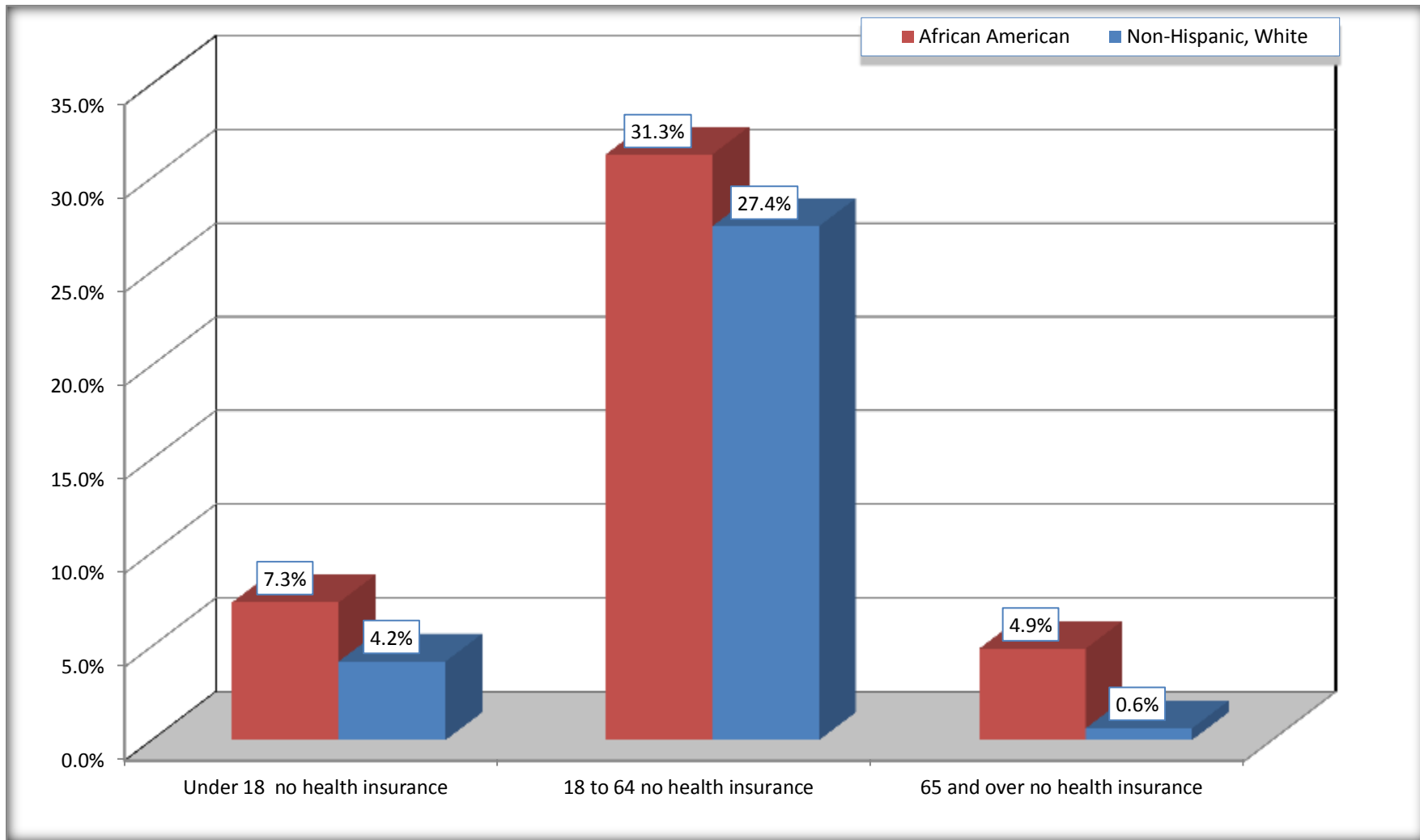
Source: U.S. Census Bureau, 2008-2012 American Community Survey

For information on confidentiality protection, sampling error, nonsampling error, and definitions, see Survey Methodology.

<http://www.census.gov/acs/www/UseData/index.htm>

Lack of Health Insurance Coverage by Age

Nevada County, Arkansas



Source: C27001B. HEALTH INSURANCE COVERAGE STATUS BY AGE
Data Set: 2008-2012 American Community Survey 5-Year Estimates