

Selected Socio-Economic Data

Calhoun County, Arkansas

African American and White, Not Hispanic

Data Set: 2008-2012 American Community Survey 5-Year Estimates

www.fairvote2020.org

www.fairdata2000.com

[29-Dec-13](#)

C02003.DETAILED RACE - Universe: TOTAL POPULATION

Data Set: 2008-2012 American Community Survey 5-Year Estimates

	Calhoun County, Arkansas		
	Population	Margin of Error (+/-)	% of Total
Total:	5,373	*****	100.0%
Population of one race:	5,281	82	98.3%
White	3,972	58	73.9%
Black or African American	1,307	89	24.3%
American Indian and Alaska Native	0	17	0.0%
Asian alone	0	17	0.0%
Native Hawaiian and Other Pacific Islander	0	17	0.0%
Some other race	2	4	0.0%
Population of two or more races:	92	82	1.7%
Two races including Some other race	0	17	0.0%
Two races excluding Some other race, and three or more races	92	82	1.7%
Population of two races:	92	82	1.7%
White; Black or African American	5	7	0.1%
White; American Indian and Alaska Native	80	81	1.5%
White; Asian	0	17	0.0%
Black or African American; American Indian and Alaska Native	0	17	0.0%
All other two race combinations	7	10	0.1%
Population of three races	0	17	0.0%
Population of four or more races	0	17	0.0%

Note: Hispanics may be of any race. See Table B03002 and chart.

Source: U.S. Census Bureau, 2008-2012 American Community Survey

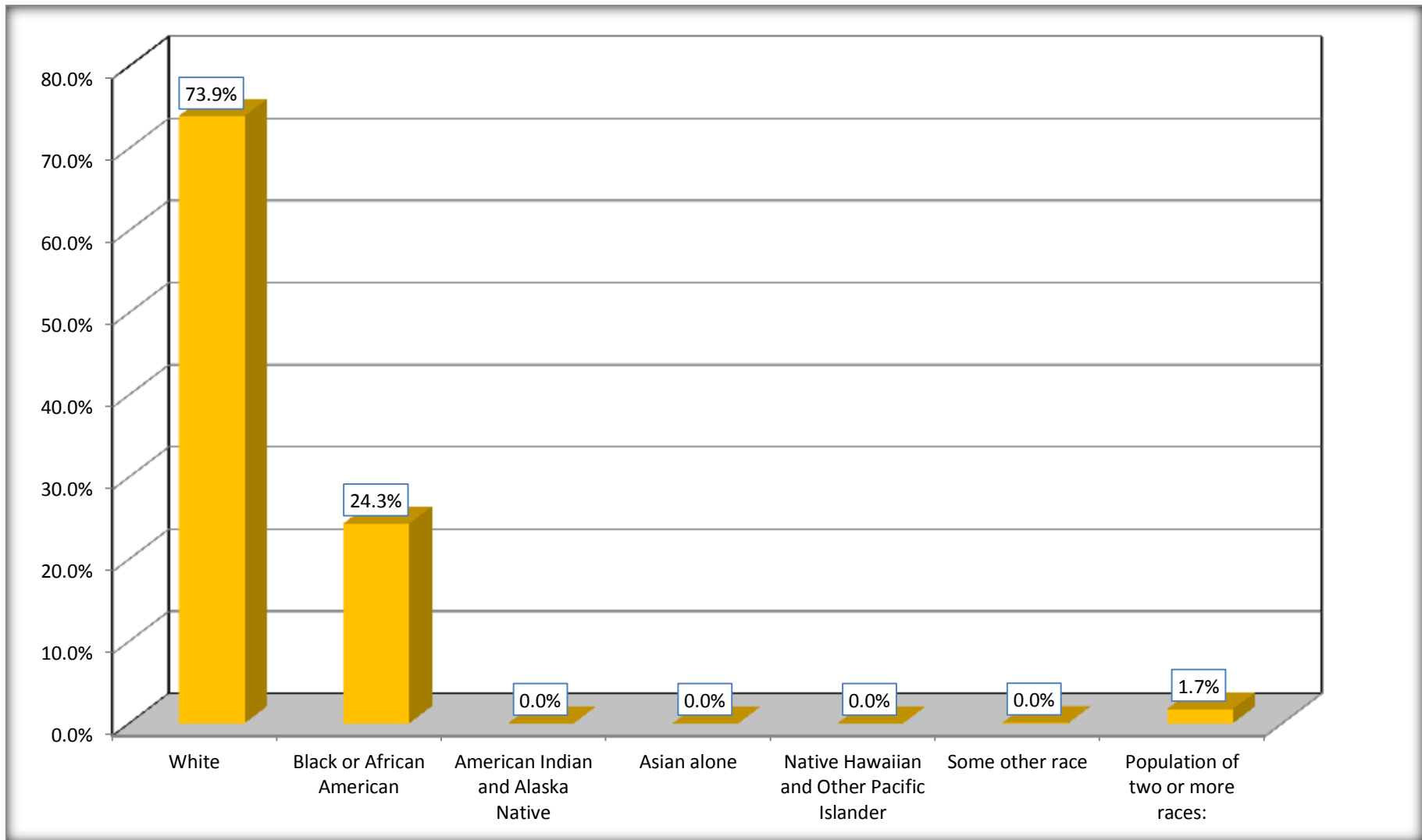
Although the American Community Survey (ACS) produces population, demographic and housing unit estimates, it is the Census Bureau's Population Estimates Program that produces and disseminates the official estimates of the population for the nation, states, counties, cities and towns and estimates of housing units for states and counties.

For information on confidentiality protection, sampling error, nonsampling error, and definitions, see Survey Methodology.

<http://www.census.gov/acs/www/UseData/index.htm>

Population by Race

Calhoun County, Arkansas



Source: C02003.DETAILED RACE - Universe: TOTAL POPULATION
Data Set: 2008-2012 American Community Survey 5-Year Estimates

B03002. HISPANIC OR LATINO ORIGIN BY RACE - Universe: TOTAL POPULATION

Data Set: 2008-2012 American Community Survey 5-Year Estimates

	Calhoun County, Arkansas		
	Population	Margin of Error (+/-)	% of Total
Total:	5,373	*****	100.0%
Not Hispanic or Latino:	5,328	59	99.2%
White alone	3,932	17	73.2%
Black or African American alone	1,304	90	24.3%
American Indian and Alaska Native alone	0	17	0.0%
Asian alone	0	17	0.0%
Native Hawaiian and Other Pacific Islander alone	0	17	0.0%
Some other race alone	0	17	0.0%
Two or more races:	92	82	1.7%
Two races including Some other race	0	17	0.0%
Two races excluding Some other race, and three or more races	92	82	1.7%
Hispanic or Latino	45	59	0.8%

Source: U.S. Census Bureau, 2008-2012 American Community Survey

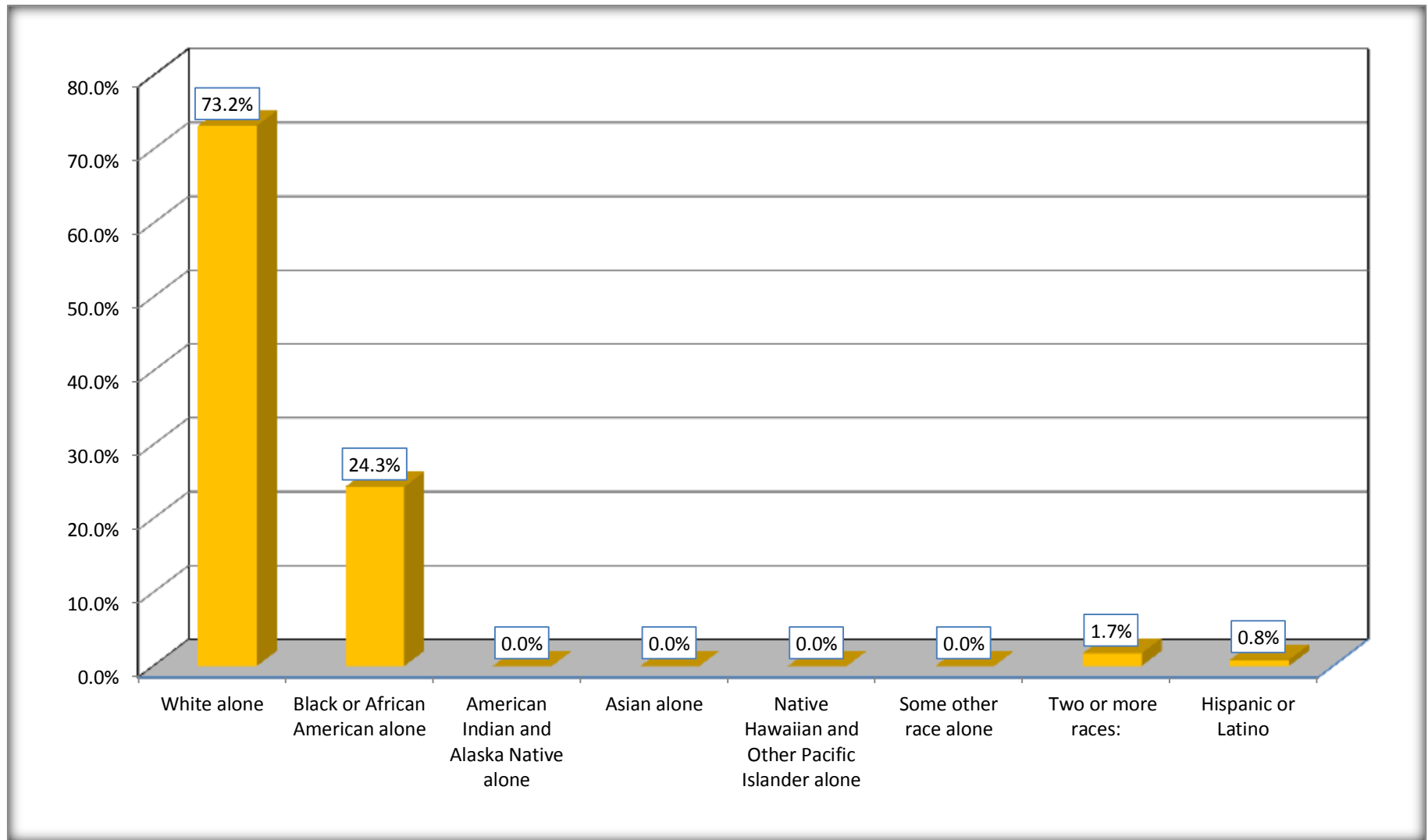
Although the American Community Survey (ACS) produces population, demographic and housing unit estimates, it is the Census Bureau's Population Estimates Program that produces and disseminates the official estimates of the population for the nation, states, counties, cities and towns and estimates of housing units for states and counties.

For information on confidentiality protection, sampling error, nonsampling error, and definitions, see Survey Methodology.

<http://www.census.gov/acs/www/UseData/index.htm>

Non-Hispanic by Race and Hispanic Population

Calhoun County, Arkansas



Source: B03002. HISPANIC OR LATINO ORIGIN BY RACE - Universe: TOTAL POPULATION
Data Set: 2008-2012 American Community Survey 5-Year Estimates

B03002. HISPANIC OR LATINO ORIGIN BY RACE

Data Set: 2008-2012 American Community Survey 5-Year Estimates

	Calhoun County, Arkansas		
	Population	Margin of Error (+/-)	% of Total
Hispanic or Latino:	45	59	100.0%
White alone	40	58	88.9%
Black or African American alone	3	5	6.7%
American Indian and Alaska Native alone	0	17	0.0%
Asian alone	0	17	0.0%
Native Hawaiian and Other Pacific Islander alone	0	17	0.0%
Some other race alone	2	4	4.4%
Two or more races:	0	17	0.0%
Two races including Some other race	0	17	0.0%
Two races excluding Some other race, and three or more races	0	17	0.0%

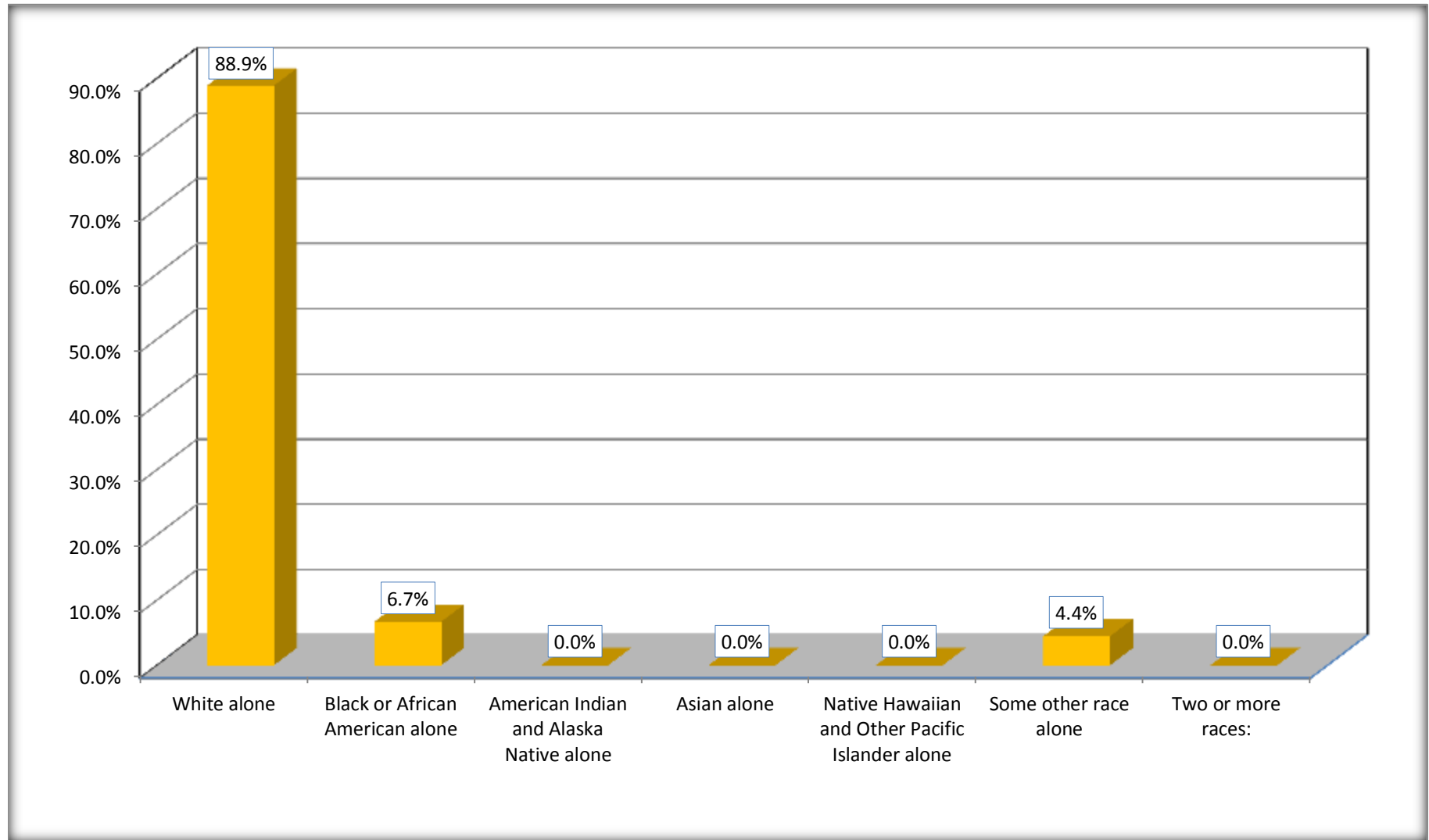
Source: U.S. Census Bureau, 2008-2012 American Community Survey

Although the American Community Survey (ACS) produces population, demographic and housing unit estimates, it is the Census Bureau's Population Estimates Program that produces and disseminates the official estimates of the population for the nation, states, counties, cities and towns and estimates of housing units for states and counties.

For information on confidentiality protection, sampling error, nonsampling error, and definitions, see Survey Methodology.

<http://www.census.gov/acs/www/UseData/index.htm>

Hispanic or Latino Origin by Race Calhoun County, Arkansas



Source: B03002. HISPANIC OR LATINO ORIGIN BY RACE
Data Set: 2008-2012 American Community Survey 5-Year Estimates

B01001. SEX BY AGE

Data Set: 2008-2012 American Community Survey 5-Year Estimates

	Calhoun County, Arkansas					
	African American	Margin of Error (+/-)	% of AA Total	White, Not Hispanic	Margin of Error (+/-)	% of NHW Total
Total:	1,307	89	100.0%	3,932	17	100.0%
Under 18 years	311	NC	23.8%	747	NC	19.0%
18 to 64 years	823	NC	63.0%	2,424	NC	61.6%
65 years and over	173	NC	13.2%	761	NC	19.4%
Male:	692	64	52.9%	2,060	389	52.4%
Under 18 years	177	NC	13.5%	432	NC	11.0%
18 to 64 years	441	NC	33.7%	1,293	NC	32.9%
65 years and over	74	NC	5.7%	335	NC	8.5%
Female:	615	83	47.1%	1,872	412	47.6%
Under 18 years	134	NC	10.3%	315	NC	8.0%
18 to 64 years	382	NC	29.2%	1,131	NC	28.8%
65 years and over	99	NC	7.6%	426	NC	10.8%

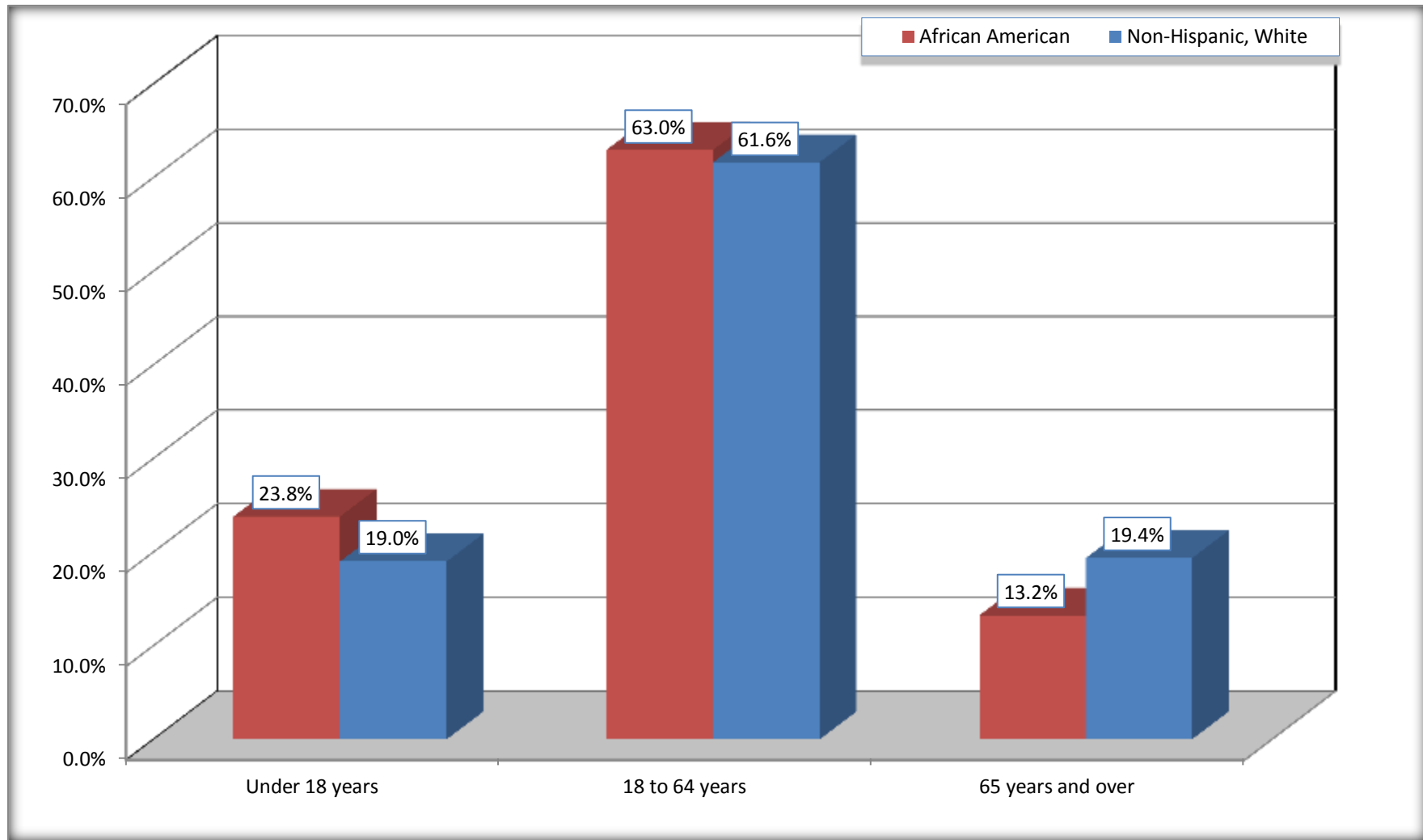
Source: U.S. Census Bureau, 2008-2012 American Community Survey

Although the American Community Survey (ACS) produces population, demographic and housing unit estimates, it is the Census Bureau's Population Estimates Program that produces and disseminates the official estimates of the population for the nation, states, counties, cities and towns and estimates of housing units for states and counties.

For information on confidentiality protection, sampling error, nonsampling error, and definitions, see Survey Methodology.
<http://www.census.gov/acs/www/UseData/index.htm>

Population by Age

Calhoun County, Arkansas



Source: B01001. SEX BY AGE
Data Set: 2008-2012 American Community Survey 5-Year Estimates

B05003. SEX BY AGE BY CITIZENSHIP STATUS

Data Set: 2008-2012 American Community Survey 5-Year Estimates

	Calhoun County, Arkansas					
	African American	Margin of Error (+/-)	% of AA Total by Age	White, Not Hispanic	Margin of Error (+/-)	% of NHW Total by Age
Total:	1,307	89	100.0%	3,932	17	100.0%
Under 18 years:	311	NC	100.0%	747	NC	100.0%
Native	311	NC	100.0%	747	NC	100.0%
Foreign born:	0	NC	0.0%	0	NC	0.0%
Naturalized U.S. citizen	0	NC	0.0%	0	NC	0.0%
Not a U.S. citizen	0	NC	0.0%	0	NC	0.0%
18 years and over:	996	NC	100.0%	3,185	NC	100.0%
Native	996	NC	100.0%	3,185	NC	100.0%
Foreign born:	0	NC	0.0%	0	NC	0.0%
Naturalized U.S. citizen	0	NC	0.0%	0	NC	0.0%
Not a U.S. citizen	0	NC	0.0%	0	NC	0.0%
Male:	692	64	52.9%	2,060	46	52.4%
Under 18 years:	177	64	100.0%	432	46	100.0%
Native	177	64	100.0%	432	46	100.0%
Foreign born:	0	17	0.0%	0	17	0.0%
Naturalized U.S. citizen	0	17	0.0%	0	17	0.0%
Not a U.S. citizen	0	17	0.0%	0	17	0.0%
18 years and over:	515	11	100.0%	1,628	17	100.0%
Native	515	11	100.0%	1,628	17	100.0%
Foreign born:	0	17	0.0%	0	17	0.0%
Naturalized U.S. citizen	0	17	0.0%	0	17	0.0%
Not a U.S. citizen	0	17	0.0%	0	17	0.0%

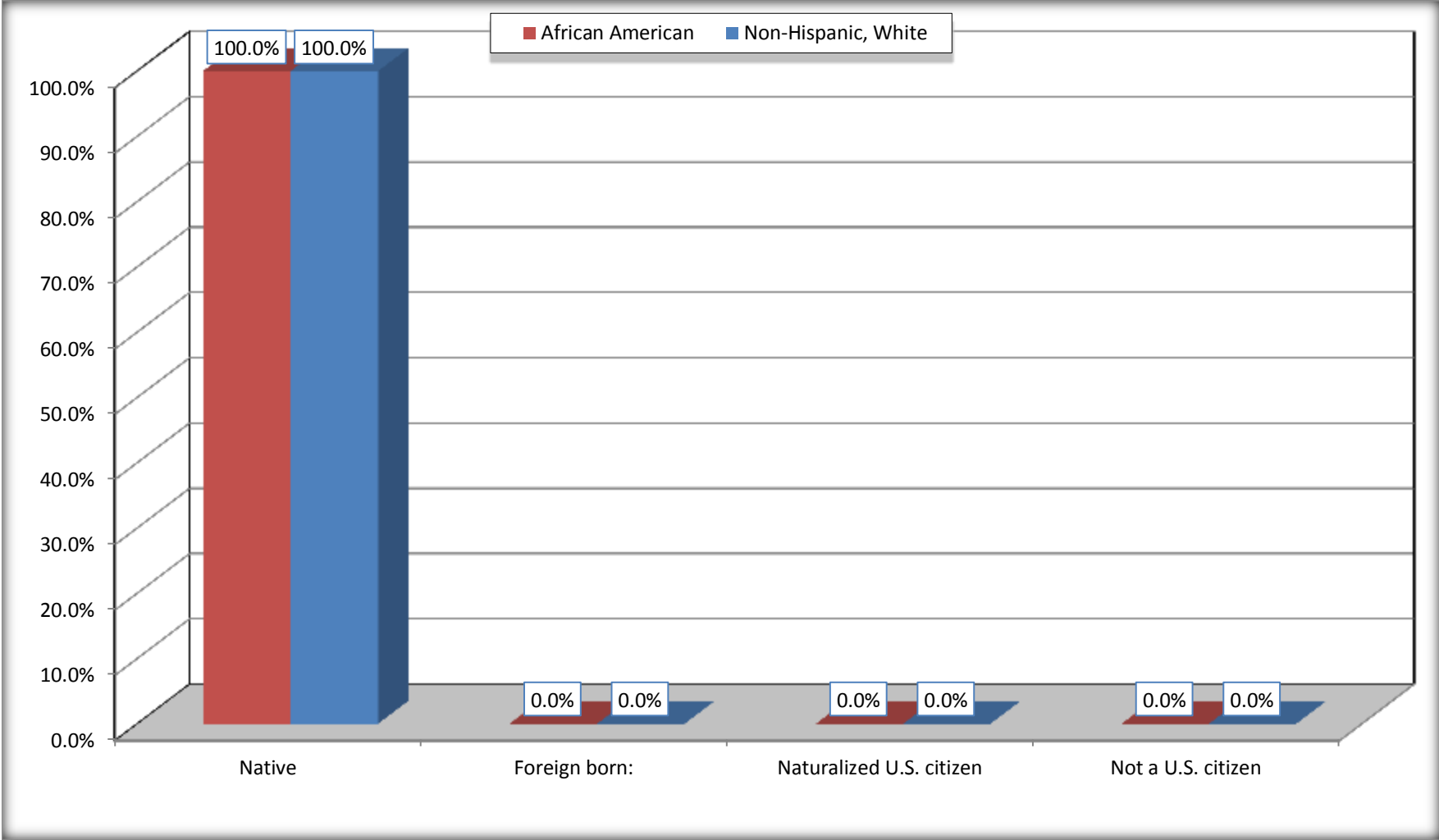
	Calhoun County, Arkansas					
	African American	Margin of Error (+/-)	% of AA by Age	White, Not Hispanic	Margin of Error (+/-)	% of NHW by Age
Female:	615	83	47.1%	1,872	46	47.6%
Under 18 years:	134	46	100.0%	315	46	100.0%
Native	134	46	100.0%	315	46	100.0%
Foreign born:	0	17	0.0%	0	17	0.0%
Naturalized U.S. citizen	0	17	0.0%	0	17	0.0%
Not a U.S. citizen	0	17	0.0%	0	17	0.0%
18 years and over:	481	68	100.0%	1,557	17	100.0%
Native	481	68	100.0%	1,557	17	100.0%
Foreign born:	0	17	0.0%	0	17	0.0%
Naturalized U.S. citizen	0	17	0.0%	0	17	0.0%
Not a U.S. citizen	0	17	0.0%	0	17	0.0%

Source: U.S. Census Bureau, 2008-2012 American Community Survey

For information on confidentiality protection, sampling error, nonsampling error, and definitions, see Survey Methodology.
<http://www.census.gov/acs/www/UseData/index.htm>

Citizenship Status of Voting Age Population (18 and Over)

Calhoun County, Arkansas



Source: B05003. SEX BY AGE BY CITIZENSHIP STATUS
Data Set: 2008-2012 American Community Survey 5-Year Estimates

**B07004. GEOGRAPHICAL MOBILITY IN THE PAST YEAR BY RACE FOR CURRENT RESIDENCE IN THE UNITED STATES - Universe:
POPULATION 1 YEAR AND OVER**

Data Set: 2008-2012 American Community Survey 5-Year Estimates

	Calhoun County, Arkansas					
	African American	Margin of Error (+/-)	% of AA Total	White, Not Hispanic	Margin of Error (+/-)	% of NHW Total
Total:	1,297	90	100.0%	3,879	19	100.0%
Same house 1 year ago	1,214	105	93.6%	3,511	145	90.5%
Moved within same county	22	25	1.7%	162	116	4.2%
Moved from different county within same state	43	35	3.3%	194	83	5.0%
Moved from different state	18	32	1.4%	12	18	0.3%
Moved from abroad	0	17	0.0%	0	17	0.0%

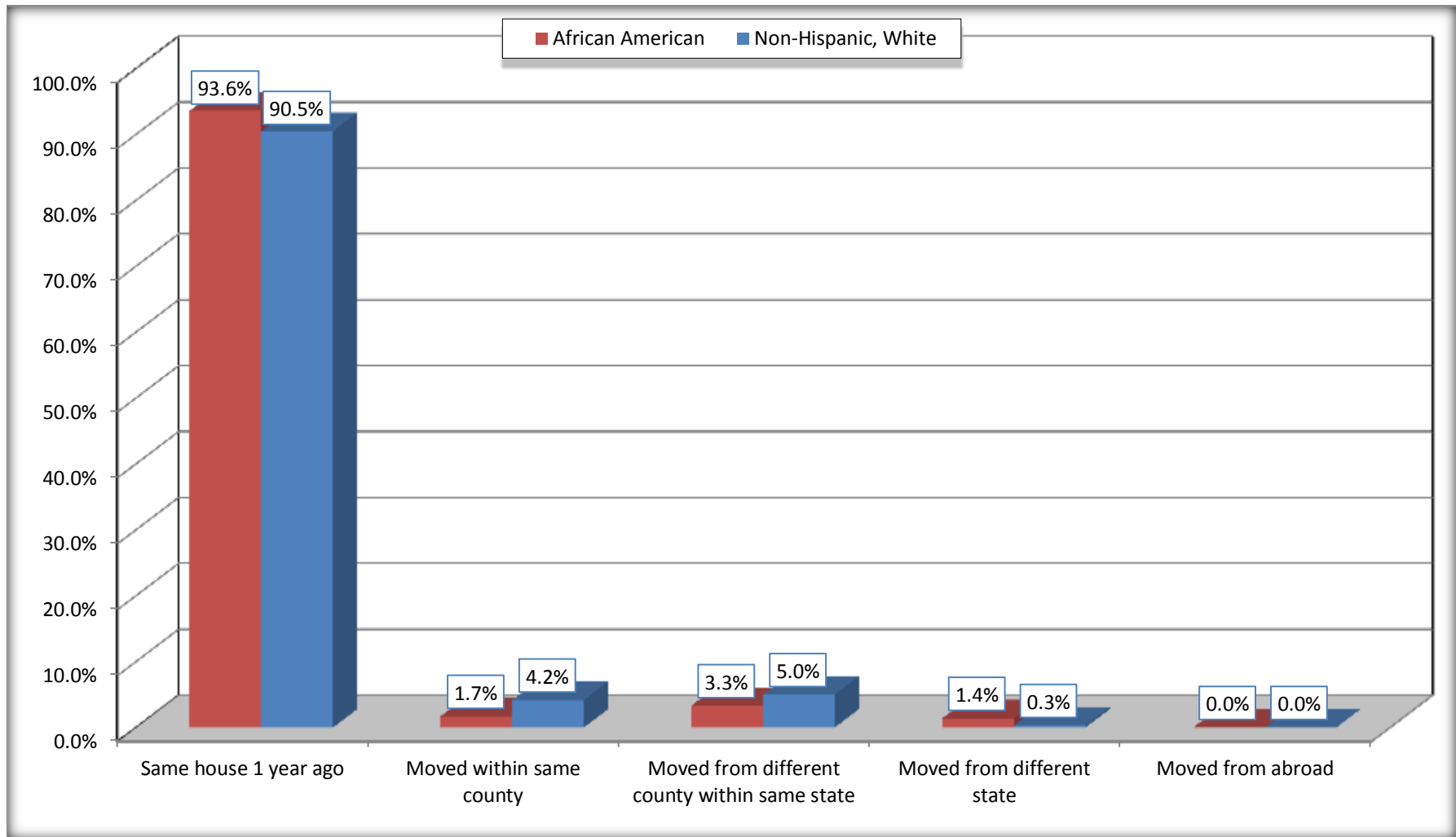
Source: U.S. Census Bureau, 2008-2012 American Community Survey

For information on confidentiality protection, sampling error, nonsampling error, and definitions, see Survey Methodology.

<http://www.census.gov/acs/www/UseData/index.htm>

Geographical Mobility in the Past Year (Population 1 Year and Over)

Calhoun County, Arkansas



Source: B07004. GEOGRAPHICAL MOBILITY IN THE PAST YEAR BY RACE FOR CURRENT RESIDENCE IN THE UNITED STATES - Universe: POPULATION 1 YEAR AND OVER

Data Set: 2008-2012 American Community Survey 5-Year Estimates

B08105. MEANS OF TRANSPORTATION TO WORK - Universe: WORKERS 16 YEARS AND OVER

Data Set: 2008-2012 American Community Survey 5-Year Estimates

	Calhoun County, Arkansas					
	African American	Margin of Error (+/-)	% of AA Total	White, Not Hispanic	Margin of Error (+/-)	% of NHW Total
Total:	442	88	100.0%	1765	145	100.0%
Car, truck, or van - drove alone	347	85	78.5%	1437	167	81.4%
Car, truck, or van - carpooled	82	52	18.6%	231	93	13.1%
Public transportation (excluding taxicab)	0	17	0.0%	0	17	0.0%
Walked	8	9	1.8%	36	35	2.0%
Taxicab, motorcycle, bicycle, or other means	5	9	1.1%	13	15	0.7%
Worked at home	0	17	0.0%	48	41	2.7%

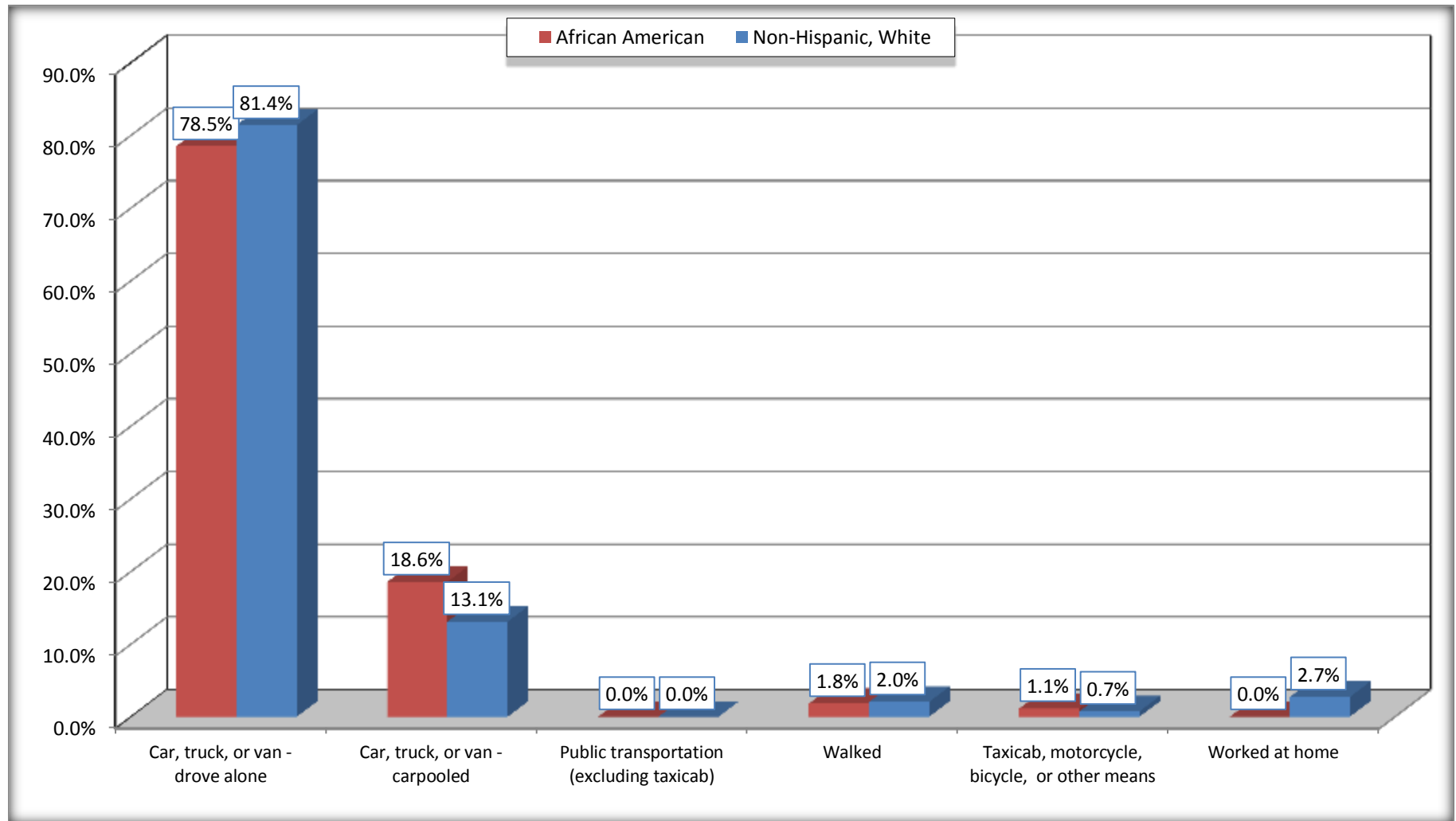
Source: U.S. Census Bureau, 2008-2012 American Community Survey

For information on confidentiality protection, sampling error, nonsampling error, and definitions, see Survey Methodology.

<http://www.census.gov/acs/www/UseData/index.htm>

Means of Transportation to Work (Workers 16 Years and Over)

Calhoun County, Arkansas



Source: B08105. MEANS OF TRANSPORTATION TO WORK - Universe: WORKERS 16 YEARS AND OVER
Data Set: 2008-2012 American Community Survey 5-Year Estimates

B11002. HOUSEHOLD TYPE BY RELATIVES AND NONRELATIVES FOR POPULATION IN HOUSEHOLDS

Data Set: 2008-2012 American Community Survey 5-Year Estimates

	Calhoun County, Arkansas					
	African American	Margin of Error (+/-)	% of AA Total	White, Not Hispanic	Margin of Error (+/-)	% of NHW Total
Total:	1268	97	100.0%	3920	75	100.0%
In family households	1045	126	82.4%	3413	146	87.1%
In nonfamily households	223	73	17.6%	507	132	12.9%

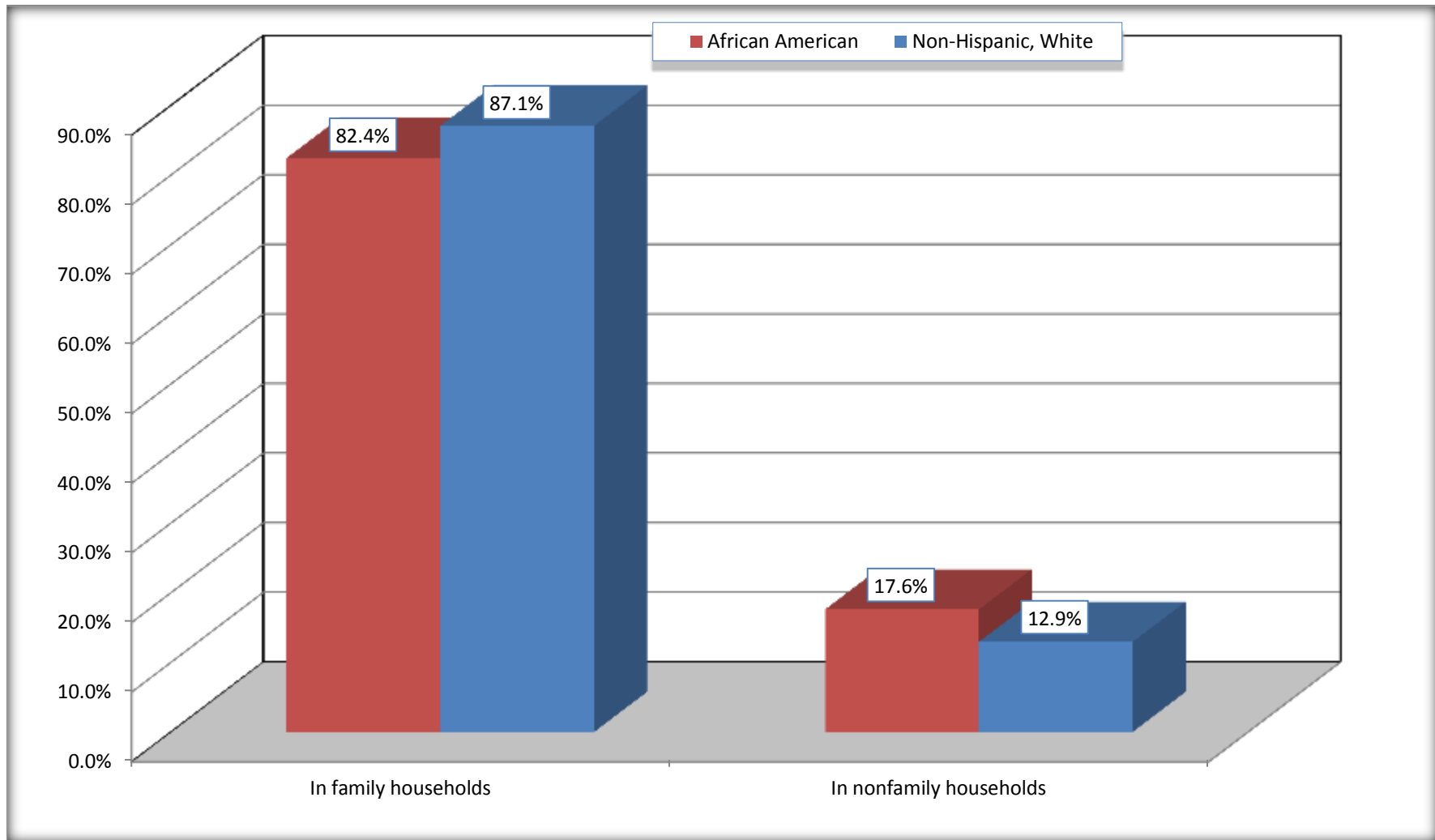
Source: U.S. Census Bureau, 2008-2012 American Community Survey

For information on confidentiality protection, sampling error, nonsampling error, and definitions, see Survey Methodology.

<http://www.census.gov/acs/www/UseData/index.htm>

Household Type for Population in Households

Calhoun County, Arkansas



Source: B11002. HOUSEHOLD TYPE BY RELATIVES AND NONRELATIVES FOR POPULATION IN HOUSEHOLDS
Data Set: 2008-2012 American Community Survey 5-Year Estimates

B12002. MARITAL STATUS FOR THE POPULATION 15 YEARS AND OVER

Data Set: 2008-2012 American Community Survey 5-Year Estimates

	Calhoun County, Arkansas					
	African American	Margin of Error (+/-)	% of AA Total	White, Not Hispanic	Margin of Error (+/-)	% of NHW Total
Total:	1,053	73	100.0%	3,347	1	100.0%
Never married	346	NC	32.9%	633	NC	18.9%
Now married (except separated)	310	NC	29.4%	1,901	NC	56.8%
Separated	114	NC	10.8%	71	NC	2.1%
Widowed	133	NC	12.6%	373	NC	11.1%
Divorced	150	NC	14.2%	369	NC	11.0%
Male:	562	33	53.4%	1,736	34	51.9%
Never married	247	72	23.5%	443	81	13.2%
Now married (except separated)	150	70	14.2%	990	131	29.6%
Separated	66	47	6.3%	63	49	1.9%
Widowed	13	14	1.2%	54	42	1.6%
Divorced	86	32	8.2%	186	77	5.6%
Female:	491	71	46.6%	1,611	34	48.1%
Never married	99	45	9.4%	190	44	5.7%
Now married (except separated)	160	58	15.2%	911	108	27.2%
Separated	48	29	4.6%	8	7	0.2%
Widowed	120	51	11.4%	319	79	9.5%
Divorced	64	45	6.1%	183	77	5.5%

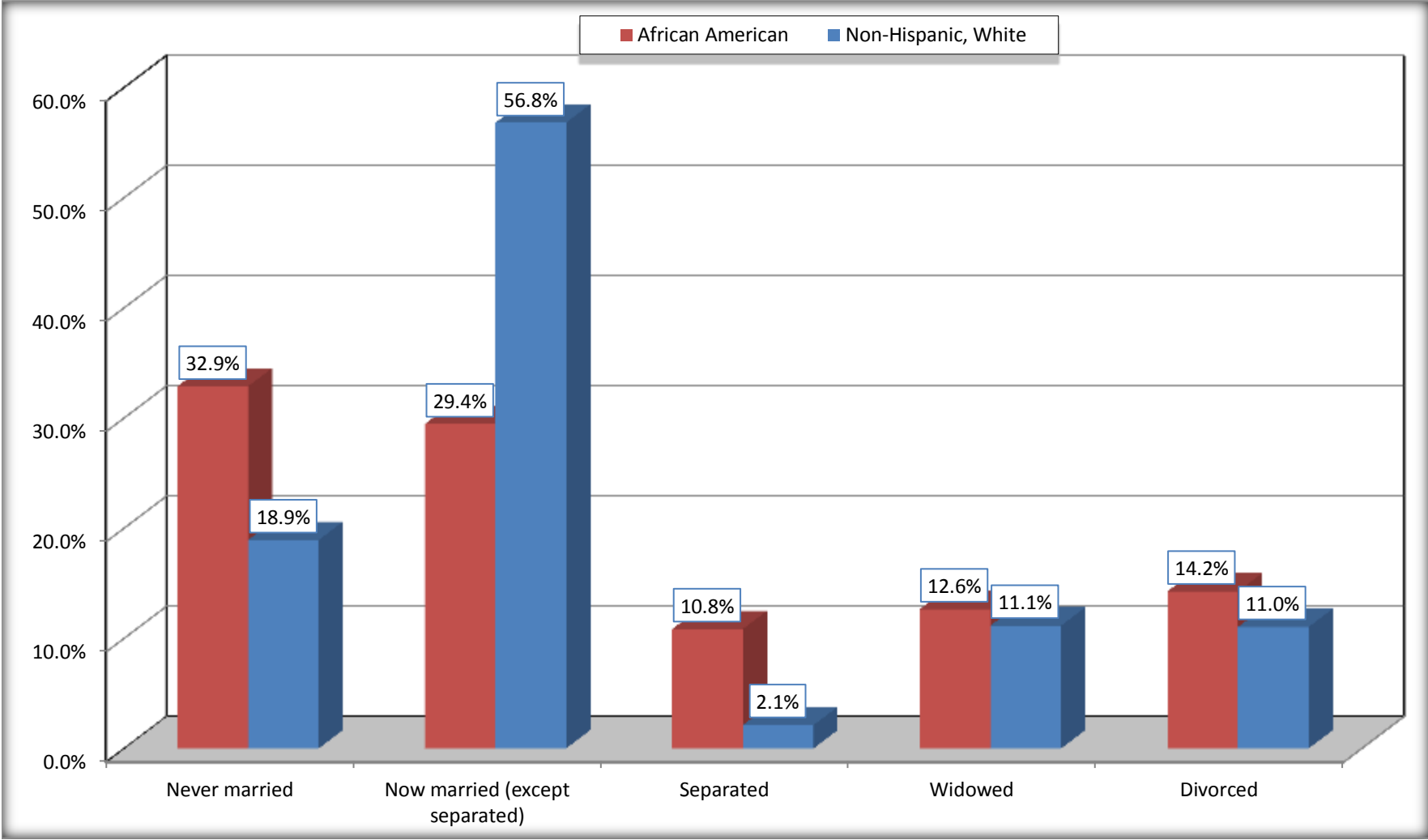
Source: U.S. Census Bureau, 2008-2012 American Community Survey

For information on confidentiality protection, sampling error, nonsampling error, and definitions, see Survey Methodology.

<http://www.census.gov/acs/www/UseData/index.htm>

Marital Status for the Population 15 Years and Over

Calhoun County, Arkansas



Source: B12002. MARITAL STATUS FOR THE POPULATION 15 YEARS AND OVER
Data Set: 2008-2012 American Community Survey 5-Year Estimates

C15002. SEX BY EDUCATIONAL ATTAINMENT FOR THE POPULATION 25 YEARS AND OVER

Data Set: 2008-2012 American Community Survey 5-Year Estimates

	Calhoun County, Arkansas					
	African American	Margin of Error (+/-)	% of AA Total	White, Not Hispanic	Margin of Error (+/-)	% of NHW Total
Total:	851	88	100.0%	2,867	17	100.0%
Less than high school diploma	249	NC	29.3%	537	NC	18.7%
High school graduate, GED, or alternative	435	NC	51.1%	1,311	NC	45.7%
Some college or associate's degree	133	NC	15.6%	797	NC	27.8%
Bachelor's degree or higher	34	NC	4.0%	222	NC	7.7%
Male:	392	47	46.1%	1,438	17	50.2%
Less than high school diploma	94	39	11.0%	297	93	10.4%
High school graduate, GED, or alternative	243	64	28.6%	747	122	26.1%
Some college or associate's degree	44	38	5.2%	329	86	11.5%
Bachelor's degree or higher	11	13	1.3%	65	45	2.3%
Female:	459	68	53.9%	1,429	17	49.8%
Less than high school diploma	155	58	18.2%	240	68	8.4%
High school graduate, GED, or alternative	192	55	22.6%	564	106	19.7%
Some college or associate's degree	89	37	10.5%	468	106	16.3%
Bachelor's degree or higher	23	24	2.7%	157	71	5.5%

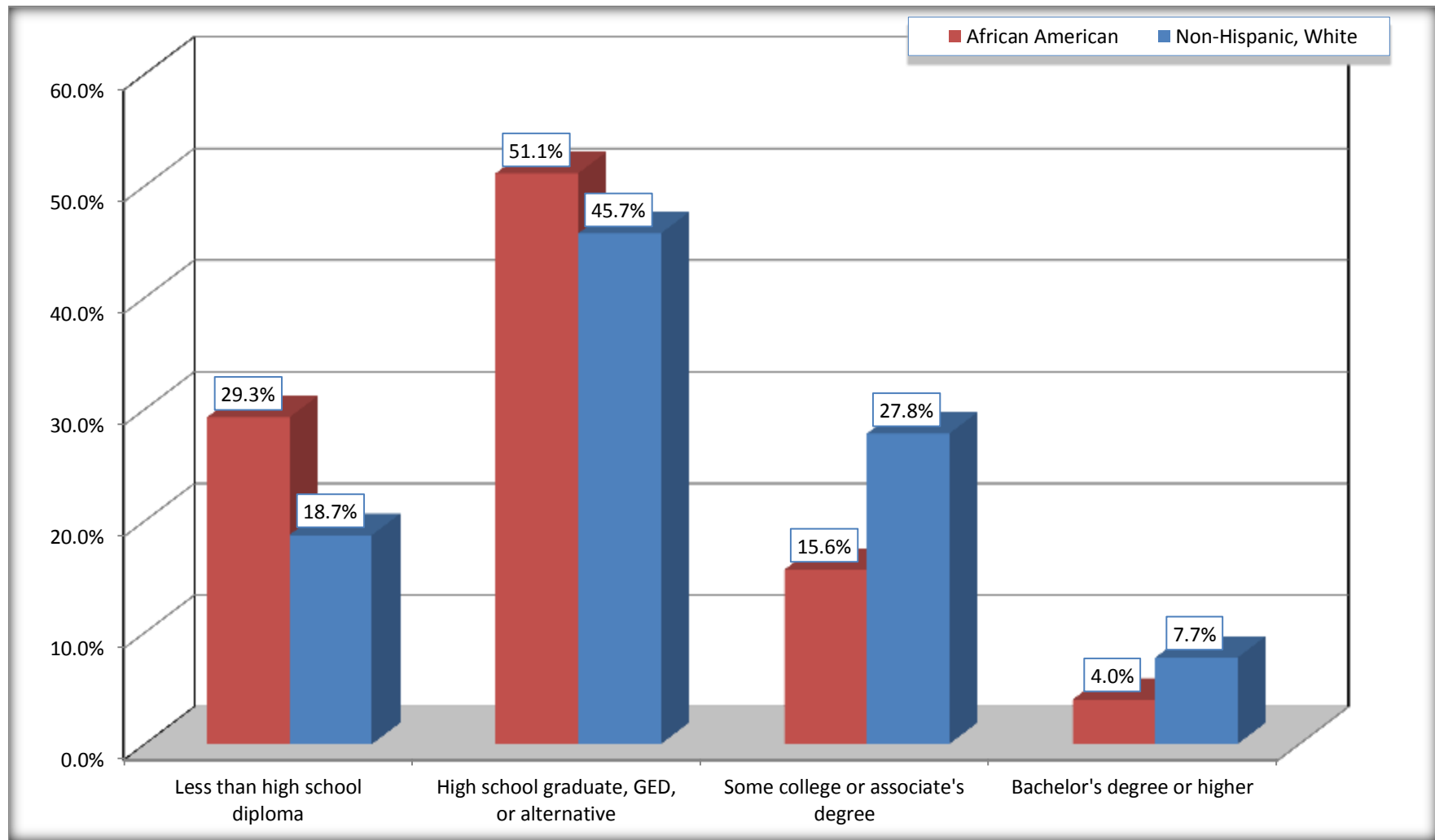
Source: U.S. Census Bureau, 2008-2012 American Community Survey

For information on confidentiality protection, sampling error, nonsampling error, and definitions, see Survey Methodology.

<http://www.census.gov/acs/www/UseData/index.htm>

Educational Attainment for the Population 25 Years and Older

Calhoun County, Arkansas



Source: C15002. SEX BY EDUCATIONAL ATTAINMENT FOR THE POPULATION 25 YEARS AND OVER
Data Set: 2008-2012 American Community Survey 5-Year Estimates

B17010. POVERTY STATUS IN THE PAST 12 MONTHS OF FAMILIES BY FAMILY TYPE BY PRESENCE OF RELATED CHILDREN UNDER 18 YEARS

Data Set: 2008-2012 American Community Survey 5-Year Estimates

	Calhoun County, Arkansas					
	African American	Margin of Error (+/-)	% of AA Total	White, Not Hispanic	Margin of Error (+/-)	% of NHW Total
Total:	247	64	100.0%	1,119	110	100.0%
Income in the past 12 months below poverty level:	21	18	8.5%	62	47	5.5%
Married-couple family:	4	5	1.6%	51	42	4.6%
With related children under 18 years	0	17	0.0%	25	27	2.2%
Other family:	17	17	6.9%	11	18	1.0%
Male householder, no wife present	7	11	2.8%	11	18	1.0%
With related children under 18 years	7	11	2.8%	11	18	1.0%
Female householder, no husband present	10	14	4.0%	0	17	0.0%
With related children under 18 years	10	14	4.0%	0	17	0.0%
Income in the past 12 months at or above poverty level:	226	58	91.5%	1,057	109	94.5%
Married-couple family:	107	44	43.3%	872	111	77.9%
With related children under 18 years	29	30	11.7%	350	88	31.3%
Other family:	119	49	48.2%	185	68	16.5%
Male householder, no wife present	56	47	22.7%	29	30	2.6%
With related children under 18 years	44	47	17.8%	27	29	2.4%
Female householder, no husband present	63	44	25.5%	156	64	13.9%
With related children under 18 years	51	37	20.6%	112	60	10.0%

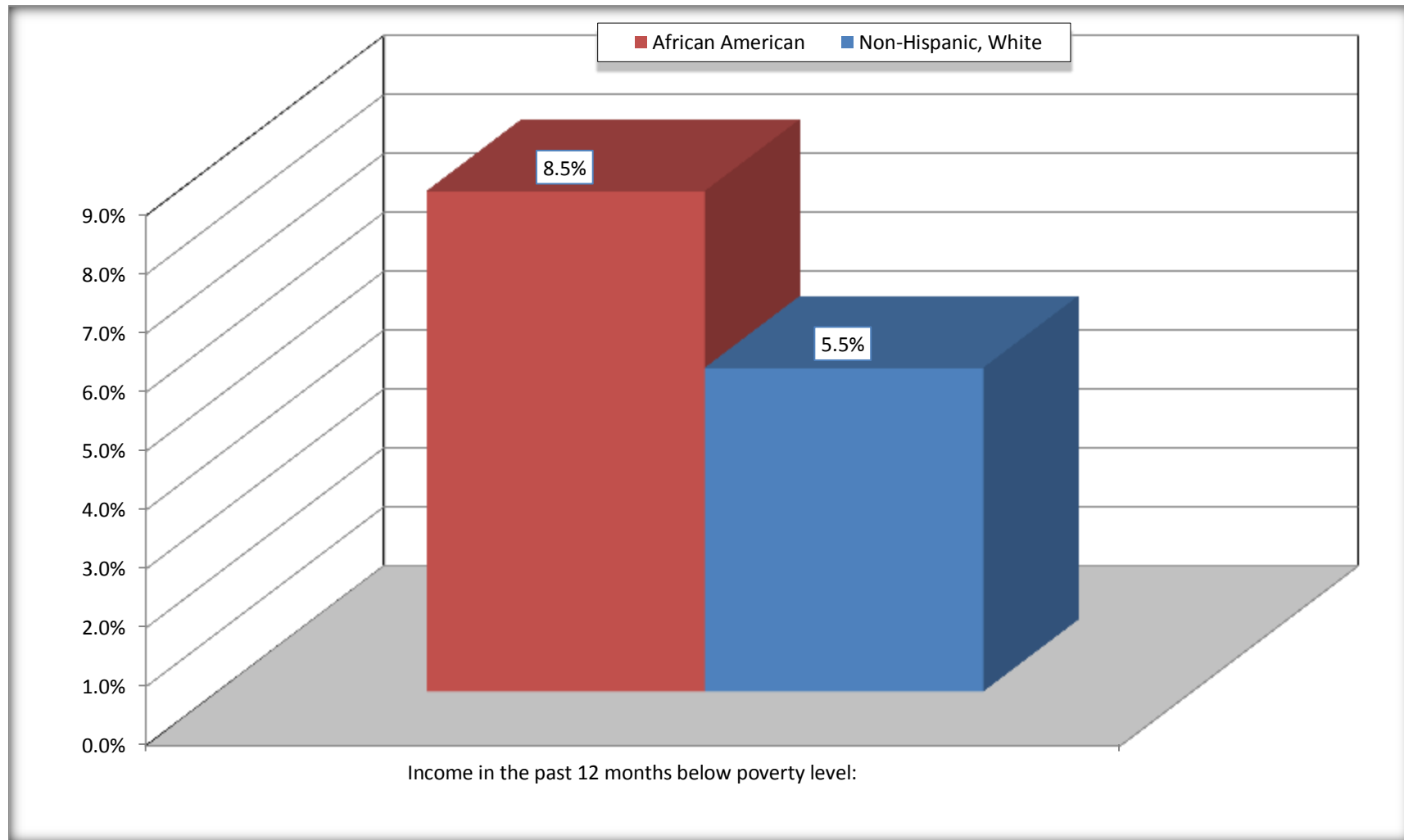
Source: U.S. Census Bureau, 2008-2012 American Community Survey

For information on confidentiality protection, sampling error, nonsampling error, and definitions, see Survey Methodology.

<http://www.census.gov/acs/www/UseData/index.htm>

Family Households Below Poverty in the Past 12 Months

Calhoun County, Arkansas

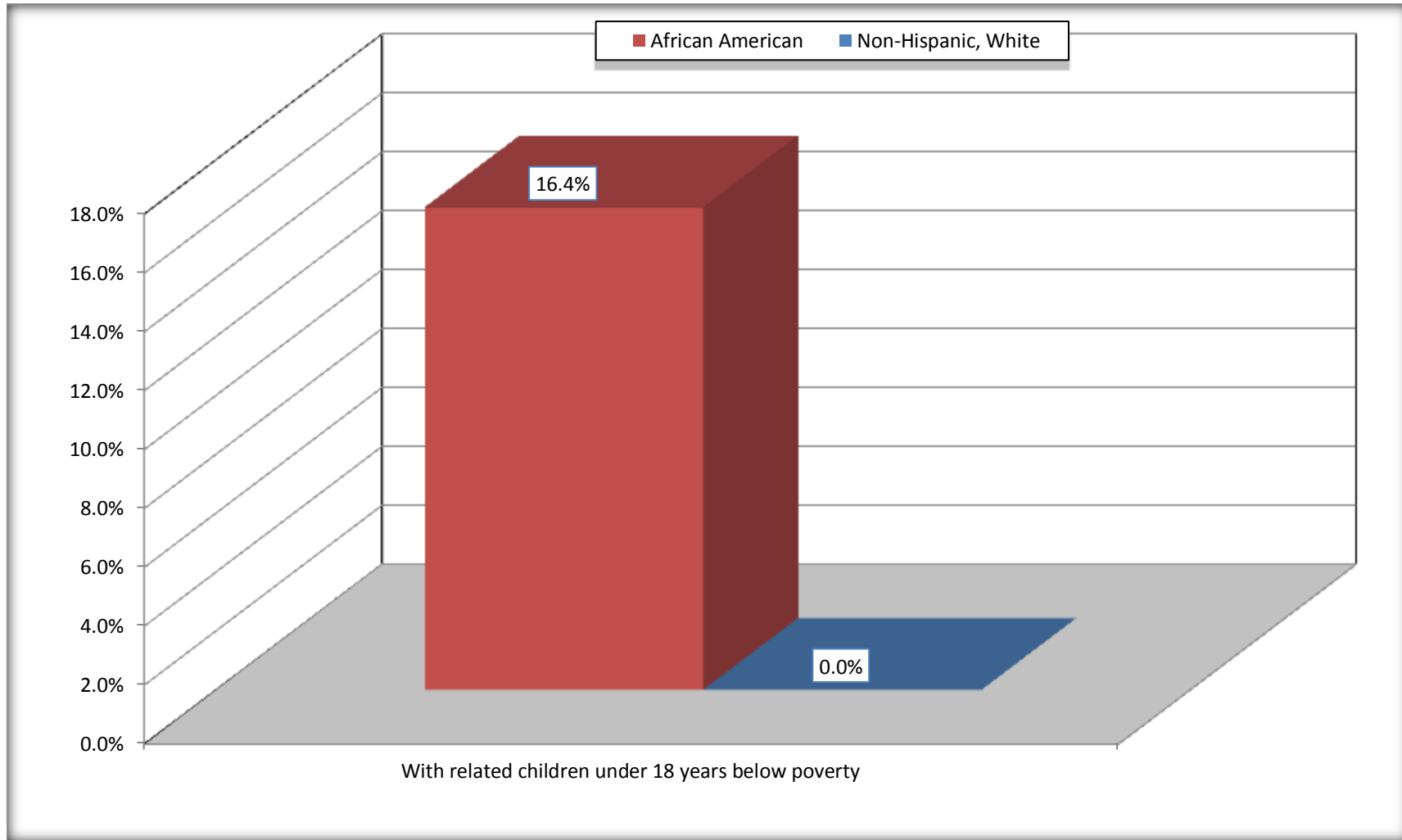


Source: B17010. POVERTY STATUS IN THE PAST 12 MONTHS OF FAMILIES BY FAMILY TYPE BY PRESENCE OF RELATED CHILDREN UNDER 18 YEARS

Data Set: 2008-2012 American Community Survey 5-Year Estimates

Female-headed Households with Related Children Below Poverty in the Past 12 Months

Calhoun County, Arkansas



Source: B17010. POVERTY STATUS IN THE PAST 12 MONTHS OF FAMILIES BY FAMILY TYPE BY PRESENCE OF RELATED CHILDREN UNDER 18 YEARS

Data Set: 2008-2012 American Community Survey 5-Year Estimates

B17020 POVERTY STATUS IN THE PAST 12 MONTHS BY AGE - Universe: POPULATION FOR WHOM POVERTY STATUS IS DETERMINED

Data Set: 2008-2012 American Community Survey 5-Year Estimates

	Calhoun County, Arkansas					
	African American	Margin of Error (+/-)	% of AA By Age	White, Not Hispanic	Margin of Error (+/-)	% of NHW By Age
Total:	1,263	96	100.0%	3,880	52	100.0%
Income in the past 12 months below poverty level:	196	93	15.5%	351	135	9.0%
Under 18 years	49	NC	15.9%	42	NC	5.6%
18 to 64 years	110	56	14.1%	247	106	10.3%
65 years and over	37	NC	21.4%	62	NC	8.3%
Income in the past 12 months at or above poverty level:	1,067	133	84.5%	3,529	145	91.0%
Under 18 years	259	NC	84.1%	705	NC	94.4%
18 to 64 years	672	75	85.9%	2,143	115	89.7%
65 years and over	136	NC	78.6%	681	NC	91.7%

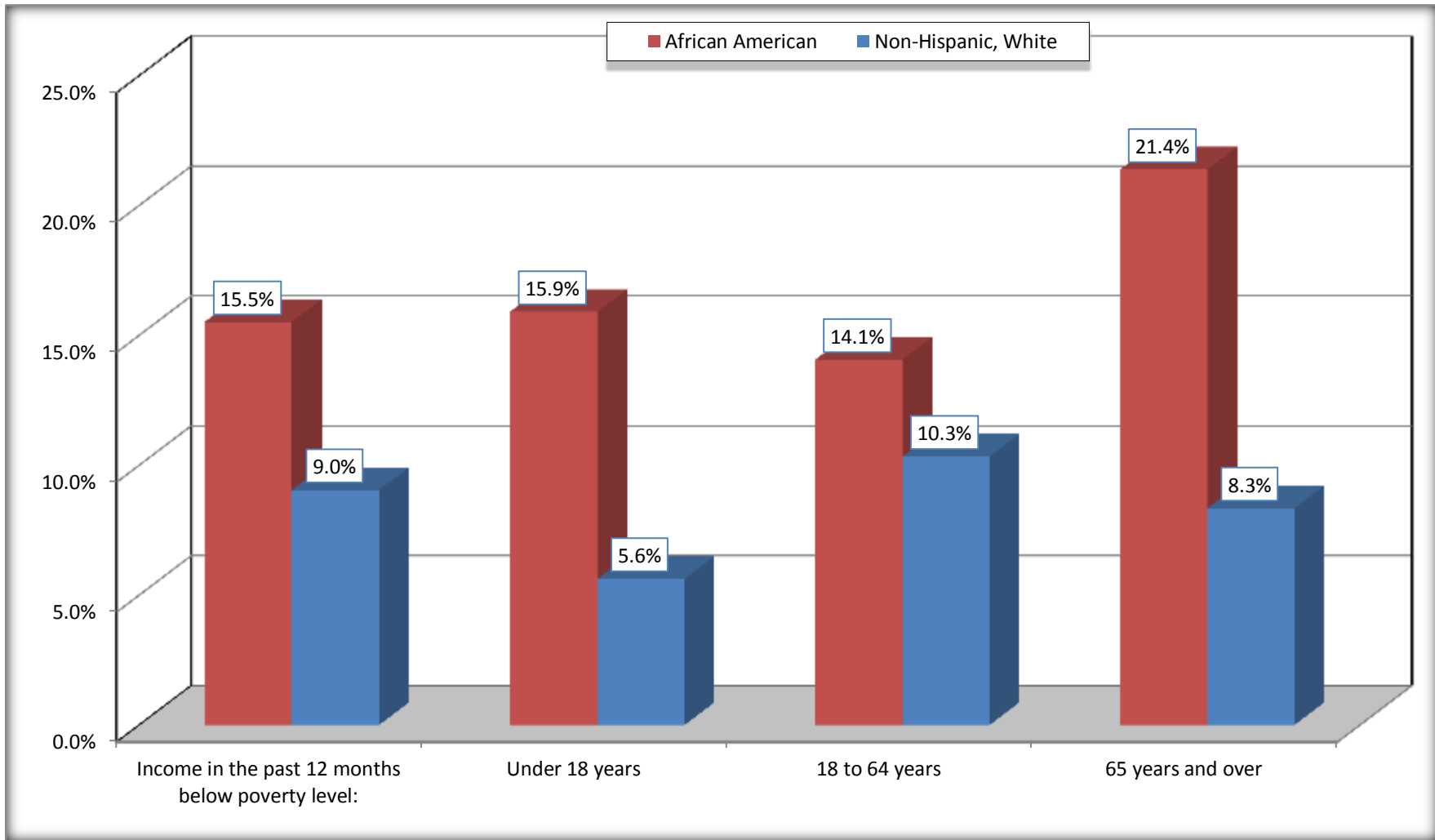
Source: U.S. Census Bureau, 2008-2012 American Community Survey

For information on confidentiality protection, sampling error, nonsampling error, and definitions, see Survey Methodology.

<http://www.census.gov/acs/www/UseData/index.htm>

Population Below Poverty in the Past 12 Months

Calhoun County, Arkansas



Source: B17020 POVERTY STATUS IN THE PAST 12 MONTHS BY AGE - Universe: POPULATION FOR WHOM POVERTY STATUS IS DETERMINED
Data Set: 2008-2012 American Community Survey 5-Year Estimates

B19001. HOUSEHOLD INCOME IN THE PAST 12 MONTHS (IN 2010 INFLATION-ADJUSTED DOLLARS)

Data Set: 2008-2012 American Community Survey 5-Year Estimates

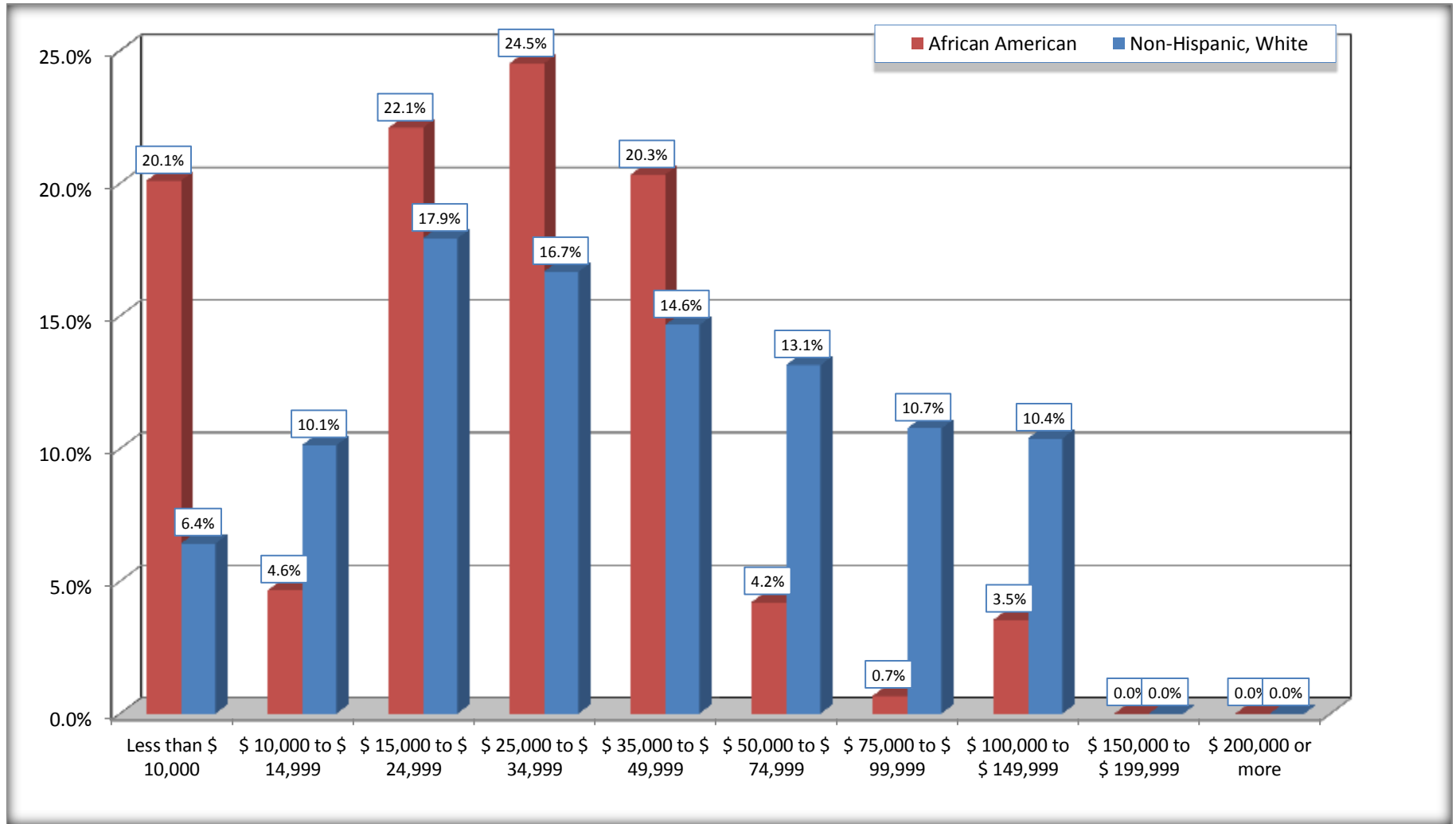
	Calhoun County, Arkansas					
	African American	Margin of Error (+/-)	% of AA Total	White, Not Hispanic	Margin of Error (+/-)	% of NHW Total
Total:	453	92	100.0%	1,591	103	100.0%
Less than \$ 10,000	91	45	20.1%	102	53	6.4%
\$ 10,000 to \$ 14,999	21	19	4.6%	161	67	10.1%
\$ 15,000 to \$ 24,999	100	NC	22.1%	285	NC	17.9%
\$ 25,000 to \$ 34,999	111	NC	24.5%	265	NC	16.7%
\$ 35,000 to \$ 49,999	92	NC	20.3%	233	NC	14.6%
\$ 50,000 to \$ 74,999	19	NC	4.2%	209	NC	13.1%
\$ 75,000 to \$ 99,999	3	7	0.7%	171	68	10.7%
\$ 100,000 to \$ 149,999	16	NC	3.5%	165	NC	10.4%
\$ 150,000 to \$ 199,999	0	17	0.0%	0	17	0.0%
\$ 200,000 or more	0	17	0.0%	0	17	0.0%

Source: U.S. Census Bureau, 2008-2012 American Community Survey

For information on confidentiality protection, sampling error, nonsampling error, and definitions, see Survey Methodology.

<http://www.census.gov/acs/www/UseData/index.htm>

Household Income in the Past 12 Months Calhoun County, Arkansas



Source: B19001. HOUSEHOLD INCOME IN THE PAST 12 MONTHS (IN 2010 INFLATION-ADJUSTED DOLLARS)
Data Set: 2008-2012 American Community Survey 5-Year Estimates

B19013. MEDIAN HOUSEHOLD INCOME IN THE PAST 12 MONTHS (IN 2010 INFLATION-ADJUSTED DOLLARS)

Data Set: 2008-2012 American Community Survey 5-Year Estimates

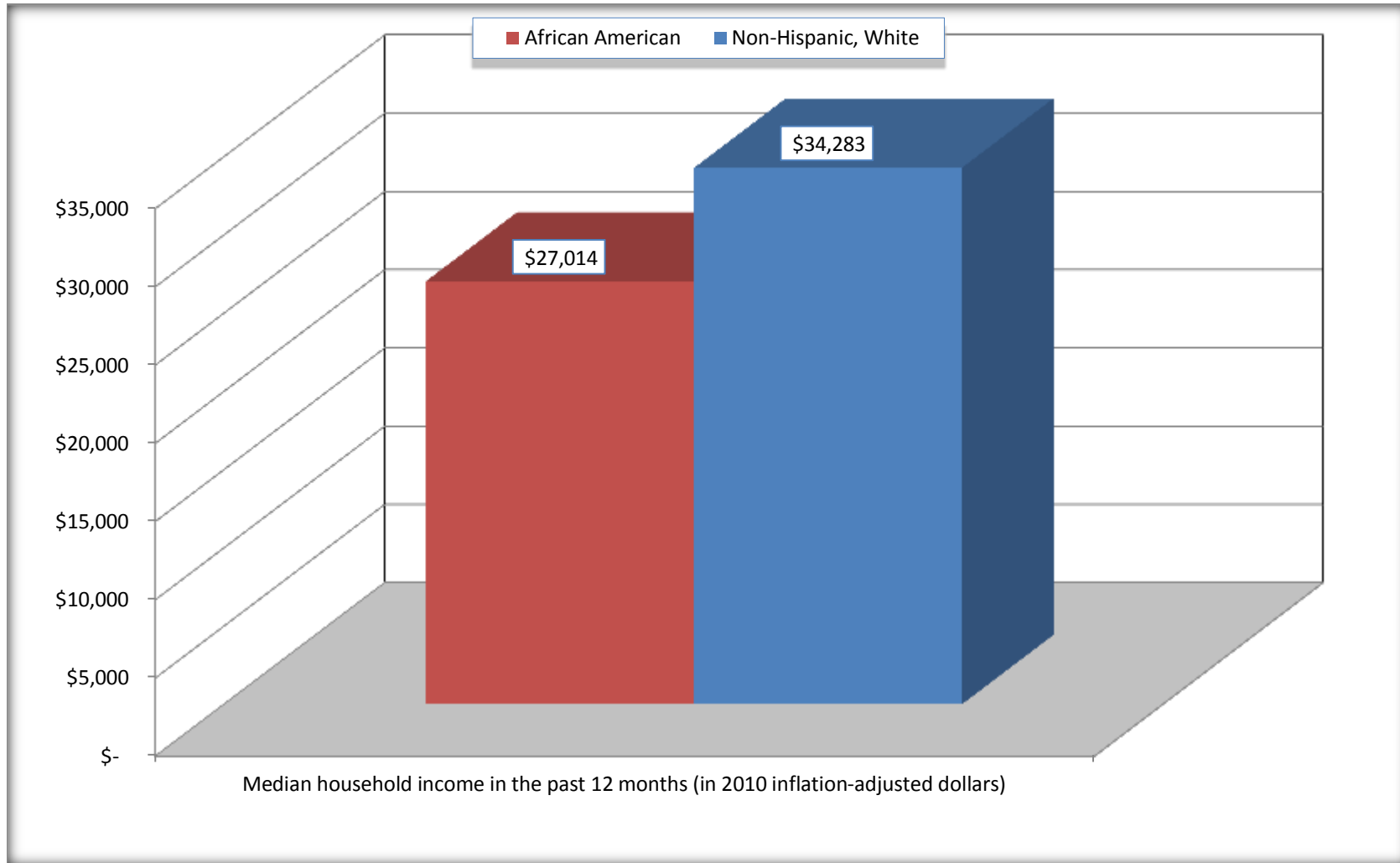
	Calhoun County, Arkansas			
	African American	Margin of Error (+/-)	White, Not Hispanic	Margin of Error (+/-)
Median household income in the past 12 months (in 2010 inflation-adjusted dollars)	\$ 27,014	\$ 4,388	\$ 34,283	\$ 6,069

Source: U.S. Census Bureau, 2008-2012 American Community Survey

For information on confidentiality protection, sampling error, nonsampling error, and definitions, see Survey Methodology.
<http://www.census.gov/acs/www/UseData/index.htm>

Median Household Income in the Past 12 Months

Calhoun County, Arkansas



Source: B19013. MEDIAN HOUSEHOLD INCOME IN THE PAST 12 MONTHS (IN 2010 INFLATION-ADJUSTED DOLLARS)
Data Set: 2008-2012 American Community Survey 5-Year Estimates

B19101. FAMILY INCOME IN THE PAST 12 MONTHS (IN 2010 INFLATION-ADJUSTED DOLLARS)

Data Set: 2008-2012 American Community Survey 5-Year Estimates

	Calhoun County, Arkansas					
	African American	Margin of Error (+/-)	% of AA Total	White, Not Hispanic	Margin of Error (+/-)	% of NHW Total
Total:	247	64	100.0%	1,119	110	100.0%
Less than \$ 10,000	11	14	4.5%	29	35	2.6%
\$ 10,000 to \$ 14,999	4	5	1.6%	5	6	0.4%
\$ 15,000 to \$ 24,999	44	NC	17.8%	168	NC	15.0%
\$ 25,000 to \$ 34,999	89	NC	36.0%	206	NC	18.4%
\$ 35,000 to \$ 49,999	87	NC	35.2%	193	NC	17.2%
\$ 50,000 to \$ 74,999	6	NC	2.4%	200	NC	17.9%
\$ 100,000 to \$ 149,999	6	NC	2.4%	149	NC	13.3%
\$ 150,000 to \$ 199,999	0	17	0.0%	0	17	0.0%
\$ 200,000 or more	0	17	0.0%	0	17	0.0%

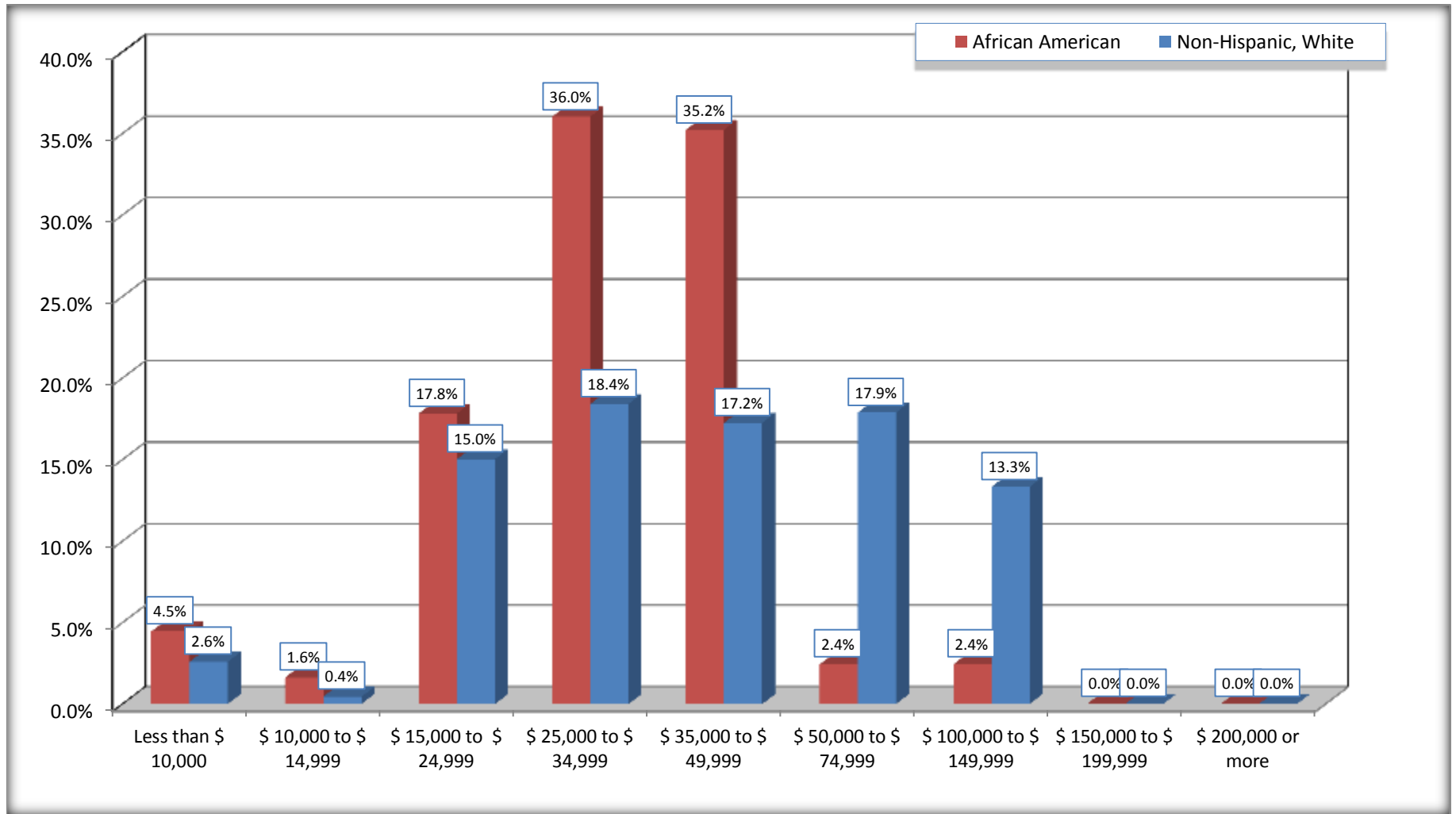
Source: U.S. Census Bureau, 2008-2012 American Community Survey

For information on confidentiality protection, sampling error, nonsampling error, and definitions, see Survey Methodology.

<http://www.census.gov/acs/www/UseData/index.htm>

Family Income in the Past 12 Months

Calhoun County, Arkansas



Source: B19101. FAMILY INCOME IN THE PAST 12 MONTHS (IN 2010 INFLATION-ADJUSTED DOLLARS)
Data Set: 2008-2012 American Community Survey 5-Year Estimates

B19113. MEDIAN FAMILY INCOME IN THE PAST 12 MONTHS (IN 2010 INFLATION-ADJUSTED DOLLARS)

Data Set: 2008-2012 American Community Survey 5-Year Estimates

	Calhoun County, Arkansas			
	African American	Margin of Error (+/-)	White, Not Hispanic	Margin of Error (+/-)
Median family income in the past 12 months (in 2010 inflation-adjusted dollars)	\$ 29,653	\$ 7,812	\$ 46,148	\$ 5,938

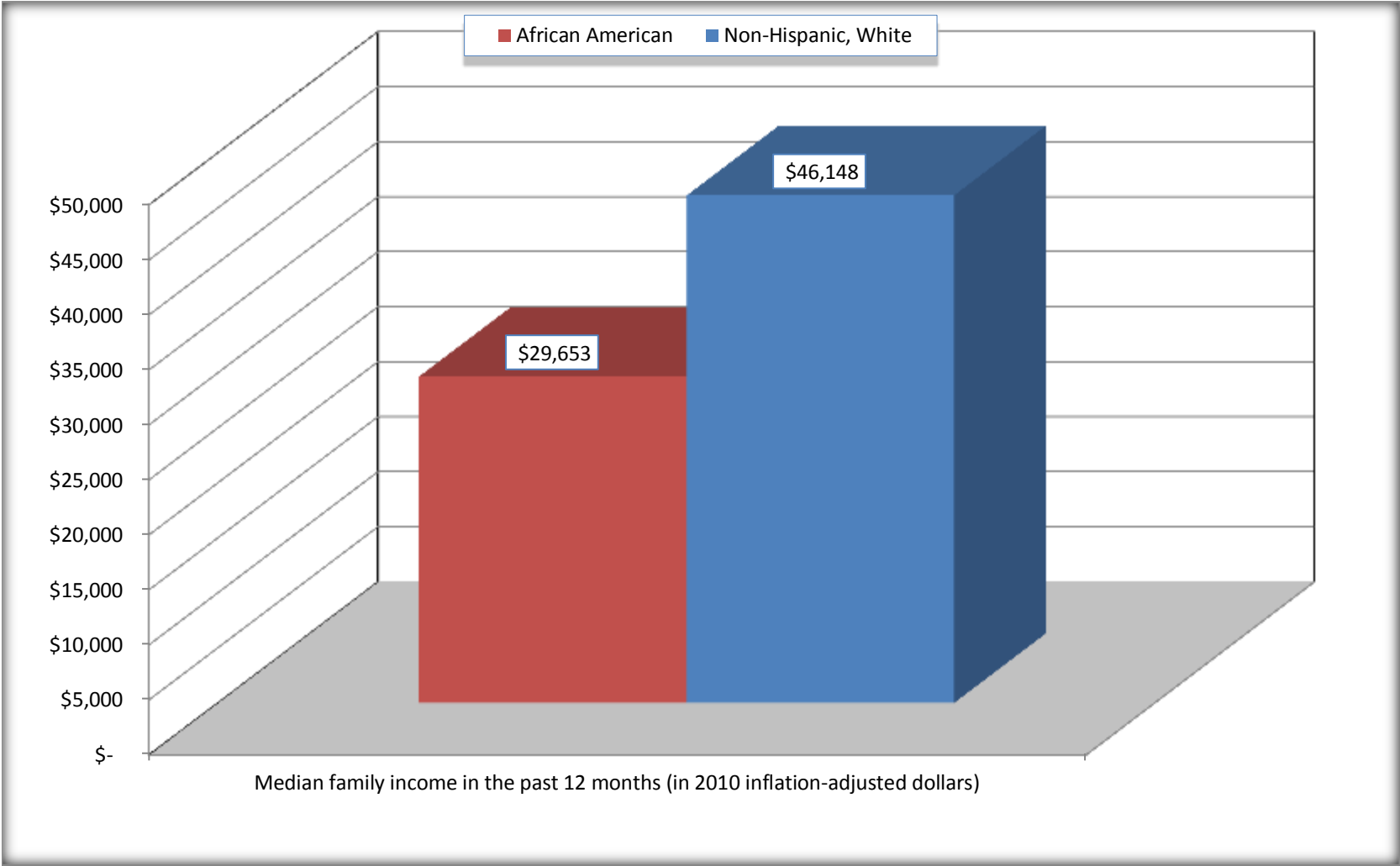
Source: U.S. Census Bureau, 2008-2012 American Community Survey

For information on confidentiality protection, sampling error, nonsampling error, and definitions, see Survey Methodology.

<http://www.census.gov/acs/www/UseData/index.htm>

Median Family Income in the Past 12 Months

Calhoun County, Arkansas



Source: B19113. MEDIAN FAMILY INCOME IN THE PAST 12 MONTHS (IN 2010 INFLATION-ADJUSTED DOLLARS)
Data Set: 2008-2012 American Community Survey 5-Year Estimates

B19202. MEDIAN NONFAMILY HOUSEHOLD INCOME IN THE PAST 12 MONTHS (IN 2010 INFLATION-ADJUSTED DOLLARS)

Data Set: 2008-2012 American Community Survey 5-Year Estimates

	Calhoun County, Arkansas			
	African American	Margin of Error (+/-)	White, Not Hispanic	Margin of Error (+/-)
Median nonfamily household income in the past 12 months (in 2010 inflation-adjusted dollars)	\$ 15,500	\$ 4,289	\$ 15,515	\$ 3,302

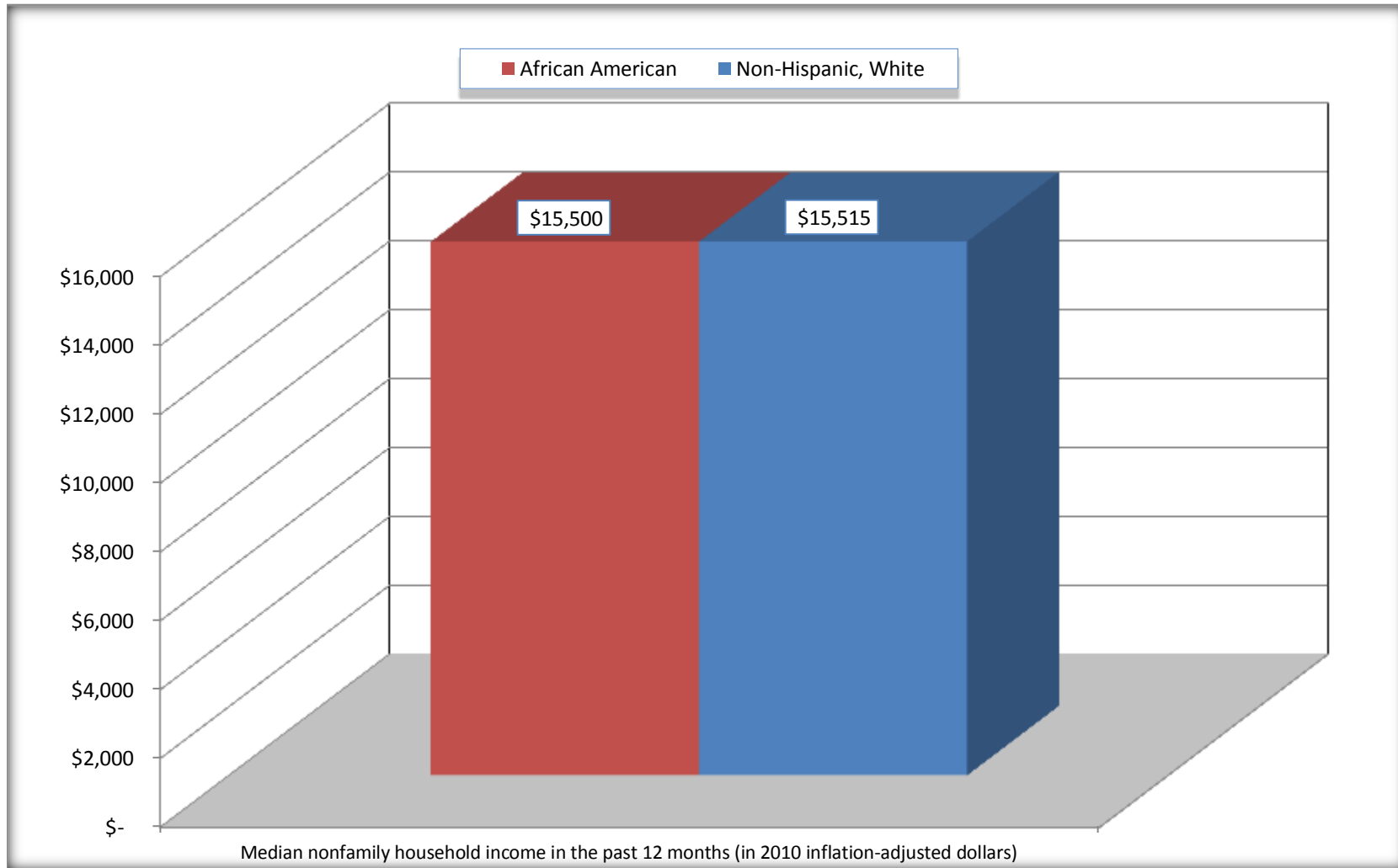
Source: U.S. Census Bureau, 2008-2012 American Community Survey

For information on confidentiality protection, sampling error, nonsampling error, and definitions, see Survey Methodology.

<http://www.census.gov/acs/www/UseData/index.htm>

Median Non-Family Income in the Past 12 Months

Calhoun County, Arkansas



Source: B19202. MEDIAN NONFAMILY HOUSEHOLD INCOME IN THE PAST 12 MONTHS (IN 2010 INFLATION-ADJUSTED DOLLARS)
Data Set: 2008-2012 American Community Survey 5-Year Estimates

B19301. PER CAPITA INCOME IN THE PAST 12 MONTHS (IN 2010 INFLATION-ADJUSTED DOLLARS)

Data Set: 2008-2012 American Community Survey 5-Year Estimates

	Calhoun County, Arkansas			
	African American	Margin of Error (+/-)	White, Not Hispanic	Margin of Error (+/-)
Per capita income in the past 12 months (in 2010 inflation-adjusted dollars)	\$ 11,827	\$ 1,405	\$ 19,569	\$ 1,755

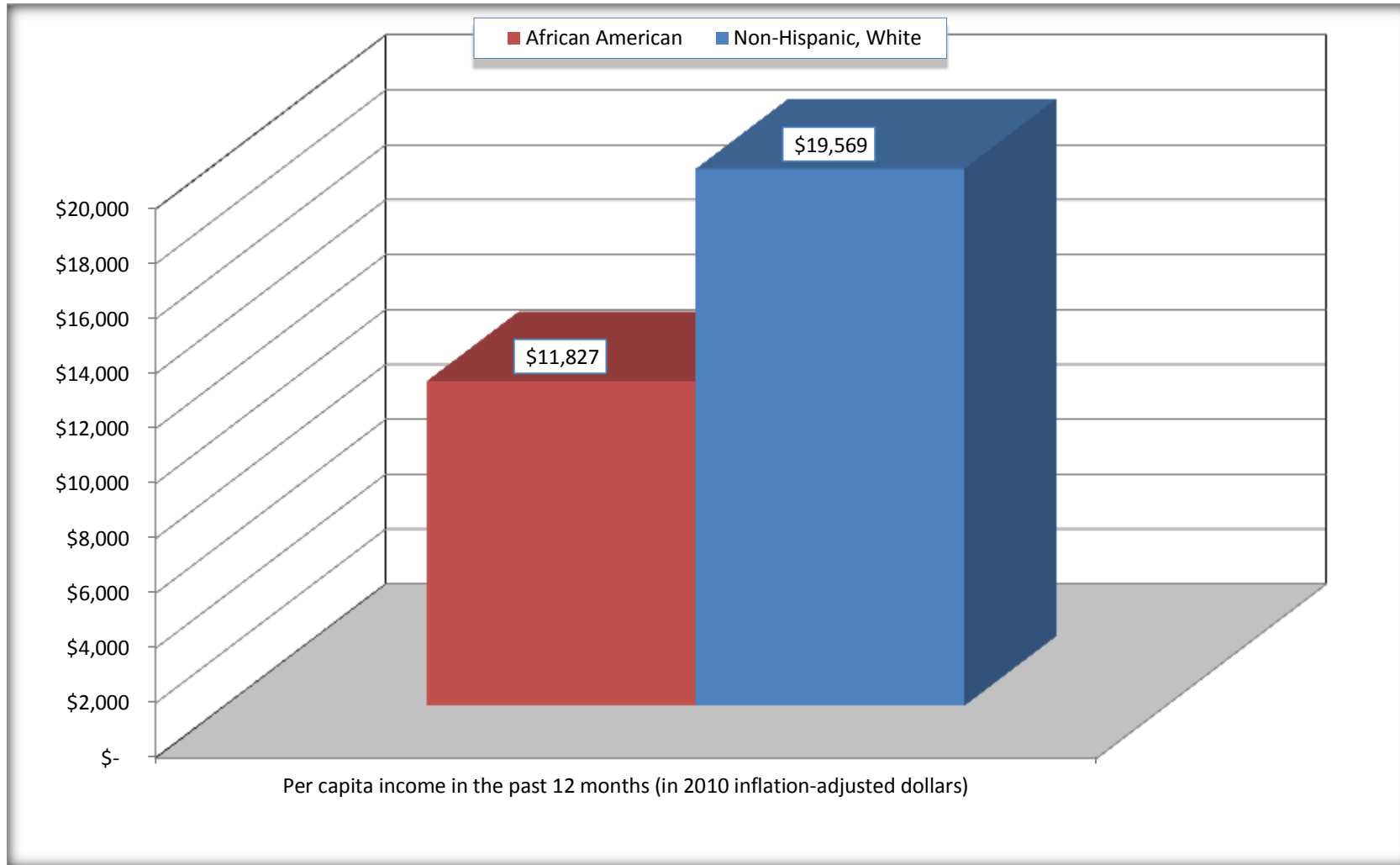
Source: U.S. Census Bureau, 2008-2012 American Community Survey

For information on confidentiality protection, sampling error, nonsampling error, and definitions, see Survey Methodology.

<http://www.census.gov/acs/www/UseData/index.htm>

Per capita Income in the Past 12 Months

Calhoun County, Arkansas



Source: B19301. PER CAPITA INCOME IN THE PAST 12 MONTHS (IN 2010 INFLATION-ADJUSTED DOLLARS)
Data Set: 2008-2012 American Community Survey 5-Year Estimates

B20017. MEDIAN EARNINGS IN THE PAST 12 MONTHS (IN 2010 INFLATION-ADJUSTED DOLLARS) BY SEX BY WORK EXPERIENCE IN THE PAST 12 MONTHS FOR THE POPULATION 16 YEARS AND OVER WITH EARNINGS IN THE PAST 12 MONTHS

Data Set: 2008-2012 American Community Survey 5-Year Estimates

	Calhoun County, Arkansas			
	African American	Margin of Error (+/-)	White, Not Hispanic	Margin of Error (+/-)
Median earnings in the past 12 months (in 2010 inflation-adjusted dollars) --				
Total:	\$ 15,699	\$ 1,714	\$ 25,926	\$ 2,635
Male --				
Total	\$ 13,668	\$ 2,837	\$ 30,765	\$ 3,129
Worked full-time, year-round in the past 12 months	\$ 21,071	\$ 10,479	\$ 34,506	\$ 5,380
Other	\$ 5,139	\$ 2,983	\$ 15,278	\$ 7,204
Female --				
Total	\$ 17,034	\$ 2,035	\$ 21,016	\$ 2,030
Worked full-time, year-round in the past 12 months	\$ 22,321	\$ 5,418	\$ 26,599	\$ 3,304
Other	\$ 5,583	\$ 1,611	\$ 5,475	\$ 2,575

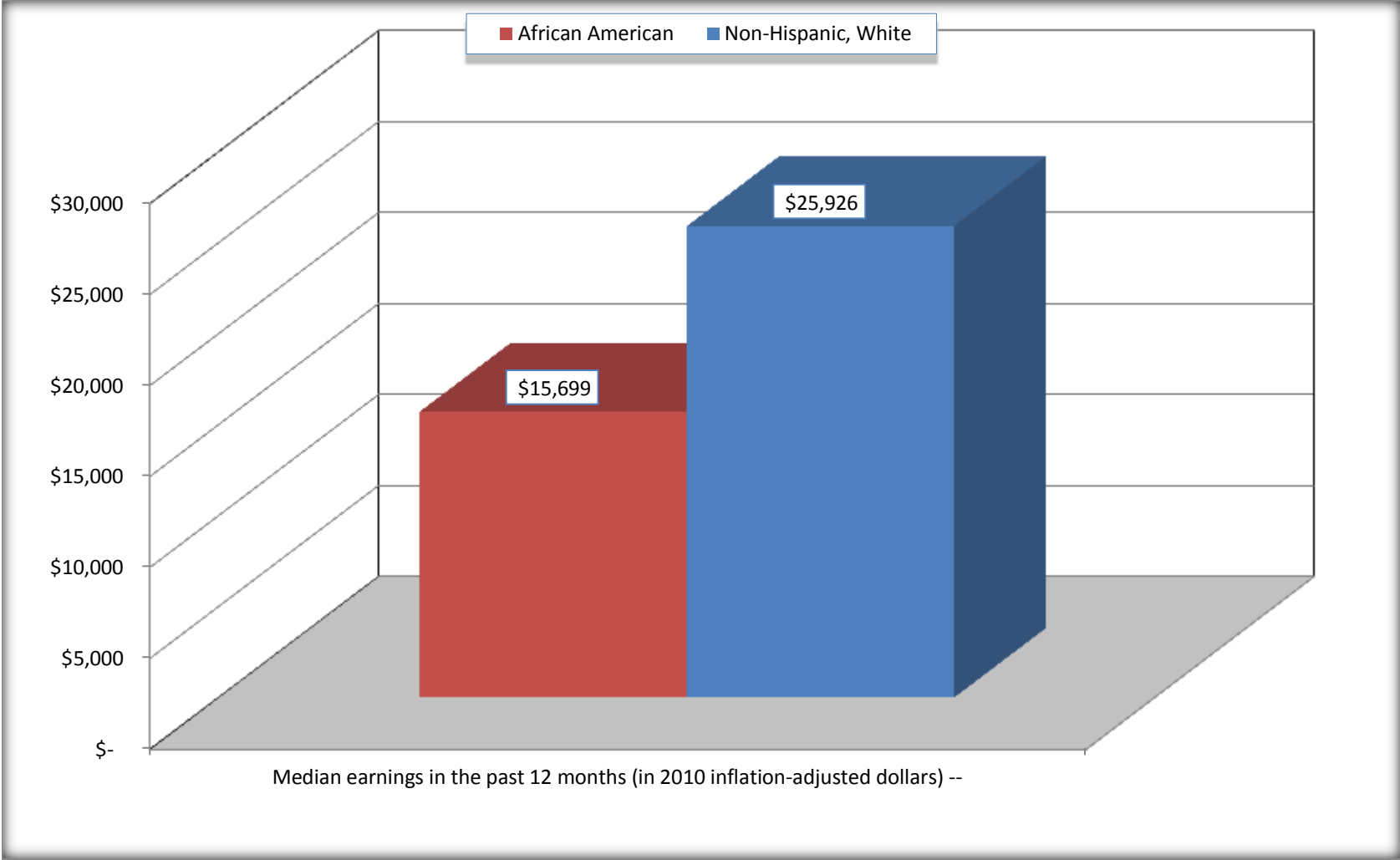
Source: U.S. Census Bureau, 2008-2012 American Community Survey

For information on confidentiality protection, sampling error, nonsampling error, and definitions, see Survey Methodology.

<http://www.census.gov/acs/www/UseData/index.htm>

Median earnings in the Past 12 Months (16 Years and Over with Earnings)

Calhoun County, Arkansas



Source: B20017. MEDIAN EARNINGS IN THE PAST 12 MONTHS (IN 2010 INFLATION-ADJUSTED DOLLARS) BY SEX BY WORK EXPERIENCE IN THE PAST 12 MONTHS FOR THE POPULATION 16 YEARS AND OVER WITH EARNINGS IN THE PAST 12 MONTHS
Data Set: 2008-2012 American Community Survey 5-Year Estimates

B20005. SEX BY WORK EXPERIENCE IN THE PAST 12 MONTHS BY EARNINGS IN THE PAST 12 MONTHS (IN 2010 INFLATION-ADJUSTED DOLLARS) FOR THE POPULATION 16 YEARS AND OVER

Data Set: 2008-2012 American Community Survey 5-Year Estimates

	Calhoun County, Arkansas					
	African American	Margin of Error (+/-)	% of AA Total	White, Not Hispanic	Margin of Error (+/-)	% of NHW Total
Total:	1,053	73	100.0%	3,331	14	100.0%
Worked full-time, year-round in the past 12 months:	306	NC	29.1%	1,382	NC	41.5%
No earnings	0	NC	0.0%	0	NC	0.0%
With earnings:	306	NC	29.1%	1,382	NC	41.5%
\$ 1 to \$ 9,999 or loss	3	NC	0.3%	25	NC	0.8%
\$ 10,000 to \$ 19,999	134	NC	12.7%	215	NC	6.5%
\$ 20,000 to \$ 29,999	93	NC	8.8%	400	NC	12.0%
\$ 30,000 to \$ 49,999	58	NC	5.5%	432	NC	13.0%
\$ 50,000 to \$ 74,999	15	NC	1.4%	226	NC	6.8%
\$ 75,000 or more	3	NC	0.3%	84	NC	2.5%
Other:	747	NC	70.9%	1,949	NC	58.5%
No earnings	488	NC	46.3%	1,330	NC	39.9%
With earnings: less than full time, year-round	259	NC	24.6%	619	NC	18.6%
Male:	562	33	53.4%	1,727	33	51.8%
Worked full-time, year-round in the past 12 months:	164	55	15.6%	827	131	24.8%
No earnings	0	17	0.0%	0	17	0.0%
With earnings:	164	55	15.6%	827	131	24.8%
\$ 1 to \$ 9,999 or loss	3	NC	0.3%	18	NC	0.5%
\$ 10,000 to \$ 19,999	76	NC	7.2%	106	NC	3.2%
\$ 20,000 to \$ 29,999	43	NC	4.1%	157	NC	4.7%
\$ 30,000 to \$ 49,999	36	NC	3.4%	348	NC	10.4%
\$ 50,000 to \$ 74,999	6	NC	0.6%	114	NC	3.4%
\$ 75,000 or more	0	NC	0.0%	84	NC	2.5%

	Calhoun County, Arkansas					
	African American	Margin of Error (+/-)	% of AA Total	White, Not Hispanic	Margin of Error (+/-)	% of NHW Total
Other:	398	51	37.8%	900	141	27.0%
No earnings	267	78	25.4%	618	101	18.6%
With earnings:	131	56	12.4%	282	99	8.5%
Female:	491	71	46.6%	1,604	34	48.2%
Worked full-time, year-round in the past 12 months:	142	52	13.5%	555	87	16.7%
No earnings	0	17	0.0%	0	17	0.0%
With earnings:	142	52	13.5%	555	87	16.7%
\$ 1 to \$ 9,999 or loss	0	NC	0.0%	7	NC	0.2%
\$ 10,000 to \$ 19,999	58	NC	5.5%	109	NC	3.3%
\$ 20,000 to \$ 29,999	50	NC	4.7%	243	NC	7.3%
\$ 30,000 to \$ 49,999	22	NC	2.1%	84	NC	2.5%
\$ 50,000 to \$ 74,999	9	NC	0.9%	112	NC	3.4%
\$ 75,000 or more	3	NC	0.3%	0	NC	0.0%
Other:	349	82	33.1%	1,049	92	31.5%
No earnings	221	69	21.0%	712	87	21.4%
With earnings:	128	62	12.2%	337	79	10.1%

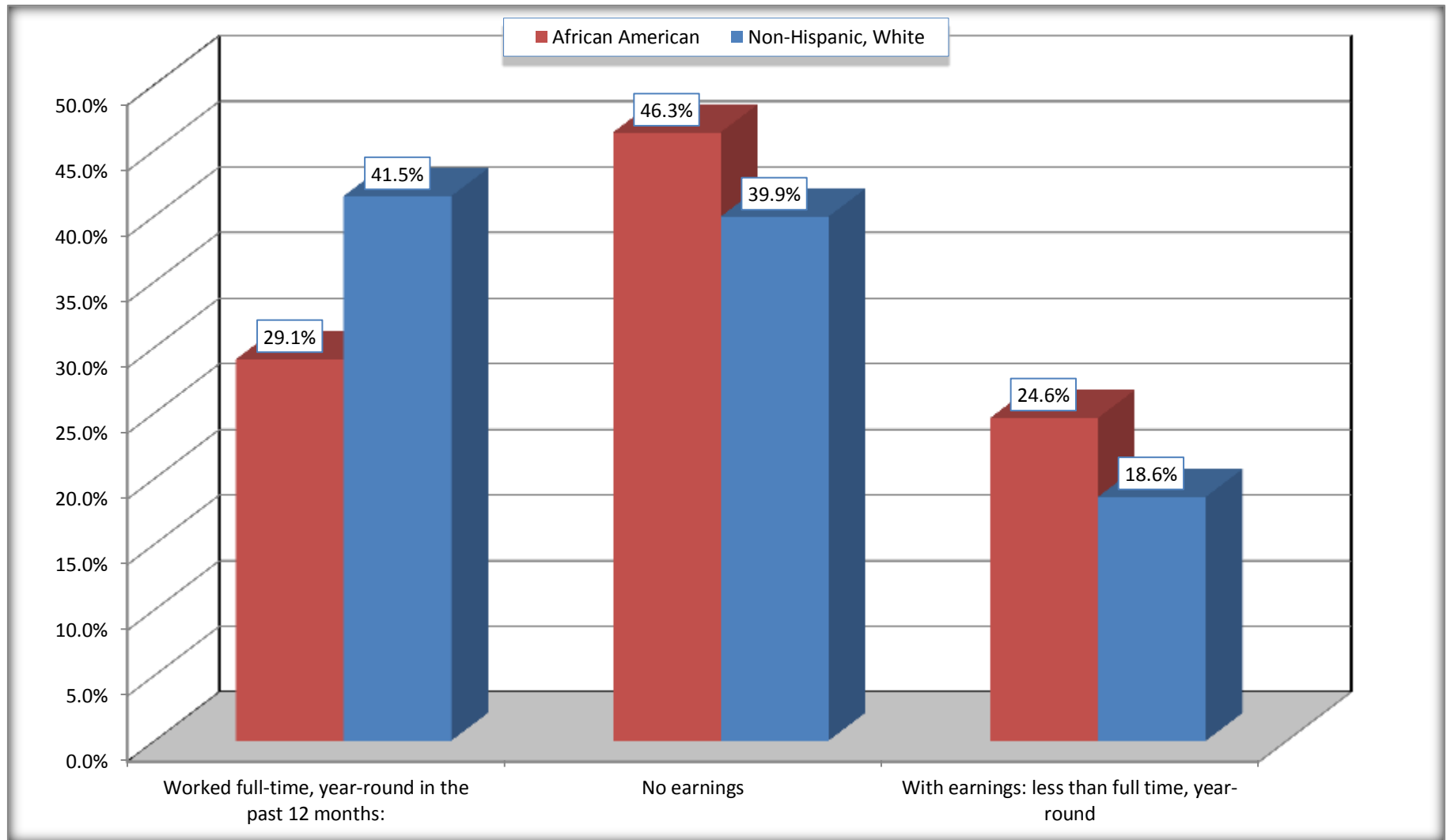
Source: U.S. Census Bureau, 2008-2012 American Community Survey

For information on confidentiality protection, sampling error, nonsampling error, and definitions, see Survey Methodology.

<http://www.census.gov/acs/www/UseData/index.htm>

Employment and Earnings in in the Past 12 Months (16 Years and Over)

Calhoun County, Arkansas



Source: B20005. SEX BY WORK EXPERIENCE IN THE PAST 12 MONTHS BY EARNINGS IN THE PAST 12 MONTHS (IN 2010 INFLATION-ADJUSTED DOLLARS) FOR THE POPULATION 16 YEARS AND OVER

Data Set: 2008-2012 American Community Survey 5-Year Estimates

C21001. SEX BY AGE BY VETERAN STATUS FOR THE CIVILIAN POPULATION 18 YEARS AND OVER

Data Set: 2008-2012 American Community Survey 5-Year Estimates

	Calhoun County, Arkansas					
	African American	Margin of Error (+/-)	% of AA Total	White, Not Hispanic	Margin of Error (+/-)	% of NHW Total
Total:	996	68	100.0%	3,185	17	100.0%
Veteran	67	NC	6.7%	379	NC	11.9%
Nonveteran	929	NC	93.3%	2,806	NC	88.1%
Male:	515	11	51.7%	1,628	17	51.1%
18 to 64 years:	441	11	44.3%	1,293	17	40.6%
Veteran	44	29	4.4%	198	59	6.2%
Nonveteran	397	32	39.9%	1,095	59	34.4%
65 years and over:	74	17	7.4%	335	17	10.5%
Veteran	23	18	2.3%	174	36	5.5%
Nonveteran	51	18	5.1%	161	36	5.1%
Female:	481	68	48.3%	1,557	17	48.9%
18 to 64 years:	382	49	38.4%	1,131	17	35.5%
Veteran	0	17	0.0%	7	12	0.2%
Nonveteran	382	49	38.4%	1,124	12	35.3%
65 years and over:	99	23	9.9%	426	17	13.4%
Veteran	0	17	0.0%	0	17	0.0%
Nonveteran	99	23	9.9%	426	17	13.4%

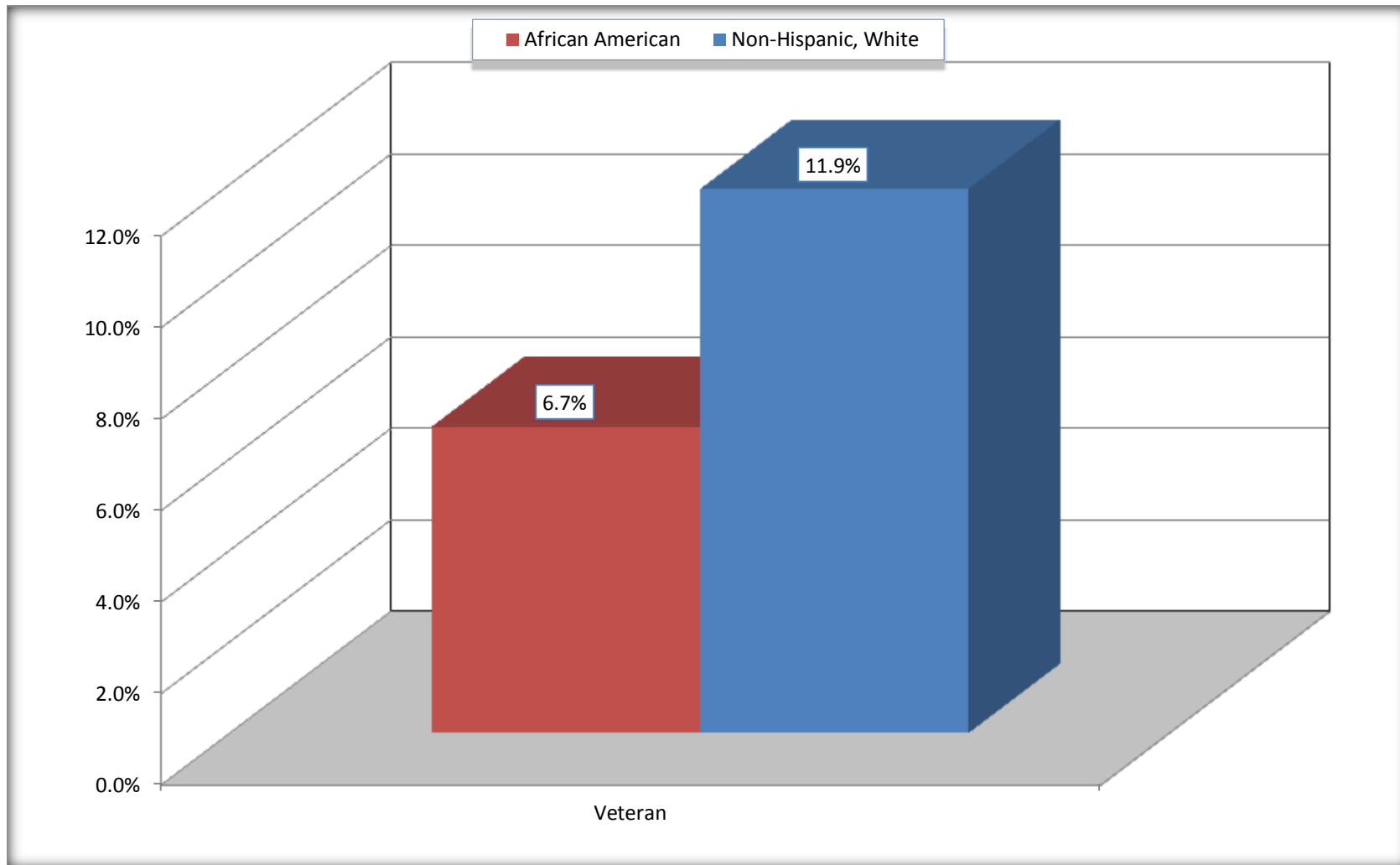
Source: U.S. Census Bureau, 2008-2012 American Community Survey

For information on confidentiality protection, sampling error, nonsampling error, and definitions, see Survey Methodology.

<http://www.census.gov/acs/www/UseData/index.htm>

Veterans in the Civilian Population 18 Years and Over

Calhoun County, Arkansas



Source: C21001. SEX BY AGE BY VETERAN STATUS FOR THE CIVILIAN POPULATION 18 YEARS AND OVER
Data Set: 2008-2012 American Community Survey 5-Year Estimates

B22005. RECEIPT OF FOOD STAMPS/SNAP IN THE PAST 12 MONTHS BY RACE OF HOUSEHOLDER

Data Set: 2008-2012 American Community Survey 5-Year Estimates

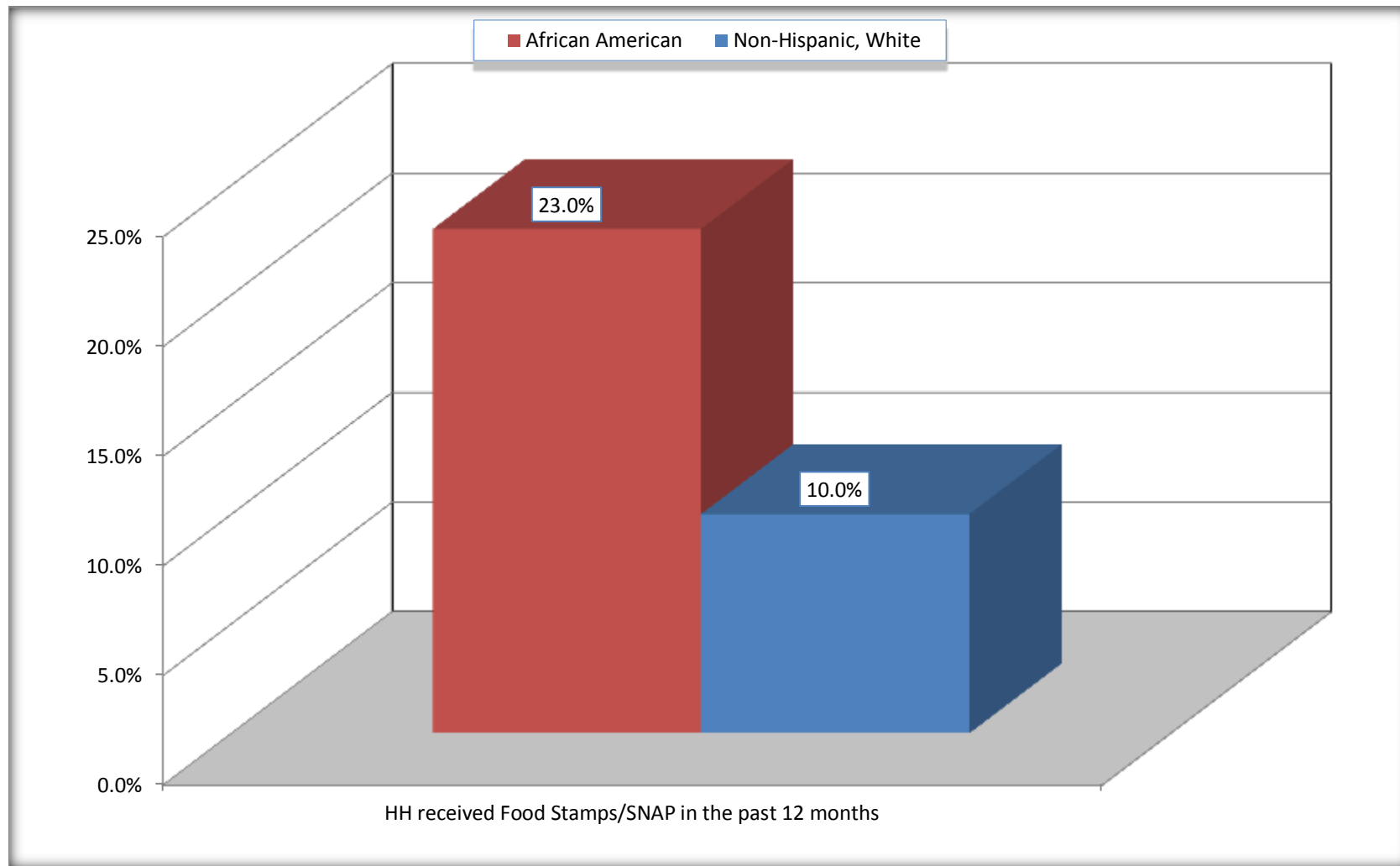
	Calhoun County, Arkansas					
	African American	Margin of Error (+/-)	% of AA Total	White, Not Hispanic	Margin of Error (+/-)	% of NHW Total
Total:	453	92	100.0%	1,591	103	100.0%
HH received Food Stamps/SNAP in the past 12 months	104	41	23.0%	159	66	10.0%
HH did not receive Food Stamps/SNAP in the past 12 months	349	81	77.0%	1,432	115	90.0%

Source: U.S. Census Bureau, 2008-2012 American Community Survey

For information on confidentiality protection, sampling error, nonsampling error, and definitions, see Survey Methodology.

<http://www.census.gov/acs/www/UseData/index.htm>

Receipt of Food Stamps/SNAP in the Past 12 Months by Household Calhoun County, Arkansas



Source: B22005. RECEIPT OF FOOD STAMPS/SNAP IN THE PAST 12 MONTHS BY RACE OF HOUSEHOLDER
Data Set: 2008-2012 American Community Survey 5-Year Estimates

C23002. SEX BY AGE BY EMPLOYMENT STATUS FOR THE POPULATION 16 YEARS AND OVER

Data Set: 2008-2012 American Community Survey 5-Year Estimates

	Calhoun County, Arkansas					
	African American	Margin of Error (+/-)	% of AA Total	White, Not Hispanic	Margin of Error (+/-)	% of NHW Total
Total:	1,053	73	100.0%	3,331	14	100.0%
In labor force:	519	NC	49.3%	1,917	NC	57.6%
In Armed Forces	0	NC	0.0%	0	NC	0.0%
Civilian:	506	NC	48.1%	1,865	NC	56.0%
Employed	446	NC	42.4%	1,798	NC	54.0%
Unemployed	73	NC	6.9%	119	NC	3.6%
Not in labor force	534	NC	50.7%	1,414	NC	42.4%
Male:	562	33	53.4%	1,727	33	51.8%
16 to 64 years:	488	33	46.3%	1,392	33	41.8%
In labor force:	257	75	24.4%	1,057	97	31.7%
In Armed Forces	0	17	0.0%	0	17	0.0%
Civilian:	257	75	24.4%	1,057	97	31.7%
Employed	221	72	21.0%	1,008	100	30.3%
Unemployed	36	32	3.4%	49	42	1.5%
Not in labor force	231	83	21.9%	335	105	10.1%
65 years and over:	74	17	7.0%	335	17	10.1%
In labor force:	13	17	1.2%	18	18	0.5%
Employed	13	17	1.2%	18	18	0.5%
Unemployed	0	17	0.0%	0	17	0.0%
Not in labor force	61	17	5.8%	317	18	9.5%

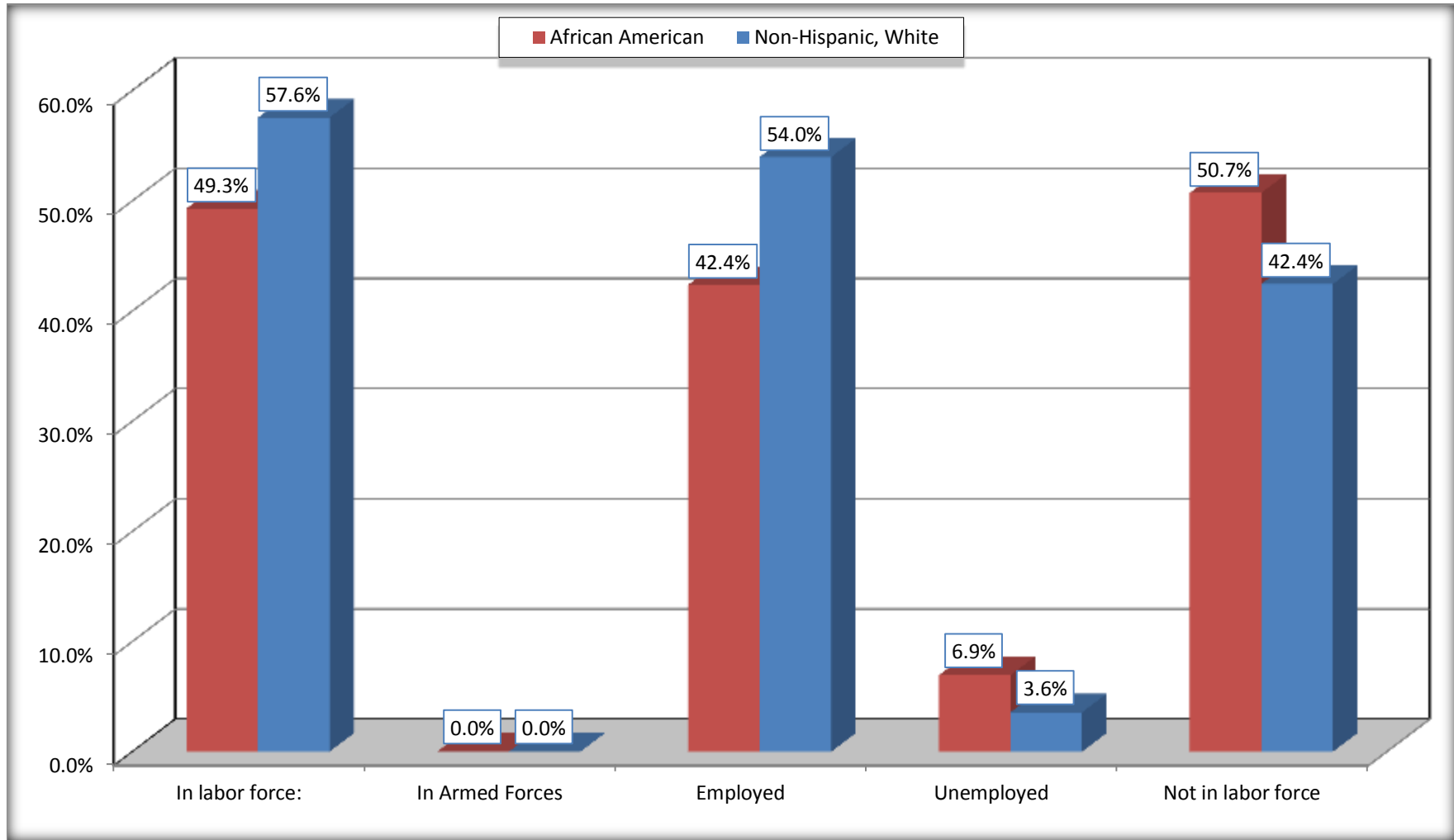
	Calhoun County, Arkansas					
	African American	Margin of Error (+/-)	% of AA Total	White, Not Hispanic	Margin of Error (+/-)	% of NHW Total
Female:	491	71	46.6%	1,604	34	48.2%
16 to 64 years:	392	52	37.2%	1,178	34	35.4%
In labor force:	249	56	23.6%	808	83	24.3%
In Armed Forces	0	17	0.0%	0	17	0.0%
Civilian:	249	56	23.6%	808	83	24.3%
Employed	212	49	20.1%	738	99	22.2%
Unemployed	37	41	3.5%	70	52	2.1%
Not in labor force	143	59	13.6%	370	95	11.1%
65 years and over:	99	23	9.4%	426	17	12.8%
In labor force:	0	17	0.0%	34	24	1.0%
Employed	0	17	0.0%	34	24	1.0%
Unemployed	0	17	0.0%	0	17	0.0%
Not in labor force	99	23	9.4%	392	24	11.8%

Source: U.S. Census Bureau, 2008-2012 American Community Survey

For information on confidentiality protection, sampling error, nonsampling error, and definitions, see Survey Methodology.
<http://www.census.gov/acs/www/UseData/index.htm>

Employment Status for the Population 16 years and over

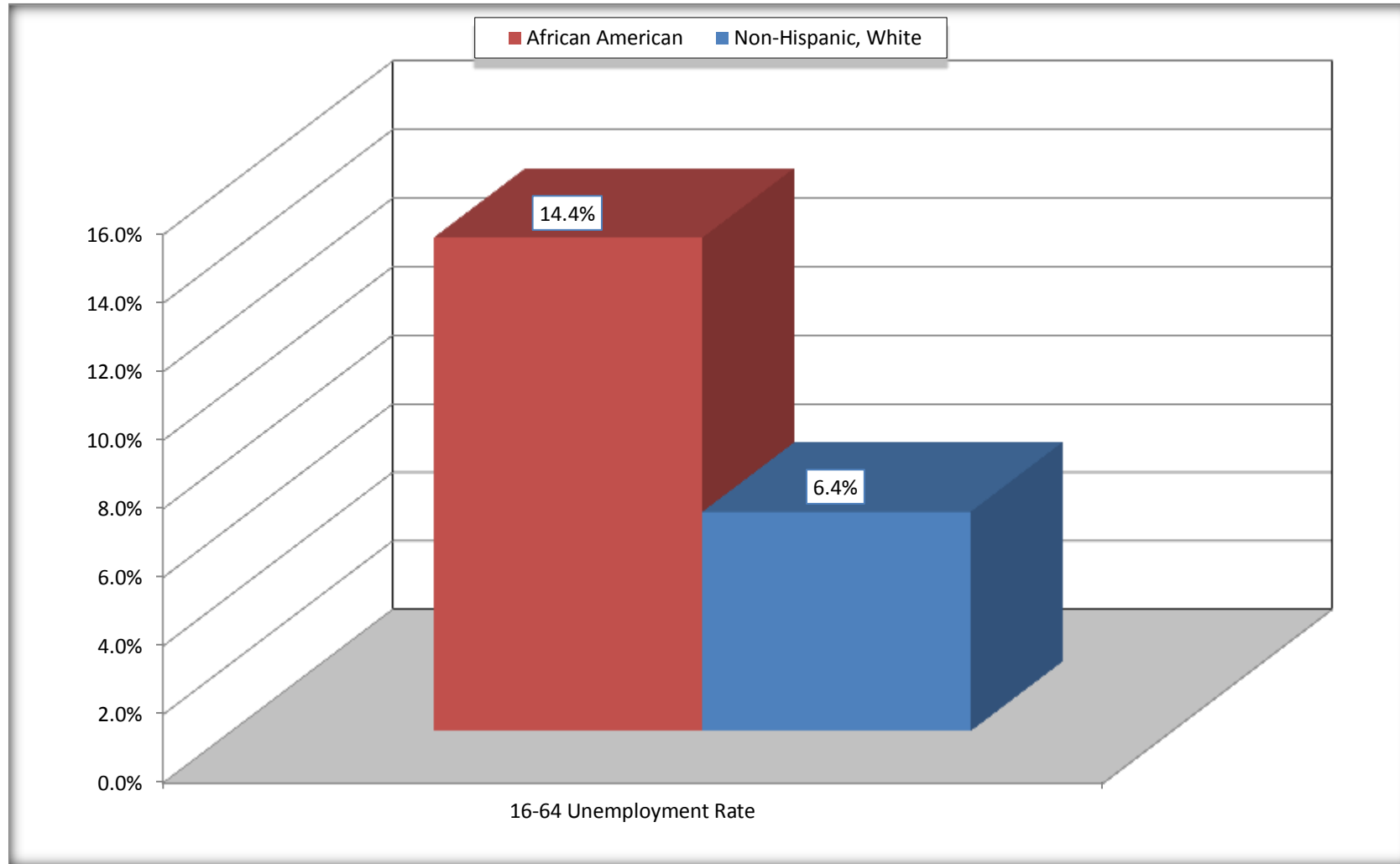
Calhoun County, Arkansas



Source: C23002. SEX BY AGE BY EMPLOYMENT STATUS FOR THE POPULATION 16 YEARS AND OVER
Data Set: 2008-2012 American Community Survey 5-Year Estimates

Unemployment of Working Age Population (Ages 16 to 64) (As a Percent of 16-64 Civilian Labor Force)

Calhoun County, Arkansas



Source: C23002. SEX BY AGE BY EMPLOYMENT STATUS FOR THE POPULATION 16 YEARS AND OVER
Data Set: 2008-2012 American Community Survey 5-Year Estimates

C24010. SEX BY OCCUPATION FOR THE CIVILIAN EMPLOYED POPULATION 16 YEARS AND OVER

Data Set: 2008-2012 American Community Survey 5-Year Estimates

	Calhoun County, Arkansas					
	African American	Margin of Error (+/-)	% of AA Total	White, Not Hispanic	Margin of Error (+/-)	% of NHW Total
Total:	446	88	100.0%	1,798	144	100.0%
Management, professional, and related occupations	32	NC	7.2%	418	NC	23.2%
Service occupations	113	NC	25.3%	191	NC	10.6%
Sales and office occupations	20	NC	4.5%	356	NC	19.8%
Natural resources, construction, and maintenance occupations:	48	NC	10.8%	418	NC	23.2%
Production, transportation, and material moving occupations	233	NC	52.2%	415	NC	23.1%
Male:	234	71	52.5%	1,026	100	57.1%
Management, business, science, and arts occupations:	4	6	0.9%	203	75	11.3%
Service occupations	69	50	15.5%	59	59	3.3%
Sales and office occupations	0	17	0.0%	29	28	1.6%
Natural resources, construction, and maintenance occupations:	48	44	10.8%	410	111	22.8%
Production, transportation, and material moving occupations	113	59	25.3%	325	81	18.1%
Female:	212	49	47.5%	772	105	42.9%
Management, professional, and related occupations	28	24	6.3%	215	77	12.0%
Service occupations	44	31	9.9%	132	59	7.3%
Sales and office occupations	20	20	4.5%	327	89	18.2%
Natural resources, construction, and maintenance occupations:	0	17	0.0%	8	15	0.4%
Production, transportation, and material moving occupations	120	45	26.9%	90	54	5.0%

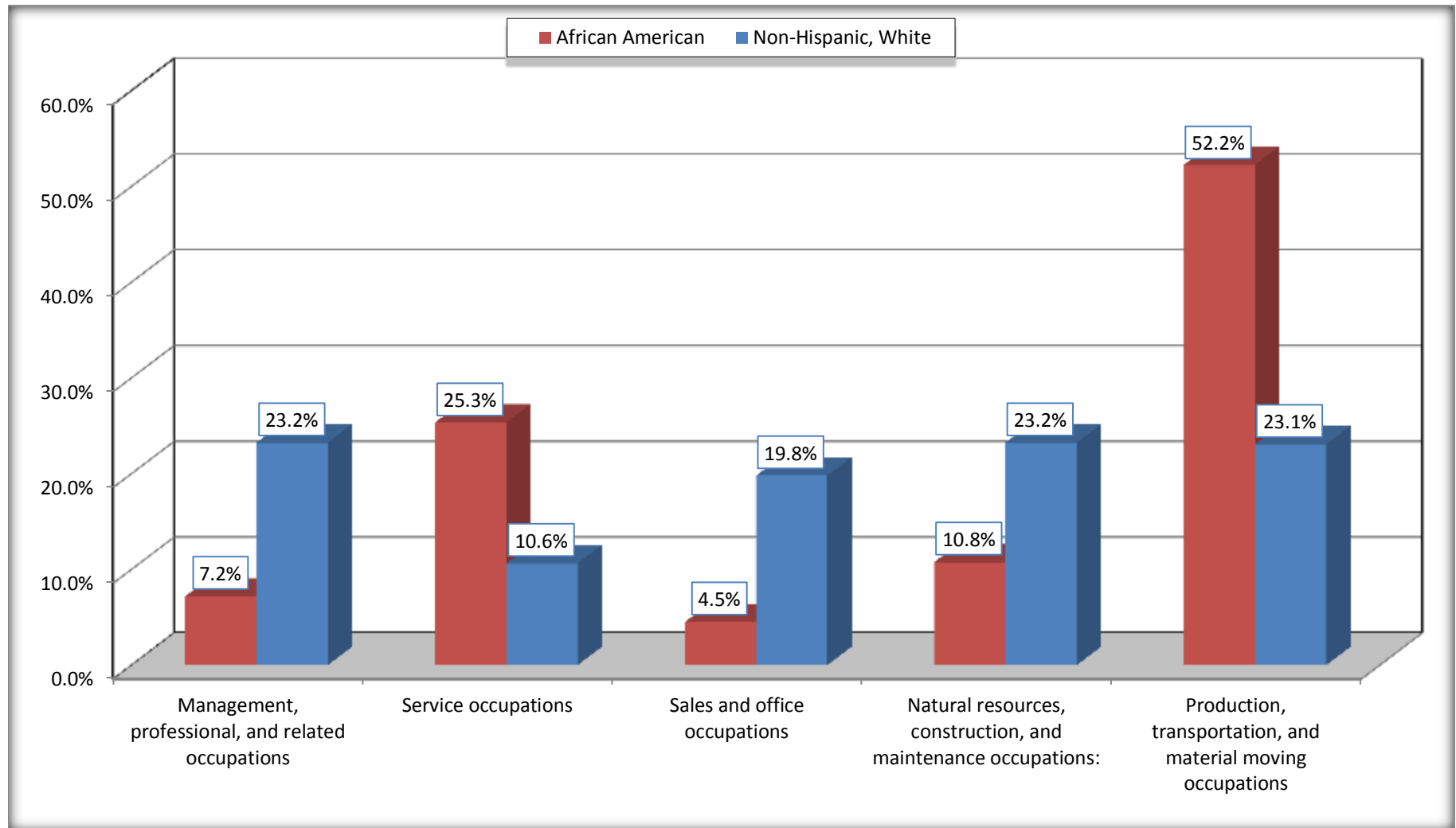
Source: U.S. Census Bureau, 2008-2012 American Community Survey

For information on confidentiality protection, sampling error, nonsampling error, and definitions, see Survey Methodology.

<http://www.census.gov/acs/www/UseData/index.htm>

Occupation for the Civilian Employed 16 Years and Over Population

Calhoun County, Arkansas



Source: C24010. SEX BY OCCUPATION FOR THE CIVILIAN EMPLOYED POPULATION 16 YEARS AND OVER
Data Set: 2008-2012 American Community Survey 5-Year Estimates

B25003. TENURE - Universe: OCCUPIED HOUSING UNITS

Data Set: 2008-2012 American Community Survey 5-Year Estimates

	Calhoun County, Arkansas					
	African American	Margin of Error (+/-)	% of AA Total	White, Not Hispanic	Margin of Error (+/-)	% of NHW Total
Total:	453	92	100.0%	1,591	103	100.0%
Owner occupied	336	68	74.2%	1,301	108	81.8%
Renter occupied	117	56	25.8%	290	82	18.2%

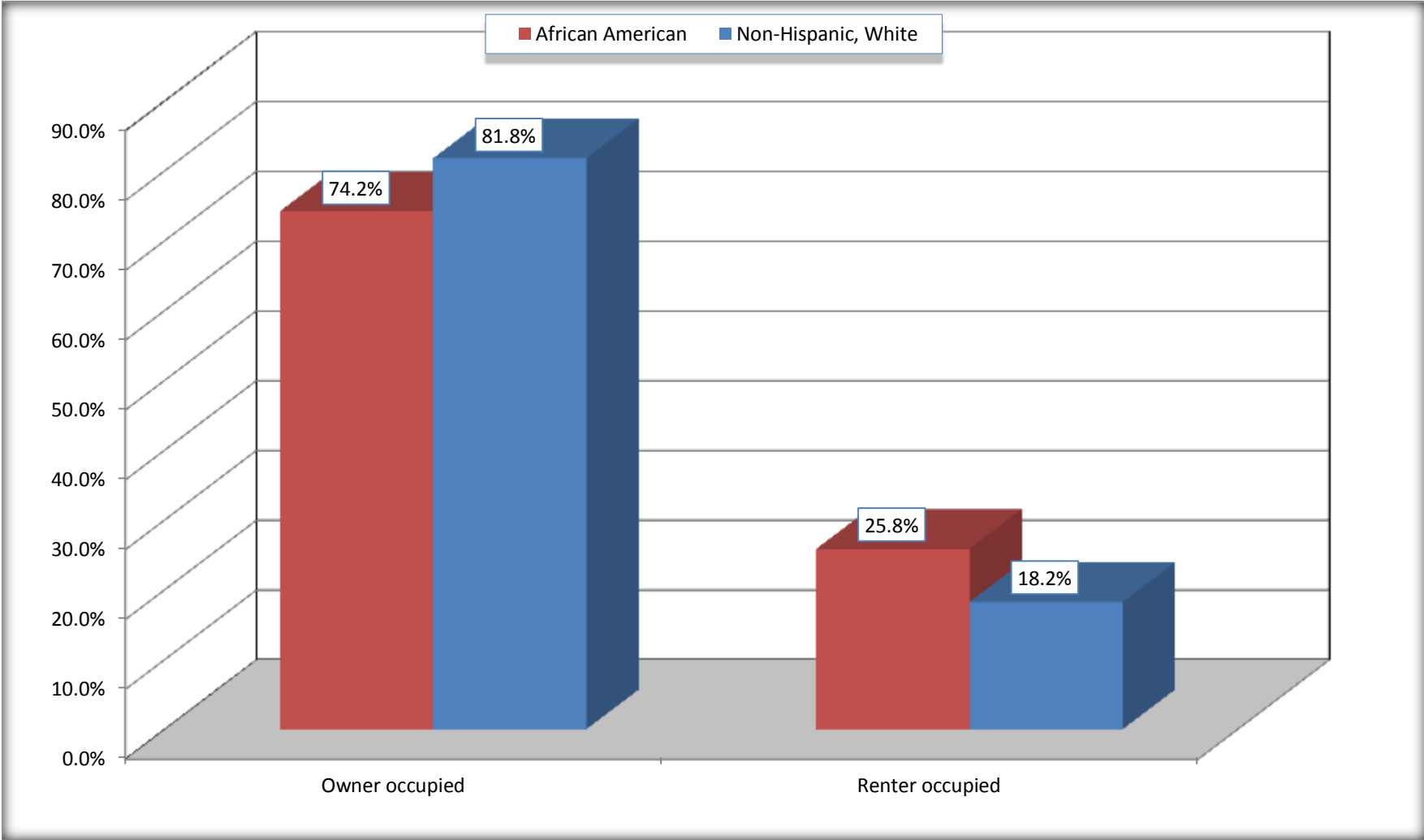
Source: U.S. Census Bureau, 2008-2012 American Community Survey

For information on confidentiality protection, sampling error, nonsampling error, and definitions, see Survey Methodology.

<http://www.census.gov/acs/www/UseData/index.h>

Home Owners and Renters by Household

Calhoun County, Arkansas



Source: B25003. TENURE - Universe: OCCUPIED HOUSING UNITS
Data Set: 2008-2012 American Community Survey 5-Year Estimates

B25014. OCCUPANTS PER ROOM - Universe: OCCUPIED HOUSING UNITS

Data Set: 2008-2012 American Community Survey 5-Year Estimates

	Calhoun County, Arkansas					
	African American	Margin of Error (+/-)	% of AA Total	White, Not Hispanic	Margin of Error (+/-)	% of NHW Total
Total:	453	92	100.0%	1,591	103	100.0%
1.00 or less occupants per room	453	92	100.0%	1,589	101	99.9%
1.01 or more occupants per room	0	17	0.0%	2	4	0.1%

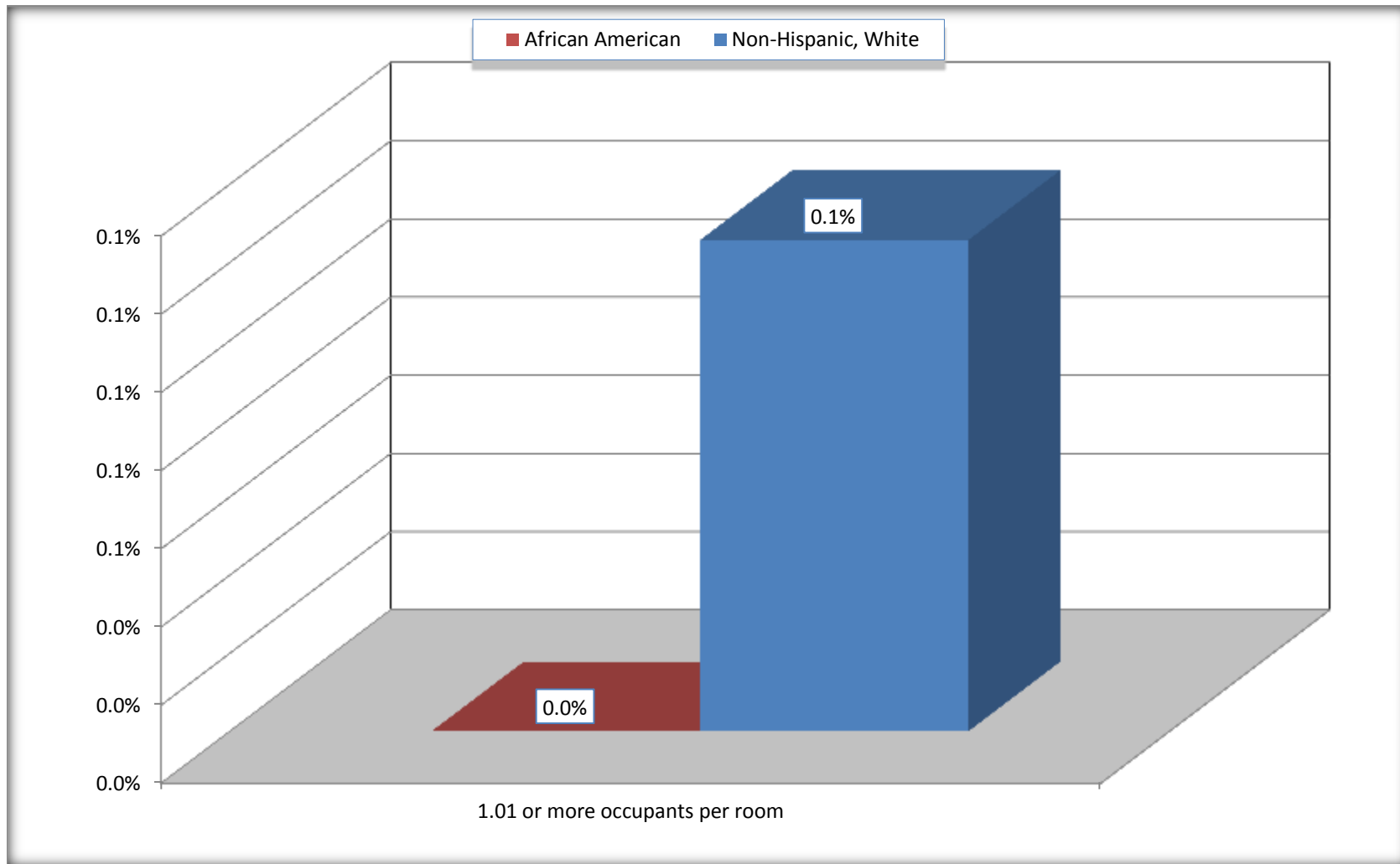
Source: U.S. Census Bureau, 2008-2012 American Community Survey

For information on confidentiality protection, sampling error, nonsampling error, and definitions, see Survey Methodology.

<http://www.census.gov/acs/www/UseData/index.ht>

More than One Person per Room (Crowding) by Household

Calhoun County, Arkansas



Source: B25014. OCCUPANTS PER ROOM - Universe: OCCUPIED HOUSING UNITS
Data Set: 2008-2012 American Community Survey 5-Year Estimates

B18101. AGE BY DISABILITY STATUS

Data Set: 2008-2012 American Community Survey 5-Year Estimates

	Calhoun County, Arkansas					
	African American	Margin of Error (+/-)	% of AA Total	White, Not Hispanic	Margin of Error (+/-)	% of NHW Total
Total:	1,286	92	100.0%	3,898	42	100.0%
Under 18 years:	311	52	24.2%	747	31	19.2%
With a disability	3	5	0.2%	8	11	0.2%
No disability	308	53	24.0%	739	11	19.0%
18 to 64 years:	802	53	62.4%	2,408	18	61.8%
With a disability	213	64	16.6%	529	137	13.6%
No disability	589	68	45.8%	1,879	137	48.2%
65 years and over:	173	23	13.5%	743	39	19.1%
With a disability	133	30	10.3%	475	63	12.2%
No disability	40	24	3.1%	268	59	6.9%

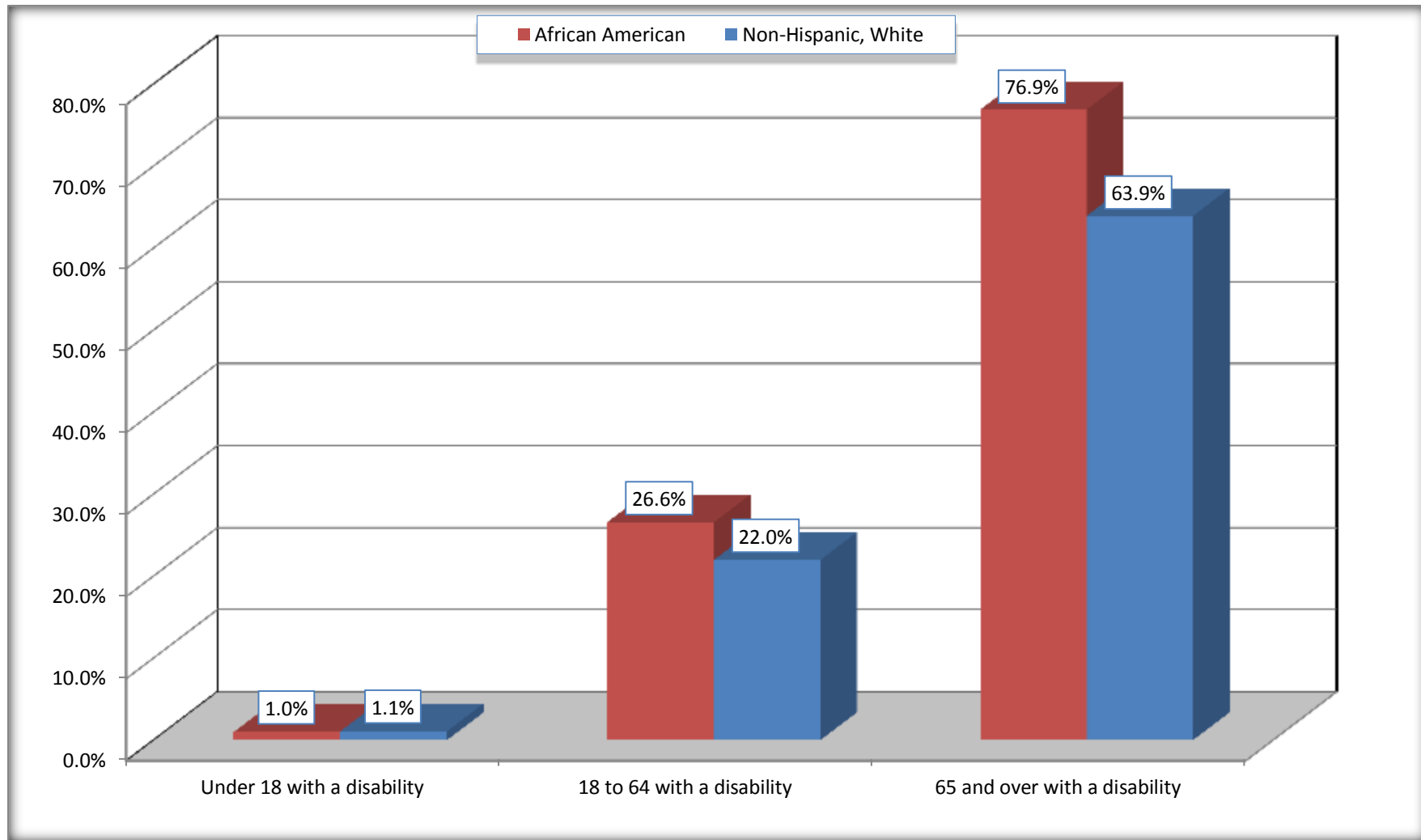
Source: U.S. Census Bureau, 2008-2012 American Community Survey

For information on confidentiality protection, sampling error, nonsampling error, and definitions, see Survey Methodology.

<http://www.census.gov/acs/www/UseData/index.htm>

Disability by Age

Calhoun County, Arkansas



Source: B18101. AGE BY DISABILITY STATUS
Data Set: 2008-2012 American Community Survey 5-Year Estimates

C27001B. HEALTH INSURANCE COVERAGE STATUS BY AGE

Data Set: 2008-2012 American Community Survey 5-Year Estimates

	Calhoun County, Arkansas					
	African American	Margin of Error (+/-)	% of AA Total	White, Not Hispanic	Margin of Error (+/-)	% of NHW Total
Total:	1,286	92	100.0%	3,898	42	100.0%
Under 18 years:	311	52	24.2%	747	17	19.2%
With health insurance coverage	253	43	19.7%	717	30	18.4%
No health insurance coverage	58	41	4.5%	30	30	0.8%
18 to 64 years:	802	53	62.4%	2,408	18	61.8%
With health insurance coverage	478	84	37.2%	1,923	121	49.3%
No health insurance coverage	324	86	25.2%	485	118	12.4%
65 years and over:	173	23	13.5%	743	39	19.1%
With health insurance coverage	173	23	13.5%	743	39	19.1%
No health insurance coverage	0	17	0.0%	0	17	0.0%

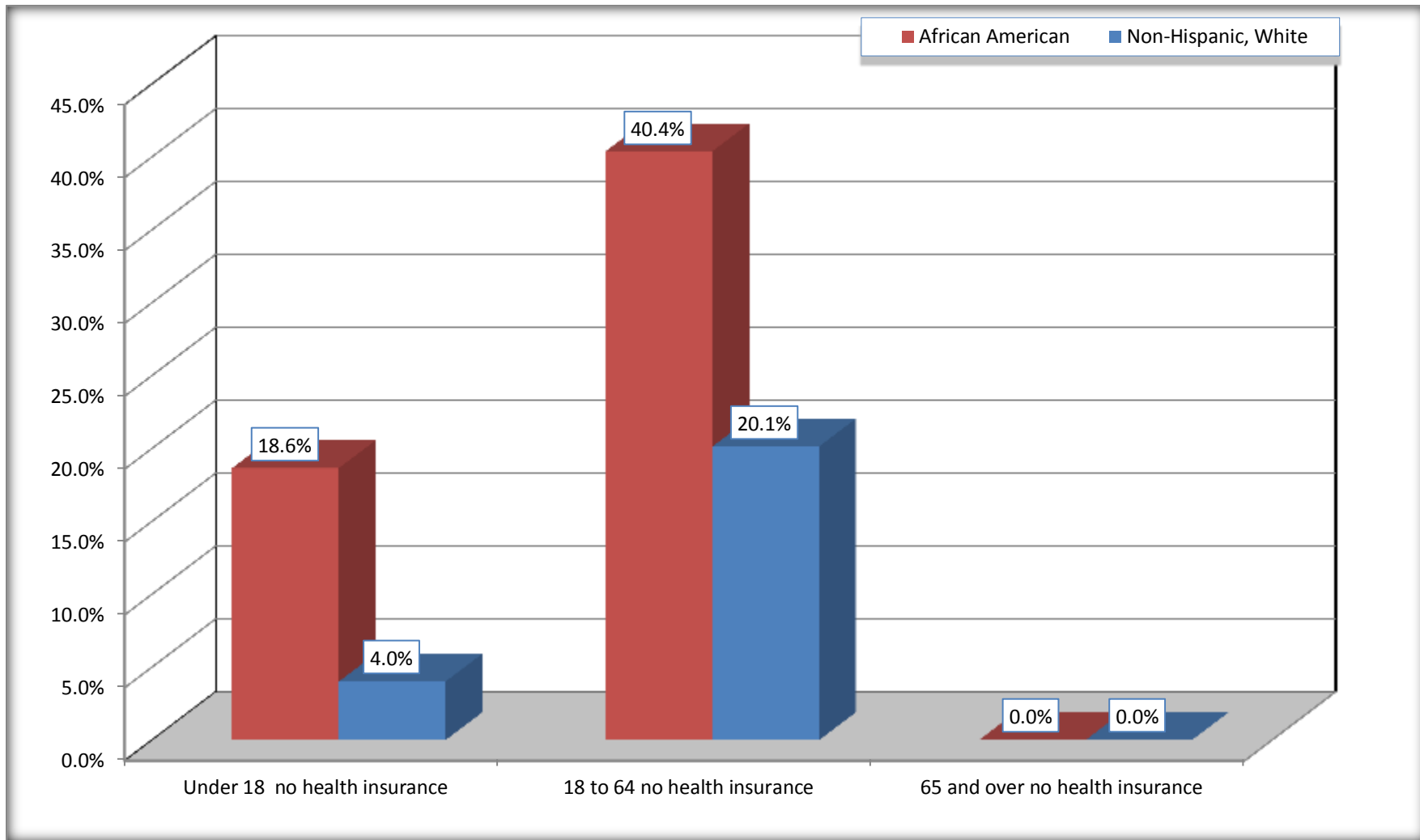
Source: U.S. Census Bureau, 2008-2012 American Community Survey

For information on confidentiality protection, sampling error, nonsampling error, and definitions, see Survey Methodology.

<http://www.census.gov/acs/www/UseData/index.htm>

Lack of Health Insurance Coverage by Age

Calhoun County, Arkansas



Source: C27001B. HEALTH INSURANCE COVERAGE STATUS BY AGE
Data Set: 2008-2012 American Community Survey 5-Year Estimates