

Selected Socio-Economic Data

Roanoke city, Alabama

African American and White, Not Hispanic

Data Set: 2008-2012 American Community Survey 5-Year Estimates

www.fairvote2020.org

www.fairdata2000.com

[29-Dec-13](#)

C02003.DETAILED RACE - Universe: TOTAL POPULATION

Data Set: 2008-2012 American Community Survey 5-Year Estimates

	Roanoke city, Alabama		
	Population	Margin of Error (+/-)	% of Total
Total:	6,075	50	100.0%
Population of one race:	5,949	157	97.9%
White	3,292	357	54.2%
Black or African American	2,657	365	43.7%
American Indian and Alaska Native	0	17	0.0%
Asian alone	0	17	0.0%
Native Hawaiian and Other Pacific Islander	0	17	0.0%
Some other race	0	17	0.0%
Population of two or more races:	126	142	2.1%
Two races including Some other race	0	17	0.0%
Two races excluding Some other race, and three or more races	126	142	2.1%
Population of two races:	126	142	2.1%
White; Black or African American	28	41	0.5%
White; American Indian and Alaska Native	0	17	0.0%
White; Asian	0	17	0.0%
Black or African American; American Indian and Alaska Native	98	136	1.6%
All other two race combinations	0	17	0.0%
Population of three races	0	17	0.0%
Population of four or more races	0	17	0.0%

Note: Hispanics may be of any race. See Table B03002 and chart.

Source: U.S. Census Bureau, 2008-2012 American Community Survey

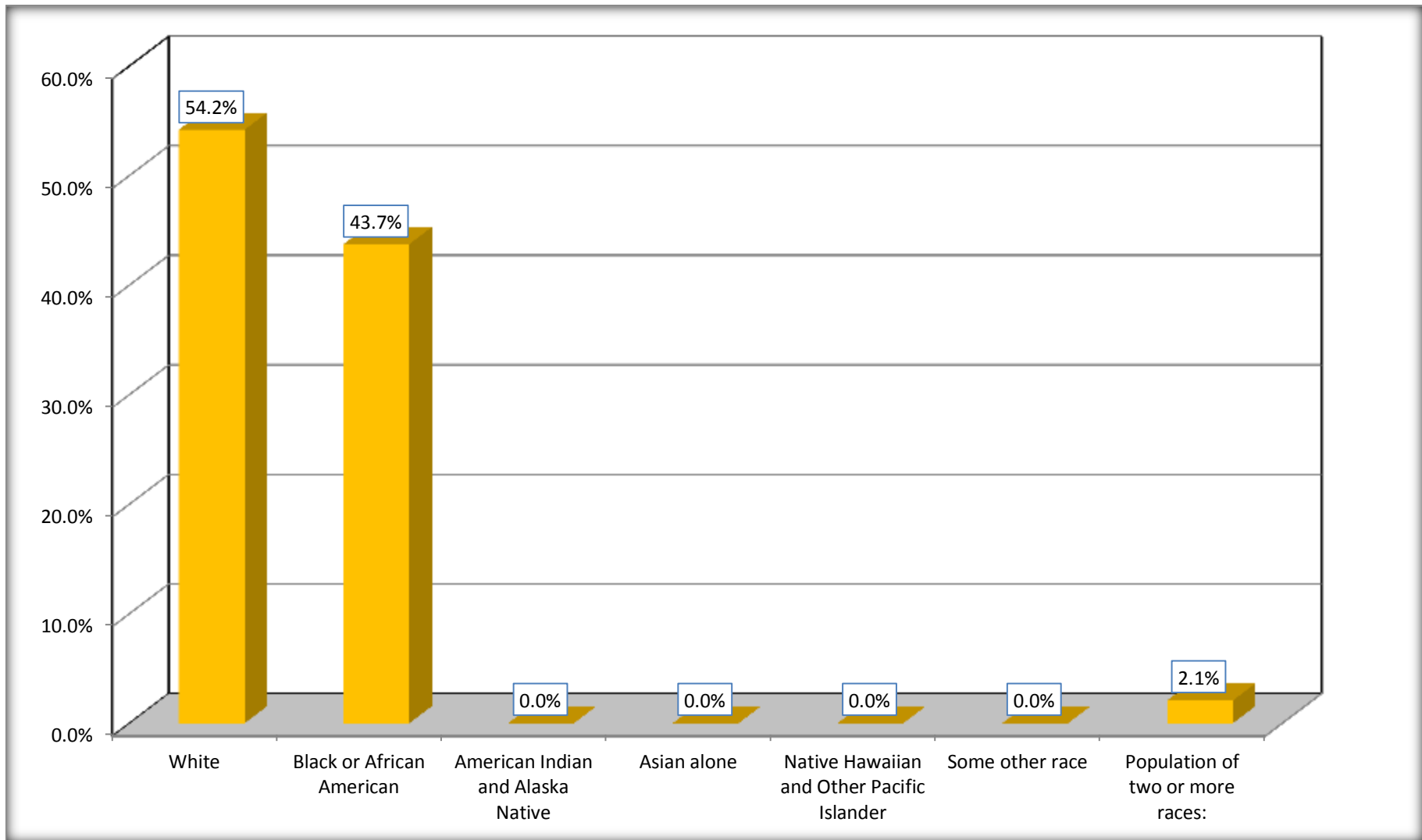
Although the American Community Survey (ACS) produces population, demographic and housing unit estimates, it is the Census Bureau's Population Estimates Program that produces and disseminates the official estimates of the population for the nation, states, counties, cities and towns and estimates of housing units for states and counties.

For information on confidentiality protection, sampling error, nonsampling error, and definitions, see Survey Methodology.

<http://www.census.gov/acs/www/UseData/index.htm>

Population by Race

Roanoke city, Alabama



Source: C02003.DETAILED RACE - Universe: TOTAL POPULATION
Data Set: 2008-2012 American Community Survey 5-Year Estimates

B03002. HISPANIC OR LATINO ORIGIN BY RACE - Universe: TOTAL POPULATION

Data Set: 2008-2012 American Community Survey 5-Year Estimates

	Roanoke city, Alabama		
	Population	Margin of Error (+/-)	% of Total
Total:	6,075	50	100.0%
Not Hispanic or Latino:	5,958	138	98.1%
White alone	3,228	373	53.1%
Black or African American alone	2,604	360	42.9%
American Indian and Alaska Native alone	0	17	0.0%
Asian alone	0	17	0.0%
Native Hawaiian and Other Pacific Islander alone	0	17	0.0%
Some other race alone	0	17	0.0%
Two or more races:	126	142	2.1%
Two races including Some other race	0	17	0.0%
Two races excluding Some other race, and three or more races	126	142	2.1%
Hispanic or Latino	117	132	1.9%

Source: U.S. Census Bureau, 2008-2012 American Community Survey

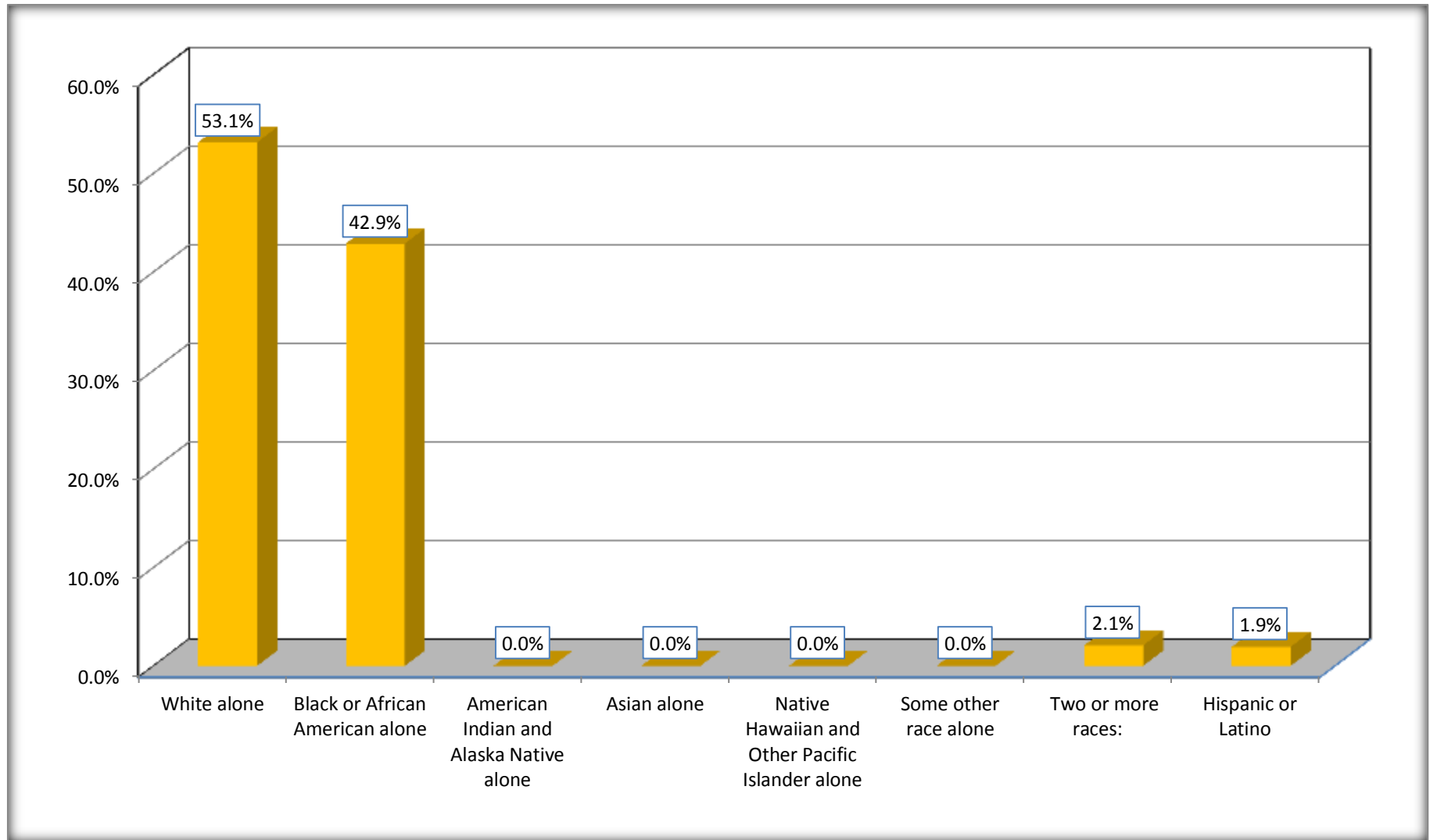
Although the American Community Survey (ACS) produces population, demographic and housing unit estimates, it is the Census Bureau's Population Estimates Program that produces and disseminates the official estimates of the population for the nation, states, counties, cities and towns and estimates of housing units for states and counties.

For information on confidentiality protection, sampling error, nonsampling error, and definitions, see Survey Methodology.

<http://www.census.gov/acs/www/UseData/index.htm>

Non-Hispanic by Race and Hispanic Population

Roanoke city, Alabama



Source: B03002. HISPANIC OR LATINO ORIGIN BY RACE - Universe: TOTAL POPULATION
Data Set: 2008-2012 American Community Survey 5-Year Estimates

B03002. HISPANIC OR LATINO ORIGIN BY RACE

Data Set: 2008-2012 American Community Survey 5-Year Estimates

	Roanoke city, Alabama		
	Population	Margin of Error (+/-)	% of Total
Hispanic or Latino:	117	132	100.0%
White alone	64	109	54.7%
Black or African American alone	53	87	45.3%
American Indian and Alaska Native alone	0	17	0.0%
Asian alone	0	17	0.0%
Native Hawaiian and Other Pacific Islander alone	0	17	0.0%
Some other race alone	0	17	0.0%
Two or more races:	0	17	0.0%
Two races including Some other race	0	17	0.0%
Two races excluding Some other race, and three or more races	0	17	0.0%

Source: U.S. Census Bureau, 2008-2012 American Community Survey

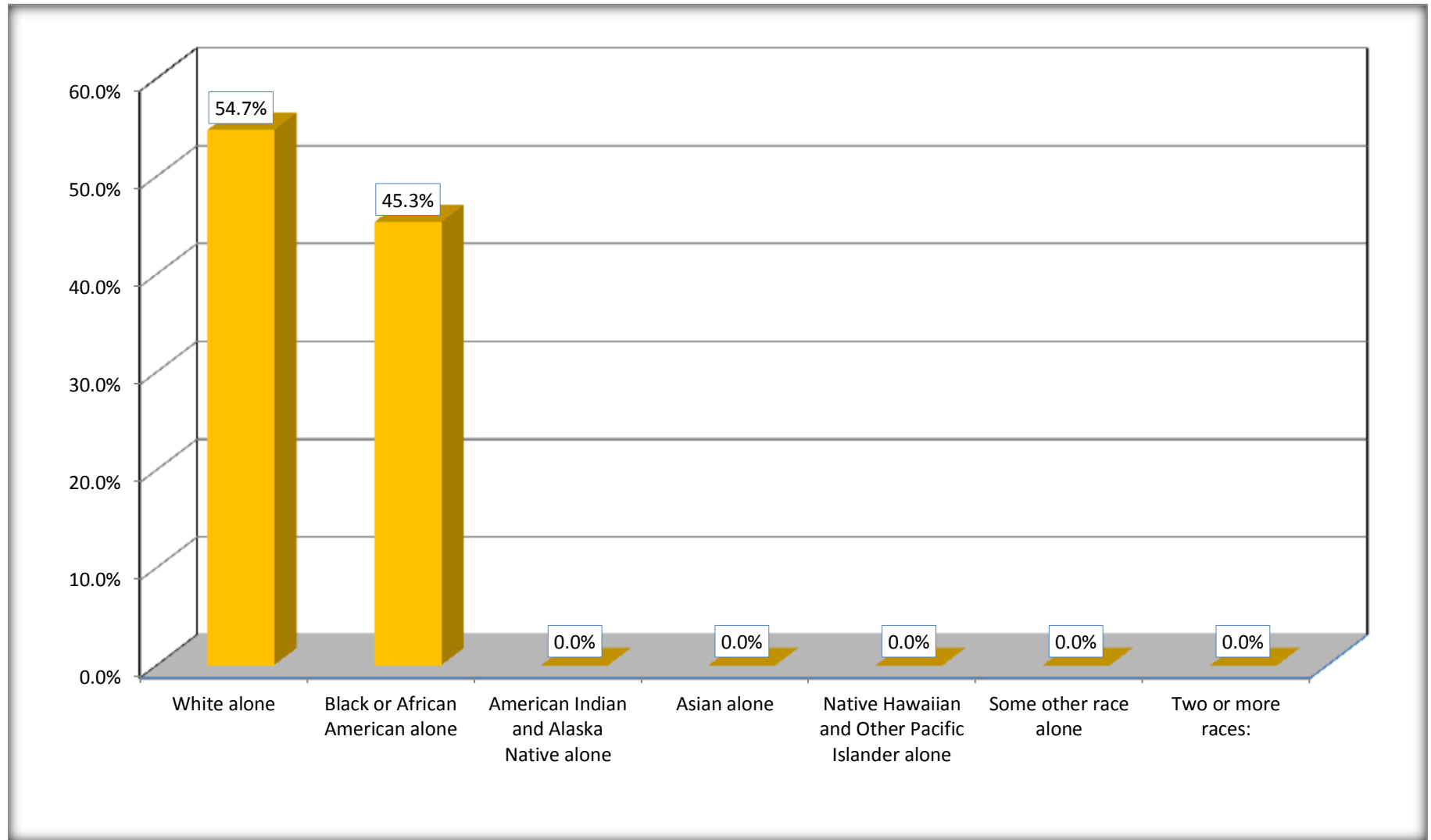
Although the American Community Survey (ACS) produces population, demographic and housing unit estimates, it is the Census Bureau's Population Estimates Program that produces and disseminates the official estimates of the population for the nation, states, counties, cities and towns and estimates of housing units for states and counties.

For information on confidentiality protection, sampling error, nonsampling error, and definitions, see Survey Methodology.

<http://www.census.gov/acs/www/UseData/index.htm>

Hispanic or Latino Origin by Race

Roanoke city, Alabama



Source: B03002. HISPANIC OR LATINO ORIGIN BY RACE
Data Set: 2008-2012 American Community Survey 5-Year Estimates

B01001. SEX BY AGE

Data Set: 2008-2012 American Community Survey 5-Year Estimates

	Roanoke city, Alabama					
	African American	Margin of Error (+/-)	% of AA Total	White, Not Hispanic	Margin of Error (+/-)	% of NHW Total
Total:	2,657	365	100.0%	3,228	373	100.0%
Under 18 years	958	NC	36.1%	601	NC	18.6%
18 to 64 years	1,404	NC	52.8%	1,782	NC	55.2%
65 years and over	295	NC	11.1%	845	NC	26.2%
Male:	1,124	224	42.3%	1,467	389	45.4%
Under 18 years	510	NC	19.2%	373	NC	11.6%
18 to 64 years	493	NC	18.6%	749	NC	23.2%
65 years and over	121	NC	4.6%	345	NC	10.7%
Female:	1,533	204	57.7%	1,761	412	54.6%
Under 18 years	448	NC	16.9%	228	NC	7.1%
18 to 64 years	911	NC	34.3%	1,033	NC	32.0%
65 years and over	174	NC	6.5%	500	NC	15.5%

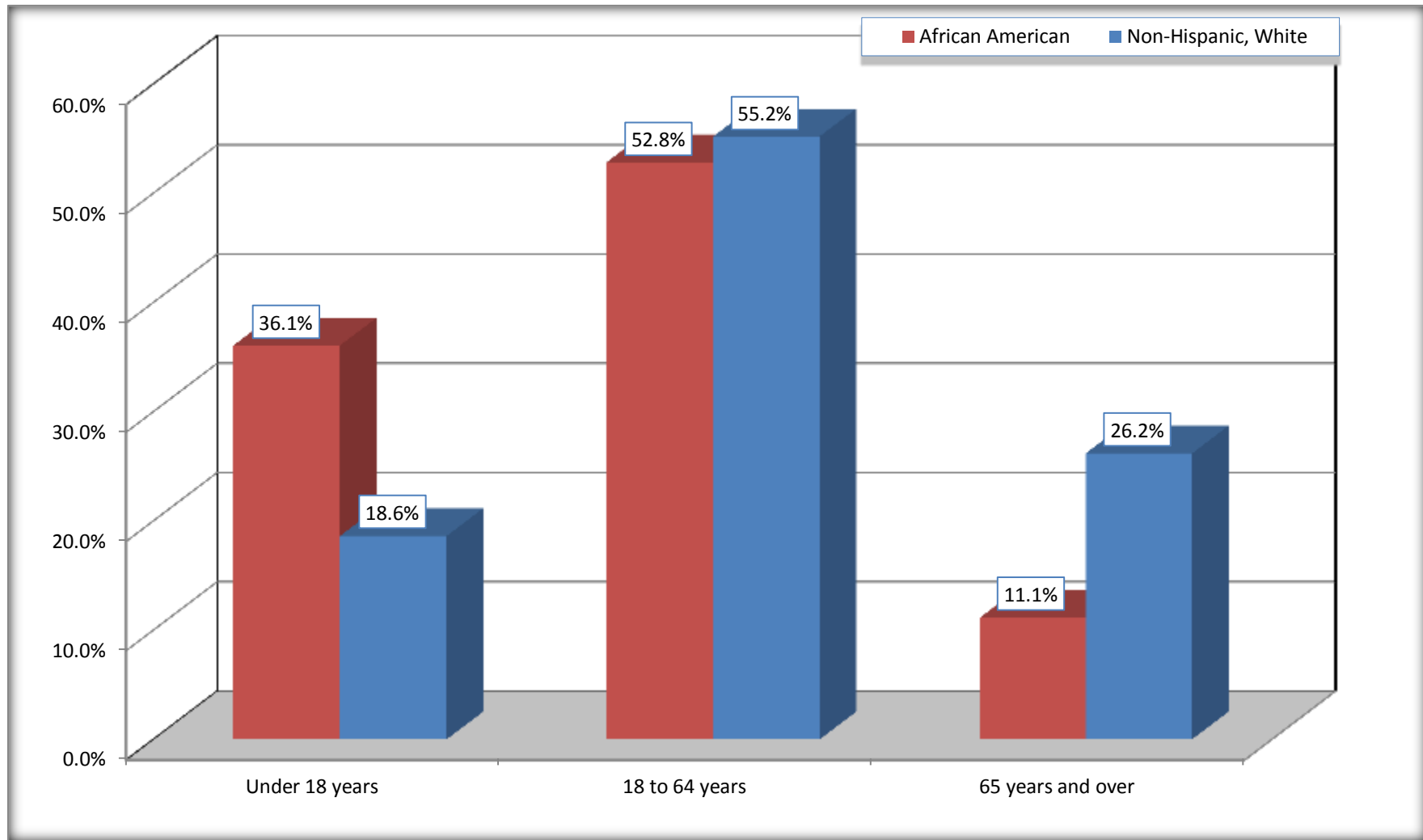
Source: U.S. Census Bureau, 2008-2012 American Community Survey

Although the American Community Survey (ACS) produces population, demographic and housing unit estimates, it is the Census Bureau's Population Estimates Program that produces and disseminates the official estimates of the population for the nation, states, counties, cities and towns and estimates of housing units for states and counties.

For information on confidentiality protection, sampling error, nonsampling error, and definitions, see Survey Methodology.
<http://www.census.gov/acs/www/UseData/index.htm>

Population by Age

Roanoke city, Alabama



Source: B01001. SEX BY AGE
Data Set: 2008-2012 American Community Survey 5-Year Estimates

B05003. SEX BY AGE BY CITIZENSHIP STATUS

Data Set: 2008-2012 American Community Survey 5-Year Estimates

	Roanoke city, Alabama					
	African American	Margin of Error (+/-)	% of AA Total by Age	White, Not Hispanic	Margin of Error (+/-)	% of NHW Total by Age
Total:	2,657	365	100.0%	3,228	373	100.0%
Under 18 years:	958	NC	100.0%	601	NC	100.0%
Native	958	NC	100.0%	601	NC	100.0%
Foreign born:	0	NC	0.0%	0	NC	0.0%
Naturalized U.S. citizen	0	NC	0.0%	0	NC	0.0%
Not a U.S. citizen	0	NC	0.0%	0	NC	0.0%
18 years and over:	1,699	NC	100.0%	2,627	NC	100.0%
Native	1,699	NC	100.0%	2,627	NC	100.0%
Foreign born:	0	NC	0.0%	0	NC	0.0%
Naturalized U.S. citizen	0	NC	0.0%	0	NC	0.0%
Not a U.S. citizen	0	NC	0.0%	0	NC	0.0%
Male:	1,124	224	42.3%	1,467	233	45.4%
Under 18 years:	510	131	100.0%	373	130	100.0%
Native	510	131	100.0%	373	130	100.0%
Foreign born:	0	17	0.0%	0	17	0.0%
Naturalized U.S. citizen	0	17	0.0%	0	17	0.0%
Not a U.S. citizen	0	17	0.0%	0	17	0.0%
18 years and over:	614	151	100.0%	1,094	167	100.0%
Native	614	151	100.0%	1,094	167	100.0%
Foreign born:	0	17	0.0%	0	17	0.0%
Naturalized U.S. citizen	0	17	0.0%	0	17	0.0%
Not a U.S. citizen	0	17	0.0%	0	17	0.0%

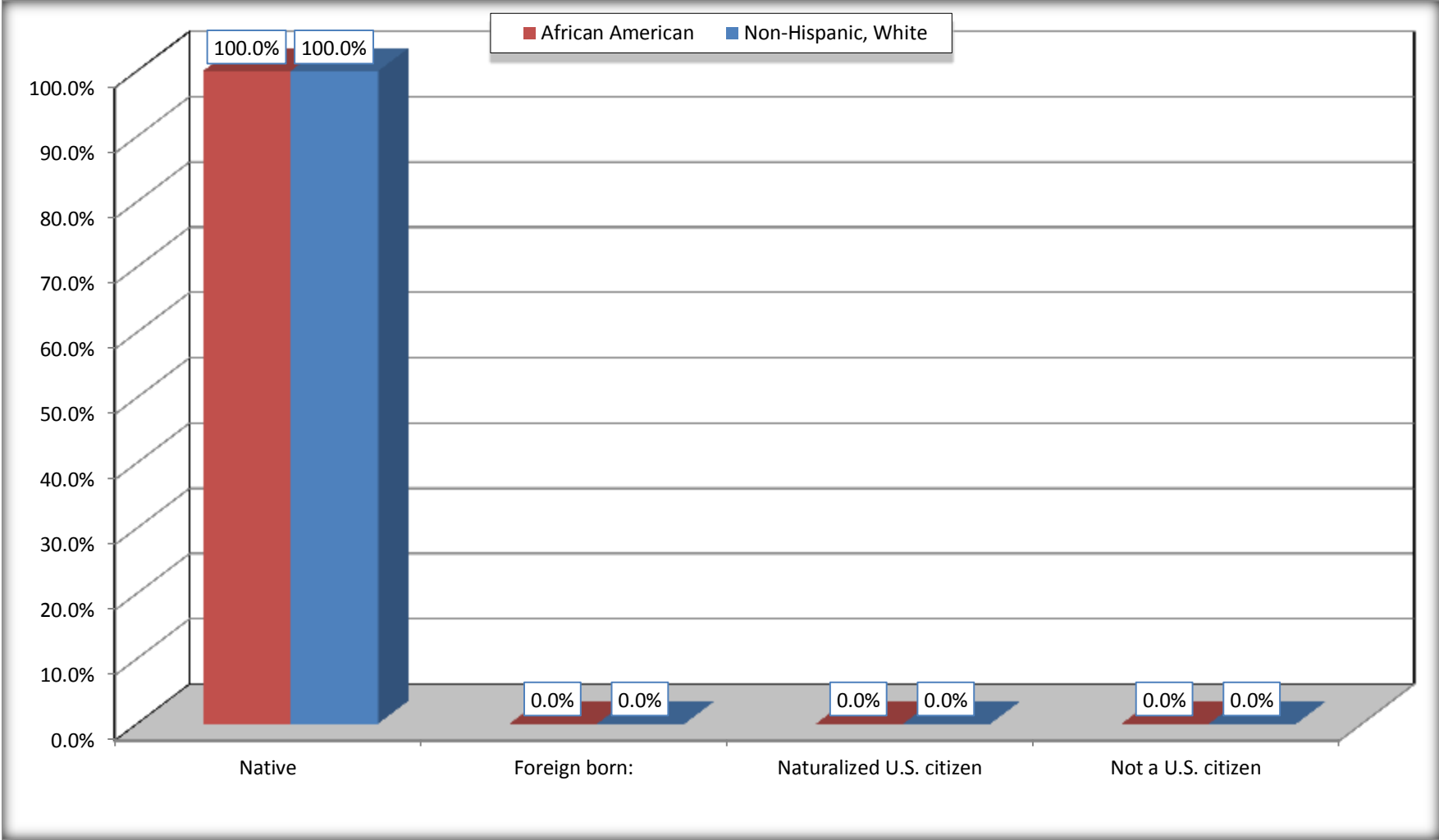
	Roanoke city, Alabama					
	African American	Margin of Error (+/-)	% of AA by Age	White, Not Hispanic	Margin of Error (+/-)	% of NHW by Age
Female:	1,533	204	57.7%	1,761	226	54.6%
Under 18 years:	448	94	100.0%	228	122	100.0%
Native	448	94	100.0%	228	122	100.0%
Foreign born:	0	17	0.0%	0	17	0.0%
Naturalized U.S. citizen	0	17	0.0%	0	17	0.0%
Not a U.S. citizen	0	17	0.0%	0	17	0.0%
18 years and over:	1,085	148	100.0%	1,533	187	100.0%
Native	1,085	148	100.0%	1,533	187	100.0%
Foreign born:	0	17	0.0%	0	17	0.0%
Naturalized U.S. citizen	0	17	0.0%	0	17	0.0%
Not a U.S. citizen	0	17	0.0%	0	17	0.0%

Source: U.S. Census Bureau, 2008-2012 American Community Survey

For information on confidentiality protection, sampling error, nonsampling error, and definitions, see Survey Methodology.
<http://www.census.gov/acs/www/UseData/index.htm>

Citizenship Status of Voting Age Population (18 and Over)

Roanoke city, Alabama



Source: B05003. SEX BY AGE BY CITIZENSHIP STATUS
Data Set: 2008-2012 American Community Survey 5-Year Estimates

**B07004. GEOGRAPHICAL MOBILITY IN THE PAST YEAR BY RACE FOR CURRENT RESIDENCE IN THE UNITED STATES - Universe:
POPULATION 1 YEAR AND OVER**

Data Set: 2008-2012 American Community Survey 5-Year Estimates

	Roanoke city, Alabama					
	African American	Margin of Error (+/-)	% of AA Total	White, Not Hispanic	Margin of Error (+/-)	% of NHW Total
Total:	2,621	363	100.0%	3,174	354	100.0%
Same house 1 year ago	2,114	378	80.7%	2,628	373	82.8%
Moved within same county	415	366	15.8%	425	238	13.4%
Moved from different county within same state	44	46	1.7%	55	38	1.7%
Moved from different state	48	46	1.8%	52	50	1.6%
Moved from abroad	0	17	0.0%	14	23	0.4%

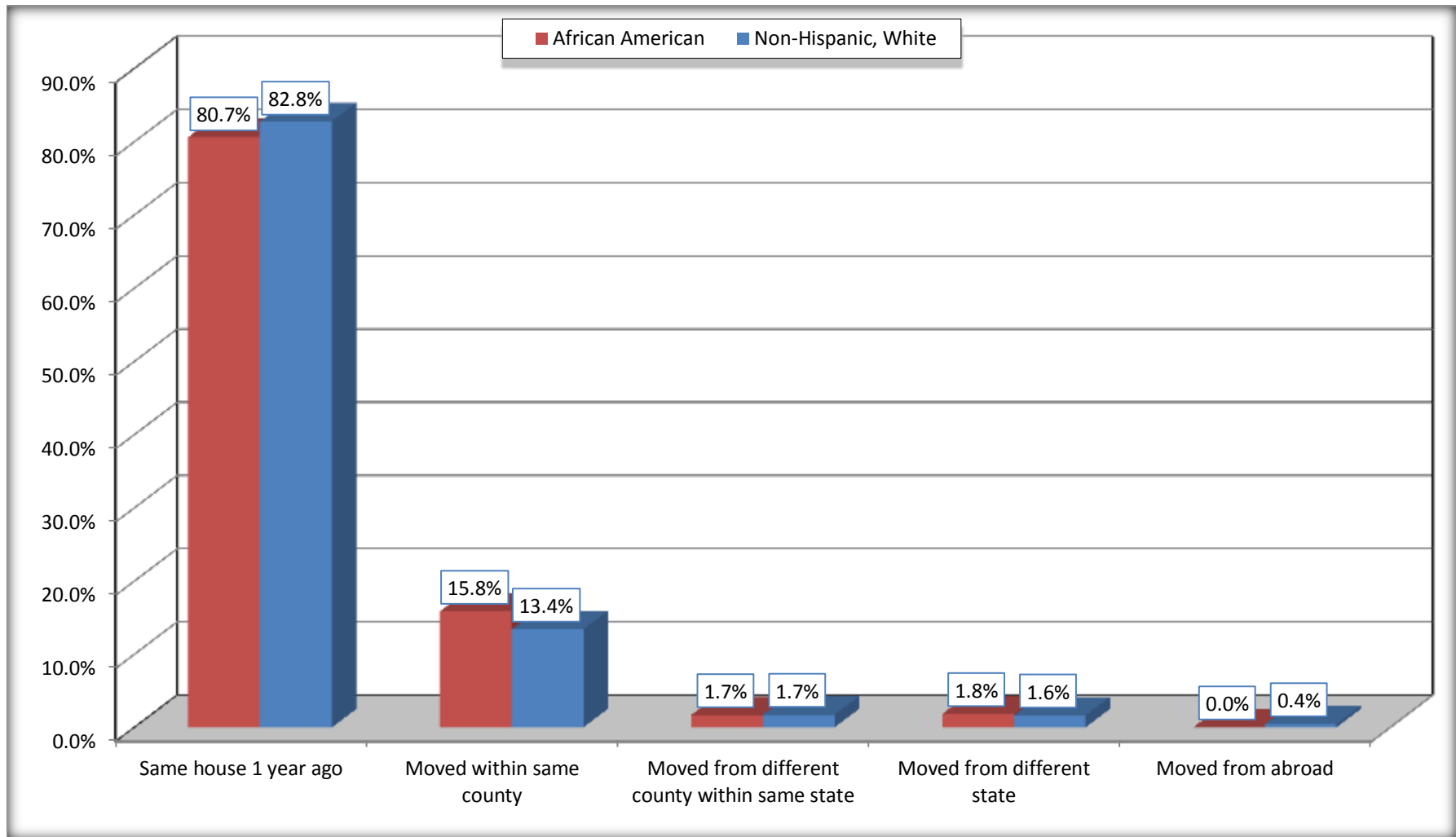
Source: U.S. Census Bureau, 2008-2012 American Community Survey

For information on confidentiality protection, sampling error, nonsampling error, and definitions, see Survey Methodology.

<http://www.census.gov/acs/www/UseData/index.htm>

Geographical Mobility in the Past Year (Population 1 Year and Over)

Roanoke city, Alabama



Source: B07004. GEOGRAPHICAL MOBILITY IN THE PAST YEAR BY RACE FOR CURRENT RESIDENCE IN THE UNITED STATES - Universe: POPULATION 1 YEAR AND OVER

Data Set: 2008-2012 American Community Survey 5-Year Estimates

B08105. MEANS OF TRANSPORTATION TO WORK - Universe: WORKERS 16 YEARS AND OVER

Data Set: 2008-2012 American Community Survey 5-Year Estimates

	Roanoke city, Alabama					
	African American	Margin of Error (+/-)	% of AA Total	White, Not Hispanic	Margin of Error (+/-)	% of NHW Total
Total:	893	236	100.0%	1086	202	100.0%
Car, truck, or van - drove alone	681	236	76.3%	982	193	90.4%
Car, truck, or van - carpooled	184	109	20.6%	70	51	6.4%
Public transportation (excluding taxicab)	0	17	0.0%	0	17	0.0%
Walked	13	21	1.5%	9	13	0.8%
Taxicab, motorcycle, bicycle, or other means	15	26	1.7%	15	19	1.4%
Worked at home	0	17	0.0%	10	17	0.9%

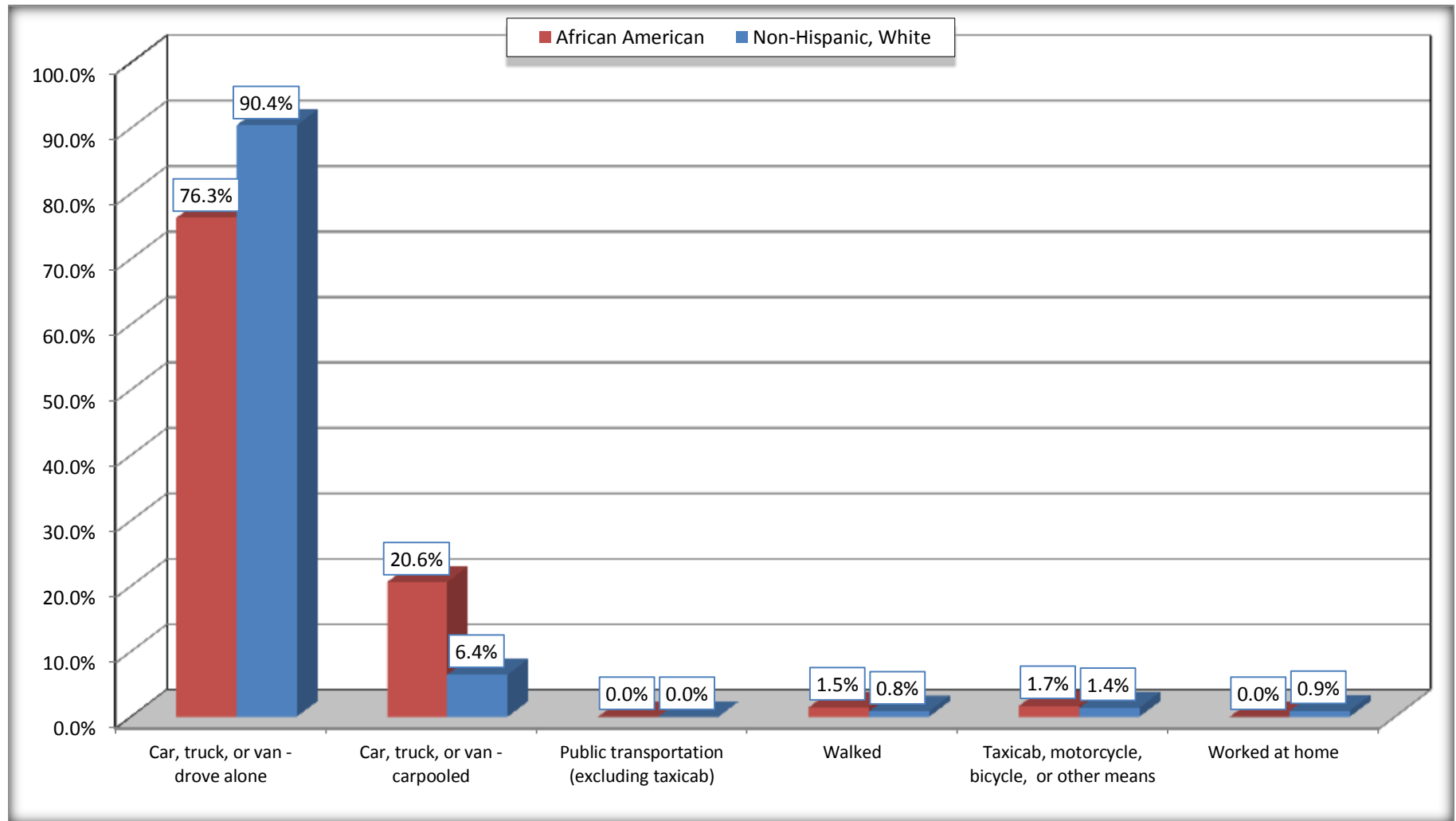
Source: U.S. Census Bureau, 2008-2012 American Community Survey

For information on confidentiality protection, sampling error, nonsampling error, and definitions, see Survey Methodology.

<http://www.census.gov/acs/www/UseData/index.htm>

Means of Transportation to Work (Workers 16 Years and Over)

Roanoke city, Alabama



Source: B08105. MEANS OF TRANSPORTATION TO WORK - Universe: WORKERS 16 YEARS AND OVER
Data Set: 2008-2012 American Community Survey 5-Year Estimates

B11002. HOUSEHOLD TYPE BY RELATIVES AND NONRELATIVES FOR POPULATION IN HOUSEHOLDS

Data Set: 2008-2012 American Community Survey 5-Year Estimates

	Roanoke city, Alabama					
	African American	Margin of Error (+/-)	% of AA Total	White, Not Hispanic	Margin of Error (+/-)	% of NHW Total
Total:	2551	358	100.0%	3135	364	100.0%
In family households	2286	373	89.6%	2587	359	82.5%
In nonfamily households	265	126	10.4%	548	161	17.5%

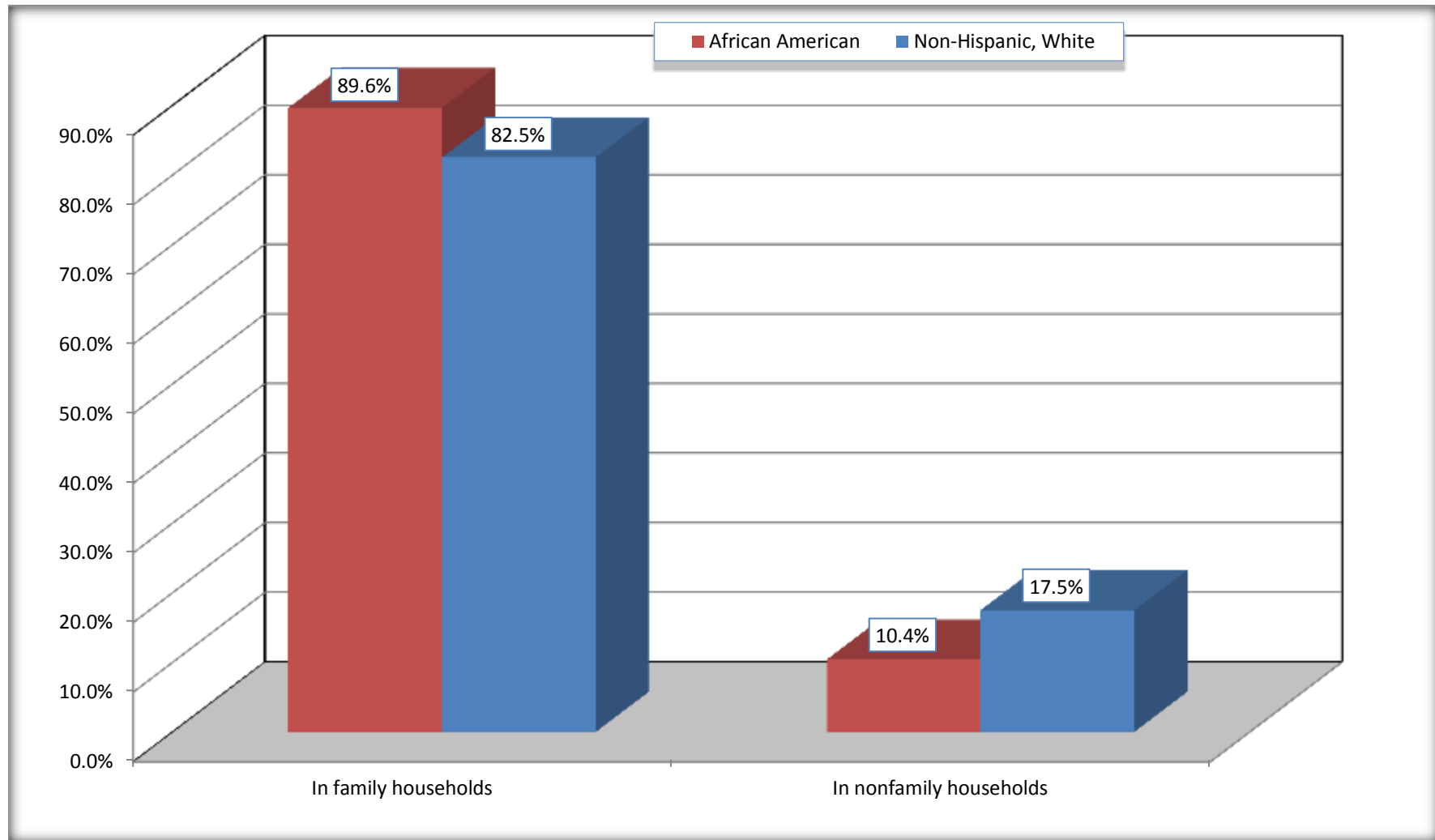
Source: U.S. Census Bureau, 2008-2012 American Community Survey

For information on confidentiality protection, sampling error, nonsampling error, and definitions, see Survey Methodology.

<http://www.census.gov/acs/www/UseData/index.htm>

Household Type for Population in Households

Roanoke city, Alabama



Source: B11002. HOUSEHOLD TYPE BY RELATIVES AND NONRELATIVES FOR POPULATION IN HOUSEHOLDS
Data Set: 2008-2012 American Community Survey 5-Year Estimates

B12002. MARITAL STATUS FOR THE POPULATION 15 YEARS AND OVER

Data Set: 2008-2012 American Community Survey 5-Year Estimates

	Roanoke city, Alabama					
	African American	Margin of Error (+/-)	% of AA Total	White, Not Hispanic	Margin of Error (+/-)	% of NHW Total
Total:	1,857	273	100.0%	2,765	301	100.0%
Never married	736	NC	39.6%	532	NC	19.2%
Now married (except separated)	741	NC	39.9%	1,397	NC	50.5%
Separated	107	NC	5.8%	144	NC	5.2%
Widowed	185	NC	10.0%	384	NC	13.9%
Divorced	88	NC	4.7%	308	NC	11.1%
Male:	711	173	38.3%	1,138	169	41.2%
Never married	210	97	11.3%	185	83	6.7%
Now married (except separated)	337	128	18.1%	708	148	25.6%
Separated	95	90	5.1%	32	29	1.2%
Widowed	4	8	0.2%	55	50	2.0%
Divorced	65	55	3.5%	158	87	5.7%
Female:	1,146	155	61.7%	1,627	195	58.8%
Never married	526	135	28.3%	347	100	12.5%
Now married (except separated)	404	102	21.8%	689	129	24.9%
Separated	12	18	0.6%	112	79	4.1%
Widowed	181	83	9.7%	329	115	11.9%
Divorced	23	37	1.2%	150	70	5.4%

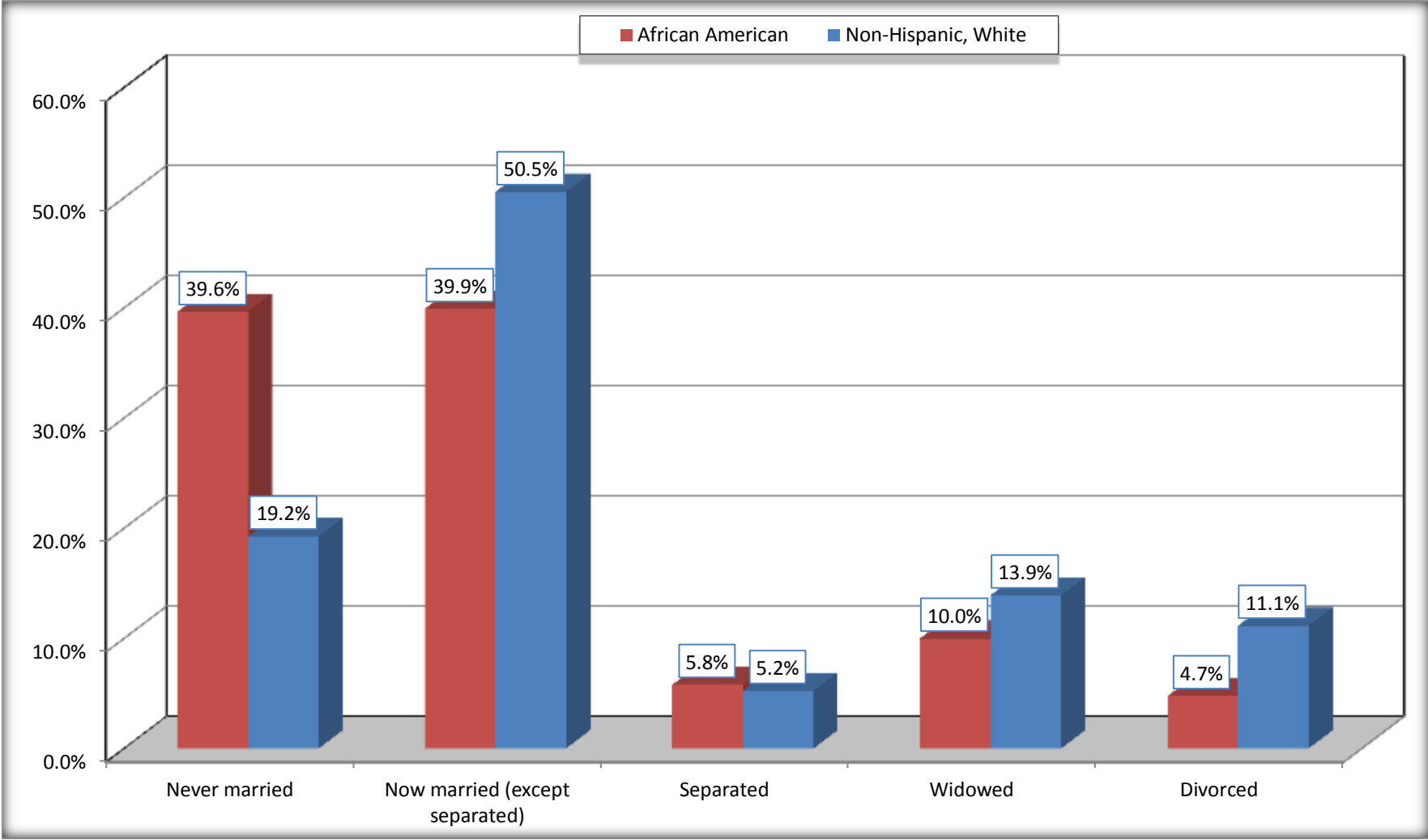
Source: U.S. Census Bureau, 2008-2012 American Community Survey

For information on confidentiality protection, sampling error, nonsampling error, and definitions, see Survey Methodology.

<http://www.census.gov/acs/www/UseData/index.htm>

Marital Status for the Population 15 Years and Over

Roanoke city, Alabama



Source: B12002. MARITAL STATUS FOR THE POPULATION 15 YEARS AND OVER
Data Set: 2008-2012 American Community Survey 5-Year Estimates

C15002. SEX BY EDUCATIONAL ATTAINMENT FOR THE POPULATION 25 YEARS AND OVER

Data Set: 2008-2012 American Community Survey 5-Year Estimates

	Roanoke city, Alabama					
	African American	Margin of Error (+/-)	% of AA Total	White, Not Hispanic	Margin of Error (+/-)	% of NHW Total
Total:	1,399	214	100.0%	2,417	275	100.0%
Less than high school diploma	398	NC	28.4%	612	NC	25.3%
High school graduate, GED, or alternative	464	NC	33.2%	599	NC	24.8%
Some college or associate's degree	438	NC	31.3%	839	NC	34.7%
Bachelor's degree or higher	99	NC	7.1%	367	NC	15.2%
Male:	549	141	39.2%	1,010	159	41.8%
Less than high school diploma	165	88	11.8%	219	102	9.1%
High school graduate, GED, or alternative	151	81	10.8%	278	95	11.5%
Some college or associate's degree	222	126	15.9%	424	111	17.5%
Bachelor's degree or higher	11	14	0.8%	89	51	3.7%
Female:	850	124	60.8%	1,407	181	58.2%
Less than high school diploma	233	87	16.7%	393	130	16.3%
High school graduate, GED, or alternative	313	114	22.4%	321	101	13.3%
Some college or associate's degree	216	105	15.4%	415	126	17.2%
Bachelor's degree or higher	88	59	6.3%	278	116	11.5%

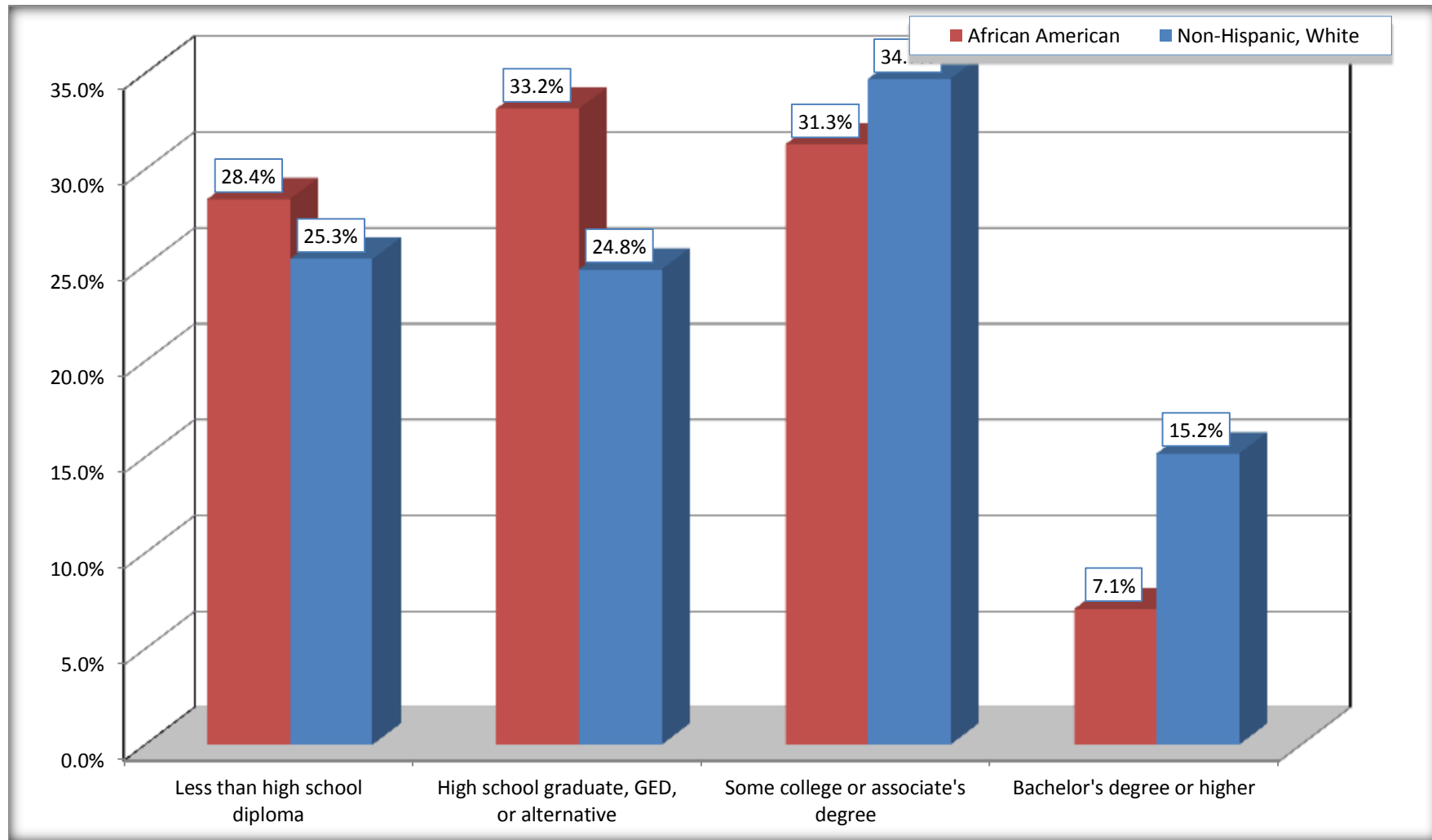
Source: U.S. Census Bureau, 2008-2012 American Community Survey

For information on confidentiality protection, sampling error, nonsampling error, and definitions, see Survey Methodology.

<http://www.census.gov/acs/www/UseData/index.htm>

Educational Attainment for the Population 25 Years and Older

Roanoke city, Alabama



Source: C15002. SEX BY EDUCATIONAL ATTAINMENT FOR THE POPULATION 25 YEARS AND OVER
Data Set: 2008-2012 American Community Survey 5-Year Estimates

B17010. POVERTY STATUS IN THE PAST 12 MONTHS OF FAMILIES BY FAMILY TYPE BY PRESENCE OF RELATED CHILDREN UNDER 18 YEARS

Data Set: 2008-2012 American Community Survey 5-Year Estimates

	Roanoke city, Alabama					
	African American	Margin of Error (+/-)	% of AA Total	White, Not Hispanic	Margin of Error (+/-)	% of NHW Total
Total:	710	138	100.0%	799	116	100.0%
Income in the past 12 months below poverty level:	267	112	37.6%	77	49	9.6%
Married-couple family:	15	26	2.1%	67	42	8.4%
With related children under 18 years	15	26	2.1%	44	30	5.5%
Other family:	252	106	35.5%	10	18	1.3%
Male householder, no wife present	0	17	0.0%	0	17	0.0%
With related children under 18 years	0	17	0.0%	0	17	0.0%
Female householder, no husband present	252	106	35.5%	10	18	1.3%
With related children under 18 years	211	95	29.7%	10	18	1.3%
Income in the past 12 months at or above poverty level:	443	129	62.4%	722	124	90.4%
Married-couple family:	304	105	42.8%	528	112	66.1%
With related children under 18 years	72	78	10.1%	147	71	18.4%
Other family:	139	86	19.6%	194	93	24.3%
Male householder, no wife present	23	39	3.2%	70	65	8.8%
With related children under 18 years	23	39	3.2%	59	60	7.4%
Female householder, no husband present	116	76	16.3%	124	63	15.5%
With related children under 18 years	116	76	16.3%	78	54	9.8%

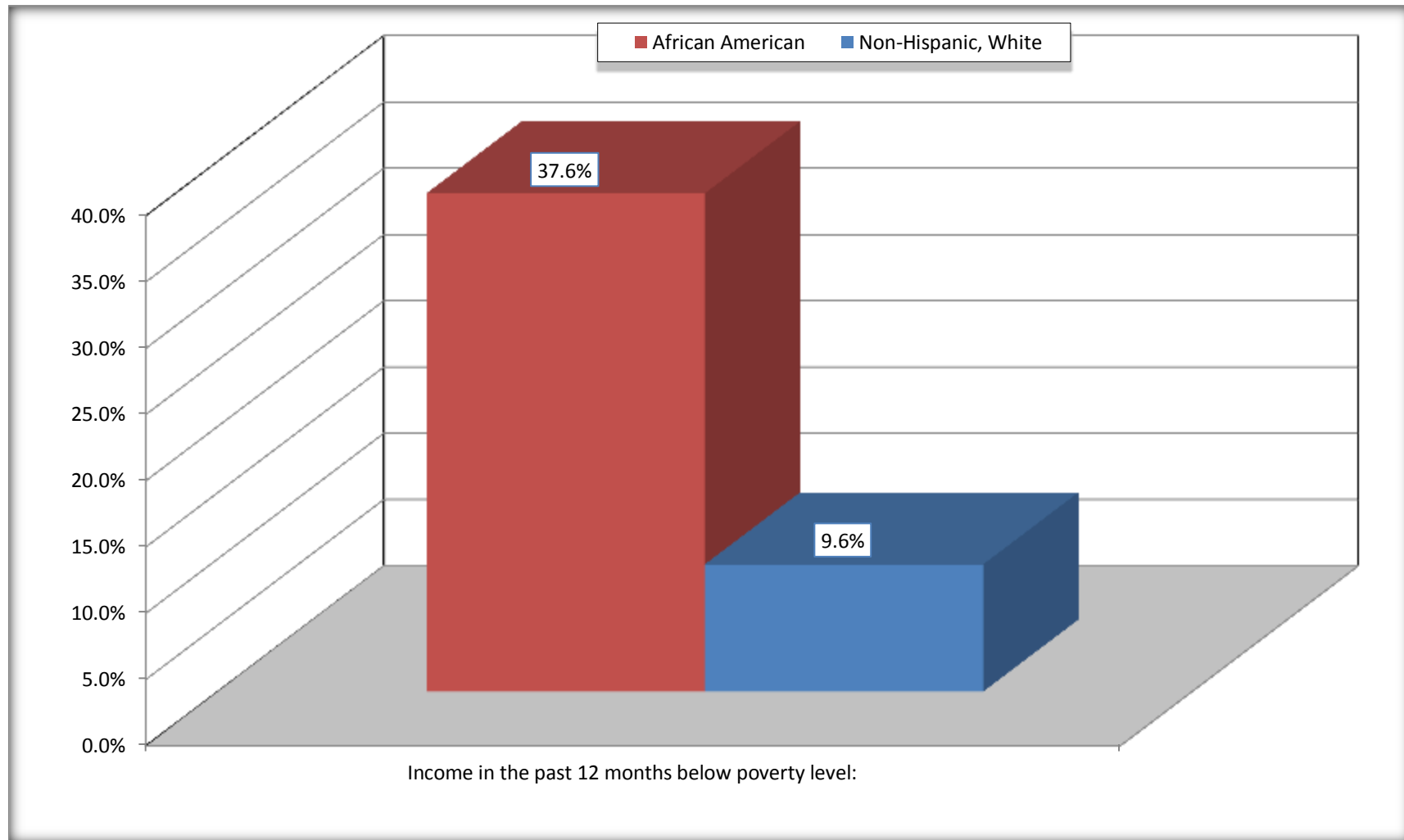
Source: U.S. Census Bureau, 2008-2012 American Community Survey

For information on confidentiality protection, sampling error, nonsampling error, and definitions, see Survey Methodology.

<http://www.census.gov/acs/www/UseData/index.htm>

Family Households Below Poverty in the Past 12 Months

Roanoke city, Alabama

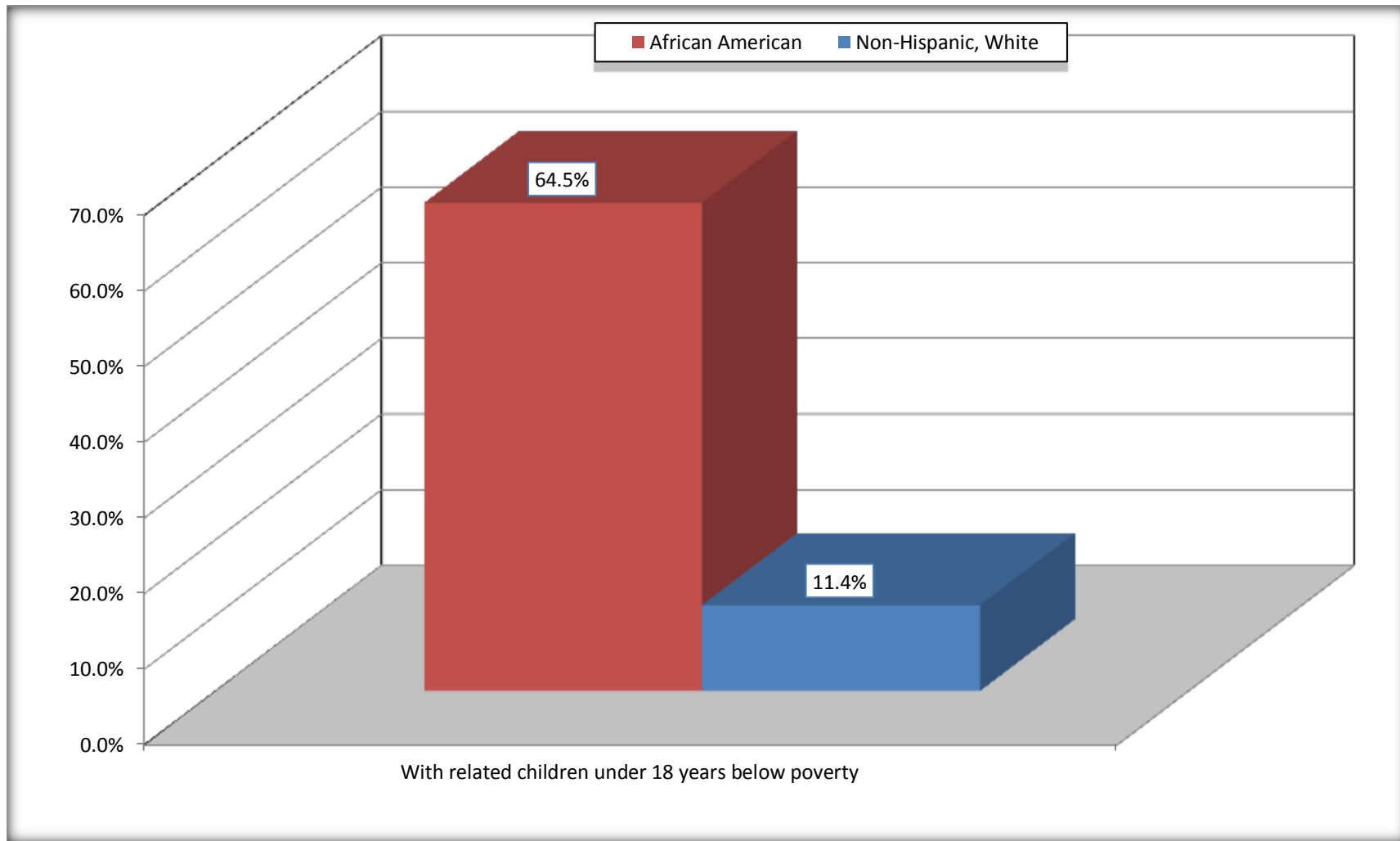


Source: B17010. POVERTY STATUS IN THE PAST 12 MONTHS OF FAMILIES BY FAMILY TYPE BY PRESENCE OF RELATED CHILDREN UNDER 18 YEARS

Data Set: 2008-2012 American Community Survey 5-Year Estimates

Female-headed Households with Related Children Below Poverty in the Past 12 Months

Roanoke city, Alabama



Source: B17010. POVERTY STATUS IN THE PAST 12 MONTHS OF FAMILIES BY FAMILY TYPE BY PRESENCE OF RELATED CHILDREN UNDER 18 YEARS

Data Set: 2008-2012 American Community Survey 5-Year Estimates

B17020 POVERTY STATUS IN THE PAST 12 MONTHS BY AGE - Universe: POPULATION FOR WHOM POVERTY STATUS IS DETERMINED

Data Set: 2008-2012 American Community Survey 5-Year Estimates

	Roanoke city, Alabama					
	African American	Margin of Error (+/-)	% of AA By Age	White, Not Hispanic	Margin of Error (+/-)	% of NHW By Age
Total:	2,574	358	100.0%	3,087	369	100.0%
Income in the past 12 months below poverty level:	1,104	346	42.9%	629	258	20.4%
Under 18 years	537	NC	56.1%	159	NC	26.5%
18 to 64 years	498	163	36.8%	298	142	17.1%
65 years and over	69	NC	26.3%	172	NC	23.2%
Income in the past 12 months at or above poverty level:	1,470	442	57.1%	2,458	408	79.6%
Under 18 years	421	NC	43.9%	442	NC	73.5%
18 to 64 years	856	252	63.2%	1,448	279	82.9%
65 years and over	193	NC	73.7%	568	NC	76.8%

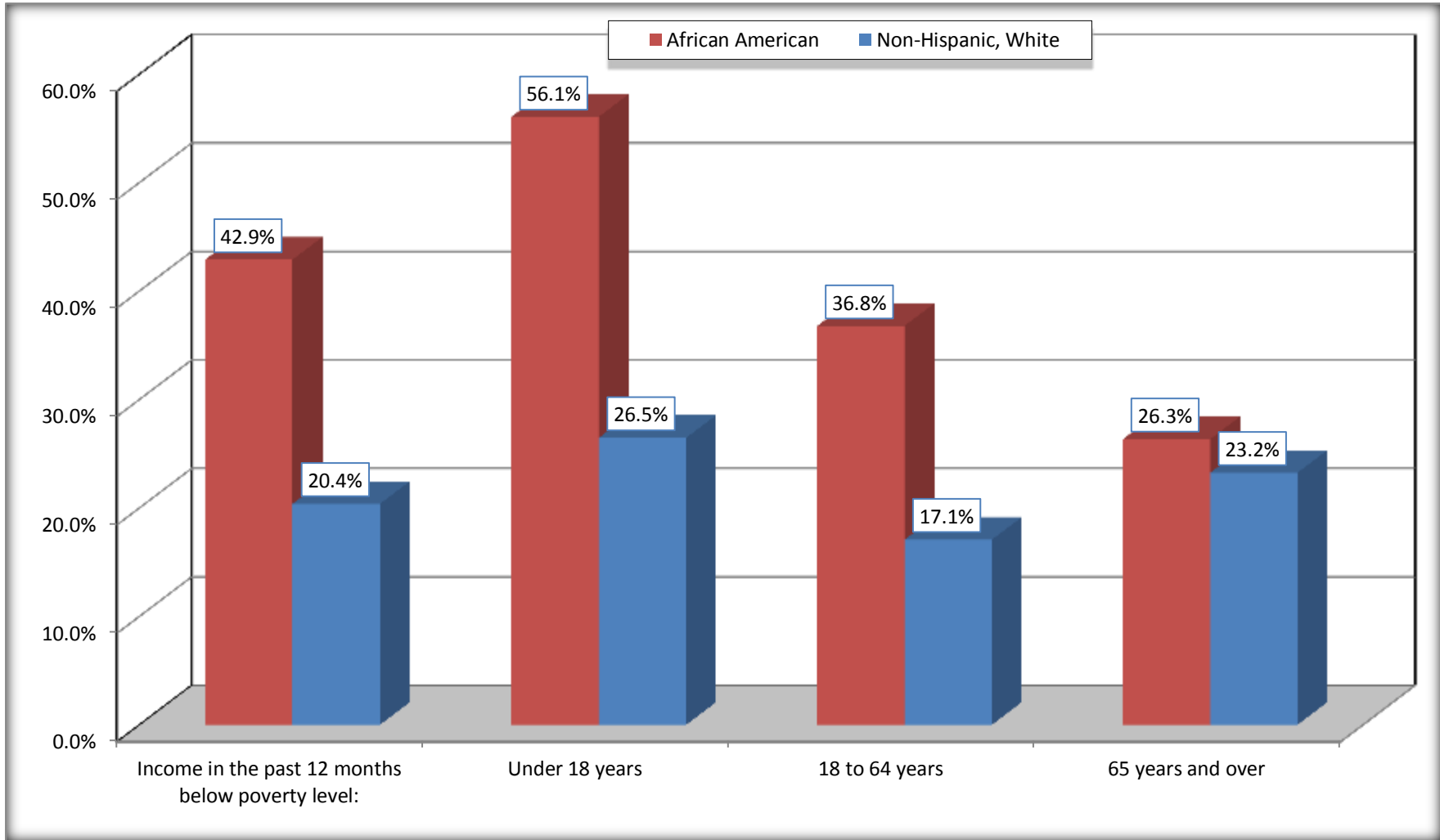
Source: U.S. Census Bureau, 2008-2012 American Community Survey

For information on confidentiality protection, sampling error, nonsampling error, and definitions, see Survey Methodology.

<http://www.census.gov/acs/www/UseData/index.htm>

Population Below Poverty in the Past 12 Months

Roanoke city, Alabama



Source: B17020 POVERTY STATUS IN THE PAST 12 MONTHS BY AGE - Universe: POPULATION FOR WHOM POVERTY STATUS IS DETERMINED
Data Set: 2008-2012 American Community Survey 5-Year Estimates

B19001. HOUSEHOLD INCOME IN THE PAST 12 MONTHS (IN 2010 INFLATION-ADJUSTED DOLLARS)

Data Set: 2008-2012 American Community Survey 5-Year Estimates

	Roanoke city, Alabama					
	African American	Margin of Error (+/-)	% of AA Total	White, Not Hispanic	Margin of Error (+/-)	% of NHW Total
Total:	975	170	100.0%	1,321	192	100.0%
Less than \$ 10,000	271	118	27.8%	146	98	11.1%
\$ 10,000 to \$ 14,999	28	33	2.9%	179	93	13.6%
\$ 15,000 to \$ 24,999	180	NC	18.5%	200	NC	15.1%
\$ 25,000 to \$ 34,999	184	NC	18.9%	152	NC	11.5%
\$ 35,000 to \$ 49,999	44	NC	4.5%	163	NC	12.3%
\$ 50,000 to \$ 74,999	121	NC	12.4%	214	NC	16.2%
\$ 75,000 to \$ 99,999	73	53	7.5%	107	53	8.1%
\$ 100,000 to \$ 149,999	54	NC	5.5%	148	NC	11.2%
\$ 150,000 to \$ 199,999	0	17	0.0%	8	14	0.6%
\$ 200,000 or more	20	29	2.1%	4	10	0.3%

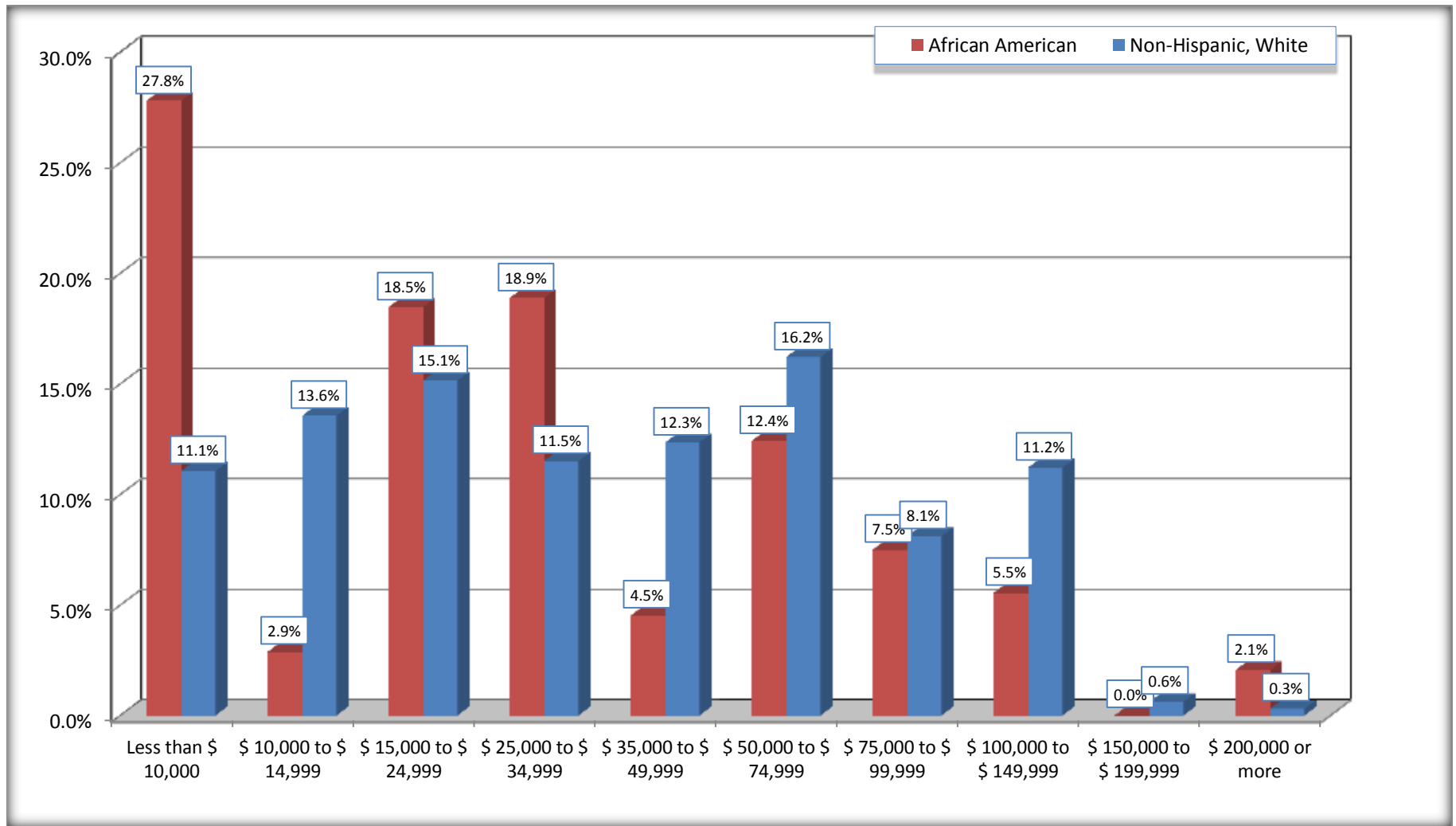
Source: U.S. Census Bureau, 2008-2012 American Community Survey

For information on confidentiality protection, sampling error, nonsampling error, and definitions, see Survey Methodology.

<http://www.census.gov/acs/www/UseData/index.htm>

Household Income in the Past 12 Months

Roanoke city, Alabama



Source: B19001. HOUSEHOLD INCOME IN THE PAST 12 MONTHS (IN 2010 INFLATION-ADJUSTED DOLLARS)
Data Set: 2008-2012 American Community Survey 5-Year Estimates

B19013. MEDIAN HOUSEHOLD INCOME IN THE PAST 12 MONTHS (IN 2010 INFLATION-ADJUSTED DOLLARS)

Data Set: 2008-2012 American Community Survey 5-Year Estimates

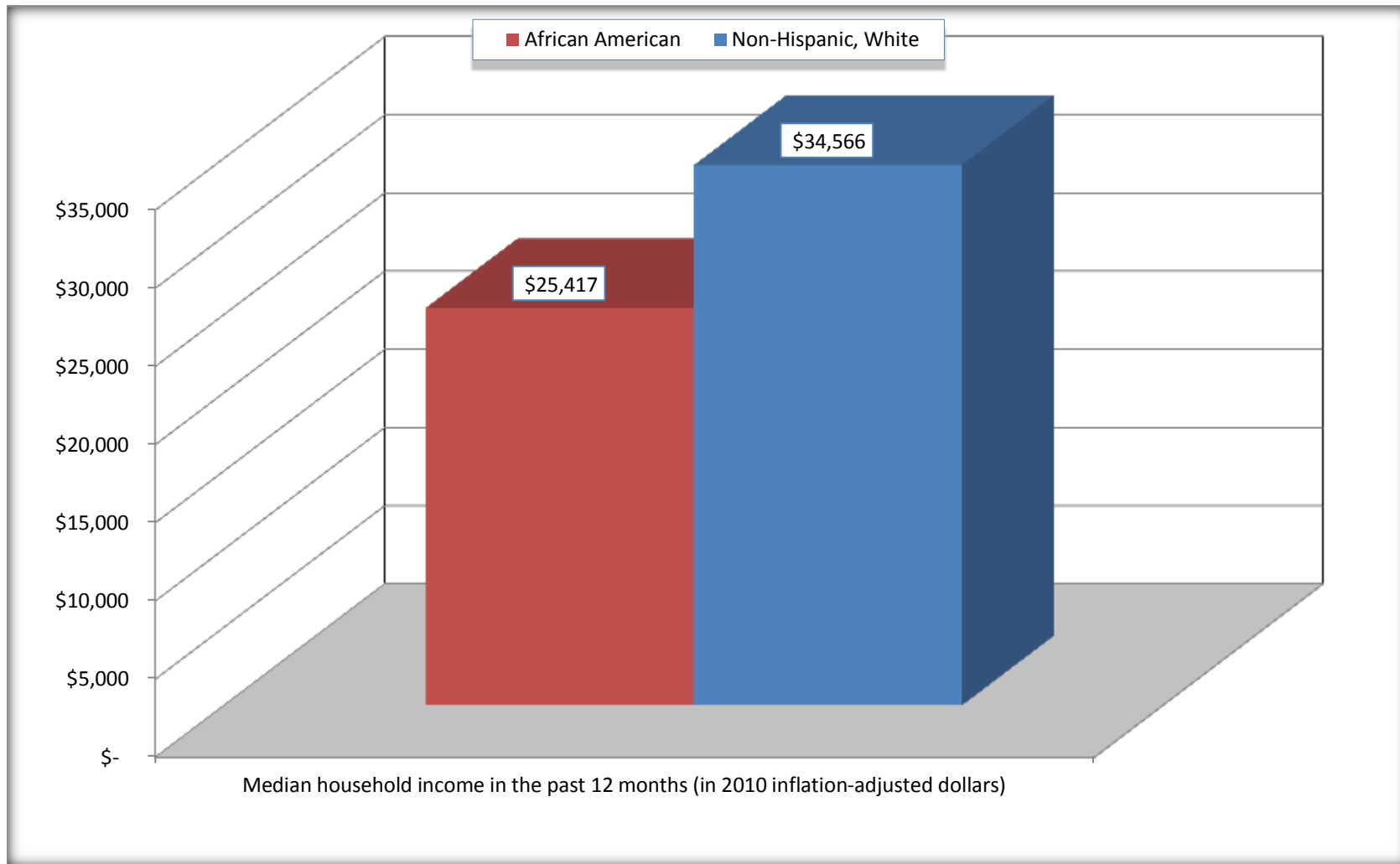
	Roanoke city, Alabama			
	African American	Margin of Error (+/-)	White, Not Hispanic	Margin of Error (+/-)
Median household income in the past 12 months (in 2010 inflation-adjusted dollars)	\$ 25,417	\$ 7,358	\$ 34,566	\$ 5,241

Source: U.S. Census Bureau, 2008-2012 American Community Survey

For information on confidentiality protection, sampling error, nonsampling error, and definitions, see Survey Methodology.
<http://www.census.gov/acs/www/UseData/index.htm>

Median Household Income in the Past 12 Months

Roanoke city, Alabama



Source: B19013. MEDIAN HOUSEHOLD INCOME IN THE PAST 12 MONTHS (IN 2010 INFLATION-ADJUSTED DOLLARS)
Data Set: 2008-2012 American Community Survey 5-Year Estimates

B19101. FAMILY INCOME IN THE PAST 12 MONTHS (IN 2010 INFLATION-ADJUSTED DOLLARS)

Data Set: 2008-2012 American Community Survey 5-Year Estimates

	Roanoke city, Alabama					
	African American	Margin of Error (+/-)	% of AA Total	White, Not Hispanic	Margin of Error (+/-)	% of NHW Total
Total:	710	138	100.0%	799	116	100.0%
Less than \$ 10,000	162	96	22.8%	8	13	1.0%
\$ 10,000 to \$ 14,999	18	28	2.5%	24	33	3.0%
\$ 15,000 to \$ 24,999	155	NC	21.8%	99	NC	12.4%
\$ 25,000 to \$ 34,999	149	NC	21.0%	113	NC	14.1%
\$ 35,000 to \$ 49,999	44	NC	6.2%	135	NC	16.9%
\$ 50,000 to \$ 74,999	54	NC	7.6%	181	NC	22.7%
\$ 100,000 to \$ 149,999	54	NC	7.6%	148	NC	18.5%
\$ 150,000 to \$ 199,999	0	17	0.0%	8	14	1.0%
\$ 200,000 or more	20	29	2.8%	4	10	0.5%

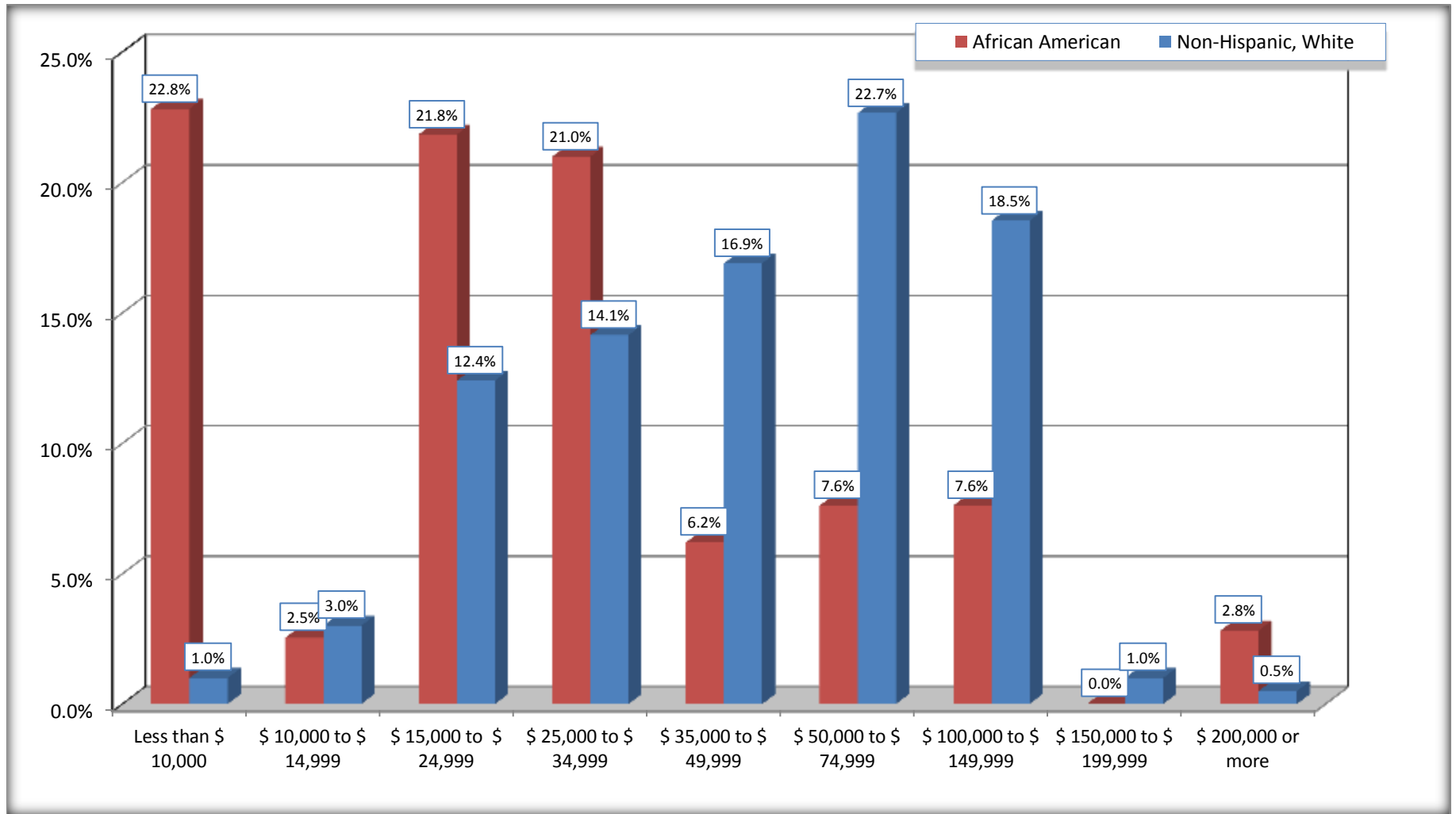
Source: U.S. Census Bureau, 2008-2012 American Community Survey

For information on confidentiality protection, sampling error, nonsampling error, and definitions, see Survey Methodology.

<http://www.census.gov/acs/www/UseData/index.htm>

Family Income in the Past 12 Months

Roanoke city, Alabama



Source: B19101. FAMILY INCOME IN THE PAST 12 MONTHS (IN 2010 INFLATION-ADJUSTED DOLLARS)
Data Set: 2008-2012 American Community Survey 5-Year Estimates

B19113. MEDIAN FAMILY INCOME IN THE PAST 12 MONTHS (IN 2010 INFLATION-ADJUSTED DOLLARS)

Data Set: 2008-2012 American Community Survey 5-Year Estimates

	Roanoke city, Alabama			
	African American	Margin of Error (+/-)	White, Not Hispanic	Margin of Error (+/-)
Median family income in the past 12 months (in 2010 inflation-adjusted dollars)	\$ 26,136	\$ 7,132	\$ 54,550	\$ 15,793

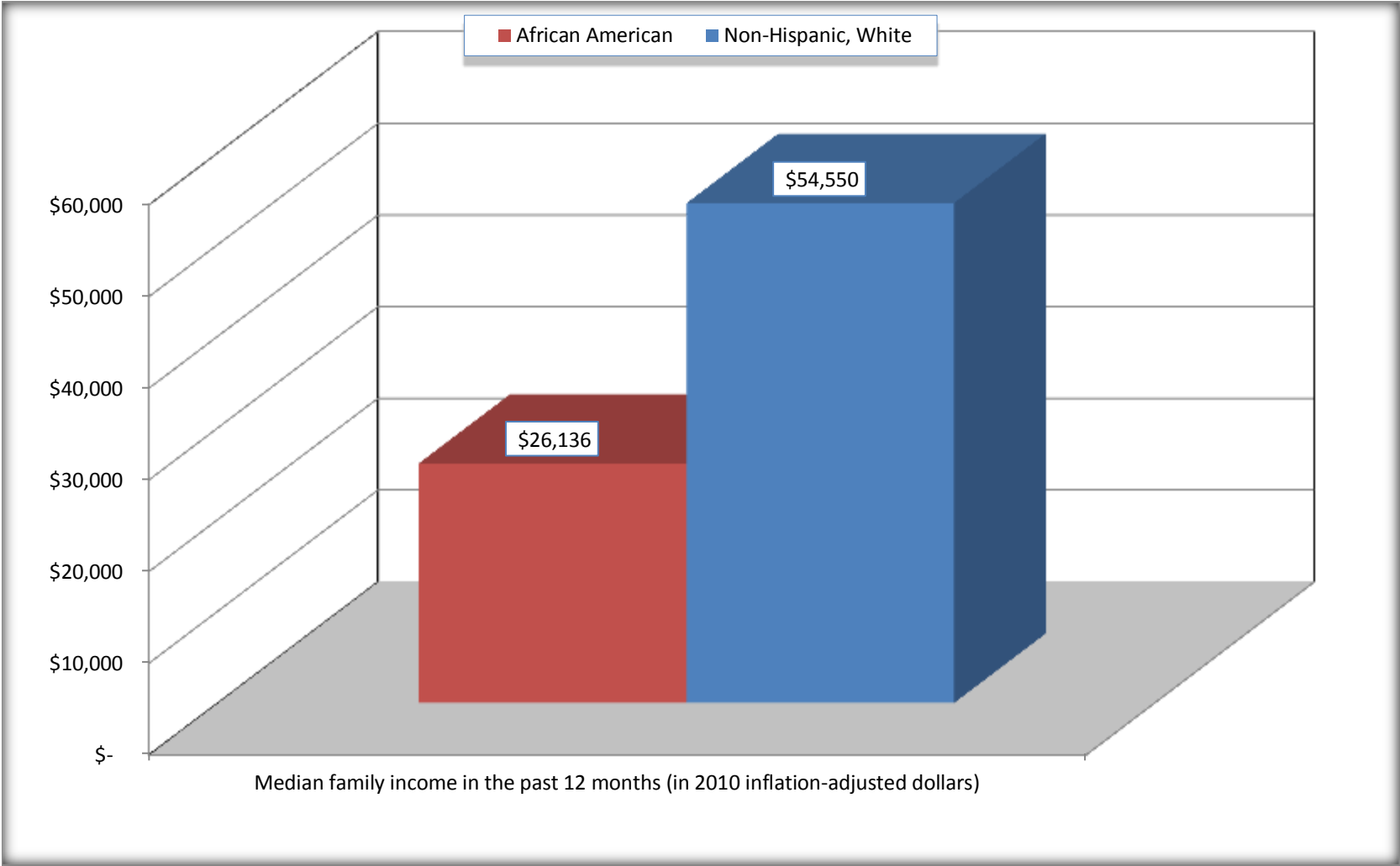
Source: U.S. Census Bureau, 2008-2012 American Community Survey

For information on confidentiality protection, sampling error, nonsampling error, and definitions, see Survey Methodology.

<http://www.census.gov/acs/www/UseData/index.htm>

Median Family Income in the Past 12 Months

Roanoke city, Alabama



Source: B19113. MEDIAN FAMILY INCOME IN THE PAST 12 MONTHS (IN 2010 INFLATION-ADJUSTED DOLLARS)
Data Set: 2008-2012 American Community Survey 5-Year Estimates

B19202. MEDIAN NONFAMILY HOUSEHOLD INCOME IN THE PAST 12 MONTHS (IN 2010 INFLATION-ADJUSTED DOLLARS)

Data Set: 2008-2012 American Community Survey 5-Year Estimates

	Roanoke city, Alabama			
	African American	Margin of Error (+/-)	White, Not Hispanic	Margin of Error (+/-)
Median nonfamily household income in the past 12 months (in 2010 inflation-adjusted dollars)	\$ 16,350	\$ 22,915	\$ 12,576	\$ 4,016

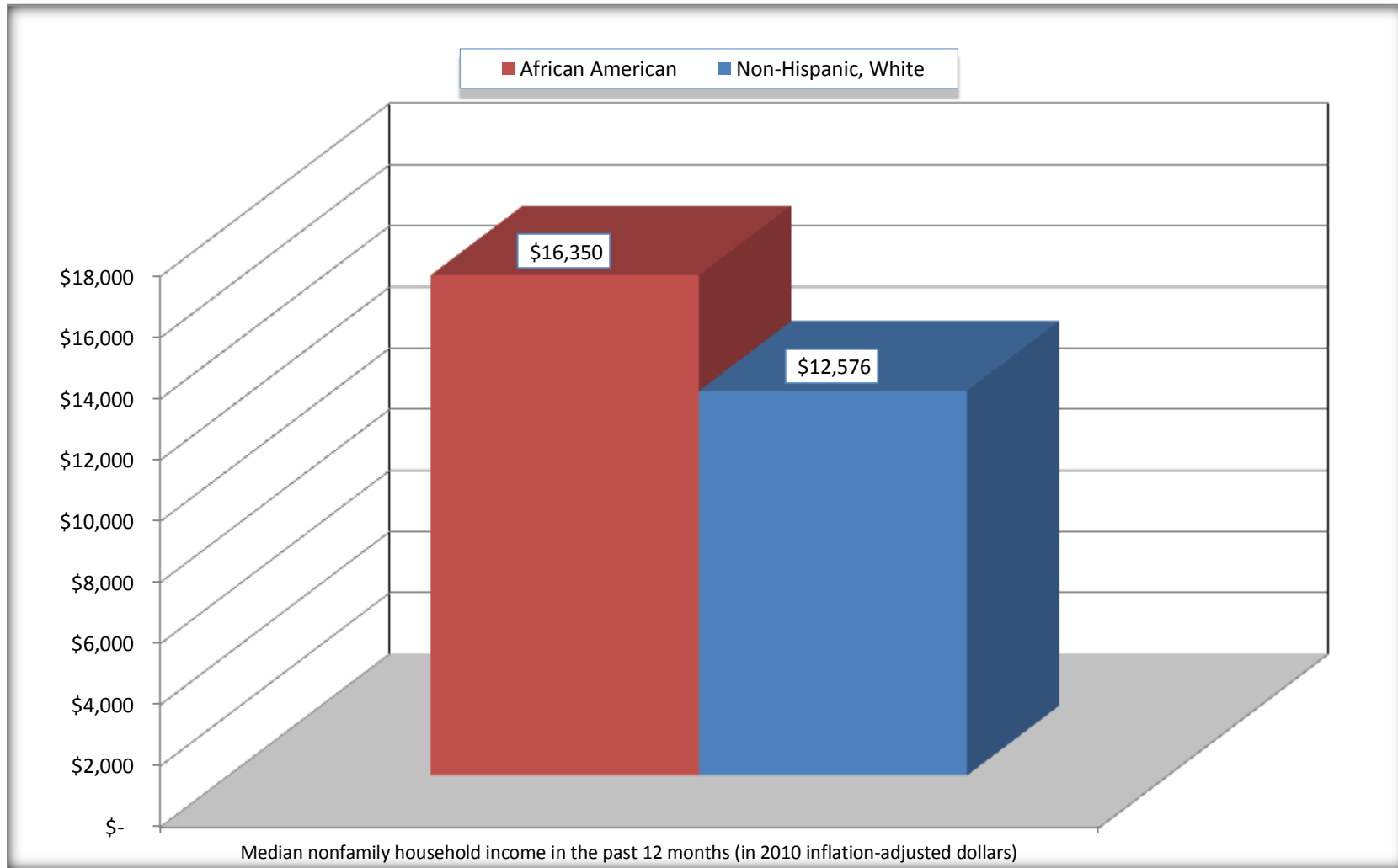
Source: U.S. Census Bureau, 2008-2012 American Community Survey

For information on confidentiality protection, sampling error, nonsampling error, and definitions, see Survey Methodology.

<http://www.census.gov/acs/www/UseData/index.htm>

Median Non-Family Income in the Past 12 Months

Roanoke city, Alabama



Source: B19202. MEDIAN NONFAMILY HOUSEHOLD INCOME IN THE PAST 12 MONTHS (IN 2010 INFLATION-ADJUSTED DOLLARS)
Data Set: 2008-2012 American Community Survey 5-Year Estimates

B19301. PER CAPITA INCOME IN THE PAST 12 MONTHS (IN 2010 INFLATION-ADJUSTED DOLLARS)

Data Set: 2008-2012 American Community Survey 5-Year Estimates

	Roanoke city, Alabama			
	African American	Margin of Error (+/-)	White, Not Hispanic	Margin of Error (+/-)
Per capita income in the past 12 months (in 2010 inflation-adjusted dollars)	\$ 22,316	\$ 13,244	\$ 21,249	\$ 2,862

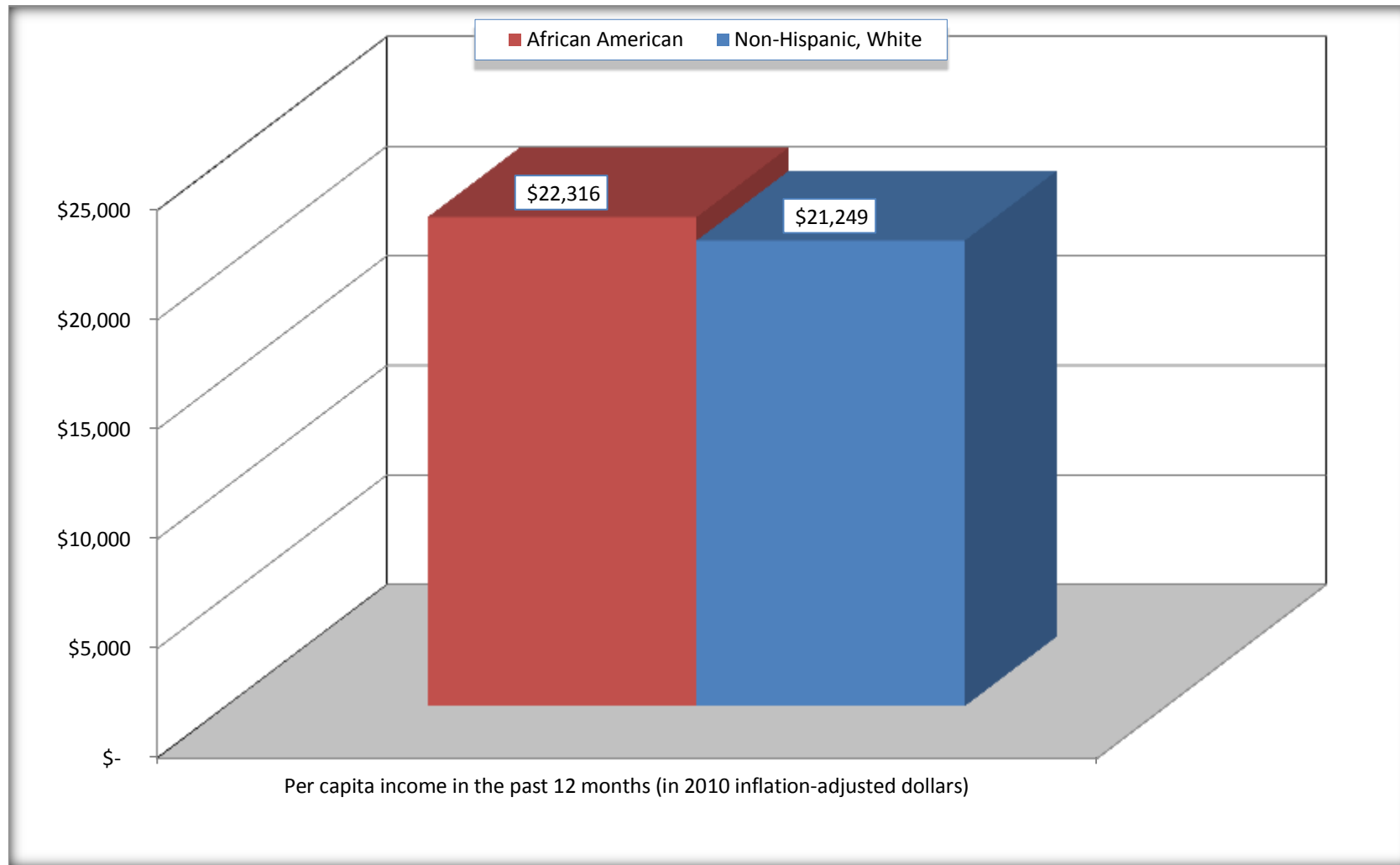
Source: U.S. Census Bureau, 2008-2012 American Community Survey

For information on confidentiality protection, sampling error, nonsampling error, and definitions, see Survey Methodology.

<http://www.census.gov/acs/www/UseData/index.htm>

Per capita Income in the Past 12 Months

Roanoke city, Alabama



Source: B19301. PER CAPITA INCOME IN THE PAST 12 MONTHS (IN 2010 INFLATION-ADJUSTED DOLLARS)
Data Set: 2008-2012 American Community Survey 5-Year Estimates

B20017. MEDIAN EARNINGS IN THE PAST 12 MONTHS (IN 2010 INFLATION-ADJUSTED DOLLARS) BY SEX BY WORK EXPERIENCE IN THE PAST 12 MONTHS FOR THE POPULATION 16 YEARS AND OVER WITH EARNINGS IN THE PAST 12 MONTHS

Data Set: 2008-2012 American Community Survey 5-Year Estimates

	Roanoke city, Alabama			
	African American	Margin of Error (+/-)	White, Not Hispanic	Margin of Error (+/-)
Median earnings in the past 12 months (in 2010 inflation-adjusted dollars) --				
Total:	\$ 21,612	\$ 6,146	\$ 31,161	\$ 5,066
Male --				
Total	\$ 33,594	\$ 51,220	\$ 33,571	\$ 6,765
Worked full-time, year-round in the past 12 months	\$ 61,944	\$ 21,776	\$ 37,393	\$ 20,812
Other	\$ 3,641	\$ 3,083	\$ 12,018	\$ 7,195
Female --				
Total	\$ 19,701	\$ 3,640	\$ 26,912	\$ 9,472
Worked full-time, year-round in the past 12 months	\$ 30,268	\$ 15,293	\$ 38,357	\$ 7,179
Other	\$ 7,462	\$ 6,239	\$ 11,908	\$ 3,085

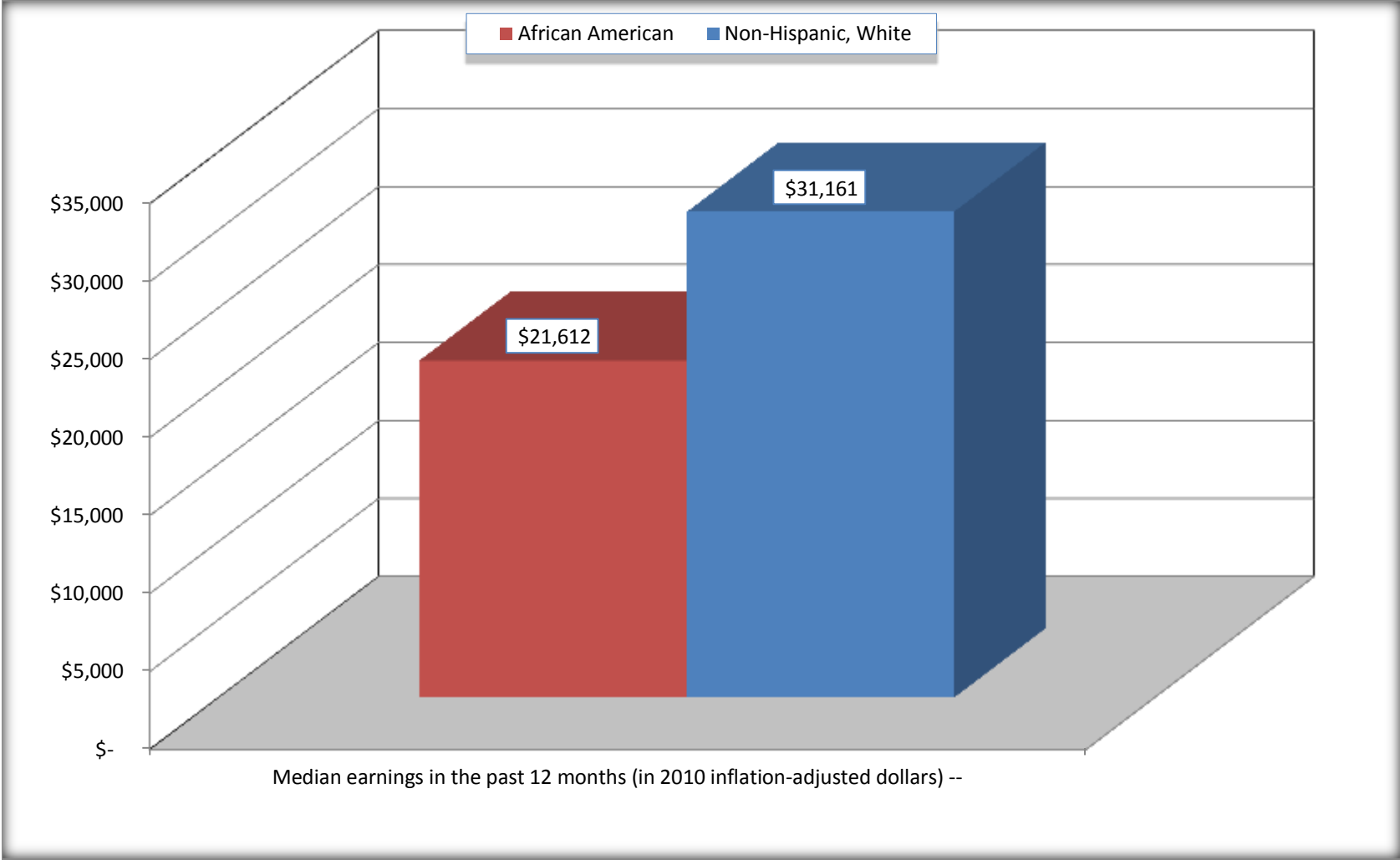
Source: U.S. Census Bureau, 2008-2012 American Community Survey

For information on confidentiality protection, sampling error, nonsampling error, and definitions, see Survey Methodology.

<http://www.census.gov/acs/www/UseData/index.htm>

Median earnings in the Past 12 Months (16 Years and Over with Earnings)

Roanoke city, Alabama



Source: B20017. MEDIAN EARNINGS IN THE PAST 12 MONTHS (IN 2010 INFLATION-ADJUSTED DOLLARS) BY SEX BY WORK EXPERIENCE IN THE PAST 12 MONTHS FOR THE POPULATION 16 YEARS AND OVER WITH EARNINGS IN THE PAST 12 MONTHS
Data Set: 2008-2012 American Community Survey 5-Year Estimates

B20005. SEX BY WORK EXPERIENCE IN THE PAST 12 MONTHS BY EARNINGS IN THE PAST 12 MONTHS (IN 2010 INFLATION-ADJUSTED DOLLARS) FOR THE POPULATION 16 YEARS AND OVER

Data Set: 2008-2012 American Community Survey 5-Year Estimates

	Roanoke city, Alabama					
	African American	Margin of Error (+/-)	% of AA Total	White, Not Hispanic	Margin of Error (+/-)	% of NHW Total
Total:	1,831	273	100.0%	2,705	297	100.0%
Worked full-time, year-round in the past 12 months:	589	NC	32.2%	824	NC	30.5%
No earnings	0	NC	0.0%	0	NC	0.0%
With earnings:	589	NC	32.2%	824	NC	30.5%
\$ 1 to \$ 9,999 or loss	0	NC	0.0%	35	NC	1.3%
\$ 10,000 to \$ 19,999	97	NC	5.3%	96	NC	3.5%
\$ 20,000 to \$ 29,999	124	NC	6.8%	85	NC	3.1%
\$ 30,000 to \$ 49,999	137	NC	7.5%	322	NC	11.9%
\$ 50,000 to \$ 74,999	188	NC	10.3%	244	NC	9.0%
\$ 75,000 or more	43	NC	2.3%	42	NC	1.6%
Other:	1,242	NC	67.8%	1,881	NC	69.5%
No earnings	901	NC	49.2%	1,409	NC	52.1%
With earnings: less than full time, year-round	341	NC	18.6%	472	NC	17.4%
Male:	685	178	37.4%	1,107	170	40.9%
Worked full-time, year-round in the past 12 months:	270	121	14.7%	442	143	16.3%
No earnings	0	17	0.0%	0	17	0.0%
With earnings:	270	121	14.7%	442	143	16.3%
\$ 1 to \$ 9,999 or loss	0	NC	0.0%	16	NC	0.6%
\$ 10,000 to \$ 19,999	13	NC	0.7%	35	NC	1.3%
\$ 20,000 to \$ 29,999	53	NC	2.9%	47	NC	1.7%
\$ 30,000 to \$ 49,999	34	NC	1.9%	159	NC	5.9%
\$ 50,000 to \$ 74,999	151	NC	8.2%	143	NC	5.3%
\$ 75,000 or more	19	NC	1.0%	42	NC	1.6%

	Roanoke city, Alabama					
	African American	Margin of Error (+/-)	% of AA Total	White, Not Hispanic	Margin of Error (+/-)	% of NHW Total
Other:	415	119	22.7%	665	130	24.6%
No earnings	320	121	17.5%	469	109	17.3%
With earnings:	95	59	5.2%	196	76	7.2%
Female:	1,146	155	62.6%	1,598	192	59.1%
Worked full-time, year-round in the past 12 months:	319	113	17.4%	382	105	14.1%
No earnings	0	17	0.0%	0	17	0.0%
With earnings:	319	113	17.4%	382	105	14.1%
\$ 1 to \$ 9,999 or loss	0	NC	0.0%	19	NC	0.7%
\$ 10,000 to \$ 19,999	84	NC	4.6%	61	NC	2.3%
\$ 20,000 to \$ 29,999	71	NC	3.9%	38	NC	1.4%
\$ 30,000 to \$ 49,999	103	NC	5.6%	163	NC	6.0%
\$ 50,000 to \$ 74,999	37	NC	2.0%	101	NC	3.7%
\$ 75,000 or more	24	NC	1.3%	0	NC	0.0%
Other:	827	149	45.2%	1,216	194	45.0%
No earnings	581	156	31.7%	940	180	34.8%
With earnings:	246	105	13.4%	276	85	10.2%

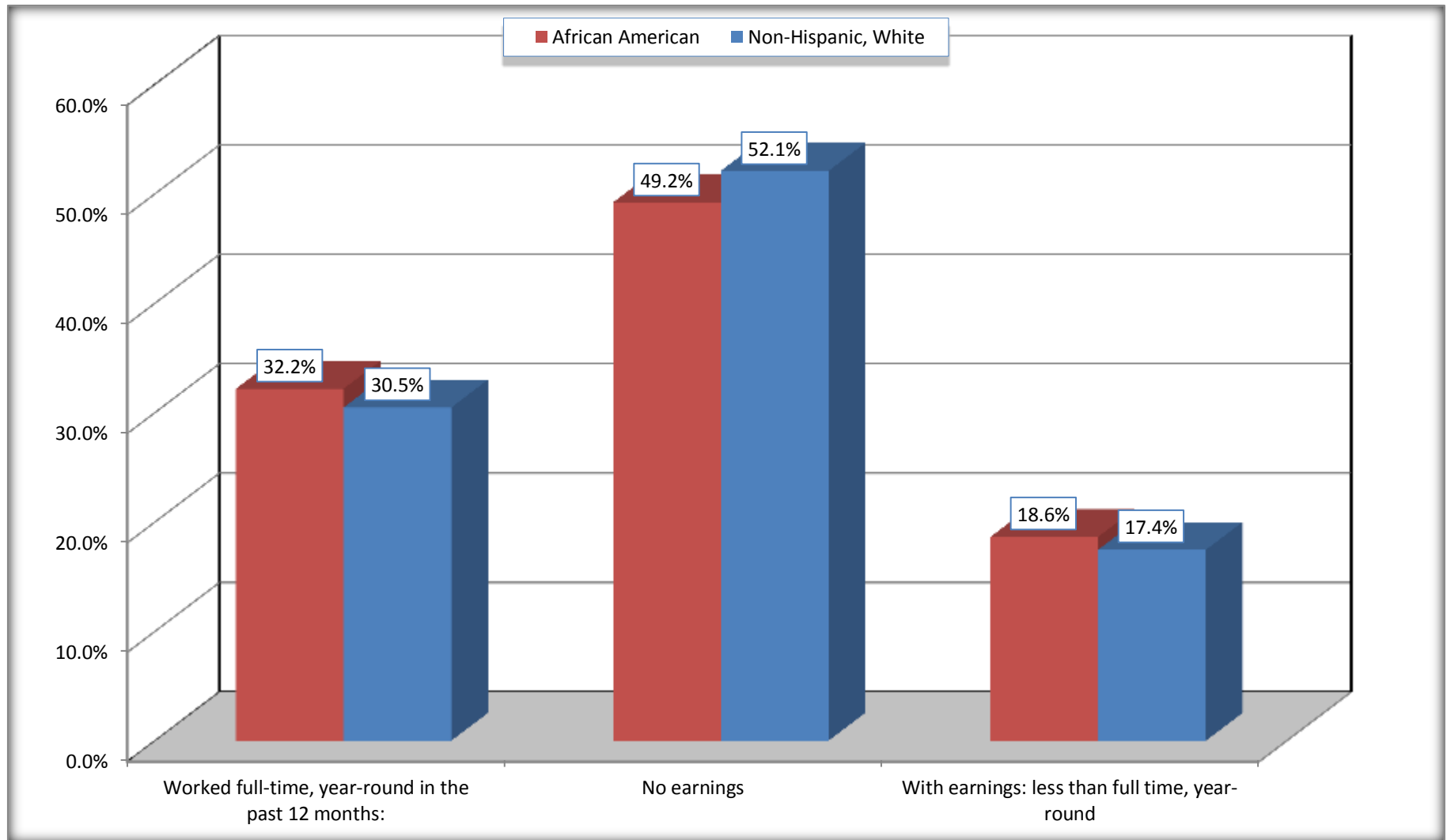
Source: U.S. Census Bureau, 2008-2012 American Community Survey

For information on confidentiality protection, sampling error, nonsampling error, and definitions, see Survey Methodology.

<http://www.census.gov/acs/www/UseData/index.htm>

Employment and Earnings in in the Past 12 Months (16 Years and Over)

Roanoke city, Alabama



Source: B20005. SEX BY WORK EXPERIENCE IN THE PAST 12 MONTHS BY EARNINGS IN THE PAST 12 MONTHS (IN 2010 INFLATION-ADJUSTED DOLLARS) FOR THE POPULATION 16 YEARS AND OVER

Data Set: 2008-2012 American Community Survey 5-Year Estimates

C21001. SEX BY AGE BY VETERAN STATUS FOR THE CIVILIAN POPULATION 18 YEARS AND OVER

Data Set: 2008-2012 American Community Survey 5-Year Estimates

	Roanoke city, Alabama					
	African American	Margin of Error (+/-)	% of AA Total	White, Not Hispanic	Margin of Error (+/-)	% of NHW Total
Total:	1,699	249	100.0%	2,627	289	100.0%
Veteran	286	NC	16.8%	320	NC	12.2%
Nonveteran	1,413	NC	83.2%	2,307	NC	87.8%
Male:	614	151	36.1%	1,094	167	41.6%
18 to 64 years:	493	146	29.0%	749	145	28.5%
Veteran	226	136	13.3%	143	65	5.4%
Nonveteran	267	106	15.7%	606	150	23.1%
65 years and over:	121	58	7.1%	345	99	13.1%
Veteran	29	32	1.7%	177	80	6.7%
Nonveteran	92	66	5.4%	168	77	6.4%
Female:	1,085	148	63.9%	1,533	187	58.4%
18 to 64 years:	911	123	53.6%	1,033	153	39.3%
Veteran	31	50	1.8%	0	17	0.0%
Nonveteran	880	125	51.8%	1,033	153	39.3%
65 years and over:	174	64	10.2%	500	122	19.0%
Veteran	0	17	0.0%	0	17	0.0%
Nonveteran	174	64	10.2%	500	122	19.0%

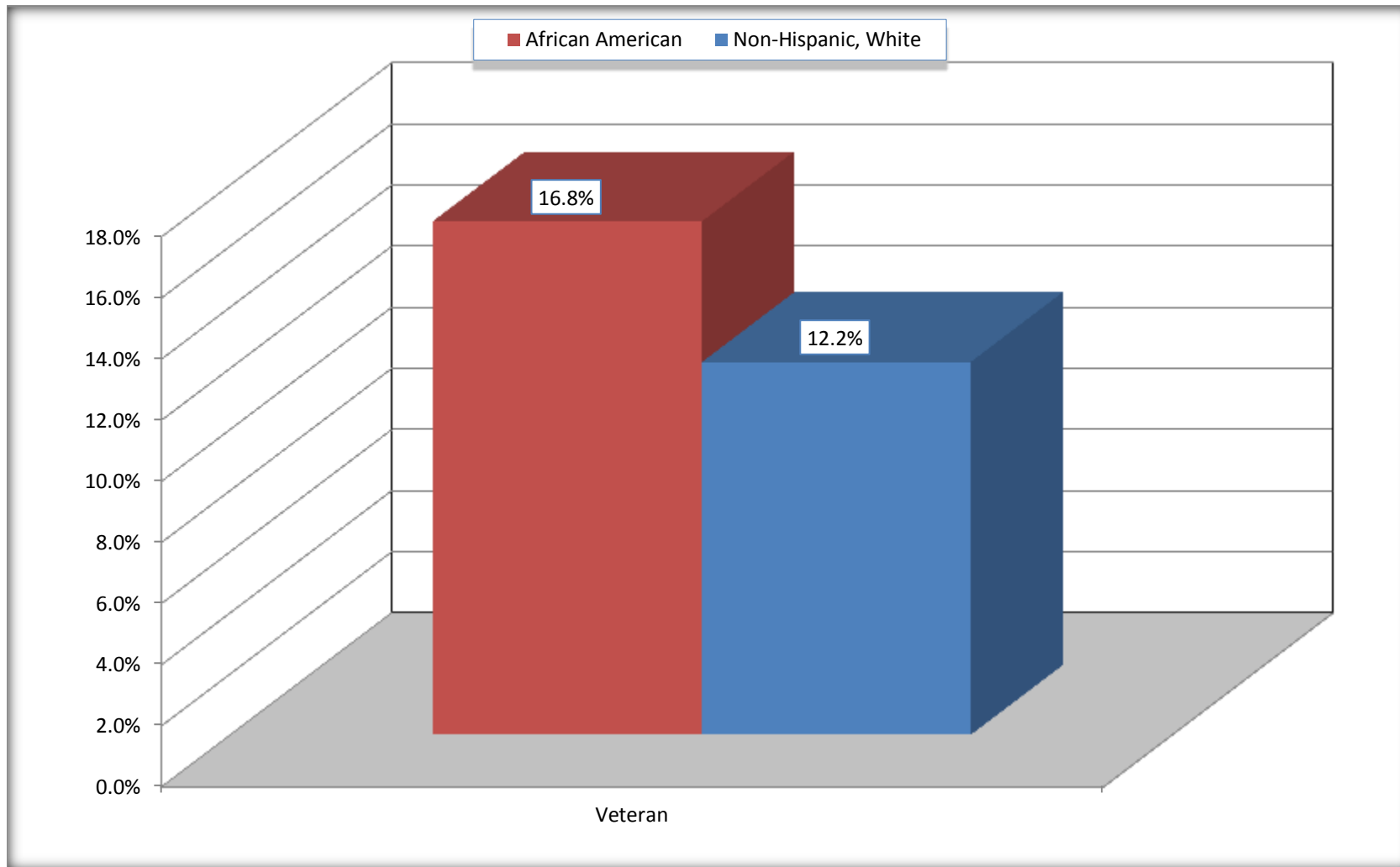
Source: U.S. Census Bureau, 2008-2012 American Community Survey

For information on confidentiality protection, sampling error, nonsampling error, and definitions, see Survey Methodology.

<http://www.census.gov/acs/www/UseData/index.htm>

Veterans in the Civilian Population 18 Years and Over

Roanoke city, Alabama



Source: C21001. SEX BY AGE BY VETERAN STATUS FOR THE CIVILIAN POPULATION 18 YEARS AND OVER
Data Set: 2008-2012 American Community Survey 5-Year Estimates

B22005. RECEIPT OF FOOD STAMPS/SNAP IN THE PAST 12 MONTHS BY RACE OF HOUSEHOLDER

Data Set: 2008-2012 American Community Survey 5-Year Estimates

	Roanoke city, Alabama					
	African American	Margin of Error (+/-)	% of AA Total	White, Not Hispanic	Margin of Error (+/-)	% of NHW Total
Total:	975	170	100.0%	1,321	192	100.0%
HH received Food Stamps/SNAP in the past 12 months	377	128	38.7%	228	96	17.3%
HH did not receive Food Stamps/SNAP in the past 12 months	598	169	61.3%	1,093	189	82.7%

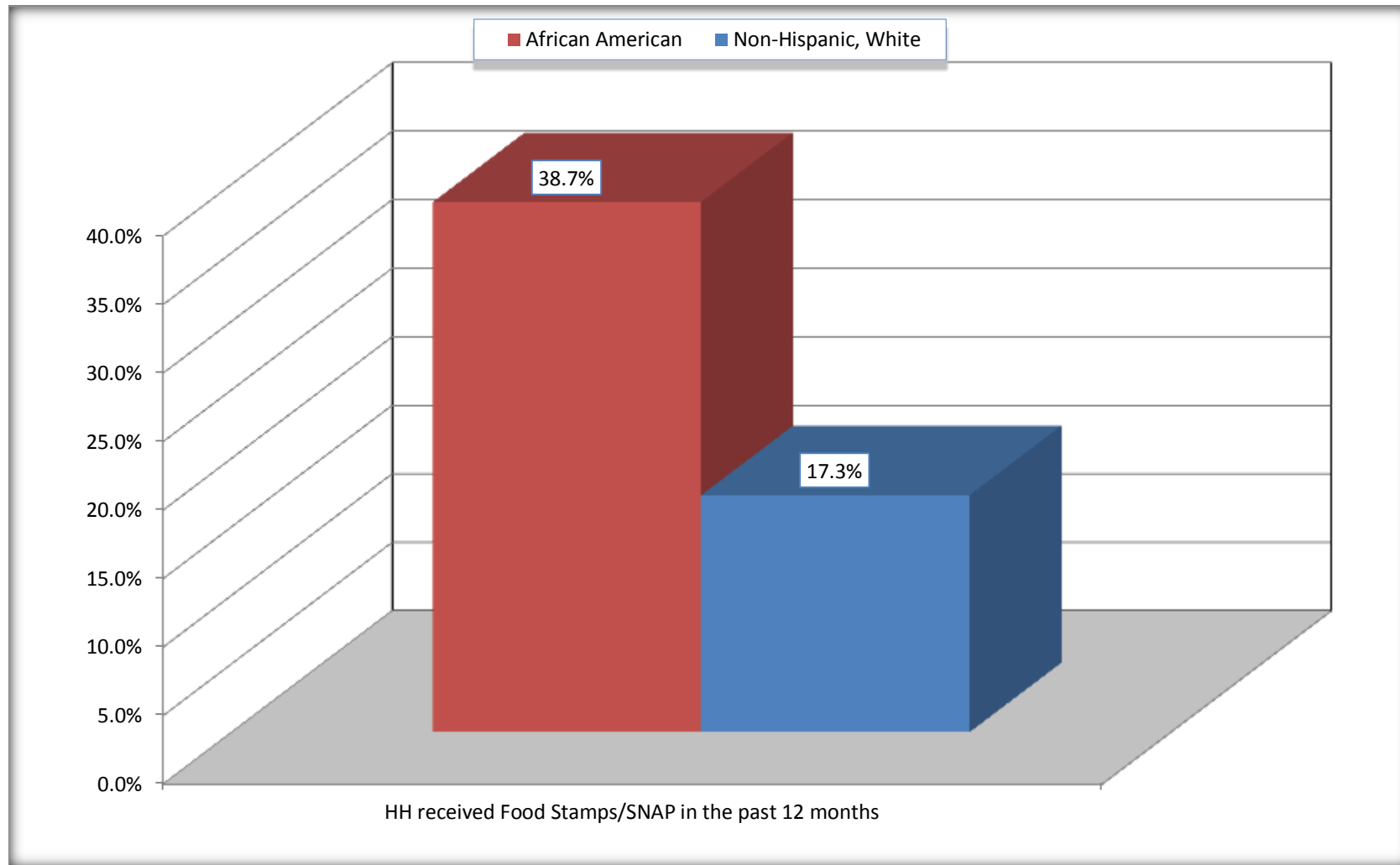
Source: U.S. Census Bureau, 2008-2012 American Community Survey

For information on confidentiality protection, sampling error, nonsampling error, and definitions, see Survey Methodology.

<http://www.census.gov/acs/www/UseData/index.htm>

Receipt of Food Stamps/SNAP in the Past 12 Months by Household

Roanoke city, Alabama



Source: B22005. RECEIPT OF FOOD STAMPS/SNAP IN THE PAST 12 MONTHS BY RACE OF HOUSEHOLDER
Data Set: 2008-2012 American Community Survey 5-Year Estimates

C23002. SEX BY AGE BY EMPLOYMENT STATUS FOR THE POPULATION 16 YEARS AND OVER

Data Set: 2008-2012 American Community Survey 5-Year Estimates

	Roanoke city, Alabama					
	African American	Margin of Error (+/-)	% of AA Total	White, Not Hispanic	Margin of Error (+/-)	% of NHW Total
Total:	1,831	273	100.0%	2,705	297	100.0%
In labor force:	1,039	NC	56.7%	1,185	NC	43.8%
In Armed Forces	0	NC	0.0%	0	NC	0.0%
Civilian:	1,004	NC	54.8%	1,098	NC	40.6%
Employed	893	NC	48.8%	1,136	NC	42.0%
Unemployed	146	NC	8.0%	49	NC	1.8%
Not in labor force	792	NC	43.3%	1,520	NC	56.2%
Male:	685	178	37.4%	1,107	170	40.9%
16 to 64 years:	564	174	30.8%	762	147	28.2%
In labor force:	386	157	21.1%	525	144	19.4%
In Armed Forces	0	17	0.0%	0	17	0.0%
Civilian:	386	157	21.1%	525	144	19.4%
Employed	333	146	18.2%	525	144	19.4%
Unemployed	53	57	2.9%	0	17	0.0%
Not in labor force	178	85	9.7%	237	83	8.8%
65 years and over:	121	58	6.6%	345	99	12.8%
In labor force:	14	22	0.8%	31	34	1.1%
Employed	14	22	0.8%	31	34	1.1%
Unemployed	0	17	0.0%	0	17	0.0%
Not in labor force	107	62	5.8%	314	92	11.6%

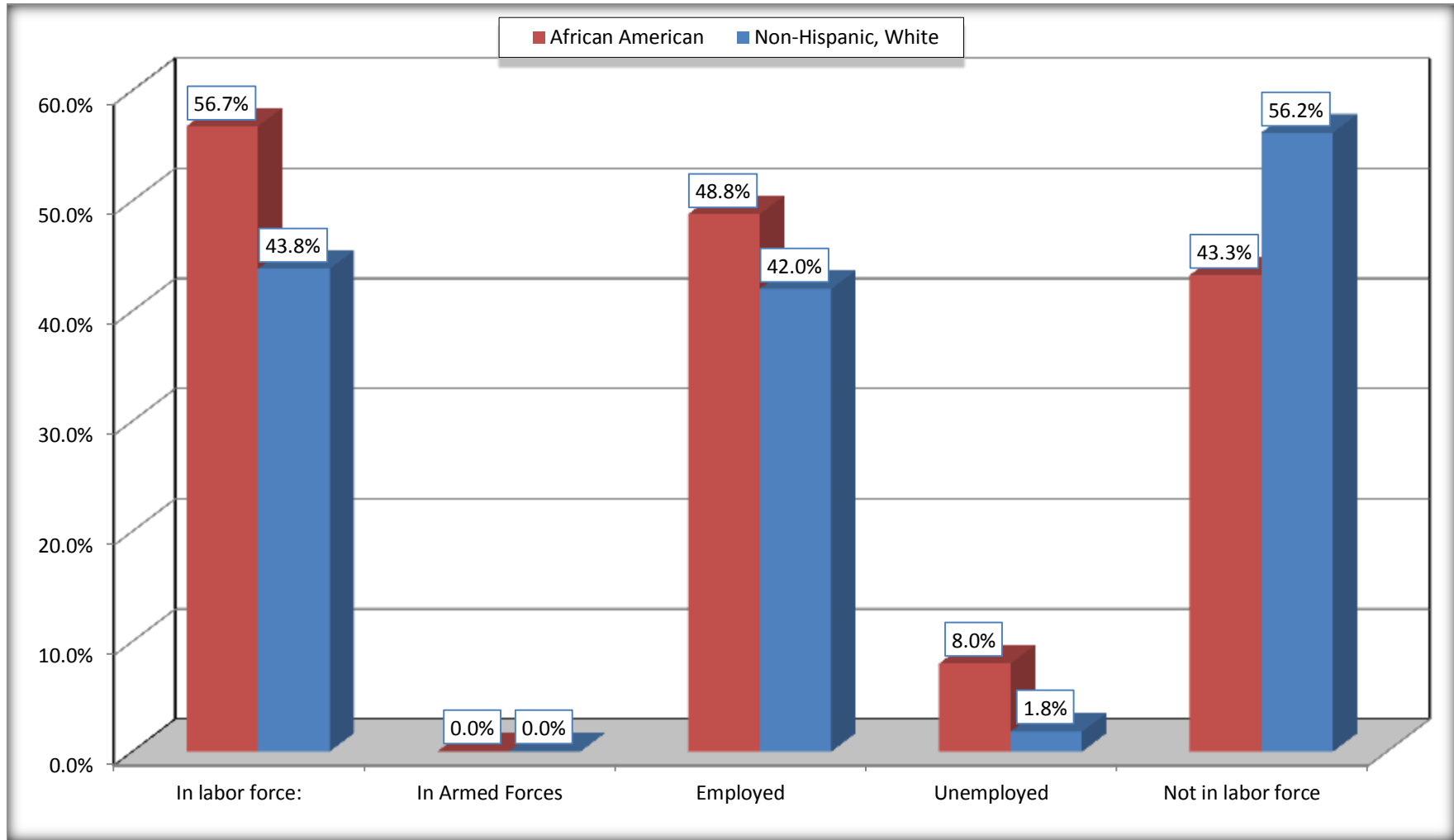
	Roanoke city, Alabama					
	African American	Margin of Error (+/-)	% of AA Total	White, Not Hispanic	Margin of Error (+/-)	% of NHW Total
Female:	1,146	155	62.6%	1,598	192	59.1%
16 to 64 years:	972	133	53.1%	1,098	158	40.6%
In labor force:	618	144	33.8%	573	118	21.2%
In Armed Forces	0	17	0.0%	0	17	0.0%
Civilian:	618	144	33.8%	573	118	21.2%
Employed	525	152	28.7%	524	106	19.4%
Unemployed	93	67	5.1%	49	39	1.8%
Not in labor force	354	126	19.3%	525	145	19.4%
65 years and over:	174	64	9.5%	500	122	18.5%
In labor force:	21	31	1.1%	56	41	2.1%
Employed	21	31	1.1%	56	41	2.1%
Unemployed	0	17	0.0%	0	17	0.0%
Not in labor force	153	70	8.4%	444	124	16.4%

Source: U.S. Census Bureau, 2008-2012 American Community Survey

For information on confidentiality protection, sampling error, nonsampling error, and definitions, see Survey Methodology.
<http://www.census.gov/acs/www/UseData/index.htm>

Employment Status for the Population 16 years and over

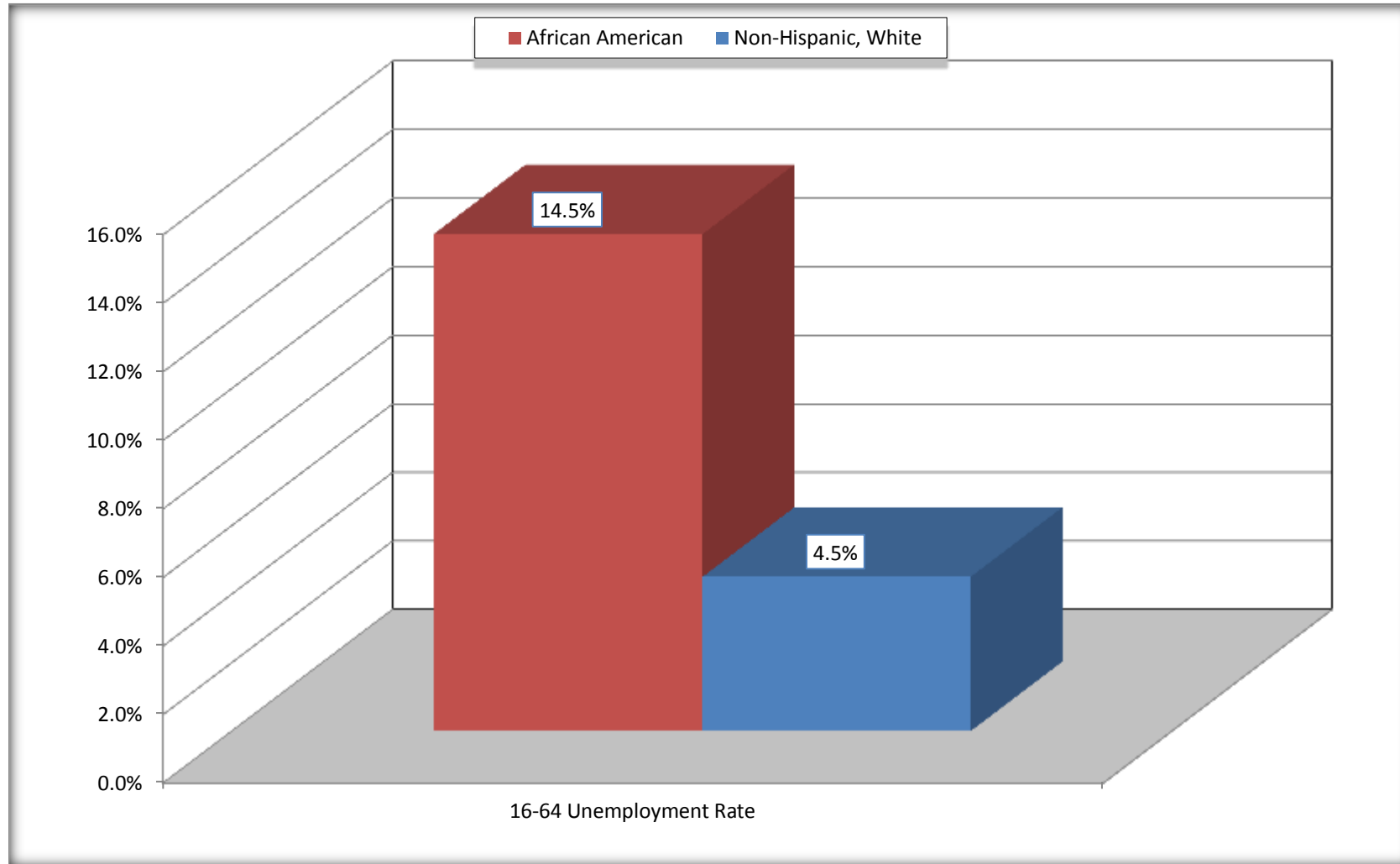
Roanoke city, Alabama



Source: C23002. SEX BY AGE BY EMPLOYMENT STATUS FOR THE POPULATION 16 YEARS AND OVER
Data Set: 2008-2012 American Community Survey 5-Year Estimates

Unemployment of Working Age Population (Ages 16 to 64) (As a Percent of 16-64 Civilian Labor Force)

Roanoke city, Alabama



Source: C23002. SEX BY AGE BY EMPLOYMENT STATUS FOR THE POPULATION 16 YEARS AND OVER
Data Set: 2008-2012 American Community Survey 5-Year Estimates

C24010. SEX BY OCCUPATION FOR THE CIVILIAN EMPLOYED POPULATION 16 YEARS AND OVER

Data Set: 2008-2012 American Community Survey 5-Year Estimates

	Roanoke city, Alabama					
	African American	Margin of Error (+/-)	% of AA Total	White, Not Hispanic	Margin of Error (+/-)	% of NHW Total
Total:	893	236	100.0%	1,136	209	100.0%
Management, professional, and related occupations	151	NC	16.9%	332	NC	29.2%
Service occupations	222	NC	24.9%	183	NC	16.1%
Sales and office occupations	167	NC	18.7%	253	NC	22.3%
Natural resources, construction, and maintenance occupations:	67	NC	7.5%	70	NC	6.2%
Production, transportation, and material moving occupations	286	NC	32.0%	298	NC	26.2%
Male:	347	148	38.9%	556	149	48.9%
Management, business, science, and arts occupations:	94	78	10.5%	133	78	11.7%
Service occupations	46	49	5.2%	28	26	2.5%
Sales and office occupations	45	53	5.0%	48	31	4.2%
Natural resources, construction, and maintenance occupations:	67	86	7.5%	70	44	6.2%
Production, transportation, and material moving occupations	95	71	10.6%	277	144	24.4%
Female:	546	157	61.1%	580	117	51.1%
Management, professional, and related occupations	57	49	6.4%	199	75	17.5%
Service occupations	176	94	19.7%	155	64	13.6%
Sales and office occupations	122	97	13.7%	205	89	18.0%
Natural resources, construction, and maintenance occupations:	0	17	0.0%	0	17	0.0%
Production, transportation, and material moving occupations	191	103	21.4%	21	24	1.8%

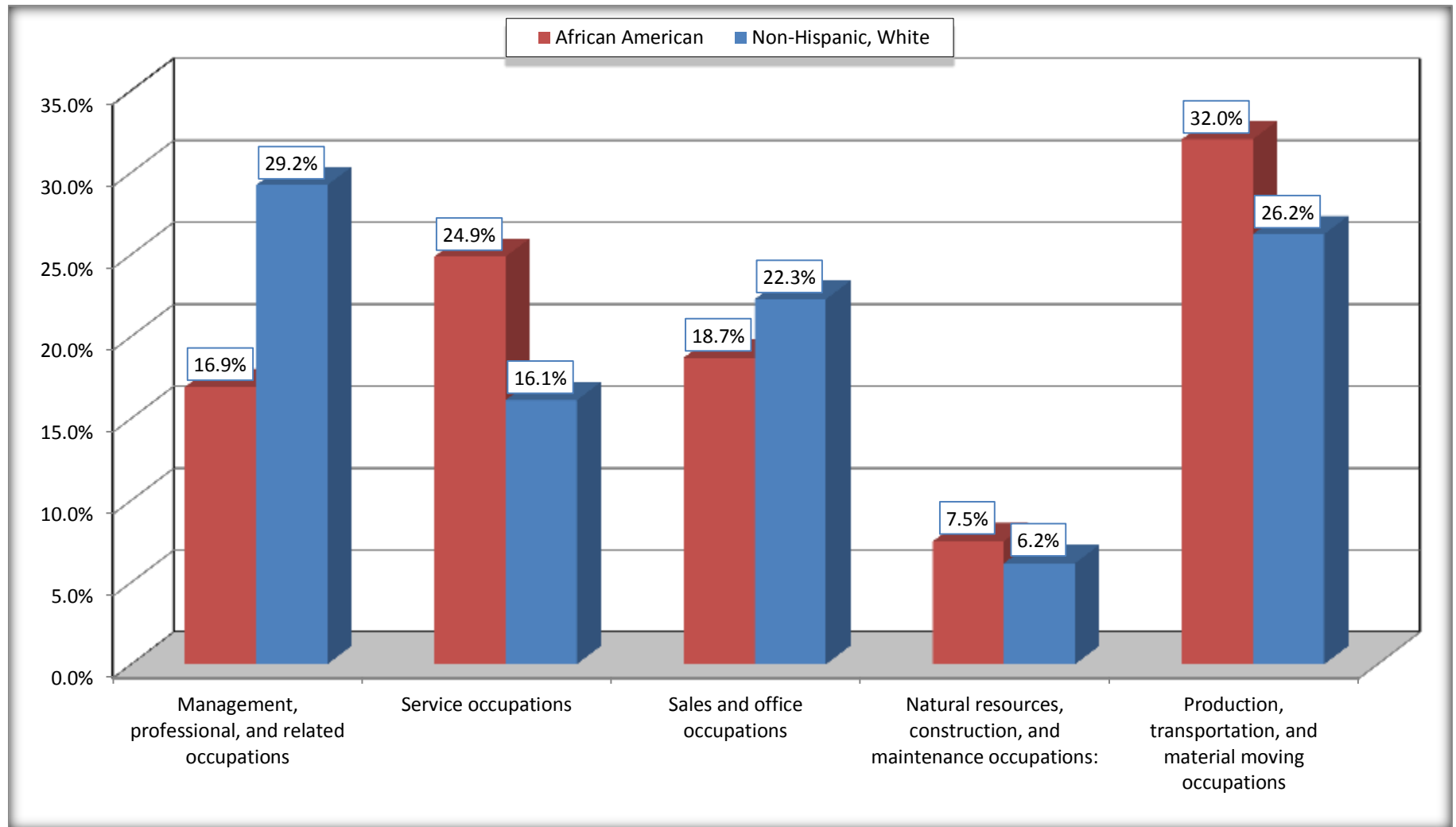
Source: U.S. Census Bureau, 2008-2012 American Community Survey

For information on confidentiality protection, sampling error, nonsampling error, and definitions, see Survey Methodology.

<http://www.census.gov/acs/www/UseData/index.htm>

Occupation for the Civilian Employed 16 Years and Over Population

Roanoke city, Alabama



Source: C24010. SEX BY OCCUPATION FOR THE CIVILIAN EMPLOYED POPULATION 16 YEARS AND OVER
Data Set: 2008-2012 American Community Survey 5-Year Estimates

B25003. TENURE - Universe: OCCUPIED HOUSING UNITS

Data Set: 2008-2012 American Community Survey 5-Year Estimates

	Roanoke city, Alabama					
	African American	Margin of Error (+/-)	% of AA Total	White, Not Hispanic	Margin of Error (+/-)	% of NHW Total
Total:	975	170	100.0%	1,321	192	100.0%
Owner occupied	449	127	46.1%	899	153	68.1%
Renter occupied	526	153	53.9%	422	145	31.9%

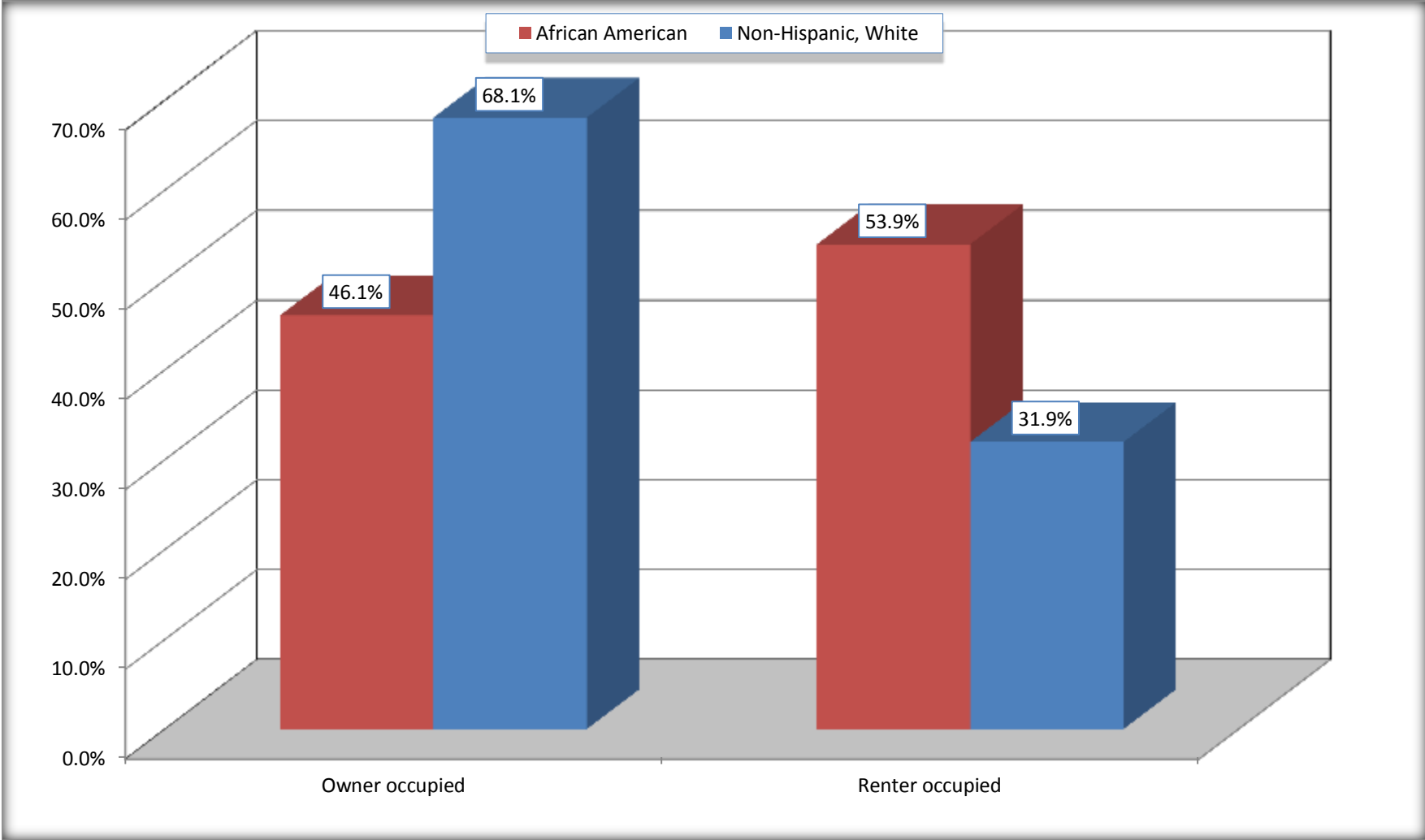
Source: U.S. Census Bureau, 2008-2012 American Community Survey

For information on confidentiality protection, sampling error, nonsampling error, and definitions, see Survey Methodology.

<http://www.census.gov/acs/www/UseData/index.h>

Home Owners and Renters by Household

Roanoke city, Alabama



Source: B25003. TENURE - Universe: OCCUPIED HOUSING UNITS
Data Set: 2008-2012 American Community Survey 5-Year Estimates

B25014. OCCUPANTS PER ROOM - Universe: OCCUPIED HOUSING UNITS

Data Set: 2008-2012 American Community Survey 5-Year Estimates

	Roanoke city, Alabama					
	African American	Margin of Error (+/-)	% of AA Total	White, Not Hispanic	Margin of Error (+/-)	% of NHW Total
Total:	975	170	100.0%	1,321	192	100.0%
1.00 or less occupants per room	786	157	80.6%	1,321	192	100.0%
1.01 or more occupants per room	189	106	19.4%	0	17	0.0%

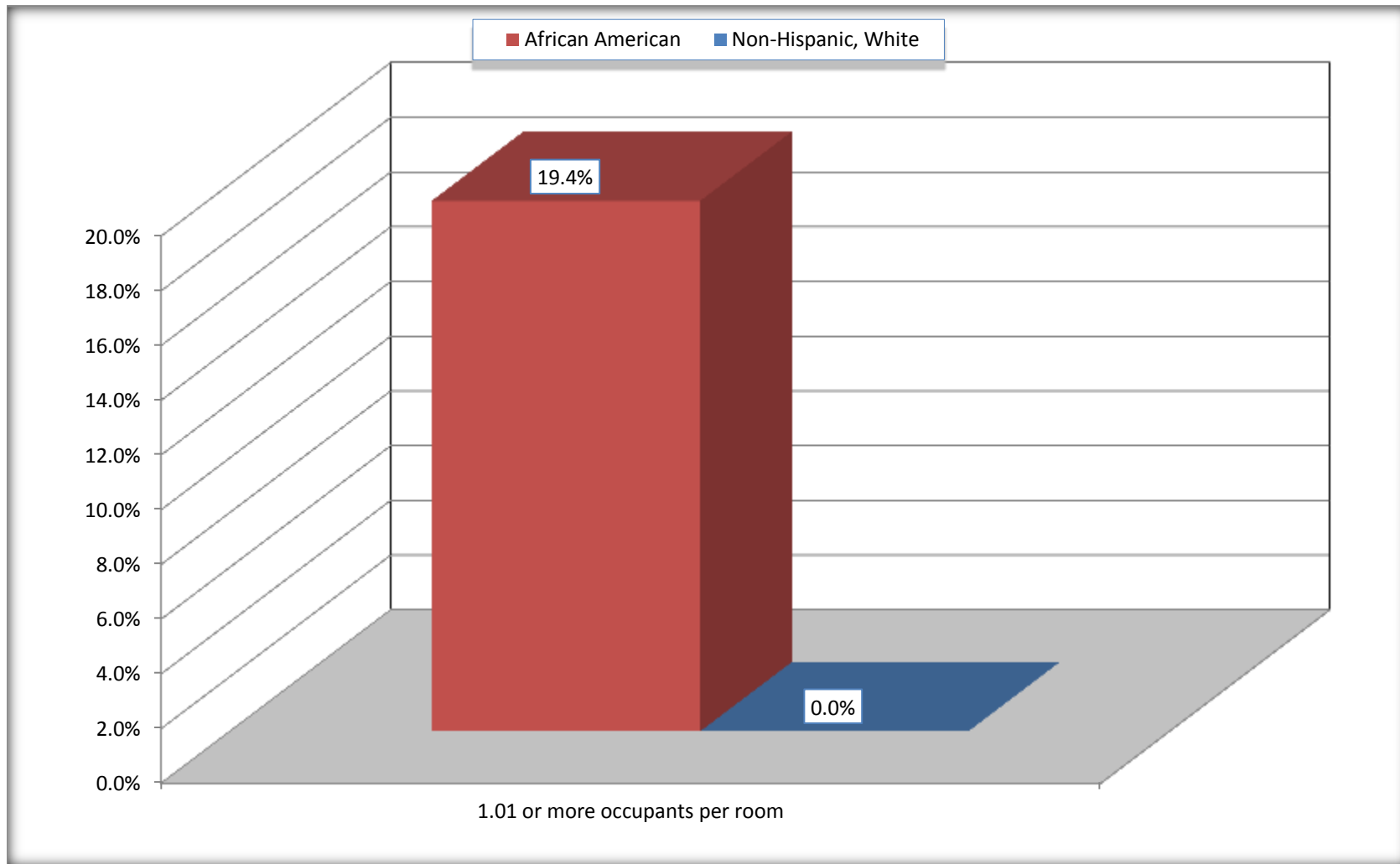
Source: U.S. Census Bureau, 2008-2012 American Community Survey

For information on confidentiality protection, sampling error, nonsampling error, and definitions, see Survey Methodology.

<http://www.census.gov/acs/www/UseData/index.ht>

More than One Person per Room (Crowding) by Household

Roanoke city, Alabama



Source: B25014. OCCUPANTS PER ROOM - Universe: OCCUPIED HOUSING UNITS
Data Set: 2008-2012 American Community Survey 5-Year Estimates

B18101. AGE BY DISABILITY STATUS

Data Set: 2008-2012 American Community Survey 5-Year Estimates

	Roanoke city, Alabama					
	African American	Margin of Error (+/-)	% of AA Total	White, Not Hispanic	Margin of Error (+/-)	% of NHW Total
Total:	2,574	358	100.0%	3,087	369	100.0%
Under 18 years:	958	191	37.2%	601	14	19.5%
With a disability	83	92	3.2%	40	46	1.3%
No disability	875	168	34.0%	561	189	18.2%
18 to 64 years:	1,354	228	52.6%	1,746	244	56.6%
With a disability	306	115	11.9%	399	112	12.9%
No disability	1,048	213	40.7%	1,347	210	43.6%
65 years and over:	262	101	10.2%	740	181	24.0%
With a disability	161	70	6.3%	387	128	12.5%
No disability	101	69	3.9%	353	111	11.4%

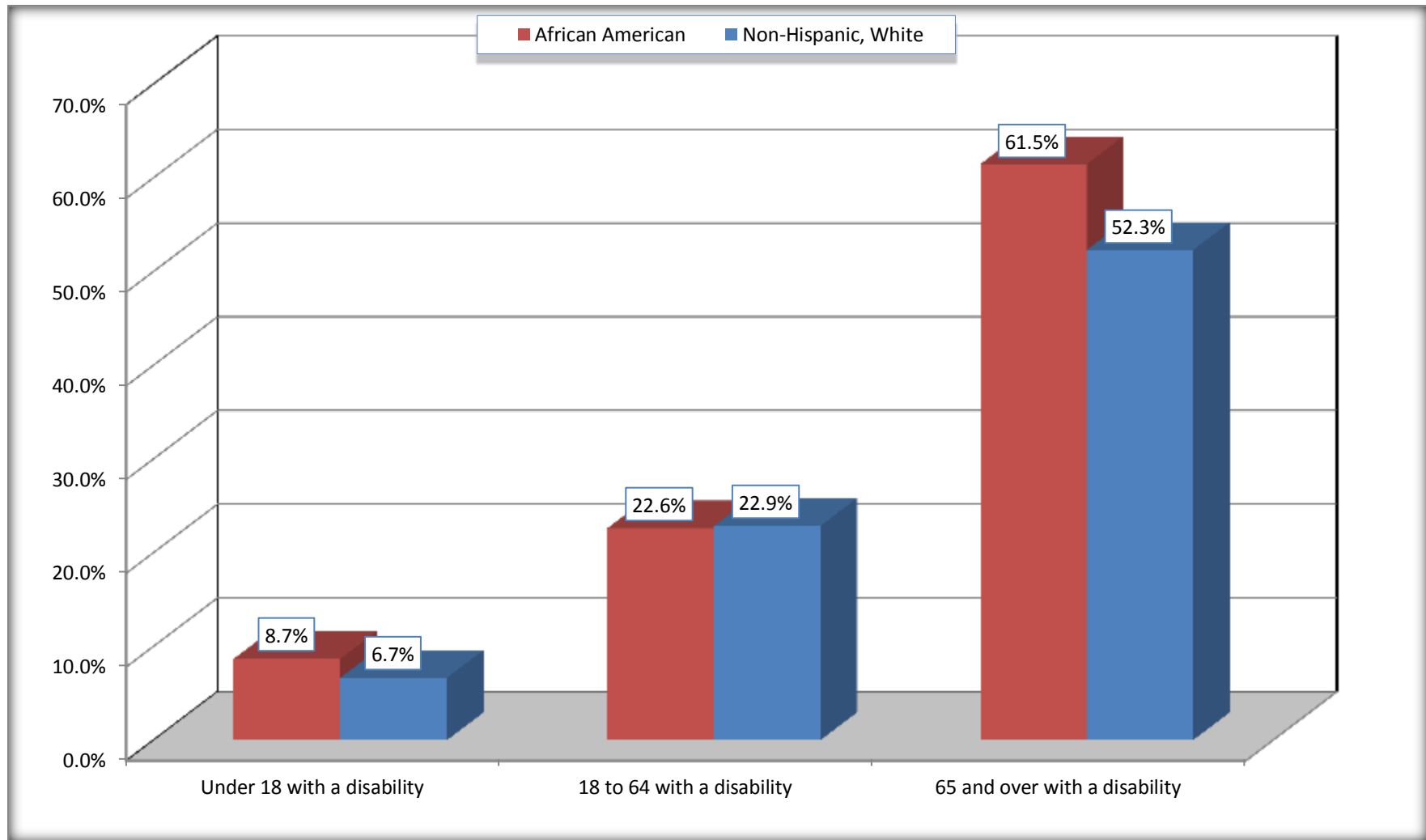
Source: U.S. Census Bureau, 2008-2012 American Community Survey

For information on confidentiality protection, sampling error, nonsampling error, and definitions, see Survey Methodology.

<http://www.census.gov/acs/www/UseData/index.htm>

Disability by Age

Roanoke city, Alabama



Source: B18101. AGE BY DISABILITY STATUS
Data Set: 2008-2012 American Community Survey 5-Year Estimates

C27001B. HEALTH INSURANCE COVERAGE STATUS BY AGE

Data Set: 2008-2012 American Community Survey 5-Year Estimates

	Roanoke city, Alabama					
	African American	Margin of Error (+/-)	% of AA Total	White, Not Hispanic	Margin of Error (+/-)	% of NHW Total
Total:	2,574	358	100.0%	3,087	369	100.0%
Under 18 years:	958	191	37.2%	601	191	19.5%
With health insurance coverage	919	208	35.7%	601	191	19.5%
No health insurance coverage	39	61	1.5%	0	17	0.0%
18 to 64 years:	1,354	228	52.6%	1,746	244	56.6%
With health insurance coverage	1,086	219	42.2%	1,471	232	47.7%
No health insurance coverage	268	121	10.4%	275	114	8.9%
65 years and over:	262	101	10.2%	740	181	24.0%
With health insurance coverage	262	101	10.2%	740	181	24.0%
No health insurance coverage	0	17	0.0%	0	17	0.0%

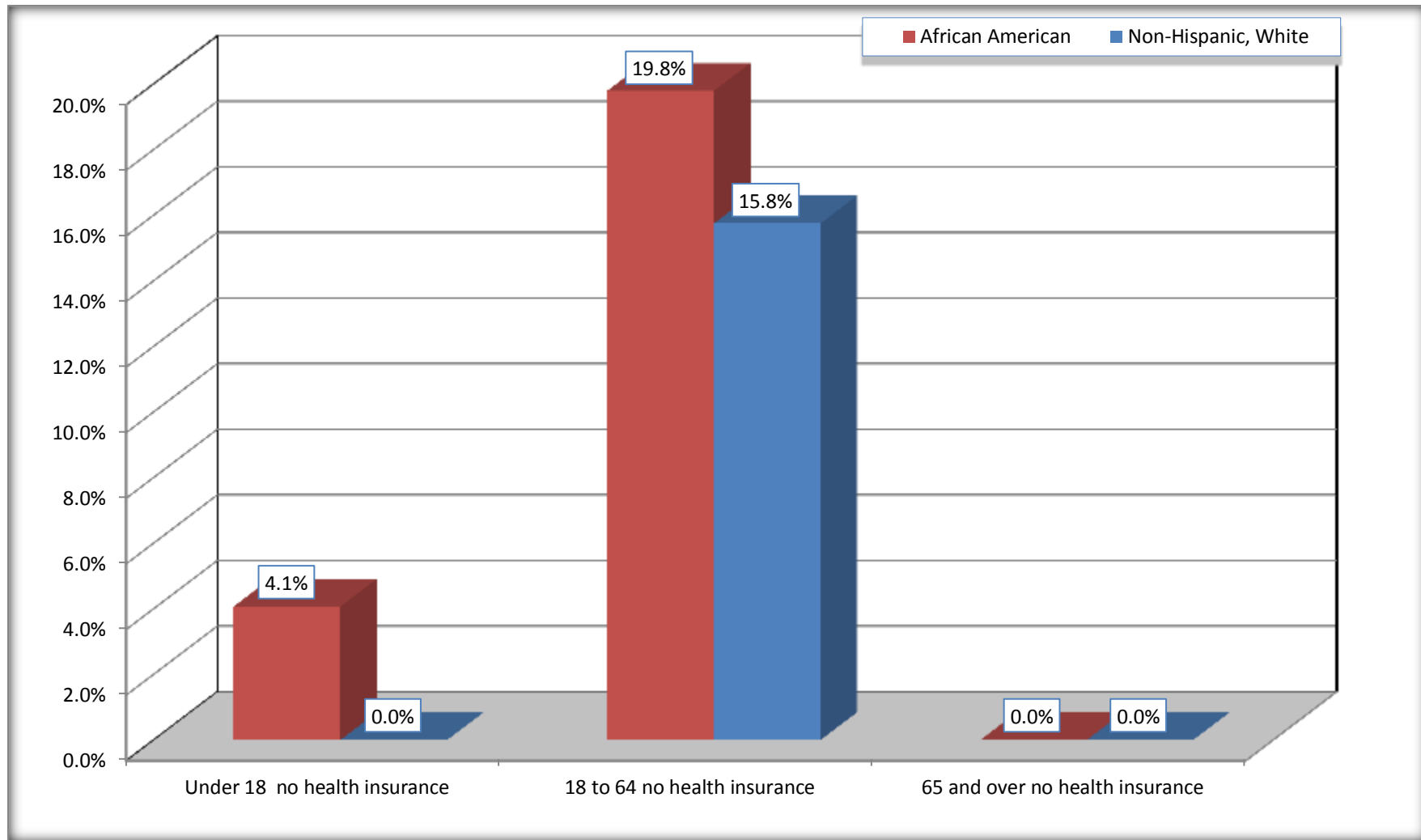
Source: U.S. Census Bureau, 2008-2012 American Community Survey

For information on confidentiality protection, sampling error, nonsampling error, and definitions, see Survey Methodology.

<http://www.census.gov/acs/www/UseData/index.htm>

Lack of Health Insurance Coverage by Age

Roanoke city, Alabama



Source: C27001B. HEALTH INSURANCE COVERAGE STATUS BY AGE
Data Set: 2008-2012 American Community Survey 5-Year Estimates