

# **Selected Socio-Economic Data**

## **Pickens County, Alabama**

### **African American and White, Not Hispanic**

**Data Set: 2008-2012 American Community Survey 5-Year Estimates**

[www.fairvote2020.org](http://www.fairvote2020.org)

[www.fairdata2000.com](http://www.fairdata2000.com)

[29-Dec-13](#)

**C02003.DETAILED RACE - Universe: TOTAL POPULATION**  
 Data Set: 2008-2012 American Community Survey 5-Year Estimates

	Pickens County, Alabama		
	Population	Margin of Error (+/-)	% of Total
<b>Total:</b>	<b>19,646</b>	<b>*****</b>	<b>100.0%</b>
Population of one race:	19,449	107	99.0%
White	11,249	44	57.3%
Black or African American	8,168	101	41.6%
American Indian and Alaska Native	16	18	0.1%
Asian alone	4	7	0.0%
Native Hawaiian and Other Pacific Islander	0	19	0.0%
Some other race	12	18	0.1%
Population of two or more races:	197	107	1.0%
Two races including Some other race	13	23	0.1%
Two races excluding Some other race, and three or more races	184	105	0.9%
Population of two races:	184	102	0.9%
White; Black or African American	96	80	0.5%
White; American Indian and Alaska Native	60	53	0.3%
White; Asian	0	19	0.0%
Black or African American; American Indian and Alaska Native	15	22	0.1%
All other two race combinations	13	23	0.1%
Population of three races	13	20	0.1%
Population of four or more races	0	19	0.0%

Note: Hispanics may be of any race. See Table B03002 and chart.

Source: U.S. Census Bureau, 2008-2012 American Community Survey

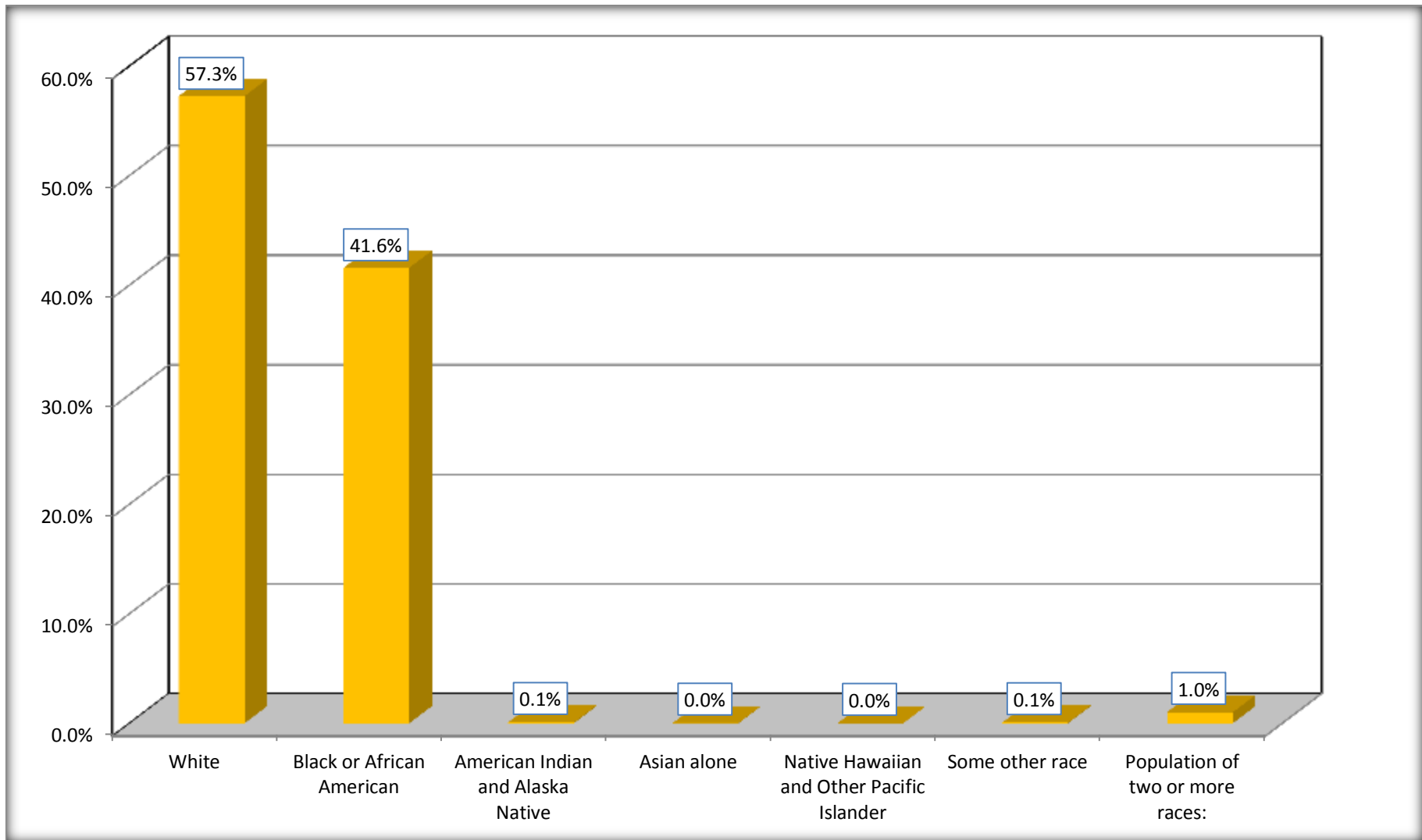
Although the American Community Survey (ACS) produces population, demographic and housing unit estimates, it is the Census Bureau's Population Estimates Program that produces and disseminates the official estimates of the population for the nation, states, counties, cities and towns and estimates of housing units for states and counties.

For information on confidentiality protection, sampling error, nonsampling error, and definitions, see Survey Methodology.

<http://www.census.gov/acs/www/UseData/index.htm>

# Population by Race

## Pickens County, Alabama



Source: C02003.DETAILED RACE - Universe: TOTAL POPULATION  
Data Set: 2008-2012 American Community Survey 5-Year Estimates

**B03002. HISPANIC OR LATINO ORIGIN BY RACE - Universe: TOTAL POPULATION**

Data Set: 2008-2012 American Community Survey 5-Year Estimates

	Pickens County, Alabama		
	Population	Margin of Error (+/-)	% of Total
<b>Total:</b>	19,646	*****	<b>100.0%</b>
Not Hispanic or Latino:	19,326	*****	98.4%
White alone	10,954	18	55.8%
Black or African American alone	8,168	101	41.6%
American Indian and Alaska Native alone	16	18	0.1%
Asian alone	4	7	0.0%
Native Hawaiian and Other Pacific Islander alone	0	19	0.0%
Some other race alone	12	18	0.1%
Two or more races:	172	98	0.9%
Two races including Some other race	13	23	0.1%
Two races excluding Some other race, and three or more races	159	95	0.8%
Hispanic or Latino	320	*****	1.6%

Source: U.S. Census Bureau, 2008-2012 American Community Survey

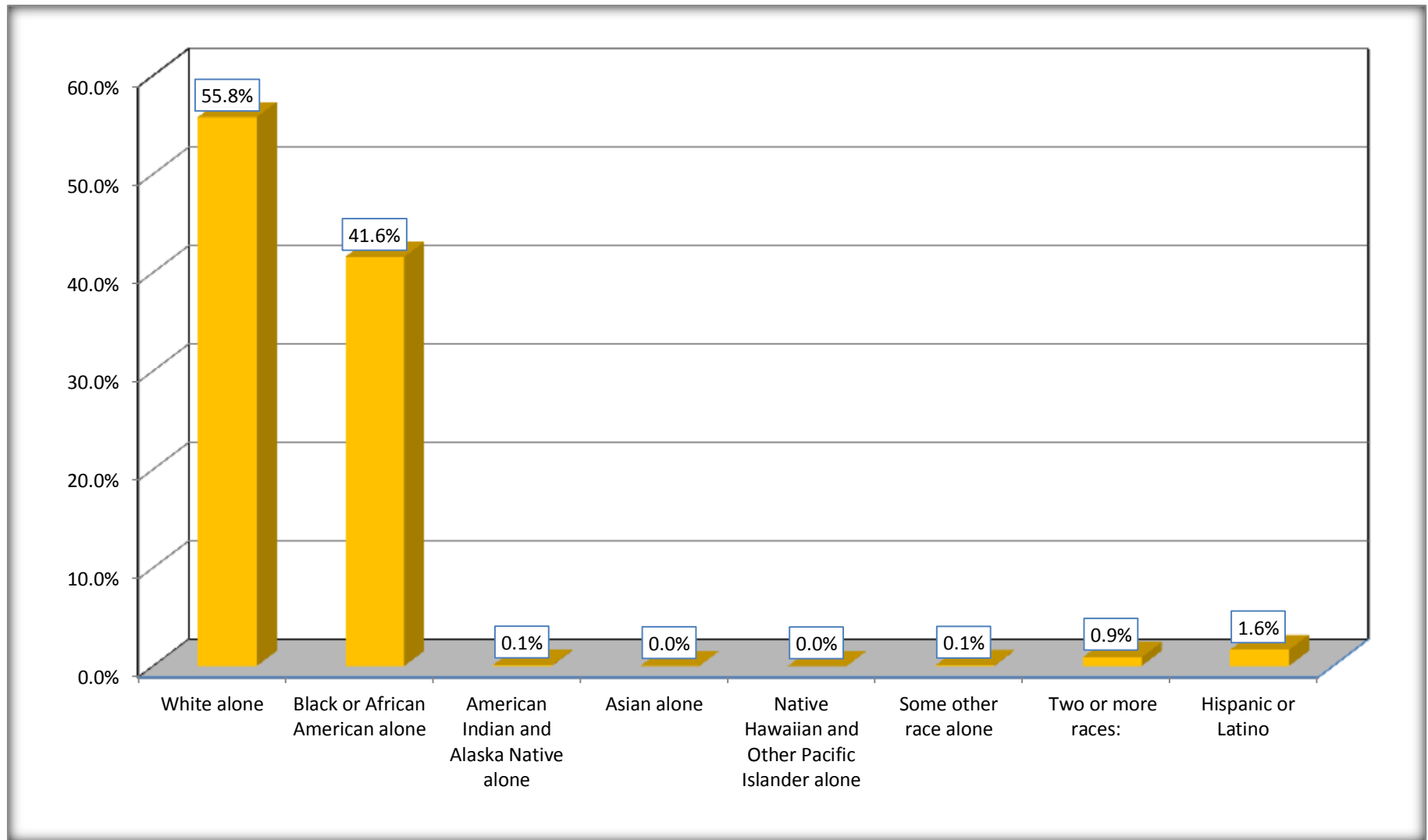
Although the American Community Survey (ACS) produces population, demographic and housing unit estimates, it is the Census Bureau's Population Estimates Program that produces and disseminates the official estimates of the population for the nation, states, counties, cities and towns and estimates of housing units for states and counties.

For information on confidentiality protection, sampling error, nonsampling error, and definitions, see Survey Methodology.

<http://www.census.gov/acs/www/UseData/index.htm>

# Non-Hispanic by Race and Hispanic Population

## Pickens County, Alabama



Source: B03002. HISPANIC OR LATINO ORIGIN BY RACE - Universe: TOTAL POPULATION  
Data Set: 2008-2012 American Community Survey 5-Year Estimates

**B03002. HISPANIC OR LATINO ORIGIN BY RACE**

Data Set: 2008-2012 American Community Survey 5-Year Estimates

	Pickens County, Alabama		
	Population	Margin of Error (+/-)	% of Total
Hispanic or Latino:	320	*****	<b>100.0%</b>
White alone	295	41	92.2%
Black or African American alone	0	19	0.0%
American Indian and Alaska Native alone	0	19	0.0%
Asian alone	0	19	0.0%
Native Hawaiian and Other Pacific Islander alone	0	19	0.0%
Some other race alone	0	19	0.0%
Two or more races:	25	42	7.8%
Two races including Some other race	0	19	0.0%
Two races excluding Some other race, and three or more races	25	42	7.8%

Source: U.S. Census Bureau, 2008-2012 American Community Survey

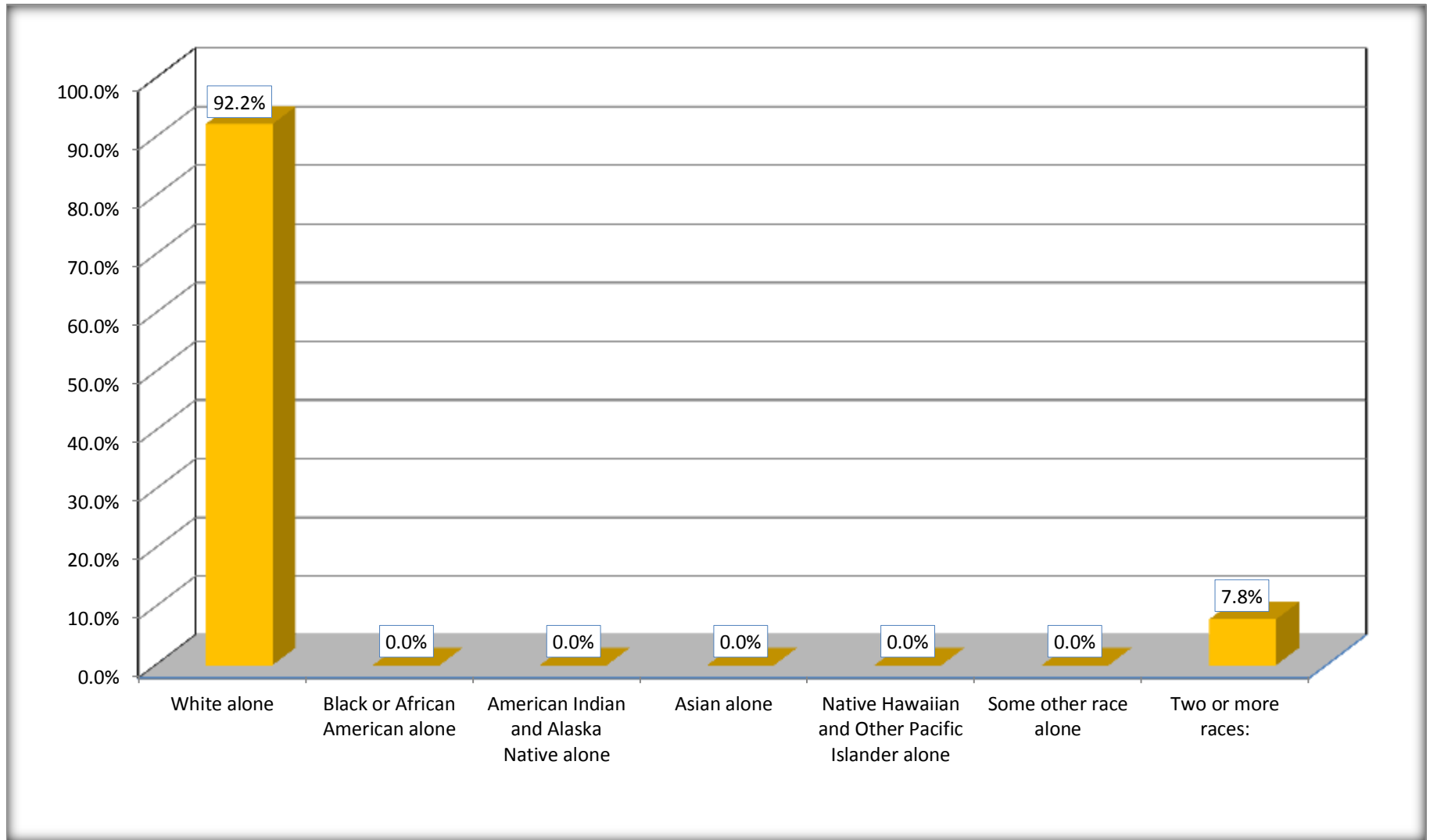
Although the American Community Survey (ACS) produces population, demographic and housing unit estimates, it is the Census Bureau's Population Estimates Program that produces and disseminates the official estimates of the population for the nation, states, counties, cities and towns and estimates of housing units for states and counties.

For information on confidentiality protection, sampling error, nonsampling error, and definitions, see Survey Methodology.

<http://www.census.gov/acs/www/UseData/index.htm>

# Hispanic or Latino Origin by Race

## Pickens County, Alabama



Source: B03002. HISPANIC OR LATINO ORIGIN BY RACE  
Data Set: 2008-2012 American Community Survey 5-Year Estimates

**B01001. SEX BY AGE**

Data Set: 2008-2012 American Community Survey 5-Year Estimates

	Pickens County, Alabama					
	African American	Margin of Error (+/-)	% of AA Total	White, Not Hispanic	Margin of Error (+/-)	% of NHW Total
<b>Total:</b>	<b>8,168</b>	<b>101</b>	<b>100.0%</b>	<b>10,954</b>	<b>18</b>	<b>100.0%</b>
Under 18 years	2,271	NC	27.8%	2,161	NC	19.7%
18 to 64 years	4,909	NC	60.1%	6,466	NC	59.0%
65 years and over	988	NC	12.1%	2,327	NC	21.2%
Male:	3,719	39	45.5%	5,390	389	49.2%
Under 18 years	1,159	NC	14.2%	1,097	NC	10.0%
18 to 64 years	2,175	NC	26.6%	3,270	NC	29.9%
65 years and over	385	NC	4.7%	1,023	NC	9.3%
Female:	4,449	77	54.5%	5,564	412	50.8%
Under 18 years	1,112	NC	13.6%	1,064	NC	9.7%
18 to 64 years	2,734	NC	33.5%	3,196	NC	29.2%
65 years and over	603	NC	7.4%	1,304	NC	11.9%

Source: U.S. Census Bureau, 2008-2012 American Community Survey

Although the American Community Survey (ACS) produces population, demographic and housing unit estimates, it is the Census Bureau's Population Estimates Program that produces and disseminates the official estimates of the population for the nation, states, counties, cities and towns and estimates of housing units for states and counties.

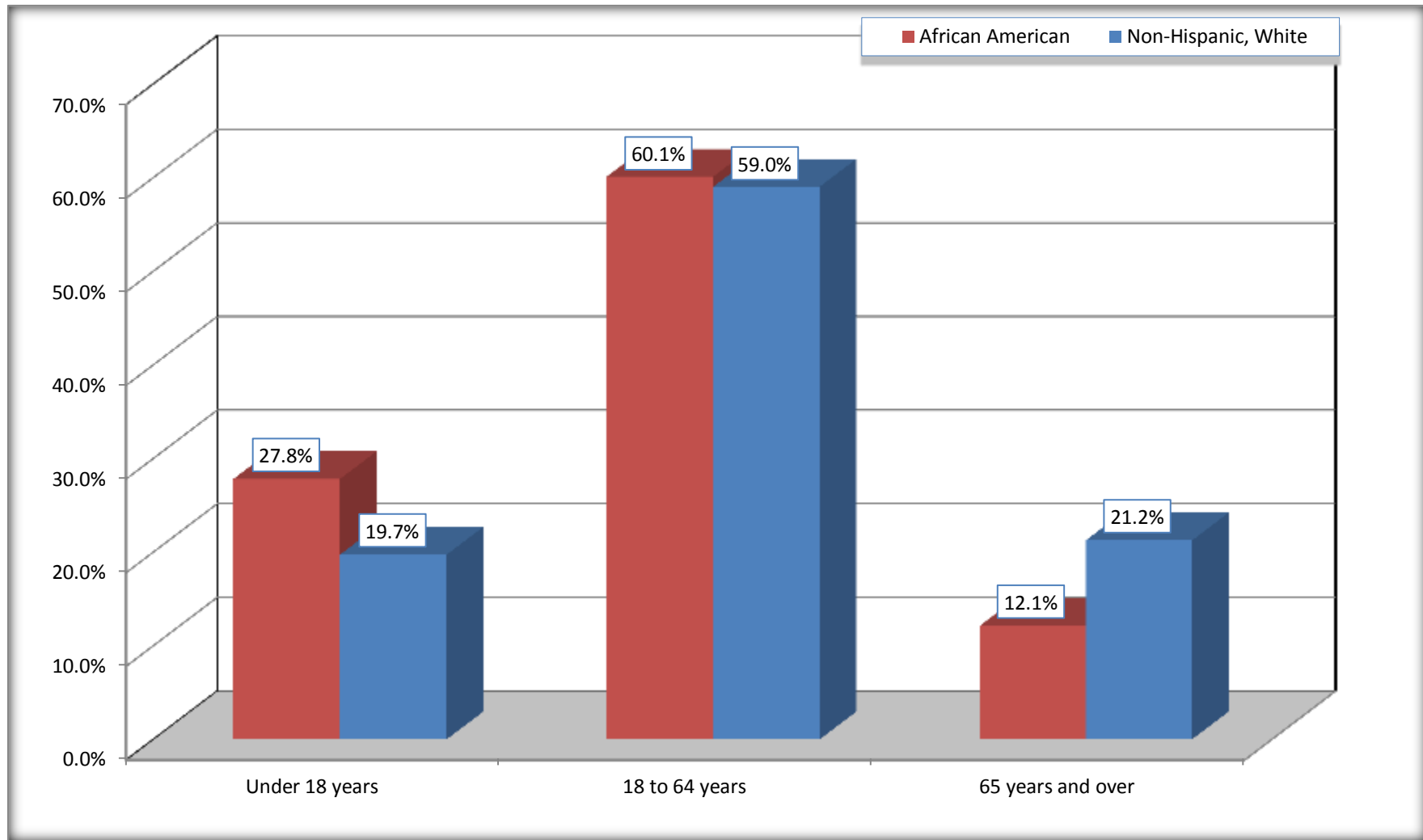
For information on confidentiality protection, sampling error, nonsampling error, and definitions, see Survey Methodology.

<http://www.census.gov/acs/www/UseData/index.htm>



# Population by Age

## Pickens County, Alabama



Source: B01001. SEX BY AGE  
Data Set: 2008-2012 American Community Survey 5-Year Estimates

**B05003. SEX BY AGE BY CITIZENSHIP STATUS**

Data Set: 2008-2012 American Community Survey 5-Year Estimates

	Pickens County, Alabama					
	African American	Margin of Error (+/-)	% of AA Total by Age	White, Not Hispanic	Margin of Error (+/-)	% of NHW Total by Age
<b>Total:</b>	<b>8,168</b>	<b>101</b>	<b>100.0%</b>	<b>10,954</b>	<b>18</b>	<b>100.0%</b>
<b>Under 18 years:</b>	<b>2,271</b>	<b>NC</b>	<b>100.0%</b>	<b>2,161</b>	<b>NC</b>	<b>100.0%</b>
Native	2,271	NC	100.0%	2,161	NC	100.0%
Foreign born:	0	NC	0.0%	0	NC	0.0%
Naturalized U.S. citizen	0	NC	0.0%	0	NC	0.0%
Not a U.S. citizen	0	NC	0.0%	0	NC	0.0%
<b>18 years and over:</b>	<b>5,897</b>	<b>NC</b>	<b>100.0%</b>	<b>8,793</b>	<b>NC</b>	<b>100.0%</b>
Native	5,897	NC	100.0%	8,793	NC	100.0%
Foreign born:	0	NC	0.0%	0	NC	0.0%
Naturalized U.S. citizen	0	NC	0.0%	0	NC	0.0%
Not a U.S. citizen	0	NC	0.0%	0	NC	0.0%
<b>Male:</b>	<b>3,719</b>	<b>39</b>	<b>45.5%</b>	<b>5,390</b>	<b>19</b>	<b>49.2%</b>
<b>Under 18 years:</b>	<b>1,159</b>	<b>23</b>	<b>100.0%</b>	<b>1,097</b>	<b>19</b>	<b>100.0%</b>
Native	1,159	23	100.0%	1,097	19	100.0%
Foreign born:	0	19	0.0%	0	19	0.0%
Naturalized U.S. citizen	0	19	0.0%	0	19	0.0%
Not a U.S. citizen	0	19	0.0%	0	19	0.0%
<b>18 years and over:</b>	<b>2,560</b>	<b>28</b>	<b>100.0%</b>	<b>4,293</b>	<b>19</b>	<b>100.0%</b>
Native	2,560	28	100.0%	4,293	19	100.0%
Foreign born:	0	19	0.0%	0	19	0.0%
Naturalized U.S. citizen	0	19	0.0%	0	19	0.0%
Not a U.S. citizen	0	19	0.0%	0	19	0.0%

	Pickens County, Alabama					
	African American	Margin of Error (+/-)	% of AA by Age	White, Not Hispanic	Margin of Error (+/-)	% of NHW by Age
<b>Female:</b>	4,449	77	54.5%	5,564	18	50.8%
<b>Under 18 years:</b>	<b>1,112</b>	<b>32</b>	<b>100.0%</b>	<b>1,064</b>	<b>18</b>	<b>100.0%</b>
Native	1,112	32	100.0%	1,064	18	100.0%
Foreign born:	0	19	0.0%	0	19	0.0%
Naturalized U.S. citizen	0	19	0.0%	0	19	0.0%
Not a U.S. citizen	0	19	0.0%	0	19	0.0%
<b>18 years and over:</b>	<b>3,337</b>	<b>57</b>	<b>100.0%</b>	<b>4,500</b>	<b>19</b>	<b>100.0%</b>
Native	3,337	57	100.0%	4,500	19	100.0%
Foreign born:	0	19	0.0%	0	19	0.0%
Naturalized U.S. citizen	0	19	0.0%	0	19	0.0%
Not a U.S. citizen	0	19	0.0%	0	19	0.0%

Source: U.S. Census Bureau, 2008-2012 American Community Survey

For information on confidentiality protection, sampling error, nonsampling error, and definitions, see Survey Methodology.  
<http://www.census.gov/acs/www/UseData/index.htm>

# Citizenship Status of Voting Age Population (18 and Over)

## Pickens County, Alabama



Source: B05003. SEX BY AGE BY CITIZENSHIP STATUS  
Data Set: 2008-2012 American Community Survey 5-Year Estimates

**B07004. GEOGRAPHICAL MOBILITY IN THE PAST YEAR BY RACE FOR CURRENT RESIDENCE IN THE UNITED STATES - Universe:  
POPULATION 1 YEAR AND OVER**

Data Set: 2008-2012 American Community Survey 5-Year Estimates

	Pickens County, Alabama					
	African American	Margin of Error (+/-)	% of AA Total	White, Not Hispanic	Margin of Error (+/-)	% of NHW Total
<b>Total:</b>	<b>8,036</b>	<b>114</b>	<b>100.0%</b>	<b>10,869</b>	<b>44</b>	<b>100.0%</b>
Same house 1 year ago	7,237	354	90.1%	10,290	178	94.7%
Moved within same county	617	338	7.7%	213	75	2.0%
Moved from different county within same state	144	84	1.8%	246	138	2.3%
Moved from different state	38	26	0.5%	120	74	1.1%
Moved from abroad	0	19	0.0%	0	19	0.0%

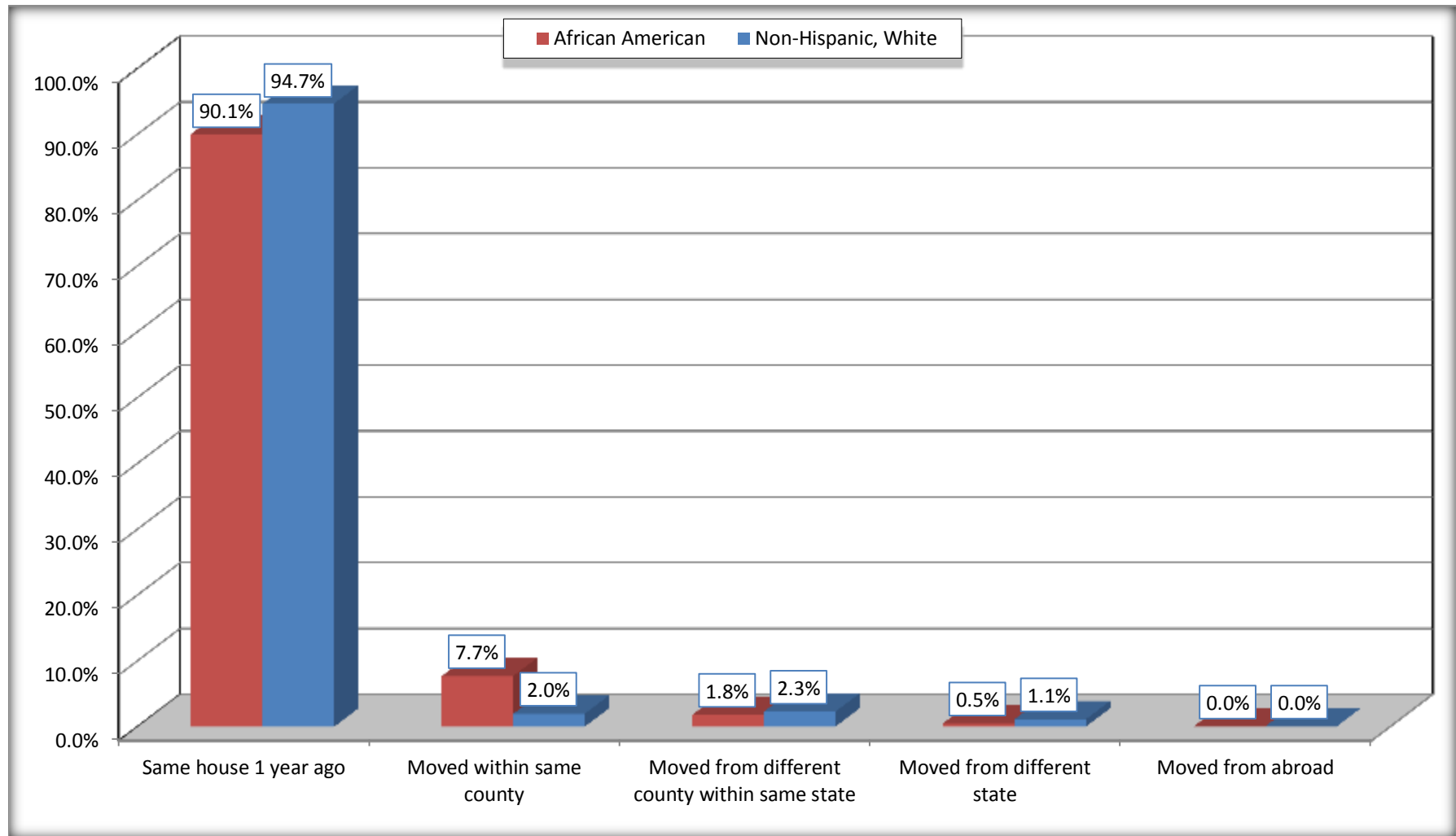
Source: U.S. Census Bureau, 2008-2012 American Community Survey

For information on confidentiality protection, sampling error, nonsampling error, and definitions, see Survey Methodology.

<http://www.census.gov/acs/www/UseData/index.htm>

# Geographical Mobility in the Past Year (Population 1 Year and Over)

## Pickens County, Alabama



Source: B07004. GEOGRAPHICAL MOBILITY IN THE PAST YEAR BY RACE FOR CURRENT RESIDENCE IN THE UNITED STATES - Universe: POPULATION 1 YEAR AND OVER

Data Set: 2008-2012 American Community Survey 5-Year Estimates

**B08105. MEANS OF TRANSPORTATION TO WORK - Universe: WORKERS 16 YEARS AND OVER**

Data Set: 2008-2012 American Community Survey 5-Year Estimates

	Pickens County, Alabama					
	African American	Margin of Error (+/-)	% of AA Total	White, Not Hispanic	Margin of Error (+/-)	% of NHW Total
<b>Total:</b>	2075	254	<b>100.0%</b>	4513	176	<b>100.0%</b>
Car, truck, or van - drove alone	1642	241	79.1%	3892	209	86.2%
Car, truck, or van - carpooled	327	102	15.8%	322	105	7.1%
Public transportation (excluding taxicab)	42	45	2.0%	0	19	0.0%
Walked	38	35	1.8%	32	29	0.7%
Taxicab, motorcycle, bicycle, or other means	11	15	0.5%	11	18	0.2%
Worked at home	15	23	0.7%	256	128	5.7%

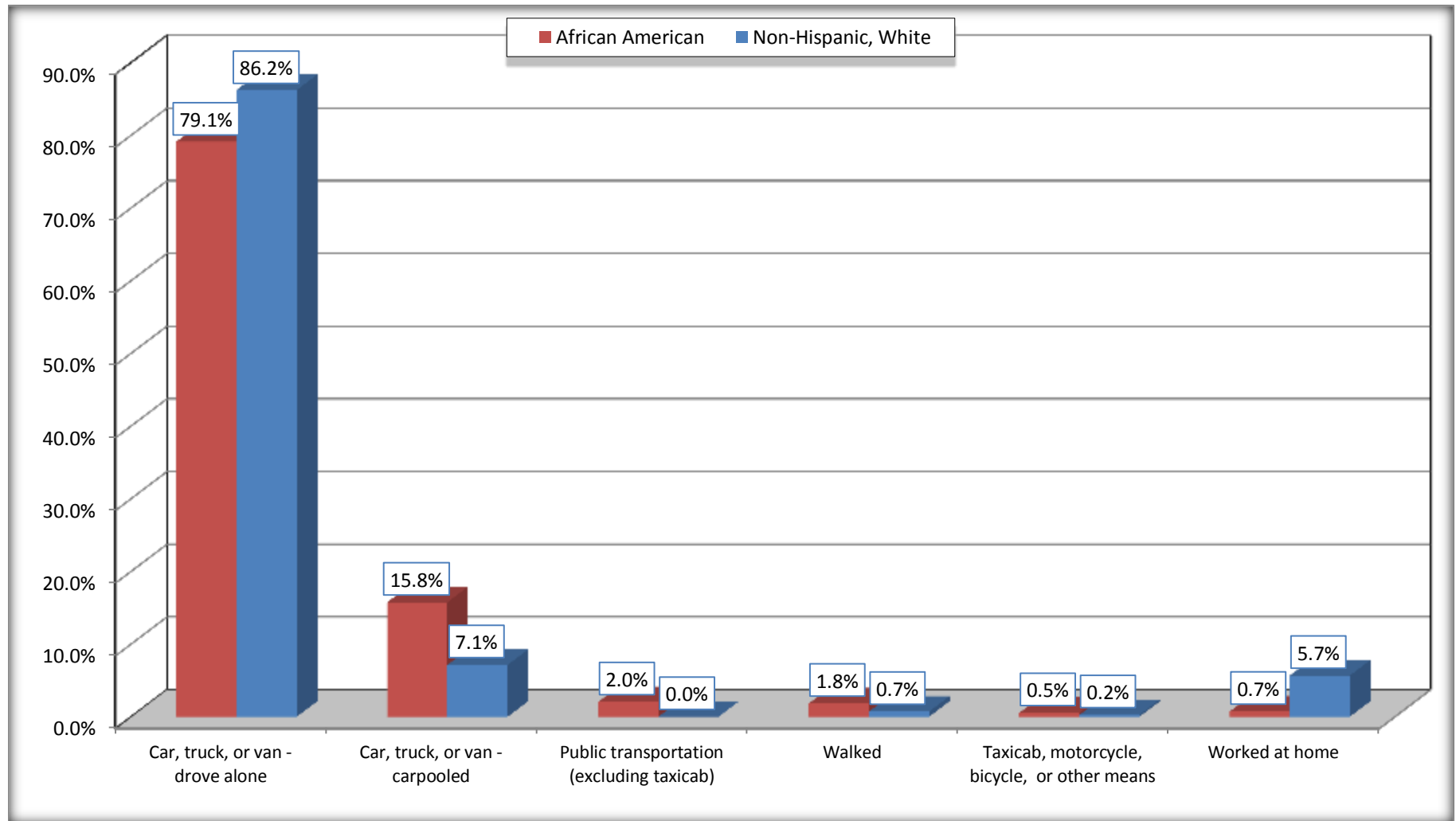
Source: U.S. Census Bureau, 2008-2012 American Community Survey

For information on confidentiality protection, sampling error, nonsampling error, and definitions, see Survey Methodology.

<http://www.census.gov/acs/www/UseData/index.htm>

# Means of Transportation to Work (Workers 16 Years and Over)

## Pickens County, Alabama



Source: B08105. MEANS OF TRANSPORTATION TO WORK - Universe: WORKERS 16 YEARS AND OVER  
Data Set: 2008-2012 American Community Survey 5-Year Estimates



**B11002. HOUSEHOLD TYPE BY RELATIVES AND NONRELATIVES FOR POPULATION IN HOUSEHOLDS**

Data Set: 2008-2012 American Community Survey 5-Year Estimates

	Pickens County, Alabama					
	African American	Margin of Error (+/-)	% of AA Total	White, Not Hispanic	Margin of Error (+/-)	% of NHW Total
<b>Total:</b>	7908	173	<b>100.0%</b>	11043	139	<b>100.0%</b>
In family households	6864	216	86.8%	9269	271	83.9%
In nonfamily households	1044	139	13.2%	1774	233	16.1%

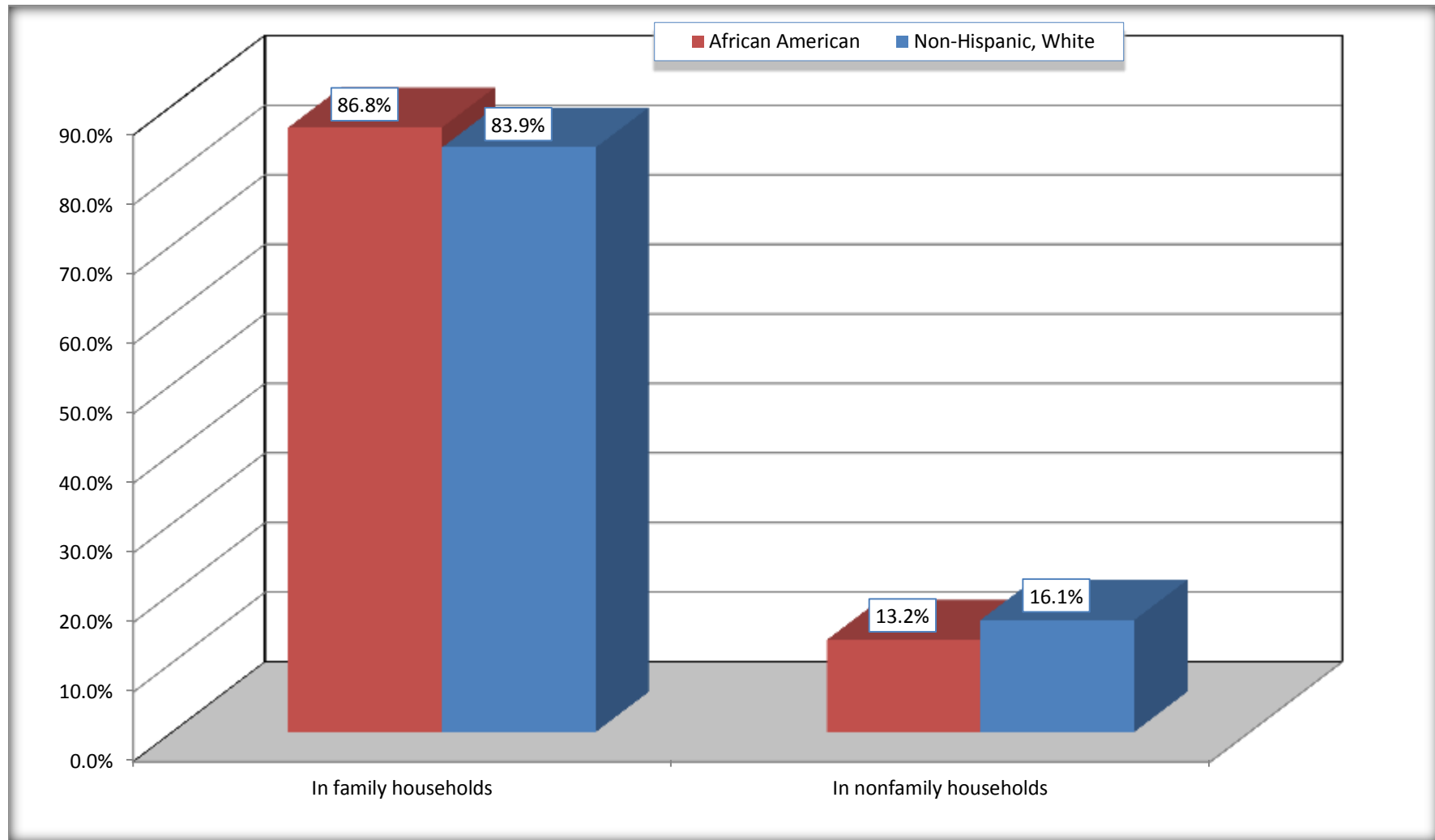
Source: U.S. Census Bureau, 2008-2012 American Community Survey

For information on confidentiality protection, sampling error, nonsampling error, and definitions, see Survey Methodology.

<http://www.census.gov/acs/www/UseData/index.htm>

# Household Type for Population in Households

## Pickens County, Alabama



Source: B11002. HOUSEHOLD TYPE BY RELATIVES AND NONRELATIVES FOR POPULATION IN HOUSEHOLDS  
Data Set: 2008-2012 American Community Survey 5-Year Estimates

**B12002. MARITAL STATUS FOR THE POPULATION 15 YEARS AND OVER**

Data Set: 2008-2012 American Community Survey 5-Year Estimates

	Pickens County, Alabama					
	African American	Margin of Error (+/-)	% of AA Total	White, Not Hispanic	Margin of Error (+/-)	% of NHW Total
<b>Total:</b>	<b>6,323</b>	<b>75</b>	<b>100.0%</b>	<b>9,168</b>	<b>19</b>	<b>100.0%</b>
Never married	2,890	NC	45.7%	1,580	NC	17.2%
Now married (except separated)	1,531	NC	24.2%	5,561	NC	60.7%
Separated	507	NC	8.0%	178	NC	1.9%
Widowed	608	NC	9.6%	797	NC	8.7%
Divorced	787	NC	12.4%	1,052	NC	11.5%
<b>Male:</b>	<b>2,791</b>	<b>28</b>	<b>44.1%</b>	<b>4,475</b>	<b>19</b>	<b>48.8%</b>
Never married	1,394	141	22.0%	916	123	10.0%
Now married (except separated)	785	150	12.4%	2,809	171	30.6%
Separated	153	59	2.4%	122	78	1.3%
Widowed	113	42	1.8%	162	92	1.8%
Divorced	346	106	5.5%	466	115	5.1%
<b>Female:</b>	<b>3,532</b>	<b>67</b>	<b>55.9%</b>	<b>4,693</b>	<b>19</b>	<b>51.2%</b>
Never married	1,496	156	23.7%	664	78	7.2%
Now married (except separated)	746	150	11.8%	2,752	186	30.0%
Separated	354	120	5.6%	56	37	0.6%
Widowed	495	85	7.8%	635	88	6.9%
Divorced	441	114	7.0%	586	141	6.4%

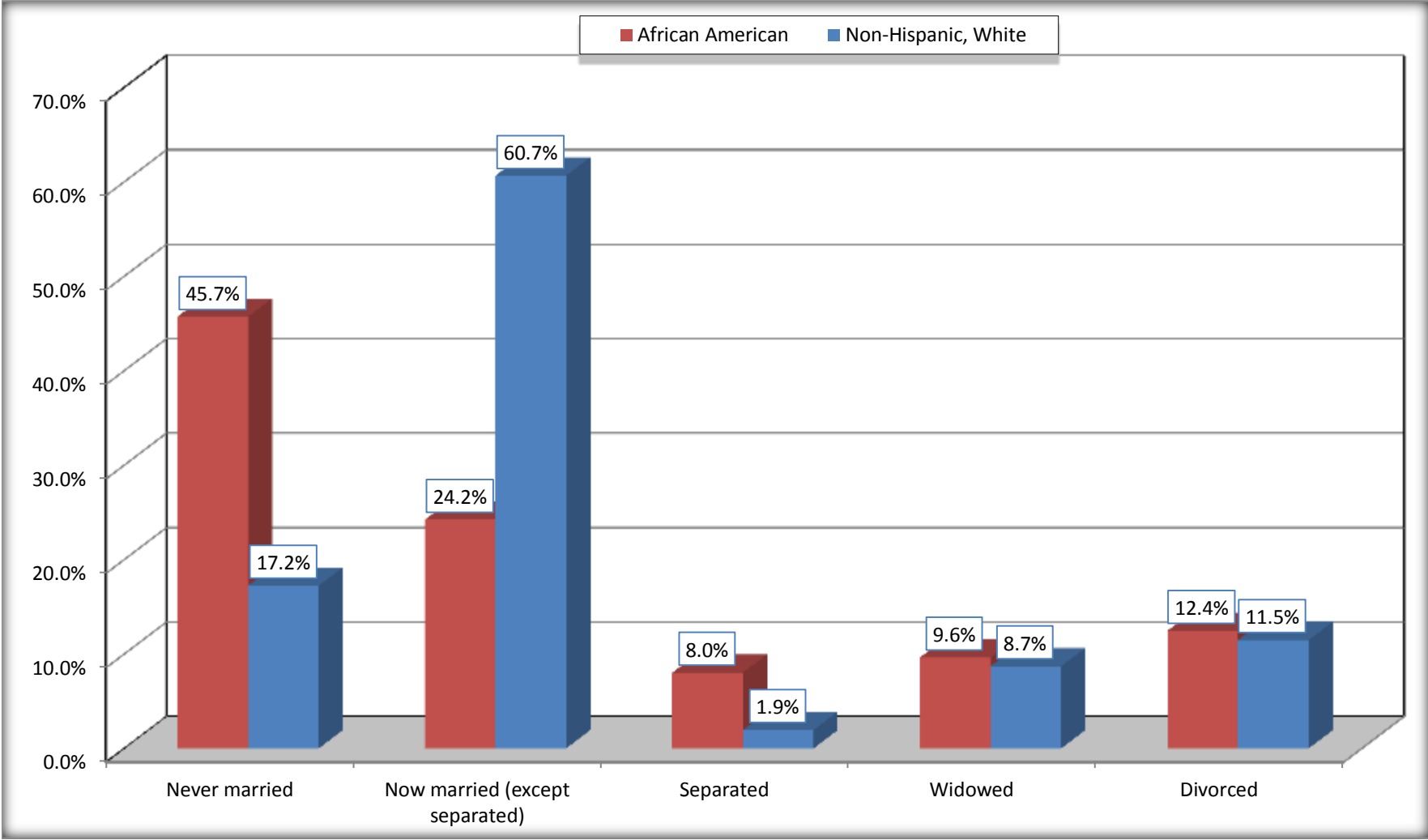
Source: U.S. Census Bureau, 2008-2012 American Community Survey

For information on confidentiality protection, sampling error, nonsampling error, and definitions, see Survey Methodology.

<http://www.census.gov/acs/www/UseData/index.htm>

# Marital Status for the Population 15 Years and Over

## Pickens County, Alabama



Source: B12002. MARITAL STATUS FOR THE POPULATION 15 YEARS AND OVER  
Data Set: 2008-2012 American Community Survey 5-Year Estimates

**C15002. SEX BY EDUCATIONAL ATTAINMENT FOR THE POPULATION 25 YEARS AND OVER**

Data Set: 2008-2012 American Community Survey 5-Year Estimates

	Pickens County, Alabama					
	African American	Margin of Error (+/-)	% of AA Total	White, Not Hispanic	Margin of Error (+/-)	% of NHW Total
<b>Total:</b>	<b>5,088</b>	<b>54</b>	<b>100.0%</b>	<b>8,008</b>	<b>19</b>	<b>100.0%</b>
Less than high school diploma	1,483	NC	29.1%	1,386	NC	17.3%
High school graduate, GED, or alternative	2,154	NC	42.3%	3,457	NC	43.2%
Some college or associate's degree	1,174	NC	23.1%	2,145	NC	26.8%
Bachelor's degree or higher	277	NC	5.4%	1,020	NC	12.7%
Male:	2,151	22	42.3%	3,897	19	48.7%
Less than high school diploma	698	138	13.7%	682	138	8.5%
High school graduate, GED, or alternative	1,022	153	20.1%	1,871	157	23.4%
Some college or associate's degree	383	125	7.5%	884	144	11.0%
Bachelor's degree or higher	48	32	0.9%	460	99	5.7%
Female:	2,937	47	57.7%	4,111	19	51.3%
Less than high school diploma	785	135	15.4%	704	126	8.8%
High school graduate, GED, or alternative	1,132	145	22.2%	1,586	173	19.8%
Some college or associate's degree	791	158	15.5%	1,261	161	15.7%
Bachelor's degree or higher	229	116	4.5%	560	112	7.0%

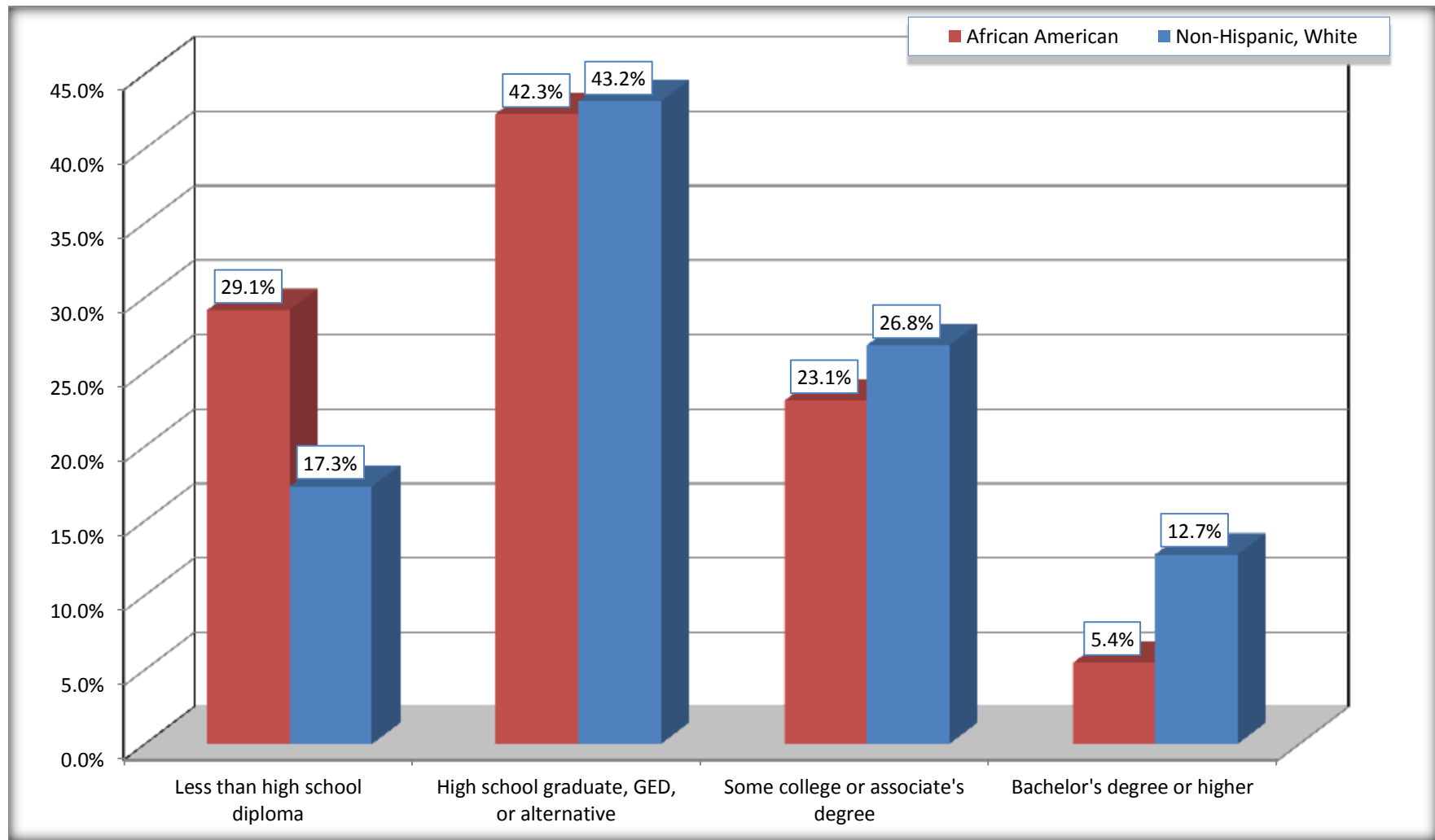
Source: U.S. Census Bureau, 2008-2012 American Community Survey

For information on confidentiality protection, sampling error, nonsampling error, and definitions, see Survey Methodology.

<http://www.census.gov/acs/www/UseData/index.htm>

# Educational Attainment for the Population 25 Years and Older

## Pickens County, Alabama



Source: C15002. SEX BY EDUCATIONAL ATTAINMENT FOR THE POPULATION 25 YEARS AND OVER  
Data Set: 2008-2012 American Community Survey 5-Year Estimates

**B17010. POVERTY STATUS IN THE PAST 12 MONTHS OF FAMILIES BY FAMILY TYPE BY PRESENCE OF RELATED CHILDREN UNDER 18 YEARS**

Data Set: 2008-2012 American Community Survey 5-Year Estimates

	Pickens County, Alabama					
	African American	Margin of Error (+/-)	% of AA Total	White, Not Hispanic	Margin of Error (+/-)	% of NHW Total
<b>Total:</b>	<b>2,114</b>	<b>199</b>	<b>100.0%</b>	<b>3,143</b>	<b>168</b>	<b>100.0%</b>
Income in the past 12 months below poverty level:	892	159	42.2%	291	104	9.3%
Married-couple family:	145	68	6.9%	170	83	5.4%
With related children under 18 years	68	37	3.2%	78	42	2.5%
Other family:	747	143	35.3%	121	61	3.8%
Male householder, no wife present	55	38	2.6%	32	31	1.0%
With related children under 18 years	41	31	1.9%	22	29	0.7%
Female householder, no husband present	692	135	32.7%	89	55	2.8%
With related children under 18 years	608	124	28.8%	73	50	2.3%
Income in the past 12 months at or above poverty level:	1,222	180	57.8%	2,852	181	90.7%
Married-couple family:	539	132	25.5%	2,524	178	80.3%
With related children under 18 years	183	74	8.7%	935	128	29.7%
Other family:	683	126	32.3%	328	94	10.4%
Male householder, no wife present	154	69	7.3%	136	72	4.3%
With related children under 18 years	74	49	3.5%	79	62	2.5%
Female householder, no husband present	529	115	25.0%	192	67	6.1%
With related children under 18 years	298	91	14.1%	107	54	3.4%

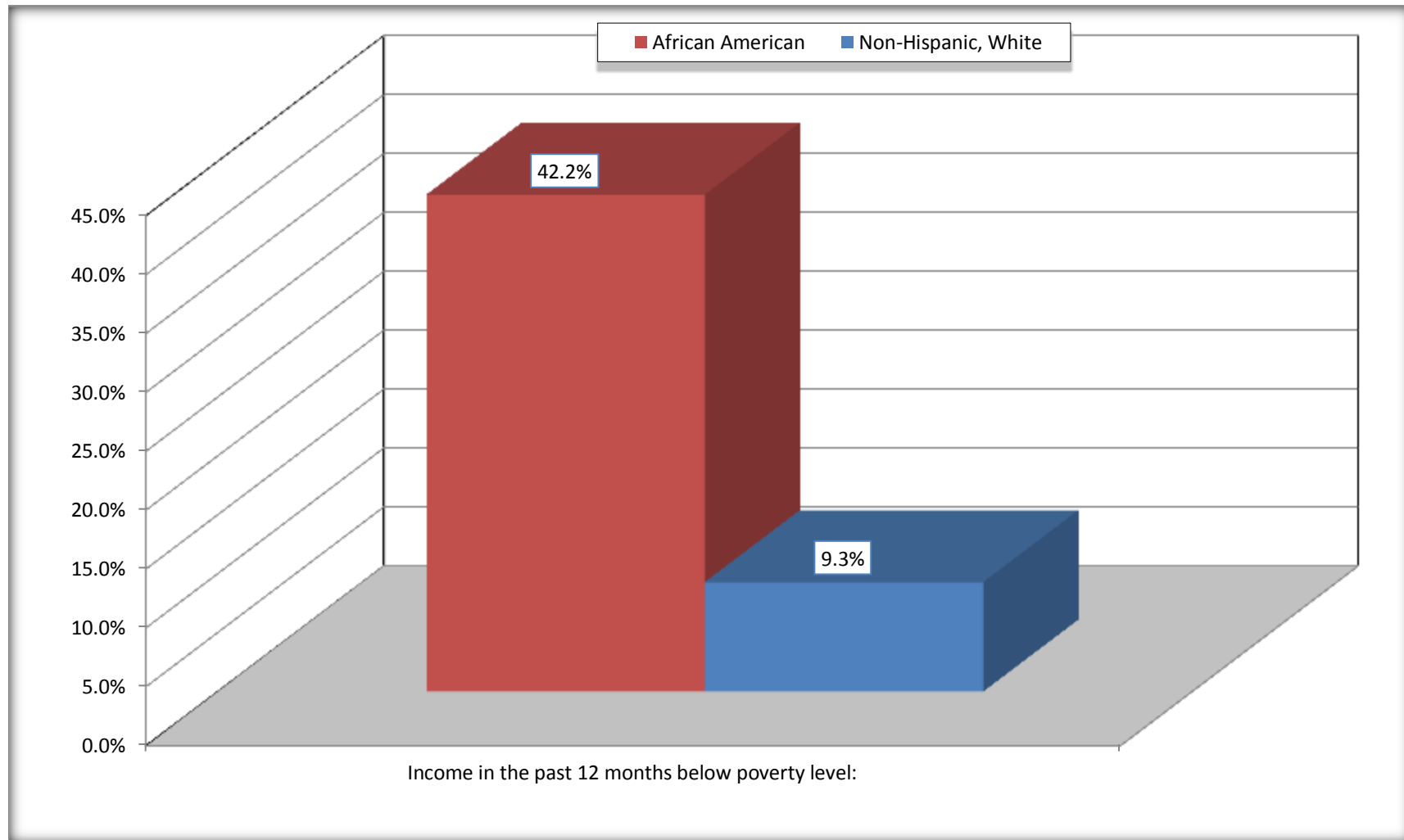
Source: U.S. Census Bureau, 2008-2012 American Community Survey

For information on confidentiality protection, sampling error, nonsampling error, and definitions, see Survey Methodology.

<http://www.census.gov/acs/www/UseData/index.htm>

# Family Households Below Poverty in the Past 12 Months

## Pickens County, Alabama



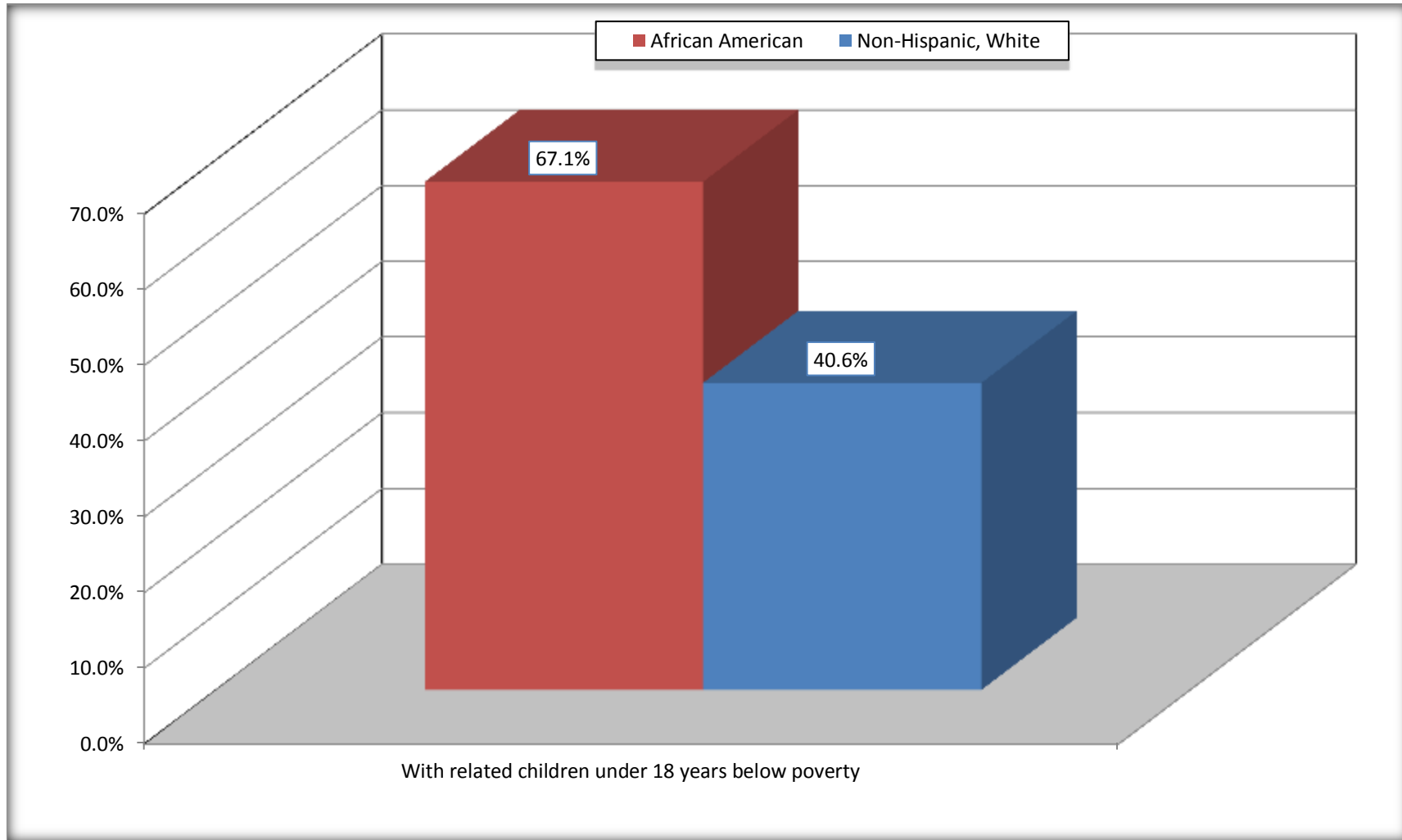
Source: B17010. POVERTY STATUS IN THE PAST 12 MONTHS OF FAMILIES BY FAMILY TYPE BY PRESENCE OF RELATED CHILDREN UNDER 18 YEARS

Data Set: 2008-2012 American Community Survey 5-Year Estimates



# Female-headed Households with Related Children Below Poverty in the Past 12 Months

## Pickens County, Alabama



Source: B17010. POVERTY STATUS IN THE PAST 12 MONTHS OF FAMILIES BY FAMILY TYPE BY PRESENCE OF RELATED CHILDREN UNDER 18 YEARS

Data Set: 2008-2012 American Community Survey 5-Year Estimates

**B17020 POVERTY STATUS IN THE PAST 12 MONTHS BY AGE - Universe: POPULATION FOR WHOM POVERTY STATUS IS DETERMINED**

Data Set: 2008-2012 American Community Survey 5-Year Estimates

	Pickens County, Alabama					
	African American	Margin of Error (+/-)	% of AA By Age	White, Not Hispanic	Margin of Error (+/-)	% of NHW By Age
<b>Total:</b>	<b>7,984</b>	<b>151</b>	<b>100.0%</b>	<b>10,826</b>	<b>65</b>	<b>100.0%</b>
Income in the past 12 months below poverty level:	3,958	422	49.6%	1,246	304	11.5%
<b>Under 18 years</b>	1,531	NC	68.1%	237	NC	11.0%
<b>18 to 64 years</b>	2,058	265	42.9%	754	204	11.8%
<b>65 years and over</b>	369	NC	39.2%	255	NC	11.3%
Income in the past 12 months at or above poverty level:	4,026	432	50.4%	9,580	299	88.5%
<b>Under 18 years</b>	717	NC	31.9%	1,920	NC	89.0%
<b>18 to 64 years</b>	2,737	279	57.1%	5,657	202	88.2%
<b>65 years and over</b>	572	NC	60.8%	2,003	NC	88.7%

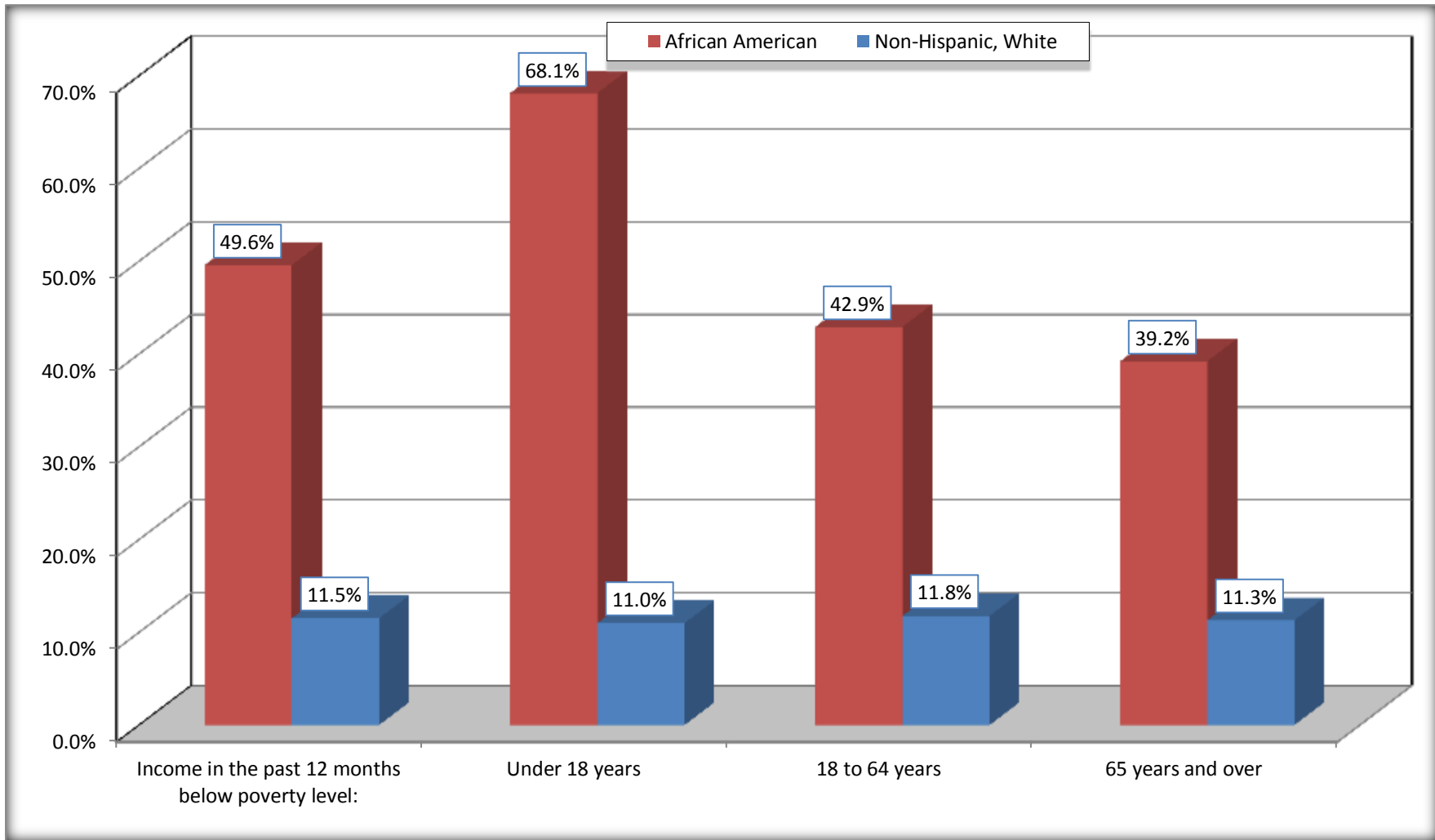
Source: U.S. Census Bureau, 2008-2012 American Community Survey

For information on confidentiality protection, sampling error, nonsampling error, and definitions, see Survey Methodology.

<http://www.census.gov/acs/www/UseData/index.htm>

# Population Below Poverty in the Past 12 Months

## Pickens County, Alabama



Source: B17020 POVERTY STATUS IN THE PAST 12 MONTHS BY AGE - Universe: POPULATION FOR WHOM POVERTY STATUS IS DETERMINED  
Data Set: 2008-2012 American Community Survey 5-Year Estimates

**B19001. HOUSEHOLD INCOME IN THE PAST 12 MONTHS (IN 2010 INFLATION-ADJUSTED DOLLARS)**

Data Set: 2008-2012 American Community Survey 5-Year Estimates

	Pickens County, Alabama					
	African American	Margin of Error (+/-)	% of AA Total	White, Not Hispanic	Margin of Error (+/-)	% of NHW Total
<b>Total:</b>	<b>3,120</b>	<b>211</b>	<b>100.0%</b>	<b>4,751</b>	<b>143</b>	<b>100.0%</b>
Less than \$ 10,000	947	181	30.4%	418	122	8.8%
\$ 10,000 to \$ 14,999	469	135	15.0%	302	98	6.4%
<b>\$ 15,000 to \$ 24,999</b>	689	NC	22.1%	798	NC	16.8%
<b>\$ 25,000 to \$ 34,999</b>	329	NC	10.5%	459	NC	9.7%
<b>\$ 35,000 to \$ 49,999</b>	170	NC	5.4%	787	NC	16.6%
<b>\$ 50,000 to \$ 74,999</b>	330	NC	10.6%	892	NC	18.8%
\$ 75,000 to \$ 99,999	94	59	3.0%	617	135	13.0%
<b>\$ 100,000 to \$ 149,999</b>	85	NC	2.7%	373	NC	7.9%
\$ 150,000 to \$ 199,999	7	11	0.2%	65	35	1.4%
\$ 200,000 or more	0	19	0.0%	40	46	0.8%

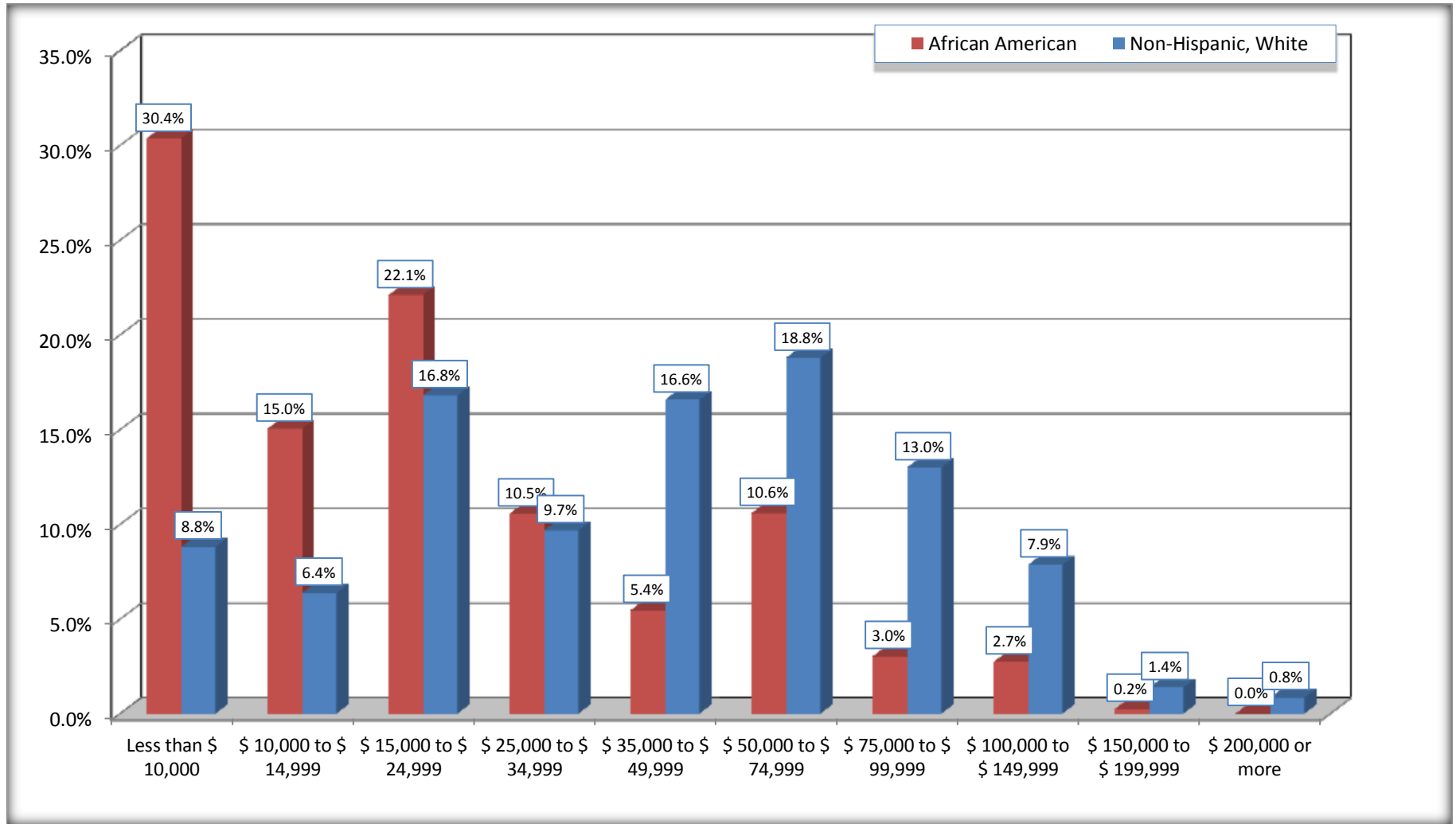
Source: U.S. Census Bureau, 2008-2012 American Community Survey

For information on confidentiality protection, sampling error, nonsampling error, and definitions, see Survey Methodology.

<http://www.census.gov/acs/www/UseData/index.htm>

# Household Income in the Past 12 Months

## Pickens County, Alabama



Source: B19001. HOUSEHOLD INCOME IN THE PAST 12 MONTHS (IN 2010 INFLATION-ADJUSTED DOLLARS)  
Data Set: 2008-2012 American Community Survey 5-Year Estimates

**B19013. MEDIAN HOUSEHOLD INCOME IN THE PAST 12 MONTHS (IN 2010 INFLATION-ADJUSTED DOLLARS)**

Data Set: 2008-2012 American Community Survey 5-Year Estimates

	<b>Pickens County, Alabama</b>			
	African American	Margin of Error (+/-)	White, Not Hispanic	Margin of Error (+/-)
Median household income in the past 12 months (in 2010 inflation-adjusted dollars)	\$ 17,093	\$ 2,380	\$ 40,948	\$ 4,630

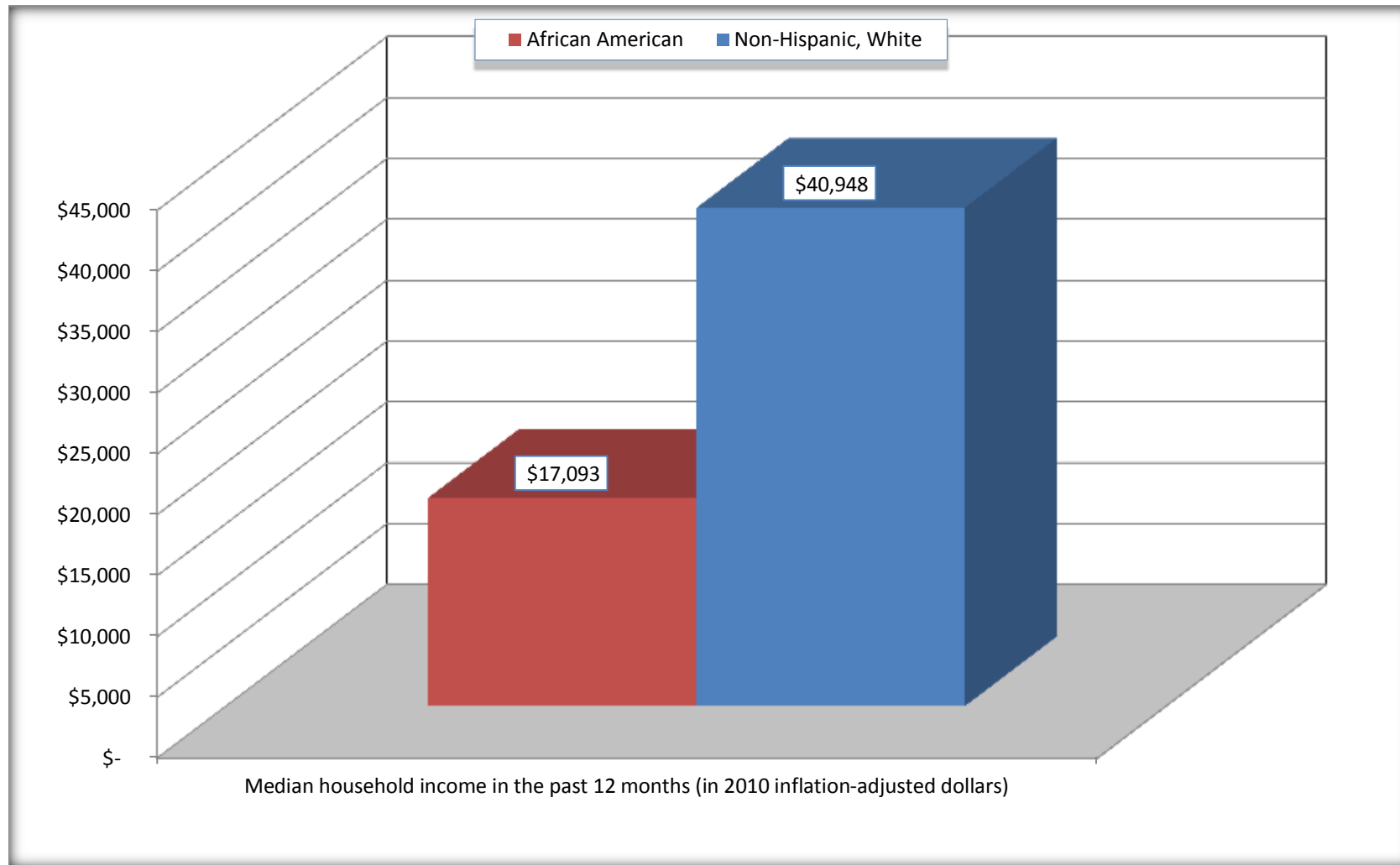
Source: U.S. Census Bureau, 2008-2012 American Community Survey

For information on confidentiality protection, sampling error, nonsampling error, and definitions, see Survey Methodology.

<http://www.census.gov/acs/www/UseData/index.htm>

## Median Household Income in the Past 12 Months

### Pickens County, Alabama



Source: B19013. MEDIAN HOUSEHOLD INCOME IN THE PAST 12 MONTHS (IN 2010 INFLATION-ADJUSTED DOLLARS)  
Data Set: 2008-2012 American Community Survey 5-Year Estimates

**B19101. FAMILY INCOME IN THE PAST 12 MONTHS (IN 2010 INFLATION-ADJUSTED DOLLARS)**

Data Set: 2008-2012 American Community Survey 5-Year Estimates

	Pickens County, Alabama					
	African American	Margin of Error (+/-)	% of AA Total	White, Not Hispanic	Margin of Error (+/-)	% of NHW Total
<b>Total:</b>	<b>2,114</b>	<b>199</b>	<b>100.0%</b>	<b>3,143</b>	<b>168</b>	<b>100.0%</b>
Less than \$ 10,000	454	126	21.5%	141	72	4.5%
\$ 10,000 to \$ 14,999	278	103	13.2%	111	72	3.5%
<b>\$ 15,000 to \$ 24,999</b>	<b>501</b>	<b>NC</b>	<b>23.7%</b>	<b>287</b>	<b>NC</b>	<b>9.1%</b>
<b>\$ 25,000 to \$ 34,999</b>	<b>289</b>	<b>NC</b>	<b>13.7%</b>	<b>358</b>	<b>NC</b>	<b>11.4%</b>
<b>\$ 35,000 to \$ 49,999</b>	<b>162</b>	<b>NC</b>	<b>7.7%</b>	<b>547</b>	<b>NC</b>	<b>17.4%</b>
<b>\$ 50,000 to \$ 74,999</b>	<b>268</b>	<b>NC</b>	<b>12.7%</b>	<b>752</b>	<b>NC</b>	<b>23.9%</b>
<b>\$ 100,000 to \$ 149,999</b>	<b>85</b>	<b>NC</b>	<b>4.0%</b>	<b>334</b>	<b>NC</b>	<b>10.6%</b>
\$ 150,000 to \$ 199,999	7	11	0.3%	65	35	2.1%
\$ 200,000 or more	0	19	0.0%	4	7	0.1%

Source: U.S. Census Bureau, 2008-2012 American Community Survey

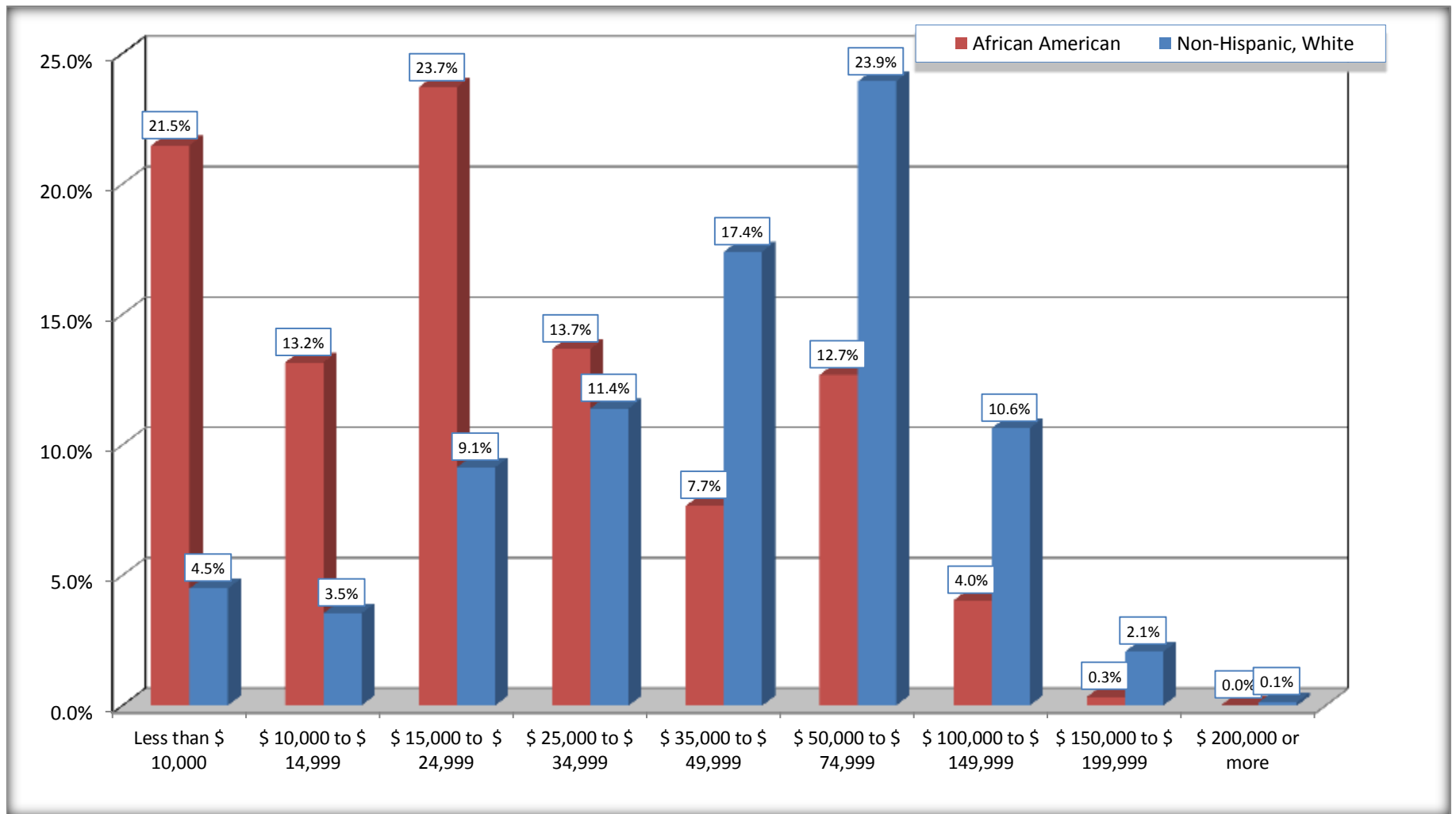
For information on confidentiality protection, sampling error, nonsampling error, and definitions, see Survey Methodology.

<http://www.census.gov/acs/www/UseData/index.htm>



# Family Income in the Past 12 Months

## Pickens County, Alabama



Source: B19101. FAMILY INCOME IN THE PAST 12 MONTHS (IN 2010 INFLATION-ADJUSTED DOLLARS)  
Data Set: 2008-2012 American Community Survey 5-Year Estimates

**B19113. MEDIAN FAMILY INCOME IN THE PAST 12 MONTHS (IN 2010 INFLATION-ADJUSTED DOLLARS)**

Data Set: 2008-2012 American Community Survey 5-Year Estimates

	Pickens County, Alabama			
	African American	Margin of Error (+/-)	White, Not Hispanic	Margin of Error (+/-)
Median family income in the past 12 months (in 2010 inflation-adjusted dollars)	\$ 19,988	\$ 3,204	\$ 53,805	\$ 1,884

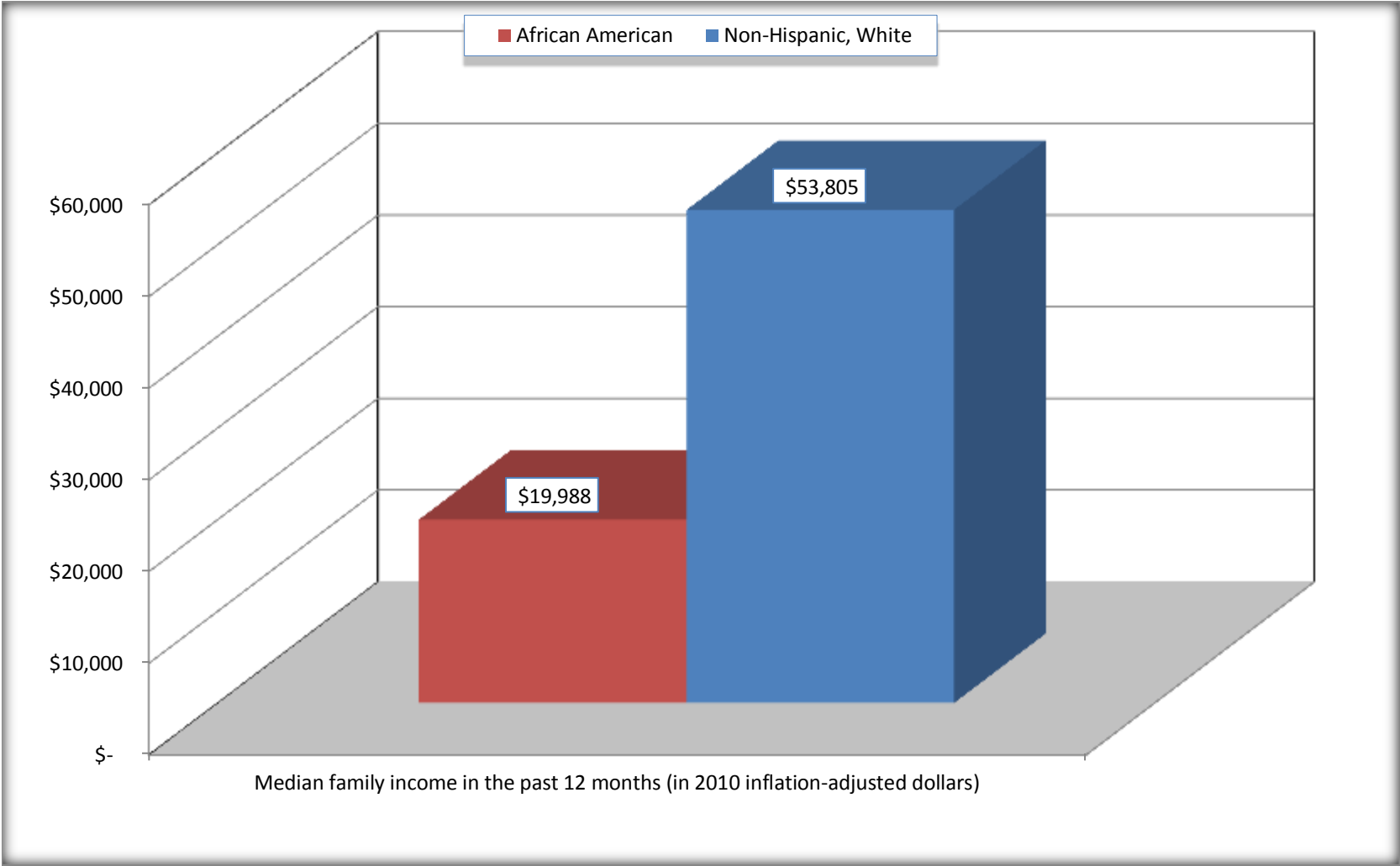
Source: U.S. Census Bureau, 2008-2012 American Community Survey

For information on confidentiality protection, sampling error, nonsampling error, and definitions, see Survey Methodology.

<http://www.census.gov/acs/www/UseData/index.htm>

# Median Family Income in the Past 12 Months

## Pickens County, Alabama



Source: B19113. MEDIAN FAMILY INCOME IN THE PAST 12 MONTHS (IN 2010 INFLATION-ADJUSTED DOLLARS)  
Data Set: 2008-2012 American Community Survey 5-Year Estimates

**B19202. MEDIAN NONFAMILY HOUSEHOLD INCOME IN THE PAST 12 MONTHS (IN 2010 INFLATION-ADJUSTED DOLLARS)**

Data Set: 2008-2012 American Community Survey 5-Year Estimates

	Pickens County, Alabama			
	African American	Margin of Error (+/-)	White, Not Hispanic	Margin of Error (+/-)
Median nonfamily household income in the past 12 months (in 2010 inflation-adjusted dollars)	\$ 9,815	\$ 1,238	\$ 21,038	\$ 1,309

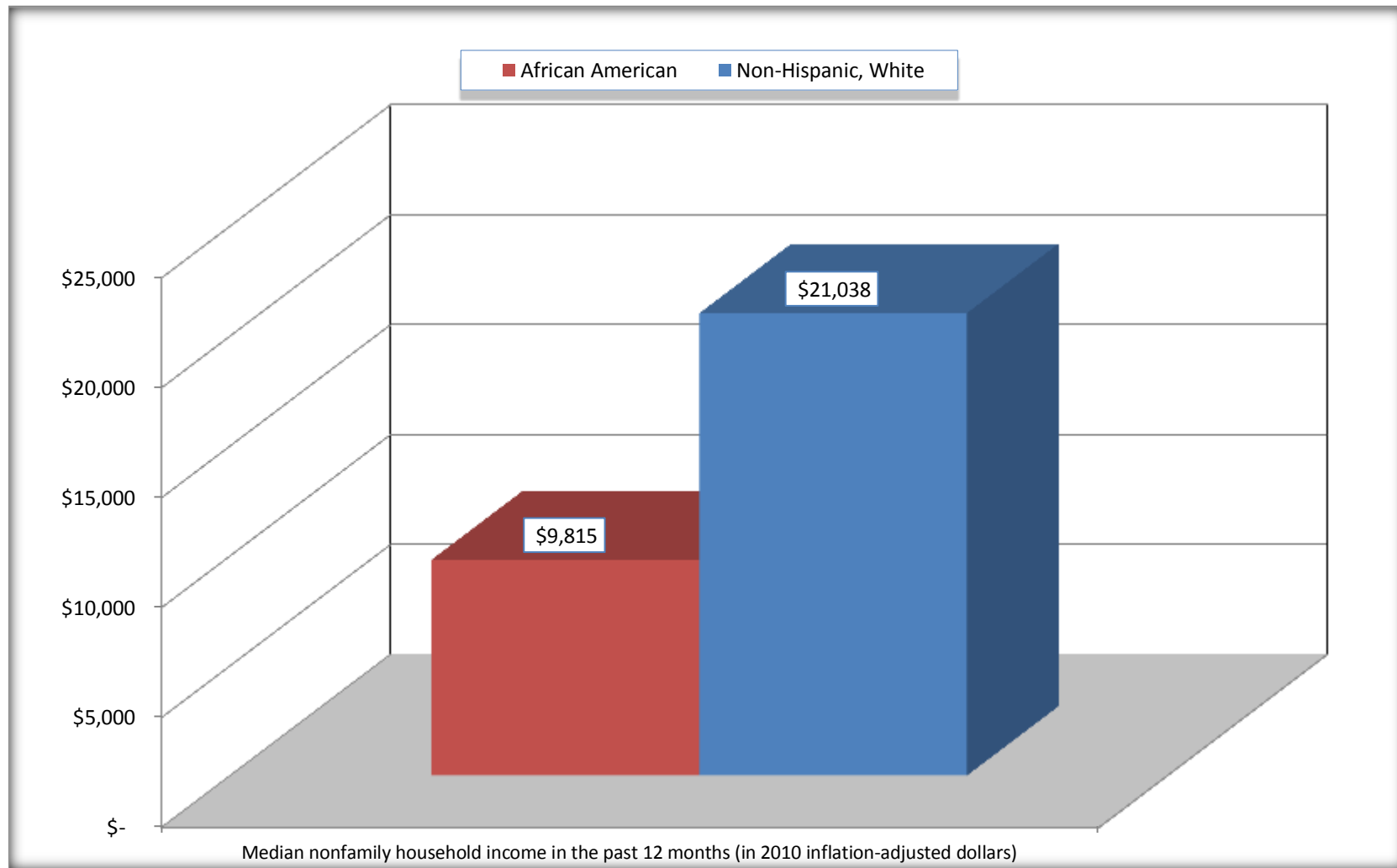
Source: U.S. Census Bureau, 2008-2012 American Community Survey

For information on confidentiality protection, sampling error, nonsampling error, and definitions, see Survey Methodology.

<http://www.census.gov/acs/www/UseData/index.htm>

# Median Non-Family Income in the Past 12 Months

## Pickens County, Alabama



Source: B19202. MEDIAN NONFAMILY HOUSEHOLD INCOME IN THE PAST 12 MONTHS (IN 2010 INFLATION-ADJUSTED DOLLARS)  
Data Set: 2008-2012 American Community Survey 5-Year Estimates

**B19301. PER CAPITA INCOME IN THE PAST 12 MONTHS (IN 2010 INFLATION-ADJUSTED DOLLARS)**

Data Set: 2008-2012 American Community Survey 5-Year Estimates

	Pickens County, Alabama			
	African American	Margin of Error (+/-)	White, Not Hispanic	Margin of Error (+/-)
Per capita income in the past 12 months (in 2010 inflation-adjusted dollars)	\$ 10,482	\$ 955	\$ 22,278	\$ 1,276

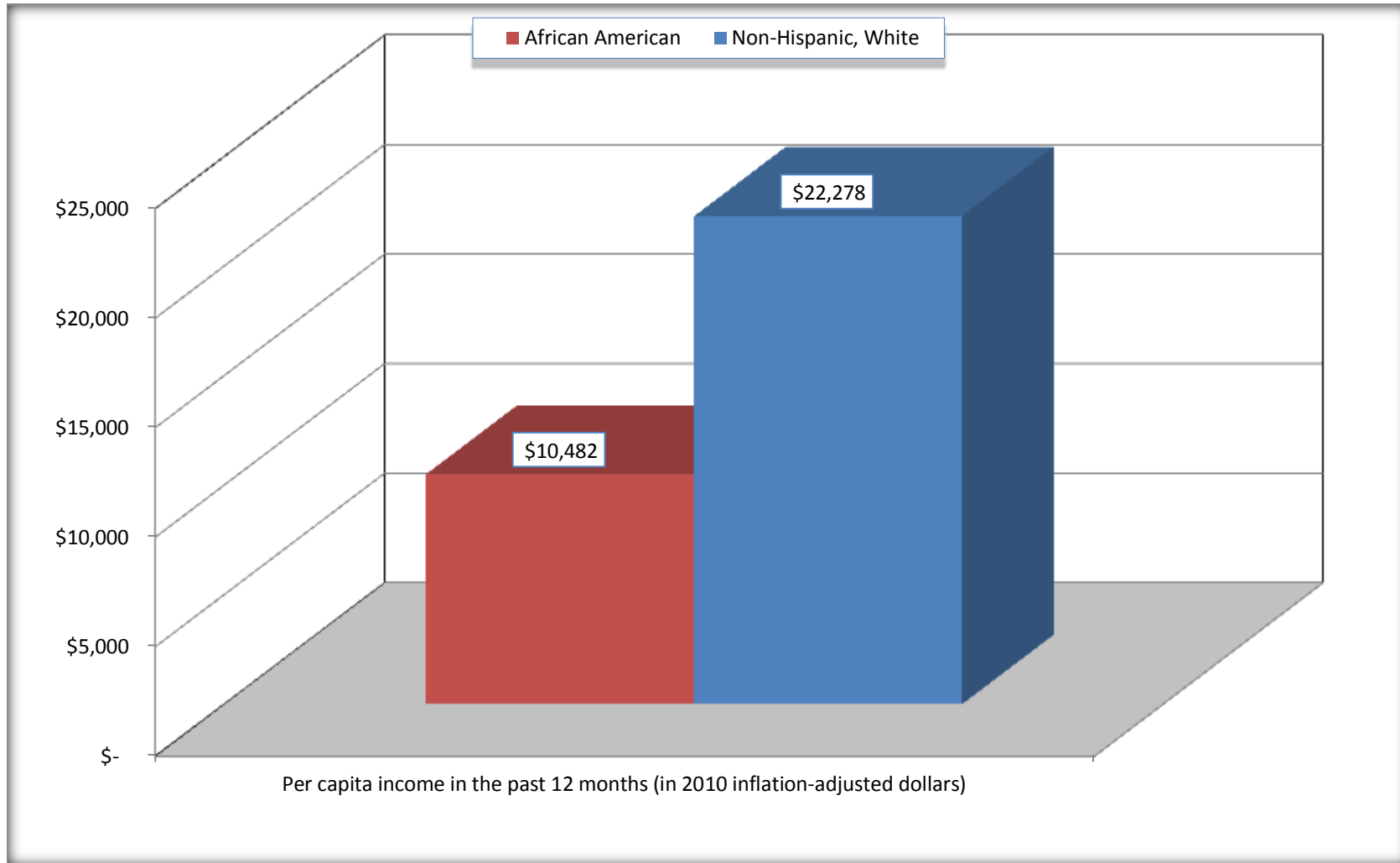
Source: U.S. Census Bureau, 2008-2012 American Community Survey

For information on confidentiality protection, sampling error, nonsampling error, and definitions, see Survey Methodology.

<http://www.census.gov/acs/www/UseData/index.htm>

# Per capita Income in the Past 12 Months

## Pickens County, Alabama



Source: B19301. PER CAPITA INCOME IN THE PAST 12 MONTHS (IN 2010 INFLATION-ADJUSTED DOLLARS)  
Data Set: 2008-2012 American Community Survey 5-Year Estimates

**B20017. MEDIAN EARNINGS IN THE PAST 12 MONTHS (IN 2010 INFLATION-ADJUSTED DOLLARS) BY SEX BY WORK EXPERIENCE IN THE PAST 12 MONTHS FOR THE POPULATION 16 YEARS AND OVER WITH EARNINGS IN THE PAST 12 MONTHS**

Data Set: 2008-2012 American Community Survey 5-Year Estimates

	Pickens County, Alabama			
	African American	Margin of Error (+/-)	White, Not Hispanic	Margin of Error (+/-)
Median earnings in the past 12 months (in 2010 inflation-adjusted dollars) --				
Total:	\$ 17,615	\$ 1,484	\$ 30,074	\$ 2,350
Male --				
Total	\$ 18,284	\$ 3,679	\$ 38,521	\$ 4,938
Worked full-time, year-round in the past 12 months	\$ 26,007	\$ 3,989	\$ 44,912	\$ 2,258
Other	\$ 10,861	\$ 2,601	\$ 13,432	\$ 3,922
Female --				
Total	\$ 17,393	\$ 2,712	\$ 22,253	\$ 4,357
Worked full-time, year-round in the past 12 months	\$ 21,963	\$ 1,877	\$ 32,070	\$ 2,245
Other	\$ 7,339	\$ 4,629	\$ 7,872	\$ 2,161

Source: U.S. Census Bureau, 2008-2012 American Community Survey

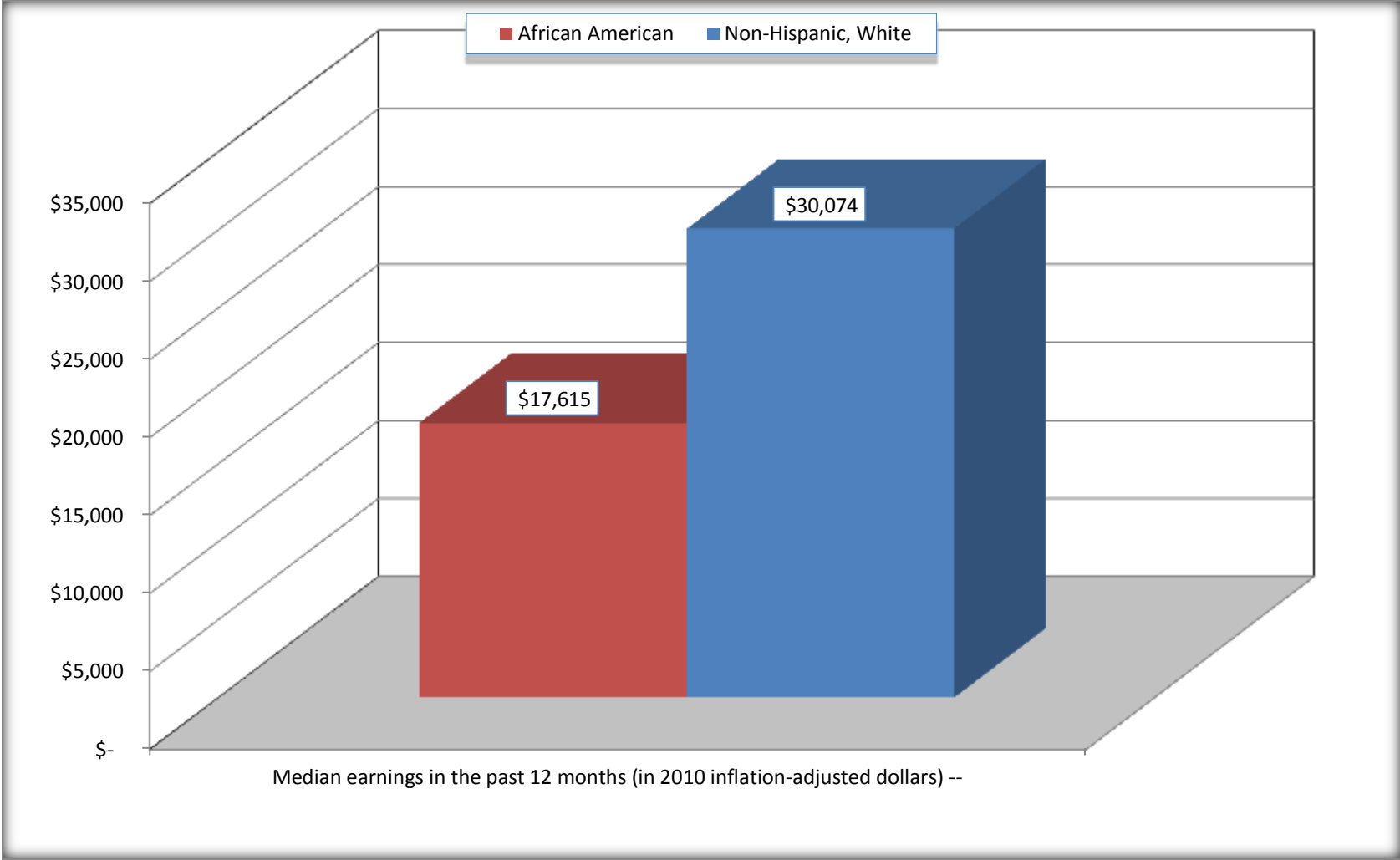
For information on confidentiality protection, sampling error, nonsampling error, and definitions, see Survey Methodology.

<http://www.census.gov/acs/www/UseData/index.htm>



# Median earnings in the Past 12 Months (16 Years and Over with Earnings)

## Pickens County, Alabama



Source: B20017. MEDIAN EARNINGS IN THE PAST 12 MONTHS (IN 2010 INFLATION-ADJUSTED DOLLARS) BY SEX BY WORK EXPERIENCE IN THE PAST 12 MONTHS FOR THE POPULATION 16 YEARS AND OVER WITH EARNINGS IN THE PAST 12 MONTHS  
Data Set: 2008-2012 American Community Survey 5-Year Estimates

**B20005. SEX BY WORK EXPERIENCE IN THE PAST 12 MONTHS BY EARNINGS IN THE PAST 12 MONTHS (IN 2010 INFLATION-ADJUSTED DOLLARS) FOR THE POPULATION 16 YEARS AND OVER**

Data Set: 2008-2012 American Community Survey 5-Year Estimates

	Pickens County, Alabama					
	African American	Margin of Error (+/-)	% of AA Total	White, Not Hispanic	Margin of Error (+/-)	% of NHW Total
<b>Total:</b>	<b>6,202</b>	<b>100</b>	<b>100.0%</b>	<b>9,065</b>	<b>42</b>	<b>100.0%</b>
Worked full-time, year-round in the past 12 months:	1,393	NC	22.5%	3,534	NC	39.0%
No earnings	0	NC	0.0%	0	NC	0.0%
With earnings:	1,393	NC	22.5%	3,534	NC	39.0%
\$ 1 to \$ 9,999 or loss	26	NC	0.4%	103	NC	1.1%
\$ 10,000 to \$ 19,999	438	NC	7.1%	378	NC	4.2%
\$ 20,000 to \$ 29,999	436	NC	7.0%	681	NC	7.5%
\$ 30,000 to \$ 49,999	325	NC	5.2%	1,227	NC	13.5%
\$ 50,000 to \$ 74,999	130	NC	2.1%	745	NC	8.2%
\$ 75,000 or more	38	NC	0.6%	400	NC	4.4%
Other:	4,809	NC	77.5%	5,531	NC	61.0%
No earnings	3,539	NC	57.1%	3,901	NC	43.0%
With earnings: less than full time, year-round	1,270	NC	20.5%	1,630	NC	18.0%
Male:	2,728	45	44.0%	4,451	26	49.1%
Worked full-time, year-round in the past 12 months:	606	129	9.8%	2,134	142	23.5%
No earnings	0	19	0.0%	0	19	0.0%
With earnings:	606	129	9.8%	2,134	142	23.5%
\$ 1 to \$ 9,999 or loss	12	NC	0.2%	11	NC	0.1%
\$ 10,000 to \$ 19,999	170	NC	2.7%	178	NC	2.0%
\$ 20,000 to \$ 29,999	178	NC	2.9%	379	NC	4.2%
\$ 30,000 to \$ 49,999	170	NC	2.7%	712	NC	7.9%
\$ 50,000 to \$ 74,999	45	NC	0.7%	500	NC	5.5%
\$ 75,000 or more	31	NC	0.5%	354	NC	3.9%

	Pickens County, Alabama					
	African American	Margin of Error (+/-)	% of AA Total	White, Not Hispanic	Margin of Error (+/-)	% of NHW Total
Other:	2,122	146	34.2%	2,317	144	25.6%
No earnings	1,580	167	25.5%	1,577	153	17.4%
With earnings:	542	118	8.7%	740	137	8.2%
Female:	3,474	78	56.0%	4,614	39	50.9%
Worked full-time, year-round in the past 12 months:	787	192	12.7%	1,400	178	15.4%
No earnings	0	19	0.0%	0	19	0.0%
With earnings:	787	192	12.7%	1,400	178	15.4%
\$ 1 to \$ 9,999 or loss	14	NC	0.2%	92	NC	1.0%
\$ 10,000 to \$ 19,999	268	NC	4.3%	200	NC	2.2%
\$ 20,000 to \$ 29,999	258	NC	4.2%	302	NC	3.3%
\$ 30,000 to \$ 49,999	155	NC	2.5%	515	NC	5.7%
\$ 50,000 to \$ 74,999	85	NC	1.4%	245	NC	2.7%
\$ 75,000 or more	7	NC	0.1%	46	NC	0.5%
Other:	2,687	197	43.3%	3,214	180	35.5%
No earnings	1,959	195	31.6%	2,324	168	25.6%
With earnings:	728	129	11.7%	890	152	9.8%

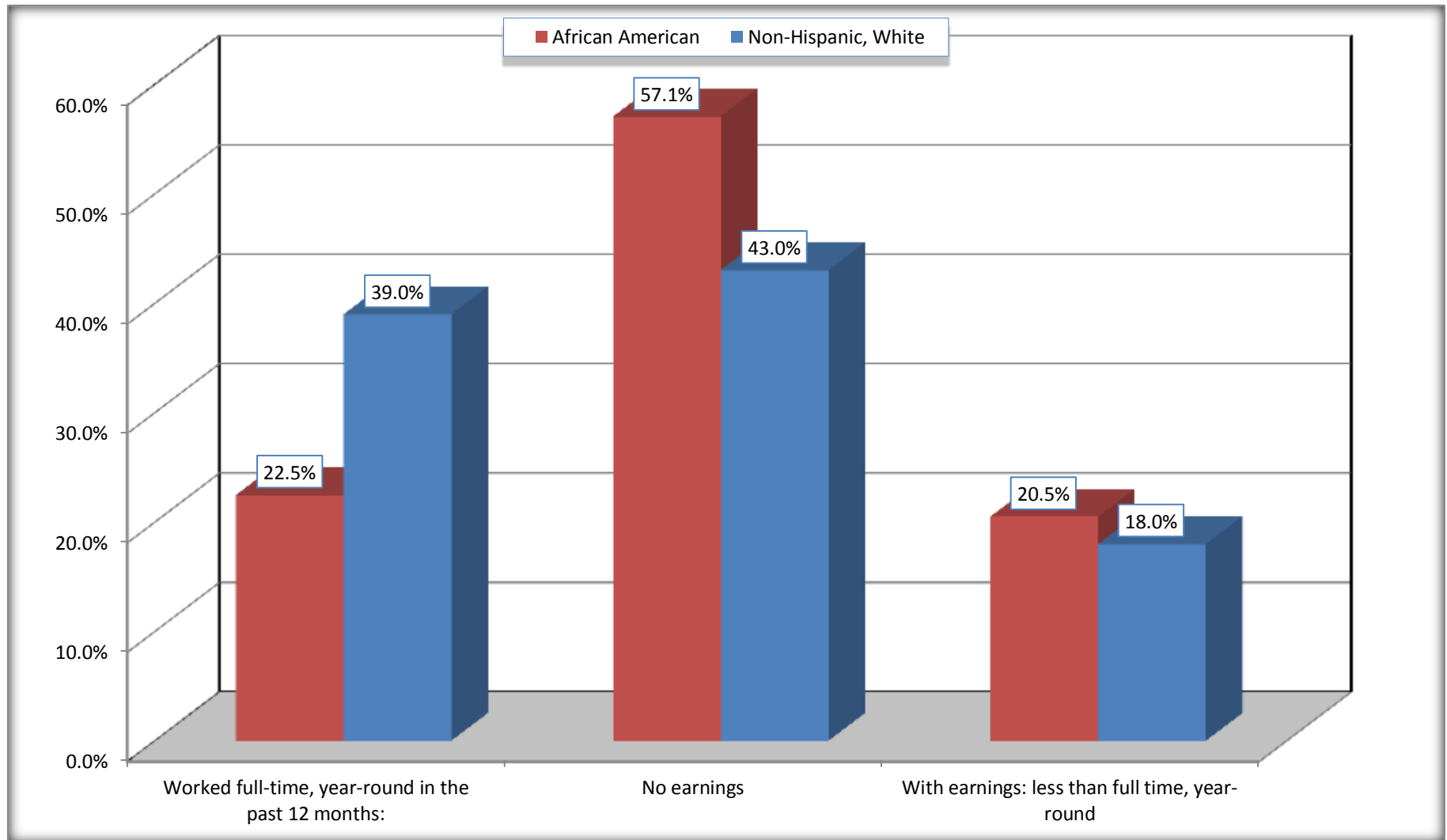
Source: U.S. Census Bureau, 2008-2012 American Community Survey

For information on confidentiality protection, sampling error, nonsampling error, and definitions, see Survey Methodology.

<http://www.census.gov/acs/www/UseData/index.htm>

# Employment and Earnings in in the Past 12 Months (16 Years and Over)

## Pickens County, Alabama



Source: B20005. SEX BY WORK EXPERIENCE IN THE PAST 12 MONTHS BY EARNINGS IN THE PAST 12 MONTHS (IN 2010 INFLATION-ADJUSTED DOLLARS) FOR THE POPULATION 16 YEARS AND OVER

Data Set: 2008-2012 American Community Survey 5-Year Estimates

**C21001. SEX BY AGE BY VETERAN STATUS FOR THE CIVILIAN POPULATION 18 YEARS AND OVER**

Data Set: 2008-2012 American Community Survey 5-Year Estimates

	Pickens County, Alabama					
	African American	Margin of Error (+/-)	% of AA Total	White, Not Hispanic	Margin of Error (+/-)	% of NHW Total
<b>Total:</b>	<b>5,897</b>	<b>67</b>	<b>100.0%</b>	<b>8,793</b>	<b>19</b>	<b>100.0%</b>
Veteran	443	NC	7.5%	1,038	NC	11.8%
Nonveteran	5,454	NC	92.5%	7,755	NC	88.2%
Male:	2,560	28	43.4%	4,293	19	48.8%
18 to 64 years:	2,175	28	36.9%	3,270	19	37.2%
Veteran	265	94	4.5%	579	111	6.6%
Nonveteran	1,910	93	32.4%	2,691	111	30.6%
65 years and over:	385	5	6.5%	1,023	19	11.6%
Veteran	59	34	1.0%	429	86	4.9%
Nonveteran	326	34	5.5%	594	86	6.8%
Female:	3,337	57	56.6%	4,500	19	51.2%
18 to 64 years:	2,734	42	46.4%	3,196	19	36.3%
Veteran	118	78	2.0%	25	18	0.3%
Nonveteran	2,616	83	44.4%	3,171	18	36.1%
65 years and over:	603	28	10.2%	1,304	19	14.8%
Veteran	1	3	0.0%	5	7	0.1%
Nonveteran	602	29	10.2%	1,299	7	14.8%

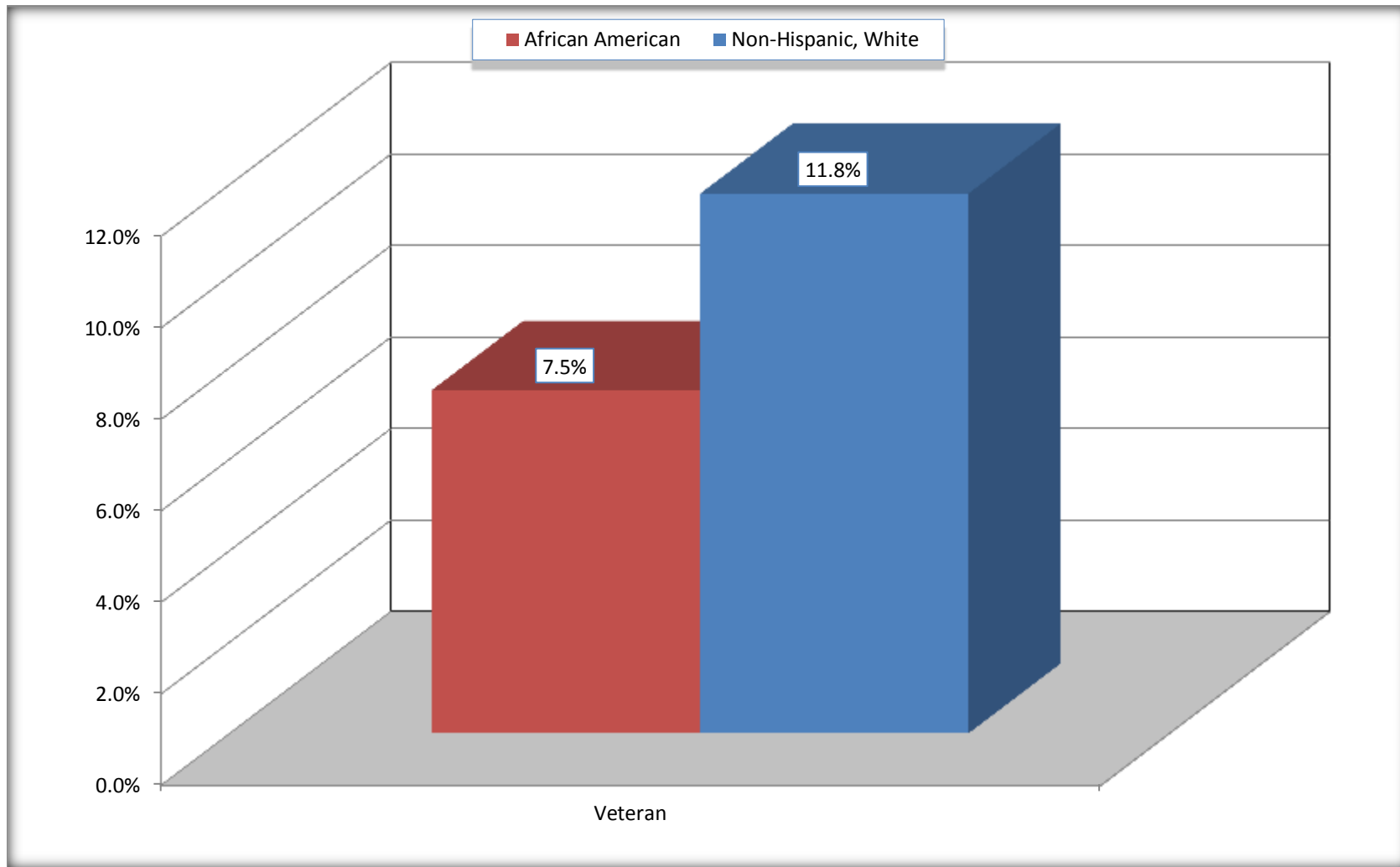
Source: U.S. Census Bureau, 2008-2012 American Community Survey

For information on confidentiality protection, sampling error, nonsampling error, and definitions, see Survey Methodology.

<http://www.census.gov/acs/www/UseData/index.htm>

# Veterans in the Civilian Population 18 Years and Over

## Pickens County, Alabama



Source: C21001. SEX BY AGE BY VETERAN STATUS FOR THE CIVILIAN POPULATION 18 YEARS AND OVER  
Data Set: 2008-2012 American Community Survey 5-Year Estimates

**B22005. RECEIPT OF FOOD STAMPS/SNAP IN THE PAST 12 MONTHS BY RACE OF HOUSEHOLDER**

Data Set: 2008-2012 American Community Survey 5-Year Estimates

	Pickens County, Alabama					
	African American	Margin of Error (+/-)	% of AA Total	White, Not Hispanic	Margin of Error (+/-)	% of NHW Total
<b>Total:</b>	<b>3,120</b>	<b>211</b>	<b>100.0%</b>	<b>4,751</b>	<b>143</b>	<b>100.0%</b>
HH received Food Stamps/SNAP in the past 12 months	1,200	189	38.5%	347	107	7.3%
HH did not receive Food Stamps/SNAP in the past 12 months	1,920	210	61.5%	4,404	166	92.7%

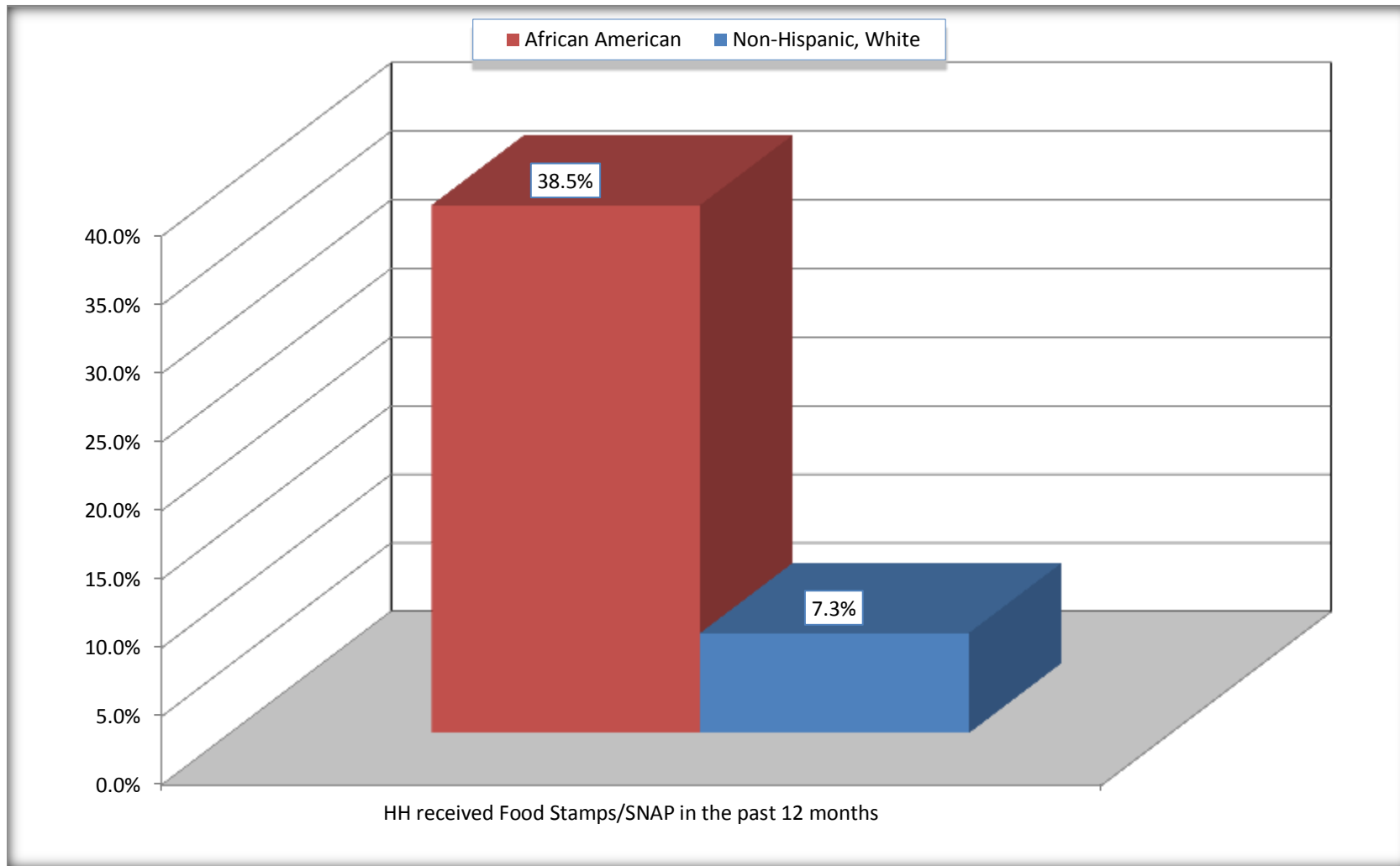
Source: U.S. Census Bureau, 2008-2012 American Community Survey

For information on confidentiality protection, sampling error, nonsampling error, and definitions, see Survey Methodology.

<http://www.census.gov/acs/www/UseData/index.htm>

# Receipt of Food Stamps/SNAP in the Past 12 Months by Household

## Pickens County, Alabama



Source: B22005. RECEIPT OF FOOD STAMPS/SNAP IN THE PAST 12 MONTHS BY RACE OF HOUSEHOLDER  
Data Set: 2008-2012 American Community Survey 5-Year Estimates



**C23002. SEX BY AGE BY EMPLOYMENT STATUS FOR THE POPULATION 16 YEARS AND OVER**

Data Set: 2008-2012 American Community Survey 5-Year Estimates

	Pickens County, Alabama					
	African American	Margin of Error (+/-)	% of AA Total	White, Not Hispanic	Margin of Error (+/-)	% of NHW Total
<b>Total:</b>	<b>6,202</b>	<b>100</b>	<b>100.0%</b>	<b>9,065</b>	<b>42</b>	<b>100.0%</b>
In labor force:	2,946	NC	47.5%	4,943	NC	54.5%
In Armed Forces	0	NC	0.0%	0	NC	0.0%
Civilian:	2,880	NC	46.4%	4,653	NC	51.3%
Employed	2,091	NC	33.7%	4,645	NC	51.2%
Unemployed	855	NC	13.8%	298	NC	3.3%
Not in labor force	3,256	NC	52.5%	4,122	NC	45.5%
Male:	2,728	45	44.0%	4,451	26	49.1%
16 to 64 years:	2,343	45	37.8%	3,428	26	37.8%
In labor force:	1,150	163	18.5%	2,562	136	28.3%
In Armed Forces	0	19	0.0%	0	19	0.0%
Civilian:	1,150	163	18.5%	2,562	136	28.3%
Employed	811	149	13.1%	2423	124	26.7%
Unemployed	339	83	5.5%	139	77	1.5%
Not in labor force	1,193	174	19.2%	866	134	9.6%
65 years and over:	385	5	6.2%	1,023	19	11.3%
In labor force:	40	31	0.6%	193	64	2.1%
Employed	40	31	0.6%	193	64	2.1%
Unemployed	0	19	0.0%	0	19	0.0%
Not in labor force	345	32	5.6%	830	64	9.2%

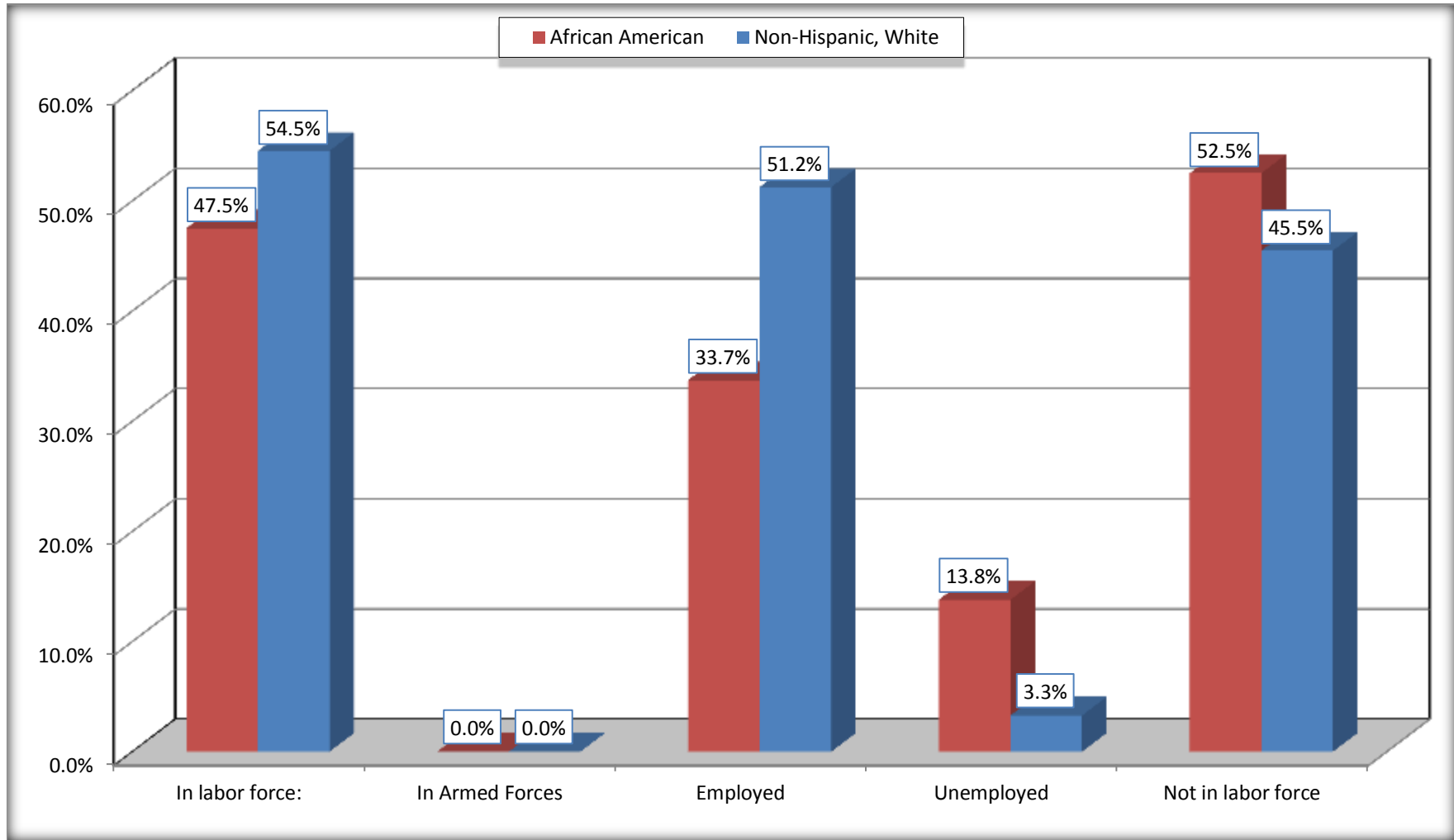
	Pickens County, Alabama					
	African American	Margin of Error (+/-)	% of AA Total	White, Not Hispanic	Margin of Error (+/-)	% of NHW Total
Female:	3,474	78	56.0%	4,614	39	50.9%
16 to 64 years:	2,871	66	46.3%	3,310	39	36.5%
In labor force:	1,730	184	27.9%	2,091	136	23.1%
In Armed Forces	0	19	0.0%	0	19	0.0%
Civilian:	1,730	184	27.9%	2,091	136	23.1%
Employed	1,214	209	19.6%	1,935	141	21.3%
Unemployed	516	141	8.3%	156	68	1.7%
Not in labor force	1,141	182	18.4%	1,219	140	13.4%
65 years and over:	603	28	9.7%	1,304	19	14.4%
In labor force:	26	18	0.4%	97	49	1.1%
Employed	26	18	0.4%	94	49	1.0%
Unemployed	0	19	0.0%	3	4	0.0%
Not in labor force	577	29	9.3%	1,207	49	13.3%

Source: U.S. Census Bureau, 2008-2012 American Community Survey

For information on confidentiality protection, sampling error, nonsampling error, and definitions, see Survey Methodology.  
<http://www.census.gov/acs/www/UseData/index.htm>

# Employment Status for the Population 16 years and over

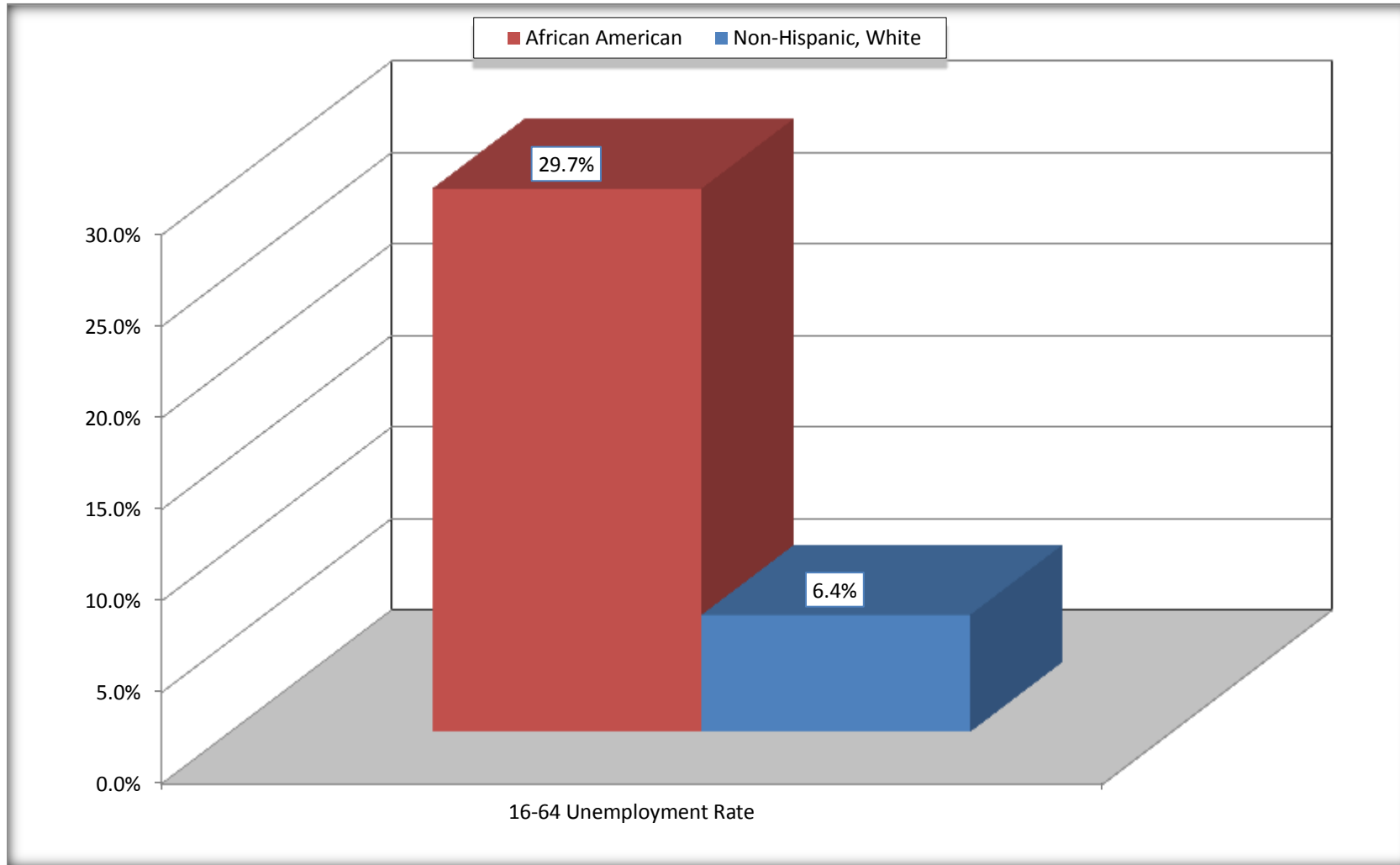
## Pickens County, Alabama



Source: C23002. SEX BY AGE BY EMPLOYMENT STATUS FOR THE POPULATION 16 YEARS AND OVER  
Data Set: 2008-2012 American Community Survey 5-Year Estimates

# Unemployment of Working Age Population (Ages 16 to 64) (As a Percent of 16-64 Civilian Labor Force)

## Pickens County, Alabama



Source: C23002. SEX BY AGE BY EMPLOYMENT STATUS FOR THE POPULATION 16 YEARS AND OVER  
Data Set: 2008-2012 American Community Survey 5-Year Estimates

**C24010. SEX BY OCCUPATION FOR THE CIVILIAN EMPLOYED POPULATION 16 YEARS AND OVER**

Data Set: 2008-2012 American Community Survey 5-Year Estimates

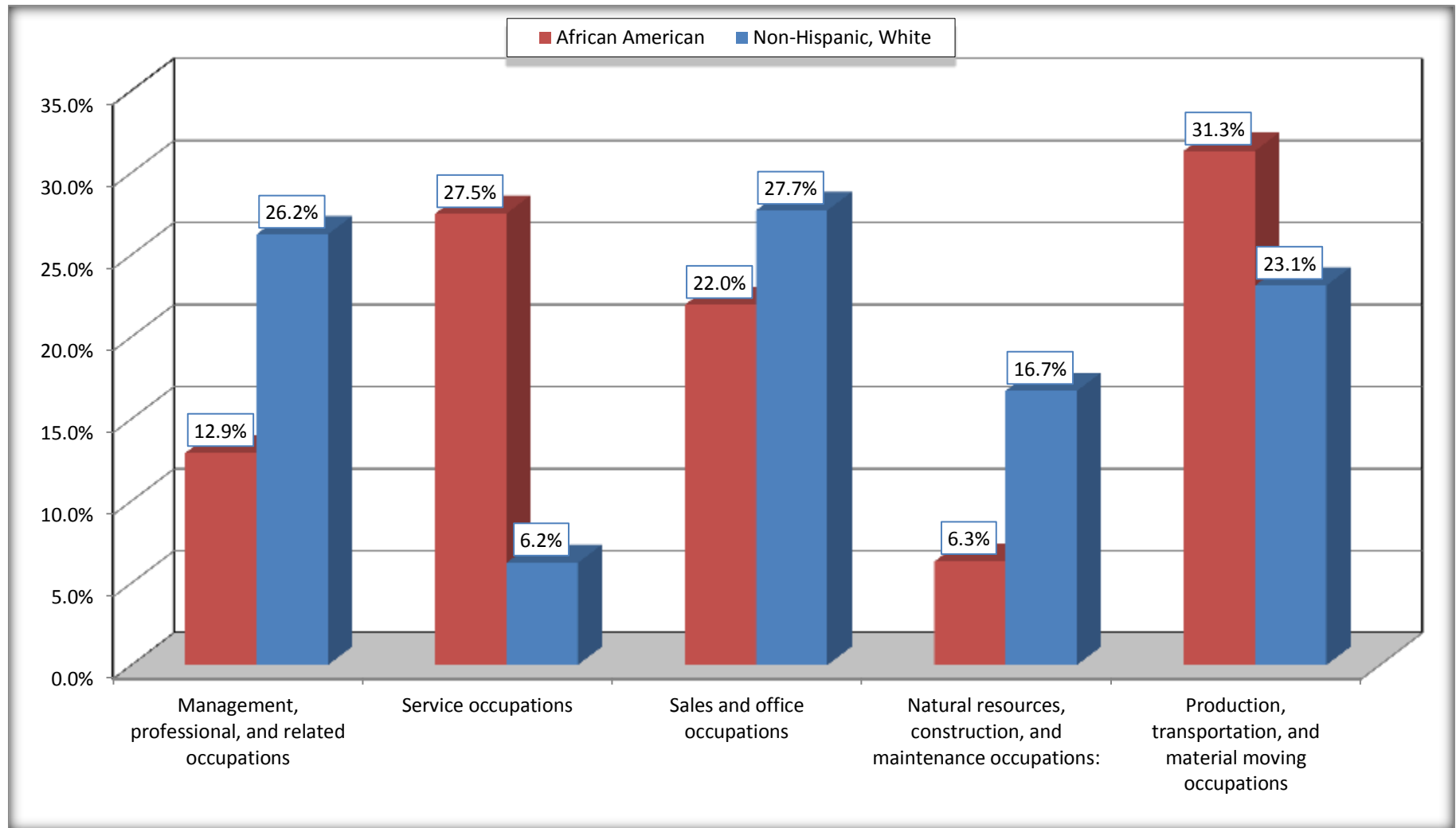
	Pickens County, Alabama					
	African American	Margin of Error (+/-)	% of AA Total	White, Not Hispanic	Margin of Error (+/-)	% of NHW Total
<b>Total:</b>	<b>2,091</b>	<b>255</b>	<b>100.0%</b>	<b>4,645</b>	<b>188</b>	<b>100.0%</b>
Management, professional, and related occupations	270	NC	12.9%	1,219	NC	26.2%
Service occupations	575	NC	27.5%	289	NC	6.2%
Sales and office occupations	459	NC	22.0%	1,287	NC	27.7%
Natural resources, construction, and maintenance occupations:	132	NC	6.3%	776	NC	16.7%
Production, transportation, and material moving occupations	655	NC	31.3%	1,074	NC	23.1%
Male:	851	151	40.7%	2,616	136	56.3%
Management, business, science, and arts occupations:	44	41	2.1%	538	124	11.6%
Service occupations	98	50	4.7%	139	76	3.0%
Sales and office occupations	112	56	5.4%	320	105	6.9%
Natural resources, construction, and maintenance occupations:	132	73	6.3%	753	166	16.2%
Production, transportation, and material moving occupations	465	130	22.2%	866	162	18.6%
Female:	1,240	212	59.3%	2,029	155	43.7%
Management, professional, and related occupations	226	78	10.8%	681	122	14.7%
Service occupations	477	124	22.8%	150	58	3.2%
Sales and office occupations	347	113	16.6%	967	151	20.8%
Natural resources, construction, and maintenance occupations:	0	19	0.0%	23	27	0.5%
Production, transportation, and material moving occupations	190	102	9.1%	208	85	4.5%

Source: U.S. Census Bureau, 2008-2012 American Community Survey

For information on confidentiality protection, sampling error, nonsampling error, and definitions, see Survey Methodology.

<http://www.census.gov/acs/www/UseData/index.htm>

## Occupation for the Civilian Employed 16 Years and Over Population Pickens County, Alabama



Source: C24010. SEX BY OCCUPATION FOR THE CIVILIAN EMPLOYED POPULATION 16 YEARS AND OVER  
Data Set: 2008-2012 American Community Survey 5-Year Estimates

**B25003. TENURE - Universe: OCCUPIED HOUSING UNITS**

Data Set: 2008-2012 American Community Survey 5-Year Estimates

	Pickens County, Alabama					
	African American	Margin of Error (+/-)	% of AA Total	White, Not Hispanic	Margin of Error (+/-)	% of NHW Total
<b>Total:</b>	<b>3,120</b>	<b>211</b>	<b>100.0%</b>	<b>4,751</b>	<b>143</b>	<b>100.0%</b>
Owner occupied	1,790	212	57.4%	3,854	205	81.1%
Renter occupied	1,330	183	42.6%	897	158	18.9%

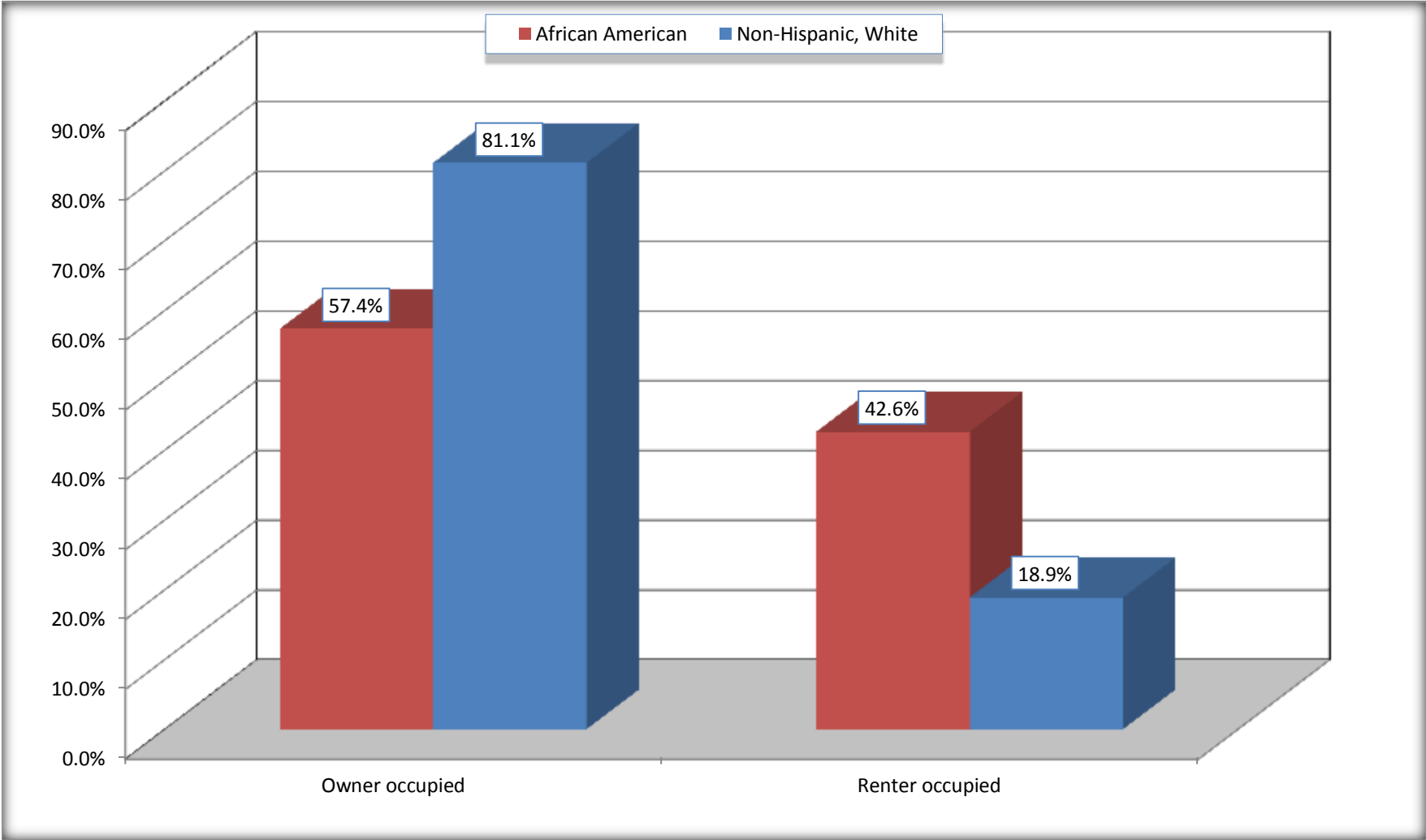
Source: U.S. Census Bureau, 2008-2012 American Community Survey

For information on confidentiality protection, sampling error, nonsampling error, and definitions, see Survey Methodology.

<http://www.census.gov/acs/www/UseData/index.h>

# Home Owners and Renters by Household

## Pickens County, Alabama



Source: B25003. TENURE - Universe: OCCUPIED HOUSING UNITS  
Data Set: 2008-2012 American Community Survey 5-Year Estimates



**B25014. OCCUPANTS PER ROOM - Universe: OCCUPIED HOUSING UNITS**

Data Set: 2008-2012 American Community Survey 5-Year Estimates

	Pickens County, Alabama					
	African American	Margin of Error (+/-)	% of AA Total	White, Not Hispanic	Margin of Error (+/-)	% of NHW Total
<b>Total:</b>	<b>3,120</b>	<b>211</b>	<b>100.0%</b>	<b>4,751</b>	<b>143</b>	<b>100.0%</b>
1.00 or less occupants per room	3,022	220	96.9%	4,736	139	99.7%
1.01 or more occupants per room	98	53	3.1%	15	21	0.3%

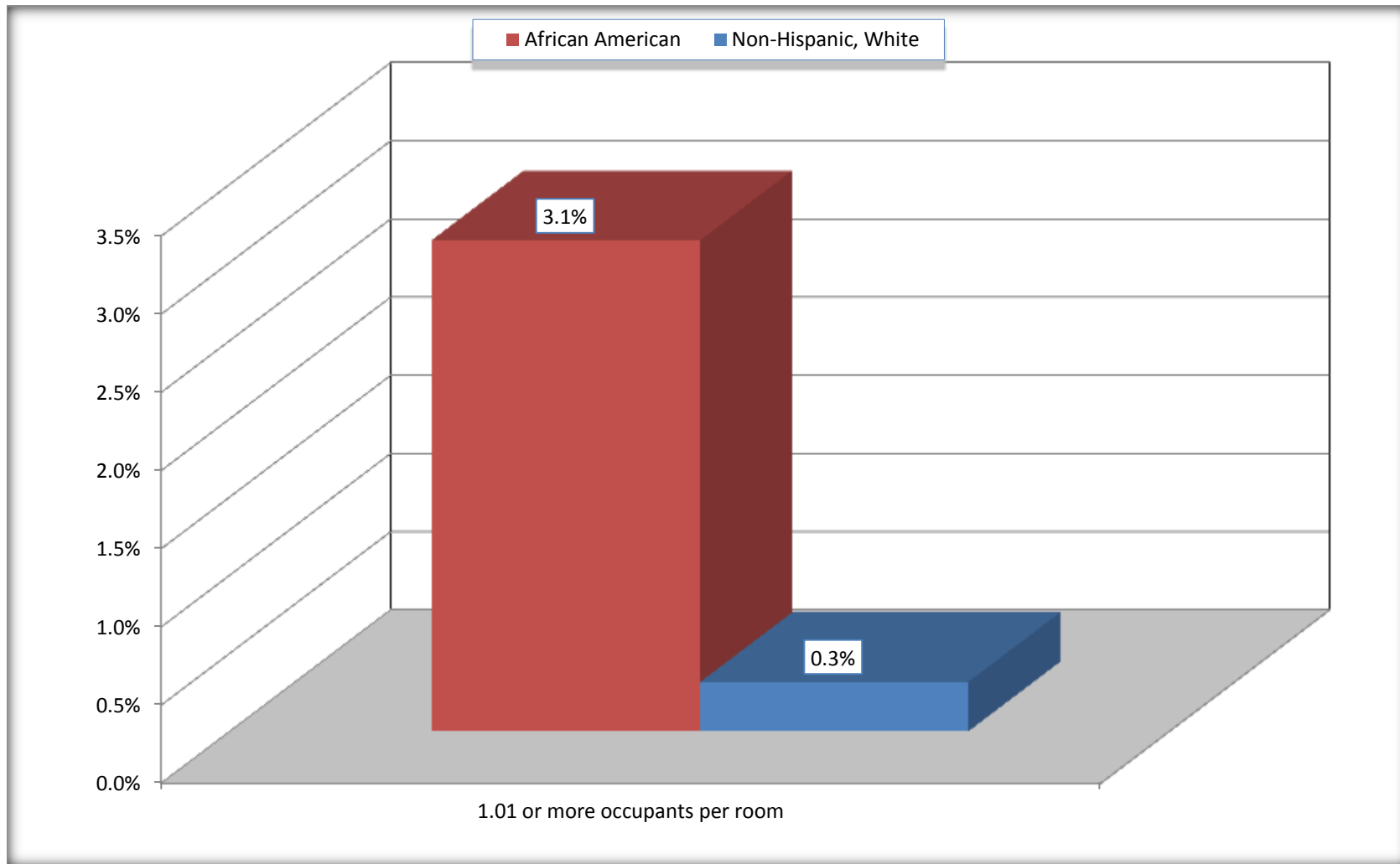
Source: U.S. Census Bureau, 2008-2012 American Community Survey

For information on confidentiality protection, sampling error, nonsampling error, and definitions, see Survey Methodology.

<http://www.census.gov/acs/www/UseData/index.ht>

# More than One Person per Room (Crowding) by Household

## Pickens County, Alabama



Source: B25014. OCCUPANTS PER ROOM - Universe: OCCUPIED HOUSING UNITS  
Data Set: 2008-2012 American Community Survey 5-Year Estimates

**B18101. AGE BY DISABILITY STATUS**

Data Set: 2008-2012 American Community Survey 5-Year Estimates

	Pickens County, Alabama					
	African American	Margin of Error (+/-)	% of AA Total	White, Not Hispanic	Margin of Error (+/-)	% of NHW Total
<b>Total:</b>	<b>8,007</b>	<b>147</b>	<b>100.0%</b>	<b>10,829</b>	<b>65</b>	<b>100.0%</b>
Under 18 years:	2,271	51	28.4%	2,160	78	19.9%
With a disability	267	100	3.3%	114	73	1.1%
No disability	2,004	118	25.0%	2,046	70	18.9%
18 to 64 years:	4,795	101	59.9%	6,411	52	59.2%
With a disability	1,095	169	13.7%	1,464	200	13.5%
No disability	3,700	204	46.2%	4,947	203	45.7%
65 years and over:	941	60	11.8%	2,258	35	20.9%
With a disability	515	84	6.4%	1,103	135	10.2%
No disability	426	82	5.3%	1,155	135	10.7%

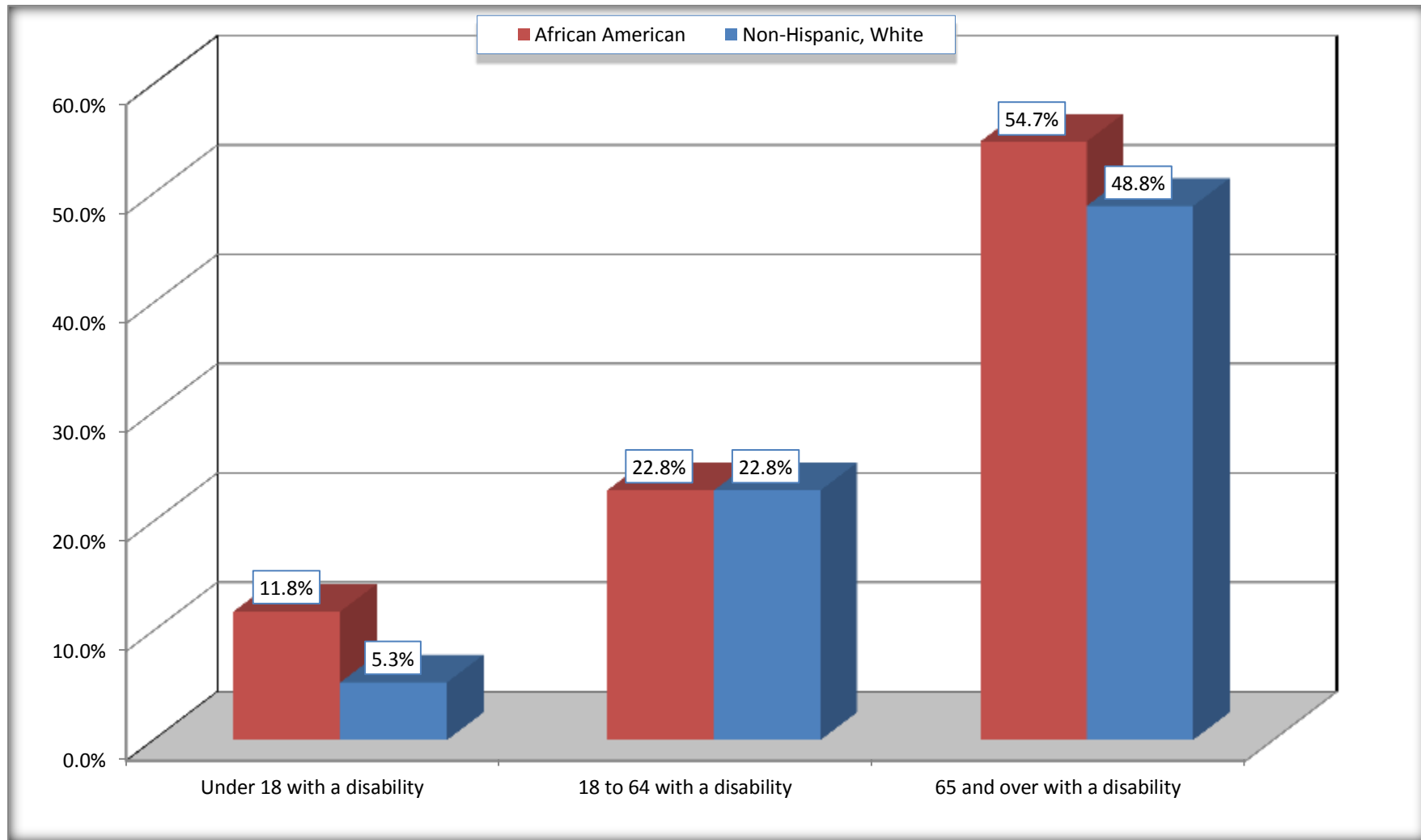
Source: U.S. Census Bureau, 2008-2012 American Community Survey

For information on confidentiality protection, sampling error, nonsampling error, and definitions, see Survey Methodology.

<http://www.census.gov/acs/www/UseData/index.htm>

# Disability by Age

## Pickens County, Alabama



Source: B18101. AGE BY DISABILITY STATUS  
Data Set: 2008-2012 American Community Survey 5-Year Estimates

**C27001B. HEALTH INSURANCE COVERAGE STATUS BY AGE**

Data Set: 2008-2012 American Community Survey 5-Year Estimates

	<b>Pickens County, Alabama</b>					
	African American	Margin of Error (+/-)	% of AA Total	White, Not Hispanic	Margin of Error (+/-)	% of NHW Total
<b>Total:</b>	<b>8,007</b>	<b>147</b>	<b>100.0%</b>	<b>10,829</b>	<b>65</b>	<b>100.0%</b>
Under 18 years:	2,271	51	28.4%	2,160	18	19.9%
With health insurance coverage	2,176	72	27.2%	2,119	58	19.6%
No health insurance coverage	95	45	1.2%	41	56	0.4%
18 to 64 years:	4,795	101	59.9%	6,411	52	59.2%
With health insurance coverage	3,336	250	41.7%	5,695	166	52.6%
No health insurance coverage	1,459	219	18.2%	716	164	6.6%
65 years and over:	941	60	11.8%	2,258	35	20.9%
With health insurance coverage	941	60	11.8%	2,258	35	20.9%
No health insurance coverage	0	19	0.0%	0	19	0.0%

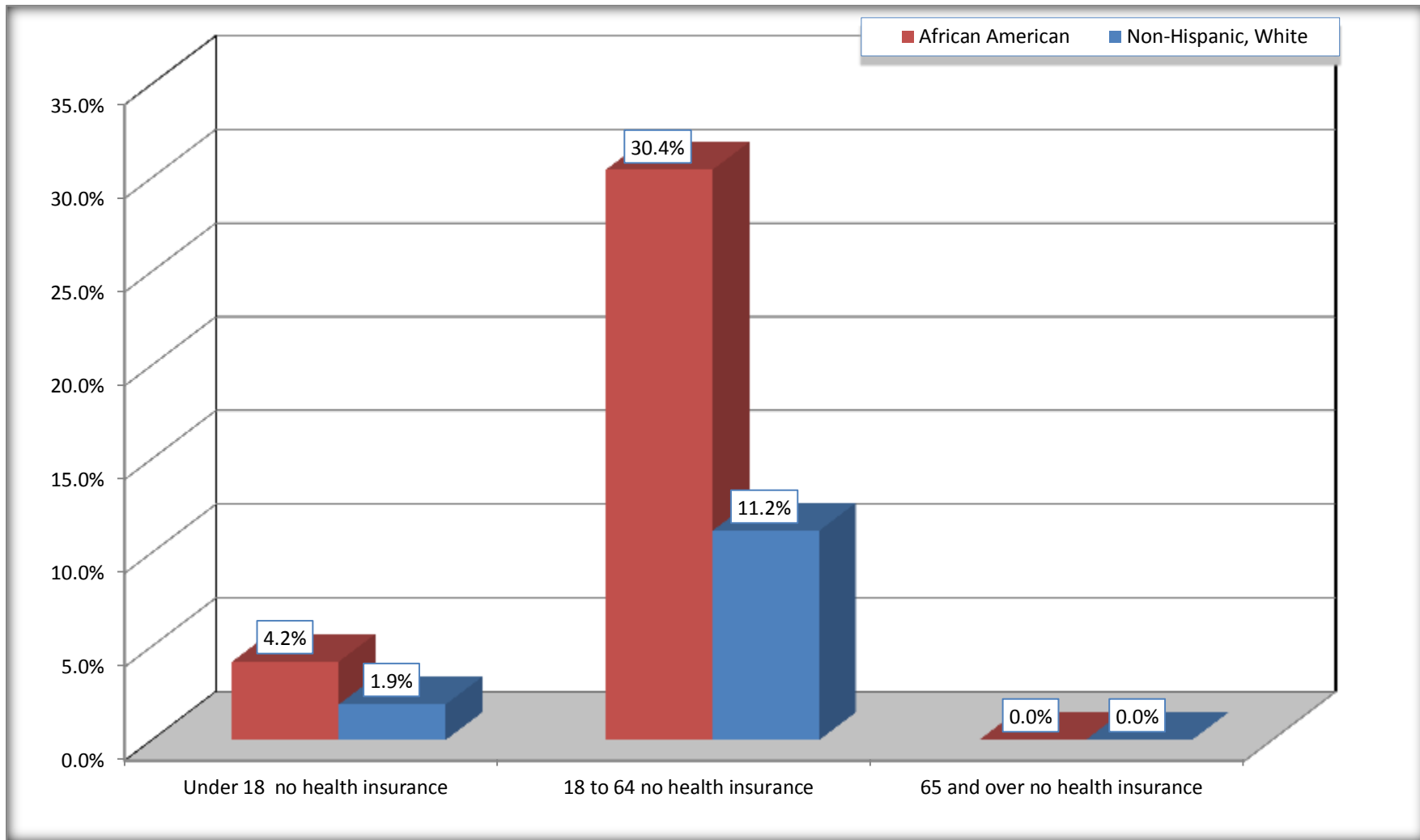
Source: U.S. Census Bureau, 2008-2012 American Community Survey

For information on confidentiality protection, sampling error, nonsampling error, and definitions, see Survey Methodology.

<http://www.census.gov/acs/www/UseData/index.htm>

# Lack of Health Insurance Coverage by Age

## Pickens County, Alabama



Source: C27001B. HEALTH INSURANCE COVERAGE STATUS BY AGE  
Data Set: 2008-2012 American Community Survey 5-Year Estimates