

# **Selected Socio-Economic Data**

## **Macon County, Alabama**

### **African American and White, Not Hispanic**

**Data Set: 2008-2012 American Community Survey 5-Year Estimates**

[www.fairvote2020.org](http://www.fairvote2020.org)

[www.fairdata2000.com](http://www.fairdata2000.com)

[29-Dec-13](#)

**C02003.DETAILED RACE - Universe: TOTAL POPULATION**  
 Data Set: 2008-2012 American Community Survey 5-Year Estimates

	Macon County, Alabama		
	Population	Margin of Error (+/-)	% of Total
<b>Total:</b>	<b>21,214</b>	<b>*****</b>	<b>100.0%</b>
Population of one race:	21,067	61	99.3%
White	3,365	57	15.9%
Black or African American	17,635	84	83.1%
American Indian and Alaska Native	42	20	0.2%
Asian alone	0	22	0.0%
Native Hawaiian and Other Pacific Islander	0	22	0.0%
Some other race	25	25	0.1%
Population of two or more races:	147	61	0.7%
Two races including Some other race	3	5	0.0%
Two races excluding Some other race, and three or more races	144	60	0.7%
Population of two races:	147	61	0.7%
White; Black or African American	43	39	0.2%
White; American Indian and Alaska Native	25	20	0.1%
White; Asian	16	24	0.1%
Black or African American; American Indian and Alaska Native	60	56	0.3%
All other two race combinations	3	5	0.0%
Population of three races	0	22	0.0%
Population of four or more races	0	22	0.0%

Note: Hispanics may be of any race. See Table B03002 and chart.

Source: U.S. Census Bureau, 2008-2012 American Community Survey

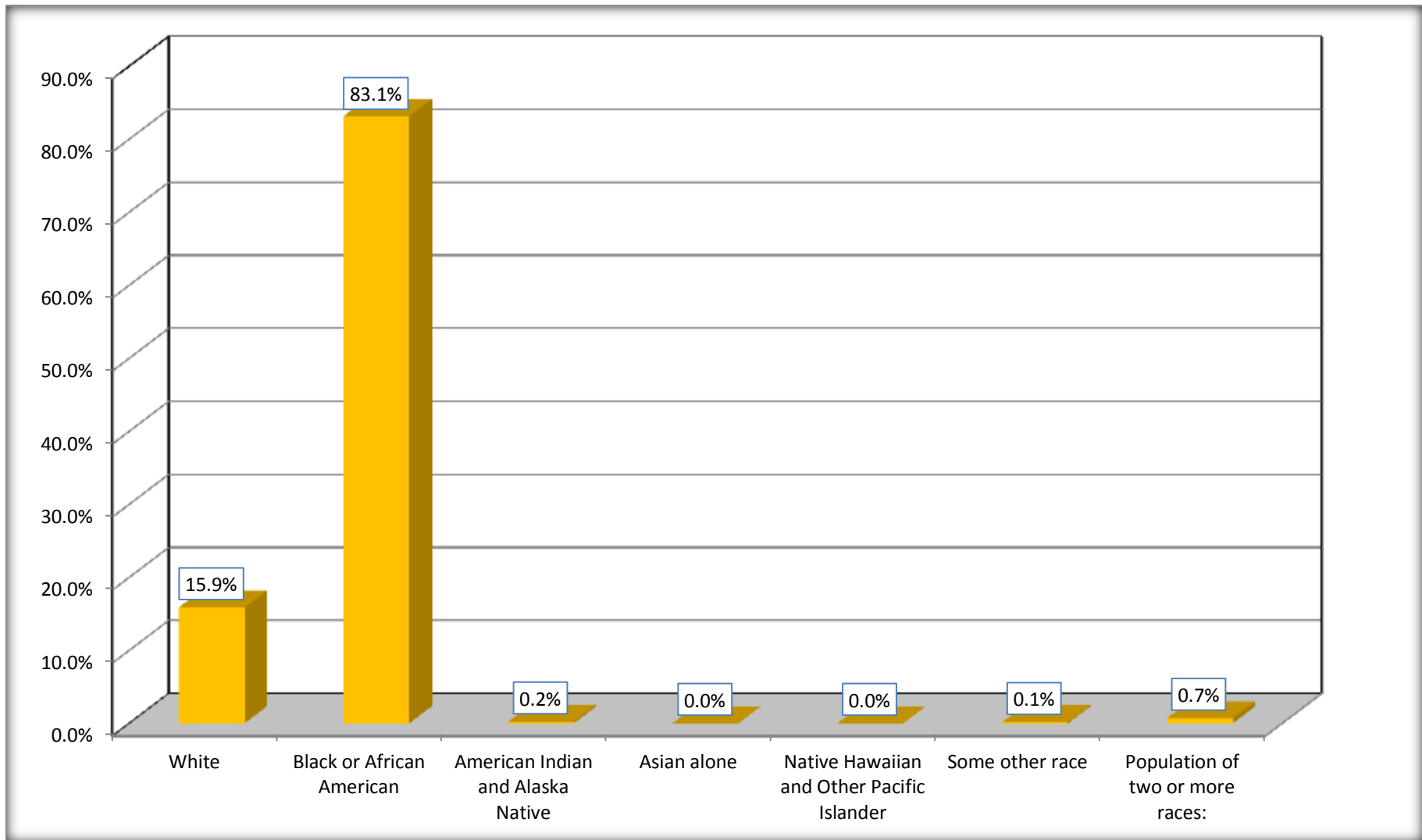
Although the American Community Survey (ACS) produces population, demographic and housing unit estimates, it is the Census Bureau's Population Estimates Program that produces and disseminates the official estimates of the population for the nation, states, counties, cities and towns and estimates of housing units for states and counties.

For information on confidentiality protection, sampling error, nonsampling error, and definitions, see Survey Methodology.

<http://www.census.gov/acs/www/UseData/index.htm>

# Population by Race

## Macon County, Alabama



Source: C02003.DETAILED RACE - Universe: TOTAL POPULATION  
Data Set: 2008-2012 American Community Survey 5-Year Estimates

**B03002. HISPANIC OR LATINO ORIGIN BY RACE - Universe: TOTAL POPULATION**

Data Set: 2008-2012 American Community Survey 5-Year Estimates

	Macon County, Alabama		
	Population	Margin of Error (+/-)	% of Total
<b>Total:</b>	21,214	*****	<b>100.0%</b>
Not Hispanic or Latino:	20,940	*****	98.7%
White alone	3,262	22	15.4%
Black or African American alone	17,495	58	82.5%
American Indian and Alaska Native alone	42	20	0.2%
Asian alone	0	22	0.0%
Native Hawaiian and Other Pacific Islander alone	0	22	0.0%
Some other race alone	0	22	0.0%
Two or more races:	141	60	0.7%
Two races including Some other race	0	22	0.0%
Two races excluding Some other race, and three or more races	141	60	0.7%
Hispanic or Latino	274	*****	1.3%

Source: U.S. Census Bureau, 2008-2012 American Community Survey

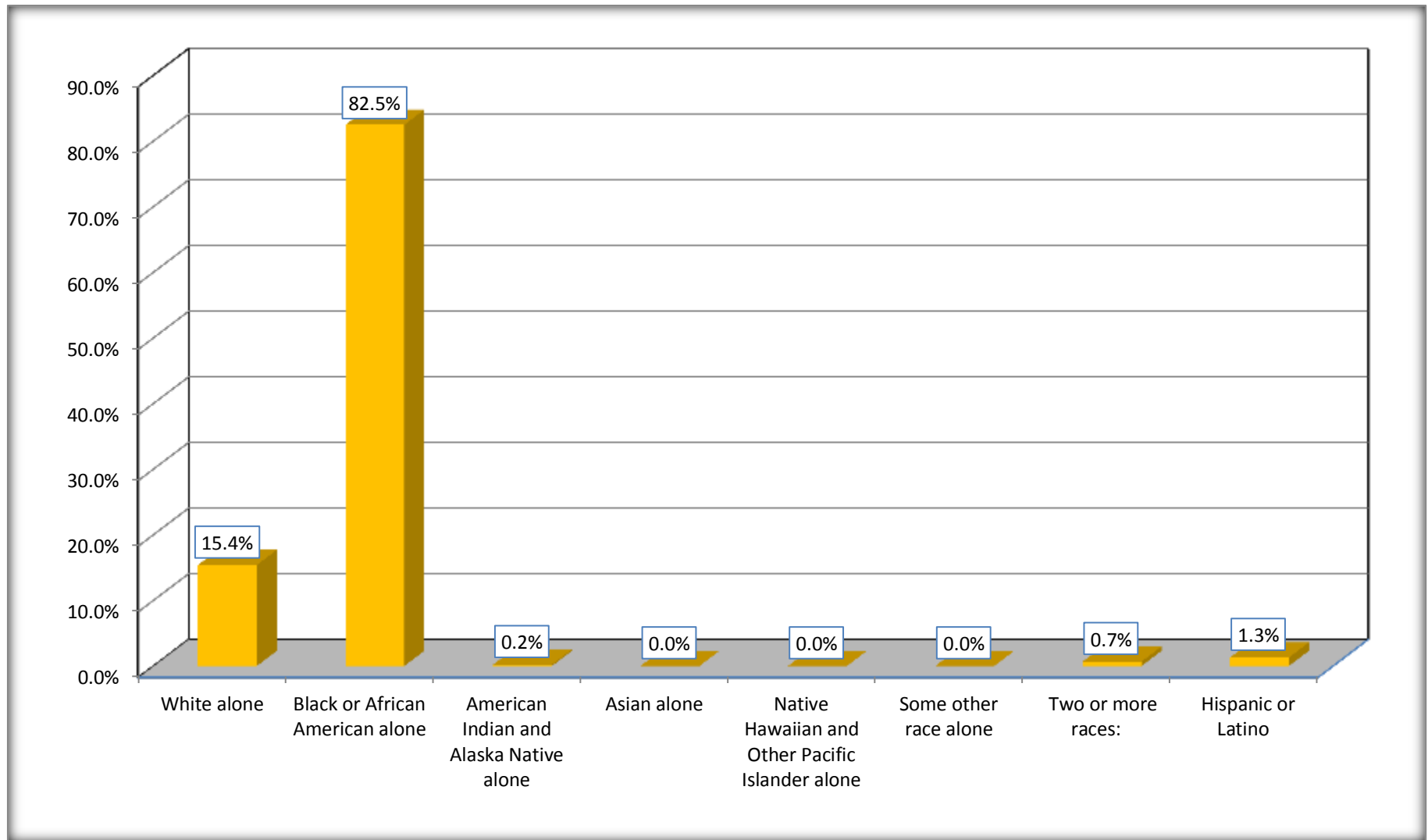
Although the American Community Survey (ACS) produces population, demographic and housing unit estimates, it is the Census Bureau's Population Estimates Program that produces and disseminates the official estimates of the population for the nation, states, counties, cities and towns and estimates of housing units for states and counties.

For information on confidentiality protection, sampling error, nonsampling error, and definitions, see Survey Methodology.

<http://www.census.gov/acs/www/UseData/index.htm>

# Non-Hispanic by Race and Hispanic Population

## Macon County, Alabama



Source: B03002. HISPANIC OR LATINO ORIGIN BY RACE - Universe: TOTAL POPULATION  
Data Set: 2008-2012 American Community Survey 5-Year Estimates

**B03002. HISPANIC OR LATINO ORIGIN BY RACE**

Data Set: 2008-2012 American Community Survey 5-Year Estimates

	Macon County, Alabama		
	Population	Margin of Error (+/-)	% of Total
Hispanic or Latino:	274	*****	<b>100.0%</b>
White alone	103	57	37.6%
Black or African American alone	140	62	51.1%
American Indian and Alaska Native alone	0	22	0.0%
Asian alone	0	22	0.0%
Native Hawaiian and Other Pacific Islander alone	0	22	0.0%
Some other race alone	25	25	9.1%
Two or more races:	6	8	2.2%
Two races including Some other race	3	5	1.1%
Two races excluding Some other race, and three or more races	3	6	1.1%

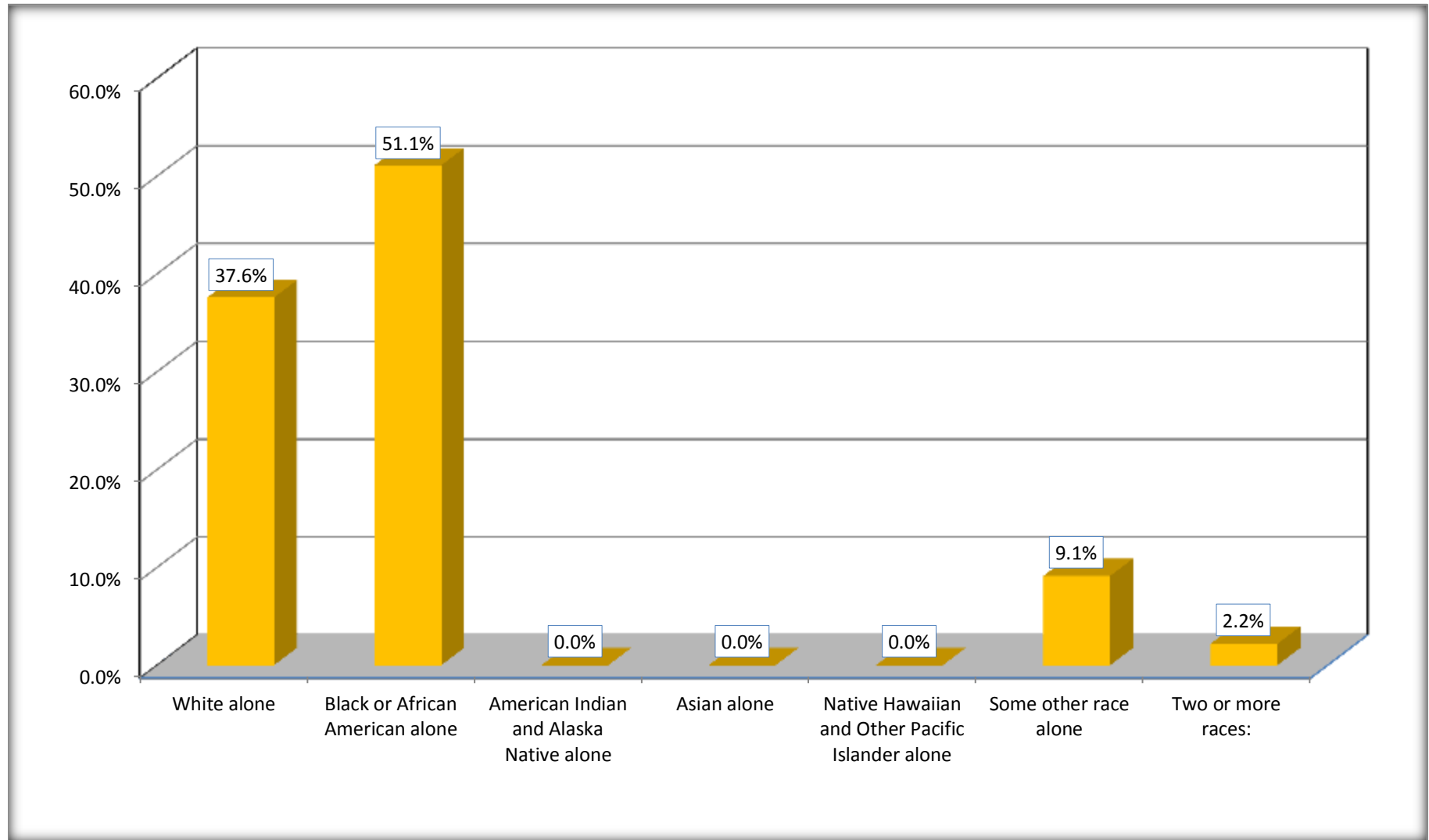
Source: U.S. Census Bureau, 2008-2012 American Community Survey

Although the American Community Survey (ACS) produces population, demographic and housing unit estimates, it is the Census Bureau's Population Estimates Program that produces and disseminates the official estimates of the population for the nation, states, counties, cities and towns and estimates of housing units for states and counties.

For information on confidentiality protection, sampling error, nonsampling error, and definitions, see Survey Methodology.

<http://www.census.gov/acs/www/UseData/index.htm>

## Hispanic or Latino Origin by Race Macon County, Alabama



Source: B03002. HISPANIC OR LATINO ORIGIN BY RACE  
Data Set: 2008-2012 American Community Survey 5-Year Estimates

**B01001. SEX BY AGE**

Data Set: 2008-2012 American Community Survey 5-Year Estimates

	Macon County, Alabama					
	African American	Margin of Error (+/-)	% of AA Total	White, Not Hispanic	Margin of Error (+/-)	% of NHW Total
<b>Total:</b>	<b>17,635</b>	<b>84</b>	<b>100.0%</b>	<b>3,262</b>	<b>22</b>	<b>100.0%</b>
Under 18 years	3,642	NC	20.7%	587	NC	18.0%
18 to 64 years	11,576	NC	65.6%	2,066	NC	63.3%
65 years and over	2,417	NC	13.7%	609	NC	18.7%
Male:	7,920	36	44.9%	1,617	389	49.6%
Under 18 years	1,868	NC	10.6%	272	NC	8.3%
18 to 64 years	5,135	NC	29.1%	1,044	NC	32.0%
65 years and over	917	NC	5.2%	301	NC	9.2%
Female:	9,715	85	55.1%	1,645	412	50.4%
Under 18 years	1,774	NC	10.1%	315	NC	9.7%
18 to 64 years	6,441	NC	36.5%	1,022	NC	31.3%
65 years and over	1,500	NC	8.5%	308	NC	9.4%

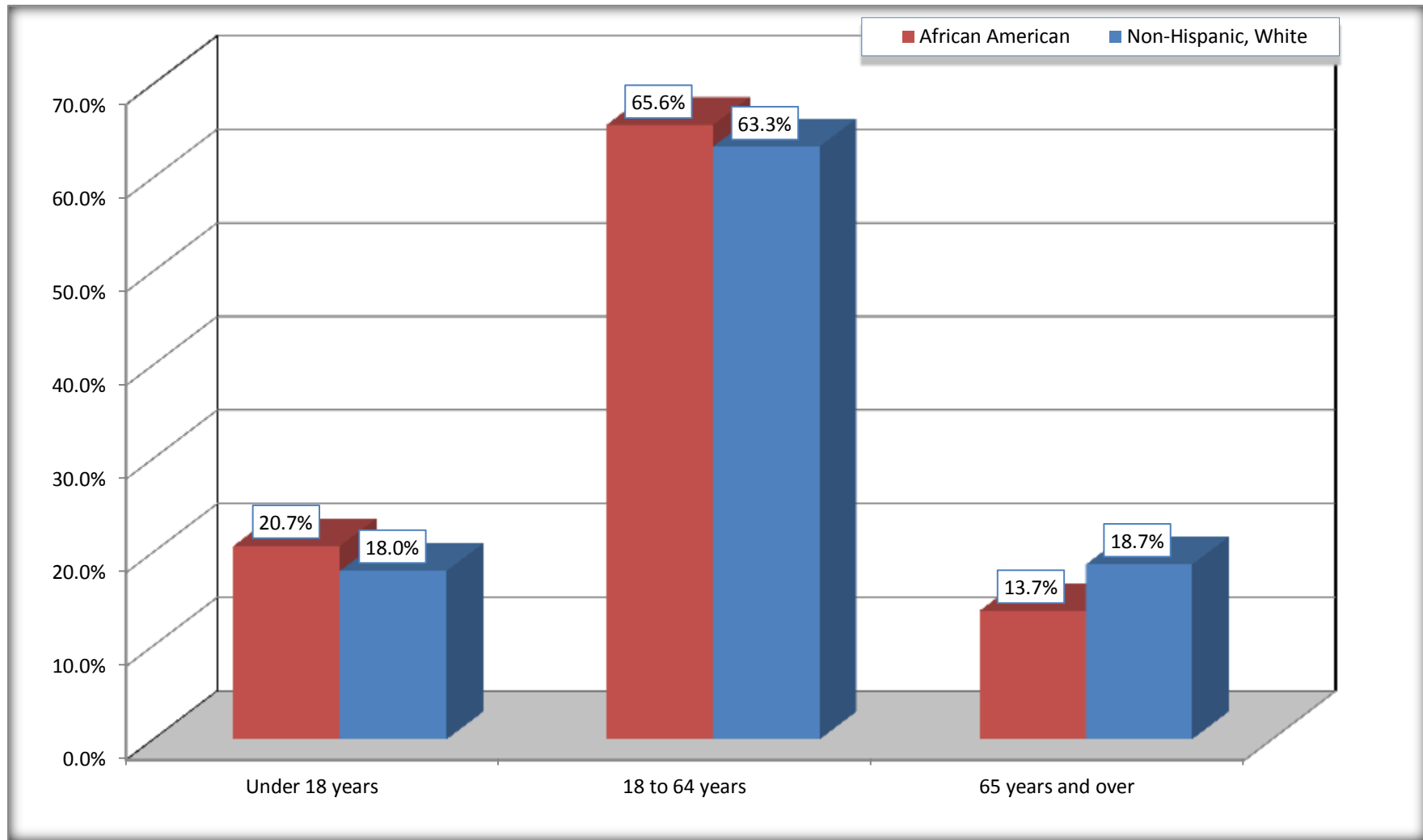
Source: U.S. Census Bureau, 2008-2012 American Community Survey

Although the American Community Survey (ACS) produces population, demographic and housing unit estimates, it is the Census Bureau's Population Estimates Program that produces and disseminates the official estimates of the population for the nation, states, counties, cities and towns and estimates of housing units for states and counties.

For information on confidentiality protection, sampling error, nonsampling error, and definitions, see Survey Methodology.  
<http://www.census.gov/acs/www/UseData/index.htm>



## Population by Age Macon County, Alabama



Source: B01001. SEX BY AGE  
Data Set: 2008-2012 American Community Survey 5-Year Estimates

**B05003. SEX BY AGE BY CITIZENSHIP STATUS**

Data Set: 2008-2012 American Community Survey 5-Year Estimates

	Macon County, Alabama					
	African American	Margin of Error (+/-)	% of AA Total by Age	White, Not Hispanic	Margin of Error (+/-)	% of NHW Total by Age
<b>Total:</b>	<b>17,635</b>	<b>84</b>	<b>100.0%</b>	<b>3,262</b>	<b>22</b>	<b>100.0%</b>
<b>Under 18 years:</b>	<b>3,642</b>	<b>NC</b>	<b>100.0%</b>	<b>587</b>	<b>NC</b>	<b>100.0%</b>
Native	3,642	NC	100.0%	587	NC	100.0%
Foreign born:	0	NC	0.0%	0	NC	0.0%
Naturalized U.S. citizen	0	NC	0.0%	0	NC	0.0%
Not a U.S. citizen	0	NC	0.0%	0	NC	0.0%
<b>18 years and over:</b>	<b>13,993</b>	<b>NC</b>	<b>100.0%</b>	<b>2,675</b>	<b>NC</b>	<b>100.0%</b>
Native	13,909	NC	99.4%	2,665	NC	99.6%
Foreign born:	84	NC	0.6%	10	NC	0.4%
Naturalized U.S. citizen	62	NC	0.4%	5	NC	0.2%
Not a U.S. citizen	22	NC	0.2%	5	NC	0.2%
<b>Male:</b>	<b>7,920</b>	<b>36</b>	<b>44.9%</b>	<b>1,617</b>	<b>50</b>	<b>49.6%</b>
<b>Under 18 years:</b>	<b>1,868</b>	<b>22</b>	<b>100.0%</b>	<b>272</b>	<b>50</b>	<b>100.0%</b>
Native	1,868	22	100.0%	272	50	100.0%
Foreign born:	0	22	0.0%	0	22	0.0%
Naturalized U.S. citizen	0	22	0.0%	0	22	0.0%
Not a U.S. citizen	0	22	0.0%	0	22	0.0%
<b>18 years and over:</b>	<b>6,052</b>	<b>36</b>	<b>100.0%</b>	<b>1,345</b>	<b>22</b>	<b>100.0%</b>
Native	6,006	47	99.2%	1,335	12	99.3%
Foreign born:	46	28	0.8%	10	12	0.7%
Naturalized U.S. citizen	44	27	0.7%	5	8	0.4%
Not a U.S. citizen	2	6	0.0%	5	9	0.4%

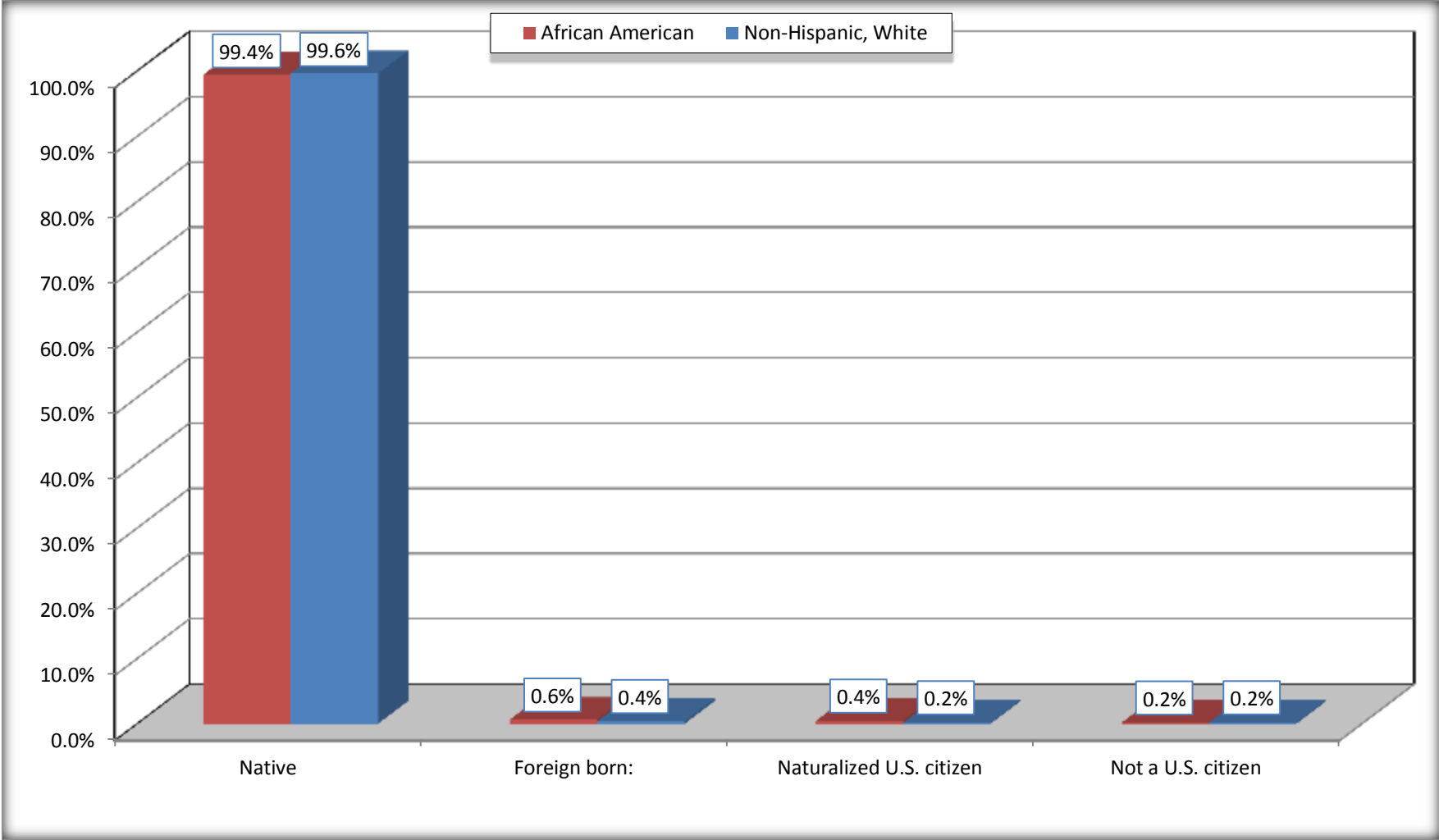
	<b>Macon County, Alabama</b>					
	African American	Margin of Error (+/-)	% of AA by Age	White, Not Hispanic	Margin of Error (+/-)	% of NHW by Age
<b>Female:</b>	9,715	85	55.1%	1,645	50	50.4%
<b>Under 18 years:</b>	<b>1,774</b>	<b>20</b>	<b>100.0%</b>	<b>315</b>	<b>50</b>	<b>100.0%</b>
Native	1,774	20	100.0%	315	50	100.0%
Foreign born:	0	22	0.0%	0	22	0.0%
Naturalized U.S. citizen	0	22	0.0%	0	22	0.0%
Not a U.S. citizen	0	22	0.0%	0	22	0.0%
<b>18 years and over:</b>	<b>7,941</b>	<b>81</b>	<b>100.0%</b>	<b>1,330</b>	<b>22</b>	<b>100.0%</b>
Native	7,903	90	99.5%	1,330	22	100.0%
Foreign born:	38	30	0.5%	0	22	0.0%
Naturalized U.S. citizen	18	20	0.2%	0	22	0.0%
Not a U.S. citizen	20	20	0.3%	0	22	0.0%

Source: U.S. Census Bureau, 2008-2012 American Community Survey

For information on confidentiality protection, sampling error, nonsampling error, and definitions, see Survey Methodology.  
<http://www.census.gov/acs/www/UseData/index.htm>

# Citizenship Status of Voting Age Population (18 and Over)

## Macon County, Alabama



Source: B05003. SEX BY AGE BY CITIZENSHIP STATUS  
Data Set: 2008-2012 American Community Survey 5-Year Estimates

**B07004. GEOGRAPHICAL MOBILITY IN THE PAST YEAR BY RACE FOR CURRENT RESIDENCE IN THE UNITED STATES - Universe:  
POPULATION 1 YEAR AND OVER**

Data Set: 2008-2012 American Community Survey 5-Year Estimates

	Macon County, Alabama					
	African American	Margin of Error (+/-)	% of AA Total	White, Not Hispanic	Margin of Error (+/-)	% of NHW Total
<b>Total:</b>	<b>17,470</b>	<b>102</b>	<b>100.0%</b>	<b>3,200</b>	<b>49</b>	<b>100.0%</b>
Same house 1 year ago	14,587	418	83.5%	2,811	140	87.8%
Moved within same county	1,427	306	8.2%	145	80	4.5%
Moved from different county within same state	551	171	3.2%	85	42	2.7%
Moved from different state	867	250	5.0%	159	94	5.0%
Moved from abroad	38	46	0.2%	0	22	0.0%

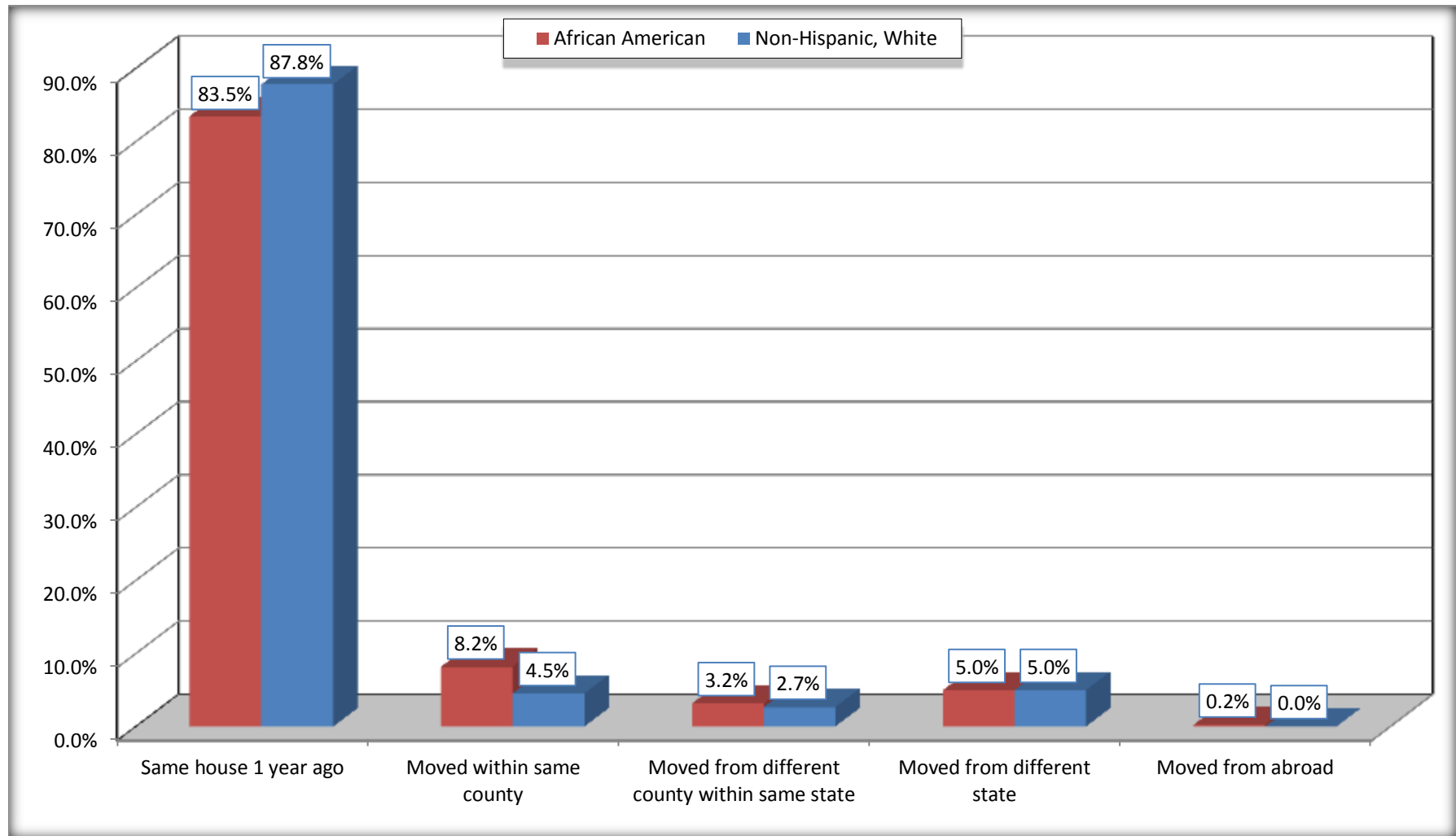
Source: U.S. Census Bureau, 2008-2012 American Community Survey

For information on confidentiality protection, sampling error, nonsampling error, and definitions, see Survey Methodology.

<http://www.census.gov/acs/www/UseData/index.htm>

# Geographical Mobility in the Past Year (Population 1 Year and Over)

## Macon County, Alabama



Source: B07004. GEOGRAPHICAL MOBILITY IN THE PAST YEAR BY RACE FOR CURRENT RESIDENCE IN THE UNITED STATES - Universe: POPULATION 1 YEAR AND OVER

Data Set: 2008-2012 American Community Survey 5-Year Estimates

**B08105. MEANS OF TRANSPORTATION TO WORK - Universe: WORKERS 16 YEARS AND OVER**

Data Set: 2008-2012 American Community Survey 5-Year Estimates

	Macon County, Alabama					
	African American	Margin of Error (+/-)	% of AA Total	White, Not Hispanic	Margin of Error (+/-)	% of NHW Total
<b>Total:</b>	6205	390	<b>100.0%</b>	1307	141	<b>100.0%</b>
Car, truck, or van - drove alone	4530	329	73.0%	1125	131	86.1%
Car, truck, or van - carpooled	1013	246	16.3%	111	58	8.5%
Public transportation (excluding taxicab)	0	22	0.0%	0	22	0.0%
Walked	416	131	6.7%	23	36	1.8%
Taxicab, motorcycle, bicycle, or other means	119	83	1.9%	0	22	0.0%
Worked at home	127	67	2.0%	48	50	3.7%

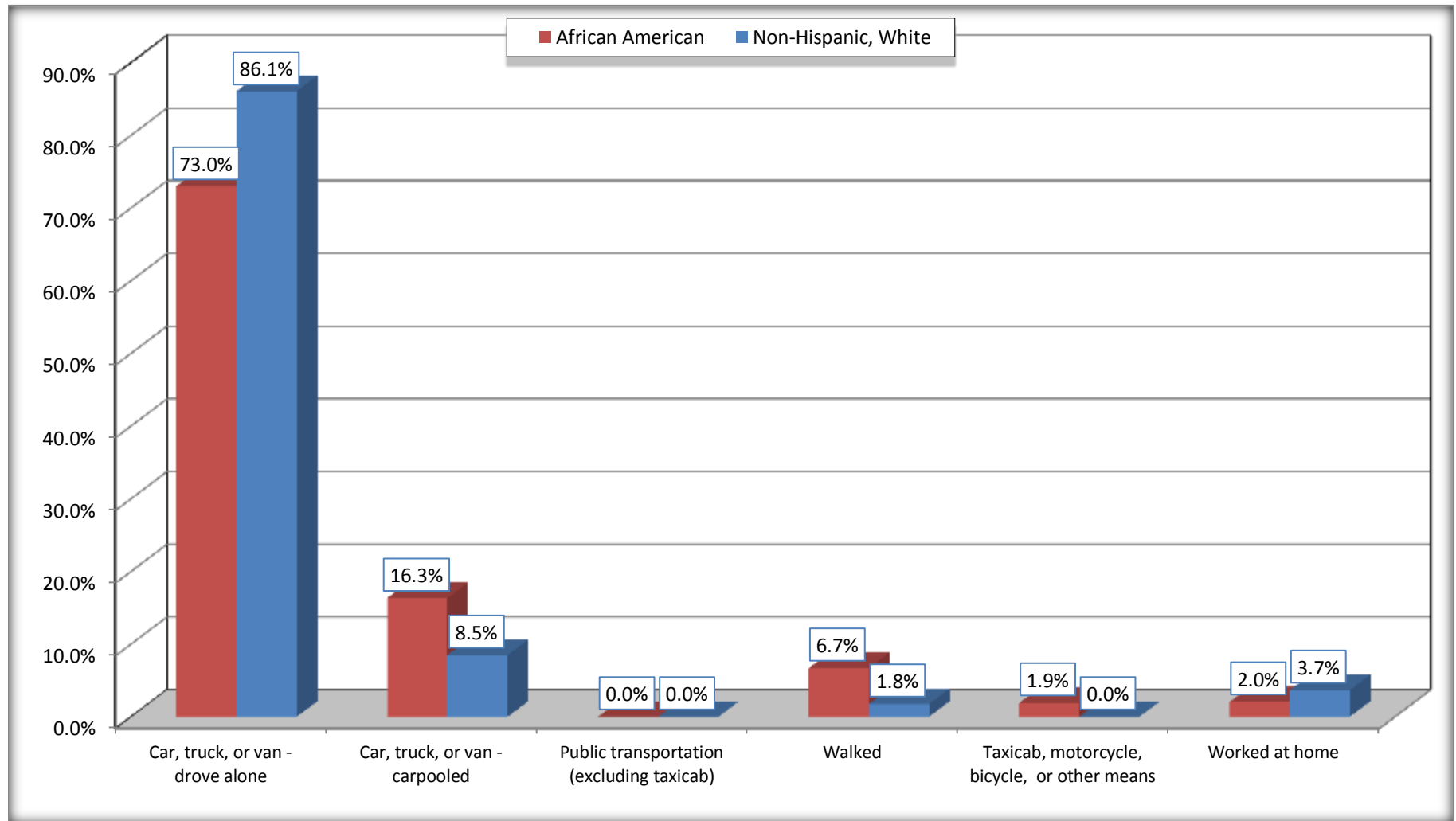
Source: U.S. Census Bureau, 2008-2012 American Community Survey

For information on confidentiality protection, sampling error, nonsampling error, and definitions, see Survey Methodology.

<http://www.census.gov/acs/www/UseData/index.htm>

# Means of Transportation to Work (Workers 16 Years and Over)

## Macon County, Alabama



Source: B08105. MEANS OF TRANSPORTATION TO WORK - Universe: WORKERS 16 YEARS AND OVER  
Data Set: 2008-2012 American Community Survey 5-Year Estimates



**B11002. HOUSEHOLD TYPE BY RELATIVES AND NONRELATIVES FOR POPULATION IN HOUSEHOLDS**

Data Set: 2008-2012 American Community Survey 5-Year Estimates

	Macon County, Alabama					
	African American	Margin of Error (+/-)	% of AA Total	White, Not Hispanic	Margin of Error (+/-)	% of NHW Total
<b>Total:</b>	15643	376	<b>100.0%</b>	2975	141	<b>100.0%</b>
In family households	12759	393	81.6%	2449	162	82.3%
In nonfamily households	2884	263	18.4%	526	97	17.7%

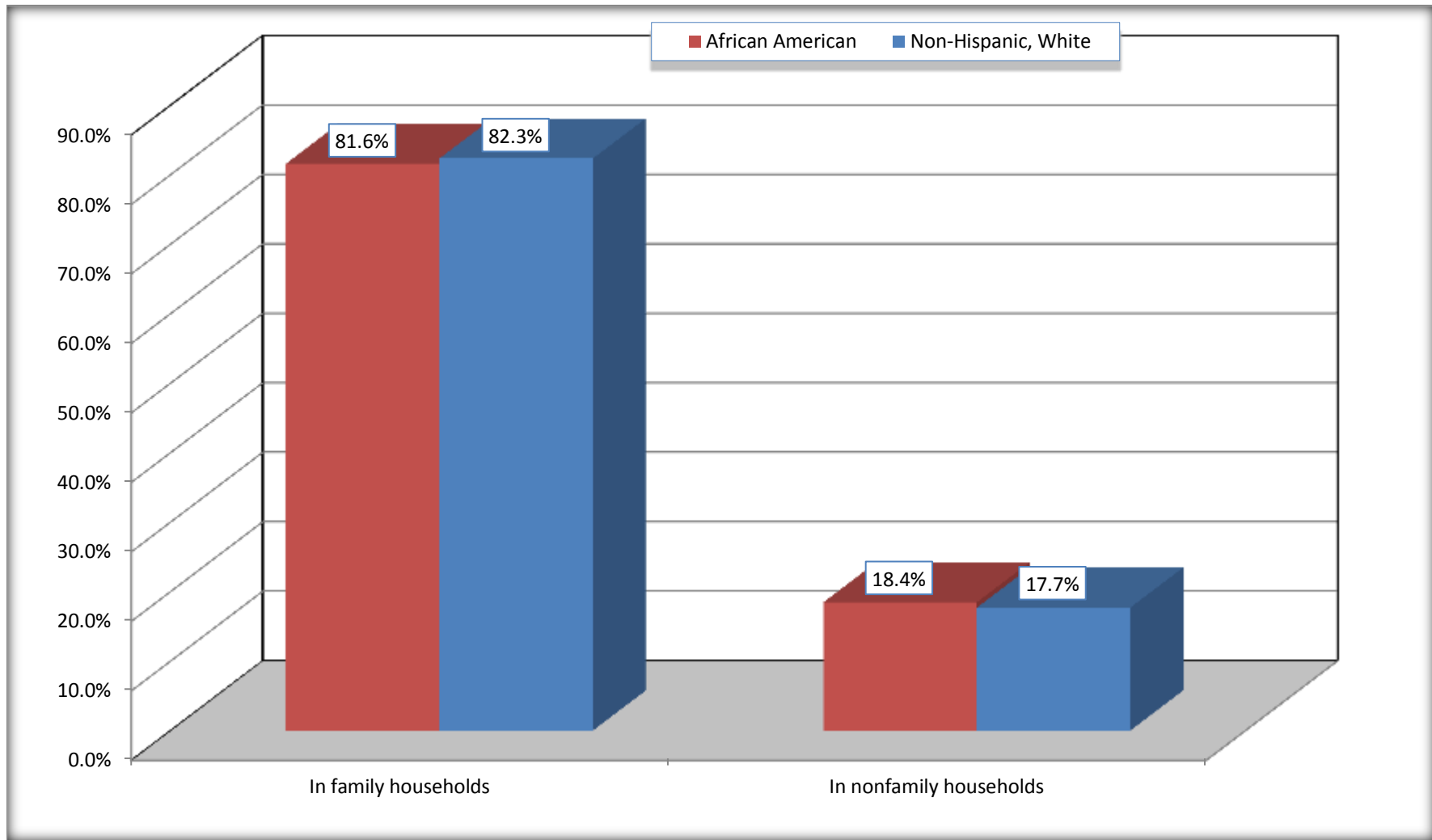
Source: U.S. Census Bureau, 2008-2012 American Community Survey

For information on confidentiality protection, sampling error, nonsampling error, and definitions, see Survey Methodology.

<http://www.census.gov/acs/www/UseData/index.htm>

# Household Type for Population in Households

## Macon County, Alabama



Source: B11002. HOUSEHOLD TYPE BY RELATIVES AND NONRELATIVES FOR POPULATION IN HOUSEHOLDS  
Data Set: 2008-2012 American Community Survey 5-Year Estimates

**B12002. MARITAL STATUS FOR THE POPULATION 15 YEARS AND OVER**

Data Set: 2008-2012 American Community Survey 5-Year Estimates

	Macon County, Alabama					
	African American	Margin of Error (+/-)	% of AA Total	White, Not Hispanic	Margin of Error (+/-)	% of NHW Total
<b>Total:</b>	<b>14,741</b>	<b>81</b>	<b>100.0%</b>	<b>2,752</b>	<b>49</b>	<b>100.0%</b>
Never married	7,648	NC	51.9%	583	NC	21.2%
Now married (except separated)	3,829	NC	26.0%	1,526	NC	55.5%
Separated	660	NC	4.5%	37	NC	1.3%
Widowed	1,159	NC	7.9%	273	NC	9.9%
Divorced	1,445	NC	9.8%	333	NC	12.1%
<b>Male:</b>	<b>6,458</b>	<b>36</b>	<b>43.8%</b>	<b>1,403</b>	<b>49</b>	<b>51.0%</b>
Never married	3,414	178	23.2%	393	85	14.3%
Now married (except separated)	1,920	216	13.0%	756	90	27.5%
Separated	260	103	1.8%	0	22	0.0%
Widowed	297	84	2.0%	68	34	2.5%
Divorced	567	142	3.8%	186	54	6.8%
<b>Female:</b>	<b>8,283</b>	<b>81</b>	<b>56.2%</b>	<b>1,349</b>	<b>24</b>	<b>49.0%</b>
Never married	4,234	258	28.7%	190	70	6.9%
Now married (except separated)	1,909	260	13.0%	770	94	28.0%
Separated	400	106	2.7%	37	26	1.3%
Widowed	862	125	5.8%	205	47	7.4%
Divorced	878	143	6.0%	147	53	5.3%

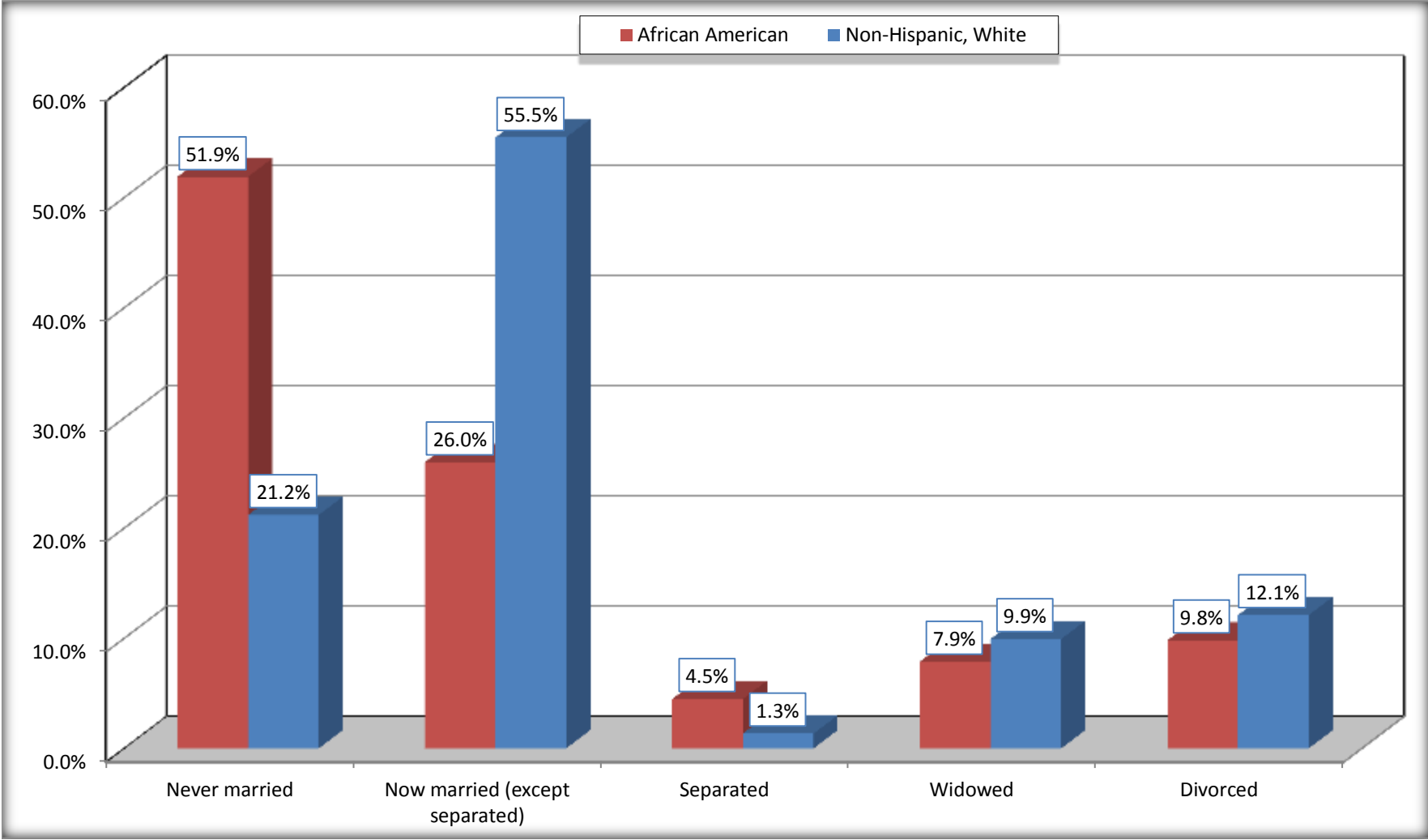
Source: U.S. Census Bureau, 2008-2012 American Community Survey

For information on confidentiality protection, sampling error, nonsampling error, and definitions, see Survey Methodology.

<http://www.census.gov/acs/www/UseData/index.htm>

# Marital Status for the Population 15 Years and Over

## Macon County, Alabama



Source: B12002. MARITAL STATUS FOR THE POPULATION 15 YEARS AND OVER  
Data Set: 2008-2012 American Community Survey 5-Year Estimates

**C15002. SEX BY EDUCATIONAL ATTAINMENT FOR THE POPULATION 25 YEARS AND OVER**

Data Set: 2008-2012 American Community Survey 5-Year Estimates

	Macon County, Alabama					
	African American	Margin of Error (+/-)	% of AA Total	White, Not Hispanic	Margin of Error (+/-)	% of NHW Total
<b>Total:</b>	<b>10,385</b>	<b>51</b>	<b>100.0%</b>	<b>2,353</b>	<b>31</b>	<b>100.0%</b>
Less than high school diploma	2,186	NC	21.0%	405	NC	17.2%
High school graduate, GED, or alternative	2,876	NC	27.7%	819	NC	34.8%
Some college or associate's degree	3,408	NC	32.8%	567	NC	24.1%
Bachelor's degree or higher	1,915	NC	18.4%	562	NC	23.9%
Male:	4,552	12	43.8%	1,161	31	49.3%
Less than high school diploma	1,059	178	10.2%	224	61	9.5%
High school graduate, GED, or alternative	1,432	179	13.8%	395	77	16.8%
Some college or associate's degree	1,357	195	13.1%	303	72	12.9%
Bachelor's degree or higher	704	143	6.8%	239	71	10.2%
Female:	5,833	50	56.2%	1,192	22	50.7%
Less than high school diploma	1,127	174	10.9%	181	62	7.7%
High school graduate, GED, or alternative	1,444	172	13.9%	424	86	18.0%
Some college or associate's degree	2,051	204	19.7%	264	66	11.2%
Bachelor's degree or higher	1,211	186	11.7%	323	79	13.7%

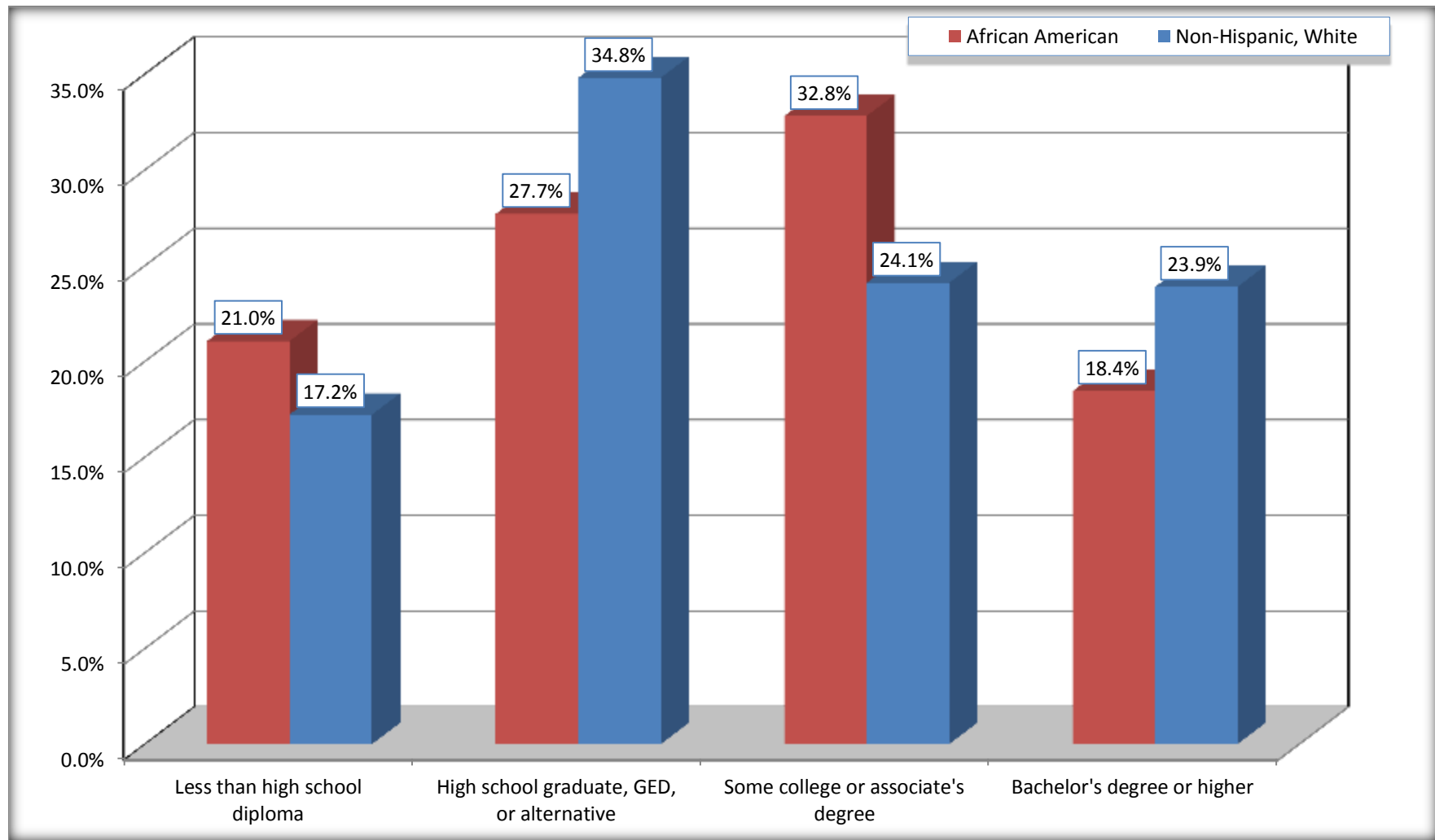
Source: U.S. Census Bureau, 2008-2012 American Community Survey

For information on confidentiality protection, sampling error, nonsampling error, and definitions, see Survey Methodology.

<http://www.census.gov/acs/www/UseData/index.htm>

# Educational Attainment for the Population 25 Years and Older

## Macon County, Alabama



Source: C15002. SEX BY EDUCATIONAL ATTAINMENT FOR THE POPULATION 25 YEARS AND OVER  
Data Set: 2008-2012 American Community Survey 5-Year Estimates

**B17010. POVERTY STATUS IN THE PAST 12 MONTHS OF FAMILIES BY FAMILY TYPE BY PRESENCE OF RELATED CHILDREN UNDER 18 YEARS**

Data Set: 2008-2012 American Community Survey 5-Year Estimates

	Macon County, Alabama					
	African American	Margin of Error (+/-)	% of AA Total	White, Not Hispanic	Margin of Error (+/-)	% of NHW Total
<b>Total:</b>	<b>4,050</b>	<b>247</b>	<b>100.0%</b>	<b>865</b>	<b>72</b>	<b>100.0%</b>
Income in the past 12 months below poverty level:	1,084	148	26.8%	65	34	7.5%
Married-couple family:	143	77	3.5%	6	7	0.7%
With related children under 18 years	107	71	2.6%	0	22	0.0%
Other family:	941	139	23.2%	59	31	6.8%
Male householder, no wife present	66	44	1.6%	14	15	1.6%
With related children under 18 years	46	34	1.1%	6	10	0.7%
Female householder, no husband present	875	135	21.6%	45	28	5.2%
With related children under 18 years	754	135	18.6%	37	26	4.3%
Income in the past 12 months at or above poverty level:	2,966	251	73.2%	800	75	92.5%
Married-couple family:	1,567	215	38.7%	718	74	83.0%
With related children under 18 years	557	133	13.8%	203	55	23.5%
Other family:	1,399	205	34.5%	82	46	9.5%
Male householder, no wife present	320	109	7.9%	47	33	5.4%
With related children under 18 years	146	59	3.6%	24	28	2.8%
Female householder, no husband present	1,079	168	26.6%	35	27	4.0%
With related children under 18 years	553	121	13.7%	1	3	0.1%

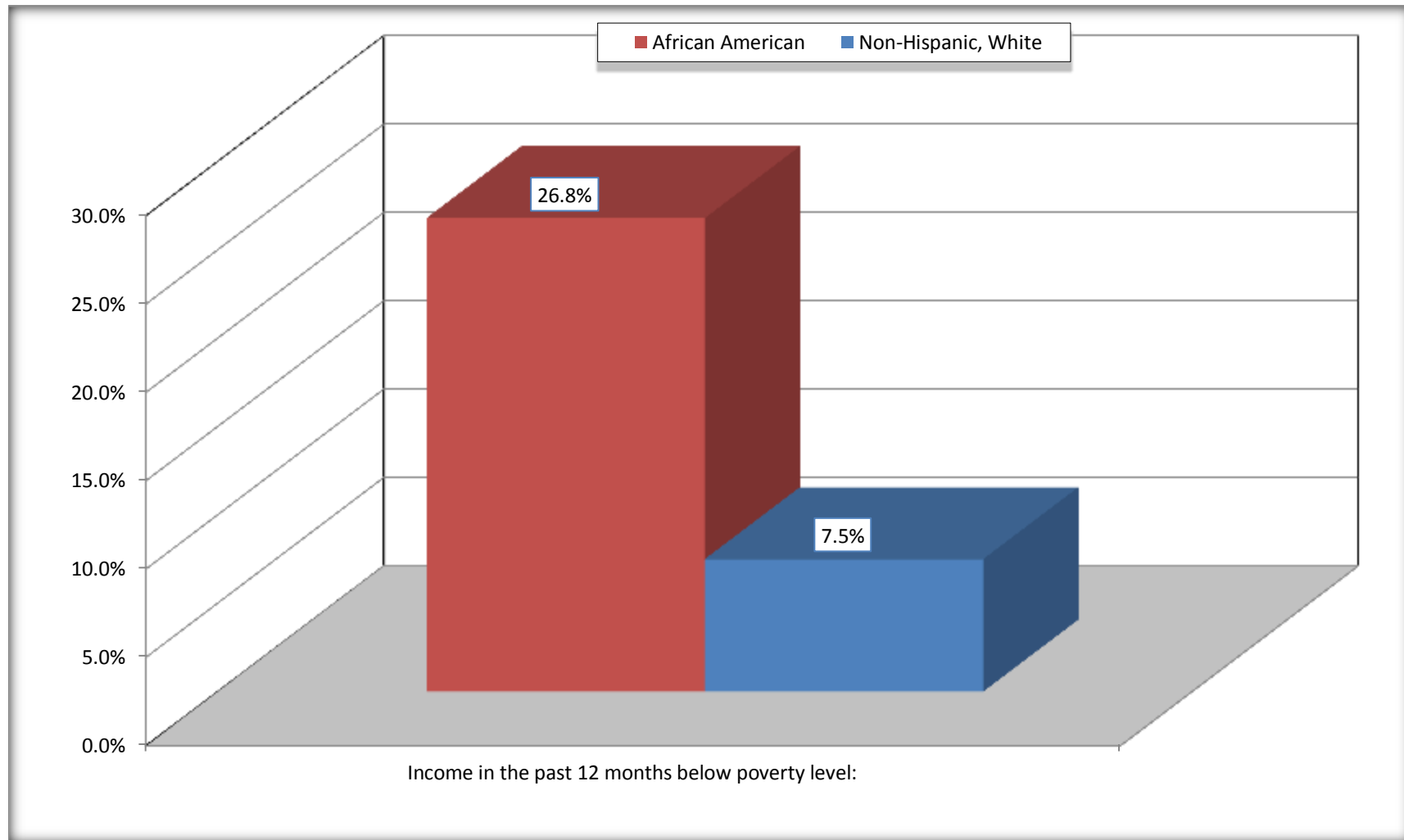
Source: U.S. Census Bureau, 2008-2012 American Community Survey

For information on confidentiality protection, sampling error, nonsampling error, and definitions, see Survey Methodology.

<http://www.census.gov/acs/www/UseData/index.htm>

# Family Households Below Poverty in the Past 12 Months

## Macon County, Alabama



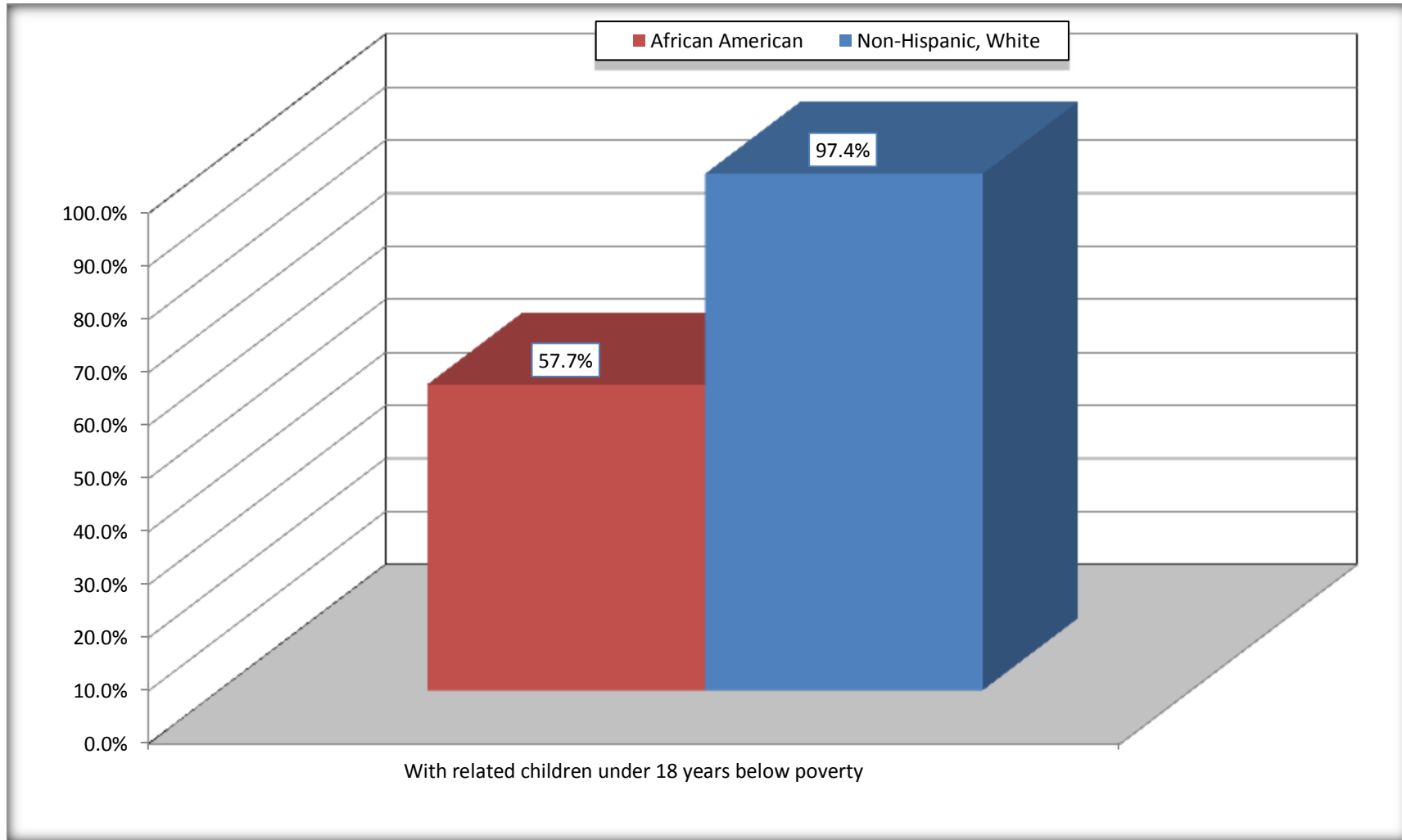
Source: B17010. POVERTY STATUS IN THE PAST 12 MONTHS OF FAMILIES BY FAMILY TYPE BY PRESENCE OF RELATED CHILDREN UNDER 18 YEARS

Data Set: 2008-2012 American Community Survey 5-Year Estimates



# Female-headed Households with Related Children Below Poverty in the Past 12 Months

## Macon County, Alabama



Source: B17010. POVERTY STATUS IN THE PAST 12 MONTHS OF FAMILIES BY FAMILY TYPE BY PRESENCE OF RELATED CHILDREN UNDER 18 YEARS

Data Set: 2008-2012 American Community Survey 5-Year Estimates

**B17020 POVERTY STATUS IN THE PAST 12 MONTHS BY AGE - Universe: POPULATION FOR WHOM POVERTY STATUS IS DETERMINED**

Data Set: 2008-2012 American Community Survey 5-Year Estimates

	Macon County, Alabama					
	African American	Margin of Error (+/-)	% of AA By Age	White, Not Hispanic	Margin of Error (+/-)	% of NHW By Age
<b>Total:</b>	<b>15,708</b>	<b>370</b>	<b>100.0%</b>	<b>2,979</b>	<b>119</b>	<b>100.0%</b>
Income in the past 12 months below poverty level:	4,901	524	31.2%	342	116	11.5%
<b>Under 18 years</b>	1,791	NC	49.9%	69	NC	11.9%
<b>18 to 64 years</b>	2,687	352	27.4%	200	71	10.5%
<b>65 years and over</b>	423	NC	18.2%	73	NC	14.6%
Income in the past 12 months at or above poverty level:	10,807	597	68.8%	2,637	139	88.5%
<b>Under 18 years</b>	1,795	NC	50.1%	511	NC	88.1%
<b>18 to 64 years</b>	7,108	407	72.6%	1,700	105	89.5%
<b>65 years and over</b>	1,904	NC	81.8%	426	NC	85.4%

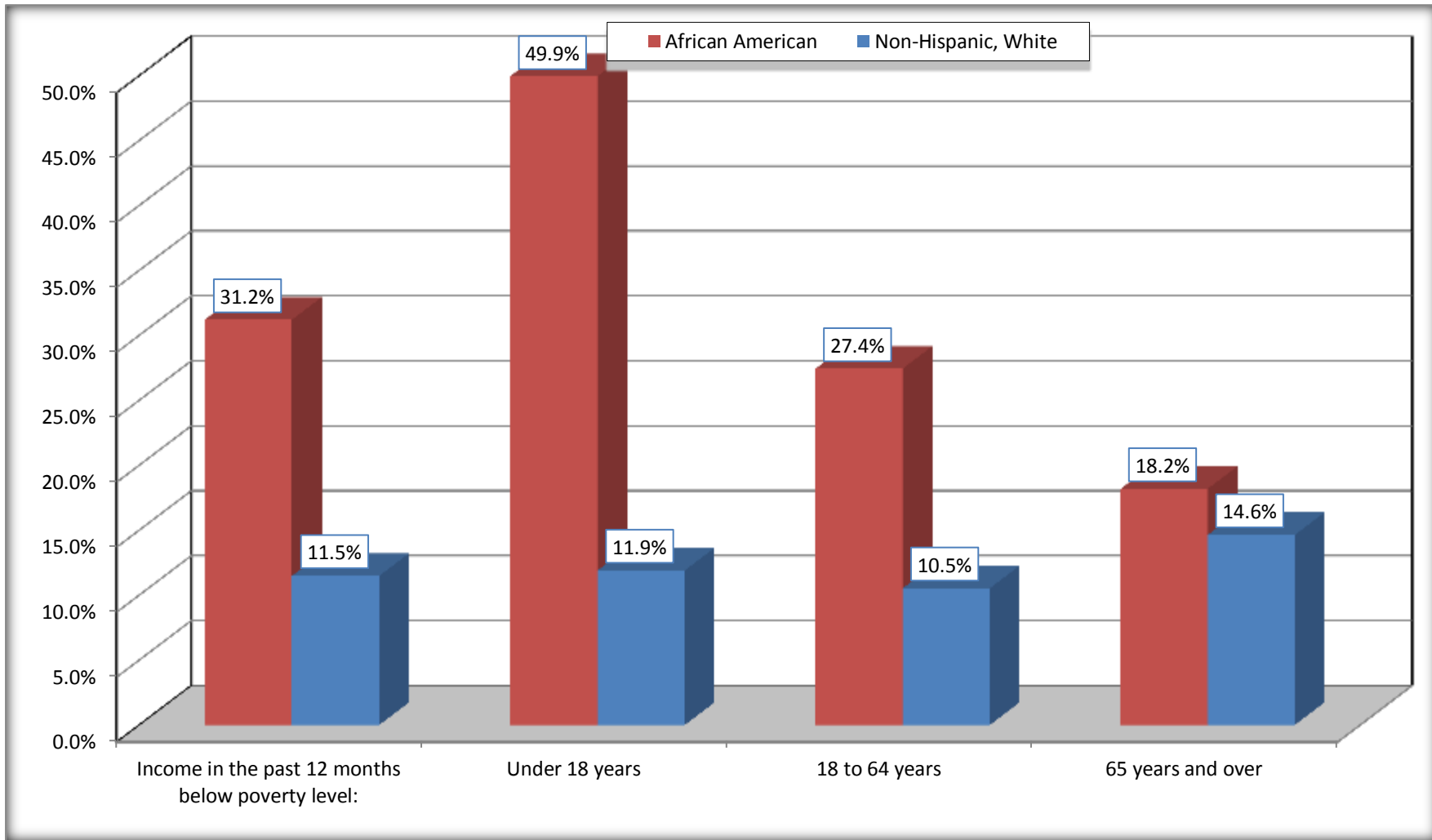
Source: U.S. Census Bureau, 2008-2012 American Community Survey

For information on confidentiality protection, sampling error, nonsampling error, and definitions, see Survey Methodology.

<http://www.census.gov/acs/www/UseData/index.htm>

# Population Below Poverty in the Past 12 Months

## Macon County, Alabama



Source: B17020 POVERTY STATUS IN THE PAST 12 MONTHS BY AGE - Universe: POPULATION FOR WHOM POVERTY STATUS IS DETERMINED  
Data Set: 2008-2012 American Community Survey 5-Year Estimates

**B19001. HOUSEHOLD INCOME IN THE PAST 12 MONTHS (IN 2010 INFLATION-ADJUSTED DOLLARS)**

Data Set: 2008-2012 American Community Survey 5-Year Estimates

	Macon County, Alabama					
	African American	Margin of Error (+/-)	% of AA Total	White, Not Hispanic	Margin of Error (+/-)	% of NHW Total
<b>Total:</b>	<b>6,610</b>	<b>300</b>	<b>100.0%</b>	<b>1,360</b>	<b>94</b>	<b>100.0%</b>
Less than \$ 10,000	1,288	225	19.5%	122	59	9.0%
\$ 10,000 to \$ 14,999	689	161	10.4%	61	34	4.5%
<b>\$ 15,000 to \$ 24,999</b>	1,190	NC	18.0%	162	NC	11.9%
<b>\$ 25,000 to \$ 34,999</b>	768	NC	11.6%	210	NC	15.4%
<b>\$ 35,000 to \$ 49,999</b>	944	NC	14.3%	224	NC	16.5%
<b>\$ 50,000 to \$ 74,999</b>	1,020	NC	15.4%	251	NC	18.5%
\$ 75,000 to \$ 99,999	386	103	5.8%	88	42	6.5%
<b>\$ 100,000 to \$ 149,999</b>	233	NC	3.5%	137	NC	10.1%
\$ 150,000 to \$ 199,999	73	45	1.1%	69	39	5.1%
\$ 200,000 or more	19	19	0.3%	36	29	2.6%

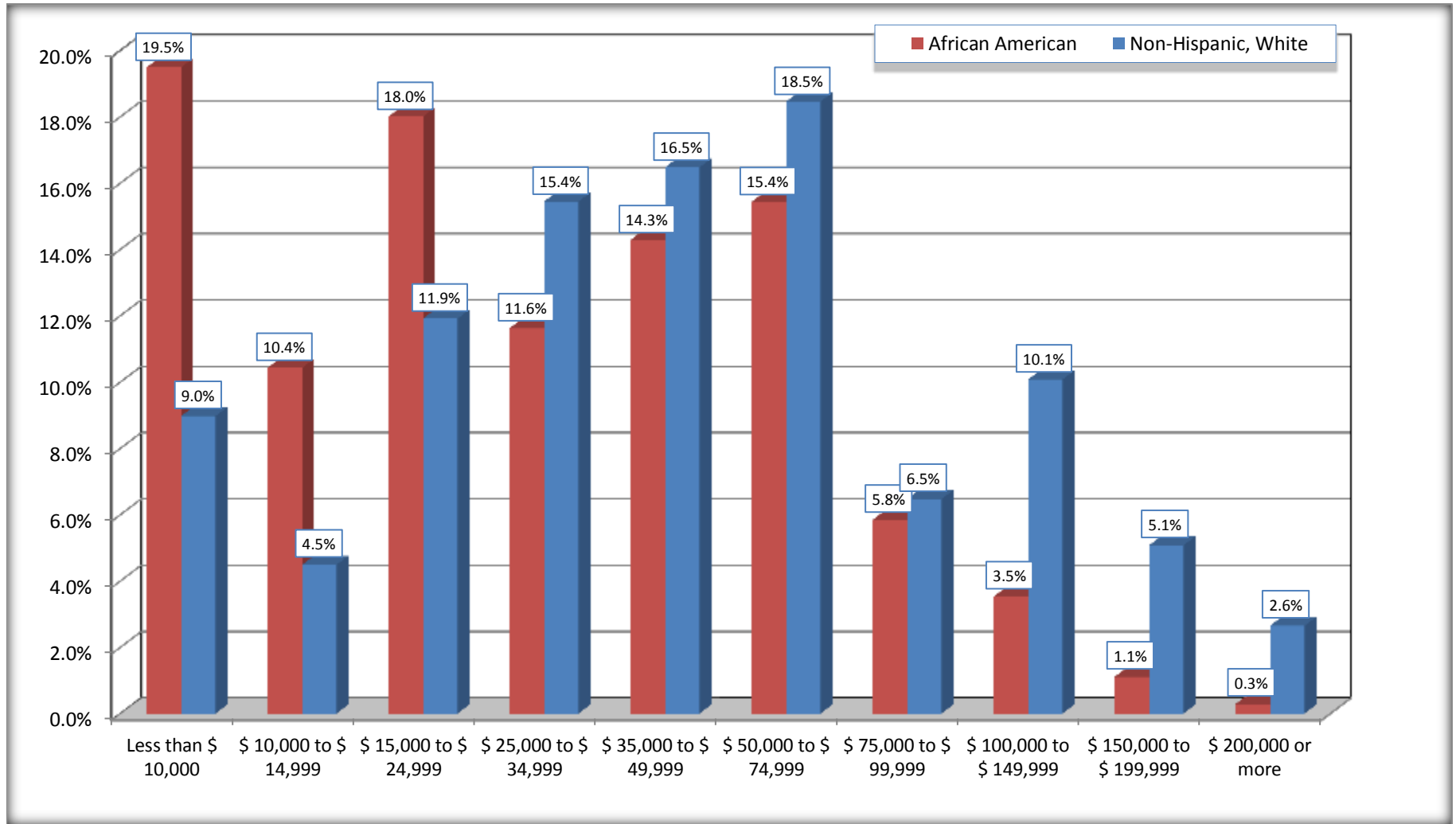
Source: U.S. Census Bureau, 2008-2012 American Community Survey

For information on confidentiality protection, sampling error, nonsampling error, and definitions, see Survey Methodology.

<http://www.census.gov/acs/www/UseData/index.htm>

# Household Income in the Past 12 Months

## Macon County, Alabama



Source: B19001. HOUSEHOLD INCOME IN THE PAST 12 MONTHS (IN 2010 INFLATION-ADJUSTED DOLLARS)  
Data Set: 2008-2012 American Community Survey 5-Year Estimates

**B19013. MEDIAN HOUSEHOLD INCOME IN THE PAST 12 MONTHS (IN 2010 INFLATION-ADJUSTED DOLLARS)**

Data Set: 2008-2012 American Community Survey 5-Year Estimates

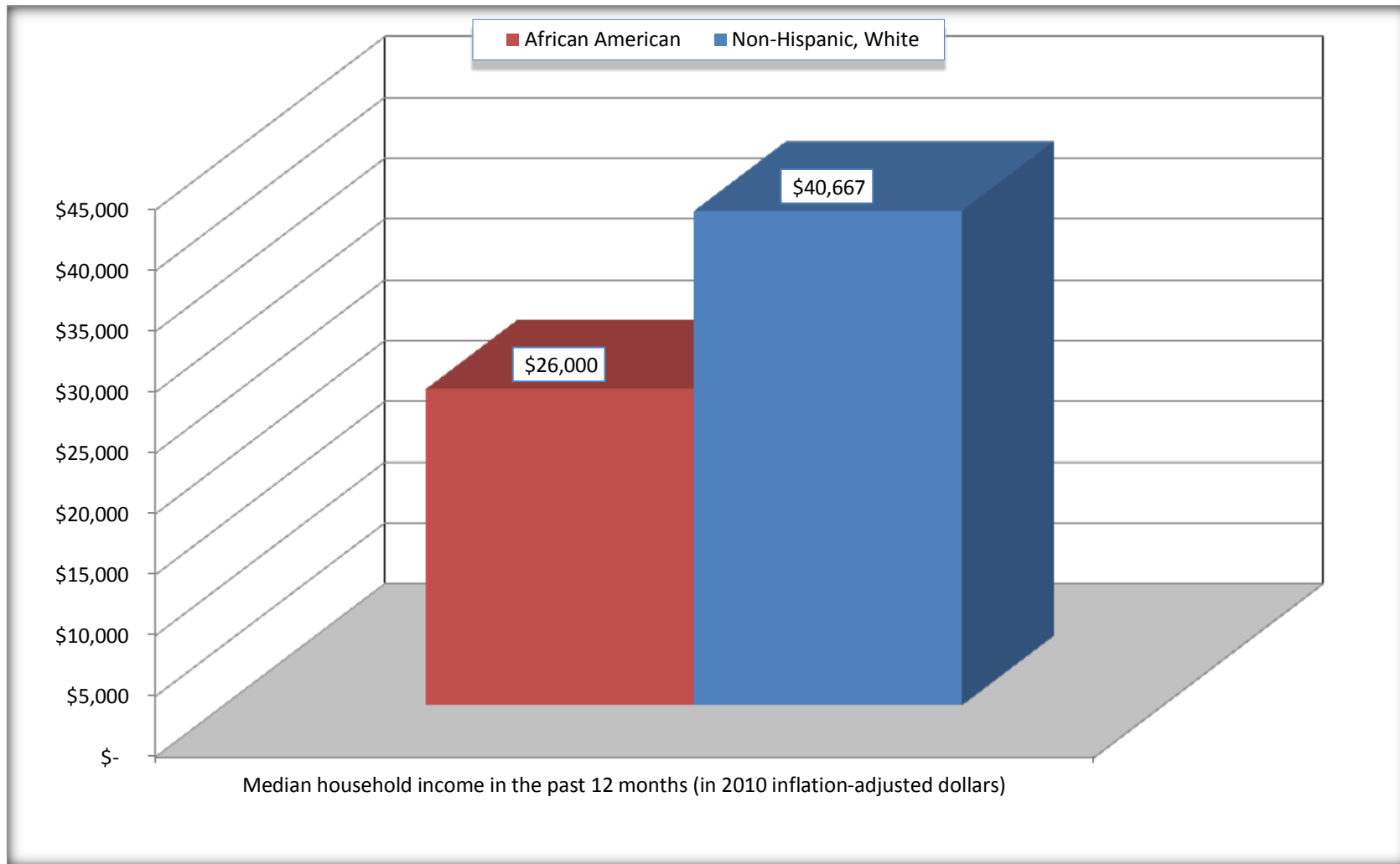
	<b>Macon County, Alabama</b>			
	African American	Margin of Error (+/-)	White, Not Hispanic	Margin of Error (+/-)
Median household income in the past 12 months (in 2010 inflation-adjusted dollars)	\$ 26,000	\$ 1,682	\$ 40,667	\$ 4,018

Source: U.S. Census Bureau, 2008-2012 American Community Survey

For information on confidentiality protection, sampling error, nonsampling error, and definitions, see Survey Methodology.  
<http://www.census.gov/acs/www/UseData/index.htm>

## Median Household Income in the Past 12 Months

### Macon County, Alabama



Source: B19013. MEDIAN HOUSEHOLD INCOME IN THE PAST 12 MONTHS (IN 2010 INFLATION-ADJUSTED DOLLARS)  
Data Set: 2008-2012 American Community Survey 5-Year Estimates

**B19101. FAMILY INCOME IN THE PAST 12 MONTHS (IN 2010 INFLATION-ADJUSTED DOLLARS)**

Data Set: 2008-2012 American Community Survey 5-Year Estimates

	Macon County, Alabama					
	African American	Margin of Error (+/-)	% of AA Total	White, Not Hispanic	Margin of Error (+/-)	% of NHW Total
<b>Total:</b>	<b>4,050</b>	<b>247</b>	<b>100.0%</b>	<b>865</b>	<b>72</b>	<b>100.0%</b>
Less than \$ 10,000	471	113	11.6%	26	22	3.0%
\$ 10,000 to \$ 14,999	342	116	8.4%	33	22	3.8%
<b>\$ 15,000 to \$ 24,999</b>	<b>598</b>	<b>NC</b>	<b>14.8%</b>	<b>60</b>	<b>NC</b>	<b>6.9%</b>
<b>\$ 25,000 to \$ 34,999</b>	<b>536</b>	<b>NC</b>	<b>13.2%</b>	<b>106</b>	<b>NC</b>	<b>12.3%</b>
<b>\$ 35,000 to \$ 49,999</b>	<b>691</b>	<b>NC</b>	<b>17.1%</b>	<b>161</b>	<b>NC</b>	<b>18.6%</b>
<b>\$ 50,000 to \$ 74,999</b>	<b>827</b>	<b>NC</b>	<b>20.4%</b>	<b>172</b>	<b>NC</b>	<b>19.9%</b>
<b>\$ 100,000 to \$ 149,999</b>	<b>202</b>	<b>NC</b>	<b>5.0%</b>	<b>124</b>	<b>NC</b>	<b>14.3%</b>
\$ 150,000 to \$ 199,999	73	45	1.8%	69	39	8.0%
\$ 200,000 or more	19	19	0.5%	35	29	4.0%

Source: U.S. Census Bureau, 2008-2012 American Community Survey

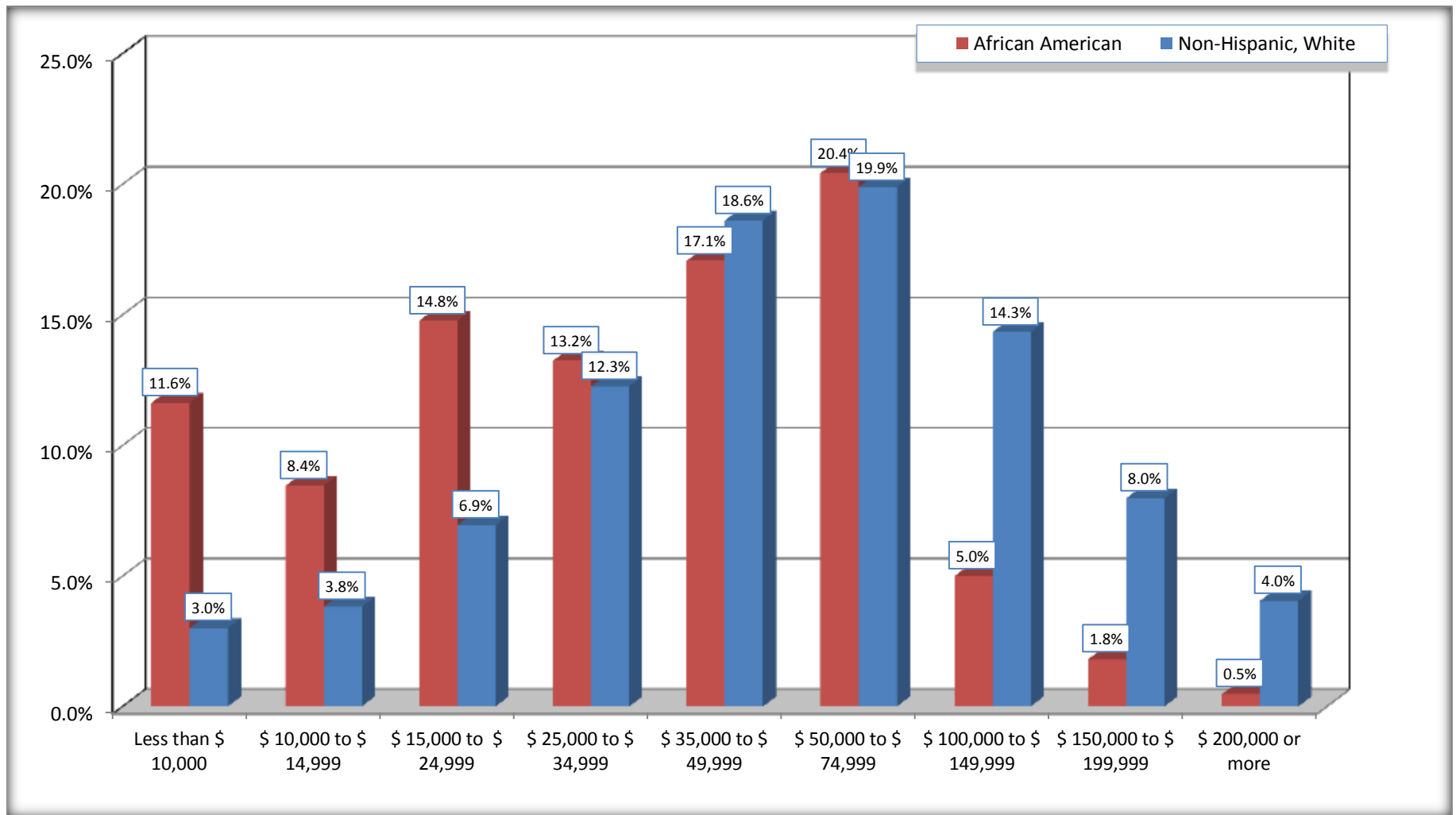
For information on confidentiality protection, sampling error, nonsampling error, and definitions, see Survey Methodology.

<http://www.census.gov/acs/www/UseData/index.htm>



# Family Income in the Past 12 Months

## Macon County, Alabama



Source: B19101. FAMILY INCOME IN THE PAST 12 MONTHS (IN 2010 INFLATION-ADJUSTED DOLLARS)  
Data Set: 2008-2012 American Community Survey 5-Year Estimates

**B19113. MEDIAN FAMILY INCOME IN THE PAST 12 MONTHS (IN 2010 INFLATION-ADJUSTED DOLLARS)**

Data Set: 2008-2012 American Community Survey 5-Year Estimates

	<b>Macon County, Alabama</b>			
	African American	Margin of Error (+/-)	White, Not Hispanic	Margin of Error (+/-)
Median family income in the past 12 months (in 2010 inflation-adjusted dollars)	\$ 37,740	\$ 5,054	\$ 56,696	\$ 7,875

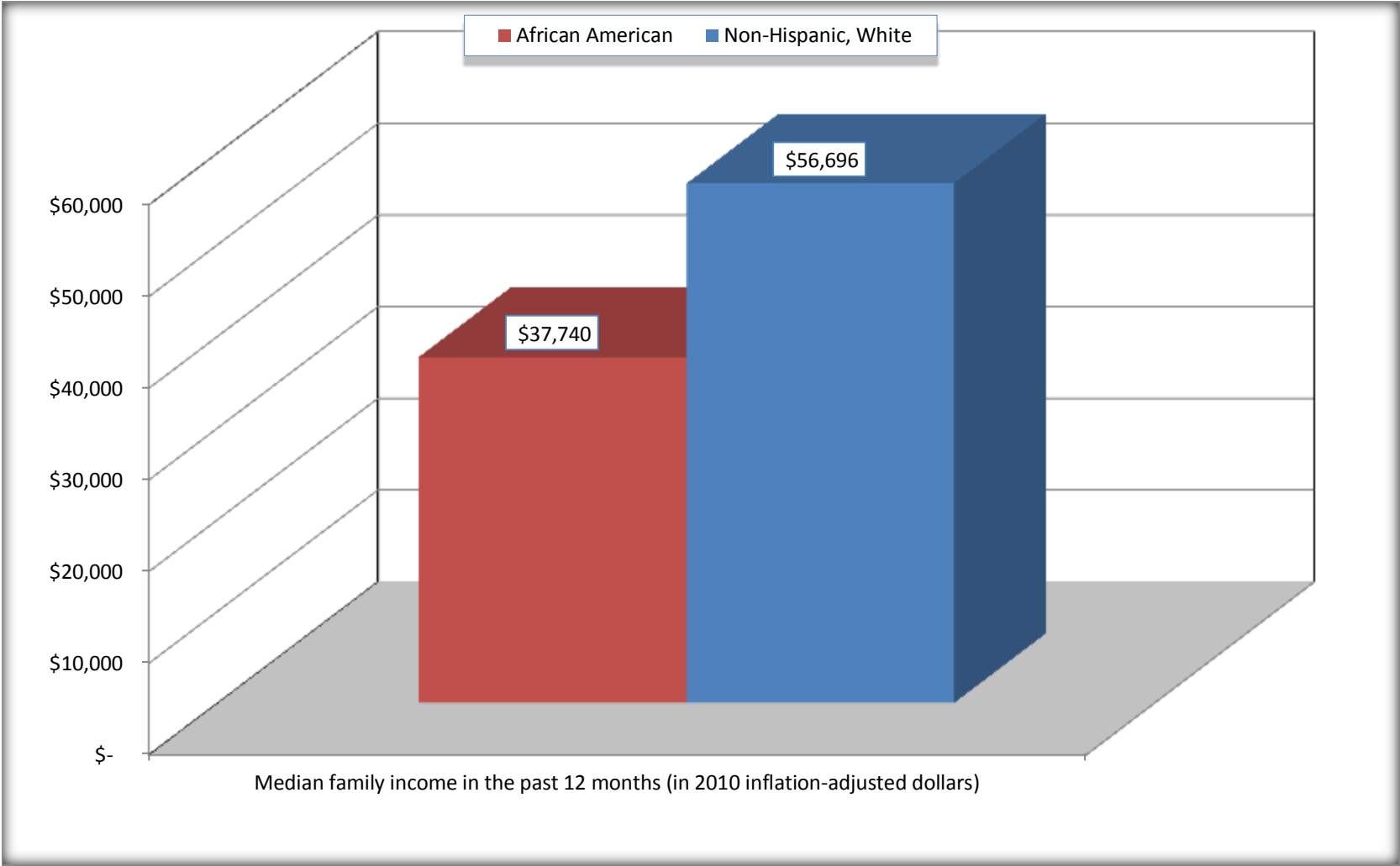
Source: U.S. Census Bureau, 2008-2012 American Community Survey

For information on confidentiality protection, sampling error, nonsampling error, and definitions, see Survey Methodology.

<http://www.census.gov/acs/www/UseData/index.htm>

# Median Family Income in the Past 12 Months

## Macon County, Alabama



Source: B19113. MEDIAN FAMILY INCOME IN THE PAST 12 MONTHS (IN 2010 INFLATION-ADJUSTED DOLLARS)  
Data Set: 2008-2012 American Community Survey 5-Year Estimates

**B19202. MEDIAN NONFAMILY HOUSEHOLD INCOME IN THE PAST 12 MONTHS (IN 2010 INFLATION-ADJUSTED DOLLARS)**

Data Set: 2008-2012 American Community Survey 5-Year Estimates

	<b>Macon County, Alabama</b>			
	African American	Margin of Error (+/-)	White, Not Hispanic	Margin of Error (+/-)
Median nonfamily household income in the past 12 months (in 2010 inflation-adjusted dollars)	\$ 16,180	\$ 1,669	\$ 25,592	\$ 6,797

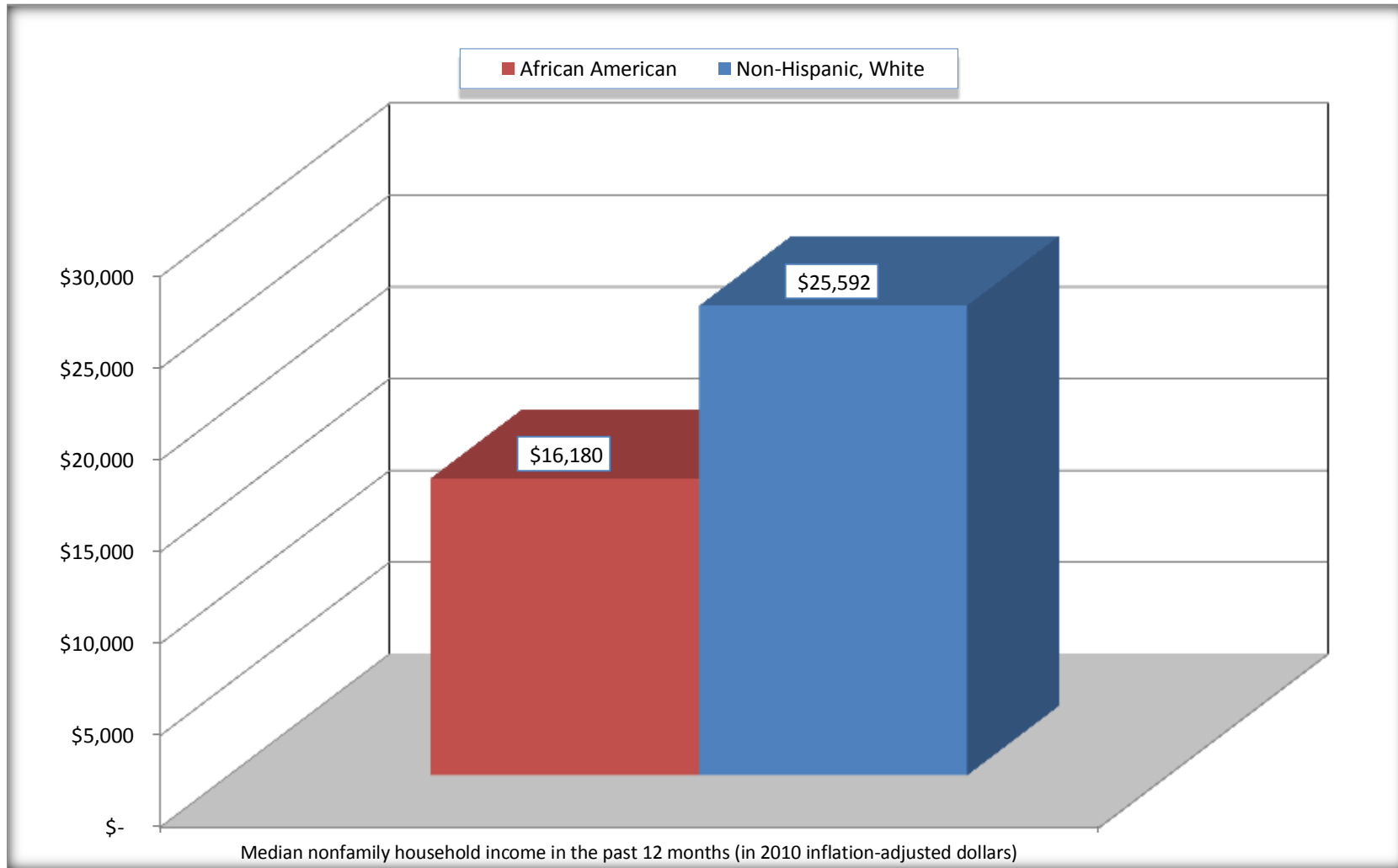
Source: U.S. Census Bureau, 2008-2012 American Community Survey

For information on confidentiality protection, sampling error, nonsampling error, and definitions, see Survey Methodology.

<http://www.census.gov/acs/www/UseData/index.htm>

# Median Non-Family Income in the Past 12 Months

## Macon County, Alabama



Source: B19202. MEDIAN NONFAMILY HOUSEHOLD INCOME IN THE PAST 12 MONTHS (IN 2010 INFLATION-ADJUSTED DOLLARS)  
Data Set: 2008-2012 American Community Survey 5-Year Estimates

**B19301. PER CAPITA INCOME IN THE PAST 12 MONTHS (IN 2010 INFLATION-ADJUSTED DOLLARS)**

Data Set: 2008-2012 American Community Survey 5-Year Estimates

	<b>Macon County, Alabama</b>			
	African American	Margin of Error (+/-)	White, Not Hispanic	Margin of Error (+/-)
Per capita income in the past 12 months (in 2010 inflation-adjusted dollars)	\$ 14,720	\$ 870	\$ 25,175	\$ 2,425

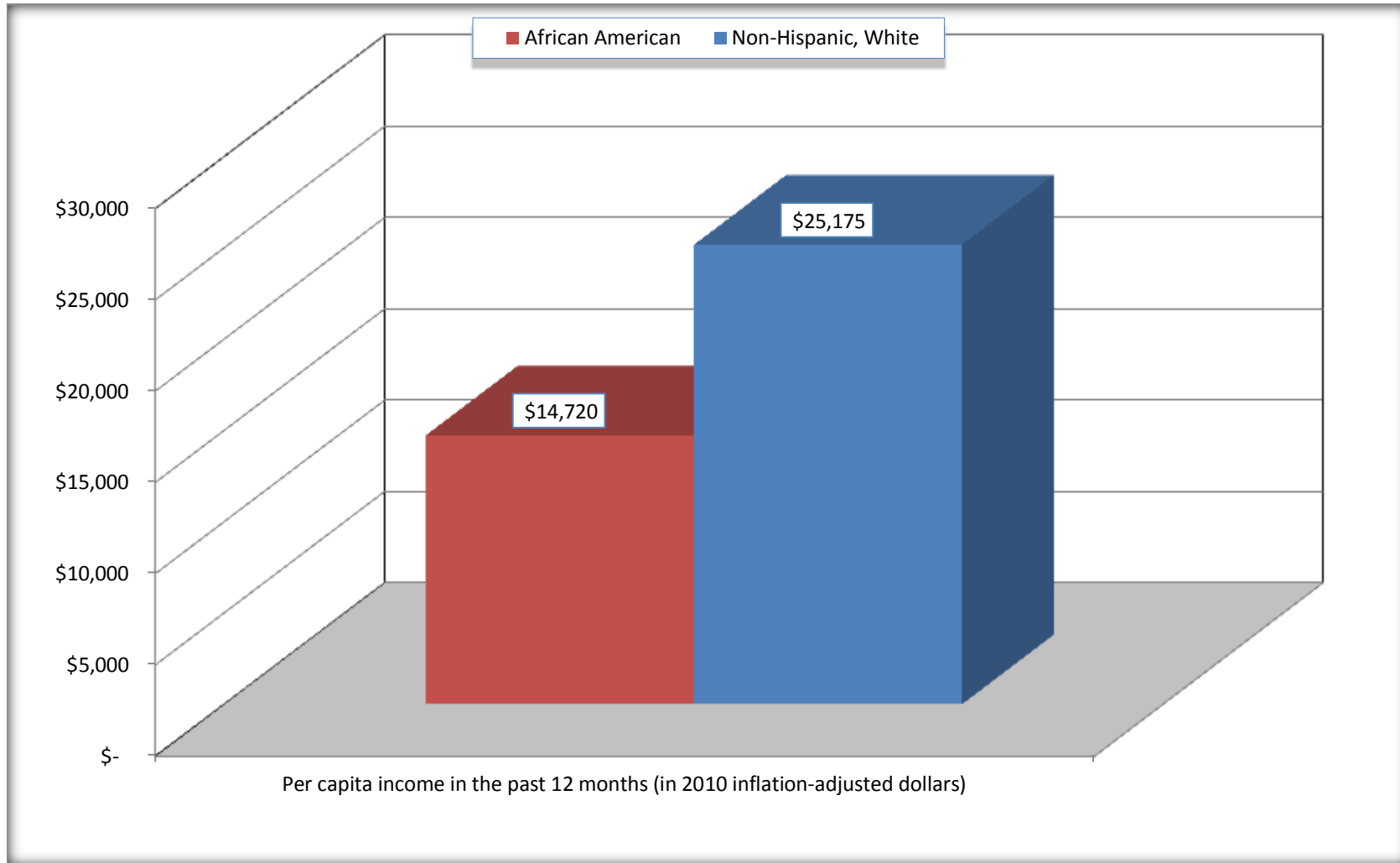
Source: U.S. Census Bureau, 2008-2012 American Community Survey

For information on confidentiality protection, sampling error, nonsampling error, and definitions, see Survey Methodology.

<http://www.census.gov/acs/www/UseData/index.htm>

## Per capita Income in the Past 12 Months

### Macon County, Alabama



Source: B19301. PER CAPITA INCOME IN THE PAST 12 MONTHS (IN 2010 INFLATION-ADJUSTED DOLLARS)  
Data Set: 2008-2012 American Community Survey 5-Year Estimates

**B20017. MEDIAN EARNINGS IN THE PAST 12 MONTHS (IN 2010 INFLATION-ADJUSTED DOLLARS) BY SEX BY WORK EXPERIENCE IN THE PAST 12 MONTHS FOR THE POPULATION 16 YEARS AND OVER WITH EARNINGS IN THE PAST 12 MONTHS**

Data Set: 2008-2012 American Community Survey 5-Year Estimates

	Dallas County, Alabama			
	African American	Margin of Error (+/-)	White, Not Hispanic	Margin of Error (+/-)
Median earnings in the past 12 months (in 2010 inflation-adjusted dollars) --				
Total:	\$ 17,607	\$ 1,737	\$ 28,520	\$ 2,708
Male --				
Total	\$ 22,579	\$ 4,964	\$ 30,025	\$ 2,342
Worked full-time, year-round in the past 12 months	\$ 31,369	\$ 3,299	\$ 41,154	\$ 6,593
Other	\$ 8,717	\$ 2,174	\$ 7,121	\$ 3,559
Female --				
Total	\$ 14,881	\$ 1,775	\$ 24,925	\$ 6,905
Worked full-time, year-round in the past 12 months	\$ 26,016	\$ 3,157	\$ 31,588	\$ 11,493
Other	\$ 7,833	\$ 1,859	\$ 10,648	\$ 4,036

Source: U.S. Census Bureau, 2008-2012 American Community Survey

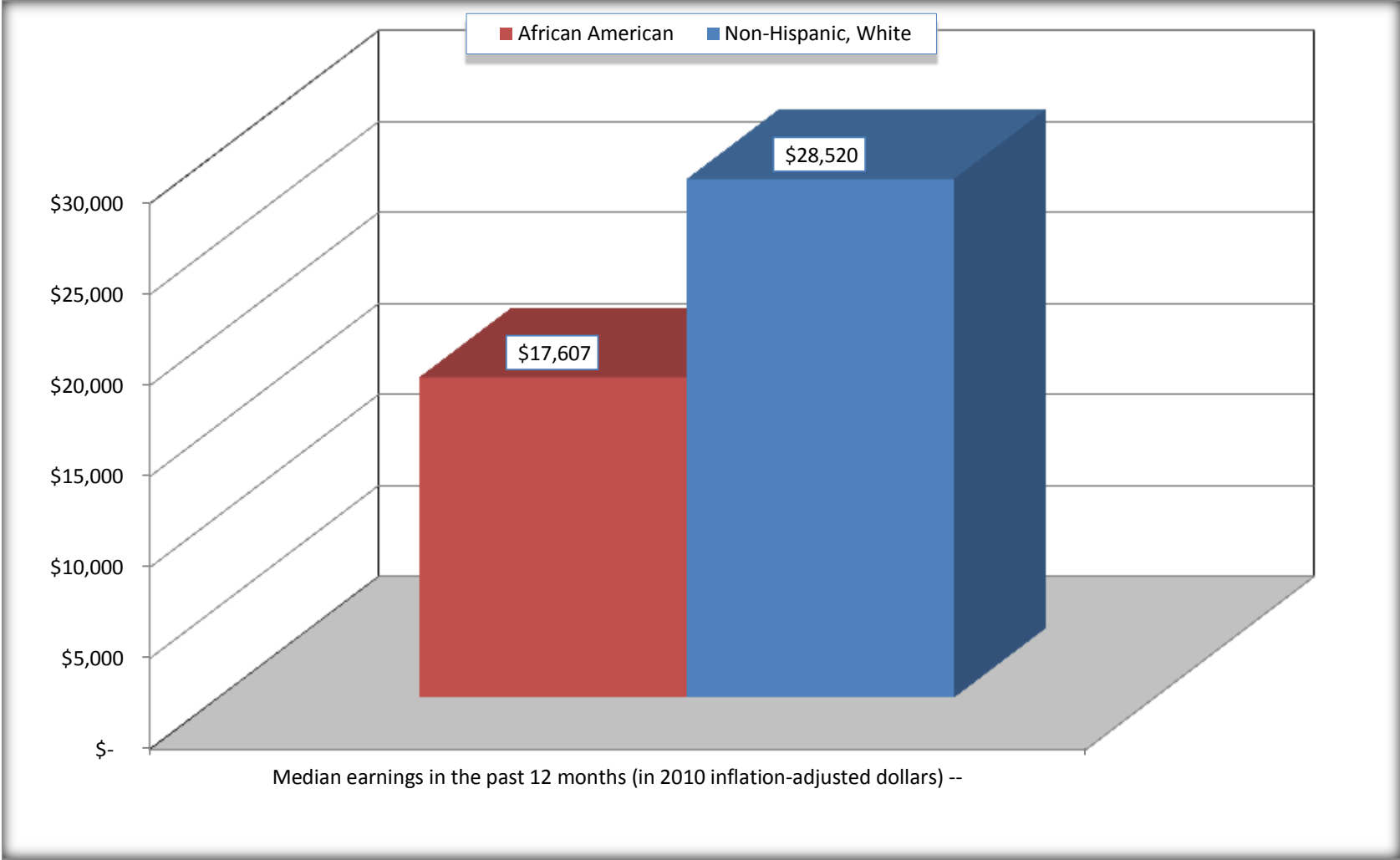
For information on confidentiality protection, sampling error, nonsampling error, and definitions, see Survey Methodology.

<http://www.census.gov/acs/www/UseData/index.htm>



# Median earnings in the Past 12 Months (16 Years and Over with Earnings)

## Dallas County, Alabama



Source: B20017. MEDIAN EARNINGS IN THE PAST 12 MONTHS (IN 2010 INFLATION-ADJUSTED DOLLARS) BY SEX BY WORK EXPERIENCE IN THE PAST 12 MONTHS FOR THE POPULATION 16 YEARS AND OVER WITH EARNINGS IN THE PAST 12 MONTHS  
Data Set: 2008-2012 American Community Survey 5-Year Estimates

**B20005. SEX BY WORK EXPERIENCE IN THE PAST 12 MONTHS BY EARNINGS IN THE PAST 12 MONTHS (IN 2010 INFLATION-ADJUSTED DOLLARS) FOR THE POPULATION 16 YEARS AND OVER**

Data Set: 2008-2012 American Community Survey 5-Year Estimates

	Macon County, Alabama					
	African American	Margin of Error (+/-)	% of AA Total	White, Not Hispanic	Margin of Error (+/-)	% of NHW Total
<b>Total:</b>	<b>14,499</b>	<b>111</b>	<b>100.0%</b>	<b>2,736</b>	<b>49</b>	<b>100.0%</b>
Worked full-time, year-round in the past 12 months:	4,286	NC	29.6%	1,075	NC	39.3%
No earnings	0	NC	0.0%	0	NC	0.0%
With earnings:	4,286	NC	29.6%	1,075	NC	39.3%
\$ 1 to \$ 9,999 or loss	222	NC	1.5%	13	NC	0.5%
\$ 10,000 to \$ 19,999	916	NC	6.3%	145	NC	5.3%
\$ 20,000 to \$ 29,999	1,155	NC	8.0%	239	NC	8.7%
\$ 30,000 to \$ 49,999	1,344	NC	9.3%	309	NC	11.3%
\$ 50,000 to \$ 74,999	446	NC	3.1%	221	NC	8.1%
\$ 75,000 or more	203	NC	1.4%	148	NC	5.4%
Other:	10,213	NC	70.4%	1,661	NC	60.7%
No earnings	6,339	NC	43.7%	1,133	NC	41.4%
With earnings: less than full time, year-round	3,874	NC	26.7%	528	NC	19.3%
Male:	6,323	64	43.6%	1,396	47	51.0%
Worked full-time, year-round in the past 12 months:	1,883	222	13.0%	608	100	22.2%
No earnings	0	22	0.0%	0	22	0.0%
With earnings:	1,883	222	13.0%	608	100	22.2%
\$ 1 to \$ 9,999 or loss	72	NC	0.5%	0	NC	0.0%
\$ 10,000 to \$ 19,999	267	NC	1.8%	51	NC	1.9%
\$ 20,000 to \$ 29,999	496	NC	3.4%	136	NC	5.0%
\$ 30,000 to \$ 49,999	671	NC	4.6%	189	NC	6.9%
\$ 50,000 to \$ 74,999	245	NC	1.7%	127	NC	4.6%
\$ 75,000 or more	132	NC	0.9%	105	NC	3.8%

	Macon County, Alabama					
	African American	Margin of Error (+/-)	% of AA Total	White, Not Hispanic	Margin of Error (+/-)	% of NHW Total
Other:	4,440	243	30.6%	788	106	28.8%
No earnings	2,824	267	19.5%	476	83	17.4%
With earnings:	1,616	231	11.1%	312	75	11.4%
Female:	8,176	96	56.4%	1,340	14	49.0%
Worked full-time, year-round in the past 12 months:	2,403	284	16.6%	467	88	17.1%
No earnings	0	22	0.0%	0	22	0.0%
With earnings:	2,403	284	16.6%	467	88	17.1%
\$ 1 to \$ 9,999 or loss	150	NC	1.0%	13	NC	0.5%
\$ 10,000 to \$ 19,999	649	NC	4.5%	94	NC	3.4%
\$ 20,000 to \$ 29,999	659	NC	4.5%	103	NC	3.8%
\$ 30,000 to \$ 49,999	673	NC	4.6%	120	NC	4.4%
\$ 50,000 to \$ 74,999	201	NC	1.4%	94	NC	3.4%
\$ 75,000 or more	71	NC	0.5%	43	NC	1.6%
Other:	5,773	307	39.8%	873	92	31.9%
No earnings	3,515	290	24.2%	657	93	24.0%
With earnings:	2,258	229	15.6%	216	68	7.9%

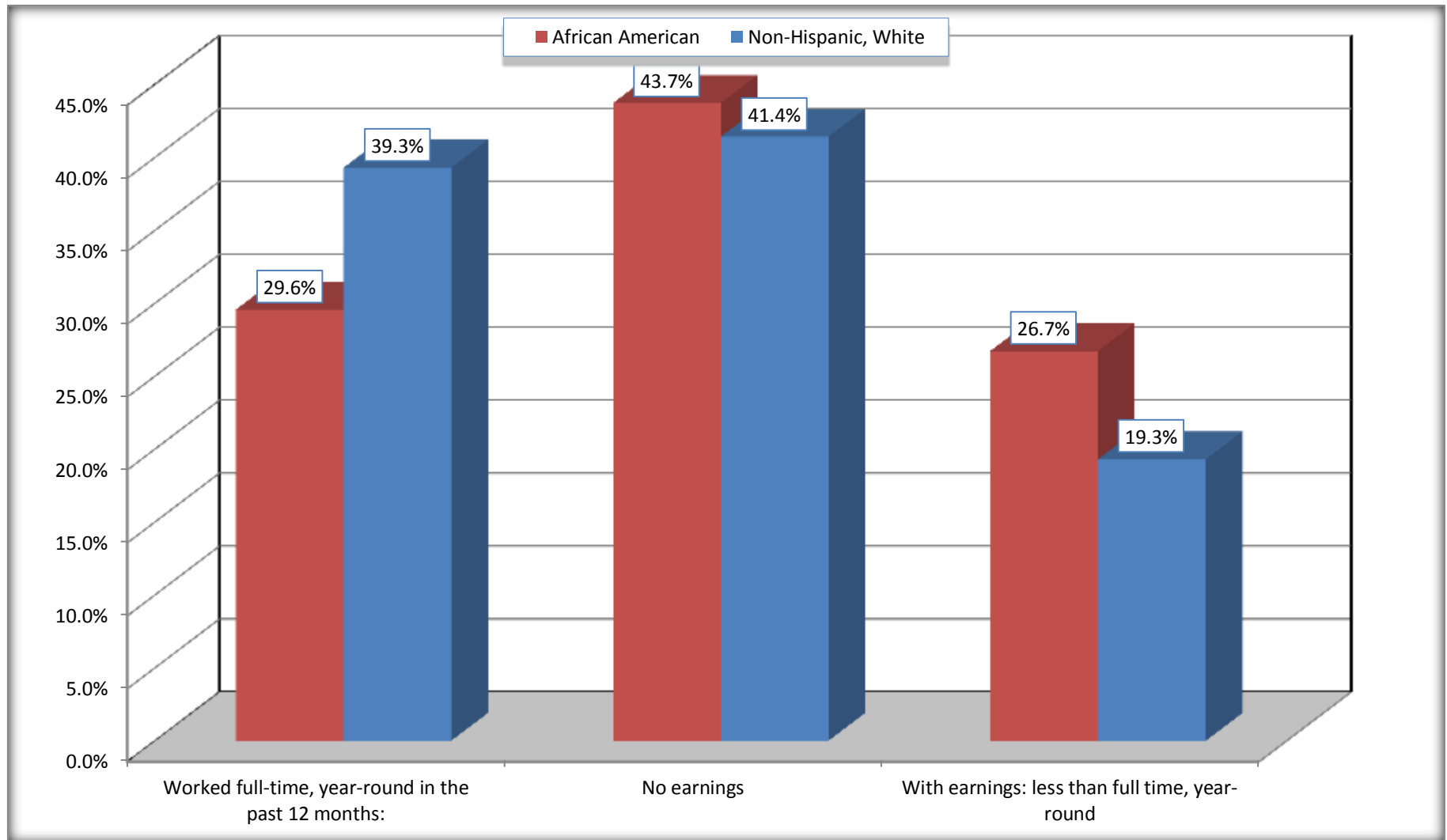
Source: U.S. Census Bureau, 2008-2012 American Community Survey

For information on confidentiality protection, sampling error, nonsampling error, and definitions, see Survey Methodology.

<http://www.census.gov/acs/www/UseData/index.htm>

# Employment and Earnings in in the Past 12 Months (16 Years and Over)

## Macon County, Alabama



Source: B20005. SEX BY WORK EXPERIENCE IN THE PAST 12 MONTHS BY EARNINGS IN THE PAST 12 MONTHS (IN 2010 INFLATION-ADJUSTED DOLLARS) FOR THE POPULATION 16 YEARS AND OVER

Data Set: 2008-2012 American Community Survey 5-Year Estimates

**C21001. SEX BY AGE BY VETERAN STATUS FOR THE CIVILIAN POPULATION 18 YEARS AND OVER**

Data Set: 2008-2012 American Community Survey 5-Year Estimates

	Macon County, Alabama					
	African American	Margin of Error (+/-)	% of AA Total	White, Not Hispanic	Margin of Error (+/-)	% of NHW Total
<b>Total:</b>	<b>13,966</b>	<b>93</b>	<b>100.0%</b>	<b>2,659</b>	<b>23</b>	<b>100.0%</b>
Veteran	1,430	NC	10.2%	378	NC	14.2%
Nonveteran	12,536	NC	89.8%	2,281	NC	85.8%
Male:	6,025	58	43.1%	1,329	23	50.0%
18 to 64 years:	5,108	59	36.6%	1,028	23	38.7%
Veteran	723	133	5.2%	178	51	6.7%
Nonveteran	4,385	139	31.4%	850	56	32.0%
65 years and over:	917	4	6.6%	301	22	11.3%
Veteran	499	82	3.6%	157	46	5.9%
Nonveteran	418	82	3.0%	144	46	5.4%
Female:	7,941	81	56.9%	1,330	22	50.0%
18 to 64 years:	6,441	81	46.1%	1,022	22	38.4%
Veteran	189	99	1.4%	0	22	0.0%
Nonveteran	6,252	117	44.8%	1,022	22	38.4%
65 years and over:	1,500	22	10.7%	308	22	11.6%
Veteran	19	21	0.1%	43	39	1.6%
Nonveteran	1,481	21	10.6%	265	39	10.0%

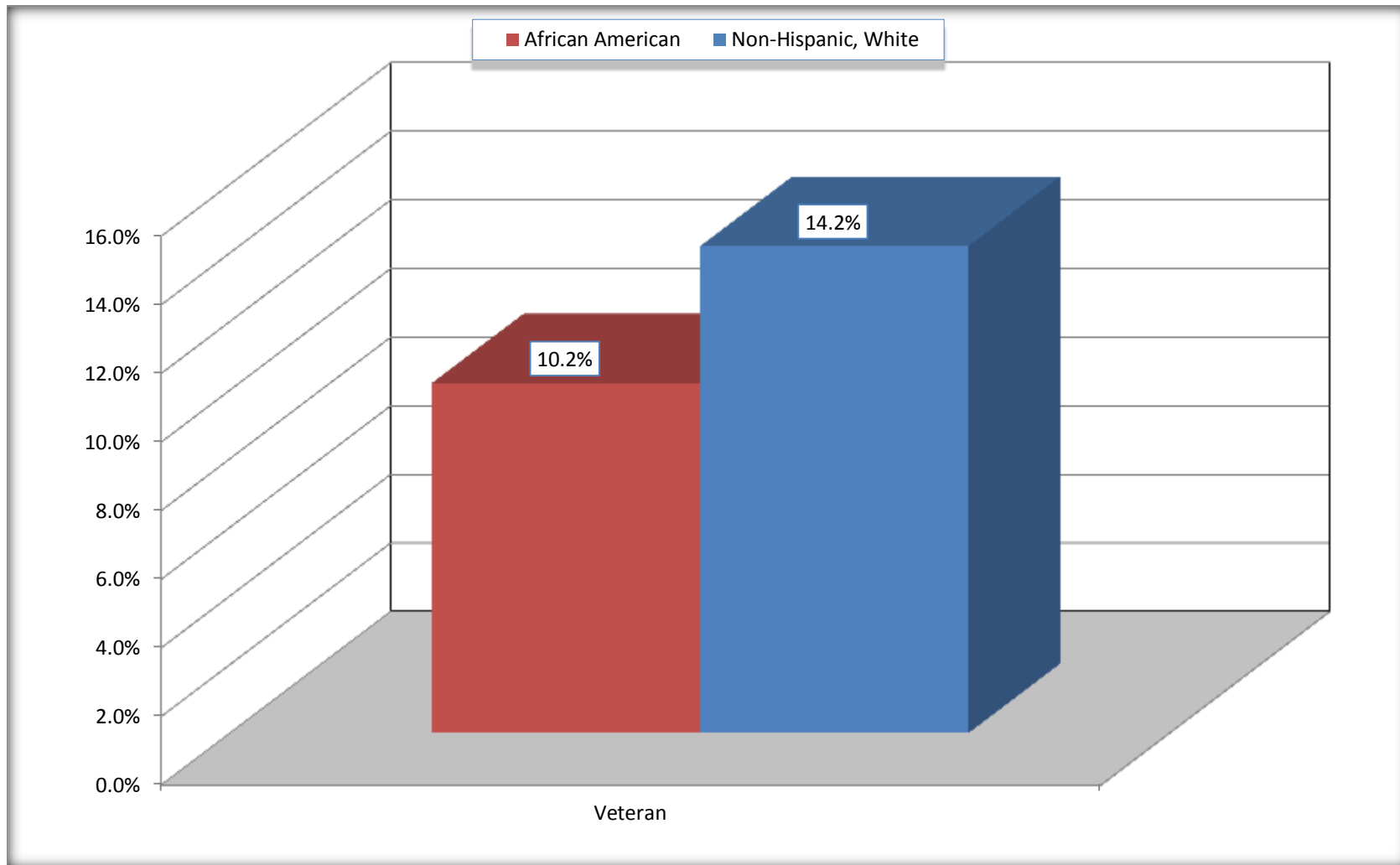
Source: U.S. Census Bureau, 2008-2012 American Community Survey

For information on confidentiality protection, sampling error, nonsampling error, and definitions, see Survey Methodology.

<http://www.census.gov/acs/www/UseData/index.htm>

# Veterans in the Civilian Population 18 Years and Over

## Macon County, Alabama



Source: C21001. SEX BY AGE BY VETERAN STATUS FOR THE CIVILIAN POPULATION 18 YEARS AND OVER  
Data Set: 2008-2012 American Community Survey 5-Year Estimates

**B22005. RECEIPT OF FOOD STAMPS/SNAP IN THE PAST 12 MONTHS BY RACE OF HOUSEHOLDER**

Data Set: 2008-2012 American Community Survey 5-Year Estimates

	Dallas County, Alabama					
	African American	Margin of Error (+/-)	% of AA Total	White, Not Hispanic	Margin of Error (+/-)	% of NHW Total
<b>Total:</b>	<b>10,563</b>	<b>355</b>	<b>100.0%</b>	<b>1,360</b>	<b>94</b>	<b>100.0%</b>
HH received Food Stamps/SNAP in the past 12 months	4,310	362	40.8%	149	66	11.0%
HH did not receive Food Stamps/SNAP in the past 12 months	6,253	389	59.2%	1,211	97	89.0%

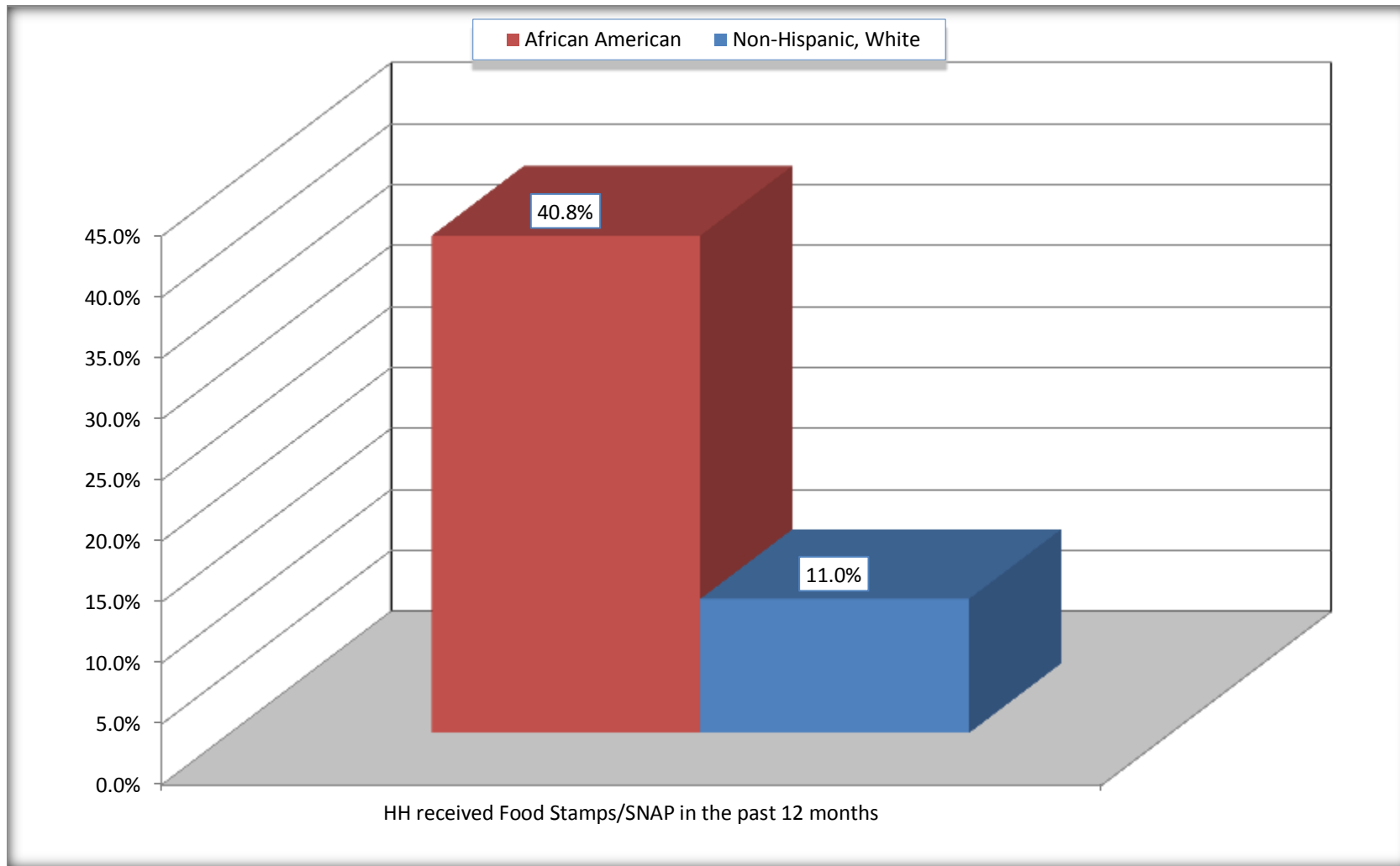
Source: U.S. Census Bureau, 2008-2012 American Community Survey

For information on confidentiality protection, sampling error, nonsampling error, and definitions, see Survey Methodology.

<http://www.census.gov/acs/www/UseData/index.htm>

# Receipt of Food Stamps/SNAP in the Past 12 Months by Household

## Dallas County, Alabama



Source: B22005. RECEIPT OF FOOD STAMPS/SNAP IN THE PAST 12 MONTHS BY RACE OF HOUSEHOLDER  
Data Set: 2008-2012 American Community Survey 5-Year Estimates



**C23002. SEX BY AGE BY EMPLOYMENT STATUS FOR THE POPULATION 16 YEARS AND OVER**

Data Set: 2008-2012 American Community Survey 5-Year Estimates

	Macon County, Alabama					
	African American	Margin of Error (+/-)	% of AA Total	White, Not Hispanic	Margin of Error (+/-)	% of NHW Total
<b>Total:</b>	<b>14,499</b>	<b>111</b>	<b>100.0%</b>	<b>2,736</b>	<b>49</b>	<b>100.0%</b>
In labor force:	7,808	NC	53.9%	1,440	NC	52.6%
In Armed Forces	27	NC	0.2%	16	NC	0.6%
Civilian:	7,391	NC	51.0%	1,345	NC	49.2%
Employed	6,339	NC	43.7%	1,332	NC	48.7%
Unemployed	1,442	NC	9.9%	92	NC	3.4%
Not in labor force	6,691	NC	46.1%	1,296	NC	47.4%
Male:	6,323	64	43.6%	1,396	47	51.0%
16 to 64 years:	5,406	64	37.3%	1,095	47	40.0%
In labor force:	3,236	294	22.3%	792	87	28.9%
In Armed Forces	27	35	0.2%	16	23	0.6%
Civilian:	3,209	292	22.1%	776	85	28.4%
Employed	2,569	260	17.7%	702	101	25.7%
Unemployed	640	137	4.4%	74	39	2.7%
Not in labor force	2,170	314	15.0%	303	102	11.1%
65 years and over:	917	4	6.3%	301	22	11.0%
In labor force:	174	64	1.2%	47	29	1.7%
Employed	173	64	1.2%	47	29	1.7%
Unemployed	1	3	0.0%	0	22	0.0%
Not in labor force	743	64	5.1%	254	29	9.3%

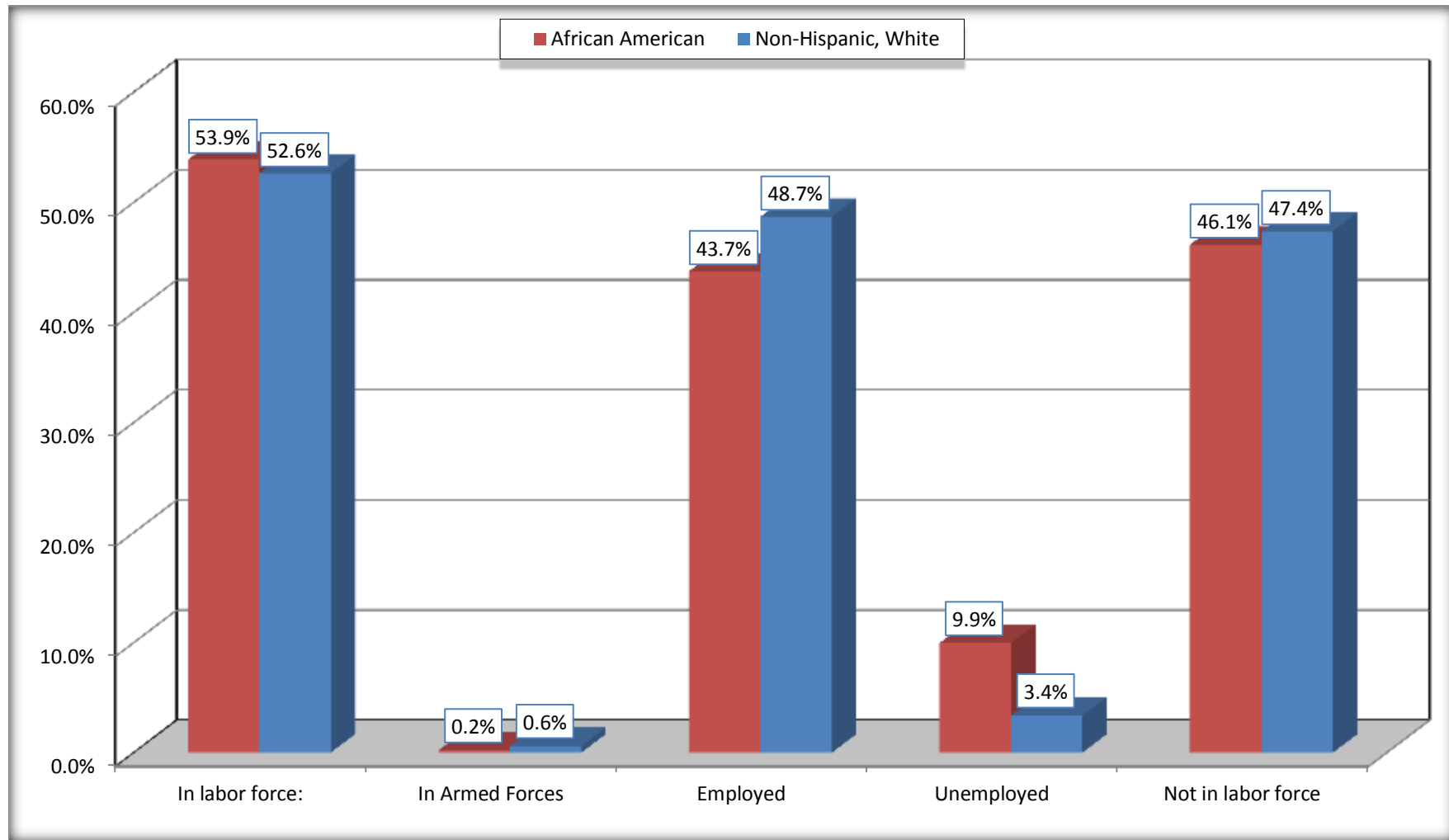
	Macon County, Alabama					
	African American	Margin of Error (+/-)	% of AA Total	White, Not Hispanic	Margin of Error (+/-)	% of NHW Total
Female:	8,176	96	56.4%	1,340	14	49.0%
16 to 64 years:	6,676	96	46.0%	1,032	14	37.7%
In labor force:	4,182	232	28.8%	569	91	20.8%
In Armed Forces	0	22	0.0%	0	22	0.0%
Civilian:	4,182	232	28.8%	569	91	20.8%
Employed	3,429	237	23.6%	551	93	20.1%
Unemployed	753	174	5.2%	18	19	0.7%
Not in labor force	2,494	247	17.2%	463	93	16.9%
65 years and over:	1,500	22	10.3%	308	22	11.3%
In labor force:	216	53	1.5%	32	21	1.2%
Employed	168	54	1.2%	32	21	1.2%
Unemployed	48	32	0.3%	0	22	0.0%
Not in labor force	1,284	53	8.9%	276	21	10.1%

Source: U.S. Census Bureau, 2008-2012 American Community Survey

For information on confidentiality protection, sampling error, nonsampling error, and definitions, see Survey Methodology.  
<http://www.census.gov/acs/www/UseData/index.htm>

# Employment Status for the Population 16 years and over

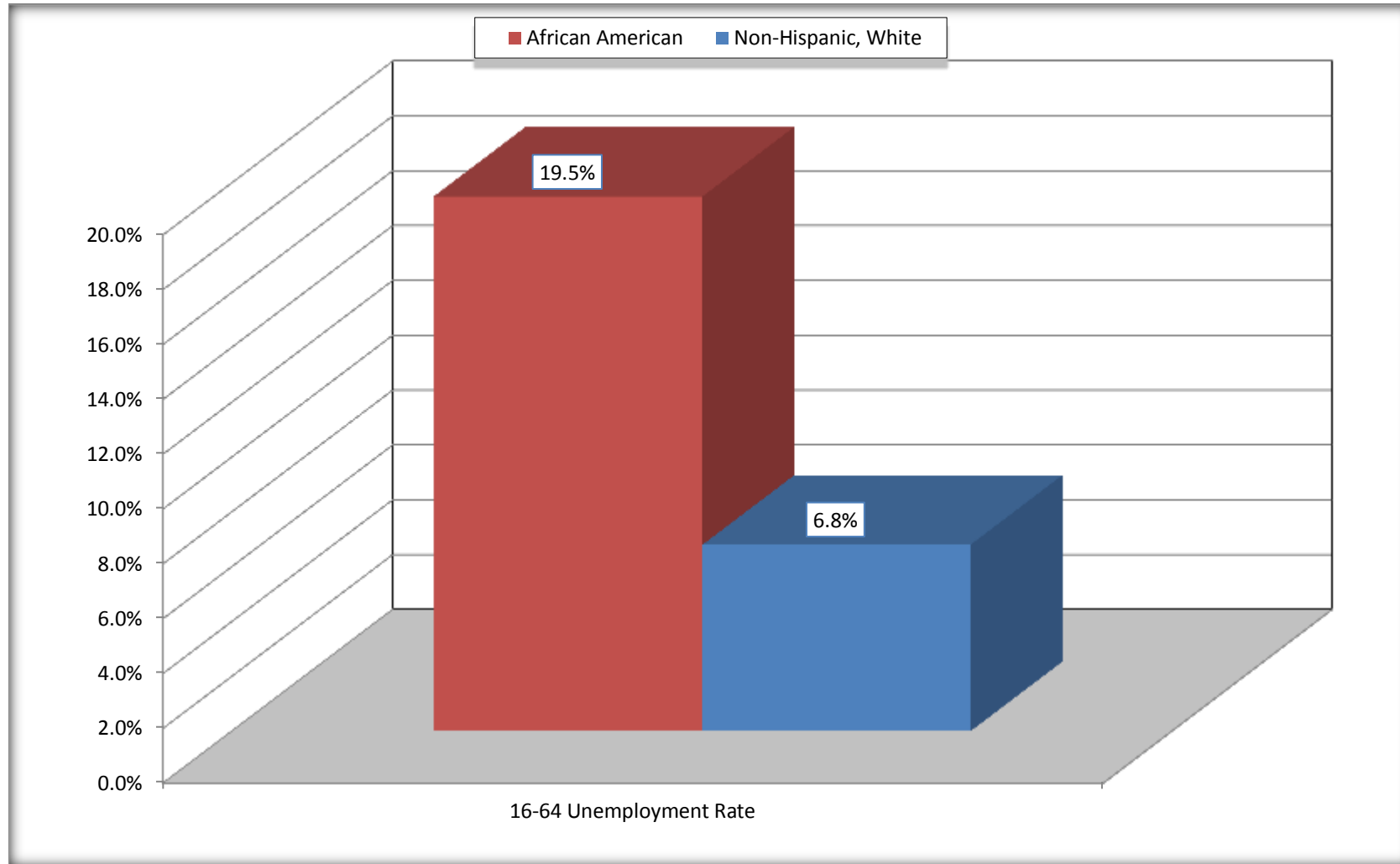
## Macon County, Alabama



Source: C23002. SEX BY AGE BY EMPLOYMENT STATUS FOR THE POPULATION 16 YEARS AND OVER  
Data Set: 2008-2012 American Community Survey 5-Year Estimates

# Unemployment of Working Age Population (Ages 16 to 64) (As a Percent of 16-64 Civilian Labor Force)

## Macon County, Alabama



Source: C23002. SEX BY AGE BY EMPLOYMENT STATUS FOR THE POPULATION 16 YEARS AND OVER  
Data Set: 2008-2012 American Community Survey 5-Year Estimates

**C24010. SEX BY OCCUPATION FOR THE CIVILIAN EMPLOYED POPULATION 16 YEARS AND OVER**

Data Set: 2008-2012 American Community Survey 5-Year Estimates

	Macon County, Alabama					
	African American	Margin of Error (+/-)	% of AA Total	White, Not Hispanic	Margin of Error (+/-)	% of NHW Total
<b>Total:</b>	<b>6,339</b>	<b>375</b>	<b>100.0%</b>	<b>1,332</b>	<b>139</b>	<b>100.0%</b>
Management, professional, and related occupations	1,488	NC	23.5%	508	NC	38.1%
Service occupations	1,815	NC	28.6%	149	NC	11.2%
Sales and office occupations	1,584	NC	25.0%	324	NC	24.3%
Natural resources, construction, and maintenance occupations:	508	NC	8.0%	225	NC	16.9%
Production, transportation, and material moving occupations	944	NC	14.9%	126	NC	9.5%
Male:	2,742	263	43.3%	749	97	56.2%
Management, business, science, and arts occupations:	493	123	7.8%	235	59	17.6%
Service occupations	835	192	13.2%	104	51	7.8%
Sales and office occupations	320	105	5.0%	112	49	8.4%
Natural resources, construction, and maintenance occupations:	462	138	7.3%	225	61	16.9%
Production, transportation, and material moving occupations	632	129	10.0%	73	40	5.5%
Female:	3,597	246	56.7%	583	98	43.8%
Management, professional, and related occupations	995	175	15.7%	273	94	20.5%
Service occupations	980	144	15.5%	45	28	3.4%
Sales and office occupations	1,264	188	19.9%	212	73	15.9%
Natural resources, construction, and maintenance occupations:	46	30	0.7%	0	22	0.0%
Production, transportation, and material moving occupations	312	107	4.9%	53	33	4.0%

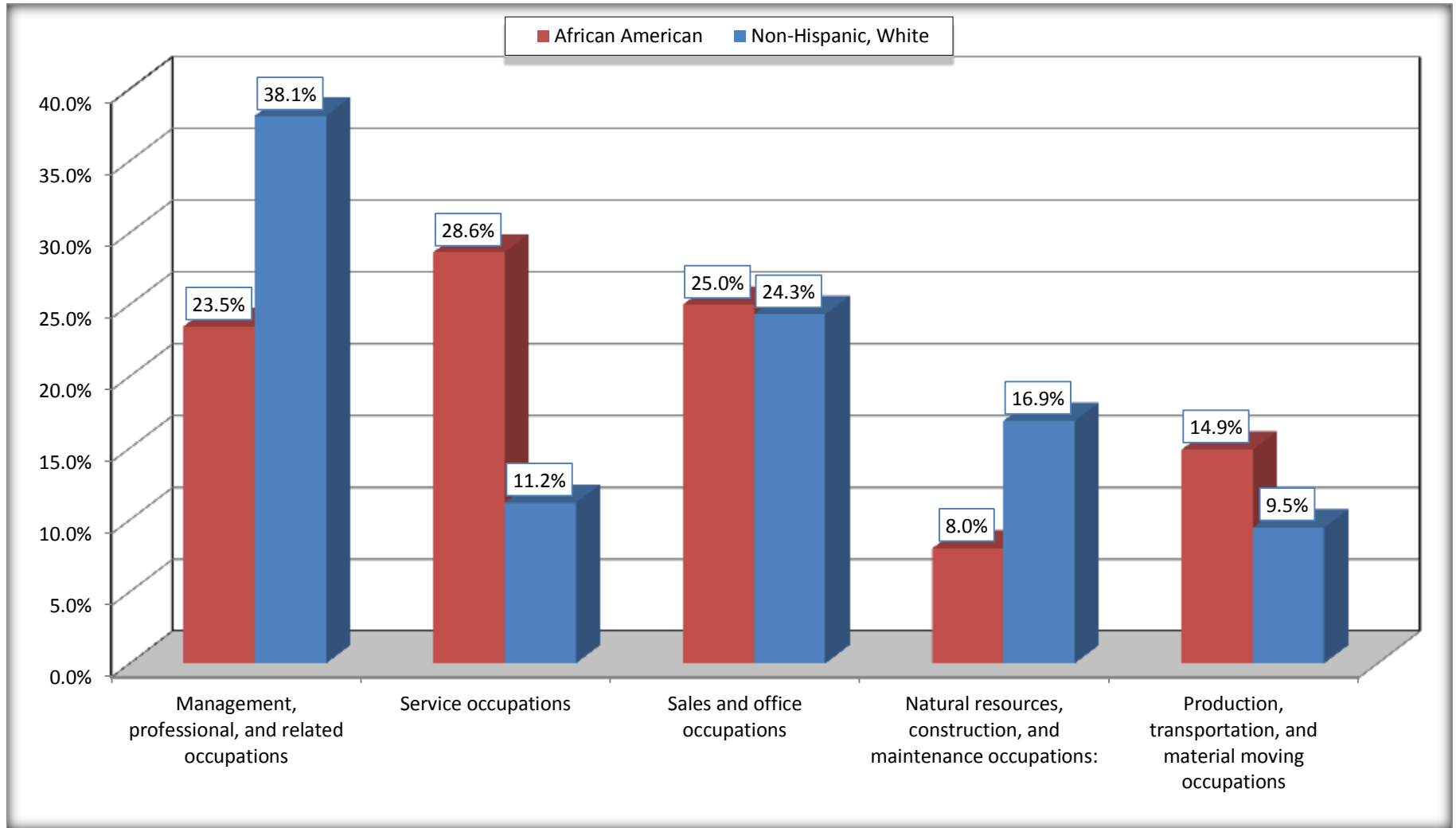
Source: U.S. Census Bureau, 2008-2012 American Community Survey

For information on confidentiality protection, sampling error, nonsampling error, and definitions, see Survey Methodology.

<http://www.census.gov/acs/www/UseData/index.htm>

# Occupation for the Civilian Employed 16 Years and Over Population

## Macon County, Alabama



Source: C24010. SEX BY OCCUPATION FOR THE CIVILIAN EMPLOYED POPULATION 16 YEARS AND OVER  
Data Set: 2008-2012 American Community Survey 5-Year Estimates

**B25003. TENURE - Universe: OCCUPIED HOUSING UNITS**

Data Set: 2008-2012 American Community Survey 5-Year Estimates

	<b>Macon County, Alabama</b>					
	African American	Margin of Error (+/-)	% of AA Total	White, Not Hispanic	Margin of Error (+/-)	% of NHW Total
<b>Total:</b>	<b>10,563</b>	<b>355</b>	<b>100.0%</b>	<b>1,360</b>	<b>94</b>	<b>100.0%</b>
Owner occupied	5,672	336	53.7%	1,133	89	83.3%
Renter occupied	4,891	381	46.3%	227	65	16.7%

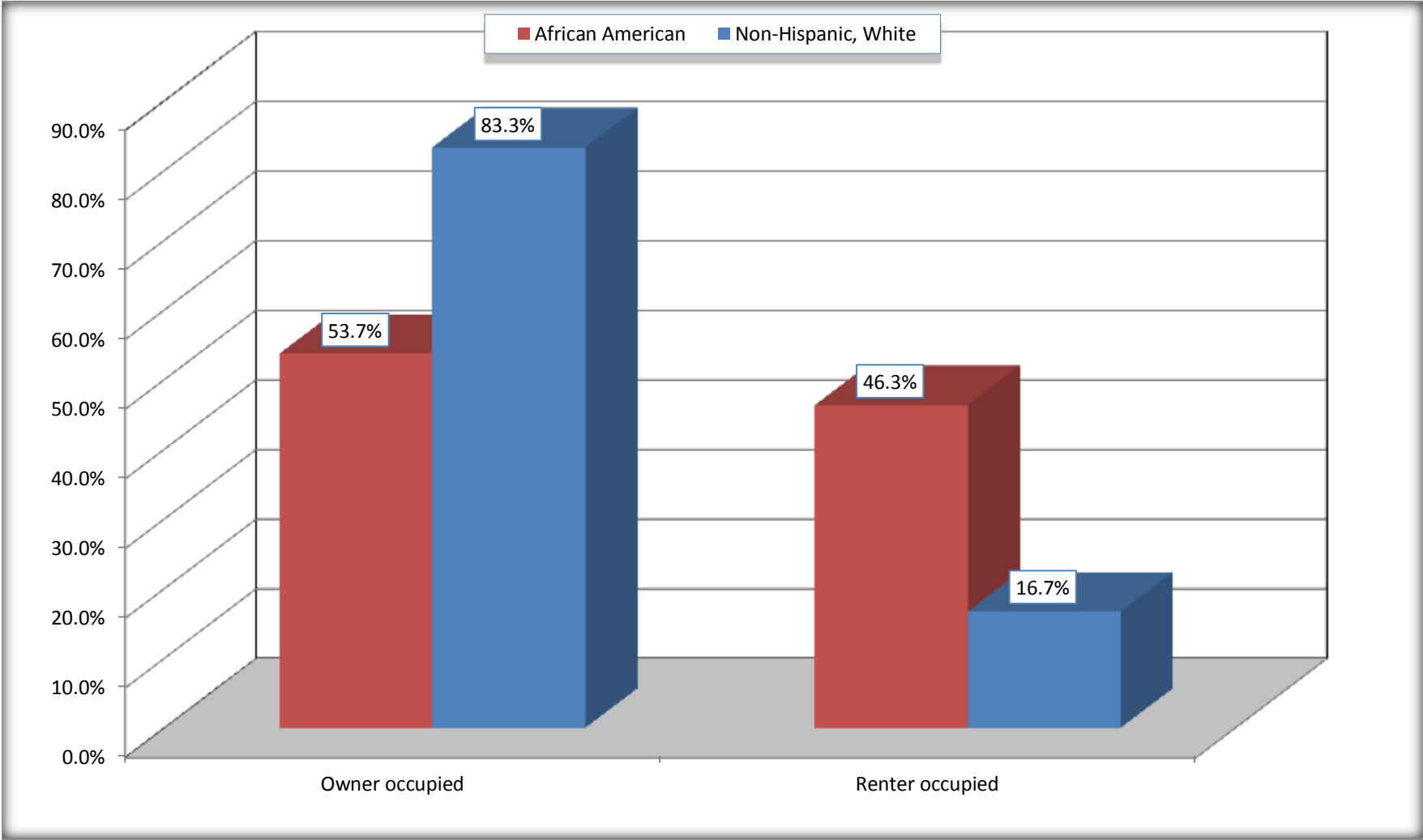
Source: U.S. Census Bureau, 2008-2012 American Community Survey

For information on confidentiality protection, sampling error, nonsampling error, and definitions, see Survey Methodology.

<http://www.census.gov/acs/www/UseData/index.h>

# Home Owners and Renters by Household

## Macon County, Alabama



Source: B25003. TENURE - Universe: OCCUPIED HOUSING UNITS  
Data Set: 2008-2012 American Community Survey 5-Year Estimates



**B25014. OCCUPANTS PER ROOM - Universe: OCCUPIED HOUSING UNITS**

Data Set: 2008-2012 American Community Survey 5-Year Estimates

	Dallas County, Alabama					
	African American	Margin of Error (+/-)	% of AA Total	White, Not Hispanic	Margin of Error (+/-)	% of NHW Total
<b>Total:</b>	<b>10,563</b>	<b>355</b>	<b>100.0%</b>	<b>1,360</b>	<b>94</b>	<b>100.0%</b>
1.00 or less occupants per room	9,794	392	92.7%	1,349	95	99.2%
1.01 or more occupants per room	769	205	7.3%	11	18	0.8%

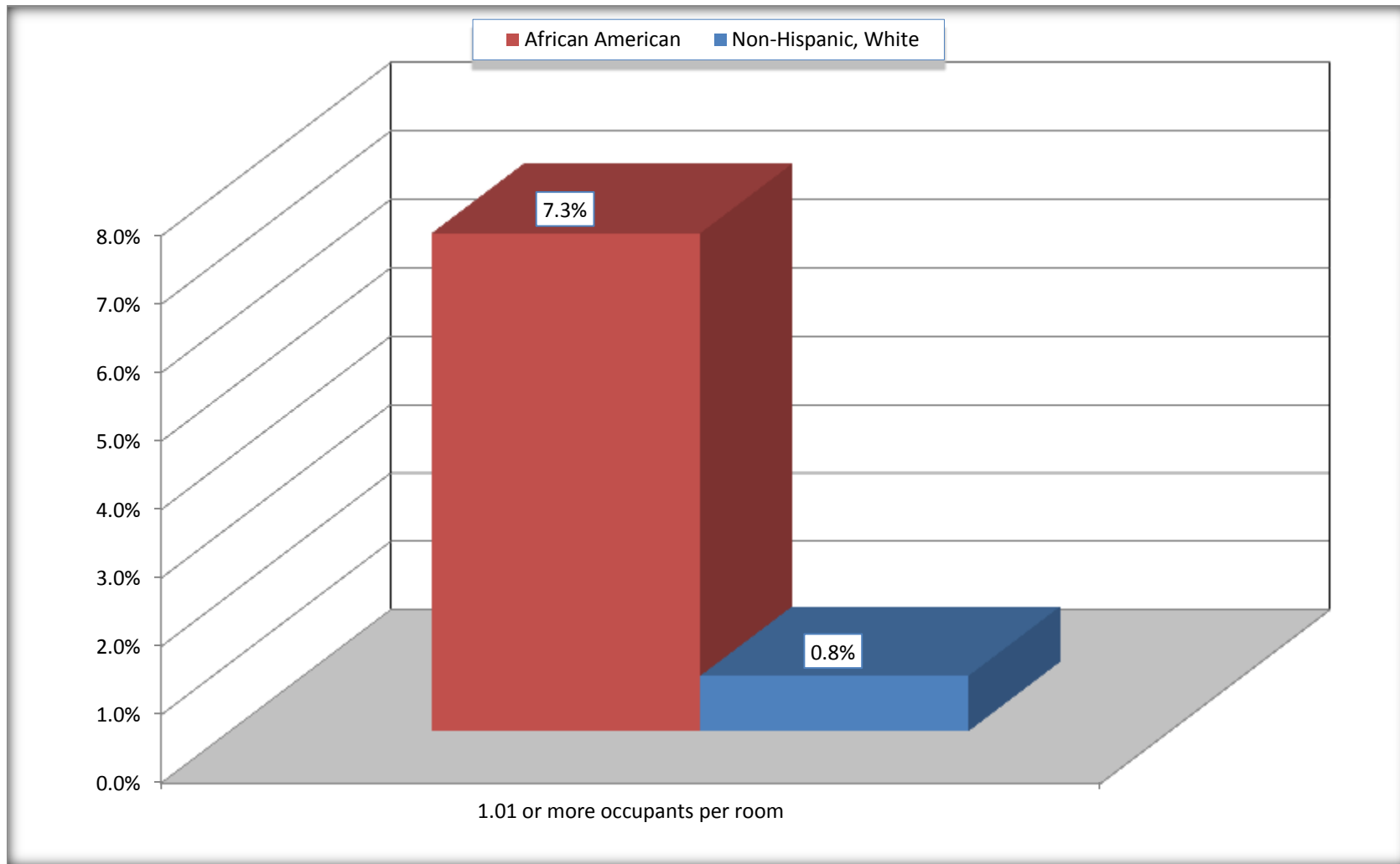
Source: U.S. Census Bureau, 2008-2012 American Community Survey

For information on confidentiality protection, sampling error, nonsampling error, and definitions, see Survey Methodology.

<http://www.census.gov/acs/www/UseData/index.ht>

# More than One Person per Room (Crowding) by Household

## Dallas County, Alabama



Source: B25014. OCCUPANTS PER ROOM - Universe: OCCUPIED HOUSING UNITS  
Data Set: 2008-2012 American Community Survey 5-Year Estimates

**B18101. AGE BY DISABILITY STATUS**

Data Set: 2008-2012 American Community Survey 5-Year Estimates

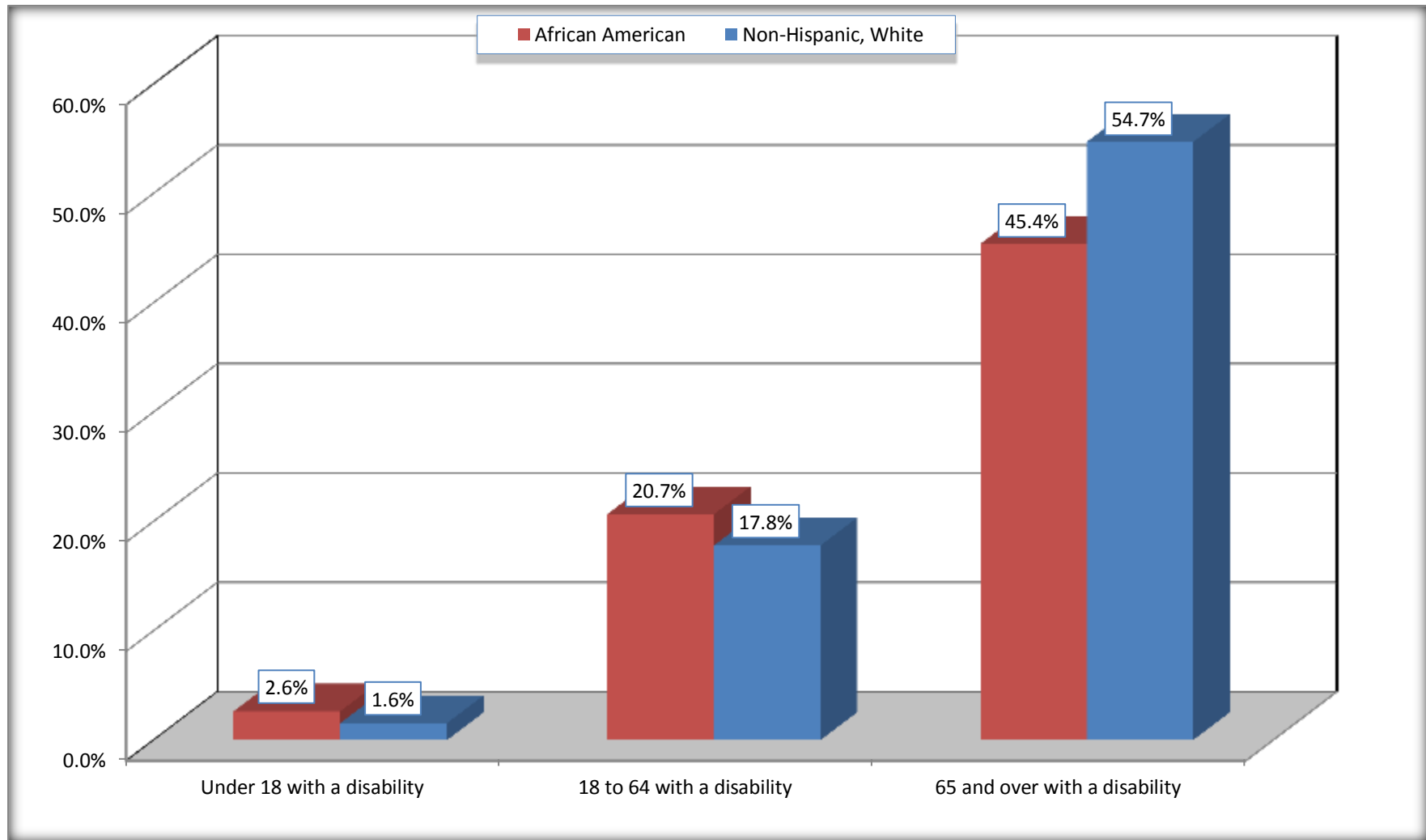
	Macon County, Alabama					
	African American	Margin of Error (+/-)	% of AA Total	White, Not Hispanic	Margin of Error (+/-)	% of NHW Total
<b>Total:</b>	<b>17,400</b>	<b>121</b>	<b>100.0%</b>	<b>3,090</b>	<b>57</b>	<b>100.0%</b>
Under 18 years:	3,615	34	20.8%	580	25	18.8%
With a disability	95	45	0.5%	9	11	0.3%
No disability	3,520	56	20.2%	571	20	18.5%
18 to 64 years:	11,458	113	65.9%	2,011	36	65.1%
With a disability	2,367	314	13.6%	358	90	11.6%
No disability	9,091	330	52.2%	1,653	104	53.5%
65 years and over:	2,327	56	13.4%	499	46	16.1%
With a disability	1,056	115	6.1%	273	59	8.8%
No disability	1,271	121	7.3%	226	51	7.3%

Source: U.S. Census Bureau, 2008-2012 American Community Survey

For information on confidentiality protection, sampling error, nonsampling error, and definitions, see Survey Methodology.

<http://www.census.gov/acs/www/UseData/index.htm>

## Disability by Age Macon County, Alabama



Source: B18101. AGE BY DISABILITY STATUS  
Data Set: 2008-2012 American Community Survey 5-Year Estimates

**C27001B. HEALTH INSURANCE COVERAGE STATUS BY AGE**

Data Set: 2008-2012 American Community Survey 5-Year Estimates

	<b>Macon County, Alabama</b>					
	African American	Margin of Error (+/-)	% of AA Total	White, Not Hispanic	Margin of Error (+/-)	% of NHW Total
<b>Total:</b>	<b>17,400</b>	<b>121</b>	<b>100.0%</b>	<b>3,090</b>	<b>57</b>	<b>100.0%</b>
Under 18 years:	3,615	34	20.8%	580	14	18.8%
With health insurance coverage	3,509	99	20.2%	552	40	17.9%
No health insurance coverage	106	91	0.6%	28	37	0.9%
18 to 64 years:	11,458	113	65.9%	2,011	36	65.1%
With health insurance coverage	9,374	298	53.9%	1,631	101	52.8%
No health insurance coverage	2,084	272	12.0%	380	99	12.3%
65 years and over:	2,327	56	13.4%	499	46	16.1%
With health insurance coverage	2,327	56	13.4%	499	46	16.1%
No health insurance coverage	0	22	0.0%	0	22	0.0%

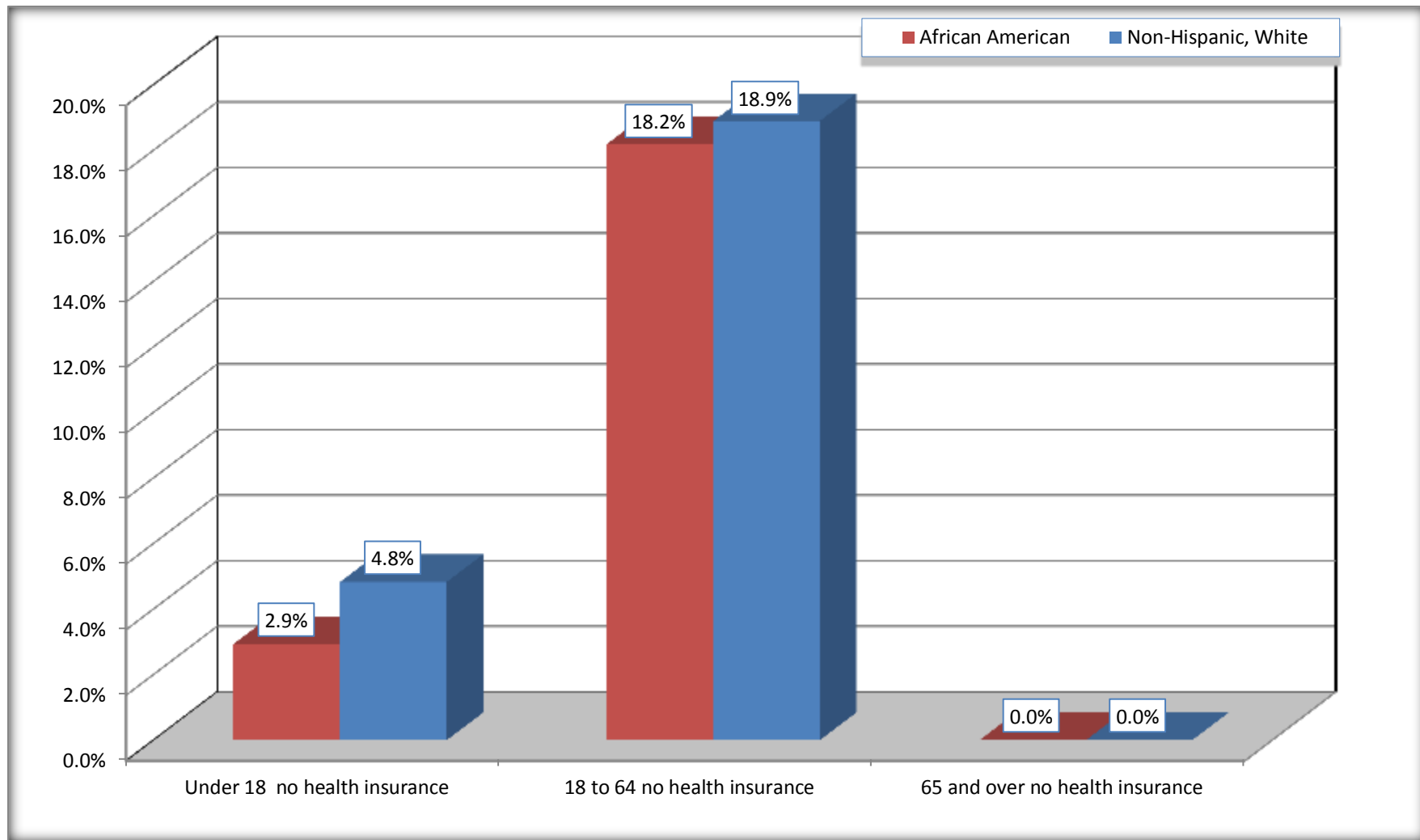
Source: U.S. Census Bureau, 2008-2012 American Community Survey

For information on confidentiality protection, sampling error, nonsampling error, and definitions, see Survey Methodology.

<http://www.census.gov/acs/www/UseData/index.htm>

# Lack of Health Insurance Coverage by Age

## Macon County, Alabama



Source: C27001B. HEALTH INSURANCE COVERAGE STATUS BY AGE  
Data Set: 2008-2012 American Community Survey 5-Year Estimates