

Selected Socio-Economic Data

Hale County, Alabama

African American and White, Not Hispanic

Data Set: 2008-2012 American Community Survey 5-Year Estimates

www.fairvote2020.org

www.fairdata2000.com

[29-Dec-13](#)

C02003.DETAILED RACE - Universe: TOTAL POPULATION
 Data Set: 2008-2012 American Community Survey 5-Year Estimates

	Hale County, Alabama		
	Population	Margin of Error (+/-)	% of Total
Total:	15,750	*****	100.0%
Population of one race:	15,713	36	99.8%
White	6,292	76	39.9%
Black or African American	9,327	126	59.2%
American Indian and Alaska Native	32	32	0.2%
Asian alone	48	71	0.3%
Native Hawaiian and Other Pacific Islander	14	21	0.1%
Some other race	0	19	0.0%
Population of two or more races:	37	36	0.2%
Two races including Some other race	0	19	0.0%
Two races excluding Some other race, and three or more races	37	36	0.2%
Population of two races:	37	36	0.2%
White; Black or African American	4	9	0.0%
White; American Indian and Alaska Native	18	26	0.1%
White; Asian	0	19	0.0%
Black or African American; American Indian and Alaska Native	0	19	0.0%
All other two race combinations	15	21	0.1%
Population of three races	0	19	0.0%
Population of four or more races	0	19	0.0%

Note: Hispanics may be of any race. See Table B03002 and chart.

Source: U.S. Census Bureau, 2008-2012 American Community Survey

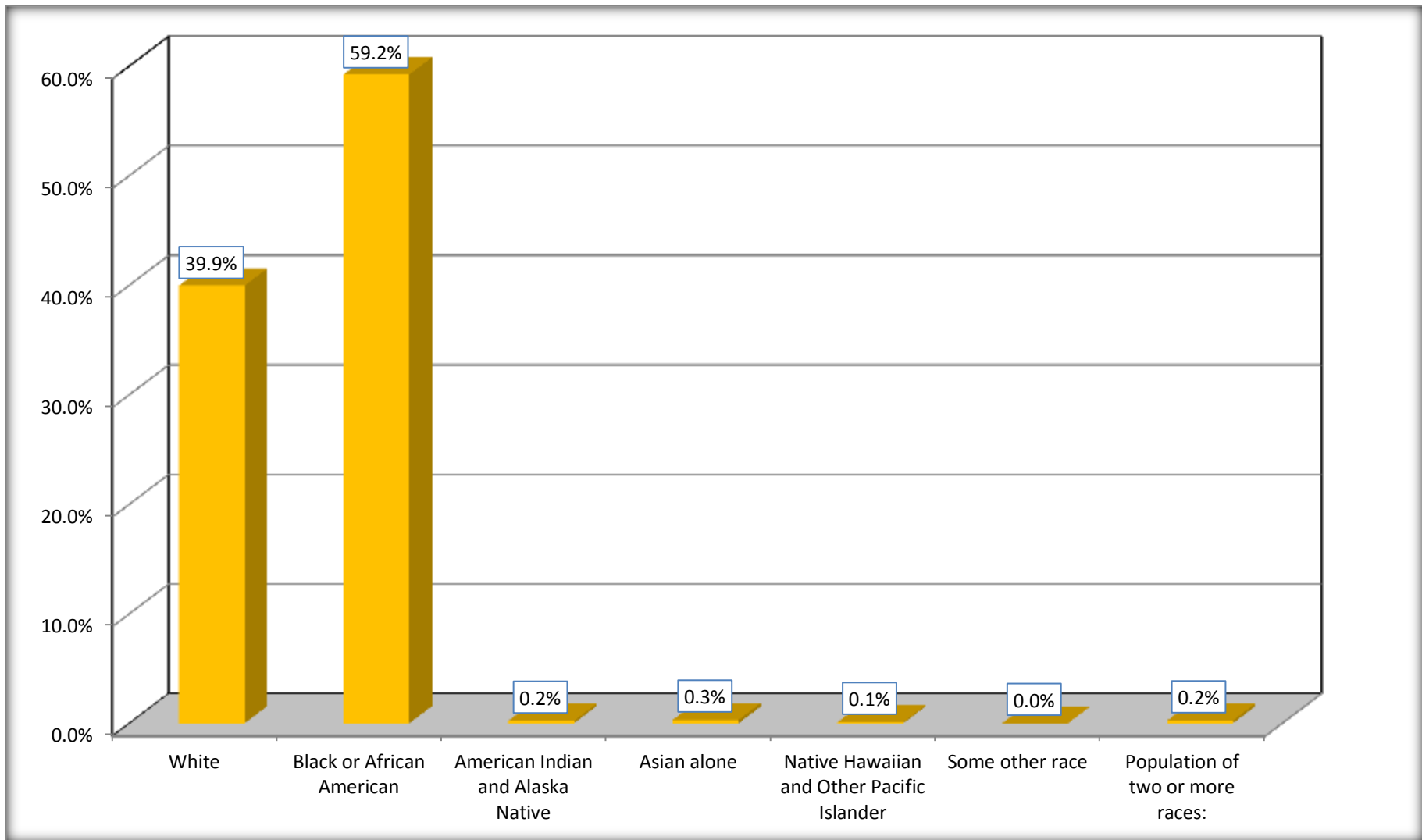
Although the American Community Survey (ACS) produces population, demographic and housing unit estimates, it is the Census Bureau's Population Estimates Program that produces and disseminates the official estimates of the population for the nation, states, counties, cities and towns and estimates of housing units for states and counties.

For information on confidentiality protection, sampling error, nonsampling error, and definitions, see Survey Methodology.

<http://www.census.gov/acs/www/UseData/index.htm>

Population by Race

Hale County, Alabama



Source: C02003.DETAILED RACE - Universe: TOTAL POPULATION
Data Set: 2008-2012 American Community Survey 5-Year Estimates

B03002. HISPANIC OR LATINO ORIGIN BY RACE - Universe: TOTAL POPULATION

Data Set: 2008-2012 American Community Survey 5-Year Estimates

	Hale County, Alabama		
	Population	Margin of Error (+/-)	% of Total
Total:	15,750	*****	100.0%
Not Hispanic or Latino:	15,684	79	99.6%
White alone	6,241	19	39.6%
Black or African American alone	9,312	130	59.1%
American Indian and Alaska Native alone	32	32	0.2%
Asian alone	48	71	0.3%
Native Hawaiian and Other Pacific Islander alone	14	21	0.1%
Some other race alone	0	19	0.0%
Two or more races:	37	36	0.2%
Two races including Some other race	0	19	0.0%
Two races excluding Some other race, and three or more races	37	36	0.2%
Hispanic or Latino	66	79	0.4%

Source: U.S. Census Bureau, 2008-2012 American Community Survey

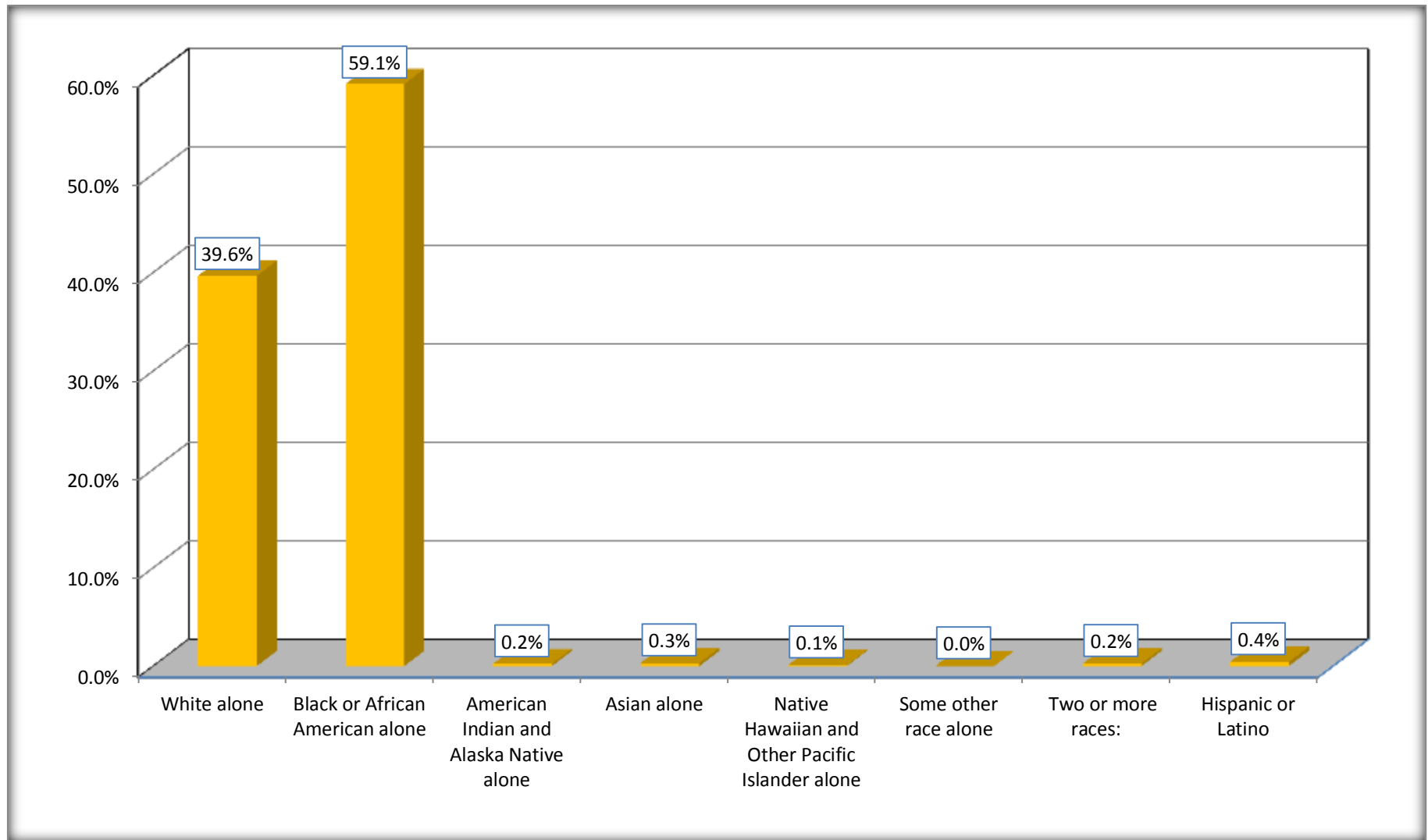
Although the American Community Survey (ACS) produces population, demographic and housing unit estimates, it is the Census Bureau's Population Estimates Program that produces and disseminates the official estimates of the population for the nation, states, counties, cities and towns and estimates of housing units for states and counties.

For information on confidentiality protection, sampling error, nonsampling error, and definitions, see Survey Methodology.

<http://www.census.gov/acs/www/UseData/index.htm>

Non-Hispanic by Race and Hispanic Population

Hale County, Alabama



Source: B03002. HISPANIC OR LATINO ORIGIN BY RACE - Universe: TOTAL POPULATION
Data Set: 2008-2012 American Community Survey 5-Year Estimates

B03002. HISPANIC OR LATINO ORIGIN BY RACE

Data Set: 2008-2012 American Community Survey 5-Year Estimates

	Hale County, Alabama		
	Population	Margin of Error (+/-)	% of Total
Hispanic or Latino:	66	79	100.0%
White alone	51	76	77.3%
Black or African American alone	15	24	22.7%
American Indian and Alaska Native alone	0	19	0.0%
Asian alone	0	19	0.0%
Native Hawaiian and Other Pacific Islander alone	0	19	0.0%
Some other race alone	0	19	0.0%
Two or more races:	0	19	0.0%
Two races including Some other race	0	19	0.0%
Two races excluding Some other race, and three or more races	0	19	0.0%

Source: U.S. Census Bureau, 2008-2012 American Community Survey

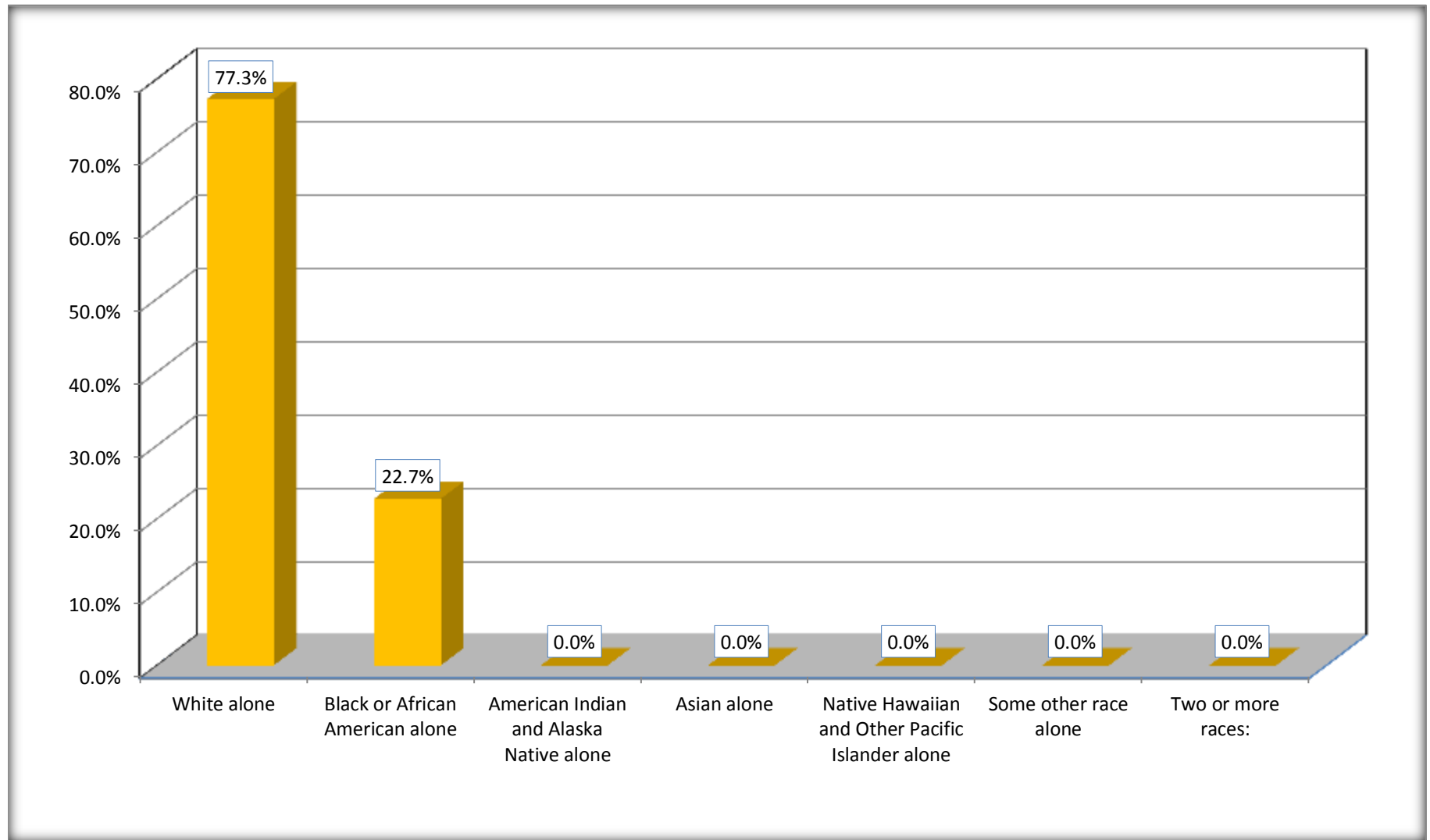
Although the American Community Survey (ACS) produces population, demographic and housing unit estimates, it is the Census Bureau's Population Estimates Program that produces and disseminates the official estimates of the population for the nation, states, counties, cities and towns and estimates of housing units for states and counties.

For information on confidentiality protection, sampling error, nonsampling error, and definitions, see Survey Methodology.

<http://www.census.gov/acs/www/UseData/index.htm>

Hispanic or Latino Origin by Race

Hale County, Alabama



Source: B03002. HISPANIC OR LATINO ORIGIN BY RACE
Data Set: 2008-2012 American Community Survey 5-Year Estimates

B01001. SEX BY AGE

Data Set: 2008-2012 American Community Survey 5-Year Estimates

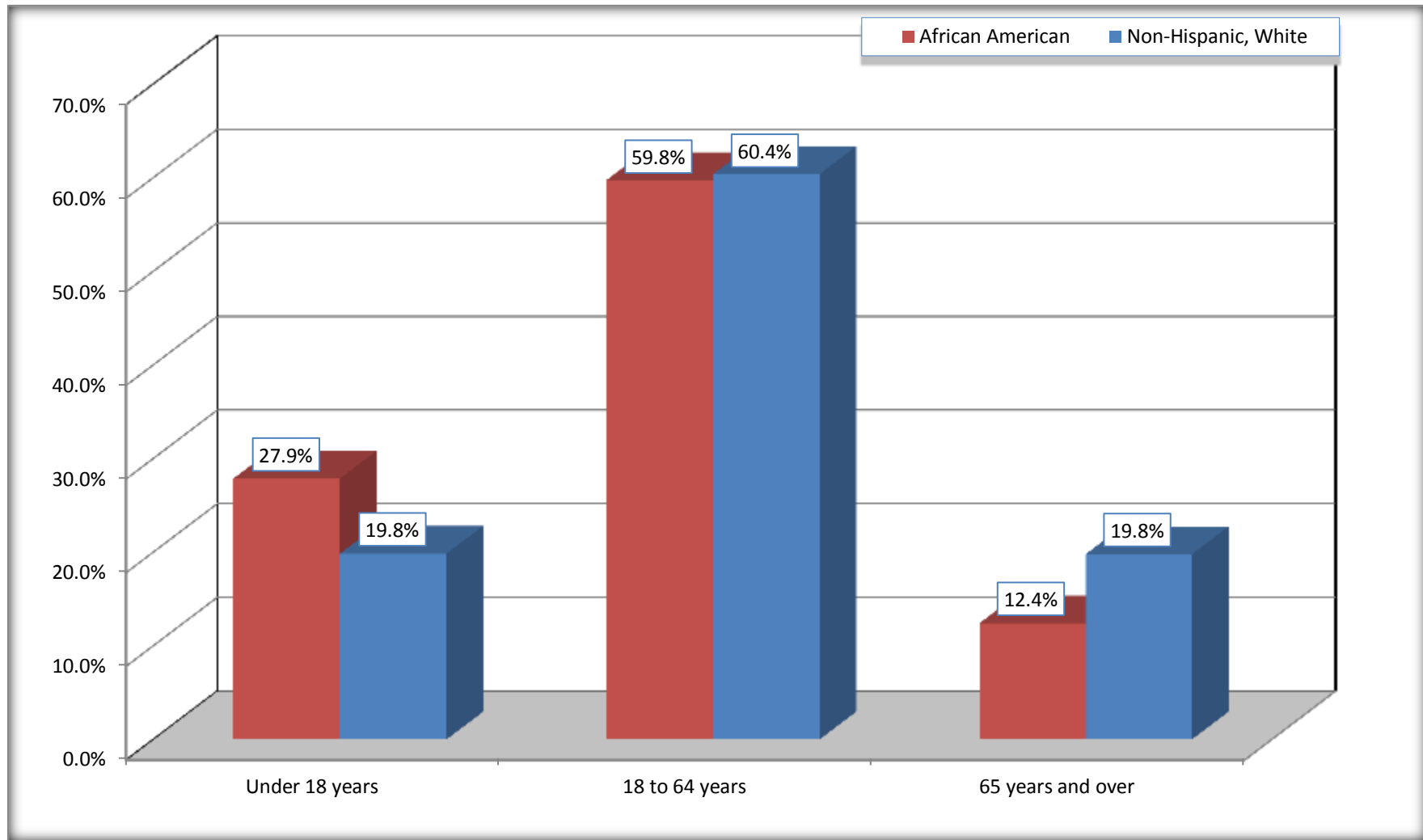
	Hale County, Alabama					
	African American	Margin of Error (+/-)	% of AA Total	White, Not Hispanic	Margin of Error (+/-)	% of NHW Total
Total:	9,327	126	100.0%	6,241	19	100.0%
Under 18 years	2,598	NC	27.9%	1,238	NC	19.8%
18 to 64 years	5,573	NC	59.8%	3,769	NC	60.4%
65 years and over	1,156	NC	12.4%	1,234	NC	19.8%
Male:	4,323	58	46.3%	3,084	389	49.4%
Under 18 years	1308	NC	14.0%	591	NC	9.5%
18 to 64 years	2,560	NC	27.4%	1,947	NC	31.2%
65 years and over	455	NC	4.9%	546	NC	8.7%
Female:	5,004	84	53.7%	3,157	412	50.6%
Under 18 years	1,290	NC	13.8%	647	NC	10.4%
18 to 64 years	3,013	NC	32.3%	1,822	NC	29.2%
65 years and over	701	NC	7.5%	688	NC	11.0%

Source: U.S. Census Bureau, 2008-2012 American Community Survey

Although the American Community Survey (ACS) produces population, demographic and housing unit estimates, it is the Census Bureau's Population Estimates Program that produces and disseminates the official estimates of the population for the nation, states, counties, cities and towns and estimates of housing units for states and counties.

For information on confidentiality protection, sampling error, nonsampling error, and definitions, see Survey Methodology.
<http://www.census.gov/acs/www/UseData/index.htm>

Population by Age Hale County, Alabama



Source: B01001. SEX BY AGE

Data Set: 2008-2012 American Community Survey 5-Year Estimates

B05003. SEX BY AGE BY CITIZENSHIP STATUS

Data Set: 2008-2012 American Community Survey 5-Year Estimates

	Hale County, Alabama					
	African American	Margin of Error (+/-)	% of AA Total by Age	White, Not Hispanic	Margin of Error (+/-)	% of NHW Total by Age
Total:	9,327	126	100.0%	6,241	19	100.0%
Under 18 years:	2,598	NC	100.0%	1,238	NC	100.0%
Native	2,598	NC	100.0%	1,238	NC	100.0%
Foreign born:	0	NC	0.0%	0	NC	0.0%
Naturalized U.S. citizen	0	NC	0.0%	0	NC	0.0%
Not a U.S. citizen	0	NC	0.0%	0	NC	0.0%
18 years and over:	6,729	NC	100.0%	5,003	NC	100.0%
Native	6,729	NC	100.0%	4,923	NC	98.4%
Foreign born:	0	NC	0.0%	80	NC	1.6%
Naturalized U.S. citizen	0	NC	0.0%	0	NC	0.0%
Not a U.S. citizen	0	NC	0.0%	80	NC	1.6%
Male:	4,323	58	46.3%	3,084	19	49.4%
Under 18 years:	1,308	33	100.0%	591	19	100.0%
Native	1,308	33	100.0%	591	19	100.0%
Foreign born:	0	19	0.0%	0	19	0.0%
Naturalized U.S. citizen	0	19	0.0%	0	19	0.0%
Not a U.S. citizen	0	19	0.0%	0	19	0.0%
18 years and over:	3,015	37	100.0%	2,493	19	100.0%
Native	3,015	37	100.0%	2,419	93	97.0%
Foreign born:	0	19	0.0%	74	93	3.0%
Naturalized U.S. citizen	0	19	0.0%	0	19	0.0%
Not a U.S. citizen	0	19	0.0%	74	93	3.0%

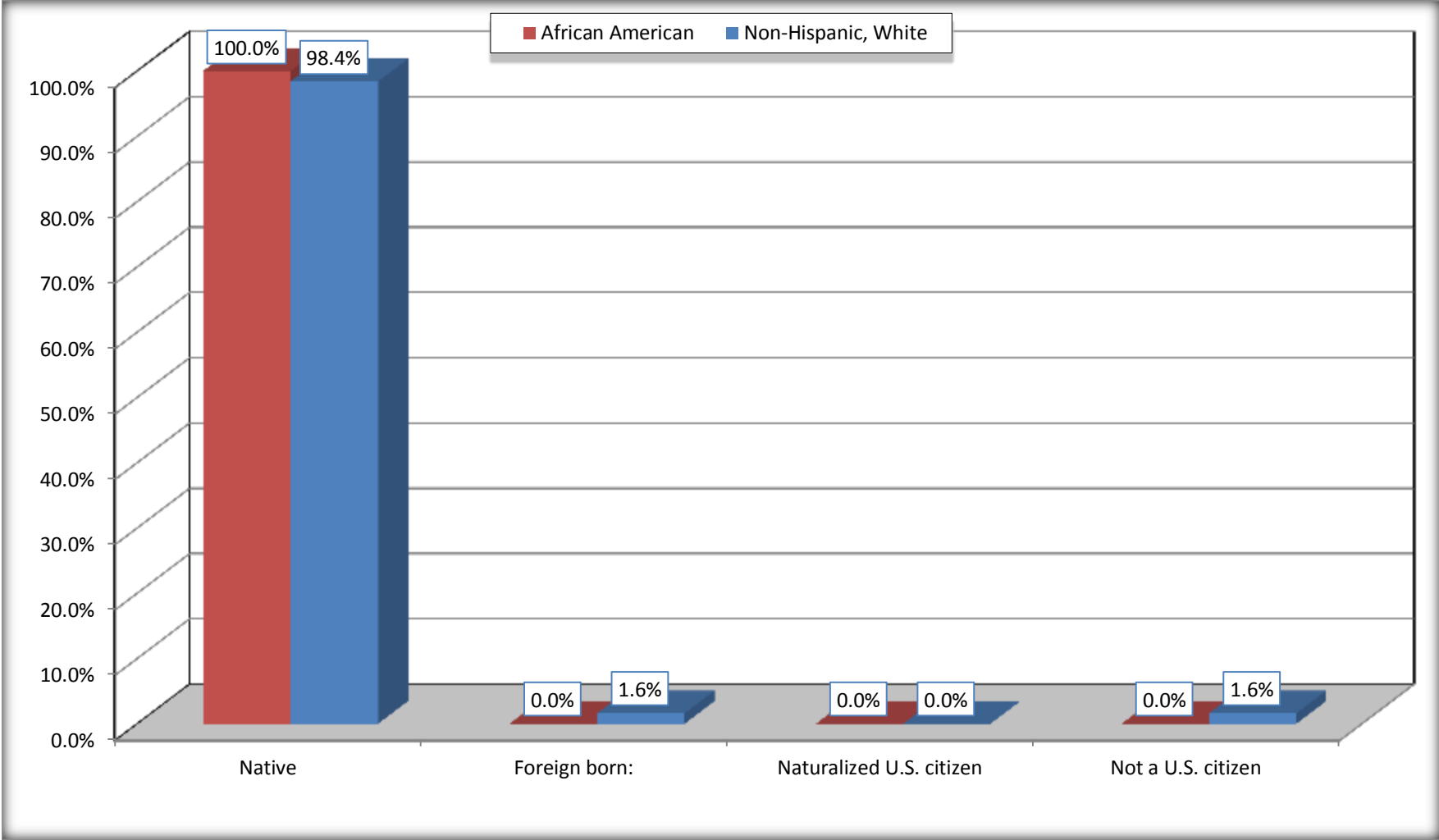
	Hale County, Alabama					
	African American	Margin of Error (+/-)	% of AA by Age	White, Not Hispanic	Margin of Error (+/-)	% of NHW by Age
Female:	5,004	84	53.7%	3,157	19	50.6%
Under 18 years:	1,290	28	100.0%	647	19	100.0%
Native	1,290	28	100.0%	647	19	100.0%
Foreign born:	0	19	0.0%	0	19	0.0%
Naturalized U.S. citizen	0	19	0.0%	0	19	0.0%
Not a U.S. citizen	0	19	0.0%	0	19	0.0%
18 years and over:	3,714	59	100.0%	2,510	19	100.0%
Native	3,714	59	100.0%	2,504	10	99.8%
Foreign born:	0	19	0.0%	6	10	0.2%
Naturalized U.S. citizen	0	19	0.0%	0	19	0.0%
Not a U.S. citizen	0	19	0.0%	6	10	0.2%

Source: U.S. Census Bureau, 2008-2012 American Community Survey

For information on confidentiality protection, sampling error, nonsampling error, and definitions, see Survey Methodology.
<http://www.census.gov/acs/www/UseData/index.htm>

Citizenship Status of Voting Age Population (18 and Over)

Hale County, Alabama



Source: B05003. SEX BY AGE BY CITIZENSHIP STATUS
Data Set: 2008-2012 American Community Survey 5-Year Estimates

**B07004. GEOGRAPHICAL MOBILITY IN THE PAST YEAR BY RACE FOR CURRENT RESIDENCE IN THE UNITED STATES - Universe:
POPULATION 1 YEAR AND OVER**

Data Set: 2008-2012 American Community Survey 5-Year Estimates

	Hale County, Alabama					
	African American	Margin of Error (+/-)	% of AA Total	White, Not Hispanic	Margin of Error (+/-)	% of NHW Total
Total:	9,261	135	100.0%	6,170	39	100.0%
Same house 1 year ago	8,448	307	91.2%	5,421	224	87.9%
Moved within same county	424	197	4.6%	315	137	5.1%
Moved from different county within same state	292	179	3.2%	302	194	4.9%
Moved from different state	79	66	0.9%	132	106	2.1%
Moved from abroad	18	31	0.2%	0	19	0.0%

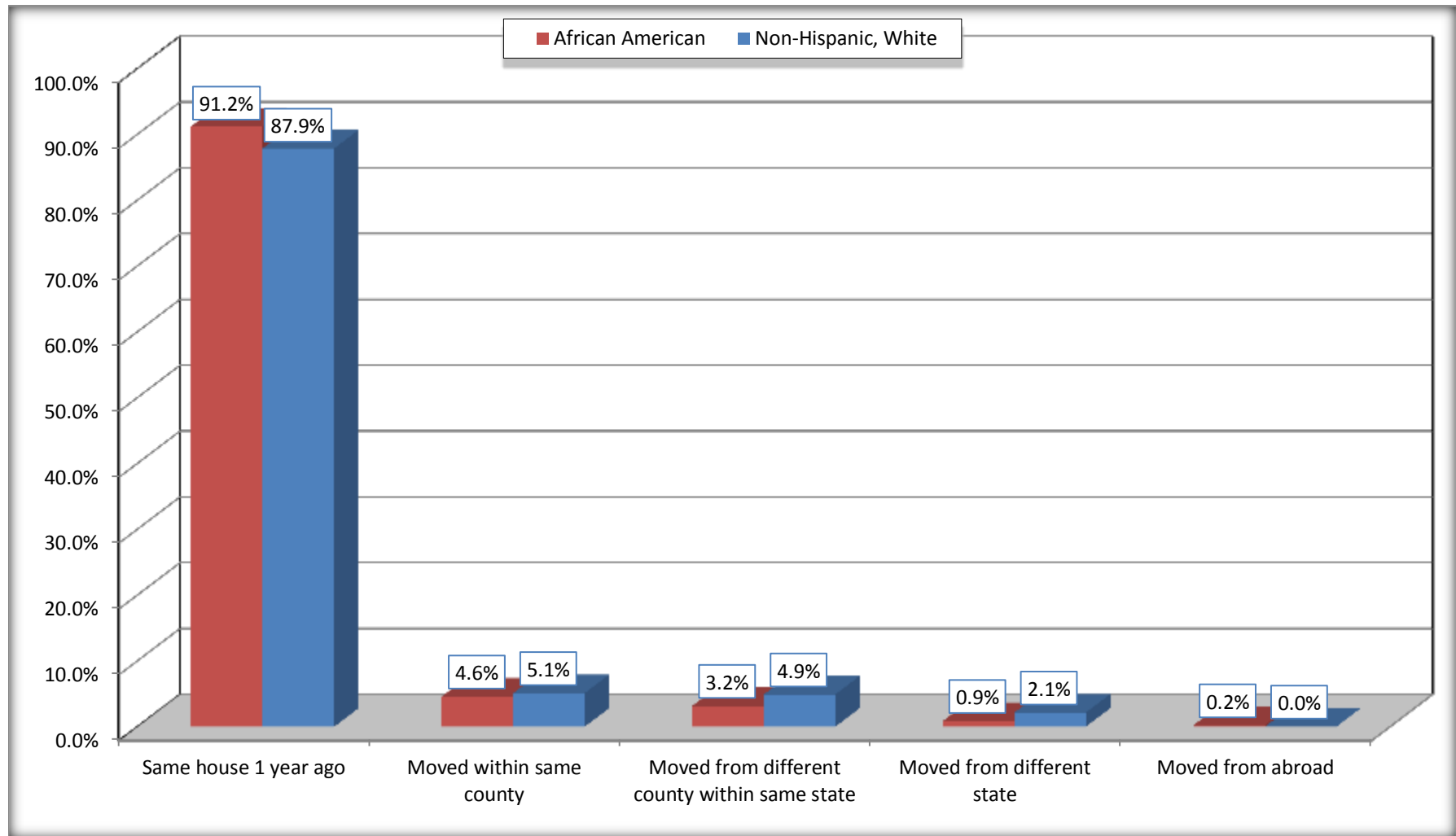
Source: U.S. Census Bureau, 2008-2012 American Community Survey

For information on confidentiality protection, sampling error, nonsampling error, and definitions, see Survey Methodology.

<http://www.census.gov/acs/www/UseData/index.htm>

Geographical Mobility in the Past Year (Population 1 Year and Over)

Hale County, Alabama



Source: B07004. GEOGRAPHICAL MOBILITY IN THE PAST YEAR BY RACE FOR CURRENT RESIDENCE IN THE UNITED STATES - Universe: POPULATION 1 YEAR AND OVER

Data Set: 2008-2012 American Community Survey 5-Year Estimates

B08105. MEANS OF TRANSPORTATION TO WORK - Universe: WORKERS 16 YEARS AND OVER

Data Set: 2008-2012 American Community Survey 5-Year Estimates

	Hale County, Alabama					
	African American	Margin of Error (+/-)	% of AA Total	White, Not Hispanic	Margin of Error (+/-)	% of NHW Total
Total:	2646	256	100.0%	2570	201	100.0%
Car, truck, or van - drove alone	2048	243	77.4%	2289	185	89.1%
Car, truck, or van - carpooled	478	119	18.1%	171	67	6.7%
Public transportation (excluding taxicab)	4	6	0.2%	0	19	0.0%
Walked	33	37	1.2%	82	94	3.2%
Taxicab, motorcycle, bicycle, or other means	25	25	0.9%	11	13	0.4%
Worked at home	58	43	2.2%	17	14	0.7%

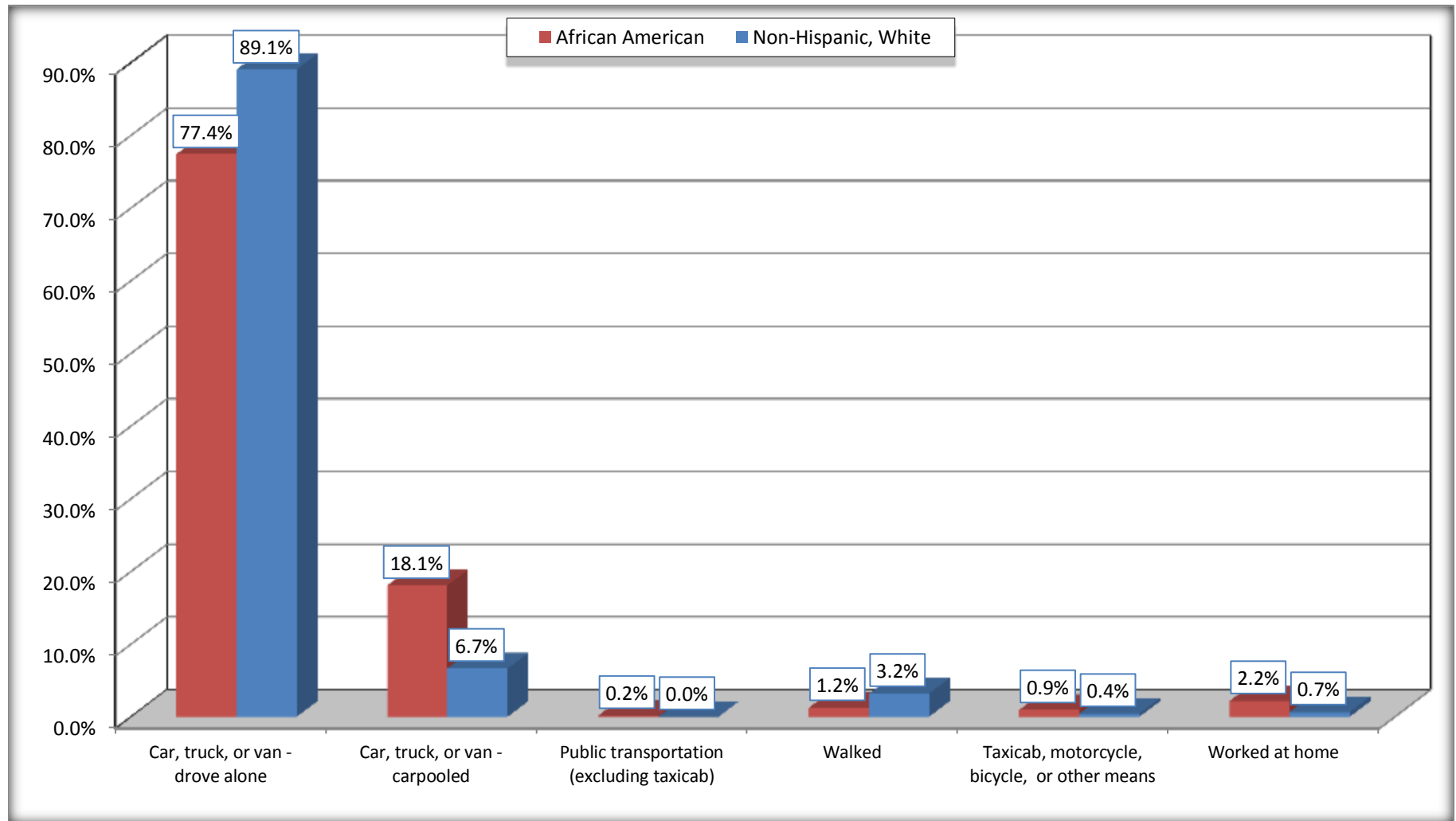
Source: U.S. Census Bureau, 2008-2012 American Community Survey

For information on confidentiality protection, sampling error, nonsampling error, and definitions, see Survey Methodology.

<http://www.census.gov/acs/www/UseData/index.htm>

Means of Transportation to Work (Workers 16 Years and Over)

Hale County, Alabama



Source: B08105. MEANS OF TRANSPORTATION TO WORK - Universe: WORKERS 16 YEARS AND OVER
Data Set: 2008-2012 American Community Survey 5-Year Estimates

B11002. HOUSEHOLD TYPE BY RELATIVES AND NONRELATIVES FOR POPULATION IN HOUSEHOLDS

Data Set: 2008-2012 American Community Survey 5-Year Estimates

	Hale County, Alabama					
	African American	Margin of Error (+/-)	% of AA Total	White, Not Hispanic	Margin of Error (+/-)	% of NHW Total
Total:	9144	130	100.0%	6089	75	100.0%
In family households	7862	247	86.0%	5020	215	82.4%
In nonfamily households	1282	201	14.0%	1069	193	17.6%

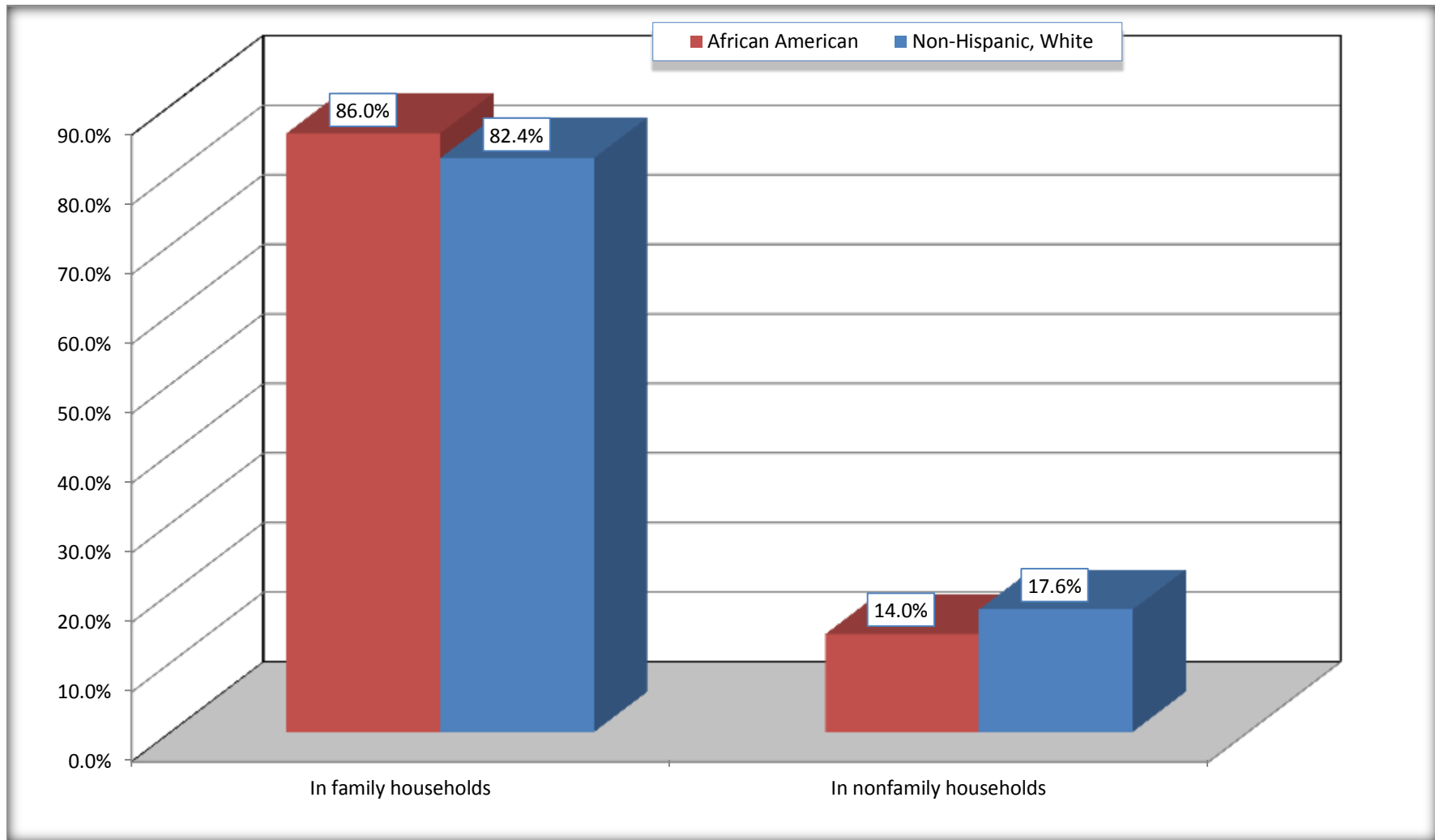
Source: U.S. Census Bureau, 2008-2012 American Community Survey

For information on confidentiality protection, sampling error, nonsampling error, and definitions, see Survey Methodology.

<http://www.census.gov/acs/www/UseData/index.htm>

Household Type for Population in Households

Hale County, Alabama



Source: B11002. HOUSEHOLD TYPE BY RELATIVES AND NONRELATIVES FOR POPULATION IN HOUSEHOLDS
Data Set: 2008-2012 American Community Survey 5-Year Estimates

B12002. MARITAL STATUS FOR THE POPULATION 15 YEARS AND OVER

Data Set: 2008-2012 American Community Survey 5-Year Estimates

	Hale County, Alabama					
	African American	Margin of Error (+/-)	% of AA Total	White, Not Hispanic	Margin of Error (+/-)	% of NHW Total
Total:	7,262	85	100.0%	5,236	19	100.0%
Never married	3,199	NC	44.1%	1,178	NC	22.5%
Now married (except separated)	1,947	NC	26.8%	2,891	NC	55.2%
Separated	404	NC	5.6%	91	NC	1.7%
Widowed	893	NC	12.3%	479	NC	9.1%
Divorced	819	NC	11.3%	597	NC	11.4%
Male:	3,280	38	45.2%	2,600	19	49.7%
Never married	1,550	148	21.3%	689	101	13.2%
Now married (except separated)	971	161	13.4%	1,410	136	26.9%
Separated	232	102	3.2%	67	50	1.3%
Widowed	193	98	2.7%	116	65	2.2%
Divorced	334	89	4.6%	318	105	6.1%
Female:	3,982	60	54.8%	2,636	19	50.3%
Never married	1,649	145	22.7%	489	104	9.3%
Now married (except separated)	976	174	13.4%	1,481	131	28.3%
Separated	172	71	2.4%	24	29	0.5%
Widowed	700	118	9.6%	363	67	6.9%
Divorced	485	176	6.7%	279	76	5.3%

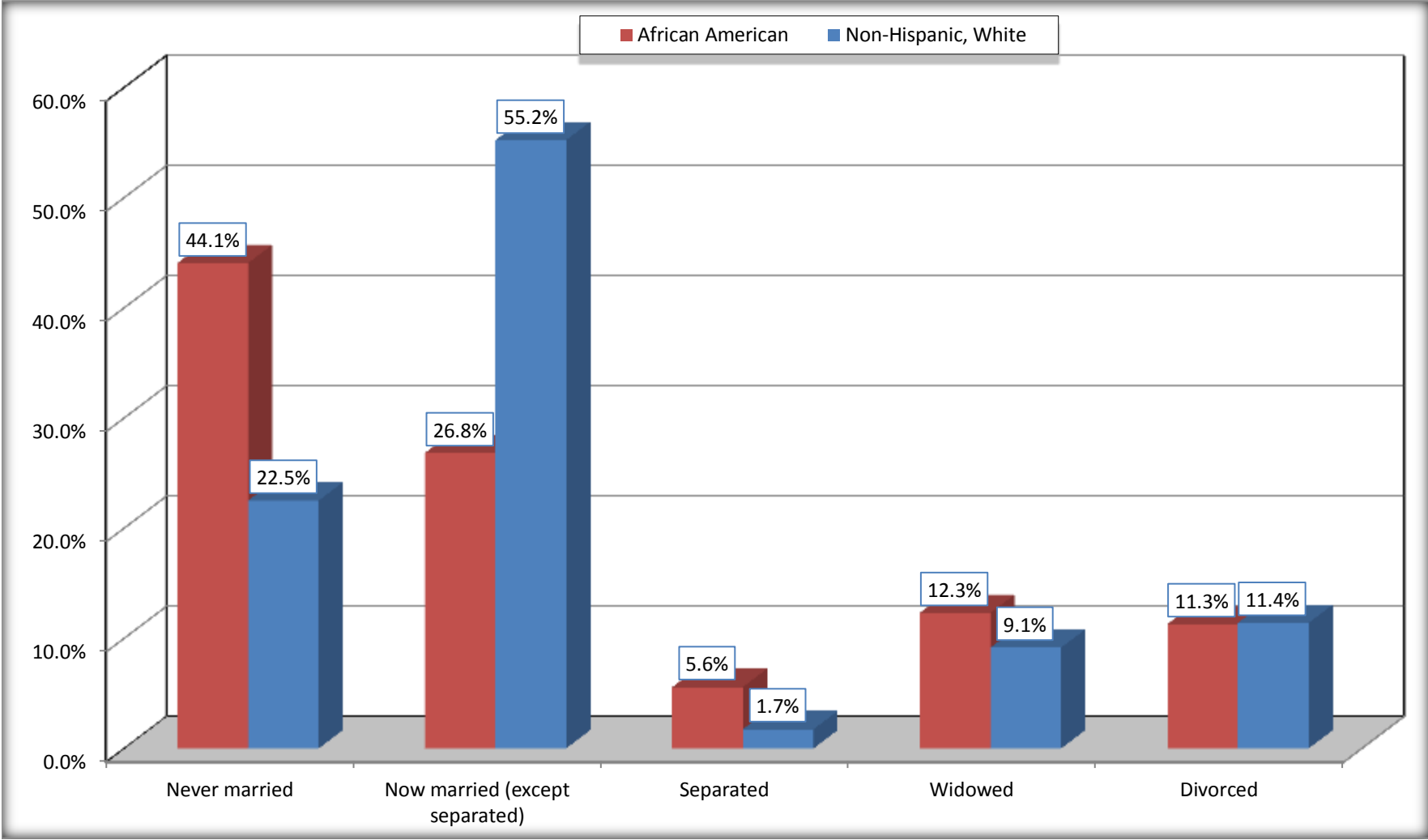
Source: U.S. Census Bureau, 2008-2012 American Community Survey

For information on confidentiality protection, sampling error, nonsampling error, and definitions, see Survey Methodology.

<http://www.census.gov/acs/www/UseData/index.htm>

Marital Status for the Population 15 Years and Over

Hale County, Alabama



Source: B12002. MARITAL STATUS FOR THE POPULATION 15 YEARS AND OVER
Data Set: 2008-2012 American Community Survey 5-Year Estimates

C15002. SEX BY EDUCATIONAL ATTAINMENT FOR THE POPULATION 25 YEARS AND OVER

Data Set: 2008-2012 American Community Survey 5-Year Estimates

	Hale County, Alabama					
	African American	Margin of Error (+/-)	% of AA Total	White, Not Hispanic	Margin of Error (+/-)	% of NHW Total
Total:	5,802	74	100.0%	4,560	19	100.0%
Less than high school diploma	1,860	NC	32.1%	931	NC	20.4%
High school graduate, GED, or alternative	2,219	NC	38.2%	1,647	NC	36.1%
Some college or associate's degree	1,269	NC	21.9%	1,213	NC	26.6%
Bachelor's degree or higher	454	NC	7.8%	769	NC	16.9%
Male:	2,551	32	44.0%	2,258	19	49.5%
Less than high school diploma	892	148	15.4%	491	121	10.8%
High school graduate, GED, or alternative	1,115	165	19.2%	764	145	16.8%
Some college or associate's degree	438	107	7.5%	612	117	13.4%
Bachelor's degree or higher	106	55	1.8%	391	101	8.6%
Female:	3,251	56	56.0%	2,302	19	50.5%
Less than high school diploma	968	159	16.7%	440	111	9.6%
High school graduate, GED, or alternative	1,104	164	19.0%	883	121	19.4%
Some college or associate's degree	831	160	14.3%	601	105	13.2%
Bachelor's degree or higher	348	86	6.0%	378	100	8.3%

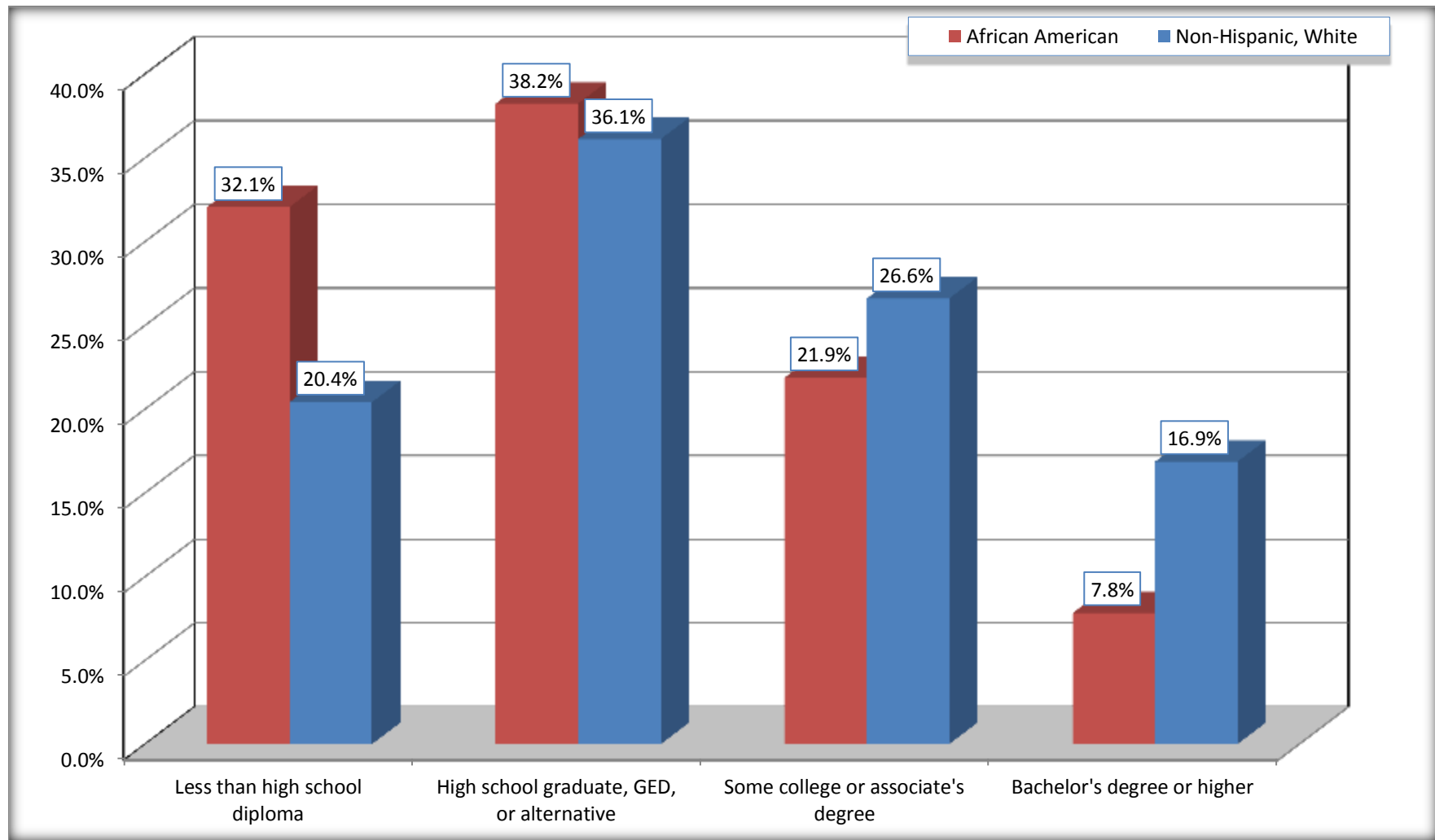
Source: U.S. Census Bureau, 2008-2012 American Community Survey

For information on confidentiality protection, sampling error, nonsampling error, and definitions, see Survey Methodology.

<http://www.census.gov/acs/www/UseData/index.htm>

Educational Attainment for the Population 25 Years and Older

Hale County, Alabama



Source: C15002. SEX BY EDUCATIONAL ATTAINMENT FOR THE POPULATION 25 YEARS AND OVER
Data Set: 2008-2012 American Community Survey 5-Year Estimates

B17010. POVERTY STATUS IN THE PAST 12 MONTHS OF FAMILIES BY FAMILY TYPE BY PRESENCE OF RELATED CHILDREN UNDER 18 YEARS

Data Set: 2008-2012 American Community Survey 5-Year Estimates

	Hale County, Alabama					
	African American	Margin of Error (+/-)	% of AA Total	White, Not Hispanic	Margin of Error (+/-)	% of NHW Total
Total:	2,232	187	100.0%	1,573	133	100.0%
Income in the past 12 months below poverty level:	802	152	35.9%	65	33	4.1%
Married-couple family:	62	44	2.8%	28	23	1.8%
With related children under 18 years	8	10	0.4%	0	19	0.0%
Other family:	740	147	33.2%	37	24	2.4%
Male householder, no wife present	94	70	4.2%	3	7	0.2%
With related children under 18 years	46	43	2.1%	0	19	0.0%
Female householder, no husband present	646	133	28.9%	34	24	2.2%
With related children under 18 years	498	117	22.3%	28	22	1.8%
Income in the past 12 months at or above poverty level:	1,430	182	64.1%	1,508	131	95.9%
Married-couple family:	838	151	37.5%	1,294	129	82.3%
With related children under 18 years	277	80	12.4%	570	118	36.2%
Other family:	592	124	26.5%	214	70	13.6%
Male householder, no wife present	65	38	2.9%	89	45	5.7%
With related children under 18 years	26	25	1.2%	23	25	1.5%
Female householder, no husband present	527	120	23.6%	125	60	7.9%
With related children under 18 years	301	90	13.5%	75	47	4.8%

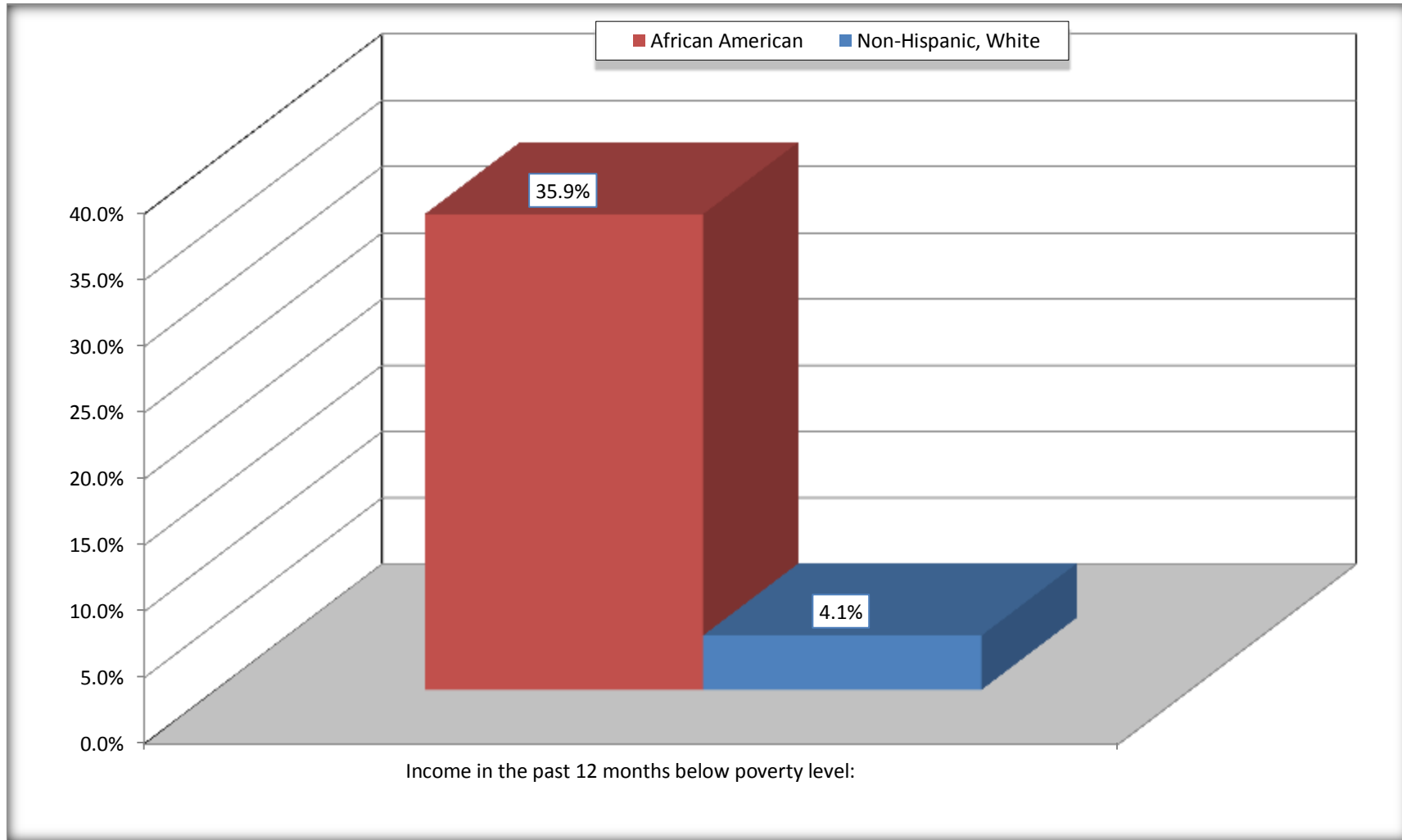
Source: U.S. Census Bureau, 2008-2012 American Community Survey

For information on confidentiality protection, sampling error, nonsampling error, and definitions, see Survey Methodology.

<http://www.census.gov/acs/www/UseData/index.htm>

Family Households Below Poverty in the Past 12 Months

Hale County, Alabama

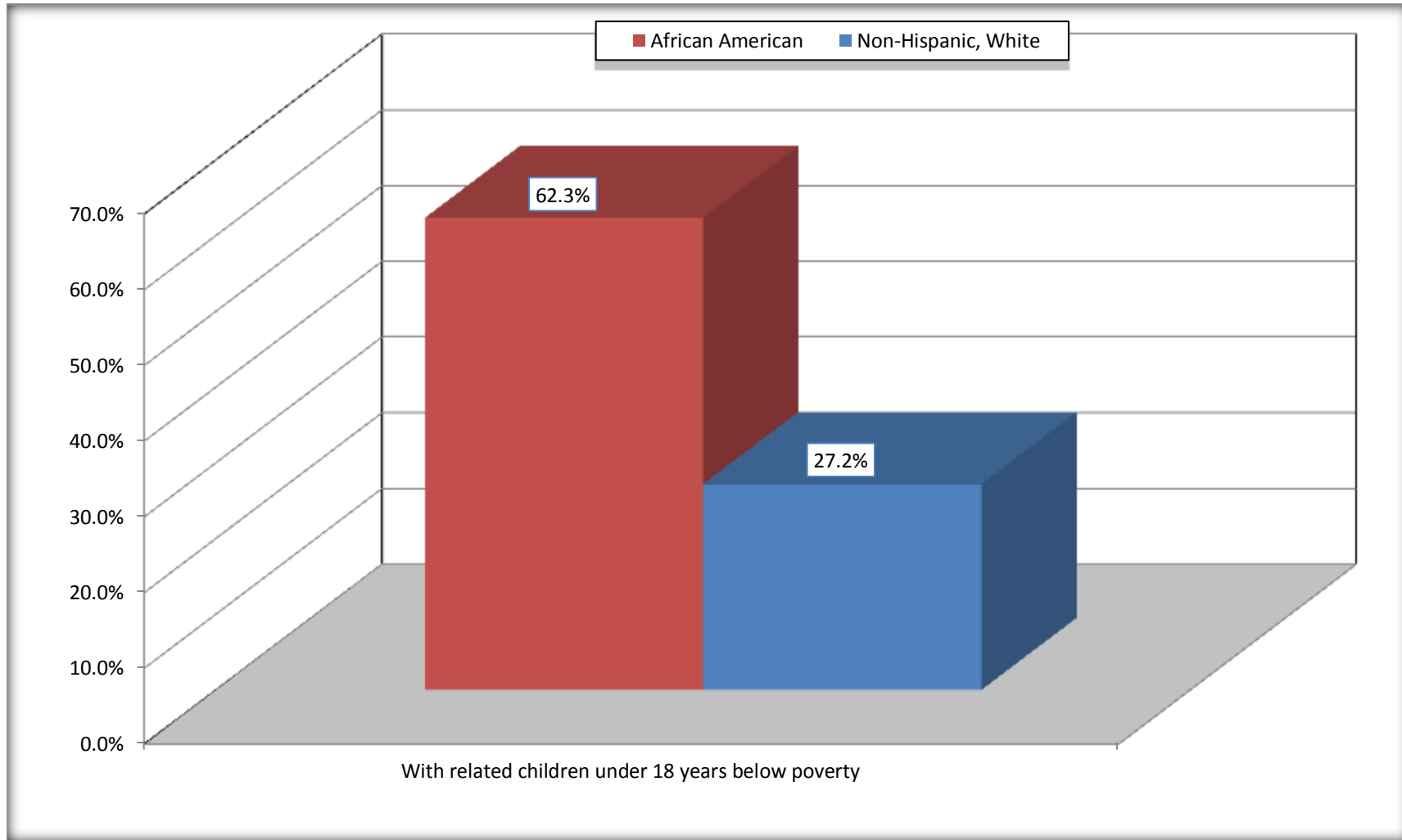


Source: B17010. POVERTY STATUS IN THE PAST 12 MONTHS OF FAMILIES BY FAMILY TYPE BY PRESENCE OF RELATED CHILDREN UNDER 18 YEARS

Data Set: 2008-2012 American Community Survey 5-Year Estimates

Female-headed Households with Related Children Below Poverty in the Past 12 Months

Hale County, Alabama



Source: B17010. POVERTY STATUS IN THE PAST 12 MONTHS OF FAMILIES BY FAMILY TYPE BY PRESENCE OF RELATED CHILDREN UNDER 18 YEARS

Data Set: 2008-2012 American Community Survey 5-Year Estimates

B17020 POVERTY STATUS IN THE PAST 12 MONTHS BY AGE - Universe: POPULATION FOR WHOM POVERTY STATUS IS DETERMINED

Data Set: 2008-2012 American Community Survey 5-Year Estimates

	Hale County, Alabama					
	African American	Margin of Error (+/-)	% of AA By Age	White, Not Hispanic	Margin of Error (+/-)	% of NHW By Age
Total:	9,178	130	100.0%	6,092	53	100.0%
Income in the past 12 months below poverty level:	3,746	524	40.8%	468	134	7.7%
Under 18 years	1,453	NC	55.9%	45	NC	3.6%
18 to 64 years	1,949	314	35.7%	304	119	8.2%
65 years and over	344	NC	30.9%	119	NC	10.3%
Income in the past 12 months at or above poverty level:	5,432	514	59.2%	5,624	148	92.3%
Under 18 years	1,145	NC	44.1%	1,193	NC	96.4%
18 to 64 years	3,517	322	64.3%	3,399	125	91.8%
65 years and over	770	NC	69.1%	1,032	NC	89.7%

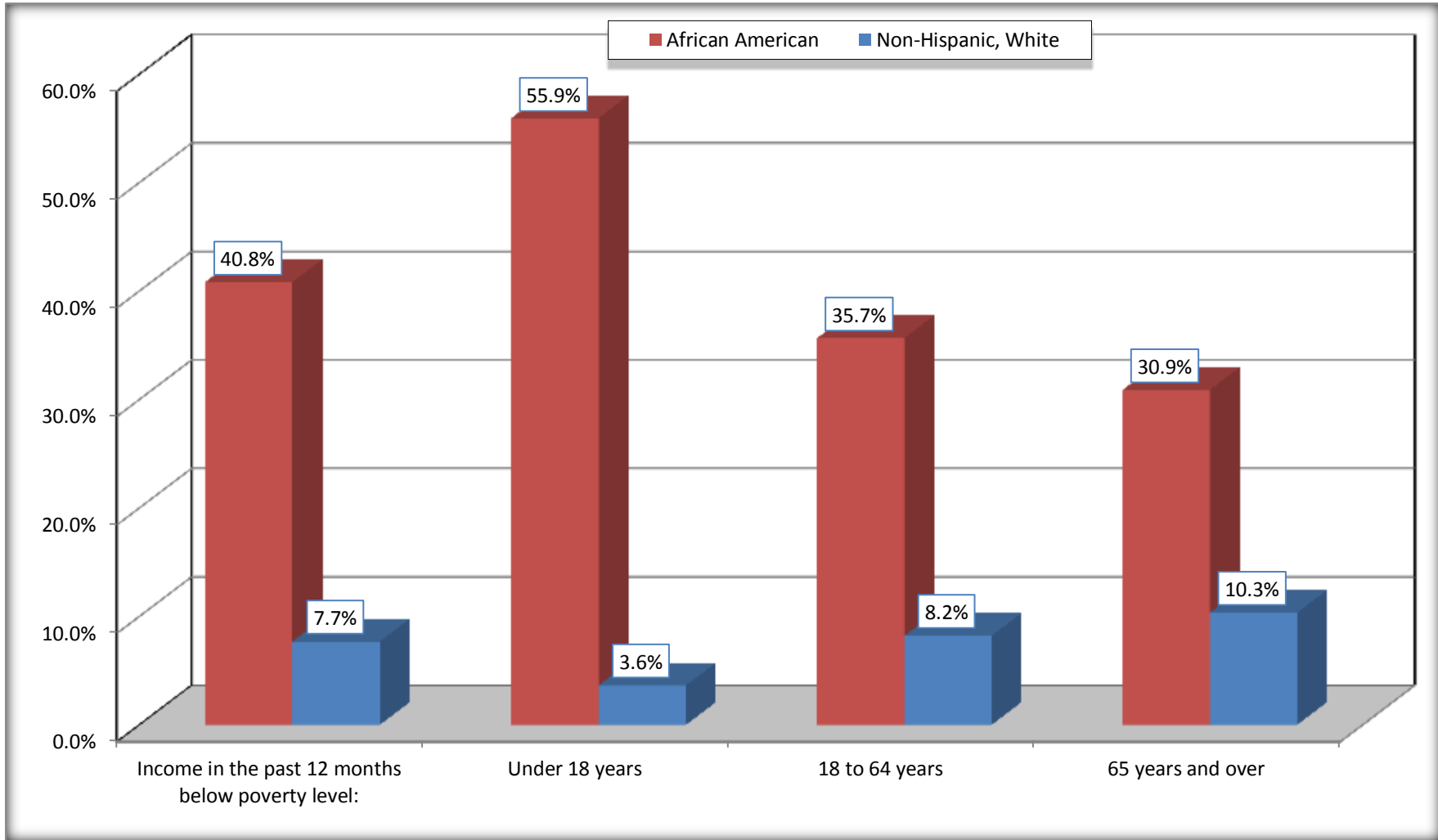
Source: U.S. Census Bureau, 2008-2012 American Community Survey

For information on confidentiality protection, sampling error, nonsampling error, and definitions, see Survey Methodology.

<http://www.census.gov/acs/www/UseData/index.htm>

Population Below Poverty in the Past 12 Months

Hale County, Alabama



Source: B17020 POVERTY STATUS IN THE PAST 12 MONTHS BY AGE - Universe: POPULATION FOR WHOM POVERTY STATUS IS DETERMINED
Data Set: 2008-2012 American Community Survey 5-Year Estimates

B19001. HOUSEHOLD INCOME IN THE PAST 12 MONTHS (IN 2010 INFLATION-ADJUSTED DOLLARS)

Data Set: 2008-2012 American Community Survey 5-Year Estimates

	Hale County, Alabama					
	African American	Margin of Error (+/-)	% of AA Total	White, Not Hispanic	Margin of Error (+/-)	% of NHW Total
Total:	3,440	168	100.0%	2,468	126	100.0%
Less than \$ 10,000	737	158	21.4%	203	78	8.2%
\$ 10,000 to \$ 14,999	448	135	13.0%	95	46	3.8%
\$ 15,000 to \$ 24,999	729	NC	21.2%	363	NC	14.7%
\$ 25,000 to \$ 34,999	546	NC	15.9%	336	NC	13.6%
\$ 35,000 to \$ 49,999	458	NC	13.3%	410	NC	16.6%
\$ 50,000 to \$ 74,999	296	NC	8.6%	400	NC	16.2%
\$ 75,000 to \$ 99,999	110	58	3.2%	327	104	13.2%
\$ 100,000 to \$ 149,999	81	NC	2.4%	279	NC	11.3%
\$ 150,000 to \$ 199,999	21	27	0.6%	43	32	1.7%
\$ 200,000 or more	14	22	0.4%	12	13	0.5%

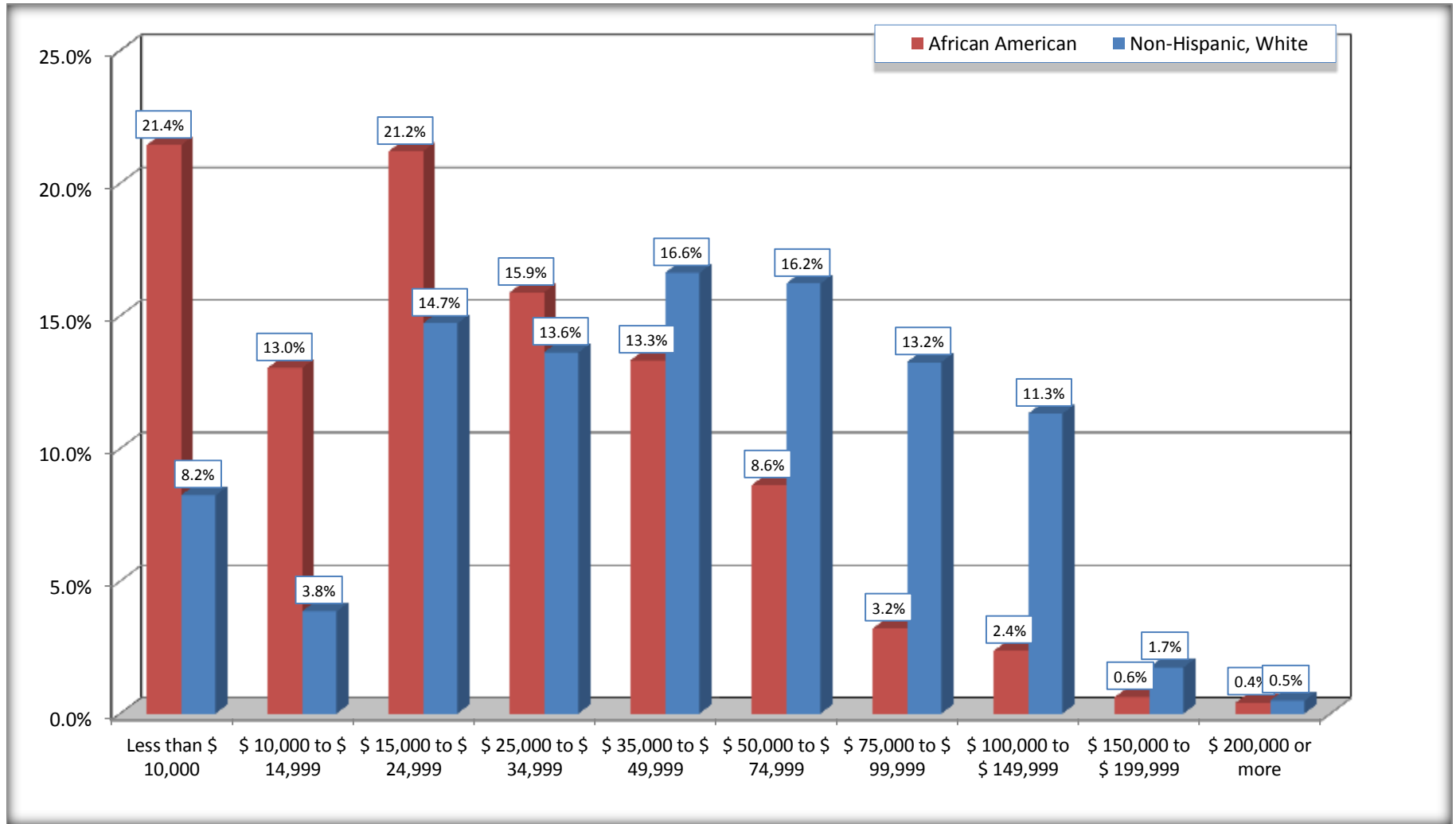
Source: U.S. Census Bureau, 2008-2012 American Community Survey

For information on confidentiality protection, sampling error, nonsampling error, and definitions, see Survey Methodology.

<http://www.census.gov/acs/www/UseData/index.htm>

Household Income in the Past 12 Months

Hale County, Alabama



Source: B19001. HOUSEHOLD INCOME IN THE PAST 12 MONTHS (IN 2010 INFLATION-ADJUSTED DOLLARS)
Data Set: 2008-2012 American Community Survey 5-Year Estimates

B19013. MEDIAN HOUSEHOLD INCOME IN THE PAST 12 MONTHS (IN 2010 INFLATION-ADJUSTED DOLLARS)

Data Set: 2008-2012 American Community Survey 5-Year Estimates

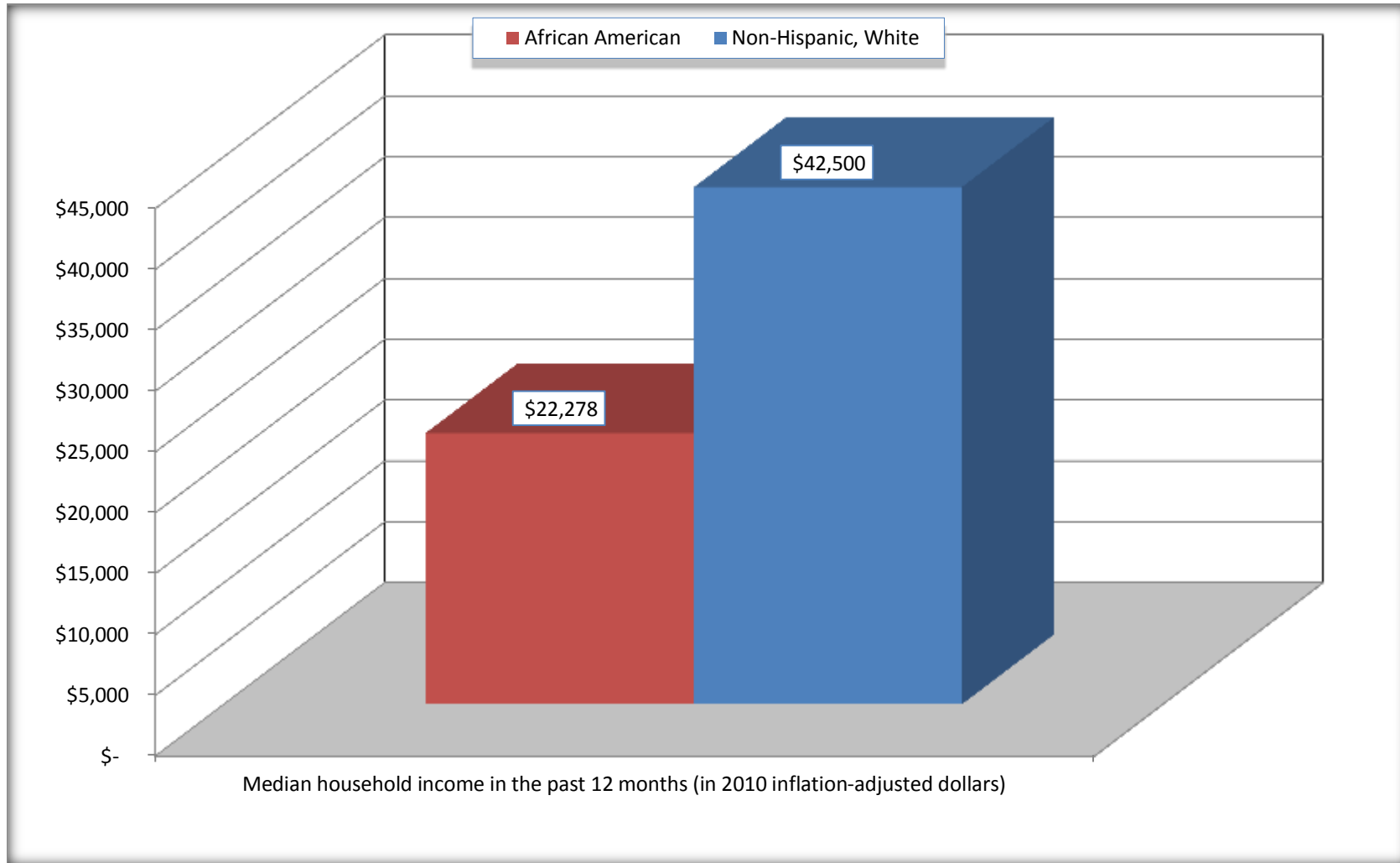
	Hale County, Alabama			
	African American	Margin of Error (+/-)	White, Not Hispanic	Margin of Error (+/-)
Median household income in the past 12 months (in 2010 inflation-adjusted dollars)	\$ 22,278	\$ 2,192	\$ 42,500	\$ 5,712

Source: U.S. Census Bureau, 2008-2012 American Community Survey

For information on confidentiality protection, sampling error, nonsampling error, and definitions, see Survey Methodology.
<http://www.census.gov/acs/www/UseData/index.htm>

Median Household Income in the Past 12 Months

Hale County, Alabama



Source: B19013. MEDIAN HOUSEHOLD INCOME IN THE PAST 12 MONTHS (IN 2010 INFLATION-ADJUSTED DOLLARS)
Data Set: 2008-2012 American Community Survey 5-Year Estimates

B19101. FAMILY INCOME IN THE PAST 12 MONTHS (IN 2010 INFLATION-ADJUSTED DOLLARS)

Data Set: 2008-2012 American Community Survey 5-Year Estimates

	Hale County, Alabama					
	African American	Margin of Error (+/-)	% of AA Total	White, Not Hispanic	Margin of Error (+/-)	% of NHW Total
Total:	2,232	187	100.0%	1,573	133	100.0%
Less than \$ 10,000	411	122	18.4%	14	15	0.9%
\$ 10,000 to \$ 14,999	236	93	10.6%	35	24	2.2%
\$ 15,000 to \$ 24,999	421	NC	18.9%	135	NC	8.6%
\$ 25,000 to \$ 34,999	359	NC	16.1%	196	NC	12.5%
\$ 35,000 to \$ 49,999	361	NC	16.2%	299	NC	19.0%
\$ 50,000 to \$ 74,999	234	NC	10.5%	311	NC	19.8%
\$ 100,000 to \$ 149,999	81	NC	3.6%	271	NC	17.2%
\$ 150,000 to \$ 199,999	21	27	0.9%	43	32	2.7%
\$ 200,000 or more	0	19	0.0%	12	13	0.8%

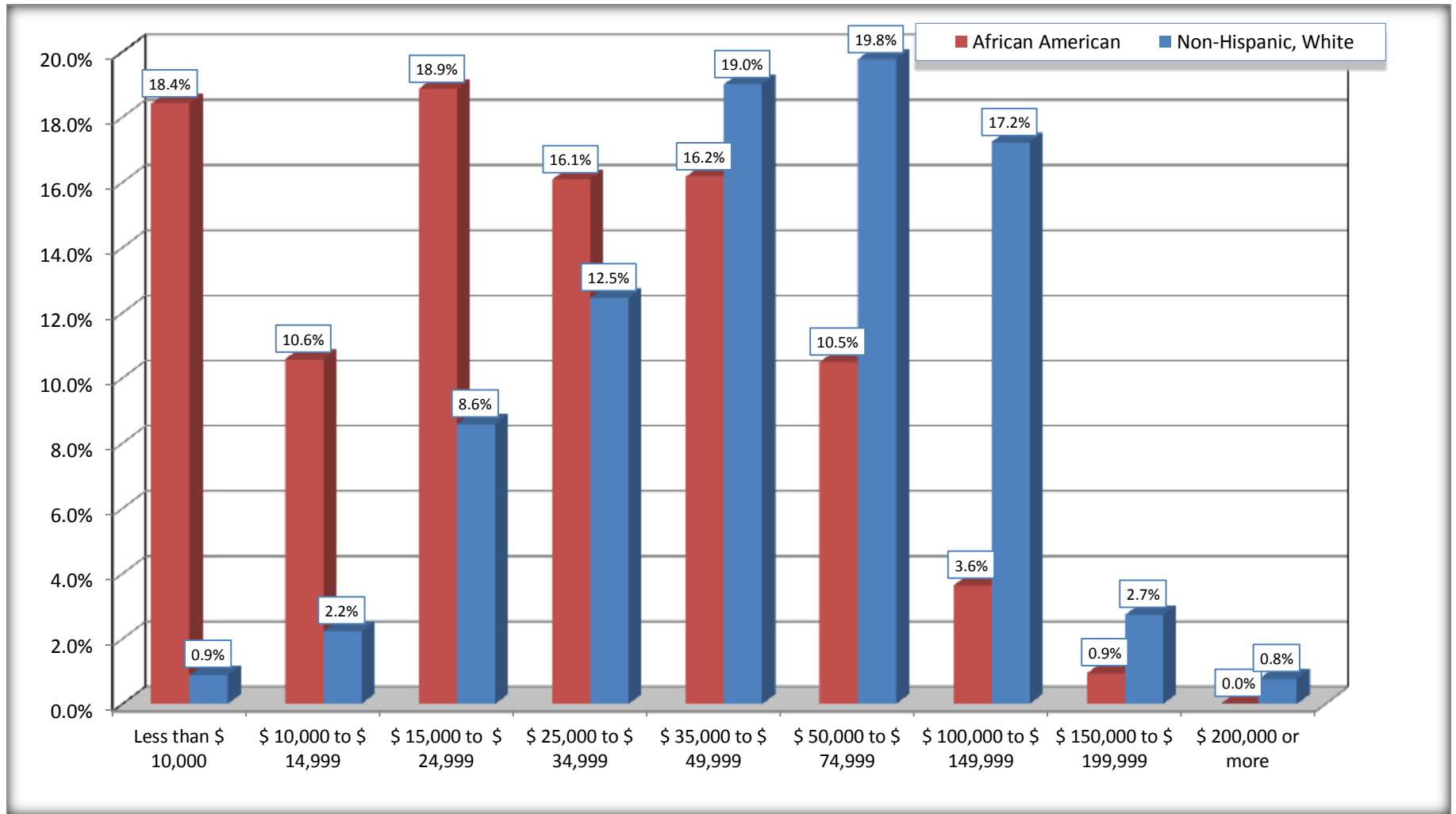
Source: U.S. Census Bureau, 2008-2012 American Community Survey

For information on confidentiality protection, sampling error, nonsampling error, and definitions, see Survey Methodology.

<http://www.census.gov/acs/www/UseData/index.htm>

Family Income in the Past 12 Months

Hale County, Alabama



Source: B19101. FAMILY INCOME IN THE PAST 12 MONTHS (IN 2010 INFLATION-ADJUSTED DOLLARS)
Data Set: 2008-2012 American Community Survey 5-Year Estimates

B19113. MEDIAN FAMILY INCOME IN THE PAST 12 MONTHS (IN 2010 INFLATION-ADJUSTED DOLLARS)

Data Set: 2008-2012 American Community Survey 5-Year Estimates

	Hale County, Alabama			
	African American	Margin of Error (+/-)	White, Not Hispanic	Margin of Error (+/-)
Median family income in the past 12 months (in 2010 inflation-adjusted dollars)	\$ 26,538	\$ 3,672	\$ 58,350	\$ 11,156

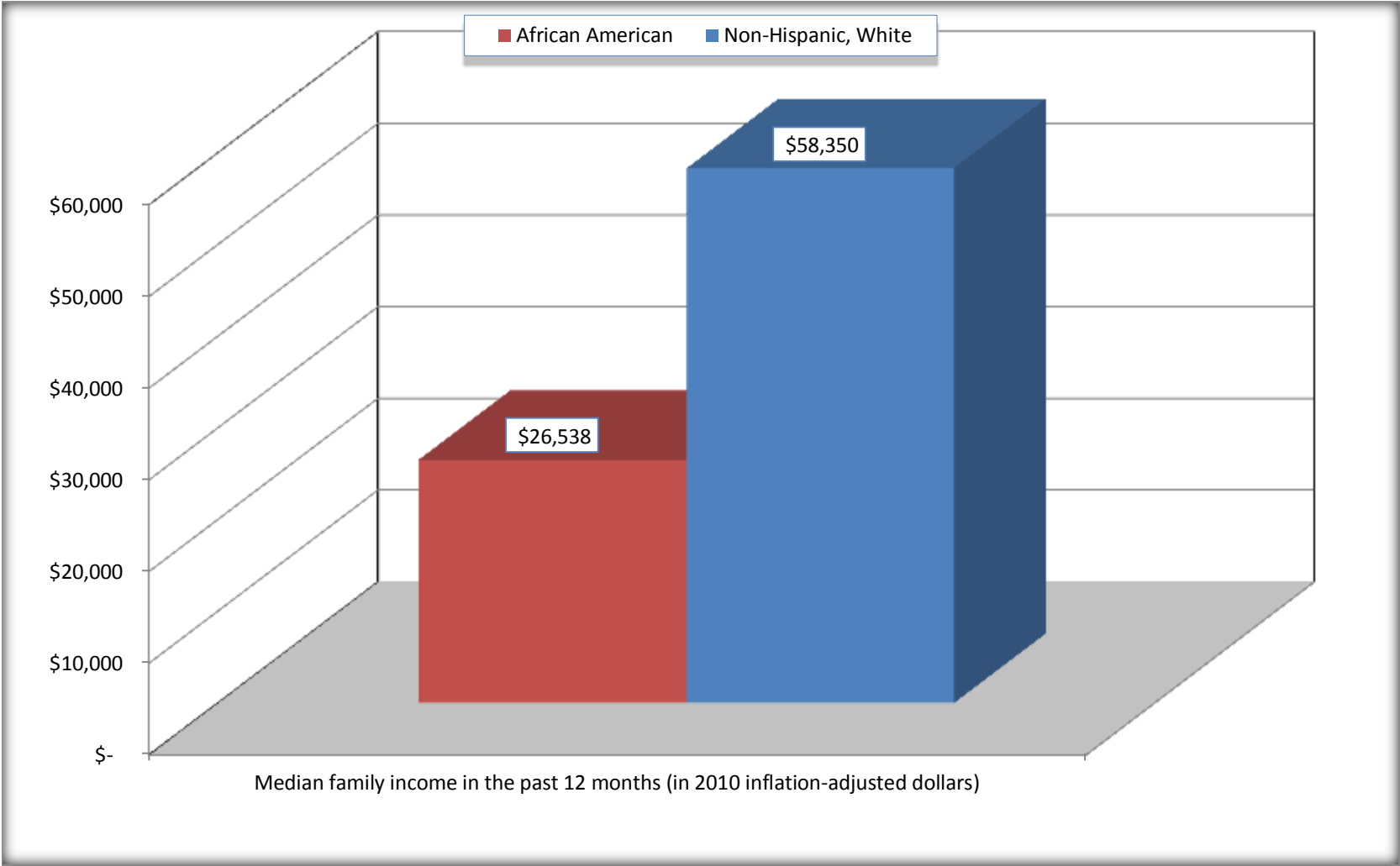
Source: U.S. Census Bureau, 2008-2012 American Community Survey

For information on confidentiality protection, sampling error, nonsampling error, and definitions, see Survey Methodology.

<http://www.census.gov/acs/www/UseData/index.htm>

Median Family Income in the Past 12 Months

Hale County, Alabama



Source: B19113. MEDIAN FAMILY INCOME IN THE PAST 12 MONTHS (IN 2010 INFLATION-ADJUSTED DOLLARS)
Data Set: 2008-2012 American Community Survey 5-Year Estimates

B19202. MEDIAN NONFAMILY HOUSEHOLD INCOME IN THE PAST 12 MONTHS (IN 2010 INFLATION-ADJUSTED DOLLARS)

Data Set: 2008-2012 American Community Survey 5-Year Estimates

	Hale County, Alabama			
	African American	Margin of Error (+/-)	White, Not Hispanic	Margin of Error (+/-)
Median nonfamily household income in the past 12 months (in 2010 inflation-adjusted dollars)	\$ 14,402	\$ 3,844	\$ 22,386	\$ 6,712

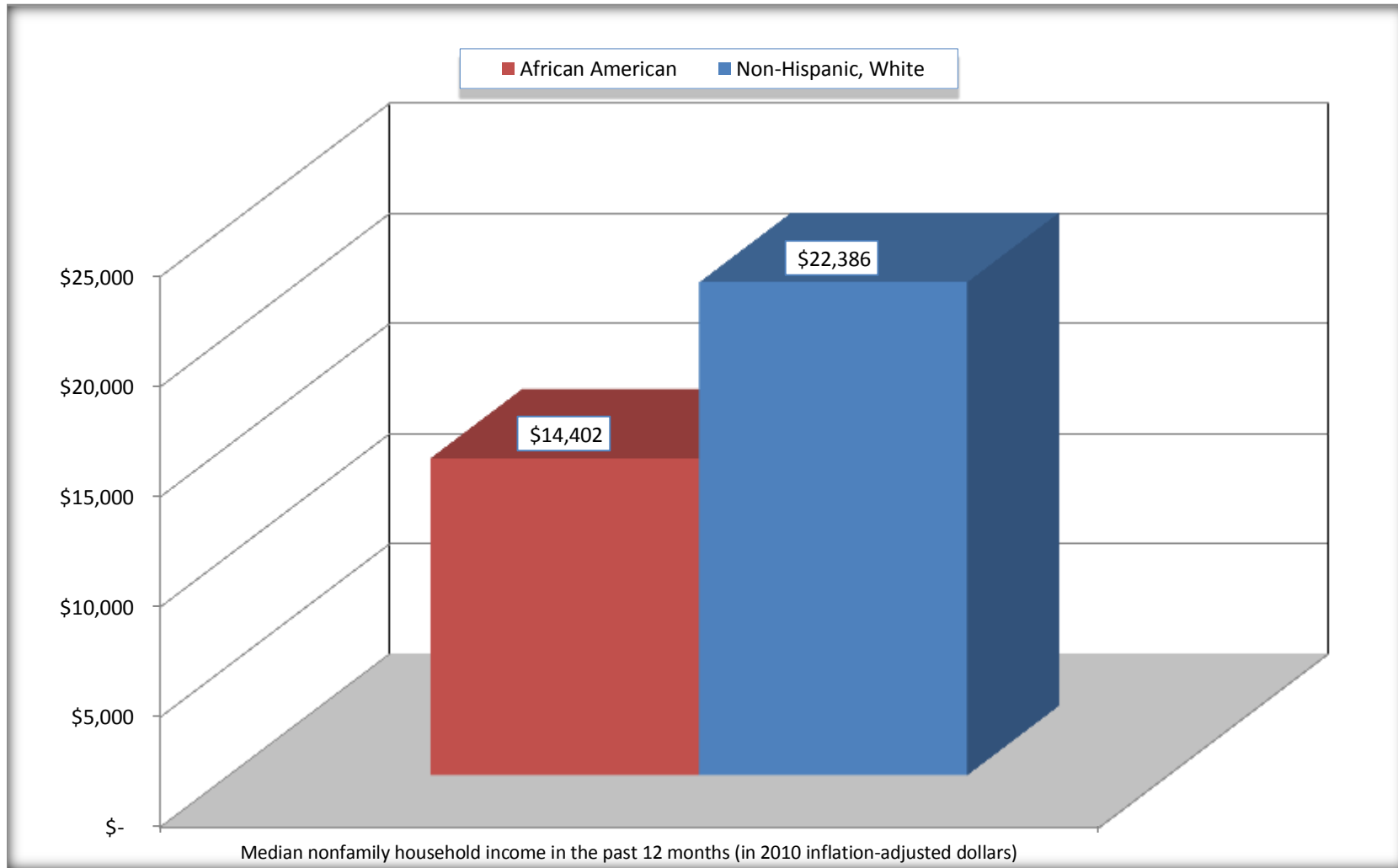
Source: U.S. Census Bureau, 2008-2012 American Community Survey

For information on confidentiality protection, sampling error, nonsampling error, and definitions, see Survey Methodology.

<http://www.census.gov/acs/www/UseData/index.htm>

Median Non-Family Income in the Past 12 Months

Hale County, Alabama



Source: B19202. MEDIAN NONFAMILY HOUSEHOLD INCOME IN THE PAST 12 MONTHS (IN 2010 INFLATION-ADJUSTED DOLLARS)
Data Set: 2008-2012 American Community Survey 5-Year Estimates

B19301. PER CAPITA INCOME IN THE PAST 12 MONTHS (IN 2010 INFLATION-ADJUSTED DOLLARS)

Data Set: 2008-2012 American Community Survey 5-Year Estimates

	Hale County, Alabama			
	African American	Margin of Error (+/-)	White, Not Hispanic	Margin of Error (+/-)
Per capita income in the past 12 months (in 2010 inflation-adjusted dollars)	\$ 13,412	\$ 3,076	\$ 23,100	\$ 1,665

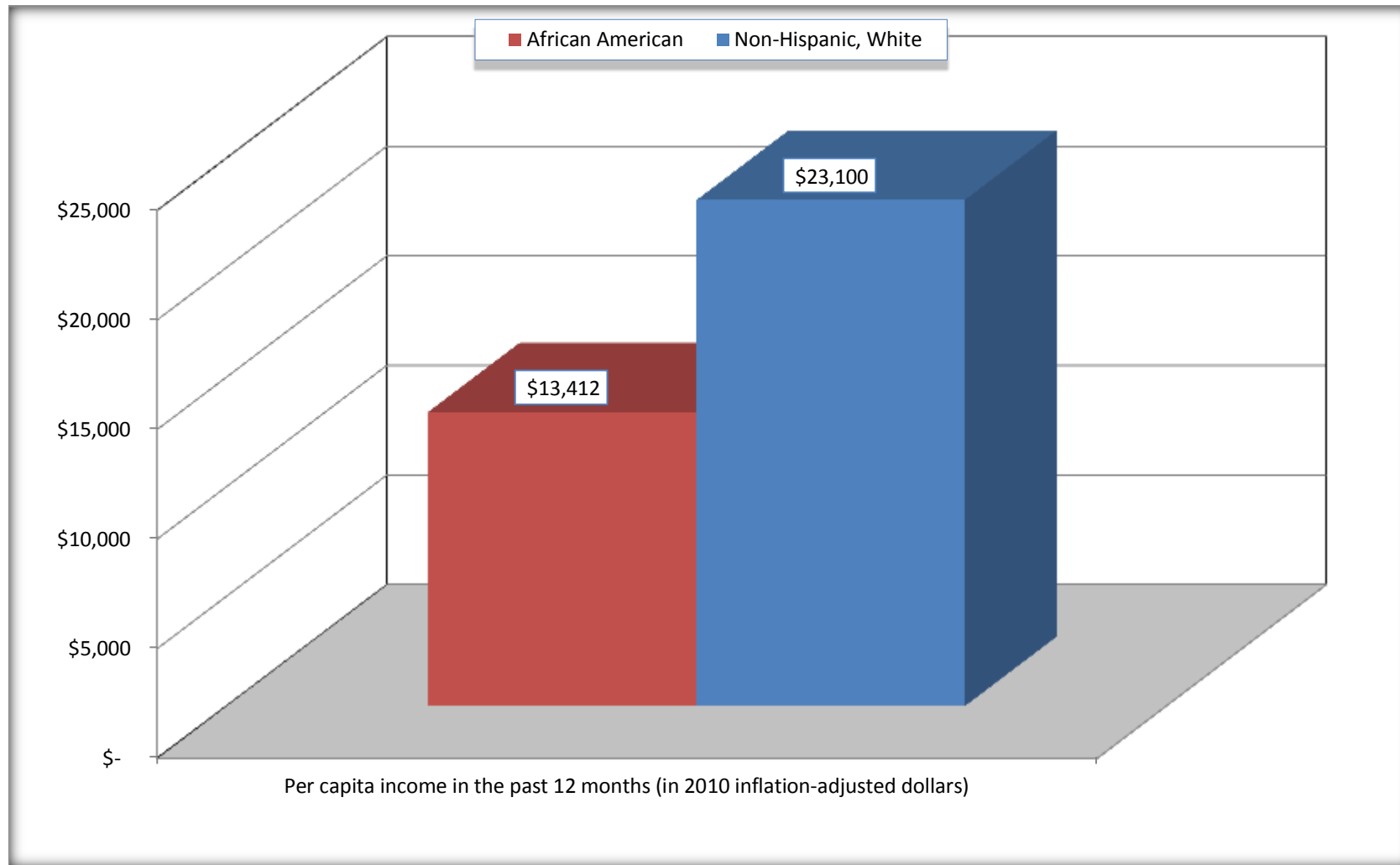
Source: U.S. Census Bureau, 2008-2012 American Community Survey

For information on confidentiality protection, sampling error, nonsampling error, and definitions, see Survey Methodology.

<http://www.census.gov/acs/www/UseData/index.htm>

Per capita Income in the Past 12 Months

Hale County, Alabama



Source: B19301. PER CAPITA INCOME IN THE PAST 12 MONTHS (IN 2010 INFLATION-ADJUSTED DOLLARS)
Data Set: 2008-2012 American Community Survey 5-Year Estimates

B20017. MEDIAN EARNINGS IN THE PAST 12 MONTHS (IN 2010 INFLATION-ADJUSTED DOLLARS) BY SEX BY WORK EXPERIENCE IN THE PAST 12 MONTHS FOR THE POPULATION 16 YEARS AND OVER WITH EARNINGS IN THE PAST 12 MONTHS

Data Set: 2008-2012 American Community Survey 5-Year Estimates

	Lamar County, Alabama			
	African American	Margin of Error (+/-)	White, Not Hispanic	Margin of Error (+/-)
Median earnings in the past 12 months (in 2010 inflation-adjusted dollars) --				
Total:	\$ 20,833	\$ 6,810	\$ 30,154	\$ 5,673
Male --				
Total	\$ 23,696	\$ 4,257	\$ 34,458	\$ 4,363
Worked full-time, year-round in the past 12 months	\$ 25,509	\$ 4,239	\$ 41,179	\$ 5,463
Other	\$ 11,932	\$ 19,616	\$ 16,563	\$ 6,220
Female --				
Total	\$ 14,659	\$ 9,717	\$ 21,963	\$ 4,925
Worked full-time, year-round in the past 12 months	\$ 26,521	\$ 3,969	\$ 35,669	\$ 4,558
Other	\$ 6,827	\$ 5,684	\$ 13,866	\$ 1,794

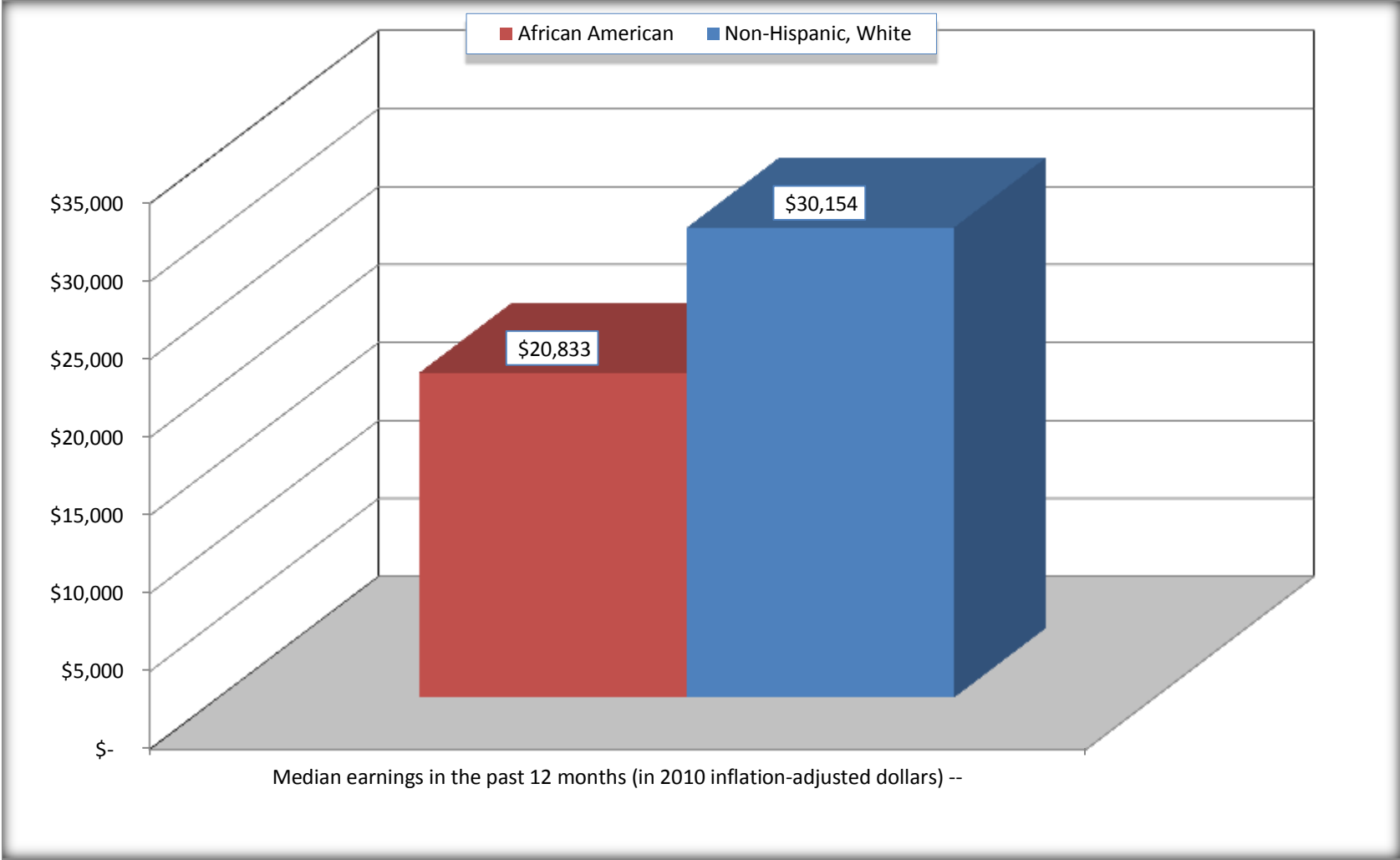
Source: U.S. Census Bureau, 2008-2012 American Community Survey

For information on confidentiality protection, sampling error, nonsampling error, and definitions, see Survey Methodology.

<http://www.census.gov/acs/www/UseData/index.htm>

Median earnings in the Past 12 Months (16 Years and Over with Earnings)

Lamar County, Alabama



Source: B20017. MEDIAN EARNINGS IN THE PAST 12 MONTHS (IN 2010 INFLATION-ADJUSTED DOLLARS) BY SEX BY WORK EXPERIENCE IN THE PAST 12 MONTHS FOR THE POPULATION 16 YEARS AND OVER WITH EARNINGS IN THE PAST 12 MONTHS
Data Set: 2008-2012 American Community Survey 5-Year Estimates

B20005. SEX BY WORK EXPERIENCE IN THE PAST 12 MONTHS BY EARNINGS IN THE PAST 12 MONTHS (IN 2010 INFLATION-ADJUSTED DOLLARS) FOR THE POPULATION 16 YEARS AND OVER

Data Set: 2008-2012 American Community Survey 5-Year Estimates

	Hale County, Alabama					
	African American	Margin of Error (+/-)	% of AA Total	White, Not Hispanic	Margin of Error (+/-)	% of NHW Total
Total:	6,974	110	100.0%	5,126	44	100.0%
Worked full-time, year-round in the past 12 months:	1,851	NC	26.5%	1,821	NC	35.5%
No earnings	0	NC	0.0%	0	NC	0.0%
With earnings:	1,851	NC	26.5%	1,821	NC	35.5%
\$ 1 to \$ 9,999 or loss	79	NC	1.1%	32	NC	0.6%
\$ 10,000 to \$ 19,999	482	NC	6.9%	217	NC	4.2%
\$ 20,000 to \$ 29,999	497	NC	7.1%	365	NC	7.1%
\$ 30,000 to \$ 49,999	525	NC	7.5%	598	NC	11.7%
\$ 50,000 to \$ 74,999	199	NC	2.9%	358	NC	7.0%
\$ 75,000 or more	69	NC	1.0%	251	NC	4.9%
Other:	5,123	NC	73.5%	3,305	NC	64.5%
No earnings	3,510	NC	50.3%	2,234	NC	43.6%
With earnings: less than full time, year-round	1,613	NC	23.1%	1,071	NC	20.9%
Male:	3,162	56	45.3%	2,560	23	49.9%
Worked full-time, year-round in the past 12 months:	890	164	12.8%	1,170	144	22.8%
No earnings	0	19	0.0%	0	19	0.0%
With earnings:	890	164	12.8%	1,170	144	22.8%
\$ 1 to \$ 9,999 or loss	39	NC	0.6%	32	NC	0.6%
\$ 10,000 to \$ 19,999	229	NC	3.3%	109	NC	2.1%
\$ 20,000 to \$ 29,999	201	NC	2.9%	219	NC	4.3%
\$ 30,000 to \$ 49,999	245	NC	3.5%	347	NC	6.8%
\$ 50,000 to \$ 74,999	107	NC	1.5%	237	NC	4.6%
\$ 75,000 or more	69	NC	1.0%	226	NC	4.4%

	Hale County, Alabama					
	African American	Margin of Error (+/-)	% of AA Total	White, Not Hispanic	Margin of Error (+/-)	% of NHW Total
Other:	2,272	184	32.6%	1,390	142	27.1%
No earnings	1,440	171	20.6%	947	151	18.5%
With earnings:	832	171	11.9%	443	113	8.6%
Female:	3,812	86	54.7%	2,566	35	50.1%
Worked full-time, year-round in the past 12 months:	961	171	13.8%	651	107	12.7%
No earnings	0	19	0.0%	0	19	0.0%
With earnings:	961	171	13.8%	651	107	12.7%
\$ 1 to \$ 9,999 or loss	40	NC	0.6%	0	NC	0.0%
\$ 10,000 to \$ 19,999	253	NC	3.6%	108	NC	2.1%
\$ 20,000 to \$ 29,999	296	NC	4.2%	146	NC	2.8%
\$ 30,000 to \$ 49,999	280	NC	4.0%	251	NC	4.9%
\$ 50,000 to \$ 74,999	92	NC	1.3%	121	NC	2.4%
\$ 75,000 or more	0	NC	0.0%	25	NC	0.5%
Other:	2,851	199	40.9%	1,915	112	37.4%
No earnings	2,070	187	29.7%	1,287	124	25.1%
With earnings:	781	146	11.2%	628	120	12.3%

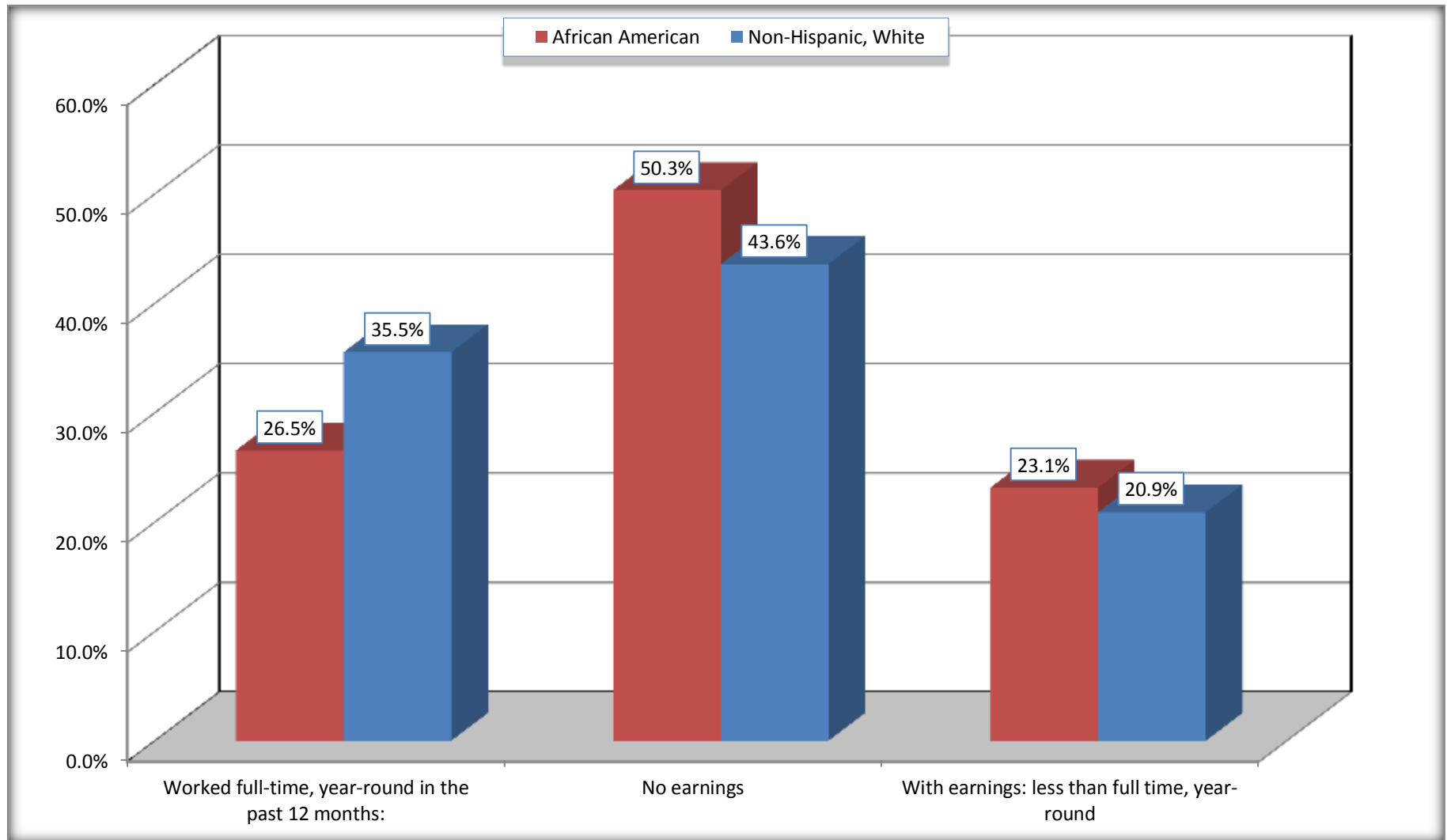
Source: U.S. Census Bureau, 2008-2012 American Community Survey

For information on confidentiality protection, sampling error, nonsampling error, and definitions, see Survey Methodology.

<http://www.census.gov/acs/www/UseData/index.htm>

Employment and Earnings in in the Past 12 Months (16 Years and Over)

Hale County, Alabama



Source: B20005. SEX BY WORK EXPERIENCE IN THE PAST 12 MONTHS BY EARNINGS IN THE PAST 12 MONTHS (IN 2010 INFLATION-ADJUSTED DOLLARS) FOR THE POPULATION 16 YEARS AND OVER

Data Set: 2008-2012 American Community Survey 5-Year Estimates

C21001. SEX BY AGE BY VETERAN STATUS FOR THE CIVILIAN POPULATION 18 YEARS AND OVER

Data Set: 2008-2012 American Community Survey 5-Year Estimates

	Hale County, Alabama					
	African American	Margin of Error (+/-)	% of AA Total	White, Not Hispanic	Margin of Error (+/-)	% of NHW Total
Total:	6,719	82	100.0%	5,003	19	100.0%
Veteran	518	NC	7.7%	589	NC	11.8%
Nonveteran	6,201	NC	92.3%	4,414	NC	88.2%
Male:	3,005	38	44.7%	2,493	19	49.8%
18 to 64 years:	2,550	35	38.0%	1,947	19	38.9%
Veteran	363	107	5.4%	266	94	5.3%
Nonveteran	2,187	115	32.5%	1,681	94	33.6%
65 years and over:	455	11	6.8%	546	19	10.9%
Veteran	136	58	2.0%	268	63	5.4%
Nonveteran	319	56	4.7%	278	63	5.6%
Female:	3,714	59	55.3%	2,510	19	50.2%
18 to 64 years:	3,013	60	44.8%	1,822	19	36.4%
Veteran	19	19	0.3%	45	45	0.9%
Nonveteran	2,994	61	44.6%	1,777	45	35.5%
65 years and over:	701	5	10.4%	688	19	13.8%
Veteran	0	19	0.0%	10	11	0.2%
Nonveteran	701	5	10.4%	678	11	13.6%

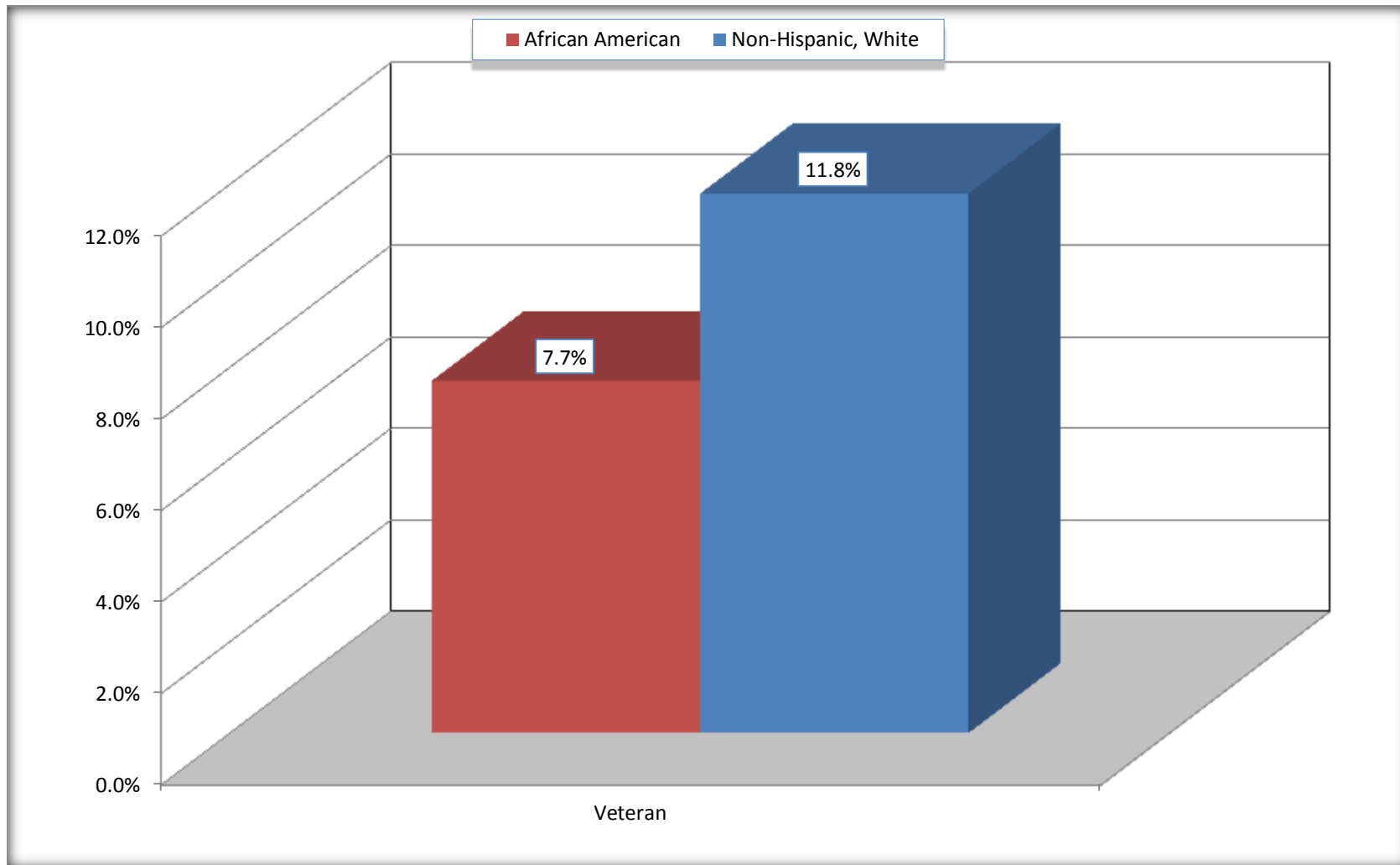
Source: U.S. Census Bureau, 2008-2012 American Community Survey

For information on confidentiality protection, sampling error, nonsampling error, and definitions, see Survey Methodology.

<http://www.census.gov/acs/www/UseData/index.htm>

Veterans in the Civilian Population 18 Years and Over

Hale County, Alabama



Source: C21001. SEX BY AGE BY VETERAN STATUS FOR THE CIVILIAN POPULATION 18 YEARS AND OVER
Data Set: 2008-2012 American Community Survey 5-Year Estimates

B22005. RECEIPT OF FOOD STAMPS/SNAP IN THE PAST 12 MONTHS BY RACE OF HOUSEHOLDER

Data Set: 2008-2012 American Community Survey 5-Year Estimates

	Lamar County, Alabama					
	African American	Margin of Error (+/-)	% of AA Total	White, Not Hispanic	Margin of Error (+/-)	% of NHW Total
Total:	787	75	100.0%	2,468	126	100.0%
HH received Food Stamps/SNAP in the past 12 months	339	96	43.1%	172	67	7.0%
HH did not receive Food Stamps/SNAP in the past 12 months	448	95	56.9%	2,296	122	93.0%

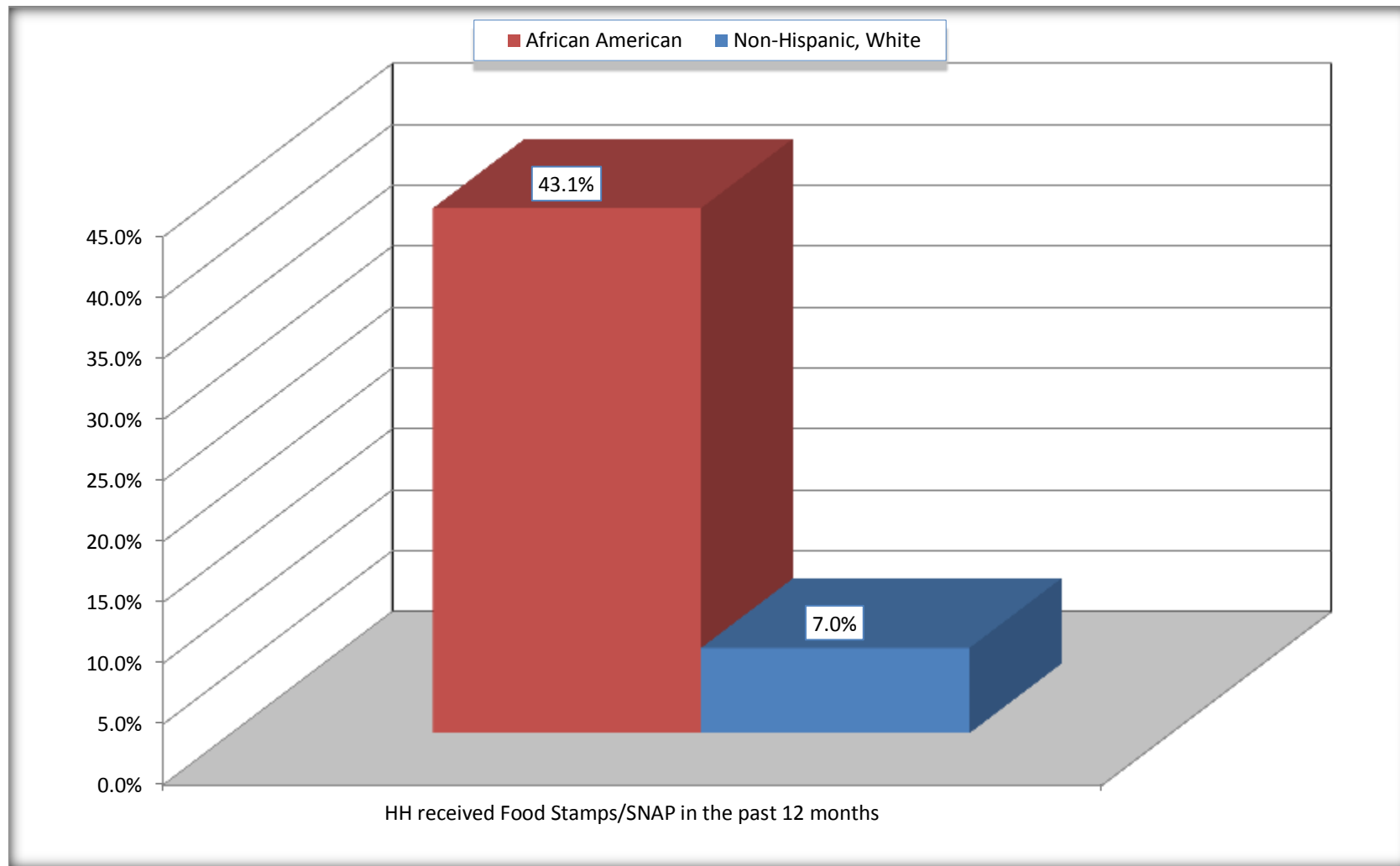
Source: U.S. Census Bureau, 2008-2012 American Community Survey

For information on confidentiality protection, sampling error, nonsampling error, and definitions, see Survey Methodology.

<http://www.census.gov/acs/www/UseData/index.htm>

Receipt of Food Stamps/SNAP in the Past 12 Months by Household

Lamar County, Alabama



Source: B22005. RECEIPT OF FOOD STAMPS/SNAP IN THE PAST 12 MONTHS BY RACE OF HOUSEHOLDER
Data Set: 2008-2012 American Community Survey 5-Year Estimates

C23002. SEX BY AGE BY EMPLOYMENT STATUS FOR THE POPULATION 16 YEARS AND OVER

Data Set: 2008-2012 American Community Survey 5-Year Estimates

	Hale County, Alabama					
	African American	Margin of Error (+/-)	% of AA Total	White, Not Hispanic	Margin of Error (+/-)	% of NHW Total
Total:	6,974	110	100.0%	5,126	44	100.0%
In labor force:	3,554	NC	51.0%	2,838	NC	55.4%
In Armed Forces	10	NC	0.1%	0	NC	0.0%
Civilian:	3,477	NC	49.9%	2,669	NC	52.1%
Employed	2,713	NC	38.9%	2,656	NC	51.8%
Unemployed	831	NC	11.9%	182	NC	3.6%
Not in labor force	3,420	NC	49.0%	2,288	NC	44.6%
Male:	3,162	56	45.3%	2,560	23	49.9%
16 to 64 years:	2,707	53	38.8%	2,014	23	39.3%
In labor force:	1,706	132	24.5%	1,477	136	28.8%
In Armed Forces	10	20	0.1%	0	19	0.0%
Civilian:	1,696	135	24.3%	1,477	136	28.8%
Employed	1,208	186	17.3%	1,384	165	27.0%
Unemployed	488	153	7.0%	93	61	1.8%
Not in labor force	1,001	145	14.4%	537	132	10.5%
65 years and over:	455	11	6.5%	546	19	10.7%
In labor force:	42	29	0.6%	85	41	1.7%
Employed	42	29	0.6%	74	41	1.4%
Unemployed	0	19	0.0%	11	19	0.2%
Not in labor force	413	31	5.9%	461	41	9.0%

	Hale County, Alabama					
	African American	Margin of Error (+/-)	% of AA Total	White, Not Hispanic	Margin of Error (+/-)	% of NHW Total
Female:	3,812	86	54.7%	2,566	35	50.1%
16 to 64 years:	3,111	87	44.6%	1,878	35	36.6%
In labor force:	1,781	202	25.5%	1,192	105	23.3%
In Armed Forces	0	19	0.0%	0	19	0.0%
Civilian:	1,781	202	25.5%	1,192	105	23.3%
Employed	1,438	178	20.6%	1,114	112	21.7%
Unemployed	343	115	4.9%	78	49	1.5%
Not in labor force	1,330	211	19.1%	686	97	13.4%
65 years and over:	701	5	10.1%	688	19	13.4%
In labor force:	25	37	0.4%	84	46	1.6%
Employed	25	37	0.4%	84	46	1.6%
Unemployed	0	19	0.0%	0	19	0.0%
Not in labor force	676	38	9.7%	604	46	11.8%

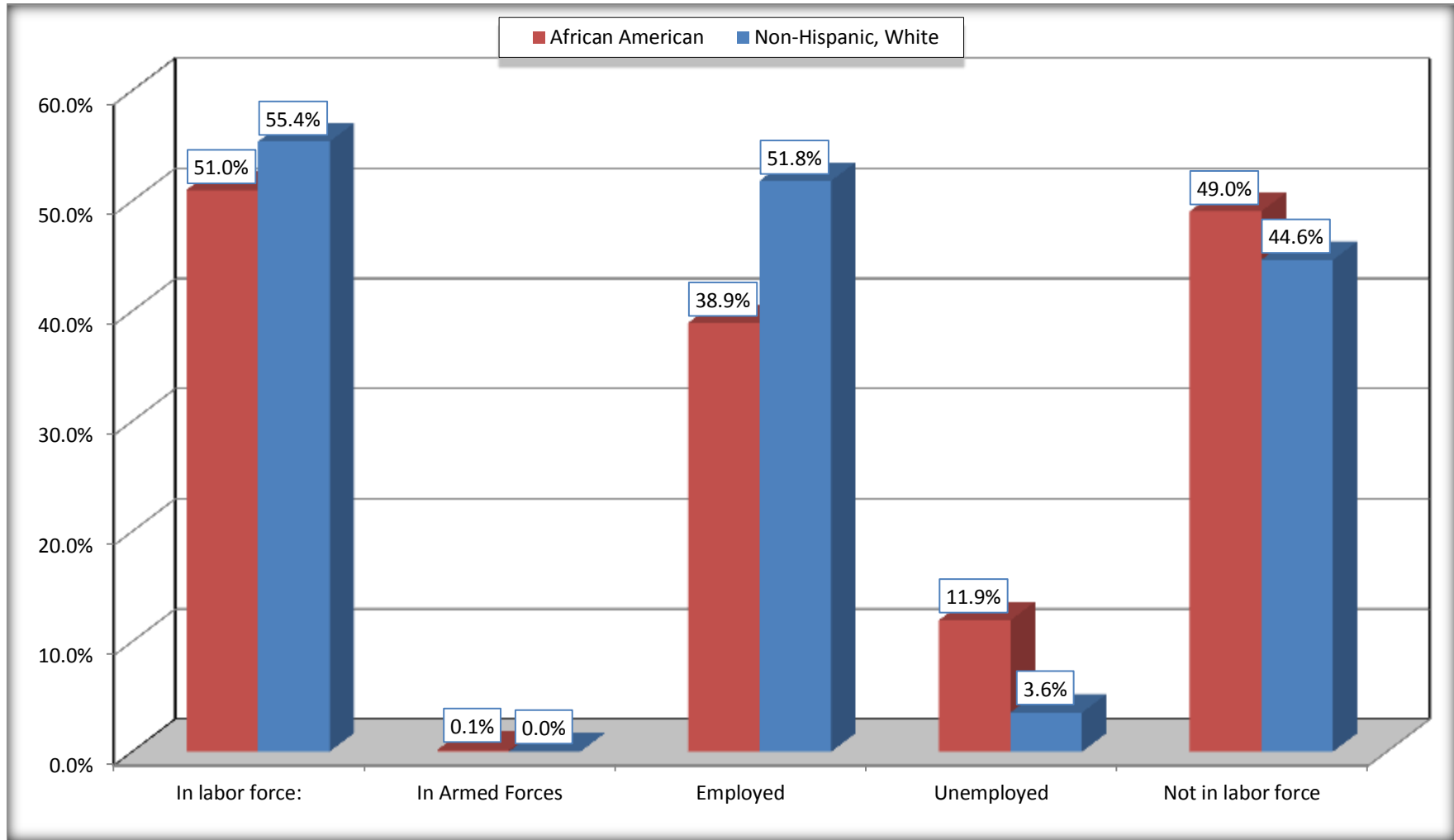
Source: U.S. Census Bureau, 2008-2012 American Community Survey

For information on confidentiality protection, sampling error, nonsampling error, and definitions, see Survey Methodology.

<http://www.census.gov/acs/www/UseData/index.htm>

Employment Status for the Population 16 years and over

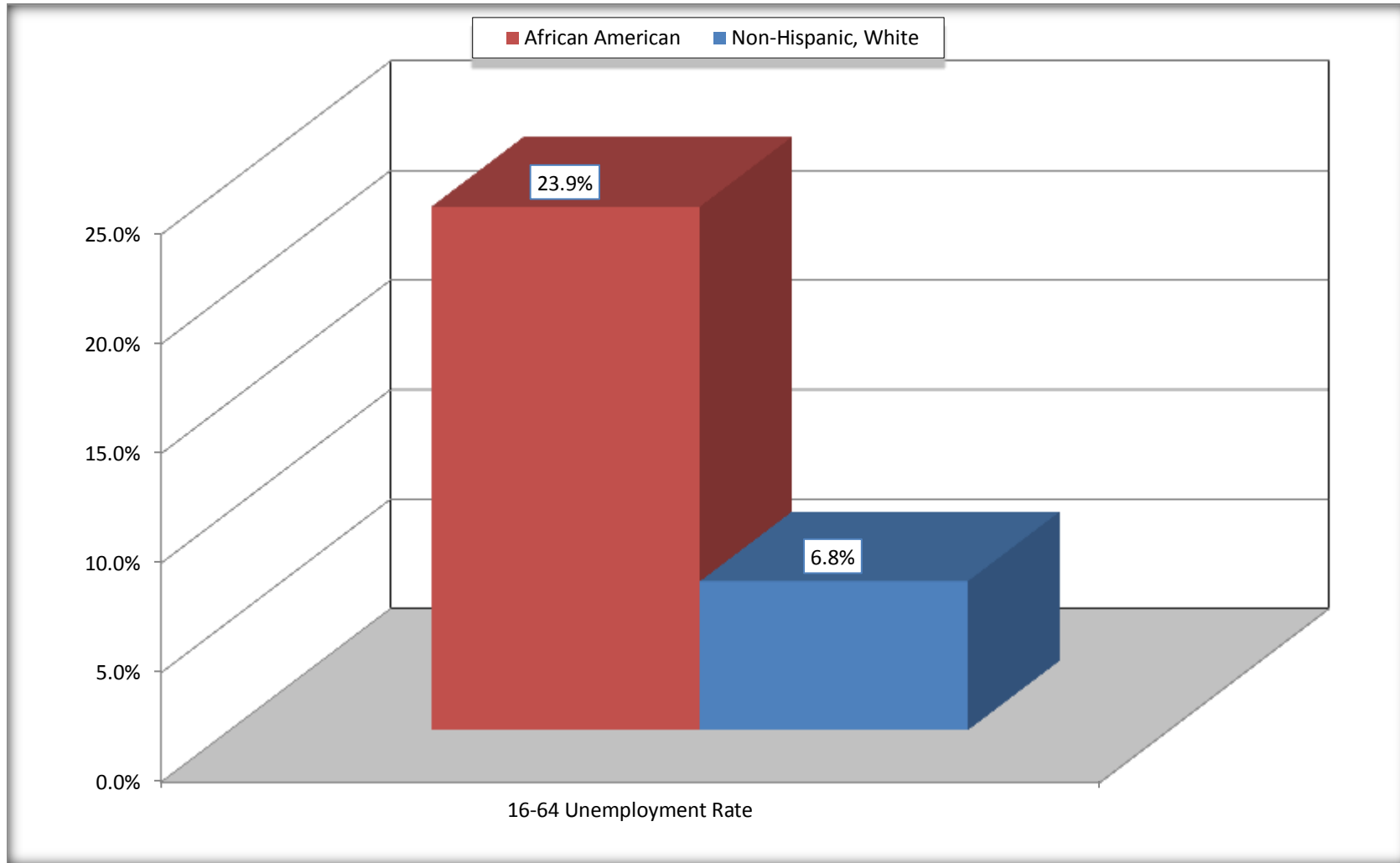
Hale County, Alabama



Source: C23002. SEX BY AGE BY EMPLOYMENT STATUS FOR THE POPULATION 16 YEARS AND OVER
Data Set: 2008-2012 American Community Survey 5-Year Estimates

Unemployment of Working Age Population (Ages 16 to 64) (As a Percent of 16-64 Civilian Labor Force)

Hale County, Alabama



Source: C23002. SEX BY AGE BY EMPLOYMENT STATUS FOR THE POPULATION 16 YEARS AND OVER
Data Set: 2008-2012 American Community Survey 5-Year Estimates

C24010. SEX BY OCCUPATION FOR THE CIVILIAN EMPLOYED POPULATION 16 YEARS AND OVER

Data Set: 2008-2012 American Community Survey 5-Year Estimates

	Hale County, Alabama					
	African American	Margin of Error (+/-)	% of AA Total	White, Not Hispanic	Margin of Error (+/-)	% of NHW Total
Total:	2,713	268	100.0%	2,656	197	100.0%
Management, professional, and related occupations	385	NC	14.2%	887	NC	33.4%
Service occupations	560	NC	20.6%	318	NC	12.0%
Sales and office occupations	635	NC	23.4%	612	NC	23.0%
Natural resources, construction, and maintenance occupations:	368	NC	13.6%	429	NC	16.2%
Production, transportation, and material moving occupations	765	NC	28.2%	410	NC	15.4%
Male:	1,250	187	46.1%	1,458	170	54.9%
Management, business, science, and arts occupations:	73	47	2.7%	391	109	14.7%
Service occupations	240	113	8.8%	144	68	5.4%
Sales and office occupations	175	71	6.5%	135	62	5.1%
Natural resources, construction, and maintenance occupations:	341	114	12.6%	413	114	15.5%
Production, transportation, and material moving occupations	421	113	15.5%	375	96	14.1%
Female:	1,463	179	53.9%	1,198	126	45.1%
Management, professional, and related occupations	312	114	11.5%	496	127	18.7%
Service occupations	320	98	11.8%	174	73	6.6%
Sales and office occupations	460	138	17.0%	477	113	18.0%
Natural resources, construction, and maintenance occupations:	27	26	1.0%	16	20	0.6%
Production, transportation, and material moving occupations	344	111	12.7%	35	32	1.3%

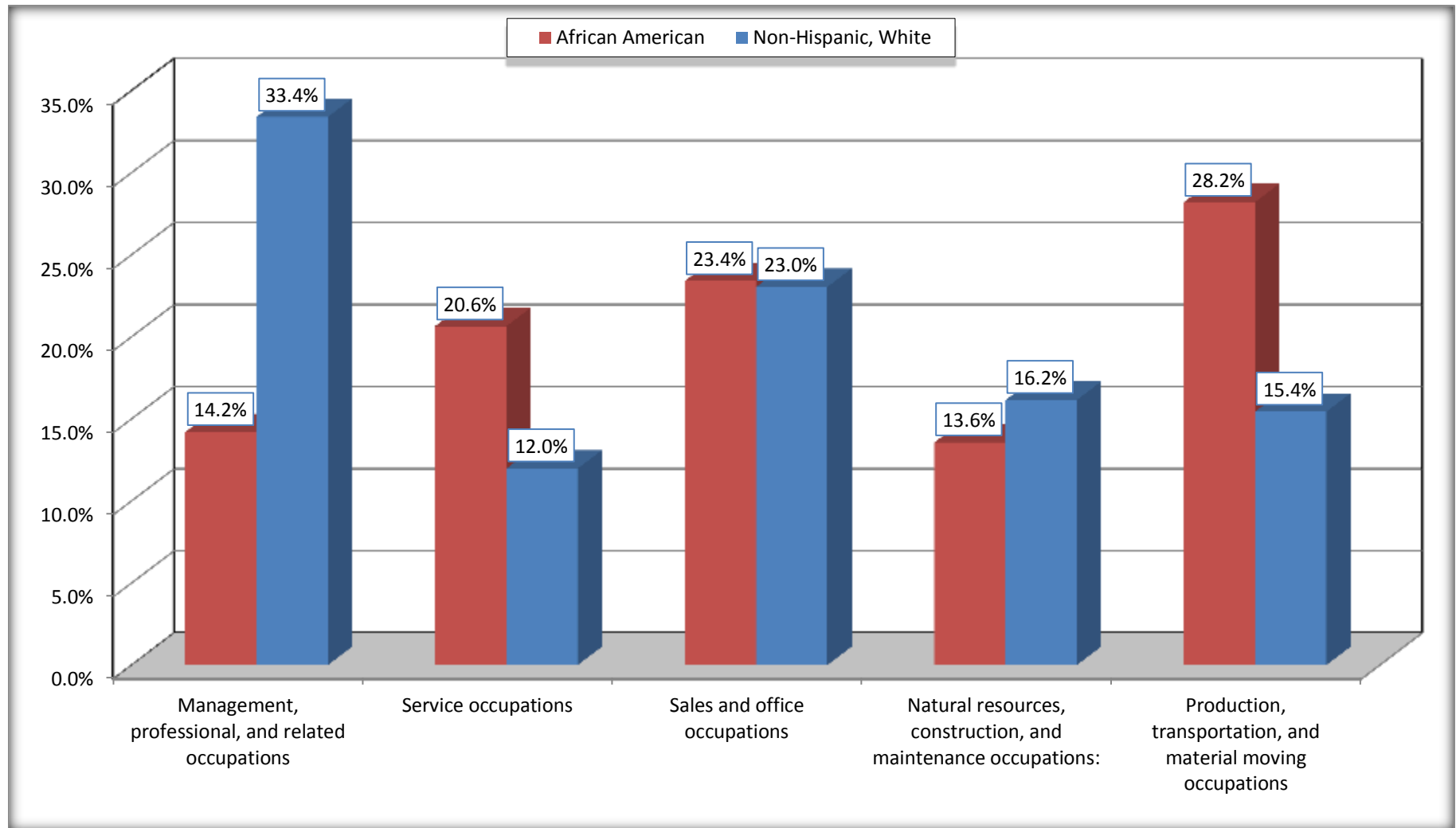
Source: U.S. Census Bureau, 2008-2012 American Community Survey

For information on confidentiality protection, sampling error, nonsampling error, and definitions, see Survey Methodology.

<http://www.census.gov/acs/www/UseData/index.htm>

Occupation for the Civilian Employed 16 Years and Over Population

Hale County, Alabama



Source: C24010. SEX BY OCCUPATION FOR THE CIVILIAN EMPLOYED POPULATION 16 YEARS AND OVER
Data Set: 2008-2012 American Community Survey 5-Year Estimates

B25003. TENURE - Universe: OCCUPIED HOUSING UNITS

Data Set: 2008-2012 American Community Survey 5-Year Estimates

	Hale County, Alabama					
	African American	Margin of Error (+/-)	% of AA Total	White, Not Hispanic	Margin of Error (+/-)	% of NHW Total
Total:	787	75	100.0%	2,468	126	100.0%
Owner occupied	397	100	50.4%	2,011	132	81.5%
Renter occupied	390	114	49.6%	457	109	18.5%

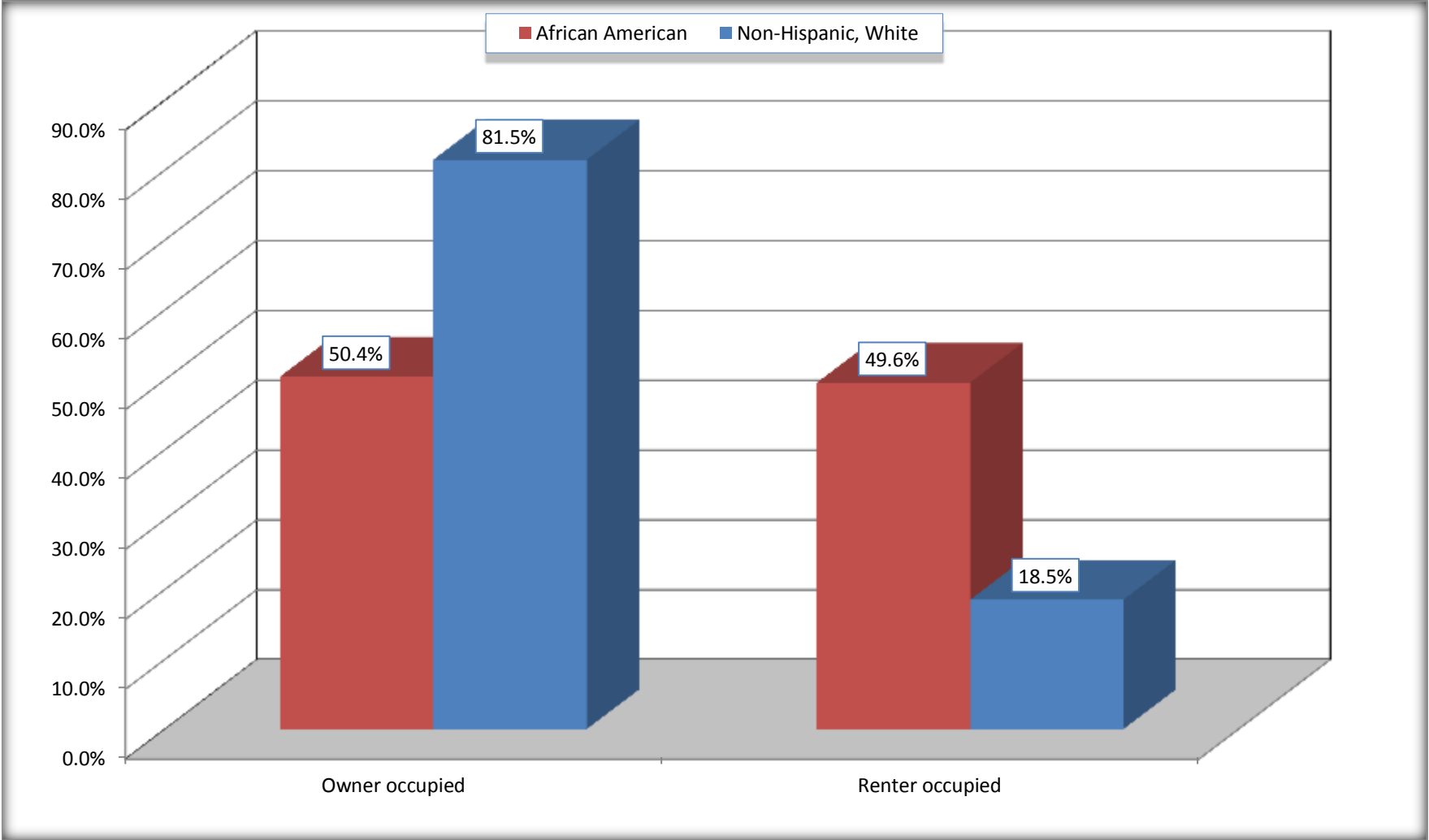
Source: U.S. Census Bureau, 2008-2012 American Community Survey

For information on confidentiality protection, sampling error, nonsampling error, and definitions, see Survey Methodology.

<http://www.census.gov/acs/www/UseData/index.h>

Home Owners and Renters by Household

Hale County, Alabama



Source: B25003. TENURE - Universe: OCCUPIED HOUSING UNITS
Data Set: 2008-2012 American Community Survey 5-Year Estimates

B25014. OCCUPANTS PER ROOM - Universe: OCCUPIED HOUSING UNITS

Data Set: 2008-2012 American Community Survey 5-Year Estimates

	Lamar County, Alabama					
	African American	Margin of Error (+/-)	% of AA Total	White, Not Hispanic	Margin of Error (+/-)	% of NHW Total
Total:	787	75	100.0%	2,468	126	100.0%
1.00 or less occupants per room	778	80	98.9%	2,438	125	98.8%
1.01 or more occupants per room	9	18	1.1%	30	35	1.2%

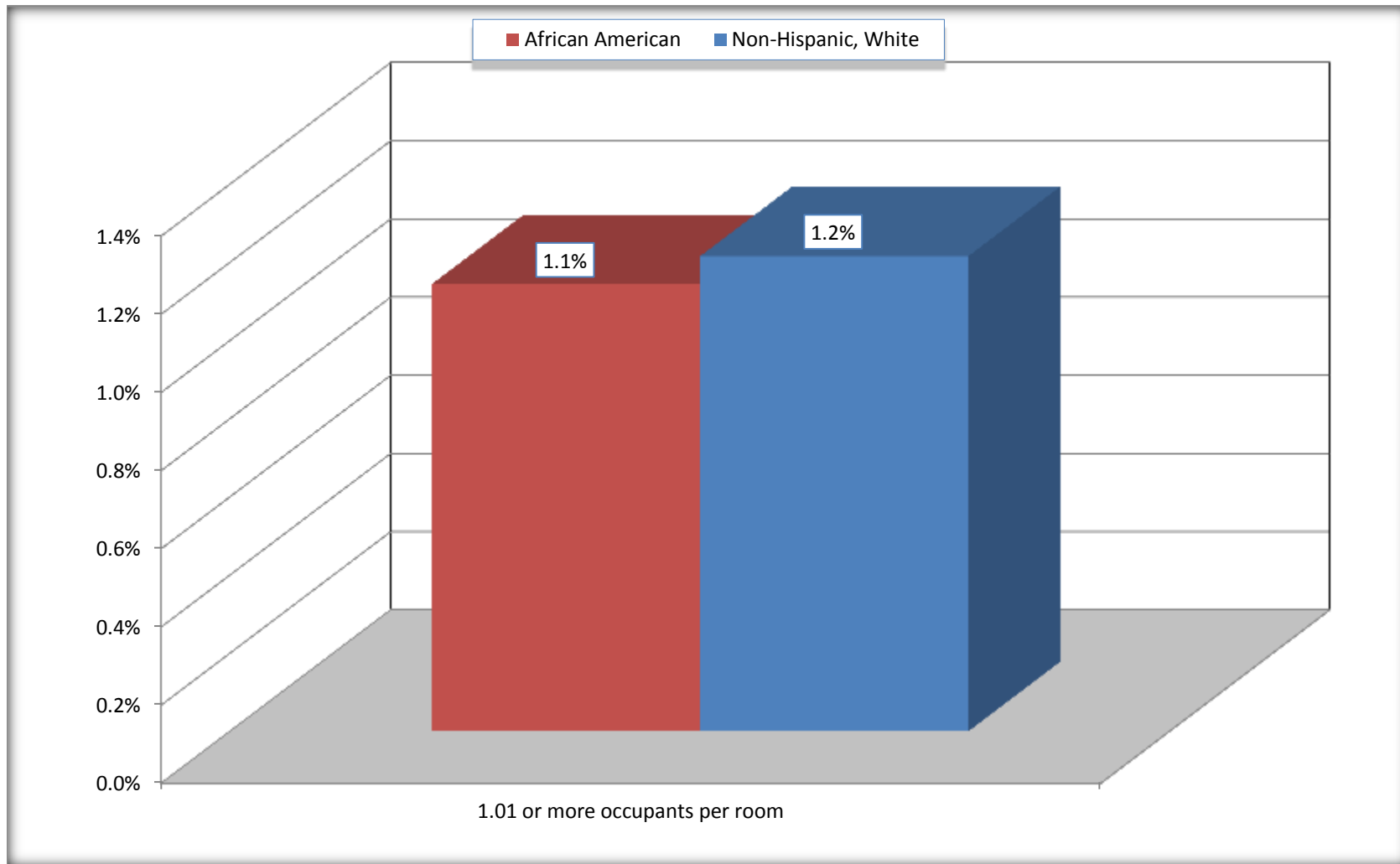
Source: U.S. Census Bureau, 2008-2012 American Community Survey

For information on confidentiality protection, sampling error, nonsampling error, and definitions, see Survey Methodology.

<http://www.census.gov/acs/www/UseData/index.ht>

More than One Person per Room (Crowding) by Household

Lamar County, Alabama



Source: B25014. OCCUPANTS PER ROOM - Universe: OCCUPIED HOUSING UNITS
Data Set: 2008-2012 American Community Survey 5-Year Estimates

B18101. AGE BY DISABILITY STATUS

Data Set: 2008-2012 American Community Survey 5-Year Estimates

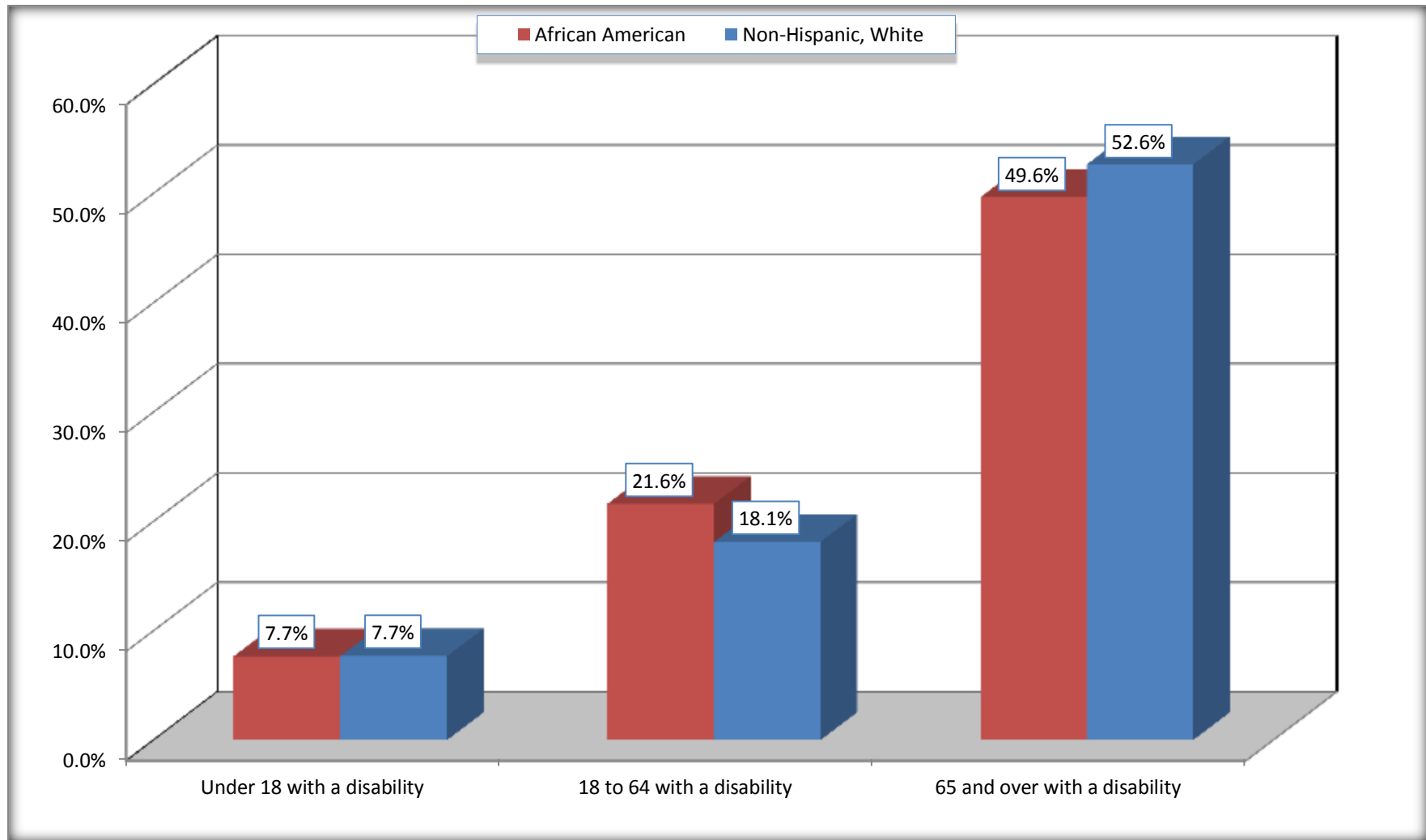
	Hale County, Alabama					
	African American	Margin of Error (+/-)	% of AA Total	White, Not Hispanic	Margin of Error (+/-)	% of NHW Total
Total:	9,168	130	100.0%	6,092	53	100.0%
Under 18 years:	2,598	53	28.3%	1,238	61	20.3%
With a disability	199	102	2.2%	95	74	1.6%
No disability	2,399	109	26.2%	1,143	74	18.8%
18 to 64 years:	5,456	86	59.5%	3,703	39	60.8%
With a disability	1,178	194	12.8%	671	165	11.0%
No disability	4,278	209	46.7%	3,032	173	49.8%
65 years and over:	1,114	42	12.2%	1,151	32	18.9%
With a disability	553	113	6.0%	606	108	9.9%
No disability	561	113	6.1%	545	106	8.9%

Source: U.S. Census Bureau, 2008-2012 American Community Survey

For information on confidentiality protection, sampling error, nonsampling error, and definitions, see Survey Methodology.

<http://www.census.gov/acs/www/UseData/index.htm>

Disability by Age Hale County, Alabama



Source: B18101. AGE BY DISABILITY STATUS
Data Set: 2008-2012 American Community Survey 5-Year Estimates

C27001B. HEALTH INSURANCE COVERAGE STATUS BY AGE

Data Set: 2008-2012 American Community Survey 5-Year Estimates

	Hale County, Alabama					
	African American	Margin of Error (+/-)	% of AA Total	White, Not Hispanic	Margin of Error (+/-)	% of NHW Total
Total:	9,168	130	100.0%	6,092	53	100.0%
Under 18 years:	2,598	53	28.3%	1,238	19	20.3%
With health insurance coverage	2,484	99	27.1%	1,238	19	20.3%
No health insurance coverage	114	81	1.2%	0	19	0.0%
18 to 64 years:	5,456	86	59.5%	3,703	39	60.8%
With health insurance coverage	3,911	240	42.7%	3,045	138	50.0%
No health insurance coverage	1,545	226	16.9%	658	134	10.8%
65 years and over:	1,114	42	12.2%	1,151	32	18.9%
With health insurance coverage	1,114	42	12.2%	1,151	32	18.9%
No health insurance coverage	0	19	0.0%	0	19	0.0%

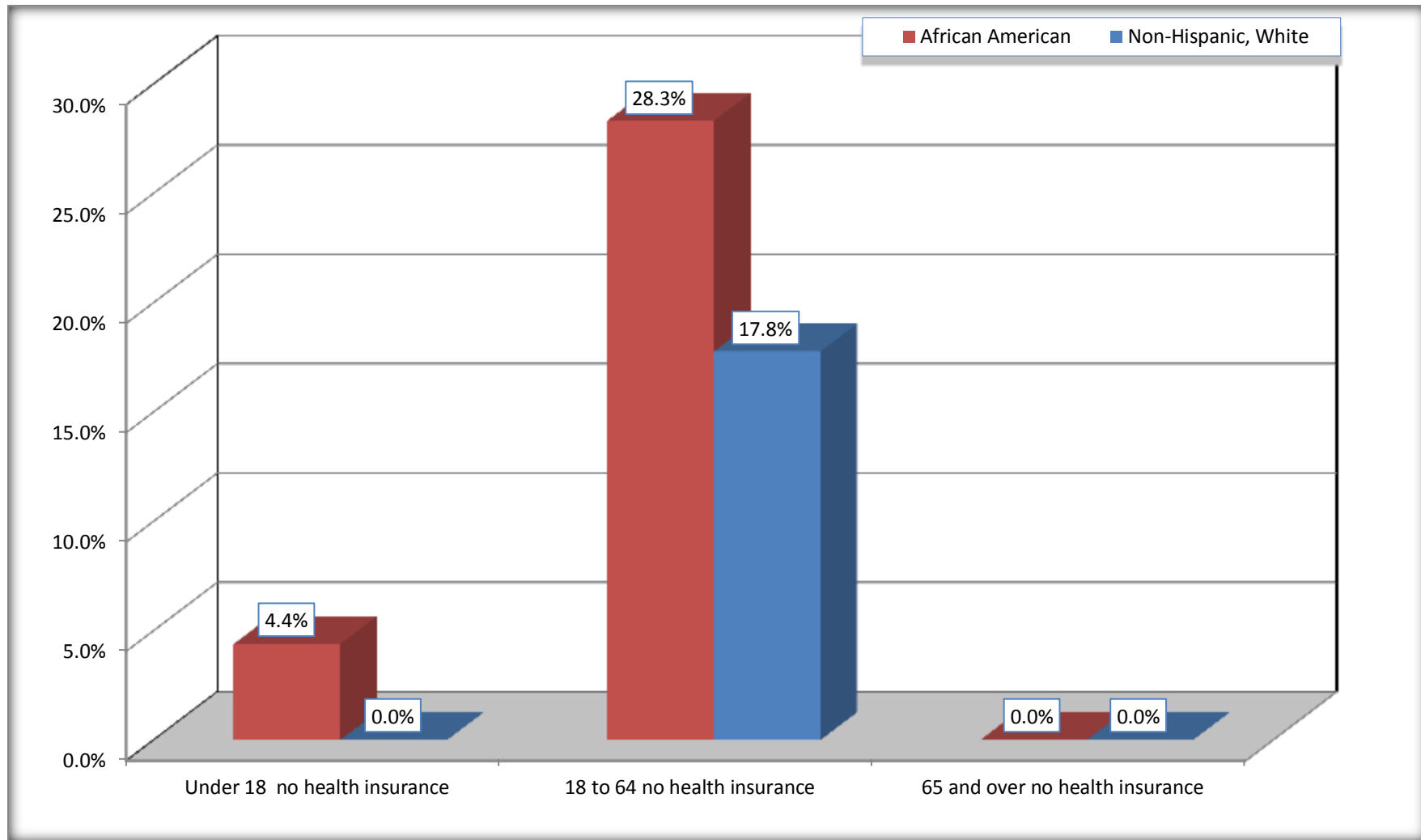
Source: U.S. Census Bureau, 2008-2012 American Community Survey

For information on confidentiality protection, sampling error, nonsampling error, and definitions, see Survey Methodology.

<http://www.census.gov/acs/www/UseData/index.htm>

Lack of Health Insurance Coverage by Age

Hale County, Alabama



Source: C27001B. HEALTH INSURANCE COVERAGE STATUS BY AGE
Data Set: 2008-2012 American Community Survey 5-Year Estimates